



THE OAR



'45

MUSIC
INSTRUMENTS

W. B. STICHEL
M. J. STICHEL
M. J. STICHEL

Digitized by the Internet Archive
in 2009 with funding from
Lyrasis Members and Sloan Foundation

<http://www.archive.org/details/oakyearb1945indi>

The Oak of 1945

State Teachers College, Indiana, Pa.

U
1905
1906

Contents

GUARDIANS OF OUR FUTURE

Administrators and Faculty

PEOPLE OF THE YEAR

Classes

Senior

Junior

Sophomore

Freshman

HIGHLIGHTS OF THE MONTH

Cultural Activities

Parties and Dances

EVENTS OF THE WEEK

Professional and Social Fraternities

Departmental and Religious Organizations

ACTIVITIES OF THE DAY

Athletics

Student Publications

Student Government

Classroom Activities



ATTRACTIONS OF THE HOUR

Beauties
Personalities
Student Organizations
Leisure Hour Opportunities on Campus

MINUTE MEN AND WOMEN

Men and Women in Service
Cadet Nurses on Campus
War Service Committees

SPLIT SECOND SHOTS AND SERVICES

Candids and Advertisements

Respectfully submitted by the student
staff of the 1945 OAK.

Betty Lee, Editor
Sue Single, Business Manager





HROUGHOUT the years the administration and faculty guide the students of Indiana State Teachers College. Always striving to meet individual needs, they extend a helping hand to each student struggling with social as well as scholastic problems. They work untiringly assisting every member in opening the doors of opportunity that lead to a better, brighter future. Without claim for recognition or honor, they patiently serve, offering wise counsel and encouragement where needed. The administration and faculty of Indiana are our guardians, not only of the present—but they are indeed Guardians of Our Future.

This



Mrs. Getty, Dr. Uhler

Dr. and Mrs. Uhler

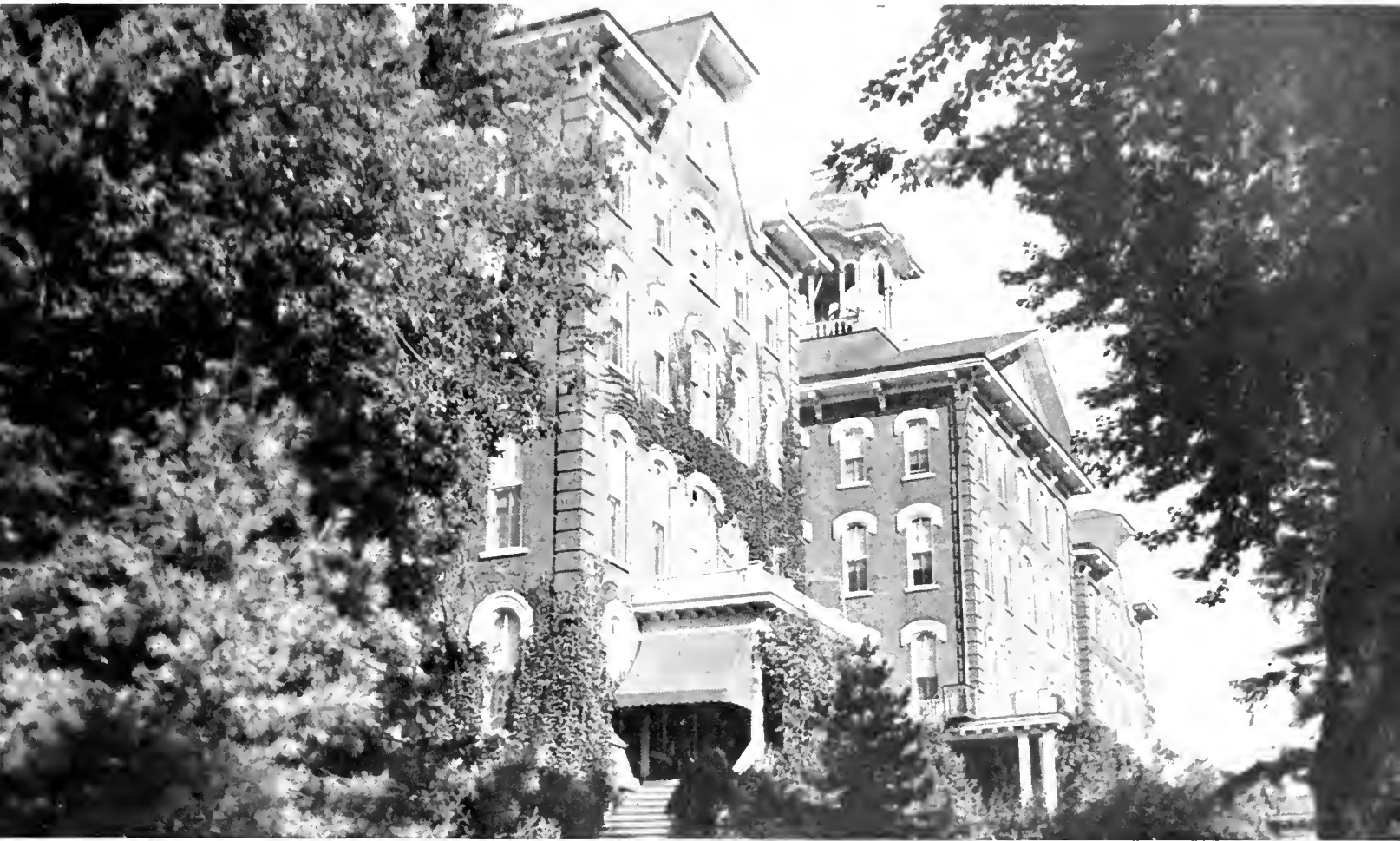


Leading the steps of the students to the paths of success as teachers we find our president and his aides, the faculty and the Board of Trustees. Through their democratic standards the Freshman is given confidence. By their invaluable advice and encouragement, by their sincere interest in his welfare and in developing his strengths, the Sophomore is aided in solving his problems. In their outstanding personalities the Junior sees a style to copy for getting along with others. From their life patterns of superior scholarship, integrity, progressive ideas and success, the Senior molds the form of his future. They are the keepers of the keys that unlock the doors to knowledge—a knowledge not based entirely upon books. They have uncomplainingly helped the student through many difficulties and rejoiced over his accomplishments. As the transition from shy Freshman to self-assured Senior was made so will the Senior change from a student of teaching to a teacher of students. We are proud of them—the Guardians of our Future.



Dr. Uhler

is our President . . .



. . . and our College

Deans and



Dr. Heiges,
Dean of Instruction



Mr. Beard,
Assistant Dean of Instruction

Dr Heiges, Dean of Instruction, is chiefly concerned with needs for teaching preparation under which come credit evaluation, courses of study, and departmental organization. His advice, both wise and friendly, accounts for his popularity.

In his years of dealing with college men and women, Dean Whitmyre has shown great ability in seeing matters from the point of view of the student. His versatility is exemplified by his position as Dean of Men, as well as head of the Social Studies Department and faculty advisor of the Student Council.



Mr. Davis,
Director of
Student Teaching.



Dr. Hall,
Assistant Dean of Women.



Mr. Shuster, Bursar.

Administrative Assistants

The assistant Dean of Women, Dr Dorcas Hall, devotes much time to aiding young women in the Y. W. C. A. and Non-Resident Women's League, and in sponsoring Vesper services. In addition to these many duties, she is a popular member of the faculty in the Social Studies Department.

To offer social guidance to the women of Indiana is one of the chief concerns of Miss Florence Kimball, Dean of Women. She is interested in the creative as well as the social development of the students as is shown by her participation on the Creative Arts Committee. In addition she sponsors the Panhellenic Association and the Resident Women's League.



Mr. Whitmyre, Dean of Men



Miss Kimball,
Dean of Women.



Miss Esch, Registrar.



Dr. File,
Central Treasurer of
Campus Organizations.



Mr. Woodring,
Treasurer of Student
Cooperative Association.

Our Faculty . . .



Risheberger, J. Davis, G. Davis, Beard,
Head of Department, Strong, Comp,
Chew.



Seated — Kough, Murdock, Zimmer-
man, Ayers, Duncan, Porter, Graham,
Gruber.

Standing — Smay, O'Toole, Borge,
Hort, D'Andreo, McLeon, Coughlin,
Davis, Director.

EDUCATION

The Education Department, with Mr. Ralph B. Beard as head, has recently made an analysis of the courses in education studying overlapping, gaps, or sequence of subject matter. A survey of the available references was made, followed by a suggestion that the library purchase additional material. A program was initiated this year whereby students are made familiar with important phases of educational organizations. The purpose and organization of the State department, accrediting agencies, and professional associations have been explained. The student learned to distinguish between the types of certificates; he learned specifically what he must do regarding his certificate, the kinds of degrees, and how they may be obtained. The Education Department offers courses that form the basis for teaching in all departments, regular or special.

SUPERVISING TEACHERS

Three years of the college students school days are spent in preparation for that most important phase—student teaching. While attending classes the foundation is laid upon which that final test of achievement is built. Upon becoming a senior he is placed in a new environment where his superior is not just a teacher but a supervising teacher. It is she who gives inspiration and guidance to the student teacher. During this period the subject matter and the theory of teaching are integrated with actual experience. Under this direction the prospective teacher learns to organize and plan classroom work, and is shown how to conduct the best possible school activity. The supervising teacher through individual conferences aids the student to capitalize upon his strengths and to minimize his weaknesses.

ELEMENTARY

For these results are the faculty of the Elementary Department striving: to send efficient, well-prepared elementary teachers into the public schools; to encourage specialization of these teachers in one or two fields rather than in general courses; to set up a logical sequence of courses that students may be better prepared. In former years it has been the practice of students in this department to take their electives in a wide range of subjects. This year the Elementary Department of which Mr. Ralph Beard is head has tried to encourage students to select their electives in a single field. In addition, a system has been set up whereby students must take courses in logical sequence. Through careful planning this process is facilitated by proper arrangement of student programs. This year the addition of Miss Laverne Strong, who replaced Miss Lillian McLean, has proven most satisfactory. Miss Strong came to Indiana from Richmond, Indiana, where she was the head of Elementary Education; she has also served as assistant to Dr. Betz, director of reading at Pennsylvania State College.



Mr. Beard, Head of Department.

SECONDARY

The Secondary Education Department prepares teachers for junior and senior high schools. In this department a student may choose to have certification in one or more fields: Social Studies, Mathematics, Foreign Languages, English, Geography, Science. There have been some temporary and permanent changes in the faculty and a continued shortage of male students due to wartime conditions, but the enrollment of the department has been increased again this year by the Nurse Cadet Corps. One group each semester filled the science, psychology, and sociology classes to capacity in addition to the special courses relative to the nursing profession. The Secondaries show versatility in many extra-curricular as well as curricular activities. Emphasis this year was placed on making preparations for the returning war veterans. Miss Joy Mahachek is the head of this department.



Miss Mahachek, Head of Department.

Guides to Learning . . .



Mrs. Bieghler



Boyts, Zinc, Acting Head of Department.

FOREIGN LANGUAGE

To enable the students to read, write, and speak the language in which they are interested is the major aim of the Foreign Language Department. Although stress is placed on skills, cultural information about the country whose language is being studied is also presented. The rising demand for people with such knowledge is attracting a larger number of students to this curriculum. To fulfill the demands courses have been opened to all who wish to broaden their education as well as to those who are seeking certification in this field. Mrs. Bieghler is substituting for Dr. Edward Bieghler who is serving in the armed forces.

GEOGRAPHY

The Geography Department, in addition to training specialists in geographic education, has aided in the war effort by offering courses in cartography, meteorology, commercial air transportation, and world problems. Commercial air transportation deals with such items as freedom of the air, ownership and control of airlines, strategic locations for bases and future air routes. World Problems in Geography takes up such items as the interpretation of news, the geographic background of changing boundaries, and the feeding of European refugees. A study of the history, interpretation, and special types of maps comprise an interesting and valuable new course.



Seated—MacDonald, Stabley, Head of Department,
Perkins.
Standing—Jones, Sterrett.

Barbor, Littlefield, Ridenour



ENGLISH

Personnel changes marked the year for the English Department. Three staff members were granted leaves of absence—Miss Margaret Stitt and Miss Ruth Knowles for the year, Mrs. Carrie Belle Norton for a semester. Replacing Miss Stitt were Dr. Reid Sterrett, Western Kentucky State Teachers College, for the first semester, and Dr. Abigail Boardman, New York University, for the second.

LIBRARY

During this college year it has been gratifying to see students using the library more and more. In order to provide some of the current fiction which many want to read, Student Council gave one-hundred dollars to establish a Rental Library which is proving popular. Several donations of money for the purchase of books have been appreciated.



Miss Mahachek,
Head of Department.

MATHEMATICS

The demand for trained teachers of mathematics has increased during the past year. In this field, as in industry, a girl adequately prepared has released a man for armed service on many occasions. Emphasis for both men and women teachers of mathematics has not only been placed on mathematics needed by youth for war service but also on that needed by an intelligent citizenry to meet the problem of democratic living.

SCIENCE

The Science Department trained approximately two hundred nurse cadets in addition to its work with the regular students. Science in the war was stressed in all classes where many substitute materials and synthetics were studied carefully. The physics classes, taught by Mr. McKelvey, were enlarged to meet the needs of those men who are returning from or entering military service. The newly reorganized laboratories have proven invaluable in research. Dr. Willis Bell was added to the faculty of the biological science department which had an increase in enrollment.



Seated— Iams, Emmert, Smythe, Head
of Department, Brenneman, Sall-
berger.

Standing— Dimit, Bell, McKelvey.

More Faculty



Seated—Wallace, Hall Belden.
Standing—Whitmyre, Head of Department, Jahnsen.

PHYSICAL EDUCATION

Although emphasis is placed on the technique of teaching health and physical education in the public schools, the health of the college student is also the concern of the Physical Education Department. In addition to these activities it also directs intramural sports, provides training in individual skills, gives instruction in Safety Education and in First Aid.

SOCIAL STUDIES

Studying the causes of increasing world turmoil and its effect upon future generations is of particular interest to the Social Studies Department. By delving into past history the roots of present day problems were found. Classes were made interesting with the discussion of social and political issues and current events. The aim of this department is to prepare teachers who are not only well informed in history of the past but who are keenly aware of the importance of current events.



Hamblen, Ellenberger, Miller, Head of Department, Dillan.



Seated—Reynolds, Murdock, Kipp, Head of Department, Gasslander

Standing—Smay.

Seated—File, Hill, Head of Department, Webb, Farrell

Standing—Drumheller, McLuckie.

Seated—Hastie, Duncan, Rhodes, Head of Department, Dennistan, Merriman.

Standing—Pecora, Secretary, Oxley, Finter, Hayes, Rose

Seated—Remsberg, Caulange, Feed, Beeler, Burge, Chettyette, Head of Department

Standing—Duckwall, D'Andrea, Hughes, Stitt, Jones.

ART

The enrollment of the Art Department is steadily increasing because of its established reputation for thorough preparation in art education. Its curriculum permits the prospective artist-teacher to specialize in one or more art fields while he is securing a broad cultural background in art and general education. This year more courses were opened to members of other departments. Among these were Theater and Industrial Arts. Exhibitions include the work of the faculty, of the students, and of artist members of the community. The success of the Art Department is reflected in the enviable records of its graduates.

BUSINESS EDUCATION

The Business Education Department is designed as one in which commercial teachers for the high schools of the Commonwealth may be trained. An excellent opportunity is available here for men and women who possess the ability, personality, and ambition requisite for success in this type of work. The practice department, equipped for efficient and up-to-date work with a full supply of modern office machines, includes not only the procedure but also the actual atmosphere and environment of the modern business world.

HOME ECONOMICS

All experiences, in or out of the classroom, are a part of the Home Economics picture. The tendency is toward an integration of general and vocational education emphasizing the social approach. A faculty composed of specialists dedicated to appreciating with students the experiences of a vital program in Home Economics makes this possible. Practical values are stressed in food preservation, meal planning, and the purchasing of household commodities. Care and direct observation of young children in the Nursery School, managerial experience in the cafeteria, and experience in Home Management House provide practice in this field.

MUSIC EDUCATION

The Music Education Department is founded on the aesthetic basis of producing musicians and music educators. In pursuance of the aims to present the best of music to the students, the Department teaches various subjects that tend to create fine musicianship. It not only offers academic courses in ear-training, harmony, and sight-reading, together with skill techniques in voice and all orchestral instruments, but also stresses the historical development of the art. Music for school programs is supervised by and often evolves directly from this department.

Speaking of Faculty . . .

By their words ye shall know them! (See page 151).

"Now gutterly speaking . . ."

"Trite!"

"Keep your eye on your dear teacher."

"This business of art . . ."

"I got a letter this morning from one of our boys in . . ."

"Now remember what I've said about the English and the Americans."

"Now get this, get this point Here's the meat in the thing."

"Notice, if you please."

"Remember I'm right; you're wrong"

(Calling roll) "Dr Cartwright, Reverend Kenton . . ."

"If you have a little spare time write a sonnet or two, a short story and a villanelle"

"Please see me at your earliest convenience."





MEETINGS, student, you're in the limelight! Yes, all attention is herein focused upon you, class member. Every year, your group—and you were in there pitching—has combined social service with social life. You helped sell bonds and stamps, you gave your blood, and even while planning that traditional class event of the year, you were checking the bank account to be certain that you could contribute more than your share to the Red Cross and W.S.S.F. Drives. Indiana salutes you. You are the People of the Year.



OFFICERS

President	Marian Templeton
Vice President	Neva Sparks
Treasurer	Dorothy Hammers
Secretary	Jean Huey
Assistant Secretary	Elaine Kautz
Sponsor	A. E. Drumheller

FOUR SHORT YEARS TOGETHER

In September 1941, three short months before that fateful day when war became something more than a headline in the newspapers, we launched our college careers at Indiana State Teachers College. Some of us had come to further our cultural education, a few came for social purposes, but we each had a definite goal in mind. Our class was a large one, and in spite of conscription we even had some boys start the journey with us. Most of the boys knew what lay ahead of them, but were determined to get a head start in their life work. Few of us harbored thoughts that war would interrupt our lives so completely. Such was our general make-up—we who were the last Freshmen to enter college before the United States went to war. The adjustment to college life was hard but by November that Frosh look was pretty well rubbed out. And then the rocking news came that changed the paths of so many. After December 7, 1941, the happy-go-lucky Freshman was gone. In his place a mature person stood; one who read the news frantically, unfolded maps eagerly, noticed the disappearance of the vengeful upperclassmen slowly take place. The boys finally found the induction center where they signed the papers that meant the postponement of their personal ambitions. Those who were not accepted immediately were placed in the reserve corps. We girls made a solemn, silent promise to continue in our chosen work devoting every possible second to the hastening of their return. It was quite a different class who said their 'so longs' in May—a sober, determined one.

THE SENIOR CLASS



Kautz, Templeton, Hammers, Sparks, Huey.

In September, a few more of the original members of the class were conspicuous by their absence. Those of us who did return devoted all our time and effort to the purpose of keeping that sacred for which our classmates were fighting—yes, even giving their lives so soon. A bond was formed by this common purpose that held the class closer than ever before. We worked out together the additional responsibilities we would shoulder to aid in the war effort. That year the Enlisted Reserve Corps of the Army and the Naval Reserve called to active duty many of the Sophomore boys.

By September, 1943, rationing, V-mail, A. P. O., Red Cross, U. S. O. became part of everyone's vocabulary. North Africa, Pearl Harbor, Guadalcanal, Corregidor became realities rather than place names, and the censor's stamp a matter of course, no longer a novelty. But still we worked on together—sharing our joys and heartaches.

And now it is May 1945. We are about to spread our influence about the world. The awe we felt as Freshmen returns; the purpose we had as Sophomores flames high within us; the cooperation we developed as Juniors and Seniors working toward the same goal binds us still. All of these, now part of us, we take with us as we enter the future. As we look back we find it has not been long. We have a life ahead of us: Problems to solve, decisions to make. But as we leave the campus, the faculty, and classmates we have learned to love, we regret that we have had but four short years together.





LILLIAN MABEL ADAMI

Indiana Secondary
Penn Staff, Newman Club, Secondary Education Club; Science Club

DOROTHY ADAMSON

Cheswick Elementary
Y. W. C. A.; Elementary Club; Winter Sports Club; Methodist Club; Leonard Literary Society; Resident Women's League.

PEARL CAROLINE ALSNAUER

Pittsburgh Home Economics
Y. W. C. A.; Home Economics Club; Winter Sports Club; Methodist Club; Intramurals: Basketball, Mushball, Volley Ball.

LILLIAN LUCILLE AMOND

Helvetia Home Economics
Y. W. C. A.; Home Economics Club; Winter Sports Club; Westminster League, President (4), Leonard Literary Society; Inter-Collegiate Conference on Government

HOPE APPEGATH

Ashland, Ohio Secondary
Sigma Sigma Sigma; Oak Staff; Student Council, President, 1944-45; Secondary Education Club; Methodist Club, "Finger of God;" Resident Women's League.

FERN IRENE AUMAN

Birdsboro Secondary
Y. W. C. A.; Secondary Education Club; Lutheran Club; Intramurals: Basketball; Resident Women's League; Non-Resident Women's League.

OPAL IRENE BADER

Turtle Creek Home Economics
Y. W. C. A.; Home Economics Club; Winter Sports Club; Lutheran Club; Intramurals: Rifle Club, Leonard Literary Society.

SARAH ELEANOR BAIR

Ruffsdale Secondary
Y. W. C. A.; Secondary Education Club; Leonard Literary Society; Non-Resident Women's League.

CARMEN BAKER

Altoona Elementary
Alpha Sigma Alpha; Y. W. C. A.; Elementary Club; Winter Sports Club; Leonard Literary Society; Advisory Board (3); Resident Women's League

MARY EMMA BARNHART

Bradford Woods Secondary
Sigma Sigma Sigma; Y. W. C. A.; Secondary Education Club; Winter Sports Club; Resident Women's League.

DOROTHY M. BECK

Indiana Music
Pi Kappa Sigma; Y. W. C. A.; Winter Sports Club, Band; Orchestra; Vesper Choir; Music Educator's Club; Girls' Chorus; Intramurals: Tennis, Swimming, Life Saving; Girls' Swing Band.

ALICE GERTRUDE BENNETT

Punxsutawney Secondary
Alpha Omega Geographers, Secretary-Treasurer (3); Y. W. C. A.; Newman Club; Secondary Education Club; Winter Sports Club; Intramurals: Basketball, Volley Ball; Non-Resident Women's League.

ADAMI

ALSNAUER

APPEGATH

BADER

BAKER

BECK

ADAMSON

AMOND

AUMAN

BAIR

BARNHART

BENNETT





Seniors

BIANCO
BLOOM
BORLAND
BROWN
BUCK
BURGOON

BLISSELL
BOLAND
BRAUGHT
BRUNO
BURCHFIELD
BYERS

ARLENE JOAN BIANCO

Homer City Elementary
Newman Club; Elementary Club; Non-Resident Women's League.

LLORAIN NICOLYN BLISSELL

Oil City Secondary
Delta Sigma Epsilon, Corresponding Secretary (4); Oak Staff, Penn Staff, Exchange Editor (3); Y. W. C. A.; Newman Club; Secondary Education Club, Winter Sports Club; "The Silver Card;" "The Golden Cross;" "Rich Man, Poor Man;" "The Finger of God."

HELEN BLOOM

Jahnstown Elementary
Y. W. C. A.; Elementary Club; Methodist Club.

KATHLEEN BOLAND

Indiana Business Education
Junior Chamber of Commerce.

ELIZABETH E. BORLAND

Indiana Business Education
Delta Sigma Epsilon, Vice President (4); Panhellenic Association, Scribe; Y. W. C. A.; Junior Chamber of Commerce; Winter Sports Club; Non-Resident Women's League, Secretary (3).

MARGARET HENRIETTA BRAUGHT

Coalport Business Education
Theta Sigma Upsilon, Treasurer (2); Panhellenic Association, Treasurer (3); Y. W. C. A.; Junior Chamber of Commerce; Winter Sports Club; Leonard Literary Society.

JEANNE BROWN

Pittsburgh Home Economics
Delta Sigma Epsilon; Home Economics Club; Y. W. C. A.; Winter Sports Club.

MARY BRUNO

Indiana Business Education
Kappa Delta Pi, Treasurer (4); Pi Omega Pi, President (4); Oak Staff, Business Manager (3); Newman Club, Treasurer (3); Student Council; Junior Chamber of Commerce, President (3); Who's Who in American Colleges and Universities.

MARIAN A. BUCK

Warmleysburg Music
Y. W. C. A.; Methodist Club; Bond; Vesper Choir; Music Educator's Club; Girls' Chorus.

ANNE BURCHFIELD

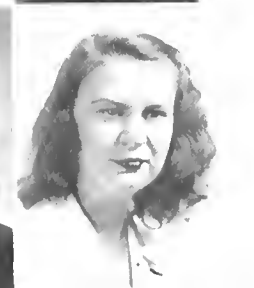
Jahnstown Art
Oak Staff, Penn Staff, Art Editor (4); Art Club; Winter Sports Club; Intramurals: Rifle Club.

DOROTHY ANNE BURGOON

Cresson Elementary
Newman Club; Elementary Club; Winter Sports Club.

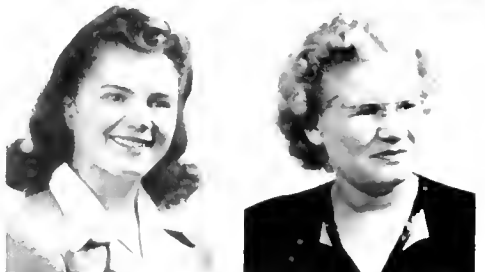
CLARA HOSFELD BYERS

Lampeter Art
Alpha Sigma Tau, Treasurer (2), Vice President (4); Panhellenic Association; Y. W. C. A.; Student Council; Art Club; Winter Sports Club; Leonard Literary Society; Cultural Life Committee.



Seniors

- | | |
|-------------|----------|
| BYERS | CAMPBELL |
| CAMPBELL | CHRIST |
| CHRISTOPHER | CIRANNI |
| COFFMAN | COMBS |
| CORL | COY |
| CRAWFORD | CROUSE |



STELLA M. BYERS

Indiana Business Education
Pi Kappa Sigma, Treasurer (3), President (4); Y. W. C. A.; Junior Chamber of Commerce; Winter Sports Club; Vesper Choir; Leonard Literary Society; "Uncle Harry;" Non-Resident Women's League, Panhellenic Representative.

ESTHER MAE CAMPBELL

Blairsville Home Economics
Y. W. C. A., Home Economics Club; Non Resident Women's League.

HELEN ELIZABETH CAMPBELL

Bellevue Home Economics
Y. W. C. A., President (3); Home Economics Club; International Relations Club; Erskin Club; Co-Chairman of Religious Enrichment Week (3), Girls' Chorus; Member of Campus Religious Life Committee; Delegate to Y. W., Y. M. Conference; Member of American Youth Foundation.

MARY JANE CHRIST

Kutztown Home Economics
Y. W. C. A., Home Economics Club; Lutheran Club, Secretary (2, 3)

VIRGINIA CHRISTOPHER

Grindstone Music
Y. W. C. A., Winter Sports Club; Presbyterian Club; Bond, Orchestra; Vesper Choir; Music Educator's Club; Girls' Chorus; Mixed Chorus; Resident Women's League.

CARMELA CIRANNI

Homer City Secondary
Newman Club; Secondary Education Club.

ALICE C. COFFMAN

New Salem Music
Y. W. C. A.; Student Council; Vesper Choir; Music Educator's Club; Girls' Chorus; Class Vice President (3); Resident Women's League, President (3), Advisory Board, Fire Drill Committee.

MARJORIE JEAN COMBS

Uniontown Business Education
Oak Staff, Penn Staff, Y. W. C. A., Junior Chamber of Commerce, Treasurer (3); Winter Sports Club; Intramurals: Volley Ball, Rifle Club; Leonard Literary Society.

ANGELA CORL

South Fork Home Economics
Y. W. C. A.; Newman Club; Home Economics Club.

BESSE SWANEY COY

Meadville Home Economics
American College Quill Club; Penn Staff, Y. W. C. A.; Home Economics Club; Lutheran Club; Intramurals: Volley Ball.

MARY ELIZABETH CRAWFORD

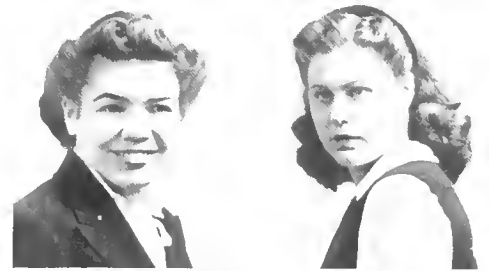
Apollo Elementary
Y. W. C. A.; Elementary Club; Winter Sports Club; Lutheran Club, Vice President (4); Intramurals: Basketball; W. A. A., President (3), Mushball, Volley Ball; Leonard Literary Society, "Burning Altar;" Swing Out.

RUTH CROUSE

Greensburg Secondary
Alpha Omega Geographers; Sigma Sigma Sigma; Y. W. C. A.; Secondary Education Club; Winter Sports Club; Methodist Club; Vesper Choir.

LOUISE CROZIER

Oil City Elementary
Theta Sigma Upsilon, Corresponding Secretary (2); Vice President (3); Y. W. C. A.; Elementary Club; Intramurals: Basketball, Volley Ball.



BETTY EUNICE CRUMM

Altoona Art
Sigma Sigma Sigma; Y. W. C. A.; Art Club; Elementary Club; Leonard Literary Society.

HARRIET ELIZABETH DANNER

Elwood City Art
American College Quill Club, President (4); Kappa Delta Pi; Y. W. C. A.; Art Club; International Relations Club.

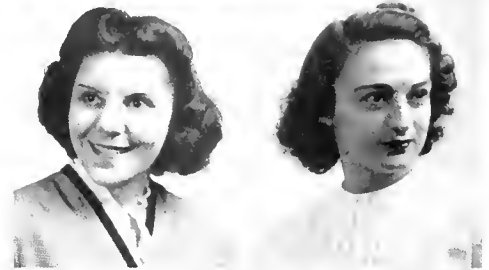


RUSSELL ROSS DEANER, JR.

Samersett Art
American College Quill Club; Sigma Tau Gamma, Chaplain (3); Y. M. C. A.; Art Club; Leonard Literary Society; "Uncle Harry;" Penn Staff; Eastern Art Association, President (4).

LLORA DE PETRO

Independence Home Economics
Penn Staff; Y. W. C. A.; Newman Club; Home Economics Club; W. A. A.; Religious Life Committee; Cultural Life Committee; Resident Women's League; Spiritual Enrichment Week League; Who's Who in American Colleges and Universities.



LAURA ANNA DESANTIS

Indiana Elementary
Elementary Club; Winter Sports Club; Erskine Club.

PEARL DEZZUTTI

Hyde Park Business Education
Pi Omega Pi; Penn Staff; Y. W. C. A.; Newman Club; Junior Chamber of Commerce; Winter Sports Club; "Summer Times."



GEORGE W. DOUGLASS, JR.

McMurray Secondary
Y. M. C. A.; Secondary Education Club, Treasurer (3); Winter Sports Club; Erskine Club; Band; Music Educator's Club; College Choir; Men's Glee Club; Intramurals: Basketball, Mushroom; Leonard Literary Society.

WILLIAM LEWIS DOVENSPIKE

Shippenville Music
Sigma Tau Gamma, Historian (2), House Manager (3); Band; Orchestra; Music Educator's Club; Intramurals: Badminton, Mushroom; "Burning Altar;" College Choir; Cultural Life Committee; String Orchestra; Men's Glee Club; College Dance Band, Leader.

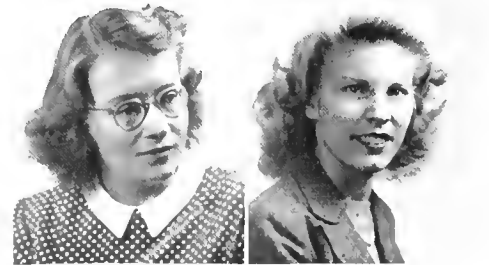


RUTHE S. EATON

Cambridge Springs Music
Y. W. C. A.; Winter Sports Club; Methodist Club; Band; Vesper Choir; Music Educator's Club; Girls' Chorus; Leonard Literary Society.

MARY JANE EICHLER

Northampton Home Economics
Pi Kappa Sigma; Y. Y. C. A.; Home Economics Club; Winter Sports Club; Lutheran Club; Band; Resident Women's League.



MARY JANE FISCUS

Indiana Music
Y. W. C. A.; Winter Sports Club; Erskine Club; Non-Resident Women's League; Band; Orchestra; Vesper Choir; Music Educator's Club; Girls' Chorus; Majorette.

CROZIER

CRUMM

DANNER

DEANER

DE PETRO

DE SANTIS

DEZZUTTI

DOUGLASS

DOVENSPIKE

EATON

EICHLER

FISCUS



Seniors



FLAHERTY GARRITY FOREMAN GERBER FOWLER GERHARDT FRANGOULIS GHIZZONI FREDERICK GIBSON GACH GOLDSTEIN

CATHERINE LOUISE FLAHERTY
Turtle Creek Home Economics
Y. W. C. A.; Newmon Club; Student Council; Home Economics Club; Winter Sports Club.

MARTHA CAROLYN FOREMAN
Soxton Music
Y. W. C. A.; Band; Vesper Choir; Music Educator's Club; Girls' Choir; Leonard Literary Society; Lutheran Club.

BETTY JEANNE FOWLER
Indiono Elementary
Delta Sigma Epsilon; Elementary Club; Winter Sports Club; Intramurals: Life Saving; Leonard Literary Society.

STELLA FRANGOULIS
Leechburg Business Education
P. Omega Pi; Penn Stoff; Y. W. C. A., Junior Chamber of Commerce; Winter Sports Club.

LILA JEAN FREDERICK
Ford City Elementary
Oak Staff; Y. W. C. A.; Elementary Club; Winter Sports Club; Methodist Club, Treasurer (3), Choplain (4); Girls' Charus; Intramurals: Basketball, Volley Ball.

BLANCHE GACH
Glen Campbell Business Education
Y. W. C. A.; Newman Club; Student Council; Junior Chamber of Commerce; Winter Sports Club; Leonard Literary Society.

MARY VIRGINIA GARRITY
Altoano Secondary
Alpha Omega Geographers; Sigma Sigma Sigma; Y. W. C. A.; Newman Club; Student Council; Secondary Education Club; Winter Sports Club.

THOMAS GERBER
Johnstown Secondary
Sigma Tau Gamma, Sergeant at Arms (2, 3), Assistant House Manager (3); Oak Stoff, Penn Stoff, Y. M. C. A., Vice President (3); Secondary Education Club; Winter Sports Club; Swimming team; Intromural: Swimming, Teach (3, 4), Life Saving, Religious Life Committee (3, 4); Resident Men's League; Wor Chest Drive.

NANCY JANE GERHARDT
Johnstown Art
Y. W. C. A.; Student Council; Art Club; Winter Sports Club; Leonard Literary Society; Class Secretary (2).

DOROTHY GHIZZONI
Homer City Business Education
Pi Omega Pi, Secretary (4); Oak Staff; Newman Club; Student Council; Junior Chamber of Commerce, Vice President (3); Non-Resident Women's League, Secretary-Treasurer (2).

CLARA LOUISE GIBSON
Blairsville Home Economics
Y. W. C. A.; Home Economics Club; Non-Resident Women's League.

DARRIEL HARRIET GOLDSTEIN
Altoano Home Economics
Home Economics Club; Winter Sports Club.



Seniors



GOSNELL
HARDY

GRAFF
HEID

GRIGSBY
HELFENBEIN

HAMMERS
HENCH

HAMMOND
HENRY

HARTMAN
HIPPI

MARY ARLOWYN GOSNELL

Saltsburg Secondary
Alpha Omega Geographers, Vice President (4); Penn Staff; Y. W. C. A.; Secondary Education Club; Non-Resident Women's League.

MARIE THERESA GRAFF

Indiana Secondary
Alpha Omega Geographers; Kappa Delta Pi; Alpha Sigma Tau, Secretary (4).

RUTHE GRIGSBY

Pittsburgh Elementary
Delta Sigma Epsilon; Panhellenic Association; Y. W. C. A.; Elementary Club; Winter Sports Club; Lutheran Club; W. A. A.; Intramurals: Rifle Club; Cheerleader (1, 2, 3); Coach Cheerleader at Laboratory School (1, 2, 3).

DOROTHY MAE HAMMERS

Indiana Business Education
Pi Kappa Sigma, Recording Secretary (4); Panhellenic Association, Scribe (3); Y. W. C. A.; Junior Chamber of Commerce; Winter Sports Club; Erskine Club; Girls' Chorus; Class Treasurer (4).

JANE HAMMOND

Spangler Secondary
Y. W. C. A.; Newman Club; Secondary Education Club; Biology Club, Treasurer.

VIRGINIA C. HARTMAN

Wilkinsburg Home Economics
Theta Sigma Upsilon, Vice President (2), President (4); Panhellenic Association; Student Council; Home Economics Club; Winter Sports Club; Intramurals: Tennis, Badminton; "Idiot's Delight;" Resident Women's League.

LOIS JEAN HARDY

Dunbar Secondary
Alpha Omega Geographers, President (4); Y. W. C. A.; Secondary Education Club; Winter Sports Club; Methodist Club; Intramurals: Basketball, Volley Ball.

LOIS HELEN HEID

Pittsburgh Elementary
Kappa Delta Pi; Y. W. C. A.; Elementary Club, Vice President (3), President (4); International Relations Club; Winter Sports Club; Methodist Club, Vice President (3); Intramurals: Basketball, Volley Ball; Who's Who in American Colleges and Universities.

PHYLLIS LEE HELFENBEIN

Braddock Secondary
American College Quill Club; Kappa Delta Pi; Oak Staff; Penn Staff, Associate Editor (3); Y. W. C. A.; Secondary Education Club; Winter Sports Club; Intercollegiate Conference on Government, Secretary (3); Vesper Chair; Intramurals: Rifle Club; Leonard Literary Society; Technical work in "Willow and I;" "The Man Who Came to Dinner;" "Night at an Inn;" Student Director, "Nine Girls;" Sophomore Customs Tribunal.

RACHEL E. HENCH

Dallastown Home Economics
Delta Sigma Epsilon; Y. W. C. A.; Home Economics Club; Winter Sports Club; Lutheran Club, Vice President (2), President (3); Cheerleader (2, 3); Girls' Swing Quartette.

ETHEL BLANCHE HENRY

Heilwood Secondary
Alpha Omega Geographers, Corresponding Secretary (4); Secondary Education Club; Methodist Club; Non-Resident Women's League; Intramurals: Basketball, Mushball, Volley Ball.

KATHERINE EILEEN HIPPI

Erie Elementary
Elementary Club; Newman Club; Winter Sports Club; Student Co-op; Y. W. C. A.



Seniors



HITE	HUEY
HUGHES	HULBERT
JABLONSKI	JOHNSTON
KAUTZ	KERR
KING	KISH
KNELLER	KOONTZ



PALMA M. HITE

Greensburg Elementary
Alpha Sigma Tau, Vice President (3), President (4); Y. W. C. A., Elementary Club; Winter Sports Club.

DOROTHY JEAN HUEY

Punxsutawney Business Education
Pi Omega Pi; Alpha Sigma Tau, Treasurer (2); Panhellenic Association; Y. W. C. A.; Student Co-op, Secretary-Treasurer (2); Winter Sports Club; Intramurals: Basketball; Resident Women's League, Senior Secretary.

ELIZABETH MARGARET HUGHES

Ardmore Home Economics
Y. W. C. A., Newman Club; Home Economics Club; Leonard Literary Society

HOWARD EUGENE HULBERT

Pittsburgh Music
American College Quill Club, Treasurer (3); Sigma Tau Gamma, Chaplain (2), President (3), Vice President (4); Penn Staff, Student Council, President (4); Student Co-op; Winter Sports Club, String Quartet, Band; Orchestra; Music Educator's Club, College Dance Band; Men's Glee Club; College Choir; Intramurals: Mushball; "Finger of God;" "Burning Altar."

FRANCES JABLONSKI

Ford City Home Economics
Kappa Delta Pi, Kappa Omicron Phi, President (4); Y. W. C. A., Home Economics Club, First Presbyterian C. C., Vice President (3).

BETTY JEAN JOHNSTON

Indiana Elementary
Kappa Delta Pi; Alpha Sigma Tau, Historian (3); Panhellenic Association; Elementary Club; Winter Sports Club; International Relations Club.

ELAINE ANN KAUTZ

Pittsburgh Elementary
American College Quill Club, Treasurer (3); Y. W. C. A., Cabinet (3); International Relations Club, Secretary (3); Erskine Club, Resident Women's League; Chairman, Spiritual Enrichment Week (3); Oak Personality (3, 4)

HELEN ELIZABETH KERR

Wilkinsburg Elementary
Oak, Penn; Y. W. C. A., Elementary Club; Winter Sports Club; Girls' Chorus.

GRACE VIRGINIA KING

Duquesne Elementary
Y. W. C. A.; Elementary Club; Winter Sports Club; Intramurals: Basketball, Mushball, Volleyball; W. A. A.

PEARL KISH

Monessen Art
Y. W. C. A.; Art Club; Intramurals: Mushball, Valley Ball.

MILDRED ELIZABETH KNELLER

Nazareth Home Economics
Y. W. C. A.; Home Economics Club; Winter Sports Club.

LENCRE KOONTZ

Johnstown Music
Kappa Delta Pi; Oak; Penn; Y. W. C. A.; Student Co-op; Methodist Club, President (3); Band; Orchestra; Vesper Choir; Music Educator's Club; Girls' Chorus; "Silver Chord" Stage Manager



KUNKLE
LICHY

LEE
LIGHTNER

LEISTER
LUSH

LEVERGOOD
McCORMICK

LI CASTRO
McDANIELS

LICHLITER
McDIVITT

MARTHA JANE KUNKLE
Export Secondary
Y. W. C. A.; Secondary Education Club; Winter Sports Club; Vesper Choir; W. A. A.; Intramurals; Basketball, Swimming, Volley Ball, Life Saving.

ELIZABETH LEE (SHERIDAN)
Windber Music
Y. W. C. A.; Winter Sports Club; Methodist Club, Secretary-Treasurer (4); Band; Orchestra; Vesper Choir; Music Educator's Club; Girls' Chorus.

JANET D. LEISTER
Huntington Music
Y. W. C. A.; Vesper Choir; Music Educator's Club; Girls' Chorus; Senior Chorus; Leonard Literary Society.

WANDA GRACE LEVERGOOD
Dickerson Run Home Economics
Alpha Sigma Alpha; Penn Staff; Y. W. C. A.; Home Economics Club; Winter Sports Club; Lutheran Club; Rifle Club; Junior Secretary.

MARY JEAN LICASTRO
Port Allegany Secondary
Alpha Sigma Alpha, Secretary (4); Y. W. C. A.; Newman Club; Secondary Education Club; International Relations Club; Winter Sports Club; Cultural Life Committee.

EMILY JANE LICHLITER
Salisbury Home Economics
Theta Sigma Upsilon; Y. W. C. A.; Panhellenic Association; Home Economics Club; Winter Sports Club.

RUTH LICHY
Mars Elementary
Y. W. C. A.; Elementary Club; Winter Sports Club; Methodist Club; Life Saving.

MARY C. LIGHTNER
Hollidaysburg Elementary
Y. W. C. A.; Elementary Club, Secretary (3); Winter Sports Club; Girls' Chorus; Life Saving.

LAURA MAE LUSH
Wellsboro Elementary
Pi Kappa Sigma, Vice President (3), Keeper of Archives (4); Y. W. C. A.; Student Council, Vice President (3); Elementary Club; Winter Sports Club; Leonard Literary Society; Who's Who in American Colleges and Universities, 1943-1944.

ELEANOR McCORMICK
Charleroi Elementary
Y. W. C. A.; Elementary Club; Winter Sports Club; Methodist Club; W. A. A.; Intramurals; Basketball, Mushball, Volley Ball; Leonard Literary Society Play Productions.

A LOUISE McDANIELS
Meyersdale Music
Y. W. C. A.; Band; Vesper Choir; Music Educator's Club; Girls' Chorus; Mixed Chorus; Methodist Club.

SARA JANE McDIVITT
Freeport Elementary
Alpha Sigma Alpha, Treasurer (3); Panhellenic Association, Treasurer (4); Y. W. C. A.; Student Council; Elementary Club; Winter Sports Club; Lutheran Club, Leonard Literary Society.





McFARLAND MAURO McGARVEY MAZZEI McQUADE MEEHAN MARINO MENTCH MARKEL F. MILLER MARLIN M. MILLER

PHYLLIS JEAN McFARLAND
Oil City Secondary
Sigma Sigma Sigma; Y. W. C. A.; Newman Club; Secondary Education Club; International Relations Club; Winter Sports Club; Intramurals. Ping Pong.

ERNESTINE ANNA McGARVEY
Coalport Home Economics
Y. W. C. A.; Home Economics Club.

MARGARET ANNE McQUADE
Cresson Art
Newman Club, Art Club; Winter Sports Club.

JOSEPHINE VIRGINIA MARINO
Clearfield Home Economics
Y. W. C. A., Newman Club, Vice President (3); Student Co-op.; Winter Sports Club; Leonard Literary Society.

GLORIA MARKLE
Jeannette Business Education
Junior Chamber of Commerce, Newman Club; Y. W. C. A.

ALICE JOAN MARLIN
Clymer Home Economics
Delta Sigma Epsilon; Y. W. C. A.; Home Economics Club, Corresponding Secretary (1); Winter Sports Club.

ALBERT PETER MAURO
Jeonette Secondary
Phi Sigma Pi, Chaplain, (3); Newman Club; Secondary Education Club; International Relations Club, President (3); Winter Sports Club; Baseball; Basketball; Intramurals: Rifle Club; Varsity "I" Show; Laboratory School Coach; "Uncle Harry."

MARY ELODIA MAZZEI
Ellwood City Secondary
Oak Staff, Assistant Editor, (4); Y. W. C. A.; Newman Club, Secondary Education Club; W. A. A.; Intramurals: Basketball, Volley Ball.

MARY LOUISE MEEHAN
Indiana Secondary
Secondary Education Club; Non-Resident Women's League

MARY ELLAJEAN MENTCH
Calver Elementary
Y. W. C. A.; Elementary Club; Winter Sports Club, Intramurals: Basketball, Mshball, Volley Ball; Leonard Literary Society Production Staff.

FRANCES LOUISE MILLER
Leechburg Home Economics
Alpha Sigma Tau, Historian (2), President (3); Y. W. C. A., Student Council; Home Economics Club, Secretary (2); Winter Sports Club; Lutheran Club; Panhellenic Association, Resident Women's League, Vice President (3); Leonard Literary Society; "Burning Altar;" Oak Beauty, 1944; Home Economics Convention Delegate, Student Council Conference Delegate.

MARGARET ELIZABETH MILLER
Bloirsville Elementary
Elementary Club; Non-Resident Women's League.





Seniors

MITCHELL
MOSTLER
MYSLIVY
NELSON
OFFNER
OPRIS

MONFREDO
MUSSER
NEHLS
NORRIS
OLSON
ORANGE

MARY LOUISE MITCHELL

Pittsburgh Home Economics
Penn, Y. W. C. A.; Home Economics Club; Intramurals: Basketball, Tennis, Volley Ball; "Idiot's Delight," "Christmas Nativity."

VIOLA AUDREY MONFREDO

Universal Secondary
Kappa Delta Pi; Penn Staff; Newman Club; Secondary Education Club; Winter Sports Club; Resident Women's League; Intercollegiate Conference on Government, Vice President (4); Honor Roll Dedication.

BETTY JANE MOSTLER

Pittsburgh Secondary
Kappa Delta Pi; Alpha Sigma Alpha, Treasurer (2); Secondary Education Club, Secretary (2, 4); International Relations Club; Winter Sports Club; Who's Who in American Universities and Colleges (3); Resident Women's League.

NANCY HELEN MUSSER

Tyrone Art
Oak; Y. W. C. A.; Art Club; Winter Sports Club.

FRANCES MYSLIVY

Bornesboro Elementary
Y. W. C. A.; Newman Club; Elementary Club.

MARY JANE NEHLS

Somerset Art
Sigma Sigma Sigma; Oak, Assistant Art Editor (3); Y. W. C. A.; Art Club; Winter Sports Club; Volley Ball; Leonard Literary Society.

DORIS ERWIN NELSON

Aliquippo Business Education
Y. W. C. A.; Junior Chamber of Commerce; Winter Sports Club; W. A. A.; Volley Ball; Majorette.

RUTH REYNOLDS NORRIS

Jahnstown Elementary
Elementary Club; Methodist Club; Winter Sports Club; Y. W. C. A.; Intramurals.

JEAN OFFNER

Edinboro Business Education
American College Quill Club, Penn, Editor (3); Y. W. C. A.; Junior Chamber of Commerce; Winter Sports Club; Girls' Chorus.

RUTH LUCILLE OLSON

Blairsville Elementary
Elementary Club; Methodist Club; Non-Resident Women's League.

MARGARET V. OPRIS

Glassport Business Education
Theta Sigma Upsilon; Oak; Newman Club; Junior Chamber of Commerce; Winter Sports Club; Intramurals: Basketball, Mushball, Volley Ball.

REBECCA ORANGE

Indiana Secondary
Alpha Sigma Tau, Secretary (3); Secondary Education Club; Winter Sports Club; W. A. A.; Volley Ball; Junior Class Treasurer.





Seniors

PARTINGTON	POPSON
PORTER	RACE
RETZER	RICH
RICHARDSON	ROBERTS
ROBINSON	ROCERETO
ROLSTON	ROWE

ESTHER PARTINGTON

Pittsburgh Home Economics
Y. W. C. A., Winter Sports Club; Home Economics Club; Episcopal Club, Leonard Literary Society.

PEGGY POPSON

Nemacolin Home Economics
Y. W. C. A.; Newman Club; Home Economics Club, Vice President (3), Winter Sports Club.

MAXINE PORTER

Indiana Art
Alpha Sigma Tau, Corresponding Secretary (3); Art Club, President (3); Volley Ball.

NANCY LOUISE RACE

Indiana Secondary
Kappa Delta Pi; Sigma Sigma Sigma, Treasurer (3), Secondary Education Club; International Relations Club; Winter Sports Club; Leonard Literary Society; Non-Resident Women's League; Christmas Pageant; "Idiot's Delight," "The Silver Cord," "Nine Girls;" "Uncle Horry."

MARY LENORE RETZER

Hickory Home Economics
Sigma Sigma Sigma, Treasurer (3); President (4); Oak; Penn, Y. W. C. A., Home Economics Club.

JOSEPHINE RICH

Uniontown Business Education
Pi Omega Pi, Treasurer (4); Penn, Editor (3); Y. W. C. A.; Newman Club; Junior Chamber of Commerce, Corresponding Secretary (3), Winter Sports Club; Intercollegiate Conference on Government, Vice President (3), Resident Women's League.

VIVIEN RICHARDSON

Portage Elementary
Y. W. C. A.; Elementary Club; Volley Ball.

SARA MAE ROBERTS

Indiana Elementary
Y. W. C. A.; Student Council; Elementary Club; Winter Sports Club; Elementary Council; Non-Resident Women's League, President (3).

ELIZABETH F. ROBINSON

New Castle Music
Y. W. C. A.; Winter Sports Club; Methodist Club; Band; Vesper Choir; Music Educator's Club; Girls' Chorus; Senior Choir.

GLORIA MAE ROCERETO

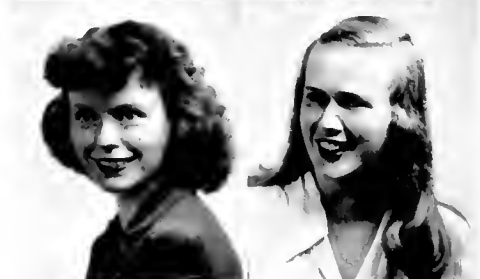
Pittsburgh Music
Kappa Delta Pi, Corresponding Secretary (4); Newman Club; Student Council; Band; Vesper Choir; Music Educator's Club, Girls' Chorus; Mixed Chorus.

GRACE ELIZABETH ROLSTON

Indiana Music
Kappa Delta Pi, Vice President (4); Y. W. C. A., Cabinet (3); International Relations Club, President (4); Winter Sports Club; Methodist Club; Band; Orchestra; Music Educator's Club; Girls' Chorus; Mixed Choir, Student Christian Movement, Campus War Chest, Chairman (3).

LEOLA ROWE

Indiana Music
Kappa Delta Pi, President (4); Pi Kappa Sigma, Assistant Treasurer (4); Y. W. C. A.; International Relations Club; Band, Orchestra; Music Educator's Club, President (3); Girls' Chorus; Mixed Chorus; "Silver Cord," Representative Eastern States Teachers College Conference (3).





GRACE RUFFING
 Portage Home Economics
 Y. W. C. A.; Newman Club; Home Economics Club, Winter Sports Club.



ROSEMARY RUPPERT
 Pittsburgh Business Education
 Pi Omega Pi; Theta Sigma Upsilon, Treasurer (3, 4); Oak Staff; Newman Club, Historian (3); Junior Chamber of Commerce; Winter Sports Club, Intramurals: Basketball, Mushball, Volley Ball.

MARY JANE RUSSELL
 Connellsville Elementary
 Alpha Sigma Alpha; Y. W. C. A.; Elementary Club, Winter Sports Club; Methodist Club, Outdoor Biology Club, President.

ROSE SANTUCCI
 Windber Business Education
 Penn, Y. W. C. A., Newman Club; Junior Chamber of Commerce; Winter Sports Club; Band Majorette; Basketball; Resident Women's League.



LOIS M. SCHORR
 Duquesne Home Economics
 Pi Kappa Sigma, Recording Secretary (2); Newman Club; Home Economics Club; Winter Sports Club.

ROBERTA JANE SHAFFER
 Harrisburg Home Economics
 Alpha Sigma Alpha, Registrar (3); Y. W. C. A., Student Council; Home Economics Club, Treasurer (2); Student Co-op.; Winter Sports Club; Lutheran Club; Band; Volley Ball.



BETTY JANE SHIVELEY
 New Brighton Business Education
 Y. W. C. A., Junior Chamber of Commerce, Winter Sports Club; Intramurals: Volley Ball, Rifle Club.

SUE SINGLE
 Dunlc Business Education
 Pi Omega Pi; Oak, Business Manager (4); Newman Club, Vice President (4); Junior Chamber of Commerce; Rifle Club.



KATHRYN ELIZABETH SKINNER
 Dry Run Home Economics
 Kappa Omicron Phi, Guard (3), Delegate (3), Keeper of Archives (4); Y. W. C. A.; Home Economics Club; Presbyterian Club; Girls' Chorus (2); "Burning Altar," Delegate to Camp Kanesotake.

MARGARET ANNABEL SMITH
 Blairsville Elementary
 Elementary Club; Non-Resident Women's League.

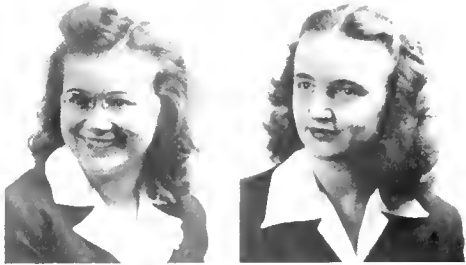
ISABEL SMITH
 Blairsville Elementary
 Elementary Club; Non-Resident Women's League.



PHYLLIS B. SNYDER
 Glassport Elementary
 Y. W. C. A.; Elementary Club; Winter Sports Club; Leonord Literary Society; Biology Club.

RUFFING
 RUSSELL
 SCHORR
 SHIVELEY
 SKINNER
 I. SMITH
 RUPPERT
 SANTUCCI
 SHAFFER
 SINGLE
 A. SMITH
 SNYDER





NEVA DAWN SPARKS
 Scottdale Home Economics
 Kappa Omicron Phi, Treasurer (3), Guard (4); Kappa Delta Pi; Home Economics Club; Student Council; Resident Women's League; Winter Sports Club; Presbyterian C. C., Treasurer (3); Vice President, Senior Class; Y. W. C. A.

BILLIE SPEELMAN
 Turtle Creek Secondary
 Sigma Sigma Sigma; Y. W. C. A.; Secondary Club; Winter Sports Club; Leonard Literary Society; "The Willow and I;" "Uncle Harry."

IVA JEAN SPROUL
 Ohiapyle Home Economics
 Y. W. C. A.; Home Economics Club; Methodist Club.

MARJORIE LOUISE STRAITIFF
 Punxsutawney Business Education
 Y. W. C. A.; Junior Chamber of Commerce; Winter Sports Club; Resident Women's League; Intramurals: Basketball, Volley Ball.

MARIAN M. TEMPLETON
 Pittsburgh Music
 Kappa Delta Pi, Recording Secretary (4), Pi Kappa Sigma, Treasurer (4); Y. W. C. A.; Student Council, International Relations Club; Winter Sports Club; Methodist Club; Band, Orchestra, Music Educator's Club; Girls' Chorus; Mixed Choir; Leonard Literary Society; Resident Women's League.

JANET PATTON THOMPSON
 Mount Pleasant Art
 Y. W. C. A., Art Club; Winter Sports Club, Tennis; Leonard Literary Society.

ELIZABETH IMOGENE TRUXEL
 Mount Pleasant Music
 Y. W. C. A., Band, Vesper Choir, Music Educator's Club; Girls' Chorus; Life Saving, Leonard Literary Society.

MARGERY WALLACE
 Marion Center Elementary
 Y. W. C. A., Elementary Club, Treasurer (3); Non-Resident Women's League; Cultural Life Committee.

ROXLINA WALTERS
 Carmichaels Home Economics
 Y. W. C. A., Student Council; Home Economics Club; Winter Sports Club; Intramurals, Basketball, Volley Ball; Resident Women's League.

FRANCES T. WASCZNICK
 Belle Vernon Business Education
 Y. W. C. A.; Junior Chamber of Commerce.

ANNE ESTHER WEAVER
 Pittsburgh Elementary
 Kappa Delta Pi, Pi Kappa Sigma, President (3), Vice President (4); Y. W. C. A., Elementary Club, Council (3); Winter Sports Club, International Relations Club, Vesper Chair, Girls' Chorus, Swimming Instructor (2, 3, 4); Life Saving Instructor (2, 3, 4); Girl Scout Leader; Handbook Committee; Methodist Club.

LAURA E. WEIGLE
 Mechanicsburg Home Economics
 Delta Sigma Epsilon, Y. W. C. A.; Home Economics Club, Lutheran Club.

SPARKS
 SPROUL
 TEMPLETON
 TRUXEL
 WALTERS
 WEAVER

SPEELMAN
 STRAITIFF
 THOMPSON
 WALLACE
 WASCZNICK
 WEIGLE



Seniors



WENGER
M. WOLF



WHETSTONE
D. WOLFE



F. WILLIAMS
WRIGHT



T. WILLIAMS
YOUNG



WILLIAMSON
YUKSIC



ARLENE LOUISE WENGER
Reading Business Education
Pi Omega Pi; Oak; Y. W. C. A.; Junior Chamber of Commerce; Winter Sports Club; Lutheran Club; Intramurals: Basketball, Volley Ball; Resident Women's League.

ANITA WHETSTONE
Oysterburg Home Economics
Home Economics Club, Treasurer (3); Lutheran Club; Y. W. C. A.

FAYE WILLIAMS
Indiana Secondary
Secondary Education Club; Non-Resident Women's League.

THOMAS WILLIAMS
Butler Secondary
Secondary Education Club; "The Golden Cross."

MARJEANNE WILLIAMSON
Aliquippa Home Economics
Alpha Sigma Tau; Y. W. C. A.; Home Economics Club, President (3), Convention Delegate (3); Winter Sports Club; Leonard Literary Society.

MARGARET ANN WOLF
Hallidaysburg Elementary
Sigma Sigma Sigma; Y. W. C. A.; Elementary Club; Winter Sports Club; Leonard Literary Society.

DOLORES ELIZABETH WOLFE
Everett Elementary
Y. W. C. A.; Elementary Club, Council (3, 4); Winter Sports Club; Non-Resident Women's League; Red Cross Committee.

MAIRA J. WRIGHT
Ebensburg Secondary
Delta Sigma Epsilon, Corresponding Secretary (3), Vice President (4); Penn; Y. W. C. A., Vice President (3); Secondary Education Club; International Relations Club, Rifle Club; Cheerleader (1, 2, 3).

BESSIE MARIE YOUNG
Rimersburg Home Economics
Kappa Omicron Phi; Y. W. C. A.; Home Economics Club; Methodist Club; Volley Ball.

SARA YUKSIC
Ruffsdale Music
Theta Sigma Upsilon, Corresponding Secretary (3, 4); Y. W. C. A.; Band; Vesper Choir; Music Educator's Club, Secretary (3); Girls' Chorus; Mixed Chorus; Intramurals: Basketball, Mushball, Volley Ball.



Dignified . . .

BUT NOT PERSONIFIED



OFFICERS

President	Helen Berner
Vice President	Evelyn Kuhns
Secretary	Lucy Quinn
Treasurer	Ellen Mae Sayers
Sponsor	Laura Remsburg

Following their established reputation as a group which accomplishes things, the Juniors set about the activities of the year in their usual enthusiastic manner. Although many were missing from their original group of freshman, the bonds of loyalty and spirit for their beloved Alma Mater still held steadfast.

Remembering all of their former classmates and friends who are now serving our country in battlefields all over the world, they welcomed the opportunity to make a generous contribution to the World Student Service Fund. Each member of the Class of 1946 who had been called into service was remembered at Christmas with a card, personalized by a special greeting from all members of the class. They chose a day in which to sponsor the sale of war bonds and stamps and cooperated not only by selling but felt the need to be represented also in the buying.



JUNIORS



To relieve the strain of depressing war-time activity and busy schedules, a class party was held at the College Lodge in honor of Saint Valentine's Day. Trimmied in a whity lacy fringe, the large red hearts and unique favors added to the atmosphere of the party. After dinner and dancing, the evening of festivity was climaxed by an entertaining program which gave the class an opportunity to display some of its fine talent.

The Juniors look back upon their days at ISTC and, reluctantly, admit that the bulk of them is gone. Their activities prove that they are making the most of their opportunities and show beyond a doubt that they will become Seniors of whom their Alma Mater can be proud.

As We Picture Them Above

Row I—Dellar, Wilson, Politoske, Toohey, Mellott, Polman, Coyne, Lewis, Kuhns, Remsburg, Bowman, Thomas, Holama, Smucker, Shomo, McGee, Woodman, Stockton, Kunkle.

Row II—Dennison, Carpenter, Webster, Parsons, Boarts, Fleming, Houck, Sheriff, Carlson, Woolridge, Coombs, Saul, Soyers, Jenkins, Simkovich, Taucher, Toturo.

Row III—Cortwright, Compbell, Lemmert, Wilson, Gardner, Carpenter, Heeter, Bair, Allen, McFate, Altman, Previte, Berner, Gamberoni, Benney, McNeel, Brame.

Row IV—Hess, Countryman, Cassidy, Sekinger, Ross, Bush, Lingle, Lorditch, Holm, Barron, Doak, Hayes, Ross, Streams, Munshower, Johnston, Cretcher, Hess, Lee.

SOPHOMORES



Last year's Freshies, next year's Juniors, but definitely part of the Indiana State Teachers College family. That's the Sophomore class this year; always on the go. Naturally one half of the "go" was pleasure, but can you blame them?

To start the year off right they had a party. Their party was different. It was not a party for the class members themselves but for the children of Willard Home. At this affair held in December it is reported that the members of the class had more fun than did the children—although the children had fun, too. Next came Christmas, and the Sophomores, not to be outdone by others, lent their hands to the wreath making for Deshon Hospital in Butler, Pennsylvania. It proved a good morale builder for two parties: the soldiers in the hospital and the Sophomores who helped. Then for some well earned fun. The class party was held at the College Lodge in January. The deep snow, grand eats, and entertaining program all contributed to a super-elegant evening.

As We Picture Them Above

Row I—Graff, De Tilia, McKee, Mitchell, Fees, Gunsaulus, McGowan, Hood, Miller, Hall, Mentzer, Nagy, Laughlin.

Row II—Adams, Smith, Shirley, Mass, Stine, Harriger, Miller, McDougall, Mellinger, McElroy, Hile, Wampler, De Muth.

Row III—Garman, Smith, Wallace, Brawn, Cooper, Stewert, Foreman, Haller, McDowell, Pezutti, Hess, Brady, Dunn, Sharbaugh.

Row IV—Mulder, McCoy, Mercer, Griffith, Shope, Edwards, Harvey, Kapera, Ferrier, Bagley, Duncan, Pezutti, Graham, Graff.

Sophisticated . . .

BUT PLEASURE BAITED

OFFICERS

President	Harriet Groff
Vice President	Mary Margaret Novick
Secretary	Marilyn Miller
Treasurer	Leo Kenton
Sponsor	Lawrence C. Stitt



Patriotically inclined, for personal and general reasons, the class took its turn selling war bonds and stamps. Quite a success, too. As a group and individually, they were on call to help their Alma Mater or the war effort. All those who could donated blood to the Red Cross Blood Bank; all donated to the W. S. S. F. They were the enthusiastic Writers-of-a-Letter Week.

Members of the class are truly grateful for the constructive help and guidance of their sponsor, Mr. Lawrence C. Stitt, who will leave for the armed forces at the close of this year. He has been a friend in need to them, and the Sophomores will miss his gracious smile and helpful counsel next year. They have given him a send-off that will prove their appreciation more than words.

Question: Will they make good Juniors?

Answer: Without a doubt. Just watch!



Green . . .

AND OFTEN SEEN

FRESHMAN OFFICERS

President	Stephen Ferko
Vice President	Ruth Boyd
Secretary	Jane Bowman
Treasurer	Betty Lemmon
Sponsor	Paul A. Rishberger



Jitterbug Contest

FRESHMEN



The class of 1948 made its debut in September with a rousing spirit comparable to that of any army about to conquer. This spirit has made an outstanding group in many respects. The first task that confronted the beginning Freshman was orienting himself to college life; this meant adjusting himself from the high ranking high school senior to the youngest and most immature college student. This process under the guardianship of Mr. Paul Rischeberger was a rapid one, and now there is no Frosh who is not an eligible Sophomore.

The means through which the class reached this end were both social and professional in nature. The Christmas party at the Lodge in December, their outstanding modern rendition of "The Night Before Christmas" at the formal Christmas party, and their own Spring formal in April were instances proving their rapid social adjustment. Through their classes, which are chiefly introductory courses, and the advice of their sponsor they began to achieve a philosophy of life and education which will lead them to the highway of success.

As You See Them Above

(Right to Left)

Row I Boyle, Beighley, Jacecko, Steele, Johnson, Miller, Roller, Becker, Wampler, Myers, Curry, Bruner, Edwards, Bowman, Mardsilk, Telasko, Wiegler, Brown, Albright.

Row II Zimmerman, Christian, Gillespie, Simmons, Mekna, Rapp, Hobough, Bajcura, Batdorf, Pollet, Bojanowski, Semyan, McHail, Sullivan, Ferguson, Janoserat, Saracom, Rolimonitz, Berney, Nelson.

Row III Cunkelman, Hale, Lemmon, Walk, Mc Ardle, Buegart, Obett, Spangler, Novick, Yorgey, Roach, Mauer, Cowen, Boarts, Graham, Germak, Lux, Paulsick, Trout, Asheim, McGowan, Roelyn, Stewart.

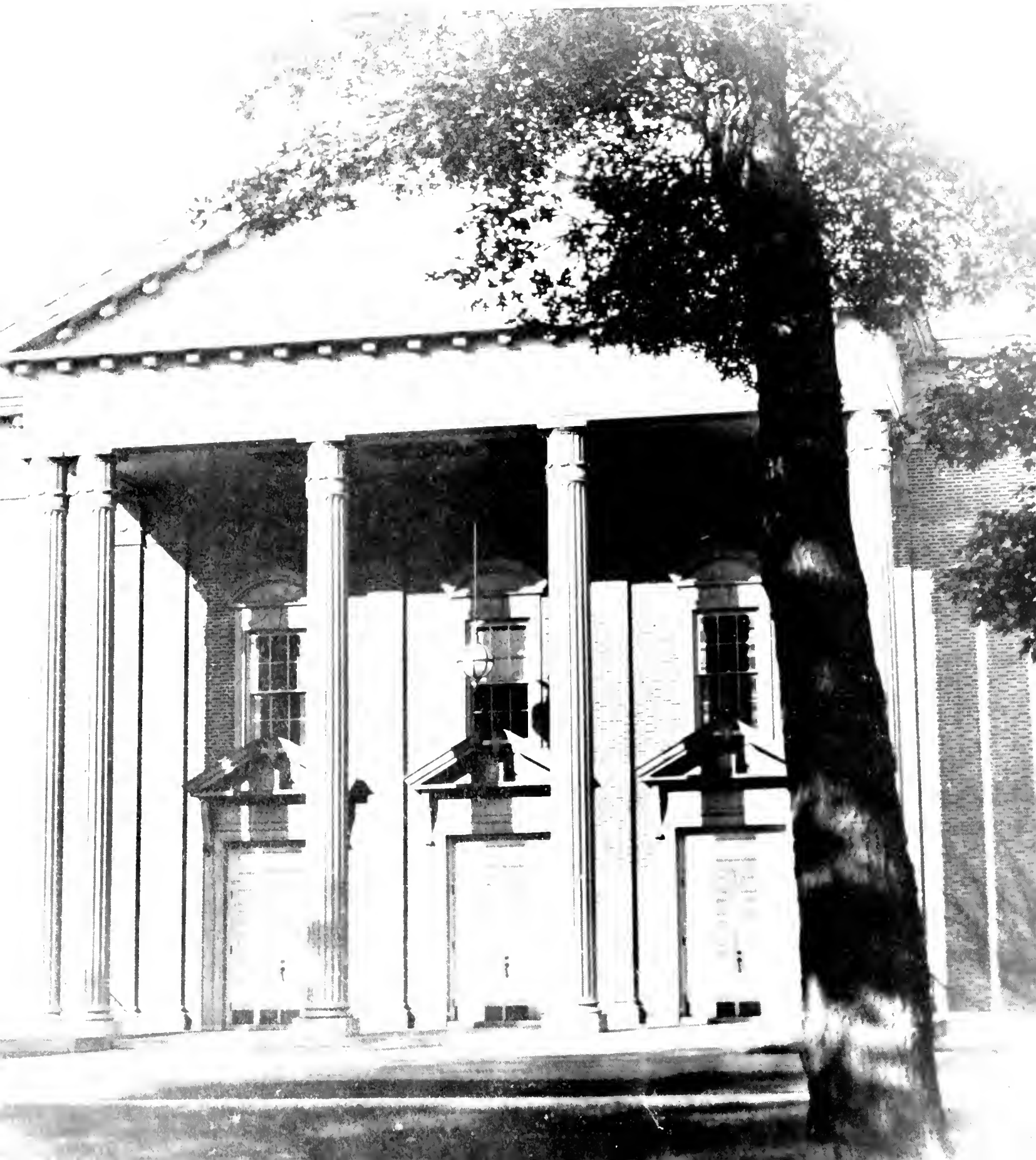
Row IV Lahrr, Farr, Rutzie, Woodruff, Master, Westover, Swanson, Swisher, Sosada, Brown, Swanson, Randall, Lipsme, Dewey, Wahl, How, Deckford, Knitz, Cramer.

Row V Hawbaker, Doris, Shien, Angle, Martin, Smith, Herry, Wasichno, Bruno, Derabasse, Smith, Conrad, Crawford, Craft, Hosack, Dobson, Ward, Santucci, Wertz, Thomas, Heberling, Carlbough, Stongger.

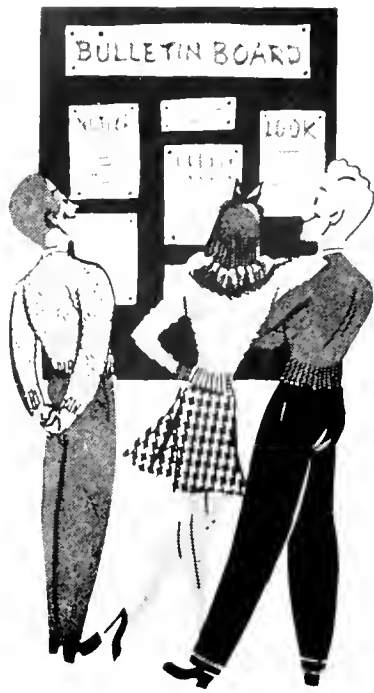
Row VI Gordon, Daley, Napolitan, Frey, Torrent, Ross, Sprul, Clawson, Palmer, Kople, Kody, Brechbill.

Row VII Johns, Shaw, Myers, Rutledge, Love, Erickson, McRoberts, Bacon, Wyhe, Sawhill, Tanner, Brinker, Brown, Morrow, Lyons, McGrew, Schweene braten, Hall, Goser, Meehling, Williams.

Row VIII Stockdale, Smith, Horck, Fetko, Rubb, Meats, Wilson, Clover, Oliver, Grube, Levine, Dempsey, Collins, Volpini, Hartigan, Buchanan, Boyd, Lawson, Sargent, Black, Marshall.



ACH month brings its own special activities for the student. A celebrity or two to entertain with music, dance or talk appears on the scene. The amateur but very professional-like dramatic and musical programs presented by student groups supplementing this schedule are enjoyed as thoroughly. Such events as the departmental Fall and Spring outings at the Lodge, the Christmas parties, the breakfasts and dinners, and especially the Saturday night dances make up the informal social times. Recall that favorite cultural life program, that wonderful dance, that gala party? These were the Highlights of the Month.



Activities crowd our days...

Activities? Sure, lots of 'em! Parties—Saturday night's not the loneliest night of the year. Departments helped, lots and lots of fun. Classes, too—each had a night. Other campus organizations not to be outdone. All student talent, all student participation, all students invited. More parties—College Lodge, Elementaries, Secondaries, Home Ecs, Bus Eds, Art, Music—all there. Eats, too. Games exciting, skits humorous. Good time had by all—remember? Orchestra nights—Billy Lewis. Almost "big name band" fun! Who says we don't have dances around here?

Cultural life—have your "I" card? Opera—"La Traviata," classical and beautiful. Remember, all you boys and girls? American ballad singers—songs to remember. You don't forget Angna Enters, famous mime. Robert Kitain, Russian violinist. He made those strings vibrate with "out of this world" music. Ah, that baritone, Donald Dickson in person. Still swooning over him? Ticklin' the ivories Egon Petri—shades of the departed masters. Good, wasn't he? Learning new things—Rotary Institute lectures. Russia, China, Australia, North America—used to be names on maps, but now!

Plays, too. Dr. Sterrett's "Uncle Harry." Three acts of suspense, great cast! Hometown (or campus) gal makes good! Billie Speelman's a new playwright. Remember "Room 119," Tisha's actions, Paulette's friendliness? All girl cast. After Dr. Sterrett, Dr. Abigail Boardman. Spring production of "The Swan." Laughs and more laughs.

Who says we don't have fun? Don't the pictures tell the opposite story? Good pictures of good times. Recognize yourself, reader? That's you over there being very active in the activities of the month.



"La Traviata"

Norina Greco



Duno



Doris Doree



Tokatyan





Angna Enters



Eliot Janeway



Igon Petri

On campus candid's . . .

Dr. Eddy chatting with Dr. Uhler on campus.

The Ballad Singers pose

Norina Greco—back stage at the opera.

Mr. Davidian confers with Betty Ralston and Mr. Davis before his lecture

The autograph addict!



Cultural Life

Rotary International Speakers

Simon M. Davidian



Jay William Hudson



Dr. Lin Mousheng



Archibald Gilchrist



Robert Kitain

School Parties



Non-Resident Women's League Tea
 Characters at the Hallowe'en Party
 Resident Women's League Tea
 "The Boar's Head"

"Eight Maids a'Milking" at the Christmas Party
 Music Club Tea and Recital
 Music Students' Version of "La Traviata"
 The Formal Christmas Dinner

Departmental



Spaghetti Deluxe—the Art Club way



Too many cooks spoil the soup

Parties



That h'ain't the way I heard it.



Mrs. Santa Claus at the Home Ec. Christmas Party.

Music students entertaining and being entertained.

Bus. Ed. students giving the children a Merry Christmas.

Bus. Ed. Fall Outing

Notice that faculty supervision (circle).

Dramatics . . .

Remember "Uncle Harry"? That was the first dramatic presentation of the year at Indiana. The three act play directed by Dr. Reid Sterrett, starring Nancy Race, Billie Speelman, and Don Rubb was considered a complete success.

Later in the season, Billie Speelman's original one act play, "Room 119," was presented. College dormitory life was depicted with such authenticity that the story seemed more like a real situation than an imaginary one.





Scenes from the three act play, "Uncle Harry"

In May, the annual spring production directed by Dr. Abigail Boardman was "The Swan." Male as well as female roles were acted by girls. With the addition of make-up and costuming the actresses succeeded in portraying these characterizations in a manner very satisfying to a large audience





FROM Sunday to Saturday — meetings, meetings, meetings! The week begins with Sunday School and church, the college church club members usually attending en masse. Later, the group may have a party or at least a meeting. Monday through Saturday campus organization get-togethers seemingly predominate regular routine. Thursday evening, the sororities and fraternities hash over the old and deal with the new business. Another evening fellow department members may meet to learn what's new in education in their field. Choir, band, and orchestra practice offer the musically inclined students still another opportunity to be together. These gatherings of classmates with mutual interests are closed reluctantly; however, the parting is not for long—these are the **Events of the Week.**

Alpha Omega Geographers



Bennett	Boyts	Crouse	Garrity
Gosnell	Groff	Hardy	Henry
Johnston	Orange	Zimmerman	Zink



Alpha Omega is an honorary geography fraternity whose purpose is to further professional interests and to furnish contacts in the field. To be eligible for membership in this fraternity at least nine hours of geography must have been completed with a "B" average. Only majors and minors in this field may qualify. Upon having achieved the scholastic requirements the applicant must then submit a project that deals with an important phase of geography. Much originality has been displayed in the development of that requirement. The Indiana chapter of Alpha Omega has not been slow in gaining recognition. The president, Miss Jean Hardy, published in the December issue of **The Journal of Geography** a paper entitled "The Beehives Are Glowing," which deals with the coke ovens of Pennsylvania.

This fraternity is not entirely professional as is shown by the many social functions held this year. The new term was started with an outing at the College Lodge for members and geography-minded friends. In December the Christmas party which took place at the Activities Cottage set the Yuletide off on a merry note. The annual dinner, featuring several guest speakers, was held in January at Mrs. Thompson's Tea Room. In true Indiana fashion, the Spring outing was held at the Lodge, bringing to a close another year of activity and, for many members, the close of their college days. Alpha Omegas mindful of the responsibilities war places upon them sponsored a successful bond and stamp sale as well as letter writing sessions to former members now in the armed services.

OFFICERS

President	Jean Hardy
Vice President	Mary Gosnell
Corresponding Secretary	Ethel Henry
Secretary-Treasurer	Alice Bennett
Sponsor	Dr. Norah B. Zinc

Kappa Omicron Phi



OFFICERS	
President	Frances Jablonski
1st Vice President	Betty Lloyd
2nd Vice President	Neva Sparks
Corresponding Secretary	Betty Wallace
Treasurer	June Kunkle
Sponsor	Laura B. Duncan

Tau chapter began the new year with ten enthusiastic members and five anxious pledges. Our first event was the annual fall outing at the Lodge with the Home Economics faculty as guests. Someone's culinary talent was certainly displayed in those hamburg barbeques.

December brought our formal Founder's Day—one that will never be forgotten by Tau members for it was then that the letter from the National President brought the news that the Efficiency Placque was ours to keep.

In February we were visited by Mrs. Thelma Downing, our former sponsor, who was on an inspection tour from the National Council. During her visit a dessert was served by our patronesses: Mrs. Sollberger, Mrs. Heiges, and Miss Brenneman.

On May 6th we honored our mothers at a tea. With spring comes farewells—ours for the three graduating Seniors was held at the Country Club. So ended another year for the Tau Chapter of Kappa Omicron Phi, National Professional Home Economics Fraternity.



Duncan	Edwards	Folger	Hain
Harvey	Jablonski	Knepper	Kunkle
Lee	Lloyd	Mehlman	Mellinger
Skinner	Sparks	Wolloce	Wilson



Bruno
Graff

Danner
Halama

Davis
Heid

Duncan
Heiges

Frangoulis
Helfenbein

Gamberoni
Jablanski

George
Jenkins

Beta Gamma Chapter



OFFICERS

President	Leola Rowe
Vice President	Betty Rolston
Recording Secretary	Marion Templeton
Corresponding Secretary	Gloria Rocereto
Treasurer	Mary Bruno
Sponsor	Pearl Reed

The purpose of Kappa Delta Pi, national Honor Society in Education, as stated in its charter is "—to encourage high professional, intellectual, and personal standards and to recognize contributions to education. To this end it shall invite to membership such persons as exhibit commendable personal qualities, worthy educational ideals, and sound scholarship. It shall endeavor to maintain a high degree of professional fellowship among its members and to quicken professional growth by honoring achievement in education work."

In accordance with these aims Beta Gamma Chapter carried out two projects and presented a varied program to its members. Dr. George S. Counts, recently elected Laureate Member, presented his evaluation of Russia as a member of the community of nations gained from his experience while working there. Miss Alice St. Clair described in detail the modern, well-managed Nursery School of the Kaiser Ship Yard in Portland, Oregon, and her work there during the past summer. A panel of students representing the various departments of the college discussed the place of the holiday observance—religious, patriotic, and traditional-folk—in the general school program and in subject fields. Mrs. Marlin showed slides of the locales of various Army camps of the United States.

Feeling the need of students who are in emergency situations created by the war, the society again participated in their relief, contributing through the Campus War Chest. A large sum was given to the World Student Service Fund. Books are being furnished to student internees and prisoners of war who are endeavoring to carry on their education during their period of enforced inactivity. Allowances for food, gifts of clothing and study materials, and medical attention are being given to other students to whom the misfortunes of war are but an added challenge to continue their education.

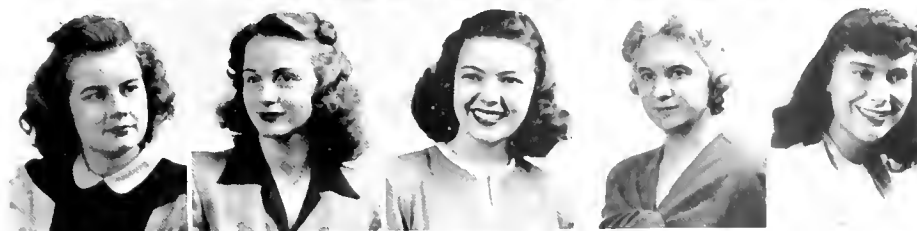
Beta Gamma Chapter has also established a scholarship to be awarded each semester to a deserving student.

Kappa Delta Pi was incorporated as a national organization in 1911 at the University of Illinois. The Indiana Chapter was established May 19, 1928.

Johnson
 Kaschaulk
 Kautz
 Kipp
 Kline



Koontz
 Kuhns
 Lee
 Mahachek
 Monfredo



Mostler
 Polman
 Porter
 Race
 Reed



Rhodes
 Rocereto
 Rolston
 Rowe
 Sheriff



Sparks
 Templeton
 Uhler
 Walsh
 Weaver



C. Wilson
 E. Wilson
 Woods
 Zimmerman



KAPPA DELTA PI

Pi Omega Pi



Berner	Bruno	Dozzuti	Drumheller	Farrell
File	Frangoulis	Ghizzoni	Halama	Kuhns
McLuckie	Pelman	Rich	Ruppert	Sayers
Single	Sturiae	Webb	Wenger	



Pi Omega Pi, national honorary Business Education fraternity, has as its purpose the promotion of high ethical standards in business and commerce and of interest in commerce in the schools and in professional life. The Kappa chapter was established at I. S. T. C. in 1929.

In keeping with present times Kappa chapter has endeavored to develop its program this year along more serious lines. In spite of the war and the resulting reduction in the enrollment of the school, the scholastic standards necessary for qualification for membership have not been lowered. At the first meeting in October, seven proud members of the Business Education Department were initiated. In February this year new students who met the necessary requirements were pledged.

In the promotion of interest in commerce in the schools, Pi Omega Pi dealt with the professional problems of its members, whether of a teaching nature or student adjustment. Fraternity members discussed with each other in round table fashion problems that face them as Business Education people. At the meetings student teachers presented difficulties that had arisen. New developments in the field of business were given full attention.

The social life of Pi Omega Pi members were not neglected. Special affairs were held by the group; among these were outings at the Lodge and holiday parties.

The almost totally feminine membership of the society drew their attention sharply to the grim war at hand. At Christmas, this fact in mind, Pi Omegas remembered their fraternity brothers now in the armed services by sending Christmas cards to them.

OFFICERS

President	Mary Bruno
Vice President	Ann Halama
Secretary	Dorothy Ghizzoni
Treasurer	Ellen Mae Sayers
Sponsor	A. E. Drumheller

Panhellenic Association

Seated: Retzer, Palaschek, Mellatt, Weaver, Grigsby, Kimball, Smith, Wilson.

Standing: Johnston, Hite, Benney, McNeel, Yuksic, Coyne.



HAVE MANY DUTIES

Panhellenic Association, composed of representatives from the six educational sororities, is organized to broaden and enrich friendship among the sororities and to further their interests. To establish standards of excellence along every line of sorority endeavor as an organization, as a factor in college, and as a force in the lives of undergraduate members is a primary object of Panhellenic. This group also serves as a forum for the discussion of all matters of interest to the sororities.

Although many of the activities of Panhellenic are businesslike in nature it upholds the basis of its social foundation by contributing forms of entertainment for the members and the student body. In October Freshmen and new students met, danced with, and enjoyed the company of Panhellenic members in the now-traditional Coffee Hour, an after dinner social period held in Recreation Hall. An all-school party early in the second semester featured a program made up of five minutes of fun contributed by each sorority.

Members of this group, not unlike the entire Indiana student body, were not unaware of the additional stress of another year at war. Setting the example to be followed by the constituent groups, Panhellenic contributed generously to W. S. F., sponsored a bond and stamp sale, and took part in other activities undertaken to shorten the war and to aid in the relief of wartorn countries.

OFFICERS

President	Irene McNeel
Treasurer	Sarah McDivitt & Marian Smith
Corresponding Secretary	Betty Jean Johnston
Recording Secretary	Ruth Grigsby
Sponsor	Miss Florence B. Kimball

"Alpha Sigs"

Alpha Gamma Chapter has had a busy year not only sharing as much as possible in the campus war projects, but socially as well. Rushing, theatre parties, the Founders' Day luncheon, the circus out at the lodge, the lovely Christmas party, our Senior breakfast, and Mothers' Day luncheon all highlighted a very memorable year.

In March, we held our formal party and everyone was tense until the night of pledging. Our beautiful ceremony was another reminder of the high standards we are constantly trying to maintain, and the loyalty and friendships we gain through association with our Alpha Sig sisters. It reminded us, too, of the small group who organized Alpha Sigma Alpha at Farmville, Virginia, in 1901, and those who established Alpha Gamma Chapter on this campus.

During this year we have been working in coordination with other chapters as a result of a detailed program, **Leadership in Alpha Sigma Alpha**, presented by our national president, Mrs. Wilma Wilson Sharp. This has brought us in even closer contact with the national organization.

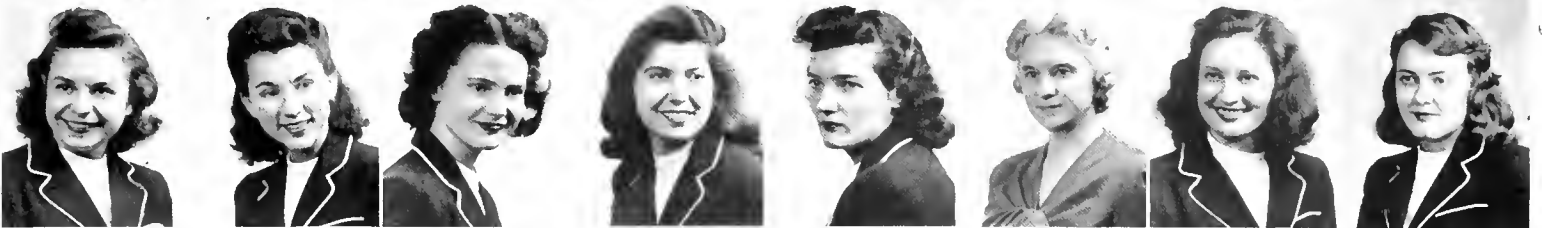
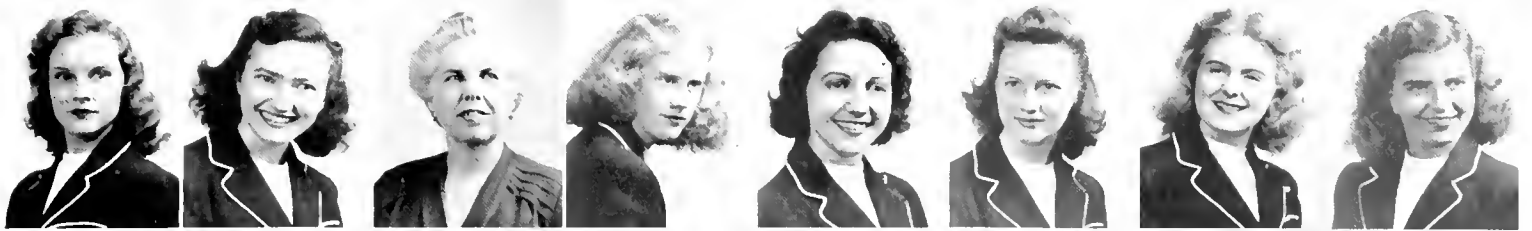
We have been happy to have many of our alumnae back with us this year, especially one of our former presidents, Sally Hawkins, whom we invited as our guest since a national officer was unable to come for the annual visit.

As the year came to an end we realized that it meant saying "goodbye" to many of our sisters for good. We wish them all success and happiness, and we hope that membership in Alpha Sigma Alpha has made them better women for the tasks they will meet.

OFFICERS

President	Eleanor Wilson
Vice President	Audrey George
Secretary	Mary Jean Licastro
Treasurer	Nancy Coombs
Chaplain	Betty Keller
Registrar	Elizabeth Carroll
Sponsors	Miss Ethel Belden Miss Joy Mahachek





Baker
George
Knepper
Politaski

Beck
Hawkins
Levergaard
Russell

Beldon
Iams
Lewellen
Schaffer

Carroll
Jahnsen, M.
Licastro
Schatz

Canrath
Jahnsen, P.
McDivitt
Shorbaugh

Coombs
Jahnsen, R.
Mahachek
Slagel

Ehrenfeld
Keller, B.
Mostler
Smith

Fees
Keller, N.
Nissley
Wilson

ALPHA SIGMA ALPHA

"The Taus"



Twenty-two enthusiastic Taus returned to the Indiana campus in September, ready and anxious to get all we could from the new year ahead—yet not forgetting we were in our fourth year of war.

Eager to be together, we rounded up all of our sisters for a theater party followed by cokes at "Stapleton's," where we rehashed the memories of the shore, camp counselling, working in Washington, D. C., and even Summer School.

Pledges as well as members worked hard in preparation for the visit of Mrs. Staehle, our national president who greatly inspired the Delta Chapter girls.

Cokes at the "Dell," in the Smoker, Friday-nite movies, conversation, Cultural Life programs, and the dances were just a few of the opportunities the Taus had to meet the fine crop of Freshmen, some of whom attended the informal rush party. On the heels of this came the glamorous formal rush party which was an overwhelming success. Silence period followed the party, during which time many anxious hours were spent wondering who. Pledging, then true to Tau tradition, cherry pie a la mode was served. Filling up the calendar (and pledge books) for two weeks were duties, poems, and black marks. As a great climax the Senior picnic and the Mother's Day tea drew the curtain on another full year for Alpha Sigma Tau members.

OFFICERS

President	Palma Hite
Vice President	Clara Byers
Recording Secretary	Barbara Woods
Corresponding Secretary	Marie Graff
Treasurer	Betty Jean Johnston
Chaplain	Mary Jane Ferrier
Editor	Harriet Groff
Sponsor	Mrs. Alma Gasslander

Barchie
Barilar
Boardman
Byers
Cretcher



Darby
Edwards
Ferrier
Gasslander
Graff



Groff
Hess
Hite
Huey
Huston



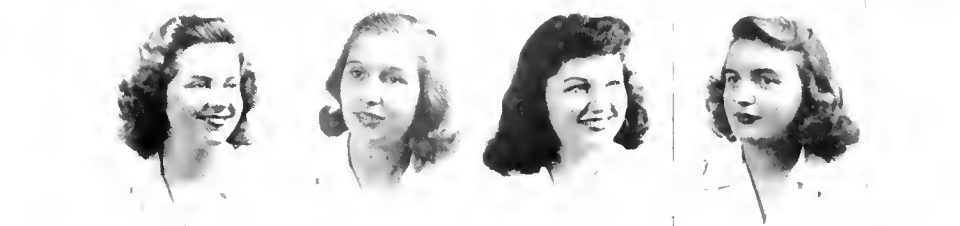
Johnston
Jones
McGowen
F. Miller
M. Miller



R. Miller
Munshower
Orange
Orange
Porter



Walton
Wells
Williamson
Woods



ALPHA SIGMA TAU



- Bierer
- Blissell
- Borland
- Brinkley
- Brown
- Coyne
- Fowler
- Grigsby
- Hench
- Kobasa
- Long
- McGee
- Marlin
- Novick
- Palaschek
- Parker
- Perkins
- Price
- Polman
- Shomo
- Smith
- Woodman
- Wright
- Weigle
- Yukenberg

DELTA SIGMA EPSILON

"The Delts"



"Well, F' Gosh Sakes! I see by the ring that 'The Great Man' had a furlough this summer." . . . Fall—and again we herd ourselves back to the old Alma Mater—full of vim, vigor, and every bit of available gossip . . . A get-together at Dr. Perkins' . . . More discussion . . . Plans for the year . . . Panhellenic Hour . . . Packing again? . . . this time the Province Meeting in Pittsburgh . . . Gals, gags and gobs of fun . . . Four new Pledges . . . four new sisters . . . The cream and green all over campus??? . . . Oh—the new Delt "Dinks" . . . Alumni and Founders Day luncheon sandwiches—tea—gumdrops—and more gossip . . . Miss Ellenberger's "Beta Belles" . . .

And Christmas time again . . . everybody happy?—but yes!!! . . . Party at Activities cottage . . . Bond sale a smashing success . . . Molecules—atoms—test tubes . . . a chemistry party at Rustic—Frosh Fun.

Back from vacation . . . and more work on salvage for O'Reilly Hospital . . . March . . . The Mezzanine . . . and the Formal Rush Party . . . Hustle—Hilarity—A Hush—Silence week . . . Suspense—Pledging . . . and more "sisters" . . . through the paces . . . Pledge Duties . . .

Comes Spring—Senior breakfast . . . Mother's Day Tea—then, the long awaited day . . . Bus tickets . . . The family car . . . and home for the summer.

OFFICERS

President	Jeanne Smith
Vice President	Bette Borland
Corresponding Secretary	Lorraine Blissel
Recording Secretary	Clara McGee
Treasurer	Pauline Parker
Historian	Elizabeth Woodman
Sergeant	Monica Coyne
Chaplain	Jeane Shomo
Sponsors	Dr. Reba N. Perkins Miss Lena Ellenberger



“The Pi Kaps”

OFFICERS

President	Stella Byers
Vice President	Anne Weaver
Recording Secretary	Dorothy Hammers
Corresponding Secretary	Dorothy Lemmert
Treasurer	Marian Templeton
Assistant Treasurer	Margaret Sahlaney
Keeper of Archives	Mary Jane Eichler
Sergeant-at-Arms	Constance Wilson
Sponsor	Miss Mary Hart

November 17, 1944, Pi Kappa Sigma, the oldest of the Association of Education Sororities, celebrated its Golden Anniversary with a Founders' Day Bridge at the Activities Cottage. This summer the Pi Kaps from the Atlantic to the Pacific will gather at Ypsilanti, Michigan, the home of Pi Kappa Sigma, to celebrate nationally its fiftieth birthday.

In the fall the Pi Kaps attended a Founders' Day Banquet given by the Pittsburgh Alumnae Chapter. The Greenwich Village party held at the school lodge with the burning candles casting mellow shadows upon artist, musician, and author friends added to the gaiety of our year together. We will never forget the good times we had at the dinners at the Chicken Pie Shop, the card parties, the hilarious picnics, the breakfasts at dayybreak, and the formal rush party. The theater party and refreshments given by the Pi Kaps "little sisters" for their "big sisters" was great fun. How grand it is to gather together in the apartment of our cherished sponsor, Miss Hart, for an evening of merriment.

The members of Pi Kappa Sigma Sorority believe that the lessons of sorority life, learned while striving together in sisterly love for social efficiency, intellectual growth, and moral development, will make them more tender and true to the best interest of the world's sisterhood.



Beck
Hammers
Lush
Sahlaney

Byers
Hart
Mathews
Scharr

Clark
Heffley
Parkington
Shank

Eichler
Horger
Rowe
Templeton

Fogie
Kush
Rumsey
Weaver

Garman
Lemmert
Russell
Wilson

PI KAPPA SIGMA



Benny
 Bowman
 Braucht
 Brame
 Crozier

 Deller
 Grubb
 Gunsaulus
 Hastie
 Hartman

 Hendrick
 Hixon
 Kuhns
 Lichliter
 Mehlman

 Mentzer
 McDougall
 McNeel
 Miller
 Opris

 Ruppert
 Steiner
 Strehler
 Wallace
 Yuksic

THETA SIGMA UPSILON

"The Thetas"



Ot-m: What's new? Jive along with the froshies at the Pan-Hellenic Coffee Hour—Luscious hamburgers and cokes at the Minerva Day party—Added attraction at the meetings: Miss Mabel Hastie teamed with Miss Wallace to help us "Straighten Up and Fly Right!"

Wint-r: Patchin' ski pants after a snow party at the lodge—Sippin' Russian tea by French candlelight in the livingroom of Miss Wallace's home at Christmas—"Ac-cent-tchu-atin' the Positive" at "Wreck" Hall after lamb and rice in the dining room—Tenshun! January 26: Theta Sig Canteen open for business to Pfc's of the freshman class—really something to go A. W. O. L.

Spr-ring: A young frosh's fancy lightly turns to thoughts of sorority—Pledging—"Going Our Way?"—Those duties—Oh, my aching back!—Slurp—real spaghetti in little Italy—Indiana theater replaces warped floors after Theta "Sob Sisters" see "Since You Went Away!"

Some-r: And now—"With your permission we'll take a brief intermission." So long Sis—Don't let 'em "Fence you in!!!"

OFFICERS

President	Ruth Steiner
Vice President	Emmeline Mehlman
Recording Secretary	Evelyn Kuhns
Corresponding Secretary	Mabel Bowman
Treasurer	Earla Mentzer
Editor	Ruth Hixson
Panhellenic Representatives:	Irene McNeel, Jean Benney
Sponsors:	Miss Florence Wallace Miss Mabel Hastie



Bornhart
Gilbert
Lee
Proffitt

Berner
Graff
McFarland
Quinn
Thomos

Betz
Hall
McKee
Race
Toohey

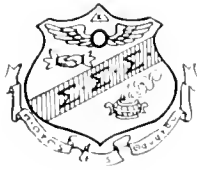
Crouse
Hood
Mellott
Retzer
Wolf

Crumm
Hornick
Mitchell
Smucker
Zimmermon

Garrity
La Roche
Nehls
Speelmon

SIGMA SIGMA SIGMA

"The Tri Sigs"



ANNOUNCER: From station Sigma Sigma Sigma, the powerful twenty-six watter, we now bring you a brief resume of Sigma session, reported by your Sigma Snooper.

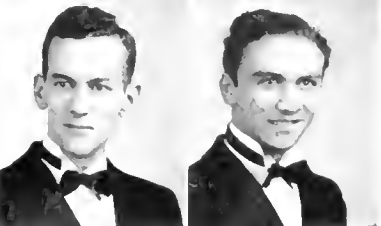
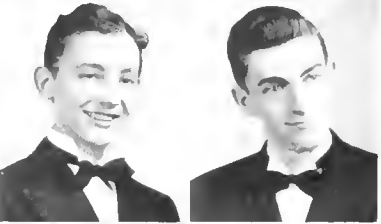
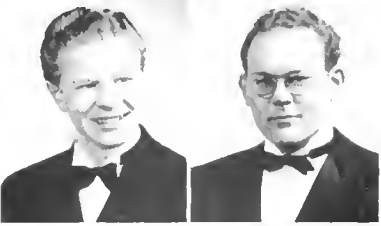
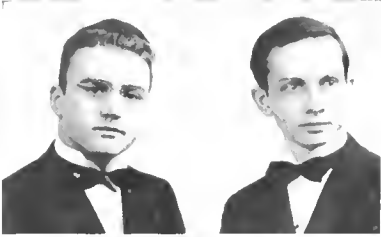
SIGMA SNOOPER: Hello everybody! I'm back again to round out the Sigma Session for the year 1945. Starting off on the double, the gals entertained their first alumnae visitor, Mrs. John Norton. Soon after that, the institution of Friday night dinner and movie started. On Sunday, after dinner you could always find Tri Sigs and their friends grouped around the piano in the Lounge singing to their heart's content. Something new for this year was the monthly-bridge parties at the home of the sponsor, Miss Zimmerman; these were started in November and continued throughout the year much to the pleasure of all. Then came that April week-end in Pittsburgh when actives of Lambda joined the Pittsburgh Alumnae Chapter in the celebration of Founders' Day. But Tri Sig had her serious moments too doing her share for the war effort which included sponsoring the sale of war bonds and stamps, making Christmas wreaths for the Deshon Hospital, assisting in the sending of mail to service men and women, and by donating blood to the Red Cross. One of the most treasured memories of Tri Sig lies in the deep thrill, quiet beauty and impressiveness of pledging and initiation ceremonies. These events brought a fitting climax to a very happy year for Lambda. We have formed friendships and gained memories that are a part of us—the part which builds better and finer women.

OFFICERS

President Lenore Retzer
Vice President Helen Berner
Recording Secretary
 Rosemary LaRoche
Corresponding Secretary
 Marian Toohey
Keeper of Grades
 Marilyn Proffitt
Sponsor
 Miss Martha Zimmerman



Sigma Tau Gamma



Bona
Dovenspike
Griffith
Smay
Zerfoss

Deaner
Gerber
Hulbert
Strassler
Zaffuto

"Wish we were back in the Tau House again this year"—"Yeah! Well, we'll be back again soon."—"Come on, you guys, we'll be late for the meeting."—"I move the secretary be chastised thoroughly for that last remark."—"We'll now have the report of the Committee on . . ."

Such runs the conversation of the Taus this year. Memories are many and rich since the Seniors have behind them three years in the Frat house to reminisce on. Recollections of days when every room was filled and the open-aid third-floor sleeping quarters had double-decker beds for thirty men. The big electric Tau sign is down now, but already plans are being made for a grand reopening, when circumstances permit, and the sign will again shine forth to guide its men home.

Sigma Tau Gamma remained active this year even though enrollment was small. Professional meetings were held regularly. Mr. James Park, former member of the American Consulate at Bayreuth, India, and many other places in the Near East, was made an honorary member. Often at informal outings he and Mr. Smay combined culinary talents and prepared the famous Smay chili and the equally potent Park green salad. The Taus advanced in social affairs by holding several planned parties to which our members all brought guests. At these clam-bakes, in accordance with tradition, the circle was formed and the well-known songs were sung. In these ways has Sigma Tau Gamma, Pi Chapter, kept the spirit of fraternity alive on campus this year.

OFFICERS

President	Gene Strassler
Vice President	Eugene Hulbert
Secretary	Robert Griffith
Treasurer	Eugene Zerfoss
Chaplain	William Dovenspike
Historian	Ross Deaner





SORORITY INFORMAL RUSH PARTIES

CAN YOU NAME THEM?



Religious Groups

Y. W. C. A.

Row I—Horger, DeSensi, Fogie, Beighley, Rolston, Templeton, Beck, Brohme, Spangler, Yorgey, Novick, Teleska, Mercer, Brown, Kobasa, Taohy, Shomo, McGee.

Row II—Russell, Lemmert, Rumsey, Keller, Llewellyn, Bowman, Kuhns, Lewis, Strehler, Carpenter, Deller, Bair, Heeter, Everitt, Ferguson, Woodruff, Hale, Farr.

Row III—Laddy, Kunkle, Woodman, Horvey, Curry, Bowman, Countryman, Cassdey, Jahns, Shaw, Grahn, Brady, Dunn, Reitz, Rasdorf, Bruner, Crawford, Boyle, Bierer.

Row IV—Sahlonev, Schweinebraten, McGrew, Lyone, Modar, Morrow, Allen, Wise, Brown, Gaiser, Smith, Sproul, Herry, Wosuhno, Swanson, Jenkins, Sayers, Hornick, Quinn, Speicher.

Row V—Matthews, Schaeffer, Lingle, Dobson, Bruno, Swisher, Sekinger, Truxell, Ross, Morgon, McHail, Martin, Proffitt, Smucker, Jacecko.

Row VI—Carbaugh, Titus, Stewart, Hile, Hosock, Burgart, Amond, Scheidemantel, Frederick, Stockton, Totura, Volpini, Collins, Hartigan, Urbanic.



NEWMAN

Row I—Volpini, Kopler, Mansoli, Myers, Hipp, McAvoy, Petroliti, Novick, Derabosse, Master, Lahr.

Row II—Urbanic, Gamberoni, Janoscat, Gach, Ruffing, Gidow, Kline, Semyan, Bajunowski, Venesky.

Row III—Collins, Hutzler, Grolak, DiTullio, Santucci, Kaschalk, LaMonaca, Malone, Kline, Dudich, Single, Yokomovitz.

Row IV—Hartigan, Scarano, Mathews, Striba, Hughes, Rhoades, McQuade, Dodds, Huber, Lordi, Huber, Lorditch, Ferko, Bona, Chidboy.



METHODIST

Row I—Eaton, Ferguson, Steiner, Webster, Benney, Carpenter, Beeler, Sheridan, Frederick.

Row II—Martin, Carpenter, Deller, Sproul, Templeton, Koontz, Croft.

Row III—Bair, Keller, Llewellyn, George, Keller, Mourer, Conrad, Lyons.

Row IV—McDaniel, Wasuhno, Dewey, Nayton, Himes, Mullen, Bacon.



PRESBYTERIAN

Row I—Kunkle, Finnley, Stockton, Lloyd, Randall, Titus, Reburn.

Row II—Allbright, Rapp, Norjick, Smith, Stewert, Musser.

Row III—Smith, Amond, Hogg, Thompson, Miller, Early, McElroy.

Row IV—Kautz, Hain, Haller, McDowell, Allen.

Row V—Johnson, Dimit, Wilson, Horvey, Lawson, Hill.

ERSKINE

Row I—Johnson, Wahl, Edwards, Edwards.
Row II—Duncon, Fiscus, Dunn, Brody.



Promote Goodwill

The Religious Organizations on the Indiana campus are the Erskine Club for the members of the United Presbyterian Church, the Newman Club for those of the Roman Catholic Church, the Methodist Club, the First Presbyterian College Class, the Lutheran Club, and the Young Women's Christian Association, a general organization for all. These groups sponsor the Spiritual Enrichment Week at which time matters concerning racial and religious controversies, and national activities in which the clubs may participate are suggested and explained.

The members of the various clubs find an opportunity to discuss their problems through their common membership in the YWCA, the organization which enters the life of the Freshman girl by providing her with a Big Sister to help her adjust to college living. Increasing world turmoil has made these clubs even more conscious of the importance of minimizing their religious differences and of stressing the democratic ideals for which the war is being fought.



LUTHERAN

Row I—Countrymon, Dennison, Westover, Millinger.
Row II—Swanson, Kepple, Eichler, Spon-
ler, Christ.



Symphony Orchestra

Say It With Music . . .

The various organizations of the Music Department are open to students interested in participating in music activities. Recitals are held both in Reception Lounge and in the department. Those held in Reception Lounge are variety programs consisting of vocal, instrumental, and piano solos, while those held in the department are either piano or vocal programs. All recitals are open to everyone.

The String Orchestra under the direction of Miss Pearl Reed and the Symphony Orchestra under the direction of Mr. Lawrence Stitt brought pleasure to both the audience and performers. The String Orchestra played for the White Gift and the Union Services.

This year the enrollment of several additional men made it possible for a Mixed Chorus to be organized. The Vesper Choir conducted by Miss Laura Remsberg appeared regularly at the Sunday evening Vesper services, as well as for the Thanksgiving Burning Altar program and the Christmas White Gift Service.

The Women's Choir conducted by Mrs. Esther Coulangue also sang for Vesper services several times during the year. A trip to the Deshon Hospital, a Spring Concert, and singing for Sunday services in the local churches comprised the main events of the year. The band conducted by Dr. Irving Cheyette played for assemblies and radio programs.



Billy Lewis and His Orchestra

Mixed Chorus



Vesper Choir



Women's Chorus



Concert Band



String Orchestra



Speaking of Clubs . . .



ART CLUB

For twenty years Indiana has had an Art Club composed of Art majors and other interested students. This year, an honorary art fraternity, Delta Phi, was organized with students having the highest scholastic averages eligible to join. Thus far, twelve students have been initiated. At the present time, Delta Phi is a local fraternity, but it plans to become national within the year.



ELEMENTARY CLUB

The Elementary Education Club has as its objective the social and professional growth of all students in that department. At the monthly meetings new trends in Elementary Education were discussed. One of its most important activities was the entertaining of children at the Willard Home. The Fall outing and the Spring banquet were important social occasions.



HOME ECONOMICS CLUB

All the members of the Home Economics Department belong to the Home Economics Club. Among the many activities of the club were the teas to which the entire school was invited, parties at the Lodge, preparing baskets for the needy, and a Christmas party. This highly gratifying year was concluded by the annual May Day Breakfast.

Risheberger, Munshower, Hess, Risheberger
N. Keller, Johnston, Heid, B. Keller,
Ferner, Lichliter, Carpenter, Allen, Stine, LaDonne.

ART

Row I—Deaner, Taylor, Hall, Hood, Gearhardt, Byers, Kipp Row II—Byers, Allbright, Kish, Thompson, Picking, Crumm, Novick. Row III—Beighley, Graff, Gordon, Nissley, Danner, Schaff, Musser, Gasslander Row IV—Cramer, Bajcura, Nehls, Cooper, Powloski, McQuade. Row V—Risheberger, Risheberger, Brown, Neale, Davis, Gilbert, Mulder Row VI—Swanson, Wampler, Rutledge, Tortello, Burchfield, Hess, Boardman, Strehler Row VII—Reynolds, Smay, Murdock, Walk, Cretcher, Munshower

OFFICERS

President Betty Jane Hess
 Vice President Betty Risheberger
 Secretary Mary Jane Munshower
 Treasurer Peggy Risheberger
 Sponsor Mrs. Gasslander



OFFICERS

President Lois Heid
 Vice President Betty Keller
 Secretary Natalie Keller
 Treasurer Betty Jean Johnston
 Sponsor Miss Zimmermon



OFFICERS

President Emily Jane Lichter
 Vice President Beryl Allen
 Secretary Mory Jane Ferrier
 Treasurer Ellen Carpenter
 Sponsor Miss O'ley



ELEMENTARY

Row I—Rumsey, Hutzler, Lightner, DeSensi, Truxell, Baker, Petrilli, Boston, Hayes, Tonner, Randall, Conrad Row II—Weaver, Crozier, McElroy, Frederick, Wilson, Derabosse, Coombs, Brandler, Sowhill, Janoserat, Mourer. Row III—Matthews, Conrath, Lorditch, Carnohan, Holm, Barron, Saul, Lyons, Gaiser, Bacon, Johnston. Row IV—Olson, Wolfe, Brady, Ross, Sekinger, Bianco, Streams, Ross, Wallace, Whitman, Thomas Row V—Hile, Keller, George, Miller, Smith, Smith, Lookabaugh, Heid, DeSantis, Wylie, Stewart, Kerr.

HOME ECONOMICS

Row I—Baller, Brown, Stouffer, McGrew, McGowan, Miller, Miller, Levergood, Goldstein, Jurgens, Wiegler, Whetstone, DeMuth, Laughlin, Nagy, Dobson. Row II—Love, Carpenter, Gardner, Biss, Polen, Stahl, Mehlman, Steiner, Carl, Marino, Amond, Hughes, Hixson, Heeter, Wallace, Sullivan Row III—Lipsinic, Heberling, Ward, Walton, Paulisick, Germak, Webster, Rietz, Robinowitz, Everitt, Hughes, Wilson, Stine, Kunkle, Lloyd, Weimer, Roddy Row IV—Bolog, Lee, Allen, Coy, Moss, Houston, Cassidy, Morgan, Scheidmontel Schweinebraten, Clark, Hendricks, Mercer, Ferrier, Stockton, Bair, Deller. Row V—Grahm, Mader, Carpenter, Hawbaker, Danis, Nordsiek, Titus, Rapp, Brown, Dennison, Wambough, Brown, Countryman, McGowan, Becker, Brame, Duncon, Early, Edwards.

MUSIC EDUCATORS

Row I—Craig, Baarts, Politoske, Smucker, McGee, Toohey, Fleming, Dewey, Obert, Buchanan, Martin, Lahr. Row II—Andrick, Parsons, Widdowson, LaMonaca, Allen, Foreman, Doak, Stephenson, Ross, Boyd, Hohns. Row III—Munro, Harris, Woolridge, Carlson, Sheriff, Haller, McDowell, Miller, Christopher, Keller, Huber. Row IV—Thomas, Mechling, Block, Beckford, Lawson, Coffman, Marshall, Brady, Master. Row V—Fenko, Dampsey, Levine, Rolston, Rowe, Templeton, Yuckenber, Rocerto, Yuksic, McDaniel. Row VI—Mears, Griffith, Zeffuto, Shape, Hulbert, Dovenspike, Wilson.



OFFICERS

President	Eleanor Wilson
Secretary	Lois Woolridge



OFFICERS

President	Evelyn Kuhns
Vice President	Monica Coyne
Recording Sec'y	Mabel Bowman
Corresponding Sec'y	Lucy Quinn
Treasurer	Ruth Hornick



OFFICERS

President	Elizabeth Woodman
Vice President	Mary Johnson
Secretary	Mercedes Gomberoni
Treasurer	Patricia Johnson
Sponsor	Miss Mahachek

JUNIOR CHAMBER OF COMMERCE

Row I—Johnson, Jachico, Westover, Nelson, Roslan, Ross, Bruno, Sahlonev, Fogie, Horger, Kobasa, Combs. Row II—Santucci, McHail, Kuhns, Bowman, Palmon, Coyne, Simkovich, Taucher, Halama, Stroutiff, Bieher, Parker, Brown, Byers, Hammers. Row III—Kuntz, Tortello, Brown, Hall, Smith, Swanson, Miller, Berner, Clawson, Palmer, Pezzutti, Melissa, Woddell, Davis, Braucht. Row IV—Mentzer, Dodds, Washino, Altman, Sayers, Jenkins, Hess, Mathews, Kush, Skiba, McRoberts, Pezzutti. Row V—Kenton, Oliver, Cartwright, Zeffoss, Lemmert, Smith, Harriger, McDougall, Pezzutti, Gorman, Gidow, Zeigler, Baumgartner, Griffith, Johnson, Shiveley.

SECONDARY EDUCATION

Row I—Adami, Smith, Woodman, Wright, LoRoche, Appelgoth, McForland, Barnhort, Race, Lewis, Henry. Row II—Williams, Manuli, McAvoy, DiTullio, Allen, George, Lehmier, Auman, Bair, Gosnell, Bowser, Campbell, Zimmerman. Row III—Clarke, Scarno, Telosko, Smith, McCordle, Show, Gach, Thomas, Steele, Miller, Schatz, Russell, Romona. Row IV—Johnson, Surgent, Smith, Troub, Winter, Christian, Houck, Stockdale, Kunkle, Monfredo, Gensbigler, Grubb. Row V—Weigle, Sharbough, Iams, Ashcom, Bowman, Bruener, Hosock, Curry, Myers, Hartegan, Seymon, Craft, Gamberoni. Row VI—Bojanowski, Batdorf, Mullen, Allen, Edwards. Row VII—Douglass, Hess, Kritzer, Shoffer, Chidboy, Gerber, Rubb, Yakimovitz, Williams, Ludwig, Clover, Partington, Bowen.

More Clubs

MUSIC EDUCATORS

Each month the Music Club, composed of the members of the Music Department, sponsored a recital-tea which was open to the entire student body. Groups within the department alternated in performing the duties of host. The week preceding Christmas vacation was highlighted by several all-school Christmas musicales. A banquet completed the many functions of the club.



JUNIOR CHAMBER OF COMMERCE

The Junior Chamber of Commerce is comprised of the members of the Business Education Department. At the annual Fall outing the Freshmen became better acquainted with the members of the organization. The club sponsored a March of Dimes and a rummage sale to provide funds to entertain the children from the Willard Home. Climaxing the year was the farewell party in May at the College Lodge.



SECONDARY EDUCATION CLUB

Because the interests of the Secondary Education Club are varied, it attempts to acquaint its members with each other and their respective fields. The organization has endeavored to promote a greater solidarity on campus and a consciousness of the teaching profession. Activities consisted of Fall and Spring outings at the Lodge and several professional meetings to stimulate interest.



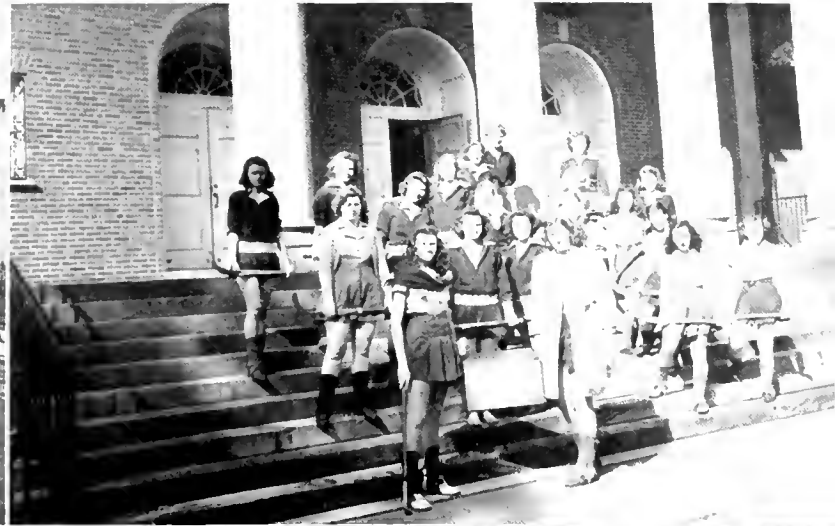
Woolridge, Wilson.

Coyne, Hornick, Kuhns, Bowman, Quinn.

Gamberoni, P. Johnson, Woodman, M. Johnson.



I, SIS, where are you going?" "To class, have to hurry, almost late"—"That test was tough"—"Finished your experiment yet?"—"The Doc was on a rampage today; he took our assignments"—"Did you get the last three problems?"—such bits of collegiate chatter are gleaned about the campus. The noise of busy students sewing, cooking, painting, typing, experimenting, singing, and adding resounds until the final bell rings ending the day of classes. From across the way come the shouts of guys and gals involved in exciting games. In the offices of the student publications, news reports and pictures of school and spare time activities are noted—the Activities of the Day.



Lightner ropes a man!
Keep your eyes on the ball!

All set for a game of hockey
Must have been in a wreck.

GYM CLASSES

Batters up—strike one—strike two—it's a good one—run! Out on third! You might guess it; it's mushball, the favorite Fall sport.

Brisk days found the girls on the hockey field chasing up and down after the ball striving for the goal; and then as Fall passed on into Winter, classes were resumed in the gym; it was an interesting sight to watch the unison displayed in calisthenics, and various forms of folk dancing. "One, two, three—stretch One, two, three—bend. That's it! Be sure your hands touch the floor. Meet your partner, greet her; swing her round and round."

Other activities include relays, volleyball, and instruction in the teaching of games in the school. The second semester brought that fast, breath-taking game of basketball. Teams were drawn up and a form of tournament was played in class. The Physical Education Department offers each girl a well-rounded course in calisthenics, sports, and games so that not only is physical activity looked upon as a requirement but as an opportunity to relax from the regular grind of the day.

TOURNAMENTS

There had to be a beginning to the competition which did not prove to be too tough for the Dodgers, the final winners of the 1944 volleyball tournament. It all began one Monday night in November when eight teams were drawn up under the original names of the Stooges, Gravel Gerties, Dodgers, Brown Bombettes, Orphans, Jugglers, Sampsonettes, and Sad Sacks. Confident of their agility and ability in playing volleyball the Dodgers got off to a good start. They worked together on every play, which is, by the way, the secret of all good team work. Strong serves and good returns were also two of their winning qualities. It is interesting to note that the same team that won last year was again the banner holder. With the exception of one player, Betty Wallace, who because of other activities was replaced by Ruth Reynolds Norris, the same girls participated: Lila Jean Frederick, Evelyn Kuhns, Lisa Polman, Eleanor Jenkins, Mary Ann Simkovich, Mary Mazzei, and Ellen Mae Sayers, captain. Congratulations girls, you did a beautiful job.

Indiana in Action

FIRST AID

The students in the first aid classes did a good job of camouflaging some poor human guinea pig. Fraction splints and all types of bandages completed the personified mummy. It is a wonder that actual first aid did not have to be rendered to some of the victims after the novices had finished practicing on them. As in life saving the Red Cross standard course of study was followed and upon its completion certificates were awarded. This class was open to persons enrolled in any department and, much to their advantage, many took the opportunity presented

LIFE SAVING

Life saving was offered to all those students who had passed their college swimming test and had mastered the fundamentals of the various strokes. Part of each class period was devoted to the discussion of water safety, forms of rescue, and resuscitation while the other part was spent in actual practice. Emphasis was placed upon special forms of rescue. Each student who successfully qualified under Red Cross Standards was issued a Life Saving Certificate. This was enrollment in the instructors course which was presented in April by a representative from the Red Cross headquarters.

W. V. I.

The aim of every athletic minded girl on campus is to obtain enough points to qualify for W. V. I. These can only be secured through hard work and eager participation in all sports. Girls achieving this goal are to be admired for their fine display of leadership, sportmanship, and physical fitness. W. V. I. became very active on campus this year and just after the beginning of the second semester officers were elected.

W V I Members





RIFLE CLUB

If medals for marksmanship could be awarded to civilians, I S T C campus would proudly boast of its share of sharpshooters. The old adage, "Practice Makes Perfect," has been proven by the results of the Tuesday evening practice sessions held in the gym. In order to obtain the best results, membership in this club is limited. Under the skillful supervision of Mr. G. G. Hill the finalists must pass certain rigid military tests in conformance with the priority rights.

WINTER SPORTS CLUB

What can be more fun than conquering a snowy hill on snowboggans, skis, or one's imagination? Old Man Winter did his part to make the Winter Sports Club a success this year; he did not leave a barren spot on the ground from the middle of December until the second week in February which just happened to be the week set aside for the Winter Sports Carnival. However, the lack of snow did not put a damper on the party.

Roller Skating
On the hill



Going out
Back to the fire





Seated—Miller, Stevens, Mauro, Freebourn, Guest
 Standing—Meyers, Kenton, Zerfass, Rubb (Mgr.), Treese, Matchit, Douglass.

BOYS' BASKETBALL

Ya goin' to the game this afternoon?—game? What game? And where?—The game between Indiana and California in the gym, dope!

That's right. Once again the bleachers are let down; cheerleaders don their red skirts and white sweaters; and students air their lungs in a rousing cheer for an I.S.T.C. basketball team.

In spite of scores, excitement at the last game was no lower pitched than that at the first. The score does not always tell the all. For Indiana the joy of having a team made it a winner.

The opener was played with California as our opponents. Quick thinking, sure shooting Al Mauro captained the boys in a fast moving game that exemplified excellent teamwork in spite of the short practice time. California chalked up a victor, but I.S.T.C. had achieved her goal — the revival of intramural sports. Other opponents were St. Vincent, Slippery Rock, and St. Francis.

Let's give three cheers for Mr. George Miller and Al Mauro who jointly coached our team; for Bill Cartwright, George Douglass, Glen Ewer, Norbert Freebourn, Neil Guest, Leo Kenton, Jay Matchit, Bill Myers, and Bill Treese who brought out of its dark closet the Indiana spirit.

The spectators hold their breath!



We Wrote It You Read It



Betty Lee, Editor

Sue Single, Business Manager

How can I word this?

The busy business staff.



Yes sir, it's all yours. We've tried to make it the kind of a yearbook you'd be proud to show around. Have we succeeded?

Of course, we'd be nowhere without the very helpful aid of our faculty advisors. Mr. Ralph Reynolds, our sponsor, assisted in planning the general layout as well as the artistic phase of the entire book. With him, the editor and business manager made the contacts necessary in publishing a book of this nature. Our finances were handled by Mr. E. J. McLuckie. Mr. Wilbur Emmert, faculty photographer, and Mr. Paul Boyts were invaluable in securing pictures of our men and women in the service. Part of the credit for the success of this annual should be given to the students and faculty who cooperated in making possible the pictures that appear and the written work. For your patience in posing in all kinds of weather and for giving us bits of information which we wrote up, we pay a special vote of thanks to all of you.

THE STAFF

Editor-in-Chief: Betty Lee

Assistant Editor: Mary Mozzei

Editorial Assistants: Hope Applegath, Mary Brandler, Ann Burchfield, Eunice Crumm, Lila Jean Frederick, Joana Joseph, Monna G. Kobasa, Teresa LaMonaca, Joanne Mellott, Jane Nissley, Barbara Sutton, Ellen Louise Thomas

Business Manager: Sue Single

Assistant Business Managers: Helen Berner, Lisa Polman

Business Assistants: Mary Lou Bierer, Amelia Kush, Isabel Matthews, Margaret Opris, Pauline Parker, Elissa Pezzuti, Rosemary Rupert, Lucille Schoenberger, Arlene Wenger

Art Editors: Dorothy Cooper, Nancy Musser

Art Assistants: Joan Gilbert, Charles Gillis, Jane Nissley, Mary Margaret Novick, Fronces Schoff, Ann Strehler, Peggy Wampler.



The Staff — at work (?).

Ralph W. Reynolds

Ernest McLuckie

Wilbur C. Emmert





Ethel L. Farrel

Rhodes R. Stabley

"To present news fairly and factually; to act as voice for all students and organizations; to back activities working for Indiana's good; or to present controversial subjects in terms of student and administrative viewpoints . . ."

Sound familiar? It should for it is the policy and constitution of the editors of the Indiana Penn. To these standards do they adhere in publishing this paper.

Despite difficulties the war has brought about, the Penn has been published. The custom of sending it to the men and women in the services still holds true, and each week a number of copies accompany the Newsletter all over the world. The Penn has the reputation of having the highest overseas circulation of any school paper. Besides this, the staff printed an issue devoted entirely to servicemen and women, featuring articles written by them.

Standards for editorship have become higher this year in keeping with the superior scholarship policy of the school. Grades now enter into the choice, which limits the opportunities to those only who have succeeded in maintaining a good record and who show the special ability and experience necessary for editing a college newspaper. Under the financial advisorship of Miss Ethel Farrell and sponsorship of Dr. Rhodes R. Stabley, the Penn has succeeded in keeping present as well as former students informed about current world events, campus news, news from ex-students and cultural opportunities.

The Penn



Ann Haloma, Editor



Time to start.
Proof reading

Typing the articles
The finished product.

EXECUTIVE BOARD — FIRST SEMESTER

Ann Halama
Genevieve Bush, Helen Winter
Laird Scheidemantel
Mary Ann Simkovich
Anne Burchfield
Monica Coyne
Rhodes R. Stabley
Ethel L. Farrell

Editor-in-Chief
Assistant Editors
Exchange Editor
Service Editor
Art Editor
Sports Editor
Faculty Advisor
Financial Advisor

EXECUTIVE BOARD — SECOND SEMESTER

Ann Halama
Mercedes Gamberoni
Laird Scheidemantel
Mary Ann Simkovich
Anne Burchfield
Monica Coyne
Rhodes R. Stabley
Ethel L. Farrell

Editor-in-Chief
Assistant Editor
Exchange Editor
Service Editor
Art Editor
Sports Editor
Faculty Advisor
Financial Advisor

STAFF ASSISTANTS

Blanche Gach
Mary Brandler
Mildred Morgan
Louise Horger
Catherine Weigle
Nancy Boyle
Jean McDougall
Joseph Bona
Thelma Love

Peg Wambaugh
Virginia Harriger
Helen Grubb
Mercedes Gamberoni
Monna Kobasa
Kathleen Miller
Jeanne Smith
Florence Webster
Norbert Freebourn

STAFF ASSISTANTS

Helen Winter
Genevieve Bush
Mary Brandler
Mildred Morgan
Louise Horger
Catherine Weigle
Jean McDougall
Joseph Bona
Thelma Love

Peg Wambaugh
Virginia Harriger
Helen Grubb
Monna Kobasa
Kathleen Miller
Jeanne Smith
Florence Webster
Norbert Freebourn

TYPISTS

Lucille Schoenberger
Wilma Speicher

Rose Taucher
Dale Westover

TYPISTS

Lucille Schoenberger
Wilma Speicher

Rose Taucher
Dale Westover



Standing—Gamberoni, Ferrier, Ioms, Whitmyre, Ferko, Johnson, Whitmon, Gerber, Rocerto, Groff.
Seated—Miller, Albright, Hulbert, George, Templeton.

Hall, Kough, Boker, Monfredo, Boardman, Allen, Templeton.

Student Council Officers

President	Hope Applegath
V. Pres.	Jeonne Boardman
Secretary	Audrey George
Sponsor	W. W. Whitmyre

Advisory Board Officers

President	Morion Templeton
Secretary	Carmen Boker
Sponsor	Dr. Dorcas Hall

STUDENT COUNCIL

Composed of four representatives from the Senior class, four from the Junior class, three from the Sophomore class, two from the Freshman class and one each from the Women's and Men's Resident and Non-Resident Leagues, the Student Council, a member of the Associated Student Governments of the State Teachers Colleges of Pennsylvania, regulates the academic and social life of the student body. Convening monthly in the commuters' Lounge, the Council selects the Cultural Life programs, sponsors social affairs of the school which includes buying recordings, elects the student members of Who's Who and the delegates to the various student conferences. This organization promotes cooperation among the students, faculties, and the administration in consideration of school problems which pertain to scholarship, school life, community relationship, and professional development. Matters of student conduct and welfare are referred to it by the President of the College or the Faculty Committee, and the Council tries to solve these problems as they see fit. Dan Whitmyre is the sponsor of the Council.

ADVISORY BOARD

Three Seniors, three Juniors, two Sophomores chosen in general election, the presidents of both the Resident and Non-Resident Women's Leagues, a faculty member, and the Assistant Dean of Women make up the Advisory Board which meets twice a month. In addition to studying regulations, making recommendations, and proposing matters to the League for consideration, the Advisory Board, set up by the constitution of the Resident Women's League, also acts on disciplinary problems as they arise.

This year the Board has been studying the comparison of the governing codes of other colleges. In considering these, the organization has attempted to make a wise deduction choosing the most fitting and successful for a trial on the Indiana State Teachers College campus. They are striving towards student rather than faculty supervision over the student body. Many cases, brought before the board this year, were solved satisfactorily. Each year the Constitution is revised and any needed corrections are made. The Advisory Board convenes in Miss Kimball's office under the sponsorship of Dr. Dorcas Hall.



RESIDENT WOMEN'S LEAGUE

All boarding women are automatically members of the Resident Women's League. The government of this group is invested in a president, vice president, secretary, treasurer, the Advisory Board, elected by the students, and the Resident Women's League Council made up of all presidents and chairmen of standing committees.

The council, meeting twice each month, discusses problems of social organization and promotes cooperation between the boarding women and the administration. Its aim is to develop responsibility, self control, respect for authority and consideration for others, all contributing factors in more comfortable living conditions. The increasing problem of wartime adjustments in dormitory living has been the major issues facing the League.

During this year the League sponsored monthly teas, an all-school Halloween party, a party for Freshmen, a rummage sale, and the sale of stamps and bonds.

OFFICERS

President	Mercedes Gamberoni
Vice President	Dorothy Wallace
Sec'y-Treasurer	Nora Pezzuti
Sponsor	Dr. Dorcas Hall

Row I—Williams, Reed, Doak, Barron, Hers, Boston, Hobough, Hayes, Campbell, Stephenson, Sasola.

Row II—McArdle, Gamberoni, Huber, Smith, Shirley, Simmons, Previte, Williams, Crawford, Altman, Olson.

Row III—Meehan, Rischeberger, Miller, Campbell, Fleming, Pezzuti, Streams, Ross, Wallace, Bianco, Melissa, Pezzuti, Wolfe, Fiscus.

OFFICERS

President	Jeanne Boardman
Vice President	Gretchen Gardner
Secretary	Marilyn Miller

Standing—Shiveley, Applegath, Jenkins, Woolridge, Adamson, Lemmert, Grahn, Sheriff, Lee, Monfredo, Moder.

Seated—Quinn, Dittmar, Halama, Kimball, Boardman, Gardner, M. Miller, R. Miller, Conrath, Weimer, Coombs.

NON-RESIDENT WOMEN'S LEAGUE

Friendship and cooperation is stressed by the Non-Resident Women's League, the governing body of the non-resident students. Meeting monthly in the Commuters' Lounge, various committees carry on the duties assigned them to assist the officers in making a happy living situation. Social functions of the year included a get-acquainted party, fall and spring outings at the Lodge, and an Easter tea. The Christmas season was highlighted by a Christmas party at which wreaths were made for Deshon Hospital. Quite prominent in campus activities, the League showed enthusiasm in the successful rummage sale, Red Cross work, a bond and stamp sale, and the United War Chest Drive in which they collected a large sum.

The Non-Resident Women's League is comprised of one hundred forty-seven students under the sponsorship of Dr. Dorcas Hall.

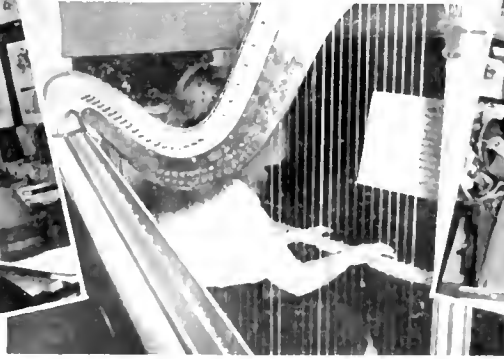




Speaking of Classes

THERE ARE THOSE WHO SIT IN CLASS

AND THOSE WHO REALLY WORK



The mystery of the universe



Keep your eyes on your copy.



That's a nice boy!

Drope shopes!



Con't get the hang of it!



Musical interlude



Preschool core.

How for is it?





ACH new class adds its quota to the ever increasing number of campus beauties; produces its share of those who achieve an outstanding position by their readiness to serve the student body; contributes members from each department who have gained recognition by high scholastic honors. As each new group becomes accustomed to campus ways, the student meeting places also become part of life for its members. Yes, college days fill but fleeting hours; students, their honors, their habits, their haunts, are but passing attractions—Attractions of the Hour.

Campus Beauties



Anna Mae Dennison

If a pretty girl is like a melody, I.S.T.C. campus reverberates in a mighty chorus. With a smile and a song "Ellie" captures the heart of her audience. "Dutch's" air of sophistication would drive the doorman to writing poetry. You dream about "Lew's" cameo-like beauty. Consider the effect of Betty's ever radiant smile and graceful form upon the waltz composer. Tall, graceful, raven-tressed newcomer is Marge. Tiny Toohey, full of poise, is the girl a soldier dreams about. Those "make you want to romance" eyes, a lovely face, and a mellow voice belong to Betty Jo. Try to duplicate the pert nose, dimpled smile, and twinkling eyes of "Stel."

Casual in traditional sweaters as they hurry to classes or stroll leisurely along shaded walks, or exotic in svelte evening dresses, they make striking pictures that more than one army-bound fellow carries along with him as memory material. No china dolls, they do not primp and pose but work and play shoulder to shoulder with their men and women friends.

Marjorie Lawson

Stella Byers

Marjorie Llewellyn





Marian Foshey



Eleanor Wilson

Betty Lee



Betty Jo Mitchell



Billie Speelman

Eugene Hulbert

The Cream of the Crop

Indiana has more than its share of outstanding personalities. Of the large number, eight have been chosen as representative by the student body. Their many activities are well known and appreciated by every person who has met them. For those new students who have not had the pleasure of making their acquaintance we present our chosen eight.

Whether you meet him as Billy Lewis, the genial dance orchestra leader who blows a mean trumpet, or William Dovenspike, Music Senior, you can be sure you have met one of the best in music, in thinking, and in personality.

Think of the stage on an opening night: the house lights grow dim; the curtains rise to disclose our talented Secondary Junior, Billie Speelman who shows versatility in portraying character roles and knows how to keep others happy.

Sharp witted, talented baritone of the Music Department, Eugene Hulbert, popular member of the Senior class who was elected to Student Council, is a prominent contributor to many entertainments held in the college.

Lisa Polman's interest in international affairs comes from remembrance of a country that was the victim of unfair international policy. This vice president of I. R. C., and fine Business Education Student is easily recognizable by a soft voice that still carries with it a slight trace of accent.

Betty Rolston, Music Senior and recent recipient of the Alpheus B. Clark Memorial Scholarship, has devoted unlimited time to the Y.W.C.A., W.S.S.F., Red Cross, and other work requiring plenty of give in time and energy, and little more than satisfaction in return, but she still finds time to enjoy music and poetry.

Elaine Kautz, Elementary Senior, is gifted with a lovely voice, a unique literary style, and a sparkling smile that has won her many friends. Among her many interests are Y.W.C.A., music, literature, and underprivileged children.

Charming possessor of a lovely soprano voice, Eleanor Wilson has won the sincere admiration of Indiana students as well as of those fortunate people who have heard her sing. An effervescent personality and simple beauty combine to make a young miss who cannot help but succeed in her ambition to become a great singer.

As president of the Resident Women's League, tall, stately Jeanne Boardman directs the business at hand in true executive fashion. Black curly hair, an ever-ready smile, and a soft voice come with Jeanne, an Art Junior and representative to Student Council.

In case you have been wondering about campus beauty queens and personalities listed, worry no longer. Any student of I.S.T.C. who has beauty, an outstanding personality, or both is eligible. The beauties and personalities presented on the preceding pages are those people who, in the eyes of the student body, best qualify for these titles. At a convocation held in the second semester a ballot was given each student upon which he was to write the names of eight people whom he thought beautiful and eight who were outstanding personalities. A careful tabulation of these ballots disclosed the results which are pictured on the pages just passed.

William Dovenspike
Betty Rolston



Elaine Kautz
Lisa Polman



Jeanne Boardman
Eleanor Wilson





Seated—George, Monfredo, Rowe, Miller, Levergood, Shoffer, Johnston, Race, Danner.

Standing—Boordman, Gamberoni, Kuhns, Roberts, Templeton, Hulbert, Ralston, Wilson, Porter, Dovenspike.



Row I—Donner, Kuhns, Halomo, Novick, Pezzuti, Pezzuti, Weitzel.

Row II—Partington, Wolloce, Koutz, Polmon, Rolston, Belden.

Row III—Horger, Quinn, Coombs, George, Bono, Johnston, Johnson, Russell.

Row IV—Freebourne, Heid, Shorbaugh, Simkovich, Woods, Yokimovicz, Miller.

WHO'S WHO

Early in the year the Student Council members from each department met with their respective departmental heads to select students with high scholastic rating and extra-curricular activities outstanding in that department. These were candidates for recognition in "Who's Who in American Colleges and Universities." A minimum of five and a maximum of seven names chosen by each group were submitted to Council members from all six departments. Each member voted upon the slate as a whole, the twenty receiving the highest number of votes being named to the honor.

Any Junior or Senior meeting these standards may be selected. The departmental slate is set up by an election held in a meeting of Juniors and Seniors. Each year such a group is chosen as representative of Indiana State Teachers College.

I. R. C.

The theme of the International Relations Club this year was post-war planning. Political discussions and open forums were entitled "What Shall We Do With Germany" and "Post-War Education and Treatment of War Criminals in Germany." Other forms consisted of discussions of peace plans, post-war airways, and an international office for culture and education. Reviews of current books concerning this problem such as Sumner Well's "Time for Decision" were given. One of the new service projects was an assembly program entitled "Compulsory Military Conscription." Interesting events which occurred during the year were a conference at Marywood College and an Inter-Cultural Tea. Membership in the I.R.C. is selective. Its influence on campus this year has been the posting of the I.R.C. News Bulletin in which the major headlines of the day are included.

If I get a phone call . . .



Meet me in the "Den."

Drink that coke before 7:30.



Perfect shot—
Mademoiselle Room.



Isn't love grand?

Every mood possible is displayed here



I'll be on campus!



You're coming home on furlough?

East Campus snowed under.

Men's inner sanctum—Esquire Lounge.

The 9:50 rush—Book Store



FLIGHT

GIANTIC bird that wings through distant skies,
Proud monster swooping downward toward the earth,
Perfection of machine that glorifies
Man's ingenuity, proving his worth
As master builder! As you swoop through space,
The sunlight glitters on your silver frame,
A perfect complement to your lithe grace.
Men envy you, honor you, speak your fame,
And yearn to wing through cloudless skies of blue
Secluded from the anguished world below.
Once I too felt impersonal pride in you—
NOW hate and anger and fear within me grow.
Why do I loathe the plane that flies above?
Because it robbed me of my one true love.

—E. Louise Horger



In the Service . . .

Those Who Gave Their Lives

Joseph Abele
Stephen Thomas Barto
Thomas Bianco
Charles Henry Campbell
Charles Daugherty, Jr.
Norman Edmund Davis
Charles W. Deptola
Frank Steven Evanko
Wayne Henderson
Donald Goheen Kime
Donald Clair King
Leonard J. Litzinger
George Elroy Miller
Howard Franklin Porter
Merle Schall
Samuel Robert Shumaker
Albert Clement Surra
Laird D. Travis
Lawrence DeVore Varner
Kenneth Woodle

"Over There," a popular song twenty-six years ago, can still strike an all-time high with so many of our Minute Men and Women "Over There." Indiana is proud of the fact that through the untiring efforts of Mr. Boyts and his committee bits of news and gossip are reported in our Newsletter reaching every continent of this far stretched globe. She is even prouder of her large family of young men and women devoting their time and lives for the right to keep her campus filled with the smiles, tears, joys, and sorrows they knew as part of their life here. She is ever mindful of the sacrifices, hardships, and discomforts they are suffering

Charles DiMuro

Ray Bernober

John Bellish



E. Lewis Hough

Robert Finn

James McQuade



James Hess

Albert Dichak

Orest Zarena



Abel, Christine Louise
 Abele, Joseph Romanus
 Abraham, Thomas
 Adami, William Stephen
 Adamson, Merlin James
 Addis, Samuel Robert
 Aiman, Allan Neile
 Alcamo, Frank Paul
 Alleman, Norris Wilbur
 Allen, Robert Carl
 Allison, George Edward, Jr.
 Amundson, Gerald Joseph
 Anderson, Charles Robert
 Anderson, George Wilder
 Anderson, Maurice Hamilton
 Andrew, Thomas W.
 Anthony, Eleanor Jean
 Antan, Thomas
 Armor, Dorothy May
 Askey, William Anthony
 Askins, Albert Wesley
 Atkinson, Clifford Waide
 Ault, Robert Budd
 Avampato, James Harry
 Barbarsky, Michael
 Baird, Harold Zebulon
 Baker, Elwood Stahl
 Baldrige, Richard Smythe
 Balonis, William Andrew
 Balag, John Adolph
 Balog, Victor Joseph
 Banks, Robert George
 Barletto, Fred Mathew
 Barnett, Fredericka Natolie
 Barnhart, Eleanor Virginia
 Bartlebaugh, James Albert
 Baskin, Bernard Harold
 Battersby, Alta Lee
 Baum, Willis Alexander
 Baumbaugh, Herle Roy
 Beamer, Richard Kenneth
 Beatty, Robert Eugene
 Beck, Kathryn Jane
 Beckley, Londs Paul
 Beckley, Pauline Bawers
 Becoskey, John Matthew
 Beezer, Robert Hamilton
 Bell, David McCall
 Bellish, John Paul
 Benack, Benedict Edward
 Bence, Gerald Clair
 Bendall, John Charles, Jr.
 Bengel, Wayne Patterson
 Bennett, Charles Malcolm
 Bennett, James Rowland
 Benson, John Paul
 Bentz, Richard Rhey

Benya, Joseph
 Berchin, Horry
 Bergman, Lawrence Dean
 Bergman, Paul Joseph
 Berkey, Charles Ellis
 Bernabei, Leo
 Bernabei, Raymond
 Berti, David James
 Besser, Margaret Louise
 Bieghler, Edward W.
 Bielski, Florence Marie
 Blakely, Hugh James
 Blanc, Robert Vincent
 Blase, Paul Revere
 Blase, William Harl
 Bohince, Victor N.
 Bond, Lan Skinner
 Bond, Ronald Meade
 Bongiovanni, Benjamin Bosco
 Boot, Alvin Ellis
 Border, Daniel Webster
 Borland, James Habort
 Borland, Thomas Edgar
 Bornak, Matthew John
 Botsford, Paul Lewis
 Bowser, John Gilpin
 Bayd, Richard Gnagey
 Bayer, Donald G.
 Boyer, Owen Dale
 Boyle, James Gordon
 Bracken, Robert Arthur
 Brant, Russell Lee
 Broughler, John Thomas
 Breit, Edward Nicklas
 Brennan, Charles A.
 Brenneman, Harald Wayne

John Hogue
 Elwood Sheeder
 Donald Hammer
 Chap Marshall



Breth, William Lloyd
 Bright, Billie Maxine
 Bromberick, Lawrence Edward
 Brooke, Robert Earle
 Brown, Clarence Copeland
 Brown, David MacLagan
 Brown, Ellwood Warren
 Brown, Emily Dunn
 Brawn, William Edward
 Brazeski, Carl Stanley
 Brumbaugh, Thomas Brendle
 Bruna, Anthony P.
 Bruno, James Byron
 Bruno, Samuel Antonio
 Buchanan, Frank Auraudt
 Buchanan, Meade
 Buchanan, William George
 Buchheit, Harold Martin
 Buchheit, James Arthur
 Buck, Ida Hermine
 Buck, Margaret St. Clair
 Buerkle, Raymond Edgar, Jr.
 Burke, Gerald David
 Burns, Charles Lee
 Bush, Harold Miles
 Bush, William Ernest
 Butiste, Leo Francis
 Cable, Paul Elvin
 Coimi, Frank Baptist
 Caldwell, Bruce Allen
 Calhoun, Norval Smith
 Calhoun, Samuel Reed
 Campbell, Francis Myrl
 Campbell, Frank H.
 Campbell, Wilbur Paul
 Carbaugh, Justin Lee
 Carey, Edwin Wayne
 Carlisle, James Robert
 Carlson, Morris Emerson
 Carlson, Russell Roy
 Caroff, James William
 Caroff, Wayne John
 Carpenter, Lais Ann
 Corroll, George Anthony
 Carter, William George
 Caruso, Henry James
 Cassatt, Donald Lee
 Catalano, Felix John
 Caylor, Harold Eugene
 Caylor, Ray Rishell
 Chambers, Wilfred
 Chapman, Charlotte Sophia
 Chapman, Florence Joseph
 Charlson, William Louis
 Chenet, Joseph Charles
 Cherney, William John
 Chidboy, Chester
 Chihon, John Roman

Chynoweth, James Richard, Jr.
 Cicero, Mario John
 Cicero, Sylvester Charles
 Cicolo, John Joseph
 Clark, Carl Neol
 Clark, Charles Paul
 Clark, Governor Chilcote
 Caber, John Gordon
 Cachrane, Robert Duncan
 Colelli, Leonard Maria
 College, Howard Cloyd
 Cammella, Samuel Edward
 Conn, Betty Louise
 Conrath, Lionel Brady
 Conrad, Chester Robert
 Constanza, Victor Philip
 Coaper, Charles Lewis
 Cooper, Robert James
 Corey, Donald Ray
 Corliss, Burns Gardner
 Cornell, William A.
 Costantino, Samuel N.
 Costello, Benny Louis
 Cotroneo, Anthony
 Coulter, Charles A.
 Cox, Sarah Emma
 Craft, Fred Dadd
 Craig, Lloyd Arthur
 Cramer, William Stansbury
 Cravener, Leahman Augusta
 Crawford, George Glen
 Creighton, Bert H.
 Creps, Elbie Gordon
 Creps, John Howard
 Crank, Charles Robert
 Craushore, Joseph Cook
 Cumming, James Francis
 Cunningham, Edwin McIntire
 Cunningham, Roe Addison
 Curley, George M.
 Curley, William Norbert
 Curry, William Gregory, Jr.
 Cutler, William E.
 Dailey, John F.
 Dandar, Emil Basil
 Daniels, Maxine Farrell
 Daugherty, Charles M.
 Daugherty, Jean Burnette
 Davis, Charles Albert
 Davis, Harry Edmund, Jr.
 Davis, James Lawrence
 Davis, Joseph Robert
 Davis, Kenneth Williams
 Davis, Marlin H.
 Davis, Robert Warner
 Davis, Victor Wayne
 Davis, Walter Richard
 Davis, William Ashley



Londs Paul Beckley

Andrew Paul
 Raymond McNaughton
 Donald Gibson
 William Cornell
 Walter Wineman
 Harry Berchin
 Leroy Hagg
 Don Lischman



Davison, Fred Strahen
 Deane, Paul Edwin
 Deasy, Wilfred Francis
 Decker, Roy Blair
 DeFazio, Peter Paul
 DeMatt, Eugene Robert
 DeMatt, Robert Michael
 DeMezza, Markle John
 Dentici, Michael A., Jr.
 Depp, Lillian Elinor
 DeSimone, Floyd Raymond
 DeWolfe, Evalyn L.
 Dichak, Albert Francis
 Dick, James Liggett
 Dick, Max E.
 Dickey, Warren Jay
 Diehl, Edgar Dale
 Diem, Margaret Elizabeth
 DiMauro, Charles Rudy
 Dimit, Robert Morgan
 Dinsmore, Bruce Heasley
 Ditrovati, Anthony Frank
 Dominick, Willard Frank
 Dassi, Serenus William
 Daugherty, John Winslow
 Dreisbach, Robert James
 Duffalo, Stephen
 Duffy, Lawrence
 Dysert, David Charles
 Ebner, Clarence Ford
 Edelman, Gunther
 Elgin, Vernon Gibson
 Elias, John Adam
 Elko, George Henry
 Elliott, Janet Holliday
 Ellis, James A.
 Ellswarth, Lee Schrengast
 Elwood, Harry Walter
 Esch, Royal L.
 Evans, Albert, Jr.
 Evans, Robert David
 Everett, Edward George
 Everhart, Frank Richard
 Fanelli, Alphonse Michael
 Fanelli, Joseph Louis
 Fatoro, John Alaysius
 Fozia, Samuel Joseph
 Feather, John Henry, Jr.
 Feitt, Mary Elizabeth
 Felker, Harry Luther, Jr.
 Fetter, Warren Rudolph
 Fetterman, Miles Quintin
 Fetterman, Ralph E.
 File, James Carroll
 File, Robert Watson
 Finizio, Oresta Vincent
 Finn, Hardy Leonard
 Finn, Robert Sherwin

Finn, Walter Jacob
 Fisher, George Dixon
 Fisher, Lemuel Latara
 Fleming, Edward Lee
 Flenner, Robert Horace
 Flickinger, John Wilson
 Flinn, Paul Shart
 Flori, Francis Dee
 Flowers, Harry Richard
 Foley, John Richard
 Frantz, Paul J. F.
 Fredericks, John Leonard
 Friel, Roy Henry
 Frischmann, Donald William
 Fry, Donald Hartman
 Fullerton, Gurney Roe
 Fullerton, Theo W.
 Fulton, Harold Wynne
 Gahagan, William Douglas
 Galie, Adam
 Gallo, Albert Joseph
 Gamble, Edwin Walter
 Ganley, Bernard James
 Garber, Thomas Mumma
 Gardner, Edgar Kenneth
 Gerber, Mary Jane
 Gesey, Robert Clair
 Gessler, Robert Ulrich
 Gezich, Ferdinand Joseph
 Gibson, Donald Mott
 Gill, Sara K.
 Gittings, Raymond Ward
 Glasstetter, Robert Eugene
 Glebovich, Paul Joseph
 Gnagy, Herbert Galen
 Gnupe, Edward
 Goldmen, Julian Mintz
 Golish, Stephen Joseph
 Gangaware, Wayne Gale
 Good, Jean Waddell
 Graham, Robert Allen
 Grandinett, Harry Felix
 Gravelle, John W.
 Green, Carl William
 Green, Edna Pearl
 Green, James Francis
 Greenberg, Jack Henry
 Gregg, Herbert Steele
 Grasklas, Richard Ralph
 Gross, Harold Benjamin
 Grassman, Martan Charles
 Grumbling, Hudson Virgil
 Grundy, Edward Joseph
 Hadley, Samuel Trevor
 Hagele, Richard Charles
 Hagenbuch, Ruth Fairchild
 Haines, Waide Ardell
 Halferty, Wayne Donald

Hammer, Donald Nikolaus
 Hanna, Jackie John
 Hanson, Verner William
 Harbaugh, Norman Ross
 Harkleroad, Zenos Vernell
 Harrison, Ralph Augustus
 Harrison, Thomas Harry
 Harrison, William Luther
 Hartley, Jess Dyson
 Hartmen, Adorpha
 Hartmen, Herman George
 Heffner, George William
 Heginbotham, Edwin
 Heilman, James Eric
 Henderson, Duane Thomas
 Henderson, Joseph Ralston
 Henderson, Paul Leroy
 Henderson, Wilbur Wayne
 Hendricksan, Robert Frank
 Henry, Joseph Merl
 Henry, Wilmer Ord
 Hensel, Robert Penn
 Hermann, Robert M.
 Hess, Clarke Freas
 Hess, Donald Charles
 Hess, Glenn Carson
 Hess, James Wilbur
 Hess, James William
 Hess, Robert Dale
 Hile, Ralph Eugene
 Hill, Benjamin Wilson
 Hill, George Gardner
 Hill, Marjorie L.
 Hill, Richard Clyde
 Hill, Thomas Quay, Jr.
 Hill, Virginia Shamma
 Hill, Walter Carleton
 Himebaugh, Margaret Elizabeth
 Hitchcock, Richard Cheney
 Hixson, Richard Ebbert
 Haenstine, Earl Samuel
 Haffman, Donald Elwood
 Haffman, Richard Truxal
 Hahn, Matthew Henry
 Halben, Edward Henry
 Halt, Earle Francis
 Holt, Leonard LeRay
 Holt, Merle George
 Haugh, Edward Lewis
 Hovanec, Albert John Charles
 Howe, Chester Edward
 Hozik, Michael
 Hrezo, John Vincent
 Hughes, Orval S.
 Hunter, David G.
 Hunter, Eleanor Jane
 Hunter, James Murry
 Hunter, James Nathaniel

Husak, John E.
 Hussey, Frank Spencer, Jr.
 Hutchinson, Phyllis Main
 Ickes, Curtis F.
 Ickes, John Llyad, Jr.
 Ifert, William Eugene
 Illar, Frank Julius
 Jacobson, Lena Jane
 Jacques, Alfred E.
 James, Phyllis Adele
 Jamison, Clair Reyburn
 Johnson, Benton Kenneth
 Johnson, Florence Elizabeth
 Johnson, Robert Daniel
 Johnston, James Stewart
 Johnston, Raymond Milton
 Johnston, Robert Owen
 Johnston, Archibald Edwin
 Jainer, Harold Dale
 Jones, Clyde Ray
 Jones, John Arthur
 Jones, Rachel Mary
 Jordan, Robert Frederick
 Jordan, Russell Edward
 Joseph, John Thomas
 Jurkowski, Casimir Raymond
 Kaminski, Stanley Joseph
 Karabinus, Dorothy Victoria
 Kauffman, Albert Wendell
 Kauffman, Francis Emerson
 Kearney, Dean Albert
 Keene, George Leslie
 Kelley, Ralph Joseph
 Kelly, Ernest Kenneth
 Kelly, William
 Kennedy, Albert Allen
 Kensek, Michael Joseph
 Keough, John Ellswarth
 Kessler, Jack Elwood
 Kier, William Ralph
 Killen, Robert Jay
 King, Joseph Hoffman
 Kingston, Howard Melvin
 Kinter, James Lucas, Jr.
 Kinter, Lynn Stewart
 Kipp, Walter James
 Kirk, Robert Scott
 Kirsch, Norman
 Kish, Nicholas Zachary
 Kiska, John Albert
 Kistler, Edward A.
 Kline, Harold Buzby
 Kline, John Justin
 Knapp, Joseph, Jr.
 Laenig, James Robert
 Laenig, Lyle Marlowe
 Kohler, Earl Francis
 Kalady, John Theodore

Kaazer, Wendell Smith
 Kopchick, Nicholas
 Kosanovich, William Theodore
 Kostas, John Nicholas
 Katchin, Stanley Paul
 Koziel, Frank Thomas
 Kuhns, Howard L.
 Kunkle, Paul Thomas
 Kuzmiak, John
 LaMantia, Anthony Paul
 Lambert, Milton Louis
 Lamendola, James
 Lamendola, John Bosco
 Landis, William Elias
 Lang, Joseph Donald
 Lauer, William Andrew
 Lavine, Milton
 Leasure, William Clair
 Lebovitz, Joseph F.
 Leech, Russell Y.
 Lentine, Joseph Paul
 Lewis, Rowland Arner
 Lieb, Daniel J.
 Linamen, Harold Frederick
 Lindell, Phyllis Elaine
 Lindsay, Eugene Elmer
 Ling, Charles Ray
 Lingenfelter, John Francis
 Link, Theodore William
 Little, Fred Wallace
 Little, Raymond Merle
 Litzinger, Francis Donald
 Litzinger, Morgan J.
 Loboda, Samuel Richard
 Lackard, Vincent Melville
 Logan, Howard William
 Lang, Esca Charles
 Lang, Jean Francis
 Lang, John Clifford
 Lostrick, Thomas Richard
 Lott, Pearl David
 Lawry, Terry Blaine
 Lozas, Evan
 Ludwick, John S. A.
 Luke, Harry Victor
 Lybarger, Bruce Franklin
 Lydic, Elder Richard
 Lydic, Joseph Calvin
 Lynch, Robert Emmett
 Lyons, Byron Philip
 McAfoase, Richard Donald
 McCabe, Patrick Francis
 McCandless, Paul Brownlee
 McCann, Patrick Hugh
 McCarmick, James Ward
 McCullough, Jack Rowland
 McDonald, William Macky
 McDowell, Edward Burr
 McDowell, James LaVerne
 McElhaes, John Edward
 McFarland, Josephine McCreight
 McGee, Richard Wayne

Lisle Miller
 Jack Marley
 Robert McGrew
 John Balog

McGawna, John Joseph
 McGrew, Don Curtis
 McHenry, Arthur Irwin
 McHugh, Martha Jane
 McInay, Hillis Eugene
 McKee, James Elder
 McKnight, Boyd Wellington
 McKrell, Paul LeRoy
 McMillen, William R.
 McNaughton, Raymond D.
 McPhelimy, Harry Simpson
 McQuown, Andrew Bellis
 Maccarelli, William P.
 Magill, Vernon Thompson
 Malane, John Edward
 Mancusca, Gerald Richard
 Mangan, John Joseph
 Marcus, George
 Marietta, Leslie Harry
 Markiw, Myraslaw
 Marley, Jack Edward
 Marsh, Albert James
 Marshall, Benjamin Franklin
 Marshall, Dean Byron
 Marshall, J. Chapman
 Martin, Richard C.
 Martin, Walter William
 Martinko, Richard
 Martino, John Bosco
 Maslanik, William Boris
 Matejczyk, Leonard Francis
 Matlin, George Edward
 Mazza, Anthony Peter
 Mechling, Randall J.
 Meehan, James, Jr.
 Meighen, James Albert
 Menk, George Henry
 Menoher, Omar Clyde
 Metzler, John Henry
 Miller, Andy Henry
 Miller, Francis Paul
 Miller, Francis William
 Miller, Lisle Fleming
 Miller, Nelson Arthur
 Miller, Paul David
 Miller, Ray William



Miller, Richard Ray
 Miller, Robert Louis
 Miller, William Edgar
 Milligan, Dale Neale
 Milligan, William Bortz
 Mintmier, Edward August
 Miscoe, Jack Francis, Jr.
 Mitchell, Harry Elijah
 Mitchell, Ralph Black
 Moarhead, Logan R.
 Moser, Jay Clyde
 Moss, Rachel
 Motily, Michael
 Motovich, Esau
 Mowrey, Kenneth Eugene
 Mowrey, Paul Morgan
 Moyer, Charles Eugene
 Moyer, LeRay Annan
 Munn, Alvin Alexander
 Munn, Jack Irvin
 Munn, Rass Leslie
 Myers, Harold John
 Mykut, Joseph
 Nardis, Bernard Dean
 Nardis, Samuel Raymond
 Nealer, Paul Ernest
 Nelmes, Edwin Vincent
 Neuman, Milton
 New, Charles Joseph
 Nichal, Charles Manrae
 Nichols, Harold Edwin
 Nicklas, Elmer John
 Nix, James McKee
 Nacca, Louis Jack
 Noel, William
 Narman, William Thomas
 Northover, Russell Charles
 Nasal, Walter Stanley
 Nasal, Willard Henry
 O'Connor, Donald James
 O'Hara, Norman
 Oleszowski, William Louis
 Olshack, John Milton
 Orr, Ralph Henry
 O'Toole, James Lawrence

Page, Harry Glenn
 Palmer, Jacob Shank
 Palamaki, Charles Kermit
 Patterson, Charles Edwin
 Paul, Andrew Joseph
 Paulsick, John George
 Peace, Eugene Clark
 Pearson, Richard Frederic
 Penney, James Fox
 Perfilio, Anthony
 Peron, Thomas Meade
 Perry, Howard Vail
 Persichetti, Elmer Vincent
 Peters, James Leroy
 Pfeiffer, Kenneth McGregor
 Pfeiffer, Paul Leslie
 Pharaoh, Henry William
 Phillippi, Bayd Mahlan
 Phillippi, Woodrow Lamar
 Pignani, Tullio Joseph
 Piper, Samuel Rayden
 Playfoot, Olive Martha
 Pollard, Burton Hale
 Pollock, George Raymond
 Popoff, Victor Daniel
 Pounds, Robert Frank
 Powell, Harry W.
 Previte, Aurelius Frank
 Previte, Benjamin Anthony
 Price, Arthur Edwin
 Pringle, Ruth Proper
 Pritts, Bert Glenn
 Pugliese, Michael Joseph
 Pugliese, Virginia Violet
 Purdie, James Taylor
 Race, William Allen
 Raher, Jack Bernard
 Ramale, Dorothy Amanda
 Rankin, James Rogers
 Rankin, Wilbert Earl
 Raup, Lee Keiser
 Raup, Richard Robert
 Rea, Georgia Jane
 Reamer, Charles Allen
 Reams, James Vernon
 Redding, Lawrence James, III
 Reed, Harold Slaan
 Reilly, William Justyn
 Reinish, William J.
 Remley, Dan Fred
 Repine, Wayne H.
 Reutschler, John Alfred
 Reynolds, Edwin Ross
 Reynolds, Robert
 Rigby, Elwood Blair
 Rimer, Lorain Camden
 Rininger, Theodore Fern

Robert Crank
 and the Women!



Richard McAfoose
 Ted Harrison
 Rocco Romeo
 Walter Wineman



Meade Buchanon
 Tullio Pignoni
 Doniel Sondi
 Doniel Bernabei



Ritter, John Dunhom
 Ritter, Winston Robert
 Romon, Costic
 Romeo, Rocco Samuel
 Ross, Dominic
 Roumm, Arthur
 Roush, Jack Doyton
 Rowe, Eugene Moynord
 Rowe, Grant Emerson
 Rowley, Elmer LeRoy
 Rubis, Albert
 Ruddock, William McClove
 Rumbaugh, Robert Charles
 Rupert, Blair Holmon
 Ruro, Gustie Edward
 Russell, Nell H.
 Ruthko, Fred, Jr.
 Salay, John, Jr.
 Salsgiver, Poul L.
 Sample, Malcolm Earl
 Sondi, Daniel Louis
 Sansonetti, Fred Philip
 Santo Maris, William Thomas
 Sontongelo, Russell Joseph
 Sontarelli, Tobias Franklin
 Santucci, Dominic
 Souers, Mary Leona
 Scongo, James Vincent
 Schall, Merle Theodore
 Schandelmier, George Herbert
 Schell, Daniel James
 Schendowich, Lewis
 Schnell, LeRoy H.
 Schroll, George Albert
 Schwer, Ruth Hilliard
 Schwing, Donald Louis
 Scott, John Wayne
 Scurci, Edward Joseph
 Searle, Wilbur Sandom
 Sell, Kenneth Mock
 Shaffer, James Francis
 Shoffer, Paul Cloy
 Shank, Berdyne Delmont
 Shonk, Donald Blair
 Shank, Doyle A.
 Shankle, Ford Wilson, Jr.
 Shaul, Andrew Francis
 Shaul, Dorothy Vern
 Shaulis, Richard Swonk
 Show, Robert Sherrick
 Sheoffer, James Wiley
 Sheorin, Don Richard
 Sheeder, Elwood Batley
 Sheehe, Richard
 Shick, William Woodrow
 Shoenfelt, Joseph Franklin

Shome, Curtis Franklin
 Shomo, Joseph Henry
 Shrecengost, Woyne Leroy
 Shuster, John
 Shuster, Stephen
 Sickenberger, Samuel Fleming
 Siegler, Irwin Joy
 Silvestri, Nicholas John
 Simmons, William Blase, Jr.
 Simpson, Roy H.
 Sinclair, Harold Earl
 Singer, Chester Jerome
 Siranovich, Stanley Louis
 Skonier, John Joseph
 Sleeth, Emily Juanito
 Sliker, Robert C.
 Small, Lore Elroy
 Smeltzer, Wallace Guy
 Smith, Clarence Wilson
 Smith, Donald Ralph
 Smith, Harry Roymond
 Smith, Henry Joy
 Smith, James Wesley
 Smith, John Clair
 Smith, Rolph Edward
 Snodgrass, John Eugene
 Soisson, James Howard
 Spagnole, Edward Anthony
 Sparks, Julius Elmer
 Spence, Mary Wilma
 Spicher, Beulah Irene
 Spicher, Smith E.
 Stadtmiller, Carl Joseph
 Stadtmiller, James Philip
 Startzell, Harry Irvin
 Stortzell, James Lee
 Steele, Donald Clifton
 Steele, Helen Beatrice
 Steele, Marjorie Anno
 Steele, William Monroe
 Steetle, Jack Robert
 Steiner, Arnold Morris
 Stenger, Eugene George
 Stepanchak, Mory
 Stephenson, Clarence D.
 Stewart, Charles Lloyd
 Stockdole, Martin Hicks
 Stokes, John Frederick
 Stoner, James Kermit
 Stormer, William Jack
 Stover, Edward Rhodes
 Strong, Earl Poe
 Strong, John William
 Stroup, Boyd Vance
 Stull, Doryl Leroy
 Stump, Major Hunter

Sullivan, Loyalo F.
 Sutilo, Joseph
 Sutton, Poul Guy
 Swan, Edmund B.
 Swan, Harry George
 Swank, Ellery Ellis
 Swanson, Robert Echean
 Swauger, Croig Giffen
 Swenk, William Franklin
 Sybinsky, Andrew
 Szabo, Peter, Jr.
 Tarallo, Joseph John
 Taylor, John William
 Telerico, Frank Louis
 Terlinski, Robert Marion
 Thomas, Clyde Paul
 Thomas, Edward Martin
 Thomas, Richard L.
 Thomas, Richard Runyon
 Thompson, Hortley Lewis
 Thompson, Robert R.
 Thull, Edward Cornelious
 Timm, Fred Adolph
 Timmons, Robert W
 Tobin, James Heberling
 Tomb, Randall Howard
 Torrance, Robert Milc
 Tortello, Sylvester Silvio
 Toy, Woid Sednie
 Trainer, James Otis
 Trainer, Clark Winfield
 Travis, Laird Dwight
 Trimorchi, Eugene James
 Truby, Charles Hill
 Trusal, Maurice Earl
 Truxal, Rondol Wayne
 Turansky, Robert Albert
 Turnbull, Thomas Howard
 Tyger, Charles Hanno
 Vail, Marion Louise
 Valentine, John Leroy
 VanDyke, Chester James
 Varner, Max Murry
 Venturella, Samuel Frank
 Visnovsky, Andrew Joseph
 Vozar, Kolmon
 Wogner, Clair Clarence
 Walker, Donald Monroe
 Walker, Galen Bernard
 Walker, Harry Clark
 Walls, James Edwin
 Wolters, Charles Henry
 Wordrop, Raymond James
 Wareham, Elmer Clair
 Warner, Edwin Kimmel
 Watkins, David Herbert

Watt, Vada Jane
 Waugaman, Donald Eugene
 Weamer, Raymond Pfeiffer
 Weezorak, Robert John
 Wegley, William Victor
 Wells, Lewis Edwin
 Wentzel, Wade William
 Westrick, Leo James
 Wettling, Robert Chester
 Wheeler, E. Deon
 Wherry, Chouncey Harold
 Whiting, Richard Loren
 Whittaker, Russell Ernest
 Wiggins, Charles L.
 Wiggins, Robert McClellan
 Wilkins, Clair Benjamin
 Will, Thomas Augustine
 Wille, Albert Ray
 Williams, Harry Edgar
 Williams, James Evan
 Williamson, Stewart Tount
 Wilson, Harold Alton
 Wine, John Richard
 Wine, William Bernard
 Wineman, Walter Ray
 Winger, Charles William
 Wisor, Wilbert J.
 Wolfe, Budd Louis
 Wolfe, George Dale
 Wolfe, Richard Eugene
 Wolfe, Warren Jerrold
 Wonders, Charles Bornett
 Woodle, Kenneth Andrew
 Woodring, Marshall Reitz
 Work, Joseph Ky'e
 Work, Leonard Arvin
 Yohres, Samuel Charles
 Yingling, Elmer Francis
 Yingling, Poul A
 Yon, George Arthur
 Young, John F.
 Yount, William Luther
 Zachary, Bernard Stephen
 Zombotti, Bruno Mario
 Zongus, Gus George
 Zanzuccki, Albert Anthony
 Zehner, Wayne Carl
 Zeitler, Margaret Jean
 Zeitler, Vernon Arthur
 Zellmon, Lawrence Gerold
 Zerfoss, Guy Elmer
 Zimmerman, Charles Max
 Zimmerman, George Emery
 Zoffuto, Charles Alfonso
 Zoll, Mary Mortha
 Zoreno, Orest Anthony



The dawn of a new day--6:30!

A Typical Day in the Life of a Student Nurse at Indiana

From the beginning of the war, Indiana has been cooperating with several hospitals in western Pennsylvania to assist in teaching young women the basic sciences in nursing. Since September, 1942, there have been five groups of student nurses on the campus taking pre-clinical training.

That last bit of cramming
Looking at the microbes.

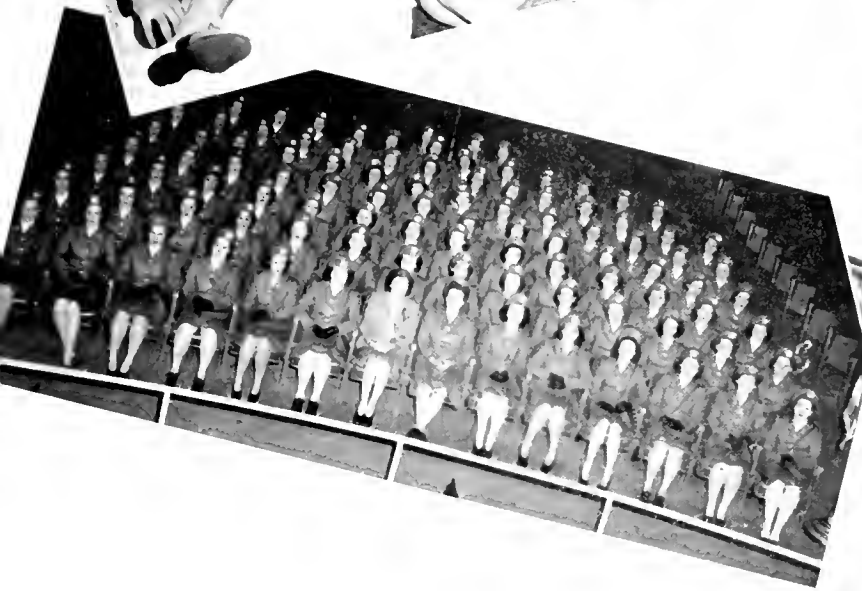
A nurse must cook.

Second breakfast at the "Dell."
Well earned recreation hour.





A letter from him?
Dressed for parade.



The cots!
Friendly conference with Mrs. Dumm.

The day of a cadet nurse begins when she rises at 6:30 for breakfast in the college dining room; by 8:00 o'clock she reports for her first class, Microbiology. At 10:00 a pick-up at the Dell is fortification for Chemistry lab. Then Anatomy and Physiology, Psychology, Sociology, and Nutrition fill the afternoon; an hour of leisure, then dinner. By 6:30 the student nurse enjoys a well earned recreation often in the form of dancing in Recreation Hall or a bull session in her room. During the week evenings are spent in preparing lessons for the twenty semester hours, although necessary and worthwhile, are a heavy burden. When 11:00 rolls around the cadets are quite ready for bed

The student nurses are eligible to participate in all the campus functions. Athletics, lectures, entertainment, dancing, and social privileges of the campus are shared with the boarding students.

Good night, sweet dreams.





On the Home Front

World Student Service Fund Committee

Seated—Boardman, Hornick, Grubb, Hürger,
Whitman, Kautz

Standing—Ralston, Weaver, Templeton, Ayers,
Sahlaney, Danner, Powłowski

Mailing Newsletters and Penns to our boys



Making wreaths to deck the halls of Deshon Hospital.



We who have remained at home have realized the necessity of participating more in those activities which are directed to the war effort. Our job has been a small one compared to the sacrifices our former classmates are making on the battle fronts, but we are trying our best to do that which is asked of us. When in November the first call for blood donors came, Indiana more than filled the Red Cross quota. We felt it was the least we could do for those men who have been wounded fighting for our safety. Each week bond and stamp sales were held with a sorority, fraternity, club, or class in charge of the booth. Those students who were not selling sacrificed a little more to buy an extra stamp or two.



And it got results!

Selling bonds and stamps.



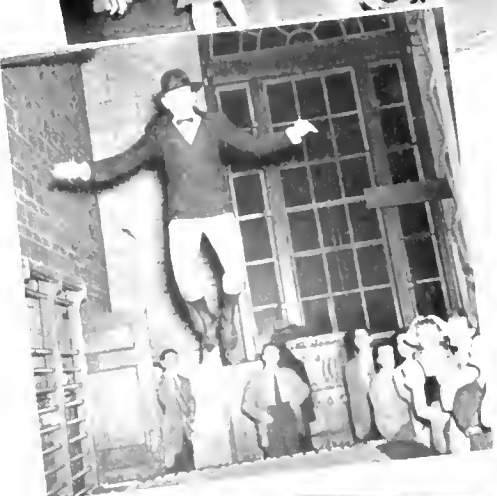
During the winter, the World Student Service Fund Drive was also well supported. The money donated by our students to the fund was sent to foreign countries to help supply other scholars with the necessary books and equipment to continue their education.

Other tasks, as making wreaths at Christmas time for the windows of Deshon Hospital and mailing Newsletters and Penns to Indiana's students in the service were also welcomed activities. In these small ways, we tried to do our part in making life a little better and more pleasant for those about us.



N A PAR with the speed of the split-second shots are the services rendered by our patrons. Indiana students gratefully acknowledge the courtesies that are extended to them yearly. For Split Second Service we recommend our patrons.

Lights — Action — Camera! "That's all, thank you." "Ah, there's a shot I want but I'll have to take it fast." And so another candid is taken. A split-second shot! Indian summer, snow days, spring, our photographers carried their heavy cameras waiting for that opportune moment, that unusual scene. And not in vain as you, dear reader, may discern. Found yourself?



Our cheerleaders!

Broad outlook from fourth, John Sutton.

And this went on in the Lounge of Clark Hall!

How we dance at S. T. C.

And one was high at the Hallowe'en party.

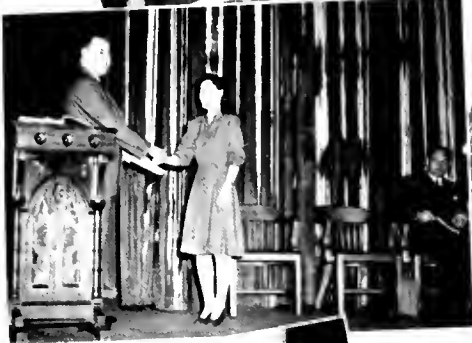
The assistant editor come to this.

Listen, my children!

Dr. Stabley emotes at rehearsal of "Room 109"

It's love, love, love.

Ten o'clock mail rush.



The toy instruments did blare
at the Christmas party.
Betty Ralston receiving the second
semester Clark Scholarship.
Home on furlough!
Wha's hungry anyway!

Oh well, it was a nice fall day!
The Thinker!

What's the matter,
can't you read?
Maxine Parter receiving the first
semester Clark Scholarship.
Our man about campus, Mr. Hayt.
The new Delta Phi's meet with their
sponsor, Mrs. Gaslander.

**69 Years of
Conservative Banking**

★

This Bank reflects the progress
of the community and vicinity
for a period of 69 years.
Make it your Bank by starting
an account now.

★

**Farmers Bank and
Trust Company
OF INDIANA, PA.**

Serving with Safety Since 1876

Member Federal Deposit Insurance Corporation



Shot from Leonord—more beauty outside than in.

TROUTMAN'S

One of Pennsylvania's Finest Stores



Featuring—at all times, the smarter types
in fine apparel and accessories at moderate
prices for the discriminating college Miss
or Mister.



THE FIRST BIG STORE ON YOUR WAY DOWNTOWN

M c C R E A R Y
Tire & Rubber Company

Manufacturers of Quality Tires and Tubes Since 1915

I N D I A N A , P E N N S Y L V A N I A

★ ★ ★

Conserve Your Present Tires . . .

When the War Is Over Buy

M c C R E A R Y ' S

★ ★ ★

BUY WAR BONDS and STAMPS . . .

SAVE AMERICA FOR AMERICANS

COMPLIMENTS OF
**ROCHESTER & PITTSBURGH
COAL COMPANY**

★ ★ ★

Miners of Bituminous Coal and Manufacturers of Coke

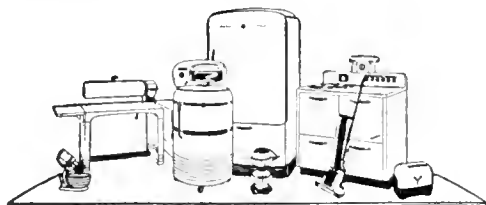
★ ★ ★

INDIANA, PENNSYLVANIA

WHITEMAN & COMPANY, INC.

INDIANA, PENNSYLVANIA

distributors of these appliances which
GENERAL ELECTRIC
makes for the home



General Electric appliances are famous
for their quality. There's a General
Electric Dealer in your community.



REFRIGERATORS
HOME FREEZERS
RANGES
WATER HEATERS
WASHERS
IRONERS
DRYERS
DISHWASHERS
DISPOSALLS
ELECTRIC SINKS
CABINETS
AUTOMATIC BLANKETS
CLEANERS

Also
*Traffic
Appliances
including:*
IRONS
MIXERS
TOASTERS
COFFEE MAKERS
CLOCKS
FANS
SUNLAMPS, etc.

Greetings to the
Graduating Classes and Student Body

from

THE PEOPLES NATURAL GAS COMPANY

Serving homes and industries of Western Pennsylvania

Sutton-Miller Co.

20 South Sixth Street
INDIANA, PA.

**STORAGE and SERVICE
FORD CARS**

Monessen Amusement Co.

★

MANOS

and

INDIANA

THEATRES

★

**PRESENT THE FINEST IN
MOTION PICTURE ENTERTAINMENT**

A little on the homey side!





IT DONT MUSS THINGS OR SCATTER INK BLOTS AROUND

Mark Twain wrote a memorable letter one day in 1874—his first use of his new Remington Model 1 "Type-Writer". In the Gothic capitals which was all the machine would print, he typed:

I SAW THE THING IN BOSTON THE OTHER DAY & WAS GREATLY TAKEN WITH IT. IT HAS SEVERAL VIRTUES. I BELIEVE IT WILL PRINT FASTER THAN I CAN WRITE. ONE MAY LEAN BACK IN HIS CHAIR & WORK IT. IT PILES AN AWFUL STACK OF WORDS ON ONE PAGE. IT DONT MUSS THINGS OR SCATTER INK BLOTS AROUND. OF COURSE IT SAVES PAPER.

This 71-year-old tribute has been followed by thousands of others. For Remington leader-

ship, through all the years since Mark Twain's day, has been grounded on fundamentals: original engineering, superb manufacturing, world-wide marketing.

Little wonder, then, that more Remingtons have been bought than any other make.

Little wonder, too, that thousands of fingers are itching to try the keys of a new Remington

Rand Model Seventeen. For news has spread, from the Armed Forces, the war plants, the essential industries who are absorbing our current production, that Remington Rand has done it again... adding a new lightning action, a new feather touch, to a machine already superlative in performance. The word is: "A new Seventeen is worth waiting for!"



Remington Rand

THE FIRST NAME IN TYPEWRITERS



"In betwixt and between."

Carburetor and Ignition

Tune-Up

VOGEL ELECTRIC CO.

128 N. Fifth Street Indiana, Pa.

**THE
MAYFAIR SHOPPE**

705 Philadelphia Street
INDIANA, PA.

LADIES' READY-TO-WEAR

Phone 74

Indiana Sales and Service

STUDEBAKER

Certified Used Cars

Guaranteed Service

1080 PHILADELPHIA STREET
INDIANA, PA.

DAIRY-DELL

Dairy Products Build

Better Bodies

JOHNSTOWN INDIANA
EBENSBURG

COMPLIMENTS

of

Clymer Water Service Co.

INDIANA, PENNA.

Quality Dry Cleaners

PHONE INDIANA 299

Daily Service

We Operate Our Own Plant
Expert Ladies' and Gents' Tailoring
5 S. Fifth Street Indiana, Pa.



COMPLIMENTS

of

King Leathers Inc.

Manufacturers of Fine Leather Goods

INDIANA, PA.

Emile Your Hairdresser



17 North Eighth Street

HOTEL MOORE

Indiana, Pennsylvania



Phone 1849

For the College "Miss"

Slick chicks will
treat their feet to

Casuals
Oxfords

\$3.45
\$3.99



Widths
AAA
to
C

Brown's Boot Shop

INDIANA, PA.

McNAUGHTON BROS.

Phone 904

729 Church St.

STORAGE and TRANSFER

Local and Long Distance Moving

Sophomores entertaining at Willord Home.



DOUGLASS STUDIO

38 So. Seventh Street

Indiana, Pennsylvania



Photography

Portrait

Commercial

Photo Finishing

We Use Fluorescent Light

HESS BROS. RESTAURANT

Indiana's Most Complete
Where People Meet to Eat

OUR AIM—
Is Not How Much We Can
Get for What We Give . . .

BUT—
How Much We Can Give
For What We Get

Bus Tickets and Information

11 SOUTH SEVENTH STREET
Phone 335

24-Hour Service



Must have been one of Mr. Chew's jokes.

More and more
smart and thrifty
women shoppers
are realizing the
wisdom of visiting
our Fashion Floor.



Sportswear
Dresses
Coats
Suits
Furs

MONTGOMERY WARD

★

Indiana Evening Gazette

PHONES 500-501

843 Philadelphia Street

INDIANA, PA.

★

CHEVROLET
and
OLDSMOBILE

SALES and SERVICE

★

Edwards Motor Co.

Courtway

Indiana, Pa.

McCRORY'S
5 & 10c STORE

★

Always Ready to Help and Serve

You for Your Needs

Air Conditioned for Your

Comfort

★

Indiana, Pennsylvania

GEARHART'S

Mildred R. Gearhart

707 PHILADELPHIA STREET

B. F. Goodrich Stores

B. F. Goodrich Tires . . .
Tubes . . . Batteries

EXPERT RECAPPING
24-Hour Service

628 Philadelphia Street Indiana, Pa.

THE PARK PRESS

- ★ Printing
- ★ for
- ★ Every
- ★ College
- ★ Organization

A N O P E N B O O K

The story of Penn's success is an Open Book to thousands of customers in a 10-county area. Service is the keynote to that success.

PENN
FURNITURE CO.

- ★ INDIANA
- ★ JOHNSTOWN
- ★ ALTOONA
- ★ SOMERSET

COMPLIMENTS



Education is learning while intelligence is knowledge used for the greatest good!

SEARS ROEBUCK AND CO
627 Philadelphia Street Indiana, Pa.

When in . . .

INDIANA
NEW CASTLE
BLAIRSVILLE

Stop and Try

Dean's Diner

ROBINSON Funeral Homes

ESTABLISHED 1891

Ambulance Service

INDIANA, PA. SALTSBURG, PA.

*For the Best Spaghetti
in Town . . .*

Try

LA PRIMA'S

11 North Sixth Street Phone 9247

Hot Water Heat Running Water

HOUK HOTEL

★

INDIANA, PA.

Main Street, Route 422

MODERATE RATES PHONE 516-R

ASH SHOE COMPANY

The House of Good Shoes

SHOES TO FIT
EVERY PURSE

X-RAY FITTING

730 PHILADELPHIA STREET
Phone 1274

Matches were scarce this year.



COMPLIMENTS
of
Indiana Hotel

McCONN'S RESTAURANTS

726 Philadelphia Street



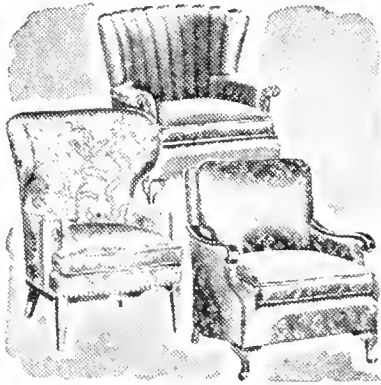
VARSIY GRILL AT THE COLLEGE

992 Oakland Avenue



NICER THINGS TO EAT

Use Our Party Room for Your Parties



COMPLIMENTS

of

BUCHHEIT BROS.

734 Philadelphia St. Indiana, Pa.

FURNITURE SINCE 1911



S M I T H ' S

716 Philadelphia St. Indiana, Pa.



Third Clark, please!

**HAPPY FEET
MAKE
HAPPY FACES**



YES
KEEP THAT SMILE
WEAR

A N D E R S O N S
Better Shoes

PHONE 972

Opposite Court House Indiana, Pa.

You, Your Money and Your Bank . . .

Health, Wealth and Happiness are three great basic wants.

Money is important; it opens the door to most things you want in life. That's why a good strong bank is so important to you. It safeguards your money, helps you keep track of it, aids you in disbursing it efficiently. Used properly and fully, this bank can be a most helpful financial ally to you.

THE SAVINGS & TRUST COMPANY OF INDIANA

INDIANA, PENNSYLVANIA



RESOURCES OVER SEVEN MILLION DOLLARS

Member Federal Deposit Insurance Corporation

**MARION CENTER
CREAMERY**

INDIANA, PENNA.



Phone 429-J

HENRY HALL

Incorporated

**BOOKS, STATIONERY, PRINTING
LEGAL BLANKS**

Greeting Cards for All
Occasions



**OFFICE AND SCHOOL
SUPPLIES**

INDIANA, PENNSYLVANIA

**BARCLAY'S
HARDWARE**

520 PHILADELPHIA STREET

Phone 1522

Indiana, Pa.

Nu-Bilt Upholstering Co.

840 PHILADELPHIA STREET
INDIANA, PA.

New and Reupholstered
Living Room Furniture

COMPLIMENTS OF
of
HOEY'S MARKET

Meats — Groceries — Produce

22 SOUTH SEVENTH STREET

Pig tails, dinks, unmatched socks—guess who?



THE PLAZA

Billiards and Bowling

INDIANA THEATRE BLDG.

BLAIR F. UBER

Largest Radio Store in Pennsylvania

Over 1100 Albums of Records
More Than 15,000 Records in Stock

Opposite Court House
INDIANA, PA.

Stahura's Market

Groceries and Produce
Feature Quality Meats

9 Carpenter Ave. Indiana, Pa.
Phone 790 - 789

WE APPRECIATE YOUR
PATRONAGE

WIDDOWSON'S

JEWELERS

508-R

Indiana, Pa.

INDIANA LUMBER & SUPPLY COMPANY

★

Builders - Suppliers
Special Mill Work
DuPont Paint
Johns-Manville Roofing

★

BELL PHONE 69
Oak and Tenth Streets
INDIANA, PA.

GATTI'S Cut Rate Drugs

First Drug Store on Way Up-Town

★

Soda Fountain Service
PRESCRIPTIONS
Creams and Cosmetics

★

Phone 9448

Complete INSURANCE Service

Wilfred E. Helwig

Savings & Trust Company Bldg.

INDIANA, PA.

Phone 14



No Tribunal in sight!

The J. M. Shick Company

PRINTING, BINDING, ENGRAVING,
PAPER RULING, LOOSE-LEAF FORMS
AND BINDERS

Snap-out Forms Legal Blanks
Steel Office Equipment

INDIANA, PENNSYLVANIA

Flowers for All Occasions

Indiana Floral Co.

630 Philadelphia Street

INDIANA, PA.



“Accent Your Individuality”



Brody's major in the campus
fashions that are smart
for every occasion

BRODY'S

Indiana's Leading Department Store

“Refresh
yourself”



BOTTLED UNDER AUTHORITY OF THE COCA-COLA COMPANY BY

COCA-COLA BOTTLING CO.

Indiana, Pa.

Telephone 860-J

Rend Bros.



Bakers of Fine Pastries

Bread and Rolls

COMPLIMENTS

of

Daugherty Drug Store

Roy W. Baldwin

800 Philadelphia St.

Indiana, Pa.



GRADE "A"
and
HOMOGENIZED
MILK

★

SEALED with CELLOPHANE

★

**INDIANA DAIRY
COMPANY**

Phone 395

LABORATORY CONTROL

Meet and Greet Your Friends at

MURPHY'S

College students have learned from experience that **MURPHY'S** is the place to buy **EVERYTHING!** When new students arrive they come to Murphy's for room furnishings and the countless other things all college students need . . . and all during the school term, it's Murphy's for "this" and Murphy's for "that." Such popularity must be deserved!

Our Fountain and Luncheonette is also a popular spot . . . where a delightful lunch or refreshing sundae can be enjoyed.

Murphy's — The Friendly Store

5c and 10c STORES

G. C. MURPHY COMPANY

WITH SELECTED MERCHANDISE TO \$1.00

COMPLIMENTS
of
CAMPUS GRILL

Buy With Confidence

MOLLY ANN DRESS SHOP

710 Philadelphia St. Phone 1588
INDIANA, PA.

★
Geo. T. Buchanan Co.

WHOLESALE GROCERS

Indiana, Pa.

★

**MORTON'S DRUG
STORE**

★

The Rexall Store

"Originators of
Live Lemon Cokes"

Where You Are Always Welcome

★

Earl S. Morton, Ph.C.

Final checkup!



LUXENBERG'S

Indiana's Leading Jewelry Store

INDIANA, PA.

INDIANA MOTOR COMPANY

NORTH EIGHTH STREET



BODY and FENDER REPAIRS

STORAGE, CAR WASHING AND GREASING

EXPERT REPAIRS ON ALL MAKES OF CARS



BUICK SALES AND SERVICE

WIDMANN AND TEAH, Inc.

**Indiana's Original and Dependable
Cut-Rate Drug Store**

We take this opportunity to thank all the students and Faculty for their patronage at our Drug Store during the 1944-45 season. To the Graduating Class we wish you success in your future life's work. To the Faculty and Under-classmen we hope we will have the pleasure to serve you again during your next school term. You are always welcome to meet your classmates at our store while shopping in town.

William Penn Restaurant

**A New Place to Eat
We Aim to Please**

31 Years of experience as chef for
Popular Hotels - - -

FORT PITT, WILLIAM PENN and
JOHNSTOWN HOTELS

583 Philadelphia Street Phone 9267



Little Russia—S. T. C.

Capitol Restaurant

fine sea foods

OPEN DAY AND NIGHT

626 Philadelphia Street — Phone 9282

BERGENSTOCK and RUFFNER

**Authorized Hawkinson Tire Tread
Service**

1067-1075 Philadelphia Street
INDIANA, PENNSYLVANIA

Telephone 1979

BUCHMAN'S

At the Railroad

Indiana, Pa.

QUALITY DRESS,
WORK AND SPORT CLOTHING
AND FOOTWEAR

YORGEY'S

Dry Cleaning and Laundry



Only YORGEY'S can give you

RESTORIZING

Keeps clothes clean longer



19 SOUTH SEVENTH STREET

INDIANA, PA.

COMPLIMENTS

of

CHICKEN PIE SHOP

1102 Philadelphia Street Indiana, Pa.

COMPLIMENTS

of

WAXLER'S

Greater Values Always

S I S C O

A Good Ice Cream

STORAGE ICE AND SUPPLY CO.

INDIANA, PA.

WE SOLICIT YOUR

PATRONAGE

Indiana Hardware Co.

Phone 65

Herbert Owens Food Market

The Busy Market on the Corner



901 Philadelphia Street Phone 898

Indiana Office Supply

548 Philadelphia Street Phone 1132-J

Indiana, Pennsylvania



EVERYTHING FOR THE OFFICE

Green Vase Floral Shoppe

FLOWERS

HALLMARK GREETING CARDS

For Every Occasion

567 Philadelphia Street Phone 37-J

Bea—u—tiful limbs!



FIRST NATIONAL BANK

IN

INDIANA, PENNSYLVANIA



DIRECTORS

EDWARD B. BENNETT

DR. G. E. SIMPSON

DR. M. J. WALSH

DR. H. B. BUTERBAUGH

PAUL J. STRAITIFF

L. W. HOUSEHOLDER

W. W. TAYLOR

WHEN YOU ENROLL AT INDIANA STATE TEACHERS COLLEGE
YOU SELECT A GOOD COLLEGE



Why Not Select a Good Dry Cleaner by Calling
INDIANA 90



DAILY SERVICE

ROSS AND DeGAETANO

WE CALL FOR AND DELIVER

This Book was Printed by

Ziegler Printing Company

G. Wayne Brown, Owner and Manager

235 West Cunningham Street

BUTLER, PENN'A

★ ★

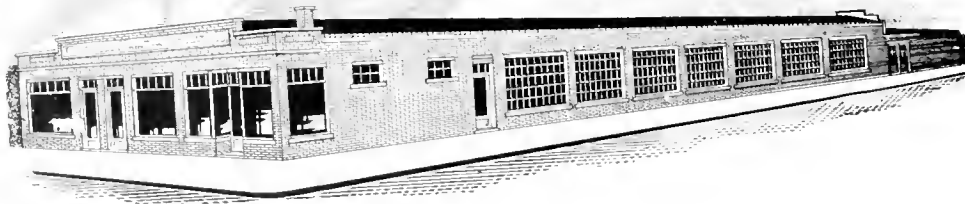
College Annuals
High School Year Books
Monthly Publications

★ ★

A Complete Printing Service

★ ★

Phone 22-240





Busy (?) Home Wreckers

COMPLIMENTS
of
CONEY ISLAND
INDIANA, PA.

**INDIANA
MACARONI
COMPANY**
INDIANA, PENNSYLVANIA

★

Sole Manufacturers of
La Gragnano Brand Macaroni

★

PHONE 880

COMPLIMENTS
of
T. H. NEVILLE
NEWSDEALER
Pittsburgh, New York, Philadelphia and
Johnstown papers. Delivered.
PHONE 1637

MURRAY'S
DYEING and CLEANING COMPANY
Delivery Service to the College
PHONE 430
Indiana, Pennsylvania
Established 1905

Streamline Market
FROZEN FOOD LOCKERS
★
Corner School Street and Oakland Avenue
INDIANA, PENNA.

COMPLIMENTS
of
**JAMES M. STEWART
& CO.**
HARDWARE
Phone 811

MASTER ENGRAVERS TO AMERICA'S SCHOOLS



An American

TRADITION

For more than half a century Pontiac has been producing **QUALITY** printing plates for all types of publication work and has established a reputation for dependable service which is unexcelled among photo-engravers. Everywhere Pontiac yearbook service men have become known for their friendly, helpful assistance and are recognized for their ability as specialists in the school publication field.

It has become "An American Tradition" for schools to select Pontiac as their engraver year after year, with the result that the number of annuals handled by Pontiac has steadily increased. Hundreds of these staffs have developed distinctive books with the assistance of Pontiac artists and have gained recognition for the originality and success of their publications.

The entire personnel of Pontiac Engraving & Electrotype Co. salute the publishers of this book for their splendid efforts in producing a fine yearbook. They invite other schools to join the thousands of satisfied Pontiac clients for assistance in the solution of their engraving problems.

Pontiac served as the Official Engraver to this book.

PONTIAC ENGRAVING AND ELECTROTYPE CO.

812-822 WEST VAN BUREN STREET, CHICAGO, ILLINOIS

88 

Index

Activities of the Day	84-85	Librarians	13
Advisory Board	94	Life Saving	87
Alpha Omega	56	Mathematics Department	14
Alpha Sigma Alpha	62-63	Men and Women in Service	110-115
Alpha Sigma Tau	64-65	Minute Men and Women	108-109
Art Club	80	Music Education Department	16
Art Department	16	Music Educators Club	83
Attractions of the Hour	98-99	Music Organizations	78-79
Basketball	88	Non Resident Women's League	95
Beauties	100-101	Oak	90-91
Cadet Nurses	116-117	Panhellenic Association	61
Cultural Life	45-48	Penn, The	92-93
Deans and Administrative Assistants	8-9	People of the Year	18-19
Delta Sigma Epsilon	66-67	Personalities	102-103
Departmental Parties	50-51	Physical Education Department	15
Dramatics	52-53	Pi Kappa Sigma	68-69
Education Department	10	Pi Omega Pi	60
Elementary Department	11	President	6
English Department	13	Religious Organizations	76-77
Events of the Week	54-55	Resident Women's League	95
First Aid	87	Rifle Club	88
Foreign Language Department	12	Science Department	14
Four Short Years Together	20-21	Secondary Education Club	83
Freshman Class	40-41	Secondary Education Department	11
Geography Department	12	Senior Class	20-35
Guardians of the Future	4-5	Sigma Tau Gamma	74
Gym Classes	86	Sigma Sigma Sigma	72-73
Highlights of the Month	42-43	Social Studies Department	15
Home Economics Club	80	Sophomore Class	38-39
Home Economics Department	14	Split Second Shots and Services	120-121
Home Front Activities	118-119	Student Council	94
International Relations Club	104	Supervising Teachers	10
Junior Chamber of Commerce	83	Theta Sigma Upsilon	70-71
Junior Class	36-37	Who's Who	104
Kappa Delta Pi	58-59	Winter Sports Club	88
Kappa Omicron Phi	57	Women's Varsity I	87
Leisure Time Opportunities	105-106		

Answers to "By Their Words . . . "

Dr. Guy Davis
 Dr. Reba Perkins
 Mr. Wilbur Emmert
 Mr. Paul Smay
 Mr. Paul Boyts
 Dr. Norah Zinc
 Mr. Paul Rischeberger
 Mr. Walter Whitmyre
 Miss Ethel Farrell
 Mr. Robert Webb
 Dr. Rhodes Stabley
 Miss Florence Kimball

Autographs

1970
MAY 11
RA

MR. GIBSON
INDIANA PA

