

# Orbit

1952









# Foreword . . .



The academic year 1951-52 has witnessed many important historic events. To the Class of 1952 the most important event of the year is the termination, for many of us, of our formal education. Some, to be sure, will continue their studies; others will enter directly into their chosen profession; still others will go out into different walks of life where they can best use the educational experiences obtained here at Bloomsburg.

Whatever our course may be, however, we all have one thing in common. That is the obligation to use what influence we may possess for the betterment of mankind. We must do our best to eliminate prejudice, greed, hate, corruption, and other factors which breed discontent within the hearts of men.

We must use the accumulated wisdom of the ages—of men like Plato, Voltaire, Rousseau, Mann, Dewey, and others—to accomplish our goal. These men combined philosophy and education to give us the fundamentals, along with our faith and trust in God, upon which to build a better world.



# Obiter

1952

Volume XXXVI

Published by  
**THE SENIOR CLASS**  
State Teachers College  
BLOOMSBURG, PA.

## *Contents:*

Section I . . . . .	1-23
College	
Section II . . . . .	24-59
Classes	
Section III . . . . .	60-103
Activities	
Section IV . . . . .	104-123
Athletics	
Section V . . . . .	124-146
Advertising	
Section VI . . . . .	147-148
Senior Directory	

**T**HE fact that *OBITER* 1952 is being dedicated to two persons in no way lessens the sincere respect and appreciation with which the dedication is tendered.

In the process of living there is no more important phase than that of learning. Those people who take upon themselves the difficult task of teaching their fellow men must be endowed with certain inherent characteristics among which are honesty, devotion, good humor, and patience.

There is no better proof of these characteristics than long and faithful service. It is for just such service that we wish to dedicate this book.

### **Miss Alice Johnston**

Miss Johnston has served the college faithfully and well for twenty-six and one-half years as instructor in the fields of speech and speech correction. Miss Johnston, during her active teaching career at Bloomsburg, also was sponsor of the Dramatic Club; Alpha Psi Omega, the dramatic fraternity; and Sigma Alpha Eta, the speech fraternity.

During her years as teacher and friend she has done much to make this the "Friendly College on the Hill."





**Mr. Edward A. Reams**



In his genial, thorough manner, Mr. Reams has taught social studies here on the Hill for twenty-six years. During that time Mr. Reams has been active as sponsor of the Phi Sigma Pi Fraternity and as a sub-chairman of the Faculty Assembly Committee. Mr. Reams terminates his fine service to the College in May of 1952. It is our hope that he receives from the future as much as he has given us in the past.





“That alone—I mean wisdom—  
is the true and unalloyed coin,  
for which we ought to exchange  
all these things: for this, and with  
this, everything is in reality bought  
and sold— fortitude, temperance,  
and justice, and, in a word, true  
virtue subsists with wisdom.”

—PLATO

# *College*



Carver Hall



Noetting Hall

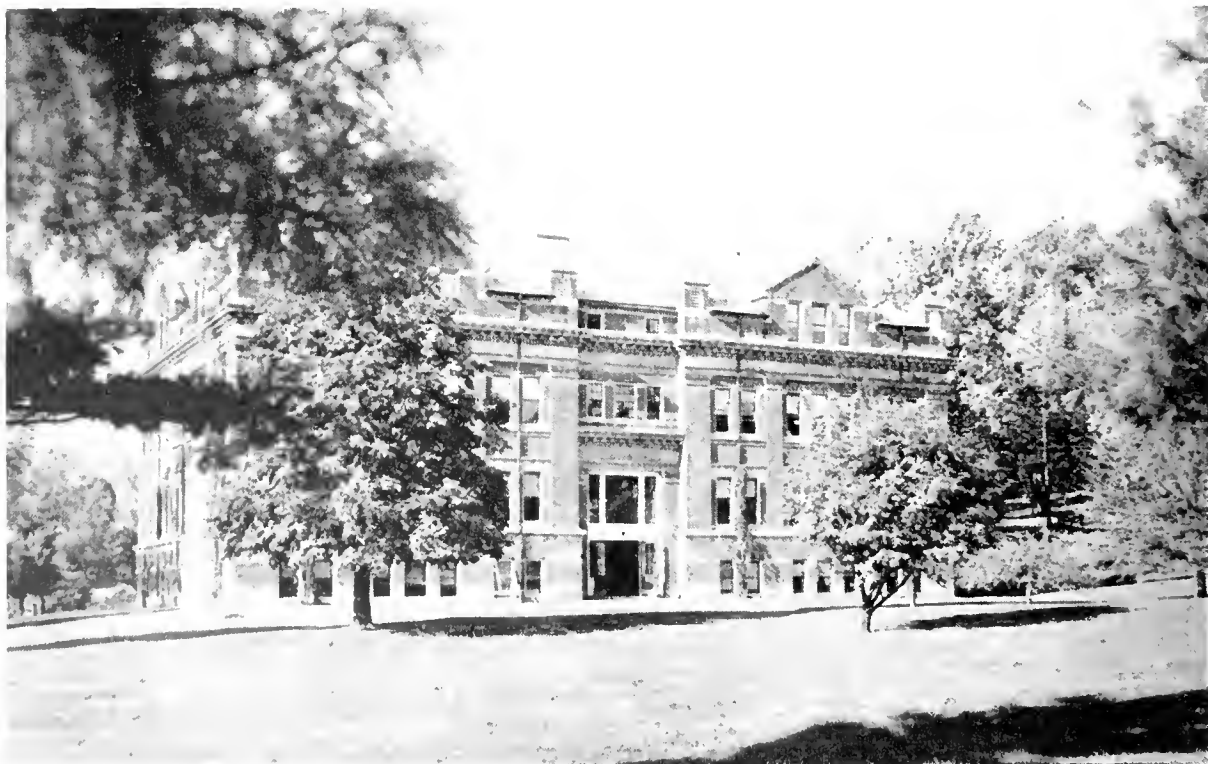
Waller Hall

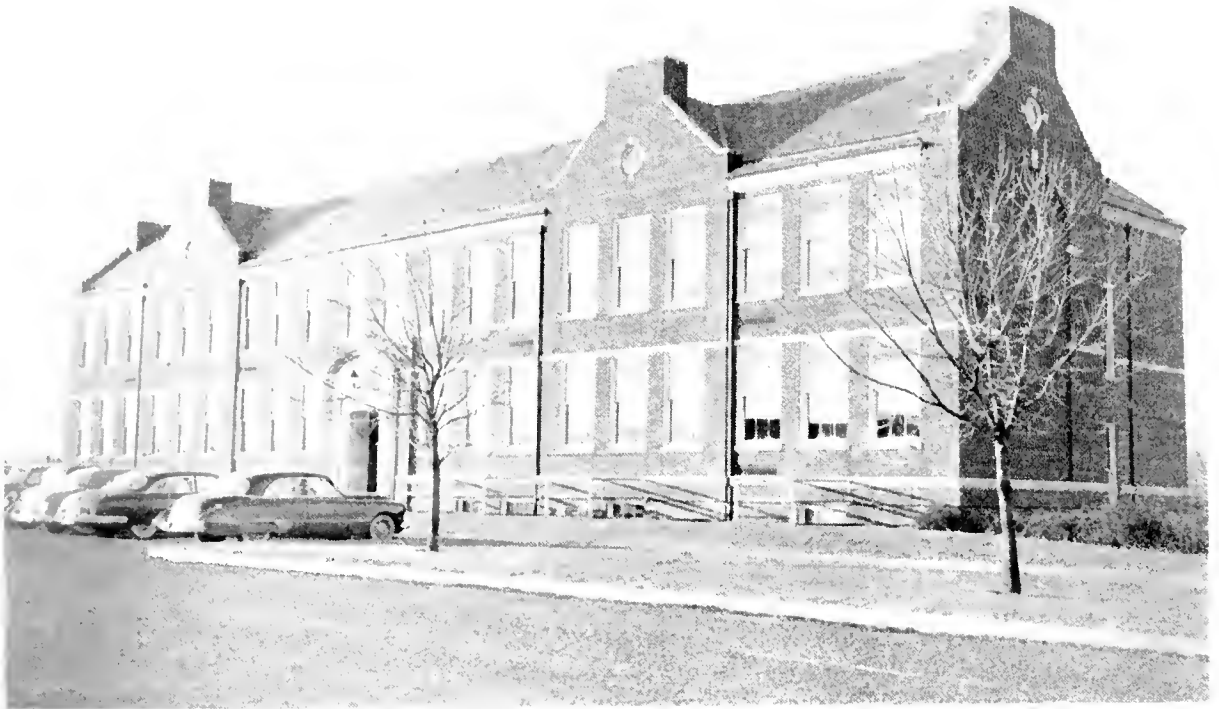




North Hall

Science Hall





**Navy Hall**

**Benjamin Franklin Training School**



Centennial  
Gymnasium



President's Home





DR. HARVEY A. ANDRUSS  
*President*



### **L'Envoi to Graduates**

And so you go, but still you stay behind  
For something you left here will be ours  
To make us think of you, to hope you'll find  
Long years of usefulness and happy hours.

Bloomsburg is what its graduates make it through their continued efforts as moulders of the American youth of tomorrow.

Life is now your college. May you graduate and earn some honors for yourself and your Alma Mater in your chosen profession.

*Harvey A. Andrus*  
*President.*

A Message From the Dean of Instruction:

It is a pleasure to extend greetings to the members of our college community, especially to the members of our graduating class. The class of 1952 has witnessed for the first time in history a growing alertness on the part of the students of education, teachers and administrators within all the areas of teaching, to the need for an organized profession to take part in the selection, in the preparation and in the development of standards for its members. Here at "old Bloomsburg" we have taken our places in the crusade for better schools and the elevation of teaching to a profession. The early interest of many of our students in professional activities on and off our campus presages leadership in the profession in the years to come.

*Thomas P. North*  
*Dean of Instruction.*

DR. THOMAS P. NORTH  
*Dean of Instruction*

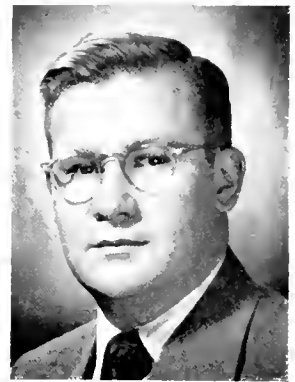




*Left to Right* — H. Billig, B. Eyerly, J. Sherman, E. Wilson.



**E. D. SHARRETTS**  
*Superintendent of Grounds*



**P. G. MARTIN**  
*Business Manager*



*Left to Right* — M. Haggerty, M. Ammerman,  
V. Knight, A. Gillespie.



*Left to Right* — R. Eyerly, P. Erdman, M. Luschyk.



MARGUERITE KEHR  
*Dean of Women*

TO THE CLASS OF 1952:

When you came to college the road to becoming Seniors probably looked long. Now you have achieved that proud distinction and we congratulate you. When you take the future step of becoming alumni you will enter upon a lifelong relationship to your Alma Mater which we hope you will keep alive by coming back often. With all good wishes,

Sincerely yours,  
MARGUERITE KEHR,  
*Dean of Women*



ETHEL A. RANSON  
*Assistant Dean of Women  
and Mathematics*  
University of Illinois, A.B.; Col-  
umbia University, M.A.; Grad-  
uate Work, Columbia University.



MARY E. MACDONALD  
*Assistant to Dean of Women,  
Coordinator of Guidance Services*  
University of Michigan, A.B.;  
Teachers College, Columbia Uni-  
versity, A.M.; Graduate Work,  
Columbia University.

TO THE SENIOR CLASS:

Each beginning teacher has a unique opportunity. The next generation sits in his classroom—future bank tellers and statesmen, creative artists and drug store attendants, future men of wealth and men of poverty, workers, farmers, and just plain city folks, including all the fathers and mothers of the generation to follow. It will be they who must accomplish a great forward step—to balance the scientific materialism of this generation with the spiritual victory of the next. That is why the beginning teacher must be an inspirational teacher in a technical age.

JOHN A. HOCH,  
*Dean of Men*



RALPH S. HERRE  
*Social Studies*  
Colgate University, B.S.; Teach-  
ers College, Albany, New York,  
M.A.; Graduate Work, Clark  
University, New York University,  
University of Buffalo; Penn-  
sylvania State College, Ed.D.



ROBERT B. REDMAN  
*Social Studies and  
Athletic Coaching*  
Swarthmore College, A.B.; Penn-  
sylvania State College; Graduate  
Work, University of Wisconsin;  
Duke University, M.A.



JOHN A. HOCH  
*Dean of Men*

EDUCATIONAL LEADERS



**RICHARD G. HALLISY**  
*Director of Business Education*  
 State Teachers College, Whitewater, Wisconsin, B.Ed.; University of Iowa, M.A.; Graduate Work, University of Pittsburgh.



**EDNA J. HAZEN**  
*Director of Elementary Education*  
 State Normal School, Edinboro, Pennsylvania; Allegheny College, Meadville, Pennsylvania; Columbia University, B.S., M.A.; Graduate Work, New York University, Clark University.



**ERNEST H. ENGELHARDT**  
*Director of Secondary Education and Placement Service*  
*Director of Extension Education*  
 Bucknell University, A.B.; New York University, Bucknell University, M.A.; University of Pittsburgh, Ed.D.

BUSINESS EDUCATION



**WILLIAM C. FORNEY**  
 Temple University, B.S.; New York University, M.A.; Graduate Work, Harvard University, Chicago University.



**EARL A. GEHRIG**  
 State Teachers College, Bloomsburg, Pennsylvania, B.S.; Graduate Work, Bucknell University; Northwestern University, M.B.A.



**CHARLES H. HENRIE**  
 State Teachers College, Bloomsburg, Pennsylvania, B.S.; Temple University, M.Ed.; Graduate Work, University of Pittsburgh, New York University.



**CLAYTON H. HINKEL**  
 State Teachers College, Bloomsburg, Pennsylvania, B.S.; Temple University, M.Ed.; New York University, Graduate Work.



**HONORA M. NOYES**  
 George Washington University, B.A.; University of Pittsburgh, M.Ed.; Graduate Work, Pennsylvania State College, Columbia University.



**WALTER S. RYGIEL**  
 Temple University, B.S., M.Ed.; Graduate Work, Temple University, University of Pennsylvania, Pennsylvania State College.

ELEMENTARY EDUCATION



**MRS. LUCILE J. BAKER**  
*Training Teacher, Grade I*  
 Western State College, Colorado, A.B.  
 Tri-State College, Indiana, Mus.B.,  
 Columbia University, A.M.; Graduate  
 Work, Pestalozzi-Froebel School, Chi-  
 cago, Illinois; Denver University, Den-  
 ver, Colorado.



**EDNA J. BARNES**  
*Training Teacher, Grade VI*  
 McMurray College, Jacksonville, Illi-  
 nois; Western State College, Macomb,  
 Illinois; B.S.; Columbia University,  
 M.A.; Graduate Work, University of  
 Colorado, Columbia University.



**IVA MAE BECKLEY**  
*Training Teacher, Grade II*  
 State Teachers College, Lock Haven,  
 Pennsylvania, B.S.; Pennsylvania State  
 College, M.Ed.; Graduate Work, Colum-  
 bia University.



**RUSSELL F. SCHLEICHER**  
 State Teachers College, Kutztown,  
 Pennsylvania, Pennsylvania State Col-  
 lege, B.S.; Lehigh University, M.A.



**ANNA GARRISON SCOTT**  
*Training Teacher, Grade IV*  
 State Normal School, Bloomsburg,  
 Pennsylvania; Columbia University,  
 B.S., M.A.



**MARCELLA MARIE STICKLER**  
*Training Teacher, Grade III*  
 State Teachers College, Lock Haven,  
 Pennsylvania, B.S.; St. Bonaventure  
 College, M.S.; Graduate Work, Penn-  
 sylvania State College.



**MARJORIE STOVER**  
*Training Teacher, Special Class*  
 State Teachers College, Bloomsburg,  
 Pennsylvania, B.S.; Graduate Work,  
 University of Michigan, Temple Uni-  
 versity.



**GRACE H. WOOLWORTH**  
*Training Teacher, Kindergarten*  
 State Teachers College, Kearney, Ne-  
 braska; University of Chicago, Ph.D.;  
 University of California; Columbia Uni-  
 versity, A.M.; Graduate Work, Colum-  
 bia University.



OLIVE PAYNE BEEMAN  
*Art*

University of Chicago, Associate Ed.B., Ph.B.; Graduate Work, University of Indiana, Oswald Art School.



C. CORDELIA BRONG  
*Clinical Speech*

Hood College, Frederick, Md., B.A.; U.C. Columbia University, M.A.; Northwestern University, Ph.D.



EDWARD T. DE VOE  
*English*

State Teachers College, Bloomsburg, Pennsylvania, B.S.; Bucknell University, M.Ed.; Graduate Work, Pennsylvania State College.



HOWARD F. FENSTEMAKER  
*Foreign Languages*

State Normal School, Bloomsburg, Pennsylvania; University of Michigan, B.A.; New York University, M.A.; Graduate Work, University of Pennsylvania.



ALICE JOHNSTON  
*Speech*

Park College, Missouri, L.B.; Columbia University, M.A.; Graduate Work, University of Wisconsin, Columbia University, University of Michigan, University of Chicago, Central School of Speech, London, England; New York League for Hard of Hearing, Pezgan School of Dramatic Art, New York.



KIMBER C. KUSTER  
*Biological Science*

State Normal School, Bloomsburg, Pennsylvania; University of Michigan, B.S., M.S., Ph.D.



HAROLD H. LANTERMAN  
*Physical Science*

State Teachers College, Bloomsburg, Pennsylvania, B.S.; New York University, M.A.; Graduate Work, New York University, Pennsylvania State College.



NELL MAUPIN  
*Social Studies*

Peabody Teachers College, B.A.; Vanderbilt University; Chicago University; University of Iowa, M.A.; Ph.D.; New York University.



LUCY McCAMMON  
*Health Education*

Southwestern Missouri Teachers College, Springfield, Missouri, A.B.; Columbia University, M.A.; Graduate Work, Alabama University, Columbia University.





**EDWARD A. REAMS**  
*Social Studies*

Kansas Wesleyan, A.B.; Columbia University, M.A.; Graduate Work, Pennsylvania State College, New York University, University of Southern California.



**J. ALMUS RUSSELL**  
*English*

Dartmouth College, A.B.; Cornell University, A.M., Ph.D.; London University, Certificate.



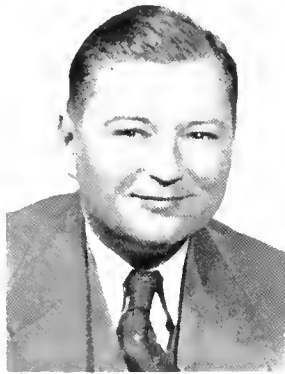
**HAROLD S. SHELLY**  
*Physical Education*

Ohio Northern University, Ada, Ohio, A.B.; University of Michigan, Ann Arbor, Michigan, M.A.



**RALPH FISHER SMITH**  
*Public School Music*

Faellen Pianoforte School, Boston, Mass.; Private Study, Arthur Foote, Boston, Mass.; Bandmasters and Musicians School, Chaumont, France; New York University, B.S.; Temple University, M.Ed.



**WILLIAM B. STERLING**  
*Aviation*

Plattsburg State Normal School, Diploma; University of Buffalo, B.S.; Syracuse University, M.S. Ed.; Instructor's Rating, Single Engine Land; Designated Flight Examiner No. 3199 (C. A. A.); Graduate Work, United Air Lines Pilot School, Denver, Colorado.



**DOROTHY E. STOLF**  
*Speech and English*

Eastern Washington College of Education, B.A.; Northwestern University, M.A.; Additional Graduate Work, Northwestern University and Louisiana State University.



**PAUL E. WAGNER**

Pennsylvania State College, B.S., M.S., Ed.D.



**MARGARET E. WALDRON**  
*Mathematics*

Wellesley College, B.A.; Columbia University, M.A.; Graduate Work, University of Southern California, Harvard University.



**STEPHEN R. HOPKINS**  
*Private School of Music*

Yale University School of Music, B. of Music; Student, Tobias Mathay Pianoforte School, Royal Academy of Music, and Dalcroze School, all of London, England.

## DIETITIAN



REBEKAH S. HUTCUT  
*Dietitian*

Columbia University, B.S. in Home Economics.

## COLLEGE NURSE



M. BEATRICE METTLER  
*Graduate Nurse*

Bucknell University, A.B.; University of Pennsylvania, M.S.; Graduate of the Johns Hopkins Hospital School of Nursing, Baltimore, Maryland; Graduate Work, University of Chicago; R.N., Pennsylvania and Maryland.

## LIBRARIANS



ELSIE G. BOWER  
*Assistant Librarian*

State Teachers College, Bloomsburg, Pennsylvania; Pennsylvania State College, B.S.; Drexel Institute of Technology, Philadelphia, Pennsylvania, B.S. in L.S.



ELINOR R. KEEFER  
*Librarian*

Muskingum College, New Concord, Ohio, A.B.; University of Pittsburgh, Pittsburgh, Pa., LL.M.; George Peabody College for Teachers, Nashville, Tennessee, B.S. in L.S.

## Faculty Advisers

DR. MAUPIN  
1948-1949

MARJORIE KELLER SWARTZ  
1949-1950

DR. KUSTER  
1950-1951

MR. GEHRIG  
1951-1952



MR. EARL GEHRIG  
*Senior Class Adviser*

### *To My Fellow Graduates:*

We've come to the end of four long and happy years of college life that entitles us to that sometimes illusive sheepskin. Now, we are about to assume full adult responsibility toward solving problems which are, today, world wide in scope.

We're heading out into a society of loyalty oaths, guilt by association, and of fear. If we teach, we must take a loyalty oath and then be mighty careful what we say for it might result in the loss of our job and a smirched reputation. It is up to us as individual citizens to combat these things lest we lose our right to heterodox thought which has been one of our bulwarks of democracy. My fervent wish is that when you look at these lines years from now you will think my fears silly for you'll be enjoying full civil liberties. I hope so.

I want to thank all of you for your wonderful co-operation and help this year. It has been a privilege and an honor to work with you and for you. God bless you all.

TOM ANTHONY, *President.*  
Senior Class of 1952



MARGARET BOURDETTE  
ROBERT BURNS  
*Senior Class Representatives*

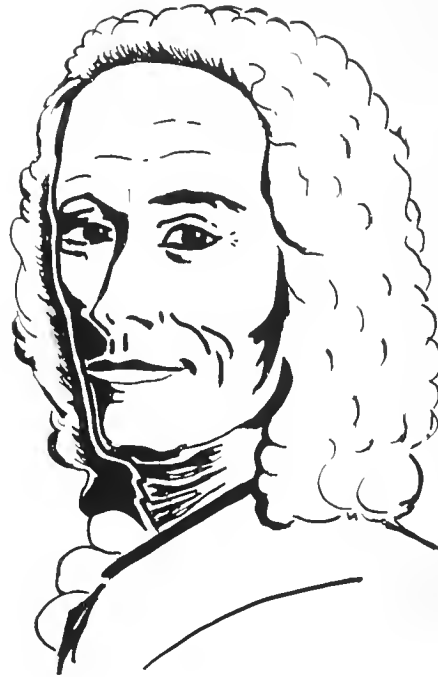
THOMAS ANTHONY  
*Senior Class President*





LASS

1912



"I disapprove of what you say,  
but I defend to the death you're  
right to say it."

—VOLTAIRE

---

# *Classes*

---

# SENIOR CLASS

## OFFICERS

THOMAS ANTHONY	- - - - -	<i>President</i>
MAYNARD HARRING	- - - - -	<i>Vice President</i>
BARBARA HARMON	- - - - -	<i>Secretary</i>
RICHARD POWELL	- - - - -	<i>Treasurer</i>
ROBERT BURNS	- - - - -	<i>Man Representative</i>
MARGARET BOURDETTE	- - - - -	<i>Woman Representative</i>

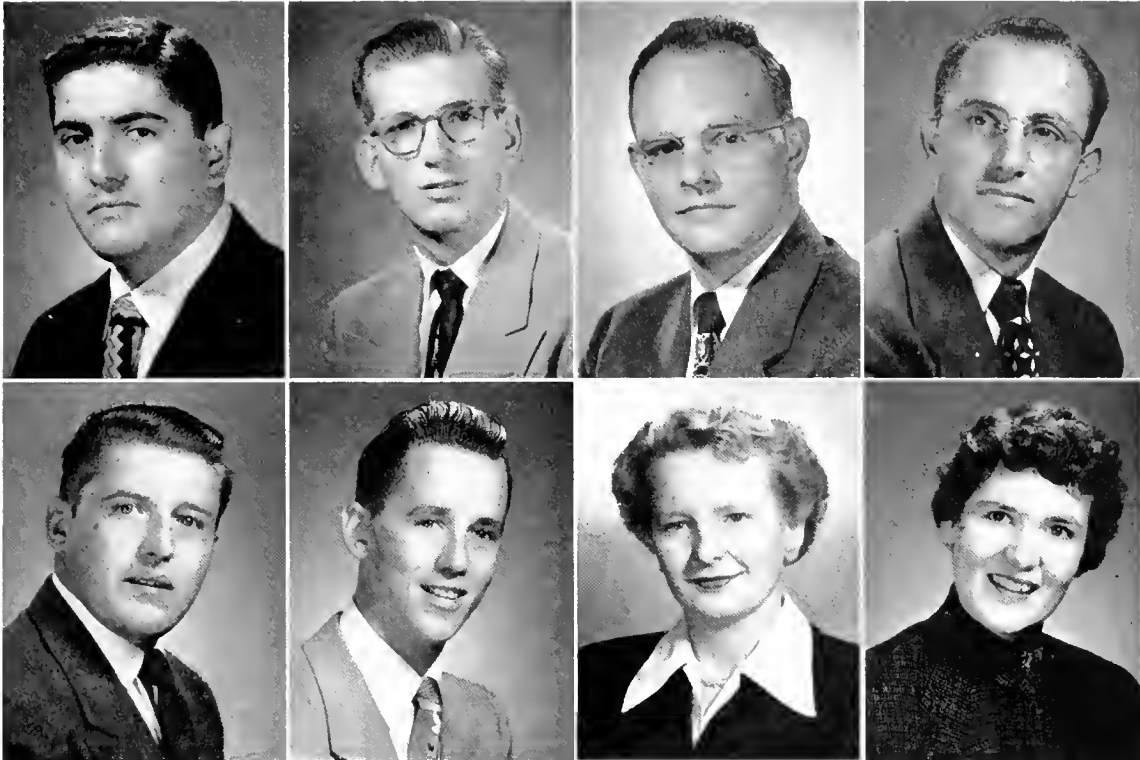
*Class Adviser—MR. EARL H. GEHRIG*

The graduating seniors always have many happy memories of their days at Bloomsburg. But as graduating seniors, the time for carefree college days being gone, they must settle down to the more serious business immediately at hand. The Class of 1952, as a group and individually, has made many commendable contributions to the college community. The Seniors leave with the fervent hope that all they have known here may be kept alive by the remaining classes.



*Front Row* M. Bourdette, T. Anthony, B. Harmon.  
*Back Row* R. Powell, M. Harring, R. Burns.

# BUSINESS CURRICULUM



*Upper row:*

**EUGENE A. ADAMI**

Berwick

*Accounting, Social Studies*

Business Education Club 1, 2, 3, 4; *Maroon and Gold* 3; Aviation Club 3; Day Men's Association 2, 3, 4.

**THOMAS H. ANTHONY, JR.**

Shamokin

*General Business*

Senior Class President 1; Sophomore Class President 2; College Council 2, 3, 4, Vice President 3; Alpha Psi Omega 2, 3, 4, President 3; Pi Omega Pi 3, 4; Kappa Delta Pi 3, 4; Football Manager 1, 2, 3, 4; OMTER 2, 3, Director of Publicity 2, 3; *Maroon and Gold* 2; *Who's Who in American Colleges and Universities* 4; Dramatic Club 1, 2, 3, 4; Business Education Club 2, 3, 4; Men's Glee Club 1, 2, 3; Varsity Club 3, 4; Future Teachers of America 3, 4; Men's Dormitory Association 1, 2, 3; Day Men's Association 4; Business Education Contest 3; Co-chairman of Typewriting Committee.

**JAMES BABCOCK**

Mahanoy City

*Accounting, Retail Selling*

Men's Glee Club 1, 2, 3; Community Government Association 2, 3; *Maroon and Gold* Band 3; Phi Sigma Pi 3, 4; Future Teachers of America 3, 4.

**GEORGE V. BAKSI**

Keiser

*Accounting, Social Studies*

Day Men's Association 1, 2, 3, 4; Business Education Club 1, 2; Aviation Club 3; Phi Sigma Pi 3, 4.

*Lower row:*

**CHARLES BARON**

Endicott, New York

*Accounting, Retail Sales, Social Studies*

Football 1, 2, 3, 4; Track 1, 2; Future Teachers of America 3; Business Education Club 3; Varsity Club 1, 2, 3; Golf 1.

**DALE T. BENNETT**

East Bangor

*Accounting, Typing, Mathematics*

Business Education Club 1, 2, 3, 4; Day Men's Association 1, 2, 3, 4, Vice President 2; Basketball Manager 1, 2, 3, 4; College Council 3; Kappa Delta Pi 3, 4; Pi Omega Pi 3, 4, President 4.

**ELEANORE D. BOLINSKY**

Hazleton

*General Business*

Women's Chorus 1; Business Education Club 1, 2; Newman Club 1, 2, 3, 4; OMTER 3, 4, Typist 3, 4; Future Teachers of America 4.

**MARGARET L. BOIRDETTE**

Athens

*General Business*

Waller Hall Association 1, 2, 3, 4; Waller Hall Governing Board 4, Secretary 1; Kappa Delta Pi 3, 4, Recording Secretary 4 (one semester); Pi Omega Pi 3, 4; *Maroon and Gold* Band 2, 3; College Council 4; B Club 2, 3, 4, President 4; Future Teachers of America 4; Business Education Club 1, 2, 3, 4, Historian 4; OMTER 2, 4, Typist 2, Secretary 4; Election Board 3.



*Upper row:*

**ALBERT L. BROWN**  
Sunbury  
*Accounting, Sales, Typing*

Basketball 1; Business Education Club 1; Aviation Club 1; Day Men's Association 1, 2, 3, 4; Future Teachers of America 4.

**FRANCIS T. BROWN**  
Sunbury  
*Accounting, Sales, Typing*

Aviation Club 2, 3; Business Education Club 2, 3; Day Men's Association 1, 2, 3, 4; Future Teachers of America 4.

**MICHAELNE A. CASULA**  
Shenandoah  
*Secretarial Sequence, Retail Selling, English*

Business Education Club 2, 3; Science Club 2; Women's Chorus 2, 3; B Club 2, 3, 4; Fashion Show Co-ordinator 3, 4; Ombudsman 3; Secretary 3; Waller Hall Association 1, 2, 3, 4; Assembly Committee 3, 4; Future Teachers of America.

**ROCCO A. CHERILLA**  
Hazleton  
*General Business*

Kappa Delta Pi 3, 4; Pi Omega Pi 3, 4; Business Education Club 1, 2, 3, 4; Vice President 3; Newman Club 3, 4; Future Teachers of America 4; Men's Dormitory Association 2, 3, 4.

*Lower row:*

**IRENE G. ECKERT**  
Gilberton  
*Secretarial Sequence, Retail Selling, English*

Band 1; Business Education Club 1, 2, 3; Fashion Show Co-ordinator 3; Future Teachers of America 4; B Club 3, 4; Secretary 18 weeks 4; Waller Hall Association 1, 2, 3, 4; Wesley Fellowship 1, 2, 3.

**MARGUERITE M. FITZSIMMONS**  
Mayfield  
*General Business*

Maroon and Gold 1; Business Education Club; Waller Hall Association 1, 2, 3; Newman Club 2, 3; Future Teachers of America 4; Social and Recreational Committee.

**GERALDINE FUNK**  
Lebanon  
*General Commercial*

Women's Chorus 1, 2; Business Education Club 1, 2, 3, 4; Women's Athletics 1, 2, 3; Waller Hall Association 2, 3; Kappa Delta Pi 3, 4; Pi Omega Pi 3, 4.

**LEONARD GALLEY**  
Danville  
*General Commercial*

Business Education Club 2; Aviation Club, Treasurer 3; Kappa Delta Pi 3, 4; Pi Omega Pi 3, 4.



Upper row:

**FRANCIS B. GALINSKI**

Forest City  
*General Business*

Business Education Club 1, 2, 3, 4; President 1; Newman Club 1, 2, 3, 4; Treasurer 3; President 1; Pi Omega Pi 3, 4; Men's Dormitory Association 1, 2, 3, 4; Future Teachers of America 1; Election Board 3; Kappa Delta Pi 3, 4.

**EDWARD GALLAGHER**

Shickshinny  
*Accounting, Social Studies*

Science Club 2, 3, 4; Business Education Club 2.

**JOSEPH DENNIS GEORGE**

Chambersville  
*Accounting, Social Studies*

Men's Glee Club 3; Business Education Club 3, 4; Day Men's Association; Men's Dormitory Association.

**RUTH GLIDDEN**

Susquehanna  
*General Commercial*

Maroon and Gold Band 1, 2, 3; Secretary 1; Librarian 2; Business Education Club 1, 2, 3, 4; Waller Hall Association 2, 3; Governing Board 2, 3; Women's Athletics 2, 3; Vice President 3; Community Government Association 3; Kappa Delta Pi 3, 4; Pi Omega Pi 3, 4.

Lower row:

**DYAR HADDAD**

Schuylkill Haven  
*Secretarial, Sales*

Day Men's Association 2, 3, 4; Men's Dormitory Association 1; Business Education Club 1, 2, 3; Aviation Club 2, 3; Vice President 3; Future Teachers of America 4.

**BERNARD HAMERSHOCK**

Weatherly  
*Accounting, Sales, History*

Men's Dormitory Association 2, 3, 4; Men's Glee Club 1, 2; Football 2, 3; Future Teachers of America 3; Varsity Club 3, 4.

**BARBARA HARMAN**

Lykens  
*General Commercial*

Bloomsburg Players 1, 2; Cheerleader 1, 2, 3; Women's Athletics 1, 3; Business Education Club 2, 3, 4; Secretary 3; Waller Hall Association, Governing Board 2; Pi Omega Pi 3, 4; Junior Class Officer, Secretary 3; Kappa Delta Pi 3, 4; Fashion Show 3.

**LESTER J. HORNBERGER**

Mt. Carmel  
*Accounting, Social Studies*

Business Education Club 1, 3; Kappa Delta Pi 3, 4; Day Men's Association 1, 2, 3, 4; Treasurer 4.



*Upper row.*

**HENRY C. HURTI**

Forty Fort

*Accounting, Sales*

Phi Sigma Pi 3, 4; Kappa Delta Pi 3, 4; Men's Dormitory Association 1, 2, 3, 4; Community Government Association 1, Treasurer 1; Maroon and Gold Band 1, 2, 3, President 3; Varsity Tennis 3, 4; *Maroon and Gold* 2; Knox Fellowship 2; Election Board 2; C. G. A. Budget Committee 3; *Who's Who in American Colleges and Universities* 4.

**WILLIAM J. KREISHER**

Shamokin

*Accounting, Typing, Sales*

Aviation Club 1, 2, President 2; Business Education Club 3; Science Club 3; Day Men's Association 1, 2, 3, 4.

**MICHAEL A. KREPICH**

Berwick

*Sales, Social Studies*

Football 2; Track 1; Business Education Club 1; Day Men's Association 1, 2, 3, 4.

**RICHARD LAUN**

Trucksville

*General Commercial*

Business Education Club 1, 2, 3, 4; Community Government Association 2, 3; Pi Omega Pi 2, 3, 4; Kappa Delta Pi 2, 3, 4; Future Teachers of America 3, 4; *Who's Who in American Colleges and Universities* 4.

*Lower row.*

**RICHARD A. LEDYARD**

Bloomsburg

*Accounting, Sales, Typing*

Baseball 2, 3, 4; Basketball 1; Varsity Club 2, 3, 4; Day Men's Association 1, 2, 3, 4.

**MICHAEL LYLO**

Berwick

*Accounting, Social Studies*

Business Education Club 2, 3, 4; Day's Men's Association 1, 2, 3, 4; Aviation Club 3.

**ALFRED S. MARSILIO**

Hazleton

*Accounting, Sales*

Men's Glee Club 1, 2, 3, Vice President 2; Men's Dormitory Association 1, 2, 3; Newman Club 1, 2, 3, Vice President 2; Future Teachers of America 3; College Council 3, Treasurer; Election Board 1; NSA Delegate 3; Calendar Committee 2; Finance and Allocation Committee 3; Assembly Committee 3; Phi Sigma Pi 4.

**WILLIAM McALOOSE**

Kelayses

*Accounting, Retail Selling, Typewriting*

Aviation Club 2, 3, Vice President 3, Secretary 3.





*Upper row:*

**THOMAS J. McLAUGHLIN**  
Mahanoy Township  
*Accounting, Sales, Typing, English*

Athenaeum Club 1; Football 1, 2, 3, 4; *Maroon and Gold* 1, 2; Future Teachers of America 3, 4; Newman Club 1, 2; Varsity Club 3, 4; Treasurer; Men's Dormitory Association.

**ROBERT E. MILLER**  
Sumbury  
*Accounting, Sales, Social Studies*

Aviation Club 3; Business Education Club 2, 3; Future Teachers of America 4; Day Men's Association 3, 4; Men's Dormitory Association 1, 2.

**RICHARD R. MORRISON**  
Danville  
*Accounting, Sales, Social Studies*

Business Education Club 2; Aviation Club 2.

**VINCENT NAWROCKI**  
New Philadelphia  
*General Business*

Kappa Delta Pi 4; Pi Omega Pi 3, 4; Phi Sigma Pi, Treasurer 3; Business Education Club 1, 2, 3, 4; Newman Club 1, 2, 3, 4; Vice President 3; Future Teachers of America 1; Men's Dormitory Association 1, 2, 3, 4.

*Lower row:*

**ROBERT G. OSENBACH**  
Frackville  
*Accounting, Sales, Typing*

Pi Omega Pi 3, 4; Business Education Club 1, 2, 3; Aviation Club 2, 4; Day Men's Association 1, 2, 3, 4; Future Teachers of America 1; Kappa Delta Pi 4.

**JOSEPH J. PELCHAR**  
Keiser

*Secretarial Sequence, Social Studies*  
Business Education Club 1, 2; Day Men's Association 1, 2, 3, 4.

**LAURA A. PHLO**  
Bloomsburg  
*General Business, Sales*

Business Education Club 1, 2, 3, 4, Secretary 2; Bloomsburg Players 1, 2, 3, 4, Secretary 2; Alpha Psi Omega 2, 3, 4, Treasurer 3, Secretary 1; College Council 3, Secretary; Fashion Show 2, 3, 4; Maroon and Gold Band 1, 2, 3, 4; *Maroon and Gold* 3, 4; Day Women's Association 1, 2, 3, 4; Future Teachers of America; Senior Class Secretary (18 weeks).

**RICHARD C. POWELL**  
Pottstown  
*General Business*

Future Teachers of America 3, 4; Business Education Club 2, 3, 4, Historian 3; Men's Glee Club 2, 3, 4, President 3; Dramatic Club 2, 3, 4, Business Manager 3; Pi Omega Pi 3, 4; Kappa Delta Pi 3, 4, Treasurer 4; Phi Sigma Pi 1; Day Men's Association 2; Men's Dormitory Association 3, 4; OMBLER 3, 4; Wesley Fellowship 3, 4, President 1; Vice President Junior Class; Treasurer Senior Class; *Who's Who in American Colleges and Universities* 4.



*Upper row:*

**JANET E. PRICE**

Reading

*General Business*

Dramatic Club 2, 3, 4; Waller Hall Association 3; B Club 3, 4, Treasurer 3, 4 (18 weeks); Business Education Club 2, 3, 4; Future Teachers of America 4; Athenaeum Club 4; Maroon and Gold Band 2, 3; NSA Committee 2, 3.

**GEORGE RACHKO**

Frackville

*General Business*

Future Teachers of America 4; Business Education Club 1, 2, 3, 4; Aviation Club 3; Day Men's Association 1, 2; Men's Dormitory Association 3, 4.

**WILLIAM W. REED**

Sumbury

*Accounting, Social Studies*

Business Education Club 1, 2, 3; Aviation Club 3, 4.

**KATHRYN L. RHINARD**

Berwick

*Secretarial, English, Sales*

Business Education Club; Fashion Show; Day Women's Association 1, 2, 3, 4.

*Lower row:*

**ANGELO P. SCHENO**

Bloomsburg

*Accounting, Social Studies*

Maroon and Gold 1; Business Education Club 1, 4; Day Men's Association.

**THOMAS E. SCHUKIS**

Mahanoy City

*Accounting, Social Studies*

Football 1, 2, 3, 4; Basketball 1; Newman Club 1, 2, 3, 4; Varsity Club 3, 4.

**JOHN P. SHANAHAN**

Bangor

*Accounting*

Business Education Club 1, 2, 3, 4; Future Teachers of America 4; Aviation Club 1; Vice President Sophomore Class.

**FRANCIS J. SHEEHAN**

Mahanoy City

*Accounting*

Football 1, 2, 3, 4; Varsity Club 3, 4, Vice President 4; College Crier 3; Future Teachers of America 4; Business Education Club 1; Men's Dormitory Association 1, 2, 3, 4; Newman Club 1, 2.

*Upper row:*

**JOYCE SLUYTER**

Towanda

*General Commercial*

Women's Chorus 1, 2, 3; Business Education Club 1, 2, 3; Women's Athletics 1, 2, 3; Kappa Delta Pi 3, 4; Pi Omega Pi 3, 4; Waller Hall Association 3.

**FRANCIS J. STANITSKIE**

Kulpmont

*General Business*

Day Men's Association 1, 2, 3, 4; Business Education Club 1, 4; Aviation Club 2; Pi Omega Pi 3, 4; Future Teachers of America 1; Kappa Delta Pi 4.

**JOHN STEVENS**

Morea

*General Business*

Baseball 1; Business Education Club 1, 2, 3; Day Men's Association 2, 3; Aviation Club 1, 2, 3; Future Teachers of America 3.

*Lower row:*

**NANCY DAWN SWARTZ**

Forty Fort

*Secretarial Sequence, Sales, English*

OBITER 1; *Maroon and Gold* 1; College Council 2; Business Education Club 1, 2, 3; Maroon and Gold Band 1, 2, 3, 4; Fashion Show 1, 2, 3, 4; Waller Hall Association 1, 2, 3, 4; Waller Hall Governing Board 3. Treasurer; Future Teachers of America 4; Women's Chorus 3, 4; Kappa Delta Pi 3, 4; Pi Omega Pi 3, 4.

**JAMES A. WHIBLEY**

Coatesville

*General Business*

Dramatics Club 1; Business Education Club 1, 2; Pi Omega Pi 2, 3; Kappa Delta Pi 2, 3; Soccer Team 1; Maroon and Gold Band 1; Future Teachers of America 3; Sophomore Class President; *Who's Who in American Colleges and Universities*.

Not Pictured

CARL SHULTZ



## ELEMENTARY EDUCATION



*Upper row:*

**JEAN RUTH ALLEN**

Scranton  
*Elementary*

Student Christian Association 3, 4; Poetry Club 3, 4; Historian 4; *Maroon and Gold* 4; Knox Fellowship 3, 4; Athenaeum Club 3, 4; Future Teachers of America 4; Kappa Delta Pi 4.

**SHIRLEY J. COLEMAN**

Beavertown  
*Elementary*

Waller Hall Governing Board 4; Women's Chorus 2, 3; Kappa Delta Pi 3, 4; Future Teachers of America 4.

**LOLA JEAN DEIBERT**

Danville  
*Elementary*

Women's Chorus 1, 2, 3, 4, Treasurer 2, Vice President 3, President 1; Student Christian Association 1, 2, Secretary 2; Athenaeum Club 1, 2, Treasurer 2; Waller Hall Association 1, 2, 3, 4; Waller Hall Governing Board 3, 4, Vice President 3; *Pilot* 3, Associate Editor; *Who's Who in American Colleges and Universities* 4.

**JOHN A. DIETZ**

Plymouth,  
*Elementary*

Varsity Club; Football 2, 3, 4; Men's Dormitory Association 2, 3, 4, Treasurer 4; Future Teachers of America 4; Aviation Club 4; Men's Glee Club 4.

*Lower row:*

**MARGARET A. DORASAVAGE**

Pottsville  
*Elementary, Special Education*

Cheerleader 1, 2, 3; Dramatic Club 1, 2, 3, 4; Poetry Club 2; Newman Club 1, 2, 3, 4; Alpha Psi Omega 3, 4, Treasurer 4; Future Teachers of America 4; Waller Hall Association 1, 2, 3, 4.

**RICHARD MORGAN EDWARDS**

Plymouth  
*Elementary, Special Education*

Men's Glee Club 1; Future Teachers of America 4; Kappa Delta Pi 3, 4; C. G. A. Awards Committee.

**JOAN C. ENAMA**

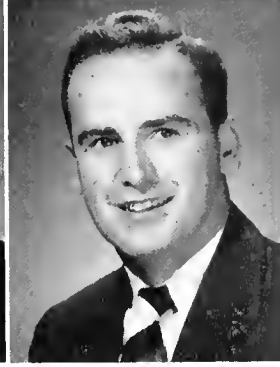
Nuremberg  
*Elementary*

Women's Chorus 1, 2, Librarian; Cheerleader 1, 2; Fashion Show 2, 3, 4; Waller Hall Governing Board 4; Future Teachers of America 4.

**MARILYN BEVERLY EVANS**

Wilkes-Barre  
*Elementary*

Kappa Delta Pi 3, 4, Inter-fraternity Representative 3; *Maroon and Gold* 1, 2, 3, 4; Poetry Club 1, 2, 3, 4, Secretary 2, Vice President 4, President 3; B Club 2, 3, 4; Student Christian Association 1, 2; Women's Chorus 1, 2, 3, 4.



*Upper row:*

**ELLEN A. GIBBONS**  
Trucksville  
*Elementary*

Newman Club 2; Dramatic Club 3, 4; Future Teachers of America 3, 4; Waller Hall Association 2, 3, 4; Day Women's Association 1.

**HAROLD V. HARTLEY**  
Lenoxville  
*Elementary, Speech Correction*

Men's Dormitory Association 1, 2, 3, 4; Wesley Fellowship 1, 2, 3, 4; Football Manager 1, 2; Track 2, 3; Science Club 3; Future Teachers of America 3, 4; Sigma Alpha Eta 3, 4.

**WILLIAM G. HERR**  
Hazleton  
*Elementary*  
Athenaeum Club; Aviation Club 1.

**BARBARA M. HESSERT**  
South Williamsport  
*Elementary*

Women's Chorus 1, 2, 3, 4, Treasurer 4; Student Christian Association 3; Future Teachers of America 4; B Club 4; Kappa Delta Pi 4.

*Lower row:*

**ALBERT HITCHINGS**  
Luzerne  
*Elementary*

Day Men's Association 1, 2, 3, 4; Soccer 1; Future Teachers of America 4; Aviation Club 4.

**MILTON G. HUGHES**  
Wilkes-Barre  
*Elementary*

Knox Fellowship 1, 2, 3, 4; Aviation Club 2, 3, 4; Men's Dormitory Association 2, 3, 4; Day Men's Association; Future Teachers of America 4.

**ELEANOR M. JOHNSON**  
Kane  
*Elementary*

Student Christian Association 1, 2, 3, 4, Vice President 2, 3; Maroon and Gold Band 1, 2; Future Teachers of America 3, 4; Women's Chorus 3; Waller Hall Association 1, 2, 3, 4; Waller Hall Governing Board 3, 4, Secretary 3, President 1; College Council 4; Lutheran Student Association 1, 2, 3, 4, Local Secretary 2, Susquehanna Area Secretary 3, Susquehanna Area President 4, North Atlantic Region Secretary 1, National Relationships Secretary 4; *Who's Who in American Colleges and Universities* 4.

**THOMAS C. JONES**  
West Pittston  
*Elementary*

Maroon and Gold Band 1, 2, 3; Aviation Club 1, 2, 3; Science Club 1, 2; Glee Club 1, 2, 3; Future Teachers of America 4; Men's Dormitory Association 4; Day Men's Association 1, 2, 3.

*Upper row:*

**ELEANOR A. KENNEDY**

Bloomsburg  
*Elementary*

Women's Chorus 1, 2, 3, 4; Science Club 2; Day Women's Association 1, 2, 3, 4; Future Teachers of America 4.

**PATRICIA A. KISTLER**

Bloomsburg  
*Elementary*

B Club 4; Day Women's Association 1, 2, 3, 4; Future Teachers of America 1; Maroon and Gold Band 1, 2, 3; Lutheran Student Association 1, 2, 3, 4, Secretary 3.

**GEORGE KOBAL**

Nanticoke  
*Elementary, Special Education*

Aviation Club 2; Athenaeum Club 4; Future Teachers of America 4; Phi Sigma Pi 4; Day Men's Association 1; Men's Dormitory Association 2, 3, 4.

**JEANNE C. KRZYWICKI**

Plymouth  
*Elementary*

Women's Chorus 1, 2, 3, 4; Future Teachers of America 4; B Club 4.

*Lower row:*

**ROBERT E. LAUBSCHER**

Selinsgrove  
*Elementary, Speech Correction*

Future Teachers of America 3, 4; Dramatic Club 2, 3, 4; Men's Glee Club 3, 4, Vice President; Sigma Alpha Eta 3, 4, Vice President; Alpha Psi Omega 4; Election Board 3, Co-chairman.

**RUSS LOOKER**

Johnstown  
*Elementary, Special Education*

Football 1, 2, 3, 4; Knox Fellowship 1, 2, President; Dramatics Club 1; College Council President; Future Teachers of America 1; Varsity Club 1, 2; Student Christian Association 3, 4.

**MARILYN W. LUNDY**

Bloomsburg  
*Elementary, Speech Correction*

Day Women's Association 1, 2, 3, 4; Women's Chorus 1, 2, 3, 4; Kappa Delta Pi 3, 4, Corresponding Secretary 4; Sigma Alpha Eta 3, 4, Treasurer 3, Secretary 4; Future Teachers of America 4.

**JOYCE J. MacDOUGALL**

Berwick  
*Elementary*

Outlet 1; Science Club 1, 2, 3, 4, Secretary 3, 4; Assembly Committee 2, 3, 4, Secretary 2, 3; Women's Chorus 2, 3; Day Women's Association 1, 2, 3, 4; *Olympian* 2; Fashion Show 1, 2, 3, 4; Future Teachers of America; *Who's Who in American Colleges and Universities* 4.







*Upper row:*

**CHARLOTTE M. MATULESKI**

Nanticoke  
*Elementary*

Future Teachers of America 4; Student Christian Association 1; NSA 1, 2; Women's Chorus 1, 2, 3; Athenaeum Club 4; Waller Hall Handbook 2; Student Faculty Committee 1; Kappa Delta Pi 4.

**GLORIA MAZZETTI**

Berwick  
*Elementary*

Women's Chorus 1; Day Women's Association 1, 2, 3; Future Teachers of America 3; Sigma Alpha Eta 2, 3; *Haroon and Gold* 2.

**CORNELIUS McHUGH**

Hazleton  
*Elementary*

Men's Glee Club 1, 2; Future Teachers of America 4; Day Men's Association 3, 4.

**DOROTHY CEDOR McNAMEE**

Berwick  
*Elementary*

College Players 1; *Haroon and Gold* 1, 2, 3, 4; Science Club 3; Fashion Show 1, 2, 3; Future Teachers of America 3, 4; Day Women's Association 1, 2, 3, 4.

*Lower row:*

**JEAN M. MEIER**

Millinville  
*Elementary*

Women's Chorus 1, 2, 3, 4; B Club 3, 4; Future Teachers of America 4; Day Women's Association 1, 2, 3, 4.

**FLORENCE MERTZ**

Northumberland  
*Elementary*

Women's Chorus 2, 3, 4, Librarian 3, Secretary 4; Waller Hall Association 2, 3, 4; Election 2, 3; Future Teachers of America 4.

**KATHLEEN MITCHELL**

Mahanoy City  
*Elementary*

Cheerleader 1, 2, 3, 4; Poetry Club 2; Dramatic Club 2, 3, 4; Fashion Show 1, 2, 3, 4; Future Teachers of America 4.

**OLIVE MOUERY**

Mt. Carmel  
*Elementary*

Athenaeum Club 2, 3, Secretary 3, Treasurer 3; Sigma Alpha Eta 3, 4, Corresponding Secretary 4; Science Club 2; Waller Hall Governing Board 3; Future Teachers of America 4; Waller Hall Association 2, 3, 4; Kappa Delta Pi 3, 4; Fashion Show 2; Election Board 2.



*Upper row:*

**LOIS J. NEWMAN**  
 Wilkes-Barre  
 Elementary

Kappa Delta Pi 4; Waller Hall Association 1, 2, 3, 4; Waller Hall Governing Board 4; Women's Chorus 1, 2, 3; Poetry Club 3; Student Christian Association 1.

**THOMAS J. REED**  
 Plymouth  
 Elementary

Men's Dormitory Association 1, Vice President 4; Basketball 1; Future Teachers of America 1; Aviation Club 1.

**M. JANICE RIDER**  
 Millville  
 Elementary

Women's Chorus 3; Science Club 1, 2, 3, 4, Secretary 2, Treasurer 3; Day Women's Association 1, 2, 3, 4; Future Teachers of America 1; Kappa Delta Pi 4.

**JOHN E. RILEY**  
 Danville  
 Elementary

Football 1; Basketball 1; Baseball 1, 2; Varsity Club 3, 4; Future Teachers of America 1; Day Men's Association 1, 2, 3, 4.

*Lower row:*

**M. JEANNE RUCKLE**  
 Bloomsburg  
 Elementary

Day Women's Association 1, 2, 3, 4, President 3, Treasurer 4; Women's Chorus 2, 3, 4; Dramatic Club 1, 2, 3, 4; Alpha Psi Omega 2, 3, 4, Secretary 3, President 4; Kappa Delta Pi 3, 4, Historian 4; Future Teachers of America 4; *Maroon and Gold* 3, 4.

**PHILIP W. SEARCH**  
 Wilkes-Barre  
 Elementary, Social Studies

Men's Glee Club 1, 2, 3; *Maroon and Gold* 2, 3; C. G. A. Publicity Committee 2.

**BARBARA A. SHERMAN**  
 Benton  
 Elementary, Speech Correction

Dramatic Club 1, 2, 3, 4; Women's Chorus 1, 2, 3; Sigma Alpha Eta 3, 4, Secretary 3; Future Teachers of America 4; Assembly Committee 2, 3, 4; Waller Hall Association 1, 2, 3, 4; Kappa Delta Pi 4.

**EDWARD P. SLIKES**  
 Wilkes-Barre  
 Elementary

Phi Sigma Pi 3, 1; Kappa Delta Pi 3, 4; Future Teachers of America 4; Men's Glee Club 1, 2, 3; Athenaeum Club 4; Newman Club 4.

*Upper row:*

CONSTANCE M. STANKO

Danville  
*Elementary*

Athenaeum Club 2; Day Women's Association 1, 2, 3;  
Future Teachers of America 3; B Club 3.

JOHN M. STONIK

Plymouth  
*Elementary*

Men's Dormitory Association 1, 2, 3, 4; Future Teachers  
of America 1; Football 1, 2, 3; Varsity Club 3, 4.

PATRICIA J. TAYLOR

Dushore  
*Elementary*

Dramatic Club 1, 3, 4; Newman Club 1, 4; Future  
Teachers of America 1; Women's Chorus 4; Waller  
Hall Association 1, 3, 4; Freshman Class Secretary;  
Fashion Show; Athenaeum Club 3.

DAVID H. THOMAS

Orangeville  
*Elementary, Special Education*

Aviation Club 1; Athenaeum Club 1; Day Men's Asso-  
ciation 1, 2, 3; Future Teachers of America 4.

*Lower row:*

NANCY JEAN UNGER

Forty Fort  
*Elementary*

Dramatic Club 2, 3, 4, Secretary; Women's Chorus;  
B Club 4; Alpha Psi Omega 4.

JOANNE M. VANDERSLICE

Bloomsburg  
*Elementary*

Maroon and Gold Band 1, 2, 3, Librarian 1; Day Wo-  
men's Association 1, 2, 3, 4; Lutheran Student Associa-  
tion 1, 2, 3, 4, Vice President 3, 4; Fashion Show 1, 2,  
3, 4; Future Teachers of America 4.

PHILIP WEINSTEIN

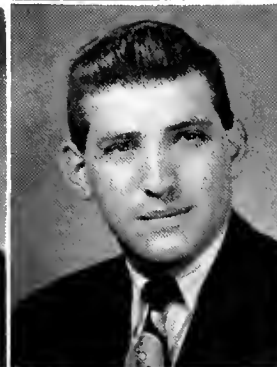
Wilkes-Barre  
*Elementary, Speech Correction*

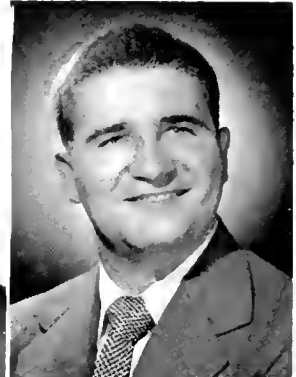
Dramatic Club 2, 3, 4; Alpha Psi Omega 4; Men's Glee  
Club 2, 3, 4; Kappa Delta Pi 3, 4; Sigma Alpha Eta  
3, 4; *Olympian* 3; *Maroon and Gold* 2, 3, 4; Future  
Teachers of America 3, 4; Election Board 3; *College  
Handbook Editor* 1951; Men's Dormitory Associa-  
tion 3, 4.

GEORGE E. WILLIAMS

Shickshinny  
*Elementary, Science*

Science Club 1, 2, 3; Glee Club 1, 3; *Maroon and Gold*  
3; Future Teachers of America 4; Day Men's Associa-  
tion 1, 2, 3, 4.





MARY A. WRIGHT

Bloomsburg

*Elementary, Speech Correction*

Day Women's Association 1, 2, 3, 4; Women's Chorus 2, 3; Lutheran Student Association 1, 2, 3, 4; Wesley Fellowship 1, 2, 3; Sigma Alpha Eta 3, 4; Future Teachers of America 4; *Maroon and Gold* 4.

\* WILLIAM J. CLEAVER

R. D. 2, Orangeville

*Elementary*

Soccer 1, 2; Day Men's Association 1, 2, 3, 4; Varsity Club 3, 4.

Out of alphabetical order.

MARIE C. YOZVIAK

Hanover

*Elementary*

Science Club 2, 3; Future Teachers of America 3, 4; B Club 4; Waller Hall Association 2, 3, 4; Kappa Delta Pi 4.

‡ JACK D. REESE

Berwick

*Social Studies, English*

Treasurer, Senior Class of 1951 (First Semester); Feature Editor, *Maroon and Gold* 3, 4; Men's Dormitory Association 2, 3; Day Men's Association 3, 4.

‡Returned from service at mid-semester. (Secondary Student).



*A Class in the Benjamin Franklin Laboratory School*

## SECONDARY EDUCATION



*Upper row:*

**PRISCILLA ABBOTT**

Lehman  
*English, Biological Science*

*Maroon and Gold* 1, 2, 3, 4, Co-editor 4; Bloomsburg Players 2, 3; B Club 2, 3, 4, Secretary 3, Vice President 1; Women's Chorus 1; Science Club 2, 3; Kappa Delta Pi 3, 4, Vice President 1; Future Teachers of America 4; College Council 1; Poetry Club 2, 3; *Maroon and Gold* Band 2, 3; Waller Hall Association 1, 2, 3, 4.

**ATWOOD F. BADMAN**

Shamokin  
*Science, Social Studies*

Football Manager 1; Men's Glee Club 1, 2, 3; Soccer 3; Science Club 3, 4; Future Teachers of America 3, 4; Track 1; Day Men's Association 1, 2; Men's Dormitory Association 3, 4.

**ADAM BEN**

Blakely  
*Science, Mathematics*

Science Club 3, 4, Vice President 3, 4; Kappa Delta Pi 3, 4; Phi Sigma Pi 1; Soccer 1, 2; Track 1, 2; Day Men's Association 1; Men's Dormitory Association 2, 3, 4; Future Teachers of America 1, President 4.

**GEORGE E. BLYLER**

Battletown  
*Science, Math*

Science Club 1; Dramatic Club 2, 3, 4; Kappa Delta Pi 3, 4; Day Men's Association 1, 2, 3, 4; Future Teachers of America 4; Alpha Psi Omega 4.

*Lower row:*

**DORIS R. BOWMAN**

Milton  
*Spanish, French, English*  
Waller Hall Association 1, 2, 3, 4; Waller Hall Governing Board 3; Hospitality Committee 2, Chairman 2; Sophomore Class Secretary 2; Women's Chorus 1, 2, 3, Secretary 3; Kappa Delta Pi 3, 4; *Maroon and Gold* 3; Future Teachers of America 1; *Who's Who in American Colleges and Universities* 4.

**RUSSELL C. BRACHMAN**

West Hazleton  
*Science, Math*  
Science Club 1; Day Men's Association 2.

**JOHN J. BURNS**

Harrisburg  
*Social Studies, English*  
Kappa Delta Pi 1; Phi Sigma Pi 1; *OBITER* 2, 3, 4, Associate Editor 3, Editor-in-Chief 4; *Maroon and Gold* 3, Business Manager 3; *Olympian* 2; Men's Glee Club 1, 2, 3, Vice President 3; Athenaeum Club 2, 3, Vice President 3; Assembly Committee 3; Social and Recreational Committee 2, Chairman; Election Board 3, 4, Co-chairman 3, 4; Assistant Track Manager 1; Future Teachers of America 4, Treasurer; Day Men's Association 1, 2; Men's Dormitory Association 3, 4; Newman Club 1, 2, 3, President 3.

**ROBERT P. BURNS**

Harrisburg  
*Social Studies, Geography*  
Science Club 2; Gamma Theta Upsilon 3, 4; *OBITER* 3, 4, Advertising Manager 3, 4; Athenaeum Club 3, 4; College Council 4; *Maroon and Gold* 3, Assistant Business Manager 3; Day Men's Association 2; Men's Dormitory Association 3, 4; Newman Club 2, 3, 4; Future Teachers of America 4; Phi Sigma Pi 4.

*Upper row:*

**RONALD P. BUSHICK**

Kulpmont

*Biological Science, Social Studies*

Day Men's Association 1, 2, 3; Science Club 3; Men's Dormitory Association 1, 2, 3, 4; Aviation Club 1, 2; Band 1.

**DONALD JOSEPH BUTLER**

Warrior Run

*Speech Correction, Social Studies*

Sigma Alpha Eta 3, 4; Basketball 1, 2, 3, 4; Baseball 1, 2, 3, 4; Future Teachers of America 4; Men's Dormitory Association 1, 2, 3, 4; Varsity Club 3, 4.

**JAMES J. CANNON**

Shamokin

*Science, Social Studies*

Aviation Club 1, 2, Secretary 2; Day Men's Association 1, 2, 3, 4, President 3; College Council 3; Future Teachers of America 4; Kappa Delta Pi 4.

**HAROLD W. CAREY**

West Pittston

*Spanish, French, English*

Kappa Delta Pi 3, 4; Phi Sigma Pi 2, 3, 4; Men's Dormitory Association 1, Treasurer; Day Men's Association; Aviation Club 1; Future Teachers of America 4; Knox Fellowship 1, 2, 3, 4.

*Lower row:*

**DONALD J. CESARE**

Old Forge

*Social Studies, English*

Kappa Delta Pi 3, 4; Phi Sigma Pi 3, 4, Vice President 3; Varsity Club 2, 3, 4, President 4; Football 2, 3, 4; Men's Dormitory Association 4; Future Teachers of America.

**ANTHONY CIAMPI**

Shick-shinny

*Social Studies, Geography*

Kappa Delta Pi 3, 4; Gamma Theta Upsilon 3, 4; Science Club 1, 2, 3; *Maroon and Gold* 2, 3, 4; Day Men's Association 1, 2, 3, 4; Phi Sigma Pi 4.

**CLIFTON G. CLARRIDGE**

Washington, D. C.

*Science, Mathematics*

Kappa Delta Pi 4; Science Club 2, 3; Men's Glee Club 2, 3, Treasurer 3; Day Men's Association 1, 2, 3, 4; Future Teachers of America 4; Track Manager 2, 3; OBITER 2, 3, 1, Advertising Manager 3, 4; Phi Sigma Pi 4.

**LEON COVAL**

Bloomsburg

*Science, Geography*

Science Club 1, 2, 3, 4; Aviation Club 3; Gamma Theta Upsilon 2, 3, 4.





*Upper row:*

**JACOB E. DAILEY**

Danville

*Science, Geography*

Science Club 1, 2; Day Men's Association; Future Teachers of America 4.

**CHARLES J. DALY**

Kane

*Speech Correction, English, Social Studies*

Basketball 2, 3, 4; Track 3; Varsity Club 3, 4; *Haroon and Gold* 4; Sigma Alpha Eta 3, 4.

**STEWART E. DAVIS**

Wilkes-Barre

*Science, Geography*

Kappa Delta Pi 2, 3; Science Club 2, 3; Future Teachers of America 3; Day Men's Association; Gamma Theta Upsilon 4.

**ROSE MARIE DOMALESKI**

Frackville

*Science, Mathematics*

Women's Chorus 1, 2, 3; Science Club 1, 2, 3; Waller Hall Dormitory Association 1, 2, 3, 4; Waller Hall Governing Board 3; Future Teachers of America 3; Kappa Delta Pi 4.

*Lower row:*

**MICHAEL J. DORAK, JR.**

Berwick

*Social Studies, English*

Assembly Committee 2, 3, 4; Chairman 3, 4; Future Teachers of America 1; Vice President 4; Day Men's Association 1, 2, 3, 4; *Haroon and Gold* 2, 3; Advertising Manager 2, 3; OBITER 2, 3; C. G. A. Budget Committee 3; Phi Sigma Pi 3, 4; Kappa Delta Pi 4; *Who's Who in American Colleges and Universities* 1.

**DAVID C. EVANS**

West Reading

*Science, Geography*

Football 1, 2, 3, 4; Track 1, 2, 3, 4; Men's Dormitory Association 1, 2, 3, 4; Future Teachers of America 3, 4; Gamma Theta Upsilon 3, 4; Varsity Club 3, 4; Wesley Fellowship 3, 4; Phi Sigma Pi 4.

**HARRY M. FENSTERMACHER**

Catawissa

*Social Studies, English*

Science Club 1, 2, 3; Varsity Club 3, 4; Soccer 1, 2; Kappa Delta Pi 3, 4; Day Men's Association 1, 2, 3, 4; *Haroon and Gold* 3; OBITER 3; Assistant Editor; Future Teachers of America 4; *Olympinn* 3.

**GLENN N. FOGEL**

Sunbury

*Science, Social Studies*

Business Education Club 1; Aviation Club 3; Day Men's Association 3, 4; Kappa Delta Pi.



*Upper row:*

**FRANK J. FURGELE**  
Shamokin  
*Social Studies, Geography*

Soccer 1, 2, 3; Basketball 1, 3; Men's Dormitory Association 1, 2, 3, 4; Varsity Club 3, 4, Secretary 4; Future Teachers of America 4; Gamma Theta Upsilon 2, 3, 4, President 4; Phi Sigma Pi 4.

**FRANKLYN I. GEIST**  
Danville  
*Science, Mathematics*

Science Club 2, 3; Day Men's Association; Future Teachers of America 4.

**WILLIAM J. GILBERT**  
Wilkes-Barre  
*Science, Mathematics*

Future Teachers of America 1; Track 1, 2, 3, 4; Science Club 2; Men's Dormitory Association 1, 2, 3, 4.

**WILLIAM G. GILLESPIE**  
Bloomsburg

*Biological Science, Social Studies, English*  
Science Club 1, 2, 3; Kappa Delta Pi 3, 4; Day Men's Association 1, 2, 3, 4.

*Lower row:*

**WILLIAM GINTER**  
Hunlock Creek  
*Science, Mathematics*

Track 2, 3, 4; Maroon and Gold Band 3, 4; Day Men's Association 1; Men's Dormitory Association 2, 3, 4; Science Club 1, 2; Phi Sigma Pi 4.

**JOHN C. HADDON**  
Northumberland  
*Speech Correction, English*

Aviation Club 2; Sigma Alpha Eta 2, 3, Treasurer 3; Dramatic Club 1, 2; Kappa Delta Pi 4.

**MAYNARD L. HARRING**  
Pitman  
*Science, Mathematics*

College Council 2, 3, 4; Day Men's Association 1; Men's Dormitory Association 2, 3, 4, Secretary 3, President 4; Science Club 1, 2, 3, 4, President 4; Varsity Club 4; Soccer 3; Track 3, 1; Phi Sigma Pi 3, 4; Kappa Delta Pi 3, 4, President 4; Junior Class President; Senior Class Vice President.

**DAVID L. HECKMAN**  
Bloomsburg  
*Science, Mathematics*

Maroon and Gold Band 1, 2, 3, Librarian 2, Vice President 3; Dramatic Club 1; Future Teachers of America 3; Kappa Delta Pi 3; Day Men's Association 1, 2, 3.



*Upper row:*

**HARRY M. HERMAN**

Sunbury

*English, Speech Arts*

Dramatic Club 1; Aviation Club 1.

**WILLIAM F. HRISKO**

Frackville

*Science, Social Studies*

Science Club 4; Future Teachers of America 1; Day Men's Association 4.

**DAVID WALTER JENKINS**

West Hazleton

*Social Studies, English*

Science Club 3; Day Men's Association 3, 4; *Maroon and Gold* 3; OBITER 3, 4; Phi Sigma Pi 4; Future Teachers of America 1; C. G. A. Assembly Committee 3.

**EDWARD W. JOHNSON**

Mainville

*Science, Mathematics*

Aviation Club 1, 2; Football 3; Baseball 2, 3, 4; Day Men's Association 1, 2; Varsity Club 3, 4; *Maroon and Gold* Band 1; Future Teachers of America 4.

*Lower row:*

**RONALD A. KALER**

Millville

*Science, Mathematics*

Men's Glee Club 1, 2; Science Club 1, 2; Future Teachers of America 4; Day Men's Association 1, 2, 3, 4.

**CALVIN W. KANYUCK**

Glen Lyon

*General Science, Mathematics*

Dramatic Club 1, 2, 3, 4; Science Club 2, 3, 4; Day Men's Association 1, 2, 3, 4; College Crier 2; Alpha Psi Omega 3, 4; *Maroon and Gold* 3, 4; Lutheran Students Association 1, 2, 3, 4; Future Teachers of America 3, 4; Student Faculty Assembly Committee; Student Christian Association 4.

**NELSON H. KILE**

Wyoming

*Mathematics, Geography*

Men's Glee Club 1, 2, 3; Men's Dormitory Association 1, 2; Day Men's Association 3, 4; Gamma Theta Upsilon 2, 3, 4; Treasurer 1; Student Social and Recreation Committee 2, Chairman 2; Future Teachers of America 3, 4; Knox Fellowship 1, 2, 3, 4.

**RAYMOND J. KOZLOWSKI**

Kingsley

*Science, Social Studies, English*

Science Club 2, 3; Aviation Club 1; Future Teachers of America 4; Kappa Delta Pi 1.





*Upper row:*

**JACK M. LENHART**

Bloomsburg

*Science, Mathematics*

Basketball 1; Baseball 1; Science Club 1; Varsity Club 4; Day Men's Association 1, 2, 3, 4.

**STANLEY LeVAN**

Bloomsburg

*Biological Science, Geography*

Baseball 1, 2, 3; Basketball 1; Aviation Club 1, 2, 3; Future Teachers of America 4; Day Men's Association 1, 2, 3, 4; Varsity Club 3, 4; Gamma Theta Upsilon 4.

**ROYAL A. MILLER**

Bloomsburg

*Social Studies, Geography*

Aviation Club 1; Men's Glee Club 1; Soccer 4; Gamma Theta Upsilon 2.

**DAVID TAYLOR NORTH**

Bloomsburg

*Science, Social Studies*

Science Club 1, 2, 3; Future Teachers of America 4; Bloomsburg Players 1, 2, 3, 4; Phi Sigma Pi 4.

*Lower row:*

**MARION V. PAYNE**

Williamsport

*English, French, Social Studies*

Athenaeum Club; Women's Chorus; *Matron and Gold*; Knox Fellowship; Future Teachers of America.

**JOHN JOSEPH PEFFER**

Kulpmont

*Science, Geography*

Future Teachers of America 3, 4, President 3; Gamma Theta Upsilon 3, 4; Aviation Club 1, 2, 3; Men's Dormitory Association 2, 3, 4; Science Club 1.

**WILLIAM JOSEPH RADZWICH**

West Hazleton

*Social Studies, Geography*

Day Men's Association 1, 3, 4; Future Teachers of America 1; Gamma Theta Upsilon 4; Track 3, 4; Varsity Club 4.

**FREDERICK C. RUMMAGE**

Hunlock Creek

*Science, Mathematics*

Science Club 2; Athenaeum Club 3; Future Teachers of America 4; Phi Sigma Pi 4; Kappa Delta Pi 4; Men's Dormitory Association.

*Upper row:*

**ROY W. SANDERS**

Shamokin  
*Science, Social Studies*

Men's Dormitory Association 1, 2, 3, 4; Science Club 1, 2, 3; Future Teachers of America 3, 4; Baseball 3.

**EDWIN R. SIMPSON**

Berwick  
*English, Speech Correction*

Men's Chorus 1, 2; *Olympian* 1, 2, 3, Associate Editor; Sigma Alpha Eta 2, 3, President; Day Men's Association 1, 2, 3.

**GEORGE A. SMITH**

Sunbury  
*Speech Correction, Geography*

Dramatic Club 2, 3, 4, President 4; Science Club 1, 2, 3; Athenaeum Club 2; Future Teachers of America 3, 4; Day Men's Association 1, 2, 3; Sigma Alpha Eta 3, 4; Gamma Theta Upsilon 3, 4; Alpha Psi Omega 4; Men's Dormitory Association 4; Track 1, 2.

**EDWARD SNYDER**

Hazleton  
*Social Studies, French*

Day Men's Association 1, 2, 3, 4; Men's Glee Club 1; Science Club 2; Future Teachers of America 4; Gamma Theta Upsilon 4.

*Lower row:*

**DOROTHY M. STEC**

Mahanoy Plane  
*English, French*

Newman Club 1; Women's Chorus 1, 2; Waller Hall Association 1, 2, 3, 4; Future Teachers of America 4.

**FRED L. STRAUSSER**

Bloomsburg  
*Science, Social Studies*  
Science Club 1, 2, 3; Day Men's Association 1, 2, 3; Kappa Delta Pi 1.

**ROBERT L. THURSTON**

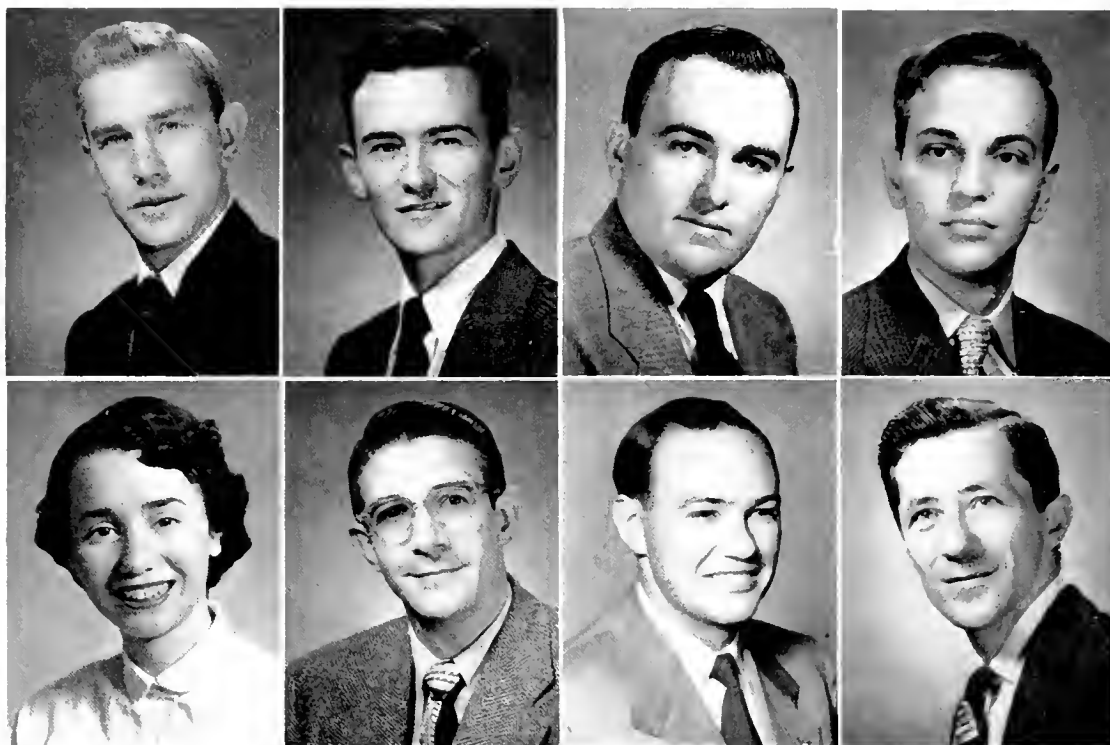
Sunbury  
*Social Studies, Speech Correction*

Football 1, 2, 3, 4; Varsity Club 3; Men's Dormitory Association 1, 2, 3, 4.

**JOHN F. TRISKO**

Hazleton  
*Science, Mathematics*  
Science Club; Aviation Club.





*Upper row:*

**C. WALTER TROUTMAN**

Shamokin

*Biological Science, Mathematics*

Day Men's Association 1, 2; Aviation Club 1, 2, 3, 4; Treasurer 2; Soccer 3; Junior Class Treasurer 3; Phi Sigma Pi 3, 4; Vice President 4; Science Club 3, 4; Future Teachers of America 3, 4; Men's Dormitory Association 3, 4.

**WILLIAM I. TROXELL**

Shamokin

*Science, Mathematics*

Aviation Club 3, 4; Business Education Club 3; Science Club 3, 4.

**JOHN I. WAGNER**

Mt. Carmel

*Science, Speech Correction*

Aviation Club 3, 4; Alpha Psi Omega 3, 4; Future Teachers of America 4.

**JOHN EDWARD WHITE**

Bloomsburg

*Social Studies, Spanish, English*

Science Club 1, 2.

*Lower row:*

**NANCY B. WILLIAMS**

Ashland

*Social Studies, Geography*

Athenaem Club 1; Student Christian Association 1; Science Club 2, 3; Secretary 3; Gamma Theta Upsilon 2, 3, 4; Future Teachers of America 3, 4.

**ROBERT M. WOMER**

Pottsville

*Biological Science, Social Studies, English*

Knox Fellowship 1; Science Club 1; Men's Dormitory Association 2, 3; Athenaem Club 4; Day Men's Association 1, 4; Aviation Club 1; Future Teachers of America 4.

**GRAYDON C. WOOD**

Berwick

*Mathematics, Science*

Aviation Club 1, 2, 3; President; Day Men's Association 1, 2, 3.

**WALTER WORHACZ**

Shamokin

*Speech Correction, Social Studies*

Day Men's Association 1, 2, 3; President 3; Dramatic Club 1, 2; Aviation Club 1, 2; Sigma Alpha Eta 1, 2; Business Education Club 2; Phi Sigma Pi 4; Future Teachers of America 4.



JAMES WHIBLEY, THOMAS ANTHONY



DORIS BOWMAN, JOYCE MacDOUGALL



RICHARD LAUX, MICHAEL DORAK



RICHARD POWELL, HENRY HURTT

## WHO'S WHO IN AMERICAN COLLEGES AND UNIVERSITIES

Seniors who make outstanding contributions in service of the College Community are annually chosen by a faculty committee for recognition in *Who's Who in American Colleges and Universities*. Traits taken into consideration in making the awards are scholarship, leadership in educational and extra-curricular activities, general citizenship, and professional promise.

LOLA DEIBERT, ELEANOR JOHNSON





Left to Right E. Bean, D. Newbery, W. Kline, C. Brennan.

## Junior Class

### OFFICERS

DAVID NEWBURY	- - - - -	President
CHARLES BRENNAN	- - - - -	Vice President
ERMA BEAN	- - - - -	Secretary
WILLIAM KLINE	- - - - -	Treasurer
CLAUDE RENNINGER	- - - - -	Man Representative
NANCY HEEBNER	- - - - -	Woman Representative

Class Adviser—DR. KIMBER C. KUSTER

With the Seniors necessarily attending to the various duties of student teaching and graduation, it becomes the duty of the Junior Class to assume leadership, as upperclassmen, of the various campus activities. Juniors can be found in positions of responsibility in student government, publications, sports, dramatics, and music. The Junior Class activities include one of the main social events of the year, the Junior Prom, and procurement of college rings.



## Junior Class Roll

Adams, Clyde  
 Almers, Mary G.  
 Ayre, Marjorie H.  
 Baer, Elizabeth A.  
 Barkely, Joseph  
 Bartleson, William A.  
 Bean, Erma R.  
 Bearde, Keith S.  
 Bell, Clyde H.  
 Bemmer, Lee  
 Bickel, Irvin R.  
 Bishop, Richard  
 Blyler, Donald N.  
 Bodek, Sylvester V.  
 Bogdan, John T.  
 Boychuck, Daniel  
 Boyle, Joseph E.  
 Brennan, Charles M.  
 Brooks, Harry P.  
 Burness, Mrs. Vivian  
 Byham, William  
 Caccia, Lena A.

Camp, Kenneth M.  
 Campbell, Edward J.  
 Carmody, Shirley M.  
 Castle, Robert J.  
 Charney, Theresa L.  
 Ciavaglia, Salvatore  
 Cichowicz, Irene  
 Condon, Mary C.  
 Conwell, Ann T.  
 Cooke, LaRue A.  
 Coursen, Ha M.  
 Croop, Roy  
 Cull, Joanne R.  
 Cunfer, Edwin W.  
 Cyganowski, Alfred J.  
 D'Angelo, Ronald  
 Danilo, Rosella  
 Davis, Clare  
 Dean, Mary Ellen  
 DeCampi, Helen K.  
 Diltz, Leona I.  
 DiRico, John M.

Doty, James E.  
 Dowd, Robert  
 Duke, Ben C.  
 Durso, Michael J.  
 Dyer, Palmer E.  
 Edwards, Harry R.  
 Endler, Irene J.  
 Erickson, N. Douglas  
 Evans, Richard  
 Ewing, C. Richard  
 Fago, Stephen  
 Feifer, Joseph  
 Felker, Madge  
 Ferdinand, James  
 Fisher, William G.  
 Fitzpatrick, Daniel  
 Formulak, Loretta  
 Fornwald, JoAnn  
 Fulmer, Thurston S.  
 Gembusia, John M.  
 Gerhard, Robert A.  
 Goodhart, Edward

Goodwin, Thomas  
 Gordner, Arlene G.  
 Graybill, Gilmore  
 Grazel, Marie R.  
 Greco, Joan  
 Gulick, Barbara A.  
 Haas, Robert V.  
 Hale, Robert E.  
 Harding, Delores  
 Harris, Robert E.  
 Hatrack, William  
 Hayhurst, Douglas  
 Heacock, Anna C.  
 Heebner, Nancy  
 Heppe, Grace  
 Herchel, Regina M.  
 Heydenreich, Fred C.  
 Hileman, Mrs. Winnie  
 Hous, Russell  
 Hosler, Mrs. Margery  
 Hummel, R. Eugene  
 Hvasta, Susan  
 Johnson, Janice E.  
 Johnson, Jimmie D.  
 Johnson, Thomas J.  
 Jones, Richard H.  
 Jones, Wilma  
 Kallenbach, Mary  
 Kelley, Anne  
 Kennedy, John  
 Kerschner, Herbert R.  
 Kline, William H.  
 Knause, Richard C.  
 Koharski, Alex P.  
 Krunkosky, Joseph  
 Krunkosky, Mary Lou  
 Ksanznak, Lawrence R.  
 Kubik, Alex W.  
 LaBarr, Robert L.  
 Laubrinis, George  
 Lang, Robert  
 Linkhorst, David  
 Linn, Edward R.  
 Linn, William B.  
 Locke, Richard  
 Long, Mildred J.  
 MacGill, Leonora M.  
 Makowski, Clem  
 Marini, R. Henry  
 McAnall, Kenneth H.  
 McClintock, Donald  
 McQuown, Nira J.  
 Megargel, Myrtele  
 Meier, Joseph  
 Meisner, Rita  
 Mensch, Walter  
 Meredith, Donald E.  
 Mervine, Mildred A.  
 Miller, Jeanne L.  
 Mincemoyer, John  
 Moore, Robert  
 Morgan, Phyllis  
 Morrison, M. Eugene  
 Moss, Ogden  
 Newbury, David  
 Ney, Leland E.  
 Neyhard, Miriam L.  
 Ohlman, M. Elaine  
 Palko, Michael J.  
 Paternoster, Doris  
 Patton, Mary E.  
 Pauzer, Edwin L.  
 Pease, Charles E.  
 Pichel, June  
 Pihanich, Michael  
 Pliscott, Mildred  
 Price, Robert I.  
 Quick, Alice J.  
 Raabe, Raymond R.  
 Raker, Warren L.  
 Reaser, Suzy W.  
 Reisenweaver, Shirley  
 Renninger, Claude W.  
 Rhoads, Nancy Lou  
 Rittenmeyer, Jack  
 Roberts, Fay I.  
 Roll, Theodore  
 Rompala, Edward  
 Sable, Edward A.  
 Scrimgeour, John S.  
 Sharp, James H.  
 Sivulich, John  
 Skeeba, Jean A.  
 Soberick, Jack  
 Speal, Elizabeth  
 Stefanik, Thomas  
 Stevenson, Robert  
 Stiner, Martha  
 Stoutenburgh, William  
 Swaboski, Alexander  
 Swartz, Nellie  
 Taylor, C. Howard  
 Thomas, Ruth  
 Thompson, James W.  
 Todd, Mary Lou  
 Verbousky, Russ  
 Wagner, Raymond J.  
 Wallace, Jeanne A.  
 Walsh, Thomas A.  
 Wanick, Robert G.  
 Wasiakowski, Joseph  
 Watkins, Dorothy  
 Weaver, Edward P.  
 Weisinger, Joan  
 Wesner, Alfred V.  
 Whitebread, Harold  
 Williams, Albert  
 Williams, Bessmarie  
 Williams, Sheldon  
 Wrzesniewski, Mildred  
 Wynings, Shirley  
 Yeager, Samuel R.  
 Zeigenfuse, Ardell  
 Zerby, Alton S.





*First Row, Left to Right—J. Scrimgeour,  
C. Andrews, I. Cichowicz.  
Second Row—E. Berry, M. Crisci.*

## Sophomore Class

### OFFICERS

CHARLES ANDREWS	- - - - -	<i>President</i>
JOHN SCRIMGEOUR	- - - - -	<i>Vice President</i>
IRENE CICHOWICZ	- - - - -	<i>Secretary</i>
EDGAR BERRY	- - - - -	<i>Treasurer</i>
MICHAEL CRISCI	- - - - -	<i>Man Representative</i>
ELAINE GUNTHER	- - - - -	<i>Woman Representative</i>

*Class Adviser—Miss HONORA NOYES*

As students reach the Sophomore Class level, they come to realize their important positions. A bit higher than Freshmen, they act as guides whenever possible; a little less than Juniors and Seniors, they are eager to assume responsibility and fit even more tightly into the pattern of life at Bloomsburg. The main social event of the year is the always successful Sophomore Cotillion.



## Sophomore Class Roll

Aagaard, Stanley	Czerwinski, Antoinette	Grant, Rose Marie
Albertson, Myra E.	Dennen, John E.	Gray, Harry G.
Anderson, John A.	DePaul, Mary A.	Gunther, Elaine C.
Andrews, Charles R.	Doyle, Dolores A.	Gunton, Nancy L.
Anspach, Terry	Dreibelbis, Mary R.	Gurzynski, Frank
Benner, Gloria E.	Edwards, Patricia L.	Hantjis, Anthony
Bennett, Louis G.	Erwine, Sheldon	Haupt, Margaret
Berry, Edgar F.	Eunson, E. Faith	Havard, Joan M.
Bittner, Anna K.	Eveland, Shirley	Hleisley, Joanne K.
Boyle, Patricia E.	Fedrigon, Olive J.	Hendershot, Thelma A.
Bushick, Robert E.	Fink, Mary A.	Hess, Patricia A.
Carson, William L.	Froncek, Joseph	Hinger, Carl K.
Cherrington, John	Fry, Judith E.	Hoffman, Sara J.
Chiscon, Alfred J.	Fry, Ruth Ann	Houseknecht, Gerald
Cleaver, Colleen	Garrison, Robert	Hes, Joseph
Crammer, William E.	Gavio, Francis P.	Jacobs, William
Creasy, George William	Gengenbach, Ann	Johnson, John C.
Crisci, Michael R.	Glosek, Joseph	Jones, Blandford

Jones, Mervyn W.	Nemetz, John W.	Snierski, Rosemary
Kallenbach, George	Neugard, Mae	Soberick, Fernie A.
Kapsak, Edward	Newhart, Jean E.	Stauffer, Douglas
Kelshaw, Joan M.	Noll, Margaret L.	Steinbach, Ronald
Kessler, James L.	Noz, Nancy L.	Superdock, David
Kirk, Kenneth G.	Num, William E.	Swigonski, Joseph
Kissinger, Flora J.	O'Donnell, Jean	Teter, Catharine
Kissinger, Joseph D.	O'Loughlin, Patricia	Tilmont, John J.
Knecht, Alfred C.	Ondrula, Joseph E.	Tovey, Nancy E.
Kocher, George E.	Oney, Robert C.	Traver, Jeanette E.
Kopeck, Jerome S.	Osevala, Barney J.	Trocki, Daniel B.
Korba, Rose M.	Ottaviani, William	Troy, James D.
Kornfeld, Anna M.	Parrish, Marie	Ulrich, Sarae
Ksanznak, Stanley L.	Pugh, Janice	Vanderslice, Betty
Laidacker, John	Rhoads, Charles	VonDrach, Robert
Latimer, William	Rhodes, Russell	Vought, Carol D.
Ledyard, Mary	Richardson, Donald	Wagner, Kenneth D.
Lesser, James	Rowley, Thomas J.	Walters, Margaret
Lewis, Thomas R.	Rulling, Charles J.	Walters, Shirley
Logan, Robert H.	Ruppel, Karol	Watts, Sarah
Longo, Edmund M.	Schaar, John A.	Williams, Floyd C.
Makowski, Phyllis	Schmidt, Roland C.	Williams, Harriet
Marr, Howard	Schullery, Louise	Williams, Mary J.
Mattz, Mary Ann	Seeley, Jane E.	Williamson, Leota
McCauley, Jevita	Shaffer, John E.	Wirth, Jay S.
McLaren, Phyllis	Shamro, Jean B.	Wolfe, Stephen
McManus, Albert	Shultz, Margaret E.	Wolfe, William Allen
Mont, Bernard J.	Skammer, David J.	Yeager, Betty
Montagne, Ruth A.	Slembarsky, Jacob	Yencha, Shirley
Morgan, Margaret	Smith, Keith A.	Yesson, Charles
Moyer, Arlene E.	Smulyan, Arthur	Zahora, Joseph



*Front Row, Left to Right R. Rainey,  
R. Gillman, R. Holtzman.  
Back Row - M. Moran, K. McKay.*

## Freshman Class

### OFFICERS

KEITH MCKAY	- - - - -	<i>President</i>
MICHAEL MORAN	- - - - -	<i>Vice President</i>
RUTH GILLMAN	- - - - -	<i>Secretary</i>
ROBERT RAINY	- - - - -	<i>Treasurer</i>
RUDOLPH HOLTZMAN	- - - - -	<i>Historian</i>
FRED DEL MONTE	- - - - -	<i>Man Representative</i>
BARBARA JAMES	- - - - -	<i>Woman Representative</i>

*Class Adviser - Mrs. CHARLES BEFMAN*

Always the largest class, the Freshmen are also the most willing to learn how to assume their role as college men and women. Even with many adjustments to be made in their new life at Bloomsburg, the Freshmen still find time to sponsor the Frosh Hop as their contribution to the social life of the college.



## Freshman Class Roll

Adams, Thomas	Bishop, Byron	Cole, Ronald L.
Angus, John D.	Bitler, Marguerite	Colone, Joseph
Arnold, Shirley A.	Bogardus, Marion E.	Connolley, Edward J.
Aurand, Robert L.	Bogart, Lynda M.	Cook, Jean L.
Babetski, Robert A.	Bolling, Judith M.	Cornell, Richard
Baiamonte, Andrew	Bond, Carole Ann	Couch, Ronald J.
Baker, Oren A.	Bower, Janice B.	Cumens, Robert E.
Balent, Eleanor	Brace, Ethel M.	Curilla, Joan A.
Bangs, Nancy M.	Brandt, James	Czeck, John J.
Barnes, Dorothy A.	Bucher, Barbara A.	Davis, Charles
Batey, George D.	Buchwash, Vincent	Davis, Thomas
Bauer, Constance M.	Burlingame, Allene	DeMonte, Fred B.
Bauer, Judith	Burrows, Louise M.	Derk, George W.
Belin-ky, Albert T.	Cain, Paul M.	Derr, Druscilla M.
Belock, Michalene	Carey, Robert	Devereux, Stephen
Berdy, Carolyn	Chapin, Joan M.	DeWolfe, Robert
Betz, Fredric J.	Childs, Edward	Dotter, Sharon L.
Bidelspach, Francis A.	Coates, Gerald S.	Dougherty, Cyril R.

Dreese, Anna L.	Harris, Gloria M.	Koval, Joseph
Eckart, Harvey	Heise, Loretta	Krapf, J. Sylvia
Ellinger, William	Hendershot, Raymond	Krause, John L.
Ellis, Rebecca A.	Henning, Mary E.	Krum, Shirley A.
Eunson, Elizabeth	Herbert, Thomas R.	Kubik, Mary Louise
Evans, Jeananne	Herre, George M.	Kwak, Joseph J.
Fisher, Alice	Hidlay, Kenneth	Laine, Clarence
Flack, Patricia	Hill, William J.	LaSorsa, Marie L.
Flaugh, Donald S.	Hiller, Sherrill	Ledger, Rex
Forschner, Richard	Hines, David	Lenio, John
Frace, Charles R.	Hippensteel, Mollie	Leonard, John C.
Franklin, A. Paul	Histed, Grace	Levan, Donald
Franks, Paul J.	Hoffman, Betty J.	Lewis, Mary G.
Frey, Aileen G.	Holdren, Gertrude A.	Lubnow, Francis
Fry, Loretta N.	Holtzman, Rudolph V.	Luchs, James
Galanti, Anthony V.	Hoover, Betty M.	Lukac, June E.
Garinger, R. Arnold	Horne, Hope H.	Mahoney, James E.
Gerosky, Eileen H.	Horne, Virginia G.	Martz, Charles W.
Gill, Cora R.	Horning, Cornelia	Masanovich, George
Gillman, Ruth	Hughes, Janet A.	Mayo, George R.
Girdauskas, Rae B.	Hurt, Richard	McCanley, Jacqueline
Gobster, Marlene	Ikeler, Alfred E.	McCormick, Joanne
Goodell, Carolyn R.	Ives, Patricia C.	McGee, Edward J.
Grabowski, Richard	James, Barbara L.	McKay, Keith
Griffiths, Jean E.	Janowczyk, Frank A.	McLaughlin, Charles
Gruzza, Frank	Johnson, Dolores I.	McNelis, Donald T.
Guinard, Theresa B.	Johnston, John E.	Mensing, Mary G.
Gurzynski, Archie	Katchi, Jean J.	Mihaly, John
Gydosh, Rita	Kanaskie, Ronald B.	Mihocko, June M.
Haas, Mollie	Kanyok, Joan L.	Milewski, Dolores
Haddon, Donna	Karol, Eugene	Miller, Reed
Haleovich, John	Karycki, Victor J.	Miller, Robert E. H.
Hall, Elizabeth	Keiper, Florence	Mincer, Jeannetta
Hammershock, Kenneth	Kinder, Joseph E.	Montague, Florence
Harding, Paul D.	Klimovich, Eugene J.	Moran, Michael

Moran, Nancy A.	Rohrbach, Relda M.	Steiner, James P.
Morgan, Mary	Romanell, Mildred	Steiner, Joseph A.
Morgan, Sally	Rowland, Mary A.	Stewart, Harley
Morris, Mark G.	Rumer, Claude W.	Stoehr, Charlotte
Nolan, Edward G.	Rutkoski, Helen C.	Szerafinski, Lura
Norquest, Robert O.	Sadowski, Doris A.	Taylor, Charles F.
Novick, Eleanor M.	Sanders, Thomas E.	Thomas, Barbara
O'Braitis, Mary E.	Schalles, Joyce E.	Thomas, Donald W.
Ondrula, Rudy	Schell, George A.	Tregellas, Shirley
Ott, Grace D.	Schickley, Nancy L.	Tuckett, James
Paige, Phyllis E.	Schmidt, Alton W.	Vacante, Frank
Palushock, Edward	Schofield, Joyce L.	Verano, Ralph C.
Palutis, Joan H.	Semanski, Alberta J.	Wagner, Janet R.
Panichello, John	Seybert, Jerry	Wagner, William
Patterson, E. Joau	Shamp, Charles B.	Walburn, Allen B.
Paul, Ruth E.	Shemanski, Joseph J.	Wallace, Constance
Payne, Patricia	Shiner, Donald S.	Walp, Nancy A.
Persing, Thomas	Shupp, Carol	Walter, Bernice
Phillips, Patricia L.	Shuttlesworth, Robert	Walter, Marjorie A.
Phillips, Sherrill	Sibly, John	Ward, Harry A.
Plafcan, Robert B.	Sick, Lois E.	Wayne, Raymond
Pope, Charles G.	Smith, Donald E.	Weaver, Evelyn M.
Pozzebon, Louise	Smith, Holley	Welliver, Thomas
Rainey, Robert C.	Smith, Malcolm	Westover, Robert
Rainey, Theodore	Sneidman, W. Carl	Wiik, Glenn
Reinsmith, George	Snyder, Ann E.	Williams, Nancy S.
Rhodes, Paul H.	Snyder, Nancy M.	Yost, Carolyn A.
Richards, Donald G.	Snyder, Robert F.	Yozviak, Janice
Rinehimer, Shirley		Zimmerman, Mary B.







“As soon as public service ceases to be the chief business of the citizens, and they would rather serve with their money than with their persons, the State is not far from its fall.”

—JEAN JACQUES ROUSSEAU, 1712-1778

# *Activities*



*Left to Right—H. Kerschner, H. Marini, R. Looker, C. Davis, H. Hurtt.*

## **Community Government Association**

The Community Government Association is comprised of the entire student body. The Association's objectives are carried out by the College Council, which is composed of student and faculty representatives whose duty consists of recommending policies for all student activities. The College Community benefits from the exchange of ideas made possible by communication with the organizations of other colleges.



*Seated, Left to Right*— M. Macdonald, H. Kerschner, H. Hurtt, C. Davis, R. Looker, H. Marini, D. Newbury, D. Harding.  
*Standing*— K. McKay, M. Crisci, P. Abbott, F. Del Monte, M. Bourdette, C. Andrews, E. Johnson, T. Anthony, N. Heebner, J. Hoch, E. Ranson, M. Haring, E. Hazen, E. Gunther, B. James, R. Hallisy, M. Kehr, R. Burns, T. North.

## Community Government Association

### OFFICERS

RUSSELL LOOKER	- - - - -	<i>President</i>
HENRY MARINI	- - - - -	<i>Vice President</i>
CLARE DAVIS	- - - - -	<i>Secretary</i>
HENRY HURT	- - - - -	<i>Treasurer</i>
HERBERT KERSCHNER	- - - - -	<i>Assistant Treasurer</i>

### FACULTY MEMBERS

Dr. North	Miss Macdonald	Miss Hazen
Dr. Kehr	Miss Ranson	Dr. Engelhardt
Mr. Hoch	Mr. Redman	Mr. Hallisy
	Dr. Herre	

### STUDENT REPRESENTATIVES

Thomas Anthony	Charles Andrews	Barbara James
Margaret Bourdette	Michael Crisci	Priscilla Abbott
Robert Burns	Elaine Gunther	Delores Harding
Dave Newbury	Keith McKay	Walter Worhacz
Claude Renninger	Fred DelMonte	Eleanor Johnson
Nancy Heebner		Maynard Haring



RUSSELL LOOKER  
*President*



## Phi Sigma Pi

### OFFICERS

CLAUDE RENNINGER	- - - - -	<i>President</i>
WALTER TROUTMAN	- - - - -	<i>Vice President</i>
CHARLES BRENNAN	- - - - -	<i>Secretary</i>
VINCENT NAWROCKI	- - - - -	<i>Treasurer</i>
MR. REAMS	- - - - -	<i>Adviser</i>

The Iota Chapter of Phi Sigma Pi, a National Professional Educational Fraternity for men, was installed at Bloom-burg State Teachers College on April 26, 1930. The three basic principles upon which Phi Sigma Pi is founded are: Fellowship, scholarship, and professional skill. Members of the Fraternity are selected on the basis of leadership in both professional and social life.

# Pi Omega Pi

## OFFICERS

DALE BENNETT	- - - - -	-	<i>President</i>
JAMES WHIBLEY	- - - - -	-	<i>Vice President</i>
GERALDINE FUNK	- - - - -	-	<i>Secretary</i>
MR. GEHRIG	- - - - -	-	<i>Adviser</i>

Members of the Department of Business Education who have shown high professional promise and have demonstrated superior scholastic ratings are eligible for membership in Pi Omega Pi. The Alpha Delta Chapter of the National Professional Education Fraternity was installed at Bloomsburg State Teachers College on May 28, 1935. Since that time it has consistently promoted, extended, and created interest and scholarship in commerce. In addition, it encourages and fosters high ethical standards and teaches the ideal of service as the basis of all worthy enterprise. Outstanding among Pi Omega Pi's activities of its past year was the radio program which presented the story of our fraternity on the campus.





# Kappa Delta Pi

## OFFICERS

MAYNARD L. HARRING	- - - - -	- - - - -	- - - - -	- - - - -	- - - - -	- - - - -	- - - - -	<i>President</i>
PRISCILLA ABBOTT	- - - - -	- - - - -	- - - - -	- - - - -	- - - - -	- - - - -	- - - - -	<i>Vice President</i>
BARBARA HARMAN, MARGARET BOURDETTE	- - - - -	- - - - -	- - - - -	- - - - -	- - - - -	- - - - -	- - - - -	<i>Recording Secretaries</i>
MARILYN LUNDY	- - - - -	- - - - -	- - - - -	- - - - -	- - - - -	- - - - -	- - - - -	<i>Corresponding Secretary</i>
RICHARD POWELL	- - - - -	- - - - -	- - - - -	- - - - -	- - - - -	- - - - -	- - - - -	<i>Treasurer</i>
JEANNE RUCKLE	- - - - -	- - - - -	- - - - -	- - - - -	- - - - -	- - - - -	- - - - -	<i>Historian-Reporter</i>
CLIFTON CLARRIDGE, HENRY MARINI	- - - - -	- - - - -	- - - - -	- - - - -	- - - - -	- - - - -	- - - - -	<i>Program Chairmen</i>
DR. NELL MAUPIN	- - - - -	- - - - -	- - - - -	- - - - -	- - - - -	- - - - -	- - - - -	<i>Counselor</i>

Kappa Delta Pi is a National Honor Society in Education. The Gamma Beta Chapter of Kappa Delta Pi, was installed at the State Teachers College, Bloomsburg, Pennsylvania, on February 21, 1931. Membership is extended to those Junior and Senior students who have commendable personal qualities and worthy ideals and whose cumulative grades are in the upper quartile of the composite grade of the institution.

The purpose of the fraternity is to encourage high professional, intellectual, and personal standards; to recognize a high degree of professional fellowship among its members and to quicken professional growth by honoring achievement in educational work.



## Kappa Delta Pi

The following students are members of Kappa Delta Pi:

Abbott, Priscilla  
 Allen, Jean  
 Anthony, Thomas  
 Bean, Erma  
 Ben, Adam  
 Benner, Lee  
 Bennett, Dale  
 Blyler, Donald  
 Blyler, George  
 Bourdette, Margaret  
 Bowman, Doris  
 Brennan, Charles  
 Burns, John  
 Cannon, James  
 Carey, Harold  
 Carmody, Shirley  
 Cesare, Donald  
 Cherilla, Rocco  
 Ciampi, Anthony  
 Ciavaglia, James  
 Clarridge, Clifton  
 Coleman, Shirley  
 Condon, Mary  
 Cunfer, Edwin  
 Danilo, Rosella  
 Davis, Clarabelle  
 Davis, Stewart  
 Dean, Mary Ellen

Domaleski, Rose Marie  
 Dorak, Michael  
 Duke, Ben  
 Edwards, Harry  
 Edwards, Richard  
 Evans, Marilyn  
 Ewing, C. Richard  
 Fenstermacher, Harry  
 Fisher, William  
 Fitzpatrick, Daniel  
 Fogel, Glenn  
 Foley, M. Iva  
 Fornwald, JoAnn  
 Fulmer, Thurston  
 Funk, Geraldine  
 Galiley, Leonard  
 Galinski, Francis  
 Gillespie, William  
 Glidden, Ruth  
 Goodwin, Thomas  
 Groff, Bertha  
 Gulick, Barbara  
 Haddon, John  
 Harman, Barbara  
 Harring, Maynard  
 Hemlock, Michael  
 Herchel, Regina  
 Heckman, David

Hessert, Barbara  
 Hornberger, Lester  
 Hurtt, Henry  
 Johnson, Barbara  
 Johnson, Janice  
 Jones, Wilma  
 Kozłowski, Raymond  
 Ksanznak, Lawrence  
 Kubie, Alex  
 Laux, Richard  
 Linn, William  
 Long, Mildred June  
 Lundy, Marilyn  
 MacGill, Leonota  
 Marini, Henry  
 Matuleski, Charlotte  
 McClintock, Donald  
 Mouery, Olive  
 Nawrocki, Vincent  
 Newman, Lois  
 Osenback, Robert  
 Paternoster, Doris  
 Pease, Charles  
 Pichel, June  
 Pihanich, Michael  
 Powell, Richard  
 Price, Robert  
 Quick, Alice

Raker, Warren  
 Rider, Janice  
 Ruckle, Jeanne  
 Rummage, Fred  
 Russell, Donald  
 Scringeur, John  
 Sherman, Barbara  
 Shultz, Carl  
 Slikes, Edward  
 Sluyter, Joyce  
 Soberick, Jack  
 Speal, Elizabeth  
 Stanitskie, Francis  
 Strausser, Fred  
 Swartz, Nancy  
 Thomas, Harvey  
 Thomas, Ruth  
 Todd, Mary Louise  
 Wallace, Jeanne  
 Wanick, Robert  
 Watkins, Dorothy  
 Weinstein, Philip  
 Wersinger, Joan  
 Whibley, James  
 Whitebread, Harold  
 Wrzniewski, Mildred  
 Yozziak, Marie  
 Zerby, Alton

# Alpha Psi Omega

## OFFICERS

JEAN RUCKLE	President
LACRA PHILO	Vice President
PEGGY DORSAVAGE	Treasurer
MISS STOLP, MISS JOHNSTON	Advisers

The Alpha Omicron Chapter of Alpha Psi Omega, a National Honorary Fraternity in Dramatics, provides encouragement and recognition for students who are interested in dramatics and the college theater. The chapter here at Bloomsburg is composed of those members of the Bloomsburg Players who have done commendable work in dramatics.







## Gamma Theta Upsilon

### OFFICERS

FRANK FURCELE	- - - - -	<i>President</i>
NANCY WILLIAMS	- - - - -	<i>Secretary</i>
NELSON KILE	- - - - -	<i>Treasurer</i>
MR. STERLING	- - - - -	<i>Adviser</i>

The Delta Chapter of Gamma Theta Upsilon, a Professional Geography Fraternity, seeks to bring a closer bond of fellowship among undergraduate students of geography, and to promote the professional study of the subject. Membership in Gamma Theta Upsilon is extended to students of geography who show professional promise and give evidence of high character and ideals.



# Business Education Club

## OFFICERS

FRANCIS GALINSKI	- - - - -	<i>President</i>
RICHARD KNAUSE	- - - - -	<i>Vice President</i>
MILDRED WRZENIEWSKI	- - - - -	<i>Secretary</i>
WARREN RAKER	- - - - -	<i>Treasurer</i>
MR. RYGIEL	- - - - -	<i>Adviser</i>

The Business Education Club, one of the largest and most active organizations on campus, has sponsored through the year a number of socially and educationally interesting programs. The purpose of the club is primarily that of enlarging the business education experiences of its members through extracurricular activities. Through such activities as the Business Education commercial contest for high schools, a project in which the club assists, high school students are acquainted with the type of professional work developed at Bloomsburg.





## Waller Hall Association

### OFFICERS

ELLANOR JOHNSON	<i>President</i>
MARY ELLEN DEAN	<i>Vice President</i>
MARGARET BOURDETTE	<i>Secretary</i>
NELLIE SWARTZ	<i>Treasurer</i>



## Waller Hall Association

The Waller Hall Association is composed of all women dormitory residents. The Association strives to make living in Waller Hall a pleasant, cheerful, and cooperative experience. The functions of the Association are carried out through the Governing Board assisted by the Dean and Assistant Dean of Women. Various committees carry out the social and educational programs.



# Women's Chorus

## OFFICERS

LOLA JEAN DEIBERT	- - - - -	<i>President</i>
MYRA ALBERTSON	- - - - -	<i>Vice President</i>
FLORENCE MERTZ	- - - - -	<i>Secretary</i>
BARBARA HESSERT	- - - - -	<i>Treasurer</i>
OLIVE JEAN FREDIGON, MARY LEDYARD	- - - - -	<i>Librarians</i>
MR. SMITH	- - - - -	<i>Director</i>



The Women's Chorus is one of the largest and most active organizations on campus. The group appears at various times throughout the year in chapel exercises and radio programs. The highlight of the year is the annual Christmas program.



## Women's Chorus

### MEMBERS

#### *First Soprano*

Albertson, Myra	Fedrigon, Olive Jean	Ledyard, Mary	Semanski, Alberta
Bogart, Lynda	Fink, Mary Ann	Lukac, June	Slicker, La Rue
Bucher, Barbara	Fry, Loretta	Martini, Doris	Stoehr, Charlotte
Caccia, Lee Ann	Fry, Ruth Ann	Matuleski, Charlotte	Snyder, Ann
Chapin, Joan	Gulick, Barbara	Mervine, Mildred	Swartz, Nancy
Edwards, Patricia	Gunton, Nancy	Mertz, Florence	Vanderslice, Betty
Eunson, Elizabeth	Gillman, Ruth	O'Loughlin, Patricia	Vought, Carol
Eunson, Faith	Kelshaw, Joan	Ott, Grace	Yenchia, Shirley
Evans, Jeananne	Krapf, Sylvia	Noll, Peggy	

#### *Second Soprano*

Barnes, Dorothy	Gerosky, Eileen	Hoffman, Betty	Patton, Clara
Bower, Janice	Girdauskas, Rac	Hoffman, Sarah	Schickley, Nancy
Brace, Ethel	Gobster, Marlene	Horning, Cornelia	Snierski, Rose
Brobst, Annabelle	Grant, Rosemarie	Korba, Rose	Traver, Jeannette
Coursen, Ida Mae	Heacock, Carolyn	McCormick, Joanne	Wagner, Janet
Curilla, Joan	Haupt, Margaret	Miller, Jeanne	Watkins, Dorothy
Dreese, Anna	Histed, Grace	Ohlman, Elaine	Williams, Joyce
Derr, Druscilla			Williams, Mary Jo

#### *First Alto*

Balent, Eleanor	Harris, Gloria	Novick, Eleanor	Swartz, Nellie
Bauer, Constance	Hoover, Betty	O'Braitis, Mary	Sick, Lois
Bitler, Peggy	Keiper, Florence	O'Donnell, Jean	Taylor, Patricia
Bogardus, Marion	Lewis, Mary	Patton, Mary Elizabeth	Thomas, Ruth
Conwell, Ann	Mincer, Jeannette	Paul, Ruth	Ulrich, Sarae
Gill, Cora	Morgan, Sally	Phillips, Patricia	Williams, Nancy
Grazel, Marie	Newhart, Jean	Schullery, Louise	

#### *Second Alto*

Charney, Theresa	De Paul, Mary	Heppe, Grace	Kornfeld, Ann
Dean, Mary Ellen			Sadowski, Doris



## Men's Glee Club

### MEMBERS

#### *First Tenor*

Dick Powell  
John Bogdan

Clyde Bell  
Thomas Johnson

Frank Janowizyk  
Robert Lewis

#### *Second Tenor*

Thomas Adams  
Alfred Chiscou  
Gerald Houseknecht  
Raymond Raabe

Bob Westover  
Bill Latimer  
Malcolm Smith  
Howard Marr

Atwood Badman  
Kenneth Hamershock  
Holley Smith  
Richard Forschner

#### *Baritone*

Alex Koharski  
John Sibly  
Donald Smith

Charles Pope  
Mike Moran  
Donald McNelis

Frank Vacante  
George Derk  
Richard Hurtt

#### *Bass*

Alex Kubik  
Karol Ruppel  
Joseph Kinder

Keith McKay  
Thomas Anthony  
James Mahony

Steve Devereux  
Ben Lynn  
David Hines



# Men's Glee Club

## OFFICERS

ALEX KUBIK	<i>President</i>
KAROL RUPPEL	<i>Vice President</i>
ALEX KOHARSKI	<i>Secretary</i>
DONALD SMITH	<i>Treasurer</i>
THOMAS JOHNSON, MALCOLM SMITH	<i>Librarians</i>
MR. RALPH FISHER SMITH	<i>Director</i>



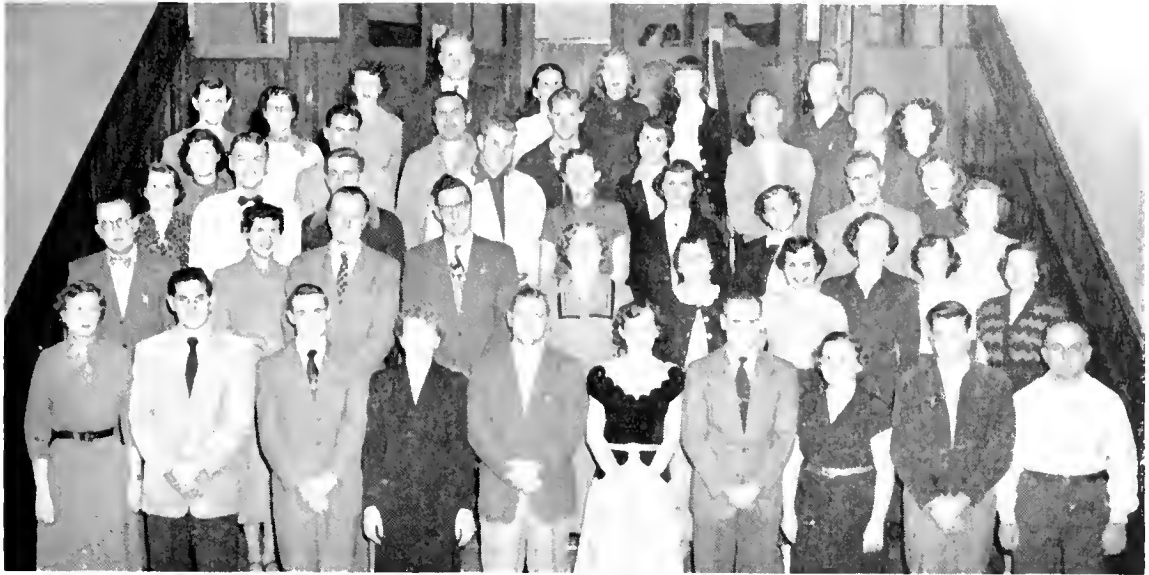
The Men's Glee Club, an enthusiastic choral organization on campus, is in the hands of a new and capable director this year—Mr. Smith. The Glee Club presents several concerts each year in addition to a number of off-campus engagements. One of the most impressive choral presentations of the year is the annual combined chorus Christmas program in which the Glee Club joins with the Women's Chorus.



## Future Teachers of America

### OFFICERS

ADAM BEN	.....	<i>President</i>
MICHAEL DORAK (First Semester)	.....	<i>Vice President</i>
MAYNARD HARRING (Second Semester)	.....	<i>Vice President</i>
DORIS PATERNOSTER	.....	<i>Secretary</i>
JOHN BURNS	.....	<i>Treasurer</i>
DR. ENGELHARDT, MR. HALLISY, MISS HAZEN	.....	<i>Advisers</i>



## Future Teachers of America

Chapters of Future Teachers of America are organized under the auspices of the National Education Association. F. T. A. has as its purpose the acquainting of teachers in training with the problems of the profession in order to interest the best type of men and women in education as a career. Membership is open to any student with an interest in the advancement of education.



## Science Club

The Science Club is one of the largest organizations on the campus. The chief aims of the club are to promote interest in science and afford its members opportunity to enlarge their knowledge and experience through scientific lectures and demonstrations. The recent acceleration of scientific progress has given the club a diversity of material that has led to the presentation of programs of unusual interest and value. Highlight of the club's activity is the annual field trip and picnic taken each spring.





## Science Club

### OFFICERS

#### *First Semester*

MAYNARD HARRING - - - - *President*  
 ADAM BEN - - - - *Vice President*  
 JOYCE MACDOUGALL - - - - *Secretary*  
 RUTH THOMAS - - - - *Treasurer*  
 WILLIAM FISHER - *Program Chairman*  
 DR. KUSTER, MR. LANTERMAN - *Advisers*  
 ELIZABETH BAER *Maroon and Gold Reporter*

#### *Second Semester*

WILLIAM FISHER - - - - *President*  
 LEON COVAL - - - - *Vice President*  
 ELIZABETH BAER - - - - *Secretary*  
 RUTH THOMAS - - - - *Treasurer*  
 JOHN SCRIMEGEOUR - *Program Chairman*  
 DR. KUSTER, MR. LANTERMAN - *Advisers*  
 REGINA HERCHEL *Maroon and Gold Reporter*





## Bloomsburg Players

### OFFICERS

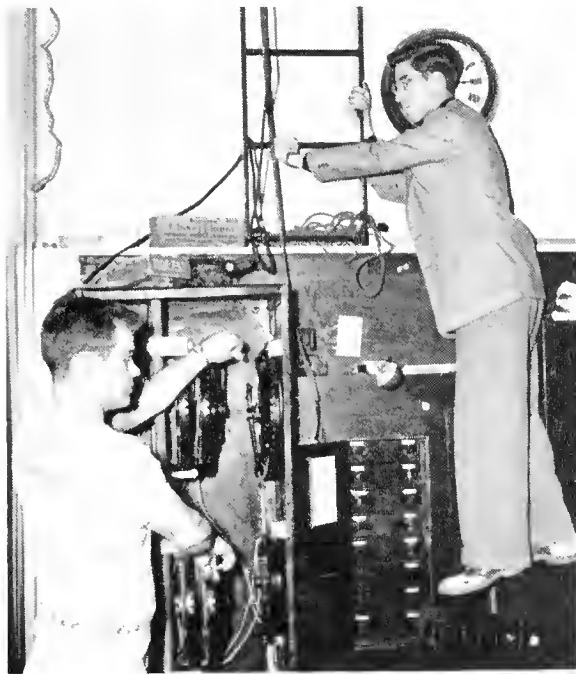
#### *First Semester*

GEORGE SMITH - - - - *President*  
 ROSELLA DANILO - - - - *Vice President*  
 JEANNE MILLER - - - - *Secretary*  
 LEE ANN CACCIA - - - - *Treasurer*  
 MISS JOHNSTON - - - - *Adviser*

#### *Second Semester*

KAROL RUPPEL - - - - *President*  
 ROBERT VON DRACH - - - - *Vice President*  
 JOANNE CUFF - - - - *Secretary*  
 LEE ANN CACCIA - - - - *Treasurer*  
 MISS STOLP - - - - *Adviser*

The Bloomsburg Players is the College dramatics group. Through plays produced at weekly meetings under student directors, a workshop is provided for those students interested in the various aspects of dramatics. In addition to presenting plays for the College Community, the group also participates in radio programs and presents plays in nearby communities.



# Day Men's Association

The membership of the Day Men's Association includes all non-dormitory male members of the student body. Its primary purpose is to give the Day Men representation in student government and to afford opportunity to formulate policies for the group's benefit. Besides its administrative functions, the Association also sponsors several social affairs, one of which is a dance for the entire College Community.



## OFFICERS

WALTER WORNIACZ - - - - *President*  
WILLIAM FISHER - - - - *Vice President*  
ROBERT GARRISON - - - - *Secretary*  
LESTER HORNBERGER - - - - *Treasurer*  
DR. HERRE - - - - *Advisor*





## Day Women's Association

The Day Women's Association is made up of all the non-dormitory women members of the student body. The Day Women's Rooms on the first floor of Noetling Hall have recently been refurnished. These rooms consist of office and study, a lounging room, and a lunch room with a modern electric unit.

The purpose of the organization is to promote and protect the interests of day women and make them feel that they are a real part of the College Community. Each year the association sponsors social events for its members and their guests and engages in welfare work during the Christmas Season.

### OFFICERS

DELORES HARDING	- - -	<i>President</i>
ELAINE GUNTHER	- - -	<i>Vice President</i>
PHYLLIS MORGAN	- - -	<i>Secretary</i>
JEAN RUCKLE	- - -	<i>Treasurer</i>
MISS RANSON	- - -	<i>Adviser</i>



*Left to Right: E. Gunther, P. Makowski, D. Harding, B. Yeager, J. Ruckle, P. Morgan, R. Thomas, J. Vanderslice.*



## Men's Dormitory Association

### OFFICERS

MAYNARD L. HARRING	- - - - -	-	<i>President</i>
THOMAS REED	- - - - -	-	<i>Vice President</i>
CHARLES BRENNAN	- - - - -	-	<i>Secretary</i>
JOHN DIETZ	- - - - -	-	<i>Treasurer</i>
JOHN A. HOCH	- - - - -	-	<i>Adviser</i>

The Men's Dormitory Association is composed of all resident male students of the college. The Association regulates conditions in the men's dormitories and provides a varied social program for the benefit of the entire College Community. The highlights of the Association's social program were: a Dorm Men's party, in the form of a square and round dance; an all-college dance; and a pep parade preceding the West Chester football game. This pep parade was the largest and most successful of any of the previously staged parades.

# The "B" Club

The "B" Club is an athletic organization for girls who have accumulated a sufficiently high point rating for membership. This point rating is based on participation in individual or group sports. Through its social and recreational program, the Club strives to further the ideals of sportsmanship, co-operation and athletic fitness. The girls' intramural sports program is sponsored by the Club.



## OFFICERS

MARGARET BOURDETTE	-	-	<i>President</i>
PRISCILLA ABBOTT	-	-	<i>Vice President</i>
RUTH GLIDDEN	-	-	<i>Secretary</i>
BARBARA HARMAN	-	-	<i>Treasurer</i>
MISS McCAMMON	-	-	<i>Adviser</i>



ALFRED CHISCON  
*Co-editor*



PRISCILLA ABBOTT  
*Co-editor*

## The Maroon and Gold

*Co-editors*

<i>Editorial Board</i>	HARRIET WILLIAMS, BESS MARIE WILLIAMS, CHARLES ANDREWS, DAVE NEWBURY	PRISCILLA ABBOTT AND ALFRED CHISCON
<i>Business Manager</i>	WILLIAM LAIMER	ALBERT McMANUS
<i>Feature Editor</i>	MARILYN EVANS	HARRY BROOKS
<i>Layout Editor</i>	WILLIAM WAGNER	EVELYN WEAVER
	EDWARD T. DEVOE, <i>Adviser</i>	

STAFF

*News Staff*

Barbara Bucher	Janet Hughes	Marion Payne	Margaret Walters
James Ferdinand	Nan Kelly	Alice Quick	Nancy Sue Williams
Carolyn Goodell	Mildred Mervine	Don Smith	Betty Yeager
Nancy Heebner	Margaret Morgan	Ferne Soborick	Robert Van Droch
Hope Horne			Shirley Reisinweaver

*Art and Humor*

Nancy Lou Rhoads                      Phil Search

*Exchange*

Jean Allen                                      Edna Keim

*Feature Staff*

Anna Bittner	Eileen Gerosky	Robert Price	Mary Lou Todd
Dolores Doyle	Theresa Guinand	Thomas Rowley	Mar Neugard
Ann Gengenbach	Molly Haas	Jacob Slembarczyk	

*G. I. Mail*

Mary Anna Wright                      Jeanne Ruckle

*Sports Staff*

John Bogdan	Chuck Daly	George Horre	Gene Morrison
Bill Byham			Charles Yesson

*Photographers*

Richard Knause	Donald Shiner	Keith Smith	William Wagner
----------------	---------------	-------------	----------------

*Advertising Staff*

Sharon Dotter	Mollie Haas	Jean Newhart	Sarae Ulrich
Shirley Eveland	Joanne Heisley	Sherill Phillips	Connie Wallace
Jeananne Evans			

*Circulation Staff*

Anthony Ciampi	Frank Gutzynski	Martha Steiner	Nancy Noz
William Fisher	Mary Kallenbach	Jeanne Wallace	

*Typists*

Robert Castle	William Ottaviani	Jean Skocba	Betty Speel
---------------	-------------------	-------------	-------------



## The Maroon and Gold

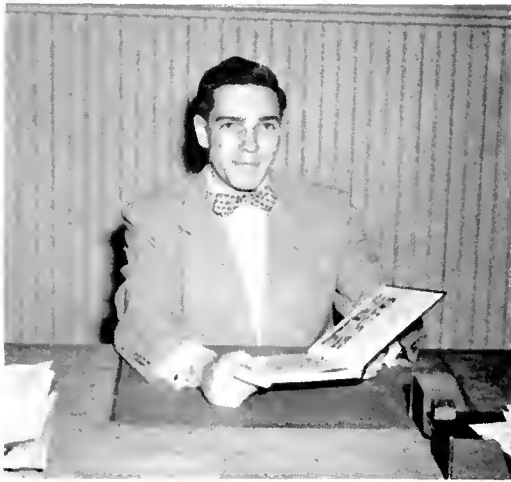
The *Maroon and Gold* is the weekly College newspaper published by members of the student body interested in journalism. Its purpose is to present news and opinion of current interest to the College Community. Staff membership is extended to all students who show ability in creative writing or interest in the technical aspects of newspaper work.



WILLIAM LATIMER  
*Business Manager*



EDITORIAL BOARD  
H. Williams, C. Andrews, D. Newbuy,  
B. Williams



JOHN BURNS  
*Editor-in-Chief*

## The Obiter

The OBITER is the annual publication of the student body of Bloomsburg State Teachers College. Its primary objective is to provide a lasting record of our thoughtful as well as carefree associations during college years. Staff membership is extended to all students interested in any of the various phases of yearbook publication. The OBITER not only provides a service to the College, but also gives workshop experience in yearbook construction.



JOSEPH BARKLEY  
*Business Manager*



CLIFTON CLARRIDGE  
*Advertising Manager*



Robert Burns, Margaret Bourdette, David Newbury



Harry Brooks, Alex Kubik, Sam Yeager

## The Obiter Staff

*Editor-in-Chief* - - - - JOHN BURNS

*Junior Editor* - - - - DAVID NEWBURY

*Business Manager* - - - JOSEPH BARKLEY

*Sports Editor* - - - - HARRY BROOKS

*Advertising Managers*

ROBERT BURNS, CLIFTON CLARRIDGE

*Director of Senior Pictures* JOYCE MACDOUGALL

*Photographers*

RICHARD KNAUSE, KEITH SMITH, WILLIAM WAGNER

*Secretary* - - - - MARGARET BOURDETTE

EDWARD T. DE VOE, *Adviser*

*Sales Manager and Obiter Show* ALEX KUBIK

*Coed of the Year Director* SAMUEL YEAGER

*Typists*—ERMA BEAN, IRENE CICHOWICZ, ELEANOR BOLINSKY, RICHARD POWELL

*Advertising*—DORIS BOWMAN, LEON COVAL, MICHAEL DORAK, JOANNE HEISLEY, DAVID JENKINS, JOHN JOHNSON, ELAINE OHMAN, NANCY LOU RHODES, CHARLES RUFFING, JO ANN VANDERSLICE, BARBARA JAMES

*Sales*—GRACE HEPPE, RHELD A RHORBACH, LOUISE SCHULLERY



William Wagner, Dick Knause, Keith Smith



Dick Powell, Joyce MacDougall



STEVE WOLFE

CHARLES ANDREWS

DAVID SUPERDOCK

## The Olympian

### STAFF

CHARLES R. ANDREWS	- - - - -	<i>Editor-in-Chief</i>
STEPHEN WOLFE, DAVID SUPERDOCK	- - - - -	<i>Associate Editors</i>
LEONORA MACGILL	- - - - -	<i>Business Manager</i>
BESSMARIE WILLIAMS	- - - - -	<i>Advertising Manager</i>
MILDRED PLISCOTT	- - - - -	<i>Sales Manager</i>
STEPHEN WOLFE	- - - - -	<i>Art</i>
HARRIET WILLIAMS	- - - - -	<i>Humor</i>
MILLIE MERVINE, JOHN SIVULICH, DEBBY GRAZEL	- - - - -	<i>Typists and Copyreaders</i>
DR. J. A. RUSSELL	- - - - -	<i>Faculty Adviser</i>

*The Olympian*, the campus literary-humor magazine, is provided as an extension of campus publication services and a means of recognition and encouragement for students interested in creative writing. Students who contribute material for publication are eligible for staff membership.



# Student Christian Association

## OFFICERS

GERALD HOUSEKNECHT	- - - - -	<i>President</i>
MARY ELLEN DEAN	- - - - -	<i>Vice President</i>
ROSELLA DANILO	- - - - -	<i>Secretary</i>
ROBERT LEWIS	- - - - -	<i>Treasurer</i>
MR. HINKEL	- - - - -	<i>Adviser</i>

The Student Christian Association is an on-campus organization that includes students of all denominations united in Christian fellowship.

A Freshman get-acquainted party and hike, attendance at religious conferences and conventions, programs in local churches, and Lenten services in Carver Hall auditorium, are activities in which SCA members participate.

At regular meetings, held on the first and third Wednesdays of each month, worship programs, speakers, and discussion periods furnish interesting and very worthwhile subjects. Social activities are also enjoyed in conjunction with the regular meetings.



# Maroon and Gold Band

## OFFICERS

R. EUGENE HUMMEL	<i>President</i>
DAVID HECKMAN	<i>Vice President</i>
NANCY LOU RHOADES	<i>Secretary</i>
MR. HENRIE	<i>Adviser</i>

The Maroon and Gold Band is open to those students interested in music and who are able to play band instruments. In addition to serving as a training unit for band leaders of the future, it serves as an outlet for expression. In fulfillment of these aims, it serves its secondary purpose—entertainment for the College Community. Always on hand for athletic contests, the band also gives a number of concerts each year, both in College assemblies and in regional high school auditoriums.





## Athenaeum Club

### OFFICERS

JOHN T. BOGDAN	-		<i>President</i>
JOHN J. BURNS	-		<i>Vice President</i>
FLORA J. KISSINGER	-		<i>Secretary</i>
WILLIAM K. LATIMER	-		<i>Treasurer</i>
JAMES V. FERDINAND	-		<i>Program Chairman</i>
MR. SMITH	-		<i>Adviser</i>

The Athenaeum Club, organized in 1945, is composed of sixty-eight members. This club has for its chief objective a more thorough enjoyment of all music, classical, semi-classical, and popular, by a more extensive understanding of the music. Piano, vocal, and instrumental selections by the members of the club and a musical quiz show add variation to the planned programs of recorded music. Membership is open to all students interested in both classical and popular music as a means toward cultural growth.



# Newman Club\*

## OFFICERS

### *First Semester*

FRANCIS GALINSKI - - - *President*  
VINCENT NAWROCKI *Vice President*  
MILDRED WRZESNIEWSKI *Secretary*  
EDWARD ROMPALA - - - *Treasurer*  
ROCCO CHERILLA - - - *Marshall*

### *Second Semester*

ALEX KAHARSKI - - - *President*  
EDWARD ROMPALA - *Vice President*  
JOANN MCCORMICK - *Secretary*  
SYLVESTER BODEK - - - *Treasurer*

MR. RYGIEL, *Adviser*

VERY REVEREND FATHER WILLIAM J. BURKE, *Chaplain*

The Newman Club, an organization composed of Catholic students of the College, has as its purpose the deepening and enriching of the spiritual and temporal lives of its members. Its varied activities comprise a program of religious, intellectual, and social pursuits which endeavor to develop capable student leadership among its members. The Club is also affiliated with the National Newman Club Federation.

\* This is an off-campus organization. No extra-curricular credit is given for this activity.





The contestants for the Coed of the Year contest were selected by the popular vote of the man and woman representatives from each of the classes. The contestants were selected on the basis of beauty, personality, popularity, and participation in campus activities.

The Coed of the Year was then selected from these contestants by an all-college vote and crowned at the Freshman Mardi Gras as Coed of the Year and Queen of the Mardi Gras.

*Top to Bottom*

RUTH GILMAN  
NANCY SUE WILLIAMS  
DOLORES DOYLE  
CLARE DAVIS  
WILMA JONES  
BARBARA HARMON  
NANCY SWARTZ



PHYLLIS McLAREN

*Coed of the Year*



PEGGY BOURDETTE  
*Snow Queen*



SHERRILL HILLER  
*Varsity Queen*





*Waller Hall at Night*



*The Tower at Christmas*



## Fashion Show

The house lights dim, the spotlights flick on, and the annual Fashion Show is set in sparkling motion. The Fashion Show is a major social enterprise sponsored each year by the Business Department in cooperation with the downtown merchants.

Through this event college women are given an opportunity to taste the bright career of a model.



*The search for knowledge*



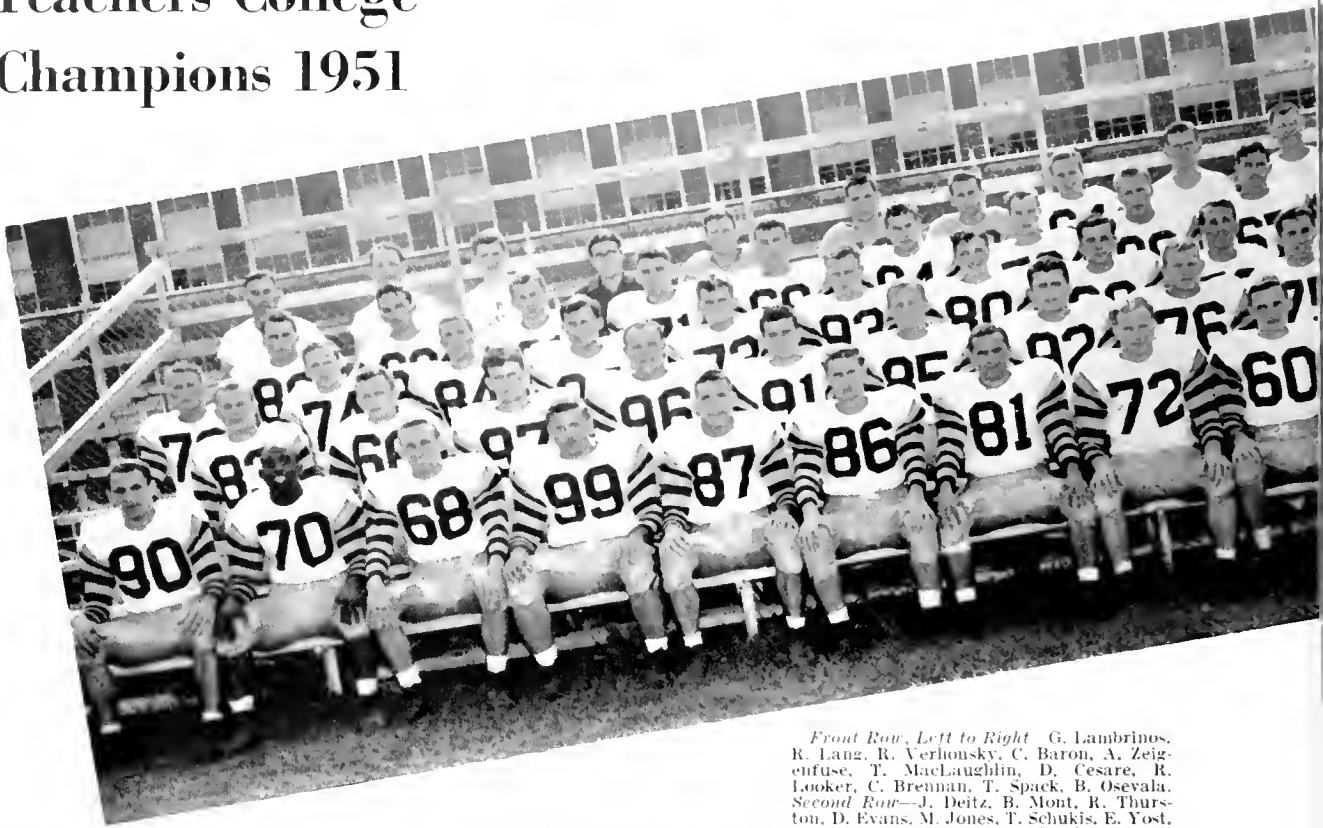


“The school cannot be a preparation for social life except as it reproduces the typical conditions of life.”

JOHN DEWEY

# *Athletics*

# Teachers College Champions 1951



*Front Row, Left to Right*—G. Lambrinos, R. Lang, R. Verhonsky, C. Baron, A. Zeigenschuf, T. MacLaughlin, D. Cesare, R. Looker, C. Brennan, T. Spack, B. Osevala.

*Second Row*—J. Deitz, B. Mont, R. Thurston, D. Evans, M. Jones, T. Schukis, E. Yost, A. Kubik, J. Scheirer, D. Linkhorst, J. Long. *Third Row*—R. Schmidt, J. Boyle, K. Ruppel, J. Nemetz, J. Costa, F. Sheehan, J. Glosek, J. Panichello, J. Schar, A. Boychuck, T. Rainey. *Fourth Row*—J. Angus, D. Trocki, R. Rainey, F. Williams, F. Bidel-pach, B. Zenuck, J. Steiner, T. Thomas, R. Couch, G. Morrison, E. Connally. *Fifth Row*—R. Redman, J. Hoch, E. Cunfer, S. Williams, J. Lenox, C. Pope, R. Verano, J. Steiner, T. Anthony, H. Shelly, J. Colone, R. Cumens.

Again last fall, the versatile Bob Redman with his assistants John Hoch, Harold Shelly, and "Bells" Colone manned the Husky reins and whipped the growling gridders into shape to net B. S. T. C. its second unbeaten, untied campaign in four years. Despite the fact that the Redmen faced their most strident schedule in years, they came out on top to bowl over eight fighting opponents and also annex the first Teachers College Conference Title. With these achievements heaped atop all past laurels, the Huskies can well wear their new-found crown with permanent pride. Nineteen Fifty-one will pass on in the annals as another banner year in par excellent football at Bloomsburg, surpassing all previous grid-war glories at the tough but "Friendly College on the Hill."



COACH ROBERT REDMAN

1951 SUMMARY

Bloomsburg	----	20	Mansfield S. T. C.	----	7
Bloomsburg	----	35	Lock Haven S. T. C.	--	6
Bloomsburg	----	10	Millersville S. T. C.	--	14
Bloomsburg	----	40	Shippensburg S. T. C.		14
Bloomsburg	----	23	Kutztown S. T. C.	----	0
Bloomsburg	----	27	Wilkes College	-----	7
Bloomsburg	----	16	West Chester S. T. C.	--	7
Bloomsburg	----	20	Indiana S. T. C.	-----	0

"Bob" Redman, football kingpin here at Bloomsburg, has now completed his sixth season coaching the Husky forces in football and baseball. During his half dozen year reign, his teams have been the most successful in the history of the College.

At the "Friendly College," "Bob" has made countless friends with his genial social wit; his sparkle in the academic classroom; and his sound, hard-driving tactics on the pig-skin turf or baseball diamond.

A product of Swarthmore College, Redman served in the United States Navy with an officer's commission during the last war, and prior to that, had coached at Triple Cities College. He has carved his name well in the Husky hall of fame, and has certainly earned the title, "Teachers College Coach of the Year—1951."



A worm's eye view.



SHEEHAN, *Center*



McLAUGHIN, *Center*



SHUKIS, *Center*



CESARE, *Guard*

In the initial fracas of the 1951 campaign, the Maroon and Gold generated their high-powered offense sparingly to electrify Mansfield's tame Mountaineers 20-7 on Berwick's Crispin Field. On this early September night, the Redmen marched to an easy win behind the double touchdown treks of Bob Lang, and Tom Spack's flashy 71 yard jaunt. The outcome of the game was never in doubt as the Huskies led at halftime, 20-0. Mansfield tallied in the last stanza against Husky reserves.

On September 29, the Lock Haven Tutors journeyed to Athletic Park for the second tilt of the season. With gazelle-like running by Bob Lang, Barney Osevala, and Tom Spack, the Huskies clipped the Bald Eagles' wings for a 35-6 decision. "Daddy" ripped off two trips to paydirt in the first half, then Spack, Osevala, and Brennan participated in the victory drama by slamming over three more tallies in the second act. Dave Linkchorst booted five extra points to boost his season's total to seven for eight.

Again Athletic Park was the scene of battle and once more the Redmen raced to victory. This time the Millersville gridders fell, 40-11. Behind the high-octane arm of D'Amico and their Bunyan-like end, Alexander, the Millers made it an exciting melee for three periods before the running of the reliables Lang, Osevala, and Spack, made the contest a rout. The Huskies tallied three times in the first half, then garnered another three in the third and fourth stanzas to mark the highest point total since 1949.

Sports fans awaited the all-star fray between the visiting Red Raiders from Shippensburg and Redman's Huskies scheduled for





LAMBRINOS, *Quarterback*



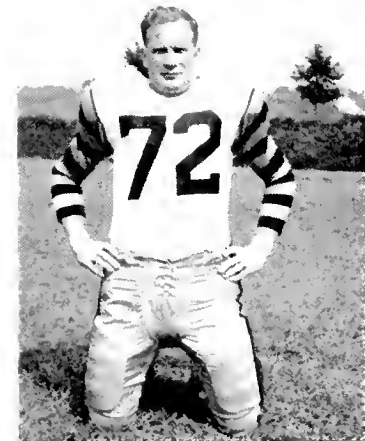
DIETZ, *Quarterback*



LANG, *Halfback*

Olympus on Homecoming Day. They were not disappointed. The largest Alumni Day crowd in several years watched the Huskies romp, run, and wreck the Red Raider offense to down Rambo's air-minded aggregation, 10-14. The first quarter was a tense affair as a long Shippensburg pass put the Raiders out in front, 7-0. But not for long. Behind the brilliant passing arm of Tom Spack and the running of "13" point Lang, the Huskies slugged back to send the Red Raiders home "Blue Velvet" under the wake of six touchdowns. Lang, Verhousky, Osevala, Spack, and Thurston appeared in the Huskies' T. D. parade.

Playing their first battle on foreign turf, the Redmen found the Pennsylvania Dutch country to their liking and promptly walked away with a 28-0 verdict over Kutztown. Despite their



LOOKER, *Tackle*

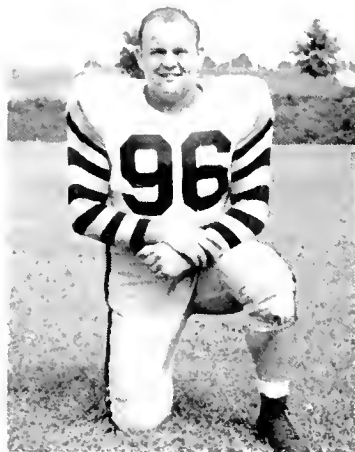
Nice blocking by Shippensburg.





Spack slices for yardage against W. C.

lack of punch in this game, the Huskies had the power in the clutch. Brilliant line play by Nemetz, Verhousky, and Lambrinos halted an early Golden Avalanche drive, then in the second quarter, the listless Huskies came to life as Tom Spack found the airlines free to pass to Charlie Brennan for a T. D. Spack also ran for a Bloom six-pointer. The score at intermission read, Bloom 11, Kutztown 0. In the second half, it was much the same story. Spack flipped to Verhousky and Thurston to make the final total Bloomsburg 23, Kutztown 0. The game marked the first time Lang was held scoreless, and also the first time the opposition was held free of scoring. "Link" booted four more extra points for a 21 for 21 percentage.



EVANS, Tackle

Once again the Maroon and Gold spread out the traveling maps and paddled up the Susquehanna to meet "Pappy" Ralston's scrappy Wilkes gridders on a bitter cold November evening in Kingston Stadium. A handful of hardy B. S. T. C. eskimos watched the Huskies' blood circulate long enough to snow-under the Colonels, 27-7. What little Al Nicholas could do for Wilkes wasn't enough as Lang, Osevala, and Long crossed the final chalk mark for Redman's eleven. After leading by only 7-0 at half-time, the Maroon and Gold began to roll in the final stanzas. Lang tallied twice in the third period to ice the frigid prelim to the big tilt with West Chester the next week.

Perhaps the most widely publicized fracas in Bloom history took form on sunny Crispin Field before a crowd of 4,000 on November 10th. "The battle of the year" with West Chester's Golden Rams resulted in a brilliant Husky upset, 16-7. In addi-



THURSTON, End



LINKHORST, Halfback



OSEVALA, Fullback



VERHOUSKY, *End*



SPACK, *Halfback*



BARON, *Tackle*

tion to the revenge win, the Huskies toted off the first Tutor Crown in the newly organized Teacher Conference.

Early in the initial stanza, the Golden Rams' Hersh "shook up" the crowd by scampering 33 yards to put the flock ahead, 7-0. A few minutes later, after "Irish" Brennan tackled Hagan in the end zone for a B. S. T. C. safety, "Crazy Legs" Lang ripped a page out of 1920 football and raced 34 yards for a "statue of liberty" T. D. Bloom led at the quarter, 9-7. Late in the second period, Osevala clinched the upset by tallying to end the scoring for the day. See-saw play marked the second half, but the most exciting performance was put on by the Giltless Rams' genial mentor, Glenn Killinger, when he flipped his fedora on the field. All the boys, both on the line and in the backfield shined in the victory.

In the season's final fray, Indiana's Indians came scalp hunting on Mount Olympus and found the Husky warpath a dead end. Thus the B. S. T. C. gridders ended an exciting eight game schedule with a 20-0 win, to cop an undefeated, untied, season. After the strong M. and G. forward wall halted an early Indiana drive, the Huskies attacked with atomic power and shoved the hopeless Red and White visitors up and down the soggy turf for the remainder of the game. With this win, the Huskies fought to their second unblemished record in four years and recorded their thirty-eighth victory in forty-two tries—truly an accomplishment for the "Friendly College."



NEMETZ, *Tackle*



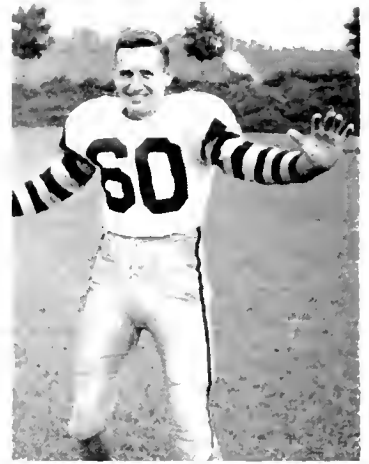
Lang greeted by a host of Golden Rams.



*ZEIGENFUSE, Guard*



*BOYCHUCK, Halfback*



*BRENNAN, End*



*McLaughlin throws Hersh of  
W. C. for a loss.*



*BIDLESPACH, Guard*



*Left to Right Redman, Hoch,  
Shelly, Colone, Zahora.*



*Left to Right - Linkhorst, Betz, Boychuck, Holtzman, Daly, Gerhard, Erickson, Goodhart, Shuttlesworth, Butler, Byham, Ksanzuak, Williams.*

## Basketball

Mr. Shelley's basketball wizardry finally reigned on the State Teachers College courts this past season as the Maroon and Gold eagers dribbled, swished, and bucketed their way to a brilliant record of 12 happy nights against but 1 reversals. With Chuck Daly, Kane ace, leading the Husky pack with 203 points, the B. S. T. C. boys lost only to Millersville, Lock Haven, Mansfield, and Kutztown, all in foreign dens. Another phenomenon lay in the fact that Shelly's stars didn't bow to any team twice this year—quite a feat considering the strong opposition in Millersville and Lock Haven.

The Huskies opened the season with an easy home verdict over Harpur. Mediocre success followed as the locals bowed in close tilts to Kutztown and Millersville. After the New Year, the Husky Hoopsters found new life and rolled over practically all competition. As the campaign ended, the Maroon and Gold had up-ended seven consecutive foes to set their final chart at 12 and 1.

Shelly's free use of substitutions was advantageous on almost every occasion, and the closeness in individual scoring showed this true. After Daly were Byham, Williams, Linkhorst, and Erickson in tallying—all four of these boys scoring over 120 points.

With the loss of but three players via the diploma route, the Shellymen can well point to next season when old standby Maroon and Gold talent will show its full might on the courts of the Tutor Conference.



ERICKSON, *Center*



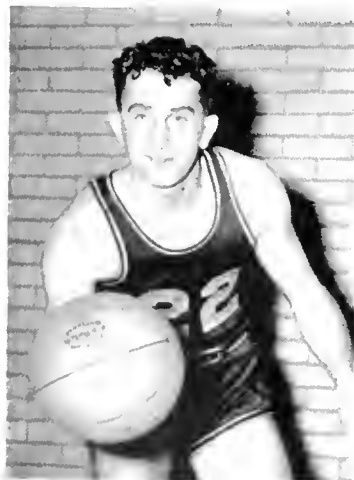
BYHAM, *Forward*



DALY, *Forward*



WILLIAMS, *Guard*



LINKHORST, *Guard*

### SCORES

B. S. T. C. -----	65	Harpur -----	47
B. S. T. C. -----	55	Kutztown -----	56*
B. S. T. C. -----	71	Lock Haven -----	57*
B. S. T. C. -----	60	Millersville -----	64*
B. S. T. C. -----	67	Kutztown -----	43*
B. S. T. C. -----	69	Lock Haven -----	84*
B. S. T. C. -----	75	Wilkes -----	71
B. S. T. C. -----	60	Shippensburg -----	37*
B. S. T. S. -----	44	Mansfield -----	48*
B. S. T. C. -----	65	Millersville -----	56*
B. S. T. C. -----	72	Mansfield -----	57*
B. S. T. C. -----	93	West Chester -----	76*
B. S. T. C. -----	92	Shippensburg -----	53*
B. S. T. C. -----	79	Indiana -----	73*
B. S. T. C. -----	33	Wilkes -----	66
B. S. T. C. -----	90	Harpur -----	69

Won 12; Lost 4

\* Denotes League games.



GEARHART, *Center*



ONDRULA, *Forward*

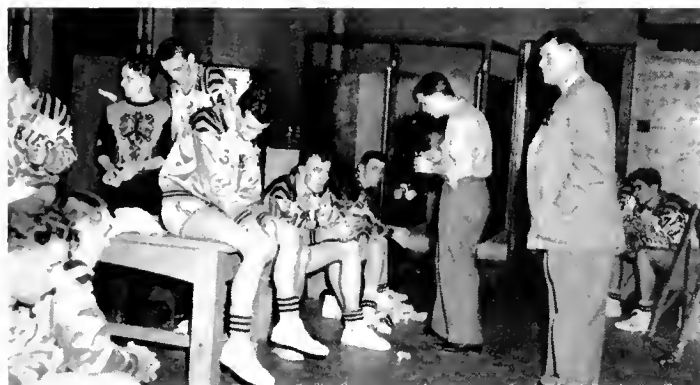


BETZ, *Guard*

<i>Players</i>	<i>Field Goals</i>	<i>Foul Goals</i>	<i>Foul Attempts</i>	<i>Total Points</i>
Daly, C. ....	76	51	63	203
Byham, W. ....	52	34	54	138
Williams, A. ....	56	23	28	135
Linkhorst, D. ....	54	26	36	131
Erickson, D. ....	51	22	36	124
Ksanznak .....	40	19	31	99
Gerhard, R. ....	36	19	17	91
Butler, D. ....	30	16	37	76
Ondrula, J. ....	25	7	11	57
Betz, F. ....	15	7	12	37
Boychuck, D. ....	7	9	17	23
Shuttlesworth, W. ....	5	4	1	14
Kopec, J. ....	2	1	1	5
Goodhart, E. ....	2	0	1	4
Bartleson, W. ....	0	2	1	2
Durso, M. ....	1	0	0	2
Holtzman, R. ....	0	0	0	0
Lubnow .....	0	0	0	0
Ondrula, R. ....	0	0	0	0
	152	240	385	1144



BOYCHUCK, *Forward*



At the half.



KSANZNAK, *Guard*



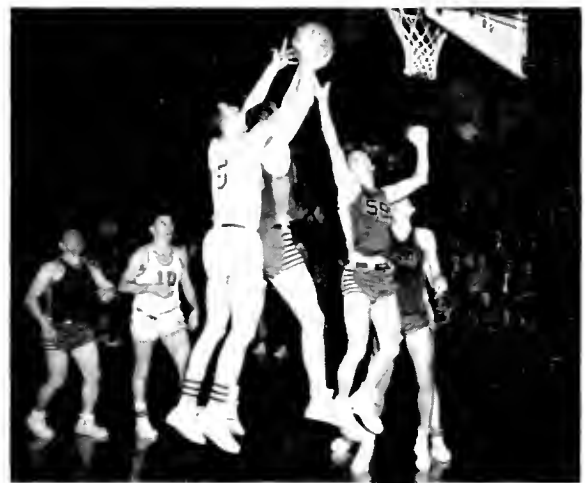
Left to Right: M. Durso, C. Hinger, F. Lubnow, J. Mahoney, F. Grutza, S. Aagaard, C. Dougherty, J. Kopeck.



Doug gets the tap against W. C.



Gerhard tries for one.



"Jumpin' Joe" steals the ball.



### HAROLD S. SHELLY

Genial Harold Shelly this year led the Huskies to one of their most successful cage campaigns in the last twenty years when his team boasted a record of twelve wins and only four reverses, including an all-win streak on the home hardwoods.

Shelly's sound judgment has won him the respect of the entire college community who has seen his proteges come out on top of the heap repeatedly.





## Track 1951

1951 marked another tough track schedule and also another disheartening season for the Shelly thin clad. Winning only one of five meets, the Huskies developed a well-rounded field and track attack, but lacked the depth to cop more decisions. The lone Bloomsburg victory came at the hands of Lock Haven while the local cinder boys bowed to Scranton U, Shippensburg, Bucknell, and West Chester. In addition to these dual meets, the Shellymen competed and represented Bloomsburg well in both the Penn Relays and the State Meet at West Chester.

Probably the most outstanding squad member for the 1951 campaign was Frank Womer who was consistently a stellar standout for the locals. His pole vault of twelve feet, seven and a half inches at Shippensburg set a new Husky record. Tom Spack, master with the javelin, was another star in the developing Maroon and Gold constellation.



### THE RECORD

Bloomsburg .....	53	Scranton .....	76
Penn Relays—			
Bloomsburg .....	63	Lock Haven .....	63
Bloomsburg .....	51	Shippensburg .....	75
State Meet at West Chester—			
Bloomsburg .....	29	Bucknell .....	97
Bloomsburg .....	57	West Chester .....	69



*Front Row, Left to Right* D. Butler, B. Byham, S. Levau, R. Hummel, M. Evans, J. Glosek, R. Ledgerd, *Second Row* D. Boychuck, G. Lambrinos, D. Linchurst, J. Thompson, E. Johnson, D. Kearns, D. Fitzpatrick, A. Boychuck. *Third Row* R. Redman, J. Costa, R. Stembach, R. Verhousky, E. Kaysak, W. Stoutenburgh, M. Jones.

## Baseball 1951

Behind the sturdy pitching arms of Buck Byham, Don Kearns, and Clem Makowski, the Maroon and Gold swatters of coach Rapid Robert Redman smacked out a bright eleven and three record for the 1951 diamond season. During the campaign, the locals bowed only to Trenton, Wilkes, and Lock Haven while at the same time they whipped several formidable foes. The stormy season found the hot Husky batters slapping out 124 runs in fourteen tilts for an average of almost nine runs per game. At the same time, the opposition racked the Redmen hurlers for 5.5 tallies per fracas. Outfielders Don Butler and Mike Evans led the high-octaned Maroon and Gold attack with top batting averages and consistent clutch hitting. Per usual, Redman produced another balanced diamond representative for B. S. T. C.

## BASEBALL RECORD

B. S. T. C. -----	8	Lock Haven	4
B. S. T. C. -----	13	Trenton ----	14
B. S. T. C. ---	10	Temple ---	9
B. S. T. C. -----	4	Kings -----	3
B. S. T. C. -----	2	Wilkes -----	5
B. S. T. C. ---	10	Shippensburg	8
B. S. T. C. -----	4	Mansfield ---	3
B. S. T. C. -----	7	Scranton -----	6
B. S. T. C. -----	8	Kutztown -----	4
B. S. T. C. -----	5	Lock Haven ---	11
B. S. T. C. -----	17	Kings -----	2
B. S. T. C. -----	12	St. Francis ---	0
B. S. T. C. -----	12	Millersville ---	2
B. S. T. C. -----	12	Wilkes -----	6





Training for her "M R S".



Looks like fun!



A game of volleyball.



"Where's the birdie?"

# Women's Sports

From the pictures on these two pages, it is evident that our coeds have been active each Thursday night at Centennial Gymnasium.

In trying to accumulate the necessary 1000 points for "B" club membership, the women participate in the following sports:

- |             |              |
|-------------|--------------|
| BASKETBALL  | BADMINTON    |
| VOLLEY BALL | SOFT BALL    |
| CAGEBALL    | FIELD HOCKEY |
| SWIMMING    | PING PONG    |

## SHUFFLEBOARD

Red Cross courses in Junior and Senior Life Saving



Ping Pong.

The ball's up there somewhere.



Three types of holds. (These classes should be coeducational.)



*Left to Right* — Sara Ehrlich, Mary Lou Todd, Luck Pliscutt, D. Doyle, Ruth Gillman, Mary Louise Kubie.

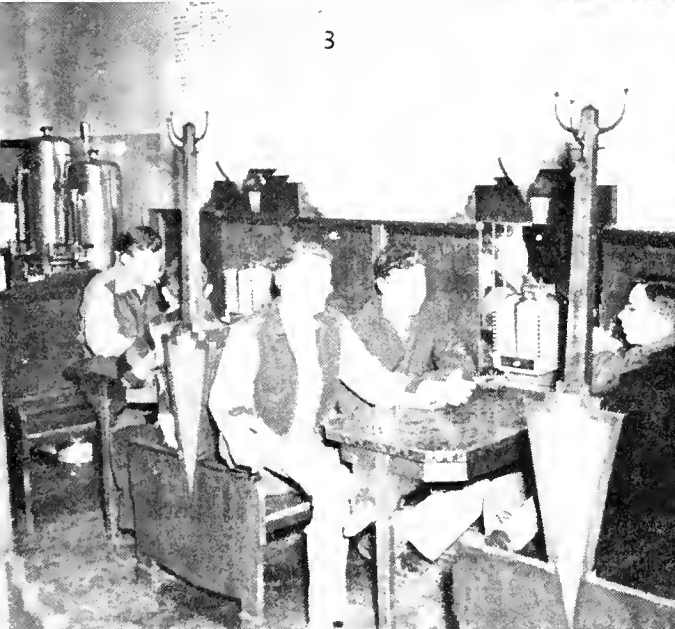
## Cheerleaders

Under Captain Dolores Doyle, our cheerleaders really had something to yell about this year. Our second undefeated football season in three years found the cheerleaders rising to the occasion.

Several new cheers were introduced this year and the spirit at games and pep rallies was generally good.



Time out between cheers.



1 Student teachers take a break. 2 Mr. Fenstermaker - guest conductor. 3 "Now, here's the way I see it . . ." 4 From out of the East. 5 Burning the midnight oil. 6 A song by Mary Ann. 7 Where's everybody going?



VIA JOHNSON  
INVITATION  
DOROTHY MCCOY  
DONALD OWEN CARTER

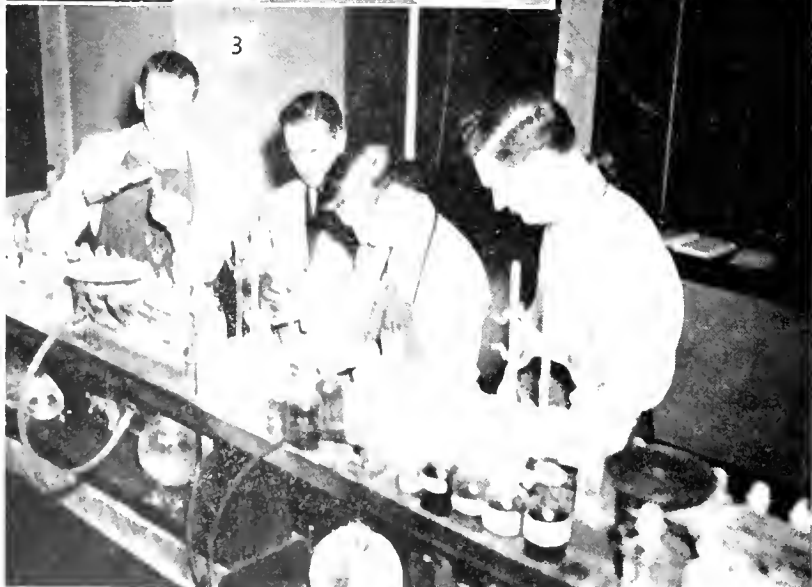




"Lost, yesterday, somewhere  
between sunrise and sunset, two  
golden hours, each set with sixty  
diamond minutes. No reward is  
offered for they are gone forever."

—HORACE MANN, 1796-1859

# *Advertising*



1- Between Classes. 2- "Who's sweater, Barle?" 3- Careful, now! 4- Oh, to own a convertible! 5- In a huddle. 6- A couple of coeds. 7- What, no heart?

# SENIORS

Join your ALUMNI ASSOCIATION, and keep your membership active through the years. Annual dues of \$2.00 will include a year's subscription to the ALUMNI QUARTERLY. This magazine, which appears four times a year, will keep you informed of the activities of your classmates, and the events happening on the campus.

## *Our Object:*

"To Keep the Door of Opportunity  
Open for Worthy American Youth."

## *Our Slogan:*

"Every Graduate of Bloomsburg an  
Active Member of the ALUMNI  
ASSOCIATION."



DR. E. H. NELSON

*All Dues Should Be Sent to:*

**DR. E. H. NELSON**

President, Alumni Association

**STATE TEACHERS COLLEGE**

BLOOMSBURG, PENNSYLVANIA

# MAGEE CARPETS

*make your house a home*

The

# MAGEE CARPET COMPANY

BLOOMSBURG, PENNSYLVANIA



*Manufacturers*

Velvet

Axminster

Broadloom

Wilton

— CARPETS AND RUGS —



*Sales Offices:*

NEW YORK CITY . . . CHICAGO



1 - Chow hounds! 2 - Wanna help? 3 - (No caption necessary). 4 - At least it's balanced. 5 - What are you selling now, Rowley? 6 - Inner sanctum. 7 - Discussion of world-shaking events. 8 - Doesn't anyone drink that coffee?

# SNYDER'S DAIRY

Safe MILK  
and the

*Finest in*

## DAIRY PRODUCTS

BLOOMSBURG—CATAWISSA

DANVILLE



## Robert N. Somerville

*Photographer*

~

WILLIAMSPORT, PA.



Be Sure  
of the  
Wise Owl  
Trademark!

It's your assurance of  
Crispy Fresh

# WISE POTATO CHIPS



*"Through these portals"*

# Letterman's Bakery, Inc.

4th and Market Streets

Bloomsburg — Phone 554

*Baking Masters  
of "Master" Products*

Best of Wishes  
to the  
CLASS OF '52

## ROCK'S RESTAURANT

Where Old  
Friends  
Meet

501 East St., BLOOMSBURG, PA.

ANN BRUNER

DRESS SHOP

111 East Main Street  
BLOOMSBURG, PA.

Enjoy the Best  
from

**BREISCH'S DAIRY**  
CATAWISSA, PA.

Congratulations Seniors—

Look your best for graduation

**Ruth's Corset and Lingerie Shop**

features all standard brands in  
Girdles, Corsets, Lingerie, Hose,  
Bras, and Pajama Sets

**RUTH'S CORSET SHOP**

Graduate Corsetieres

1 E. Main

Bloomsburg, Pa.

Compliments of

**SEARS, ROEBUCK and CO.**



*Nash Airlyte*

**A. A. BOWMAN & SON**

806 N. Front St. Telephone 662

MILTON, PENNA.

Where Dad Took His Girl

**THE TEXAS**

D. J. COMENTZIS, *Prop.*

BLOOMSBURG, PA.

Compliments of

**BART PURSEL**

BLOOMSBURG, PA.

CLOTHING for Men and Boys

DRY CLEANING

*Compliments of*

**BLOOMSBURG MILLS, INC.**

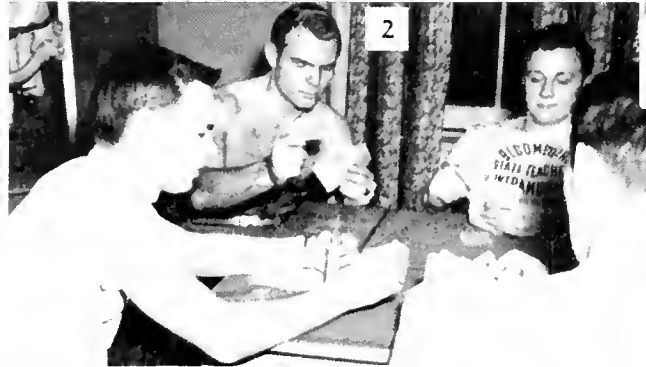
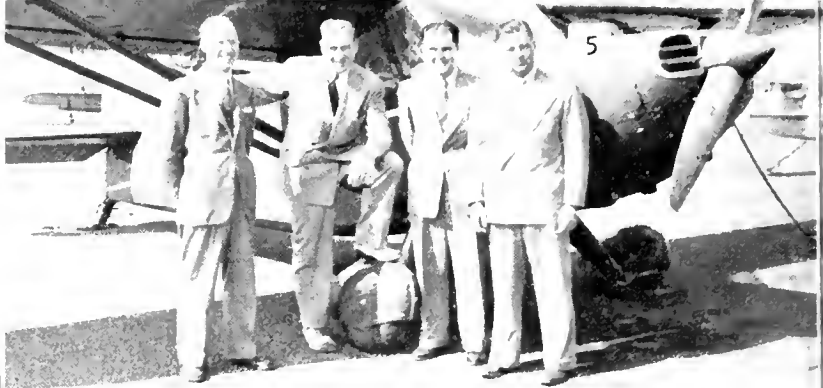


Sales Office

525 Seventh Avenue  
NEW YORK, N. Y.

Mills at

BLOOMSBURG, PA.  
LOCK HAVEN, PA.  
DALLAS, PA.



1. The pause that refreshes. 2. What d'ya bid Ughamop? 3. Hess' found. 4. The fruits of victory. 5. Tail-spin Tommy and crew. 6. Off to the salt mines. 7. Our raw material. 8. Cass, Jones and Chief Engineer.

Compliments of

*CLEWELL'S*

**ICE CREAM**

Dairy products of Columbia County  
for over 50 years

**BERWICK CREAMERY**

Laboratory Controlled Dairy Products

*for Belles:*

from their Beaux - - -

Fresh

Fragrant

**FLOWERS**

*from*

**DILLON'S**

Individually designed  
especially to please her

Phone 127

EAST 5th STREET

BE PHOTOGRAPHED

by

**GEISTWITE STUDIOS**

124 East Main St.

BLOOMSBURG, PA.

**H. B. SHARPLESS**

HARDWARE

and

GIFTS

**STEWART'S**

*Quick Service*

**ATLANTIC STATION**

•

CATAWISSA, PENNSYLVANIA

Compliments of

**TEMPLE OF MUSIC**

PIANOS—EVERYTHING MUSICAL

Compliments of

**ROSE and WALT'S**

East Street

◆

Hoping you never forget those sub-  
marines you ate.

*The Name*

**“BALFOUR”**

*Stands for the finest in*

Class Rings, Commencement Announcements, Club  
Pins, Diplomas, Medals and Trophies

**L. G.**

**BALFOUR**

**COMPANY**

AMBY NOLAN, Miners Bank Building, Wilkes-Barre, Pa.

*Compliments of*

**SUSQUEHANNA  
DISTRIBUTORS**

DIVISION OF SUSQUEHANNA  
FOOD PROCESSORS & LOCKERS, INC.

STORE FRONTS

AUTO GLASS

**BLOOMSBURG GLASS CO.**

**All Kinds of FLAT GLASS**

OTTO W. ASHWORTH, JR. and JOHN J. NICELY, Owners

Phone 2311

GLASS BLOCKS

WINDOW GLASS

**FOX DRUG STORE**

CATAWISSA, PA.

Dial 3531



1



5



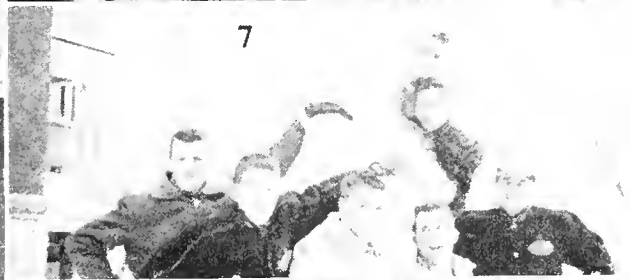
2.



6



3



7



8



4



9.

1. Known as *barking* one's shin. 2. Hey, how did they get a broom job? 3. "Five foot two, eyes of blue . . ." 4. That's Cyrano in the middle. 5. "What, they changed the book again?" 6. "Little Ducky Duddle . . ." 7. North Hall gang. 8. Isn't she sweet? 9. It's not all work.

*Compliments of*

**NORTH BRANCH BUS COMPANY**



**HUSKY TRANSPORTATION**

With Compliments

of

**Milco Undergarment**

**Company, Inc.**

*"All-Ways" Reliable*

The BEST in Men's  
Furnishings

**FRED R. HIPPENSTEEL**

Compliments of

**HOTEL MAGEE**

BLOOMSBURG, PA.

Professional Friends of OBITER 1952

MR. HEMMINGWAY

DR. REESE

DR. YOST

The Farmers National Bank

BLOOMSBURG, PA.



Sound Banking Since 1891

Congratulations

Class of '52

**W H L M**

The Voice of the Susquehanna Valley

690 ON YOUR DIAL

Affiliate of:

LIBERTY BROADCASTING  
SYSTEM



HOUSENICK MOTOR CO.

SALES and SERVICE

MAIN and EAST STREETS

PHOTO SERVICES, INC.

36 E. MAIN

*Featuring All Makes of*  
CAMERAS and MOTION PICTURE EQUIP.

Expert Photo Finishing

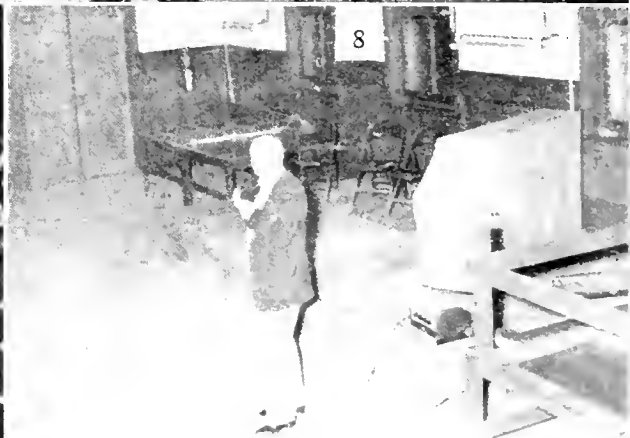
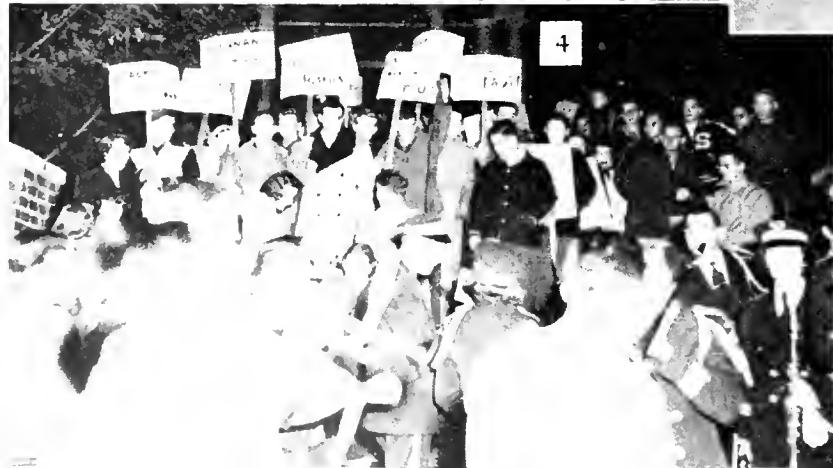
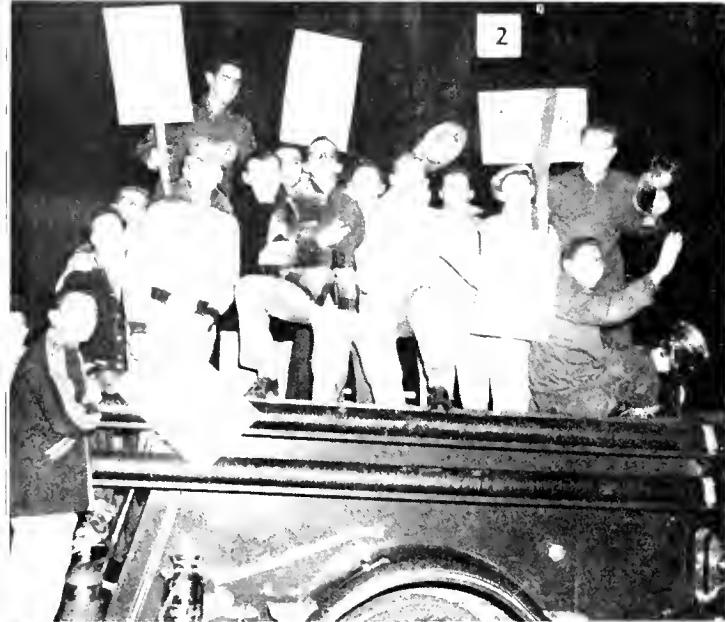
BLOOMSBURG

PHONE 2227

CONGRATULATIONS

**F. W. WOOLWORTH  
COMPANY**

BLOOMSBURG, PA.



This is a picture of... On the water wizer... It must have been funny... 4. Mass confusion... 5. Most dignified Fraternity... 6. Whose Frindle?... 7. No lack of spirit here... 8. The Final... on Proclamation... for one day.



# HESS' GRILL

FILL'er Up at

**GIRTON'S**

**GAS STATION**

East Street

BLOOMSBURG, PA.

**EPPLEY'S DRUG STORE**

Main and Iron Streets

BLOOMSBURG, PENNSYLVANIA

**RITTER'S**

*Everything for SCHOOL*

*and OFFICE*

Main Street

BLOOMSBURG, PA.

**HARRY S. BARTON**

REAL ESTATE—INSURANCE

BLOOMSBURG, PA.

**Bloomsburg Bank  
Columbia Trust Co.**

BLOOMSBURG, PENNSYLVANIA

Over Fifty Years of Banking  
Service to This Community

*Invites Your Business*

Member F. D. I. C.

**LOW'S**

*for*

**HOUSEHOLD APPLIANCES**

**BOTTLED GAS**

63 East Main

BLOOMSBURG, PA.

**FEST'S  
RESTAURANT**

**SUNSHINE LAUNDRY, INC.**

BLOOMSBURG—BERWICK

CALL

2400

3651

**LYCOMING LINEN SUPPLY**

9th and Market Streets BLOOMSBURG

**JOHN H. SHUMAN**

INSURANCE

REAL ESTATE

NOTARY

54 East Main Street

BLOOMSBURG, PENNSYLVANIA

Compliments of

**J. S. RAUB SHOE STORE**

Smart Styles and Better Values

24 East Main Street

BLOOMSBURG, PENNSYLVANIA

**MOYER BROS. INC.**

BLOOMSBURG'S

LEADING PRESCRIPTION

DRUG STORE

Since 1868

A Lodge of Over 2,500 Members

# LOYAL ORDER OF MOOSE

**BLOOMSBURG LODGE No. 623**



Our membership has always been interested in all  
B. S. T. C. activities.

To the graduating class of 1952 we extend our  
sincere congratulations, and wish each and every  
one the best of luck.



Carrying the Finest Lines in the  
Jewelry Industry

CLOCKS SILVERWARE  
DIAMONDS

Guaranteed Repair

**HARRY LOGAN, Jeweler**

5 West Main St. BLOOMSBURG, Pa.  
Phone 2205

**MILLER OFFICE SUPPLY**  
and  
**EQUIPMENT COMPANY**

Office and School  
SUPPLIES

ROYAL TYPEWRITERS

9 East Main Street

---

## WOLFE WHOLESALE

*Distributors*

CONFECTIONS CIGARETTES

Phone—866J

1081 Market Street

BLOOMSBURG, PENNSYLVANIA

---

Compliments  
to the Class of 1952

**DEISROTH'S**

Your  
Department Store

Bloomsburg's Friendly Place to Shop

**ENT'S**  
**EATS**

STEAKS, CHOPS,  
SEA FOODS  
and  
SHORT ORDERS

24 Hrs. Service Friday  
and Saturday

## BOWMAN'S CLEANERS

*The BEST in  
Town*

TUXEDOS FOR HIRE

*Orders:*

For TAILORED SUITS, OVERCOATS,  
and DRESSES.

## KRESSLER GREEN HOUSES

JIM AND LOIS SNYDER. *Prop.*

Phone 114

BLOOMSBURG, PA.

## ARCUS'

*For a Prettier You*

BLOOMSBURG—BERWICK

Patronize

Your

Community Store

B. S. T. C.



## Confair's Beverage Co.

BERWICK, PA.

*Your*

## OBITER

Was Engraved, Printed and Bound  
in our School Annual Department.

GRIT offers complete services in commercial art for design and layout, photography, photo-engraving for black and white and color plates, a modern letterpress plant and a bindery with facilities for every phase of the work.

You can depend on GRIT'S service and quality workmanship. Consult us before placing your next order for printing.

**GRIT PUBLISHING COMPANY**

WILLIAMSPORT, PA.



CARVER HALL TOWER

# 1952 Senior Directory

Abbott, Priscilla	Lehman, Pa.	Fogel, Glenn N.	524 Edison Ave., Sunbury, Pa.
Adami, Eugene A.	510A Vine St., Berwick, Pa.	Funk, Geraldine M.	Route 1, Lebanon, Pa.
Allen, Jean R.	122 Quincey Ave., Scranton, Pa.	Furgele, Frank J.	Box 253, Shamokin, Pa.
Anthony, Thomas H.	228 E. Fifth St., Bloomsburg, Pa.	Galiley, Leonard E.	2 Grand St., Danville, Pa.
Babeock, James R.	35 E. Spruce St., Mahanoy City, Pa.	Galinski, Francis B.	607 Lackawanna St., Forest City, Pa.
Badman, Atwood F.	Pavinos, Pa.	Gallagher, Edward C.	87 N. Main St., Shickshinny, Pa.
Baksi, George A.	112 North St., Keiser, Pa.	Geist, Franklin I.	R. D. 1, Danville, Pa.
Baron, Charles	324 Rogers Ave., Endicott, N. Y.	George, Joseph D.	Box 36, Chambersville, Pa.
Ben, Adam M.	168 Seventh St., Blakely, Pa.	Gilbert, William J.	33 Amberst Ave., Wilkes-Barre, Pa.
Bennett, Dale T.	S. Broad St., East Bangor, Pa.	Gillespie, William	312 East St., Bloomsburg, Pa.
Blyler, George E.	R. D. 2, Bloomsburg, Pa.	Ginter, William L.	R. D. 2, Hunlock Creek, Pa.
Bolinsky, Eleanore D.	513 Alter St., Hazleton, Pa.	Glidden, Ruth R.	108 Erie Ave., Susquehanna, Pa.
Bourdette, Margaret L.	503 First St., Athens, Pa.	Haddad, Dyar	292 Arch St., Sunbury, Pa.
Bowman, Doris R.	231 Walnut St., Milton, Pa.	Haddon, John C.	232 Jefferson St., Bloomsburg, Pa.
Brachman, Russell	339 N. Broad St., W. Hazleton, Pa.	Harmon, Barbara	R. D. 1, Lykens, Pa.
Brown, Albert L.	235½ S. 4th St., Sunbury, Pa.	Harring, Maynard L.	Pitman, Pa.
Brown, Francis F.	415½ Walnut St., Sunbury, Pa.	Hartley, Harold V.	Lenoxville, Pa.
Burns, John J.	317 Hamilton St., Harrisburg, Pa.	Beckman, David L.	41 E. Third St., Bloomsburg, Pa.
Burns, Robert P.	317 Hamilton St., Harrisburg, Pa.	Herman, Harry	512 Reagan St., Sunbury, Pa.
Bushick, Ronald P.	755 Chestnut St., Kulpmont, Pa.	Heri, William G.	536 W. Maple St., Hazleton, Pa.
Butler, Donald J.	526 Orchard St., Warrior Run, Pa.	Hessert, Barbara M.	1005 W. Southern Ave., South Williamsport, Pa.
Cannon, James J.	1246 Center St., Shamokin, Pa.	Hitchings, Albert H.	483 Charles St., Luzerne, Pa.
Carey, Harold W.	324 Blackman St., W. Pittston, Pa.	Hornberger, Lester J.	149 N. Quince St., Mt. Carmel, Pa.
Casula, Michalene A.	403 Coal St., Shenandoah, Pa.	Hrisko, William F.	312 S. Middle St., Frackville, Pa.
Cesare, Donald J.	515 Lawrence St., Old Forge, Pa.	Hughes, Milton G.	19 S. Regent St., Wilkes-Barre, Pa.
Cherilla, Rocco V.	246 E. First St., Hazleton, Pa.	Hurt, Henry G.	141 Butler St., Forty-Fort, Pa.
Ciampi, Anthony G.	92 S. Main St., Shickshinny, Pa.	Jenkins, David W.	5 Oak St., West Hazleton, Pa.
Clarridge, Clifton	1303 Maple View Pl., S. E., Washington, D. C.	Johnson, Edward W.	R. D. 3, Bloomsburg, Pa.
Cleaver, William J.	R. D. 2, Orangeville, Pa.	Johnson, Eleanor M.	R. D. 4, Box 304, Kane, Pa.
Coleman, Shirley J.	Beavertown, Pa.	Jones, Thomas C.	544 Delaware Ave., W. Pittston, Pa.
Coval, Leon	20 Columbia Ave., Bloomsburg, Pa.	Kaler, Ronald A.	State St., Millville, Pa.
Dailey, Jacob E.	323 W. Market St., Danville, Pa.	Kanyuck, Calvin	6 Rock St., Glen Lyon, Pa.
Daly, Charles J.	315 Moffit Ave., Kane, Pa.	Kennedy, Eleanor	R. D. 5, Bloomsburg, Pa.
Davis, Stewart E.	315 E. Fifth St., Bloomsburg, Pa.	Kile, Nelson H.	54 W. Eighth St., Wyoming, Pa.
Deibert, Lola J.	R. D. 2, Danville, Pa.	Kistler, Patricia A.	River Road, Bloomsburg, Pa.
Dietz, John A.	260 Vine St., Plymouth, Pa.	Kobal, George	138 Oak St., Nanticoke, Pa.
Domaleski, Rose Marie	716 W. Pine St., Frackville, Pa.	Kozlowski, Raymond J.	Kingsley, Pa.
Dorak, Michael J.	1416 W. Front St., Berwick, Pa.	Kreisher, William J.	P. O., Box 107, Shamokin, Pa.
Dorasavage, Margaret	700 Mahantongo St., Pottsville, Pa.	Krepich, Michael A.	1233 Ferris Ave., Berwick, Pa.
Eckert, Irene G.	Shaft St., Gilberton, Pa.	Krzywicki, Jeanne C.	104 E. Main St., Plymouth, Pa.
Edwards, Richard	447 Moss St., Plymouth, Pa.	Laubscher, Robert E.	105 Broad St., Selinsgrove, Pa.
Enama, Joan C.	Nuremberg, Pa.	Laux, Richard F.	W. Main St., Trucksville, Pa.
Evans, David C.	341 Chestnut St., W. Reading, Pa.	Ledyard, Richard A.	453 E. Fourth St., Bloomsburg, Pa.
Evans, Marilyn B.	654 N. Franklin St., Wilkes-Barre, Pa.	Leihart, Jack M.	803 Berwick Rd., Bloomsburg, Pa.
Fenstermacher, Harry	239 Pine St., Catawissa, Pa.	LeVan, Stanley L.	635 E. Fourth St., Bloomsburg, Pa.
Fitzsimmons, Marguerite	1019 Lackawanna Ave., Mayfield, Pa.	Looker, Russell L.	129 Lorain St., Johnstown, Pa.

# 1952 Senior Directory

Lundy, Marilyn W.	122 E. Fourth St., Bloomsburg, Pa.	Scheno, Angelo P.	63 E. Fifth St., Bloomsburg, Pa.
Lylo, Michael	1419 Second Ave., Berwick, Pa.	Schukis, Thomas E.	714 Center St., Mahanoy City, Pa.
MacDougall, Joyce L.	729 E. Third St., Berwick, Pa.	Search, Philip W.	262 Madison St., Wilkes-Barre, Pa.
Marsilio, Alfred S.	240 E. Elm St., Hazleton, Pa.	Shanahan, John P.	415 Pennsylvania Ave., Bangor, Pa.
Matuleski, Charlotte M.	31 Slope St., Nanticoke, Pa.	Sheehan, Francis J.	64 Valley St., New Philadelphia, Pa.
Mazzitti, L. Gloria	1403 Ferris Ave., Berwick, Pa.	Sherman, Barbara A.	Benton, Pa.
McAlouse, William M.	Center St., Kelayres, Pa.	Shultz, Carl R.	306 Glenn Ave., Bloomsburg, Pa.
McHugh, Cornelius J.	415 W. Seventh St., Hazleton, Pa.	Simpson, Edwin R.	1023 Pine St., Berwick, Pa.
McLaughlin, Thomas J.	Brook Mountain, Barnesville, Pa.	Sikes, Edward P.	18 Gravel St., Wilkes-Barre, Pa.
McNamee, Mrs. Dorothy Cedor	Havre de Grace, Md.	Sluyter, Joyce M.	R. D. 1, Towanda, Pa.
Meier, Jean M.	Mifflinville, Pa.	Smith, George A.	335 Catawissa Ave., Sunbury, Pa.
Mertz, Florence M.	R. D. 1, Northumberland, Pa.	Snyder, Edward	466 W. Broad St., Hazleton, Pa.
Miller, Robert E.	322 S. Fourth St., Sunbury, Pa.	Stankis, Francis J.	1341 Chestnut St., Kulpmont, Pa.
Miller, Royal A.	R. D. 3, Bloomsburg, Pa.	Stanko, Constance M.	321 Front St., Danville, Pa.
Mitchell, Kathleen	467 W. Mahanoy St., Mahanoy City, Pa.	Stee, Dorothy M.	23 Main St., Mahanoy Plane, Pa.
Morrison, Richard R.	528 E. Market St., Danville, Pa.	Stevens, John	47 Main St., Morea, Pa.
Monery, Olive L.	136 S. Poplar St., Mt. Carmel, Pa.	Stonik, John M.	64 E. Shawnee Ave., Plymouth, Pa.
Nawrocki, Vincent F.	1 Federal St., New Philadelphia, Pa.	Strausser, Fred L.	203 E. Ninth St., Bloomsburg, Pa.
Newman, Lois J.	73 Oliver St., Wilkes-Barre, Pa.	Swartz, Nancy D.	56 Bedford St., Forty-Fort, Pa.
North, David T.	Millville, Rd., Bloomsburg, Pa.	Faylor, Patricia J.	Dushore, Pa.
Osenbach, Robert C.	19 S. Fourth St., Frackville, Pa.	Thomas, David H.	Orangeville, Pa.
Payne, Marion V.	1016 Vine Ave., Williamsport, Pa.	Thurston, Robert L.	136 South St., Sunbury, Pa.
Peffer, John J.	1064 Chestnut St., Kulpmont, Pa.	Trisko, John	745 James St., Hazleton, Pa.
Pelehar, Joseph J.	538 North St., Keiser, Pa.	Frontman, C. Walter	Overlook, R. D. 2, Shamokin, Pa.
Philo, Laura A.	240 E. First St., Bloomsburg, Pa.	Troxell, William	426 Stevens St., Shamokin, Pa.
Powell, Richard C.	356 S. Hanover St., Pottstown, Pa.	Unger, Nancy J.	27 W. Pettebone St., Forty-Fort, Pa.
Price, Janet E.	251 Carsonia Ave., Reading, Pa.	Vanderslice, Joanne M.	360 W. Fifth St., Bloomsburg, Pa.
Rachko, George	324 Lehigh Ave., Frackville, Pa.	Wagner, John L.	2 E. Pine St., Bloomsburg, Pa.
Radzwich, William J.	521 Main St., Tomhicken, Pa.	Weinstein, Philip	85 S. Grant St., Wilkes-Barre, Pa.
Reed, Thomas J.	114 Blair St., Plymouth, Pa.	Whibley, James A.	227 W. Main St., Bloomsburg, Pa.
Reed, William W.	1265 Highland Ave., Sunbury, Pa.	White, John E.	623 E. Fifth St., Bloomsburg, Pa.
Reese, Jack	406 E. 5th St., Berwick, Pa.	Williams, George E.	15 Cross St., Danville, Pa.
Rhinard, Kathryn L.	1400 Chestnut St., Berwick, Pa.	Williams, Nancy B.	732 Centre St., Ashland, Pa.
Rider, M. Janice	State St., Millville, Pa.	Womer, Robert M.	1202 Howard Ave., Pottsville, Pa.
Riley, John E.	29 Mulberry St., Danville, Pa.	Wood, Graydon C.	1929 N. Market St., Berwick, Pa.
Ruckle, M. Jeanne	324 W. Third St., Bloomsburg, Pa.	Worhacz, Walter	234 S. Second St., Shamokin, Pa.
Rummage, Frederick C.	R. D. 4, Hunlock Creek, Pa.	Wright, Mary Anna	8 E. Third St., Bloomsburg, Pa.
Sanders, Roy W.	1412 State St., Shamokin, Pa.	Yozviak, Marie C.	31 Luzerne St., Wilkes-Barre, Pa.









