

OBITER '92

ANDRUS LIBRARY RESERVE DESK

EXPECT  
THE  
*Unexpected*

Andrew J. Fink  
Bloomington, PA 17815  
Bloomington, PA. 17815



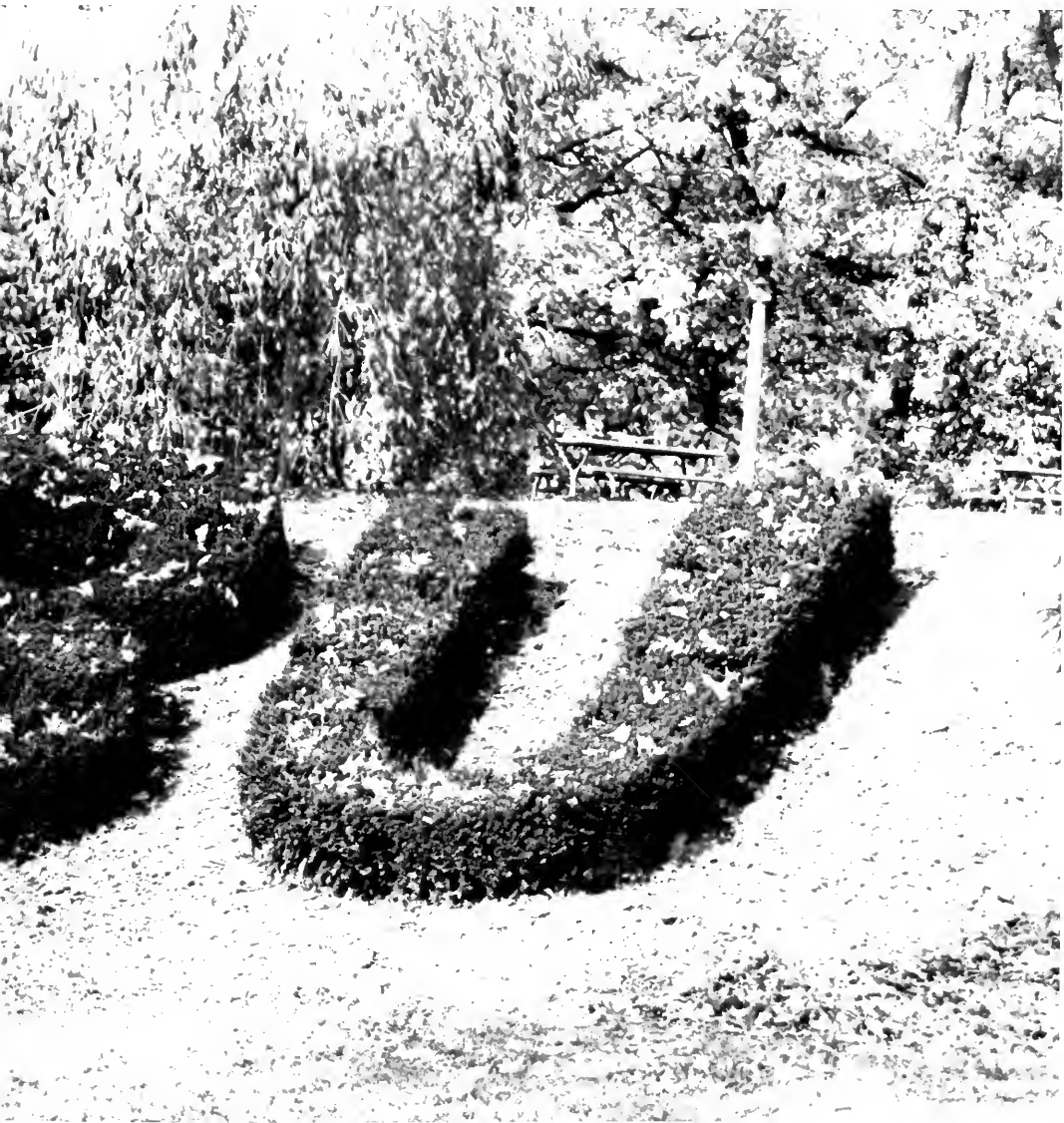


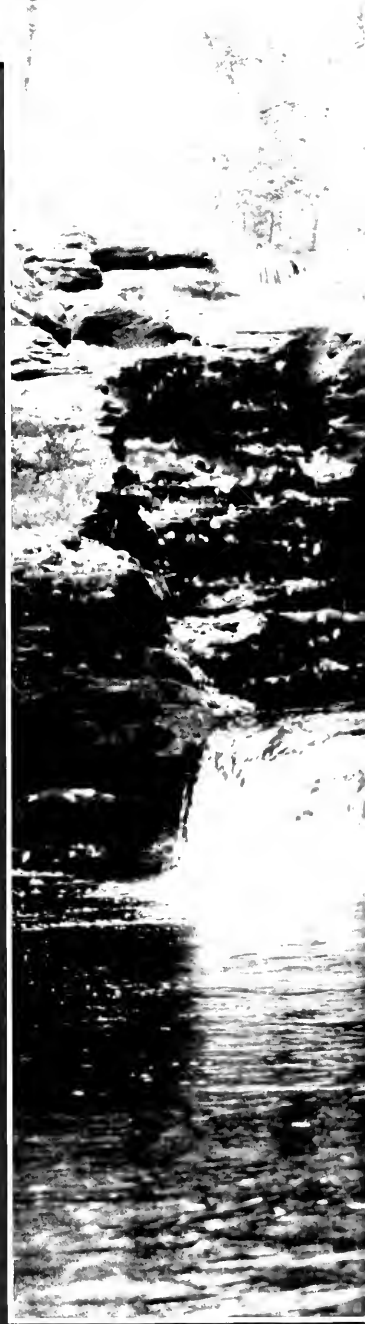
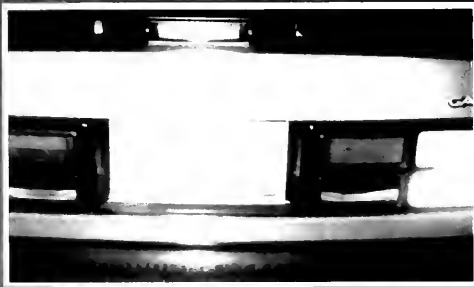
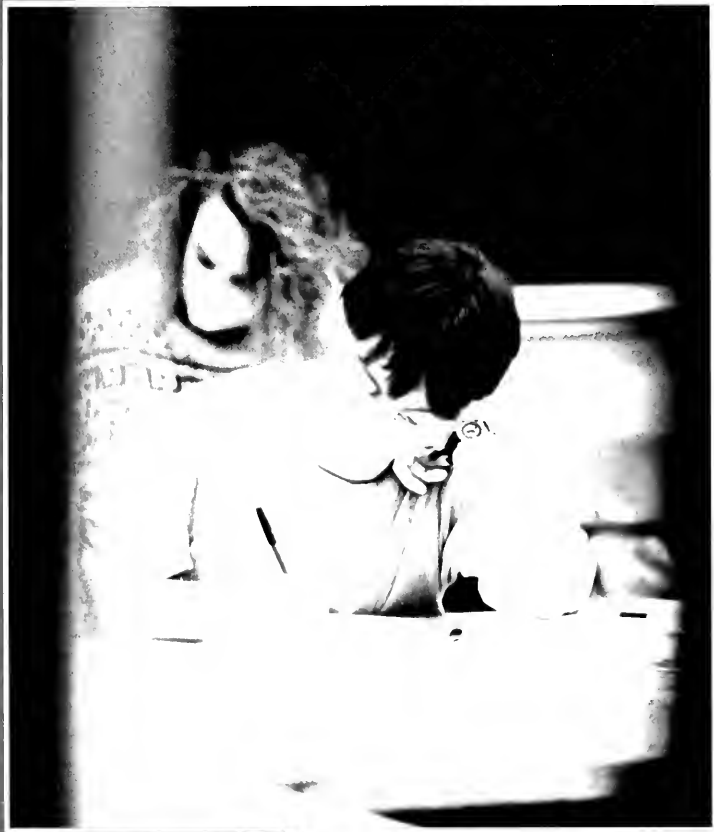


# C O N T E N T S

<b>Opening</b>	<b>4</b>
<b>Student Life</b>	<b>16</b>
<b>Academics</b>	<b>48</b>
<b>Campus Living</b>	<b>66</b>
<b>Sports</b>	<b>90</b>
<b>Greeks</b>	<b>132</b>
<b>Organizations</b>	<b>156</b>
<b>Seniors</b>	<b>174</b>
<b>Closing</b>	<b>232</b>









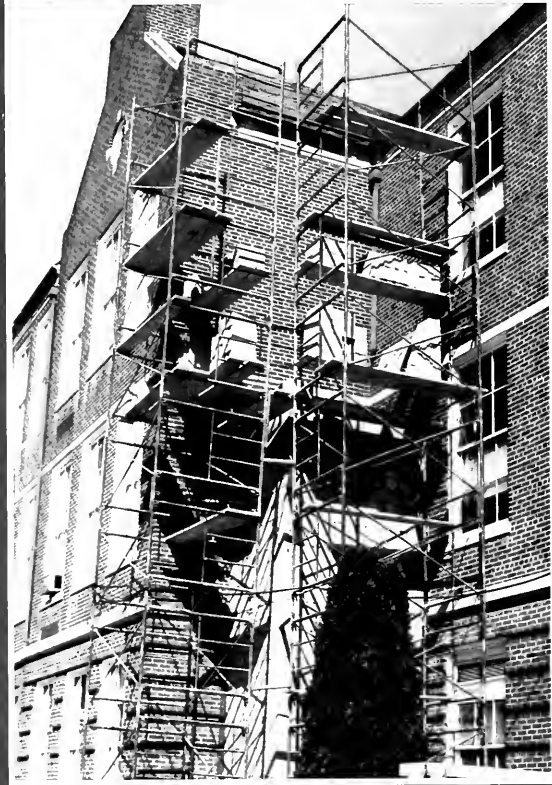
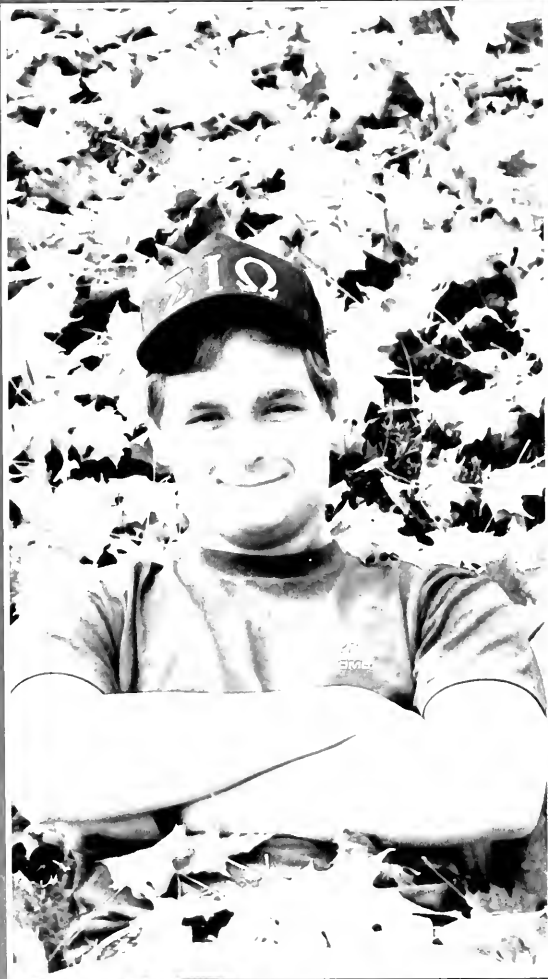












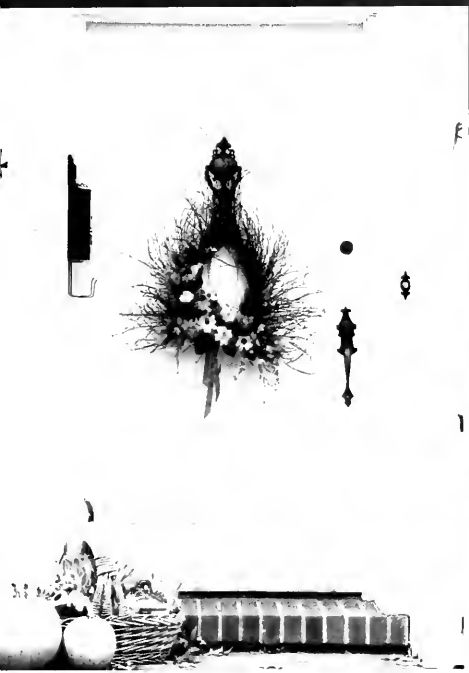












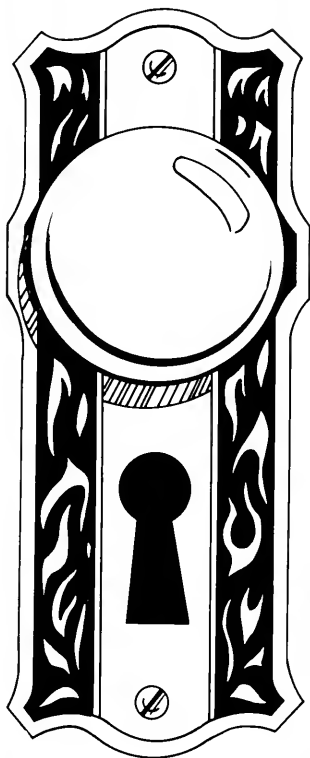


**S**TUDENT LIFE. The KEY to the real world involves a lot more than going to classes and studying for exams. College is about life, and it is the social aspect of Bloomsburg which makes "life" interesting.

From the minute we step onto campus to the last few hours we spend saying good-byes at graduation, we become engulfed in an array of social activities that shape our lives. Whether it be unpacking with your roommate at the beginning of the semester, sharing cotton candy at the Bloomsburg Fair with your date, or going out for a night on the town with your friends the evening before graduation. Besides the various campus and town activities, we also become concerned about the various world events that shape our future.

Whatever our individual interests may be, there is something for everyone in the Student Life at Bloomsburg. Now that you have the key, go ahead, unlock the door and turn the knob to experience the unexpected!





# A New Beginning. . .

## Making The Move To College

**B**eep. Beep. Beep . . . Beep, Beep. The sound of your alarm woke you to your first day at Bloomsburg. You probably ran around frantically trying to put some last minute belongings together, preparing yourself to move into your new "home". Upon entering the campus, you witnessed the hustle and bustle of others in similar shoes. There were parents unloading their cars, students running around trying to find carts, others ordering refrigerators,

and people trying to make a deal with the carpet man.

WOW! All this in one day! After you moved in, it was time to say goodbye to your parents. They probably gave you last minute advice and told you they would call every other day. Most likely, they slipped a few extra dollars into your hand.

The first day ended and you once again set your alarm clock for tomorrow morning's classes, and the Beep, Beep . . . still goes on.



This cutie cracks a smile while moving in.

Look at those muscles!

This father just looves moving his daughter in!





Purchasing books takes a toll on the brain as well as the pocket.

Look who's happy to be back!

"Last name and social security number, please!"





## Food, Fun, and Frolic. . .

### At The Bloomsburg Fair

**A**s the Bloomsburg Fair came to town, everyone anticipated the food, activities, and entertainment that provides pleasure for both young and old year after year.

Children beamed with excitement as they approached the numerous rides around the fairgrounds. Occasionally, one could see an adult carrying on just like a child.

Others opted for the many delicious foods the fair had to offer. Whether it was sausage, pizza, french fries,

or ice cream, there was sure to be a treat to meet everyone's liking.

As always, the fair offered numerous live acts which kept the excitement going strong. Whether it was the sold out Cheap Trick, Kenny Rogers, or the Charlie Daniels Band concerts, the crowd enjoyed the bands thoroughly.

Once again, the Bloomsburg Fair has proved to be a nice beginning to the fall semester at Bloomsburg University.







## Visitors From Afar. . .

### At the Annual Parent's Weekend

The Twenty-First Annual Parent's Weekend was an opportunity for our parents to visit our home away from home.

Every year, parents come from all around to spend time with their sons or daughters that they miss so much! There are tons of activities to participate in, from cheering on the Huskies at the football games to attending concerts, and let's not forget the choosing of the Best

Mom and Dad of Bloomsburg University. Whatever your taste may be, there is much to do. (Including squeezing in time to visit Weis Market!)

Parent's Weekend is a time for introducing your parents to your friends, as well as all you love about Bloomsburg. It is truly a memorable weekend both parents and students look forward to and enjoy.



Our Parents Have Given Us

Strength to know ourselves  
 Hope that our lives could be better  
 Kindness when we were frightened  
 Comfort in our grief  
 Faith when we were depressed  
 Options when we were confused  
 Comfort when we were alone  
 Understanding when we were scared  
 Challenge for us to change  
 Support when we tried  
 Acceptance when we failed, encouragement to go  
 Warmth to sustain us  
 Insight to better comprehend  
 Knowledge of our growth  
 Recognition of our accomplishments  
 Guidance toward higher goals  
 And through all of these, an example  
 that will sustain and nurture the people  
 we are becoming.

**THANK YOU FOR CARING!!**

# Under the Big Top

## Homecoming 1991

Homecoming is an opportunity for alumni to return to their alma mater and re-live their college days. It is also a time for those of us at Bloomsburg to show our school spirit. This year's festivities began on October 25 with the annual Homecoming Parade featuring the "Under the Big Top" theme. At the Alumni House, alumni picniced with their former classmates and remembered the "good old days".

The highlight of the day was, of course, the football game at Redman Stadium. The Huskies battled Cheyney

in front of an enthusiastic crowd. The Huskies led 27-0 after the first quarter, winning with a final score of 44-14.

During halftime, anticipation filled the stands as the crowd awaited the announcement of the Homecoming Sweetheart. Much to everyone's surprise, Brenden Degenhart was the winner. He is the first male sweetheart in the history of Bloomsburg.

The 1991 Homecoming was an event that was enjoyed by all and will be remembered for years to come.



Husky cheerleaders push-up for the fans after every B.U. touchdown.

Luzerne Homecoming Sweetheart and her escort.

Chris Lower and the Husky mascot take a break during half-time.





Clowning around "Under the Big Top".

Women's Choral Sweetheart, Michelle, and her escort.

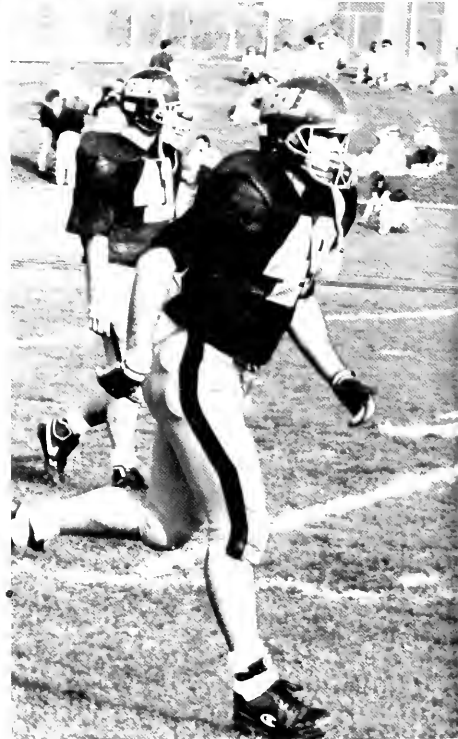
Don't forget Pinhead's creative fly-by marriage proposal.

Bandfront women strut their stuff.

**BLOOMSBURG UNIVERSITY** OCT. 25-27  
**• HOMECOMING**







Here's looking to our future!

Send in the clowns!

This Husky does his thing against  
Cheyney.



Winners of the Hall Decorating Contest.

Peace Mon! Everyone enjoyed Conrad Anthony and his group, George Wesley & the Irietations, at the Reggae Fest 1991.

Matt Teter and his fellow greeks are all smiles during the journey up Main Street.

C.G.A. President, Mike Jemo.

What a CROWD!



# Experiencing The Unexpected

## The Expansion of Kehr Union

Upon entering college, you probably never imagined this much construction could occur in one place. It has, but it is for our own benefit. Campus construction has been in progress since the early months of 1991 and is hoped to be completed by the onset of Fall, 1992.

A major project underway is the renovation of the Kehr Union Building. It is

being expanded to accommodate the growing population of our school. This will allow all the services available to the students to be in a central location instead of scattered across the entire campus. These facilities include the Health Center, the Career Development Office, the Community Activities Office, and various organizations.



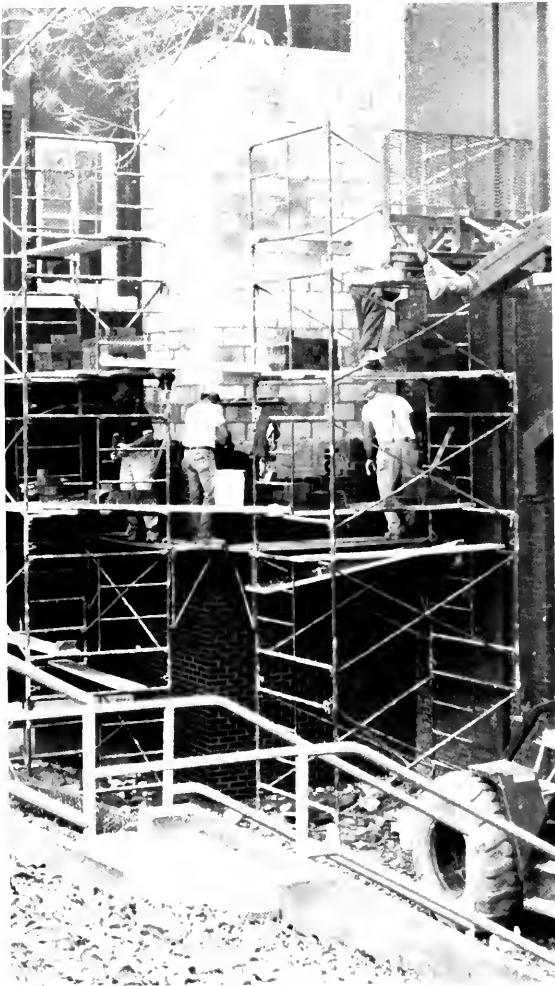




Dr. Trathen inspects the progress made on the Union.

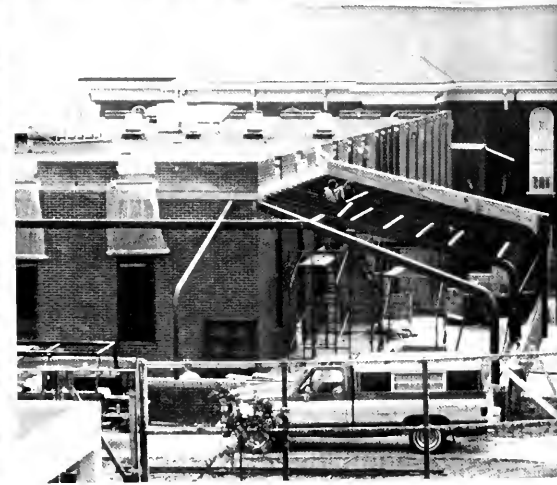
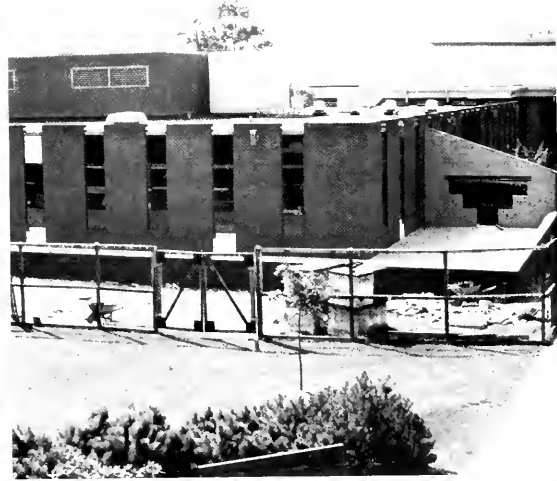
Construction of the new Kehr Union Building.

Men at Work.



Workmen on Carver Hall put the finishing touches on the new elevator.

Here we see the progress of the addition of the Long Porch and handicap accessible ramps.





## Experience More of the Unexpected

### The Revamping of College Hill

**T**he Kehr Union is not the only structure on the campus getting a face-lift. In the Commons, such additions include the Long Porch for sunny afternoon lunches, Itza Pizza for a quick slice, the Hard Hat Cafe, and the Husky Trail. These establishments have expanded the wide variety of food services available to the on-campus diner.

Upper campus residents have finally been blessed with the opening of Monty's,

a deli and convenience store all in one. Some of these new services also include on campus delivery.

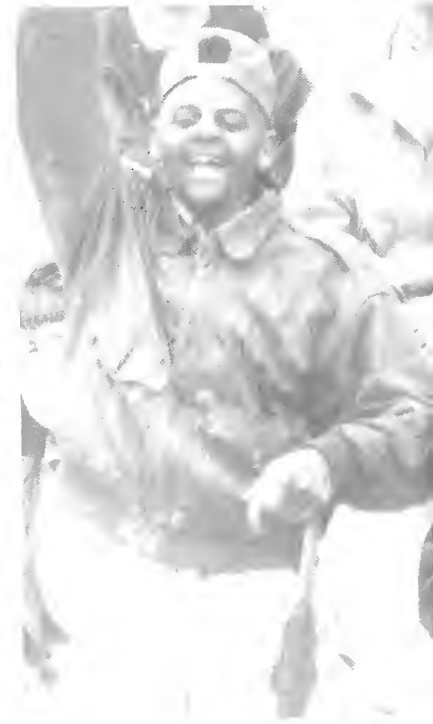
Carver Hall, Navy, Ben Franklin and Haas all acquired new elevators to make our campus more accessible to the handicapped. In order to accomplish this further, ramps are also being constructed throughout campus. So you see, the unexpected, at Bloomsburg, is also an enhancement to our school.

# On the count of three. . .

Say cheese!

This year the yearbook staff had tons of great pictures, especially of smiling faces. The key to a successful and memorable college career entails being able to smile in between stressful

study sessions, boring classes, rough days at work, or physically exhausting athletic practices. So, just sit back and enjoy these happy faces and remember to smile every once in a while.







## Money, Money, M-O-N-E-Y

### The True Cost of Campus Life

**A**fter tuition and community activities fees are covered, the buck does not stop there...it's book time. The bookstore is instantly crowded with anxious students grabbing textbooks, notebooks, pens and pencils. Each student must select a line, cash, credit or even Mac.

All that shopping can make someone work up an appetite...why not order in tonight? Or you can walk downtown and grab a bite to eat...forgot your money?... You can always stop at MAC along the way.

As the cash flow tends to dwindle, students start to

scrimp and save...spending their last spare change on photocopy machines, soda machines, and even video games...but don't forget to save at least twenty-nine cents to write home and beg for more.

As the days fly by and checkbooks don't balance, BU students start counting the days...not just for finals but for another eagerly awaited occasion...book buy-back...and again our students learn another valuable lesson...the true costs of Campus life...and of course their MAC pin number!





Can't pass up the vast Valentine card selection at the Bookstore.

### Mac Attack!

No one enjoys spending money on books, but it has to be done.

This guy would rather spend his quarters on video games (instead of wash).



# Renaissance Jamboree...

## A Good Time For All

The Renaissance Jamboree is a one day festival held on Main Street in Downtown Bloomsburg. The Jamboree brings together the community and the students for a fun-filled day including events ranging from juggling and dancing to an obstacle course and arts and crafts displays. If those

events did not quench the appetite, Main Street was also packed with several food vendors ready to serve the starved and thirsty. Although the weather was on the chilly side this April 26th, our photographers caught many Jamboree goers enjoying themselves at this festive event.







## Siblings Weekend. . .

### Future Huskies?

Every year, the University sets aside a special weekend for the brother, sisters, nieces, nephews, or children of all Bloomsburg University students. Sibling's weekend was held from April 24-26 and was sponsored by the Kehr Union Program Board. The schedule of events included

BINGO, Children's Theater, swimming, the movie-*Beauty and the Beast*, an outdoor Hawaiian Dance, miniature golf, campus-wide Capture the Flag, and of course, the Renaissance Jamboree. The many smiling faces say more than words in expressing the fun had by all.



## The Pursuit for Excellence. . .

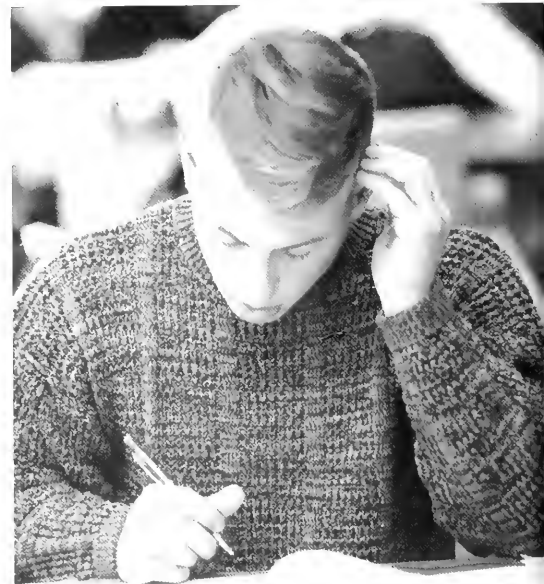
### The Stressful Life of Students

A dark, desolate place or so it seemed at first, but gradually the study lounge in the resident hall began to become a second home for many of us. It was a meeting place for new found friends, a time to get work done without being disturbed, or a place to relax when someone yelled, "Study Break!"

Whether you're cramming for exams or studying for the BIG test, or even just catching up on your reading, most students attempt to seek out a somewhat quiet,

comfortable environment. Some students tend to seek out the Quiet Floor, the top floor of the library, for some serious studying. Other times when you walk past empty classrooms you can catch some students getting that last minute reading done.

And finally, when spring rolls around, we will most likely see students studying outdoors while soaking up the rays. At times, college work and studying leaves us stress-filled and anxious for a break, but we know in the long run it will all pay off.





Student hard at work.



The library allows students to study in different settings — including the quiet floor and the group study floor — there's even a room for those who want to eat.



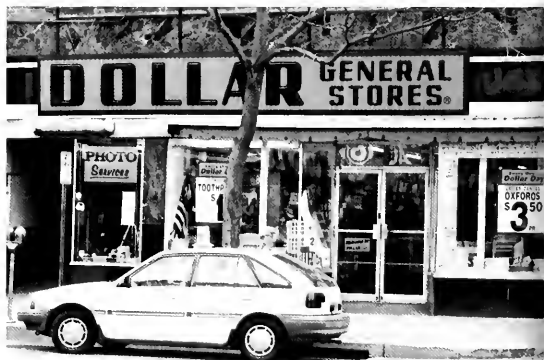
# Our Town

## Where To Go

**B**loomsburg is a little town with an abundance of shops to wander through. In "our town" there is something for everyone. If you come to Bloomsburg, you can not leave without going to the favorite store of every college student, the Dollar Store. Prices are small and the quality and number of useful items is large. The second most visited shop would be Rea & Derick's. They take care of all your drug store needs. When your boyfriend or girlfriend comes to town, the Theatre is the local hot spot and when your parents come to visit, the Magee

Main St. Inn is the hang out. If you are given fresh flowers they were probably picked up at the Floral Center. A place to not visit is the Police Station. To add to the small town charm of Bloomsburg, you can hear the melody of an accordin while walking past the monument.

Sooner or later you will probably get hungry so stop in at Sal's or Napoli's, especially on a Friday or Saturday night. Everyone that is anyone will be there for the food, folks, and fun. So you see, throughout the years Bloomsburg has become *OUR TOWN*.





# QUE PASA BOUTIQUE



E. MAIN ST



All Sports is the store for every B.U. athlete.  
 Magee's is the place to be for Comedy Night!  
 For those 21 and over Hess's is the hangout!  
 Every girl loves a clothing shop- Que Pasa.  
 The theater is a great place for a romantic date.



## What's Happening. . .

### World News 1991-1992

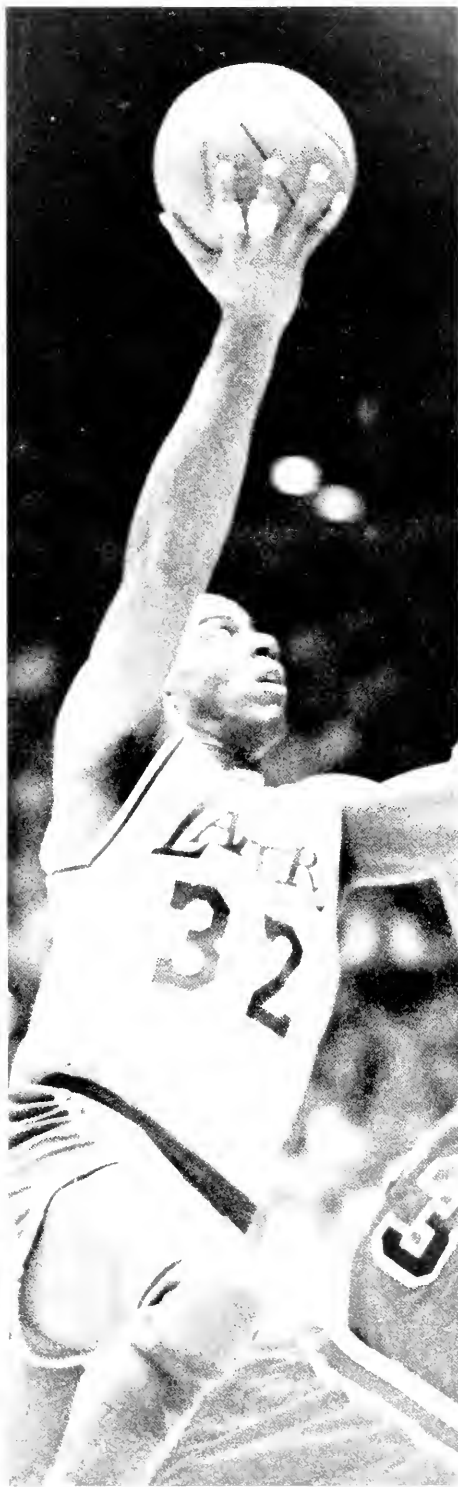
**A**cademics and social events at school are not the only things which guide our lives. We also grow through world events. With the onset of the Fall semester (and more studying) came welcome home parades in honor of the Persian Gulf heroes. Anita Hill and Clarence Thomas made the news under the sexual harrasment spotlight. At the same time, the USSR fell in a political coup and Mikail Gorbachev ended his reign.

For the avid sporting

fan, '91-'92 brought about a World Series win for the Twins and a Super Bowl victory for the Redskins. On a less exciting note, the famous Lakers basketball player, Magic Johnson, announced his fight against the AIDS virus.

Whether news is good or bad, it is the key to understanding our lives. When we look back upon these events in the coming years, we will be looking back on the events that shaped our lives.





# Who's Who...

## At Bloomsburg University 1992

Every year, faculty and administration members are asked to nominate graduating seniors to become candidates for "Who's Who Among Students in American Colleges". Once nominations are submitted, a university committee selects those most qualified to represent our school. The national office then approves those selected.

This year, 95 of Bloom-

sburg's finest made the National Who's Who list. They have been recognized for demonstrating outstanding ability in scholastic achievements, personal traits, leadership, potential usefulness in society, and professional promise.

These students have certainly used the KEY to open the doors of opportunity in order to achieve the UNEXPECTED.



Kerry Abell  
James Amon  
Allison Arentz  
Michelle Bannon  
Diane Bartoff  
Andrea Bauman  
Christine Belskie  
Kerry Bender  
Maria Bosak  
Susan Bower  
Lisa Capobianco  
James Ceccati  
Sushma Chokshi  
CharLynn Conaway  
Claudia Cooper  
Sylvia Costa  
Karin Cressman  
Sister Allan Crowder  
Amy Cunningham  
Belinda Currey  
Jennifer Davis  
Renec Donmoyer  
Kristen Ecker  
Michele Eddinger  
Kirsten Elek  
Nancy Farnan  
Johanna Figueroa  
Darren Foreman  
Deborah Fox  
Colleen Foy  
Gregory German  
Melissa Greene  
Sean Gregorwicz  
Jody Heckman  
Melchior Heller  
Angel Hernandez  
Juli Herring  
Dana Hess  
Daniel Holredge  
Marnie Hoose  
Lisa Hreshko  
Richard Hummel  
Judith Jemiola  
Michael Kacsmar  
Jennifer Kaffka  
Bruce Keller  
Jay Kellett  
Sandra Kent  
Ranee Lazur  
Deborah Letkiewicz  
Cathy Lex  
Eric Lovely  
Victoria Magdeburg  
Craig Martin  
Stuart McAleer  
Todd Mengel  
Debra Milgrim  
Susan Misiwicz  
Ellen Moharsky  
Sharon Mohr  
James Myers  
Michelle Nangle

Colleen Neufield  
Stacey Noll  
Kevin Norton  
Dawn Olivera  
Joann O'Toole  
Michael Peterson  
Sharon Rainey  
Brian Ralph  
K. Raver  
James Reichner  
Kirsten Reitmeyer  
Carl Risch  
Peggy Ritchie  
Corrine Rogers  
Karen Ruhmann  
Karen Russell  
Jennifer Saraceno  
David Sarley  
Sandra Saxman  
Laura Sharpe  
Kami Silk  
Michelle Simons  
Shannon Strasbaugh  
James J. Tolbert  
Leslie Toglione  
Susan Versailles  
Cheri Walters  
Tara Wolfgang  
Amy Wozniak  
Jeanie Yap  
Linda Zellin



# University Awards Luncheon

April 26, 1992

On April 26, 1992, Bloomsburg University held its annual Awards Luncheon to recognize this year's outstanding students. Those who attended included administrators, faculty, the students and their friends and family members. Besides the various awards given to students by their respective departments, 41 graduating seniors were recognized for their academic achievement in at-

taining Magna Cum Laude by maintaining a cumulative average of at least 3.75 for the duration of their university career.

Eight other exceptional students were honored with Summa Cum Laude for maintaining at least a 3.95 cumulative average throughout their college career. The most prestigious award given to graduating seniors for involvement and leadership in extra-curricular activities is

the Service Key Award. The recipients of this honor include: Laurie Ann Cook, Sylvia M. Costa, Jody S. Heckman, Turon M. Humphrey, Jay R. Kellett, Timothy G. Mordaunt, Todd M. Mullen, Brian C. Ralph, Jennifer L. Saraceno, and Daniel L. Trexler.

The final awards given were the Class Awards. These were presented to the outstanding students in each class. The awards were based

on the students performance in both academic and leadership in extra-curricular activities. The Freshman Award was received by Corine E. Cadle; the Sophomore Award was given to John McDaniel; the Junior Award was given to Anne E. Shannon; and the Senior Award was given to Sylvia Costa.

Ms. Costa was the first non-traditional student to be honored as Bloomsburg University's Outstanding Senior.



Outstanding Students-(L-R) Corine Cadle, Paoli freshman elementary education major; Sylvia Costa, Shamokin senior social welfare major; Anne Shannon, Pocono junior mass communications major; and John McDaniel, Philadelphia sophomore sociology major with a concentration in criminal justice.

# Carver Hall

## Taking Back Our Steps

Early Monday morning on March 2, 1992, a cross made of wood and rags was found burning on the front steps of Carver Hall. No one knows who placed the cross on the steps, but this racial incident provoked fear and anxiety throughout the campus. On March 4, 1992 more than 2,000 Bloomsburg students, faculty, administrators, staff, and towns people assembled at the site of the incident to sing out against racism and "reclaim" our steps at Carver Hall.

This section of *The Obiter* is a tribute to Carver Hall and everything the Hall means to the people of Bloomsburg University. I believe that Father Chet Snyder said it best on that cold March night:

"This is a place called home. Our home. We reclaim it for people of goodwill everywhere. Here may we share our joys and calm our fears. May we welcome all who come in peace. May we welcome all who work to promote justice. May we encourage all who long to be understood."

In the course of the turmoil, President Harry Ausprich reacted to the incident by saying, "We are especially concerned about all of our brothers and sisters who have and continue to be the target of harassment and/or intimidation. But not one among us should feel human rights is his or her issue alone. Every person who values respect and justice for all persons and the dignity of the human spirit must join together in publicly rejecting anonymous and hateful acts. We must not and will not remain silent."

By no means have people kept quiet. A familiar voice

to the Bloomsburg community this year was that of Mike Mullen, the Editor-in-Chief of *The Voice*. In the Thursday March 5 edition, he wrote an editorial called "It isn't only black and white". In it he encouraged people to look at the world in a different light.

"Jeff Mack always looks serious. But he doesn't always talk as gravely as he did this week." The general feeling is anger, he told the Press-Enterprise. "We don't feel that this is the feeling of the whole community," he said. "The situation is making us feel uneasy." And why shouldn't it? How many of us can identify with the feeling of being hated or mistrusted by people we have never met simply because we are of a different color or religion? How many of us can say we were targeted as an object of racial terrorism or religious persecution for something we have no control over or have every right to choose ourselves? Maybe now we can.

"When the cross was burned on the Carver Hall steps in the early hours of Monday morning, it most likely was directed at BU minorities, especially the almost 200 blacks, and maybe in other communities, that would have been the case. But that isn't how Bob Peiffer, Protestant Campus Minister, and Father Chet Snyder, Catholic Campus Minister, saw things.

"We are a family," Peiffer began, "and when we first met with administration and faculty, we struggled to decide how to respond to this incident, but it was obvious." Because the assault was on campus, regardless of who it was directed at specifically, it became a student-body issue.

"And we are a family."

Peiffer restated. "And what do families do when they are faced with tough times? They gather and face it together." And at Bloomsburg University, there was no better place to gather than where the final blow was dealt—Carver Hall.

"It was sacred ground," Peiffer continued. "We wanted to gather there and consecrate it again." Snyder emphasized the reclaiming of people in addition to the place. "There were people hurt by this act," he said. "There was healing to be done and it was tonight. We not only reclaimed the steps, but we reclaimed friendships and shared our support."

"I hope so. I hope we weren't out there for any other reasons. Andy Wilson, an active student volunteer, knows me and knows what I mean by that statement. He knows how cynical I can be and I was an awful lot of that last night. After the vigil, I wondered out loud if we accomplished anything. Did we address any new issues, offer any solutions, or send any messages to the people who did this or are sympathetic to them? Or did we simply ease our own minds?"

"Sure we all came out in full force to display our abhorrence for racism, but as soon as all the cameras stopped rolling, everyone was gone. We all headed home proud of ourselves for standing up to these racist members of our community. We all would sleep better tonight—our beds a little warmer because our world was a little safer.

"Is it? I ask again, what did we accomplish? What will happen the next time a black student crosses East Street? Will the slurs be easier to bear? What will hap-

pen the next time a black student is physically assaulted on Main Street? Will the feeling of being violated go away quicker? What will happen when we all return from Spring Break and this incident is but a distant memory, except to those who live it every day? Have we merely treated a symptom, while the disease goes merrily on?

"These questions are not easily answered. But Wilson did point out to me that perhaps the most important message sent last night was the simplest of all. BU minorities do not have to face these problems alone.

"If nothing else was accomplished last night, Wilson told me, as long as one person realized that the BU campus is behind them 100 percent, then the entire event was worth it. He is absolutely right. And, once again, I must thank him for setting me on the right track.

"But that cynicism in my heart still lingers, and I must remind everyone that these problems will not disappear while we are away for break. It may be easy for some of us—myself included—to forget about the effects of this week's events, but for others like Jeff Mack it isn't.

"Over seven thousand of us on this campus see the world in black and white. We have been looking at the world that way ever since we were born. We know of no other perspective. Maybe the best thing for us would be a chance to look at the world the way Jeff Mack sees it everyday — in white and black. Then maybe we might finally understand why his smile that can brighten any room comes so less often these days."



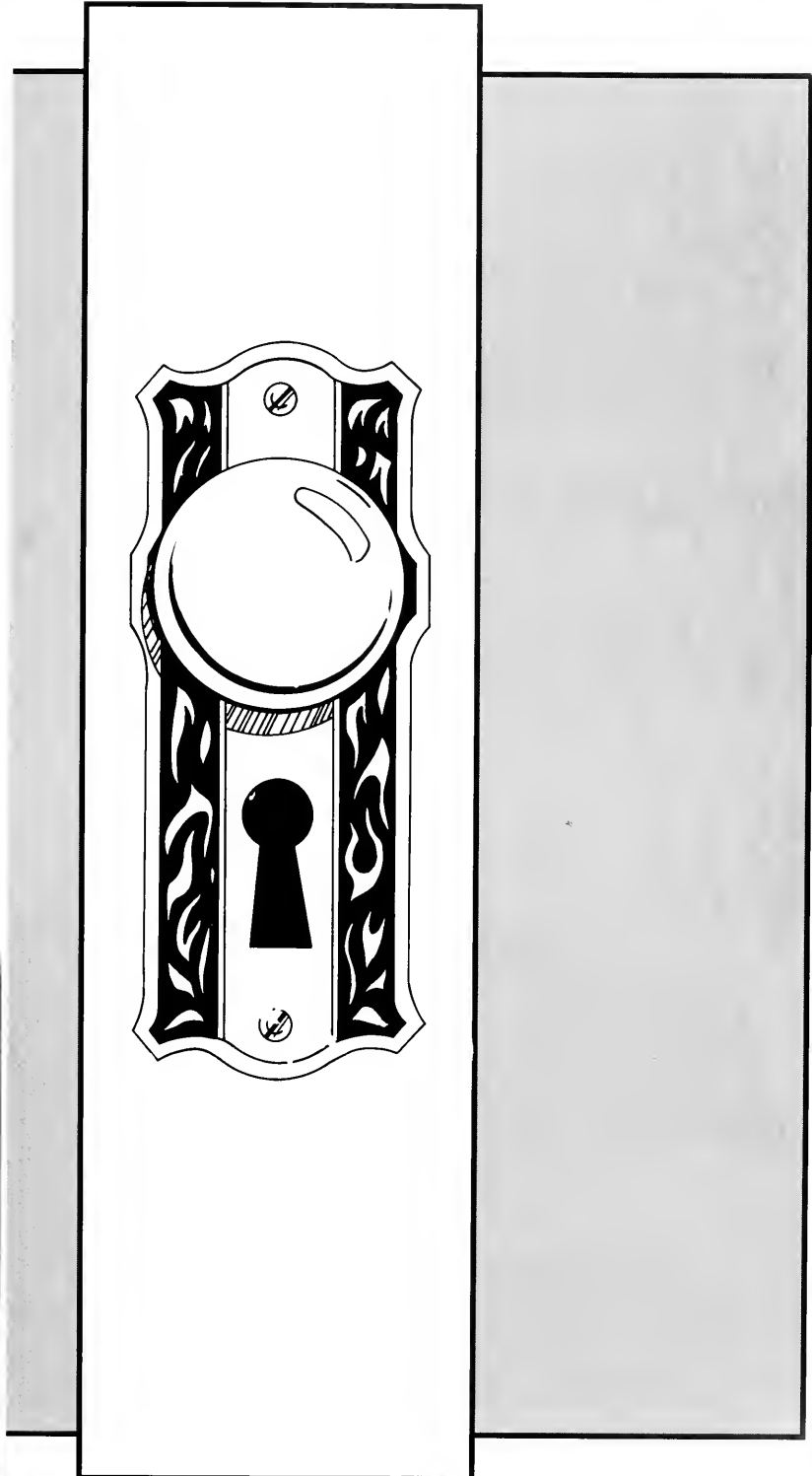


**A**CADEMICS. The KEY to a successful future undoubtedly involves academics. At Bloomsburg University, the faculty and staff play a very important role in the student's road to success.

Bloomsburg is one of the 14 universities in Pennsylvania's State System of Higher Education, and has 6,186 full-time students with more than 2,594 living on campus. Originally established as an academy in 1839, this multi-mission institution offers degrees in the arts and sciences, teacher education, business, nursing, and health sciences.

The University has witnessed many unexpected changes within the past academic year, especially the retirement of many vital faculty and staff members. As these people are moving on to other life endeavors, we, as students must also move forward with our lives. Bloomsburg University's faculty and staff has given us the key. . .use it to unlock the door to a world of unexpected opportunities.





# Harry Ausprich University President

**T**he President of any university has a unique position of being in charge of the entire university community. President Harry Ausprich exemplifies this description, but he also gives more to Bloomsburg than what is naturally expected from him.

Dr. Ausprich came to Bloomsburg in 1985 from Kent State University in Ohio where he was Dean of the College of Fine Arts and Professional Arts for seven years. Among his many duties at Bloomsburg he oversees the school's budget, administration and the overall running of the University. President and Mrs. Ausprich can also be seen speaking at many University functions,

including Homecoming, Parent's Weekend, and Alumni functions.

Near the end of the Spring 1992 semester, President Ausprich sadly announced his plans for retirement from the University in the upcoming year. He has accomplished a great deal in his six years at Bloomsburg and he will be greatly missed by the University community.

To President and Mrs. Ausprich: Bloomsburg has given you the KEY to open the doors to the UNEXPECTED... Good Luck and Best Wishes for a wonderful future.

OME B





# Vice Presidents

## Unique Individuals

The four Vice Presidents of our University exemplify the diversity that is felt on campus. Their education and previous work experience is as varied as their responsibilities to the University.

Betty D. Allamong is Provost and Vice President for Academic Affairs. Dr. Allamong earned her degrees in Biology. Before coming to Bloomsburg, she filled several niches at Ball State University in Muncie, Indiana. She served as an assistant professor, then tenured professor of Biology. She then worked as an intern in the Provost office. That led to Dr. Allamong's appointment as Assistant Dean of Science and Humanities. She then advanced to Acting Dean of Science and Humanities.

As Provost at Bloomsburg, Dr. Allamong is second only to President Ausprich. When President Ausprich is away, Dr. Allamong assumes the role of Acting President. As Vice President for Academic Affairs, she oversees the academic activities of the University. The Deans of all the schools report to her. She also hears from the Dean of Library Services, Assistant Vice President for Graduate Studies and Research, and her Assistant Vice President of Academic Affairs.

Jerrold A. Griffis served as Vice President of Student Life until his retirement in December of 1991. Dr. Griffis brought many years of resident life experience to his position. He served as a resident advisor during his undergraduate years at West Chester University, where he earned a bachelor's degree in Health and Physical Education. After earning his master's degree at Ohio University in Guidance and Human Relations, Dr. Griffis went to Penn State to work on his doctoral degree in Counseling and Psychology. He previously served as Assistant Dean of Men at Bucknell, and Area Coordinator in the Dean of Men's office at Penn State. He also served as Dean of Men, then Dean of Student Development at Ohio University.

The position of Dean of Student Life at Bloomsburg was created in 1971 when Dr. Griffis came to our campus. As Vice President, Dr. Griffis was responsible for the non-academic life of the students. Areas under the Vice President of Student Life's eye include the Greek System, Campus Child Care Center, Kehr Union, Residence Life, and the Commons. Dr. Griffis also was responsible the Counseling Center, Student Development, Financial Aid, Career Development, and Athletics. Mrs. Jennie Carpenter currently serves as the Interim Vice-President of Student Life.

John L. Walker carries the title of Vice President of University Advancement. Mr. Walker earned his bachelors degree in Business Administration and his masters degree in Education, both from Westminster College. Mr. Walker, before coming to Bloomsburg University in 1965, served as Assistant Director of Admissions at the University of Pittsburgh. In 1965, Mr. Walker took over the position of Director of Admissions at Bloomsburg. He went on to serve as Assistant Dean of Students, Assistant Vice President of Student Life, Executive Assistant to the President before his appointment as Vice President of University Advancement in 1983.

As our Vice President of University Advancement, Mr. Walker deals with the external relationships of the University. He represents the University in town matters that affect the University. Mr. Walker also oversees the Bloomsburg University Foundation, University Relations, Alumni Relations and Long Range Planning and Institutional Research. He also works with the Affirmative Action program.

Robert Parrish is the Vice President for Administration and Treasurer. Dr. Parrish holds a bachelors degree in Commerce from Ohio University, a masters in Public Administration and a Ph.D. in Education, the latter two from Florida Atlantic University. Dr. Parrish brings a wealth of experience to his position. At Florida Atlantic University he served as Controller, worked in the budget office, and was Assistant Vice President for Administration Affairs. He also served as Director of Accounting for the State of West Virginia.

As Vice President of Administration, Dr. Parrish oversees the University's investments and budget. He is in charge of the overall management of Accounts Receivable and Accounts Payable, the operation of the Maintenance Center, and University Construction. The various departments that report to Dr. Parrish are University Police, Personnel, Accounting and Computer Services.

The uniqueness and individuality that accompanies each of these people helps contribute to the atmosphere at Bloomsburg. Unfortunately, the University community must say good-bye to one of these valued individuals. This Spring, Vice President Betty Allamong announced her retirement beginning at the end of June 1992. She will be greatly missed by all.

To Mr. Griffis and Mrs. Allamong: Bloomsburg University has also given you the KEY to open the doors to the UNEXPECTED. . . Good Luck and Best Wishes for a wonderful future!

-Jennifer Saraceno, Editor-in-Chief







University Vice Presidents-(L-R) John L. Walker, Vice President of University Advancement; Robert Parrish, Vice President for Administration and Treasurer; Harry Ausprich, University President; Jerrold Griffis, Vice President of Student Life; and Betty Allamong, Provost and Vice President for Academic Affairs.



James H. McCormick, President Emeritus  
Chancellor of the State System of Higher Education

# Council of Trustees



The Council of Trustees presides over the operations of Bloomsburg University. Members of the Council, pictured above, include, from left to right; front row, Ramona H. Alley; President Harry Ausprich; Anna Mae Lehr, *Vice Chairperson*; and Gail A. Zurick. From left to right; second row, Robert W. Buehner, Jr.;

Gerald E. Malinowski, *Secretary*; Sheraton L. Smith (former member); Elbern H. Alkire, Jr.(former member); and LaRoy G. Davis, *Chairperson*.

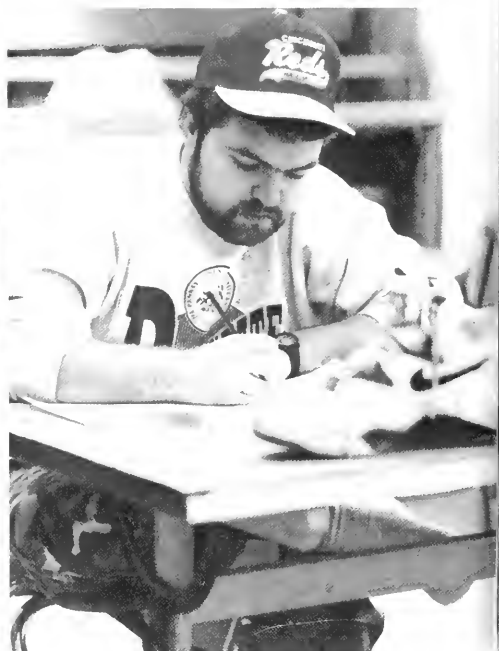
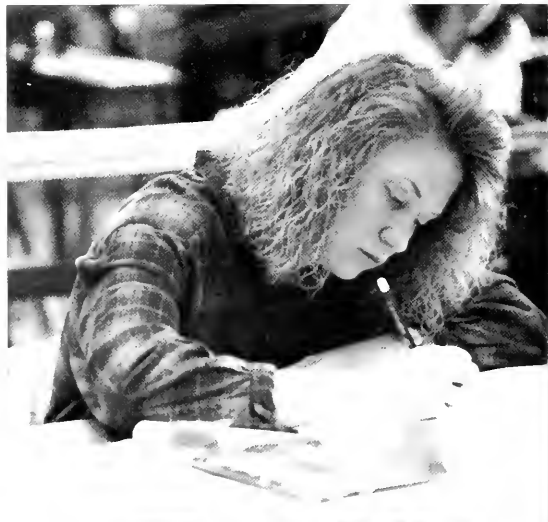
Those not pictured include: James T. Atherton, Jr.; Howard B. Johnson; Kevin M. O'Conner; and Julie A. Snyder.

# College of Arts & Sciences

The College of Arts and Sciences at Bloomsburg University offers 31 programs leading to the Bachelor of Science and Bachelor of Arts degrees. Each degree program provides students the opportunity to gain a broad liberal arts education complimented by an in depth understanding of a specific arts and science discipline. When students graduate from the Arts and Science program they have vast opportunities to enter the competitive job market

or continue their education at professional or graduate schools.

In addition to the regular programs of study, the College of Arts and Science allows superior students to participate in a scholars program for freshman and sophomores and an honors program for juniors and seniors. Upon graduation from Bloomsburg, each student is guaranteed a fulfilling and rewarding education given by the faculty of their school and its departments.



These hard working students have the opportunity to study in any of the majors in the School of Arts and Sciences. To name a few, the Arts and Science majors include: Adult Health, Art Studio, Biology, Business Economics, Computer and Information Sciences, History, Mass Communications, Political Science, Psychology, Sociology, and Speech Communications





## College of Business

**T**he College of Business at Bloomsburg University is designed to equip students with the skills and experiences necessary to succeed in the highly competitive business world. Graduates generally enter directly into the job market in business, industry, or government, although these programs also provide excellent preparation for further study at professional or graduate school.

The college is made up of five departments. The faculty

members in each of these departments bring a wide range of academic backgrounds and professional experiences, ranging from doctoral degrees from some of the world's most respected universities to job experiences at some of the nation's top corporations. Whatever their experiences may be, the faculty shares their knowledge with each other as well as with their students to make the School of Business one of the finest in the State System of Higher Education.





These Business students are studying in one of the finest Business programs around. When selecting a major, they can choose to study in one of five departments including: Accounting, Computer and Information Systems, Finance and Business Law, Marketing and Management, and Business Education and Office Administration.

They will graduate with one of four Bachelor Degrees offered by the School: Bachelor of Science in Business Administration, Bachelor of Science, Bachelor of Science in Education, or Bachelor of Science in Office Administration.



These students in the College of Professional Studies usually enter the work force soon after graduation. They can graduate from Bloomsburg University from one of two schools: the School of Education from which they can share their knowledge and experiences with the younger generation, or the School of Health Sciences from which they can share their knowledge and experiences with those who need their professional care.







# College of

# Professional Studies

The College of Professional Studies offers a variety of professionally oriented degree programs through the School of Education and the School of Health Sciences. Graduates usually enter directly into their careers, but the academic training provided in the various majors also gives students the necessary background for entry into grad-

uate school or other advanced professional training.

Each degree program in the School of Education and Allied Health Sciences begins with a broad base of coursework in the humanities, the natural sciences, the social sciences, and mathematics. Students then undertake concentrated training in their respective area of study.



# Faculty and Staff Retirement

The yearbook theme, Expect the Unexpected, rings true when looking at the number of administrative, faculty, and staff retirements that occurred this past academic year. The unusually large number of retirements at mid-year was no coincidence. They were prompted by the so-called Mellow law, named for its sponsor, state Senator Robert Mellow, D-Scranton. The law offered state employees 55 and older with at least 10 years of service an additional 10 percent service credit for their pensions.

The record number of retirements sent Bloomsburg University officials scrambling to fill the vacancies, but they managed to staff all classes by the time the Spring semester began the week of January 13. "Our deans and departments have done an absolutely miraculous job," said Betty Allamong, Provost and Vice President for Academic Affairs.

"They started working very early to replace the positions when we heard there might be a Mellow law."

Those retirees not pictured below include: Donald Carplese, Charlotte M. Hess, Martin M. Keller, Craig A. Newton, Ann Marie Noakes, John Scrimgeour, R. Edward Ward, Kenneth Edwards, Jean L. Johnson, and Donald Kling. Since the announcement of retirees in the Winter 1992 edition of *The Bloomsburg*, there have been several other retirement announcements, including those of President Allamong and Provost and Vice President Betty Allamong.

To all those who have left or who will be leaving the University community, you will be missed. Thank you for sharing yourselves with Bloomsburg, and always remember that you hold the KEY to the UNEXPECTED!



William A. Acierno



Charles M. Bayler



Ruth Ann Bond



William L. Carlough



Blaise C. Delnis



Bernard C. Dill



Wendelin R. Frantz



Martin Gildea



John E. Hartzel



Michael Herbert



Lee C. Hoppel



Andrew J. Karpinski



Coleen J. Marks



John M. McLaughlin



Robert G. Meeker



Scott E. Miller, Jr.



Allen F. Murphy



Ronald W. Novak



Thomas L. Ohl



Laretta Pierce



Robert L. Rosholt



Susan Rusinko



John J. Serff, Jr.



Anthony Sylvester



George E. Stetson



Melvin L. Woodward



Robert P. Yori



G. Dane Keller



Eugene Biacchi



Kenneth Weaver



Joan Walton



Richard Viets



Richard Neuffer



Dale Leighow



Stanley Bogert



Charles Carlson



Louise Williams



Evelyn Kressler



Ronald Linn



Jack Millard, Sr.



Kimber Reese



George Stauffer



Karlene Wright



Paul Conrad





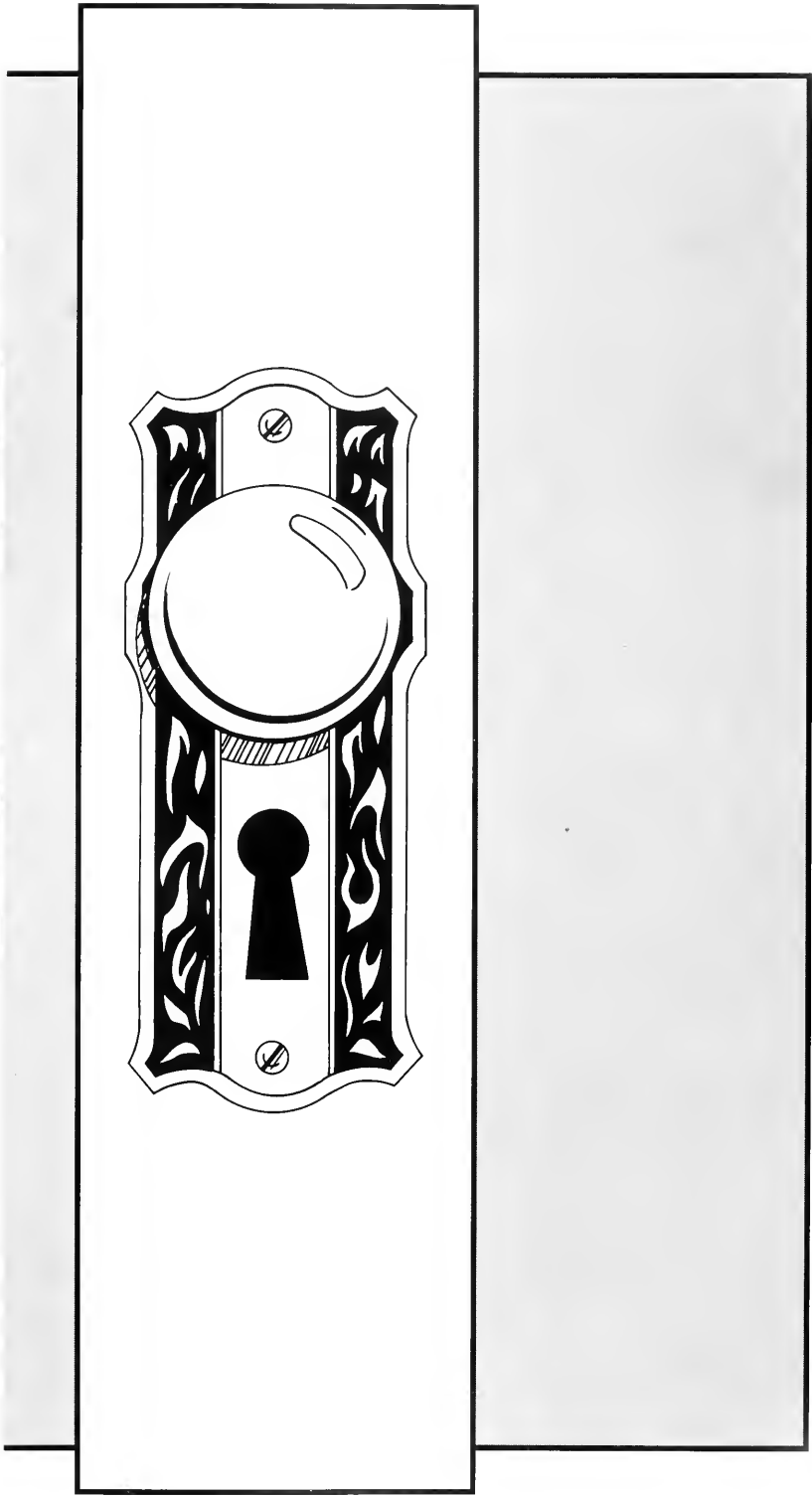


**C**AMPUS LIVING. The KEY to surviving college life is being able cope with the fact that our mothers and fathers will not be around to pick up after us and that we are going to have to learn to deal with living with others who are just as "stressed" as us.

For the students who live on campus, the Residence Life office and staff makes dealing with reality a little bit easier. At Bloomsburg, there are seven residence halls and one on-campus apartment complex. Women can live in Columbia Hall, Elwell Hall, or Lycoming Hall. The men are housed in Luzerne, Montgomery, or Northumberland Halls. Those who choose to go "co-ed" live in Schuylkill, and students who opt for apartment living quad up at Montgomery Apartments on Upper Campus.

Then there are those of us who chose to go completely on our own by moving off campus and tackling the wonderful world of "LANDLORDS", without the guidance of Resident Advisors. But, no matter where we chose to live, we should expect the unexpected. So now that you have the key, go ahead and turn the knob to experience the unexpected!







THE SCHOOL OF  
ARTS AND SCIENCES  
IS PLEASED TO  
ANNOUNCE THE  
SCHEDULE OF  
LECTURES FOR  
THE YEAR 1970-71.  
The following  
lectures will be  
given by  
Distinguished  
Visiting Lecturers  
and Faculty Members  
of the School of  
Arts and Sciences.  
The dates and  
times of the  
lectures are  
given below.  
For a complete  
list of the  
lectures, please  
contact the  
Office of the  
Dean of the  
School of Arts  
and Sciences,  
Room 100, 100  
University Hall,  
Cambridge, MA  
02138.







C  
O  
L  
U  
M  
B  
I  
A

The newest residence hall on campus, completed in 1970, is nestled in a corner of the campus allowing for a little bit of privacy. It is nine stories tall housing 400 students and a special apartment for the residence director. On the odd floors there are kitchenettes equipped with a microwave. Also, there is a television so students can occupy

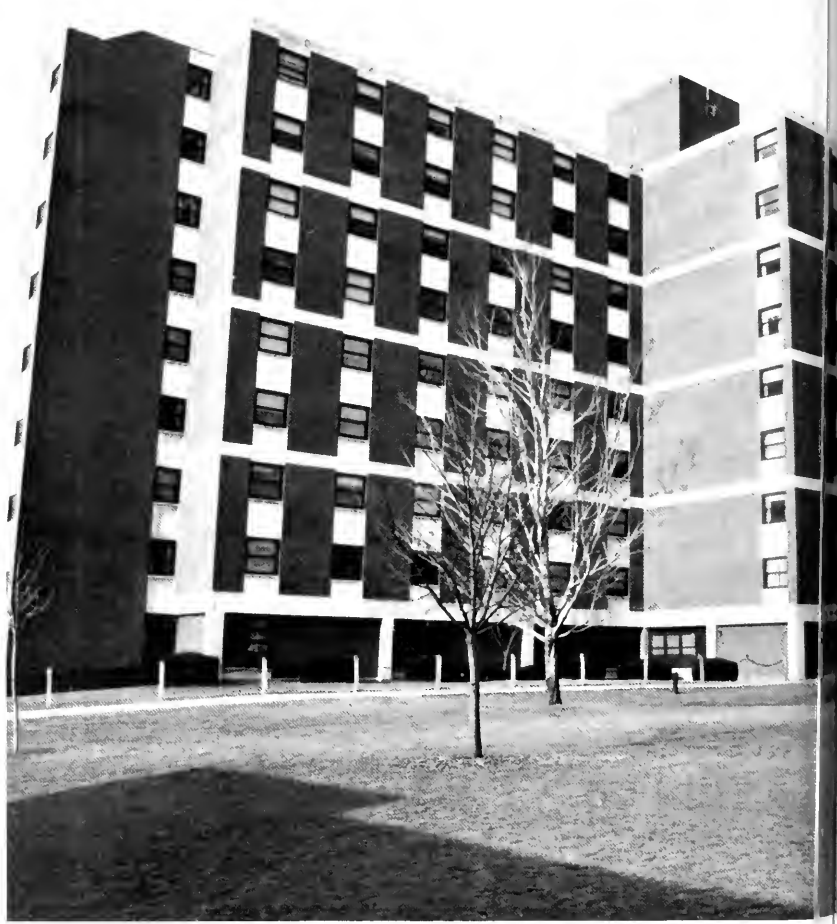
themselves while waiting for a fresh bag of popcorn to pop. On the even floors there are study lounges.

Getting to all these floors is easy due to a newly installed elevator, the fastest on campus. The huge hall lounge, located on the first floor, has a sound proof piano room, a sewing machine, a stationary exercise bike, a pool table, and several vending ma-

chines.

Columbia is an active dorm and hosts movies and aerobics in its lounge, and participates in volleyball tournaments.

To the women that live in Columbia Hall, it is their home away from home, and the Residence Life Staff in Columbia does its best to fulfill that goal.





E  
L  
W  
E  
L  
L

What's seven stories high, about the length of a football field, and houses approximately 600 females? Elwell Hall, of course. Rumor has it that Elwell is the largest women's residence hall out of all the Pennsylvania State System of Universities.

Elwell Hall was built in 1969 and named after George E. Elwell Esquire. It is the only dorm on

campus that isn't named after a neighboring county.

Like everything, "Hotel Elwell," as it is frequently called, has its advantages and disadvantages. When residents were asked about the advantages, they responded with things such as: "You meet a lot of people", "There's a lot of storage space in the rooms", "It has its own computer lab", and "It has a big laundry room so you never have to wait!" And what did

residents not like about living in Elwell? "Moving in is quite a experience with 60 girls and all their clothes", "Long walks to the bathrooms", and "Having broken down elevators, and having to walk up never-ending steps!"

It is quite an experience living in Elwell but the memories and friendships made there will last forever.





L  
U  
Z  
E  
R  
N  
E

Situated in the heart of Bloomsburg University's campus is Luzerne Hall. A men's hall, occupied by about 300 students, it is centrally located next to the Kehr Union Annex, the under-construction Kehr Union Building, Northumberland Hall and the favorite outdoor hangout, the bas-

ketball courts.

Luzerne was completed in 1967 and houses a recreation and television room, and a Residence Director's apartment on the first floor. There are also television lounges and quiet study rooms on the second, third, and fourth floors.

Luzerne residents have a wide variety of activities to choose from

in order to occupy themselves in between classes, studying, and sleeping. These events include co-ed social dorm mixers to touch football on the front lawn.

Whatever the means of entertainment may be, the men of Luzerne make friendships and memories that last a lifetime.





L  
Y  
C  
O  
M  
I  
N  
G

Lycoming Hall is the smallest women's hall on campus, housing 250 students on five floors, the ground floor being reserved for upper classmen. It opened in the Fall of 1976 and is surrounded by the Kehr Union Building, the University Bookstore, the Commons, and Elwell Hall.

The women in Lycoming enjoy the flexibility found within their dorm rooms. Because the furniture is not fixed, as in the other six, the residents find it very easy and fun to play the role of interior designers by moving the furniture around to make themselves feel at home.

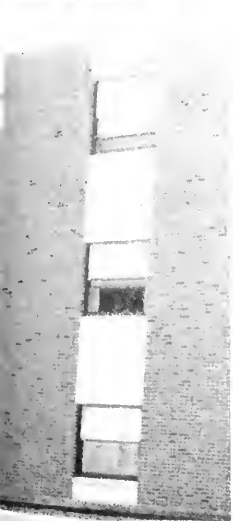
In addition to great rooms, the Residence

Life staff in Lycoming offers a wide variety of social events to keep the women busy. Such events include the sponsorship of Women Awareness Week, mock wine and cheese party, movie nights and a tree decorating contest in downtown Bloomsburg.

The women of Lycoming have certainly made their hall a "home away from home".







# Campus Candida





M  
O  
N  
T  
O  
U  
R

Four stories tall, Montour, an all men's hall, is located at the bottom of the campus near Old Science Hall and the Kehr Union Building. Montour was completed in 1964, the same year as Schuylkill, and lodges about 250 students.

Located on every other floor in Montour are television lounges and

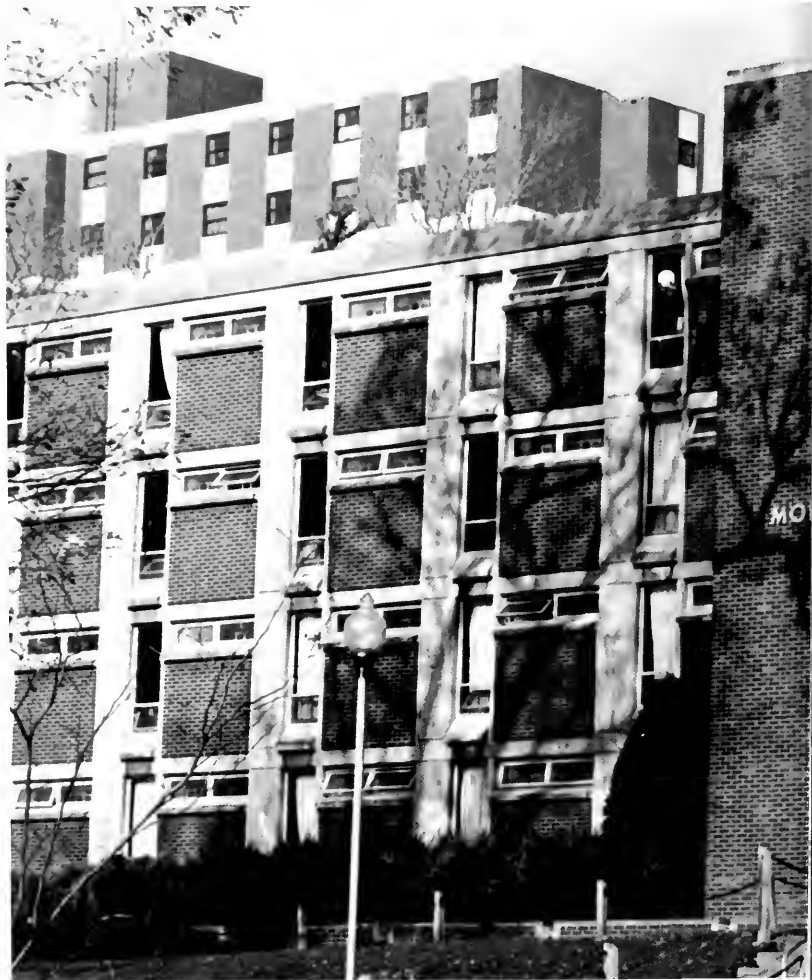
vending machines. On the other floors are study lounges for those who need "peace and quiet".

Also, as in all the other halls, Montour has a large recreation room that is used to hold hall and campus social events.

This year, Montour won the "Under the Big Top" Homecoming dorm decorating contest. They displayed

their fine artistic talent by painting murals, in relation to the theme, on Montour's outer windows for passersby to enjoy.

Although the residents of Montour had to live with waking up to a great deal of noisy construction this year, it has only enhanced the friendships and memories made in this "unique" living situation.





N  
O  
R  
T  
H  
U  
M  
B  
E  
R  
L  
A  
N  
D

**N**orthumberland, also known as "North", is the oldest residence hall on campus and is one of the three male halls. It is situated in the center of Bloomsburg's campus, surrounded by Columbia Hall, Luzerne Hall, Montour Hall, and the basketball courts.

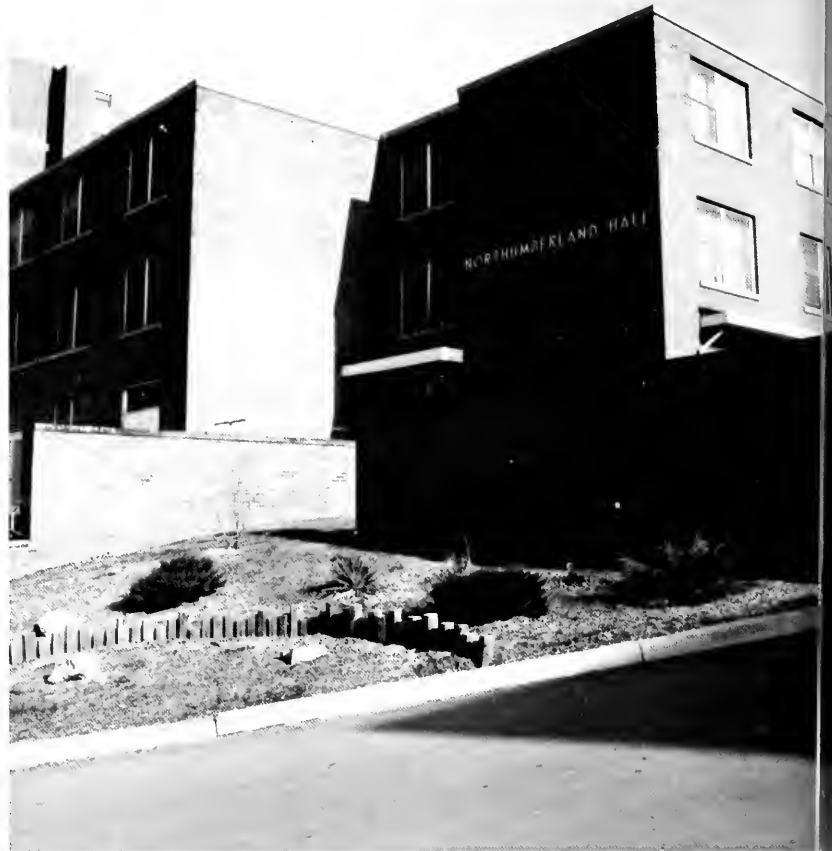
It houses about 200 students on three floors. The first floor consists of a large

game room equipped with a pingpong table and vending machines. Also located downstairs is a study room, a Residence Director apartment, and the BITEK office (where campus dwellers rush every month to pay their phone bills!). The second and third floors house the North residents.

The North men pass their time away in-between classes, studying, and sleeping, by at-

tending hall social functions, participating in snowball battles on the back lawn and chin-ming in on late night yelling matches between the two wings ("tast great, less filling!"- the guys know what we mean!)

Whatever the meaning of fun is, living in Northumberland everything hall life should be like ... especially living without parents!





S  
C  
H  
U  
Y  
L  
K  
I  
L  
L

Schuykill hall, established 1964, is the only co-ed hall on campus, and it is reserved for upperclassmen. Each sex occupies a wing of floors in the hall. Next year, unfortunately, this is going to change. Due to a lack of interest, Schuykill will be designated an all-women's hall open to students in any class.

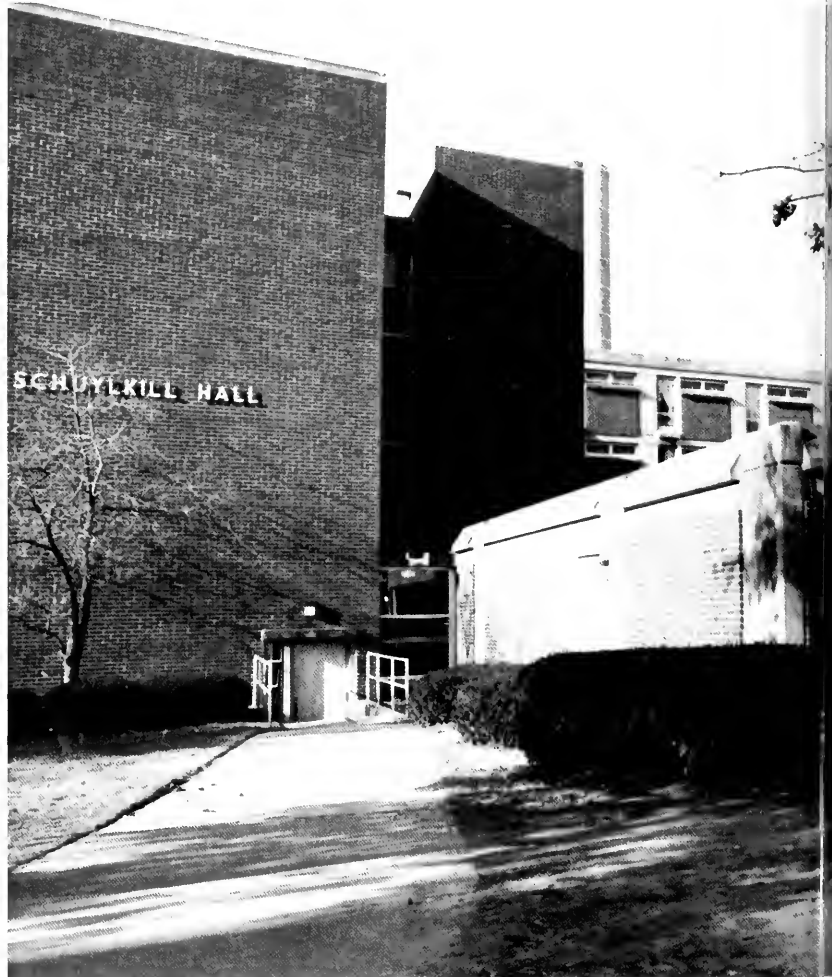
Located at the

lower end of campus, Schuykill is surrounded by the Kehr Union Building, Carver Hall, and Old Science Hall. It has four floors and lodges 250 men and women. In the basement is a large recreation room and on the floors above there are television lounges and study rooms.

Throughout the year the hall has had activities such as movies,

study breaks, intramural sports, an ugly R.A. contest, and mixers between wings. Also residents participated in a service project for the Towson Park campaign.

It is sad to see the only co-ed residence hall fizzle, but this year's occupants will leave knowing they had the best time of their lives learning to live with the opposite sex.







O  
F  
F  
C  
A  
M  
P  
U  
S

Making the move out of the safety of Bloomsburg's campus is probably one of the hardest but most exciting decisions a student and his or her parent's have to make. Most students choose to move into off-campus housing after their first and second years at Bloomsburg.

To move off of campus is a big project. First, a student has to

find a group of people willing to live together. Next, they have to find a suitable place to live. Once they have signed the lease, they have committed themselves to paying the rent as well as the television, water, heat, and electric bills. What a jump from paying a flat sum while living on campus.

Another shock to the system is something no student can live with-

out...FOOD! Most college students learn to use the stove for the first time in their life, but the smart ones stick to using FLEX and the Commons meal plan.

Living on one's own is just one of the many lessons students learn by leaving the protection of Bloomsburg's hall life. But through it all, they also make friendship and memories that last a lifetime and beyond.

*Sesame Apartments*

**Husky**

*Maroon and Gold*

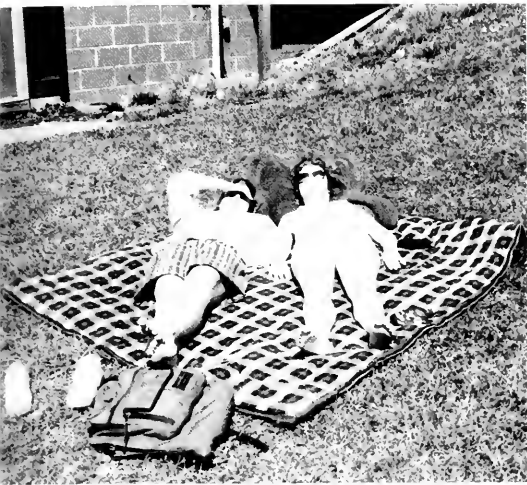
*Old School House*

*Glenn*

*Montgomery Apartments*

*Penn Street Apts.*

**Ligh**



ners

ents

street







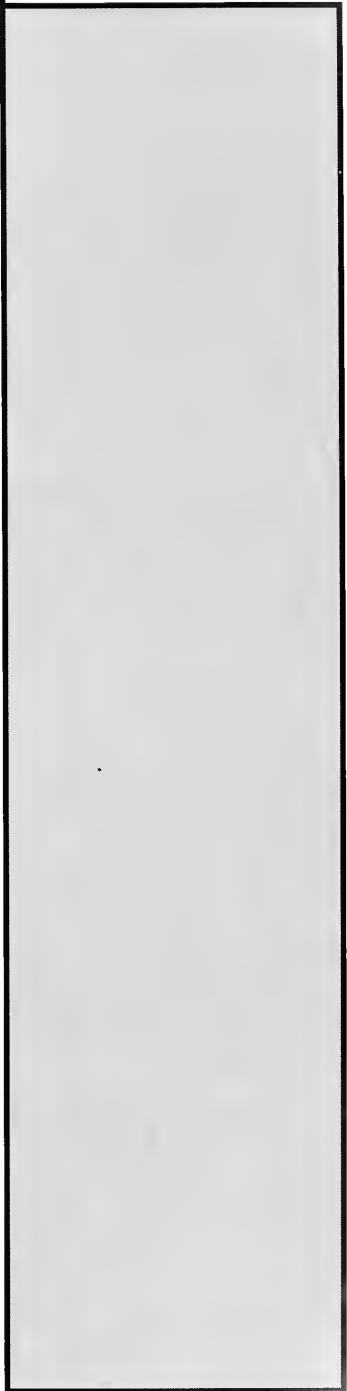
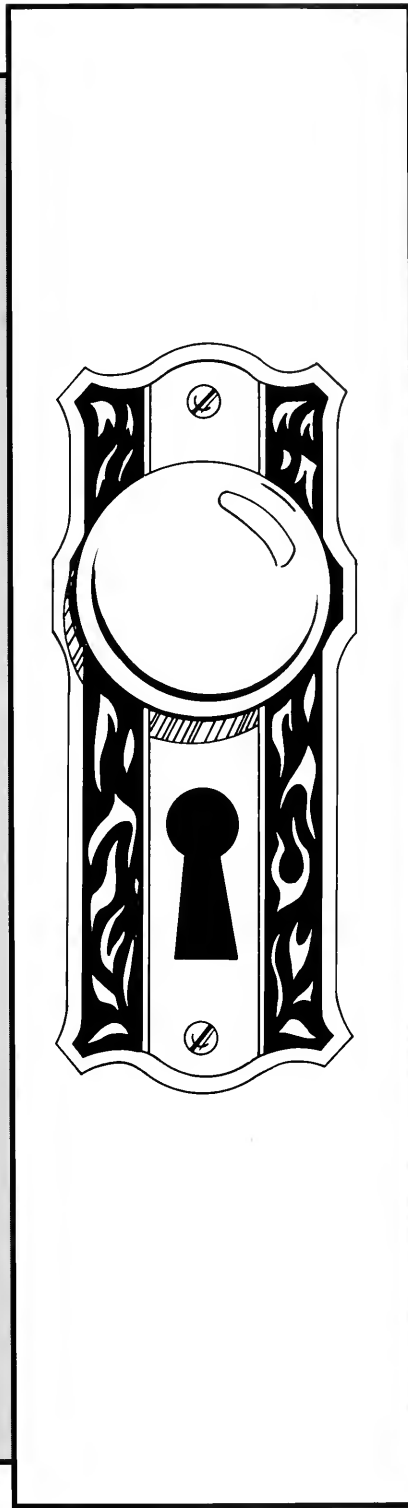
**A**THLETICS. The KEY to understanding the element of setting goals and achieving them is to participate in athletics, whether as a spectator or as an athlete.

Athletics are a significant part of campus life at Bloomsburg University. In the fall, the Robert Redman stadium is filled to capacity for Husky Football games, while in the winter months, spectators move into Nelson Field House to cheer on the winter teams. When the sun starts warming up the air, the avid sports fans move out of doors to watch the raquets swing on the tennis courts.

It is exciting to watch Bloomsburg's teams compete, but the glory of these sports does not come easy to the athletes. They have trained long and hard to get where they are today. Whatever the case may be, each and every athlete is valuable to the strength and success of the Husky athletic program.

Now that you have the key to understanding the setting and achievement of goals, turn the knob and expect the unexpected that has been accomplished by the Husky athletes.





# Cross Country

Always on the Move

BU's Cross Country team hit the ground running in the 1991 season. The teams were led by Senior Mark Jobs and Sophomore Aimee Gerlinski.

The women, who are coached by Tom Martucci, completed the season with an overall rec-

ord of 1-1 and a NCAA Regional ranking of 11th.

Finishing up at 2-1, Lanny Conner's team achieved a NCAA Regional ranking of 10th.

Both teams have young talent who will help lead them to victory in season's to come.







	<b>Women</b>	<b>Their Score</b>
<b>BU</b>	<b>Opponent</b>	
	Lafayette Invitational	
	Penn State Invitational	
34	East Stroudsburg	22
18	Lock Haven	44
	Bloomsburg Invitational	4th
	Lehigh Invitational	30th(36)
	Allentown Invitational	5th(18)
	Pa. Conference Championship	8th
	NCAA Regional	11th
	<b>Men</b>	
	Lafayette Invitational	
	Penn State Invitational	
37	East Stroudsburg	20
16	Lock Haven	47
20	Mansfield	43
	Bloomsburg Invitational	2nd
	Lehigh Invitational	23rd (31)
	Allentown Invitational	3rd (18)
	Gettysburg Invitational	4th (12)
	Pa. Regional Championships	6th
	NCAA Regional	10th

# Field Hockey

## Team Captures PSAC Title

The Field Hockey team captured its second consecutive PSAC title to cap a fine regular season that saw the team lose just one-time.

The young team went on to win an NCAA regional event and reach the national semifinals for the 10th time in the last 11 years. The Huskies moved on to the national championship game where they dropped a one-goal deci-

sion to Trenton State. Their season closed with an overall record of 22-2.

Four players, Seniors Gisela Smith, Trudy Horst, Beth Bowman and Junior Denise Miller earned All-American honors.

Smith was named winner of the Broderick Award as the nation's top player for the second season in a row.





BU	Opponent	Their Score
6	Lebanon Valley	0
2	Lock Haven	0
5	Slippery Rock	0
9	IUP	0
2	East Stroudsburg	0
2	William Smith	0
3	St. Lawrence	0
4	Shippensburg	0
1	Millersville	0
4	Kutztown	1
4	Marywood	0
4	Johns Hopkins	0
4	Mansfield	0
0	Franklin & Marshall	1
4	Gettysburg	1
5	Wilkes	0
3	Ithaca	2
4	Messiah	1
1	Shippensburg	0
3	Lock Haven	0
2	Franklin & Marshall	0
2	Lebanon Valley	0
2	Hartwick	1
0	Trenton State	1

# Football

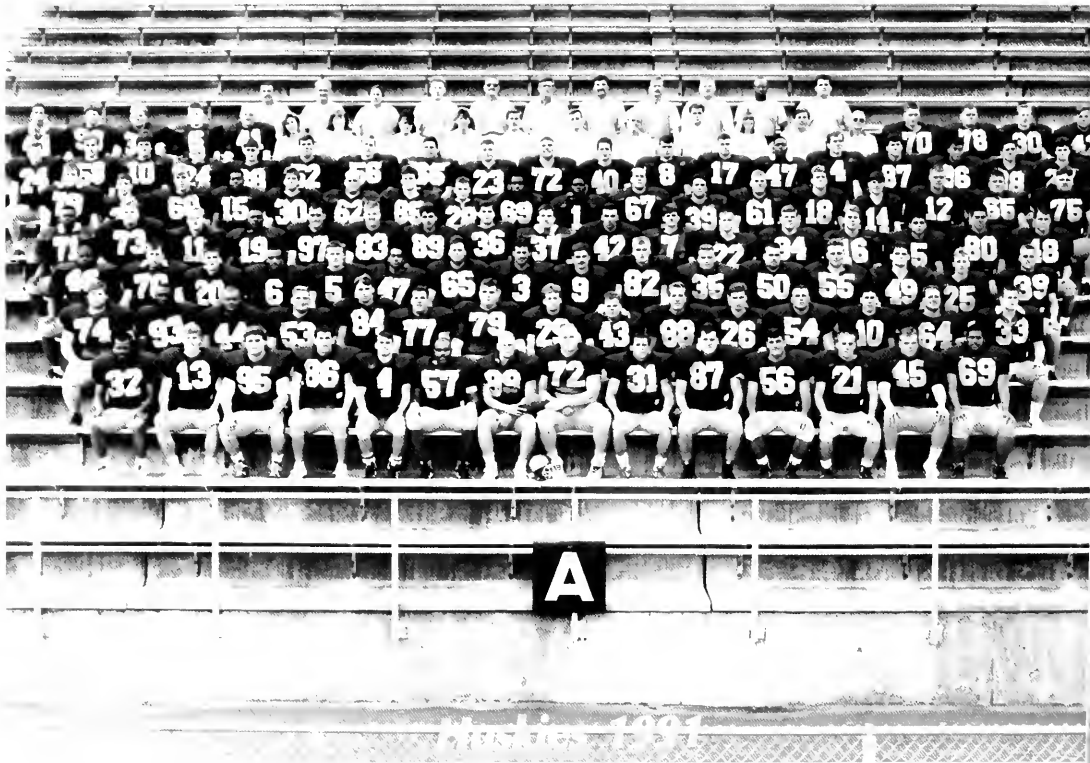
## Marks Sparks Huskies

At kickoff of the 1991 season the Bloomsburg Husky Football team looked like a contender for the PSAC title. However, injuries to top players held the Huskies back. Just when it looked too late though the Huskies came through, ending the season with four straight victories. Through those last games, Bloomsburg out scored their opponents 133-67. The Huskies ended up with a 5-5 record which led them to a 2nd place tie in the Pennsylvania State Athletic Conference East Division in which they were 4-2.

The Huskies were led this

season by the air attack of quarterback Alan Eck who completed 59 of 100 passes for 653 yards and 6 touchdowns. Senior Jerry Marks and Sal Brown led the rush. Marks rushed for 860 yards on 195 carries while an injury ridden Brown gained 203 yards on 63 rushes.

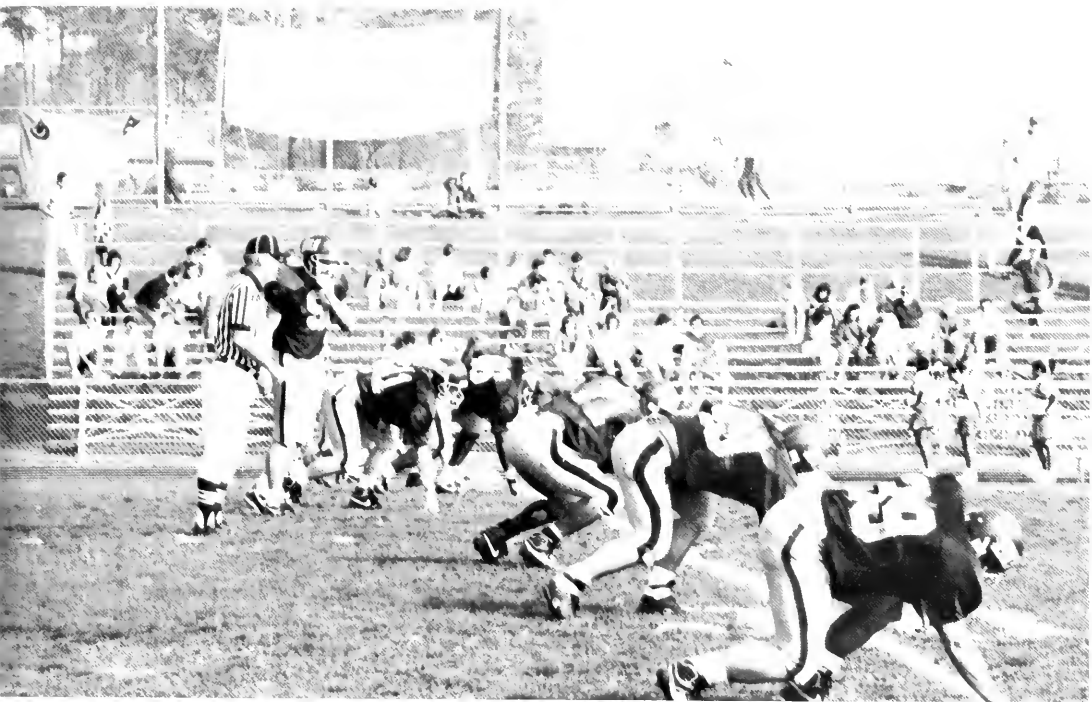
The Huskies will be losing a number of talented players. Twenty seniors were on the squad, with twelve (five offensive and seven defensive players) at starting positions. A number of underclassmen got experience on the field this season. This will help the Huskies in 1992.





BU	Opponent	Their Score
21	Shippensburg	24
9	Lock Haven	14
21	Edinboro	23
19	Kutztown	67
37	Central Connecticut	7
10	East Stroudsburg	20
44	Cheyney	14
31	Mansfield	24
24	Millersville	17
34	West Chester	12





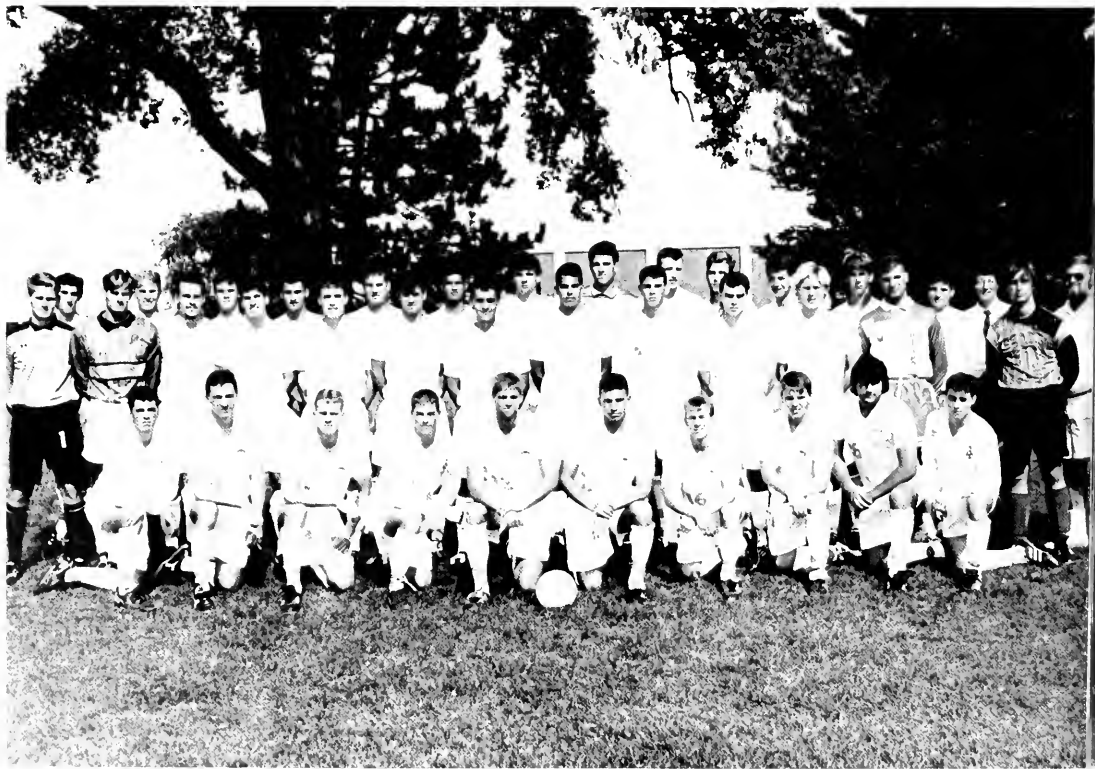
# Men's Soccer

## Scoring Falls Short

The Men's Soccer team experienced trouble scoring goals which led to a 6-11-2 record. The Huskies, among the leading PSAC defensive teams throughout much of the season, scored only 20 goals in 19

games.

Junior Mark Hattersley was the leading scorer with six goals and Junior Kevin Kenjarski earned All-PSAC honors as he headed a tough defense as a member of the back line.







<b>BU</b>	<b>Opponent</b>	<b>Their Score</b>
0	Philadelphia Textile	3
1	Gannon	0
0	Millersville	0
1	Muhlenberg	3
1	Shippensburg	2
3	IUP	1
0	Wilkes	1
0	Scranton	3
1	David & Elkins	1
2	Salem-Teikyo	3
0	Bucknell	3
2	Kutztown	3
0	East Stroudsburg	8
0	St. Joseph's	2
0	Lock Haven	3
2	Kings	1
0	West Chester	2
4	Susquehanna	0
1	District of Columbia	0

# Women's Soccer

## Winning Record in Second Season

The Women's Soccer team, in only its second season as a varsity squad, posted a 9-7-1 mark against a tough schedule that included many of the region's top teams. The Huskies appeared 19th in the national rankings for the

first time in the program's history.

Junior Tiffany Burrier was the Huskies leading scorer for the second straight year with 11 goals. Freshman Denise Pecoraro was close behind with 10 goals.





BU	Opponent	Their Score
0	Adelphi	3
4	Kutztown	0
1	LeMoyne	2
4	Wilkes	0
6	Beaver	0
5	Bethany	0
0	West Virginia Wesleyan	1
2	Lehigh	1
0	Southampton	1
7	Muhlenberg	2
0	Scranton	0
2	Gannon	0
3	Bucknell	5
1	Trenton State	7
1	Messiah	0
0	Mercyhurst	2
3	Lafayette	1

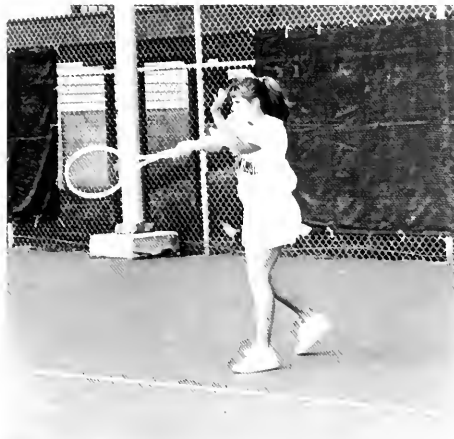
# Women's Tennis

## Coach Herbert Retires After 15 Seasons

The Women's Tennis team finished ninth in the PSAC Championships as coach Mike Herbert (127-88) concluded his 15th year at the helm of the team. The year was highlighted by Sophomore Cherilyn DeVol's fourth-place finish at the number six singles. Senior Michelle Strutt led the team with a 9-4 record.

The doubles team of DeVol and Junior Tiffany Marino finished with a 7-4 mark. The team will return five underclassmen for the 1992 season to assist the new coach.





BU	Opponent	Their Score
4	Lock Haven	5
2	West Chester	7
2	Millersville	7
7	East Stroudsburg	2
0	California	9
2	Scranton	7
4	Marywood	5
1	Shippensburg	8
0	Franklin & Marshall	9
0	Bucknell	9
2	Kutztown	7
	PSAC Championships	9th





# Men's Basketball

## Youth and Experience Key To 1992-93 Prospects

Bloomsburg University's Men's Basketball team netted a 12-15 record, going 5-7 in the PSAC in their 1991-92 season. Although the Huskies were expected to finish at the top, a series of injuries kept them out of contention.

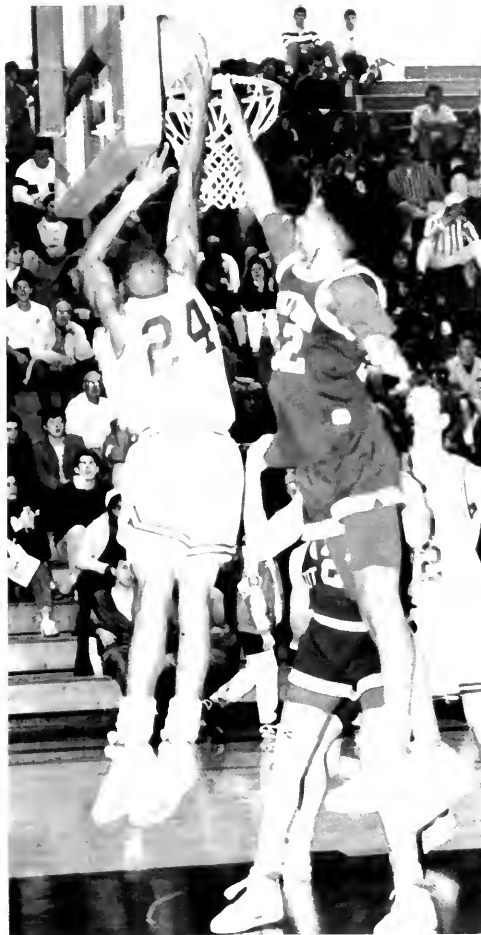
This was the Huskies first losing season in 26 seasons and the first in Coach Chronister's 21 seasons as BU's head coach.

The Huskies ended up 5th overall in the Pennsylvania Conference East.

Senior Chris Parker ended his career at BU with a fourth place finish in rebounding in the PSAC. Youth and experience will be the keys to the future for the Huskies with talented underclassmen Shawn Godown, Karl Zachman and Paul Denenbaum leading the squad.

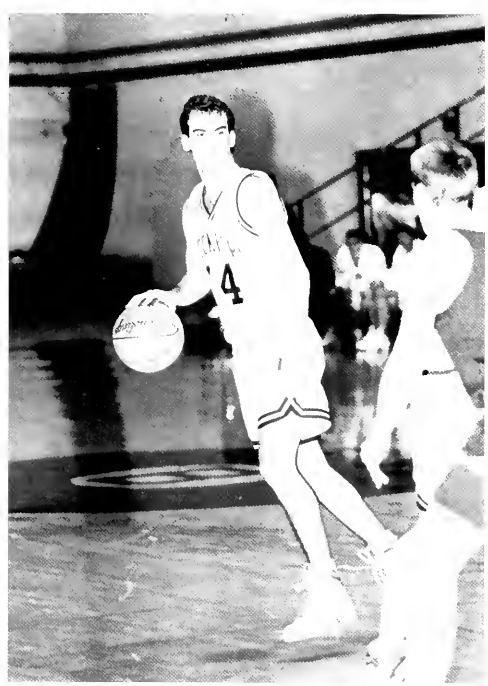






BU	Opponent	Their Score
96	Salem-Teikyo	80
82	Edinboro	91
91	Millersville	83
65	Gannon	77(OT)
91	Susquehanna	72
70	Shippensburg	81
55	C.W. Post	51
62	Lock Haven	63
77	Alvernia	65
58	Franklin Pierce	70
65	District of Columbia	45
76	East Stroudsburg	83
69	Millersville	83
72	Cheyney	64
71	West Chester	75
80	Kutztown	69
67	IUP	76
67	Alvernia	77
63	Mansfield	49
61	East Stroudsburg	71
70	Cheyney	81
63	West Chester	69
94	Pitt-Johnstown	62
89	Kutztown	57
59	Phila. Textile	60
74	Mansfield	63
69	Millersville	85





# Women's Basketball

## Seniors Lead Way to NCAA Berth

The Women's Basketball team finished with a fine 22-8 record, which included the PSAC title and a berth in the NCAA South Atlantic Regional Championships. The Huskies closed the season with a loss to eventual regional champion North Dakota.

Bloomsburg was led by Seniors Michelle Simons and Kathy Maguire.

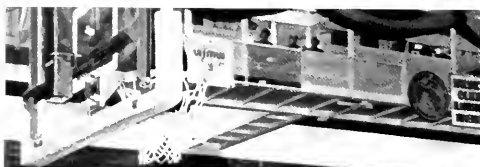
Simons was an All-PSAC and All-ECAC selection for the fourth consecutive year, while also being named "Player of the Year" in the PSAC and the ECAC. Simons averaged 20 points and 7.3 rebounds per contest while leading the team with 111 steals. Maguire, also an All-PSAC selection, averaged 13.3 points and 8.4 rebounds per game.





BU	Opponent	Their Score
72	Adelphi	58
62	Kutztown	52
91	Delaware Valley	49
78	Southampton	56
95	Dowling	61
92	Bloomfield	76
69	IUP	79
76	California	65
63	Philadelphia Textile	65
60	Adelphi	65
96	Slippery Rock	80
84	Clarion	94
69	Shippensburg	64
71	East Stroudsburg	56
64	Millersville	49
75	Cheyney	50
72	West Chester	78
57	Kutztown	46
98	IUP	90
69	Mansfield	57
72	East Stroudsburg	54
74	Cheyney	51
55	West Chester	63
81	Kutztown	56
70	Pitt-Johnstown	78
82	Mansfield	41
83	Millersville	67
79	Clarion	75
70	Edinboro	40
50	North Dakota	79





# Swimming

## Women Go To NCAA Championships

The Huskies dove right into the 1991-92 season. The Men's and Women's teams are coached by David Rider who has led the Husky Ladies to five consecutive second place finishes in the PSAC. The ladies were led by Senior Co-Captains Shanon Simonet and Kelley Tracey and PC Champion Tracy Price.

Simonet, Tracey, Price and Val Brindza placed in events at NCAA Nationals. In the national competition the Ladies ended up 7th in a field of 26 overall.

The men's team ended up with an 0-9 record. MVP Jeff Jones led the swimmers to a PC Conference finish of 6th.







BU	Women Opponent	Their Score
118	LaSalle	175
	Bloomsburg Relays	1st
148	Ithaca	93
156	Trenton State	68
63	Bucknell	159
63	Edinboro	48
75	Shippensburg	37
145	Army	155
139	IUP	98
90	Clarion	143
165	Kutztown	62
137	Navy	163
141	West Chester	93
	PC Championships	2nd
	NCAA Championships	7th

Men		
	Bloomsburg Relays	4th
90	Ithaca	141
85	Trenton State	131
115	Bucknell	126
	Buffalo Invitational	7th
39	Edinboro	56
79	IUP	127
41	Clarion	135
93	Kutztown	117
67	West Chester	142
	PC Championships	6th

# Wrestling

## Another Trip to the NCAA Championships

The Husky Wrestling team pinned down a victorious season. Coached by Roger Sanders the team ended with a 8-6-3 overall record and a 1-5-1 record in the Eastern Wrestling League.

The grapplers began the season with a 1st place finish in the Bloomsburg Invitational and ended with a 6th place finish in the EWL's.

Seniors Matt Kreider,

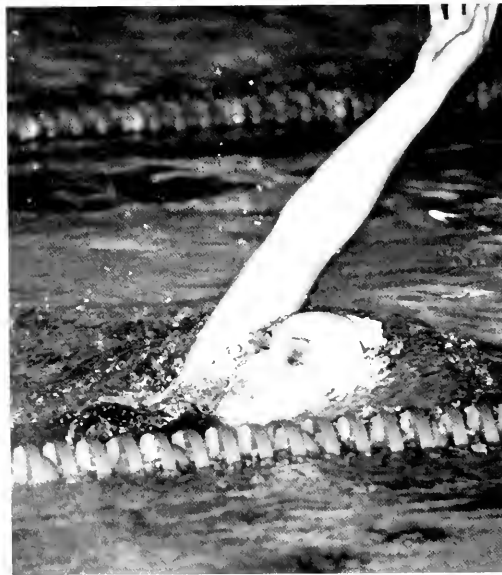
the team's winningest member, and Tim Casey led the team. Kreider was also named BU's "Male Athlete of the Year".

The team is looking to the underclassmen, such as Brad Rozanski, Andy Fitzpatrick and Tyrone Howard, all of whom competed in the EWL with strong results. The team is already working for success in the coming year.





BU	Opponent	Their Score
	Bloomsburg Invitational	1st
	Sheridan Invitational	2nd
17	Navy	15
34	Drexel	14
16	North Carolina	16
21	Indiana	16
15	Minnesota	18
11	Clarion	28
	PC Championships	4th
21	West Virginia	23
20	Pittsburgh	21
19	Edinboro	17
18	Cleveland State	18
31	Shippensburg	15
29	Millersville	9
25	Bucknell	13
7	Penn State	34
33	Wilkes	9
14	Lock Haven	20
20	Lehigh	20
	EWL Championships	6th
	NCAA Championships	31st





# Baseball

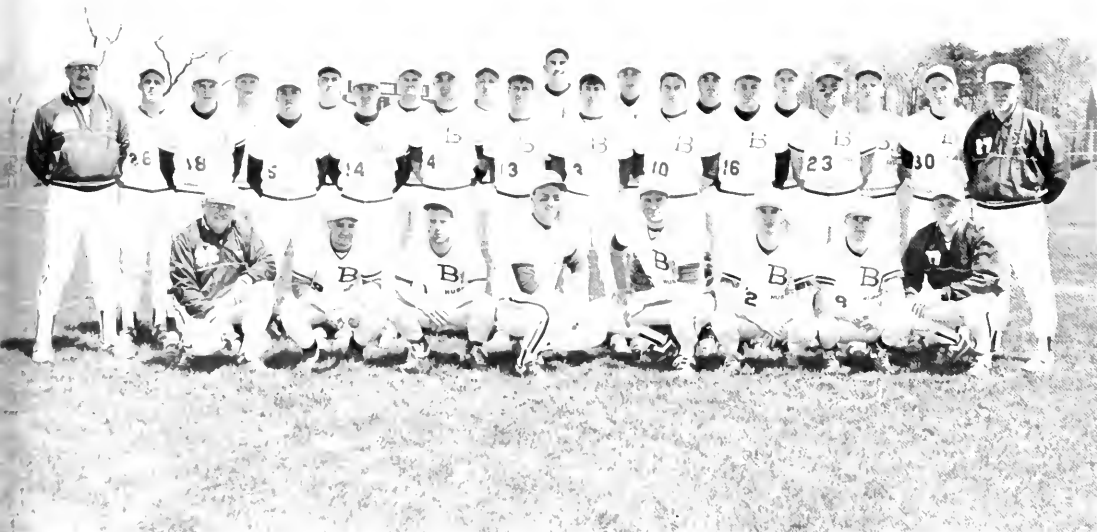
## Three All-PSAC Players Named

**B**U Baseball went up to bat in the 1992 season looking to make their 3rd trip to the PSAC Championship. In his 2nd years as head coach, Matt Haney relied on the experience of Senior tri-captain Mike Bruno. Bruno's experience on the field as a pitcher and a team leader helped bring the young team to a 16-18 record.

Fellow tri-captains Chad Holdren and Dan Eroh also helped to anchor the infield with Derek Little and Jason Vavra holding their own in the outfield. Bruno, Holdren and Jason Vavra were named All-PSAC players.

Although the Huskies title hopes fell short in the end, the team gained much needed experience. With this season under their belts, the team is looking to make a stab at a title next season.





BU	Opponent	Their Score
5	Christopher Newport	2
9	Christopher Newport	7
12	Newport News Apprentice	9
6	Barton	9
4	Barton	11
5	North Carolina Wesleyan	11
6	Longwood	15
5	Longwood	6
13	Longwood	15
3	Millersville	0
3	Millersville	4
7	Bucknell	6
6	Shippensburg	5
0	Shippensburg	4
6	Kutztown	7
11	Kutztown	2
10	Mansfield	6
2	Mansfield	3
16	East Stroudsburg	8
3	East Stroudsburg	2
4	Lebanon Valley	0
12	Lebanon Valley	4
3	Kutztown	2
11	Kutztown	7
14	Millersville	6
1	Millersville	5
1	Shippensburg	5
5	Shippensburg	8
0	Bucknell	9
1	Wilkes	6
4	Mansfield	6
0	Mansfield	11
3	East Stroudsburg	12
7	East Stroudsburg	1

# Women's Lacrosse

## 7th Consecutive PSAC Appearance

Sophomore Bridget Drake was an All-PSAC performer for the Women's Lacrosse team under coach Sharon O'Keefe. Bloomsburg ended the season with a 7-6 record, losing in the first round of the PSAC Championships to Mil-

lerville. Bloomsburg was the defending champion and was making its seventh consecutive appearance in the PSAC tournament.

The Huskies lose only four players to graduation, returning nineteen players for next season.







BU	Opp.	Their Score
10	Dickinson	0
10	West Chester	11
11	Shippensburg	9
7	Lock Haven	2
11	East Stroudsburg	4
8	Ithaca	7
4	William Smith	17
7	Frostburg State	12
4	Millersville	7
13	Drew	10
12	Franklin & Marshall	13
7	Cortland State	4
4	Millersville	8

# Softball

## Another Shot at the National Finals

The Husky Softball team came out swinging in their 1992 season. After their second straight appearance in the final rounds of the NCAA Division II Championships last season, the Huskies could only hope to improve their mark in 1992.

Under the guidance of Jan Hutchinson for the 15th year the Huskies ended up with a 43-5 record. Making it to the

NCAA Championship Finals in Shawnee, Kansas.

The Huskies were led by two-time All-American Marty Laudato, Senior Janelle Brenneman and Junior Denise Miller. Brenneman is a two time All-PSAC player while Miller took All-PSAC honors in the 1991 season.

Once again, the Huskies lived up to their great expectations.





BU	Opponent	Their Score
5	Lewis	3
8	Barry	0
4	Regis	3
6	American International	0
9	IUP	1
3	Shippensburg	0
9	Ashland	2
8	Assumption	0
7	Sacred Heart	0
2	Chapman	0
0	Missouri-Rolla	1
0	Florida-Southern	3
17	Slippery Rock	0
4	Slippery Rock	2
4	Pace	0
13	Pace	0
6	Mansfield	1
1	Mansfield	0
2	Lock Haven	0
6	Lock Haven	0
6	West Chester	1
8	West Chester	0
8	Maryland-Baltimore Cty	1
10	Maryland-Baltimore Cty	0
3	Shippensburg	0
8	Shippensburg	3
8	Kutztown	0
9	Kutztown	0
5	Millersville	4
16	Millersville	0
10	East Stroudsburg	0
5	East Stroudsburg	4
1	Gannon	0
7	Scranton	0
9	Gannon	1
4	Bucknell	0
5	Bucknell	1
7	Lock Haven	1
11	California	5
10	Shippensburg	0
1	Sacred Heart	2
6	California	3
5	Sacred Heart	1
4	Shippensburg	0
3	Shippensburg	1
3	Cal State-Hayward	0
0	Missouri Southern	1
3	Cal State-Hayward	4

# Men's Tennis

## 5th PSAC Title

The Men's Tennis team at BU serves up another victorious season. Twenty-four season head coach Burt Reese relied on his only Senior and team captain Mike Petersen to lead the otherwise young team. Kyle Barton, last season's "Rookie of the Year" and Sophomore James Mason also led the youthful team.

The team ended the season with a close win against Edinboro to gain the PSAC

title for the fifth time and a 13-6 regular season record.

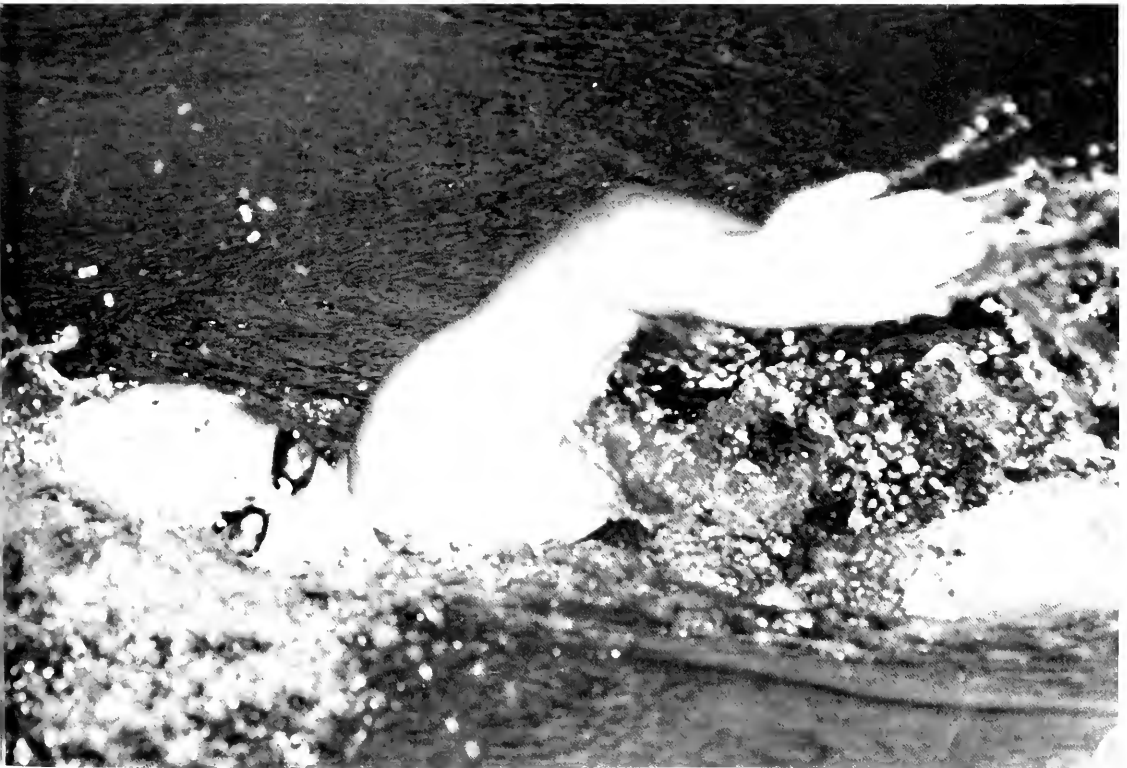
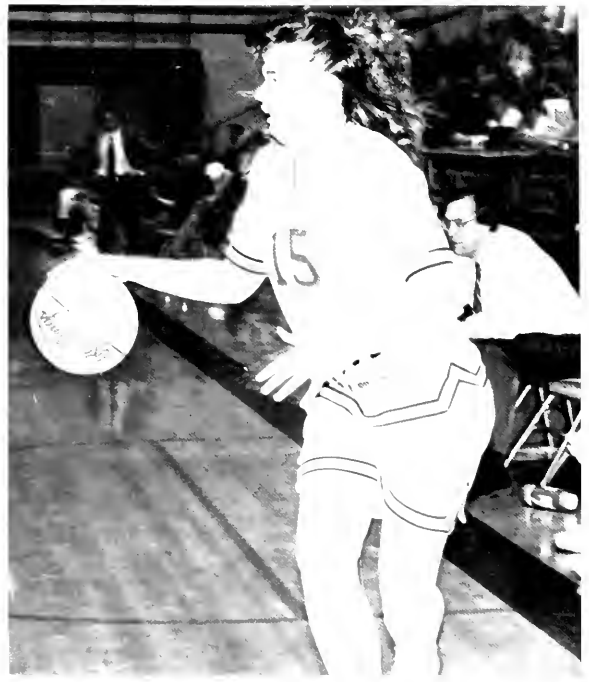
Petersen won his 8th PSAC title with Scott Thyroff, Jeremy Eby, Brian Billone and Dan Adriano also gaining titles. In NCAA Championship competition Petersen and Barton were defeated one match short of the quarterfinals in Edmond, Oklahoma. Both were awarded All-American status based on their top 16 finishes.





BU	Opponent	Their Score
6	George Mason	2
4	William & Mary	5
7	Virginia Wesleyan	1
0	Hampton	6
8	Georgetown	0
4	Cornell	5
4	Army	5
7	Boston	2
5	Central Connecticut	4
6	Mt. St. Mary's	0
4	Penn State	4
6	Millersville	0
5	Mercyhurst	1
5	Concordia	1
6	Edinboro	3
4	Rutgers	2
7	Bucknell	0
2	Navy	7
6	Swarthmore	3







**G**REEK LIFE. The KEY to enhancing college life can also be found through the Greek world. The Greek system at Bloomsburg University, although older than many of its members, is relatively young. In 1964, a group of men met to establish a fraternity on the Bloomsburg campus. That group, called the Social Improvement Organization, paved the road for the foundation of a Greek System. After two years of work with the University, the Organization became Sigma Iota Omega and thus, the greek system was born.

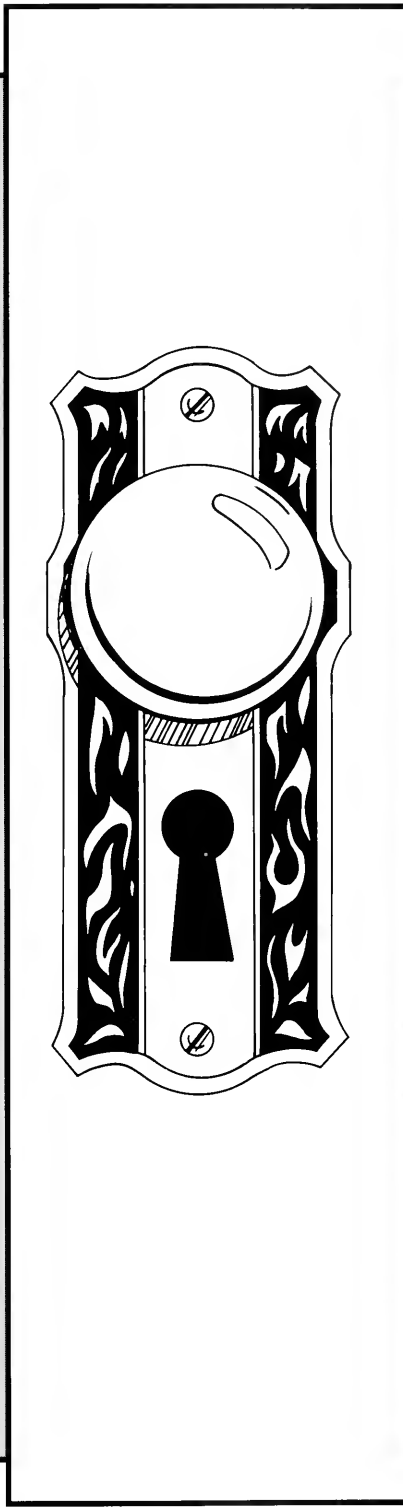
Today it consists of 19 unique associations that share fairly universal goals. Each was built upon the ideals of friendship, leadership, and service to others. The ways to achieve each of their goals is what sets each fraternity and sorority apart from the others.

These Greek organizations are governed by the Inter-Fraternity Council and the Panhellenic Council. In following the guidelines of their respective governments, the Greeks have an extensive social calendar filled with mixers, philanthropic events, service projects, date parties, banquets, and alumni get-togethers. The Greeks also participate in Homecoming activities and Greek Week, the college version of Greek Olympics.

With the key to the Greek world in your possession, open the door and expect the unexpected!











*by donating any a*

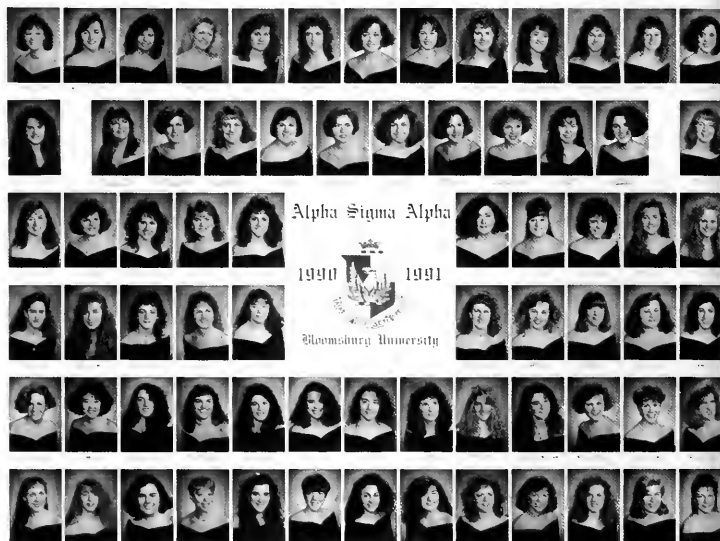


# Alpha Sigma Alpha

ΑΣΑ

January 26, 1979 marked the beginning of a new bond of sisterhood at BU when 46 founding sisters began pledging as the Delta Chi Colony of Alpha Sigma Alpha. The aims of Alpha Sigma Alpha, a national social and service sorority, are to establish a sisterhood that shall have for its four-fold objectives the physical, intellectual, social, and spiritual development of its members following their motto, "Aspire, Seek, Attain."

The Delta Chi Colony was installed as a chapter on September 8, 1979. There are many service projects that are carried on throughout the year. Alpha Sigma Alpha's national philanthropic project is to aid the mentally retarded. Their social events include date parties, banquets, and mixers. They also participate in annual events, such as Homecoming and Greek Week. Alpha Sigma Alpha feels they have a strong bond of sisterhood that will continue for years to come.



## Graduating Seniors

Kristen Ash  
Julie Benn  
Susie Bolcavage  
Alison Coffin  
Michele Cupitt

Eve Czeponis  
Suzi Davis  
Jodi Dominick  
Colleen Foy  
Elaine Leonard

Chris Malti  
Lauri Pfluger  
Liane Ringsdorf  
Sandy Saxman  
Hellen Simms

# Alpha Sigma Tau



## ΑΣΤ

**A**lpha Sigma Tau's colors are emerald green and gold and their flower is the yellow rose. Their motto is "Active, Self-Reliant, Trust-worthy."

In 1899, the founding sisters of Alpha Sigma Tau began a group based on friendship and memories of loyalty and devotion. In 1979, the local sorority, Tau Sigma Pi, became the Beta Nu chapter of Alpha Sigma Tau at B.U. AST was formed with many goals in mind: forming meaningful and rewarding relationships through sisterhood and by fostering relationships between Greeks and independents.

This year AST put their efforts towards raising money for Tracy Banick, an AST alumna. Tracy has been recently diagnosed with cancer. AST raised over 12,000 dollars through fund raisers, donations from local sororities and fraternities, area merchants, school organizations, professors, and students. Alumnae as well as other Alpha Sigma Tau chapters also contributed greatly.

From the hearts of Alpha Sigma Tau and the Banick family, they appreciate your compassion and generosity.

*ALPHA* greek week date parties rush parties  
 banquets *SIGMA* socials hayrides  
 service projects sisterhood friendship *TAU*

### Graduating Seniors

- |                |                  |                 |
|----------------|------------------|-----------------|
| Claudia Cooper | Christine Gover  | Jill Morrow     |
| Kerri Donald   | Stephanie Grosch | Jenn Roy        |
| Meg Dougherty  | Juli Herring     | Chris Siegfried |
| Kirsten Elek   | Heather          | Erin Silcox     |
| Kelly Gillette | MacLaughlin      | Candy Wydra     |

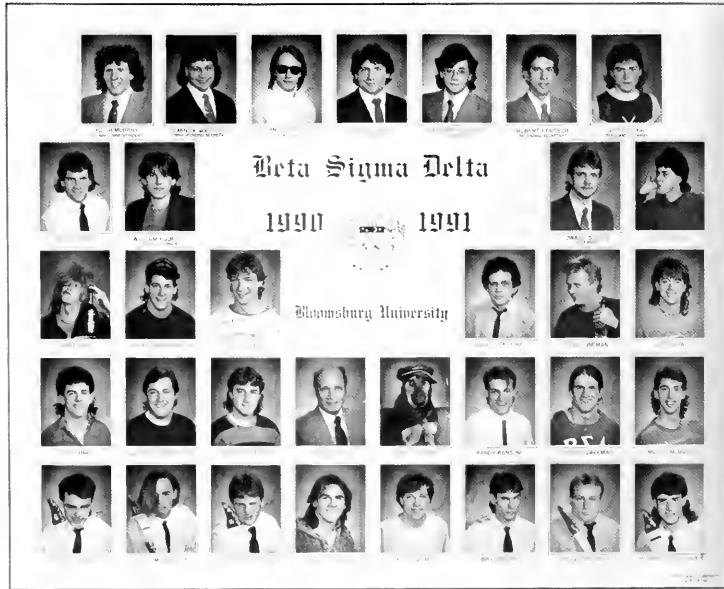
# Beta Sigma Delta

**ΒΣΔ**

**B**eta Sigma Delta's nickname is Beta and their colors are green and white. The brothers of Beta Sigma Delta follow the motto, "Brotherhood is deeper than friendship".

Beta was founded March 9, 1966. Their letters stand for Brotherhood for Social Development. They have always maintained closeness and unity within the organization and have always tried to keep in good relations with the university and its community

Beta's strength is mostly contributable to the fact that the size of the fraternity has never and will never exceed 40 active members. This is to prevent the formation of cliques.



**BETA**

hayrides

service projects

date parties

rush

**SIGMA**

parties

friendship

socials

brotherhood

banquets

greek week

**DELTA**

# Chi Sigma Rho



## Graduating Seniors

Nicole Buschmeier  
Jeni Conver  
Denise Deputy  
Megan Daspro

Kathy Freer  
Vicki Hohl  
Aimee Krouse  
Ange Lepore

Stacie Smith  
Michelle Strutt  
Tonia Tiech

## XΣP

Chi Sig's colors are yellow and grey and their flower is the yellow carnation. Their motto is "Unity Through Individuality."

On October 22, 1967, six women met informally to discuss the idea of a new social sorority at Bloomsburg State College. Following many meetings with ISC and the Committee on Student Organizations, Chi Sigma Rho was approved to be a permanent sorority on May 19, 1969.

Chi Sigma Rho is made of many individuals who have the common bond of sisterhood. Each semester Chi Sig participates in many social events, such as mixers with other sororities and fraternities, date parties, banquets, and much more. These serve to bring the sisters closer to other students at Bloomsburg. Homecoming and Greek Week are two more activities in which Chi Sig enjoys participating. Each year brings growth and change, which improves the sisterhood all the time. Each sister's individuality is something stressed by Chi Sigma Rho.

# Chi Theta Pi

## XΘΠ

Chi Theta Pi's colors are pink and royal blue and their flower is the pink rose. Their motto is "Communication and Trust through Love, Friendship, and Sisterhood". Chi Theta Pi was started by sixteen very enthusiastic and determined women who already held a strong bond of sisterhood. They took sixteen charter sisters who helped them to achieve their goals through countless hours of hardwork and community service. Annual social events include a Spring banquet, hayrides, cookouts, date parties, and mixers with other Greek organizations.



## Graduating Seniors

Debi Acri  
 Lisa Brecker  
 Sherri Dagostin  
 Holly Delaco  
 Kristen Fitzgerald  
 Kim Henninger

Coleen Houck  
 Diane Kovacs  
 Lynne Kost  
 Michelle Kremitske  
 Lisa Leinbach  
 Vicki Merrit

Lori Ann Nazzaro  
 Dina Pachence  
 Jennifer Spencer  
 Sherry Voloshin  
 Karen Weber



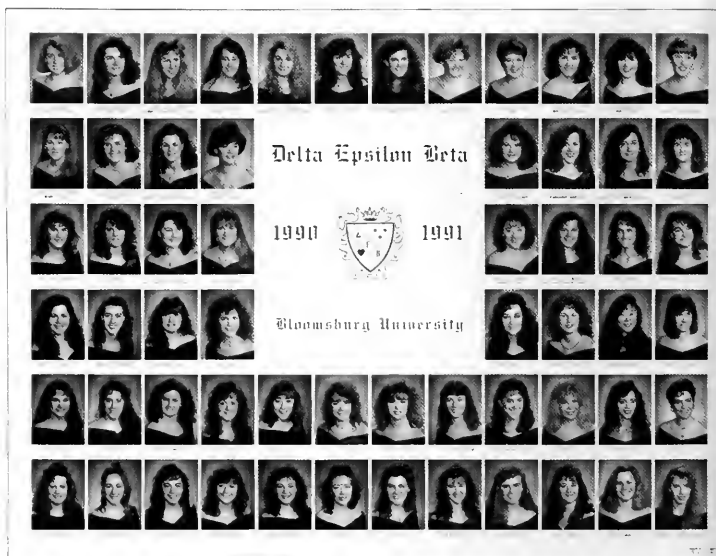


# Delta Epsilon Beta

ΔEB

**D**eb's colors are violet and white and their flower is the violet. Their motto is "First and Forever". Their history began on October 27, 1966 when thirty women met to form the first social sorority at Bloomsburg State College. On Feb. 13, 1967, after the completion of the Constitution and ideals, DEB went before the Community Government Association for approval. On that day, DEB was approved as a probationary social sorority. In October of 1967, DEB received permanent status.

Today, DEB is involved with many different service projects, such as Central Treatment Unit at Danville State Hospital, St. Columba's, and the Women's Center. Every semester they have date parties, mixers, hayrides, picnics, and a banquet.



friendship  
 date parties  
 hayrides  
 parties  
 greek week  
*DEB*  
 banquets  
 rush  
 service projects  
 socials  
 sisterhood

## Graduating Seniors

Christine Baney  
 Kelly Bracken  
 Judi Cunningham  
 Debbie Dorfman

Karen Gensiejewski  
 Nicole Gerdes  
 Kristine Kipphut  
 Susan McWilliams

Missy Noll  
 Kerri Richetta  
 Allison Tyson

# Delta Phi Epsilon



ΔΦΕ

“Deephers” colors are royal purple and gold and their flower is the purple iris. Their motto is “To be, rather than to seem to be.” Delta Phi Epsilon is an international sorority which was first founded on March 17, 1917 at New York University Law School. Previously colonized as Alpha Delta Chi on December 8, 1990, the Bloomsburg Alpha Chi Chapter was installed on September 7, 1991.

Since this time, the sisters of Delta Phi Epsilon have taken part in various activities such as Adopt-A-Highway, Greek Week, making floats for the Homecoming parade, helping with the Child Care Center, the Women’s Center, Into the Streets, and several other functions. Besides the banquets, hayrides, and mixers, the sisters of Delta Phi Epsilon use their time together as a period of fun and growth for a happier and more prosperous future.



## Graduating Seniors

Kelly Crane  
Kimberly Colotti  
Michelle Edling

Susan Evans  
Kathleen McGonigle

Wendy Stachel  
Chloe Williams  
Christa Zose

# Gamma Epsilon Omicron

## ΓΕΟ

**B**lood red and midnight black are GEO's colors. Gamma Epsilon Omicron was founded in December of 1986 by twenty-four men from Luzerne Residence Hall. The brothers are involved in many service projects, most notably, visiting Danville State Hospital and skating with mentally handicapped children. GEO takes pride in being a member of the Inter-Fraternity Council and a recognized organization at Bloomsburg University. In the past, Gamma Epsilon Omicron has had five brothers serve as officers on IFC Executive Council, including two presidential terms, and six brothers serve the university as class officers on CGA, five of those being president.

Gamma Epsilon Omicron knows that future pledge classes will continue the trends of success that their brothers have set and continue the traditions at Bloomsburg University.



**GAMMA**

friendship

parties

hayrides

Greek week

brotherhood

**EPSILON**

banquets

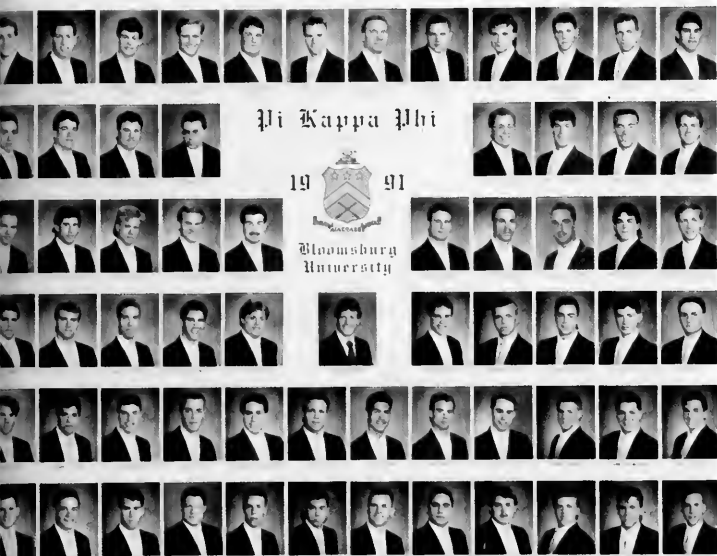
service projects

date parties

socials

**OMICRON**

# Pi Kappa Phi



## ΠΚΦ

**G**old, white and royal blue are the colors of Pi Kappa Phi. Their motto is "Nothing shall ever tear us asunder" and their flower is the red rose. Pi Kappa Phi National Fraternity was founded in South Carolina at the College of Charleston on December 10, 1904. Three men drawn together from a true feeling of brotherhood began what today is the strongest fraternity in the United States. These three men, Simon Fogerty, Harry Mixon, and Andrew Kroeg, never knew that their feeling of brotherhood would flourish into over 170 chapters reaching the far corners of the nation.

Pi Kappa Phi has the privilege of being the only national fraternity to have a national service project among all its chapters-P.U.S.H -People Understanding the Severely Handicapped.

Some eighty years later here at Bloomsburg University the feeling spread. On April 28, 1990, forty-four men were given the privilege to bear letters and be presented as Charter members of Pi Kappa Phi. Pi Kap's founding here at Bloomsburg was much the same as its founders in 1904. John J. Pek Jr., the Founding Archon, upheld the ideals that the forefathers instilled in its members. What he instilled to the members at Bloomsburg was the undescribable feeling of BROTHERHOOD. Pi Kappa Phi is still growing with more chapters being added in the U.S. and brothers at the Zeta Upsilon Chapter. While other fraternities speak of brotherhood, PI KAPPA PHI is Brotherhood!

brotherhood  
 date parties  
 friendship  
 KAPPA  
 socials  
 service projects  
 hayrides  
 greek week  
 banquets  
 PHI

# Phi Delta

ΦΔ

Phi Delta was formed in the fall of 1983. Their nickname is "Phi Delt" and their colors are navy blue, kelly green, and white. Phi Delt's flower is the red rose and their motto is "Believing in what you're doing is half the battle won".

Their main objective is that you can maintain your own individuality while belonging to a Greek organization. As a social sorority they participate actively in Greek Week, hayrides, mixers, banquets, and date parties, including a Luau. Many of the sisters have been recognized by the University due to their outstanding achievements, scholastically, athletically, and extracurricularly.

Phi Delta's service projects include: Adopt-a-Highway, the Women's Center, Bloodmobile, and local projects. They are actively growing, with 45 sisters, as a local sorority.



## Graduating Seniors

Stephanie Birster  
Dana Domkoski  
Maureen Link  
Missy Locke  
Deanna Mills

Melissa Minakowski  
Jenna Moon  
Sherri Netterblade  
Karen Nice  
Lori Printy

Stacey Ragazzone  
Kimberly A. Turofski  
Ellen Wirth  
Diane Youngblut  
Christine Zazarino

# Phi Iota Chi



## ΦΙΧ

**P**ixies colors are mint green and forest green and their flower is the daisy. Their motto is "Friendship, Individuality, and Courage."

The fifteen founding sisters, all of whom were freshmen, had many goals in mind. Phi Iota Chi began to strive for lasting and meaningful friendship with each sister being herself, an individual. Phi Iota Chi was founded on March 19 1974.

Pixies, like other sororities, participate in annual events such as Homecoming and Greek Week. They are involved in service projects each year to help out some organizations in the area. Annual social events include banquets, date parties, hayrides, picnics, and mixers with fraternities and sororities.

In the first few years of Phi Iota Chi's existence, the value of being a sister has grown and meant more each day, and the future years promise to be even more rewarding.

service projects

rush

sisterhood

socials

*PIXIES*

date parties

hayrides

greek week

banquets

# Phi Sigma Sigma

ΦΣΣ

**P**hi Sig Sig's colors are blue and gold and their flower is the American Beauty Rose. Their motto is "Aim High."

Ten women of different religious backgrounds bonded together in September, 1913, in New York, to form the Alpha chapter of Phi Sigma Sigma. Thirty-four women at Bloomsburg University gathered and formed the Epsilon Zeta chapter in April, 1988, and the chapter has grown considerably since that time.

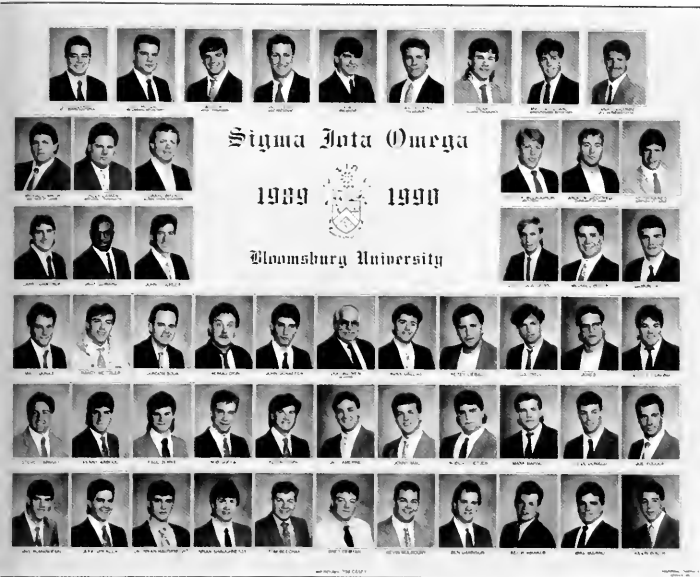
Throughout their development into a strong part of Bloomsburg's great Greek system, Phi Sigma Sigma have been involved in many philanthropic endeavors which include helping at the Bloom Nursing Home and the National Kidney Foundation.

Socially, Phi Sigma Sigma strengthens their ties through mixers with fraternities and other sororities, a Spring Banquet, hayrides, and date parties.





# Sigma Iota Omega



ΣΙΩ

**B**urgundy and white are the colors of Sigma Iota Omega and their motto is "A single soul in friends."

In 1964, several men met in what was the North Hall for the purpose of establishing a social fraternity at Bloomsburg State College. Strenuous efforts, however, led first to the creation of a club as there would "never be social fraternities at Bloomsburg." The men selected the name "Social Improvement Organization" (SIO) and continued to press for recognition as a fraternity. Two years of hard work led finally to the recognition of SIO-Sigma Iota Omega by the Board of Trustees as Bloomsburg's first social fraternity. From this early beginning there has evolved the "Greek System" on campus as it is known today. Dr. Robert D. Warren has been the only advisor of SIO and was, early on, dubbed The Father of the Greek System at Bloomsburg.

**SIGMA** friendship parties  
 hayrides service projects  
 rush IOTA date parties  
 brotherhood greek week socials  
**OMEGA**

# Sigma Sigma Sigma

ΣΣΣ

Sigma Sigma Sigma's colors are purple and white, their flower is the violet, and their motto is "To share, To love, To Give". Tri Sigma began Feb. 1967 as Theta Gamma Phi. Their first organizational meeting was in March 1967. On November 14, 1969 they received permanent status as a local sorority. March 1, 1971 Theta Gamma Phi petitioned Sigma Sigma Sigma. On Nov. 5, 1971 the sisterhood was installed as the Delta Zeta chapter of Sigma Sigma Sigma.

Today they are involved in numerous activities ranging from the Robby Page Memorial fund to community service projects.



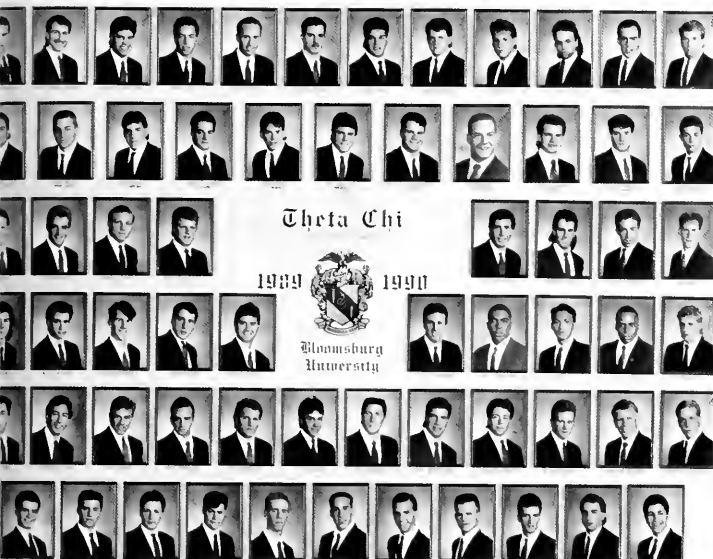
## Graduating Seniors

Kenley Atherholt  
Colleen Buchter  
Jennifer Correll  
Stacey Critchley

Jody Durfos  
Jackie Fisher  
Melissa Genovese  
Tracy Kistler

Pamela Meilan  
Valerie Reilly  
Julie Snyder

# Theta Chi



OX

Theta Chi's colors are military red and white. Brotherhood at Theta Chi is a lifelong bond. Theta Chi, founded in 1856, is one of the oldest fraternities in the nation.

Theta Chi, Theta Lambda chapter, Bloomsburg University was founded on October 28, 1987 and since then their brotherhood has grown to 52 active brothers.

To date Theta Chi has won the Outstanding Fraternity Award given by the Bloomsburg Board of Trustees since the award's establishment two years ago.

Theta Chi is proud to participate in and sponsor many social activities. Their well rounded social calendar includes various theme mixers, date parties, and hay rides.

Theta Chi social life is not limited to only partying, the brothers also take an active part in the community by volunteering in service projects such as the Red Cross Bloodmobile and Special Olympics.

sh parties friendship  
**THETA**  
 brotherhood socials  
 service projects **CHI**  
 banquets greek week

# Theta Tau Omega

ΘΤΩ

Theta Tau Omega's colors are navy blue and light blue and their flower is the blue carnation. Their motto is "Truth Through Openmindedness". Theta Tau, organized in 1968, consists of eight founding sisters and thirteen charter sisters. Permanent status was granted to the sorority in October 1970. There are now 40 active sisters in Theta Tau who participate in service projects and fund raisers.



sisterhood date parties service projects  
*THETA*  
 socials parties banquets  
 hayrides rush *TAU*  
 friendship

## Graduating Seniors

Kerry Abell  
 Tracy Arner  
 Lori Boesler  
 Lori Ann Currid

Regina Egorille  
 Colleen Gallagher  
 Janet Huffard  
 Kallie McClary

Kristen Niebling  
 Laura Sharpe  
 Amy Suchan  
 Jennifer Wescoe

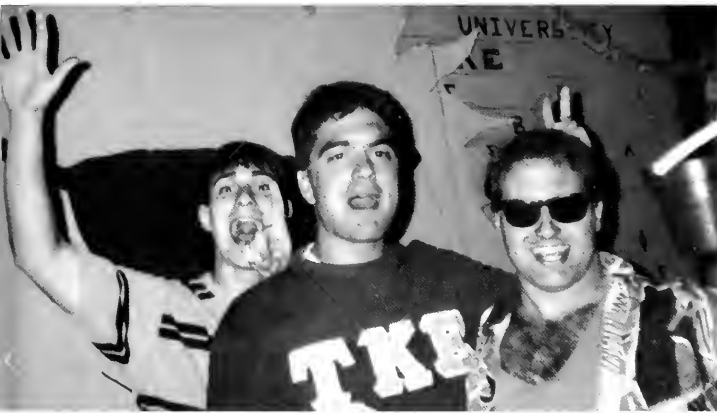
# Tau Kappa Epsilon



## TKE

The red carnation and the colors cherry and grey represent TKE Fraternity. Tau Kappa Epsilon International Social Fraternity was founded on January 10, 1899 at Illinois Wesleyan University in Bloomington, Illinois. Since that cold night in January, TKE has grown to over 320 active chapters and 181,000 initiates. TKE is the fastest-growing fraternity on the continent and has pioneered more new fraternity systems than any other fraternity.

Pennsylvania has more TKE fraternity chapters than any other state. Included in this is the Pi Beta chapter of TKE at Bloomsburg University. The Pi Beta chapter was founded on April 1, 1978. TKE sponsors a full range of social, service, and philanthropic endeavors. Most recently, TKE has helped usher the Celebrity Artist Series, worked with the group S.H.A.R.E., and with their international philanthropy, Special Olympics.



## Graduating Seniors

Scott Busch	Bill Lucas	Brian Schilling
Joe Franceschino	Art Moser	Dean Stasio
Mike Graves	Mike Mullen	Matt Szerencsis
Bob Heller	Chris Nawrocki	Matt Whitfill
	Brent Robinson	





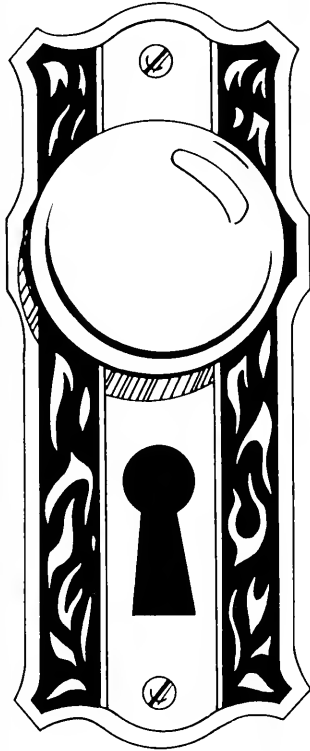


**O**RGANIZATIONS. The KEY to enhancing one's education comes through involvement in one or more of the various organizations found at Bloomsburg University. Every student is given the opportunity, at the beginning of each Fall semester, to learn about B.U.'s 150+ clubs and organizations at the Annual Activities Fair sponsored by the Kehr Union Program Board.

Many of the campus organizations and clubs take this time to show off their group and gain new members. No doubt there is a club or organization for everyone to become involved. No matter what your interest; politics, sports, writing, business or whatever; Bloomsburg has a group to suit every student. From the Accounting Club to the Young Republicans each club and organization contributes in an effort to make our campus a more enjoyable place to spend one's time. What each group has in store for its members is unexpected, but only those who dare to use the key to open the door will have experiences of a lifetime.







## Delta Mu Delta

(L-R) Valerie DeBalko- Vice-President, Daniel O. Cospers-Secretary, Jon P. Hall- President, Diane L. Bartolf-Treasurer.



## Bloomsburg Association for the Hearing Impaired

Row 1 (L-R) Angelic Stait-Secretary, Michael Stanford-Treasurer, Nicole M. Fisher-President, Perry L. Plotkin-Sergeant at Arms, Row 2 Judith M. Hirshfield- Advisor, Kelly Cain, Maureen Hill- Interpreter, Jammi Scott, Kristen McCrudden.





## Sigma Tau Delta

Row 1 (L-R) Heather Far-  
rington- Treasurer, Michelle  
Jaske- Vice President, Vickey  
Magdeburg- President.

Row 2 Jay D'Alessandro,  
Beth Skinner, Tina  
Kovalchik.

Row 3 Aileen Koperos, Lisa  
Pizzichemi, Sean Carroll,  
Heather Kichner.

Row 4 Ervene Gulley- Ad-  
visor, Pauline Falton, Lynn  
A. Halkowicz, Lisa Saby.



## Pre-Law Club

Row 1 (L-R) Eva Mosakow-  
ski, Diane M. Eberle, Janet  
C. Uston.

Row 2 Constantine Fokas,  
Jackie A. Fuentes, Vijay  
Raju, Linda M. Waldron,  
Raine Comier, Timothy L.  
Martin, Bruce Rockwood-  
Advisor, James S. Taylor.

# Tau Beta Sigma

Row 1 (L-R) Tracy Lyn Knauf- Historian, Jessica Serie- Corresponding Secretary, Stacey Bardonnex- Vice President, Lisa Kilcoyne- Recording Secretary, Jen Brong, Heather Hoyt.

Row 2 Patty Lloyd- President, Fred Dakes- Parliamentarian, Chris Rush, Tim Mordaunt, Andrea Bauman, Leanne Shamp.

Row 3 Tammy Ludwig, April Light, Nicole Neidig, Samuel Stahl, Katie Brady, Ali McPherson.

Row 4 Ashley Coates, Steve Getz, Elizabeth Genoese- Representative to the Band, Suzanne Compton, Kelly Kullman, Lynne Palmer- Treasurer, Claudine Hanincik.



# Commuters and Returning Students

(L-R) Dana Fern- Treasurer, Sylvia Costa- Co-Chairperson, Karen Girton- Co-Chairperson, Dennis Delorso.





## Elwell Hall Council

(L-R) Patricia A. DeNapoli- Vice-President, Carli M. Yeager- Secretary, Traci A. Haas- President, Kelly Olver- Treasurer.



## Gospel Choir

Row 1 (L-R) Stephanie Carroll, Mary Randall, Gaaynele Boyd, Kimyatta Murray, Bridgette Cooksye- Drummer, Dennita Oliver.

Row 2 Sondra A. Hubbard, Amy Freeman- Advisor, Amanda Simmons, Charles A. Durham, Robert M. Reeves Jr., Jai Oliver Darden, DuAne A. Davis, Raymond Rivera, Chavonne Evette Hodge, Rachel Lee, Latrice A. Wright, Devida Sherman.

## French Club

Row 1 (L-R) Dawn Bowler, Angela Wade, Vicki Muckenthaler, Nadine Yarmush.

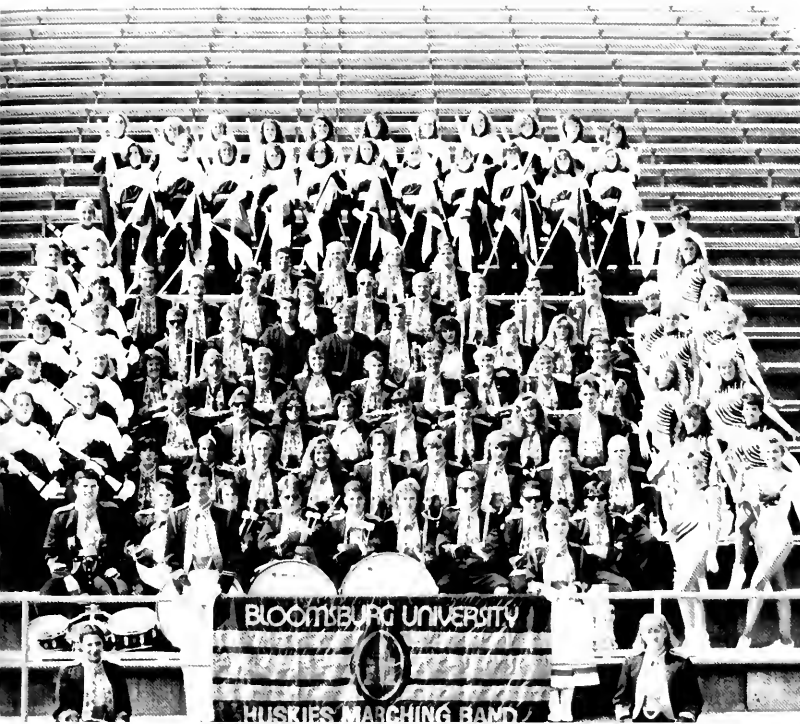
Row 2 Jean Raspen, Thierry Gaborieau, Caroline Caille.



## History Club

Jeff Regener, MaryJane Hayward.





# Maroon and Gold Band

Standing (L-R) Melissa Pretnow, Melissa Locke

Row 1 Ian Hastings, Ashley Coates, Todd Mengel, Jennifer Wierscholding, Perry Swigart, Chris Scheckel, Lynn Miller, Scott Beaver, Jason Bogden, Tim Hershey, Tara Goldman, Sue Hanna

Row 2 Jen Rosencrance, Tushanna Oman, Judy Bednar, Gail Regener, Kelly Kullman, Kristie Grang, Kandy Blackwell, Lisa Arndt, Candy Kraye, Kim McKinnell, Jenny Rinehmer, Teresa Loftus.

Row 3 Jen Barkume, Sue Compton, Sam Stahl, Donna Brodowski, Dawn Madzarac, Liz Genoese, Jen Pfeil, Janice Tysiak, Lauren Anioloff, Steve Getz, Lori Blydenburgh, Stephanie Liken.

Row 4 Stacy Bardonnex, Mindy DeFacies, Jackie Hoffman, Michelle Costenbader, Brenda Yeagly, Missy Imes, Sheri Wood, Jeff Hoppe, Lisa Kileoone, Patty Lloyd, Bill Hauck, Kelly Miller, Michelle Henne

Row 5 Nikki Neuldg, Michelle Hile, Fred Oakes, Eric Frost, Tim Mordant, Chris Rush, Brian Bertout, Jacki Lipovsky, Jen Brong, Michelle Cohoon, Carissa Wise, Pam Flager.

Row 6 Amy Kaminsky, Heidi Boyer, Ken, Neil Strme, Keith Dawe, Tammy Ludwig, Ron Kouf, Andy Slater, Jim Wansor, Andrew Fitch, Matt Steinruck, MaryAnn McDonald.

Row 7 Lynn Fremlin, Jason Ross, Alyssa Baird, Nancy Rankin, Dave Reningers Leanne Champ.

Row 8 Kerry Bender, Robin Zebo, Katie King, Vicki Muckenthaler, Allison Distefano, Allison Paynter, Amy Jo Reece, Alison McPherson, Kim Wiehr, Michelle Mitrnacht, Stephanie Motchan.

Row 9 Christine Rogers, Meredith Ceton, TracyLyn Knaut, Claudine Haninick, Lynne Palmer, Andrea Bauman, Kate Brady, Terri Shsko, Jessica Serie, April Light, Heather Hoyt.



# Image

Row 1 (L-R) Amy Jo Reece, Amy Remley, CharLynn Conaway, Aimee Hill.

Row 2 Kyle Blind, Kim Col-lotti, Tracy Carr, Patti Cashman.

Row 3 Amy Cebrosky, Tiffany Matz, Kristen Fitzgerald, Kim Refsnider, Jessica Lacarrubba.

# Bowling Team — Women

Row 1 (L-R) Michelle Dailey  
— Treasurer, Susan Heil.  
Row 2 Karen Ostrowsk,  
Dawn Baldwin, Jen Mosser,  
Coach.

Not pictured: Christa Knoll,  
Coach.



# Social Welfare Club

Left row (bottom to top) Di-  
ane Eberle, Genny Buck,  
Steve Getz, Greg Hughey.

Right row Teri Weirback,  
Jamie Dietrick, Gabrielle  
Stander, Dale Switzbaugh —  
Advisor.







## Program Board

Row 1 John McDaniel, (kneeling) Mike Kaiser, Angel H. Hernandez, Krista M. Brusco, Vanessa L. Starr.

Row 2 Jimmy Gilliland- Advisor, Mia Woods, Jennifer Szalku, Cathy Lex, Laurie Cook, Kate King, Cissy Drybola.

Row 3 Kaiti Yarrington, Jay "Ray" Kellett, Matt Tucholke, Christine Rogers, Randy Wagner.



## Psychology Association

(L-R) Rick Hummel, Miriam T. Guerrero, Angel H. Hernandez, Brett Beck- Advisor, Jay Kellett, Heather Kinney, Sheri Johnson.

# Community Government Association

## Executive Committee

Row 1 (L-R): Anne Shannon- Corresponding Secretary; John Spangler- Vice President; Mike Jemo- President; Matt Fidler- Treasurer; Ron Ebert- Recording Secretary.

Row 2: David Hill- Advisor; John McDaniel- Executive Coordinator; Amy Kravetz- Parliamentarian; Peter Barnes- Senate Representative; Cori Cadle- Senate Representative; Janice Michaud- Project Coordinator; Shannon Symon- Historian; Julie Snyder- Trustee; John Trathen- Advisor.



## Senate





## Husky Ambassadors

Row 1 (L-R): Sheron Johnson, Amy Remley.

Row 2: Jennifer Saraceno, Kim Amin, CharLynn Conaway, Elaine Bosack, Jody Heckman, Anne Shannon.

Row 3: Amy Kravetz, Steve Zezza, Tim Brooks, Brian Ralph, Dan Holdredge, Ken Wolff, Kim Bowers.

Not Pictured: Jan Hoffman, Stuart McLear, Gary Groenheim, and Doug Hippenstiel- Advisor



## Society for Human Resource Development

Row 1: Lisette Meehleib-Secretary; Tina Vassallo, Susan Bower, Heather Whit-Treasurer.

Row 2: Diane Bartolf- President; Natalie Way, Susan Baxter.

Row 3: Tim Eyer, Dwight Heckman, Wilfred Boonman, Steve Kozokas, Scott Copeland, Frank Luck-angelo, Howard Kinslinger-Advisor.

Not Pictured: John Bing-Vice President, John Pek-Publicity Chairperson.

## Bowling Team-Men

Row 1 (L-R): Dean Brooks,  
John Kulick- President, Rob-  
ert Haines.

Row 2: Edward Kubinsky-  
Captain/Coach, John Ling,  
Doug Sterner- Vice Presi-  
dent.

Not Pictured: Chuck Phillips,  
Scott Schowalter, Steve El-  
dred, Chuck Budris, Ross  
Vandermark.



## University Studio Band





Volunteer  
Services



Schuykill  
Hall  
Council

# Pi Kappa Delta



# Forensics Society













**S**ENIORS. (Finally!) The KEY to becoming a Senior lies within each and every one of us that walks across the stage on graduation day with a diploma in hand, a smile on our face and a feeling of accomplishment that can not be expressed in words.

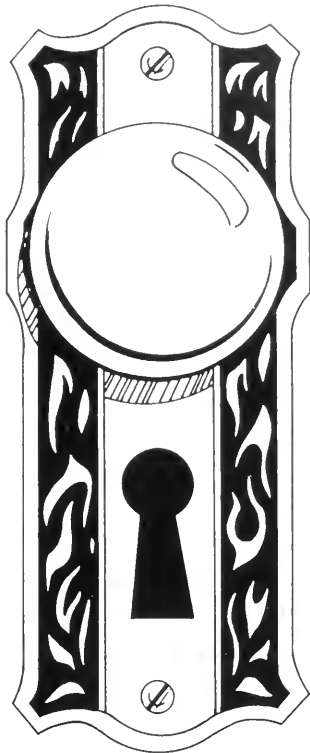
Four years ago we enrolled in Bloomsburg each with individual dreams and ambitions — but we all entered with the belief that in a few years, after hours of classes and studying, we would graduate.

Graduation has come and gone but the events which have led to the occasion are what have made Seniors seniors and Senior year the best of all. So now that the studying has ended, classes are over and memories are tucked away forever, it is time to take the KEY and open the door to the unexpected. We all expected this.

In the words of our favorite childhood writer the late Dr. Seuss,

“Congratulations  
Today is your day  
You’re off to Great Places  
You’re off and away!  
Oh, the places you’ll go!” 1990







Kerry M. Abell



Debra A. Acri



Natalie M. Alansky



Melissa Alba



Gary Alexis



Evelyn Alsvan



Mark L. Amarose



Jennifer L. Amato



John L. Andronis



Joe Angelo



Erica N. Anstett



Jeanine R. Ascani



Kristen L. Ask



Kenley E. Atherholt



Angela A. Augustine



Adrienne F. Bahl



Dernet J. Bailey



Amy L. Bair



Kristie J. Baker



April L. Balderston

# Seniors 1992



April D. Baldwin



Illyse K. Balsam



Maryann J. Balutis



Christine D. Baney



Lisa A. Baniewicz



Michelle L. Bannon



Jennifer Baram



Eric J. Barcavage



Macy Bardonnex



Maryann Bardsley



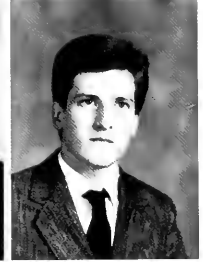
Natalie Barninger



Diane L. Bartolf



Lawrence Bates



Franklin J. Battin



Michele L. Baum



Andrea K. Bauman



Susan L. Baxter



Dale D. Behler



Laurence Beilis



Christine M. Belksie



Matthew Belevedere



Kerry Bender



Tina J. Bennett



Michael L. Bieber



Terri A. Bieber



John Bing



Laura Biscontini



Stacey Black



Brian W. Blickensderfer



David Blough



Bryan J. Bobrowsky



Thomas Bogovich



Stacy Bohler



Susan Bolcavage



Andrew J. Bomboy



Lauren L. Boorujy



Kim Borchick



Maria A. Bosack



Rosann A. Bowen



Dawn M. Bowler

# Seniors 1992



Jeffrey Bowman



Kelly L. Bracken



Brian R. Broadt



Donna M. Brodoski



James A. Brogna



Ileen Brooks



Louis H. Brooks Jr.



Timothy Brooks



Joseph G.  
Broscius Jr.



Kelly A. Brown



Genny A. Buck



Patricia Burke



Cathy A. Burson



Scott F. Caldwell



Katie Callahan



Joy R. Camella



Stephanie A.  
Campomizzi



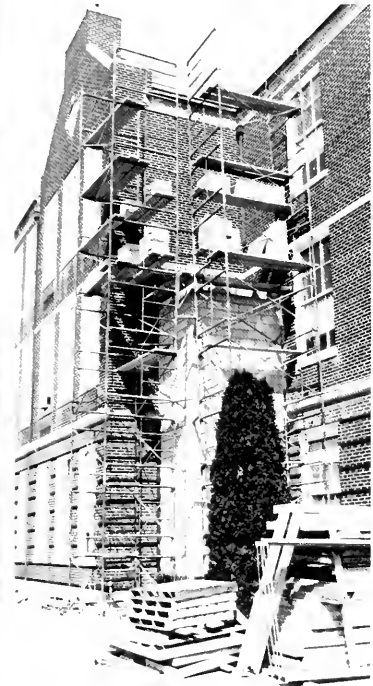
Jaclyn L. Cantor



Lisa Capobianco



Marlo Capoccia











Donna A. Carides

Kelli L. Carpenter

Sandra Carpenter

Gina Caruso



Daniel H. Caughey

Marcella C.  
Cavanaugh

Laura L. Cebrosky

James S. Ceccati



Bonnie Celmer

Nina M. Chaskin

Joann M. Chasko

Michael S. Chiarkas

Marsha M. Childs

Pamela E. Christman



Lisa M. Cianciarulo

Mark J. Cibort

Robert S. Cienki

Joseph C. Cipriani

Dawn M. Clements

AmyJo Clemson

# Seniors 1992



Jane Clewell



Kimberly Clinton



Geoffrey Coates



Tracey Cobb



Alison Coffin



Frank T. Colangelo



Denise S. Cole



Kimberly J. Colotti



Robert Comeau



Stephen A. Comly



Christine L. Conant



CharLynn M.  
Conaway



Jennifer L. Conver



Laurie A. Cook



Claudia J. Cooper



Jennifer E. Correll



Karen E. Correll



Kerry Corse



Daniel O. Cospser



Eileen Costantini





Sylvia M. Costa



Patricia Covert



Susan L. Crane



Stacey A. Critchley



Amy Cunningham



Judith P.  
Cunningham



Michele Cupitt



Kathleen Curran



N. Dagostin



Jennifer L. Dammer



Kimberly J. David



Jennifer E. Davis



Suzanne Davis



Heather Dawes



Holly J. De Iaco



Valerie A. Debalk



Catherine T.  
Dempsey



Jennifer M.  
Derderian



Danielle M. Derr



Lisa Devito

# 1992 Seniors



Kimberly A.  
Dietrich



Susan Dietterich



Neil Diffenderfer



Giuseppe Dimaio



Anthony J. Disipio



Diane M. Dolan



Tina M. Domday



Charles Dominick



Jodi Dominick



Dana S. Domkoski



Suzanne E. Donahoe



Debra A. Donahue



John P. Donahue



Kerri E. Donald



Adam A. Donkus



Renee Donmoyer



James F. Donohue



David J. Donovan



Sherri R. Dorazio



Deborah L.  
Dorfman



Theresa M. Dotzel



Jennifer Dougherty



Dawn Drakely



Patrick A. Dulaney



Jody L. Durfos



Samantha Duval



Susan M. Earl



Dale R. Eby



Kristin Ecker



Kristine M. Eckhart



Kelly R. Eckman



Michelle N. Edling



Carl A. Edwards



Regina Egoville



Joseph P.  
Eiswerth Jr.



Kirsten J. Elek



Jennifer L. Ely



William G. Enck



Katrina S. Erhard



Melinda L. Eroh

# Seniors 1992



Meryl L. Esandrio



Erick Estrada



Susan A. Evans



Michael S. Fahringer



Jennifer Farr



Shannon B. Farr



David E. Farrell



Heather M.  
Farrington



Denise M. Fehrman



Angela D. Feifer



Kay L. Fessler



Melissa Fetterolf



Julie M. Feulner



Debra A. Feusner



Alisha D. Fink



Daniel J. Finn



acqueline N. Fisher



Kristen M.  
Fitzgerald

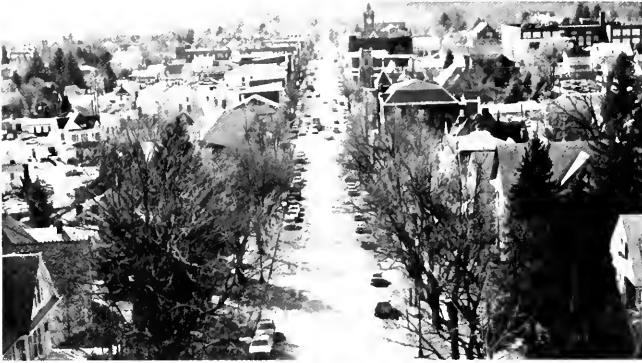


Deirdre Flanagan



Holly A. Fletcher











Theresa M. Flynn



Kim Y. Ford



Edward D. Forman



Maria Forsette



Susan L. Foust



Jennifer Fowler



Jacqueline Fox



Colleen Foy



Joseph P.  
Franceschino



Pamela J. Frank



Stephanie Frank



Kathleen M. Freer



Lynne M. Fremlin



Joyce Frenedick



Amy M. Frey



Charles M. Frickar



Timothy R. Fries



Gregory F. Frisch



Tricia L. Fry



Christine Fuller

# Senior 1992



D. Rancee Fultz

John B. Gabage

Jeanine A. Gaffney

Lisa A. Gaito

Kathleen P. Gally

Ann Geffken



Ronald L. Geib, Jr.

James Geiger

Meg E. Geisser

Stacey A.  
Gemberling

Melissa E. Genovese

Nicole M. Gerdes



Gregory E. German

Christiane Gibson

Bridget E. Gigg

Kelly A. Gillette



Christine A. Girman

Karen R. Girton

Geoffrey A. Goehler

Tara L. Goldman





Christine A. Gover

Erin A. Gownley

Monica R. Gresh

Shelly Griffith

Joella M. Grimm

Gary T. Groenheier



Stefanie Grosch

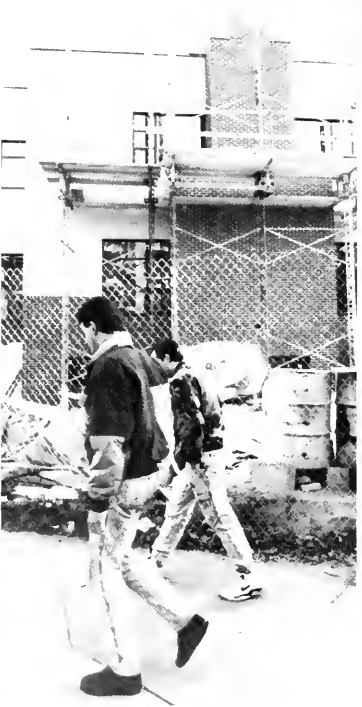
Lisa E. Gross

Amy J. Gum

Lynda M. Haas

Craig L.  
Haberstumpf

Amy P. Hackenber



Jeff H. Haflett

Jill Haflett

Michelle Hall

Dawn S. Hamptor



Susan F. Hanna

Kelly Harding

Jill L. Harman

Jill K. Harris

# Seniors 1992



Angela D. Hartman



Marylee J.  
Hassebach



Thomas Hauber



Nicole Haverstraw



Jody S. Heckman



Bridget Hedman



Wayne R. Hemsley



Karen Hendel



Kimberly A.  
Henninger



Dawn Hepner



Angel Hernandez



John D. Hernandez



Juli Herring



Melissa Hertrich



Dana L. Hess



Joann Hess



Doris Heusner



Anita M. Higgins



Michelle Hile



Karen Hilplo



Roger L. Hilscher



Kyle V. Hindsman



James J. Hines



Jennifer Hoffmar



Vicki L. Hohl



Ned M. Hojnacki



Craig J. Holden



Daniel C. Holdred



Lisamarie Holinka



Kim S. Hoo



Jennifer L.  
Houghton



John Houghton



Caroline  
Houseknecht



William H.  
Housley Jr.



Kimberly Hower



Lori A. Hrino



Debra Hubal



Theresa Huber



Rick Hummel



Turon M.  
Humphrey

# Seniors 1992



Catherine M. Hunter

Brian K. Itterly

Michelle D. Jaske

Judith A. Jemiola

Mark Jobs

Aurora L. Johansen



David M. Johns

Heidi M. Johnson

Gary W. Johnston

Judy Jones

Shelley Jones

Marsha L. Jopski



John Juckniewicz

John W. Juckniewicz

Michael J. Kacsmar

Kristine M. Kaczmarek



Jennifer A. Kaffka

Donna A. Kahler

Suzanne R. Kalman

Claudine Keemss





© 1980









Jennifer L. Keiner



Jay R. Kellett



Todd K. Kennedy



Robert C. Kessler



Jean L. Kester



Kristine Kichline



Heather Kichner



Dee A. Kindt



Kenji M. Kinoshita



Jody L. Kinot



Jeanine Kinsey



Kristine L. Kipphut



Tracy L. Kistler



Matthew A. Klass



Shane Kleiner



Michelle K.  
Kochenash



Marguerite A.  
Kochin



Aileen P. Kopervos



Judith M. Kosman

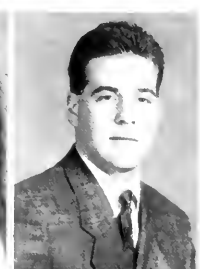


Lynne Kost

# Seniors 1992



Scott Kostenbauder Brenda L. Kozerski Susan M. Koziol Steve K. Kozokas Elwood L. Kratzer II Matthew Kreider



Ann Kreisler Michele J. Kremitske Lori A. Krukus Barbara Kuchta Elizabeth Kurowski Brian C. Kutsmeda



Mark F. Lamm Julie M. Lamphere Michael G. Lamprinos Sharon Lank



Geoffrey Lapp Diane Lappano Lesley J. Laubscher Daniel J. Lawler





Carey A. Lazevnick



Jennifer Leach



Heather M. Leap



Perry A. Lederman



Tanya L. Leh



Brenda Leigey



Lisa A. Leinbach



James A. Lettieri



Ellen K. Lewis



Karen B. Lewis



Richard Lewis



Cathy Lex



Tracey R. Lichter



Lori Liguori



Maureen Link



Patricia A. Lloyd



Teresa J. Loftus



Sherry L. Lohr



Jennifer L. Long



Tammy L. Longac

# Seniors 1992



Lori Longenberger



Eric C. Lovely



Christopher B.  
Lower



William M. Lucas



Lauren Luksic



Angela M. Lunow



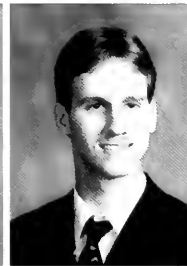
Diane M. Lutz



James Lyons



Daniel Lysak



George W.  
MacIntyre, Jr.



Stephanie Mack



Heather  
MacLaughlin



Mark A. Maggs



Cynthia M. Makos



Christina Malti



Melissa J. Maltman



Karen Manfredonia



Chistine Marinko



Brian C. Martin



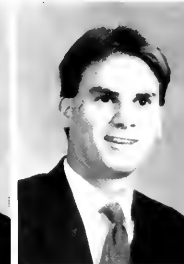
Erin P. Martin



Mary M. Martino Michele A. Matsko Stephanie A. Matyas Pamela S. Mausteller



Leigh C. Mayer Dun W. Mayson Julia A. McAdams Stuart B. McAleer



Erin McAndrew Jill McCormack Jon C. McCormack Michael R. McFeeley James P. McGurrin Brian T. McHullin



Amy McLaughlin Deana McNett Susan J. McWilliams Jennifer L. Mead Elaine J. Meade Lisette Meehleib

# Seniors 1992



Jane A. Mehlbaum



Shana Meier



Donna M. Mekenney



Pamela A. Meilan



Laurie Melton



Todd Mengel



Vincent S. Mennella



Melissa A. Mericle



Vicki D. Merritt



Barbara Meyer



Debra L. Milgrim



Bonnie Milisavic



Kimm Miller



Melissa A. Miller



Darlene Miller-Warren



Aliisa Milligan



Deanna L. Mills



Robert J. Mindick

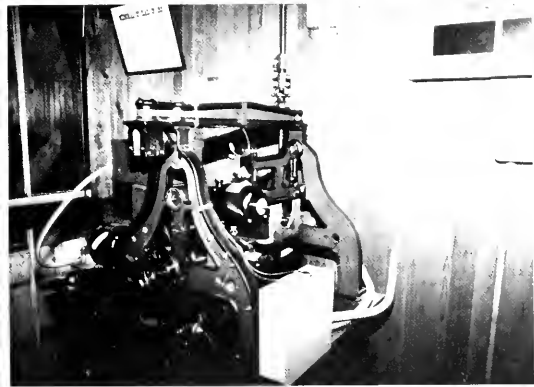


Jamie M. Minichella



Trisha L. Mirabile











Susan A. Misiewicz



Adele I. Mitch



Dawn K. Mitchell



Sharon A. Mohr



Linda A. Moisey



Stephanie A.  
Molchan



Molly R. Molnar



John Monahan



Judith Moncavage



Deborah C.  
Montgomery



Jennifer A. Moon



Kathleen J. Moore



Mark Moore



Timothy Mordau



Jill A. Morrow



Kristin Morse



Arthur A. Moser



Lori E. Mowder



Deborah S. Mumaw



Michael G.  
Musser II

# Seniors 1992



Patricia A. Mychak



Angela K. Myers



Loring Nagle



Christopher  
Nawrocki



Lori A. Nazzaro



Sherri L.  
Netterblade



Cindy A. Neuber



Colleen Neufield



Todd A. Neuhard



Bill Newhouse



Karen L. Nice



Kristen B. Niebling



Lawrence J. Nissen



Ellen M. Nixon



Marijane Noll



Stacey L. Noll



Kevin P. Norton



London Nuss



Michele O'Brien



Sean O'Brien





Jeff M. O'Connell



Joann O'Toole



Fredericke J.  
Oakes Jr.



Michelle M.  
O'Connor



Andrew O'Donnell



Dawn M. Oliver



Michele Opp



Gina M. Orlandini



Kristen M. Over



Dina Pachence



Gladys Pachkoski



Heidi Page



Thomas A. Pajic



Pamela J. Palermo



Robert P. Palermo



Salvador Pandolf



James Pappert Jr.



Lynn A. Paris



Tina M. Paul



Anissa E. Peiffer

# Seniors 1992



John Pek



Beth Persons



Michael Petersen



Robert J. Petit-Clair



Sean J. Petrasek



Laurie A. Pflugler



James M. Pishock



Nikki Pivovar



Suzanne Plafcan



Kathleen R. Pratt



Joseph B. Price



Tracy L. Price



Janice L.  
Puffenberger



Robert S. Purnell



Dianne Pursell



James E. Quaales



Brian C. Ralph



Dana Rapson



Amy J. Reece



Kimberly M.  
Refsnider



Celina M. Reich



James E. Reichner



Marian Reifer



Michael R. Reige



Darren W. Reighard



Eugene Reilly



Valerie Reilly



Greg W. Reimer



Ronald M. Reinhard



Amy Remley



Richard S.  
Remington



David A. Renninger



Frank J. Riccette



Anita M. Rice



Amy Rich



Deborah J.  
Richmond



Liane Ringsdorf



Lisa Ritt



George J. Rittle



Rachelle Roche

# 1992 Seniors



Jane E. Rohrer

Laurel M. Romano

Ralph J. Romano

Bruce A. Rosengrant

Jennifer Ross

Gina Rossi



Stephanie Rough

Karen Rouse

Jennifer Ruddy

Tammy Rudy

Karen J. Ruhmann

Christopher Rush



Karen Russell

Lincoln D. Russell

Amy L. Rutt

Robert L.  
Samtmann Jr.



Carol L. Sands

Laura M. Sandy

Thea J. Sangiuliano

Jennifer L. Saraceno











Maria T. Scheithauer



Brian C. Schilling



Jamie R. Schilling



Kurtis W. Schmid



Kristine Schoenleber



Richard Schofield



Kerri A. Schwier



David L. Scott



Mike Seibert



Melissa Seitz



Leanne J. Shamp



Cynthia A. Shankweiler



Tracie Sharrow



Kenneth Shearer



Kelly M. Sheridan



Kristine L. Short



Stacy I. Shotz



Marvin K. Shrawder



Christine L. Siegfried



Amy Simmons

# Seniors 1992



Shannon Simonet

Mike Simpson

Kathleen M. Sinnott

Francis P. Sisko

Kimberly J. Slusser

Andrea N. Smith



Gisela Smith

Kelly S. Smith

Rosemary Smuller

Dawn Snyder

Julie Snyder

Michelle Snyder



Tina L. Snyder

Vicki L. Snyder

Janet H. Soback

Jessica L. Sobolewski

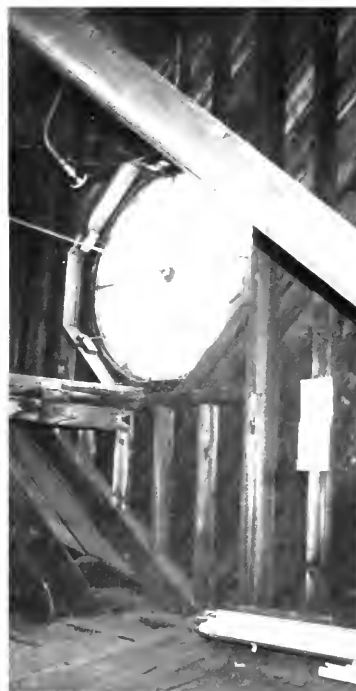


Mary J. Sorensen

Amy Spagnoletti

John Spangler

Jennifer L. Spencer





Sharon R. Spering



Jaime Stably



Wendy L. Stachel



Chadyeane A. Stambaugh



Rita A. Stancavage



Dean Stasio



Victoria L. Steiner



Melinda Stoudt



Colleen Stout



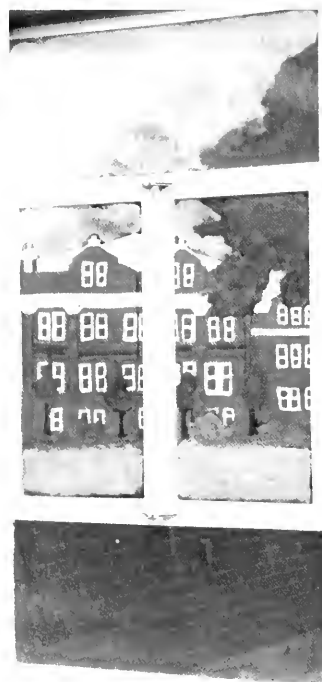
Deanne L. Stout



George Stout



Jennifer M. Street



Robert M. Stroup II



Michelle M. Strutt



Susan A. Stuchell



Catherine C. Sullivan



Karen A. Sulpy



Shannon Symons



Matthew Szerencsits



Russell A. Talamo



Beverly Taylor

Kirk E. Taylor

Rebecca L. Teaford

Christine Terrel



Erin N. Thomas

Michelle Thomas

Randy S. Thomas

Christina Thompson



Annette M. Tielle

Beth A. Tobias

James J. Tolbert

Kimberly A.  
Tonkinson

David M. Torrey

Amy K. Totin



David H. Trathen

Dan Trexler

Leslie A. Troglione

Donna J. Troutman

Stacy Turock

Kimberly A.  
Turofski



Jeffery J. Ulanoski



Albert W. Unrath Jr.



Lauri Vachino



Jared Valeski



Cheryl L. Valousky



Steven J. Vigorito



Sherry L. Voloshin



Kiersten E. Voytek



Jennifer Waasworth



Debra Wagner



Marci A. Wagner



Randy A. Wagner



Keely Walsh



Cheri S. Walters



Elizabeth L. Walton



Karen C. Weber



Janette M. Weigano



Jennifer J.  
Weinstein



Mark Weiss



Raymond J.  
Welgosh

# Seniors 1992



Jill A. Wenders

Kristina Wenger

Tammy L. Wenner

Shannon L. Wentz

David A. White

Dawn L. Whitebread



odi M. Whitebread

Heather White

Jerrell M. Whitfill

Cathy L. Wieder

Kevin E. Wigoda

Chloe R. Williams



Christy M. Williams

Kelly Williams

Donna Wilt

Timothy L. Wilver



Cheri A. Withrow

Donna Witts

Barbara Wolek

Jason S. Wolfe





Tara Wolfgang



Cheryl L. Wood



Bonnie L.  
Worthington



Amy Wozniak



Krista R. Wright



Candace Wydra



Diane Yablonski



Jeanie Yap



Christine A. Yerke



Heather Young



Keith A. Young



Stacie Young



Diane F. Youngblut



Donna M. Zampetti



Christine Zazzari



Elaine C. Zelenak



Linda M. Zellin



Lisa K. Zellin



Dawn B.  
Zimmerman



Georgeann M.  
Zitkus



Carolyn L. Zulic



The staff of the 1992 Obitier is continuing a tradition of giving parents and friends an opportunity to say congratulations. The response to this invitation has been heartwarming. We would like to thank each of you who responded. Congratulations to every graduate from the Obitier staff.

Mathy Lex  
Congratulations and best wishes for a bright and prosperous future.  
Love, Dad and Mom

David E. Farrell  
Congratulations on a job well done. We are very proud of you. You took a lot of hard work and you made it.  
Love, Dad and Mom

Alph J. Romano  
Congratulations on your graduation and may your future bring you every happiness.  
Love, Mom & Dad, Deneen, Joe, Britine, Mark & Theresa

Kelly L. Williams  
Congratulations Kelly! We knew you could do it.  
Love, Dad & Mrs. Lloyd Williams

Anna Marie Orlandini  
Congratulations, daughter. We are so proud of you. Your dreams will come true. Chin up! The path may be a long & winding one, but the goals you set, will be at the end. You will achieve.  
Love you, Mom & Dad

Susan F. Hanna  
"The future belongs to those who believe in the beauty of their dreams." Eleanor Roosevelt

Congratulations, Susan, from your Father, Mother and Sister Jill

Cheryl Lynn Wood  
Congratulations Cheryl! You did it & with honors too! We've always been proud of you, but never more than right now. The world is yours! Go show them what you can do.

Love Mom & Dad, Brian and Tommy and Granny

Christine Gover  
Chris; Way to go. Great job. We are all proud of you. Best of luck in your nursing career and new job.  
Lots of Love, Mom, Dad, David, Brian, Dan, Brandi, Casey, Tasha

Loring A. Nagle  
Loring, We're proud of you & we love you.

Mom & Kevin

Michael Fahringer  
Congratulations in successfully

completing your education goal! We both wish you the very best in whatever you undertake.  
Love Dad & Mom

Mark Cibort  
Congratulations! Does this mean you're the "Biggest Bumblebee"?  
Love Mom & Dad

Joe Broscius, Jr.  
Congratulations on your graduation. You have made us very proud of you. We wish you the very best in all you do.  
Love Mom & Dad Broscius

Kerri Schwier  
Congratulations Kerri, we are proud of you. Good luck in your future endeavors.  
Mom & Dad

Judith P. Cunningham  
Judi. We are proud of you for all your hard work and accomplishments these past four years. Best wishes for continued success in your nursing career and all your future endeavors.  
Love, Mom & Dad

Congratulations Tom & All the Graduates. God Bless You All!

Thru the LORD, hard work, sacrifice and . . .  
simply BELIEVE, You can achieve great things.

Only as high as you reach can you grow,  
Only as far as you seek can you go,  
Only as deep as you look can you see,  
Only as much as you dream can you be.

The Pajic Family

Erin Patricia Martin  
Congratulations Erin! Thank God! Our 6th and last child has received her college diploma. It is now time to ENJOY life.  
We love you! Mom & Dad

Leanne J. Shamp  
Leanne, WE made it!! You worked. We paid and prayed. We made it!! Lots of luck in the future. You deserve it  
Love Ya, Mom & Dad

Karen Weber  
Congratulations! We wish the brightest and happiest future for you. We couldn't be prouder of your achievements or of you as a person.  
All our love, Mom, Dad, Melinda, Barb, Nana & Pop-Pop

Lauren Luksic

Of everything I've ever done in my life, raising you is what I'm proudest of. If I never accomplish anything else, I know I've done something wonderful and beautiful for the world!

All my love. . .Dad

Amy Spagnoletti  
Congratulations Amy, You've reached another milestone in your life. The road to this point was full of obstacles, some seemingly impassable, but you endured, and you made it. We're so proud of you. We wish you only the best along the road ahead.

Love, Mom & Dad

John J. Pek, Jr.  
Dear John, Congratulations and best wishes for all your accomplishments and good work over the last four years.  
All our love, Always.  
Mom, Dad & Lisa

Judith A. Jemiola  
Congratulations and good luck Judy.  
Love, Mom, Dad, Joann, Jeff

Donna Brodoski  
Donna, Wishing you the best of luck, success and happiness in the future. We know you will achieve your goals and dreams, as you have done in the past, making us

all so very proud of your accomplishments.  
With all our love for now and always.  
Mom, Dad, Karen & Tom

Congratulations Susan  
Congratulations R. J. Vi and Bill Delker

Judith M. Kosman  
Congratulations Judy, Great job!! We are all very proud of you. Good luck in all your future endeavors.  
Love Mom, Dad, Jan and Cindy

Sue Evans  
You are the greatest. Good Luck.  
Love Mom, Dad, Meg, Tod

Annette M. Tielle  
Dear Annette; Congratulations in all you have achieved, the outstanding student teacher award, the 4.0 averages and most of all your success in the goals you set for yourself. We are very proud of you. God bless you in your future.  
Our love always, Mom, Dad and Suzie

Jennifer Kaffka  
Congratulations Jennifer from two of the proudest parents in the world. Always remember you can

anything you set your mind to  
You are a very special person  
and we love you very much.  
Love, Mom and Dad

Jane Clewell  
Sometimes the road was bumpy,  
sometimes downright rough —  
but you stuck with it no matter  
how tough. We are all very proud  
of you & love you very much.  
Love, Mom, Dad & Dawn

Amela A. Meilan  
Dear Pam; Congratulations! We  
are very proud of your achieve-  
ments and wish you the very best  
in everything in the future. We  
love you!!  
Love, Mom & Dad

Sara Ritt  
Congratulations Lisa. We are so  
proud of you.  
Love, Mom & Dad

Equeline Fisher  
Dear Jake, Whatever you do,  
may the happiness you so de-  
serve, go hand in hand with you.  
Love, Mom & Ray

Weather, Angela and Valerie, The  
hard work has finally paid off!  
May all your dreams and aspira-  
tions come true.  
Love, Lisamarie

Sherri Dagostin  
Congratulations: Sherri from  
Mom and Robert.  
We love you: We made it togeth-  
er: Forever, thanks to PapPap,  
Ju, Aunt Dot

Edward F. Palmer III  
Congratulations Ed. You made  
your family so very proud. Al-  
ways the best the future can  
bring. We Love You, Ed & Lucy  
Palmer

John B. Gabage  
John, to be sure "the guy in the  
glass" is your friend. You will  
always make the difference, no  
matter where you go. God Bless  
you!!  
Mr. & Mrs Robert Gabage

Regina Marie Egoville  
Regina-Congratulations!  
With love and pride. Dad Mom,  
Chuck, Justin, Chris, Anna and  
Mark

Kristin Ecker  
Congratulations for a job well  
done.  
Mr. & Mrs Peter Ecker

Ilyse K. Balsam  
Ilyse, We're very happy and  
proud of you. We hope life ahead  
brings you lots of happiness and

joy. Congratulations and best  
wishes.  
All our love, Mom, Dad, Mer-  
edith and Steven

James E. Quales  
Jim, It was a long road, but I  
knew you could do it. Just be  
yourself.  
Love, Mom

Jill Ann Morrow  
Congratulations, Jill!  
Love, Mom, Dad, Jean, Dennis,  
Janice and Tom

Robert C. Kessler  
Dear Bob, Thank you for letting  
us share your life. Seeing you  
change from a delightful little boy  
into a caring young man has been  
a wonderful experience for us.  
We wish you love, happiness and  
a successful career. May God be  
with you.  
Love, Mom and Dad

Eric James Barcavage  
Congratulations Eric and best of  
luck in the future. We love you  
and we are very proud of you and  
all your endeavors.  
Mom, Dad, Stesha, Steve, Penny,  
Leann, Shaun, Ryan and Bandit

Marguerite Ann Kochin  
Marguerite (Peggy), You are very  
special to us. We wish you all the  
luck and success in your nursing  
career. Keep your sense of hu-  
mor. May you always be happy.  
We love you, Mom & Dad

Patricia Mychak  
Patti: Congratulations on your  
graduation! We can't begin to tell

you how proud we are of you. May your future be bright, successful and full of happiness, because you really deserve it. Whenever you go always remember we're here for you.  
Love, Mom, Dad & Debi

Jill K. Harris  
Congratulations Jill. We are proud of you.  
Love, Mom & Dad

Geoffrey A. Goehler  
Geoffrey, As we look back with pride to all the achievements you have attained, we look forward to a rewarding future ahead for you. We love you and are so very proud of you!  
Love, Mom and Dad

Timothy R. Fries  
Congratulations, Timothy. We're very proud of you!  
Love, Mom, Dad, Colleen and Steven

Craig J. Holden  
Congratulations Craig! We knew you could do it. Good luck in all future endeavors.  
Love, Mom & Dad, Joey & Brian

Lisa Baniewicz  
Congratulations Lisa Baniewicz!  
We love you  
Mommy, Daddy, Carin, Darryl, Uncle Eddie, Evelyn, Shopti and Mooshka

Jeff O'Connell  
Jeff, Congratulations. We are so proud of you.  
Love, Mom, Dad & Shannon

Jennifer Baram  
Congratulations Jennifer Baram! We are so proud of you for who you are and what you will be someday. Your dedication and perseverance were the means to your success. Hold your college memories dear to your heart and look to the future where new and exciting opportunities await.  
Love, Mom, Dad and Ann

Adrienne Bahl  
Congratulations. We wish you the very best in life and may the future years be filled with love and happiness.  
Love, Mom & Dad

Kyle Hindsman  
To Kyle with all our love. Congratulations for this accomplishment. We are very proud of you. May God be with you in everything you do in the future.  
Love, Mom, Dad, Sean, Vonda, Sabrina, Mom Mom & Pop Pop Mason

Dana Louise Hess'  
Dear Dana, Pride... Respect... Love, You've earned them all! Congratulations on an outstanding job and our best wishes for a successful and happy future.  
Love, Mom, Dad and Ryan

Elaine C. Zelenak  
Congratulations and best wishes as you take this next step in your life. May you prosper in life and take what you have learned and use it to the fullest. We love you for who you are and wish you well. Remember, we are here for you.  
Love, Mom & Dad

Erin N. Thomas  
Congratulations, Erin. We are very proud of you. We love you.  
Mom and Dad

Natalie Alansky  
Natalie; You've earned your degree-now you must transfer that knowledge to your students. You've accomplished a lot both academically and athletically. We're very proud of you.  
Love, Mom, Dad and Scott

Jennifer L. Wadsworth  
Congratulations Jen: You made it! (A Bachelor of Science degree in Nursing). We are so proud of you. We wish you happiness and success in all your future plans. We love you.  
Mom and Dad

Theresa Huber  
Dear Tree, Last, but certainly not least! Congratulations, success and a lifetime of happiness!  
Love, Mom & Dad

Stacey Noll  
Dear Stacey: Much love and pride go out to you today. You have achieved the goal you're so deserving of. You will be a very caring teacher. With the support of friends and family the last several years you're on your way. With all our love.  
Mom, Dad and Muffy

Greg Reimer  
Congratulations Greg, you've grown in knowledge, understanding and wisdom, filled our lives with love, challenges, joy. As you pursue your future, make a difference, fulfill dreams, motivate

ers, mold futures. Walk with  
God, seek His guidance in your  
e. We love you and are proud  
t be your parents!  
bris and Al Reimer

ian C. Ralph  
ve worked very hard, had some  
eat times and made lifetime  
endships. We are very proud of  
u and your accomplishments  
d wish you a life of success and  
ppiness.  
ve always, Mom and Dad

shma, We're so proud of you!  
ngratulations and best wishes  
the future.  
ve, Mom, Dad, Nimish, Aarti  
Ketan

illiam M. Lucas III  
f you think you can, you  
ll. . ." We're all Soooo proud!  
ve, Mom, Frank, Wendy, Aunt  
nda, Uncle Herb, Grandma  
d Grandpa

A. Wenders  
ngratulations, Jill.  
ve, Mom, Dad & Brian

urren Reighard, Dave Sarley,  
n Brogna, Joe Eiswerth, Tim  
ies, Jamie Schilling, Rob  
roup, Joe Franceschino

t the long meetings, all the de-  
led discussions, all the un-  
nned problems. . .some how it  
seems worth it. Thanks for  
tributing your precious time  
d sincere effort. Your only limi-  
tion is the size of your ideas  
d the degree of your dedica-

tion: Best of luck in all you do.  
WBUQ-FM

Stacey Critchley  
Congratulations Stacey.  
Mom, Dad & Ronnie

Jennifer Kaffka

Congratulations Jennifer from  
two of the proudest parents in the  
world. Always remember you can  
do anything you set your mind to  
do. You are a very special person  
and we love you very much.  
Love, Mom and Dad

Jennifer Ann Durkin  
Jen; The road to success is never  
easy, but you managed the hard  
work with laughter and fun! We  
wish you the best of everything  
that life can bring-you deserve it.  
Remember, always follow your  
conscience and God will show the  
way.  
We love you, Mom, Dad and J.P.

Albert W. Unrath, Jr.  
Albert, Your one of a kind  
Love, Mom and Dad

Melissa E. Genovese  
Melissa, Lots of luck and a bright  
, happy future! You have made us  
very proud.  
Mom and Dad


James Allen Marshall  
Congratulations Jay! "You made  
it through the rain". Best wishes  
for a very successful future.  
"Don't Quit". #99  
Mom & Dad

Michael A. Smith  
Congratulations and best wishes.  
A. J. Smith

Debra Donahue  
"D" is for the days spent study-  
ing,  
"E" is for the effort put forth.  
"B" is for Boston and Bloom,  
"R" is for rides to Reading, PA.  
"A" is for always . . . we will love  
you.  
Mom & Dad  
Congratulations on a job well  
done  
P.S. I will miss you a lot.  
Love, your sister

# ALUMNI ASSOCIATION

Bloomsburg University • Bloomsburg, PA 17815  
(717)389-4058 • 800-526-0254 • FAX: (717)389-4060



Fenstemaker Alumni House

Dear Graduate:

WELCOME to the Bloomsburg University Alumni Association!

With Commencement, you have moved from one important part of the Bloomsburg University family — the student body — to another: the Alumni Association. You have joined over 34,000 other alumni who are making significant contributions to society in every state and more than two dozen foreign countries.

Wherever you go, please remember this: The staff of the Alumni Office stands ready to serve you, whether it is next month or in 20 years. That's why we are here, to serve as your liaison with the University. If ever you encounter a problem or need information, please contact us first. We will do everything we can to expedite a solution or a response.

In the meantime, we would like you to know what else you can expect from your Alumni Office. In a word, it is SERVICE. Here are some examples:

- \* Publishing *BLOOMSBURG*, the publication for alumni and friends of the University. Please feel free to send news about significant events in your life for the "Class Notes" section — the most popular part of the publication.

- \* Planning class reunions at five-year intervals on either Alumni Weekend in the spring or on Homecoming in the fall. If you would like to help plan your reunions, please contact the Alumni Office.

- \* Arranging regional alumni meetings throughout Pennsylvania and other parts of the United States. Be sure to tell us when you move, so we can let you know when a meeting is planned in your area.

- \* Providing opportunities for alumni to return to campus to share their experiences with current students. These opportunities include the Alumni Fellow-in-Residence program and the Share-a-Day program.

- \* Informing you of ways in which you can serve your Alma Mater, either through financial contributions to the University's Alumni Annual Fund or by contributions of your time and talent.

Above all, please remember that your Alumni Association will be better if you take an active role in its projects and programs!

Sincerely,



Doug Hippenstiel '68

Director of Alumni Affairs

P.S. You can reach us by calling our toll-free telephone number: 1-800-526-0254. And always feel welcome to visit us at the Fenstemaker Alumni House — your home at Bloomsburg University.

# Western Sizzlin<sup>®</sup>

More than just a great Steak house.  
Fish, Seafood, and Chicken.

At Western Sizzlin, we care about your health.  
All our fried foods are cooked in cholesterol-free  
oil which contains 50% less the amount of saturated  
fat than other oils, for your good health.

I-80 and Rte. 42, exit 34  
(717)784-7757



# MAGEE'S

---

## MAIN STREET INN

BED & BREAKFAST

Activated in 1985, the Bloomsburg University Foundation, Inc. has the responsibility of securing private funds to maintain and enhance quality and excellence in all areas of the University. The BU Foundation conducts an active program of information, cultivation, and solicitation among individuals, corporations, and foundations. The Bloomsburg University Foundation membership includes outstanding business, professional, and civic leaders from throughout the Commonwealth.



117 W. Main St.  
Bloomsburg, PA 17815  
(717) 387-1332

CONGRATULATIONS

GRADUATES!

---

**RITTER OFFICE SUPPLY**  
112 E. MAIN STREET  
BLOOMSBURG, PA 17815  
PHONE (717) 784-4323

## The New

P  NUT BOWL

-Snack Shop -16 Lanes  
-Pro Shop -Video Room  
-Automatic Scorer  
2701 P-Nut Lane (Route 11)  
784-0202



**campus beer  
distributor**

---

3 North Iron Street, Bloomsburg, PA 17815  
(717) 784-3285

# NAPOLI PIZZA

of Bloomsburg  
387-0511

**CONGRATULATIONS GRADUATES!**



**THE  
HUSKY  
AMBASSADOR S**

**CONGRATULATE**

*"BLOOMSBURG UNIVERSITY'S FINEST"*

---

**GOOD LUCK & BEST WISHES  
to the  
GRADUATING AMBASSADORS**





# ALUMNI ASSOCIATION

Bloomsburg University • Bloomsburg, PA 17815  
(717)389-4058 • 800-526-0254 • FAX: (717)389-4060

Fenstemaker Alumni House

Dear Graduate:

WELCOME to the Bloomsburg University Alumni Association!

With Commencement, you have moved from one important part of the Bloomsburg University family — the student body — to another: the Alumni Association. You have joined over 34,000 other alumni who are making significant contributions to society in every state and more than two dozen foreign countries.

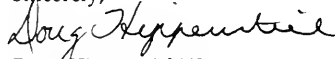
Wherever you go, please remember this: The staff of the Alumni Office stands ready to serve you, whether it is next month or in 20 years. That's why we are here, to serve as your liaison with the University. If ever you encounter a problem or need information, please contact us first. We will do everything we can to expedite a solution or a response.

In the meantime, we would like you to know what else you can expect from your Alumni Office. In a word, it is SERVICE. Here are some examples:

- \* Publishing *BLOOMSBURG*, the publication for alumni and friends of the University. Please feel free to send news about significant events in your life for the "Class Notes" section — the most popular part of the publication.
- \* Planning class reunions at five-year intervals on either Alumni Weekend in the spring or on Homecoming in the fall. If you would like to help plan your reunions, please contact the Alumni Office.
- \* Arranging regional alumni meetings throughout Pennsylvania and other parts of the United States. Be sure to tell us when you move, so we can let you know when a meeting is planned in your area.
- \* Providing opportunities for alumni to return to campus to share their experiences with current students. These opportunities include the Alumni Fellow-in-Residence program and the Share-a-Day program.
- \* Informing you of ways in which you can serve your Alma Mater, either through financial contributions to the University's Alumni Annual Fund or by contributions of your time and talent.

Above all, please remember that your Alumni Association will be better if you take an active role in its projects and programs!

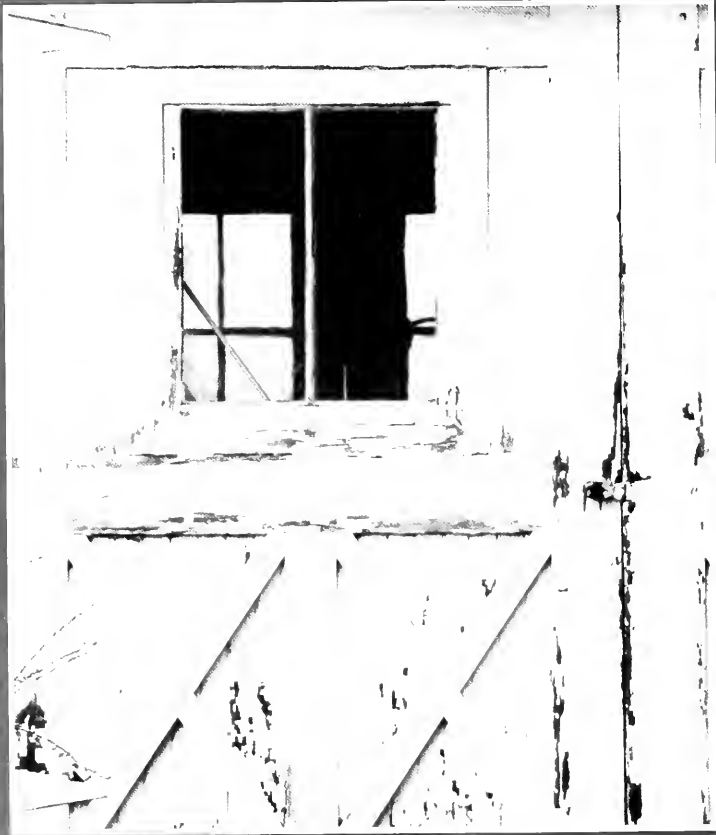
Sincerely,



Doug Hippenstiel '68  
Director of Alumni Affairs

P.S. You can reach us by calling our toll-free telephone number: 1-800-526-0254. And always feel welcome to visit us at the Fenstemaker Alumni House — your home at Bloomsburg University.







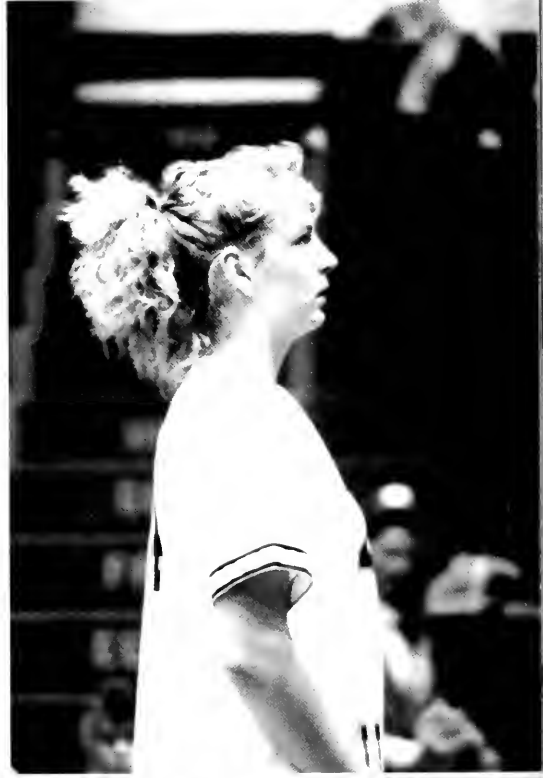










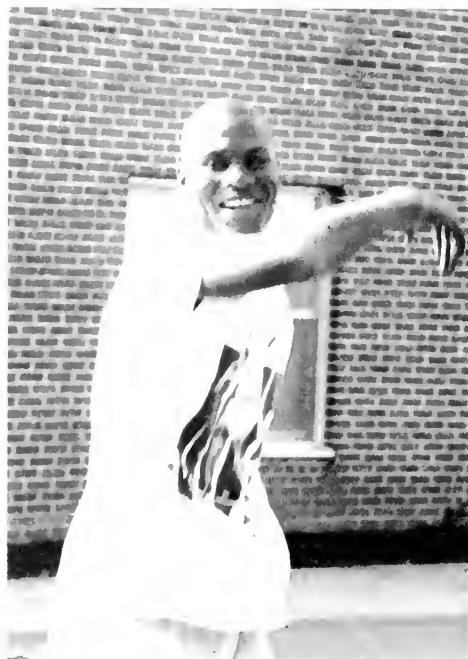


















# Obiter

/o-bat-er, ab-at-/ n. [fr. L. OBITER DICTUM] an incidental or casually interjected remark, reflection, comment, or opinion.

THE YEARBOOK OF BLOOMSBURG UNIVERSITY



**T**HE END...well, almost. This is the page of the yearbook where the editor (myself) is allowed to thank all of the people who made this book a reality. Do you see those four people in the photograph? They are my family — mom, dad, brother and me. They deserve a huge round of applause because if it wasn't for their love, support and good advice, I would have never taken on the responsibility of Editor-in-Chief in my final semester, let alone finish the book without going insane. Thank-you for being my family. I love you!

Next, I would like to thank the entire *Obiter* staff for doing the impossible and fulfilling my bizarre requests. "Expect the Unexpected" is a perfect theme for this year, wouldn't you say?

Dr. David Hill and the entire Community Activities staff have played a very, very important part in the publication of "Expect the Unexpected". Thank you, Dr. Hill for taking over the yearbook this summer and for working the many miracles you have in order to make this book a reality. Yes, no sooner has the 1992 book been completed then it is time to begin the 1993 edition. I wish you the best of luck in the future. It was a great pleasure to work with you and the Community Activities staff.

Not many people realize this, but a yearbook can not become a reality without a printing company and a photography studio. The *Obiter* has contracted two wonderful outfits to make our yearbook possible: Taylor Publishing Company and Davor Photographers. Thank you Ed Patrick



for your time and help in getting this yearbook together in one semester. I truly enjoyed working with you. As for Mark Huff and the Davor photographers: you all did a wonderful job in capturing the faces and memories of Bloomsburg University. Thank You.

There are many people who deserve to be thanked for getting this book together and I apologize if I fail to thank everyone involved in "Expect the Unexpected".

To conclude my praise and undying thanks, I would like to say goodbye and thank you to some very special people in my life: my friends, old and new.

**Mike Mullen:** (*The Voice*) You are a wonderful writer and a great listener. It was a pleasure working with you. You may have missed Senior portraits, but anyone who reads pages 46-47 will re-

member you forever. Good Luck.

**Mike Jemo:** (CGA) Hey, we didn't forget you guys this year (for fear of losing our budget!). Anyway, it was great being your "office neighbor" and personal composition tutor. Enjoy your final year. Good Luck!

**"41 Sesame"**- (Kelley, Tracy, Corinne, Vicki and Cheryl) You were the best roommates ever! I don't know how you put up with me and my activities, but thanks for doing so! I love you!

**Husky Ambassadors-** The best support group any one person can have. We are what teamwork is all about. Keep smiling and best wishes to everyone.

**Cari Lyon, Amy Kravetz, Steve Zezza, Linda Pitcher, Jamie Oberman, Lauren Conca, Sue Little, Meg Oberman, and Matt Teter** — Thank you for picking me up when I'm

down and sharing the good times with me. You are all wonderful people and one of the major reasons why I got through this book — because you all had faith in me. Thank you!

As the Editor-in-Chief of the *Obiter*, I would like to take full responsibility for any mistakes made or groups omitted from the book.

Around December of 1991, I was asked to take over the yearbook because the past editor would not be finishing out the school year at Bloomsburg. I have never put together a yearbook and did not know what the job entailed, but I said yes because there was no other person to put together my and your Senior yearbook. The staff and I made it through the semester and did our best to give you a yearbook worth keeping forever. On behalf of the *Obiter* staff, I hope you have enjoyed "Expect the Unexpected", because we enjoyed putting it together for you. Good luck.

Jennifer L. Saraceno  
Editor-in-Chief





BLOOMSBURG UNIVERSITY



3 2404 00293582 9

