



This is a digital copy of a book that was preserved for generations on library shelves before it was carefully scanned by Google as part of a project to make the world's books discoverable online.

It has survived long enough for the copyright to expire and the book to enter the public domain. A public domain book is one that was never subject to copyright or whose legal copyright term has expired. Whether a book is in the public domain may vary country to country. Public domain books are our gateways to the past, representing a wealth of history, culture and knowledge that's often difficult to discover.

Marks, notations and other marginalia present in the original volume will appear in this file - a reminder of this book's long journey from the publisher to a library and finally to you.

Usage guidelines

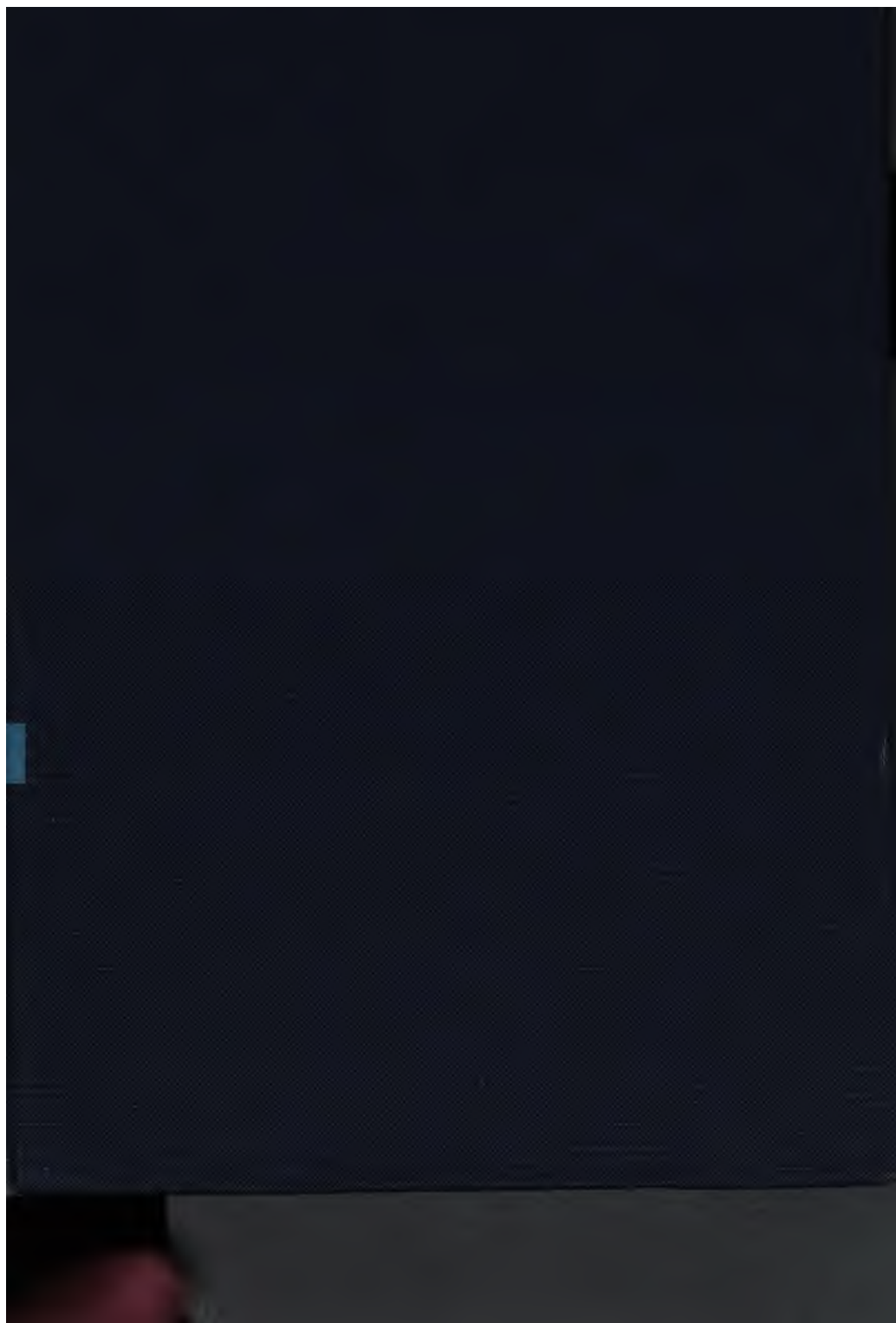
Google is proud to partner with libraries to digitize public domain materials and make them widely accessible. Public domain books belong to the public and we are merely their custodians. Nevertheless, this work is expensive, so in order to keep providing this resource, we have taken steps to prevent abuse by commercial parties, including placing technical restrictions on automated querying.

We also ask that you:

- + *Make non-commercial use of the files* We designed Google Book Search for use by individuals, and we request that you use these files for personal, non-commercial purposes.
- + *Refrain from automated querying* Do not send automated queries of any sort to Google's system: If you are conducting research on machine translation, optical character recognition or other areas where access to a large amount of text is helpful, please contact us. We encourage the use of public domain materials for these purposes and may be able to help.
- + *Maintain attribution* The Google "watermark" you see on each file is essential for informing people about this project and helping them find additional materials through Google Book Search. Please do not remove it.
- + *Keep it legal* Whatever your use, remember that you are responsible for ensuring that what you are doing is legal. Do not assume that just because we believe a book is in the public domain for users in the United States, that the work is also in the public domain for users in other countries. Whether a book is still in copyright varies from country to country, and we can't offer guidance on whether any specific use of any specific book is allowed. Please do not assume that a book's appearance in Google Book Search means it can be used in any manner anywhere in the world. Copyright infringement liability can be quite severe.

About Google Book Search

Google's mission is to organize the world's information and to make it universally accessible and useful. Google Book Search helps readers discover the world's books while helping authors and publishers reach new audiences. You can search through the full text of this book on the web at <http://books.google.com/>





PROPERTY OF THE

*University of
Michigan
Libraries*

1817

ARTES SCIENTIA VERITAS



Engin Lit
8
71
1
.1124
1907

Hand Book of
**Gasoline
Automobiles**

For the information of the
public who are interested
in their manufacture
and use

1907

Automobile

Engin. Library

TL

1

H24

1907

Copyright, 1906, by the
Association of Licensed Automobile Manufacturers
New York City, N. Y.

Fourth Annual Announcement

THE Hand Book has become indispensable to prospective purchasers of automobiles. It has definitely taken its place as a permanent annual publication, and is the accepted standard authority on the subject with which it deals. In its illustrations and specifications are fully and correctly described the products of the principal manufacturers of automobiles throughout the United States of America, as well as of the leading importers of gasoline machines. There is no important question arising in the mind of an intending purchaser which is not embodied in these specifications, with the accompanying answer in red ink. It will be observed that all the machines herein described are subjected to one uniform series of interrogations. This makes the process of comparison both easy and accurate, and enables the purchaser to select a machine best suited to his needs, to his personal taste, or to the means at his command.

Such a method of comparison is obviously of advantage to the purchaser, and the manufacturers and importers who have adopted it may fairly claim the credit of entire disinterestedness.

There is no combination among these manufacturers and importers. Every one of them conducts his business in entire independence of any of the others, and among them all a free competition is maintained. But there is a basic United States patent, No. 549,160, granted to George B. Selden November 5, 1895, on gasoline automobiles, which controls broadly all of such machines as are accepted as commercially practicable. The only bond between the companies represented herein is their recognition of this patent and their conviction that such recognition is a guarantee that the purchaser of their machines is thereby secured against the annoyance and expense of litigation attendant on the infringement of a patent.

Should you be unable to obtain from the agent in your vicinity catalogues of individual makers giving further details, these can be had by addressing any company represented in this book, using one of the "Catalogue Request Blanks" on pages 151, 153 and 155.

Organization of Association of Licensed Automobile Manufacturers

Officers

Charles Clifton, *President* The George N. Pierce Company
Thomas H. Henderson, *Vice-President*, Winton Motor Carriage Company
L. H. Kittredge, *Secretary* Peerless Motor Car Company
H. H. Franklin, *Treasurer* H. H. Franklin Manufacturing Company

Executive Committee

F. L. Smith Olds Motor Works
S. T. Davis, Jr. Locomobile Company of America
E. H. Cutler Knox Automobile Company
M. J. Budlong Electric Vehicle Company
William E. Metzger Cadillac Motor Car Company

Trades Committee

William E. Metzger Cadillac Motor Car Company
George Pope Pope Manufacturing Company
G. H. Stilwell H. H. Franklin Manufacturing Company
C. C. Hildebrand Stevens-Duryea Company
Thomas H. Henderson Winton Motor Carriage Company

Committee on Tires

Albert L. Pope Pope Manufacturing Company
L. H. Kittredge Peerless Motor Car Company
S. D. Waldon Packard Motor Car Company

Hand Book Committee

L. H. Kittredge Peerless Motor Car Company
William E. Metzger Cadillac Motor Car Company
Thomas H. Henderson Winton Motor Carriage Company

Show Committee

George Pope Pope Manufacturing Company
Marcus I. Brock A. L. A. M.
C. R. Mabley Smith & Mabley, Incorporated
Merle L. Downs, *Secretary* A. L. A. M.

Traffic Committee

S. D. Waldon Packard Motor Car Company
Thomas H. Henderson Winton Motor Carriage Company
E. P. Chalfant Waltham Manufacturing Company

Advertising and Publicity Committee

F. L. Smith	Olds Motor Works
E. R. Thomas	E. R. Thomas Motor Company
M. J. Budlong	Electric Vehicle Company
Charles B. Shanks	Winton Motor Carriage Company
J. A. Kingman	Locomobile Company of America

New York Office

George H. Day	<i>General Manager</i>
Marcus I. Brock	<i>Assistant General Manager</i>

Patent Department

Hermann F. Cuntz	<i>Manager</i>
----------------------------	----------------

Agency Department

Charles A. Wardle	<i>Manager</i>
-----------------------------	----------------

Traffic Department

James S. Marvin	<i>Manager</i>
---------------------------	----------------

Advertising and Publicity Department

Harry T. Clinton	<i>Manager</i>	Arthur N. Jervis, <i>Special Press Agent</i>
----------------------------	----------------	--

Mechanical Branch

A. L. Riker, <i>Chairman</i>	Locomobile Company of America
Coker F. Clarkson, <i>Secretary</i>	A. L. A. M.
Henry Souther, <i>Metallurgist</i>	Hartford, Conn.

Committee on Tests

A. L. Riker (<i>Ex-officio</i>)	Locomobile Company of America
H. E. Coffin	E. R. Thomas Motor Company
H. P. Maxim	Electric Vehicle Company
Charles B. King	Northern Motor Car Company
John Wilkinson	H. H. Franklin Manufacturing Company
Russell Huff	Packard Motor Car Company

Association Patents Company

Directors

Charles Clifton, <i>President</i>	The George N. Pierce Company
G. H. Stilwell, <i>Vice-President</i>	H. H. Franklin Manufacturing Company
Marcus I. Brock, <i>Secretary</i>	A. L. A. M.
E. H. Cutler, <i>Treasurer</i>	Knox Automobile Company
E. R. Thomas	E. R. Thomas Motor Company
James H. Becker	Elmore Manufacturing Company
Elwood Haynes	Haynes Automobile Company

The following manufacturers and importers are licensed under the basic United States patent No. 549,160, granted to George B. Selden, dated November 5th, 1895, and are the owners of about 400 other patents on

Gasoline Automobiles

The Commissioner of Patents in his annual report for the year 1895, said ; "Selden, in 1895, received a patent, November 5th, No. 549,160, which may be considered the pioneer invention in the application of the compression gas engine to road or horseless carriage use."

Alphabetical Index

	PAGES		PAGES
Apperson Brothers Automobile		Locomobile Co. of America . . .	75-80
Co.	29-31	Lozier Motor Co.	81-86
Archer & Co.	128-130	Matheson Motor Car Co. . . .	144-146
Auto Import Co.	52	Northern Motor Car Co. . . .	134-137
Autocar Co.	89-91	Olds Motor Works	108-113
Sidney B Bowman Automobile		Packard Motor Car Co.	37-42
Co.	48-50	Peerless Motor Car Co.	69-74
Buffalo Gasolene Motor Co. . .		George N. Pierce Co.	58-61
Buick Motor Co.	147-150	Pope Manufacturing Co.	24, 25
Cadillac Motor Car Co.	118-123	Pope Motor Car Co.	26, 27
Corbin Motor Vehicle Corpora-		Royal Motor Car Co.	114-117
tion	62-64	Alden Sampson, 2nd	
Darracq Motor Car Co.	131-133	Smith & Mabley, Inc.	18-23
De Dietrich Import Co.	28	F. B. Stearns Co.	65
Electric Vehicle Co.	103-107	Stevens-Duryea Co.	92-96
Elmore Manufacturing Co. . . .	124, 125	Studebaker Automobile Co. . .	66-68
H. H. Franklin Mfg. Co.	10-15	E. R. Thomas Motor Co. . . .	53-57
Haynes Automobile Co.	43-47	Walter Automobile Co.	51
Hewitt Motor Co.	32-36	Waltham Manufacturing Co. . .	97-102
Hol-Tan Co.	126, 127	Winton Motor Carriage Co. . .	16, 17
Knox Automobile Co.	138-143	Wyckoff, Church & Partridge	87, 88

Catalogue Request Blanks, 151, 153, 155

Index of Trade Names

	PAGES		PAGES
Apperson	29-31	Matheson	144-146
Autocar	89-91	Northern	134-137
Buick	147-150	Oldsmobile	108-113
Cadillac	118-123	Packard	37-42
C. G. V.	88	Panhard	21
Clement-Bayard	48-50	Peerless	69-74
Columbia	103-107	Pierce Great Arrow	58-61
Corbin	62-64	Pope-Hartford	24, 25
Darracq	131-133	Pope-Toledo	26, 27
DeDietrich	28	Renault	20
Elmore	124, 125	Rochet-Schneider	52
English Daimler	87	Royal Tourist	114-117
F I A T	126, 127	Smith & Mabley Simplex	18, 19
Franklin	10-15	Stearns	65
Haynes	43-47	Stevens-Duryea	92-96
Hewitt	32-36	Studebaker	66-68
Hotchkiss	128-130	Thomas	53-57
Isotta Fraschini	22, 23	Walter	51
Knox	138-143	Waltham-Orient	97-102
Locomobile	75-80	Winton	16, 17
Lozier	81-86		

Catalogue Request Blanks, 151, 153, 155

H. H. FRANKLIN MANUFACTURING COMPANY, SYRACUSE, N. Y.

Price

\$2800

Limousine

\$4000



Model : D.

Color : Royal blue.

Seating capacity : Five persons.

Clutch : Disc.

Wheel base : 105 inches.

Tread : 54 inches.

Tire dimensions, front : 34 x 3 inches.

Tire dimensions, rear : 34 x 3½ inches.

Brakes : Three.

Type : Contracting on transmission
and rear wheels.

Horse-power : 20.

Number of cylinders : Four.

Bore : 4 inches. Stroke : 4 inches.

Cylinders arranged : Vertically, under
hood.

Cooling : Air.

Ignition : Jump spark, four coils.

Electric source : Dry batteries.

Drive : Bevel gear.

Transmission : Sliding gear.

Number gear changes : Three forward,
one reverse.

Descriptive catalogue sent upon application to the above-named company.

H. H. FRANKLIN MANUFACTURING COMPANY, SYRACUSE, N. Y.

Price

\$1850



Model: G.

Color: Royal blue.

Seating capacity: Four persons.

Clutch: Disc.

Wheel base: 90 inches.

Tread: 54 inches.

Tire dimensions, front: 30 x 3 inches.

Tire dimensions, rear: 30 x 3½ inches.

Brakes: Three.

Type: Contracting on transmission and rear wheels.

Horse-power: 12.

Number of cylinders: Four.

Bore: 3¼ inches. Stroke: 3¼ inches.

Cylinders arranged: Vertically, under hood.

Cooling: Air.

Ignition: Jump spark, four coils.

Electric source: Dry batteries.

Drive: Bevel gear.

Transmission: Sliding gear.

Number gear changes: Three forward, one reverse.

Descriptive catalogue sent upon application to the above-named company.

H. H. FRANKLIN MANUFACTURING COMPANY, SYRACUSE, N. Y.

Price

\$4000

Limousine

\$5200



Model : H.

Horse-power : 30.

Color : Royal blue.

Number of cylinders : Six.

Seating capacity : Seven persons.

Bore : 4 inches. Stroke : 4 inches.

Clutch : Disc.

Cylinders arranged : Vertically, under hood.

Wheel base : 120 inches.

Cooling : Air.

Tread : 54 inches.

Ignition : Jump spark, six coils.

Tire dimensions, front : 36 x 3 1/2 inches.

Electric source : Dry batteries.

Tire dimensions, rear : 36 x 4 inches.

Drive : Bevel gear.

Brakes : Three.

Transmission : Sliding gear.

Type : Contracting on transmission and rear wheels.

Number gear changes : Three forward, one reverse.

Descriptive catalogue sent upon application to the above-named company.

H. H. FRANKLIN MANUFACTURING COMPANY, SYRACUSE, N. Y.

Price

\$1800



Model: G, RUNABOUT.

Color: Royal blue.

Seating capacity: Two persons.

Clutch: Disc.

Wheel base: 90 inches.

Tread: 54 inches.

Tire dimensions, front: 30 x 3 inches.

Tire dimensions, rear: 30 x 3½ inches.

Brakes: Three.

Type: Contracting on transmission
and rear wheels.

Horse-power: 12.

Descriptive catalogue sent upon application to the above-named company.

Number of cylinders: Four.

Bore: 3¼ inches. **Stroke:** 3¼ inches.

Cylinders arranged: Vertically, under
hood.

Cooling: Air.

Ignition: Jump spark, four coils.

Electric source: Dry batteries.

Drive: Bevel gear.

Transmission: Sliding gear.

Number gear changes: Three forward,
one reverse.

H. H. FRANKLIN MANUFACTURING COMPANY, SYRACUSE, N. Y.

Price

\$4000



Model: D, LANDAULET.

Horse-power: 20.

Color: Green and black.

Number of cylinders: Four.

Seating capacity: Five persons.

Bore: 4 inches. Stroke: 4 inches.

Clutch: Disc.

Cylinders arranged: Vertically, under hood.

Wheel base: 105 inches.

Cooling: Air.

Tread: 54 inches.

Ignition: Jump spark, four coils.

Tire dimensions, front: 34 x 3½ inches.

Electric source: Dry batteries.

Tire dimensions, rear: 34 x 4 inches.

Drive: Bevel gear.

Brakes: Three.

Transmission: Sliding gear.

Type: Contracting on transmission and rear wheels.

Number gear changes: Three forward, one reverse.

Descriptive catalogue sent upon application to the above-named company.

H. H. FRANKLIN MANUFACTURING COMPANY, SYRACUSE, N. Y.

Price

\$5200



Model: H, LIMOUSINE.

Horse-power: 30.

Color: Green and black.

Number of cylinders: Six.

Seating capacity: Seven persons.

Bore: 4 inches. **Stroke:** 4 inches.

Clutch: Disc.

Cylinders arranged: Vertically, under hood.

Wheel base: 120 inches.

Cooling: Air.

Tread: 54 inches.

Ignition: Jump spark, six coils.

Tire dimensions, front: 36 x 4 inches.

Electric source: Dry batteries.

Tire dimensions, rear: 36 x 4½ inches.

Drive: Bevel gear.

Brakes: Three.

Transmission: Sliding gear.

Type: Contracting on transmission and rear wheels.

Number gear changes: Three forward, one reverse.

Descriptive catalogue sent upon application to the above-named company.

THE WINTON MOTOR CARRIAGE COMPANY, CLEVELAND, OHIO

Price

\$2500

With cape top

\$2650

Limousine

\$3500



Model: TYPE X-I-V.

Color: Red, blue, green or gray.

Seating capacity: Five persons.

Clutch: Individual.

Wheel base: 104 inches.

Tread: 56½ inches.

Tire dimensions, front: 34 x 4 inches.

Tire dimensions, rear: 34 x 4 inches.

Brakes: Four.

Type: External and internal hub.

Horse-power: 30.

Number of cylinders: Four.

Bore: 4½ inches. Stroke: 5 inches.

Cylinders arranged: Vertically, under hood.

Cooling: Water.

Radiator: Vertical tubes with fins.

Ignition: Jump spark, unit coil.

Electric source: Storage and dry batteries.

Drive: Bevel gear.

Transmission: Individual clutch.

Number gear changes: Two forward, one reverse.

Descriptive catalogue sent upon application to the above-named company.

THE WINTON MOTOR CARRIAGE COMPANY, CLEVELAND, OHIO

Price

\$3500
With cape top
\$3650
Limousine
\$4500



Model : M.

Color : Red, blue, green or gray.

Seating capacity : Seven persons.

Clutch : Multiple disc.

Wheel base : 112 inches.

Tread : 56½ inches.

Tire dimensions, front : 34 x 4½ inches.

Tire dimensions, rear : 34 x 4½ inches.

Brakes : Four.

Type : Internal and external hub.

Horse-power : 40.

Number of cylinders : Four.

Bore : 5 inches. Stroke : 5 inches.

Cylinders arranged : Vertically, under hood.

Cooling : Water.

Radiator : Vertical tubes with fins.

Ignition : Jump spark, unit coil.

Electric source : Storage and dry batteries.

Drive : Bevel gear.

Transmission : Selective sliding gear.

Number gear changes : Four forward, one reverse.

Descriptive catalogue sent upon application to the above-named company.

Price

runabout
\$4950

Other bodies
extra, according
to style and
make



Model: S. & M. SIMPLEX A A.

Color: Optional.

Seating capacity: Two, and four to seven persons.

Clutch: Reverse cone, Renault type.

Wheel base: 106 inches (also 111 and 114 inches).

Tread: 54 inches.

Tire dimensions, front: 910 x 90 m/m.

Tire dimensions rear: 920 x 120 m/m.

Brakes: Three

Type: Foot on differential, contracting; emergency, hand on rear wheels, contracting.

Horse-power: 30-35.

Number of cylinders: Four.

Bore: 4½ inches. **Stroke:** 5½ inches.

Cylinders arranged: Vertically, under hood; cast in pairs.

Cooling: Water.

Radiator: Honeycomb.

Ignition: Double jump spark.

Electric source: Magneto and storage battery.

Drive: Double side chain.

Transmission: Progressive sliding gear.

Number gear changes: Four forward, one reverse.

Descriptive catalogue sent upon application to the above-named company.

Price

runabout

\$5750

Other bodies
extra, according
to style and make



Model: S. & M. SIMPLEX D A.

Color: Optional.

Seating capacity: Two, and four to seven persons.

Clutch: S. & M. metallic.

Wheel base: 124 inches.

Tread: 56 inches.

Tire dimensions, front: 915 x 105 m/m.

Tire dimensions, rear: 935 x 135 m/m.

Brakes: Four.

Type: Emergency and two foot, all contracting.

Horse-power: 50

Number of cylinders: Four.

Bore: $5\frac{7}{8}$ inches. **Stroke:** $5\frac{7}{8}$ inches.

Cylinders arranged: Vertically, under hood: cast in pairs.

Cooling: Water.

Radiator: Honeycomb.

Ignition: Double jump spark.

Electric source: Magneto and storage battery.

Drive: Double side chain.

Transmission: Selective sliding gear.

Number gear changes: Four forward, one reverse.

Descriptive catalogue sent upon application to the above-named company.

Price

runabout
\$5750

Other bodies
extra, according
to style and make



Model: RENAULT, 1907.

Color: Optional.

Seating capacity: Two, and four to seven persons.

Clutch: Reverse cone, leather face.

Wheel base: 118 inches.

Tread: 54 inches

Tire dimensions, front: 875 x 105 m/m.

Tire dimensions, rear: 880 x 120 m/m.

Brakes: Three.

Type: Foot on driving shaft, contracting; hand emergency on rear wheels, expanding.

Descriptive catalogue sent upon application to the above-named company.

Horse-power: 20 (also 10-14, 14-20 and 35-45).

Number of cylinders: Four.

Bore: 100 m/m. Stroke: 140 m/m.

Cylinders arranged: Vertically, under hood; cast in pairs.

Cooling: Water, thermo-syphon.

Radiator: Cellular.

Ignition: Jump spark.

Electric source: Magneto.

Drive: Bevel gear.

Transmission: Sliding gear.

Number gear changes: Four forward, one reverse.

Price

runabout
\$8050

Other bodies
extra, according
to style and make



Model: PANHARD, 1907.

Color: Optional.

Seating capacity: Two, and four to seven persons.

Clutch: Multiple disc.

Wheel base: 124 inches.

Tread: 56 inches.

Tire dimensions, front: 920 x 120 m/m.

Tire dimensions, rear: 920 x 120 m/m.

Brakes: Three.

Type: Foot on differential, contracting; hand emergency on rear wheels, expanding.

Horse-power: 35 (also 15, 24 and 50).

Number of cylinders: Four.

Bore: 130 m/m. **Stroke:** 140 m/m.

Cylinders arranged: Vertically, under hood; cast separately.

Cooling: Water.

Radiator: Honeycomb.

Ignition: Jump spark.

Electric source: Magneto and battery.

Drive: Double side chain.

Transmission: Progressive sliding gear.

Number gear changes: Four forward, one reverse.

Descriptive catalogue sent upon application to the above-named company.

Price

runabout
\$7250
Other bodies
extra, according
to style and make



Model : ISOTTA FRASCHINI, 1907.

Color : Optional.

Seating capacity : Two, and four to seven persons.

Clutch : Multiple disc.

Wheel base : 120 inches.

Tread : 55 inches.

Tire dimensions, front : 910 x 90 m/m.

Tire dimensions, rear : 920 x 120 m/m.

Brakes : Four.

Type : Contracting on transmission (water cooled) and countershaft, and expanding on rear wheels.

Descriptive catalogue sent upon application to the above-named company.

Horse-power : 35 (also 22).

Number of cylinders : Four.

Bore : 130 m/m. Stroke : 150 m/m.

Cylinders arranged : Vertically, under hood ; cast in pairs.

Cooling : Water.

Radiator : Honeycomb.

Ignition : Double jump spark.

Electric source : Magneto.

Drive : Double side chain.

Transmission : Selective sliding gear.

Number gear changes : Four forward, one reverse.

Price

runabout
\$10,250

Other bodies
extra, according
to style and make



Model: ISOTTA FRASCHINI, 1907.

Color: Optional.

Seating capacity: Two, and four to seven persons.

Clutch: Multiple disc.

Wheel base: 132 inches.

Tread: 55 inches.

Tire dimensions, front: 910 x 90 m/m.

Tire dimensions, rear: 920 x 120 m/m.

Brakes: Four.

Type: Contracting on transmission (water cooled) and countershaft; expanding on rear wheels.

Horse-power: 50-65.

Number of cylinders: Four.

Bore: 145 m/m. **Stroke:** 160 m/m.

Cylinders arranged: Vertically, under hood; cast in pairs.

Cooling: Water.

Radiator: Honeycomb.

Ignition: Double jump spark.

Electric source: Magneto.

Drive: Double side chain.

Transmission: Selective sliding gear.

Number gear changes: Four forward, one reverse.

Descriptive catalogue sent upon application to the above-named company.

POPE MANUFACTURING COMPANY, HARTFORD, CONN.

Price

\$1600

With cape top

\$1700



Model: POPE - HARTFORD,
MODEL G.

Color: Brewster green.

Seating capacity: Five persons.

Clutch: Cone.

Wheel base: 88 inches.

Tread: 56 inches.

Tire dimensions, front: 30 x 3 1/2 inches.

Tire dimensions, rear: 30 x 3 1/2 inches.

Brakes: Three.

Type: Expanding on rear wheel
drums and band on driving shaft.

Horse-power: 18.

Number of cylinders: Two.

Cylinders arranged: Horizontally op-
posed, under hood.

Cooling: Water.

Radiator: Cellular.

Ignition: Jump spark.

Electric source: Two sets of dry
batteries.

Drive: Bevel gear.

Transmission: Sliding gear.

Number gear changes: Three forward,
one reverse.

Descriptive catalogue sent upon application to the above-named company.

POPE MANUFACTURING COMPANY, HARTFORD, CONN.

Price

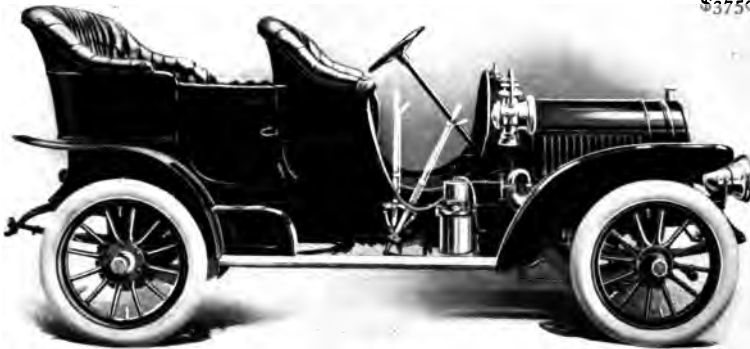
\$2750

With cape top

\$2900

Limousine

\$3750



Model : P O P E - H A R T F O R D ,
M O D E L L .

Color : Brewster green or royal blue.

Seating capacity : Five persons.

Clutch : Inverted cone.

Wheel base : 102 inches.

Tread : 56 inches.

Tire dimensions, front : 32 x 4 inches.

Tire dimensions, rear : 32 x 4 inches.

Brakes : Three.

Type : Expanding on rear wheel
drums and band on driving shaft.

Horse-power : 25-30.

Number of cylinders : Four.

Cylinders arranged : Vertically, under
hood ; cast in pairs.

Cooling : Water.

Radiator : Planetic.

Ignition : Jump spark.

Electric source : Dry and storage
batteries ; provision for magneto.

Drive : Bevel gear.

Transmission : Sliding gear.

Number gear changes : Three forward,
one reverse.

Descriptive catalogue sent upon application to the above-named company.

POPE MOTOR CAR COMPANY, TOLEDO, OHIO



Price

\$3500
With cape top
\$3700
Limousine
\$5000

Model: POPE-TOLEDO, TYPE XII,
LIMOUSINE.

Color: Black body ; blue or maroon
panels, optional.

Seating capacity: Seven persons.

Clutch: External cone.

Wheel base: 104 inches.

Tread: 54 inches.

Tire dimensions, front: 34 x 4 inches.

Tire dimensions, rear: 34 x 4½ inches.

Brakes: Four.

Type: Internal expanding on rear
wheels.

Horse-power: 35-40.

Number of cylinders: Four.

Cylinders arranged: Vertically, under
hood ; individual cylinders, twin
heads.

Cooling: Water.

Radiator: Pope-Toledo planetic.

Ignition: Jump spark

Electric source: Dry batteries ; pro-
vision for magneto.

Drive: Double side chain.

Transmission: Sliding gear.

Number gear changes: Three forward,
one reverse.

Descriptive catalogue sent upon application to the above-named company.

POPE MOTOR CAR COMPANY, TOLEDO, OHIO

Price

\$4250
With cape top
\$4450
Limousine
\$6000



Model: POPE-TOLEDO, TYPE XV. Horse-power: 50.
Color: Red, green or blue. Number of cylinders: Four.
Seating capacity: Seven persons. Cylinders arranged: Vertically, under hood; cast in pairs.
Clutch: Multiple metal disc. Cooling: Water.
Wheel base: 115 inches. Radiator: Pope-Toledo planetic.
Tread: 54 inches. Ignition: Jump spark.
Tire dimensions, front: 36 x 3½ inches. Electric source: High tension magneto.
Tire dimensions, rear: 36 x 4½ inches.
Brakes: Three. Drive: Double side chain.
Type: Foot, on driving shaft; emergency, internal expanding on rear wheels. Transmission: Selective sliding gear.
Number gear changes: Four forward, one reverse.

Descriptive catalogue sent upon application to the above-named company.

DE DIETRICH IMPORT COMPANY, 3 WEST 44TH ST., NEW YORK

Price

with cape top

\$10,500

Limousine

\$11,000



Model: LORRAINE-DE DIETRICH,
1907.

Color: Optional.

Seating capacity: Seven persons.

Clutch: Metal or leather, optional.

Wheel base: 128 inches.

Tread: 56 inches.

Tire dimensions, front: 870 x 100 m/m.

Tire dimensions, rear: 920 x 125 m/m.

Brakes: Three.

Type: Emergency, internal expanding;
foot, band on drum.

Horse-power: 40-50.

Number of cylinders: Four.

Bore: 130 m/m. Stroke: 160 m/m.

Cylinders arranged: Vertically, under
hood; cast in pairs.

Cooling: Water.

Radiator: Tubular.

Ignition: Make-and-break.

Electric source: Low tension mag-
neto.

Drive: Double side chain.

Transmission: Selective sliding gear.

Number gear changes: Four forward,
one reverse.

Descriptive catalogue sent upon application to the above-named company.

APPERSON BROTHERS AUTOMOBILE COMPANY, KOKOMO, IND.

Price

\$4000
With cape top
\$4200
Limousine
\$6000



Model : B 4.

Color : Optional.

Seating capacity : Seven persons.

Clutch : Compression band.

Wheel base : 114 inches.

Tread : 56 inches.

Tire dimensions, front : 36 x 4 inches.

Tire dimensions, rear : 36 x 4½ inches.

Brakes : Three.

Type : Compression band, metal.

Horse-power : 40.

Number of cylinders : Four.

Bore : 5 inches. **Stroke :** 5 inches.

Cylinders arranged : Vertically, under hood ; cast separately.

Cooling : Water.

Radiator : Tubular.

Ignition : Jump spark.

Electric source : Storage batteries and magneto.

Drive : Double side chain.

Transmission : Selective sliding gear.

Number gear changes : Four forward, one reverse.

Descriptive catalogue sent upon application to the above-named company.

APPERSON BROTHERS AUTOMOBILE COMPANY, KOKOMO, IND.

Price

\$4500

With cape top

\$4700

Limousine

\$6700



Model : A 4.

Color : Optional.

Seating capacity : Seven persons.

Clutch : Compression band.

Wheel base : 114 inches.

Tread : 56 inches.

Tire dimensions, front : 36 x 4 inches.

Tire dimensions, rear : 36 x 4 1/2 inches.

Brakes : Three.

Type : Compression band, metal.

Horse-power : 50.

Number of cylinders : Four.

Bore : 5 1/2 inches. Stroke : 5 inches.

Cylinders arranged : Vertically, under hood ; cast separately.

Cooling : Water.

Radiator : Tubular.

Ignition : Jump spark.

Electric source : Storage battery and magneto.

Drive : Double side chain.

Transmission : Selective sliding gear.

Number gear changes : Four forward, one reverse.

Descriptive catalogue sent upon application to the above-named company.

APPERSON BROTHERS AUTOMOBILE COMPANY, KOKOMO, IND.

Price

\$15,000



Model: SPECIAL.

Color: Optional.

Seating capacity: Two persons.

Clutch: Compression band.

Wheel base: 110 inches.

Tread: 56 inches.

Tire dimensions, front: 34 x 3½ inches.

Tire dimensions, rear: 34 x 4½ inches.

Brakes: Three.

Type: External, metal.

Horse-power: 96.

Number of cylinders: Four.

Bore: 6¼ inches. **Stroke:** 5½ inches.

Cylinders arranged: Vertically, under hood; cast separately.

Cooling: Water.

Radiator: Tubular.

Ignition: Jump spark.

Electric source: Storage battery and magneto.

Drive: Double side chain.

Transmission: Selective sliding gear.

Number gear changes: Four forward, one reverse.

Descriptive catalogue sent upon application to the above-named company.

Price

touring car

\$1900

Limousine or

Landaulet

\$2600



Model: TOWN CAR.

Color: Optional.

Seating capacity: Five persons.

Clutch: Cone.

Wheel base: 84 inches.

Tread: 54½ inches.

Tire dimensions, front: 30 x 3¼ inches
(760 x 90 m/m).

Tire dimensions, rear: 30 x 4 inches
(765 x 105 m/m).

Brakes: Three.

Type: Toggle expanding on rear
hubs and transmission.

Horse-power: 10.

Number of cylinders: One.

Bore: 4¾ inches. **Stroke:** 6 inches.

Cylinder arranged: Horizontally, under
body.

Cooling: Water.

Radiator: Square tube cellular.

Ignition: Jump spark and make-and-
break.

Electric source: Storage battery and
coil to plug; magneto to make-
and-break.

Drive: Single chain; countershaft to
rear axle.

Transmission: Planetary.

Number gear changes: Two forward,
one reverse.

Descriptive catalogue sent upon application to the above-named company.

Price

\$1000
With folding
top, storm
cover, rear seat,
foreign tires and
magneto
\$1210



Model: RUNABOUT.

Color: Optional.

Seating capacity: Two persons; extra rear seat.

Clutch: Cone.

Wheel base: 72 inches.

Tread: 54½ inches.

Tire dimensions, front: 30 x 3¼ inches
(760 x 90 m/m).

Tire dimensions, rear: 30 x 3¼ inches
(760 x 90 m/m).

Brakes: Three.

Type: Toggle expanding on rear hubs and transmission.

Horse-power: 10.

Descriptive catalogue sent upon application to the above named company.

Number of cylinders: One.

Bore: 4¾ inches. **Stroke:** 6 inches.

Cylinder arranged: Horizontally, under body.

Cooling: Water.

Radiator: Square tube cellular.

Ignition: Jump spark and make-and-break.

Electric source: Storage battery and coil to plug; magneto to make-and-break.

Drive: Single chain.

Transmission: Planetary.

Number gear changes: Two forward, one reverse.

Price

\$1600



Model: LIGHT DELIVERY CAR.

Color: Optional.

Carrying capacity: 1000 pounds.

Seating capacity: Two persons.

Clutch: Cone.

Wheel base: 84 inches.

Tread: 54½ inches.

Tire dimensions, front: 30 x 2½ inches (solid).

Tire dimensions, rear: 30 x 3 inches (solid).

Brakes: Three.

Type: Toggle expanding on rear hubs and transmission.

Horse-power: 10.

Number of cylinders: One.

Bore: 4¾ inches. **Stroke:** 6 inches.

Cylinder arranged: Horizontally, under body.

Cooling: Water.

Radiator: Square tube cellular.

Ignition: Jump spark and make-and-break.

Electric source: Storage battery and coil to plug; magneto to make-and-break.

Drive: Single chain; countershaft to rear axle.

Transmission: Planetary.

Number gear changes: Two forward, one reverse.

Descriptive catalogue sent upon application to the above-named company.

Price

chassis
\$4000



- Model:** FIVE-TON MOTOR TRUCK. **Number of cylinders:** Four.
Color: Finished in lead. **Bore:** $4\frac{1}{4}$ inches. **Stroke:** $5\frac{1}{2}$ inches.
Seating capacity: Two persons. **Cylinders arranged:** Vertically, under hood, between seats.
Clutch: Cone. **Cooling:** Water.
Wheel base: 168 inches. **Radiator:** Square tube cellular.
Tread: 68 inches. **Ignition:** Make-and-break.
Tire dimensions, front: 36 x 5 inches (solid). **Electric source:** Low tension magneto and storage battery.
Tire dimensions, rear: 36 x 4 inches (twin solid). **Drive:** Double side chain.
Brakes: Three. **Transmission:** Planetary.
Type: Toggle expanding on rear wheels and driving shaft. **Number gear changes:** Two forward, one reverse.
Horse-power: 30.

Descriptive catalogue sent upon application to the above-named company.

Price

chassis

\$4000



Model: TOURING CAR, LAND-
AULET OR LIMOUSINE.

Color: Optional.

Seating capacity: Five persons.

Clutch: Cone.

Wheel base: 112 inches.

Tread: 54½ inches.

Tire dimensions, front: 870 x 90 m/m.

Tire dimensions, rear: 875 x 105 m/m.

Brakes: Three.

Type: Toggle expanding on rear
wheels and driving shaft.

Horse-power: 50-60.

Descriptive catalogue sent upon application to the above-named company.

Number of cylinders: Eight.

Bore: 4 inches. Stroke: 4½ inches.

Cylinders arranged: V type, four each
side, 90 degrees apart, under hood.

Cooling: Water.

Radiator: Square tube cellular.

Ignition: Jump spark.

Electric source: High tension mag-
neto.

Drive: Bevel gear.

Transmission: Sliding gear or plan-
etary.

Number gear changes: Three or two
forward, one reverse.

PACKARD MOTOR CAR COMPANY, DETROIT, MICHIGAN

Price

\$4200



Model: **PACKARD 30.**

Color: **Body and frame, Richelieu blue, with black moulding; running gear, cream yellow.**

Seating capacity: **Five (with folding seats, seven) persons.**

Clutch: **Packard expanding band.**

Wheel base: **122 inches.**

Tread: **56½ inches.**

Tire dimensions, front: **34 x 4 inches.**

Tire dimensions, rear: **34 x 4½ inches.**

Brakes: **Four.**

Type: **Expanding and contracting on rear wheels.**

Horse-power: **30.**

Number of cylinders: **Four.**

Bore: **5 inches.** Stroke: **5½ inches.**

Cylinders arranged: **Vertically, under hood; cast in pairs.**

Cooling: **Water.**

Radiator: **Tubular.**

Ignition: **Jump spark.**

Electric source: **Low tension magneto and storage batteries.**

Drive: **Bevel gear.**

Transmission: **Sliding gear.**

Number gear changes: **Three forward, one reverse.**

Descriptive catalogue sent upon application to the above-named company.

PACKARD MOTOR CAR COMPANY, DETROIT, MICHIGAN

Price

with canopy top
\$4575



Model: PACKARD 30.

Color: Body and frame, Richelieu blue, with black moulding; running gear, cream yellow.

Seating capacity: Five (with folding seats, seven) persons.

Clutch: Packard expanding band.

Wheel base: 122 inches.

Tread: 56½ inches.

Tire dimensions, front: 34 x 4 inches.

Tire dimensions, rear: 34 x 4½ inches.

Brakes: Four.

Type: Expanding and contracting on rear wheels.

Horse-power: 30.

Number of cylinders: Four.

Bore: 5 inches. **Stroke:** 5½ inches.

Cylinders arranged: Vertically, under hood; cast in pairs.

Cooling: Water.

Radiator: Tubular.

Ignition: Jump spark.

Electric source: Low tension magneto and storage batteries.

Drive: Bevel gear.

Transmission: Sliding gear.

Number gear changes: Three forward, one reverse.

Descriptive catalogue sent upon application to the above-named company.

PACKARD MOTOR CAR COMPANY, DETROIT, MICHIGAN

Price

limousine

\$5500



Model: **PACKARD 30.**

Color: **Upper body and mouldings, black; under body, frame and running gear, Richelieu blue; roof over driver and all window frames, mahogany, natural finish.**

Seating capacity: **Seven persons.**

Clutch: **Packard expanding band.**

Wheel base: **122 inches.**

Tread: **56½ inches.**

Tire dimensions, front: **34 x 4 inches.**

Tire dimensions, rear: **34 x 4½ inches.**

Brakes: **Four.**

Type: **Expanding and contracting on rear wheels.**

Horse-power: **30.**

Number of cylinders: **Four.**

Bore: **5 inches.** Stroke: **5½ inches.**

Cylinders arranged: **Vertically, under hood; cast in pairs.**

Cooling: **Water.**

Radiator: **Tubular.**

Ignition: **Jump spark.**

Electric source: **Low tension magneto and storage batteries.**

Drive: **Bevel gear.**

Transmission: **Sliding gear.**

Number gear changes: **Three forward, one reverse.**

Descriptive catalogue sent upon application to the above-named company.

PACKARD MOTOR CAR COMPANY, DETROIT, MICHIGAN

Price

landaulet
\$5600



Model: **PACKARD 30.**

Color: **Upper body and mouldings, black; under body, frame and running gear, Richelieu blue; roof over driver and all window frames, mahogany, natural finish.**

Seating capacity: **Seven persons.**

Clutch: **Packard expanding band.**

Wheel base: **122 inches.**

Tread: **56½ inches.**

Tire dimensions, front: **34 x 4 inches.**

Tire dimensions, rear: **34 x 4½ inches.**

Brakes: **Four.**

Type: **Expanding and contracting on rear wheels.**

Horse-power: **30.**

Number of cylinders: **Four.**

Bore: **5 inches.** Stroke: **5½ inches.**

Cylinders arranged: **Vertically, under hood; cast in pairs.**

Cooling: **Water.**

Radiator: **Tubular.**

Ignition: **Jump spark.**

Electric source: **Low tension magneto and storage batteries.**

Drive: **Bevel gear.**

Transmission: **Sliding gear.**

Number gear changes: **Three forward, one reverse.**

Descriptive catalogue sent upon application to the above-named company.

PACKARD MOTOR CAR COMPANY, DETROIT, MICHIGAN

Price

with cape top
\$4325 to
\$4350



Model: **PACKARD 30.**

Color: **Body and frame, Richelieu blue, with black moulding ; running gear, cream yellow.**

Seating capacity: **Five (with folding seats, seven) persons.**

Clutch: **Packard expanding band.**

Wheel base: **122 inches.**

Tread: **56½ inches.**

Tire dimensions, front: **34 x 4 inches.**

Tire dimensions, rear: **34 x 4½ inches.**

Brakes: **Four.**

Type: **Expanding and contracting on rear wheels.**

Horse-power: **30.**

Number of cylinders: **Four.**

Bore: **5 inches.** Stroke: **5½ inches.**

Cylinders arranged: **Vertically, under hood ; cast in pairs.**

Cooling: **Water.**

Radiator: **Tubular.**

Ignition: **Jump spark.**

Electric source: **Low tension magneto and storage batteries.**

Drive: **Bevel gear.**

Transmission: **Sliding gear.**

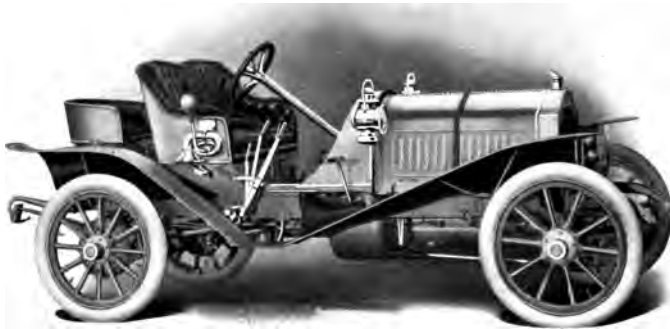
Number gear changes: **Three forward, one reverse.**

Descriptive catalogue sent upon application to the above-named company.

PACKARD MOTOR CAR COMPANY, DETROIT, MICHIGAN

Price

runabout
\$4200



Model: PACKARD 30.

Color: Body and frame, Richelieu blue, with black moulding; running gear, cream yellow.

Seating capacity: Two persons (and one on rumble).

Clutch: Packard expanding band.

Wheel base: 108 inches.

Tread: 56 ½ inches.

Tire dimensions, front: 34 x 3 ½ inches.

Tire dimensions, rear: 34 x 4 inches.

Brakes: Four.

Type: Expanding and contracting on rear wheels.

Horse-power: 30.

Number of cylinders: Four.

Bore: 5 inches. **Stroke:** 5 ½ inches.

Cylinders arranged: Vertically, under hood; cast in pairs.

Cooling: Water.

Radiator: Tubular.

Ignition: Jump spark.

Electric source: Low tension magneto and storage batteries.

Drive: Bevel gear.

Transmission: Sliding gear.

Number gear changes: Three forward, one reverse.

Descriptive catalogue sent upon application to the above-named company.

THE HAYNES AUTOMOBILE COMPANY, KOKOMO, INDIANA

Price

\$2400

With top

\$2475



Model: S RUNABOUT.

Color: Dark green and red.

Seating capacity: Two persons.

Clutch: Haynes band.

Wheel base: 103 inches.

Tread: 56 inches.

Tire dimensions, front: 32 x 4 inches.

Tire dimensions, rear: 32 x 4 inches.

Brakes: Four.

Type: Double bands on 10-inch drum on rear wheels; internal expanding, controlled by hand lever; external contracting, controlled by foot pedal.

Horse-power: 30.

Number of cylinders: Four.

Bore: 4¼ inches. Stroke: 5 inches.

Cylinders arranged: Vertically, under hood.

Cooling: Water.

Radiator: Honeycomb.

Ignition: Jump spark.

Electric source: Storage and dry batteries.

Drive: Shaft, with Haynes roller pinion and sprocket.

Transmission: Selective sliding gear.

Number gear changes: Three forward, one reverse.

Descriptive catalogue sent upon application to the above-named company.

THE HAYNES AUTOMOBILE COMPANY, KOKOMO, INDIANA

Price

\$2500

With unlined top

\$2600

With lined top

\$2625

Limousine

\$3500



Model : S.

Color : Dark green and red.

Seating capacity : Five persons.

Clutch : Haynes band.

Wheel base : 103 inches.

Tread : 56 inches.

Tire dimensions, front : 32 x 4 inches.

Tire dimensions, rear : 32 x 4 inches.

Brakes : Four.

Type : Double bands on 10-inch drum on rear wheels ; internal expanding, controlled by hand lever ; external contracting, controlled by foot pedal.

Horse-power : 30.

Number of cylinders : Four.

Bore : $4\frac{1}{4}$ inches. Stroke : 5 inches.

Cylinders arranged : Vertically, under hood.

Cooling : Water.

Radiator : Honeycomb.

Ignition : Jump spark.

Electric source : Storage and dry batteries.

Drive : Shaft, with Haynes roller pinion and sprocket.

Transmission : Selective sliding gear.

Number gear changes : Three forward, one reverse.

Descriptive catalogue sent upon application to the above-named company.

THE HAYNES AUTOMOBILE COMPANY, KOKOMO, INDIANA

Price

\$3500



Model: **V.**

Color: **Optional.**

Seating capacity: **Two persons.**

Clutch: **Haynes band.**

Wheel base: **106 inches.**

Tread: **56 inches.**

Tire dimensions, front: **32 x 4 inches.**

Tire dimensions, rear: **32 x 4 inches.**

Brakes: **Four.**

Type: **Double bands on 10-inch drum on rear wheels; internal expanding, controlled by hand lever; external contracting, controlled by foot pedal.**

Horse-power: **50.**

Number of cylinders: **Four.**

Bore: **5¼ inches.** Stroke: **6 inches.**

Cylinders arranged: **Vertically, under hood.**

Cooling: **Water.**

Radiator: **Honeycomb.**

Ignition: **Jump spark.**

Electric source: **High tension magneto and storage battery.**

Drive: **Shaft, with Haynes roller pinion and sprocket.**

Transmission: **Selective sliding gear.**

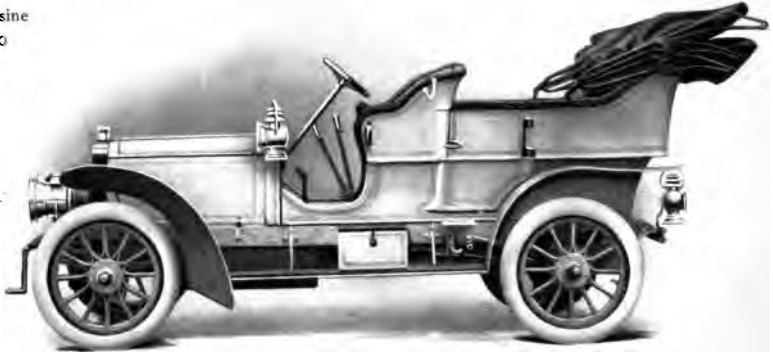
Number gear changes: **Three forward, one reverse.**

Descriptive catalogue sent upon application to the above-named company.

THE HAYNES AUTOMOBILE COMPANY, KOKOMO, INDIANA

Price

\$3500
With unlined top
\$3600
With lined top
\$3625
Limousine
\$4500



Model: T.

Color: Dark green and red.

Seating capacity: Seven persons.

Clutch: Haynes band.

Wheel base: 108 inches.

Tread: 56 inches.

Tire dimensions, front: 34 x 4½ inches.

Tire dimensions, rear: 34 x 4½ inches.

Brakes: Four.

Type: Double bands on 12-inch drum on rear wheels; internal expanding, controlled by hand lever; external contracting, controlled by foot pedal.

Horse-power: 50.

Number of cylinders: Four.

Bore: 5¼ inches. Stroke: 6 inches.

Cylinders arranged: Vertically, under hood.

Cooling: Water.

Radiator: Honeycomb.

Ignition: Jump spark.

Electric source: High tension magneto and storage battery.

Drive: Shaft, with Haynes roller pinion and sprocket.

Transmission: Selective sliding gear.

Number gear changes: Three forward, one reverse.

Descriptive catalogue sent upon application to the above-named company.

THE HAYNES AUTOMOBILE COMPANY, KOKOMO, INDIANA

Price

\$4500



Model: **T, LIMOUSINE.**

Color: **Optional.**

Seating capacity: **Seven persons.**

Clutch: **Haynes band.**

Wheel base: **108 inches.**

Tread: **56 inches.**

Tire dimensions, front: **34 x 4½ inches.**

Tire dimensions, rear: **34 x 4½ inches.**

Brakes: **Four.**

Type: **Double bands on 12-inch drum on rear wheels; internal expanding, controlled by hand lever; external contracting, controlled by foot pedal.**

Horse power: **50.**

Number of cylinders: **Four.**

Bore: **5¼ inches.** Stroke: **6 inches.**

Cylinders arranged: **Vertically, under hood.**

Cooling: **Water.**

Radiator: **Honeycomb.**

Ignition: **Jump spark.**

Electric source: **High tension magneto and storage battery.**

Drive: **Shaft, with Haynes roller pinion and sprocket.**

Transmission: **Selective sliding gear.**

Number gear changes: **Three forward, one reverse.**

Descriptive catalogue sent upon application to the above-named company.

SIDNEY B. BOWMAN AUTOMOBILE COMPANY, NEW YORK, N. Y.

Price

runabout
\$5750
Other bodies
extra, according
to style and make



Model : CLEMENT-BAYARD.

Number of cylinders : Four.

Color : Blue and red, green and yellow,
red and red.

Cylinders arranged : Vertically, under
hood ; cast separately.

Seating capacity : Six persons.

Cooling : Water.

Clutch : Disc.

Radiator : Honeycomb.

Wheel base : 115 inches.

Ignition : Double jump spark.

Tread : 56 inches.

Electric source : High tension mag-
neto and storage battery.

Tire dimensions, front : 34 x 3½ inches.

Tire dimensions rear : 34 x 4½ inches.

Drive : Bevel gear.

Brakes : Three.

Transmission : Progressive sliding
gear.

Type : Expanding on driving shaft
and rear wheels.

Number gear changes : Four forward,
one reverse.

Horse-power : 24.

Descriptive catalogue sent upon application to the above-named company.

Price

runabout
\$8750

Other bodies
extra, according
to style and make



Model: CLEMENT-BAYARD.

Number of cylinders: Four.

Color: Blue and red, green and yellow,
red and red.

Cylinders arranged: Vertically, under
hood; cast separately.

Seating capacity: Seven persons.

Cooling: Water.

Clutch: Disc.

Radiator: Honeycomb.

Wheel base: 125 inches.

Ignition: Make-and-break and jump
spark.

Tread: 56 inches.

Electric source: Low tension mag-
neto and storage battery.

Tire dimensions, front: 36 x 4½ inches.

Tire dimensions, rear: 36 x 4¾ inches.

Brakes: Three.

Drive: Double side chain.

Type: Expanding on driving shaft
and rear wheels.

Transmission: Selective sliding gear.

Horse-power: 45 (also 30).

Number gear changes: Four forward,
one reverse.

Descriptive catalogue sent upon application to the above-named company

SIDNEY B. BOWMAN AUTOMOBILE COMPANY, NEW YORK, N. Y.

Price

runabout
\$10,750
Other bodies
extra, according
to style and make



Model: CLEMENT-BAYARD.

Number of cylinders: Four.

Color: Blue and red, green and yellow,
red and red.

Cylinders arranged: Vertically, under
hood; cast separately.

Seating capacity: Eight persons.

Cooling: Water.

Clutch: Disc.

Radiator: Honeycomb.

Wheel base: 130 inches.

Ignition: Make-and-break and jump
spark.

Tread: 57 inches.

Electric source: Low tension mag-
neto and storage battery.

Tire dimensions, front: 36 x 4½ inches.

Tire dimensions, rear: 36 x 5¼ inches.

Brakes: Three.

Drive: Double side chain.

Type: Expanding on driving shaft
and rear wheels.

Transmission: Selective sliding gear.

Horse-power: 60.

Number gear changes: Four forward,
one reverse.

Descriptive catalogue sent upon application to the above-named company.

WALTER AUTOMOBILE COMPANY, 49 W. 68TH ST., NEW YORK

Price

\$5500
With cape top
\$5650
Limousine
\$6900



Model : 1907.

Color : Optional.

Seating capacity : Seven persons.

Clutch : Metallic.

Wheel base : 122 inches.

Tread : 56½ inches.

Tire dimensions, front : 36 x 4 inches.

Tire dimensions, rear : 36 x 5 inches.

Brakes : Three.

Type : Metallic.

Horse-power : 50 (also 40).

Number of cylinders : Four.

Bore : 5 inches. **Stroke :** 5½ inches.

Cylinders arranged : Vertically, under hood ; cast in pairs.

Cooling : Water.

Radiator : Honeycomb.

Ignition : Jump spark.

Electric source : High tension magneto.

Drive : Bevel gear.

Transmission : Double sliding gear.

Number gear changes : Three forward, one reverse.

Descriptive catalogue sent upon application to the above-named company.



Price

runabout
\$7000

Other bodies extra,
according to make

Model: ROCHET-SCHNEIDER.

Color: Optional.

Seating capacity: Two to seven persons.

Clutch: Metal internal expanding.

Wheel base: 117 inches.

Tread: 57 inches.

Tire dimensions, front: 920 x 120 m/m.

Tire dimensions, rear: 920 x 120 m/m.

Brakes: Three.

Type: Band, enclosed.

Horse-power: 30-35 (also 18-22 and 40-50).

Number of cylinders: Four.

Bore: 120 m/m. **Stroke:** 160 m/m.

Cylinders arranged: Vertically, under hood; cast in pairs.

Cooling: Water.

Radiator: Cellular.

Ignition: Make-and-break.

Electric source: Magneto.

Drive: Double side chain.

Transmission: Selective sliding gear.

Number gear changes: Four forward, one reverse.

Descriptive catalogue sent upon application to the above-named company.

E. R. THOMAS MOTOR COMPANY, BUFFALO, N. Y.

Price

\$2750



Model: C-1, THOMAS 40-HORSE.

Color: French gray.

Seating capacity: Two persons (rumble seat at extra price).

Clutch: Cone, leather faced.

Wheel base: 112½ inches.

Tread: 56 inches.

Tire dimensions, front: 34 x 4 inches.

Tire dimensions, rear: 34 x 4 inches.

Brakes: Three.

Type: Internal expanding on rear wheels and external band on driving shaft.

Horse-power: 35-40.

Number of cylinders: Four.

Bore: 4¾ inches. **Stroke:** 5 inches.

Cylinders arranged: Vertically, under hood.

Cooling: Water.

Radiator: Tubular.

Ignition: Jump spark.

Electric source: Storage and dry batteries.

Drive: Bevel gear.

Transmission: Selective sliding gear.

Number gear changes: Three forward, one reverse.

Descriptive catalogue sent upon application to the above-named company.

E. R. THOMAS MOTOR COMPANY, BUFFALO, N. Y.

Price

\$2750

With cape top

\$2900

Limousine

\$3750



Model: C-II, THOMAS 40-HORSE.

Color: Thomas blue.

Seating capacity: Five persons.

Clutch: Cone, leather faced.

Wheel base: 112½ inches.

Tread: 56 inches.

Tire dimensions, front: 34 x 4 inches.

Tire dimensions, rear: 34 x 4 inches.

Brakes: Three.

Type: Internal expanding on rear wheels and external band on driving shaft.

Horse-power: 35-40.

Number of cylinders: Four.

Bore: 4¼ inches. **Stroke:** 5 inches.

Cylinders arranged: Vertically, under hood.

Cooling: Water.

Radiator: Tubular.

Ignition: Jump spark.

Electric source: Storage and dry batteries.

Drive: Bevel gear.

Transmission: Selective sliding gear.

Number gear changes: Three forward, one reverse.

Descriptive catalogue sent upon application to the above-named company.

E. R. THOMAS MOTOR COMPANY, BUFFALO, N. Y.

Price

\$4000

With cape top

\$4200



Model: XXXVI, THOMAS FLYER.

Color: Royal green, Mercedes red or Victoria Park lake body with English vermilion gear.

Seating capacity: Seven persons.

Clutch: Three metallic discs.

Wheel base: 118 inches.

Tread: 56 inches.

Tire dimensions, front: 36 x 4 inches.

Tire dimensions, rear: 36 x 5 inches.

Brakes: Four.

Type: External on rear wheels and hubs on forward sprockets.

Horse-power: 60.

Number of cylinders: Four.

Bore: 5½ inches. **Stroke:** 5½ inches.

Cylinders arranged: Vertically, under hood.

Cooling: Water.

Radiator: Cellular.

Ignition: Double jump spark.

Electric source: Dry battery and magneto.

Drive: Double side chain.

Transmission: Selective sliding gear.

Number gear changes: Four forward, one reverse.

Descriptive catalogue sent upon application to the above-named company.



Price

limousine

\$5000

With all windows
arranged to drop
in pockets

\$5200

Model: XXXIX, THOMAS FLYER.

Color: Royal green, Mercedes red
or Victoria Park lake body with
English vermilion gear.

Seating capacity: Seven persons.

Clutch: Three metallic discs.

Wheel base: 118 inches.

Tread: 56 inches.

Tire dimensions, front: 36 x 4 inches.

Tire dimensions, rear: 36 x 5 inches.

Brakes: Four.

Type: External on rear wheels and
hubs on forward sprockets.

Horse-power: 60.

Number of cylinders: Four.

Bore: 5½ inches. **Stroke:** 5½ inches.

Cylinders arranged: Vertically, under
hood.

Cooling: Water.

Radiator: Cellular.

Ignition: Double jump spark.

Electric source: Dry battery and
magneto.

Drive: Double side chain.

Transmission: Selective sliding gear.

Number gear changes: Four forward,
one reverse.

Descriptive catalogue sent upon application to the above-named company.

E. R. THOMAS MOTOR COMPANY, BUFFALO, N. Y.

Price

landaulet

\$5200



Model: XL, THOMAS FLYER.

Color: Royal green, Mercedes red or Victoria Park lake body with English vermilion gear.

Seating capacity: Seven persons.

Clutch: Three metallic discs.

Wheel base: 118 inches.

Tread: 56 inches.

Tire dimensions, front: 36 x 4 inches.

Tire dimensions, rear: 36 x 5 inches.

Brakes: Four.

Type: External on rear wheels and hubs on forward sprockets.

Horse-power: 60.

Number of cylinders: Four.

Bore: 5½ inches. **Stroke:** 5½ inches.

Cylinders arranged: Vertically, under hood.

Cooling: Water.

Radiator: Cellular.

Ignition: Double jump spark.

Electric source: Dry battery and magneto.

Drive: Double side chain.

Transmission: Selective sliding gear.

Number gear changes: Four forward, one reverse.

Descriptive catalogue sent upon application to the above-named company.

THE GEORGE N. PIERCE COMPANY, BUFFALO, N. Y.

Price

\$4000

With cape top

\$4200

Limousine

\$5000



Model: PIERCE GREAT ARROW.

Color: Optional.

Seating capacity: Five persons.

Clutch: Cone, leather faced.

Wheel base: 112 inches.

Tread: 56 inches.

Tire dimensions, front: 34 x 4 inches.

Tire dimensions, rear: 34 x 4½ inches.

Brakes: Four.

Type: Internal and external on drums on both rear wheels.

Horse-power: 28-32.

Number of cylinders: Four.

Bore: 4¼ inches. **Stroke:** 4¾ inches.

Cylinders arranged: Vertically, under hood.

Cooling: Water.

Radiator: Cellular.

Ignition: Jump spark.

Electric source: Storage battery and high tension magneto.

Drive: Bevel gear.

Transmission: Sliding gear.

Number gear changes: Three forward, one reverse.

Descriptive catalogue sent upon application to the above-named company.

THE GEORGE N. PIERCE COMPANY, BUFFALO, N. Y.

Price

\$5000

With cape top

\$5200

Limousine

\$6250



Model : PIERCE GREAT ARROW.

Color : Optional.

Seating capacity : Seven persons.

Clutch : Cone, leather faced.

Wheel base : 124 inches.

Tread : 56 inches.

Tire dimensions, front : 36 x 4 inches.

Tire dimensions, rear : 36 x 5 inches.

Brakes : Four.

Type : Internal and external on drums on both rear wheels.

Horse-power : 40-45.

Number of cylinders : Four.

Bore : 5 inches. **Stroke :** 5½ inches.

Cylinders arranged : Vertically, under hood.

Cooling : Water.

Radiator : Cellular.

Ignition : Jump spark.

Electric source : Storage battery and high tension magneto.

Drive : Bevel gear.

Transmission : Sliding gear.

Number gear changes : Three forward, one reverse.

Descriptive catalogue sent upon application to the above-named company.

THE GEORGE N. PIERCE COMPANY, BUFFALO, N. Y.

Price

\$6500

With cape top

\$6700



Model: PIERCE GREAT ARROW.

Color: Optional.

Seating capacity: Seven persons.

Clutch: Cone, leather faced.

Wheel base: 135 inches.

Tread: 56 inches.

Tire dimensions, front: 36 x 4½ inches.

Tire dimensions, rear: 36 x 5 inches.

Brakes: Four.

Type: Internal and external on drums on both rear wheels.

Horse-power: 65.

Number of cylinders: Six.

Bore: 5 inches. Stroke: 5½ inches.

Cylinders arranged: Vertically, under hood.

Cooling: Water.

Radiator: Cellular.

Ignition: Jump spark.

Electric source: Storage battery and high tension magneto.

Drive: Bevel gear.

Transmission: Sliding gear.

Number gear changes: Three forward, one reverse.

Descriptive catalogue sent upon application to the above-named company.

THE GEORGE N. PIERCE COMPANY, BUFFALO, N. Y.

Price

\$5000

With 40-45
horse-power

\$6250



Model: GREAT ARROW SUBURBAN.

Color: Optional.

Seating capacity: Seven persons.

Clutch: Cone, leather faced.

Wheel base: 112 inches.

Tread: 56 inches.

Tire dimensions, front: 34 x 4 inches.

Tire dimensions, rear: 34 x 4½ inches.

Brakes: Four.

Type: Internal and external on drums on both rear wheels.

Horse-power: 28-32.

Number of cylinders: Four.

Bore: 4¼ inches. **Stroke:** 4¾ inches.

Cylinders arranged: Vertically, under hood.

Cooling: Water.

Radiator: Cellular.

Ignition: Jump spark.

Electric source: Storage battery and high tension magneto.

Drive: Bevel gear.

Transmission: Sliding gear.

Number gear changes: Three forward, one reverse.

Descriptive catalogue sent upon application to the above-named company.

THE CORBIN MOTOR VEHICLE CORPORATION, NEW BRITAIN, CT.

Price

\$2250

With cape top

\$2300



Model : I.

Color : Venetian green with black stripes.

Seating capacity : Three persons, including chauffeur's seat.

Clutch : Cone, leather faced.

Wheel base : 100 inches.

Tread : 56 inches.

Tire dimensions, front : 34 x 3 1/2 inches.

Tire dimensions, rear : 34 x 4 inches.

Brakes : Four.

Type : Expanding on rear wheels.

Horse-power : 24.

Number of cylinders : Four.

Bore : 4 1/4 inches. Stroke : 4 1/4 inches.

Cylinders arranged : Vertically, under hood.

Cooling : Air.

Ignition : Jump spark.

Electric source : Storage battery.

Drive : Bevel gear.

Transmission : Selective sliding gear.

Number gear changes : Three forward, one reverse.

Descriptive catalogue sent upon application to the above-named company.

THE CORBIN MOTOR VEHICLE CORPORATION, NEW BRITAIN, CT.

Price

\$2500

With cape top
\$2600

Limousine
\$3500



Model: H.

Horse-power: 24.

Color: Venetian green with black stripes.

Number of cylinders: Four.

Bore: $4\frac{1}{4}$ inches. **Stroke:** $4\frac{1}{4}$ inches.

Seating capacity: Five persons.

Cylinders arranged: Vertically, under hood.

Clutch: Cone, leather faced.

Cooling: Air.

Wheel base: 108 inches.

Ignition: Jump spark.

Tread: 56 inches.

Electric source: Storage battery.

Tire dimensions, front: $34 \times 3\frac{1}{2}$ inches.

Drive: Bevel gear.

Tire dimensions, rear: 34×4 inches.

Transmission: Selective sliding gear.

Brakes: Four.

Number gear changes: Three forward, one reverse.

Type: Expanding on rear wheels.

Descriptive catalogue sent upon application to the above-named company.

THE CORBIN MOTOR VEHICLE CORPORATION, NEW BRITAIN, CT.

Price

limousine
\$3500



Model: H, LIMOUSINE.

Color: Brewster green.

Seating capacity: Five persons.

Clutch: Cone, leather faced.

Wheel base: 108 inches.

Tread: 56 inches.

Tire dimensions, front: 34 x 4 inches.

Tire dimensions, rear: 34 x 4 inches.

Brakes: Four.

Type: Expanding on rear wheels.

Horse-power: 24.

Number of cylinders: Four.

Bore: $4\frac{1}{4}$ inches. Stroke: $4\frac{1}{4}$ inches.

Cylinders arranged: Vertically, under hood.

Cooling: Air.

Ignition: Jump spark.

Electric source: Storage battery.

Drive: Bevel gear.

Transmission: Selective sliding gear.

Number gear changes: Three forward, one reverse.

Descriptive catalogue sent upon application to the above-named company.

THE F. B. STEARNS COMPANY, CLEVELAND, OHIO

Price
\$4500



Model: STEARNS 30 HORSE
POWER.

Color: Optional.

Seating capacity: Five to seven persons.

Clutch: Expanding on rim of fly-wheel.

Wheel base: 120 inches.

Tread: 56 inches.

Tire dimensions, front: 36 x 4 inches.

Tire dimensions, rear: 36 x 4½ inches.

Brakes: Three.

Type: Band on differential; internal expanding on rear wheels.

Horse-power: 30.

Number of cylinders: Four.

Bore: 5¾ inches. **Stroke:** 5¾ inches.

Cylinders arranged: Vertically, under hood; cast in pairs.

Cooling: Water.

Radiator: Vertical flat tubes.

Ignition: Jump spark.

Electric source: High tension magneto and dry batteries.

Drive: Double side chain.

Transmission: Selective sliding gear.

Number gear changes: Four forward, one reverse.

Descriptive catalogue sent upon application to the above-named company.

STUDEBAKER AUTOMOBILE COMPANY, SOUTH BEND, INDIANA

Price

\$3000
With cape top
\$3200
Limousine
\$4000



Model: L.

Color: Dark blue, body and gear;
dark green, body and gear; carmine
body, vermilion gear.

Seating capacity: Five persons.

Clutch: Cone.

Wheel base: 104 inches.

Tread: 54 inches.

Tire dimensions, front: 34 x 4 inches.

Tire dimensions, rear: 34 x 4 inches.

Brakes: Four.

Type: Contracting on rear wheels,
controlled by pedal; expanding
on rear wheels, controlled by hand
lever.

Descriptive catalogue sent upon application to the above-named company.

Horse-power: 28.

Number of cylinders: Four.

Bore: 4 $\frac{1}{4}$ inches. **Stroke:** 4 $\frac{3}{4}$ inches.

Cylinders arranged: Vertically, under
hood.

Cooling: Water.

Radiator: Tubular.

Ignition: Jump spark.

Electric source: Storage battery.

Drive: Bevel gear.

Transmission: Sliding gear.

Number gear changes: Three forward,
one reverse.

STUDEBAKER AUTOMOBILE COMPANY, SOUTH BEND, INDIANA

Price

\$4000
With cape top
\$4200
Limousine
\$5000



Model: H.

Color: Dark blue, body and gear ;
dark green, body and gear ; carmine
body, vermilion gear.

Seating capacity: Five persons.

Clutch: Cone, with cork inserts.

Wheel base: 104 inches.

Tread: 54 inches.

Tire dimensions, front: 34 x 4 inches.

Tire dimensions, rear: 34 x 4 inches.

Brakes: Three.

Type: Contracting on driving shaft,
controlled by pedal ; expanding
on rear wheels, controlled by hand
lever.

Descriptive catalogue sent upon application to the above-named company.

Horse-power: 30.

Number of cylinders: Four.

Bore: 4 ¹/₈ inches. **Stroke:** 5 ¹/₄ inches.

Cylinders arranged: Vertically, under
hood.

Cooling: Water.

Radiator: Cellular.

Ignition: Make-and-break.

Electric source: Low tension mag-
neto.

Drive: Bevel gear.

Transmission: Sliding gear.

Number gear changes: Three forward,
one reverse.

STUDEBAKER AUTOMOBILE COMPANY, SOUTH BEND, INDIANA

Price

\$5000



Model: H, LIMOUSINE.

Horse-power: 30.

Color: Dark blue, dark green or maroon.

Number of cylinders: Four.

Bore: $4\frac{1}{8}$ inches. **Stroke:** $5\frac{1}{4}$ inches.

Seating capacity: Seven persons.

Cylinders arranged: Vertically, under hood.

Clutch: Cone, with cork inserts.

Cooling: Water.

Wheel base: 104 inches.

Radiator: Cellular.

Tread: 54 inches.

Ignition: Make-and-break.

Tire dimensions, front: 34 x 4 inches.

Electric source: Low tension magneto.

Tire dimensions, rear: 34 x $4\frac{1}{2}$ inches.

Brakes: Three.

Drive: Bevel gear.

Type: Contracting on driving shaft, controlled by pedal; expanding on rear wheels, controlled by hand lever.

Transmission: Sliding gear.

Number gear changes: Three forward, one reverse.

Descriptive catalogue sent upon application to the above-named company.

THE PEERLESS MOTOR CAR COMPANY, CLEVELAND, OHIO

Price

\$4000

With cape top

\$4150

Limousine

\$5000



Model: 16, TOURING.

Color: Peerless green (standard).

Seating capacity: Five persons.

Clutch: Internal expanding.

Wheel base: 109 inches.

Tread: 56 inches.

Tire dimensions, front: 34 x 4 inches.

Tire dimensions, rear: 34 x 4½ inches.

Brakes: Four.

Type: Expanding and contracting
on rear wheels.

Horse-power: 30.

Number of cylinders: Four.

Bore: 4⅝ inches. **Stroke:** 5½ inches.

Cylinders arranged: Vertically, under
hood.

Cooling: Water.

Radiator: Tubular.

Ignition: Jump spark.

Electric source: Storage batteries.

Drive: Bevel gear.

Transmission: Selective sliding gear.

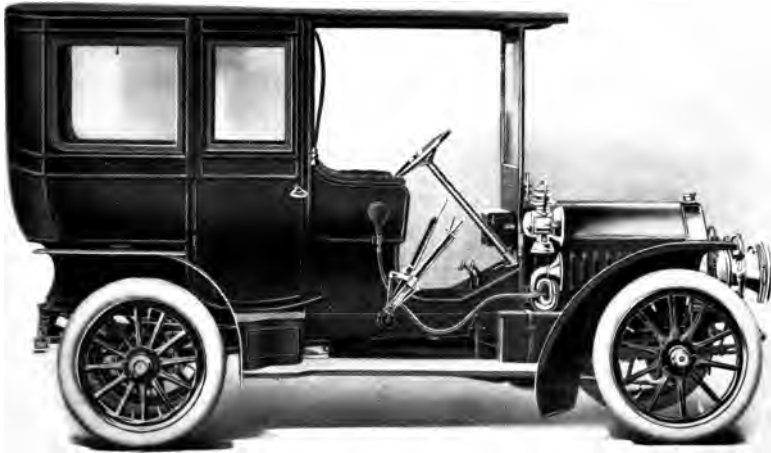
Number gear changes: Four forward,
one reverse.

Descriptive catalogue sent upon application to the above-named company.

THE PEERLESS MOTOR CAR COMPANY, CLEVELAND, OHIO

Price

\$5000



Model: 16, LIMOUSINE.

Color: Blue or maroon.

Seating capacity: Seven persons.

Clutch: Internal expanding.

Wheel base: 109 inches.

Tread: 56 inches.

Tire dimensions, front: 34 x 4 inches.

Tire dimensions, rear: 34 x 4½ inches.

Brakes: Four.

Type: Expanding and contracting
on rear wheels.

Horse-power: 30.

Number of cylinders: Four.

Bore: 4⅞ inches. **Stroke:** 5½ inches.

Cylinders arranged: Vertically, under
hood.

Cooling: Water.

Radiator: Tubular.

Ignition: Jump spark.

Electric source: Storage batteries.

Drive: Bevel gear.

Transmission: Selective sliding gear.

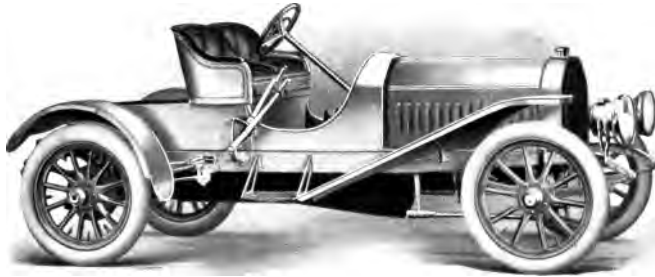
Number gear changes: Four forward,
one reverse.

Descriptive catalogue sent upon application to the above-named company.

THE PEERLESS MOTOR CAR COMPANY, CLEVELAND, OHIO

Price

\$5000



Model: 15, ROADSTER.

Color: Blue with red running gear.

Seating capacity: Three persons, including chauffeur's seat.

Clutch: Internal expanding.

Wheel base: 114 inches.

Tread: 56 inches.

Tire dimensions, front: 34 x 4 inches.

Tire dimensions, rear: 34 x 4½ inches.

Brakes: Four.

Type: Expanding and contracting on rear wheels.

Horse-power: 45.

Number of cylinders: Four.

Bore: 5¼ inches. Stroke: 5¼ inches.

Cylinders arranged: Vertically, under hood.

Cooling: Water.

Radiator: Tubular.

Ignition: Jump spark.

Electric source: Storage batteries.

Drive: Bevel gear.

Transmission: Selective sliding gear.

Number gear changes: Four forward, one reverse.

Descriptive catalogue sent upon application to the above-named company.

THE PEERLESS MOTOR CAR COMPANY, CLEVELAND, OHIO

Price

\$5000

With cape top

\$5150

Limousine

\$6000



Model: 15. TOURING.

Color: Peerless green.

Seating capacity: Five persons.

Clutch: Internal expanding.

Wheel base: 114 inches.

Tread: 56 inches.

Tire dimensions, front: 34 x 4 inches.

Tire dimensions, rear: 34 x 4 $\frac{1}{2}$ inches.

Brakes: Four.

Type: Expanding and contracting on rear wheels.

Horse-power: 45.

Number of cylinders: Four.

Bore: 5 $\frac{1}{4}$ inches. **Stroke:** 5 $\frac{3}{4}$ inches.

Cylinders arranged: Vertically, under hood.

Cooling: Water.

Radiator: Tubular.

Ignition: Jump spark.

Electric source: Storage batteries.

Drive: Bevel gear.

Transmission: Selective sliding gear.

Number gear changes: Four forward, one reverse

Descriptive catalogue sent upon application to the above-named company.

THE PEERLESS MOTOR CAR COMPANY, CLEVELAND, OHIO

Price

\$5000
With cape top
\$5150
Limousine
\$6000



Model: 15.

Color: Peerless green.

Seating capacity: Seven persons.

Clutch: Internal expanding.

Wheel base: 119 inches.

Tread: 56 inches.

Tire dimensions, front: 34 x 4 inches.

Tire dimensions, rear: 34 x 4½ inches.

Brakes: Four.

Type: Expanding and contracting on rear wheels.

Horse-power: 45.

Number of cylinders: Four.

Bore: 5¼ inches. **Stroke:** 5¾ inches.

Cylinders arranged: Vertically, under hood.

Cooling: Water.

Radiator: Tubular.

Ignition: Jump spark.

Electric source: Storage batteries.

Drive: Bevel gear.

Transmission: Selective sliding gear.

Number gear changes: Four forward, one reverse.

Descriptive catalogue sent upon application to the above-named company.

THE PEERLESS MOTOR CAR COMPANY, CLEVELAND, OHIO

Price

\$6000



Model: 15, LIMOUSINE.

Color: Blue.

Seating capacity: Seven persons.

Clutch: Internal expanding.

Wheel base: 119 inches.

Tread: 56 inches.

Tire dimensions, front: 34 x 4 inches.

Tire dimensions, rear: 34 x 4½ inches.

Brakes: Four.

Type: Expanding and contracting on rear wheels.

Horse-power: 45.

Number of cylinders: Four.

Bore: 5¼ inches. **Stroke:** 5¾ inches.

Cylinders arranged: Vertically, under hood.

Cooling: Water.

Radiator: Tubular.

Ignition: Jump spark.

Electric source: Storage batteries.

Drive: Bevel gear.

Transmission: Selective sliding gear.

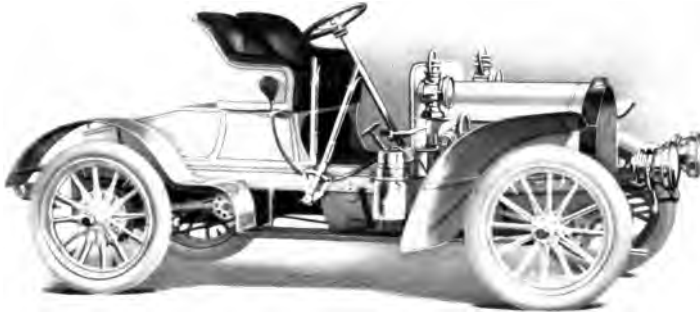
Number gear changes: Four forward, one reverse.

Descriptive catalogue sent upon application to the above-named company.

THE LOCOMOBILE COMPANY OF AMERICA, BRIDGEPORT, CONN.

Price

\$2700



Model: E, FISH-TAIL RUNABOUT. **Number of cylinders:** Four.
Color: Optional. **Bore:** $3\frac{3}{4}$ inches. **Stroke:** $4\frac{1}{2}$ inches.
Seating capacity: Two persons. **Cylinders arranged:** Vertically, under hood.
Clutch: Cone. **Cooling:** Water.
Wheel base: 96 inches. **Radiator:** Cellular.
Tread: 50 inches. **Ignition:** Make-and-break.
Tire dimensions, front: 32 x 4 inches. **Electric source:** Low tension magneto.
Tire dimensions, rear: 32 x 4 inches.
Brakes: Three. **Drive:** Double side chain.
Type: Contracting on countershaft and expanding on rear wheels, all metal-to-metal. **Transmission:** Sliding gear.
Horse-power: 20. **Number gear changes:** Three forward, one reverse.

Descriptive catalogue sent upon application to the above-named company.

THE LOCOMOBILE COMPANY OF AMERICA, BRIDGEPORT, CONN.

Price

without top
\$2800



Model: E, STANDARD.

Color: Optional.

Seating capacity: Five persons.

Clutch: Cone.

Wheel base: 96 inches.

Tread: 50 inches.

Tire dimensions, front: 32 x 4 inches.

Tire dimensions, rear: 32 x 4 inches.

Brakes: Three.

Type: Contracting on countershaft
and expanding on rear wheels,
all metal-to-metal.

Horse-power: 20.

Number of cylinders: Four.

Bore: $3\frac{3}{4}$ inches. **Stroke:** $4\frac{1}{2}$ inches.

Cylinders arranged: Vertically, under
hood.

Cooling: Water.

Radiator: Cellular.

Ignition: Make-and-break.

Electric source: Low tension mag-
neto.

Drive: Double side chain.

Transmission: Sliding gear.

Number gear changes: Three forward,
one reverse.

Descriptive catalogue sent upon application to the above-named company.

THE LOCOMOBILE COMPANY OF AMERICA, BRIDGEPORT, CONN.

Price
\$3800



Model : E, LIMOUSINE.

Color : Optional.

Seating capacity : Seven persons.

Clutch : Cone.

Wheel base : 106 inches.

Tread : 50 inches.

Tire dimensions, front : 32 x 4 inches.

Tire dimensions, rear : 32 x 4½ inches.

Brakes : Three.

Type : Contracting on countershaft and expanding on rear wheels, all metal-to-metal.

Horse-power : 20.

Number of cylinders : Four.

Bore : 3¼ inches. **Stroke :** 4½ inches.

Cylinders arranged : Vertically, under hood.

Cooling : Water.

Radiator : Cellular.

Ignition : Make-and-break.

Electric source : Low tension magneto.

Drive : Double side chain.

Transmission : Sliding gear.

Number gear changes : Three forward, one reverse.

Descriptive catalogue sent upon application to the above-named company.

THE LOCOMOBILE COMPANY OF AMERICA, BRIDGEPORT, CONN.

Price

without top

\$4500



Model: H, STANDARD.

Color: Optional.

Seating capacity: Seven persons.

Clutch: Cone.

Wheel base: 120 inches.

Tread: 54 inches.

Tire dimensions, front: 34 x 4 inches.

Tire dimensions, rear: 34 x 4½ inches.

Brakes: Three.

Type: Contracting on countershaft and expanding on rear wheels, all metal-to-metal.

Horse-power: 35.

Number of cylinders: Four.

Bore: 4½ inches. Stroke: 5½ inches.

Cylinders arranged: Vertically, under hood.

Cooling: Water.

Radiator: Cellular.

Ignition: Make-and-break.

Electric source: Low tension magneto.

Drive: Double side chain.

Transmission: Selective sliding gear.

Number gear changes: Four forward, one reverse.

Descriptive catalogue sent upon application to the above-named company.

THE LOCOMOBILE COMPANY OF AMERICA, BRIDGEPORT, CONN.

Price
\$5700



Model: H, LIMOUSINE.

Color: Optional.

Seating capacity: Seven persons.

Clutch: Cone.

Wheel base: 120 inches.

Tread: 54 inches.

Tire dimensions, front: 34 x 4 inches.

Tire dimensions, rear: 34 x 5 inches.

Brakes: Three.

Type: Contracting on countershaft and expanding on rear wheels, all metal-to-metal.

Horse-power: 35.

Number of cylinders: Four.

Bore: 4½ inches. **Stroke:** 5½ inches.

Cylinders arranged: Vertically, under hood.

Cooling: Water.

Radiator: Cellular.

Ignition: Make-and-break.

Electric source: Low tension magneto.

Drive: Double side chain.

Transmission: Selective sliding gear.

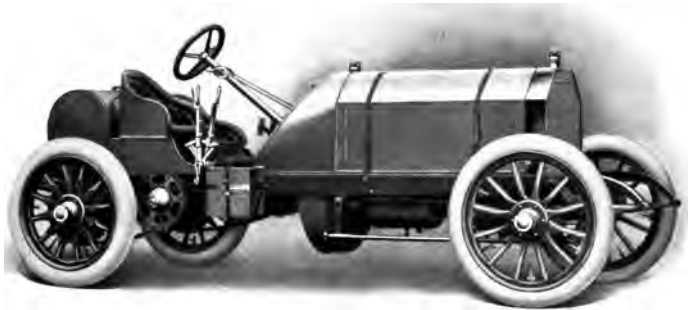
Number gear changes: Four forward, one reverse.

Descriptive catalogue sent upon application to the above-named company.

THE LOCOMOBILE COMPANY OF AMERICA, BRIDGEPORT, CONN.

Price

\$15,000



Model: CUP RACER.

Color: French gray.

Seating capacity: Two persons.

Clutch: Cone.

Wheel base: 110 inches.

Tread: 54 inches.

Tire dimensions, front: 34 x 3½ inches.

Tire dimensions, rear: 34 x 4½ inches.

Brakes: Three.

Type: Contracting on countershaft
and expanding on rear wheels,
all metal-to-metal.

Horse-power: 90.

Number of cylinders: Four.

Bore: 7¼ inches. **Stroke:** 6 inches.

Cylinders arranged: Vertically, under
hood.

Cooling: Water.

Radiator: Cellular.

Ignition: Make-and-break.

Electric source: Low tension mag-
neto.

Drive: Double side chain.

Transmission: Sliding gear.

Number gear changes: Three forward,
one reverse.

Descriptive catalogue sent upon application to the above-named company.

Price

\$5000
With Stanhope top
\$5200
Limousine
\$6000



Model : F, RUNABOUT.

Color : Blue, gray, carmine or maroon.

Seating capacity : Three persons.

Clutch : Multiple disc.

Wheel base : 117 inches.

Tread : 56 inches.

Tire dimensions, front : 36 x 3½ inches.

Tire dimensions, rear : 36 x 4 inches.

Brakes : Four.

Type : Foot, contracting, and expanding hub ; all metal-to-metal.

Horse-power : 40.

Number of cylinders : Four.

Bore : 4¾ inches. **Stroke :** 5½ inches.

Cylinders arranged : Vertically, under hood ; cast in pairs.

Cooling : Water.

Radiator : Tubular.

Ignition : Double jump spark.

Electric source : Storage battery and high tension magneto.

Drive : Double side chain.

Transmission : Selective sliding gear.

Number gear changes : Four forward, one reverse.

Descriptive catalogue sent upon application to the above-named company.

LOZIER MOTOR COMPANY, BROADWAY AT 55TH ST., NEW YORK

Price

\$5000

With cap

\$5200

Limousine

\$6000



Model : F, TOURING.

Color : Blue, gray, carmine or maroon.

Seating capacity : Seven persons.

Clutch : Multiple disc.

Wheel base : 117 inches.

Tread : 56 inches.

Tire dimensions, front : 36 x 4 inches.

Tire dimensions, rear : 36 x 4½ inches.

Brakes : Four.

Type : Foot, contracting, and expanding hub ; all metal-to-metal.

Horse-power : 40.

Number of cylinders : Four.

Bore : 4⅝ inches. Stroke : 5½ inches.

Cylinders arranged : Vertically, under hood ; cast in pairs.

Cooling : Water.

Radiator : Tubular.

Ignition : Double jump spark.

Electric source : Storage battery and high tension magneto.

Drive : Double side chain.

Transmission : Selective sliding gear.

Number gear changes : Four forward, one reverse.

Descriptive catalogue sent upon application to the above-named company.

Price

\$6000



Model : F, LANDAULET.

Color : Optional.

Seating capacity : Seven persons.

Clutch : Multiple disc.

Wheel base : 117 inches.

Tread : 56 inches.

Tire dimensions, front : 36 x 4 inches.

Tire dimensions, rear : 36 x 4½ inches.

Brakes : Four.

Type : Foot contracting, and expanding hub ; all metal-to-metal.

Horse-power : 40.

Number of cylinders : Four.

Bore : 4 ⅜ inches. Stroke : 5 ½ inches.

Cylinders arranged : Vertically, under hood ; cast in pairs.

Cooling : Water.

Radiator : Tubular.

Ignition : Double jump spark.

Electric source : Storage battery and high tension magneto.

Drive : Double side chain.

Transmission : Selective sliding gear.

Number gear changes : Four forward, one reverse.

Descriptive catalogue sent upon application to the above-named company.

Price

\$6000



Model : F, LIMOUSINE.

Color : Optional.

Seating capacity : Seven persons.

Clutch : Multiple disc.

Wheel base : 117 inches.

Tread : 56 inches.

Tire dimensions, front : 36 x 4 inches.

Tire dimensions, rear : 36 x 4½ inches.

Brakes : Four.

Type : Foot, contracting, and expanding hub; all metal-to-metal.

Horse-power : 40.

Number of cylinders : Four.

Bore : 4 ⅜ inches. Stroke : 5 ½ inches.

Cylinders arranged : Vertically, under hood ; cast in pairs.

Cooling : Water.

Radiator : Tubular.

Ignition : Double jump spark.

Electric source : Storage battery and high tension magneto.

Drive : Double side chain.

Transmission : Selective sliding gear.

Number gear changes : Four forward, one reverse.

Descriptive catalogue sent upon application to the above-named company.



Price

\$7000
With cape top
\$7200
Limousine
\$8000

Model: E, TOURING.

Color: Blue, gray, carmine or maroon.

Seating capacity: Seven persons.

Clutch: Multiple disc.

Wheel base: 120 inches.

Tread: 56 inches.

Tire dimensions, front: 36 x 4 inches.

Tire dimensions, rear: 36 x 4½ inches.

Brakes: Four.

Type: Foot, contracting, and expanding hub; all metal-to-metal.

Horse-power: 60.

Number of cylinders: Four.

Bore: 5½ inches. Stroke: 6 inches.

Cylinders arranged: Vertically, under hood; cast in pairs.

Cooling: Water.

Radiator: Tubular.

Ignition: Double jump spark.

Electric source: Storage battery and high tension magneto.

Drive: Double side chain.

Transmission: Selective sliding gear.

Number gear changes: Four forward, one reverse.

Descriptive catalogue sent upon application to the above-named company.

LOZIER MOTOR COMPANY, BROADWAY AT 55TH ST., NEW YORK

Price

\$7000

With cape top

\$7200

Limousine

\$8000



Model : E.

Color : Blue, gray, carmine or maroon.

Seating capacity : Seven persons.

Clutch : Multiple disc.

Wheel base : 120 inches.

Tread : 56 inches.

Tire dimensions, front : 36 x 4 inches.

Tire dimensions, rear : 36 x 4½ inches.

Brakes : Four.

Type : Foot, contracting, and expanding hub; all metal-to-metal.

Horse-power : 60.

Number of cylinders : Four.

Bore : 5½ inches. **Stroke :** 6 inches.

Cylinders arranged : Vertically, under hood; cast in pairs.

Cooling : Water.

Radiator : Tubular.

Ignition : Double jump spark.

Electric source : Storage battery and high tension magneto.

Drive : Double side chain.

Transmission : Selective sliding gear.

Number gear changes : Four forward, one reverse.

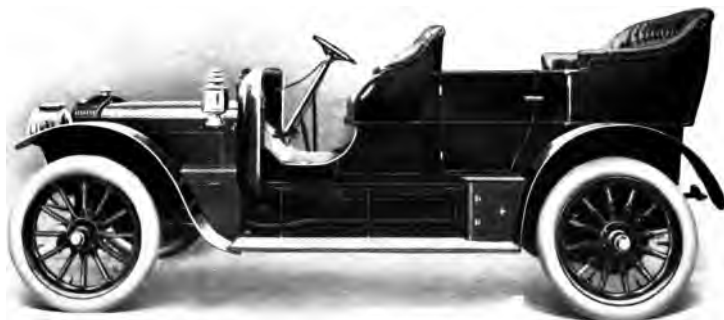
Descriptive catalogue sent upon application to the above-named company.

WYCKOFF, CHURCH & PARTRIDGE, BROADWAY, COR. 56TH ST., N. Y.

Price

runabout
\$6500

Other bodies
extra, according
to style and
make



Model: ENGLISH DAIMLER.

Color: Optional.

Seating capacity: Two, and four to seven persons.

Clutch: Cone, leather faced.

Wheel base: 114 to 140 inches.

Tread: 54 inches.

Tire dimensions, front: 920 x 120 m/m.

Tire dimensions, rear: 920 x 120 m/m.

Brakes: Four.

Type: External on rear wheels and countershaft.

Horse-power: 30-40.

Number of cylinders: Four.

Bore: 130 m/m. **Stroke:** 150 m/m.

Cylinders arranged: Vertically, under hood.

Cooling: Water.

Radiator: Tubular.

Ignition: Jump spark.

Electric source: Storage battery and magneto.

Drive: Double side chain.

Transmission: Selective sliding gear.

Number gear changes: Four forward, one reverse.

Descriptive catalogue sent upon application to the above-named company.

Price

runabout
\$7250

Other bodies
extra, according
to style and
make



Model : C. G. V.

Color : Optional.

Seating capacity : Two, and four to
seven persons.

Clutch : Cone, leather faced.

Wheel base : 102 to 120 inches.

Tread : 56 inches.

Tire dimensions, front : 920 x 120 m/m.

Tire dimensions, rear : 920 x 120 m/m.

Brakes : Three.

Type : Expanding on rear wheels
and differential.

Horse-power : 30-35.

Number of cylinders : Four.

Bore : 4½ inches. Stroke : 5⅝ inches.

Cylinders arranged : Vertically, under
hood.

Cooling : Water.

Radiator : Gilled tube.

Ignition : Jump spark.

Electric source : Storage battery and
magneto.

Drive : Double side chain.

Transmission : Sliding gear.

Number gear changes : Four forward,
one reverse.

Descriptive catalogue sent upon application to the above-named company.

Price

\$1200



Model : TYPE XV.

Color : Automobile red or Brewster green.

Seating capacity : Two or three persons.

Clutch : Autocar floating disc with inserts.

Wheel base : 80½ inches.

Tread : 54 inches.

Tire dimensions, front : 30 x 3 inches.

Tire dimensions, rear : 30 x 3 inches.

Brakes : Four.

Type : External and internal on rear wheels.

Horse-power : 12.

Number of cylinders : Two.

Bore : 4 inches. Stroke : 4 inches.

Cylinders arranged : Horizontally opposed, under hood.

Cooling : Water.

Radiator : Tubular.

Ignition : Jump spark.

Electric source : Storage batteries.

Drive : Bevel gear.

Transmission : Sliding gear.

Number gear changes : Three forward, one reverse.

Descriptive catalogue sent upon application to the above-named company.

THE AUTOCAR COMPANY, ARDMORE, P.A.

Price

\$3000



Model: TYPE XIV.

Horse-power: 30.

Color: Automobile red or Brewster green.

Number of cylinders: Four.

Bore: $4\frac{1}{4}$ inches. Stroke: $4\frac{1}{2}$ inches.

Seating capacity: Five persons.

Cylinders arranged: Vertically, under hood; cast separately.

Clutch: Autocar floating disc with inserts.

Cooling: Water.

Wheel base: 109 inches.

Radiator: Tubular.

Tread: 56 inches.

Ignition: Jump spark.

Tire dimensions, front: 34 x 4 inches.

Electric source: Storage batteries.

Tire dimensions, rear: 34 x 4 inches.

Drive: Bevel gear.

Brakes: Four.

Transmission: Sliding gear.

Type: External and internal on rear wheels.

Number gear changes: Three forward, one reverse.

Descriptive catalogue sent upon application to the above-named company.



Price

limousine or
landaulet, includ-
ing open touring
body
\$3500

Model: TYPE XII LIMOUSINE.

Horse-power: 24.

Color: Brewster green with red running gear.

Number of cylinders: Four.

Bore: 4 inches. **Stroke:** 4 inches.

Seating capacity: Five persons.

Cylinders arranged: Vertically, under hood; cast separately.

Clutch: Autocar floating disc with inserts.

Cooling: Water.

Wheel base: 100 inches.

Radiator: Tubular.

Tread: 56 inches.

Ignition: Jump spark.

Tire dimensions, front: 34 x 4 inches.

Electric source: Storage batteries.

Tire dimensions, rear: 34 x 4½ inches.

Drive: Bevel gear.

Brakes: Four.

Transmission: Sliding gear.

Type: External and internal on rear wheels.

Number gear changes: Three forward, one reverse.

Descriptive catalogue sent upon application to the above-named company.

STEVENS-DURYEA COMPANY, CHICOPEE FALLS, MASS.

Price

\$2400

With cape top

\$2470



Model : R, RUNABOUT.

Color : Brewster green.

Seating capacity : Two persons.

Clutch : Multiple disc.

Wheel base : 90 inches.

Tread : 56 inches.

Tire dimensions, front : 30 x 3½ inches.

Tire dimensions, rear : 30 x 3½ inches.

Brakes : Three.

**Type : Contracting on driving shaft
and expanding on rear wheels.**

Horse-power : 20.

Number of cylinders : Four.

Bore : 3¾ inches. Stroke : 4½ inches.

**Cylinders arranged : Vertically, under
hood ; cast separately.**

Cooling : Water.

Radiator : Cellular.

Ignition : Jump spark.

Electric source : Dry cells.

Drive : Bevel gear.

Transmission : Sliding gear.

**Number gear changes : Three forward,
one reverse.**

Descriptive catalogue sent upon application to the above-named company.

STEVENS-DURYEA COMPANY, CHICOPEE FALLS, MASS.

Price

\$2500

With cape top

\$2600

Limousine

\$3300



Model: R.

Color: Brewster green.

Seating capacity: Five persons.

Clutch: Multiple disc.

Wheel base: 90 inches.

Tread: 56 inches.

Tire dimensions, front: 30 x 3½ inches.

Tire dimensions, rear: 30 x 3½ inches.

Brakes: Three.

Type: Contracting on driving shaft
and expanding on rear wheels.

Horse-power: 20.

Number of cylinders: Four.

Bore: 3¼ inches. Stroke: 4½ inches.

Cylinders arranged: Vertically, under
hood; cast separately.

Cooling: Water.

Radiator: Cellular.

Ignition: Jump spark.

Electric source: Dry cells.

Drive: Bevel gear.

Transmission: Sliding gear.

Number gear changes: Three forward,
one reverse.

Descriptive catalogue sent upon application to the above-named company.

STEVENS-DURYEA COMPANY, CHICOPEE FALLS, MASS.

Price

\$3300



Model : R, LIMOUSINE.

Color : Brewster green.

Seating capacity : Five persons.

Clutch : Multiple disc.

Wheel base : 90 inches.

Tread : 56 inches.

Tire dimensions, front : 31 x 4 inches.

Tire dimensions, rear : 31 x 4 inches.

Brakes : Three.

Type : Contracting on driving shaft
and expanding on rear wheels.

Horse-power : 20.

Descriptive catalogue sent upon application to the above-named company.

Number of cylinders : Four.

Bore : $3\frac{3}{8}$ inches. Stroke : $4\frac{1}{2}$ inches.

Cylinders arranged : Vertically, under
hood ; cast separately.

Cooling : Water.

Radiator : Cellular.

Ignition : Jump spark.

Electric source : Dry cells.

Drive : Bevel gear.

Transmission : Sliding gear.

Number gear changes : Three forward,
one reverse.

STEVENS-DURVEA COMPANY, CHICOPEE FALLS, MASS.

Price

\$3500

With cape top

\$3650



Model: U.

Seating capacity: Five persons.

Clutch: Multiple disc.

Wheel base: 114 inches.

Tread: 56 inches.

Tire dimensions, front: 34 x 4 inches.

Tire dimensions, rear: 34 x 4 inches.

Brakes: Four.

Type: Contracting and expanding
on rear hubs.

Horse-power: 30-35.

Number of cylinders: Six.

Bore: $3\frac{7}{8}$ inches. **Stroke:** $4\frac{3}{4}$ inches.

Cylinders arranged: Vertically, under
hood; cast separately.

Cooling: Water.

Radiator: Cellular.

Ignition: Jump spark.

Drive: Bevel gear.

Transmission: Sliding gear.

Number gear changes: Three forward,
one reverse.

Descriptive catalogue sent upon application to the above-named company.

STEVENS-DURYEA COMPANY, CHICOPEE FALLS, MASS.

Price

with cape top
\$6000



Model: S.

Color: S-D. green, and crimson chassis; or any color desired.

Seating capacity: Seven persons.

Clutch: Multiple disc.

Wheel base: 122 inches.

Tread: 56 inches.

Tire dimensions, front: 36 x 4 inches.

Tire dimensions, rear: 36 x 5 inches.

Brakes: Four.

Type: Contracting and expanding on rear hubs.

Horse-power: 50.

Number of cylinders: Six.

Bore: $4\frac{1}{4}$ inches. Stroke: $5\frac{1}{4}$ inches.

Cylinders arranged: Vertically, under hood; cast separately.

Cooling: Water.

Radiator: Cellular.

Ignition: Jump spark.

Electric source: Dry and storage batteries.

Drive: Bevel gear.

Transmission: Sliding gear.

Number gear changes: Three forward, one reverse.

Descriptive catalogue sent upon application to the above-named company.

WALTHAM MANUFACTURING COMPANY, WALTHAM, MASS.

Price

\$400

With buggy top

\$425



Model: B. R., ORIENT BUCK-BOARD.

Color: Natural wood; carmine running gear.

Seating capacity: Two persons.

Wheel base: 80 inches.

Tread: 42 inches.

Tire dimensions, front: 26 x 2½ inches.

Tire dimensions, rear: 26 x 2½ inches.

Brakes: Two.

Type: External bands on both rear hubs.

Horse-power: 4.

Number of cylinders: One.

Bore: 3¼ inches. **Stroke:** 4¼ inches.

Cylinder arranged: Vertically, in rear of car.

Cooling: Air.

Ignition: Jump spark.

Electric source: Dry batteries.

Drive: Double side chain.

Transmission: Friction.

Number gear changes: Five forward, two reverse.

Descriptive catalogue sent upon application to the above-named company.

WALTHAM MANUFACTURING COMPANY, WALTHAM, MASS.

Price

\$450



Model: D. C , WALTHAM DELIV-
ERY CAR.

Color: Natural wood; carmine run-
ning gear.

Seating capacity: Two persons.

Wheel base : 89 inches.

Tread : 42 inches.

Tire dimensions, front : 26 x 2½ inches.

Tire dimensions, rear : 26 x 2½ inches.

Brakes : Two.

Type : External bands on both rear
wheels.

Horse-power : 4.

Number of cylinders : One.

Bore : 3¼ inches. Stroke : 4¼ inches.

Cylinder arranged : Vertically, in rear
of car.

Cooling : Air.

Ignition : Jump spark.

Electric source : Dry batteries.

Drive : Double side chain.

Transmission : Friction.

Number gear changes : Five forward,
two reverse.

Descriptive catalogue sent upon application to the above-named company.

WALTHAM MANUFACTURING COMPANY, WALTHAM, MASS.

Price

\$475

With cape top

\$500



- Model:** E. R., ORIENT RUNABOUT. **Number of cylinders:** One.
- Color:** Dark green ; carmine running gear. **Bore:** $3\frac{1}{4}$ inches. **Stroke:** $4\frac{1}{4}$ inches.
- Seating capacity:** Two persons. **Cylinder arranged:** Vertically, in rear of car.
- Wheel base:** 73 inches. **Cooling:** Air.
- Tread:** 42 inches. **Ignition:** Jump spark.
- Tire dimensions, front:** 26 x $2\frac{1}{2}$ inches. **Electric source:** Dry batteries.
- Tire dimensions, rear:** 26 x $2\frac{1}{2}$ inches. **Drive:** Double side chain.
- Brakes:** Two. **Transmission:** Friction.
- Type:** External bands on rear hubs. **Number gear changes:** Five forward, two reverse.
- Horse-power:** 4.
- Descriptive catalogue sent upon application to the above-named company.**

Price

\$1250

With buggy top

\$1325



Model: T. R., WALTHAM-ORIENT.

Number of cylinders: Four.

Color: Brewster green; cream-white running gear.

Bore: $3\frac{1}{4}$ inches. Stroke: $4\frac{1}{4}$ inches.

Seating capacity: Two persons.

Cylinders arranged: Vertically, under hood.

Clutch: Cone, leather faced.

Cooling: Air.

Wheel base: 82 inches.

Ignition: Jump spark.

Tread: 56 inches.

Electric source: Storage and dry batteries.

Tire dimensions, front: $30 \times 3\frac{1}{2}$ inches.

Tire dimensions, rear: $30 \times 3\frac{1}{2}$ inches.

Brakes: Three.

Drive: Bevel gear.

Type: Foot, on transmission shaft; hand, external bands on rear hubs.

Transmission: Sliding gear.

Horse-power: 16.

Number gear changes: Three forward, one reverse.

Descriptive catalogue sent upon application to the above-named company.

WALTHAM MANUFACTURING COMPANY, WALTHAM, MASS.

Price

\$1750

**With cape top
\$1850**



- Model:** T.T., WALTHAM-ORIENT. **Number of cylinders:** Four.
- Color:** Brewster green; cream-white **Bore:** 4 inches. **Stroke:** 4¼ inches.
running gear.
- Seating capacity:** Five persons. **Cylinders arranged:** Vertically, under hood.
- Clutch:** Cone, leather faced. **Cooling:** Air.
- Wheel base:** 96 inches. **Ignition:** Jump spark.
- Tread:** 56 inches. **Electric source:** Storage and dry batteries.
- Tire dimensions, front:** 32 x 3½ inches. **Drive:** Bevel gear.
- Tire dimensions, rear:** 32 x 3½ inches. **Transmission:** Sliding gear.
- Brakes:** Three. **Number gear changes:** Three forward, one reverse.
- Type:** Foot on driving shaft; hand, external bands on rear hubs.
- Horse-power:** 20.

Descriptive catalogue sent upon application to the above-named company.

WALTHAM MANUFACTURING COMPANY, WALTHAM, MASS.

Price

\$2000

With cape top

\$2100



- Model:** D.L., WALTHAM-ORIENT. **Number of cylinders:** Four.
- Color:** Brewster green; cream-white running gear. **Bore:** 4 inches. **Stroke:** 4¼ inches.
- Seating capacity:** Five persons. **Cylinders arranged:** Vertically, under hood.
- Clutch:** Cone, leather faced. **Cooling:** Air.
- Wheel base:** 96 inches. **Ignition:** Jump spark.
- Tread:** 56 inches. **Electric source:** Storage and dry batteries.
- Tire dimensions, front:** 32 x 3½ inches. **Drive:** Bevel gear.
- Tire dimensions, rear:** 32 x 3½ inches. **Transmission:** Sliding gear.
- Brakes:** Three. **Number gear changes:** Three forward, one reverse.
- Type:** Foot, on driving shaft; hand, external bands on rear hubs.
- Horse-power:** 20.

Descriptive catalogue sent upon application to the above-named company.

ELECTRIC VEHICLE COMPANY, HARTFORD, CONN.

Price

\$1650

With cape top

\$1775



Model: XLIV-2.

Color: Body: green, gold stripe; gear: green, light green stripe.

Seating capacity: Five persons.

Clutch: Cone, leather faced.

Wheel base: 91 inches.

Tread: 55 inches.

Tire dimensions, front: 32 x 3 1/2 inches.

Tire dimensions, rear: 32 x 3 1/2 inches.

Brakes: Four.

Type: Hand, expanding on rear wheels; foot, contracting on rear wheels; drums separated for cooling.

Horse-power: 18-19.

Number of cylinders: Two.

Bore: 5 inches. **Stroke:** 4 1/4 inches.

Cylinders arranged: Horizontally opposed, under hood.

Cooling: Water.

Radiator: Cellular.

Ignition: Jump spark.

Electric source: Dry batteries.

Drive: Bevel gear.

Transmission: Selective sliding gear.

Number gear changes: Three forward, one reverse.

Descriptive catalogue sent upon application to the above-named company.

ELECTRIC VEHICLE COMPANY, HARTFORD, CONN.

Price

\$3000

With cape top

\$3150

Limousine

\$4200



Model: COLUMBIA MARK XLVIII
TOURING CAR.

Color: Green.

Seating capacity: Five persons.

Clutch: Cone, leather faced.

Wheel base: 109 inches.

Tread: 56 inches.

Tire dimensions, front: 32 x 3½ inches.

Tire dimensions, rear: 32 x 4 inches.

Brakes: Four.

Type: Foot, contracting bands;
emergency, expanding shoes; all
on rear wheels.

Horse-power: 24-28.

Number of cylinders: Four.

Bore: 4 inches. Stroke: 4¼ inches.

Cylinders arranged: Vertically, under
hood; cast in pairs.

Cooling: Water.

Radiator: Cellular.

Ignition: Make-and-break

Electric source: Low tension mag-
neto.

Drive: Bevel gear.

Transmission: Selective sliding gear.

Number gear changes: Three forward,
one reverse.

Descriptive catalogue sent upon application to the above-named company.

ELECTRIC VEHICLE COMPANY, HARTFORD, CONN.

Price

\$4500

With cape top

\$4750

Limousine

\$5500



Model: COLUMBIA MARK XLIX
TOURING CAR.

Color: Green.

Seating capacity: Seven persons.

Clutch: Cone, leather faced.

Wheel base: 112 inches.

Tread: 55 inches.

Tire dimensions, front: 36 x 4 inches.

Tire dimensions, rear: 36 x 4½ inches.

Brakes: Four.

Type: Foot, expanding on counter-shaft; emergency, expanding on rear wheels.

Horse-power: 40-45.

Number of cylinders: Four.

Bore: 5 inches. **Stroke:** 5 inches.

Cylinders arranged: Vertically, under hood; cast in pairs.

Cooling: Water.

Radiator: Cellular.

Ignition: Jump spark.

Electric source: Storage battery (option of high tension magneto).

Drive: Double side chain.

Transmission: Selective sliding gear.

Number gear changes: Four forward, one reverse.

Descriptive catalogue sent upon application to the above-named company.

ELECTRIC VEHICLE COMPANY, HARTFORD, CONN.

Price

\$5500



**Model: COLUMBIA MARK XLIX,
LANDAULET.**

Color: Optional.

Seating capacity: Seven persons.

Clutch: Cone, leather faced.

Wheel base: 119½ inches.

Tread: 55 inches.

Tire dimensions, front: 36 x 4 inches.

Tire dimensions, rear: 36 x 4½ inches.

Brakes: Four.

**Type: Foot, expanding on counter-
shaft; emergency, expanding on
rear wheels.**

Horse-power: 40-45.

Number of cylinders: Four.

Bore: 5 inches. Stroke: 5 inches.

**Cylinders arranged: Vertically, under
hood; cast in pairs.**

Cooling: Water.

Radiator: Cellular.

Ignition: Jump spark.

**Electric source: Storage battery
(option of high tension magneto).**

Drive: Double side chain.

Transmission: Selective sliding gear.

**Number gear changes: Four forward,
one reverse.**

Descriptive catalogue sent upon application to the above-named company.

ELECTRIC VEHICLE COMPANY, HARTFORD, CONN

Price

\$5500



Model: COLUMBIA MARK XLIX,
LIMOUSINE.

Color: Optional.

Seating capacity: Seven persons.

Clutch: Cone, leather faced.

Wheel base: 119½ inches.

Tread: 55 inches.

Tire dimensions, front: 36 x 4 inches.

Tire dimensions, rear: 36 x 4½ inches.

Brakes: Four.

Type: Foot, expanding on counter-
shaft; emergency, expanding on
rear wheels.

Horse-power: 40-45.

Number of cylinders: Four.

Bore: 5 inches. **Stroke:** 5 inches.

Cylinders arranged: Vertically, under
hood; cast in pairs.

Cooling: Water.

Radiator: Cellular.

Ignition: Jump spark.

Electric source: Storage battery
(option of high tension magneto).

Drive: Double side chain.

Transmission: Selective sliding gear.

Number gear changes: Four forward,
one reverse.

Descriptive catalogue sent upon application to the above-named company.

OLDS MOTOR WORKS, LANSING, MICHIGAN

Price

\$650



Model: B, STRAIGHT-DASH RUN-ABOUT.

Color: Black or French gray.

Seating capacity: Two persons.

Clutch: Disc.

Wheel base: 66 inches.

Tread: 55 inches.

Tire dimensions, front: 28 x 3 inches.

Tire dimensions, rear: 28 x 3 inches.

Brakes: Three.

Type: Transmission and rear hub.

Horse-power: 7.

Number of cylinders: One.

Bore: 5 inches. Stroke: 6 inches.

Cylinder arranged: Horizontally, under body.

Cooling: Water.

Radiator: Tubular.

Ignition: Jump spark.

Electric source: Dry batteries.

Drive: Single chain.

Transmission: Planetary.

Number gear changes: Two forward, one reverse.

Descriptive catalogue sent upon application to the above-named company.

OLDS MOTOR WORKS, LANSING, MICHIGAN

Price
\$2100



Model: F, OLDSMOBILE
DELIVERY.

Color: Optional.

Carrying capacity: 1500 pounds.

Clutch: Disc.

Wheel base: 83 inches.

Tread: 56 inches.

Tire dimensions, front: 30 x 4 inches.

Tire dimensions, rear: 30 x 4 inches.

Brakes: Three.

Type: Hub, controlled by lever;
transmission, controlled by pedal.

Horse-power: 16.

Number of cylinders: Two.

Bore: 5 inches. Stroke: 5 inches.

Cylinders arranged: Vertically, under
seat.

Cooling: Water.

Radiator: Tubular.

Ignition: Jump spark.

Electric source: Storage and dry
batteries.

Drive: Double side chain.

Transmission: Planetary.

Number gear changes: Two forward,
one reverse.

Descriptive catalogue sent upon application to the above-named company.

OLDS MOTOR WORKS, LANSING, MICHIGAN

Price

\$2300



Model: **F, WAGONETTE.**

Color: **Optional.**

Seating capacity: **Twelve persons.**

Clutch: **Disc.**

Wheel base: **82 inches.**

Tread: **56 inches.**

Tire dimensions, front: **30 x 4 inches.**

Tire dimensions, rear: **30 x 4 inches.**

Brakes: **Three.**

Type: **Hub, controlled by lever;**
transmission, controlled by pedal.

Horse-power: **16.**

Number of cylinders: **Two.**

Bore: **5 inches. Stroke: 5 inches.**

Cylinders arranged: **Vertically, under**
seat.

Cooling: **Water.**

Radiator: **Tubular.**

Ignition: **Jump spark.**

Electric source: **Storage and dry**
batteries.

Drive: **Double side chain.**

Transmission: **Planetary.**

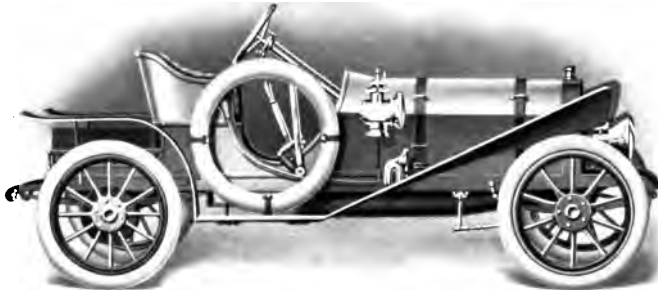
Number gear changes: **Two forward,**
one reverse.

Descriptive catalogue sent upon application to the above-named company.

OLDS MOTOR WORKS, LANSING, MICHIGAN

Price

\$2750



Model: H, FLYING ROADSTER.

Color: Red and French gray.

Seating capacity: Two persons.

Clutch: Reversed cone.

Wheel base: 106 1/2 inches.

Tread: 55 inches.

Tire dimensions, front: 34 x 3 1/2 inches.

Tire dimensions, rear: 34 x 4 inches.

Brakes: Three.

Type: Internal expanding on hubs;
contracting on transmission.

Horse-power: 35-40.

Number of cylinders: Four.

Bore: 4 1/2 inches. Stroke: 4 3/4 inches.

Cylinders arranged: Vertically, under
hood.

Cooling: Water.

Radiator: Tubular.

Ignition: Jump spark.

Electric source: Storage and dry
batteries.

Drive: Bevel gear.

Transmission: Sliding gear.

Number gear changes: Three forward,
one reverse.

Descriptive catalogue sent upon application to the above-named company.

OLDS MOTOR WORKS, LANSING, MICHIGAN

Price

\$2750



Model: A, PALACE TOURING CAR.

Color: Brewster green or French gray.

Seating capacity: Five persons.

Clutch: Reversed cone.

Wheel base: 106½ inches.

Tread: 55 inches.

Tire dimensions, front: 34 x 3½ inches.

Tire dimensions, rear: 34 x 4 inches.

Brakes: Three.

Type: Expanding on hubs; contracting on transmission.

Horse-power: 35-40.

Number of cylinders: Four.

Bore: 4½ inches. Stroke: 4¼ inches.

Cylinders arranged: Vertically, under hood.

Cooling: Water.

Radiator: Vertical tube.

Ignition: Jump spark.

Electric source: Storage and dry batteries.

Drive: Bevel gear.

Transmission: Sliding gear.

Number gear changes: Three forward, one reverse.

Descriptive catalogue sent upon application to the above-named company.

OLDS MOTOR WORKS, LANSING, MICHIGAN

Price

\$3800



Model : A, LIMOUSINE.

Color : Brewster green or French gray.

Seating capacity : Five persons.

Clutch : Reversed cone.

Wheel base : 106½ inches.

Tread : 55 inches.

Tire dimensions, front : 34 x 3½ inches.

Tire dimensions, rear : 34 x 4 inches.

Brakes : Three.

Type : Expanding on hubs ; contracting on transmission.

Horse-power : 35-40.

Descriptive catalogue sent upon application to the above-named company.

Number of cylinders : Four.

Bore : 4½ inches. Stroke : 4¾ inches.

Cylinders arranged : Vertically, under hood.

Cooling : Water.

Radiator : Vertical tubular.

Ignition : Jump spark.

Electric source : Storage and dry batteries.

Drive : Bevel gear.

Transmission : Sliding gear.

Number gear changes : Three forward, one reverse.

THE ROYAL MOTOR CAR COMPANY, CLEVELAND, OHIO

Price

\$4000

With cape top
and equip-
ment shown

\$4200



**Model: ROYAL TOURIST RUN-
ABOUT.**

Color: Standard.

Seating capacity: Two persons.

Clutch: Cone, leather faced.

Wheel base: 114 inches.

Tread: 56 inches.

Tire dimensions, front: 34 x 4½ inches.

Tire dimensions, rear: 34 x 4½ inches.

Brakes: Three.

**Type: Expanding on rear wheels;
contracting on driving shaft.**

Horse-power: 45.

Number of cylinders: Four.

Bore: 5½ inches. Stroke: 5½ inches.

**Cylinders arranged: Vertically, under
hood; cast in pairs.**

Cooling: Water.

Radiator: Cellular.

Ignition: Jump spark.

Electric source: Storage battery.

Drive: Bevel gear.

Transmission: Sliding gear.

**Number gear changes: Three forward,
one reverse.**

Descriptive catalogue sent upon application to the above-named company.

THE ROYAL MOTOR CAR COMPANY, CLEVELAND, OHIO

Price

\$4000

With cape top

\$4150



Model: ROYAL TOURIST G-2.

Color: Standard.

Seating capacity: Seven persons.

Clutch: Cone, leather faced.

Wheel base: 114 inches.

Tread: 56 inches.

Tire dimensions, front: 34 x 4½ inches.

Tire dimensions, rear: 34 x 4½ inches.

Brakes: Three.

Type: Expanding on rear wheels ;
contracting on driving shaft.

Horse-power: 45.

Number of cylinders: Four.

Bore: 5⅞ inches. **Stroke:** 5½ inches.

Cylinders arranged: Vertically, under
hood ; cast in pairs.

Cooling: Water.

Radiator: Cellular.

Ignition: Jump spark.

Electric source: Storage battery.

Drive: Bevel gear.

Transmission: Sliding gear.

Number gear changes: Three forward,
one reverse.

Descriptive catalogue sent upon application to the above-named company.

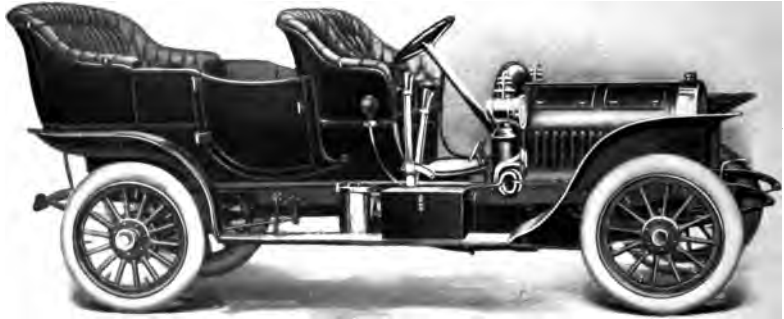
THE ROYAL MOTOR CAR COMPANY, CLEVELAND, OHIO

Price

\$4000

With cape top

\$4150



Model: ROYAL TOURIST SPECIAL G-2.

Color: Standard.

Seating capacity: Seven persons.

Clutch: Cone, leather faced.

Wheel base: 114 inches.

Tread: 56 inches.

Tire dimensions, front: 34 x 4½ inches.

Tire dimensions, rear: 34 x 4½ inches.

Brakes: Three.

Type: Expanding on rear wheels; contracting on driving shaft.

Horse-power: 45.

Number of cylinders: Four.

Bore: 5 1/8 inches. Stroke: 5½ inches.

Cylinders arranged: Vertically, under hood; cast in pairs.

Cooling: Water.

Radiator: Cellular.

Ignition: Jump spark.

Electric source: Storage battery.

Drive: Bevel gear.

Transmission: Sliding gear.

Number gear changes: Three forward, one reverse.

Descriptive catalogue sent upon application to the above-named company.

Price
\$5000



Model: ROYAL TOURIST LIM-
OUSINE.

Color: Standard.

Seating capacity: Seven persons.

Clutch: Cone, leather faced.

Wheel base: 114 inches.

Tread: 56 inches.

Tire dimensions, front: 34 x 4½ inches.

Tire dimensions, rear: 34 x 4½ inches.

Brakes: Three.

Type: Expanding on rear wheels ;
contracting on driving shaft.

Horse-power: 45.

Descriptive catalogue sent upon application to the above-named company.

Number of cylinders: Four.

Bore: 5¼ inches. Stroke: 5½ inches.

Cylinders arranged: Vertically, under
hood ; cast in pairs.

Cooling: Water.

Radiator: Cellular.

Ignition: Jump spark.

Electric source: Storage battery.

Drive: Bevel gear.

Transmission: Sliding gear.

Number gear changes: Three forward,
one reverse.

CADILLAC MOTOR CAR COMPANY, DETROIT, MICHIGAN

Price

(without lamps)

\$800

With leather top

\$870



Model: K, RUNABOUT.

Color: Brewster green; red running gear.

Seating capacity: Two persons.

Clutch: Flat disc.

Wheel base: 74 inches.

Tread: 56 inches (option of 61 inches).

Tire dimensions, front: 30 x 3 inches.

Tire dimensions, rear: 30 x 3 inches.

Brakes: Two.

Type: Double band on differential.

Horse-power: 10.

Number of cylinders: One.

Bore: 5 inches. Stroke: 5 inches.

Cylinder arranged: Horizontally, under body.

Cooling: Water.

Radiator: Tubular fin.

Ignition: Jump spark.

Electric source: Dry batteries.

Drive: Single chain.

Transmission: Planetary.

Number gear changes: Two forward, one reverse.

Descriptive catalogue sent upon application to the above-named company.

CADILLAC MOTOR CAR COMPANY, DETROIT, MICHIGAN

Price

(without lamps)
\$950



Model: M, DELIVERY.

Color: Brewster green; red running gear.

Carrying capacity: 500 to 600 pounds.

Clutch: Flat disc.

Wheel base: 76 inches.

Tread: 56 inches (option of 61 inches).

Tire dimensions, front: 30 x 3½ inches.

Tire dimensions, rear: 30 x 3½ inches.

Brakes: Two.

Type: Double band on differential.

Horse-power: 10.

Number of cylinders: One.

Bore: 5 inches. **Stroke:** 5 inches.

Cylinder arranged: Horizontally, under body.

Cooling: Water.

Radiator: Tubular fin.

Ignition: Jump spark.

Electric source: Dry batteries.

Drive: Single chain.

Transmission: Planetary.

Number gear changes: Two forward, one reverse.

Descriptive catalogue sent upon application to the above-named company.

CADILLAC MOTOR CAR COMPANY, DETROIT, MICHIGAN

Price

(without lamps)
\$950

With cape top
\$1050

Coupé
\$1200



Model: M.

Color: Brewster green; red running gear.

Seating capacity: Four persons.

Clutch: Flat disc.

Wheel base: 76 inches.

Tread: 56 inches (option of 61 inches).

Tire dimensions, front: 30 x 3½ inches.

Tire dimensions, rear: 30 x 3½ inches.

Brakes: Two.

Type: Double band on differential.

Horse-power: 10.

Number of cylinders: One.

Bore: 5 inches. Stroke: 5 inches.

Cylinder arranged: Horizontally, under body.

Cooling: Water.

Radiator: Tubular fin.

Ignition: Jump spark.

Electric source: Dry batteries.

Drive: Single chain.

Transmission: Planetary.

Number gear changes: Two forward, one reverse.

Descriptive catalogue sent upon application to the above-named company.

CADILLAC MOTOR CAR COMPANY, DETROIT, MICHIGAN

Price

(without lamps)

\$2000

With cape top

\$2120

Runabout

\$2000



Model: G.

Color: Brewster green ; black trimmings.

Seating capacity: Five persons.

Clutch: Friction, metal, oil cushioned.

Wheel base: 96 inches.

Tread: 56 inches.

Tire dimensions, front: 32 x 3½ inches.

Tire dimensions, rear: 32 x 3½ inches.

Brakes: Four.

Type: Contracting and expanding on rear wheels.

Horse-power: 20.

Number of cylinders: Four.

Bore: 4 inches. **Stroke:** 4½ inches.

Cylinders arranged: Vertically, under hood.

Cooling: Water.

Radiator: Flat tubular.

Ignition: Jump spark.

Electric source: Storage batteries.

Drive: Bevel gear.

Transmission: Selective sliding gear.

Number gear changes: Three forward, one reverse.

Descriptive catalogue sent upon application to the above-named company.

CADILLAC MOTOR CAR COMPANY, DETROIT, MICHIGAN

Price

(without lamps)

\$2500

With cape top

\$2650

Runabout

\$2500



Model: H.

Color: Brewster green; black trimmings.

Seating capacity: Five persons.

Clutch: Double flat disc.

Wheel base: 102 inches.

Tread: 56 inches (option of 61 inches).

Tire dimensions, front: 32 x 4 inches.

Tire dimensions, rear: 32 x 4 inches.

Brakes: Four.

Type: Contracting and expanding on rear wheels.

Horse-power: 30.

Number of cylinders: Four.

Bore: 4 $\frac{3}{8}$ inches. **Stroke:** 5 inches.

Cylinders arranged: Vertically, under hood.

Cooling: Water.

Radiator: Honeycomb.

Ignition: Jump spark.

Electric source: Storage batteries.

Drive: Bevel gear.

Transmission: Planetary.

Number gear changes: Three forward, one reverse.

Descriptive catalogue sent upon application to the above-named company.

CADILLAC MOTOR CAR COMPANY, DETROIT, MICHIGAN

Price
(without lamps)
\$3500



Model: H, LIMOUSINE.

Color: Brewster green; black trimmings.

Seating capacity: Six persons.

Clutch: Double flat disc.

Wheel base: 102 inches.

Tread: 56 inches (option of 61 inches).

Tire dimensions, front: 32 x 4 inches.

Tire dimensions, rear: 32 x 4½ inches.

Brakes: Four.

Type: Contracting and expanding on rear wheels.

Horse-power: 30.

Descriptive catalogue sent upon application to the above-named company.

Number of cylinders: Four.

Bore: 4¾ inches. **Stroke:** 5 inches.

Cylinders arranged: Vertically, under hood.

Cooling: Water.

Radiator: Honeycomb.

Ignition: Jump spark.

Electric source: Storage batteries.

Drive: Bevel gear.

Transmission: Planetary.

Number gear changes: Three forward, one reverse.

ELMORE MANUFACTURING COMPANY, CLYDE, OHIO

Price

\$1750



Model: 16

Color: Blue.

Seating capacity: Five persons.

Clutch: Expanding ring.

Wheel base: 100 inches.

Tread: 56 inches.

Tire dimensions, front: 32 x 3 $\frac{1}{2}$ inches.

Tire dimensions, rear: 32 x 3 $\frac{1}{2}$ inches.

Brakes: Three.

Type: Internal hub and band on driving shaft.

Horse-power: 24.

Number of cylinders: Three two-cycle.

Bore: 4 $\frac{1}{2}$ inches. **Stroke:** 4 inches.

Cylinders arranged: Vertically, under hood.

Cooling: Water.

Radiator: Cellular.

Ignition: Jump spark.

Electric source: Storage battery.

Drive: Bevel gear.

Transmission: Selective sliding gear.

Number gear changes: Three forward, one reverse.

Descriptive catalogue sent upon application to the above-named company.

ELMORE MANUFACTURING COMPANY, CLYDE, OHIO

Price

\$2500

With cape top
\$2625



Model: 18.

Color: Blue.

Seating capacity: Five persons.

Clutch: Expanding ring.

Wheel base: 109 inches.

Tread: 56 inches.

Tire dimensions, front: 34 x 4 inches.

Tire dimensions, rear: 34 x 4 inches.

Brakes: Three.

Type: Internal and external.

Horse-power: 30-35.

Number of cylinders: Four two-cycle.

Bore: 4½ inches. Stroke: 4 inches.

Cylinders arranged: Vertically, under hood.

Cooling: Water.

Radiator: Cellular.

Ignition: Jump spark.

Electric source: Storage battery.

Drive: Bevel gear.

Transmission: Selective sliding gear.

Number gear changes: Three forward,
one reverse.

Descriptive catalogue sent upon application to the above-named company.

Price

chassis

\$5500

Body extra



Model: F I A T.

Color: Optional.

Seating capacity: Two to seven persons.

Clutch: Multiple disc.

Wheel base: 111, 119 and 131 inches.

Tread: 54 inches.

Tire dimensions, front: 910 x 90 m/m.

Tire dimensions, rear: 920 x 120 m/m.

Brakes: Four.

Type: Emergency, expanding on rear wheels; foot, on differential and countershaft, water-cooled.

Horse-power: 20.

Number of cylinders: Four.

Bore: 120 m/m. Stroke: 135 m/m.

Cylinders arranged: Vertically, under hood; cast in pairs.

Cooling: Water.

Radiator: Honeycomb.

Ignition: Make-and-break.

Electric source: Low tension magneto.

Drive: Double side chain.

Transmission: Selective sliding gear.

Number gear changes: Four forward, one reverse.

Descriptive catalogue sent upon application to the above-named company.

Price

chassis

\$7500

Body extra



Model: F I A T.

Color: Optional.

Seating capacity: Two to seven persons.

Clutch: Multiple disc.

Wheel base: 114, 122 and 136 inches.

Tread: 54 inches.

Tire dimensions, front: 910 x 90 m/m.

Tire dimensions, rear: 920 x 120 m/m.

Brakes: Four.

Type: Emergency, expanding on rear wheels; foot, on differential and countershaft, water-cooled.

Horse-power: 35.

Descriptive catalogue sent upon application to the above-named company.

Number of cylinders: Four.

Bore: 125 m/m. **Stroke:** 150 m/m.

Cylinders arranged: Vertically, under hood; cast in pairs.

Cooling: Water.

Radiator: Honeycomb.

Ignition: Make-and-break.

Electric source: Low tension magneto.

Drive: Double side chain.

Transmission: Selective sliding gear.

Number gear changes: Four forward, one reverse.

Price

runabout
\$5750

Other bodies
extra, according
to style and m



Model : R, HOTCHKISS.

Color : Optional.

Seating capacity : Two, and four to seven persons.

Clutch : Cone, leather faced.

Wheel base : 118 inches.

Tread : 56 inches.

Tire dimensions, front : 875 x 105 m/m.

Tire dimensions, rear : 880 x 120 m/m.

Brakes : Three.

Type : Contracting on driving shaft and expanding on rear wheels.

Horse-power : 20-30.

Number of cylinders : Four.

Bore : 115 m/m. **Stroke :** 120 m/m.

Cylinders arranged : Vertically, under hood ; cast in pairs.

Cooling : Water.

Radiator : Honeycomb.

Ignition : Jump spark.

Electric source : Low tension magneto.

Drive : Bevel gear.

Transmission : Selective sliding gear.

Number gear changes : Four forward, one reverse.

Descriptive catalogue sent upon application to the above-named company.

Price

runabout

\$6750

Other bodies
extra, according
to style and make



Model: M, HOTCHKISS.

Color: Optional.

Seating capacity: Two, and four to seven persons.

Clutch: Cone, leather faced.

Wheel base: 118 inches.

Tread: 56 inches.

Tire dimensions, front: 875 x 105 m/m.

Tire dimensions, rear: 880 x 120 m/m.

Brakes: Three.

Type: Contracting on driving shaft and expanding on rear wheels.

Horse-power: 35.

Descriptive catalogue sent upon application to the above-named company.

Number of cylinders: Four.

Bore: 125 m/m. Stroke: 125 m/m.

Cylinders arranged: Vertically, under hood; cast in pairs.

Cooling: Water.

Radiator: Honeycomb.

Ignition: Jump spark.

Electric source: Low tension magneto.

Drive: Bevel gear.

Transmission: Selective sliding gear.

Number gear changes: Four forward, one reverse.

Price

runabout
\$9250

Other bodies
extra, according
to style and make



Model: L, HOTCHKISS.

Color: Optional.

Seating capacity: Two, and four to seven persons.

Clutch: Cone, leather faced.

Wheel base: 132 inches.

Tread: 56 inches.

Tire dimensions, front: 875 x 105 m/m.

Tire dimensions, rear: 880 x 120 m/m.

Brakes: Three.

Type: Contracting on driving shaft and expanding on rear wheels.

Horse-power: 50.

Number of cylinders: Six.

Bore: 125 m/m. Stroke: 125 m/m.

Cylinders arranged: Vertically, under hood; cast in pairs.

Cooling: Water.

Radiator: Honeycomb.

Ignition: Jump spark.

Electric source: Low tension magneto.

Drive: Bevel gear.

Transmission: Selective sliding gear.

Number gear changes: Four forward, one reverse.

Descriptive catalogue sent upon application to the above-named company.

Price

runabout
\$5500

Other bodies
extra, according
to style and make



Model: **DARRACQ COUPÉ LIMOUSINE.**

Color: **Royal blue, dark green or red.**

Seating capacity: **Two to seven persons.**

Clutch: **Cone, leather faced.**

Wheel base: **120 inches.**

Tread: **53 inches.**

Tire dimensions front: **880 x 120 m/m.**

Tire dimensions, rear: **880 x 120 m/m.**

Brakes: **Three.**

Type: **Internal expanding on driving shaft, controlled by foot pedal; and on rear wheels, controlled by side hand lever.**

Horse-power: **20-32.**

Number of cylinders: **Four.**

Bore: **112 m/m.** Stroke: **120 m/m.**

Cylinders arranged: **Vertically, under hood; cast in pairs.**

Cooling: **Water.**

Radiator: **Gilled tubular.**

Ignition: **Make-and-break and jump spark.**

Electric source: **Magneto, coil and storage battery.**

Drive: **Bevel gear.**

Transmission: **Sliding gear.**

Number gear changes: **Three forward, one reverse.**

Descriptive catalogue sent upon application to the above-named company.

DARRACQ MOTOR CAR COMPANY, 1989 BROADWAY, NEW YORK

Price

runabout

\$7750

Other bodies
extra, according
to style and make



Model: DARRACQ TOURING CAR.

Color: Royal blue, dark green or red.

Seating capacity: Two to seven persons.

Clutch: Cone, leather faced.

Wheel base: 125 inches.

Tread: 53 inches.

Tire dimensions, front: 935 x 135 m/m.

Tire dimensions, rear: 935 x 135 m/m.

Brakes: Three.

Type: Internal expanding on driving shaft, controlled by foot pedal; and on rear wheels, controlled by side hand lever.

Horse-power: 40-60.

Number of cylinders: Four.

Bore: 130 m/m. **Stroke:** 130 m/m.

Cylinders arranged: Vertically, under hood; cast in pairs.

Cooling: Water.

Radiator: Gilled tubular.

Ignition: Make-and-break and jump spark.

Electric source: Magneto, coil and storage battery.

Drive: Bevel gear.

Transmission: Sliding gear.

Number gear changes: Three forward, one reverse.

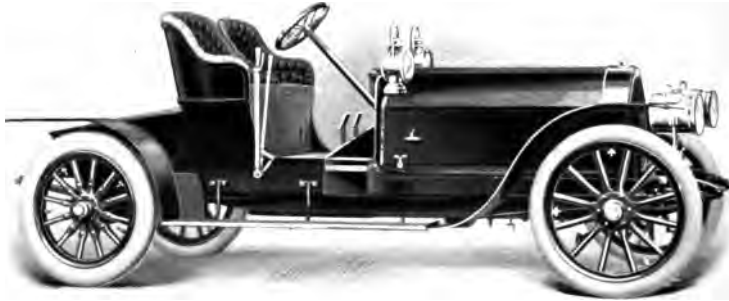
Descriptive catalogue sent upon application to the above-named company.

DARRACQ MOTOR CAR COMPANY, 1989 BROADWAY, NEW YORK

Price

runabout
\$8000

Other bodies
extra, according
to style and make



Model: DARRACQ RUNABOUT.
Color: Royal blue, dark green or red.
Seating capacity: Two to seven persons.
Clutch: Cone, leather faced.
Wheel base: 132 inches.
Tread: 53 inches.
Tire dimensions, front: 880 x 120 m/m.
Tire dimensions, rear: 880 x 120 m/m.
Brakes: Three.
Type: Internal expanding on driving shaft, controlled by foot pedal; and on rear wheels, controlled by side hand lever.
Horse-power: 30-40.

Number of cylinders: Six.
Bore: 100 m/m. **Stroke:** 120 m/m.
Cylinders arranged: Vertically, under hood; cast in pairs.
Cooling: Water.
Radiator: Gilled tubular.
Ignition: Make-and-break and jump spark.
Electric source: Magneto, coil and storage battery.
Drive: Bevel gear.
Transmission: Sliding gear.
Number gear changes: Four forward, one reverse.

Descriptive catalogue sent upon application to the above-named company.

NORTHERN MOTOR CAR COMPANY, DETROIT, MICHIGAN

Price

\$1600

With cape top

\$1700



**Model: C, TWO - PASSENGER
- TOURING RUNABOUT.**

Color: Green body, cream gear.

Seating capacity: Two persons.

**Clutch: Expansion ring actuated by
cone.**

Wheel base: 88, 100 or 106 inches.

Tread: 56 inches.

Tire dimensions, front: 30 x 4 inches.

Tire dimensions, rear: 30 x 4 inches.

Brakes: Three.

**Type: Contracting bands on hubs
and transmission.**

Horse-power: 20.

Number of cylinders: Two.

Bore: 5½ inches. Stroke: 5¼ inches.

**Cylinders arranged: Horizontally op-
posed, under hood.**

Cooling: Water.

Radiator: Tubular fin.

Ignition: Jump spark.

Electric source: Dry cells.

Drive: Bevel gear.

Transmission: Planetary.

**Number gear changes: Two forward,
one reverse.**

Descriptive catalogue sent upon application to the above-named company.

NORTHERN MOTOR CAR COMPANY, DETROIT, MICHIGAN

Price

\$1700

With cape top

\$1800



Model : C, SIDE - ENTRANCE
TOURING CAR.

Color : Green body, cream gear.

Seating capacity : Five persons.

Clutch : Expansion ring actuated by
cone.

Wheel base : 100 or 106 inches.

Tread : 56 inches.

Tire dimensions, front : 30 x 4 inches.

Tire dimensions, rear : 30 x 4 inches.

Brakes : Three.

Type : Contracting bands on hubs
and transmission.

Horse-power : 20.

Number of cylinders : Two.

Bore : $5\frac{1}{2}$ inches. **Stroke :** $5\frac{1}{4}$ inches.

Cylinders arranged : Horizontally op-
posed, under hood.

Cooling : Water.

Radiator : Tubular fin.

Ignition : Jump spark.

Electric source : Dry cells.

Drive : Bevel gear.

Transmission : Planetary.

Number gear changes : Two forward,
one reverse.

Descriptive catalogue sent upon application to the above-named company.

NORTHERN MOTOR CAR COMPANY, DETROIT, MICHIGAN

Price
\$3000



Model: C, LIMOUSINE.

Color: All blue.

Seating capacity: Five persons.

Clutch: Expansion ring actuated by cone.

Wheel base: 106 inches.

Tread: 56 inches.

Tire dimensions, front: 32 x 4 inches.

Tire dimensions, rear: 32 x 4 inches.

Brakes: Three.

Type: Contracting bands on hubs and transmission.

Horse-power: 20.

Number of cylinders: Two.

Bore: 5½ inches. **Stroke:** 5¼ inches.

Cylinders arranged: Horizontally opposed, under hood.

Cooling: Water.

Radiator: Tubular fin.

Ignition: Jump spark.

Electric source: Dry cells.

Drive: Bevel gear.

Transmission: Planetary.

Number gear changes: Two forward, one reverse.

Descriptive catalogue sent upon application to the above-named company.

NORTHERN MOTOR CAR COMPANY, DETROIT, MICHIGAN

Price

\$3500

With cape top
\$3750

Runabout
\$3500

Limousine
\$4500



Model : L.

Color : Blue body, vermilion gear.

Seating capacity : Six persons.

Clutch : Pneumatic.

Wheel base : 119 inches.

Tread : 56 inches.

Tire dimensions, front : 34 x 4½ inches.

Tire dimensions, rear : 34 x 4½ inches.

Brakes : Four.

Type : Air, contracting, and foot, expanding, on rear wheels.

Horse-power : 50.

Number of cylinders : Four.

Bore : 5 inches. **Stroke :** 5½ inches.

Cylinders arranged : Vertically, under hood ; in one casting.

Cooling : Water.

Radiator : Flat tube.

Ignition : Jump spark.

Electric source : Storage battery.

Drive : Bevel gear.

Transmission : Sliding gear.

Number gear changes : Three forward, one reverse.

Descriptive catalogue sent upon application to the above-named company.

KNOX AUTOMOBILE COMPANY, SPRINGFIELD, MASS.

Price

\$1800



Model: 41, DELIVERY WAGON.

Number of cylinders: One.

Color: Red or green.

Bore: 5 inches. **Stroke:** 8 inches.

Carrying capacity: 1500 pounds.

Cylinder arranged: Horizontally, under body.

Clutch: Multiple disc.

Cooling: Air.

Wheel base: 78 inches.

Tread: 56 inches.

Ignition: Jump spark.

Tire dimensions, front: 32 x 3½ inches.

Electric source: Dry cells and coil.

Tire dimensions, rear: 32 x 3½ inches.

Brakes: Three.

Drive: Single chain.

Type: Foot and hand on transmission and differential.

Transmission: Planetary.

Horse-power: 8-10.

Number gear changes: Two forward, one reverse.

Descriptive catalogue sent upon application to the above-named company.

KNOX AUTOMOBILE COMPANY, SPRINGFIELD, MASS.

Price

\$3700

With stationary top

\$3900

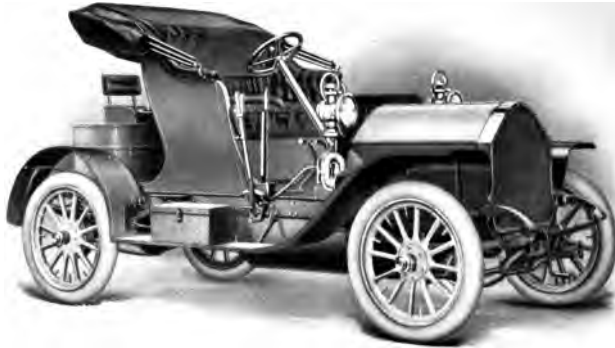


- Model: 102, KNOX WATERLESS. Number of cylinders: Two.
Color: Optional. Bore: 5 inches. Stroke: 7 inches.
Carrying capacity: 6000 pounds. Cylinders arranged: Horizontally opposed, under body.
Clutch: Multiple disc. Cooling: Air.
Wheel base: 111 inches. Ignition: Jump spark.
Tread: 62 inches. Electric source: Dry cells and coil.
Tire dimensions, front: 36 x 4 inches. Drive: Double side chain.
Tire dimensions, rear: 36 x 6 inches. Transmission: Planetary.
Brakes: Three. Number gear changes: Two forward, one reverse.
Type: Foot and hand on transmission and rear hubs.
Horse-power: 16-20.
Descriptive catalogue sent upon application to the above-named company.

KNOX AUTOMOBILE COMPANY, SPRINGFIELD, MASS.

Price

with Stanhope top
\$2500



Model: H, STANHOPE.

Horse-power: 25-30.

Color: Napier green or Mercedes red,
with red upholstery.

Number of cylinders: Four.

Bore: $4\frac{3}{8}$ inches. **Stroke:** $4\frac{3}{4}$ inches.

Seating capacity: Two persons.

Cylinders arranged: Vertically, under
hood.

Clutch: Cone, metal-to-metal; in oil
bath.

Cooling: Air.

Wheel base: 102 inches.

Ignition: Jump spark.

Tread: 56 inches.

Electric source: Dry batteries.

Tire dimensions, front: 32 x 4 inches.

Drive: Bevel gear.

Tire dimensions, rear: 32 x 4 inches.

Brakes: Four.

Transmission: Selective sliding gear.

Type: Expanding and contracting
on rear hubs.

Number gear changes: Three forward,
one reverse.

Descriptive catalogue sent upon application to the above-named company.

KNOX AUTOMOBILE COMPANY, SPRINGFIELD, MASS.

Price

\$2500

With cape top

\$2650



Model: H, KNOX WATERLESS.

Horse-power: 25-30.

Color: Napier green or Mercedes red,
with red upholstery.

Number of cylinders: Four.

Bore: $4\frac{3}{8}$ inches. **Stroke:** $4\frac{3}{4}$ inches.

Seating capacity: Five persons.

Cylinders arranged: Vertically, under
hood.

Clutch: Cone, metal-to-metal; in oil
bath.

Cooling: Air.

Wheel base: 102 inches.

Ignition: Jump spark.

Tread: 56 inches.

Electric source: Dry batteries.

Tire dimensions, front: 32 x 4 inches.

Drive: Bevel gear.

Tire dimensions, rear: 32 x 4 inches.

Transmission: Selective sliding gear.

Brakes: Four.

Type: Expanding and contracting
on rear hubs.

Number gear changes: Three forward,
one reverse.

Descriptive catalogue sent upon application to the above-named company.

KNOX AUTOMOBILE COMPANY, SPRINGFIELD, MASS.

Price

\$4000

With cape top

\$4200

Limousine

\$5000



Model: G, KNOX WATERLESS.

Number of cylinders: Four.

Color: Napier green or Mercedes red.

Bore: $4\frac{3}{4}$ inches. Stroke: $5\frac{1}{2}$ inches.

Seating capacity: Seven persons.

Cylinders arranged: Vertically, under hood.

Clutch: Cone, metal-to-metal; in oil bath.

Cooling: Air.

Wheel base: 112 inches.

Ignition: Jump spark.

Tread: 56 inches.

Tire dimensions, front: 34 x 4 inches.

Electric source: Magneto and dry battery.

Tire dimensions, rear: 34 x $4\frac{1}{2}$ inches.

Brakes: Three.

Drive: Double side chain.

Type: Foot, on differential; hand, expanding on rear wheels; all metal-to-metal.

Transmission: Selective sliding gear.

Horse-power: 35-40.

Number gear changes: Four forward, one reverse.

Descriptive catalogue sent upon application to the above-named company.

KNOX AUTOMOBILE COMPANY, SPRINGFIELD, MASS.

Price
Limousine
\$5000



Model: G, LIMOUSINE.

Color: Optional.

Seating capacity: Six persons.

Clutch: Cone, metal-to-metal; in oil bath.

Wheel base: 112 inches.

Tread: 56 inches.

Tire dimensions, front: 34 x 4 inches.

Tire dimensions, rear: 34 x 4½ inches.

Brakes: Three.

Type: Foot, on differential; hand, expanding on rear hubs; all metal-to-metal.

Horse-power: 35-40.

Number of cylinders: Four.

Bore: 4¾ inches. **Stroke:** 5½ inches.

Cylinders arranged: Vertically, under hood.

Cooling: Air.

Ignition: Jump spark.

Electric source: Magneto and dry battery.

Drive: Double side chain.

Transmission: Selective sliding gear.

Number gear changes: Four forward, one reverse.

Descriptive catalogue sent upon application to the above-named company.

MATHESON MOTOR CAR COMPANY, WILKESBARRE, PA.

Price

\$4500

Runabout

\$4000

Limousine
or Landalet

\$5500



Model : TOURING CAR.

Color : Optional.

Seating capacity : Seven persons.

Clutch : Multiple disc.

Wheel base : 123 inches.

Tread : 56½ inches.

Tire dimensions, front : 36 x 4 inches.

Tire dimensions, rear : 36 x 4½ inches.

Brakes : Four.

**Type : Expanding in rear wheel
hubs and band on sprocket shafts.**

Horse-power : 35.

Number of cylinders : Four.

Bore : 4½ inches. Stroke : 6 inches.

**Cylinders arranged : Vertically, under
hood.**

Cooling : Water.

Radiator : Honeycomb.

Ignition : Make-and-break.

Electric source : Magneto.

Drive : Double side chain.

Transmission : Selective sliding gear.

**Number gear changes : Four forward,
one reverse.**

Descriptive catalogue sent upon application to the above-named company.

MATHESON MOTOR CAR COMPANY, WILKESBARRE, PA.

Price

\$5500

Runabout
\$5000

Limousine
or Landaulet
~~\$6500~~



Model: TOURING CAR.

Color: Optional.

Seating capacity: Seven persons.

Clutch: Multiple disc.

Wheel base: 129 inches.

Tread: 56½ inches.

Tire dimensions, front: 36 x 4 inches.

Tire dimensions, rear: 36 x 5 inches.

Brakes: Four.

Type: Expanding in rear wheel hubs
and band on sprocket shafts.

Horse-power: 50.

Number of cylinders: Four.

Bore: 5 inches. Stroke: 6 inches.

Cylinders arranged: Vertically, under
hood.

Cooling: Water.

Radiator: Honeycomb.

Ignition: Make-and-break.

Electric source: Magneto.

Drive: Double side chain.

Transmission: Selective sliding gear.

Number gear changes: Four forward,
one reverse.

Descriptive catalogue sent upon application to the above-named company.

MATHESON MOTOR CAR COMPANY, WILKESBARRE, PA.

Price

\$6500



Model: **LIMOUSINE.**

Color: **Optional.**

Seating capacity: **Seven persons.**

Clutch: **Multiple disc.**

Wheel base: **129 inches.**

Tread: **56½ inches.**

Tire dimensions, front: **36 x 4 inches.**

Tire dimensions, rear: **36 x 5 inches.**

Brakes: **Four.**

Type: **Expanding in rear wheel hubs
and band on sprocket shafts.**

Horse-power: **50.**

Number of cylinders: **Four.**

Bore: **5 inches.** Stroke: **6 inches.**

Cylinders arranged: **Vertically, under
hood.**

Cooling: **Water.**

Radiator: **Honeycomb.**

Ignition: **Make-and-break.**

Electric source: **Magneto.**

Drive: **Double side chain.**

Transmission: **Selective sliding gear.**

Number gear changes: **Four forward,
one reverse.**

Descriptive catalogue sent upon application to the above-named company.

BUICK MOTOR COMPANY, JACKSON, MICHIGAN

Price

\$1150

With cape top

\$1230



Model: G, RUNABOUT.

Color: Purple lake.

Seating capacity: Two persons.

Clutch: Cone.

Wheel base: 89 inches.

Tread: 56 inches.

Tire dimensions, front: 30 x 3 $\frac{1}{2}$ inches.

Tire dimensions, rear: 30 x 3 $\frac{1}{2}$ inches.

Brakes: Two.

Type: Expanding on rear hubs.

Horse-power: 22.

Number of cylinders: Two.

Bore: 4 $\frac{1}{2}$ inches. Stroke: 5 inches.

Cylinders arranged: Horizontally,
under body.

Cooling: Water.

Radiator: Tubular.

Ignition: Jump spark.

Electric source: Storage battery.

Drive: Single chain.

Transmission: Planetary.

Number gear changes: Two forward,
one reverse.

Descriptive catalogue sent upon application to the above-named company.

BUICK MOTOR COMPANY, JACKSON, MICHIGAN

Price

--- \$1250

With cape top
\$1350



Model: F, TOURING CAR.

Color: Purple lake (deep wine).

Seating capacity: Five persons.

Clutch: Cone.

Wheel base: 89 inches.

Tread: 56 inches.

Tire dimensions, front: 30 x 3½ inches.

Tire dimensions, rear: 30 x 3½ inches.

Brakes: Two.

Type: Expanding on rear hubs.

Horse-power: 22.

Number of cylinders: Two.

Bore: 4½ inches. Stroke: 5 inches.

Cylinders arranged: **Horizontally,**
under body.

Cooling: Water.

Radiator: Tubular.

Ignition: Jump spark.

Electric source: Storage battery.

Drive: Single chain.

Transmission: Planetary.

Number gear changes: **Two forward,**
one reverse.

Descriptive catalogue sent upon application to the above-named company.

BUICK MOTOR COMPANY, JACKSON, MICHIGAN

Price

\$2000



Model : K, RUNABOUT.

Color : Buick gray.

Seating capacity : Two persons.

Clutch : Plate.

Wheel base : 106 inches.

Tread : 56 inches.

Tire dimensions, front : 32 x 4 inches.

Tire dimensions, rear : 32 x 4 inches.

Brakes : Three.

Type : Contracting on driving shaft
and expanding on rear hubs.

Horse-power : 25-30.

Descriptive catalogue sent upon application to the above-named company.

Number of cylinders : Four.

Bore: $4\frac{1}{4}$ inches. Stroke: $4\frac{1}{2}$ inches.

Cylinders arranged : Vertically, under
hood.

Cooling : Water.

Radiator : Tubular.

Ignition : Jump spark.

Electric source : Storage battery.

Drive : Bevel gear.

Transmission : Planetary.

Number gear changes : Two forward,
one reverse.

BUICK MOTOR COMPANY, JACKSON, MICHIGAN

Price

\$2200

With cape top

\$2300



Model: D.

Color: Blue body.

Seating capacity: Five persons.

Clutch: Plate.

Wheel base: 102½ inches.

Tread: 56 inches.

Tire dimensions, front: 32 x 4 inches.

Tire dimensions, rear: 32 x 4 inches.

Brakes: Three.

Type: Contracting on driving shaft
and expanding on rear hubs.

Horse-power: 25-30.

Number of cylinders: Four.

Bore: 4¼ inches. Stroke: 4½ inches.

Cylinders arranged: Vertically, under
hood.

Cooling: Water.

Radiator: Tubular.

Ignition: Jump spark.

Electric source: Storage battery.

Drive: Bevel gear.

Transmission: Sliding gear.

Number gear changes: Three forward,
one reverse.

Descriptive catalogue sent upon application to the above-named company.

CATALOGUE REQUEST BLANK

.....1907

.....
.....
GENTLEMEN :—Please send me catalogue describing your automobiles shown in the HAND BOOK OF GASOLINE AUTOMOBILES, published by the Association of Licensed Automobile Manufacturers, and oblige,

Name.....

Street..... City.....

CATALOGUE REQUEST BLANK

.....1907

.....
.....
GENTLEMEN :—Please send me catalogue describing your automobiles shown in the HAND BOOK OF GASOLINE AUTOMOBILES, published by the Association of Licensed Automobile Manufacturers, and oblige,

Name.....

Street..... City.....

CATALOGUE REQUEST BLANK

.....1907

.....
.....
GENTLEMEN :—Please send me catalogue describing your automobiles shown in the HAND BOOK OF GASOLINE AUTOMOBILES, published by the Association of Licensed Automobile Manufacturers, and oblige,

Name.....

Street..... City.....

CATALOGUE REQUEST BLANK

.....-1907

.....
.....
GENTLEMEN :—Please send me catalogue describing your automobiles shown in the HAND BOOK OF GASOLINE AUTOMOBILES, published by the Association of Licensed Automobile Manufacturers, and oblige,

Name.....

Street..... City.....

CATALOGUE REQUEST BLANK

.....1907

.....
.....
GENTLEMEN :—Please send me catalogue describing your automobiles shown in the HAND BOOK OF GASOLINE AUTOMOBILES, published by the Association of Licensed Automobile Manufacturers, and oblige,

Name.....

Street..... City.....

CATALOGUE REQUEST BLANK

.....1907

.....
.....
GENTLEMEN :—Please send me catalogue describing your automobiles shown in the HAND BOOK OF GASOLINE AUTOMOBILES, published by the Association of Licensed Automobile Manufacturers, and oblige,

Name.....

Street..... City.....

.....

.....

CATALOGUE REQUEST BLANK

.....1907

.....
.....
GENTLEMEN :—Please send me catalogue describing your automobiles shown in the HAND BOOK OF GASOLINE AUTOMOBILES, published by the Association of Licensed Automobile Manufacturers, and oblige,

Name.....

Street..... City.....

CATALOGUE REQUEST BLANK

.....1907

.....
.....
GENTLEMEN :—Please send me catalogue describing your automobiles shown in the HAND BOOK OF GASOLINE AUTOMOBILES, published by the Association of Licensed Automobile Manufacturers, and oblige,

Name.....

Street..... City.....

CATALOGUE REQUEST BLANK

.....1907

.....
.....
GENTLEMEN :—Please send me catalogue describing your automobiles shown in the HAND BOOK OF GASOLINE AUTOMOBILES, published by the Association of Licensed Automobile Manufacturers, and oblige,

Name.....

Street..... City.....

the first two, the third is a *de novo* mutation. The first two are inherited from the mother and the third from the father.

The first two are inherited from the mother and the third from the father.

The first two are inherited from the mother and the third from the father.

The first two are inherited from the mother and the third from the father.

The first two are inherited from the mother and the third from the father.

The first two are inherited from the mother and the third from the father.

The first two are inherited from the mother and the third from the father.

The first two are inherited from the mother and the third from the father.

The first two are inherited from the mother and the third from the father.

The first two are inherited from the mother and the third from the father.

The first two are inherited from the mother and the third from the father.

The first two are inherited from the mother and the third from the father.

The first two are inherited from the mother and the third from the father.

The first two are inherited from the mother and the third from the father.

The first two are inherited from the mother and the third from the father.

The first two are inherited from the mother and the third from the father.

The first two are inherited from the mother and the third from the father.

The first two are inherited from the mother and the third from the father.

The first two are inherited from the mother and the third from the father.

The first two are inherited from the mother and the third from the father.

The first two are inherited from the mother and the third from the father.