

A

0
0
0
0
6
8
1
4
2
9



UC SOUTHERN REGIONAL LIBRARY FACILITY

100
Chess Problems
By
A. Cyril Pearson

ornia
al

Ex Libris

C. K. OGDEN



to
Dr. A. H. Downes.
with all good wishes
from the Author -

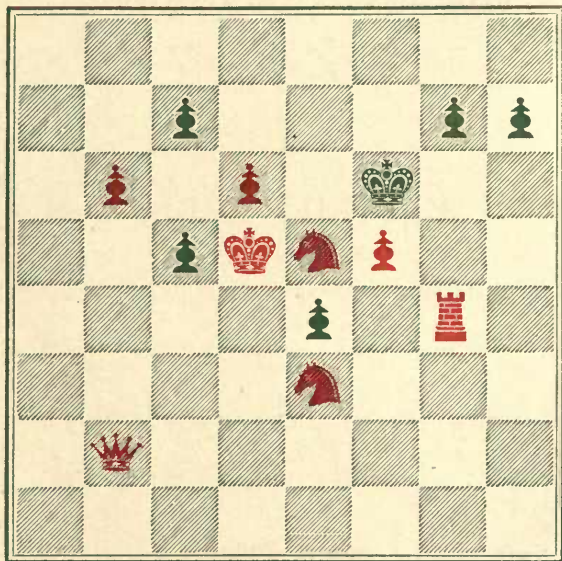
A. Cyril Pearson*

Christmas. 1899.

* Father of
Sir Arthur Pearson
A.H.D.

Chess Puzzle.

Black.



White.

White (Red) might have given mate on the last move.

White now to retract his move, and mate at once.

Shew by analysis the mating position.

ONE HUNDRED
CHESS PROBLEMS,

WITH CHESS PUZZLE FRONTISPIECE.

BY

REV. A. CYRIL PEARSON, M.A.,

Of Balliol College, Oxford,

RECTOR OF DRAYTON PARSLow, BUCKS.

ENTERED AT STATIONERS' HALL.

Third Edition.

LONDON:

CIVIL SERVICE PRINTING AND PUBLISHING COMPANY LIMITED,

8, SALISBURY COURT, FLEET STREET, E.C.

1883.

LONDON:
CIVIL SERVICE PRINTING AND PUBLISHING COMPANY LIMITED,
8, SALISBURY COURT, FLEET STREET, E.C.

P R E F A C E .



THE pleasure of constructing Chess Problems is, in itself, a fair equivalent for the time and pains which a careful composer must expend, but it is to the interest shown by solvers that he must look for encouragement, and their approval is his best reward.

As a contributor for several years to the principal Chess columns and magazines, I have had the benefit of much kindly and valuable criticism, not less kindly, nor of less value, when it has been opposed to my own fancies ; and I now venture to offer to the Chess public a selection from those problems which have stood the test of publication, in the hope that what has been to me a labour of love, may be acceptable to some of those, at home and abroad, who take delight in the quaint and manifold combinations which no number of games or problems can exhaust.

It may be true that a composer is not a good judge of the merits of his work, but it is not less true that he can best appreciate the difficulty of combining clear construction with some subtlety, and freshness of idea. He knows well "where the shoe pinches," and he must often take strong measures to guard against flaws, or to prevent second solutions. These meet him face to face, though they seldom present themselves to the notice of the solver after they have been overcome by the introduction of pieces condemned, perhaps, as unnecessary by the off-hand critic.

This charge of overloading the position is not always un-

PREFACE.

reasonable and there are few composers who do not at times deserve it. As in other matters "Prevention is better than cure," and he shews far truer feeling for his art who *prevents* the faults of a position by careful reconstruction, by *working down* his problem, and refining it, than he who with less trouble cures by coarser means the false results.

Such high finish is, however, more easily aimed at than attained; it must be looked for, as a rule, in the admirable work of those few who stand as problem composers a clear head and shoulders above us all.

It has been my good fortune to meet on friendly terms many members of the Brotherhood of Chess; others are familiar to me from their masterpieces, which reflect with such variety the distinct and characteristic conceptions of their minds:—To all I offer heartily, with this little book, the New Year's greeting—"Peace, health, and happiness."

A. CYRIL PEARSON.

DRAYTON PARSLOW RECTORY,

December, 1878.

PREFACE TO THIRD EDITION.



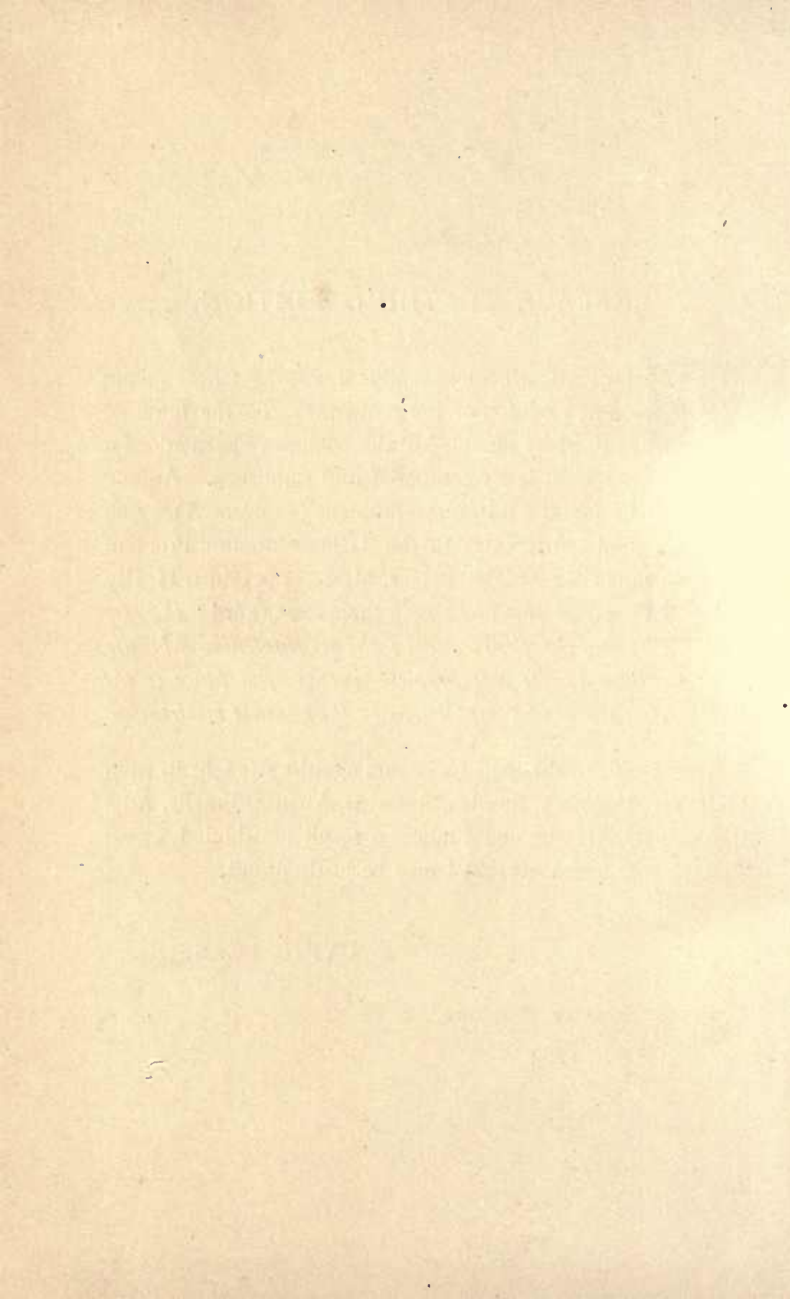
OFFER, with much pleasure, to the Chess public a new edition of my problems. To the hundred originally included in the book have been added a few that have been lately composed and published. Among these will be found a four-move problem (Problem A) which took the double-first prize in the "Chess Monthly Problem Tournament, 1882." The judges, Messrs. Zukertort, Healey and Collins, say of this problem in their final award "*the gem of the set and the Tournament ; the originality and beauty of the leader render this problem worthy of a place in the choicest selection of compositions by the greatest masters.*"

This problem obtained its honors against sets sent in from Germany, Denmark, Sweden, America, Austria, Brazils, Australia, India, Greece and France, a result of which I, as an English composer, feel that I may be justly proud.

A. CYRIL PEARSON.

DRAYTON PARSLow RECTORY,

April, 1883.





EDICATED TO MY



IFE.

— *“The play’s the thing
“Wherein I’ll catch . . . the King.”*

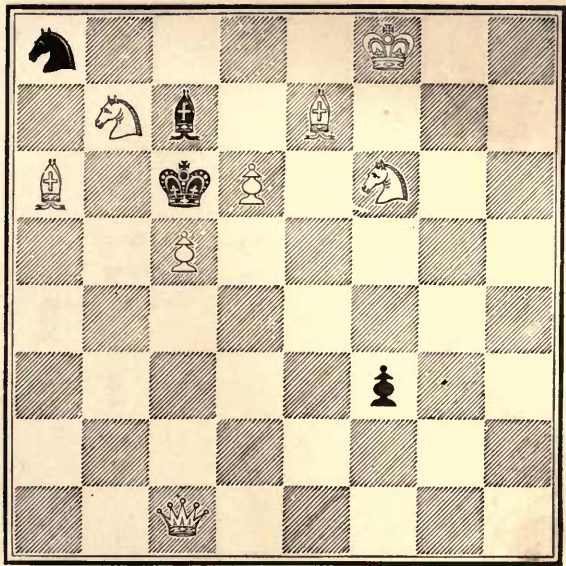
SHAKESPEARE.

TWO MOVE PROBLEMS.



PROBLEM No. 1.

BLACK.

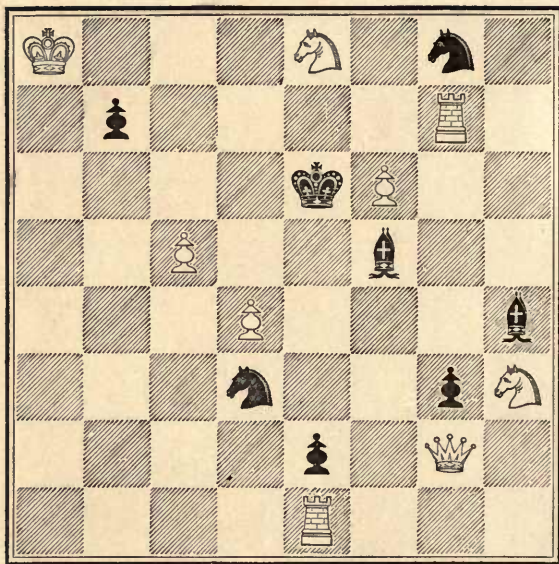


WHITE.

White to play and mate in two moves.

PROBLEM No. 2.

BLACK.

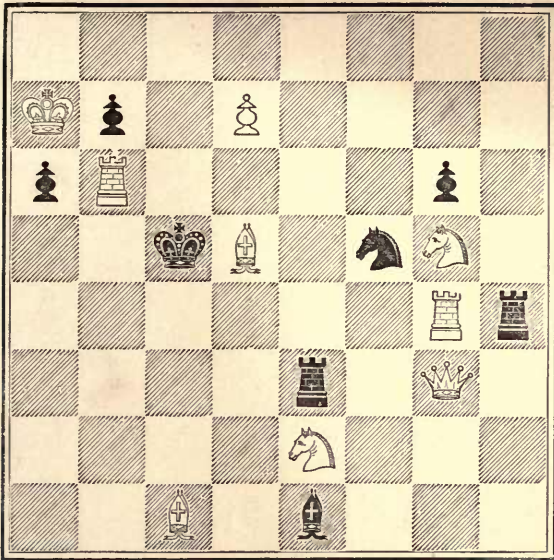


WHITE.

White to play and mate in two moves.

PROBLEM No. 3.

BLACK.

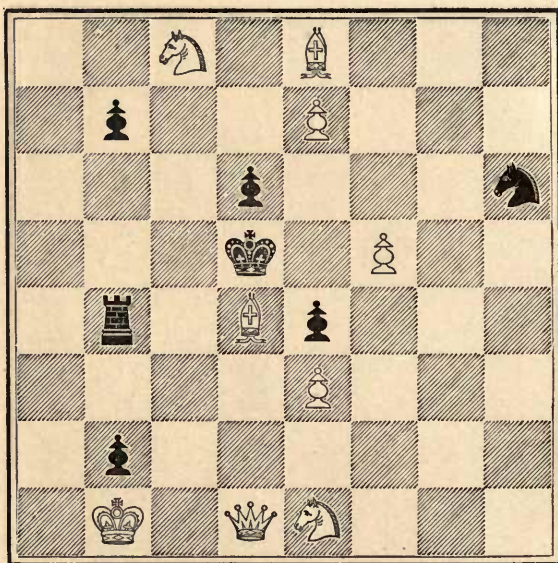


WHITE.

White to play and mate in two moves.

PROBLEM No 4.

BLACK.

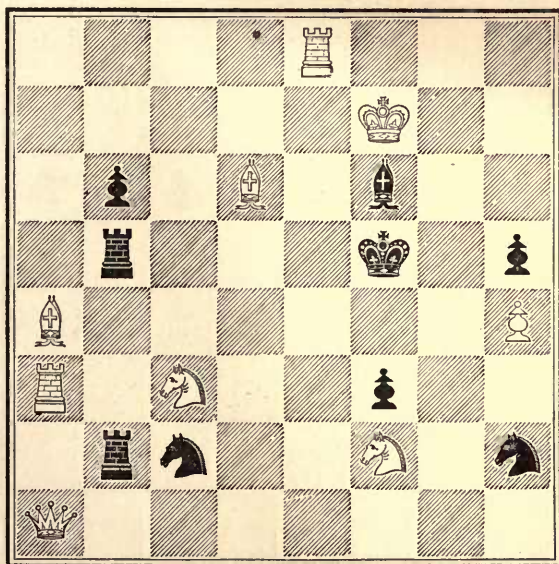


WHITE.

White to play and mate in two moves.

PROBLEM No. 5.

BLACK.

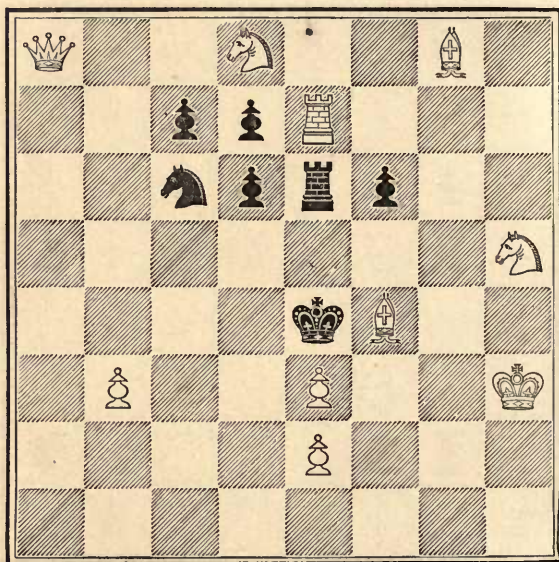


WHITE.

White to play and mate in two moves.

PROBLEM No. 6.

BLACK.

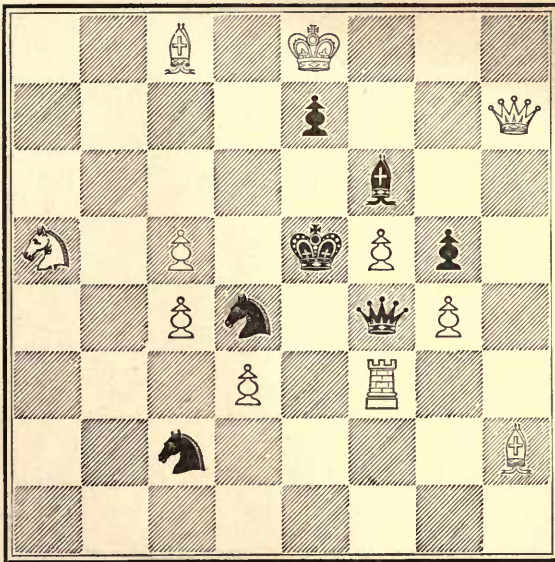


WHITE.

White to play and mate in two moves.

PROBLEM No. 7.

BLACK.

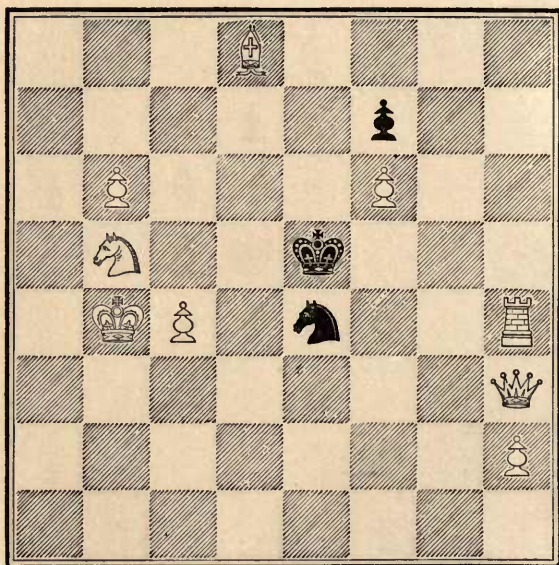


WHITE.

White to play and mate in two moves.

PROBLEM No. 8.

BLACK.

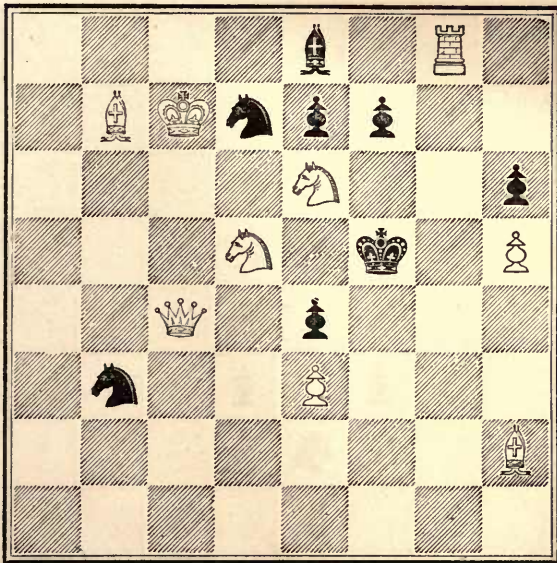


WHITE.

White to play and mate in two moves.

PROBLEM No. 9.

BLACK.



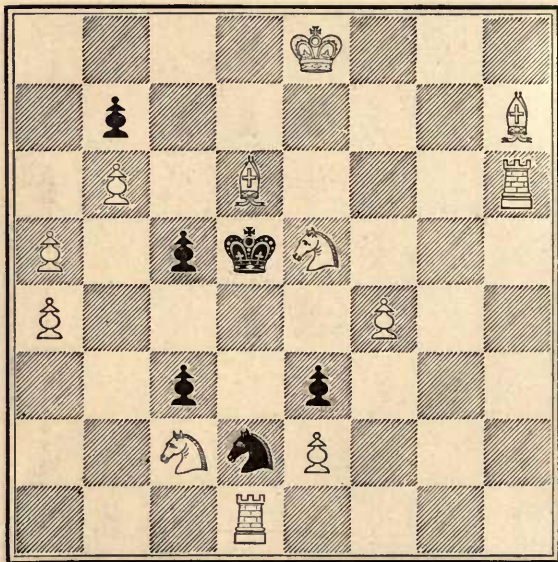
WHITE.

White to play and mate in two moves.

X X

PROBLEM No. 10.

BLACK.

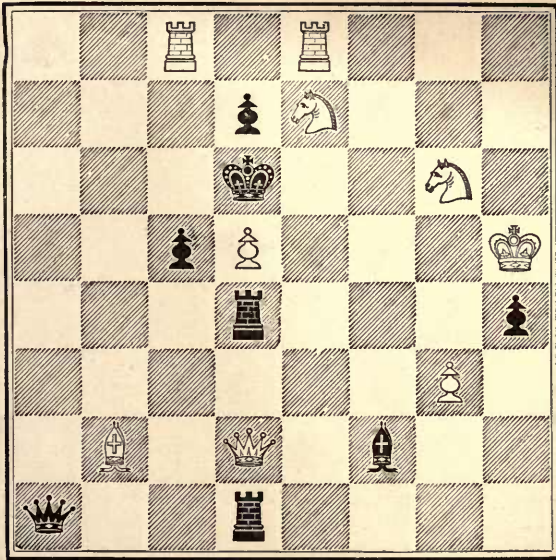


WHITE

White to play and mate in two moves.

PROBLEM No. 11.

BLACK.

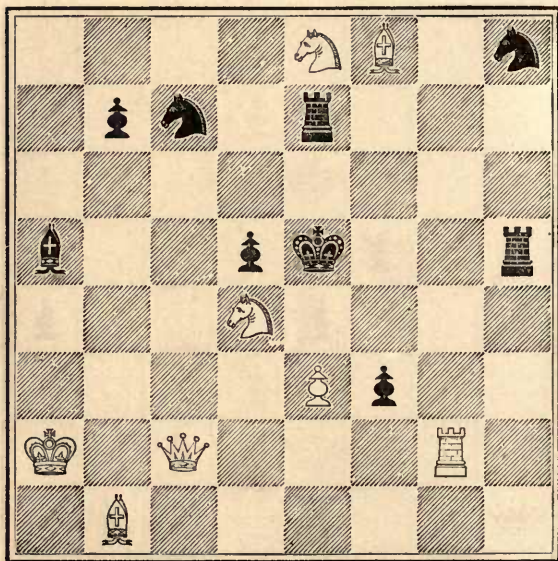


WHITE.

White to play and mate in two moves.

PROBLEM No. 12.

BLACK.



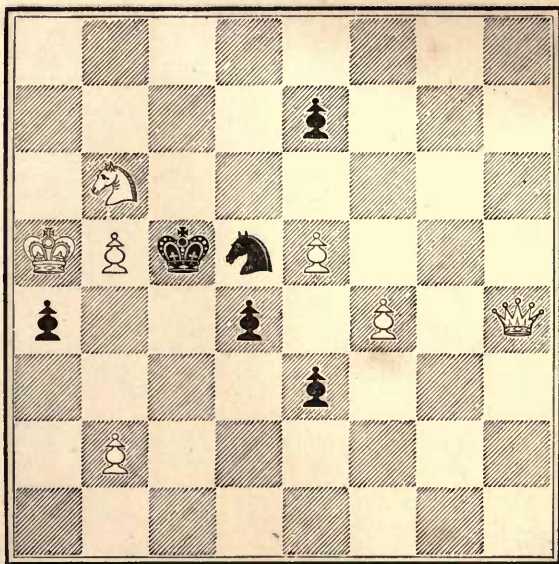
WHITE.

White to play and mate in two moves.

THREE MOVE PROBLEMS.

PROBLEM No. 13.

BLACK.



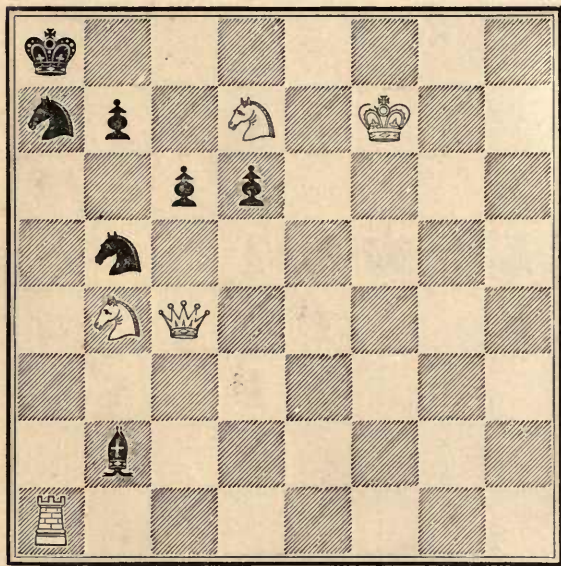
WHITE.

White to play and mate in three moves.

X X X

PROBLEM No. 14.

BLACK.



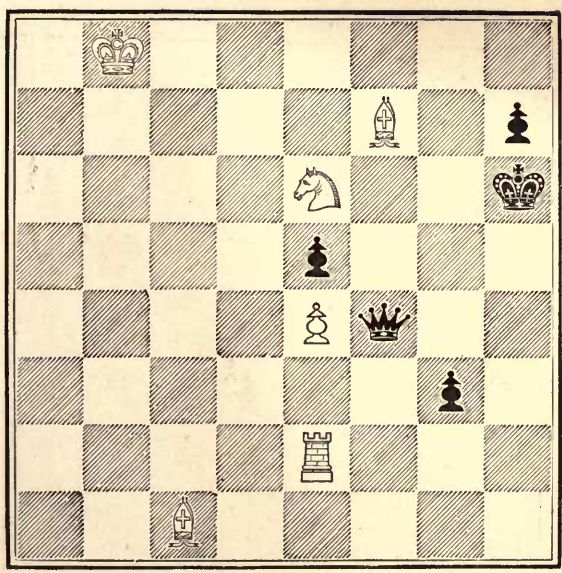
WHITE.

White to play and mate in three moves.

+

PROBLEM No. 15.

BLACK.

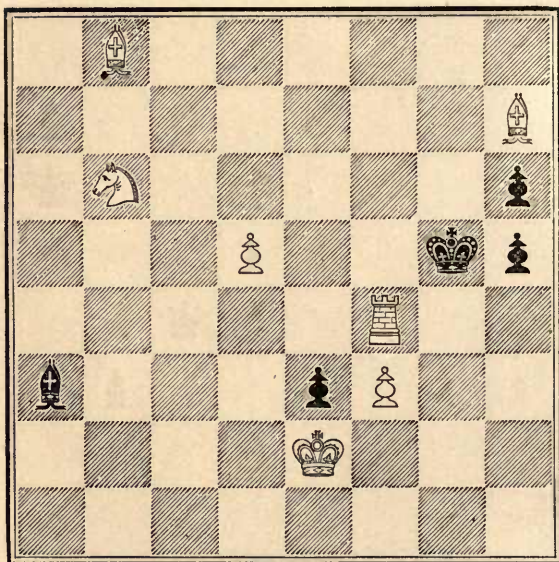


WHITE.

White to play and mate in three moves.

PROBLEM No. 16.

BLACK.

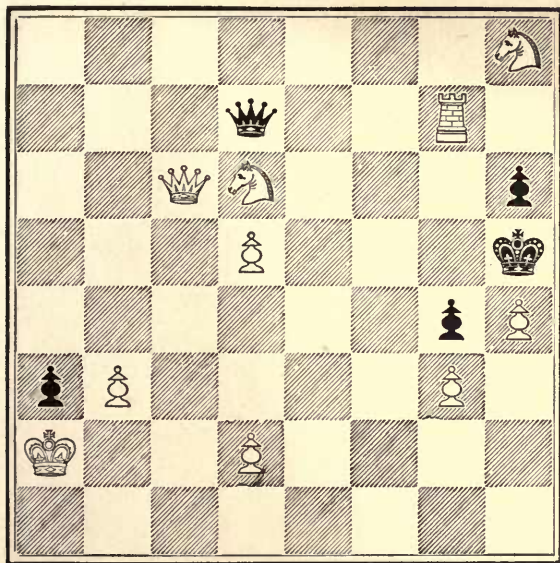


WHITE.

White to play and mate in three moves.

PROBLEM No. 17.

BLACK.

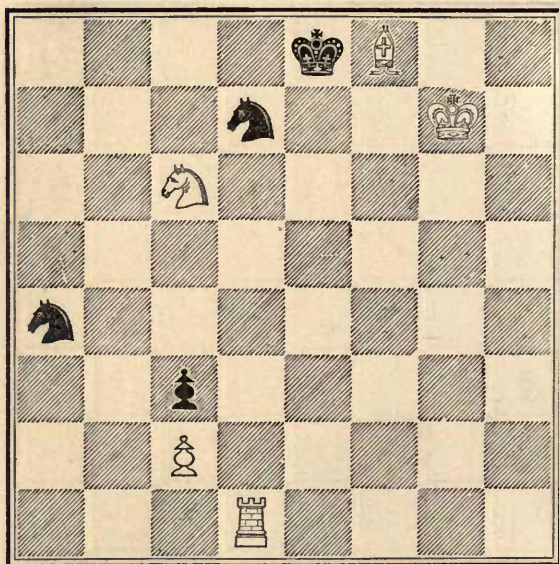


WHITE.

White to play and mate in three moves.

PROBLEM No. 18.

BLACK.

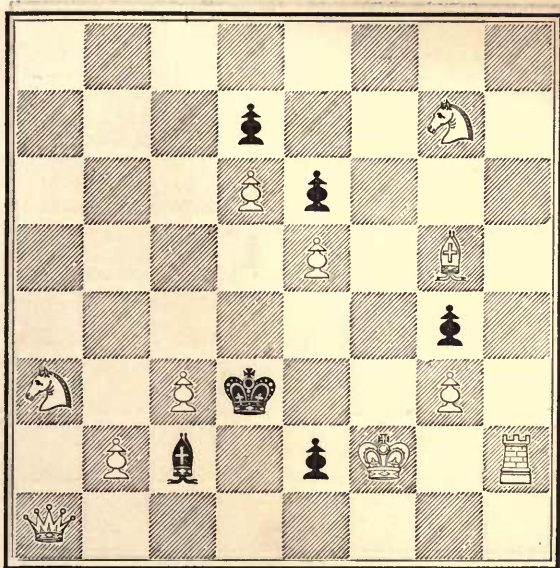


WHITE.

White to play and mate in three moves.

PROBLEM No. 19.

BLACK.

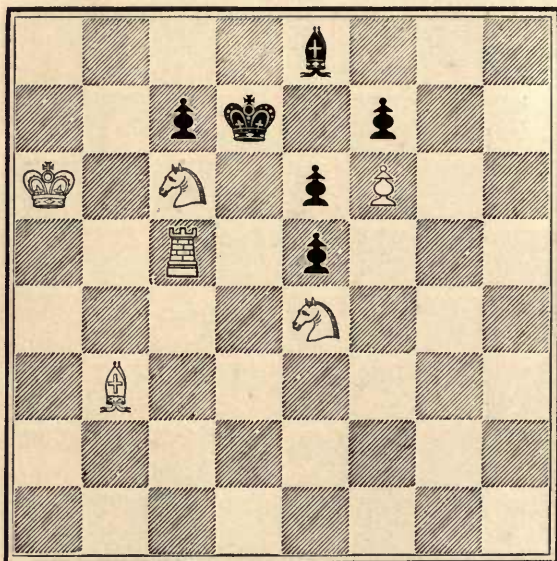


WHITE,

White to play and mate in three moves.

PROBLEM No. 20.

BLACK.

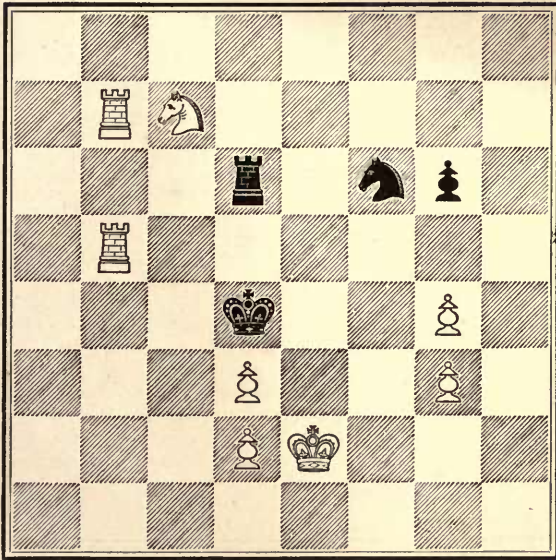


WHITE.

White to play and mate in three moves.

PROBLEM No. 21.

BLACK.

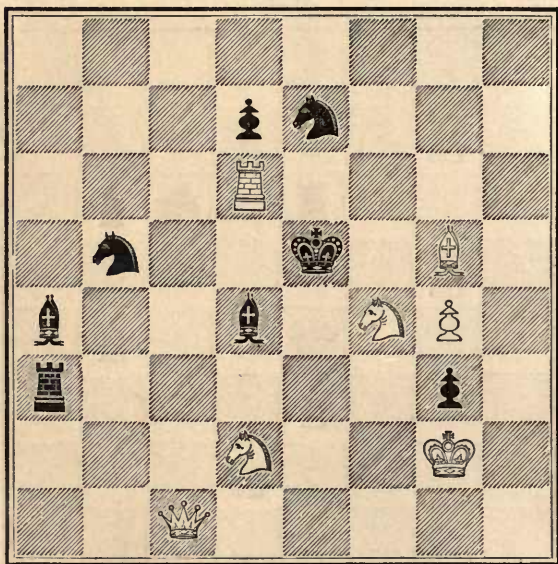


WHITE.

White to play and mate in three moves.

PROBLEM No. 22.

BLACK.



WHITE.

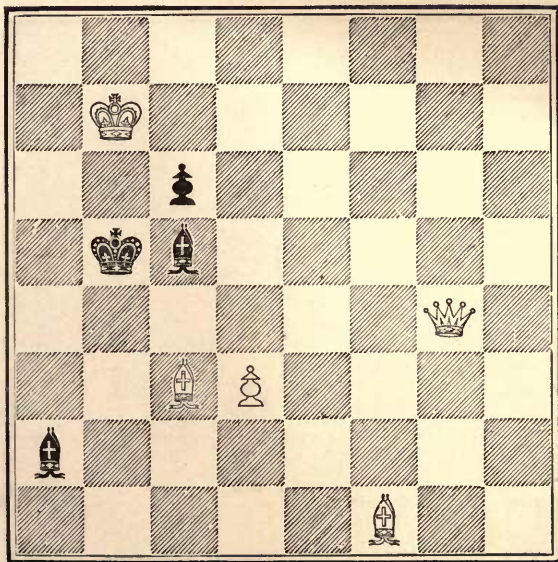
White to play and mate in three moves.

The Bench of Bishops

X X

PROBLEM No. 23.

BLACK.

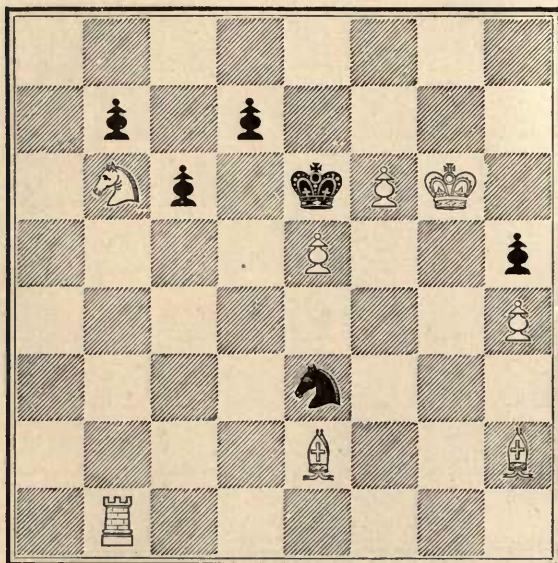


WHITE.

White to play and mate in three moves.

PROBLEM No. 24.

BLACK.

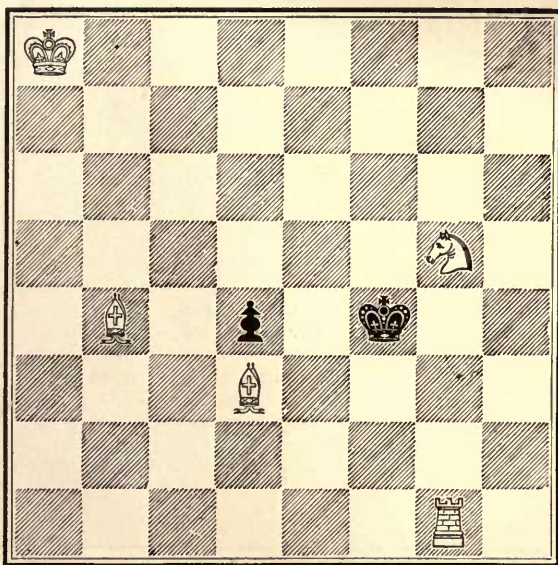


WHITE.

White to play and mate in three moves.

PROBLEM No. 25.

BLACK.

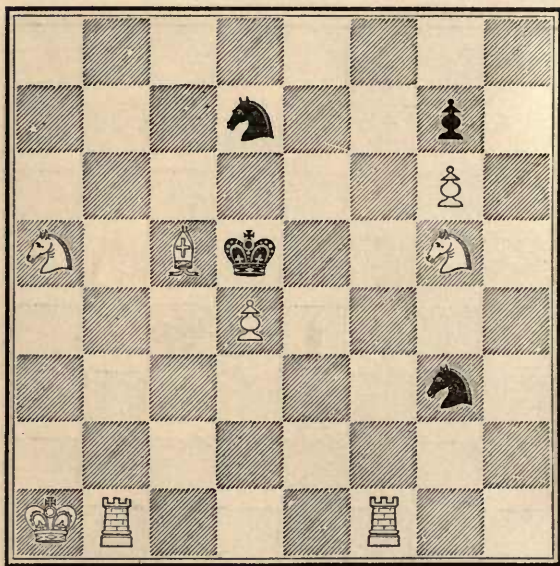


WHITE.

White to play and mate in three moves.

PROBLEM No. 26.

BLACK.

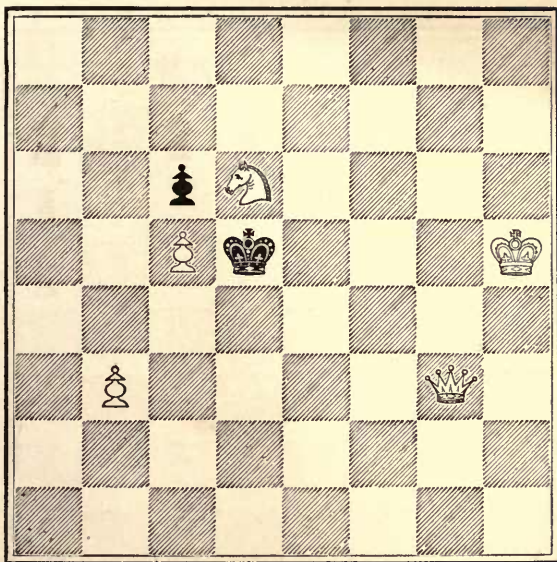


WHITE.

White to play and mate in three moves.

PROBLEM No. 27.

BLACK.

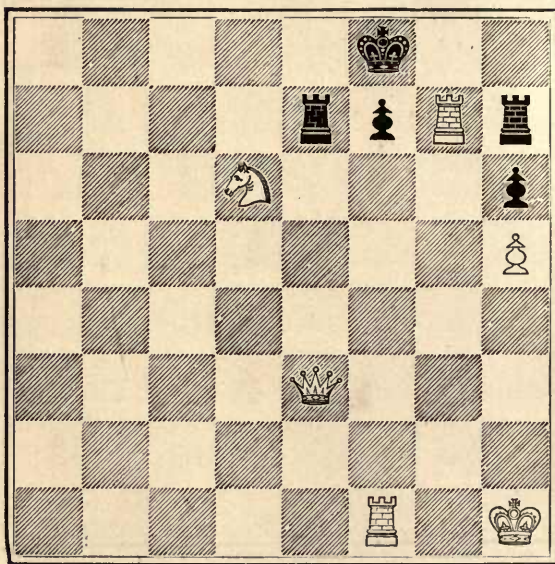


WHITE.

White to play and mate in three moves.

PROBLEM No. 28.

BLACK.

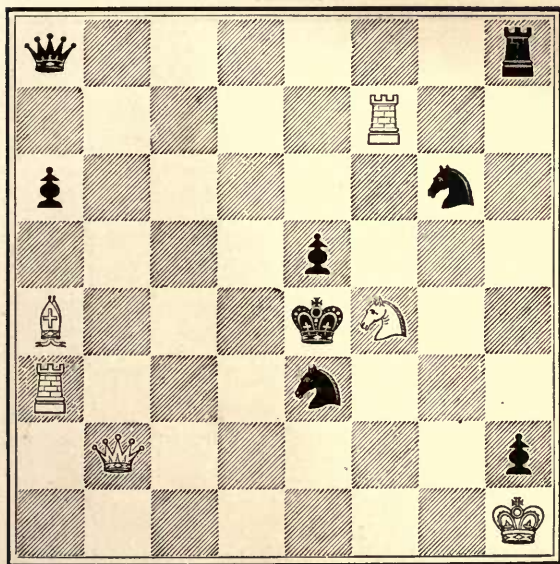


WHITE.

White to play and mate in three moves.

PROBLEM No. 29

BLACK.

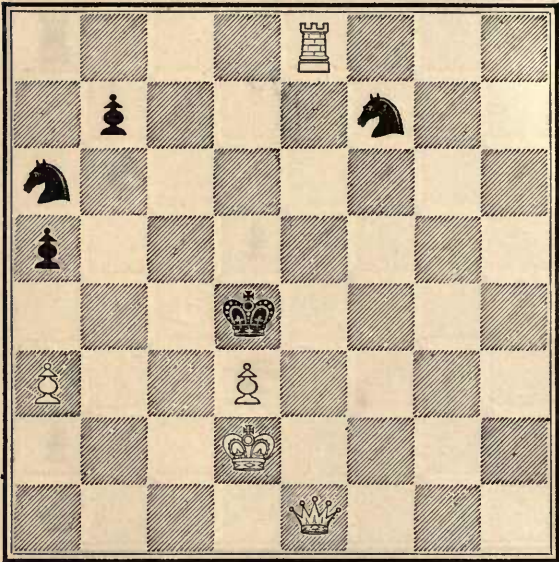


WHITE.

White to play and mate in three moves.

PROBLEM No. 30.

BLACK.

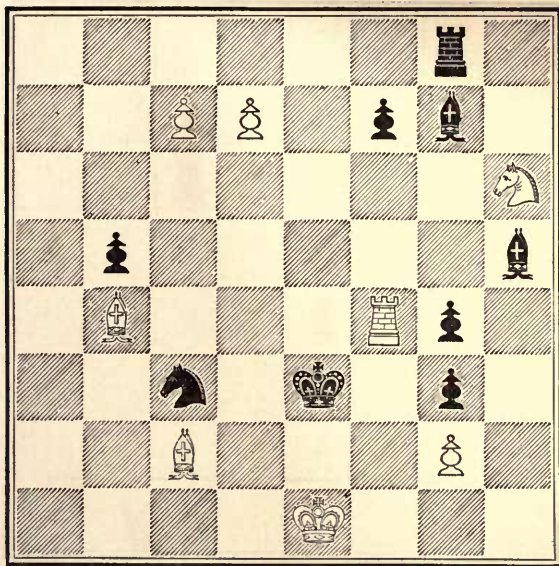


WHITE.

White to play and mate in three moves.

PROBLEM No. 31.

BLACK.

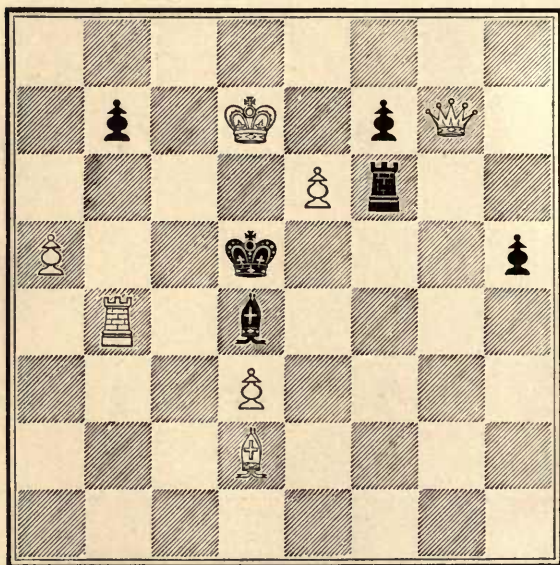


WHITE.

White to play and mate in three moves.

PROBLEM No. 32.

BLACK.

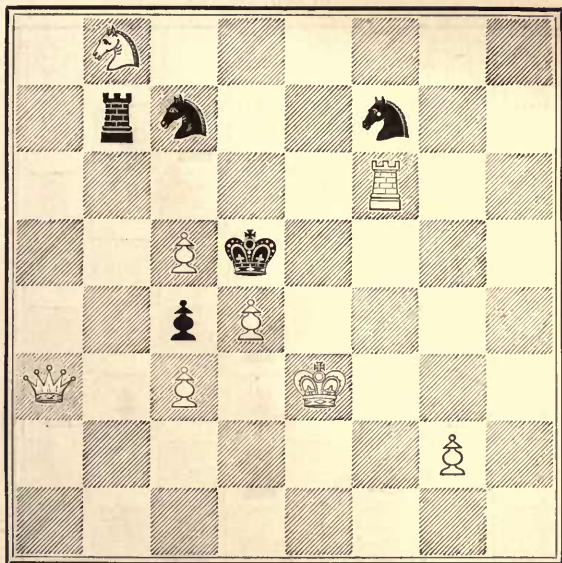


WHITE.

White to play and mate in three moves.

PROBLEM No. 33.

BLACK.

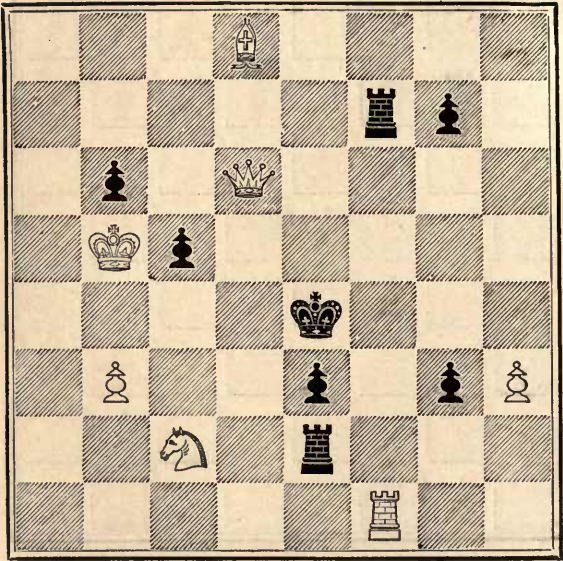


WHITE.

White to play and mate in three moves.

PROBLEM No. 34.

BLACK.

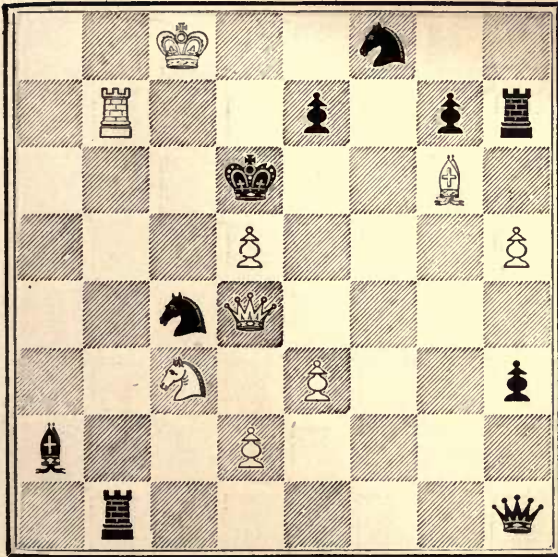


WHITE.

White to play and mate in three moves.

PROBLEM No. 35.

BLACK.

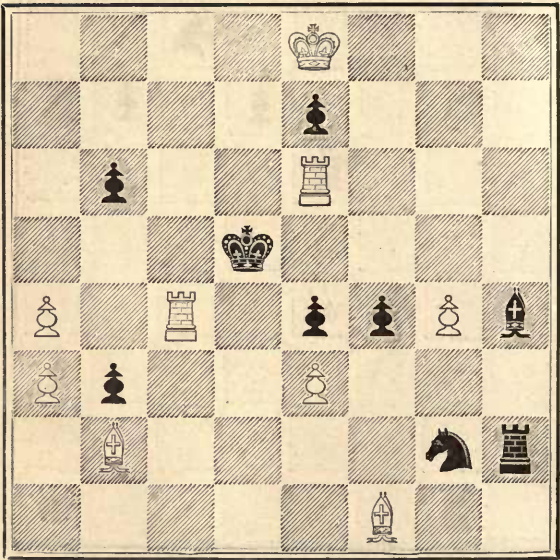


WHITE.

White to play and mate in three moves.

PROBLEM No. 36.

BLACK.

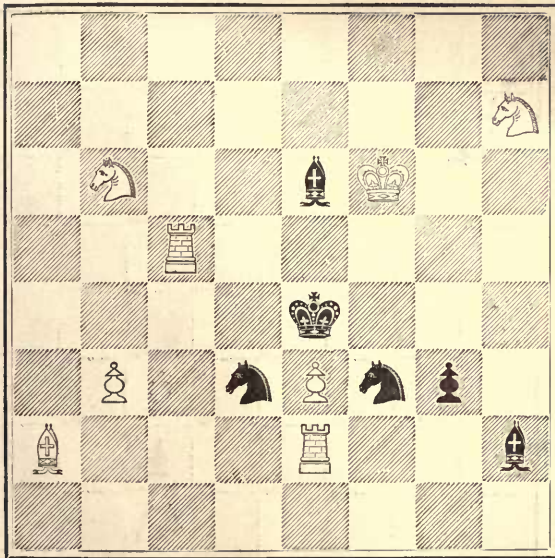


WHITE.

White to play and mate in three moves.

PROBLEM No. 37.

BLACK.

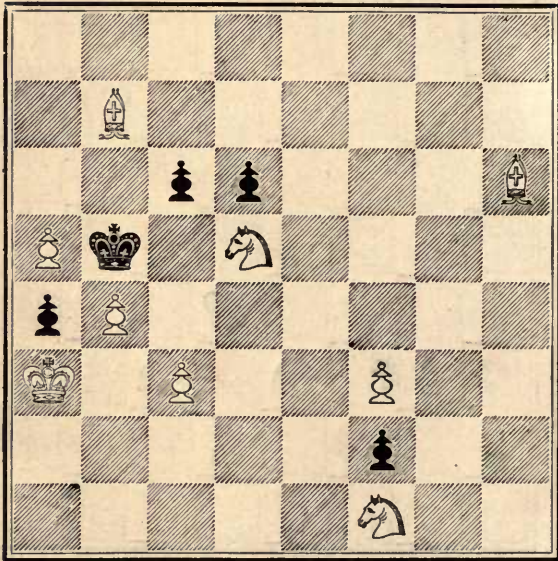


WHITE.

White to play and mate in three moves.

PROBLEM No. 38.

BLACK.

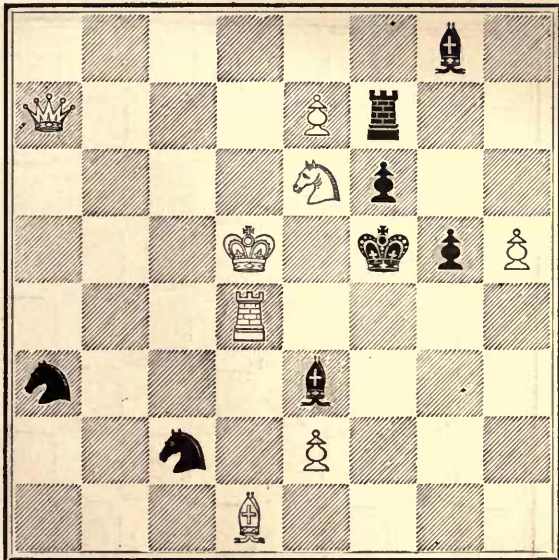


WHITE.

White to play and mate in three moves.

PROBLEM No. 39

BLACK.

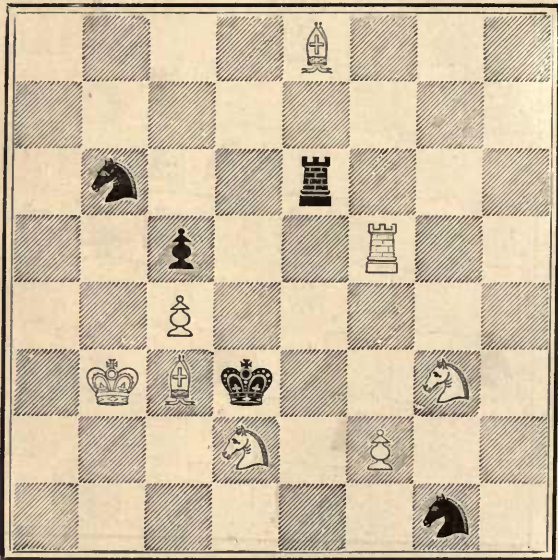


WHITE.

White to play and mate in three moves.

PROBLEM No. 40.

BLACK.

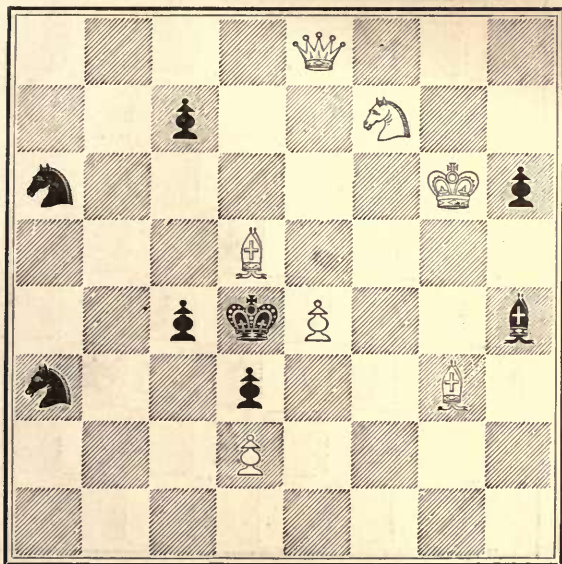


WHITE.

White to play and mate in three moves.

PROBLEM No. 41.

BLACK.

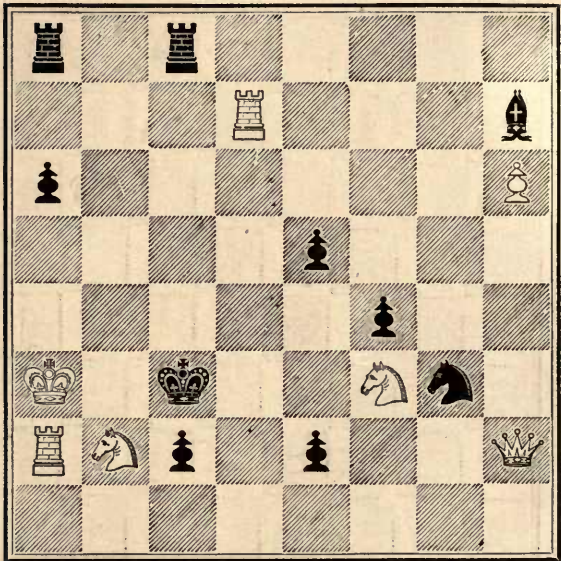


WHITE.

White to play and mate in three moves.

PROBLEM No. 42.

BLACK.

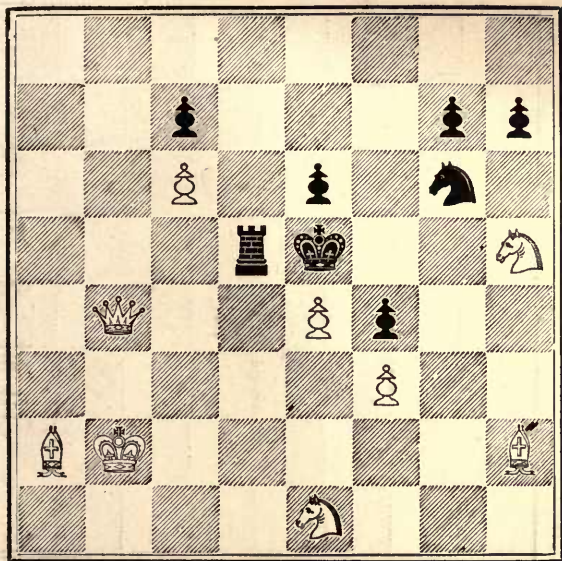


WHITE.

White to play and mate in three moves.

PROBLEM No. 43.

BLACK.

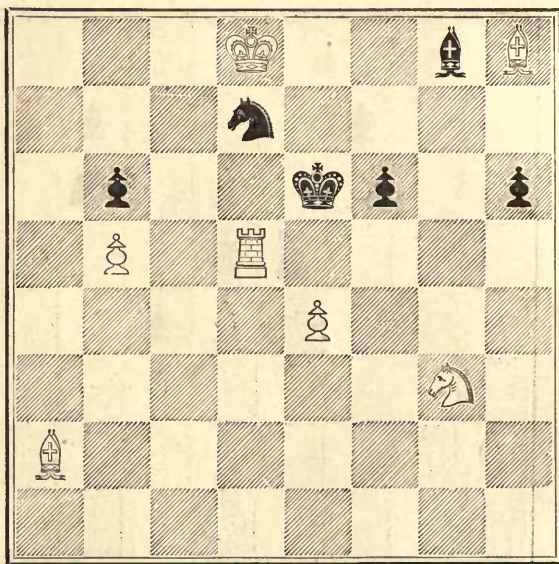


WHITE.

White to play and mate in three moves.

PROBLEM No. 44.

BLACK.

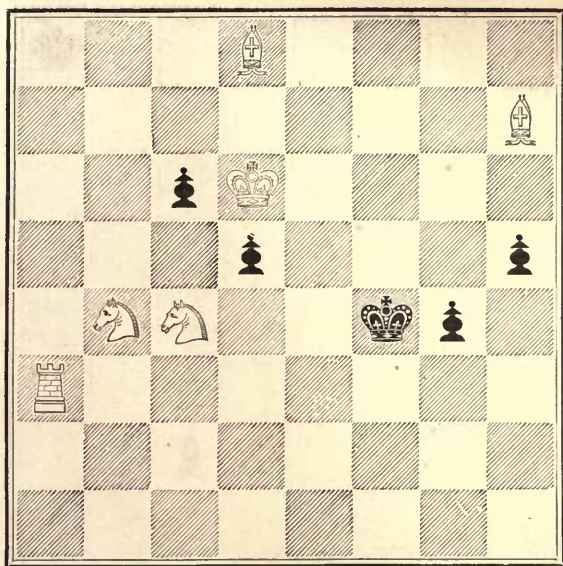


WHITE.

White to play and mate in three moves.

PROBLEM No. 45.

BLACK.

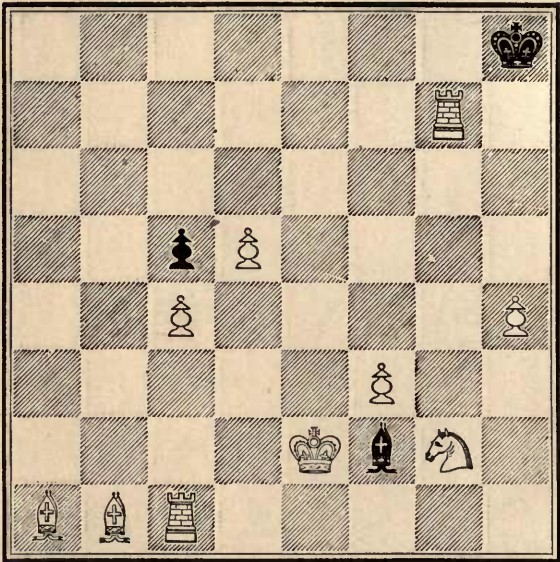


WHITE.

White to play and mate in three moves.

PROBLEM No. 46.

BLACK.

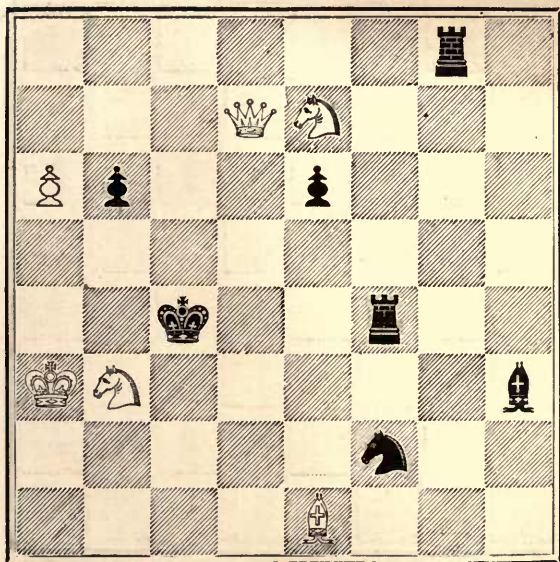


WHITE.

White to play and mate in three moves.

PROBLEM No. 47.

BLACK.

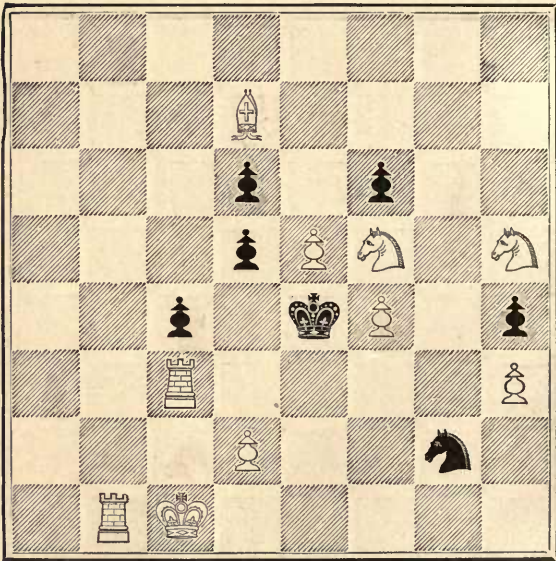


WHITE.

White to play and mate in three moves.

PROBLEM No. 48.

BLACK.

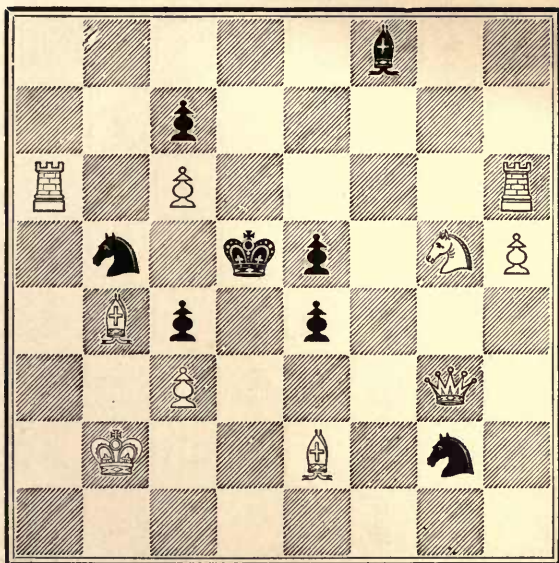


WHITE.

White to play and mate in three moves.

PROBLEM No. 49.

BLACK.

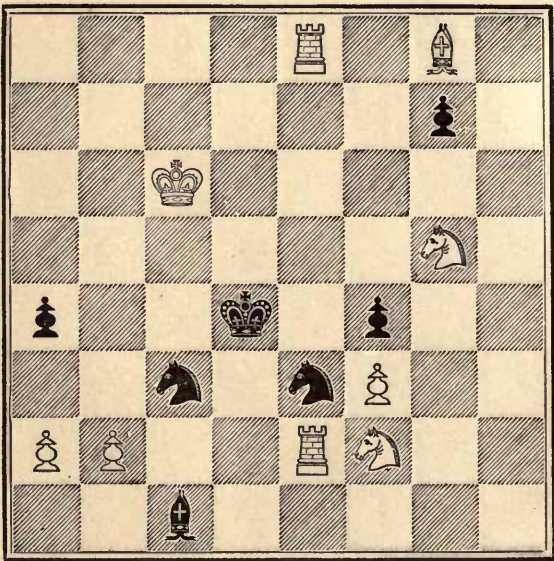


WHITE.

White to play and mate in three moves.

PROBLEM No. 50.

BLACK.

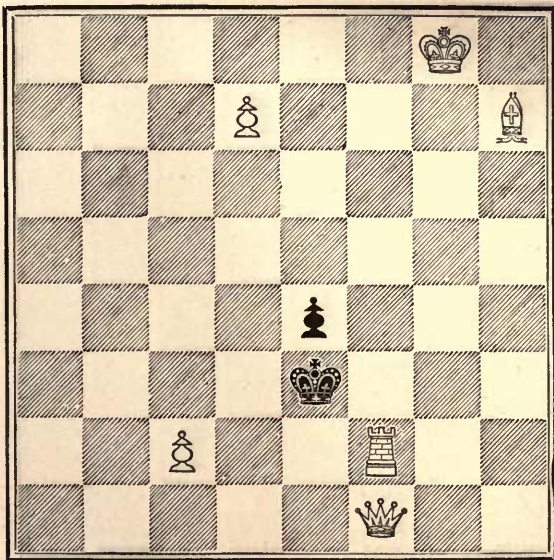


WHITE.

White to play and mate in three moves.

PROBLEM No. 51.

BLACK.

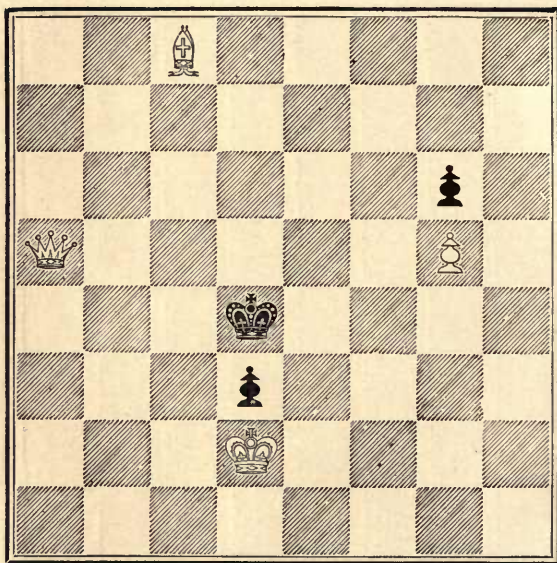


WHITE.

White to play and mate in three moves.

PROBLEM No. 52.

BLACK.

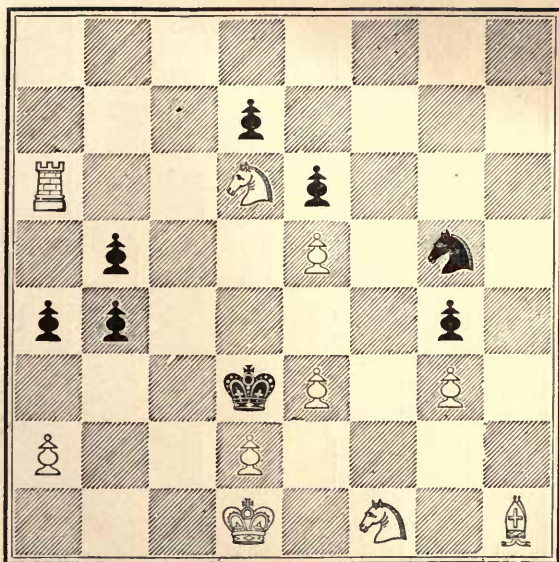


WHITE.

White to play and mate in three moves.

PROBLEM No. 53.

BLACK.

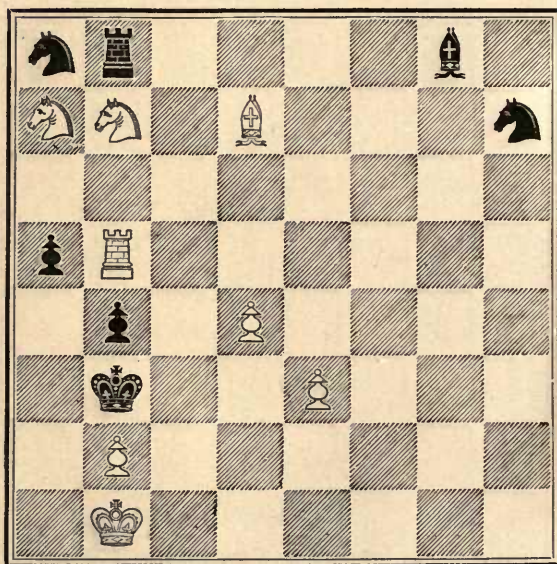


WHITE.

White to play and mate in three moves.

PROBLEM No. 54.

BLACK.

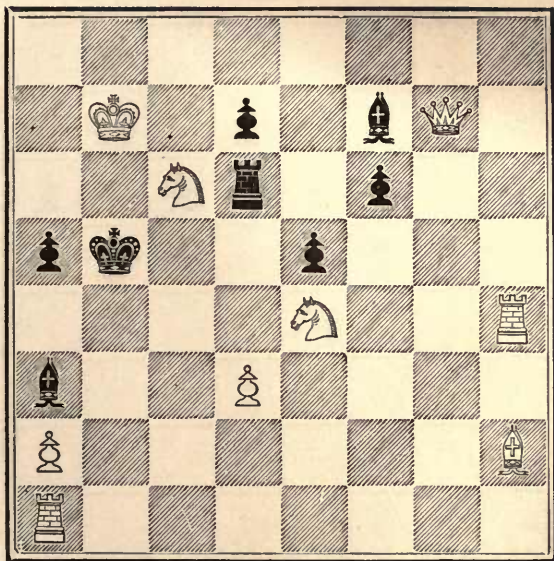


WHITE.

White to play and mate in three moves.

PROBLEM No. 55.

BLACK.

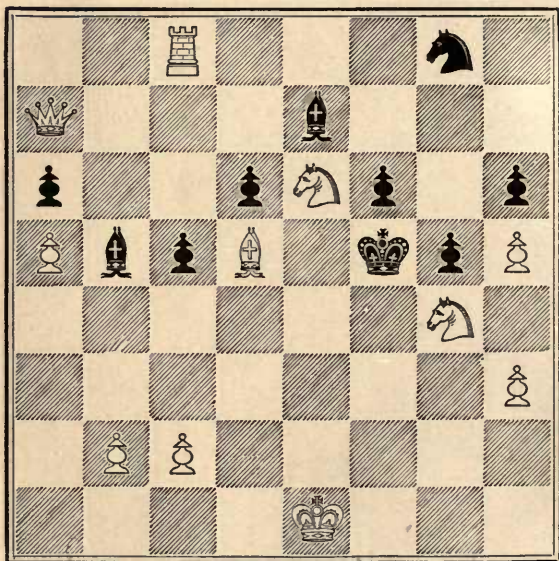


WHITE.

White to play and mate in three moves.

PROBLEM No. 56.

BLACK.

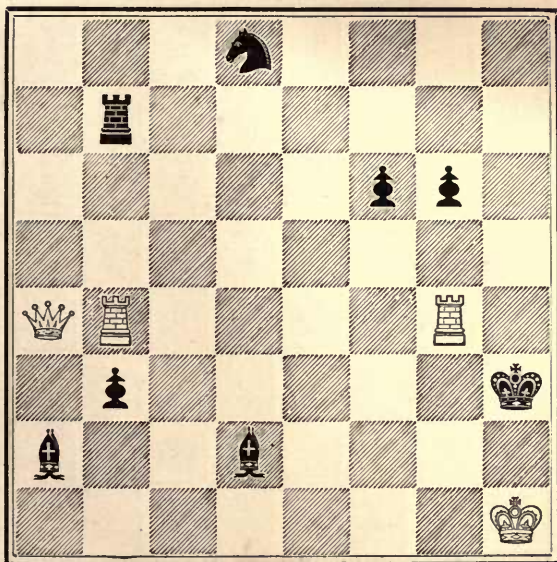


WHITE.

White to play and mate in three moves.

PROBLEM No. 57.

BLACK.

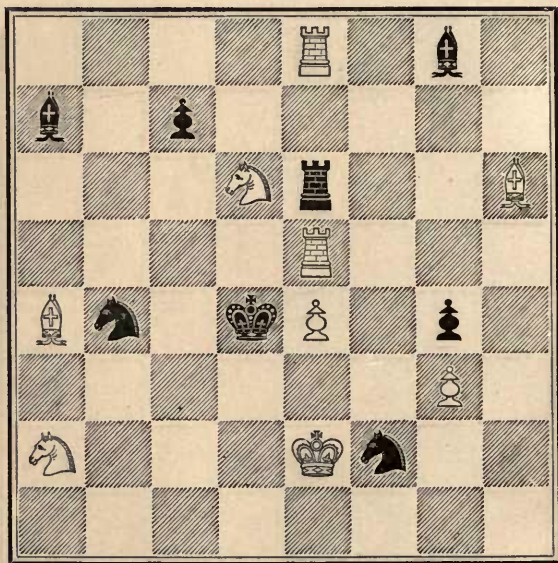


WHITE.

White to play and mate in three moves.

PROBLEM No. 58.

BLACK.

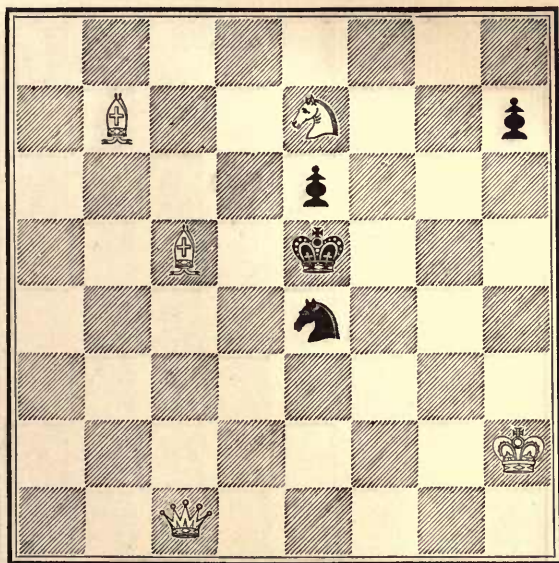


WHITE.

White to play and mate in three moves.

PROBLEM No. 59.

BLACK.

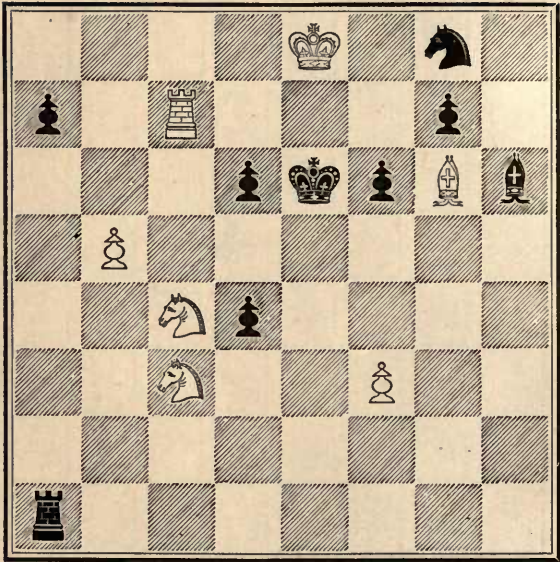


WHITE.

White to play and mate in three moves.

PROBLEM No. 60.

BLACK.

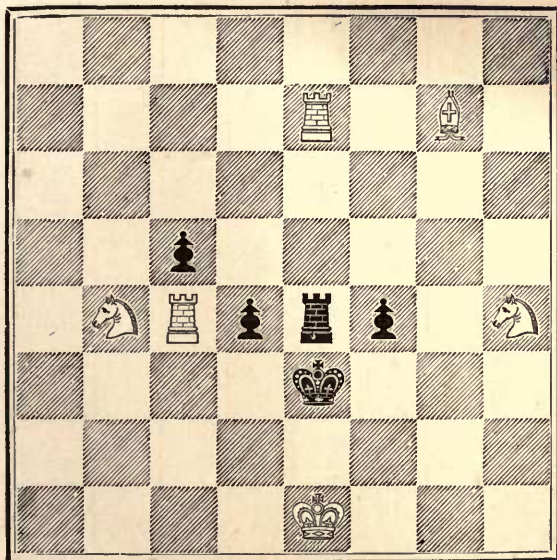


WHITE.

White to play and mate in three moves.

PROBLEM No. 61.

BLACK.

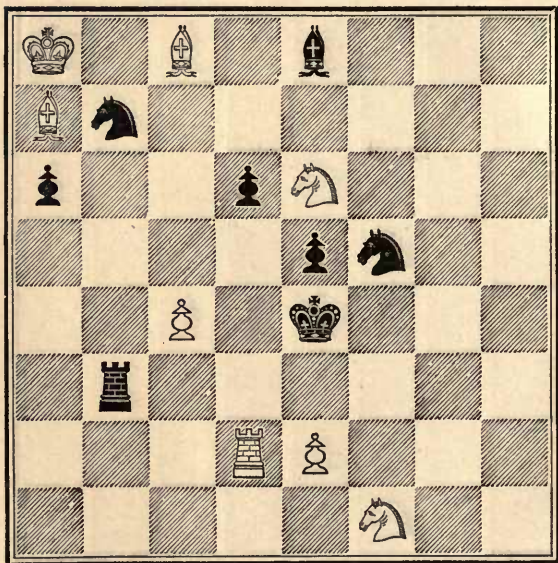


WHITE.

White to play and mate in three moves.

PROBLEM No. 62.

BLACK.

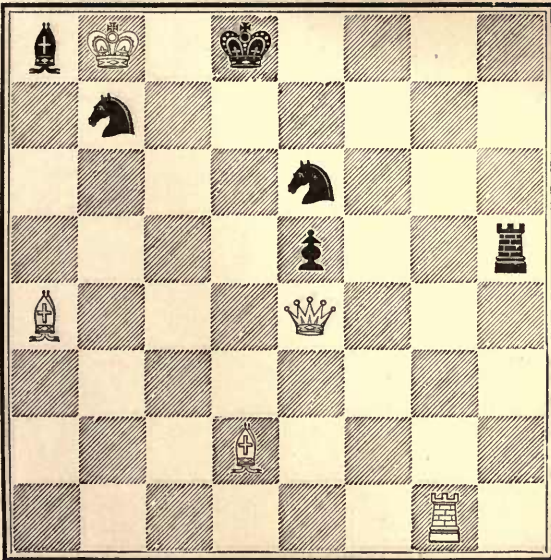


WHITE.

White to play and mate in three moves.

PROBLEM No. 63.

BLACK.

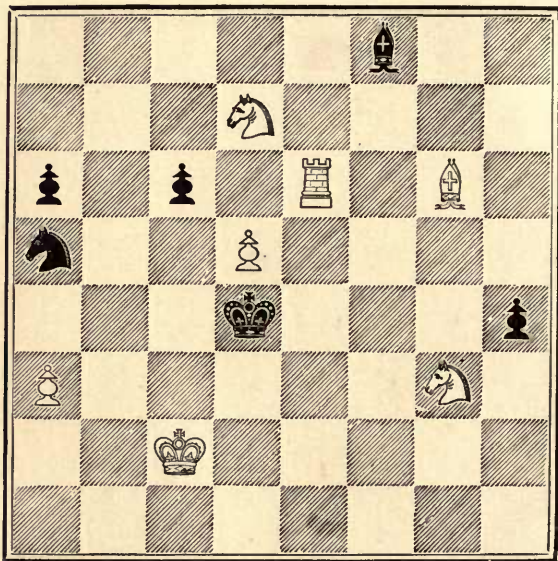


WHITE.

White to play and mate in three moves

PROBLEM No. 64.

BLACK.

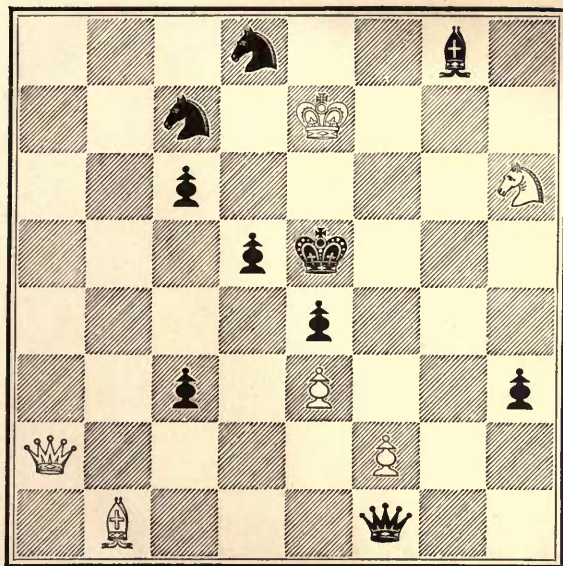


WHITE.

White to play and mate in three moves.

PROBLEM No. 65.

BLACK.

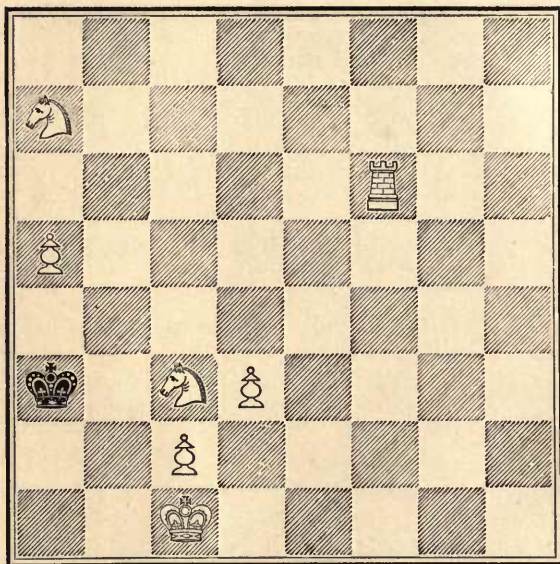


WHITE.

White to play and mate in three moves.

PROBLEM No. 66.

BLACK.

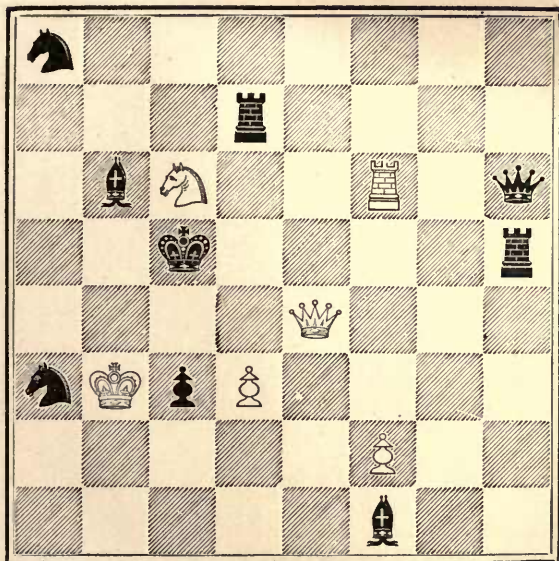


WHITE.

White to play and mate in three moves.

PROBLEM No. 67.

BLACK.

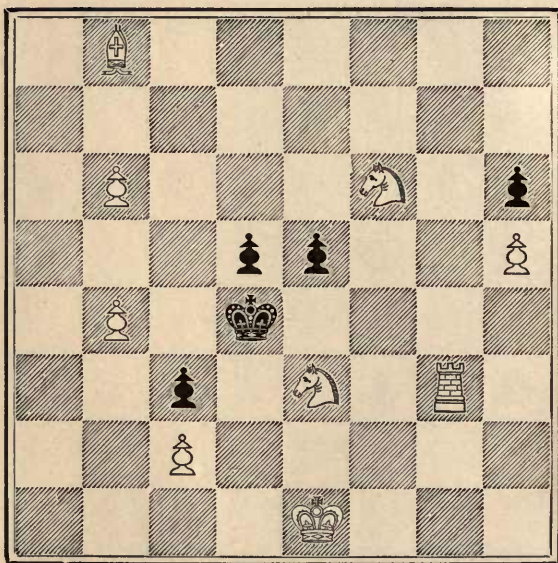


WHITE

White to play and mate in three moves,

PROBLEM No. 68.

BLACK.

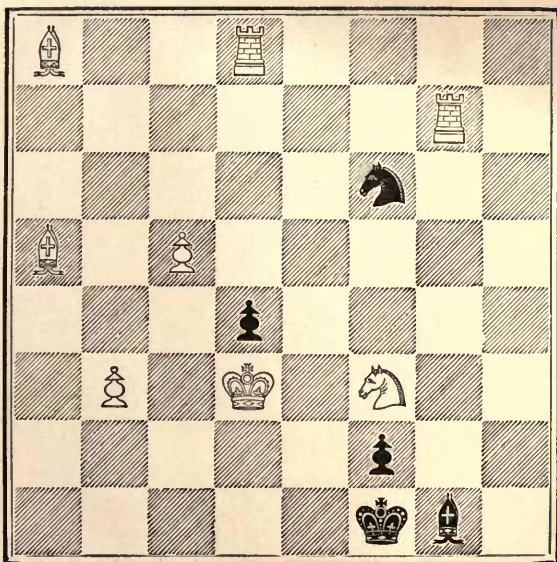


WHITE.

White to play and mate in three moves.

PROBLEM No. 69.

BLACK.

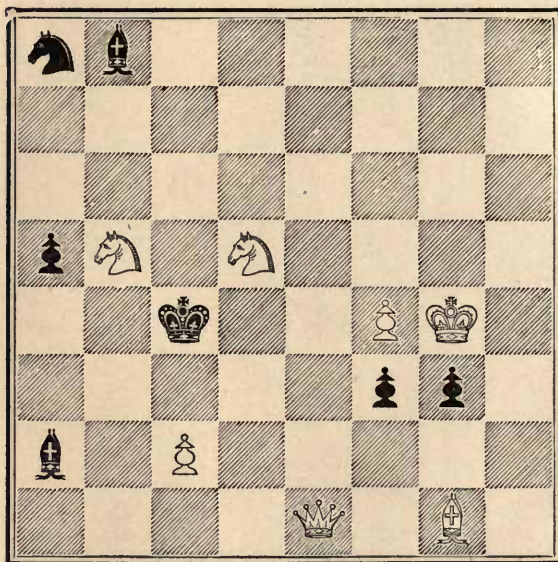


WHITE.

White to play and mate in three moves.

PROBLEM No. 70.

BLACK.

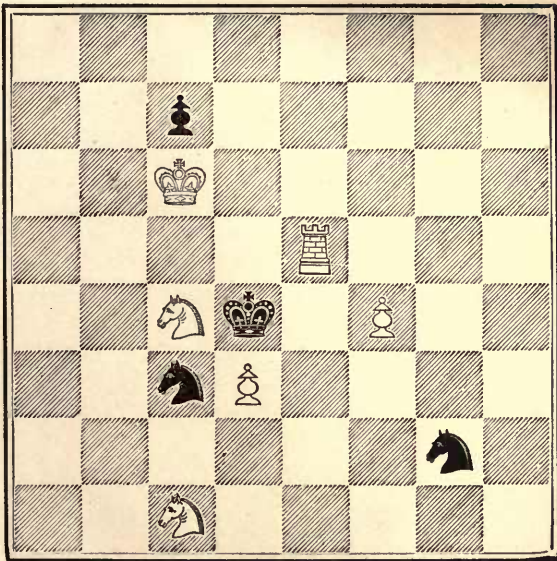


WHITE.

White to play and mate in three moves.

PROBLEM No. 71.

BLACK.

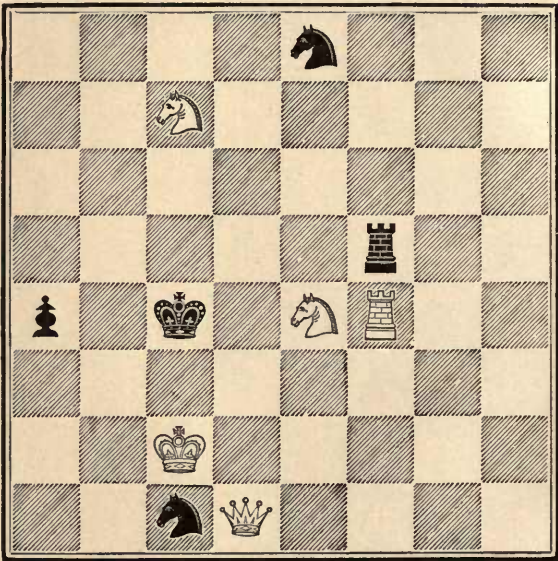


WHITE.

White to play and mate in three moves.

PROBLEM No. 72.

BLACK.

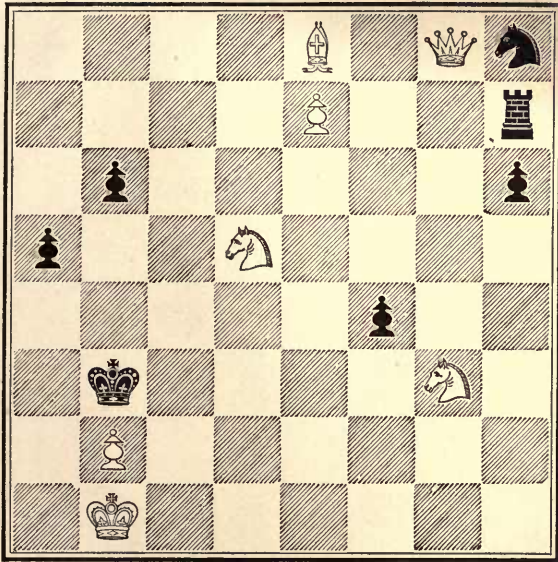


WHITE.

White to play and mate in three moves.

PROBLEM No. 73.

BLACK.

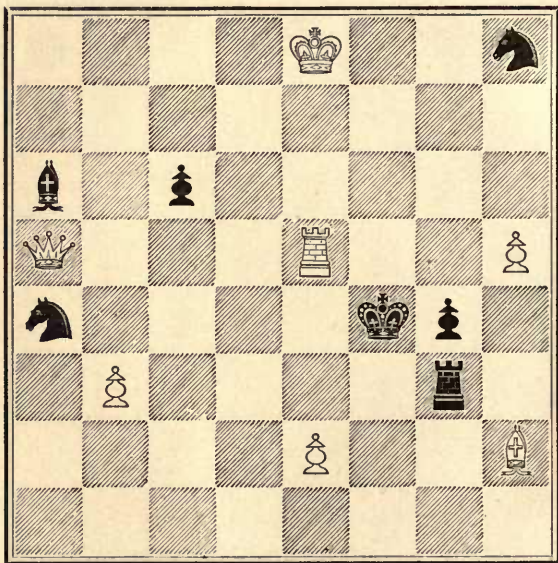


WHITE.

White to play and mate in three moves.

PROBLEM No. 74.

BLACK.

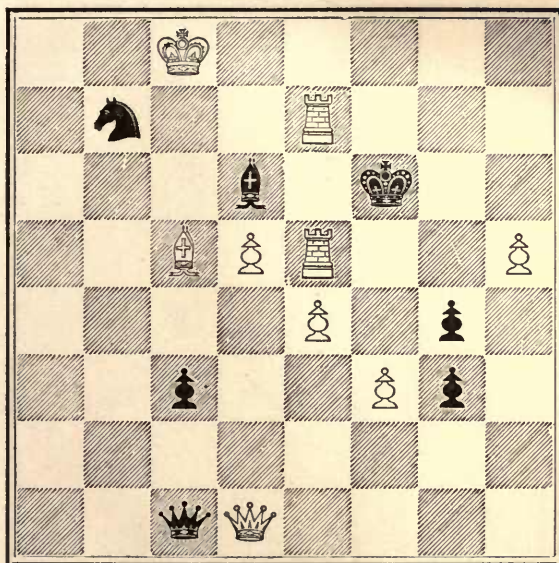


WHITE.

White to play and mate in three moves.

PROBLEM No. 75.

BLACK.

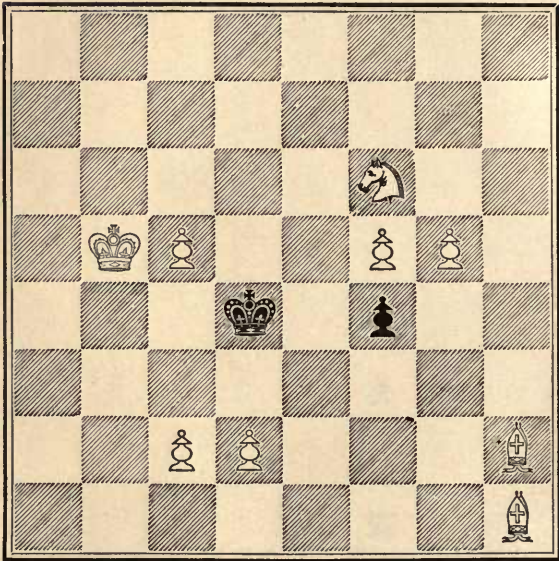


WHITE.

White to play and mate in three moves.

PROBLEM No. 76.

BLACK.

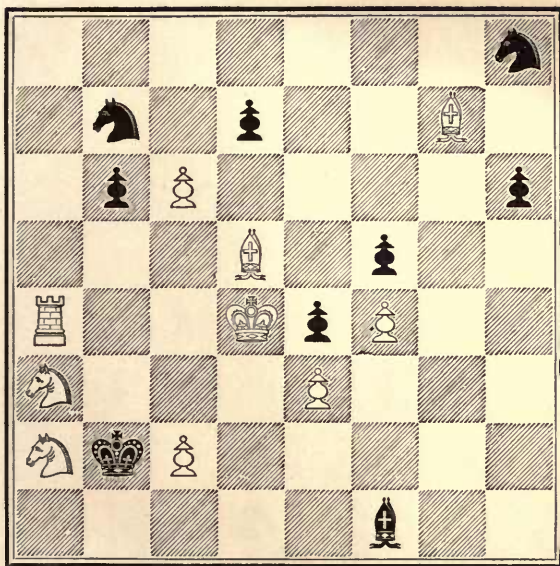


WHITE.

White to play and mate in three moves.

PROBLEM No. 77.

BLACK.

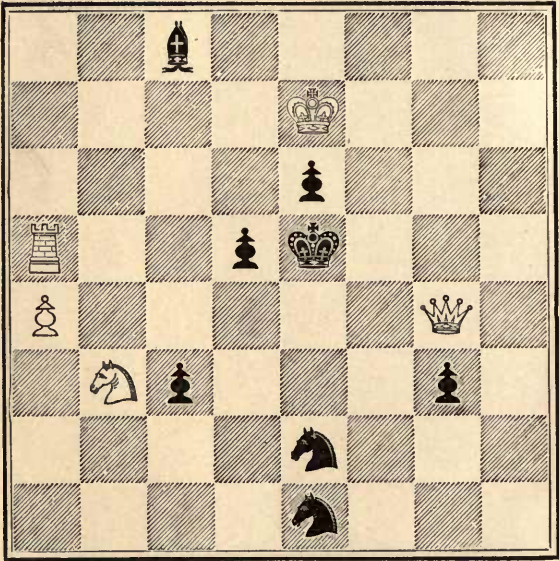


WHITE.

White to play and mate in three moves.

PROBLEM No. 78.

BLACK.

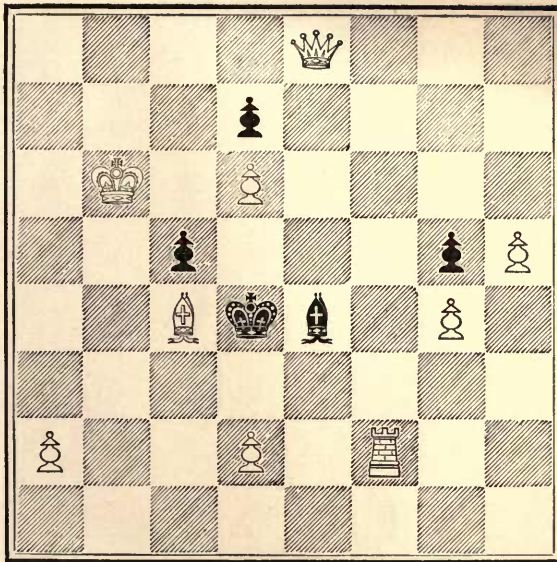


WHITE.

White to play and mate in three moves.

PROBLEM No. 79.

BLACK.

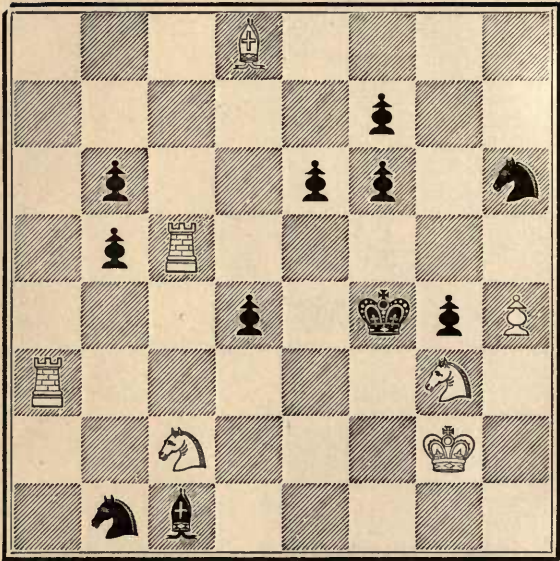


WHITE.

White to play and mate in three moves.

PROBLEM No. 80.

BLACK.

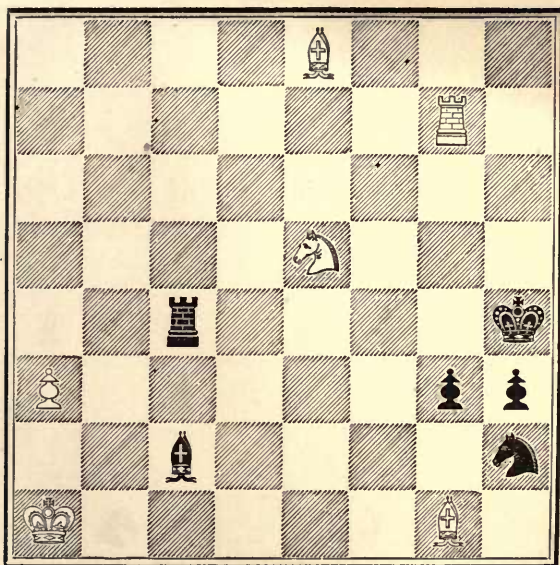


WHITE.

White to play and mate in three moves.

PROBLEM No. 81.

BLACK.

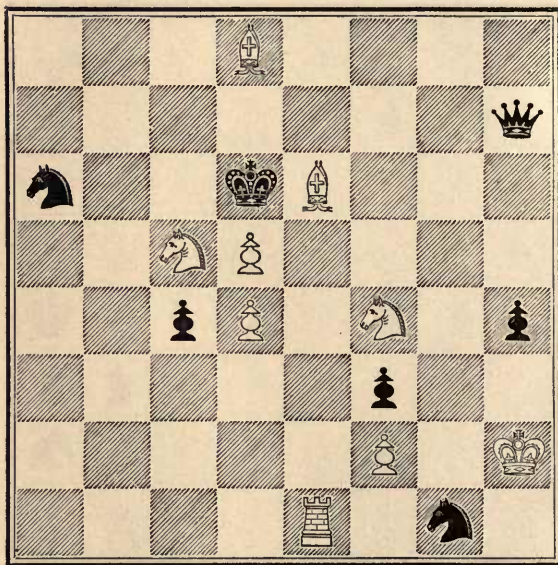


WHITE.

White to play and mate in three moves.

PROBLEM No. 82.

BLACK.

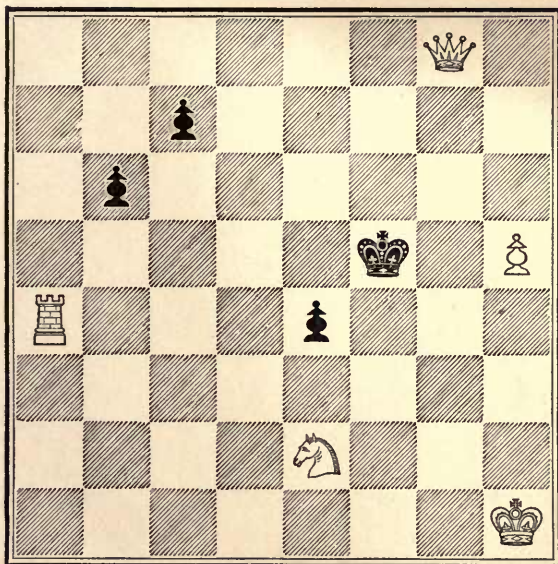


WHITE.

White to play and mate in three moves.

PROBLEM No. 83.

BLACK.

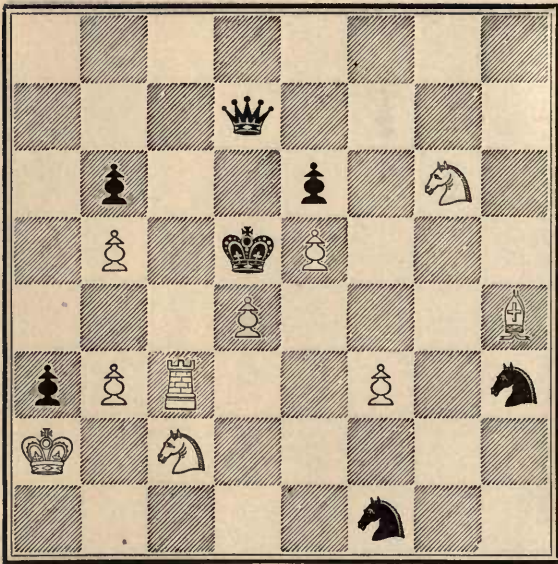


WHITE.

White to play and mate in three moves.

PROBLEM No. 84.

BLACK.

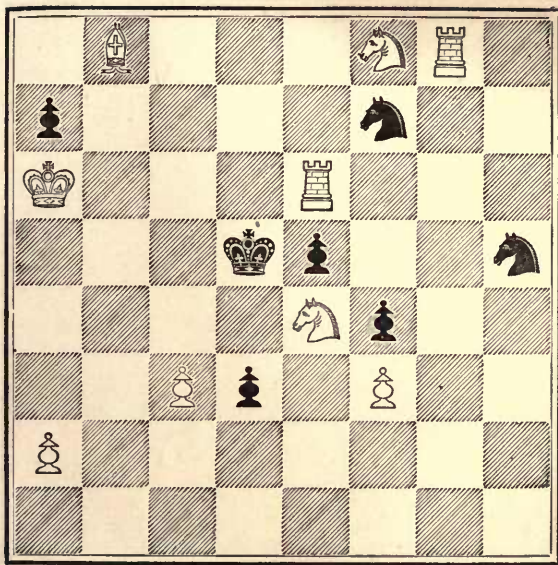


WHITE.

White to play and mate in three moves.

PROBLEM No. 85.

BLACK.



WHITE.

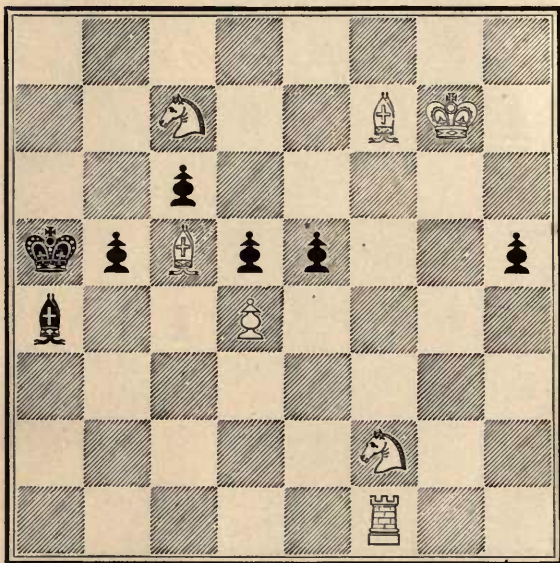
White to play and mate in three moves.

FOUR MOVE PROBLEMS.



PROBLEM No. 86.

BLACK.

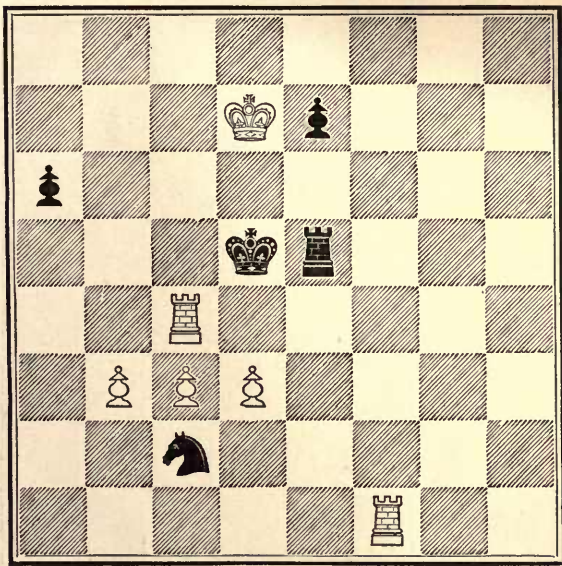


WHITE.

White to play and mate in four moves.

PROBLEM No. 87.

BLACK.

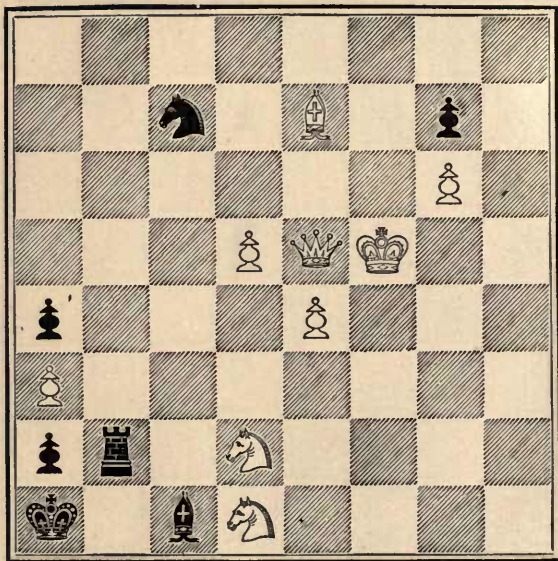


WHITE.

White to play and mate in four moves.

PROBLEM No. 88.

BLACK.

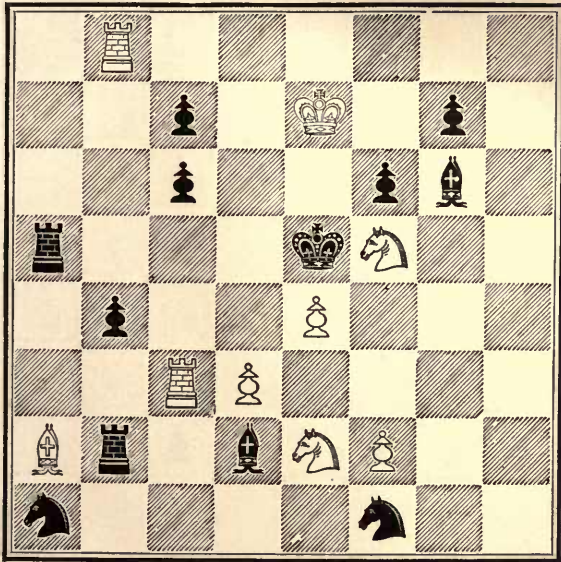


WHITE.

White to play and mate in four moves.

PROBLEM No. 89.

BLACK.

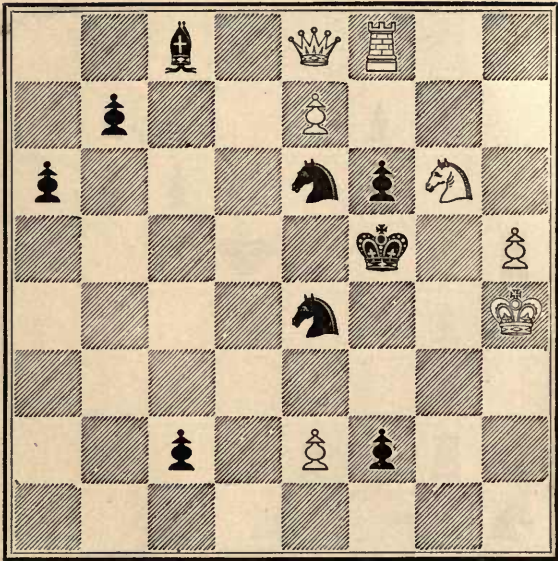


WHITE.

White to play and mate in four moves.

PROBLEM No. 90.

BLACK.

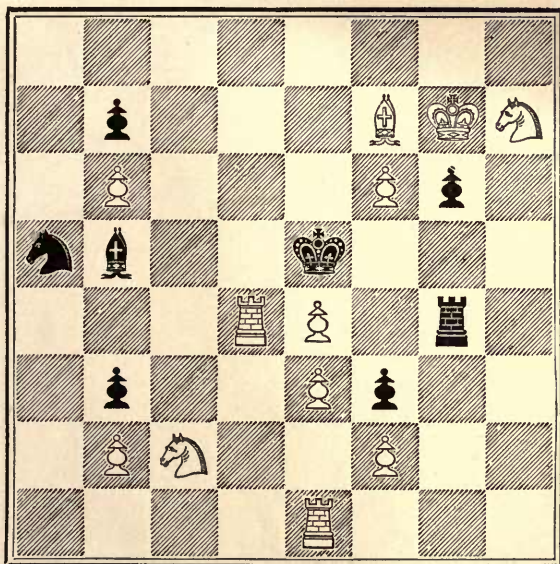


WHITE.

White to play and mate in four moves.

PROBLEM No. 91.

BLACK.

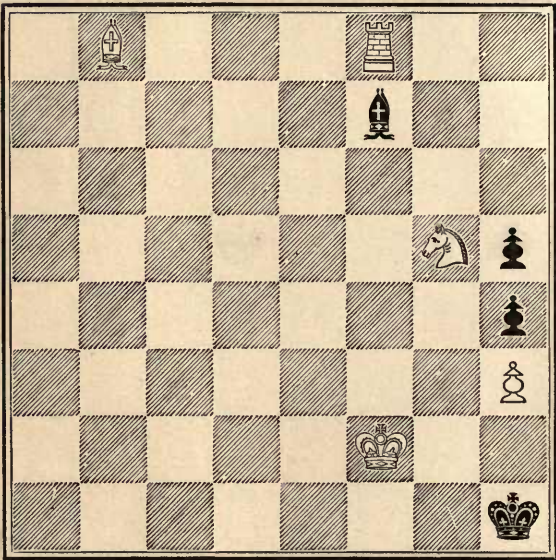


WHITE.

White to play and mate in four moves.

PROBLEM No. 92.

BLACK.

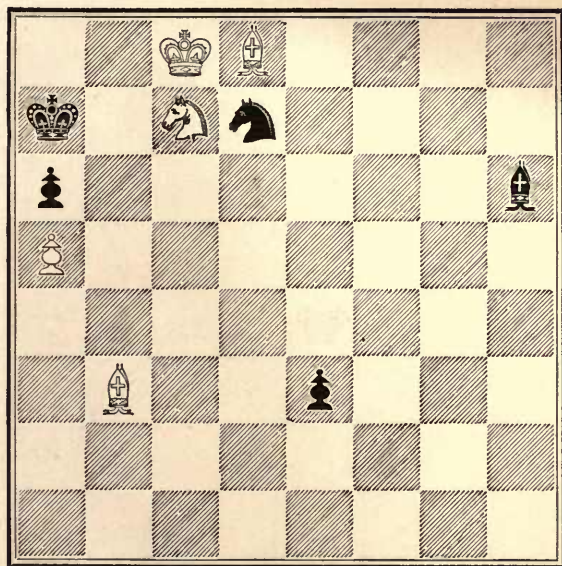


WHITE.

White to play and mate in four moves.

PROBLEM No. 93

BLACK.

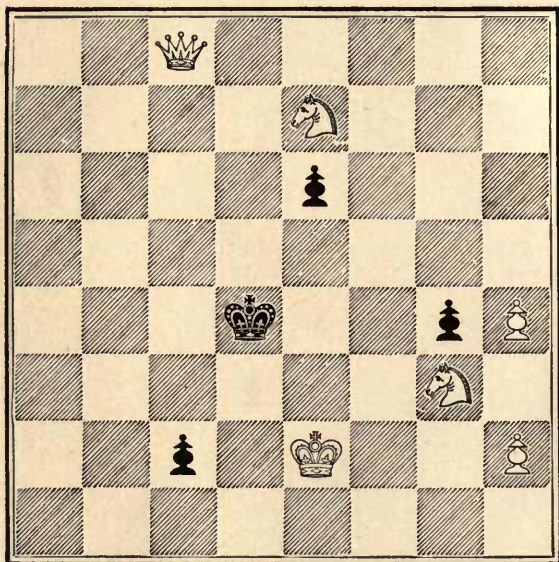


WHITE.

White to play and mate in four moves.

PROBLEM No. 94.

BLACK.



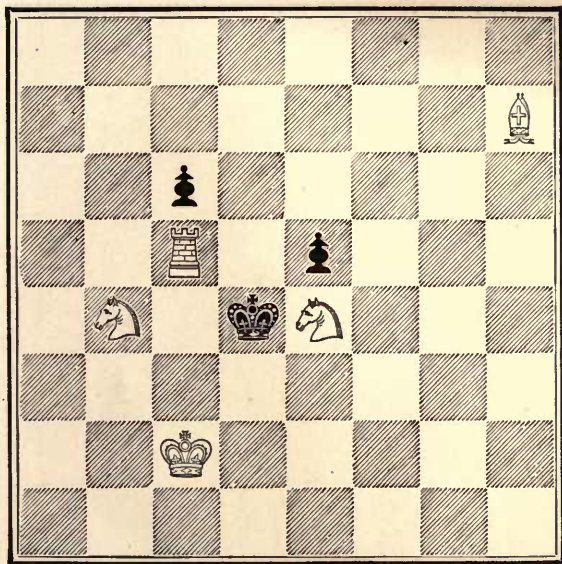
WHITE.

White to play and mate in four moves.

X X X

PROBLEM No. 95.

BLACK.

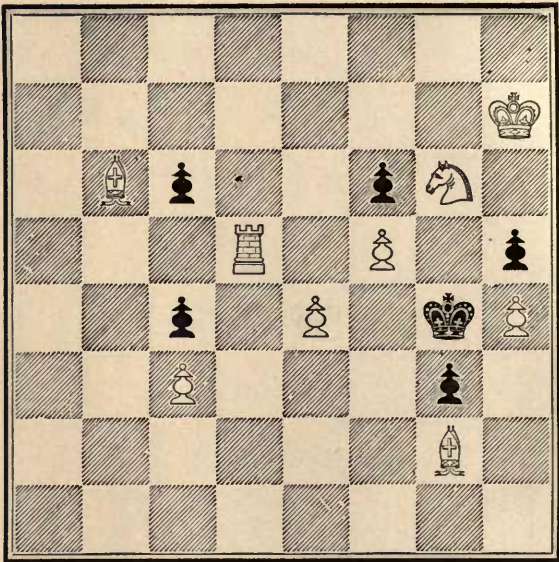


WHITE.

White to play and mate in four moves.

PROBLEM No. 96.

BLACK.

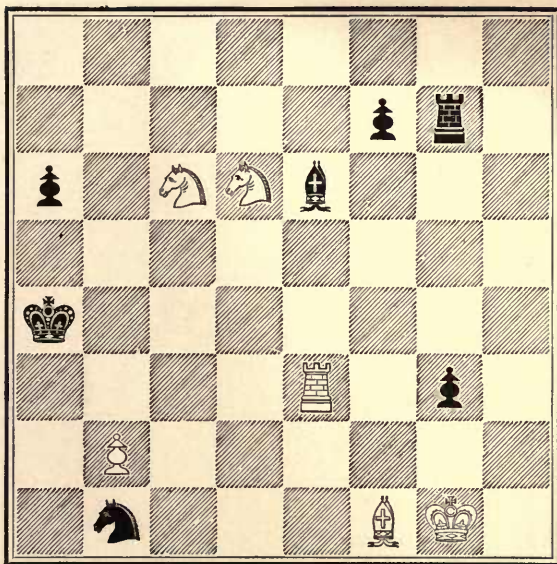


WHITE.

White to play and mate in four moves.

PROBLEM No. 97.

BLACK.

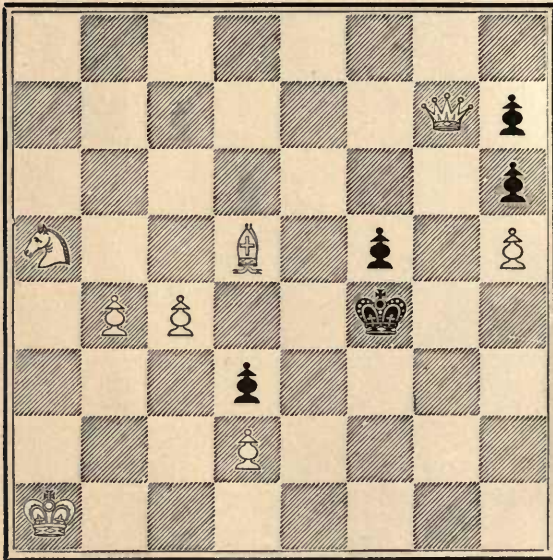


WHITE.

White to play and mate in four moves.

PROBLEM No. 98.

BLACK.

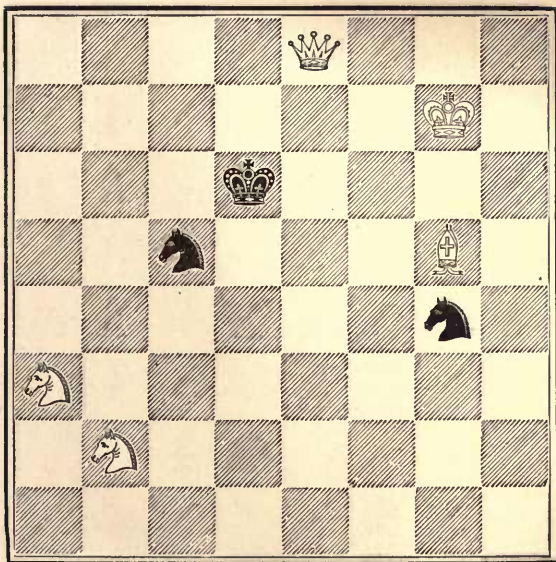


WHITE.

White to play and mate in four moves.

PROBLEM No. 99.

BLACK.



WHITE.

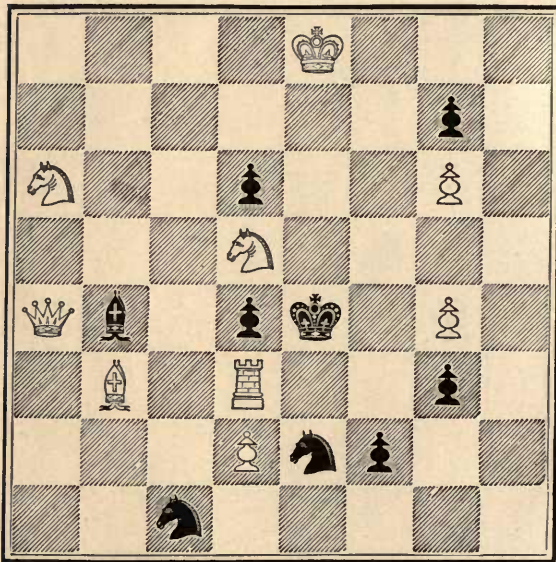
White to play and mate in four moves.

ENIGMA.



PROBLEM No. 100.

BLACK.



WHITE.

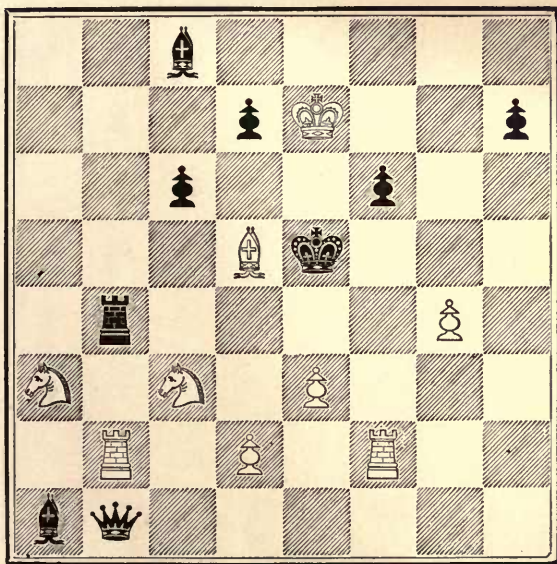
“In how few moves can White mate?”

PROBLEM A.

DOUBLE FIRST PRIZE

“CHESS MONTHLY PROBLEM TOURNAMENT.”

BLACK.



WHITE.

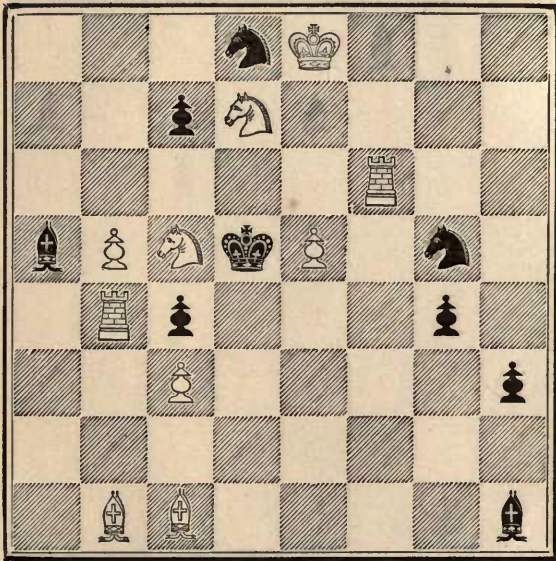
White to play and mate in four moves.

PROBLEM B.

FROM PRIZE SET.

“CHESS MONTHLY PROBLEM TOURNAMENT.”

BLACK.

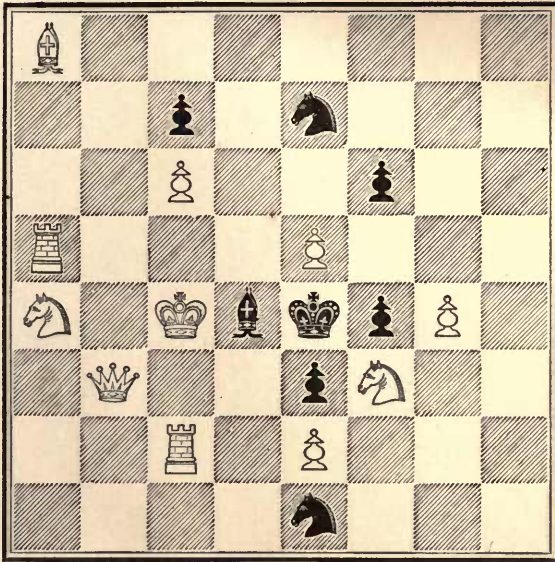


WHITE.

White to play and mate in three moves.

PROBLEM C.

BLACK.



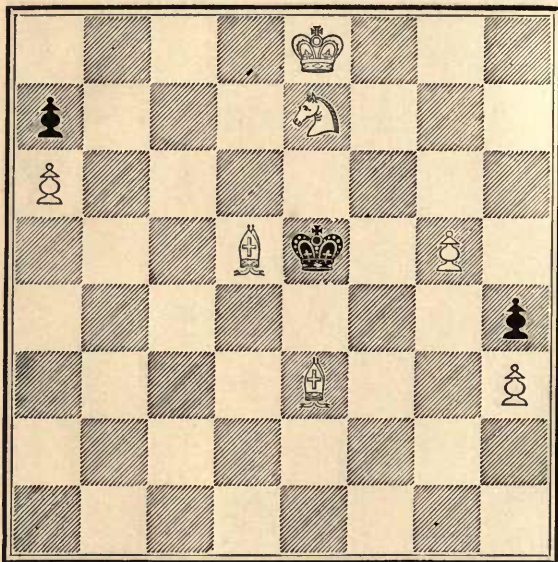
WHITE.

White to play and mate in two moves.

X X X

PROBLEM D.

BLACK.



WHITE.

White to play and mate in four moves.

Solution to Chess Puzzle

ON FRONTISPIECE.

Replace the White Kt at B 7, and a Black Pawn at K 4 ; then P takes P *en pas*. Mate.

ANALYSIS AND PROOF.

It can be proved that Black's last move *must have been* P from K 2 to K 4, so that White may take the P *en pas*.

The Black King cannot have moved from any *occupied* square.
(The White Kt now occupies B 7.)

Nor from Kt 3 or 4, as both are now *doubly* guarded, so that he cannot have moved *out of a check*.

(The White Kt now helps to guard Kt 5.)

Nor can he have moved from K 2, as the White P on Q 6 cannot have moved *to give check*.

No other P can have moved.

The K P cannot have moved from K 3, because of the position of the White King.

Therefore Black's last move *must have been* P from K 2 to K 4, which White can take *en pas*., giving Mate.

Q. E. D.

SOLUTIONS.



TWO MOVE PROBLEMS.

No. 1	B to Q 8	No. 7	R to Kt 3
” 2	R to K B sq.	” 8	Kt to Q 4
” 3	B to Kt 3	” 9	B to B 8
” 4	Q to R 4	” 10	Kt to Kt 6
” 5	Kt to Q 5	” 11	Kt to R 8
” 6	Kt to Q Kt 7	” 12	Q to R 7

THREE MOVE PROBLEMS.

No. 13.

1 Q to R 6	1 Kt to B 3
2 P to B 5	2 Any
3 Q or P mates accordingly	
2 Q to B 6 ch	If 1 P to Q 6
3 Q to B 4 mate	2 K moves
2 Q to K 6	If 1 Kt to Kt 5
3 Q mates	2 Any

No. 14.

1 Kt to Q 5	1 B to Q 5
2 Q to B 3	2 Any
3 Q or Kt mates accordingly.	

SOLUTIONS.

No. 15.

- | | |
|------------------|----------------|
| 1 R to Q 2 | 1 Q takes B |
| 2 R to R 2 ch | 2 K moves |
| 3 R to R 6 mate | |
| | If 1 P to Kt 7 |
| 2 R takes P | 2 Any |
| 3 B or R mates | |
| | If 1 Q moves |
| 2 R to R 2 ch | 2 P takes R |
| 3 B takes Q mate | |
-

No. 16.

- | | |
|-----------------------------|---------------|
| 1 Kt to R 8 | 1 B moves |
| 2 Kt to B 7 | 2 Any |
| 3 R or Kt mates accordingly | |
| | If 1 B to Q 3 |
| 2 B takes B | 2 P moves |
| 3 R mates | |
-

No. 17.

- | | |
|-----------------------------|----------------|
| 1 R to B 7 | 1 Q takes R |
| 2 Kt to K 8 | 2 Any |
| 3 Q or Kt mates accordingly | |
| | If 1 Q to K 2 |
| 2 Q to K 8 | 2 Any |
| 3 Q or R mates accordingly | |
| | If 1 Q to B sq |
| 2 Kt to K 8, &c. | |
-

No. 18.

- | | |
|-----------------------|-----------------|
| 1 B to B 5 | 1 Kt takes B |
| 2 R to Q 6 | 2 Any |
| 3 R mates accordingly | |
| | If 1 Kt to Kt 3 |
| 2 B takes Kt | 2 Kt moves |
| 3 R mates | |

SOLUTIONS.

No. 19.

- | | |
|--|---|
| <p>1 R to R 8
 2 Q to R sq ch
 3 Q or Kt mates accordingly</p> | <p>1 K moves
 2 Any</p> |
| <p>2 Q to Kt sq ch
 3 Q takes B mate</p> | <p>If 1 B moves
 2 B to B 7</p> |
| <p>2 Q takes P and mates next move</p> | <p>If 1 P becomes Q</p> |
-

No. 20.

- | | |
|--|--|
| <p>1 R to Kt 5
 2 R to Q 5
 3 B or R mates accordingly</p> | <p>1 K takes Kt
 2 Any</p> |
| <p>2 R to Kt 8 ch
 3 Kt takes P mate</p> | <p>If 1 K to B sq
 2 K moves</p> |
-

No. 21.

- | | |
|--|---|
| <p>1 R from Kt 7 to Kt 6
 2 R to Kt 5
 3 Kt or R mates accordingly</p> | <p>1 R takes R
 2 Any</p> |
| <p>2 R to Kt 4 ch
 3 R mates</p> | <p>If 1 R to Q 4
 2 K moves</p> |
| <p>2 R takes R, &c.</p> | <p>If 1 Kt to Q 4</p> |
-

No. 22.

- | | |
|--|---|
| <p>1 Q to B 6
 2 Q to K 4 ch
 3 Kt mates</p> | <p>1 Kt takes R
 2 Kt takes Q</p> |
|--|---|

SOLUTIONS.

No. 23.

1 B to K Kt 2
2 Q to B 4 ch
3 B takes P mate

1 B to Q 4
2 B takes Q

2 B takes P ch
3 Q takes B mate

If 1 B to Q 5
2 K moves

No. 24.

1 R to K sq
2 B to B 4 ch
3 P takes P *en pas.* double ch mate

1 Kt to B 4
2 P to Q 4

2 B to B 4
3 Mates accordingly

If 1 Kt to Q 4
2 Any

2 B to Kt 5
3 B mates

If 1 P to B 4
2 Any

2 P takes P
3 Mates accordingly

If 1 Q P moves
2 Any

No. 25.

1 K to Kt 7
2 R to Kt 3 ch
3 B or Kt mates accordingly

1 K to K 6
2 K moves

2 R to K B sq
3 R mates

If 1 K to K 4
2 K moves

SOLUTIONS.

No. 26.

- | | |
|---|---|
| <p>1 R to Kt 8
 2 R to B 7
 3 R mates accordingly</p> | <p>1 Kt takes R
 2 Any</p> |
| <p>2 R to Q 8 ch
 3 R takes Kt mate</p> | <p>If 1 Kt takes B
 2 Kt to Q 2</p> |
-

No. 27.

- | | |
|---|--|
| <p>1 Kt to B 4
 2 Q to Q B 3
 3 Q mates accordingly</p> | <p>1 K takes P
 2 K moves</p> |
| <p>2 Q to Kt 7
 3 Q mates accordingly</p> | <p>If 1 K to K 3
 2 K moves</p> |
| <p>2 Q to K 3 ch
 3 Q mates accordingly</p> | <p>If 1 K to Q 5 or K 5
 2 K moves</p> |
-

No. 28.

- | | |
|--|--|
| <p>1 Q to K 5
 2 R takes P ch
 3 Q mates accordingly</p> | <p>1 R takes R
 2 Either R takes R</p> |
| <p>2 R to K Kt sq
 3 Q or R mates accordingly</p> | <p>If 1 R to R sq
 2 Any</p> |
-

No. 29.

- | | |
|---|--|
| <p>1 B to Q sq
 2 B to B 3 ch
 3 Q to Kt 2 mate</p> | <p>1 Kt takes Kt
 2 K takes B</p> |
| <p>2 Q to Kt 4 ch
 3 B mates</p> | <p>If 1 Kt to B 4
 2 Kt covers</p> |

SOLUTIONS.

No. 30.

- 1 R to K 6
- 2 Q to K 5 ch
- 3 R mates

- 1 Kt to B 4
- 2 Kt takes Q

- 2 Q to B sq ch
- 3 Q mates

- If
- 1 K to B 4
 - 2 K moves

- 2 Q to K 4 ch
- 3 R mates

- If
- 1 P to Kt 4
 - 2 K moves

No. 31.

- 1 B to Q 6
- 2 B to R 3
- 3 R, B, or Kt mates accordingly

- 1 B to K 4
- 2 Any

- 2 R to Kt 4
- 3 B or R mates accordingly

- If
- 1 B takes Kt
 - 2 Any

No. 32.

- 1 B to B 4
- 2 Q takes B ch
- 3 R to Kt 5 mate

- 1 R takes B
- 2 R takes Q

- 2 Q to Kt 2 ch
- 3 B to Q 6 mate

- If
- 1 B to Q B 6
 - 2 K moves

- 2 Q to Kt sq
- 3 Q or R mates accordingly

- If
- 1 B to K 4
 - 2 Any

- 2 Q to B 8 ch
- 3 Q to Q 6 mate

- If
- 1 K moves
 - 2 K moves

SOLUTIONS.

No. 33.

- | | |
|-----------------------------|--------------|
| 1 Q to R 8 | 1 Kt takes Q |
| 2 Kt to B 6 | 2 Any |
| 3 Kt or R mates accordingly | |
-

No. 34.

- | | |
|-----------------------|------------------|
| 1 K to B 6 | 1 R to B 3 or 4 |
| 2 R to B 4 ch | 2 R takes R |
| 3 Q mates | |
| | If 1 R takes R |
| 2 Q to Q 5 ch | 2 K moves |
| 3 B to Kt 5 mate | |
| | If 1 R to Q 7 |
| 2 Q to K 6 ch | 2 K moves |
| 3 Q to B 4 mate | |
| | If 1 R to B 2 ch |
| 2 B takes R | 2 Any |
| 3 Q mates accordingly | |
-

No. 35.

- | | |
|-----------------------|--------------------|
| 1 R to Kt 4 | 1 R takes R |
| 2 Q to B 4 ch | 2 Any |
| 3 Q mates accordingly | |
| | If 1 Kt to Kt 3 ch |
| 2 Q takes Kt ch | 2 K moves |
| 3 P mates | |
| | If 1 P to K 3 |
| 2 Kt to Kt 5 ch | 2 K moves |
| 3 Q to R 4 mates | |
-

No. 36.

- | | |
|------------------|---------------------|
| 1 B to Q 3 | 1 P takes B |
| 2 P to K 4 ch | 2 K takes either R |
| 3 R mates | |
| | If 1 Any other move |
| 2 B takes P, &c. | |

SOLUTIONS.

No. 37.

- 1 R to Q 5
- 2 Kt to R 4
- 3 Mates accordingly

- 2 R to Q 4 ch
- 3 Kt mates

- 2 B to Kt sq ch
- 3 B takes Kt mate

- 1 B takes R
- 2 Any

- If
- 1 B to Kt 8
 - 2 Kt takes R

- If
- 1 Kt at Q 6 moves
 - 2 Kt covers

No. 38.

- 1 B to Kt 7
- 2 Kt from Q 5 to K 3 ch
- 3 B or P mates accordingly

- 2 B to Q 4
- 3 B mates

- 2 Kt to B 7 ch
- 3 B mates

- 1 K moves
- 2 K moves

- If
- 1 P takes Kt
 - 2 K moves

- If
- 1 P moves
 - 2 K moves

No. 39.

- 1 Q to B 5
- 2 Q takes Kt
- 3 P mates

- 2 K to Q 6 dis ch
- 3 Q takes Kt mate

- 1 Kt takes R
- 2 B takes Q

- If
- 1 Kt to Kt 5 ch
 - 2 Kt covers

No. 40.

- 1 Kt from Q 2 to K 4
- 2 B to Kt 6
- 3 Mates accordingly

- 2 B or R takes R
- 3 Mates accordingly

- 1 R takes Kt
- 2 Any

- If
- 1 R to Q B 3, or K 4
 - 2 Any

SOLUTIONS.

No. 41.

- | | |
|---|--|
| <p>1 Q to K B 8
 2 Kt to K 5
 3 Q to B 2 mate</p> | <p>1 B takes B
 2 B takes Kt</p> |
|---|--|
-

No. 42.

- | | |
|--|---|
| <p>1 Q to Kt sq
 2 Q to Kt 8
 3 Q, R or Kt mates accordingly</p> | <p>1 Kt to B 8
 2 Any</p> |
|--|---|
- (Note.) If 2 P at B 7 Queens
- 3 Q mates
- And if 2 Pat B 7 becomes Kt
- 3 Kt mates
-

No. 43.

- | | |
|--|---|
| <p>1 K to B 3
 2 Q to K 7
 3 Q B or Kt mates accordingly</p> | <p>1 P moves
 2 Any</p> |
|--|---|
- If 1 R to Q 5 &c.
 2 R covers
- 2 Q to B 5 ch
 3 Kt mates
-

No. 44.

- | | |
|--|--|
| <p>1 P to K 5
 2 R to Q 6 ch
 3 Kt mates</p> | <p>1 Kt takes P
 2 K takes R</p> |
|--|--|
- If 1 K moves
 2 K moves
- 2 R takes Kt ch
 3 R or B mates accordingly

SOLUTIONS.

No. 45.

- | | |
|------------------------|------------------|
| 1 B to R 4 | 1 P takes Kt |
| 2 R to K Kt 3 | 2 Either P moves |
| 3 Kt mates accordingly | |
| | If 1 P to Kt 6 |
| 2 Kt to K 5 | 2 Any |
| 3 R mates | |
-

No. 46.

- | | |
|------------------------|--------------|
| 1 Kt to K 3 | 1 B takes Kt |
| 2 R from B sq to Kt sq | 2 B takes R |
| 3 R takes B dis mate | |
-

No. 47.

- | | |
|-------------------|-------------------|
| 1 Kt to K B 5 | 1 B or P takes Kt |
| 2 K to R 4 | 2 Any |
| 3 Q mates | |
| | If 1 Kt to Q 8 |
| 2 Q to B 6 ch | 2 K moves |
| 3 Kt to B sq mate | |
-

No. 48.

- | | |
|---------------------|--------------------|
| 1 R to Kt 4 | 1 Either P takes P |
| 2 P to Q 4 | 2 Any |
| 3 Mates accordingly | |
| | If 1 P to Q 5 |
| 2 Kt takes Q P ch | 2 K moves |
| 3 R mates | |
-

No. 49.

- | | |
|-------------------------------|-------------|
| 1 Kt to R 3 | 1 B to Kt 2 |
| 2 Q to Kt 5 | 2 Any |
| 3 Q B or Kt mates accordingly | |

(Continued on next page.)

SOLUTIONS.

No. 49—(continued).

- | | | |
|-------------------|--|----------------------|
| | | If 1 Kt takes P |
| 2 Q takes Kt | | 2 Any |
| 3 Q mates | | |
| | | If 1 B takes B |
| 2 Q to Kt 8 ch | | 2 K moves |
| 3 Q takes P mate | | |
| | | If 1 Either Kt moves |
| 2 Q to Kt 8 ch | | 2 Kt covers |
| 3 Q takes Kt mate | | |
-

No. 50.

- | | | |
|---------------------|--|-----------|
| 1 P to R 3 | | 1 P moves |
| 2 B to R 2 | | 2 Any |
| 3 Mates accordingly | | |
-

No. 51.

- | | | |
|-----------------------|--|-----------|
| 1 P becomes B | | 1 K moves |
| 2 Q to Kt 5 | | 2 Any |
| 3 B mates accordingly | | |
-

No. 52.

- | | | |
|---------------|--|---------------|
| 1 B to R 3 | | 1 K to K 5 |
| 2 Q to Q B 5 | | 2 K moves |
| 3 Q mates | | |
| | | If 1 K to B 5 |
| 2 B to K 6 ch | | 2 K moves |
| 3 Q mates | | |
-

No. 53.

- | | | |
|----------------------------|--|------------|
| 1 B to Kt 7 | | 1 P to R 6 |
| 2 R to R 4 | | 2 Any |
| 3 R or B mates accordingly | | |

SOLUTIONS.

No. 54.

- 1 Kt to B 6
- 2 R takes Kt P ch
- 3 Kt to R 5 dis mate

- 1 K to R 5
- 2 P takes R

- 2 R takes P ch
- 3 Kt mates

- If
- 1 R takes Kt
 - 2 P or R takes R

- 2 Kt to K 5 ch
- 3 Kt to B 5 mate

- If
- 1 K to B 5
 - 2 K moves
-

No. 55.

- 1 Q to B 8
- 2 Q to B 5 ch
- 3 Kt mates accordingly

- 1 R takes Kt
- 2 R or B takes Q

- 2 Kt to B 3 ch
- 3 Kt to R 7 mate

- If
- 1 R takes P
 - 2 R takes Kt

- 2 Kt to B 3 ch
- 3 B mates

- If
- 1 P takes Kt
 - 2 K moves
-

No. 56.

- 1 R to Kt 8
- 2 R to Kt 4
- 3 Mates accordingly

- 1 B to B 3 or 5, or R 5
- 2 Any

- 2 R to Kt 3
- 3 R mates

- If
- 1 B to Q 2
 - 2 B takes Kt
-

No. 57.

- 1 Q to R 6
- 2 Q to K 2
- 3 Q mates

- 1 R takes R
- 2 R takes R

- 2 Q takes P
- 3 Q mates

- If
- 1 R to Kt 4
 - 2 Any

SOLUTIONS.

No. 58.

- | | |
|-----------------------|-----------------------------|
| 1 R to Q Kt 5 | 1 P takes Kt |
| 2 R takes Kt ch | 2 K moves |
| 3 B mates accordingly | |
| | If 1 R takes P ch |
| 2 R takes R ch | 2 Kt takes R |
| 3 B to K 3 mate | |
| | If 1 Kt tks Kt, or B to B 4 |
| 2 B to Kt 7 ch | 2 R covers |
| 3 B mates | |
| | If 1 R takes B |
| 2 R takes Kt ch | 2 K moves |
| 3 Kt to Kt 7 mate | |
-

No. 59.

- | | |
|-----------------------------|------------------------|
| 1 Q to R 6 | 1 Kt takes B |
| 2 Q to Kt 7 ch | 2 K moves |
| 3 Kt or Q mates accordingly | |
| | If 1 Kt to Q 3 or Kt 6 |
| 2 Q to Kt 7 ch | 2 K moves |
| 3 Q mates | |
-

No. 60.

- | | |
|-----------------------------|---------------|
| 1 R to B 5 | 1 P takes R |
| 2 Kt to Q 5 | 2 Any |
| 3 B or Kt mates accordingly | |
| | If 1 P to B 4 |
| 2 B takes P ch | 2 K moves |
| 3 Kt to K 4, mate | |
-

No. 61.

- | | |
|---------------------|-------------|
| 1 R takes Q P | 1 P takes R |
| 2 B to K 5 | 2 Any |
| 3 Mates accordingly | |

SOLUTIONS.

No. 62.

- 1 R to Q 3
 2 B to K 3
 3 Mates accordingly

- 1 R takes R
 2 R or Kt takes B

- 2 R to K 3 ch
 3 Kt to Kt 3, mate

- If 1 R to Kt 7
 2 Kt takes R
-

No. 63.

- 1 R to Kt 7
 2 Q to R 4 ch
 3 B mates

- 1 Kt takes R
 2 R takes Q
-

No. 64.

- 1 B to B 7
 2 R to K 4 ch
 3 Kt to B 5 mate

 2 Kt to B 5
 3 Mates accordingly

 2 R to K 4 ch
 3 P mates

- 1 P takes P
 2 P takes R

- If 1 K takes P
 2 Any

- If 1 K moves
 2 K moves
-

No. 65.

- 1 Q to K 2
 2 P to B 4 ch
 3 Kt mates

 2 Q to B 3
 3 Q or Kt mates accordingly

- 1 Q takes Q
 2 P takes P *en pas*

- If 1 B to B 2
 2 Any
-

No. 66.

- 1 Kt to B 8
 2 R to B 4 ch
 3 R mates accordingly

- 1 K moves
 2 Any

SOLUTIONS.

No. 67.

- | | |
|--------------------|-----------------|
| 1 Kt to K 7 | 1 Q to B 5 |
| 2 Q to B 6 ch | 2 K moves |
| 3 Q takes P mate | |
| | If 1 R takes Kt |
| 2 Q to Kt 4 ch | 2 K moves |
| 3 Q to Q 6 mate | |
| | If 1 B to R 4 |
| 2 P to Q 4 ch | 2 K moves |
| 3 Q to B 6 mate | |
| | If 1 K moves |
| 2 Q to R 4 ch, &c. | |
-

No. 68.

- | | |
|---------------------|--------------|
| 1 R to R 3 | 1 P moves |
| 2 B to Kt 3 | 2 K takes Kt |
| 3 B to K 5 dis mate | |
-

No. 69.

- | | |
|----------------------------|--------------------------|
| 1 R to K B 8 | 1 Kt to R 2 or 4, or Q 2 |
| 2 R takes B ch | 2 P takes R Queening |
| 3 Kt to R 2 double ch mate | |
| | If 1 Kt elsewhere |
| 2 B or R takes Kt | 2 B moves |
| 3 Kt takes B mate | |
-

No. 70.

- | | |
|------------------|--------------|
| 1 Q to K 8 | 1 K takes Kt |
| 2 Q to K 4 ch | 2 K takes Q |
| 3 Kt to B 3 mate | |
-

No. 71.

- | | |
|------------------------|--------------|
| 1 R to K 3 | 1 Kt takes R |
| 2 Kt to R 3 | 2 Any |
| 3 Kt mates accordingly | |

SOLUTIONS.

No. 72.

- | | |
|--------------------|---------------|
| 1 Q to Kt sq | 1 Kt takes Kt |
| 2 Q to B 5 ch | 2 R takes Q |
| 3 Kt to B 3 mate | |
| | If 1 K moves |
| 2 Q to Q 4 ch, &c. | |
-

No. 73.

- | | |
|----------------------------|----------------|
| 1 B to B 7 | 1 K to B 5 |
| 2 Q to B 8 ch | 2 K moves |
| 3 Q or B mates accordingly | |
| | If 1 R takes B |
| 2 Q to B 8 | 2 Any |
| 3 Q mates accordingly | |
| | If 1 P to Kt 4 |
| 2 Q to B 8 &c. | |
-

No. 74.

- | | |
|-----------------------|-------------|
| 1 Q to K sq | 1 K takes R |
| 2 Q takes R ch | 2 K moves |
| 3 Q mates accordingly | |
-

No. 75.

- | | |
|--------------------------------|----------------|
| 1 R to R 7 | 1 Q to B 5 |
| 2 Q to Q B sq | 2 Any |
| 3 Q, R, or B mates accordingly | |
| | If 1 K takes R |
| 2 Q to Q 4 ch | 2 K moves |
| 3 Q to B 6 mate | |
-

No. 76.

- | | |
|------------------|--------------|
| 1 Kt to Q 5 | 1 K to K 4 |
| 2 Kt to K 7 | 2 K moves |
| 3 Kt to B 6 mate | |
| | If 1 P moves |
| 2 Kt to B 3 | 2 P moves |
| 3 Kt to K 2 mate | |

SOLUTIONS.

No. 77.

- 1 K to K 5
- 2 K to B 6
- 3 Mates accordingly

- 2 Kt takes P dis ch
- 3 B takes Kt mate

- 2 K takes P dis ch
- 3 B takes B mate

- 1 B to R 6
- 2 Any

- If 1 Kt checks
- 2 Kt to K 4

- If 1 B to B 5
- 2 K takes Kt

No. 78.

- 1 Kt to B 5
- 2 Q to K 4 ch
- 3 Kt takes P dis mate

- 2 Q to K 4 ch
- 3 Kt to Q 3 mate

- 2 Q to Kt 5 ch
- 3 Q takes Kt mate

- 1 P to B 7
- 2 P takes Q

- If 1 Kt to Q 5
- 2 P takes Q

- If 1 Kt to B 5
- 2 K moves

No. 79.

- 1 R to B sq
- 2 R to Q B sq
- 3 Q mates accordingly

- 2 Q to K 3 ch
- 3 Q mates

- 2 K to Kt 5
- 3 Q to R 8 mate

- 3 Q to K 3 mate.

- 1 B to B 7
- 2 Any

- If 1 B to Q 4 or 6
- 2 K takes B

- If 1 B to R 2
- 2 B to K 5

- If 2 B elsewhere

SOLUTIONS.

No. 80.

- | | |
|------------------------------|----------------|
| 1 Kt to Kt 4 | 1 B takes R |
| 2 R to K 5 | 2 Any |
| 3 Mates accordingly | |
| | If 1 P takes R |
| 2 B to B 7 ch | 2 P to K 4 |
| 3 Kt to Q 5 mate | |
| | If 1 Kt to B 4 |
| 2 R takes Kt ch, and B mates | |

No. 81.

- | | |
|------------------|----------------|
| 1 B to B 5 | 1 R takes B |
| 2 R to Kt 4 ch | 2 Kt takes R |
| 3 Kt to B 3 mate | |
| | If 1 B to Kt 3 |
| 2 B to K 7 ch | 2 K moves |
| 3 R to R 7 mate | |

No. 82.

- | | |
|-----------------------------|-------------|
| 1 R to Kt sq | 1 Q takes R |
| 2 Kt to Q 3 | 2 Any |
| 3 Kt or P mates accordingly | |

No. 83.

- | | |
|-----------------------|-----------|
| 1 Kt to B 3 | 1 K moves |
| 2 R takes P | 2 Any |
| 3 Q mates accordingly | |

No. 84.

- | | |
|---------------------|------------|
| 1 R to Q 3 | 1 Q to Q 3 |
| 2 B to K 7 | 2 Any |
| 3 Mates accordingly | |

No. 85.

- | | |
|------------------|-------------|
| 1 R to K 8 | 1 Kt to Q 3 |
| 2 R takes P ch | 2 K takes R |
| 3 R to Kt 5 mate | |

(Continued on next page.)

SOLUTIONS.

No. 85 (*continued*).

- | | |
|---------------------------------|----------------|
| | If 1 Kt to B 3 |
| 2 Kt takes Kt ch | 2 K moves |
| 3 R to B 8 mate | |
| | If 1 K moves |
| 2 R to B 8 ch, &c. | |
| | If 1 P moves |
| 2 R to B 8 and mates next move. | |

FOUR MOVE PROBLEMS.

No. 86.

- | | |
|------------------|---------------|
| 1 Kt to K 4 | 1 P takes Kt |
| 2 B to Kt 3 | 2 B takes B |
| 3 R to B 8 | 3 Any |
| 4 R to R 8 mate | |
| | If 1 B to Q 8 |
| 2 R takes B | 2 K to R 5 |
| 3 Kt to Q 2 | 3 Any |
| 4 R to R sq mate | |

No. 87.

- | | |
|-----------------|--------------|
| 1 R to Q R sq | 1 Kt takes R |
| 2 P to Kt 4 | 2 Kt to Kt 6 |
| 3 R to Q 4 ch | 3 Kt takes R |
| 4 P to B 4 mate | |

No. 88.

- | | |
|------------------|-----------------|
| 1 B to B 5 | 1 Kt to Kt 4 |
| 2 P to Q 6 | 2 Kt moves |
| 3 Captures Kt | 3 B takes Kt |
| 4 Q takes R mate | |
| | If 1 Kt to R 3 |
| 2 B to Q 6 | 2 Kt moves |
| 3 Captures Kt | 3 B takes Kt |
| 4 Q mates | |
| | If 1 Kt to K sq |

(Continued on next page).

SOLUTIONS.

No. 88 (*continued.*)

- | | |
|-----------------|-------------|
| 2 Q to B 3 | 2 Kt moves |
| 3 Q takes B ch | 3 R to Kt 8 |
| 4 B to Q 4 mate | |
-

No. 89.

- | | |
|-----------------------------|-----------------------|
| 1 R to K 8 | 1 B takes R |
| 2 R takes P | 2 B takes R |
| 3 Kt to R 4 | 3 Any |
| 4 Kt or P mates accordingly | |
| | If 1 R to Q 4 |
| 2 R takes P | 2 R to Q 2 ch |
| 3 K to B 8 dis ch | 3 Any |
| 4 Mates accordingly | |
| | If 1 P takes R |
| 2 Kt to R 4 | 2 B to R 4 |
| 3 Kt to B 3 ch | 3 B takes Kt |
| 4 K to Q 7 dis mate | |
| | If 1 B to K 6 or Kt 4 |
| 2 P to B 4 ch | 2 B takes P |
| 3 Kt from B 5 to Q 4 | 3 Any |
| 4 Kt mates | |
-

No. 90.

- | | |
|------------------|----------------|
| 1 Q to B 6 | 1 P takes Q |
| 2 P becomes Kt | 2 P Queens |
| 3 R takes P ch | 3 Kt takes R |
| 4 Kt to Q 6 mate | |
| | If 1 Kt to B 5 |
| 2 Q takes B ch | 2 Kt to K 3 |
| 3 P becomes Kt | 3 Any |
| 4 Kt mates | |
-

No. 91.

- | | |
|---------------------|-------------|
| 1 R to K Kt sq | 1 R takes R |
| 2 Kt to K sq | 2 R to Kt 6 |
| 3 Kt to B 8 | 3 Any |
| 4 Mates accordingly | |

(Continued on next page.)

SOLUTIONS.

No. 91 (continued.)

- | | |
|--|--|
| <p>3 R to Q 5 ch
4 Kt to Kt 5 mate</p> | <p>If 2 R takes Kt
3 K takes P</p> |
|--|--|
-

No. 92.

- | | |
|---|---|
| <p>1 Kt to K 6
2 R to K 8
3 R to K sq ch
4 R takes B mate</p> | <p>1 B takes Kt
2 B moves
3 B to B 8</p> |
| <p>2 R to Kt 8
3 R to Kt 7
4 R mates</p> | <p>If 1 B to K sq
2 B to Kt 3
3 B moves</p> |
-

No. 93.

- | | |
|---|--|
| <p>1 Kt to R 8
2 B to Kt 6
3 P takes Kt
4 B mates</p> | <p>1 K takes Kt
2 Kt takes B
3 Any</p> |
| <p>3 B to R 4
4 B mates</p> | <p>If 2 Kt to B 3
3 Any</p> |
-

No. 94.

- | | |
|---|--|
| <p>1 Q to B 7
2 Q takes Q or Kt
3 Q to K B 4 ch
4 Kt to Kt 6 mate</p> | <p>1 P becomes Q or Kt
2 K moves
3 K takes Q</p> |
|---|--|
-

No. 95.

- | | |
|---|--|
| <p>1 Kt to Q 5
2 R to B 3
3 B to Kt 8
4 R to B 4 mate</p> | <p>1 P takes Kt
2 P takes Kt
3 P moves</p> |
|---|--|
-

No. 96.

- | | |
|---|--|
| <p>1 B to B 5
2 B to Q 4
3 B to K 3
4 B to R 3 mate</p> | <p>1 P takes R
2 P takes P
3 K takes P</p> |
|---|--|

SOLUTIONS.

No. 97.

- | | |
|------------------|--------------|
| 1 Kt to B 8 | 1 B takes Kt |
| 2 B to B 4 | 2 B to K 3 |
| 3 R to R 3 ch | 3 Kt takes R |
| 4 P to Kt 3 mate | |
-

No. 98.

- | | |
|-------------------|-----------|
| 1 Q to Kt sq | 1 K moves |
| 2 Q to Q 4 ch | 2 K moves |
| 3 Q to Kt 7 | 3 P moves |
| 4 Kt to Kt 7 mate | |
- If 2 K takes Q
- 3 Kt mates
-

No. 99.

- | | |
|-----------------|--------------|
| 1 Kt to Kt 5 ch | 1 K moves |
| 2 Kt to B 3 ch | 2 K to Q 5 |
| 3 Q to K 3 ch | 3 Kt takes Q |
| 4 B to B 6 mate | |
- If 2 K to Q 3
- 3 B to B 4 ch, &c.
-

No. 100.

- | | |
|-----------------------|------------------|
| 1 Kt to B 5 ch | 1 P takes Kt |
| 2 Q to Q 7 | 2 P Queens |
| 3 Kt to B 4 | 3 Q takes Kt |
| 4 R to K 3 ch | 4 Q or P takes R |
| 5 Q mates accordingly | |
- If 2 K takes R
- | | |
|------------------|-------------|
| 3 Q to B 5 ch | 3 K takes P |
| 4 Q to B 2 ch | 4 K to K 8 |
| 5 Q to Q sq mate | |

SOLUTIONS.

A.

- | | |
|-----------------------------------|---------------------------|
| 1 Kt from R 3 to Kt 5 | 1 P takes Kt |
| 2 B to B 4 | 2 P takes B |
| 3 P to Q 4 ch | 3 P takes P <i>en pas</i> |
| 4 R to B 5 mate | |
| | If 2 R takes B |
| 3 R to Kt 5 ch | 3 Any |
| 4 KR, QR, or P, mates accordingly | |
| | If 1 P to Q B 4 |
| 2 Kt to Q 6 | 2 Q to Kt 3 |
| 3 R to B 5 ch | 3 Q takes R |
| 4 Kt to B 7 mate | |
-

B.

- | | |
|----------------------------------|----------------------|
| 1 R to B 3 | 1 P or B takes R |
| 2 Kt to Q 3 | 2 Any |
| 3 KR, QR, or B mates accordingly | |
| | If 1 Kt to K 3, or B |
| | [takes QR] |
| 2 R to Q 3 ch | 2 Any |
| 3 R or B mates accordingly | |
-

C.

K to Kt 4 *into six checks.*

D.

- | | |
|------------------|---------------|
| 1 P to Kt 6 | 1 K to B 3 |
| 2 B to B 4 | 2 K moves |
| 3 B to Kt 5 | 3 K moves |
| 4 B to B 6 mate | |
| | If 1 K to Q 3 |
| 2 B to Q 4 | 2 K moves |
| 3 B to B 5 | 3 K moves |
| 4 B to Q 6 mate. | |

OPINIONS OF THE PRESS.

“Mr. Pearson’s compositions are distinguished by originality and graceful fancy, and no amateur should be without this little record of his work in the poetry of Chess.”—*Illustrated London News*, April, 1883.

“Mr. Pearson’s problems are uniformly correct, as well as elegant and classical. We commend them to the notice of the problem-loving community.”—*Sporting and Dramatic News*, April, 1883.

“We have pleasure in recommending the work to all problem lovers.”—*British Chess Magazine*, April, 1883.

“‘One Hundred Chess Problems,’ by Rev. A. Cyril Pearson, is a well printed and tastefully got up book, worthy of a place on the drawing-room table, as well as in the library. Mr. Pearson evidently delights in simple and pleasing stratagems, but there are many indications in his work that he by no means lacks the ability to construct difficult and complicated problems. In publishing this collection Mr. Pearson has proved himself a perfect master of the lighter style of composition.”—*Sporting and Dramatic News*, May, 1879.

“Among the three-movers are a considerable number which, without being particularly difficult, are yet extremely pleasant to solve, either on account of their piquant subjects, skilful workmanship, or (as often happens) both qualities combined. Being generally more intent upon pleasing than puzzling, our author has, on that very account, produced a book all the more likely to be widely popular. A word of praise is due as well to the neat and tasteful exterior as to the typographical excellence of this little volume.”—*Huddersfield College Magazine*, 1879.

OPINIONS OF THE PRESS—(continued).

“We may say of the two-movers that they are excellent. There are some fine compositions in the three move class. We may specially commend No. 89, a four-mover. The book is cheap and well got up.”—*The Field*, 1879.

“A neat little volume by a composer of known merit. The problems are distinguished by happiness of conception and elegance of construction.”—*Illustrated London News*, 1879.

“The Rev. A. Cyril Pearson has distinguished himself by gaining the prize for the best problem in the tournament, and also the prize for the best four-mover. Mr. Pearson’s four-mover surpasses all his previous compositions, and is justly pronounced a masterpiece by our most eminent authorities.”—*Sporting and Dramatic News*, Jan. 20, 1883.

[The problem thus referred to appears as problem A in this third edition.]

“A third edition of the Rev. A. Cyril Pearson’s “Hundred Chess Problems” is being printed by the Civil Service Publishing Co., Salisbury-court, Fleet-street, E.C., price 2s. 9d., post free. This announcement is of itself a sufficient commendation. The fact of this being a third edition shows that Mr. Pearson’s elegant productions are appreciated by the chess community. That Mr. Pearson, though less liberal than formerly towards problemists, has by no means lost his old skill, is evinced by the fact that a four-mover of his lately carried off a double first in the *Chess Monthly* Problem Tournament. This production, together with a few problems lately composed, will be included in the forthcoming volume. As a collection of good problems essentially of the modern school, we commend the book to the notice of that body of fresh and rising composers which is now making itself conspicuous.”—*Land and Water*, April 7, 1883.

“We are informed that a third edition of “100 Chess Problems,” by Rev. A. Cyril Pearson, is in course of preparation by the Civil Service Publishing Co., 8, Salisbury-court, Fleet-street, which will include a few problems lately composed, and a “four-mover” which took the double first prize in the *Chess Monthly* Problem Tournament. The distinction achieved in the last-named event has given a fresh impulse to the author’s activity, and we hope to see his once familiar name as a problemist again before the public.”—*The Field*, April, 1883.

JUST PUBLISHED,

Third Edition, Crown 8vo. Cloth, Price 2s. 6d., post free, 2s. 9d.

100 CHESS PROBLEMS,

BY THE REV. A. CYRIL PEARSON, M.A.,

Of Baliol College, Oxford, and Rector of Drayton Parslow, Bucks,

With some new ones, among them the celebrated Four-move Problem which was awarded the Double-First Prize in the Chess Monthly Tournament, 1882, and of which the judges, Messrs. Zukertort, Healey and Collins, say in their final award "*that it is worthy of a place in the choicest selection of compositions by the greatest masters.*"

"Mr. Pearson's compositions are distinguished by originality and graceful fancy, and no amateur should be without this little record of his work in the poetry of chess."—ILLUSTRATED LONDON NEWS, April 14, 1883.

Civil Service Printing and Publishing Company, Limited,
8, SALISBURY COURT, FLEET ST., E.C.,
AND OF ALL BOOKSELLERS.

OPEN COMPETITIONS.

Every Candidate for Civil Service Appointments should possess

*The Student's Manual of the History, Laws,
and Constitution of England*

(THIRD EDITION),

By Dr. KLEIN, M.A., Director of the Civil Service Institute,
110, Cannon Street, E.C.

EXTRACTS FROM THE PRESS.

"THE CIVILIAN" says: This book supplies a pressing want.—
"Army and Navy Gazette": This Book will save much labour to
Students.—"South London Press": A most useful work on English
History.—"Church Review": Students will find this Manual a
multum in parvo.—"City Press": Those who avail themselves
of Dr. KLEIN's guidance will find that he has fully met the
requirements of the case. Handsomely bound in cloth, price 4s. 6d.

Civil Service Printing and Publishing Company, Limited,
8, SALISBURY COURT, FLEET ST., E.C.,
AND CIVIL SERVICE INSTITUTE, 110, CANNON ST., E.C.

SECOND EDITION.

Crown 8vo. Cloth Boards. Price 3s.; post free, 3s. 3d.

The "Complete Passport to the Civil Service"

(LOWER DIVISION),

Containing papers set at Seventeen Consecutive Examinations, viz:—Arithmetic, Geography, Orthography, Tots, Book-keeping, History, Indexing, Digesting Returns, Composition, &c., with Miscellaneous Papers. Also copious Hints on every subject, and Answers to all the questions in Arithmetic. Suitable for Candidates for Men Clerks, Excise, Female Clerks, Boy Clerks, Teachers, Masters, &c.

By GEORGE E. CLARK, OF H.M. CIVIL SERVICE (C. S. TUTOR).

"The Civil Service Passport is a book likely to be of considerable service to those preparing for the examinations for the Civil Service."—*Schoolmaster*.

Also THE "CIVIL SERVICE COPYING BOOK" - - - - PRICE 6d. EACH.

THE "COPYING MANUSCRIPT BOOK," FOR CIVIL SERVICE CANDIDATES PRICE 1/6 EACH.

PUBLISHED BY THE

Civil Service Printing and Publishing Company, Limited,
8, SALISBURY COURT, FLEET ST., E.C.

AND SIMPKIN, MARSHALL & Co.

(Can be obtained also of the Author, 163, Southgate Road, London.)

JUST PUBLISHED ¹⁸ PRICE ONE SHILLING.

CAPITAL AND LABOUR IN THE WEST INDIES, by C. S. SALMON. London: Civil Service Printing and Publishing Company, Limited, 8, Salisbury Court, Fleet Street, E.C.

A POEM: EIGHTEEN HUNDRED AND SEVENTY. Price 5s. Published by the Civil Service Printing and Publishing Company, Limited, 8, Salisbury Court, Fleet Street, London, E.C.

BREEDING HORSES FOR USE, by F. RAM. Price 2s. "The whole of it will repay perusal."—*Mark Lane Express*. Civil Service Printing and Publishing Company, Limited, 8, Salisbury Court, Fleet Street, London, E.C.

CARISBROOKE AND OTHER POEMS, by A. W. NORTON, Price 1s. Civil Service Printing and Publishing Company, Limited, 8, Salisbury Court, Fleet Street, London, E.C.

PRICE ONE SHILLING.

SPITHEAD AND OTHER POEMS, by A. W. NORTON. Civil Service Printing and Publishing Company, Limited, 8, Salisbury Court, Fleet Street, London, E.C.



UNIVERSITY OF CALIFORNIA LIBRARY
Los Angeles

This book is DUE on the last date stamped below.

NO PHONE RENEWALS

LD
URL

MAR 1988
REC'D LD-URL

AUG 19 1988



3 1158 01118 1889

UC SOUTHERN REGIONAL LIBRARY FACILITY



A 000 068 142 9

Unive.
Sou
Li