

PRESBYTERIAN COLLEGE LIBRARY



3 5197 00118872 4

379.787
11
1986
C. 2



1

9

5

0

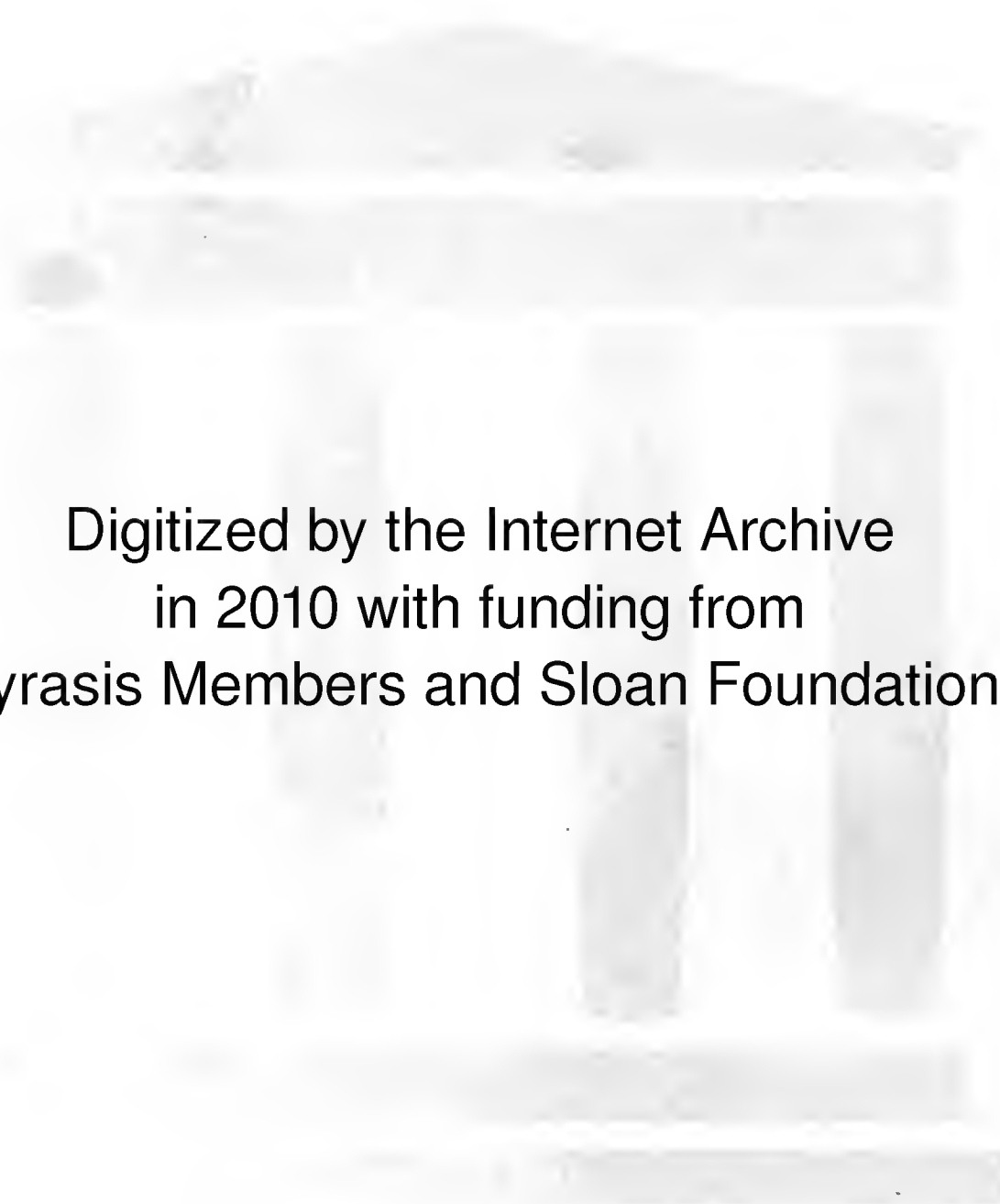
To Uncle Thomson with deepest personal regards

THE JACOBS BROTHERS

Hugh S. Jacobs

Presbyterian College
James H. Thomason Library
Clinton, South Carolina 29325

Presbyterian College
James H. Thomson Library



Digitized by the Internet Archive
in 2010 with funding from
Lyrasis Members and Sloan Foundation

<http://www.archive.org/details/pacsac1950pres>

P

RESENTING

the

Presbyterian

A

College

of

South

A

Carolina

Ferd Jacobs
Jim Haughton

editor

business manager

for

1950



Neville Hall

UNIVERSITY OF TORONTO
James H. Thompson Library
Center, Toronto, Ontario M5S 1A5



A L M A M A T E R

Alma Mater, hail to thee!
Everyone sings praise to thee.
Thou art built on faith;
We have faith in thee!
Here we stand now side by side,
Singing praise to thee;
Great Presbyterian,
Hail to thee!

149021



D E D I C A T I O N

We hope that, in this small way, we will be able to show our gratitude to one who has been our close companion and counselor during our years at Presbyterian College. It is because we always look to you for inspiration and guidance that we dedicate this, the nineteen-fifty **PaC SaC**, to you

Mrs. GEORGE TAYLOR



The President's Home

—THE COLLEGE OF COLUMNS—

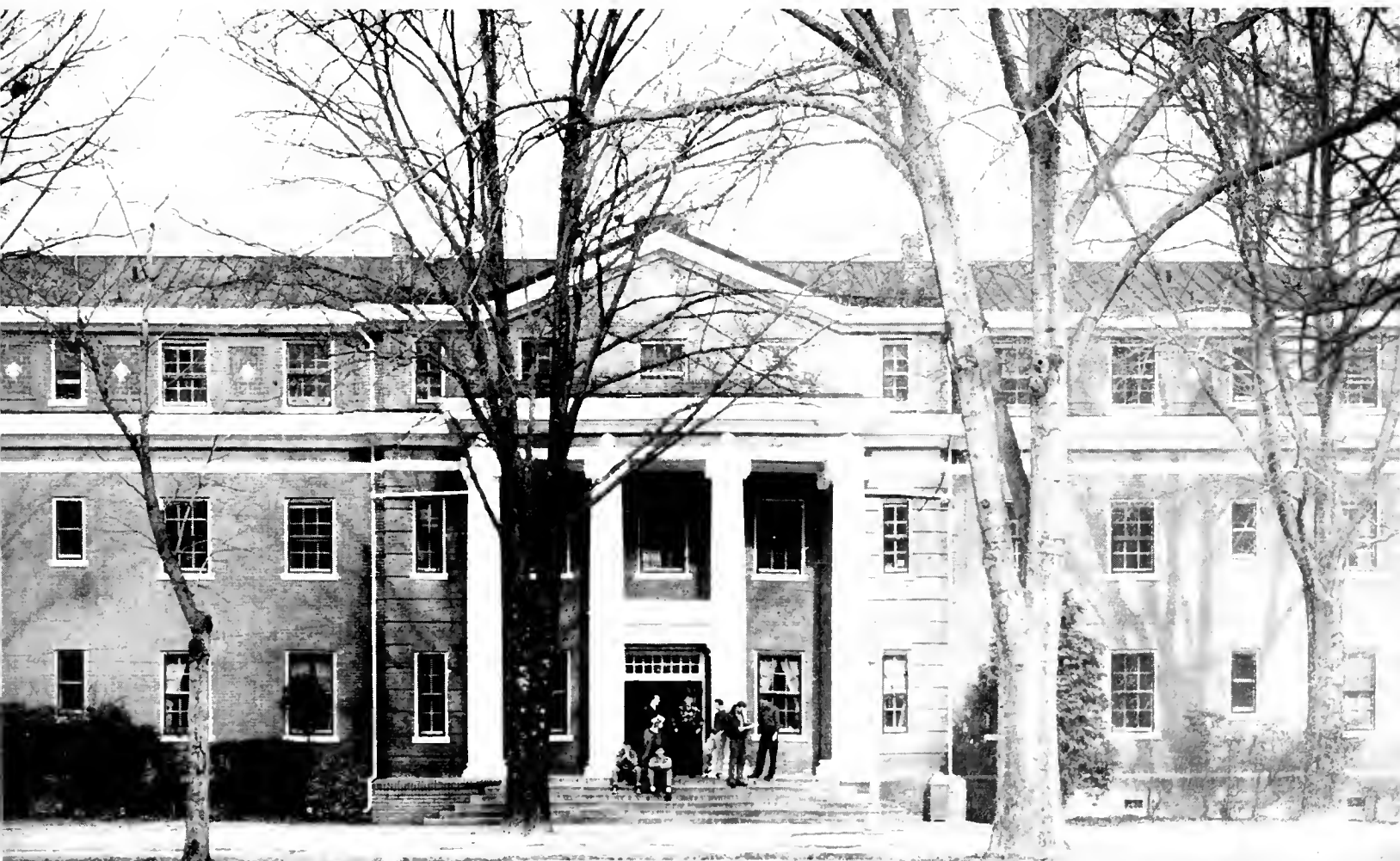


The PAC SAC 1950



The Library and Administrative Offices

Spencer Dormitory





Laurens Dormitory

Leroy Springs Gymnasium and Swimming Pool





J. F. Jacobs Memorial Forum Room

William P. Jacobs Science Hall





MARSHALL W. BROWN

B.A., M.A., Ped.D., LL.D.

Centre College
University of Vienna
University of Wisconsin

President

P R E S I D E N T

Coming to Presbyterian College in 1925, Dr. Marshall W. Brown has been the guiding hand of the school since he assumed the presidency in 1944. Prior to this, he served the college as Dean and Professor of History. Dr. Brown is constantly planning for a better P. C.; and, to us, he represents the zenith of intellectual and spiritual attainment which he is endeavoring to implant in the lives of Presbyterian College students.



GEORGE C. BELLINGRATH

A.B., B.D., Ph.D.

Davidson College
Union Theological Seminary
Columbia University

Dean of Instruction and
Professor of Education



a n d D E A N S



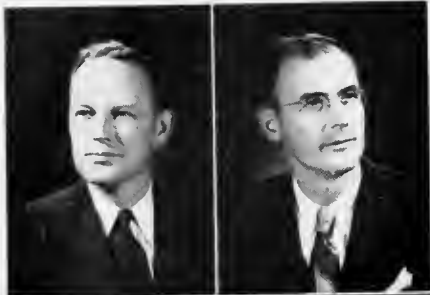
HAYNIE G. PRINCE

B.A., M.A.

Presbyterian College
University of South Carolina

Dean of Students

FACULTY and ADMINISTRATION



GEORGE ANDREW ANDERSON

B.A., B.D.

*Hamden-Sydney College, Columbia
Theological Seminary*

Assistant Professor of Bible

KENNETH NORTON BAKER

B.A., M.A.

*University of South Carolina, Walton School
of Commerce, Mid-Western School of Commerce*

Professor of Commerce



J. WALLACE BARNHILL

B.A., M.A.

*Presbyterian College, McGill University,
Harvard University, Northwestern University*

Assistant Professor of History

ROBERT M. BURTS, JR.

B.A., M.A.

Berry Schools, Duke University

Assistant Professor of Social Science



ROBERT DEDARDEL

Licence es Lettres

University of Geneva

Assistant Professor of French

JOHN ASHBY DICK

A.B., M.A.

*Davidson College, Sorbonne University,
University of North Carolina*

Assistant Professor of English



THOMAS LAYTON FRASER

A.B., B.D., S.T.M.

*Davidson College, Union Theological Seminary,
Biblical Seminary in New York*

Professor of Bible

JOHN S. GLOVER

B.A., M.A.

Oxford University

**Assistant Professor of Romance
Languages**



GORDON M. GOODALE

B.S., M.A.

*Clemson College, University of North
Carolina*

Assistant Professor of Chemistry

JAMES S. GRAY

B.A., B.D.

Davidson College, Union Theological Seminary

Associate Professor of Philosophy



JOHN W. HARRIS

B.A., M.A., Ph.D.

Wofford College, University of North Carolina

Professor of English

SAMUEL LAFFADAY

B.S., M.S.

University of South Carolina

Assistant Professor of Biology



EDOUARD PATTE

B.A., Litt.B., Th.M., Licencie en Sociologie, Th.D.
College Jean Calvin, University of Geneva
Professor of Sociology

GEORGE M. REEVES

B.S., M.A.
Wofford College, University of Alabama
Assistant Professor of English



WILLIAM A. SHERRATT

B.S.
North Carolina State College
Assistant Professor of Mathematics

JABIR SHIBLI

B.A., B.D., M.A., Ph.D.
*Oberlin College, University of North Dakota,
McCormick Seminary, University of Wisconsin,
Columbia University*
Professor of Mathematics

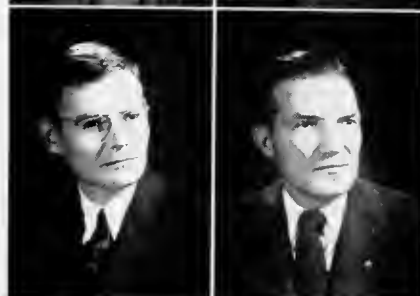


ALEXANDER B. STUMP

B.S., M.S., Ph.D.
University of Virginia
Professor of Biology

FRANCIS P. THOMPSON

B.S., M.A.
*University of South Carolina, University of
North Carolina, Duke University*
**Assistant Professor of Economics
and Education**



REDDEN K. TIMMONS

B.A., B.D., D.D.
Davidson College, Union Theological Seminary
Associate Professor of Spanish

KENDRICK WALLER

B.A., M.A.
University of Alabama
Assistant Professor of English



NEIL G. WHITELAW

B.A., M.A., Ph.D.
*Miami University (Ohio), University of
Wisconsin*
Professor of Physics

POWELL A. FRASER

B.A.
*Presbyterian College; Lieutenant Colonel of
Infantry, United States Army*
Professor of Military Science and Tactics



FACULTY and ADMINISTRATION



SAMUEL GRAY, IV

B.A., B.S., M.A.

University of Pennsylvania, Command and General Staff College; Major of Infantry, United States Army

Assistant Professor of Military Science and Tactics



JAMES LEIGHTON

Dartmouth College

Coach of Tennis



BENJAMIN R. MOYE

B.S.

Presbyterian College, University of North Carolina

Assistant Coach of Football



MRS. NELLIE G. CAMPBELL

B.S.

Winthrop College

Registrar



MRS. BETTY COPLEY

B.S. in H.E.

Furman University

Dietitian

WALTER A. JOHNSON
Battle Creek College, University of Wisconsin, University of Southern California, University of Illinois, Northwestern University

Director of Athletics

LONNIE S. McMILLIAN
B.A.
Presbyterian College, University of Illinois, University of Southern California
Associate Director of Athletics

MARIAN A. BURTS
B.A., M.A., B.S. in L.S.
Greenville Woman's College, University of South Carolina, George Peabody College for Teachers
Acting Librarian

ROSLYN CASON
B.A.
Winthrop College
Secretary to the President

MRS. E. H. HALL, SR.
B.A.
Converse College
Y. M. C. A. Hostess



BEN HAY HAMMETT

B.A., B.J.

*Presbyterian College, University of Missouri,
Columbia University*

Director of Public Relations

MRS. JANE HAMMETT

Alabama Polytechnic Institute

Alumni Secretary



MRS. JUANITA LINDSAY

Winthrop College

Assistant to the Registrar

LEO VERNON POWELL

*North Greenville Baptist Academy and
Junior College*

Dining Hall Manager



DELMAR O. RHAME

B.A., M.D.

*Presbyterian College, College of Physicians
and Surgeons of Columbia University*

College Physician

EDGAR N. SULLIVAN

B.S., M.D.

*University of South Carolina, Medical College
at South Carolina at Charleston*

College Physician



MRS. JULIA TAYLOR

Converse College

Bursar

MRS. BLANCHE WILDER

Wesleyan College

Secretary to the Academic Dean



WILLIAM B. CALLOWAY

Sergeant First Class, United States Army

R. O. T. C. Supply N. C. O.

CLAUDE PLEXICO

Master Sergeant, United States Army

R. O. T. C. Administrative N. C. O.





C

L

A

S

S

E

S





STUTTS, GILES, DUSENBURY AND LINDSAY.

S E N

- ROBERT STUTTS ----- President
 VERNON DUSENBURY ----- Vice-President
 H. L. GILES ----- Secretary
 DICK LINDSAY ----- Treasurer



MRS. ROBERT STUTTS
 SENIOR CLASS SPONSOR

I O R C L A S S

ERNEST T. ANDERSON
Lowrys, S. C.

B.S. in Commerce, Theta Chi
ROTC 1, 2, 3, 4, Platoon Leader 4, Drill Platoon 2.

HAROLD ATWOOD
Yadkinville, N. C.

A.B. in Economics
Transfer from Guilford College, 4.

JAMES A. BAGWELL
Clinton, S. C.

B.S. in Commerce, Pi Kappa Alpha
ROTC 1, 2.

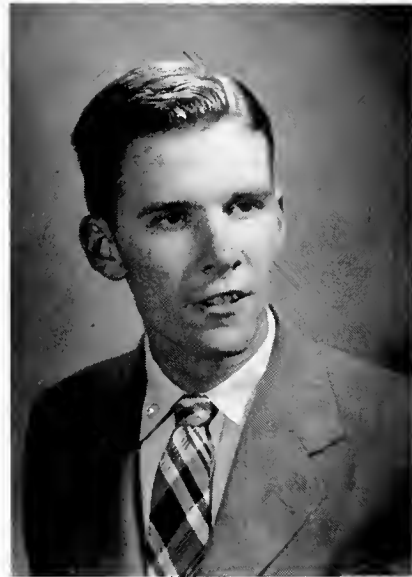


S. ADOLPHUS BAGLEY
Columbia, S. C.

B.S. in Commerce, Theta Chi
Baseball 3, 4; Block "P" Club 3, 4.

JOSEPH D. BEALE
Atlanta, Ga.

A.B. in English and Bible, Alpha Sigma Phi
Fraternity Treasurer 4; Ministerial Club 1, 2,
3, 4; Glee Club 1, 2, 3, 4, President 1; Pi Kappa
Delta 2.



ANDERSON W. BUCHANAN
Americus, Ga.

A.B. in Bible
ROTC 1, 2; Dean's List 1, 2, 3; Ministerial Club
1, 2, 3, 4, Treasurer 2; Vice-President South
Carolina Westminster Fellowship 3; Foreign
Missions Fellowship 4.

CHARLES E. BURNETT
Clinton, S. C.

B.S. in Commerce
Football 1, 2; Baseball 1, 2, 3, 4; Block "P"
Club 2, 3, 4.



WALLACE A. BERRY
Bishopville, S. C.

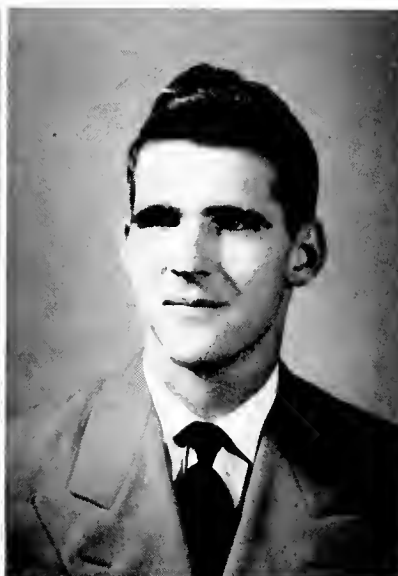
B.S. in Commerce, Alpha Lambda Tau
ROTC 1; Football 1, 2; Basketball 1; Baseball
1, 2, 3, 4; Block "P" Club 2, 3, 4.

JAMES M. BOLT
Gray Court, S. C.

B.S. in Commerce, Theta Chi

BENNETT A. BROWN
Kingstree, S. C.

B.S. in Commerce, Pi Kappa Alpha
ROTC 1, 2, 3, 4, Platoon Leader 4; Fraternity
Vice-President 2, President 3; Wrestling Team
2, 3, 4, Co-Captain 3, Captain 4; International
Relations Club 2, 3, 4; Block "P" Club 2, 3, 4;
Knap-sack Staff 2; Blue Key 4.



JOHN BURRY
Taylors, S. C.

B.S. in Chemistry, Kappa Alpha
Transfer from Limestone 3; Pi Sigma Chi 3, 4.

WILLIAM V. BYRUM
Great Falls, S. C.

A.B. in Education
Pi Sigma Chi 2, 3, 4, Secretary 3, 4; Gamma
Beta Phi 2, 3, 4, Treasurer 2, Vice-President 3,
President 4; Glee Club 3; International Rela-
tions Club 4.

CHARLES C. CALDWELL
Charlotte, N. C.

A.B. in History and English
Transfer from Presbyterian Junior College 3;
Ministerial Club 3, 4; Gamma Beta Phi 3, 4.



GARY EDWARD CAMPBELL
McCormick, S. C.

A.B. in Mathematics and Economics
Dean's List 1, 2, 3, 4; Glee Club 1, 2, 3, 4,
President 4; Faculty-Student Advisory Commit-
tee 4; Who's Who 4; Blue Key 4.

GEORGE L. CAMPBELL
Marion, S. C.

B.S. in Commerce, Alpha Lambda Tau

HAROLD J. COOPER
Greenville, S. C.

A.B. in History
 ROTC 1; Football 1, 2, Trainer 3, 4; Block "P"
Club 1, 2, 3, 4.

GEORGE T. COPELAND
Clinton, S. C.

B.S. in Commerce
 ROTC 1, 2, 3, 4, Platoon Leader 4.

WILLIAM CARLYLE COPLEY
Aiken, S. C.

A.B. in Economics, Alpha Lambda Tau
Football 1, 2; Block "P" Club 1, 2, 3, 4; Inter-
national Relations Club 3, 4; Economics Student
Assistant 4.





CLARENCE ANSEL CHANEY

Laurens, S. C.
B.S. in Commerce
Band 1, 2, 3, 4.

EDGAR RICHARD COLE

Pinehurst, N. C.
B.S. in Commerce, Alpha Sigma Phi
Transfer from Louisburg Junior College 3; Glee Club 3, 4, Secretary 4; Fraternity Secretary 4; Westminster Fellowship 4.

BENJAMIN LEE COLLINS

Miami Beach, Fla.
A.B. in English, Alpha Sigma Phi
Transfer from University of Miami 2; Fraternity Treasurer 3, Fraternity Vice-President 4; Glee Club 2, 3, 4; International Relations Club 4; Pan Hellenic Secretary and Treasurer 3, 4; Freshman Council 4; *Blue Stocking Staff* 3; *Pac Sac Staff* 3; *Knapsack Staff* 3; Westminster Fellowship 2, 3, 4; S. C. A. Cabinet 3, 4, President 4; Blue Key 3, 4.

JOHN R. COX

Laurens, S. C.
B.S. in Commerce

GEORGE REYNOLDS CUNNINGHAM

Smithfield, N. C.
B.S. in Commerce, Alpha Lambda Tau
Fraternity President 4; Black "P" Club 1, 2, 3, 4; Golf Team 1, 2, 3, 4, Captain 2, 3.



GARVIN J. DANIEL, JR.
Birmingham, Ala.

A.B. in English, Theta Chi

ROTC 1; Ministerial Club 1, 2; Blue Stocking Staff 2; Fraternity Secretary 3, Chaplain 4; International Relations Club 2, 3, 4, Vice-President 4; Glee Club 2, 3, 4, Treasurer 3; Spanish Student Assistant 4.

CHARLES V. DAVIDSON
Augusta, Ga.

B.S. in Commerce

Transfer from University of Georgia 1; Football 1; Freshman Football Coach 3, 4; Freshman Basketball Coach 3; Baseball 2; Assistant Baseball Coach 3; Block "P" Club 1, 2, 3, 4.



CANTEY C. DUBOSE, JR.
Birmingham, Ala.

A.B. in English and Sociology, Theta Chi

ROTC 1, 2, 3, 4, Platoon Leader 4; Glee Club 1, 2, 3, 4; Rifle Team 1; S. C. A. Cabinet 3; Block "P" Club 1, 2, 3, 4; Drill Platoon 1, 2; Best Drilled Cadet 2; Ministerial Club 1; Fraternity Treasurer 2; Pac Sac Staff 3; Collegian Staff 4.

PHILIP W. DUNFORD
Miami, Fla.

A.B. in English

Transfer from Presbyterian Junior College 3; Student Council 3.



JAMES W. DAVIS
Dillon, S. C.

A.B. in English, Alpha Lambda Tau
Fraternity Pledge President 2; Football 1, 2;
Dean's List 1; Glee Club 1; Blue Stocking Staff
3; Basketball 1; Baseball 2.

PHILIP A. DAVIS
Charlotte, N. C.

A.B. in Economics, Pi Kappa Alpha
Transfer from Maryville College 3.

FREDERIC R. DINKINS
Leaksville, Miss.

A.B. in Bible
Transfer from University of Mississippi 2; ROTC
2, 3, Band Executive Officer 3; Foreign Missions
Fellowship 2, 3, 4, Secretary 3; Wrestling Team 4.



VERNON L. DUSENBURY
Marion, S. C.

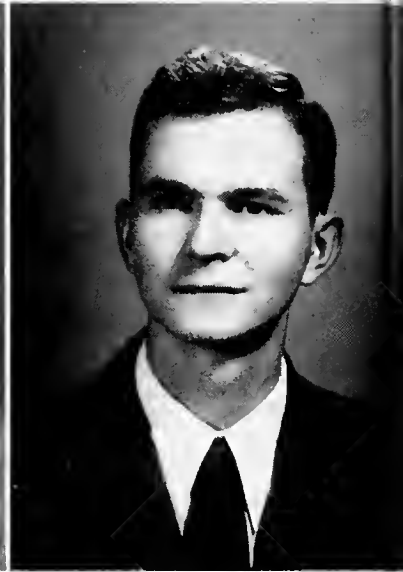
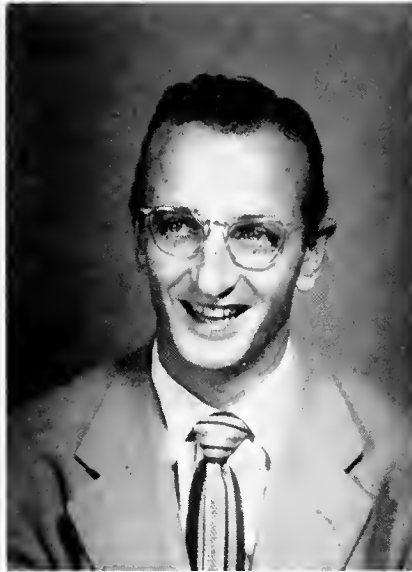
B.S. in Commerce, Alpha Lambda Tau
ROTC 1; Student Council 1; Football 1, 2, 3, 4;
Baseball 1; Block "P" Club 1, 2, 3, 4; Class
Vice-President 4.

HAYNESWORTH V. EPPS
Union, S. C.

A.B. in History, Kappa Alpha
Tennis Team 1; Golf Team 1.

KARL H. ESPIEG
Clinton, S. C.

A.B. in English
Transfer from Clemson College 2.



WILLIAM E. ESPIEG
Clinton, S. C.

B.S. in Mathematics
Transfer from Clemson College 3.

RALPH M. FORD
Georgetown, S. C.

A.B. in Economics, Theta Chi
ROTC 1, 2, 3, 4, Band Executive Officer 4;
Glee Club 1, 2, 3, 4, Treasurer 2, Secretary 3;
S. C. A. Cabinet 2, 3, 4; Band 1, 2, 3, 4; Gamma
Beta Phi 2, 3, 4, Vice-President 4; Dean's List 1;
Westminster Fellowship 1, 2.

RUPERT R. GADDY, JR.
Dillon, S. C.

A.B. in English
Transfer from University of South Carolina 1.

WILLIAM D. GIBSON
Bennettsville, S. C.

A.B. in Economics, Kappa Alpha
Fraternity Pledge President 1, Fraternity Secretary 4.

HARRISON L. GILES
Greenwood, S. C.

B.S. in Commerce, Theta Chi
Block "P" Club 2, 3, 4; Basketball Manager 1,
2, 3, 4; Baseball Manager 2, 3; Class Treasurer
3; Student Council 4; S. C. A. Cabinet 4; Fresh-
man Basketball Coach 4.





LOUIS B. FOWLER
Fountain Inn, S. C.

A.B. in Economics, Pi Kappa Alpha
Transfer from Clemson College 1; Dean's List 4.

KARL A. FREDRICKSON
Charleston, S. C.

B.S. in Commerce

JAMES EDGAR GADDY
Dillon, S. C.

A.B. in English, Alpha Sigma Phi
ROTC 1, 2.

ERNEST E. GILMORE
Columbus, Ga.

A.B. in English
Transfer from University of Georgia 2; Wrestling Team 3; Ministerial Club 3, 4; Foreign Missions Fellowship 3, 4, President 3; Westminster Fellowship 3, 4, President 4.

HARRELL E. GRAHAM
Lake City, S. C.

A.B. in Economics, Kappa Alpha
Baseball 1, 2, 3, 4; Block "P" Club 1, 2, 3, 4.



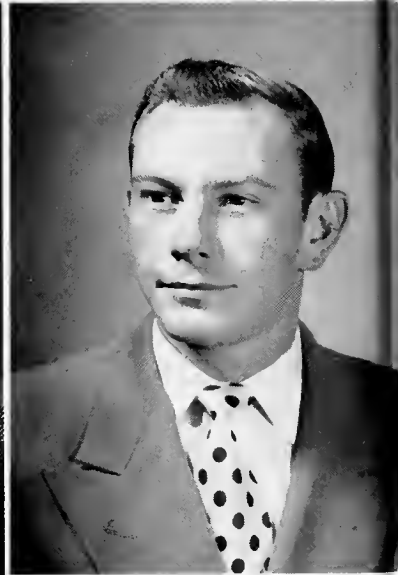
WENDELL W. HAIR
Joanna, S. C.
B.S. in Commerce



WILLIAM D. HAITHCOCK
Bennettsville, S. C.
A.B. in History, Pi Kappo Alpha
Transfer from Wake Forest 1; Football 1, 2;
Track 1; Fraternity Historian 2, Treasurer 3,
Pledge Master 4; ROTC 3; Class President 3;
Blue Stocking Staff 3, 4; Freshman Assistant
Football Coach 4.



CHARLES C. HERTWIG, JR.
Macon, Ga.
A.B. in History and English, Alpha Tau Omega
Transfer from Davidson College 3; *Collegian*
Staff 4.



WILLIS L. HILL
Enoree, S. C.
B.S. in Commerce
ROTC 1, 2, 3, 4, Platoon Leader 4.



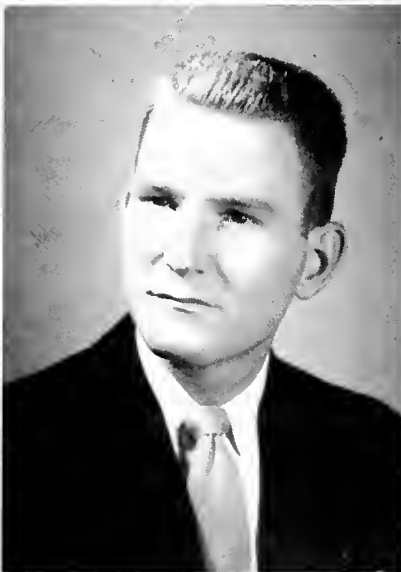
HOYT W. HAMILTON
Whitmire, S. C.
B.S. in Commerce

WILLIAM M. HARPER
Darlington, S. C.

A.B. in Education, Alpha Lambda Tau
Tennis 1, 2, 3, 4, Runner-up State Doubles 1,
Winner State Doubles 2, 3; Basketball 2; Block
"P" Club 1, 2, 3, 4; S. C. A. Ex-officio 4; Stu-
dent Body President 4; Student-Faculty Advisory
Board 4; Blue Key 4; Who's Who 4; Dean's
List 1, 2, 3.

JAMES D. HAUGHTON
Kingstree, S. C.

B.S. in Commerce, Pi Kappa Alpha
Pac Sac Business Manager 4.



WILLIAM F. HOBEKIA
Dillon, S. C.

A.B. in Bible, Pi Kappa Alpha
Track 1; Assistant Wrestling Coach 3, 4

WILLIAM M. HOLCOMBE
Westminister, S. C.

B.S. in Psychology, Theta Chi
Transfer from College of Charleston 2; Fraternity
Pledge Secretary 2, Fraternity President 4; Inter-
national Relations Club 2, 3, 4; Biology Student
Assistant 2; Dean's List 3; Sociology Student
Assistant 4.

JIMMIE R. HOLLANDSWORTH
Norfolk, Va.

A.B. in Bible, Alpha Sigma Phi
ROTC 1, 2, 3, 4, Battalion Staff 4; Drill Platoon
3; Glee Club 1, 2, 3, 4, President 2, 3; Dean's
List 1, 2, 3, 4; Gamma Beta Phi 3; S. C. A.
Cabinet 3, 4, Vice-President 4; Fraternity Pledge
President 3, Fraternity Treasurer 4; Westminster
Fellowship Vice-President 4; Blue Key 4.



JOSEPH G. HOLLIS, III
 Rodman, S. C.
B.S. in Commerce



FRANK W. HOLMES
 Spartanburg, S. C.
A.B. in Economics, Theta Chi
 ROTC 1, 2, 3, 4, Platoon Leader 4; Glee Club 1;
 International Relations Club 2, 3, 4.

FERDINAND JACOBS
 Clinton, S. C.

A.B. in Mathematics and Economics, Alpha Lambda Tau
 ROTC 1, 2, 3, 4, Battalion Staff 4; Class President 1; Dean's List 1, 2, 3; Gamma Beta Phi 1, 2, 3; Drill Platoon 2, 3; Tennis 1, 2, 3, 4; Block "P" Club 3, 4; Class Secretary 3; International Relations Club 3, 4; Spanish Student Assistant 1; Knapsack Business Manager 3; Pac Sac Editor 4; Blue Key 4, Who's Who 4.

HAMLET L. JOHNSON
 Greenville, S. C.

A.B. in Economics, Pi Kappa Phi
 ROTC 1, Platoon Leader 1; Student Council 1; Football 1, 2, 3; Blue Stocking Staff 3; Fraternity Secretary 4.

JAMES R. JOHNSON
 Washington, Ga.

B.S. in Commerce, Theta Chi
 Transfer from Mars Hill College 1; Band 2, 3, 4; Assistant in Athletic Department 3, 4.





GEORGE C. HOPKINS, JR.

West Palm Beach, Fla.

B.S. in Commerce, Theta Chi

Transfer from Palm Beach Junior College 3;
Blue Stocking Staff 3; Cheerleader 3.

CLAUDE H. HOWE

Tallahassee, Fla.

A.B. in English

ROTC 2, 3, Platoon Leader 3; Football 1, 2, 3, 4;
Class Vice-President 3; Block "P" Club 1, 2, 3, 4.

RALPH W. HUNTER

Pendleton, S. C.

A.B. in History, Theta Chi

Transfer from Clemson College 2; Freshman
Council 4.

ROBERT E. JOHNSON

Laurens, S. C.

A.B. in Economics

ROTC 1, 2.

STANLEY L. JOHNSON

Laurens, S. C.

B.S. in Commerce

Transfer from North Georgia College 1.

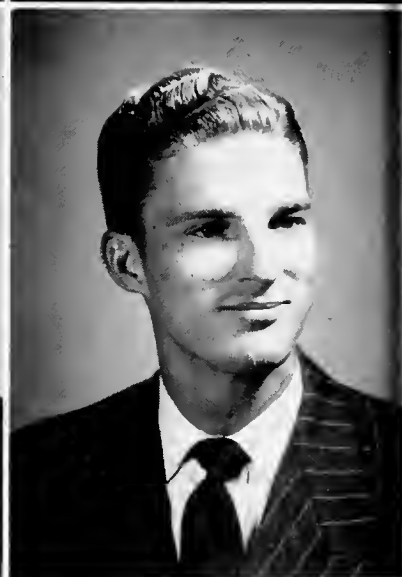


WILLIAM R. JOHNSON
Asheville, N. C.

B.S. in Biology, Pi Kappa Alpha
ROTC 1, 2; Band 1, 2, 3, 4; Fraternity Secretary 3; Biology Student Assistant 4.

WILLIAM J. JOLLY
Union, S. C.

A.B. in English, Pi Kappa Phi
Transfer from Clemson College 2; Football 3, 4; Block "P" Club 3, 4; Fraternity Pledge President 3, Fraternity Treasurer 4.



JOSEPH ALLEN KEITH
West Point, Ga.

B.S. in Commerce, Pi Kappa Phi
Pan Hellenic Council 2, 3, Vice-President 3; Fraternity President 4.

LORENZO H. LEE
Mullins, S. C.

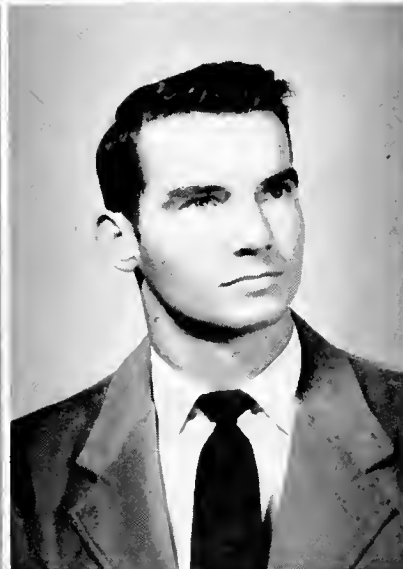
B.S. in Commerce, Alpha Sigma Phi
ROTC 1, 2, 3, 4, Platoon Leader 4.



HAROLD H. JONES
 Elberton, Ga.
B.S. in Mathematics
 Dean's List 1, 2, 3, 4.

LEAMAN D. JONES
 Clinton, S. C.
B.S. in Commerce
 Spanish Student Assistant 1, 2; Dean's List 1, 2, 3; Commerce Student Assistant 4.

EDWARD BECKHAM KENNEY
 Aiken, S. C.
A.B. in History and English, Alpha Lambda Tau
 ROTC 1, 2, 3, 4, Battalion Staff 4; International Relations Club 1, 2, 3, 4, Secretary 1, Treasurer 2, Vice-President 3, President 4; Golf Team 2, 3, 4; Dean's List 2, 3, 4; Knapsack Staff 4; Pac Sac Staff 4; Pi Sigma Chi 2, 3; Fraternity Pledge Vice-President 3; S. C. A. Cabinet 4; Drill Platoon 2, 3; Freshman Committee 3, 4, Co-Chairman 3, Chairman 4; Bible Student Assistant 2, History Student Assistant 4; Blue Key 4.



HENRY P. J. L'HEUREUX, JR.
 Georgetown, S. C.
B.S. in Chemistry and Biology, Theta Chi
 ROTC 1, 2, 3, 4; Band 1, 2, 3, 4, Band Commander 4; Glee Club 1, 2, 3, 4; Dean's List 1; Pi Sigma Chi 2, 3, 4, Vice-President 4; Pan Hellenic Council 4; Biology Student Assistant 4; Who's Who 4; Blue Key 4.

WILLIAM B. LILES
 Columbia, S. C.
B.S. in Commerce, Theta Chi
 ROTC 1, 2, 3, 4, Company Executive Officer 4; Rifle Team 1, 2, 3, 4, Drill Platoon 1, 2; Block "P" Club 1, 2, 3, 4; Fraternity Vice-President 3, 4; Pi Sigma Chi 2, 3, 4, Treasurer 3, Vice-President 4.

RICHARD T. LINDSAY
 Bennettsville, S. C.
A.B. in Education, Alpha Lambda Tau
 Football 1, 2, 3, 4; Track 1; Tennis 3, 4; Block "P" Club 1, 2, 3, 4; Class Treasurer 4; Pan Hellenic Council 4.



WILLIAM E. LINK
Laurens, S. C.

B.S. in Commerce, Pi Kappa Phi
Transfer from U. S. C. 2; Glee Club 3, 4; Blue Stocking Staff 3, 4; Dean's List 3; International Relations Club 3, 4.

HENRY LUCIUS, JR.
Dillon, S. C.

Transfer from Clemson 3; Pan Hellenic Council 4.

WILLIAM P. McKINNON
Jacksonville, Fla.

A.B. in Bible
ROTC 1, 2, 3, 4, Platoon Leader 4; Ministerial Club 1, 2, 3, 4; S. C. A. 1, 2, 3; Pi Kappa Delta 2; Foreign Missions Fellowship 2, 3, 4, Secretary 2.

WILLIAM D. McLEOD
Rembert, S. C.

B.S. in Commerce, Alpha Lambda Tau
Dean's List 1; Wrestling Team 3, 4, Manager 4; International Relations Club 4; Student Council 4.

LONNIE SEXTON McMILLIAN, JR.
Clinton, S. C.

B.S. in Commerce
ROTC 1; Football Manager 1; Dean's List 3, 4; Pac Soc Associate Editor 4.





NEELY D. McCARTER
Gastonia, N. C.

A.B. in Bible, Alpha Sigma Phi

ROTC 1, 2; Fraternity Secretary 3, President 4;
Glee Club 1, 2, 3, 4; Blue Stocking Staff 2, 3;
Pac Sac Staff 4; S. C. A. 2, 3; Student-Faculty
Committee 4; Blue Key 3, 4; Who's Who 4;
Dean's List 1, 2, 3, 4; President of South Carolina
Westminster Fellowship 4; Student Council 3;
Music Student Assistant 4; Ministerial Club
Secretary 2.

FRANK C. McGREGOR
Ruby, S. C.

B.S. in Commerce, Alpha Lambda Tau

ROTC 1, 2; Dean's List 3; International Rela-
tions Club 3, 4.

ROBERT L. McKINNEY
Cradock, Va.

A.B. in History, Alpha Lambda Tau

Glee Club 1; Baseball 1, 2, 3, 4, Co-Captain 4;
Block "P" Club 1, 2, 3, 4.

ODIS M. McNEILL
Broadway, N. C.

A.B. in English

Transfer from Presbyterian Junior College 2;
Ministerial Club 3, 4; Foreign Missions Fellow-
ship 3, 4.

LEE ROY MANESS
Iva, S. C.

B.S. in Commerce



DAVID HARROD MARTIN
 Union, S. C.

A.B. in Economics, Pi Kappa Phi
 Transfer from Clemson College 2; Football 3.

WILLIAM THOMAS MUNDY, JR.
 Abbeville, S. C.

A.B. in Mathematics, Alpha Lambda Tau
 ROTC 1, 2, 3, 4, Company Executive Officer 4,
 Drill Platoon 1, 2, 3; Pi Sigma Chi 2, 3; Inter-
 national Relations Club 3, 4; Pac Sac Staff 4.



HAROLD W. PATTON
 Swannanoa, N. C.

B.S. in Biology
 Basketball 1; Pi Sigma Chi 2, 3, 4; International
 Relations Club 3, 4; Biology Student Assistant
 3, 4.

ALAN F. PLUMMER
 Clio, S. C.

B.S. in Commerce, Pi Kappa Phi
 ROTC 2, 3, Platoon Leader 3; Fraternity Alumni
 Secretary 3; Glee Club 1; Wrestling 3, 4; Block
 "P" Club 3, 4.



ERNEST D. NEWTON
Rock Hill, S. C.

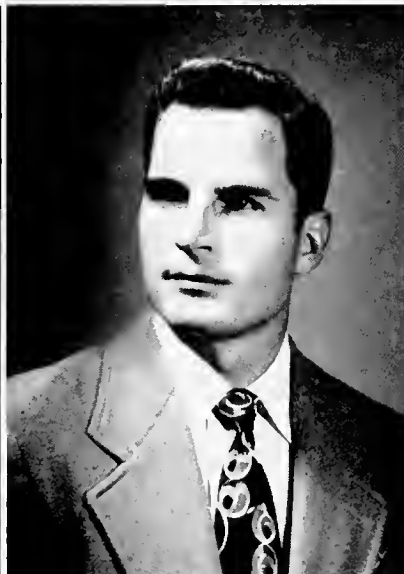
A.B. in Economics, Phi Gamma Delta
Transfer from Davidson College 3; ROTC 3, 4,
Platoon Leader 4; Track 3, 4.

FRANKLIN OAKLEY, JR.
Clinton, S. C.

B.S. in Commerce

WILLIAM T. OZMINT
Iva, S. C.

B.S. in Commerce, Alpha Lambda Tau
ROTC 1, 2, 3, 4, Platoon Leader 4; Football
Manager 1, 2, 3; Block "P" Club 3, 4.



JAMES P. POAG
Rock Hill, S. C.

A.B. in Economics, Phi Gamma Delta
Transfer from Davidson College 3; ROTC 3, 4,
Platoon Leader 4.

ALAN M. POOLE
Anderson, S. C.

B.S. in Commerce, Theta Chi
ROTC 3, 4, Company Executive Officer 4.

BRITTON W. PRESSLEY, JR.
Gastonia, N. C.

B.S. in Commerce
Transfer from Presbyterian Junior College 3.



GORDON R. QUICK
Bennettsville, S. C.

B.S. in Biology, Pi Kappa Alpha
Transfer from Clemson College 1; ROTC 1, 2, Drill Platoon 1, 2; S. C. A. Cabinet 2; Pi Sigma Chi 2, 3, 4; Student Council Secretary-Treasurer 3; Biology Student Assistant 4.

GEORGE M. REYNOLDS, JR.
Charlotte, N. C.

B.S. in Commerce, Alpha Lambda Tau
Transfer from University of North Carolina 3.

CLAYTO L. ROBERTS
Anderson, S. C.

A.B. in History, Alpha Lambda Tau
Football 1; Track 2.

LAWRENCE B. ROBINSON
Honea Path, S. C.

A.B. in English
Transfer from Columbia Theological Seminary 3; Dean's List 3, 4.

ROBERT H. SELLARS
Shallote, N. C.

A.B. in History, Alpha Sigma Phi
Transfer from Presbyterian Junior College 2.





LAWRENCE A. RICHARDSON
 Simpsonville, S. C.
B.S. in Commerce
 Glee Club 1.

THOMAS R. ROARK
 Pickens, S. C.
B.S. in Chemistry and Biology, Theta Chi
 ROTC 1, 2, 3, 4, Company Executive Officer 4;
 Fraternity Chaplain 2, Treasurer 3, Alumni Secretary 4; Rifle Team 1; Block "P" Club 1, 2, 3, 4;
 Drill Platoon 2; Pi Sigma Chi 2, 3, 4, President 4;
 Blue Key 3, 4, Secretary-Treasurer 4; Biology Student Assistant 3, 4.

CLARENCE L. ROBERTS
 Laurens, S. C.
B.S. in Commerce

THOMAS GERALD SMITH
 Seneca, S. C.
B.S. in Commerce
 ROTC 2, 3, Company Commander 3; Dean's List 2, Glee Club 3; Rifle Team 3.

BETTY R. SPRINGER
 Laurens, S. C.
A.B. in English
 Transfer from U. S. C. 2; Cheerleader 3.



ROBERT P. STUTTS
Rock Hill, S. C.

A.B. in History, Alpha Lambda Tau
ROTC 2, 3, Company Executive Officer 3; Football 1, 2, 3, 4, Honorable Mention All-State 3, 4; Block "P" Club 1, 2, 3, 4; Class President 4.

RALPH N. TEDARDS
Greenville, S. C.

A.B. in History
POTC 1; Student Council 3; Football 1, 2, 3, 4; Basketball 2, 3, 4; Block "P" Club 1, 2, 3, 4, President 4.



THOMAS VERENAKIS, JR.
Florence, S. C.

B.S. in Commerce, Pi Kappa Alpha
ROTC 1, 2, 3, 4, Platoon Leader 4; Transfer from Emory 1; Dean's List 2; International Relations Club 3, 4; Blue Stocking Staff 4.

REUBEN J. WALLACE
Bartow, Florida

A.B. in Bible
Transfer from Lees-McRae College 3; S. C. A. Cabinet 4.



NOLAN H. TEDDER
Florence, S. C.

A.B. in English, Alpha Lambda Tau
Transfer from Spartanburg Junior College 2;
ROTC 3; Football 3.

CLIFTON R. TERRELL
Bristol, Va.

A.B. in English
Transfer from Presbyterian Junior College 2;
Band 2; Ministerial Club 2.

EDWARD L. TIMMERMAN
Laurens, S. C.

A.B. in Economics, Theta Chi
ROTC 1, 2, 3, 4, Company Executive Officer 4;
Drill Platoon 2; Rifle Team 1; Pac Sac Staff 4;
Fraternity Treasurer 4; Gamma Beta Phi 4.



WARREN M. WARDLAW
Marietta, Ga.

A.B. in Bible, Alpha Sigma Phi
ROTC 2, 4, Platoon Leader 4; Glee Club 1, 2, 3,
4; Gamma Beta Phi 2; Dean's List 3.

ALBERT E. WATSON
Brunswick, Ga.

B.S. in Commerce, Pi Kappa Alpha
ROTC 1, 2, 3, 4, Platoon Leader 4; Glee Club 1;
Track 2, 3, 4; Block "P" Club 3, 4; Blue Stocking
Staff 3, 4; Wrestling 3, 4; Tennis 4; Football 1,
2, 3, 4.

GEORGE D. WATT
Thomasville, Ga.

B.S. in Commerce, Kappa Alpha
ROTC 2, 3, Battalion Staff 3; Fraternity Vice-
President 3, President 4; S. C. A. 2; Glee Club 2;
Student Council 3, 4, Vice-President 4; Pan Hel-
lenic Council 3; Blue Key 3, 4, President 4;
Who's Who 4; Spanish Student Assistant 3, 4.



HORACE R. WEST
Valdosta, Ga.

B.S. in Commerce, Theta Chi
 ROTC 1, 2, 3, 4, Platoon Leader 4; Fraternity Secretary 2, Vice-President 3; Class Vice-President 1; Drill Platoon 2; Golf 1, 2, 3, 4; Block "P" Club 1, 2, 3, 4, Vice-President 4; Freshman Council 4.

WALTER D. WHEELER
Thomson, Ga.

B.S. in Chemistry, Pi Kappa Phi
 ROTC 1, 2, 3; Glee Club 3, 4; Gamma Beta Phi 3, 4; Pi Sigma Chi 4.

JAMES M. WILLIAMS
Florence, S. C.

B.S. in Commerce, Kappa Alpha
 ROTC 1, 2, 3, 4, Platoon Leader 4; Tennis 3, 4; Cheerleader 4.

MARION T. WOOD
West Palm Beach, Florida

A.B. in English
 ROTC 1, 2, 3, 4, Battalion Staff 4, Best-drilled Cadet 1; Glee Club 1, 2, 3, 4; International Relations Club 1, 2, 3, 4; Basketball 1, 2, 3, 4; Block "P" Club 2, 3, 4; Dean's List 1, 3; Pac Sac Staff 2, 3; Knapsack Executive Editor 2; S. C. A. Cabinet 4; Bible Student Assistant 1, 2.

FRED A. YARBOROUGH
Florence, S. C.

A.B. in Economics, Alpha Lambda Tau
 ROTC 1, 2; Fraternity Treasurer 2, Vice-President 4; Football 1, 2, 3, 4; Baseball 1; Wrestling 3; Block "P" Club 1, 2, 3, 4.





WINDSOR D. WILDER
Atlanta, Ga.

A.B. in English
Transfer from Georgia Tech 2; Glee Club 3.

WALLACE K. WILKINSON
Rome, Ga.

A.B. in English, Alpha Lambda Tau
ROTC 3, 4, Company Commander 4; Fraternity Secretary 4; *Blue Stocking Staff* 1, 2, Editor 2; Baseball 1, 2, 3, 4; Block "P" Club 2, 3, 4, Secretary-Treasurer 4.

JAMES A. WILLIAMS
Sumter, S. C.

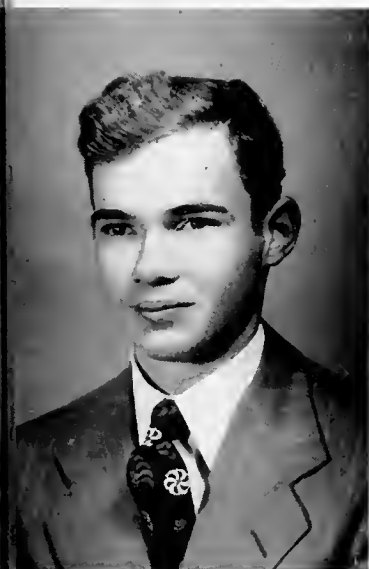
B.S. in Commerce, Theta Chi
Fraternity Pledge President 2, Treasurer 4.

ARNOLD L. YOUNG
Clinton, S. C.

B.S. in Commerce
ROTC 1, 2, 3, 4, Platoon Leader 4; Rifle Team 1, 2; Block "P" Club 1, 2, 3, 4; Gamma Beta Phi 2, 3, 4; Drill Platoon 2.

GRACE YOUNG
Clinton, S. C.

A.B. in English, Alpha Psi Delta
Transfer from Winthrop 3; Sorority President 4; Gamma Beta Phi 3, 4, Treasurer 4; Westminster Fellowship Council 3, 4, Secretary 4; Library Assistant 3, 4; Dean's List 3; Pac Sac Staff 4.





BREARLEY, GOOCH, JOHNSTON AND WATTS

J U N

BLAKE WATTS

President

RONNIE JOHNSTON

Vice-President

WALTER GOOCH

Secretary

LADDIE BREARLEY

Treasurer



MISS MARY NELL JEFFORDS
JUNIOR CLASS SPONSOR

FOR CLASS

Joseph W. Armory
 Jack J. Arnold
 Sam Baker
 Gerald K. Banks
 John H. Barton
 Charles M. Berry

Norfolk, Va.
 Seneca, S. C.
 Summerton, S. C.
 Birmingham, Ala.
 Laurens, S. C.
 Bennettsville, S. C.

Lee A. Blakely
 David Boland
 Laddie Brearley
 Mrs. Annette Brewer
 Ernest J. Brewer
 James T. Bridger

Clinton, S. C.
 Clinton, S. C.
 Myrtle Beach, S. C.
 Atlanta, Ga.
 Atlanta, Ga.
 Bladenboro, N. C.

ARMORY
 BLAKELY

ARNOLD
 BOLAND

BAKER
 BREARLEY

BANKS
 BREWER

BARTON
 BREWER

BERRY
 BRIDGER



P A C S A C 1 9 5 0

J U N I O R S

John C. Broadnax
 Clifford Brown
 Hollis Cate
 Edwin Cavaleri
 Paul Cavender
 Brooks Copeland
 Gerald Copley
 Bobby Dean Dailey
 Robert Dean

Taylors, S. C.
 Clinton, S. C.
 Brunswick, Ga.
 Atlanta, Ga.
 Laurens, S. C.
 Clinton, S. C.
 Aiken, S. C.
 Clinton, S. C.
 Jacksonville, Fla.

Harry Shuler Dent
 George DeVore
 Wilson T. Dowling
 Mrs. Virginia Dunford
 Alexander Edgerton
 Bobby Edwards
 Hensil Engleman
 Edward M. Epps
 George Fleming

St. Matthews, S. C.
 Ninety-Six, S. C.
 Columbia, S. C.
 Miami, Fla.
 Concord, N. C.
 Union, S. C.
 Stuarts Draft, Va.
 Kingstree, S. C.
 Honea Path, S. C.

BROADNAX
 COPLEY
 DUNFORD

BROWN
 DAILEY
 EDGERTON

CATE
 DEAN
 EDWARDS

CAVALERI
 DENT
 ENGLEMAN

CAVENDER
 DeVORE
 EPPS

COPELAND
 DOWLING
 FLEMING





Lyon A. Flynt
 Art C. Freet
 Walter Gooch
 Sidney S. Hill
 Gene Hollingsworth
 Frank Honea
 George Howard
 William R. Howell
 Kenneth Idol

Charlotte, N. C.
 Clinton, S. C.
 Clinton, S. C.
 Walterboro, S. C.
 Greenwood, S. C.
 Athens, Ga.
 Greenville, S. C.
 St. George, S. C.
 Clinton, S. C.

Marion L. Idol
 Ralph Jackson
 Ronald Johnston
 William E. Kennedy
 Doug Kiker
 Randy Kirby
 Preston B. Kizer
 Ed Langham
 Veldee Lankford

Clinton, S. C.
 Dillon, S. C.
 Newnan, Ga.
 Ninety-Six, S. C.
 Griffin, Ga.
 Charlotte, N. C.
 St. George, S. C.
 Montgomery, Ala.
 Greenville, S. C.

FLYNT
 HOWARD
 KENNEDY

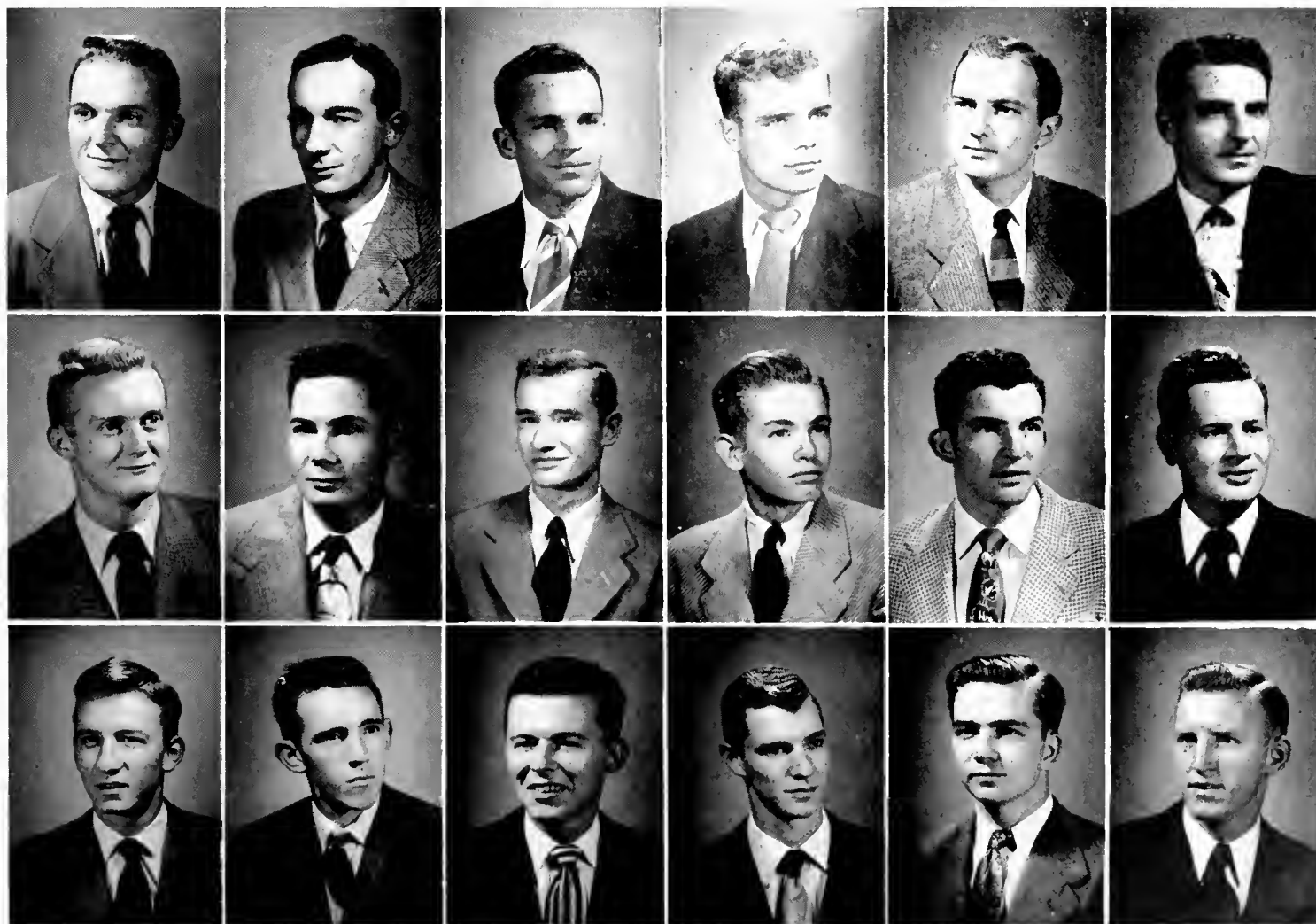
FREET
 HOWELL
 KIKER

GOOCH
 IDOL
 KIRBY

HILL
 IDOL
 KIZER

HOLLINGSWORTH
 JACKSON
 LANGHAM

HONEA
 JOHNSTON
 LANKFORD



J U N I O R S

Marshall A. Lanter
 James Lindsay
 Righton Lyndon
 Kenneth McCutcheon
 John McKissick
 Franklin McNeill
 Cyrus Mallard
 Ben H. Martin
 Mrs. Mildred Martin

Thomasville, Ga.
 Greenville, S. C.
 Macon, Ga.
 Dillon, S. C.
 Kingstree, S. C.
 Raeford, N. C.
 Thomasville, Ga.
 Gainesville, Ga.
 Gainesville, Ga.

Paul Martin
 Thomas Massey
 Hybert L. Matthews
 David Maxwell
 Sidney Maxwell
 Morris Meadors
 Cary Moore
 David Moore
 Robert B. Moore

Seneca, S. C.
 Waxhaw, N. C.
 Effingham, S. C.
 Clinton, S. C.
 Clinton, S. C.
 Clio, S. C.
 Bennettsville, S. C.
 Rock Hill, S. C.
 Atlanta, Ga.

LANTER
 MALLARD
 MAXWELL

LINDSAY
 MARTIN
 MAXWELL

LYNDON
 MARTIN
 MEADORS

McCUTCHEON
 MARTIN
 MOORE

McKISSICK
 MASSEY
 MOORE

McNEILL
 MATTHEWS
 MOORE





William M. Murray
 Robert B. Nelson
 David Neville
 Miss Helen Norwood
 William R. Owens
 Jesse M. Parks
 Herschel Q. Peddicord
 James B. Puryear
 Henry Robards

Fort Valley, Ga.
 Chio, S. C.
 Newberry, S. C.
 Marion, Va.
 Clinton, S. C.
 New Bern, N. C.
 Laurens, S. C.
 Portsmouth, Va.
 Greenwood, S. C.

Albert A. Rowe
 Edgar O. R. Sadler
 Ted Sasser
 Carl Sexton
 Wyman Shealy
 Ector Shepard
 William D. Shepard
 Garland Simpson
 Smith Severn Somerville

Burlington, N. C.
 Clinton, S. C.
 Brunswick, Ga.
 Clinton, S. C.
 Clinton, S. C.
 Salters Depot, S. C.
 Lane, S. C.
 Inman, S. C.
 Barnardville, N. C.

MURRAY
 PEDDICORD
 SEXTON

NELSON
 PURYEAR
 SHEALY

NEVILLE
 ROBARDS
 SHEPARD

NORWOOD
 ROWE
 SHEPARD

OWENS
 SADLER
 SIMPSON

PARKS
 SASSER
 SOMERVILLE



J U N I O R S

Travis Stevenson
 Richard Stutts
 Lewis Surls
 Cooper Tedder
 Ed Thompson
 Gene Turner
 John R. Upchurch
 Julius Wannamaker
 Donald Warthen

Walterboro, S. C.
 Clinton, S. C.
 Florence, S. C.
 Timmonsville, S. C.
 Durham, N. C.
 Grover, N. C.
 Thomasville, Ga.
 Pickens, S.C.
 Asheville, N. C.

Gus H. Watt
 Blake L. Watts
 Joseph A. Weingartner
 William H. Weir
 Robert Westbrook
 Raymond S. Williams
 Ben C. Williamson
 William M. Wollet

Thomasville, Ga.
 Bishopville, S. C.
 Decatur, Ga.
 Shelby, N. C.
 Charlotte, N. C.
 Marietta, Ga.
 Washington, Ga.
 Griffin, Ga.

STEVENSON
 UPCHURCH

STUTTS
 WANNAMAKER

SURLS
 WARTHEN

TEDDER
 WATT

THOMPSON
 WATTS

TURNER
 WEINGARTNER

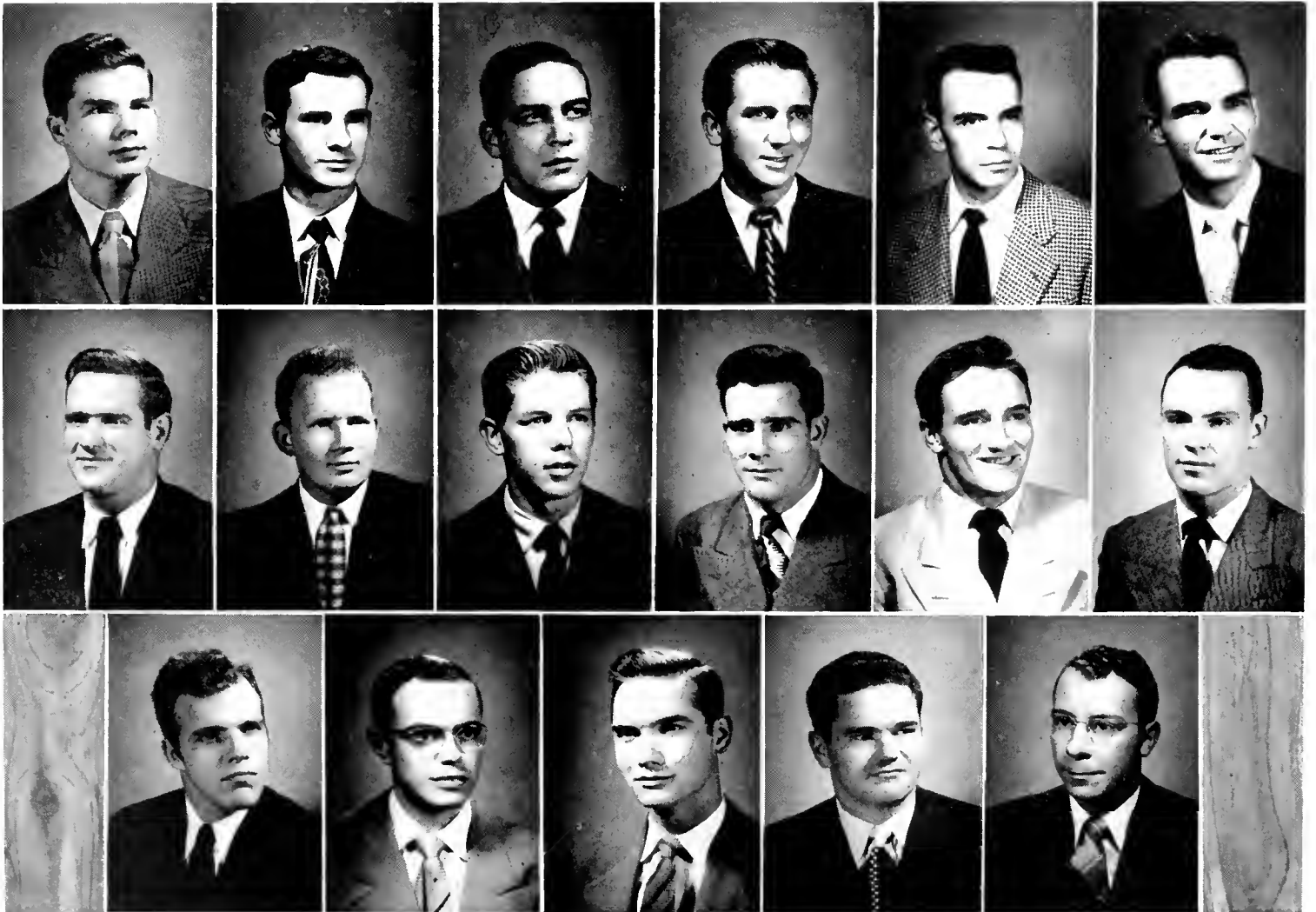
WEIR

WESTBROOK

WILLIAMS

WILLIAMSON

WOLLET





Cinematic Scrapbook

*20
3
4
5
6
7
8
9
10
11
12
13
14
15
16
17
18
19
20
21
22
23
24
25
26
27
28
29
30
31
32
33
34
35
36
37
38
39
40
41
42
43
44
45
46
47
48
49
50
51
52
53
54
55
56
57
58
59
60
61
62
63
64
65
66
67
68
69
70
71
72
73
74
75
76
77
78
79
80
81
82
83
84
85
86
87
88
89
90
91
92
93
94
95
96
97
98
99
100*



10.

11.

S O P H O



Standing—JACKSON, GRONINGER. Seated—CALLAHAM, MOORE.

JOHN CALLAHAM

President

KIRBY JACKSON

Vice-President

DWIGHT GRONINGER

Secretary

PAUL MOORE

Treasurer



MRS. J. W. CALLAHAM
SOPHOMORE CLASS SPONSOR

MORE CLASSES

Lynn Barry Albright
 William P. Altman
 David H. Armstrong

Orangeburg, S. C.
 Cleveland, Ohio
 Bladenboro, N. C.



James D. Arnette
 Edwin K. Ashe
 Robert V. Atkinson

Winnsboro, S. C.
 Richburg, S. C.
 Winnsboro, S. C.



Fred Barnum
 Alfred J. Beckum
 C. O. Belk

Clearwater, Fla.
 Washington, Ga.
 Great Falls, S. C.



Donald R. Bloxham
 Malcolm Bullock
 Joseph A. Burgess

Lyman, S. C.
 Fairmont, N. C.
 Sumter, S. C.



Henry Burton
 John W. Callaham
 Raymond Campbell

Clinton, S. C.
 Liberty, S. C.
 Clinton, S. C.



Leon W. Castles
 William Childs
 Herschel Clay

Great Falls, S. C.
 Clinton, S. C.
 Thomasville, Ga.

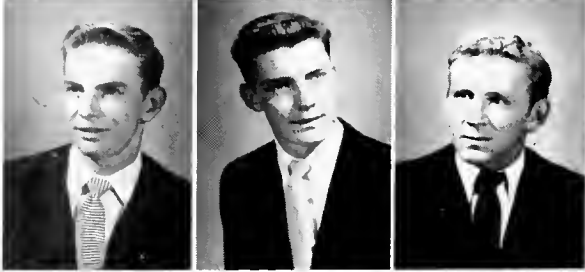


S O P H O M O R E S



Robert E. Cooley
Henry P. Cooper
Bob Cowan

Wagram, N. C.
Lanford, S. C.
Savannah, Ga.



Maurice Cox
Bill Crosby
J. D. Currie

Ware Shoals, S. C.
Greenwood, S. C.
Moxton, N. C.



Willie J. Davis
Sid Denham
Joe Dodd

Conway, S. C.
Atlanta, Ga.
Rome, Ga.



Louis P. Dondero
Thomas W. Edwards
Eldon Faircloth

Revere, Mass.
Spartanburg, S. C.
Laurens, S. C.



Tommy Fesperman
William R. Floyd
Harry Foster

Waycross, Ga.
Athens, Ga.
Summerville, Ga.



Henry Gallaway
Thomas Gilbert
Dwight Groninger

Jacksonville, Fla.
Atlanta, Ga.
Akron, Ind.



Perry M. Hamilton
Lewis Hawkins
Kay Hill

Clinton, S. C.
Plymouth, Ind.
Akron, Ind.

John D. Hilton
 Ken Horn
 Robert Hunt

Dillon, S. C.
 Plymouth, Ind.
 Greenville, S. C.



David M. Hutchinson
 Kirby Jackson
 Charles Jordan

Rock Hill, S. C.
 Sumter, S. C.
 Washington, Ga.



Byron King
 Henry W. Koelling
 Bobby Link

Bennettsville, S. C.
 McClellanville, S. C.
 Laurens, S. C.



John Love
 A. F. McCurdy
 Mack McGahee

York, S. C.
 Summerville, Ga.
 Augusta, Ga.



George McIntosh
 Charles McInville
 Rene McMillan

Fayetteville, N. C.
 Clinton, S. C.
 Mullins, S. C.



William C. Mauldin
 Doug Meador
 Harold Miller

Laurens, S. C.
 Union, S. C.
 Holly Hill, S. C.



Jcseph Miller
 James P. Mitchell
 Paul Moore

Bennettsville, S. C.
 Laurens, S. C.
 Atlanta, Ga.

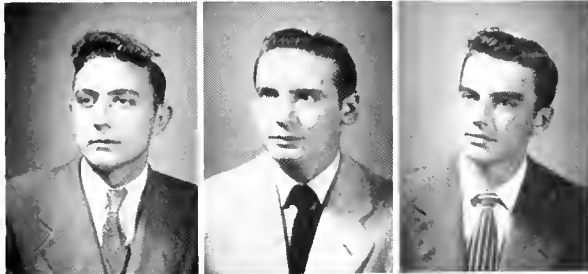


S O P H O M O R E S



Walter Morris
Buddy Neely
Bobby Ogletree

Clinton, S. C.
Rock Hill, S. C.
Griffin, Ga.



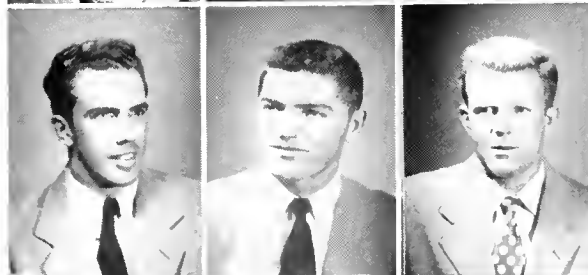
Oscar L. Patterson
Robert Pierce
Curtis L. Platt

Clinton, S. C.
Savannah, Ga.
Walterboro, S. C.



Frank Spears
William Spencer
Joseph M. Stevenson

Greenville, S. C.
Rock Hill, S. C.
Sumter, S. C.



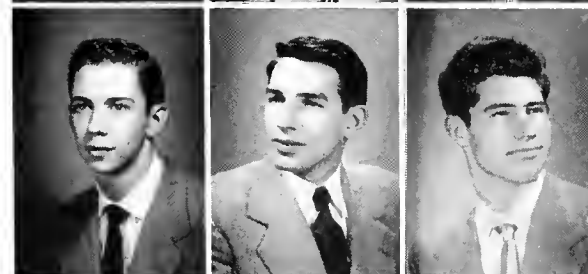
Warren Steverson
James Watt Stewart
John M. Stewart

Hot Springs, Ark.
Easley, S. C.
Rock Hill, S. C.



David Stone
Charles C. Stratford
Phil Thornton

Martinsville, Va.
Spartanburg, S. C.
Craddock, Va.



John K. Thurman
Billy A. Tunstall
Richard Weldon

Atlanta, Ga.
Laurens, S. C.
Bennettsville, S. C.



Charles L. Wheeler
Joe Wheeler
John M. Witsell

Thomson, Ga.
Thomson, Ga.
Walterboro, S. C.

H O M E C O M I N G

Dorm Decorations



Homecoming Float



Woof-Woof's Team of '15



Miss Gene Lanier



Homecoming Queen



Queen's Coronation



Football Thrills



Homecoming Dance

W E E K - E N D

F R E S



TSACRIOS, HOLLANDSWORTH, SMITH AND JORDAN.

BILL TSACRIOS	President
NED HOLLANDSWORTH	Vice-President
HENRY SMITH	Secretary
TOMMY JORDAN	Treasurer

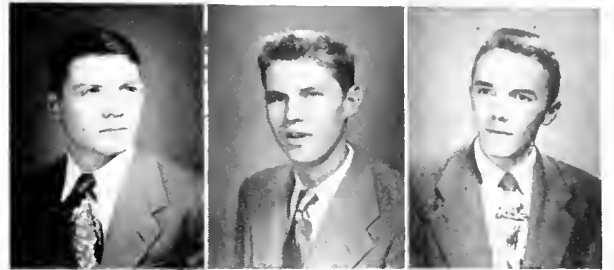


MISS GERRY ORT
FRESHMAN CLASS SPONSOR

H M A N C L A S S

Robert H. Almon
 Don L. Anderson
 William G. Armstrong

Fort Valley, Ga.
 Rome, Ga.
 Philadelphia, Pa.



Thomas W. Arnold
 Oscar W. Avant
 Billy J. Barclift

Seneca, S. C.
 Florence, S. C.
 Charlotte, N. C.



Bobby G. Barclift
 Richard J. Bass
 Robert L. Blanz

Charlotte, N. C.
 Lyons, Ga.
 Decatur, Ga.



George Boosalis
 William E. Brake
 William E. Buchanan

Fayetteville, N. C.
 Washington, Ga.
 Clinton, S. C.



John Bumgardner
 William J. Caddell
 Wade Camlin

Columbia, S. C.
 Moncks Corner, S. C.
 Georgetown, S. C.



Kay Campbell
 William Cannon
 Richard Childers

Sunbury, Pa.
 Fort Valley, Ga.
 Birmingham, Ala.



F R E S H M E N



James Cleland
 Ted Clement
 Walt Comer
 Benjamin F. Copeland

Seneca, S. C.
 Greenville, S. C.
 Portsmouth, Va.
 Clinton, S. C.



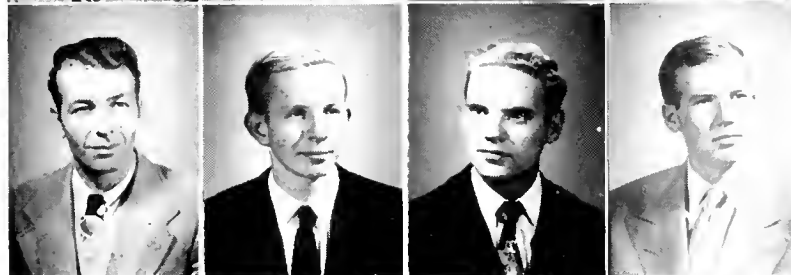
Ike W. Cousins
 Curtis Crowther
 James Cuttino
 Lawton Daugherty

Rome, Ga.
 Columbia, S. C.
 Sumter, S. C.
 Atlanta, Ga.



Ralph Deschamps
 Carlyle Donevant
 Harold Dunton
 Robert Edens

Bishopville, S. C.
 Myrtle Beach, S. C.
 Atlanta, Ga.
 Lumberton, N. C.



Claude Fagan
 Charles Ficken
 William Fisher
 Ted Freeman

Cross Hill, S. C.
 Asheville, N. C.
 Fayetteville, N. C.
 Fort Lawn, S. C.



Emmett A. Fulk
 Bruce Galloway
 Robert Gandy
 John Garrison

Darlington, S. C.
 Jacksonville, Fla.
 Florence, S. C.
 Liberty, S. C.



James Gentry
 Myers Godfrey
 William Hagan
 Breeden Hamer

Walterboro, S. C.
 Charlotte, N. C.
 Lake City, S. C.
 Clio, S. C.



Alva R. Hamilton
 Mortan Hamm
 Enoch Harding
 John Harper

Easley, S. C.
 Joanna, S. C.
 Greenville, S. C.
 Decatur, Ga.

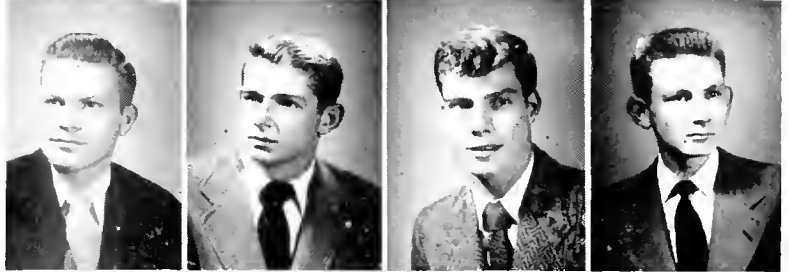
James Hatcher
 Henry Hay
 Miss Marianne Hellams
 Cloud Hicklin

Columbus, Ga.
 Wadmalaw Island, S. C.
 Laurens, S. C.
 Richburg, S. C.



Daniel Hicks
 Dent Hill
 Frank Hill
 Ned Hollandsworth

Ninety-Six, S. C.
 Pacolet, S. C.
 Akron, Ind.
 Norfolk, Va.



Miss Dorcas Hudgens
 E. M. Huffstetler
 Herbert W. Hunter
 Leroy Hutto

Clinton, S. C.
 Clinton, S. C.
 Clinton, S. C.
 McClellansville, S. C.



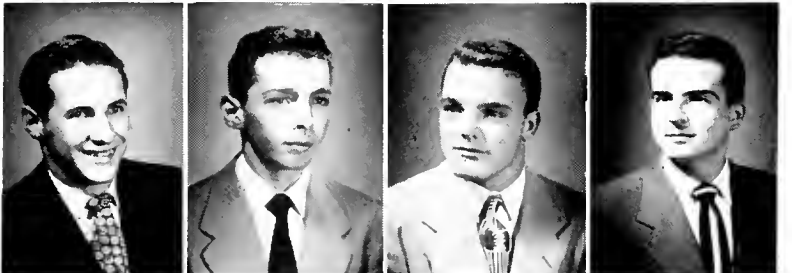
Robert Hyman
 Wilson Jarman
 Cedric Jernigan
 Kenneth Johnson

Florence, S. C.
 Sumter, S. C.
 Fayetteville, N. C.
 Fort Valley, Ga.



Thomas Jordan
 Jake O. Kafer
 Roger Kenyon
 Homer Kirkman

Bishopville, S. C.
 Florence, S. C.
 Clearwater, Fla.
 Charlotte, N. C.



Miss Gene Lanier
 Walter Lanter
 Donald Leslie
 Thomas Lide

Madison, Fla.
 Thomasville, Ga.
 Decatur, Ga.
 Cheraw, S. C.



James Lynch
 Sanford Lyons
 Willard McFayden
 Robert McGahee

Lake City, S. C.
 Charlotte, N. C.
 Ellerbe, N. C.
 Augusta, Ga.



F R E S H M E N



Hugh McLaurin
James McQueen
Burnett McWhorter
Elmer Mobley

Sumter, S. C.
Mullins, S. C.
Decatur, Ga.
Albany, Ga.



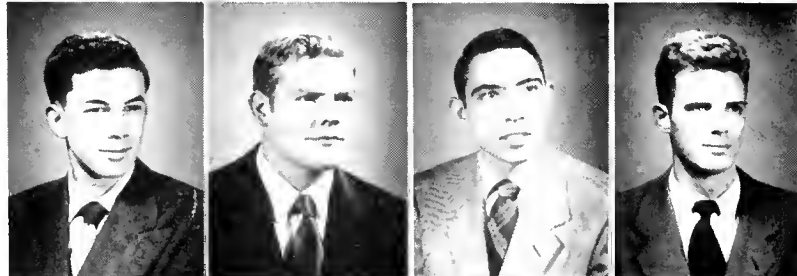
Mrs. Jeane Mobley
Buster Mull
William Nash
Edwin W. Neville

Auburn, Ga.
Greenville, S. C.
Lincolnton, N. C.
Horse Shoe, N. C.



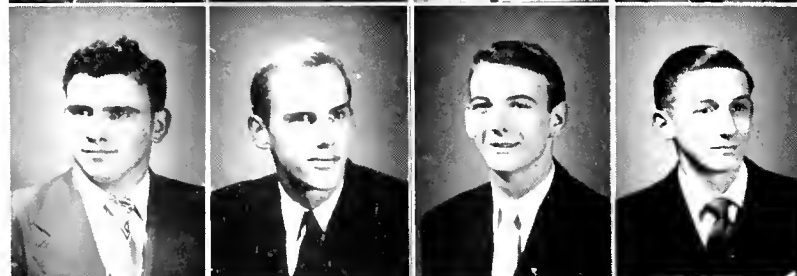
William Nichols
Paul Nye
William O'Dell
Arnold Parker

Greenville, S. C.
Akron, Ind.
Whitmire, S. C.
Cherry Grove Beach, S. C.



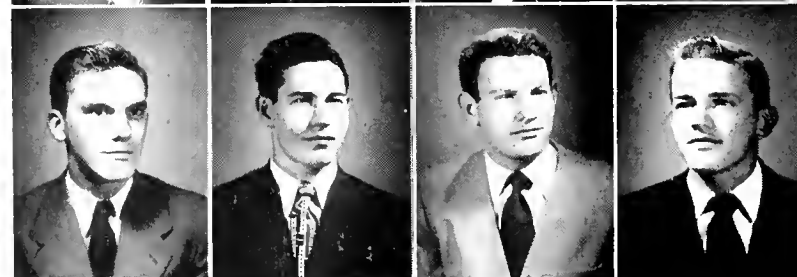
John Parler
Robert Patterson
Robert Peacock
Sam Peddicord

Batesburg, S. C.
Bon Air, Va.
Columbus, Ga.
Atlanta, Ga.



Frank Penninger
James Perryman
Carl Pickett
Robert Pittman

Charlotte, N. C.
Walterboro, S. C.
Waycross, Ga.
Florence, S. C.



A. B. Plexico
Bonner Pratt
Furman Prickett
Jake Privette

Sharon, S. C.
Liberty, S. C.
St. Matthews, S. C.
Darlington, S. C.



Niles Pulley
Maurice Randle
Donald Rawlins
James Robinson

Laurens, S. C.
Sumter, S. C.
Decatur, Ga.
Atlanta, Ga.

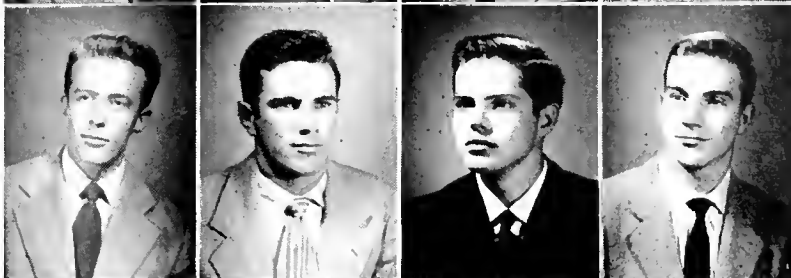
Lawrence Roth
 George Sanborn
 John Sease
 Thomas Sheriff

Clinton, S. C.
 Schoolfield, Va.
 Clinton, S. C.
 Orangeburg, S. C.



Charles Smith
 Donald Smith
 Henry Smith
 Alan Stadler

Mullins, S. C.
 Cheraw, S. C.
 Sylvester, Ga.
 Martinsville, Va.



Elmo Storey
 Everett Tandy
 Roy Tedards
 Edward Thomas

Rome, Ga.
 Danielsville, Ga.
 Laurens, S. C.
 Waycross, Ga.



James Thompson
 Kenneth Thompson
 Thomas Thornton
 William Tsacrios

Olanta, S. C.
 Brunswick, Ga.
 Washington, Ga.
 Clearwater, Fla.



David R. Vaughan
 William Ware
 Cal Watford
 William Watson

Decatur, Ga.
 Abbeville, S. C.
 College Park, Ga.
 Spartanburg, S. C.



E. M. Watt
 John D. Wheeler
 Dukes Williamson
 Worth Wilson

Sumter, S. C.
 Fayetteville, N. C.
 Charlotte, N. C.
 Charlotte, N. C.



John W. Winn
 Charles Woodson
 James Wooten
 Edgar Wrenn

Hinesville, Ga.
 Thomasville, Ga.
 Laurens, S. C.
 Heath Springs, S. C.





M

I

L

I

T

A

R



Presbyterian's R. O. T. C. Unit established in 1919, has developed into one of the most important phases of the college life. Today, under the supervision of Lt. Col. Fraser and Maj. Gray, P.C. is sending many well-trained reserve officers out into the world.



LANTER

BATTALION STAFF

MARSHALL A. LANTER Major
Battalion Commander

MARION T. WOOD First Lieutenant
Battalion Adjutant

JIMMIE R. HOLLANDSWORTH First Lieutenant
Battalion S-2

EDWARD B. KENNEY First Lieutenant
Battalion S-3

JAMES F. JACOBS First Lieutenant
Battalion S-4

GUS. H. WATT Sergeant Major

KENNY, WATT, JACOBS
WOOD, HOLLANDSWORTH
LANTER



MILITARY BAND

HENRY P. J. L'HEUREUX _____ Captain
Band Commander

RALPH M. FORD _____ First Lieutenant
Executive Officer

DAVID B. MAXWELL _____ First Sergeant

EDWIN F. CAVALERI _____ Platoon Sergeant



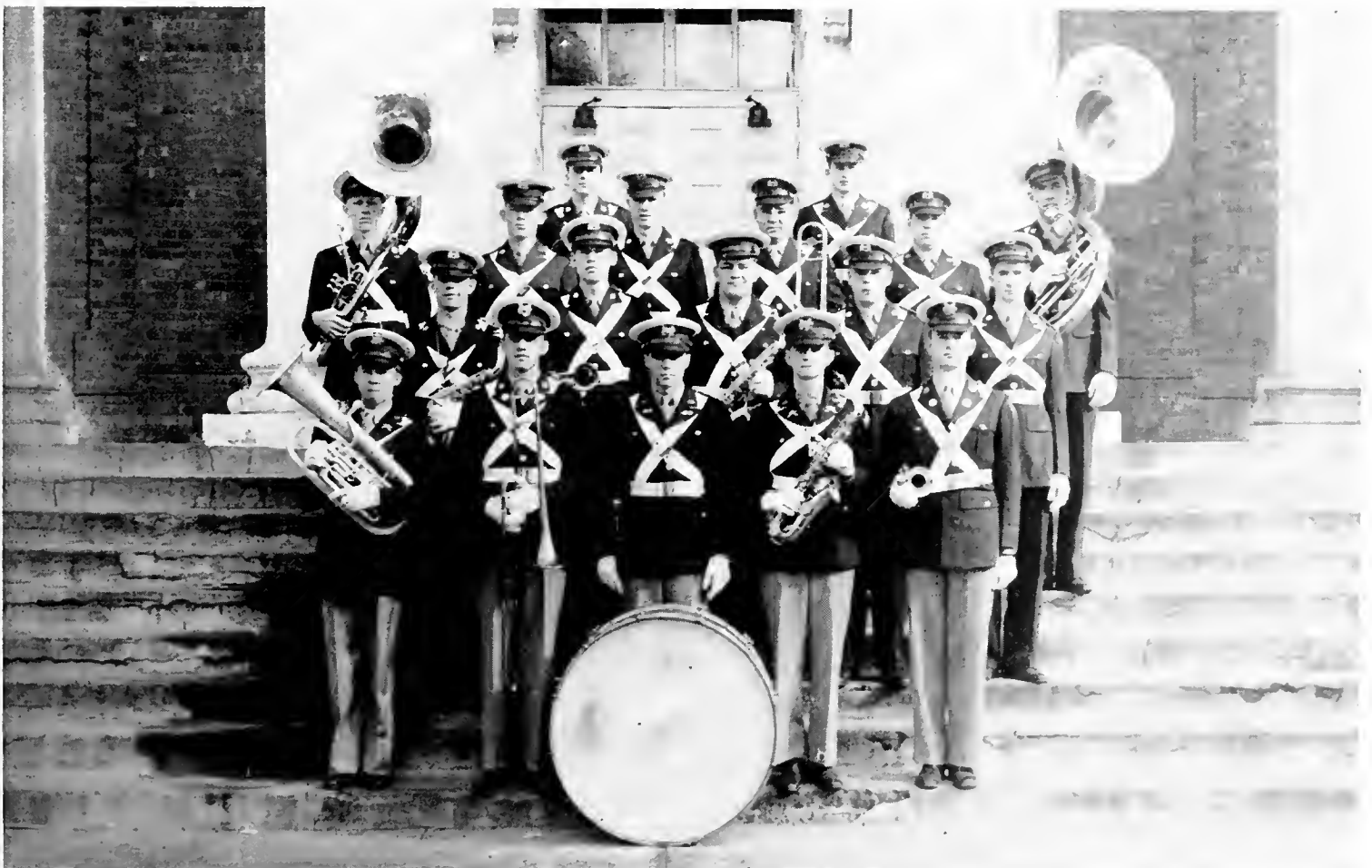
L'HEUREUX

Front Row: JOHNSON, CAVALERI, L'HEUREUX, FORD, MAXWELL.

Second Row: BOOSALIS, FREEMAN, COPLEY, HAMER, BULLOCK.

Third Row: NASH, FESPERMAN, McQUEEN, HATCHER, RANDLE, PEACOCK.

Fourth Row: KIRKMAN, JORDAN.





PURYEAR

COMPANY A

JAMES B. PURYEAR Captain
Company Commander

GEORGE HOWARD First Lieutenant
Executive Officer

THOMAS ROARK First Lieutenant
Executive Officer

SEVERN SOMERVILLE First Sergeant

First Platoon

B. A. BROWN Second Lieutenant
Platoon Leader

W. P. McKINNON Second Lieutenant
Assistant Platoon Leader

H. O. PEDDICORD Platoon Sergeant

D. W. A. NEVILLE Platoon Guide

FIRST PLATOON

Front Row: SOMERVILLE, BROWN, PURYEAR, McKINNON, HOWARD, ROARK, WEINGARTNER, Second Row: SMITH, SHOLAR, McWHORTER, PARKER, HARPER, PLEXICO, PRIVETTE. Third Row: HILL, SMITH, BLOXHAM, THOMPSON, JORDAN.





SECOND PLATOON

Front Row: WITSELL, CANNON, COPELAND, WATSON, CAMLIN. Second Row: D. HILL, JARMAN, K. HILL, GRONINGER, BLANTZ, SMITH. Third Row: HAGAN, THOMPSON, HUNTER, ARNOLD, ALMON.

Second Platoon

- ALBERT WATSON Second Lieutenant
Platoon Leader
- GEORGE COPELAND Second Lieutenant
Assistant Platoon Leader
- W. J. CANNON Platoon Sergeant
- J. M. WITSELL Platoon Guide

Third Platoon

- JAMES WILLIAMS Second Lieutenant
Platoon Leader
- L. H. LEE Second Lieutenant
Assistant Platoon Leader
- W. R. FLOYD Platoon Sergeant
- J. M. STEVENSON Platoon Guide

THIRD PLATOON

Front Row: TSACRIOS, WILLIAMS, LEE, FLOYD, DONDERO. Second Row: HARDING, LYONS, STEVENSON, COX, HUNT, LAWHORN. Third Row: B. WARE, WILSON, HORN, HAWKINS, JOHNSON.





MARTIN

COMPANY B

PAUL B. MARTIN Captain
Company Commander

W. T. MUNDY First Lieutenant
Executive Officer

R. J. LINDSAY First Sergeant

First Platoon

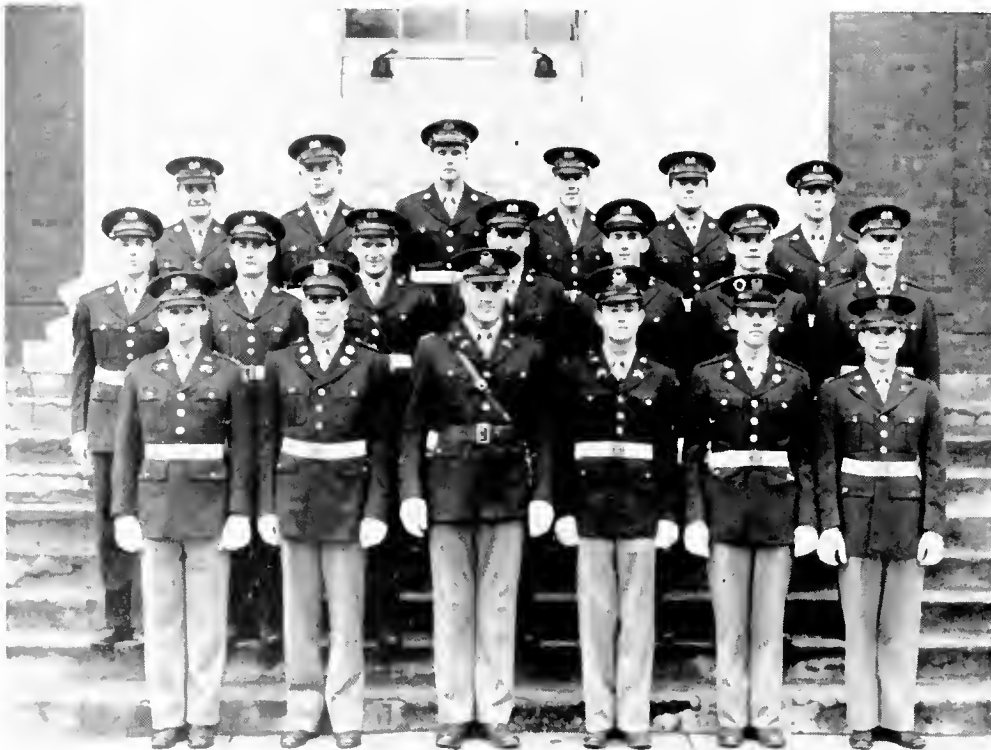
WILLIAM B. LILES First Lieutenant
Platoon Leader

W. M. MURRAY Second Lieutenant
Assistant Platoon Leader

EDWARD M. EPPS Second Lieutenant
Assistant Platoon Leader

C. O. BELK Platoon Sergeant

J. R. UPCHURCH Platoon Guide



FIRST PLATOON

Front Row: LILES, WATT, MARTIN, MURRAY, BELK, MUNDY. *Second Row:* BASS, SANBORN, UPCHURCH, COUSINS, NEVILLE, JONES, PED- DICORD. *Third Row:* JERNIGAN, HENRY, DONE- VANT, WINN, AVANT, STADLER.



SECOND PLATOON

Front Row: DUBOSE, MOORE, WILLIAMS, HOLMES, SASSER. Second Row: STONE, FOSTER, McLAURIN, PICKETT, ANDERSON, LESLIE. Third Row: BRAKE, LANTER, McFAYDEN, JACKSON, HAYMAN, MULL, WATT.

Second Platoon

- CANTEY C. DUBOSE Second Lieutenant
Platoon Leader
- FRANK W. HOLMES Second Lieutenant
Assistant Platoon Leader
- R. S. WILLIAMS Second Lieutenant
Assistant Platoon Leader
- R. T. SASSER Platoon Sergeant
- CARY P. MOORE Platoon Guide

Third Platoon

- HORACE R. WEST Second Lieutenant
Platoon Leader
- ARNOLD L. YOUNG Second Lieutenant
Assistant Platoon Leader
- J. P. POAG Second Lieutenant
Assistant Platoon Leader
- R. B. NELSON Platoon Sergeant
- JULIUS WANNAMAKER Platoon Guide

THIRD PLATOON

Front Row: WEST, WANNAMAKER, POAG, NELSON, YOUNG. Second Row: BARCLIFT, HAY, SHERIFF, STRATFORD, LOVE. Third Row: RAWLINS, GODFREY, WHELLER, THORNTON.





WILKINSON

COMPANY C

WALLACE K. WILKINSON Captain
Company Commander

ALLAN M. POOL First Lieutenant
Executive Officer

E. L. TIMMERMAN First Lieutenant
Executive Officer

RONALD JOHNSTON First Sergeant

First Platoon

ECTOR SHEPARD Second Lieutenant
Platoon Leader

WILLIS HILL Second Lieutenant
Assistant Platoon Leader

JOHN STEWART Platoon Sergeant

LADDIE BREARLEY Platoon Guide



FIRST PLATOON

Front Row: BREARLEY, STEWART, HILL, TIMMERMAN, SHEPARD. Second Row: HUTTO, DODD, CASTLES, FICKEN, BOGGS, WHEELER, PATTERSON. Third Row: KAHER, HOLLINGSWORTH, LYNCH, TANDY, SLOAN, CANNON, VAUGHN.



SECOND PLATOON

Front Row: DENT, NEWTON, WARDLAW, CATE.
 Second Row: PULLEY, ARMSTRONG, STOREY,
 WOODSON, THURMAN. Third Row: LIDE,
 KIRVEN, McINTOSH, GENTRY, WATFORD,
 McMILLAN.

Second Platoon

- E. D. NEWTON Second Lieutenant
Platoon Leader
- WARREN WARDLAW Second Lieutenant
Assistant Platoon Leader
- F. P. McNEILL Platoon Sergeant
- HOLLIS CATE Platoon Guide

Third Platoon

- E. T. ANDERSON Second Lieutenant
Platoon Leader
- TOM VERENAKIS Second Lieutenant
Assistant Platoon Leader
- L. A. FLYNT Platoon Sergeant
- E. J. BREWER Platoon Guide

THIRD PLATOON

Front Row: VERENAKIS, ANDERSON, WILKIN-
 SON, BREWER, FLYNT, JOHNSTON. Second
 Row: BARCLIFT, PRATT, GANDY, CLEMENT,
 THRELKELD, FISHER. Third Row: PIERCE,
 NEELY, BARNUM, OGLETREE, DUNTON.





1.



2.



3.

Any Questions? ---Move Out!

The most unforgettable experience in the life of any R.O.T.C. student is the six week's training he receives at summer camp. Since most of P. C.'s thirty-five senior cadets were at Fort Benning, Ga., the **PaC SaC** would like to present a pictorial account of one day's events at **Benning School for Boys**.

First we get a glimpse of the camp itself (1), and then in (2), we see a group of the famed warriors before going out to the days battles. In (3), the troops are enroute to the morning adventures, which may include: mortar firing (4), tank demonstration (5), or working in the pits of the rifle range (6).

During the noon hour, we see our boys going to mess hall (7), reading mail from home (8), or just plain resting (9). After dinner, it's back to formation (10) to see some demonstration (11), or to fire the mortars again (12).

In (13), the gallant band is finally on the way home.

What do they do when they get there? Well, the day picked was the day before inspection, so the entertainment for the evening will probably include something on the order of (14) and (15).

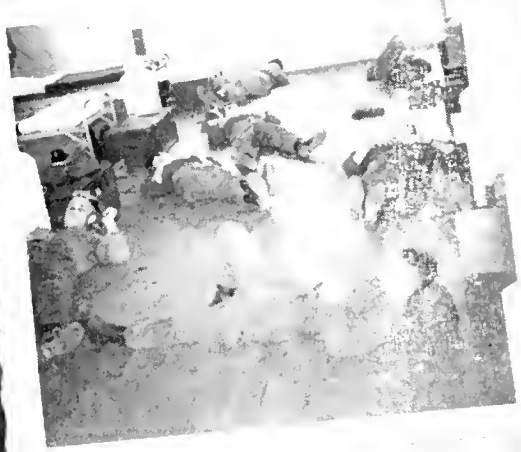
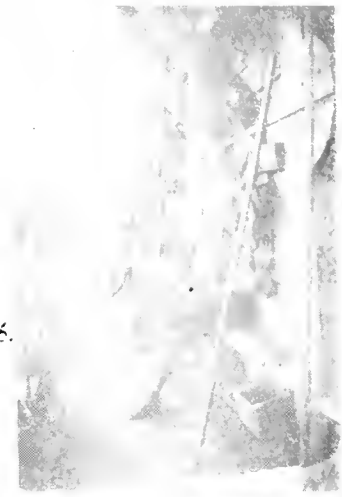
Everything is in order for the inspection in (16), so we shall bid adieu to Benning School for Boys.



7.



13.





C T I V I T I E S





JACOBS

THE PaC SaC

THE 1950 EDITION

The **PaC SaC**, the annual publication of the students at Presbyterian College, was originated in 1914, and has continued every year thereafter, except for the war years.

In this, the thirty-fourth edition of the **PaC SaC**, we have attempted to picture our joys, our sorrows, our activities and our inspirations at Presbyterian College.

Associate Editor Harry Dent and Activities Editor Neely McCarter are due much credit for their constant interest and assistance. Also, we would like to thank Bill Shields for his photography and cooperation, and William Jacobs of Jacobs Brothers for his all-around contributions toward making this the epitome of our life at P. C.



HAUGHTON

THE STAFF

FERD JACOBS	Editor
HARRY S. DENT	Associate Editor
LONNIE McMILLIAN	Associate Editor
TOMMY MUNDY	Assistant Editor
ED KENNEY	Senior Class Editor
HUB HUNTER	Sports Editor
NEELY McCARTER	Activities Editor
ED TIMMERMAN	Military Editor
GRACE YOUNG	Co-ed Editor
JAMES HAUGHTON	Business Manager
BOB WESTBROOK	Assistant to Business Mgr
TRAVIS STEVENSON	Assistant to Business Mgr
FRANK HOLMES	Assistant to Business Mgr



Seated: DENT, JACOBS, HAUGHTON, YOUNG. Standing: MUNDY, McCARTER, HUNTER, KENNEY, WESTBROOK, TIMMERMAN, STEVENSON.



KIKER

The Blue Stocking

The **Blue Stocking**, the student newspaper, is rated "All-American" by the Associated Collegiate Press. In gaining this rating, the highest given by the association, it marked the fifth time that it has received the honor.

It has also been rated as one of the top three newspapers in the United States in colleges having a 500 enrollment or under, and, in 1942, it was one of the seven best in the country, regardless of size.

The paper was reorganized in 1946 after four years of silence during the war. Since that time it has presented the news of the college in a light, informative manner, conforming to the best rules of college journalism.



BREARLEY

THE STAFF

DOUG KIKER	Editor
LADDIE BREARLEY	Business Manager
HARRY DENT	Assistant Editor
BOB HUNT	Assistant Editor
BILL LINK	Advertising Manager
TOM VERENAKIS	Circulation Manager
ALBERT WATSON	Assistant
GEORGE SANBORN, TED FREEMAN	Reporters
Sara Robinson (Limestone), Jean Martin (Converse), Barrie Jean Wingard (Winthrop)	Newsgirls



Left to Right: WATSON, VERENAKIS, DENT, KIKER, BREARLEY, LINK, HUNT.



HARPER

The STUDENT COUNCIL

STUDENT GOVERNMENT

The Student Council is composed of eleven members elected by the Student Body. The Council governs the Student Body according to the laws and by-laws set forth in the Student Body Constitution.

The Council represents the Student Body in every phase of student activity and endeavors to enforce the Honor System. It also strives to promote school spirit and other ideals which should prepare the students of Presbyterian College to be active, intelligent, and sincere citizens of the United States and useful, co-operative members of society.

THE COUNCIL MEMBERS

BILL HARPER	President
GEORGE WATT	Vice-President
GUS WATT	Secretary-Treasurer
JOHN CALLAHAM	Chairman of the Honor System
MRS. JEAN MOBLEY	Co-ed Representative
LONZO GILES	Senior Representative
DAN McLEOD	Junior Representative
WALTER GOOCH	Junior Representative
ROBERT ATKINSON	Sophomore Representative
WORTH WILSON	Freshman Representative
CLOUD HICKLIN	Freshman Representative



Seated: GILES, HICKLIN, GEORGE WATT, GUS WATT, WILSON. Standing: ATKINSON, McLEOD, HARPER, MOBLEY, GOOCH.



COLLINS

The Student Christian Association

OFFICERS

BEN COLLINS	President
JIMMIE HOLLANDSWORTH	Vice-President
BLAKE WATTS	Secretary
DAVID NEVILLE	Treasurer

MEMBERS

Ed Cavaleri	Lonzo Giles
Harry Dent	Bill Harper
Joe Dodd	Ed Kenney
Tommy Fesperman	Marshall Lanter
Ralph Ford	Cyrus Mallard

The objective of the Student Christian Association is to organize campus activities in an efficient manner so as to provide for the recreational outlets and spiritual growth of the student body.

Some of the highlights of this program are as follows: the annual Christmas Party, deputation teams, vesper services, chapel services, weekly dormitory discussions, Boy Scout Work, Hi-Y organization, world relatedness programs, and the annual Religious Emphasis Week.

Further activities of the Student Christian Association have been to form a Freshman S. C. A. Cabinet, which serves to coordinate freshmen activities, and the instigation of a new intramural program, with the awarding of an intramural trophy at the end of the school year.

The **Knapsack**, one of the student publications, is under the supervision of the Student Christian Association.



MRS. L. F. COLLINS
S. C. A. SPONSOR



Seated: DENT, HOLLANDSWORTH, COLLINS, WATTS, NEVILLE Standing: GILES, HARPER,
FESPERMAN, DODD, LANTER, KENNEY, CAVALERI, FORD, MALLARD.



FRESHMAN S. C. A. CABINET

Seated: BARCLIFT, WATT, KIRVEN, SHERIFF Standing: HOLLANDSWORTH, SMITH, WATLING



CAMPBELL

HARPER

JACOBS

L'HEUREUX

McCARTER

WATT

WHO'S WHO

By unanimous vote of the college faculty, six seniors were chosen to have their biographies included in this year's edition of "Who's Who in American Universities and Colleges". Top students from over 600 American colleges are included in this publication.

The purpose of Who's Who is to serve as: an incentive for students to obtain the most out of their college careers, a means of commendation to the student, a standard of measurement for students, and a recommendation to the business world.

These students are to be congratulated for their selection, which was based on scholarship, leadership, and character.



WATT

The Presbyterian College chapter of Blue Key National Honor Fraternity was established March 29, 1932. The purposes for which **Blue Key** was organized are: "In order that through the organized effort among student leaders in American colleges and universities.

(1) The belief in God will be perpetuated and intensified, and the government of the United States will be supported and defended.

(2) An ambition for intellectual attainment and desire to serve college and fellows will be fostered among students.

(3) Student problems may be studied, student life may be enriched, and the progress and best interests of the institutions in which the organization is formed may be stimulated and promoted."

BLUE KEY

National Honor Fraternity

OFFICERS

- George D. Watt, *President*
- Jimmy Lindsay, *Vice-Pres.*
- Tom Roark, *Secy.-Treas.*

OTHER MEMBERS

- Neely McCarter
- Ben Collins
- Ferd Jacobs
- Walter Gooch
- Bill Harper
- Harry Dent
- Ed Campbell
- Ed Kenney
- Jimmie Hollandsworth
- B. A. Brown
- Henry L'heureux



First Row: ROARK, WATT, LINDSAY. Second Row: McCARTER, HARPER, COLLINS, DENT. Third Row: HOLLANDSWORTH, GOOCH, BROWN, KENNEY, CAMPBELL, L'HEUREUX.

THE KNAP-SACK



KIKER

DOUG KIKER
 FERD JACOBS
 B. A. BROWN
 TOM ROARK
 ED KENNEY
 TRAVIS STEVENSON

Editor
 Business Manager
 Associate Editor
 Military Editor
 Activities Editor
 Executive Editor

The **Knapsack** is the annual handbook which is published under the auspices of the S. C. A. It is one of four student publications and serves to orient the new students to life at P. C.

The **Knapsack** contains information pertaining to all phases of college activity, as well as the specific requirements in regard to the conduct of the Presbyterian College student.



MRS. R. D. KIKER
 KNAPSACK SPONSOR



Right top: JACOBS, BROWN, ROARK; bottom: KENNEY, STEVENSON.

THE COLLEGIAN

STAFF

HARRY DENT	Co-Editor
DOUG KIKER	Co-Editor
RAY WILLIAMS	Literary Staff
CHARLES HERTWIG	Literary Staff
NEELY McCARTER	Literary Staff
SID DENHAM	Art Editor
TOMMY ARNOLD	Art Editor
CANTEY DUBOSE	Art Editor
GEORGE REEVES	Faculty Advisor



KIKER

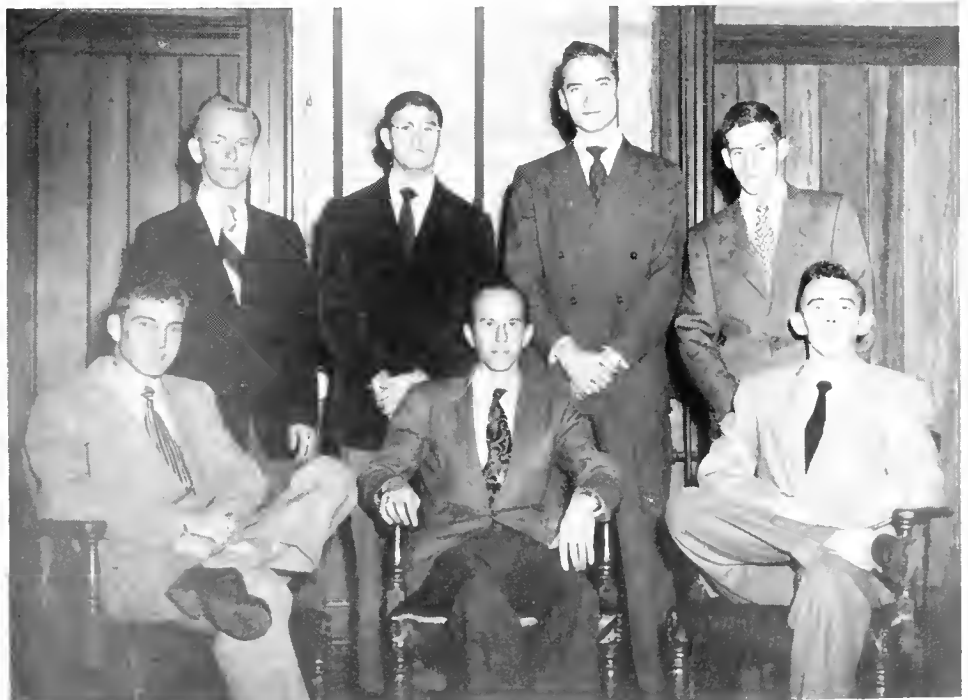


DENT

The Collegian is Presbyterian College's literary magazine, presenting its readers with light and serious fiction and non-fiction literature. Equally as inviting to the reader's eye, however, are **The Collegian's** attractive makeup and illustrations which lend a modernistic air to the magazine.

This year marked the first appearance of **The Collegian** on the campus since 1941 when World War II sent the publication to the morgue for an eight year rest.

It is published semi-annually, the winter issue coming off the presses in December and the spring edition in April. Most of its manuscripts were produced in Prof. George Reeves' creative writing class.



Seated: DENT, Professor REEVES, KIKER.
Standing: DUBOSE, DENHAM, WILLIAMS, ARNOLD.



ROARK

Pi Sigma Chi

Scientific Fraternity

OFFICERS

THOMAS R. ROARK	President
WILLIAM B. LILES, JR.	1st Vice-President
HENRY P. J. L'HEUREUX, JR.	2nd Vice-President
WILLIAM V. BYRUM	Secretary
EDWARD M. EPPS	Treasurer

MEMBERS: LEE BLAKELY, JOHN CALLAHAM, HARRY FOSTER, BILL JOHNSON, WILLIAM KENNEDY, HAROLD PATTON, TRAVIS STEVENSON, WALTER WHEELER.

Pi Sigma Chi Scientific Fraternity, founded at Presbyterian in 1945, has as its aim the promotion of scientific interest on the campus.

Its membership includes those students majoring in the natural sciences.

Meetings of the fraternity are highlighted by guest speakers, films, and papers presented by the members.

Seated: BYRUM, LILES, ROARK, L'HEUREUX. Standing: KENNEDY, STEVENSON, BLAKELY, PATTON, FOSTER, CALLAHAM, WHEELER.



International Relations Club

OFFICERS

ED B. KENNEY
GARVIN DANIEL
HARRY FOSTER
WILLIAM LINK

President
Vice-President
Secretary
Treasurer



KENNEY

Members: B. Brown, W. Byrum, G. Copley, W. Copley, G. Daniel, H. Dent, H. Foster, W. Holcombe, F. Holmes, W. Hunt, F. Jacobs, E. Kenney, W. Link, B. Matthews, F. McGregor, T. Mundy, H. Patton, T. Stevenson, T. Verenakis and M. Wood.

The **International Relations Club** is an organization sponsored by the Carnegie Endowment for International Peace. The local club was established at Presbyterian College in 1924 and reorganized in 1946 after a period of inactivity during the war. It is the only organization on the campus to which membership is obtained by competitive examination.

Seated: FOSTER, DANIEL, KENNEY, LINK. Standing: STEVENSON, VERENAKIS, DENT, BYRUM, MATTHEWS, MASSEY, BROWN, MCGREGOR, PATTON, HOLMES, JACOBS, HUNT, MUNDY.





GAMMA BETA PHI

OFFICERS

WILLIAM BYRUM

President

RALPH FORD

Vice-President

GRACE YOUNG

Secretary-Treasurer

BYRUM

The **Alpha Chapter** of the **Gamma Beta Phi** honorary scholastic society, was re-organized on the Presbyterian College campus November 5, 1947, after a period of inactivity during the war years. Only former **Beta Club** members are eligible for membership in the society at present.

The purpose of the society is to promote leadership, character, and scholarship, and to bring the advantages of college to the students in nearby high schools.

Seated: YOUNG, BYRUM, FORD. Standing: STEVENSON, JACOBS, MASSEY, DENT, MATTHEWS, TIMMERMAN, MCGREGOR, LINK, MUNDY.



BLOCK P CLUB

OFFICERS

BUZZ TEDARDS

President

FRED YARBOROUGH

Vice-President

WALLACE WILKINSON

Secretary-Treasurer



TEDARDS

The **Block "P" Club** of Presbyterian College is composed of all men who have earned a varsity letter in the various intercollegiate sports. The purpose of the club is to stimulate interest in all athletics. Block letters and sweaters are presented at the annual banquet.

Front Row: WEINGARTNER, FLEMING, STEVENSON, EDWARDS, HAWKINS, TEDARDS, LINDSAY, DODD, WATSON, CUNNINGHAM. Second Row: McCUTCHEON, TURNER, WATTS, HORN, GRONINGER, HARPER, WOOD, BROWN, GILES, McKINNEY. Third Row: GRAHAM, GOOCH, ROARK, OZMINT, WILKINSON, LANTER, COPELAND, COOPER, YARBOROUGH, NEVILLE, WEST. Fourth Row: BECKUM, WATT, BAKER, DESCHAMPS, STARNES, STEWART, MASSEY, OGLETREE. Fifth Row: STUTTS, FLYNT, HILL, WELDON, JACKSON, McNEILL. Sixth Row: DUSENBURY, PIERCE, UPCHURCH, LINDSAY, HOWE, PURYEAR, KING, HONEA.



Ministerial Club

OFFICERS

**SIDNEY MAXWELL
CYRUS MALLARD
WILSON DOWLING
REUBEN WALLACE
ED LANGHAM**

President
Vice-President
Secretary
Treasurer
Chaplain

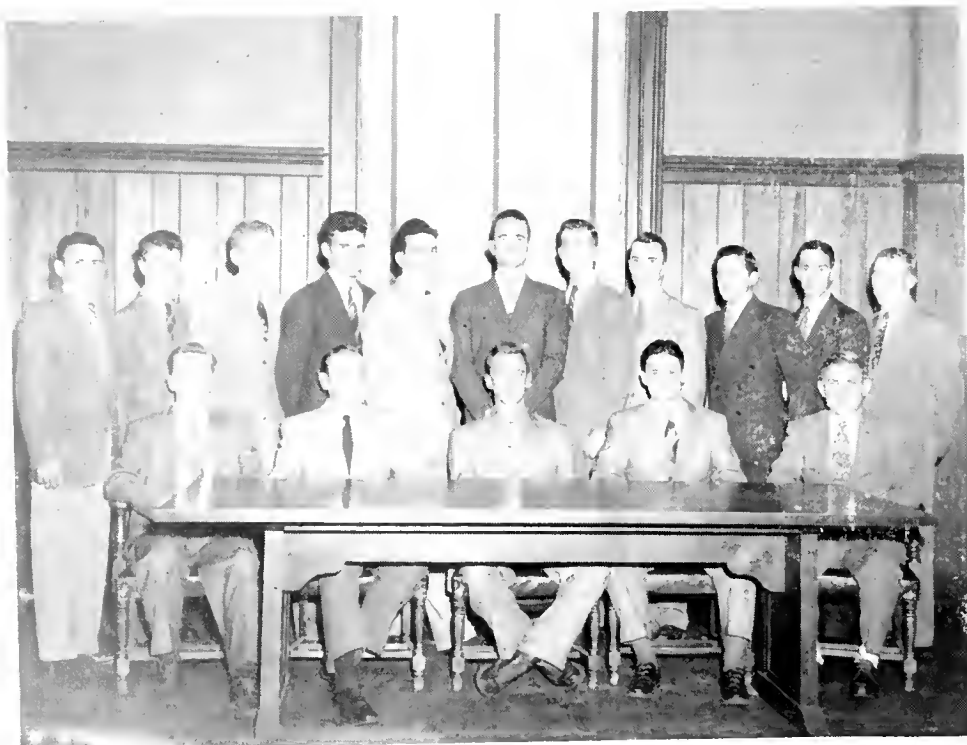


MAXWELL

Through membership in this club the student who is devoting himself to full-time christian service is given an opportunity to find expression of this desire by doing actual missionary work, such as preaching, teaching and leading Sunday Schools.

The Club strives to strengthen the bands of Christian Fellowship and to assist the student in every way possible to become a better servant of God by affording opportunities for service, growth and fellowship centered in the Bible.

Seated: LANGHAM, DOWLING, MAXWELL S., MALLARD, WALLACE. Standing: PENNINGER, McNEILL, BUCHANAN, DEAN, McDONALD, MAXWELL D., HUFSTETLER, BASS, SMITH, BEALE, DINKINS.



MRS. A. S. MAXWELL
MINISTERIAL CLUB SPONSOR

Foreign Mission Fellowship

DAVID MAXWELL

President



MAXWELL

The Presbyterian College Chapter of **Foreign Missions Fellowship** was organized in January, 1948. It is a branch of the Inter-Varsity Christian Fellowship of the United States.

Weekly meetings are held during which members report on current conditions in mission fields and the lives of foreign missionaries.

Membership consists of two classes: those who have definitely purposed to go to the foreign field, and those associate members who have committed themselves to prayer concerning a possible call. The meetings are open to all who sincerely desire Christian fellowship and information concerning foreign missions.

Seated: MAXWELL S., LANGHAM, MAXWELL D., MALLARD, GILMORE. Standing: DINKINS BASS, BUCHANAN, DOWLING, BULLOCK, WALLACE, SMITH, McNEILL, PENNINGER.



MISS FRANCIS MAXWELL

FOREIGN MISSIONS FELLOWSHIP SPONSOR



Presbyterian College

CHOIR



ED. CAMPBELL
President



DR. EDOUARD PATTE
Director

The Choir, under the direction of Dr. Edouard Patte, is composed of approximately thirty-five students who love to sing and enjoy the Christian fellowship that the Choir affords. During the year, two tours were made and more than fifty concerts given before audiences in South Carolina, Georgia, Florida, and Alabama.





First Row, left to right: LINK, KIKER, BEALE, H. GALLOWAY, CUTTINO, COLE, WARDLAW, NEVILLE, MALLARD, CAMPBELL, J. HOLLANDSWORTH, DOWLING. Second Row: S. MAXWELL, PEDDICORD, ROBINSON, WATFORD, DENHAM, HATCHER, N. HOLLANDSWORTH, ARNETTE, PENNINGER, PATTERSON. Third Row: BURTON, EDENS, DANIEL, L'HEUREUX, PEACOCK, FREEMAN, WOOD, B. GALLOWAY, FORD, DAUGHTERY, D. MAXWELL. Not in picture: DUBOSE, HARDEN, COVIN, RAWLINS, WILLIAMSON, STONE, MONTGOMERY.

Officers:

Edward Campbell, *President*

Richard Cole, *Secretary*

Sidney Maxwell, *Treasurer*

Sidney Denham, *Historian and Accompanist*

Bruce Galloway, *Assistant Accompanist*

David Maxwell, *Custodian*

Chris Patte, *Boy Assistant*



Pan-Hellenic Council

The Pan-Hellenic Council serves as the governing body of the fraternities at Presbyterian College.

The members are elected by each fraternity as its representative to the council. This council established rules for the conduct of rushing and pledging on the campus, and sponsored several formal balls featuring excellent orchestras.

Under the competent leadership of President Jimmy Lindsay, the Pan-Hellenic Council had a very successful year.

BREWER



COLLINS





JAMES LINDSAY
President

MEMBERS

JAMES LINDSAY

PRESIDENT

Pi Kappa Phi

HENRY LUCIUS

VICE-PRESIDENT

Pi Kappa Alpha

BEN COLLINS

SECRETARY-TREASURER

Alpha Sigma Phi

DICK LINDSAY

Alpha Lambda Tau

JAKE BREWER

Kappa Alpha

HENRY L'HEUREUX

Theta Chi

L'HEUREUX

LUCIUS

DICK LINDSAY



Alpha Lambda Tau

Colors: Old Gold and Black

Flower: American Beauty Rose

OFFICERS

GEORGE CUNNINGHAM

President

FRED YARBOROUGH

Vice-President

WALLACE WILKINSON

Secretary

WILLIAM P. ALTMAN

Treasurer



GEORGE CUNNINGHAM

President

Alpha Lambda Tau fraternity was founded at Oglethorpe University on October 6, 1921. Iota Chapter at Presbyterian College was chartered in 1927.

The purposes of Alpha Lambda Tau fraternity are to promote Christian character, encourage scholarship, assist in constructive activities, and foster a brotherly and sympathetic feeling among its members.

ALTMAN
DAVIS
McGAHEE
RICHARD STUTTS

BERRY
DUSENBURY
McGREGOR
ROBERT STUTTS

BROWN
FLEMING
McKINNEY
TEDDER

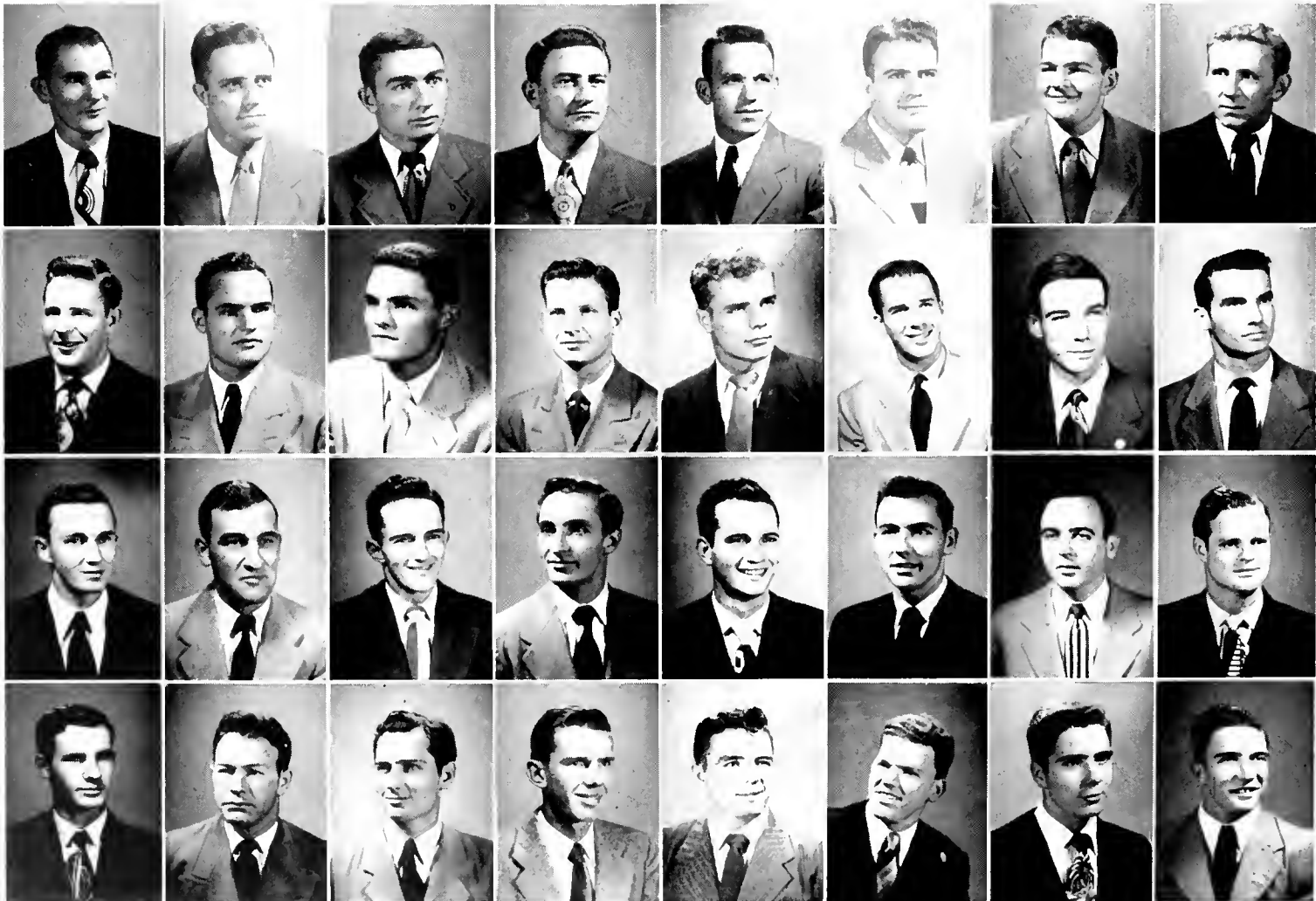
CAMPBELL
HARPER
McLEOD
WILKINSON

COPELAND
HILL
MUNDY
YARBOROUGH

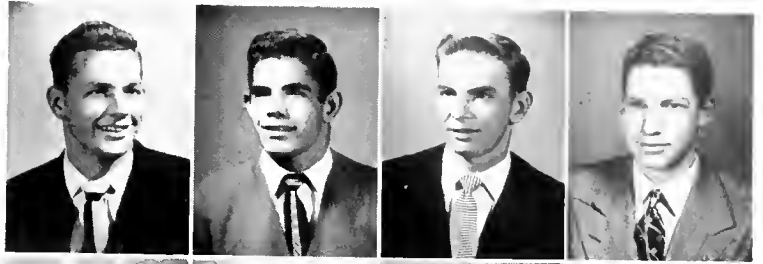
B. COPLEY
JACOBS
OZMINT
BANKS

G. COPLEY
KENNEY
REYNOLDS
BILLY BARCLIFT

CURRIE
LINDSAY
ROBERTS
BRAKE



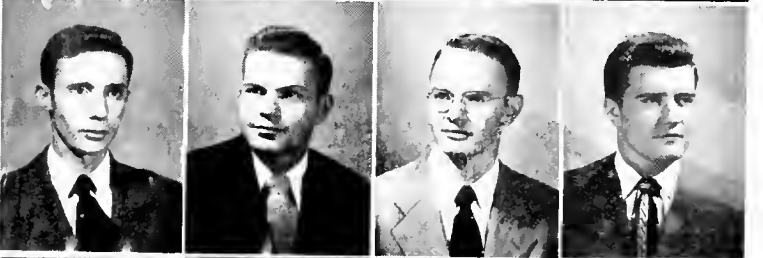
BOOSALIS, CAMLIN, COX, DESCHAMPS



DUNTON, EDWARDS, FISHER, FULK



GENTRY, HICKS, HUNTER, JERNIGAN



R. McGAHEE, McQUEEN, MULL, NEELY



NYE, PIERCE, PLATT, SMITH



STEVERSON, SURLS, TEDDER, THOMPSON



THORNTON, WARE, WHEELER, WILSON





NEELY McCARTER
President

Alpha Sigma Phi

Colors: Cardinal red, stone gray

Flower: Talisman rose

OFFICERS

NEELY McCARTER

President

BEN COLLINS

Vice-President

RICHARD COLE

Secretary

JIMMIE HOLLANDSWORTH

Treasurer

It was on December 6, 1845, that Louis Manigault of Charleston, S. C. met with two of his college mates at Yale University to hold the first meeting of Alpha Sigma Phi. The fraternity, the tenth oldest Greek letter fraternity in the nation, has grown and prospered with our country. Its aim is to foster scholarship, and Christian conduct within a brotherhood of gentlemen.

The Alpha Psi chapter here on our campus, formerly the Eta chapter of Alpha Kappa Pi, was established in 1928. The consolidation of Alpha Kappa Pi with Alpha Sigma Phi brought the total number of chapters to seventy-three.

BLAKELY

COLE

COLLINS

DENHAM

DEVORE

ENGLEMAN



J. HOLLANDSWORTH
WARDLAW
DAVIS
LIDE

HUNT
AMORY
FAGAN
PEDDICORD

LEE
ANDERSON
GADDY
MOBLEY

D. MAXWELL
ARNOLD
HARDING
RAWLINS

S. MAXWELL
BASS
HAY
ROBINSON

SELLARS
BURTON
N. HOLLANDSWORTH
WATFORD





GEORGE WATT
President

Kappa Alpha

Colors: Crimson and Gold

Flowers: Magnolia and Red Rose

OFFICERS

GEORGE D. WATT	President
ED F. CAVALERI	Vice-President
GUS H. WATT	Secretary
BILL GIBSON	Treasurer

The Kappa Alpha Order was founded at Washington College in December, 1865, while Robert E. Lee was president of that institution. Lee's gracious and knightly life is enshrined forever in the fraternity's customs, and the ideals and aims of the founders were largely influenced by him. Although it is a charter member of the National Interfraternity Council, Kappa Alpha is by tradition a Southern fraternity, whose aim has been to maintain and preserve the high traditions, ideals, manners, and customs of the Southern gentleman.

Beta Pi chapter of Kappa Alpha at Presbyterian College was chartered in 1921.

BERRY
GRAHAM
SPEARS
BURRY
McLAURIN

BREWER
JOHNSTON
STEVENSON
CLAY
MILLER

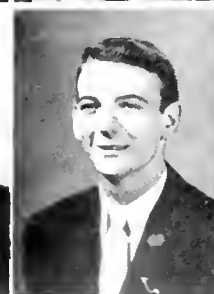
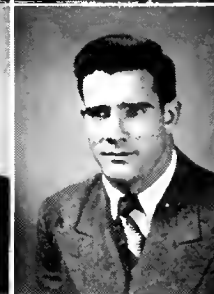
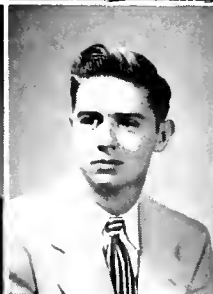
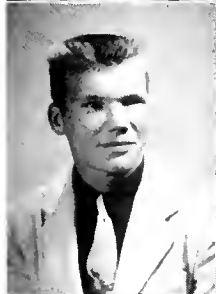
CAVALERI
KENNEDY
STRATFORD
CUTTINO
MURRAY

DODD
HIRBY
UPCHURCH
FLYNT
OGLETREE

EPPS
M. LANTER
WANNAMAKER
HILL
PICKETT

FESPERMAN
LYNDON
GUS WATT
JARMAN
RANDALL

GIBSON
MOORE
WILLIAMS
W. LANTER
SMITH



Pi Kappa Alpha

Colors: Garnet and Gold Flower: Lily of the Valley

OFFICERS



WALTER GOOCH
President

WALTER GOOCH

President

B. A. BROWN

Vice-President

TRAVIS STEVENSON

Secretary

DAVID NEVILLE

Treasurer

On March 1, 1868, Pi Kappa Alpha fraternity was founded at the University of Virginia by five friends who had gone through the Civil War together. A year later the fraternity became national, and it has enjoyed a very prosperous growth. Mu chapter was chartered at Presbyterian College in 1890, but was inactive from 1909 until 1921.

BROWN
HOBEIKA
TURNER
ATKINSON

BREARLY
JOHNSON
VERENAKIS
BLANZ

BECKUM
LUCIUS
WATSON
CATE

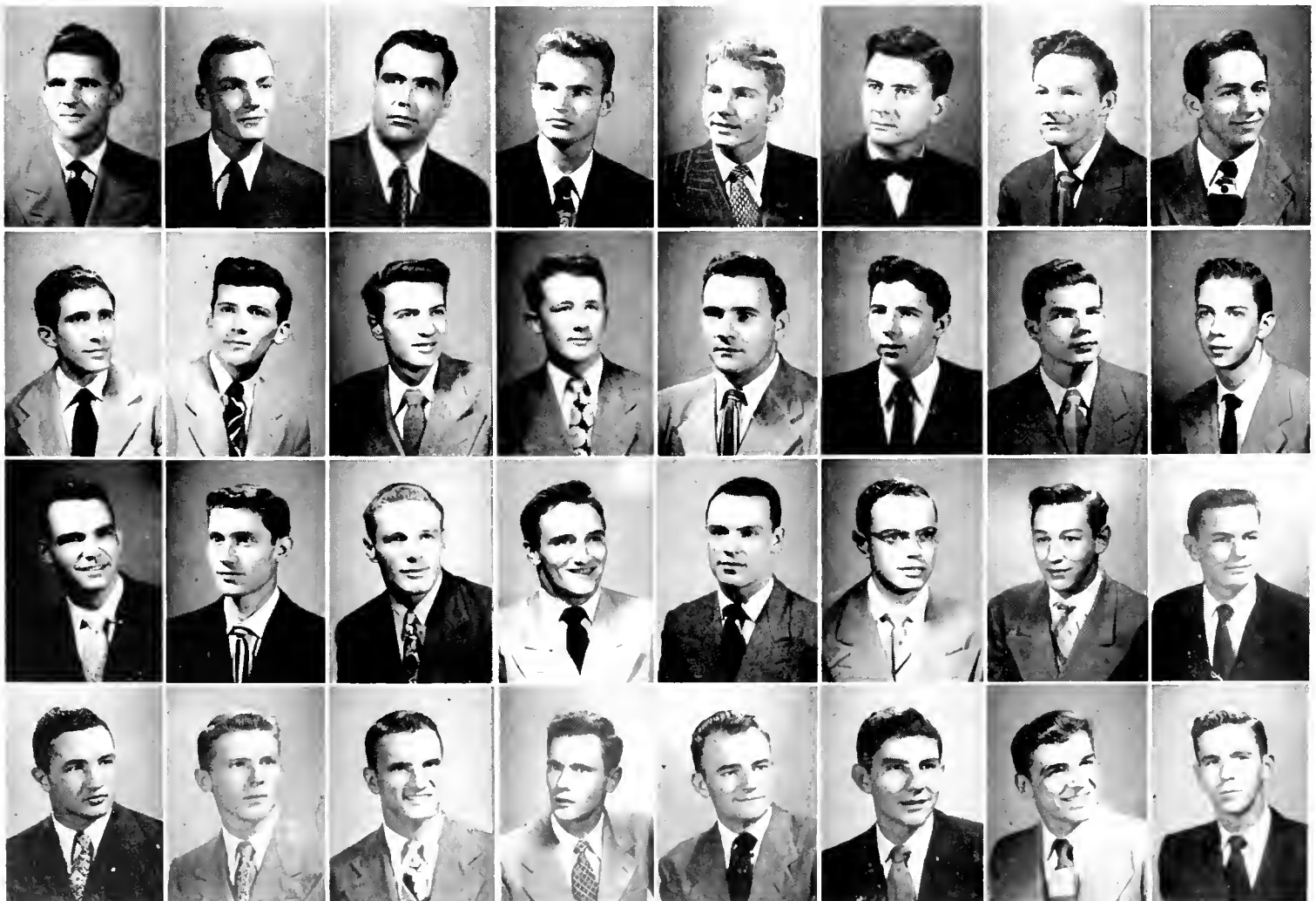
DAVIS
NEVILLE
WATTS
DONEVANT

DENT
PURYEAR
WEINGARTNER
EDENS

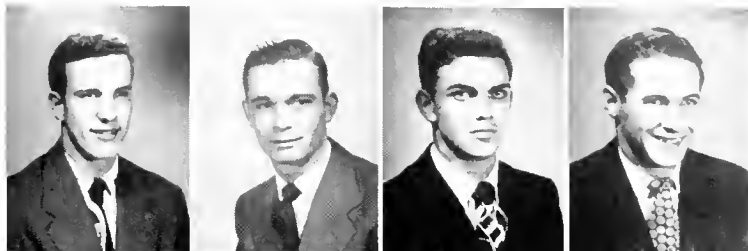
HAITHCOCK
QUICK
WESTBROOK
GANDY

HAUGHTON
STEVENSON
ALBRIGHT
GODFREY

HAWKINS
THURMAN
ARNETTE
HAGAN



HARPER, HYMAN, JACKSON, JORDAN



KAFER, KENYON, KIRKMAN, LESLIE



LYNCH, LYONS, McKISSICK, MOORE



NELSON, PERRYMAN, PRIVETTE, ROWE



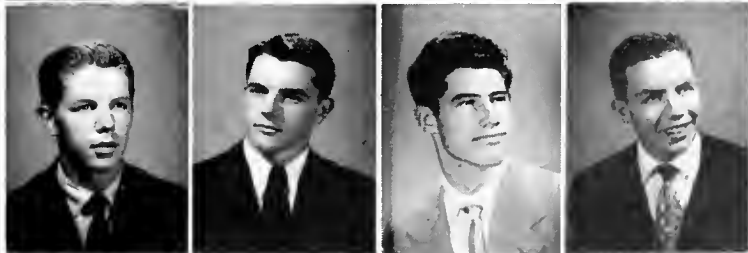
SASSER, SHERIFF, STEWART, TANDY



E. THOMPSON, K. THOMPSON, TSACRIOS, VAUGHN



WARTHEN, WATT, WELDON, WILLIAMSON





JOE KEITH
President

Pi Kappa Phi

Colors: White and Gold **Flower:** Red Rose

OFFICERS

JOE KEITH

HAMLET JOHNSON

WILLIAM JOLLY

President

Secretary

Treasurer

Pi Kappa Phi was originated in Charleston, South Carolina in 1904, with the first chapter being located on the campus of the College of Charleston. This is the only national fraternity to be founded in South Carolina. Beta Chapter was established at Presbyterian College in 1907, the same year that the fraternity became national. The growth of the fraternity has been greater in the South, though it has never been confined there by policy.

ARMSTRONG
LINDSAY
WHEELER
PRATT

BLOXHAM
MARTIN
WHEELER
STADLER

BRIDGES
PLUMMER
ALMON
STONE

JOHNSON
SHEALY
CLEMENT
STOREY

JOLLY
BILL SHEPARD
COWAN
THORNTON

NIKER
ECTOR SHEPARD
HONEA
WRENN





BILL HOLCOMBE
President

Theta Chi Fraternity

Colors: Military Red and White Flower: Red Carnation

OFFICERS

BILL M. HOLCOMBE	President
BILL LILES	Vice-President
RAY WILLIAMS	Secretary
JAMES WILLIAMS, JR.	Treasurer

Theta Chi fraternity was founded in 1856 at Norwich University, Northfield, Vt., by Frederick Freeman and Arthur Chase. Theta Chi is in its ninety-fourth year of activity; has 96 chapters, all active; is one of the top 12 national fraternities; and has the fourth largest endowment.

The fraternity is known as the "Fraternity of College Deans". Among its distinguished Alumni are Governors Ernest W. Gibson of Vt. and Fuller Warren of Florida. Also Sammy Kaye, nationally famous orchestra leader.

Beta Psi chapter of Theta Chi was chartered at P. C. on December 5, 1942, after the merger of Beta Kappa Fraternity with Theta Chi.

ANDERSON
GILES

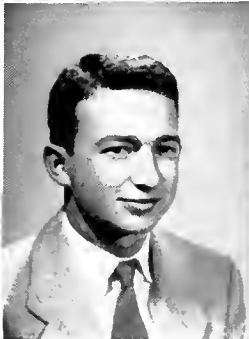
ASHE
HOLMES

BOLT
HUNTER

COOPER
JOHNSON

DANIEL
JORDAN

FORD
L'HEUREUX



LILES
R. WILLIAMS
HICKLIN

POOL
BROADNAX
McINTOSH

ROARK
CALLAHAM
MILLER

TIMMERMAN
CASTLES
MITCHELL

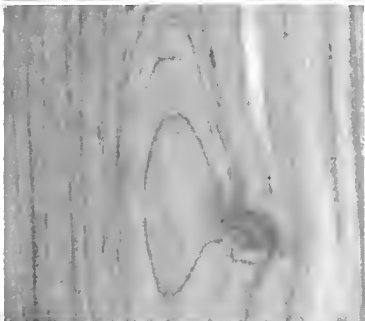
WEST
GARRISON
NICHOLS

J. WILLIAMS
HATCHER
PARLER

PEACOCK

WITSELL

WOLLET





GRACE YOUNG
President

Alpha Psi Delta Sorority

The Alpha Psi Delta Sorority is a local coed organization. It was founded in 1933 to promote fellowship among the girls who are students at Presbyterian College.

Qualifications for membership in this group are high standards in scholarship, character, and social adaptability.

The Pan-Hellenic Council governs the sorority just as it does fraternities.

Mrs. E. H. Hall, hostess of the Student Christian Association Building, is Sorority Mother.



MR. HENRY YOUNG
Alpha Psi Delta Sponsor



MARIANNE HELLAMS



DORCAS HUDGENS

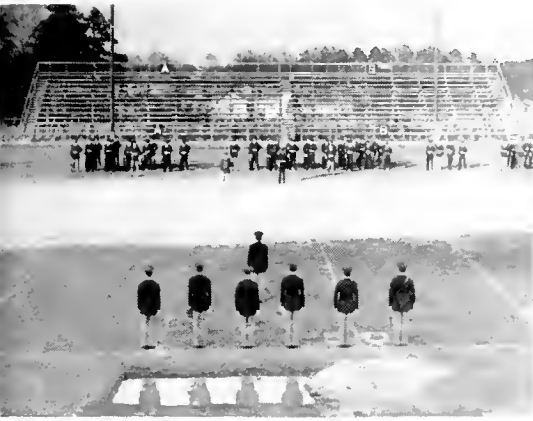


GENE LANIER



BETTY SPRINGER

MILITARY BALL



PARADE REST



SPONSORS



OFFICERS FRONT

PASS IN REVIEW



GEORGIA BULLDOGS



SABER ARCH





—A

T



H L E T I C S





Walter A. Johnson

Walter A. Johnson, the "Genial Swede", has been a part of Presbyterian College Athletics since 1915 when he became associated with the institution.

"Coach", as he is still called, is responsible for the development of the athletic plant, rated as one of the best among the nation's smaller colleges.

Over a long span of years, Johnson has built a wide reputation for his sportsmanship and P. C. spirit. Sports writers and opponents alike honor him. This was impressively demonstrated at Greenville this year when the merchants of that city sponsored a Johnson Day Celebration to honor this Dean of Southern Coaches.

Johnson served as an active coach until he was called into the service in 1941. He remained in the Army until 1946, at which time he returned to P. C. to become Director of Athletics and Professor of Physical Education.

Friends of Coach Johnson have recently inaugurated a movement to build a home in Clinton for him. This is one of the ways the people of South Carolina and the Nation are showing their esteem and respect for this builder of men.



Lonnie S. McMillian



"Coach Mac", as the head football mentor is affectionately known, is beginning his 35th year at Presbyterian College. He entered P. C. as a freshman in 1915 and after being selected "All State" for three consecutive years, he began his coaching career at his Alma Mater.

McMillian coached basketball, track, and freshman football until 1941, at which time he took over the reins of the varsity football squad, in addition to his other duties.

"Lonnie Mac" immediately installed the deceptive "T" formation at P. C. and the Hosemen became the first team in the Southeast to expound this system which is now used by a majority of the schools throughout the nation.

McMillian was recently showered with gifts from the merchants of Clinton and many other friends. He remarked at that time, "I am not a man of words—I like to show by action". He has been showing this action ever since arriving at Clinton from Arkansas.

A firm believer in fundamentals, Coach Mac drills his teams until they are well trained in the sport they are to play. This seems to have paid off in victories as his charges have won 38 games since 1941.

Many men who have been under his guiding hand can look back happily to their experiences with their beloved "Coach Mac".



The BLUE HOSE

The Presbyterian Blue Hose of 1949 startled the South Carolina sporting world by upset victories over Davidson and Furman, two Southern Conference powers. After the demoralizing defeat at the hands of Wofford, the Hosemen never seemed to regain their early season brilliance. Despite this, however, P. C. ended the season with a 5-4 record and second place in the South Carolina standings.

The Blue Hose of 1949 also contributed tackle Bozo Weir to the all-state team and Blake Watts to the second team. Both of these were mentioned in the little all-American selections. Halfback Walt Gooch was mentioned for all-state honors, as were: ends Lindsay and Dusenbury, tackle Sam Baker, guards Stutts and Starnes, and Fullback Fred Yarborough.



Left to Right: LINE COACH MOYE, HEAD COACH McMILLIAN, BACKFIELD COACH TODD.



**Presbyterian
Football
Roster**

No.	Name	Pos.
60	JoJo Weingartner	B
61	Robert Stutts	G
62	Lew Hawkins	E
63	Claude Howe	C
64	Marshall Lanter	E
65	Fred Yarborough	B
66	Walter Gooch	B
67	Vernon Dusenbury	F
68	Lum Edwards	B
69	Joe Dodd	B
70	Hollis Cate	B
71	Brooks Copeland	F
72	Bo Atkinson	G
73	Bobby Ogletree	F
74	Dick Lindsay	E
75	Bud Neely	F
76	Blake Watts	B
77	Bill Jolly	B
78	George Fleming	D
79	Ken McCutcheon	B
80	Gus Watt	T
81	Ronnie Johnston	B
82	Ralph Tedards	B
83	Harrod Martin	F
84	"Stevie" Stevenson	B
85	Bobby Pierce	G
86	Kirby Jackson	F
87	Jimmy Lindsay	C
88	J. McKissick	F
89	Frank Honea	G
90	Fred Barnum	F
91	H. C. Starnes	G
92	Bozo Weir	T
94	Lewis Surls	G
95	Ken Horn	T
96	Al Beckum	G
97	Sam Baker	T



FRED BARNUM, F



THE BLUE HOSE' OFFENSIVE TEAM

Clemson 69

Presbyterian 7

Hampered by injuries and a powerful Clemson team, the Presbyterian Blue Hose were defeated in their opening game by the one-sided score of 69-7. However, the game was much closer than the score would indicate as P. C. amassed a total of 202 yards rushing while making 9 first downs.

It was only until the clock showed 7 minutes to play that the fleet-footed hosemen hit pay dirt. 18,000 spectators rose simultaneously to applaud Blake Watts, who dashed 66 yards to the double marker to claim 6 points for P. C.—its first score against the mighty Tigers in 6 years.

Clemson's backs Cone, Matthews, and Calvert led the Tiger attack—making this game the 15th consecutive win for the Gator Bowl Champions.



All State Tackle
BOZO WEIR

Presbyterian 27

Davidson 7

After being humbled by Clemson, the Blue Stocking came back with a fighting spirit and showed little respect for their big brother Presbyterians from North Carolina. The underdog McMillianmen chased the Davidson Cats away and claimed a 27-7 victory.

Early in the first period, George Fleming took a fourth-down lateral from Bill Jolly and bulled his way into the end zone for tally number one. A few minutes later "Kilo" Watts hit off left tackle and scooted 69 yards through the Davidson secondary.

Auburn Lambeth, Davidson's highly praised passer, began to hit his targets and the Wildcats moved to the P. C.'s 25. From there the North Carolinians stayed on ground and crossed the goal for their only touchdown.

After an exchange of punts, the Blue Hose again began to ramble sparked by Gooch and McKissick. Gooch drove over from the four for P. C.'s third touchdown. In the final quarter Jolly flipped to Hollis Cate for the last score of the evening.



Senior Tackle
SAM BAKER





Presbyterian 39

Erskine 13



Senior Guard
BOB STUTTS

Presbyterian silenced Erskine's Victory Bell and sent them home on the short end of a 39-13 score.

In the opening minutes of play, George Fleming's 75 yard punt return gave an indication of things to come. His rushing total for the evening amounted to some 180 yards.

The Flying Fleet led only once in the high-scoring contest. Neal scored for Erskine after pass interference had been called on the P. C. one-yard line. The extra point was good.

After a sustained drive of 40 yards, "Rocky" Gooch crashed over for a P. C. tally. Later in the first half, Cate gathered in Quarter-back Jolly's pass and went to the Erskine two yard line. On the next play, Jolly skirted right end for the six points.

In the last half, the other components of P. C.'s ten-second backfield scored as Watts and McCutcheon tallied on dashes of 40 and 20 yards respectively.

Presbyterian 20

Furman University 13

The Blue Hose helped celebrate Walter Johnson Day at Sistine Stadium in Greenville by taking their third straight win of the season, defeating the Furman Purple Hurricane 20-13.

Walter Gooch opened the scoring as he made a beautiful finger-tip catch of Jolly's pass and scooted the remaining distance to pay dirt. Big Fred Barnum converted to put the Hose out front 7-0.

Later in the first half, Blake Watts made another touchdown dash. This time he took a handoff and raced 72 yards. Barnum again kicked the extra point.

Furman threatened several times in the first half but could not push past the powerful Presbyterian forward wall. These defensive stands were sparked by tackles "Bozo" Weir and Sam Baker, End Dusenbury, and Jimmy Lindsay at center.

In the second half, Quarterback "Buzz" Tedards passed to George Fleming for six more points.



Senior Fullback
FRED YARBOROUGH





Wofford 14

Presbyterian 7

Johnson Field, full and overflowing with a record-breaking crowd, was the scene of a Wofford victory, which spoiled Presbyterian's Homecoming.

The entire first half was an example of excellent defensive football. Even Wofford's score, which came only a fraction of a second left to play in the first half, was strictly a defensive maneuver. A Presbyterian punt was blocked by end Doug Loveday and Rowell, Terrier fullback, covered the pigskin in the end zone for the score.

In the third quarter, Loveday set the stage for a second Wofford score with another blocked punt. With John Clabo driving over from the 5, the Terriers moved fourteen points into the lead.

In the final period the Blue Hose began rolling. Led by Fred Yarborough, P. C. moved sixty yards to the Wofford six. From that point, Ken McCutcheon took a pitchout and circled right end for the T. D.



Set for End

VERN DUSENBURY

Presbyterian 19

Catawba 13

The Hosemen regained the scalps which they lost last year to the Catawba Indians as they defeated the North Carolinians 19-13 on Johnson Field.

The Indians surprised P. C. with an unorthodox spread formation which hampered our defense considerably. The Presbyterian's first break came in the first quarter when Walt Gooch intercepted a pass on the Indians 27 yard line. A few plays later, Jolly threw a jump pass to Brooks Copeland in the end zone.

In the second half, Dick Lindsay blocked a Catawba punt on their 20 yard line; and three plays later, Gooch did the honors for the Hose as he crashed over from the 5.

The Indians got back into the ball game once again as Gore intercepted a Presbyterian pass to set up a touchdown.

Early in the final quarter the Hosemen moved from the middle of the field down to the Catawba goal line where "Tick Tock" McCutcheon carried the mail across the double stripes.



Senior End

DICK LINDSAY





Citadel 27

Presbyterian 7



Senior Quarterback
BILL JOLLY

An inspired group of Bulldogs upset the Hosemen as they blocked and tackled their way to victory. The Cadets opened the scoring early in the first quarter as Jeff Chandler, ace passer, flipped to Bozeman for a score.

The Stockings came back late in the initial period to tie the score. Jolly scooted off tackle from the three, climaxing a 54 yard drive, which had been sparked by Watts, Gooch, and Fleming. Barnum converted and the score stood at seven-all.

In the second period, Chandler again passed; this time to Kennedy for another score.

After the kickoff, Presbyterian drove all the way to the Citadel three-yard line where they lost possession of the ball, as the first half ended.

In the final canto the Bulldogs showed their power by scoring two more touchdowns. Ohland and Foxworth did the honors for the Citadel as they went on to sew up the game 27-7.

Presbyterian 14

Stetson 12

A hot Florida sun couldn't cramp Fullback Blake "Kilo" Watts' style as the Blue Stockings rang up their fifth victory of the season in Deland, Florida at the expense of Stetson University.

The PC flashback romped for 150 of PC's 280 ground yards, reeling off one 49-yard gallop for paydirt.

But the Hosemen had to come from behind to score their 14-12 triumph. Stetson started a 55-yard drive to the PC goal early in the game.

The visiting Presbyterians bounced right back as Watts made his 49-yard dash to the end zone.

Early in the second quarter, Center Jim Lindsay recovered a Stetson miscue on the 16-yard line. Watts took the ball on the next play and skirted end for the second and final PC score.

Unable to gain against the sturdy PC forward wall, the Stetson Hatters took to the airplanes for the second half of the ball game. In the third quarter a 22-yard pass from Hinckley to Marks registered another Hat score.



Senior Quarterback
BUZZ TEDARDS





Newberry 20

Presbyterian 14

Nursing a heavy heart from last season's crushing 40-7 defeat handed them by the PC Hosemen, an inspired Newberry team ripped for three touchdowns and staved off several Hose jabs to take a 20-14 victory over their arch rivals.

Thrown in along with the loss to the Newberry Indians went the Bronze Derby, symbol of athletic supremacy between the two colleges.

"Forgin' Fred" Yarborough scored both tallies for the Hose, cracking over from the three in the first quarter and again from 24 yards out in the third period. Aiding him with most of the PC ball lugging was Right Half Back Walter Gooch who teamed up with Yarborough to set up both scores.

Fullback Blake "Kilo" Watts got off two good runs—one for 30 yards and another for a 25-yard romp to the double stripes which was called back.

Late in the final frame, the Hosemen began another drive toward paydirt, but this one fell short of its mark as had several previous deep thrusts.



Senior Center
CLAUDE HOWE

JUNIOR VARSITY

Small in size, but deep in strength and broad in spirit, the Blue Anklets of Presbyterian College blazed an enviable record into the scorebooks during the 1949 season.

The scrappy Anklet team, coached by Charlie Davidson and Bill "Bomber" Haithcock, ran roughshod over four of six opponents on their rugged schedule. First to fall under the Anklet attack was Richmond Academy of Augusta. Next came Presbyterian Junior College, and then Newberry's Junior Varsity team followed. The PC Jayvees scalped the Newberry Papooses twice over the route.

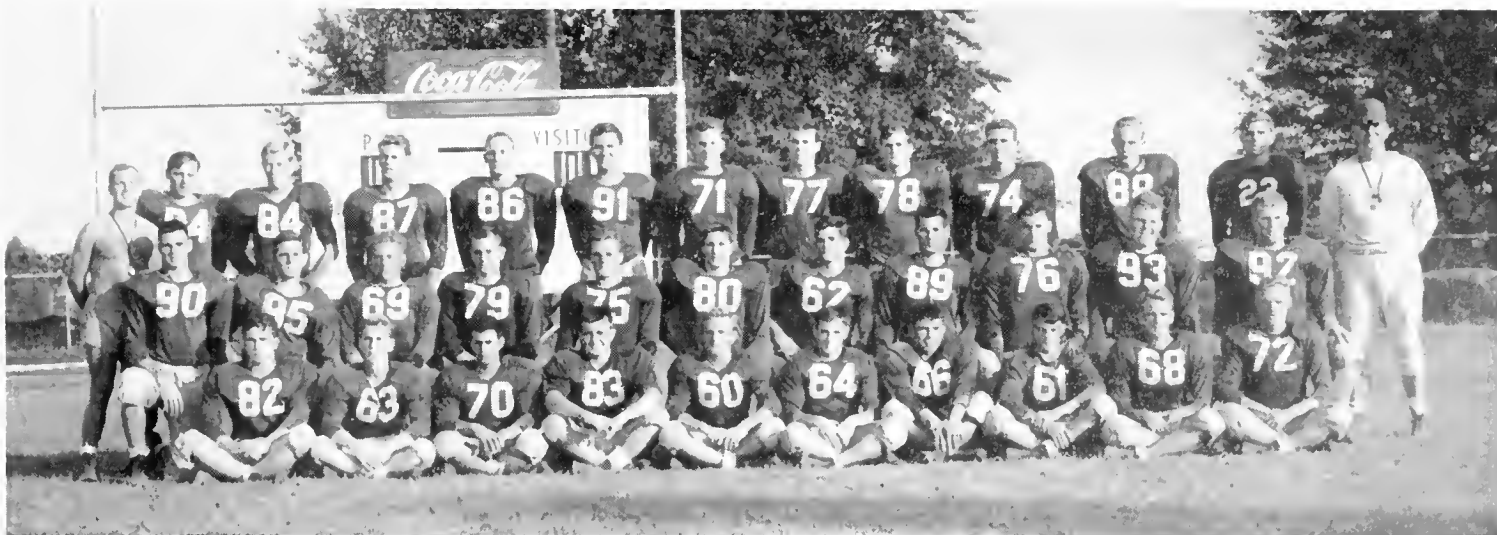
The Anklets dropped two games—one to Clemson and the other to Wofford.

After leading Clemson's Baby Bengals for three and one-half quarters, the Anklets succumbed in the final moments of play as a Clemson back intercepted a pass and ran away to the goal and a Clemson victory, 13-8.

Highlight of the Anklets' season was the passing combination of Jack "Lefty" Harper to Ends Joe Kirven and Luke Wheeler, which netted many scores and much yardage for the PC team. Sensational also was the sharp punting toe of Tailback E. M. Watt and the line-crashing of Fullback Bob "Horse" Walker, the team's most valuable player.

Other standouts on the team included Ends John Harper and Cooper Tedder; Tackles Tommy Sheriff, Marion Threlkeld, and Tom Gilbert; Guards Don Leslie, Wade Camlin, and Cedric Jernigan; Center Worth Wilson; and Backs "Tex" Vaughan, Jim Sloan, Ted Sasser, and Emmett Fulk.

Front Row, Left to Right: BRAKE, HAGAN, TSCARIOS, JERNIGAN, PRIVETTE, JORDAN, VAUGHN, WATT, SASSER, FISCHER. 2nd Row: JACK HARPER, BOOSALIS, CAMPBELL, LESLIE, KENYON, SHERIFF, CAMLIN, FULK, COUSINS, GILBERT, STUART. 3rd Row: DAVIDSON, PIERCE, McLAURIN, CRAWFORD, THRELKELD, TEDDER, J. D. HARPER, WHEELER, WILSON, KIRVEN, THORNTON, GODFEY, HAITHCOCK.





COACH CLAUDE CROCKER



BIG FIVE—Left to Right: NYE, GRONINGER, THOMPSON, HILL and HAWKINS.

BASKETBALL

Seated, Left to Right: TURNER; TEDARDS; GRONINGER; THOMPSON; HILL; LINDSAY; HAWKINS; and CROWTHER, manager. Standing: COACH CROCKER; ROWE; HORN; TEDDER; JACKSON; NYE; McNEILL; and ATKINSON, manager.





Left to right and top to bottom: GRONINGER, ALL STATE FORWARD AND CAPTAIN; TEDARDS, CO-CAPTAIN; NYE, IN "ACTION"; THOMPSON; HAWKINS; HILL; and BENCH WARMERS.

Billed as "the fanciest club in Palmetto circles," the dazzling cage play of the 1950 Blue Hose basketball team caught the eyes of spectators all over South Carolina and wherever the PC team staged a show.

The colorful Hosemen closed their season with a creditable 14-15 record over a long and drawn out schedule.

Paced by Captain Dwight "Easy" Groninger's sharp shooting and all-around floor play, the fancy dribbling and court maneuvering of Lewis Hawkins and Paul Nye, the consistent shooting and play of Kay Hill, and the backboard retrieving of Center Ed Thompson, the Hosemen proved a tough foe to topple.

6 of the 15 games lost were dropped by one to two point margins, providing some of the State's most exciting ball games.





Starting at bottom left and reading clockwise: GRONINGER HITS FOR TWO POINTS; ROWE; JACKSON; HAWKINS' WALTZ; HORN; TEDDER; TURNER; ACTION IN WOFFORD GAME; WOOD; THE LONG AND SHORT OF IT; WARTHEN.

Forward Kirby Jackson, Co-Captain Ralph Tedards, and Center Ken Horn contributed generously to the team play as relief-men for the first fivesome. Other consistent performers were Forward Anke Rowe, and Guards Don Warthen and Jim Lindsay.

Honors fell to several of the team members late in the season. Groninger teamed with Jim Slaughter of Carolina as the only repeaters to the All-State five for 1950. Receiving honorable mention for the honor team were Nye, Hawkins, and Hill. Hill and Groninger received first place berths on all-opponent teams, while Nye was named to the All-Little Four team.

The team was coached by Claude Crocker, former player at the University of North Carolina and last season's baseball coach.

At the season's close, the sophomore-dominated crew had shown many moments of greatness and much promise for a championship team in the future.





1949-1950 Basketball Results

P. C. Score	Opponent	Opponent Score	P. C. Score	Opponent	Opponent Score
67	Monaghan Mill	58	59	Furman	63
68	Pelzer Mill	57	51	Erskine	70
78	Akron (Ind.)	56	63	Wofford	59
53	Clemson	55	66	Catawba	59
52	Pelzer Mill	63	51	Clemson	74
59	Piedmont Mfg. Co.	54	56	The Citadel	42
69	Piedmont Mfg. Co.	56	56	Georgia Teachers	71
69	Lyman-Pacific Mill	63	52	Newberry	46
76	College of Charleston	55	41	Newberry	65
66	The Citadel	64	74	Georgia Teachers	86
69	Mercer	70	65	Mercer	87
58	Furman	44	58	Erskine	82
30	Catawba	63	64	Wofford	65
53	Calhoun Falls Mill	48	59	Newberry	66
57	Wofford	58			

Junior Varsity Squad

Seated, left to right: ENGLEMAN, SMITH, CROSBY, JARMAN, WHEELER, McQUEEN, THOMPSON,
 Standing: WATT, HUTTO, COOLEY, WARE, COX, HYMAN, CAMPBELL, HILL, GILES, Coach.





Coach ASHEY DICK

WRESTLING

Grunting and groaning all the way, the PC wrestlers mustered enough manpower at the season's close to salvage one victory over their 1950 nine-match route.

But just one victory assured the team of a successful season as they grappled with the South's top and most experienced wrestling crews. The young up and coming PC mat team had to lock holds with such top teams as Appalachian, the AAU champions for the past several years.

Included on the schedule were North Carolina State, The Citadel, and the High Point "Y" teams. All are noted for wrestling fame.



Capt. B. A. BROWN

Front Row, Left to Right: THURMAN, THOMAS, KAER, JORDAN, GALLOWAY, MOORE. Second Row: BROWN, WATSON, GILBERT, DUNTON, YARBOROUGH, BARNUM, STARNES. Third Row: HOBEIKA, COACH DICK, NEVILLE, BLOXHAM, FOWLER, BLANZ, GALLOWAY, DINKINS, McLEOD.





Reading from top left, clockwise: HOBEIKA, GALLOWAY AND DUNTON, THURMAN AND THOMAS, JUST BEFORE THE BATTLE, WATSON AND MOORE, DURING THE BATTLE, MOVE, JOE, MOVE.

The only mat crew on the agenda that measured up to the Blue Hose grapplers in experience was the Western Carolina teachers. The future professors man-handled the Hosemen in the first engagement, but the PC'uns bounced back in the final match to smother the Tarheel teachers.

Again this year the team was coached by Coach J. Ashby Dick, who organized the team two years ago.

And again this year Captain B. A. Brown, 165-pounder, and Captain-elect Albert Watson, 175-pounder, paced the squad. This year, however, they were pushed for the wrestling spotlight by a newcomer, Harold Dunton, 155-lb. wrestler.

The unlimited tugs were handled by several newcomers to the sport. Wrestling in the top weight were John McKissick, Ernie Gilmore, and Tom Gilbert.

In the lighter weights the competition was keener for a team position since most squad members fell into this category. Johnnie Thurman and Bobby Link handled most of the 121-lb. oncomers, while Willie Hobeika and Fred Dinkins shared the 128-lb. duties. Grappling in the 136-lb. division were Pete Kafer and Joe Weingartner. In the 145-lb. weight were Tommy Jordan and Henry Galloway.





Coach McMILLIAN

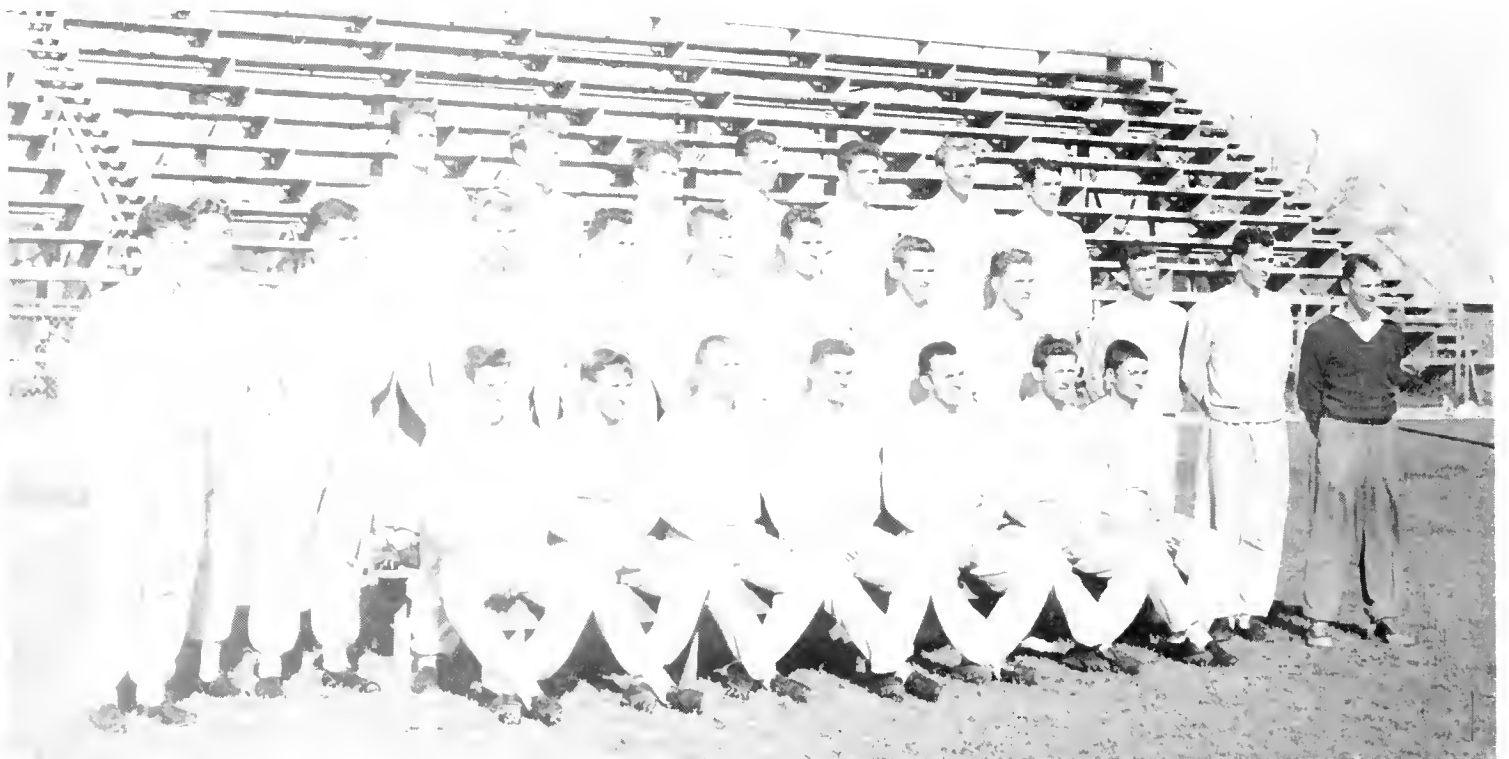
TRACK



Individual High Point Award, State Meet of 1949

KEN McCUTCHEON OF P. C.

Front Row, left to right: NEWTON, WATTS, WATSON, FLEMING, GOOCH, McCUTCHEON, BROWN. Second Row: BLOXHAM, WILSON, WATT, MARTIN, LANTER, SMITH, DAUGHERTY, UPCHURCH, BUCHANAN, REDDY, TANDY, ALTMAN, manager. Third Row: BOOSALIS, MULL, JORDAN, HYMAN, BARCLIFT, SLOAN, WATT.





State Champion Relay Team

IRON MAN CLIFF "SACK" BROWN, *States Champion, Two-Mile Run* and WALTER GOOCH, *all-around athlete.*

The Presbyterian College cindermen, under the able direction of Coach Lonnie McMillian, have given indications of being a strong contender for statewide honors this season. Returning this year are practically all of the 1949 squad which finished second only to Clemson in the annual State Meet at Clinton last year.

Interest in track has risen continually at P. C. since the war. This enthusiasm has been brought about almost single-handedly by Coach Lonnie S. McMillian. "Coach Mac", as he is affectionately called, is a great believer in track being a builder of athletics for all sports. It has been through his efforts that P. C. has arisen from the mediocre track contenders of yesterday to the cinder champions of today.

So far this season the Blue Hose have appeared in two meets, dropping the first to the Clemson State Champions but coming back to swamp Furman 105-26 the next week-end. Partial blame for the Clemson defeat can be laid to injuries of several key men, but the probable reason is the lack of depth in the P. C. squad.





MARTIN

Discus State Champion

McCUTCHEON

State Champion, 100 and 220-yard dashes



*Awards, Two Mile Run
1949 State Meet
BROWN (1)*

The greatest individual star on the 1950 cinder squad is the versatile Walter Gooch. Against Furman Walt aggregated the amazing total of 21 1/4 points by winning first place in the broad jump, javelin, and pole vault, tying for first in high jump, third place in the shot put, and running a lap of the winning relay. All was part of the day's program.

In the dashes P. C. appears to be strongest, having such speed merchants as Ken McCutcheon, "Frog" Weldon, Ed Newton, George Fleming, and Blake Watts. McCutcheon, state champion in the 100 and 220-yard dashes, is back to defend both of these, and Watts, 440 state champion, is on the injured list at present but is expected to come around in time for the State Meet at Clinton May 12-13.

The 880 yard run will find Reddy and Sasser at the starting post while the mile and two-mile runs will feature Cliff "Sack" Brown, backed up by Don Bloxham and Al Watson.

In the low and high hurdles, Marshall Lanter, a veteran of two years' service in this department, will continue to set the pace.

In the field events one can always expect to see Mr. Gooch performing. In the broad jump, he is aided by Fleming, Gene Turner, and Joe Dodd; while in the high jump, 1949 freshman state champion Dwight Groninger will be on hand. In the pole vault Mac Hamilton will assist the iron man Gooch.

Going over to the shot put ring we find Mr. Gooch once again, this time in the presence of Ken Horn and Gus Watt. All of these can be seen in the discus ring where 1949 state champion Paul Martin reigns supreme.

There is no need to say who is hurling the javelin for distance. It is none other than "Rocky" Gooch, aided by Henry Gollaway and Buddy Upchurch.

In the final event Gooch, Fleming, McCutcheon and Watts will be passing the baton to one another. These four form the 1949 state champion relay team, but if needed, Newton, Reddy, and Sasser can also be used.

Always with an eye on the future, "Coach Mac" is developing a strong freshman team. On it we find such capable performers as Distance man J. T. McQueen, Shot Putter Worth Wilson, High Jumper Charlie Smith, and the flash-lightning speedster Tommy Jordan. Freshman star E. M. Watt has already shown versatility enough to warrant his being called Walt Gooch, Jr. All of these will be seen on the cinder pat at P. C. in the years to come.



Awards, Discus
1949 State Meet
(1) MARTIN (2) TOWNSEND (3) RIDDLE



Finish of 440 in '49 State Meet



BROWN ending the mile run

Mile Relay Award in 1949 State Meet
(1) P. C. (2) FURMAN (3) CLEMSON



TENNIS

Although handicapped by the loss of 1949 State Champion Bob Spurrier, and Runner-up Kay Kaiser, the Presbyterian College 1950 Tennis Team again won the state championship. P. C. has reigned supreme over South Carolina tennis since 1937; and this year seems to be no exception.

This year the team played the toughest schedule since 1942. In addition to the annual tour of North Carolina, they invaded Florida to meet some of the strongest collegiate teams in the nation.

The team of 1950 was under the able direction of Coach Jim Leighton, a former professional at the Wee Burn Beach Club in Connecticut and the Bahama Shores Yacht Club in St. Petersburg, Florida. Coach Leighton, a Dartmouth College alumnus, is beginning his first year at P. C. with the ambition of restoring the school's tennis fame to its pre-war brilliance.



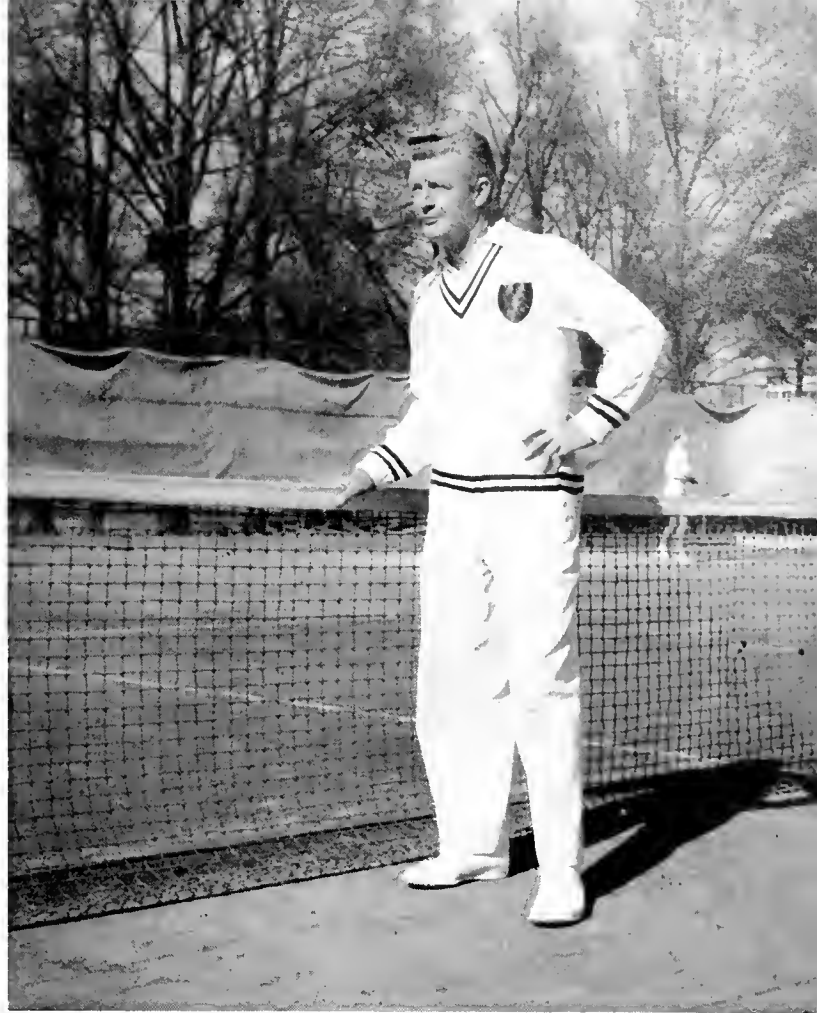
Capt. BILL HARPER
1950 S. C. Singles Champion

Kneeling: WILLIAMS, DODD, SPEARS, TOOLE.
Standing: Coach LEIGHTON, HARPER, WAR-
THEN, LYNDON, THOMPSON, JACOBS.



Season's Results—15 won, 7 lost

P. C.	Opponent	Opponent
8	Charleston	1
8	South Carolina	1
6	Charleston	2
6	N. C. State	3
2	Davidson	7
0	Duke	9
9	Wake Forest	0
0	North Carolina	9
0	Kalamazoo	9
8	South Carolina	1
8	Wofford	1
5	Erskine	2
4	Furman	0
9	Wofford	0
8	Furman	1
1	Davidson	8
6	Georgia	3
7	Mercer	2
8	Florida State	1
1	Florida	8
1	Rollins	8
7	Jacksonville	2
State Meet—Won by P. C.		



Coach LEIGHTON

RIGHTON LYNDON

Manager—Trainer—Player



The squad's most prominent individual star is Captain Bill Harper, State doubles champion in 1948, 1949, and 1950. Harper, the most consistent performer on the team, played in the number one position.

If there were a most valuable award given to a member of the tennis team, it would undoubtedly go to Righton Lyndon, the squad's player-manager-trainer. Righton, who is known, for his ability to "talk a good game", is recognized as the All-American tennis manager.



SPEARS



WARTHEN



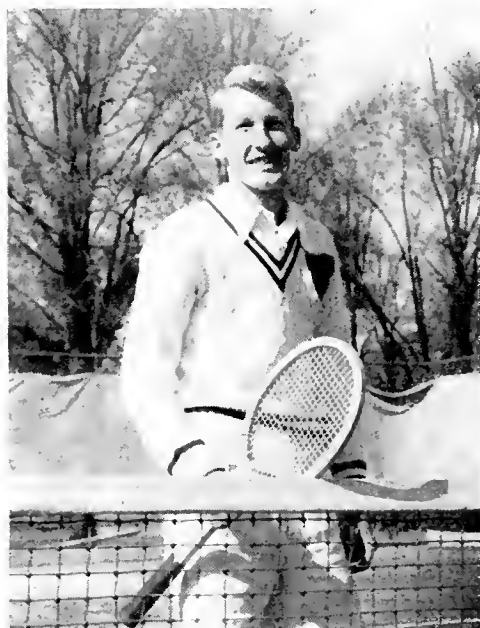
JACOBS

After Harper in the lineup comes Sophomore Frank Spears, the most improved player on the squad. Spears is a returnee from last year; and, during the past summer, he copped both the South Carolina junior championship at Darlington and the Carolinas junior championship at Hartsville.

The number three position is held down by Don Warthen, a junior transfer student from Asheville Biltmore College. Like Spears, he is also a former South Carolina junior champion.

Following Warthen is Ferd Jacobs, senior letterman from last year's State Championship Squad, Bill Toole, a promising freshman star from St. Petersburg, Florida, and Joe Dodd, runner-up in the Mid-Southern junior tournament.

Ed Montgomery and Ken Thompson, Georgia State High School Champion, are two freshman players that were used against non-Southern Conference opposition. Others who contributed victories this year are Seniors Jimmy Williams, Al Watson, Horace West, and Marion Wood.



TOOLE

DODD



GOLF

The golf team of 1950 started the season off with a smashing victory over the Newberry College team, 18 to 0. This intercollegiate sport is being revived at P. C. after a break during last season. The team shows great promise in having one of the best seasons in many a year.

Members of the team are: George Cunningham, Captain for the current season, W. J. MacBrayer, "Smokey" Jackson, Mike Sholar, Buddy Upchurch, Horace West, Ed Kenney, and Bob Edens.

As the PAC SAC goes to press, a schedule has been announced which includes:

April 4	Wofford	Spartanburg
April 18	Wofford	Clinton
April 27	Newberry	Newberry
May 2	Clemson	Clemson
May 4	Clemson	Clinton
May 9-11	State Meet	Spartanburg

Left to Right: CUNNINGHAM, MacBRAYER, WEST, CHUCK MacBRAYER, mascot, JACKSON, KENNEY, UPCHURCH.



BASEBALL

Led by Coach Walter Barbare, former major league star and now one of South Carolina's top baseball personalities, the Blue Sox enjoyed a successful season on the diamond. Coach Barbare opened training sessions on February 22 to gird his charges for the rugged 24-game schedule which faced them.

Plate power was furnished by Shortstop Dick "Frog" Weldon, Rightfielder Kirby Jackson, and Leftfielder Brooks Copeland. Weldon was also an asset to his infield position, while Jackson and Copeland formed the most valuable portion of the outfield.

First Sacker Bob McKinney, although injured in mid-season, was a sure hitter and contributed valuable service at first base.



Coach WALTER BARBARE

Seated, Left to Right: DUNTON, HILL, BREWER, BANKS, KING, KIMSEY, ROWE, JACKSON.
Standing: Coach BARBARE, WEINGARTNER, EDWARDS, WELDON, COPELAND, LIDE, McKINNEY, DAVIS, manager.





HURLERS—Left to Right: ROWE, HILL, BREWER, LIDE, EDWARDS.
(WILKINSON was absent when picture was made.)

Pitching chores fell mostly on veteran Lum Edwards again this year. Assisting the seasoned right-hander were newcomers Anke Rowe, Tommy Lide, and Jake Brewer. Returning to a relief role was Wally "Whip" Wilkinson, a veteran of the last three seasons.

Catching the Sox hurlers were three newcomers to the PC team. They are John McKissick, Gerald "Red" Banks, and Harold Dunton.

BROOKS COPELAND
Co-Captain, L. F.



BOB MCKINNEY
Co-Captain, 1B



Seasons Results—11 won, 13 lost.

We—They	Opponent	Place
3—4	—Newberry	Johnston
7—8	—Catawba	Clinton
12—20	—Furman	Greenville
0—12	—Catawba	Salisbury, N. C.
2—12	—Clemson	Clinton
18—9	—Wofford	Spartanburg
3—2	—Ga. Teachers	Statesboro
10—8	—Mercer	Macon, Ga.
7—8	—Mercer	Macon, Ga.
10—11	—Clemson	Clemson
6—5	—Georgia Teachers	Clinton
6—9	—Newberry	Newberry
5—6	—Erskine	Clinton
12—2	—Erskine	Due West
6—10	—Newberry	Clinton
11—2	—Wofford	Clinton
13—4	—Furman	Clinton
6—11	—Newberry	Newberry
8—2	—Erskine	Clinton
3—7	—Wofford	Spartanburg
6—10	—Newberry	Clinton
6—5	—Wofford	Clinton
8—16	—Erskine	Due West
9—3	—Mercer	Clinton
8—7	—Mercer	Clinton



BANKS
Catcher



WEINGARTNER
Second Base



KING
Third Base



WELDON
Shortstop

Rounding out the infield were Byron King and Jo-Jo Weingartner at third and second bases respectively. Utility infielders were Phil Thorton, Warren Steverson, and Ted Thompson.

Regis Kimsey, a transfer and Emmett Fulk, a freshman, shared a position in the outfield. Both are consistent hitters and good fielders.

Team co-captains for the season were McKinney and Copeland.

JACKSON
Right Field

KIMSEY
Center Field



THE GIRL OF THE GAME

She has the "curves"—she has the "speed",
She also has "control" to dangle;
If it should please she'll try the "squeeze",
Provided it's the proper angle.

She likes a "fast one round the waist",
A "salary whip" that's trained and steady,
A "home run guy" whose batting eye
Is "on the plate" when meals are ready.

"The diamond?" Yes, it goes with her,
A "good catch" finds her mitts extended;
But through the fight this "Bleacherite"
Calls for a "tie game" when it's ended.

S P O N S O R S



Miss Elizabeth Chachere
The PaC SaC Sponsor



Mis Rosemary Peters
The Blue Stocking Sponsor



Miss Marian McFadden
The Student Council Sponsor



Miss Lucille Manley
Pan-Hellenic Council Sponsor



S P O N S O R S

Miss Annette McCarter
Alpha Sigma Phi Sponsor

Mrs. Walter Gooch
Pi Kappa Alpha Sponsor

Miss Iris Lanier
Pi Kappa Phi Sponsor



Miss Betty Ann Christopher
Theta Chi Sponsor



Miss Jean Watson
Kappa Alpha Sponsor
Blue Key Sponsor



Miss Helen Newton
Alpha Lambda Tau Sponsor





Miss Pat Fowler
Battalion Sponsor

S P O N S O R S

Mrs. James Puryear
Company A Sponsor





Mrs. Paul Martin
Company B Sponsor

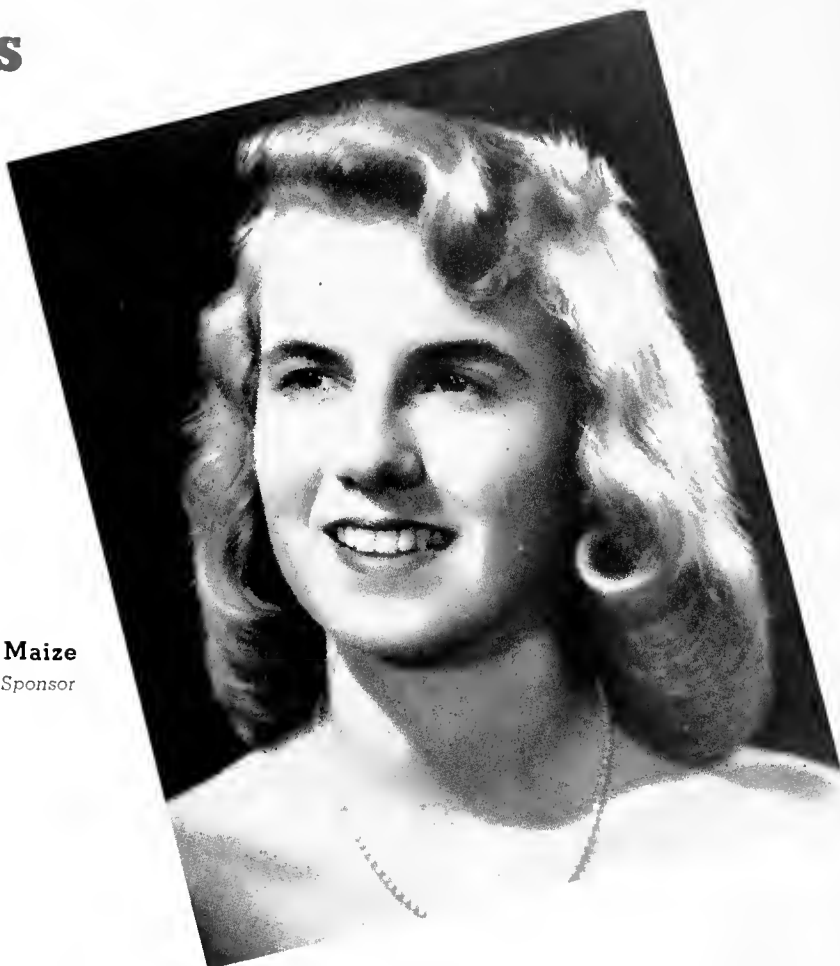
Miss Marrian Howard
Company C Sponsor



Miss Dot Daggett
Military Band Sponsor



S P O N S O R S



Miss Patsy Maize
I. R. C. Sponsor



Miss Jean Harris
Gamma Beta Phi Sponsor

Miss Betty Francis
The Collegian Sponsor





Miss Florence Lark
Block "P" Club Sponsor

Miss Jo Ryan
Pi Sigma Chi Sponsor



Mrs. Edward Campbell
Glee Club Sponsor



Mrs. H. G. Prince

*Fraternity Mother
Alpha Lambda Tau Fraternity*

*Neely McCarter receives scholastic Trophy for
Alpha Sigma Phi Fraternity*





Windy's Waltz



Kilo



Tuck-Tuck

Snaps

Sack

Papa Campbell and Christian Leader



We Three



SKAGS

Jim Soldiers



Gleesters

Hore and Guesmoke



Gooch

Rat

REST

Midnight Jive



SAMSON BELIEVED IN ADVERTISING; HE
TOOK TWO COLUMNS AND BROUGHT DOWN
THE WHOLE HOUSE.

Pac Sac Photographer

WILLIAM M. SHIELDS

JACOBS BUILDING

CLINTON, S. C.

BANK OF CLINTON

MEMBER FDIC

R. P. HAMER *President*
T. E. ADDISON *Vice-President*
JOHN T. YOUNG *Vice-President*
F. M. BOLAND *Cashier*
H. Y. McSWEEN *Assistant Cashier*



OUR BANK IS DEDICATED TO THE SERVICE
OF OUR COMMUNITY



BIG WHEELS!



BOOK WORMS

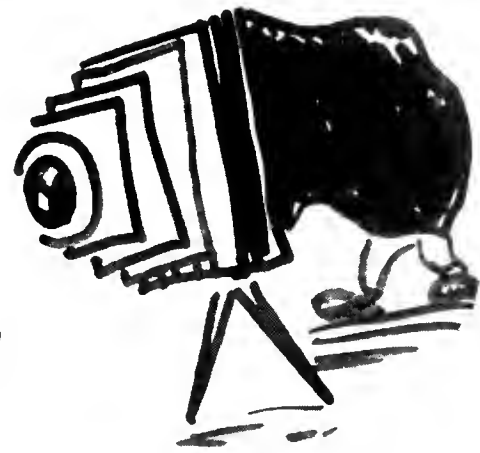


IT'S OVER

CAMPUSNAPS



WANT
a
LIGHT?



HOLD that
POSE



TIRED!



FOUR JACKS
and a
JEEP

SONGBIRDS



COMPLIMENTS OF

BROADWAY - CASINO

THEATRES

Which have Served P. C.'uns With the Best in
Entertainment for More Than 25 Years.

COMPLIMENTS OF

SPRATT GROCERY CO., Laurens

AND

J. C. TODD GROCERY CO., Clinton

WHOLESALE GROCERS

ADAIR'S MEN'S SHOP

FASHION HEADQUARTERS

FOR

YOUNG MEN'S FURNISHINGS

COMPLETE LINE OF
FREEMAN SHOES
"Worn by Millions"

PHONE 243-W

CLINTON, SOUTH CAROLINA

COMPLIMENTS OF

RODDY'S DRIVE - IN

3 BLOCKS FROM COLLEGE
ON GREENWOOD HIGHWAY

*Specializing in Sandwiches,
And Fountain Drinks*

CLINTON, SOUTH CAROLINA

TRAVEL BUS

Economical — Safe

CAROLINA SCENIC COACH LINES CAROLINA STAGES, INC.

SPARTANBURG, SOUTH CAROLINA

CHARTER TRIPS — Contact Home Office

SCHEDULES AND FARES — Contact Local Agent

Excellent Express Service

ICE CREAM BAR

College Boys Welcome

ICE CREAM

DO-NUTS

COFFEE

S. BROAD ST.

CLINTON, S. C.

For

QUALITY PRINTING

QUICK SERVICE

Take It To

TRULUCK COMMERCIAL PRINTING CO.

PHONE 748

CLINTON, SOUTH CAROLINA

MIDWAY DRIVE - IN THEATER

Open Every Night

Except Sunday

NEWBERRY HIGHWAY

BALDWIN MOTOR CO.

YOUR FORD DEALER

BALDWIN APPLIANCE CO.

YOUR FRIGIDAIRE DEALER

CLINTON FLOWER SHOP

FLOWERS — GIFTS



BIG and LITTLE



CLEAR!



CORNER SITTERS

Out of the Trash Bucket

WHAT
of LIFE!



PSYCHO



TOTEM
POLE



RAH P.C.



P.W.s



INITIATES

CHOW



POLITICS

QUEEN

DR. TIM'S CLASS



BOTH of US



CRUTCHFIELD'S, INC.

South Carolina's Leading Sporting Goods Store

Team Equipment Our Specialty

RAWLINGS
SPALDING
WILSON

RIDDELL
REACH, W & D
VOIT

MILT MANESS, Representative

SPARTANBURG, S. C.

CALL 226

E. MAIN AT PINE

McGEE'S DRUG STORE

CLINTON, SOUTH CAROLINA

THE MEN'S SHOP

LAURENS, S. C.

CLOTHING
FURNISHINGS OF STYLE
QUALITY

P. C. HEADQUARTERS

IN

LAURENS

Formal Wear For Rent

GOLDVILLE CLEANERS AND LAUNDRY SERVICE

HATTERS — DYERS

BLAKE WATTS, Campus Representative

JOANNA, S. C.

Welcome
P. C. FACULTY
and
STUDENT BODY

L. B. DILLARD
Gent's Furnishings and Shoes

CLINTON, SOUTH CAROLINA

COMPLIMENTS OF
YOUNG'S PHARMACY
"The Old Reliable"
PRESCRIPTIONS
DRUGS — FOUNTAIN

CLINTON, SOUTH CAROLINA

J. C. THOMAS
Jeweler
"It's Time That Counts"
PHONE 89
CLINTON, SOUTH CAROLINA

DIAMONDS, WATCHES, JEWELRY

MAXWELL
BROTHERS AND WILKES
"It's Quality That Counts"
COMPLETE HOME FURNISHERS
TELEPHONE 247
CLINTON, SOUTH CAROLINA

YARBOROUGH OIL CO.
Goodyear Tires
GAS — OIL — ACCESSORIES
PHONE 440
CLINTON, SOUTH CAROLINA

PRATHER - SIMPSON
FURNITURE COMPANY
*We Appreciate the Patronage of the College,
Professors, Students and Fraternities*

CLINTON, SOUTH CAROLINA

BLAKELY - BURTON'S
Hardware and Seeds

PHONE 188 18 N. BROAD

CLINTON, SOUTH CAROLINA

COMPLIMENTS OF
CAROLINA
SERVICE STATION
Texaco Products

TELEPHONE 27
CLINTON, SOUTH CAROLINA

COLEMAN'S
SNOW WHITE WASHETERIA

"We Appreciate P. C.'uns Patronage"

CLINTON, SOUTH CAROLINA

D. E. TRIBBLE COMPANY

"Dependable Service at all Times"

LET US SUPPLY YOUR BUILDING NEEDS

CLINTON, SOUTH CAROLINA

COMPLIMENTS OF
GEO. A. COPELAND
AND SON

SPORTING GOODS AND HARDWARE

CLINTON, SOUTH CAROLINA

ROYAL CLEANERS, INC.

"Beautiful Dry Cleaning"

PHONE 77

CLINTON, SOUTH CAROLINA

CHRONICLE
PUBLISHING COMPANY

*"We Do All Kinds of Printing
Except Bad"*

TELEPHONE 74

CLINTON, SOUTH CAROLINA

COMPLIMENTS OF
CLINTON CAFE

"WHERE THE ELITE MEET TO EAT"

A True Friend of the College

CLINTON, SOUTH CAROLINA

COMPLIMENTS OF
JOANNA STORES

JOANNA, S. C.

HAMILTON'S, INC.

Jewelers

DIAMONDS — WATCHES — SILVERWARE

PHONE 51

"A Credit to all South Carolina"

CLINTON, SOUTH CAROLINA

COMPLIMENTS OF
TIMMERMAN MOTOR CO.

OLDSMOBILE — GMC TRUCKS

"Sales and Service"

CLINTON, SOUTH CAROLINA

MEET

ME

AT

LOUIE'S

BISHOP AND WALKER

The REXALL Store

Everything a Modern Drug Store

Should Have

CLINTON, SOUTH CAROLINA

JOE'S

ESSO SERVICE

TELEPHONE 128

COMPLETE FOUNTAIN SERVICE

Standard Oil Products

CLINTON, SOUTH CAROLINA

BELK'S

CLINTON'S COMPLETE SHOPPING CENTER

"Everything to Wear"

CLINTON, SOUTH CAROLINA

SUNSHINE CLEANERS

SHIRT LAUNDRY

QUALITY WORK — QUICK SERVICE

PHONE 436

CLINTON, SOUTH CAROLINA

JOHNSON BROTHERS
SERVICE STATION

ALSO

LOCAL AND LONG DISTANCE

HAULING

TELEPHONES

DAY 9267 NITE 304

CLINTON, SOUTH CAROLINA

COMPLIMENTS OF

H. D. PAYNE AND COMPANY

Distributors of

TEXACO PRODUCTS

FIRESTONE AND U. S. ROYAL TIRES

Dealers for General Electric Products

CLINTON, SOUTH CAROLINA

ENJOY
SPUR COLA

A Finer Cola

CANADA DRY BOTTLING OF CLINTON, S. C.

THE COUNTRY MARKET

FRESH MEATS, FISH

OYSTERS

"Quality Meats—Our Specialty"

TELEPHONE 98

CLINTON, SOUTH CAROLINA

COMPLIMENTS OF

W. G. KING & SONS

BUILDING MATERIALS

"We Sell Everything To Build Anything"

PHONE 438

CLINTON, SOUTH CAROLINA

COMPLIMENTS OF

CENTER SERVICE STATION

TEXACO PRODUCTS

TELEPHONE 700

COMPLIMENTS OF

CLINTON SERVICE STATION

C. S., E. M., and C. W. YOUNG

PHONE 96

E. CAROLINA AVE.

HODGES SALES CO.

HODGES, SOUTH CAROLINA

TELEPHONE 2525

Distributors of

KAHN'S AMERICAN BEAUTY

HAMS — BACON — SAUSAGE

ROWLAND'S

RADIO SALES AND SERVICE

Expert and Guaranteed Repairs on Any Model

NEW RADIOS AND RECORD PLAYERS

TELEPHONE 430

CLINTON, S. C.



I RECKON SO"



WE CAN'T STOP HERE



MAKONITES



THIS IS THE LIFE



WHAT A CREW!



'ATTABOY ROE

Can't help but Remember



IT'S LIKE THIS
MAN and NATURE



JOE, GINNY and
"OUR CAR"

TOO
TIRED
TO WALK



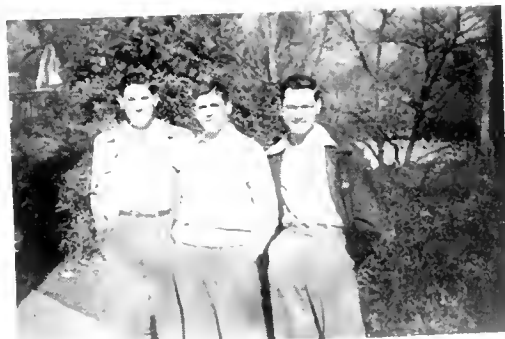
MONTREAT
SORORITY
HOUSE
PARTY



WARDLAW'S
WRECK



BLOWING ROCK



CAN YOU BELIEVE IT?



M. S. BAILEY and SON BANKERS

WITH OUR BEST WISHES FOR YOUR SUCCESS



ROBERT M. VANCE *President*
R. C. ADAIR *Executive Vice-President*
G. L. SIMPSON *Cashier*
R. G. WATSON *Assistant Cashier*
JAMES H. VON HOLLEN *Teller*



SERVING PRESBYTERIAN COLLEGE

SINCE ITS BEGINNING

ESTABLISHED 1886

CAPITAL & SURPLUS \$600,000.00

MEMBER FDIC

The **FACTS** are **HERE!**

*You have assembled on these pages
words and pictures which tell the story
of one year, this year, in your school.*

*In future years, when events are fond
memories, this book will serve as proof
to you of the happenings . . .*

*We also present this book as proof . . . proof
of the outstanding designing, engraving and
printing that has made our plant
famous for distinguished work.*



jacobs brothers

Printers. Designers and Photoengravers

CLINTON, S. C.

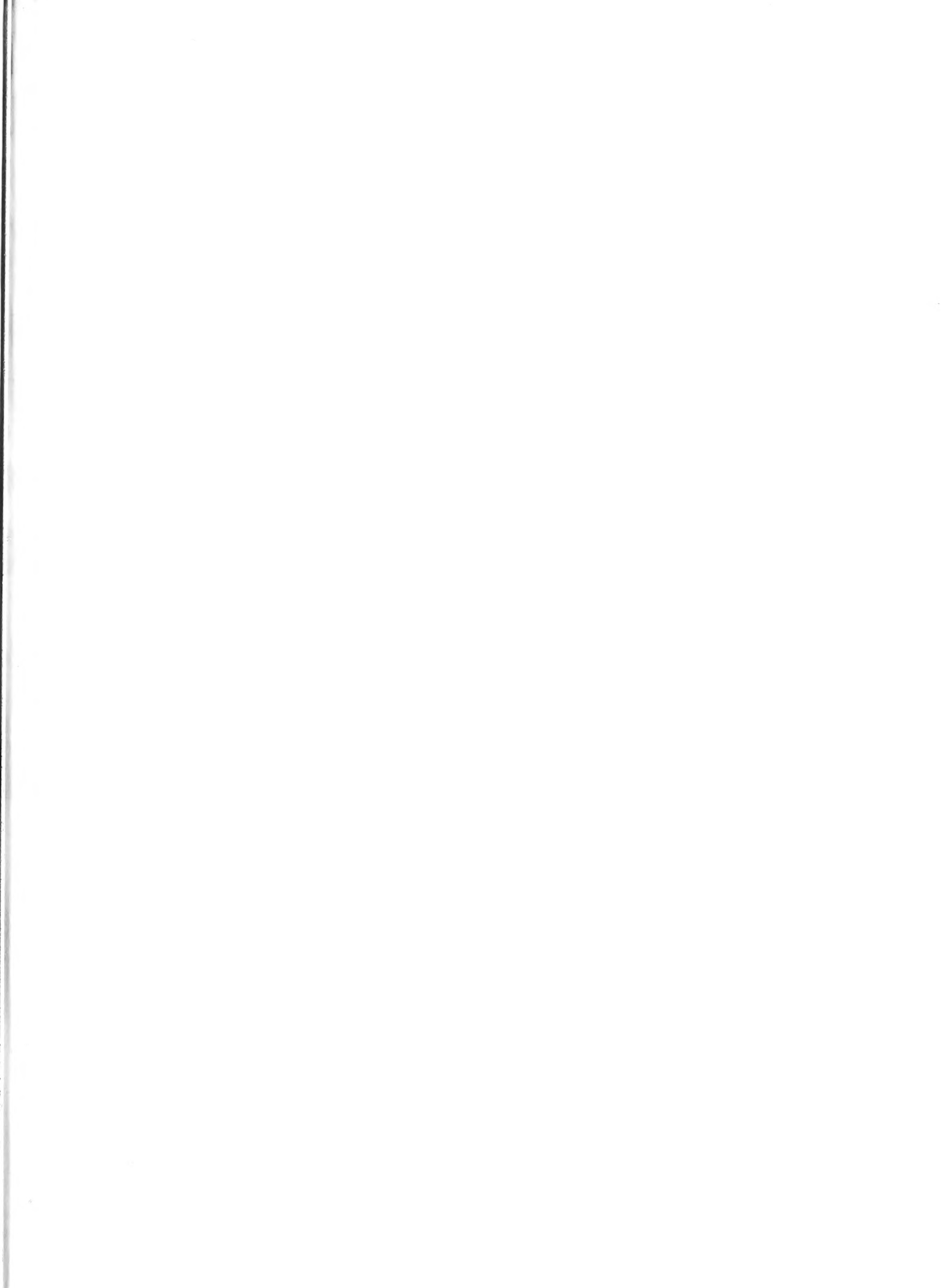
**Creative, Idea Printing, a Family Tradition
for Four Generations**



PRESBYTERIAN COLLEGE

FOUNDED IN THE SPIRIT OF CHRISTIAN FAITH AND
BROTHERHOOD, PRESBYTERIAN COLLEGE HAS AS
ITS PRIMARY PURPOSE THE PROVIDING OF ALL
ESSENTIALS NECESSARY TO MAKE RESOURCEFUL,
ENLIGHTENED, AND COMPETENT CHRISTIAN LAY-
MEN AND MINISTERS

CLINTON, SOUTH CAROLINA



PRESBYTERIAN COLLEGE LIBRARY



3 5197 00118872 4

