

T 485
.C1 P42
Copy 1

T 485
.C1 P42



Souvenir
of the



PAN-
AMER-
ICAN
EXPOS-
ITION.

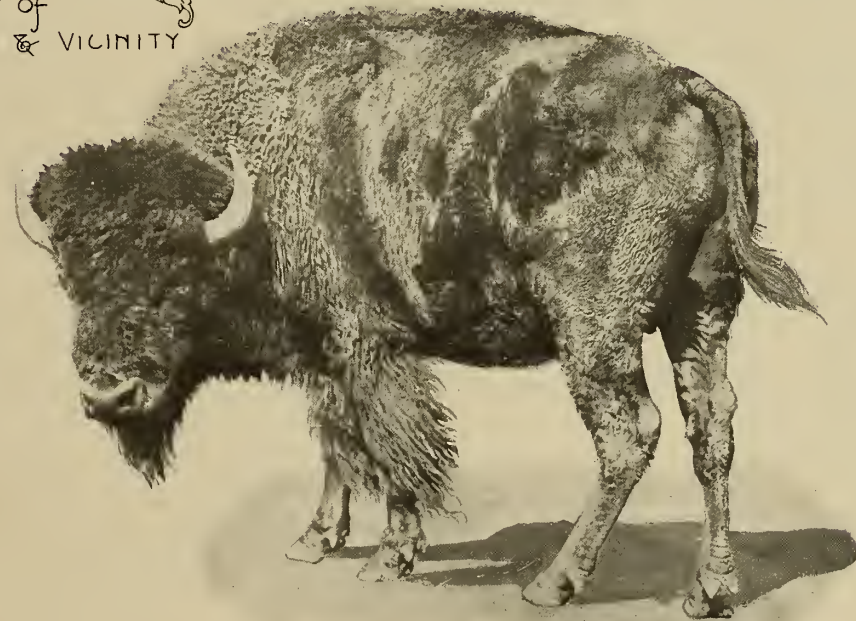
Buffalo N.Y. U.S.A.
1901 ~ ~ ~

SPECIAL EDITION

Copyright ~ 1901.

THE LIBRARY OF
CONGRESS.
RECEIVED
JUN 17 1901
COPYRIGHT ENTRY
Feb. 16. 1901
CLASS. & X.C. NO.
3385
D.C.P. D.

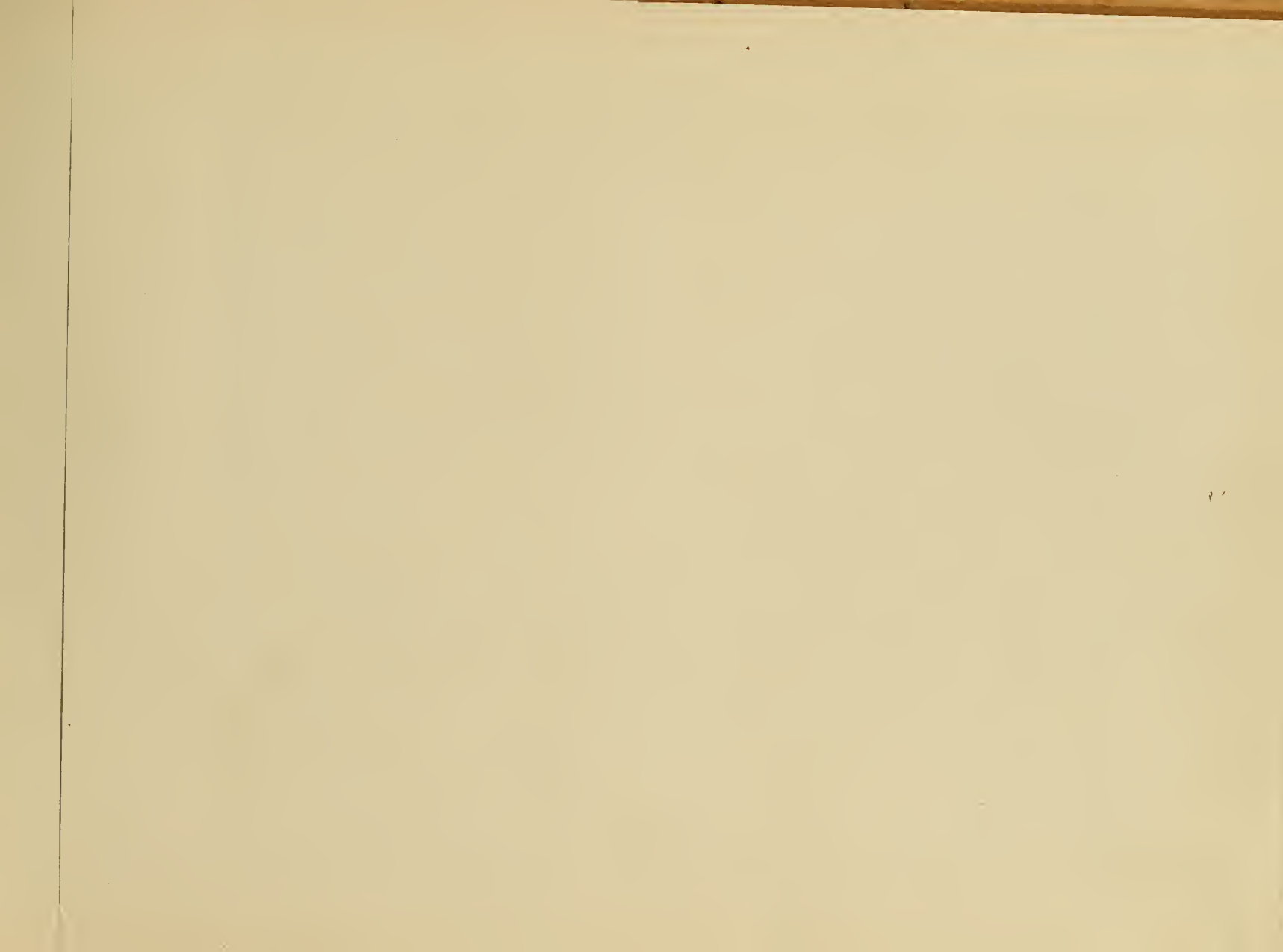
The
PAN AMERICAN -
EXPOSITION -
INCLUDING
PICTURES of
BUFFALO & VICINITY



YRABILL INT

229000 70

1405
CIP4E



YRABLI :

229000

T45
CIP42



1901
CREW, STON & CO.
BUFFALO, NY



THE TRIUMPHAL BRIDGE

A structure swung from our piers, 100 feet high, each surmounted by a sculptural group



UNITED STATES GOVERNMENT BUILDING

Containing, in addition to the Fisheries and Department displays, exhibits from the Hawaiian and Philippine Islands, Tutuila, Guam, Porto Rico and Cuba.



MACHINERY AND TRANSPORTATION BUILDING, 350 x 500 ft.

In the machinery department, machinery for making and transmitting power and general machinery are exhibited.



ELECTRICITY BUILDING 500 x 150 ft.

Contains plant for distribution of electric power for the Exposition, and the commercial and historic exhibits in electrical arts.



Manufactures and Liberal Arts Building

Ethnology Building

Court of Fountains

Triumphal Bridge



GRAPHIC ARTS BUILDING, 150 ft. square

Here are exhibited all the latest inventions pertaining to printing and its allied arts.



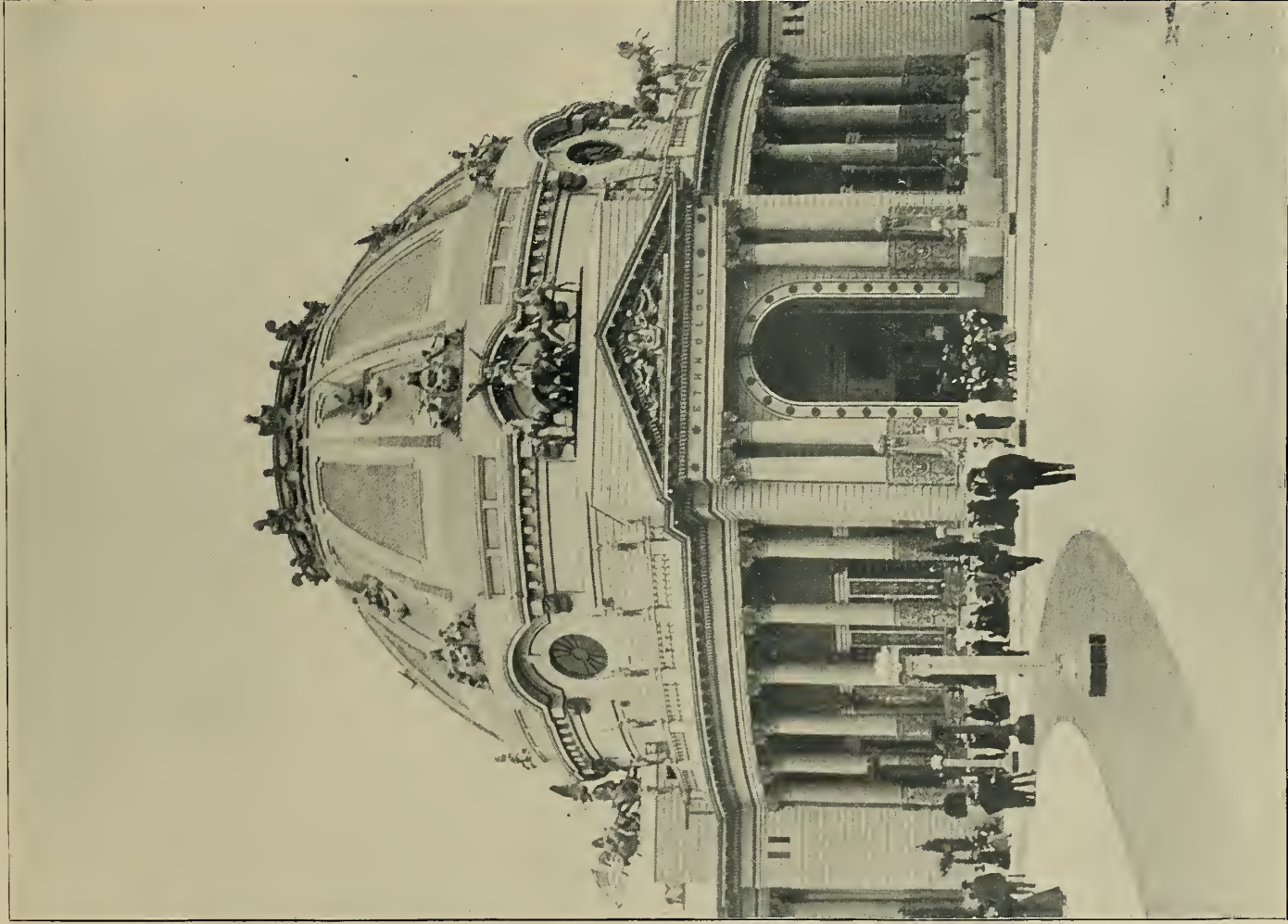
HORTICULTURE BUILDING, 220 ft. square

The exhibits include all the popular fruits and their products from many states and countries.



THE TEMPLE OF MUSIC

Seating capacity 2,200; contains the largest and finest pipe organ ever built in the United States. Two recitals daily.



ETHNOLOGY BUILDING

Exhibits relating to prehistoric and historic archaeology, ethnology and related arts.



AGRICULTURE BUILDING (Showing Columns), 150 x 500 ft.

Contains exhibits of agricultural products, implements and machinery

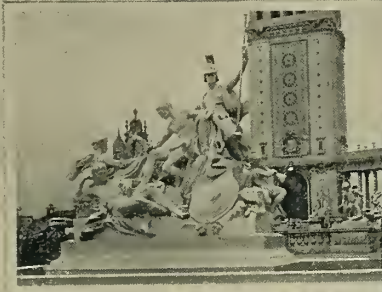


THE BLACKSMITH

CHARIOTE



THE ARTS



ENLIGHTENMENT
AGE OF



FOUNTAIN
OF
NATURE
AGRICULTURE
MINERAL
WATER





THE PROPYLÆA

is 500 feet long, with a massive towered entrance at each end.

The Esplanade
from Ethnology Building.



The Court of the Fountains
from the Mall



The Tower Basin

Looking South from the Midway



IN AND ABOUT
THE MIDWAY



SCENES ON THE
MIDWAY



THE SERVICE BUILDING

Headquarters upon the grounds for the Exposition authorities.

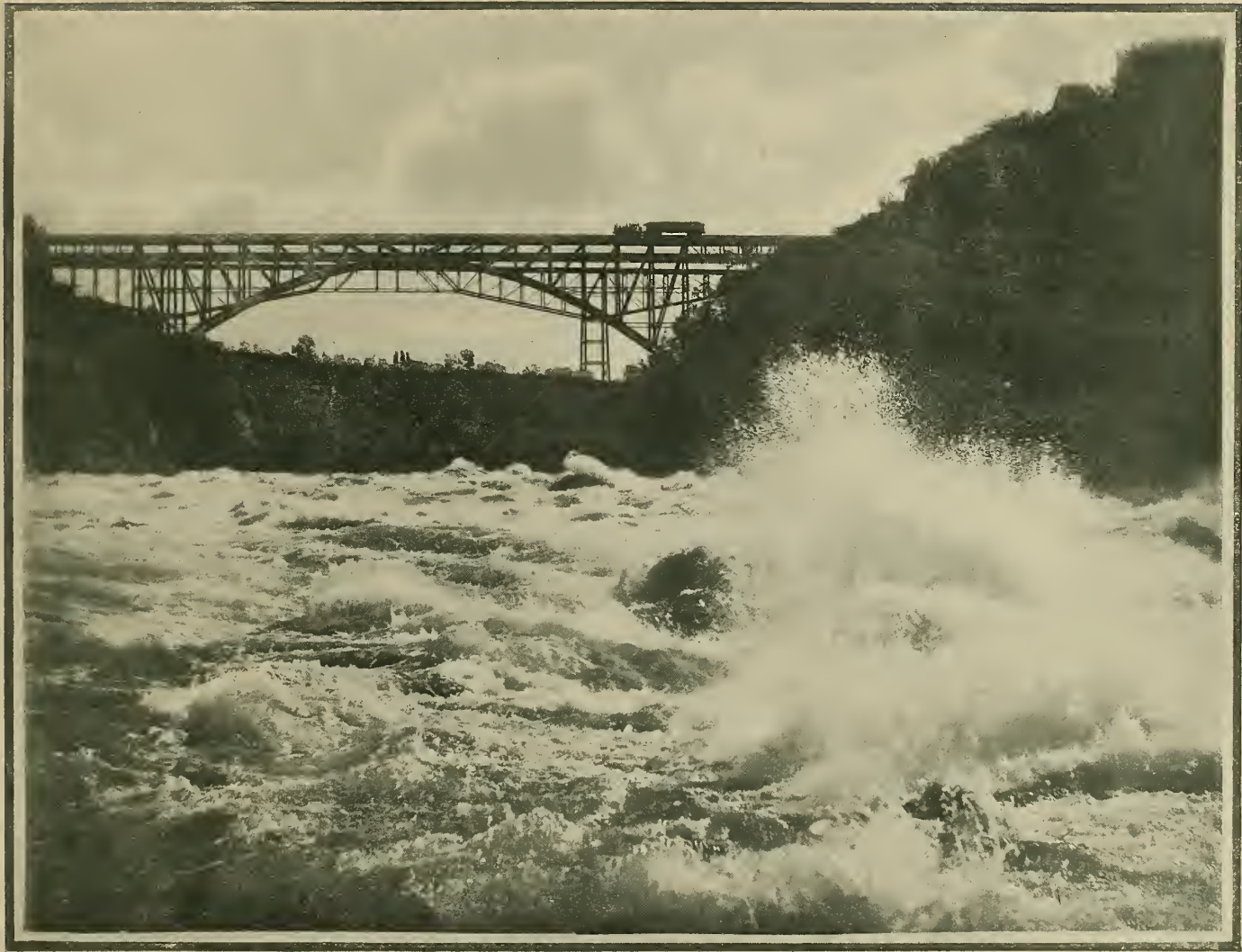


A GENERAL VIEW
OF THE FALLS

The
Sister
Islands



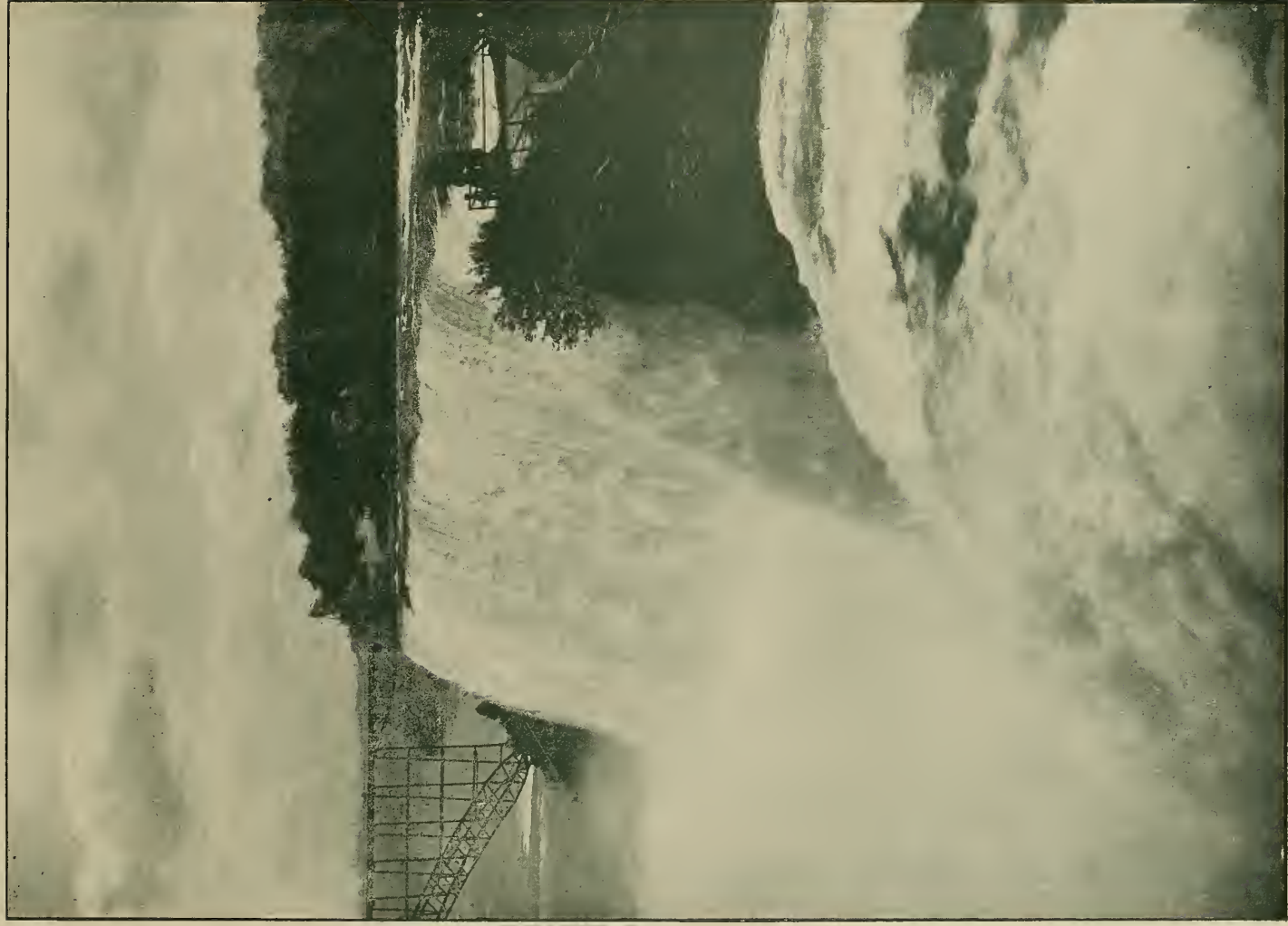
Whirlpool
Rapids



THE WHIRLPOOL
RAPIDS



THE FALLS FROM
BELOW



THE AMERICAN
FALL



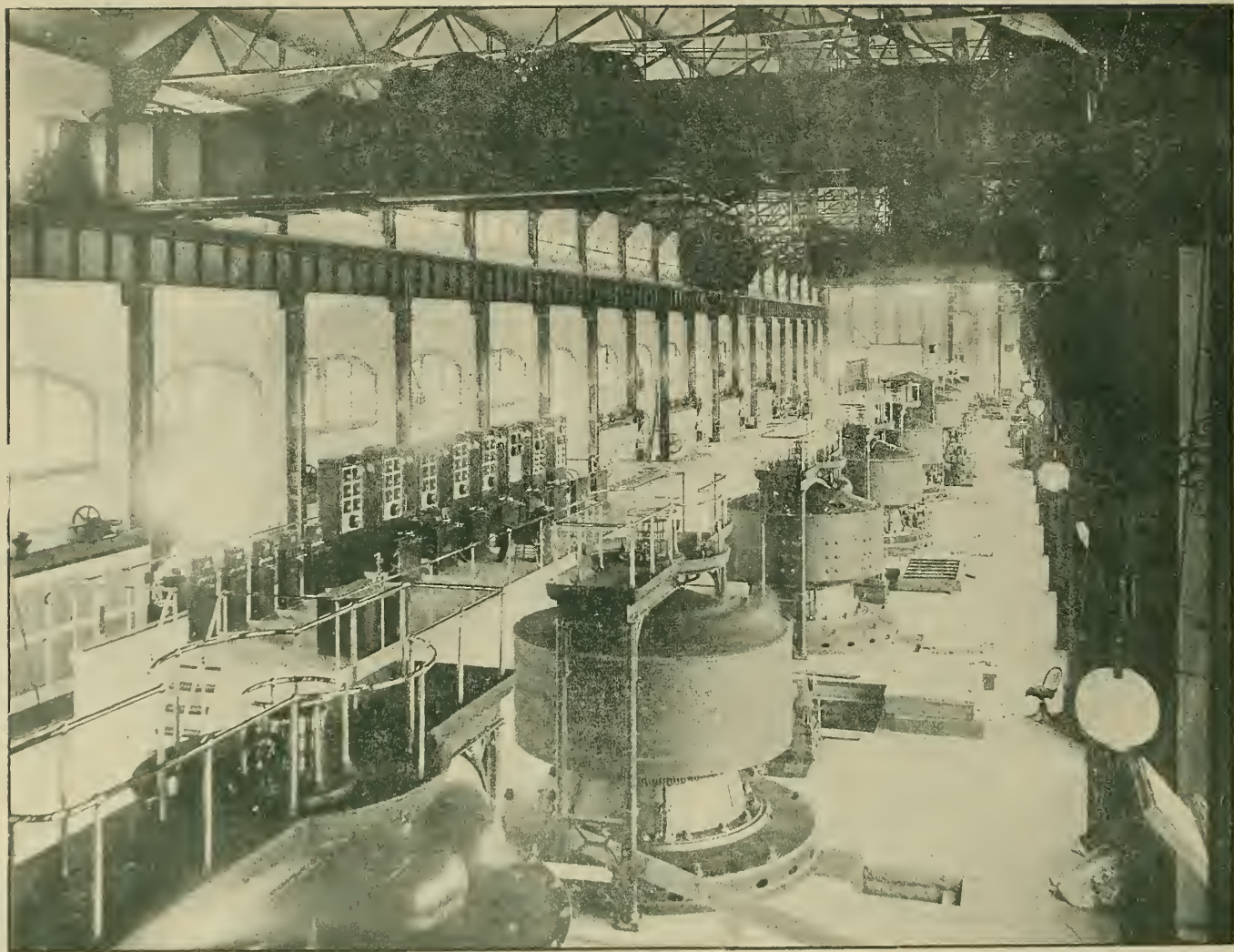
Trees on ~ ~
Goat Island

The New
Steel Arch Bridge -





ROCK OF AGES AND
CAVE OF THE WINDS



INTERIOR OF NIAGARA FALLS
POWER HOUSE



THE HOSKESHOE
FALL



THE CITY AND
COUNTY HALL, BUFFALO

**THE
NEW
POST
OFFICE**

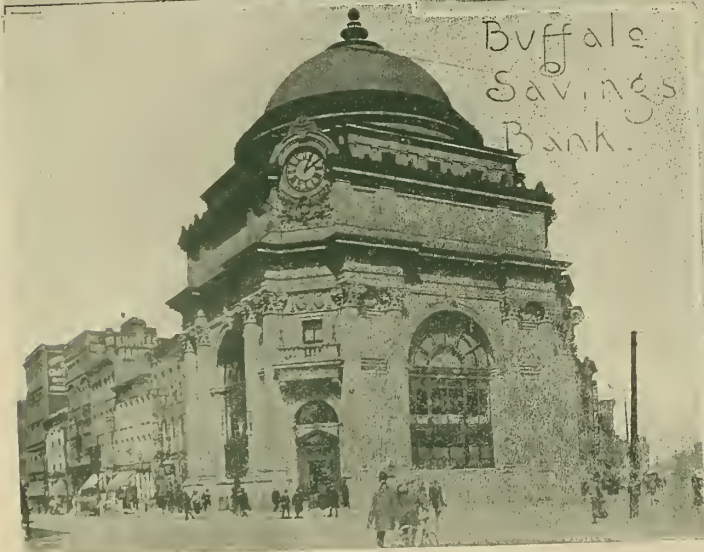
Covers
an
entire
square.
Cost,
\$2,500,000



First
Savings
Bank



Bank of
Buffalo



Buffalo
Savings
Bank

Bank of
Buffalo





BUFFALO PUBLIC LIBRARY

and home of the Academy of Fine Arts, Historical Society and the Society of Natural Science.



ERIE COUNTY BANK BUILDING AND
ST. PAUL'S EPISCOPAL CHURCH



MAIN ST
LOOKING
SOUTH



THE
ELLICOTT
SQUARE

The Ellicott Square is the largest office building in the world, occupying an entire square.



ARMORY OF THE 74th REGIMENT
N. C., N. Y.



BIRD'S-EYE VIEW
FROM THE ARMORY



STAR
THEATRE





BIRD'S-EYE VIEW FROM
THE PRUDENTIAL BUILDING



Lafayette Square

Mooney-Brisbane Building

Main Street, looking South

TEMPLE
BETH ~
ZION ~
JEWISH



DELAWARE
~ AVENUE
BAPTIST ~
CHURCH ~



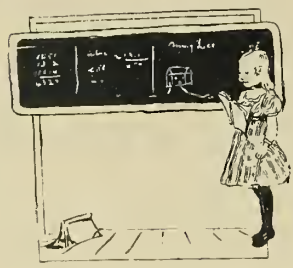
ST. LOUIS
CHURCH
ROMAN ~
CATHOLIC



DELAWARE
AVENUE ~
METHODIST
CHURCH



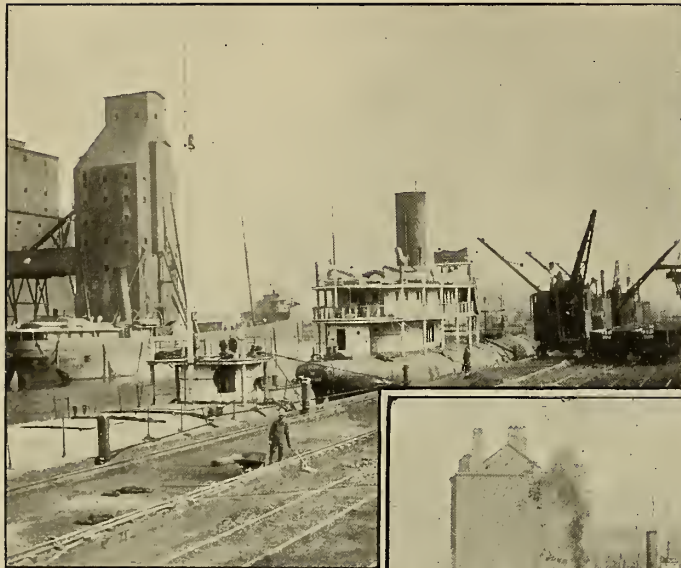
FIRST PRESBYTERIAN CHURCH ~



MASTEN PARK HIGH SCHOOL AND
STATE NORMAL SCHOOL



THE IDLERS!



SHIPPING INTERESTS

Buffalo is the fourth shipping city of the world.



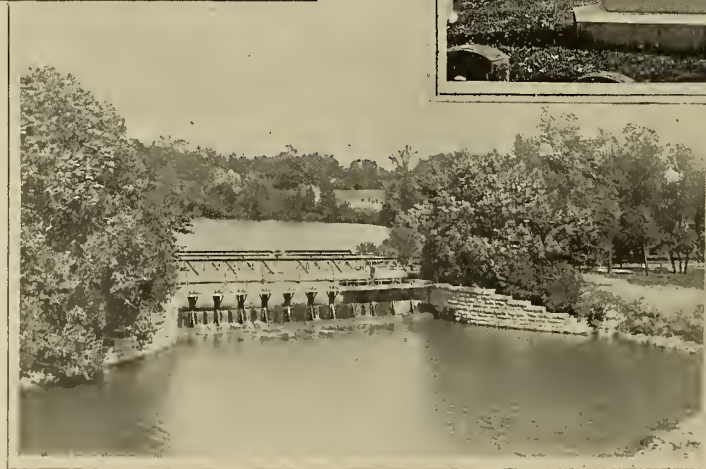
A SCENE IN DELAWARE PARK

Now part of the Exposition grounds.



PARK ~ ~
SCENES

RED
JACKETS
MONUMENT ~ ~





AT THE ZOO
IN DELAWARE PARK



**PALMS AT CONSERVATORY
SOUTH PARK**

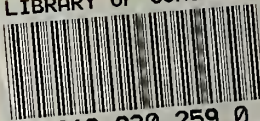


A NIGHT SCENE

AUG 17 1901

PUBLISHED BY
CARL H. MEIBOHM,
W. RAY TOWNSEND,
BUFFALO, N. Y. U S A.

LIBRARY OF CONGRESS



0 019 930 259 0

