



PARIS
ILLINOIS

THE
LAW
OF
MORALS

ILLINOIS HISTORICAL SURVEY

Preface

C

HIS book deals in facts. It is published under the auspices of The Commercial Club of Paris (incorporated) and the figures and estimates given have been compiled and verified with great care.

If you are looking for a site for a factory or other commercial enterprise, or for a location for a home, you cannot do better than to come to Paris. You will be welcomed by our citizens, and our Commercial Club stands ready to co-operate with you in every possible way.

We have great natural resources, enterprising people and a growing, flourishing city. We intend to continue to grow and flourish. To that end we want more manufacturing industries, and we shall do all in our power to make every comer successful, satisfied and happy.

Address all communications to

CHARLES F. PROPST, Secretary.



1777.561
F2182



COURT HOUSE

150000

Paris...



A CITY of *8000 inhabitants, is the county seat of Edgar County, Illinois. It is peculiarly well favored in location, being situated upon the border of the most fertile prairie in the world, and yet bounded by timber land to the east and south and within a few miles of the great Indiana coal fields.

The natural products of the surrounding country are, therefore, rich and diversified. 100 bushels to the acre is a normal corn crop for Edgar county, while wheat and oats yield proportionally, and fruit of all kind abounds. The cattle, horse and hog industries are also very extensive.

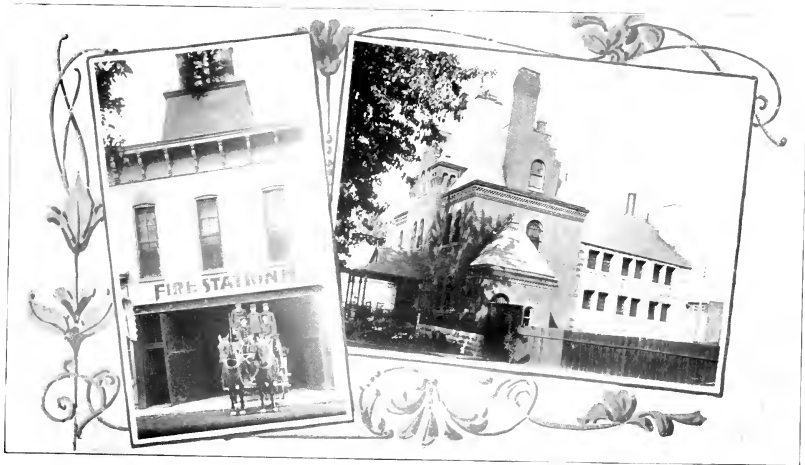
As proof of the great wealth of the district, attention is called to the statements of our banks, which show a condition of prosperity unequalled elsewhere in the west.

Paris is, furthermore, especially fortunate as to markets, being almost equally distant from the great cities of Chicago, St. Louis, Cincinnati, Louisville and Indianapolis. Our transportation facilities are strikingly demonstrated by the fact that morning papers reach us daily before noon from Chicago, St. Louis, Cincinnati and Indianapolis.

The natural resources of Edgar County are boundless; the peculiar commercial and social advantages of Paris, scarcely equalled. Especially within the past five years has Paris made a wonderful growth. During the year, 1903, \$300,000 have been expended in building. 150 new residences have been erected, 25 business houses, and \$150,000 have been invested in factories and public buildings. Yet this remarkable growth has scarcely kept pace with the increase of population.

And yet there has been no boom, but a gradual, thrifty, substantial growth. So secure is the natural wealth of our community that the financial depression of 1893 had but little effect upon Paris. Workmen from many surrounding cities came here and found work in abundance at good wages during that period.

*Since this work was compiled, a new City Directory has been issued which contains 4763 names. Multiplying these figures by two, which is considered a conservative rule for estimating population, gives a total of 9526, as our present population.



COUNTY JAIL AND FIRE STATION

The City of Paris



As a Place to Live in, Paris is an Ideal City.

This is situated upon rolling land, is well drained, clean and healthful. A complete modern sanitary sewer system is in course of construction, nine miles of sewer being already in operation. The sewerage is disposed of in the most approved, scientific manner. Four miles of streets and alleys are substantially paved with vitrified brick on a concrete base, and other streets are in process of like improvement.

There are fifty miles of concrete and brick sidewalks within the city limits.

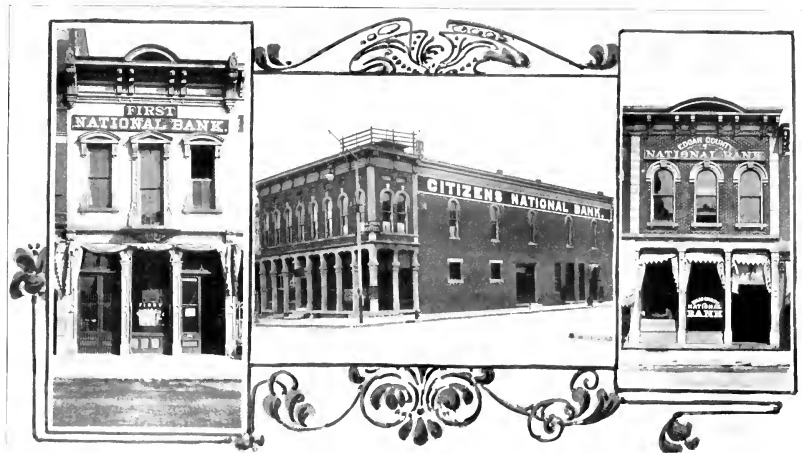
The streets are amply shaded with arching maples and other hardy trees and are kept clean.

Beautiful homes, with well kept grounds, are the rule, our unlimited water supply (there being a hydrant on almost every lot) facilitating the care of lawns.

Ample protection against fire is afforded by a paid Fire Department equipped with two teams of horses and all modern appliances.

A Yaryan Hot Water Heating Plant has been in successful operation for the past three years, supplying ideal heat to 200 of our business houses and residences at a moderate cost. In connection with it is also operated an extensive gas plant and electric light system, supplying light and power.

Franchises have been granted and surveys made for a complete electric street car system, traversing our principal streets and connecting the City with Reservoir Park. Interurban systems, connecting Paris and Terre Haute, and Paris and Danville are assured for the near future.



FIRST NATIONAL BANK

CITIZENS' NATIONAL BANK

EDGAR COUNTY NATIONAL BANK

Schools and Churches



The public school system of Paris is a matter of just pride on the part of our citizens. The city schools have an annual enrollment of more than 1300 pupils. 32 teachers are employed. There are three substantial brick public school buildings in convenient parts of the city, and a catholic parochial school.

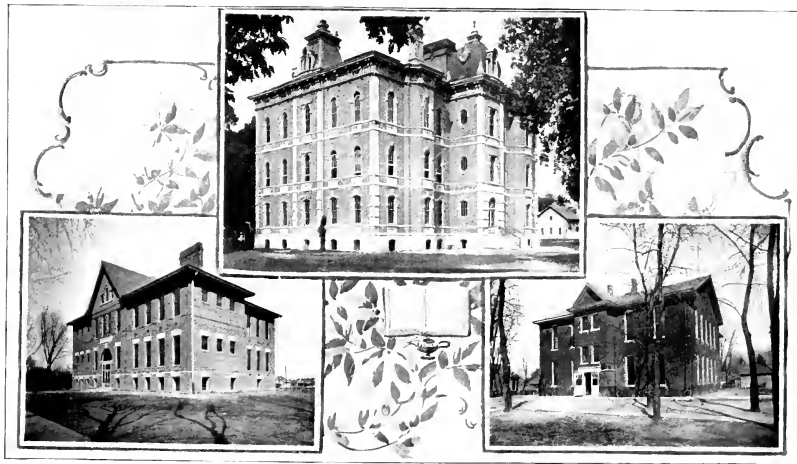
The city high school has an enrollment of over 200, with six teachers, and offers three courses of four years each. It is on the accredited list of all the leading colleges and universities of the west. It numbers among its 450 graduates men and women now prominent in law, politics, journalism, medicine, the ministry, teaching, literature and commercial pursuits.

The enrollment of the city schools for 1903, showing an increase of 19 per cent, is a true indication of the actual growth of the city.

The support given the schools by the public, the interest of patrons and enthusiasm of pupils and teachers are all prophetic of a still higher grade of culture and citizenship for the community.

Paris is pre-eminently a City of Churches. It is admitted that in no other city in the west is the standard of church architecture so high as here. Within the past ten years the following new churches have been erected: The First Methodist Episcopal, at a cost of \$53,000; the Christian, cost, \$45,000; First Presbyterian, cost, \$43,000; Catholic, cost, \$50,000; First Baptist, cost \$20,000; Second Baptist, cost, \$4,000; African Methodist Episcopal, cost, \$7,000.

The United Brethren, Episcopalians, Methodist Protestants and Pentecosts also have substantial and commodious church edifices..



TANNER SCHOOL BUILDING

HIGH SCHOOL BUILDING

FIRST WARD SCHOOL BUILDING

Fraternal Orders



Paris is the home of two flourishing Masonic Lodges, numbers 77 and 268, having a combined membership of 500. A chapter of Royal Arch Masons and a Commandery of Knights Templar are also located here, and a chapter of the Order of Eastern Stars having a membership of 150. The two Masonic Lodges own their quarters, handsome three story brick and stone structures, elegantly furnished and equipped.

Other fraternal orders are represented as follows: Two Lodges of the Independent Order of Odd Fellows and a Rebecca Lodge, with a combined membership of 400; camp of Modern Woodman of America, membership, 325; Ben Hur, membership, 150; Court of Honor, membership, 125; Benevolent and Protective Order of Elks, membership, 200; Ancient Order of United Workman, membership, 135; Knights of Pythias, membership, 50. The Elks have particularly handsome quarters in a modern three story stone building just completed at a cost of \$20,000.

The Grand Recorder's office of the A. O. U. W. of Illinois is located here, and gives employment to a large corps of assistants.



ODD FELLOWS BUILDING

B. P. O. ELKS BUILDING

City Library

..*.*.*

In 1902 Andrew Carnegie donated \$18,000 to the city of Paris for the construction of a free public library building. This beautiful structure, just completed, will accomodate 20,000 volumes, and is a model of convenience and completeness. It is built strictly upon classic lines and is acknowledged to be one of the most imposing library buildings in the west.



CARNEGIE LIBRARY

Children's Home



In 1897 Edgar County appropriated \$10,000 for the erection of a home for destitute children. The Children's Home is situated in the east part of the city in a beautiful natural grove of ten acres, donated for the purpose by the late Jas. A. Eads.

The home is maintained partly by the county and partly by private charity and accomplishes a great work in rescuing and training indigent children.

Hospitals

The Benedictine Sisters have recently instituted a movement for the establishment of a Public Hospital in Paris, one of the most commodious and beautiful buildings in the City, having been acquired by them for that purpose.

An organization has also been perfected by a number of leading citizens for the establishment of a Union Hospital, so that Paris will soon be amply provided for in this direction.



EDGAR COUNTY POOR FARM



CHILDREN'S HOME

Water Works and Electric Light Plant.

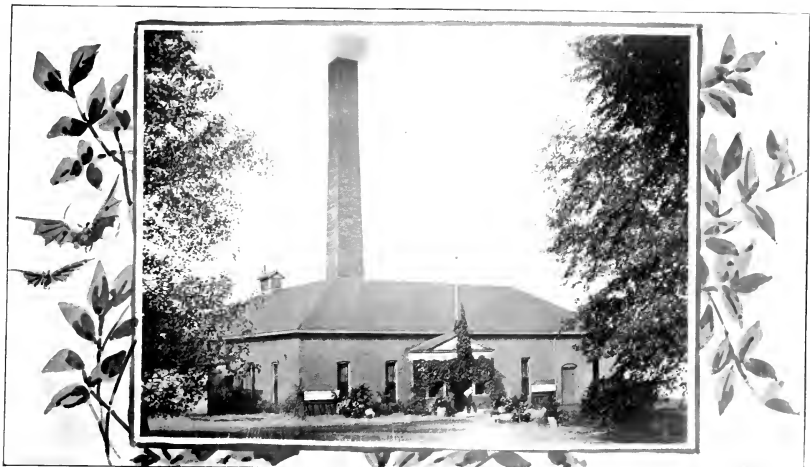


The city of Paris maintains its own water works and electric light plant, and in point of efficiency and economy has attained for them a place in the front rank of such municipal institutions.

Our water supply is obtained from a reservoir, 66 acres in extent and having a capacity of 100,000,000 gallons. This beautiful inland lake is fed by numerous springs and streams, giving us a supply of pure water practically inexhaustible.

The pumping station is fitted with the highest class equipments, including triple expansion pumps with a capacity of 2,500,000 gallons per day and a reserve pump of 750,000 gallons capacity. There are 14 miles of water mains and the average consumption of water per day is 600,000 gallons.

Our electric light system is operated in connection with the water works plant. We have 110 arc lights, operated at an annual cost of \$49 each, making Paris at once the most thoroughly and economically lighted city in the west.



WATER WORKS AND ELECTRIC LIGHT PLANT

Reservoir Park.



Reservoir Park, comprising the grounds adjoining the city reservoir, one mile north of the city, is, without exception, the finest pleasure resort within a radius of one hundred miles. Although open to the public only a few years, it has already become the Mecca of summer pleasure-seekers throughout a large section of Illinois and Indiana.

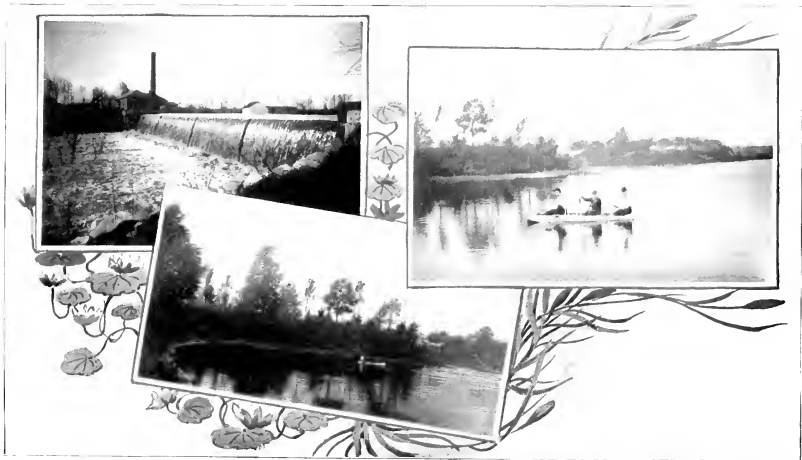
For a place of rest and recreation it is unrivalled. The lake, covering an area of sixty-six acres, abounds in black bass and other game fish. Bass weighing as much as six pounds have been caught. An average weight of four pounds is altogether common. Row boats are to be had at reasonable rental rates, while a steamboat and a naphtha launch with a combined capacity of 175 passengers, ply the lake on all occasions.

The park grounds, encircling the lake, are of ample extent and furnish an ideal place for camping parties and picnics. They are covered with a natural growth of forest trees and are picturesque in the extreme, being interspersed with romantic glades and glens, hills and ravines, where ferns and flowers grow wild and refreshing mineral springs flow perpetually.

The park is well supplied with swings and merry-go-rounds, dining halls and dancing pavillions, which are available at all times.

Reservoir Park is reached from the city by the C. V. & C. railway, and two wagon roads. A street car line, connecting it with the city will also be in operation in the near future.

A summer Chataqua will be held in the park in August, 1904, and annually thereafter, some of the best talent in the country having been already engaged.



VIEWS OF RESERVOIR PARK

Banks

Paris has three National Banks whose reports speak for themselves.

The First National has a capital of \$108,000, a surplus of \$108,000 and deposits of \$1,001,445. Footing, \$1,404,137.

The Edgar County National has a capital of \$100,000, a surplus of \$100,000 and deposits of \$858,298. Footing, \$1,192,365.

The Citizen's National with a capital of \$100,000, a surplus of \$24,000, and deposits of \$147,227.21. The last named bank has been in business only one year. An especially commendable feature of all three banks is the fact that all the stock is owned by citizens of our community. There are four other banks in the county having smaller capital, but in equally as good condition as the above.

Building and Loan Associations

Paris has three Building and Loan Associations, which have enjoyed uninterrupted prosperity and have contributed largely to the upbuilding of the city.

THE PARIS SAVINGS AND LOAN ASSOCIATION, organized in 1893 offers the following statement of its condition

Loans disbursements, year ending Nov. 1, 1903	\$ 64,414
Net increase in loans, past 3 1/2 years	102,277
Total loans since organization	346,864
Total receipts since organization	512,707
Total disbursements since organization	509,708

THE EDGAR COUNTY BUILDING AND LOAN ASSOCIATION was organized in 1897. Their condition is shown in the following statement:

Loans outstanding	\$ 229,850
Increase in past two years	100,000
Loans disbursements past year,	86,725
Total loans since organized	685,340
Stock matured	274,300
Total receipts since organized	1,551,505
Total disbursements since organized	1,536,640

THE HOME BUILDING AND LOAN ASSOCIATION, which was organized in January, 1903 entered immediately upon a profitable career, and already shows a condition of prosperity in keeping with the growth of the city.

Hotels

We have two large hotels with all modern conveniences, conducted in a thoroughly up-to-date style, which cater especially to transient trade and have a very enviable reputation among traveling men, and four or five smaller hotels which take care of all comers in a satisfactory manner, also catering to the wants of our citizens who prefer boarding.



VIEWS OF RESERVOIR PARK

Railroad Facilities.

Our railroad facilities are especially worthy of note, being much better than those enjoyed by many cities having double our population. We have the distinction of being on two great systems or trunk lines, the BIG FOUR, with two branches, one running north and south and the main line, running east and west; also the PENNSYLVANIA, or Vandalia, the Peoria division of which passes through our city.

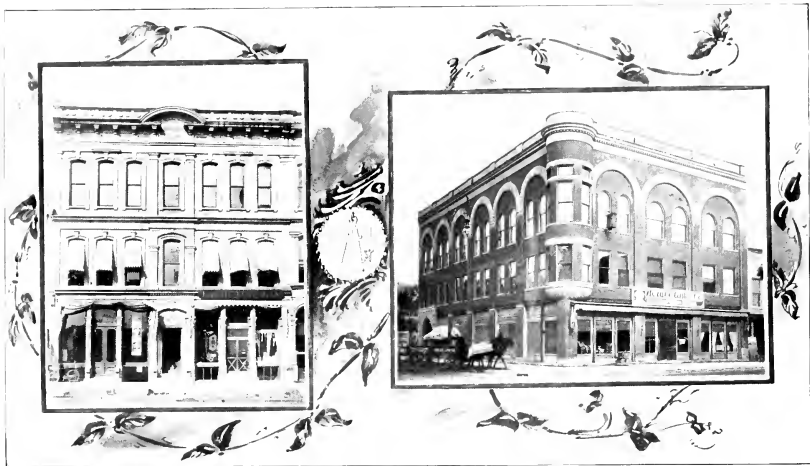
These, with the acquisition in the near future of a branch of the C. & E. I., the right of way of which has already been surveyed, will give us direct communication with every large city in the country. To many places we have the advantage of competing lines, which insure freight rates enjoyed by few cities.

Our annual railroad tonnage is as follows: Big Four, inbound, 32,850 tons; outbound, 20,775 tons and Vandalia, inbound, 27,922 tons; outbound, 23,891 tons.

We are also at the present time negotiating for several electric inter-urban lines (one or two of which are assured) which will greatly increase the radius of the city's retail business. It is therefore without assumption that we lay particular stress upon our railroad facilities, reiterating the statement that we enjoy exceptional advantages along this line which make our city a most desirable location for any kind of industry, making a product marketable in the great middle west.

Coal.

Edgar county, besides being contiguous to the great bituminous coal fields of western Indiana, has its entire eastern half underlaid with extensive veins of the best steam coal, with several shafts in operation and many others being prospected. The proposed branch line of the C. & E. I. railway from Clinton, Indiana, to Paris will tap this coal field and also bring the Indiana coal to us at a very low rate, assuring us as cheap coal as is enjoyed by the most favored community. We already have direct connection by two railroads with the Brazil and Sullivan county fields, and are less than forty miles from them.



MASONIC BUILDINGS

The Humphrey-Dearth Glass Company

..s.s.s

Manufacturers of Druggists' Prescription and Catsup Bottles, Brandy Flasks, Etc.

This is conceded to be the most thoroughly equipped bottle works in the country. The plant, occupying five acres of ground in the south part of the city, consists of a number of spacious and substantial buildings, and includes a box factory and electric light plant.

The main tank has a capacity of 240 tons and has twelve "rings" or "shops."

Twelve carloads of material are consumed each week and nine carloads of bottles are produced.

The company's goods are of a very high quality and in such demand that it is impossible for them to keep up with their orders.

The factory is operated night and day and employs 125 men and 100 boys. A large proportion of the employes are skilled artisans, receiving the highest wages. To skilled workmen \$3,500 per week are paid out, and to unskilled \$1,000.

The wisdom of locating an industry of this kind in Paris has been amply proved by this firm's success. Both proprietors and workmen have found our city a better location from every standpoint than any metropolis affords.



HUMPHREY-DEARTH GLASS FACTORY

The Merkle-Wiley Broom Company



This factory is a verification of the adage, "Great oaks from little acorns grow." The business started from a one man hand power shop and is now the largest broom factory in the country, having a capacity of 800 dozen brooms per day, and employing 200 hands. It has distributing depots in most of the large cities and its products are shipped all over the United States and Canada.

Most of the employes are skilled workmen, making good wages, and constitute a very respectable portion of our population. The factory is constantly growing and increasing its output, a large addition to their buildings and a new invoice of machinery having been added in 1903.

Paris is justly proud of this institution, which has demonstrated the highest ideals of factory management.



THE MERKLE-WILEY BROOM FACTORY

The Kidder Corn Milling Plant



This is the most complete corn milling plant in the world, having a producing capacity of 6000 bushels per day and a storage capacity of 1,200,000 bushels. The building is a mammoth fire-proof structure, built of vitrified paving brick, and the engines, operating the various milling machinery, represent 1200 horse power.

Everything that can be made from corn is here manufactured, and the products shipped to all parts of the globe. Hominy, corn flour, brewers' supplies, corn oil and corn flakes are produced, the latter a delicious breakfast food of snowy whiteness and rich, creamy flavor, destined soon to supplant all similar products.

The Kidder Plant is a striking example of the modern scientific method of utilizing all by-products. Even the stray husks from the corn are packed in bales and sold as stock food, while the cobs are used as fuel. About 100 hands are employed, and one and a half millions of dollars paid to the surrounding farmers for the raw material every year. A fair-sized trainload of the various products is shipped every day.



KIDDER CORN MILLING PLANT

The U. O. Colson Company



Manufacturers and Jobbers of Advertising Novelties

This enterprising firm, which began business with two employes in 1893, has become one of the leading houses in its line in the United States.

The Company was incorporated in 1903 with U. O. Colson, President and H. F. O'Bannon, Secretary and Treasurer.

Their present plant contains 200,000 square feet of floor space and they have 40 employes, many of them skilled workmen. Their goods are sold in almost every State in the Union, while they have branch houses in several large cities.

Everything in the way of advertising novelties is made by them. Among their leading specialties may be mentioned calendars, aluminum goods, wood and leather novelties and souvenirs for all lines of trade.



COFFMAN'S IMPLEMENT AND BUGGY HOUSE



COOKS FURNITURE STORE

The Edgar Printing Company

This progressive firm which began business on a small scale some two years ago has made such remarkable growth that it is now one of the foremost institutions of its kind in the state.

A specialty is made of high grade advertising novelties, such as calendars, fans, carpenters' aprons, etc., which are sold throughout the west.

Their plant consists of a modern brick structure centrally located, to which there will shortly be added extensive ware rooms. 25 workmen are employed at present. Improved machinery for fine color work will soon be installed, and other additions made to their already substantial equipment.



CHRISTIAN CHURCH

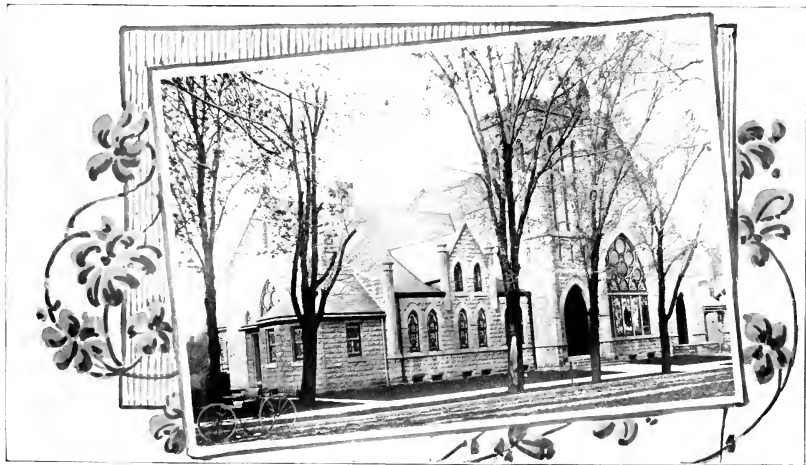


FIRST M. E. CHURCH

The Paris Art Folder Company



Owned and conducted by C. E. Jay, this institution has gained an established reputation all over the country by supplying to the photographers a special form of photograph mount which is so much more artistic than the old forms as at once to jump into favor with such artists as make a specialty of high class work. These mounts and folders are shipped by thousands all over the country, and are now accepted as the ideal material for all of the finest work. Originally an artistic conception of the proprietor for his own use, the demands of the jobbers drove him to the establishment of a plant to supply their wants. The business has so rapidly increased that a quantity of embossing and beveling machinery has been installed and the services of quite a number of skilled employes are now constantly required.

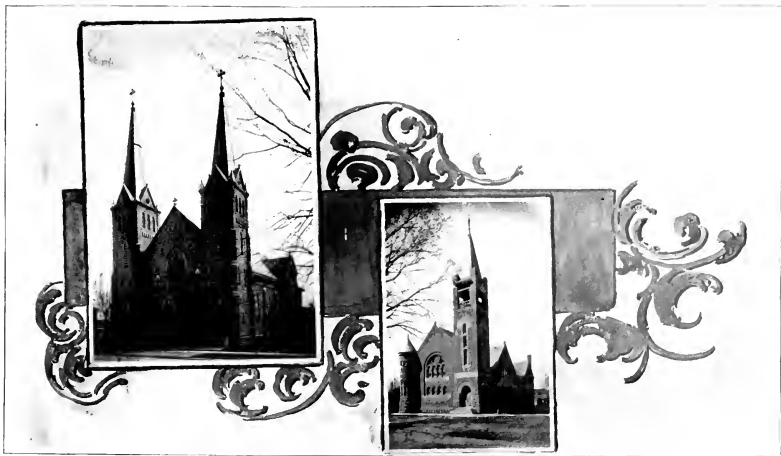


PRESBYTERIAN CHURCH

Broom Corn Machinery

•••••

The operation of our large Broom Factory having aroused our farmers to the need of supplying the raw material, the enterprising proprietor of the Paris Foundry and Machine Works invented and is now building a broom corn thresher which has become the standard in every section of the country where broom corn is raised. This, with the operation of a very complete foundry and machine shop, gives employment to a large number of high class and well salaried mechanics, who make a very desirable acquisition to our city.



CATHOLIC CHURCH

FIRST BAPTIST CHURCH

Edgar Stone Company



This industry, established in 1903 for the manufacture of artificial building stone, has developed a very extensive and prosperous business. A number of houses and business blocks are being built of their material, which possesses decided advantages over either brick or natural stone in economy, durability and appearance. They have a model plant and give employment to quite a number of workmen.



STREET SCENES

The Foley Carriage Works



Established in 1884, this factory has enjoyed a long and prosperous career. The highest standard of excellence is maintained by them, and their name is recognized throughout the country as a synonym for high grade, thorough workmanship. They occupy a substantial brick block and are thoroughly equipped.



H. W. AUGUSTUS

H. L. JONES

W. B. BEEBE

Mitten Factory



This is a new industry which bids fair to become one of our most important and lucrative enterprises. Mittens and husking gloves are manufactured—staple articles, for which the demand is steady and increasing. Employment is afforded to a number of workmen, and their output is sold throughout the west.



J. G BROWN

A L KEYS

MAX WILSON

The Paris Road Supply Company

..

**Manufacturers of Steel Bridges and Wholesale Dealers in Sewer Pipe and Road Machinery,
Geo. E. Zimmerly, Proprietor**

This establishment, which began in a modest way in 1900, has become one of our most progressive and profitable industries, employing a large number of skilled mechanics and doing business throughout a wide territory.

Their principal line is the manufacture and construction of steel bridges and other structural steel work. Within the past year their output has increased more than 50 per cent and they have found it necessary to build extensive additions to their shops for the coming season.

The striking success of this firm goes far toward substantiating the claim that Paris offers unexcelled advantages as a manufacturing center.



R. G. SUTHERLAND

R J CHILCOTE

C. P HITCH

Hamilton Planing Mill



We have at present in operation one of the most complete Planing Mills in the State. Fitted with modern machinery, this plant takes advantage of the output of two large saw mills located in our city, using their best lumber and making a specialty of furnishing the entire interior finish of the many handsome buildings which have been and are now being erected in this city.

Their thorough capability is amply evidenced by the high quality of their work and the fact that that the plant has never been shut down for a single day since its establishment. Employment is given to a high class of artisans, who are a credit as citizens of our community. Within the past year their business has increased 50 per cent.



R P. LOGAN

CHAS LOGAN

C W CURL

Saw Mills

We have two large Saw Mills, with a capacity of over 15,000 feet per day, which are operated continuously and give employment to quite a number of men. Various hard woods grow in abundance in this locality, and both mills make a specialty of supplying "Dimension stuff" to the numerous industries using lumber in manufacturing.



JACOB SHOLEM

L A G SHCAFF

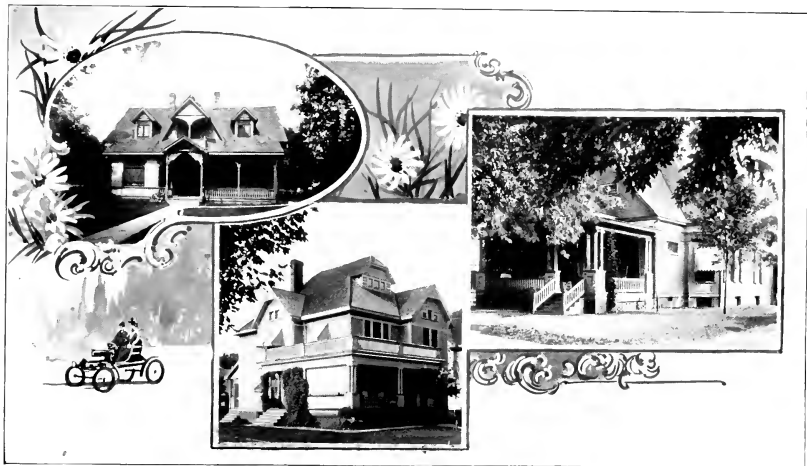
H. L. HODGE

Gulman & Co.

..*..*

Wholesale Grocers

This enterprising firm of Terre Haute, Indiana, recognizing the demands of our city, has established a branch house here which occupies three floors 40 by 150 feet each. They carry a \$30,000 stock of goods, and besides supplying our own retail merchants, ship merchandise to many surrounding towns.



W. O. WILSON

CHAS. BERLAU

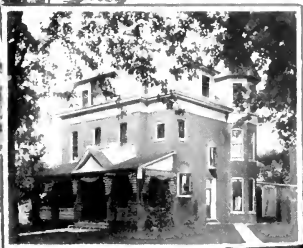
HORACE LINK

Farmers' and Threshers' Insurance Co.



This company, whose home offices are located here, began writing insurance in July, 1903. In their first six months they have written over a million dollars worth of insurance. Regularly chartered under the laws of Illinois to place insurance upon all kinds of farm property, they have thus far made a specialty of insuring farm implements and threshing machinery.

In their line they have been very successful and the outlook is bright for a prosperous career for them.



R O. KIRBY

F W REESE

J W SNYDER

The Propst Lumber Company



This institution deserves special notice because it enjoys the unique distinction of being the most completely equipped lumber yard anywhere in the west. Throughout the country it is known to the trade as a model of perfection in appointments and management.

The entire yard, comprising a block, is covered, not by a mere shed, but by a substantial and beautiful structure, which is an ornament to the city. The building is divided into various departments by spacious driveways, and everything, even to the stables, is kept in perfect order.

The company's commodious offices are simply parlors, being decorated and furnished in the highest style and supplied with every modern appliance. They contain luxurious reception rooms, private compartments—everything possible, indeed, for the comfort and convenience of patrons and employes.

The Propst Lumber Company is one of her enterprises of which Paris is justly proud.



PROPST LUMBER COMPANY

Shaw's Bottling Works

..*..*..

Manufacturers of all Kinds of Carbonated Beverages and Wholesale Dealers in Beer.

This industry, established some fifteen years ago, has built up a very extensive business, its products being sold throughout a wide territory.

The plant is supplied with the most modern machinery and gives regular employment to a number of hands.



CLIFFORD WILEY

O. J. MCGURTY

F. L. KIDDER

Newspapers



PARIS has three daily newspapers and one weekly. Each of the dailies publishes also a weekly or semi-weekly edition.

THE PARIS BEACON, the oldest newspaper in the county, was founded in 1848. The daily was first issued in 1882. It is now published by The Beacon Publishing Company (incorporated) and has one of the most thoroughly equipped plants in Illinois. The company owns its building, a handsome two-story block, and has every modern appliance, including linotype machines, etc.

The paper is issued both as a daily and semi-weekly and is one of the strongest and most ably managed newspapers in the state.

Besides an efficient staff of editors and reporters, a large clerical and mechanical force is employed, and an extensive job printing business is done. The Beacon is republican in politics.

THE PARIS GAZETTE was established as a weekly in 1873, the daily edition, in 1893. The Gazette is another staunch and substantial publication, which ranks among the foremost of Illinois newspapers, both as to popularity and commercial standing.

The Gazette plant is supplied with linotype machines and all modern conveniences. A large amount of job printing is done and employment given to a number of skilled workmen. The Gazette is democratic in politics.

THE PARIS REPUBLICAN was founded in 1877. It is issued in both daily and weekly editions and has long enjoyed an enviable reputation as a clean, conservative family newspaper.

THE PARIS WEEKLY HERALD was established in 1890. It is democratic in politics and has attained an extensive circulation throughout the county. The Herald office is well equipped and does a successful job printing business in connection with the publication of the paper.



CHAS. LAMB

FRANK ALEXANDER

J W WINN

Mabash Telephone Company

..*.*.*

In the above Company's plant, Paris has one of the most efficient and extensive telephone systems in the state. The Company is capitalized for \$125,000, and besides covering the larger portion of Edgar County, its lines extend into adjoining counties. There are 2500 instruments in the system, of which 1300 communicate directly with the Paris switchboard and are installed within the city or the surrounding rural district.

Long distance connection is had with all the principal cities, the individual 'phones being of such high grade that they can be connected with the long distance lines direct.

Sixteen operators are employed in the local exchange and a large corps of linemen and assistants.



J. E. PARRISH

R. M. LINK

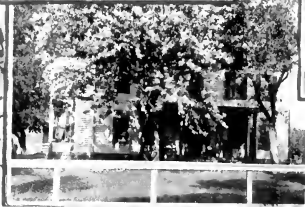
A. J. HUNTER

Shoaff's Opera House



Owned and conducted by L. A. G. Shoaff, whose entire life has been devoted to the business. The new building, erected some ten years ago, was designed by Mr. Shoaff on modern lines and with a view to accomodating all classes of amusements. It is a ground floor structure, with commodious auditorium and a very large stage, upon the construction of which Mr. Shoaff is frequently complimented by members of the theatrical profession.

During the season the opera house averages three attractions a week of a variety suited to all tastes.



Dr. J. T. MUSSELMAN

J. C. PALMER, Farm Residence

J. CRETOR

Retail Business



The following is a capitulation of the retail business houses of Paris: Automobiles, 1; Bicycles, 3; Books and periodicals, 4; Boots and shoes, 8; Buggies, 7; Carpets and rugs, 5; Clothing, 8; Cigar factories, 4; Confectionery, 1; Dry goods, 8; Drugs, 6; Dentists, 5; Express Companies, 3; Furniture, 3; Feed stores, 7; Groceries, 32; Harness, etc., 4; Hardware, 4; Hotels, and high class boarding houses, 6; Implements, 7; Jewelers, 4; Laundries, 2; Lawyers, 18; Livery stables, 3; Lumber yards, 3; Meat markets, 6; Merchant tailors, 3; Medicines, m'rs. of, 2; Millinery, 6; Notions, etc., 5; Physicians, 20; Printing offices, 6; Pianos etc., 3; Phonographs, 1; Photograph galleries, 4; Poultry dealers, 2; Restaurants, 5; Stoves and tinware, 7; Wall paper, 4.



J. D. HUNTER

HENRY CREDE

C. T. MERKLE

Other Industries

.....

In addition to the foregoing, Paris has many lesser industries, all doing a successful business and employing in the aggregate a large number of workmen. Among these may be mentioned 3 planing mills, 3 foundries, 3 brick plants, 2 large flouring mills, 4 elevators, an extensive drain tile factory and 2 packing houses.



M. E. PARSONAGE



J. W. CRYDER



E. E. WHITEHEAD

The Commercial Club of Paris, Illinois.

Officers, 1903-1904.

H. L. HODGE, PRESIDENT.
C. F. PROPST, SECRETARY.

R. M. LINK, VICE-PRESIDENT.
C. H. LAMB, TREASURER.

.. Directors ..

E. E. WHITEHEAD
C. F. PROPST

W. H. HODGE
F. T. O'HAIR

J. WILL SNYDER
R. M. LINK

E. O. LAUGHLIN
H. L. HODGE

J. G. BROWN
F. A. COOK

.. Members ..

Name	Representing	Business	Name	Representing	Business
Adams, J. E.	J. E. Adams	Dentist	Brown, J. G.	Brown & McCord	City Mills
Alexander, F. R.	F. R. Alexander	Saw Mill	Brown, J. H.	J. H. Brown	Real Estate
Allen, C. E.	C. E. Allen		Brown, S. C.	S. C. Brown	Notions & Paper
Anthony, D. D.	D. D. Anthony	Grocer	Browning, J. H.	J. H. Browning	Real Estate
Athon, Mora	F. J. Athon & Co	Coal Dealers	Brubaker, Frank	Brubaker Bros	Grocers
Athon, F. J.			Brubaker, Hiram	" "	"
Baber, A. J.	1st. National Bank	President	Brubaker, H. L.	H. L. Brubaker	Gardener
Barbour, W. R.			Bruns, Andy	Andy Bruns	Tailor
Barr, J. D.	Citizens Bank	Banker	Campbell, Geo. R.	Reed & Campbell	Painters & Paper Hangers
Barth, Alva	Alva Barth	Restaurant	Cantlon, Wm	Wm Cantlon	Plumber
Basyn, Z. T.	Z. T. Baum	Physician (Mayor)	Cline, Alva H.	1st National Bank	Asst Cashier
Beall, C. E.	C. E. Beal & Sons	Brick Layers	Clinton, W. H.	W. H. Clinton	Attorney
Beall, John	" "	" "	Clinton, G. H.	G. H. Clinton	Jeweler
Beall, Bernie	" "	" "	Coady, Patrick	P. H. Coady	Saloon
Beckett, J. P.	J. P. Beckett	Insurance	Coffman, D. A.	D. A. Coffman	Farm Implements
Benefield, J. D.	Jenkins & Benefield	Contractors	Colson, U. O.	U. O. Colson Company	Advertising Novelties
Berlau, Charles	S. Berlau & Sons	Clothiers	Cook, W. T.	J. Cook & Sons	Furniture & Undertakers
Berlau, D.	" "	" "	Cook, F. A.	" "	"
Berlau, Frank	" "	" "	Cornwell, J. E.	J. E. Cornwell	Asst County Treasurer
Bibo, Max		Attorney	Curl, Jerry	Jerry Curl	Mail Carrier
Bibo, Phillip		Capitalist	Crede, Henry	Henry Crede	Boots & Shoes
Black, John	John Black		Dillon, Wm	Wm Dillon	Tailor
Bumgardner, Gideon	Gideon Bumgardner	Blacksmith	Davis, W. E.	W. E. Davis	
Bovell, J. B.	J. B. Bovell	Stoves & Tinware	Deak, J. W.	J. W. Deak	Attorney
Boyer, H. O.	H. O. Boyer	Auctioneer	Dole, Geo. V.	Geo V Dole	
Bradshaw, W. H.	W. H. Bradshaw	Jeweler	Dollarhide, Horace	Horace Dollarhide	
Buston, Frank	Vandalia R. R.	Bill Clerk	Draper, Harry	Harry Draper	Saloon
Brandenstein, Simon			Eads, J. T.	J. T. Eads	Real Estate
Bridgeman, Gus	Gus Bridgeman	Cigar Mfg.	Ferris, E. E.	E. E. Ferris	Druggist
Brooks, H. M.	H. M. Brooks	Preacher	Foley, T. A.	T. A. Foley	Saw Mill



R. LEE MILLER

WM. SHOLEM

JNO A LOGAN

The Commercial Club of Paris, Illinois—Continued.

Name	Representing	Business	Name	Representing	Business
Frazier, Alex	Noah Henrie	Clerk	Lamb, C. H.	C. H. Lamb	Grocer
Frazer, E. B.	Coady & Frazer	Saloon	Laughlin, E. O.	E. O. Laughlin	Physician & Surgeon
Gaumer, W. F.			Lee, Charles	Thos. Moyer	Paper Hanger
Gillivary, Jas.	Jas. Gillivary	Saloon	Levin, Benard	Benard Levin	Clothier
Gillivary, John	John Gillivary	"	Levings, W. F.	W. F. Levings	Insurance
Gist, J. H. C.	J. H. C. Gist	Brick Mfg.	Link, R. M.	Royal Planisiter Mill	Miller
Grant, G. W.	G. W. Grant	Real Estate	Link, Nate	"	"
Graham, W. A.	W. A. Graham	"	Link, J. A.	Miller & Hart	"
Gregg, E. E.	E. E. Gregg	Abstractor	Link, W. A.	W. A. Link	Grocer
Halloran, W. A.	W. A. Halloran	Grocer	Link, Horace	Horace Link & Co	Furniture and Undertaking
Hamilton, W. F.	Hamilton Bros.	Flour and Feed	Letch, J. H.	J. H. Letch	Saloon
Hamilton, Chas.	"	"	Logan, W. S.	W. S. Logan	Lumber
Hamilton, Louis	"	Farmer	Lutz, Chas.	Lutz Bros.	Butcher
Hamilton, P. S.	Kaufman & Hamilton	Planing Mill	Lutz, John	"	"
Hanks, J. E.	J. A. Price	Butcher	Luther, Wm.	Wm. Luther	Blacksmith
Harris, W. K.	"	"	Lycan, Hiram	Hiram Lycan	Farmer
Haug, E. P.	E. P. Haug	Jeweler	Lycan, R. S.	R. S. Lycan	Physician and Surgeon
Henline, Noah	Noah Henline	Hardware and Tinner	Lydiak, F. D.	F. D. Lydiak	"
Henn, Chas.	Chas. Henn	Grain Dealer	McCord, T. H.	McCord & Risser	Lumber
Heilrich, J. A.	J. A. Heilrich	Florist	McCord, S. E.	Brown & McCord	City Mills
Hitch, C. P.	"	U. S. Marshal	McCubbin, F. B.	Robt. McCubbins	Farmer
Hinds, W. W.	Hinds & Perisho	Feed	McCulloch, Jas. H.	Jas. H. McCulloch	"
Hodge, B. W.	Hodge Bros.	Furniture & Undertaking	McGarty, O. J.	O. J. McGarty	Livery and Veterinary Sur.
Hodge, C. H.	"	"	McFall, Thos.	Thos. McFall	Retired
Hodge, H. L.	Eoath & Hodge	Dry Goods	McLaughlin, Thos.	McLaughlin & Pearman	Clothiers
Hodge, J. G.	W. H. & J. G. Hodge	Hardware	Manning, Cran	Oran Manning	Real Estate
Hodge, W. H.	"	"	Mawer, Fred	Fred Mawer	"
Hoff, W. H.	W. H. Huff	Physician & Livery	Meloy, J. E.	Booth & Hojze	Clerk
Hopkins, Dale	"	"	Merkle, O. T.	Merkle-Wiley Broom Co.	Mfg. Brooms
Huffman, D. A.	D. A. Huffman & Son	Grocer	Miller, Chester	H. R. Miller	Boots and Shoes
Huls, John	John Huls	Sexton Edg. Cemetery	Miller, Lew	J. Miller & Sons	Dry Goods
Hunter, J. D.	Citizens Bank	President	Miller, Frank	"	"
Hunter, W. J.	W. J. Hunter	Farmer	Moffett, N. R.	N. R. Moffett	Insurance
Huston, D. D.	Rudy & Co	Grain Dealers	Morton, A. J.	A. J. Morton	Saloon
Huston, S. S.	S. S. Huston	Real Estate	Moyer, Thos.	Thos. Moyer	Paper Hanger
Jay, Chas. E.	C. E. Jay	Photographer	Morton, Edgar	"	Farmer
Jenkins, Arnold	Jenkins & Benefield	Contractors	Monical, H. W.	Paris Pub. School	Supt.
Johnson, David	"	"	Murphy, J. W.	J. W. Murphy	States Attorney
Jones, E. E.	E. E. Jones	Dentist	Musselman, J. T.	J. T. Musselman	Physician
Jones, O. S.	O. S. Jones	Real Estate	O'Hair, F. T.	Dundas & O'Hair	Attorneys
Jones, H. L.	H. L. Jones	Dry Goods	O'Hair, H. B.	H. B. O'Hair	Livery
Keys, A. L.	Wabash Telephone Co	Manager	O'Hair, W. S.	W. S. O'Hair	Trader
Kile, R. H.	Edgar County Bank	Cashier	O'Hair, J. Odgen	J. Odgen O'Hair	"
Kirby, G. T.	The Propst Lumber Co	Lumber	Parish, J. E.	Edgar County Bank	President



MRS A E DOLE

CHAS E SHAW

CHAS F PROPST

The Commercial Club of Paris Illinois—Continued.

Name	Representing	Business	Name	Representing	Business
Parrish, J. A.	J. A. Parrish	Grocer	Sholem, Sam	Sholem & Sons	Clothier and Dry Goods
Patton, Chas.	Chas. Patton	Saloon	Sholem, Maurice	"	"
Patty, E. A.	E. A. Patty	Saloon	Sholem, Wm.	Wm. Sholem	Boots and Shoes
Pearman, Frank	McLaughlin & Pearman	Clothiers	Shutt, Paul	Paris Beacon Pub. Co.	Manager
Perisho, J. E.	J. E. Perisho	Farmer	Shutt, Harry	H. Shutt & Co.	Clothier
Perisho, W. H.	W. H. Perisho	Feed	Sizemore, Otis	Otis Sizemore	Saloon
Perkins, G. Y.	Geo. Y. Perkins	Druggist	Slanker, C. B.	C. B. Slanker	Cigar Mfg.
Pettiford, Edward	Edward Pettiford	Barber	Snyder, Ed. W.	Ed. W. Snyder	"
Piter, C. N.	Piter Bros.	Hardware and Implement	Snyder, J. Will	J. Will Snyder	Real Estate
Piter, Ed.	"	"	Spreenon, J. J.	Vantalia R. R.	Agent
Porter, Troy	Troy Porter	Plumber	Sutherland, R. G.	First National Bank	Cashier
Potts, S. D.	S. D. Potts	Farmer	Steidl, Joseph	J. Steidl & Son	Grocer and Meat Packer
Powell, J. E.	J. E. Powell	"	Stephens, Frank	Frank Stephens	Carpenter
Price, F. H.	F. H. Price	Butcher	Tanner, Everett	Paris Beacon	Reporter
Propst, C. F.	The Propst Lbr. Co.	Lumber	Thompson, W. C.	W. C. Thompson	"
Purcell, J. W.	J. W. Purcell	Plasterer	Tallinger, J. W.	Wright & Tallinger	Implements
Reed, W. E.	Reed & Campbell	Painters	Vance, J. E.	Vance & Dillon	Mfg. Mittens
Reed, J. E.	Central Hotel	Hotel	Van Sellar, Harry	Van Sellar & Van Sellar	Attorneys
Reed, J. H.	J. H. Reed	Jewelry	Van Sellar, Frank	"	"
Reese, H. E.	Paris Hotel	Hotel	Vansickle, Samuel	Swisher & Vansickle	Insurance
Reese, Ed.	"	"	Wetsel, Ronald	Wetsel Bros.	Boots and Shoes
Reese, Fred.	"	"	Wetsel, Walter	"	"
Risser, Simon	Paris Foundry & Mach.	Foundry	Weider, E. L.	Paris Laundry	Laundry
Risser, Abe	McCord & Risser	Lumber	Whiteneck, Meritt	Meritt Whiteneck	Carpenter
Reeves, M. C.	First National Bank	Banker	Wiley, Clifford	Merkle Wiley Broom Co.	Mfg. Brooms
Reeves, D. C.	Reeves Bros.	Grocery	Wilson, O. N.	Edgar Printing Co.	Advertising Novelties
Rowe, H. B.	"	"	Wilson, John	Wilson Bros.	Grocer
Rogers, C. E.	H. B. Rowe & Co.	Druggists	Winn, M. F.	Whitehead & Winn	Clothiers
Rudy, B. F.	C. E. Rogers	Farmer	Witt, A. G.	A. G. WITT & Co.	Farm Implements
Ryan, G. W.	Fudy & Co.	Craig Dealers	WITT, John	"	"
Rittenhouse, M. L.	G. W. Ryan	Harness	Wittick, John	Wittick Bros.	Printers
Shaw, C. E.	M. L. Rittenhouse	Gardener	Wittick, George	"	"
Shepherd, J. W.	C. E. Shaw	Bottling Works	Wolfe, A. W.	A. W. Wolfe	"The Fair"
Shepherd, James	Shepherd & Trogon	Attorney	Wright, Sol	Wright & Taflinger	Farm Implements
Sheriff, W. B.	James Shepherd	Insurance	Young, D. W.	D. W. Young	Physician
Shoaff, Fred	W. B. Sheriff	"			
Shoaff, L. A. G.	J. D. & F. L. Shoaff	Newspaper			
	L. A. C. Shoaff	Opera House			

LADY MEMBERS

Miss Alice Nelson	Miss Mary McCubbins	Mrs. E. Williams	Mrs. Mary Hodge
Miss Anna Reese	Miss Alice Trogon	Mrs. M. J. McCubbins	Mrs. Sarah How
	Mrs. Matilda Rogers	Mrs. Maggie Bennfield	

