

*P. D. Skaar's*

# Montana Bird Distribution

---

Revised by:

*Dwight Bergeron*

*Cedron Jones*

*David L. Genter*

*Daniel Sullivan*

Fourth Edition

January 1992



Montana Natural Heritage Program  
Special Publication No. 2



This publication is a cooperative effort of the following organizations:

AN 1 6 1997  
P 3 7 2000  
Montana Department of Fish, Wildlife, and Parks  
*(Support provided by the Nongame Tax Checkoff Fund)*

Montana Audubon Council

Montana Natural Heritage Program

Copies of this publication are \$6.00 and can be obtained from Regional Offices of the Montana Department of Fish, Wildlife, and Parks; the Montana Audubon Council and most local Audubon chapters; select bookstores in Montana; or from the Montana Natural Heritage Program (mail orders, please add \$1 for shipping).

Montana Natural Heritage Program  
State Library Building  
1515 East Sixth Avenue  
Helena, MT 59620

This document should be cited as follows:

Bergeron, D., C. Jones, D. L. Genter, and D. Sullivan. 1992. P. D. Skaar's Montana Bird Distribution, Fourth Edition. Special Publication No. 2. Montana Natural Heritage Program, Helena. 116 pp.

Cover drawing of Belted Kingfisher by Ted Nordhagen ©1991

©1992 Montana Natural Heritage Program

P. D. SKAAR'S  
MONTANA BIRD DISTRIBUTION  
Fourth Edition

Revised By:

Dwight Bergeron  
800 Glendale  
Helena, MT 59601

Cedron Jones  
940 Wilder Avenue  
Helena, MT 59601

David L. Genter  
1515 East Sixth Avenue  
Helena, MT 59620

Daniel Sullivan  
851 Silverette  
Helena, MT 59601

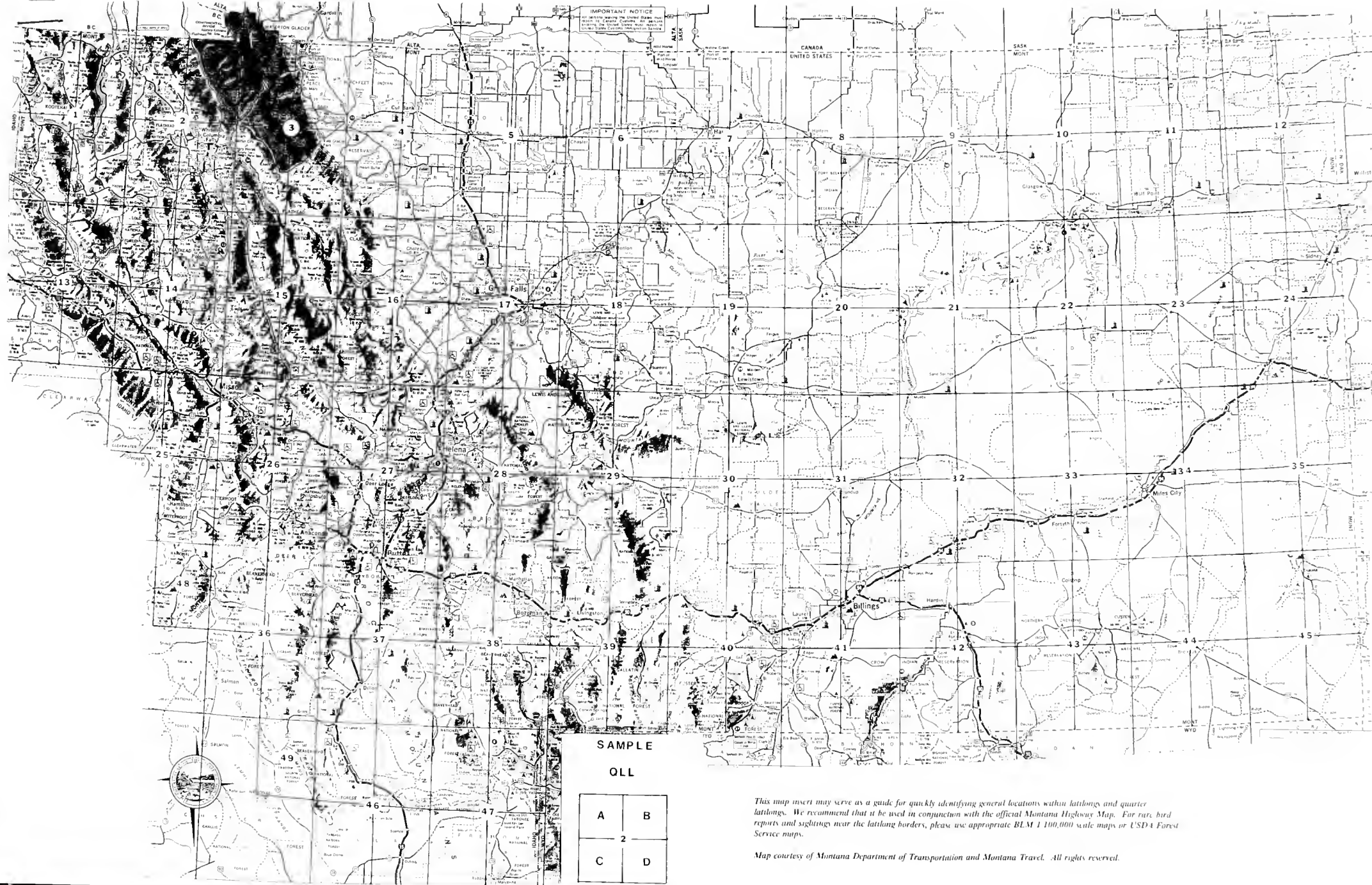
STATE DOCUMENTS COLLECTION

AUG 26 1992

MONTANA STATE LIBRARY  
1515 E. 6th AVE.  
HELENA, MONTANA 59620

Special Publication No. 2  
Montana Natural Heritage Program  
1992

PLEASE RETURN



**IMPORTANT NOTICE**  
 All writing appearing on the Lower 48 map, including the National System map, is the property of the U.S. Government and is not to be distributed outside the United States.

SAMPLE

OLL

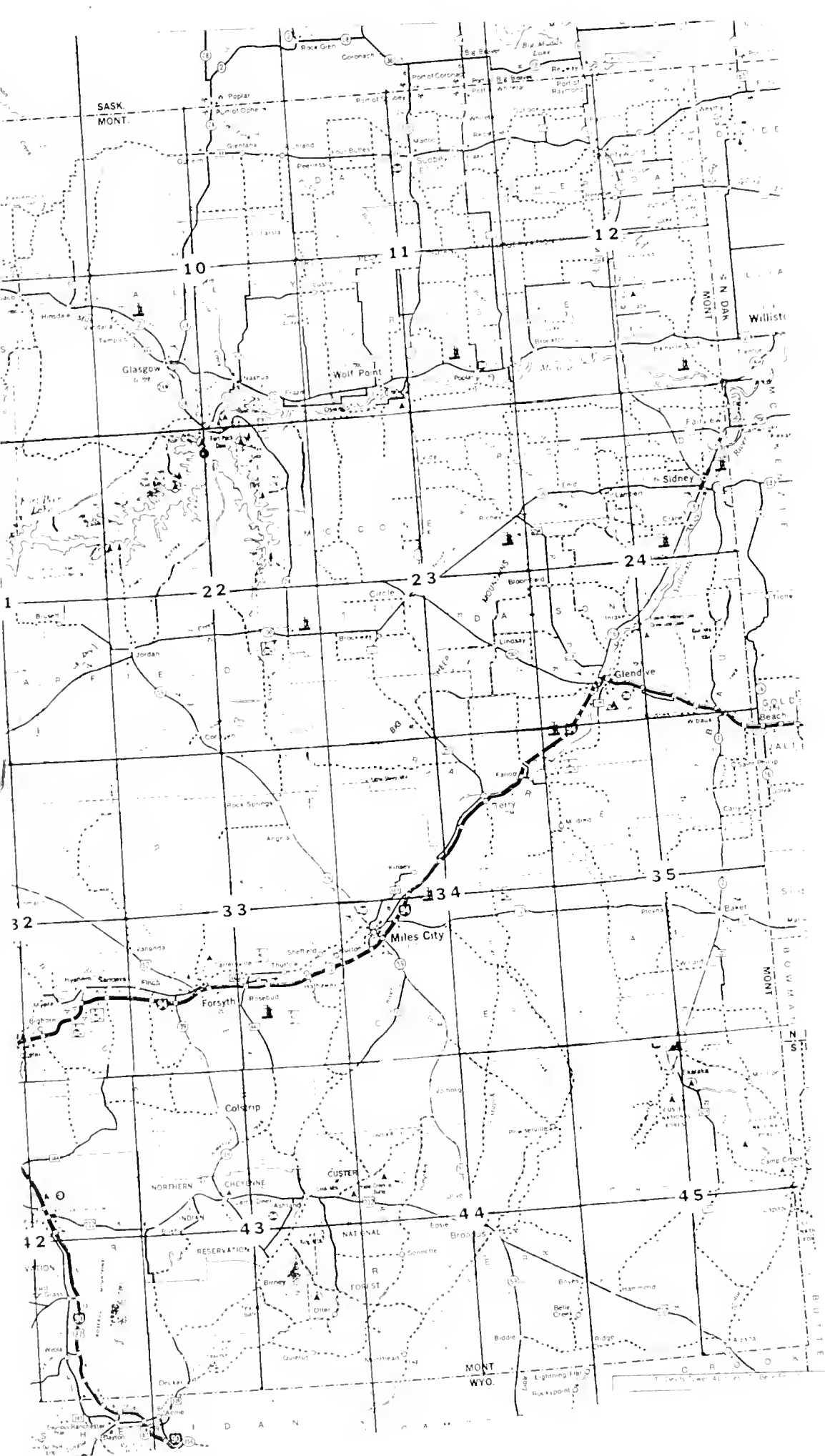
A	B
2	
C	D

*This map insert may serve as a guide for quickly identifying general locations within latlongs and quarter latlongs. We recommend that it be used in conjunction with the official Montana Highway Map. For rare bird reports and sightings near the latlong borders, please use appropriate BLM 1:100,000 scale maps or USDA Forest Service maps.*

*Map courtesy of Montana Department of Transportation and Montana Travel. All rights reserved.*

## TABLE OF CONTENTS

Biographical Note - P. D. Skaar	ii
Dedication - Larry S. Thompson	iii
Preface	iv
Acknowledgements	v
Introduction	1
Physiography of Montana	1
Latilongs as mapping units	1
Quarter Latilongs	2
Taxonomic changes and subspecies	3
Other Changes	3
Evaluation of records	4
Species with Special Status	4
Neotropical Migratory Species	5
How to read maps and interpret symbols	6
Submission of new records	8
Distribution maps	9
Bibliography	107
Contributors	108
APPENDICES	
A -- List of TES and SI Species in Montana	109
B -- Neotropical Migratory Bird Species in Montana	110, 111
C -- Hypothetical Species List	112
D -- Breeding Status Code Definitions	113
E -- Rare Bird Report Form	114
F -- Quarter Latilong Reporting Form	115
Index	116, 117
Notes	118
Insert -- Montana Highway Map with QLL Units	



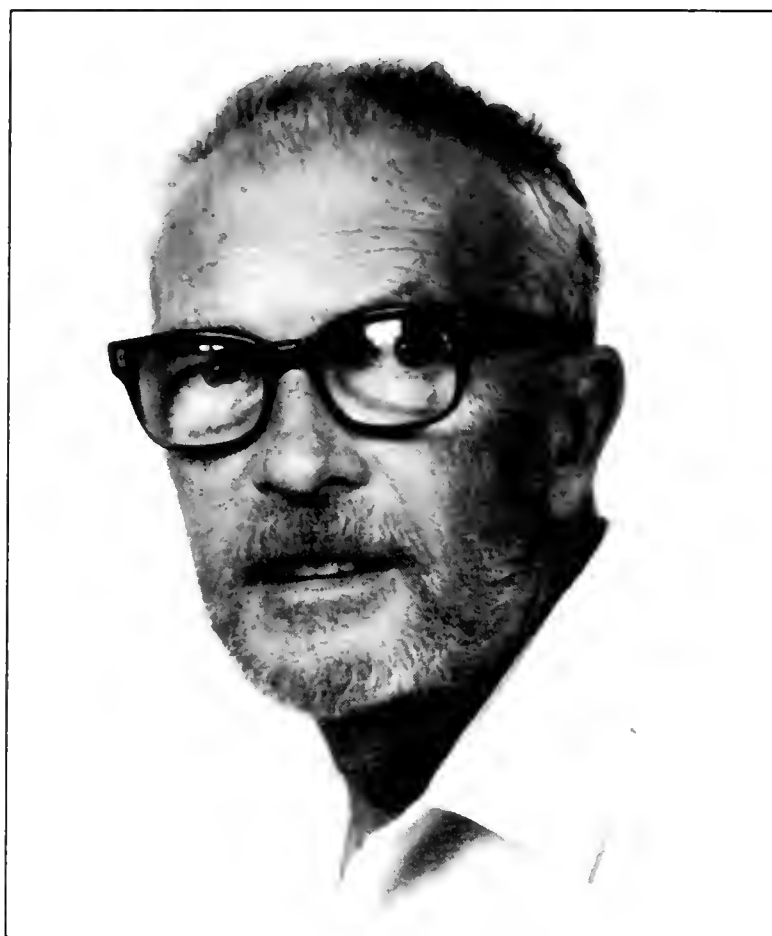
Identifying general locations within latilongs and quarter  
 on with the official Montana Highway Map. For rare bird  
 use appropriate BLM 1:100,000 scale maps or USDA Forest

ion and Montana Travel. All rights reserved.

## TABLE OF CONTENTS

Biographical Note - P. D. Skaar	ii
Dedication - Larry S. Thompson	iii
Preface	iv
Acknowledgements	v
Introduction	1
Physiography of Montana	1
Latilongs as mapping units	1
Quarter Latilongs	2
Taxonomic changes and subspecies	3
Other Changes	3
Evaluation of records	4
Species with Special Status	4
Neotropical Migratory Species	5
How to read maps and interpret symbols	6
Submission of new records	8
Distribution maps	9
Bibliography	107
Contributors	108
APPENDICES	
A -- List of TES and SI Species in Montana	109
B -- Neotropical Migratory Bird Species in Montana	110, 111
C -- Hypothetical Species List	112
D -- Breeding Status Code Definitions	113
E -- Rare Bird Report Form	114
F -- Quarter Latilong Reporting Form	115
Index	116, 117
Notes	118
Insert -- Montana Highway Map with QLL Units	

## BIOGRAPHICAL NOTE



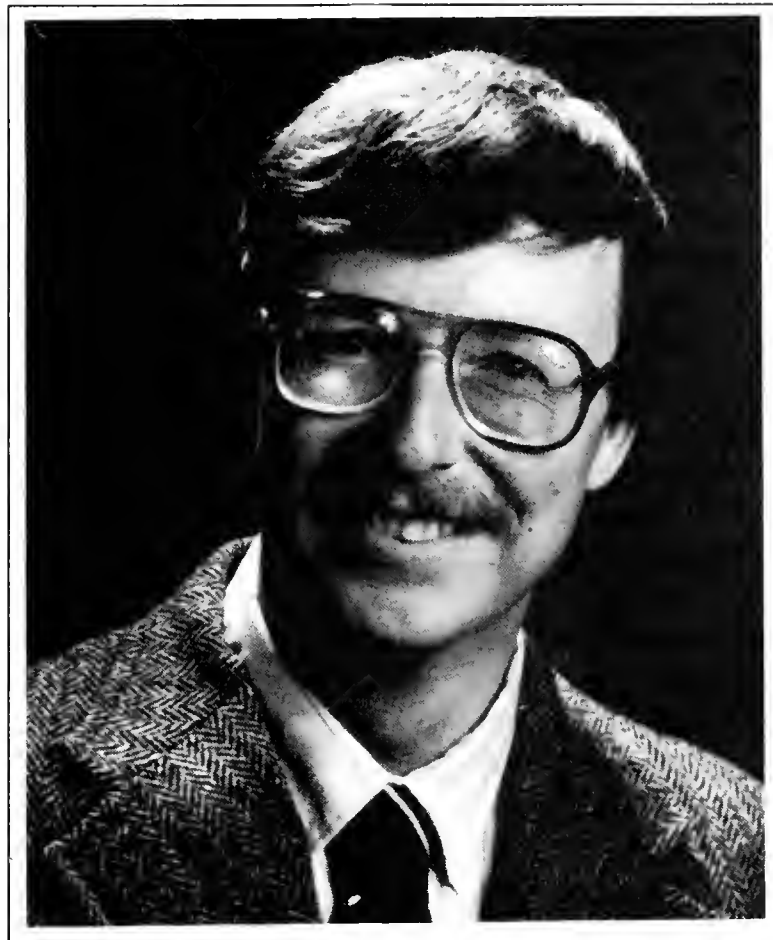
Palmer David Skaar

No one person has done more to further the study of Montana birds than Dave Skaar (1923-1983). Dr. Skaar came to Montana in 1957 to join the faculty of Montana State College (now MSU). He was widely respected as a microbial geneticist at that time, and during his career he wrote extensively in that field. He also founded and directed the Genetics Institute at MSU, and served for four years as editor of the Proceedings of the Montana Academy of Sciences. Dave's involvement in the study of Montana bird distribution made him well-known and respected throughout the state. His enthusiasm was contagious, and his patience and modesty were exemplary. He was not one to discourage or belittle the amateur and his words were always encouraging, never demeaning.

Dave pioneered the "latilong" concept in distributional studies. His definitive *Birds of the Bozeman Latilong* was published in 1969 and was a model regional bird account. In 1975, Dave published the first edition of *Montana Bird Distribution*. The impact of this book was tremendous. It motivated and mobilized amateurs and professionals across the state, and resulted in careful ornithological scrutiny of vast areas of Montana that had never before been studied. The Fourth Edition of *Montana Bird Distribution* is one of Dave's ongoing legacies. Future editions will continue as a direct result of Dr. Skaar's inspiration and visionary efforts.



## DEDICATION



Larry Steven Thompson

Larry Thompson (1949-1988) was born in Kalispell and dedicated his life to the exploration and study of Montana's rich natural heritage. Larry attended Montana State University and received a Masters Degree from Washington State University, completing a thesis on the biogeographical relationships of bird populations found on Montana's prairie mountain ranges. For 12 years, beginning in the mid-1970s, Larry worked at the Montana Department of Natural Resources and Conservation, involved in the oversight of facility siting. In 1985, Larry became the first manager of the Natural Resource Information System where he began the job of cataloging Montana's natural resources.

Accomplished as he was in his work, it seemed to be his time away from work that touched the most people. He wrote extensively, publishing scientific and popular articles, including one of the Montana Geographic Series, *Montana Explorers*. He co-authored the Third Edition of *Montana Bird Distribution*. He was a natural musician and a gifted artist. (Some of his drawings illustrate this edition.) Above all, Larry was a naturalist. He was interested in, curious about and saw beauty in everything -- big, small, obscure, animal, plant or rock -- it didn't matter. No one could be around Larry without seeing the world differently and having a new appreciation for things commonly passed by. As a person and a naturalist, Larry's contributions to the quality of life and the knowledge and conservation of Montana's natural resources were remarkable. We respectfully, and with great affection, dedicate this edition to him.

## PREFACE

The Fourth Edition of P. D. Skaar's *Montana Bird Distribution* is the latest in a series of contributions to Montana ornithology. It was Dr. Skaar who pioneered the use of latilongs as a mapping unit for bird distribution and biogeographical studies. Since the publication of Skaar's first edition (1975), several other states and vertebrate groups have been mapped using the latilong system. In this edition we have begun recording bird distribution in quarter latilong units in an attempt to more accurately display each species' spatial distribution.

This edition begins an effort to provide a visual display of current bird distribution in Montana. It is a transition from previous editions, where all distribution data from the earliest recorded sightings to the most current were represented, to subsequent editions, where only data since the last edition will be represented. We believe this will document changes in bird distribution, drawing attention to contractions or expansions which, we hope, will result in efforts to determine the cause for these changes.

Although historical data will not be displayed in future editions, these data will not be lost. Presently, all data represented in previous editions as well as this edition have been entered into a computer database. These records contain more data than is represented by the symbol on the distribution maps and often include multiple sightings per latilong. The bird distribution database contains over 25,000 individual records. It is housed and maintained at the Natural Heritage Program in Helena and will be updated continuously as additional data are received. The database will be available for use by anyone interested in the distribution of Montana birds.

We plan to publish the Fifth Edition in 1995 with subsequent editions every 5 years thereafter. The success of this effort, however, will depend on the dedication of the birding public, amateur and professional, in submitting observations. We are no longer interested **only** in new latilong records and rare sightings. It is critical that contributors record and report sightings on **all species** for the appropriate quarter latilongs during each revision period.

These changes are not cast in concrete. We want to know what you think of them, and so we have included a Response Form at the back of the book. Please tear it out, fill it in and return it to us.

A few people, with some time and a little money, compiled this publication. In a greater sense, this is a product of hundreds, perhaps thousands, of individuals who made an effort and took the time to write down their observations and report them. These are people who see the beauty, grace, and diversity of birds, but understand that the conservation of bird populations and the environment upon which they depend requires awareness and knowledge. This publication is a tribute to those contributors and our thanks are extended to them.

Helena, Mont.  
January, 1992

## ACKNOWLEDGEMENTS

Dozens of contributors submitted the thousands of recent records to make this update possible. We are most grateful to those contributors who provided recent sightings (see p.108). Centrum data are from the Third Edition. The U.S. Fish and Wildlife Service's Breeding Bird Survey and the databases of the Montana Natural Heritage Program provided additional sources of information.

A steering committee was responsible for the overall production and fundraising for this Fourth Edition. Members include Janet Ellis, David Genter, George Holton, Cedron Jones, Deborah Richie, and Dan Sullivan, all of Helena. Dwight Bergeron was employed to compile data and assist in production. Special thanks to Dwight, Cedron, and Dan for their long and dedicated efforts in data entry, troubleshooting, and keeping things moving.

A verification committee was established to review rare bird sightings and provide advice and comment on a number of issues in the production of this edition. The verification committee is comprised of Chuck Carlson (Chair, Ft. Peck), Helen Carlson (Billings), Dan Casey (Kalispell), Dr. Bob Eng (Bozeman), Bebe FitzGerald (Billings), Harriet Marble (Chester), Terry McEneaney (Gardiner), Fritz Prellwitz (Malta), and Dr. Phil Wright (Missoula). We thank them for their continuing efforts and dedication to a better understanding of Montana birds.

Jim Senkler ably provided us with the design and programming of the database. We thank the Natural Resource Information System and the Montana State Library for staff time and computers. Don Skaar and Dennis Flath provided access to many post-Third Edition records and commented on the draft. Dan Sullivan obtained and compiled the data from the Breeding Bird Surveys. Margaret Beer provided technical support and tolerance for Dwight and Cedron to be on her computers and in her space for much of the past 6 months. Several individuals provided helpful suggestions and advice in planning and review of the project including Kristi DuBois, Shannon Heath, Sue Jackson, Cary Lund, and Don Stoecker. We thank them all.

Financial support for the project came with the cooperation of the following individuals and organizations: Montana Department of Fish, Wildlife and Parks (Dennis Flath & Deborah Richie), USDI Bureau of Land Management (Bob Haburchak), USDA Forest Service (Alan Christensen and Bill Ruediger), Stillwater Mining (Bruce Gilbert), Western Energy Co. (Bruce Waage), WESTECH (Dean Culwell and Pat Farmer), Last Chance Audubon (Helena), Yellowstone Valley Audubon (Billings), Bitterroot Audubon (Hamilton), Five Valleys Audubon (Missoula), William and Lee Ballard, the Montana Audubon Council, and Michael T. Schwitters.



## **Introduction**

Birders in Montana have recorded the presence of 357 species over the past four decades. There are 259 species that regularly breed in the state. The total number of wintering species is 177. An additional 12 species are of hypothetical occurrence (see p.112), including several species that are expanding their ranges and will likely make their way into a future edition of the *Montana Bird Distribution*.

## **Physiography of Montana**

Montana is characterized by 3 physiographic divisions: the Rocky Mountains of the western third, dominated by high rugged mountain ranges dissected with broad valleys; the central plains where island mountain ranges rise out of the grassy plains; and the eastern half in the Northern Great Plains with rolling grass-covered plains carved by major rivers.

Vastly different climate and vegetation occur in Montana. Continental air masses with cold, dry winters and hot summers dominate most of the state. Northwest Montana is more influenced by Pacific moist air with moderate temperatures. The plains range between -40°F (-40°C) and over 100°F (38°C), with annual precipitation between 8 inches (20 cm) and 15 inches (40 cm). Droughts can be frequent and severe. The Rocky Mountains are somewhat cooler and more moist. Annual precipitation generally increases with elevation, much of it as snow.

These factors, combined with Montana's geographic position among the Great Basin, Great Plains, and Northern Rockies, contribute to the great diversity and abundance of birds in our state. Land-use practices have also changed the abundance and distribution of our avifauna. Some species (such as the starling) tend to thrive in human-altered landscapes, expanding their range and numbers. Other species (such as the piping plover) require specialized natural habitat and may become increasingly rare or threatened by habitat changes or encroachment of competitors.

As we view the distribution of Montana birds over time, we will undoubtedly witness the introduction and expansion of some species and the continued decline of others, particularly those that are more specialized. Montana is a large, sparsely-populated state. It is difficult to conceive of high-intensity efforts to atlas birds as in other states. Until the financial and human resources become available, the application of coarse-scale distribution units such as latilongs will continue to be the most feasible. By refining our efforts to the quarter latilong, we will be recording the dynamic phenomena of statewide bird distribution to the best of our current abilities. As additional data are recorded by quarter latilong, we expect this effort to more effectively project species' distribution.

## **Latilongs as Mapping Units**

Latilongs are rectangular units formed by successive parallels of latitude and meridians of longitude, each at one degree intervals (see map on back cover). They form a grid pattern across Montana that includes all or parts of 49 latilongs. The average dimensions of each latilong are 47 miles (76 km) wide and 69 miles (111 km)

long. This represents an average area of 3200 sq. miles (8436 sq. km) per latilong. Latilongs along the Canadian border are 5.4 percent smaller than those along the Wyoming border.

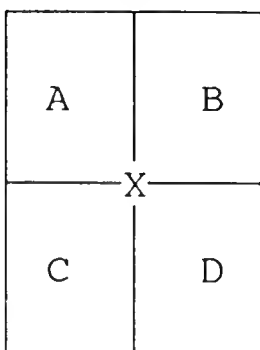
These nearly-uniform units form a global grid across middle latitudes that provide conformity between states and nations. The U.S. Fish and Wildlife Service's Breeding Bird Survey is based on this latilong grid. So successful was Skaar's early use of the latilong as a biogeographic aid (Skaar 1969, 1980), that several neighboring states have used latilongs for mapping bird distribution (Stephens and Sturts 1991; Kingery 1987; Oakleaf et al. 1982) and other vertebrate groups (Thompson 1982; Findholt et al. 1981).

The map on the back cover depicts the 49 latilongs and 185 quarter latilongs in Montana. This includes L48 and L49 which cover small portions of southwest Montana previously excluded from the first three editions. Also enclosed in this edition is a latilong map that has been superimposed over a state highway map. This is an extra aid that will permit accurate location of the quarter latilong (QLL) where an observation is made. For finer resolution when sightings are near boundaries and for reporting rare birds, please refer to the Forest Service, BLM, and USGS topographic maps to accurately determine the correct QLL location.

### Quarter Latilongs

The most obvious change from the Third Edition is the use of quarter latilongs (QLL). QLL units are created by dividing each latilong unit into four quarters at the 30 minute degree mark between each degree of latitude and longitude. Each QLL cell retains the number of the latilong cell with the addition of a letter (A,B,C, or D) ordered left to right (Fig. 1). Thus, latilong 25 is now broken into 4 QLLs: 25A, 25B, 25C, 25D (see p.7). Each of the latilongs has the Third Edition data listed in the center (Example "X" Fig. 1). All of the new (post-Third Edition) data are presented in the quarter latilong positions.

**Figure 1.** Quarter Latilong Letter Code Sequence.



We recognize that the maps displayed in this edition are "busy" and may be confusing at first glance. However, a sufficient amount of new data did not exist to adequately represent the distribution of most birds in Montana. The Third Edition data are retained in the center of the latilong so that there is continuity between the old and new formats. In the Fifth Edition (1995) only the quarter latilong values, based on data submitted since Third Edition data, will be displayed. In the past, contributors have focused on

the rare species and new latilong records. Conversion to quarter latilongs and a commitment to continually update *Montana Bird Distribution* (MBD) requires a fundamental change in the way Montana birders list and submit their observations. For the effort to succeed, all species, common and rare alike, must be recorded for each QLL during each revision period.

### **Taxonomic changes and subspecies**

All species names and taxonomic revisions follow the American Ornithologist's Union (AOU) Checklist of North American Birds, 6th edition (AOU 1983), as amended by the 35th through the 38th supplements (AOU 1985, 1987, 1989, 1991). The AOU has made several taxonomic revisions since the MBD Third Edition. These changes are reflected in the species lists and maps, where appropriate.

In consultation with the verification committee, we identified 5 species for which enhanced data collection for subspecies distribution is warranted. In some cases this is to provide better information for future taxonomic assignments. In others, it is simply of interest to maintain the geographic distinctions between taxa. The species names and maps do not display these subspecific ranges, but we are recording and maintaining records in the databases at the subspecific level. We request that contributors submit records for these species at the subspecies level, whenever possible.

Species for which information is kept on subspecies, races, or forms include:

**Northern Flicker**

Red-shafted Flicker  
Yellow-shafted Flicker

**Yellow-rumped Warbler**

Audubon's Warbler  
Myrtle Warbler

**Dark-eyed Junco**

Slate-colored Junco  
Montana ("Oregon Junco")  
Pink-sided Junco  
White-winged Junco  
Gray-headed Junco

**Northern Oriole**

Bullock's Oriole  
Baltimore Oriole

**Rosy Finch**

Gray-crowned Rosy Finch  
Gray-headed (Hepburns's) Rosy Finch  
Black Rosy Finch

### **Other Changes**

The first arrival dates for species were not included. There was no additional information to update the Third Edition. We have the capacity to record and manage information on arrival and departure dates for all species. We need several contributors to record and submit this information from various regions in the state. Please contact the editors at the Montana Natural Heritage Program for further information.

We have eliminated the "S" and "s" symbols for species documented by a specimen or photograph. Specimen data and photograph records will be entered into the database. Files for photographs, slides, or copies have been established.

Dr. P. L. Wright of the verification committee will compile a list of specimens, including the vertebrate collections where they are stored. This list will be available and updated as additions to the collections occur.

The symbols "?" (questionable sightings) and "I" (uncertain latilong location) found in the Third Edition are not used in this edition. The steering and verification committees will not accept records in these categories so the designations are dropped from this and future editions.

## Evaluation of Records

A verification committee was established in June 1991. The committee established rules for conducting business and evaluating records. Criteria for suitable documentation were reviewed and a voting procedure established. The verification committee is responsible for accepting records of rare birds (less than 20 sightings) and sightings of birds outside their normal range. Contributors with observations in these categories are asked to submit a rare bird report describing their sighting (Appendix E). No rare or out-of-range records will be accepted without committee approval.

## Species with Special Status

Any special status for each species is indicated by the letters and symbols which follow the common and scientific name.

**n=** Rare birds (fewer than 20 verified sightings) are identified by the letter "n" followed by the number of sightings. The most recent sighting is listed with location and date.

**TES** We have identified those species that are considered threatened, endangered, or sensitive in Montana or throughout their range by the symbol **TES**. Species assigned to this category are any one of the following: federally recognized endangered, threatened, or candidate species for listing under the Endangered Species Act; U.S. Forest Service sensitive species, as assigned by the Regional Forester; or species of special concern, as recognized by the Montana Natural Heritage Program and Montana Department of Fish, Wildlife, and Parks. A list of species in each of these categories is found in Appendix A. It is important to note that all of these lists are subject to change. For current information, contact one of the local offices of the US Fish & Wildlife Service; Montana Department of Fish, Wildlife, and Parks; US Forest Service; or Montana Natural Heritage Program.

**SI** Another group of species was identified as being poorly known in the state or as having unique breeding habits that warrant further study. There is a need for additional information on the distribution, breeding habits, and status of these "species needing additional information," or **SI**.

Contributors submitting sightings of **TES** and **SI** species are requested to submit detailed information. This information should include the date of observation, specific location, number of individuals, and details on nesting, if observed. This is an



important aspect of maintaining statewide information on species that are either more vulnerable, less visible, or experiencing range or population decline. Rare bird sightings are requested to be submitted on the rare bird report form (Appendix E).

### **Neotropical Migratory Species**

There are many birds that breed or migrate through Montana and spend their winter in the "neotropics" (Central and South America). Recent evidence suggests that populations of some of these bird species may be declining. Thus, in 1990 the National Fish and Wildlife Foundation proposed a major initiative for the conservation of migratory land birds that breed in North America and winter in neotropical countries. Several major federal land management agencies, conservation groups, state fish and wildlife agencies, and academics have joined to develop the Neotropical Migratory Bird Program. This collaborative effort attempts to determine the causes for declines in our migratory bird populations. Part of this effort involves identification of species vulnerable to declines from either of the two primary causes suggested: fragmentation of breeding ground habitat in the U.S. and Canada, and loss of wintering habitat in Mexico, Central and South America, and the Caribbean.

A major initiative for research, monitoring, and management of migratory landbirds, has been established at the national and local levels. We have listed the Neotropical Migratory Bird species known to occur in Montana (Appendix B). The species included in the program are both long- and short-distance migrants. Wintering zones for species are identified and nicely handled in the "Conservation" subheading of The Birder's Handbook (Ehrlich et al. 1988). Additional information and activities are being developed by the local Montana Steering Committee of the Neotropical Migratory Bird Program, including a handbook, monitoring activities, study of habitat relationships, and international partnerships. For additional information on local activities, contact the Neotropical Migratory Bird Program Coordinator, Wildlife and Fisheries, U.S. Forest Service Northern Region, P.O. Box 7669, Missoula, MT 59807.

## How to read maps and interpret symbols

Each species is listed by common and scientific name in taxonomic order. Order and family names are inserted to aid in grouping the species. A common name is placed in the top outside margin of each right hand page for the predominant group of species found on that page.

Information on the species' status is provided on the lines beneath some of the names. Symbols and their definitions are explained below. Further information is provided on page 4. See Appendix A (p.109) for a list of species.

n= Number of documented records (for species with fewer than 20 verified records).

TES Species considered threatened, endangered, or sensitive.

SI Additional information requested for these species.

introduced - Not native to North America or a native North American species transplanted to Montana.

The distribution maps are shaped in the general outline of Montana. Each rectangular block represents one latilong. Each symbol within the block represents the highest documented status for the species in each latilong or quarter latilong. All of the Third Edition data are presented in the center of the latilong block. The quarter latilong data are presented in the corners of the latilong block and represent observations submitted since 1985. The symbols used are as follows (see p.113, Appendix D, for complete definitions):

B Direct evidence of breeding (nest or dependent young observed).

b Indirect or circumstantial evidence of breeding.

t Observed, no evidence of breeding.

- Absent or no observations submitted.

The winter distribution of species is recorded between December 15 and February 15. Winter maps display data in latilong blocks only. However, post-Third Edition data are recorded by QLL in the database. The symbols and their definitions are:

W Overwintering. Regular sightings during the winter period.

w Overwintering not yet documented, but species observed at least once between Dec. 15 and Feb. 15.

- Absent or no verified winter records submitted.

**Example:** In the map below, Third Edition data show a verified sighting of an American Flamingo in Latilong 25 by the presence of a "t" in the center of latilong block number 25. There is a "t" in the "A" quarter of the latilong block meaning that a sighting also occurred since 1985. Only 2 sightings have been recorded (n=2). The most recent sighting was in 1988 near Florence along the Bitterroot River. As designated by the symbol, "SI", more detailed information is requested if there are further sightings. In this case, because there are fewer than 20 sightings, verification by the verification committee is required before the report will be accepted. A rare bird report should be submitted. The winter map lists no winter (Dec 15 - Feb 15) sightings.

**American Flamingo**

*Gardenus effigis*

QLL 25A; April 1, 1988

Bitterroot River, Florence

n=2; SI

-----  
 -----  
 -----  
 -----  
 --

-	-	-	-	-	-	-	-	-	-	-	-
-	-	-	-	-	-	-	-	-	-	-	-
	t	-	-	-	-	-	-	-	-	-	-
	t	-	-	-	-	-	-	-	-	-	-
		-	-	-	-	-	-	-	-	-	-
			-	-							
				-	-						

## Submission of New Records

Contributors are asked to submit records in one of two formats.

**1. Quarter Latilong Bird Lists:** This is a list of bird species observed within a quarter latilong (QLL). If there were several birding trips within a single QLL the sightings from each trip should be summarized into a single master list for that QLL. For each species recorded, list the highest status observed ("B" greater than "b" greater than "t") and then the most recent observation date. Make one list per QLL in taxonomic (Field Guide) order. For full-page form, see p.115.

In areas where you live or that you frequent each year we would like a single master QLL list annually. If the status is listed as "B", briefly state the criteria used (i.e., nest, dependent young, etc.). A brief location description is requested (i.e., Bean Lake, Long Pine Hills, Chinook, Hwy 200, 10 miles west of Simms, etc.).

## 2. Single Observations (rare, out of range, and SI species)

These sightings require thorough, detailed descriptions. It will be best to use the Rare Bird Report Form found in Appendix E, however, any report format with sufficient information will do. Fill in the information only for items that you actually observed. Do not fill in items you felt you should have seen but did not. It is the exception where all possible criteria are seen. Complete the report as soon as possible following the observation while your impressions are fresh. Please submit any drawings or photographs; they will become part of the permanent record unless return is requested. All rare and out-of-range sightings are submitted to the verification committee. They can only judge your sighting based on your report. "It looked just like the picture in the book" won't pass.

Please submit individual records and individual QLL lists as soon after the observations as possible. For QLLs that you visit more than once, send in a master QLL list annually. New records will be added to the Montana Bird Distribution database on a regular schedule. This will allow for periodic updates and queries on species or selected geographic areas. It will also greatly facilitate producing the next edition.

We plan development of a computer software program that will permit data entry of field sightings by observers with access to personal computers. This will permit observers to send in their observations via diskette. Use of this method of recordkeeping will significantly reduce data entry time at the central database. We intend to design the program so that observers will be able to access and display their own data. All observers with access to personal computers are encouraged to use this method when it becomes available.

Mail all records to:

Montana Bird Distribution Update  
Montana Natural Heritage Program  
1515 East Sixth Avenue  
Helena, MT 59620

**Red-throated Loon**

*Gavia stellata*

QLL 10D; May, 1991; Ft. Peck  
n=7

---w-----  
-----  
-----  
-----  
-----  
--

-	-	t	-	-	-	-	-	-	-	t	-
-	-	-	-	-	-	-	-	-	-	-	-
	-	-	-	-	-	-	-	-	-	-	-
		-	-	t	-	-	-	-	-	-	-
			-	-							

**Pacific Loon**

*Gavia pacifica*

(formerly combined with Arctic Loon)  
LL 3; Sept. 25, 1976; Lake McDonald  
n=2

-----  
-----  
-----  
-----  
-----  
--

-	-	t	-	-	-	-	-	-	-	-	-
-	-	-	-	-	-	-	-	-	-	-	-
	-	-	-	-	-	-	-	-	-	-	-
		-	-	t	-	-	-	-	-	-	-
			-	-							

**Common Loon**

*Gavia immer*

TES

WWW-----W--  
Ww-----  
---w-----  
---w-----  
--

B B	B B	B B	t	t	t	-	-	b	b	-	t
B	B	B	t	t	t	-	-	t	b	-	t
B B	B B	B B	t	t	t	-	-	t	t	-	t
b	B	B t	t	t	-	t	t	t	t	-	t
	B	B B	t	t	-	t	t	t	t	-	t
		B B B	t	t	-	t	t	t	t	-	t
	t	t	t t	t	t	t	t	t	t	-	t
	t	B	t	t	t	t	t	t	t	-	t
		t	t	t	t	t	t	t	t	-	t
			t	t	t	B	t	-	t	t	t
				t	t	t	t	t	t	t	t
				t	t	t	t	t	t	t	t
				t	t	t	t	t	t	t	t

**Yellow-billed Loon**

*Gavia adamsii*

QLL 17D; Jan. 5, 1987;  
Giant Springs, Great Falls  
n=1

-----  
-----w-----  
-----  
-----  
-----  
--

-	-	-	-	-	-	-	-	-	-	-	-
-	-	-	-	-	-	-	-	-	-	-	-
	-	-	-	-	-	-	-	-	-	-	-
		-	-	-	-	-	-	-	-	-	-
			-	-							

**Pied-billed Grebe**  
*Podilymbus podiceps*

WWW-----W--  
 WW-----  
 W-WW-----  
 --WW-W-----  
 --

B	B	b	B	B	B	B	b	B	B	B	B
	b	B	b	B	b	B	B	B	t	B	B
t	t	b	b	B	b	B	B	b	B	b	B
	B	B	t	t	B	b	B	B	b	B	b
		t	t	b	t	b	B	B	B	B	B
		-	t	B	B	b	B	B	B	B	B
				B	B						
				b	B						
					B						

**Horned Grebe**  
*Podiceps auritus*

WWW-----  
 WW--W-----  
 -----  
 --

B	B	t	b	b	-	t	b	t	B	B	t	B
	t	B	B	b	B	-	t	t	t	t	t	-
t	t	b	B	b	t							
	t	t	t	t	t	t	t	b	t	t	b	
		-	t	t	t	t	-	t	t	-	b	
			-	t								

**Red-necked Grebe**  
*Podiceps grisegena*

WWW-----  
 -W-----  
 -----  
 --

B	b	t	b	t	-	t	-	t	t	t	-	-
	B	B	B	b	B					t		
t	B	B	B	B	t	-	-	-	-	t	-	-
	b	b	t	b	B							
	t	B	B	t	t	-	-	-	-	-	-	-
		B	t	t	t							
				b	t	-	t	-	-	-	-	-
				t	t							
				-	-							
					t							
					-							

**Eared Grebe**  
*Podiceps nigricollis*

-WW-----  
 -W--W-----  
 -----  
 --WW-----  
 --

B	B	t	b	b	B	b	B	B	B	B	t	B
	B	B	B	b	B	b	b	B	B	t		
t	B	B	B	B	B	b	B	B	B	B	B	t
	b	B							t			t
	B	b	B	t	B	B	B	B	B	B	t	b
		t	t	t	t				t			t
		B	b	b	t	B	t	-	t	B	B	
		b	b	b	t							
					t							
						B	B					
						B	B					









**Green-backed Heron**

*Butorides striatus*

QLL 17B; May 22, 1985; Benton Lake NWR  
 QLL 9C; May 23, 1985; Bowdoin NWR  
 n=9

-----  
 -----  
 -----  
 -----  
 --

-	t	-	-	-	-	-	-	-	t	-	-
-	t	-	-	t	-	-	-	-	-	-	-
	-	-	-	-	-	-	-	-	-	t	t
		-	-	-	t	-	-	-	-	-	-
			-	-							

**Black-crowned Night-heron**

*Nycticorax nycticorax*

SI

-----  
 -----  
 -----  
 -----  
 --

-	B	-	-	-	t	t	b	B	t	B	B
-	t	-	B	B	t	-	t	t	t	t	t
	t	-	-	t	t	t	t	-	-	t	t
		-	-	t	t	t	t	-	t	-	t

**Yellow-crowned Night-heron**

*Nyctanassa violaceus*

LL 29; Sept. 26, 1976;  
 Cottonwood Reservoir  
 n=2

-----  
 -----  
 -----  
 -----  
 --

-	-	-	-	-	-	-	t	-	-	-	-
-	-	-	-	-	-	-	-	-	-	-	-
	-	-	-	-	t	-	-	-	-	-	-
		-	-	-	-	-	-	-	-	-	-

■ **Threskiornithidae**

**White-faced Ibis**

*Plegadis chihi*

TES

-----  
 -----  
 -----  
 -----  
 --

-	t	-	-	-	-	-	t	B	t	-	t
-	t	-	B	B	-	-	-	t	-	-	-
	t	-	t	t	t	-	B	t	-	t	-
		-	t	t	-	B	t	-	-	-	-

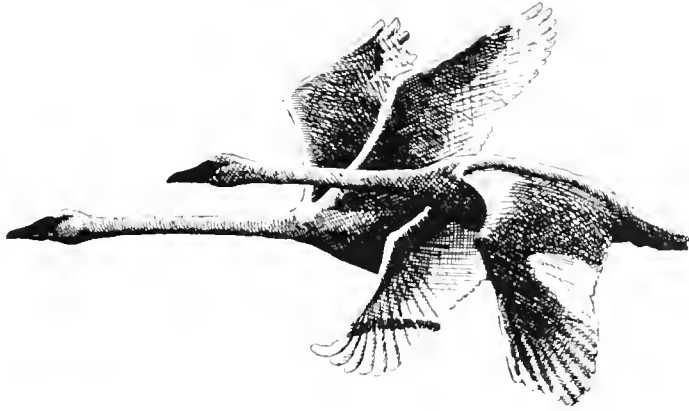
**Wood Stork**

*Mycteria americana*

LL 32; May 4, 1918; Custer  
n=2

-----  
-----  
-----  
-----  
--

-	-	-	-	-	-	-	-	-	-	-	-
-	-	-	-	-	-	-	-	-	-	-	-
	-	-	-	-	-	-	-	t	-	-	-
		-	-	t	-	-	-	-	-	-	-
			-	-							



● ANSERIFORMES ■ Anatidae

**Tundra Swan**

*Cygnus columbianus*

-W--W-----  
-WWW-----  
WW-w-----  
--WW-w-----  
-W

t	t	t	t	t	t	t	t	t	t	t	t
t	t	t	t	t	t	t	t	t	t	t	t
t	t	t	t	t	t	t	t	t	t	-	t
	t	t	t	t	t	t	t	t	t	t	-
		-	t	t	t	t	t	-	t	-	-
				t	t						

**Trumpeter Swan**

*Cygnus buccinator*

TES

-W-----  
-W--W-----  
W-----  
--WW--W--  
-W

-	b	t	t	-	-	-	-	-	-	b	-
-	t	b	B	t	-	t	-	-	-	-	-
	t	b	t	t	t	t	-	-	-	t	-
		-	t	B	t	B	-	-	t	-	-
				B	B	B					
				B	B						

**Mute Swan**

*Cygnus olor*

SI (introduced)

-----  
 -----  
 -----  
 ---W-----  
 --

-	-	-	-	-	-	-	-	-	-	-	-
-	t	-	-	-	-	-	-	-	-	-	-
	-	-	-	t	t	-	-	-	-	-	-
		-	-	t	B	B	-	-	-	-	-
			t	B	B						
			t	t							

**Greater White-fronted Goose**

*Anser albifrons*

-W-----  
 -----  
 -----  
 ---W-----  
 ---W-----  
 --

-	-	-	-	-	-	-	-	t	t	t	t
	t	-	t	t	-	-	-	t	t	-	t
	t	t	-	t	-	t	t	t	t	t	-
		-	-	t	-	-	t	-	t	-	-
			-	t							
			-	t							

**Snow Goose**

*Chen caerulescens*

WW-----  
 -W-----  
 -----  
 ---WW---WW--  
 ---WW-W-----  
 --

t	t	t	t	t	t	t	t	t	t	t	t
t	t	t	t	t	t	t	t	t	t	-	t
	t	t	t	t	t	t	t	t	t	t	-
		-	t	t	t	-	t	t	t	t	-
			t	t							
			t	t							

**Ross' Goose**

*Chen rossii*

-----  
 -----  
 -----  
 -----  
 -----  
 --

-	t	t	t	t	t	t	-	t	t	-	t
	t	-	t	t	t	t	-	-	-	-	-
	t	t	-	t	-	-	t	-	-	t	-
		-	-	t	-	t	-	-	-	-	-
			-	-							
			-	-							

**Brant**

*Branta bernicla*

LL 33; No location

n=7

-----  
 -----  
 -----  
 -----  
 --

-	t	-	t	-	-	-	-	-	-	-	-
-	-	-	t	-	-	-	t	-	-	-	-
	-	-	-	-	-	-	-	-	t	-	-
		-	-	t	-	-	-	-	-	-	-
			-	-							

**Canada Goose**

*Branta canadensis*

WWW-WWW-WW-W  
 WWWWWW-WWW-W  
 WWWWW--WWW-  
 -WWWWWW-  
 WW

B	B	t B	b	t t	B	B B B	B	B	B	B	B
B b	B B	b B B	B	B b t	b	b B B	B B	B B	B	B	B
t t	B	B B	B B	B	B	B B	B B	B B	B	B	B
	B B	B b b				B B	B B	t			
	t	B	b b	b						b	B
	B	B	B	B	B	B	B	B	B	B	B
	B		t B	B B	B t	t		b			
		t b	b	B B	B	b	B			b	B
		t	B	B	B	B	B	B	B	B	b
			t	t	B			b			b
				B B B							
				B	B						

**Wood Duck**

*Aix sponsa*

WW-----W---  
 -W-----  
 W-WW-----  
 --W--W---  
 --

B	B	t	-	-	-	-	b	B	t	t	t
	B	B	t	t			t	B	t	-	t
	t	B	t	b	-	t	B	t		t	B
		t	b								
	B	b b	t	b	-	-	t	B	B	B	-
	b	-	B	t				b			
			B	B	B	B	B	B	t	t	-
				B	B	B	B	t			
				t							
					t						

**Green-winged Teal**

*Anas crecca*

WW-----W---  
 WW-WWWW-----  
 WWWW-----  
 --WW-W---  
 WW

B	B	B	b	t	b	B	B	B B	B	b	B
	B	b	B	B				B	t		
	t	b	B	B	b	B	B	b	t	B	B
	b	B	B	B	b	B	B	b	B	b	B
		t	B	b b			b			b	
		B	B	b	t	b	b	B	t	b	B
		B		t							b
			B	t							
			t t	b	B	B	B	t	t	B	b
			b	B	B	B	B	t			
				B B							
				b	B						

**American Black Duck**  
*Anas rubripes*

-	-	-	-	t	-	-	-	t	t	-	t
-	t	-	-	t	-	t	-	-	-	-	t
	t	t	-	-	-	-	-	-	t	-	-
		-	-	t	t	-	t	-	t	-	-

-----w-w  
 ---W-----  
 -----  
 ---w-w----  
 --

**Mallard**  
*Anas platyrhynchos*

B	t	b b	b	b	B B		B	B B	B		b
B	B	t B	t B	B	B	B	b	b B	B B	B	B
B B	t B	t B	B B	B	B	B	B	B B	B B	B B	B
B t	t B	B t	B B	B	b	B	B	B	b B	B	B
b	B	B	B	B	B	B	B	B	B	B	B
	t	B B	b B	b	B	B	B	B	b	B	B
	B	B	B	B	B	B	B	B	B	B	B
	B	B	b B	B t	t B	t t	t B	b	b	B	b
		B b	b	B b	B t	t b	b b	b	B	b	b
		B	B	B	B	B	B	B	B	B	B
			b	B t	t			b b		t b	

WWWWWWWWWWW-  
 WWWWWWWWWWW-  
 WWWWWWWWWWW  
 -WWWWWWWW-  
 WW

**Northern Pintail**  
*Anas acuta*

B	B	b	B	b	B B		b B	B B	B		b
	t	t B	B	B	B b	b	B	B B	B t		B
b	B	B	B	B	B	B	B	B	B	B	B
	b	t	b B	B	b	B	B	B	B	B	B
	B	B	B	B	B	B	B	B	B	B	B
		t	B t	B	B	B	B	B	B	B	B
		B	B	B	B	B	B	B	B	B	B
		B	b	B t	B	B	B	B	B	B	B
		t b	b t	t t	t	B	B	B	B	B	B
		B	t	B	t	b	B	B	t	B	B

WW-----WW--  
 -W-WWWW-----  
 WWW-----  
 -WWW-WW---  
 -W

**Garganey**  
*Anas querquedula*

QLL 14D; April 4, 1991; Charlo n=2

-	-	-	-	-	-	-	-	-	-	-	-
-	-	-	-	t	-	-	-	-	-	-	-
	t	-	-	-	-	-	-	-	-	-	-
		-	-	-	-	-	-	-	-	-	-

-----  
 -----  
 -----  
 -----  
 --

**Blue-winged Teal**  
*Anas discors*

B	B	B	b	b	b	B	B	B	B	B	B	b
b	B	B	B	b	b	b	B	B	B	B	t	B
t	B	B	b	B	B	b	B	B	B	b	B	B
	b	t	b	b			b	B	B	b	b	B
	B	B	B	B	b	b	B	B	B	B	B	B
		B	b	t	b	B	b					b
		t	t		b	t	b	b	B	t	b	B
			-	B	B	t	B	B	B	t	B	B
				b								b
				b	B	B						
				b	B							

-W-----  
 -----W-----  
 W--W-----  
 --W-W-----  
 --

**Cinnamon Teal**  
*Anas cyanoptera*

B	B	t	B	b	b	b	B	b	t	-	b
b	b	B	B	b	b	b	B	B	t		
t	B	B	b	B	B	t	B	B	t	b	t
	b	t	B	B					b	b	t
	B	B	t	b	B	b	-	B	b	-	t
		B	b	t	b	t					b
		t	t		b	B	t	B	B	t	-
			b	B	b	t	t	B	B	b	t
			b								
			b	B	B						
			b	B							

-----  
 -W-----  
 W--W-----  
 -----  
 --

**Northern Shoveler**  
*Anas clypeata*

b	B	t	B	b	B	B	B	B	B	B	B
	b	B	B	b	B	B	b	B	B	t	t
t	B	B	t	B	B	B	B	B	B	b	B
	b	t	B	B	B	B	B	B	B	B	B
		B	b	t	B	B	B	B	B	b	B
		b	t	B	t	B	B	B	B	b	B
		t	t	t	t	t	B	B	B	b	B
			b	B	t	B	B	B	B	b	B
			b								b
			b	B							
			b	B							

WW-----  
 W-----  
 W--W-----  
 --WW-W-----  
 -W

**Gadwall**  
*Anas strepera*

b	t	B	b	b	b	B	B	B	B	B	b
	b	B	B	b	b	b	b	B	t	t	B
t	B	B	B	B	b	B	B	B	b	B	B
	b	B	B	B	b	B	B	B	B	B	B
	B	b	b	B	B	b	B	B	-	-	B
		b	b	B	B	b	B	B			b
		t	t	B	t	B	t	B	b	t	b
			-	t	B	t	B	B	b	t	B
				B							t
				B	B						
				B	B						

WW-----WW--  
 WW--W-W-----  
 W--W-----  
 --WW-WW-----  
 -W

**Eurasian Wigeon**  
*Anas penelope*

-	t	t	-	t	-	t	-	-	t	-	-
-	t	t	t	t	-	-	-	-	-	-	-
	t	-	t	t	-	-	-	-	-	-	-
	t	-	-	t	-	-	-	-	-	-	-
		-	-	t	-	t	t	-	-	-	-
			-	-							

-----W-----  
-----  
-----  
-----  
-----  
--

**American Wigeon**  
*Anas americana*

B	B	B	B	b	b	b	b	B	B	B	b	B
t	t	b	t	B	B	B	b	B	B	B	b	B
	B	B	B	B	B	B	B	B	B	B	B	B
	B	B	B	B	B	B	B	B	B	B	B	B
	t	B	B	B	B	B	B	B	B	B	B	B
		B	B	B	B	B	B	B	B	B	B	B

WWW-W---WW--  
WW--WW-----  
WW-W-----WW-  
--WW-WW-----  
-W

**Canvasback**  
*Aythya valisineria*

B	B	B	B	b	b	b	B	B	b	t	B
t	t	B	B	B	B	B	B	B	t	t	b
	B	B	t	t	t	t	B	t	t	t	t
		t	B	B	B	B	B	B	B	B	B
		-	t	t	t	b	t	t	t	t	t
			B	B							

WWW-----  
WW--W-----  
W-----  
--WW--W-----  
-W

**Redhead**  
*Aythya americana*

B	B	B	B	b	b	b	B	B	b	t	B
t	t	b	t	B	B	b	B	B	t	t	b
	B	B	B	B	B	B	B	B	B	B	B
	B	B	B	B	B	B	B	B	B	B	B
	t	t	t	B	B	B	t	t	t	b	t
		B	B								

WW-----W--  
WW--W-----  
W-----  
--WW-WW-----  
-W



**Ring-necked Duck**  
*Aythya collaris*

WWW-----  
WW--W-----  
W--W-----  
--W-----  
-W

B	B	t B	b	-	-	b	t	t	t	t	t
t	b	t B	b B		b				t	t	t
	t	B	t	t	t	t	t	t	B	t	t
			t								
		b	-	b	b	t	t	t	t	t	t
					b						
			t	B B							
				B							

**Greater Scaup**  
*Aythya marila*

--W-----  
---W-----  
W--W-----  
--W-----  
--

-	-	t	-	-	-	-	-	-	-	-	-
-	t	-	t	t	-	-	-	-	-	-	t
	t	t	-	t	-	-	t	-	-	-	-
		-	-	t	-	t	-	-	-	-	-

**Lesser Scaup**  
*Aythya affinis*

WW-----W--  
WW--W-----  
W-WW-----  
--WW-WW----  
-W

B	B	B	B	b t	t	b	B	B	B	b	b
t	B	B	B	b	b	b	B	B	t t	b	B
t t	t t	B	B	B	B	t	B	B	t t	b	B
		b	t	b b					t	b	
	t	B	B	B	t	t	b	B	b	t	t
			B	B	t t				b		t
		b	t	b	t	B	t	t	t	b	t
					b						
			b	B B							
			b	B							

**Harlequin Duck**  
*Histrionicus histrionicus*  
TES

-----  
-----  
-W-----  
-----  
--

B	B	B b	b	-	-	-	-	-	t	-	-
B	b	B B	B					t			
B	t	B B	B	-	-	-	-	-	-	-	-
		B	B								
	b	B	-	t	t	b	-	-	-	-	-
		-	-	b	b	b	-	-	-	-	-
					B B						

**Oldsquaw**  
*Clangula hyemalis*

-----  
 ---W---W---  
 -W-W-----  
 -----W---  
 --

-	t	-	-	-	-	-	-	t	-	-	t
-	t	-	t	t	-	-	t	-	t	-	-
-	t	-	t	-	t	-	-	-	-	-	-
-	-	t	t	t	t	t	-	-	-	-	-
-	-	-	-	-	-	-	-	-	-	-	-

**Black Scoter**  
*Melanitta nigra*  
LL 17; Nov. 2 1979; Benton Lake  
n=4

-----  
 -----  
 -----  
 -----  
 --

-	-	-	-	-	-	-	-	-	-	-	t
-	-	-	t	t	-	-	-	-	-	-	-
-	-	-	-	-	-	-	-	-	-	-	-
-	-	t	-	t	-	-	-	-	-	-	-
-	-	-	-	-	-	-	-	-	-	-	-

**Surf Scoter**  
*Melanitta perspicillata*

-----  
 -----  
 -----  
 -----  
 --

-	-	t	-	-	-	-	-	t	t	-	t
t	-	t	-	t	t	-	-	-	-	-	-
-	t	t	t	-	t	-	-	-	-	-	-
-	t	t	-	t	-	-	-	t	-	-	-
-	t	-	-	-	-	-	-	-	-	-	-

**White-winged Scoter**  
*Melanitta fusca*

-W-----  
 -----  
 -----  
 W--W-----  
 -----  
 --

-	t	t	-	-	-	-	-	t	t	-	t
t	-	t	t	t	t	-	-	t	t	-	-
t	t	-	t	-	-	t	-	-	-	-	-
-	-	t	-	t	-	-	-	-	-	-	-
-	-	-	-	-	-	-	-	-	-	-	-











**Golden Eagle**  
*Aquila chrysaetos*

WWWWWWWWWW  
 WWWWWWWWWWW  
 WWWWWWWWWWW  
 WWWWWWWWWWW  
 WW

B	B	t b	B B	b b	B B	B	B	B	t	b	b
	b t	b B	B B	b b		b	B	B	b	t	
b	B	t b	B b	B	b	B	B	B	b B	B	b t
	t	b	b t			t			B		
	B	t b	b t	B t	B	B	B	t	B	B	B
	t	t	B	B	t b	b t	t		B		
		b B	b	B	b B	t			t	t	
		b	B	B	B	B	B	B	B	B	B t
				B	B	t B	b	B			
				b B b							
				B	B						

**Falconidae**  
**American Kestrel**  
*Falco sparverius*

WW-----W--  
 WW-WWW-----  
 W-WWW-WWWW-  
 --WW-W-W-W  
 --

t	B	B	B	b b	B B	B	t	B	B	B	t
	t	b	t	B t	t B	B	b	b	b b	b	B
t	t b	b	b B	B	t	B	B	B	B b	B	B t
	B	t b	t b	B b				B	B	t	
		t	t B	b B	b		B	t	b	t	
	B	t	B	B	B	B	B	B	b	b	B
		B	t	B	b t	t B	B t	t B	t	B	b
		B B	b	b t	B B	t t	t t	t t	t t	t t	b
		B	B	t	B	b	B	B	B	B	B
				t	B	t b	b		b b	b t	t b
				B B B							
				B	B						

**Merlin**  
*Falco columbarius*

WWW-WWW-WWW-  
 WW-WW-WW---W  
 WW-W----WWW  
 -WW--W-W-W  
 --

b	b	t	B	B	t	B	t	b	B	b	t
	t	b t	t	b				t	t		
t	t	B	B	B	-	B	B	b	b	b	B
	t	t	t								
	b	t	t	B	B	t	b	-	t	t	B
	t	b	b	B	B	t	b	b	t	t	B
		t	t	B	t	b	-	t	t	B	
		t	t	B	t	b	-	t	t	B	
				b	t						
				b	t						

**Peregrine Falcon**  
*Falco peregrinus*  
TES

WW---W-WWW--  
 -W--W--WW-W-  
 W--W-WW-W--  
 -WWW-W----  
 --

b	b	t t	-	t	t	B	t	t	t	-	B
	t	b t	t								
b	B	B	t	b	-	t	B	t	t t	t	t
	t	t	t								
	B	-	b	t	b	t	t	b	t	B	t
		t	t	B	t	t	B	B	t	t	t
		t	t	B	b	t	B	B	t	t	-
				B B							
				t	B						



**Gyr Falcon**  
*Falco rusticolus*

-	t	-	-	t	-	t	-	t	t	-	-
-	t	-	t	t	t	t	-	-	t	-	-
	t	t	t	t	t	-	-	t	-	t	-
		-	-	t	t	-	t	t	t	-	t
				-	t						

-W-----WW--  
-W-WWW--W--  
WWWWW-----  
--W--WW--  
--

**Prairie Falcon**  
*Falco mexicanus*

b	b	t	b	B	B	b	b	B	t	b	t	t	B
B	B	B	B	B	B	B	B	b	B	b	B	B	B
B	B	B	B	B	B	B	B	B	B	B	B	B	B
	B	B	B	B	B	B	B	B	B	B	B	B	B
		t	B	B	B	B	B	B	B	B	B	B	B
				B	B	B	B	B	B	B	B	B	B

WW-WWW--WW-W  
WW-WW-WWWWWW  
WWWWW-WWW  
-WWWWWW  
W-

■ GALLIFORMES ■ Phasianidae

**Gray Partridge**  
*Perdix perdix*  
(introduced)

B	B	b	b	b	B	B	B	b	B	B	B	B	b	B
b	B	-	b	B	B	b	B	B	B	B	b	B	b	b
	B	B	B	B	B	B	B	B	B	B	B	B	B	B
		B	B	B	B	B	B	B	B	B	B	B	B	B

WWWWWWWWWW  
WW-WWWWWW  
WWWWW  
WWWWW-  
-W

**Chukar**  
*Alectoris chukar*  
(introduced)

-	b	-	-	-	-	-	-	-	-	-	-	-	-	-
-	B	-	-	-	-	-	-	-	-	-	-	-	-	-
		-	b	-	-	-	-	-	-	-	-	-	-	-
				-	-	b	-	-	B	B	b	-	-	-

-W-----  
-W-----  
-----  
---W-W-  
--

**Ring-necked Pheasant**  
*Phasianus colchicus*  
 (introduced)

b	B	b	B	b	B	B	b	B	B	B	B	b
	B		b	B	b	B	B	B	B	B	B	B
-	B	b	B	B	B	B	B	B	B	B	B	B
	B			B	B	B	B	B	B	B	B	B
				B	B	B	B	B	B	B	B	B
					B	B	B	B	B	B	B	B
						B	B	B	B	B	B	B
							B	B	B	B	B	B
								B	B	B	B	B
									B	B	B	B
										B	B	B
											B	B
												B

WW-XXXXXXXXXX  
 -W-XXXXXXXXXX  
 XXXXXXXXXXXXX  
 -XXXXXXXXXX-  
 --

**Spruce Grouse**  
*Dendragapus canadensis*

B	B	B	-	-	-	-	-	-	-	-	-
	B	B	B	-	-	-	-	-	-	-	-
B	B	B	B	t	-	-	-	-	-	-	-
		B	B	B	-	-	-	-	-	-	-
			B	B	-	-	-	-	-	-	-
				B	-	-	-	-	-	-	-
					B	-	-	-	-	-	-
						B	-	-	-	-	-
							B	-	-	-	-
								B	-	-	-
									B	-	-
										B	-
											B

WWW-----  
 WWW-----  
 WW-----  
 -----  
 --

**Blue Grouse**  
*Dendragapus obscurus*

B	B	B	-	-	-	B	-	-	-	-	-
	B	B	B	B	B	B	B	B	B	B	B
B	B	B	b	B	B	b	B	b	-	-	-
		B	B	B	B	B	B	B	B	B	B
			B	B	B	B	B	B	B	B	B
				B	B	B	B	B	B	B	B
					B	B	B	B	B	B	B
						B	B	B	B	B	B
							B	B	B	B	B
								B	B	B	B
									B	B	B
										B	B
											B

WWW--W-----  
 WWW-WWW-----  
 WW-WWW-----  
 --WW-----  
 -W

**Willow Ptarmigan**  
*Lagopus lagopus*  
 LL 3; Feb. 21, 1914; Midvale  
 n=1

-	-	t	-	-	-	-	-	-	-	-	-

-----  
 -----  
 -----  
 -----  
 -----  
 --

**White-tailed Ptarmigan**  
*Lagopus leucurus*

-	B	B b	-	-	-	-	-	-	-	-	-	-
-	-	B	B	-	-	-	-	-	-	-	-	-
	-	-	-	-	-	-	-	-	-	-	-	-
		-	-	-	-	-	-	-	-	-	-	-
			-	-								

-W-----  
-----  
-----  
-----  
--

**Ruffed Grouse**  
*Bonasa umbellus*

b	B	b B	t	-	-	-	-	-	-	-	-	-
B	B	B B	B	-	-	-	-	-	-	-	-	-
b	B	B B	B	-	-	-	-	-	-	-	-	-
B	t	B b	B t	B	t	B	t	-	-	-	-	-
B	B	B B	B	B	t	B	t	-	-	-	-	-
	b b	b b	b	B	B	B	B	t	-	-	-	-
	B	B	B	B	B	B	B	t	-	-	-	-
		B	t									
	b	B	B	b	B	B	B	B	b	-	-	-
	B	B	B	B	t	B	B	B	B	b	-	-
			B B									
		B	B									

WWW-----  
WWW-WWW--  
WWWWW-----  
-WWW-----  
-W



**Sage Grouse**  
*Centrocercus urophasianus*

-	-	-	-	t	b	B	B	B	B	B	-	-
-	-	-	-	-	b	B	B	B	B B	B	B	-
	-	-	t	B	B	B	B	B	B b	B	B	-
					B	B	B	B	B b	B	B	-
			B	B	B	B	B	B	B	B	B	-
									B	B	B	-
					B	B						-
					B	B						-

----WWW--  
----WWW--  
--WW-WWWW  
--W-WWWW  
-W

**Greater Prairie-chicken**

*Tympanuchus cupido*

LL 12; Medicine Lake; (MT  
Outdoors 11:25)

n=1

-----  
-----  
-----  
-----  
--

-	-	-	-	-	-	-	-	-	-	-	-	b
-	-	-	-	-	-	-	-	-	-	-	-	-
		-	-	-	-	-	-	-	-	-	-	-
			-	-	-	-	-	-	-	-	-	-
				-	-	-	-	-	-	-	-	-
					-	-	-	-	-	-	-	-
						-	-	-	-	-	-	-

**Sharp-tailed Grouse**

*Tympanuchus phasianellus*

WWWWWWWWWW  
-W-WWWWWWW  
W--WWWWWW  
--WWWWWW  
--

B	B	B	B	b	B	B	B	B	B	B	B	b
B	b	b	B	B	B	B	B	B	B	t	b	B
-	b	B	b	B	B	B	B	B	B	B	B	B
		b	b	t	B	B	B	B	B	B	b	B
				b	B	B	B	B	B	B	B	B
					B	B	B	B	B	B	B	B
						B	B	B	B	B	B	B
							B	B	B	B	B	B

**Wild Turkey**

*Meleagris gallopavo*

(introduced)

WW-----  
W-W--WWW--W  
W--WWWWWW  
---W-WWWW  
--

B	B	b	-	-	-	B	-	t	t	-	-	-
B	b	B	t	b	b	t	B	B	B	B	-	b
		B	B	b	t	B	B	B	B	B	B	B
		t					B					
			B	b	-	t	B	-	B	B	b	B
							b					
								B	B	B	B	B

**Northern Bobwhite**

*Colinus virginianus*

LL 2; Feb., 1982; Big Fork  
n=9 (introduced)

-----  
-----  
-----  
-----  
--

-	b	-	-	-	-	-	-	-	-	-	-	-
-	b	-	-	-	-	-	-	-	-	-	-	-
		-	-	-	b	-	-	-	-	-	-	-
						-	-	-	-	-	-	-
							-	-	-	-	-	-
								-	-	-	-	-
									-	-	-	-
										-	-	-

**Yellow Rail**

*Coturnicops noveboracensis*

QLL 14B; Sept. 30, 1984;  
East Bay, Flathead Lake  
n=3

-----  
-----  
-----  
-----  
--

-	-	-	-	-	-	-	-	-	-	-	b
-	t	-	-	-	-	-	-	-	-	-	-
	-	-	-	-	-	-	-	-	-	-	-
		-	-	-	-	-	t	-	-	-	-
			-	-							
			-	-							

**Virginia Rail**

*Rallus limicola*

-----  
-----  
W--W-----  
-W--W-----  
--

-	b	-	-	-	-	-	-	b	b	t	b
b	B							B			
-	t	-	b	-	-	t	-	-	-	-	b
	B	t	-	-	-	-	-	-	-	-	-
		B	t	t	b	-	B	-	-	b	-
			t								
			B	b	b	B	B	t	t	b	t
				b							
				b	b						

**Sora**

*Porzana carolina*

-----  
-----  
W-----  
--W--W-----  
--

B	B	b	-	b	b	b	b	b	B	b	B
b	b	b	b	B	b	b	b	B	b	b	B
-	b	b	b	B	B	b	B	B	t	t	b
	B	b	b	B	B	b	B	B	t	b	b
		B	B	B	b	b	B	b	b	b	b
			B						b		
		b	b	b	b	B	-	b	b	b	b
			B	B	B	b	B	t	b		
			b	t	B						
				b	B	B					
				b	B						

**Common Moorhen**

*Gallinula chloropus*

LL 15; May 2, 1972; Seeley Lake  
n=1

-----  
-----  
-----  
-----  
--

-	-	-	-	-	-	-	-	-	-	-	-
-	-	t	-	-	-	-	-	-	-	-	-
	-	-	-	-	-	-	-	-	-	-	-
		-	-	-	-	-	-	-	-	-	-
			-	-							
			-	-							

**American Coot**  
*Fulica americana*

WW-----W---  
WWW-W-----  
W-WW-----  
--WW-W-----  
--

B	B	B	B	b	B	B	B	b	B	B	B	B
t B	B	b B	B	B	t b	b b	b	B	B	b B	B	B
t	t B	B t	b B	t B			B	B	B	t t	B	B
b	B	b B	B b	B			b	B	B	t	b	B
	t	t b	t	b			B	b	B	b	b	B
	B	B	B	B	B	b	B	B	B	b	b	B
	B		t	b t	t t	b t	t					b
		t B	t	B	B	B	t	B	B	B	b	B
		b	B	B	B	B	B	B	B	B	B	B
			b	B B								b
			b	B								B

■ **Gruidae**

**Sandhill Crane**  
*Grus canadensis*

-----  
-----  
-----  
-----  
--

t	B	B	-	t			t	b	t	t	t	t
b	b B	b	b t	-	t	-	t	t	t	t	t	t
	t	t	b b	t	-	b	t	t	t t	t	t	t
	B	B	b	b								
	b	B	B	B	B	B	t	t	t	t	t	t
	t	B B	B b	B	B	b	t					
		b	B	B	b	B	t	t	t	t	t	t
			t	B	B	t						
				B	B B							
				B	B							

**Whooping Crane**  
*Grus americana*  
TES

-----  
-----  
-----  
-----  
--

-	-	-	-	-	t	-	-	t t	-	-	t
-	-	-	-	-	-	t	-	-	t	t	t
	-	-	-	t	t	-	t	-	-	t	t
		-	-	t	-	-	t	-	t	t	t
			-	t							
					-	t					

● **CHARADRIIFORMES** ■ **Charadriidae**

**Black-bellied Plover**  
*Pluvialis squatarola*

-----  
-----  
-----  
-----  
--

-	t	t	-	-	-	-	t	t	t	t	t
-	t	-	t	t	-	t	t	t	t	-	t
	t	-	t	t	t	t	t	-	-	t	-
	t		t	t	t	t					
		-	-	t	-	t	t	-	-	t	t
					t	t					
					t	t					
					-	t					

**Lesser Golden-plover**  
*Pluvialis dominica*

-	t	-	-	-	-	-	-	t	t	-	t
-	t	-	t	t	-	-	-	-	t	-	-
	t	-	-	-	-	-	t	-	-	t	-
		-	-	t	-	t	-	t	-	-	-
			-	-							

-----  
-----  
-----  
-----  
--

**Snowy Plover**  
*Charadrius alexandrinus*

LL 41; Sept. 5, 1982;  
Broadview  
n=4 TES

-	-	-	-	-	-	-	-	-	-	-	-
-	-	-	-	-	-	-	-	-	t	-	-
	-	-	-	b	-	-	-	-	-	-	-
		-	-	-	-	-	t	-	-	-	-
			-	-							

-----  
-----  
-----  
-----  
--

**Semipalmated Plover**  
*Charadrius semipalmatus*

-	t	-	-	t	t	t	-	t	t	-	t
t	t	t	t	t	-	t	t	-	t	-	t
	t	t	t	t	-	-	t	-	-	t	-
		-	-	t	-	t	t	-	t	-	t
			-	-							

-----  
-----  
-----  
-----  
--

**Piping Plover**  
*Charadrius melodus*  
TES

-	-	-	-	-	-	-	-	B	B	-	-	B
-	-	-	t	-	-	-	-	-	B	B	-	B
	-	-	-	t	-	-	-	-	-	-	-	-
		-	-	-	-	-	-	-	-	-	-	-
			-	-								

-----  
-----  
-----  
-----  
--





**Greater Yellowlegs**  
*Tringa melanoleuca*

t	t	t	t	-	t	t	t	t	t	t	t
	t	t		t	-	t	t	t	t	t	t
		t	t	t	t	t	t	t	t	t	t
			t	t	t	t	t	t	t	t	t
				-	-	t	-	t	t	t	t
						t					

-----  
-----  
-----  
-----  
--

**Lesser Yellowlegs**  
*Tringa flavipes*

t	t	t	-	t	t	t	t	t	t	t	t
	t	t	t	t	t	t	t	t	t	t	t
		t	t	t	t	t	t	t	t	t	t
			t	t	t	t	t	t	t	t	t
				t	t	t	t	t	t	t	t
						t					

-----  
-----  
-----  
-----  
--

**Solitary Sandpiper**  
*Tringa solitaria*

t	t	t	t	t	t	t	t	t	t	t	t
	t	t	t	t	-	t	t	t	t	-	t
		t	t	t	t	t	t	t	t	t	t
			t	t	t	t	t	t	t	t	t

-----  
-----  
-----  
-----  
--

**Willet**  
*Catoptrophorus semipalmatus*

-	t	b	t	b	b	B	b	B	b	B	b
	t	b	b	B	b	B	t	B	b	B	B
		b	B	B	b	B	t	B	b	B	B
			B	B	b	B	t	B	b	B	B

-----  
-----  
-----  
-----  
--

**Spotted Sandpiper**  
*Actitis macularia*

B	B	b b	B	B	B	B	b	B	b	B	b
b	B	B B	b b	b	B	B	B	B	b	b b	b
	b	b B	b	b	B	b	b	B	B	B	b
	B	B	B	b	t b	b	t	B	B	B	b
		B b	b	b t	B	b	B B	b	b	b	b
		B	B	t	B	B	b	b	b	b	b
			t	t	B	b					
				B B							
			b	b							

-----  
-----  
w-----  
-----  
--

**Upland Sandpiper**  
*Bartramia longicauda*

t	t	b	b	B	b	b	t	b	B	B	b
-	B	b	b B	B	b	B	B	b	t t	b	b
	t	b	-	-	b	t	b	t	B	b	b
		t			B	B	b	b	b	B	b
		t	-	B	b	B	b	b	B	B	B
					B						t
				-	-						

-----  
-----  
-----  
-----  
--

**Whimbrel**  
*Numenius phaeopus*

-	t	-	-	-	-	-	-	t	t	-	-
-	-	-	t	t	-	-	-	-	t	-	-
	t	-	t	t	-	-	t	t	-	-	-
		-	-	t	-	t	t	t	-	-	-
				-	-						

-----  
-----  
-----  
-----  
--

**Long-billed Curlew**  
*Numenius americanus*

B	b	b	t	b	b b	B	t	B	b	b	b
-	b B	b	b B	B	b	B	B	b	t t	t	b
	B	t	b b	B	b	B	B	b	B	t	b
	t	t	b	t	b	B	B	B	b	B	B
		b	B	B	B	B	B	B	b	B	B
		t b		b t	b	b	B	b	t	B	b
			-	B	B						
				t							
				B	B						
				B	B						

-----  
-----  
-----  
-----  
--

**Hudsonian Godwit**

*Limosa haemastica*

QLL 9C; April 29, 1991;

Bowdoin NWR

n=11

-	t	-	-	-	-	-	-	t	t	-	-
-	-	-	t	t	-	t	-	-	-	-	-
	-	-	-	-	-	t	t	-	-	t	-
		-	-	-	-	t	-	-	-	-	-
			-	-							

-----  
 -----  
 -----  
 -----  
 --

**Marbled Godwit**

*Limosa fedoa*

t	t	t	t	b	t	t	t	b	B	b	B	b
	t	t	b	b	t	t	b	B	B	t	B	B
t	t	t	b	B	B	b	t	t	t	t	t	b
	t	t	t	t	B	-	b	t	t	-	t	t
		-	-	t	b	b	b	b	-	t	-	t
				t	b							

-----  
 -----  
 -----  
 -----  
 --

**Ruddy Turnstone**

*Arenaria interpres*

-	-	-	-	-	-	-	-	t	t	-	t
-	t	-	t	t	-	-	-	-	t	-	-
	t	-	-	t	-	-	t	-	-	-	-
		-	-	t	-	-	-	-	-	-	-

-----  
 -----  
 -----  
 -----  
 --

**Black Turnstone**

*Arenaria melanocephala*

LL 3; Aug. 28, 1957; Lake McDonald

n=1

-	-	t	-	-	-	-	-	-	-	-	-
-	-	-	-	-	-	-	-	-	-	-	-
	-	-	-	-	-	-	-	-	-	-	-
		-	-	-	-	-	-	-	-	-	-

-----  
 -----  
 -----  
 -----  
 --

**Red Knot**

*Calidris canutus*

QLL 9C; May 13, 1988;

Bowdoin NWR

n=17

-----  
 -----  
 -----  
 -----  
 --

-	-	-	-	-	-	-	-	t	-	-	t
-	-	-	t	t	-	-	-	-	t	-	-
	-	-	-	-	-	-	t	t	-	-	t
		-	-	t	-	-	t	-	-	-	-
			-	-							

**Sanderling**

*Calidris alba*

-----  
 -----  
 -----  
 -----  
 --

-	t	-	-	-	-	-	-	t	t	-	t
-	t	-	t	t	-	-	-	-	t	-	-
	t	-	-	t	t	t	t	t	-	t	t
		-	-	t	-	-	-	-	-	-	-
			-	t							

**Semipalmated Sandpiper**

*Calidris pusilla*

-----  
 -----  
 -----  
 -----  
 --

t	t	-	-	t	t	-	-	t	-	-	t
t	t	-	t	t	-	-	t	t	t	t	-
	t	t	t	t	t	-	t	t	t	t	t
		-	-	t	t	t	t	-	t	-	-
			-	t							

**Western Sandpiper**

*Calidris mauri*

-----  
 -----  
 -----  
 -----  
 --

-	t	-	-	-	t	-	-	t	-	-	t
t	t	t	-	t	-	-	-	-	t	-	-
	t	-	t	t	t	-	t	t	-	t	-
		-	-	t	-	-	t	-	-	-	t
			-	t							

**Least Sandpiper**  
*Calidris minutilla*

-----  
-----  
-----  
-----  
--

t	t	-	-	t	t	t	-	t	t	-	t	
	t								t	t		
t	t	t	t	t	t	t	t	-	t	t	t	
	t											
	t	-	-	t	t	t	-	t	t	t	t	
				t								
		-	t	t	t	t	t	-	-	t	t	t
				-	t							

**White-rumped Sandpiper**  
*Calidris fuscicollis*

QLL 2A; July 29, 1985;  
Dry Lake, Fortine  
n=14

-----  
-----  
-----  
-----  
--

-	t	-	-	-	-	-	-	-	t	t	-	-	t
										t	t		
-	-	-	-	-	-	-	-	-	-	-	-	-	-
	t	-	-	-	-	-	-	t	-	-	t	-	
		-	-	t	-	-	-	-	-	-	-	-	-
				-	-								

**Baird's Sandpiper**  
*Calidris bairdii*

-----  
-----  
-----  
-----  
--

t	t	t	t	t	t	t	-	t	-	t	t	t	t
	t									t	t		
-	t	t	t	t	-	-	t	-	t	t	t	-	
	t												
	t	-	t	t	t	t	t	-	t	t	-		
			t										
		-	-	t	t	t	t	-	-	t	t	t	t
				-	t								

**Pectoral Sandpiper**  
*Calidris melanotos*

-----  
-----  
-----  
-----  
--

t	t	t	-	t	-	t	t	t	-	t	t		
	t									t	t		
-	t	t	t	t	-	t	t	-	t	t	t	t	
	t												
	t	-	-	t	t	-	t	t	t	t	t	-	
		-	-	t	-	t	t	-	-	t	-		
				-	t								

**Dunlin**  
*Calidris alpina*

-----  
-----  
-----  
-----  
--

-	t	-	-	-	-	-	-	t	t	-	t
-	-	-	t	t	-	-	-	-	-	-	-
	t	-	-	t	-	-	t	-	-	-	-
	t	-	-	t	-	t	t	-	-	-	t
				t							
				t							

**Curlew Sandpiper**  
*Calidris ferruginea*  
LL 17; May 14, 1972;  
Benton Lake  
n=1

-----  
-----  
-----  
-----  
--

-	-	-	-	-	-	-	-	-	-	-	-
-	-	-	-	t	-	-	-	-	-	-	-
	-	-	-	-	-	-	-	-	-	-	-
	-	-	-	-	-	-	-	-	-	-	-
				-							
				-							

**Stilt Sandpiper**  
*Calidris himantopus*

-----  
-----  
-----  
-----  
--

t	t	t	-	-	-	-	t	t	-	-	t
-	t	-	t	t	-	-	-	t	t	t	-
	t	-	t	t	-	t	t	t	-	t	-
						t	t				t
				t	-	-	t	-	-	t	-
				-		t					
				-							

**Buff-breasted Sandpiper**  
*Tryngites subruficollis*  
LL 14; Fall, 1982;  
Pablo Reservoir  
n=8

-----  
-----  
-----  
-----  
--

-	-	-	-	-	-	-	-	t	-	-	-
-	t	-	-	-	-	-	-	-	t	-	-
	-	-	-	t	-	-	t	-	-	-	-
				t	-	-	-	-	-	-	-
				-							
				-							

**Short-billed Dowitcher**

*Limnodromus griseus*

QLL 25B; July 23, 1988;

south of Frenchtown

n=19

-----  
 -----  
 -----  
 -----  
 --

-	t	-	-	-	-	-	-	t	-	-	t
-	t	-	t	-	-	-	-	-	-	-	-
	t	-	-	-	-	-	-	-	-	t	-
		-	-	t	-	-	-	-	-	-	-
			-	-							

**Long-billed Dowitcher**

*Limnodromus scolopaceus*

-----  
 -----  
 -----  
 -----  
 --

t	t	t	-	t	t	t	t	t	t	t	t
-	t	t	t	t	-	t	t	t	t	t	t
	t	-	t	t	t	t	t	t	t	t	t
		-	t	t	-	t	t	t	t	t	t
			-	t							

**Common Snipe**

*Gallinago gallinago*

WW-----WW--  
 WW--w-W-----W  
 WWW-----WW  
 -WWWWW-----  
 WW

B	B	b	b	b	B	b	B	t	b	b	t	b	b
b	B	B	b	B	b	B	b	b	t	t	b	b	b
	b	B	b	B	B	b	b	b	b	b	b	b	b
		B	B	B	B	t	B	b	b	b	b	b	b
			t	t	B	t	B	b	b	b	b	b	b
			b	B	B								
			b	B									

**American Woodcock**

*Scolopax minor*

LL 14; Oct. 1, 1983;

Ninemile Creek

n=2

-----  
 -----  
 -----  
 -----  
 --

-	-	-	-	-	-	-	-	-	-	-	-
-	t	-	-	-	-	-	-	-	-	-	-
		-	-	-	-	-	-	-	-	-	-
			-	-	-	-	t	-	-	-	-

**Wilson's Phalarope**  
*Phalaropus tricolor*

-----  
-----  
-----  
-----  
--

b	B	b	b	b	b	b	b	B	b	b	b
	t	B	b	B	B	b	b	B	t	b	B
-	t	B	b	B	b	B	B	t	t	b	b
	B	t	B	B	b	B	b	t	B	b	b
	t	b	b	t	b	b	b	B	b	b	t
	B	b	b	t	b	b	B	t	b	b	b
	t	B	t	B	b	t	b	t	b	b	B
	b	B	t	B	b	B	b	t	b	B	b
		b	B								t
		b	B								

**Red-necked Phalarope**  
*Phalaropus lobatus*

-----  
-----  
-----  
-----  
--

-	t	t	t	-	-	-	-	t	t	t	t
	t		t	t	t	t	-	t	t	t	t
-	t	-	t	t	t	t	-	t	t	t	t
	t	t	t	t	t	t	-	-	t	-	
		t	t	t	t	t	-	-	t	t	-
		-	t	t	t	t	-	-	t	t	-
			-	t							
			-	t							

**Red Phalarope**  
*Phalaropus fulicaria*  
QLL 9C; July 24, 1984;  
Bowdoin NWR  
n=6

-----  
-----  
-----  
-----  
--

-	-	-	-	-	-	-	-	t	-	-	-
								t			
-	-	-	-	-	-	-	-	-	-	-	-

■ Laridae

**Pomarine Jaeger**  
*Stercorarius pomarinus*  
QLL 40B; June 28, 1990;  
Halfbreed NWR  
n=4

-----  
-----  
-----  
-----  
--

-	-	-	-	t	-	-	-	-	-	-	-
-	-	-	-	-	-	-	-	-	t	-	-



**Parasitic Jaeger**  
*Stercorarius parasiticus*  
 QLL 2D; Nov. 15, 1987;  
 near Somers  
 n=13

-	-	-	-	-	-	-	-	-	-	-	-
-	t	-	-	-	-	-	-	-	-	-	-
-	-	-	t	t	-	-	-	-	-	-	-
	-	-	-	t	t	-	-	-	-	-	-
		-	-	-	-	-	-	-	-	-	-
			-	t							
			-	t							

**Long-tailed Jaeger**  
*Stercorarius longicaudus*  
 QLL 14B; Sept. 30, 1988; Flathead Lake  
 southwest of Wildhorse Island  
 n=6

-	-	-	-	-	-	-	-	-	-	-	-
-	t	-	-	t	-	-	-	-	-	-	-
	-	t	t	-	t	-	-	-	-	-	-
		-	-	-	-	-	-	-	-	-	-
			-	-							
			-	-							

**Laughing Gull**  
*Larus atricilla*  
 LL 27; May 27, 1980;  
 Warm Springs  
 n=1

-	-	-	-	-	-	-	-	-	-	-	-
-	-	-	-	-	-	-	-	-	-	-	-
	-	-	t	-	-	-	-	-	-	-	-
		-	-	-	-	-	-	-	-	-	-
			-	-							
			-	-							

**Franklin's Gull**  
*Larus pipixcan*  
 SI

-	-	t	t	b	b	b	t	B	t	t	b
-	t	t	t	b	b	b	t	B	t	t	b
t	t	t	t	B	B	t	t	t	t	t	t
	t	-	t	t	b	t	t	t	t	t	t
		t	t	t	t	t	t	t	t	t	t
		-	t	t	t	B	t	-	t	t	t
			t	B							
			t	B							

**Bonaparte's Gull**  
*Larus philadelphia*

-----  
-----  
-----  
-----  
--

t	t	t	-	-	-	-	-	t	t	-	t
	t		t	t	-	-	-	-	t	-	-
	t	t	t	t	t	t	t	-	-	t	-
		t	-	t	t	t	-	-	t	-	-
			t								
				-	t						

**Mew Gull**  
*Larus canus*

LL 10; Oct. 26, 1977;  
Ft. Peck  
n=1

-----  
-----  
-----  
-----  
--

-	-	-	-	-	-	-	-	-	t	-	-
-	-	-	-	-	-	-	-	-	-	-	-
	-	-	-	-	-	-	-	-	-	-	-
		-	-	-	-	-	-	-	-	-	-
			-	-							
				-	-						

**Ring-billed Gull**  
*Larus delawarensis*

SI

WW-----WW--  
WW-----W--  
--W-----  
--W-W-----  
--

t	t	t	t	t	b	t	b	t	B	t	t	t	
t	t	t	B	t	B	t	b	b	B	B	t	t	B
t	t	t	B	t	B	t	t	t	B	t	B	t	t
	t	t	b	t	B	t	t	t	B	t	t	t	t
		t	t	t	B	t	t	t	t	t	t	t	t
			t	t	t	t	t	t	t	t	t	t	-
				t	t								
					B	t	t						

**California Gull**  
*Larus californicus*

SI

-WW-W-----W--  
-W-----W--  
--W-----  
--WW-W-----  
--

t	t	t	t	t	b	t	b	t	B	t	t	t	B
t	t	t	B	t	B	t	b	B	B	t	t	b	B
t	B	t	t	t	B	t	b	B	t	t	B	t	-
	t	b	t	t	B	t	t	B	t	t	t	t	-
		t	t	t	B	t	t	t	t	t	t	t	-
			t	t	t	t	t	t	-	t	t	t	t
				t	t								
					b	t							
					B	t							

**Herring Gull**  
*Larus argentatus*

WW-----W--  
WW--W----W--  
-----  
-----  
--

t	t	t	-	t	-	-	-	B	t	-	t
t	t	-	t	t	t	-	t	t	t	-	-
	t	-	-	t	-	t	-	t	-	-	-
		-	-	t	-	t	-	-	t	-	-
				-	-						

**Thayer's Gull**  
*Larus thayeri*

QLL 10D; Nov. 16, 1991;  
Ft. Peck  
n=3

-----  
-----  
-----  
-----  
--

-	-	-	-	-	-	-	-	-	t	-	-
-	-	-	-	-	-	-	-	-	-	-	-
	-	-	-	-	-	-	-	-	-	-	-
		-	-	-	-	-	-	-	-	-	-
				-	-						

**Iceland Gull**  
*Larus glaucooides*

LL 10; Dec. 14, 1979; Ft. Peck  
n=2

-----  
-----  
---W-----  
-----  
--

-	-	-	-	-	-	-	-	-	t	-	-
-	-	-	-	-	-	-	-	-	-	-	-
	-	-	-	t	-	-	-	-	-	-	-
		-	-	-	-	-	-	-	-	-	-
				-	-						

**Glaucous Gull**  
*Larus hyperboreus*

LL 10; Jan., 1984; Ft. Peck  
n=11

-----W--  
-----W--  
-----  
-----  
--

-	t	-	-	-	-	-	-	-	t	-	-
-	t	-	-	-	-	-	-	-	t	-	-
	-	-	-	-	-	-	-	-	-	-	-
		-	-	t	-	-	-	-	-	-	-
				-	-						

**Glaucous-winged Gull**

*Larus glaucescens*

QLL 14B; Jan. 26, 1991; Polson  
n=2

-----  
-w-----  
-----  
-----  
--

-	-	-	-	-	-	-	-	-	-	t	-	-
-	-	-	-	-	-	-	-	-	-	-	-	-
		-	-	-	-	-	-	-	-	-	-	-
			-	-	-	-	-	-	-	-	-	-
				-	-	-	-	-	-	-	-	-
					-	-	-	-	-	-	-	-
						-	-	-	-	-	-	-

**Great Black-backed Gull**

*Larus marinus*

QLL 10D; Feb. 21, 1987; Missouri  
River below Ft. Peck power plant  
n=2

-----w--  
-----  
-----  
-----  
--

-	-	-	-	-	-	-	-	-	-	t	-	-
-	-	-	-	-	-	-	-	-	-	-	-	-
		-	-	-	-	-	-	-	-	-	-	-
			-	-	-	-	-	-	-	-	-	-
				-	-	-	-	-	-	-	-	-
					-	-	-	-	-	-	-	-
						-	-	-	-	-	-	-

**Black-legged Kittiwake**

*Rissa tridactyla*

QLL 28A; Nov. 23, 1990;  
Canyon Ferry Dam  
n=4

-----w--  
-----w--  
-----  
-----  
--

-	-	-	-	-	-	-	-	-	-	-	-	-
-	t	-	-	-	-	-	-	-	-	-	-	-
		-	-	-	t	-	-	-	-	-	-	-
			-	-	-	-	-	-	-	-	-	-
				-	-	-	-	-	-	-	-	-
					-	-	-	-	-	-	-	-
						-	-	-	-	-	-	-

**Sabine's Gull**

*Xema sabini*

QLL 1D; Sept. 17, 1985;  
Libby Dam  
n=10

-----  
-----  
-----  
-----  
--

-	-	-	-	-	-	-	-	-	-	-	-	-
-	t	-	-	-	-	-	-	-	-	-	-	-
		-	-	t	-	-	-	-	-	-	t	-
			-	-	t	-	t	-	-	-	-	-
				-	-	t	-	-	-	-	-	-
					-	-	-	-	-	-	-	-
						-	-	-	-	-	-	-







■ CUCULIFORMES ■ Cuculidae

**Black-billed Cuckoo**  
*Coccyzus erythrophthalmus*

-----  
-----  
-----  
-----  
--

-	-	t	b	b	b	b	b	b	b	b	b
-	b	-	b	b	b	b	b	b	b	b	b
-	-	b	t	B	-	b	b	b	b	b	b
-	b	B	b	b	b	b	b	b	B	b	B
-	t										

**Yellow-billed Cuckoo**  
*Coccyzus americanus*

-----  
-----  
-----  
-----  
--

-	t	-	-	-	-	-	-	t	-	-	-
-	t	-	-	-	-	-	-	-	-	-	-
t	t	-	-	-	-	-	-	b	b	b	-
-	-	b	-	-	b	-	b	b	b	b	
-	-										

■ STRIGIFORMES ■ Tytonidae

**Common Barn-owl**

*Tyto alba*

QLL 26A; July 7, 1991; Rattlesnake  
drainage north of Missoula  
n=10

-----  
-----  
-----  
-----  
--

t	-	-	-	-	-	t	-	t	-	-	-
-	t	-	-	-	-	-	-	-	-	-	-
-	t	-	-	-	-	-	-	-	-	-	-
-	t	-	-	-	-	t	-	t	-	-	-
-	-										

■ Strigidae

**Flammulated Owl**

*Otus flammeolus*

QLL 25D; July 29, 1991;  
Blodgett Canyon  
n=9 TES

-----  
-----  
-----  
-----  
--

-	-	t	-	-	-	-	-	-	-	-	-
-	-	-	-	-	-	-	-	-	-	-	-
B	B	B	t	-	-	-	-	-	-	-	-
t	t										
-	-	-	-	-	-	-	-	-	-	-	-
-	-										





**Snowy Owl**  
*Nyctea scandiaca*

WW-XXXXXXXXXX  
-W-XXXXXXXXXX  
W--XXXXXXXXX-  
W-W-XXXX--W  
--

t	t	t	t	t	t	t	t	t	t	t	t
-	t	t	t	t	t	t	t	t	t	t	t
	t	t	t	t	t	t	t	t	t	t	-
		-	-	t	t	t	t	t	-	t	t
				-	-						

**Northern Hawk-owl**  
*Surnia ulula*

LL 14; Dec. 20, 1981;  
Pablo Reservoir  
n=12

-W-----  
-----  
-----  
-----  
--W-----  
--

t	t	t	-	-	-	-	-	-	-	-	-
-	t	-	-	-	-	-	-	-	-	-	-
	-	-	-	-	-	-	t	-	-	-	-
		-	-	t	-	-	-	-	-	-	-
				-	t						

**Northern Pygmy-owl**  
*Glaucidium gnoma*

WWW-----  
WWW-----  
WWW-W-----  
--WW-----  
--

b	B	b	-	-	-	-	-	-	-	-	-
t	b	t	b	t	b	t	-	-	-	-	-
	t	b	t	t	t	t	-	-	-	t	-
		B		t							
		b	b	b	B	b	-	-	-	-	-
					t						

**Burrowing Owl**  
*Speotyto cunicularia*  
(formerly genus Athene)  
TES

-----  
-----W-----  
-----  
-----  
--

b	t	-	-	B	B	B	B	B	B	B	B
t	b	-	b	B	t	t	b	B	B	B	B
	t		b	t	t	b	B	b	b	b	B
				B	B		b	B			
			b	t	b	B	B	b	B	B	b
									t		t
				t	t						









**Calliope Hummingbird**  
*Stellula calliope*

-----  
-----  
-----  
-----  
--

B	B	b b	b	-	-	-	-	-	-	-	-
B	B	B	b	-	-	-	-	-	-	-	-
b	b	b b	b	-	-	t	-	-	-	-	-
	t b	b	b b	b	-	-	-	-	t	-	-
	B	B	b	b	b	-	-	-	-	-	-
		B	t	b	-	-	-	-	-	-	-
			t	b	b	b	b	-	-	-	-
				-	B	t	b	B	-	-	-
					-	B	b	-	-	-	-

**Broad-tailed Hummingbird**  
*Selasphorus platycercus*  
LL 13; May 19, 1981; St. Regis  
n=10

-----  
-----  
-----  
-----  
--

-	t	b	-	-	-	-	-	-	-	-	-
t	-	-	-	-	-	-	-	-	-	-	-
	-	t	-	-	-	-	-	-	-	-	-
			-	-	-	t	-	-	-	-	-
				-	b	-	-	-	-	-	-

**Rufous Hummingbird**  
*Selasphorus rufus*

-----  
-----  
-----  
-----  
--

B	B	b b	t	t	t	-	-	-	-	-	-
B	B	B	t	t	t	-	-	-	-	-	-
b b	b	B b	b	t	t	-	-	-	-	-	-
b	t	B t	B	t	-	-	-	-	-	-	-
	b	B t	B	t	-	-	-	-	-	-	-
		t	b	t	-	t	-	-	-	-	-
		B	B	b	-	t	-	-	-	-	-
		B	t	b	-	-	-	-	-	-	-
			b	-	B	t	b	t	t	t	B
				-	-	t	t	t	B	-	-
					-	t	-	-	-	-	-

■ CORACIIFORMES ■ Alcedinidae

**Belted Kingfisher**  
*Ceryle alcyon*

WWW-W----W--  
WWW-WW-----  
WWWWW----W-  
-WWWWWW--  
WW

b	B	b b	b	b	b	B	t	b	b	b	b
B	B	b	b	b	b	B	-	b	b	b	b
b b	b	t b	b	b	b	B	b	b	b	b	b
b	t	B t	B	b	b	B	B	t	t	b	b
	t	B	B	b	b	B	B	t	t	b	b
		t t	b t	b b	b	B	B	t	t	b	b
			b	b b	b t b	B	b	b	b	B	b
			B	B	b	b	b	b	b	B	b
			B	t t	t B	B	t B	-	-	-	-
				B b	b	B	B	B	b	b	b
				b	B	B	B	B	b	b	b
				b	B	B	B	B	b	b	b
					b t	B	b	-	-	-	-
						b	B	B	-	-	-
						b	B	B	-	-	-

**Lewis' Woodpecker**  
*Melanerpes lewis*

Ww-----  
-----  
Ww-----  
--W--W-w--  
--

B	B	B	-	-	b	b	-	-	-	-	-
b	B	B	t	t	b	t	b	t	-	-	-
	B	B	t	t	b	t	t	t	b	-	-
		t	b	B	b	B	B	B	B	-	B
			-	t							
				b							

**Red-headed Woodpecker**  
*Melanerpes erythrocephalus*

-----  
-----  
--w-----  
-----  
--

-	t	t	-	t	t	B	b	B	B	b	B
-	t	b	t	t	-	B	B	B	t	b	B
	-	-	t	t	b	b	b	b	B	B	B
				t	t	B	B	b	t	b	b
								t			b
											b

**Red-bellied Woodpecker**  
*Melanerpes carolinus*  
LL 10; Dec. 1, 1981; Ft. Peck  
n=1

-----w--  
-----  
-----  
-----  
--

-	-	-	-	-	-	-	-	-	t	-	-
-	-	-	-	-	-	-	-	-	-	-	-
	-	-	-	-	-	-	-	-	-	-	-
		-	-	-	-	-	-	-	-	-	-
			-	-	-	-	-	-	-	-	-

**Red-naped Sapsucker**  
*Sphyrapicus nuchalis*  
(formerly combined with  
Yellow-bellied Sapsucker)

-----  
-----  
w-----  
-----  
--

B	B	b	b	b	-	B	t	t	-	-	-
b	B	B	B	B	-	B	B	t	-	-	t
	B	b	b	b	B	B	B	t	-	-	-
		B	B	B	B	B	B	t	-	-	-
			b	t	b	b					
		b	t	B	B	B	B	b	B	b	-
											t



**Williamson's Sapsucker**  
*Sphyrapicus thyroideus*

-----  
-----  
-----  
-----  
--

B	B	b	-	-	-	-	-	-	-	-	-
b	B										
-	b	B	-	-	-	-	-	-	-	-	-
	b	b	B	b	b						
	b	B		-	-	-	-	-	-	-	-
		b	B	B	B						
			B	B	B						
				B							
				b	b						

**Downy Woodpecker**  
*Picoides pubescens*

WWWWWWWWWW  
WWWWWW-WW-W  
WWWWWWWW-W  
WWW-WWWW  
-W

b	B	b	b	b	b	b	t	b	B	b	b		
b	b	b	b										
b	B	B	t	b	t	b	B	t	t	t	b	b	
	B	t	b	b									
	B	B	t	t	b	b	B	B	b	t	b	b	b
		B	t	b	B	B	t	b					
			t	B	B	B	B	b	b	b	b	b	b
				B	B	t	t	B	b	b	b	b	b
					B								
					b	b							

**Hairy Woodpecker**  
*Picoides villosus*

WWWWWWWWWW-W  
WWWWWW--WWW  
WWW-WWWW-  
WWWWWWWW  
-W

b	B	t	b	b	b	B	t	b	B	t	b	
B	b	b	b									
B	B	B	t	B	t	b	b	b	b	t	t	b
	B	b	B	b	b							
	B	B	B	B	B	B	b	t	t	b	b	B
		B	B	b	t	b		t				
		b	b	B	B	B	B	b	b	B	b	B
			B	B	B	B	b	b	b	b	b	B
				B	B	B	B	b	b	B	b	B
					B	B	b	b	b	b	b	B
					b	b						

**White-headed Woodpecker**  
*Picoides albolarvatus*

QLL 1B; March 23, 1991; Parsnip  
Overlook Trail southwest of Eureka  
n=6

-----  
-----  
-----  
-----  
--

t	t	-	-	-	-	-	-	-	-	-	-
-	t	t									
-	-	-	-	-	-	-	-	-	-	-	-
	-	-	-	-	t	-	-	-	-	-	-
		-	-	t	-	-	-	-	-	-	-



**Olive-sided Flycatcher**  
*Contopus borealis*

b	b	b b	-	-	-	-	-	-	-	-	-
b	t	B	b b	b	b	-	-	-	-	-	-
b	b	B	b	b	b	t	t	t	-	t	-
b	t	b	b	b	b	t	t	t	-	t	-
	b b	B	b	b	b	t	t	t	-	t	-
	b	t	b	B	b	b	-	-	-	-	-
		b	b								
			b								
				b							
					b						
						b					
							b				
								b			
									b		
										b	
											b

-----  
-----  
-----  
-----  
--

**Western Wood-pewee**  
*Contopus sordidulus*

B	B	B	b	B	b	B	B	b	B	b	b
b	B	B t	b b	b	B	B	B	b	B	b	b
b	B	B	b	B	B	B	B	b	B	b	b
b	b	b	b	b	b	b	b	b	b	b	b
	t b	B	B	B	B	B	B	B	B	B	B
	b	B	B	B	B	B	B	B	B	B	B
		b	B	B	B	B	B	B	B	B	B
			b	B	B	B	B	B	B	B	B
				B	B	B	B	B	B	B	B
					B	B	B	B	B	B	B
						B	B	B	B	B	B
							B	B	B	B	B
								B	B	B	B
									B	B	B
										B	B
											B

-----  
-----  
-----  
-----  
--

**Eastern Wood-pewee**  
*Contopus virens*

LL 8; June 6, 1970; Dodson  
n=2

-	-	-	-	-	-	-	t	-	-	-	-
-	-	-	-	-	-	-	-	-	-	-	-
	-	-	-	-	-	-	-	-	-	-	-
		-	-	-	-	-	-	-	-	-	t
			-	-	-	-	-	-	-	-	
				-	-	-	-	-	-	-	
					-	-	-	-	-	-	
						-	-	-	-	-	
							-	-	-	-	
								-	-	-	
									-	-	
										-	
											-

-----  
-----  
-----  
-----  
--

**Alder Flycatcher**  
*Empidonax alnorum*

QLL 16A; Sept. 11, 1991;  
Pine Butte Swamp  
n=3

-	-	-	-	-	-	-	-	t	-	-	-
-	-	-	t t	-	-	-	-	-	-	-	-
	-	-	-	-	-	-	-	-	-	-	-
		-	-	-	-	-	-	-	-	-	-
			-	-	-	-	-	-	-	-	-
				-	-	-	-	-	-	-	-
					-	-	-	-	-	-	-
						-	-	-	-	-	-
							-	-	-	-	-
								-	-	-	-
									-	-	-
										-	-
											-

-----  
-----  
-----  
-----  
--

**Willow Flycatcher**  
*Empidonax traillii*

-----  
-----  
-----  
-----  
--

b	B	b b	b	b	t	b	-	t	-	-	b
b	B	t b	b	b	b	b	-	-	-	-	b
B	B	B	b b	b	b	t	-	-	-	-	-
	b b	b	b	b	B	b	t	b	t	t	-
	B	B	B	b	B	-	t	b	t	t	-
		b	b	b	b B	-	b	-	-	-	t
		b	b	b	b	-	b	-	-	-	t
				b	B B						
				b	b						

**Least Flycatcher**  
*Empidonax minimus*

-----  
-----  
-----  
-----  
--

t	b	b	-	b	b	-	t	t	b	b	B
b	b	b	b	b	b	b	B	B	-	t t	b
-	b	b	B	b	b	B	B	b	-	t	b
	b	b	B	b	b	B	B	b	-	t	b
	B	b	-	b	b	b	b	b	t	b	b
	B	B	b	b	b	b	b	b	t	b	b
		-	-	B	b	B	b b	B	B	b	b
		-	-	B	b	B	b	B	B	b	b
				-	b b						
				-	-						

**Hammond's Flycatcher**  
*Empidonax hammondii*

-----  
-----  
-----  
-----  
--

B	B	b b	-	-	-	-	-	-	-	-	-
b	B	b b	b	-	-	t	-	-	-	-	-
b	B	b	b	-	-	t	-	-	-	-	-
	b	b	b	b	-	-	-	-	-	-	-
	B	B	b	b	-	-	-	-	-	-	-
	B	B	b	b	-	-	-	-	-	-	-
		b t	b	B	b	-	b	-	-	-	-
		b	b	B	B	t	b	-	-	-	-
				B B	B						
				-	b						

**Dusky Flycatcher**  
*Empidonax oberholseri*

-----  
-----  
-----  
-----  
--

B	B	b b	b	b	-	b	b	-	-	-	-
b	B	b b	b	b	-	B	b	B	-	-	-
	B	B	b	b	-	B	b	B	-	-	-
	b	b	b	b	-	B	b	B	-	-	-
	B	B	b	b	-	B	b	B	-	-	-
	B	B	b	b	-	B	b	B	-	-	-
		b	B	B	b b	b	b	-	-	-	-
		b	B	B	B	b	b	-	-	-	-
				b	B B	B					
				b	B	B					





**Scissor-tailed Flycatcher**

*Tyrannus forficatus*

QLL 48B; June 10, 1986; Conner  
n=6

-----  
-----  
-----  
-----  
--

-	t	-	-	-	-	-	-	-	t	-	-
-	-	-	-	-	-	-	-	-	-	-	-
	-	-	-	-	-	-	t	-	-	-	-
	t	-	-	-	-	t	t	-	-	-	-
		-	-								

■ **Alaudidae**

**Horned Lark**

*Eremophila alpestris*

WWWWWWWWWWWW  
WWWWWWWWWWWW  
WWWWWWWWWWWW  
-WWWWW-WWW  
WW

b	t	b	b b	b	B	B	b	B	B	B	b
	t	b	b t	B	B b	b	b	B	t b	b	B
t	b	b	b B	B	b	B	B	B	B B	B	B
	t	t	b	B	B	B	b	b	b	b	b
		B	B	t b	b	B	B	B	b	b	B
		t	b	B	B	B	B	t	b	b	b
			B	B	b	B	b	b	t b	b	t b
			B	B	B	B	b	B	b	b	t b
				b	B	B	B	B	b	t	B
				B	B	B	B	B	b	t	t b
				B	t t						
				B	B						

■ **Hirundinidae**

**Purple Martin**

*Progne subis*

LL 10; May 10, 1982; Ft. Peck  
n=18

-----  
-----  
-----  
-----  
--

-	-	-	-	-	-	-	-	t	t	t	t
-	-	-	-	t	-	t	-	-	-	-	t
	-	t	-	-	-	-	-	b	b	t	-
		-	t	t	-	-	t	-	-	-	-
			-	-							

**Tree Swallow**

*Tachycineta bicolor*

-----  
-----  
-----  
-----  
--

B	B	t b	t	-	t	B	-	B	b	B	b	b
B b	B	B b	b	b	B	B	b	b	B	t B	b	b
B	t B	B	B	B	t	t	B	b	B	b	t	t
B	b t	B B	b b	B	B	B	B	t	b	t	b	t
	t	t	b	b	B	B	b	t	t	b	B	t
	B	B	B	B	t	B	b	t	t	t	b	b
		B t	B	B	B	B	b	t B	B	t	t	b
		B	B	B	B	B	B	B	b	B	b	b
			t	B	B t	b B	B	b	B	B	b	b
			b	B B								
			B	B								

**Violet-green Swallow**  
*Tachycineta thalassina*

b	B	b	b	-	B	t	b	-	t	B	b	-
B	B	B	B	B	B	B	B	B	B	B	B	B
b	B	b	B	b	B	b	B	b	B	b	B	b
	t	t	b	b	B	b	b	t	-	b	b	-
	B	B	b	B	B	b	t	-	b	b	-	
		t	t	b	b	B	b	t	-	b	b	-
		B	B	b	B	B	b	t	-	b	b	-
			t	b	b	b	t	B	b	B	B	b
			b	B	B	B	B	B	b	B	B	b
				b	B	B						
				b	B	B						

-----  
-----  
-----  
-----  
--

**Northern Rough-winged Swallow**  
*Stelgidopteryx serripennis*

b	B	t	b	t	b	b	-	b	B	-	t	b
B	B	B	B	B	B	B	B	B	B	B	B	B
b	B	B	B	B	B	B	B	B	B	B	B	B
	b	b	b	B	B	B	B	B	B	B	B	B
	B	B	B	B	B	B	B	B	B	B	B	B
		t	t	b	b	B	b	b	b	b	t	B
		B	B	B	B	B	B	B	B	B	B	B
			b	B	B	B	B	B	B	B	B	B
			B	B	B	B	B	B	B	B	B	B
				b	B	B						
				b	B	B						

-----  
-----  
-----  
-----  
--

**Bank Swallow**  
*Riparia riparia*

B	B	b	b	B	B	B	t	B	B	B	B
B	B	B	B	B	B	B	B	B	B	B	B
b	B	B	B	B	B	B	B	B	B	B	B
	t	t	b	B	B	B	B	B	B	B	B
	B	B	B	B	B	B	B	B	B	B	B
		t	b	B	B	B	B	B	B	B	B
		B	B	B	B	B	B	B	B	B	B
			B	B	B	B	B	B	B	B	B
				B	B	B	B	B	B	B	B
				B	B	B	B	B	B	B	B
				B	B	B	B	B	B	B	B

-----  
-----  
-----  
-----  
--

**Cliff Swallow**  
*Hirundo pyrrhonota*

B	B	b	B	B	B	B	t	B	B	B	b
B	B	B	B	B	B	B	B	B	B	B	B
b	B	B	B	B	B	B	B	B	B	B	B
	t	t	b	B	B	B	B	B	B	B	B
	B	B	B	B	B	B	B	B	B	B	B
		t	b	B	B	B	B	B	B	B	B
		B	B	B	B	B	B	B	B	B	B
			B	B	B	B	B	B	B	B	B
				B	B	B	B	B	B	B	B
				B	B	B	B	B	B	B	B
				B	B	B	B	B	B	B	B

-----  
-----  
-----  
-----  
--





**Pinyon Jay**  
*Gymnorhinus cyanocephalus*

-----  
-----WW-----  
WWWW-WWWWWW  
WWWW-WWWWWW  
--

t	t	-	-	-	-	t	-	-	t	-	-
-	-	-	-	t	t	b	b	b	b	-	b
	t	t	t	B	t	b	b	b	b	t	t
		t	-	t	B	B	b	B	t	B	b
			-	-							

**Clark's Nutcracker**  
*Nucifraga columbiana*

WWWWW-WW-----  
WWWW-WWWW-----  
WWWW-W---W-  
WWWWW---W  
WW

b	t	b	b	b	B	-	b	b	-	t	-	-
b	B	t	b	B	b	b	B	b	t	-	-	-
	t	b	t	t	b	t	b	B	B	t	-	-
		B	b	B	b	B	B	t	-	-	t	-
			b	b	B	-	B	B	b	b	B	t
							B	t	b			

**Black-billed Magpie**  
*Pica pica*

WWWWWWWWWWWW  
WWWWWWWWWWWW  
WWWWWWWWWWWW  
WWWWWWWWWWWW  
WW

B	B	B	B	b	B	B	b	B	B	B	B	b
t	t	t	B	t	b	B	b	B	B	B	B	b
		t	B	t	B	b	B	B	B	B	B	b
			B	B	B	B	b	B	B	B	B	B
				B	B	B	B	B	B	B	B	B
					B	B	B	B	B	B	B	B

**American Crow**  
*Corvus brachyrhynchos*

WW---WW-W---  
WWWWWWW-----  
WWWW-WWWWWW  
-WWWWW-W  
-W

b	B	b	B	t	b	b	b	B	B	B	b
b	b	t	B	t	B	B	b	B	b	t	B
		t	B	t	B	B	B	B	B	B	B
			B	B	B	B	B	B	B	B	B
				B	B	B	B	B	B	B	B
					B	B	B	B	B	B	B















**Gray-cheeked Thrush**

*Catharus minimus*

LL 12; May 16, 1983;  
Medicine Lake  
n=16

-----  
-----  
-----  
-----  
--

-	-	-	-	-	-	-	-	t	t	-	t
-	-	-	-	-	-	-	-	-	-	t	-
	-	-	-	-	-	-	-	t	t	t	-
		-	-	t	-	-	t	-	-	-	-
			-	-							

**Swainson's Thrush**

*Catharus ustulatus*

-----  
-----  
-----  
-----  
--

b	B	b b	-	b	t	B	-	t	t	t	t
B	B	b b	b	b	b	B	b	-	t	t	t
b	B	B	B	b	b	B	b	-	-	t	t
	B	b B	b	b	b	B	b	-	-	t	t
	b b	b	b	b	b	b	t	t	t	t	-
		B	b	b	b	b	t	t	t	t	-
			B	B	B	b	b	t	t	t	t
				B	B	t b	b	t	t	t	-

**Hermit Thrush**

*Catharus guttatus*

-----  
-----  
W-----  
-----  
--

b	B	b b	-	b	-	-	-	t	t	-	-
b	B	b	b	b	b	b	b	-	t	-	t
	b	b	b	b	b	b	b	-	-	-	-
	B	B	B	B	B	B	b	-	-	-	-
		b b	b	b	b	b	-	-	-	-	-
			B	B	B	B	b	-	-	-	-
				B	B	t b	b	-	-	-	-

**Wood Thrush**

*Hylocichla mustelina*

LL 43; May 2, 1981; Birney  
n=5

-----  
-----  
-----  
-----  
--

-	-	-	-	-	-	-	-	t	-	-	-
-	-	-	-	-	-	-	-	-	-	-	-
	-	-	-	-	-	-	-	-	-	-	-
		-	-	t	-	-	t	-	t	-	-



**Sage Thrasher**  
*Oreoscoptes montanus*

-----  
-----  
-----  
-----  
--

-	t	-	-	-	t	-	b	-	t	-	t
-	-	t	-	b	-	-	b	b	b	t	-
	t	t	b	B	b	-	b	b	t	b	t
		b	b	B	b	b	b	b	B	B	b
			b	B							

**Brown Thrasher**  
*Toxostoma rufum*

-----w-----  
-----  
-----  
-----w-----  
--

-	-	b	-	b	B	B	b	b	B	b	b
-	t	-	t	b	b	B	b	b	B	B	B
	t	-	-	t	t	b	B	b	b	b	B
		-	-	-	-	b	b	b	B	B	b

■ **Motacillidae**

**American Pipit**  
*Anthus rubescens*  
(formerly Water Pipit)

-w-----  
-w-----  
w-----  
---w-w---  
--

b	b	b	t	t	t	t	-	t	t	-	t
t	t	t	t	t	-	t	t	-	t	t	t
	b	B	t	t	B	B	t	t	t	t	t
		b	B	t	B	B	t	-	t	t	t

**Sprague's Pipit**  
*Anthus spragueii*

-----  
-----  
-----  
-----  
--

-	-	b	b	b	b	b	b	B	b	b	b
-	t	-	b	b	b	B	b	-	t	b	b
	-	-	-	b	b	b	b	-	-	b	b
		-	-	b	-	b	-	-	t	-	b

■ Bombycillidae

**Bohemian Waxwing**  
*Bombycilla garrulus*

WWW- WWWWWW  
 WWWWWW  
 WWWWWW  
 WWWWWW  
 W-

B	t	B	-	t	t	t	t	t	t	t	t
t	t	t	t	t	t	t	t	t	t	t	t
t	t	t	t	t	t	t	t	t	t	t	t
-	t	t	t	t	t	t	t	t	t	t	t
t	t										

**Cedar Waxwing**  
*Bombycilla cedrorum*

WW-----WW--  
 -WWW-W-----  
 WWW--WWW--  
 -WWW-WWW--  
 WW

B	B	b	b	b	b	B	b	-	B	B	b	b	
b	b	B	b	b	t	B	b	b	-	t	t	b	b
b	B	B	B	B	b	b	B	b	-	t	b	b	
b	b	t	b	b	b	b	B	b	-	t	b	b	
b	B	B	B	B	b	b	t	t	B	b	b		
t	B	B	B	B	b	B	b	b	b	b	b		
b	B	B	B	t	t	B	b	b	b	b			
b	t												

■ Laniidae

**Northern Shrike**  
*Lanius excubitor*

WWWWW- WWW- W  
 WWWWWW  
 WWWWWW  
 WWWWWW  
 W-

t	t	t	t	t	t	t	t	t	t	t	t
t	t	t	t	t	t	t	t	t	t	t	t
t	t	t	t	t	t	t	t	t	t	t	t
t	t	t	t	t	t	t	t	t	t	t	t
t	t										

**Loggerhead Shrike**  
*Lanius ludovicianus*

TES  
 -----W-  
 -----  
 -----  
 -WW-----  
 --

b	t	t	b	B	B	B	b	B	B	B	b	B
-	b	t	t	B	B	B	B	B	B	B	b	B
t	b	t	b	t	t	B	b	B	B	b	B	B
t	b	B	-	B	B	b	b	B	B	b	B	B
-	t	t										



**Red-eyed Vireo**  
*Vireo olivaceus*

-----  
-----  
-----  
-----  
--

B	B	t b	-	b	b	B	b	b	b	b	b
b b	b	B b	b	b	t						
b	B	B	b t	b	b	B	b	-	t	-	B
b	b	b t						t			
	B	b	b	b	b	b	t	B	b	B	-
	B	B	b	b	b	b	t	B	b	B	-
		b	b	B	b	b	b	B	b	b	b
		b	b	B	b t	b	b	B	b	b	b
			-	t							

■ **Emberizidae**

-----

**Tennessee Warbler**  
*Vermivora peregrina*

-----  
-----  
-----  
-----  
--

b	B	b	-	-	t	-	t	t	t	t	t
b											
-	b	t	-	-	-	-	-	-	-	t	t
		-									
	t	t	t	t	-	-	-	t	t	t	-
	t										
		-	-	t	-	-	t	t	t	-	t
			-	t							

**Orange-crowned Warbler**  
*Vermivora celata*

-----  
-----  
-----  
-----  
--

b	b	b b	-	b	t	b	t	t	t	-	t
b b	b	b b			t						
b	t	b b	b	t	b	t	b	-	t	t	t
b	B	b b	b								
b	b b	b	b	b	b	-	-	t	t	t	t
		b	b	b	b	-	-	t	t	t	t
		b	b	b	b	b	b	t	-	-	-
		b	b	b	b	b	b	t	-	-	-
			-	-							

**Nashville Warbler**  
*Vermivora ruficapilla*

-----  
-----  
-----  
-----  
--

B	B	b	-	-	-	-	-	-	-	-	t
B											
b	B	t	-	-	-	-	-	-	-	-	t
b											
b	b	B	-	-	-	-	-	-	-	-	t
b	b	b	-	-	-	-	-	-	-	-	t
	b	b	-	-	-	-	-	-	t	t	-
	b	b	-	-	-	-	-	-	t	t	-
		b	-	-	-	-	-	-	-	-	-
		b	-	-	t	t	-	t	-	-	-
			-	-							
			-	-							



**Cape May Warbler**

*Dendroica tigrina*

QLL 12B; Aug. 3, 1990;

Westby

n=5

-----  
 -----  
 -----  
 -----  
 --

-	-	-	-	-	-	-	-	-	t	-	t
-	-	-	-	-	-	-	-	-	-	-	t
	-	-	-	-	-	-	-	-	-	-	-
		-	t	-	-	-	-	-	-	-	-
			-	-							

**Black-throated Blue Warbler**

*Dendroica caerulescens*

LL 41; Sept. 23, 1980; Billings

n=3

-----  
 -----  
 -----  
 -----  
 --

-	-	-	-	-	-	-	-	-	t	-	-
-	-	-	-	-	-	-	-	-	-	-	-
	-	-	-	-	-	-	-	-	-	t	-
		-	-	-	-	t	-	-	-	-	-
			-	-							

**Yellow-rumped Warbler**

*Dendroica coronata*

SI

W-----  
 -WW-----  
 -W-----  
 --W-----  
 --

b	t	b	b	b	b	t	b	b	t	t	t	t
B	B	B	b	B	t	b	b	t	t	t	t	t
b	b	b	B	b	t	b	b	b	t	b	t	t
	b	B	b	B	B	B	b	b	b	t	b	t
		b	b	t	b	t	b		b	b	t	b
		b	t	B	B	B	b	b	-	B	B	t
			B	B	b	t	t		B	B	b	b
				b	B	B						

**Black-throated Gray Warbler**

*Dendroica nigrescens*

LL 27; March 25, 1983; Helena

n=3

-----  
 -----  
 -----  
 -----  
 --W-----  
 --

-	-	-	-	-	-	-	-	-	-	-	-
-	-	-	-	-	-	-	-	-	-	-	-
	-	-	t	-	-	-	-	-	-	-	-
		-	-	t	-	-	t	-	-	-	-
			-	-							



**Townsend's Warbler**  
*Dendroica townsendi*

b	B	b	b	-	t	-	-	-	-	-	-
B	B	B	-	t	-	-	-	-	t	-	-
b	b	b	b	b	-	-	-	-	-	-	-
B	B	B	B	B	t	-	-	-	-	-	-
	b	b	b	t	t	-	-	-	-	t	-
	B	B	B	-	t	-	-	-	-	-	-
	b	b	b	b	-	-	-	-	-	-	-
		b	-	t	t	t	t	-	-	-	-
			-	t	t	t	t	-	-	-	-
				-	-						

-----  
-----  
-----  
-----  
--

**Black-throated Green Warbler**  
*Dendroica virens*

LL 38; May 17, 1981; Bozeman  
n=5

-	-	-	-	-	-	t	-	-	-	-	t
-	-	-	-	t	-	-	-	-	-	-	-
	-	-	-	-	-	-	-	-	-	-	-
		-	-	t	-	-	-	-	-	-	-
			-	-							

-----  
-----  
-----  
-----  
--

**Blackburnian Warbler**  
*Dendroica fusca*

QLL 9C; May 23, 1991;  
Bowdoin NWR  
n=7

t	-	-	-	-	-	-	-	t	-	-	t
-	-	-	-	-	-	-	-	t	-	-	-
	-	-	-	-	-	-	-	-	-	-	-
		-	-	t	-	-	t	-	-	-	-
			-	-							

-----  
-----  
-----  
-----  
--

**Yellow-throated Warbler**  
*Dendroica dominica*

LL 41; Dec. 20, 1981; Billings  
n=1

-	-	-	-	-	-	-	-	-	-	-	-
-	-	-	-	-	-	-	-	-	-	-	-
	-	-	-	-	-	-	-	-	-	-	-
		-	-	-	-	-	t	-	-	-	-
			-	-							

-----  
-----  
-----  
-----w-----  
--

**Pine Warbler**

*Dendroica pinus*

QLL 12B; Aug. 15, 1990;

Westby

n=3

-----  
-----  
-----  
-----  
--

-	-	-	-	-	-	-	-	-	-	-	-
-	-	-	-	-	-	-	-	-	-	-	-
		-	-	-	-	-	-	-	-	-	-
			-	-	t	-	-	t	-	-	-
				-	-						
				-	-						

**Prairie Warbler**

*Dendroica discolor*

LL 10; Sept. 5, 1973; Ft. Peck

n=1

-----  
-----  
-----  
-----  
--

-	-	-	-	-	-	-	-	-	t	-	-
-	-	-	-	-	-	-	-	-	-	-	-
		-	-	-	-	-	-	-	-	-	-
			-	-	-	-	-	-	-	-	-
				-	-						
				-	-						

**Palm Warbler**

*Dendroica palmarum*

QLL 12B; Sept. 30, 1990; Westby

n=15

-----  
-----  
-----  
-----  
--

t	-	-	-	-	-	-	t	t	t	t	t
-	-	t	-	t	-	-	-	t	-	-	-
		-	-	-	-	-	-	-	-	-	-
			-	-	-	-	t	-	-	-	-
				-	-						
				-	-						

**Bay-breasted Warbler**

*Dendroica castanea*

LL 41; April 29, 1981

n=5

-----  
-----  
-----  
-----  
--

-	-	-	-	-	t	-	-	-	t	-	-
-	-	-	-	-	-	-	-	-	-	-	-
		-	-	-	-	-	-	-	-	-	-
			-	-	t	-	-	t	-	-	-
				-	-						
				-	-						

**Blackpoll Warbler**  
*Dendroica striata*

t	t	-	-	t	t	-	-	t	t	t	t
-	-	-	t	t	-	t	t	-	t	t	-
	t	t	t	-	-	-	-	-	t	t	t
		t	-	-	t	t	-	-	t	t	
			-	-							

-----  
-----  
-----  
-----  
--

**Black-and-white Warbler**  
*Mniotilta varia*

-	t	t	-	t	t	t	t	-	B	b	b
-	-	-	-	t	-	-	-	-	t	t	b
	-	-	-	-	-	-	-	-	b	t	-
		-	-	t	-	-	t	-	b	-	b
					t						

-----  
-----  
-----  
-----  
--

**American Redstart**  
*Setophaga ruticilla*

B	B	b	b	t	b	B	t	t	b	b	B
b	b	B	b	t	b	B	b	-	-	b	b
	b	B	B	b	b	b	t	b	b	b	b
		b	b	b	B	b	b	B	b	t	b
					t	t					

-----  
-----  
-----  
-----  
--

**Ovenbird**  
*Seiurus aurocapillus*

-	-	b	-	b	-	b	t	t	b	b	b
-	-	b	b	b	b	B	b	b	-	t	b
	-	-	b	b	-	b	-	t	-	b	-
		t	-	b	t	b	b	b	b	b	b

-----  
-----  
-----  
-----  
--

**Northern Waterthrush**  
*Seiurus noveboracensis*

b	B	b b	b	t	t	-	b	t	t	t	t
B	B	B	b b	t	t	-	b	t	t	t	t
b	b	b b	b b	t	t	-	b	t	t	t	t
-	b	B t	b b	t	-	b	-	-	-	-	t
b	b	b	b b	t	-	b	-	-	-	-	t
B	b	B	B	b	b	-	-	t	t	t	-
B	B	b	B	b	b	t	-	-	-	-	t
b	b	B	B	b	b	b	t	-	-	-	t
-	b										

-----  
-----  
-----  
-----  
--

**Kentucky Warbler**  
*Oporornis formosus*  
LL 10; Oct. 19, 1979; Ft. Peck  
n=1

-	-	-	-	-	-	-	-	-	t	-	-
-	-	-	-	-	-	-	-	-	-	-	-
-	-	-	-	-	-	-	-	-	-	-	-
-	-	-	-	-	-	-	-	-	-	-	-
-	-	-	-	-	-	-	-	-	-	-	-

-----  
-----  
-----  
-----  
--

**Connecticut Warbler**  
*Oporornis agilis*  
QLL 12B; September 5, 1990 ; Westby  
n=3

-	-	-	-	-	-	-	-	-	-	-	t
-	-	-	-	-	-	-	-	-	-	-	t
-	-	-	-	-	-	-	-	-	-	-	-
-	-	-	-	-	-	-	-	-	-	-	-
-	-	-	-	-	-	t	-	-	-	-	-
-	-	-	-	-	-	-	-	-	-	-	-

-----  
-----  
-----  
-----  
--

**Mourning Warbler**  
*Oporornis philadelphia*  
LL 9; June 9, 1969;  
Bowdoin NWR  
n=1

-	-	-	-	-	-	-	-	t	-	-	-
-	-	-	-	-	-	-	-	-	-	-	-
-	-	-	-	-	-	-	-	-	-	-	-
-	-	-	-	-	-	-	-	-	-	-	-
-	-	-	-	-	-	-	-	-	-	-	-
-	-	-	-	-	-	-	-	-	-	-	-

-----  
-----  
-----  
-----  
--

**MacGillivray's Warbler**  
*Oporornis tolmiei*

-----  
-----  
-----  
-----  
--

b	B	B	b b	b	B	t	b	t	-	t	t	-	t
b	B	B	b b	b b	B	b	b	b	-	-	t	t	
	b	B	B	b	B	b	b	-	-	t	t	t	
		B	b	B	b	B	b	-	-	t	t	t	
			B	B	B	b	-	b	-	-	-	-	
				B	B	B	b b	b b					
					B	B							
						B							
							B						
								B					
									B				
										B			
											B		
												B	
													B

**Common Yellowthroat**  
*Geothlypis trichas*

-----  
-----  
-----  
-----  
--

b	B	B	b b	B	B	B	B	b b	b	B	b	B	
b	B	B	b b	b b	b	b	B	b b	B	t t	B	b	
	b	B	B	b b	b	b	B	b b	b	b	B	b	
		B	B	B	B	B	b	b	B	b	b	b	
			B	B	B	B	b	b	B	B	b b	b	
				B	B	B	b	B	B	b	b	b	
					B	B	b	B	B	b	b	b	
						B						B	
							B						B
								B					
									B				
										B			
											B		
												B	
													B

**Wilson's Warbler**  
*Wilsonia pusilla*

-----  
-----  
-----  
-----  
--

b	B	B	t	t	t	t	t	t	t	t	t		
b	B	B	t	t	t	t	t	t	t	t	t		
	b	B	t	t	t	t	t	t	t	t	t		
		B	t	t	t	t	t	t	t	t	t		
			B	t	t	t	t	t	t	t	t		
				B	t	t	t	t	t	t	t		
					B	t	t	t	t	t	t		
						B	t	t	t	t	t		
							B	t	t	t	t		
								B	t	t	t		
									B	t	t		
										B	t		
											B		
												B	
													B

**Canada Warbler**  
*Wilsonia canadensis*  
QLL 12B; Aug. 15, 1990;  
Westby  
n=4

-----  
-----  
-----  
-----  
--

-	-	t	-	-	-	-	-	t	-	-	-	-	t
-	-	-	-	-	-	-	-	-	-	-	-	-	-
	-	-	-	-	-	-	-	-	-	-	-	-	-
		-	-	-	-	t	-	-	-	-	-	-	-
			-	-	-								
				-	-								
					-								
						-							
							-						
								-					
									-				
										-			
											-		
												-	
													-



**Rose-breasted Grosbeak**  
*Pheucticus ludovicianus*

-----  
 -----  
 -----  
 --w-----  
 --

-	t	-	t	t	t	-	-	t	t	t	t
-	-	-	-	-	-	-	t	-	t	-	-
	t	-	t	-	-	-	t	-	t	t	-
		-	t	t	t	t	b	-	-	-	-
		-	-								

**Black-headed Grosbeak**  
*Pheucticus melanocephalus*

-----  
 -----  
 --w-----  
 -----  
 --w-----  
 --

b	B	b b	t	b	-	b	b	t	b	b	B		
b	b	b b	b	b	t	b	b	t	B				
b	B	b	b b	B	B	b	b	B	-	b	t	b	b
	t	b	b	b	b	b	b	b	b	B	b	b	b
		B	B	B	b	b	b	b	b	B	b	b	b
		b	b	b	B	b	b b	b	b b	b	b	b	b
		b	b	b	B	t	b	B	b	b b	b b	b	B
		-	B	b									

**Blue Grosbeak**  
*Guiraca caerulea*

LL 41; 1975  
n=3

-----  
 -----  
 -----  
 -----  
 --

-	-	-	-	-	-	-	-	-	-	-	t
-	-	-	-	-	-	-	-	-	-	-	-
	-	-	-	-	-	-	-	-	-	-	-
		-	-	-	-	-	b	-	-	-	-
		-	-								

**Lazuli Bunting**  
*Passerina amoena*

-----  
 -----  
 -----  
 -----  
 --

b	B	b b	b	b	-	B	b	t	B	b	b	
b	b	b b	b	b	b	B	b	t	t			
b	B	b	b b	t	b	B	b	b	b	b	b	b
	t	b	b	b	b	b	b	b	b	b	b	b
		B	B	B	b	b	b	b	b	b	b	b
		b	B	b	b B	b	b b	b	B	b	B	B
		b	B	b	B	t b	b b	b	b	b	b	b
		b	B	b								

**Indigo Bunting**  
*Passerina cyanea*

-----  
-----  
-----  
-----  
--

-	t	-	-	-	-	-	-	-	b	b	b
-	-	-	b	-	-	-	b	-	-	-	b
	t	t	-	-	-	-	b	-	-	t	-
		-	-	t	t	-	b	b	b	-	b
				-	-						

**Dickcissel**  
*Spiza americana*  
n=14 TES

-----  
-----  
-----  
-----  
--

-	-	-	-	-	-	-	-	-	b	b	b
-	-	t	-	-	-	-	-	-	-	-	b
	-	-	-	-	-	-	b	b	b	B	-
		-	-	-	-	-	-	b	-	-	b

**Green-tailed Towhee**  
*Pipilo chlorurus*

-----  
-----  
-----  
-----  
--

-	-	t	-	-	-	b	-	-	-	-	-
-	-	-	-	-	-	b	b	t	-	-	-
	t	-	b	t	B	B	-	-	-	-	-
		-	b	B	B	B	b	b	t	-	-

**Rufous-sided Towhee**  
*Pipilo erythrophthalmus*

WW-----  
-----  
WW-----  
--W--W--  
--

B	b	t	b	b	B	B	b	B	B	b	b
B	B	b	b	b	b	B	B	B	t	t	B
	b	b	b	t			b	b	b	b	b
	b	B	B	b	B	b	b	b	b	B	b
		t	t	b	b	B	b	b	B	b	b
		b	b	B	B	B	b	B	b	B	b



**American Tree Sparrow**  
*Spizella arborea*

WW-WWW-WW-W  
 WWW-WWW--W  
 WWWWWW-  
 -WWW-  
 WW

t	t	t	t	t	t	t	t	t	t	t	t
	t	t	t	t	t	t	t	t	t	t	t
-	t	t	t	t	t	t	t	t	t	t	t
	t	t	t	t	t	t	t	t	t	t	t
		t	t	t	t	t	t	t	t	t	t
			t	t	t	t	t	t	t	t	t
				t	t	t	t	t	t	t	t
					t	t	t	t	t	t	t
						t	t	t	t	t	t
							t	t	t	t	t
								t	t	t	t
									t	t	t
										t	t
											t

**Chipping Sparrow**  
*Spizella passerina*

-----  
 -W-----  
 -W-----  
 -----  
 --

b	B	B	B	b	b	b	B	t	b	b	B	b	B
B	B	B	B	B	B	b	B	B	b	b	b	b	B
	t	b	B	b	b	b	B	B	b	b	b	b	B
	B	B	B	B	B	B	B	B	b	b	b	b	B
		b	B	b	B	B	B	B	b	B	b	b	B
		B	B	B	B	B	B	B	b	B	b	b	B
			b	B	B	B	B	B	b	B	b	b	B
			B	B	B	B	B	B	b	B	b	b	B
				b	B	B	B	B	b	B	b	b	B
				B	B	B	B	B	b	B	b	b	B
					b	B	B	B	b	B	b	b	B
					B	B	B	B	b	B	b	b	B
						b	B	B	b	B	b	b	B
							b	B	b	B	b	b	B
								b	B	b	b	b	B
									b	B	b	b	B
										b	B	b	B
											b	B	B
												b	B
													b

**Clay-colored Sparrow**  
*Spizella pallida*

-----  
 -----  
 -----  
 -----  
 --

-	t	b	B	b	B	b	b	B	B	B	B	b	B
	b	b	b	B	B	b	b	b	b	b	b	b	B
-	B	-	b	b	b	b	b	b	b	b	b	b	b
			b	b	b	b	b	b	b	b	b	b	b
			B	b	b	b	b	b	b	b	b	b	b
				B	b	b	b	b	b	b	b	b	b
					b	b	b	b	b	b	b	b	b
						b	b	b	b	b	b	b	b
							b	b	b	b	b	b	b
								b	b	b	b	b	b
									b	b	b	b	b
										b	b	b	b
											b	b	b
												b	b
													b

**Brewer's Sparrow**  
*Spizella breweri*

-----  
 -----  
 -----  
 -----  
 --

B	B	t	-	b	b	B	b	B	B	b	t		
	b	-	b	b	b	B	B	B	B	b	b	b	b
-	B	-	b	b	b	B	B	B	B	b	b	b	b
			b	b	b	B	B	B	B	b	b	b	b
			B	b	b	B	B	B	B	b	b	b	b
				B	b	B	B	B	B	b	b	b	b
					B	b	B	B	B	b	b	b	b
						B	b	B	B	b	b	b	b
							B	b	B	b	b	b	b
								B	b	B	b	b	b
									B	b	b	b	b
										B	b	b	b
											B	b	b
												B	b
													B

**Field Sparrow**  
*Spizella pusilla*

-----  
-----  
-----  
-----  
--

-	t	-	-	-	-	-	-	t	b	b	b
-	-	-	-	-	-	-	-	-	<sup>t</sup> b	b	B b
-	-	-	-	-	-	-	-	b	b b	b	B
-	-	-	-	-	t	-	-	b	b	b	b
-	-										

**Vesper Sparrow**  
*Poecetes gramineus*

-----  
-----  
-----  
-----  
--

B b	B b	B B	b b	b B	B B	B B	b b	B b	b b	B b	b B
B b	t B	B B	b b	b B	b b	B B	B B	B B	b b	b b	b b
b B	B B	B B	b b	b B	b b	B B	B b	B b	b b	b b	B b
b B	B B	B B	b b	b B	b B	b B	b B	B B	t B	t b	b B
B B	B B										

**Lark Sparrow**  
*Chondestes grammacus*

-----  
-----  
-----  
-----  
--

B	t	b b	-	b b	B b	B b	b b	b b	B b	b B	b B
-	b t	t t	b B	b b	b b	B B	B b	b b	b B	B B	B b
B t	b t	B t	B t	b t	b b	t B	B B	b b	B b	B B	B B
-	b	b	B	b	B	b	B	b B	t B	t B	b t
t b											

**Black-throated Sparrow**  
*Amphispiza bilineata*

LL 25; May 21, 1975; Missoula  
n=2

-----  
-----  
-----  
-----  
--

-	-	-	-	-	-	-	-	-	-	-	-
-	-	-	-	-	-	-	-	-	-	-	-
t	-	-	-	-	-	-	-	-	-	-	-
-	-	-	-	-	-	-	-	-	-	-	-
-	-										

**Sage Sparrow**  
*Amphispiza belli*  
 LL 35; June, 1984;  
 Fallon County  
 n=10 TES

-	-	-	-	-	-	-	-	-	-	-	-
-	t	-	-	-	-	t	-	-	-	-	-
	t	-	-	-	t	-	-	-	-	-	B
		-	-	b	b	-	-	-	-	-	-
			-	-							

-----  
 -----  
 -----  
 -----  
 --

**Lark Bunting**  
*Calamospiza melanocorys*

t	t	b	b	b	B	b	b	B	B	B	b
	t	t	b	B	B	b	b	B	B	B	B
t	t	-	b	B	b	B	B	B	B	B	b
	t	t	t	t	b	b	B	b	B	b	B
			b	b	b	B	B	b	B	b	b
		-	t	t	t	B	B	B	b	t	b
			B	t	b	B	B	B	b	B	B
									b	b	t
										b	t

-----  
 -----  
 -----  
 -----  
 --

**Savannah Sparrow**  
*Passerculus sandwichensis*

b	B	b	b	b	b	b	b	B	b	b	b
b	b	b	b	b	b	b	b	b	b	b	b
-	b	B	B	B	B	b	B	B	b	t	t
	b	B	B	B	B	b	B	B	b	b	b
		b	b	b	b	B	b	b	b	b	b
		B	t	t	b	b	t	b	b		b
		b	t	b	b	B	B	B	b	t	b
		B	B	B	b	b	B	b	b	B	b

-----  
 -----  
 -----  
 -----  
 --

**Baird's Sparrow**  
*Ammodramus bairdii*

t	t	b	b	b	b	b	b	b	b	b	b
	t	t	t	b	b	b	b	b	b	b	b
-	t	-	b	B	b	-	-	b	b	b	b
			b	b	b	b	b	b	b	b	b
		t	-	-	t	-	-	-	b	-	b
										b	b
						b	-	-	-	b	b

-----  
 -----  
 -----  
 -----  
 --

**Grasshopper Sparrow**  
*Ammodramus savannarum*

-----  
-----  
-----  
-----  
--

b	t	b	b	-	b	B	b	b	B	b	b
-	B	t	t	B	b	B	b	b	t	b	b
	b	b	-	-	b	b	b	b	b	b	B
	t				b	b	b	b	b	b	b
		-	-	t	-	b	b	b	b	b	b
				b		b	b	-	B	b	b
				t							
				-							

**Le Conte's Sparrow**  
*Ammodramus leconteii*

QLL 28A; Oct. 6, 1990;  
Lake Helena  
n=17 TES

-----  
-----  
-----  
-----  
--

-	B	b	-	-	-	-	-	t	-	-	b
-	-	-	-	-	-	-	-	-	-	-	-
	t	-	-	t	-	-	-	-	-	-	-
		-	-	-	-	-	t	-	-	t	-

**Sharp-tailed Sparrow**  
*Ammodramus caudacutus*

LL 12; Sept., 1943;  
Medicine Lake  
n=2

-----  
-----  
-----  
-----  
--

-	-	-	-	-	-	-	-	-	-	-	b
-	-	-	-	-	-	-	-	-	-	-	-
	-	-	-	-	-	-	-	-	-	-	-
		-	-	-	-	-	-	-	-	-	-

**Fox Sparrow**  
*Passerella iliaca*

ww---W-----  
-----  
-----  
-----  
---W-----  
--

b	B	b	b	-	-	t	-	-	-	t	-	-
b	b	B	B	-	-	t	-	-	-	t	-	-
-	b	B	B	b	b	t	-	-	-	-	-	-
	b	b	b	b	b	b	-	-	t	-	t	-
		b	b	b	b	b	-	-	t	t	-	-
		b	b	b	b	b	-	t	t	-	-	-

**Song Sparrow**  
*Melospiza melodia*

WW---W---W---  
WWW-W-W-----  
WWW---W-W-  
-WWW-W-W-  
-W

B	B	b b	B	b	B	B	b	b	b	b	b
B	B	B	B	B	t	B	b	b	b	b	b
b	B	b t	b b	B	b	B	B	b	t	t	b
B	b b	B b	b b	B	B	B	b	t	b	t	b
	b b	b b	b b	B	B	b	b	b	b	b	b
	B	B	B	B	b	b	b	b	b	b	b
	B	t t	b b	b t	b	b	b	b	b	b	b
	b	B	b	b	B	B	B	b	b	b	B
	b	b	B	b	B	t	B	B	b	b	B
		t	B B								
		b	b								

**Lincoln's Sparrow**  
*Melospiza lincolni*

-----  
-----  
-----  
-----  
--

b	B	b b	-	-	t	-	t	t	t	-	t
b	B	b b	-	-	t	-	t	t	t	-	t
-	t	B	b	t	-	t	-	t	t	t	t
b	B	b	b	t	b	t	-	-	t	t	t
	t	B	b	b	B	b	b	b	b	-	-
	b	B	b	b	B	b	b	b	b	-	-
	b	B	b	b	B	b	b	b	b	-	-
		t	B B								
		-	b								

**Swamp Sparrow**  
*Melospiza georgiana*

LL 41; Oct. 24, 1981  
n=8

-----  
-----  
-W-----  
-----  
--

-	-	-	-	-	-	-	-	-	-	-	t
-	-	-	-	-	-	-	-	-	-	-	-
	t	t	t	-	-	-	-	-	-	t	-
		-	-	-	-	-	t	-	-	-	-
		-	-								
		-	-								

**White-throated Sparrow**  
*Zonotrichia albicollis*

WW-----  
--W-----  
WWW-----  
--WW-W-  
--

t	t	-	-	t	t	t	t	t	t	t	t
t	t	-	-	t	t	t	t	t	t	t	t
-	t	-	t	t	-	t	t	-	t	-	-
	t	t	t	t	t	-	-	t	t	t	t
		-	t	t	t	-	t	-	-	-	t
		-	-								
		-	-								

**Golden-crowned Sparrow**

*Zonotrichia atricapilla*

QLL 9C; May 13, 1988;

Bowdoin NWR

n=4

-----  
 -----  
 -----  
 -----  
 --

-	-	-	-	-	-	-	-	-	t	-	-	-
t	-	-	-	-	-	-	-	-	-	-	-	-
	-	t	-	-	-	-	-	-	-	-	-	-
		-	-	-	-	-	t	-	-	-	-	-
			-	-								
			-	-								

**White-crowned Sparrow**

*Zonotrichia leucophrys*

WW----W-----  
 --W-----  
 W--W-----  
 ---W-W-----  
 -W

b	B	b	b	b	t	t	B	t	t	t	t	t
b	b	t	b	b	B	b	B	b	t	t	t	t
	b	b	b	t	B	B	t	t	t	t	t	t
	b	t	B	B	B	B	B	t	b	t	t	t
		b	B									
		b	B									

**Harris' Sparrow**

*Zonotrichia querula*

WW---W--W--W  
 -WW---W-----  
 WWW---WW-  
 -WWW-W-----  
 --

t	t	t	-	-	t	t	t	t	t	-	t
-	t	t	-	t	-	t	-	-	t	t	t
	t	t	t	t	t	-	-	t	t	t	-
		t	t								
		-	t	t	-	-	t	-	-	-	-
			-	t							

**Dark-eyed Junco**

*Junco hyemalis*

SI

WWW-W---WW-W  
 WWW-W-W---W  
 WWW---WWW-  
 -WWW-W-W-W  
 -W

b	t	b	b	-	B	t	b	t	t	t	t	t
B	B	B	B	b	B	t	b	t	t	t	t	t
b	b	B	B	b	B	b	B	b	t	t	t	t
	B	B	B	B	B	B	B	b	t	b	b	t
		B	B	t	b	b						
		b	b	b	B	b	b	b	B	B	t	B
			B	B	B	B	b	b	B	B		
			b	B								
			b	B								

**McCown's Longspur**  
*Calcarius mccownii*

-----  
-----  
-----  
-----W-----  
--

-	-	b	b	b	B	b	b	B	B	b	b
-	-	-	b	b	B	B	B	t	-	b	b
	-	-	-	B	b	t	B	B	-	b	b
		-	b	b	-	B	B	-	-	b	-
			b	-							

**Lapland Longspur**  
*Calcarius lapponicus*

-W--WWW--Ww-  
-W-ww--W-WWW  
--www-wwww  
--www-wwww  
--

-	t	t	-	t	t	t	-	-	t	t	t
-	-	t	t	t	-	t	t	-	t	t	t
	t	t	t	t	t	t	t	t	t	t	t
		t	-	t	t	t	t	t	t	t	-
			-	-							

**Smith's Longspur**  
*Calcarius pictus*

LL 44; Sept. 15, 1977;  
Broadus  
n=4

-----  
-----  
-----  
-----  
--

-	-	-	-	-	-	-	-	-	-	-	-
-	-	-	-	-	-	-	-	-	-	t	-
	-	-	-	-	-	-	-	-	-	-	-
		-	-	-	t	t	-	-	t	-	-
			-	-							

**Chestnut-collared Longspur**  
*Calcarius ornatus*

-----  
-----  
-----  
-----  
--

-	t	b	B	B	B	b	b	B	b	B	B
-	-	t	b	B	B	B	B	-	b	t	B
	-	-	-	t	b	b	B	B	b	b	b
		-	b	b	-	B	B	b	b	t	B
			-	-							

**Snow Bunting**  
*Plectrophenax nivalis*

wwwwwwwwwwww  
wwwwwwwwwwww  
www-wwwwww  
wwwwwwww-  
ww

t	t	t	t	t	t	t	t	t	t	t	t
	t		t		t		t		t	t	
		t	t	t	t	t	t	t	t	t	t
			t	t	t	t	t	t	t	t	t
				t	t						

**Bobolink**  
*Dolichonyx oryzivorus*

-----  
-----  
-----  
-----  
--

b	B	t	b	b	b	b	b	b	b	b	b
b	b	B	b	b	b	B	b	b	b	b	b
-	B	B	t	b	b	B	B	b	b	b	b
		B	B	b	B	B	b	b	b	-	t
			t	b	b	b	b	b	-	t	b
				B	B	B	B	B	-	b	b
					b	b	B	B	-	b	b
						b	B	B	-	b	b
							B	B	-	b	b

**Red-winged Blackbird**  
*Agelaius phoeniceus*

www-w-w-ww-  
-ww---w----  
wwww---www-  
--ww-w----  
-w

B	B	t	B	b	b	B	B	b	B	B	B	b
b	B	B	B	B	B	B	B	b	B	B	B	B
	b	B	B	B	B	B	B	b	B	B	B	B
		b	B	B	B	B	B	b	B	B	B	B
			B	B	B	B	B	b	B	B	B	B
				B	B	B	B	b	B	B	B	B
					B	B	B	b	B	B	B	B
						B	B	b	B	B	B	B
							B	B	b	B	B	B
								B	B	b	B	B
									B	B	b	B
										B	B	b
											B	B
												B

**Western Meadowlark**  
*Sturnella neglecta*

ww--w---ww--  
-w--w-----  
w--w-w-wwww  
-www-w----  
-w

B	B	B	b	b	B	B	B	b	B	B	B	b
b	B	B	B	B	B	B	B	b	B	B	B	B
	b	B	B	B	B	B	B	b	B	B	B	B
		B	B	B	B	B	B	b	B	B	B	B
			B	B	B	B	B	b	B	B	B	B
				B	B	B	B	b	B	B	B	B
					B	B	B	b	B	B	B	B
						B	B	b	B	B	B	B
							B	B	b	B	B	B
								B	B	b	B	B
									B	B	b	B
										B	B	b
											B	B
												B



**Yellow-headed Blackbird**  
*Xanthocephalus xanthocephalus*

B	B	B	b	b	B	B	b	B	B	B	B	
b	B	B	b	B	B	b	B	b	B	t	B	b
-	t	B	B	b	B	B	b	B	b	B	B	B
	b	B	B	B	B	b	B	b	B	b	B	B
		B	B	B	B	b	B	b	B	b	B	B
			B	B	t	B	B	b	B	b	B	B
				B	B	B	B	B	B	b	B	B
					B	B	B	B	B	B	B	B
						B	B	B	B	B	B	B
							B	B	B	B	B	B

-----  
-W-----  
W-----  
-----W---  
--

**Rusty Blackbird**  
*Euphagus carolinus*

t	t	t	-	t	t	-	-	t	t	t	-
					t				t		
-	t	-	-	t	-	-	-	-	-	-	-
	t	t	-	t	-	-	-	-	-	t	-
					t	t	-	t	-	-	-

-W--W---WW--  
-----W---  
---W-----  
--WW-W---W  
--

**Brewer's Blackbird**  
*Euphagus cyanocephalus*

B	B	b	b	b	B	B	b	B	b	B	B
b	t	B	t	b	B	B	b	B	t	B	B
B	t	B	t	b	B	B	B	B	b	B	B
b	B	b	B	B	B	B	B	B	b	B	B
	b	t	b	t	b	B	B	B	b	b	b
		B	B	B	B	B	B	B	b	b	b
			B	B	B	B	B	B	B	B	B
				B	B	B	B	B	B	B	B
					B	B	B	B	B	B	B
						B	B	B	B	B	B
							B	B	B	B	B

WWW-----W---  
-----W-W-----  
W--W-----WW  
--WW-W-W---  
--

**Common Grackle**  
*Quiscalus quiscula*

-	t	b	b	b	t	B	b	B	B	b	B
			t	b	t	B	b	B	t	B	B
-	b	-	b	B	b	B	b	B	t	b	B
	t		b	B	b	B	b	B	b	B	B
			B	B	B	B	B	B	B	B	B
				B	B	B	B	B	B	B	B
					B	B	B	B	B	B	B
						B	B	B	B	B	B
							B	B	B	B	B
								B	B	B	B
									B	B	B

-----W---  
-----W---W  
-----  
--WW-W---  
--

**Brown-headed Cowbird**  
*Molothrus ater*

-----W-----  
-----  
-----W-----  
-----W-----  
-----  
--

B	B	b b	b	b	B	B	B	B	B	B	b
b	b	b b	b	B	B b	b	b	B	t B	b	B
B	t b	t	b B	b	b	B	B	b	t t	B	B
b	b b	b t	b	B	b	B	b	b	b	b	b
b b	b b	t b	b	B	b	B	b	B	b	B	B
B	B	B	B	B	B	b	B	b	B	B	B
B	b	b t	b t	B B	B	B	b	b	b	B	B
b	B	b b	B	b	b t	b t	t b	B b	b	B	b
B	B	B	B	B	B	B	B	b b	t	t b	B
B	B B										
b	B										

**Orchard Oriole**  
*Icterus spurius*

-----  
-----  
-----  
-----  
-----  
--

-	-	-	-	-	-	-	-	-	b	t	b
-	-	-	-	-	-	-	-	t	B		
-	-	-	-	-	-	-	-	b	b	b	B
-	-	-	-	-	-	-	-	b	b	b	b
-	-	-	-	-	-	b	-	-	-	t	t
-	-										

**Northern Oriole**  
*Icterus galbula*  
SI

-----  
-----  
-----  
-----  
-----  
--

b	B	b	b	b	B	B	b	B	B	B	B
b	B	b	t	B	B	B	b	B	B B	B	B
b	b	b B	b	B	B	B	b	t b	b	b	B
B	B	b	B	B	b	B	B	b	b	b	b
t	B	B	B	b	b	B	B	B	B	B	B
-	B	B	B	B	B	B	B	B	B	b	b
-	b		t t	b	b	B	B	B	b b		b
-	t										

■ **Fringillidae**

**Brambling**  
*Fringilla montifringilla*

LL 15; Dec. 3, 1978; Swan lake  
n=1

-----  
-----  
-----  
-----  
-----  
--

-	-	-	-	-	-	-	-	-	-	-	-
-	-	t	-	-	-	-	-	-	-	-	-
-	-	-	-	-	-	-	-	-	-	-	-
-	-	-	-	-	-	-	-	-	-	-	-
-	-										

**Rosy Finch**  
*Leucosticte arctoa*  
SI

WWW-WWW-WW-W  
-WWWWWWW---W  
W-WWW-WWW-  
-WWWWWWW  
WW

B	B	b B	-	t	t	t	-	t	t	-	t
	t	b B							t		
b	t	t	t t	t	b	t	t	-	t	-	t
	t										
	b	t	t	b	t	t	t	t	t	t	-
	t										
		-	t	b	t	t	t	t	t	t	-
				t	t	B					
				t	B						
				t	t						

**Pine Grosbeak**  
*Pinicola enucleator*

WWW-W-W-WW--  
WWW-WWW-W---  
WWW--W---W  
WWWWW-----  
-W

B	B	b	t	b	t	t	-	t	t	-	-
b	t	b b			t			t	t		
t	b	t	t	t	t	t	-	t	t	-	t
	b	b									
	b	t	t	b	b	t	-	-	-	-	-
	t	b									
		B	t	b	b	t	-	-	-	-	-
				B	b						
				-	B						
					b						

**Purple Finch**  
*Carpodacus purpureus*

-----Ww--  
-----W-----  
-W-----W--  
--Ww-W-----  
--

-	t	-	-	-	-	-	-	-	t	-	t
	t							t	t		
-	t	-	-	-	-	t	-	-	-	-	-
		-	t	t	-	-	-	-	t	t	-
		-	-	t	t	-	t	-	-	-	-
				-	t						

**Cassin's Finch**  
*Carpodacus cassinii*

WWW-----W---  
WWW---W-----  
WWW-----  
--Ww-W-W--  
-W

B	t	b b	-	-	-	b	-	-	-	-	-
b	B	b b						t	t		
b	b	B	b	b	b	B	-	-	-	-	-
	b	B									
	B	B	b	b	b	b	-	-	-	-	-
	b	B	b	b	b	b					
	b	b	b t	b							
		b									
		b	B	B	B	b	B	-	b	-	-
				B	B	B	B				
				B	t						
				b	B	B					
				b	b						



**Hoary Redpoll**  
*Carduelis hornemanni*

WWW-----WW--  
-W-----W-----W  
W-WW--W-----  
--W-WW-W--  
--

t	t	-	-	-	-	-	-	t	t	-	t
	t			t		t					t
		t	t	t	t	-	t	-	-	t	-
			-	t	t	t	-	t	-	-	-

**Pine Siskin**  
*Carduelis pinus*

WWW--WWW--  
WWW-W-W-----  
WWW-WW--W-  
-WWW-WW-W-  
-W

b	t	b	b	b	B	-	b	t	t	t	-	t
B	B	B	b	B	t		b	t	t	t		t
b	t	B	b	b								
B	b	B	t	b	t	B	b	b	-	t	-	t
b	B	B	b	B	b	B	b	b	b			
		b	b	b	b							
			B	B	t	B	b	B	-	b	b	b
			B	b	t	b	b					
			b	B	B	B	b	B	t	b	b	b
			b	B	B	B	t	b	b			
				B	B							
				b	B							

**American Goldfinch**  
*Carduelis tristis*

WW-----  
WWW-W-----  
WWW-----  
-WWW-W-----  
--

b	b	t	b	b	b	B	b	b	b	b	b	b	B
b	b	t	b	b	t	b	b	b	b	b	b	b	b
			b	b	B	B	B	b	b	b	b	b	b
			B	t	b	b	b	b	b	b	b	b	b
			b	B	B	B	B	b	b	b	b	b	b
			b	B	B	B	B	b	b	B	b	b	b
				b	b								
				b	b								

**Evening Grosbeak**  
*Coccothraustes vespertinus*

WWW-WWW-WW-W  
WWW-WWW-W---  
WWW-W-W--W  
-WWW-W-WW-  
--

b	B	t	B	-	t	t	t	-	t	t	-	t
b	B	b	B	t								
B	b	B	t	b	b	b	t	B	b	t	t	t
b	b	b	B	b	b	b	t	B	b	t	t	t
			B	t	t							
			b	B	B	B	b	b	t	t	t	t
			b	B	B	B	b	b	t	t	t	t
				t								
				-	b							

■ Passeridae

-----

**House Sparrow**  
*Passer domesticus*  
 (introduced)

WWWWWWWWWW  
 WWWWWWWWWWW  
 WWWWWWWWWWW  
 -WWWWWWWWWW  
 -W

B	B	B	b	b	B	B	B	B	B	B	b
B	B	B	B	B	B	B	b	b	B	B	B
	t	B	B	B	b	b	B	B	B	t	B
b	B	B	B	B	b	B	B	B	B	B	b
B	B	b	b	b	B	B	b	B	B	B	b
	B	B	B	B	b	b	B	b	B	B	b
	B		B	t	B	B	b	b	B	B	b
		b	B	B	B	B	B	b	t	t	B
			b	B	t	B	B	b	b	B	B
				b							b
				b	b						

## BIBLIOGRAPHY

- American Ornithologist's Union. 1983. Checklist of North American Birds, 6th edition. Allen Press. Lawrence, KS. 877 pp.
- AOU. 1985. Thirty-fifth supplement to the AOU checklist of North American birds. Auk 102: 680-686.
- AOU. 1987. Thirty-sixth supplement to the AOU checklist of North American Birds. Auk 104: 591-596.
- AOU. 1989. Thirty-seventh supplement to the AOU checklist of North American birds. Auk 106: 532-538.
- AOU. 1991. Thirty-eighth supplement to the AOU checklist of North American birds. Auk 108: 750-754.
- Dorn, J.L. and R.D. Dorn. 1990. Wyoming Birds. Mountain Press. Cheyenne. 138 pp.
- Ehrlich, P.R., D.S. Dobkin, and D. Wheye. 1988. The Birder's Handbook. Simon and Schuster, Inc. 785 pp.
- Findholt, S., B. Oakleaf, and B. Long (eds.). 1981. Wyoming Mammal Atlas, working draft. Wyoming Game and Fish Dept. Cheyenne.
- Kingery H. (ed.). 1987. Colorado Bird Distribution Latilong Study. Colo. Div. Wildlife. Denver. 81 pp.
- Oakleaf, B., H. Downing, B. Raynes, M. Raynes, and O.Scott. 1982. Wyoming Avian Atlas. Wyoming Game and Fish Department, Cheyenne.
- Skaar, D., D. Flath, and L.S. Thompson. 1985. Montana Bird Distribution, Third Edition. Monograph No. 3, Montana Acad. Sciences, Supplement to Proceedings, Vol 44, 1985. 70 pp.
- Skaar, P.D. 1980. Montana Bird Distribution. Published by the author, Bozeman.
- Skaar, P.D. 1969. Birds of the Bozeman Latilong. Published by the author, Bozeman.
- Stephens, D.A. and S.H. Sturts. 1991. Idaho Bird Distribution. Spec. Publ. No. 11, Idaho Museum of Natural History, Pocatello. 76 pp.
- Thompson, L.S. 1982. Distribution of Montana Amphibians, Reptiles, and Mammals. Montana Audubon Council, Helena. 24 pp.

## Contributors to the Fourth Edition

### More than 1000 Records:

Daniel Casey, Daniel Sullivan

### 501 - 1000 Records:

Lou Bruno, Charles M. Carlson, David Genter, Harriet M. Marble, Terry McEneaney

### 101 - 500 Records:

Dwight Bergeron, Marcy M. Bishop, Clifford V. Davis, Kristi Dubois, Robert L. Eng, G. J. Frazier, S. J. Gniadek, W. Edward Harper, John Hartman, Sally Hejl, C. J. Hoff, George Holton, Judy Hoy, Elly G. Jones, Larry Malone, D. L. Martin, Fritz Prellwitz, Montana Natural Heritage Program, Sue Reel, W. P. Roney, Michael T. Schwitters, Don Skaar, D. Tribby, S. D. Weller, J. Young, Mike Young.

### 1 - 100 Records:

Peter Achuff, Connie Akers, Kathleen Anderson, Margaret Anderson, Paul Anderson, June Ash, Maria Ash, Rod Ash, Alice Austin, Art Aylesworth, Beth Baker, Tim Baker, Janissa Balcomb, Lee Ballard, Jim Barnum, Dale Becker, Benton Lake NWR staff, Arnold Bolle, Gordon Browder, James Brown, T. S. Burns, Tom Butts, Charles Campbell, Marion Campbell, Suzi Campbell, Joel Carlson, Lynn Clark, Jane Collins, Bob Daniels, Jerome DeSanto, Claude Demarest, Dave Dickson, Jeffery E. Dobb, Sr., Pat Dolan, Anne Dueker, Joseph Engler, David Ewer, Bebe FitzGerald, Dennis Flath, Roger Fliger, S. R. Flores, Betsy Follman, Christian Frazza, Sid Frisell, Bill Good, Deb Goslin, Harvey Hackett, David Hamilton, Denise Hamilton, D. Hanson, Tom Harris, Barb Hazlewood, Rob Hazlewood, D. Heide, J. Heide, Paul Hendricks, Cal Henry, Willis Heron, K. L. Hicks, Bobby Hoe, John Hofflund, Denver Holt, Martin Holt, Mary Holt, Bob Hoy, Peter Hunt, Dick Hutto, Jaimie Ingold, Warren Iverson, Sue Jackson, Ron Jenkins, Sara J. Johnson, Cedron Jones, Thomas S. Jones, Connie Kay, W. Kerling, Jill King, Craig Knowles, Thomas Komberec, B. Krepps, M. E. Krook, Bob Krumm, Douglas Laye, Rose Leach, K. Leichter, Tom Lemke, Cary Lund, Jeff Marks, Charles Marlen, Stephen Martin, L. McEvoy, K. McLaughlin, C. D. Mitchell, Gerald Mueller, Norma H. Nixon, Larry Nordell, Ted J. Nordhagen, Bart O'Gara, Chris Paige, R. L. Pearson, J. H. Phelps, Sandy Pletcher, T. Prellwitz, J. Regan, Katherine Roberts, James Rogers, A. Roogaard, Vicki Roth, Bill Ruediger, Dave Shea, G. Sipe, Jean E. Smith, Kalmar R. Stevenson, Don Stoecker, J. M. Story, Karen L. Stutzman, Marjorie Swanson, Jon Swenson, Maureen Theilerr, B. Thompson, Gordon Thompson, William L. Thompson, R. A. Thorbert, Dorinda Trautman, Dave Trochlell, S. Turman, Jamie Turner, Steven Turner, Bob Twist, Virginia Vincent, J. D. Waldo, Robert Wallace, Byron Weber, Winton Weydemeyer, Carl Wolf, Dave Worthington, Philip L. Wright, Anne Zimmermann.



**Appendix A. List of Threatened, Endangered, and Sensitive Species (TES) and species requiring Supplemental Information (SI)**

TES	SI
Common Loon	Double-crested Cormorant*
American White Pelican	Great Blue Heron*
White-faced Ibis	Black-crowned Night Heron*
Trumpeter Swan	Mute Swan
Harlequin Duck	Franklin's Gull*
Bald Eagle	Ring-billed Gull*
Northern Goshawk	California Gull*
Ferruginous Hawk	Caspian Tern*
Peregrine Falcon	Common Tern*
Whooping Crane	Forster's Tern*
Snowy Plover	Eastern Screech-owl
Piping Plover	Western Screech-owl
Mountain Plover	Northern Flicker <sup>+</sup>
Least Tern	Cassin's Kingbird
Flammulated Owl	Yellow-rumped Warbler <sup>+</sup>
Burrowing Owl	Dark-eyed Junco <sup>+</sup>
Great Gray Owl	Northern Oriole <sup>+</sup>
Boreal Owl	Rosy Finch <sup>+</sup>
Black-backed Woodpecker	
Dickcissel	
Sage Sparrow	
Le Conte's Sparrow	

TES - Threatened, Endangered or Sensitive species. Please provide information on precise location, numbers of individuals, date of observation and details on nesting, if any.

SI - Species poorly known; little information on habitat preferences; questions on distribution; <sup>+</sup>subspecies distribution requested; \*nesting colonies. Please provide date of observation, information on precise location, habitat, nesting details, if any.

## Appendix B. Neotropical Migratory Bird Species in Montana

Killdeer	Western Kingbird
Mountain Plover	Great Crested Flycatcher
Marbled Godwit	Olive-sided Flycatcher
Long-billed Curlew	Eastern Wood-Pewee
Willet	Eastern Phoebe
Spotted Sandpiper	Say's Phoebe
Upland Sandpiper	Hammond's Flycatcher
Turkey Vulture	Dusky Flycatcher
Golden Eagle	Least Flycatcher
Northern Harrier	Willow Flycatcher
Sharp-shinned Hawk	Cordilleran Flycatcher
Cooper's Hawk	Horned Lark
Northern Goshawk	Tree Swallow
Broad-winged Hawk	Purple Martin
Red-tailed Hawk	Violet-green Swallow
Swainson's Hawk	Northern Rough-winged Swallow
Ferruginous Hawk	Bank Swallow
Osprey	Cliff Swallow
American Kestrel	Barn Swallow
Merlin	Brown Creeper
Prairie Falcon	House Wren
Peregrine Falcon	Marsh Wren
Mourning Dove	Sedge Wren
Yellow-billed Cuckoo	Rock Wren
Black-billed Cuckoo	Ruby-crowned Kinglet
Short-eared Owl	Eastern Bluebird
Long-eared Owl	Western Bluebird
Flammulated Owl	Mountain Bluebird
Burrowing Owl	Townsend's Solitaire
Common Poorwill	Veery
Common Nighthawk	Swainson's Thrush
Black Swift	Hermit Thrush
Chimney Swift	American Robin
Vaux's Swift	Loggerhead Shrike
White-throated Swift	Northern Mockingbird
Black-chinned Hummingbird	Gray Catbird
Ruby-throated Hummingbird	Sage Thrasher
Calliope Hummingbird	Sprague's Pipit
Broad-tailed Hummingbird	Water Pipit
Rufous Hummingbird	Cedar Waxwing
Belted Kingfisher	Yellow-throated Vireo
Lewis' Woodpecker	Bell's Vireo
Williamson's Sapsucker	Solitary Vireo
Yellow-bellied Sapsucker	Red-eyed Vireo
Red-naped Sapsucker	Warbling Vireo
Eastern Kingbird	Tennessee Warbler
Cassin's Kingbird	Orange-crowned Warbler

Nashville Warbler  
Black-and-white Warbler  
Yellow-rumped Warbler  
Townsend's Warbler  
Yellow Warbler  
MacGillivray's Warbler  
Wilson's Warbler  
Ovenbird  
Northern Waterthrush  
Common Yellowthroat  
American Redstart  
Yellow-breasted Chat  
Rose-breasted Grosbeak  
Black-headed Grosbeak  
Lazuli Bunting  
Indigo Bunting  
Dickcissel  
Rufous-sided Towhee  
Green-tailed Towhee  
Grasshopper Sparrow  
Baird's Sparrow  
Vesper Sparrow  
Savannah Sparrow  
Lark Sparrow  
Sage Sparrow  
Chipping Sparrow  
Clay-colored Sparrow  
Brewer's Sparrow  
Dark-eyed Junco  
White-crowned Sparrow  
Fox Sparrow  
Song Sparrow  
Swamp Sparrow  
Lincoln's Sparrow  
Chestnut-collared Longspur  
McCown's Longspur  
Lark Bunting  
Bobolink  
Western Meadowlark  
Red-winged Blackbird  
Yellow-headed Blackbird  
Brewer's Blackbird  
Orchard Oriole  
Northern Oriole  
Western Tanager  
Scarlet Tanager  
Pine Siskin  
American Goldfinch  
Cassin's Finch

## Appendix C. Hypothetical Species List

Some of these sightings are very old and probably should not be considered as species likely to be found in Montana. They have been carried over from the Third Edition pending further review by the editors and the verification committee. The newer records have not been reviewed by the verification committee and may be incorporated into the Fifth Edition.

Common Eider. L24: 1907.

Eskimo Curlew. L12: 1858, 1862, 1973.

Spotted Owl. L2: 1927. L3: 1959, 1976.

\*Yellow-bellied Sapsucker. QLL 3C: 1991.

Bewick's Wren. L15: 1973. L25: 1973.

Phainopepla. L3

Bell's Vireo. L12: 1858.

Blue-winged Warbler. L41: 1984.

Virginia's Warbler. L37: 1976.

\*Painted Redstart. QLL 25A: 1987.

\*Cardinal. QLL 42C: 1987.

Painted Bunting. L43: 1978.

\*new since the Third Edition

## Appendix D. Breeding Status Code Definitions

- B** Use of the "B" to designate breeding requires "hard evidence." A "B" can be hard to get. Do not assume breeding simply by presence or behavior. Use the "B" only if one of the following criteria are met.
1. Occupied nest. Adults entering or leaving nest site in circumstances indicating an occupied nest (includes high nests or nest-holes, the contents of which cannot be seen) or adult incubating or brooding.
  2. Recently fledged young (of altricial species) incapable of sustained flight, or downy young (of precocial species) restricted to the natal area by dependence on adults or limited mobility.
  3. Attending young; adult carrying food or fecal sac for young, or feeding recently fledged young.
  4. Used nest or eggshells found (Caution: identification must be convincing if such records are to be accepted).
  5. Nest with egg(s) which can be clearly identified. The presence of cowbird eggs or young is confirmation of breeding for both cowbird and host species.
  6. Nest with young, seen or heard, which can be clearly identified.
- b** Breeding is supported by circumstantial evidence.
1. Singing males, pairs or territorial birds observed in suitable nesting habitat during the species' breeding season.
  2. Courtship behavior or copulation.
  3. Adults visiting a probable nest site.
  4. Agitation behavior, distraction display, injury feigning, or anxiety calls from an adult.
  5. Nest building.
  6. Physiological evidence of breeding (brood patch or eggs in oviduct) based on bird in hand.
- t** No evidence of breeding. Transients; migrants; or mobile, wide ranging species that exhibit no breeding behavior at the time of observation.
- No records

**Appendix E. Rare Bird Report Form**  
 (For Species Annotated TES, SI, n=)

Species: \_\_\_\_\_ Observer's Name: \_\_\_\_\_  
 Date Observed: \_\_\_\_\_ Address: \_\_\_\_\_  
 Reporter's Name: \_\_\_\_\_  
 Date Written: \_\_\_\_\_ Telephone No: \_\_\_\_\_  
 Other Observers: \_\_\_\_\_

QLL: \_\_\_\_\_ Nearest Town/Landmark: \_\_\_\_\_  
 Specific Location: \_\_\_\_\_

\_\_\_\_\_ Township \_\_\_\_\_ Range \_\_\_\_\_ Section \_\_\_\_\_  
 Describe the Habitat: \_\_\_\_\_

Plumage(Circle) Sex  M Describe Weather: \_\_\_\_\_  
 Adult Immature  F \_\_\_\_\_  
 Subadult Juvenal  Unk \_\_\_\_\_

Optics Used and Power:  
 Binoculars  Spotting Scope  Unaided Eye  
 Quality and direction of light. \_\_\_\_\_

Distance from Bird: \_\_\_\_\_ Duration of Observation: \_\_\_\_\_  
 Previous Experience with Species? Where and when: \_\_\_\_\_

Discuss How Similar Appearing Species were Eliminated: \_\_\_\_\_  
 \_\_\_\_\_  
 \_\_\_\_\_

This Report was Written:  During or right after observation  
 From memory  hrs/ days later.

Describe the bird you observed. Record only field marks and behaviors you actually saw. State size (compared to similar size common bird). Record relevant information such as color, body shape, bill, legs, voice, behavior, no. of individuals, sex. Use back of form if more space is needed. Please include any photos or drawings. **Print or type clearly.**

Send your report to:  
 Montana Bird Distribution Update  
 Natural Heritage Program  
 1515 East Sixth Avenue  
 Helena, MT 59620

4th Ed|1992



## INDEX

The last word of the common name is indexed for species found in this book. Several topics and subjects have been included from the text.

Avocet . . . . .	36	Garganey . . . . .	18
Bittern . . . . .	12	Gnatcatcher . . . . .	75
Blackbirds . . . . .	100,101	Godwits . . . . .	39
Bluebirds . . . . .	75,76	Goldeneyes . . . . .	23
Bobolink . . . . .	100	Goldfinch . . . . .	105
Bobwhite . . . . .	32	Geese . . . . .	16,17
Brambling . . . . .	102	Goshawk . . . . .	26
Brant . . . . .	17	Grackle . . . . .	101
Breeding definitions (B,b) . . . .	6,113	Grebes . . . . .	10
Bufflehead . . . . .	23	Grosbeaks . . . . .	91,103,105
Bunting . . . . .	91,92,95,100,112	Grouse . . . . .	30-32
Canvasback . . . . .	20	Gulls . . . . .	45-49
Cardinal . . . . .	112	Gyrfalcon . . . . .	29
Catbird . . . . .	78	Harrier . . . . .	25
Chat . . . . .	90	Hawks . . . . .	25-27
Chickadees . . . . .	71,72	Hérons . . . . .	12-14
Chukar . . . . .	29	Hummingbirds . . . . .	58,59
Coot . . . . .	34	Ibis . . . . .	14
Cormorant . . . . .	12	Jaegers . . . . .	44,45
Cowbird . . . . .	102	Jays . . . . .	69,70
Cranes . . . . .	34	Junco . . . . .	98
Creeper . . . . .	73	Kestrel . . . . .	28
Crossbills . . . . .	104	Killdeer . . . . .	36
Crow . . . . .	70	Kingbirds . . . . .	66
Cuckoo . . . . .	52	Kingfisher . . . . .	59
Curlew . . . . .	38,112	Kinglets . . . . .	75
Dickcissel . . . . .	92	Kittiwake . . . . .	48
Dipper . . . . .	74	Knot . . . . .	40
Dove . . . . .	51	Lark . . . . .	67
Dowitcher . . . . .	43	Latilongs . . . . .	1,2
Ducks . . . . .	17-24	Longspurs . . . . .	99
Dunlin . . . . .	42	Loons . . . . .	9
Eagle . . . . .	25,28	Magpie . . . . .	70
Eider . . . . .	112	Mallard . . . . .	18
Egret . . . . .	13	Martin . . . . .	67
Falcons . . . . .	28,29	Meadowlark . . . . .	100
Finches . . . . .	103,104	Mergansers . . . . .	23,24
Flamingo . . . . .	7	Merlin . . . . .	28
Flicker . . . . .	62	Mockingbird . . . . .	78
Flycatchers . . . . .	63-67	Moorhen . . . . .	33
Gadwall . . . . .	19	Murrelet . . . . .	50



n=	4,6	Stilt	36
Neotropical migrant	5,110	Stork	15
Nighthawk	56	Swallows	67-69
Nutcracker	70	Swans	15,16
Nuthatches	72	Swifts	57,58
Oldsquaw	22	TES definition	4,6
Orioles	102	TES list	109
Osprey	25	Tanagers	90
Ovenbird	87	Teal	17,19
Owls	52-56,112	Terns	49,50
Partridge	29	Thrashers	79
Parula	83	Thrushes	77,78
Pelican	11	Towhees	92
Pewee	63	Transient status (t)	6,113
Phalarope	44	Turkey	32
Pheasant	30	Turnstone	39
Phoebe	65	Veery	76
Pigeon	51	Verification Committee	v,3
Pintail	18	Vireos	81,82,112
Pipits	79	Vulture	24
Plovers	34-36	Warblers	82-89,112
Poorwill	56	Waterthrush	88
Prairie-chicken	32	Waxwings	80
Ptarmigan	30,31	Whimbrel	38
Quarter Latilong	2	Whip-poor-will	57
Rails	33	Wigeon	20
Rare Bird Report Form	114	Willet	37
Raven	71	Winter status ( <u>W</u> ,w)	6
Redhead	20	Woodcock	43
Redpolls	104,105	Woodpeckers	60-62
Redstart	87,112	Wrens	73,74,112
Robin	78	Yellowlegs	37
Sanderling	40	Yellowthroat	89
Sandpipers	37-42		
Sapsucker	60,61,112		
Scaups	21		
Scoters	22		
Shoveler	19		
Shrikes	80		
SI definition	4,6		
SI list	109		
Siskin	105		
Snipe	43		
Solitaire	76		
Sora	33		
Sparrows	93-98,106		
Subspecies	3		
Starling	81		

# NOTES

---- Response Form ----

Please tear out, complete, and return to:

Montana Bird Distribution  
c/o Montana Natural Heritage Program  
1515 E. 6th Ave.  
Helena, MT 59620

FORMAT

1. Are the maps in this book intelligible and useful?
  
2. Please indicate which format you would prefer for the next edition of this book:
  - a. whole latilong records only (no quarters)
  - b. same as this book
  - c. quarter latilong records only (no centers)
  - d. other:
  
3. Do you have any comments or suggestions regarding the maps of winter records?
  
4. Do you have any comments or suggestions regarding the overall size and format of the maps and of the whole book?

DATA

5. Please indicate what kind of data you would prefer for the next edition of this book:
  - a. cumulative records of observations through time, as in the first three editions
  - b. only those observations reported since the previous edition (as discussed in the text)
  - c. other:
  
6. Would you recommend any additions to or deletions from the current set of "observation types" (B,b,t,w,W)?

7. Are there other kinds of data that you'd like to see in the next edition (e.g., spring arrivals, fall departures, abundance, habitats)? If yes, please describe.

GENERAL

8. How often do you think this book should be updated?

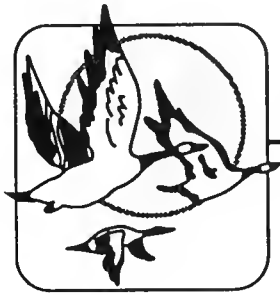
9. Would you prefer a fancier book (e.g., photos, graphics, nicer design, nicer paper)?

10. What can we do or provide to help you send us more data?

11. How could we improve the text in the book to make it more understandable or useful to you?

12. Anything else?

We thank the following corporations and agencies  
whose generous contributions made this publication possible



*Montana Audubon*



**WESTERN ENERGY COMPANY**



**WESTECH**



## MONTANA NATURAL HERITAGE PROGRAM

1515 East Sixth Avenue  
Helena, Montana 59620  
(406) 444-3009



A	B
C	D

