



LIBRARY
OF THE
UNIVERSITY
OF ILLINOIS

630.7
I l 6 b
no. 445-457
cop. 2

AGRICULTURE

NOTICE: Return or renew all Library Materials! The *Minimum Fee* for each Lost Book is \$50.00.

The person charging this material is responsible for its return to the library from which it was withdrawn on or before the **Latest Date** stamped below.

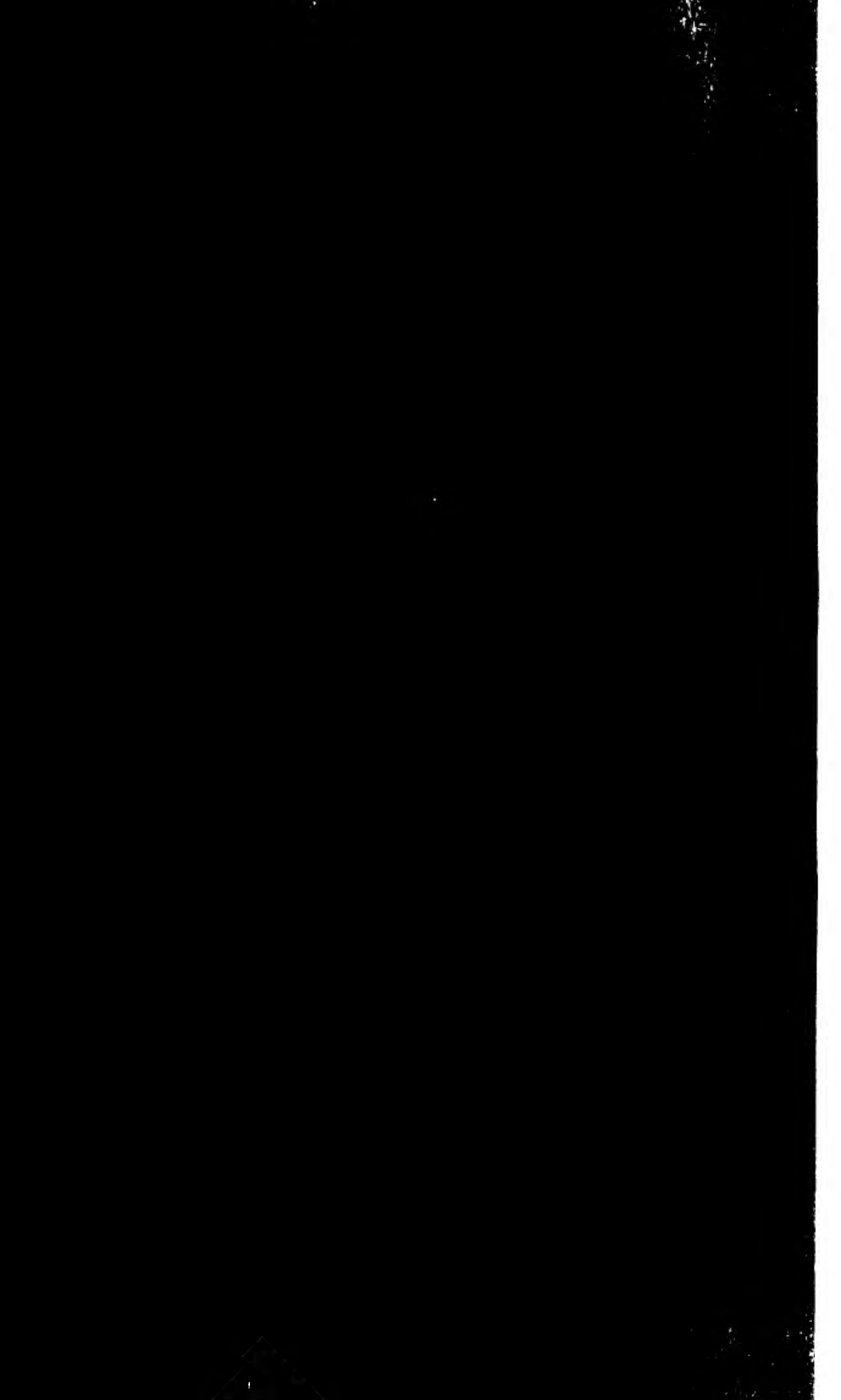
Theft, mutilation, and underlining of books are reasons for disciplinary action and may result in dismissal from the University.
To renew call Telephone Center, 333-8400

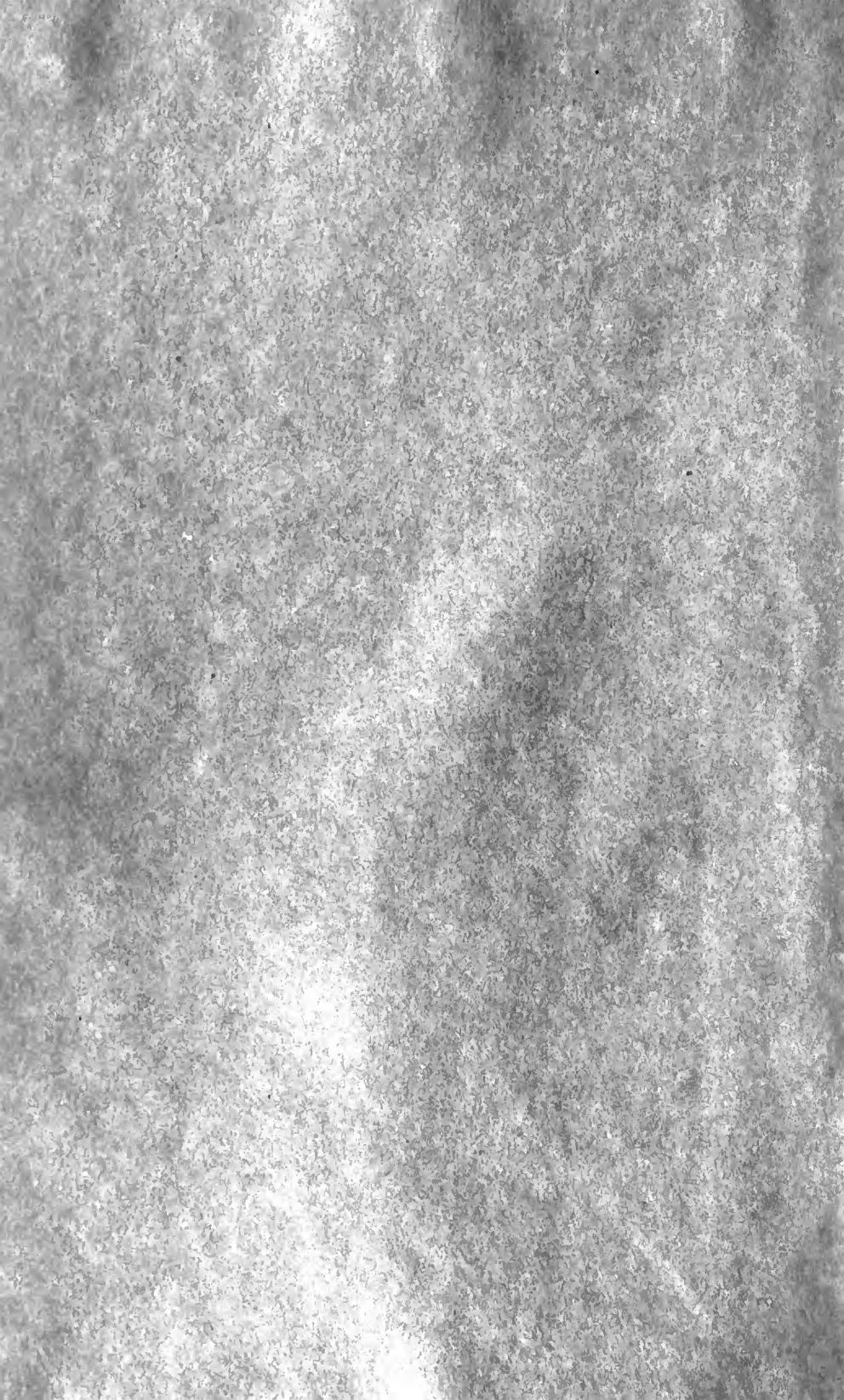
UNIVERSITY OF ILLINOIS LIBRARY AT URBANA-CHAMPAIGN

~~FEB 06 1992~~

AUG 22 1995



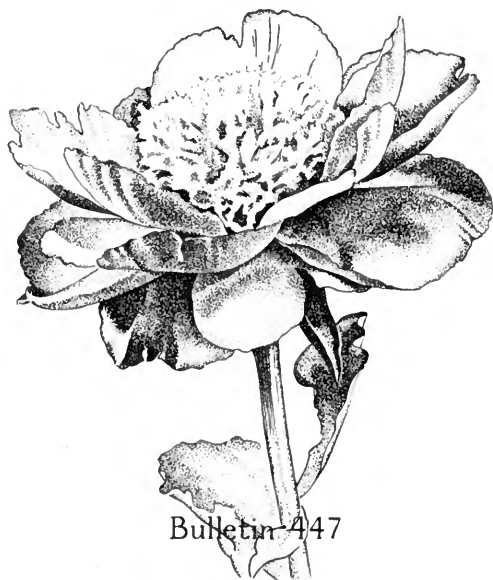




P e o n i e s

Single and Japanese
in the Illinois Trial Garden

by
F.F. Weinard and H.B. Dorner

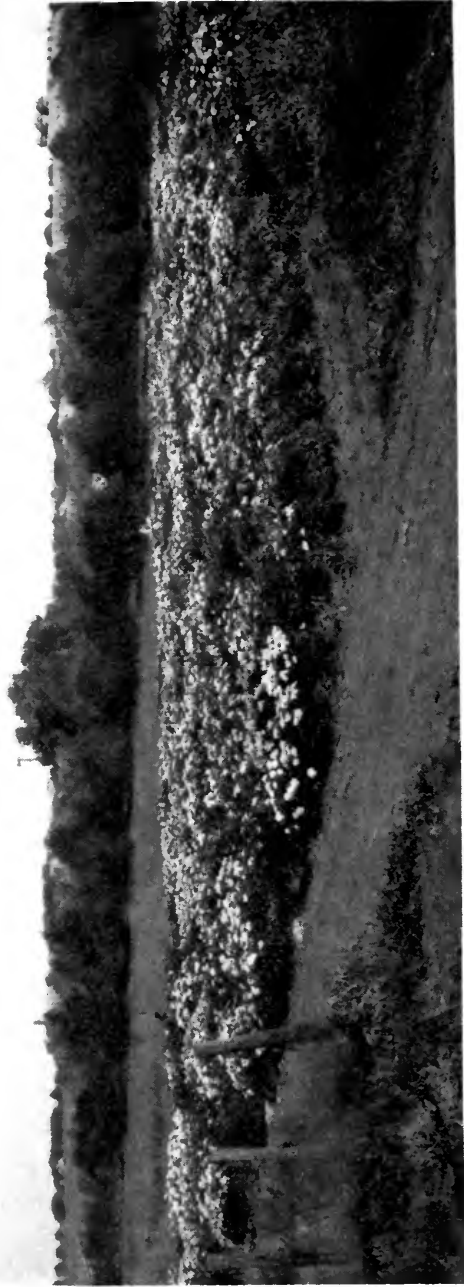


Bulletin 447

University of Illinois
Agricultural Experiment Station

CONTENTS

	PAGE
THE GARDEN	97
Purpose and Plan.....	97
Contributors	98
The Planting.....	100
FLOWER STRUCTURE OF SINGLE AND JAPANESE PEONIES.....	100
DISTINGUISHING BETWEEN VARIETIES.....	101
VARIETY DESCRIPTIONS FOR SINGLE AND JAPANESE PEONIES.....	103
Single Peonies	103
Japanese Peonies.....	122
OTHER VARIETIES AND SPECIES IN THE TRIAL GARDEN	149
Semidouble and Double Peonies.....	149
Peonies Other Than <i>albiflora</i>	150
Unnamed Seedlings.....	151
VARIETIES APPARENTLY IDENTICAL.....	152
VARIETIES VERY SIMILAR.....	152
VARIETIES CAUSING CONFUSION.....	153
PLAN FOR MASTER PLANTING OF SINGLE, JAPANESE, AND DOUBLE PEONIES.....	154



Trial garden of single and Japanese peonies at the University of Illinois

Peonies Single and Japanese in the Illinois Trial Garden

By F. F. WEINARD and H. B. DORNER¹

THERE ARE many beautiful forms of single and Japanese peonies. Many of the older varieties have been imported from Europe or Japan, but some of the best have been originated by hybridizers in this country. With the increase in number of varieties has come confusion in their nomenclature owing to the many close resemblances between the different kinds, and the lack of adequate records of their history and characteristics. Then, too, names have been used which are easily misspelled, and at times there may have been intentional substitutions by unscrupulous dealers.

The Garden

Purpose and Plan.—Commercial growers and others interested in growing and disseminating peonies have been unanimous for years in a desire to correct the confusion existing in the identification of varieties of single and Japanese peonies. The suggestion for a trial garden for these peonies came first from Mr. John van Leeuwen of Sassenheim, Holland, and the Netherlands' Peony Society expressed a desire to cooperate in such a project. Later at a meeting of the Board of Directors of the American Peony Society in New York City, March 14, 1926, the president was given authority to appoint a committee of three members "to investigate regarding a test planting of single and Japanese peonies for the purpose of correcting names and eliminating duplicates." A cooperative experiment was arranged with the University of Illinois, Department of Horticulture.

Briefly, it was agreed that the trial gardens would be located on University grounds at Urbana, the entire expense of preparing the

¹F. F. WEINARD, Associate Chief in Floricultural Physiology, and H. B. DORNER, Chief in Floriculture.

ground, fertilizing, planting, and culture during the test period of three to five years to be borne by the University.¹ The growers furnishing plants for the garden were to supply them to the University free of charge. The checking of plants was to include all Japanese and single varieties in commerce (tree peonies not included), as far as they could be secured, both from America and from Holland.

With respect to planting, it was specified: "Plants are to be set four feet apart each way so as to allow sufficient room for each kind to show its individuality as to plant characteristics, and further, for the purpose of guarding against infection in the event that any of the stock should be diseased."

It was further understood that at the conclusion of the experiment sufficient stock would be retained by the University for a permanent planting, the increase to be returned to the donors if they so stipulated.

Contributors.—The committee proceeded to enlist the interest of growers in different parts of the country who had single and Japanese peonies, and arranged for donations of plants of each kind available, from different localities. The names of the persons and firms contributing peonies for the trial garden are listed below. In the description of varieties (pages 103 to 151) these donors are indicated by their respective numbers in this list.

1. American Rose and Plant Co., Springfield, Ohio
2. Auten, Edward, Jr., Princeville, Illinois
3. Babcock Peony Gardens, Jamestown, New York
4. Berneche, E. J., Portland, Oregon
5. Bonnewitz Gardens (Lee R. Bonnewitz), Van Wert, Ohio
6. Brand Peony Farms, Faribault, Minnesota
7. Buechley, E. M., Greenville, Ohio
8. Cherry Hill Nurseries (Thurlows & Stranger, Inc.), West Newbury, Massachusetts

¹The agreement is reported in full in the American Peony Society Bulletin for December, 1926.

The committee of three members acting for the Peony Society consisted of Mr. Paul L. Battey, Chairman, Glencoe, Illinois; Mr. Edward Auten, Jr., Princeville, Illinois; and Mr. W. L. Gumm, Remington, Indiana. After the death of Mr. Gumm in 1931 and the resignation of Mr. Auten, the officers of the Society secured Mr. Charles Wassenberg, Van Wert, Ohio, and Mr. Charles Klehm, Arlington Heights, Illinois, to act on the committee.

9. Christman, W. F., Northbrook, Illinois
10. Clem, Joseph A., Sidney, Ohio
11. Cottage Gardens, Lansing, Michigan
12. Cranfield, W. B., East Lodge, Enfield Chase, Middlesex, England
13. Dumont, W. G., Des Moines, Iowa
14. Franklin Nursery (A. B. Franklin), Minneapolis, Minnesota
15. Gray & Cole, Ward Hill, Massachusetts
16. Greystone Flower Gardens, Oskaloosa, Iowa
17. Gumm, W. L., Remington, Indiana
18. Harris, S. G., Tarrytown, New York
19. Hendrickson, I. S., Jamesport, L. I., New York
20. Hillenmeyer Nurseries, Lexington, Kentucky
21. Indian Spring Farms, Inc., Baldwinsville, New York
22. Ives, Mrs. Francis R., Meriden, Connecticut
23. Jacobs, Mrs. M. W., Harrisburg, Pennsylvania
24. Johnson, John M., Liberty, Indiana
25. Koerth, Otto, Fredericksburg, Iowa
26. Kuehner, R. D., Freeport, Illinois
27. Lemke, Dr. A. H., Wausau, Wisconsin
28. Napier, R. A., Blue Island, Illinois
29. Netherlands' Society of Peony Growers and Dealers (Plants forwarded by L. van Leeuwen & Son, wholesale bulb growers and exporters, Sassenheim, Holland. The sixteen growers making contributions were designated by letter.)
30. Northbrook Gardens (Paul L. Battey), Northbrook, Illinois
31. Oronogo Flower Gardens (B. C. Auten), Carterville, Missouri
32. Payne, W. A., Terre Haute, Indiana
33. Pfeiffer Nursery, Winona, Minnesota
34. Puget Sound Peony Gardens (I. W. Goodner), Seattle, Washington
35. Reading, H. G., Franklin, Pennsylvania
36. Reid, Donald U., Syracuse, New York
37. Riverview Gardens, St. Paul, Minnesota
38. Saunders, A. P., Clinton, New York
39. Secor, Miss Nina, Forest City, Iowa
40. Shaylor & Allison, Auburndale, Massachusetts
41. Sisson, W. A., Rosendale, Wisconsin
42. Storrs & Harrison Co., Painesville, Ohio
43. Vaughan's Seed Store, Chicago, Illinois
44. Vories, Judge L. A., St. Joseph, Missouri
45. Wassenberg, Charles F., Van Wert, Ohio
46. Weed's Landscape Nursery (H. E. Weed), Beaverton, Oregon
47. Wettengel, C. N., Macomb, Illinois
48. Windy Hill Gardens, Rapidan, Virginia
49. Wyomissing Nurseries (B. H. Farr), Womelsdorf, Pennsylvania

The Planting.—A total of 1,263 plants were received for the trial garden at the University—975 plants in 1927, 216 in 1928, 58 in 1929, 13 in 1930, and 1 in 1933. When it became evident that there was no way of telling just what was coming or when, the original plan of planting together those varieties which were presumably similar, was abandoned. As a result, the task of comparing the many similar varieties scattered widely thru the plantation was relatively slow and laborious.

A notation was made of the condition of the roots as they came in, then the plants were set in the ground. In the first season this was done as late as December 20. A straw mulch was applied over the newly planted roots. Each plant was marked with an embossed aluminum label on a wire stake set firmly in the ground. A total of 57 plants were lost from all causes during the course of the experiment. Many of these were small or weak divisions. Fortunately duplicate plants were available for almost every plant lost.

The planting was made in a fertile silt loam area, well drained and sloping slightly toward the north. The plants were set 4 feet apart each way to allow for ease in cultivation and to give each plant plenty of room for normal development. No fertilizers were used. The side buds were removed each spring to allow the terminal flowers to reach a good size. The seed pods were removed later to improve the vigor of the plants and also as a precaution against possible mixups which might occur if chance seedlings came up among the other plants.

Records were made of the date of emergence of the shoots from the soil, the time of bloom, and other characteristics of plants and flowers which could be used to help distinguish between similar varieties.

Flower Structure of Single and Japanese Peonies

All the commonly cultivated varieties of herbaceous peonies belong to the species *Paeonia albiflora*, to which the present study was confined. Single peonies have one or two rows of guard petals, varying from white thru light and dark pink or variegated to

dark red. At the center are found three to five carpels which bear the seeds, surrounded by numerous bright-yellow stamens which produce an abundance of pollen. In some forms of peonies petals like the guards appear among the stamens, and these are referred to as "semidoubles." In double peonies all of the stamens and frequently the carpels have been transformed into petals which more or less resemble the guards.

Japanese peonies are a transition type between the singles and doubles, in which the stamens are only partially transformed into petals and are referred to as "staminodes" or sometimes as "petaloids." In some Japanese varieties the slightly enlarged anthers or pollen sacs are borne on normal filaments. In other varieties the stamens take on a ribbon-like to petal form, with vestiges of the anthers showing as yellow lines or spots on the edges. Often the staminodes are incurved, curled or twisted, and they form a cushion in the center of the bloom which contrasts more or less in form and color with the guards to make all manner of attractive combinations.

Wherever the vestiges of anthers are present, the problem of identifying the type is not difficult. In some peonies, however, the center consists of a fluffy cushion of narrow staminodes entirely devoid of pollen. These peonies have sometimes been referred to as "anemone Japs" to distinguish them from the "anemone" type in which the center petals show a more or less close resemblance to the guards. While it is not always clear just where to draw the line, it seems fair to class with the doubles those forms which show no vestiges of pollen and no marked contrast between staminodes and guards. This has been done in the present work.

Distinguishing Between Varieties

Size and color of the guards are two characters most noticeable when a peony bloom is first examined. The size of the blooms on a given variety will vary with the soil, the season, and other factors. In the descriptions which follow referring to disbudded shoots, the "very large" flowers were, under favorable conditions, 7 inches or more in diameter. "Large" flowers were 6 inches, "medium" 5 inches, and "small" about 4 inches in diameter. Ridgway's "Color Standards and Nomenclature" was used to

determine colors. The range from pink to dark red included rose pink (light pink); amaranth pink (medium pink); Tyrian pink and spinel pink (dark pink); amaranth purple (bright red); aster purple (slightly darker than amaranth purple); dahlia purple and bordeaux (dark red). The blush-pink color describing some varieties, but not included in Ridgway, simply means that there was a faint blush on the petals which was apt to fade to white.

The time of bloom is also an important distinguishing character. The period of beginning bloom of the single and Japanese peonies at Urbana, Illinois, extended as a rule from May 22 to June 7. The early varieties opened during the first three days of the season. Then there was a sharp increase in the numbers of midseason varieties coming into bloom each day for about six days. Then the late varieties straggled in over an eight-day period.

In distinguishing between varieties which are superficially similar, the color and shape of the staminodes (Japanese peonies), the color of the stigmas or carpel tips, the presence or absence of hairs on the carpels, and the development and color of the disk, as well as the appearance of the guards, were found to be very useful. The disk is an outgrowth of the receptacle or tip of the flowering stem. It shows as a more or less distinct collar encircling the carpels, in some varieties reduced to a few small pointed or rounded projections.

Sometimes the staminodes of Japanese peonies retain the filaments of normal stamens, and resemble the latter more or less closely. Frequently, however, they are narrow, with rather parallel sides, best described as *linear*. Those which are slightly wider toward the pointed tips are referred to as *oblanceolate*, and the spoon-shaped forms as *spatulate*. *Obovate* staminodes are those which most resemble guard petals in shape.

Some plants have a bushy, compact appearance, and a few outstanding varieties are noticeably erect. The great majority of vigorous plants, however, are best described as *spreading*. In a relatively few cases where the weight of the blooms carries the lower branches to the ground, the plants may justly be called *widely spreading* or even *sprawling*. Some plants may be seen covered with a mass of flowers borne close to the foliage, but as a rule the blooms of single and Japanese peonies show 5 or 6 inches above

the mass of foliage (*well above*), while the outstanding varieties may bear their flowers 8 inches above the foliage (*high above*).

Variety Descriptions for Single and Japanese Peonies

Among the closely related varieties of single and Japanese peonies many resemblances are to be found. Oftentimes differences which are difficult to put into words can be seen at a glance when flowers and plants are compared. On the other hand, some varieties with apparently identical blooms are nevertheless distinct, perhaps coming into flower at different times. Even tho repeated comparisons were made in the course of this work, doubtless some cases of synonymy were overlooked or errors made.

The single and Japanese peonies which seem to be distinct varieties and correctly named, as far as could be determined, are described below in some detail.¹ While no attempt was made to rate the different varieties, the authors feel that it is not out of place to call attention to those which appeared to best advantage.

A star (*) following the name of a variety indicates that it was one of those showing to best advantage in the trial garden. The American Peony Society rating is likewise given wherever such rating has been made. The numbers in italics following the names refer to the donors (see list of donors on pages 98 and 99). Where the variety received was not true to name, the donor's number has been omitted.

Single Peonies

(albiflora)

Apple Blossom (4)

Small, Tyrian pink, midseason. Carpels smooth, tips white; disk conspicuous, white. Plant medium size, spreading. A Japanese Apple Blossom is also described.

¹The American Peony Society committee, particularly Mr. Little and Mr. Brand, helped greatly by ruling on some of the more puzzling cases of doubtful type or mixed nomenclature.

Areos (21)

Large, blush pink, early. Carpels smooth, with red tips; disk distinct, pink. Plant medium size, compact. A blush pink single, with hairy, pink-tipped carpels was also received under this name.

Awadji (Millet, 1905)* (5)

Large, amaranth purple, midseason. Carpels smooth, with cream-colored tips; disk distinct, white. Plant medium size, spreading; flowers high above the foliage.

Balliol* (29L)

Large, amaranth purple, early. Carpels inconspicuously hairy, with bright red tips; disk conspicuous, pink. Plant large and compact, with flowers showing well above the foliage. Lord Kitchener is identical.

Baron J. Hulot (Millet, 1919) (5)

Medium size, pink blush, midseason. Carpels smooth, with white tips; disk inconspicuous, white. Plant medium size, spreading. Sagoromo is identical.

Black Beauty (Berneche, 1924)* (4)

Very large, bright aster purple, midseason. Carpels smooth, with white tips; disk distinct, white. Plant large, spreading; flowers numerous and showing high above the foliage.

Black Magic (Auten, 1929)* (2)

Very large, bordeaux, midseason. Stamen filaments red; carpels smooth, with white tips; disk conspicuous, cream-colored. Plant large, spreading; flowers showing well above the foliage.

Black Prince (Thurlow, 1915)* 8.5 (8, 21, 46)

Medium size, dark amaranth purple, midseason. Carpels smooth, with white tips; disk conspicuous, white. Plant large, spreading; flowers numerous and showing well above the foliage.

Brilliant (17)

Large, aster purple, early. Carpels hairy, with bright red tips; disk conspicuous, pink. Plant large, spreading; flowers showing high above the foliage.

Camille (Dessert, 1908) 7.3 (1, 29D)

Medium size, aster purple, midseason. Carpels smooth, with pink tips; disk distinct, white. Plant medium size, spreading.

Carnea 8.4 (48)

Large, blush pink, early. Carpels smooth, with bright red tips; disk inconspicuous, pink-tinged. Plant medium size, spreading.

Carnot (Dessert, 1913) 7.7 (1, 5, 17)

Large amaranth purple, early. Stamen filaments red; carpels smooth, with red tips; disk inconspicuous, pink. Plant medium size,

compact. A blush pink variety, apparently Edith West, was also received under this name.

Caroline (Pleas) (3, 45)

Large, Tyrian pink, midseason. Carpels hairy, with pink tips; disk conspicuous, pink. Plant medium size, compact.

Catherine Parry (Hendrickson, 1925) (19, 48)

Very large, blush pink, early. Carpels hairy, with light pink tips; disk distinct, white. Plant large, compact, with flowers showing well above the foliage.

Catherine S. Fox (Berneche, 1920)* (4, 46)

Large, Tyrian pink, midseason. Carpels smooth, with pink-tinged tips; disk conspicuous, white. Plant medium size, compact, with flowers showing well above the foliage.

Celeste Brochet (Brochet) (46)

Medium size, white speckled with amaranth pink, midseason. Carpels sparsely hairy, tips pink; disk conspicuous, light pink. Plant medium size, compact.

Celestial (Dessert) (46)

Medium size, Tyrian pink, midseason. Carpels hairy, with bright red tips; disk high, dark pink. Plant medium size, spreading. A pink-flowered variety with smooth carpels was also received under this name.

Cendrillon (Japan-Dessert, 1913) 7.7 (5, 29D, 29J, 49)

Medium size, guards folded, and notched at tips, pink with red streaks, midseason. Carpels smooth, with bright red tips; disk distinct, dark pink. Plant medium size, compact.

Clairette (Dessert, 1905) 8.1 (1, 5, 29B, 30, 40, 49)

Large, blush pink, early. Carpels hairy, tips white; disk distinct, white. Plant medium size, spreading.

Clio (Peterson, 1906) 7.6 (30, 45)

Large, Tyrian pink, midseason. Carpels hairy, with cream-colored, pink-tinged tips; disk distinct, white. Plant medium size, compact.

Colonel Poe (Kelway)* (1)

Large, Tyrian pink, midseason. Carpels sparsely hairy, with white, pink-tinged tips; disk conspicuous, white, tinged pink. Plant large, compact; flowers numerous and showing well above the foliage.

Columbus (17)

Large, spinel pink, early. Carpels hairy, with red tips; disk distinct, pink. Plant medium size, spreading.

Corinne (Auten, 1926) (2)

Medium size, blush pink, midseason. Carpels hairy, with dark pink tips; disk distinct, light pink. Plant large, compact; flowers numerous and showing well above the foliage.

Dai-jo-kuhan (Millet) (1, 29B, 29H, 49)

Medium size, aster purple, midseason. Carpels smooth, with white, pink-tinged tips; disk conspicuous, white. Plant large, compact, with numerous flowers. A pink-flowered double variety was also received under this name.

Darkness (Brand, 1913)* 8.2 (2, 6, 17)

Medium size, bordeaux, midseason. Carpels smooth, with red tips; disk conspicuous, white, tinged pink. Plant large, spreading; flowers numerous and brilliant, held well above the foliage.

Deborah Sayles (Shaylor, 1916) (40, 48)

Large, blush pink, midseason. Carpels smooth, with dark pink tips; disk conspicuous, broad, dark pink. Plant medium size, spreading.

Defiance (Terry, 1903) 7.0 (13)

Medium size, aster purple, early. Carpels hairy, with red tips; disk conspicuous, pink. Plant medium size, spreading.

Demetrius (24)

Medium size, aster purple, midseason. Carpels hairy, with bright red tips; disk distinct, red. Plant small, compact.

Departing Sun (Wilkus)* 8.5 (37)

Very large, bright aster purple, midseason. Carpels hairy, with dark red tips; disk conspicuous, red. Plant large, spreading; flowers held high above the foliage. A Japanese Departing Sun is also described.

Dorothy (Kelway, 1898) 7.5 (8)

Medium size, Tyrian pink, midseason. Carpels smooth, with dark red tips; disk conspicuous, broad, dark pink. Plant large, compact; flowers numerous and held well above the foliage. Duchess of Portland is identical.

Dorothy Allison (Shaylor, 1918) (17, 21)

Large, white, speckled with pink, midseason. Carpels smooth, with red tips; disk distinct, dark pink. Plant medium size, compact; flowers numerous, close to the foliage.

Dreadnought (Barr) (46)

Large, bright aster purple, midseason. Carpels smooth, with dark red tips; disk conspicuous, pink. Plant medium size, spreading; flowers held well above the foliage.

Duchess of Portland (Barr) 7.8 (8), *see* Dorothy

A pink double variety was also received under this name.

Edith West (Brand, 1920) (2, 21)

Very large, blush pink, midseason. Carpels hairy, tips white; disk conspicuous, white. Plant medium size, spreading; flowers numerous and held well above the foliage. Lady Lillian Ogle, Pure Love, Rosy Dawn, and The Bride are apparently identical.

Eglantine (Dessert, 1913) 8.1 (5, 21, 29D, 29N, 30)

Large, light amaranth pink, midseason. Carpels smooth, with cream-colored tips; practically no disk. Plant medium size, compact. A light pink variety with hairy carpels, tipped dark pink, was also received under this name.

Emily (Kelway) 7.4 (8)

Large, dark Tyrian pink, midseason. Carpels smooth, tips white with pink tinge; disk inconspicuous, white. Plant large, compact; flowers numerous, attractive and held well above foliage. A light pink form with red-tipped carpels was also received under this name.

Enchantress (Kelway) (1, 29N)

Large, rose pink, midseason. Carpels smooth, tips white; disk distinct, white. Plant large, compact.

E. St. Hill (Kelway, 1916)* 8.0 (17, 29N)

Large, rose pink, midseason. Carpels hairy, with dark red tips; disk distinct, pink. Plant large, compact; flowers numerous, attractive and held well above foliage.

Etienne Dessert (Dessert, 1913) (5, 30)

Medium size, Tyrian pink, midseason. Carpels hairy, with dark pink tips; disk distinct, pink. Plant medium size, erect.

Exquisite (3)

Large, midseason, white. Carpels smooth, tips cream-colored; disk inconspicuous, white. Plant small, compact. A Japanese Exquisite is also described.

Favorite (Berneche, 1920) (4)

Very large, bright aster purple, midseason. Carpels smooth, tips pink; disk conspicuous, light pink. Plant large, compact; flowers numerous, close to the foliage.

Festiva Fragrans (18)

Medium size, Tyrian pink, early. Carpels smooth, with bright red tips; disk conspicuous, light pink. Plant large, spreading; flowers numerous.

Fine Lady (Kelway, 1909) 8.0 (46)

Large, Tyrian pink, midseason. Carpels smooth, tips light pink; disk inconspicuous, white. Plant small, compact.

Florestine (Berneche, 1924)* (4)

Large, bright aster purple, midseason. Carpels hairy, tips cream-colored; disk high, white. Plant large, erect; flowers numerous and attractive.

Fusyama (Japan) (1, 5, 29H, 49)

Medium size, rose pink, midseason. Carpels hairy, with red tips; disk conspicuous, pink. Plant medium size, compact.

George Alexander (Kelway, 1909-10) (17)

Medium size, bright aster purple, midseason. Carpels smooth, tips pink-tinged; disk conspicuous, pink-tinged. Plant medium size, compact. Jupiter is apparently identical.

Ginko-nishiki (Japan-Dessert, 1921) (5, 13, 14, 17, 21)

Small, white with red streaks, midseason. Carpels smooth, with red tips; disk conspicuous, red. Plant medium size, spreading.

Ginpukurin (29L)

Very large, bright aster purple, early. Carpels smooth, tips pink-tinged; disk conspicuous, pink-tinged. Plant large, compact; flowers showing well above foliage.

Gloria (2)

Large, light Tyrian pink, early. Carpels smooth, with bright red tips; disk distinct, light pink. Plant medium size, spreading.

Goliath (29L)

Medium size, bright aster purple, early. Carpels smooth, tips white; disk inconspicuous, white. Plant medium size, compact.

Habanera (Auten, 1930) (2)

Large, bright aster purple, early. Carpels smooth, tips cream-colored; disk conspicuous, white. Plant medium size, spreading; flowers showing well above foliage.

Hana Gesho (49)

Medium size, light Tyrian pink, early. Carpels smooth, with dark pink tips; disk conspicuous, pink-tinged. Plant medium size, spreading. Hesperus is apparently identical.

Harriet Olney (Brand, 1920)* 8.7 (6, 28, 30)

Very large, light aster purple, early. Carpels smooth, with red tips; disk conspicuous, red. Plant large, compact; flowers numerous, very attractive and showing well above foliage.

Helen (Thurlow, 1922) 8.9 (21)

Large, rose pink, early. Carpels hairy, with red tips; disk conspicuous, dark pink. Plant medium size, spreading; flowers held well above foliage.



COMPACT_PLANT (Surugu)



SPREADING PLANT (Mischief)

Hermes (Kelway) (8, 30)

Medium size, Tyrian pink, midseason. Carpels smooth, with dark red tips; disk conspicuous, pink. Plant medium size, compact. A variety received as Wild Rose is apparently identical. A pink variety with cream-tipped carpels was also received under this name.

Hesperus (Kelway) (8, 46, 49), *see* Hana Gesho**Hiogo** (Millet, 1909) (5)

Medium size, Tyrian pink, midseason. Carpels smooth, with red tips; disk conspicuous, red. Plant medium size, spreading.

Isani Ishi (29K)

Small, blush pink, midseason. Carpels smooth, tips red; disk inconspicuous, pink. Plant medium size, spreading.

Iten-shikai (Japan) (5, 29C)

Small, white with bright red streaks, petals narrow and curled. midseason. Carpels smooth, tips red; disk distinct, red. Plant medium size, compact. Two identical plants were received under the name Inten-shikai.

Jappensha-ikku (Millet, 1924) 7.8 (29J, 29L)

Large, bordeaux, midseason. Carpels hairy, tips dark red; disk inconspicuous, pink. Plant medium size, spreading.

Josephine (Kelway, 1897)* 5.0 (20)

Very large, Tyrian pink, midseason. Carpels hairy, with bright red tips; disk very inconspicuous, dark pink. Plant large, quite compact; flowers very numerous, rather close to foliage. A Japanese Josephine is also described.

Jupiter (Kelway) (49), *see* George Alexander**Kamma** (5)

Small, white with amaranth purple streaks, midseason. Carpels smooth, tips bright red; disk conspicuous, dark red. Plant small, compact.

Katori-nahiko (Millet, 1924)* 7.8 (29L, 48)

Large, aster purple, midseason. Carpels smooth, tips white; disk inconspicuous, white. Plant large, spreading; flowers numerous and attractive, showing high above foliage.

Kelway's Luck (Kelway)* (29A)

Large, rose pink, midseason. Carpels smooth, tips red; disk distinct, pink. Plant large, spreading; flowers numerous and held high above the foliage. Pride of Langport is apparently identical.

Kelway's Rosalie (Kelway) (29A)

Very large, dark Tyrian pink, early. Carpels smooth, tips light pink; disk broad, white. Plant medium size, compact; flowers held well above the foliage.

Kewanee (Auten, 1930)* (2)

Large, bright aster purple, midseason. Carpels smooth, tips pink-tinged; disk distinct, pink-tinged. Plant medium size, erect; flowers held high above foliage.

King Albert (Kelway, 1916) 7.9 (29N)

Large, dark Tyrian pink, midseason. Carpels smooth, with light pink tips; disk conspicuous, high, pink-tinged. Plant medium size, compact; flowers numerous and held well above the foliage.

Kinsui* (29L)

Large, blush pink, midseason. Carpels hairy, with cream-colored tips; disk inconspicuous, white. Plant medium size, compact; flowers numerous, attractive and held well above the foliage. La Fiancee and La Fraicheur are apparently identical.

Kossi (Millet, 1909) (1)

Large, rose pink, early. Carpels smooth, tips red; disk absent. Plant medium size, spreading.

Lady Godiva (Kelway) (17)

Medium size, rose pink, early. Carpels smooth, tips white; disk conspicuous, white. Plant large, compact.

Lady Lillian Ogle (Kelway) (8, 48), *see* Edith West**Lady Margaret Ferguson** (8)

Medium size, bright aster purple, midseason. Carpels smooth, tips cream-colored; disk conspicuous, white. Plant medium size, spreading.

Lady of Grace (Kelway) (24)

Small, white streaked and blotched with aster purple, midseason. Carpels smooth, tips red; disk distinct, red. Plant small, compact.

La Fiancee (Dessert, 1899)* 8.4 (3, 5), *see* Kinsui**La Fraicheur** (Dessert, 1905)* 8.1 (5, 29D, 29H, 46), *see* Kinsui**La Nuit** (Shaylor, 1915) 7.7 (17, 21, 28, 30)

Medium size, bordeaux, early. Carpels smooth, with bright red tips; disk conspicuous, pink. Plant medium size, compact.

Laura C. Reed (Hollis) (3, 21)

Medium size, bordeaux, early. Carpels hairy, with light pink tips; disk distinct, light pink. Plant medium size, compact.

Le Jour (Shaylor, 1915)* 8.6 (5, 21, 30, 32)

Large, white, early. Carpels smooth, with red tips; disk conspicuous, pink-tinged. Plant large, compact. A white-flowered

variety with sparsely hairy, pink-tipped carpels and white disk was also received under this name.

L'Étincelante (Dessert, 1899)* 8.4 (1, 5, 21, 29B, 30, 43)

Large, Tyrian pink, midseason. Carpels hairy, with bright red tips; disk inconspicuous, light pink. Plant large, compact; flowers numerous and attractive.

Letitia (Kelway) (1)

Large, light aster purple, midseason. Carpels smooth, with bright red tips; disk distinct, pink. Plant large, spreading; flowers held well above the foliage.

Lord Kitchener (Kelway)* (1), *see* Balliol

Lucienne (Dessert, 1908) 7.7 (1, 5, 21, 29D, 46)

Medium size, blush pink, midseason. Carpels inconspicuously hairy, with bright red tips; disk inconspicuous, pink. Plant medium size, compact. A pink variety with smooth, pink-tipped carpels was also received under this name.

Madeleine Gauthier (Dessert, 1908) 8.5 (5, 17, 21, 29D, 30)

Large, rose pink, early. Carpels smooth, tips dark pink; disk inconspicuous, pink-tinged. Plant medium size, compact; flowers held well above the foliage.

Mafeking (Kelway)* 8.5 (5, 30)

Large, aster purple, early. Carpels smooth, with pink-tinged tips; disk conspicuous, white. Plant large, compact; flowers numerous. A variety resembling the above but with conspicuous pink disk and reddish stems was also received under this name.

Marguerite Dessert (Dessert, 1913)* 8.5 (5, 15, 21, 30)

Very large, white speckled lightly with pink, midseason. Carpels hairy, with bright red tips; disk conspicuous, dark pink. Plant medium size, compact; flowers numerous and attractive.

Mary Reid (Reid, 1930)* (36)

Medium size, amaranth pink, midseason. Carpels hairy, with cream-colored tips; disk conspicuous, cream. Plant large, erect; flowers numerous and attractive, held well above the foliage.

May Bee (Berneche) (4)

Large, aster purple, midseason. Carpels smooth, tips pink; disk distinct, pink. Plant large, spreading; flowers quite numerous and held well above the foliage. A similar variety with hairy, red-tipped carpels was also received under this name.

May Davidson (Pleas) (47)

Large, Tyrian pink, midseason. Carpels smooth, tips white; disk distinct, white. Plant medium size, spreading.

May Oleson (Oleson, 1924) (41)

Large, light pink, midseason. Carpels smooth, tips pink; disk distinct, light pink. Plant medium size, spreading; flowers attractive, showing well above foliage.

Mellin Knight (Brand, 1920)* 8.5 (6, 30, 47)

Very large, aster purple, midseason. Carpels smooth, with red tips; disk conspicuous, pink. Plant large, erect; flowers numerous and striking, showing high above the foliage.

Millais (Kelway) 7.4 (46)

Large, bright amaranth purple, midseason. Carpels hairy, with dark pink tips; disk conspicuous, pink. Plant medium size, spreading.

Minerve (Dessert, 1909) (1, 5, 29C, 29J)

Large, amaranth pink, early. Carpels inconspicuously hairy, tips red; disk distinct, light pink. Plant medium size, compact.

Minnehaha (Pleas) (3, 47)

Large, amaranth purple, midseason. Carpels hairy, tips red; disk conspicuous, pink. Plant small, compact.

Mischief (Auten, 1925)* 8.7 (2)

Large, dark rose pink, midseason. Carpels smooth, with dark pink tips; disk distinct, pink. Plant large, spreading; flowers attractive and held high above the foliage.

Miss Ida Chamberlain (Kelway) (1, 29L)

Large, Tyrian pink, midseason. Carpels sparsely hairy, tips red; disk distinct, pink. Plant large, compact.

Mistral (Dessert, 1905) 7.3 (5, 29H)

Large, Tyrian pink, midseason. Carpels hairy, tips red; disk inconspicuous, light pink. Plant medium size, compact; flowers numerous and attractive, held rather close to the foliage.

Mobuchi (Millet) (1, 29K)

Medium size, bright aster purple, midseason. Carpels smooth, with red tips; disk inconspicuous, pink-tinged. Plant medium size, spreading. A white double was also received under this name.

Mrs. Beerbohm Tree (Kelway) (17, 24, 49)

Medium size, blush pink, midseason. Carpels smooth, with light pink tips; no disk. Plant medium size, compact.

Mrs. Key (Terry) 7.9 (3, 8)

Large, aster purple, midseason. Carpels inconspicuously hairy, with red tips; disk distinct, pink. Plant large, spreading.

Mrs. Woodward (Terry, 1906) (47)

Large, Tyrian pink, midseason. Carpels hairy, with dark pink tips; disk distinct, pink-tinged. Plant small, compact; flowers held close to foliage.

Mr. Thim (van Leeuwen, 1926)* (29L)

Very large, Tyrian pink, midseason. Carpels hairy, with dark red tips; disk inconspicuous, light pink. Plant medium size, spreading; flowers held well above the foliage on strong stems.

Nagasaki (Millet)* (1, 29L)

Large, dark Tyrian pink, midseason. Carpels sparsely hairy, with dark red tips; disk conspicuous, pink. Plant large, spreading; attractive flowers showing well above foliage. A Tyrian pink variety with smooth, white-tipped carpels and white disk was also received under this name.

Naubunishiki (Japan-Dessert, 1913) (1, 13, 29C, 29J)

Medium, white with streaks of amaranth purple, midseason. Carpels smooth, tips pink; disk pink. Plant medium size, widely spreading. A variety with hairy, red-tipped carpels and hairy stems was received under this name; also one with more red in the guards, red-tipped carpels and disk. A single received from two sources under the name of Kara-ori-nishiki was identical with Naubunishiki.

Nekowat (Japan) (1, 29K)

Medium size, Tyrian pink, early. Carpels smooth, tips pink; disk conspicuous, pink-tinged. Plant medium size, compact.

Nellie (Kelway, 1915) 8.4 (5, 10, 17, 30)

Medium size, rose pink, early. Carpels hairy, tips dark pink; disk distinct, pink. Plant medium size, compact.

Nulli Secundus (Kelway, 1909) (17, 49)

Medium size, amaranth purple, early. Carpels smooth, tips dark red; disk conspicuous, dark pink. Plant large, spreading.

Nymphe (Dessert, 1913) 8.7 (1, 5, 29H, 47, 49)

Large, light Tyrian pink, midseason. Carpels smooth, tips bright red; disk inconspicuous, light pink. Plant medium size, compact. A Japanese Nymphe is also described.

Okinama (Japan) (1, 11, 29H, 29L)

Medium size, bright aster purple, midseason. Carpels smooth, pink-tinged; disk broad, light pink. Plant medium size, compact; flowers held well above foliage. Identical plants were received under the names Ohinawa and Okinawa.

Ophir (46)

Medium size, aster purple, midseason. Carpels hairy, tips light pink; disk conspicuous, light pink. Plant medium size, spreading. A blush-pink double form was also received under this name.

Othello (Dessert, 1908) (1, 5, 29L, 47)

Medium size, bright aster purple, midseason. Carpels smooth,

tips light pink; disk conspicuous, white. Plant medium size, compact; flowers rather close to foliage.

Perle Blanche (Dessert, 1913) 8.4 (5, 29N, 49)

Large, blush pink, early. Stamens mostly normal, sometimes a few white staminodes in center; carpels smooth with dark pink tips; disk distinct, pink. Plant medium size, spreading.

Perle Rose (Dessert, 1913) (5, 20, 29D)

Large, rose pink, midseason. Carpels smooth, tips red; disk distinct, red. Plant medium size, compact.

Peter Oleson (Oleson, 1924)* 8.0 (41)

Large, bright aster purple, midseason. Carpels smooth, with pink-tinged tips; disk conspicuous, white. Plant large, spreading.

Petite Louise (Nieuwenhuyzen, 1918)* (1, 29D)

Very large, bright amaranth purple, midseason. Carpels smooth, with dark red tips; disk inconspicuous, pink. Plant large, compact; the numerous, attractive flowers showing well above the foliage.

Pink Delight (Nieuwenhuyzen) (29L)

Large, rose pink, midseason. Carpels hairy, tips bright red; disk very conspicuous, pink. Plant medium size, spreading.

Presto (Auten, 1925) 8.6 (2)

Large, aster purple, early. Carpels smooth, tips red; disk conspicuous, pink-tinged. Plant large, spreading; flowers held high above the foliage.

Pride of Langport (Kelway, 1910)* 8.9 (5, 30), *see* Kelway's Luck

A pink-flowered double form was also received under this name.

Princess Mathilde (Dessert, 1908) 7.2 (1, 3, 15, 29L, 47)

Large, Tyrian pink, early. Carpels smooth, tips dark pink; disk inconspicuous, pink. Plant medium size, spreading; flowers numerous.

Pure Love (Kelway) (5, 21, 46), *see* Edith West

Purple Cup (Secor, 1924) 9.0 (39)

Large, bright aster purple, early. Carpels smooth, with bright red tips; disk inconspicuous, light pink. Plant medium size, spreading.

Queen Bess (Terry) (47)

Large, blush pink, midseason. Carpels inconspicuously hairy, tips dark red; disk conspicuous, dark pink. Plant large, spreading.

Queen of May (Kelway) (29P, 30)

Large, Tyrian pink, midseason. Carpels smooth, tips white; disk distinct, white. Plant large, spreading; flowers numerous but quite close to foliage.

Queen of the Belgians (Kelway)* 8.9 (29L)

Very large, white, midseason. Carpels hairy, with cream-colored tips; disk conspicuous, white. Plant medium size, spreading.

Rabelais (Dessert, 1922) (29L, 48)

Medium size, light Tyrian pink, midseason. Carpels hairy, tips bright red; disk distinct, pink. Plant medium size, spreading; flowers attractive and held well above the foliage.

Red Queen (Kelway)* (29M)

Large, amaranth purple, midseason. Carpels smooth, tips white; disk conspicuous, lightly tinged with pink. Plant large, compact; flowers many. A Tyrian pink form also received under this name.

Rei-ka-zan (29K)

Large, light Tyrian pink, early. Carpels smooth, tips light pink; disk conspicuous, pink-tinged. Plant large, sprawling.

Rosy Dawn (Barr) 8.5 (29E), *see* Edith West**R. W. Marsh** (Kelway) (1, 29N)

Very large, amaranth purple, midseason. Carpels smooth, tips red; disk inconspicuous, pink. Plant medium size, compact; flowers numerous and attractive.

Sagoromo (Millet, 1924) 7.7 (29J), *see* Baron J. Hulot**Satsuma** (Millet) (1)

Large, Tyrian pink, early. Carpels smooth, tips dark pink; disk conspicuous, pink. Plant medium size, spreading.

Schwindt (Goos and Koenemann, 1910)* 8.1 (6, 21, 47)

Large, amaranth pink, midseason. Carpels hairy, with light pink tips; disk inconspicuous, white. Plant large, spreading; the numerous, attractive flowers showing well above the foliage.

Shinso-jibiki (Millet, 1911) (29D)

Medium size, light amaranth pink, midseason. Carpels hairy, tips white; disk distinct, pink-tinged. Plant medium size, spreading.

Shi-pen-kue (Millet) (1, 29F, 49)

Large, aster purple, midseason. Carpels smooth, tips dark pink; disk inconspicuous, pink-tinged. Plant medium size, compact; flowers rather close to foliage. A very similar early flowering variety with a conspicuous, pink disk also received under this name.

Shirley Walker (Shaylor, 1918)* 8.6 (17, 21, 40, 48)

Very large, blush pink, early. Carpels smooth, tips pink-tinged; disk very conspicuous, white. Plant large, compact.

Shogun (1, 5)

Large, aster purple, early. Carpels smooth, tips red; disk conspicuous, light pink. Plant large, spreading; flowers held well above the foliage.

Silver Cup (Kelway, 1909) (17, 21, 46)

Very large, blush pink, early. Carpels hairy, tips white; disk inconspicuous, white. Plant medium size, spreading.

Sir Aga Khan (Kelway) (29L)

Large, bright aster purple, midseason. Carpels smooth, tips white; disk conspicuous, pink. Plant large, compact; flowers held high above the foliage.

Snow Sprite (Auten, 1930)* (2)

Large, white, midseason. Carpels hairy, tips white; disk inconspicuous, white. Plant medium size, spreading; flowers held high above foliage.

Somerton (Kelway)* (1, 29L)

Large, Tyrian pink, early. Carpels smooth, with bright red tips; disk conspicuous, pink. Plant large, compact.

Souvenir de Zephir (29C)

Small, amaranth purple, early. Carpels hairy, tips pink-tinged; disk inconspicuous, white. Plant medium size, compact.

Stanley (Kelway, 1890)* 7.8 (8, 46)

Large, bright aster purple, midseason. Carpels sparsely hairy, with red tips; disk very conspicuous, pink. Plant large, compact; flowers held well above the foliage. An amaranth purple variety with cream-tipped carpels and cream-colored disk was also received under this name.

Success* (28L)

Very large, Tyrian pink, midseason. Carpels smooth, tips red; disk conspicuous, pink. Plant large, compact; numerous, attractive flowers showing well above the foliage.

Taikoon (Japan) (1, 29L, 43)

Large, amaranth purple, early. Carpels hairy, tips red; disk conspicuous, red. Plant medium size, compact; flowers numerous.

The Bride (Dessert, 1902)* 8.4 (13, 30), *see* Edith West**The Moor** (Barr, 1916)* 7.8 (17, 29A)

Medium size, dark aster purple, early. Carpels smooth, tips red; disk conspicuous, pink. Plant large, spreading; flowers held well above the foliage.

The Queen (Kelway, 1902) 8.3 (21)

Very large, white, midseason. Carpels hairy, tips pink; practically no disk. Plant large, compact; numerous flowers close to the foliage. The Bride was also received under this name.

Thurlow Weed (46)

Very large, dark Tyrian pink, midseason. Carpels smooth, tips



WIDELY SPREADING PLANT (Naubunishiki)



MELLIN KNIGHT
Single

red; disk distinct, red. Plant medium size, spreading; flowers attractive and held above foliage.

Tom Tinker (Auten, 1930)* (2)

Large, bright aster purple, midseason. Carpels hairy, tips dark red; disk conspicuous, dark red. Plant medium size, compact; flowers numerous and held well above the foliage.

Toreador (Wettengel, 1921)* 7.8 (5, 45, 47)

Very large, aster purple, midseason. Carpels sparsely hairy, tips dark pink; disk conspicuous, pink-tinged. Plant large, spreading; flowers numerous and held high above the foliage.

Veloutine (Dessert, 1908)* 7.3 (1, 5, 21, 29C, 29J, 47)

Large, aster purple, early. Carpels hairy, tips dark pink; disk inconspicuous, pink-tinged. Plant medium size, erect.

Venise (Dessert, 1913) 7.3 (1, 5, 17)

Medium size, light amaranth pink, early. Stamens with slightly modified anthers, yellow. Carpels smooth, tips pink; disk conspicuous, light pink. Plant medium size, compact.

Venus (Barr)* 8.3 (8)

Large, Tyrian pink, midseason. Carpels hairy, tips bright red; disk conspicuous, dark pink. Plant medium size, compact; many attractive flowers showing well above the foliage. A Japanese Venus is also described.

Vera (Gumm, 1923)* 8.8 (17, 21)

Large, aster purple, early. Carpels smooth, tips dark red; disk conspicuous, pink. Plant large, compact; flowers showing well above foliage.

Vesuve (Dessert, 1905) (1, 5, 29C, 29J, 30)

Medium size, aster purple, early. Carpels hairy, tips light pink; disk conspicuous, light pink. Plant medium size, compact.

Watteau (Goos and Koenemann, 1911) (29D, 29M)

Large, blush pink, midseason. Carpels smooth, tips pink-tinged; disk conspicuous, white. Plant large, spreading.

White Japan (5, 45)

Large, light blush pink, early. Carpels hairy, tips white; disk inconspicuous, white. Plant medium size, spreading. White Swan is identical.

White Swan (Pleas, 1913) 8.5 (5, 46), *see* White Japan

Whitleyi Major 8.5 (2, 21, 29K, 29M)

Large, light blush pink. Carpels hairy, tips white; disk inconspicuous, white. Plant medium size, spreading.

Wilbur Wright (Kelway, 1909-10) 8.0

A dahlia purple variety with red-tipped carpels was received

under this name, but according to Mr. H. F. Little it was not a true Wilbur Wright. A red double was also received under the name of Wilbur Wright.

Wild Rose (Kelway) 7.9 (5, 21, 30)

Large, white speckled with Tyrian pink, midseason. Carpels smooth, tips dark red; disk conspicuous, red. Plant large.

Wild Rose 7.7 (21), *see* Hermes

Winnebago Chief (Secor)* (39)

Medium size, aster purple, midseason. Carpels smooth, tips dark red; disk conspicuous, pink. Plant large, erect; flowers showing well above foliage.

Yama China (Millet) (1, 5, 29L)

Large, amaranth purple, early. Carpels smooth, tips red; disk conspicuous, red. Plant large, spreading.

Japanese Peonies

(albiflora)

Abbe (Lewis, 1921)* 8.8 (21)

Large, dark Tyrian pink, midseason. Staminodes stamen-like to spatulate, pink-tinged, with a few yellow spots on the edges. Carpels smooth, tips light pink; disk distinct, white. Plant medium size, compact. A variety with Tyrian pink guards and staminodes, and hairy, pink-tipped carpels was also received under this name.

Akalu (Japan) 8.1 (3, 5, 17, 21, 29B, 29L)

Very large, dark Tyrian pink, midseason. Staminodes oblanceolate, purple-tinged with yellow edges. Carpels smooth, tips pink-tinged; disk conspicuous, white. Plant medium size, spreading; flowers quite numerous and held well above the foliage.

Akashigata (Japan)* (6, 28, 30)

Large, light aster purple, midseason. Staminodes yellow, purple-tinged, with yellow filaments. Carpels smooth, tips pink; disk conspicuous, light pink. Plant large, spreading; flowers many and held well above the foliage. A deep Tyrian pink variety with purplish, oblanceolate staminodes, cream-tipped carpels and white disk was also received under this name.

Alma (Shaylor, 1916) 8.5 (5, 15, 21, 30)

Large, blush pink, midseason. Staminodes mostly linear to spatulate, white, yellow edges near tips. Carpels smooth, tips cream; no disk. Plant medium size, spreading.

Altar Candles (Pleas, 1905) 8.0 (17, 21, 30, 47)

Large, light blush pink, midseason. Staminodes oblanceolate,

bright yellow with yellow edges. Carpels smooth, tips red; practically no disk. Plant large, compact; flowers many and held well above foliage.

Ama-no-sode (Japan)* 9.2 (5, 21, 30, 43, 45)

Very large, Tyrian pink, midseason. Staminodes oblanceolate, pale yellow with pink tinge and with yellow on edges. Carpels green, sparsely hairy, tips cream-colored; disk broad, cream-colored. Plant large, spreading. Two other forms similar in coloration were also received under this name. The carpels in one variety were smooth with pink-tinged tips and in the other variety, smooth with red tips.

Antwerpen (Japan)* (29K, 29L)

Very large, Tyrian pink, midseason. Staminodes oblanceolate, light yellow, with yellow on edges. Carpels smooth, tips pink-tinged; disk conspicuous, high, white. Plant medium size, erect.

Apple Blossom (Japan-Farr) (30)

Large, Tyrian pink, midseason. Staminodes yellow, with yellow filaments. Carpels smooth, tips cream; disk conspicuous, white. Plant medium size, compact; flowers many and held well above the foliage. A single Apple Blossom is also described.

Apollo (47)

Medium size, rose pink, midseason. Staminodes oblanceolate, light yellow. Carpels smooth, tips pink; disk inconspicuous, pink-tinged. Plant medium size, spreading.

Arlequin (Dessert, 1921) 8.1 (5, 45)

Large, light Tyrian pink, midseason. Staminodes linear to obovate, light pink with a few yellow spots on the edges. Carpels smooth, tips light pink; disk inconspicuous, pink-tinged. Plant large, spreading.

Attraction (Hollis, 1906)* 8.2 (5)

Very large, dark Tyrian pink, midseason. Staminodes mostly oblanceolate, pink, with a few yellow spots on the edges. Carpels smooth, tips red; disk inconspicuous, pink-tinged. Plant large, spreading; flowers many and held high above the foliage. A blush pink double form was also received under this name.

Aubesan (29K)

Large, Tyrian pink, midseason. Staminodes varying from filamented to obovate, pink. Carpels smooth, tips bright red; disk distinct, pink. Plant medium size, compact; flowers many and held high above the foliage.

Beacon Light (Wettengel, 1924) 7.7 (47)

Medium size, Tyrian pink, midseason. Staminodes oblanceolate, pink-tinged with yellow on edges. Carpels in transition, inconspicu-

ously hairy, tips pink; disk inconspicuous, white. Plant small, compact.

Benisangai (29L)

Large, light aster purple, midseason. Staminodes oblanceolate to spatulate, color of guards, mostly without pollen. Carpels smooth, tips red; disk distinct, dark pink. Plant large, compact. A variety with staminodes lighter than the guards, sparsely hairy carpels, and white disk was also received under this name.

Bobbie Bee (Hollis, 1907) 6.0 (33, 47)

Small, light Tyrian pink, midseason. Staminodes pink-tinged with yellow edges and yellow filaments. Carpels smooth, tips red; no disk. Plant small, compact.

Capt. Alcock (Kelway) (45)

Large, aster purple, midseason. Staminodes varying from filamented to oblanceolate, the latter pink-tinged with yellow spots on the edges. Carpels hairy, tips pink; disk conspicuous, pink. Plant small, compact; flowers borne close to foliage.

Cascade (3, 46)

Very large, white, midseason. Staminodes oblanceolate, cream to yellowish, mostly without pollen. Carpels smooth, tips cream; disk toothed, white. Plant small, compact. Karatsu, Lemon Queen, and Purity are identical. A variety with blush pink guards, cream-colored staminodes, and pink-tipped carpels was also received under this name.

Cathedral (Japan)* 8.1 (17, 21, 30, 46)

Large, aster purple, midseason. Staminodes mostly spatulate, slightly lighter in color than the guards, without pollen. Carpels hairy, tips pink; no disk. Plant large, compact; flowers many and held well above the foliage. Hana-no-sato is identical.

Claire (2)

Large, aster purple, midseason. Staminodes purple-tinged, with yellow on edges and yellow filaments. Carpels smooth, tips pink; disk inconspicuous, pink-tinged. Plant medium size, spreading.

Constance (Berneche, 1924) (4)

Large, Tyrian pink, midseason. Staminodes oblanceolate, yellowish, pink-tinged with yellow on edges. Carpels smooth, tips light pink; disk conspicuous, white. Plant large, spreading; flowers numerous and attractive.

Crimson and Gold (Wallace) (46)

Medium size, aster purple, midseason. Staminodes purple-tinged on upper surface, yellowish below, yellow on edges, with orange-tinged filaments. Carpels smooth, tips pink-tinged; disk distinct, pink-tinged. Plant small, compact.

Crown of Thorns (Hollis, 1907) 6.0 (47)

Medium size, bright aster purple, midseason. Staminodes oblanceolate, dark pink. Carpels smooth, tips white; disk lacking. Plant medium size, spreading.

Crystal Queen* (47)

Large, white, midseason. Staminodes oblanceolate, white. Carpels smooth, tips cream; disk inconspicuous, white. Plant small, compact; attractive flowers rather close to foliage. White Queen is identical. A white-flowered practically double form was also received under this name.

Curiosity (Dessert and Mechin, 1886) 6.1 (47)

Medium size, aster purple, midseason. Staminodes oblanceolate, aster purple. Carpels in transition, hairy, tips red; disk inconspicuous, pink. Plant small, compact.

Currant Jap (Jeffries)* (48)

Large, amaranth purple, midseason. Staminodes oblanceolate, purple-tinged, with yellow on the edges. Carpels in transition, smooth, tips dark red; disk inconspicuous, pink. Plant medium size, compact; flowers many, close to the foliage.

Dawn (Wallace) (13, 21)

Large, Tyrian pink, midseason. Staminodes oblanceolate, cream-colored, with yellow edges. Carpels smooth, tips red; disk inconspicuous, pink. Plant large, erect.

Daybreak (Hollis, 1910) 7.7 (33)

Medium size, Tyrian pink, midseason. Staminodes yellow, with yellow filaments. Carpels smooth, tips cream; disk conspicuous, white. Plant large, spreading; flowers quite numerous and rather attractive.

Departing Sun (Japan)* 8.5 (14, 16, 30)

Very large, dark Tyrian pink, midseason. Staminodes oblanceolate, dark Tyrian pink with some yellow spots on the edges. Carpels smooth, tips light pink; disk inconspicuous, pink-tinged. Plant medium size, spreading; flowers held well above the foliage. A single Departing Sun is also described.

Distinction (Dessert, 1895) 6.4 (43)

Medium size, Tyrian pink, midseason. Staminodes oblanceolate, Tyrian pink. Carpels hairy, tips red; no disk. Plant medium size, spreading; flowers fragrant. A white-flowered variety, apparently Snow Wheel, was also received under this name.

Dog Rose (Wallace) 7.9 (14, 15, 21)

Large, Tyrian pink, midseason. Staminodes yellow, with yellow filaments. Carpels smooth, tips pink-tinged; disk distinct, pink-

tinged. Plant medium size, spreading; flowers attractive and held well above the foliage.

Dragon's Head (30)

Medium size, white with amaranth purple blotches, midseason. Staminodes yellow with yellow filaments, resembling normal stamens. Carpels smooth, tips dark red; disk conspicuous, pink. Plant medium size, spreading. A variety more like a single and with pink-tipped carpels and inconspicuous pink disk was also received under this name.

Dr. Edgar Pleas (Pleas, 1900) 6.3 (47)

Medium size, blush pink, midseason. Staminodes oblanceolate to broad and folded, yellow. Carpels in transition, hairy, tips pink; no disk. Plant small, compact.

Duchess of Bedford (Kelway)* (14)

Large, Tyrian pink, late. Staminodes yellow, with yellow filaments. Carpels smooth, tips pink-tinged; disk inconspicuous, pink-tinged. Plant large, spreading; flowers many, attractive, and held high above the foliage.

Edward VII (Kelway) (2, 8, 47)

Medium size, aster purple, midseason. Staminodes yellow, purple-tinged on upper surface, with yellow filaments. Carpels smooth, tips pink; disk conspicuous, light pink. Plant large, spreading; flowers attractive and held high above the foliage.

Eileen Kelway (Kelway) (46)

Large, blush fading to white, midseason. Staminodes oblanceolate, white with yellow edges. Carpels smooth, with pink tips; disk distinct, tinged with pink. Plant medium size, compact, with flowers held well above the foliage. Emelie and Yeso are apparently identical.

Emelie 7.4 (29H, 29S), see Eileen Kelway

Emma (29F, 29L, 49)

Large, Tyrian pink, late. Staminodes oblanceolate, pink-tinged on upper surface, yellow spots on the edges. Carpels smooth, tips dark pink; disk conspicuous, pink-tinged. Plant small, compact; many flowers held high above the foliage.

Emperor of India* (45)

Large, bright amaranth purple, midseason. Staminodes purple-tinged on upper surface, with yellow filaments. Carpels sparsely hairy, tips bright red; disk conspicuous, pink. Plant medium size, compact; many attractive flowers showing high above the foliage.

Esther (Terry) 7.7 (3, 48)

Medium size, Tyrian pink, midseason. Staminodes linear to

obovate, light Tyrian pink. Carpels smooth, tips pink-tinged; disk very inconspicuous, white. Plant medium size, compact.

Eva (2, 29L)

Medium size, Tyrian pink, late. Staminodes yellow, with yellow filaments. Carpels inconspicuously hairy, tips cream-colored; disk conspicuous, pink-tinged. Plant medium size, compact.

Evelina (29S)

Large, Tyrian pink, late. Staminodes filamented, yellow. Carpels sparsely hairy, tips cream; disk inconspicuous, white. Plant small, compact. Germaine is apparently identical.

Exquisite (Kelway, 1912) (14)

Medium size, blush pink, late. Staminodes yellow, with yellow filaments. Carpels smooth, tips cream-colored; disk inconspicuous, cream-colored. Plant medium size, spreading. Other varieties received under this name included a white-flowered Japanese, apparently Snow Wheel, a pink-flowered form with hairy, cream-tipped carpels, and a pink double, evidently Kelway's Exquisite. A white single Exquisite is also described.

Fabiola (47)

Medium size, rose pink, midseason. Staminodes yellow, with yellow filaments. Carpels smooth, tips light pink; disk conspicuous, white. Plant medium size, spreading.

Fascination (47)

Small, dark Tyrian pink, midseason. Staminodes oblanceolate to spatulate, light pink on the upper surface. Carpels smooth, tips light pink; disk inconspicuous, white. Plant medium size, compact.

Fat Si Sio (5)

Small, Tyrian pink, midseason. Staminodes pink-tinged, with yellow filaments. Carpels smooth, tips pink; disk inconspicuous, pink-tinged. Plant medium size, erect.

Fauvette (Japan-Dessert, 1913) (3, 5, 29C, 29J, 47)

Small, white with aster purple streaks and blotches, late. Staminodes similar to guards but slightly smaller. Carpels in transition, densely hairy, tips bright red; disk inconspicuous, red. Plant small, compact.

Felicity (46)

Small, white, midseason. Staminodes yellow, with yellow filaments. Carpels smooth, tips cream-colored; disk conspicuous, white. Plant small, compact.

Flamboyant (Japan)* 8.5 (21, 46)

Medium size, bright aster purple, midseason. Staminodes yellow, purple-tinged on the upper surface, with yellow filaments. Carpels

hairy, tips dark red; disk conspicuous, dark pink. Plant small, compact; flowers quite numerous and held well above the foliage. Kamenokegoromo, Kino-kimo, and Rino-kino are identical.

Flashlight (Hollis, 1906) 8.2 (15, 19)

Medium size, light Tyrian pink, midseason. Staminodes oblanceolate, light pink. Carpels hairy, tips pink; disk distinct, pink-tinged. Plant medium size, spreading. A dark pink variety, with smooth, red-tipped carpels was also received under this name.

Foaming Wave (Japan) (19)

Large, Tyrian pink, midseason. Staminodes yellow, with yellow filaments. Carpels smooth, tips dark pink; disk distinct, pink-tinged. Plant large, spreading; numerous, attractive flowers held well above the foliage.

Francois (29D, 29L)

Large, Tyrian pink, late. Staminodes oblanceolate, Tyrian pink with yellow edges. Carpels smooth, tips pink-tinged; disk inconspicuous, pink-tinged. Plant large, compact; flowers held high above the foliage. A slightly darker form with hairy carpels was also received under this name.

Frank Newbold (17)

Medium size, Tyrian pink, midseason. Staminodes oblanceolate, orange-tinged on the upper surface to yellow toward the base, with yellow edges, forming a broad cushion. Carpels smooth, tips cream-colored; disk inconspicuous, white. Plant medium size, compact; flowers held well above the foliage.

Fuji-mine (Japan) 7.9 (49)

Medium size, blush fading to white, midseason. Staminodes linear to oblanceolate, white, with or without pollen. Carpels hairy, with white tips; disk distinct, white. Plant medium size, spreading; flowers held well above the foliage on straight stems. Gekkiuden, Seiriu Somae, and Shiro-sangai seemed identical. A white variety with pink-tipped carpels, and a white double were also received under this name.

Fuji-no-mine (Japan-Dessert, 1921) (5)

Medium size, white, midseason. Staminodes oblanceolate, straw yellow with yellow edges. Carpels smooth, tips cream-colored; disk conspicuous, white. Plant medium size, spreading. A white-flowered variety with hairy, cream-colored tips was received under this name, also another distinct white-flowered form.

Fuji-no-yuki (29L)

Medium size, white, slightly purple-tinged, midseason. Staminodes resembling guards but slightly smaller, with irregular margins. Carpels in transition, smooth, tips pink-tinged; disk inconspicuous,



SOME-GANOKO
Japanese



SURUGU
Japanese

pink-tinged. Plant medium size, spreading; flowers numerous on rather weak stems.

Fuji-some-goromo (Japan)* (42, 45)

Very large, Tyrian pink, midseason. Stamines filaments to oblongate, lightly pink-tinged; with yellow spots on the edges. Carpels smooth, tips light pink; disk conspicuous, pink-tinged. Plant medium size, spreading; flowers attractive.

Fuyajo (Japan)* 9.2 (5, 21, 30, 42)

Large, bordeaux, midseason. Stamines mostly oblongate, aster purple on the upper surface, with some yellow spots on the edges. Carpels smooth, tips pink-tinged; disk conspicuous, pink-tinged. Plant medium size, spreading; flowers held high above the foliage.

Geisha (29L)

Large, aster purple, late. Stamines oblongate, purple-tinged on the upper surface, yellow toward the base, with yellow edges. Carpels smooth, tips light pink; disk conspicuous, white. Plant medium size, spreading; flowers quite numerous and attractive, held high above the foliage.

Gekkiuden (29L), *see* Fuji-mine

Georgette (Wettengel, 1924) 7.7 (47)

Medium size, Tyrian pink, midseason. Stamines oblongate, Tyrian pink to yellow toward the base. Carpels smooth, tips dark pink; disk distinct, pink-tinged. Plant large, spreading; flowers held well above the foliage.

Geraldine (Kelway) (33, 47, 49)

Medium size, bright aster purple, midseason. Stamines oblongate to spatulate, Tyrian pink. Carpels in transition, smooth, tips dark pink; disk inconspicuous, pink-tinged. Plant medium size, spreading. *Abbe* is similar. A pink-flowered double was also received under this name.

Germaine (29S), *see* *Evelina*

Gertrude (29K)

Very large, rose pink, late. Stamines mostly oblongate, yellow, pink-tinged on the upper surface. Carpels smooth, tips cream; disk inconspicuous, white. Plant medium size, spreading; flowers quite numerous and held well above the foliage.

Glory (Hollis, 1907) 7.3 (3, 17, 45)

Large, light Tyrian pink, midseason. Stamines filaments to oblongate, light pink. Carpels hairy, tips white; practically no disk. Plant large, compact. *Golden Nugget* is similar.

Gold Mine (Hollis, 1907)* 8.2 (30, 43, 46)

Medium size, dark Tyrian pink, midseason. Staminodes oblanceolate, Tyrian pink on the upper surface, yellow toward the base, yellow edges near the tips. Carpels in transition, sparsely hairy, tips dark pink; disk inconspicuous, pink-tinged. Plant medium size, spreading; flowers attractive and held well above the foliage.

Gretchen (29L)

Medium size, rose pink, midseason. Staminodes mostly oblanceolate, yellowish, a few broad, light pink. Carpels in transition, hairy, tips dark red; no disk. Plant medium size, spreading.

Gypsy (Hollis, 1904) 8.0 (49)

Large, Tyrian pink, midseason. Staminodes oblanceolate, pink, with a few yellow spots on the edges. Carpels smooth with dark pink tips; disk inconspicuous, pink. Plant large, spreading.

Hakodate (Millet)* 9.0 (29L)

Very large, white, midseason. Staminodes yellow, with yellow filaments. Carpels smooth, with light pink tips; disk conspicuous, pink-tinged. Plant small, compact. Snowflake appeared identical.

Hana-no-sato (Japan-Dessert, 1921) 8.1 (5, 14), *see* Cathedral

A similar variety, slightly lighter in color, and with smooth carpels was also received under this name.

Hatsugi (45)

Large, bright aster purple, midseason. Staminodes oblanceolate, color of guards with some yellow spots on edges near the tips. Carpels smooth, with red tips; disk rather high, pink-tinged. Plant medium size, compact. A variety with light aster purple flowers and smooth, pink-tipped carpels was also received under this name.

Hatsu-tori (29K, 29L)

Large, light rose pink, early. Staminodes oblanceolate, salmon pink to yellow at the base, with yellow spots on the edges. Carpels smooth, with dark pink tips; disk distinct, pink. Plant large, spreading; flowers many.

Hawa (Millet, 1907)* (5, 29D, 29L)

Medium size, dark Tyrian pink, midseason. Staminodes resembling normal stamens enlarged. Carpels smooth with light pink tips; disk conspicuous, pink-tinged. Plant large, compact; numerous, attractive flowers held well above the foliage.

Henri Potin (Doriat, 1924) 8.5 (29L, 48)

Large, Tyrian pink, midseason. Staminodes pink-tinged on upper surface, with yellow filaments, and pollen near the tips. Carpels in transition, hairy, tips dark red; disk distinct, dark pink. Plant medium size, compact; flowers numerous and held well above the foliage.

High Jinks (Auten, 1929) (2)

Large, bright aster purple, midseason. Staminodes mostly oblanceolate, pink. Carpels in transition, smooth, tips red; disk inconspicuous, pink-tinged. Plant large, compact; flowers held high above the foliage.

Hinode-sekai (Japan-Dessert, 1921) (5, 14, 29K, 38)

Medium size, Tyrian pink, midseason. Staminodes oblanceolate to obovate, with some yellow spots on the edges. Carpels smooth with bright red tips; disk distinct, pink-tinged. Plant medium size, compact. Rose of Nippon is identical.

Hirishima (Japan) (5)

Medium size, aster purple, midseason. Staminodes yellow, with yellow filaments. Carpels smooth with pink-tinged tips; practically no disk. Plant medium size, compact. A pink single was also received under this name.

Ho-Gioku (Japan-Dessert, 1913) 7.7 (3, 5, 29L)

Large, white, midseason. Staminodes oblanceolate, light yellow with some yellow spots on the edges. Carpels smooth with pink tips; disk distinct, pink-tinged. Plant medium size, spreading. Mine-no-money and Tylerline are similar.

H. R. H. Princess Louise (24)

Medium size, light Tyrian pink, midseason. Staminodes linear to spatulate, light yellow, with some yellow spots on the edges. Carpels smooth, with red tips; disk distinct, dark pink. Plant medium size, spreading.

Hyakka-To (29K)

Large, aster purple, midseason. Staminodes resembling normal stamens, yellow. Carpels smooth with dark pink tips; disk conspicuous, light pink. Plant medium size, spreading; flowers numerous, attractive and held well above the foliage.

Imperial Queen (Wallace) (47)

Medium size, amaranth purple, midseason. Staminodes purple-tinged, with yellow filaments. Carpels hairy, tips cream-colored; disk inconspicuous, white. Plant small, compact; flowers rather attractive, held well above foliage on rather weak stems.

Innocence (Hollis, 1904) 8.3 (46)

Medium size, rose pink, midseason. Staminodes yellow, with yellow spots on the edges and yellow filaments. Carpels hairy, tips pink-tinged; disk conspicuous, pink-tinged. Plant medium size, spreading.

Instituteur Doriat (Doriat, 1925)* 8.8 (48)

Large, amaranth purple, midseason. Staminodes oblanceolate to broad, amaranth purple, the narrower forms with white tips. Carpels smooth with cream-colored tips; disk conspicuous, white. Plant

large, spreading; attractive flowers held high above the foliage. "Strictly speaking this is not a true Jap."—H. F. Little.

Iroka (Millet) (29D, 29L, 30)

Large, rose pink, midseason. Staminodes yellow, resembling normal stamens enlarged. Carpels smooth with pink-tinged tips; disk distinct, white. Plant medium size, compact.

Isani Gidui or **Isami Jishi** (Japan-Dessert, 1909)* 9.3 (3, 5, 21, 29L, 30, 48)

Very large, white, midseason. Staminodes oblanceolate, cream-colored with yellow edges. Carpels smooth with cream-colored tips; disk conspicuous, cream-colored. Plant large, spreading. Generally considered the finest of the Japanese type. A white single was also received as Isani Gidui.

Jacoba (29O)

Large, rose pink, late. Staminodes resembling normal stamens, yellow. Carpels large, smooth, with cream-colored tips; disk conspicuous, white. Plant medium size, spreading; many flowers, held well above the foliage.

Jacqueline (29G, 49)

Large, white, midseason. Some staminodes resembling normal stamens but mostly linear, light yellow, without pollen. Carpels smooth with cream-colored tips; disk inconspicuous, white. Plant medium size, spreading; flowers numerous and quite attractive, held well above the foliage.

Jan van Leeuwen* (29F)

Medium size, white, midseason. Staminodes resembling normal stamens, yellow. Carpels sparsely hairy, tips yellow; disk distinct, yellowish. Plant medium size, compact.

Japanese Fairy (Secor, 1924) 9.0 (39)

Very large, rose pink, midseason. Staminodes resembling normal stamens, yellow. Carpels smooth with pink tips; disk inconspicuous, pink-tinged. Plant medium size, spreading.

Jeanne Lapandry (Doriat, 1925) 8.5 (29L)

Medium size, white, midseason. Staminodes linear to oblanceolate, yellow, with practically no pollen. Carpels smooth with white tips; disk inconspicuous, white. Plant large, spreading; flowers attractive and held well above the foliage.

Josephine (29F, 29G)

Large, dark Tyrian pink, midseason. Staminodes resembling normal stamens, pink-tinged with yellow filaments. Carpels smooth with dark pink tips; disk inconspicuous, pink. Plant large, compact; many attractive flowers, held well above the foliage. A single Josephine is also described.

Kameno-kegoromo or **Kameno-kerogoma** (Japan-Dessert, 1913)*
8.5 (5, 29D), *see* Flamboyant

A light pink form was also received under this name.

Kameno Reginis (29L)

Large, Tyrian pink, midseason. Staminodes pink-tinged with yellow filaments. Carpels smooth with pink-tinged tips; disk distinct, white. Plant medium size, spreading.

Kara-ori-nishiki (Japan-Dessert, 1922) (47)

Large, Tyrian pink, midseason. Staminodes oblanceolate, pink-tinged, yellow toward the base, with yellow edges. Carpels smooth with cream-colored tips; disk conspicuous, white. Plant large, spreading. A single form was also received under this name.

Karatsu (Millet, 1910) (5, 29B), *see* Cascade

Kasane-jishi (Japan) (29K, 29L)

Large, blush pink, midseason. Staminodes oblanceolate, yellow. Carpels smooth with white tips; disk conspicuous, white. Plant medium size, spreading.

Kasmino Requis (29M)

Medium size, dark Tyrian pink, midseason. Staminodes pink-tinged; with yellow filaments. Carpels smooth with cream-colored tips; disk inconspicuous, white. Plant medium size, spreading.

King of England (Kelway, 1902)* 8.6 (29L)

Medium size, bright aster purple, midseason. Staminodes oblanceolate, purple-tinged, with yellow edges and yellow filaments. Carpels smooth, tips pink-tinged; disk conspicuous, white. Plant large, spreading; flowers held high above the foliage. Hawa is similar. This is the red-stemmed King of England according to Mr. H. F. Little, and it is the best of the varieties received under this name. A very similar variety known as the green-stemmed King of England was also received (21, 30). The latter has hairy carpels. A third form received under the name of King of England has yellow staminodes resembling normal stamens.

Kino-kimo (Japan-Dessert, 1913)* 8.2 (17, 18), *see* Flamboyant

Two other distinct forms were received under this name.

Kiou Shou (Japan) (5)

Medium size, light Tyrian pink, midseason. Staminodes lightly tinged with pink on upper surface, with yellow edges and yellow filaments. Carpels smooth with salmon pink tips; disk inconspicuous, pink-tinged. Plant medium size, spreading.

Knight of the Thistle (Kelway) (5)

Large, aster purple, midseason. Staminodes purplish on upper surface, with yellow edges and yellow filaments. Carpels sparsely

hairy, with red tips; disk conspicuous, pink. Plant medium size, spreading.

Kochomai* (21)

Medium size, aster purple, midseason. Staminodes oblanceolate, upper surface purple, lower yellow, with yellow edges and yellow filaments. Carpels sparsely hairy, with pink tips; disk inconspicuous, pink-tinged. Plant medium size, compact; flowers many and held high above the foliage. An amaranth purple variety with hairy, red-tipped carpels, and an aster purple one with smooth, pink-tipped carpels, were also received under this name.

Kocho-no-mai (Japan-Dessert, 1922) (17)

Medium size, aster purple, midseason. Staminodes purple-tinged on upper surface, with yellow edges and yellow filaments. Carpels smooth, with pink-tinged tips; disk distinct, white. Plant medium size, spreading; flowers quite numerous and held well above the foliage.

Kokurun Rui (29L)

Large, dark aster purple, midseason. Staminodes aster purple on upper surface, with yellow edges and light orange-colored filaments. Carpels smooth, with cream-colored tips; disk inconspicuous, pink-tinged. Plant medium size, spreading.

Kokury Ukaku (29L)

Large, dark Tyrian pink, late. Staminodes pink-tinged on upper surface, with yellow edges and yellow filaments. Carpels sparsely hairy, tips pink; disk conspicuous, white. Plant medium size, spreading; flowers numerous and held well above the foliage.

Kukenu-jishi (Japan-Dessert, 1921)* 9.5 (5, 14, 17, 21, 30)

Very large, rose pink, midseason. Staminodes filamented, light yellowish with yellow spots on the edges near the tips. Carpels smooth, with cream-colored tips; disk distinct, white. Plant medium size, spreading. Exquisite, Jacoba and Kasane-Jishi are similar.

Kuni-mori (29K)

Very large, dark Tyrian pink, midseason. Staminodes pink-tinged on upper surface, with yellow filaments. Carpels smooth, with bright red tips; disk dentate, pink. Plant medium size, spreading; flowers attractive and held well above the foliage.

Labolas (Kelway) 7.6 (33)

Medium size, amaranth purple, midseason. Staminodes oblanceolate, amaranth purple on upper surface, with yellow spots on the edges. Carpels smooth, with bright red tips; practically no disk. Plant medium size, spreading.

Largo (Voriss, 1929) (44)

Very large, Tyrian pink, midseason. Staminodes oblanceolate to

spatulate, irregular, pink-tinged on upper surface with a few yellow spots on the edges. Carpels in transition, smooth, tips pink-tinged; disk conspicuous, white. Plant large, spreading; flowers many, held high above the foliage.

Lemon Queen (Japan)* (29D, 29K, 47), *see* Cascade

A blush-pink form with hairy, pink-tipped carpels was also received under this name.

Leonie (29D)

Very large, Tyrian pink, midseason. Staminodes linear, pink on the upper surface, with yellow on the edges near the tips. Carpels hairy, with pink-tinged tips; disk inconspicuous, white. Plant medium size, spreading; flowers held well above the foliage.

Lieutenant Hobson (Hollis, 1903) 8.0 (47)

Small, aster purple, midseason. Staminodes mostly linear, aster purple on the upper surface, with yellow on the edges near the tips. Carpels smooth with dark pink tips; disk inconspicuous, pink. Plant small, compact.

L'Innocence (Shaylor, 1915) (21)

Medium size, rose pink, midseason. Staminodes oblanceolate, light yellow with some yellow spots on the edges near the tips. Carpels sparsely hairy, tips cream-colored; disk inconspicuous, white. Plant small, compact.

Lothario (Wettengel, 1921) 7.7 (45, 47)

Large, Tyrian pink, midseason. Staminodes oblanceolate, pink, no pollen. Carpels in transition, sparsely hairy, with pink tips; disk dentate, white. Plant medium size, spreading.

Magnificence (Kelway) (5, 24)

Large, Tyrian pink, midseason. Staminodes linear, pink-tinged on the upper surface, with yellow edges. Carpels smooth, tips white; disk inconspicuous, white. Plant medium size, compact.

Major Loder (Kelway) (17, 30, 47)

Large, Tyrian pink, early. Staminodes oblanceolate, yellowish, no pollen. Carpels smooth, tips white; disk distinct, white. Plant medium size, spreading.

Makitateyama (29K)

Very large, dark Tyrian pink, midseason. Staminodes pink-tinged on the upper surface, with yellow edges and yellow filaments. Carpels sparsely hairy, tips white; disk serrate, white. Plant medium size, spreading; flowers numerous, attractive and held high above the foliage. Crimson and Gold and Mikado are similar. Another form, darker in color, with less yellow in the center and smooth carpels was also received under this name.

Margaret Atwood (Japan-Farr)* 8.7 (29M)

Large, white, midseason. Staminodes cream-colored with yellow edges and yellow filaments. Carpels smooth with cream-colored tips; disk conspicuous, white. Plant medium size, spreading; flowers attractive and held well above the foliage. Edith West and Isani Gidui are similar. A blush pink single, apparently Edith West, was also received under this name.

Marguerite (29G)

Medium size, pale amaranth pink, late. Staminodes yellow, with yellow edges and yellow filaments. Carpels smooth, with salmon-pink tips; disk dentate, yellow. Plant medium size, spreading; flowers held high above the foliage.

Marianne (29G)

Medium size, Tyrian pink, midseason. Staminodes pink-tinged, with yellow edges and yellow filaments. Carpels smooth, with pink-tinged tips; disk inconspicuous, white. Plant medium size, spreading; flowers quite numerous and attractive, held high above the foliage.

Mary May (Berneche, 1924) (4)

Small, light aster purple, midseason. Staminodes oblanceolate, purplish on the upper surface, with yellow edges and yellowish toward the base. Carpels smooth, with yellowish tips; disk dentate, white. Plant medium size, spreading; flowers held high above the foliage.

Meigetsuko* (29L)

Large, Tyrian pink, late. Staminodes yellow, with yellow edges and yellow filaments. Carpels smooth, tips pink; disk dentate, pink-tinged. Plant large, spreading; flowers quite numerous and attractive, held well above the foliage.

Mikado (Japan-Dessert, 1909)* 8.6 (3, 5, 21, 29M, 30)

Very large, bright aster purple, midseason. Staminodes linear to oblanceolate, purple-tinged on the upper surface, with yellow edges and light orange filaments. Carpels smooth, with cream-colored tips; disk conspicuous, serrate, white. Plant large, compact; flowers numerous and handsome, held high above the foliage. Ruigegno is identical. Crimson and Gold and King of England are similar. A slightly different form, with pink-tipped carpels was also received under this name.

Mr. G. F. Hemerik (van Leeuwen)* 9.0 (29A, 29L)

Very large, rose pink, midseason. Staminodes oblanceolate, cream-colored with pink tinges on the upper surface and some yellow spots on the edges. Carpels hairy, with pink-tinged tips; disk serrate, white. Plant medium size, spreading; flowers many, handsome and showing well above the foliage.



AMA-NO-SODE
Japanese



INSTITUTEUR DORIAT
Japanese

Mutsu-hito (Japan) (1, 29K, 49)

Medium size, rose pink, midseason. Staminodes resembling normal stamens, yellow. Carpels smooth, with light pink tips; disk dentate, white. Plant small, compact.

Nana-henge-shibori (42)

Small, Tyrian pink with aster purple streaks, late. Staminodes resembling the guards but smaller. Carpels in transition, smooth, tips dark red; disk inconspicuous, dark pink. Plant small, compact.

Niscite Gawa (29L)

Large, amaranth purple, late. Staminodes purple-tinged on the upper surface, with yellow edges and yellow filaments. Carpels smooth, with light pink tips; disk inconspicuous, white. Plant medium size, spreading; flowers many and held high above the foliage.

Noonday (Kelway)* (5, 46)

Large, amaranth purple, midseason. Staminodes filamented to oblanceolate, pink-tinged on the upper surface with yellow edges near the tips, and yellow toward the base. Carpels smooth, with red tips; disk inconspicuous, pink. Plant large, spreading; flowers quite numerous and very attractive.

Nymphe (Harrison) (45)

Large, rose pink, midseason. Staminodes linear to oblanceolate, yellow, with yellow edges. Carpels smooth, with dark pink tips; disk inconspicuous, white. Plant medium size, spreading. A single *Nymphe* is also described.

O Fuji (Japan-Dessert, 1913) 6.9 (1, 3, 5, 21, 29C, 29H)

Medium size, blush pink, midseason. Staminodes oblanceolate to spatulate, white, no pollen. Carpels smooth, with cream-colored tips; disk inconspicuous, pink-tinged. Plant medium size, spreading. *Yoochi-no-Tsuki* is similar.

Ohanagasa (30, 46)

Medium size, dark Tyrian pink, midseason. Staminodes oblanceolate to spatulate, Tyrian pink, with yellow on the edges near the tips. Carpels smooth, tips pink; disk dentate, pink-tinged. Plant medium size, compact. A slightly different form of similar color, but with dark pink-tipped carpels and pink disk was also received under this name.

Ohirama (Japan-Dessert, 1913) 8.2 (5, 29L, 30)

Large, Tyrian pink, midseason. Staminodes pink-tinged on upper surface, with yellow edges and yellow filaments. Carpels hairy, with pink tips; disk conspicuous, pink. Plant medium size, spreading. A variety received as *Ohirawa* is identical. A pink form with

smooth, cream-tipped carpels and another with oblanceolate, cream-colored staminodes were also received under this name.

Oimatsu (29L, 49)

Large, light Tyrian pink, midseason. Staminodes oblanceolate, yellow faintly tinged with pink, with yellow edges. Carpels smooth, with cream-colored tips; disk distinct, white. Plant medium size, spreading; flowers many, held well above the foliage.

Oki (Millet, 1911) (3)

Large, Tyrian pink, late. Staminodes lightly tinged with pink on upper surface, with yellow edges and yellow filaments. Carpels smooth with yellowish tips; disk inconspicuous, white. Plant large, compact; flowers quite numerous and held well above the foliage. Daybreak is similar.

Olivia (46)

Medium size, blush pink, late. Staminodes linear to oblanceolate, light yellow, mostly without pollen. Carpels smooth, with pink tips; practically no disk. Plant small, compact.

Onahama (Gumm, 1928)* 8.9 (17, 21)

Large, bright aster purple, midseason. Staminodes oblanceolate, purple on upper surface, with yellow edges and yellow toward the base. Carpels smooth, with bright red tips; disk distinct, pink-tinged. Plant large, spreading; flowers held high above the foliage.

Orange Prince (Pleas, 1909) (46, 47)

Medium size, Tyrian pink, midseason. Staminodes oblanceolate, light pink, practically no pollen. Carpels smooth, with red tips; practically no disk. Plant medium size, spreading. A blush pink single was also received under this name.

Orion (Cranfield) (12)

Medium size, aster purple, midseason. Staminodes purple-tinged on the upper surface, with yellow edges and light orange-colored filaments. Carpels smooth, with red tips; disk serrate, pink. Plant small, compact; flowers attractive.

Petite Renee (Dessert, 1899) 7.6 (5, 29J, 47)

Very large, amaranth pink, midseason. Staminodes mostly linear, amaranth pink, without pollen. Carpels smooth, with bright red tips; disk inconspicuous, pink-tinged. Plant medium size, spreading; flowers fragrant.

Pink Lady (Secor) (39)

Very large, rose pink, midseason. Staminodes linear to oblanceolate, lightly pink-tinged, with a few yellow spots on the edges. Carpels smooth, with pink tips; disk dentate, pink-tinged. Plant large, spreading.

Pocahontas (Pleas, 1914) (46)

Large, bright Tyrian pink, midseason. Staminodes linear to obovate, yellow to light pink, without pollen. Carpels in transition, smooth, with pink tips; disk very inconspicuous, pink-tinged. Plant medium size, spreading.

Pride of Remington (17)

Large, Tyrian pink, midseason. Staminodes filamented to oblanceolate, pink-tinged on the upper surface, with yellow edges and yellow filaments. Carpels smooth, with pink tips; disk conspicuous, serrate, pink-tinged. Plant medium size, spreading; flowers numerous, attractive and held high above the foliage.

Princess Duleep Singh (Kelway) (14, 21, 30)

Large, Tyrian pink, midseason. Staminodes resembling normal stamens, pink-tinged on the upper surface with yellow edges and yellow filaments. Carpels hairy, with light pink tips; disk serrate, white. Plant large, compact; flowers showing well above the foliage.

Purity (2, 8, 21, 46, 47), *see* Cascade

A white variety with uniform, white staminodes and pink-tipped carpels was also received under this name.

Queen Alexandra (Kelway, 1902) 7.7 (2)

Medium size, dark rose color, midseason. Staminodes small, oblanceolate, pink-tinged to broad pink streaked with yellow, no pollen. Carpels smooth, with dark red expanded tips; disk dentate, pink. Plant large, compact; flowers held well above the foliage.

Rare Brocade (Pleas) 7.2 (21)

Medium size, white, midseason. Staminodes oblanceolate to obovate, white, no pollen. Carpels smooth, with pink tips; disk dentate, light pink. Plant medium size, compact.

Rashooman (Japan)* 8.7 (21, 42, 45)

Large, light aster purple, midseason. Staminodes oblanceolate, aster purple on the upper surface, with yellow spots on the edges and yellow toward the base. Carpels smooth, with pink tips; disk serrate, light pink. Plant medium size, spreading; attractive flowers held high above the foliage.

Rinhosen (29K, 29L)

Very large, rose pink, late. Staminodes cream-colored on upper surface, with yellow edges and yellow filaments. Carpels smooth, with pink tips; disk distinct, light pink. Plant medium size, spreading; flowers held well above the foliage.

Rino-kino* (29L), *see* Flamboyant**Rosa** (Hollis, 1910) (29K)

Large, dark Tyrian pink, midseason. Staminodes pink-tinged

on the upper surface, with yellow edges and yellow filaments. Carpels hairy, with cream-colored tips; disk high, dentate, white. Plant medium size, compact.

Rosalind (46)

Medium size, light amaranth pink, midseason. Staminodes pink-tinged on the upper surface, with yellow edges and yellow filaments. Carpels smooth, with dark pink tips; disk inconspicuous, dark pink. Plant small, compact.

Rose of Nippon (3, 42, 45), *see* Hinode-sekai

Ruigegno (Japan)* (1, 29F, 30, 49), *see* Mikado

Saturn (46, 47)

Medium size, light Tyrian pink, midseason. Staminodes oblanceolate, bright yellow, without pollen. Carpels hairy, tips dark pink; disk dentate, light pink. Plant medium size, compact; flowers held well above the foliage.

Seioba (Japan) (29L)

Medium size, white, midseason. Staminodes oblanceolate, white, no pollen. Carpels in transition, hairy, with cream-colored tips; disk inconspicuous, white. Plant medium size, spreading.

Seiriu Somae (Japan-Dessert, 1909) 8.2 (1, 5, 21, 46), *see* Fuji-mine

Sendo-nishiki (49)

Large, dark Tyrian pink, midseason. Staminodes oblanceolate to spatulate, pink-tinged, yellowish toward the base, no pollen. Carpels smooth, with pink tips; disk inconspicuous, pink-tinged. Plant medium size, compact.

Shaylor's Sunburst (Allison, 1931)* (40)

Large, white, midseason. Staminodes resembling normal stamens, bright yellow with yellow filaments. Carpels smooth, with pink-tinged tips; disk inconspicuous, white. Plant large, spreading; flowers many and very attractive, showing high above the foliage. Resembles Isami Jishi. Received as Seedling No. 101.

Shiro-sangai (42, 45), *see* Fuji-mine

Sir Madhi Singh (Kelway) 7.8 (47)

Large, dark Tyrian pink, midseason. Staminodes oblanceolate, pink with yellow on edges near the tips. Carpels in transition, smooth, with red tips; disk (if any) inconspicuous, pink. Plant large, spreading. Currant Jap is similar.

Snowdrift (Wallace) (46, 47)

Small, white, with faint blush, midseason. Staminodes linear to obovate, blush to yellowish cream, no pollen. Carpels hairy, tips white; disk inconspicuous, white. Plant medium size, compact.

Snowflake (Kelway) (38), *see* Hakodate

Snow Wheel (Japan) 8.3 (21, 30)

Medium size, white, midseason. Staminodes oblanceolate, cream-colored with yellow edges and yellow filaments. Carpels sparsely hairy, with red tips; disk distinct, red. Plant medium size, compact. A white-flowered form, with yellow staminodes, pink-tipped carpels, and pink disk was also received under this name.

Some-ganoko (Japan)* 9.0 (5, 21, 30)

Large, bright aster purple, midseason. Staminodes purple-tinged on the upper surface, with yellow edges and yellow to orange-colored filaments. Carpels smooth, with cream-colored tips; disk distinct, white. Plant medium size; spreading; flowers very attractive and quite numerous. Two different dark pink forms with pink-tipped carpels were also received under this name.

Sophia Houston (2)

Medium size, Tyrian pink, midseason. Staminodes resembling normal stamens, yellow with yellow edges and yellow filaments. Carpels smooth, with yellowish tips; disk distinct, white. Plant medium size, compact.

Soshi (Millet)* (5, 29L, 49)

Medium size, bright amaranth purple, late. Staminodes pink-tinged on upper surface, with yellow edges and yellow filaments. Carpels smooth, with pink tips; disk serrate, faintly pink-tinged. Plant medium size, spreading.

Souvenir (14)

Large, light Tyrian pink, midseason. Staminodes oblanceolate, yellow on the upper surface, with yellow edges and yellow filaments. Carpels smooth, with cream-colored tips; disk serrate, white. Plant medium size, compact; flowers attractive and quite numerous, held well above the foliage.

Souvenir de Guynemer (Millet, 1919) (5)

Medium size, Tyrian pink, midseason. Staminodes resembling normal stamens, yellow. Carpels smooth, with pink-tinged tips; disk conspicuous, serrate, white. Plant medium size, spreading.

Spinning Wheel (Babcock) (3)

Small, dark Tyrian pink, midseason. Staminodes oblanceolate, pink on the upper surface, orange-colored toward the base, no pollen. Carpels smooth, with cream-colored tips; disk conspicuous, serrate, white. Plant small, compact; flowers held well above the foliage.

Sunbeam (Hollis, 1906) 8.3 (46)

Large, rose pink, midseason. Staminodes oblanceolate to broad,

light yellow to pink, with some yellow spots on the edges. Carpels in transition, smooth, tips white; disk inconspicuous, white. Plant medium size, spreading; flowers held high above the foliage.

Sunrise (Hollis, 1909) 8.0

An aster purple variety received under this name is not true, in the opinion of Mr. H. F. Little. An aster purple double was also planted.

Surugu (Millet, 1907)* (1, 29L)

Medium size, bright aster purple, midseason. Staminodes resembling normal stamens, purplish on the upper surface, with yellow edges and yellow filaments. Carpels smooth, with dark red tips; disk inconspicuous, red. Plant medium size, compact; flowers most attractive and held well above the foliage.

Taiho (Japan)

A rose pink form from two sources is not true, according to Mr. H. F. Little. Another, apparently Margaret Atwood, was also received under this name.

Taika-kusei (26)

Medium size, faint blush pink, midseason. Staminodes spatulate to obovate, white, no pollen. Carpels hairy, with cream-colored tips; disk conspicuous, dentate, white. Plant large, spreading.

Takaradama (46)

Medium size, blush pink, late. Staminodes oblanceolate, yellow, spotted with yellow on the edges near the tips. Carpels hairy, with cream-colored tips; disk dentate, cream-colored. Plant small, erect; flowers held well above the foliage.

Tamatbako or **Tamate-Boku** (Japan-Dessert, 1913)* 9.4 (5, 30)

Medium size, Tyrian pink, late. Staminodes oblanceolate, tinged lightly with pink on the upper surface, with yellow edges and yellow filaments. Carpels hairy, tips dark pink; disk conspicuous, dentate, pink-tinged. Plant medium size, spreading; flowers held well above the foliage.

Tarantelle (Auten, 1929)* (2)

Large, Tyrian pink, midseason. Staminodes oblanceolate, pink, mostly without pollen. Carpels inconspicuously hairy, with dark pink tips; disk practically lacking. Plant medium size, compact; flowers many and attractive.

The Dragon (Wallace)* (47)

Very large, bright aster purple, midseason. Staminodes resembling normal stamens, purple-tinged on the upper surface with yellow edges and yellow filaments. Carpels smooth, tips light pink; disk practically lacking. Plant large, spreading; flowers most attractive and held high above the foliage.

Titian (14, 16)

Large, white, midseason. Staminodes filamented, yellow, to oblanceolate, light yellow, with yellow on the edges. Carpels smooth, with pink tips; disk conspicuous, pink-tinged. Plant medium size, compact. White Lady is similar. A Tyrian pink form was also received under this name.

Tokio (Japan-Dessert, 1910)* 8.9 (2, 5, 21, 29L, 30)

Large, light Tyrian pink, midseason. Staminodes pink-tinged on the upper surface, with yellow edges and yellow filaments. Carpels hairy, with white tips; disk serrate, white. Plant large, compact; flowers showing high above the foliage. A darker pink form, with smooth carpels was also received under this name.

Toro-no-maki (Japan)* 9.0 (21, 30)

Very large, white, midseason. Staminodes resembling normal stamens, yellowish with yellow edges and yellow filaments. Carpels smooth, with light pink tips; disk dentate, white. Plant large, compact; flowers many and very attractive.

Torpilleur (Japan-Dessert, 1913)* 8.0 (3, 5, 17, 21, 30)

Medium size, bright aster purple, midseason. Staminodes mostly oblanceolate, to broad, red with white tips, no pollen. Carpels smooth, with dark red tips; disk inconspicuous, pink. Plant medium size, compact; flowers numerous and held high above the foliage. A pink form with hairy carpels was also received, from two sources.

Tsin Tsion (5)

Medium size, amaranth purple, midseason. Staminodes resembling normal stamens, purple-tinged on the upper surface, with yellow edges and yellow filaments. Carpels smooth, with red tips; disk serrate, red. Plant medium size, compact.

Tyerline (29M)

Large, white, midseason. Staminodes oblanceolate, cream-colored, with yellow spots near the tips. Carpels smooth, with pink tips; disk conspicuous, serrate, pink-tinged. Plant medium size, compact.

Venus (47)

Medium size, white, midseason. Staminodes white, mostly oblanceolate, with some yellow spots at the tips. Carpels smooth, with pink tips; disk distinct, light pink. Plant medium size, compact. A single Venus is also described.

Vestucius (46)

Medium size, light Tyrian pink, midseason. Staminodes oblanceolate to spatulate, cream-colored to pink on the upper surface, with a few yellow spots on the edges and yellowish toward the

base. Carpels smooth, tips dark pink; disk inconspicuous, pink-tinged. Plant medium size, spreading.

Victoria (29S)

Large, dark Tyrian pink, midseason. Staminodes resembling normal stamens, lightly pink-tinged on the upper surface, with yellow edges and yellow filaments. Carpels smooth, tips light pink; disk inconspicuous, pink. Plant medium size, spreading; flowers quite attractive and held high above the foliage.

White Lady (Kelway, 1900)* 9.0 (30)

Large, white, midseason. Staminodes resembling normal stamens, light yellow with yellow edges and yellow filaments. Carpels smooth, with pink tips; disk dentate, white. Plant small, compact. A white form with staminodes mostly broad, white, without pollen was also received under this name.

White Queen (Wallace)* (2, 21), see Crystal Queen

Yamato Tsukasa (42)

Large, rose pink, midseason. Staminodes oblanceolate, blush pink, without pollen. Carpels in transition, hairy, tips red; disk inconspicuous, pink-tinged. Plant medium size, compact; flowers many and quite attractive.

Yayoura (Japan) (9)

Small, white with aster purple streaks, late. Staminodes oblanceolate to obovate, marked like the guards, no pollen. Carpels hairy, with dark red tips; disk inconspicuous, red. Plant small, compact.

Yeso (Japan-Dessert, 1909) 7.7 (1, 5, 21, 30, 29L, 47, 49), see Eileen Kelway

Yokohama (Millet, 1907)* (29L, 30)

Large, rose pink, late. Staminodes resembling normal stamens, yellow, with yellow edges and yellow filaments. Carpels smooth, with pink-tinged tips; disk dentate, white. Plant medium size, compact; flowers numerous. *Fabiola* is similar.

Yoochi-no-Tsuki (Japan) (3, 42, 49)

Large, blush pink, midseason. Staminodes oblanceolate to obovate, white, without pollen. Carpels smooth, with pink-tinged tips; disk very inconspicuous, pink-tinged. Plant medium size, spreading. A variety received as *Yenchi-no-Tsuki* is identical.

Zansetsu* (29K)

Large, white, late. Staminodes resembling normal stamens, yellow, with yellow edges and yellow filaments. Carpels sparsely hairy, with cream-colored tips; disk high, dentate, white. Plant small, compact.

Other Varieties and Species in the Trial Garden

A number of varieties received for planting in the trial garden should be classified as semidoubles or doubles, in the judgment of the authors and their advisers. Since these varieties do not really belong within the scope of this work, they are listed below without detailed descriptions. Other species and unnamed seedlings received for planting are similarly listed.

Semidouble and Double Peonies

(albiflora)

Albatross (Wallace) (21, 46), blush pink
 Aureole (Hollis, 1905) (46), light Tyrian pink
 Aureolin (Shaylor, 1916) 8.9 (40, 45), rose pink
 Baron Rozen (29L), blush pink
 Cardinal (17), aster purple
 Christoble (17), aster purple
 Crown on Crown (13, 33), light Tyrian pink.
 Diana (2), light rose pink
 Dora (29K), light Tyrian pink
 Elizabeth (29K), white.
 Esther Owen (Reid, 1930) (36), dark rose pink
 Eugenie (29C, 29S), dark Tyrian pink
 Fantasy (Auten, 1925)(2), deep rose pink
 Faust (Berneche) (4), light rose pink
 Felix Crousse (Crousse, 1881) 8.4 (4), amaranth purple
 Fuji (3), blush pink
 Fuji-some-ginu (29L), dark Tyrian pink
 Garnet (17), aster purple
 Golden Dawn (17), white
 Golden Nugget (Pleas, 1913) 7.4 (3, 46, 47), deep rose pink
 Grace Blanding (Reid, 1930) (36), rose pink
 Grace Ott (17), aster purple
 Gunpo-nishiki (2), blush pink
 Gunpoo-no-nishiki (3, 42), light Tyrian pink
 Gunpooro (2, 3), light Tyrian pink
 Hakuseko (Japan-Dessert, 1913) (1, 5, 42, 47), blush pink
 Hanagishi (29M), Tyrian pink
 Henry Farman (Kelway) (21), amaranth purple

Joseph Decaisne (38), white
 Kamakurako (Japan-Dessert, 1913) (29M), aster purple
 Karafune (47), rose pink
 Kugari-kun (2), aster purple
 Kugesoa Kun (5), aster purple
 Kumagoe (Japan-Dessert, 1909) (1, 5, 29D), Tyrian pink
 Lady Emily (Pleas) (3), rose pink
 Leander Starr Jameson (Kelway) (17), Tyrian pink
 Lillian Gumm (17), light Tyrian pink
 Lotus (Introd. Storrs and Harrison) (42), white
 Maurice Maeterlinck (Kelway, 1915) (29D), blush pink
 Melody (Auten, 1925) (2), blush pink
 Minamota (Millet) (29H), light Tyrian pink
 Mine-no-money (29K), white
 M. J. Astle (Kelway, 1912) (29L), Tyrian pink
 Mlle. Cimschowska (29M), aster purple
 Neptune (Dessert, 1905) (46, 47), dark Tyrian pink
 Oki-no-nami (3, 42, 45), blush pink
 Ophir (3), white
 Oshio-Kun (Japan-Dessert, 1913) (5, 45), blush pink
 Ostrich Plume (Pleas) (45), light Tyrian pink
 Philomele (Calot, 1861) 7.7 (34), blush pink
 Ping Wing (5), blush pink
 Princess of Wales (Barr) (21), blush pink
 Queen of Pleasance (Pleas) (45), dark Tyrian pink
 Romona (17), Tyrian pink
 Rosy Dawn (21), Tyrian pink
 Ruth Force (Shaylor, 1922) 8.3 (40), Tyrian pink
 Shikou (5), white
 Shinsi-adori (29K), blush pink
 Silvia Saunders (Saunders, 1921) (14), amaranth pink
 Tago-no-Tsuki (Japan-Dessert, 1909) (1, 2, 29H, 29M), blush pink
 Yamato-Sangai (29K, 43), Tyrian pink

Peonies Other Than *albiflora*

Alpha (Arends) (*peregrina* x *Wittmanniana*) (29K), cream
 anemoneflora aurea ligulata (*officinalis*) (29K), amaranth purple
 anemoneflora rosea (*officinalis*) (29L), Tyrian pink
 anemoneflora rubra (*officinalis*) (2), amaranth purple
 anemoneflora rubra (*officinalis*) (2), Japanese type, amaranth purple
 anomala (2, 24, 29O, 47), amaranth purple
 Avant Garde (Lemoine, 1907) (*albiflora* x *Wittmanniana*) (6, 32),
 light pink

corallina (29L), Tyrian pink
 decora (29L), amaranth purple
 humilis (29O), Tyrian pink
 Le Printemps (Lemoine, 1905) (albiflora x Wittmanniana) (2, 32),
 white
 lobata (officinalis) (24, 29L), rose
 Maikönigin (Arends) (albiflora x Wittmanniana) (29C), white
 Messagère (Lemoine, 1909) (albiflora x Wittmanniana) (2, 24), cream
 pubens (29O), aster purple
 tenuifolia (2, 29L), amaranth purple
 violacea sphaerica (29L), aster purple

Unnamed Seedlings

Singles

No. 95 (3), aster purple	No. 146 (3), aster purple
No. 101* (3), Tyrian pink (now Shaylor's Sunburst)	No. 15 (21), aster purple No. 147 (27), white

Japanese

No. 29 (3), Tyrian pink	No. 153 (3), aster purple
No. 33 (3), bordeaux	No. 5 (8), aster purple
No. 36 (3), blush	No. 6 (8), amaranth pink
No. 55 (3), aster purple	No. 77A (8), Tyrian pink
No. 62 (3), aster purple	No. 135½* (8), aster purple
No. 64 (3), aster purple	No. 0-51 (21), Tyrian pink
No. 69 (3), aster purple	No. 25* (21), rose pink
No. 71 (3), aster purple	No. 26 (21), Tyrian pink
No. 77 (3), amaranth purple	No. 115 (49), Tyrian pink
No. 78 (3), rose pink	No. 214 (49), Tyrian pink
No. 80 (3), white	No. 216 (49), Tyrian pink
No. 82 (3), aster purple	No. 217 (49), aster purple
No. 147 (3), rose pink	No. 223 (49), Tyrian pink

Doubles

No. 39 (3), Tyrian pink	No. 201 (3), aster purple
No. 46 (3), Tyrian pink	No. 18 (21), rose pink
No. 148 (3), Tyrian pink	No. 13 (42), white
No. 154 (3), Tyrian pink	

Varieties Apparently Identical

A list of varieties of single and Japanese peonies received under different names but which were apparently identical, is given below.

Singles

Balliol, Lord Kitchener	Hana Gesho, Hesperus
Baron J. Hulot, Sagoromo	Hermes, Wild Rose
Dorothy, Duchess of Portland	Kelway's Luck, Pride of Lang-
Edith West, Lady Lillian Ogle,	port
Pure Love, Rosy Dawn, The	Kinsui, La Fiancee, La Frai-
Bride	cheur
George Alexander, Jupiter	White Japan, White Swan

Japanese

Cascade, Karatsu, Lemon Queen,	Flamboyant, Kameno-kegoromo,
Purity	Kino-kimo, Rino-kino
Cathedral, Hana-no-sato	Fuji-mine, Gekkiuden, Seiriu
Crystal Queen, White Queen	Somae, Shiro-sangai
Eileen Kelway, Emelie, Yeso	Hakodate, Snowflake
Evelina, Germaine	Hinode-sekai, Rose of Nippon
	Mikado, Ruigegno

Varieties Very Similar

Among the varieties which were *very similar*, but not identical, may be mentioned the following:

Singles

Areos, Perle Blanche	Exquisite, Shirley Walker
Balliol, Vera	Festiva Fragrans, Gloria
Black Beauty, Othello	George Alexander, Peter Oleson
Black Prince, Florestine	Ginko-nishiki, Iten-shikai
Camille, Dai-jo-kuhan, Emily,	Miss Ida Chamberlain, Nagasaki
Katori-nahiko	Petite Louise, Presto, Purple Cup,
Carnot, Dreadnought, Nulli Sec-	Shogun
undus, The Moor	White Swan, Whitleyi Major
Celestial, Venus	

Japanese

Abbe, Geraldine	Fabiola, Yokohama
Crimson and Gold, Mikado	Hawa, King of England, Kocho- no-mai
Currant Jap, Sir Madhi Singh	Ho Gioku, Tyerline
Daybreak, Oki	O Fuji, Yoochi-no-Tsuki
Emperor of India, Flamboyant	Oki, Tokio
Eva, Evelina	
Exquisite, Jacoba, Kasane-Jishi, Kukenu-Jishi	

Doubles

Baron Rozen, Oshio-Kun, Shinsi-adori, Tago-no-Tsuki.
Christoble, Garnet, Grace Ott, Mlle. Cimschowska.

Varieties Causing Confusion

Two or more kinds were received under each of the following names.

Abbe (J)	Flashlight (J)
Apple Blossom (s, J)	Francois (J)
Akashigata (J)	Fuji-mine (J)
Ama-no-sode (J)	Fuji-no-mine (J)
Areos (s)	Geraldine (J)
Attraction (J)	Hana-no-sato (J)
Benisangai (J)	Hatsugi (J)
Carnot (s)	Hermes (s)
Cascade (J)	Hirishima (J)
Celestial (s)	Isani Gidui (J)
Crystal Queen (J)	Josephine (s, J)
Dai-jo-kuhan (s)	Kameno-kegoromo (J)
Departing Sun (s, J)	Kara-ori-nishiki (J)
Distinction (J)	King of England (J)
Dragon's Head (J)	Kino-kimo (J)
Duchess of Portland (s)	Kochomai (J)
Eglantine (s)	Le Jour (s)
Emily (s)	Lemon Queen (J)
Exquisite (s, J)	Lucienne (s)

Mafeking (s)	Red Queen (s)
Makitateyama (J)	Shi-pen-kue (s)
Margaret Atwood (J)	Snow Wheel (J)
May Bee (s)	Some-ganoko (J)
Mikado (J)	Stanley (s)
Mobuchi (s)	Sunrise (J)
Nagasaki (s)	Taiho (J)
Naubunishiki (s)	The Queen (s)
Nymphe (s, J)	Titian (J)
Ohanagasa (J)	Tokio (J)
OHIRAMA (J)	Torpilleur (J)
Ophir (s)	Venus (s, J)
Orange Prince (J)	White Lady (J)
Pride of Langport (s)	Wilbur Wright (s)
Purity (J)	

Plan for Master Planting of Single, Japanese, and Double Peonies

On June 20, 1935, at a meeting of the Board of Directors of the American Peony Society held in Boston, Secretary W. F. Christman reported that the trial garden experiment was essentially complete. Mr. H. F. Little, Camillus, New York, was delegated to make a careful checkup of the work during the following blooming season. At a meeting of the Board of Directors in Toronto, June 24, 1936, Mr. Little reported in detail on his inspection trip. At the same time he introduced a plan for a master planting of single, Japanese, and double peonies, to be located on the campus of the University of Illinois, Urbana. This garden was not to contain all varieties in commerce, but rather the most outstanding varieties being disseminated, the selection of which was left to a committee appointed by the American Peony Society.¹

With the cooperation of the American Peony Society it is hoped to establish and maintain an up-to-date, representative collection of single, Japanese, and double peonies. Such a planting would be for study and display. To it people could come to see the best in peonies and to compare them with varieties of their own.

¹Mr. H. F. Little was named chairman of this committee. The other members were: Mr. A. M. Brand, Faribault, Minnesota, and Mr. George W. Peyton, Rapidan, Virginia.

From the varieties represented in the trial garden, the Peony Society has recommended the following as particularly distinct, undisputed, and outstanding among the older introductions. In the fall of 1937 these particular varieties were transplanted from the trial garden to the plot set aside for the permanent master planting.

Singles

Black Magic (Auten, 1929)	Marguerite Dessert (Dessert, 1913)
Black Prince (Thurlow, 1915)	Mellin Knight (Brand, 1920)
Catherine Parry (Hendrickson, 1925)	Mischief (Auten, 1925)
Catherine S. Fox (Berneche, 1920)	Mr. Thim (van Leeuwen, 1926)
Clairette (Dessert, 1905)	Pink Delight (Nieuwenhuyzen)
Darkness (Brand, 1913)	Pride of Langport (Kelway, 1910)
Departing Sun (Wilkus)	Queen of the Belgians (Kelway)
Harriet Olney (Brand, 1920)	Shirley Walker (Shaylor, 1918)
Helen (Thurlow, 1922)	Snow Sprite (Auten, 1930)
Kewanee (Auten, 1930)	The Bride (Dessert, 1902)
Le Jour (Shaylor, 1915) -	Vera (Gumm, 1923)
L'Étincelante (Dessert, 1899)	Wild Rose (Kelway)

Japanese

Abbe (Lewis, 1921)	Kameno-kegoromo (Japan-Dessert, 1913)
Akashigata (Japan)	King of England (Kelway, 1902)
Ama-no-sode (Japan)	Kukenu-Jishi (Japan-Dessert, 1921)
Antwerpen (Japan)	Margaret Atwood (Japan-Farr)
Cathedral (Japan)	Mikado (Japan-Dessert, 1909)
Currant Jap (Jeffries)	Mr. G. F. Hemerik (van Leeuwen)
Departing Sun (Japan)	Onahama (Gumm, 1926)
Exquisite (Kelway)	Rashooman (Japan)
Flamboyant (Japan)	Shaylor's Sunburst (Allison, 1931)
Fuji-some-goromo (Japan)	Some-ganoko (Japan)
Fuyajo (Japan)	Soshi (Millet)
Gold Mine (Hollis, 1907)	Surugu (Millet, 1907)
Hakodate (Millet)	Tamatbako (Japan-Dessert, 1913)
Hawa (Millet, 1907)	Tokio (Japan-Dessert, 1910)
Instituteur Doriat (Doriat, 1925)	
Isani Gidui (Japan-Dessert, 1909)	
Jan van Leeuwen	
Jeanne Lapandry (Doriat, 1925)	

Toro-no-maki (Japan)	White Queen (Wallace)
Torpilleur (Japan-Dessert, 1913)	Yokohama (Millet, 1907)
White Lady (Kelway, 1900)	

The following single and Japanese varieties, mostly recent introductions which it was not possible to secure for the trial garden, were also recommended by the American Peony Society committee. No recommendations for double peonies have yet been made.

Singles

Arcturus (Auten, 1933)	Krinkled White (Brand, 1928)
Flanders Fields (Brand, 1928)	Man o' War (Brand)
Gopher Beauty (Franklin, 1923)	President Lincoln (Brand, 1928)
Imperial Red (Sass)	Verdun (Dessert-Doriat, 1927)

Japanese

Charm (Franklin, 1931)	Prairie Afire (Brand, 1932)
Hari-ai-nin (Babcock, 1929)	Yellow King
Nippon Beauty (Auten, 1927)	

In such relatively short lists many kinds not distinctly different from those named were necessarily omitted. Some new kinds that are perhaps worthy were passed over because it was thought that they should be more thoroly tested out.





UNIVERSITY OF ILLINOIS-URBANA

Q 630 .71L6B
BULLETIN URBANA
445-457 1938-39

C002



3 0112 019529285