



The
Pertelote
1935

James Addison Jones Library



Brevard College
Brevard, North Carolina

Brevard College
Library



The Hertelote



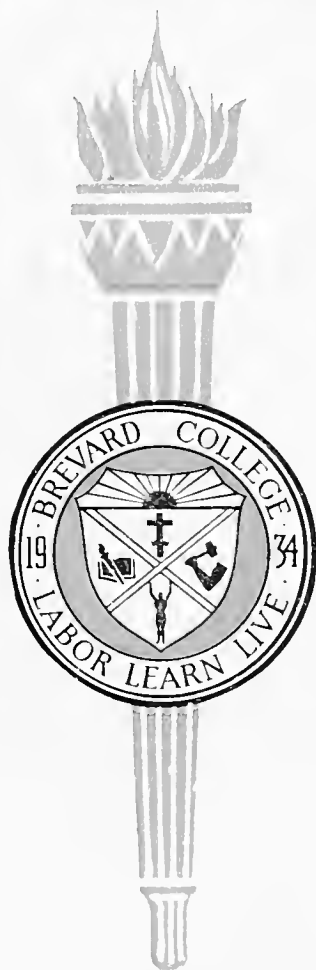
1935

COPYRIGHT 1935

GUY H. HOWELL
Editor

JACK H. WILDFY
Business Manager

The
Pertelote



PUBLISHED BY THE SOPHOMORE CLASS
OF BREVARD COLLEGE

BREVARD - - - NORTH CAROLINA

VOLUME ~ ONE ~ NINETEEN
HUNDRED ~ THIRTY ~ FIVE

373.9726

B8462

1935'

c.1



EUGENE J. COLTRANE, A.B., A.M.



DEDICATION

THIS, the first edition of THE PERTELOTE, is dedicated with cordial esteem and gratitude to one whose untiring efforts, dynamic personality, and Christian faith, whose foresight, courage, sympathy, and loyalty to what is right, and whose co-operation with faculty and students have made possible the opening and operation of Brevard College during its first difficult but successful year—to our President.

EUGENE J. COLTRANE



26582

FOREWORD

I T IS hardly possible by stretch of the imagination to conceive what Brevard College may be twenty years from now; but in this, the first edition of THE PERTELOTE, we have endeavored to portray in picture and in word, Brevard College as it is now in this, its first year. The name of this book signifies our relationship to our big brother, Duke University. The title of Duke's annual is "The Chanticleer." In Chaucer's old tale, Pertelote was the hen most loved by the valiant Chanticleer. So, since we are in various ways connected with Duke, and particularly are of the same religious denomination, we elected to call our annual THE PERTELOTE.

This book is built entirely around the college seal, our motto serving as the basis. The seal is on the cover in blue and white, the colors of the college. Each main division page has the seal with an every-day campus scene illustrating our three-word motto, Labor, Learn, Live. Not only is this dominant idea portrayed on the main division page, but also throughout the entire edition.

The theme of this edition, portrayed in sketches on each main division page, pictures students coming to the college with torches which glow dimly; that is, they have



FOREWORD

only completed high school work. As they enter into various college activities, the torch burns brighter and brighter as the days go by, not only by knowledge acquired in the class-room, but by intelligent engagement in athletics and other campus activities, in which all participate as one large family. In the daily pursuance of what may appear to be commonplace routine we find the torches to be growing brighter and shedding a more radiant light. It is only through consistent application of one's time and effort that any goal is ever attained.

The building of this annual has called for labor, but a labor of love because it was being done for you. We who have contributed to its building have exercised many of those fine qualities of patience, loyalty, and devotion toward a creation which we hope will keep alive our torch as we go forth into whatever walk of life may lie before us.

May we strive to keep aloft our torch; strive also to keep its light burning brightly, for in so doing we help those whose torches have as yet been unlighted, thereby helping someone else to lead a happier life. May we labor diligently, learn to coöperate with our fellowmen, and live for our Creator whose abundant life we seek to know.

—THE EDITOR.



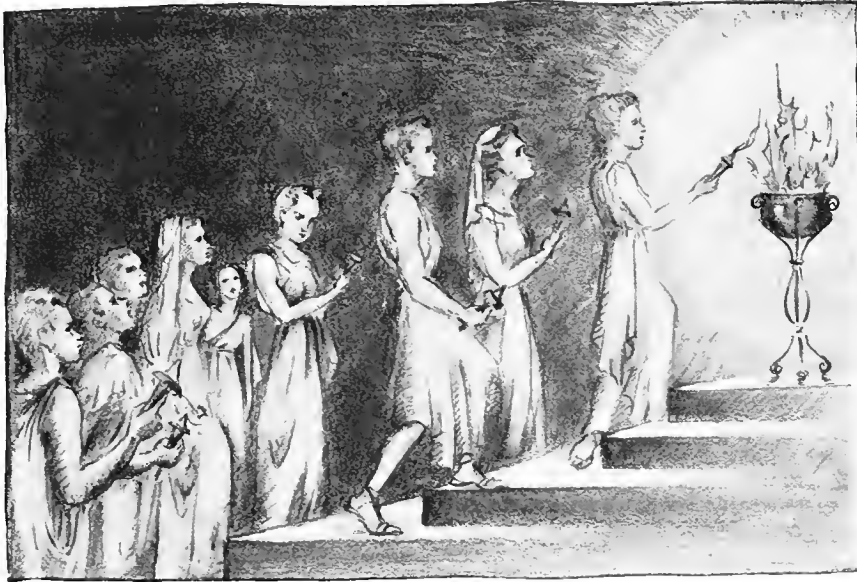
CONTENTS

BOOK I - - - THE COLLEGE

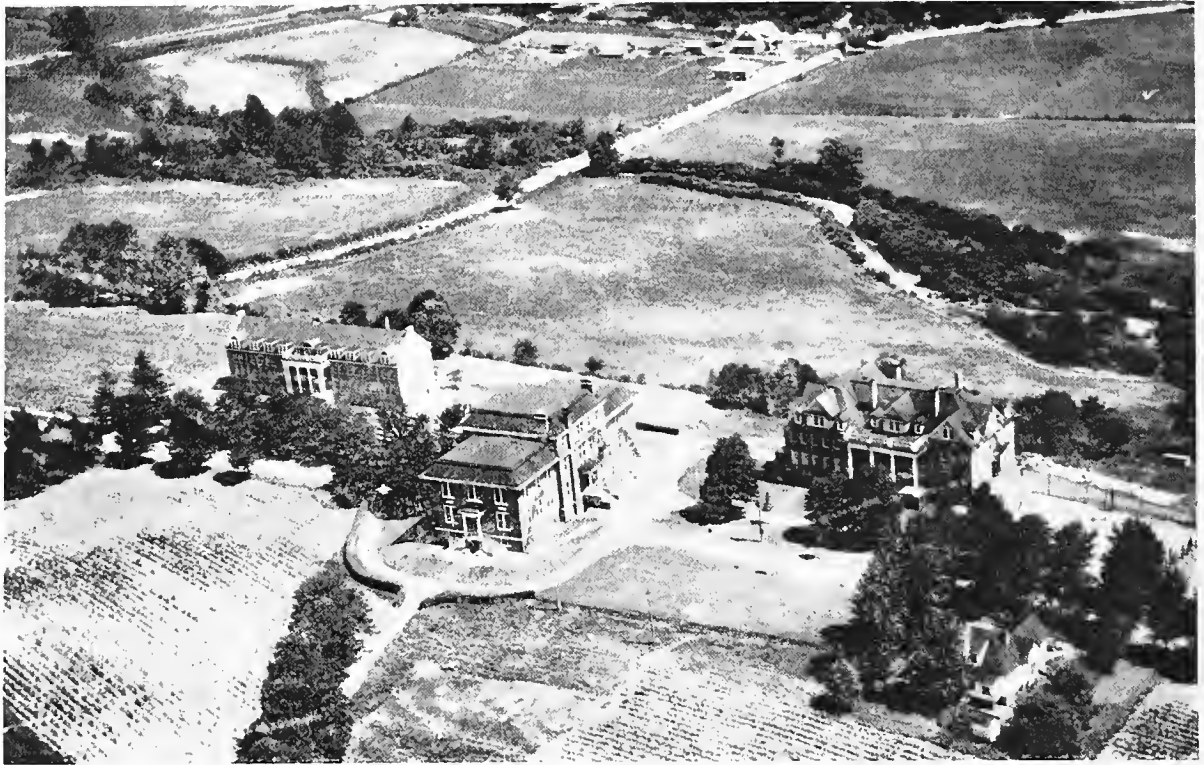
BOOK II - - - THE CLASSES
SOPHOMORES
FRESHMEN
COMMERCIAL
HIGH SCHOOL

BOOK III - - - - ATHLETICS

BOOK IV - - - - ACTIVITIES
SUPERLATIVES
SPONSORS



THE COLLEGE

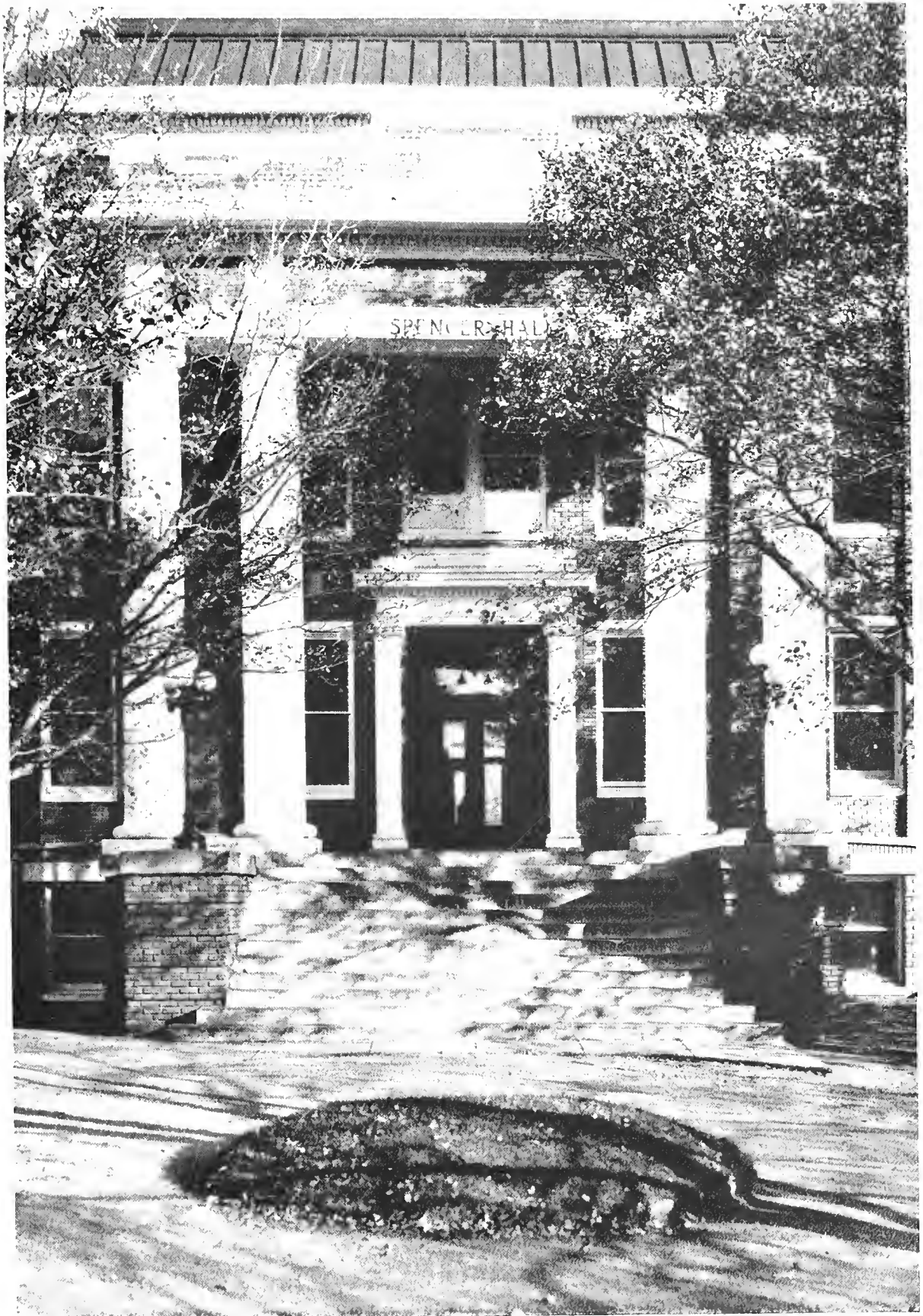


BREVARD COLLEGE IN ITS BEAUTIFUL SETTING

History of Brevard College

In November, 1933, the Western North Carolina Conference of the Methodist Episcopal Church, South, in annual session, made provision whereby Rutherford College and Weaver College would be merged into Brevard College. Rutherford College and Weaver College had been operated for approximately fifty years. The excellent service rendered by these two institutions is attested by the large number of their alumni who have held responsible positions in both church and state. In each case the principle of Christian education received strong emphasis. Brevard College, as the successor of these two colleges, is pledged to the continuance of their noble traditions.

The Annual Conference appointed a Board of Trustees consisting of eighteen members. On March 5, 1934, the Board selected a President and empowered the Executive Committee to select a faculty for the new institution and to open it in September. The





SPENCER HALL ADMINISTRATION BUILDING

necessary arrangements were made and the college opened on September 17 with an enrollment of 385 students. On account of this heavy enrollment, additional members of the faculty were employed, so that now the college has a faculty of twenty-two officers and teachers.

The citizens of Brevard, under the leadership of Rev. Joseph H. West, pastor of the local Methodist Church, had obligated themselves to recondition one of the dormitories on the campus. For several months preceding the opening, a force of workmen had been busy in discharging this obligation. The property that formerly was useless was so thoroughly repaired and modernized that it became a suitable home for one hundred young women. As a fitting memorial to the untiring efforts of Mr. West, the board of trustees at a recent session named this building as the Joseph H. West Hall.

During the entire summer preceding the opening, definite efforts were made to bring the college to the attention of the public. Many conferences were held in different localities with interested young people and their parents. The ministers in the Western North Carolina Conference were active in giving publicity to the new insti-

tution and its advantages. Without this intelligent and loyal support, the successful opening of the college would not have been possible.

During the first week of the new college year a definite effort was made to acquaint the students with the ideals of the college. A special program, known as Freshman Week, was carried out. Students and teachers became acquainted, a regular routine was established, and by the end of the week the college was ready for a systematic program of activities.

Two ideas were uppermost in the minds of the founders of this institution. It was to be a church-related college, and therefore emphasis was to be placed on the development of Christian character. Also, provision was made whereby the principle of self-help should be made operative in the college. From the beginning, these two principles have been adhered to. Since the college had no definite traditions of its own, the administration was free to develop such standards as appeared to represent the highest conception of what a college should accomplish. Primary emphasis was therefore placed on sound scholarship. Within a period of nine months this ideal has been accepted by faculty and students alike.



WEST HALL—GIRLS' DORMITORY



TAYLOR HALL—BOYS' DORMITORY

An outstanding phase of the life in Brevard College has been the participation of the students in the management of the institution. Student activities have been organized and conducted by students under their own leadership. This fact is evidenced by four literary societies, eighteen student clubs, a definite program of religious activities, and efficient system of athletics, and a coöperative student council.

More than thirty members of the Weaver College student body were enrolled in Brevard College. These students have been active in promoting the ideals which for many years characterized the life of Weaver College. In the organization of literary societies, in the publication of *THE PERTELOTE*, and in developing a plan of student participation in the management of college affairs, these students have assumed the principal responsibility. By their energy, initiative, and good sense they have sought at all times to enlist the support of the student body in such projects as would make the life on the Brevard College campus what its sponsors desired it to be. Without the efforts of this body of students, the organization of student activities would have been greatly delayed.

Brevard College is a standard junior college and has been so recognized by various accrediting agencies. The North Carolina State Department of Education has accepted the institution and on this basis the college is a member of the North Carolina College Conference. Arrangement has been made whereby graduates of Brevard College will be accepted in practically all the institutions of higher rank in the state. Announcement has been made that the college will this summer operate a summer school as an integral part of the college year. A definite effort will be made to develop a type of institution suited to the needs of young people. The present situation indicates that the project will be a success.

EUGENE J. COLTRANE.

President of the College.



ROSS HALL—BOYS' DORMITORY

Board of Trustees

REV. H. C. SPRINKLE. <i>Chairman</i>	Lexington, N. C.
REV. C. M. PICKENS. <i>Vice-Chairman</i>	Winston-Salem, N. C.
H. B. KELLY. <i>Secretary-Treasurer</i>	Hendersonville, N. C.

TERM EXPIRES 1935

MRS. J. W. DOWNS	Nashville, Tenn.
H. B. KELLY	Hendersonville, N. C.
MRS. E. L. MCKEE	Sylva, N. C.
J. H. PICKELSEIMER	Brevard, N. C.
REV. A. W. PLYLER	Greensboro, N. C.
REV. J. H. WEST	Brevard, N. C.

TERM EXPIRES 1937

REV. PAUL HARDIN, JR.	Waynesville, N. C.
R. O. LINDSAY	High Point, N. C.
REV. JAMES B. McLARTY	Asheville, N. C.
J. C. SALES	Fletcher, N. C.
REV. H. C. SPRINKLE	Lexington, N. C.
GUY WEAVER	Asheville, N. C.

TERM EXPIRES 1939

W. H. BOBBITT	Charlotte, N. C.
REV. D. D. HOLT	Charlotte, N. C.
JAMES E. LAMBETH	Thomasville, N. C.
REV. C. H. MOSER	Hendersonville, N. C.
REV. C. M. PICKENS	Winston-Salem, N. C.
MRS. BESSIE GRAY PLUMLEY	Winston-Salem, N. C.

EXECUTIVE COMMITTEE

W. H. BOBBITT	REV. H. C. SPRINKLE, <i>Chairman</i>	
	H. B. KELLY	MRS. E. L. MCKEE
	EUGENE J. COLTRANE, <i>ex officio</i>	



The first year of Brevard College has been one of difficult experiences. It has likewise been a year of significant triumph. The actual opening of the college called for faith and courage. The same qualities have characterized faculty and students during the year. The achievements, however, have inspired all of us to continue the effort. We believe that great victories lie ahead of us.

Soon after my election as president, a prominent educator of the state wrote me that it takes both students and money to make a college. At that time we did not know that it would be possible to have a student body of more than four hundred eager and ambitious young men and young women. At the present time we do not know that it will be possible to secure the necessary funds to make the college the kind of institution it ought to become. We shall approach this problem in the belief that our friends will provide the money that will be necessary. Our students are our best emissaries.

Eugene J. Coltrane



Faculty



C. H. TROWBRIDGE, *Dean*
Science
Harvard University, A.B.; A.M.



JOHN A. CARLISLE
Associate Administrative Officer
Berea, 1932



MRS. LOULA M. PANGLE
Mathematics
Randolph-Macon Woman's College, A.B.; Columbia
University, A.M.



MISS LUCILE SMITH, *Dean of Women*
English and Dramatics
Georgia State College for Women, A.B.; University
of Georgia, A.M.



J. WESLEY WILLIAMS, *Dean of Men*
Mathematics and Physics
Duke University, A.B.; Georgia School of Tech-
nology, B.S.



Faculty

MRS. ERNA PEDERSON TRAMMELL

Latin, German, and Greek

University of Wisconsin. A.B., A.M.; University of Michigan. Ph.D.



MRS. ISABEL DOUB COLTRANE

English

Flora Macdonald College. B.L.; Duke University. A.M.



CORNELIUS O. CATHEY

History and Government

Davidson College. A.B., A.M.



JACK STYLES DENDY

Biology

Presbyterian College. B.S.; University of North Carolina. M.A.



MAXWELL G. PANGLE

Economics and Sociology

Emory and Henry College. A.B.; University of North Carolina. A.M.



Faculty



MISS DULCIE HAYES

French and Spanish

University of Illinois, A.B., A.M.



MISS ELEANOR GOODHUE TROWBRIDGE

French and Prep School Departments

Weaver College; Greensboro College; Duke University, A.B.



MISS RUTH RICH

English and Expression

Lenoir Rhyne College, A.B.



MISS MERLIE SIZEMORE

Home Economics, and Dietitian

Guilford College, B.S.



MISS EARLEEN LEHMANN POINDEXTER

Head of Commercial Department

Eastman Gains Business College; Strayer Business College; George Washington University.



Faculty

MISS EDDIE GLADYS FEWELL

Commercial Department

Murray State Teachers College. A.B.; Union University; Bowling Green College of Commerce.



REMBERT DURBIN MCNEER

Religious Education

Randolph-Macon College. A.B.; Emory University. B.D.



MISS FRANCES DELLA SHORE

Librarian

Guilford College. B.S.; University of North Carolina. B.L.S.



HOMER KINDALL COMPTON

Voice

University of Nebraska. B.M.; Private Study with David Bisphom, William Shakespeare, Percy Rector Stephens, Richard Hageman, Franz Proschowski.



MRS. HOMER K. COMPTON

Assistant in Voice Department



Faculty



BENJAMIN D. FRANKLIN

*Director of Student Labor
Mathematics*

University of North Carolina, A.B.; Columbia University, A.M.



DANIEL S. TRAMMELL

*Director of Music Department
Piano and Theoretical Music*

Chase Conservatory of Music, B.M.; Private work with Ernest Hutcheson, Florence Brinkman, Edwin Hughes, Cecil de Hovarth, Paul Stoye, Adolph Broune, and Franz Kuschan.



RALPH E. JAMES

*Director of Physical Education
Coach of Athletics*

Wake Forest College.



MRS. CORNELIUS O. CATHEY

Manager of Book Room



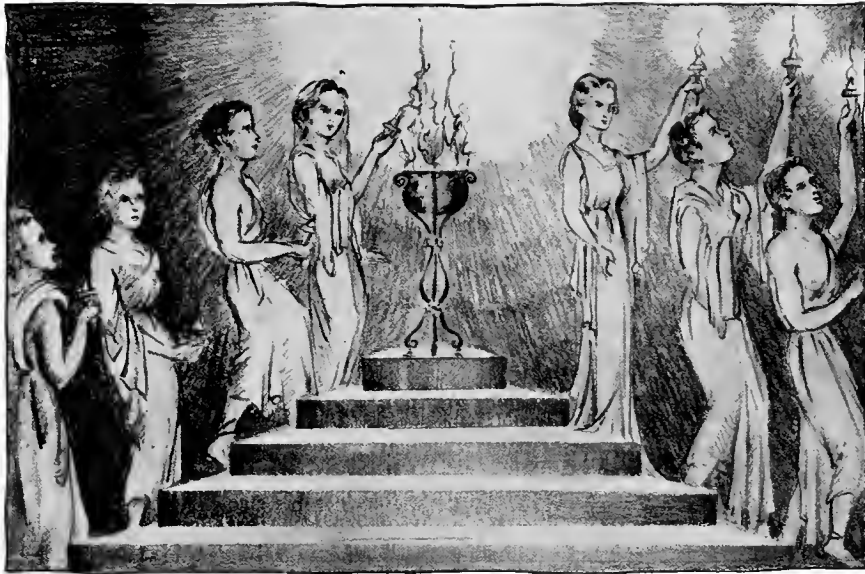
MRS. FANNIE H. E. ROSS

Bursar

MISS MERTISE BALLARD

Assistant Dietitian



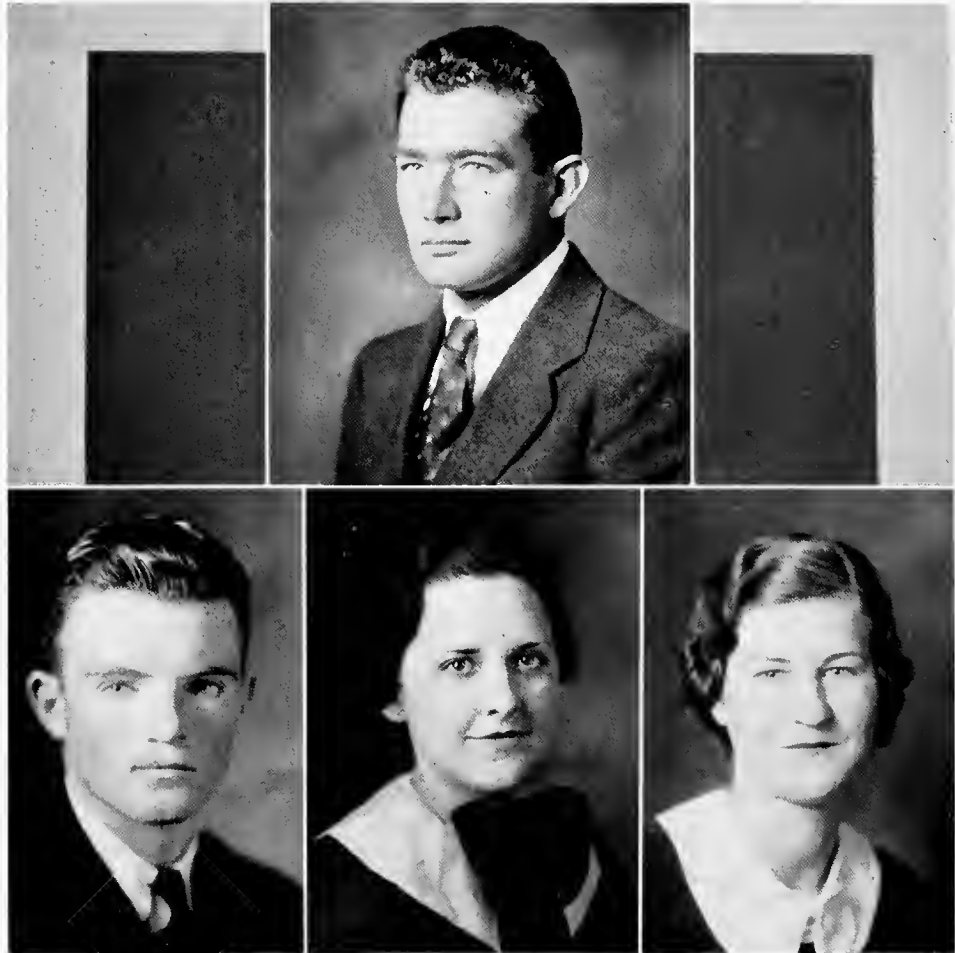


CLASSES





SOPHOMORES



Sophomore Class Officers

HOWARD SITTON *President*

JAMES PROFFIT *Vice-President*

CATHERINE CARPENTER *Secretary*

ALEANE RUTHERFORD *Treasurer*





JUANITA AVETT
NORWOOD, N. C.

*"You'll always find her true and just,
A girl whom all will love and trust."*

Mnemosynean, President; Student Council; International Relations Club; Dramatic Club; A Capello Choir, Secretary.

Take executive ability, brains, and an attractive personality; then add a sunny disposition and an even temperament, and you may have some idea of what Nita is like. A bit of the Puritan, a dash of the madcap, the gracious charm of Southern girlhood—that's Nita.



DAVID A. BOYD
WAYNESVILLE, N. C.

*"Admired by all who know him well,
But he gets into mischief too often to tell."*

Clisophic, Chaplain; Photography and Nature Club.

Every class has to have a monkey, so that justifies "Monkey" Boyd's existence. He is into everything with twinkling eyes and a flippant remark. He is a great social success and even now he enjoys the special favor of his "King."



BERNICE CALLAHAN

*"We leave thy praises unexpressed,
We leave thy greatness to be guessed."*

Mnemosynean.

An amiable fellow student who, though she didn't join us until after Christmas, has become one of our most popular co-eds. She possesses poise and grace, and will be one of our loveliest memories.



CATHERINE CARPENTER
CHERRYVILLE, N. C.

*"None knew her but to love her,
None named her but to praise."*

Mnemosyneans, President; Student Council;
Sophomore Class. Secretary; Annual Staff; A Ca-
pello Choir.

It would take a poet's pen to sing the praise
due to Cat. Her sunny smile, gay friendliness, and
staunch loyalty win all hearts. She deserves the
best, cut on a "Patton" from Swannanoa.



HAROLD L. CROOKS
CONCORD, N. C.

*"Tho' modest, on his unembarrassed brow
Nature has written 'Gentleman'."*

Delphian; Dramatic Club.

The library wouldn't be a library—at least it
wouldn't be a good library if it weren't for Harold
Crooks. His lanky frame, dependability, and ag-
gressiveness have made him what he is today. (Jack
of all trades.)



EMMA MARION DEAVOR
BREVARD, N. C.

*"She was made of happy thoughts
And full of wit and laughter."*

Mnemosynean; Authors' Club; Photography
and Nature Club; Day Students' Club; Annual
Staff; Episcopal Club.

The personality of a real girl can not be learned
through mere words; you must know her your-
self. Emma is a real girl, fond of athletics. She
is original and clever, radiating energy, pep, and
enthusiasm. In fact, she is a girl after our hearts,
and the only way we can express it is to say
she's the berries!





CAROLYN VIRGINIA FINK
CONCORD, N. C.

*"And still they gazed, and still their wonder grew,
That one small head could carry all she knew."*

Mnemosynean.

Brains and more brains! Making A's is a habit with Virginia—and she doesn't even think it is a thing unusual. Her quiet friendliness and steady dependability wins our admiration.



ELLIS E. FRADY
LEXINGTON, N. C.

*"He may be rough, and he may be tough,
But still we all think he's the stuff."*

Delphian: Debating Club; Radio Club.

His nick-name, "Roughhouse," might indicate that he is not a gentleman, but he is one of the finest men in our class. He is a deep thinker and weighs his thoughts as well as his words.

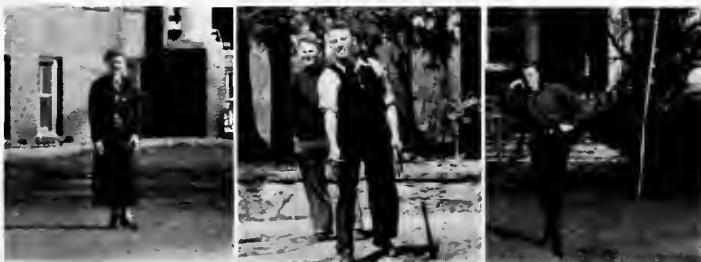


ELMO WESLEY GHORMLEY
ROBBINSVILLE, N. C.

*"When Duty whispers low, 'Thou must,'
The youth replies, 'I can'."*

Delphian: International Relations Club. President; House of David Club. Secretary; Ross Hall Etiquette Club. President; Ross Hall Council; Garden Club.

Initiative, courtesy, and strength of character will make Elmo a leader of men. He knows when to assume and when to lay aside his dignity. We predict for him an honored, useful life.

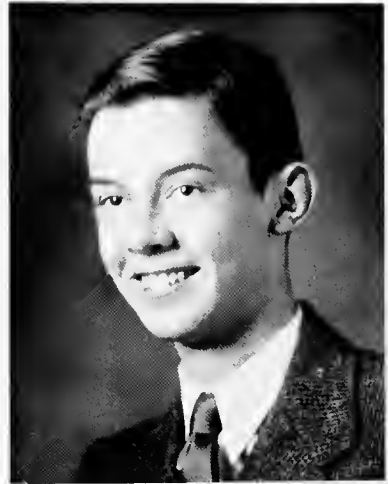


JOSEPH GOODIN
BURNSVILLE, N. C.

*"Full of laughter, full of pep,
Never quiet—that's his rep."*

Delphian, Vice-President; Dramatic Club, President; Annual Staff; Cheer Leader.

Hands flapping, tongue wagging, eyes flashing, ears flopping—that's "Bubber." We salute a boy with a pronounced sense of humor and the ability to make and keep friends. We would hesitate to say what our class would be without our "Bubber."



FRANCES LYTTON GREEN
SHELBY, N. C.

*"Rare compound of quality, noble and true,
With plenty of sense and good humor, too."*

Mnemosynean; Photography and Nature Club; Day Students' Club; Baptist Club.

The microscope isn't necessary to show that this pretty maid knows a thing or two. Modest, sweet, and friendly, we have found her; a genial companion admired and loved by all because of her qualities of character and scholarship.



JOHN H. GREENE
LEICESTER, N. C.

*"Love many, trust few,
But always paddle
Your own canoe."*

Delphian.

This tall, stately personage is a well-known and well-liked member of our class. He is rather reserved, but to know him is to like him. John is not a mere ladies' man, but is a desirable participant in all social affairs.





WOODROW P. GRIFFIN
HENDERSONVILLE, N. C.

*"One who never turns his back,
But marches chest forward."*

*Clio. President; Co-Captain Football Team; Basketball; Baseball; Monogram Club; Ross Hall Council; Baptist Club; Debating Club.

Don't we all stand in awe of those mighty three-letter athletes? The captain of the football team must necessarily be a man of strength and force. These qualities combined with those of leadership and the ability to make friends have made Woody one of our outstanding members.



IRENE HARRILL

"To be most useful is the greatest virtue."

Mnemosynean; Photography and Nature Club; Romance Language Club.

Perseverance and dependability are her outstanding traits. She is always at hand when there's anything to be done. Irene will be remembered for her calmness and deliberation in speech as well as in walk.



PERCY CAESAR HARRIS
THOMASVILLE, N. C.

*"Ever ready for the comical
Yet with purpose intent."*

Delphian; Censor; International Relations Club; Debating Club.

One of the most attractive nuts we've ever met, but he can come back to earth when called. He is a droll mimic, but his humor is always kindly. His unique actions and unusual personality assure him a welcome anywhere.



MARY FRANCES HEFNER
WINGATE, N. C.

*"Here's to the girl with the heart and smile
Who makes the bubble of life worth while."*

Euterpean; Debating Club; Dramatic Club.

Pretty and gay, talking and laughing is our stylish classmate of whose appearance we are always proud. She possesses that little something which appeals to men, and which has made her one of our most popular co-eds.



JAMES PINICKNEY HORNBUCKLE, JR.
CONCORD, N. C.

*"Never trouble trouble
Till trouble troubles you."*

Clio; Ministerial Association. Vice-President; Debating Club.

With us there will always linger pleasant memories of this affable, talkative classmate. He greets you with a contagious grin and a cheerful word. The fact that he is companionable and has acute mental faculties has kept him in the vanguard of our class.



GUY H. HOWELL
CHERRYVILLE, N. C.

"In soul sincere, in action faithful, in honor clear."

Clio, Secretary; Editor-in-Chief Annual; Chairman Boys' Mid-Week Service Committee; Debating Club; International Relations Club; Archeological Club.

Guy is a leader and has carried burdens this year like a real man. He is a versatile chap, and has gained laurels as a speaker and amateur artist. He has worked hard in coöperation with his friends and teachers, and to put it plainly, it just wouldn't be a college without Guy.





JACK RICHARD HOWIE
MONROE, N. C.

*"A little bit of knowledge plus a large amount
of bluff
Make all the teachers think I know my stuff."*

Delphian; International Relations Club; Photography and Nature Club; A Capello Choir.

Look the college over and you will hardly find a person who is more generally liked by the student body because of his loyalty, congeniality, and heartiness. We're betting on you, Richard, with your pep and enthusiasm.



JAMES HAROLD LINER
HILLSBORO, N. C.

*"A man he seems of cheerful yesterdays and
confident tomorrows."*

Delphian; Dramatic Club.

Harold is a fellow with the determination which will win in any fight. His magnetic attraction, which draws everyone toward him, has made him one of the friendliest students in school. It is only right that Harold get the best out of life, because he has played his best with us.



ALBERT REED LAMBERT
GREENSBORO, N. C.

*"In every rank, or great or small:
'Tis industry supports us all."*

Delphian.

Pleasant, modest, and rather bashful, Reed has not pushed himself forward, but we who know him recognize his worth. He is a good student whose conscientious work and mental ability will surely win success.



SAMUEL FORD MILLER

*"Describe him who can, an abridgement of all that
is pleasant in man."*

Clio: Photography and Nature Club: A Capello Choir.

Ford is handsome, good-natured, and studious; he, therefore, pleases the girls, the boys, and his teachers. He does everything in moderation, and does it well. It will not take a prophet to foretell his success.



CAROLYN DOUGLASS MUNROE
COLUMBUS, GA.

*"It is better to wear out in mischief
Than to rust out in being solemn."*

Mnemosynean. Vice-President: Presbyterian Club, President; Reading Club; Photography and Nature Club.

Jolly, laughing, careless—her days are always sunny both for herself and others. She has a talent for art and a genius for mischief. There is no peace with her and no fun without her; moreover she is from Georgia!!



EMILY FERGUSON PALMER
CLYDE, N. C.

*"True and sincere, loyal and kind,
Another just like her you'll never find."*

Euterpean. Secretary and Treasurer: Annual Staff; Photography and Nature Club. Secretary and Treasurer.

A thoroughly good-natured girl who tips the scales of intellectuality and fine fellowship. Not only a good student but a good citizen who overflows with college spirit and willingness to contribute her full share of energy and accept her full share of responsibility.





RILEY PALMER

CLYDE, N. C.

*"The man who wins is the man who works,
The man who toils while the next man shirks."*

Clio, President, Secretary; Photography and Nature Club; International Relations Club.

Palmer, the man that brings all the girls and boys their sugar reports, is one sincere fellow. Besides playing Santa to us, Riley studies hard, and always wears a million-dollar smile.



WOODROW WILSON PATTON

SWANNANOA, N. C.

*"Take the lemon Fate gives you
And start a lemonade stand."*

Delphian, Secretary; Taylor Hall Council; Archeological Club; Basketball; Baseball.

Woody is first of all an optimist. He is original, possessing an abundant endowment of wit. Whoever is fortunate enough to be associated with him in life will find him a cheerful and loyal comrade.



RUTH ADELAIDE PICKELSIMER

BREVARD, N. C.

*"Personality is the thing that towers
Over everything else in the world."*

Mnemosynean, Secretary; Annual Staff; A Capello Choir; Authors' Club.

One in whom the arts of self-control and clear thinking are highly developed. Industry, wit, and cheerfulness are some of the treasures of this rich classmate. "Pick" is an all-round girl. What more can be said of her?

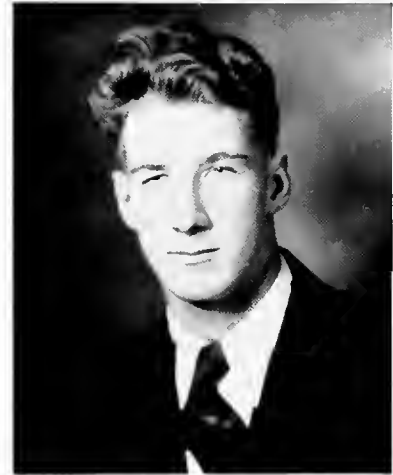


GEORGE WILLIAM PRENTICE
CLEVELAND, OHIO

"Consider the postage stamps—its power to get there consists in its ability to stick."

Clisophic; Assistant Dean, Ross Hall.

"Papa George" can be trusted on any and all occasions; he is on the job till the task is finished. His ability on the football field, and his close attention to his duties as Assistant Dean of Ross Hall have won the respect of all those who know him.



JAMES PROFFITT
BALD CREEK, N. C.

"Success is his who says little, hears much, and thinks deeply."

Delphian, President; Monogram Club, President; Senior Class, Vice-President; Student Council; Taylor Hall Council; Co-Captain Football Team; Basketball; Baseball; Photography and Nature Club.

His manliness, his forceful personality, and his modest demeanor make up a formula with but one result, a man. Here's to "Big Man," the personification of strength and speed in athletic conflict, the loyal comrade in the walks of friendship.



MARGARET HAMPTON PROFFITT
BURNSVILLE, N. C.

"Lovable, kindly, gracious, and sweet. She is a dear from her head to her feet."

Euterpean, President; Dramatic Club.

"Baby Margie" is so lovable and so wistfully sweet that everyone longs to protect her from the thorns of life. One of those rare persons who is always doing things for you and then forgetting the service they have rendered.





MARY VANCE PROFFITT
BURNSVILLE, N. C.

*"To worry little, to study less,
Is my idea of happiness."*

Euterpean; Dramatic Club; Home Economics Club; Glee Club.

Gay and happy-go-lucky, careless and nonchalant, "Why worry?" asks Mary Vance. "You aren't ever going to get out of life alive anyway." There is just a wee bit of Mary Vance, but she occupies a large place in our hearts.



DAVIS BOONE ROGERS
CLYDE, N. C.

*"Sense, sincerity, simplicity—
The three graces of a gentleman."*

Clio, Chaplain; Y. M. C. A., Chaplain; Ministerial Association, President; Photography and Nature Club.

Upright, straightforward, and prepossessing alike in physical and mental characteristics, and withal a man of infinite resource and sagacity. Davis creates a favorable impression in whatever circle he may move, and steadily wins friends among the faculty and students.

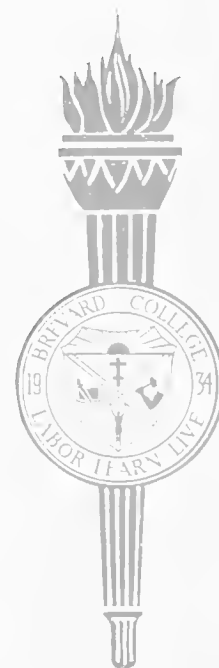


ALEANE RUTHERFORD
CANDLER, N. C.

*"A maiden all who saw admired,
Courteous tho' coy, and gentle tho' retired."*

Euterpean, President; Glee Club; Dramatic Club; Sophomore Class, Treasurer.

An original cut-up whose personality is a delightful mixture of fun and dignity. Her thoughtfulness and kindness to others have won for her an enviable reputation among her friends, who are numerous.



IRIS EULETA SILVER
HORSE SHOE, N. C.

"Determination is the master key to success."

Day Students' Club.

Sunshine, rain, nor snow, calm nor storm, stress of circumstances nor strain of conditions—none of these daunt Iris in her grim determination to reach Brevard College at 8:25 each morning. As a student she is diligent, as a friend loyal and warm-hearted.

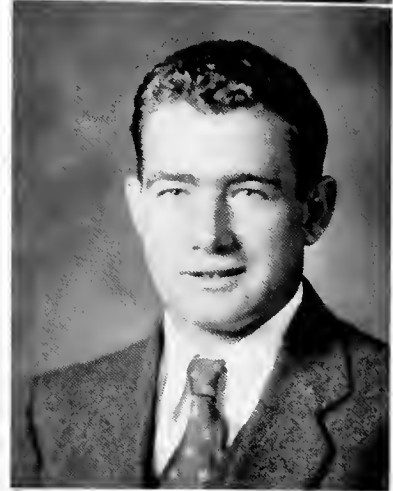


HOWARD SITTON
HORSE SHOE, N. C.

*"When a task is set that the rest can't do
He buckles down till he puts it through."*

Philosophic, Vice-President; Sophomore Class, President; Athletic Association, Secretary and Treasurer; Football; Annual Staff; Photography and Nature Club, President.

He meets difficulties with courage and a twinkle in his blue eyes; he never dodges an issue, never shirks his duty. He is a diligent student and an athlete of prowess. Here's to Buck, our president and all-state tackle of '34.



CATHERINE LOUISE SPAULDING
ASHEVILLE, N. C.

*"For O! Eternity is too short to utter all
thy praise."*

Mnemosynean; Home Economics Club; Photography and Nature Club.

Under a serious and rather dignified mein she hides a merry spirit and gay heart. She is an ideal companion for thoughtful hours or idle moments.





W. L. STAPLES
MARIETTA, GA.

*"Am I not rich? A millionaire no less,
If wealth be told in terms of happiness."*

Cliosophic; Day Students' Club.

W. L. has endeared himself to his friends by his numberless virtues and even by his few faults. He is one of the most accommodating persons alive, ready and willing to do anything for another at any time, any place. Hats off to a boy with a happy smile and an amiable disposition!



RALEIGH THOMAS WALDROP
BREVARD, N. C.

*"A man who consecrates his hours
By vigorous efforts and honest aims."*

Delphian; Day Students' Club.

Raleigh is one of the day students of our class, and hence we are not as familiar with him as we should like to be. He is a student who seemingly does his best, and so life must hold lots of good things for him.



ALFRED MARCUS WHITE
ROSMAN, N. C.

"Music has powers to soothe the savage breast."

A Capello Choir, President; Fine Arts Club; German Club; Day Students' Club.

An amicable chap who has made many friends on the campus because of his congeniality. A man who slowly won a place in the student body. His aspirations to be an accomplished musician will surely materialize. He fairly lives, breathes, and thinks in terms of music. He's plenty good now; think what he will be in the future!



ROBERT WEAVER
MURPHY, N. C.

*"Those who await no gift from Chance
have conquered Fate."*

Clisophic; Debating Club; International Relations Club.

Robert can be trusted on any and all occasions. He is always on the job and will see it through. His pluck, grit, and industry, coupled with his sense of fair play, guarantee him success in this large world.



HARRY EUGENE WHISENHUNT
WAYNESVILLE, N. C.

"True blue sport, happy boy, confident man!"

Delphian, President; Photography and Nature Club; Student Council; Taylor Hall Council; Monogram Club; Football; Basketball Team, Captain; Baseball.

Harry's popularity is based on his sterling character and genuine ability. He never advertises himself, but he has the goods "all wool and a yard wide." He loves fun but is thoughtful; he is unassuming but forceful. Brevard College is proud to send into the world a man like Harry Whisenhunt.

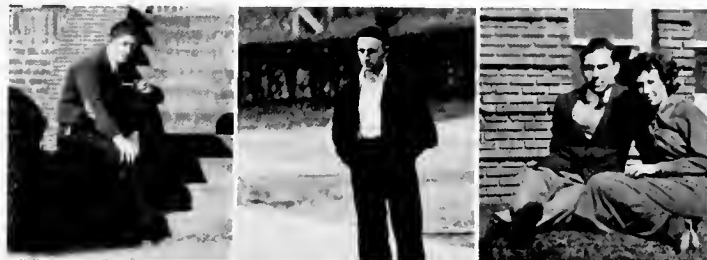


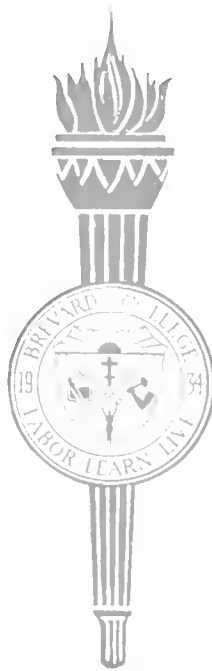
JACK H. WILDEY
ASHEVILLE, N. C.

*"For even though vanquished, he could
argue still."*

Student Body, President; Clisophic, Critic and Censor; Debating Club; International Relations Club; Annual Staff.

Active in athletics, keen in argument, earnest in pursuit of knowledge, cooperative in spirit, fair in his dealings with others. Jack is an outstanding man on the campus. Whatever he is, he will never be mediocre. He thinks fearlessly and is unafraid to express his thoughts.





FRESHMEN



Freshman Class Officers

JAMES WEBB *President*

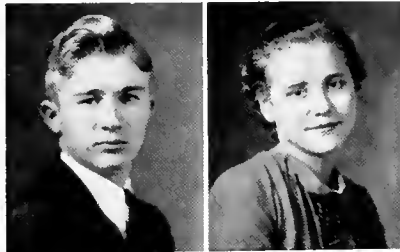
TOM CAMPBELL *Vice-President*

RENA MORGAN *Secretary*

EUNICE ARNOLD *Treasurer*

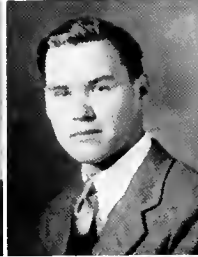


ROBERT ABERNATHY
VALE, N. C.
Delphian



DORA A. AIKEN
BREVARD, N. C.

LIONEL AIKEN
BREVARD, N. C.
Delphian



JOSEPH A. ALLEN
GASTONIA, N. C.
Clisophic

JOHN MACK ALLISON
BREVARD, N. C.
De'phian



FRANCES ANDREWS
TUXEDO, N. C.
Euterpean

EUNICE L. ARNOLD
LEXINGTON, N. C.
Mnemosynean



DAVID CHARLES ASHWORTH
BREVARD, N. C.
De'phian

WALTER CARMON ASHWORTH
BREVARD, N. C.
Delphian



HELEN B. AVETT
CORNELIUS, N. C.
Mnemosynean

IRA M. BALDWIN
EDNEYVILLE, N. C.
Clisophic



JOE HAROLD BALLARD
EDNEYVILLE, N. C.
Clisophic





YATES BARNETT
LANDRUM, S. C.
De'phian

GEORGE S. BARNWELL
MEBANE, N. C.
Cliosopic

STEWART GORDON BARBOUR
SALUDA, N. C.
Cliosopic

EDITH G. BEARD
CHARLOTTE, N. C.
Mnemosunean

EDWARD HELSABECK BEASON
WINSTON-SALEM, N. C.
De'phian

GEORGE ROBERT BELL
REIDSVILLE, N. C.
Cliosopic

JOHN RUSSELL BOSTIC
BRYSON CITY, N. C.
De'phian

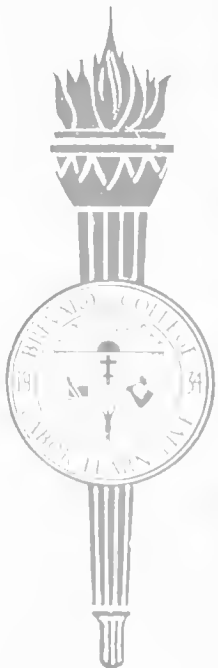
SARAH MILDRED BOWMAN
KERNERSVILLE, N. C.
Mnemosynean

EMMA LOU BRAMLETTE
TAYLORS, S. C.
Euterpean

JAMES ROBERT BRASWELL
STANDFIELD, N. C.
Cliosopic

PAULA MAVIS BRIGGS
FLETCHER, N. C.
Euterpean

PHILLIPS BROOKS
LEXINGTON, N. C.
Delphian



FRED MCKINLEY BROWN
SALISBURY, N. C.

Cliosopic

GERTRUDE BROWN
GRANITE QUARRY, N. C.

Mnemosynean

MARSHAL HOKE BROWN
LINCOLN, N. C.

Cliosopic

KATHERINE ELIZABETH BROWN
BLACK MOUNTAIN, N. C.

Euterpean

MILDRED V. BUNDY
JAMESTOWN, N. C.

Mnemosynean

JOHN R. BURTON, JR.
BURNSVILLE, N. C.

Delphian

ELAINE CALL
MOCKSVILLE, N. C.

Euterpean

PAUL McLAUGHLIN CAMPBELL
CHARLOTTE, N. C.

Delphian

TOM LEROY CAMPBELL, JR.
ASHEVILLE, N. C.

Delphian

NANCY VIRGINIA CANSLER
PISGAH FOREST, N. C.

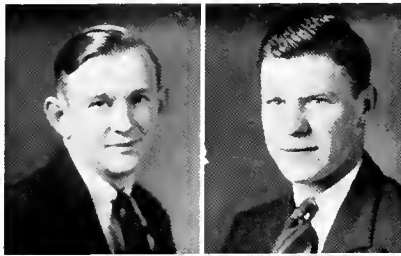
JAMES EDWIN CARLISLE
BOSTIC, N. C.

Delphian

JOHN ST. CLAIR CARSON
MILLS RIVER, N. C.

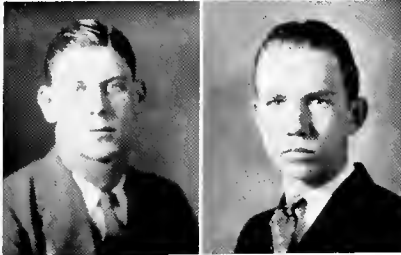
Cliosopic





CHARLES CHERRY
HAYESVILLE, N. C.
Delphian

EDWARD CLAYTON
BREVARD, N. C.
Delphian



WALTER SHIELDS CLAYTON
BREVARD, N. C.
Delphian

JOFFRE L. COE
GREENSBORO, N. C.
Clisophic



ETHEL KATHERINE COFFEY
GASTONIA, N. C.
Eutepan

RUTH LOIS COLTRANE
TRINITY, N. C.
Mnemosynean



RUTH JANE CREASMAN
TRYON, N. C.
Mnemosynean

ELLEN JEAN CUFF
BREVARD, N. C.



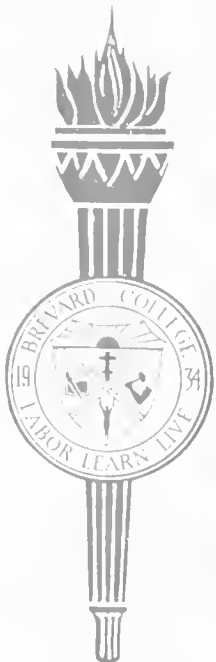
BAIN LAMAR CURTIS
CHARLOTTE, N. C.
Delphian

T. K. DARROUGH, JR.
ASHEVILLE, N. C.
Delphian



WILLIAM HAROLD DAVIS
BADIN, N. C.
Clisophic

HAROLD DAVIS
HORSESHOE, N. C.
Clisophic



CHARLES WILLIAM DEAL
CONOVER, N. C.

Cliosopic

JAMES PATTON DEAVOR
BREVARD, N. C.

GLEN DILLARD
HORSESHOE, N. C.

Cliosopic

HELEN F. DILLARD
HORSESHOE, N. C.

JOE ROBERT DIXON
FALLSTON, N. C.

Delphian

EDWARD MAURICE DIXON
MEBANE, N. C.

Delphian

FLOYD A. DUNCAN
LINCOLN, N. C.

Cliosopic

LUCILLE DUNCAN
HENDERSONVILLE, N. C.

Euterpean

CAROLYN EARGLE
CHARLOTTE, N. C.

Mnemosynean

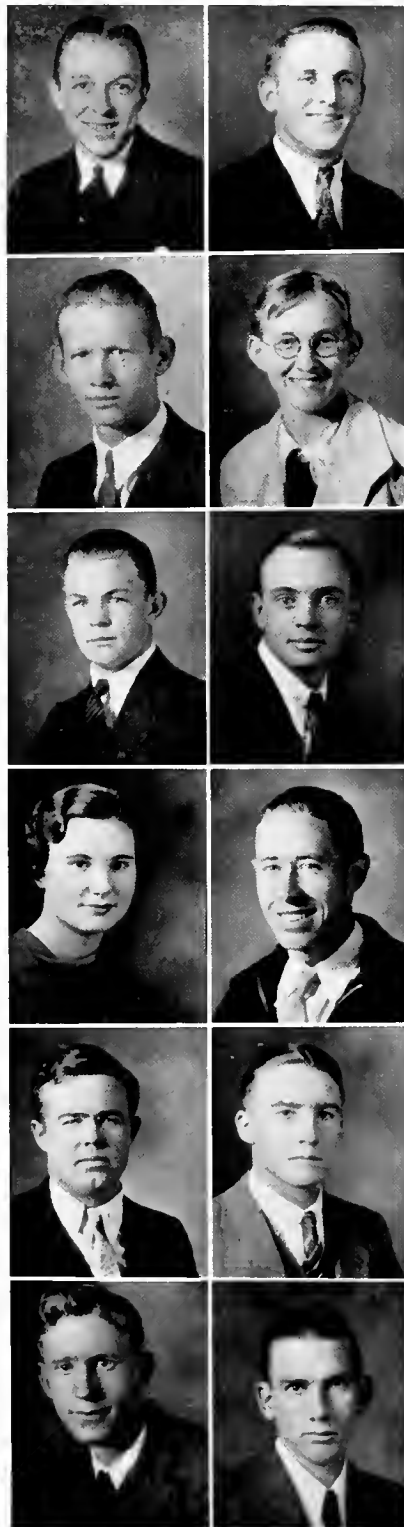
EDWIN R. ECKERD, JR.
PISGAH FOREST, N. C.

CHARLES DOYLE EDMUNSON
PISGAH FOREST, N. C.

CECIL BOLICK EDWARDS
HIGHLANDS, N. C.

De'phian





RALPH ELDRIDGE
ROSMAN, N. C.

Delphian

ERNEST CLIFTON ELLIOTT
LONG ISLAND, N. C.

Cliosophic

BARTON R. FARTHING
SUGAR GROVE, N. C.

Cliosophic

DELIA MADELINE FARTHING
SUGAR GROVE, N. C.

BILL JACK FERGUSON
SPRING CREEK, N. C.

Cliosophic

GEORGE THOMAS FERGUSON
SPRING CREEK, N. C.

Cliosophic

WYLMA RUTH FERGUSON
ASHEVILLE, N. C.

Euterpear

JAMES WASHINGTON FISHER
ROSMAN, N. C.

FRED CAMERON FLAKE
WADESBORO, N. C.

WILSON ALEXANDER FORBES
GASTONIA, N. C.

EARL FOWLER
HENDERSON, N. C.

OTHO H. FOWLER
MILL SPRINGS, N. C.

Cliosophic



ARNEY C. FOX
BURNSVILLE, N. C.
Delphian

BAXTER G. FRANKLIN, JR.
SPEAR, N. C.
Cliosopic

ELMA EUGENIA FREEMAN
WINSTON-SALEM, N. C.
Euterpean

ELLISON FUNDERBURK
MATTHEWS, N. C.
Delphian

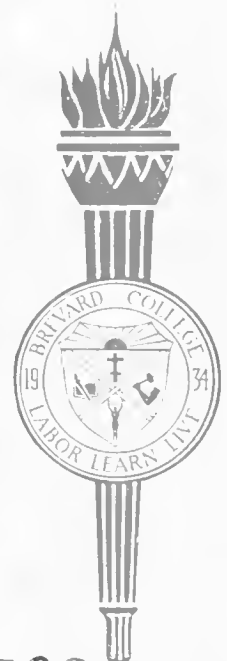
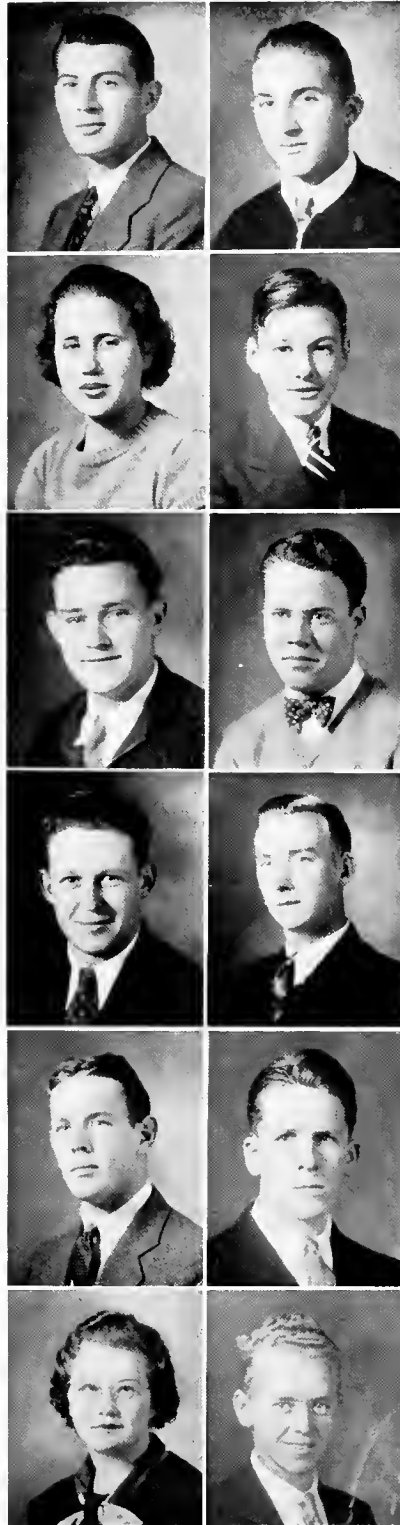
RALPH GALLOWAY
BALSAM GROVE, N. C.
RALPH MORGAN GALLOWAY
BREVARD, N. C.

CHARLES J. GARREN
ARDEN, N. C.
Cliosopic

JAMES GANTT
LAWDALE, N. C.
Delphian

CLARENCE P. GASTON
ASHEVILLE, N. C.
JAMES ULRICH GIBBS, JR.
WHITTIER, N. C.
Delphian

LILA ELIZABETH GILLESPIE
BREVARD, N. C.
CHARLES GLAZNER
ROSMAN, N. C.





FRANCES ANNA BELLE GOFORTH
KINGS MOUNTAIN, N. C.

Mnemosynean



ETHELEEN GOODNIGHT
MT. ULLA, N. C.

NAN GOODNIGHT
MT. ULLA, N. C.

Mnemosynean

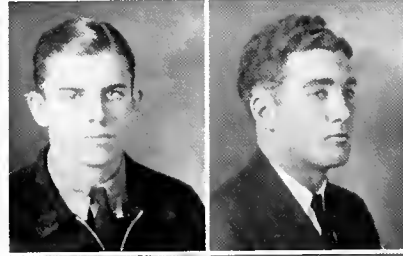


THOMAS MARQUIS GRAHAM
FERNANDINA, FLA.

Cliosopic

ROBERT ELMORE GRANT
GERTON, N. C.

CAROLINE MARTHA GRAY
BREVARD, N. C.



ROBERT GRAVELY
BREVARD, N. C.

DAVID S. GRAY, JR.
BREVARD, N. C.



MARY ALICE GREEN
LEICESTER, N. C.

Mnemosynean

DAVID RAWLINGS GREEN
CHARLOTTE, N. C.

Delphian



RICHARD HOLT GRIMSHAWE
BREVARD, N. C.

WALTER P. GROCE
HIGH POINT, N. C.

Cliosopic



HELEN RAE HALL
BREVARD, N. C.

MARTHA ELIZABETH HARDIN
CHARLOTTE, N. C.
Euterpean

ROBERT HILL HARDISTER
BADIN, N. C.
Delphian

CLAUD W. HARMON
LEXINGTON, N. C.
Delphian

WARREN EVERETTE HARRELSON
GASTONIA, N. C.
Delphian

WILLIAM HOYLE HART
DERITA, N. C.
Delphian

HARRY L. HAWKINS
ASHEVILLE, N. C.
Delphian

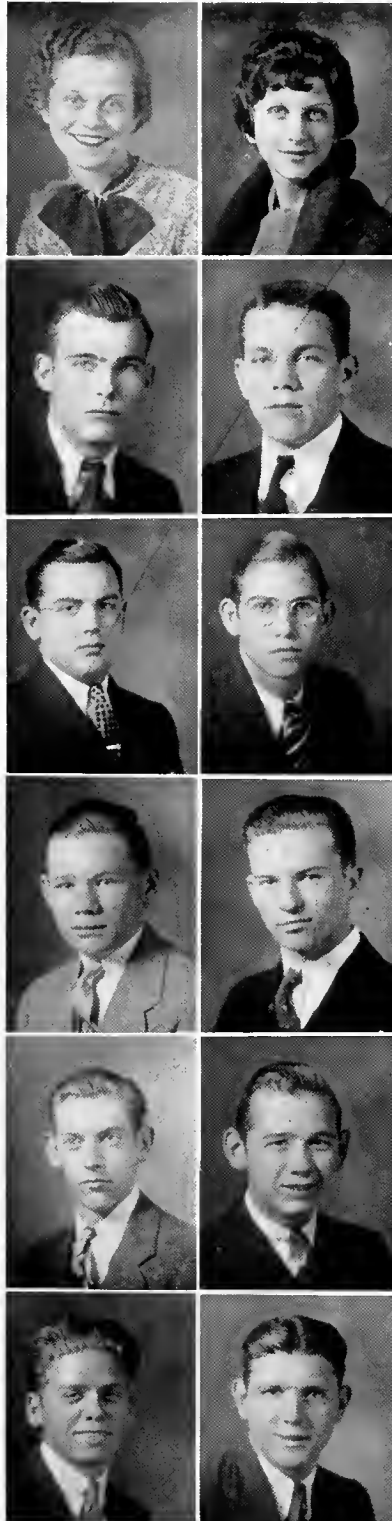
CHARLES F. HARRISON
DENVER, N. C.
Delphian

LOUIE VAN BUREN HARRISON
DENVER, N. C.
Delphian

FRANK WILLIAM HEFFNER
MAIDEN, N. C.
Cliosopic

BOYCE ALEXANDER HELMS
CHARLOTTE, N. C.
Cliosopic

WILLIAM MARTIN HECKARD
HENRIETTA, N. C.
Delphian





RUTH HENSON
GASTONIA, N. C.
Mnemosynean



CARL HEPLER
THOMASVILLE, N. C.



EDNA MAE HINES
CAMPOBELLO, S. C.
Mnemosynean



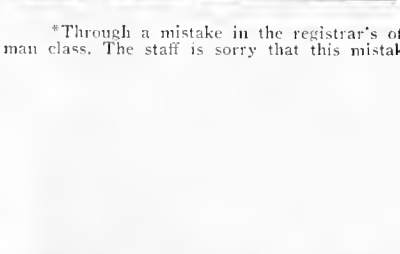
ALVA LEE HOLLINGSWORTH
ROBERTSTOWN, GA.
Euterpean



LUCILLE HONEYCUTT
HENDERSONVILLE, N. C.
Mnemosynean



JOE BOYER HORNBUCKLE
CONCORD, N. C.
Cliosopic



GUY ARTHUR HOVIS
ROSMAN, N. C.



JOHN HOYLE
SHELBY, N. C.
Cliosopic

RUBY NADALIAH HUGGINS
TUXEDO, N. C.

T. B. HUNEYCUTT, JR.*
NEBO, N. C.
Delphian

CHARLES JEROME HUNEYCUTT
CHARLOTTE, N. C.
Delphian

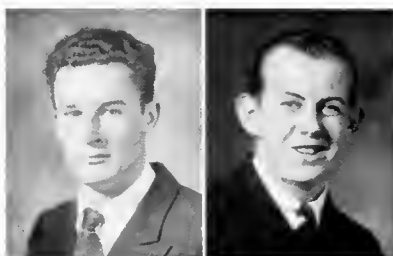
ED HUTCHINS
BURNSVILLE, N. C.
Cliosopic



*Through a mistake in the registrar's office, T. B. Huneycutt's picture was placed in the freshman class. The staff is sorry that this mistake was made, as he is rated as a sophomore.

ARCHIE McCANSLAND HYATT
WINDOM, N. C.

CHARLES HANNIBAL HYATT
MURPHY, N. C.



FRANK ISRAEL
BREVARD, N. C.

FRANCES ROBERTS JENKINS
BREVARD, N. C.



ANNIE LOUISE JENKINS
PARMELE, N. C.

Euterpean

BURTON CORNELIUS JESSUP
GUILFORD COLLEGE, N. C.

Delphian

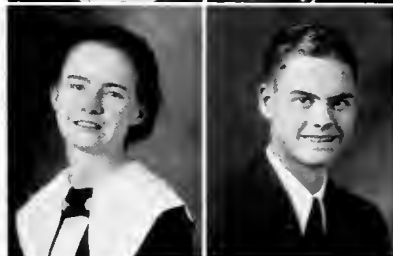


OLA MAY JOHNSON
FOREST CITY, N. C.

Euterpean

ROBERT FLOYD JOLLEY
MILLS SPRINGS, N. C.

Delphian



WATSON HOKE JONAS
VALE, N. C.

Cliosopic

HENRY CARLISLE JONES, JR.
FAIRFIELD, N. C.

Delphian



EMILY JOSEPHINE JONES
SKYLAND, N. C.

Euterpean

QUEEN JUSTICE
WAYNESVILLE, N. C.

Euterpean





ETHEL MADELINE KERR
CHARLOTTE, N. C.

Euterpean

MATT RICHARDSON KETNER
MAGGIE, N. C.



RICHARD EVERETTE KIBLER
MORVEN, N. C.

Delphian

SARA LOU KIGER
MOUNT AIRY, N. C.

Mnemosynean



ALBERT T. KILPATRICK
BREVARD, N. C.

SARA KING
WINSTON-SALEM, N. C.

Euterpean



MITCHELL JOLLEY KING
BREVARD, N. C.

Delphian

VIRGINIA L. KING
BURNSVILLE, N. C.

Euterpean



MARY KINNEY
LIMESTONE, N. Y.

HOUSTON W. KITCHIN
HORSESHOE, N. C.



VIVIAN REED KREEGER
PILOT MOUNTAIN, N. C.

Euterpean

HERMAN EDWARD LACKEY
HIDDENITE, N. C.

Chiosophic



JANE RHEA LACKEY
STONE POINT, N. C.

Euterpean

WALES RANDALL LANKFORD
BREVARD, N. C.

OCTAVIA ZURA LATHAM
PILOT MOUNTAIN, N. C.

Euterpean

MARY ADELINE LEFTWICH
STANLEY, N. C.

Euterpean

EDWARD K. LEGGETT
HOBGOOD, N. C.

JOHN EDGAR LOFTIS, JR.
BREVARD, N. C.

Delphian

MARTHA L. LOLLAR
RUTHERFORDTON, N. C.

Euterpean

JOHN THOMAS LOWE
WADESBORO, N. C.

Delphian

VERNON D. LOWDER
BADIN, N. C.

Delphian

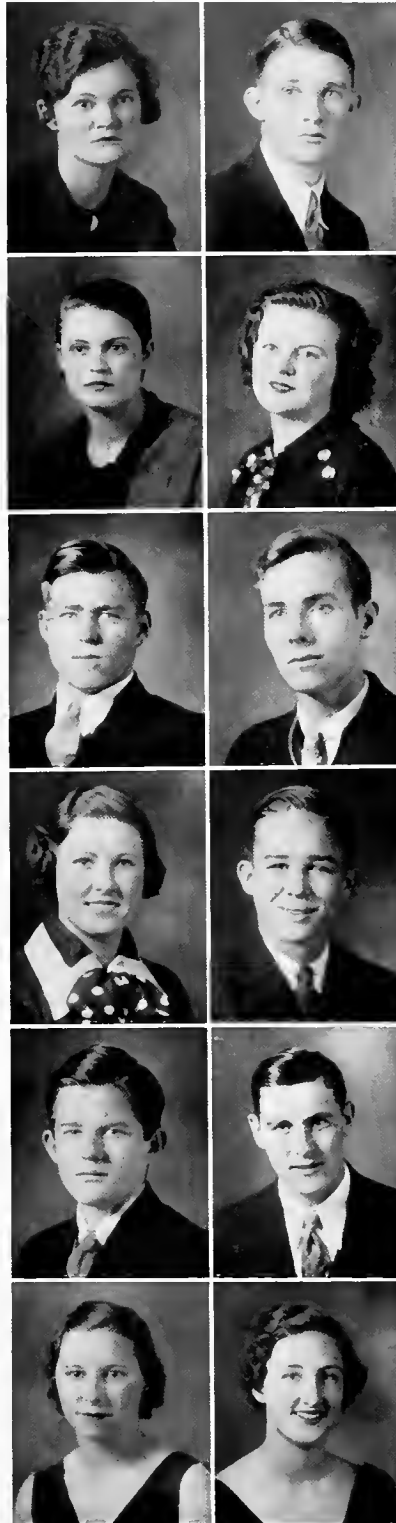
JOHN HALSELL LYDAY
BREVARD, N. C.

EMILY SUE MALLONEE
CANDLER, N. C.

Euterpean

MARY ELIZABETH MARCHO
CONCORD, N. C.

Mnemosynean





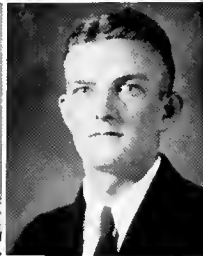
EMMA MILDRED MARTIN
GOLD HILL, N. C.

Euterpean



EUGENE ORAN MATTHEWS
ARGURA, N. C.

Cliosopic



WINNIE M. MATTHEWS
ARGURA, N. C.

Euterpean



REXFORD SUMMERS MAUGANS
STATESVILLE, N. C.

Cliosopic



CECIL W. McCOMBS
KANNAPOLIS, N. C.

Cliosopic



ELIZABETH MCCOY
PISGAH FOREST, N. C.



ESTHER MAE MCCRARY
BREVARD, N. C.



MARTHA MCCrackEN
WAYNESVILLE, N. C.

Euterpean



CATHERINE E. McCLEOD
BREVARD, N. C.



BESSIE MAE McFADDEN
FLAT ROCK, N. C.

Euterpean



ADA BLANCHE MEADOWS
KNOXVILLE, TENN.

Mnemosynean

JOE THURMAN MELTON
BOSTIC, N. C.

Cliosopic



JOHN CAMBRIDGE MILLER
PISGAH FOREST, N. C.

Delphian

LOUIS LYNTON MILLER
LEXINGTON, N. C.

Delphian

HARRY ZIMMERMAN MOCK
LEXINGTON, N. C.

Cliosophic

JETHRO W. MOCK
ADVANCE, N. C.

Delphian

ALLISON L. MOORE
BREVARD, N. C.

VIVIAN MOORE
ANDREWS, N. C.

Mnemosynean

CHARLIE MARIE MORGAN
ALBEMARLE, N. C.

Euterpan

SARAH MORGAN
ANDERSON, S. C.

Mnemosynean

RENA MORGAN
GOLD HILL, N. C.

Mnemosynean

MAZON MURPHY
STANLEY, N. C.

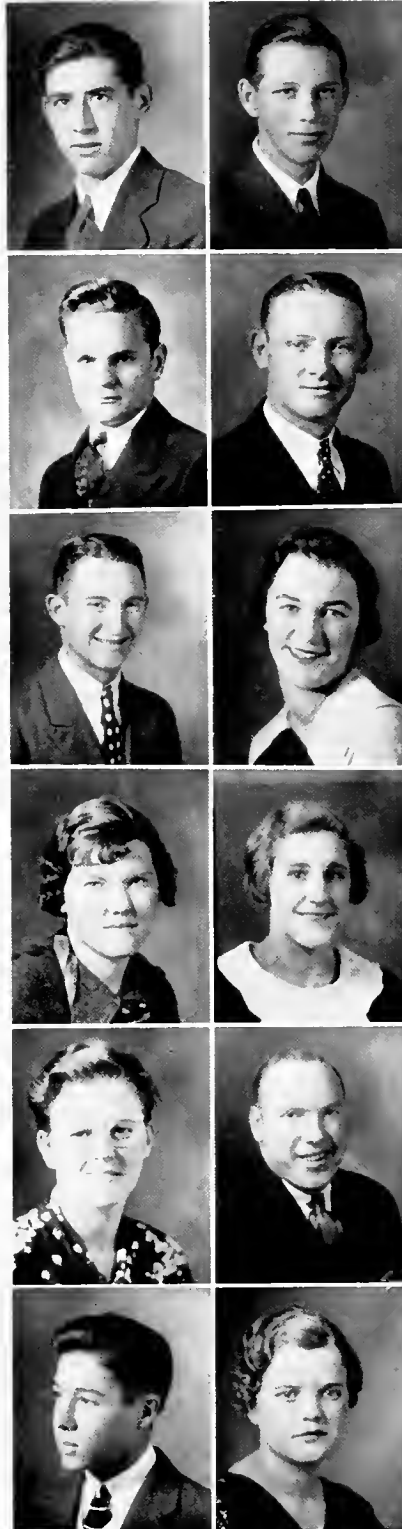
Cliosophic

WILLIAM ROBERT MURRAY, III
CHARLOTTE, N. C.

Cliosophic

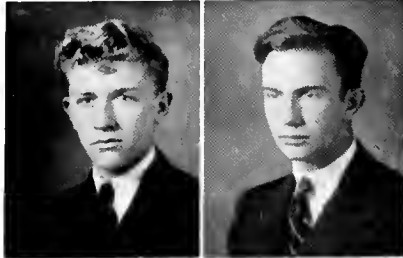
MARY LOIS MOSER
HENDERSONVILLE, N. C.

Mnemosynean





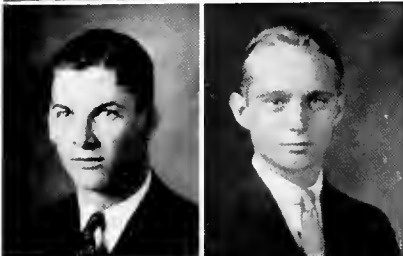
RACHAEL RUTH ORR
BREVARD, N. C.
Mnemosynean



WILLIAM DAVIS OSBORNE
HORSE SHOE, N. C.
Cliosopic



LLOYD ELWIN PARKS
LEXINGTON, N. C.
Delphian



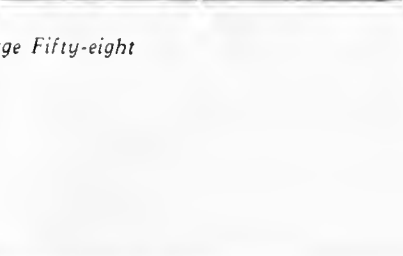
NICHOLAS PATTON
ROBINSVILLE, N. C.
Delphian



CHARLOTTE PATTON
BREVARD, N. C.



JOHN EARL PEARSON
ASHEVILLE, N. C.
Cliosopic



THOMAS PEELER
BELWOOD, N. C.
Delphian



ALVIN PENLAND
HAYESVILLE, N. C.
Delphian

FRANK PENLAND
HAYESVILLE, N. C.
Delphian

JOE PHILBECK
BOSTIC, N. C.

JULIA CARMEN PLOTT
WAYNESVILLE, N. C.
Euterpean

JOSEPHINE PLOTT
WAYNESVILLE, N. C.
Euterpean



EGAR NORMAN PLOTT
CANTON, N. C.
Cliosophic

BESS PONDER
BREVARD, N. C.

D. D. POPE, JR.
WOODLEAF, N. C.
Cliosophic

ERNEST CLINTON PRUETT
HORSE SHOE, N. C.
Cliosophic

JAMES RICHARD QUEEN
WAYNESVILLE, N. C.
Cliosophic

HAZEL W. RAMSEY
BREVARD, N. C.

EDGAR MARVIN RAMSEY
WALNUT, N. C.

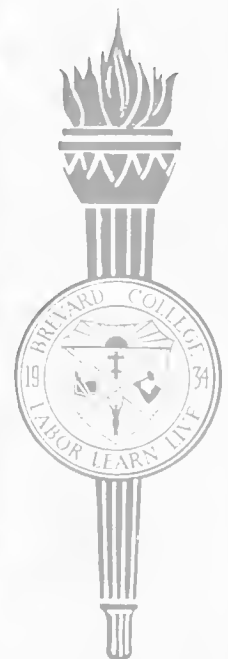
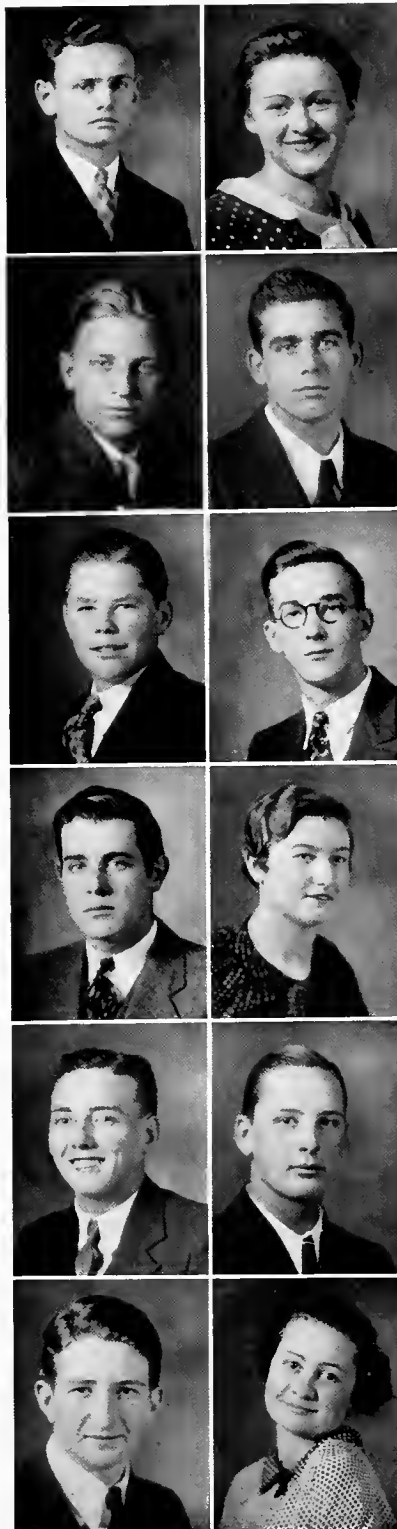
VIRGIE LENORA RANDALL
CONCORD, N. C.
Mnemosynean

JAMES WILLIAM REGAN
LEXINGTON, N. C.
Cliosophic

JOHN ROBERT REINHARDT
NEWTON, N. C.
Delphian

JOHN MACKEY REYNOLDS
BURNSVILLE, N. C.
Delphian

RUBY ELEANOR ROBERTS
BLACK MOUNTAIN, N. C.
Mnemosynean





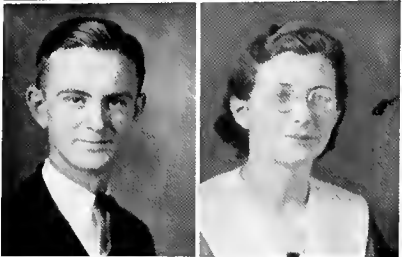
E. AUSTIN ROBERTS
SHELBY, N. C.
Delphian

LORENA F. ROGERS
CLYDE, N. C.
Euterpean



FRANCES ROSE
WAYNESVILLE, N. C.
Euterpean

DORIS SAUNDERS
COLERAINE, N. C.
Euterpean



JAMES MARLIN SCHREYER
FLETCHER, N. C.
Clisophic

ALICE E. SCOTT
FALLSTON, N. C.
Mnemosynean



ELLA KINGSBURY SHACKFORD
ROCK HILL, S. C.
Mnemosynean

VELMA MONA SHARP
BREVARD, N. C.



RALPH K. SHEPPARD
HENDERSONVILLE, N. C.
Clisophic

OTIS HAMILTON SHIPMAN
PISGAH FOREST, N. C.



CELIA JANE SHUFORD
BREVARD, N. C.

CLYDE SHUFORD
BREVARD, N. C.



MERRIMON HAMILTON SHUFORD
PENROSE, N. C.

ROBERT B. SHUFORD
ARDEN, N. C.

MARGARET A. SLAGLE
CANDLER, N. C.
Euterpean

FRED L. SMATHERS
ASHEVILLE, N. C.
Delphian

GILBERT SMITH
HIDDENITE, N. C.
Cliosopic

SIBYL SPRATT
DYSARTVILLE, N. C.
Mnemosynean

ROBERT STEVENSON
HENDERSONVILLE, N. C.
Cliosopic

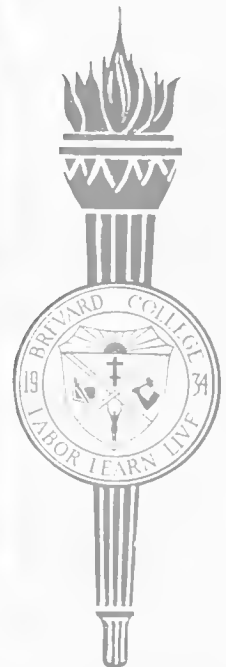
RUBY STOVER
BREVARD, N. C.

DONALD E. STROBLE
WINSTON-SALEM, N. C.
Delphian

D. R. STYLES
BURNSVILLE, N. C.
Delphian

A. G. SUTHERLAND, JR.
CHARLOTTE, N. C.
Delphian

MARTHA ROSE SWOFFARD
SALISBURY, N. C.
Mnemosynean





RUTH T. SYLVESTER
BLACK MOUNTAIN, N. C.

Euterpean

WILLIAM THURMAN TATE
WINSTON-SALEM, N. C.

Clisophic



J. FRED THOMPSON
CANDLER, N. C.

Delphian

GARTH GARRETT THOMPSON
HAYESVILLE, N. C.

Delphian



NETTIE MAE TOWNSEND
BREVARD, N. C.

Euterpean

JAMES E. TROUTMAN
MOORESVILLE, N. C.

Delphian



EDITH RIGLER TREDENICK
CHARLOTTE, N. C.

Mnemosynean

VERNON TUCKER
STANDFIELD, N. C.

Clisophic

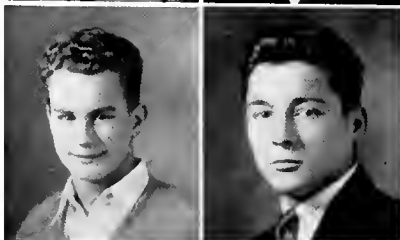


FRED C. TURBYFILL
TOCANE, N. C.

Clisophic

WILLIS SIDNEY TURNER
RALEIGH, N. C.

Clisophic



EDWARD VARNER
BREVARD, N. C.

JOHN WAHONICK
GLEN ROBBINS, OHIO

Clisophic



MARTHA WALKER
ATLANTA, GA.
Euterpean



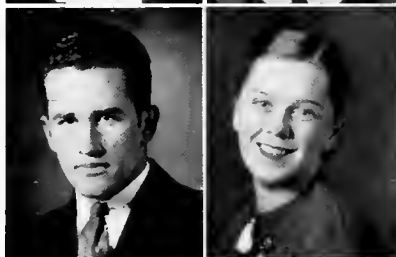
EVERETTE WALL
MARION, N. C.
Cliosopic

PAULINE WALL
FOREST CITY, N. C.
Mnemosynean



MAE LOUISE WARD
HICKORY, N. C.
Mnemosynean

J. HERMAN WASHAM
DAVIDSON, N. C.
Cliosopic



WILLIE KATE WATERS
BREVARD, N. C.

JAMES EVERETTE WEBB
CAROLEEN, N. C.
Cliosopic



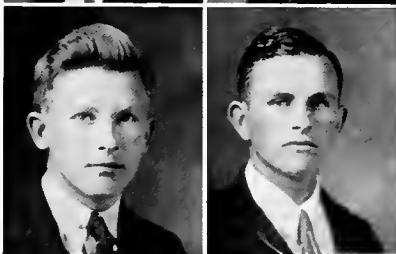
IDA MARGARETTA WHISENANT
MAIDEN, N. C.
Mnemosynean

EARL S. WHITE
ROSMAN, N. C.



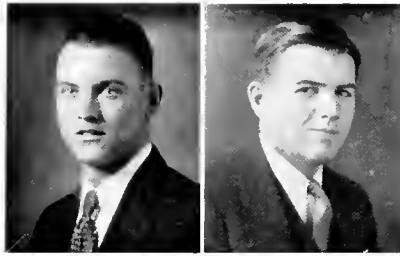
OPHELIA OLA WHITE
ROSMAN, N. C.

MILLARD CLIFTON WHITESIDES
HENDERSONVILLE, N. C.
Cliosopic



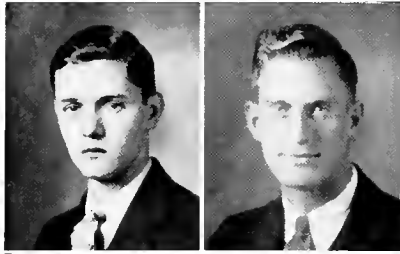
EDWARD JORDAN WHITMIRE, JR.
BREVARD, N. C.





HOWARD R. WILKERSON
CHARLOTTE, N. C.
Clisophic

N. CARSON WILLIAMS, JR.
KANNAPOLIS, N. C.
Clisophic



DANIEL BINKLEY WILLIAMS
BOONESVILLE, N. C.
Delphian

LAWRENCE M. WILLIAMS
BREVARD, N. C.



E. DIXON WILLIS
VALE, N. C.

MRYTLE VIRGINIA WILSON
ROCKINGHAM, N. C.
Euterpean



ELIZABETH H. WIMBISH
KINGS MOUNTAIN, N. C.

ELIZABETH CORDELIA WOOD
BREVARD, N. C.



THELBERT C. WRIGHT
SHELBY, N. C.
Delphian

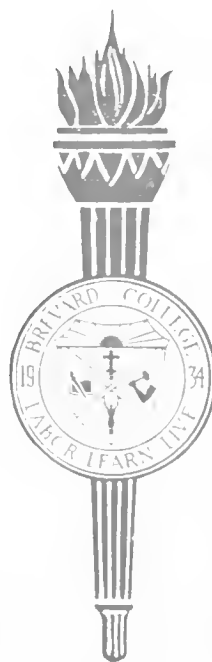
GERTRUDE L. YARBOROUGH
WINSTON-SALEM, N. C.
Euterpean



CHRISTINE CLARA YONGUE
BREVARD, N. C.

NATHANIEL FERRELL YOUNG
WALNUT COVE, N. C.
Clisophic





COMMERCIAL

Commercial Class

CLARA BARNETT
PISGAH FOREST, N. C.

EUGENIA BOSTON
WAYNESVILLE, N. C.

Euterpean

JESSIE ALLEN BYERS
TRYON, N. C.

Euterpean

LISA COLSON
ASHEVILLE, N. C.

Mnemosynean

EVELYN E. CORDELL
BLACK MOUNTAIN, N. C.

Euterpean

HENRY H. DUPRE, JR.
HOUSTON, TEXAS

Delphian

RUBY JANE EDMUNSON
PISGAH FOREST, N. C.

JOHN DOUGLAS ELDRIDGE
ROSMAN, N. C.

Delphian

PEARL HELEN FINK
CONCORD, N. C.

Mnemosynean

DAISY LORENA GALLOWAY
ROSMAN, N. C.



Commercial Class

REBA MAE GEORGE
PENROSE, N. C.

IENA GODWIN
BREVARD, N. C.

CORNELIA RACHAEL GOFORTH
KINGS MOUNTAIN, N. C.

Mnemosynean

CHRISTINE GOLDSTON
KANNAPOLIS, N. C.

Mnemosynean

RUTH CAROLYN HYATT
WINDOM, N. C.

DECATUR JACK HARRIS
FOREST CITY, N. C.

Cliosopic

EDNA JONES
ASHEVILLE, N. C.

Euterpean

RUTH LOCKHART
TRYON, N. C.

Euterpean

DOYLE ANNE MARTIN
FALLSTON, N. C.

MABEL JOSEPHINE MCNEELY
LAKE TOXAWAY, N. C.

Euterpean



Commercial Class



VIVIAN MOORE
ANDREWS, N. C.

Mnemosynean

S. L. ROBERTS, JR.
SHELBY, N. C.

Delphian



RUTH AMERICA ROSS
MORGANTON, N. C.

Mnemosynean

CHRISTINE K. SALTZ
BREVARD, N. C.

Mnemosynean



CLAIBORNE B. SCOTT
BALD CREEK, N. C.

Delphian

EDITH SMITH
PISGAH FOREST, N. C.



HELEN STEIN
SYLVA, N. C.

Euterpean

LUCY BLAKE STRUM
ROCKY MOUNT, N. C.



MAXINE LOUISE STUART
SNOW CAMP, N. C.

Euterpean

FLOYE TALLEY
BREVARD, N. C.



Commercial Class

GRACE L. TEAGUE
BREVARD, N. C.

JEAN THOMAS
CHARLOTTE, N. C.

Euterpean

JOHN VOLLMER
TRYON, N. C.

Cliosopfic

SARAH RUTH WALTERS
RAEFORD, N. C.

BLANCHE MAYNARD WATWOOD
GASTONIA, N. C.

Euterpean

JEANETTE BERTHA WILLIAMS
TRYON, N. C.

Euterpean

HELEN LOUISE WRIGHT
BREVARD, N. C.

JUSTINE ROBERTA WRIGHT
BREVARD, N. C.

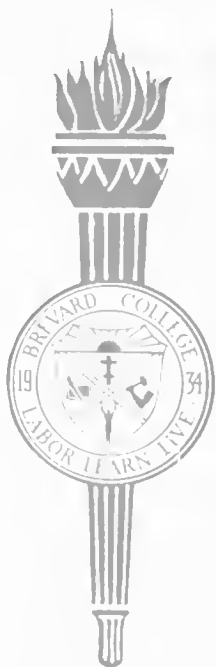
EVELYN ESTELLE WRIKE
JAMESTOWN, N. C.

Mnemosynean

MARY FRANCES WRIKE
JAMESTOWN, N. C.

Mnemosynean







PREPARATORY
DEPARTMENT



Preparatory School Officers

KATHERINE ENGLISH

*Vice-President
Brevard, N. C.
Prettiest Junior*

NELLE STURKEY

*President
Lexington, N. C.
Most Popular Senior*

JANE HAMLIN

*Secretary and Treasurer
Brevard, N. C.
Best Personality Junior*

FLOWER:

Red Rose

COLORS:

Red and White



MOTTO:

*"Saying and doing are
two things."*

Faculty Adviser

MISS ELEANOR
TROWBRIDGE

Sponsor

MRS. C. H. TROWBRIDGE





SENIORS
 EUGENIA COLTRANE
 Brevard, North Carolina
Most Original

MACK FEASTER
 Brevard, North Carolina
Best Looking



FRANCES FRYE
 Statesville, N. C.
Best All Around

JESS OATES
 Chester, South Carolina
Most Understanding



DAVID TRANUM
 Johnson City, Tennessee
Best Athlete

JUNIORS

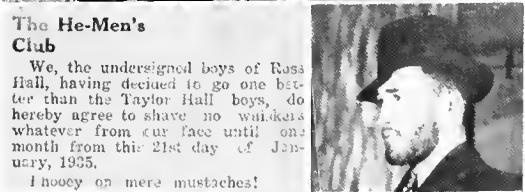
DELWIN BAGGETT
 Pineville, North Carolina
Best Sport



HELEN KELLY
 Tazewell, Virginia
Class Juliet

LUCY WHITE
 Spartanburg, South Carolina
Cutest





The He-Men's Club

We, the undersigned boys of Ross Hall, having decided to go one better than the Taylor Hall boys, do hereby agree to shave no whiskers whatever from our face until one month from this 21st day of January, 1935.

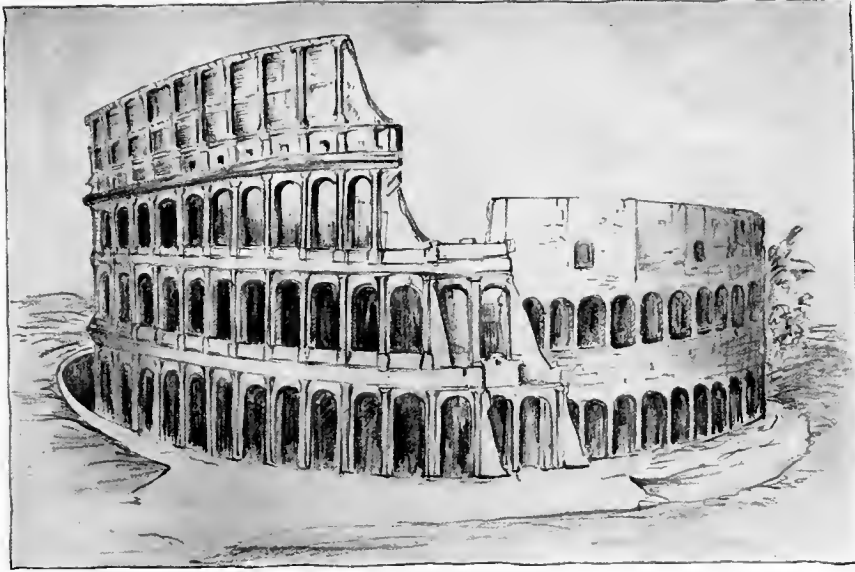
Inoocy on mere mustaches!



**BREVARD COLLEGE
TEAM UPSETS DOPE**

Brevard College Tornado basketball team lost the final game of the season to Belmont Abbey 31 to 17 but in that game won the second place rating for North Carolina junior colleges for the 1935 season.





ATHLETICS



RALPH E. JAMES

*Director of Physical Education
Coach*

Coach James

This page of honor is dedicated with respect and affection to Coach James, who, through his ability to inspire, encourage, and fill with enthusiasm, has taken boys, most of them inexperienced, and developed a football, basketball, and baseball team which rank among the best in the state.





FOOTBALL SQUAD

Reading left to right, back row to front row: Liner, Jonas, Fowler, Allison, Neal, Helms, Kitchen, Edwards, Brooks, Harmon, Smoke, Profitt, Pruett, Frady, Barnwell, Dillard, Edmundson, Campbell, Hunnicutt, Liner, Farthing, Mock, Eekerd, Griffin, Prentice, W. Clayton, Lowe, Thompson, Picklesimer, Garren, Deal, Gaston, Killpatrick, Wahonick, Campbell, Gray, Harris, E. Clayton, Legette, Ferguson, Reynolds.

Football

When the smoke of the season had cleared, we found that Brevard had proved herself entitled to compete with Mars Hill for the berth of Champion of North Carolina Junior College Football. This was, of course, to be the outstanding game of the season; therefore, on Turkey Day, the Brevard Tornado blew into Mars Hill, the den of the Mountain Lions. Practically the whole student body represented their Alma Mater at the gala occasion. The first whistle uncorked the fighting frenzy of the Lions as they rushed down the field behind a well-booted kick, only to be checked by a sweeping onrush of the Tornado. Thrice the Lions clawed their way down to the stripped section. The Tornado came only once into the vicinity of the touchdown line. Here they were met face to face with the proverbial passage: "As ye sow so shall ye reap." The Lions, remembering how they had been turned back in every serious threat, were there with fangs bared and ready to do war with anyone who threatened their domain. The game ended thus, with both teams forming a swirling mass in midfield. The Tornado twisted and charged but the iron wall of the Lions was not to be broken. But through the dark clouds of a dismal day came the silver lining that could mean but one thing. Brevard College, in its initial year, was proclaimed Co-Champion of North Carolina Junior College Football.

SEASON'S RESULTS

Brevard	62	W. C. T. C. Junior Varsity	0
Brevard	6	A. S. T. C. Freshmen	6
Brevard	0	Furman Freshmen	21
Brevard	19	Wingate	0
Brevard	14	Boiling Springs	0
Brevard	0	Tennessee Wesleyan	20
Brevard	26	Presbyterian Junior College	0
Brevard	13	Lees-McRae	0
Brevard	0	Mars Hill	0
Total	194	Total	47

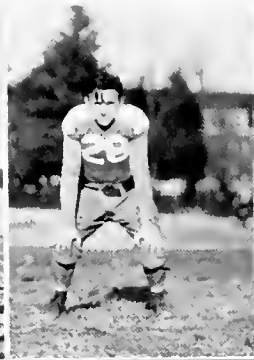




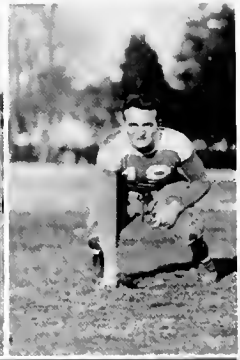
NEIL
GUARD



K. KILPATRICK
GUARD



WHISENHUNT
FULLBACK



SMOAK
TACKLE



ECKERD
HALFBACK



HARMON
TACKLE



A. KILPATRICK
TACKLE



WABONICK
END



GASTON
END



PRUETT
END



GRAY
GUARD



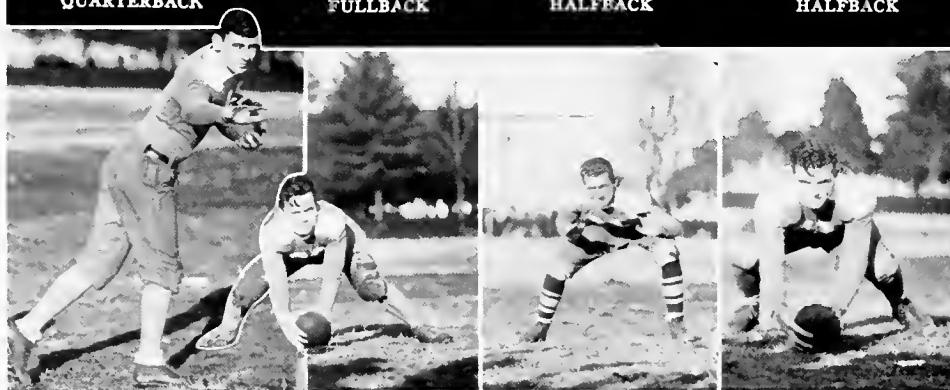


**GRIFFIN
QUARTERBACK**

**PRENTICE
FULLBACK**

**SHUFORD
HALFBACK**

**E. CLAYTON
HALFBACK**



**W. CLAYTON
HALFBACK**

**E. CLAYTON
HALFBACK**

**SITTON
TACKLE**

**PROFFITT
CENTER**

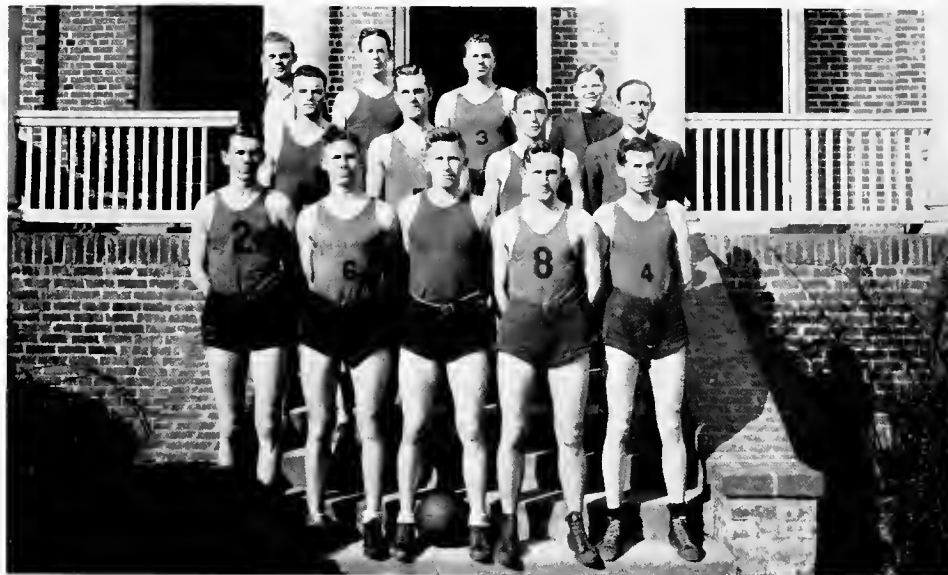


**CAMPBELL
CENTER**

**THOMISON
HALFBACK**

**DAVIS
HALFBACK**





BASKETBALL SQUAD

Reading left to right from back row to front row: Dixon (Manager), Gaston, Wright, Queen (Assistant Manager), Profitt, Webb, Griffin, James (Coach), Patton, Davis, Whitesides, Whisenhunt, Fox.

Basketball Resume

Seeded number four, but classed as a dark horse, the Brevard College quint journeyed to Charlotte on February 22, 1935, to share the honors of the North Carolina Junior College Basketball Tournament. Chalking up a victory over Lees-McRae in the opening game, it advanced to the semi-finals. Barging on to the finals by defeating Rutherford, the valiant five upset the dope of the tournament. After a splendid battle, Brevard lost to Belmont Abbey, coming out runner-up in the tourney.



SEASON'S RESULTS

Brevard	23	Biltmore	15
Brevard	20	Asheville School	23
Brevard	21	Blantons	30
Brevard	28	Blue Ridge	19
Brevard	24	Textile	28
Brevard	39	Wofford Freshmen	44
Brevard	38	Textile	41
Brevard	25	Blantons	44
Brevard	26	Wofford Freshmen	19
Brevard	31	Biltmore	24
Brevard	30	Lees-McRae	29
Brevard	35	Rutherford	30
Brevard	17	Belmont Abbey	31
Total	357	Total	377



WRIGHT
GUARD

WEBB
FORWARD

FOX
GUARD

PROFFITT
CENTER



GRIFFEN
GUARD

PATTON
FORWARD

CAPT. WHISENHUNT
FORWARD

CAMPBELL
FORWARD



DAVIS
GUARD

WHITESIDES
FORWARD

GASTON
CENTER

QUEEN
ASST. MANAGER

DIXON
MANAGER





BASEBALL SQUAD

Reading left to right, from back row to front row: Wright, Turner, Liner, Lackey, Eldridge, Frady, Whitesides, Thompson, Edmundson, Thompson, Davall, Legette (Assistant Manager), Pickelsimer, E. Clayton, Williams, Ghormley, Carlisle, Graham, Green, Mock, Whitmire, Hecherd, James (Coach), Patton, Whisenhunt, Proffitt, Griffin, Wahonick, Deal, Myers, Eckerd, Queen (Manager).

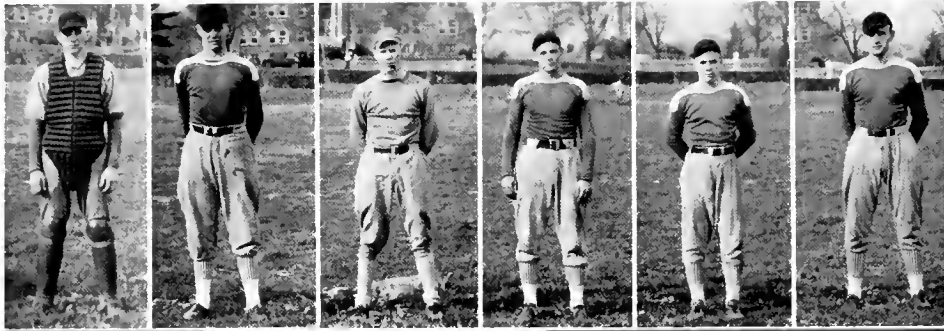
Baseball

At the time of going to press, the season was just under way. However, we predict a sweeping victory for the Brevard nine.

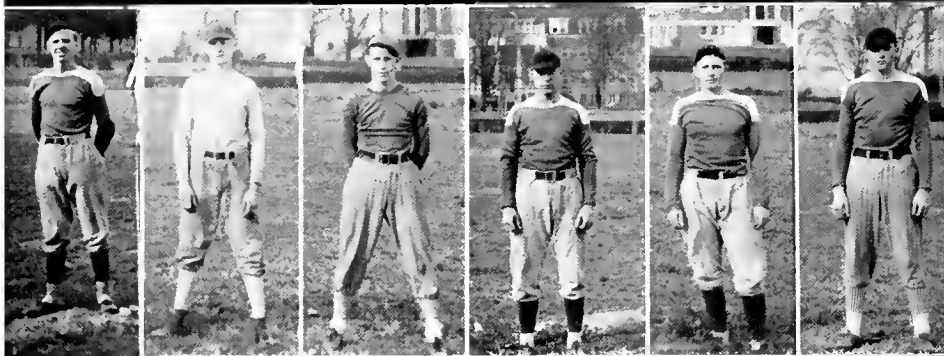
BASEBALL SCHEDULE, 1935

Brevard (..)	Davidson Frosh (..)
Brevard (..)	Rutherford College (..)
Brevard (..)	Boiling Springs College (..)
Brevard (..)	Textile College (..)
Brevard (..)	Belmont College (..)
Brevard (..)	Blue Ridge (..)
Brevard (..)	Rutherford College (..)
Brevard (..)	Davidson Frosh (..)
Brevard (..)	Belmont College (..)
Brevard (..)	Boiling Springs College (..)
Brevard (..)	Wingate (..)
Brevard (..)	Mars Hill (..)
Brevard (..)	Blue Ridge (..)
Brevard (..)	Mars Hill (..)

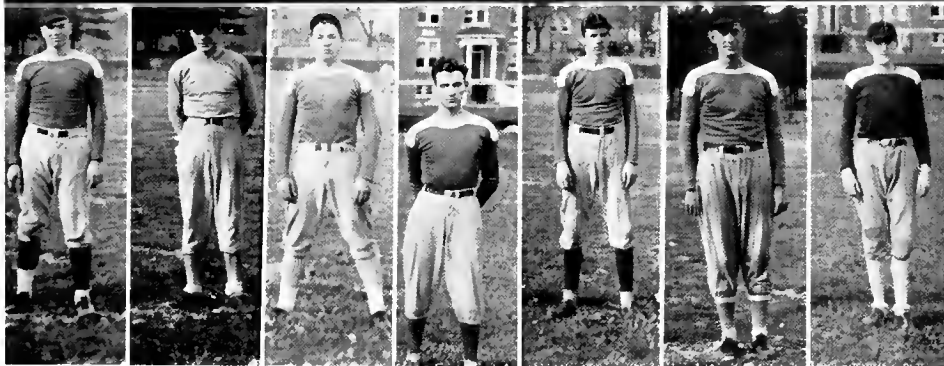




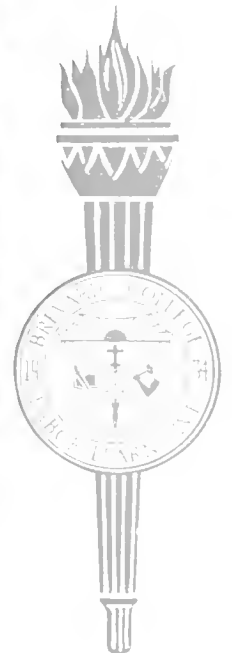
CARLISLE CATCHER GREEN CATCHER E. CLAYTON CATCHER GRIFFIN THIRD BASE B. ECKERD SHORT STOP WHISENHUNT SECOND BASE



MYERS SHORT STOP LACKEY LEFT FIELD THOMPSON RIGHT FIELD DEAL CENTER FIELD GHORMLEY LEFT FIELD PROFFITT RIGHT FIELD



WRIGHT RIGHT FIELD LINER CENTER WAHONICK PITCHER GRAHAM PITCHER PATTON PITCHER WILLIAMS PITCHER PICKELSIMER PITCHER



WILL INCREASE FACILITIES OF COLLEGE PLANT

Trowbridge Elected To Vice-Presidency At Brevard

BREVARD, April 10. (Special)—Meeting in Hickory yesterday, trustees of Brevard College, Methodist institution here, launched plans for a \$100,000 building program, re-elected Dr. E. J. Coltrane president, and promoted C. H. Trowbridge from dean to vice president of the col-



College Opens Monday Morning With Nearly 400 Pupils Enrolled

Work Begins Sept. 17. With Formal Program To Be Given on 21st

Open House and Reception for Faculty To Be Held At College On Friday

Coal
Col
F
The
tion
has
James
colleg
ed
yes

Brevard College Will Observe Thanksgiving

BREVARD, Nov. 28. (Special)—Thanksgiving Day will be appropriately observed at Brevard college with an all-day program. The program will get under way with an 8 o'clock breakfast, followed

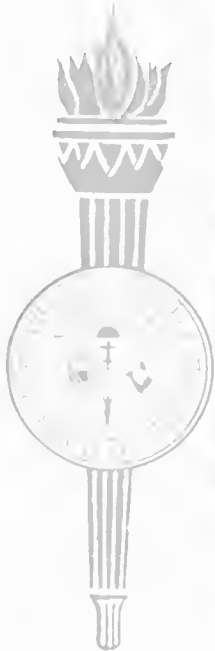


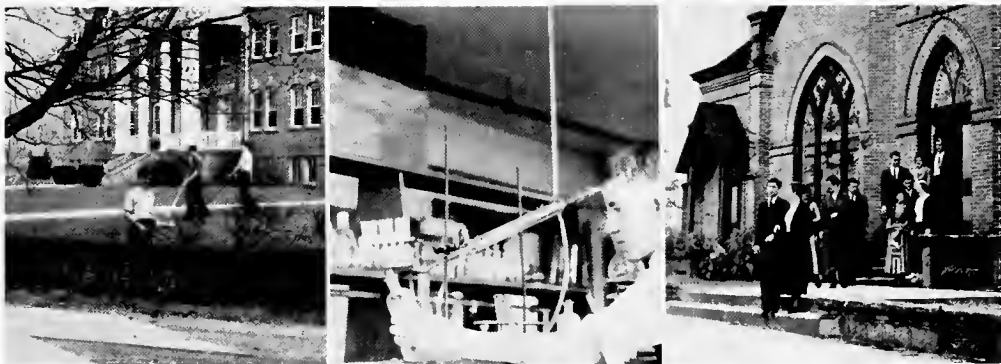
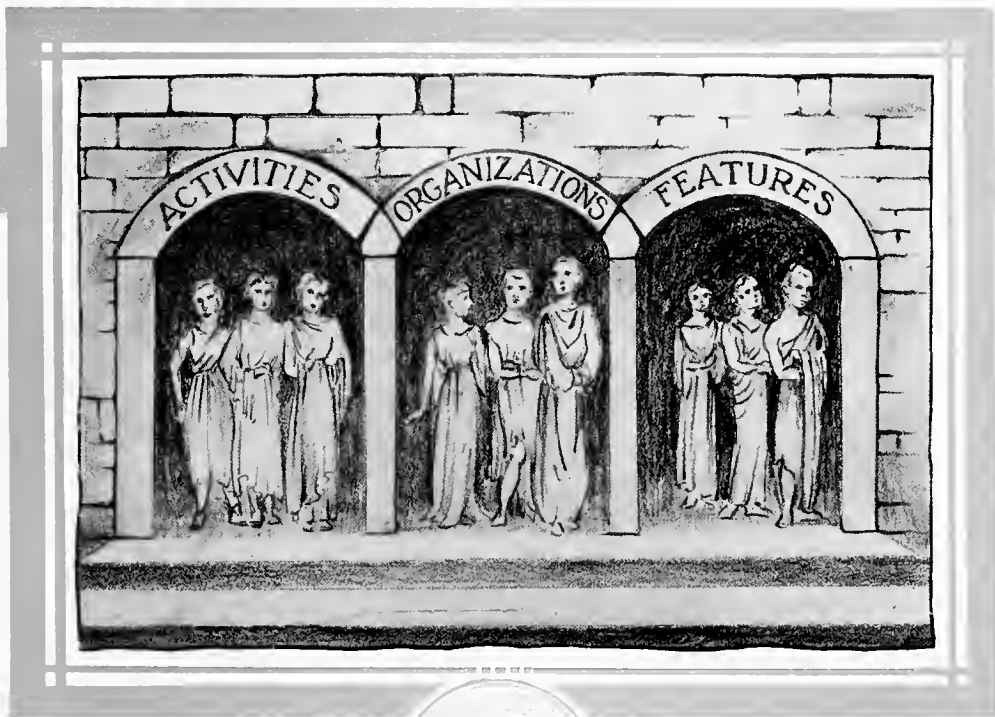
TROWBRIDGE NAMED TO COLLEGE OFFICE

New Members Added To Faculty—Fine Rreport Made at Trustees Meeting

At a meeting of the board of trustees of Brevard College, held in Hickory on Tuesday, several changes were made in the faculty, with three additions elected to the teaching staff, according to an announcement made by President E. J. Coltrane.

C. H. Trowbridge, dean of Brevard College the past year, was elected to the position of vice president of the college.





ACTIVITIES



GUY H. HOWELL
Editor-in-Chief



JACK H. WILDEY
Business Manager

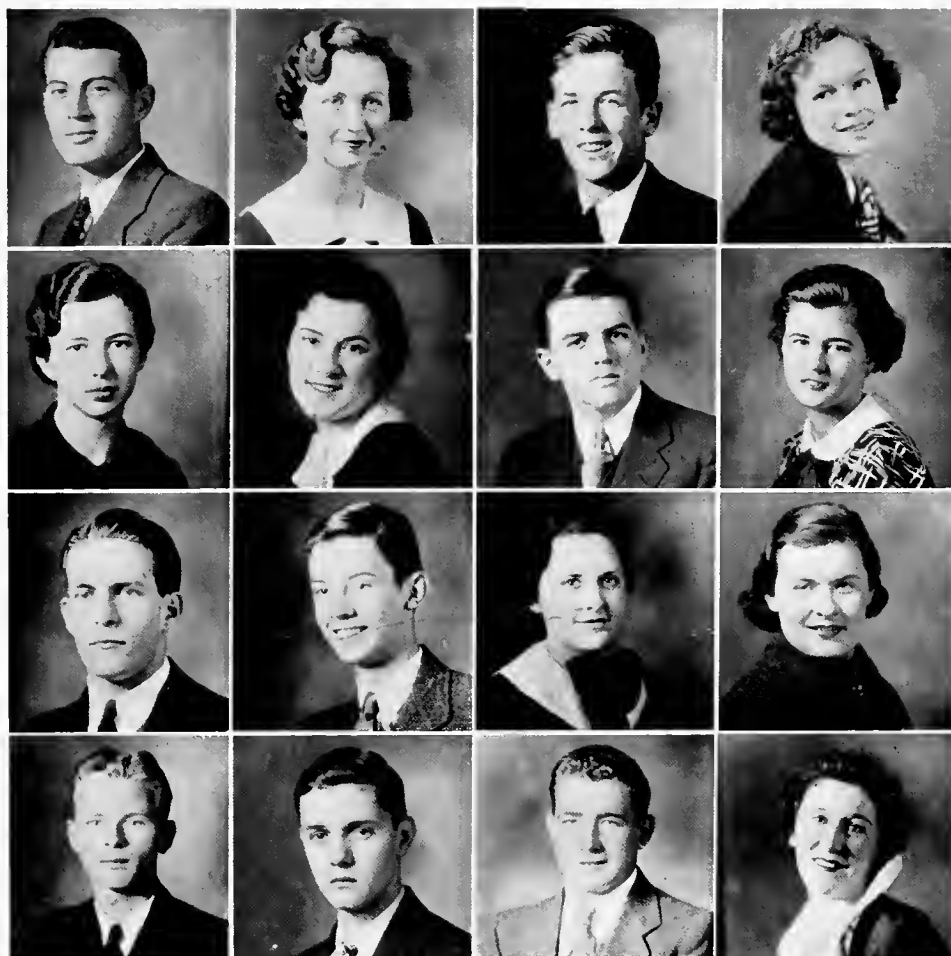
Pertelote Staff

ARNEY C. FOX	<i>Assistant Editor-in-Chief</i>
LISA COLSON	<i>Typist</i>
JACK BROOKS	<i>Sophomore Class Editor</i>
EMMA DEAVOR	<i>Assistant Sophomore Class Editor</i>
EMILY PALMER	<i>Assistant Sophomore Class Editor</i>
IDA WHISENANT	<i>Freshman Class Editor</i>
CARSON WILLIAMS	<i>Assistant Freshman Class Editor</i>
NELL STURKEY	<i>High School Editor</i>
MR. JACK S. DENDY	<i>Photographic Editor</i>
JOSEPH GOODIN	<i>Assistant Photographic Editor</i>
CATHERINE CARPENTER	<i>Organization Editor</i>
JOSEPHINE JONES	<i>Assistant Organization Editor</i>
T. B. HUNEYCUTT	<i>Athletic Editor</i>
DAN WILLIAMS	<i>Assistant Athletic Editor</i>



BUSINESS STAFF

HOWARD SITTON	<i>Advertising Manager</i>
RUTH PICKELSIMER	<i>Assistant Advertising Manager</i>



FOX
PALMER
MR. DENDY
HUNEYCUTT

COLSON
WHISNANT
GOODIN
WILLIAMS

BROOKS
WILLIAMS
CARPENTER
SITTON

DEAVOR
STURKEY
JONES
PICKELSIMER

We, the staff, have endeavored to compile a year-book that would meet the approval of every person concerned. We hope that in years to come you may glance through its pages and find it ever a source of fond recollections and pleasant memories.

—THE STAFF.

Page Eighty-seven





WHISENHUNT WHISNANT AVETT WILLIAMS



GRAHAM WILDEY TATE



PROFFITT CARPENTER COLSON WAHONICK

Student Council

HARRY WHISENHUNT	Sophomore Class
IDA WHISNANT	Freshman Class
JUANITA AVETT	Sophomore Class
CARSON WILLIAMS	Freshman Class
TOM GRAHAM	Freshman Class
JACK WILDEY	Sophomore Class, President
THURMAN TATE	Freshman Class
JAMES PROFFITT	Sophomore Class
CATHERINE CARPENTER	Sophomore Class
LISA COLSON	Sophomore Class, Secretary
JOHN WAHONICK	Freshman Class





VESPER SERVICE COMMITTEE

Back Row (left to right): A. G. Sutherland, James Proffitt. *Front Row*: Carson Williams, Catherine Carpenter, Louise Ward, Thurman Tate, Earl Pearson.

MID-WEEK PRAYER SERVICE COMMITTEES

Back Row (left to right): Bill Davis, A. G. Sutherland, Carson Williams, Ida Whisnant, James Troutman. *Front Row*: Marshall Brown, Guy Howell, Elaine Call, Sibyl Spratt, Ethel Kerr.





CLIOS

Reading left to right, from back row to front row: Lackey, Graham, Turner, Maugans, Boyd, Rogers, Ferguson, Hyatt, Murray, Oates, Baldwin, Stevenson, Sheppard, Shipman, Murphy, G. Ferguson, Pope, Braswell, Tucker, Ketner, Duncan, Palmer, Davis, Tate, Volmer, Farthing, Ballard, Prentice, Pearson, Sittou, Webb, Pickelsimer, Elliott, Barbour, F. Brown, Howell, Heffner, Hoyle, H. Mock, Queen, C. Williams, M. Brown, Plott, Wall, Young, Weaver, Melton, Matthews, Fowler.

EUTERPEANS

Back Row (left to right): Palmer, J. Plott, Townsend, Martin. *Sixth Row:* Kerr, Ward, Rose, Slagle, Walker, Jones. *Fifth Row:* Farthing, Briggs, Coffey, Stuart, C. Plott, Lollar, Hardin, Sylvester, McCracken, Leftwich, Andrews, Goodnight. *Fourth Row:* Byers, Lackey, Duncan, Lockhart, McFadden, Watwood, C. Morgan, Boston, Johnson. *Second Row:* Rutherford, Kreeger, Yarborough, Stein, Roberts, V. King, Thomas, Ferguson. *First Row:* M. V. Proffitt, Justice, S. King, Latham, Goodin, Hefner, M. Proffitt, Cordell, Call.





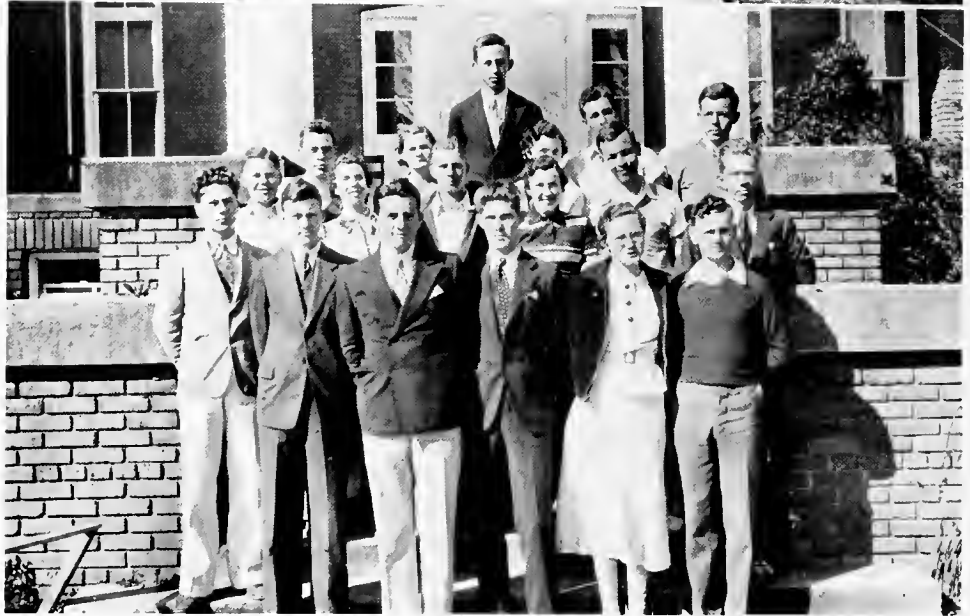
DELPHIANS

Reading left to right, from back row to front row: D. Williams, Whisenhunt, Proffitt, Jessup, Harmon, Ghormley, Troutman, Gibbs, Darrough, Grant, Cherry, Eckerd, Roberts, Lambert, Kibler, Bostic, Green, Burton, Strolle, Penland, Sutherland, J. Mock, P. Brooks, Styles, Barnett, Flake, Rhinehardt, Harris, Funderburk, R. Eldridge, Howie, Ashworth, Regan, Crooks, C. Harrison, Edwards, F. Thompson, Harrelson, Reynolds, T. B. Huueycutt, Hawkins, Parks, Abernathy, Curtis, Dixon.

MNEMOSYNEANS

Reading left to right, from back row to front row: Williams, Ross, Tredenick, F. Green, V. Fink, Randall, Pickelsimer, R. Morgan, Strum, Marcho, Yongue, Saltz, Deavor, S. Morgan, V. Moore, Kelley, Frye, Wrike, Sturkey, N. Avett, Wimlish, P. Fink, Vera Moore, Coltrane, G. Brown, Carpenter, Moser, Eargle, Creasman, F. Wrike, Spaulding, Ward, Hines, Beard, H. Avett, Bundy, Spratt, Scott, Goldston, White, Kiger, Arnold.





DEBATING CLUB

Reading left to right, back row to front row: Wall, Young, Elliot, Pearson, Gray, Weaver, Regan, Troutman, Rhinehardt, Stewart, Williams, Parks, Harris, Wimbish, McCracken, Queen, Plott, Howell.

INTERNATIONAL RELATIONS CLUB

Reading left to right, back row to front row: Young, Gray, Palmer, Willis, Lackey, Spratt, Queen, Sylvester, Ghormley, Whisnant, Howie, Barnett, Howell, Funderbrk, Harris, Weaver, King, Plott.





CHOIR

Reading left to right, back row to front row. Murphy, Pearson, Plott, Beard, Orr, Briggs, McFadden, Morgan, Gibbs, Lackey, Spanlding, Ward, White, Gray, Duncan, Lackey, Coltrane, Plott, Slagle, Brown, Carpenter, Byers, Tredenick, Hawkins, Pope, Fisher, Maugans, Matthews, Grimshaw, Strum, Martin, Marco, Gray, Pickelsimer, Young, Creasman, Wall, Barbour, Brown, Penland, Roberts, Huggins, Sylvester, Hines, Moser, Avett, Williams, Jessup, Parks, Brown, Funderburk, Spratt, Bundy, Eargle, Avett, Scott, Arnold, Regan, Brown, Glazener, Mr. Compton, Mrs. Compton, Rose, King, Cordell, Goldston, Huneycutt, Sharp, Lockhart, Cherry, Goodnight, Call, Darrough, Prentice.

DRAMATIC CLUB

Reading left to right, back row to front row: McFadden, Slagle, Scott, Arnold, Avett, Thomas, Goodin, Bundy, Young, Pickelsimer, Call, Darrough, Coltrane, Wrike, Webb, Heffner, Williams, Huneycutt, Proffitt, Goldston, Cherry, Lockhart, Duncan, Hardin, Dixon.





MINISTERIAL STUDENTS

Reading left to right, back row to front row: Duncan, Jessup, Brown, Hovis, Rogers, Pearson, Heffner, Melton, Sutherland, Edwards.

DAY STUDENTS

Reading left to right, back row to front row: Fisher, Waldrop, Israel, Gray, Eckerd, Dillard, E. Clayton, Galloway, Silver, Glazener, Deaver, Orr, Ramsey, Kitchen, Deaver, Fowler, Huggin, Dillard, Picklesimer, White, J. Picklesimer, Hyatt, Edmundson, Osborne, Gaston, Wood, Eldridge, D. Ashworth, Shipman, Hovis, Jenkins, Godwin, R. Hyatt, C. Gray, Younge, McCleod, Green, Grimshaw, Cansler, Bishop, Edmundson, O. White, McCrary, Sharpe, English, Teague, Shuford, A. M. White.





SUPERLATIVES



MOST BEAUTIFUL AND MOST HANDSOME

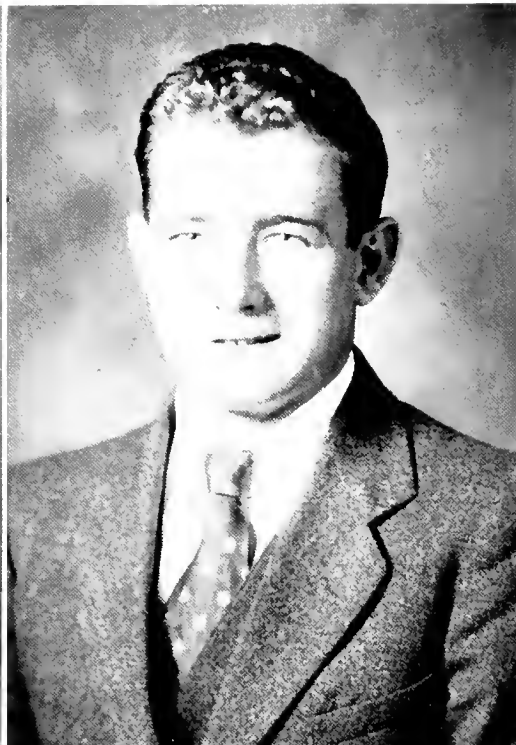
EDNA JONES

T. B. HUNEYCUTT

BEST ALL-ROUND

ANNA LUCY GOODIN

JAMES PROFFITT



MOST INTELLECTUAL

VIRGINIA FINK

HOWARD SITTON

MOST POPULAR

CATHERINE CARPENTER

HARRY WHISENHUNT



MOST FRIENDLY

MARGIE PROFFITT

RILEY PALMER

MOST ORIGINAL

MARY VANCE PROFFITT

JACK BROOKS



SPONSORS



ELAINE CALL
Pertelote Editorial Staff



ELEANOR TROWBRIDGE
Pertelote Business Staff



CATHERINE CARPENTER
Delphian-Mnemosynean

EMILY PALMER
Clio-Euterpean

RACHAEL ORR
Day Student

IDA WHISENANT
Student Body



LISA COLSON
Sophomore Class

EDNA JONES
Freshman Class

CHRISTINE SALTZ
Commercial Department

MARTHA WALKER
Student Council



ANNA LUCY GOODIN
Football

MARGIE PROFFITT
Basketball

ELMA FREEMAN
Football

BILLIE BUNDY
Baseball



AS THE STUDENTS SEE US

ADVERTISING

BREVARD COLLEGE

*A Standard Junior College
For Young Men and Young Women*

LOCATION

Located in the beautiful French Broad River Valley, thirty miles south of Asheville. Easily accessible from all points.

FACULTY AND STUDENTS

A faculty of 22 able and experienced teachers. An enrollment of 406 students the first year. Close personal contact between faculty and students, thus assuring attention to individual needs.

IDEALS

Emphasis on sound scholarship. Primary importance attached to wholesome character-building. Our chief interest is the training of young men and young women for larger usefulness and service in Church and State.

RECOGNITION

Accredited by the North Carolina State Department of Education. Member of the North Carolina College Conference and of the American Association of Junior Colleges.

CATALOGUE MAILED UPON REQUEST



PICTURES IN THIS ANNUAL

BY

AUSTIN'S STUDIO

Kodak Finishing

Enlargements

BREVARD, N. C.

"LABOR—LEARN—LIVE"

Welcome, Brevard College

The members of the Faculty and Student Body will always find
WELCOME at our store. We are WITH YOU to help
BUILD Brevard and Brevard College and
make a better place to
LABOR—LEARN—LIVE

Your REXALL Drug Store

S. M. MACFIE

"Rah—rah—rah—We want a touchdown."



Bruce Barton Says—

“The home of the future will lay all of its tiresome routine burden on the shoulders of electric machines, freeing mothers for their real work, which is motherhood. The mothers of the future will live to a good old age and keep their youth and good looks to the end.”

Mr. Barton is right—don't you think so? The young housewives of today, and the older ones too, can retain their freshness, buoyancy and attractiveness many years longer than their mothers and grandmothers were able to, thanks to the drudgery-eliminating possibilities of electric service in the home.

And the cost is insignificant!

SOUTHERN PUBLIC UTILITIES CO.

Drugs ————— Candies ————— Sodas

College Supplies

Long's Drug Store

“ON THE SQUARE”

Brevard College Boosters ————— Phone 85



Butter-Krust

BREAD AND CAKE

ASHEVILLE BAKING CO., INC.

ASHEVILLE, N. C.

BREVARD COLLEGE STUDENTS

We can save you money on your School Supplies, Cosmetics, and Novelties of all kinds. We appreciate your patronage.

UNITED VARIETY STORES

Our Motto: "Service and Courtesy"

BREVARD, N. C.

"Home of Brevard College"

WARD'S NEWS STAND

AND

SMITH'S BARBER SHOP

We Appreciate Your Patronage

5 WEST MAIN

BREVARD, N. C.

DRINK
Coca-Cola

In Bottles

Delicious and Refreshing

HENDERSONVILLE COCA-COLA
BOTTLING COMPANY



The Transylvania Times

Brevard, N. C.

In Brevard College:

On the Times Staff:

Jazzy Moore
Nell Sturkey

Lanky Williams
Ed Clayton

Jo Jones

BREVARD STEAM LAUNDRY

Prompt and Courteous Service

PHONE 44

J. S. BROMFIELD

BREVARD, N. C.

COMPLIMENTS OF

TRANSYLVANIA TRUST COMPANY

BREVARD, N. C.

COMPLIMENTS OF

CLEMSON THEATER

BREVARD, N. C.



Feeds — Seeds — Fertilizers
Poultry — Eggs

B. & B. FEED & SEED COMPANY

Brevard, North Carolina

Corn Mill — Market for Farmers

SUNNY SIDE DAIRY

GRADE A RAW MILK CREAM AND BUTTERMILK

BREVARD, N. C.

WELCOME TO

N. & W. CAFE

BREVARD, N. C.

HAROLD WHITMIRE, *Manager*

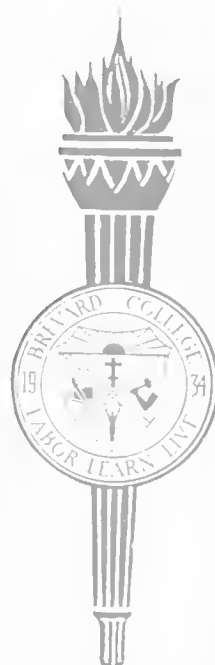
Compliments of

EBBS BROS. & CO., INC.

Wholesale Grocers

Coffee Roasters

ASHEVILLE, N. C.



DIXIE CLEANERS

GEORGE NICHOLSON, *Manager*

Phone 54

For Quality and Promptness

BREVARD, N. C.

R. H. PLUMMER & COMPANY

DEPT. STORE

Quality Merchandise

Low Prices

BROAD STREET

FARMERS SUPPLY COMPANY

HARDWARE, FURNITURE AND FARMING IMPLEMENTS

Paints, Oils

J. M. ALLISON, *Manager*

Stoves, Ranges

and

Wholesale and Retail

and

Furniture

BREVARD, N. C.

Sporting Goods

KODAK FINISHING

FRANK D. CLEMENT

The Hallmark Jeweler

CLEMSON THEATER BUILDING



RUTH'S BEAUTY SHOP

Personal and Efficient Service

EUGENE, REVERSE, AND SPIRAL PERMANENT WAVES

SPECIALTY—All Other Types of Cosmetology

52 MAIN ST.

BREVARD, N. C.

RUTH MCCRARY, *Manager*

Pearce-Young- Angel Company

Wholesale
Fruits and Produce
Grocers' Specialties
ASHEVILLE, N. C.

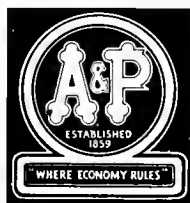
BLUE RIDGE GROCERY CO.

WHOLESALE
FOOD PRODUCTS

755 BILTMORE AVENUE
ASHEVILLE, N. C.

COMPLIMENTS

OF



FOOD STORE

ENGRAVINGS

In This Book

Made by

Charlotte
Engraving
Company

CHARLOTTE, N. C.



WHITEWAY DRY CLEANERS

"We Are Equipped"

PHONE 58

MAIN STREET

BREVARD, N. C.

W. A. WILSON

Compliments of

HOUSTON FURNITURE CO.

507-511 MAIN ST.

HENDERSONVILLE, N. C.

Your Credit Is Good With Us.

THE CANTEEN CAFE

A Good Place to Get Good Things to Eat

DOCK GALLOWAY, *Owner*

37 MAIN STREET

BREVARD, N. C.

PHONE 68



POINSETTE CAFE

SPECIAL RATES TO COLLEGE STUDENTS

MRS. J. L. SALTZ, *Proprietor*

McCRARY AUTO SERVICE



"ONE STOP SERVICE"

PRINTING AND BINDING BY
Observer Printing House, Inc.
CHARLOTTE, N. C.



Kaleidoscope

"Will John Dellinger go to the registrar and straighten out his Bible credits?" . . . Go home Miss Orr and learn some Math . . . Even Jack Wildey bit on Lockhart's birthday gag . . . Ruth Henson, where were you and Louise Spaulding on the night of October 31? . . . "Monkey" falls in love and gets serious . . . Susie does a picture dance . . . "Blondie" leaves a rag baby in Margie's mail box . . . Ruth Sylvester discovers a "pie-bed" . . . "Step back and watch my smoke" . . . The Taylor Hall boys grow moustaches? . . . Ross Hall boys take a correspondence course from Emily Post . . . Who won that football game, Delphians? Three cheers for Clios . . . "Come and get your butter boys"—Vivian Moore . . . Three's a crowd—Dendy, Shore, Williams . . . Miss Ponnie's way of making graceful curves in shorthand . . . "Flea-Hop" Wimbish gets acquainted with "Squirt" (Mr. Carlisle) . . . The tooth paste ad smile—Evelyn Wrike . . . "Don't forget to put my name on the chapel list and I'll bring you back a dope" . . . April Fool night—"Who's leading this crowd, me or you?" . . . Tyler B. and Cowboy . . . Frances Goforth spends a quiet evening in her clothes closet . . . Miss Smith suspends coaching classes because they are demoralizing . . . Bill's and Snookie's semi-monthly bust-ups . . . "Ben Bernie" out runs a Pontiac . . . "My operation resembles a cross"—Heafner . . . The girls visit Taylor Hall . . . The Night Watchman acquires an education (Goodin, Ph.D.) . . . "Big-Man" gives the girls a break . . . "Go away Danny, you are no lamp post" . . . Scratching is a good symptom . . . The boys of Taylor Hall air their mattresses . . . Miss Polly's and Miss Sam's visits enjoyed by all the daters . . . "Bubber" and Bill the handy men . . . Mary Vance writes an ode on the Night Watchman . . . Miss Sizemore's "hay-fever" . . . All the girls' boy friends vamped by the torch singer . . . "Mosey" gets bright enough for Spanish I . . . Miss Rich receives a Long letter . . . Miss Ballard vamps Carson Williams—a moonlight stroll . . . The Sap Club—broken hearts mended . . . Right in the middle of a kiss—Burma Shave . . . Miss Hayes coaches Miss Fewell in "snooping" . . . "Two cigarettes in the dark" (Ida and Helen spend a week on the campus) . . . Lisa attends the Junior-Senior at Erskine . . . The girls receive a thrill at the entrance gate . . . Frances Frye gets a sun tan—breaks up Spanish class . . . The boys resort to the back yard for their sun tans . . . Coffey gets locked in Walker's closet, Thelbert Cecil to the rescue . . . "Pardon me, but I am under a shower" . . . The amateur radio contest—Mary Vance wins . . . Eye goes to town on "Mood Indigo" . . . Girls stage floor show while Miss Smith searches the dorm for jewelry (?) . . . Mrs. Coltrane wins the Mars Hill baseball game . . . The sixty dollar week-end camping trip . . . "Good-night, boys" . . .





Archives 378 9756 B8
The Pertelote

Brevard College



0 1935 0040978 7
BREVARD COLLEGE LIBRARY

Please return to Brevard College

