

3789756  
B846p  
1939  
c.1

HELOTE

Marjorie Craig

Personal Copy

Bought from Miller Printing Company

Spring 1947

*James Addison Jones Library*



*Brevard College*

*Brevard, North Carolina*

X



THE *Porteclote*

---

OF 1939



WILLIAM A. ROCK, JR. - Editor-in-Chief

KENNETH ROYAL - Business Manager

HANS HANSON - Illustrator

---

PUBLISHED BY THE STUDENT BODY OF BREVARD



THE *Portelote* OF 1939

---



COLLEGE, BREVARD, NORTH CAROLINA . . . . .

# DEDICATION--

To Mr. Trowbridge, Vice-President of Brevard College and former president of Weaver College, for his loyal service, his unassuming kindness, and his sincere interest in the advancement of this institution, we dedicate the 1939 PERTELOTE.





# F O R E W O R D

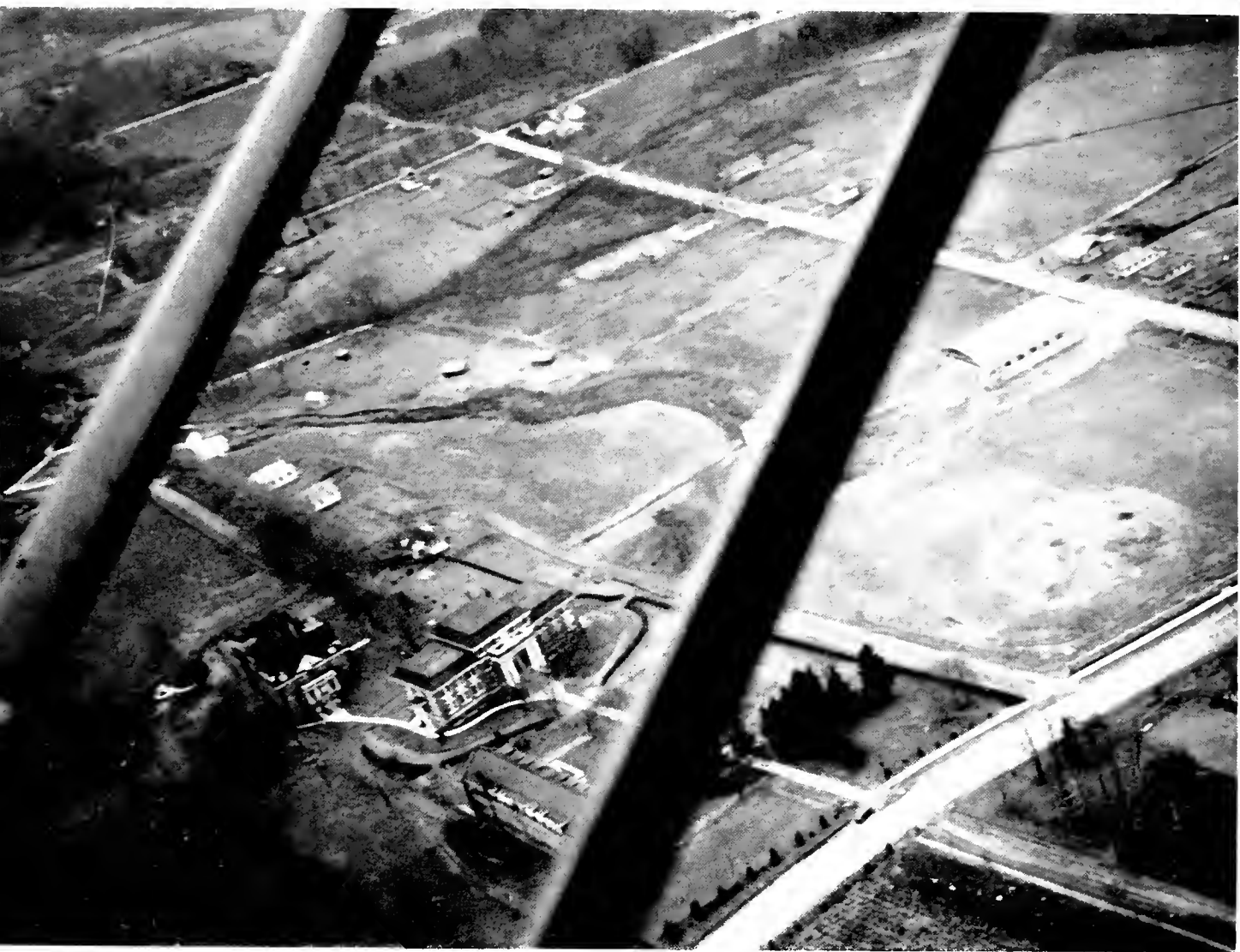
**B**REVARD COLLEGE is situated in a section of America that is particularly rich in folklore. This folklore gives us, as nothing else can, the lives of the people to whom it belongs. During the past four years the members of the Folklore Club and freshman English classes have made a collection of this material. None of this folklore has been secured from written sources, but has been handed down to us by the older inhabitants, both educated and uneducated, of the communities from which our students are drawn.

To-day we know that education can free us from ignorance, superstition, and fear. As we discard the primitive ideas expressed in this folklore, we do not want to lose its higher qualities. We wish to retain the rich and pungent flavor of the ballads, folk-songs, singing games, folk-sayings, and superstitions that lend color to the mountain regions.

It is for such a reason that we chose "Mountain Folklore" for the theme of this year's PERTELOTE and illustrate the annual with drawings that the theme suggests.

—THE EDITOR.







# THE COLLEGE

*"The Farmer in the Dell"*

*- A Folk Game*



*West Hall - Girls' Dormitory*



*Frances Ross Hall - Boys' Dormitory*



*Taylor Hall - Boys' Dormitory*



*Virginia Lodge - Girls' Dormitory*



## *Alma Mater*

*Unto Brevard we're ever loyal;  
We sing to her a song of praise.  
She gives to us endowments royal  
To guide us thru life's endless maze.*

### *CHORUS*

*Brevard, Brevard, our hearts rejoice;  
Forever and forever we will honor thee.*

*Our College, we will not forsake thee,  
Nor for one moment will forget;  
Thy standards in our hearts we'll cherish  
To guide us till our sun has set.*

*—Leighton Presson.*





*A Message  
to the Class of 1939*

*B*REVARD COLLEGE is finishing the fifth year of its operation. Its progress thus far has been due to the faith and courage of those who have been most responsible for its program. My experience leads me to believe that these two qualities of soul are most essential in the development of any project and even more so in the making of men and women. My message is simple. Look around you. Observe excellent character wherever you find it. Look behind and underneath and note that faith and courage are fundamental. Then go out and develop these two qualities in your own lives.

EUGENE J. COLTRANE,  
President of the College.

# A D M I N I S T R A T I O N

## First Row Across

C. H. TROWBRIDGE, A.B., A.M.  
Vice-President, Chemistry, Physics

C. E. BUCKNER, A.B., A.M.  
Dean and Registrar

MISS DULCIE HAYES, A.B., A.M.  
Dean of Women, Spanish

BUNYAN H. ANDREW, A.B.  
Dean of Men, History

BURT W. LOOMIS, B.S., A.M., Ph.D.  
Psychology, Education, Guidance

JOHN BOYCE BENNETT, A.B., B.D.  
Religious Education

## Second Row Across

MRS. ROSANELLE CASH BENNETT, A.B., A.M.  
French, German

MISS MYRA BINFORD  
Dietitian and Dean of Virginia Lodge

EARL D. C. BREWER, Ph.B.  
Department of Extension and Promotion

MRS. ETHEL KERR BREWER, A.B.  
Assistant Dean

MRS. BESS REAP BUCKNER  
Dietitian of Ross Hall

GRADY W. CAMPBELL, A.B.  
Director of Industrial Division, Mechanical Drawing and Woodworking

## Third Row Across

MRS. MAYBELLE POOVEY CAMPBELL, A.B.  
A. M. Business Education

JOHN BOYD CHRISTENBURY, A.B., A.M.  
Head Coach, Hygiene

MISS LINDA IRENE CLAY, B.M.  
Piano

MRS. ISABELL DOUB COLTRANE, B.L., B.MUS.,  
A.M.  
English, Speech, Dean of Coltrane Home

MISS MARJORIE CRAIG, A.B., A.M.,  
English

MRS. CHARLOTTE HATCHER DENDY, B.S.  
Vocal Music

## Fourth Row Across

CLINE FARTHING, B.S.  
Assistant Coach, Physical Education

MRS. MARY HOFFMAN FARTHING, B.S.  
Official Timekeeper

MISS HARRIET HAGOOD KILLOUGH, A.B.  
Dietitian of West Hall

MRS. ANNIE WISHAM McCALLUM, B.S.  
Business Education

COVERT S. McCALLUM, B.S.  
Agricultural Director

MRS. J. D. McRAE  
Nurse

## Fifth Row Across

MRS. R. F. MOCK  
Dean of Virginia Lodge Annex

MRS. MARILEE RALEY PALMER, B.S. IN EDUCATION  
Physical Education for Girls

THOMAS McNEIL PALMER, B.S.I.A.  
Superintendent of Construction

MRS. LOULA McNEER PANGLE, A.B., A.M.  
Mathematics

MAXWELL GALBRAITH PANGLE, A.B., A.M.  
Economics and Sociology

MRS. BROWNIE LIPE ROGERS  
Assistant Bursar

## Sixth Row Across

JAMES O'BRIEN ROGERS  
Bursar

CHARLES SCHOENKNECHT, B.S.  
Biology, Zoology, Botany

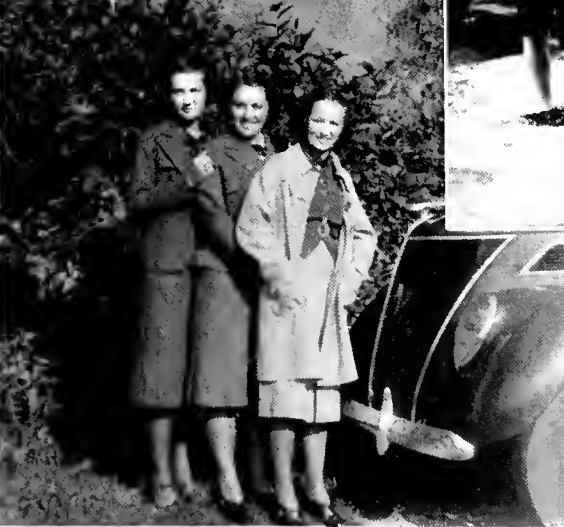
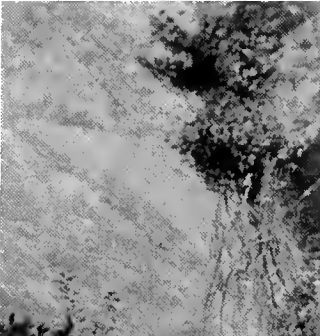
MISS DELLA SHORE, B.S., B.L.S.  
Librarian

MISS MERLIE HAZEL SIZEMORE, B.S.  
Home Economics

MISS LUCILE SMITH, A.B., A.M.  
English and Dramatics







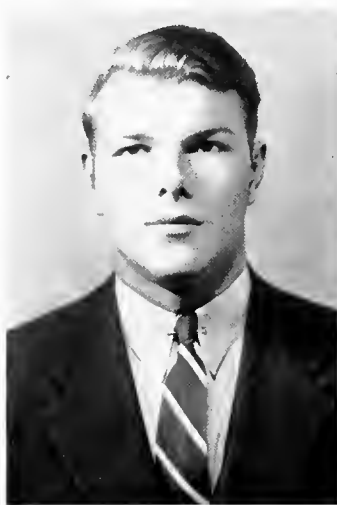


## SENIOR CLASS

*"Black Jack Davis came a-ridin' through  
the woods,  
Singing so loud and merry;  
Made green rings all round that hill  
And charmed the heart of a lady."*

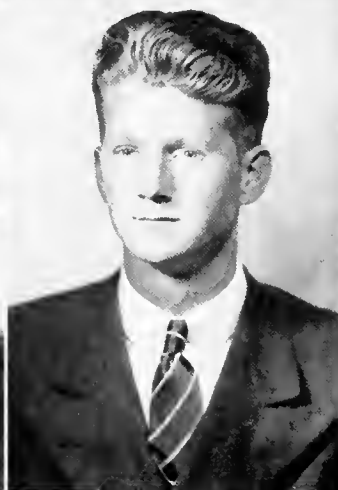
*-- Old Ballad*

# SENIOR CLASS OFFICERS



**THOMAS RUTHERFORD STEPP**

Hendersonville, North Carolina  
Baseball, Assistant Manager '38, Manager '39; Block "B" Club, Secretary-Treasurer '39; Dormitory Council, President '39; Football, Co-Captain '39; President of Senior Class. Everyone knows "Uncle Fud" for his athletic ability and his ready grin. We were fortunate in having so able a Senior President.



**CHARLES BRICE RATCHFORD**

Gastonia, North Carolina  
Philosophic, Critic '38, Censor '38, Vice-President '39; Block "B" Club; Cheer Leader; Commencement Marshal; Dormitory Council; Dramatic Club; Forensic Club, President '38-'39; Medical Science Club; Track Team; Vice-President Senior Class. Brice is the most energetic boy on the campus. No matter whether it's cheerleading, debating, or hog-calling that is needed, he is always ready to serve.

**DIXIE LEE SHEETS**

Charlotte, North Carolina

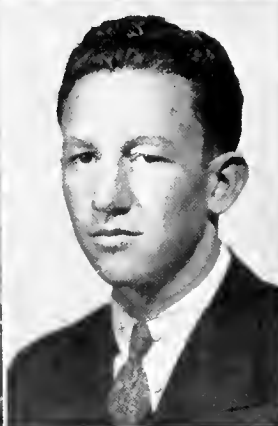
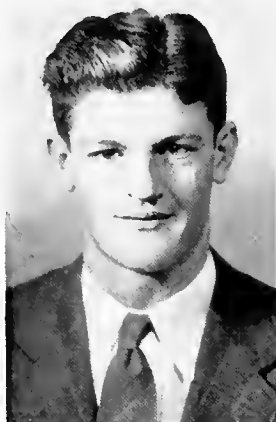
Mnemosynean, Vice-President '39; Concert Choir; Folklore Club; Glee Club, President '38; Mecklenburg County Club, President '39; Photo-Nature Club; Secretary of Senior Class. Dixie takes college seriously and doesn't mind working for what she gets. She's efficient, too, but she likes to take time out occasionally for hot rolls with butter and jelly.

**HORACE RANSOM MESSER**

Bryson City, North Carolina

Delphian; Dormitory Council; Medical Science Club; Pertelote Staff '39; Treasurer of Senior Class. Horace seems to have been rather bashful among the "Biddies," but the boys all know and like him well.

*Always start up the stairs on your left foot, or bad luck will overtake you.*



### WILLIAM A. ADAMS

Asheville, North Carolina

Bill is our dairyman, and it is he who sends Farabow out on his early morning milk route.

### WILLIAM WARREN ALBERT

Pisgah Forest, North Carolina

Transylvania County Club, Secretary-Treasurer '39. William's interests lie in the medical profession, and in girls at Asheville Normal. Quiet and unobtrusive, he has a charming personality once you know him.

### CHARLES HOWARD ALLEN

Brevard, North Carolina

Baptist Student Union, Chorister; Transylvania County Club, Vice-President '38; International Relations Club, Critic '39. This friendly young man has shown much ability in college, but it is probable that he will find his field of greatest service in religious activities.

### MARIAM ALLEN

Waynesville, North Carolina

Mnemosynean; Clarion Staff; Commercial Club, Reporter '39; Photo-Nature Club, Treasurer '38, Reporter '39. "Jimmy," as everybody calls her, has a pair of dancing feet that keep time with her mountain folk songs. She is from Waynesville, and that accounts for it.

### BLANCHE R. ARDREY

Pineville, North Carolina

Mnemosynean; Fireside Club. Everywhere we see Blanche we see Eloise. You might think them twins or sisters. We wonder whether Blanche has chosen teaching for her life work or something else that is a secret.

### MAX ASHWORTH

Brevard, North Carolina

Transylvania County Club. Max hasn't definitely decided on his life work, but a good guess is that he will make an excellent history professor.

### MARY KATE AUSTIN

Peachland, North Carolina

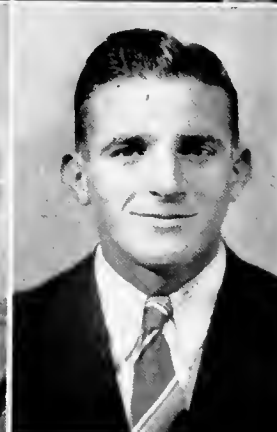
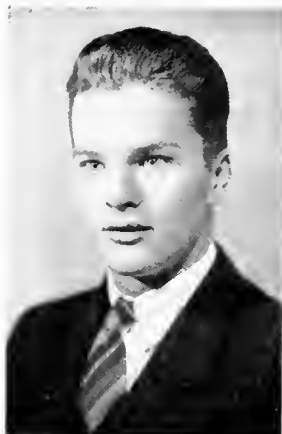
Euterpean, Secretary-Treasurer '38; Folklore Club, Secretary-Treasurer '39; Glee Club; Union County Club. As for looks, Kate has them. Just give a smile in return for hers, and you have made a friend. She has been a good student, and in her chosen field of home economics she will be a success.

### WILLIAM RALPH AUSTIN

Peachland, North Carolina

Clicsophic; Agriculture Club. It seems that Ralph is interested in dairying and agriculture; some day he hopes to lift Southern agriculture to a higher level.

*Thrash may be cured by letting the sick child drink from a stranger's shoe.*



### JACK RAYMOND BAGWELL

Asheville, North Carolina

Cliosophic; Assistant Dietitian, Ross Hall; Dramatic Club; Ministerial Missions Club, Vice-President '38. Jack has been Mrs. Buckner's right-hand man. What will she do without him? Either his acting or his good looks made him the hero in many of our plays.

### BUTLER WILSON BLACK

Clinton, North Carolina

Agriculture Club; Dormitory Council. Butler gives promise of being an outstanding agriculturist. He is devoting more time to his future vocation since Johnnie Lee left.

### JENNINGS F. BALLARD

Alexis, North Carolina

Delphian, President '39; Christian Student Movement; Forensic Club, Vice-President '39; International Relations Club; Lincoln-Catawba County Club, President. As one of the four main debaters on the campus, Jennings has kept his mind alert and responsive to significant current happenings.

### CHARLES MARVIN BOGGS

Salisbury, North Carolina

Cliosophic, Secretary '38, Reporter '39; Folklore Club, Critic '38, Vice-President '39; International Relations Club; Ministerial-Missions Club. "Herr Boggs" is always seen where there is something of interest happening on the campus. His varied activities indicate his alertness and usefulness.

### ALICE BILLINGS

Dockery, North Carolina

Euterpean; Fireside Club; Folklore Club, Critic '39; Sigma Pi Alpha. Alice is a quiet Titian blonde, whose motto is "Work before play."

### ELOISE B. BROOKS

Midland, North Carolina

Mnemosynean; Fireside Club. With her quiet, pleasing personality, she is one of the sweetest girls on the campus. Blanche is always her better half.

### VAN BIRMINGHAM, JR.

Gastonia, North Carolina

Delphian; Band; Boosters' Club; Gaston County Club, President '39; Medical Science Club; Photo-Nature Club; Track Team. Van, this tall, dark, and handsome young man, is quite the "Romeo" of our campus; and "Kat" seems to be the lucky "Juliet."

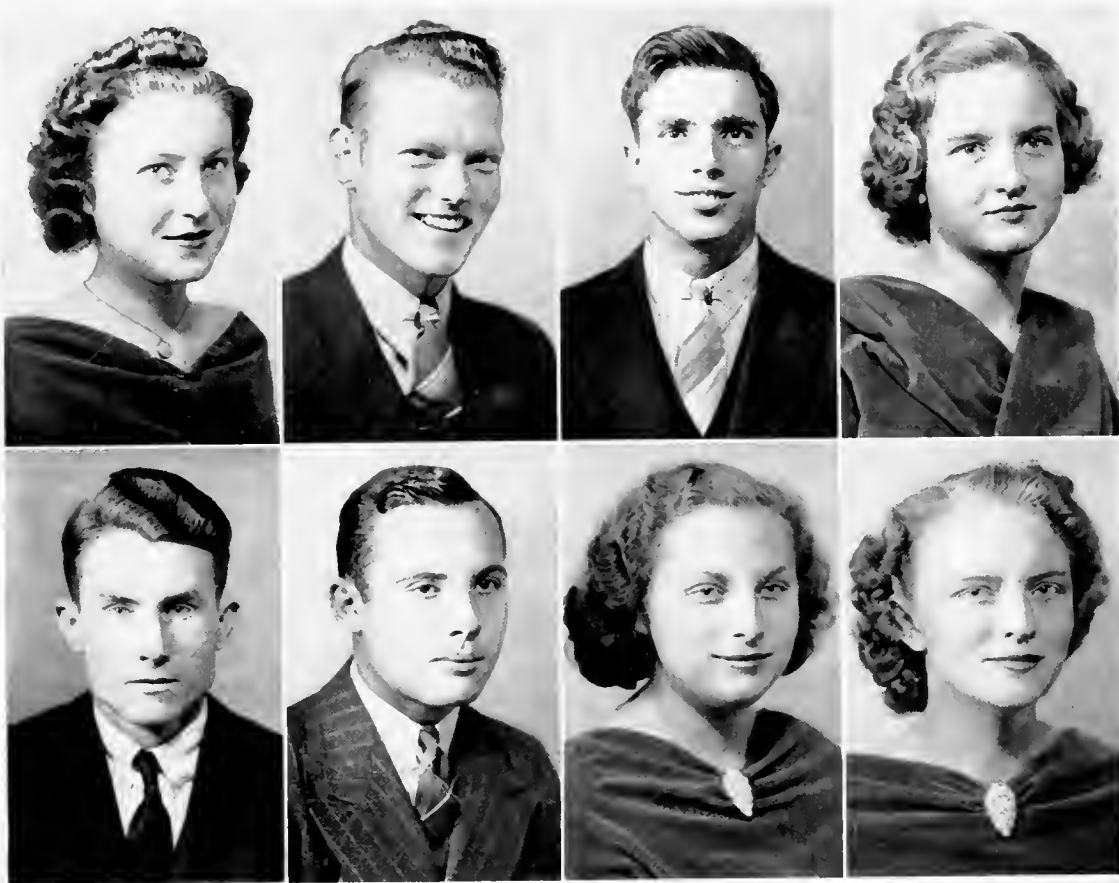
### DALLAS MARION BROWN

Crossville, Tennessee

Delphian; International Relations Club. "Tarzan" is a member of the McRae Cottage Crew, and a drier humorist cannot be found.

*Never let a lilac bush grow tall enough to shade a grave, or death will come and fill it.*





#### HELEN ROGERS BROWN

Leicester, North Carolina

Euterpean; Buncombe County Club; Fireside Club; Folklore Club; Forensic Club. Helen is one of the neatest girls on the campus. She is quiet but can hold her own in a debate.

#### ARTHUR CARNES

Walker, Kentucky

Delphian; Assistant Dean of Taylor Hall; Dormitory Council; International Relations Club. Arthur's efficiency in the shop and as assistant dean of Taylor Hall has won genuine respect from the boys.

#### TALMADGE LEROY BURNETTE

Swannanoa, North Carolina

Delphian, Secretary '38, Critic '39; Agriculture Club; Buncombe County Club, Vice-President '39; Clarion Staff; Medical Science Club. Talmadge, better known as "Red," should be president of the Spanish Athletic Association. His motto is "Come in and Throw the Bull."

#### S. C. CARPENTER, JR.

Lincolnton, North Carolina

Delphian; Band, Clarion Staff, Editor-in-Chief '39; Lincoln County Club; Medical Science Club. We predict that S. C. will pass from the stage of writing one-act plays and short-stories to the editorship of a small country newspaper.

#### LEWIS CALDWELL

Campobello, South Carolina

Medical Science Club, President '39. This very able chemistry laboratory assistant is a man's man. He has the friendliest smile we've seen in many a day.

#### EVELYN CAUBLE

Asheville, North Carolina

Mnemosynean; Baptist Student Union; Buncombe County Club, Reporter '39; Fireside Club, President '39; Travel Club, President '38. When it comes to making public speeches, Evelyn always says "No"; but with her wit and good humor, she has made her place in Brevard College.

#### NETTIE GRACE CAMERON

Polkton, North Carolina

Euterpean; Anson County Club, President '39; Folklore Club. This gentle-mannered, conscientious senior has succeeded in making friends both on the campus and out in town.

#### FRANCES CAUBLE

Mount Pleasant, North Carolina

Euterpean; Commercial Club; Dramatic Club; Glee Club. If the conversation ever gets dull, just call on Frances; she is always bubbling over with something to tell.

*Never pity an animal at the butchery; it will take longer to die.*



### J. FRANK CAUBLE

Mount Pleasant, North Carolina  
Delphian; Baseball, Co-Captain '38. When it comes to cutting weeds and playing baseball, Frank is tops

### ROBERT H. CLAYTON, JR.

Erlanger, North Carolina  
Delphian; Block "B" Club; Cheer-Leader '38; Christian Student Movement; Clarion Staff, Associate Editor '38, '39; Commercial Club; Ministerial-Missions Club, Reporter '38; Photo-Nature Club. Bob had time for cheer-leading and newspaper work, in addition to holding an office job up town.

### DOROTHY FLORINE CLINE

Concord, North Carolina  
Euterpean, Sergeant-at-Arms '38; Cabarrus County Club, Secretary-Treasurer '39; Commercial Club; Folklore Club; Glee Club. Little but loud, but who cares? With Dotty around, you are bound to be in good spirits.

### UNA MARIE COOK

Asheville, North Carolina  
Euterpean; Baptist Student Union; Buncombe County Club, Secretary '39; Fireside Club; Folklore Club; Travel Club. Una, the girl with beauty and a sweet disposition, is popular with both boys and girls so popular with one boy that he asked her twenty-seven times for a date before he succeeded.

### GEORGE NELSON COONE

Marion, North Carolina  
Delphian; Band; McDowell County Club, Vice-President '39. Being a cousin to the talented Alvin Moore should be an inspiration to our ambitious clarinet player.

### HORACE COVINGTON

Shelby, North Carolina  
Closophic; Cleveland County Club; Forensic Club. After two years at Brevard College, Horace liked Sophomore English so well that he decided to stay an extra year.

### HELEN ROSS COX

Gastonia, North Carolina  
Mnemosynean; Dramatic Club; Gaston County Club; Glee Club, Librarian '39. Helen's sparkling black eyes and her charming personality really enable her to reach a young man's heart.

### GEORGE WILLY DALTON

Lewisville, North Carolina  
Dormitory Council; Ministerial-Missions Club; Christian Student Movement. George's idea of having a good time is helping others, especially when it comes to religious matters.

*In making medicine, look for an herb the same shape of the organ you want to cure.*





### JAMES BURTON DANIELS

Crossnore, North Carolina

Delphian; Basketball; Christian Student Movement; Clarion Staff; Football; Forensic Club. If you really want to see Burt's face light up, just ask him about his little red-headed fire-cracker.

### DOROTHY CHARLOTTE DIXON

Brown Summit, North Carolina

Euterpean; Mnemosynean; Folklore Club; Glee Club; Guilford County Club, President '39; Photo-Nature Club. "Dot" has a sweet smile for every one, especially Jesse. We wonder what her chosen profession is, or is it a secret?

### MARSHALL DAVIS

Hazelwood, North Carolina

Block "B" Club; Boosters' Club; Football, Manager '38; Haywood County Club; Intramural Sports Manager. An efficient football manager is "Spud." He seems to have the training for a good housekeeper, too.

### BARBARA ELISABETH DODSON

Winston-Salem, North Carolina

Euterpean; Mnemosynean; Fireside Club; Forsyth County Club, Vice-President '39; Librarian '39; Photo-Nature Club. This little package of energy usually gets what she goes after in the way of friends.

### VIRGINIA ALICE DAVIS

Biltmore, North Carolina

Euterpean; Commercial Club; Fireside Club. With her boundless supply of wit and humor, Virginia has kept the Lodgers smiling for the past two years.

### ALTON EDWARDS

Cliffside, North Carolina

Delphian; Basketball; Block "B" Club; Dramatic Club; Rutherford County Club. Alton has shown much interest in athletics, and we think he has found a pretty little "cook" also.

### DOROTHY DEAN

Brevard, North Carolina

Glee Club; Medical Science Club; Transylvania County Club. "Dot's" sweet, sympathetic smile will be a valuable asset to her in the nursing profession.

### OLIVE GRACE ENGLISH

Swannanoa, North Carolina

Euterpean; Commercial Club. This quiet little waitress doesn't confine her service to the dining room.

*It is bad luck to burn shoes or stockings, for the part of the body covered will be burned.*



#### CARL BYRD FISHER

Whittier, North Carolina

Basketball, Manager '39; Block "B" Club; Medical Science Club. This very capable manager of the basketball team has a head for business. He believes in doing everything the scientific way.

#### ALBERT FRANKLIN GORDON

West Asheville, North Carolina

Cliosopic; Band; Concert Choir; Ministerial-Missions Club. This left-hander is better known to the students as "Flash," and as a drummer he beats them all.

#### FRANK POWELL FOX

Townsville, North Carolina

Delphian; Baseball; Block "B" Club; Dormitory Council. "Foxy" is one of the most popular boys on the campus, and does any one have a keener sense of humor?

#### JOYCE GRIFFITH

Relief, North Carolina

Euterpean; Fireside Club; Medical Science Club. Joyce is a "come easy, go easy" type of girl, who is frequently coining witty remarks.

#### REVIS FRYE

East Gastonia, North Carolina

Delphian; Band, Director; Baseball, Co-Captain '38; Block "B" Club; Boosters' Club; Concert Choir; Dramatic Club; Football; Student Council, President '39. Revis is the "father," as well as the leader, of the band. His leadership is not limited to music, however, as he also heads the Student Council and the baseball team.

#### NELVIN GUNN

Reidsville, North Carolina

Mnemosynean; Boosters' Club, Vice-President '39; Concert Choir; Dramatic Club, Secretary '38; Rockingham County Club, President; Student Council, Secretary '39. Nelvin has good looks, a striking personality, and an eagerness to serve every one around her.

#### DOROTHY HELEN GALLOWAY

Brevard, North Carolina

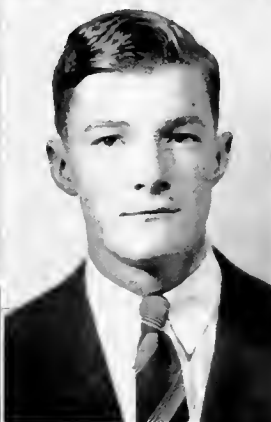
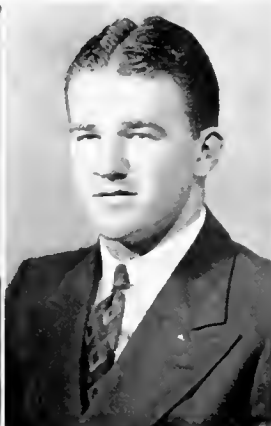
Mnemosynean; International Relations Club, Secretary-Treasurer '38, Librarian '39; Transylvania County Club. Helen is known for her keen enthusiasm in physical education, her ready explanation in classes, and her faithful membership in the I. R. C.

#### BETTY ANN GWALTNEY

Asheville, North Carolina

Mnemosynean, President '39; Buncombe County Club; Dormitory Council; Fireside Club; International Relations Club. Betty has satisfactorily divided her time between her studies and the "One-and-Only" on the west side of the campus.

*It is bad luck to take a young child across a stream of water on its first trip from home.*



### HANS MILLER HANSON

Asheville, North Carolina

Pertelote Staff, Illustrator '38, '39. Hans has the incurable habit of decorating all his papers—in class or out—with Pertelote sketches.

### JOHN TALMADGE HARPER

Zebulon, North Carolina

Delphian; Band; Commercial Club; Model-Airplane Club, Secretary '39; Photo-Nature Club. "Foozie" was an asset to our social activities as well as to the band. Without him there would have been no "St. Louis Blues."

### JULIUS S. HARRILL, JR.

Forest City, North Carolina

Delphian; Block "B" Club, Vice-President; Dramatic Club, Vice-President; Football; International Relations Club; Photo-Nature Club; Rutherford County Club, President. "Spike" is a jack-of-all-trades, but he has distinguished himself most in dramatics.

### JAMES F. HEMPHILL

Forest City, North Carolina

Delphian; Basketball. Jim is at home on the basketball and tennis courts, but he seems to fear West Hall.

### THOMAS HEMPHILL

Marion, North Carolina

Delphian, Sergeant-at-Arms; Baseball; Block "B" Club; Boosters' Club; Football; Track. The broadest grin in school characterizes this "pigskin booter." He is a firm believer in co-education and "swing."

### JOHN HENDRIX

Mocksville, North Carolina

Closophic, Secretary; Basketball, Co-Captain; Block "B" Club, President; International Relations Club, Critic. If England ever loses her Chamberlain and wants another that looks just like him, John is the very fellow to fill that vacancy.

### HOMER HUNTER HENRY

Waynesville, North Carolina

Commencement Marshal '38; Pertelote Staff; Sigma Pi Alpha, Vice-President '39. Hunter is not only an excellent student but also a generous dispenser of food in the West Hall kitchen.

### SARA FRANCES HENSLEY

Columbia, South Carolina

Mnemosynean, Secretary '39; Boosters' Club; Clarion Staff; Commercial Club; Concert Choir; Glee Club, President '38, Accompanist '39; Photo-Nature Club, Vice-President '39; South Carolina Club, Secretary '39; West Hall, Assistant Dean '39. Sara is the type of girl that everybody knows. She does not let her job as assistant dean of West Hall keep her from having a good time.

*Turn a shoe upside-down under your bed to prevent rheumatism.*



### RONALD HICKS

Winston-Salem, North Carolina  
Chief Commencement Marshal '38; Medical Science Club; Ministerial-Missions Club. Hard work and plenty of sleep are Ronald's favorite pastimes. Gwendolyn will always associate him with Oak Grove Church.

### DONALD HAMPTON HORNER

Wake Forest, North Carolina  
Delphian; Basketball. Donald is at his best on the basketball court.

### ROBERT WAYNE HOYLE

Fallston, North Carolina  
Closophic; Baptist Student Union; Commercial Club. Wayne has a broad grin for every one. It is not surprising that he is boss of the crew working on the gymnasium.

### RAY HILLIARD

Micaville, North Carolina  
Model-Airplane Club, Captain '39. Ray is interested in aviation and believes in doing something about it. He is quiet, but he is purposeful; and we shall probably hear from him soon.

### MARY GEER HINES

Rutherfordton, North Carolina  
Mn'mosyean; Concert Choir; Fireside Club; Glee Club; International Relations Club. Two things we shall especially remember about Mary Geer: her affection for Tom and her rich soprano voice.

### CHARLES H. ISBILL

Dalton, Georgia  
Baseball; Boxing; International Relations Club, President '38, '39; Out-of-State Club, President '39; Tennis, Track. Isbill's extra-curricular activities seem to be headed by the International Relations Club. He must be noticed, even if he has to wear his pajamas to class.

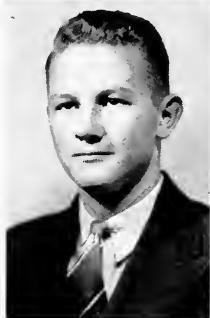
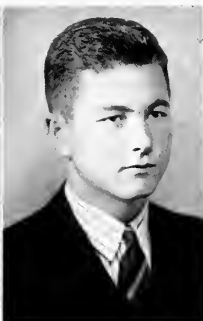
### RICHARD B. HOLCOMBE

Candler, North Carolina  
Closophic; International Relations Club, Vice-President; Mu Delta Club. Dick's friendly spirit and splendid personality will undoubtedly be useful to him in his career as a doctor.

### HERBERT LEE JACKSON

Campobello, South Carolina  
Delphian, Agriculture Club. Quiet? Some say yes, others no. Just the same, he knows his agriculture.

*It brings good luck to hang an old horse shoe up on a rail fence.*



#### ELIZABETH BECKETT JENKINS

Brevard, North Carolina  
Folklore Club; International Relations Club; Per-  
telote Staff; Transylvania County Club. Elizabeth has  
shown outstanding ability as a writer of short-stories  
and plays.

#### RALPH LANIER

Lexington, North Carolina  
Clio-sophic; Agriculture Club. We predict that  
Ralph will be as successful in any phase of agricul-  
ture as he was with his chicken project.

#### JESSE PARIS JULIAN

Franklinville, North Carolina  
Delphian; Folklore Club; Model-Airplane Club;  
Photo-Nature Club. Jesse is noted for his neatness  
in dress and his quiet manner; his appearance around  
the campus with "Dixon" seems habitual.

#### MALCOLM LENTZ

Norwood, North Carolina  
Clio-sophic. When Malcolm becomes a detective  
in the near future, we hope he will tackle something  
beside's food.

#### FLORENCE KITCHIN

Horse Shoe, North Carolina  
Mnemosynean; Fireside Club, President '38; Folk-  
lore Club; Henderson County Club; Medical Science  
Club. Florence is competent and faithful as assistant  
in home economics. We do not wonder at the fre-  
quent visits of a favored alumnus.

#### HAROLD TROY LITTLE

Lincolnton, North Carolina  
Delphian; Agriculture Club; International Rela-  
tions Club. Harold is known as a very able carpen-  
ter on Mr. Campbell's crew.

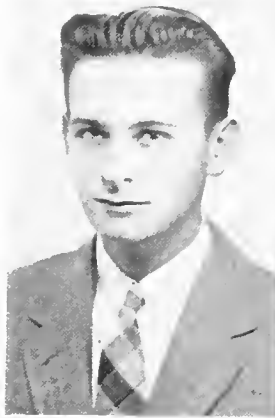
#### VIRGINIA LAMBERT

Charlotte, North Carolina  
Mnemosynean; Folklore Club; Gleo Club; Mack-  
lenburg County Club, Vice-President '39; Photo-Nature  
Club. Here is a pretty little blonde who holds her  
own in the hearts of others besides Foster. Air-  
planes are her namesakes.

#### DATHA LONDON

Ellenboro, North Carolina  
Clio-sophic; Agriculture Club. Quiet and conserva-  
tive, he is a pleasing person to have around. All  
indications are that he will be a successful business  
man.

*If you are caught in a whirlwind, shut your eyes and see the Bad Man.*



#### ROBERT CHARLES LUCKE

Eadin, North Carolina

Cliosopic; Concert Choir; Dramatic Club; Ministerial-Missions Club. A good sport is our Bobby, whose chief delight is acting and creating plays.

#### FERN McCOMBS

Easley, South Carolina

Mnemosynean; Fireside Club; South Carolina Club. We are sorry Fern's off-campus trips home frequently took this likeable person away from us.

#### WALTER C. LUDWICK

Salisbury, North Carolina

Cliosopic, Treasurer '38, President '39; Dramatic Club; Folklore Club; Ministerial-Missions Club; Rowan County Club, President '39; Student Christian Movement, Vice-President, Treasurer. Dignified, friendly, and efficient, he is one of our promising ministerial students. He has worked faithfully for the cause of religion on the campus.

#### ARTHUR McDANIELS

Forest City, North Carolina

Arthur seems quiet and conservative but is in reality mischievous and full of pranks.

#### WILLIAM LYDAY

Pisgah Forest, North Carolina

Transylvania County Club. William is a skilled huntsman and a true lover of the woods.

#### ELSIE McJUNKIN

Brevard, North Carolina

Baptist Student Union; Commercial Club; Folklore Club; Pertelote Staff; Transylvania County Club. Elsie's speed in typing will help her to become a very able secretary.

#### ROBERT S. McCALL

Forest City, North Carolina

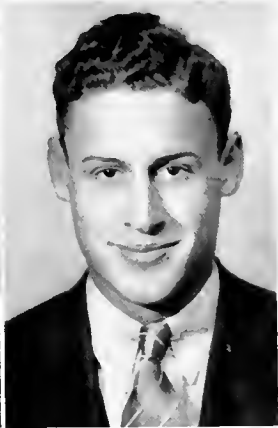
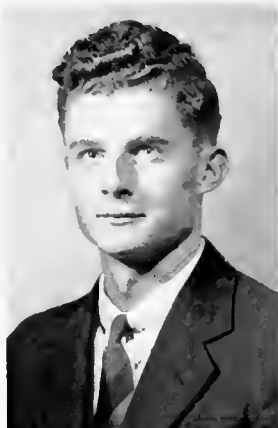
Delphian; Band; Medical Science Club. Bob is a very able member of our band. His love is "hot" rhythm.

#### LYNWOOD McELROY

Waynesville, North Carolina

Cliosopic; Baptist Student Union. The chief delight of Lynwood is taking a different girl to the movie each week.

*If a spider makes a web across the front porch, a stranger is coming.*



### WAYNE McLAIN

Statesville, North Carolina

Clisophic, Chaplain '38, Critic '39; Boosters' Club; Concert Choir; Christian Student Movement, President '39; Forensic Club; Ministerial-Missions Club; Student Council. Wayne is one of our main religious leaders on the campus and has likewise shown much ability in debating.

### NATHAN McMINN

Brevard, North Carolina

Block "B" Club. Tall, dark, and handsome—a woman hater—that last is a joke. In the summer he spends his spare time at swimming pools and lakes.

### JUNE ANN MARION

Pinnacle, North Carolina

Euterpean; Folklore Club; Forensic Club, Reporter '38; Glee Club; Mu Delta Club; Surry County Club. June encourages people to join the Travel Club; and her chief hobbies are traveling, playing basketball, and debating.

### CATHERINE MAE MARTIN

Waynesville, North Carolina

Mnemosynean; Commercial Club; Haywood County Club; Pertelote Staff; Photo-Nature Club; Secretary of Freshman Class '38. This attractive young lady has been very popular on the campus. She is outstanding in secretarial work.

### HARVEY JOEL MERRITT, JR.

Winston-Salem, North Carolina

Clisophic; Baptist Student Union, Second Vice-President '39; Commercial Club, President '39; International Relations Club, Secretary-Treasurer '38; Photo-Nature Club, Vice-President '39. Joel is a very dependable person. He has a high scholastic record and is majoring in accounting.

### EDGAR T. MESSER

Bryson City, North Carolina

Delphian; Baseball; Commercial Club, Vice-President '39; Dormitory Council. Edgar's athletic ability and attractive smile win friends for him very quickly. He is a capable person in business subjects.

### VIRGINIA MILLER

Lexington, North Carolina

Mnemosynean; Davidson County Club, Vice-President '39; Fireside Club, Secretary-Treasurer '38, Vice-President '39; Travel Club. "Miller's" friendly personality, mingled with her beauty, shows us just what an all-round college girl is like.

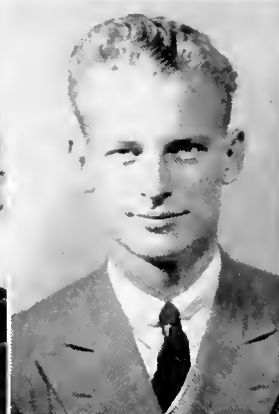
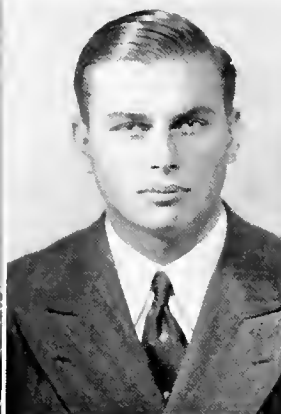
### MARY RACHEL MISENHEIMER

Taylors, South Carolina

Mnemosynean; Fireside Club; Forensic Club; International Relations Club; Ministerial-Missions Club. "Misie" has shown her ability in many fields at Brevard but especially in debating. She is also a very good chaperone.

*The first twelve days in January determine the weather for the twelve months.*





### ROBBIE GAY MOCK

Brevard, North Carolina

Mnemosynean; Commercial Club; Folklore Club; Glee Club. Robbie Gay is known for her sweet friendly manner. Her blonde attractiveness may some day win her a "cook."

### VIRGINIA RUTH ODOM

Unaka, North Carolina

Mnemosynean; Commercial Club; Fireside Club; Glee Club. Virginia Ruth's policy: If your business interferes with your pleasure, stop your business. She's a "good ole Tarheel" but has a longing for the hills of Eastern Tennessee.

### JOSEPH EARLE MOORE

Waynesville, North Carolina

Delphian. Joe is Mr. Campbell's efficient electrician. If your lights ever give you trouble, just call on him.

### RALPH A. OEHMAN, JR.

Guilford College, North Carolina

Delphian. Ralph likes to skate, dance, and play golf and tennis. He expects some day to become the champion skater of the world.

### SARAH ESTELLE MORGAN

Anderson, South Carolina

Mnemosynean; Commercial Club; South Carolina Club; Travel Club. Everyone knows Sarah, especially the kitchen force. Her pranks with other girls' suitors were just in fun.

### CLYDE K. OSBORNE, JR.

Brevard, North Carolina

C. K. isn't on the campus very much, but he is noted for his excellent class discussions. His prince-charming manners have won him the attention of many ladies.

### THOMAS F. MUNRO

Columbus, Georgia

Delphian; Band, Football; Out-of-State Club; Photo-Nature Club, Vice-President '39. Tommy hails from Georgia, and he admits he is a "pest"; but he is really just having his fun. He likes to share his jokes with a sweet little blonde from Edneyville.

### FRANK OSBORNE

Brevard, North Carolina

Medical Science Club; Student Council. Frank is one of our best students. He is very intelligent and studious; and we are sure he'll prove successful in any field he enters, especially in chemistry.

*If a stray cat comes to your house, it will bring you good luck.*





### VIRGINIA B. OSBORNE

Bethel, North Carolina

Mnemosynean; Commercial Club; Haywood County Club '39; Travel Club, Secretary-Treasurer '39. Virginia's efficiency and dependability will greatly aid her in the commercial world.

### OSCAR O. PALMER, JR.

Shelby, North Carolina

Cleveland County Club, President; Dormitory Council of Taylor Hall. Oscar is just bubbling over with friendliness. He is interested in history; and, from all indications, he will make a great life work of teaching it.

### GUY WARREN PAUL

Highlands, North Carolina

Chiosophic, Critic '38; Choir; International Relations Club, President '39. Wit, a pleasing personality, and the ability to play the lady's part have won distinction for this young fellow. Just ask any one about his famous opera singing.

### BLONDELL PENNELL

Kannapolis, North Carolina

Mnemosynean; Commercial Club; Folklore Club; Glee Club. "Bonny" thinks that studies should be supplementary to social activities. Her deft fingers produce many of our dignified coiffures.

### ELSIE PERRY

Brevard, North Carolina

The saying "Like attracts like" is strikingly illustrated by the attraction that Elsie has for a certain blond young man.

### ETHEL MADGE PHIFER

Peachland, North Carolina

Euterpean; Folklore; Union County Club, President '39. Ethel's interests are many and varied. Is there any connection between her home economics and the handsome young men on the campus?

### JOYCE LILLIAN PHIFER

Peachland, North Carolina

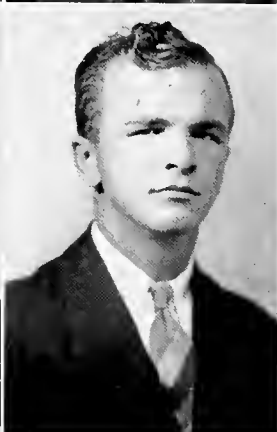
Euterpean; Boosters' Club, Secretary '39; Commercial Club; Union County Club, Secretary '39. Lillian seems to have suddenly become interested in agriculture; at any rate she has her eyes on a Gardener.

### DOROTHY EVELYN PITILLO

Asheville, North Carolina

Mnemosynean; Boosters' Club; Commercial Club; Glee Club, Secretary '39; International Relations Club. "Pat" has originality plus, and her favorite cracker is "Graham." She is never serious, but we know where her heart lies.

*It is bad luck to have a woman or a horse on a sailing boat freighter.*



### MARY POTEATE

Waynesville, North Carolina

Mnemosynean; Clarion Staff; Commercial Club; Concert Choir; Glee Club; President '39; Haywood County Club, President '39; Photo-Nature Club, Secretary '39. Mary is always in demand as a pianist; and when you hear her play, you know why.

### RAY PROCTOR

Winston-Salem, North Carolina

Delphian; Baseball; Boosters' Club, President '39; Colvard Memorial Award '38; Commercial Club, Vice-President '39; Football; Photo-Nature Club, Secretary '38, President '39; Student Council. Ray has shown us that it isn't necessary to be a giant to play football if you really have the spirit.

### FRANK RANDALL

Barnard, North Carolina

International Relations Club; Travel Club. Frank is one boy who takes his work and classes seriously. He has excelled in both.

### OLA MIRIAM RANDALL

Concord, North Carolina

Euterpean, Chaplain '38; Cabarrus County Club, President '39; Folklore Club, Vice-President '38, President '39; Forensic Club; Glee Club; Medical Science Club; Pertelote Staff. Unlike most girls, Miriam came to college to get an education; and she is undoubtedly doing a good job of it.

### THOMAS BAYNE RANDALL

King's Mountain, North Carolina

Cleveland County Club; Commercial Club. Although Bayne is one of the hardest workers on the campus, he still finds time to chip in on the third floor "bull sessions."

### STELLA ROSALTHEA RAY

Asheville, North Carolina

Euterpean, President '38, Sergeant-at-Arms '38, Critic '39; Boosters' Club; Buncombe County Club, President '39; Concert Choir; Dormitory Session, President at West Hall; Fireside Club, Vice-President '38, Reporter '38; Glee Club; House President of West Hall '39; Pertelote Staff '39; Student Christian Movement, Secretary '39. She is the perfect lady of our group. Her knowledge of home economics will stand her in good stead some day.

### FRANK RENFRO

Relief, North Carolina

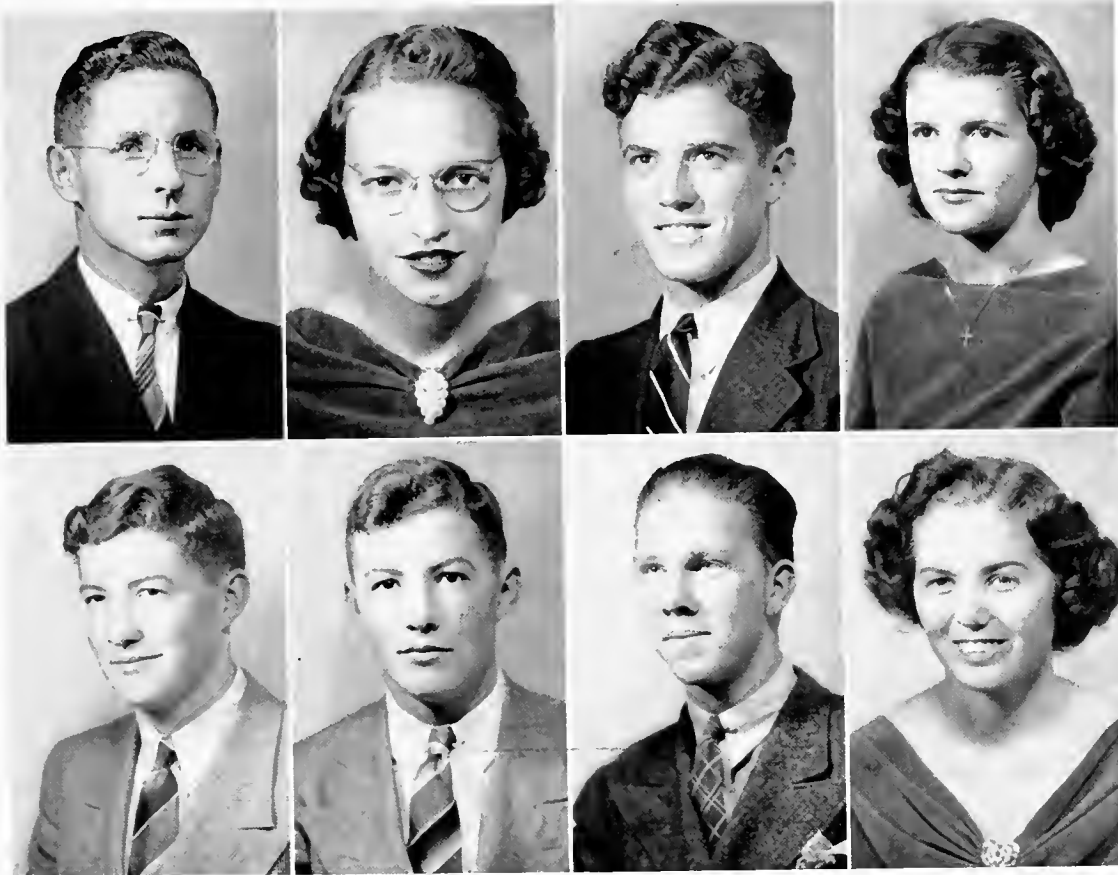
Clisophic; Forensic Club; International Relations Club, Vice-President '39. Frank is one of the most pleasant fellows on our campus, but he has a fighting spirit that will be useful to him in his career as a lawyer.

### JACK HENRY RHODES

Lincolnton, North Carolina

Delphian; Commercial Club; Football; Lincoln-Catawba County Club, Vice-President '39. Jack was one of the few people who had the ability to tell which of the Palmer twins was Mary.

*When hornets build nests high off the ground, there is a cold winter coming.*



### WILLIAM A. ROCK, JR.

Lewisville, North Carolina

Delphian, Chaplain '39; Boosters' Club; Forsyth County Club, President '39; Ministerial-Missions Club, President '38; Pertelote, Editor-in-Chief '39; Photo-Nature Club; Student Council; Student Christian Movement, President '38, '39; Vice-President of Freshman Class. We wish to put our mark of approval on Bill's sincerity and his interest in his work. He has stood out, not only in religious activities but also in numerous other ways.

### EVELYN G. ROTHROCK

Winston-Salem, North Carolina

Mnemosynean, President '39, Critic '39; Boosters' Club; Commencement Marshal; Concert Choir, Librarian; Folklore Club, Vice-President '38, Secretary '38; Forsyth County Club; Ministerial-Missions Club, Secretary; Pertelote Staff; Sigma Pi Alpha, President '39; Student Council; Student Christian Movement. Evelyn appears to be dignified but is quite fun-loving when you know her. She has proved her ability in everything she has undertaken.

### KENNETH ROYAL

Winston-Salem, North Carolina

Delphian; Baseball; Business Manager of the Pertelote; Block "B" Club; Boosters' Club; Photo-Nature Club. "Kenny" likes to play with the "Biddies" as well as we like to see him play baseball.

### RUTH RUNYON

Asheville, North Carolina

Mnemosynean; Boosters' Club; Commercial Club;

Fireside Club; Folklore Club. We all agree that Ruth's sweet disposition has won her many friends.

### JAMES DAVIS SAFFORD

Clyde, North Carolina

When looking at their pictures, even the twins have to glance at the names to distinguish them. James has created much fun and laughter during these two years, and we have all enjoyed it.

### TED RUSSELL SAFFORD

Clyde, North Carolina

Ted is the other half of the twins, who was just as well known and worked just as hard and as slowly as did any of the crew.

### WILLIAM EUGENE SAUNDERS

Charlotte, North Carolina

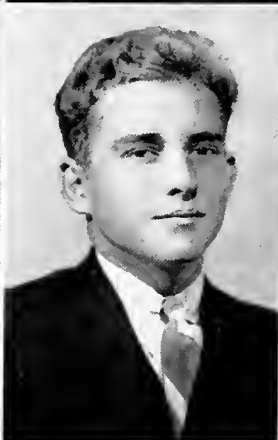
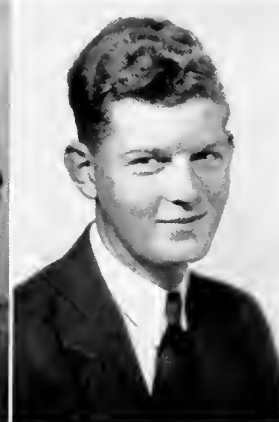
Delphian, Vice-President '39; Band; Choir; Folklore Club; Forensic Club; Mecklenburg County Club; Medical Science Club, Secretary-Treasurer '38, '39; Mu Delta Club, President '39. "Doc" has been a very prominent person on our campus, although he used such big words that we didn't know what he was saying. He is a good singer, too.

### JEANETTE SELLARS

Cowpens, South Carolina

Mnemosynean; Commercial Club; Travel Club. Jeanette's skill in business practice is shown in her work in the Bursar's office.

*If you find a snake near a spring, there will be a long dry spell.*



### NELL FRANCES SHELLEM

Denver, North Carolina

Euterpean; Commercial Club; Lincoln-Catawba County Club. Outside her hours as a dignified office worker, Frances has helped to keep us all in a happy mood.

### JAMES WRIGHT SHELLEY

Aynor, South Carolina

Delphian. J. W. doesn't speak often; but when he does, you may be certain that he has something worthwhile to say.

### ADA RUTH SHERRILL

Sherrill's Ford, North Carolina

Ada Ruth's ability to prepare sick trays is remarkable. She will some day be an expert dietitian.

### WILLIAM HAROLD SHIPMAN

Hendersonville, North Carolina

Clisophic, Treasurer '38, Vice-President '39; Clarion Staff, Business Manager '39; Commercial Club, President '39; Dormitory Council of Taylor Hall, President '39; Henderson County Club, President '39; Young People's Department, Treasurer '38. Billy's debating and kitchen work have been equally outstanding; nevertheless he has had time to break a few girls' hearts.

### LAURA KATHERINE SHORE

Boonville, North Carolina

Mnemosynean; Baptist Student Union; Commercial Club, Secretary '38; Fireside Club; Folklore Club; Photo-Nature Club; Surry County Club. "Kat's" dependability and friendliness make her the popular girl she is. As assistant in the Commercial Department she has obtained excellent training for her business career.

### BILLY MARTIN SIMMONS

Polkton, North Carolina

A smile always appears when Billy arrives. His personality wins friends for him quite effortlessly. It is rumored that he has many friends among the girls.

### WILLIAM A. SIMMONS

Winston-Salem, North Carolina

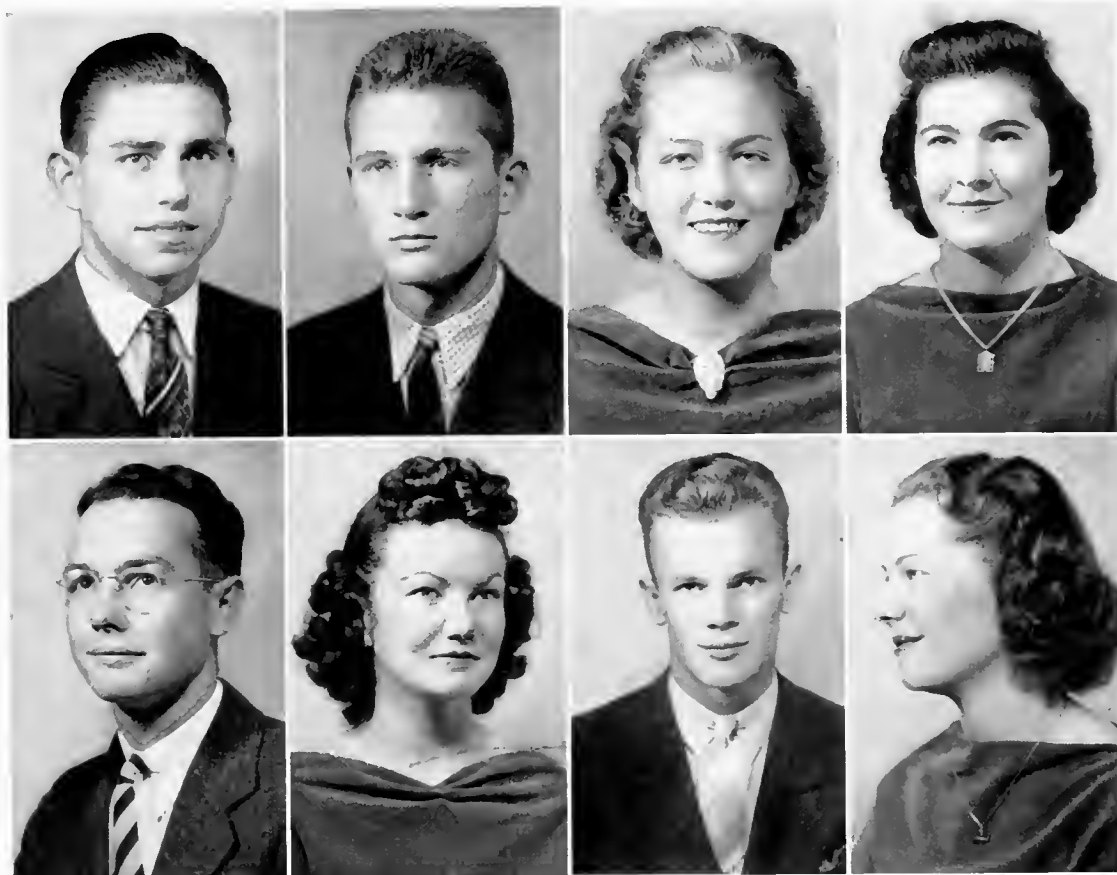
William is a conscientious student, interested particularly in chemistry, psychology, and religious activities.

### MARY EUNICE SINK

Lexington, North Carolina

Mnemosynean; Dramatic Club; Davidson County Club. Eunice plans to teach public school music in the primary grades. She says that she is in love, too.

*If one kills hogs on a sinking moon, the meat will turn to grease when it is cooked.*



### PAUL GRAHAM SINK

Lexington, North Carolina

Delphian, Reporter '39; Davidson County Club, President '39; Photo-Nature Club, Sergeant-at-Arms. Graham is president of his county club, which proves his popularity. We believe his smile will help many of his patients to get well when he becomes a doctor.

### ROBERT ROWLAND SLOAN

Charlotte, North Carolina

Delphian; Mecklenburg County Club. Bob is a boy that every one knows. Just any time you may see him truckin' up the hill. He enjoys swimming and dancing.

### RACHEL SOUTHERN

Walnut Cove, North Carolina

Mnemosynean; Commercial Club; Folklore Club; Stokes County Club. Rachel may not look very energetic; but when she's playing basketball, her side is sure to score.

### MARY DUNN STATON

Greensboro, North Carolina

Mnemosynean; Forensic Club; Guilford County Club; Medical Science Club; Travel Club. Mary Dunn's vivacity and her love of fun leave no room for dullness on the second floor of West Hall.

### ROBERT STEPP

Hendersonville, North Carolina

Boosters' Club; Commercial Club, Vice-President; Dormitory Council; Pertelote Staff; Photo-Nature Club. Affectionately dubbed "B," this future business man is one of the best-known and most popular figures on the campus.

### RUTH VIRGINIA STONESTREET

Mooresville, North Carolina

Mnemosynean, Chaplain '39; Commencement Marshal; Dormitory Council; Pertelote Staff; Sigma Pi Alpha, Secretary and Treasurer '39, Vice-President '39. This little Lodger is one of the most capable religious leaders Brevard has known.

### JACK BURT TAGGART

Asheville, North Carolina

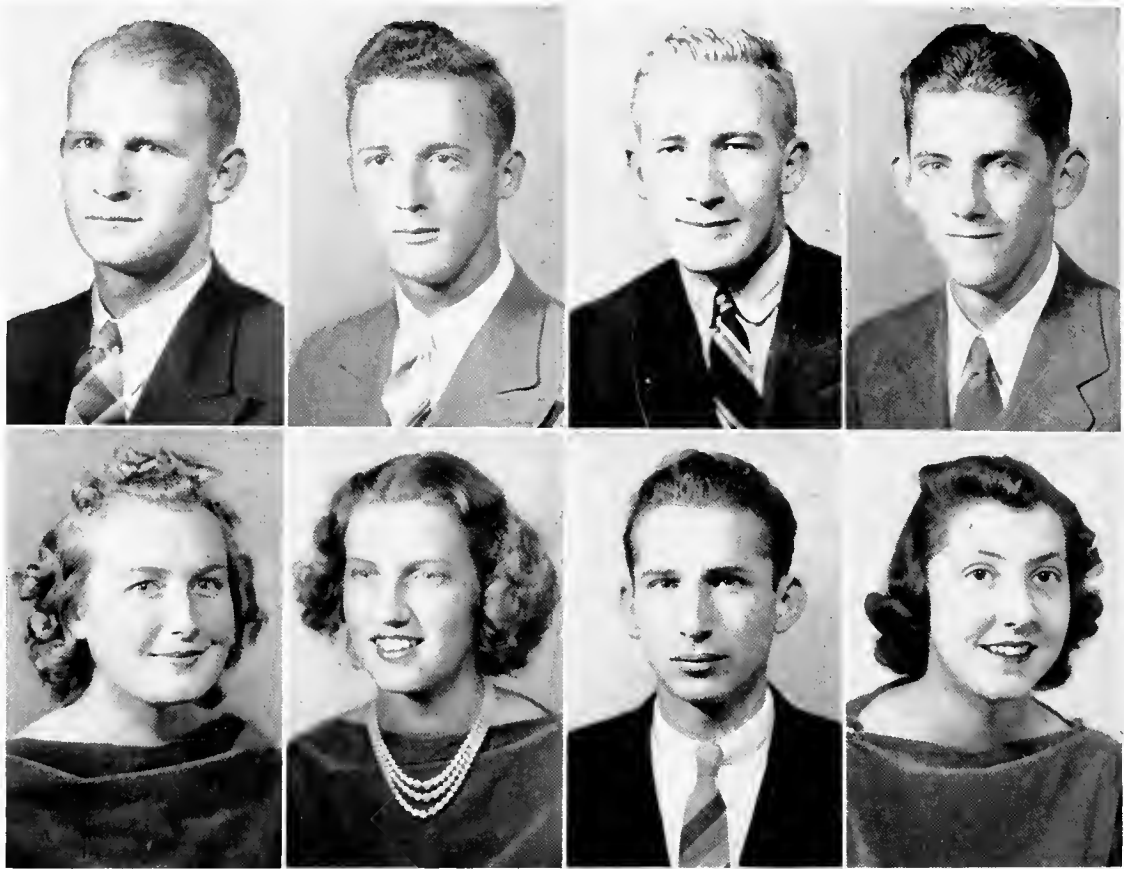
Delphian, Critic '38; Baseball; Basketball; Block "B" Club; Clarion Staff; Commercial Club; Concert Choir; Dramatic Club; Football, Co-Captain '38; Tennis; Track. Jack's ambition is to become a coach. His chief distinction is his triple-threat ability in football.

### RUTH HELEN WAGGONER

Walkertown, North Carolina

Mnemosynean; Block "B" Club; Boosters' Club; Cheerleader; Christian Student Movement; Concert Choir; Dramatic Club; Glee Club; Forsyth County Club. Ruth's enthusiasm for cheer-leading and boosting the College foreshadows the fact that she will be a success, as she now is with a certain alumnus.

*Corn will produce a better yield if planted on Good Friday.*



#### JAMES WALLACE

Pores Knob, North Carolina

Delphian; Agriculture Club; Commercial Club; Folklore Club. James wants to enter the business world, with a guitar as his most faithful companion.

#### JUANITA ESTELLE WELLS

Hendersonville, North Carolina

Mnemosynean; Fireside Club; Glee Club; Photo-Nature Club. "Nita" has seemed quite lonesome during the second semester without Tommy, but she still manages to sing.

#### EDWARD MARTIN WATSON

Lenoir, North Carolina

Delphian; Caldwell County Club; Dramatic Club, President '39. Ed's subtle humor, quick smile, and dramatic ability will help him along in his career as an architect.

#### GORDON ANNISE WEST

Walkertown, North Carolina

Mnemosynean; Boosters' Club; Commercial Club, Treasurer '38; Forsyth County Club; General Choir; Travel Club, Reporter '38. Behind her quietness you will find a strength of purpose which will help her become a successful interior decorator or private secretary.

#### ROBERT WEAVER

Asheville, North Carolina

Delphian, Vice-President '39; Band; Model-Airplane Club, President '39. Where Bob is, Perry is also. His next greatest interest lies in modeling planes, and the band ranks third.

#### JOHN W. WEST, JR.

Waynesville, North Carolina

Concert Choir; Dormitory Council, Taylor Hall; Medical Science Club, Chaplain '38. Expect the unexpected. Few people have the droll humor that this senior possesses. In saner moments he and his pal, "Doc" Saunders, plan their science career.

#### ROBERT HIRAM WELCH

Waynesville, North Carolina

Delphian; Medical Science Club. Robert is a quiet young man whose ambition is to become a public speaker.

#### JUANITA WEST

Weaverville, North Carolina

Mnemosynean; Buncombe County Club; Dramatic Club. "Jakie" is a familiar figure on and off the campus. Her interests are wide, ranging from home economics to dramatics.

*If you get your dress wet while washing, you will marry a drunkard.*





#### JAMES E. WHISENHUNT, JR.

Hazelwood, North Carolina

Delphian, President '39; Forensic Club; Haywood County Club, President '39; International Relations Club; Pertelote Staff. Knowing Dick's appreciation of good pictures, we understand why he picks out such a good-looking lady as Miss Paul to take to parties.

#### MARGARET ANNE WILEY

Charlotte, North Carolina

Mnemosynean; Fireside Club; Folklore Club; Glee Club; Mecklenburg County Club. Although she plans to teach home economics, Margaret Anne has other talents. Remember her part in the operetta.

#### WILLIE MAE WISEMAN

Spruce Pine, North Carolina

Mnemosynean; Baptist Student Union, President '39; Travel Club; Tri-County Club, Secretary-Treasurer '39. Besides being Dr. Coltrane's efficient secretary, Willie Mae finds time to do her class work with distinction.

#### PRUELLA WITHERS

Maiden, North Carolina

Mnemosynean; Commercial Club, Secretary '39; Folklore Club; Glee Club; Lincoln-Catawba County Club, Secretary-Treasurer '39. Prueella's "A's" are getting to be a habit. As an assistant to Mr. Brewer she has demonstrated her secretarial ability.

#### SARAH DORIS WRIGHT

Guilford College, North Carolina

Euterpean; Fireside Club; Folklore Club; Glee Club; Guilford County Club; Travel Club, President '39. Like the Quaker she is, Doris is very quiet; and many people never really know her.

#### ROBERT YANDELL

Pineville, North Carolina

Delphian; Mecklenburg County Club. Bob's appreciation of Gray's "Elegy" is remarkable. He comes from Pineville, which fact explains his expertness in square dancing.

#### LOUISE CHRISTINE YEATTES

Pelham, North Carolina

Euterpean, Vice-President '38, '39; Folklore Club; Forensic Club; Pertelote Staff; Rockingham County Club. We have never heard any one speak so much correct English in so little time; and that she can write, too, is proved by her original plays.

#### JANE YONGUE

Brevard, North Carolina

Dramatic Club; International Relations Club; Transylvania County Club, President '39. Jane is a day student who is just as well known on the campus as the boarding students. We have for two years enjoyed her dramatic ability.

*If a girl steps on your heels, she will get your sweetheart if you do not step on hers.*



### ROBERT YOUNG

Micaville, North Carolina

Clisophic; Basketball; Block "B" Club; Dramatic Club; International Relations Club; Track. All over the basketball court he darts, as fast as the eye can follow him. We like his way of stopping, steadying himself, and then coming forth with a shot that scores.

### SALLY OPAL YOUNGBLOOD

Fletcher, North Carolina

Euterpean, Critic '38, President '39; Boosters' Club; Commencement Marshal '38; Commercial Club; Fire-side Club; Folklore Club; Pertelote Staff. Opal is popular among boys and girls alike. Her beautiful red hair, strangely enough, does not denote the possession of a fiery temper.

### WILSON YOUNG

Micaville, North Carolina

Clisophic; Forensic Club; Ministerial-Missions Club. Wilson is better known as "Mouse," and he is just that quiet. We can't see what the print shop would have done without him.



*If a girl places her shoes in the shape of a T, she will dream of her future husband that night.*





# FRESHMEN

*"Turkey in the Straw"*  
--a Fiddle Tune

# FRESHMAN CLASS OFFICERS



E. J. Graham                      President  
Naranja, Florida

Allen B. Hamilton  
Vice-President  
Columbus, Ohio

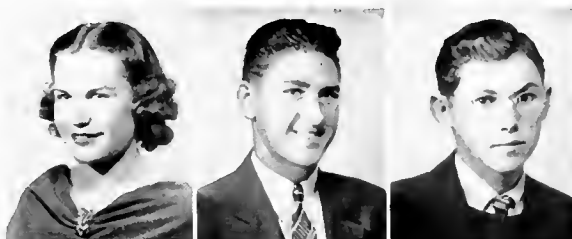
Lenore Matthews              Secretary  
New Orleans, La.

Theresa Preddy                  Treasurer  
Madison, N. C.

*One can stop bleeding by reading a verse in the Bible.*

# F R E S H M E N

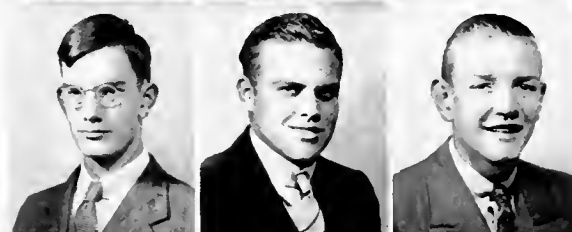
LUCY ELIZABETH ADAMS, Charleston, S. C.  
 ROBERT ALLMON, Huntersville, N. C.  
 CLAUDIUS ARMSTRONG, Denver, N. C.



KATHERINE ARMSTRONG, Belmont, N. C.  
 J. A. ATKINSON, Central, S. C.  
 MARY ALLEN AUSTIN, Marshville, N. C.



ST. CLAIR AUSTIN, Brevard, N. C.  
 THOMAS BALDWIN, Clinton, S. C.  
 BRUCE BALES, Tapoco, N. C.



FRANK BANNER, Newland, N. C.  
 RALPH BUCKNER BARDEN, Wilmington, N. C.  
 KENNETH BARNES, Candler, N. C.



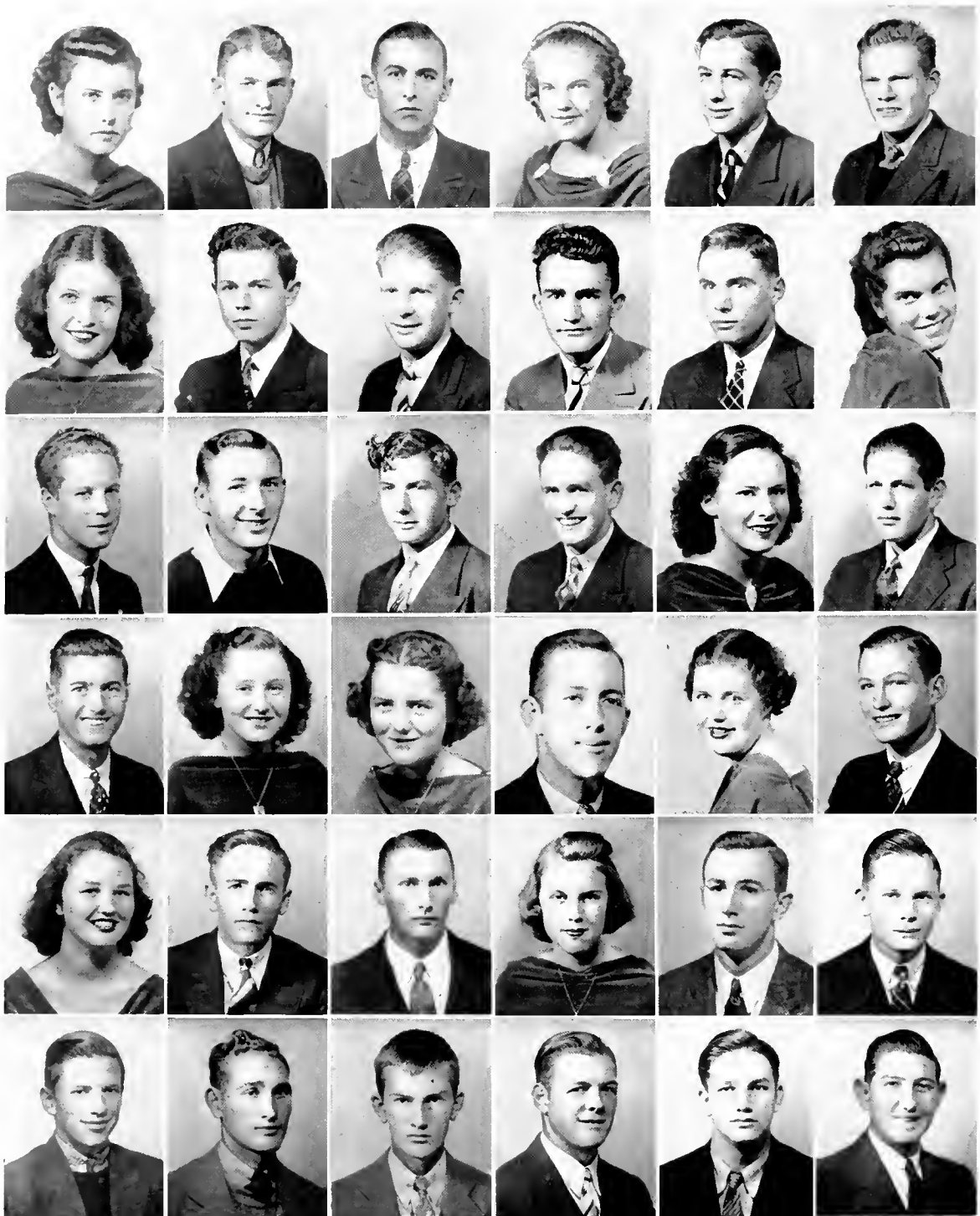
JAMES BARNHARDT, Rutherford College, N. C.  
 CLIFFORD BAUCOM, Lugoff, S. C.  
 MARIETTA BEAN, Asheville, N. C.



FRANCIS BEATTY, Sherrill's Ford, N. C.  
 ROY BEAVER, Bear Poplar, N. C.  
 HOYLE BLANTON, Forest City, N. C.



*If a baby less than a month old sees the moon, it will go blind.*



*If you see a red bird and count ten, the wish you make will come true.*

# F R E S H M E N

## First Row Across

LUCY MAE BLANTON,	Shelby, N. C.
FRED BOYD,	Mount Ulla, N. C.
DOUGLAS BRASWELL,	Waxhaw, N. C.
KATHERINE BRIGMAN,	Asheville, N. C.
BALFOUR BROOKSHIRE,	Asheville, N. C.
WALTER BROWN,	Fairview, N. C.

## Fourth Row Across

JOHN CLAYTON,	Stem, N. C.
BILLIE MARIE CLINE,	Concord, N. C.
TIMSEY NELL CLOUSE,	Franklin, N. C.
ROBERT COCHRAN,	Rocky Mount, N. C.
AUDREY CONLEY,	Franklin, N. C.
JACK COOKE,	Maiden, N. C.

## Second Row Across

MILDRED BRYSON,	Cullasaja, N. C.
DELBERT BYRUM,	Charlotte, N. C.
KENNETH CABE,	Franklin, N. C.
DAN CAMERON,	Pine View, N. C.
WILLIAM CAMPBELL,	Tampa, Florida
MARGARET CARRITHERS,	Hudson, N. C.

## Fifth Row Across

FRANCES COWARD,	Goldsboro, N. C.
ARTHUR FRANKLIN DALTON,	Brevard, N. C.
DON DALTON,	Lewisville, N. C.
MAURINE DAVIS,	Advance, N. C.
SYLVESTER DAY,	Jacksonville, N. C.
FRED DEAL,	Waxhaw, N. C.

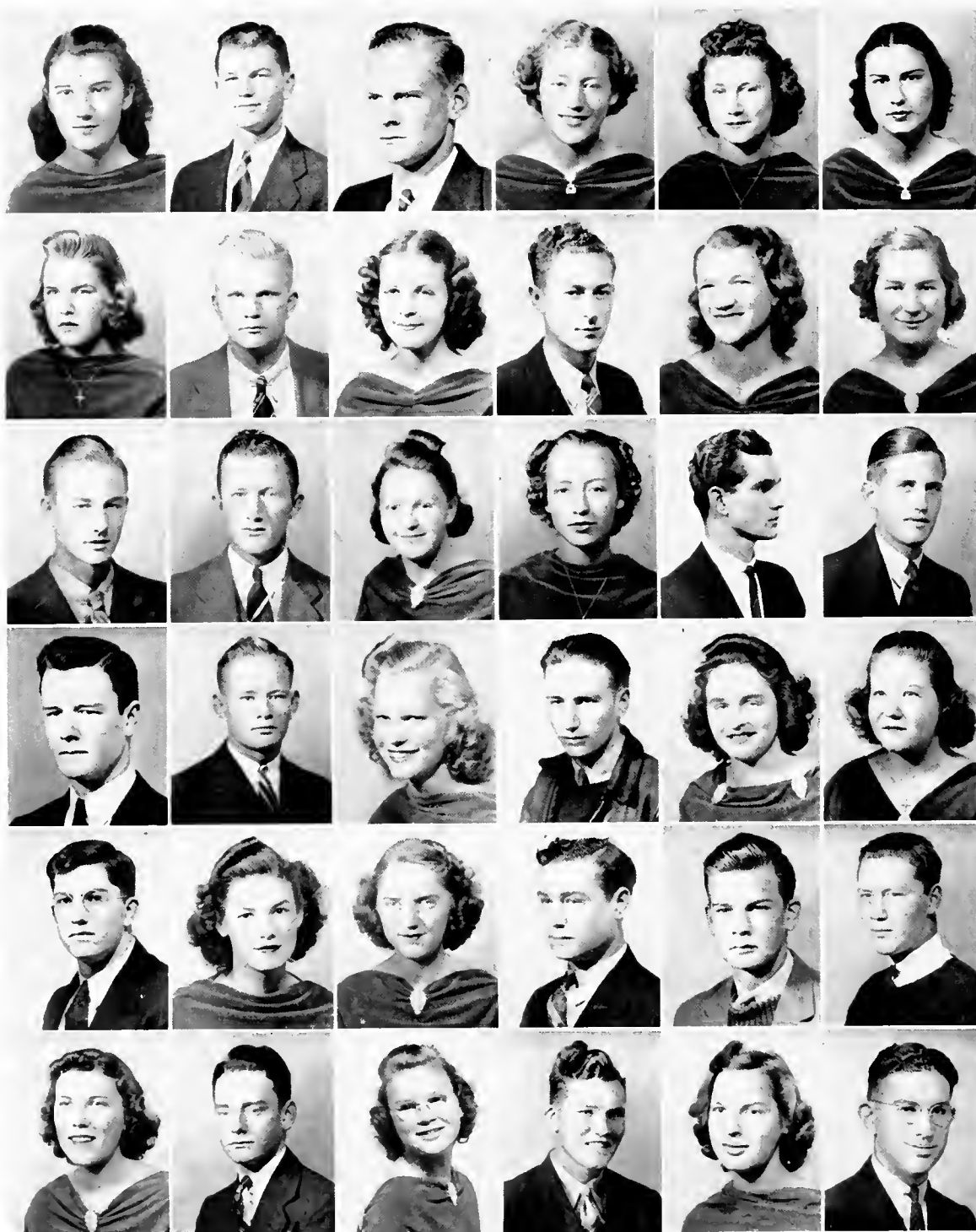
## Third Row Across

GARRY CARSON,	Democrat, N. C.
HOWARD CHAMBERS,	Winston-Salem, N. C.
RALPH CHAMBERS,	Winston-Salem, N. C.
JAMES CHAPPELL,	Barnsville, N. C.
CAROL CHISHOLM,	Fremont, N. C.
THOMAS CLARKE,	Farmville, N. C.

## Sixth Row Across

ROBERT DIMMETTE,	Aurora, N. C.
HOWARD DOTSON,	Clyde, N. C.
MAC DULA,	Lenoir, N. C.
THOMAS ELLIOT,	Shelby, N. C.
RALPH EPPERSON,	Ararat, Virginia
THOMAS EWART,	Cornelius, N. C.

*Kill the first snake you see in the spring, and you will conquer your enemy.*



*A white rock thrown behind the back log in a fire will keep the hawks away.*

# F R E S H M E N

## First Row Across

ALICE FALLS,	Lowell, N. C.
EARLE PARABOW,	Stem, N. C.
PHILETUS S. FERGUSON,	Bryson City, N. C.
FREDA FIELD,	Horse Shoe, N. C.
AGNES FINGER,	Maiden, N. C.
MILDRED FITE,	Tryon, N. C.

## Fourth Row Across

DUPRE GRAHAM,	Aynor, S. C.
BILL GRANT,	Marion, N. C.
FRANCES GRAY,	Wadesboro, N. C.
EUGENE GRIFFITH,	Relief, N. C.
MILDRED GRIFFITH,	Burnsville, N. C.
GERALDINE GROCE,	Winston-Salem, N. C.

## Second Row Across

MILDRED FITZGERALD,	Greensboro, N. C.
LAWSON FOIL,	Mount Pleasant, N. C.
DELLA WELCH FOLGER,	Mount Airy, N. C.
FRANK FOSTER,	Asheville, N. C.
GLADYS FRANKLIN,	Drexel, N. C.
LOIS FRAZIER,	Spray, N. C.

## Fifth Row Across

PARKER HAGER,	Concord, N. C.
JANE HAMELIN,	Brevard, N. C.
MAGALENE HARTLEY,	Clemmons, N. C.
JAMES RICHARD HAWKINS,	Laurel Blooming, Tenn.
JERRY HENDERSON,	Hendersonville, N. C.
CHARLIE BRYAN HERRING	Oxford, N. C.

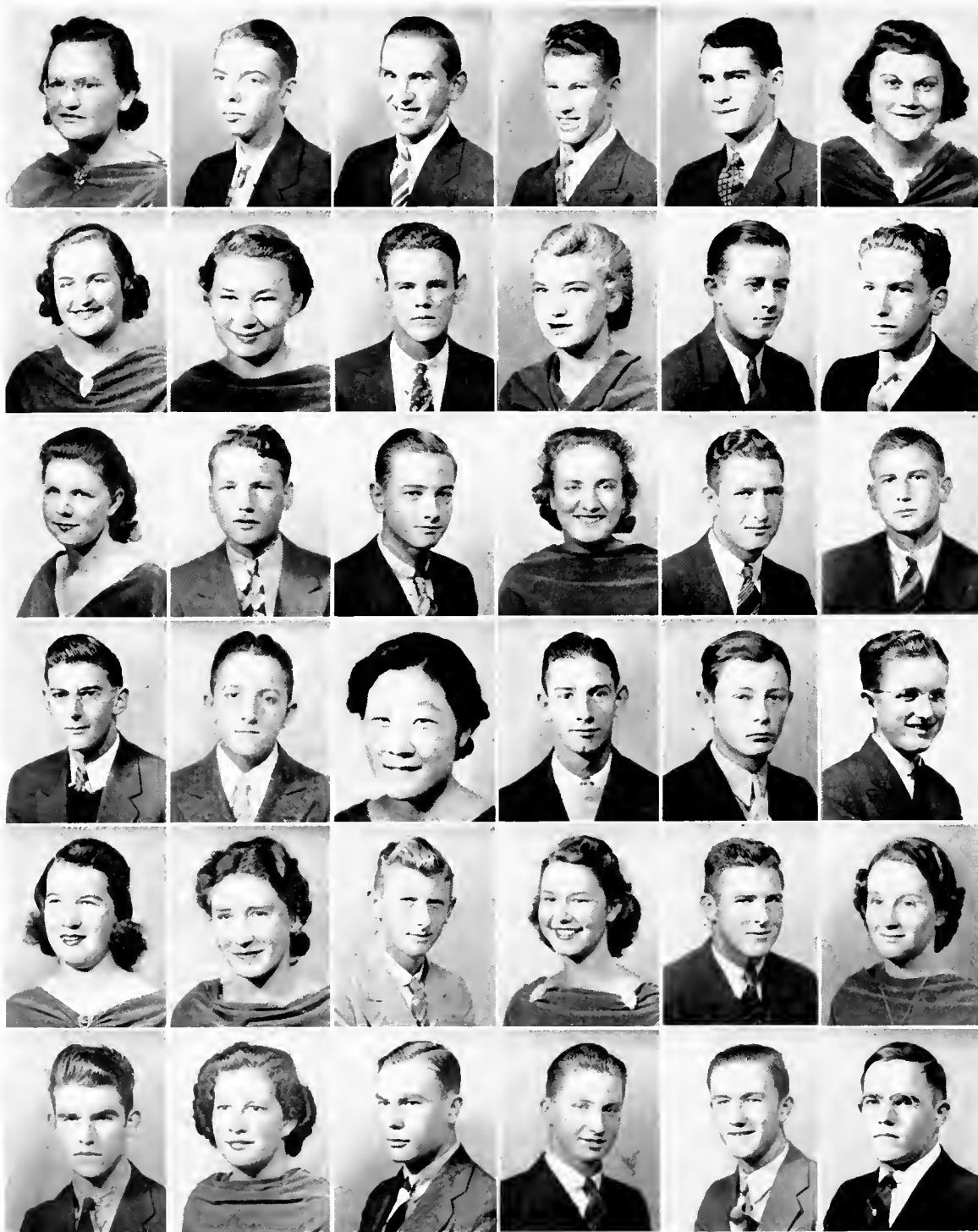
## Third Row Across

JACK FREEMAN,	Bostic, N. C.
BARNETTE GABRIEL,	Cleveland, N. C.
MAE GALLAMORE,	Brevard, N. C.
MARY HELEN GALLOWAY,	Brevard, N. C.
NOBLE GARDNER,	Asheville, N. C.
STEWART GATES,	Ararat, Virginia

## Sixth Row Across

CHRISTINE HERRING,	Goldsboro, N. C.
CARLMAN HIATT,	The Hollow, Va
EVA GERALDINE HICKS,	Winston-Salem, N. C.
R. V. HILL,	Hendersonville, N. C.
KATHERINE HOFFMAN,	Brevard, N. C.
HAROLD HOGSED,	Brevard, N. C.

*If a dog has dew-claws, it will never go mad.*



*Never apply medicine with the forefinger, because it is poison.*



# F R E S H M E N

## First Row Across

MARY HOLLY,	Augusta, Ga.
LAWRENCE HOLT,	Brevard, N. C.
LAWRENCE WALTER HOVIS,	Bessemer City, N. C.
FRANK HUNYCUTT, JR.,	Marshall, N. C.
HOBART BARR HYATT,	Waynesville, N. C.
MARY E. INGRAM,	Jonesville, N. C.

## Fourth Row Across

JAMES KEPLEY,	Salisbury, N. C.
CLYDE KIKER,	Polkton, N. C.
SOON YE KIM,	Seoul, Korea
EDWARD KIMBALL,	Clarksville, Va.
BRUCE KIRBY,	King's Creek, N. C.
HAROLD KNOX,	Davidson, N. C.

## Second Row Across

PEARL LORRAINE JACKSON,	Winston-Salem, N. C.
JANET JENKINS,	Brevard, N. C.
WILLIAM JENKINS,	Durham, N. C.
BARBARA JOHNSON,	Denver, Col.
JAMES JOHNSON,	Marion, N. C.
IRA JONES,	Winston-Salem, N. C.

## Fifth Row Across

ELIZABETH LAWING,	Forest City, N. C.
NELLIE LAWS,	Pores Knob, N. C.
A. PERRY LEE,	Charleston, S. C.
JEAN ALICE LEWIS,	Gastonia, N. C.
WRAY CLEVELAND LEWIS,	Fallston, N. C.
VIVIAN LIPE,	Lincolnton, N. C.

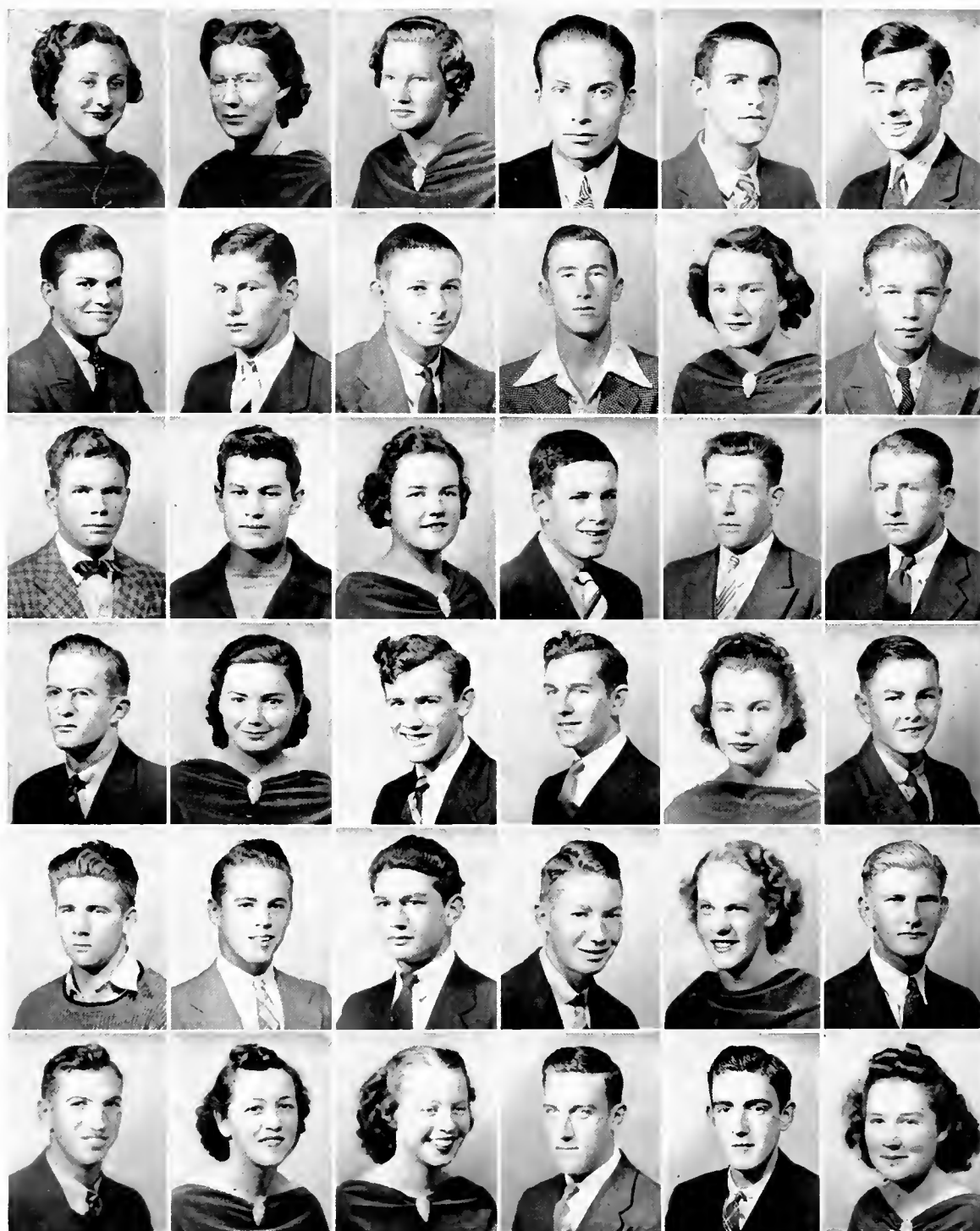
## Third Row Across

MARIE JONES,	Asheville, N. C.
VICTOR BROWN JONES,	East Flat Rock, N. C.
WILLIAM B. KEENER,	High Shoals, N. C.
LILLIAN KELLY,	Nashville, Tenn.
JACK KENDALL,	Norwood, N. C.
CHARLES KENNERLY, JR.	Lowell, N. C.

## Sixth Row Across

MARVIN LITTLE,	Derita, N. C.
JACQUELINE LIVENGOD,	Advance, N. C.
JOHN LOWDER,	Cooleemee, N. C.
CHARLES LOWMAN,	Connelly Springs, N. C.
GLENN ROBERT LYERLY,	Salisbury, N. C.
NORMAN McCALL,	Linden, N. C.

*If you cut a baby's finger-nails before it is a year old, it will steal.*



*Passing a load of hay means good luck.*

# F R E S H M E N

## First Row Across

ETTA MAE McGAHA	Brevard, N. C.
EDNA McGEE,	Lenoir, N. C.
HARLESTON McINTOSH,	Brevard, N. C.
WILLIAM McINTOSH,	Rockingham, N. C.
CHARLES LEE MANEY,	Barnardsville, N. C.
HUGH MARR,	Elizabeth City, N. C.

## Fourth Row Across

ROBERT MOOSE,	Mount Pleasant, N. C.
GWENDOLYN MORGAN,	Brevard, N. C.
PAUL MORGAN,	Nealsville, N. C.
WARREN MULLINAX,	Gastonia, N. C.
MILDRED NEAL,	Ellenboro, N. C.
KEENER NEEL,	Mooresville, N. C.

## Second Row Across

JOSEPH MARTIN,	Danbury, N. C.
ZEB CARLYLE MARTIN,	Mt. Airy, N. C.
WILLIAM MASSEY,	Waynesville, N. C.
ROSWELL MATTHEWS, JR.,	New Orleans, La.
NANA SUE MICHAEL	Pleasant Garden, N. C.
BURGESS MILLER,	Salisbury, N. C.

## Fifth Row Across

BROWNIE NEWMAN,	Hendersonville, N. C.
PAUL NIPPER, JR.,	Lowell, N. C.
G. B. NOLAND,	Clyde, N. C.
OLIVER ORR, JR.,	Brevard, N. C.
MARY OSBORNE,	Brevard, N. C.
WILLIAM C. PALMER,	Shelby, N. C.

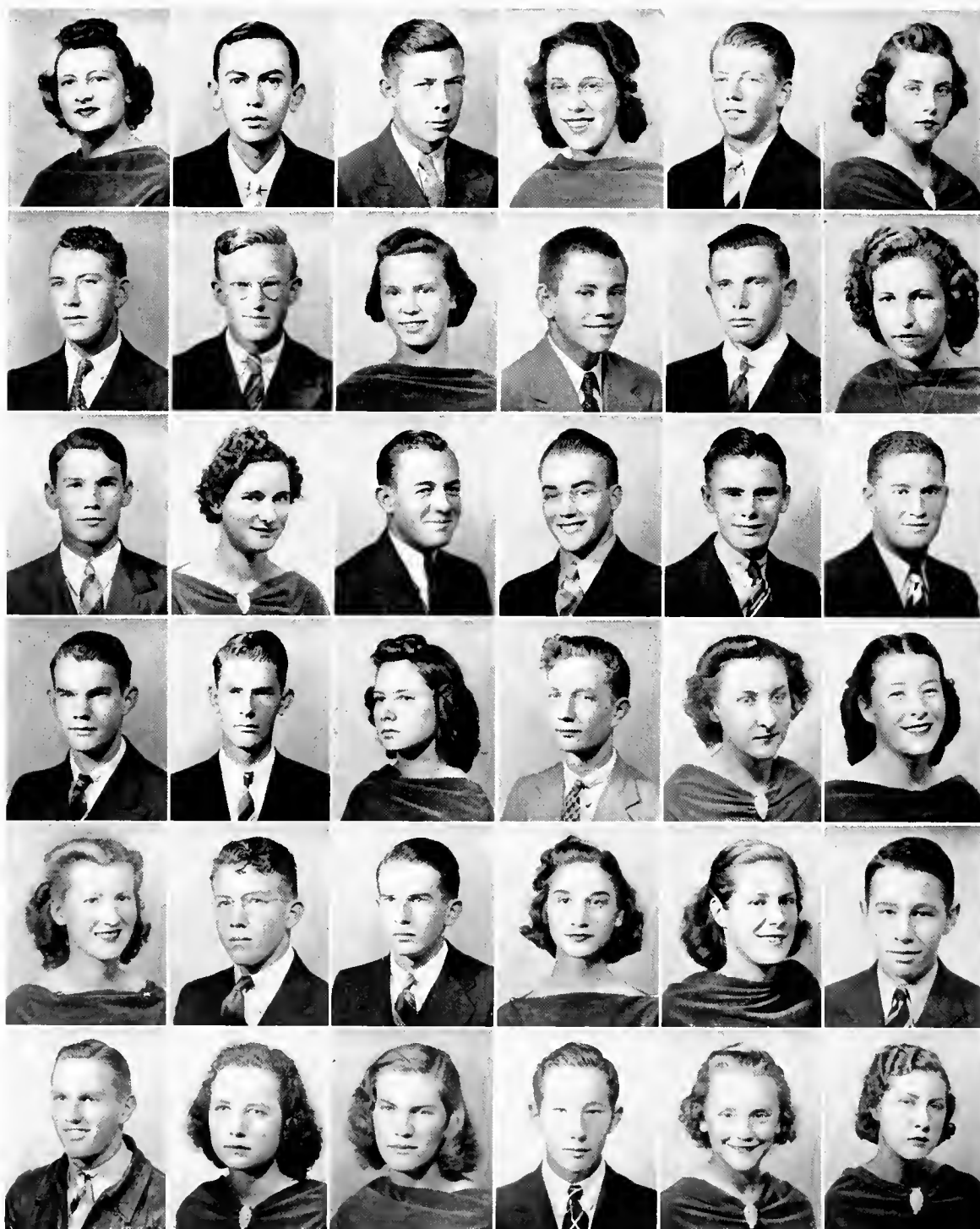
## Third Row Across

FRANKLIN MILLER,	Elkin, N. C.
JAMES MITCHELL,	High Point, N. C.
WILMA MITCHEM,	Belwood, N. C.
CECIL MOORE,	Forest City, N. C.
WILLIAM MOORE,	Mountain City, Tenn.
ERNEST MOORE,	Mountain City, Tenn.

## Sixth Row Across

LONIS PARKER,	Beuladean, N. C.
ELIZABETH PARRISH,	Walkertown, N. C.
FRANCES PEELE,	Gibson, N. C.
LEE PETERSON,	Relief, N. C.
GEORGE PETREE,	Danbury, N. C.
MARY PHIFER,	Bessemer City, N. C.

*If you plant potatoes on the dark of the moon, they will rot.*



*It is good luck for the family cat to witness the wedding ceremony.*

# F R E S H M E N

## First Row Across

EDITH PHILLIPS,	Monroe, N. C.
MARTIN S. PRATT,	Morven, N. C.
CLARENCE PRESNELL,	Burnsville, N. C.
LORENE PRICE,	Winston-Salem, N. C.
FLEET PROFFITT,	Bald Creek, N. C.
MARY GLENN PROFFITT,	Bald Creek, N. C.

## Fourth Row Across

VANCE ROBERTSON,	Bald Creek, N. C.
WINFIELD ROBERTSON,	Winston-Salem, N. C.
ESSIE JUANITA RORIE,	Lilesville, N. C.
WELLS ROSS,	Wadesboro, N. C.
PAULINE SCOTT,	Clemmons, N. C.
VIRGINIA SCOTT,	Franklin, N. C.

## Second Row Across

AARON QUAY,	Concord, N. C.
JOHN RAMSEY,	Brevard, N. C.
JOSEPHINE RAMSEY,	Brevard, N. C.
JACK RATHBONE,	Lake Junaluska, N. C.
DOUGLAS RATLEDGE,	Mocksville, N. C.
DORIS READLING,	Cornelius, N. C.

## Fifth Row Across

MARY EVA SECREST,	East Spencer, N. C.
RONE SECREST,	East Spencer, N. C.
WALTER HENRY SELLARS,	Kings Mountain, N. C.
WYLMA SETZER,	East Gastonia, N. C.
ELIZABETH SHERRILL,	Danville, Va.
ROBERT SHROPSHIRE,	Madison, N. C.

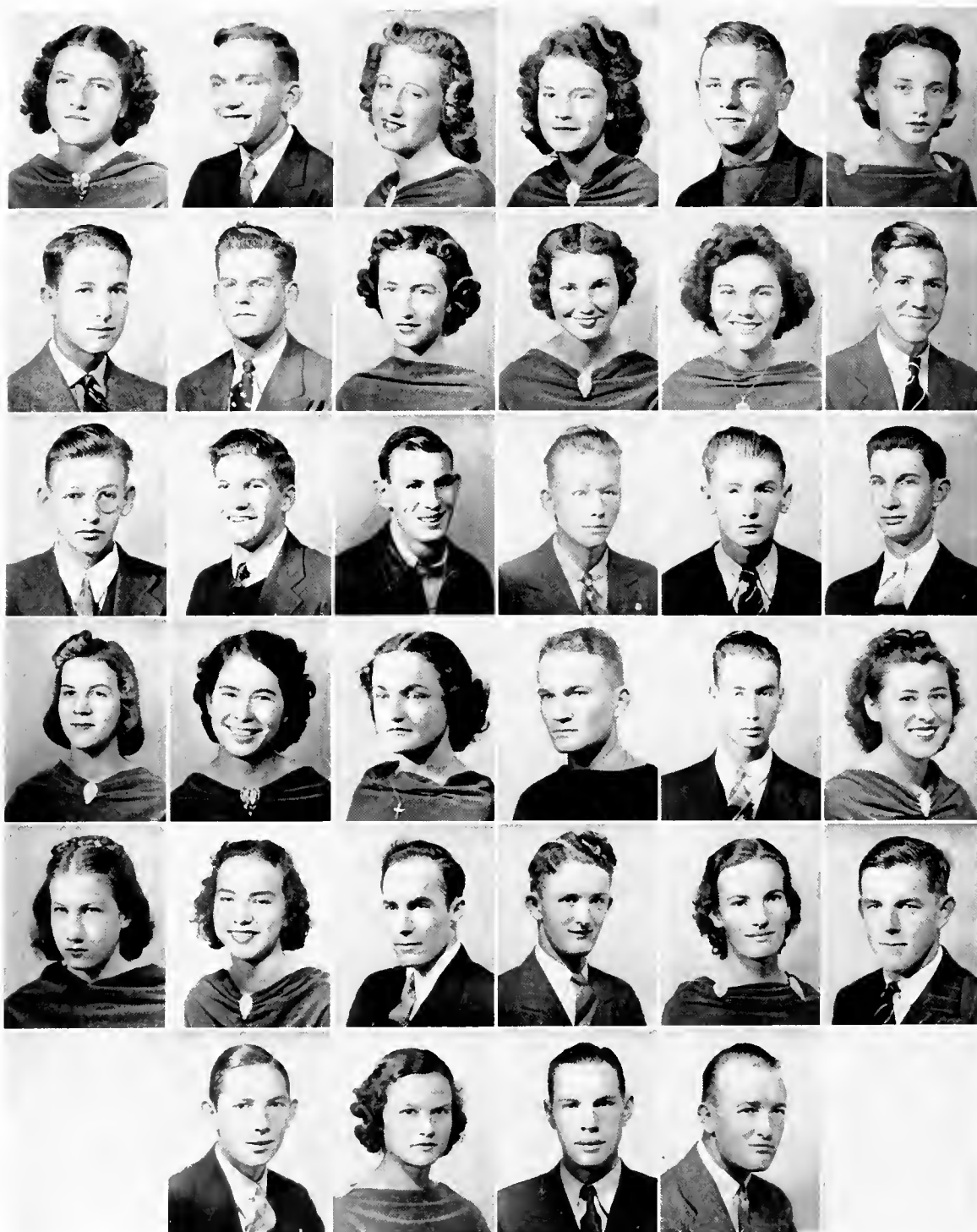
## Third Row Across

CHARLES RECTOR,	Marshall, N. C.
TOYCE RHODES,	Wilkesboro, N. C.
JOSEPH BURTON RICKS,	Rocky Mount, N. C.
HENRY RIDENHOUR,	Cooleemee, N. C.
JOHNNY ROBBINS,	Huntersville, N. C.
HOWARD ROBERSON,	Candler, N. C.

## Sixth Row Across

ALBERT SHUFORD,	Brevard, N. C.
KATHERINE SHUFORD,	Brevard, N. C.
JEAN SIMPSON,	Winston-Salem, N. C.
HAROLD SLOAN,	Franklin, N. C.
MARGARET SMITH,	Mooreville, N. C.
CARTHENE STACKHOUSE,	Stackhouse, N. C.

*If milk won't churn, a witch has cast a spell.*



*If you lean a hoe against the house, you will lose all your neighbors.*

# F R E S H M E N

## First Row Across

MARY FRANCES STAMEY,	Shelby, N. C.
HAROLD STEADMAN	Campobello, S. C.
AILEEN STONE,	Mayo, S. C.
ANNIE JEAN SUMMEY,	Brevard, N. C.
SAMUEL SUMMEY,	Forest City, N. C.
MILDRED TALLEY,	Penrose, N. C.

## Fourth Row Across

MARY MARTIN WHISNANT,	Lenoir, N. C.
EVELYN WHITESIDE,	Uree, N. C.
EDITH WILLIAMSON,	Canton, N. C.
CYRUS WHITFIELD,	Durham, N. C.
FRED WILLIS,	Belwood, N. C.
LILLIE MAE WILLIS,	Vale, N. C.

## Second Row Across

BOYCE THOMPSON,	East Flat Rock, N. C.
WILLIAM BLAINE THOMPSON,	Midland, N. C.
BARBARA GRAY TROXLER,	Brown Summit, N. C.
DOROTHY TURNER,	Chesnee, S. C.
FRANCES TURNER,	Waynesville, N. C.
WALTER UMBERGER,	Mount Ulla, N. C.

## Fifth Row Across

JANIE WILSON,	Brevard, N. C.
MILDRED WILSON,	Morganton, N. C.
STANTON WILSON,	Candler, N. C.
E. J. WINECOFF, JR.,	Concord, N. C.
MILDRED WINFREE,	Wadesboro, N. C.
THOMAS ABNER WINSLOW,	Scotland Neck, N. C.

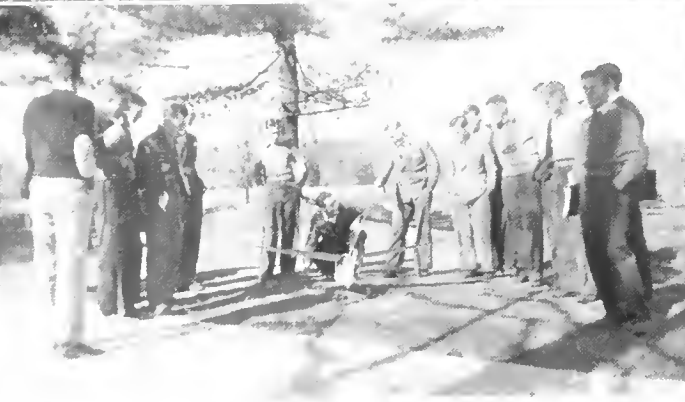
## Third Row Across

ROBERT VOGLER,	Advance, N. C.
DANIEL WADDELL,	Hendersonville, N. C.
JAMES WALDEN,	Brevard, N. C.
LESLIE WARD,	Jackson Hill, N. C.
HUBERT DAVIS WELLS,	Murphy, N. C.
CHARLES WHISNANT,	Shelby, N. C.

## Sixth Row Across

CHARLES YANDELL,	Pineville, N. C.
ELIZABETH YEATTES,	Pelham, N. C.
JOHN W. YOUNG, JR.,	Micaville, N. C.
WILLIAM BENNETT (Special Student),	High Point, N. C.

*If you wash clothes on New Year's Day, you will wash for the dead before the year is gone.*







# ATHLETICS

*"Oh, I've been to the greenwood."*

-- Old Ballad



COACHES CHRISTENBURY and FARTHING

# A T H L E T I C S

Every athlete at Brevard College looks forward to the upbuilding of the College as well as to the development of himself. Such is the thought of every one, no matter where the contest is played or who the opponents are. With this in mind, every athlete creates a feeling for the College which will never fade.



## C H E E R L E A D E R S

Jack Cooke, Marie Jones, Brice Ratchford, Ruth Waggoner.

## T H E S Q U A D

First Row, left to right: W. Moore, Roberson, Waddell, Johnson, Mitchell, Stepp, Daniels.

Second Row, left to right: Coach Farthing, Barnhardt, Rector, Shuford, Taggart, Hemphill, Barden, Coach Christenbury.

Third Row, left to right: Lewis, Kendall, Brown, Bales, Bennett, Walden.

Fourth Row, left to right: E. Moore, Grant, Ridenhour, Redmon, Hawkins, Manager Davis, and Foil.

# A T B R E V A R D

While the teams are doing their best, the support of the students gives them additional strength. If it were not for the whole-hearted support of the students of Brevard College, athletics would not have developed as it has in the past year. With this kind of support every athlete will give everything he has to the game.

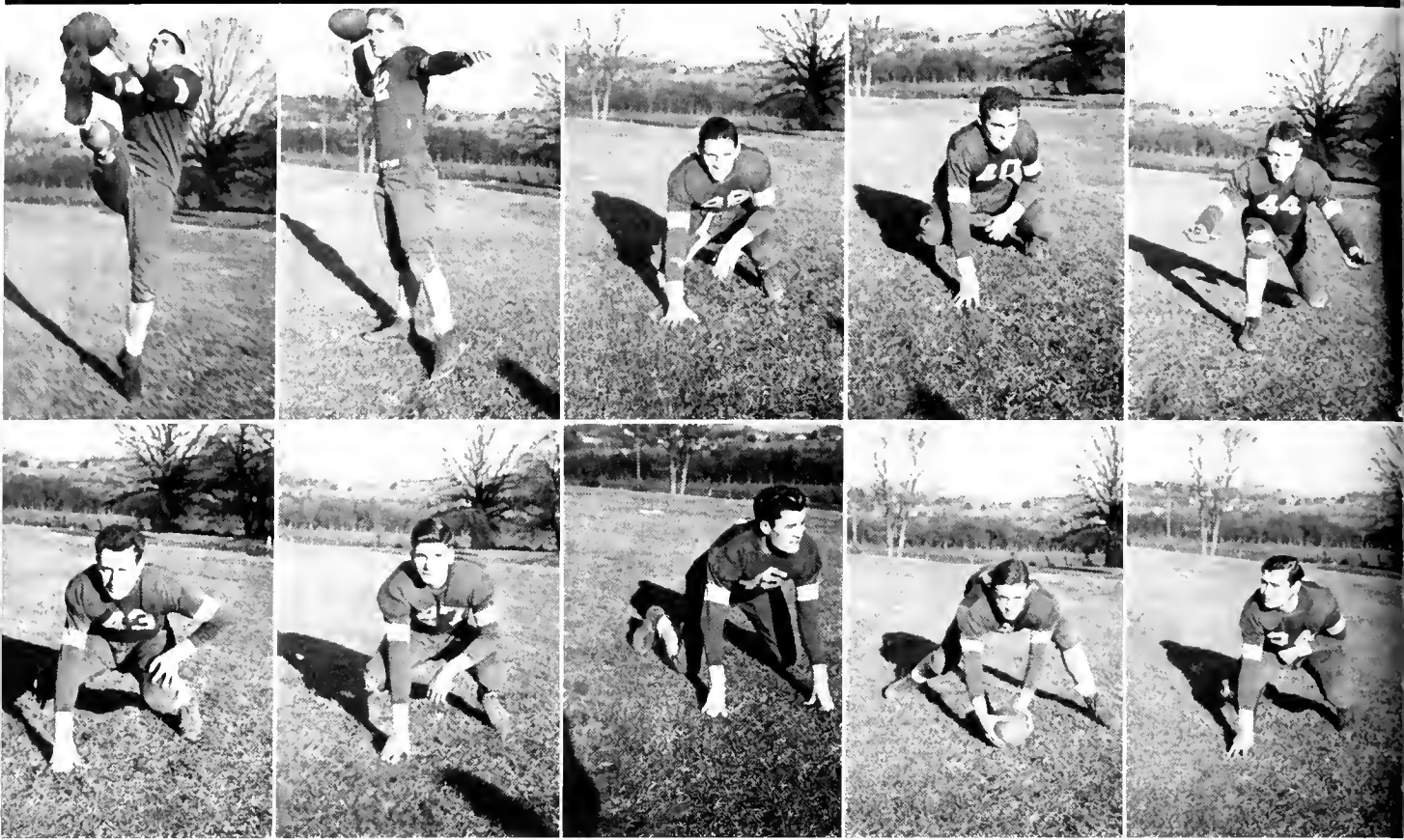
Athletic activities at Brevard do not compare in some respects to those at other institutions. Here each athlete measures up to the same standards as any other student in the College. In this way athletics does not interfere with the education of the athletes. Since this is the case, every athlete feels that he must develop his body as well as his mind to become a success in life.

The majority of students at Brevard College take part in some form of athletics, including football, basketball, baseball, boxing, tennis, and track. No matter which of these a student may take part in he will develop a feeling which will enable him to look forward to the strengthening of athletics in this institution.

Athletics at Brevard is under the direction of Coach J. B. Christenbury, Assistant Coach Cline Farthing, and Mrs. T. M. Palmer. Under these leaders Brevard has had a successful year in athletics. With such a spirit, athletics in the College will not lag behind as other departments develop.



# On The Gridiron with



HEMPHILL, Back  
W. MOORE, End

SHUFORD, Back  
WADDELL, Guard

BARDEN, Back  
MITCHELL, Guard

ROBERTSON, Tackle  
JOHNSON, Center

DANIELS, End  
HAWKINS, Guard

## RESUME OF THE SEASON

Brevard did not hope for a winning team when only two lettermen, Stepp and Taggart, returned to the Brevard College gridiron. Yet, before the season had got under way, Coach Christenbury, with the able assistance of Coach Farthing, had turned out a well-rounded team.

### CO-CAPTAINS

TAGGART, Back

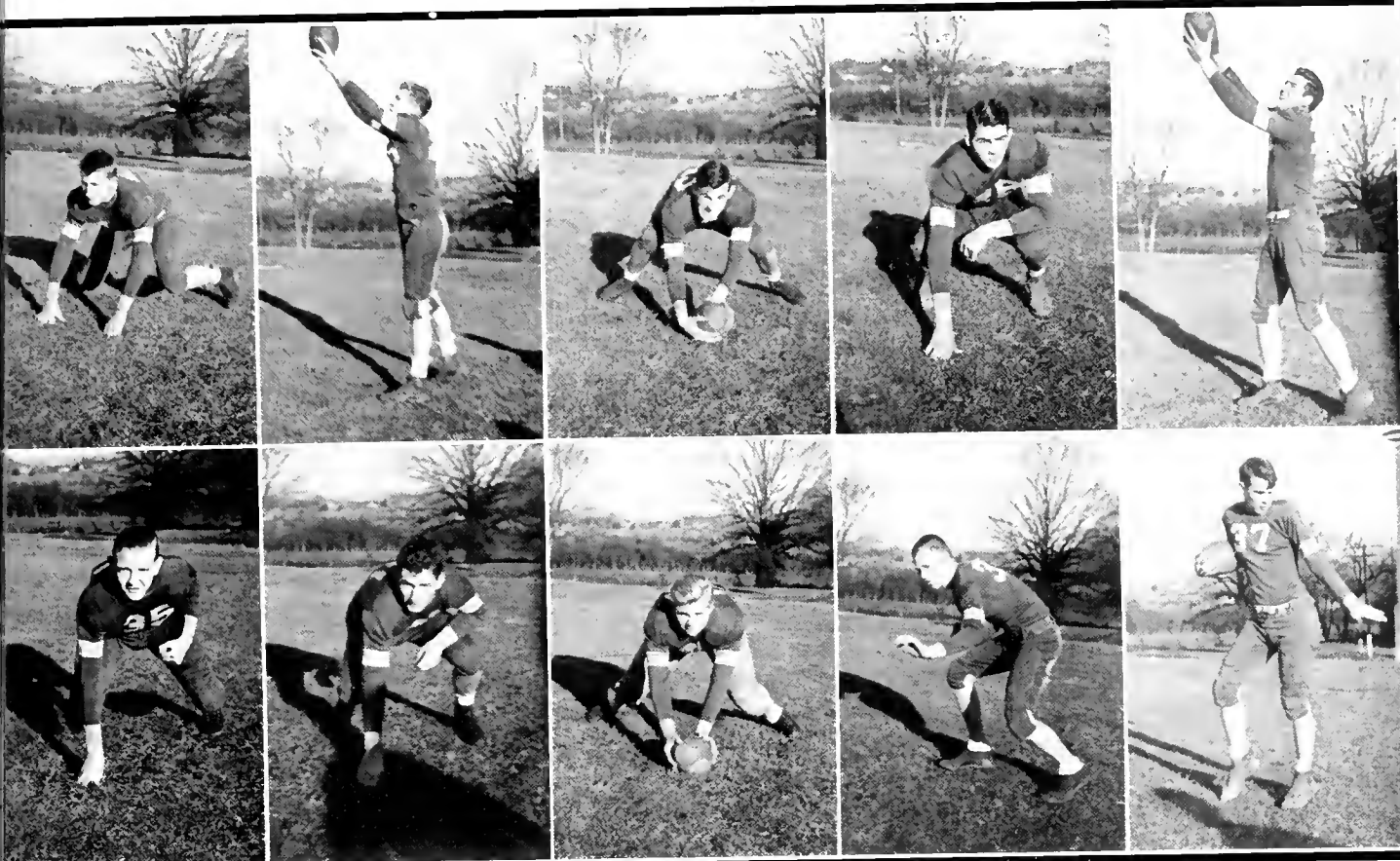
STEPP, Tackle



The Tornado got off with a slow start, but the team was soon drilled into shape, and it proved to be a fighting squad. Although it lost to its ancient rival, Mars Hill, it was able to make a fine showing against other opponents.

The men who saw most action during the season were Daniels and W. Moore as ends, Stepp and Roberson as tackles, Waddell and Mitchell as guards, with Johnson at center. The backfield was composed of Taggart, Hemphill, Shuford, Barden, and Proctor.

# the 1938 Tornadoes---



E. MOORE, Tackle  
BALES, Tackle

BROWN, End  
KENDALL, Back

WALDEN, Center  
FOIL, Center

REDMON, Guard  
BARNHARDT, Back

LEWIS, End  
RECTOR, Back



DAVIS, Manager

## SCHEDULE

		We	They
Sept. 24: W. C. T. College	There	12	26
Sept. 30: Wofford Freshmen	Here	34	0
Oct. 8: Newberry Freshmen	There	0	21
Oct. 15: Boiling Springs	There	0	12
Oct. 22: Blue Ridge	There	6	12
Oct. 29: Erskine Freshmen	Here	6	2
Nov. 5: Wingate	There	7	13
Nov. 12: P. J. College	There	18	0
Nov. 18: Lees-McRae College	Here	19	0
Nov. 24: Mars Hill College	There	0	27

# B A S K E T B A L L

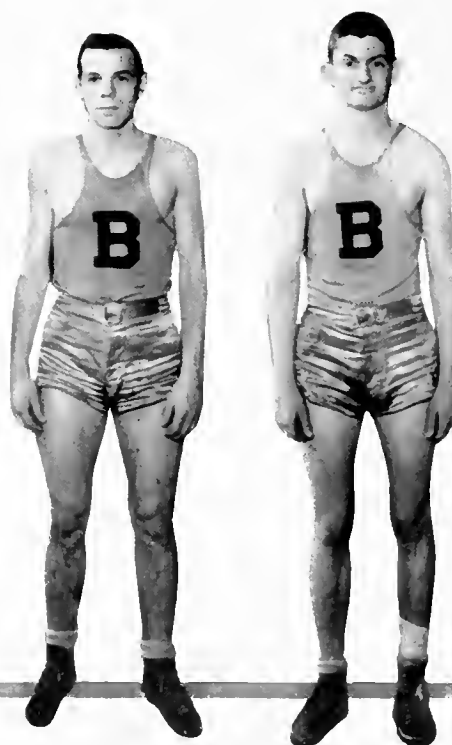
With only three lettermen returning to the Brevard Junior College unit, the prospect for a winning team looked dark; however, there was a fine turn-out, and Coach Christenbury's fleet five got off to a fine start.

Confronted by as tough a schedule as Brevard has ever met, the team was able to roll up an impressive record, winning sixteen and losing six of its games. This scrapping crew had the fighting spirit, never stopping until the final whistle had blown. The quint which saw action most of the season was composed of Hendrix and Young, the co-captains, and Peterson, Lewis, and Daniels. Peterson's high scoring, with the excellent guarding and team work of the complete five, led us through a victorious season.

The return of at least five lettermen and the completion of the new gymnasium point toward another successful season for the Brevard College cagers.



COACH CHRISTENBURY

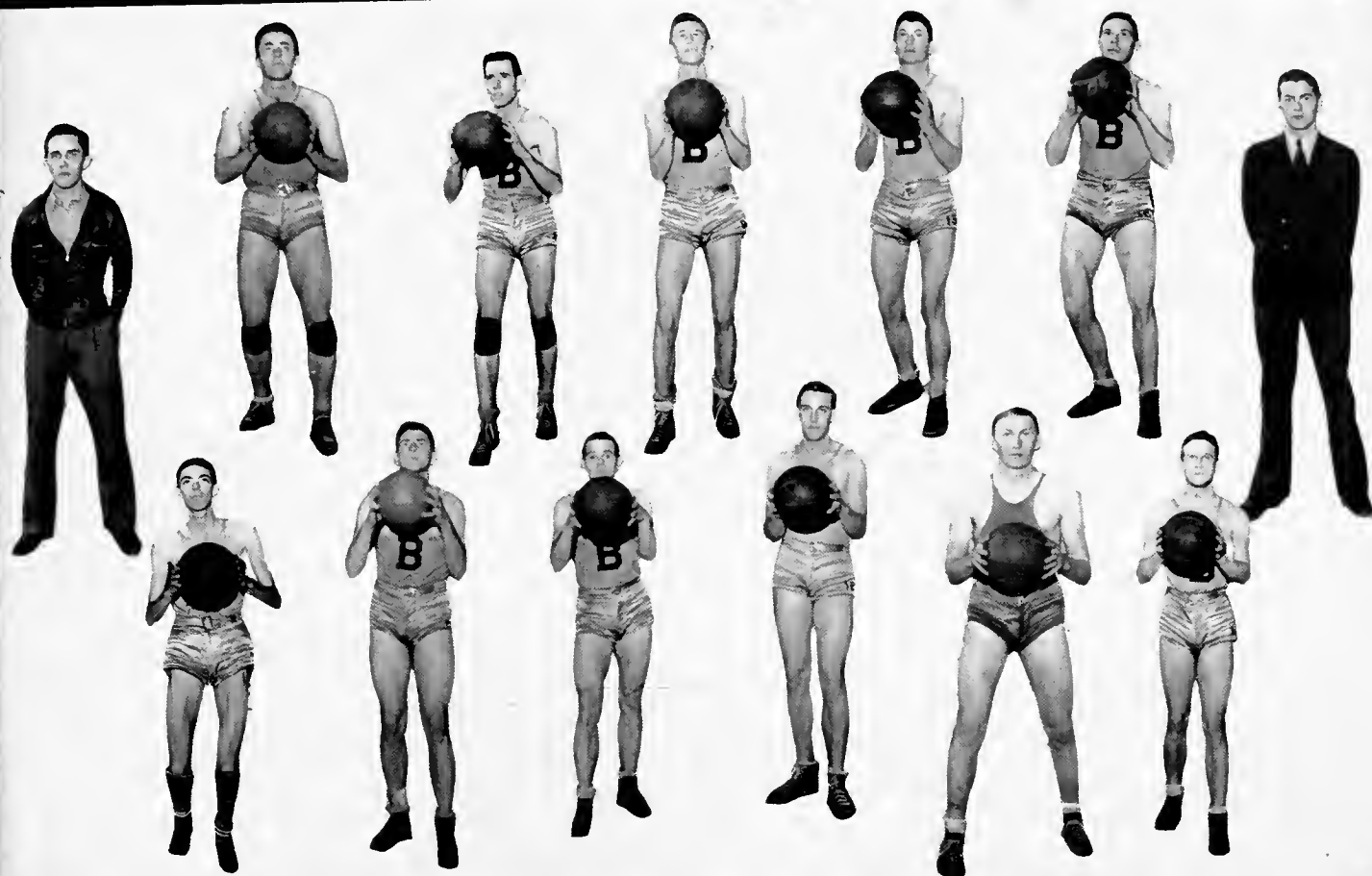


CO-CAPTAINS

R. YOUNG, Guard

HENDRIX, Guard





FISHER  
Manager

HOLT  
Guard

DANIELS  
Center

LEWIS  
Forward

HEMPHILL  
Forward

R. YOUNG  
Guard

HORNER  
Forward

PETERSON  
Forward

HENDRIX  
Guard

DALTON  
Center

J. YOUNG  
Center

JOHNSON  
Guard

MARTIN  
Ass't. Mgr.

## THE SCHEDULE

Opponents	Brevard			
North Georgia	34	35	Biltmore	36
Piedmont	16	42	Lees McRae	44
Belmont Abbey	51	36	Lees-McRae	36
Blue Ridge	28	44	Biltmore	16
Boiling Springs	33	53	Boiling Springs	34
Pfeiffer	45	49	Boiling Springs	30
Pfeiffer	18	64	Blue Ridge	20
Catawba "B"	26	46	Piedmont	30
Mars Hill	27	44	Mars Hill	52
				45
				34
				34
				43
				52
				26
				35
				41
				37

# B A S E B A L L

This spring baseball has gotten off to a good start in Brevard. Only four lettermen—Frye, Cauble, Shropshire and Royal—returned; but the contest for positions is proving interesting. Kimball, a freshman, is showing up well on the mound, while Palmer and Shuford are proving able batsmen. Brevard made an excellent record last year and will be able to go even further this year if the pitchers develop properly.

The opener, being won 4 to 2 from the strong Cullowhee nine, points toward another successful season.



CO-CAPTAINS

SHROPSHIRE

ROYAL





## THE SCHEDULE

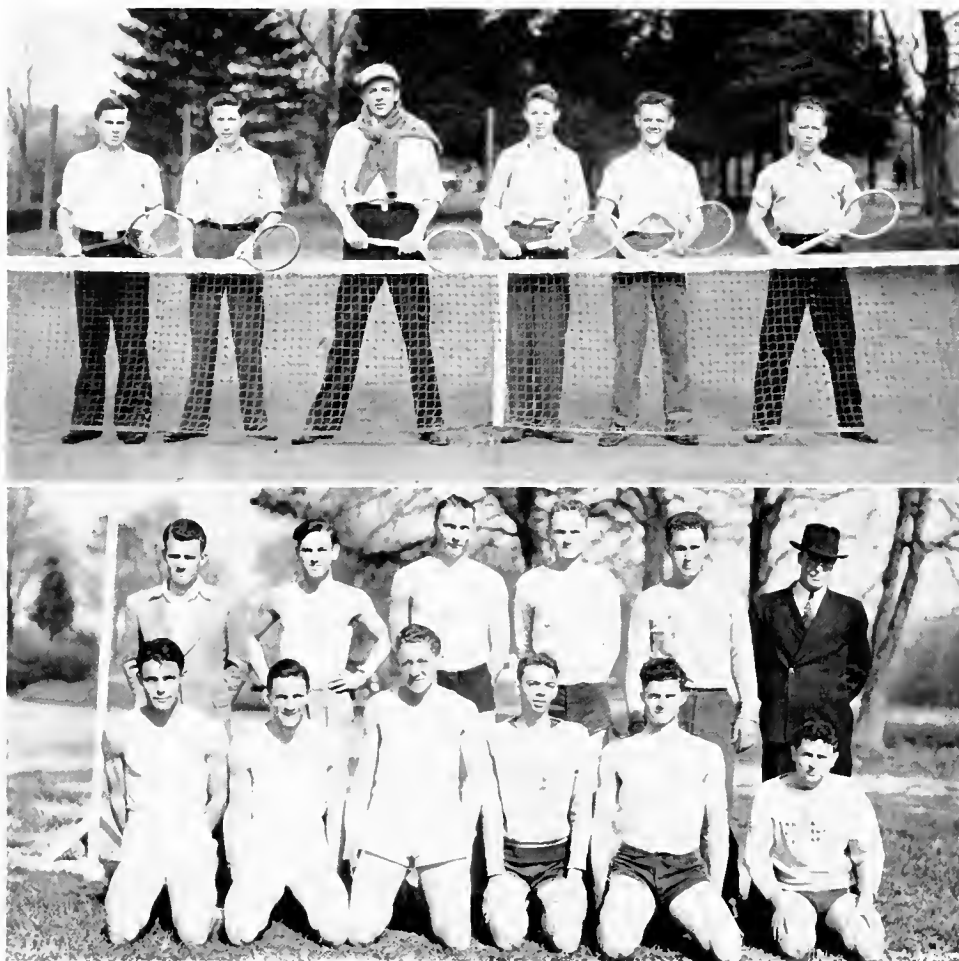
Apr. 14-15	W.C.T.C., there
" 18	Textile, there
" 22	Blue Ridge, here
" 26	Textile, here
" 29	Blue Ridge, here
May 2	Asheville High, there
" 6	Mars Hill, here
" 9	Asheville High, here
" 13	Asheville School For Boys, here
" 16	Mars Hill, there
" 20	W.C.T.C., here

## THE VARSITY

Front Row, left to right: Graham, Royal, Shropshire, Cauble, Frye, Kimball.

Second Row: Assistant Manager Winslow, Nipper, Blanton, Shuford, Kirby, Chambers, Kendall, Palmer, Coach Farthing.

Back Row: Manager Stepp, Johnson, Proffit, Wallace, J. Safford, Baucom, Ludwick, T. Safford, Lentz, Daniels.



## T E N N I S

This year Brevard is able to sponsor what looks to be a strong tennis team. The men were selected by an elimination tournament. The players from left to right are: Hoyle, Oehman, Isbill, Orr, Jenkins and Ward.

## T R A C K

For the second time Brevard College has a track team. The skill of Napier, last year's star, will be missed; but several new men are proving their speed and ability.

Front Row: Birmingham, Barden, Ratchford, Holt, McLain and Renfro.

Second Row: Harrill, Holcomb, Dalton, Whitfield, Roberson and Coach Christenbury.

# GIRLS' ATHLETICS



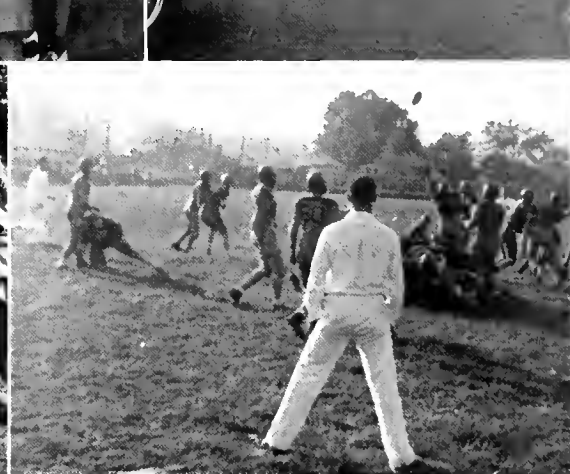
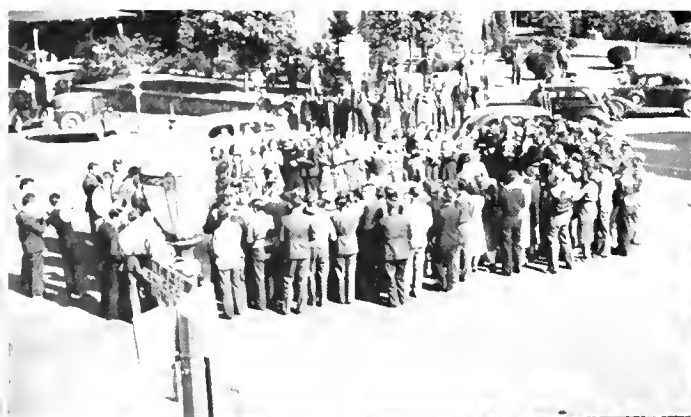
MRS. MARILEE PALMER  
Director of Girls' Athletics

The aims of Physical Education for Women at Brevard are: to develop proper ideals and attitudes toward physical activity; to develop inherent qualities of leadership, to promote the desire for wholesome associations and recreation; and to develop good character.

Intramural sports in which the young women of this institution participate are as follows: tennis, badminton, baseball, horseshoe-pitching, the aerial dart, soccer, paddle tennis, archery, basketball, soft ball, volley ball, captain ball, hit pin baseball, and lacrosse.

Other related activities are folk-dancing, tap-dancing, singing games, and the hunting games.







# ORGANIZATIONS

*"This song has no beginning;  
This song has no end."*

*-- Folk-Song*



Euterpeans



Cliosophics



Mnemosyneans



Delphians



## E U T E R P E A N S

K. Armstrong, K. Austin, M. Austin, Billings, L. Blanton, H. Brown, Bryson, Cameron, Carrithers, F. Cauble, D. Cline, Clouse, Cook, Maurine Davis, V. Davis, English, Fitzgerald, Franklin, J. Griffith, Christine Herring, Jackson, Livengood, Lawing, Laws, Maricn, Michael, Peele, E. Phifer, L. Phifer, Philips, M. Randall, Ray, Rorie, V. Scott, M. Secrest, Setzer, Shellem, Smith, Troxler, Winfree, White-side, Wright, E. Yeattes, L. Yeattes, Youngblood.

## C L I O S O P H I C S

Baucom, Boggs, Byrum, Clark, J. Clayton, Covington, Dalton, Dimmette, Gordon, D. Graham, E. J. Graham, Hendrix, Holcombe, Hoyle, Kendall, Keener, Lanier, Lentz, Lowder, Lowman, Ludwick, Martin, McLain, Merriitt, C. Moore, Paul, John Ramsey, Ratchford, Ridenhour, V. Robertson, Shipman, Umberger, R. Young.

## M N E M O S Y N E A N S

Allen, Ardrey, Bean, Brigman, Brooks, E. Cauble, Chisholm, B. Cline, Coward, Cox, Dixon, Dodson, Falls, Field, Finger, Fite, Folger, Galloway, Grey, Griffith, Groce, Gunn, Gwaltney, Hensley, Hicks, Hines, Ingram, M. Jones, B. Johnson, Kelly, Lambert, J. Lewis, Lipe, L. Matthews, C. Martin, McGee, V. Miller, Mitchem, Mock, S. Morgan, Odom, V. Osborne, Parrish, Pennell, M. Phifer, Pittillo, Preddy, Price, M. Proffit, Readling, Rothrock, P. Scott, Sellars, Sheets, Shore, Simpson, E. Sink, Southern, Stackhouse, Starney Staton, Stone-street, F. Turner, Waggoner, Wells, G. West, Juanita West, Wiley, M. Wilson, Whisnant, Withers, Wiseman.

## D E L P H I A N S

R. Austin, Ballard, Barden, Barnhardt, Birmingham, H. Blanton, D. Brown, Burnette, Carpenter, Frank Cauble, R. Clayton, Daniels, Ellet, Ewart, Ferguson, Foil, Frye, Grant, Hamilton, Harper, Harrill, Harrison, J. Hemphill, T. Hemphill, Henderson, Julian, Kennerly, Little, McCall, R. Matthews, E. Messer, F. Miller, Mitchell, Monroe, J. Moore, Nipper, Proctor, F. Proffitt, J. Rhodes, Robbins, H. Roberson, Rock, Royal, Saunders, G. Sink, R. Sloan, Steadman, Taggart, Blaine Thompson, Waddell, Weaver, Welch, Whisenhunt, Winecoff, Winslow.

*Spring comes with the first thunder storm.*

## Forensic Club

Ballard, L. Blanton, Byrum, Covington, Freeman, M. Griffith, McLain, Marion, Marr, Misenheimer, Ratchford, Renfro, Ridenhour, Shipman, Blaine Thompson, Umberger; adviser, Mr. Pangle.



## Dramatic Club

F. Cauble, R. Chambers, B. Cline, Cox, Coward, Gunn, Hamilton, Harrill, Hartley, Hicks, Hoffman, Lucke, Ludwig, L. Matthews, Michael, H. McIntosh, W. McIntosh, Parrish, Peele, M. Proffitt, Rector, W. Robertson, E. Sink, J. Summey, Thorne, Waggoner, Walden, Watson, Juanita West, F. Willis, R. Young, J. Young; adviser, Miss Smith.



## Sigma Pi Alpha

Billings, Henry, Little, Pratt, Rothrock, Stonestreet; adviser, Miss Hayes.



*If the bottom of your foot itches, you are going to walk on strange ground.*





## Block "B" Club

Bales, Barden, Brown, Cauble, Cooke, Daniels, Davis, Edwards, Frye, Harrell, Hawkins, Hemphill, Hendrix, Jones, Lewis, Mitchell, Proctor, Ratchford, Roberson, Royal, Shropshire, Stepp, Taggart, Waddell, Waggoner, Young.



## Boosters' Club

Birmingham, Marshall Davis, Frye, Gunn, T. Hemphill, Hensley, Lipe, McLain, L. Phifer, Pittillo, Proctor, Robbins, Rock, Rothrock, Royal, Runyon, R. Stepp, Waggoner, G. West, Youngblood.



## Travel Club

Bryson, L. Blanton, E. Cauble, Chisholm, U. Cook, Farabow, Hyatt, Ingram, Jackson, J. Jenkins, Kiker, Miller, G. Morgan, S. Morgan, Josephine Ramsey, P. Scott, V. Scott, Sellers, Staton, J. Wilson, Wright; adviser, Mrs. Pangle.

*It will give you a headache to walk in anyone else's tracks.*

## Photo-Nature Club

Allen, Barden, Birmingham, Brigman, R. Clayton, Dixon, Dodson, Fite, Grey, M. Griffith, Harper, Hensley, Charlie Herring, Hicks, M. Jones, Julian, Kiker, Lambert, J. Lewis, C. Martin, L. Matthews, R. Matthews, Merritt, Michael, Parrish, M. Phufer, Proctor, E. Proffitt, Reading, Sheets, Shore, G. Sink, Stackhouse, Stamey, R. Stapp, Boyce Thompson, D. Turner, Waddell, Winecoff, J. Wells; adviser, Mr. Schoenkecht.



## Medical Science and Mu Delta Club

St. C. Austin, Bales, Barden, Blanton, Cabe, Caldwell, Chisholm, Dimmette, Ewart, Fisher, E. J. Graham, Griffith, Hamilton, Kitchen, McGaha, H. Messer, F. Osborne, Ramsey, M. Randall, Saunders, P. Scott, Staton, B. Thompson, Waddell, Welch; adviser, Mr. Trowbridge.



## Model-Airplane Club

Barnhardt, Dula, Foster Hamilton, Harper, Hilliard, Holcombe, Hunycutt, Julian, R. Matthews, Monroe, Nipper, F. Sloan, Boyce Thompson, Weaver, Winslow.



*Carry a buckeye in your pocket to prevent rheumatism.*



## Concert Choir

K. Armstrong, Barden, L. Blanton, H. Blanton, Byrum, R. Chambers, Cooke, Coward, Gordon, Gunn, Hensley, Christine Herring, Hines, Lowder, Lucke, McLain, Michael, Paul, Peele, Ray, Ross, Rothrock, Royal, Saunders, Sheets, Sloan, Waggoner, John West, M. Whisnant, F. Willis.



## Girls' Glee Club

Bean, Blanton, Brigman, Bryson, B. Cline, D. Cline, Clouse, Cox, M. Davis, Dixon, Dodson, Finger, Folger, Hensley, Jackson, Lawing, Lipe, Marion, Matthews, Michael, Mock, Parrish, Pennell, Pittillo, Randall, Troxler, Wiley, Wright.



## Brevard Band

Birmingham, Carpenter, Coone, Dimmette, Gordon, Graham, Hamilton, Harper, Hemphill, Lentz, Loftis, McCall, Oehman, Ramsey, Ridenhour, Saunders, Sitton, Weaver; leader, Frye.

*For every pea you eat on New Year's Day you will have that many dollars.*

## Ministerial- Missions Club

Boggs, Byrum, Cooke, Dalton, Elliott, Gordon, Hager, Jones, Kelley, Lowder, Ludwick, Martin, McLain, Mock, Morgan, Palmer, Ridenhour, Rock, Rothrock, Simmons, Stonestreet, Turner; adviser, Mr. Bennett.



## Christian- Student Movement

Ballard, Barden, Boggs, Byrum, Cameron, Carnes, Clayton, Cooke, Daniels, Graham, Hanson, Hensley, Hicks, Jenkins, Ludwick, McLain, Misenheimer, Parrish, Paul, Poteate, Proctor, Ratchford, Ray, Ridenhour, Rock, Rothrock, Simmons, Sink, Stonestreet, Turner, Waggoner, Williamson, Wiseman; adviser, Mr. Bennett.



## International Relations Club

Allen, Boggs, Brown, Carnes, Conley, Galloway, Hamilton, Harrill, Hendrix, Hines, Holcombe, Isbill, Jenkins, Jones, Keener, Kendall, Kim, Orr, Paul, Freddy, Randall, Rentro, Whisenhunt, Young; adviser, Mr. Andrew.



*If a baby is slow in cutting teeth, rub a minnow through its mouth.*





## Fireside Club

M. Austin, K. Armstrong, Ardrey, Billings, Brigman, Brooks, Brown, Carrithers, Cauble, Cook, Field, Fitzgerald, Franklin, Gwaliney, Ingram, Kitchen, Lawing, Miller, Mitchem, Mock, Phifer, Pred- dy, Ray, Readling, Smith, Stamey, Stone, Troxler, Turner, Wells, Willis, Wright; adviser, Miss Sizemore.



## Folklore Club

K. Austin, Billings, Boggs, Cameron, J. Clayton, D. Cline, Maurine Davis, Gallamore, E. Jenkins, Kitchen, Livengood, Lowder, McJunkin, Mock, E. Phifer, Preddy, Randall, Rorie, Saunders, Shore, Wiley, Win- free, Withers, Yandell, E. Yeates, L. Yeates; adviser, Miss Craig



## Commercial Club

Allen, K. Armstrong, Bau- com, Bryson, F. Cauble, D. Cline, Colvard, Maurine Davis, English, Falls, Field, Fite, Franklin, Groce, Harper, Hart- ley, Hensley, Hogsd, Hoyle, I. Jones, Kirby, J. Lewis, Lipe, McGee, McJunkin, C. Martin, L. Matthews, Merritt, E. Mess- er, Michael, Mock, Odcm, Os- borne, Peele, Pennell, L. Phif- er, Price, Proctor, B. Randall, J. Rhodes, Robbins, Rorie, Royal, V. Scott, Secrest, Sell- ers, Shellem, Shipman, Shore, R. Stepp, Boyce Thompson, Umberger, G. West, M. Wil- son, Withers, Youngblood; adviser, Mrs. Campbell.

*If a live fish is rubbed over a baby's gums, his teething will be painless.*

# THE PERTELOTE

Editor-in-Chief

William Rock

Business Manager

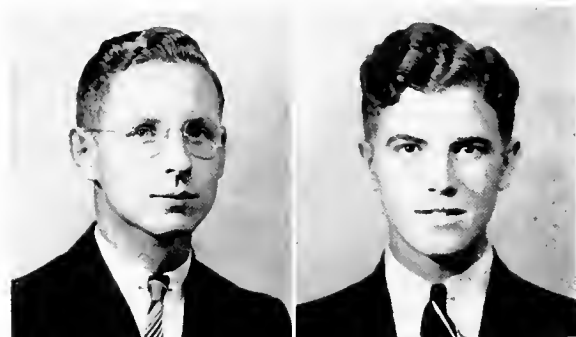
Kenneth Royal

Art Editor

Hans Hanson

Faculty Adviser

Miss Craig



Associate Editors

Senior Editor

Freshman Editor

Organizations Editor

Write-up Editors

Feature Editor

Athletic Editor

Photographic Editor

Typists

Assistant Business Manager

Advertising Manager

Circulation Manager

Evelyn Rothrock

Hunter Henry

Miriam Randall

Nana Sue Michael

Elizabeth Parrish

Louise Yeattes

Elsie McJunkin

Stella Ray

Horace Messer

Dick Whisenhunt

Margaret Smith

Opal Youngblood

Ira Jones

Robert Stepp

Fred Willis



*Happy is the bride the sun shines on; blessed is the casket the rain falls on.*

# THE CLARION

Editor-in-Chief

S. C. Carpenter

Associate Editor

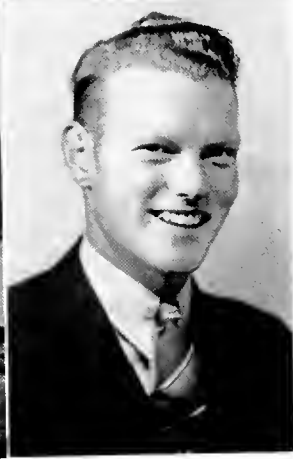
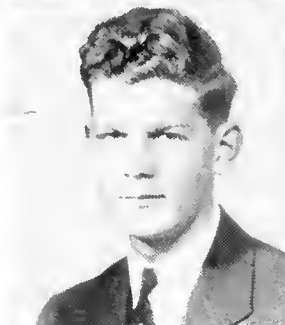
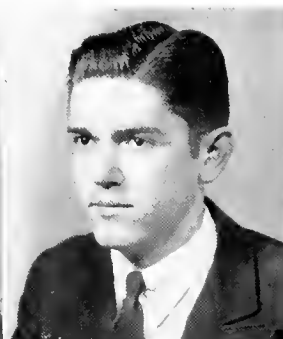
Robert Clayton

Business Manager

Billy Shipman

Faculty Adviser

Mrs. E. J. Coltrane



Sports Editor

Burton Daniels

Typist

Mariam Allen

Reporters

Sara Hensley

Marvin Little

Edith Williamson

Circulation Manager

Talmadge Burnette

*One may become a witch by saying the Lord's Prayer backwards.*

# STUDENT COUNCIL

## MEMBERS

Buck Barden, Delbert Byrum, William McIntosh, Wayne McLain, Frank Osborne, Elizabeth Parrish, Ray Proctor, William Rock, Evelyn Rothrock, Ruth Stonestreet.



## OFFICERS

President  
Secretary

Revis Frye  
Nelvin Gunn



*If you kill a hoppy-toad, your well will go dry.*





## FEATURES

*"New moon, true moon,  
Play your part.  
Bring to me  
My own sweetheart,*

*That in his arms  
I may embrace  
And see a vision  
In his face."*

*-- Folk-Saying*

# Pertelote



MRS. W. A. ROCK  
Sponsored by Editor-in-  
Chief of the Pertelote

HELEN ROSS COX  
Sponsored by Business  
Manager of the Pertelote

STELLA RAY  
Sponsored by the Cliso-  
phic and Euterpean Liter-  
ary Societies

SARAH HENSLEY  
Sponsored by the Delp-  
ian and Mnemosynean  
Literary Societies

# Sponsors



VIRGINIA MILLER

Sponsored by the Clarion Staff

SATENIK NAHIKIAN

Sponsored by the Student Council

LOIS FULTON

Sponsored by the Sophomore Class

MARY ELEANOR WILLIAMS

Sponsored by the Freshman Class

GERALDINE HICKS

Sponsored by the Football Team

MRS. B. A. HOLDER

Sponsored by the Basketball Team

LORRAINE SHROPSHIRE

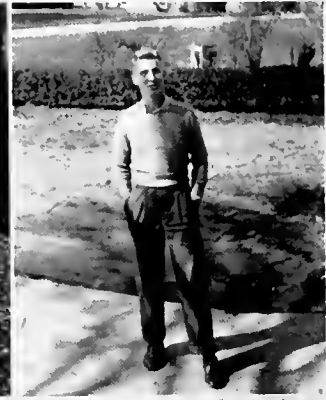
Sponsored by the Baseball Team

# SENIORS OF

## Most Popular

Ruth Waggonner

Ray Proctor



## Most Original

Charles Isbill

Dorothy Pittillo



## Best-All-Round

William Rock

Stella Ray



## Best Personality

Kenneth Royal



# T H E Y E A R



## Most Friendly

Sarah Hensley

Oscar Palmer



## Best-Looking

Edgar Messer

Kate Austin



## Most Intellectual

Ruth Stonestreet

Hunter Henry



## Best Personality

Helen Ross Cox



*Candid Camera Shots*





*at Brevard College*



## FINIS

*"When I'm dead, bury me deep.  
Put a can o' 'lasses at my feet;  
Put a pone o' bread in my hand,  
And I'll sop my way through the  
Promised Land."*

*-- Folk-Saying*





## *An Appreciation*

The staff of the Pertelote wish to express their appreciation to all who have made the 1939 edition of the annual possible. The editors have worked faithfully and have secured the cooperation of many whose names do not appear on the staff. We feel that credit should be given to those who have submitted pictures, helped in the literary work, and aided in securing advertisements. We also wish to thank our advertisers for their support. Without such help this volume would not have been possible. We are sure that our students and friends will patronize those who give us their support.

# *Mother The Drudge*

Mother used to be a drudge. There was no help for it. Some mothers are still drudges. But they needn't be.

Electricity has knocked the drudgery out of housework wherever it has been given an opportunity. Always on tap, always "a-rearing to go," electricity today is adding years of brightness and happiness to countless thousands of housewives who have taken the trouble to find out just what electricity can do in the home.

The cost of electric service has had a constant trend downward since the power industry came into being. The cost of living has substantially increased during the past two years. The cost of electric service has continued to decrease. *It is today the smallest item in the family budget.*

## DUKE POWER COMPANY

*The Latest and Best in Movie  
Entertainment*

## CLEMSON THEATRE

■  
Brevard, N. C.  
■

EQUIPPED WITH WESTERN ELECTRIC MICROPHONIC  
SOUND SYSTEM AND LATEST TYPE  
PROJECTORS

*Pictures in this Annual*

by

## AUSTIN'S STUDIO

Enlargements Can Be Made At Anytime

Negatives Put On File Permanently

PHONE 136

Brevard, N. C.

DRUGS

CANDIES

SODAS

STATIONERY

# LONG'S DRUG STORE

Brevard, N. C.



Brevard College Boosters

Phone 85

COMPLIMENTS

*of*

## GALLOWAY'S CAFE

*"Keep Well By Eating Well"*

SATISFYING FOOD

COURTEOUS SERVICE

BROAD STREET

BREVARD, N. C.

COMPLIMENTS

*of*

## Transylvania Trust Company

BREVARD - - NORTH CAROLINA

Vote For

## ECK. L. SIMS

REGISTER OF DEEDS

*The People's Friend*

Transylvania County

SUNNY SIDE  
DAIRY

Grade A      Raw Milk

*Anything in the Dairy Line*

PHONE 95-R2

BREVARD - - NORTH CAROLINA

COMPLIMENTS

*of*

DUNHAM'S  
MUSIC HOUSE

62 PATTON AVENUE

PHONE 420

ASHEVILLE - - NORTH CAROLINA

COMPLIMENTS

*of*

JARRETT FURNITURE CO.

ASHEVILLE, NORTH CAROLINA

COMPLIMENTS

*of*

CARR LUMBER CO.

PISGAH FOREST - - - - - NORTH CAROLINA

COMPLIMENTS

*of*

Lipscomb Russell  
Company

Wholesale Grocers

*Roasters of*

*FINE COFFEES*

*Complete Line of Notions*

GREENVILLE, S. C.

COMPLIMENTS

*of*

BECKER'S  
BAKERY

HENDERSONVILLE, N. C.

ETOWAH  
BRICK

*Manufactured*

*by*

THE  
MOLAND-DRYSDALE  
CORPORATION

ETOWAH, N. C.

SMOKY MOUNTAIN  
TRAILWAYS



Serves Western North Carolina,  
North Georgia  
and Eastern Tennessee

*Covering the Most Scenic Areas in  
These States*

For Further Information Call

PHONE 177-175

OFFICE 955

ASHEVILLE, N. C.

**S. M. MACFIE  
DRUG CO.**

*The Rexall Store*

Biltmore Ice Cream

School Supplies

Brevard College Boosters

BREVARD - - NORTH CAROLINA

*COMPLIMENTS*

*of*

**Brevard Lumber  
Company**

BREVARD - - NORTH CAROLINA

*COMPLIMENTS*

*of*

**B. & B. Feed & Seed  
Company**

Feeds, Seeds, Flour

Fertilizer

Wholesale Produce

BREVARD - - NORTH CAROLINA

**PLUMMER'S**

Main Street

BREVARD - - NORTH CAROLINA

Southern Paper Products  
Company

*Wholesale*  
PAPER MERCHANTS

PHONE 1108      20 SPRUCE ST.  
ASHEVILLE, N. C.

**SCHRAFFT'S**

*"The Nation's Leading Candies"*

ON SALE EVERYWHERE

**Morgan Bros., Inc.**  
DISTRIBUTORS

ASHEVILLE - - NORTH CAROLINA

**TALMAN**  
OFFICE SUPPLIES

8 COLLEGE STREET  
ASHEVILLE - - NORTH CAROLINA

**CENTRAL MARKET**  
& GROCERIES

FRESH MEATS AND  
SEA FOOD

J. E. WATERS, *Propr.*  
PHONE 124      BREVARD, N. C.

*"Always Up To Welcome You"*  
OPEN ALL NIGHT

**TINGLE'S CAFE**

19th year at same location  
29 BROADWAY    ASHEVILLE, N. C.  
*"The little cafe with big eats"*  
FRIED CHICKEN - TENDER STEAKS

*COMPLIMENTS*

*of*

**EBBS BROS. & CO.**

WHOLESALE GROCERS  
COFFEE ROASTERS

ASHEVILLE - - NORTH CAROLINA

*COMPLIMENTS*

*of*

Hajoca Corporation  
PLUMBING AND HEATING  
SUPPLIES

BILTMORE - - NORTH CAROLINA

**Pearce-Young-Angel**

*Wholesale*  
FRUITS AND PRODUCE  
*Grocers' Specialties*

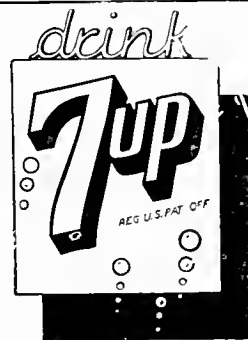
109-111 ROBERTS STREET  
ASHEVILLE - - NORTH CAROLINA



*Famous For Sizzling Steaks*  
Gross Brothers Restaurant  
5 N. W. PACK SQUARE  
ASHEVILLE, N. C.  
*Complete Restaurant Service at  
Reasonable Prices*

COMPLIMENTS  
of  
Underwood Elliot Fisher  
Company  
H. L. Lovelace, Mgr.  
TELEPHONE 916  
110-11 Miles Bldg., 2 Wall St.  
ASHEVILLE - - NORTH CAROLINA

COMPLIMENTS  
of  
Dixie Cleaners  
BREVARD - - NORTH CAROLINA



7-UP BOTTLING CO.

*We Wish to Serve You for*  
HARDWARE, PAINTS  
and SPORTING GOODS  
  
Ottis Green Hardware  
Company  
ASHEVILLE - - NORTH CAROLINA

COMPLIMENTS  
of  
S. H. Kress & Company  
5 - 10 - 25c STORE  
ASHEVILLE - - NORTH CAROLINA

TIRED-THIRSTY-HUNGRY?  
*Drink*  
**Dr. Pepper**  
GOOD FOR LIFE  
**5¢**  
*at*  
10 - 2 - 4 O'CLOCK  
ASHEVILLE - - NORTH CAROLINA

COMPLIMENTS  
of  
**ButterKrust**  
ASHEVILLE BAKING  
COMPANY  
ASHEVILLE - - NORTH CAROLINA

## Duckworth Motor Company

Sales - Service

*"One Stop Service"*

Genuine Ford Parts and Repairs  
Amoco Gas and Oils

PHONE 198

BREVARD

## McNeil Paper Company

INCORPORATED

*Mill Agents and Distributors*

PRINTING PAPERS  
TEXTILE PAPERS  
SCHOOL SUPPLIES  
TWINE - TAPE

CHARLOTTE - - NORTH CAROLINA

## United Variety Stores

Cosmetics, College Supplies  
Candies

Our Motto  
*"Service and Courtesy"*

BREVARD - - NORTH CAROLINA

*COMPLIMENTS  
of*

## Western Auto Associate Store

S. E. Campbell, Owner

BREVARD - - NORTH CAROLINA

*COMPLIMENTS  
of*

## Jennie Bowen

*"Land o' the Sky Fashions"*

HENDERSONVILLE - - N. C.

BREVARD - - NORTH CAROLINA

*COMPLIMENTS  
of*

## O. Duclos Plumbing Co.

Plumbing, Heating and Sheet  
Metal Works

Phone 125

BREVARD - - NORTH CAROLINA

COMPLIMENTS  
of  
State Trust Co.

HENDERSONVILLE - - N. C.

COMPLIMENTS  
of  
Mr. Ralph W.  
Lyday

BREVARD - - NORTH CAROLINA

COMPLIMENTS  
of  
The  
Transylvania Times

BREVARD - - NORTH CAROLINA

Day and Night Phone 95  
WHITMIRE SERVICE  
STATION  
ESSO  
"A Friend Of The College"  
Howard Whitmire, Manager  
E. Main Street Brevard, N. C.

Cantrell Produce  
Company

Wholesale Only  
FRUITS AND PRODUCE

Phone 275  
HENDERSONVILLE - - N. C.



Symbol of the World's  
Foremost Service

Drink

*Coca-Cola*

in Bottles

COCA-COLA BOTTLING CO.

HENDERSONVILLE - - N. C.

McCrary Auto  
Service

*For Economical Transportation*

One Stop Service

BREVARD - - NORTH CAROLINA

FARMERS SUPPLY  
COMPANY  
HARDWARE - FURNITURE  
SPORTING GOODS  
J. M. Allison, Mgr.  
BREVARD - - NORTH CAROLINA

Covington Sport Inc.  
*"Everything for the Discriminating  
Sportsman"*  
ASHEVILLE - - NORTH CAROLINA

*Congratulations To*  
BREVARD COLLEGE  
**Leventis Restaurant**  
177 West Main Street  
GASTONIA, NORTH CAROLINA  
*"Where Friends Meet to Eat"*  
Air Conditioned Year Round for  
Your Comfort

Morris-Taylor Lumber Co.  
Main Office  
ASHEVILLE, NORTH CAROLINA  
Mills, Planing Mill and Yard  
WEST UNION, SOUTH CAROLINA  
HARDWOODS, WHITE PINE  
and YELLOW PINE

Hendersonville Insurance  
Agency, Inc.  
Mrs. Esther J. Arledge, Manager  
*"EFFICIENT SERVICE WITH  
RELIABLE COMPANIES"*  
PHONE 814  
Third Floor, State Trust Building  
HENDERSONVILLE, N. C.

CLEANING LAUNDRY  
LET'S GO TO BREVARD COLLEGE  
1939 - 1940  
And send our clothes to Abbott-Knight, where dry  
cleaning is done with a cleaning fluid which has  
personality. More costly than ordinary cleaner's  
naptha. It is much more efficient and produces  
work which far surpasses ordinary cleaning. With  
this process there is absolutely no odor.  
ABBOTT - KNIGHT, INC.  
MOUNTAIN CITY LAUNDRY, INC.  
PLANT 207-213 COXE ST. ASHEVILLE, N. C.  
*Work Called For And Delivered At College*

Brevard Steam Laundry  
& Dry Cleaning  
*"AT YOUR SERVICE"*  
PHONE 44  
BREVARD - - NORTH CAROLINA

The Walker Insurance Agency  
Mrs. Mary Jane McCrary, Manager  
*"Always at Your Service"*  
PHONE 67  
BREVARD - - NORTH CAROLINA

# A. SALUS & SON, Inc.

CANNED FOODS OF QUALITY

*CATERING EXCLUSIVELY TO INSTITUTION TRADE*

HOME OFFICE: Philadelphia, Pa.

Branches: Atlantic City, N. J., and Miami, Fla.

Southern Representative: O. L. Kahn

*COMPLIMENTS*

*of*

**Pisgah Bakery**

PISGAH FOREST - - - N. C.

*COMPLIMENTS*

*of*

**Charlotte Engraving  
Company**

It has been a pleasure to produce the  
1939 PERTELOTE.

Mr. Rock, editor; Miss Craig, faculty adviser; Mr. Royal, business manager; Mr. Hanson, Illustrator, and the entire staff are to be commended for their excellent work on this issue of the Brevard College Yearbook.

—The Miller Printing Company.

COMPLIMENTS  
*of*  
Simpson's  
Barber Shop

*Tornado Boosters*  
BROAD STREET  
BREVARD - - NORTH CAROLINA

Asheville Showcase  
& Fixture Co.

Hotel, Restaurant and  
Institutional Supply House  
Phone 273 59 Broadway  
ASHEVILLE, NORTH CAROLINA

COMPLIMENTS  
*of*  
NUMAID  
Products Co.

*Distributors of*  
HIGH GRADE MARGARINE  
ASHEVILLE - - NORTH CAROLINA

Hursey & Co.

Jewelry and Watch Repairing  
Trophies, Gifts

67 HAYWOOD STREET  
ASHEVILLE - - NORTH CAROLINA

COMPLIMENTS  
*of*  
Service Paint Co.

PEE GEE PAINTS  
48 BILTMORE AVE.  
ASHEVILLE - - NORTH CAROLINA

W. C. Britt Co.

Plumbing and Heating Supplies  
Kohler Enamelware and  
Burnham Boilers and Radiation  
Telephone 4216  
ASHEVILLE, NORTH CAROLINA

Halsey & Griffith

OFFICE SUPPLIES AND  
ROYAL TYPEWRITERS

Asheville, North Carolina

*You Have Our Best Wishes*

ASHEVILLE NEHI  
BOTTLING CO.

*Manufacturers of*  
R. C. COLA PAR-T-PAK  
NEHI FLAVORS

ASHEVILLE - - NORTH CAROLINA

# *Autographs*



# *Autographs*





Archives 378.9756 B8  
The Pertelote.

Brevard College



0 1935 0040982 9  
BREVARD COLLEGE LIBRARY

