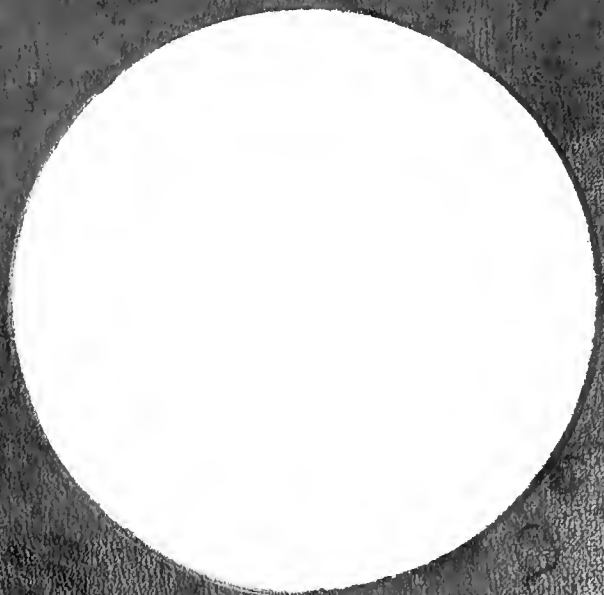


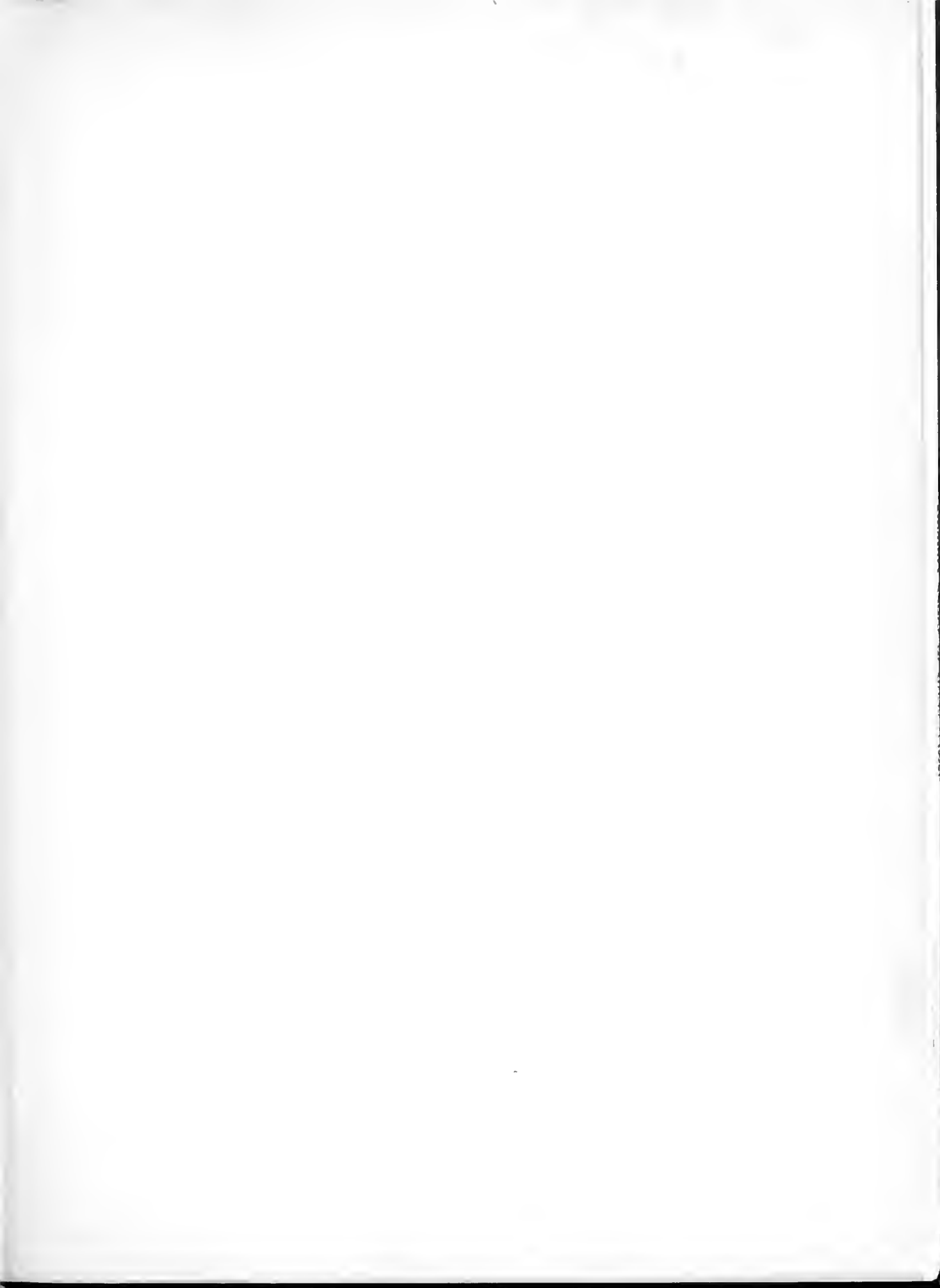
The
Portelote
1946





1853-2003

JAMES A. JONES LIBRARY
Brevard, North Carolina 28712





presenting

The
PERTELOTE
1946



Editor-in-Chief ----- ANNIE PUETT
Business Manager ----- ARTHUR SCHREYER



Published by
THE STUDENT BODY OF
BREVARD COLLEGE
Brevard, N. C.



Dedication



The 1946 PERTELOTE is dedicated to Mr. Harry A. Dunham—businessman, churchman, Christian educator, and philanthropist.

Mr. Dunham has always been interested in the welfare of Brevard College. He has long been a member of the Board of Trustees, a friend of the administration, and a supporter of the College with both spiritual and material resources.



Roosevelt Memorial

This picture records the ceremony terminating the historic period of mourning for the late President Franklin Delano Roosevelt, which was held around the Brevard College flag-pole.





LIBRARY TEA, SPRING 1945

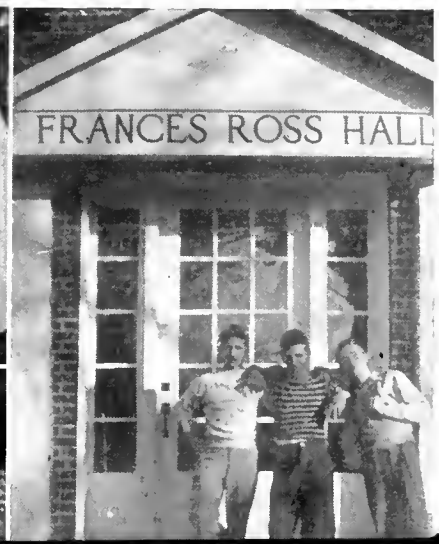
ON THE





HOMECOMING BANQUET. FALL 1945

CAMPUS





ADMINIS



EUGENE J. COLTRANE, A.B., A.M., D.Ed.
President of the College

TRATION

FACU



ALBERT L. BRAMLETT
B.S., M.A., Ph.D.
History

MRS. ELSIE G. BRAMLETT
Art and Crafts

MRS. ESTHER SMATHERS CAPPS
College Nurse

MRS. ISABEL DOUB COLTRANE
B.L., B.Mus., A.M.
English, Speech, Registrar

MISS MARJORIE CRAIG
A.B., A.M.
English

ASHLEY J. DICKSON
*Superintendent of Farm,
Dairy, and Poultry Unit*

MISS LOIS FRAZIER
B.S.
Business Education

MISS THELMA GALLOWAY
B.S.
Dean of Women

MISS MARY CLAIRE GRIFFIN
B.S.
Business Education

MISS DULCIE HAYES
A.B., A.M.
Spanish

MISS MARTHA HEYGEL
A.B.
Romance Languages

R. L. JOHNSON
Treasurer

MRS. R. N. LOBDELL
B.S., M.S.
Biology, Botany, Zoology

BURT W. LOOMIS
B.S. in Education, A.M., Ph.D.
Psychology, Education

DEWITT P. MILLER
B.M.
Vocal Music

MRS. DEWITT P. MILLER
Piano, Violin

LTY

A. J. MONTANARI
Superintendent of Buildings and Grounds

JOHN ALFRED NEEDEY
 B.S. in Education
*Physical Education for Men,
 Hygiene, Coach*

MRS. CELESTE NEEDEY
Piano, Library

MAXWELL GALBRAITH PANGLE
 A.B., A.M.
Economics, Sociology

MRS. LOULA McNEER PANGLE
 A.B., A.M.
Mathematics

MISS EVELYN POWELL
 B.S.
Dietitian

REV. C. EDWARD ROY
 A.B., B.D.
Religious Education

WILLARD E. RUGGLES
 B.A., M.A.
Government, Dean of Men

MISS LUCILE SMITH
 A.B., A.M.
*Assistant Dean of Women, English,
 Dramatics*

J. J. STEVENSON, JR.
 A.B., B.D.
Dean of Administration

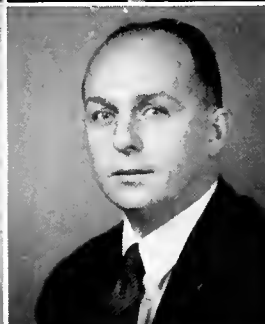
MRS. VIRGINIA DALTON TOWNSEND
Assistant Dietitian

CARL HOYT TROWBRIDGE
 A.B., A.M.
Vice-President, Chemistry, Physics

MRS. WINIFRED THURLOW
 A.B., A.M.
Home Economics

HOWARD WILKIE
 B.S.
Football Coach

MISS RUTH PAULINE WILSON
 A.B.
Physical Education for Women, Hygiene



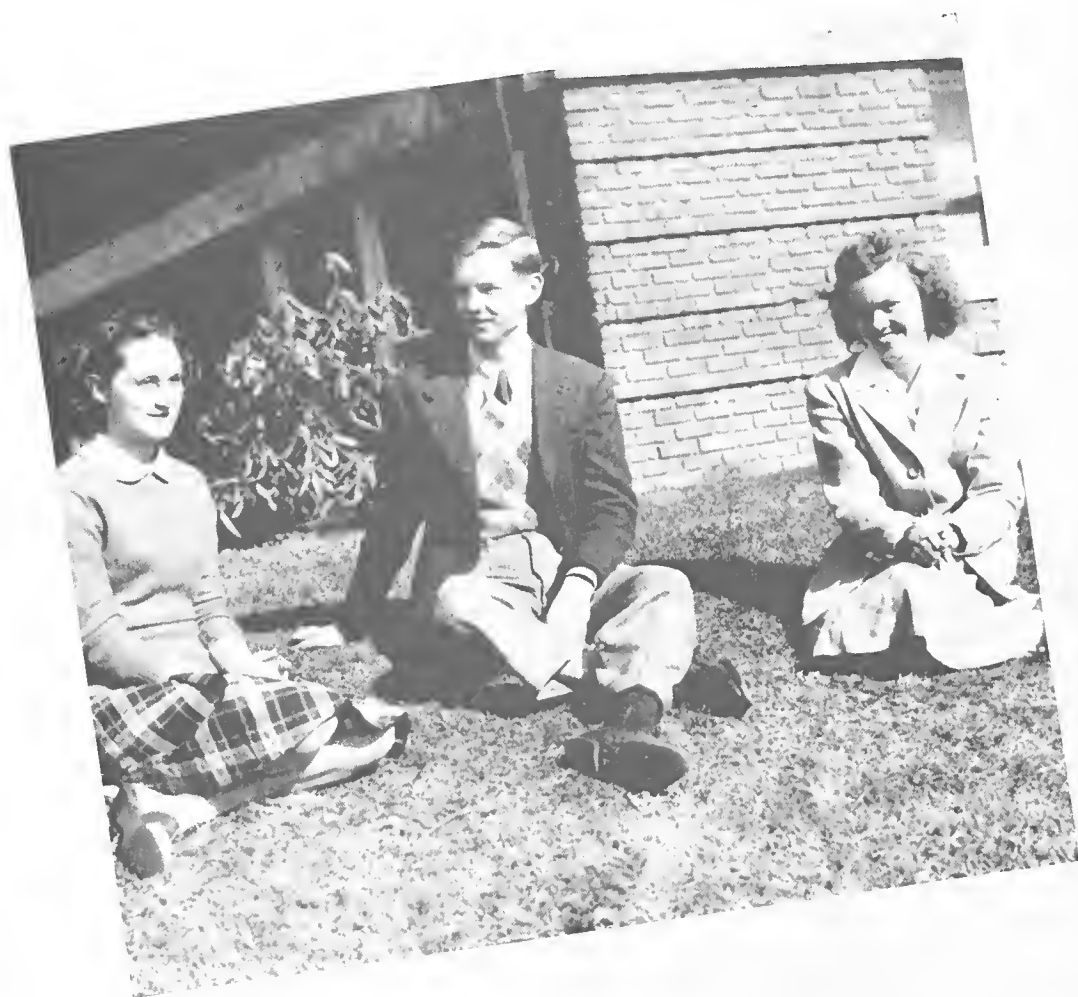


CLAS

The student body is made up of two college classes and two enrolled in accelerated pre-college work.

SES

Senior Class Officers



President
ELIZABETH BROWN

Vice President
JEFFREY COLTRANE

Secretary-Treasurer
MYRTLE BREWER

Seniors

JANE VIRGINIA ALLEN

Biltmore, N. C.

Pertelote Staff '45. Creative in writing and in art, interested in music, dependable in the dining room—that's Jane. She gives her free time to a certain pre-medical student.

★ ★

GILBERT ARTHUR

Morehead City, N. C.

Transfer from State College; Delphian; Football; Ross Hall Council. "No, Mr. Ruggles, at State we did it this way."

★ ★

RUBY LOUISE BAYNARD

Hendersonville, N. C.

Day Students' Club. Hot or cold, rain or shine, we always see Ruby waiting for the 3:15 bus to Etowah.

★ ★

JEWELL MISSOURIA BENNETT

Greer, S. C.

Euterpean; Christian Student Movement Council; Christian Workers' Club, President '46; Taylor Hall House Council '46; South Carolina Club. Jewell is interested in all Christian activities, and in a certain young man with jet black hair.

★ ★

MYRTLE VIRGINIA BREWER

Norwood, N. C.

Euterpean, Secretary-Treasurer '46; Christian Student Movement Council; Christian Workers' Club, Secretary '46; International Relations Club; Phi Theta Kappa '46; Sigma Pi Alpha, Secretary '46; Sophomore Class Secretary '46; Taylor Hall House Council '46. Quiet in her ways, but loud enough to get a certain boy to help clear her tables after each meal.

BUNA EVANS BLUE

Carthage, N. C.

Mnemosynean; Glee Club; International Relations Club; Music Appreciation Club. We remember Buna chiefly for her smile, her cheery personality, and her naturalness at all times.

CLARA MOORE BOONE

High Point, N. C.

Mnemosynean; Commercial Club, Secretary - Treasurer '46. This little red-head has shown her knack for business by her work in the Dean's office.

MARY ANNE BRAKE

Rocky Mount, N. C.

Mnemosynean; International Relations Club, Secretary '45; Medical Science Club; Secretary, Pre-College Class '45. Brake's chief interests are science and dancing.



Seniors

ELIZABETH ADELINE BROWN

Leicester, N. C.

Euterpean; Basketball Team; Home Economics Club, Secretary-Treasurer '45, President '46; International Relations Club; Sophomore Class President '46; Student Council '46; Taylor Hall House Council '45. This popular home economics major is going to make some man a wonderful wife.

★ ★

BETTY ANNE CAMP

Charlotte, N. C.

Mnemosynean. Betty Ann is the life of the party. Why is she so interested in Religious Education?

GEORGE PRITCHARD BROWN

Leicester, N. C.

Clisophic, President '46; Commencement Marshal '45; International Relations Club; Medical Science Club; Phi Theta Kappa; Ross Hall Council; Student Council, Secretary-Treasurer '46. George, after working hard in both academic and extracurricular activities, has won membership in Phi Theta Kappa.

★ ★

WILMA INEZ CHAMBERS

Winston-Salem, N. C.

Euterpean; Basketball Team '46; Christian Student Movement Council, Secretary-Treasurer '46; Christian Workers' Club; Clarion Staff, Business Manager '46; Commercial Club; Glee Club; Music Appreciation Club. "Moitle" has done a fine job as Mr. Johnson's assistant in the Business Office.

CHARLES LEWIS BROWNING

Franklin, N. C.

Delphian, Secretary-Treasurer '46; Clarion Staff '46; Dramatic Club, Vice President '45. Charlie's a genius at creating mountaineer skits.

★ ★

JEFFREY SMITH COLTRANE, JR.

Winston-Salem, N. C.

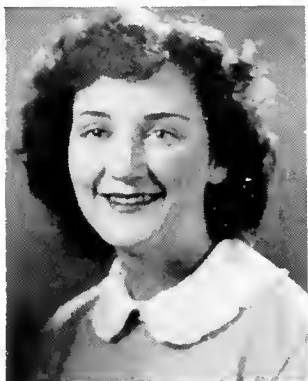
Delphian; Clarion Staff '46; Commencement Marshal '45; Freshman Class, Vice President '45; Commercial Club; International Relations Club; Sophomore Class Vice President '46; Secretary-Treasurer of Student Body '46. Jeffrey brings us our mail. As manager of the book store he has had experience which will be valuable to him as an accountant.

★ ★

ADDIE WILLENA COSTNER

Avondale, N. C.

Mnemosynean; President '46; Basketball Team; Choir; Girls' Athletic Association; Glee Club; Most Athletic Girl '45. Willena is one of Brevard's basketball stars.



Seniors

SARAH HELEN COX
Jacksonville, Fla.

Mnemosynean: Basketball Team, Manager '46; Choir; Dramatic Club; Acting Award '45, Vice President '45; Florida Club; Taylor Hall House Council '46. Any part from a duchess to a maid's Helen can act well on the stage.

★ ★

JENNIE EMILY ELDER
Jacksonville, Fla.

Mnemosynean: Best All-Round Freshman Girl '45; Cheerleader '45, Head Cheerleader '46; Florida Club, Treasurer '45, Secretary '46; Glee Club; Harvest Court '45; Home Economics Club; International Relations Club; May Court '45; Medical Science Club, Chaplain '45; Most Popular Freshman Girl '45; Pertelote Staff '45; President of Student Body '46; Student Council '45; Youth Temperance Council. Our hats off to Jennie, who possesses leadership, ability, and personality-plus.

MARY CHRISTINE CRAWFORD
Cliffside, N. C.

Mnemosynean; Choir; Christian Student Movement Council, Vice President '46; Christian Workers' Club; Recreation Chairman '46; International Relations Club; Pertelote Staff '46; Phi Theta Kappa, Secretary - Treasurer '46; Sigma Pi Alpha; Student Council '46. Filled with enthusiasm, ability, and fun - that's "Chris."

★ ★

ELSIE JAYNE ELMORE
Lincolnton, N. C.

Mnemosynean; Band '45; Basketball; Best Personality, Freshman Superlatives '45; Christian Student Movement Council, Publicity Chairman '46; Clarion Staff '46; Commercial Club; Girls' Athletic Association, President '46; International Relations Club; Medical Science Club, Vice President '46. If any of you feel like dying, just remember "Josh." Her ambition is to become an undertaker.

AMY SUE DUCKETT
Leicester, N. C.

Mnemosynean; Home Economics Club; Medical Science Club. Amy's imitations of Mrs. Thurlow are something out of this world.

★ ★

MAE BELLE ENMAN
Asheville, N. C.

Clarion Staff, Alumni Editor '45, Editor-in-Chief '46; Music Appreciation Club, Reporter '45, Vice President '46. Besides her ability to plan entertainments, Mae Belle delights all of us by her tap-dancing. Most of her spare time is spent on the *Clarion*.

BETTY JEAN DUCLOS
Brevard, N. C.

Mnemosynean: Day Students' Club. Betty Jean definitely has ability when it comes to driving that blue Ford.

★ ★

VIRGINIA ANNE FRAZIER

Spray, N. C.

Mnemosynean; Christian Workers' Club. Jolly and full of fun - that's Frazier. She expects to be a beautician.



Seniors

OLIVER KEEN GASKINS

New Bern, N. C.

Delphian; International Relations Club; Medical Science Club; Youth Temperance Council. Vice President '45. How will we ever get along without Oliver to cook breakfast?

* *

SHIRLEY GIBSON

Charlotte, N. C.

Mnemosynean; Charlotte Club; Choir; Glee Club; Home Economics Club; International Relations Club; Medical Science Club; Music Appreciation Club. "Gibby" wouldn't be herself without her ability to dance and to create those funny "hair-dos."

* *

MARY LOIS GODFREY

Hiddenite, N. C.

Euterpean; Christian Workers' Club; Commercial Club. Wherever there is laughter and fun, there you will find Mary Lois.

* *

JO ANN GOFORTH

Ellenboro, N. C.

Mnemosynean; Basketball Team '46; Girls' Athletic Association, Sophomore Representative '46; Taylor Hall House Council, Secretary '46. "Cootie's" sparkling personality makes her an outstanding member of the sophomore class.

* *

JAMES ROBERT HAMILTON

Charleston, S. C.

Delphian; Dramatic Club; International Relations Club; Preacher's Kids; South Carolina Club, President '46; Ross Hall Council, Treasurer '46. James (of 50 South Battery) is Mr. Roy's stand-by in Religious Ed. He also enjoys playing of Tschaiowsky records and taking part in plays.

DOROTHY JEAN GOODE

Avondale, N. C.

Mnemosynean; Cheerleader '46; Christian Workers' Club; Glee Club; Taylor Hall House Council, Vice President '46. "Dot" is the fun-loving, popular girl who won the Harvest King's heart.

MILDRED HARRILL

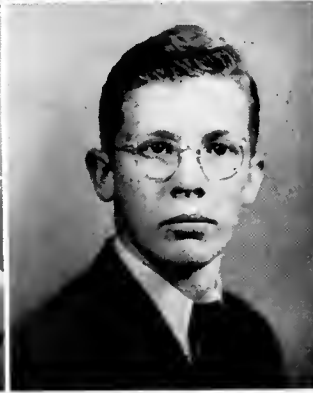
Forest City, N. C.

Euterpean; Clarion Staff '46; Commercial Club, Vice President '46. Mildred is a quiet business major; for her gentleman she prefers a blond.

PORTER HUGH HARRIS

Asheville, N. C.

Philosophic, Secretary - Treasurer '43; Agriculture Club; Basketball; Folk Dance Club; Intramural Boxing, Veterans' Club. Hugh - the athletic little veteran with the friendly smile.



Seniors

FRANCES HENDRICKS

Brevard, N. C.

Mnemosynean; Day Students' Club; Student Council, Day Student Representative '46. Although a day student, Frances has been an active leader in campus organizations.

★ ★

ANNE HENSLEY

Columbia, S. C.

Euterpean, President '45; Glee Club; Home Economics Club; Medical Science Club, Treasurer '45; Music Appreciation Club; South Carolina Club; Wittiest Girl, Freshman Superlatives '45. "Henski" will be a fine nurse some day, but she will always manage to have time to go dancing in "The Park."

★ ★

EVELYN HEYGEL

Asheville, N. C.

Transfer from Cornell University. Evelyn's German background gives her a head-start in foreign language.

★ ★

PHYLLIS HIGGINS

Hendersonville, N. C.

Mnemosynean, Vice President '45; Music Appreciation Club, Secretary '46. Phyllis' sweet manner reveals her character. Sewing is her specialty, and singing her delight.

★ ★

KATHRYN ANN HOVIS

East Bend, N. C.

Euterpean; Christian Student Movement Council; Christian Workers' Club; Home Economics Club; International Relations Club; Preacher's Kids, Secretary '45, President '46; Student Council '46. Kathryn not only collects our pennies in the library but has the distinction of being a P. K., a granddaughter of the College, and a history fan.

LELA FLAX HUNTLEY

Morven, N. C.

Mnemosynean; Christian Workers' Club; Home Economics Club; International Relations Club; Taylor Hall House Council '46. Tall, inquisitive, friendly — that's Lela.

BLANCHE BETTY INGLE

Canton, N. C.

Euterpean; Commencement Marshal '45; Commercial Club; Music Appreciation Club; Pertelote Staff '46; Sigma Pi Alpha, Vice President '46. "Shorty" is really a genius when it comes to bookkeeping and typing.

MARY ANNE JENNINGS

Greensboro, N. C.

Anne's ambition is to become a nurse. She is interested in all phases of science.



Seniors

CONRAD LEWIS
KIMBROUGH, JR.
Salisbury, N. C.

Clisophic, Chaplain '45; Secretary-Treasurer '45; Christian Student Movement Council, World Friendship Chairman '46; Christian Workers' Club, Vice President '46; Commencement Marshal '45; International Relations Club, Vice President '46; Most Intellectual Freshman Boy '45; Music Appreciation Club, President '46; Pertelote Staff '46; Phi Theta Kappa, President '46; Ross Hall Council '46; Sigma Pi Alpha, President '46; Youth Temperance Council. Conrad's seriousness, underlined with a little fun, guarantees someone a likeable Episcopal priest.

★ ★

RUTH BRICE
McCRACKEN
Asheville, N. C.

Euterpean. Carefree and gay, a friend to everyone — that's Ruth Brice.

MARY LOU KOEPLIN
Greensboro, N. C.

Mnemosynean; International Relations Club. Easy going but thorough.

★ ★

NEAL McDONALD
Carthage, N. C.

Mnemosynean; Clarion Staff '46; Glee Club; Medical Science Club. Take a beautiful song and a girl with wavy black hair; put them together, and you have Neal.

BARBARA LEE LANDIS
Nebo, N. C.

Mnemosynean; Clarion Staff '46; International Relations Club; Music Appreciation Club. Barbara's excellent work in the Commercial Department prepares her for an interesting future.

★ ★

ALMA LOUISE NESBITT
Hendersonville, N. C.

Euterpean, Chaplain '46; Christian Workers' Club; International Relations Club; Music Appreciation Club. Louise is a friendly girl with a knack for housekeeping. She has had abundant practice in our dining room.

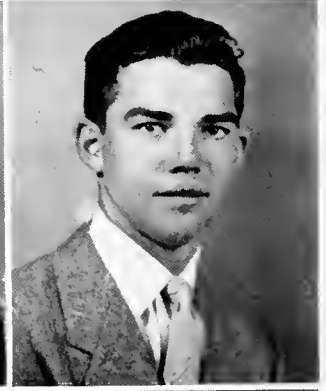
HAROLD LATTA
Hillsboro, N. C.

Transfer from Presbyterian Junior College; Delphian; Football; Glee Club; International Relations Club; Medical Science Club. Any one who knows Harold knows all about Hillsboro!

★ ★

GENEVIEVE NORFLEET
Ransomville, N. C.

Mnemosynean; Home Economics Club; Medical Science Club. A combination of brains, beauty, and boogie-woogie.



Seniors

MARGARET PALMER

Waynesville, N. C.

Mnemosynean; Commercial Club; Taylor Hall House Council '46. Margaret is a specialist in letter writing—business letters for Miss Frazier and friendly letters to a certain Private First Class.

* *

IRIS MAYE POWELL

Mill Spring, N. C.

Mnemosynean. We remember Iris by her soft-spoken tones and beautiful brown eyes.

* *

ANNIE CORDELL PUETT

Dallas, N. C.

Euterpean; Christian Workers' Club, Vice President '45; International Relations Club; Most Likely to Succeed; Freshman Superlative '45; Music Appreciation Club; Pertelote Staff, Freshman Editor '45, Editor-in-Chief '46; Student Council, Vice President '46; Youth Temperance Council. That efficient girl with a notebook, and a pencil behind her ear, that you see *everywhere* is our own lovable Puett.

* *

GENEVA ROSS

Waynesville, N. C.

Mnemosynean, Commercial Club. This tall brunette is a major in Business Education.

NANCY ROUTH

Franklinville, N. C.

Transfer from the Woman's College of the University of North Carolina; Euterpean. This gentle, blue-eyed blonde is an ardent Baptist.

WILLIAM ARTHUR SCHREYER

Fletcher, N. C.

Delphian, Vice President '46; Medical Science Club, President '46; Pertelote Staff, Business Manager '46; Ross Hall Council '45. Give Arthur a song or a basketball and he's happy.

* *

CONSTANCE AURORA V. SEGERSTROM

Jensen, Florida

Mnemosynean, Connie, another one of our Florida belles, is fond of dancing—especially "jitterbugging."

RICHARD ALVA SENTELE

Pisgah Forest, N. C.

Clisophic; Day Students' Club; Dramatic Club, President '43; Veterans' Club. Who is the smart boy in Miss Smith's sophomore English class? Why that's Alva.



Seniors

HELEN JOYCE SETZER
Newton, N. C.

Mnemosynean. Business is Helen's specialty, dancing her favorite pastime.

★ ★

MARY JOSEPHINE
SINGLETON

East Orange, New Jersey

Mnemosynean; Chief Commencement Marshal '45; Home Economics Club; Phi Theta Kappa; Sigma Pi Alpha. Quiet on the surface, but is there activity in her gray-matter!

★ ★

ANNE THROWER

Belmont, N. C.

Euterpean, Chaplain '45; Choir; Christian Student Movement Council, President '46; Christian Workers' Club; Glee Club; International Relations Club, President '46; Most Intellectual Freshman Girl '45; Sigma Pi Alpha '46; Phi Theta Kappa, Vice President '46; Student Council '46; West Hall House Council '45, '46. Where could we find a more lovable, capable person than Anne—a splendid leader with a purpose.

REVALENE SMITH
Seven Springs, N. C.

Christian Workers' Club; Euterpean; Marshal '46; Clarion Staff; Dramatic Club, President '46; International Relations Club; Taylor Hall House Council, President '46. Revalene's chief task, as assistant to the Dean of Taylor Hall, is to put the girls to bed and keep study hall quiet.

GRACE ANITA SMITH
Myrtle Grove, Florida

Euterpean; Baptist Student Union, President '46; Clarion Staff; Florida Club, President '46; Glee Club; Music Appreciation Club; Secretary to the News Bureau '46. This Florida girl has a flair for journalism.

★ ★

BETTY SUE TILSON

Gneiss, N. C.

Mnemosynean; Commercial Club, President '46. As Dean Stevenson's office assistant "Flash" checks chapel attendance, but this doesn't lessen her popularity with the boys.

JANE FAIRLEY SMITH
Huntersville, N. C.

Mnemosynean; Home Economics Club; Medical Science Club, Secretary '46. Jane is neat and attractive, and fun wherever she goes, especially on the third floor of Taylor Hall.

★ ★

JANE TRANSOU

Winston-Salem, N. C.

Euterpean; Cheerleader '45, '46; Clarion Staff '45, '46; Glee Club; Music Appreciation Club. Jane is partial to Navy men it seems.



Seniors

LYDIA EVELYN
UNDERWOOD

Yadkinville, N. C.

Transfer from the Woman's College of the University of North Carolina; Euterpean; Taylor Hall House Council '46. Lydia is charming in her manners and a specialist in the field of Home Economics.

GEORGIA URQUHART

Milton, Florida

Mnemosynean; Florida Club, Medical Science Club. This short blonde hails from "beautiful Florida"; her playful pranks make the third floor of Taylor Hall a lively place.

EDNA EARLE WHITLEY

Charlotte, N. C.

Mnemosynean; Charlotte Club; Girls' Athletic Association; Glee Club, Summer '45; Medical Science Club. This blonde works in the bookstore and joins in the fun on the third floor of Taylor Hall.

LUCY EVELYN
WILLIAMSON

Canton, N. C.

Euterpean, Vice President '46; Christian Workers' Club; Commencement Marshal '45; Home Economics Club; Music Appreciation Club; Pertelote Staff '46; Youth Temperance Council. Here is another one of our quiet sophomores, and one who likes to keep house.

★ ★

★ ★

DOROTHY MAE WRENN

High Point, N. C.

Mnemosynean; Alpha Pi Epsilon; Commercial Club; Christian Workers' Club; Dramatic Club, President '45; International Relations Club; West Hall House Council, President '46. Dot is a delightful actress, an intelligent business student, and Miss Smith's helper as president of West Hall House Council.

MARIE WILSON

Oxford, N. C.

Mnemosynean; Christian Student Movement Council, Second Vice President '46; Christian Workers' Club; Youth Temperance Council. This Religious Ed major is active in vesper programs and Christian organizations.



Freshman Class Officers



President
JASON ORR

Vice President
JOHN McNEELY

Secretary
WILLIAM BLANKENSHIP

Treasurer
JOE McINTOSH

Freshman



ARTHUR AGNEW, JR.
Greenville, S. C.

BENJAMIN ARIN
Murphy, N. C.

CYNTHIA ANN ALBRIGHT
Greensboro, N. C.

SIERRILL ALLISON
Pisgah Forest, N. C.

CHARLES ANDERSON
Asheville, N. C.

FRANCEYS ANDERSON
Pickens, S. C.

LOIS ANDREWS
Cramerton, N. C.

PATRICIA AUSTIN
Brevard, N. C.

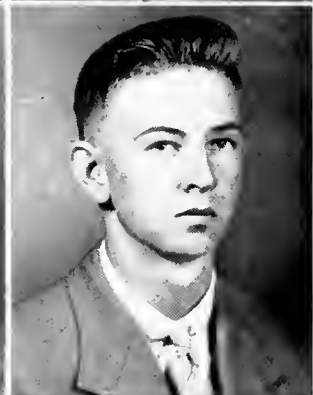
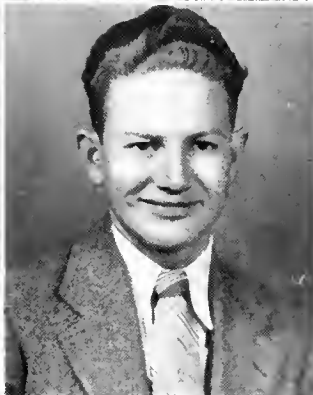
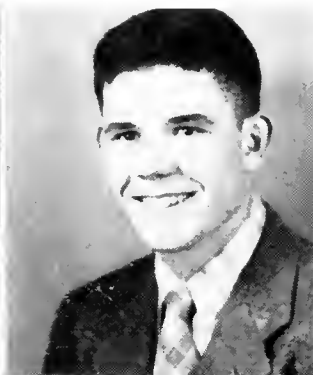
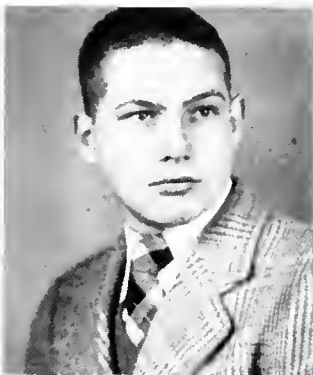
KATHERINE AUVIL
Brevard, N. C.

KENNETH BEADLES
Hayesville, N. C.

TOMMIE JEAN BECK
Carrboro, N. C.

CECIL GARLAND BENNETT
Candler, N. C.

Class



GEORGE BISHOP
Cedar Mountain, N. C.

CHARLES BLACKWELDER
Pineville, N. C.

WILLIAM BLANKENSHIP
Pineville, N. C.

JACK BLYTHE
Hendersonville, N. C.

EMILY BODENHEIMER
Winston-Salem, N. C.

JOANNY BRADLEY
Franklin, N. C.

E. G. BREWER
Wadesboro, N. C.

AL BRYANT BRINKLEY
Stem, N. C.

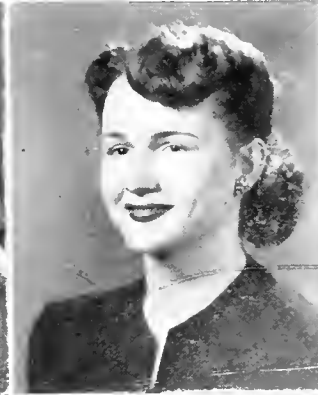
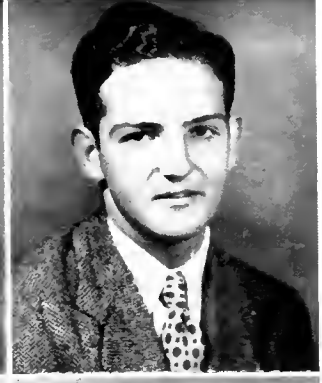
JOYCE BROWN
Harrisburg, N. C.

MARGARET ANN BUCHANAN
Penland, N. C.

CHARLES BUCKNER
Asheville, N. C.

JAMES BULMAN
Charlotte, N. C.

Freshmen



BETTY BUSH
Lenoir, N. C.

HATTIE MAE CAGLE
Whittier, N. C.

JEAN CHILDERS
Whittier, N. C.

CALVIN CLONINGER
Claremont, N. C.

ELLEN JOYCE COVINGTON
Charlotte, N. C.

ELSIE L. CRAIG
Mount Holly, N. C.

MARY ELLA CRAWFORD
Hayesville, N. C.

WORTH DALTON
Lewisville, N. C.

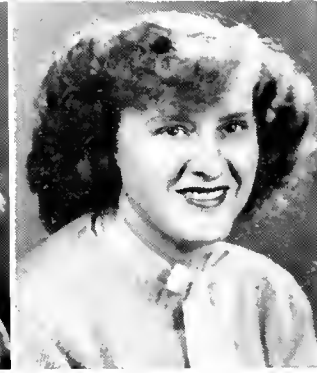
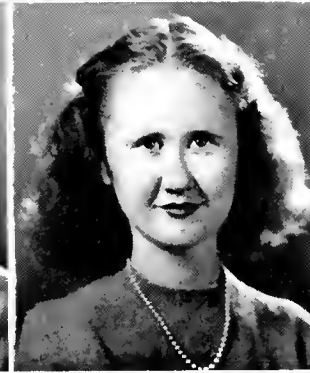
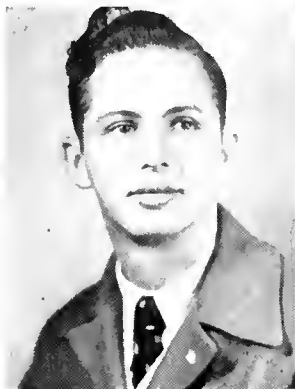
THORNWELL E. DAVENPORT
Greenville, S. C.

VIRGINIA DAVIDSON
Swannonoa, N. C.

NORMA JEAN DEAL
Kannapolis, N. C.

BETTY DEDMON
Shelby, N. C.

Freshmen



EDWIN DEGRAFF
Guilford College, N. C.

MARY JANE DILLON
Olney, Maryland

LAWRENCE FITCH DIXON
Pisgah Forest, N. C.

DONALD DOTSON
Charlotte, N. C.

CAROLYN EDMONDS
Brevard, N. C.

VIRGINIA EDMUNDSON
Mills River, N. C.

EDWIN EDWARDS
Pisgah Forest, N. C.

ELEN JUNITTA EDWARDS
Mill Spring, N. C.

JOSEPH MARVIN FEATHERSTON
Cramerton, N. C.

MABEL FOLGER
Dodson, N. C.

EMILY FORTUNE
Asheville, N. C.

AGNES FRANKLIN
Drayton, S. C.

Freshmen



WAYNE FULLBRIGHT
Brevard, N. C.

ROBBIE GASH
Etowah, N. C.

RUTH ELIZABETH GILL
Darwin, Georgia

GRACE GORDON
Asheville, N. C.

IRIS JANE GREGG
Norfolk, Virginia

SUE GREGORY
Charlotte, N. C.

MARY LOU HAMILTON
Penrose, N. C.

LOREE HARRILL
Cliffside, N. C.

PATRICIA HARRIS
Taylors, S. C.

MARY FRANCES HART
Charlotte, N. C.

URA GENE HEAD
Marietta, Georgia

BETTY EUDORA HELMS
Fort Mill, S. C.

Freshmen



BETTE JO HELMS
Charlotte, N. C.

CECIL HENDERSON
Hendersonville, N. C.

RICHARD HENDRICKS
Charlotte, N. C.

JULIA HIGDON
Tucapaw, S. C.

EVA MAE HILL
Carrboro, N. C.

MARY HIPP
Charlotte, N. C.

JACK HIPPS
Candler, N. C.

BETTY JANE HOLDEN
Pisgah Forest, N. C.

WADE HAMPTON HOLDER, JR.
Lillington, N. C.

BETTY JO HOOVER
Pineville, N. C.

JOHN HOUSTON
Pisgah Forest, N. C.

NORMAN HOWELL
Candler, N. C.

Freshmen



EVELYN DORIS HURST
Miami, Florida

CHARLES O. JOHNSON
Washington, D. C.

BETTY LOU JUSTICE
Asheville, N. C.

DOROTHY JEAN KILPATRICK
Brevard, N. C.

ELEANOR REBECCA KING
Brevard, N. C.

MARY JANE KIRBY
Winston-Salem, N. C.

GARLAND WILLIAM KNIGHTEN
Candler, N. C.

SARAH KORNEGAY
Greensboro, N. C.

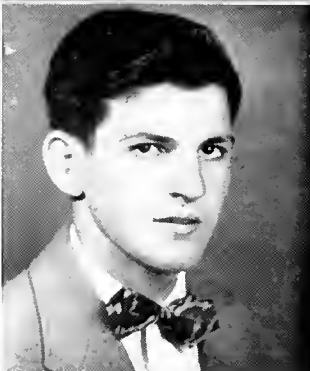
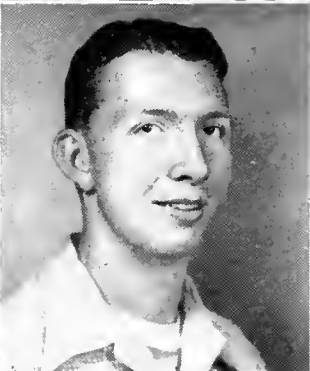
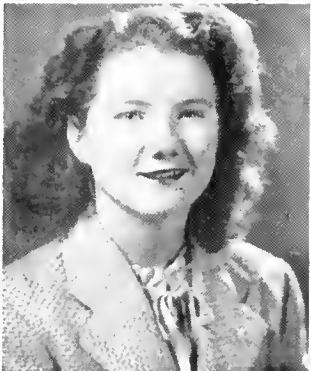
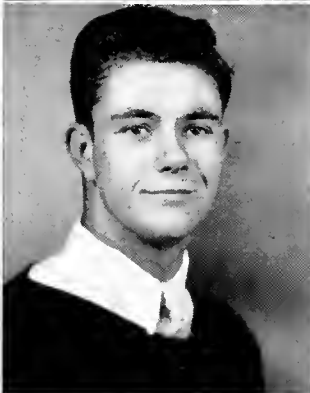
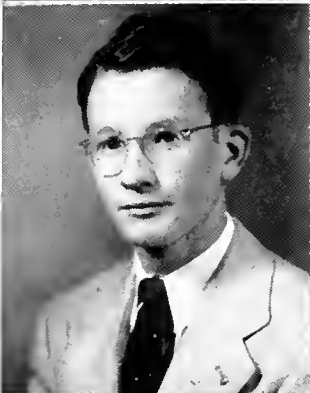
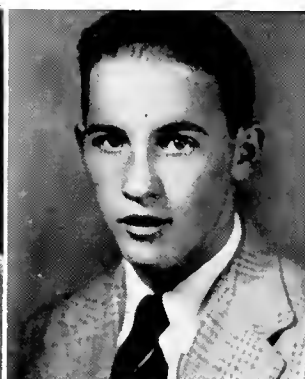
PATRICIA LACEY
(MRS. FRANK CAUBLE)
Alanson, Mich.

WILLIAM B. LEGRANDE, JR.
Mocksville, N. C.

ANNE LEWIS
Sylvia, N. C.

RACHEL LOLLIS
Taylors, S. C.

Freshmen



LOUISE LYNCH
Lincolnton, N. C.

MARGARET McATEER
Gastonia, N. C.

ELIZABETH McAULAY
Huntersville, N. C.

DONALD McCALL
Pentose, N. C.

MARY JANE McCALL
Pentose, N. C.

EDGAR ARLIN McCULLOUGH
Albemarle, N. C.

GEORGE M. McDUFFIE
Rockingham, N. C.

JOSEPHINE MCGAHA
Brevard, N. C.

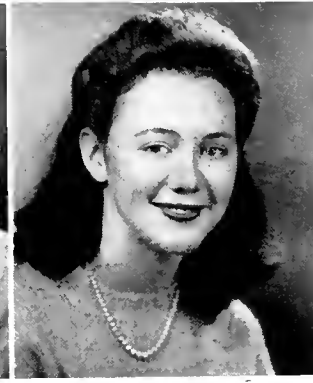
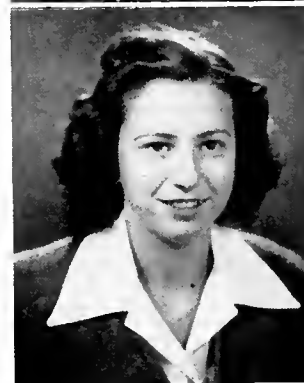
BERTHA MAE MCGEE
Winston-Salem, N. C.

JOSEPH McINTOSH
Biltmore, N. C.

JOHN MARSHALL McNEELY
Henrietta, N. C.

DORALEE MCPETERS
Weaverville, N. C.

Freshmen



BETTY JEAN MARTIN
Lyman, S. C.

PAUL KENNETH MARTIN
Bassett, Virginia

HUBERT MAXWELL
Campobello, S. C.

WALKER MILLNER
Brevard, N. C.

HERMAN C. MORGAN
Biltmore, N. C.

JACK MORGAN

EUGENE M. MORRIS
Brevard, N. C.

ELIJAH NELSON
Morehead City, N. C.

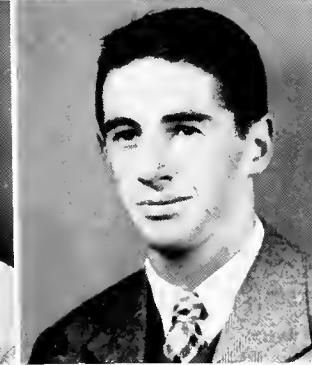
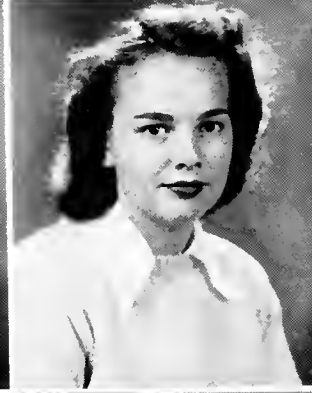
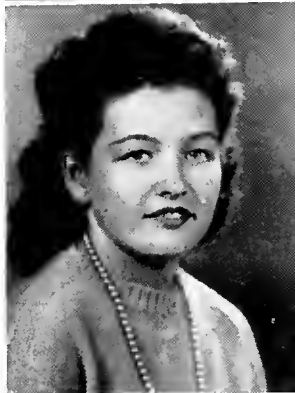
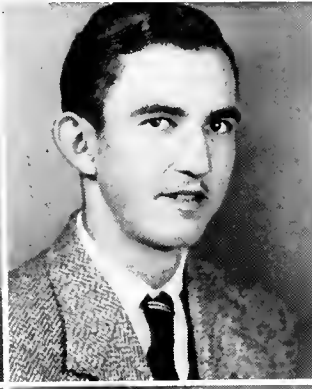
BETTY NORTON
Brevard, N. C.

Greenville, S. C.
MARY NORWOOD
Brevard, N. C.

LOVE LOUISE OWENS
Sylva, N. C.

JASON ORR
Brevard, N. C.

Freshmen



JOSEPHINE PARKER
Naples, Florida

RICHARD PARKER
Brevard, N. C.

GEORGE ALLEN PARLEIR
Conover, N. C.

PEGGY PENNINGTON
Aberdeen, N. C.

FRANCES POTTS
Hillsboro, N. C.

MILDRED POTTS
Hillsboro, N. C.

ELSIE PRESTWOOD
Lenoir, N. C.

MARY ADELE PRINCE
(MRS. ROBERT CRENSHAW)
Naples, Florida

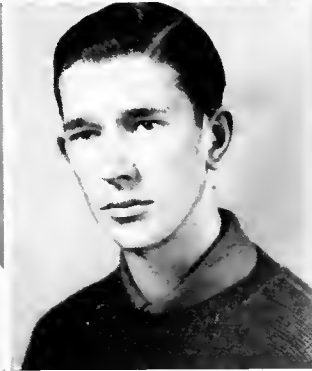
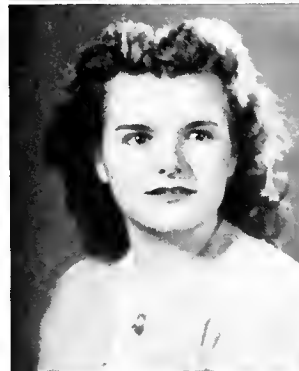
C. DWIGHT PYATT
Weaverville, N. C.

BONNIE QUAY
Harrisburg, N. C.

KENNETH RATCHFORD
Brevard, N. C.

JAMES ROBERT REGAN, JR.
Manners, N. C.

Freshmen



BEULAH BERNICE RHODES
Wilkesboro, N. C.

ZENA PEARL RICKMAN
West's Mill, N. C.

MARY ALMA ROBBINS
Asheboro, N. C.

FRANKIE ROBERTSON
Duncan, S. C.

JANICE ROBINSON
Pageland, S. C.

NELL ROBINSON
Easley, S. C.

NANCY ROSBOROUGH
Miami, Florida

DON ROSCOE
Gibsonville, N. C.

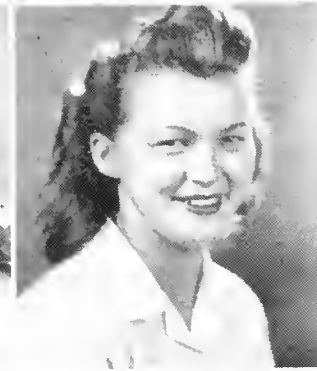
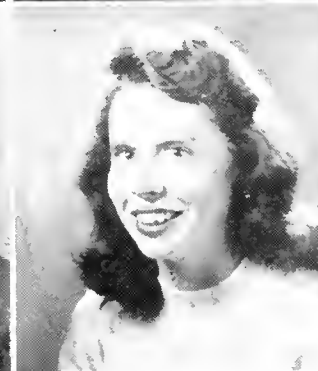
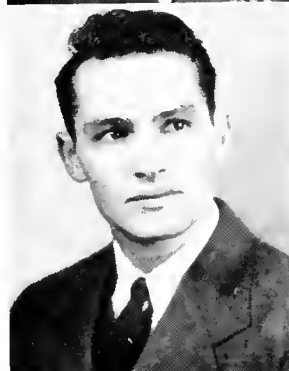
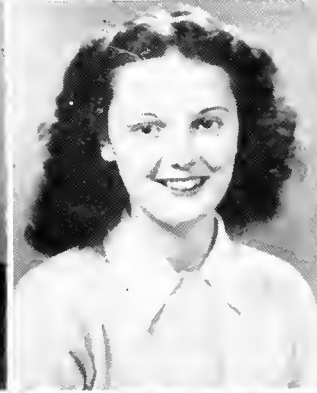
FRANCES RUNION
Brevard, N. C.

ROBERT C. SALMON
Hendersonville, N. C.

CHARLES SHANEY
Horse Shoe, N. C.

STUDIE SHEETS
Fairview, N. C.

Freshmen



DORIS SHEELMAN
Cramerton, N. C.

ELIZABETH SHIRLEY
Walstonburg, N. C.

VELMA SHROPSHIRE
Winston-Salem, N. C.

EVELYN SILVERS
Mecaville, N. C.

LUCILLE SINIARD
Brevard, N. C.

MRS. FANNIE COSTAIN SISK
Balsam Grove, N. C.

GLORIA DAVENPORT SMITH
Mount Holly, N. C.

HANNAH NEAL SMITH
Cramerton, N. C.

HAROLD SPRINKLE
Asheville, N. C.

JEAN STANFIELD
Brown Summit, N. C.

KATHERINE STEADMAN
Swannanoa, N. C.

JAMES STOCKTON
Franklin, N. C.

Freshmen



GENONA STORTER
St. Petersburg, Florida

DORIS SUTTON
Manchester, N. C.

H. G. SWIGGETT, JR.
Guilford College, N. C.

HAROLD TALBERT
Asheville, N. C.

DOUGLAS TAYLOR
Raleigh, N. C.

FRED TAYLOR
Zirconia, N. C.

BETTY ANNE THOMPSON
Saluda, N. C.

NORMA THURNER
Naples, Florida

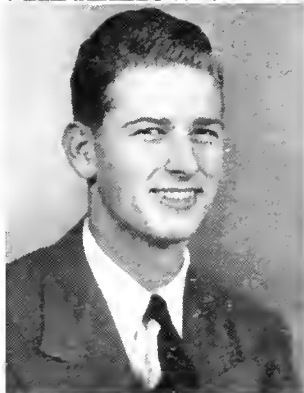
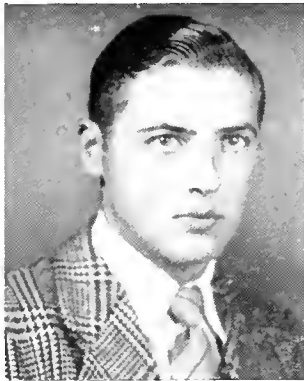
ELAINE TOLAN
Belhaven, N. C.

WILLIAM R. TRAYWICK
Charlotte, N. C.

WILLIAM TUCKER
Clifton Forge, Va.

LON DEAN VANCE
Walkertown, N. C.

Freshmen



J. C. WADE
Dunn, N. C.

AUDREY WALTON
Wilmington, N. C.

MARY FRANCES WATSON
Raleigh, N. C.

DEWEY WHITAKER
Horse Shoe, N. C.

HARVEY WILKIE
Rutherfordton, N. C.

BETTY WILKINSON
Charlotte, N. C.

CLARENCE WILLIAMS
Guilford College, N. C.

CHARLIE WILLIAMSON
Matthews, N. C.

CLENDON WINDSOR
Winston-Salem, N. C.

HELEN WITHERS
Lenoir, N. C.

ANNI WITT
Bluefields, West Va.

JAMES WOOD
Horse Shoe, N. C.

Freshmen



E. B. WRIGHT
Old Fort, N. C.



ALLIE MAE WILEY
Charlotte, N. C.



NANCY YOUNG
Raleigh, N. C.

Students Not Having Pictures Made

SENIOR

WELLS BENNETT ROSS
Wadesboro, N. C.

FRESHMEN

SUE DICKSON HAMRICK
Gastonia, N. C.

JOHN LAMBETH
Brown Summit, N. C.

ERVIN MAYNARD
Belmont, N. C.

SPECIAL COMMERCIAL
STUDENT

MRS. DESSIE CONSTANZA
Brevard, N. C.

PRE-COLLEGE
STUDENTS

YVONNE BODENHEIMER
Winston-Salem, N. C.

MARVIN BRIDGES
Goldville, S. C.

WILLIAM HEYWARD
BUCHANAN
Greenville, S. C.

JAMES BYARS
Goldville, S. C.

NORMAN L. FREEMAN
Greenville, S. C.

Freshmen

Pre-



President

JACQUELINE ROBERTS

Vice President

ROBERT TALLON

Secretary

B. M. EDMONDSON, JR.

Treasurer

EARLINE WILKES

Pre-College Officers

College



REV. JAMES ALLRED
Rosman, N. C.

ELIZABETH BENNETT
Charlotte, N. C.

THERESA BROWN
Naples, Florida

EDISON AMOS
Baltimore, Maryland

DOCTOR F. BLACKWELL
Charlotte, N. C.

ELIZABETH BUMGARNER
Norfolk, Virginia

ALBERTA BAKER
Charlotte, N. C.

JUNE BRIGGS
Asheville, N. C.

EARI CARON
Washington, D. C.

DAVID BARNES
Brevard, N. C.

LAWRENCE BROWN
Brevard, N. C.

JAMES B. CARPENTER
Forest City, N. C.



PRE-COLLEGE CLASS



CLEMONS CASH
Knoxville, Tenn.

FRANK CAUBLE
Asheville, N. C.

FRANCES COLEMAN
York, S. C.

CAROLYN COX
Norfolk, Virginia

JAMES E. DAVIS
Brevard, N. C.

HARVEY DIAMOND
Charlotte, N. C.

GRADY DULIN
Greensboro, N. C.

JOHN DUNLAP
Wadesboro, N. C.

B. M. EDMONDSON, JR.
Charleston, S. C.

MARIAN EISMAN
Charlotte, N. C.

MARY ELIZABETH FRIDAY
Dallas, N. C.

MARILYN GILLIS
Charlotte, N. C.

PRE-COLLEGE CLASS



EMORY GRAVITT
Greenville, S. C.

JUANITA GURLEY
Hendersonville, N. C.

MARY HADDON
(MRS. MILES COFFMAN)
Asheville, N. C.

CAROLINE HENDERSON
Charlotte, N. C.

FLORA ELIZABETH
HENDERSON (MRS. JOHN T.)
Spartanburg, S. C.

ROBERT HENDERSON
Brunswick, Georgia

JUNE HOUSE
Naples, Florida

PHYLLIS HOWE
Gastonia, N. C.

SELENE HUNT
Marietta, Ga.

DOROTHY INGRAM
Atlanta, Ga.

BRUCE JAMERSON
Asheville, N. C.

LOIS ANN JENKINS
Belmont, N. C.



PRE-COLLEGE CLASS



ALVIN JONES
Cedar Mountain, N. C.

HERMAN JONES
Columbus, Georgia

NANCY JONES
High Point, N. C.

CLARA MAE KELLY
Liberty, S. C.

JEAN KENNICKILL
Fletcher, N. C.

BEN KILLIAN
Blacksburg, S. C.

VIRGINIA KILPATRICK
Brevard, N. C.

PATRICIA LACKLEY
Catawba, N. C.

SYLVIA LE CLAIR
Chapel Hill, N. C.

JANE MACENTIRE
Spindale, N. C.

MARY MCKINNEY
Georgetown, S. C.

HENRY F. MANESS, JR.
Charlotte, N. C.

PRE-COLLEGE CLASS



HARRY T. MARTIN
Greenville, S. C.

JANE MILLER
Tabor City, N. C.

DORAN MODLIN
Thomasville, N. C.

WILLIAM PATTON
Greenville, S. C.

MARTHA PATTI PHILLIPS
Rutherfordton, N. C.

CHARLES PUCKETT, JR.
Kansas City, Missouri

DEAN REYNOLDS
Leicester, N. C.

REBECCA REYNOLDS
Carolina Beach, N. C.

FRANCES RIHERD
Lake Butler, Fla.

ALICIA RIVAS
Chaparra, Cuba

FABIO RIVAS
Chaparra, Cuba

ANNIE LU ROBBINS
Charleston, S. C.



PRE-COLLEGE CLASS



JACQUELINE ROBERTS
Worthington, Florida

CLAUDE ROBINSON
Mars Hill, N. C.

MARY ALICE SALISBURY
Columbus, Georgia

DUEWARD SCOTT, JR.
Clifton Forge, Virginia

MARY KATHERINE SELLERS
Bessemer City, N. C.

ANDY SIGMON
Fletcher, N. C.

SAMUEL SINCLAIR
Greenville, S. C.

DAVID SMITH
Brunswick, Ga.

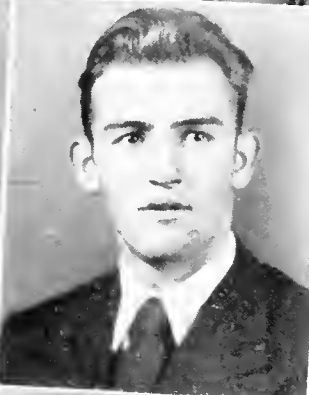
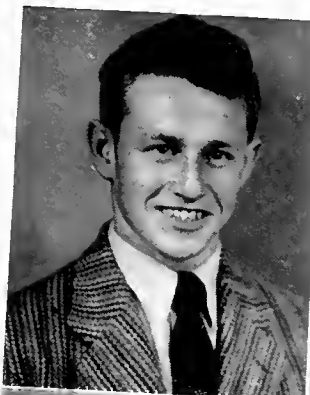
PATSY SMITH
Charlotte, N. C.

JESSIE SNYDER
Whittier, N. C.

ROSCOE STROUD, JR.
Mocksville, N. C.

CLARENCE SUMMEY
Brevard, N. C.

PRE-COLLEGE CLASS



ROBERT TALLON
Charleston, S. C.

MARY TANNER
Rutherfordton, N. C.

LEROY THOMPSON
Greenwood, S. C.

ERNEST H. TRAYNHAM
Greenville, S. C.

JOHN W. TUCKER
West Palm Beach, Florida

MURRAY VAUGHN
High Point, N. C.

JUTHORN TROY WARD
Hendersonville, N. C.

EARLINE WILKES
Milton, Fla.

RAY WILLIAMS
Easley, S. C.

JULIA ANN WILSON
Bald Creek, N. C.

THE "CLARION" OFFICERS



Editor-in-Chief ----- MAE BELLE ENMAN

Business Manager ----- WILMA CHAMBERS

ACTIV

ITIES

EUTERPEAN LITERARY SOCIETY

Officers: President, Anne Hensley; Vice President, Lucy Williamson; Secretary-Treasurer, Myrtle Brewer; Chaplain, Louise Nesbitt.

Faculty Sponsors: Miss Thelma Galloway and Miss Mary Claire Griffin.



CLIOSOPHIC LITERARY SOCIETY

Officers: President, George Brown; Vice President, Edison Amos; Secretary-Treasurer, Conrad Kimbrough; Chaplain, Dwight Pyatt; Sergeant-at-Arms, Bill Blankenship.

Faculty Sponsor: Mr. C. Edward Roy.

LITERARY

MNEMOSYNEAN LITERARY SOCIETY

Officers: President, Willena Costner; Vice President, Phyllis Higgins; Secretary-Treasurer, Betty Wilkinson.

Faculty Sponsor: Miss Lucille Smith.



DELPHIAN LITERARY SOCIETY

Officers: President, Roscoe Stroud, Jr.; Vice President, Arthur Schreyer; Secretary, Charles Browning; Treasurer, Grady Dulin.

Faculty Sponsor: Mr. John A. Needy, Jr.

SOCIETIES



STUDENT COUNCIL

<i>President</i>	JENNIE ELDER
<i>Vice President</i>	ANNIE PUETT
<i>Secretary-Treasurer</i>	GEORGE BROWN, JEFFREY COLTRANE
<i>President of Sophomore Class</i>	ELIZABETH BROWN
<i>President of Freshman Class</i>	JASON ORR
<i>President of Pre-College Class</i>	JACQUELINE ROBERTS
<i>President of Christian Student Movement</i>	ANNE THROWER
<i>Day Student Representative</i>	FRANCES HENDRICKS
<i>Sophomore Representatives</i>	CHRISTINE CRAWFORD AND KATHRYN HOVIS
<i>Freshman Representatives</i>	MARVIN FEATHERSTON AND RICHARD HENDRICKS
<i>Pre-College Representatives</i>	JACK TUCKER AND ROSCOE STROUD
<i>Faculty Adviser Elected by Students</i>	DEAN J. J. STEVENSON, JR.
<i>Faculty Adviser Elected by Faculty</i>	MISS THELMA GALLOWAY



CHRISTIAN STUDENT MOVEMENT COUNCIL

<i>President</i>	ANNE THROWER
<i>First Vice President</i>	CHRISTINE CRAWFORD
<i>Second Vice President</i>	MARIE WILSON
<i>Secretary-Treasurer</i>	WILMA CHAMBERS
<i>Publicity Chairman</i>	JAYNE ELMORE
<i>World Friendship Chairman</i>	CONRAD KIMBROUGH
<i>Recreation Chairman</i>	KATHRYN HOVIS
<i>President of the Christian Workers' Club</i>	JEWELL BENNETT
<i>Faculty Adviser</i>	REV. C. EDWARD ROY

The Pertelote Staff



LITERARY STAFF

Editor-in-Chief	ANNIE PUETT
Associate Editor	CHRISTINE CRAWFORD
Senior Editor	LUCY WILLIAMSON
Freshman Editor	CYNTHIA ALBRIGHT
Pre-College Editor	JULIA ANN WILSON
Write-Up Editor	MYRTLE BREWER
Write-Up Editor	CONRAD KIMBROUGH, JR.
Editor for Men's Athletics	ROSCOE STROUD, JR.
Editor for Women's Athletics	JEAN STANFIELD
Organizations Editor	DWIGHT PYATT
Photography Editor	MARILYN GILLIS
Typing Editor	NORNIA DEAL
Typing Editor	BLANCHIE INGLE
Feature Editor	PATRICIA AUSTIN

BUSINESS STAFF

Business Manager	ARTHUR SCHREYER
Assistant Business Manager	GEORGE PARLEIR
Advertising Manager	CALVIN CLONINGER
Circulation Manager	PAUL MARTIN
Faculty Adviser	MISS MARJORIE CRAIG

The Clarion Staff



EDITORIAL STAFF

Editor-in-Chief.....MAE BELLE ENMAN
Associate Editors.....CLEMONS CASH, JAYNE ELMORE
Make-Up Editors.....FRANKIE ROBERTSON, GENONA STORTER, JANE TRANSOU
Feature Editors.....JANE MACENTIRE, BETTY DEDMON
Sports Editor.....NEAL McDONALD
Typists.....JEFFREY COLTRANE, MILDRED HARRILL, FRED TAYLOR,
 BETTY JEAN MARTIN, MARY ADELE PRINCE
Reporters.....NEAL McDONALD, BARBARA LANDIS, ELIZABETH SHIRLEY,
 REVALENE SMITH, EVE HURST, MARY FRANCES WATSON

BUSINESS STAFF

Business Manager.....WILMA CHAMBERS
Business Staff.....GRACE GORDON, JAMES STOCKTON, BETTE JO HELMS
Circulation Manager.....CHARLES BROWNING
Faculty Adviser.....MISS RUTH WILSON

ALPHA PI EPSILON

Faculty Sponsors: Miss Mary Claire Griffin and Miss Lois Frazier.

Members: Norma Deal, Bertha Mae McGee, Dorothy Wrenn.



SIGMA PI ALPHA

Officers: President, Conrad Kimbrough; Vice President, Blanche Ingle; Secretary-Treasurer, Myrtle Brewer.

Faculty Sponsor: Miss Dulcie Hayes.

Other Members: Jane Allen, Patricia Austin, Katheryn Auvil, Jewell Bennett, Christine Crawford, Mary Lou Hamilton, Loree Harrill, Josephine McGaha, Dwight Pyatt, Bobby Regan, Doris Shellman, Mary Singleton, Anne Thrower, Lucy Williamson.

PHI THETA KAPPA

Officers: President, Conrad Kimbrough; Vice President, Anne Thrower; Secretary-Treasurer, Christine Crawford.

Faculty Sponsor: Dr. A. L. Bramlett.

Other Members: Myrtle Brewer, George Brown, Mary Singleton.



INTERNATIONAL RELATIONS CLUB

Officers: President, Anne Thrower; Vice President, Conrad Kimbrough; Secretary-Treasurer, Polly Crawford.

Faculty Sponsor: Dr. A. L. Bramlett.

Other Members: Jane Allen, Edison Amos, Jewell Bennett, Buna Blue, Mary Ann Brake, Myrtle Brewer, Elizabeth Brown, Margaret Buchanan, Jeffrey Coltrane, Christine Crawford, Jennie Elder, Loree Harrill, Mary Frances Hart, Kathryn Hovis, Mary Lou Koeplin, Barbara Landis, Harold Latta, Doralee McPeters, Louise Nesbitt, Josephine Parker, Annie Puett, Dwight Pyatt, Frankie Robertson, Revalene Smith, Jean Stanfield, Genona Storter, Harvey Wilkie.

SOUTH CAROLINA CLUB

Officers: President, James Hamilton; Vice President, Annie Lu Robbins; Secretary, Frances Anderson; Treasurer, Mary McKinney; Faculty Sponsor, Miss Mary Claire Griffin.

Other Members: Jewell Bennett, Buddy Edmondson, Pat Harris, Anne Hensley, Rachel Lollis, Jack Morgan, Frankie Robertson, Janice Robinson.



COMMERCIAL CLUB

Officers: President, Betty Sue Tilson; Vice President, Mildred Harrill; Secretary-Treasurer, Clara Boone; Program Chairman, Helen Withers; Reporter, Grace Smith.

Faculty Sponsors: Miss Lois Frazier and Miss Mary Claire Griffin.

Other Members: Emily Bodenheimer, Wilma Chambers, Jeffrey Coltrane, Joyce Covington, Betty Dedmon, Emily Fortune, Mary Lois Godfrey, Bette Jo Helms, Mary Hipp, Blanche Ingle, Patricia Lacy, Barbara Landis, Margaret McAteer, Bertha McGee, Margaret Palmer, Elsie Prestwood, Bobby Regan, Fannie Sisk, Hannah Neal Smith, Fred Taylor, Elaine Tolan, Betty Wilkinson, Dorothy Wrenn.

CHRISTIAN WORKERS' CLUB

Officers: President, Jewell Bennett; Vice President, Conrad Kimbrough; Secretary-Treasurer, Myrtle Brewer.

Faculty Sponsor: Rev. C. Edward Roy.

Other Members: Ben Akin, Lois Andrews, E. G. Brewer, Margaret Buchanan, Wilma Chambers, Christine Crawford, Worth Dalton, Jane Dillon, Emily Fortune, Virginia Frazier, James Hamilton, Loree Harrill, Mary Frances Hart, W. H. Holder, Kathryn Hovis, Conrad Kimbrough, Sarah Kornegay, Louise Nesbitt, George Parleir, Annie Puett, Dwight Pyatt, Bobby Regan, Doris Shellman, Velma Shropshire, Grace Smith, Revalene Smith, Anne Thrower, Lon Vance, Jan Wilson, Marie Wilson.



PREACHERS' KIDS

Officers: President, Kathryn Hovis; Vice President, Dwight Pyatt; Secretary-Treasurer, Mary Hipp; Chaplain, Bobby Reagan.

Faculty Sponsor: Mrs. E. J. Coltrane.

Other Members: Edison Amos, Harding Angel, Grady Dulin, James Hamilton, Patricia Lackey.

CHOIR

First Sopranos: Christine Crawford, Sarah Kornegay, Elizabeth Shirley, and Gloria Smith; Second Sopranos: Jewell Bennett, Margaret Buchanan, Annie Lu Robbins, and Doris Shellman; Altos: Betty Friday, Loree Harrill, Mary Norwood, and Anne Thrower.



GLEE CLUB

Benjamin Akin, Jewell Bennett, June Briggs, Jennie Elder, Anne Hensley, Phyllis Howe, Evelyn Hurst, Garland W. Knighten, Sarah Kornegay, Neal McDonald, Mary Norwood, George Parleir, Peggy Pennington, Robert Regan, Nancy Rosborough, Wells Ross, Mary K. Sellers, and Gloria Smith.

MUSIC APPRECIATION CLUB

Officers: President, Conrad Kimbrough; Vice President, Mae Belle Enman; Secretary-Treasurer, Phyllis Higgins.

Faculty Sponsors: Mr. and Mrs. Dewitt P. Miller.

Other Members: Buna Blue, Charles Browning, Peggy Crawford, Virginia Davidson, Jayne Elmore, Virginia Frazier, Betty Friday, Grace Gordon, Pat Harris, Blanche Ingle, Barbara Landis, Jane MacEntire, Bonnie Quay, Alicia Rivas, Nancy Rosberough, Elizabeth Shirley, Jane Transou, Mary Frances Watson, Lucy Williamson.



MEDICAL SCIENCE CLUB

Officers: President, Arthur Schreyer; Vice President, Jane Elmore; Secretary, Jane Smith.

Faculty Sponsor: Mr. C. H. Trowbridge.

Other Members: Edison Amos, Jewell Bennett, Mary Anne Brake, George Brown, Betty Camp, Amy Sue Duckett, Grady Dulin, Buddy Edmondson, Jennie Elder, Shirley Gibson, Sue Gregory, Betty Helms, Eve Hurst, Ben Killian, Harold Latta, Elizabeth McAulay, Neal McDonald, Joe McIntosh, Mary McKinney, Doralee McPeters, Frances Riherd, Jacqueline Roberts, Frankie Robertson, Lu Robbins, Evelyn Silver, David Smith, Georgia Urquhart, Mary Frances Watson, Edna Whitley, Earline Wilkes, Allie Mae Wylie.

DRAMATIC CLUB

Officers: President, Revalene Smith; First Vice President, Helen Cox; Second Vice President, Dorothy Wrenn.

Faculty Sponsor: Miss Lucille Smith.

Other Members: Charles Browning, Betty Ann Camp, Clem Cash, James Hamilton, Evelyn Hurst, Dott Ingram, Josephine Parker, Patti Phillips, Helen Setzer, David Smith, Mary Frances Watson, Clendon Windsor.



HOME ECONOMICS CLUB

Officers: President, Elizabeth Brown; Vice President, June Briggs; Secretary-Treasurer, Frankie Robertson.

Faculty Sponsor: Mrs. Winifred Thurlow.

Other Members: Amy Sue Duckett, Emily Fortune, Selene Hunt, Lela Huntley, Betty Lou Justice, Louise Lynch, Josephine McGaha, Genevieve Norfleet, Betty Norton, Evelyn Silver, Lucille Siniard.



Veteran's Club

President, Garland William Knighten; Vice-President, Harry T. Martin; Secretary-Treasurer, W. Heyward Buchanan; Chaplain, Rev. C. Edward Roy.
Faculty Sponsors: Mr. A. J. Montanari and Mr. John A. Needy, Jr.

Arthur S. Agnew, Jr.
Greenville, S. C.
Staff Sergeant,
U. S. Army Corps

David Earl Barnes
Brevard, N. C.
Electrician's Mate First
Class, U. S. Navy

Cecil Garland Bennett
Candler, N. C.
Technical Sergeant,
U. S. Army

Doctor F. Blackwell, Jr.
Charlotte, N. C.
Carpenter's Mate Second
Class, U. S. Navy

Marvin Bridges
Goldville, S. C.
Corporal, U. S. Marine
Corps

William Heyward Buchanan
Greenville, S. C.
Sergeant, U. S. Marine
Corps

Charles A. Buckner
Asheville, N. C.
Staff Sergeant, U. S. Army

Alvin Guy Burchfiel
Biltmore, N. C.
2nd Lieutenant, Navigator,
U. S. Army Air Corps

James Walker Byars
Goldville, S. C.
Private First Class,
U. S. Army

James B. Carpenter
Forest City, N. C.
Technical Sergeant,
U. S. Army Air Corps

Elsie Louise Craig
Mount Holly, N. C.
Radioman Third Class,
U. S. Naval Reserve

Thornwell E. Davenport
Greenville, S. C.
Staff Sergeant,
U. S. Army Air Corps

James E. Davis
Brevard, N. C.
Technician Fifth Grade,
U. S. Army

Edwin W. DeGraff
Guilford College, N. C.
Aviation Radioman First
Class, U. S. Naval Reserve

Lawrence F. Dixon
Pisgah Forest, N. C.
Technical Sergeant,
U. S. Air Force

John J. Dunlap
Wadesboro, N. C.
Quartermaster Second
Class, U. S. Air Force

Norman L. Freeman
Greenville, S. C.
Staff Sergeant,
U. S. Air Corps

Wayne H. Fullbright
Brevard, N. C.
Technical Sergeant,
U. S. Air Force

Emory Gravitt
Greenville, S. C.
Seaman First Class,
U. S. Navy

Porter Hugh Harris
Asheville, N. C.
Private First Class,
U. S. Army

Mrs. Ura Gene Turner Head
Marietta, Georgia
Seaman First Class,
U. S. Navy

John E. Houston
Pisgah Forest, N. C.
Technician Fourth Grade,
U. S. Army

Charles O. Johnson
Washington, D. C.
Corporal, U. S. Marine
Corps

Garland William Knighten
Candler, N. C.
Chief Boatswain's Mate,
U. S. Navy

Henry Maness, Jr.
Charlotte, N. C.
Sergeant, U. S. Army

Harry T. Martin
Greenville, S. C.
Corporal, U. S. Marine
Corps

Ervin Maynard
Belmont, N. C.
Corporal, U. S. Army Air
Corps

Walker N. Millner
Brevard, N. C.
First Class Petty Officer,
U. S. Navy

Doran M. Modlin
Thomasville, N. C.
Staff Sergeant, U. S. Army

A. J. Montanari
Woinchendon Springs,
Mass. Sergeant,
U. S. Army

Herman C. Morgan
Biltmore, N. C.
Private First Class,
U. S. Army

Eugene Morris
Brevard, N. C.
First Lieutenant, Pilot,
U. S. Army Air Corps

John Alford Needy, Jr.
Ada, Ohio
Chief Specialist (A),
U. S. Naval Reserve

Richard Parker
Brevard, N. C.
Corporal, U. S. Army

William Patton
Greenville, S. C.
Electrician's Mate,
U. S. Navy

Charles P. Puckett, Jr.
Kansas City, Missouri
Private First Class,
U. S. Army

Claude W. Robinson
Mars Hill, N. C.
Staff Sergeant,
U. S. Army Air Corps

Wells Bennett Ross
Wadesboro, N. C.
Corporal, U. S. Army

Charles Edward Roy
Helena, Alabama
Honorary Member

Robert Curtis Salmon
Hendersonville, N. C.
Private, U. S. Army Air
Corps

Richard Alva Sentelle
Pisgah Forest, N. C.
Second Lieutenant,
U. S. Naval Air Corps

Samuel Ray Sinclair
Greenville, S. C.
Seaman First Class,
U. S. Navy

Harold S-rinkle
Asheville, N. C.
Technician Fourth Grade,
U. S. Army Ordnance

Clarence M. Summey
Brevard, N. C.
Private, U. S. Army Air
Force

Henry G. Swiggett, Jr.
Guilford College, N. C.
Machinist's Mate Third
Class, U. S. Naval Reserve

LeRoy Thompson
Greenwood, S. C.
Water Tender, First Class,
U. S. Navy

Ernest H. Travnham
Greenville, S. C.
Signalman Second Class,
U. S. Navy

John W. Tucker
West Palm Beach, Florida
Private, U. S. Army
Paratroopers

William A. Tucker
Clifton Forge, Virginia
Private First Class,
U. S. Marine Corps

Murray Vaughn
High Point, N. C.
Seaman First Class,
U. S. Navy

Juthorn Troy Ward
Hendersonville, N. C.
Fire Controlman Third
Class, U. S. Navy

Clarence E. Williams
Guilford College, N. C.
Staff Sergeant,
U. S. Army Air Corps

James A. Wood
Horse Shoe, N. C.
Sergeant,
U. S. Marine Corps

PRE-COLLEGE GRADUATES

SEPTEMBER 1945

Clarence Hartwell Fitzgerald, Betty Irene Gaither, Robbie J. Gash, Doloris Gertrude Holly, Martha Rita McClam, Alice Josephine Parker, Sarah Lovell Thompson, Marcus Harry Woosley.



COLLEGE GRADUATES

SEPTEMBER 1945

Lenora Dell Allen, Anna Lee Bauman, Marjorie Carolyn Beam, James D. Brown, Betty Lou Buckner, Sarah Ellen Burnette, Mary Virginia Dotson, Sylvia Ernestine Frost, Mayme Kyle Jones, Wenonah Ellen Neeves, Patricia Hope Norris, Grace Elizabeth Ray, Mary Frances Stroud, Frances Louise Walker.



GRADUATING CLASSES

FEBRUARY 1946

College Graduates: George Pritchard Brown, Oliver Keen Gaskins, Jo Ann Goforth, Frances Hendricks, Lela Flax Huntley, Iris Maye Powell, Dorothy May Wrenn.

Pre-College Graduates: Mary Sue Gregory, Marjorie Juanita Gurley, Mary Elizabeth Haddon, Julia Lovina Higdon, William Brown LeGrande, Paul Kenneth Martin, Jacqueline V. Roberts, Mary Alice Salisbury, David Hampton Smith, Jean Ward Stanfield, Douglas Thornton Taylor.





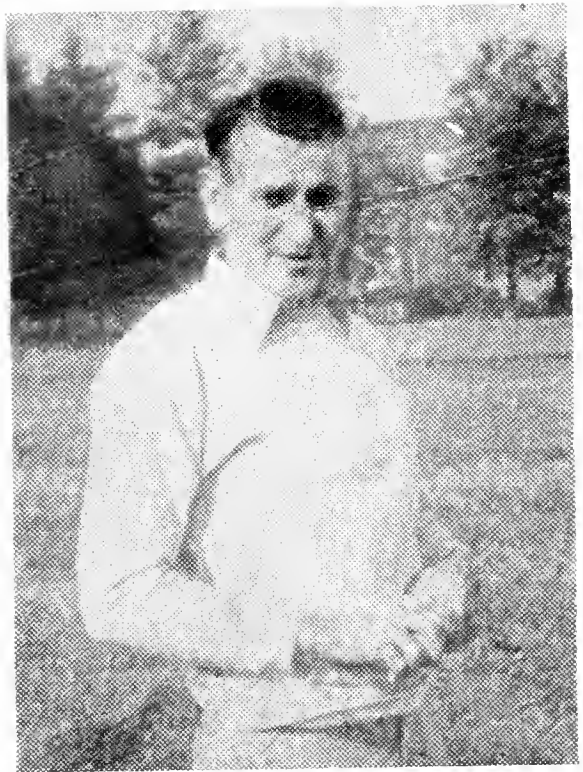
CHEERLEADERS

Jennie Elder, Chief; Lawrence Brown, Harvey Diamond, Marilyn Gillis, Dorothy Goode, Janice Robinson, Jane Transou, Clendon Windsor.

ATHLE



MR. JOHN A. NEDY, JR.



MR. HOWARD WILKIE

TICS

THE 1946 TORNADOES

Once again Brevard College put forth eleven men on the gridiron under wartime conditions. The light, youthful, and inexperienced boys were placed under the strict coaching of Howard Wilkie, former Western Carolina Teachers College star.

With only ten days' drill and workout, the Tornadoes started the toughest scheduled season ever played by Brevard College, and they fought as hard as could be expected from their teammates and coach, but our eleven were outclassed by every opponent.

Christ School, Asheville School for Boys, Mars Hill College, Hiawasse College, Western Carolina Teachers College, Hendersonville High and Brevard High all raked up victories against the Tornadoes after hard-fought games.

Brevard College is not ashamed of these defeats, but is proud that she was able to keep the spirit of sportsmanship alive. She salutes the 1946 Tornadoes.



SECOND STRING:

Front Line: Andy Sigmon, Harold Latta, Edwin Edwards, Earl Caroon, Clemsons Cash, Charles Blackwelder, Grady Dulin.

Quarter Back: Robert Tallon.

Back Line: Richard Hendricks, Jack Morgan, Cecil Henderson.



FOOTBALL MANAGERS

EDISON AMOS, ARLIN McCULLOUGH



FIRST STRING:

Front Line: Kenneth Rathford, Bob Henderson, Gilbert Arthur, Jason Orr, Norman Howell, Bud Shaney, Buddy Edmondson.

Quarter Back: Roscoe Stroud, Jr.

Back Line: Bruce Jamerson, Bill Blankenship, Dewey Whitaker.



BLOCK "B" CLUB

Officers: President, Bill Blankenship; Vice President, Roscoe Stroud; Secretary, Dewey Whitaker; Treasurer, Bob Tallon.

Faculty Sponsor: Mr. John A. Needy, Jr.

Letters in Football: Gilbert Arthur, George Bishop, Bill Blankenship, Frank Cauble, Grady Dulin, Buddy Edmondson, Bob Henderson, Cecil Henderson, Norman Howell, Bruce Jamerson, Harold Latta, Jason Orr, Kenneth Ratchford, Bud Shaney, Andy Sigmon, Roscoe Stroud, Bob Tallon, Dewey Whitaker.

Letters in Basketball: Bill Blankenship, Guy Burehfiel, Worth Dalton, Cecil Henderson, Joe McIntosh, Herman Morgan, Elijah Nelson, Kenneth Ratchford, Arthur Schreyer, Bud Shaney, Andy Sigmon, Bob Tallon, Dewey Whitaker.

Managers: Edison Amos, Arlin McCullough.



THE BREVARD 1946 TORNADOES

Under the coaching program of Mr. Jack A. Needy, the Brevard College Basketball team met the following opponents during this season: Mars Hill College, Blue Ridge School for Boys, Western Carolina Teachers College, Warren-Wilson Junior College, Biltmore Junior College, Gardner Webb Junior College, Spartanburg Junior College, Edwards Military Institute, Asheville School for Boys, and Christ School.

Men participating in basketball were Bill Blankenship, Charles Buckner, Guy Burchfiel, Worth Dalton, Hugh Harris, Cecil Henderson, Donald McCall, Joe McIntosh, Herman Morgan, Elijah Nelson, Kenneth Ratchford, Arthur Schreyer, Bud Shaney, Andy Sigmon, Bob Tallon, Dewey Whitaker.

WOMEN'S ATHLETICS



Miss RUTH WILSON

Director of Women's Athletics

The girls this year have suffered through sore shoulders, aching backs and throbbing legs to obtain the erect posture required by Miss Wilson. They still have not figured out how the exercises required of them can make them so sore, while Miss Wilson nimbly jumps on her bicycle and is off to her next appointment.

Other than calisthenics, bowling has been the main class work. The girls have trudged slowly up town, rain or shine, to roll the ball down the alley to gain a score of 80 or 40.

The girls' basketball team did not schedule many games this season; nevertheless many players were at practice every day.

This year girls are eligible for the numerals and Block B's. The activities have been allotted certain points, and candidates have to make 300 for the numerals and 500 for the letters.

The girls' sports program on the campus plays an important part in college life.



GIRLS' ATHLETIC ASSOCIATION BOARD

Officers: President, Jayne Elmore; Vice President, Willena Costner; Secretary, Jean Stanfield, Treasurer, Mabel Folger.

Faculty Sponsor: Miss Ruth Wilson.

Other Members: Sophomore Representative, Jo Ann Goforth; Freshman Representative, Mary Hipp; Pre-College Representative, Frances Riherd.



GIRLS' BASKETBALL TEAM

Forwards: Hattie Mae Cagle, Willena Costner, Mary Hipp, Dott Ingram, Louise Lynch, Frances Riberd.

Guards: Wilma Chambers, Helen Cox, Polly Crawford, Jayne Elmore, Jean Stanfield, Edna Whitley.

Coach: Miss Ruth Wilson.

Manager: Anne Hensley.



MISS PATRICIA HOPE NORRIS, MAY QUEEN 1915

FEAT

URES



MAY DAY SCENES

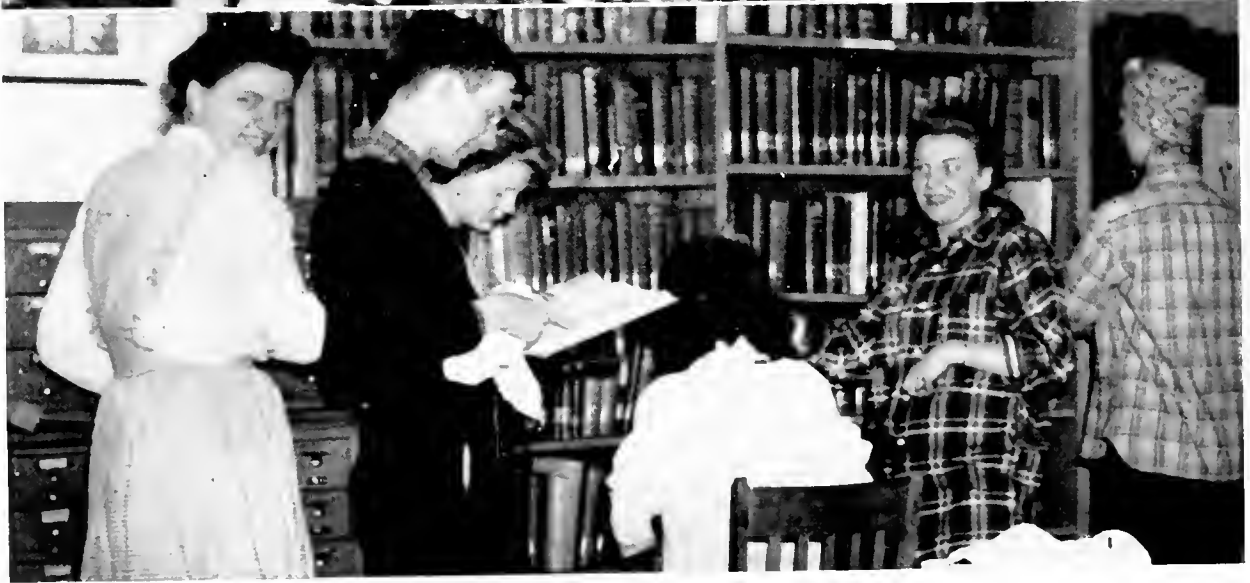


MARY McKINNEY. QUEEN OF ROSS HALL DANCE. SPRING 1946



DORIS BENNETT. QUEEN OF MUSIC APPRECIATION DANCE. SPRING 1945

*HARVEST FESTIVAL KING AND QUEEN,
RICHARD HENDRICKS, AND BETTY JO HELMS*



CLEAN-UP DAY IN THE LIBRARY

Home

HOMECOMING BANQUET



QUARTET: LENORA ALLEN, HELEN COX, ERNESTINE FROST, PATRICIA NORRIS

Coming



FOLLIES AND FIRST FORMAL DANCE



AT EASE ON THE CAMPUS

Senior



BEST ALL-ROUND
JAYNE ELMORE
ARTHUR SCHREYER

BEST PERSONALITY
WILLENA COSTNER
JEFFREY COLTRANE, Jr.



MOST POPULAR
JENNIE ELDER
CHARLES BROWNING



Superlatives

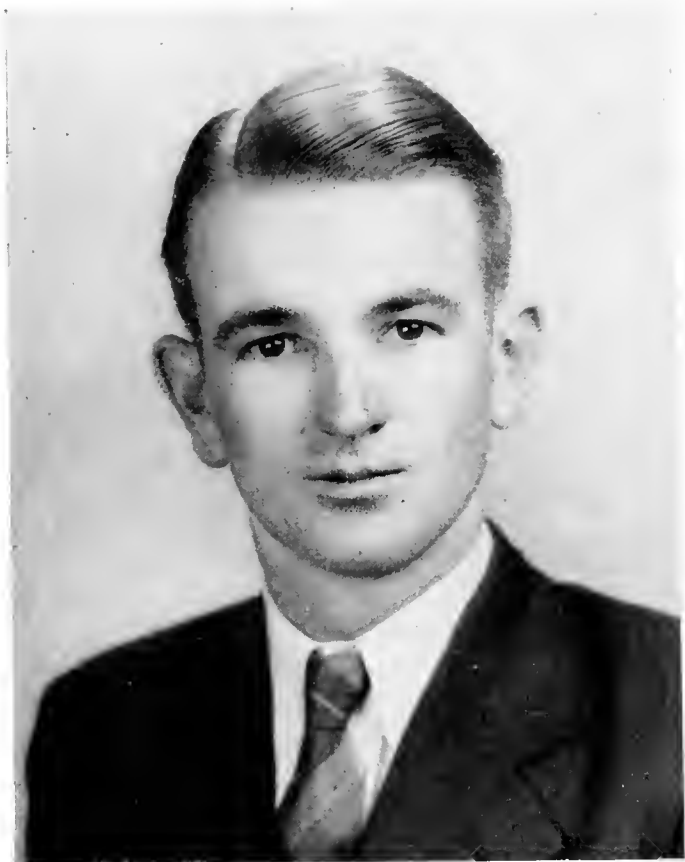
BEST LOOKING
GEORGE BROWN
LYDIA UNDERWOOD



MOST ORIGINAL
OLIVER GASKINS
JANE ALLEN



MOST INTELLECTUAL
CONRAD KIMBROUGH
MARY SINGLETON



MR. TOM WESLEY PUETT

*Sponsored by Annie Puett
Editor-in-Chief of the Pertelote*



MISS RUTH SCHREYER

*Sponsored by Arthur Schreyer
Business Manager of the Pertelote*



ALUMNI SNAPS

Top row: Visitors for Homecoming.

Bottom row: Rev. and Mrs. Wayne McLean, Ensign and Mrs. Robert Jenkins,
Mr. and Mrs. Rembert McNew.

THE GOODWILL MOTOR COMPANY

Sales and Service

PONTIAC - - - G. M. C.

Broad Street

Brevard, N. C.

Plan Your Next Trip Via SMOKY MOUNTAIN TRAILWAYS

Request Your Ticket to Read "Trailways"

Bus Station at MacFie's Drug Store

AUSTIN'S STUDIO

Enlargements Can Be Made At Any Time

NEGATIVES PUT ON FILE PERMANENTLY

Phone 136

Brevard, N. C.

BREVARD COLLEGE

Brevard, North Carolina

Summer Session June 17-August 26, 1946

JUNIOR COLLEGE COURSES
and
LAST TWO YEARS OF HIGH SCHOOL

Fall Term Begins September 17, 1946

Thorough Training — Moderate Cost

SPECIAL COURSES FOR VETERANS
Write for Information

Richard W. Parris

Donald J. Parris

BREVARD HARDWARE

Parris Brothers, Owners

Hardware for Every Home, Farm and Industrial Use

Brevard, N. C.

TALMAN OFFICE SUPPLIES, Inc.

Office Outfitters

Commercial Stationers

Office Supplies

Engraving

Telephone 2105-2106

8 College Street

Asheville, North Carolina

Compliments of

DUNHAM'S MUSIC HOUSE

63 Patton Ave.

Phone 420

Asheville, N. C.

Printers

Lithographers

Binders

THE MILLER PRINTING COMPANY

ASHEVILLE

"Western Carolina's Largest Printers"



SUMMER SCHOOL

HERFF-JONES COMPANY

Manufacturing Jewelers and Stationers

O. E. BASS, *Representative*

Hendersonville, North Carolina

Rings, Diplomas, Invitations, Cards, Caps, and Gowns

BELK'S DEPARTMENT STORE

The South's Largest Distribution of Reliable

Merchandise

WE SELL FOR LESS

East Main Street

Brevard, N. C.

PLUMMER'S

Main Street

Brevard, North Carolina

VARNER'S DRUG STORE

WALGREEN AGENCY

Brevard, North Carolina

Compliments of
CO-ED AND CLEMSON THEATRES

The Latest and Best in Movie Entertainment

Brevard, North Carolina

Compliments of
GALLOWAY'S CAFE

"Where Students and Faculty Meet"

Brevard, North Carolina

Compliments of
PET DAIRY PRODUCTS COMPANY

Serving Western North Carolina With

**GRADE "A" PASTEURIZED DAIRY PRODUCTS
and PET ICE CREAM**

"A Health Food"

Waynesville, North Carolina

PRESSLEY & OSBORNE

*Plumbing and Heating Service
Standard Fixtures*

Telephone 549

Brevard, North Carolina

HERE WE'LL WORK TOGETHER

Education and clear thinking, freedom of initiative and self-reliance . . . these are your preparation, as members of the class of '46, to meet the opportunity and the responsibilities, of these stirring times.

We are proud of serving a new generation . . . and we pledge you faithful co-operation in building a still better life here in the Piedmont Carolinas.



DUKE
POWER COMPANY.
Serving the Piedmont Carolinas.

Jewelry and Watch Repairing
Trophies, Gifts

HURSEY & COMPANY

67 Haywood Road
Asheville, North Carolina

Clothing, Shoes, Sporting Goods
When in Asheville Make Our Store Your
Headquarters

35 Patton Avenue Thru to College
ASHEVILLE ARMY STORE

Hardware, Sporting Goods, Paints, Oils,
Cutting Tools, Delta Electric Wood-
Working Tools

OTTIS-GREEN
HARDWARE COMPANY

11 West Paek Square
9-11 Walnut Street
Asheville, N. C.

TANDY'S
GULF SERVICE

Biltmore, N. C.



INITIATION

WE SALUTE . . .

BREVARD COLLEGE
GRADUATES, STUDENTS AND
FACULTY MEMBERS

THE TRANSYLVANIA
TIMES

"A Prize-Winning Newspaper"

TRANTHAM'S
DEPARTMENT STORE

Ready-to-Wear, Dry Goods
and Notions

Brevard, North Carolina

PARSONS'

JEWELRY AND GIFTS

MITCHEM'S MARKET
AND GROCERY

Meats - Groceries - Produce

Wholesale and Retail

Brevard, N. C.

Compliments of
BREVARD LUMBER
COMPANY

Brevard, North Carolina

Compliments of
TRANSYLVANIA
TRUST COMPANY

Brevard, N. C.

Compliments of
B. & B. FEED AND
SEED COMPANY

FEEDS, SEEDS, FLOUR
FERTILIZER

Brevard, North Carolina

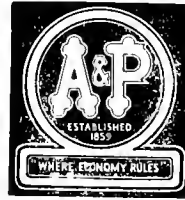
Compliments of
McFEE'S JEWELRY
SHOP

Expert Watch Repairing

Brevard, N. C.

Compliments of
**TRANSYLVANIA
PIPE COMPANY**
Brevard, North Carolina

A & P SUPER MARKET



WHERE ECONOMY RULES
Symbol of the world's foremost service
Brevard, North Carolina

Compliments of
**THE GRILL
RESTAURANT**
Brevard, N. C.

S. M. MacFIE DRUG CO.
"The Rexall Store"
FOUNTAIN SERVICE AND
SANDWICHES
BILTMORE ICE CREAM
SCHOOL SUPPLIES
Brevard, North Carolina

Compliments of
THE CANTEEN CAFE
"Wholesome Food Served"
Caldwell St., Brevard, N. C.

**SID BARNETT'S
MACHINE SHOP**
WELDING BRAZING
GENERAL REPAIRING
LATHE AND PLANER WORK
Promptness Our Motto
Pisgah Forest, N. C.

WHITEWAY CLEANERS
A Complete Quality Service
See Our Agent At College
Brevard, N. C.

DRUGS CANDIES SODAS
STATIONERY
LONG'S DRUG STORE
Brevard, N. C.
Brevard College Boosters
PHONE 85

HEYWARD MAHON
COMPANY

Greenville, S. C.

The Style and Quality Store

DOUGLAS
INSURANCE

Compliments of

ROSE'S 5-10-25c STORES

Incorporated

FRANCES K. MILLNER, Manager

Brevard, N. C.

PATTERSON'S

DEPARTMENT STORE

"Brevard's Shopping Center"

Brevard, North Carolina

Compliments of

ALLEN B. WELBORN

215-216 Professional Building
High Point, North Carolina

INSURANCE SERVICE AT A
SAVING

Compliments of

CITIZENS'
TELEPHONE COMPANY

Brevard, N. C.

FURMAN UNIVERSITY

GREENVILLE, S. C.

Founded 1826

Courses leading to degrees of Bachelor of Arts, Bachelor of Science, Bachelor of Arts in Music, and Master of Arts. Pre-professional course groupings. Special emphasis on training for Christian leadership.

Summer session includes two six weeks terms, June 10-17 and July 18-August 23. The fall semester begins on September 17.

For catalogue write

R. N. Daniel, Dean
Men's College

Elizabeth Lake Jones, Dean
Women's College



AS OTHERS SEE US

Compliments of
**CASH & CARRY
SUPER MARKET**

Home-Owned *Self-Service*

Main Street Brevard, N. C.

Compliments of
FARMERS' FEDERATION

Incorporated

Dealers in

FINE BABY CHICKS

FULL-O-PEP FEEDS

103 East Main Street

Brevard, N. C.

**MITCHELL-POPE
MOTOR COMPANY**

DODGE — PLYMOUTH

Sales and Service

PHONE 590

N. Broad St. Brevard, N. C.

Compliments of
**PATTON'S GULF
SERVICE**

Brevard, N. C.

Compliments of
HAYES MOTOR CO.
Jeeps, Kaiser, and Frazier
Automobiles
Brevard, N. C.

Compliments of
**QUALITY BEAUTY
SALON**
and
MODERN BEAUTY SHOP

PEARCE-YOUNG-ANGEL

Wholesale

FRUITS AND PRODUCE

O & C FROST SEALED

FRUITS AND VEGETABLES

109-11 Roberts Street

Asheville, North Carolina

Compliments of
STATE TRUST CO.
Hendersonville, N. C.



MEN'S ATHLETICS

Compliments of

J. A. JONES CONSTRUCTION CO.

Charlotte, N. C.

District Offices:

Brunswick, Georgia

Panama City, Florida

New York, New York

Knoxville, Tennessee

An outstanding construction organization: operates in North, Central, and South America. We specialize in Heavy Construction, Industrial Building, Shipbuilding and Repair, Engineering, Appraisals, Public Works, Utilities, Power Plants, Chemical Works, etc.



WOMEN'S ATHLETICS

Compliments

of

ECUSTA PAPER CORPORATION

Pisgah Forest, North Carolina



LET'S GO TO TOWN

HIGH POINT
COLLEGE

High Point, N. C.

*Where many Brevard grad-
uates receive their degrees.*



KEYS PRINTING COMPANY

Greenville, South Carolina

*The ability to serve you well is as important as the
desire to serve you well.*



MOUNTAIN HIKES

JOHN SEXTON & CO.



.. for those who go out
to eat! Rich, satisfying
Sexton Salad Dressing,
served by better eating
places everywhere.

Compliments of

THE LANGREN HOTEL

Western North Carolina's Largest

Asheville, N. C.

R. E. SAMS COMPANY

Asheville, N. C.

Distributor for

Potato Chips

Peanut Butter Crackers

Royal Cakes

Lay's Tasty Foods

Peanuts

Mrs. King's Pies

ASHEVILLE SHOWCASE
& FIXTURE COMPANY

Hotel, Restaurant, and Institutional
House

Phones 498-499

57-59 Broadway

Asheville, N. C.

Compliments of

Southern Dairies

Brevard, North Carolina

The Next Step
LENOIR RHYNE COLLEGE
Summer Session

STANDARD FOUR YEAR COLLEGE FOR MEN AND WOMEN

Competent, experienced faculty . . . Emphasizes development of Christian character . . . Maintains high educational standards . . . Liberal Arts, Science, Music, Teaching and Commercial Courses . . . Expenses very low, considering advantages offered.

SUMMER SCHOOL: First term June 5 to July 13
Second term July 15 to August 21

For Catalogue and other information write to
P. E. Monroe, D.D., *President*
LENOIR RHYNE COLLEGE
Hickory, N. C.

SCHRAFFT'S

"The Nation's Leading Caudies"

ON SALE AT GOOD

STORES EVERYWHERE

65c to \$1.10 per lb.

Morgan Bros., Inc.

Wholesale Distributors

67 Broadway, Asheville, N. C.

**MACK'S BILLIARD
PARLOR**

MEET ME HERE!

T. T. LOFTIS, Manager

7 East Main Street

Brevard, North Carolina

Meet Your Friends At

FORD'S CORNER

SODA AND SANDWICH SHOP

BILTMORE ICE CREAM

HOT POPCORN

Theatre Building

McCRARY AUTO SERVICE

Day Phone 290

Night Phone 291

Brevard, North Carolina

GOODYEAR PRODUCTS

Compliments of

**THE BREVARD SHOE
SHOP**

SATISFIED CUSTOMERS BUILT
OUR BUSINESS

Jordan Street

Brevard, N. C.

Compliments of

Mrs. Mary Jane McCrary

Insurance Agent

Brevard, North Carolina

**J. P. STEVENS
ENGRAVING COMPANY**

Wedding, Reception, and Visiting Cards,
Personal Stationery

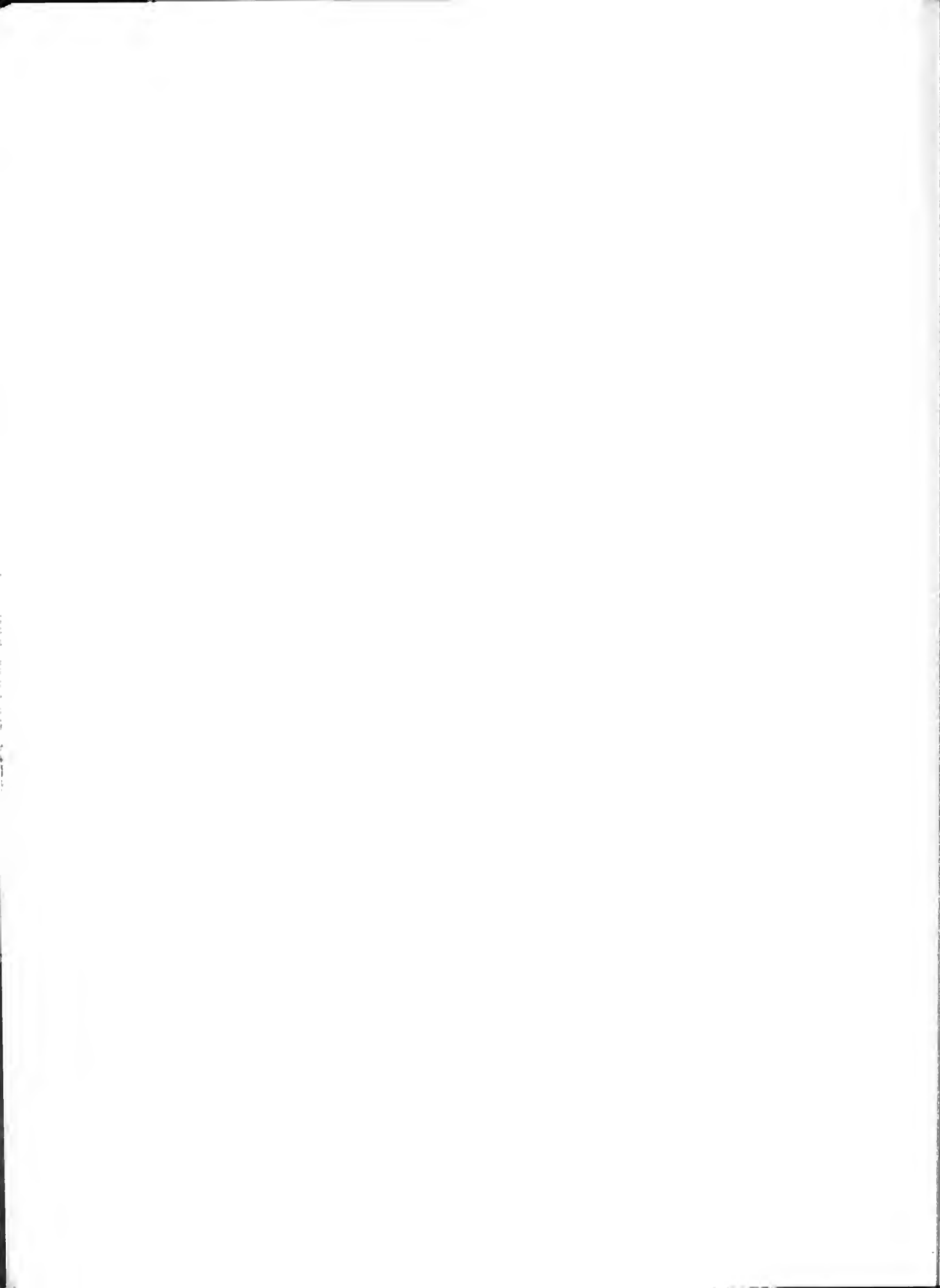
SAMPLES UPON REQUEST
110 Peachtree St. Atlanta, Ga.

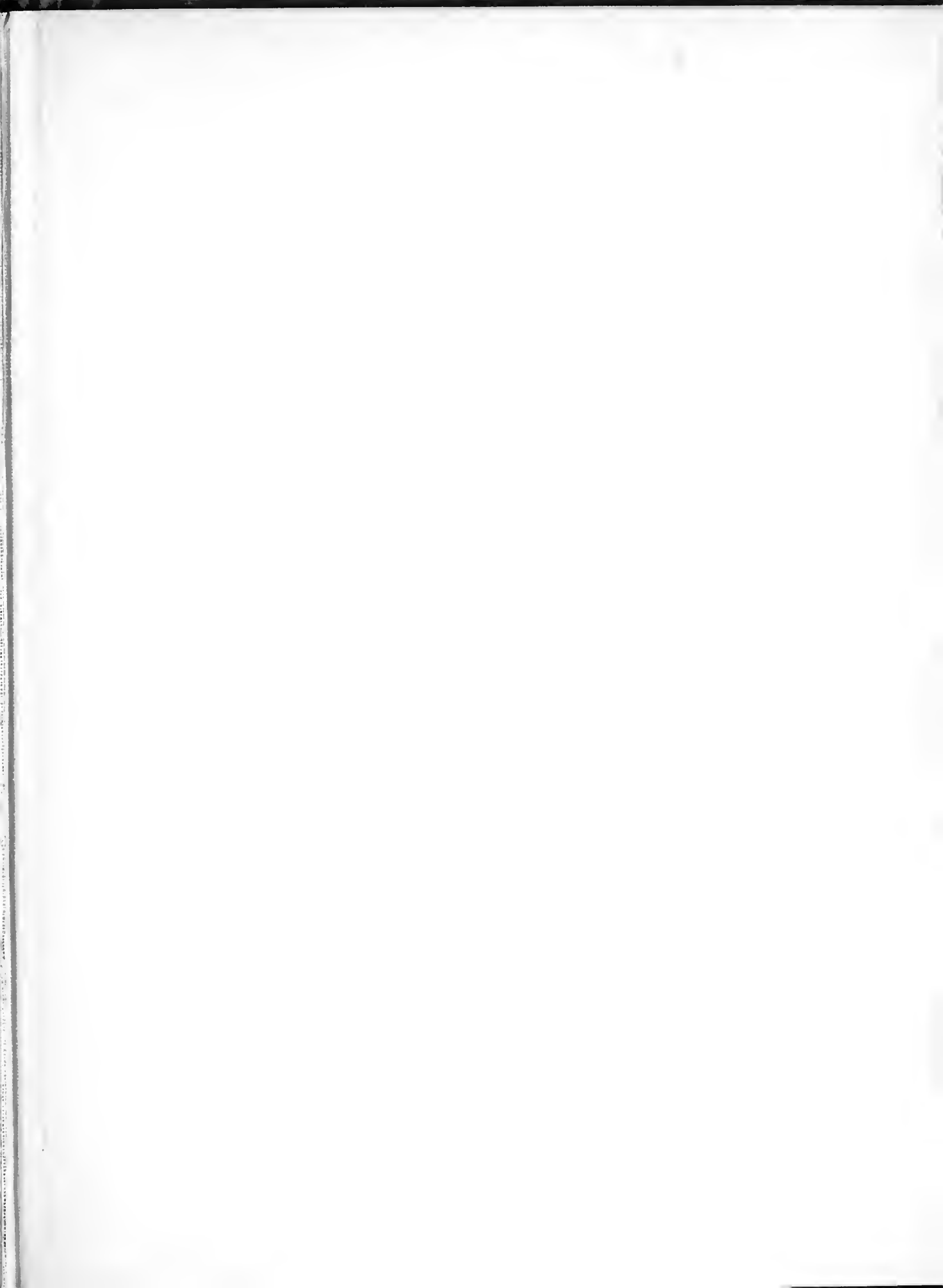
**PATRONIZE
OUR
ADVERTISERS**



The End of the Tale

Autographs







KEYS
PRINTING
CO.