

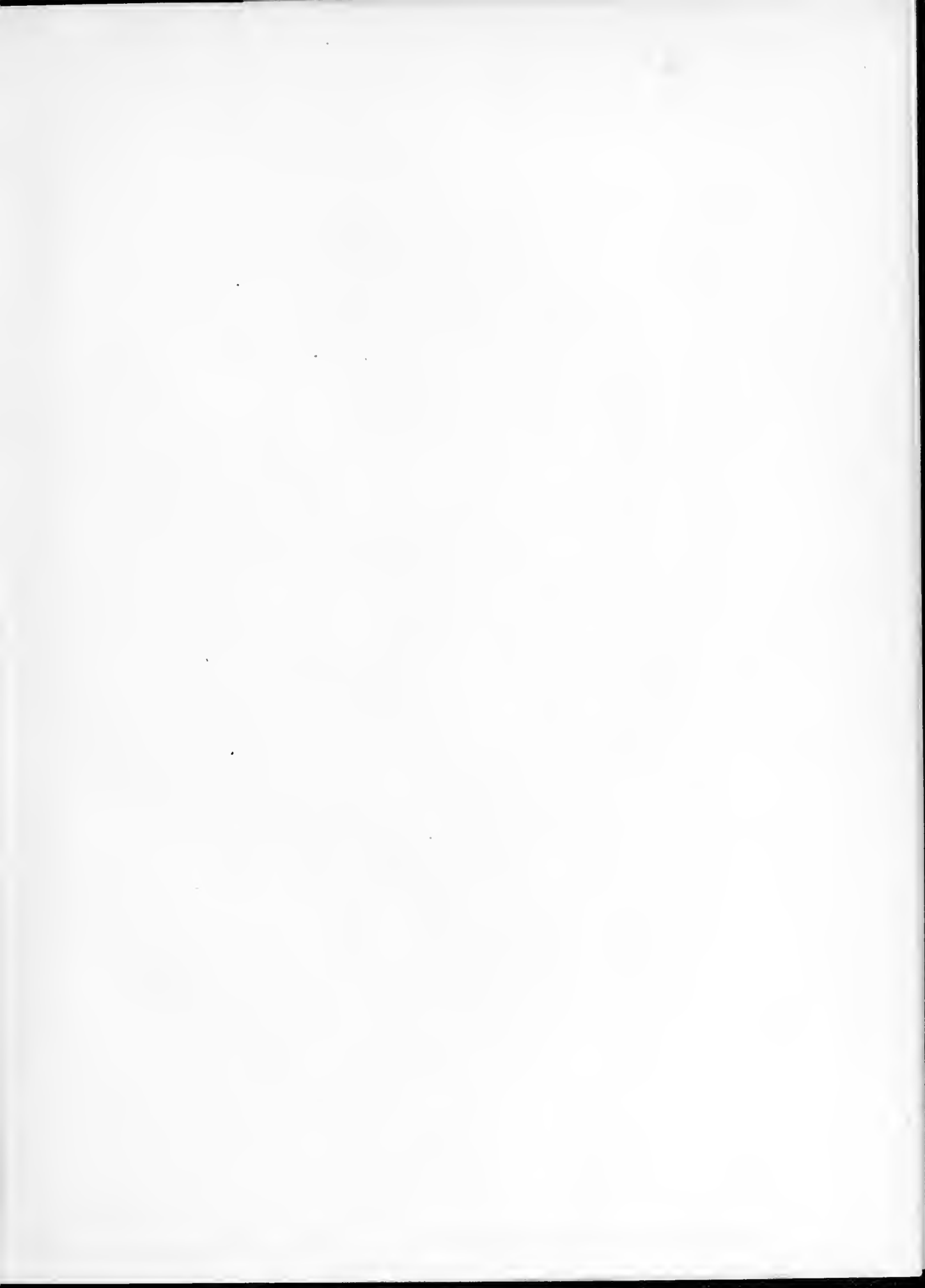


*The  
Pertelote  
1947*



1853-2003

**JAMES A. JONES LIBRARY**  
Brevard, North Carolina 28712









*Published By . . .*

THE STUDENTS OF BREVARD COLLEGE

Brevard, North Carolina

EDITOR-IN-CHIEF.....PAT AUSTIN

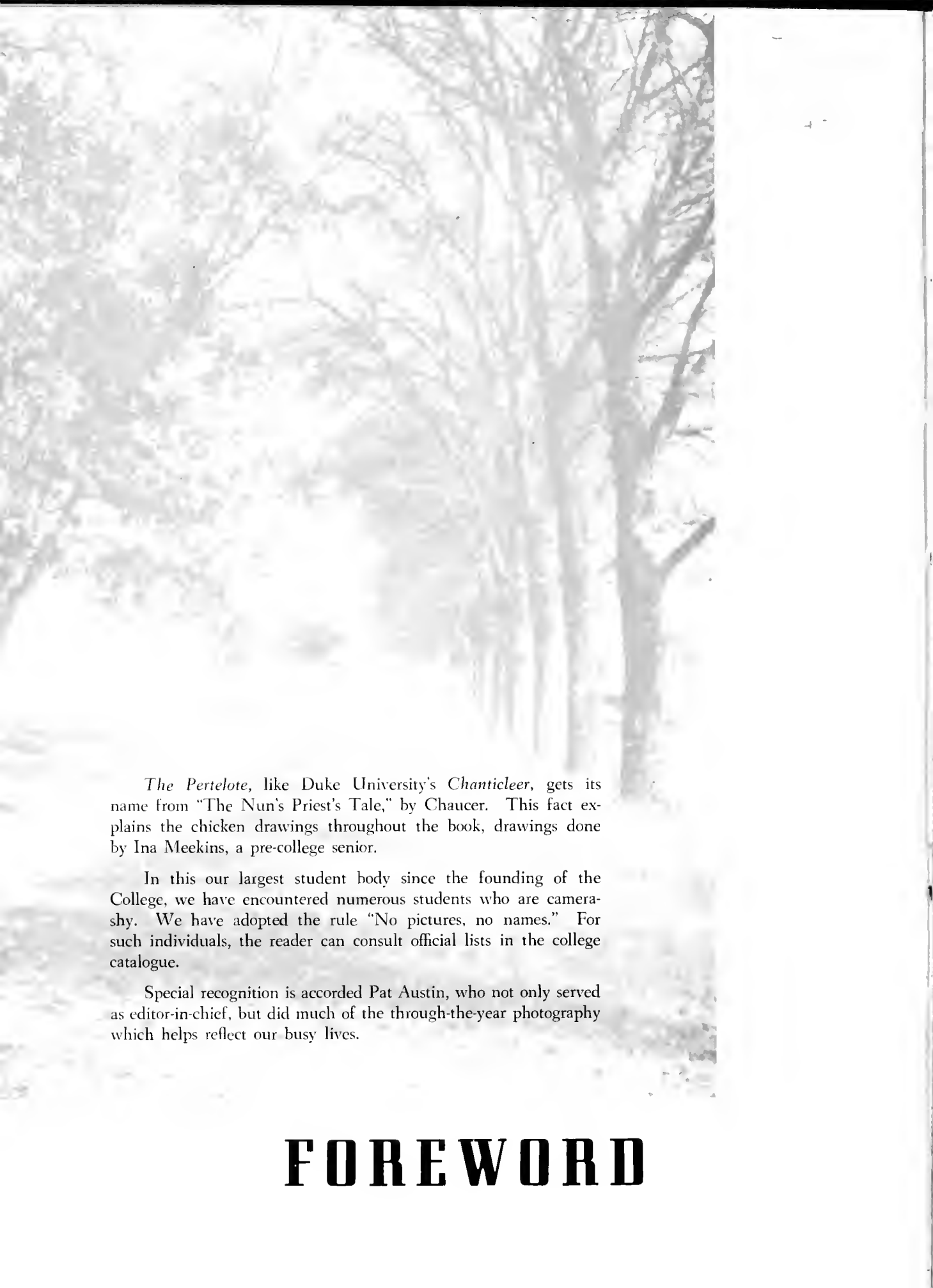
BUSINESS MANAGER.....LOIS ANDREWS



**THE**

**P E R T E L O T E**

**1947**



*The Pertelote*, like Duke University's *Chanticleer*, gets its name from "The Nun's Priest's Tale," by Chaucer. This fact explains the chicken drawings throughout the book, drawings done by Ina Meekins, a pre-college senior.

In this our largest student body since the founding of the College, we have encountered numerous students who are camera-shy. We have adopted the rule "No pictures, no names." For such individuals, the reader can consult official lists in the college catalogue.

Special recognition is accorded Pat Austin, who not only served as editor-in-chief, but did much of the through-the-year photography which helps reflect our busy lives.

# FOREWORD



*Top: PAT AUSTIN, Editor-in-Chief; LOIS ANDREWS, Business Manager.*

*Bottom: INA MEEKINS, Illustrator, receiving suggestions from MRS. BRANLETT, Art Teacher.*



# DEDICATION



This, the 1947 volume of *The Pertelote*, is dedicated to Mr. J. J. STEVENSON, JR., Dean of Brevard College—an administrator mild-mannered and kind, but staunch in the defense of his principles; hard-working, but accessible in time of need.



*Seeing Ourselves*



COLLEGE QUARTET: LON VANCE, PEGGY PENNINGTON, SARAH KORNEGAY,  
CONRAD WILSON, WITH MRS. MILLER.

A TENSE MOMENT

A TAYLOR HALL BIRTHDAY PARTY





*Top left:* Little Lil' Abner, H. G. Swiggett; Daisy Mae, Caroline Hendrick; Lena the Hyena, Mary Frances Watson.

*Top right:* Mary Norwood.

*Center left:* A Group of Students Listening to the World Series in Front of Taylor Hall, Fall 1946.

*Center right:* Scene from Dramatic Club Play.

*Bottom left:* Watching a Tennis Game.

*Bottom right:* Dr. Bramlett and Boys Unwrapping New Chairs.



*Top: FACULTY TEA*

*Bottom: COMMENCEMENT*



RELIGIOUS EMPHASIS WEEK



*M. J. Perkins*



EUGENE JARVIS COLTRANE

A. B., A. M., Ed. D.

*President of the College*

DR. COLTRANE WATCHING THE FOOTBALL GAME  
AT MARS HILL

# ADMINISTRATION

# Faculty

MISS JANE ALLEN

*Assistant in Biology Department*

MISS KATE ANDERSON

*Music*

ROBERT F. ANDREWS, JR.  
B. S.

*Coach*

MRS. RUTH H. ANDREWS  
B. S.

*Mathematics, Physical Education*

ALBERT L. BRAMLETT  
B. S., M. A., Ph. D.

*History*

MRS. ELSIE G. BRAMLETT

*Arts and Crafts*

MRS. RUTH WILSON  
CALDWELL, A. B.

*Physical Education, Hygiene for Women*

MRS. ESTHER SMATHERS  
CAPPS

*College Nurse*

MRS. ISABEL D. COLTRANE  
B. L., B. Mus., A. M.

*Speech, Registrar*

MISS MARJORIE CRAIG  
A. B., A. M.

*English*

MISS HELEN CROW  
B. S.

*Business Education*

MISS MARY CLAIRE GRIFFIN  
B. S.

*Business Education*

MISS DULCIE HAYES  
A. B., M. S.

*Spanish, French*

MISS MABEL HENDRIX  
A. B., M. S.

*Home Economics*





# The

R. L. JOHNSON

*Treasurer*

MRS. MARY GLADYS LOBDELL  
B. S., M. S.

*Biology*

BURT W. LOOMIS  
B. S., A. M., Ph. D.

*Psychology, Education, Latin*



DEWITT P. MILLER (Deceased)  
B. M.

*Voice*

MRS. DEWITT P. MILLER

*Piano, Violin*

A. J. MONTANARI

*Superintendent of Buildings and  
Grounds*



MAXWELL GALBRAITH  
PANGLE  
A. B., A. M.

*Economics, Sociology*

MRS. LOULA McNEER PANGLE  
A. B., A. M.

*Mathematics*

MRS. ADA PARKER

*Librarian, History*



JAMES ALFRED PARKER  
*Supervisor of Buildings and Grounds*

MISS EVELYN POWELL  
B. S.

*Dietitian*

REV. C. EDWARD ROY  
A. B., B. D.

*Dean of Men, Religious Education*



# Faculty

ARTHUR SCHREYER

*Assistant in Chemistry Department*

MRS. MAXINE A. SCROGGS  
A. B.

*English, French, Dean of Taylor Hall*

MISS LUCILE SMITH  
A. B., A. M.

*English, Dramatics, Dean of West Hall*

MISS MARGARET SPIRO

*Violin, Band, Piano, Music  
Appreciation*

J. J. STEVENSON, JR.  
A. B., B. D.

*Dean of the College, Government*

MRS. WALTER STRAUS

*German*

REV. RAY SWINK  
A. B., B. D.

*Assistant Dean of Men, Pre-College  
Mathematics and History*

CARL HOYT TROWBRIDGE  
A. B., A. M.

*Vice President, Chemistry, Physics*

BETTY JEAN ANDERSON

*Secretary to the President*

JEWELL BENNETT

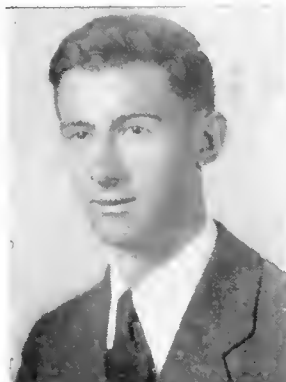
*Library Assistant*

WILMA CHAMBERS

*Assistant in the Treasurer's Office*

ANNIE CORDELL PUETT

*Assistant in the Registrar's Office*





*First row:* ELIZABETH MCAULAY, GRACE GORDON, LU ROBBINS.

*Second row:* JANE SMITH, JOE MCINTOSH, EMILY BODEN-  
HEIMER, AND GILBERT ARTHUR.

# CLASSES





*Violin Students and Instructor:* KATHERINE AUUIL, W. B. HALL, WITH MISS MARGARET SPIRO.

# Senior Class Officers



*President, WALTER POPLIN; Vice President, HAROLD SPRINKLE; Secretary-Treasurer, LON VANCE.*

# Seniors

**ARTHUR S. AGNEW**

*Veteran*

Greenville, S. C.

South Carolina Club. "Dutch" finds football, English, and Jane most interesting.

**WANDA SHERRILL  
ALLISON**

Pisgah Forest, N. C.

Not even a flood along the French Broad can keep Sherry away from Brevard Tech.

**EDNA LOIS ANDREWS**

Charlotte, N. C.

Enterpean, Chaplain '47; Christian Workers' Club; Pertelote Staff, Business Manager '47; Spanish Club; West Hall House Council, President '47. Between Pertelote business and the dormitory study hall Lois is kept busy.

**GILBERT L. ARTHUR**

Morehead City, N. C.

Transfer from N. C. State College; Delphian; Block "B" Club, College Band '46; Football Team '45. "When I get home, I'm really going to fill up on oysters."

**PATRICIA GALBRAITH  
AUSTIN**

Brevard, N. C.

Enterpean; College Band; Day Students' Club; Most Original Senior Girl; Pertelote Staff, Feature Editor '46, Editor-in-Chief '47; Sigma Phi Alpha, Secretary '46. Look out, fellows, here comes that Austin gal in her jeep!

**FAITH KATHERINE  
AUVIL**

Brevard, N. C.

Enterpean; Day Students' Club; Sigma Phi Alpha, Conductor '47; Senior Girl Most Likely to Succeed. Kat and her magic violin make an entertaining couple.

**CHARLES H. BARNHART**

*Veteran*

Rutherford College, N. C.

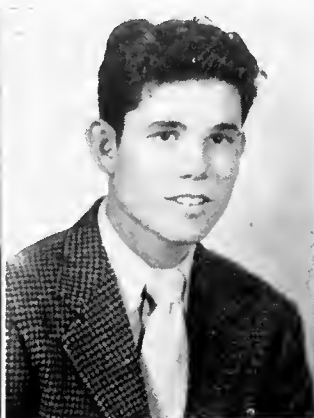
Clisophic; Preacher's Kids, Secretary '41. Perhaps the reason that Charles is so fond of tall tales is that he's a former B-21 pilot.

**CHARLES KENNETH  
BEADLES**

Hayesville, N. C.

Clisophic; Flight Club. If you ever hear "Aw, boys, don't be chicken," it means that Ken is close by.





## The Seniors

### JEWELL BENNETT

Greer, S. C.

Euterpean; Choir; Christian Workers' Club, President '46; Glee Club; International Relations Club; Medical Science Club; Sigma Pi Alpha; Student Council '47. Jewell, with a smile that sparkles like her diamond, checks chapel for the Christian Workers' Club and serves as one of its state officers.

### WILLIAM BLANKERSHIP

Pineville, N. C.

Cliosopie '46; Delphian, Block "B" Club, President '46. You can take Bill from athletics, but you can't take the athletics from Bill.

### JACK GORDON BLYTHE

Hendersonville, N. C.

Cliosopie; Football. Jack is that red-headed Romeo from Hendersonville.

### EMILY J. BODENHEIMER

Winston-Salem, N. C.

Euterpean, Marshal '46, Secretary '46; Basketball '47; Clarion Staff, Editor-in-Chief '47; Commercial Club; Most Athletic Senior Girl; Tennis Team '46; Women's Athletic Association. That vivacious young lady always gleaming news for *The Clarion* is our own likeable "Pecky."

■ ■

■ ■

■ ■

■ ■

### CALVIN SETZER CLONINGER

Claremont, N. C.

Delphian; Basketball '46; Pertelote Staff, Advertising Manager '46; Sports Reporter for the College '46. "Caledonia" is forever saying: "Mr. Ruggles didn't stand for such when he was here."

### MARGARET COCKERHAM

Dobson, N. C.

Transfer from Appalachian State Teachers' College. Margaret plans to be a Home Economics teacher. Her hobbies are art and horseback riding.

### L. A. COMAN, JR.

Veteran

Canton, N. C.

Delphian '43; Dramatic Club '43; Football '43; Day Students' Club '46. L. A. likes girls and golf.

### VERA JEAN CHILDERS

Whittier, N. C.

Mnemosynean; Christian Workers' Club; Home Economics Club. Jean's chief interest is Home Economics.

# Of 1947

ELSIE LOUISE CRAIG

*Veteran*

Mount Holly, N. C.

Mnemosynean; Day Student's Club; Dramatic Club; Freshman Marshal, Summer '46; International Relations Club; Music Appreciation Club; Student Council, Secretary-Treasurer '47. "Hut" is the veteran, whose goal is to make all A's.

MARY ELLA CRAWFORD

Hayesville, N. C.

Enterpean; Basketball '46, '47; International Relations Club, Secretary '46, '47; Women's Athletic Association. Polly has been outstanding in athletics, International Relations Club work, and mathematics.

THORNWELL E.

DAVENPORT

*Veteran*

Greenville, S. C.

Freshman Class President '46; South Carolina Club. Football, the Vets' Club, and a certain Florida Miss occupy all of Ted's spare time.

BETTE DEDMON

Shelby, N. C.

Enterpean; Music Appreciation Club; Spanish Club; West Hall House Council, President '47. Blonde curls, ready smile, personality-plus — that's our Bette D.

■ ■

■ ■

■ ■

■ ■

J. R. DUGGINS, JR.

*Veteran*

Kernersville, N. C.

Delphian. J. R. is majoring in Business Administration. His hobbies are tennis and photography.

VIRGINIA EDMUNDSON

Horse Shoe, N. C.

College Band; Day Students' Club. Virginia, that blonde with the clarinet, commutes by way of the Ecusta bus.

JAMES W. EDNEY

*Veteran*

East Flat Rock, N. C.

This veteran is majoring in Business Administration.

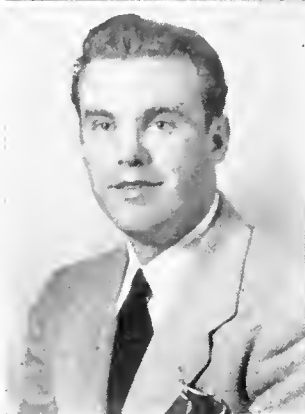
ELLEN JUNETTA

EDWARDS

Mill Spring, N. C.

Mnemosynean; Glee Club; International Relations Club; Music Appreciation Club. Here is a girl that is cute, and industrious as well.





## The Seniors

### WINFRED ERVIN

*Veteran*

Charlotte, N. C.

Clisophic; Band; Dramatics '45; International Relations Club; Pertelote, Assistant Business Manager '47; Preacher's Kids, Chaplain '45; Secretary '47; Ross Hall Council, President '45; Senior, Best Personality '45; Most Intellectual Senior Boy. Quoting from Wimp, who is a typical "P. K.", "I'll take the negative or the affirmative."

### PHILIP EUGENE FRAZIER

*Veteran*

Greensboro, N. C.

Clisophic, President '43; Bandmaster for Brevard College '47; Dramatic Club; International Relations Club; Pertelote Staff, Business Manager '43; Veterans Club, Secretary-Treasurer '47. Phil's friendly manner, glowing personality, and musical talent have made him a person to be vividly remembered at Brevard.

### MARVIN FEATHERSTON

Cramerton, N. C.

Delphian, President '47; Medical Science Club; Most Original Senior Boy; Ross Hall Council, President '47; Student Council '46. Marvin is the fellow who runs Beau Brummell a close second.

■ ■

### GRACE ELIZABETH GORDON

Asheville, N. C.

Euterpean, Vice President '46, President '47; Clarion Staff; International Relations Club; Manager of Girls' Basketball Team; Medical Science Club; Music Appreciation Club; Women's Athletic Association; Best All-Round Senior Girl. "Gracie" finds running the canteen, leading the Euterpeans, and taking part in all campus activities a great and exciting life.

■ ■

### DOROTHY ZELMA FLETCHER

North Wilkesboro, N. C.

Euterpean; Christian Workers' Club; Commercial Club; Glee Club. White cuffs and a typewriter ribbon figure in Dot's future.

■ ■

### EMILY ELIZABETH FORTUNE

Asheville, N. C.

Mnemosynean; Christian Workers' Club; Commercial Club; Home Economics Club, Glee Club; Music Appreciation Club. Emily just will not forget to ring that bell.

### GORDON GRAHAM

*Veteran*

Statesville, N. C.

Clisophic, Critic '44; International Relations Club; "P. K." Club, President '44; Student Council '44. Gordon's two interests, travel and business, are sure to provide him an exciting future.

### JAMES WEAVER GREEN

*Veteran*

Brevard, N. C.

Delphian '42, '47; Dramatics Club '42; "P. K." Club, Vice President '42, President '47; Senior Boy Most Likely to Succeed. Jim's interest in, and understanding of people make him an asset to any community.



# Of 1947

## JAMES R. HAMILTON

Lake Junaluska, N. C.

Delphian; Christian Student Movement Council; Christian Workers' Club; Dramatic Club; Ministerial Club; Music Appreciation Club; Preacher's Kids. Aside from being interested in music, journalism, and the Christian Workers' Club, "Ham" is on the spot when it comes to finding properties for the Dramatics Club or publishing *The Fortnight*.

## MARY FRANCES HART

Charlotte, N. C.

Euterpean; Christian Workers' Club, Secretary-Treasurer '47; Christian Student Movement Council, Vice President '47; International Relations Club. From a room on second floor of West Hall come laughter, screams of joy, and echoing footsteps of Mary and her Cramerton pals.

## MARY LOU HAMILTON

Penrose, N. C.

Mnemosynean; Christian Workers' Club; Clarion Staff, Business Manager '46; Day Students' Club, Secretary '47; Home Economics Club; Medical Science Club; Sigma Pi Alpha. "Rusty" is the girl who "sits on a cushion and sews a fine seam," for she's a Home Ec. major.

## IDA LOREE HARILL

Cliffside, N. C.

Mnemosynean; Choir; Christian Student Movement Council, President; Christian Workers' Club; Music Appreciation Club; Sigma Pi Alpha; Youth Temperance Council; West Hall Council, Vice President '46, Secretary-Treasurer '47. Loree's chief interest is in the religious organizations on the campus.

## SARAH PATRICIA HARRIS

Taylors, S. C.

Euterpean; Music Appreciation Club; South Carolina Club. If the lilies don't grow on West Hall's walks it's because Pat Harris stepped on them.

## ROBERT STAMEY HAUSS

Veteran

Lincolnton, N. C.

Delphian; Baseball '43; Block "B" Club '42, '43; Cheerleader '43, '47; Day Students' Club, President '47; Pertelote Staff, Business Manager '43. It's hard to tell whether Bob is at his best as a business major, a cheerleader, or a jitterbug.

## BETTY EUDORA HELMS

Fort Mill, S. C.

Euterpean; Medical Science Club; South Carolina Club. Put Betty in a Chem. Lab in the midst of test tubes and she's completely happy.

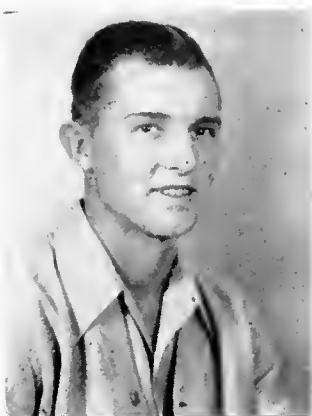
## HARRY EDWARD HEMPHILL

Veteran

Asheville, N. C.

Transfer from N. C. State College; Glee Club. Harry would be very unhappy if he couldn't argue, raise bees, and go to field trials.





## The Seniors

CECIL LEE HENDERSON  
Hendersonville, N. C.

Clisophic; Baseball, Basketball; Block "B" Club; Football. Cecil is our square-dance king; he calls the figures.

RICHARD SHERMAN  
HENDRICKS  
Charlotte, N. C.

Delphian, Secretary '47; Baseball; Best-Looking Senior Boy '47; Football; Medical Science Club; Ross Hall Council, Secretary '47; Student Council '46. Richard is always on the job, with a smile and a hearty "hello" for everyone.

JULIA LAVINA HIGDON  
Franklin, N. C.

Euterpean; International Relations Club; Music Appreciation Club. It seems easy for Julia to make friends.

MARY NELL HIPPI  
Charlotte, N. C.

Mnemosynean, Vice President '47; Basketball; International Relations Club; Preacher's Kids', Secretary Treasurer '46; Taylor Hall Council, Secretary-Treasurer '47; Women's Athletic Association, Freshman Representative '46, Secretary '47. When the basketball goes rolling down the court, we see Mary right in behind it, giving the game all the energy she has.

BETTY JANE HOLDEN  
Pisgah Forest, N. C.

Day Students' Club; Persephone Staff '47. If you hear cackles coming from the Day Students' Room, you know Betty Jane is there.

BETTY JO HOOVER  
Pineville, N. C.

Euterpean; Glee Club; International Relations Club; Medical Science Club. Jo is the only girl in Dean Stevenson's Government class.

CHARLES OLIVER  
JOHNSON  
Veteran

Washington, D. C.

Day Students' Club; Veterans' Club, President '47. Charles, the dynamo of our Vets' Club, intends to be a Congressman some day.

PAUL JOHNSON  
Veteran  
Winston-Salem, N. C.

Clisophic; International Relations Club. Christened "Luther Toxaway" early in his freshman year, Paul has had a double existence. He likes photography, athletics, and advertising.



# Of 1947

## LAWRENCE KING

*Veteran*

Cane River, N. C.

Clisophic '41; Track '41. Lawrence is a college boy, but a farmer at heart.

■ ■

## GARLAND WILLIAM KNIGHTEN

*Veteran*

Candler, N. C.

Student Council, President. Summer '46; Veterans' Club, President '46. Bill is the new bridegroom. He had a merry Christmas by getting married.

■ ■

## SARAH KORNEGAY

Greensboro, N. C.

Euterpean; Best Looking Senior Girl; Brevard College Quartet; Choir; Christian Student Movement Council; Christian Workers' Club; President '47; Glee Club; International Relations Club; Music Appreciation Club; Treasurer '47. Sarah's music ability is exceeded only by her attractive looks and personality.

■ ■

## CLYDE O. LONG

*Veteran*

Spindale, N. C.

Day Students' Club. Clyde's first-hand knowledge of New Mexico makes him an interesting conversationalist.

■ ■

## INA LOUISE LYNCH

Lincolnton, N. C.

Euterpean; Basketball '46, '47; Glee Club; Home Economics Club, President '47; International Relations Club; Medical Science Club; Taylor Hall House Council, Vice President '47; Women's Athletic Association, Vice President '46, Treasurer '47. Louise's chief interest is athletics.

## ELIZABETH McAULAY

Huntersville, N. C.

Mnemosynean, Treasurer '47; Home Economics Club; Medical Science Club, President '47. "Bitty" manages to keep Third Floor Taylor in line, create a little excitement in Chemistry Lab. and maintain sophomore's dignity all at the same time.

## MARGARET ELIZABETH McATEER

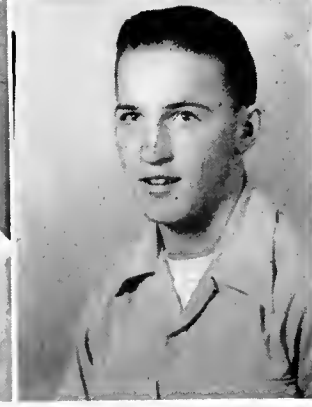
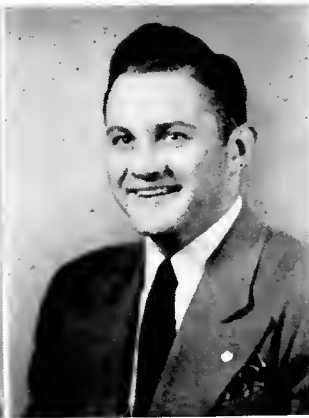
Gastonia, N. C.

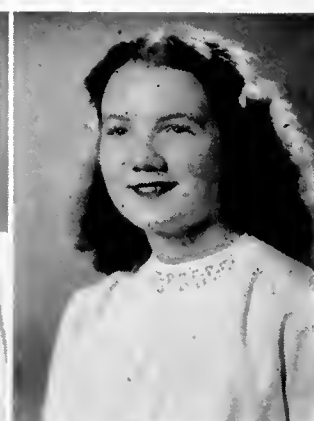
Euterpean; Christian Workers' Club; Commercial Club. "Mac's" major is business and her minor is fun — a popular combination.

## DONALD LEE McCALL

Hendersonville, N. C.

Clisophic; Basketball. Don's chief interest is agriculture.





## The Seniors

### MARY JANE McCALL

Penrose, N. C.

Mnemosynean; Day Students' Club. Mary Jane is the petite mathematics major whose soft voice tries to keep the Day Students' Room quiet.

### GEORGE MARTIN

McDUFFIE

Rockingham, N. C.

Clisophic, Vice President '47; Flight Club; International Relations Club. "Duffie," Mr. Parker's able assistant, keeps the dorm lights burning.

### JOSEPHINE VIOLA

McGAHA

Brevard, N. C.

Mnemosynean; Clarion Staff; Day Students' Club; Home Economics Club, Sigma Pi Alpha; Student Council '47. Although Jo is a Home Economics major, she keeps the French Class on its toes.

### BERTHA MAE McGEE

Winston-Salem, N. C.

Euterpean; Alpha Pi Epsilon, Secretary-Treasurer '46; Christian Workers' Club; Commercial Club, President '47; Glee Club; Most Intellectual Senior Girl; Perpetelote Staff '47. Bert's pleasantness and efficiency will make her invaluable in any office.

■ ■

■ ■

■ ■

### DORALEE IDA McPETERS

Weaverville, N. C.

Euterpean; Christian Workers' Club; International Relations Club; Medical Science Club; Music Appreciation Club. Doralee is the blonde from Weaverville who runs an unofficial dating bureau.

### WALKER M. MILNER

Veteran

Brevard, N. C.

Day Students' Club. Walker is a business major who handles his obligations with dignity and efficiency.

### HERMAN C. MORGAN

Veteran

Biltmore, N. C.

Clisophic; Baseball; Basketball; Block "B" Club; Football, Manager '46; International Relations Club; Best All-Round Senior Boy. "Bull" is to Brevard basketball what Sears is to Roebuck.

### JACK THOMAS MORGAN

Greenville, S. C.

Delphian; Baseball, Manager; Block "B" Club; Clarion Staff, Associate Editor '47; Sports Editor '47; Football; International Relations Club; Medical Science Club; South Carolina Club, Vice President '47; Sports Editor for News Bureau '47; Student Council '47. The efficiency with which Jack manages the business end of the Clarion foretells a successful career in journalism.

# Of 1947

CARY B. MORRIS, JR.

*Veteran*

Clifton Forge, Va.

"Doc" likes horseback riding and swimming; at other activities he's an interested bystander.

MORGAN PHILIP MORRIS

*Veteran*

Tryon, N. C.

Clisophic; Day Students' Club. If you ever need a French translation, contact Philip.

BETTY HILL NORTON

Brevard, N. C.

Euterpean; Day Students' Club; Home Economics Club; Medical Science Club. Betty's quiet efficiency and diligence will make her a valuable nurse.

MARY ASHLEY NORWOOD

Brevard, N. C.

Euterpean; Choir; Day Students' Club; Music Appreciation. Mary's the lass with the delicate touch on the piano.

■ ■

PEGGY PENNINGTON

McBee, S. C.

Euterpean, Vice President '47; Choir; Christian Workers' Club, Vice President '47; Clarion Staff '47; College Quartet '47; Glee Club; International Relations Club; Student Council '47; West Hall House Council, Vice President '47. Peggy is the charming young lady who leads chapel singing for the Christian Workers' Club, trains a choir of young people at the Methodist Church, and seasons her dating with coffee and song.

GEORGE ALLEN PARLEIR

Conover, N. C.

Delphian; Christian Workers' Club; Glee Club; International Relations Club; Ministerial Club, Secretary-Treasurer; Pertelote Staff '46. George is the ministerial student who brings us our mail.

NATHAN L. PARSONS

*Veteran*

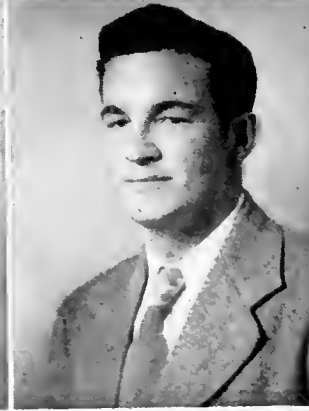
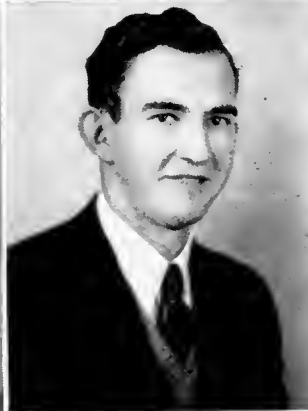
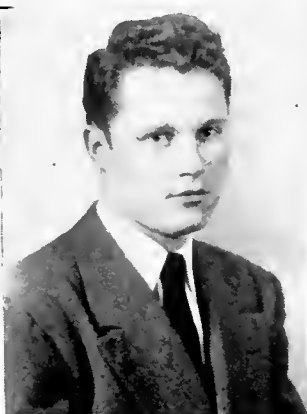
Asheville, N. C.

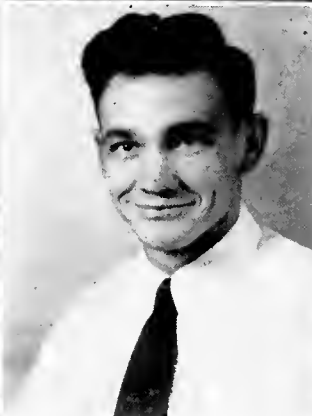
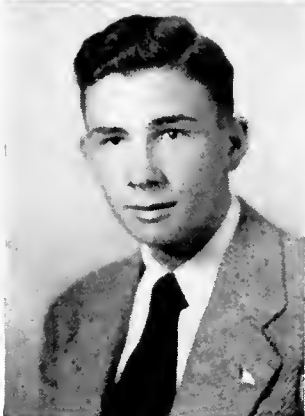
Clisophic; International Relations Club. "Foo" is usually seen between the Vet Units and Taylor Hall, or going to town with Frankie.

RICHARD FERMAN PARKER

*Veteran*

Richard can usually be found studying Spanish in the Chemistry Lab.





## The Seniors

WALTER S. POPLIN

*Veteran*

Norwood, N. C.

Transfer from Pfeiffer Junior College; Basketball; Christian Workers' Club; Football; Harvest Festival King; Most Popular Senior Boy; Senior Class President '47; Student Council '47. That easy grin of Smith Poplin's can win worlds for him.

■ ■

EUGENE GILBERT  
RANDOLPH

*Veteran*

Burnsville, N. C.

Delphian, Vice President '47; Medical Science Club. That innocent air of Randy's doesn't keep him from going places when he sets his cap for a girl.

JAMES B. PRESTWOOD

*Veteran*

Lenoir, N. C.

Clisophic, Secretary '43. James is the lucky veteran who won a bride and a car during Christmas.

■ ■

JAMES O. REED

*Veteran*

Ridgeville, S. C.

Transfer from Clemson College. "Junior" and that Charleston drawl create a stir in the Economics Class.

CLYDE DWIGHT PYATT

Weaverville, N. C.

Clisophic, Chaplain '46, Secretary-Treasurer '47; Christian Workers' Club; International Relations Club; Ministerial Club; Pertelote Staff '46; Phi Theta Kappa, President '47; Preacher's Kids, Vice President '46; Sigma Pi Alpha, Vice President '47; Spanish Club. Dwight is kept so busy between the bookstore and the Christian Workers' Club that he'll probably have a breakdown before he reaches Duke.

■ ■

ALAN T. REESE

*Veteran*

Hendersonville, N. C.

Day Students' Club; Dramatic Club; International Relations Club, President '47; Student Council '47. Alan, the trig genius, smokes his pipe and lets the girls fall where they may.

BONNIE QUAY

Harrisburg, N. C.

Enterpean, Vice President '47; Music Appreciation Club. Bonnie's potentialities have made it hard for her to choose one field; but whatever it is, she'll succeed.

■ ■

ALBERT JESSE RENO, JR.

*Veteran*

Canton, N. C.

Clisophic; Block "B" Club '43; Day Students' Club. A. J.'s chief interest is in paper-making. Canton will be proud of him some day.

ZENA PEARL RICKMAN  
West's Mill, N. C.

Mnemosynean; Day Students' Club; Home Economics Club. Zena Pearl is a town student particularly interested in piano.

FRANKIE GWENDOLYN ROBERTSON

Duncan, S. C.

Euterpean; Clarion Staff; Glee Club; Home Economics Club, Vice President '46; Medical Science Club; South Carolina Club; Taylor Hall Council, President '47. Frankie possesses enthusiasm, ability, and personality-plus.

NELL G. ROBINSON

Easley, S. C.

Transfer from Furman University; Day Students' Club. Nell is interested in business and art.

WILSIE GENEVA ROSS

Waynesville, N. C.

Mnemosynean; Christian Workers' Club; Commercial Club; Glee Club '46; Women's Athletic Association. Geneva is a business major whose work is always neat as her appearance.

SUDIE VANDELIA SHEETS

Fairview, N. C.

Euterpean; Basketball; Dramatic Club, Second Vice President '47; Home Economics Club; International Relations Club; Medical Science Club; Most Popular Senior Girl; Women's Athletic Association, President '47. Sudie is that blonde who is always to be found on a basketball court or before the spotlights.

JAMES DAVID SANDERS

Veteran

Conway, S. C.

Cliosophic '42; Dinosaur '42; South Carolina Club '42; Pipe Smokers' Club '42. Jimmy is a mathematical genius; he can add two and two and get any figure you want.

CHARLES SHANEY

Horse Shoe, N. C.

Baseball; Basketball, Block "B" Club; Football. "Bud," the son of "Struttin' Bud" Shaney, is a first-class athlete. Baseball is his favorite sport.

FRANCES ELEANOR RUNION

Brevard, N. C.

Transfer from Furman University; Day Students' Club. Frances' ambition is to be a lawyer's secretary.





## The Seniors

DORIS EVELYN  
SHELLMAN

Cramerton, N. C.

Euterpean, Marshal '47; Choir; Christian Workers' Club; Phi Theta Kappa, Secretary-Treasurer, '47; Sigma Pi Alpha, President '47. "Sherm," as she is known to her friends, spends most of her time on music, her major.

ARNOLD PINCKNEY  
SHERRILL

*Veteran*

Hickory, N. C.

Delphian; Christian Workers' Club; Ministerial Club, President '47. "Squire" is a future preacher with a flair for art.

EVELYN ELIZABETH  
SILVER

Micaville, N. C.

Euterpean, Treasurer '46; Basketball; Glee Club; Home Economics Club; Medical Science Club, President '47; Women's Athletic Association. Evelyn likes to be a bystander at basketball games, but she is happier when she is in there herself.

ESTHER LUCILLE  
SINIARD

Brevard, N. C.

Euterpean; Day Students' Club; Home Economics Club; Medical Science Club. That Lucille studies her history is proved by her grades.

■ ■

FANNIE CHASTAIN  
SISK

Balsam Grove, N. C.

Euterpean; Christian Student Movement Council; Christian Workers' Club; Commercial Club. Here is an auburn-haired business student who is interested in Red Cross and writing.

HUGH R. SIZEMORE

*Veteran*

Winston-Salem, N. C.

Transfer from College of Wooster, Wooster, Ohio; Delphian. Basketball and the Taylor Hall heartbeat keep "Hitch" on the beam.

GLORIA DAVENPORT  
SMITH

Mt. Holly, N. C.

Euterpean; Choir; Christian Workers' Club; Glee Club; Music Appreciation Club. Here is a rare combination — beauty, brains, and creative talent.

JANE FAIRLEY SMITH

Huntersville, N. C.

Transfer from the Woman's College of the University of North Carolina, Greensboro; Mnemosynean, Treasurer '46, Vice President '47; Home Economics Club, Secretary-Treasurer '47; Medical Science Club, Secretary-Treasurer '46, Treasurer '47. Treasurer of eight campus organizations!



# Of 1947

## HAROLD SPRINKLE

*Veteran*

Asheville, N. C.

Cliosopic, President '47; Baseball; Basketball; Christian Workers' Club. Harold is an enthusiastic member of the basketball team and a southpaw pitcher in baseball.

## DORIS LEE SUTTON

Manchester, N. C.

Mnemosynean; Commercial Club; Glee Club; Women's Athletic Association. Doris likes accounting and that fellow from Fort Bragg.

## HENRY GRADY SWIGGETT, JR.

*Veteran*

Guilford College, N. C.

Cliosopic; Baseball '46. When you see Henry, he is always with a girl — the same girl.

## BETTY ANNA THOMPSON

Saluda, N. C.

Euterpean, Christian Workers' Club, Women's Athletic Association. Library work flies by, for a change when B. A. is at the controls.

■ ■

■ ■

■ ■

■ ■

## LEE EDWARD THOMPSON

*Veteran*

Spear, N. C.

Day Students' Club. Lee has two interests in a basketball game — the score and one of the cheerleaders.

## INA ELAINE TOLAN

Belhaven, N. C.

Mnemosynean, President '47; Commercial Club, Secretary '47. Elaine is dainty, dignified, and studious — a good leader for the Mnemosyneans.

## WILLIAM TRAYWICK

Charlotte, N. C.

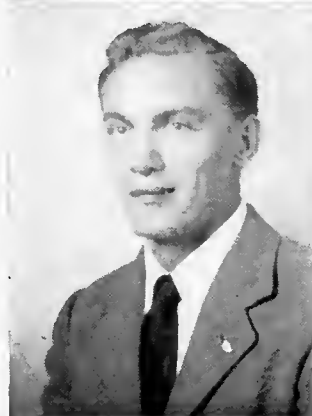
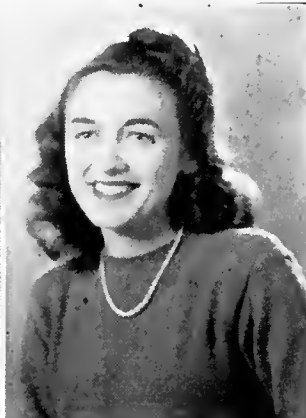
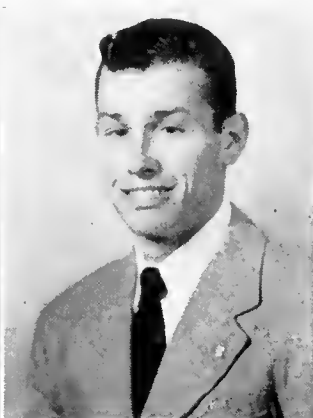
Delphian; Charlotte Club; Medical Science Club. Bill can't decide whether he's more interested in nature or photography.

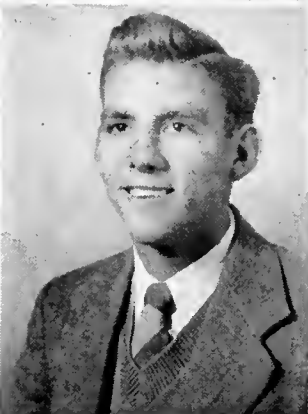
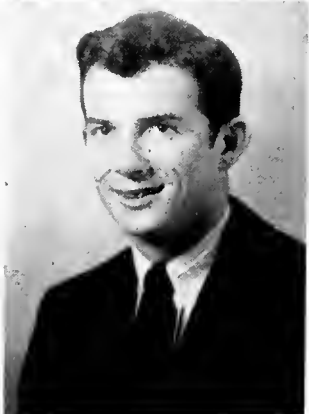
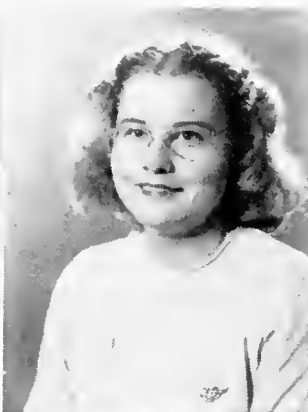
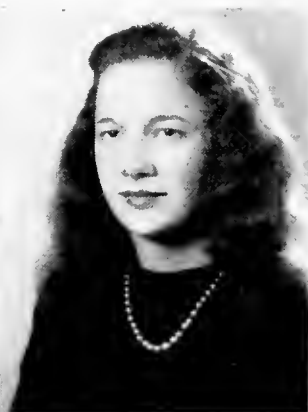
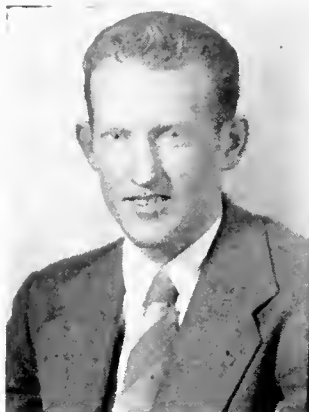
## WILLIAM A. TUCKER

*Veteran*

Clifton Forge, Va.

Cliosopic. Bill, the third musketeer of Wade and Scott, Incorporated, believes there's safety in numbers. Just ask the Taylor Hall girls.





## The Seniors

### HOWARD TWEED

*Veteran*

Biltmore, N. C.

Cliosopic; Basketball; Football. Tweed leads a busy life, between playing basketball and keeping the girls company.

### LYDIA JANE UNDERWOOD

Yadkinville, N. C.

Transfer from the Woman's College of the University of North Carolina, Greensboro; Euterpean; Home Economics Club; Sponsor for Football Team '47; May Queen '46. Lydia's beauty has made her very popular with the opposite sex.

### GEORGIA URQUIHART

Milton, Florida

Mnemosynean, Secretary '47; Florida Club; International Relations Club; Home Economics Club; Medical Science Club, Secretary '47. Georgia is the girl from Florida who takes her fun seriously, especially around initiation time.

### LON DEAN VANCE

Belews Creek, N. C.

Cliosopic, Chaplain '47; Choir; College Quartet '47; Christian Student Movement Council, First Vice President '47; Glee Club; Secretary-Treasurer of Senior Class '47; Senior boy with best personality. Lon's specialty is vocal music, his major, Religious Education.

### MARY FRANCES WATSON

Raleigh, N. C.

Euterpean; Choir '46; Christian Workers' Club; Clarion Staff '46; Dramatic Club, President '47; Glee Club '46; International Relations Club; Medical Science Club; Music Appreciation; Pertelote Staff '47. Along with the click-click of Watson's knitting needles goes a steady stream of French.

### W. L. WADE, JR.

*Veteran*

Clifton Forge, Va.

Delphian. "Whistle" divides his time between Taylor Hall and his jobs on the new buildings.

### DEWEY RICHARD WHITAKER

Horse Shoe, N. C.

Cliosopic; Basketball; Block "B" Club, Treasurer '46; Football; Most Athletic Senior Boy. Here is a versatile sportsman with a talent for chemistry.

### EDNA EARLE WHITLEY

Charlotte, N. C.

Mnemosynean, Secretary '46, President '47; Basketball; Charlotte Club; Glee Club; International Relations Club; Medical Science Club, Secretary '47; Women's Athletic Association, Senior Representative '47. Edna's anticipations include becoming Doctor Whitley.



## JAMES HARVEY WILKIE

Rutherfordton, N. C.

Delphian, Treasurer '47; Christian Workers' Club; Flight Squadron, Executive Officer '47; Pertelote Staff '47. Harvey, organizer of the Flight Club, is the Daniel Boone of the skyways over Brevard.

## BETTIE WILKINSON

Charlotte, N. C.

Mnemosynean, Treasurer '47; Charlotte Club, President '46; Commercial Club; Football Sponsor '47; Harvest Festival Queen '47; Most Popular Freshman Girl '46. Bettie's infectious chuckle has caused many a student to forget what's going on in chapel.

## CLARENCE E. WILLIAMS

*Veteran*

Guilford College, N. C.

Cliosopic. Clarence is "disc jockey" for Unit One. Bet those fellows at State will be glad when he joins them.

## CONRAD SHERWOOD WILSON, JR.

*Veteran*

Charlotte, N. C.

Cliosopic; Choir; Christian Workers' Club; College Quartet; Glee Club; International Relations Club, Pertelote Staff '37. Versatility is the keynote of "Jeff's" personality. He is gifted in music and writing, and even gets along with the women.

■ ■

■ ■

■ ■

■ ■

## WILLIAM DARR WISE

Newberry, S. C.

## WILMER WILSON

*Veteran*

Davidson, N. C.

Spanish Club. "Lum," our mustached Romeo, appears unable to see enough of Miss Crow.

Cliosopic; Chief Marshal at Commencement, February '47; Christian Workers' Club; Pertelote Staff '47; South Carolina Club. Darr is a talented musician, as well as an honor student. With his time and talents he is generous and dependable.

## ALLIE MAE WYLIE

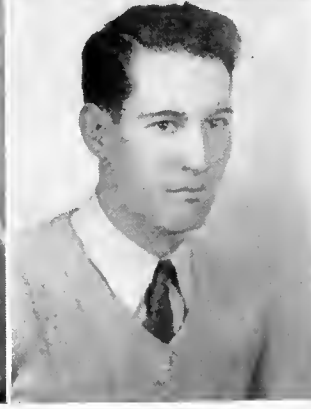
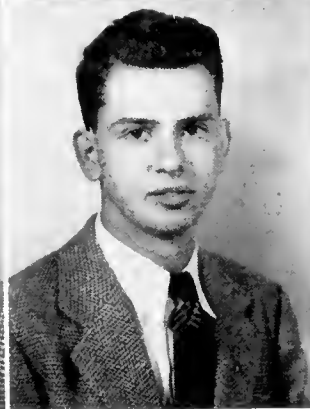
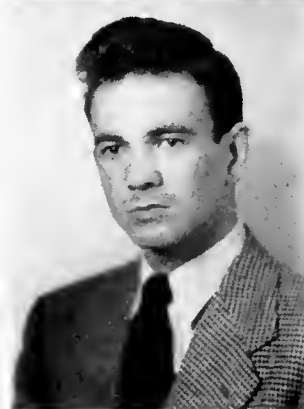
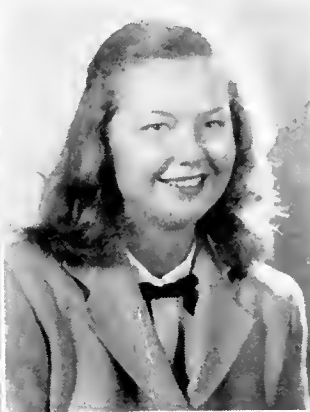
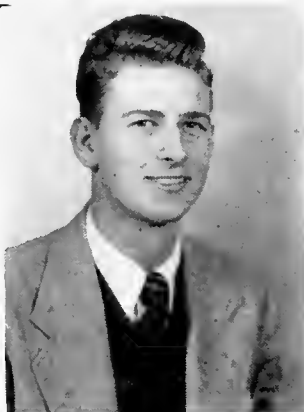
Charlotte, N. C.

Euterpean; Medical Science Club. Allie Mae is one of our prettiest sophomore girls.

## FERRELL ROBERT YOUNG

Fletcher, N. C.

Cliosopic. Ferrell is the business student with the good-humored drawl.





## Post-Graduates

JANE ALLEN  
Biltmore, N. C.

JEWELL BENNETT  
Greer, S. C.

GUY BURCHFIEL  
*Veteran*  
Biltmore, N. C.

BETTY ANN DENNETT  
Canton, N. C.

DOROTHY POOLE  
Brevard, N. C.

ANNIE PUETT  
Dallas, N. C.

ARTHUR SCHREYER  
Fletcher, N. C.

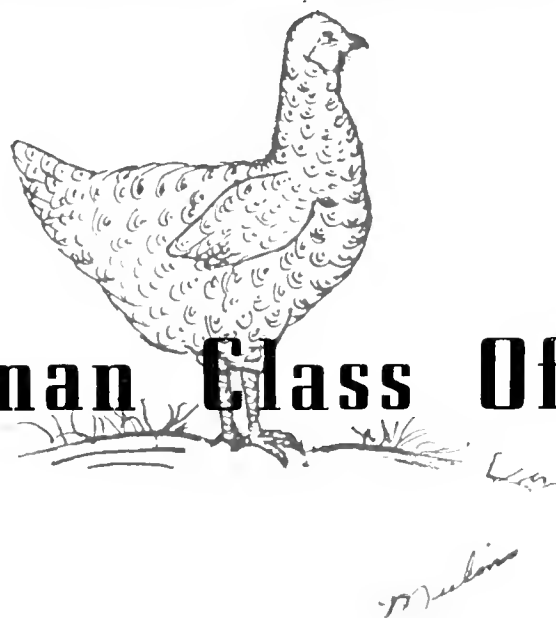
ALVA SENTELL  
*Veteran*  
Pisgah Forest, N. C.

JANE TRANSOU  
Winston-Salem, N. C.

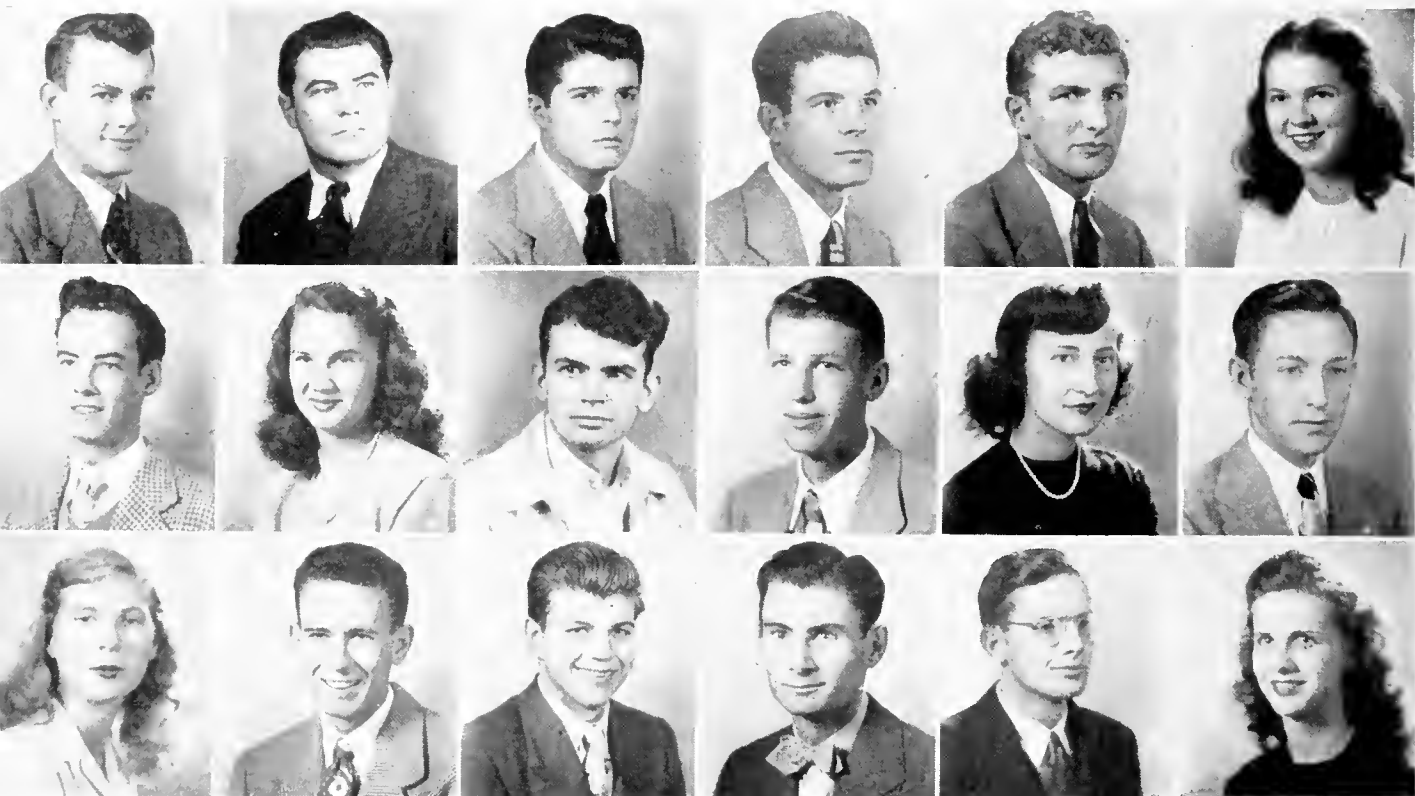
JAMES ROBERT  
WHISNANT  
*Veteran*  
Polkville, N. C.



*President, JOHN BENFIELD; Vice President, SHIRLEY STEELE;  
Secretary, DOTT INGRAM; Treasurer, JOHN MISENHEIMER.*



# Freshman Class Officers



WILLIAM AKERS

*Veteran*  
Glade Spring, Va.

REV. JAMES ALLRED

Balfour, N. C.

KENNETH ARMSTRONG

*Veteran*  
Belmont, N. C.

HENRY C. ASHMORE

*Veteran*  
Charlotte, N. C.

HARRY ASHWORTH

*Veteran*  
Brevard, N. C.

AGNES AUSTIN

Charlotte, N. C.

JACK BAILEY

Greenville, S. C.

ELSIE BANDY

Terrell, N. C.

DAVID BARNES

*Veteran*  
Brevard, N. C.

MILLARD BASON

Greensboro, N. C.

SARAH BASON

Winston-Salem, N. C.

JAMES D. BAYNE

*Veteran*  
Zirconia, N. C.

MARY JANET  
BECKERDITE

Winston-Salem, N. C.

JAMES BELK

*Veteran*  
Monroe, N. C.

OTIS BELK

*Veteran*  
Kannapolis, N. C.

JOHN BENFIELD

*Veteran*  
Mt. Holly, N. C.

DAVID BLACK, JR.

*Veteran*  
Rockingham, N. C.

MAXINE BLACK

Gaffney, S. C.

F r e s h m a n



D. F. BLACKWELL  
*Veteran*  
Charlotte, N. C.

GLORIA BOST  
Charlotte, N. C.

ANN BOSTAIN  
Rocky Mount, N. C.

WILLIAM BOSTIC  
*Veteran*  
Selma, Va.

JAMES L. BOWEN  
*Veteran*  
Asheville, N. C.

LELAH BRAY  
Tampa, Fla.

HARRIET BROWN  
St. Petersburg, Fla.

WILLIAM HEYWARD  
BUCHANAN  
*Veteran*  
Greenville, S. C.

CHARLES BURGESS  
*Veteran*  
Newton, N. C.

BETTY BYRUM  
Pineville, N. C.

CHARLES BYRUM  
*Veteran*  
Pineville, N. C.

ALETHA CAGLE  
Waynesville, N. C.

JAMES CAINES  
*Veteran*  
Clifton Forge, Va.

HAROLD CALDWELL  
*Veteran*  
Mooresville, N. C.

BOONE CAREY, JR.  
*Veteran*  
Miami, Fla.

LEWIS CARROLL  
*Veteran*  
Greensboro, N. C.

HARRY CHANDLER  
*Veteran*  
Greenville, N. C.

LEE CHESTNUTT  
Edenton, N. C.

Class



RALPH CLAYTON

*Veteran*  
Erlanger, N. C.

JOHN CLINE

*Veteran*  
Newton, N. C.

JEAN COLLINS

Umatilla, Fla.

Sara Conder  
Charlotte, N. C.

T. D. CORN, JR.  
*Veteran*  
Hendersonville, N. C.

NINA CRAFT  
Lewisville, N. C.

R. W. DALTON, JR.

*Veteran*  
Winston-Salem, N. C.

ROBERT A. DANIEL

Cowpens, S. C.

MANTEO  
DAUGHTRIDGE  
Rocky Mount, N. C.

RALPH DAVENPORT

*Veteran*  
Durham, N. C.

R. L. DAVIS  
*Veteran*  
Canton, N. C.

W. P. DAVIS  
*Veteran*  
Horse Shoe, N. C.

MAXINE DEAN  
Franklin, N. C.

FRED DELLINGER  
*Veteran*  
Cherryville, N. C.

VANCE DERBY  
*Veteran*  
Charlotte, N. C.

W. H. DIXON  
*Veteran*  
Brevard, N. C.

DONNELL DUDLEY  
*Veteran*  
Plant City, Fla.

HICKS DUNCAN  
*Veteran*  
Biltmore, N. C.

Freshman



FRANK DUNLAP

*Veteran*

Wadesboro, N. C.

WILLIAM B. EDNEY

*Veteran*

East Flat Rock, N. C.

VERLIE V. ELLER

*Veteran*

Robbinsville, N. C.

CHARLES ELLIOTT

*Veteran*

Pisgah Forest, N. C.

JOHN ELLIOTT

*Veteran*

Pisgah Forest, N. C.

WILLIAM C. ELLIS

Abbeville, S. C.

JOHN EVANS

*Veteran*

Burnsville, N. C.

MILDRED FINK

Concord, N. C.

CHARLES FINLEY

Pickens, S. C.

JAMES FITZPATRICK

*Veteran*

Biltmore, N. C.

PATSY FORTENBERY

Charlotte, N. C.

HAZEL FRANKLIN

Waynesville, N. C.

THOMAS FRANKLIN

Raleigh, N. C.

RAY FRYE

*Veteran*

Rutherfordton, N. C.

RUPERT FUNDERBURK

Monroe, N. C.

ROBERT GARRETT

*Veteran*

Greenville, S. C.

TOM GIBSON

*Veteran*

Marion, N. C.

MARY EDDY GOTT

Orlando, Fla.

Class





JAMES GRAINGER

*Veteran*  
Nichols, S. C.

VIRGINIA HALL

Brevard, N. C.

W. B. HALL  
Greensboro, N. C.

HICKS HAMRICK

*Veteran*  
Caroleen, N. C.

MARY LOU HAMRICK

Forest City, N. C.

VERNON HARRIS, JR.

*Veteran*  
Taylors, S. C.

PAUL HEAFNER

*Veteran*  
Gastonia, N. C.

FRANCES HEDDEN

Highlands, N. C.

R. W. HEFFNER

*Veteran*  
Horse Shoe, N. C.

CATHERINE

HENDERSON  
Jacksonville, N. C.

F. M. HENDERSON

*Veteran*  
Elliott, S. C.

LAWSON HENDERSON

Morganton, N. C.

W. K. HENDERSON

Elliott, S. C.

CAROLYN HENDRICK

Gastonia, N. C.

DELPHA ROSE HERRING

Fayetteville, N. C.

RICHARD HOLLADAY

*Veteran*  
Charlotte, N. C.

ARTHUR A. HOLLEMAN

*Veteran*  
Kinston, N. C.

HAROLD C.  
HOLLIFIELD

*Veteran*  
Charlotte, N. C.

# Freshman





EMMY HOWELL  
Concord, N. C.

SELENE HUNT  
Decatur, Georgia

JUNE HUSKEY  
Gaffney, S. C.

DOTT INGRAM  
Atlanta, Ga.

PHILIP JOHNSON  
*Veteran*  
Fayetteville, N. C.

ROLAND SUTTON  
JONES  
*Veteran*  
Walterboro, S. C.

KEITH JURNEY  
*Veteran*  
Statesville, N. C.

LORRAINE KEATTS  
Boynton Beach, Fla.

RUTH KEITH  
Charlotte, N. C.

JEAN KENNICKELL  
Fletcher, N. C.

CRAYTON KERR  
*Veteran*  
Charlotte, N. C.

VIRGINIA KILPATRICK  
Brevard, N. C.

GENE C. KING  
Greenville, S. C.

PATRICIA LACKEY  
Catawba, N. C.

JAMES LANDRETH  
*Veteran*  
Kernersville, N. C.

ALICE LANGSTON  
Orlando, Fla.

MARJORIE LANNING  
Jersey City, N. J.

JOHN LAUGHRIDGE  
*Veteran*  
Asheville, N. C.

Class



BERNICE LEDBETTER  
Asheville, N. C.

AILEEN LEDFORD  
Harrisburg, N. C.

JOHN HARDIN LEE, JR.  
*Veteran*  
Hickory, N. C.

JACK LIVESAY  
*Veteran*  
Clifton Forge, Va.

VIDA LOCKMAN  
Asheville, N. C.

R. J. LOFLIN  
*Veteran*  
Greensboro, N. C.

ED LOFTIS  
Taylors, S. C.

H. L. LOMAX  
*Veteran*  
Guilford College, N. C.

DORIS LONG  
Spindale, N. C.

JOE LYDAY  
*Veteran*  
Hendersonville, N. C.

RUBY McCALL  
Brevard, N. C.

NELL F. McCOMBS  
Jackson, Michigan

MARY ANN McCORMICK  
*Veteran*  
Ellerbe, N. C.

LEROY McCRAW  
*Veteran*  
Chesnee, S. C.

ALVIN McKINNISH  
*Veteran*  
Canton, N. C.

R. E. McNEELY, JR.  
*Veteran*  
Waxhaw, N. C.

A. L. McPETERS  
*Veteran*  
Weaverville, N. C.

H. FURMAN  
MANESS, JR.  
*Veteran*  
Charlotte, N. C.

F r e s h m a n



ALVA E. MARTIN, JR.  
*Veteran*  
Mooreville, N. C.

JACK MARTIN  
*Veteran*  
Williamston, S. C.

MAX MASTERS  
Forbes, N. C.

JOANNE MERCER  
Boynton Beach, Fla.

MERNA MILLER  
Boynton Beach, Fla.

JOHN MISENHEIMER  
*Veteran*  
Brevard, N. C.

ANNIE LAURIE MOORE  
Gastonia, N. C.

MARY K. MORRIS  
Charlotte, N. C.

JOANNE MUSGROVE  
Catawba, N. C.

SYBIL NICHOLS  
Mt. Airy, N. C.

DWIGHT NIFONG  
*Veteran*  
Rutherfordton, N. C.

WANDA NIFONG  
Rutherfordton, N. C.

R. E. NORWOOD  
*Veteran*  
Brevard, N. C.

LOIS OYER  
Boynton Beach, Fla.

W. J. PARRISH  
Savannah, Ga.

ARTHUR PATTEN  
*Veteran*  
Miami, Fla.

HILDA PAYNE  
Kannapolis, N. C.

VERA PEARSON  
Saluda, N. C.



BESSIE PENLAND  
Sealy, N. C.

ROBBIE PENLAND  
Shooting Creek, N. C.

CAROLYN  
PENNINGTON  
McBee, S. C.

EUGENE PERRYMAN  
*Veteran*  
Winston-Salem, N. C.

JOHN PHILPOTT  
*Veteran*  
Walkertown, N. C.

RACHEL POOLE  
Greenville, S. C.

SARAH PUETT  
Dallas, N. C.

ALEXANDER REED  
Brevard, N. C.

ALBERT REID  
*Veteran*  
Brevard, N. C.

JAMES C. RICHARDSON  
Troy, N. C.

MAE RIGDON  
Brevard, N. C.

ANNIE LU ROBBINS  
Charleston, S. C.

CHARLES ROBBINS  
*Veteran*  
Plymouth, N. C.

ELAINE RUSH  
Clyde, N. C.

ELNORA RUSH  
Clyde, N. C.

DOROTHY SANDERS  
Conway, S. C.

B. PRATT SCROGGS  
Jonesville, N. C.

ELIOTT SECREST  
*Veteran*  
East Spencer, N. C.

# Freshman



VINCENT SEVERS

*Veteran*  
Charlotte, N. C.

THOMAS SHEETS

*Veteran*  
Fairview, N. C.

ROLAND SHELLEY

*Veteran*  
Nichols, S. C.

CHARLES R. SHERRILL

*Veteran*  
Robbinsonville, N. C.

ELIZABETH SHERRILL

Lenoir, N. C.

CARL SILVER

*Veteran*  
Micaville, N. C.

JOAN SIMMONS

St. Petersburg, Fla.

EUGENE SMITH

*Veteran*  
Belew Creek, N. C.

GEORGE SMITH

Monroe, N. C.

HERMAN SMITH

*Veteran*  
Conover, N. C.

M. RAY SMITH

*Veteran*  
Rockingham, N. C.

MOLLY SPENDER

Maplewood, N. J.

SHIRLEY STEELE

Durham, N. C.

ALMA STUART

Langley Field, Va.

IONA SZUR

*Veteran*  
Metuchen, N. J.

JOHN SZUR

*Veteran*  
Metuchen, N. J.

EARL D. TALBERT

*Veteran*  
Norwood, N. C.

JACQUELINE  
TATTERSALL

Boynton Beach, Fla.

Class



## Freshman Class

JEAN TEAL  
Elkin, N. C.

LEROY THOMPSON  
*Veteran*  
Greenwood, S. C.

RALPH THOMPSON  
*Veteran*  
Spear, N. C.

JOHN TOLBERT  
Lenoir, N. C.

CLAUDE TYLER  
Greenville, S. C.

PAT WAINWRIGHT  
Tallahassee, Fla.

CHARLES WALLIS  
*Veteran*  
Biltmore, N. C.

WILLIAM SCOTT  
WHITE  
*Veteran*  
Kinston, N. C.

MARGIE WILKINS  
Rocky Mount, N. C.

JIMMY WILKINSON  
Charlotte, N. C.

JOHN C. WILLIAMS  
*Veteran*  
Freemont, N. C.

CHARLENE WILSON  
Greer, S. C.

JAN WILSON  
Bald Creek, N. C.

MARGARET WILSON  
Robbinsville, N. C.

CHARLES WINTERS  
Morganton, N. C.



*A Transylvania Hunter of 'Possums and Coons*  
(James Allred)





*Center of Top Picture: JAMES PRESTWOOD, his wife, and the car he won.  
Bottom: A Newly-Erected Veterans' Unit.*



*President, ANDY SIGMON; Vice President, ROBERT TALLON; Secretary-Treasurer, JEAN HART.*



*M. J. McKinnis*



# Pre-College

LINWOOD M. ADAMS  
Vanceboro, N. C.

JACK BENNETT  
*Veteran*  
Mt. Airy, N. C.

VIRGINIA JO BRUMSEY  
Norfolk, Virginia

ROBERT GUY  
CHRISTOPHER  
*Veteran*  
Greenville, S. C.

AMELIA AMOS  
*Veteran*  
Asheville, N. C.

REV. W. E. BOWIE  
Brevard, N. C.

W. T. BUXTON  
Chesterfield, S. C.

E. G. CRAWFORD  
*Veteran*  
Weaverville, N. C.

CATHERINE ANDREWS  
Charlotte, N. C.

CLARENCE C.  
BRADLEY, JR.  
*Veteran*  
Danville, Va.

GORDON F. CANUP  
*Veteran*  
Brevard, N. C.

BETTY ROSE DAVIS  
Charlotte, N. C.

ANN ASHMORE  
Troy, N. C.

LAWRENCE BROWN  
Brevard, N. C.

LAURA CAROON  
Newsoms, Va.

DOLLY DAVIS  
Cooleemee, N. C.





WILLIAM F. DEAN  
Kernersville, N. C.

GEORGE W. DICKINSON  
Spartanburg, S. C.

RALPH DINSMORE  
*Veteran*  
Asheville, N. C.

PEGGY EDISON  
Asheville, N. C.

VIRGINIA FAUCETTE  
Brown Summit, N. C.

JANE FAUCETTE  
Brown Summit, N. C.

ANNE FERREE  
Winston-Salem, N. C.

MARY ELIZABETH  
FRIDAY  
Dallas, N. C.

CAROLINE  
SCRUGGS GEEK  
Brevard, N. C.

KENNETH GOUGE  
*Veteran*  
Bakersville, N. C.

J. B. GROVERMAN  
*Veteran*  
Georgetown, S. C.

MARTHA HAGER  
Statesville, N. C.

JEAN HART  
Oxford, N. C.

CAROLINE HENDERSON  
Charlotte, N. C.

D. T. HUCKABEE  
*Veteran*  
Chester, S. C.

PETER T. HULTII  
*Veteran*  
Georgetown, S. C.

## Pre-College

# Pre-College

ROBERT D. HUNT  
Oxford, N. C.

E. L. HUTTO  
*Veteran*  
Blackville, S. C.

ALVIN JONES  
Cedar Mountain, N. C.

JAMES GUY JOHNSON  
Kernersville, N. C.

NANCY JONES  
High Point, N. C.

BOBBIE KEITH  
Charlotte, N. C.

PHYLLIS KLINE  
Highlands, N. C.

MRS. JANE CHANDLER  
KNIGHTEN  
Brevard, N. C.

FRED E. KUCHLER  
*Veteran*  
Jacksonville Beach, Fla.

KATHERINE LAMBETH  
Brown Summit, N. C.

CLARA B. LeGRAND  
Mocksville, N. C.

JOE LEONARD  
Catawba, N. C.

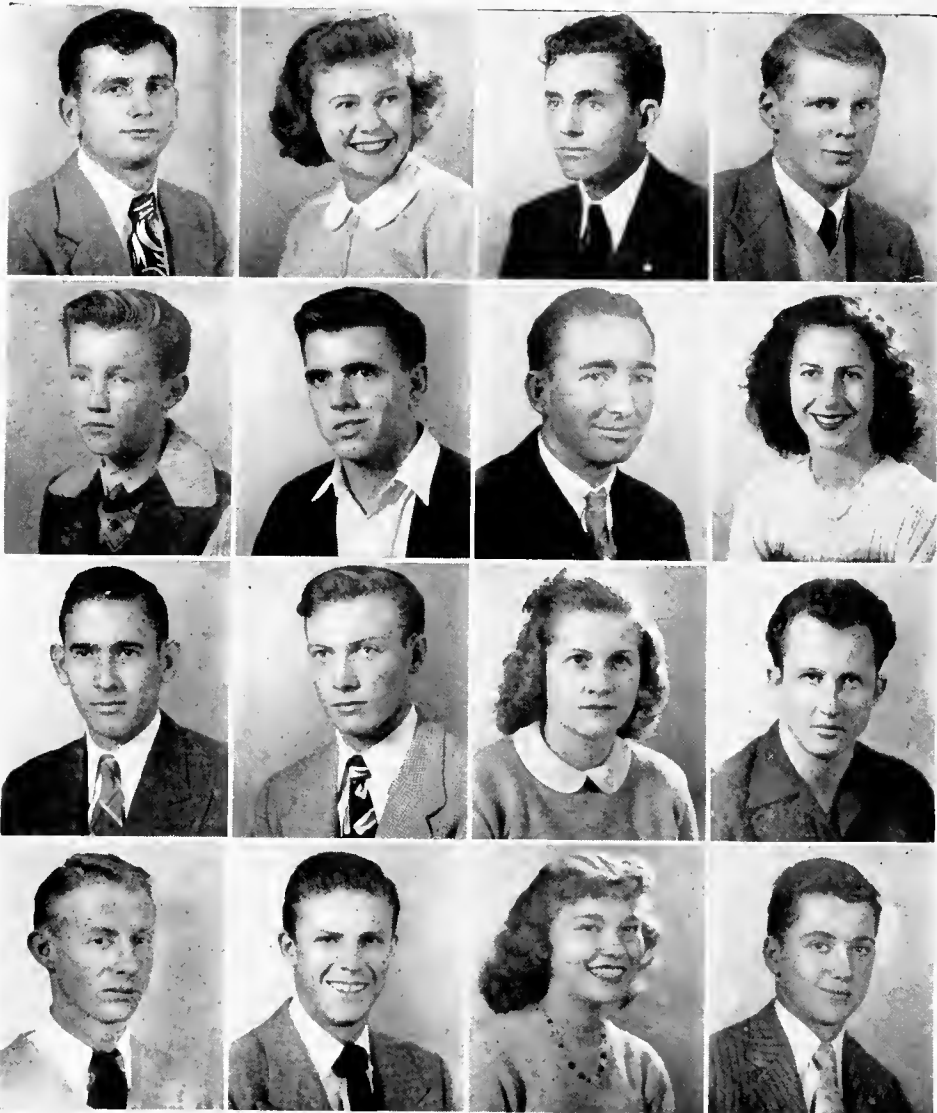
MARIA ADELA LOPEZ  
Oriente, Cuba

J. R. McCLAM  
*Veteran*  
Scranton, S. C.

JANE McENTIRE  
Spindale, N. C.

TOM E. McINVILLE  
*Veteran*  
Darlington, S. C.





GERALD D. MARTIN  
*Veteran*  
Darlington, S. C.

CHARLES  
PICKLESEIMER  
Brevard, N. C.

FABIO RIVAS  
Oriente, Cuba

A. W. SAFRIET  
*Veteran*  
Woodleaf, N. C.

INA MEEKINS  
Hatteras, N. C.

L. C. POOR  
*Veteran*  
Brevard, N. C.

PAUL ROBBINS  
*Veteran*  
Darlington, S. C.

D. H. SCOTT, JR.  
Clifton Forge, Va.

DORAN MODLIN  
*Veteran*  
Thomasville, N. C.

CLIFFORD POWELL  
Rosman, N. C.

MARY F. ROBINSON  
Catawba, N. C.

PAULINE SEWELL  
Cramerton, N. C.

BILLY NABERS  
*Veteran*  
Greenville, S. C.

ALICIA RIVAS  
Oriente, Cuba

THURMAN T.  
ROGERS, JR.  
*Veteran*  
Lake City, S. C.

ANDY SIGMON  
Fletcher, N. C.

## Pre-College

# Pre-College

RALPH SWAN

*Veteran*  
Greenville, S. C.

ROBERT TALLON

Charleston, S. C.

H. B. TARTE, JR.

*Veteran*  
Darlington, S. C.

MIRIAM THOMAS

Myrtle Beach, S. C.

ERNEST H. TRAYNHAM

*Veteran*  
Greenville, S. C.

JOHN TUCKER

*Veteran*  
West Palm Beach, Fla.

WILLIAM UPCHURCH

*Veteran*  
Cherryville, N. C.

H. W. WALKER

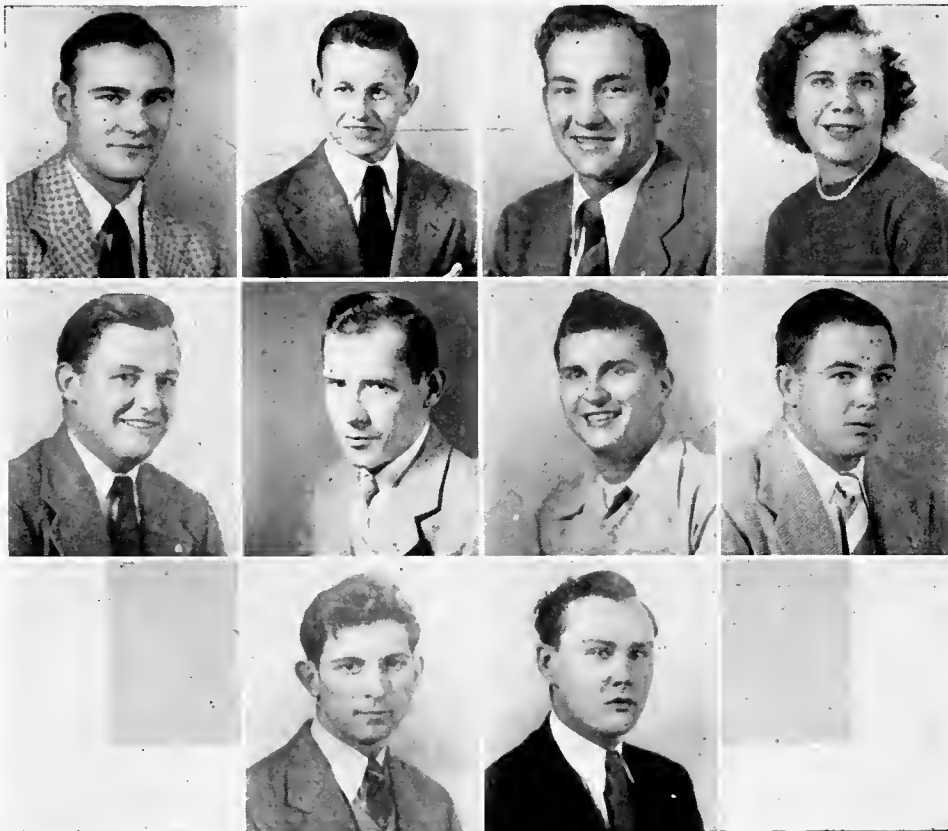
*Veteran*  
Darlington, S. C.

JEAN M. WHITLEY

*Veteran*  
Hampersville, N. C.

SPECIAL STUDENT

EVERETT BOWIE  
Brevard, N. C.

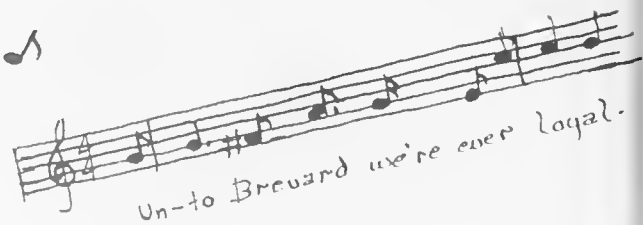


MOUNTAIN VISTA



VETERANS' COFFEE SHOP

# ORGANIZATIONS



*Mukins*

# Choir

JEWELL BENNETT, MARY E. FRIDAY, JAMES HAMILTON, LOREE HARRELL, PHIL JOHNSON, SARAH KORNEGAY, ANN LAURIE MOORE, MARY NORWOOD, PEGGY PENNINGTON, ANNIE LU ROBBINS, DORIS SHELLMAN, GLORIA SMITH, LON D. VANCE, CONRAD WILSON.



PRESENTATION OF THE MESSIAH



*Officers: President, HAROLD SPRINKLE; Vice President, GEORGE McDUFFIE; Secretary-Treasurer, DWIGHT PYATT; Chaplain, LON VANCE.*

*Other Members: Kenneth Armstrong, Charles Barnhardt, Kenneth Beadles, Charles Burgess, Tom Buxton, John Cline, Winfred Ervin, Thomas Franklin, Philip Frazier, Cecil Henderson, Paul Johnson, Andrew Marcus, George Marcus, Jack Martin, Max Masters, Walter Poplin, James Prestwood, Charles Robbins, Henry Swiggett, John Tolbert, Howard Tweed, Dewey Whitaker, John Williams, Darr Wise.*

*Faculty Adviser: Mr. Roy.*

# Literary

## Philosophic Literary Society



## Euterpean Literary Society

*Officers: President, GRACE GORDON; Vice President, PEGGY PENNINGTON; Secretary, DOTT INGRAM; Treasurer, JAN WILSON.*

*Other Members: Catherine Andrews, Lois Andrews, Pat Austin, Elsie Bandy, Jewell Bennett, Emily Bodenheimer, Ann Bostain, Lelah Bray, Jo Brumsey, Aletha Cagle, Laura Caroon, Jean Collins, Nina Craft, Polly Crawford, Betty Ann Dennett, Jane MacEntire, Jane Faucette, Virginia Faucette, Mildred Fink, Dorothy Fletcher, Betty Friday, Pat Fortenbery, Mary Eddy Gott, Martha Hager, Pat Harris, Mary Hart, Frances Hedden, Betty Helms, Catherine Henderson, Betty Jo Hoover, Emmy Howell, Nancy Jones, Sarah Kornegay, Katherine Lambeth, Alice Langston, Bernice Ledbetter, Aileen Ledford, Clara Belle LeGrand, Doris Long, Louise Lynch, Ina Meekins, Margaret McAteer, Bertha Mae McGee, Doralee McPeters, Ann Moore, Mary Katherine Morris, Jo Ann Musgrove, Sybil Nichols, Betty Norton, Vera Pearson, Bessie Penland, Rachel Poole, Sarah Puett, Bonnie Quay, Frankie Robertson, Elaine Rush, Elvora Rush, Polly Sewell, Doris Shellman, Sudie Sheets, Evelyn Silvers, Lucille Siniard, Shirley Steele, Alma Stuart, Jane Transou, Miriam Thomas, Betty Thompson, Mary Frances Watson, Charlene Wilson, Margie Wilkins.*

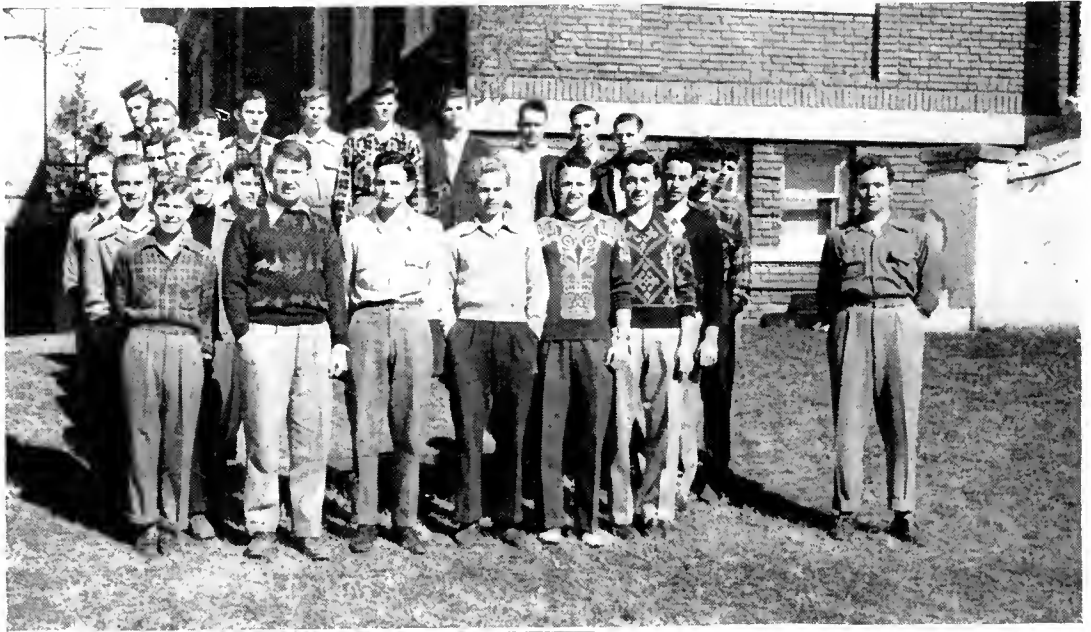
*Faculty Advisers: Miss Griffin and Miss Spiro.*



*Officers: President, MARVIN FEATHERSTON; Vice President, EUGENE RANDOLPH; Secretary, RICHARD HENDRICKS; Treasurer, HARVEY WILKIE.*

*Other Members: Linwood Adams, Gilbert Arthur, Jack Bailey, Millard Bason, David Black, William Blackenship, Lawrence Brown, Heyward Buchanan, Charles Byrum, Calvin Cloninger, Otis Cook, Wilton Cook, G. W. Dickinson, Carl Downey, Hicks Duncan, Edwin Edwards, William Ellis, William Hall, James Hamilton, Edwin Harrill, Richard Holladay, Harold Hollifield, Philip Johnson, Eugene King, Joe Leonard, Edward Loftis, Harold Lomax, Joe McIntosh, Harry Martin, Jack Morgan, George Parleir, Jack Parrish, Eugene Perryman, J. C. Richardson, Clifton Riggins, Alexander Reed, Charles Robbins, Arthur Schreyer, Dueward Scott, Andy Sigmon, Hugh Sizemore, Robert Tallon, Ernest Traynham, William Traywick, Claude Tyler, W. L. Wade, Jr., William White, James Wilkinson, J. W. Woodfin.*

*Faculty Adviser: Mr. Carl H. Trowbridge.*



Delphian  
Literary  
Society



Anemosynean  
Literary  
Society

## Societies

*Officers: President, ELAINE TOLAN; Vice President, MARY HIPPI; Secretary, EDNA WHITLEY; Treasurer, JANE SMITH.*

*Other Members: Agnes Austin, Gloria Bost, Harriet Brown, Betty Byrum, Lee Chestnutt, Jean Childers, Sarah Conder, Elsie Craig, Dolly Davis, Betty Rose Davis, Maxine Dean, Emily Fortune, Hazel Franklin, Jean Hart, Loree Harrill, Caroline Henderson, Delpha Rose Herring, Lorraine Keatts, Bobbie Keith, Jean Kennickell, Mary Jane Knighten, Pat Lackey, Marjorie Lanning, Vida Lockman, Maria Lopez, Elizabeth McAulay, Joanne Mercer, Lois Oyer, Hilda Payne, Robbie Penland, Annie Lu Robbins, Mary Frances Robinson, Alicia Rivas, Joan Simmons, Molly Spender, Doris Sutton, Jackie Tattersall, Jean Teal, Pat Wainwright, Bettie Wilkinson, Margaret Wilson.*

*Faculty Adviser: Miss Lucile Smith.*



## Student Council

GARLAND KNIGHTEN ..... *President*

CHARLES JOHNSON ..... *Vice President*

ELSIE CRAIG ..... *Secretary-Treasurer*

SMITH POPLIN... *Sophomore Class Representative*

JOHN BENFIELD... *Freshman Class Representative*

ANDY SIGMON..... *Pre-College Representative*

JACK MORGAN..... *Ross Hall Representative*

JEWELL BENNETT..... *Taylor Hall Representative*

PEGGY PENNINGTON... *West Hall Representative*

JOSEPHINE MCGAHA... *Day Student Representative*

HARRY ASHWORTH... *Day Student Representative*

ALAN REESE..... *Day Student Representative*

JOHN TUCKER ..... *Day Student Representative*

DEAN STEVENSON..... *Faculty Adviser*

# Christian Student Movement Council

## OFFICERS

LOREE HARRILL.....*President*

LON VANCE.....*First Vice President*

MARY FRANCES HART.....*Second Vice President*

JAN WILSON.....*Secretary-Treasurer*

FANNY SISK.....*World Friendship Chairman*

JAMES HAMILTON.....*Publicity Chairman*

SARAH PUETT.....*Social Chairman*

SARAH KORNEGAY.....  
*President of Christian Workers' Club*

REV. C. EDWARD ROY.....*Faculty Adviser*



# Pertelote Staff



*Editor-in-Chief*.....PAT AUSTIN  
*Associate Editor*.....SHIRLEY STEELE  
*Senior Editor*.....MARY FRANCES WATSON  
*Freshman Editor*.....DOTT INGRAM  
*Pre-College Editor*.....JACK BENNETT  
*Write-Up Editor*.....HARVEY WILKIE  
*Write-Up Editor*.....JANE McENTIRE  
*Editor for Men's Athletics*.....JOHN CLINE  
*Editor for Women's Athletics*.....MARY HIPP

*Organizations Editor*.....DARR WISE  
*Photography Editor*.....JOHN WILLIAMS  
*Typing Editor*.....BERTHA MAE McGEE  
*Typing Editor*.....BETTY JANE HOLDEN  
*Feature Editor*.....DAVID BARNES  
*Business Manager*.....LOIS ANDREWS  
*Assistant Business Manager*.....WINFRED ERVIN  
*Advertising Manager*.....JAMES BAYNE  
*Circulation Manager*.....ARNOLD MCPETERS  
*Faculty Adviser*.....MISS MARJORIE CRAIG

# Clarion Staff



*Editor-in-Chief*..... EMILY BODENHEIMER

*Associate Editors*..CONRAD WILSON, JACK MORGAN

*Make-Up Editors*.....FRANKIE ROBERTSON,  
CLARA BELL LeGRAND

*Feature Editors*.....MARGARET WILSON,  
MARY EDDY GOTT

*Sports Editors*....BETTY DEDMON, JACK MORGAN

*Reporters*..... HAROLD LOMAX,  
J. C. RICHARDSON, JIMMY WILKINSON

*Typists*.....BETTIE WILKINSON, DORIS SUTTON,  
ELAINE TOLAN, SYBIL NICHOLS

*Business Manager*.....MARY LOU HAMILTON

*Business Staff*.....GUY BURCHFIELD,  
PEGGY PENNINGTON

*Circulation Managers*.....POLLY CRAWFORD,  
VANCE DERBY

*Faculty Adviser*..MRS. RUTH WILSON CALDWELL



# Sigma Pi Alpha

*Officers: President, DORIS SHELLMAN; Vice President, DWIGHT PYATT; Secretary, PATRICIA AUSTIN; Treasurer, LOREE HARRILL; Conductor, KATHERINE AUVIL.*  
*Other Members: LOIS ANDREWS, JEWELL BENNETT, MARY LOU HAMILTON, JOSEPHINE MCGAHA.*  
*Faculty Adviser: MISS DULCIE HAYES.*

## *Honor Societies Not Pictured* Phi Theta Kappa

*President, DWIGHT PYATT; Secretary-Treasurer, DORIS SHELLMAN; Faculty Adviser, DR. BURT W. LOOMIS.*

## Alpha Pi Epsilon

*Members: BERTHA MAE MCGEE and MISS MARY CLAIRE GRIFFIN.*



# International Relations Club

*Officers: President, ALLEN REESE; Secretary-Treasurer, POLLY CRAWFORD.*

*Other Members: JACK BENNETT, JEWELL BENNETT, D. F. BLACKWELL, MAXINE DEAN, VANCE DERBY, JUNETTA EDWARDS, WINFRED ERVIN, JIMMY FITZPATRICK, NOAH GLASS, GRACE GORDON, GORDON GRAHAM, LOREE HARRILL, JULIA HIGDON, BETTY JO HOOVER, SARA KORNEGAY, PAUL JOHNSON, JOHNNY LAUGHRIDGE, HAROLD LOMAX, LOUISE LYNCH, GEORGE McDUFFIE, ARNOLD MCPETERS, DORALEE MCPETERS, JACK MORGAN, GEORGE PARLEIR, ROBBIE RUTH PENLAND, PEGGY PENNINGTON, SARA PUETT, SUDIE SHEETS, LON VANCE, JOHN WILLIAMS, CHARLENE WILSON, CONRAD WILSON, JULIA HIGDON.*

*Faculty Adviser: DR. A. L. BRAMLETT.*

# Commercial Club

*Officers: President, BERTHA MAE MCGEE; Vice President, EMMY HOWELL; Secretary, ELAINE TOLAN; Treasurer, NELL MCCOMBS; Chairman of Social Committee, MARGARET MCAITEER.*

*Other Members: EMILY BODENHEIMER, ANN BOSTAIN, LELAH BRAY, CHARLES BURGESS, BETTY BYRUM, ALETHA CAGLE, JOHN CLINE, SARAH CONDER, MILDRED FINK, PAT FORTENBERRY, EMILY FORTUNE, HAZEL FRANKLIN, JAMES GRAINGER, EDWARD HARRILL, MARY HIPP, KEITH JURNEY, JEAN KENNICKELL, ALICE LANGSTON, JACKIE TATTERSALL, BERNICE LEDBETTER, DORIS LONG, RUBY MCCALL, JOE MCINTOSH, SYBIL NICHOLS, RACHEL POOLE, MAE RIGDON, GENEVA ROSS, ELIOT SECREST, ROLAND SHELLEY, RAY SHERRILL, FANNY SISK, ROBERT STEVENSON, ALMA STUART, DORIS SUTTON, JEAN TEAL, BETTY WILKINSON.*

*Faculty Adviser: MISS MARY CLAIRE GRIFFIN.*



*President, ANNIE LU ROBBINS; Vice President, JACK MORGAN; Secretary-Treasurer, MAXINE BLACK.*

*Other Members: ARTHUR AGNEW, JACK BAILEY, JEWELL BENNETT, HARRY CHANDLER, OTIS COOK, WILTON COOK, G. W. DICKINSON, WILLIAM ELLIS, JAMES GRAINGER, JUNE HUSKEY, EDWIN HARRILL, PAT HARRIS, EZRA HUTTO, PETER HULTIH, KEITH HENDERSON, ED LOFTIS, EUGENE KING, JACK MARTIN, J. R. MCCLAM, BILLY NABERS, RACHEL POOLE, ALEX REED, ROLAND SHELLEY, RAY SINCLAIR, RALPH SWAN, ROBERT TALLON, MIRIAM THOMAS, LEROY THOMPSON, CLAUDE TYLER, DARR WISE, JAMES WOODFIN.*

*Faculty Adviser: MISS MARY CLAIRE GRIFFIN.*

# South Carolina Club



# Music Appreciation Club

*Officers: President, PHILIP JOHNSON; Vice President, JANE TRANSOU; Secretary, INA MEEKINS; Treasurer, SARAH KORNIGAY.*

*Other Members: ELSIE CRAIG, DOLLY DAVIS, PEGGY EDISON, EMILY FORTUNE, BETTY FRIDAY, GORDON GRAHAM, WILLIAM HALL, JAMES HAMILTON, LOREF HARRILL, PAT HARRIS, JULIA HIGDON, RUTH KEITH, JANE MACENTIRE, DORALFE MCPETERS, ANN MOORE, MARY KATHERINE MORRIS, MARY NORWOOD, ROBERT NORWOOD, PEGGY PENNINGTON, BONNIE QUAY, LU ROBBINS, MARY FRANCES WATSON, DARR WISE.*

*Faculty Adviser: MISS MARGARET SPIRO.*



AGNIS AUSTIN, JAMES D. BAYNE, JEWELL BENNETT, D. F. BLACKWELL, LAURA CAROON, NINA CRAFT, MAXINE DEAN, BETTY ANN DENNETT, DOROTHY FLETCHER, EMILY FORTUNE, MARY E. FRIDAY, JAMES HAMILTON, JEAN HART, HARRY E. HEMPHILL, BETTY JO HOOVER, JUNE HUSKEY, RUTH KEITH, PHYLLIS KLINE, CLARA LEGRAND, LOUISE LYNCH, BERTHA MAE MCGEE, INA MELKINS, MARY KATHERINE MORRIS, GEORGE PARLEIR, HILDA PAYNE, ARTHUR PERRYMAN, ZENA PEARL RICKMAN, FRANKIE ROBERTSON, GENEVA ROSS, POLLY SEWELL, EVELYN SILVER, GLORIA SMITH, MOLLY SPENDER, DORIS SUTTON, JOHN C. WILLIAMS, CHARLENE WILSON, ALLIE MAE WYLIE.

## Glee Club

# Christian Workers' Club

*Officers: President, SARAH KORNEGAY; Vice President, PEGGY PENNINGTON; Secretary-Treasurer, MARY HART.*

*Other Members: CATHERINE ANDREWS, LOIS ANDREWS, ANN ASHMORE, JEWELL BENNETT, JO BRUNISEY, ALETHA CAGLE, JEAN CHILDERS, MAXINE DEAN, FRED DELLINGER, MILDRED FINK, DOROTHY FLETCHER, EMILY FORTUNE, HAZEL FRANKLIN, THOMAS FRANKLIN, JAMES HAMILTON, LOREE HARRILL, CATHERINE HENDERSON, DELPHIA ROSE HERRING, MARY HIPPI, EMMY HOWELL, DOTT INGRAM, RUTH KEITH, CRAYTON KERR, JAMES LANDRETH, BERNICE LEDBETTER, ANDY MARCUS, GEORGE MARCUS, MARGARET McATEER, BERTHA MAE MCGEE, R. E. MCNEELY, ARNOLD MCPETERS, DORALEE MCPETERS, INA MEEKINS, ANN MOORE, MARY KATHERINE MORRIS, JO ANN MUSGROVE, GEORGE PARLEIR, WALTER POPLIN, SARAH PUETT, DWIGHT PYATT, CHARLES ROBBINS, GENEVA ROSS, POLLY SEWELL, DORIS SHELLMAN, ARNOLD SHERRILL, ELIZABETH SHERRILL, FANNY SISK, GLORIA SMITH, HAROLD SPRINKLE, SHIRLEY STEELE, ALMA STUART, LON VANCE, WILLIAM WHITE, EDNA WHITLEY, HARVEY WILKIE, JOHN C. WILLIAMS, CHARLENE WILSON, CONRAD WILSON, JAN WILSON, DARR WISE.*

*Faculty Adviser: REV. C. EDWARD ROY.*



*President, ARNOLD SHERRILL; Vice President, PAUL HEAFNER; Secretary-Treasurer, GEORGE PARLEIR.*

*Other Members: THOMAS FRANKLIN, NOAH GLASS, JAMES HAMILTON, DWIGHT PYATT, LON VANCE.*

*Faculty Adviser: REV. C. EDWARD ROY.*

# Ministerial Club

# Home Economics Club

*Officers: President, LOUISE LYNCH; Vice President, CATHERINE HENDERSON; Secretary-Treasurer, JANE SMITH; Reporter, FRANKIE ROBERTSON.*

*Other Members: JEAN CHILDERS, MAXINE DEAN, EMILY FORTUNE, MARTHA HAGER, MARY LOU HAMILTON, DOTT INGRAM, BOBBIT KEITH, MARGARET McATEER, ELIZABETH McAULAY, JOSEPHINE MCGAHIA, WANDA NIFONG, ROBBIE PENLAND, MARY FRANCES ROBINSON, MOLLIE SPENDER, IONA SZUR, GEORGIA URQUIHART.*

*Faculty Adviser: MISS MABEL HENDRIX.*



*Officers: Flight Commander, ALVA SENTELL; Executive Officer, HARVEY WILKIE; Flight Officer, JOHN TOLBERT; Logs and Records Officer, LAWRENCE BROWN.*

*Other Members: LINWOOD ADAMS, C. H. BARNHARDT, JAMES BAYNE, KENNETH BEADLES, GEORGE DICKINSON, JAMES FITZPATRICK, WILLIAM HALL, VERNON HARRIS, FRANK HENDERSON, KEITH HENDERSON, KEITH JURNEX, FRANKLIN KERBER, JOE LEONARD, J. R. McCLAMM, GEORGE McDUFFIE, ARNOLD McPETERS, EUGENE RANDOLPH, ROLAND SHILLY, RALPH SWAN, CHARLES WALLIS.*

*Faculty Adviser: ARTHUR SCHREYER.*

# Flight Squadron

# Dramatic Club

*Officers: President, MARY FRANCES WATSON; First Vice President, DOTT INGRAM; Second Vice President, SUDIE SHEETS; Secretary-Treasurer, JAMES WILKINSON; Publicity Chairman, LORRAINE KEATT; Wardrobe Mistress, CAROLINE HENDERSON; Chairman of Play Selection Committee, SHIRLEY STEELE.*

*Other Members: JAMES BAYNE, HARRIET BROWN, ELSIE CRAIG, MILDRED FINK, JAMES FITZPATRICK, THOMAS GIBSON, FRANK HENDERSON, KEITH HENDERSON, EMMY HOWELL, VIDA LOCKMAN, POLLY SEWELL, JOAN SIMMONS, JOHN TUCKER, PAT WAINWRIGHT.*

*Faculty Adviser: Miss LUCILE SMITH.*



*Officers: President, ELIZABETH McAULAY; Vice President, EVELYN SILVER; Secretary, EDNA WHITLEY; Treasurer, JANE SMITH; Reporter, JACK MORGAN.*

*Other Members: WALTER ASHWORTH, LAURA CAROON, MARVIN FEATHERSTON, GRACE GORDON, RICHARD HENDRICKS, BETTY JO HOOVER, JAMES LANDRETH, LOUISE LYNCH, ARNOLD MCPETERS, DORALEE MCPETERS, MAX MASTERS, BETTY NORTON, ANNIE LU ROBBINS, FRANKIE ROBERTSON, ARTHUR, SCHREYER, VINCENT SEVERS, SUDIE SHEETS, LUCILLE SINIARD, MARY FRANCES WATSON, ALLIE MAE WYLIE.*

*Faculty Adviser: Mr. CARL H. TROWBRIDGE.*

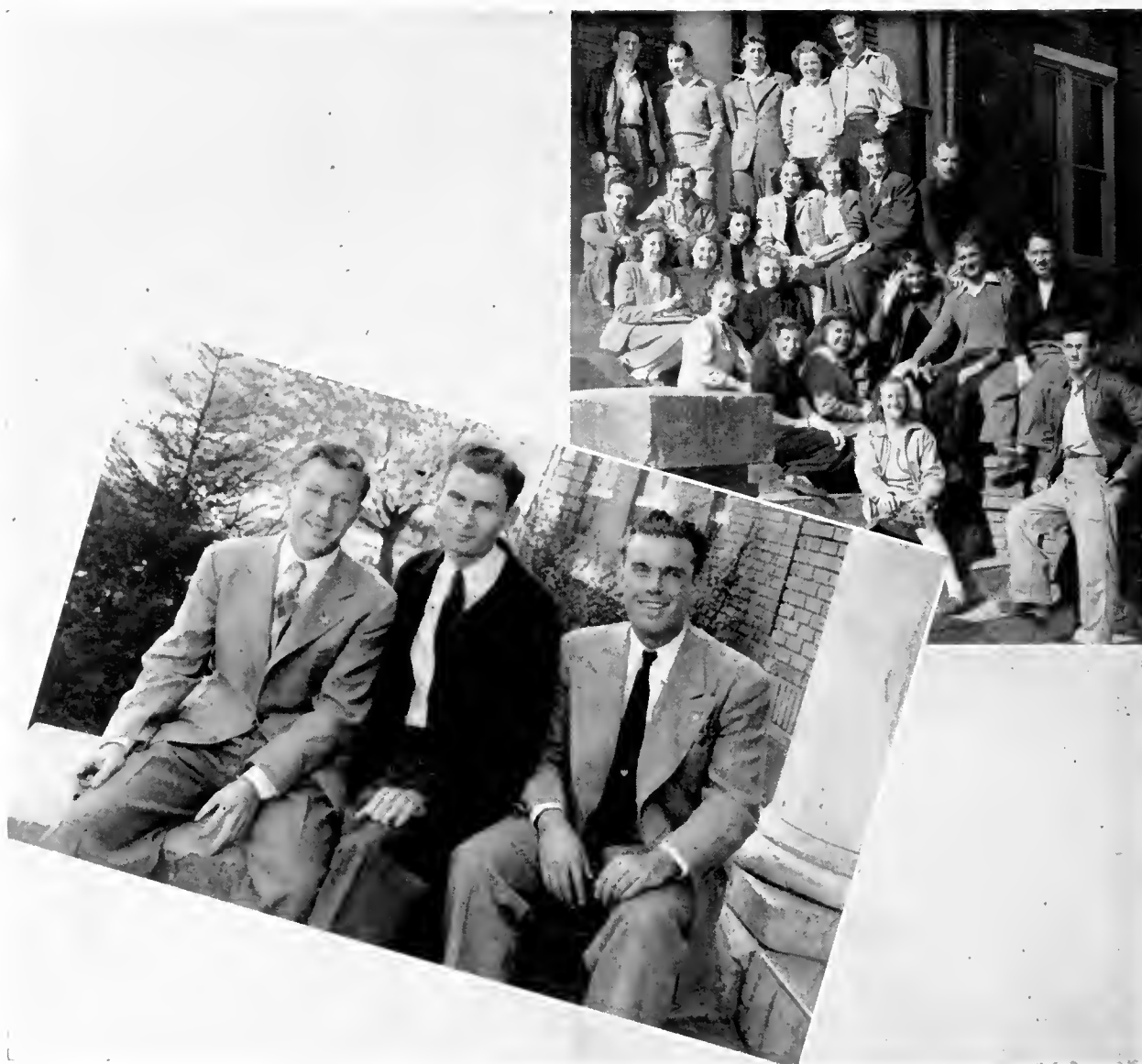
# Medical Science Club

# Day Students' Club

*Officers: President, ROBERT HAUSS; Vice President, W.H. DIXON; Secretary-Treasurer, MARY LOU HAMILTON.*

*Other Members: SIERRILL ALLISON, PAT AUSTIN, KATHERINE AUUIL, JAMES BAYNE, L. A. COMAN, T. D. CORN, ELSIE CRAIG, R. L. DAVIS, VIRGINIA EDMUNDSON, TOM G BSON, BETTY JANE HOLDEN, PERRY HOLDEN, MARY JANE MCCALL, JOSEPHINE MCGALLA, FURMAN MANESS, JR., JOHNNY MISENHEIMER, PHILIP MORRIS, BETTY NORTON, MARY NORWOD, ROBERT NORWOOD, A. T. REESE, NELI ROBINSON, LUCILLE SINIARD, HERMAN SMITH, LEE THOMPSON, JOHN TUCKER.*

*Faculty Adviser: MR. RAY SWINK.*



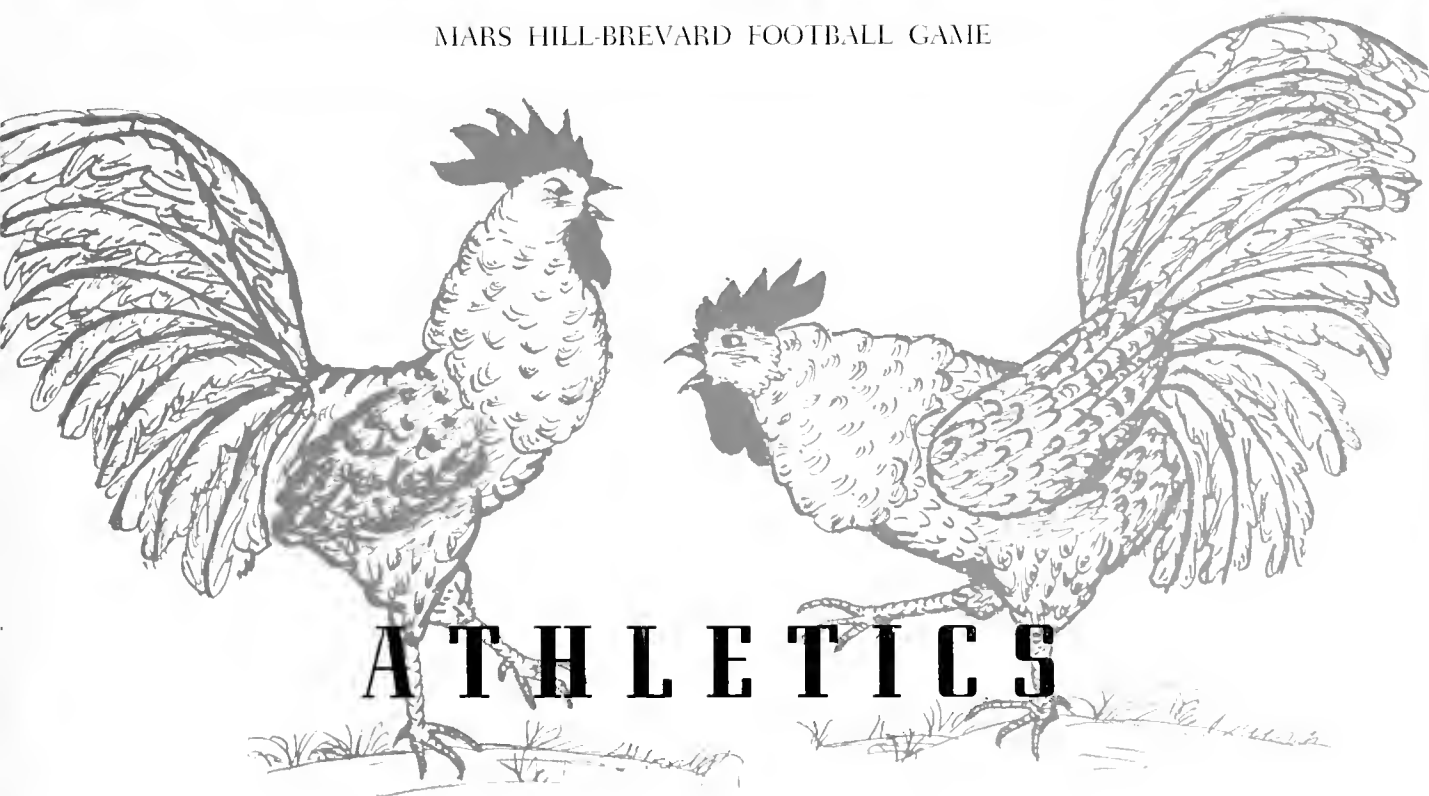
*President, CHARLES JOHNSON; Vice President, JOHN BENFIELD; Secretary-Treasurer, PHILIP FRAZIER.*

# Veterans' Club Officers





MARS HILL-BREVARD FOOTBALL GAME



## Cheerleaders



JANE TRANSOU, *Head*; CAROLYN HENDERSON, DORIS LONG, ROBERT HAUSS, G. W. DICKINSON; JOHN TUCKER and BETTY BYRUM, *Substitutes*.

## The Season In Retrospect

Hopes were high this year for the best team ever to represent Brevard College. An aggregation of seventy men turned out with thoughts of making the team, but Coach Bob Andrews soon narrowed the hopefuls down to a playing squad of forty. After four weeks of practice using the newly popularized T-formation, the team was ready to open the first game of the toughest schedule the Tornadoes had ever faced.

In the opening campaign the Tornadoes lost to Eastern Tennessee State 31-12. The game was far from a walk-away, and despite the initial upset the Tornadoes still looked forward to a good season.

In the second game Brevard lost to Edwards Military Institute 7-0. The Tornadoes made more first downs, more yards rushing; but bad breaks and several injuries were too much for them.

Brevard's worst defeat of the season came at the hands of Campbell College in the first home game. The Tornadoes held the Conference winners scoreless for three quarters, but two fumbles set up touchdowns for Campbell. The game ended 26-0.

Playing in rain and mud ankle-deep, the Tornadoes defeated a helpless Lees-McRae eleven 6-0. It was Brevard all the way, and the opponents never had a scoring opportunity.

In the following contest the Tornadoes traveled to Hiwassee and lost a heartbreaker, the winners scoring both touchdowns on long passes.

On Homecoming Day, Coach Andrews' Tornadoes lost to a smooth-clicking Tennessee-Wesleyan eleven 13-0. Brevard out-fought and out-played the visitors and did everything but out-score them.

Before the largest crowd of a home game the Tornadoes drubbed Gardner-Webb 35-0. The entire squad of forty men were used in the game.

The next week Brevard lost to Georgia Military Institute 21-6.

Undaunted by their defeat of the week before, the Tornadoes turned back the highly-favored Tusculum eleven 26-7.

In the last game of the year and before the largest crowd of the season, the Tornadoes fought brilliantly and outplayed the Mars Hill Lions in three quarters, but lost 13-0.



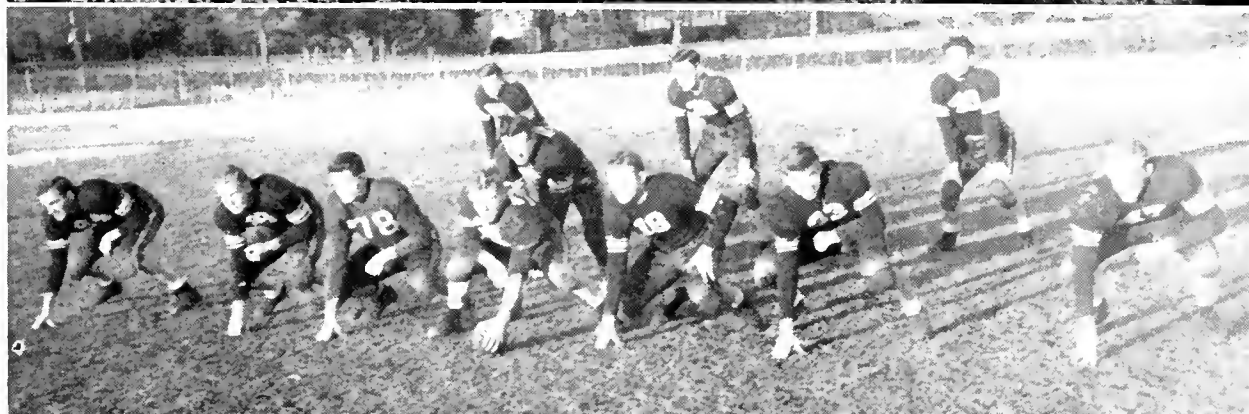
# Football Teams

## COACH ANDREWS AND "CHIP"

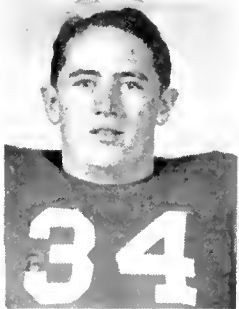
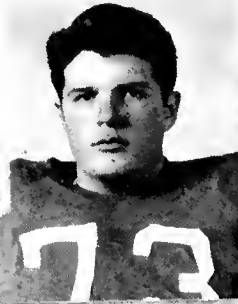
*Top:* Left End, Caines; Left Tackle, Walker; Left Guard, Cline; Center, Thompson; Right Guard, Duncan; Right Tackle, Traynham; Right End, Poplin; Quarterback, Riggins; Left Halfback, Whitaker; Right Halfback, Winchester; Fullback, Ashworth.

*Middle:* Left End, Tweed; Left Tackle, Belk; Left Guard, Burgess; Center, Martin; Right Guard, Armstrong; Right Tackle, Groverman; Right End, Burchfiel; Quarterback, Misenheimer; Left Halfback, Blakenship; Right Halfback, Agnew; Fullback, Davenport.

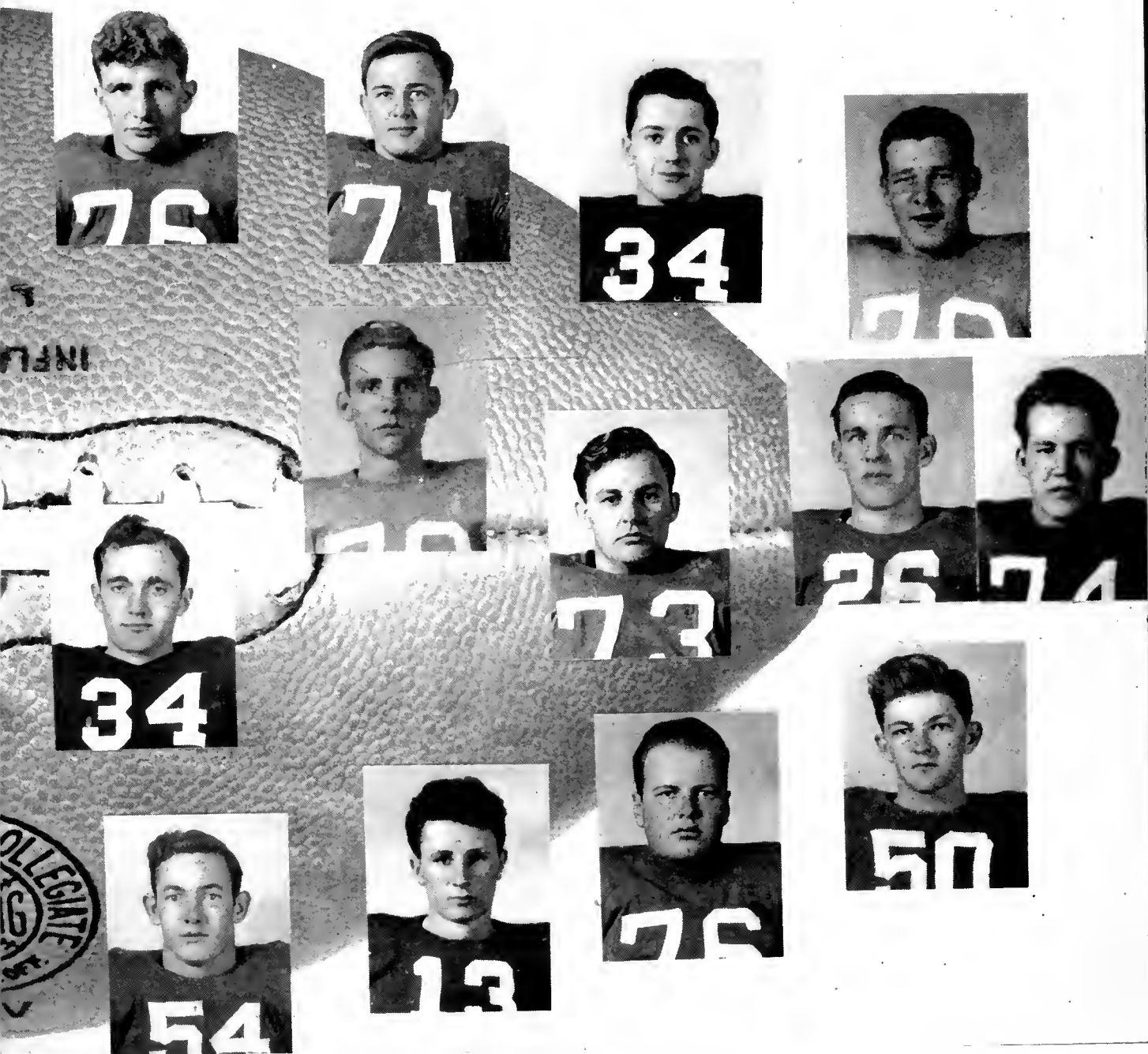
*Bottom:* Left End, Tweed; Left Tackle, Walker; Left Guard, Cline; Center, Sigmon; Right Guard, Duncan; Right Tackle, Groverman; Right End, Chandler; Quarterback, Buchanan; Left Halfback, Blankenship; Right Halfback, Misenheimer; Fullback, Sorrels.



# THE 1947



# TORNADOES



## 1946 FOOTBALL SCHEDULE

Sept. 21	Brevard — East Tenn. State	Oct. 26	Brevard — Tennessee Wesleyan
Sept. 28	Brevard — Edwards Mil. Institute	Nov. 1	Brevard — Gardner-Webb
Oct. 8	Brevard — Campbell College	Nov. 8	Brevard — Georgia Mil. Institute
Oct. 12	Brevard — Lees-McRae	Nov. 16	Brevard — Tusculum
Oct. 18	Brevard — Hiwassee	Nov. 23	Brevard — Mars Hill



*First row:* Cecil Henderson, Harold Lomax, Harold Sprinkle, Andrew Marcus, Clifton Riggins.

*Second row:* Robert Hord, James Caines, Dewey Whitaker, George Marcus, Guy Burchfield, Andy Sigmon.

*Third row (standing):* Coach Robert Andrews, Herman Morgan, Hugh Sizemore, Walter Poplin, Howard Tweed, Charles Byrum.

## The Basketball Season

With the largest turnout in Brevard College history, Coach Andrews set out to make this the best team ever to represent the school. As *The Pertelote* goes to press, the record of the Tornadoes speaks for itself. The Tornadoes are leading the Conference, with nine wins against two losses.

### BREVARD COLLEGE

#### 1946-1947 Basketball Schedule

Dec. 12	Ecusta at Brevard	Jan. 28	Lees-McRae at Brevard
Dec. 14	Enka at Brevard	Jan. 30	Wingate at Brevard
Dec. 17	U. N. C. Ext. at Brevard	Feb. 1	Mars Hill at Brevard
Jan. 7	Davidson "B" at Davidson	Feb. 7	Gar.-Webb at Boiling Sprgs.
Jan. 10	Ecusta at Brevard	Feb. 8	Davidson "B" at Brevard
Jan. 11	Beckley at Brevard	Feb. 11	Wingate at Wingate
Jan. 14	Open	Feb. 15	Open
Jan. 18	Pfeiffer at Brevard	Feb. 18	Spartanburg at Brevard
Jan. 20	W. C. T. C. at Brevard	Feb. 19	Mars Hill at Mars Hill
Jan. 21	Spartanburg at Spartanburg	Feb. 20	Lees-McRae at Banner Elk
Jan. 24	Enka at Enka	Feb. 22	Open
Jan. 25	Gardner-Webb at Brevard	Mar. 1	Pheiffer at Misenheimer





*Left to right: Poplin — Forward, Sizemore — Guard, Byrum — Guard, Coach Andrews, Morgan — Guard, Marcus — Forward, Tweed — Center*

## Basketball Teams

*Left to right: Sprinkle — Forward, Marcus — Forward, Riggins — Guard, Whitaker — Center, Marcus — Guard, Burchfiel — Guard — not pictured.*



# WOMEN'S ATHLETICS

The women's athletic program got off to a flying start with the tennis match at Girls' Play Day. It was held at Meredith College in Raleigh, November 19. "Pecky" Bodenheimer and Joan Simmons represented Brevard College and held their own until the semi-finals when they met Duke University.

The DiMaggio (or was it Casey) came out in all the girls about the time softball was taken up in the Physical Education class. After taking calisthenics, it was a hard struggle to reach Third Floor, or even Second.

At the beginning of the basketball season the outlook was anything but promising. The season opened December 7 with a game against the Bomberettes in Asheville. The other games scheduled were Enka, Ecusta, Lee-McRae, Wingate, and Pfeiffer.

Softball was organized at the beginning of the spring semester.

Girls' athletics on the campus help keep the spirit of sportsmanship alive.



*Center left: MRS. RUTH CALDWELL, Coach and Director of Women's Athletics  
Center right: GRACE GORDON, Manager; DOTT INGRAM, Timekeeper.  
Bottom: WOMEN'S ATHLETIC ASSOCIATION BOARD.*





*Top:* Women's Basketball Team, 1946-1947.

*First row:* Polly Crawford, Mildred Finck, Betty Byrum, Dolly Davis, Doris Long, Louise Lynch.

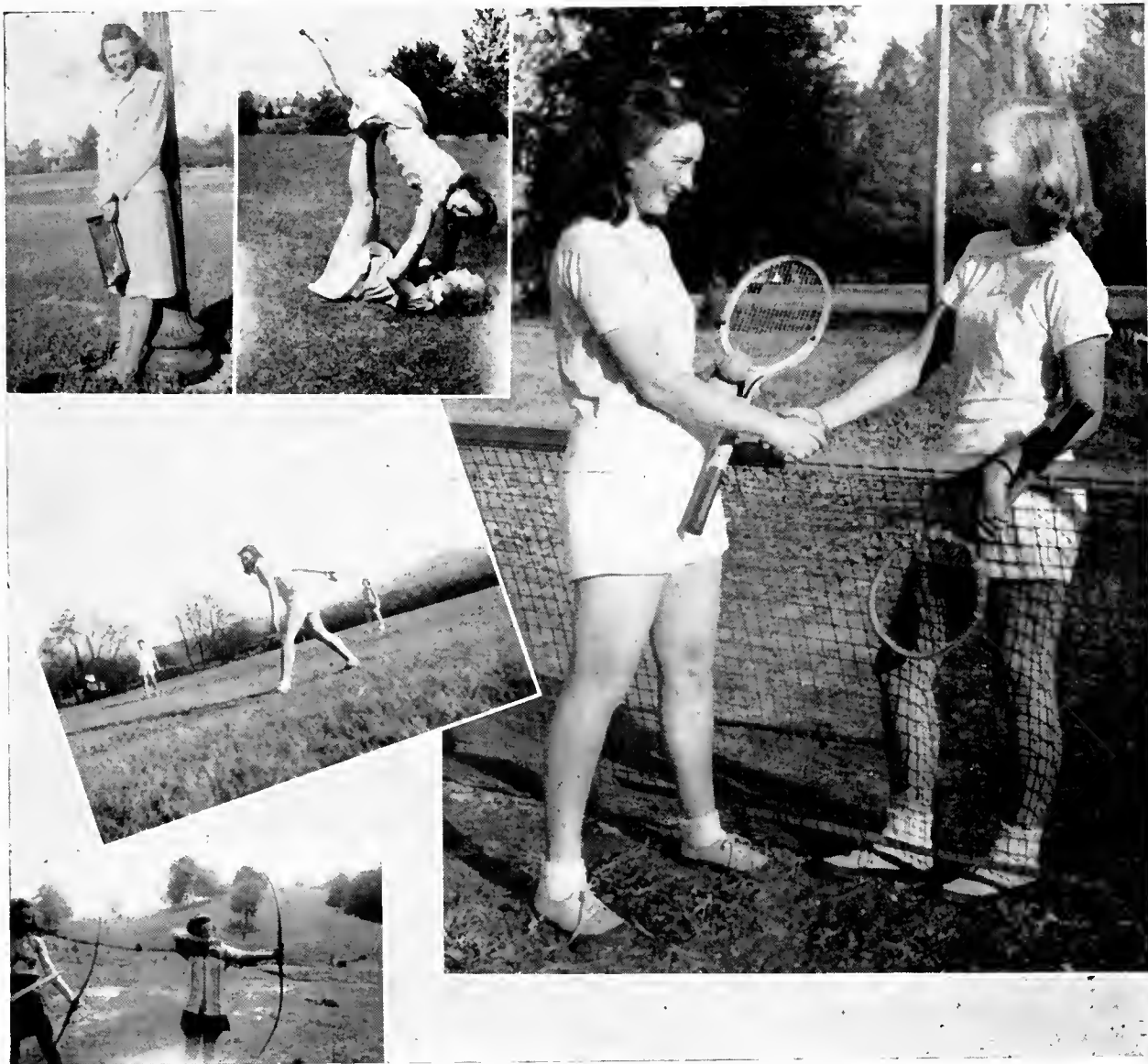
*Second row:* Mary Hipp, Vera Pearson, Emily Bodenheimer, Mrs. Ruth Caldwell, Evelyn Silver, Sudie Sheets, Edna Whitley.

*Bottom:* Brevard vs. Ecusta.





GAME WITH ECUSTA  
BOWLING  
"FOUR OF A KIND"



*Top left: MRS. ROBERT ANDREWS, Women's Athletics in Summer Session.  
Calisthenics.*

*Left center: Softball.*

*Right: Tennis: Emily Bodenheimer and Joan Simmons.*

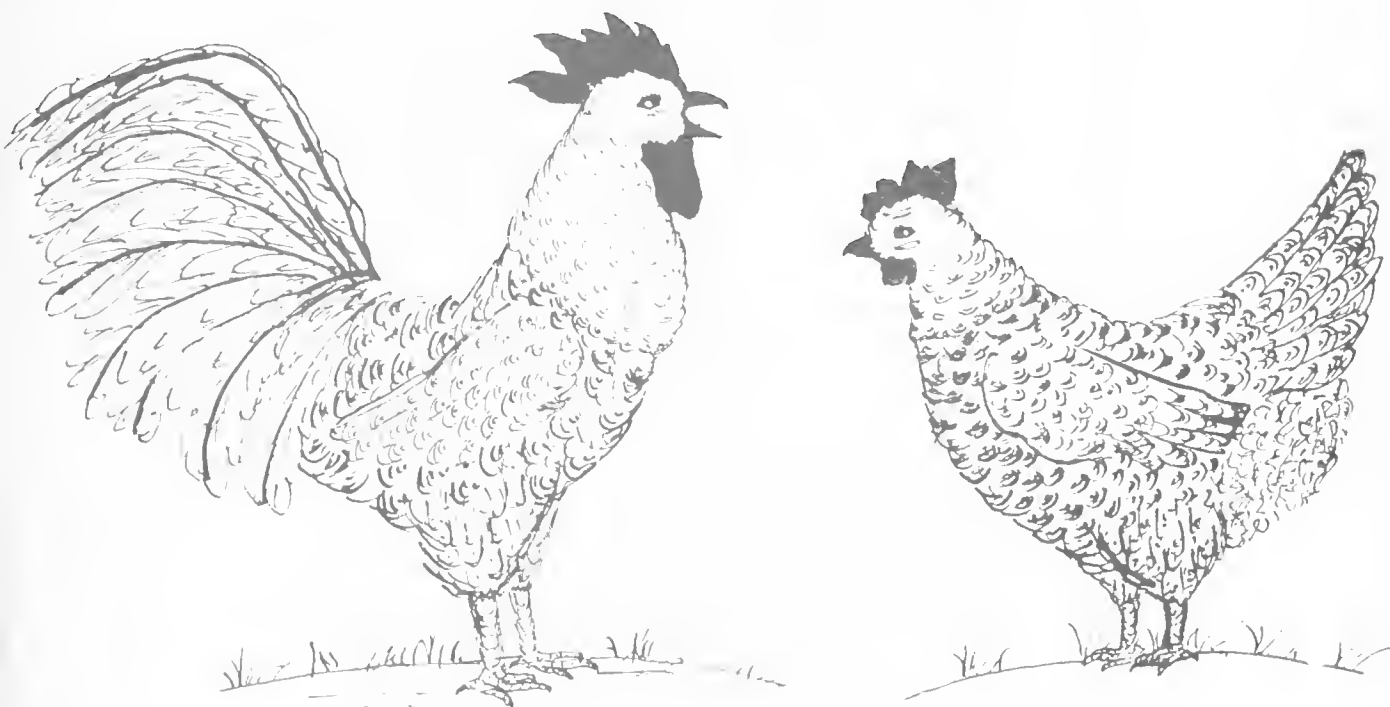
*Bottom left: Archery.*



LENA THE HYENA

*(Made for Sadie Hawkins Day by Mrs. Bramlett and Philip Frazier)*

*"For When I See The  
Beauty Of Your Face . . . ."*



*making*

**FEATURES**

# May Day



MAY QUEEN AND KING, SPRING 1946: LYDIA UNDERWOOD  
AND GUY BIRCHFIELD



MAY COURT  
FOLK DANCE







VETERANS' DANCE IN THE BARN, SADIE HAWKINS DAY.

WALTER POPLIN, KING OF HARVEST FESTIVAL 1946; BETTY  
WILKINSON, QUEEN.





SCENE FROM SADIE HAWKINS DAY: JUNE HUSKEY AND JIMMY WILKINSON, FRANKLIN KERBER AND MARY KATHERINE MORRIS.

CAKE-CUTTING AT THE WEST HALL RECEPTION FOLLOWING THE MARRIAGE OF MISS RUTH WILSON TO MR. HAROLD CALDWELL.



PHILIP FRAZIER, BANDLEADER; MARS HILL-BREVARD FOOTBALL  
GAME.  
COLLEGE BAND  
SPECTATORS



*Top left: A New Clarion.*  
*Center Right: Dwight Pyatt.*  
*Center Left: "The Doctor Has a Daughter," the Dramatic Club Play.*  
*Bottom left: Charlotte Club.*

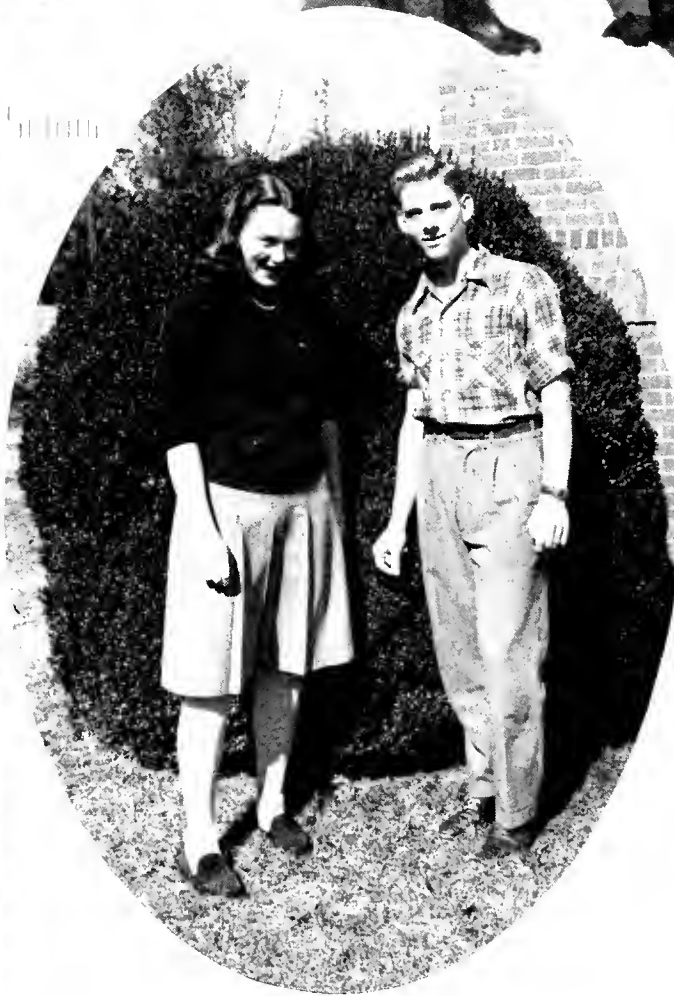
*BEST ALL ROUND*  
 GRACE GORDON HERMAN MORGAN



*MOST LIKELY TO SUCCEED*  
 KATHERINE ACVIL JIM GREENE



*BEST LOOKING*  
 SARAH KORNICAY RICHARD HENDRICKS



*MOST ATHLETIC*  
 EMILY BODENHEIMER DWYAN WHITAKER



*MOST ORIGINAL*  
PAI APSTEIN MARVIN FEATHERSTON



*MOST INTELLECTUAL*  
BETHA MAE MCGEE WINIFRED EBBIN



## Superlatives



*BEST PERSONALITY*  
BETHE WILKINSON LON VANCE



*MOST POPULAR*  
SUEDE SHEETS WALTER POPPIN



*Summer 1946*

Compliments of

**J. A. JONES CONSTRUCTION CO.**

Charlotte, N. C.

**DISTRICT OFFICES:**

BRUNSWICK, GEORGIA      PANAMA CITY, FLORIDA  
NEW YORK, NEW YORK  
KNOXVILLE, TENNESSEE

An outstanding construction organization; operates in North, Central, and South America. We specialize in Heavy Construction, Industrial Building, Shipbuilding and Repair, Engineering, Appraisals, Public Works, Utilities, Power Plants, Chemical Works, etc.





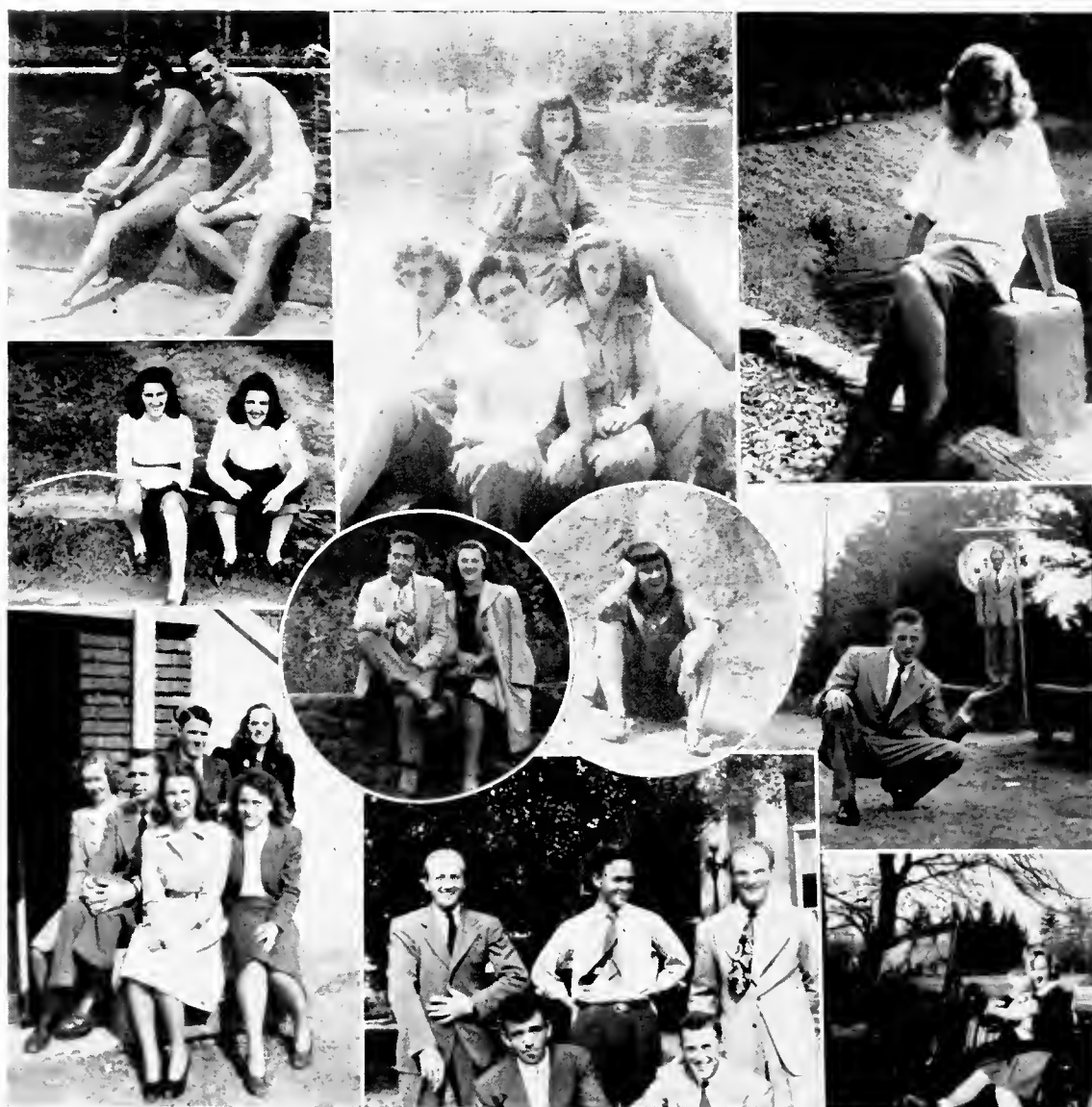
*Summer 1946*

Compliments

of

**ECUSTA PAPER CORPORATION**

Pisgah Forest, North Carolina



*Summer 1946*

**The Next Step**  
**LENOIR RHYNE COLLEGE**

**Summer Session**

**Standard Four Year College for Men and Women**

Competent, experienced faculty . . .  
Emphasizes development of Christian character . . .  
Maintains high educational standards . . .  
    Liberal Arts, Science, Music,  
    Teaching and Commercial Courses . . .  
Expenses very low, considering advantages offered.

**SUMMER SESSION:**

First Term – July 9 to July 16  
Second Term – July 17 to August 22

For Catalogue and other information write to  
**The President**

**LENOIR RHYNE COLLEGE**  
Hickory, N. C.

**KEYS PRINTING COMPANY**

**Greenville, South Carolina**

*The ability to serve you well is as important as the*

*desire to serve you well.*



## *Dances and Initiation Scenes*

Miss Griffin and Jack Livesay; Lorraine Keatts and Dean Stevenson; Group at a Dance; Joel and Dean Stevenson; Skirts Upside-Down for Initiation; Four More Initiation Snaps; *Bottom center*, Mrs. Scroggs and three girls.

*Compliments of*  
**MRS. MARY JANE McCRARY**

*Insurance Agent*

TELEPHONE 67

*"Always at your service"*

Brevard, North Carolina

*Compliments of*  
**GALLOWAY'S CAFE**

*"Where Students and Faculty Meet"*

Brevard, North Carolina

**AUSTIN'S STUDIO**

Enlargements Can Be Made At Any Time

Negatives Put On File Permanently

Phone 136

Brevard, N. C.

**DOUGLAS**

*Insurance*

**DUCKWORTH MOTOR  
COMPANY**

Sales



Service

Phone 198

Brevard, N. C.





## *Off-Campus Shots*

Choir Broadcast in Asheville; Picnic; Alva Sentell; Hikers; Julia Higdon, at the grave of Thomas Wolfe in Asheville; Choir on Asheville Trip; Florida Girls; Picnic.

## HIGH POINT COLLEGE

High Point, N. C.

Where Brevard College graduates continue their studies toward a degree, in pre-professional fields, as: law, medicine, ministry, etc. Majors in business, music, teaching, etc.

Moderate Rates

## BELK'S DEPARTMENT STORE

The South's Largest Distributors of Reliable Merchandise

*We Sell For Less*

East Main Street

Brevard, N. C.

Drugs Candies Sodas  
Stationery

LONG'S DRUG STORE

Brevard, N. C.

Brevard College Boosters  
PHONE 85

PATTERSON'S  
DEPARTMENT STORE  
"Brevard's Shopping Center"  
Brevard, North Carolina



## *Christian Workers on Trips*

Mr. Roy Leaving Sunny Acres; Peggy Pennington and Lon Vance; Lon Vance, Mr. Ray, John Williams; Loree Harrill, Sarah Puett, Peggy Pennington; Loree Harrill; Peggy Pennington and Lon Vance; Sunny Acres, with Jewell Bennett in the Foreground; Christian Student Movement Council Retreat at Mills River.

# FURMAN UNIVERSITY

Greenville, S. C.

Founded 1826

JOHN LANEY PLYLER, President

Courses leading to degrees of Bachelor of Arts, Bachelor of Science, Bachelor of Arts in Music, and Master of Arts. Pre-professional course groupings. Special emphasis on training for Christian leadership.

Summer session includes two six weeks terms, July 16-23 and July 24-August 29. The fall semester begins on September 8.

For catalogue write

R. N. DANIEL, Dean  
Men's College

ELIZABETH LAKE JONES, Dean  
Women's College

## SCHRAFFT'S

*"The Nation's Leading Candies"*

ON SALE AT GOOD  
STORES EVERYWHERE

\$1.00 — \$1.75

Morgan Bros., Inc.

*Wholesale Distributors*

67, Broadway, Asheville, N. C.



Build With

ETOWAH BRICK

THE

MOLAND-DRYSDALE

CORPORATION

*Manufacturers*

Etowah, North Carolina

*Compliments of*

CITIZENS'

TELEPHONE COMPANY

Brevard, N. C.

HEYWARD MAHON  
COMPANY

Greenville, S. C.

*The Style and Quality  
Store*



### *"Two Things to Remember"*

Lon Vance and Peggy Pennington, "Pecky" Bodenheimer and Smith Poplin, Jewell Bennett and George Parleir, Alice Langston and James Belk, Mary Eddy Gott and Frank Henderson, Jane Smith and Conrad Kimbrough, Caroline Henderson and John Burwell, Andy Marcus and Shirley Steele, George McDuffie and Elizabeth McAulay, Jackie Tattersall and Clyde Long, Arnold McPeters and Emily Fortune, Miss Spiro and Robert Norwood, Doralee McPeters and Jack Bennett.



**ENJOY  
THIS TREAT**

WHEN YOU GO OUT  
TO EAT  
SEXTON'S DELICIOUS  
FLOWERY ORANGE  
PEKOE TEA

**Sexton**  
*Quality Foods*

HARDWARE, SPORTING GOODS,  
PAINTS, OILS, CUTTING TOOLS  
DELTA ELECTRIC WOOD-WORKING  
TOOLS

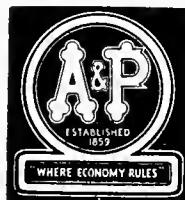
**OTTIS-GREEN  
HARDWARE COMPANY**

11 West Pack Square

9-11 Walnut Street

Asheville, N. C.

**A & P SUPER MARKET**



WHERE ECONOMY RULES  
Symbol of the world's foremost service  
Brevard, North Carolina

Compliments of  
**ELECTRIC SERVICE COMPANY**

Corner Jordan and Gaston Streets

Phone 441

Brevard, N. C.

Westinghouse Home Appliances    Youngstown Kitchens  
Construction and Repairs

All of Western North Carolina Are  
Proud of Brevard College and So  
Are We

**PEARCE-YOUNG-ANGEL**

109 Roberts St.

Phone 4277

*Wholesale Foods*

Asheville, N. C.

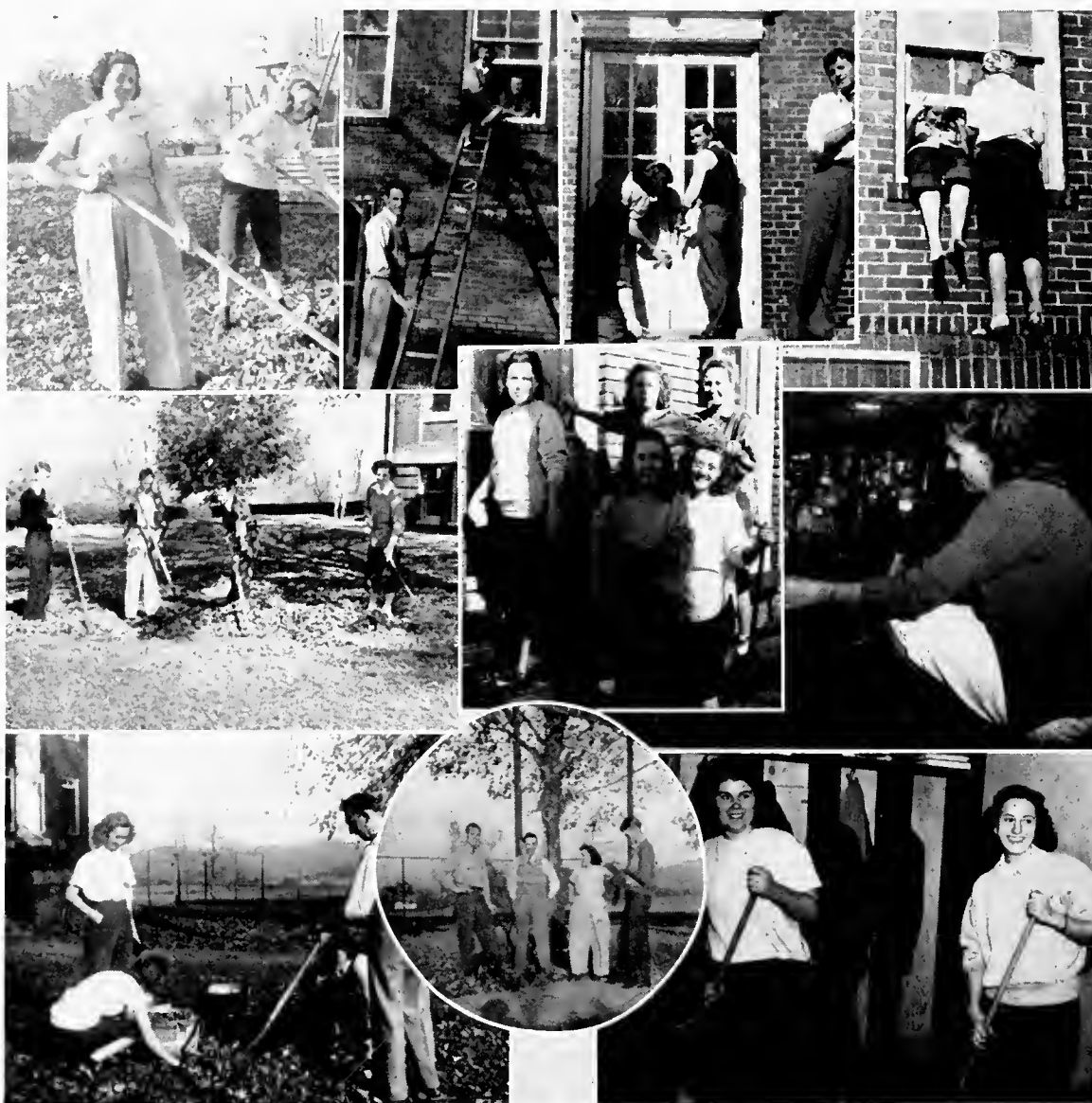
*Jewelry and Watch Repairing  
Trophies and Gifts*

**HURSEY & COMPANY**

67 Haywood Road

Asheville, North Carolina





## *Clean-Up Day*

Raking Leaves (Harvill and McPeters); Washing Windows (Knighten, Bason, McCombs); Doing the Doors (Bodenheimer, McInville, Martin); Polishing Panes and Raking the Rusty Leaves; West Hall Window Washers (Pennington, Shellman, Andrews, Kornegay, Hart); Fortune, McPeters, Harrill, Mr. Swink; Bennett, Mr. Swink, Harrill, McPeters; Allison and Norton; Robinson in the Lab.

## McCRARY AUTO SERVICE

Day Phone 290

Night Phone 291

Brevard, North Carolina

GOODYEAR PRODUCTS

Compliments of

## CO--ED AND CLEMSON THEATRES

The Latest and Best in Movie Entertainment

Brevard, North Carolina

*Compliments of*

### FARMERS' FEDERATION

Incorporated

Dealers in

FINE BABY CHICKS  
FULL-O-PEP FEEDS

103 East Main Street

Brevard, N. C.

MEET YOUR FRIENDS AT

### FORD'S CORNER

Soda and Sandwich Shop

*Biltmore Ice Cream*

*Hot Popcorn*

THEATRE BUILDING

*Compliments of*

### ROSE'S 5-10-25c STORES

Incorporated

FRANCES K. MILLNER,

Manager

Brevard, N. C.

### MITCHELL-POPE MOTOR COMPANY

DODGE-PLYMOUTH

Sales and Service

Phone 590

N. Broad St.

Brevard, N. C.



*"Wearing Out The Green"*

**PLUMMER'S**

Main Street

Brevard, North Carolina

**S. M. MacFIE DRUG CO.**

*"The Rexall Store"*

Fountain Service and  
Sandwiches

Biltmore Ice Cream

School Supplies

Brevard, North Carolina

**VARNER'S DRUG STORE**

WALGREEN AGENCY

Brevard, N. C.

**PARSONS'**

*Jewelry and Gifts*

*Watch Repair*

**SLACK'S**

*"The First To Show The Latest"*

**SLACK'S**



### *Familiar Persons and Places*

Taylor Hall; Jean Teal; Randolph, Morgan, McCall; Two Distant Views of the Campus; Chow Line on Sunday; Veterans' Unit II; View of the Gym from Front Campus; Wilson, Brumsey, Beckerdate, Andrews; Hall and Schreyer; Lorraine Keatts with Jan and Mildred Miller.

## HERFF-JONES COMPANY

*Manufacturing Jewelers and Stationers*

O. E. BASS. Representative

Hendersonville, North Carolina

Rings, Diplomas, Invitations, Cards, Caps, and Gowns

Compliments of

PET DAIRY PRODUCTS COMPANY

Phone 10

Waynesville, N. C.

Richard W. Parris

Donald J. Parris

BREVARD HARDWARE

PARRIS BROTHERS. Owners

Hardware for Every Home, Farm and Industrial Use

Brevard, N. C.

Compliments of

BECKER'S BAKERY

Hendersonville, N. C.





## *Singles*

"Bitty" McAulay, Lois Oyer, Crayton Kerr, Jane Smith, Jack Bennett, Jackie Tattersall, Merna Miller, Doralee McPeters, Jo Ann Musgrove, Bob Norwood, Marvin Featherstone, Jo Brumsey, Ralph Swan.

*Compliments of*  
**B. & B. FEED AND  
SEED COMPANY**  
FEEDS, SEEDS, FLOUR  
FERTILIZER  
Brevard, North Carolina

*Compliments of*  
**THE CANTEEN CAFE**  
"Wholesome Food Served"  
Caldwell St.  
Brevard, N. C.

*Compliments of*  
**PATTON'S GULF  
SERVICE**  
Brevard, N. C.

*Compliments of*  
**HAYES MOTOR  
COMPANY**  
*Willys Sales Service*  
Automobiles  
Brevard, N. C.

PRINTERS      BINDERS  
LITHOGRAPHERS  
**THE MILLER PRINTING  
COMPANY**  
Asheville  
"Western Carolina's  
Largest Printers"

**TRANTHAM'S  
DEPARTMENT STORE**  
Ready-to-Wear, Dry Goods  
and Notions  
Brevard, North Carolina

**ASHEVILLE SHOWCASE  
& FIXTURE COMPANY**  
Hotel, Restaurant and  
Institutional House  
Phones 498-499      57-59 Broadway  
Asheville, N. C.

**WILSON DRUG CO.**  
J. B. LOVINGOOD, Prop.  
*Prescription Druggist*  
Phone 58  
Hendersonville, N. C.



## *Homecoming, Alumni, and Faculty*

Chapel Meeting of Alumni; West Hall Living Room; Home-comers: Jeffrey Coltrane, Conrad Kimbrough, Gray Freeze, Grady Dulin, Janey Lowry; After the Wedding—the former Lallah May Edwards and her husband, Captain A. E. Anderson, Jr., of Chicago; Two Homecoming Groups; Mr. Roy Swink and Dr. Bramlett; Miss Jane Allen.

*Compliments of*

**WINNER'S**

Only Exclusive

Ready-to-Wear Shop

**MACK'S BILLIARD**

**PARLOR**

**Meet Me Here!**

**T. T. LOFTIS, Manager**

**7 East Main Street**

**Brevard, North Carolina**

**MITCHEM'S MARKET  
AND GROCERY**

**Meats — Groceries — Produce**

*Wholesale and Retail*

**Brevard, N. C.**

*Compliments of*

**TRANSYLVANIA**

**TRUST COMPANY**

**Brevard, N. C.**

*Compliments of*

**BREVARD LUMBER**

**COMPANY**

**Brevard, North Carolina**

**SOUTHERN DAIRIES**

*Sealtest*

**Ice Cream and Milk**

**T. RALPH PARRISH, Manager**

**Brevard, N. C.**

**DIXIE CLEANERS**

Phone 54

**Brevard, North Carolina**

*Compliments of*

**THE GRILL**

**RESTAURANT**

**Brevard, N. C.**



## *"Should Auld Acquaintance Be Forgot"*

Mary Frances Watson and Sudie Sheets; Alice Langston, Mary Eddy Gott, Sybil Nichols, Ann Ashmore; Fred Dellinger, Lorce Harrill, Jack Williams; Bill Withers, Polly Crawford, Bill Blankenship; Charles Wallis, Pat Wainwright, Jimmy Fitzpatrick, Joan Simmons; Maria Lopez, Mary Frances Robinson, Bobbie Keith; Alice Langston and Mary Eddy Gott; Earline Wilkes and Mary McKinney.

**BREVARD LAUNDRY  
AND COAL CO.**

7 Best Brands of Coal

Fire Brand Kindling

Laundry and Cleaning

Brevard, N. C. Phone 44

**WHITEWAY CLEANERS**

A Complete Quality Service

See Our Agent At College

Brevard, N. C.

*Compliments of*

**McFEE'S JEWELRY  
SHOP**

*Expert Watch Repairing*

Brevard, N. C.

*Compliments of*

**THE BREVARD SHOE  
SHOP**

Satisfied Customers Built

Our Business

37 E. Main St.

Brevard, N. C.

**BOOKS:**

Fiction, Adventure, Amusement,  
Biography, Cultural, Technical

*"Quality Job Printers"*

**B & L BOOK STORE**

403 N. CALDWELL ST.

Brevard, N. C.

**WE SALUTE . . .**

Brevard College Graduates,  
Students and Faculty Members

**THE TRANSYLVANIA  
TIMES**

*"A Prize-Winning Newspaper"*

Clothing, Shoes, Sporting Goods

When in Asheville Make Our Store Your

Headquarters

35 Patton Avenue Through to College

**ASHEVILLE  
ARMY STORE**

*Compliments of*

**THE CHICKEN  
KITCHEN**

Brevard, N. C.

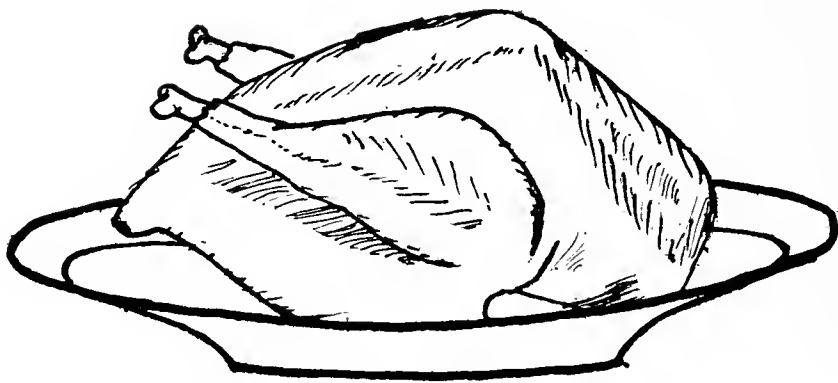


# *Autographs*

# *Autographs*

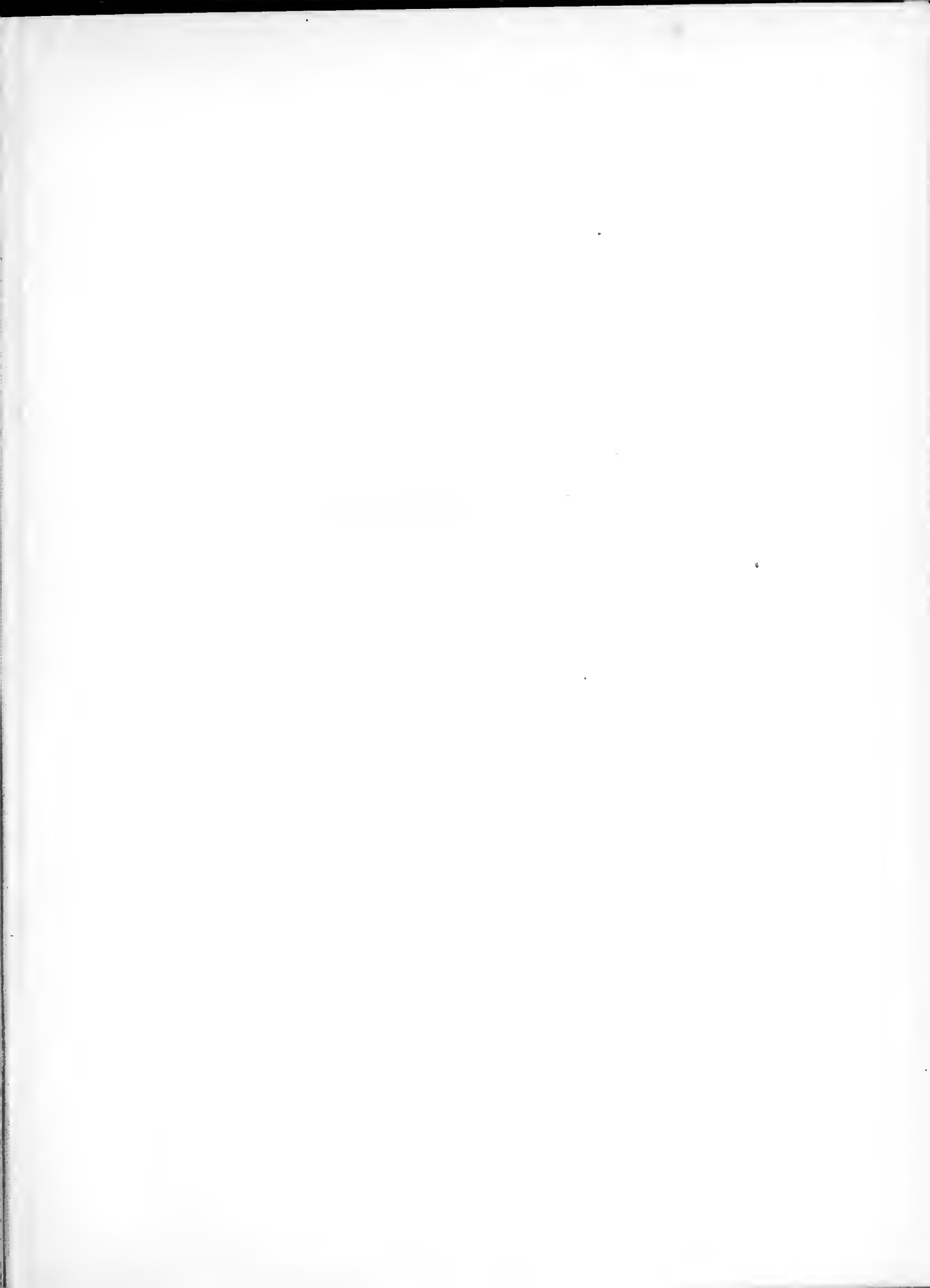
# *Autographs*

# *Autographs*

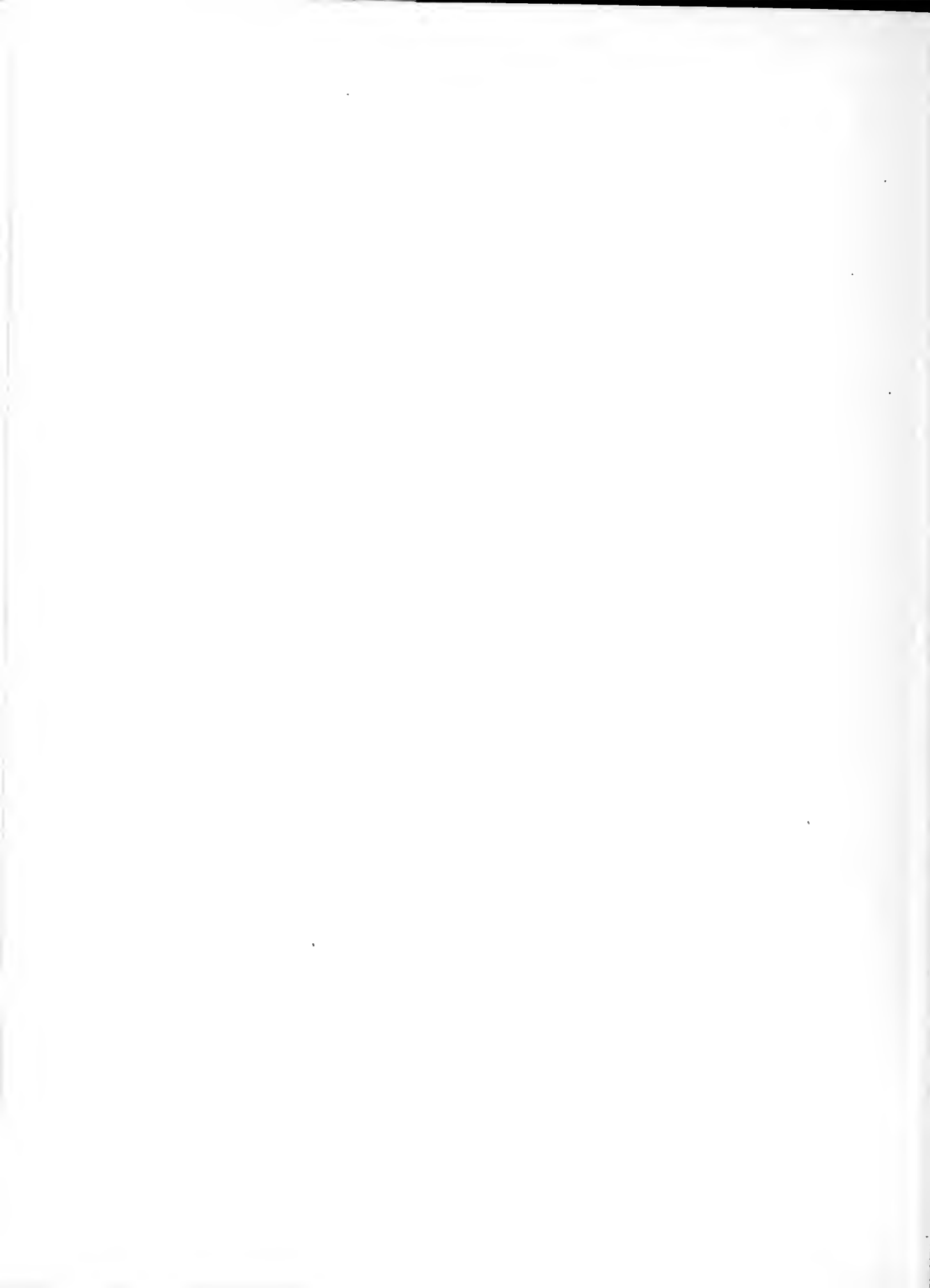


The End

*Murkin's*









0 1934 0021901 3

DATE DUE

GAYLORD			PRINTED IN U.S.A.

