

Q  
378  
.9756  
B846p  
1954

# PERTELOTE

*Les Perles de la France*





1853-2003

**JAMES A. JONES LIBRARY**  
Brevard, North Carolina 28712





*The* **PERTELOTE**

NINETEEN HUNDRED FIFTY-FOUR





*The* **PERTELOTE**

N I N E T E E N   H U N D R E D   F I F T Y - F O U R

ANNUAL PUBLICATION OF  
**BREVARD COLLEGE**  
BREVARD, NORTH CAROLINA

IMOGENE DICKSON  
EDITOR

GEORGE WHITE  
BUSINESS MANAGER



*"God, who touches earth with beauty..."*



TAYLOR HALL



JAMES ADDISON JONES LIBRARY



GIRLS' DORMITORY

## FOREWORD

We, the staff, of this, the nineteen hundred and fifty-four edition of the PERTELOTE,

Invite you, our fellow students, friends, and teachers,

To share with us the pleasure of looking back over this year and remembering our joys, hardships, and labors.

We hope that this annual has been a success and that our efforts have not been in vain.

## CONTENTS

BOOK ONE: THE COLLEGE

BOOK TWO: ACTIVITIES

BOOK THREE: FEATURES



MARY FRANCES STAMEY  
MEMORIAL INFIRMARY



# "Turn my dreams to noble action . . ."

To you, the members of the Board of Trustees of Brevard College, the staff desires to dedicate our yearbook of 1954.

In grateful appreciation for your manifold efforts in the expansion and development program of our college, the students of the class of 1954 wish to recognize the contribution which you are making to the welfare of this noble institution. We wish to express our gratitude for the new dormitory for women, the renovation of Taylor Hall, Dunham Hall, the science building, the gymnasium, and the cafeteria. These improvements have been a source of inspiration and encouragement to us during the past two years. We know future classes will share our indebtedness to you for these modern facilities and for the progressive program afforded the students of Brevard College.

We realize that you render important and vital service to our school, receiving no remuneration and often very little appreciation for the sacrifice of time and effort you make. Your contribution merits our commendation.

We, the staff, are giving you the highest praise we have to offer, that of dedicating to you our yearbook.

## THE BOARD OF TRUSTEES

### TERMS TO EXPIRE IN 1954

Ed M. Anderson . . . . .Brevard, N. C.  
 Ralph Edwards . . . . .Morganton, N. C.  
 George D. Finch . . . . .Thomasville, N. C.  
 Dr. Kenneth Goodson  
     Winston-Salem, N. C.  
 Ottis Green . . . . .Asheville, N. C.  
 Edwin L. Jones . . . . .Charlotte, N. C.  
 Dr. E. H. Nease . . . . .Mount Airy, N. C.  
 Mrs. J. H. Pickelsimer . . . . .Brevard, N. C.  
 Dr. Henry C. Sprinkle, Jr.  
     New York, N. Y.  
 S. E. Varner . . . . .Brevard, N. C.  
 Jonathan Woody . . . . .Waynesville, N. C.  
 Joel W. Wright . . . . .Asheville, N. C.

### TERMS TO EXPIRE IN 1956

Rev. Cecil Hefner . . . . .Lincolnton, N. C.  
 Leon Jvey . . . . .Hickory, N. C.  
 Richard Johnson . . . . .Wilkesboro, N. C.  
 Rev. Frank B. Jordan  
     Charlotte, N. C.  
 Rev. James B. McLarty  
     Mooresville, N. C.  
 J. Ed Millis . . . . .High Point, N. C.  
 Col. W. B. Moore . . . . .Wadesboro, N. C.  
 Clarence E. Morgan . . . . .Asheville, N. C.  
 Flake Sherrill . . . . .Statesville, N. C.  
 Rev. H. C. Sprinkle, Sr.  
     Mocksville, N. C.  
 Rev. Lee F. Tuttle . . . . .Charlotte, N. C.  
 Judge Guy Weaver . . . . .Asheville, N. C.

### TERMS TO EXPIRE IN 1958

Dr. Embree H. Blackard  
     Asheville, N. C.  
 J. Hal Bobbitt . . . . .Charlotte, N. C.  
 Rev. C. P. Bowles . . . . .Charlotte, N. C.  
 H. A. Dunham . . . . .Asheville, N. C.  
 Paul F. Evans . . . . .Lexington, N. C.  
 Rev. W. A. Kale . . . . .Durham, N. C.  
 S. Les Myers . . . . .Concord, N. C.  
 C. M. Ogle . . . . .Hendersonville, N. C.  
 Jean W. Schenck . . . . .Shelby, N. C.  
 Allen Sims . . . . .Gastonia, N. C.  
 Rev. Howard C. Wilkinson  
     Lexington, N. C.  
 O. V. Woosley  
     Winston-Salem, N. C.  
 Honorary Trustee—R. T. Amos,  
     High Point, N. C.

## THE EXECUTIVE COMMITTEE



EDWIN L. JONES, *Chairman*  
 W. BRYAN MOORE, *Vice-Chairman*  
 JAMES B. McLARTY, *Secretary*



CLARENCE E. MORGAN  
 ALLEN SIMS  
 JONATHAN WOODY



BOOK ONE . . . *the College*





*"Like the arch"*

ROBERT HENRY STANLEY  
*President of the College*



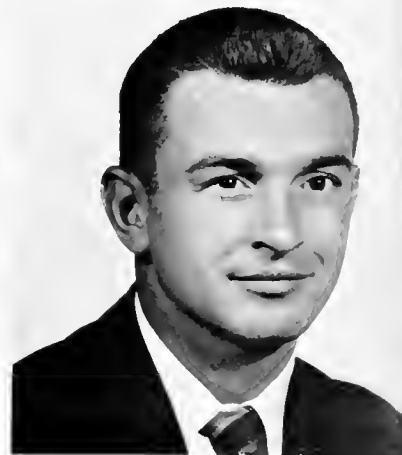
J. J. STEVENSON, JR.  
*Dean of Administration*

*ng of the heavens, lift my thoughts above . . . ”*

MARY LOUISE MOSELEY  
*Dean of Women*



JAMES NELSON FITZPATRICK  
*Dean of Men*



# F A C U L T Y



ALBERT L. BRAMLETT  
A.B., M.A., Ph.D.  
*History*  
ELSIE C. BRAMLETT  
*Art*  
ELLIOTT E. DOBSON  
B.M.E.  
*Mathematics and Physics*



JAMES N. FITZPATRICK  
B.S.  
*Dean of Men, Director of Physical Education for Men*  
DULCIE HAYES  
A.B., M.A.  
*Languages*  
ELLEN LENSING  
B.E., M.S.  
*Business Education*



BRUCE ATKINS LIVENGOOD  
B.Mus., M.Mus.  
*Piano, Organ, Choral Music*  
MARY GLADYS LOBDELL  
B.S., M.S.  
*Biology*  
BURT W. LOOMIS  
B.S., M.A., Ph.D.  
*Psychology, Director of Guidance*



NELLIE F. MCGEE  
B.S., M.S.  
*Chemistry*  
NEAL V. MCGLAMERY  
M.S., B.D., M.Th.  
*Mathematics*

LOUISE P. MILLER  
*Piano*

MARY LOUISE MOSELEY  
B.S.  
*Dean of Women, Director  
of Physical Education  
for Women*

FRANCIS BERNARD PRICE  
B.Mus.  
*Voice*



C. EDWARD ROY  
A.B., B.D., M.A.  
*Religious Education*

ELIZABETH SHEPARD  
A.B., B.A.L.S.  
*Librarian, English*

LUCILE SMITH  
A.B., M.A.  
*English*



MARY WILSON STEVENSON  
A.B.  
*English*

J. J. STEVENSON, JR.  
A.B., B.D., M.A.  
*Dean, Psychology, Education*

MARTHA E. WHELESS  
A.B., M.S.  
*Business Education*



# S T A F F



ELLA V. BUCKNER  
*Bursar*  
BETTY M. DODSON  
*Assistant Librarian*  
JOHN D. EVERSMAN  
*Director of Public Relations*



ROSA W. NORWOOD  
*Secretary to President and Dean*  
RHITA RAINVILLE  
*Hostess*  
BRONA N. ROY  
*Recorder*

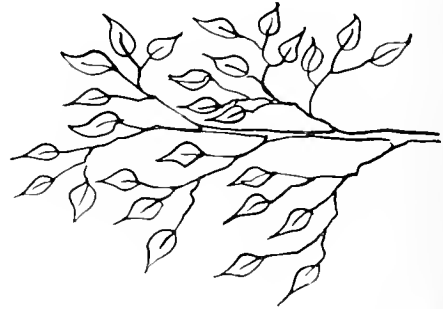


HERMAN WHITE  
*Superintendent of  
Buildings and Grounds*  
MYRTLE B. YOUNG  
*Nurse*





## ALMA MATER



Unto Brevard, we're ever loyal  
We sing to her a song of praise  
She gives to us endowments royal  
To guide us thru' life's endless maze.

### CHORUS

Brevard, Brevard  
Our hearts rejoice  
Forever and forever we will honor thee.

Our College we will not forsake thee,  
Nor for one moment will forget;  
Thy standards in our hearts we'll cherish,  
To guide us 'til our sun has set.

### CHORUS

Brevard, Brevard  
Our hearts rejoice  
Forever and forever we will honor thee.



## SOPHOMORE CLASS

### OFFICERS

HAROLD WHITE  
*President*

JAMES ELLIOTT  
*Vice-President*

BETH JONES  
*Secretary-Treasurer*



# S O P H O M O R E S

**MATILDA BELL**

SALUDA, N. C.

"A studious lass and serious you say as you pass by, but did you ever stop to think about the twinkle in her eye?"

PERTELOTE Staff; C. F. C.; Commercial Club; Euterpean Society; Phi Theta Kappa; Alpha Pi Epsilon, President, 54; Chief Marshal, 53.



**BENJAMIN TIMOTHY BROOKS, JR.**

LILESVILLE, N. C.

"All the world loves a lover."

Delphian Society; Student Council, President, 54; President of Freshman Class; B.S.U.; Glee Club; Basketball; Baseball; Monogram Club.

**CARL RAY BYARS**

ROSMAN, N. C.

"Let me have music dying and I seek no more."

Glee Club; Day Students' Club.



**MARY COLENE COOK**

KANNAPOLIS, N. C.

"Good natured and generous, jolly and clever, her tongue like a brook-let goes on forever."

I.B.C.; Euterpean Society, 53; Mnemosynean Society, 54.

**BERNICE IMOGENE DICKSON**

HORSE SHOES, N. C.

"Life is the gift of nature, but beautiful living is the gift of us dom."

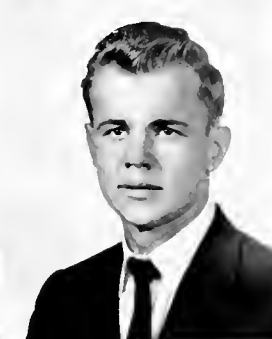
PERTELOTE Staff, Editor, 54; C.F.C., Recreation Chairman, 53; Vesper Chairman, 54; Ministerial Club, I.R.C.; Euterpean Society; Phi Theta Kappa, Vice President, 54; Sigma Pi Alpha; Cheerleader, 53; Chief, 54; May Court, 53; May Queen, 54; Marshal, 53.

**WYLLADENE VIVIAN DUCKETT**

CANDLER, N. C.

"Her voice is sweet as if it took its music from her face."

C.F.C.; Ministerial Club; Glee Club; Music Club; Euterpean Society; May Court, 53.



**REBEKAH ANN EAKER**

BESSEMER CITY, N. C.

"My style and my sentiments are my own, purely original."

Commercial Club, President, 54; Euterpean Society, 53; Mnemosynean Society, 54.

**JAMES DAVID ELLIOTT**

CHARLOTTE, N. C.

"I like my way best, don't you?"

Clarion Staff, Editor, 54; Delphian Society; Dramatics Club; Ministerial Club; Baseball; Monogram Club; Vice President Sophomore Class.



**FRANCES ELIZABETH FORTUNE**

BREVARD, N. C.

"As brimful of fun and mischief and glee as ever a mortal girl could be."

I.R.C.; Day Student, President, 54; Student Council; Clarion Staff; Glee Club; Dramatics Club, President, 54; Mnemosynean Society, Secretary, 54; W.A.V. Board; May Court, 54; Miss Sophomore.

**JOYCE ANN FULLAM**

HORSE SHOES, N. C.

"And she lived from day to day, in a cheerful sort of way."

Glee Club; Music Club; Euterpean Society, 53; Mnemosynean Society, 54; B.S.U.; Dramatics Club.

**JEANNE GLENN**

MARION, N. C.

"Pleasure fills our youthful hearts, why study if it interferes?"

Clarion Staff, 54; Dramatics Club, 54; Mnemosynean Society, 54; Basketball.

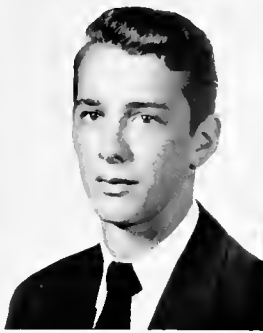
**DELMAS DAVID GRIGGS**

WADSWORTH, N. C.

"Happy am I, from care I'm free; Why aren't they all contented like me?"

Chiosophic Literary Society, Vice President, 54; C.F.C., Secretary-Treasurer, 54; Manager of Bookstore, 54.

# S O P H O M O R E S



**GARDNER NEAL HELMS**  
LINCOLN, N. C.  
*"A little nonsense now and then is  
relished by the best of men."*  
Clisophic Literary Society, Presi-  
dent, 54; Monogram Club; C.F.C.;  
I.R.C.; Student Council; Marshal,  
53.

**WALLACE BLAIR HONEYCUTT**  
GASTONIA, N. C.  
*"Of honest worth, truly a friend;  
one on whom we can all depend."*  
Delphian Society; Vice-President  
of Freshman Class; Student Council,  
Vice-President, 54; Phi Theta Kappa;  
Marshal, 53; Basketball; Baseball;  
Mr. Sophomore.



**ELIZABETH HARRIETTE JONES**  
FRANKLIN, N. C.  
*"What could I be, but what I  
am."*  
I.R.C., Secretary Treasurer; Mne-  
motechnic, Vice-President; Clarion  
Staff; Secretary Treasurer of the  
Sophomore Class.

**CHESTER KILPATRICK**  
BRIVARD, N. C.  
*"Things will happen, why worry?"*  
Delphian Society; Day Students'  
Club; Clarion Staff.

**SELMA EVELYN LEDFORD**  
CASAR, N. C.  
*"Her ways are ways of pleasant  
ness, and all her paths are peace."*  
C.F.C., Vice President, 54; Fute-  
pean Society, Vice President, 54;  
Basketball.



**DORIS FERGUSON MCGAHA**  
BRIVARD, N. C.  
*"Quiet, gentle, and refined,  
thoughtful always, true, and kind."*  
Glee Club, Secretary, 54; Music  
Club; Interpean Society; Phi Theta  
Kappa; Secretary Treasurer, 54; Bas-  
ketball; W.A.A. Board.

**JOHN WESLEY MARGNA**  
FLOWING, N. C.  
*"Not over serious, not frivolous,  
but a rare good fellow."*  
Day Student; I.R.C., Vice-Presi-  
dent, 53; President, 54; Glee Club.

**MARY FRANCES MEACHUM**  
WADSWORTH, N. C.  
*"So earnest in her work and fun,  
we know not half the work she has  
done."*

B.S.U.; Phi Theta Kappa; Sigma  
Pi Alpha, President, 54; C.F.C.;  
House President, 54; Student Coun-  
cil.



**JENNIE LOU MORRIS**  
CASAR, N. C.  
*"She's a compliment to the name  
"A good sport"*  
W.A.A. Board, President, 54;  
C.I.C.; Futerean Society, Secretary,  
53; Student Council, Secretary, 54;  
House Council; Basketball.

**HARRY ALTON PATTERSON**  
BRIVARD, N. C.  
*"Play up, play up, and play the  
game."*  
Day Student, Glee Club; Basket-  
ball; Baseball.

**DAVID WILLARD PHIPPS**  
ASHVILLE, N. C.  
*"An honest man's the noblest  
work of God."*  
C.I.C., President, 54, Delphian,  
Chaplain, 54; PRINCIPAL Staff; Bas-  
ketball; Monogram Club, Chaplain,  
54.

**JAMES ROBERT RICHARDSON**  
ASHVILLE, N. C.  
*"Resolve to be thyself."*  
Delphian Society, Sergeant at arms,  
54; C.I.C.; I.R.C.; Glee Club.

**CHARLES WESLEY RUMPH**  
CHARLOTTE, N. C.

"Why rush? Rome was not built in a day."  
C.I.C.; I.R.C.; Clusophie Literary Society.



**NANCY ANN SETZER**  
NEWTON, N. C.

"A woman's heart, like the moon, is always changing, but like the moon there's always a man in it."

W.A.V. Board, C.F.C.; Commercial Club; Luterpean Society, 53; Mnemosynean Society, 54; Basketball; May Court, 54.

**CELIA DARE SHERRILL**  
MOORESVILLE, N. C.

"Precious things always come in small parcels."

Luterpean Society, President, 54; W.A.V. Board; Basketball; Glee Club; Music Club; House Council; Phi Theta Kappa, President, 54; Sigma Pi Alpha, Secretary, 54; Pi Beta Phi Staff, Miss Freshman; Marshal, 53; cheerleader; May Court, 54.

**BETTY LEE STARNES**  
MONROE, N. C.

"She found her smile in early youth and keeps it with her now."

W.A.V. Board; Luterpean Society, 53; Mnemosynean Society, 54; Commercial Club, Secretary, 54; Student Council; House Council; Basketball; May Court, 53, 54.



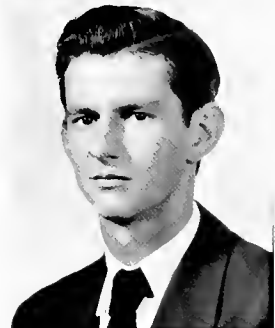
**CHARLES R. SUMMERVILLE**  
CHARLOTTE, N. C.

"None but himself can be his parallel."  
Clusophie Literary Society; I.R.C.; Glee Club.

**ELLEN HOWARD TORRENCE**  
DAVIDSON, N. C.

"Laugh? Well I guess I did."

Luterpean Society, Treasurer, 53; W.A.V. Board; Basketball; C.I.C.; Recreation Chairman, 54; Glee Club; Music Club; Student Council, Social Chairman, 54; House Council.



**EDWARD E. TRIVETTE, JR.**  
WEST JEFFERSON, N. C.

"Men of few words are the best men."  
I.R.C.; Monogram Club; Basketball.

**EDNA MAE WALDRUP**  
BRYARD, N. C.

"Success is the product of endeavor."  
Day Students' Club; Commercial Club; B.S.U.

**JOY ANN WARREN**  
HORSH SHO, N. C.

"Let us live gaily for life is all we have."  
Mnemosynean Society, President, 54; W.A.V. Board, Vice-President, 54; Basketball; Clarion Staff, Feature Editor, 54.

**IDA FRANCES WEAVER**  
BESSEMER CITY, N. C.

"To worry little, to study less, is my idea of happiness."

Commercial Club, Vice-President, 54; W.A.V. Board; Luterpean Society, 53; Mnemosynean Society, 54.



**THOMAS HAROLD WHITE**  
HAMPTONVILLE, N. C.

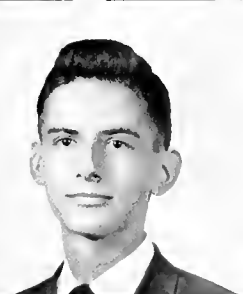
"Born for success he seemed, with grace to win, with heart to hold, with shining gifts that took all eyes."

Veterans Club, Secretary-Treasurer, 54; President of the Sophomore Class; Student Council; Basketball; Sigma Pi Alpha.

**NICHOLAS FISHER WILLIAMS**  
GASTONIA, N. C.

"Every man is a volume if you know how to read him."

Delphian Society, President, 54; I.R.C., Secretary-Treasurer, 53; Vice-President, 54; C.I.C.; Baseball Manager, 53; Monogram Club; B.S.U.; House President, 54; Student Council; Clarion Staff; Dramatics Club; Christian Student Council.



**RUTH NADINE WILLIAMS**  
SAVINGVILLE, N. C.

"The harder I try, the weaker to be, the wiser I am."

Dramatics Club, Vice-President; Mnemosynean Society.

**WILLIAM THOMAS WOODLIEF**  
RANDLEMAN, N. C.

"A jolly, unselfish personality is a great gift."  
Clusophie Literary Society.



## FRESHMAN CLASS

### OFFICERS

REGINALD SMITH  
*President*

HENRY JUSTICE  
*Vice-President*

JACQUELINE HARMON  
*Secretary-Treasurer*



HUGH PRESTON ABERNATHY  
 MARY STEWART ANDREWS  
 JAMES HENRY AYCOTH  
 CARROLL NED BEAM  
 ROBERT EDMOND BOGGAN, JR.  
 ROBERT GARRISON BOWEN

DORIS AILEEN BOYLES  
 MACK AUBBY BRIDGES  
 LAWRENCE EDWARD BROWN  
 PATSY ANN BUNGARNER  
 GLORIA RUTH BURLESON  
 ELEANOR JOYCE BYERS

## FRESHMEN

WILLIAM BYRD  
 BILLIE JEAN CANSLER  
 TOMMY LEE CASSADY  
 GARDNER CEELY  
 IKSOO CHANG  
 CARL KING CHASTAIN, JR.

HARRY CHO  
 ARNOLD STEVE COCHRAN  
 MARY CAROLINE CODY  
 FRANCES JOSEPHINE CORN  
 JIMMIE MOORE CRANE  
 PAUL LANTO CRAVEN



MYRA LUCILLE CRAWFORD  
 LARRY JEAN DAVIS  
 LONA RUTH DELLINGER  
 PANSY LEIGH DENNIS  
 RALPH JENNINGS DUCKWORTH, JR.  
 JOHN CLIFFORD ENGLISH

DOROTHY ANN FISHER  
 ANNE LEE FOSTER  
 CHARLES WESLEY FULLER, JR.  
 GLORIA DELL GILLIAN  
 ROBERTA GILMOR  
 JAMES HOUSTON GLAZENER

# FRESHMEN

JOANNE FRAULENE GOURLEY  
 LON HUGH GOWAN  
 PATRICIA MARILYN GREENE  
 KURTIS NEIL GREY  
 JOHN ROBERT GUNTER  
 JOE MARLOWE HAAS

NANIE DERLEITH HAMBY  
 MARY ELIZABETH HAMILTON  
 JACQUELINE DIANE HARMON  
 CARROLL DAVID HARRIS  
 CLARA LORETTA HARRIS  
 MARGARET FRANK HEATH





MARGARET ROSALYN HENNESSEY  
 MARY KATHLEEN HENSON  
 RICHARD EDWIN HIPPI  
 KENNETH BAXTER HOYLE  
 WAYNE EVERETTE HOYLE  
 JERRY HART JEROME

HENRY ADOLPHUS JUSTICE  
 DONALD MICHAEL JUSTUS  
 WARREN LEE KAFITZ  
 KENNETH GRAY KETNER  
 WORTH DAVIS KIGER  
 PATRICIA ANNE LACKEY

BOBBY EDWARD LAMBERT  
 ROBERT WILLIAM LONG, JR.  
 DAVID EUGENE LOWE  
 DONALD MALCOLM  
 KENNETH DEAN MCDARIS  
 MILBURN EUGENE MCGINNIS

CAROLYN GEARLDINE MILLER  
 REBECCA ANN MOORE  
 ROBIN RATTERREE MOORE  
 NANCY LOU MORRISON  
 BEN FRANKLIN NESBIT, JR.  
 MARY OLIVE NEWELL

## FRESHMEN



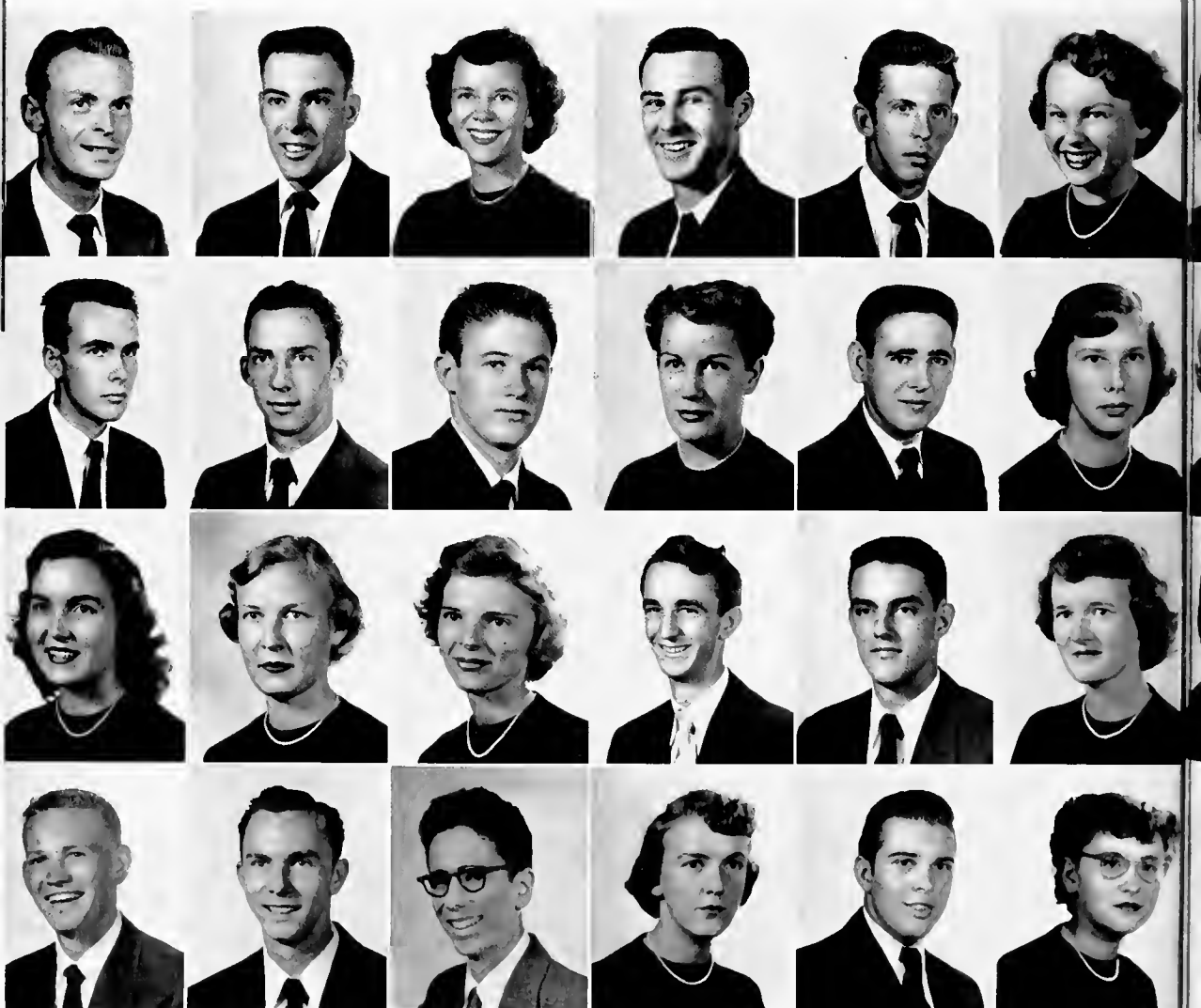
JEROME SCOTT NUNN  
 MARK PRESSLEY OSBORNE  
 PEGGY MILEY PARKER  
 JOSEPH DAVID PATNEAUDE  
 THOMAS WOOD PAXTON, JR.  
 MARY ANN PHILLIPS

ROBERT COLAN PINSON  
 DON OLIVER QUINN  
 LARRY HOUSTON RANKIN  
 SHIRLEY JEAN REINHARDT  
 CARROLL ODELL ROBINSON  
 ROWENA ROBINSON

# FRESHMEN

MINNIE SUE ROGERS  
 DOLORES CELESTIA SCHAEFER  
 EDITH AUDREY SCHEEPER  
 HAROLD DAVID SMITH  
 REGINALD LOWELL SMITH  
 VIRGINIA ANN SPENCER

ALVIN BRADLEY STARNES, JR.  
 JOHN FERGUSON STEWART, JR.  
 JACK NORTON STURGILL  
 BARBARA ANNE TEAGUE  
 WILBER EDGAR THOMPSON  
 KATE MARIE TRIVETTE



MARILYN RUTH TYSINGER  
 DIANE WARE  
 CHARLES TERRY WATKINS  
 BOBBIE MAE WELCH  
 ANITA ELAINE WHITE  
 GEORGE HERMAN WHITE

ESSIE WINIFRED WHITE  
 JO ANN WILHIDE  
 DOROTHY GAIL WILKINSON  
 BRENDA JO WILLIAMSON  
 BETTY JOANN WILLINGHAM  
 JIMMY DALE WILLIS

## FRESHMEN

JOAN WILSON  
 JOE DALTON WILSON  
 JOYCE ANN WINCHESTER  
 ADA WINGLER  
 MARY JO YOUNG  
 PATSY LOBRAINE YOUNG





BOOK TWO . . . *Activities*





# STUDENT COUNCIL

## OFFICERS

BEN BROOKS  
*President*

WALLACE HONEYCUTT  
*Vice-President*

JENNIE LOU MORRIS  
*Secretary-Treasurer*

## MEMBERS

HAROLD WHITE  
REG SMITH  
MARY FRANCES MEACHUM  
NICK WILLIAMS  
ELLEN TORRENCE  
DAVID PHIPPS  
BETTY LEE STARNES  
LARRY DAVIS  
FRANCES FORTUNE  
MISS ELLEN LENSING  
DEAN J. J. STEVENSON, JR.

*President of Sophomore Class*  
*President of Freshman Class*  
*President of Girls' Dormitory*  
*President of Taylor Hall*  
*Social Chairman*  
*President of Christian Fellowship Club*  
*Sophomore Representative*  
*Freshman Representative*  
*Day Student Representative*  
*Faculty Adviser*  
*Faculty Adviser*

# DAY STUDENTS' CLUB

## OFFICERS

CHESTER KILPATRICK

*President*

ANNE FOSTER

*Secretary-Treasurer*

FRANCES FORTUNE

*Student Council Representative*



# THE 1954 PERTELOTE

IMOGENE DICKSON  
*Editor-in-Chief*

GEORGE WHITE  
*Business Manager*

JOYCE BYERS  
CELIA SHERRILL  
PAM DENNIS  
JENNIE LOU MORRIS  
HENRY JUSTICE  
REG SMITH  
JOANNE GOURLEY  
SALLY TYSINGER  
RALPH DUCKWORTH  
PATSY BUMGARDNER  
MARY NEWELL  
ELIZABETH HAMILTON  
KATHLEEN HENSON  
MYRA CRAWFORD  
MRS. C. E. ROY

*Associate Editor*  
*Sophomore Editor*  
*Freshman Editor*  
*Women's Sports Editor*  
*Men's Sports Editor*  
*Photography Editor*  
*Snapshot Editor*  
*Circulation Editor*  
*Assistant Business Manager*  
*Typing Editor*  
*Typist*  
*Typist*  
*Typist*  
*Faculty Adviser*







# THE CLARION

JIM ELLIOTT  
*Editor-in-Chief*

JERRY JEROME  
*Business Manager*

MARY NEWELL	<i>Associate Editor</i>
JOY WARREN	<i>Feature Editor</i>
AL STARNES	<i>Feature Writer</i>
BETH JONES	<i>Society Editor</i>
NICK WILLIAMS	<i>Art Editor</i>
RUTH DELLINGER	<i>Art Editor</i>
CHESTER KILPATRICK	<i>Sports Editor</i>
JEANNE GLENN	<i>Sports Editor</i>
WALLACE HONEYCUTT	<i>Associate Sports Editor</i>
BOBBY BOGGAN	<i>Sports Writer</i>
MILBURN MCGINNIS	<i>Circulation Manager</i>
MR. AND MRS. ELLIOTT DODSON	<i>Faculty Advisers</i>

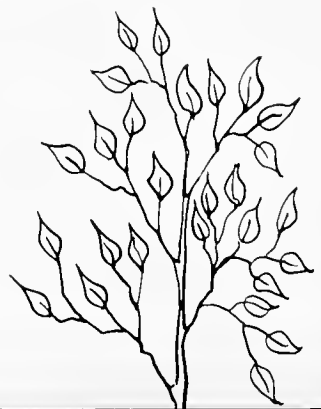


# CHRISTIAN FELLOWSHIP CLUB

## OFFICERS

DAVID PHIPPS  
EVELYN LEDFORD  
DAVID GRIGGS  
IMOGENE DICKSON  
ELLEN TORRENCE  
REV. C. E. ROY

*President*  
*Vice-President*  
*Secretary-Treasurer*  
*Vesper Chairman*  
*Recreation Chairman*  
*Faculty Adviser*





# GLEE CLUB

## OFFICERS

HENRY JUSTICE  
DORIS MCGAHA  
MR. BRUCE A. LIVENGOOD

*President*  
*Secretary-Treasurer*  
*Director*



# BAPTIST STUDENT UNION

## OFFICERS

BETTY WILLINGHAM  
BEN BROOKS  
MARY FRANCES MEACHUM

*President*  
*Vice-President*  
*Secretary-Treasurer*



# CHRISTIAN WORKERS' CLUB

## OFFICERS

KEN HOYLE  
BEG. SMITH  
MARY NEWELL  
REV. NEAL MCGILMERY  
REV. C. E. ROY

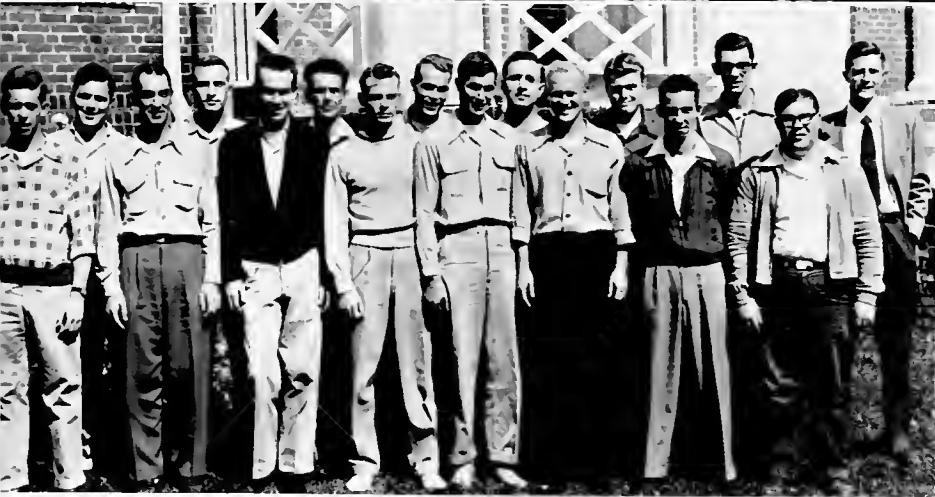
*President*  
*Chairman of Ministerial Club*  
*Chairman of D.R.E. Club*  
*Faculty Adviser*  
*Co-Adviser*

## DRAMATICS CLUB

### OFFICERS

FRANCES FORTUNE  
NADINE WILLIAMS  
BETTY WILLINGHAM  
MILBURN MCGINNIS AND JOY WARREN  
MR. FRANCIS B. PRICE

*President*  
*Vice-President*  
*Secretary-Treasurer*  
*Publicity Managers*  
*Faculty Adviser*



## WODENIANS' CLUB

### OFFICERS

BOB BOWEN  
WAYNE HOYLE  
HAROLD WHITE  
CHESTER KILPATRICK  
MR. ELLIOTT DODSON

*President*  
*Vice-President*  
*Secretary-Treasurer*  
*Recreation Chairman*  
*Faculty Adviser*

## COMMERCIAL CLUB

### OFFICERS

REBEKAH EAKER  
FRANCES WEAVER  
BETTY LEE STARNES  
BARBARA TEAGUE  
MISS ELLEN LENSING  
MISS MARTHA WHELESS

*President*  
*Vice-President*  
*Secretary*  
*Treasurer*  
*Faculty Adviser*  
*Faculty Adviser*



## INTERNATIONAL RELATIONS CLUB

### OFFICERS

NICK WILLIAMS  
FRANCES FORTUNE  
BETH JONES  
DR. A. L. BRAMLETT

*President*  
*Vice-President*  
*Secretary-Treasurer*  
*Faculty Adviser*

## MNEMOSYNEAN SOCIETY

### OFFICERS

JOY WARREN  
BETH JONES  
FRANCES FORTUNE  
MISS NELLIE F. MCGEE

*President*  
*Vice-President*  
*Secretary-Treasurer*  
*Faculty Adviser*



## DELPHIAN SOCIETY

### OFFICERS

NICK WILLIAMS  
WALLACE HONEYCUTT  
AL STARNES  
MR. BRUCE A. LIVENGOOD

*President*  
*Vice-President*  
*Secretary-Treasurer*  
*Faculty Adviser*

# EUTERPEAN SOCIETY

## OFFICERS

CELLA SHERRILL  
EVELYN LEDFORD  
DELORES SCHAEFER  
RUTH DELLINGER  
MISS ELLEN LENSING

*President*  
*Vice-President*  
*Secretary*  
*Treasurer*  
*Faculty Adviser*



# CLIOSOPHIC SOCIETY

## OFFICERS

DAVID GRIGGS  
KEN HOYLE  
DR. B. W. LOONIS

*President*  
*Secretary-Treasurer*  
*Faculty Adviser*



## PHI THETA KAPPA

### OFFICERS

CELIA SHERRILL  
IMOGENE DICKSON  
DORIS MCGAHA  
DR. BURT W. LOOMIS

*President*  
*Vice-President*  
*Secretary-Treasurer*  
*Faculty Adviser*



## SIGMA PI ALPHA

### OFFICERS

MARY FRANCES MEACHUM  
IMOGENE DICKSON  
CELIA SHERRILL  
MISS DULCIE HAYES

*President*  
*Vice-President*  
*Secretary-Treasurer*  
*Faculty Adviser*



# B A S K E T B A L L ' 5 4

JAMES N. FITZPATRICK  
*Coach*

HUGH ABERNETHY  
*Manager*

JOHN STEWART  
*Manager*

## TEAM MEMBERS

HAROLD WHITE  
DON JUSTICE  
TOMMY CASSADY  
BEN BROOKS  
HARRY PATTERSON  
ED TRIVETTE

## CONFERENCE SCORES

<i>We</i>	<i>Opponent</i>	<i>They</i>
66	Spartanburg	69
65	Lees-McRae	74
78	Mars Hill	94
56	Lees-McRae	57
71	Asheville-Biltmore	62
77	Spartanburg	65
60	N. Greenville	86
62	Asheville-Biltmore	66
63	Mars Hill	96
54	N. Greenville	70

DAVID PHIPPS  
WALLACE HONEYCUTT  
DON MALCOLM  
MACK BRIDGES  
MARTY OSBORNE  
FRANK NESBIT



# B A S E B A L L ' 5 3

JAMES N. FITZPATRICK  
*Coach*

NICK WILLIAMS  
*Manager*

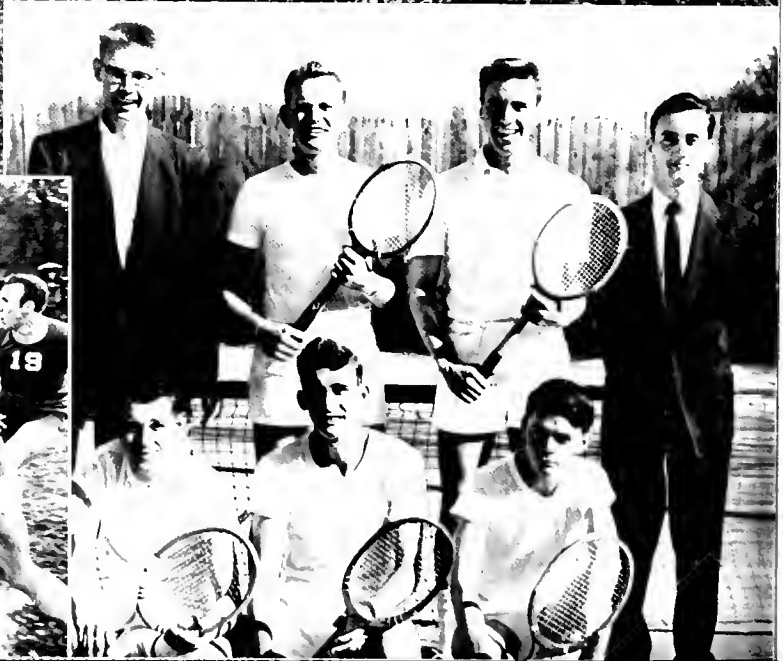
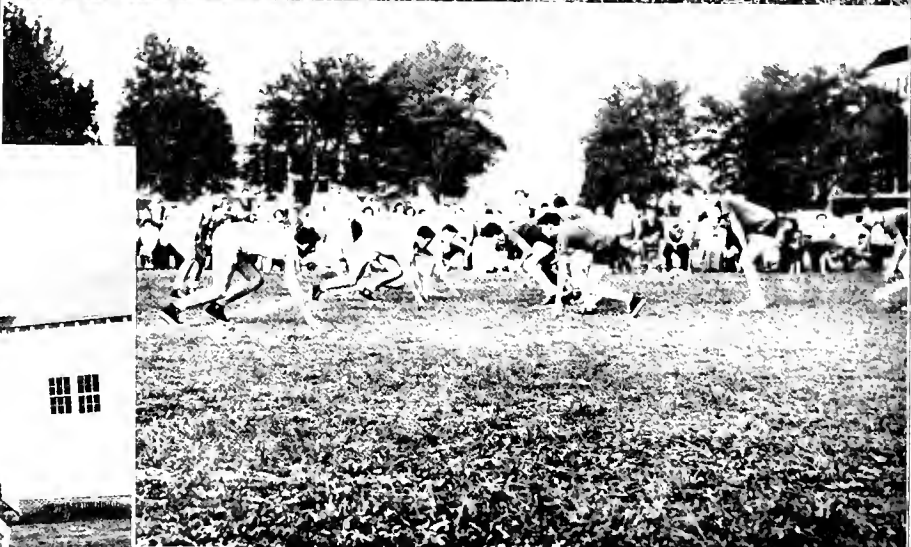
ED TRIVETTE  
*Manager*

## TEAM MEMBERS

ALEX HOUSTON	WALLACE HONEYCUTT
RA CAIN	BOB CHISHOLM
JACK PARKS	BRUCE JONES
RALPH WILKINSON	ARTHUR KING
JIM ELLIOTT	MACK BRIDGES
JAKE ABERNATHY	BEN BROOKS
HARRY PATTERSON	GARDNER HELMS
HENRY REDDICK	







## MEN'S ATHLETIC ASSOCIATION BOARD

DON MALCOLM

*Chairman*

CHARLES SUMMERSVILLE

HENRY JUSTICE

DAVID PHIPPS

REG SMITH



## MONOGRAM CLUB

### OFFICERS

ED TRIVETTE

*President*

DON MALCOLM

*Vice-President*

MACK BRIDGES

*Secretary-Treasurer*

COACH JAMES FITZPATRICK

*Faculty Adviser*



NANCY SETZER  
*Manager*

## GIRLS' BASKETBALL

### FORWARDS

JENNIE LOU MORRIS, *Captain*

JEANNE GLENN

DOT WILKINSON

BRENDA WILLIAMSON

CLARA HARRIS

EVELYN LEDFORD



MISS LOUISE MOSELEY  
*Coach*

### GUARDS

ELLEN TORRENCE

ROWENA ROBINSON

BILLIE CANSLER

PAM DENNIS

NADINE WILLIAMS

BETTY LEE STARNES



# WOMEN'S ATHLETIC ASSOCIATION BOARD



## OFFICERS

JENNIE LOU MORRIS  
JOY WARREN  
BETTY LEE STARNES  
AUDREY SCHEEPER  
CELIA SHERRILL  
DOT WILKINSON  
FRANCES WEAVER  
DORIS MCGAHA  
ELLEN TORRENCE  
BILLIE CANSLER  
JOAN WILSON  
WYLLADENE DUCKETT  
GLORIA GILLIAM  
SALLY TYSINGER  
MARGARET HENNESSEE  
NANCY SETZER  
PAT GREENE

*President*  
*Vice-President*  
*Secretary*  
*Archery Chairman*  
*Tennis*  
*Basketball*  
*Badminton*  
*Volleyball*  
*Touch Football*  
*Ping-Pong*  
*Softball*  
*Dancing*  
*Hiking*  
*Manager of Yellow Canaries*  
*Manager of Red Devils*  
*Manager of Blue Blazes*  
*Manager of Green Hornets*







# CHEERLEADERS

INGENE DICKSON  
BOBBY BOGGAN

BECKY ROY, *Mascot*  
CELIA SHERRILL  
JOYCE WINCHESTER  
REG SMITH

*Chief*  
*Assistant Chief*

WARREN KAFITZ  
PAT GREENE  
PAT LACKEY



BOOK THREE . . . *Features*



# May Day



Miss Imogene Dickson  
Queen



Miss Frances Fortune  
Maid-of-Honor

Miss Wylladene Duckett

Miss Celia Sherrill

Miss Betty Lee Starnes

Miss Nancy Setzer





*Miss Kathleen Henson*

*Miss Patsy Binghamer*

*Miss Ruth Dellinger*

*Miss Dorothy Wilkinon*



*Mr. and Miss Sophomore*

*Miss Frances Fortune*

*Mr. Wallace Honeycutt*



*Mr. and Miss Freshman*

*Mr. Reginald Smith*

*Miss Jacqueline Harmon*



DEAR FOLKS,

1. I'm studying hard. . . .
2. But just thought I'd write a line to say "How". . . .
3. I met the best looking man yesterday. . . .
4. He asked me to go to a party. . . .
5. It was formal. . . . very ritzy. . . .
6. This is me in the evening dress I wore. . . .
7. We double-dated with a Mexican couple. . . .

8. The refreshments were delicious. . . .
9. He told me the sweetest things. . . .
10. We really had fun. . . .
11. A romance might be brewing. . . .
12. Well, that's all for now. . . .

Love,

BEE VARD

# Ecusta Paper Corporation

Subsidiary of Olin Industries, Inc.

World's Largest

Manufacturer of Cigarette Paper

and

Olin Cellophane

PISGAH FOREST, NORTH CAROLINA



# GROWING WITH THE MODERN SOUTH

SINCE 1906

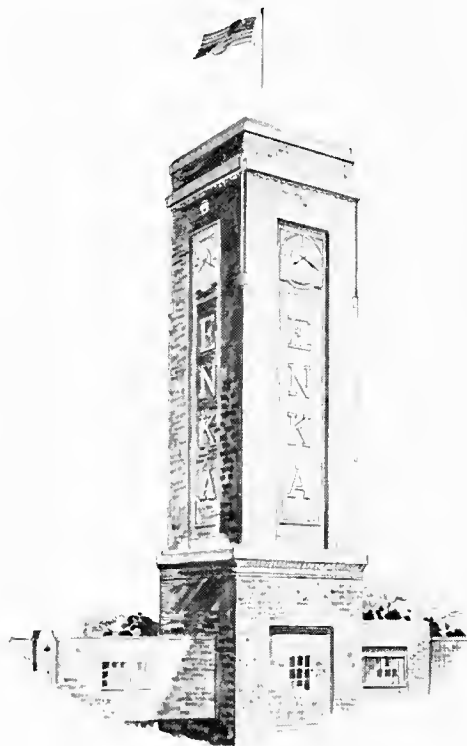
Forty-eight years ago Champion first recognized the vast natural resources and skilled workmanship of the people of the South. The combination has made it possible for us to say proudly, "Whatever Your Paper Problem, it's a Challenge to Champion."



## The Champion Paper and Fibre Company

CAROLINA DIVISION

CANTON, NORTH CAROLINA



**ENKA  
GROWS WITH THE SOUTH**

For 25 years the fashion name  
in rayon . . . today Enka is a  
major producer of high-strength  
industrial yarn . . . and tomorrow  
NYLON

AMERICAN  
**ENKA**  
CORPORATION  
ENKA, N. C.



**CO-ED AND  
CLEMSON  
THEATERS**

THE LATEST AND BEST MOVIE  
ENTERTAINMENT

BREVARD, NORTH CAROLINA

**POWER TO THE CLASS OF '54!**



We're proud of you . . . proud, too, of the chance to serve a new generation of young Piedmont citizens.

Our best to you as you move forward, in a free and responsible community . . . where you own will and effort are the measure of achievement.

**DUKE**  
**POWER COMPANY**  
*Serving the Piedmont Carolinas*

Best Wishes From Brevard's  
Modern Radio Station

**W P N F**

Located Adjacent to the  
Beautiful Campus of  
Brevard College

**NBC Affiliate**  
**1240 on AM Dial**

"Wonderful Pisgah National Forest"

BREVARD, NORTH CAROLINA

## AUSTIN'S STUDIO

Portraits—Commercial and Aerial  
Photography



11 East Main Street  
BREVARD, NORTH CAROLINA  
Phone 3-3111

## SCHRAFFT'S

*"The Nation's Leading Candies"*

ON SALE AT GOOD  
STORES EVERYWHERE  
\$1.00 — \$2.00 Lb.

Morgan Bros., Inc.  
*Wholesale Distributors*

67 Broadway, Asheville, N. C.



## LENOIR RHYNE COLLEGE

HICKORY, NORTH CAROLINA

A co-educational Senior College  
Fully Accredited

- Liberal Arts
- Science
- Music
- Teacher Training
- Commerce

Extra-curricular activities include  
Band, Orchestra, Choir, Radio, Dramatics,  
Forensics and Athletics

Emphasis on Christian character and  
Scholarship

Summer Session begins June 7  
Fall Session begins September 6

Compliments of

## GAITHER'S RESTAURANT

The Home of Good Food

RHODODENDRON  
AND  
DOGWOOD ROOMS  
BANQUETS  
CIVIC CLUBS  
SPECIAL PARTIES

Phone 3-4211

35 South Braad Street  
BREVARD, NORTH CAROLINA



PROGRAM FOR THE EVENING:

- |   |   |
|---|---|
| 1. Alexander's Rag Time Band                                    | 6. Oh! You Beautiful Dolls                      |
| 2. Featuring Jey Wilson: "The Big Bad Boogie Man"               | 7. "The Thing"                                  |
| 3. In honor of visiting royalty - King Henry and Queen Kathleen | 8. Ma! She's Making Eyes at Me                  |
| 4. "When the Saints Go Marching In"                             | 9. "They Say That Falling in Love is Wonderful" |
| 5. "Sitting on Top of the World"                                | 10. "Dancing in the Dark"                       |
|   | 11. "For He's a Jolly Good Fellow"              |
|   | 12. "So Long for a While"                       |

Compliments of

**CASH and CARRY  
SUPER MARKET**

East Main Street  
BREVARD, NORTH CAROLINA

**CASH WHOLESALE  
GROCERY**

East Jordan Street  
BREVARD, NORTH CAROLINA

Compliments of

**BREVARD LUMBER  
COMPANY**

SINCERE WISHES TO THE  
CLASS OF '54

**BREVARD JEWELERS**

Opposite the Courthouse  
Dial 2-1801

Compliments of

**CREST STORES**

South Broad Street  
BREVARD, NORTH CAROLINA

Compliments of

**ELECTRIC SERVICE CO.**

ELECTRICAL CONTRACTORS  
35 East Main St. Telephone 2-6741  
BREVARD, NORTH CAROLINA

Compliments of

**HAYES MOTOR COMPANY**

NEW & USED  
CARS & TRUCKS  
BREVARD, NORTH CAROLINA

**CHICKEN KITCHEN**

Chicken-in-the-Basket  
Barbeque, our Specialty  
Charlie Owenby, Owner  
Phone 2-6231  
BREVARD, NORTH CAROLINA

Compliments of

**Blue Ridge Trucking Co.**

ASHEVILLE, NORTH CAROLINA

Compliments of

**FARMERS' SUPPLY  
COMPANY**

BREVARD, NORTH CAROLINA

Compliments of

**TOWN 'N COUNTRY**

BREVARD, NORTH CAROLINA

**McFEE JEWELERS**

"The Old Reliable"

Established 1898

BREVARD, NORTH CAROLINA

**PLUMMER'S**

**Trantham's Department Store**

Dry Goods

Ready-to-Wear and Shoes

East Main Street

BREVARD, NORTH CAROLINA

Phone 3-2221

Compliments of

**SLEDGE RADIO AND TV**

41 N. Caldwell

BREVARD, NORTH CAROLINA

Phone 3-3911

Compliments of

**Transylvania Trust Company**

BREVARD, NORTH CAROLINA

Member Federal Deposit Insurance  
Corporation

## **COCA-COLA BOTTLING COMPANY**

HENDERSONVILLE, NORTH CAROLINA

### **Sid Barnett's Machine Shop**

Welding, Brazing, General Repairs  
Lathe and Planer Work

PROMPTNESS, OUR MOTTO

Phone 2-4021

PISGAH FOREST, NORTH CAROLINA

Compliments of

### **BILTMORE DAIRY FARMS**

"South's Finest Dairy"

Phone 3-2321

### **S. M. Macfie Drug Company**

The REXALL Store

Revlon Agency

BREVARD, NORTH CAROLINA

Your Campus Grocer

### **KEARNS GROCERY**

### **Merrill's Bicycle Shop**

We Make a Specialty of Repairing  
Children's Vehicles, all Makes of  
Typewriters and Machines

Lawn Mowers Sharpened

Telephone 3-7181

Corner Coxe and Commerce Streets  
ASHEVILLE, NORTH CAROLINA

Meet Your Friends at

### **VARNER'S OR LONG'S**

Brevard's Most Popular Drug Stores

Eddie Varner, Manager

Your Walgreen Agency

Phone 3-3311

BREVARD, NORTH CAROLINA



## **GOODWILL MOTOR COMPANY, INC.**

220 South Broad Street

Pontiac  
Authorized  
Sales & Service

Dial 3-3611  
BREVARD, NORTH CAROLINA

GMC Trucks  
Authorized  
Sales & Service

24-Hour Wrecker Service

Compliments of

### **CASSEL'S UNITED STORES**

### **HAROLD'S SUPER STORE**

NORTH BREVARD

### **SOUTHERN DAIRIES**

Sealtest Ice Cream and Milk

T. Ralph Parrish, Manager

Phone 2-3621

Box 88

BREVARD, NORTH CAROLINA

### **THE SPORTS MART, INC.**

SPORTS OF ALL SORTS  
HOBBY SUPPLIES

32 Battery Park Ave.

Dial 3-3953

ASHEVILLE, NORTH CAROLINA

We Salute  
Brevard College Graduates, Students,  
and Faculty Members

### **The Transylvania Times**

"A State and National  
Prize-winning Newspaper"

### **Talman Office Supply Co., Inc.**

8 College Street

ASHEVILLE, NORTH CAROLINA

Compliments of

**B. & B. Feed & Seed Co.**



BREVARD, NORTH CAROLINA

**Institution Wholesale Co.**

Lyman Street

Serving Institutions and Industries

Dial 2-4961—3-6082

ASHEVILLE, NORTH CAROLINA

Compliments of

**OSBORNE-SIMPSON  
FUNERAL HOME**

143 E. Main St. Phone 3-2421

BREVARD, NORTH CAROLINA

Compliments of

**Brevard Laundry and Coal Co.  
Perkins Oil Co.**

Phone 2-3231

Phone 3-3791

**SARRAT'S CLEANERS**

BREVARD, NORTH CAROLINA

Pick-up by Micy's

Compliments of

**PATTERSON'S**

**McCrary Auto Service, Inc.**

Wrecker Service

BREVARD, NORTH CAROLINA



CHEVROLET—OLDSMOBILE

**PISGAH CANDY  
COMPANY**

WHOLESALE ONLY

BREVARD, NORTH CAROLINA

Compliments of

**BREVARD COLLEGE  
BOOK STORE**

Compliments of

**A. & P.  
TEA COMPANY**



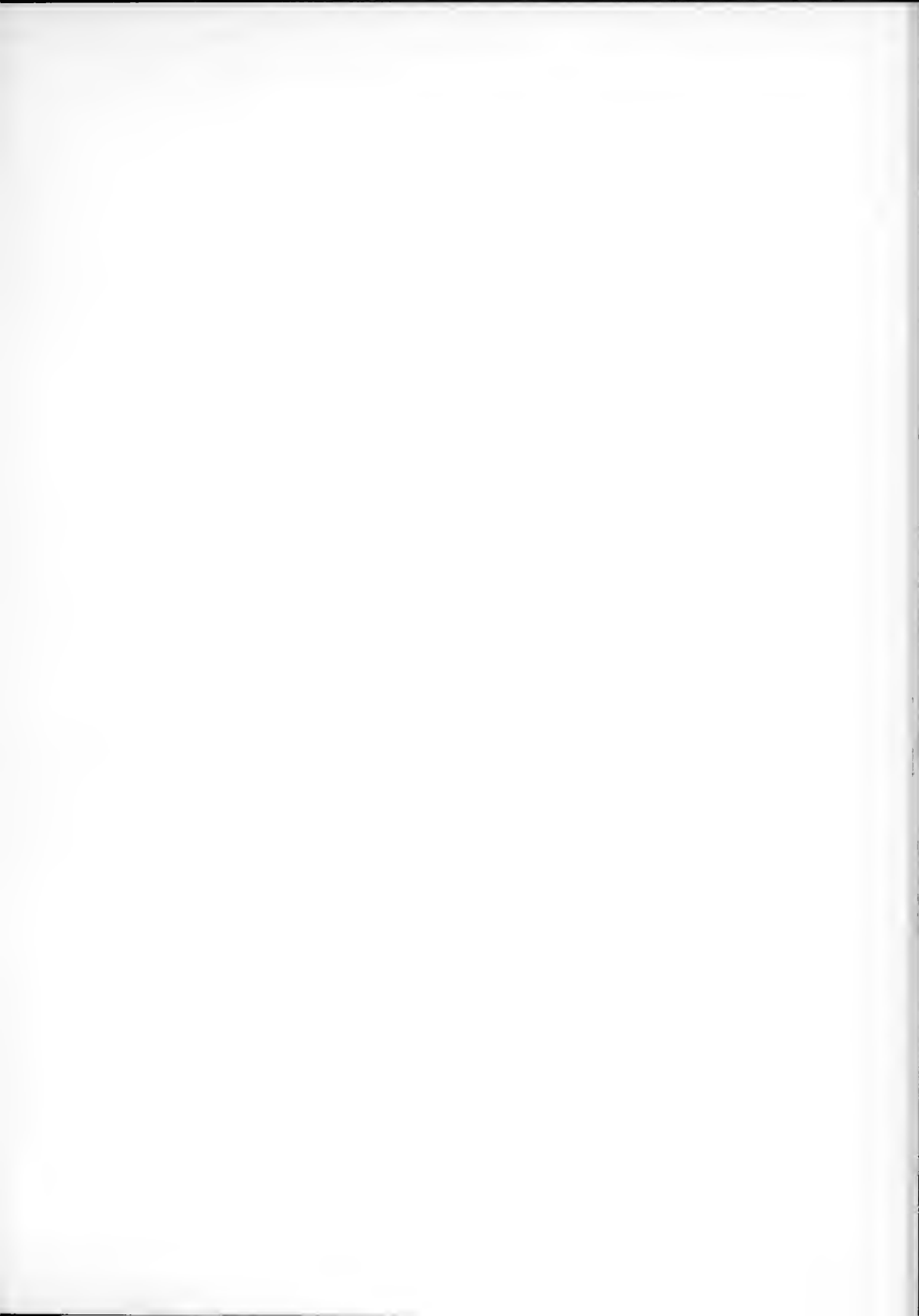
CHARLOTTE, NORTH CAROLINA

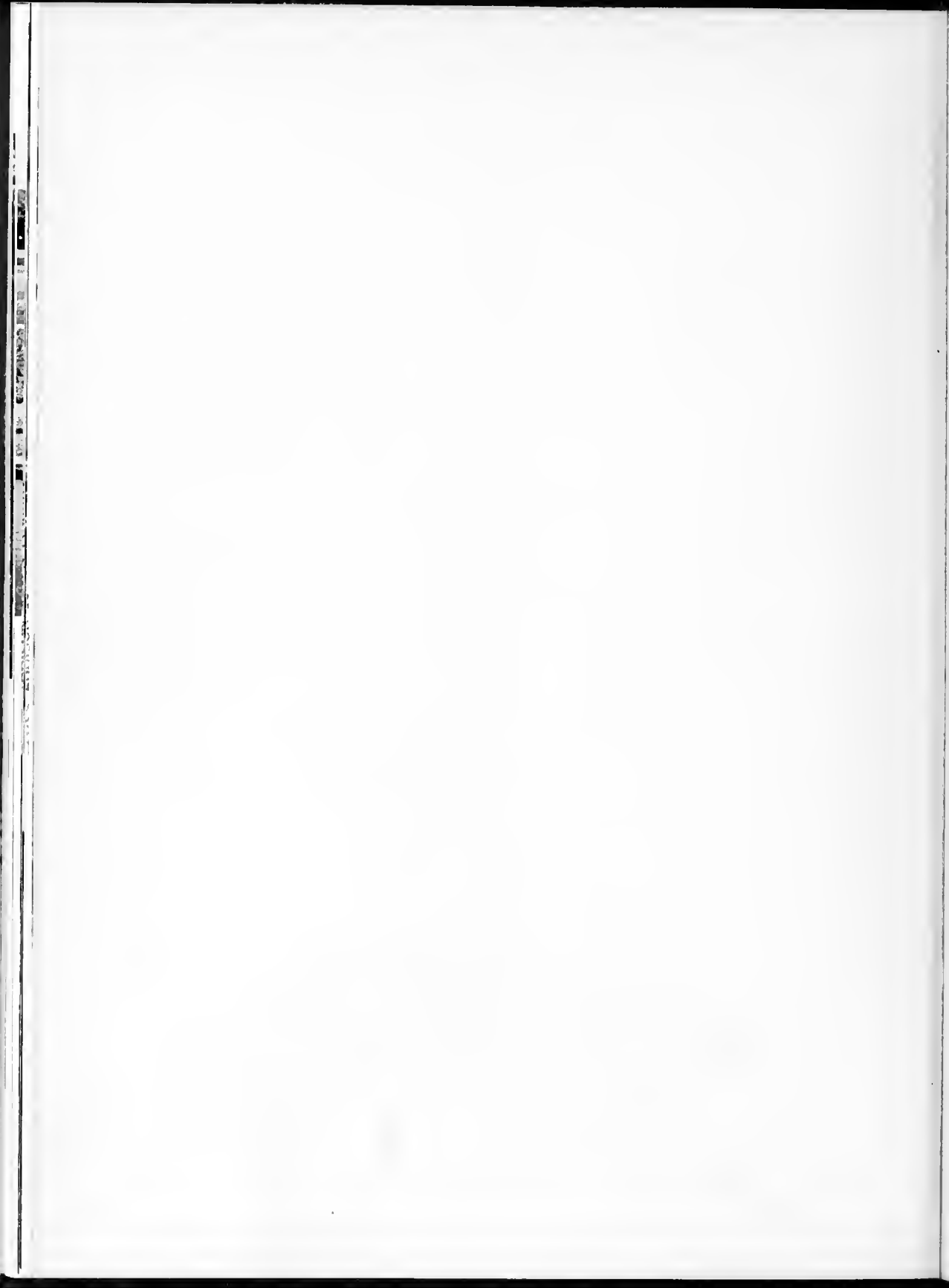


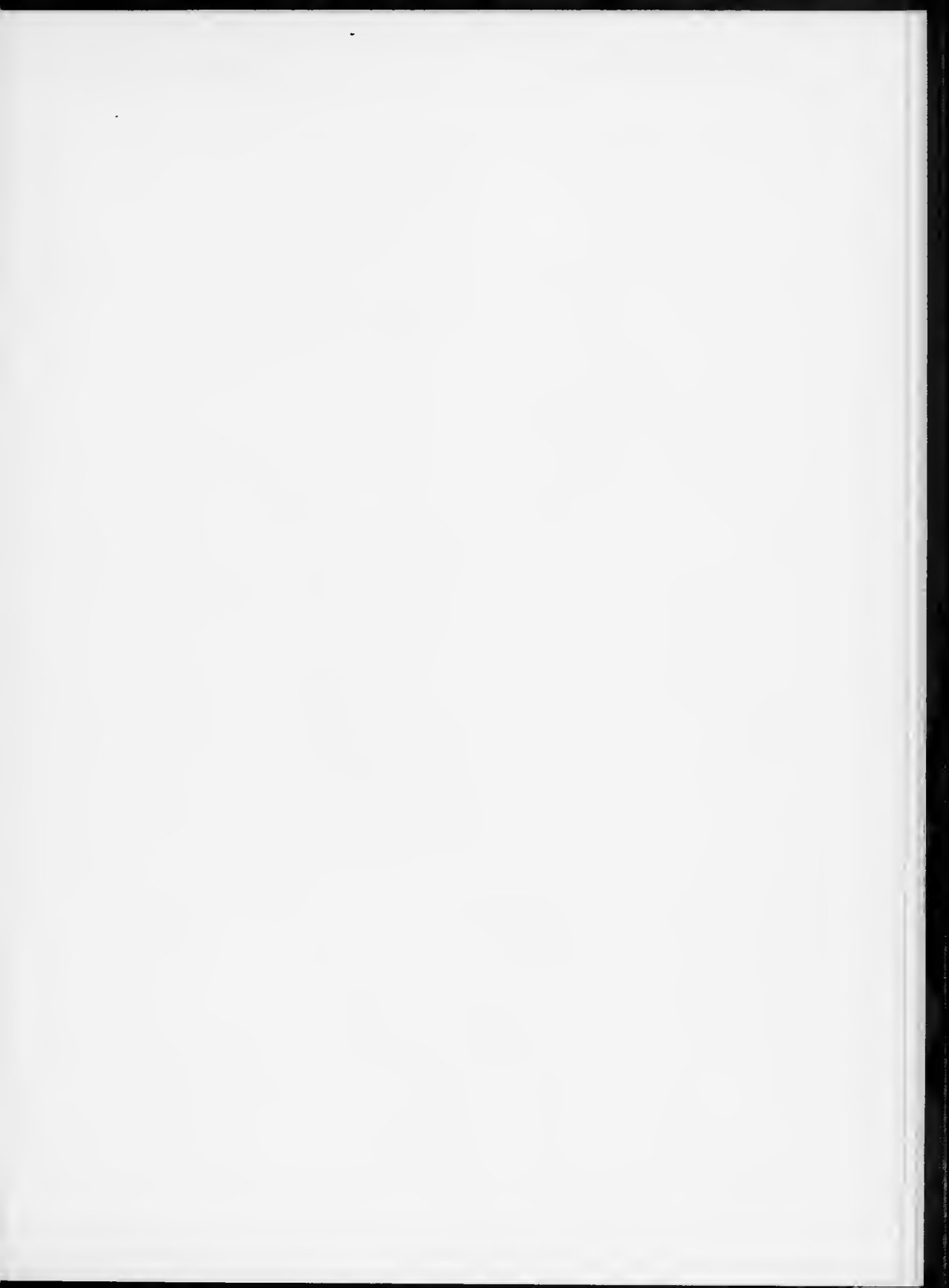


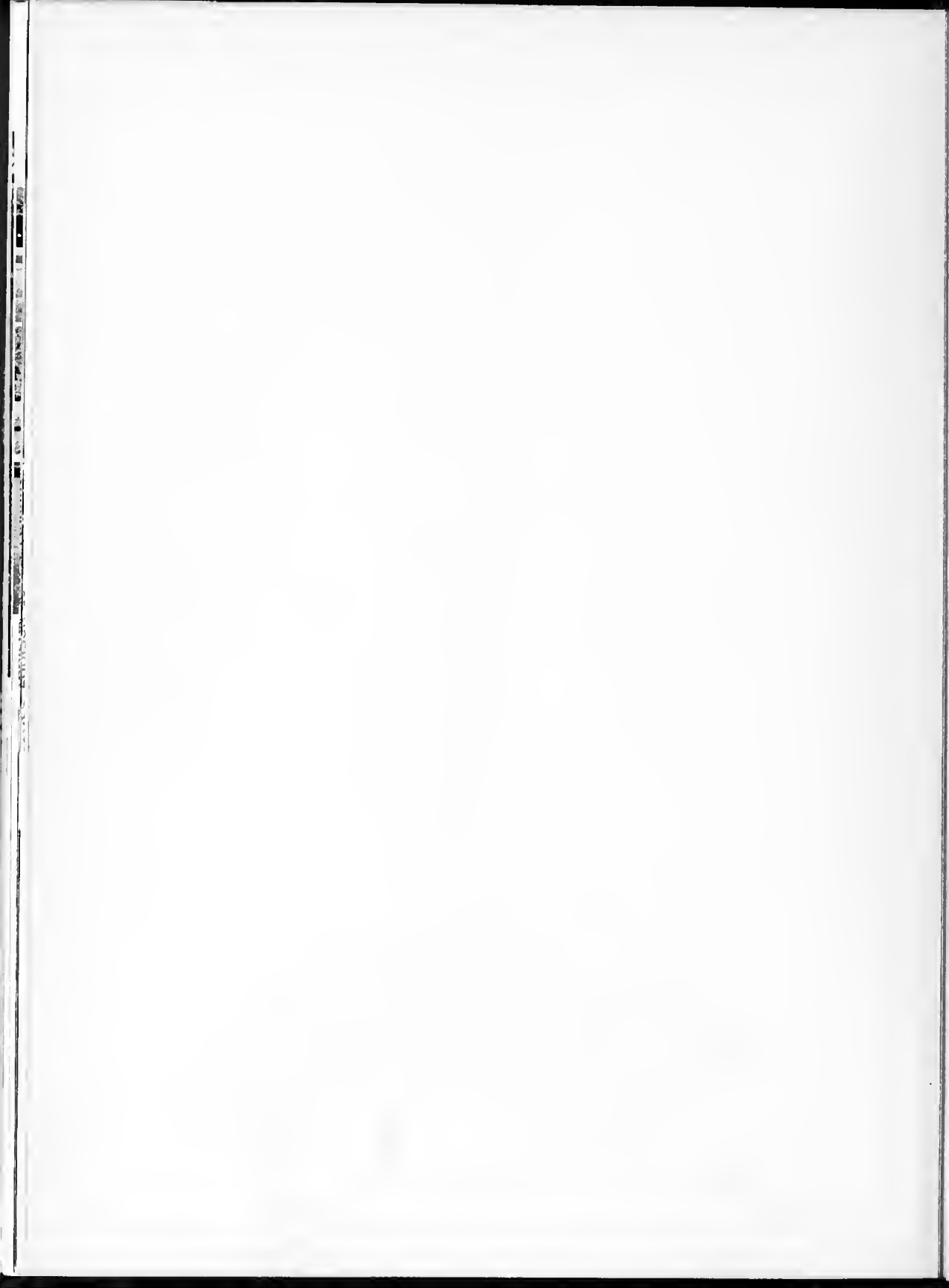
1. "Just hold on, Jim. We'll save you."  
 2. Modified Swan.  
 3. A club imitation.  
 4. All aboard that's going aboard!

5. "Tell it agin, Joyce, Charles missed the punch line."  
 6. "Aw shucks, Mr. Eversman."  
 7. A pretty girl is a pretty girl is a pretty girl.



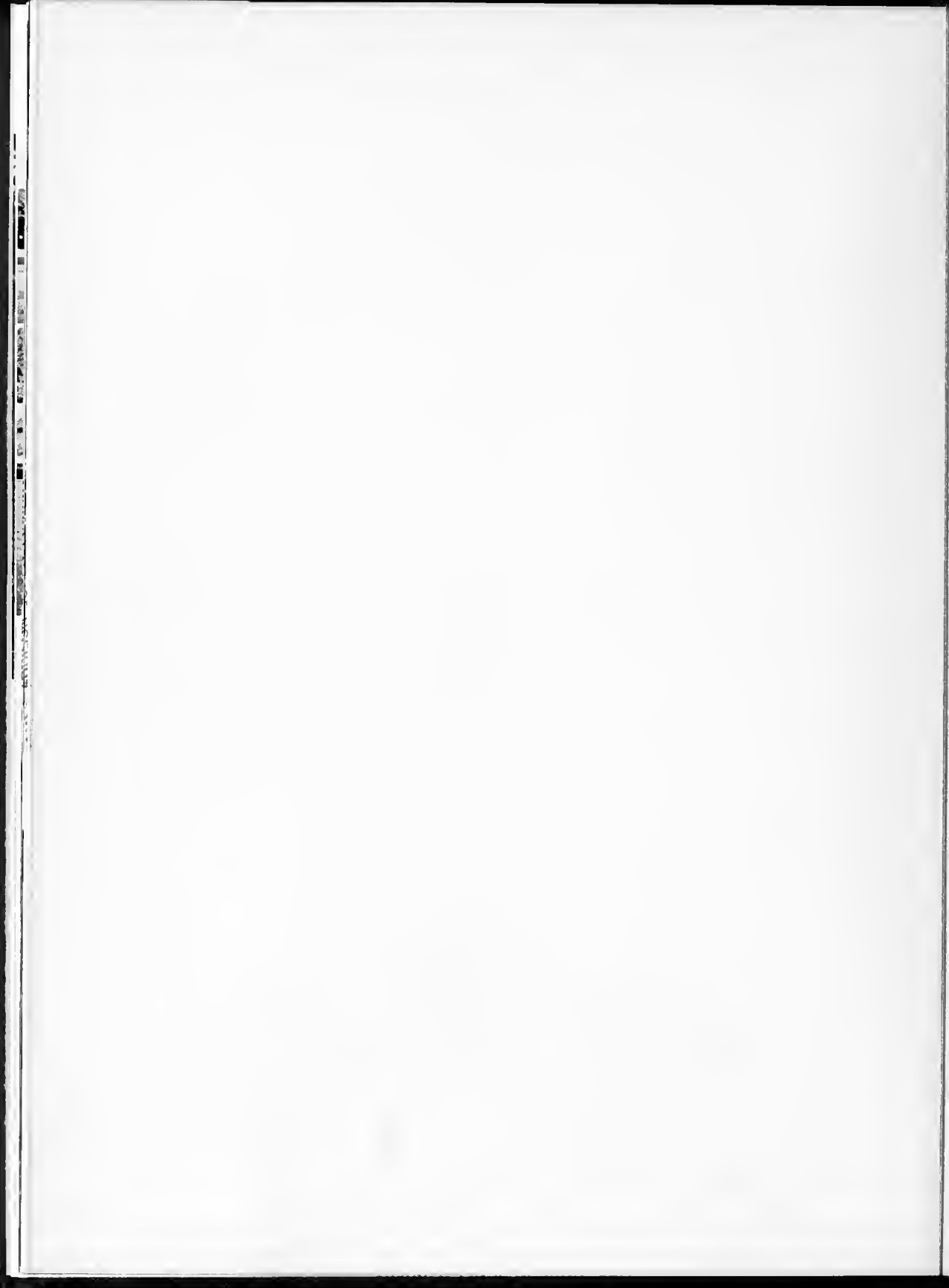




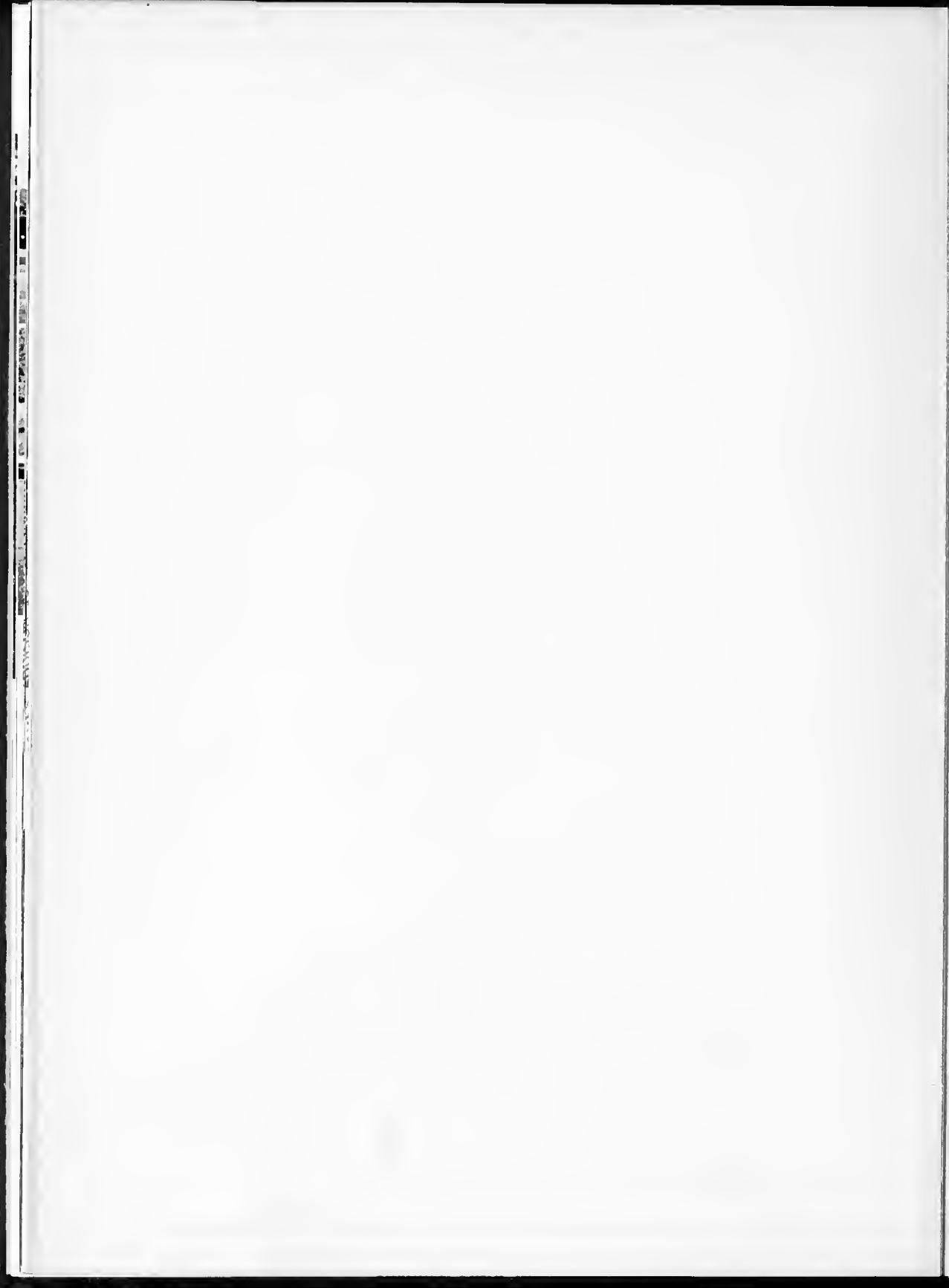














REVISED 1977

Brevard College Library



0 1934 0021882 5

DATE DUE