

THE

Pertelote

1960









the Pertelote

BREVARD COLLEGE
Brevard, North Carolina
1960



Foreword

We live but once. The years of childhood, when once past, are past forever. It matters not how ardently we may wish to live them over; it avails us nothing. So it is with the other stages of life. The past is no longer ours. It has gone beyond our reach. What we have made it, it shall remain. There is no power in Heaven or on earth that can change it. THE RECORD OF OUR PAST STANDS FORTH IN BOLD AND INEFFACEABLE CHARACTERS . . . Talmage.

Contents



Faculty and Administration

Classes

Activities

Athletics

Features

Advertisement



Dedication

His character is the stamp of his life. He stands upright, a pillar of Brevard College, always willing to give much and take little in return. Knowledge is his shining key; humble wisdom and self-sacrifice, the basis of his service. From a trained and well-filled mind spring duty well-done, faith in the outcome of what is right, and a respect for the students he governs. So, in understanding and appreciation for his great loyalty and for service well-rendered, we proudly dedicate this, the 1960 PERTELOTE, to Dr. John B. Bennett, Dean of Brevard College.



JESSE JOEL STEVENSON, JR.

In
Memoriam

"To follow knowledge like a sinking star, Beyond the utmost bound of human thought . . . Centered in the sphere of common duties . . . Ever with a welcome took the thunder and the sunshine . . . strong in will . . . To strive, to seek, to find, and not to yield."

(Tennyson's "Ulysses")

These were his ideals. He dedicated his life to others—a great man absorbed in those around him. His life was an example for all; he was a part of all that he had known.



Sims Student Center Building



Mary Frances Stamey Memorial
Infirmary



James Addison Jones
Library

Anabel Jones Hall



Taylor Hall



Green Hall







Administration and Faculty



EMMETT KENNEDY McLARTY, JR.
President, Brevard College
A.B., B.D., Duke University; D.D., Pfeiffer College



JOHN BOYCE BENNETT
Dean of Instruction
A.B., Wofford College; B.D., Ph.D., Duke
University



MALCOLM RICHARD HENDERSON
Dean of Students
B.B.A., University of Georgia; M.S., Uni-
versity of Tennessee; Graduate Study,
Georgia Institute of Technology, George
Peabody College and University of Alabama

*General
Administrators*

RUBIE ELIZABETH PLANT
Dean of Women
A.B., Florida State University; M.A., North-
western University



CHARLES A. BUTTERWORTH, JR.
Business Manager



WILLIAM GLENN HARDESTY
Director of Public Relations
B.S., North Carolina State College



Faculty



NELSON F. ADAMS
Music
A.B., M.R.E., Duke University; M.S.M., Union
Theological Seminary



MARY J. COUSINS
Health
B. S., Appalachian State Teachers College;
Graduate Study, University of Arizona



M. THOMAS COUSINS
Music
Juilliard School of Music; Bandmaster's
Certificate, Army Music School; Ap-
palachian State Teachers College



FRANK N. EGERTON
Physics
A.B., M.A., Duke University; E. E.
Princeton University; Graduate Study,
Columbia University



C. KENNETH DUBOIS
Art
A.B., Union College; Graduate Study,
Syracuse University and University of
Pittsburgh



CHARLES R. FISHER
Business Education
B.S., Western Carolina College; Gradu-
ate Study, University of Georgia

Faculty

RUPERT D. GRAVES

Mathematics

B.S., United States Military Academy; Graduate Study, Western Carolina College; M.S., Purdue University



BARBARA K. HARDESTY

English

B.S., East Tennessee State College; M.R.E., Duke University



KARL P. HARRELL

English

A.B., M.A., University of North Carolina



NELL H. HARRIS

History

A.B., M.A., Winthrop College; M.A., Columbia University; Graduate Study, University of North Carolina



FRANK M. HARVIN

History

A.B., L.L.B., Graduate Study, University of South Carolina



DULCIE HAYES

Languages

A.B., M.A., Graduate Study, University of Illinois



Faculty



MALCOLM R. HENDERSON
Business Administration
B.B.A., University of Georgia; M.S., University of Tennessee; Graduate Study, George Peabody College, Georgia Institute of Technology and University of Alabama



ELIZABETH J. HOLDER
Librarian
A.B., Salem College; M.S. in Library Science, University of North Carolina



MINNIE M. HUSSEY
Assistant Librarian
A.B., Meredith College; A.B. in Library Science, Woman's College of the University of North Carolina



MARY G. LOBDELL
Biology
B.S., Mississippi State College for Women; M.S., University of Illinois; Graduate Study, University of Minnesota



JOSEPH F. LEETE
Chemistry
B.S., Pennsylvania State University; Ph. D., University of Greifswald



BURT W. LOOMIS
Psychology and Education
Director of Guidance
B.S., University of Missouri; M.A., Columbia University; Ph.D., George Peabody College

Faculty

HENRY C. McDONALD
Mathematics
B.S., Clemson College



LEIGHTON W. MARTIN
Director of Athletics
Health & Physical Education
A.B., Mercer University; Graduate Study,
Western Carolina College and University of
North Carolina



LOUISE P. MILLER
Music
Diploma, Huntington College; Diploma,
Fontainebleu, Conservatoire Americaine,
Pupil of Anthony Stankowitch, Frank La
Forge and Isadore Philipp; Graduate
Study, Columbia University and Florida
State University



GRACE J. MUNRO
Business Education
B.S., Winthrop College; M.S., University
of Tennessee



RALPH V. REED
Music
A.B., Maryville College; M.A., George
Peabody College



C. EDWARD ROY
Religion
Director of Religious Activities
A.B., Piedmont College; B.D., Emory Un-
iversity; M.A., George Peabody College;
Graduate Study, George Peabody College



Faculty



BARBARA M. SADER
Physical Education
George Peabody College, A.B., Duke University,
B.S., Johns Hopkins University



ENA K. SIGMON
English
A.B., Lenoir-Rhyne College; Graduate Study,
Duke University and University of North Carolina



LUCILE SMITH
English
A.B., Georgia State College for Women;
M.A., University of Georgia



PIERRE R. WAGNER
Languages
La Maturite Federale (BA), College
Pierre Viret, Switzerland; Diplome D'
Ingenieur Argonome (BS), Ecole Poly-
technique Federale, Switzerland; Gradu-
ate Study, University of Colorado



MARY W. STEVENSON
Library Assistant
A.B., Wesleyan College; Graduate Study,
George Peabody College



LUCIUS A. WARD
Chemistry
B.S., Baldwin Wallace College; M.A.
Western Reserve University

Administration
Educational and Business

MABEL M. ALDERMAN
*Secretary to the Director of
Public Relations*



BESS R. BUCKNER
Dietitian



ELSIE P. BURHANS
Faculty Secretary



QUENTIN E. CANTRELL
Director of Maintenance



LUELLA H. HONEYCUTT, R.N.
Nurse



BEN M. KENERLY
Book Store Manager



LOUISE M. KENERLY
Secretary to the President



Administration
Educational and Business



LAVERNE T. McCALL
Housekeeper



IRMA R. MONTIETH
Bursar



DORIS E. MONTGOMERY
Secretary-receptionist



KEITHA C. REDDICK
Clerk



EDNA E. ROBINSON
Assistant Director
Anabel Jones Hall



BRONA N. ROY
Recorder



ALAN WALLACE
Assistant in Public
Relations
A.B., Earlham College; Graduate Study,
University of Chicago and Yale University



Max Walser, President; Betty Sutherland, Secretary-Treasurer; James Pyatt, Sophomore Representative, SGA; Eric Greene, Vice-President.

SOPHOMORE CLASS OFFICERS



MARTHA ANN ADAMS
Gastonia
 Business Club, Big Sister,
 Women's House Council, Euterpean

JOE FREDERICK ALEXANDER
Salisbury
 Mountaineers Club, Masquers, Delphian, Glee Club, Intramurals, Track



JOAN AMELIA ALLISON
Old Fort
 Mountaineers Club, Christian Fellowship, Secretary; MSF, Kappa Chi, Mnemosynean

WARREN JENNINGS
 ATKINSON
Jacksonville, Florida
 Engineers Club, Delphian, Intramurals

Class of 1960

CLEGG WALLACE AVETT
Hudson
 CLARION Staff, PERTELOTE Staff, Intramurals, Clisophic

WILLIAM EDMUND BARNES
Charleston, South Carolina
 Glee Club, Choir, Madrigals, Quartet, Trio, Civic and College Orchestras, Intramurals, Delphian

RENALDIA CONNELL
 BEATTY
Marion
 Business Club, WAA Council, Softball Manager, Honorary Softball and Volleyball Teams, Halloween Queen, Euterpean



KENNETH CRAIG BOLICK
Mount Holly
 Engineers Club, Business Club,
 Baseball Team, Monogram Club,
 Intramurals, Glee Club, Track,
 Clisophic



CAROLYN SUE BRANTON
Shelby
 Business Club, Mountaineers Club,
 Women's House Council, Mne-
 mosynean

CHARLES ALEXANDER
 BROWN, III
Cleveland
 Canterbury Club, Intramurals
 Manager, Delphian



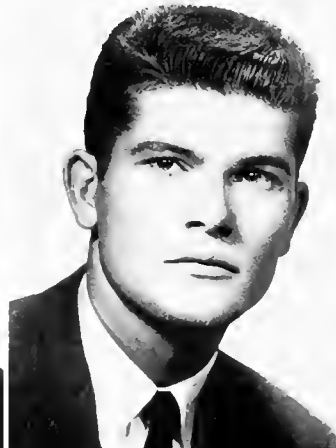
JAMES SAMUEL BROWN, II
Gastonia
 Canterbury Club, Secretary-Treas-
 urer, Clisophic

Class of 1960

STEPHEN WEBB BROWN
Asheville
 Kappa Chi, Christian Council,
 Christian Fellowship, Men's House
 Council; President, Student Gov-
 ernment Association, Glee Club,
 Madrigals, Quartet, Intramurals,
 Delphian.

CHARLES THOMAS BUCKNER
Asheville
 Basketball and Baseball Teams, In-
 tramurals, Monogram Club, Del-
 phian

WILLIAM LEE BUMGARDNER
Kings Mountain
 President, Christian Fellowship;
 Kappa Chi, CLARION Staff, PER-
 TELOTE Staff, Men's House Coun-
 cil, Clisophic.





GLORIA WOODANE
BYRUM
Rock Hill, South Carolina
Business Club, Mountaineers'
Club, Euterpean.



JERRY NEWELL
CANTRELL
Gastonia
Glee Club, Choir, Intramurals,
Masquers, Mountaineers, Clisophic.



DINAH SUE CARDEN
Concord
President, Masquers; Secretary-
Treasurer, Women's House
Council; Publicity Chairman,
Christian Fellowship; Phi Theta
Kappa, Marshal, Mnemosynean.



THOMAS EUGENE
CARPENTER
Cherryville
Intramurals, Delphian.

Class of 1960

LEROY WATTS
CARROLL
Germantown
Intramurals, Delphian.

FELIX ROBERTO
CASTILLO
Havana, Cuba
Engineers Club, Masquers, Moun-
taineers, Intramurals, Clisophic.

DAVID LEE CAUDLE
Winston-Salem
Intramurals, Delphian



CHARLES CARROLL
CAUSBY
Hendersonville
Glee Club, Choir, Civic Orches-
tra, Day Students' Club, Intra-
murals, Clisosophic.

SANKIE LOUISE
CAVINESS
Asheboro
Business Club, Euterpean



JEANETTE CHAMBERS
Canton
Business Club, President; Mne-
mosynean.

MARTHA HELEN CLARK
Concord
W. A. A. Council, Intramural
Chairman; Badminton Manager,
Honorary Basketball, Volley
ball and Softball Teams, Big
Sister, Mountaineers, Christian
Fellowship, Editor, THE PER-
TELOTE, Mnemosynean.

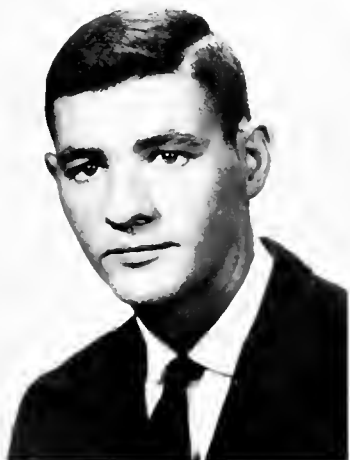


Class of 1960

JOHN ROBERT
COLE, JR.
Greenville, South Carolina
Intramurals Manager, Glee
Club, Clisosophic.

MARGARET JOY COOK
Asheville
Secretary, Business Club; Ac-
companist, Glee Club; Choir,
Madrigals, Brevard Civic Chor-
us, Valentine Court, Euterpean.

JAMES ROY CORN, JR.
Hendersonville
Men's House Council, President,
Engineers' Club, Vice President,
Delphian.





SARA FAULKNER COX

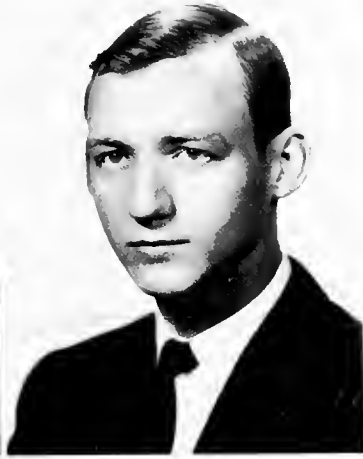
Linwood

W.A.A. Council, Softball manager; Glee Club, Choir, Madrigals, Honorary Softball and Volleyball Teams; Mountaineers, Social Chairman, Student Government Association, Women's House Council, Euterpean.

LEE OTIS CREEDE

Greensboro

President, Veterans Club, Student Government Association, Intramurals.



JAMES CRAWFORD
CRENSHAW

Lancaster, South Carolina

Choir, Glee Club, Civic Orchestra, Intramurals, Men's House Council, Delphian.

CLAYTON ALEXANDER
DABBS, JR.

Newton

Engineers Club, Mountaineers.

Class of 1960

JOHN PAUL
DAVENPORT

Newland

President, Kappi Chi; Men's House Council, Christian Council, Vesper Committee.

JUDY CHARLENE
DAVIDSON

Murphy

Business Club, Glee Club, Women's House Council, Mnemosynean.

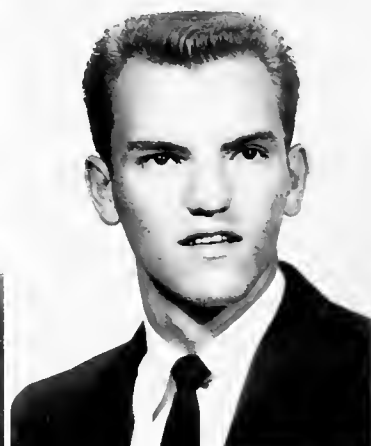
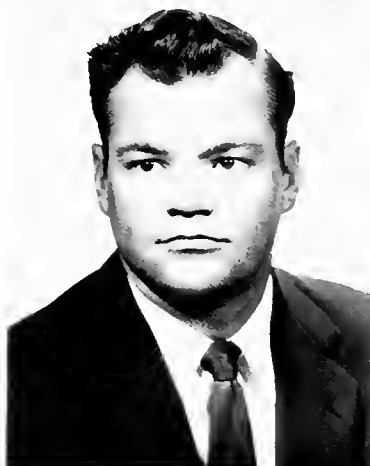
HENRY CARLTON DAVIS

Lexington

Business Club, Intramurals, Delphian.



JOHN HENRY DENSON
Lemon Springs
 Choir, Glee Club, Veterans
 Club, Day Students' Club.



THOMAS AUSTIN DICKENS
Black Mountain
 Men's House Council, Vice
 President, Student Government
 Association, Intramurals, Base-
 ball, Monogram Club, Masquers,
 Brass Ensemble, Delphian.

VIRGINIA DURANT
 DOSCHER
Charleston, South Carolina
 Vice President, Women's House
 Council, Big Sister, President,
 Canterbury Club, Christian
 Council, Euterpean.



DONNA REBECCA
 DOTSON
Black Mountain
 Women's House Council; Secre-
 tary, Christian Council, Euter-
 pean.

Class of 1960

ARTHUR JOSEPH
 DOYLE
Fort Wayne, Indiana
 Men's House Council. Intra-
 murals, Delphian.



BRENDA JOYCE
 EDISON
Gastonia
 Business Club, May Court, Hon-
 orary Softball Team, Euterpean.



MARGARET HELEN
 EDMISTON
Jacksonville, Florida
 Secretary, Kappa Chi; Method-
 ist Student Fellowship; Chair-
 man, Christian Council; Christ
 Couriers, Women's House Coun-
 cil, Student Government Associa-
 tion, Choir, Euterpean.





BROOKS WAYNE
EDWARDS
Jacksonville, Florida
Intramurals, Delphian.

CAROL PAULINE
ENGLEBERTH
Stratford, New Jersey
Women's Trio, Madrigals, Glee
Club, Choir, Women's House
Council, Euterpean.



BETTY LIND EURE
Morehead City
Mountaineers, Methodist Stu-
dent Fellowship, Christian Fel-
lowship, Big Sister, Mnemosyn-
ean.

KENNETH WAYNE
FAULKNER
Gastonia
Masquers, CLARION Staff, Cli-
osophic.

Class of 1960

NANCY JUNE
FEEMSTER
Asheville
Business Club, Big Sister, Mne-
mosynean.

ROGER CRAIG FORD
Indian Trail
Kappa Chi, Monogram Club,
Intramurals, Men's House Coun-
cil, Baseball, Delphian.

JAMES HILL GANT
Walkertown
Delphian.



CHARLES WILLIAM GIBBS
Nebo
Men's House Council, Intra-
murals, Delphian.



RICHARD ERIC GREENE
Asheville
Vice President, Sophomore
Class, CLARION Staff, Ex-
change Editor; Men's House
Council, Intramurals, Delphian.

RICHARD EUGENE
GREENE
Biltmore
Intramurals, Delphian.



EDNA TELFAIR GRIMES
Salisbury
Canterbury Club, Masquers,
Mnemosynean.

Class of 1960

FRANCIS AMSDEN
GUFFEY, JR.
Oak Hill, West Virginia
President, Men's House Coun-
cil; Veterans Club, Mountaine-
ers, Canterbury Club, Student
Government Association, Civic
Orchestra, Delphian.



BETTY LOU HARPER
Marble
Baptist Student Union, Mas-
quers, Secretary - Treasurer,
Mnemosynean.



BARBARA JEAN HARRIS
Greensboro
Treasurer, Mountaineers; Busi-
ness Club, Masquers, Canter-
bury Club, Mnemosynean.





JOSEPH SPURGEON HARRIS
Asheville
Men's House Council, Phi Theta
Kappa, Secretary - Treasurer
Veterans Club.

CHARLIE MOLT HENSLEY
Burnsville
Co-Captain, Basketball; Presi-
dent, Monogram Club; Track,
Men's House Council, Delphian.



LEROY HILL
Thomasville
President, Delphian; Basketball,
Intramurals, Men's House Coun-
cil, Business Club.

BEVERLY JO HOLLOWAY
Waynesville
Glee Club, Canterbury Club,
Honorary Volleyball Team,
Cheerleader, Masquers, Euter-
pean.

Class of 1960

CELIA IRENE HOOPER
Canton

Phi Theta Kappa, PERTE-
LOTE Staff, CLARION Staff,
W.A.A.; President, Women's
House Council; Methodist Stu-
dent Fellowship, Student Gov-
ernment Association, Mountain-
cers, Honorary Softball Team,
Mnemosynean.

BETTY LOU HORNADAY
Asheville

Women's House Council, Big
Sister, Alpha Beta Gamma, Phi
Theta Kappa, Choir, Mnemo-
synean.

PAUL ANDERSON
HOWARD, JR.
Kings Mountain

Men's House Council, Secre-
tary-Treasurer, Engineers Club;
Intramurals, Delphian.



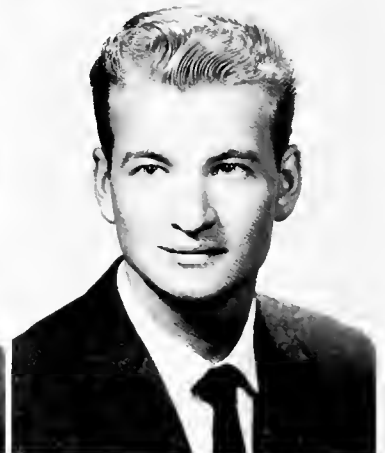
MORRIS NEIL HUNNICUTT
Horse Shoe

SUSAN WAKEFIELD HUNT
Gastonia
Masquers, Big Sister, Vice President, Mnemosynean.



CHARLES LEONARD
JACOBS, JR.
Jacksonville, Florida
Basketball, Baseball, Track, Intramurals, Delphian.

RAYFORD MANUEL
JENKINS
Clyde
Intramurals, Delphian.



Class of 1960

HELEN GENE JOHNSON
Canton
Secretary, W.A.A.; Mountaineers, Methodist Student Fellowship, Vespers Committee, Christian Fellowship, Women's House Council, Mnemosynean.

JOHN WALTER
JOHNSON, JR.
Greenwood, South Carolina
CLARION Staff, Intramurals, Veterans Club.

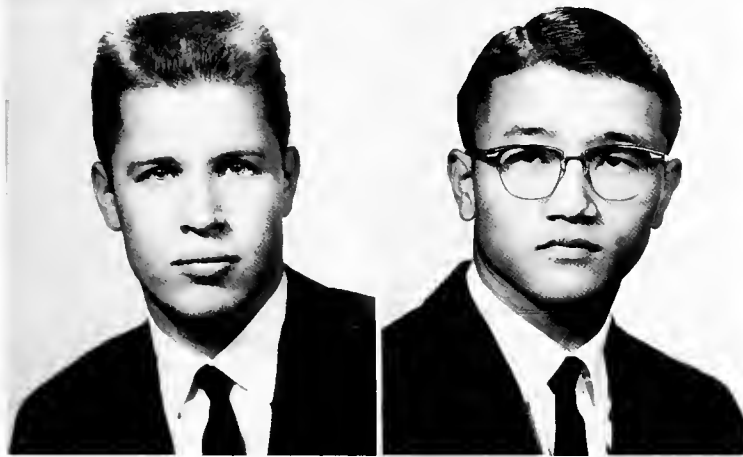
SUZANNE GAYLE JOHNSON
Pahokee, Florida
Homecoming Attendant, Mountaineers, Choir, Methodist Student Fellowship, Christian Fellowship, Honorary Volleyball and Softball Teams, W.A.A. Council, Mnemosynean.





ALTON MONROE JONES
Winston-Salem
 Basketball, Monogram Club, In-
 tramurals, Delphian.

WILLIAM ARTHUR
 KALE, JR.
Durham



CHARLES JENNINGS
 KENDALL
Wadesboro
 Baseball, Intramurals, Delphian.

CHOO KIM
Seoul, Korea
 Engineers Club, Mountaineers,
 Phi Theta Kappa, Delphian.

Class of 1960

CHI-KONG LEE
Hongkong, B.C.C.
 Engineers Club, Glee Club, Or-
 chestra, Mountaineers.

JAMES EDWIN LINEBACK
Winston-Salem
 Intramurals, Mountaineers, En-
 gineers Club, Methodist Student
 Fellowship, Delphian.

HAROLD LEE LINEBERGER
Newton
 Mountaineers, Engineers Club,
 Track, Intramurals, Clisophic.



JOE LESTER LITAKER

Concord

President, Phi Theta Kappa, PERTELOTE Staff, Sophomore Editor; Men's House Council, Clisophic.



SARA LOUISE
LOWDERMILK

Asheboro

Kappa Chi, Christian Fellowship, Methodist Student Fellowship, Glee Club, Choir, Madrigals, Brevard Civic Chorus, Ensemble, PERTELOTE Staff, CLARION Staff.

NANCY JO McCULLOUGH

Cliffside

PERTELOTE Staff, Co-Feature Editor; Christian Fellowship, Methodist Student Fellowship, Glee Club, Choir, Orchestra, Instrumental Ensemble, Mue-synsean.



THOMAS LEE McFADDEN

Morganton

Men's House Council, Intra-murals, Delphian.

JUDITH ARLENE McMANUS

Charlotte

Editor, CLARION; Masquers, Chief Marshal, Phi Theta Kappa, Methodist Student Fellowship, Big Sister, Mountaineers, Women's Assembly, Student Government Association, Secretary Enterpean.

Class of 1960

CAROLE EMMY MAPPUS

Charleston, South Carolina

May Court, Secretary, Canterbury Club; Christmas Sophomore Attendant, Choir, Mountaineers, Euterpean.

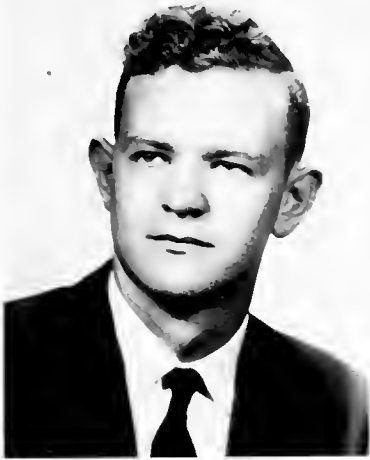
DONALD HEYWARD

MARCHANT

West Columbia, South Carolina

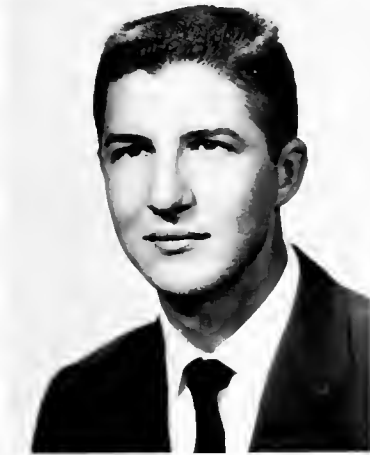
Men's House Council, Intra-murals; President, Clisophic.





ALLISON SHERRILL
MICHAEL
Lexington
Phi Theta Kappa, Intramurals,
Closophie.

CHARLES SAMUEL
MIDDLETON
Stokesdale
Monogram Club, Track, Intra-
murals, Delphian.



HAROLD LEE MITCHELL
Hiddenite
Intramurals, Delphian.

WILLIAM CARROL MOORE
Newberry, South Carolina
Engineers Club, Intramurals,
Delphian.

Class of 1960

AURELIA ELLEN MORGAN
Canton
Women's House Council; Sec-
retary-Treasurer, Student Gov-
ernment Association; Business
Club, Mountaineers; Treasurer,
Euterpean.

LOU MINERVA MORGAN
Weaverville
President, W.A.A. Council; Vol-
leyball Manager, Honorary Bas-
ketball and Softball Teams, Eu-
terpean.

GEORGE KEITH MORRIS
Matthews
Choir, Glee Club, Madrigals,
Male Quartet, Delphian.



JEANNE MARIE MORRIS

Marion

Women's House Council, Business Club, Glee Club, Euterpean.



RONALD RICHARD MOSS

Hendersonville

Engineers Club, Intramurals, Delphian.

ELIZABETH SUTER

NEALE

Charlotte

President, Big Sisters; May Court, Homecoming Queen; Vice President, Freshman Class; Mountaineers, Choir, PERTELOTE Staff, Co-Feature Editor; Mnemosynean.



JO ANN NEWSOME

Brevard

Program Chairman, Baptist Student Union; Day Students' Club, PERTELOTE Staff, Glee Club.

Class of 1960

MARY JANE NICHOLS

Waynesville

Christian Fellowship, Kappa Chi; Chairman, Vespers Committee; Methodist Student Fellowship; Glee Club, Christ Couriers, Christian Council, Mnemosynean.

JERRY WILLIAM NORMAN

Thurmond

Engineers Club, Methodist Student Fellowship, Intramurals, Mountaineers, Delphian.

ELMER HARRIS NORWOOD

Kings Mountain

President Alpha Beta Gamma, Phi Theta Kappa Vice President, Intramurals, Engineers Club, Delphian.





LAWRENCE ALEXANDER
OAKLEY, III
Orlando, Florida
Glee Club, Male Quartet, Mad-
rigals, Intramurals, Delphian.



CHRISTINE RUTH OLSEN
Charlotte
Chief Cheerleader, Choir, Glee
Club, May Court, Canterbury
Club, Honorary Volleyball
Team; President, Euterpean.



CAROLYN CHRISTINE
OWEN
Brevard
Baptist Student Union, Day Stu-
dents' Club, Student Govern-
ment Association.



JOHN HENRY PIERCE
West Jefferson
Engineers Club, Veterans' Club.

Class of 1960

NANCY LEE POLEY
Charlotte
Vice President, Euterpean; Busi-
ness Club, Big Sister, Marshal,
Masquers, Glee Club, Choir.

RICHARD HERBERT
PRIESTER
Jacksonville, Florida
Monogram Club, Baseball, In-
tramural Council, Delphian.

PATRICIA ANN PRUITT
Brevard
Vice President, Baptist Student
Union; Treasurer, Day Students'
Club; Big Sister, Phi Theta
Kappa, PERTELOTE Staff.



JAMES GRAGG PYATT
Marion
 Basketball, Masquers, Alpha
 Beta Gamma, Student Govern-
 ment Association, Engineers
 Club, Intramurals, Delphian.

JACKSON TOWNSEND
 RAMSAUR
Gastonia
 Monogram Club, Cheerleader,
 Tennis Manager, Intramural
 Council, Westminster Fellow-
 ship, Delphian.



STUART LEE REEMS
Skyland
 Intramurals, Secretary - Treas-
 urer Delphian.

FAYE ELAINE REID
Granite Falls
 Glee Club, Euterpean.



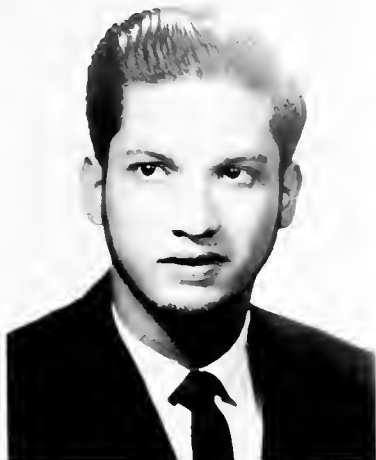
Class of 1960

ROBERT McKENDREE
 RIKE
Winston-Salem
 Intramurals, Clisophic.

CHARLES RAY RIMER
Lexington
 Business Manager, CLARION;
 Delphian.

HAROLD HARDESTY
 ROBINSON, JR.
Norwood, Pennsylvania
 Masquers, Track, Delphian.





JAMES DWIGHT ROYALL
Thurmond
Engineers Club, Intramurals,
Delphian.

CARLOS MANUEL SALAS
Marianao, Cuba
Social Chairman, Business Club,
Delphian.



DAVID JOE SAUNDERS
Belmont
President, Methodist Student
Fellowship; Christian Council,
Delphian.

JO ANN SHOUSE
Pfafftown
Glee Club, Mnemosynean.

Class of 1960

ROBERTA NIEL
SINIARD
Brevard
Day Students Club, Mountain-
eers, Phi Theta Kappa.

JOSEPH MARTIN SLOOP
Mount Ulla
President, Mountaineers; Glee
Club, Christian Fellowship,
Methodist Student Fellowship.

LINDA ANN SLUDER
Asheville
Valentine Court, Big Sister,
Business Club, Mnemosynean.



ANITA JOAN SMITH
Pleasant Garden
 Social and Publicity Chairman
 Business Club, Christmas
 Queen, Mnemosynean.



CHARLES LEROY SNYDER
Loris, South Carolina
 President, Westminster Fellow-
 ship; Engineers Club, Intramur-
 als, Masquers, Christian Coun-
 cil, Cliosophic.

GILBERT GLENN
 STEPPE
Brevard



KENNETH WAYNE
 SULLIVAN
Greensboro
 Mountaineers, Intramurals, Del-
 phian.



Class of 1960

MARY ELIZABETH
 SUTHERLAND
Asheville
 Secretary-Treasurer, Sophomore
 Class; Big Sister, Christian Fel-
 lowship, Mnemosynean.



NANCY MAE SWARINGEN
Hendersonville
 W.A.A. Council, Archery Mana-
 ger, Honorary Volleyball Team,
 Methodist Student Fellowship,
 Euterpean.



JOE LINDEN
 TANDY, JR.
Arden
 Track, Intramurals, Delphian.





THOMAS PHILIP TAPPY
Morganton
 Engineers Club, Monogram Club, Sport Editor and Associate Editor *Clarion* Staff, Men's House Council, Masquers, Intramurals, Tennis, Student Government Association, Delphian.

ELBERT LAVAUN TAYLOR
Port St. Joe, Florida
 President, Baptist Student Union; Business Manager. PERTELOTE; Men's House Council, Christian Council, Delphian.



MELVIN WAYNE TAYLOR
Saluda
 Glee Club, Choir, Intramurals, Clisophic.

WALTER BRUCE TAYLOR, JR.
Clearwater, Florida
 Vice President, Men's House Council; Masquers, Mountaineers, Delphian.

Class of 1960

ROSEMARY THOMPSON
Brevard
 Pianist, Baptist Student Union; Glee Club, Madrigals, Day Students' Club.

RALPH ANDREW THORNBURG
Gastonia
 Intramurals Manager, Delphian.

DONALD GRAY WALSER
Lexington
 Men's House Council, Intramurals, Business Club, Delphian.



WESLEY MAX WALSER

Lexington

Vice President, Alpha Beta Gamma; President, Sophomore Class; Phi Theta Kappa, Masquers, Men's House Council, Student Government Association, Co-Captain, Basketball, Track, Sports Editor, PERTELOTE; Clisophic.



MARY YARBOROUGH

WARREN

Graham

Women's House Council, Euterpean.

CHARLES KENNETH

WESTALL

Pisgah Forest

Glee Club, Intramurals, Track Manager, Delphian.



LAMAR EWING WHITE

Asheville

Men's House Council, Canterbury Club, Clisophic.

Class of 1960

MARVIN MELVYN

WILLIAMS

Jacksonville, Florida
Intramurals, Delphian.



ROBERT MOSES WOOD

Jacksonville, Florida

Vice President, Monogram Club; Mountaineers, Intramurals, Intramural Council, Baseball, Track, Delphian.



PATRICIA ANN YOUNG

Blacksburg, South Carolina

Vice President, W.A.A. Council, Honorary Basketball, Softball, Volleyball Teams, Mnemosynean.





Sandra Smith, vice-president; Patsy Greene, SGA representative; Mike Mauney, president; and Lynda Porter, secretary-treasurer.

Freshman Officers



BENJAMIN ALBERT
Clemson, South Carolina

WILLIAM SEVIER ALEXANDER
North Augusta, South Carolina

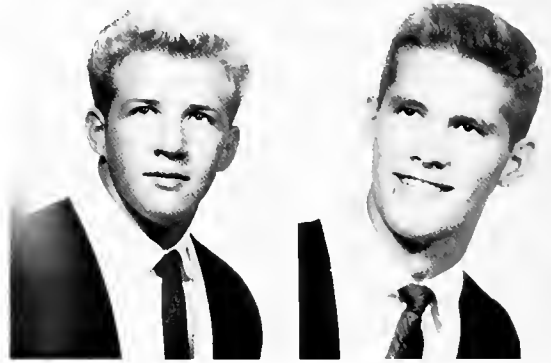
RETA LOVINE ALLISON
Old Fort



DOROTHY CUTTS ALMY
Daytona Beach, Florida

RUSSELL GOLDYN ATKINSON
Marion, South Carolina

ROBERT HENRY
AUGHENBAUGH
Dade City, Florida



Class of 1961



THOMAS DUDLEY AYERS, III
Morristown, Tennessee

BARBARA LEE BALLEW
Marion

DOROTHY JEAN BALLEW
Tryon

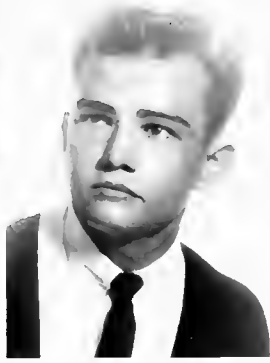


ROBERT HARRY BALLEW
Ncbo

SHIRLEY RUTH BARBEE
Harrisburg

THOMAS PENLAND BARBEE
Weaverville





JOHNNY RAY BARNES
Rutherfordton

REGINALD WORTH BARNES
Lumberton

ALICE CHASE BARNHILL
Charlotte



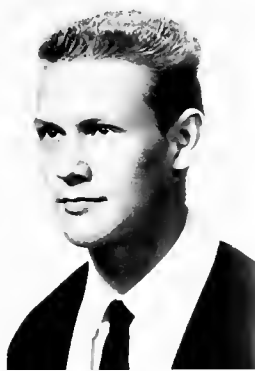
BRENDA MAE BARRIER
Jamestown

CHESSYE PAULINE BAUGHMAN
Orangeburg, South Carolina

WILLIAM MARTIN BAZEMORE
Cleveland, Ohio



Class of 1961



JOSEPH JOHN BEAL
Greensboro

CLIFFORD CARROLL BELCHER
Wellford, South Carolina

DAL HENRY BENFIELD
Lenoir



BARBARA ANN BEVERLY
Kingsport, Tennessee

GARY NEWTON BLAKE
Greensboro

BETTY HARDIN BLANTON
Charlotte





JUDITH ANN BRANCH
Asheville

EDWARD YATES BREWER
Clemmons

JOHN CHARLES BREWER
Brevard



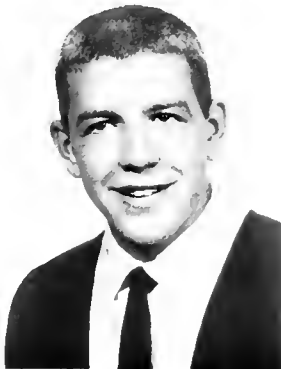
NANCY JUDITH BRITT
Greensboro

ALICE TERRY BRITTAIN
Brevard

REBECCA BIRDSEY BRITTAIN
Hendersonville



Class of 1961



WILLIAM LARRY BROOKS
Franklin

ROGER NEIL BROOKSHIRE
Lenoir

PATRICIA ANNE BROWER
Wadesboro



VANDALYN BROWN
Marion

THOMAS MONROE BRYANT
Pinebluff

FRED BRYSON, JR.
Brevard





CANDACE ANN BURNS
Charlotte

JACKIE ANN CABE
Franklin

NORMAN MANGUM CALCUTT
Southern Pines



MITTIE MAXINE CALLISHER
Greensboro

ARTHUR BARLOW
CAMPBELL, JR.
Bartow, Florida

SAMUEL BRUMFIELD
CANNON, III
Asheville



Class of 1961



LOIS ELLEN CARTER
Weaverville

ROBERT WILLIAM CAUBLE
Brevard

DOYLE AUSTIN CHAMBERS
Pisgah Forest



CAROL ASBURY CHAPLIN
Charlotte

JERRY ELMER CHAPPELL
Mooreville

BETTY ELLEN CHESNUTT
Gastonia





BRENDA JOYCE CLARK
Concord

EDNA AMORETTE CLARK
Clarkton

CYNTHIA CLARKSON
Cowpens, South Carolina



SHIRLEY MAGDALENE
CLEMENT
Whittier

KENNETH WILSON COE
Jonesville

ROBERT GLOVER COGGINS
Thomasville



Class of 1961



LARRY EUGENE CORDEHL
Gastonia

ROSEMARY ANNE CORLEY
John's Island, South Carolina

BARBARA VIRGINIA COWAN
Sylva



HAZEL MYRTIS CREECH
Mt. Pleasant, South Carolina

VIRGINIA ELAINE CROWELL
Lincolnton

BARBARA ANN DAVID
Brevard





CORINNE STEPHENS DAVIS
Greensboro

KRAMER GUY DAVIS
Statesville

BRIAN KENT DORSEY
Mountain Home



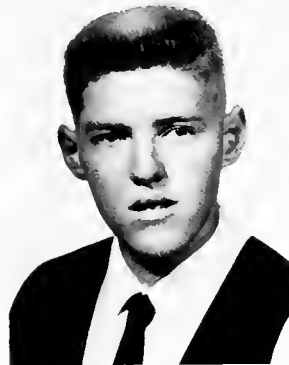
DAVE KERR DRIVER
Canton

JAMES MICHAEL DUNN
Winston-Salem

WADE FURMAN EDWARDS
Marion, South Carolina



Class of 1961



JOHN ALLISON ELLER
Weaverville

STEVEN LEIGH EVANS
Canton

MARTHA ANN FAIR
Asheville



CHRISTINE MASON FARNAN
Charlotte

HELEN KAY FERGUSON
Gibsonville

SANDRA CAROL FLEENER
Kingsport, Tennessee





JEAN LOUISE FLUKE
Brevard

CHARLES CLAUDE FOSTER
Hot Springs

JOYCE ELAINE FREEMAN
Hendersonville



CHARLES RICHARD FULTON
Winston-Salem

ASTA CHRISTINA
GABRIELSSON
Borga, Finland

SUSAN GAMBLE
Hendersonville



Class of 1961



JO GAIL GARMON
Concord

CHARLES JOSEPH GARREN
Arden

JAYNE SHIRLEY GASSAWAY
Asheville



WILLIAM RANDALL
GIGNILLIAT
Holly Hill, South Carolina

LOIS LYNNETTE GILL
Swannanoa

ROBERT COVINGTON
GLADDEN
Eastville, Virginia





PEGGY ANN GLAZENER
Brevard

CHARITY ALICE GOFORTH
Kings Mountain

BRENDA JOYCE GOLDEN
Mount Airy



PATRICIA ANNE GREENE
Thomasville

RALPH ARNOLD GREENE
Marion

FORREST REID GRIFFIN, JR.
Spindale



Class of 1961



LINDA LEE GRIFFIN
Greensboro

JUDITH LYNN GROGAN
Charlotte

MARY LOUISE HAMILTON
Brevard

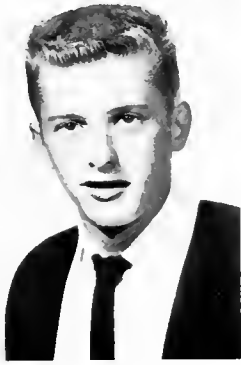


PAULINE WESSON HAMRICK
Bessemer City

JUDITH CAROL HANEY
Charlotte

ALICE CRADDOCK HARRISON
Charlotte





BRIAN STEVEN HAYNES
Arden

NANCY CAROL HAYNES
State Road

DEWEY McMANUS HAYWOOD
Waxhaw



JACQUELINE BAIR
HEATHCOTE
Phoenixville, Pennsylvania

DOYLE MARTIN HEFFNER
Shelby

BONNIE TALLEY HIMEBAUCH
Matthews



Class of 1961



MERI SUSANN HODGES
Arlington, Virginia

ELIZABETH LEAH HOOD
Charlotte

MARY LOUISE HOPPING
Charlotte



PATRICK CODY HOUSTON
Moorestville

MARGARET ANN HOWIE
Waxsaw

JOHN BERNARD HOWREN, JR.
Charlotte





STEVEN DALE HUBBARD
Kannapolis

VINCENT WALDORF
HUGGINS, JR.
Kannapolis

DOROTHY LEE HUNSUCKER
Shaw A.F.B., South Carolina



KATHLEEN INMAN
Kannapolis

JAMES HOWARD JACKSON
Moorestville

SANDRA JEANETTE JACKSON
Greer, South Carolina



Class of 1961



FRANCES ANN JAQUETTE
Milford, Delaware

FRANKLIN FLOYD JOHNSON
Greenville, South Carolina

HERBERT WHITLEY JONES
Granite Falls



SUSAN ELIZABETH JOWERS
Jamestown

BEVERLY LaMARR KELLY
Charlotte

DONALD BILLY KENAN
Asheboro





HAROLD WAYNE KESTER
Cherryville

ILENA MARIE KING
Hendersonville

MARGARET KAY KING
Brevard



FREDERICK RAY KNIGHT
Sanford

FRANCES FUNG KWOK
Hong Kong, B.C.C.

JANIS ELIZABETH LAYE
Cliffside



Class of 1961



CHARLES RICHARD LEDFORD
Casar

DONALD CRAWFORD LEDFORD
Franklin

DARRYL BRENT LEONARD
Thomasville



EVELYN MARGARET LEWIS
Charlotte

PATRICIA LOUISE LINDSAY
Clyde

SYLVIA FAYE LONG
Marion





DALE ADRIAN LOSEY, JR.
Aiken, South Carolina

ANTHONY EUGENE LUTZ
Clemmons

DAVID BISHOP McCALL
Cheraw, South Carolina



ROBERT BYRON McCRARY
Brevard

GENE MONROE McGAHA
Waynesville

ALLEN LLOYD McGOWEN
Watha



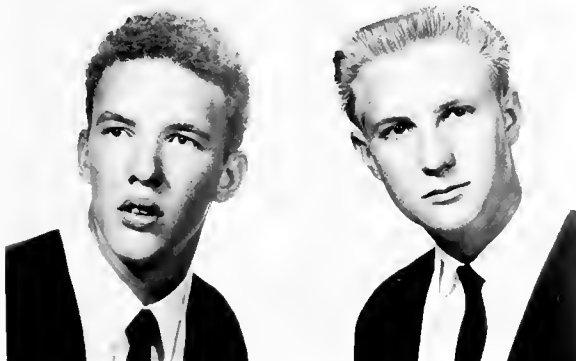
Class of 1961



STEPHEN PATRICK McINTOSH
Belmont

EDWARD BYRD McLEOD, JR.
Summerville, South Carolina

JUDITH ANN McMAHAN
Marion



JAMES ANDREW MACKAY
Pisgah Forest

GERALD CURTIS MALCOLM
Rutherford College

BILLY BROWN MASKE
Mount Gilead





BOBBY CHARLES MASKE
Mount Gilead

MICHAEL DENNIS MAUNEY
Cherryville

DONALD NEAL MAYHEW
Mooreville



GLENN RAY MELTON
Brevard

CHARLES GROVER
METCALFE, JR.
Avon Park, Florida

LAURA GALLOWAY MILLER
Lake Toxaway



Class of 1961



CHARLOTTE ELIZABETH
MOORE
Hot Springs

ESTHER MAHALA MOORE
Martinsville, Virginia

THOMAS MORGAN, JR.
Greenville, South Carolina



MAHMOOD MOTAMEN
Tehran, Iran

LINDA KAREN MULL
Brevard

BENJAMIN MULLINS
Marion, South Carolina





JAMES RALEIGH NEILL
Hendersonville

HELEN JANE NELSON
Greensboro

NANCY DIANNE NESBITT
Black Mountain



SUSAN LOUISE NICHOLS
Atlanta, Georgia

RAMONA JO NICKELS
Kingsport, Tennessee

DALE WORTHAM NORWOOD
Kannapolis



Class of 1961



GERALDINE OLIPHANT
Mooreville

BARBARA JEAN PARKS
Lexington

GARY EDWIN PARSONS
Winston-Salem



NANCY PRISCILLA PEEK
Mooreville

BOBBY DEAN PEELER
Cherryville

LINDA JOYCE PHILLIPS
Kannapolis





VADA BERNIECE PIERCE
West Jefferson

ANTONIO CARLOS PINERA
Marianao, Cuba

NANCY PINNIX
State Road



BARBARA JEAN PLESS
Kannapolis

VIRGINIA GAIL POLSTRA
Saltville, Virginia

MYRA LYNDA PORTER
Lincolnton



Class of 1961



BRENDA DOLORES POWELL
Draper

MARY CYNTHIA QUEEN
Nantahala

LINDA RAMSEY
Hot Springs



JERRY PATRICIA REECE
Hendersonville

JAMES GEORGE REEPE
Forest City

MALCOLM CEPHUS REESE, JR.
Granite Falls

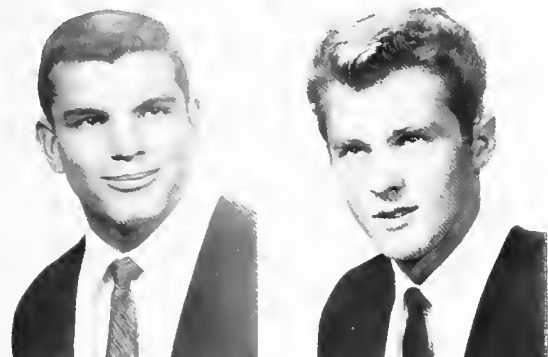
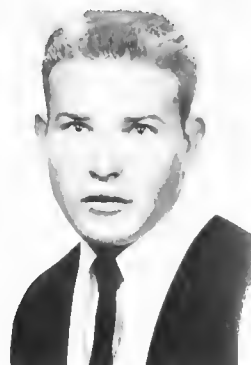




MARGARET IRENE REEVES
Hot Springs

JERRY DEAN RHONEY
Vale

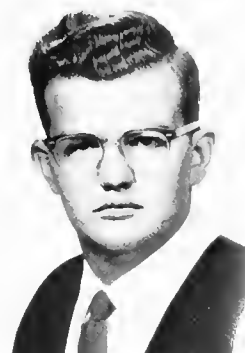
JOHNNY WHITFIELD RIDDLE
Weaverville



JAMES ARNOLD RIGGS
San Antonio, Florida

DONALD ERVIN ROBERTS
Weaverville

KENNETH COLLINS
SANDLIN, JR.
Candler



Class of 1961



WILLIAM LEWIS SAULS
Whitville

WILLIAM CYRUS SAWYER
Asheboro

KAREN PHYLLIS SCHNEIDER
Black Mountain



ROBERT STEWART SCOTT
Greenville, South Carolina

BETTY JEAN SEARCY
Tryon

CLAUDETTE VANTRICE SEARS
Hickory

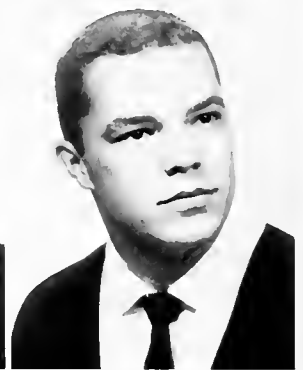




CAROLYN JANE SETTLE
Elkin

THOMAS DANIEL SETZER
Newton

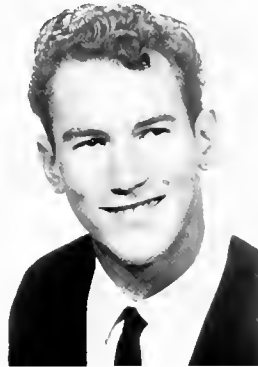
ALVIN BARRETT SHEPHERD
Winston-Salem



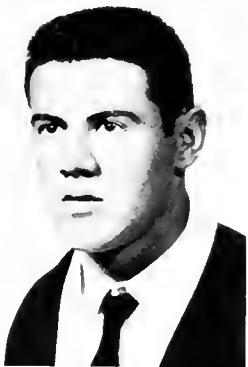
MARY BRANDON SHERRILL
Mooreville

PHILLIP MAXIE SHIELDS
Bessemer City

JOHN CLIFTON SHORT
Wadesboro



Class of 1961



GEORGE WILLIAM SHUFORD
Penrose

BECKY ANN SIGMON
Conover

CHARLES NELSON SIGMON
Mooreville



BONNIE SILER
Waynesville

FRANCES ANN SMITH
Winston-Salem

NORMA GRAY SMITH
Mayodan





PATRICIA ANNE SMITH
Asheville

ROBERT EUGENE SMITH
Mill Spring

ROYIE CAROLYN SMITH
Rutherfordton



SANDRA LEE SMITH
Marion, South Carolina

STEPHEN WRIGHT SMITH
Durham

KENNETH SOLESBEE
Nantahala



Class of 1961



CHRISTINE EUGENIA STEED
Trinity

LINDA SUE STOUT
Lancaster, South Carolina

MICHAEL LANE SWEENEY
Jacksonville, Florida



MARY JEANETTE TATE
Greensboro

NELLE MARIE TEELE
Shelby

LINDA LEE THACKER
Winston-Salem





LETA ANN TINSLEY
Brevard

LINDA LOU TINSLEY
Brevard

JOHN HAMILTON TREVITHICK
Storrs, Connecticut



GLENDA GAIL TRIMNAL
Thomasville

ELEANOR HUGHSON TROUT
Nokesville, Virginia

FRANCES KAY TUCKER
Winston-Salem



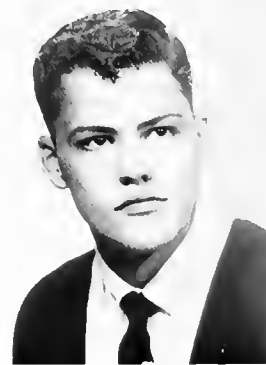
Class of 1961



MARTHA CAROLE TUCKER
Winston-Salem

BRENDA GAYLE
VanLANDINGHAM
Thomasville, Georgia

CARL SANDERS VUNCANNON
High Point



RONALD EUGENE WALKER
Asheville

THOMAS BOYD WALKER
Brevard

CONNIE DIANE WALLACE
Union Mills





CHARLES JACK WAMPLER
Elkin

CHARLES DAVID WARF
Greensboro

MARY JO WARR
Smithfield



CATHERINE FRANCES WATKINS
Concord

CAROLYN GERALDINE
WAYCASTER
Marion

BARBARA ANN WEBB
Mocksville



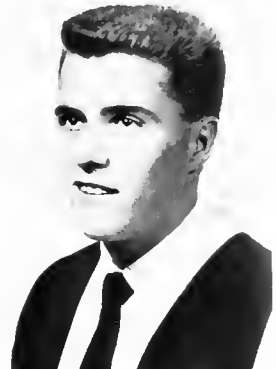
Class of 1961



WILLIAM MANSFIELD
WEINBERG
Rockledge, Florida

ANN PARKER WELLS
Brevard

JIMMY WALTER WEST
Arden

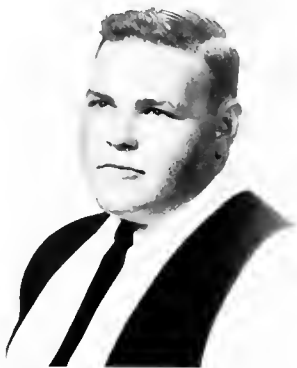


FRANK WINSTEAD WHARTON
Belhaven

CAROLE LYNN WHITE
Bryson City

RAYMOND LEE WHITFIELD
Rutherfordton





JERRY LENSY WHITMIRE
Brevard

HUGH EDWIN WHITTED, III
Winston-Salem

JULIE PALMER WIEKING
Gadsden, South Carolina



JUDY ANNE WILEY
Matthews

BARRY LEE WILKINSON
Taylorsville

JANE ANN WILKINSON
Lincolnton



Class of 1961



HAZEL SCOTT WILLIAMS
Morganton

ROSS BRASWELL WILLIAMS
Matthews

ANNA LOUISE WILLIAMSON
Dublin, Georgia



FRANCIS EUGENE WILLIS
Darlington, South Carolina

JAMES HYDE WILSON
Germantown

RODNEY CLYDE WISE
Asheville



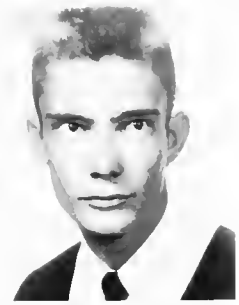


Class of 1961

CECILE WOODALL
Norwood

CORA LEE WOODY
Pisgah Forest

MANUEL DAVID WORTMAN
Lawndale



Second Semester Students

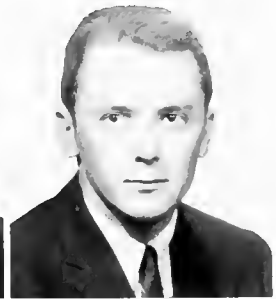
SUSAN CAROLE YOUNG
Asheville



BARRON McNEELY DUBOSE
Arden

JAMES ROBERT EDWARDS
Jacksonville, Florida

WALLACE LEE FORTENBURY
Shelby



BENNY MARTIN GALLOWAY
Brevard

PATRICIA PADGETT HOLDEN
Rosman

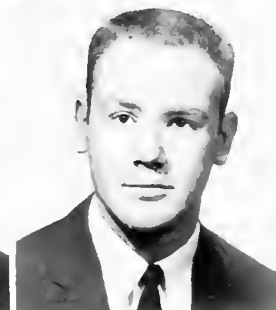
SHAHRIAR JAVAHERIAN
Tehran Iran



NANCY JANE NORLANDER
Brevard

ROBERT ROGER PATE
New Bern

WILLIAM ARNOLD SEARSON
Spartanburg, South Carolina





You can't beat Brevard's style of learnin'.



And a dose-y-doe to you too, doe-doe!

S
n
a
p
Shots



Midnight Snack



Anyone for a tube of Ipana?



Innocent as "Babes in the woods"!



Gettin' into the "swing of things."



Honest y'all, this ain't nothin' hut laundry!



Hey, Pop! Why so serious?

Activities





Mnemosynean Society
Delphian Society



Officers

SUSAN HUNT
BETTY EURE
BETTY LOU HARPER

Vice-President
President
Secretary-Treasurer



The Delphian and Mnemosynean Societies are brother-sister organizations who work together to promote campus activities. Popularly known as the Delphians and the Nemos, these groups sponsor the annual Sweetheart Ball. The sponsors are Miss Lucille Smith and Mr. Ralph Reed.

JIM CORN
Vice-President

LEROY HILL
President

STUART REEMS
Secretary-Treasurer





Officers

MARY HOPPING
CHRIS OLSEN
NANCY POLEY
MAXIE CALLISHER

Secretary
President
Vice-President
Treasurer

The Euterpean and Clisophic Societies are two of four groups on campus whose functions are to promote social activities on campus. Popularly known as the Euterps and Clios, these groups sponsor the annual Christmas Dance.

Mrs. Thomas Cousins and Mr. Karl Harrell are the advisors.



MAX WALSER
Vice-President

KEN FAULKNER
Secretary

•DONNIE MARCHANT
President

JIMMY BROWN
Treasurer

BILLY BUMGARDNER
Chaplain



Euterpean Society
Philosopic Society



Glee Club

The Glee Club, under the direction of Mr. Nelson Adams, presents both sacred and secular music. Each year one or more concert tours are conducted. The Glee Club is open to all interested students.

Joy Cook is the accompanist.





The college choir, under the direction of Mr. Thomas Cousins, present regular and special programs throughout the year.

This includes singing for college chapel services each month. The choir is open to all interested students.

Choir



Orchestra

The orchestra is open to all students. Performances are given on campus and on tours. Mr. Ralph Reed is in charge.

Madrigal Singers

Sara Lowdermilk, Sam Cannon, Ann Parker Wells, Steve Brown, Joy Cook, Malcolm Reese, Sara Cox, Bill Barnes, Lynn Gill, and Johnny Howren. Frances Kwok is the accompanist.





Masquers

This is the theater group on campus. Basically made up of the play production class, the Masquers is open to all interested students. Mr. Alan Wallace is the adviser.

Christ Couriers

Kay Ferguson, Jane Nichols, Anna Williamson, Helen Johnson, Cynthia Clarkson, Joan Allison, Sara Lowdermilk, Peggy Edmiston, and Christine Steed.





C
H
R
I
S
T
I
A
N
C
O
U
N
C
I
L

Jane Nichols, Donna Dotson, Mr. Roy, Adviser; Peggy Edmiston, Virginia Doscher, and Jane Wilkinson, Paul Davenport, Lavaun Taylor, Bill Bumgardner, and Joe Saunders.

The Christian Council is an interdenominational group composed of the presidents of the various religious organizations. The purpose of this group is to seek answers to religious problems on campus through interdenominational association.

K
A
P
P
A
C
H
I

Kappa Chi is a fraternity consisting of students interested in full-time Christian service. Mr. Roy is the adviser.





Westminister Fellowship

This group is organized for the purpose of providing fellowship among the Presbyterian students. With their adviser, Mr. Ralph Reed, they work to establish close relationship with the local Presbyterian Church.

Mr. Reed, Edna Clark, Jerry Ramsaur, Christine Farnan, Chuck Snyder, Linda Stout, Betty Searcy, Susan Nichols, Choo Kim, and Bob Scott.



Baptist Student Union

The purpose of the Baptist Student Union is to keep the student in close association with the Baptist Church. It promotes interest in the activities of the church and provides recreation and programs for the Baptist students on campus, Mr. Martin is the adviser.

Pat Pruitt, Lavaun Taylor, Betty Harper, Jo Ann Newsome, Robert McCrary, Rosemary Thompson.

M
E
T
H
O
D
I
S
T
S
T
U
D
E
N
T
F
E
L
L
O
W
S
H
I
P



Christian Fellowship

The Methodist Student Fellowship is organized to provide an opportunity for closer association of the Methodist college students. The group meets weekly under the supervision of Dean Rubie Plant.



This group is interdenominational. It meets weekly to provide wholesome recreation and fellowship for all students. Mrs. Glenn Hardesty is the adviser.



Johnny Riddle, Manuel Wortman, Rodney Wise, Steve Brown, and Paul Davenport. This group is comprised of men students interested in the ministry as a life-time vocation.

Ministerial Students



Lamar White, Bob Gladden, Charles Brown, Jim Neill, Kent Dorsey, Carol Mappus, Virginia Doscher, Linda Phillips, Martha Adams, and Edna Grimes.

The Canterbury Club is the Episcopal student group. It functions to provide a closer association between the Episcopal Church and the college students of that denomination. Mr. Harvin is the adviser.

Engineers



Students interested in engineering as a career meet to discuss problems in the field and study the various phases of engineering. Mr. Egerton advises the group.

The Mountaineers' Club formed for the purpose of exploring the scenic beauty surrounding Brevard. is led by Joe Sloop, president, and Mr. Wagner, adviser.

Mountaineers



Business Club



Jeanette Chambers is president, Mrs. Grace Munro, adviser to the Business Club which promotes high ethical standards in business and professional life, and acquaints students with the opportunities and obligations of the business world.

Veterans' Club

The purpose of the Veterans' Club is to discuss information concerning the Veterans' Administration, to encourage fellowship on campus and to promote friendship between the college and the community. Lee Creede is president and Mr. C. A. Butterworth, Jr., adviser of the group.



Foreign Students

Brevard College has foreign students representing five different countries. Their presence helps to create better understanding of our distant neighbors.

Akbar Ettefagh, Iran; Asta Gabrielson, Finland; Frances Kwok, Hongkong, R.C.C.; Felix Castillo, Cuba; Carlos Salas, Cuba; Chi-Kong Lee, Hongkong B.C.C.; Mahmood Motaman, Iran; Choo Kim, Korea; Shahriah Javaherian, Iran.



This club is comprised of non-resident students. Drawn together by a common interest, the club works to form a closer bond between the day students and the resident students. The group is advised by Mrs. Sader.

Patricia Pruitt, Rosemary Thompson, Linda Tinsley, Linda Mull, Ilena King, Jo Ann Newsome, Carolyn Owen, Patsy Reece, and Robert McCrary.



Day Students Club

Big

Sisters

The Big Sisters is an organization whose purpose it is to assist freshman women in adjusting to campus life. These sophomore women also assist in freshman orientation. Dean Rubie Plant is the adviser.

Betty Hornaday, Nancy Poley, Betty Sutherland, Betty Neale, Christine Olsen, June Feenster, Susan Hunt, Dean Plant, Judith McManus, Martha Adams, Betty Eure, Martha Clark and Virginia Doscher.



Marshals

The marshals are chosen for their scholastic ability and leadership qualities and assist with all important college functions.

Celia Hooper, Nancy Poley, Max Walser, Judith McManus, chief; Dinah Carden, and Mr. Roy, college marshal.





Alpha Beta Gamma

Alpha Beta Gamma, the honorary Chemistry fraternity, is composed of students interested in chemistry, who have a "B" average and who are all-round good citizens. It acquaints its members with the many opportunities in the field of chemistry and helps the members realize the vital roll that chemistry plays in the world today. Elmer Norwood is president and Dr. Leete is adviser of the fraternity.

Joe Litaker is president and Dr. Loomis adviser of the Delta Pi chapter of Phi Theta Kappa, the national junior college honorary scholastic fraternity. Students are voted into the fraternity on the basis of their scholarship, leadership, and moral character.

Phi Theta Kappa



Student

Government



OFFICERS: Steve Brown, president; Tommy Dickens, vice-president; Aurelia Morgan, secretary-treasurer; and Sara Cox, social chairman.

ADVISERS: Dean Plant, Dean Henderson and Mr. Butterworth.

The Student Government Association seeks to develop in students an enduring code of honor and justice, to promote loyalty to the college and to its ideals and purposes and to form an authoritative body to give expression to student opinion upon matters affecting life on the campus.

Women's

House

Council



The Women's House Council has as its purpose determining the policy concerning the social and living regulations of women students, and deepening the sense of self-responsibility of all students, as well as promoting and sponsoring a social program that will encourage and develop high social and academic standards among all women students.

Men's

House

Council



The purpose of the Men's House Council is to advise and acquaint the new men students with campus life and policy, especially during the orientation period and the first weeks of the school year.

T
H
E
C
L
A
R
I
O
N

S
T
A
F
F



"Scoop" Scott
Photographer



Phil Tappy, Associate Editor
Judy McManus, Editor-in-Chief



"Skip" Johnson
Sports Editor

T
H
E
C
L
A
R
I
O
N

S
T
A
F
F



ANITA SMITH
ERIC GREEN
CELIA HOOPER

Feature Editor
Circulation Editor
News Editor



Adviser: MRS. SIGMON

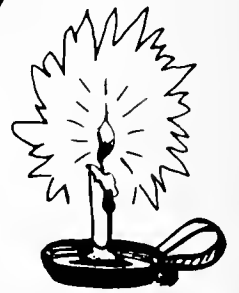
Reporters: Sara Lowdermilk, Ken Faulkner, Joan Allison,
and Billy Bumgardner.





EDITOR-IN-CHIEF
Marty Clark

Perilote Staff



ADVISER
Mrs. C. E. Roy





BUSINESS
MANAGER
Lavaun Taylor



BUSINESS
ASSISTANTS

- Joyce Clark
- Pat Pruitt
- Jo Ann Newsome
- Not Present:
Bonnie Himebauch





SPORTS EDITOR

Max Walser



CLASS EDITORS

Patsy Greene
Freshman

Joe Litaker
Sophomore

Susan Young
Freshman

Gene McGaha
Freshman





CIRCULATION MANAGERS

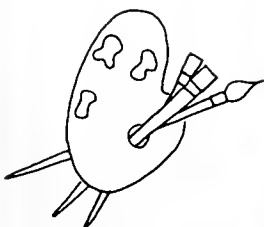
Lois Carter
Sara Lowdermilk

Pentelote Staff



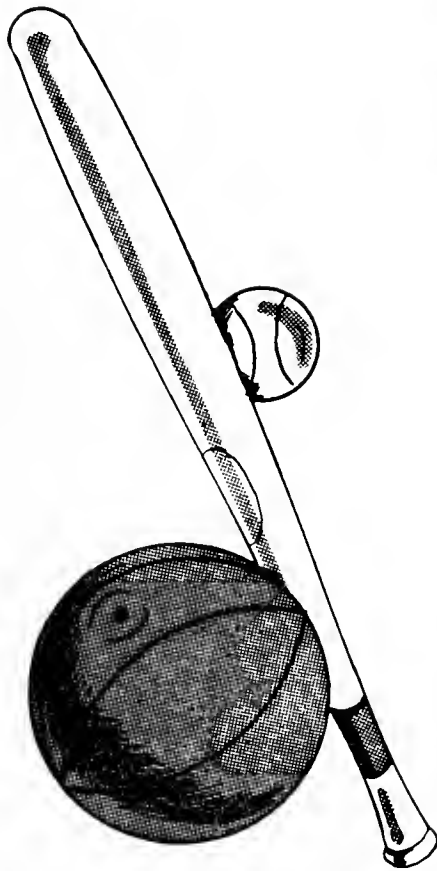
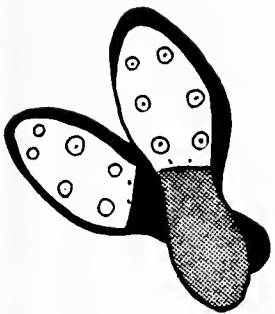
FEATURE EDITORS

Betty Neale
Nancy Jo McCullough





Athletics





FRONT: Jim Pyatt, Bill Alexander, Glover Coggins, Tom Barbee, and John Eller. BACK: Ken Solesbee, Charlie Hensley, Leroy Hill, Alton Jones, and Max Walser.

Basketball



We are very proud of our 1959-60 Basketball Team. Coach Martin has done a great job in producing one of the finest teams that Brevard has had in recent years. Our men placed third in conference play but placed first in our hearts. Two of them won conference honors. Each player deserves special recognition.

Congratulations, fellows, upon the completion of a very successful season.

COACH:
Leighton W. Martin
(Chick)

1959 - 60



MALCOLM REESE
Manager



CHARLIE HENSLEY
Co-Captain
All-Conference
All-Tournament



TOM BARBEE
All-Conference
Conference High Scorer



MAX WALSER
Co-Captain

Basketball





FIRST ROW: Antonio Pimera, Ken Bolick, Robert Wood, Richard Priester and Charles Kendall. SECOND ROW: Coach Coan, Thomas Dickens, Vincent Huggins, Max Walser, Michael Mauney and Larry Oakley. THIRD ROW: Johnny Riddle, Mack Haywood, Robert Aughenbaugh, Tom Barbee, Craig Ford, Thomas Buckner and Charles Jacobs.



Coach Gil Coan

(Outfielder in American and National Leagues for nine and one-half years)

1960 Baseball Team



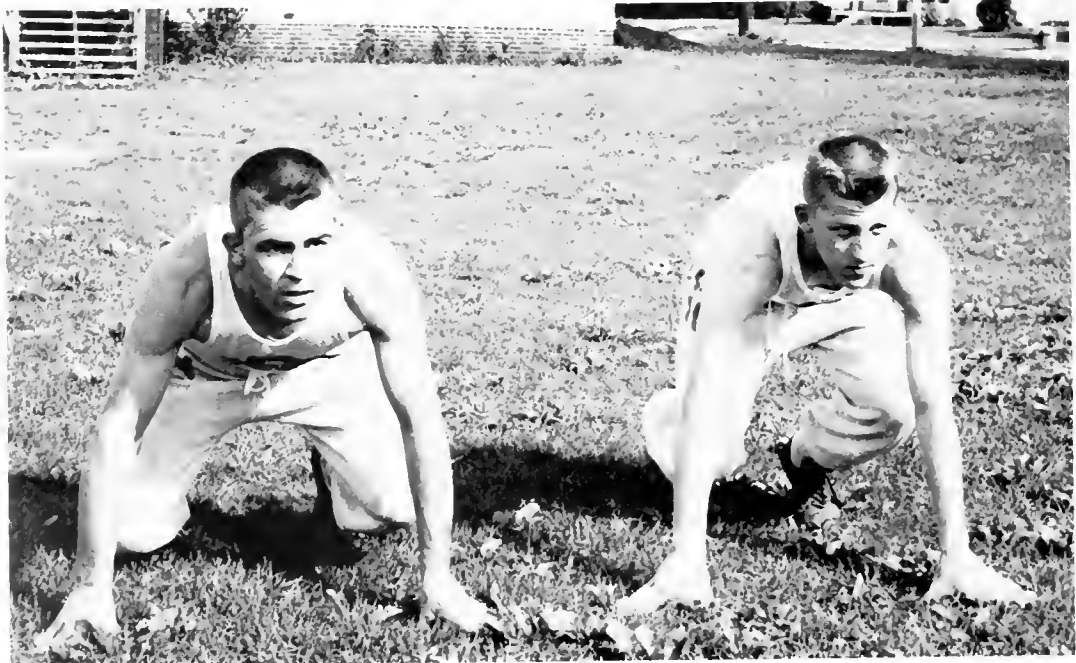


FRONT: Michael Shelley, Don Summey, Max Walser, and Charlie Middleton. BACK: Parson Hensley, Charlie Hensley, Ed Scott, John Van Horn, and Joe Tandy.

1959 Track Team

Max Walser

Mike Shelley





Burl Hull, John Duvall, Ken Dawkins, Charlie Garner, and Mike Oliff.

1959 Golf Team





FRONT: Alton Jones, Max Walser, Richard Priester, and Robert Wood. BACK: Tommy Buckner, Jerry Ramsaur, Charlie Hensley, Charlie Middleton, and Tommy Dickens.

Men's Monogram Club



Coach Chick Martin
ADVISER

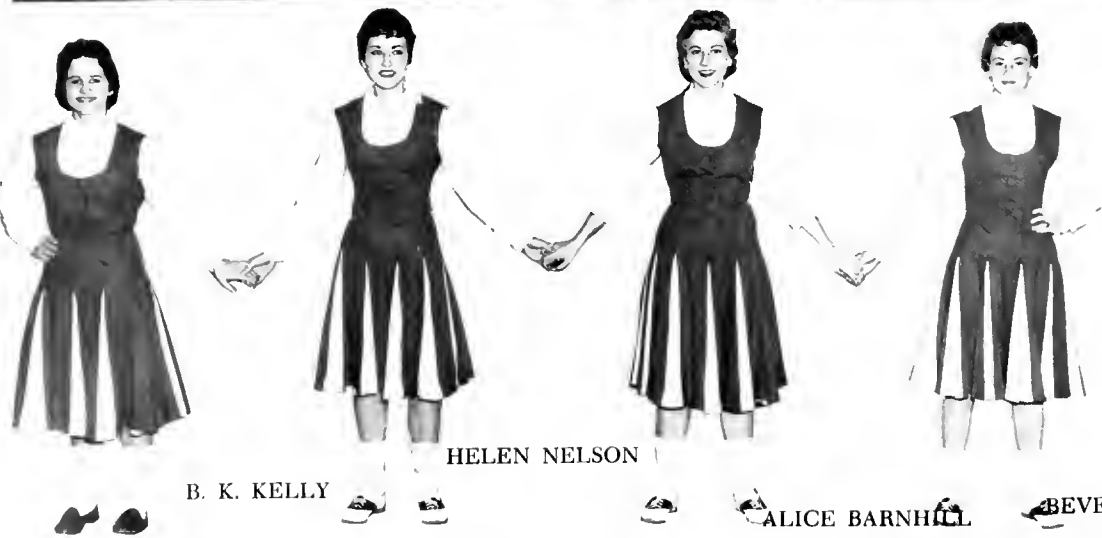
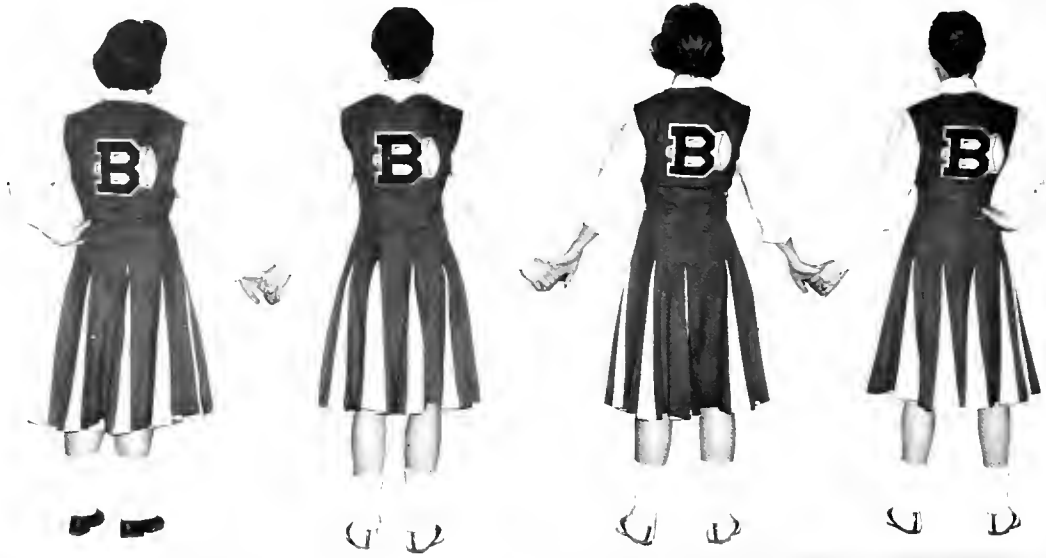


Trish Young
Gail Garmon
Mary Hopping
Marty Clark
Dottie Hunsucker
Barbara Parks
Minerva Morgan
Patsy Greene
Helen Johnson
Celia Hooper
Gayle Johnson
Joyce Freeman
Nancy Swaringen
Joyce Clark

Women's Intramural Council

MRS. M. THOMAS COUSINS
Adviser





B. K. KELLY HELEN NELSON ALICE BARNHILL BEVERLY HOLLOWAY



CHRIS OLSEN
Chief Cheerleader



CAROL CHAPLIN

MARtha
ANN FAIR

CHRISTINE
FARNAN

ALICE
HARRISON



Features



Mr. and Miss Sophomore



ANNA WILLIAMSON

STEVE BROWN

Mr. and Miss Freshman



PATSY GREENE

GLOVER COGGINS



Homecoming Queen

BETTY NEALE

Homecoming Court



SOPHOMORE
ATTENDANT
Gayle Johnson

FRESHMAN
ATTENDANT
Pat Brower





Christmas Queen

ASTA GABRIELSSON

Christmas Court



SOPHOMORE ATTENDANT
Carole Mappus



FRESHMAN ATTENDANT
Sandra Smith



Halloween King & Queen

RENALDIA BEATTY -- DON ROBERTS



ALLOW ME!!



SWING YOUR PARDNER!



The Delphian Sweetheart

SUSAN HUNT
escorted by
Wayne Edwards

Page One Hundred Thirteen

Valentine Court

*PEGGY EDMISTON
escorted by
Kent Dorsey*



*PATSY GREENE
escorted by
Glover Coggins*



Valentine Court

*JUDY GROGAN
escorted by
Art Campbell*



*NORMA SMITH
escorted by
Gerry Williams*





May Queen

CHRISTINE OLSEN



1960 May Court

MAID OF HONOR
Brenda Edison



Sophomore Attendants



CAROLE MAPPUS

JEANNE MORRIS



Sophomore Attendants

ANITA SMITH



BETTY SUTHERLAND

Freshman Attendants



MAXINE CALLISHER

JOYCE FREEMAN



Freshman Attendants

DIANNE NESBITT



SANDRA SMITH

The Pertelote 1960

Activities

Athletics

Classes

Features

*Faculty
And
Administration*

Advertisements

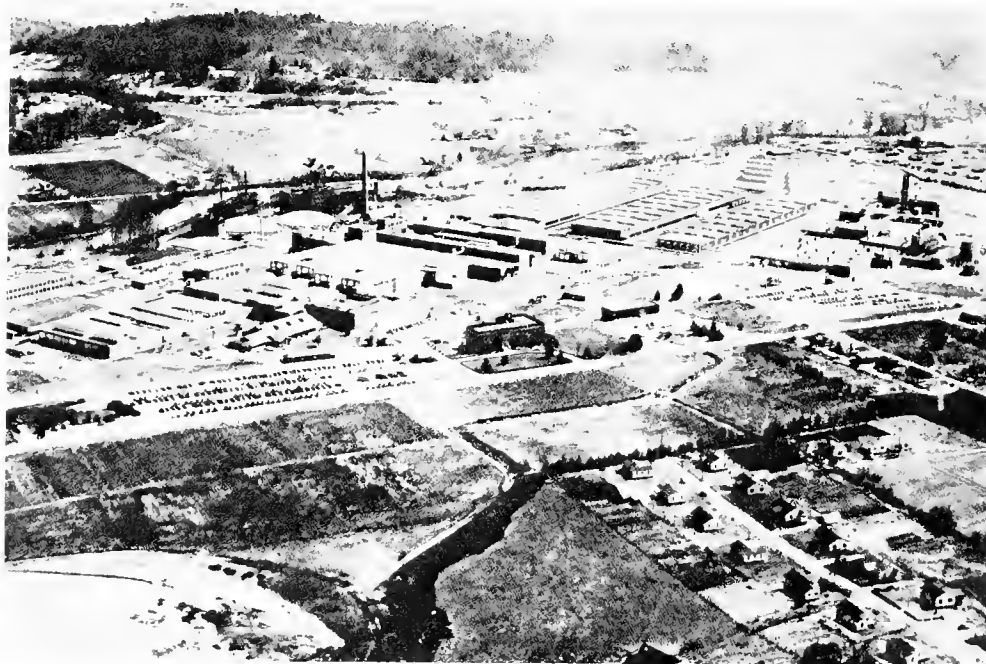
The End



Advertisements

Olin Mathieson Chemical Corporation

PISGAH FOREST, NORTH CAROLINA



Makers of Ecusta lightweight papers, and
Olin cellophane and polyethylene

Compliments of

CREST STORE

South Broad Street
Brevard, North Carolina

**TRANHAM'S
DEPARTMENT STORE**

DRY GOODS
READY-TO-WEAR AND SHOES
East Main Street
Brevard, North Carolina
Dial 3-2221

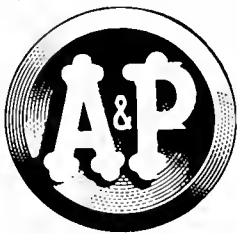
CHICKEN KITCHEN

CHICKEN-IN-THE-BASKET
Barbecue, Our Specialty
CHARLIE OWENBY, Owner
Phone 2-6231
Brevard, North Carolina

**RED DIAMOND
SERVICE STATION**

North Broad Street
Highest Quality Gasoline and Oil
Phone 3-1402

AMERICA'S DEPENDABLE FOOD MERCHANT



100th
BIRTHDAY
Celebration
1859-1959

**HEYWARD MAHON
COMPANY**

Greenville, South Carolina

Compliments of

**SLEDGE RADIO
AND TV**

Corner of Jordan and Gaston
Brevard, North Carolina
Phone 3-3911

PISGAH CANDY COMPANY

WHOLESALE DISTRIBUTORS
Brevard, North Carolina

For a quickie lunch
Or an evening snack
For a friendly brunch
Or a take-home sack



WELCOME TO
YE OLE CHATTERBOX

Compliments of

A FRIEND

With Every School Supply for the Student

CASSELS 5 and 10 STORE

Brevard, North Carolina

"Your Store"

BOWER'S

MEN'S — WOMEN'S — CHILDREN'S APPAREL

SHOES — BOOTS — PAINT

CAMPERS EQUIPMENT

TURNER 3-1092

Brevard, North Carolina

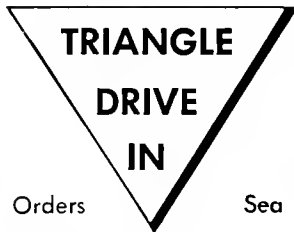
Compliments of

J. A. Jones Construction Company

CHARLOTTE, N. C.



**CITIZENS
TELEPHONE COMPANY**



- Breakfast
- Lunch
- Short Orders
- Steaks ●
- Chicken ●
- Sea Food ●

CURB SERVICE

Owned and Operated by V. L. Tinsley
Corner of S. Caldwell and Broad, Brevard, N. C.

**THE MOLAND-DRYSDALE
CORPORATION**

Manufacturers and Distributors

COMMON BRICK

ETOWAH FACE BRICK

Hendersonville, North Carolina

Phone 6561

**McCRARY AUTO
SERVICE, INC.**

WRECKER SERVICE

Brevard, North Carolina

Compliments of

**B & B FEED AND SEED
COMPANY**

**BRITAIN TRACTOR
COMPANY**

Brevard, North Carolina

PATTERSON'S

of

Brevard

**FIRST UNION
NATIONAL BANK**

of North Carolina

Brevard, North Carolina

Member — The Federal Deposit

Insurance Corporation

The Federal Reserve System

**S. M. MACFIE
DRUG COMPANY**

The REXALL Store
Revlon Agency
Brevard, North Carolina

BIKAS RESTAURANT

Home of Country Ham and Western Steaks

CLEANLINESS — QUALITY — SERVICE

Brevard, North Carolina

Phone TUrner 2-1621

EAT HERE IF IT KILLS YOU —
WE NEED THE MONEY

MORGAN BROTHERS, INC.

WHOLESALE — DISTRIBUTORS

Candy — Cigars — Drugs — Sundries

Paper Products and School Supplies

Asheville, N. C.

Compliments of

BRUNSWICK BILLIARDS

Managed by M. A. Mull

GAITHER'S RESTAURANT

BREVARD'S BEST

Rhododendron and Dogwood Rooms

Banquets — Civic Clubs — Special Parties

Phone 3-4211

34 South Broad Street
Brevard, North Carolina

MORRIS PHARMACY

Corner of Main and Broad Streets

Students Are Invited to Make This Their

"Family Drug Store" Away from Home

AUSTIN'S STUDIO

PORTRAITS — COMMERCIAL PHOTOGRAPHY

Also Popular and Classical Records
Sheet Music and Musical Supplies

11 East Main Street

Brevard, North Carolina

Phone TU 3-3111

Compliments of

BREVARD AMOCO SERVICE

Brevard, North Carolina

PLUMMER'S

Dial 2-1801

**BREVARD JEWELERS
AND
GIFT SHOP**

Corner of Main and Brood Opposite Court House

PEARCE-YOUNG-ANGEL

WHOLESALE FOODS

FRESH — FROZEN — CANNED — DRIED

Dial 2-6751

Asheville, North Carolina

"MEET YOUR FRIENDS"

BOOKSTORE

SODA SHOP

POST OFFICE

SIMS CAMPUS CENTER BUILDING

WESTERN AUTO

THE FAMILY STORE

East Main Street
HEADQUARTERS FOR AUTO PARTS
AND ACCESSORIES
Phone TU 2-5921

CLEANEST STORES

IN TOWN —

PLEASANT PLACE

TO SHOP!



VARNER'S

Your Friendly WALGREEN Agency
Brevard, North Carolina

"Everything in Music"

at

DUNHAM'S MUSIC HOUSE

62 Patton Avenue
Asheville, North Carolina

May Health, Security and Happiness be the Good Fortune
of Each Member of the Class of '60



**The Champion Paper
and Fibre Company**

CAROLINA DIVISION — CANTON, N. C.

Teacher's Pet Knows . . .



Exclusive cellophane wrapper keeps Lily thread



Lily 

MERCERIZED SEWING THREAD

...FRESH • CLEAN • STRONG

... and a strong, smooth thread sews a *perfect seam* everytime — no snarling, knotting or breaking.

LILY thread is smoother and stronger because it's mercerized — not only in all the beautiful fabric matching colors, but also in black and white.

It's economical, too, more yards for the money — more stitches for less.

LILY MILLS COMPANY • Shelby, N. C.



*educated legs wear
seamless stockings*

by Hanes

*no seams to worry about!
date and campus sheers*

1.35-1.95

**Hanes Hosiery
Mills Company**

BETTER STREET AND HIGHWAY LIGHTING
MAKES A SAFER AMERICA
CONGRATULATIONS TO THE BREVARD COLLEGE CLASS OF 1960
OUTDOOR LIGHTING DEPARTMENT
Hendersonville, North Carolina

Progress Is Our Most Important Product

GENERAL  ELECTRIC

Compliments of

HERBERT MILLS, INC.

Marion, S. C.

**WPNF
Radio**

THE BEAUTY SALON

COMPLETE BEAUTY SERVICE

The Smartest Shop In Town

Phone TU 2-3821

Compliments of

CO-ED THEATER

101 West Main Street

Phone TU 2-2191



Compliments

KEARNS GROCERY

MEATS

GROCERIES

PRODUCE

Phone TU 3-4411

Open Sundays

TALLEY'S

BEAUTY & BARBER SHOPS

17 West Main Street

Brevord, N. C.

Telephone TU 2-3122

Holland Talley—Proprietar

Try our Call and pick-up service

**BERRY'S
RESTAURANT**

FROM A SNACK

TO A BANQUET

TALMAN

OFFICE SUPPLIES, INC.

8 College Street

Asheville, North Carolina

Phone AL 3-2376



SIGN OF GOOD TASTE

Coca-Cola Bottling Co.

HENDERSONVILLE, N. C.





