





the pertelote...
BREVARD COLLEGE...

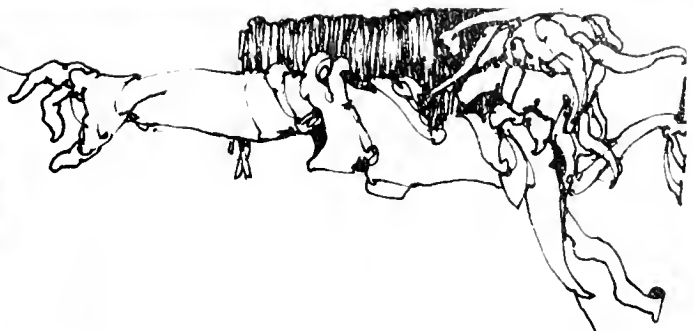
1978 - 1979

volume xlv



a JOURNEY

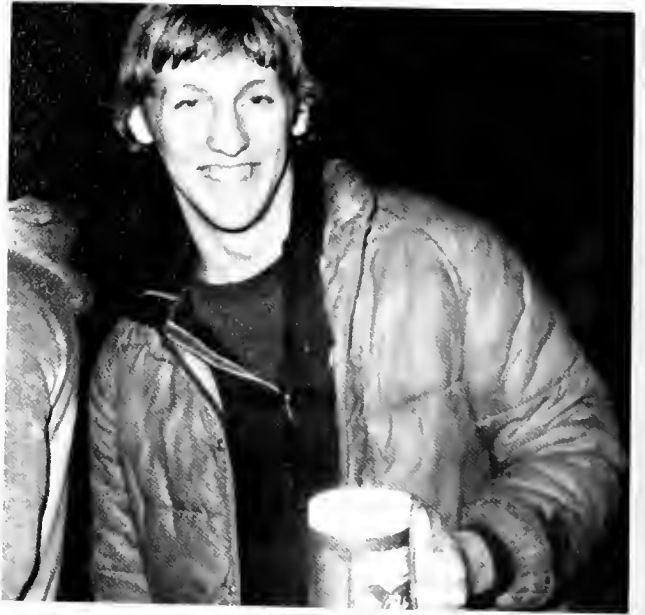




INTO BREVARD











Administration 16
Freshmen 106

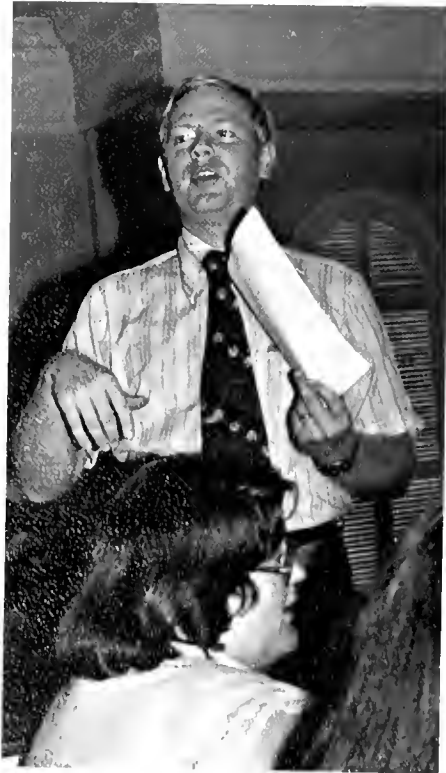
Organizations 34
Sophomores 128

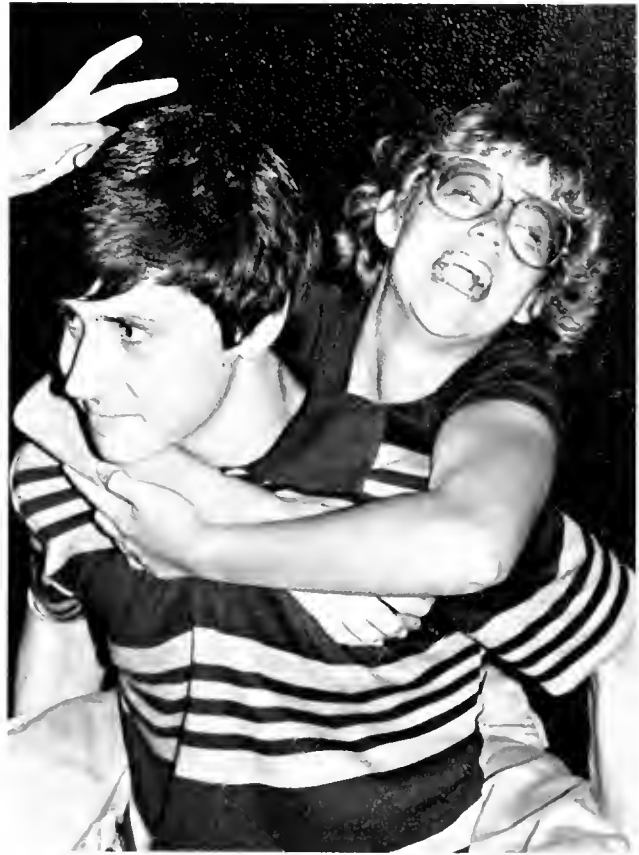


Sports 60 Campus Life 84
Community 144 Conclusion 192

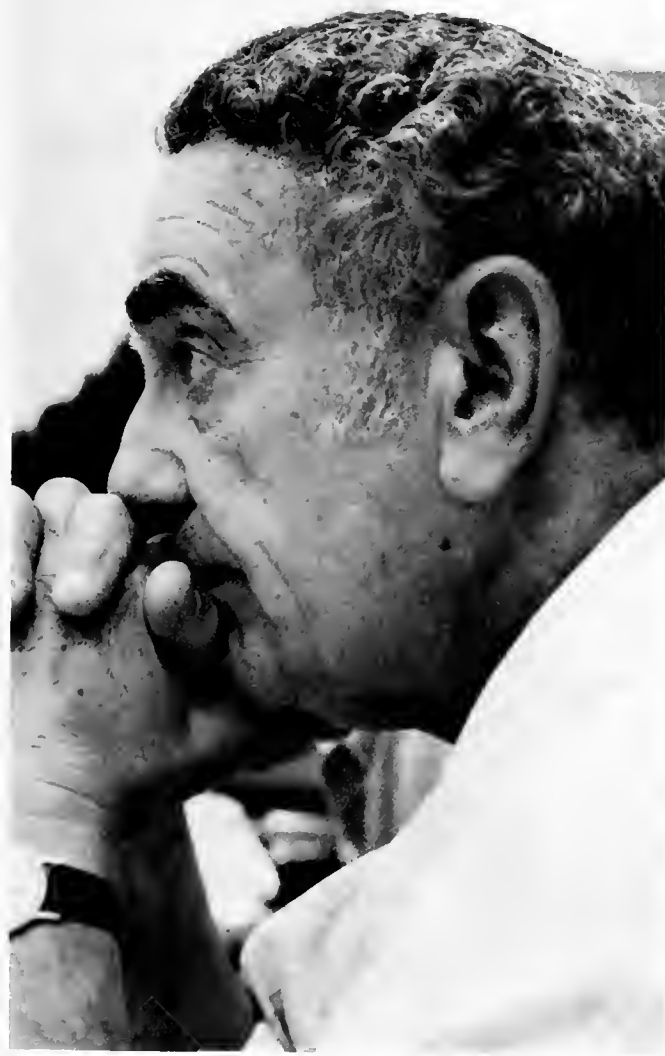














"thenceforth, journeying as I went, going withersoever I heard that the study of my chosen art most flourished, I became such as one..."

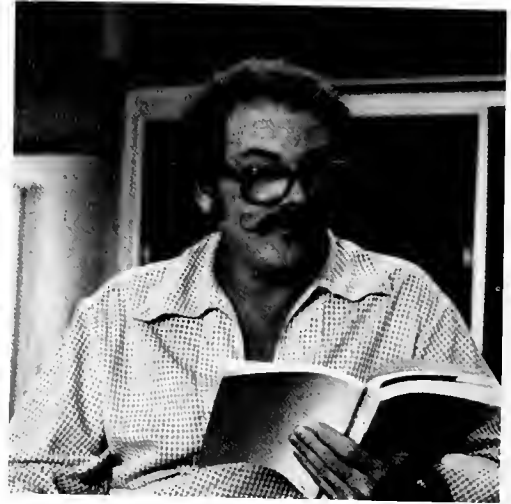
--Peter Abelard



STRIVING FOR PERFECTION...



Lee B. Bratton, Voice & Sight-Singing



Samuel L. Cope, Piano & Theater Arts



John D. Eversman, Violin & Viola



Cheryl T. Harrison, Art



George A. Henson, Woodwinds & Piano



John Jacobsen, Brass

Through Performance...



Laura P. McDowell, Piano & Keyboard Harmony



Adelaide H. Miller, Organ & Piano



Harvey H. Miller, Jr., Piano & Voice



Dorothea J. Moser, Guitar



Louise P. Miller, Piano

The Fine Arts Department at Brevard not only offers a varied assortment of studies in Music, Theory, Drama and Art, but it also promotes involvement and builds strong character. Demanding nothing short of perfection, the Arts Department sets its standards high and overcomes every obstacle. The students find respect and unlimited assistance as each faculty member guides the individual towards eventual perfection . . . through performance.



Douglas T. Murray, Art



Charles J. Parkhurst, Percussion



Patricia L. Robinson, Voice



Laura V. Tillotson, Woodwinds & Band



John D. Upchurch, Brass & Fine Arts Chairman



G. Larry Whatley, Harmony & Composition

Reading, Righting, Regions . . .



Sarah R. Barnhill, English



Sara S. Beard, English



Elizabeth S. Buck, Psychology



Peter E. Burger, History



Matilda R. Cartledge, Religion



Kenneth Chamblee, English & Journalism



Charles R. Fisher, Business & Social Dance



Alberta Hughey, Business



Randolph Jackson, English



Theodor P. Leithmann, English & German



Ethel B. LeStrange, French

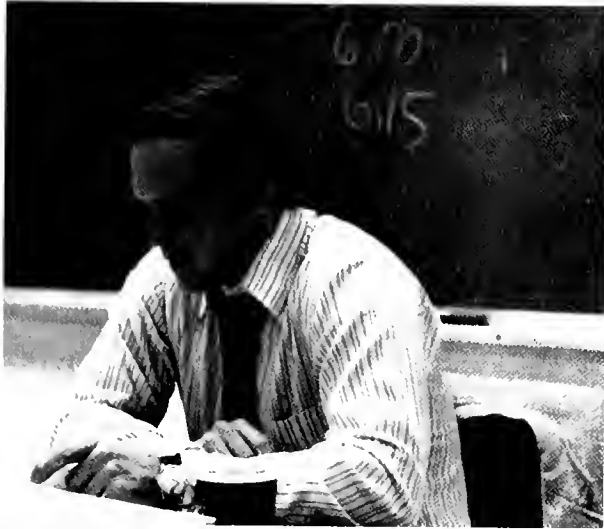
Humanities mean much more to the average student than mere books and various assignments. Brevard contains several of the best professors in English, Religion, History, Business and Romance Languages. Whether it is a casual response to a question or a "puny" answer in a "funny" situation, both the teacher and student learn that one of the secrets to growth through knowledge is a sound relationship in a friendly atmosphere. Perhaps that is why Brevard ranks high in academics among the top schools in the nation today.



Jane Love, English



Syllus E. Lovely, History



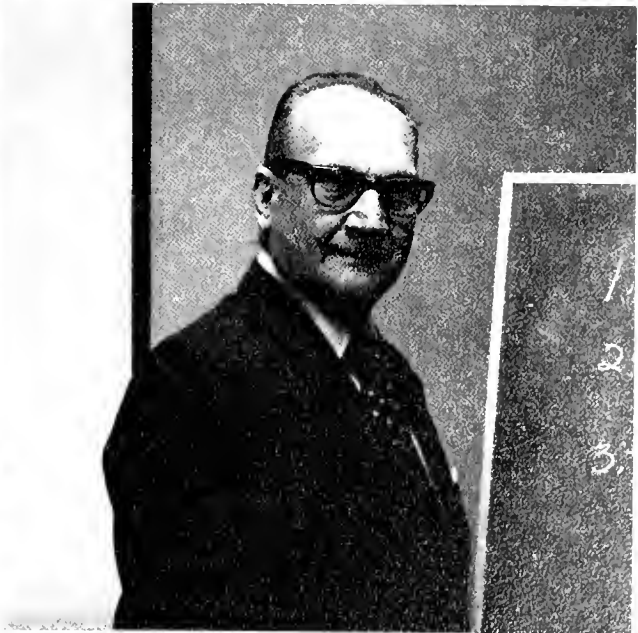
Eugene C. McDowell, Religion



Rhuemma C. Miller, English



Grace J. Munro, Business



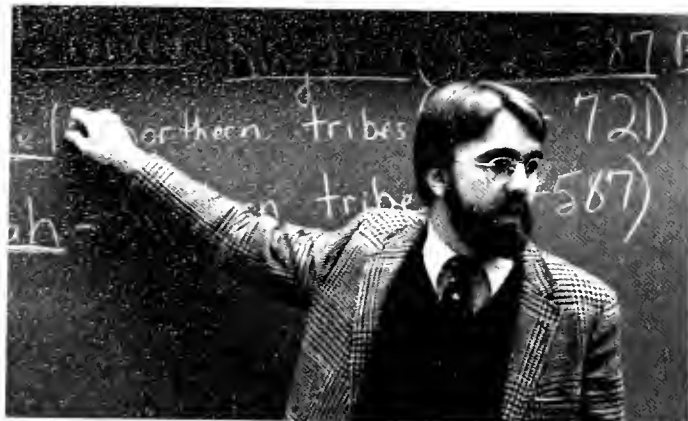
Mario P. Perez, Business & Spanish



Viola C. Perez, Spanish



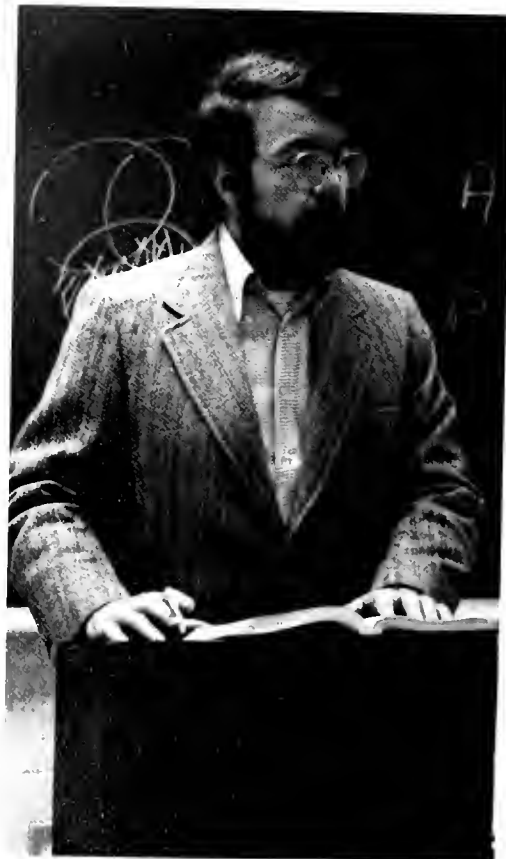
Charles E. Roy, Chaplain & Religion Chairman



Claude N. Stulting, Jr., Religion



Clara C. Wood, English



Arthur P. Woodruff, Religion



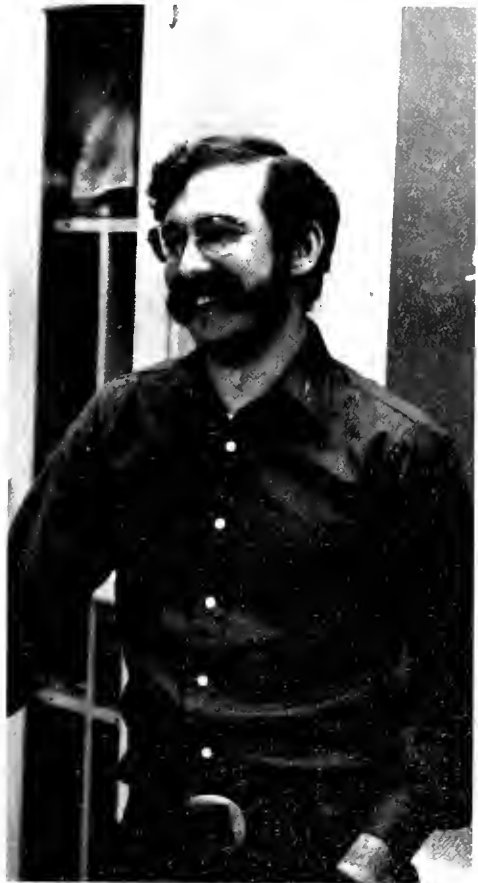
R.E.D. Anderson, Mathematics



Daniel P. Barnett, Chemistry



Sharon Brower, Mathematics



William Brower, Biology

the formulas of life yield
the tools of man...



Rachel C. Daniels, Mathematics



Edgar P. Evans, Biology



Jackie S. Holland, Mathematics



Susan L. Horn, Mathematics

Present-day Man has been faced with the evolution of the nuclear bomb, the unleashing of advanced warheads and the emergence of life from within the realm of a test tube. Whether a blessing or the foreshadowing of eventual destruction, each of these areas must be dealt with on various intellectual levels. The college student is certainly no different, and Brevard presents a challenge for its members. Students of the Maths and Sciences find pleasure and intrigue within the framework of four solid walls. Expanded courses and an intensive curriculum help to provide for a well-rounded education and sound preparation for life outside the realm of the college.



Carolyn Johnson, Mathematics



Derry D. Koob, Biology



Bobbie J. Nicholson, Chemistry



Diane Rollins, Mathematics



Colvin C. Wellborn, Physics & Mathematics

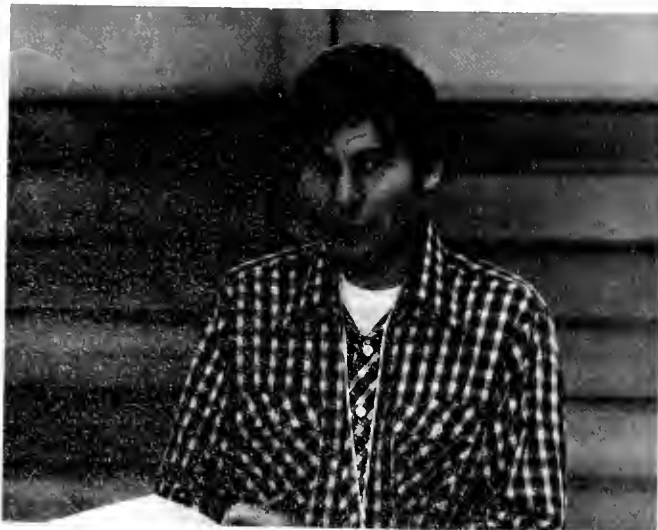
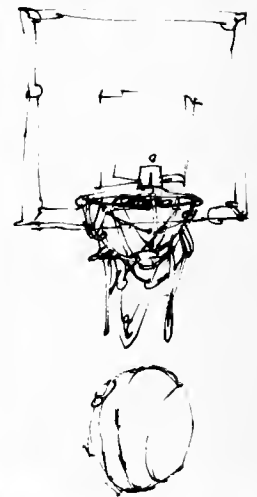
Strengthening
the Body
and Mind...
through
Participation.



Martha G. Anderson, Health & Physical Education



James L. Chester, Scuba Diving



Thomas C. Maynor, Physical Education Chairman



John W. Meyerhoff, Basketball & Tennis



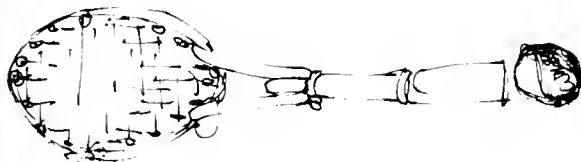
Maureen Robinson, Horseback Riding



Donald A. Scarborough, Soccer



Anne Vorus, Ballet



Norman C. Witek, Track



Jacob C. Martinson, Jr.
President



Morris G. Wray
Dean of College



Brona N. Roy
Registrar

Running a College is a Difficult Process...



Louise M. Kenerly
Secretary to the President



Clara D. Davis
Secretary to the Dean of College



Corrie G. Burdette
R.N., Director of Infirmary



Mrs. Kenneth Chamblee
Library Assistant



Roscoe J. Alderman
Manager Sims Student Union



Betty R. Choate
Secretary
Student Personnel Services



Mary M. Cox
Food Production Manager



Roma W. Childress
Assistant Student Union



Edwin K. Cunningham
Director of Student Financial Aid



Imogene M. Eaker
Alumni Secretary



Anna S. Etters
Clerk of Office Services



Rowe B. Fortune
Assistant Nurse



Lois A. Galloway
Library Secretary



Argyle W. Gash
Bookkeeper



J. Wesley Goodman
Director of Food Services



Nancy B. Hall
Faculty Secretary



Robert M. Hall
Director of Physical Operations



Bobby L. Hayes
Director of Financial Services



Kathryn T. Healey
Library Assistant



Richard T. Hinshaw
Admissions Counselor



Adella M. Holloway
Secretary to Dean of Admissions



Mary Margaret Houk
Dean of Student Affairs



Sandra P. Jameson
Faculty Secretary



Miriam E. Jones
Assistant Librarian



Laverne T. McCall
Assistant Student Union



Kathie M. McCauley
Assistant to Alumni Secretary



Margaret H. McClarty
Co-Ordinator for Learning
in Retirement



Robert G. McLendon
Dean of Admissions



Doris E. Montgomery
Assistant to Business Manager



Elizabeth S. Neale
Associate Dean of Admissions



Martha T. Nolen, Secretary & Receptionist



Maude S. Norwood, Assistant Student Union



Sarah T. O'Brien, Secretary to Development Office



Richard O'Hara, Director of Security



Jean J. Peevy, Secretary to Development Office



Kelly H. Raines, Secretary to Business Manager



Guy Payne, Director Boshamer Gymnasium



Mary E. Styles, Secretary to Division of Fine Arts



Bobbie J. Whitmire, Secretary to Science Faculty



Nancy M. Williamson, Admissions Counselor



Jane E. Wright, Librarian

.. Yet Easily
Performed
By the
Staff at BREVARD!





“God in his wisdom gives and withholds;
to many a man he mates out honor,
fame and fortune; their fill,
to some, of woes.”

— from DEOR

The PERTELOTE Staff, under the leadership of editor Michael Capps and Co-editor Clara Allen, have worked diligently to produce a yearbook that will reflect the thoughts and actions of the Brevard College Community. It is our hope that this yearbook will be enjoyed by all as much as we enjoyed doing it. We would like to express our deep appreciation to our sponsor, Mr. Preston Woodruff for his support.





perelote promotes character while the clarion presses on!

The end of the year . . . this is the time when we thank all the people who made everything possible. Well folks, THE CLARION is no exception to this tradition. We want to thank you the readers for letting us serve you this year. We came a long way this year. We began the year with a new advisor, Mr. Ken Chamlee, and a staff composed largely of Freshmen. Only one member of the original staff had previously worked with THE CLARION. Working together as a team we got the paper together and we hope that it served a purpose other than washing windows or starting fires. Thank you, Debi Crane, Editor-in-Chief, THE CLARION.



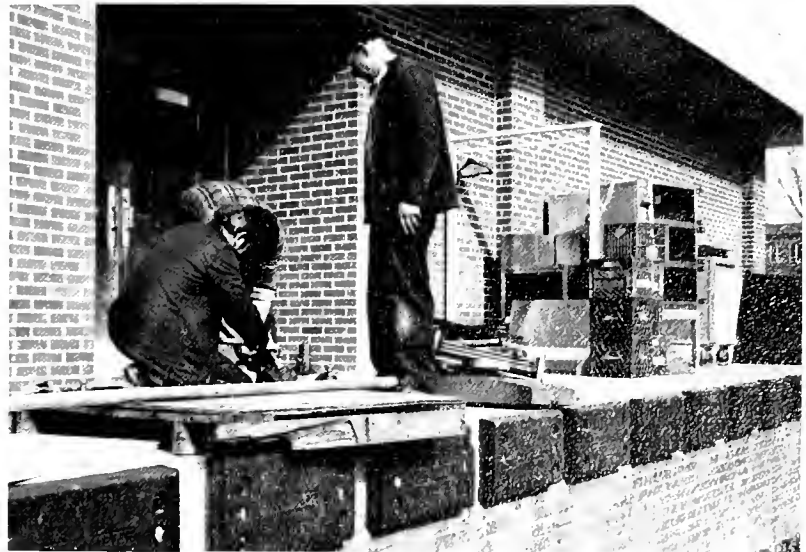
A cafeteria is the one place where a person may go to enjoy finely-prepared meals of the highest quality, expert service along the lines of buffet and beverages, and constant smiles which never dwindle into unsightly frowns or smirks. Unfortunately, the students of Brevard are blessed with a staff which meets none of these qualities. Yet are not the students better off in the long run? Carefully prepared meals are truly reminiscent of home, either distant or within the city. Expert service is for the high socialites and flashing debutantes; let the students have meals served with pride .. on *their* level. And lastly, the students do not see smiles and grins which infer everlasting peace, rather the students at Brevard see tears of pain for slaving long hours each day, inner scars and outward burns from vain attempts at new dishes which students merely shun in disgust. Humble gratitude and special thanks must be given these angels in disguise; any group that can take the punishment and disrespect attributed by a college campus certainly deserves a right-hand place at the seat of our Creator.





God's Gifts

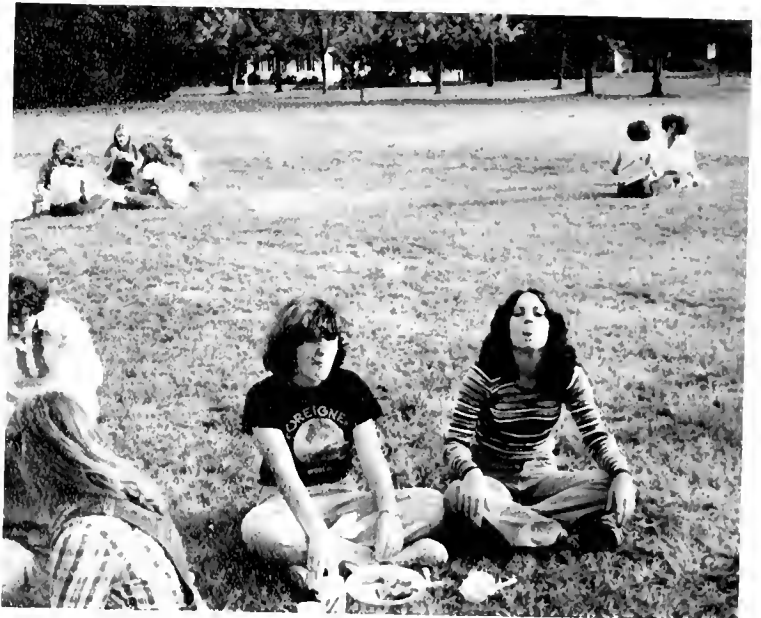
Seldom a day goes by at Brevard in which the maintenance crew is not awake and actively cleaning, scraping, emptying and generally beautifying the campus. Before the smell of hot coffee and warm showers, these men are scrambling like mice; efficiency is a must. Often neglected and forgotten by an unconcerned student body, these fine men never falter in their assigned tasks. It is certainly a shame that credit is not given the maintenance crew; but then, what prize could be awarded for deeds so priceless?



Students Yawn at SOCIAL "BORED"

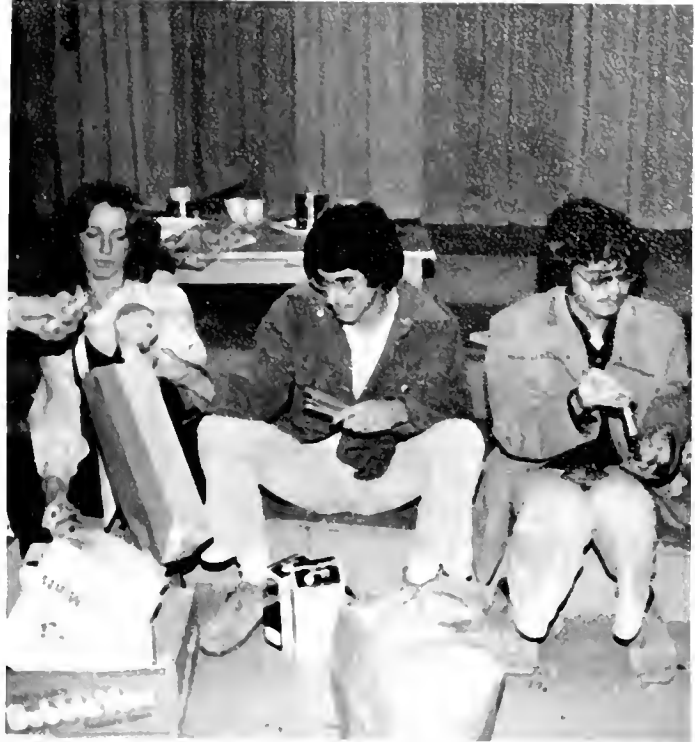
"Hey! When are we gonna have another disco?"
"I don't know; I'm not in charge!"
"Hey! When are we gonna see some posters about the dance?"
"You want posters? Put them up yourself!"

This is part of the attitude dealt out by the Social Board at Brevard. The organization is designed to give the students various sorts of entertainment ranging from dances to coffee houses; yet the students noted much apathy on the part of several members of this organization. Although the unconcern was not shared by every member of the group, students at Brevard did feel neglected and shunned at times; perhaps the SOCIAL BOARD left the campus of Brevard SOCIALLY BORED!





m
a
s
q
u
e
r
s

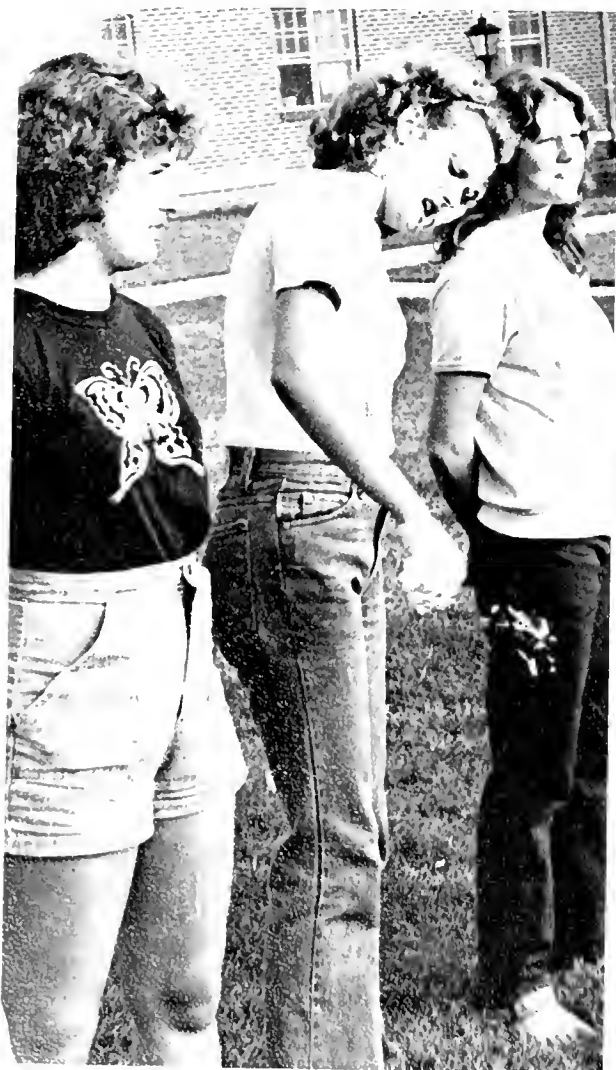


Three hot chocolates and two apples or was that two hot chocolates and three apples. This is one of the questions that might have been asked while the Masquers Club was packing up care packages during exams. The Masquers Club packed 250 care packages to help students make it through this crucial time in the semester. The Masquers also do such things as usher at the fall musical, present a student talent show, and sponsor a 50's day.



Forest Tramping Ground for Relief of Tension

The Mnemosyneans (Nemos) is a women's organization founded to serve the student body and Brevard College community. The group sponsors various social events for the benefit of the students; these activities include a slave auction for initiation and an outdoor concert. The major event of the year was the co-sponsoring of the Sweetheart Dance and the court with their brother organization, the Deiphians. The group promotes student involvement and supports various charity causes. Membership is open to all Brevard College women.





"Ninety-nine bottles of beer on the wall . . ." It is not unusual to hear this familiar tune come from the lips of one of the strongest service organizations on campus, the Delphians. Yet kegs may be a better word, for the Delphians sponsor several such parties throughout the year in Pisgah Forest. These gatherings not only assist in bringing the group closer, but it serves as a tramping ground for relief of classroom tension. Delphians aid in sponsorship of the sweetheart court, slave auction, and add color to home basketball games.

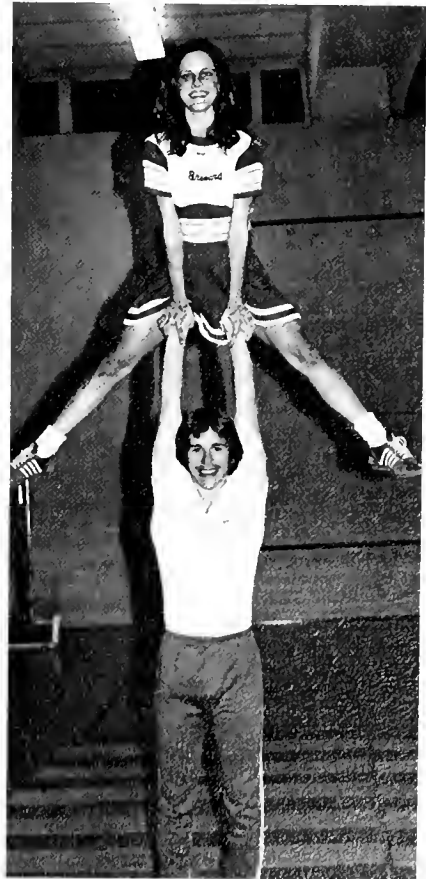


his smiles...
her tears...
the hope...
their cheers!





This year has been very unique and successful for the cheerleaders, especially since they've added a new breed: males. The purpose of cheerleaders is to promote school spirit, and this they do with fabulous chants, catchy chants, and super cheers. Hats off to the cheerleaders!



Masses Spellbound As Band Razzle - Dazzles!

The Concert Band, under the direction of Miss Virginia Tillotson, presents four concerts a year. These concerts include a variety of musical styles. With Miss "T" at the head of the class, our band cannot only create beautiful, soothing music, but it can also imitate the sound of the wind blowing through the trees. Many hours of hard work and practice are a part of being in the band. The Brevard College Concert Band is an organization that we should all be proud to have as a part of our Fine Arts department.





SACRED LITERATURE A MUST FOR DEVOTED CHORISTERS

"Va-doh, va-doh, va-doh . . ." These are just some of the sounds that come from Room 01 in Dunham Music Building on Tuesday evenings. The Oratorio Chorus, directed by Mr. Harvey Miller and accompanied by Mrs. Adelaide Miller, is a group of 40 voices made up of students, homemakers, businessmen and teachers. Oratorio music is based on the scriptures; therefore, these people come to rehearsals in a serious state of mind. But Ortorio has a humorous side also. (Remember when the moon rose outside the choir room window on Halloween?)

CHORAL ENSEMBLES:

If one walks past the choir room on certain afternoons, he might hear some strange or beautiful sounds. You may begin to think that our dear school has been invaded by foreign countries because bits of German, Latin, Spanish, and even Russian mingle with the faint tinkling of a piano. In reality, what is being heard is the Collegiate Singers (sometimes known as the Colgate Mountain Singers) rehearsing for their next concert. This group of 65 voices, under the direction of Professor Lee Bratton, performs for such occasions as trustee banquets, church services, and school assemblies.



When you hear a bloodcurdling scream pierce the air of Dunham Music Building, it is only the cries of a student being tortured by Slave Driver Bratton. The approach of spring tour brings out the Dr. Jekyll and Mr. Hyde in everyone. The purpose of the tour is to recruit new students to Brevard. These performances must be perfect; therefore, all the torture devices are dragged out of the closets and put to use.





... BUILDING VOCAL excellence

The most elite of the performing groups at Brevard College is the Chamber Choir. This group of 24 voices, under the direction of Professor Lee Bratton, sings a variety of music, from secular to madrigal. The Chamber Choir performs at different social events throughout the year and accompanies the Collegiate Singers on Spring Tour.

through family unity



Hoya! Hoya! Hoya!

The Spanish Club is a twenty-nine member club dedicated to the understanding of Spanish life and culture. President Susan Davis has the job of bringing in guests with a Spanish background to inform the club's members about the Spanish ways of life. This club meets once a month and each year has a club banquet to conclude the year's activities. Other officers for the Spanish club are Tempe White, Vice-president; Jay Kaiser, Head of Public Relations; and Sandy Geiseweite, Secretary.

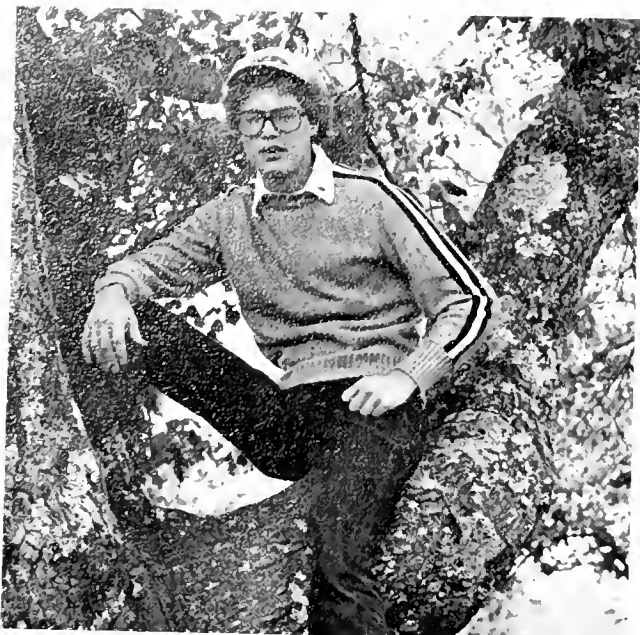




Campus Tours Promote Strong Relations

The Student Ambassadors is a group of 40 students on campus that assists the admissions office. They host students in their rooms and give campus tours plus many other jobs helping prospective students. The chairperson is Diana Ereth and co-chairperson is Mike Boykin. Visitors to Brevard College would be at a loss without the Student Ambassadors.





MSM

One of Brevard's religious organizations is the Methodist Student Movement. This club combines religious outings with informal fellowship. The club has enjoyed several activities this year, including a cookout at the home of their advisor, Mr. Preston Woodruff.

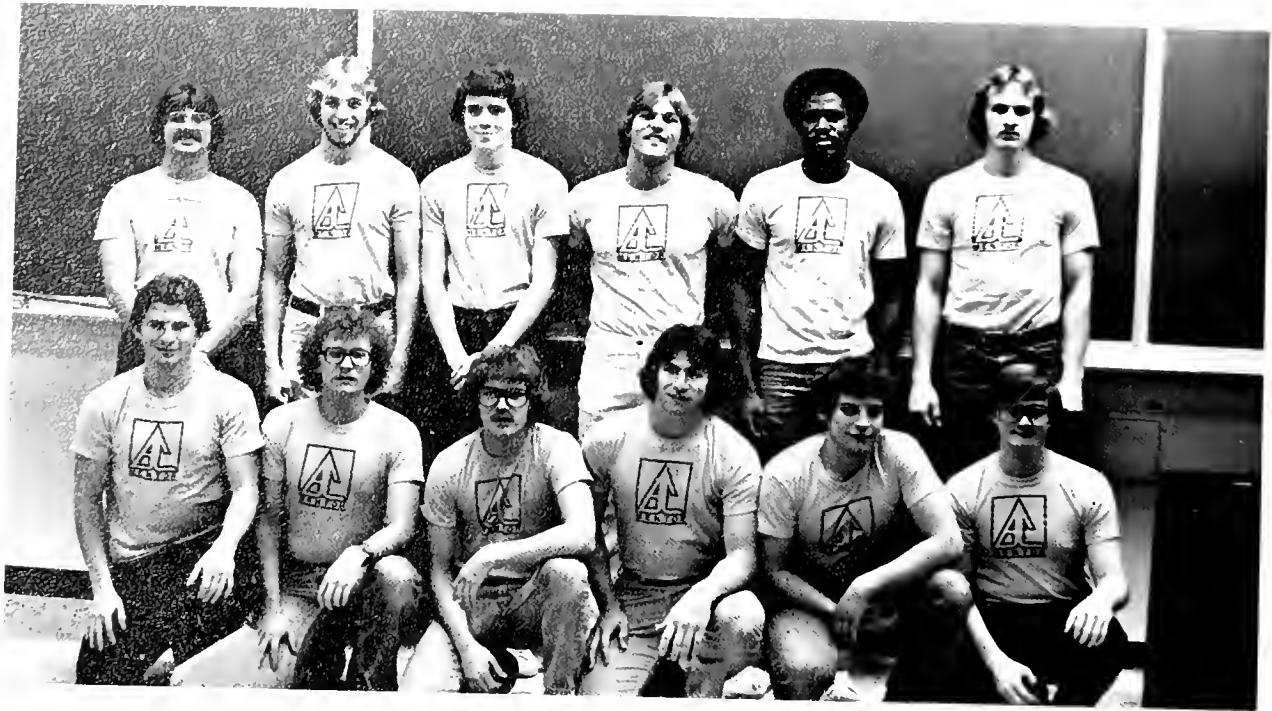


Christian Council

The Christian Council is another busy organization on campus. They are responsible for coming up with Christian related activities such as Sunday night vespers, Pause, the Thanksgiving banquet, and the Christmas tree lighting ceremonies.



"It's a happy day and things are gonna get better; living each day by the promises of God's word." These are words that one might hear on any Thursday night in the chapel across the road from the school. As you walk into the chapel, you see nothing but smiling Christian faces. This gathering is what is called Pause. It is an inter-denominational Christian fellowship hour. Pause is designed as a time for discussing the preceding week's events, a time for song and a time for prayer. This weekly gathering is a must for the young and growing Christian on campus. It is also a good place for the unknowing.



BIG SISTERS AND MENTORS

Two valuable service organizations at Brevard College are Big Sisters and Mentors. While helping students move in, they proved indispensable. At Brevard this year, the Mentors are a group of specially-chosen Sophomore men. The Big Sisters consists of 22 selected Sophomore women. As well as helping with registration, they sponsor several activities throughout the year such as the blood drive. They also sold tickets at ball games. Also they helped with concessions. Both groups are outstanding and are greatly appreciated at Brevard.







ptk sponsors avpsdd.

The Delta Pi Chapter of Phi Theta Kappa has been an active chapter this year. The year's activities were launched by the officers who attended the Phi Theta Kappa Leadership Conference in Charlotte. In November, the group sponsored a social for the Japanese students and Sophomore initiation was held.

For the first time ever, PTK was elected to the Western Carolina Community Action Board, installed provisional members, and headed the United Way Fund Drive.

In February, PTK members attended the Regional Convention in Greenwood, South Carolina. The group also inducted the new Freshmen members and sponsored the AVPSDD. In April, the members attended the National Convention in Kansas City, Missouri, where they sponsored a candidate for the national presidency of Phi Theta Kappa.





fly high with delta pi

Attending the Regional Convention in Greenwood, South Carolina was very exciting for Delta Pi members. This year the Chapter ran for President of the Carolinas region. With a lot of planning and careful thinking the group won the election. The slogan, "Fly High With Delta Pi" was used to catch the eyes of the voters. One of the responsibilities of the Regional Presidency is hosting the 1980 Phi Theta Kappa Regional Convention.





Community Affairs in an action-insult committee which sees that a majority of the campus decisions are enacted. Represented by Mary Margaret Houk, Committee Chairman, heads of all campus organizations and selected faculty members comprise the caliber of members on this committee.





Looking out for the well-being of the students and student organizations is the Student Union Legislature. Various class officers and selected members from the dorms and classes make up SUL. All legislation proposed must be brought to SUL for approval.







“Stand fast! Stand fast!
... fear nothing, for if God
please, we shall conquer.”

— anonymous

freshmen highlight
as
Sophomores
demonstrate skill



Here at Brevard College, soccer is becoming more and more popular each year. It is now the major fall sport. This year, the soccer team was under the new coaching of Don Scarborough. He is a licensed coach with the U. S. Soccer Federation and the National Intercollegiate Soccer Officials Association. Leading the BC Hot Spurs to the Region Championship this year were the co-captains Steve Schneider and Steve Stewart. The 1978-1979 soccer season was filled with excitement. Competing against teams in the southeast, the Hot Spurs compiled a 7-7 record. They played a very successful first half of the season winning five out of seven games. The second half of the season was not as successful, with the Hot Spurs losing four of the six remaining games.

On November 17, the Hot Spurs competed against Andrews College of Georgia in Jacksonville, Fla. In the first round of the South Atlantic Regionals of the NJCAA Championship playoffs. The Hot Spurs had defeated Andrews earlier in the season by the score of 2-0. The loss ended the season for the team, which was a successful one. This year's soccer team was a successful one. The Hot Spurs fought hard, whether they won or lost. Next year's team should prove to do the same, having gained valuable experience throughout the season.





DATE	OPPONENT	PLACE	SCORE
Sept. 9	Erskine College "B" Team	(Scrimmage) Away	
Sept. 12	Presbyterian College	Away	W-4-2
Sept. 16	Montreat-Anderson College	Home	W-8-0
Sept. 19	Erskine College "B" Team	Home	L-3-7
Sept. 23	Winthrop College (OT)	Away	L-1-3
	DeKalb C.C. College (OT)	Away	W-3-1
Sept. 29	Andrew College	Home	W-2-0
Oct. 3	Montreat-Anderson College	Away	W-5-2
Oct. 7	DeKalb C.C. College-Central	Away	L-1-2
Oct. 10	DeKalb C.C. College South	Home	L-0-3
Oct. 14	Abraham Baldwin Ag. College	Home	W-10-1
	(Homecoming)		
Oct. 26	DeKalb C.C. College Central	Home	W-4-2
	(OT)		
Oct. 28	Oxford College	Away	L-2-3
Nov. 4	Baptist College	Home	L-0-3
	(Parents Weekend)		

REGIONAL PLAYOFFS			
Andrew	3(OT)	Away	L-2-3





NAME	POS.	HT.	WT.	YR.	HOMETOWN
Frank Beatty	FB	5'9	155	So.	Lumberton, N.C.
Kevin Bryant	G-FB	6'1	165	So.	Roswell, Georgia
John McHugh	HB	5'10	140	So.	Matland, Florida
Paul Moseley	G	6'2	180	So.	Wake Forest, N.C.
Rob Ottley	HB	5'10	135	So.	Marietta, Georgia
Steve Schneider*	HB-F	5'9	155	So.	Asheville, N.C.
Steve Stewart*	FB	5'11	160	So.	Vero Beach, Fla.
James Tyson	FB	5'4	125	So.	Triton, Georgia
David Collins	G	5'11	180	Fr.	Kernersville, N.C.
Tom Crenshaw	FB	5'11	175	Fr.	Rutherfordton, N.C.
Andy Dickinson	F	6'0	150	Fr.	Atlanta, Georgia
Juan Dieppa	F	6'0	150	Fr.	Miami, Florida
Ed Holt	F	5'7	135	Fr.	Charlotte, N.C.
Freddie Kinnear	FB	5'8	150	Fr.	Roswell, Georgia
Mark Lee	F	6'0	145	Fr.	East Aurora, New York
Sam Licata	FB	5'8	170	Fr.	Willimantic, Connecticut
Jeff Loftin	F	5'9	140	Fr.	Asheville, N.C.
Bob Lougher	HB	5'10	155	Fr.	Decatur, Georgia
Bret Mayberry	FB	5'8	150	Fr.	Charlotte, N.C.
Mario Muniz	HB	6'0	160	Fr.	Orlando, Florida
Hassan Regimand	HB	5'3	110	Fr.	Chicago, Illinois
Curtis Rubin	FB	5'9	160	Fr.	Morrow, Georgia
Bobby Stinnett	F	5'9	130	Fr.	Atlanta, Georgia
Jeff Sullivan	FB	5'11	150	Fr.	Hendersonville, N.C.
Don Scarborough	Coach				Asheville, N.C.

*Denote Captains

Putting Their Best foot forward!!!



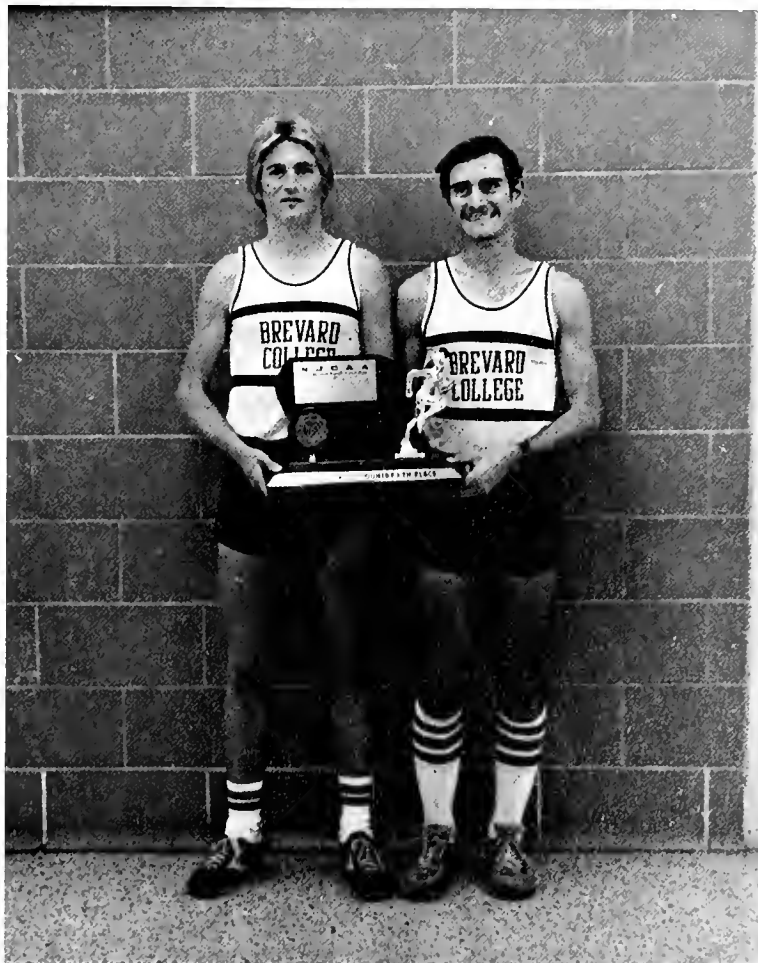
As usual, the Brevard College cross country team carried out the tradition of going undefeated during the fall of 1978. For an entire season, the Road Runners were ranked in the top 15 of the NJCAA. This is the third consecutive undefeated season for the Road Runners. They also dominated the Region X championship meet, capturing the title for the ninth straight time.



“Running
with
Style.”



The Brevard College Cross Country Team finished fourth in the nation in the NJCAA National Championship meet in Champaign, Ill. on November 11. Pacing the Road Runners were Jeff Wentworth, who finished fourteenth, and John George, who finished seventeenth. Both John and Jeff were named All-Americans. The Road Runners finished the meet with one hundred and fifty-six total points, only one point away from capturing third place. The team was coached by Norman Witek, the Region X Coach of the Year.



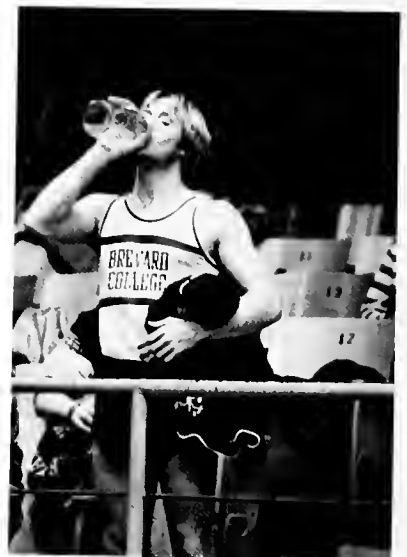


LONG DISTANCE

Greg Boyd
 Gary Burkle
 John Traynor
 Jeff Wentworth
SPRINT
 Tim Black (10,000; 5000)
 Rob Craig
 George Fox (440)
 John George (1500; 5000)
 Todd Murphy (440)
 Dirk Redwine (880)
 Kent Schweikert (1500)
 Sulayman Njie
HURDLES
 Gary Burkle
 Lammar Roberts

JUMPS

Mark Fairman (high)
 Mike Shell (long and triple)
POLE VAULT
 David Griggs
 John Holt
 Mikel Todd
 Frank Valdes
JAVELIN
 Larry Cole
 Mikel Todd
SHOTPUT
 Gary Angel
 Butch Hamby
 Lance Harwell
 Brian Lowery
DECATHLON
 Frank Valdes



TRACKIN' TORNADOES: A Decade of Champs!



The high scholastic record is not the only tradition here at Brevard. Our track team has won the conference and regional meets for the past ten years. The team's strongest points are in the long distance running, but the other track events are also strong. This strength reveals itself to the spectators through each individual member of the team. The strength is known as spirit; a brilliant spirit that bursts out in all its glory through the grace, speed and endurance of the long distance runners, sprinters and hurdles; the height attained by the pole vaulters and high jumpers; the length attained by the long jumpers and triple jumpers and the distance obtained by the javelin and shotput throwers. These fellows are a vital part of Brevard College. Their spirits are a fantastic example of what the students here can attain in life if they set themselves about it in the right attitude.





The 1978-1979 TORNADO GOLF TEAM, coached by Lee Bratton, viewed the season with optimism. Lew Ferguson and Mark Fairman were sought for leadership, skill and encouragement by the Freshmen. Though the season was difficult and the opponents presented a challenge, the Tornadoes were able to secure a satisfactory season with bright hopes for next year.



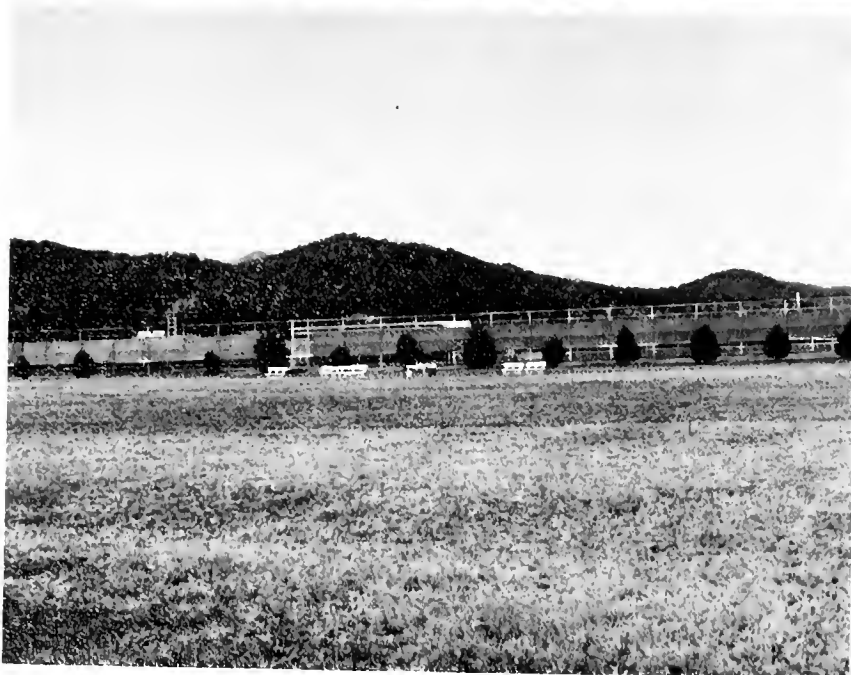


Men's tennis prospects appear improved over last year's, according to Coach Corky Manor. Freshmen with good potential are Bob Styers, Baker Heard, Mark Gibson, and Tom Wells. Styers and Heard are experienced doubles players with good high school credentials. Sophomore Jeff Harris is improved so there will doubtless be keen competition for the first six positions.

How "match tough" are the freshmen? That is the question that will probably determine the success of the season.



With the coming of spring to the Brevard College Campus, men's tennis and track started getting their seasons underway. It was also the start of Brevard College's second women's tennis team. The Lady Tornadoes had a hard rookie year in "78," but are looking forward to a better year this year behind the play of sophomores Buffie McCorkhill and Teresa Gentry. Coach Gail Anderson was skeptical at the beginning of the season but with so many talented freshmen on the squad she is looking forward to the 1980 spring season.





For a long time, men's athletics has been top priority at Brevard, but the women are slowly and certainly surtacing with pride. 1978 marked the beginning of a women's inter-collegiate volleyball team, under the coaching of Gail Anderson. Though unsuccessful in their primary attempt at a high total-point accumulation, the strict supervision, timeless practice and sense of abundant courage helped to prove successful the old adage: "It's not whether you win or lose, but how you play the game" . . . and *that* counts!

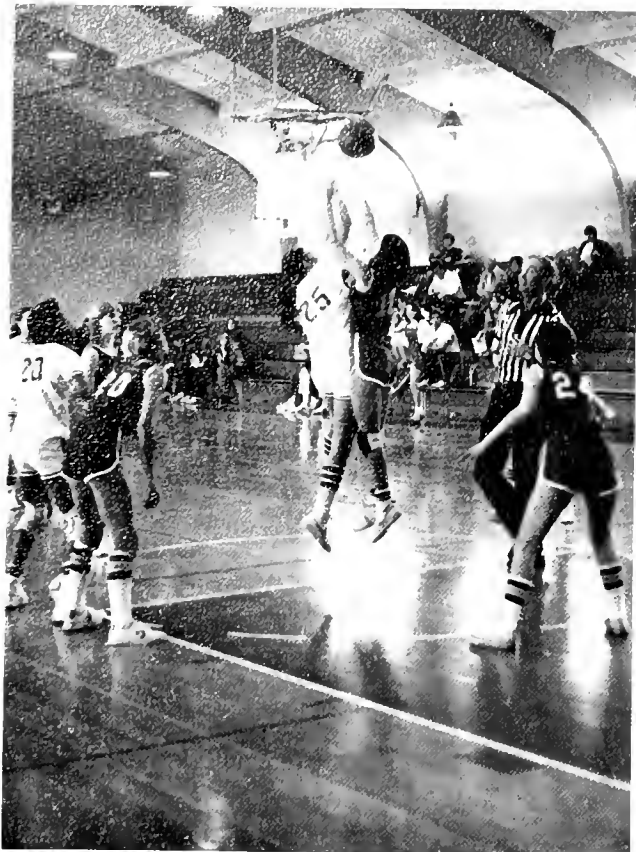




Under the leadership of new coach Don Scarborough, the Lady Tornadoes looked to the upcoming season optimistically. The competition was tough, and the schedule seemed endless as the predominantly freshman squad turned to sophomore captains Donna Clark and Carolyn Stephens for guidance. As they finished the season their record was not the best, but the Lady Tornadoes were a much improved and close knit team.







1978 Women's Basketball Schedule

November 30, 1978	Anderson	Home
December 2, 1978	Louisburg	Home
December 5, 1978	Spartanburg Methodist	Home
December 7, 1978	North Greenville	Away
December 8, 1978	Louisburg	Away
January 19, 1979	Montreat-Anderson	Away
January 20, 1979	Spartanburg Methodist	Away
January 23, 1979	Furman	Home
January 24, 1979	Truitt-McConnell	Home
January 27, 1979	Peace College	Away
January 31, 1979	Converse	Away
February 2, 1979	Warren Wilson	Home
February 6, 1979	Lees-McRae	Away
February 8, 1979	North Greenville	Home
February 10, 1979	Warren Wilson	Away
February 12, 1979	Converse	Home
February 14, 1979	Anderson	Away
February 17, 1979	Truitt-McConnell	Away
February 19, 1979	Montreat-Anderson	Home
February 23-24, 1979	Conference Tournament	





NAME	NO.	POS.	HT.	WT.	YR.	HOMETOWN
Fred Beasley*	13	Guard	6.2	165	So.	Knoxville, Tn.
Mark Cummings		Guard	6.0	159	So.	Shelby, N.C.
David Scott Harper	25	Wing	6.3	175	Fr.	Gastonia, N.C.
David Wayne Harper	33	Wing	6.4	190	Fr.	High Point, N.C.
Kevin Herron	11	Guard	5.10	148	Fr.	Franklin, Ind.
David Horner	51	Post	6.8½	200	Fr.	King, N.C.
Brian Horton* C	34	Wing	6.4	165	So.	Winston-Salem, N.C.
Larry Jewell**	53	Post	6.8½	225	So.	Franklin, Ind.
Nolan Jones*	21	Guard	6.4	165	So.	Lenoir, N.C.
Ed Mayes*	35	Wing	6.2	180	So.	Taylorsville, N.C.
James McCleave*	23	Wing	6.2	165	So.	Sherill's Ford, N.C.
Wyatt Minton	43	P/W	6.7	180	Fr.	Camden, S.C.
Jim Norwood*	41	Post	6.5	190	So.	Lenoir, N.C.
David Prange		Wing	6.5	185	Fr.	Chapel Hill, N.C.
Tom Snyder	12	Point	5.11	155	Fr.	Chapel Hill, N.C.
Bob Summers	32	Wing	6.3	180	Fr.	Jeffersonville, Ind.
Anthony Timberlake	45	Post	6.7	210	Fr.	Durham, N.C.
Benton Wade*	55	Post	6.7	205	So.	Burlington, N.C.

*1977-78 Letterman

**1976-77 Letterman

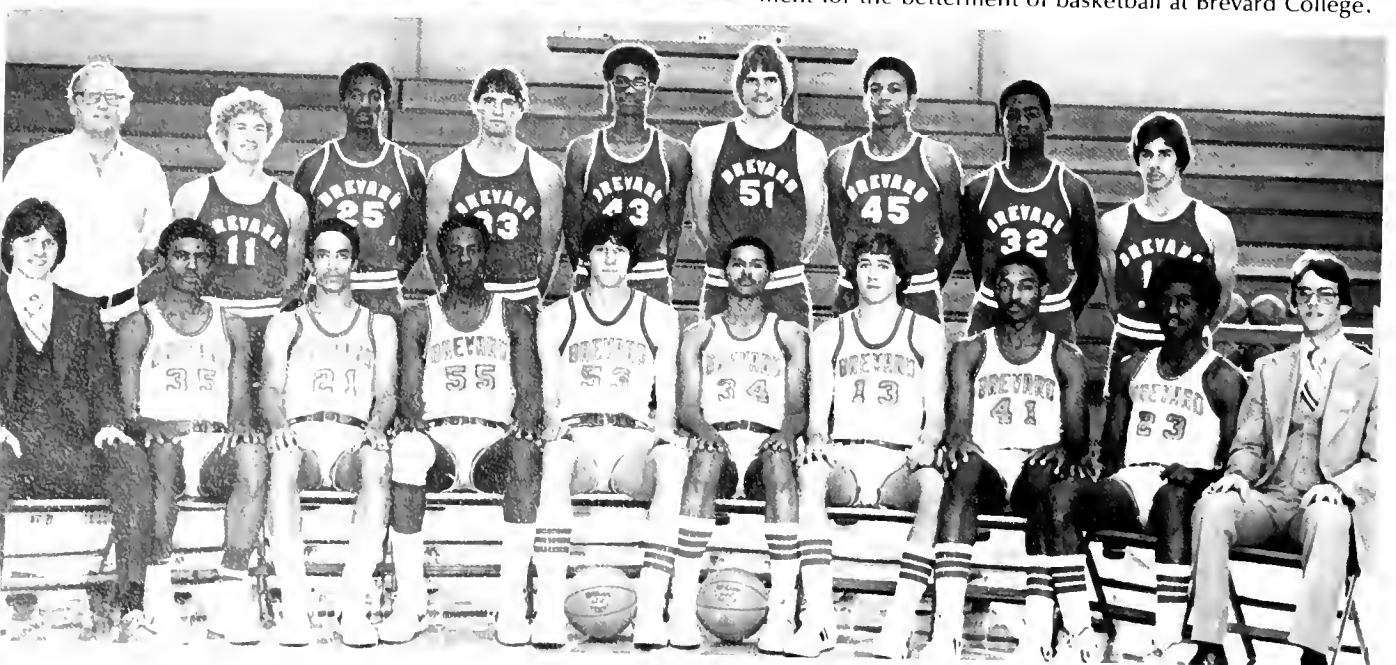
C Team Captain

Coach: John W. Meyerhoff
Mgr.: Bud Stroup

A Different Sound of String Music... The Roar of the Crowd!

As the 1978-79 basketball season finally drew to a close the Tornadoes led by Chico Horton, Benton Wade and Larry Jewell had succeeded in gaining the rank of sixth place in the NJCAA Tournament held in Hutchinson, Kansas. This marked a milestone in Brevard basketball history by setting a mark never before achieved by any other Tornado team. The path to victory in the tournament was long and hard for the Tornadoes defeating Niagra Community College 77-75 in a double overtime victory. The path then became a little rougher for the Tornadoes being defeated 84-74 by Dixie Junior College. The Consolation bracket saw Brevard blast Nebraska Junior College 75-63. The Tornadoes were then halted by Brevard Junior College (Cocoa, Florida) by a score of 83-79. When the tournament was over the Tornadoes' Chico Horton was awarded the Sportsmanship trophy out of all the teams.

While the Tornadoes season proved fruitful, it was also filled with dismay with the resignation of Coach John Meyerhoff who was in his sixth season as the head coach for the Tornadoes. He led the team to the best mark that he has attained as their coach. The decision came when another job offer persuaded him to move on after his job at Brevard was done. Despite setbacks during his coaching span at Brevard, Meyerhoff will always be remembered and respected as the one-time coach of the Brevard Tornadoes. Our hats are off to Coach Meyerhoff for his outstanding, and undying commitment for the betterment of basketball at Brevard College.

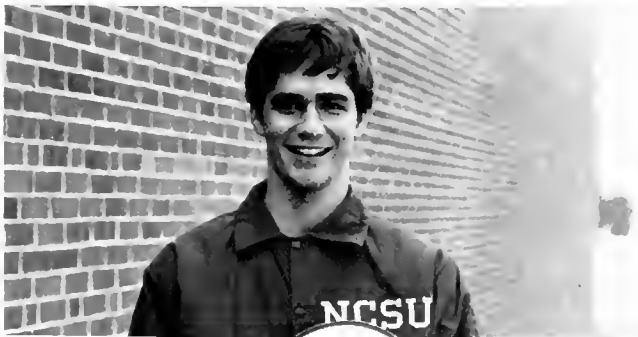




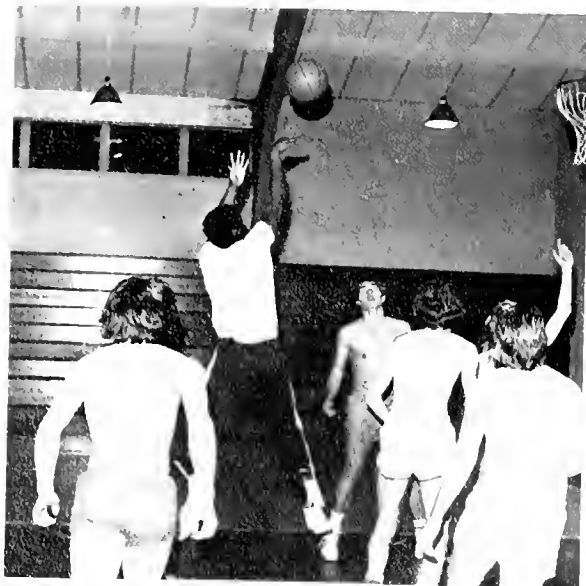
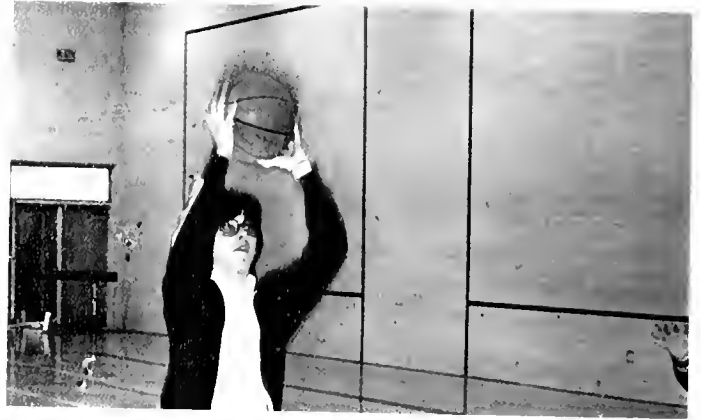


Under the leadership of Coach "Corky" Maynor, Lee Bratton, and the long hours of Guy Payne, student directors "Mikey" Black and Lillian Goss organized the Intramural program at Brevard. "Mikey" and Lillian worked hard organizing the various sports competitions throughout the year. An initial problem they encountered was apathy — getting the students involved. Through the use of numerous amounts of posters, the enthusiasm began to spread across the campus. As rivalries between teams sprang up, participation grew and the Intramural program became a success.





Winners in the Intramural sports competition for 78-79 were: Men's Flag Football-West Beam, Women's Flag Football-New Wing Jones, Women's Cross Country-Lisa Godley, Men's Cross Country-"Mikey" Black, Men's Volleyball-Green Dormitory, Women's Volleyball-Bombers, Men's Tennis Champ-Baker Heard.





Taking time out once or twice a week from studying for a little exercise and fun with fellow students is great for the mind as well as the body. Any student who has participated in Intramurals can tell you — "It's a heck of a lot of fun!" Advice: "More students should get involved." Team events this year included flag football, volleyball, basketball, and softball. Individual events such as cross-country, tennis, racquetball, free throw contests and swim competition were also organized. Championship trophies were given out in the cafeteria for the various events. The highlight of the new year in basketball came when a men's all-star team was chosen and taken to Milligan College to play in an Intramural tournament.



“let’s away with study,
folly’s sweet. treasure all
the pleasure of our youth.”

— anonymous







"Well, shred me thin and call me coleslaw."



"May I PLEASE be excused?"



"And you think YOU'VE got a secret!"

Smiles, frowns . . . Ups, Downs

There is nothing quite as exciting as being caught in the act of doing some normal gesture which makes everyone look at you and smile. Whether it is laughing at a not-too-funny joke or crying at the loss of a loved one, the average student is never quite sure of how he or she will react in a given situation . . .



Uh oh!



"Not now, I've got a headache."



"Danged if I know."



"Here we are . . . What next?"



"If I have to eat another bite, I'll just die."



WANTED: Dead or Almost



"You just broke your WHAT?!"



"What?! You've got an itch?"



"Aw c'mon. Nothing is THAT funny."



"Why so, Blueboys?"

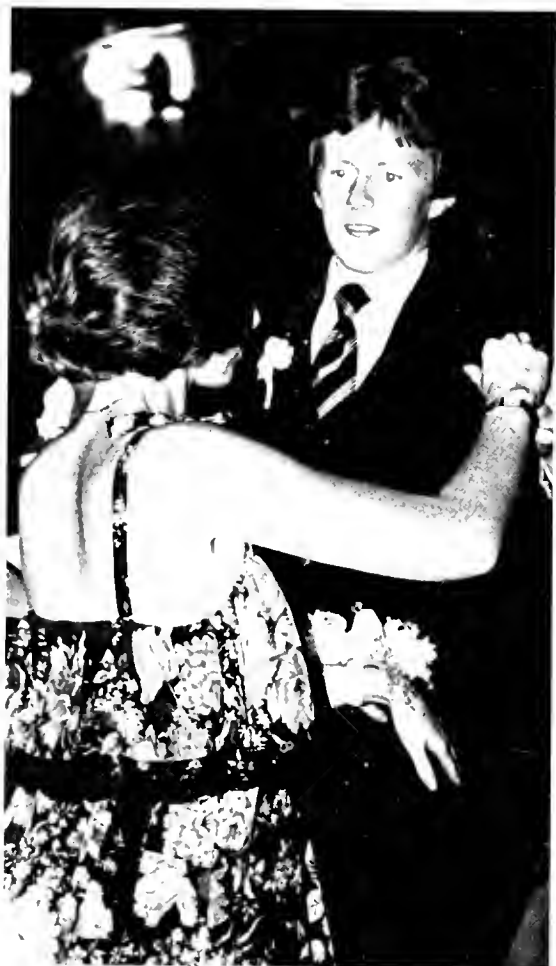


homecoming . . .
Too Close for Comfort at BREVARD?





Amid the noise, hustle, bustle and beat of a deafening band, crowded atmosphere and slightly intoxicating clouds of smoke, one solitary question rested within the minds of several students and alumni at Homecoming 1978: What is the purpose of our being here tonight? The search for a final understanding of an actual homecoming must remain up to the student . . . the person. A homecoming is much more than a chance to once again see those loved ones who left on a sour note last year; Homecoming 1978 was a time for each student at Brevard to look at his or herself and realize that in a not-to-distant future, he or she will be leaving the familiar tramping ground to invade another campus for two or more years. With this thought in mind, it should be noted that this year Homecoming was not a night to remember, but a weekend which brought tears, smiles and thoughts of a future not thriving on the past.





Frosh COURT



Soph COURT

Miss Jane Vocelle is a beautiful, high-spirited young lady. She is extremely active on campus. Jane is a member of Phi Theta Kappa, Big Sisters, the cheerleading squad, and the Spanish/American club. Her favorite hobbies are talking, going to the beach, and eating. Brevard is fortunate to have such a great young lady on campus.



1978 - 1979 homecoming Queen, Beverly Jane Vocelle



1978 - 1979 homecoming COURT



CAST

Florence — Tempe White
 Hannibal — Frank Lattimore
 Fairy May — Bobbie Orr
 Jeffery — Mike Shalomith
 Mrs. Paddy — Ginnie White
 Titus — Tim Gunter
 Samuel — Steve Collins
 Lily Belle — Katy Waters
 Ethel — Debbie Deaton
 Miss Wilhelmina — Clara Allen
 Dr. Emmett — Jon Young



Mrs. Ethel Savage, a millionairess ten times over, has been placed in an asylum by her scheming stepchildren in order to get her money. Mrs. Savage meets in the asylum a group of sometimes bizarre, occasionally profound, and always lovable people. Each character possesses a completely different personality, such as Hannibal, a violinist who can only play two notes, and Mrs. Paddy who won't speak except to list the things in the world that she hates. *The Curious Savage* is good theatre. It is entertaining, thought provoking and uplifting, and leaves the viewer with the feeling that being a member of the human race is a pretty good thing after all.

"Fairyland was never like this!"



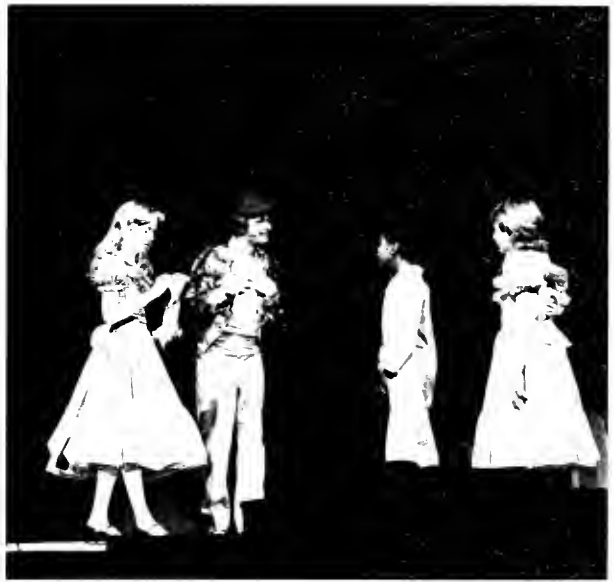
FINIAN'S RAINBOW
CAST OF CHARACTERS
(In order of apperance)

Citizens of Rainbow Valley

Buzz Collins Jim Stille
 Sheriff Bill Henry
 Susan Mahoney Melody Holmes
 Henry Scott Wynn
 Finian McLonergan Kelly Casey
 Sharon McLonergan Katy Waters
 Woody Mahoney Gary Russell
 Og (a leprechaun) Tim Gunter
 Howard Joe Springs
 Senator Billboard Rawkins Preston Woodruff
 Geologists Mark Lowdermilk
 Eric Wilson
 Mr. Shears Mike Black
 Mr. Robust Barry Harris
 Passion Pilgrim Gospels William Rhinehart
 Carle Wilson
 Eric Wilson
 Deputy Mark Lowdermilk
 Womens' Trio Glenda Flinchum, Missy Fogle, Karen McCall

Raphaella Baron
 Rosalyn Brooks
 Michael Capps
 Debi Crane
 Rodney Currin
 Carol Davis
 Jeff Davis
 Glenda Flinchum
 Missy Fogle
 Sandy Geisewite
 Beverly Gibby
 Alex Helsabeck
 Melanie Holloway

Kathy Jones
 Frank Lattimore
 Karen McCall
 Donna Mulford
 Cheryl Pierce
 William Rhinehart
 Candy Robinson
 Selena Robinson
 Crystal Sharpe
 Joe Springs
 Catherine Upchurch
 Carle Wilson
 Jonathan Young



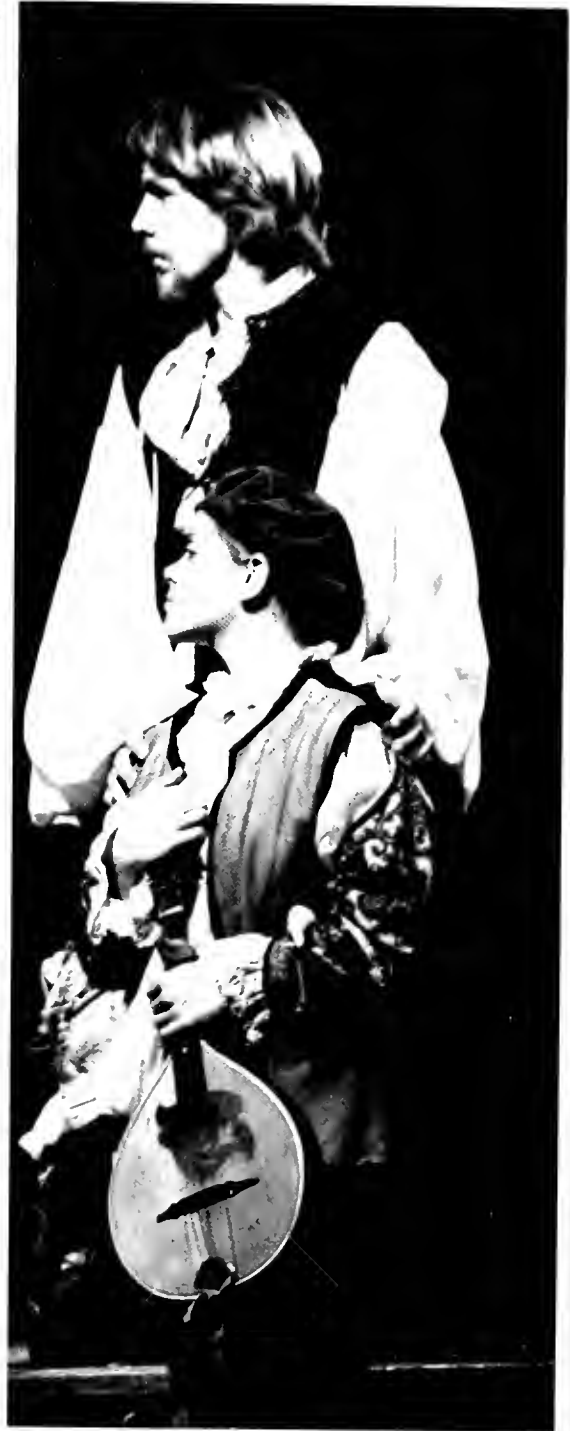




Sunday, March 11, marked the beginning of a series of festivities, song, praise and contemporary worship services hallmarking the yearly "Christian Encounter Week" at Brevard. Highlighted by speakers, soloists and prayer groups, the week-long activities promoted student interest and personal growth; it was a time to rededicate religious feelings of faith, dedicate a life to the infinite search for moral building and above all, it was a time to "humble oneself" before a Creator and a Creation. Perhaps this week should be celebrated more frequently; students at Brevard rarely find time to humble themselves, let alone pay a humble tribute to the sole reason for their existence upon this planet in the first place!

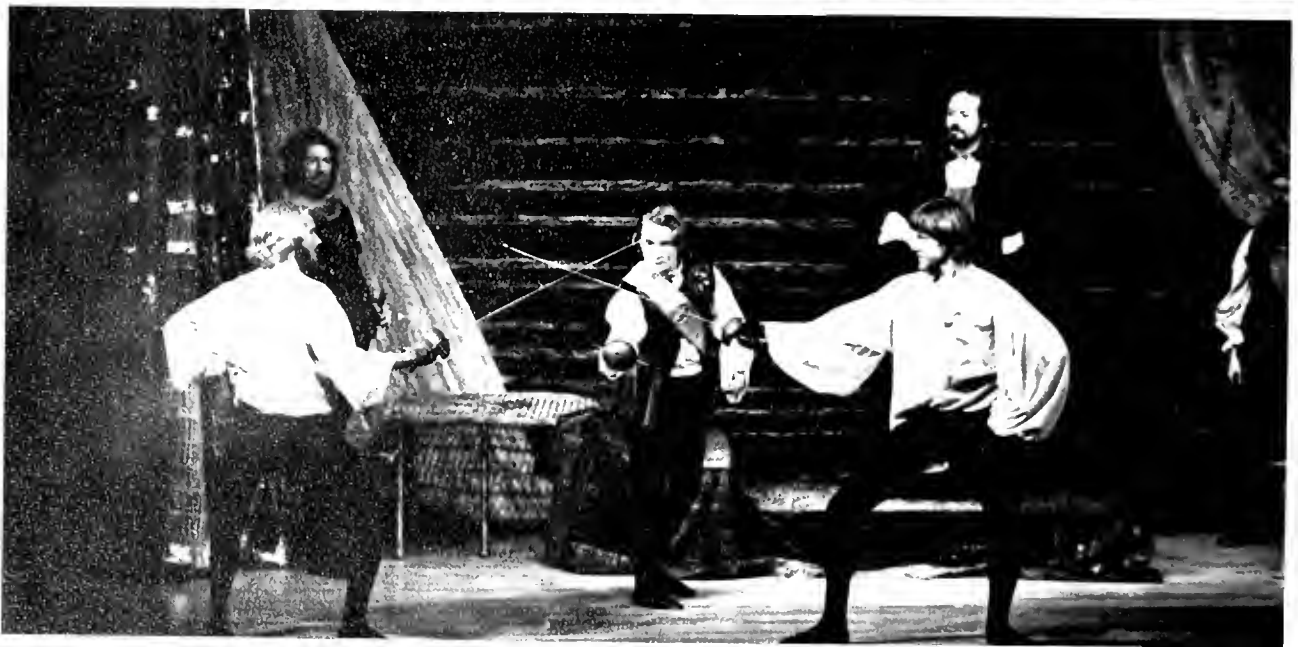


Life and culture Greatly
improves in 78 — 79





This year the students enjoyed a variety of entertainment in the Life and Culture Series. Included among the programs were Carole Simpson who gave an inspiring lecture. The students clapped and sang along with the folklore of David Holt, and the females swooned as Hamlet swept across the stage. As if this weren't enough to bring in the crowds, one-half hour credit was given per semester to all students who attended a certain number of programs. Everyone should agree that these programs enriched their lives while at Brevard (especially Hamlet!)





BELIEVE
IT OR
NOT...





Far top left: Santa pays a visit to unsuspecting Brevard College students.
 Far lower left: Missy Fogle, who showed up at the fifties dance clad in a nightgown and curlers, was heard exclaiming, "I thought it was a come as you are dance!"
 Far center left: An unusual sight of a student studying instead of partying.
 Lower left: Dracula pays a visit to his next victim, Nancy Ellis.
 Above: Brave students take a chance on mystery meat in the cafeteria.
 Upper left: It looks as if more students have fallen victim to Brevard College's insanity.
 Upper right: Now Bong Water soup brings a smile to this student's face. Too bad it will be his last!
 Left: Santa must be smiling with reindeer like this.





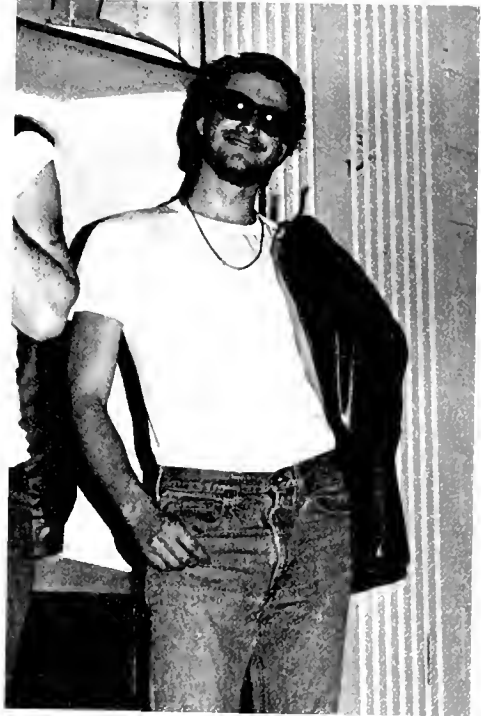
This year, the entire Brevard campus was invaded by a disease more severe and deadly than the plague; it affected every square inch of mortal physique, and the students were sent into a realm of which there was temporarily no certain return. Upon passing either an edifice or another victim, the innocent bystanders simply had no free choice but to surrender to the complete overthrow of mind, body and soul. Whether on a hard surface or soft bed of straw, each student at Brevard sought refuge and escape from the trials and boredom of the classroom through body motion and swift perspiration, all caused by certain physical destruction . . . the dance.





Nestled deep within the heart of the Brevard College Community lies a voice longing for the past and anxiously awaiting the not-too-distant future. Spirited by fads and various conglomerations of faded attire, the wide-eyed and bobby-socked girls swooned at the sights of groom-and-cleaned hair and black leather jackets, three sizes too large. All of this and other such out-of-the-ordinary events helped to bring the campus of Brevard to life when Phi Theta Kappa presented its version of an age gone by . . . the glorious fifties.









“This is a lovely place and here
I should like to make my home.”

— The Greenlander's Saga



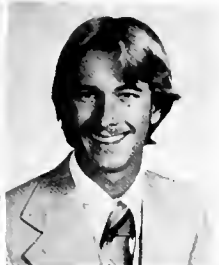
Laurence F. Abrams
Claymont, Del
Richard A. Adams
Grifton
Pamela W. Aikens
Drexel

Linardo Almuddin
Atlanta, Ga
Clara K. Allen
Clyde
Virginia B. Allen
Shelby

Lori J. Alsene
Port Charlotte, Fla
Sachiko Amahori
Okayama, Japan
David B. Anderson
Durham

Robert P. Anderson
Asheville
Gary D. Angel
Matthews
Martha S. Armistead
Blacksburg, Va.
Mark W. Armstrong
Hudson

Elizabeth S. Arnest
Alexandria, Va
Mary S. Atkins
Hickory
William B. Austin, III
Kernersville
Elisa M. Avalos
Brevard



John A. Baker
 Surry, Va.
 Laura J. Baker
 Brevard
 Sequin A. Baker
 Hendersonville
 Elizabeth J. Bales
 Louisville, Ky.
 Joan D. Barclay
 Charlottesville, Va.

Gregory N. Bare
 Lakeland, Fla.
 Reginald V. Barnes
 White Marsh, Va.
 Donna A. Barnwell
 Edneyville
 Carol L. Barr
 Pompano Beach, Fla.

Laurie A. Batteiger
 St. Petersburg, Fla.
 Charles B. Bedenbaugh
 Charlotte
 Theodore M. Benbow
 Statesville

Catherine M. Bibb
 Hendersonville, SC
 Victor P. Birckner
 Alexandria, Va.
 John S. Bittinger
 Lithonia, Ga.

Angela P. Blackmon
 Greenville, SC
 Mary H. Bland
 Huston, TX
 Bryan T. Blank
 Manning, SC

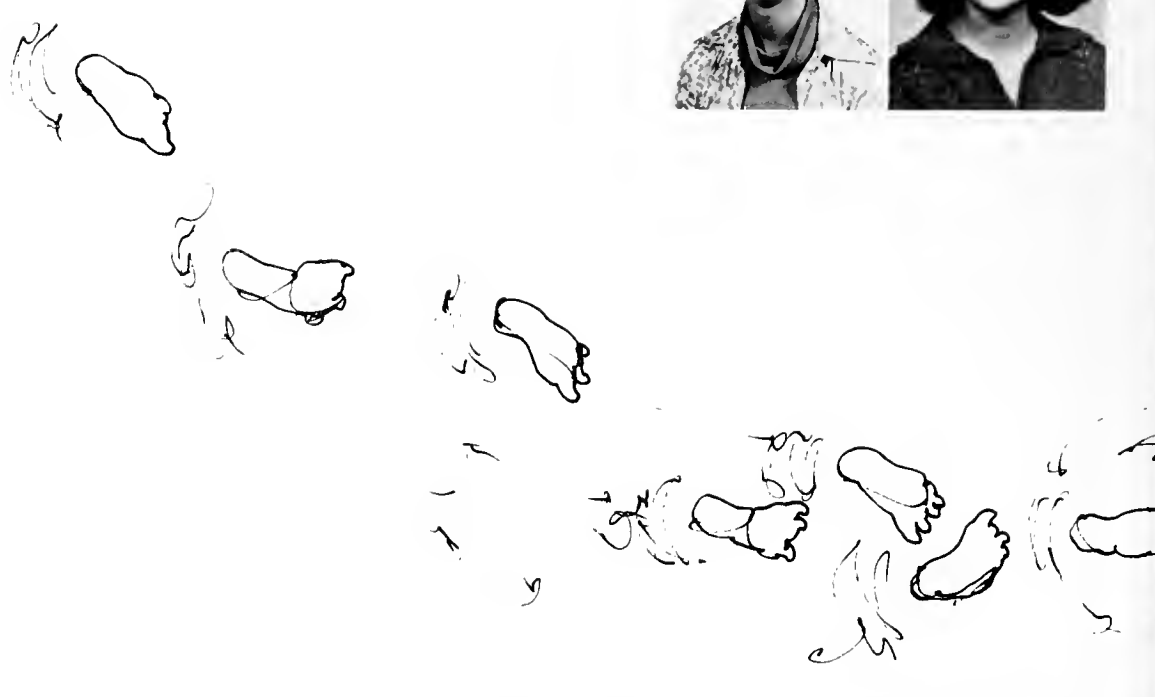
Joanne B. Bondy
Lakeland, Fla.
Barbara A. Bonitz
Winston-Salem
Linda A. Boone
Fort Mill, SC

Bruce K. Bowers
Brandon, Fla.
Michael S. Boykin
Ft. Lauderdale, Fla.
Barry L. Bradshaw
Kitty Hawk

Susan D. Brank
Hollywood, Fla.
Carol A. Branton
Plattown
Sandra R. Brittain
Vale

Steven C. Brockway
Taylors, SC
Leslie E. Brown
Brevard
Walter D. Brush
Charlotte
Patricia L. Bryson
Asheville

Pamela D. Bullock
Kannapolis
Anthony A. Burke
Atlanta, Ga.
Rodick D. Burris
Boca Raton Fla.
Karen L. Burton
Deland, Fla.



Karla M. Cannon
Horse Shoe
John C. Capin
Hilton Head Island, SC
Cynthia L. Carey
Coral Gables, Fla
Susan M. Carroll
Mobile, Ala.

Jennifer J. Carter
Smithfield
David C. Center
Ft. Pierce, Fla
Stanley L. Champron
Matthews
Stanley B. Clifton Jr.
N. Wilkesboro

Gary D. Cole
Hendersonville
David M. Collins
Brevard
Steven Z. Collins
Pompano, Fla

Susan T. Connell
Summerville, SC
Deborah L. Cope
Brevard
Neal A. Cope
Savannah, Ga

Margaret Corbell
Hendersonville
Teresa F. Corn
Horse Shoe
Bethel E. Cowart
Dunellon, Fla.





Paula C. Cox
Santard
James R. Craig
Gastonia
Thomas B. Crenshaw
Rutherfordton

Kay L. Crisp
Gastonia
Rodney P. Curran
Oxford
Delorah K. Crane
Pisgah Forest

Kathryn R. Crompton
Miami, Fla
Marjorie D. Danese
N. Miami, Fla
Amy I. Dantzler
Mt. Pleasant, SC

Catherine A. Date
Miami Shores, Fla
Barbara C. Darden
VA Beach, VA
Carol M. Davis
Georgetown, KY
Janet E. Davis
Platttown

Reginald J. Davis
Gastonia
Terri L. Davis
Waynesville
Thomas C. Davis, III
Clemson, SC
William J. Davis
Canton



Elizabeth A. Denero
Pemcroke Pines, FL.
Mary F. Devendorf
Cooleemee
Tammy L. Dickens
Hilton Head Island, S. C.
Juan C. Dieppa
Miami, FL.

Thomas B. Dismore
Jacksonville, FL.
Mary E. Doyle
Hillsdale, N. J.
Mary K. Dulin
McAdenville
Robert M. Edmiston
Chapel Hill

Floresa M. Edwards
Middlesex
Timothy E. Early
Sheibv
Mary C. Elliott
Pilot Mtn.

Nancy F. Ellis
Mocksville
Dean A. Engle
Rocky Point
Kathleen K. Erth
Havelock

Laura E. Fears
Clarkston, GA
Deborah A. Fisher
Orlando, FL
Glenda K. Flinchum
Julian



Flav H. Flynn
Shelby
Virginia M. Fogle
Charlotte
Suzanne E. Forehand
Coral Gables, Fla.

Holly B. Fortune
Deland, Fla.
Lisa L. Foster
Ellenboro
Susan Fowier
Longwood, Fla.

Ernest C. Franklin
Naples, Fla.
Jeffrey W. Fuquay
Greensboro
Keith F. Gardo
Cherryville

John O. Gartson
Anderson, S. C.
Heywood L. Garth
Miami Lakes, Fla.
Sandra L. Geisewite
Springfield, Va.
John L. George
Greensboro

Gana Gershon
Atlanta, Ga.
Glenn G. Gibbs
Miami, Fla.
Beverly C. Gibby
Bryson City
William M. Gibson
Shelby



Paula L. Givens
Fountain Inn, S. C.
Dotti D. Goble
Newton
Lisa L. Godley
Charlotte
Elizabeth E. Goodman
Clemson, S. C.

Erin Gregory
Bradenton, FL.
Hilda J. Griths
Hollywood, FL.
Hazel L. Gross
Hollywood, FL.
Cheryl A. Grubbs
Winston-Salem

Edward E. Gutknecht
Doraville, GA
Stephen K. Gwaltney
Oriental
Evelyn P. Hale
Alexandria, VA

Leslie V. Hale
Vero Beach, FL.
Alan S. Hall
Charlotte
Fannie E. Hall
Raleigh

Jettrey L. Hamby
Asheville
Mana L. Hameline
Orlando, FL.
Roberta J. Hamilton
Old Fort



Randall A. Haro
Greensboro
Haravama
Brevard
David S. Harper
Gastonia

Donna R. Harriger
Forest City
Nick K. Harris
Statesville
Susan R. Harris
Brevard

Charles E. Harrison
Allanta, GA
Nan E. Harrison
Decatur, GA
Mandee E. Hawkins
Middlesex

Theresa V. Hawkins
Steinhatchee, FLA.
Joye R. Haynes
Clyde
Archibald B. Heard
Charlotte
Sherry A. Heimer
Miami, FLA

Ray A. Hendrickson
Charlotte
Marysia A. Henley
Greensboro
William W. Henry
Greenville, S. C.
Douglas K. Hensley
Skyland



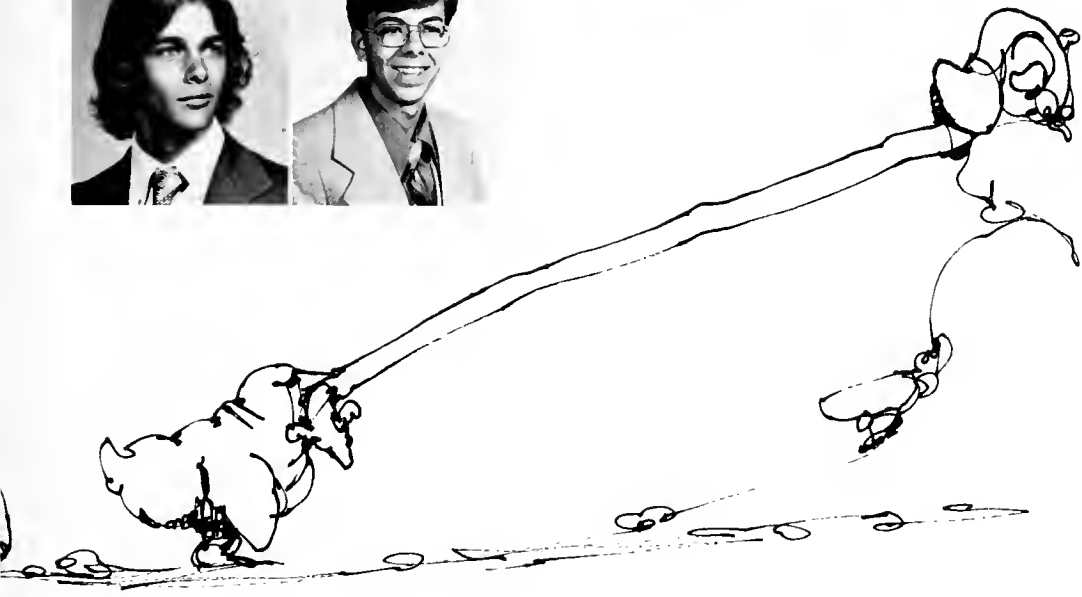
Kevin D. Herron
Franklin, Ind.
William M. Hester
Cherryville
Kazutoshi Hida
Brevard
Peter J. Higgins
Columbia, S. C.

Sandra R. Hines
North Charleston, S. C.
Kunika Hirata
Brevard
Julie A. Holder
Brevard
John H. Hoke
Brevard

Jacqueline A. Holbrook
Sapphire
Jenny L. Holladay
Charlotte
Janet T. Hollis
Bat Cove

Melody L. Holmes
Horse Shoe
Anna M. Holt
Kernersville
Edward K. Holt
Charlotte

John D. Holt
Atlanta, GA
Lynne K. Honecker
Asbury, N. J.
Amy A. Hoppe
Waynesville



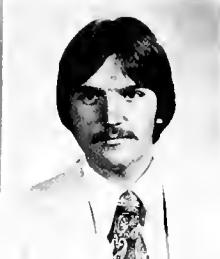
Kimberly R. Hoover
Harborcree, PA
Elizabeth F. Hopkins
Baltimore, MD
Joe L. Hord, Jr
Kings Atn

David S. Horner
King
Louann Hurst
Smyrna, GA
Robert F. Jeffrey
Jacksonville, FLA

Kimberly M. Jenkins
Henrietta
Russell K. Jenkins
Jacksonville, FL
Eva K. Jones
Greensboro

Ronald D. Jones
Charlotte
Dale H. Jordan
Charlotte
Takashi Kawaski
Brevard
Darryl L. Keene
Penrose

Robert M. Kendall
Cary
Brian E. Kalstrom
Penrose
Carol L. Kimzey
Horse Shoe
Alicia L. Kinard
Folly Beach, S. C.





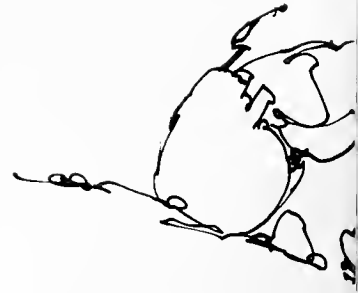
Stephanie L. Kraus
Orlando, FLA
Laurie E. Krug
Brevard
Norman F. Lang
Charlotte

Johanna L. Larose
Greensboro
Franklin C. Lattimore
Polkville
John M. Ledbetter
Shelby

Mark C. Lee
Clinton
William K. Lee
Clinton
Michael D. Leonard
Lexington

Gail O. King
Brevard
Freddie Kinnear
Roswell, GA
Robin S. Kirby III
Chapel Hill
Laura M. Kurchner
Shelby

Toshikazu Kishi
Brevard
John F. Knight
Miami, FLA
Tadaski Koana
Brevard
Julie K. Koch
Greensboro



Samuel A. Licata
Willimantic, CT
Jeffrey A. Loftin
Arden
Robert W. Lougher
Decatur, GA

Lena R. Lovette
N. Wilkesboro
Mark H. Lowdermilk
Durham
Kathy McCanley
Brevard

Anna K. McCracken
Asheville
Mitch D. McEntire
Brevard
Melissa Y. McFarlin
Candler

Vance C. McGee III
Charlotte
Patrick L. McGinty
Durham
Sandra L. McGreevey
West Palm Beach, FLA.
Stewart T. McGuire
Winston-Salem

Dan H. McLeroy
Englewood, FLA.
Sheila L. McManus
Taylors, S. C.
Glenn W. Machen
Charlotte
Beverly A. Magness
Shelby



Maurice D. Marholin
Ft. Lauderdale, FLA
Joan E. Marshall
Decatur, GA.
Charles H. Matthews
Clemson, S. C.
John D. Melvin
Havelock

Jerry R. Metcalf
Arden
Karen E. Meyer
Pompana Beach, FLA.
Annette Miale
Orange, CAL.
Jerry A. Miers
Sarasota, Fla.

Lisa L. Miller
Dunwoody, GA
Debra L. Minick
Charleston Heights, S. C.
Wyatt C. Minton
Camden, S. C.

Marcia L. Molton
Hendersonville
Susan J. Monts
W. Columbia, S. C.
Ledy R. Moreta
Wilkesboro

Donna M. Multord
Lakeland, FLA
Stephanie D. Mullins
Decatur, GA
Mario V. Muniz
Orlando, FLA

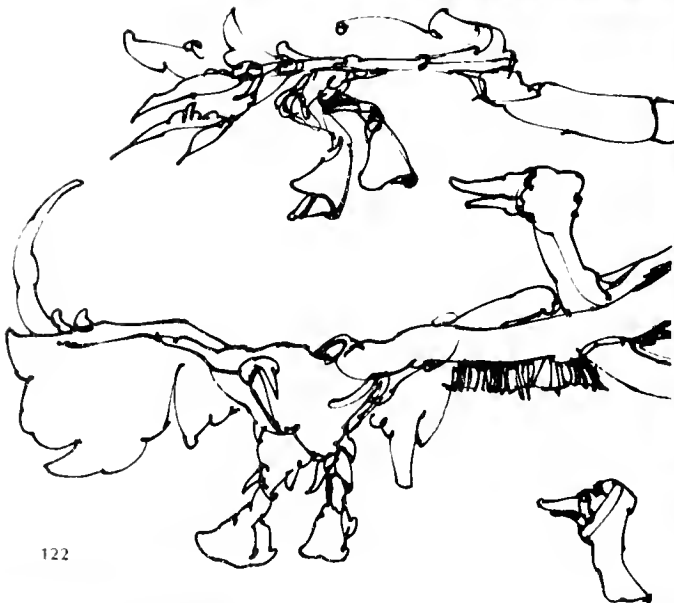
Phyllis A Owens
Rutherfordton
Bonnie D Palmer
Brevard
Loretta V. Perez-Barroso
Pittsburg, PA
Scott A Perry
Philadelphia, PA.

Gordon H Peters
Miami, FLA
Cheryl L. Pierce
Hendersonville
David E. Platt
Skyland
Michael K. Podd
Hudgins, Va

Mary C. Murphy
Sylva
Pamela A. Murphy
Winter Haven, FLA
Eileen M. Murphy
Pompano Beach, FLA

Shizuko Nakaya
Brevard
Suzanne Nash
Hollywood, Fla
Robert D. Neilson
Cinnaminson, N. J.

Elana M. Nolte
Marietta, GA
Murrel P. Noone
N. Palm Beach, FLA
Joanne E. Ogsbury
Ballston Lake, N. Y.



Jacqueline A. Poole
Wheatley Hgts., N. Y.
Linda K. Powell
Morganton
David E. Prange
Chapel Hill
Lorna K. Pfen
Charlotte

Paul K. Purdy
Pembroke Pines, FL
Richard T. Radford
Tryon
Kelly Raines
Brevard
John W. Ray III
Matthews



Dianne P. Rayfield
Biscayne Park, FL
Lorraine A. Reams
Vero Beach, FL
James M. Reardon
Moncks Corner, S. C.

William E. Roberts
Charlotte
Joseph N. Rothell
Titusville, FL
Curtis E. Rubin
Morrow, GA

Christopher S. Rudisill
Gastonia
Gary S. Russell
Charlotte
Robert S. Rutherford
Atlanta, GA





Amy L. Satterfield
Waynesville
Susan E. Schroeder
Longwood FL
Jane A. Shytle
Shelby

Mary E. Sigmon
Stanley
Scott B. Singletary
Florence, S. C.
Lisa A. Smart
Brevard

Mason W. Smith
Charlotte
Dale C. Smith
Summerfield
Deborah L. Smith
Winston-Salem

Robert W. Smith IV
Atlanta, GA
Randy L. Snyder
High Point
Thomas A. Snyder
Chapel Hill
Janet L. Spear
Flag Pond, TN

Jill M. Spear
Flag Pond, TN
Carl H. Springs
Charlotte
Sally L. Starkey
Noblesville, TN.
Laura L. Stevens
Vero Beach, FL.

James E. Stille
Whittier
Robert N. Styres
Lenoir
Jerrell M. Suddreth
Lenoir
Jacquelyn A. Sullivan
Signal Mtn., TN

Jettrey C. Sullivan
Burton S. C.
Robert S. Summers
Jettersonville, IND
Cecilia L. Sutton
Hendersonville
Misae Tanaka
Brevard



Diane L. Taylor
McGrady
William R. Taylor
Belews Creek
Mary J. Tedder
Miami, FL

Rebecca L. Thomas
Charlotte
Anthony D. Timberlake
Durham
Toshio Tsuchida
Brevard

Cheryl Tydings
Franklin
Elizabeth H. Vance
Charlotte
Sharon D. Vinson
Catawba





William H. Voss
Bellevue Creek
Laura L. Walker
Atlanta, GA
Michael B. Ward
Miami Shores, FL

Gigi A. Wasniewski
Longwood, FL
Sally K. Waters
Charlotte
Jerold T. Watson
Edgenield, S. C.

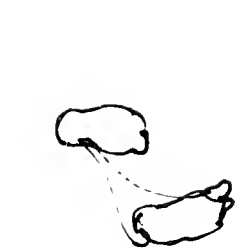
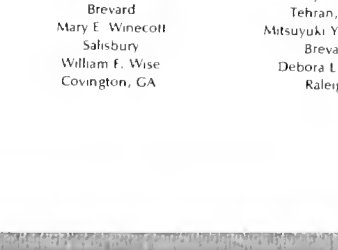
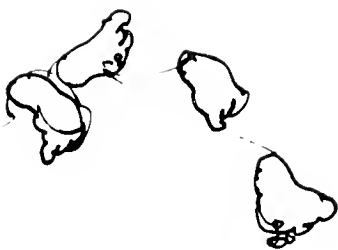
Teresa A. Wayne
Charlotte
Andrew W. Weaver
Georgetown, S. C.
Robert F. Weaver
Weaverville

Bonnie R. Weinschenker
Hendersonville
James E. Welch
Jacksonville, FL
William F. Wells
Black Mt.
Jett D. Westworth
Pensacola, FL

Carol S. Werner
Miami, FL
Junette L. Westall
Pisgah Forest
Robert A. Westbrook
Roswell, GA
Scott Westmoreland
Horse Shoe



Lisa A. White
Hendersonville
Lillian T. White
Statesville
Lee I. Whittelsey
Coral Gables, FL
Debra L. Willenborg
Miami Shores, FL
Jane C. Williams
Brevard



Marianne Williams
Sarasota, Fla.
Carol Willis
Canton
Emory L. Wilson
Greensboro
Robin S. Wilson
Salisbury

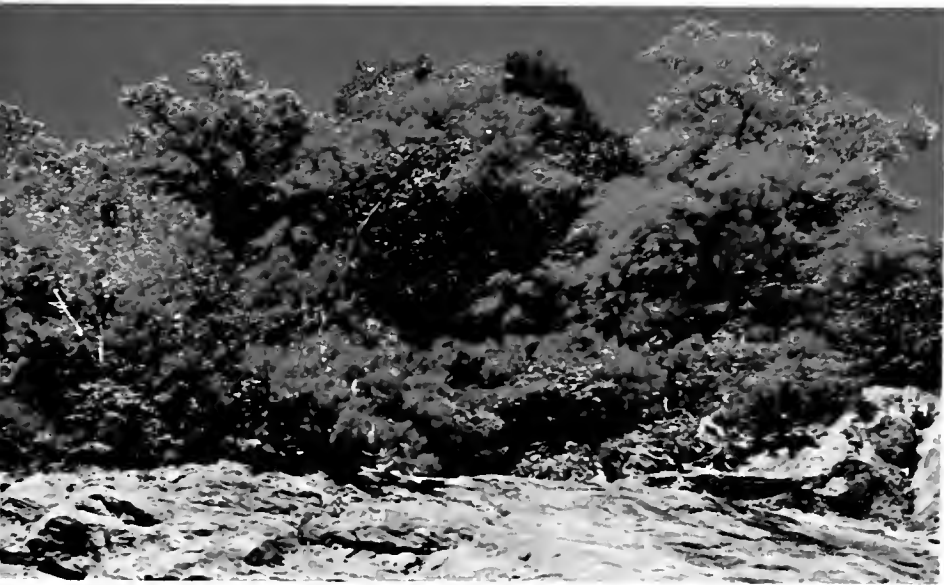
Jean A. Winchester
Brevard
Mary E. Winecott
Salisbury
William F. Wise
Covington, GA



Terry L. Wolf
Tehran, Iran
Mitsuyuki Yamanaka
Brevard
Debora L. Yates
Raleigh

Jun Yoshihama
Brevard
Charlotte M. Young
Greensboro
James E. Zimmerman
Greensboro





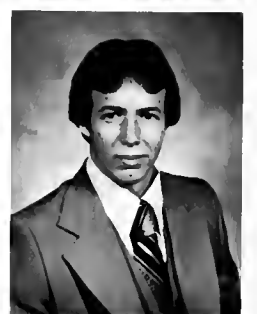
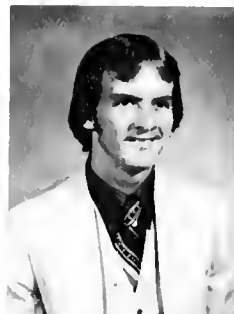
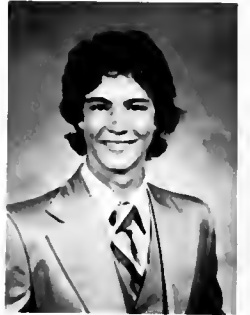
"The woods are lovely and dark and deep,
But I have promises to keep,
and miles to go before I sleep."

--ROBERT FROST

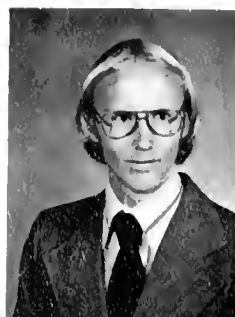
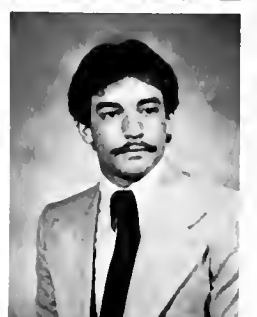


Kathy J. Barré
Concord
Charles F. Beasley
Knoxville, Tenn.
Michael E. Black
Piney Creek

Wilbert S. Barotbot
Fayetteville
Jesse F. Beatty
Lumberton
Tommy A. Black
Huntsville, Ala.



Frank L. Anderson
Old Town, Fla.



Mark C. Albright
Gaithersburg, Md.
Kerry L. Allison
Pisgah Forest
Raphaela P. Baron
Lighthouse Point, Fla.
Suzanne F. Bell
Greenville, S. C.

Chavon A. Allen
Gay
Andrew P. Ancrum
Charlotte
David E. Barr
Perrysburg, Ohio
Stuart S. Bennett
Arden

James A. Boone
Wilmington, Del.

Terry L. Brown
Chapin, S.C.

Timothy C. Burrell
Lake Toxaway

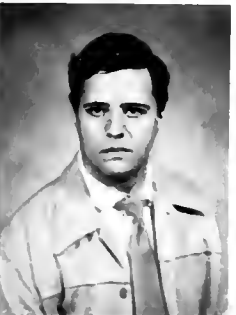
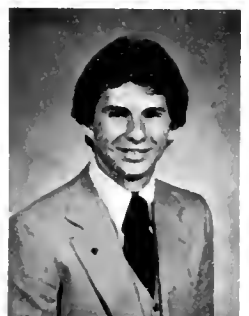
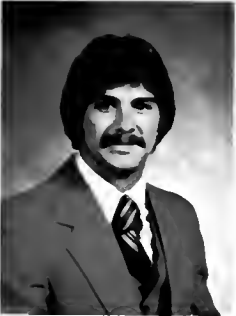
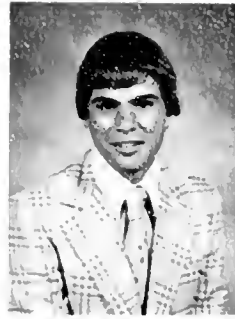
Carolyn J. Butts
Orlando, Fla.

Gregory B. Boyd
Shalmar, Fla.

Kevin R. Bryant
Roswell, Ga.

James P. Bursch
Moorestown, N.J.

Larry J. Caldwell
Arlington, Va.



Cynthia A. Blalock
Santord

Patricia L. Brantley
Norlina

Ruth L. Bryant
Danville, Ky.

Gregory R. Blaser
Greensboro

Robin L. Brown
Charlotte

Gary R. Burkle
Wilmington, Del.

Frank H. Burn III
Charlotte



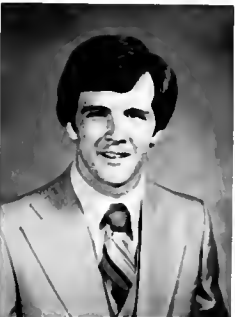
Beth A. Carruth
Miami Lakes, Fla.
Lisa M. Christensen
Richmond, Va.
Larry D. Cole
Hayesville
Kenneth B. Cook
Raleigh

Juanita C. Childers
Mauldin, S. C.
Donna J. Clark
Canton
Timothy D. Conard
Mt. Holly
Tracey L. Cook
Charlotte



William D. Carlson
Murphy

Sheree D. Carpenter
Waynesville

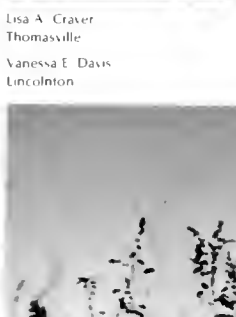
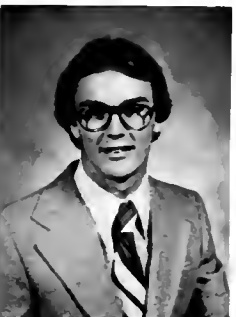


Michael W. Capps
East Flat Rock
Mary E. Childs
Columbia, S. C.
Pamela E. Coan
Brevard
Michael L. Conrad
Winston-Salem



Joel H. Cowan
 Peachtree City Ga
 Charles W. Davis
 Burlington
 Lauren E. Early
 Portsmouth Va
 Scott B. Elliott
 Atlanta Ga

Tammy J. Coward
 Cashiers
 Susan L. Davis
 Miami Fla
 Sharon E. East
 Pleasant Garden
 Diana M. Erath
 Havelock



Duane D. Cornett
 Wilkesboro
 Robert A. Costner
 Reidsville
 Cheryl A. Davis
 Lakeland Fla
 Thomas R. Deimler Jr
 Gastonia

Lisa A. Craver
 Thomasville
 Vanessa E. Davis
 Lincolnton

Mark C. Cummings
 Shelby
 Thomas A. Dehn
 Fort Lauderdale Fla





Mark A. Farman
Charlotte

John P. Fayssoux, Jr.
Gastonia

Lewis T. Ferguson
Taylorsville

Michael C. Fox
Alexandria, Va

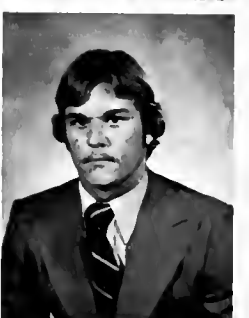
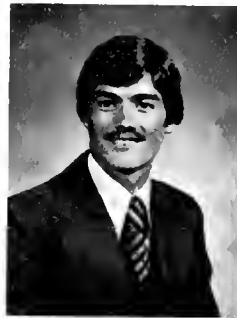
Catherine J. Frazier
Asheville

Joni D. Frazier
Waynesville

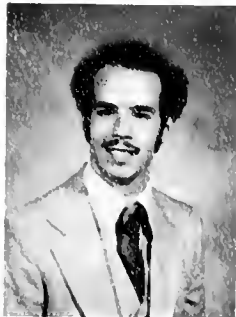
Steven Gaul, Jr.
S. Ambury, N. J.

Vanessa J. Gay
Whitakers

Teresa E. Gentry
Nebo



Patricia E. Eversman
Arlington Heights, Ill
Stephen W. Foster
Mocksville

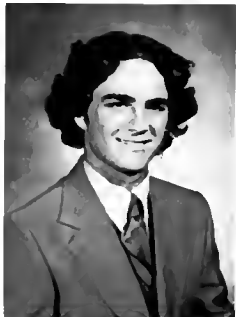
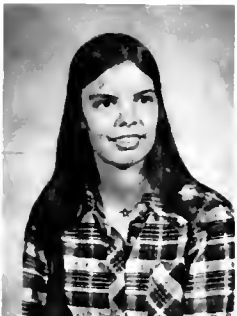
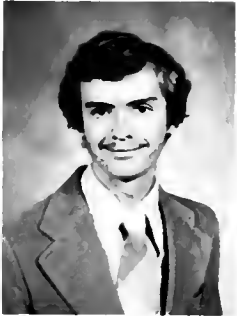
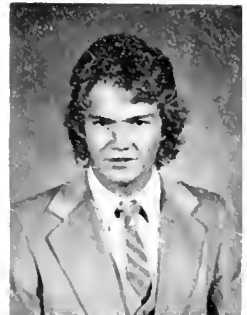
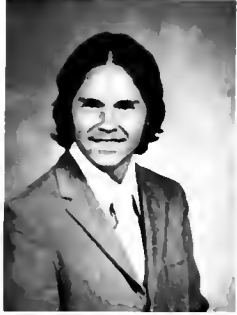


Kenneth W. Everhart
Spencer
Melinda E. Everhart
Lexington
Richard G. Fitzgerald
Tampa, Fla
Pamela R. Furman
Stuart, Fla

William V. Gravely
Myrtle Beach S C
Timothy A. Gunter
Tremont Miss
Jay W. Hannav
Ft. Lauderdale, Fla
Jeffrey G. Harris
Greensboro



Todd M. Croshong
Oak Ridge
Cheryl R. Hampton
Asheville
Barry D. Harris
Engelhard
Sarah T. Harrison
Winnaboro



Catharine C. Goudling
Atlantic Bch Fla
Ronald A. Gremer
Gastonia
Arah C. Hamlin
Hickory

Margaret E. Gosnell
Pisgah Forest
David J. Croggs
Sullern, N Y
Elizabeth M. Hamilton
Old Fort

Lillian A. Goss
Lansing
Heather D. Crowder
Hendersonville
Edwin P. Hamilton
Matthews



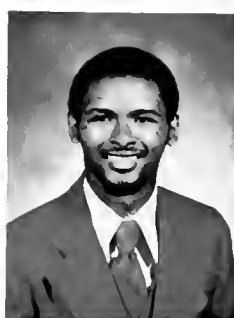


Katherine A. Hawkins
Shelby
Brian K. Horton
Winston-Salem
William H. Huntley III
Wadesboro
Keiko Ito
Brevard

Arthur A. Heisabeck
Winston-Salem
John W. Howard
Moorestville
Philip W. Hudley
Raleigh
Rebecca D. Janulet
Horseshoe



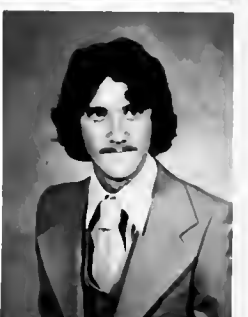
Bobby G. Henson, Jr.
Saluda

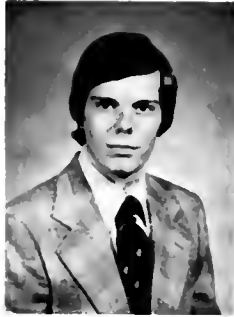


Diane M. Hickey
Tampa, Fla.
Jane S. Howell
Tampa, Fla.



Willis L. Harwell
Horseshoe
Mark E. Hatley
Kannapolis
Thomas A. Holbrook
Atlanta, Ga.
Suzanne M. Hudson
Stuart, Fla.





Jonalyn C. Johnstone
Brevard

Jay D. Kaiser
Arden

Robert H. Kivett
Asheboro

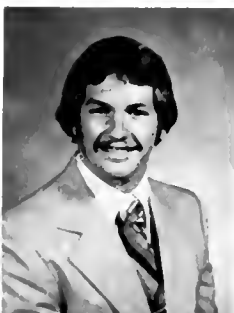
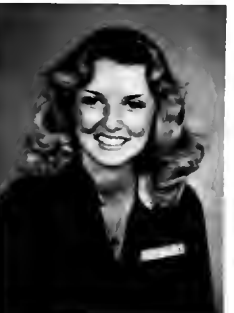
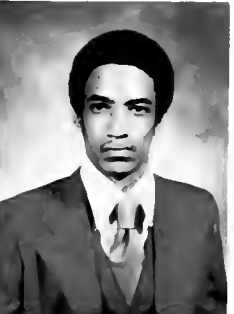
Patricia L. Link
Valdese

Alvin B. Jones
Cedar Mountain

Cynthia D. Kern
Charlotte



Carolyn A. Becker Kerns
Springfield, IL



Lee A. Jent
Winston-Salem

Lars E. Johnson
Rock Hill, S. C.

Nolan D. Jones
Lenoir

Robin M. Kalso
Charlotte

Daryl P. Johnson
Brevard

Thomas H. Johnson
Greensboro

Anne M. Juras
Augusta, Ga.

Linda Kinton
Winston-Salem





Barbara McCorkhill
Salem, Ohio

Mildred A. McKinney
Brevard

Joan A. Meadows
Hickory



Karen E. McCall
Charlotte

James E. McLeavey
Sherrills Ford



Debra J. Lee
Bayville, N. Y.
Glenn T. Lydahl
Springfield, Va.
Regina E. McCree
Brevard
Rola J. McNeely
Cleveland

Rex L. Lovette
Wilkesboro
Edward E. Maves
Taylorsville
Eldred E. McInnis
Canton
Nancy L. McSwain
Shelby

Carol C. Miles
Enka

Myra K. Monteith
Cashiers

Elaine C. Myers
Statesville

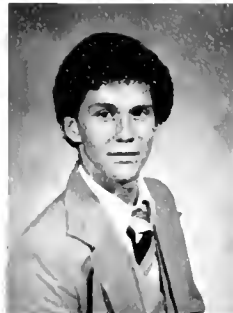
Jimmy L. Norwood Jr
Lenoir

Stacey B. Muller
Matthews

Lisa D. Morgan
Winston-Salem

Deborah J. Nash
Wichita, Ks

Tracy L. Nye
Lakeland, Fla



Vanessa L. Murray
Canton



Joseph C. Medders
Cayce, S. C.

Cheryl D. Miller
Asheville

Margaret A. Mudd
Orange Park, Fla

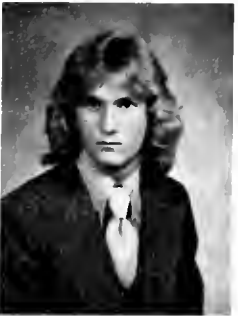
Stephen A. Mickey
Mendon, Ma

Robert A. Miller
Alexis

Walter W. Munroe
Miami, Fla



Julie E. Osborne
Greensboro
Christopher M. Pettit
Durham



Robert G. Ottley
Marietta, Ga
William T. Post
Reidsville



Arthur K. Pack
Tryon

Terri L. Power
Laurens, S. C.

Julie A. Redd
Jamestown

William A. Rhinehart
Columbia S. C.

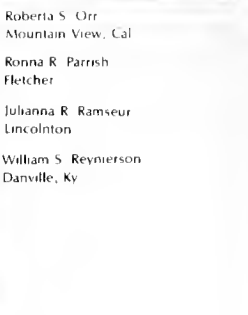
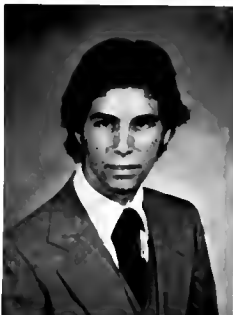


Robert W. Parker
Greensboro

Sandra K. Presley
Havelock

Dirk A. Redwine
Atlanta, Ga.

Kenneth D. Roberts
Greensboro



Roberta S. Orr
Mountain View, Cal

Ronna R. Parrish
Fletcher

Julanna R. Ramseur
Lincolnton

William S. Reynierson
Danville, Ky



David I. Roberts
Wilmington, Del

Timothy C. Robinson
Brevard

Robert C. Scoggins, Jr
Tryon

Kent B. Roberts
Lakeland, Fla

Donna M. Russell
Greensboro

Michael E. Shalomith
Chapel Hill

David J. Sherman, Jr
Clearwater, Fla

Clayton L. Roberts III
Greenwood, S C

Michael W. Sanchez
Miami, Fla

John M. Shaver
Greensboro

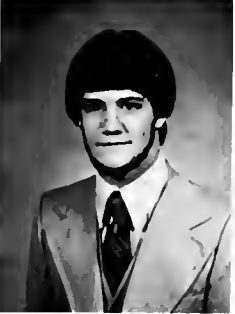
David R. Skiba
Baltimore, Md

Roger D. Robertson
Brevard

Stephen L. Schneider
Asheville

Daniel C. Robinson
Lithonia, Ga

Andrew K. Schwenker
Orange, Va





Lisa A. Spough,
Winston-Salem

Ann F. Stedman
Rockingham

Carolyn D. Stephens
Hendersonville

Robert T. Stroup
Shelby

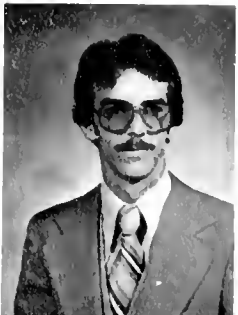
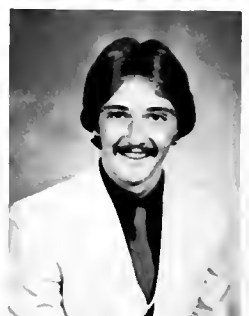
Charlie P. Taylor
Durham

Michael E. Taylor
Gastonia

James I. Tyson
Jacksonville, Fla

Amy C. Thomas
Morganton

Frank P. Valdes
Greenacres, Fla



Betty F. Smathers
Canton

Michael D. Smith
Laurinburg

Laura Snyder
Vero Beach, Fla

Karen A. Sloan
Trenton



Lisa R. Smith
Newton
William K. Smith
Greensboro
Steven T. Stewart
Vero Beach, Fla
John C. Trayner
Roswell, Ga

Elaine D. Walker
Winston-Salem
Elaine C. Wilkins
Monroeville

William K. Wood
Monroeville Ala
Takayuki Yoshikawa
Brevard



Debra R. Wiggins
Rocky Mount
Catherine A. Winchester
Waynesville

Daniel G. Yates, Jr
Charlotte
Jonathan K. Young
Greensboro



Lesley V. Hart
Winter Haven, Fla
George W. Walsh
Durham
Stephanie M. Williams
Fayetteville

Jane B. Vocelle
Vero Beach, Fla
Dennis W. Webb
Havelock
Eric V. Wilson
Alt. Holly

Benton Wade
Burlington
Louise W. Whitener
Greensboro
Sandra A. Wilson
Pisgah Forest








"I've never felt so alive!"

--Jonathan Livingston Seagull

H THE 
O **B**
B
O **B** **O**
H **O** **U** **S** **E**
 306
S. BROAD



Compliments of . . .

HUBBARD'S

Dogwood Plaza Mall, Brevard



"The
 Smart Place
 To Go . . .



For 
 Good Things
 To Eat!"



BREVARD PHARMACY, INC.

Dogwood Plaza

Brevard, N. C. 28712

Day: 883-9330 Night: 883-3702

PHARMACY



THE YARN PEDDLER

ALL TYPES NEEDLECRAFT

Helen O. Stewart

— and —

Ethelwyn Coley

306 S. Broad St.

Brevard, N. C.





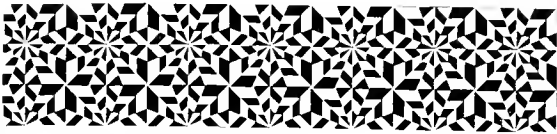
**BREVARD
JEWELERS
& GIFT
SHOP**



883-2380



Hardee's
Charbroil Burgers



*"Everybody
Drives A Used Car"*

Jud & Ed's Autos

Rt. 1 (Corner Hwys. 64 & 276)

Pisgah Forest, N. C. 28768

COMPLIMENTS

**FIRST STATE
SAVINGS
AND LOAN
ASSOCIATION**

212 E. Main St.

Brevard, N. C.

28712



PISGAH LANES

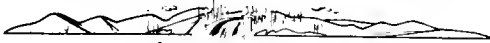


PATTERSON'S



"Because you like nice things!"

The Transylvania Times



THE TRANSYLVANIA TIMES

is Brevard's award winning semi-weekly newspaper that covers happenings at Brevard College as well as throughout the community. You'll enjoy following the Tornadoes and all Brevard College activities in the pages of the **Times!**



SPEARMAN'S

WHOLESALE
MEAT CO.
HENDERSONVILLE

**LOVE'S
 JEWELRY / GIFTS**

DIAMONDS — STERLING — PEWTER
 CHINA — CRYSTAL — FIGURINES
 STONE RINGS

"Complete Seiko and Wyler Watch Lines"

30 E. Main St.
 Brevard, N. C.
 884-4601



Compliments of

PAT'S SHOE MART

College Shopping Center

Brevard, N. C.

Brevard College students and alumni
wear their STAR rings with pride.
For details contact the College Store or
your local STAR Representative:

DON MOORE

P. O. Box 82
Rutherfordton, N. C. 28139
Phone: AC/704 287-3485



WPNE
carries the latest in
news and sports
and invites students
to tune in each evening
to Record Party.

**CO-ED
THEATRE**

**101 WEST MAIN STREET
BREVARD**



COMMUNITY CASH



BREVARD
MOTOR
LODGE

BREVARD, N. C.

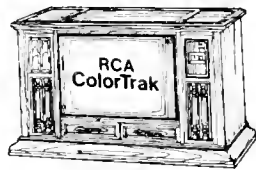


BEST WISHES FROM :

BREVARD LUMBER CO.

348 KING ST. BREWER 883-8191

**RAXTER RADIO & TV
SERVICE**



Rosman Highway
Brevard, N. C. 28712
Phone: 883-9751

CLOTHING CARE CENTER

COIN LAUNDRY

306 S. Broad St.

Reg. hours — 8:00 a.m. - 10:00 p.m.
drop-off — 8:00 a.m. — 4:00 p.m.

Next to IGA Foodliner
and Sonic Drive-In

Heavy-Duty Norge Equipment

COMPLIMENTS
OF
**McDONALD AND BREWTON
ASSOCIATES, ARCHITECTS**



RED



DIAMOND

OIL, INC



P
L
S
G
A
H

F
L
S
H

C
L
M
P

Entrance to
Pisgah
Forest

B
E
R
R
Y
S
935
ASHEVILLE
HWY.

STANDARD

PAPER

SALES





**SINCLAIR
OFFICE
SUPPLY**

**"OFFICE IN
DISTRESS,
CALL S.O.S."**

BREVARD LIGHTING CENTER

Lighting fixtures for Residential — Commercial
Use, Also, Door Chimes, Medicine Cabinets,
Mirrors, Heater-Vent-Light Combinations

35 Rosman Hwy. Brevard

Hours: Monday-Friday 7:30 a.m.-5:00 p.m., Saturday 8:00 a.m.-1:00 p.m.



**B
U
S
I
N
E
S
S**

**254-7241
Asheville**

MACHINES



**SALES
SERVICE**



B Y R D



F U R N I T U R E !



**A
C
E**



**BUILDERS
MART!**



**BREUARD
FEDERAL**

**SAVINGS &
LOAN**



S.
caldwell st.
833-8242



**T
D
R
I
A
N
G
L
E
-
D
R
I
V
E
R
E
-
L
E
N**

Steaks
Sandwiches
Side -
Orders

418
S. Broad St.

883-9060

Open Nights — Carry Outs

Phone 883-2661



**BREVARD HAIRSTYLING
STUDIO**

LINDA HENSLEY

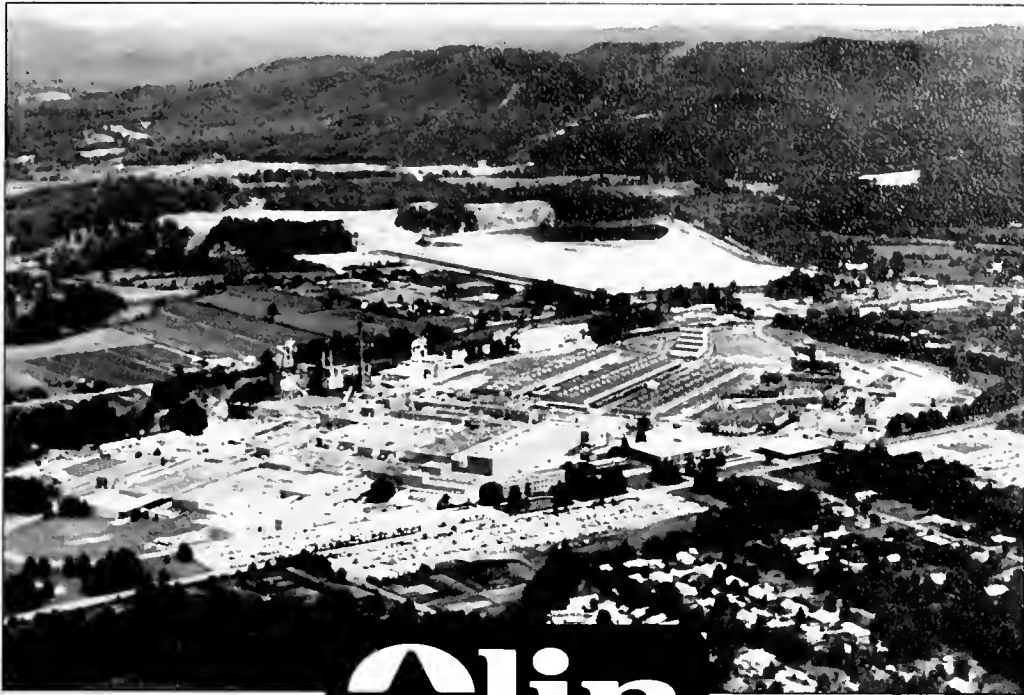
300-A North Broad Street
Brevard, N. C.

CITIZENS

**225 E. MAIN ST.
BREVARD**

TELEPHONE

CO.

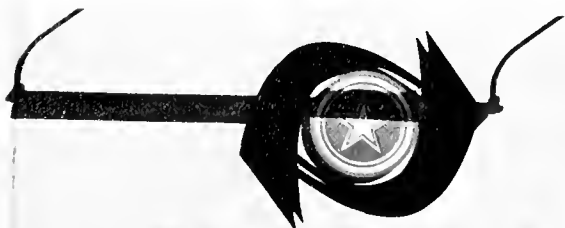


*Ecusta Paper
&
Film Group*

PISGAH FOREST
NORTH CAROLINA



AMERICAN THREAD
COMPANY



**american
thread**

SYLVAN PLANT

SYLVAN PLANT

Rosman, N. C.



GOSPEL NOTES

Books / Bibles / Small Gifts

"The Largest Selection of
Gospel Music in the Carolinas!"

105 E. Main St. (704) 884-2320



HOUSTON FURNITURE CO.

COMPLETE HOME FURNISHINGS

Phone: 883-8205

53 - 55 East Main Street





BENDIX FIELD ENGINEERING CORPORATION

Rosman, N. C.
28772

(704) 883-8211



THE SHOE TREE!

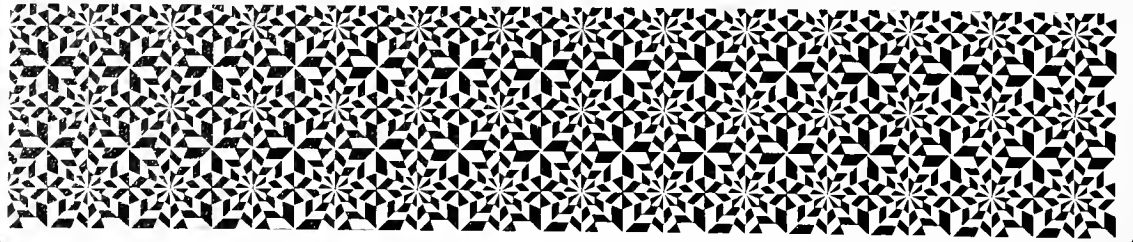


"Fine Footwear For Men
and Women"

Dogwood Plaza Mall

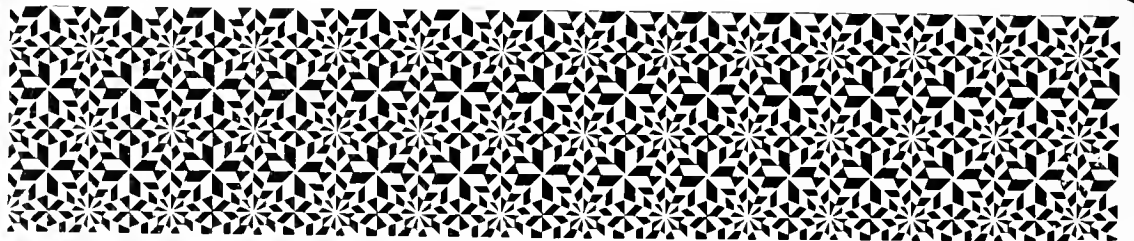
Phone: 883-3870





**OLAN
MILLS
THE NATION'S
STUDIO**

**CHATTANOOGA,
TENN.
37411**





TRY
THE RED LION

For a very
Special
Evening

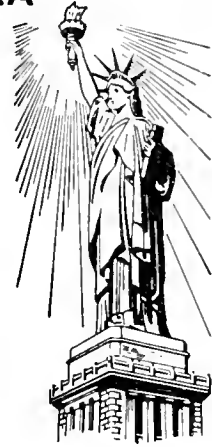
Reservations Please
862-4491

**WESTERN CAROLINA
BANK &
TRUST CO.**

"We Care Bank"

210 S. Broad St.
P. O. Box 1176
Brevard, N. C. 28712

884-2175



"TALK OF THE TOWN" HAIR STYLING, INC.



Men's Private Styling Room

Ladies' Beauty Salon

Etowah Shopping Center

Highway 64

891-3844



AUSTIN ART SHOP

Your Photo, Tape and
Record Center



11 East Main Street
Brevard, N. C.
Phone: 883-2125



SYMPATHY — HOSPITAL — WEDDING

Fresh and Permanent Flowers

"VILLAGE FLORIST"

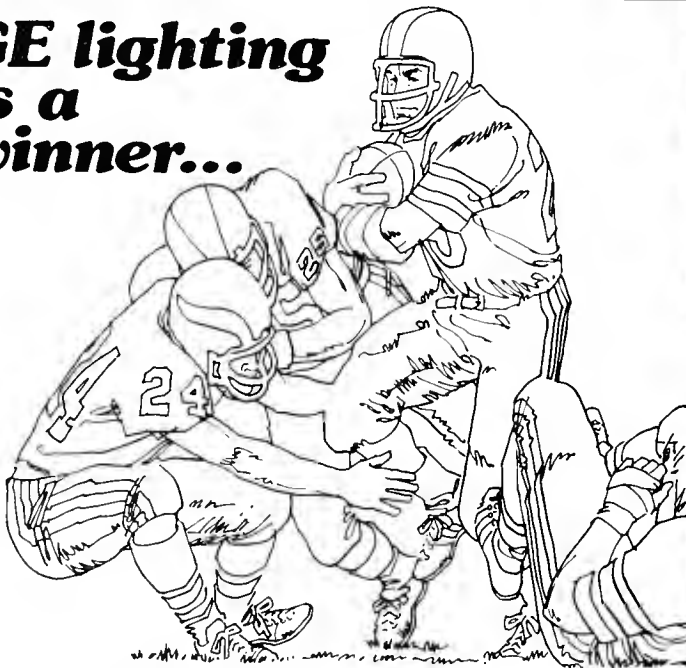
P. O. Box 192
East Flat Rock, N. C.

DIANA HOUSTON, Owner

Phone: 693-0632



**GE lighting
is a
winner...**



GENERAL ELECTRIC COMPANY
Lighting Systems Department, Hendersonville, N. C.

GENERAL  ELECTRIC





SKY CITY

BREVARD, NORTH CAROLINA



WHIRLPOOL LAUNDRY

North Caldwell Street

Brevard, North Carolina

Adjacent to the Campus

Conveniently located to
serve Brevard

College

Students



IMPERIAL MOTOR LODGE

75 Completely New & Modern Units

Conference Room Available

Highways 64 & 276 North

Phone: 883-3185

Brevard, N. C.



SEARS



Satisfaction Guaranteed or Your Money Back

883-8232

Sears

SEARS, ROEBUCK AND CO.

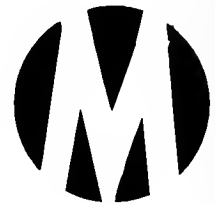
9:00 - 5:30
Mon. - Sat.

Brevard Plaza Shopping Center



MELTON COMPANY REALTORS

Founded in 1950



300 N. Broad St.

PHONE:
883-8165

James C. Gaither & Associates



REAL ESTATE — INSURANCE
34 South Broad Street
Brevard, North Carolina 28712
Bus. 883-9470



COMPLIMENTS

OF

DEPONT





Compliments of

BREVARD ELECTRIC CO.

35 ROSMAN HWY.
BREVARD, N. C.



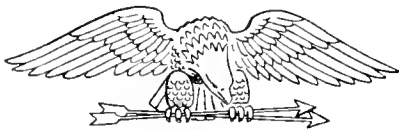
• COLLEGE PLAZA • BREVARD N.C. • 884-2424 •



GOODWILL MOTOR CO., INC.

Pontiac - Buick

220 SOUTH BROAD STREET — DIAL 884-4111
BREVARD, NORTH CAROLINA
28712
24 - HOUR WRECKER SERVICE



GROVER'S OFFICE SUPPLY

GENERAL OFFICE SUPPLIES
DESKS — CHAIRS — FILES
TYPEWRITERS — CALCULATORS
ADDING MACHINES
RUBBER STAMPS — TROPHIES

"If We Don't Have It, We Will
Order It For You"

(Back of Varner's Drug Store)
10 W Jordan St.
Phone 883-2676



GIL COAN

**BREVARD INSURANCE
AGENCY, INC.**

YOUR INDEPENDENT AGENT
serves you first

883-3121

20 E. Jordan St.

If No Answer 883-3996 or 883-9235

Brevard, N.C.





WHERE THE STYLES
OF TOMORROW ARE
BEING CREATED TODAY!



HAIRPORT

Compliments of

**FIRST STATE SAVINGS
and
LOAN ASSOCIATION**



212 E. Main St.
Brevard

Compliments
of

**MIKE MEANY
and
ASSOCIATES**

Brevard,
North Carolina





Public Service Natural Gas.
The best there is.



Public Service Company of North Carolina, Inc.

General Office: 400 Cox Rd., Gastonia, North Carolina



WARD'S HOUSE OF MUSIC

2026

Asheville Highway

ALLEN — WURLITZER ORGANS
WURLITZER — KAWAI — CURRIER
PIANOS

(704) 692-4755

AYERS

"The Store With The Merchandise."

Phone: 883-9331

West Main Street Brevard



Transylvania County's

"Levi" Store.

THE WEARHOUSE
DISCOUNT LADIES APPAREL

BLUE RIDGE TRADING CO.

DISCOUNT JEANS—SPORTING GOODS

JIM STROSNIDER, Gen. Mgr.

Rt. U. S. Hwy. 64

Pisgah Forest, N. C. 28712

(704) 877-3176 — (704) 877-4744

Casual Clothes and

Jewelry for

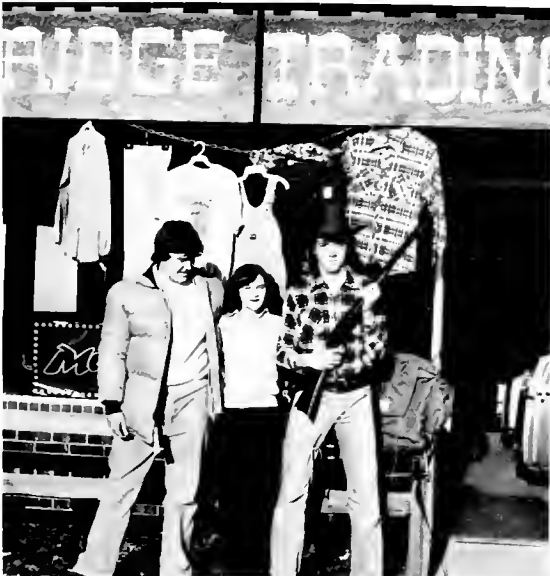
Guys and Gals!



HAROLD L. COOPER

APPLE TREE CHEVROLET, INC.

205 Smoky Park Highway, Asheville, North Carolina 28806
Bus: 704/667-5221; 704/254-4344 • Res: 648-2652





SHONEY'S BIG BOY RESTAURANT

SHONEY'S

BIG BOY

Restaurant

OPEN 6 AM
SPECIAL THIS WEEK
STEAK SAM WITH
FRIES OR ORINGS 169
STEAKS SEAFOOD





PEPSI-COLA BOTTLING COMPANY

of Asheville, Inc.

Sweeten Creek Industrial Park

P. O. Box 5315, Asheville, N. C. 28803

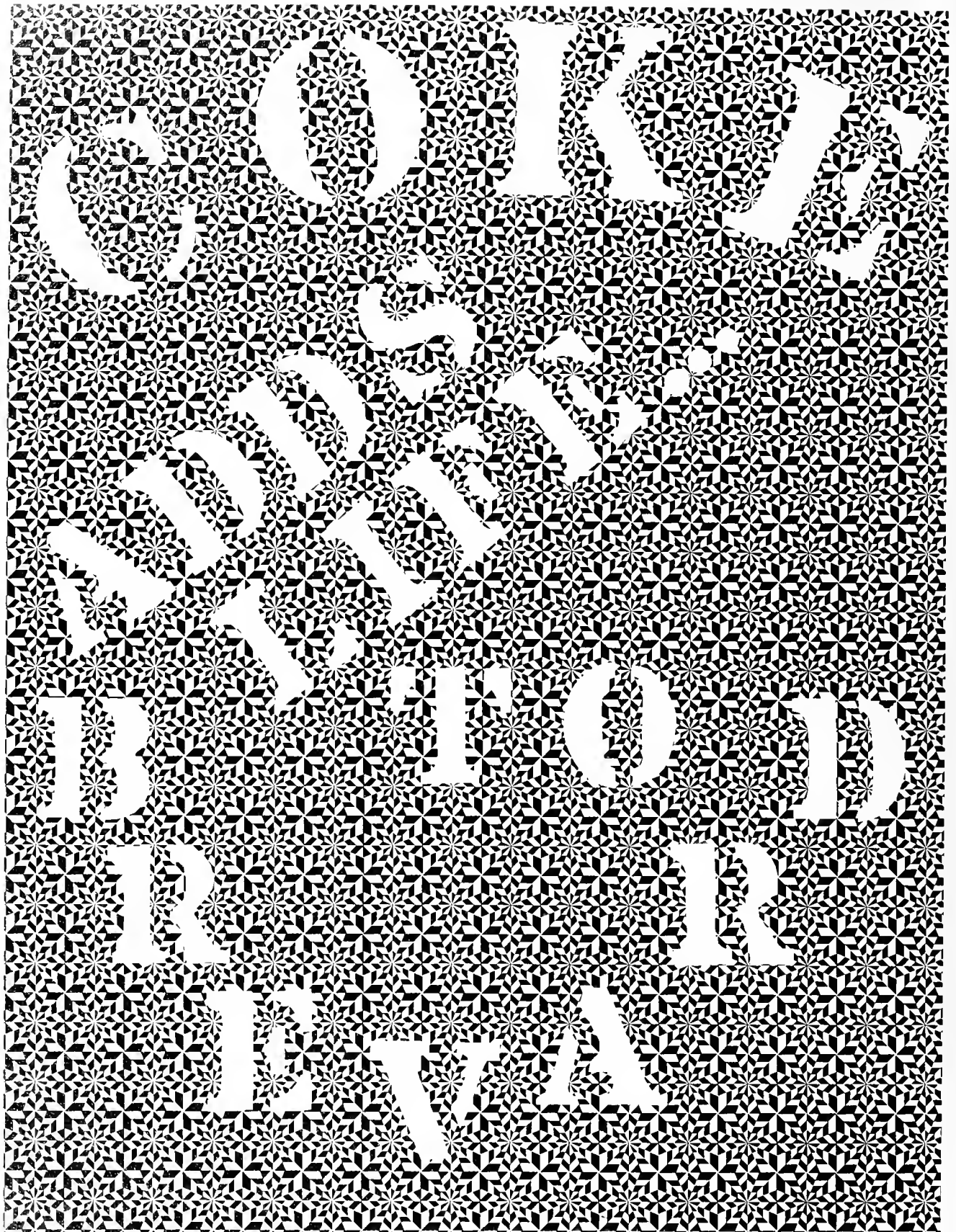
Telephone (704) 274-4600



"YOU DESERVE A BREAK TODAY."

Highway 64

884-2244





VARIETY IS THE
SPICE OF LIFE...
AND LIFESTYLES







Carolyn Johnson keeps a very full schedule as well as the other tutors. She is a math teacher as well as a math tutor. She is one of Brevard's more liberal teachers. When she is not with her East Beam girls trying to solve their problems, she is out snowballing with them or talking to them as "one of the gang." Ms. Johnson deserves a standing ovation — if she hasn't already received one.



Claude Stulting must keep the busiest schedule on campus. When he's not teaching a Religion or English class, he's preparing for one. Playing nurse-maid to the party-hearty Taylor Dorm boys is an 80 hour a week job. He's always more than willing to listen to any problem and help rectify the situation, but you'll have to run to catch him. By the way, thanks for not calling the vice-squad on our poker games or on us for that matter. We all know that you had cause to.



Randolph "Action" Jackson is the resident tutor for the newest dorm on campus: West Beam. He helps security and keeps most of the campus toeing the line-hence the name "Action." Mr. Jackson is definitely one of our more outspoken individuals. The problem is not getting him to talk but getting him to say something. Mr. Jackson helps in the English Writing Lab with those of us whose writing needs a bit of B.S. to liven up a dead subject. He also teaches English.



LIVE-INS, “we thank you FOR NOT BUSTING OUR PARTIES”

If Stulting is the busiest man on campus, Don Scarborough is definitely the most vivacious. Scarborough is a local boy, a graduate of U.N.C. Asheville. He is the boy's soccer coach, girl's basketball coach and dorm tutor for the largest boy's dorm on campus. He is extra friendly and very helpful. An extra strong hand for “a good ol' boy” and fantastic guy.

Jane Love is the resident tutor for the largest dorm on campus. She is second mother to over 180 women who live in Jones Dorm. She sees that maintenance, nurses, and teachers are notified in emergencies, as well as teaching classes in English. Jane holds a B.A. from Pfeiffer College and her Master of Theological Study from Gordon-Conwell Theological Seminary. She came to Brevard College in 1978. Jane likes to try any hobby or interest that keys to her girls. She especially enjoys old movies, reading, writing poetry, and sports (particularly softball). Let us all give Jane a big hand for a job well done.



New addition, Welcome addition



Baisley, Kevin



Fox, George



Hines, Aubrey



Kitchen, Teresa



McCall, Wallace



McFarland, Michael



Smith, Bruce Penn "Chip"



Tenenbaum, Zelik



The annual Valentine's Dance turned out to be a major event for the last of the red hot lovers. The featured band was "Southern Express" from Chapel Hill. Laura Snyder was crowned Queen of the evening and Bobby Kivett was crowned King. Prince and Princess for the occasion were Nino Dieppa and Maridee Hawkins. The dance and the selection of the Court was sponsored by the Nemos and Delphians.





Hearts Speak
When Words
Cannot...



Sophomore Directory

- Albright, Mark Clayton
Band; Intramural Council
- Allen, Chavon Antoinette
Nemo, Tornado Club
- Allison, Kerry Lynne
Nemo; Big Sister; PERTELOTE Staff
- Ancrum, Andrew Porcher
- Anderson, Frank Luther
- Bare, Kathy Jane
- Barefoot, Wilbert Steven
Concert Band; Stage Band; Collegiate Singers; Cheerleader
- Baron, Raphaela Patricia
Collegiate Singers; Chamber Choir
- Barr, David Edward
Delphian
- Beasley, Charles Frederick
Basketball
- Beatty, Jesse Franklin
Student Union, President; Social Board; Judicial Board; Soccer
- Bell, Suzanne Elizabeth
- Black, Michael Evan
Masquers; Collegiate Singers; PERTELOTE Staff; Intramural Council, Manager; Mentor, Co-ordinator; "Finian's Rainbow"
- Black, Timothy Alexander
Tennis, Captain; Track, Captain; Phi Theta Kappa
- Blalock, Cynthia Anne
Social Board
- Blaser, Gregory Robert
Class Officer; Delphian; Judicial Board; Tornado Club
- Boone, James Alan
- Boyd, Gregory Bruce
Cross Country; Track
- Brantley, Patricia Lynn
Chamber Choir, Collegiate Singers; Big Sister
- Brown, Robin Lee
- Brown, Terry Lee
Tennis
- Bryant, Kevin Rufus
Soccer
- Bryant, Ruth Lynn
- Burkle, Gary Raymond
Track
- Burn, Frank Hardee, III
- Bursch, James Phillip
Delphian; Tennis
- Butts, Carolyn Jane
- Caldwell, Larry Jay
- Camp, John Hines
Delphian
- Cantrell, Steven William
- Capps, Michael William
Phi Theta Kappa; Masquers, vice-president; Collegiate Singers; Band; Chamber Choir, president/social chairman; Oratorio Singers; PERTELOTE Staff, Editor; Student Ambassadors; Mentor; Who's Who; "Showboat"; "Finian's Rainbow"; "Androcles and the Lion"; Community Affairs Board
- Carpenter, Sheree Dell
- Carruth, Beth Allison
Tennis
- Childers, Juanita Christine
Collegiate Singers; Band; Student Ambassadors; Cheerleaders, manager
- Childs, Mary Em
- Christensen, Lisa Monique
- Clark, Donna Joyce
Basketball
- Coan, Pamela Elaine
Methodist Student Fellowship; Student Ambassadors; Day Student Club; Social Board; Tornado Club; Cheerleader; Collegiate Singers; Tennis
- Cole, Larry Dale
Track; Soccer
- Conard, Timothy Dean
- Conklin, Sue Angelyn
Nemo, President; Student Ambassador; Intramural Council/Tennis
- Conrad, Michael Evans
- Cook, Kenneth Brunson
Kappa Chi; Collegiate Singers; Band; Chamber Choir; Christian Council
- Cook, Tracy Lee
- Cornett, Duane Douglas
- Cornwell, Christopher Kelly
- Costner, Robert Anthony
Cross Country; Track
- Coward, Tammy Jean
- Craver, Lisa Anne
Big Sister, President; Band; Oratorio Singers; PERTELOTE Staff; Student Ambassador; Who's Who; Basketball, manager
- Cummings, Mark Christopher
Basketball
- Danielson, Deborah Ann
Chamber Ensemble
- David, Charles Walter
Collegiate Singers
- Davis, Cheryl Ann
Nemo
- Davis, Susan Loraine
Nemo; Spanish/American Club; Social Board; Stat Girl; Spanish/American Club, President Vice-president
- Davis, Vanessa Elaine
Student Union; Social Board; Clarion Staff; Class Officer; Nemo; Big Sister; Tornado Club; Dormitory Officer
- Deimler, Thomas Richard, Jr.
- Early, Lauren Elizabeth
- East, Sharon Elizabeth
- Elliott, Scott Bixler
- Embrey Michael Gordon
- Ereth, Diana Marie
Phi Theta Kappa; Big Sister; Student Government Association; Student Ambassadors, President; Cheerleader; Homecoming Court; Spring Festival Court; Admissions Board Committee
- Everhart, Kenneth Wesley
- Everhart, Melinda Elaine
Big Sister; Methodist Student Fellowship; Collegiate Singers; Student Ambassador
- Fairman, Mark Andrew
Delphian; Tornado Club; Track; Golf
- Fayssoux, John Paxton, Jr.
- Ferguson, Lewis Taylor
Golf
- Fitzgerald, Richard Gerard
- Flynn, Owen James
- Foster, Stephen Wade
- Fox, Michael Charles
Delphian; Social Board; Tornado Club; Dormitory Officer
- Frazier, Catherine Jenkins
Basketball
- Frazier, Joni Denise
- Frye, Toya Anita
- Furman, Pamela Renee
- Gaul, Steven, Jr.
Phi Theta Kappa
- Gentry, Teresa Elaine

Goodling, Catharine Carter Dormitory Officer; Homecoming Court	Holbrook, Thomas Anderson	McCleave, James Lee Basketball
Gosnell, Margaret Ella Student Union, Treasurer; Class Officer; Phi Theta Kappa; Marshal; Big Sister; Christian Council; Methodist Student Fellowship; Collegiate Singers; Chamber Choir; Oratorio Singers; Social Board; Judicial Board; PERTELOTE Staff; Student Ambassadors; Dormitory Officer	Horton, Brian Keith Basketball, Captain	McCorkhill, Barbara Tennis
Goss, Lillian Annette PERTELOTE Staff; Intramural Council, manager	Howard, John Webb Delphians; Tornado Club; Basketball, Assistant manager	McHugh, John Patrick Soccer
Gravelly, W. Vincent	Howell, Jane Stacy Nemo; Tennis	McInnis, Eldred Lee Delphians
Grenier, Ronald Allen	Hudson, Suzanne Marie	McNeely, Rita Jo
Griggs, David John Track	Huntley, William Henry, III	McSwain, Nancy Lynn
Groover, Heather Dale Big Sister, vice-president; Spanish/American Club	Hurley, Phillip Warren	Mayes, Edward Franklin Basketball
Groshong, Todd McAlister Delphians	Hyatt, James Robert	Meadows, Joan Adele
Gunter, Timothy Allan Chamber Choir; "Androcles and the Lion"; "Showboat"; "Finian's Rainbow"	Janulet, Rebecca Diane	Mickey, Stephen Andrew
Hamilton, Edwin Peyton	Jent, Lee Anne Spanish/American Club	Miles, Carol Carland Student Union; Dormitory Officer; Clarion; Methodist Student Fellowship; Judicial Board; Chiaroscuro, Secretary/Treasurer
Hamilton, Elizabeth May Spanish/American Club	Johnson, Daryl Paul	Miller, Cheryl Denise
Hamlin, Arah Caprice	Johnson, Lars Eric	Miller, Robert Anthony Student Ambassador; Track
Hampton, Cheryl Renee	Johnson, Thomas H. Delphians; Tennis; Chamber Ensemble	Miller, Stamey Brent
Hannay, Jay Ward Delphian, vice-president; Tornado Club; Mentor	Jones, Alvin Bradley	Minton, Linda Gail Basketball
Harris, Barry Dean Student Ambassador	Jones, Nolan Dean Basketball	Monteith, Myra Kay
Harris, Jeffrey Grant	Juras, Anne Marie Collegiate Singers	Moseley, James Paul Soccer; Golf
Harrison, Sarah Tarrant	Kaiser, Jay Douglass Spanish/American Club	Mudd, Margaret Ann Westminster Fellowship; Social Board; Judicial Board; PERTELOTE Staff; Clarion Staff; Resident Assistant; Dorm Officer; Student Ambassador; Volleyball, manager
Harwell, Willis Lance Track; Day Student Club	Kennedy, William Chunn, Jr.	Murray, Vanessa Lynn
Hatley, Mark Edward Chamber Choir; Collegiate Singers; Band; Kappa Chi; Christian Council	Kern, Cynthia Diane PERTELOTE Staff	Myers, Elaine Cole Band; Stage Band; Chamber Choir
Hawkins, Katherine Aileen Chamber Choir	Kerns, Carolyn Alice Becker	Nash, Deborah Jean
Hecker, Susan Frost	Kilgo, Robin Marie Spanish/American Club	Njie, Sulayman A. Soccer; Track
Helsabeck, Arthur Alex Chamber Choir	Kivett, Robert Howard Judicial Board; Social Board; Delphan; Sweetheart Court	Norwood, Jimmy Lee, Jr. Basketball
Henderson, Robert Aldis	Lee, Debra Jean	Nye, Tracy Louise
Henson, Bobby Garland, Jr. Golf	Link, Patricia Lynn	O'Hars, Robert Emmett
Hickey, Diane Marie Cheerleader	Lovette, Rex Lane	Orr, Roberta Susan
	Lydahl, Glenn Thomas Delphian	Osborne, Julie Elaine Nemo; Cheerleader
	McCall, Karen Eunice Student Union; Class Officer, vice-president; Nemo, vice-president; Phi Theta Kappa, president; Big Sister; Baptist Student Union; Masquers, President; Collegiate Singers; Band; Chamber Choir; Student Ambassador; Homecoming Court; Spring Festival Court; Woodwind Ensemble; Chamber Ensemble; Who's Who; "Showboat"; "Finian's Rainbow"	Ottley, Robert Glover Judicial Board, Dormitory Officer; Soccer
		Pack, Arthur Kim Phi Theta Kappa

Parker, Robert Wayne
Masquers; Collegiate Singers; Student Ambassador; Cheerleader; Mentor

Parrish, Ronna Rochelle
Band

Pettit, Christopher Michael

Post, William Thomas

Power, Terri Lynn

Presley, Sandra Kay

Ramseur, Julianna
Big Sister; Methodist Student Fellowship; Judicial Board, PERTELOTE Staff; Tornado Club; Student Government Association; Dorm Officer

Redwine, Dirk Allen
Track; Cross Country

Reynieron, William Sharp

Rhinehart, William Antonio
Student Union; Collegiate Singers; Band; Stage Band; Oratorio Singers; Music Student Advisory; "Showboat"; "Fiman's Rainbow"

Roberts, Clayto Lamar, III
Judicial Board; Track; Dormitory Officer

Roberts, David Ivon
Phi Theta Kappa, Treasurer; Marshal

Roberts, Kenneth Dale

Roberts, Kent Brooke
Delphians

Robinson, Daniel Connor

Robinson, Timothy Chandler
Day Student Club, Treasurer; Intramural Council, Captain

Russell, Donna Marie
Spanish/American Club

St. Mary, Dallas Susan

Sanchez, Michael Warren
Christian Council, Phi Theta Kappa

Schneider, Stephen Lewis
Soccer

Schweikert, Andrew Kent
Track; Cross Country; Who's Who; Fellowship of Christian Athletes

Scoggins, Robert Carroll, Jr

Shalosmith, Michael Edward
Social Board

Shaver, John McCoy

Sherman, David Joseph, Jr

Sniard, David Hale

Skiba, David Ray
Track; Cross Country

Smith, Lisa Robin

Smith, Michael Dale
Delphian; Tennis

Smith, William Kennard
Delphian

Snyder, Laura
Tornado Club

Spaugh, Lisa Ann
Basketball

Stedman, Ann Frances

Stephens, Carolyn Delia
Basketball

Stewart, Steven Timothy
Soccer

Storie, Karen Ann

Stroup, Robert Thomas
Baptist Student Union; Tornado Club; Golf; Basketball, manager

Taylor, Charlie Phillip

Taylor, Michael Eugene
Kappa Chi; Christian Council; Methodist Student Fellowship

Thomas, Amy Christina

Traynor, John Charles
Track; Cross Country

Tyson, James Irvin
Delphian; Soccer

Valdes, Frank Peter
Cross Country

Vernon, William Chester
Chamber Ensemble

Vocelle, Jane Beverly
Phi Theta; Big Sister; Spanish/American Club; Clarion; Cheerleader, Captain; Homecoming Queen; Delphians Sweetheart Court

Vuytecki, Marie Margaret

Wade, Benton
Basketball

Walker, Elaine Denise
Big Sister; Christian Council; Student Ambassador; Westminster Fellowship; Collegiate Singers; Dormitory Officer; Intramural Council; Chiaroscuro

Walsh, George William

Webb, Dennis Wayne

Whitener, Louise Wrenn

Wilkins, Elaine Carol

Williams, Stephanie Michelle
Collegiate Singers; Chamber Choir; Oratorio Choir

Wilson, Sandra Ann

Winchester, Catherine Ann

Winship, Murray Lewis

Wood, William Kevin
Student Ambassador; Tornado Club; Track; Golf; Cross Country

Yates, Daniel Gillespie, Jr.
Mentors

Young, Jonathan Koelle
Masquers; Clarion Staff



A Shiny Bald Spot

Sitting in the stiff-backed pews,
Listening to the slightly off-key choir
"Bringing in the sheaves."
All the plump widow women in their
Soft pastel prints, smelling like lilac,
Were placed with meaning in the front pew.
The cherub choir sang,
Led by one of Their numbers.
And I, dressed in polka dots, red and white,
With stiff crinolins, at least three,
Stared at the shiny spot
On the bald man's head.
Shiny with sweat.
Everyone moved the air,
With cardboard fans
From Lowe's Funeral Home.
Sweat trickled in between
The fat thighs of the widow women,
But
I sat there in skinny virginity,
Staring at the bald man's head,
Cool.
—JAL

Celery

Stirring her bloody Mary
She wept on her stalk of celery
and
Wished it were a slender, strong, green knife
or
his neck.
Snap. Crunch, Crunch.
—JAL

I am exodus

God holds me in the sands
The sun burns my skin . . . flesh exposed.
I am trying for the promised land, a hoary-headed Moses
man is now here.
I must walk the sands of God's own paths
Treading gingerly lest i see mirages and take them for my
soul.
—JAL

Stretch Tights

The fat girl sat there sniffing
After she ran out of kleenex,
Which she kept in her wadded up raincoat.

To help her mood, she fished in her pockets
Found a quarter, and got a Hersey bar.
She ate it.
She ate it. She ate everything.
It was sooooo sad.

Her mother was skinny because
and
looked good in stretch tights and
and
Now,
She had to take dance.
—JAL

Have you ever laid awake at night
wondering where you would be
If you let yourself run wild
let your confused mind run free

Have you ever laid awake at night
and seen yourself as you really are?
Did the vision leave a change
or only leave a scar?

Have you ever laid awake at night
looking down a different road?
Did it scare you to have no map
And to hear the language as a code?

Have you ever laid awake at night
A tear standing in your eye.
Thinking of its laughter and love
Time had washed on by.

Have you ever laid awake at night
watching your perfect dreams
become shattered or scattered
or torn apart at the seams

Have you ever laid awake at night
waiting for the day
When the sun will dawn before your eyes
Showing you a new way.

T. Murphy



Watch out!
The bird that now sings,
Such beautiful songs
Of such beautiful things
With such glamour and grace
As he flies the skies
With wings spread wide and guided glide
—He may be a vulture in disguise.

BF

On Religion of man
I'll take my stand.
Sister with sister
Brother with brother
Regardless of creed
Regardless of color
Forever may this way be
For this is the way it was meant to be.

E. F.



Time is Life
and Life is Time.
as seconds tick
and minutes fly,
as hours crawl
Your Life runs by!

I am me,
and I am free,
Free to be
Whatever I wish to be.
I have no one to blame
For me;
BUT ME!



May I have a smile

I'm sorry
I wanted so much
At a time
When you were not willing
to give this
to me

It seems that
I've voided anything
that might have been
And now I ask so little
May I have
A smile?

—Bobby Lougher

Love

Love is like a stormy sea
It often comes and goes,
It may describe the way you be
Or what your mind may show.

You picture Love in many things
You see it now and then,
You picture it most everywhere
And in the hearts of men.

An artist cannot picture Love
And any canvas new,
For if he'll just look in his heart
He'll find his love so true.

And in these days of troubled times
With hunger, death, and war,
If we'll just use a little Love
Our troubles live no more.

—Michael Capps

On one small street hid from the light
There stood a tiny boy
Who knew no friends at Christmastime . . .
His heart not filled with joy.

This starving child knew no safe place
For which his tears could hide,
For as the wind blew o'er his face
He bowed his head and died.

—MWC

Our Love

You came into my life
When I was amid conflict and strife.
The words you said to me
Helped solve my mystery.
Your lovings ways
Has helped me through many a rough days
And the affection you show
Always lets me know
That you are mine forever
No matter who or whatever,
The love that we share
that makes us this pair
Should be cherished for an eternity
because for me loving you
that is how long it will be

Forever.

Moose



Summer Friend

The first time I saw you
I couldn't speak at all.
Things are so much different now
You made that possible.
Laying in the summer sand
While the wind blew back your hair,
Making me much more a man
On the blankets our bodies shared.
One summer friend
I shall always love my summer friend
The warmer months have left us
And like the sun she is gone,
But the memories will never leave
I shall always hear her song.
One summer friend
I shall always love my summer friend.

MGE



Encroachment by man
 They despise - as trash
 is not left by Pan
 and his fellows. Tan
 Youngsters wade and splash
 They mourn as men Fash-
 ion whips, enslave man
 and beast, which they lash.

Knowledge comes - Wisdom
 is left behind in
 the garbage where some wayfarer, a bum,
 sees all human sin
 as he gathers in
 his food. Starving some-
 most! Starving glut's inn.

Now do you wonder
 why those woodfolk flee?
 Man made his blunder
 in grasping thunder,
 taking victory
 not his. Not be he
 so lonely, ponder-
 ing that he can't see.

—S.A.M.

GRASPING THE WRONG THING

Cold blue teeth soften
 as buds grow to green
 shelter, not as men
 can make, but a den
 of those seldom seen
 woods folk, like men
 with senses more keen.

Nothing may pass through
 without notice by
 Those going without shoe
 or weapon as woo-
 ing nature leaves high
 excitement; but why-
 ask passers-by - do
 They not stay - but fly?

Disillusions force even the strong to seek some-
 where to hide Confusion forces even the loner to
 seek someone's side.

T. Murphy



STUDENT UNION LEGISLATURE

President — Frank Beatty
 Judicial Vice President — Jeff Harris
 Social Vice President — Bobby Kivett
 Secretary — Diana Ereth
 Treasurer — Margaret Gosnell
 Gary Burkle — Green President
 Lamar Roberts — Green Vice President
 Baker Heard — Green Freshman Representative
 Dan McLeary — Green Freshman Representative
 Mike Embry — Taylor President
 Robert Ottley — Taylor Vice President
 Mark Armstrong — Taylor Freshman Representative
 Bill Henrey — Taylor Freshman Representative
 Laura Prien — Jones President
 Carol Miles — Jones Vice President
 Cheryl Miller — Jones President (New Wing)
 Margaret Gosnell — Jones Vice President (New Wing)
 Dawn Mullins — Jones Freshman Representative
 Donna Harriger — Jones Freshman Representative
 Debbie Crane — Jones Freshman Representative
 Pam Aikens — Jones Freshman Representative
 Mike Fox — West Beam President
 Greg Blaser — West Beam Vice President
 Bill Austin — West Beam Freshman

Representative
 Vanessa Davis — East Beam President
 Julie Ramseur — East Beam Vice President
 Nancy Ellis — East Beam Freshman Representative
 Jenny Holladay — East Beam Freshman Representative
 Jane Williams — Day Student Representative
 Pam Coan — Day Student Representative
 Tim Robinson — Day Student Representative

BIG SISTERS

Mary Margaret Houk, Advisor
 Kerry Allison
 Raphaela Baron
 Pat Brantley
 Donna Clark
 Tammy Coward
 Lisa Craver
 Vanessa Davis
 Diana Ereth
 Melinda Everhart
 Margaret Gosnell
 Sally Groover
 Katie Hawkins
 Cyndi Kern
 Robin Kilgo
 Debbie Lee
 Karen McCall
 Buffy McCorkhill
 Debbie Nash
 Julie Ramseur
 Karen Storie
 Jane Vocelle
 Denise Walker

PHI THETA KAPPA

Sara Beard, Advisor
 Eugene McDowell, Advisor
 Claude Stulting, Advisor
 Karen McCall — President
 Cyndi Blalock — Vice President
 Margaret Gosnell — Secretary
 David Roberts — Treasurer
 Kim Pack — Campus Activities Chairman
 Tim Black
 Michael Capps
 Tammy Coward
 Diana Ereth
 Joni Frazier
 Steve Gaul
 Vanessa Gay
 Tim Gunter
 Cheryl Hampton
 Robin Kilgo
 Rita McNeely
 Joan Meadows



Sandra Presley
 Mike Sanchez
 Jane Vocelle
 Sandra Wilson

New Members

Mark Armstrong
 Reggie Barnes
 Donna Barnwell
 Linda Boone
 Leslie Brown
 Debbie Cope
 Donna Harriger
 Maridee Hawkins
 Kimberly Jenkins
 Alicia Kinard
 Jeffrey Loftin
 Todd William Murphy
 Sandy Nolte
 Jeanne Ogsbury
 Phyllis Owens
 Joe Patchen
 Leah St. John
 Scott Singletary
 Lisa Smart
 Tom Snyder
 Misae Tanka
 Mitsuyuki Yamanaka
 Jun Yoshihama

CHEERLEADERS

Jane Vocelle — Head Cheerleader
 Diane Hickey — Head Cheerleader
 Tina Childers — Manager
 Pam Coan
 Cathy Date
 Diana Ereth
 Debbie Minick
 Dawn Mullins
 Julie Osborne
 Mark Armstrong
 Steve Barefoot
 Bryan Blank
 Ferrill Lang
 Bobby Lougher
 Dan McLeroy
 Robert Parker
 Joe Springs





MNEMOSYNEAN SOCIETY

President — Ange Conklin
 Vice President — Karen McCall
 Secretary — Julie Osborne
 Treasurer — Diane Hickey
 Kerry Allison
 Molly Armstead
 Betsy Bales
 Cyndi Blalock
 Heather Bland
 Pat Brantley
 Pam Bullock
 Susan Carroll
 Susan Davis
 Vanessa Davis
 Nancy Ellis
 Debbie Fisher
 Glenda Flinchum
 Toya Frye
 Lee Ann Gent
 Susie Hudson
 Cheri Hampton
 Robin Kilgo
 Patty Link
 Myra Montieth
 Ledy Moreta
 Karen Meyer
 Lorna Prien
 Julie Smith
 Elizabeth Vance
 Teresa Waynik

SPANISH CLUB

Mary Atkins
 Angela Blackmon
 Barbara Darden
 Susan Davis
 Juan Dieppa

Robert Edminston
 Sandra Geiswite
 Mark Hatley
 Edwin Hamilton
 Jenny Holladay
 Kimberly Hoover
 Lou Ann Hurst
 Eva Jones
 Jay Kaiser
 Carolyn Kerns
 Robin Kirby
 Stephanie Kraus
 Patricia Link
 Beverly Magness
 Donna Mulford
 Brenda Rackley
 Lorraine Reams
 Donna Russell
 Ann Stedman
 William Vernon
 Jane Vocelle
 Lillian White
 Lee Whittelsey
 Carol Willis

COLLEGIATE SINGERS

Larry Abrams
 Pam Aikens
 Lori Alsine
 David Anderson
 Mark Anderson
 Myron Anderson
 Steve Barefoot
 Raphaela Baron
 Preston Birckner
 Michael Black
 Barbara Bonitz
 Pat Brantley
 Michael Capps
 Kathy Crompton
 Rodney Currin
 Chuck Davis
 Jeff Davis
 Teri Davis
 Sharon East
 Mary Elliot
 Melinda Everhart
 Joni Frazier
 Glenda Flinchum
 Missy Fogle
 Sandy Geisewite
 Gina Gershon
 Beverly Gibby
 Margaret Gosnell
 Tim Gunter
 Butch Hamby
 Mark Hatley
 Katie Hawkins
 Maridee Hawkins
 Alex Helsabeck
 Rusty Jenkins
 Kathy Jones

Johanna LaRose
 Frank Lattimore
 Karen McCall
 Lynn McGee
 Stephen Mickey
 Chuck Minor
 Joan Meadows
 Debbie Nash
 Sandy Nolte
 Jean Ogsbury
 Greg Parmerton
 Linda Powell
 William Rhinehart
 Gary Russell
 Leah St. John
 Cecilia Sutton
 David Wall
 Denise Walker
 Katy Waters
 Jerry Watson
 James Welch
 Eric Wilson
 Michele Williams
 Doug Wright

CHAMBER CHOIR

Raphaela Baron
 Preston Birckner
 Pat Brantley
 Michael Capps
 Berry Clifton
 Rodney Currin
 Sharon East
 Joni Frazier
 Glenda Flinchum
 Margaret Gosnell
 Tim Gunter
 Mark Hatley
 Katie Hawkins
 Alex Helsabeck
 Elizabeth Hopkins
 Rusty Jenkins
 Kathy Jones
 Karen McCall
 Chuck Minor
 Linda Powell
 Gary Russell
 Scott Singletary
 Cecilia Sutton
 Michele Williams

MENTORS

Steve Barefoot
Mike Black
Tim Black
Terry Brown
Frank Burn
Michael Capps
Ken Cook
Chuck Davis
Mike Embrey
Paxton Fayssoux
Richard Fitzgerald
Jay Hannay
Jeff Harris
Mark Hatley
James McCleave
Walter Munro
Jimmy Norwood
Bobby O'Hara
Robert Parker
Mike Sanchez
John Shaver
Dan Yates

STUDENT AMBASSADORS

Richard Adams
Beth Arnest
Greg Bare
Michael Black
Cyndi Blalock
Mike Boykin
Renaë Brittain
Frank Burn
Michael Capps
Tina Childers
Berry Clifton
Pam Coan
Kenneth Cook
Teresa Corn
Lisa Craver
Thomas Dehn
Mary Kay Dulin
Nancy Ellis
Diana Ereth
Melinda Everhart
Margaret Gosnell
Barry Harris
Vickie Hawkins
Alex Helsabeck
Ray Hendrickson
Jenny Holladay
Karen McCall
Tony Miller
Peggy Mudd
Deborah Nash
Robert Parker
Sandy Presley
Michael Sanchez
Jane Shytle
Jane Williams
Robert Weaver
Dennis Webb

Eva Winecuff
Kevin Wood
Charlotte Young

STAT GIRLS

Susan Davis
Debbie Fisher
Sue Fowler
Leslie Hale
Gigi Wesniewski

MASQUERS

President — Karen McCall
Vice President — Michael Capps
Secretary — Anne Winchester/
Glenda Flinchum
Treasurer — Tim Gunter
Mike Black
Cyndi Blalock
Steve Collins



Rodney Currin
Jeff Davis
Sharon East
Alan Hall
Kathy Jones
Mark Loudermilk
Kate McCracken
Karen Meyer
Chuck Miner
Beth Sigmon
Katy Waters
Jim Zimmerman

DAY STUDENTS CLUB

President — Pam Coan
Vice President — Jane Williams
Secretary — Leslie Brown
Treasurer — Tim Robinson
Barbara Coan

Brad Daniel
Norman Giffin
Bobby Hayes
Julie Holder
Daryl Johnson
Jonalyn Johnson
Brad Jones
Jay Kaiser
Eric Kilstrom
Terry Kitchen
Mitch McEntire
Eric Montego
Bonnie Palmer
Roger Robertson
Lisa Smart
Junette Westall

JUDICIAL BOARD

Jeff Harris — Judicial Board Vice-
President
Greg Blaser
Margaret Gosnell
Carol Miles
Rob Ottley
Julie Ramseur
Lamar Roberts
Jane Williams
Mary Houk — Executive Officer
Randy Jackson — Non Voting
Jane Love

Clarion Staff

Editor in Chief — Debi Crane
New Editor — Mike Edmiston
Feature Editor — Tom Snyder
Sports Editor — Tim McGuire
Advertising Manager — Laurie Krug,
Bobby Hayes
Photographer — Ron Grenier, Chuck
Miner
Reporters — Alan Baker
Mark Lowdermilk
John George
Donna Mulford
Scott Singletary
Vanessa Davis
Duncan Rawls
Carol Miles
Peggy Mudd
Jon Young
Lisa Foster
Deborah Wiggins
Laura Baker
Phyllis Owens
Holly Fortune
Cyndie Kern
Deborah Yates
Jane Williams
Advisor — Ken Chamlee

MAINTENANCE

Parker Adams
Eddie Chapman
Charles Engel
Lawrence Heath
William Hill
Guy Harvis
V. C. Stiles
Paul Williams

WHO'S WHO

Jesse Franklin Beatty
Timothy Alexander Black
Gregory Bruce Boyd
Michael William Capps
Donna Joyce Clark
Lisa Anne Craver
Diana Marie Ereth
Margaret Ella Gosnell
Timothy Allan Gunter
Robin Marie Kilgo
Robert Howard Kivett
Karen Eunice McCall
Julie Elaine Osborne
Robert Wayne Parker
Sandra Kay Presley
Andrew Kent Schweikert
Jane Beverly Vocelle



COMMUNITY AFFAIRS BOARD

Sarah Beard
Lee Bratton
Rachel Daniels
Wes Goodman
Bob Hall
Mary Margaret Houk
Mimi Jones
Gene McDowell
John Meyerhoff
Don Scarborough
Preston Woodruff
Morris Wray
Frank Beatty — President, SUL
Terry Brown — President, Christian Council
Michael Capps — Editor, PERTELOTE
Lisa Craver — President, Big Sisters
Jeff Harris — Judicial Vice-President, SUL
Bobby Kivett — Social Vice-President, SUL
Karen McCall — President, PTK
Debi Crane — Editor, CLARION
Angelyn Conklin — President, Mnenosyneans
Jimmy Norwood — Representative-at-Large
Tom Johnson — President, Delphians

STUDENT MARSHALS

Margaret Gosnell — Chief
Timothy Gunter
Robin Kilgo
David Roberts
Sandra Wilson

WESTMINSTER FELLOWSHIP

Grace Munro, Advisor
Sally Harrison
Peggy Mudd
Debbie Nash
Betty Jane Smathers
Cecelia Sutton
Denise Walker

SOCIAL BOARD

Bobby Kivett — Vice-President
Gary Burkle
Vanessa Davis
Mike Embrey
Mike Fox
Cheryl Miller
Lorna Prien
Pam Coan

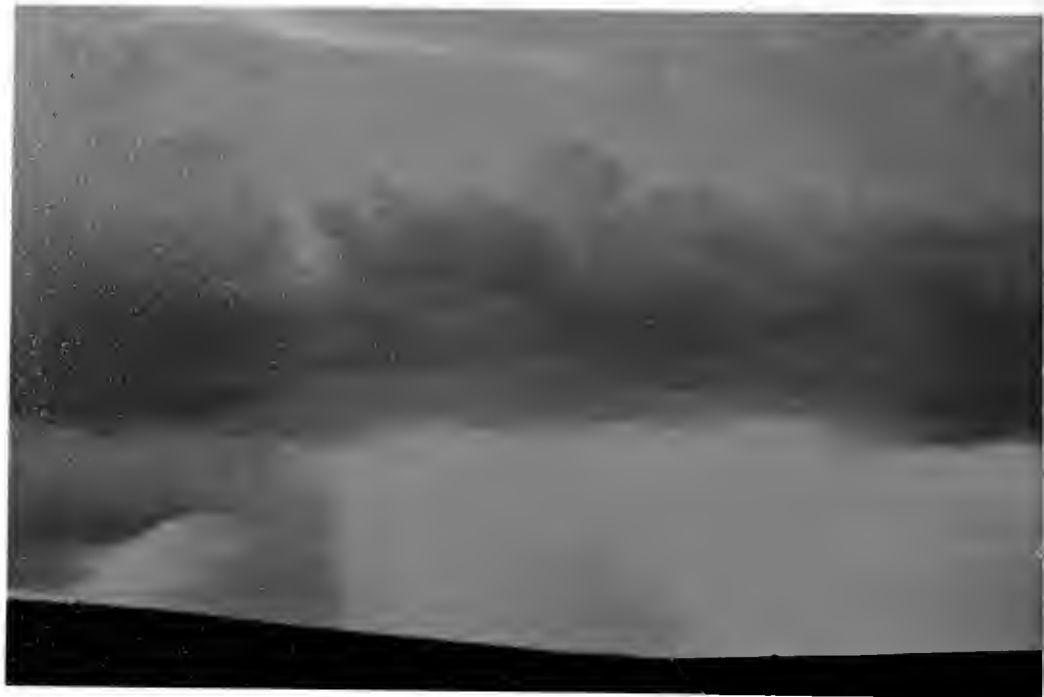
FRESHMAN REPRESENTATIVES

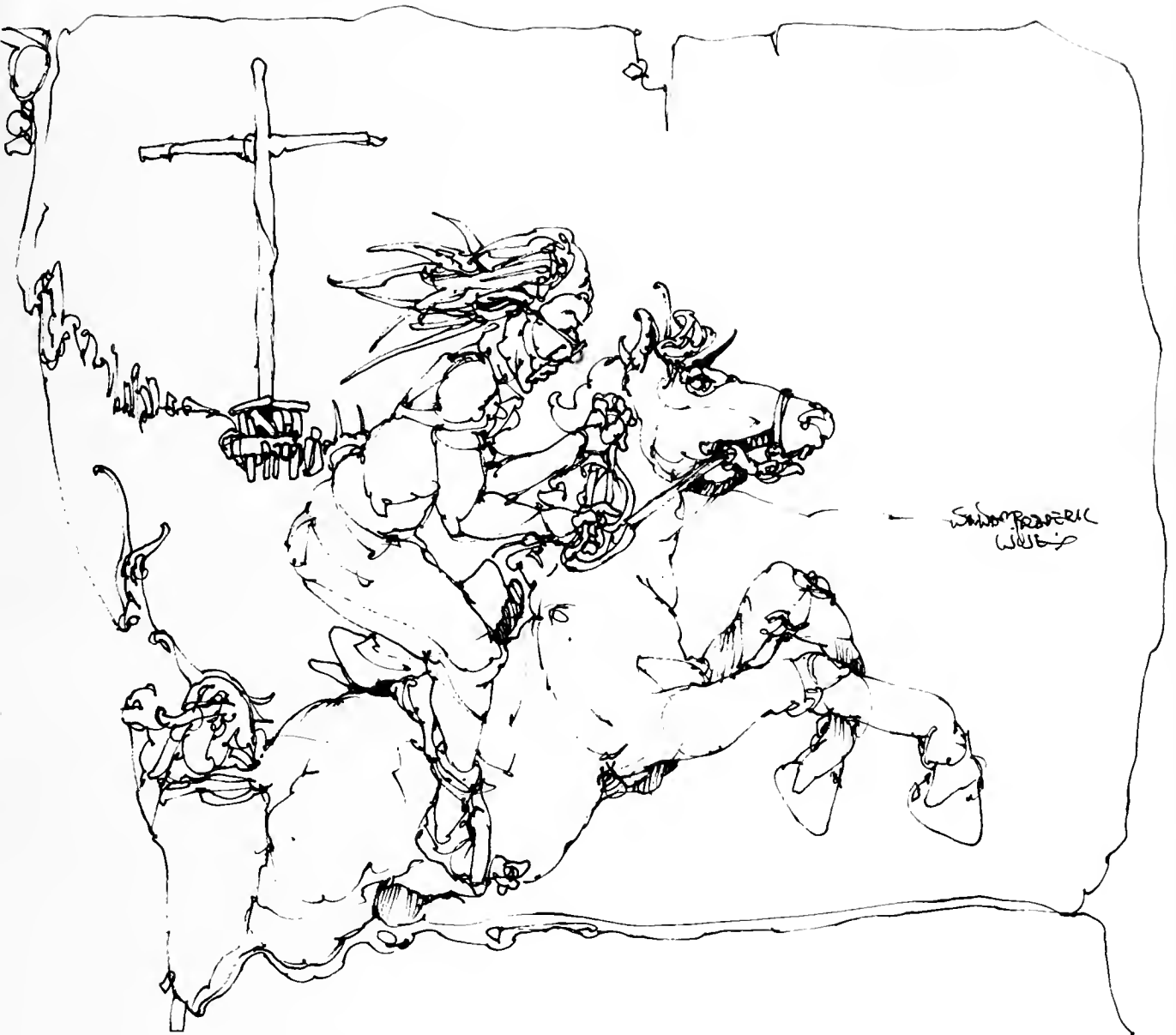
Pam Aiken
Gary Angel
Mark Armstrong
Bill Austin
Debi Crane
Nancy Ellis
Donna Harriger
Baker Heard
Bill Henry
Jenny Holliday
Dan McLeroy
Dawn Mullins
Bonnie Palmer
David Sineard

SUPREME JUDICIAL BOARD

Sarah Barnhill — Chairman
Gail Anderson
Frank Beatty
Ray Fisher
Mike Sanchez
Gigi Wesniewski
Preston Woodruff







“Go placidly amid the noise and haste,
and remember what peace there may be...
in silence.”

— — The Desiderata

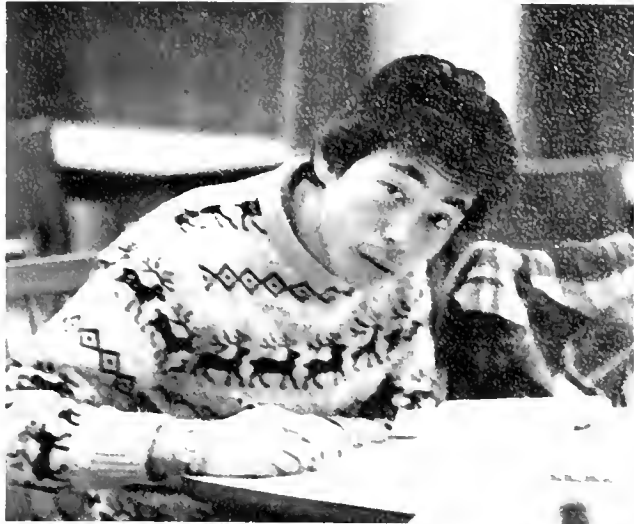


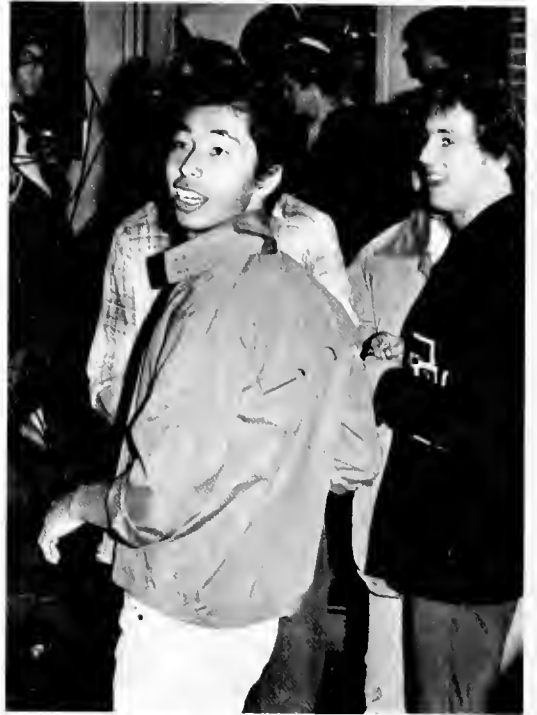


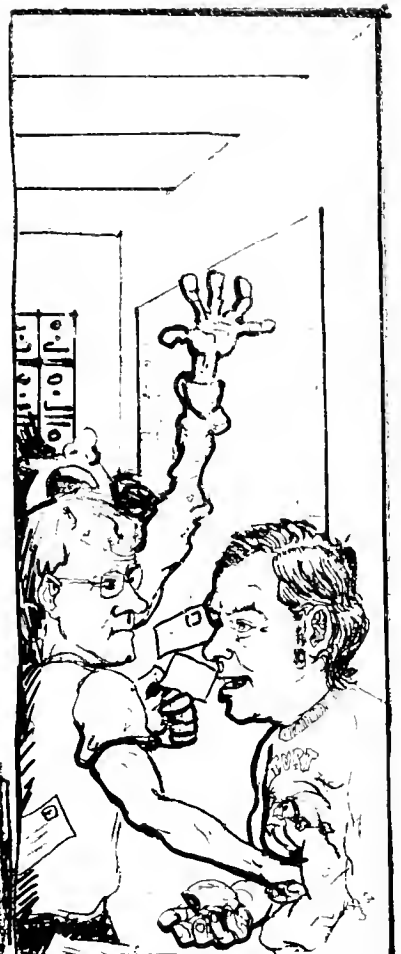




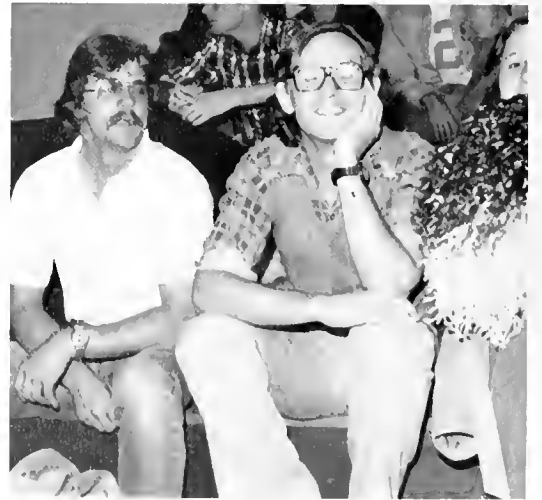








Greg Parmerton







WOMAN
FOR
WIFE

a journey
complete.



PERJELOJE STAFF

1978 - 1979

Michael William Capps, Editor
Clara Kay Allen, Associate Editor
Margaret Ella Gosnell, Business Manager

Layout

Kerry Lynne Allison
Michael Evan Black
Lisa Anne Craver
Cheryl Ann Davis
Ernest Cecil Franklin
Beverly Cheryl Gibby
Lillian Annette Goss
Donna Renee Harriger
Cynthia Diane Kern
Ledy Rene Moreta, Editor
Margaret Ann Mudd
Arthur Kim Pack
Julianna Ramseur
Mary Eva Winecoff
James Edward Zimmerman

Cover

William Frederic Wise

Illustration

William Frederic Wise

Color Photography

Ronald Allen Grenier, Editor
John Osburn Garrison

Graphics

Michael William Capps, Editor
Rick Dean Case
Teresa Katherine Case
Rodney Parker Currin

Photography

Victor Preston Birkner, Editor
Eduard Paul Willelm deNijs
Austin Charles Miner, Jr.

Typists

Mary Kay Dulin
Deborah Lynn Smith
Jerold Talton Watson

Clara Colemon Wood, English Consultant
Arthur Preston Woodruff, Advisor

The PERTELOTE is a direct derivative from Geoffrey Chaucer's Middle English tales of the voyage to Canterbury by a merry band of villagers and theologians. The NONNE PREESTES TALE is the actual source of background for our yearbook, for Pertelote was the wise hen most admired by the gallant Chanticleer in this tale of chivalry and cunning. Published annually since 1935, the PERTELOTE proves a graphic challenge for its male counterpart at Duke University.



The Staff of the PERTELOTE wishes to express its sincere appreciation for the time and effort put forth by Pat Austin, without whom this year's book would not be the photographic success it is destined to be. And a special thanks to Fred Wise for his ink and imagination which has proved that the 1978-1979 PERTELOTE is a graphic work of art.

THIS 1978-1979 PERTELOTE IS RESPECTFULLY
DEDICATED ON BEHALF OF THE CHRISTIAN
PRINCIPLES UPON WHICH BREVARO COLLEGE
WAS FOUNDED. THOUGH THE YEAR BROUGHT
SMILES, TEARS, LAUGHS AND SCARS, MAY THE
FOND MEMORIES OF THIS SCHOOL REST SOLELY IN
THE MIND OF EACH STUDENT. AND MAY THIS
BOOK SERVE AS A GENTLE REMINDER THAT
BEFORE AN INDIVIDUAL CAN ACHIEVE GREATNESS,
HE MUST BEAR UP HIS CROSS AND ABANDON THE
CHILDISH WAYS OF HIS YOUTH...

SEARCHING FOR HIS DREAM.





