

U
T
C
I
S
I
P
I
H
I
P

1935

Class 378.19

Book E668

22741 V20

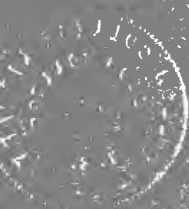
ELON COLLEGE LIBRARY



ELON COLLEGE, N. C.

The Editors







EX LIBRIS

COPYRIGHT

B. T. HOLDEN, II
Editor-in-Chief

A. R. WILLIAMS
Business Manager



VOL. XX

1955

PHIPSICLI

Published by the SENIOR CLASS OF ELON COLLEGE, Elon College, N. C.

DEDICATION

to

MRS. LEON EDGAR SMITH

who for the past four years has done her best to help Elon College in every way possible. It is to her ineffable charm, her pleasing personality that we wish to pay tribute. May she live long and continue always in her work for Elon College. And it is to her that we, the PHIPSI-CL I Staff, respectfully dedicate this twentieth volume of the PHIPSI-CL I, in grateful appreciation of her services to

ELON COLLEGE



MRS. LEON EDGAR SMITH

FOREWORD



*"Of all sad words of tongue or pen,
The saddest are these, 'It might have been'."*

THIS book is incomplete. It has many faults and those who are responsible for them realize this more than those who read it. "It might have been" much better if—many "ifs." But under the circumstances it is the best we could do. We do not hope for praise, however, we only ask that you be lenient with your censure. Even if you do not appreciate it now, we shall feel that our modest efforts have not been wasted, if, at some day in the future, when we have scattered apart, this book will be the cause of pleasant reminiscences of happy days spent at Elon.

CONTENTS



BOOK I THE COLLEGE
BOOK II THE CLASSES
BOOK III ATHLETICS
BOOK IV SPONSORS
BOOK V ORGANIZATIONS

In Memoriam

BILL HORTON

KAPPA PSI NU

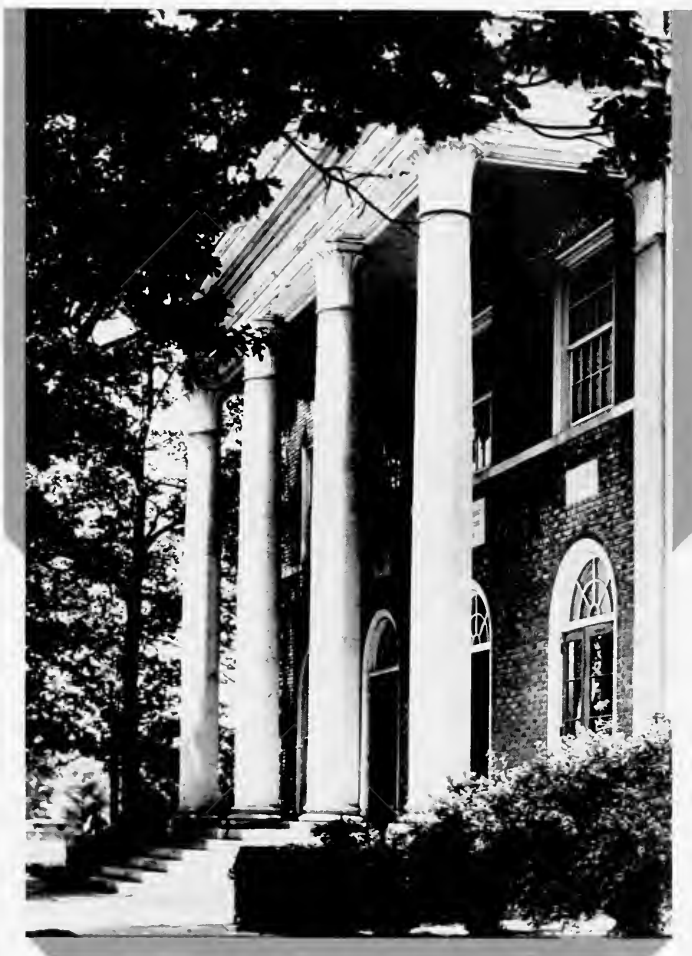
1914-1935

THE FINEST FELLOW A
FELLOW EVER KNEW



COLLEGE

BOOK ONE



WHITLEY MEMORIAL AUDITORIUM



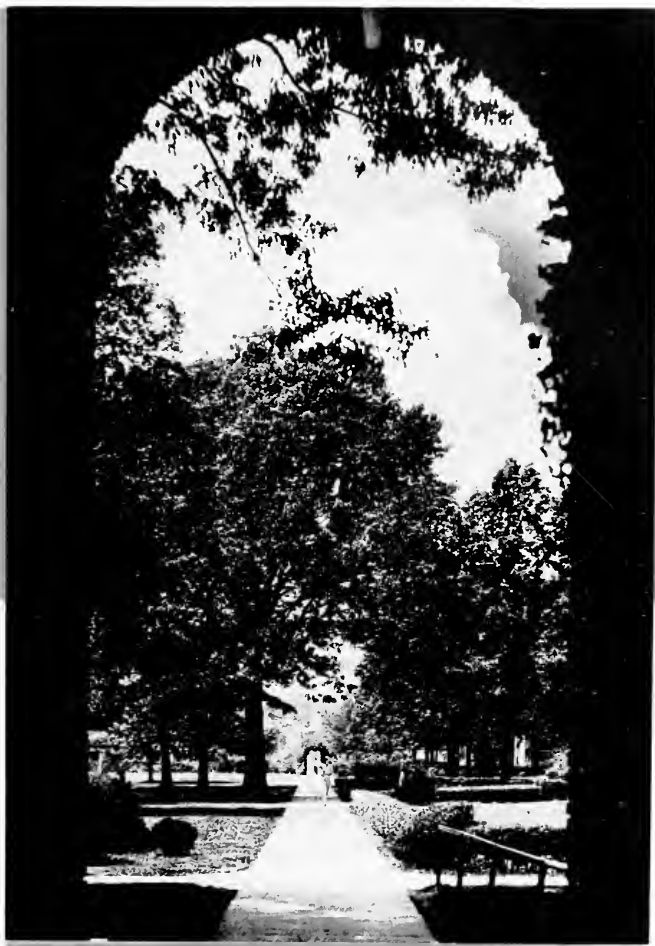
WEST DORMITORY



SOUTH GATE



EAST COLLONADES



WEST COLLONADE ARCH



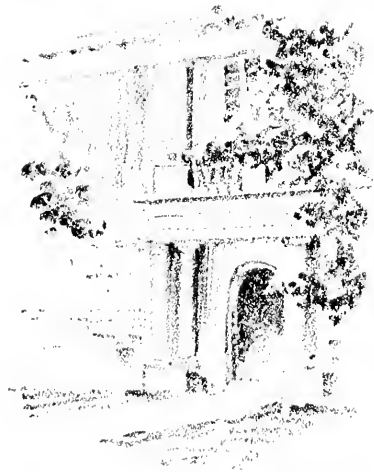
CARLTON LIBRARY



ALAMANCE BUILDING



O'KELLY MONUMENT



ADMINISTRATION



DR. LEON EDGAR SMITH

ALONZO LOHR HOOK
Dean, Professor of Physics
 A.B., M.A., M.S.

FRENCH HAYNES
*Dean of Women, Assistant Professor
 of English*
 A.B., M.A., Ph.D.

JOHN URQUART NEWMAN
*Professor of Biblical Languages and
 Literature*
 Ph.D., Lit.D., D.D.

GRANVILLE T. PRIOR
Professor of History
 A.B., M.A.

JOHN A. CLARKE
*Professor of Latin, German and
 French*
 A.B., M.A., Ph.D.

CAZLYN G. BOOKHOUT
Professor of Geology and Biology
 A.B., M.A., Ph.D.

LILA CLARE NEWMAN
Department of Fine Arts
 Ph.B.

HELEN VALENTINE CHAMBLEE
Voice and Theory
 A.B.

ALFRED APPLE
*Superintendent of Buildings and
 Grounds*





HENRY L. SNUGGS
Associate Professor of English
A.B., M.A.



LINDEN S. DODSON
Professor of Religious Education
M.R.E., B.D., Ph.D.



MRS. OMA UTLEY JOHNSON
Librarian
A.B.



MRS. WAITERS W. HOWELL
Commercial Branches
A.B., M.A.



MRS. NETTIE MCLEAN
*Assistant Superintendent of Buildings
and Grounds*



ETHYLINE REYNOLDS
Dietician



HINTON ROUNTREE
*Assistant Registrar and Business Man-
ager*
A.B.



DWIGHT M. STEERE
*Director of Music, Professor of Piano,
Organ, and Theory*
A.B., M.A., A.A.G.O.



CLASSES

BOOK TWO



SENIORS



SENIOR CLASS OFFICERS

LOUISE LAYTON *Vice-President*

ISABELLE DUNN *Secretary*

MARGARET KELBAUGH *Treasurer*

TO ELON

by

LOUISE LAYTON

*We love her traditions, her ivy clad walls,
Her long-cherished honors and her sacred halls—
Our aim for our dear alma mater so strong,
Is truth, knowledge, service, and victory o'er wrong.
Long, long shall we labor her fame to uphold,
Holding high to the world Maroon and Old Gold.
Carrying on her traditions and making her proud,
Of the class '35 and the rest of the crowd.
We've made honors, won friends, and all these we prize,
We've set our life's sails and we've made the rise,
With hearts that are eager and firm, with steady stride
We'll march upward, still upward, our goal — the skies.*



JENNIE BELLE ABERNATHY
Mebane, N. C.
President Y.W.C.A., 4; Choir 3, 4;
Honor Roll 2, 3.

DONALD GLENN AUMAN
West End, N. C.
Football 1, 2, 3, 4; Baseball 3.



WILLIAM JACOB ANDES
Harrisonburg, Va.
KAPPA PSI NU
President Student Body 4; Transfer
Kent State College 3; Choir 1, 2, 3,
4; Debating 2; College Band 4.

EUGENIA ANNE BOYD
Henderson, N. C.

DELTA Upsilon KAPPA
Vice-President Freshman Class;
Class Historian 4; Student Council
2, 3, 4; Pan-Hellenic Council 4;
Commencement Marshall 1, 2, 3.



SCOTT BOYD
Henderson, N. C.
Class Basketball 1, 2, 3, 4.



VIRGINIA DARE BLACK
Hampton, Va.
TAU ZETA PHI
Choir 1, 2, 3, 4; Student Council
4.





HELEN VALENTINE CHAMBLEE
Red Oaks, N. C.

Transfer from New England Conservatory of Music 3; Wallace Goodrich Chorus 1, 2; Elon Choir 3, 4; Instructor of Voice 3, 4.

WILLIAM OVERBY COX
Elon College, N. C.

SIGMA PHI BETA

Football 1, 2, 3, 4; Baseball 3;
Basketball 1, 2; Class Basketball 3,
4; Pi Gamma Mu 4.



FRANCES ISABELLE DUNN
Star, N. C.

DELTA UPSILON KAPPA

President Student Council 4; Secretary of Senior Class; Student Council 3, 4; Choir 1.



JOHN CHESTER GRIFFIN
Snow Camp, N. C.

IOTA TAU KAPPA

President of Student Senate 4;
Football 2; Class Basketball 3, 4;
Baseball 2, 3, 4; Captain Baseball
4; E Men's Club 4.



MARVIN LINWOOD GUNN

Reidsville, N. C.

KAPPA PSI NU

Pi Gamma Mu 4; Track 1.



JOHN E. GIPSON

Parkton, N. C.

IOTA TAU KAPPA

Commencement Marshall 1; Presi-
dent of Sunday School Class 1, 2;
Choir 1, 4; Ministerial Association
1, 2, 3, 4; President of Ministerial
Association 3; President of North
Carolina Student Ministerial Asso-
ciation; Student Senate 1, 2, 3, 4.





BENJAMIN THOMAS HOLDEN, II
Louisburg, N. C.

IOTA TAU KAPPA

Editor-in-Chief Phipsicli 4; Transfer from Louisburg College 3; Tennis 1, 2, 3, 4; Captain Tennis 4; Pan-Hellenic Council 4; Debating 1, 2; Glee Club 1, 2, 3, 4; Pi Gamma Mu 4.

MARGARET KELBAUGH
Norfolk, Va.
DELTA UPSILON KAPPA
Transfer from Marysville College
3; Treasurer of Senior Class.



WILLIAM HENRY HORTON
Ellington, N. Y.

KAPPA PSI NU

President of Pan-Hellenic Council
4; Honor Roll 1, 2, 3, 4; Chemistry
Lab Instructor 3, 4.

LOUISE LEIGH LAYTON

Franklinton, N. C.

DELTA UPSILON KAPPA

Vice-President of Senior Class;
Secretary-Treasurer 2, 3; Orator 1,
2, 3, 4; Secretary of Freshman Class.



JOHN ROBERT KERNODLE

Burlington, N. C.

SIGMA PHI BETA

Commencement Marshall 3.



ERMA ELIZABETH LLOYD

Mebane, N. C.

TAU ZETA PHI

President of Sunday School Class 1.





JAPETH EDWARDS RAWLS, JR.
Suffolk, Va.

SIGMA PHI BETA

Football 1; Tennis 1; Senate 2;
Manager of Football 3; Dramatic
Club 1, 2; E Men's Club 4.



ROBERT CHASE ROLLINS
Kannapolis, N. C.

IOTA TAU KAPPA

Basketball 1, 2; Football 2; Class
Basketball 4; Senate 4; Secretary
of Freshman Class.



ROBERT MANN
Burlington, N. C.

Transfer from Wheaton College 4;
Football 1, 2, 3, 4; Track 1, 3;
Choir 3; Debating 1, 2, 3, 4; Treas-
urer of Freshman Class.

DELLA SORRELL
Burlington, N. C.

TAU ZETA PHI
President of Day-Students 4.



CLIVE H. SHOFFNER
Snow Camp, N. C.



ARTHUR DONALD STEERE
Elon College, N. C.

KAPPA PSI NU
Transfer from Kent State College
3; Choir 1, 2, 3, 4; Debating 2;
College Band 4; Pi Gamma Mu 4.





ALTON REID WILLIAMS
Hillsboro, N. C.
SIGMA PHI BETA
Business Manager Phipsicli 4; Sen-
ate 3; Class Basketball 3.



WILBUR HAMILTON TUCK
Virginia, Va.

Baseball 1; Basketball 2; President
of Senior Class; Class Basketball 3,
4; Biology Lab Instructor 3, 4;
Vice-President Sophomore Class;
Vice-President Junior Class; Choir
1.



KATHRYN WHITAKER
Franklinton, N. C.
TAU ZETA PHI

Choir 2, 3; Festival Chorus.

BESSIE MCKINNEY
Burlington, N. C.

Telephone Operator 1, 2, 3, 4.



WILLIAM FRANK BURTON
Browns Summit, N. C.

Pan-Hellenic Council 4; Instructor
Physics Lab 3.



CLASS HISTORY

ON THIS occasion, Father Time has granted us permission to turn back the pages of history, and to live again in our under-graduate years. The first page which we turn contains the pictures of sweet, innocent children, who in 1932 were termed "Freshmen." Their pictures are etched in green—the traditional Freshman color—and their faces are expectant, hopeful, and bright. The lordly Sophomores quickly changed these happy expressions to ones of meekness and obedience. The larger pictures on the page represent the Freshmen officers: Leander Mauldin, President; Eugenia Boyd, Vice-President; Robert Rollins, Secretary; William Horton, Treasurer.

We turn another page and we see the wise Sophomores of 1933 in all their glory. Can these learned, sophisticated students be the baby Freshmen of only a year ago? Yes, it is they, and their have done well to elect for their leader William Horton; for their Vice-President, Wilbur Tuck; for their Secretary, Ruth Gamble; for their Treasurer, Louise Layton.

The following page portrays the Juniors of 1934. A bit older and a bit wiser, not quite so sure that they "know it all", but sure that some day they will. These Juniors are still as jolly and as full of fun as they were back in their Freshman days. Mike York led them through this year, with Wilbur Tuck and Louise Layton filling the offices of Vice-President and Secretary-Treasurer.

We turn the last page and behold—the Seniors of 1935. Four years have taken their toll, and only one-half of the original class stands to receive degrees. From this group Wilbur Tuck was elected President; Louise Layton, Vice-President; Isabelle Dunn, Secretary; Margaret Kelbaugh, Treasurer.

This year represents real history, for it was after the Junior-Senior dinner that Elon allowed its students to have an informal dance in the Society Hall.

The Seniors are justly proud of those of their members who have been outstanding in student government work, in academic work, and on the athletic field. They have done their part to help Elon win the North State Championship in three major sports for two consecutive years.

Father Time turns the pages of history, and we stand before you today as the Senior Class of 1935. We pledge ourselves to bring honor and glory to this school of our choice—Elon College.



JUNIORS

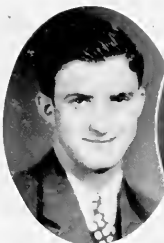


JUNIOR CLASS OFFICERS

ERNEST ASKEW *Vice-President*

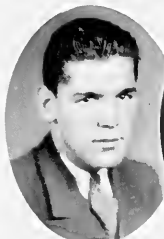
ELMINA RHODES *Secretary*

ERNEST EDWARD ASKEW
Eure, N. C.



HELEN LOUISE BARNEY
Elon College, N. C.
Tau Zeta Phi

CURTIS EBERSTEN BERRY
Boston, Mass.
Sigma Phi Beta



LUTHER CARLTON BOYD
Henderson, N. C.
Sigma Phi Beta

DRURY B. CHANDLER
Durham, N. C.



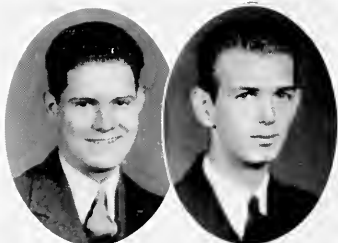
JESSIE MARGARET COBB
Parkton, N. C.
Delta Upsilon Kappa

WILLIAM LLOYD COOPER
Norfolk, N. C.
Sigma Phi Beta



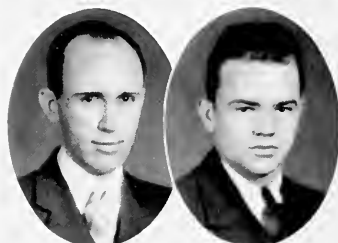
HAZEL BERNICE FARMER
Norwood, N. C.

PHIPSICLI :: 1935



ARMOR LANSON GRANGER, JR.
Norfolk, Va.

CHARLES W. HOLMES
Caldwell, N. J.
Sigma Phi Beta



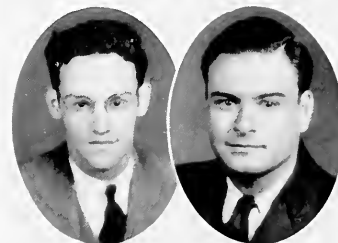
WAITUS WOODARD HOWELL
Goldsboro, N. C.
Kappa Psi Nu

CHESTER ARTHUR HUGHES
Elon College, N. C.
Iota Tau Kappa



WILLIAM W. KIMBALL, JR.
Manson, N. C.
Sigma Phi Beta

MELVIN MULLEN LILLEY
Eure, N. C.
Sigma Phi Beta



ALLAN A. LOYD
Hillsboro, N. C.

DAN WICKER MATHEWS
Mount Olive, N. C.

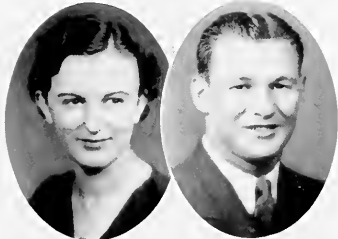
MARTHA NEESE
Burlington, N. C.

RALPH BAIN NEWMAN
Virgilina, Va.
Kappa Psi Nu



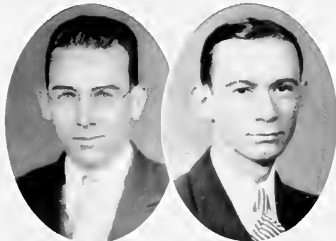
RHETTA E. NEWMAN
Woodleigh, N. C.

WILBURN ERNEST NEWSOME
Salisbury, N. C.
Iota Tau Kappa



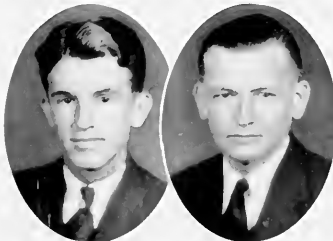
THOMAS ROBERT ROSSER
Jonesboro, N. C.

TERRELL M. SHOFFNER
Burlington, N. C.



HOWARD CONWAY SMITH
Kipling, N. C.

WYALL M. STEVENS
Roanoke, Ala.
Kappa Psi Nu



PHIPSICLI :: 1935



GEORGE CALVIN TAYLOR
Newton, N. C.
Kappa Psi Nu



AUBREY CLAYTON TODD
Norfolk, Va.



JOHN EMILIE TROPPOLI
Neptune, N. J.
Sigma Phi Beta



ETHEL MAE TRUITT
Glen Raven, N. C.



LAWRENCE OVERBY TUCK
Virgilina, Va.
Sigma Phi Beta



MARGARET O'KELLEY WALKER
Brown Summit, N. C.
Tau Zeta Phi



SAMUEL Mc'VER WATSON
Sanford, N. C.
Kappa Psi Nu



ROBERT ALLWYNN WHITTEN, JR.
Portsmouth, Va.
Kappa Psi Nu

OLIVER GEORGE COOK
Norfolk, Va.
Kappa Psi Nu



OLLIE WATTS DEMOSS
Burlington, N. C.

ESTHER SMITH HOPPENSTEDT
Briarcliffe Manor, N. Y.
Tau Zeta Phi



EUGENE STEPHENSON LANKFORD
Elon College, N. C.

ELVA GORDON MARSHALL
Pittsboro, N. C.



HAZEL ANNE MARTIN
Elkin, N. C.
Delta Upsilon Kappa

ALFRED WILLIAM NELSON
Bris, Va.
Iota Tau Kappa



ELMINA CATHERINE RHODES
Windsor, Va.
Delta Upsilon Kappa



Cheerleaders!

Carrying the male.
(He has to be carried!)

Two silent people.

The Thinker!

The darker side of life.

The night after.
(And what a night it was.)

About to leave town.
(Thank goodness!)



SOPHOMORES



OFFICERS OF THE SOPHOMORE CLASS

JOHN CAMERON *Vice-President*

NANCY CADDELL *Secretary*

MARCELLA PEARL ACKENHOUSEN

Cincinnati, Ohio

Delta Upsilon Kappa



DOROTHEA BERRY

Boston, N. C.



LOUISE BRENDLER

Irvington, N. J.

Tau Zeta Phi

EVELYN RAY BOONE

Burlington, N. C.

Tau Zeta Phi



FIELDS PAUL BRIGGS

Greensboro, N. C.

THOMAS HOLLAND BRITT

Suffolk, Va.

Sigma Phi Beta



STANLEY BURGESS

Courtland, Va.

NANCY MARGARET CADDELL

Elon College, N. C.

Delta Upsilon Kappa



JOHN L. CAMERON

Jonesboro, N. C.

Sigma Phi Beta

ARTHUR CAPPA

Neptune, N. J.





MARGARET CHASON
Lumber Bridge, N. C.

JAMES ALLEN EDWARDS
Henderson, N. C.



EDYTHE ELIZABETH ERNST
Cincinnati, Ohio
Delta Upsilon Kappa

CHARLES THOMAS EVANS
Charlottesville, Va.
Sigma Phi Beta



ODESSA SUE GALLOWAY
Hamlet, N. C.
Delta Upsilon Kappa

SOLOMON SILAS GILMORE
Sanford, N. C.



REBECCA JOY GRIGSBY
Elon College, N. C.
Tau Zeta Phi

MARY HARRINGTON
Sanford, N. C.



HILDA LEE HEATWOLE
Burlington, N. C.
Tau Zeta Phi

JANIE ESTHER HITE
Gibsonville, N. C.

MARY ELOISE HOLLAND
Holland, Va.



SARA VIRGINIA HOOK
Elon College, N. C.
Tau Zeta Phi

CATHERINE DARDEN JOLLEY
Holland, Va.



WILLIAM C. JONES
Charlottesville, Va.

JOHN THOMAS KELLEY
Fayetteville, N. C.



WILLIE HAYWOOD KIMBALL
Manson, N. C.
Delta Upsilon Kappa

FRANCIS BUSHMAN LAMBETH
Brown Summit, N. C.



BRUCE EASTMAN LEDDEN
Sanford, N. C.
Iota Tau Kappa

WILLIAM C. LOY
Shelby, N. C.



LISLIE STEPHEN MANCHESTER
Bristol, Conn.

PHIPSICLI : : 1935



VERNA ESTELLE MCGOUGAN
Lumber Bridge, N. C.

NEIL WOODROW MCINNIS
West End, N. C.



HUGH MCLEAN
Broadway, N. C.

WILLIAM COBB MOSS
Wilson, N. C.
Sigma Phi Beta



WILLIAM JUNIUS NEESE
Graham, N. C.
Iota Tau Kappa

SARA KAUFMAN NEESE
Burlington, N. C.



LEON STAGG NEWMAN
Virgilina, Va.
Sigma Phi Beta

PAULINE MARGARET OLIVER
Cedar Grove, N. C.



CLARENCE POE PARKER
Gaysburg, N. C.
Kappa Psi Nu

WOODROW WILSON PILAND
Suffolk, Va.

LUKE WALTER QUERY, JR.
Charlotte, N. C.
Sigma Phi Beta

CLYDE WESLEY RUDD
Elon College, N. C.
Iota Tau Kappa

GLADYS SANDLIN
Burlington, N. C.

CHARLES EDWARD SAUNDERS
Kenbridge, Va.

CLARA MAE SHOFFNER
Burlington, N. C.

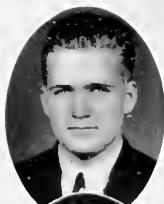
LEON EDGAR SMITH, JR.
Elon College, N. C.
Sigma Phi Beta

MARTHA CRAVEN SUTTON
Lillington, N. C.
Delta Upsilon Kappa

GARLAND MOSES TALTON
Oxford, N. C.
Sigma Phi Beta

RUSSELL THOMAS THOMPSON
Burlington, N. C.
Iota Tau Kappa

HENRY RUDOLPH WALSER
Salisbury, N. C.
Sigma Phi Beta





FRESHMEN



FRESHMEN CLASS OFFICERS

JOSEPH CARUSO *Vice-President*
MERLE RAYBURN *Secretary*
RUTH BLACK *Treasurer*

J. ALEXANDER ALBRIGHT
Elon College, N. C.

LONNIE MAVERT ARNOLD
Fuquay Springs, N. C.

KATHERYN BAKER
Holly Springs, N. C.

JOHN VAN BARROW
Snow Hill, N. C.

ANNIE LOUISE BAYNES
Burlington, N. C.

RUTH OLIVER BLACK
Hampton, Virginia

ROY INGRAM BOYD
Henderson, N. C.
Kappa Psi Nu

HAL EUGENE BRADLEY
Varina, N. C.

JACQUE BROTHERS
Suffolk, Va.
Delta Upsilon Kappa

BILLIE MOZELOUS BROWN
Gates, N. C.

NANCY LOU BUTNER
Charthage, N. C.

GEORGE LAWRENCE CAMERON, JR.
Olivia, N. C.
Kappa Psi Nu

RAYMOND GERARD CANNON, JR.
Bellerose, N. Y.
Iota Tau Kappa

JOSEPH CARUSO
Riverside, N. J.
Iota Tau Kappa

RALPH LEMFUEL CASKEY
Mooresville, N. C.
Kappa Psi Nu

JAMES MILTON CHESHIRE
Sanford, N. C.

WORTH MCKAY CLONINGER
Charlotte, N. C.



PHIPSICLI :: 1935



JAMES FLOYD COBLE
Burlington, N. C.

LAURA VIRGINIA CONYES
Ossining, N. Y.
Delta Upsilon Kappa

CARL COLNIM COOPER
Sanford, N. C.

JOSEPH WILLIAM COX
Elon College, N. C.

TRUITT ARMFIELD COX
Ramseur, N. C.
Kappa Psi Nu

HARRY BENNET CROW
Waxhaw, N. C.
Iota Tau Kappa

GORDON HOLMES CRABILL
Washington, N. C.

MARGARET WILLIAMS DAIL
Snow Hill, N. C.

IRA LEONARD DOWDEE
Raleigh, N. C.

JESSIE RUTH DUKE
Elon College, N. C.

ALLIE GARNETT EDWARDS
Vass, N. C.

GARLAND LAWRENCE FARRELL
Aberdeen, N. C.

ALLEN FRANKLIN FAUCETTE
Brown Summit, N. C.

ISAAC LEN FESMIRE
Greensboro, N. C.

SARA ELIZABETH FOWLKES
Yanceyville, N. C.

ROBERT HUGHES FOWLER
Snow Camp, N. C.
Iota Tau Kappa

AURELIA FUTRELL
Rich Square, N. C.

1935 : : P H I P S I C L I

MARGARET MASKE GALLOWAY
Hamlet, N. C.

Delta Upsilon Kappa

ALAN TOBIAS GARRISON
Burlington, N. C.

LAWRENCE GILMORE GORDON
Brown Summit, N. C.

DORIS VIRGINIA GRAHAM
Burlington, N. C.

Tau Zeta Phi

ANNIE LEE GREENE
Raleigh, N. C.

ARTHUR ALLAN GREENWALD
Huntington, N. J.
Iota Tau Kappa

JUNE GRIFFEY
Lancaster, Ohio

ANNIE MAUDE HARRELL
Gatesville, N. C.

JESSE WELDON HARRINGTON
Merry Oaks, N. C.

LOUISE AUGUSTINE HARRINGTON
Holly Springs, N. C.

LOFTON HOWELL HARRIS
Siler City, N. C.

WINGATE WOOLEY HARRIS
Candor, N. C.

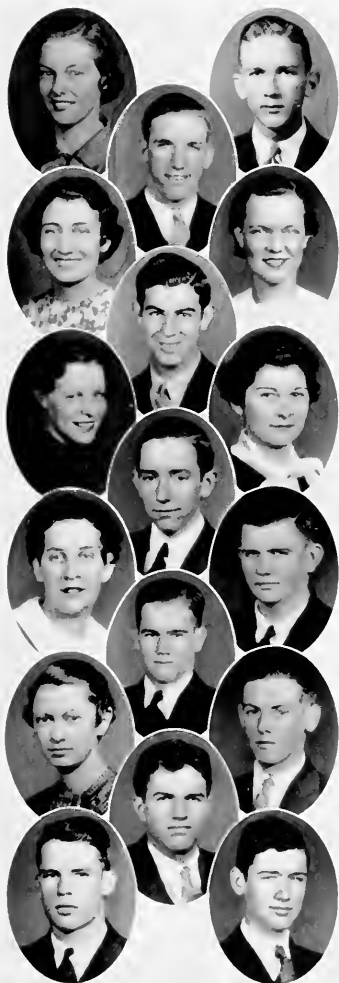
ELOISE HAY
Burlington, N. C.

BERNICE WILLIAM HESTER
Roxboro, N. C.

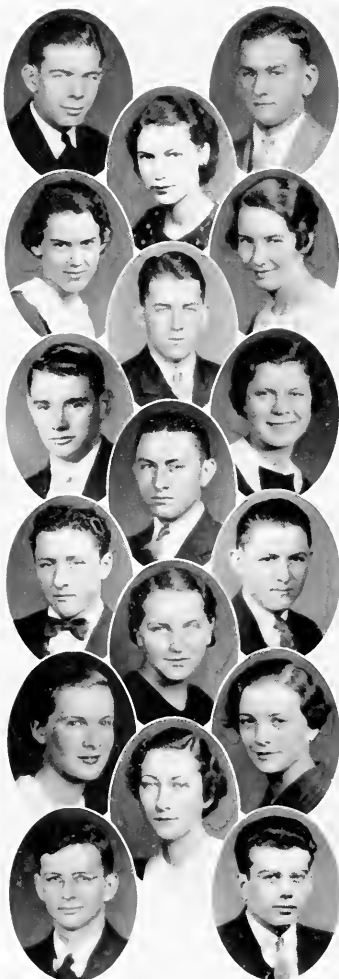
RANDOLPH THOMPSON HESTER
Roxboro, N. C.

ROBERT ALLAN HESTER
Hurdle Mills, N. C.

HAROLD HOLMES HILBURN
Fayetteville, N. C.



PHISICLI : : 1935



JOSEPH LAWRENCE HILGREEN
Caldwell, N. J.

EUGENE WILTON HODGES
Charlotte, N. C.

LAURA MAE HOLT
Graham, N. C.

MARGARET WHITNEY HOOPER
Akron, Ohio
Tau Zeta Phi

MIRIAM WILLIS HOXIE
Unionville, Conn.
Tau Zeta Phi

THOMAS MARCELLOUS HUGHES
Farmville, N. C.
Sigma Phi Beta

HOWARD HUNTER
Newell, N. C.

MARY ALNER ISELEY
Elon College, N. C.

FDWIN GRAY JONES
Wadesboro, N. C.
Kappa Psi Nu

EARL MYERS JONES
Wadesboro, N. C.

HOWARD WILSON JONES
Wadesboro, N. C.
Kappa Psi Nu

MARY ELOISE JONES
Woodleigh, N. C.

MARGARET ELAINE JOYCE
Norwood, N. C.

DOROTHY ANN KIMBALL
Townsville, N. C.

VIRGINIA KIRKLAND
Burlington, N. C.

RICHARD WAGGONER LACHMAN
Norfolk, Va.
Kappa Psi Nu

LEON DAVID LASSER
Caldwell, N. J.

WILBUR CHAPMAN LANKFORD
Elon College, N. C.

BAXTER HUGH LATTA
Hillsboro, N. C.

MARY ELIZABETH LILLEY
Waverly, Va.

BERNARD LIJEN
Irvington, N. J.
Iota Tau Kappa

LUTHER ALEXANDER LINEBERGER
Charlotte, N. C.

RUSSEL FRANCIS LITTEN
Burlington, N. C.

WADE MAXWELL LITTEN
Gibsonville, N. C.

MARY WARD LOY
Shelby, N. C.

NELL FRANCES LOY
Burlington, N. C.

HAZEL MANN
Kipling, N. C.

WILLIAM HOLT MANESS
Snow Hill, N. C.

GERALDINE MANGUM
Burlington, N. C.

RIGHARD MATHEWS
Candor, N. C.

ERNEST MICHAEL MONEFALCO
Shelton, Conn.
Iota Tau Kappa

ROBBIE JU'ANITA MORGAN
Elon College, N. C.
Tau Zeta Phi

VICTOR JAMES MURCHISON
Liberty, N. C.

JOHN McKENZIE McLEAN
Broadway, N. C.



PHIPSICLI :: 1935



WAYNE DANIEL McLEAN
Lillington, N. C.

ELIZABETH MAE NICHOLS
Durham, N. C.

JAMES DANIEL PARHAM
Charlotte, N. C.

WALTER M. PATTERSON
Burlington, N. C.

THOMAS MARSHALL PERRY, JR.
Jonesboro, N. C.

ETHYL PETTY
Sanford, N. C.

LEWIS MARSHALL PHELPS
Cedar Grove, N. C.

JOHN JOSEPH POINTER
Samoia, N. C.

EMMALINE HOLLAND RAWIS
Suffolk, Va.

MERLE JUNE RAYBURN
Briarcliffe Manor, N. Y.

RUBY ETHELINE REYNOLDS
Leaman, N. C.

HORACE SCOTT RHINEHART
High Point, N. C.

EDNA RIVES
Broadway, N. C.

GEORGE CARRAWAY ROGERS
Graham, N. C.

FRANCES ROUNTREE
Norfolk, Va.
Delta Upsilon Kappa

PAUL AUBREY ROYE
Chattanooga, Tenn.

NELL JANE RUDD
Brown Summit, N. C.

HELEN CATHERINE SCALES
Greensboro, N. C.

ISIAH SEARS
Gibsonville, N. C.

MARY ALICE SLOAN
Charlotte, N. C.

CHARLES PRICE SLOAN, JR.
Charlotte, N. C.

MARGARET REID SMITH
Kipling, N. C.

NANNIE SNIPES
Varina, N. C.

CRATON GILMER STEVENS
Hertford, N. C.

MARY ALMA STACKHOUSE
Burlington, N. C.

HATCHER P. STORY
Courtland, Va.
Sigma Phi Beta

DANIEL BARRETT SUMMERS
Elon College, N. C.

JESSIE PEARL TART
Dunn, N. C.

CLARA MAE THOMAS
Broadway, N. C.

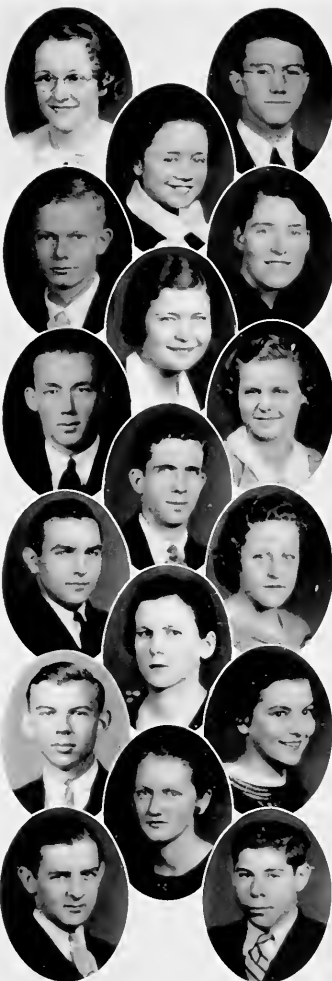
CLARANCE REID VUNCANNON
Troy, N. C.

BLANCHE WAGONER
Brown Summit, N. C.

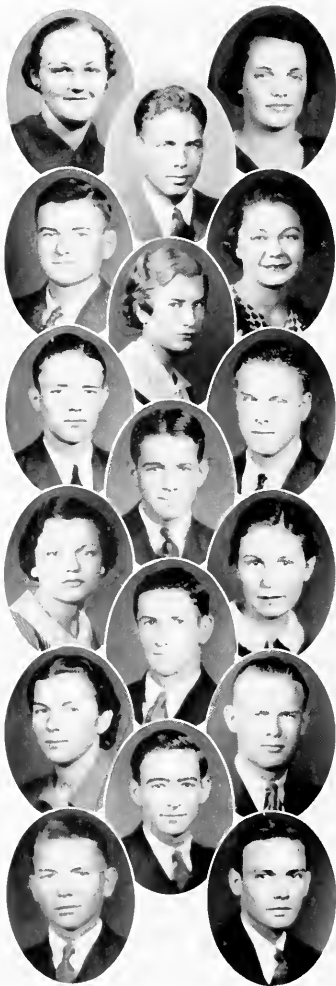
ANNIE HURDLE WALKER
Burlington, N. C.

LANDON WALKER
Charlotte, N. C.

JESSE MARSHALL WALKER
Burlington, N. C.



PHIPSICLI :: 1935



BESSIE BEATRICE WILKINS
Haw River, N. C.
Tau Zeta Phi

EVELYN ELIZABETH WILLIAMS
Raleigh, N. C.

WILLIAM HENRY WOMACK
Spencer, N. C.

WALTER YARBOROUGH
Dunn, N. C.

NANCY BURWELL BARRETT
Dendron, Va.

IVA RUTH BUCKNER
Graham, N. C.

CRAIG HARRINGTON
Moncure, N. C.

ARTHUR LEE HARTSELL
Jackson Springs, N. C.

PURVIS LESTER HOWARD
Hallison, N. C.

BERTHA DELORES LAMM
Burlington, N. C.

HAZEL MANN
Kipling, N. C.

HENRY SPECK MORGAN
Prospect Hill, N. C.

CONRADE LAVERNE PORTERFIELD
Haw River, N. C.

TERRY E. ROBBINS
Burlington, N. C.

EDWARD DRATON WHITE
Charlotte, N. C.
Kappa Psi Nu

JAMES WILBORN
Varina, N. C.

DAVID ELBERT YARBOROUGH
Jonesboro, N. C.

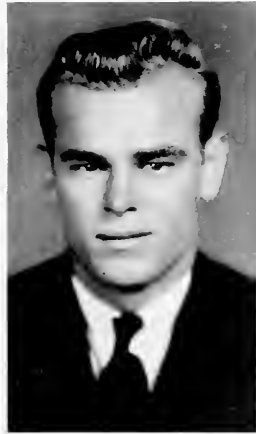


ATHLETICS

BOOK THREE



D. C. WALKER



BASEBALL



PAUL "LEFTY" CHEEK

"Lefty," first baseman, and captain-elect of the team, is the most brilliant fielder in the conference. Who knows but that some day he might be a major leaguer.

JOHN GRIFFIN

Captain of this team, and third baseman, he has been called the most dangerous of the entire team at the bat.



WEB NEWSOME

Second baseman, and the best batter in the "Little Six" last year, had but a fair season. Better luck pitching next year, Web.

"MIKE" BRIGGS

Star pitcher for Elon, who beat Guilford twice, is slated for an even better year next year.



TALMADGE JOBE

Right-handed pitcher, is a rarity, a pitcher who can hit. And how he can hit.

"POLLY" AUMAN

Catcher, who made up for his inexperience behind the plate, by his ability to hit.

"SALLY" NEWMAN

Left-fielder, known for his ability to hit, and his ability to pick a guitar.

LAWRENCE TUCK

Centerfielder, and the league's best batter, he is noted, not for his hitting, but for his wonderful ability to field. May next year be as successful as this year's was.

"RUDY" WALSER

The team's manager. And what a mouth. "Rudy" won as many games for Elon as the rest of the team. And he could certainly manage the team, by giving them his best imitation of "Peahead".

"BALDY" WILLIAMS

Here we have a good catcher but a weak hitter. But that's what we needed. And he handled the pitchers like a major leaguer.

"MUDDY" WATERS

The league's leading pitcher, last year, and the right-fielder this year. Such is life.

RALPH NEAL

A left-handed pitching experiment of "Peahead's" that turned out better than expected. He could hit, and he could field. What more could you ask of a pitcher. He could even pitch.

HOWARD SMITH

Shortstop. The fastest man on the field. When a ball was hit, there was Smitty. Come back next year, and hold down the shortstop, as well as you have done this year.



BASEBALL SEASON

OF THIS season, there is at present, no record. Due to carelessness on the part of ye edditer, and others, the records of the baseball season are gone. However, this we can say, that Elon in Baseball, as in all other sports, came out victorious.

The record for this year is one of greatness. Starting off with the loss of a second baseman and a catcher, and with no reserve strength, Elon again won the Conference, losing only two conference games. Led by "Mike" Briggs and Talmadge Jobe in the box, "Lefty" Cheek, "Smitty", and Tuck in the field, and Tuck, Griffin, and Newman in the batter's box, the team came through a season, which included wins over Wake Forest, University of Delaware, and Springfield University.

For next year, prospects look even better. Only one man will be lost to the team, "Muddy" Waters, the man who pitched Elon to a 1-0 win over Carolina, in the spring of '33.

So, to the baseball team of '35, the PHIPSICLI wishes the best of luck, and hopes the editor can keep up with the scores.



FOOTBALL



Hauselt
Guard

Day
Tackle

Bradley
End

Hunter
Tackle

Tart
Tackle

Hughes
Center

WHEN all the liquor and pop had been downed, signifying the end of another football season, it is with pardonable pride that we look back on the season and say, "Well done, Pea-head."

The team started off slowly, even badly by losing to Davidson by the lopsided score of 33 to 6. Here Elon met her strongest opponent, at a time when she was least prepared to do so. With four new men in the line-up, there was not enough time to get the players used to playing with each other.

After losing this game, the team came back to Elon, and got to work. And from then on we find no games that reflect harshly on Elon.

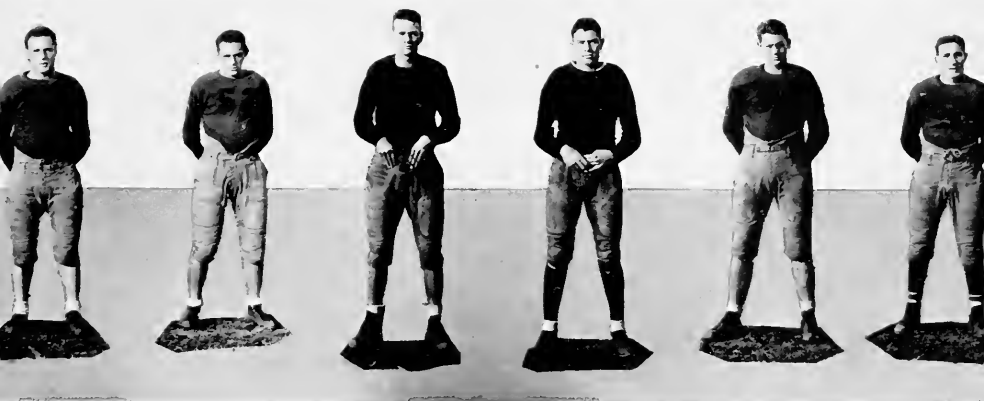
The next week-end the team travelled to Emory, Va., where they held

Emory and Henry to a six to nothing win.

Now Elon began to play football as it should be played, and from then to the entire end of the season the records show nothing but victory after victory.

First on the list came Langley Field in Virginia. Outplaying the Airmen in every part of the game, yet they won only by a score of 7 to 0. Newsome's passes in this game were simply perfect, and "Trop's" work at end was a sight for delight by Elon and a sight for despair for Langley Field.

Next, Elon played her hardest conference match — one with Catawba. Here Elon played a team which every newspaper in the state picked to beat us. Instead the result was a scoreless tie, which incidentally should have been won by Elon, but which was lost



Schlitter Jones Herington Abbott Taylor Minette
End *Back* *End* *Back* *Tackle* *Back*

by sloppy play at the goal line. Abbott, freshman fullback, made possible many attacks on Catawba's goal line by his punting, one of which went over 85 yards.

However, this was a moral victory, if the team had any morals, for the Catawba team had been selected to beat Elon, by at least two touchdowns.

Following this moral victory, Elon then went to Ashland, Va., to play Randolph-Macon. Here the team played their best game of the season. They won from Randolph-Macon by the score of 32 to 0. While it is the backfield men who get the credit for these touchdowns, we would like to pay tribute to the gallant line, who held back the hard-charging line of Randolph-Macon, when on defense, and who opened the holes for the backfield men of

Elon, when on offense. One of the backfield players that day said, "Anybody could make a touch-down that day, the way that line was opening those holes."

The next week-end found the team again on the road, with Newport News as the destination, and Naval Apprentices as the victims. Here Elon again showed the world what she could do in the way of a football team. Newsome starred in the game until a couple of his ribs were broken. Then Bill Jones went ahead to show the spectators that when the team lost a passer, she gained a great open-field runner. Another star in this game, as in all others that he played in, was Jack Stallings, ten-second man from Reidsville, and later chosen All-Conference Halfback; Walser, who was able to repeat his All-Conference rating this year; Caruso,

PHIPSICLI :: 1935



Rawls
Manager

Caruso
Back

Walser
Center

Newsome (Capt.)
Back

Troppoli
End

Auman
Guard

who has been called the sweetest blocking halfback in the conference; and many others. None was outstanding, and it was as a team that they were able to perform so well and not as individuals.

Next, Elon played the strong Lenoir-Rhyne team. This was known as Homecoming Day, and the alumni came out in large numbers.

This game started out rather slowly, due chiefly to the coolness of the day and the fact that it was raining.

In the beginning of the second period, however, Elon, led by Bill Jones, substitution for Web Newsome, pushed over a touchdown and added the extra point.

Then to show that the first touchdown was no accident, the trick was re-

peated with Stallings carrying the ball across for the touchdown, and then making the extra point good.

Lenior-Rhyne, however, fought back hard and scored a touchdown, the first, incidentally since the Emory and Henry game. She failed to make the extra point good and the game ended with the score 13 to 6.

After this hard game with Lenoir-Rhyne, came a game with Western Carolina Teachers College. Here Elon met a lighter, a less-experienced team, but a team which did not know the meaning of quit, and who fought to the last minute of play. The score 37 to 6.

Now Elon had but one more game to play, and that with Guilford. Coach Walker was heard often on the field making sarcastic remarks about the

1935 :: PHIPSI CLI



Neal
Back

Cox
Tackle

Cromlish
End

Womack
Guard

Hartsell
Guard

Mastro
Tackle

playing ability of the first string men, but one could tell that he was proud of the way that the team was working.

Finally, on Thanksgiving Day, Elon turned out to see the battle of the year—one with Guilford. There was little to be thankful for, however, on both sides. It was cold, with a strong wind, the field was sloshy, because of the heavy rain for the past two days, and it rained all during the game.

In spite of this handicap, Elon clearly demonstrated to Guilford the reason why Elon was tied for first place in the conference, by outplaying Guilford in every way.

The score was only 12 to 0, but it is safe to say that had the field been dry, Elon would have doubled the score at least. Bill Jones, proved himself the

man of the hour by scoring both touchdowns himself, one on an off tackle plunge, and the other on a wide end sweep.

While Elon was winning from Guilford, Lenoir-Rhyne was playing Catawba to a scoreless tie, thereby giving Elon undisputed possession of the North State Championship in Football.

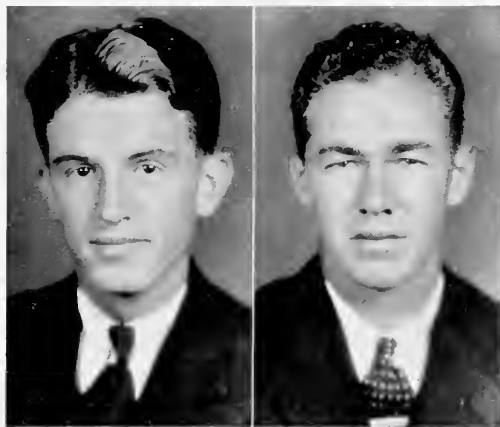
After the game, John Troppoli was chosen captain of the team for next year.

This win, incidentally, marked the third straight year that Elon has won the Championship in football.

And in conclusion, may we say to the team of this year, "Great Work." May next year be as successful as this one was.

FOOTBALL RESULTS

Sept. 22—Davidson	33	Elon	6
Sept. 28—Emory Henry	6	Elon	0
Oct. 6—Langley Field	0	Elon	7
Oct. 13—Catawba	0	Elon	0
Oct. 20—Randolph-Macon	0	Elon	32
Oct. 26—Naval Apprentice	0	Elon	26
Nov. 10—Lenoir-Rhyne	6	Elon	13
Nov. 17—W. C. T. C.	6	Elon	37
Nov. 29—Guilford	0	Elon	12



BASKETBALL

PHYSICLI :: 1935



Tuck
Forward

Check
Guard

Roy
Guard

Bradley
Center

Briggs
Manager

Smith
Forward

THIS year's team has been called one of the greatest in the history of Elon College. Starting with four members of last year's team, one of which later dropped out, "Peahead" built a team which lost but one conference game and five non-conference games.

The team lost to such teams as Carolina, George Washington, Davidson, and Saint Johns.

After winning the conference championship handily, the team entered the Tri-State Tournament, which was held at Charlotte, N. C. In this Elon again

PHIPSICLI :: 1935



Cameron
Guard

Askew
Forward

Lilien
Forward

Fesmire
Center

Cromlish
Guard

came out victorious, winning from such teams as Erskine, Lynchburg, High Point and others.

At the close of this extremely successful season, Ernest Askew, a forward, and a junior this year was chosen

to lead Elon's team through, what we hope will be as big if not bigger than this year, next year's successes. Ernest is aptly fitted for the position, and we wish him many successes in his work as captain next year.

BASKETBALL

Jan. 3—Elon	21	Carolina University	34
Jan. 9—Elon	40	Roanoke	22
Jan. 10—Elon	27	Randolph-Macon	28
Jan. 11—Elon	33	George Washington U.	34
Jan. 12—Elon	25	Saint Johns	35
Jan. 15—Elon	43	Roanoke	20
Jan. 24—Elon	35	W. C. T. C.	44
Jan. 26—Elon	43	High Point	21
Jan. 29—Elon	49	Guilford	26
Feb. 2—Elon	33	High Point	25
Feb. 7—Elon	43	Catawba	32
Feb. 8—Elon	39	Lenoir Rhyne	25
Feb. 9—Elon	43	Davidson	46
Feb. 12—Elon	66	A. C. C.	17
Feb. 16—Elon	38	Guilford	21
Feb. 19—Elon	42	Catawba	27
Feb. 21—Elon	37	Lenoir Rhyne	23
Feb. 23—Elon	58	A. C. C.	24
Feb. 24—Elon	49	E. C. T. C.	18



TENNIS



TENNIS SQUAD

DANIEL JONES *Coach*

JAMES PARHAM *Manager*

DANIEL JONES

GORDON CRABILL

BEN T. HOLDEN, II

L. E. SMITH, JR.

GENE LANGFORD

JIMMIE PARHAM

"MURPHY" TULCHAINSKY

ARTHUR GREENWALD

GEORGE TAYLOR

"DOC" WHITE

LONDON WALKER

TENNIS prospects for this year are exceedingly good. For the first time, in several years, Elon has gotten several good tennis players. "Rusty" Jones, "Butch" Crabill, and "Artie" Greenwald, freshmen, are Nos. 1, 2, and 3 respectively. And we have three varsity members of last year's team back.

In the first match, played with State College, Elon won. Jones, Crabill, Greenwald, and Holden won in singles. May this team continue in its success.



SPONSORS

BOOK FOUR



MISS BETTIE FARNWORTH

*Sponsor Phipsicli
and Tennis*



MISS NANCY CADDELL

Sponsor Senior Class



MISS JESSIE COBB
"MISS ELON"
Sponsor Football

PHIPSICLI : : 1935



CHINT LEE
(Isn't he anemic.)

"FUZZ" TUCK
(Down but not out. Here's to
you.)

CAPTAIN ASKEW
(Substitute forward.)

"Ray" for Cannon. He passed a
course.

Three of a kind!

Married? You guess.

Old Lady.

The mighty Jones in action!

Tight (?) rope walker.

"Smitty" and Laverne.

The College Bartender!

Two great characters!

Ye edditer in pusson!

Sophomore class president.



ORGANIZATIONS

BOOK FIVE

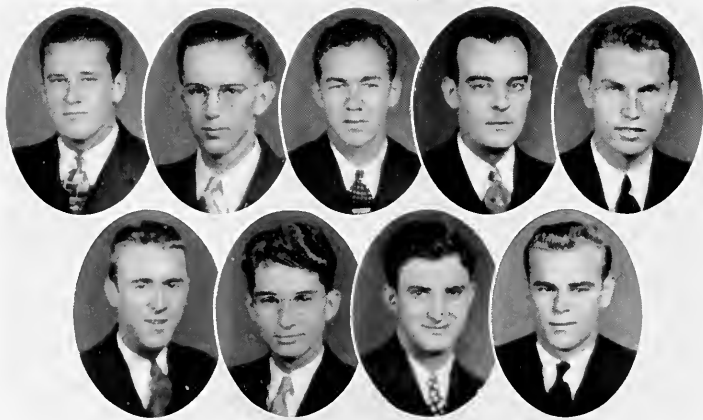


STUDENT OFFICERS

WILLIAM ANDES*President Student Body*

JOHN C. GRIFFIN*President Student Senate*

ISABELLE DUNN*President Student Council*



STUDENT SENATE

- RALPH NEAL*Sophomore*
 BILL HORTON*Senior*
 LAWRENCE TUCK*Junior*
 JOHN GIPSON*Senior*
 ROBERT ROLLINS*Senior*
 WILLIAM COOPER*Junior*
 LAWRENCE CAMERON*Freshman*
 ERNEST ASKFW*Junior*
 JOHN GRIFFIN*Senior*
 PAUL CHEEK*Sophomore*



STUDENT COUNCIL

- ELMINA RHODES *Junior*
- LOUISE LAYTON *Senior*
- MARGARET CHASON *Sophomore*
- VIRGINIA DARE BLACK *Senior*
- JEAN BOYD *Senior*
- ISABELLE DUNN *Senior*
- EDITH ERNST *Sophomore*
- HAZEL MARTIN *Junior*
- MERLE RAYBURN *Freshman*
- MARGARET KELBAUGH *Senior*



ELON COLLEGE BAND

LONDON WALKER	<i>Director</i>
MARGARET JOYCE	<i>Alto Horn</i>
WORTH CLOINGER	<i>Bass Drum</i>
RAYMOND CANNON	<i>Snare Drum</i>
HAROLD HILBERN	<i>Cornet</i>
LUKE QUERY	<i>Cornet</i>
BILL LOY	<i>Cornet</i>
ALFRED NELSON	<i>Cornet</i>
JAMES WHITE	<i>Cornet</i>
WILLIAM ANDES	<i>Bass Horn</i>
BILL HORTON	<i>Trombone</i>
GRADON WHITE	<i>Saxophone</i>
ALEX LINEBERGER	<i>Saxophone</i>
EUGENE LANKFORD	<i>Trombone</i>
OLIVER COOK	<i>Bass Horn</i>



ELON SINGERS

DWIGHT STEERE *Director*
 HELEN CHAMBLEE, *Instructor of Voice*

SOPRANOS

MARTHA SUTTON
 EDNA RIVES
 ELOISE HOLLAND
 SARA VIRGINIA HOOK

ELIZABETH FOWLKES
 EMMA WOODSON
 REBECCA SMITH
 VIRGINIA CONYES
 ANNIE LEE GREEN

PAULINE OLIVER
 FRANCES DEVINEY
 KATHRYN WHITAKER
 AURELIA FUTRELL

TENORS

OLIVER COOK
 ISSAC FESMIRE
 BEN T. HOLDEN, II
 JAMES WILBURN

JOHN MACLEAN
 SOLOMON GILMORE
 JOHN GIPSON

LEONARD DOWDEE
 WALTER PHELPS
 VICTOR MURCHISON
 LAWRENCE CAMERON

ALTOS

VIRGINIA DARE BLACK
 ESTHER HOPPENSTEDT
 CATHERINE JOLLY
 JUNE GRIFFEY

BURWELL BARRETT
 MARGARET KELBAUGH
 SUE GALLOWAY
 MAXINE COVINGTON

RUTH BLACK
 MARGARET HOOPER
 MARY LILLEY
 EVELYN WILLIAMS

BASSES

ARTHUR STEERE
 RALPH CASKEY
 BILLY ANDES

RYLAND JOHNSON
 BILL HORTON
 L. E. SMITH, JR.
 LANDON WALKER

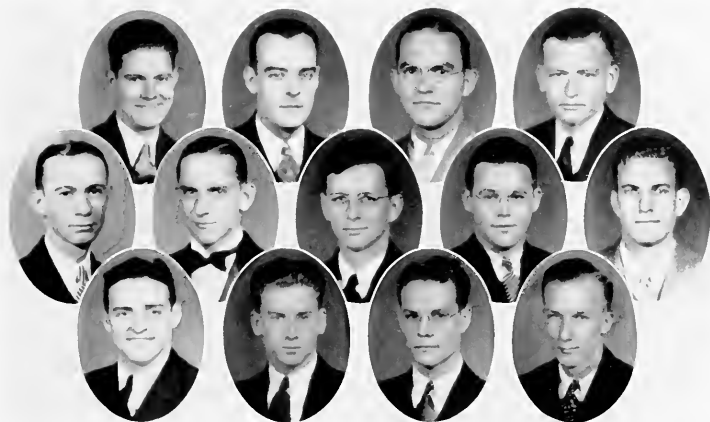
JESSE HERINGTON
 THOMAS BRITT
 HAROLD HILBERN



DRAMATIC CLUB

DOROTHY KIMBALL
CHARLES HOLMES
DICK KIMBALL
THOMAS BRITT
MERLE RAYBURN
LOUISE BRENDLER
BILLY COBB MOSS
VIRGINIA CONYES

BILL LOY
DANIEL JONES
AURELIA FUTRELL
REBECCA SMITH
CLYDE RUDD
BEATRICE WILKINS
L. E. SMITH
MARCELLA ACKENHAUSEN



MINISTERIAL ASSOCIATION

LANSON GRANGER*President*

JOHN E. GIPSON*Vice-President*

CLARENCE POE PARKER*Secretary*

MILLARD STEVENS
TERRELL SHOFNER
ROBERT WHITEN
RICHARD LACHMAN
JUNIOUS NEESE

JOHN KELLY
ROBERT MANN
STANLEY BURGESS
RUSSELL THOMPSON
WILLIAM ANDES



PHIPSICLI STAFF

BEN T. HOLDEN, II	<i>Editor-in-Chief</i>
ALTON WILLIAMS	<i>Business Manager</i>
ROBERT WHITTEN	<i>Associate Editor</i>
MILLARD STEVENS	<i>Advertising Manager</i>
MARY LOY	<i>Typist</i>
DICK KIMBALL	<i>Compiler</i>
MARGARET GALLOWAY	<i>Class Editor</i>
ERNEST MONTEFALCO	<i>Athletic Editor</i>
JESSIE COBB	<i>Typist</i>



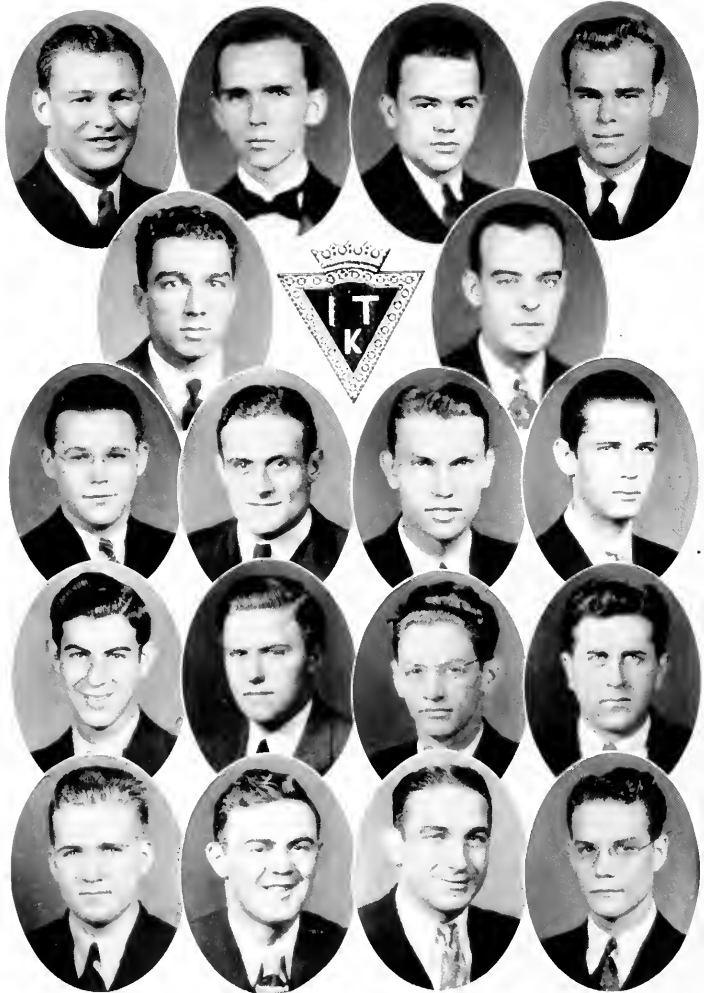
Holden

Williams



SOCIAL CLUBS

PHIPSICLI :: 1935



IOTA TAU KAPPA

SENIORS

JOHN CHESTER GRIFFIN
JOHN E. GIBSON

BEN T. HOLDEN, II
ROBERT CHASE ROLLINS

JUNIORS

WILBURN NEWSOME

ALFRID NELSON

C. A. HUGHES, JR.

SOPHOMORES

JUNIE'S NEESE
BRUCE LEDDEN

CLYDE RUDD
RUSSELL THOMPSON

FRESHMEN

ROBERT FOWLER
ARTHUR GREENWALD
RAYMOND CANNON

ERNEST MONTFALCO
BEN LILLEN
JOE CARUSO

HARRY CROW



SIGMA PHI BETA

SENIORS

WILLIAM OSWIN COX	ALTON REID WILLIAMS
RYLAND E. JOHNSON	JOHN ROBERT KERNODLE
JAPETH EDWARD RAWLS, JR.	

JUNIORS

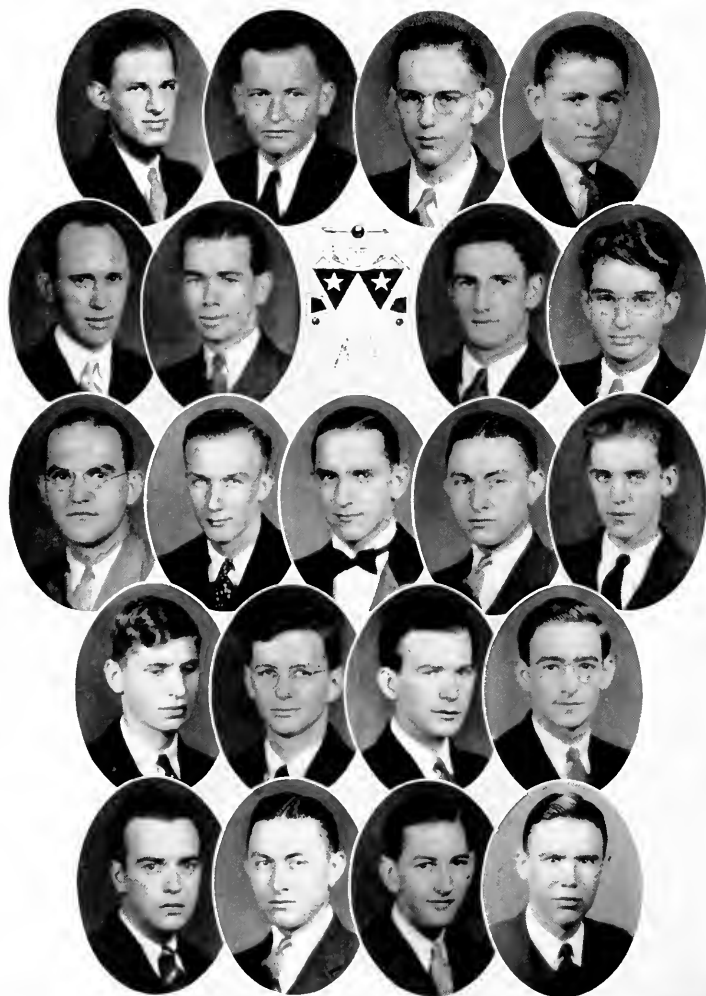
CURTIS BERRY	W. W. KIMBALL ✓
LUTHER BOYD ✓	MULLEN LILLY ✓
WILLIAM COOPER ✓	JOHN TROPPOLI ✓
CHARLES HOLMES ✓	LAWRENCE TUCK

SOPHOMORES

THOMAS BRITT	LEON NEWMAN ✓
JOHN CAMERON ✓	LUKE QUERY ✓
CHARLIE EVANS	L. E. SMITH, JR. ✓
HUNTER HERRINGTON	GARLAND TALTON
WILLIAM COBB MOSS	RUDY WALSER ✓

FRESHMEN

THOMAS HUGHES	HATCHER STORY
---------------	---------------



KAPPA PSI NU

SENIORS

WILLIAM JACOB ANDES
WILLIAM HENRY HORTON

MARVIN LINWOOD GUNN
ARTHUR DONALD STEERE

JUNIORS

OLIVER COOK
W. W. HOWELLS
RALPH NEWMAN

MILLARD STEVENS
GEORGE TAYLOR
ROBERT WHITTEN

SAM WATSON

SOPHOMORES

POE PARKER

DAN WATTS

FRESHMEN

ROY BOYD
LAWRENCE CAMERON
RALPH CASKEY
TRUITT COX
E. GRAY JONES

RICHARD LACHMAN
HENRY MORGAN
WILBUR TAYLOR
DRATON WHITE
HOWARD JONES

PHIPSICLI :: 1935



DELTA UPSILON KAPPA

SENIORS

EUGENIA ANNE BOYD
ANN MAXINE COVINGTON

ISABELLE DUNN
MARGARET KELBAUGH

JUNIORS

JESSIE COBB
HAZEL MARTIN

ELMINA RHODES
REBECCA SMITH

SOPHOMORES

NANCY CADDELL
MARCELLA ACKENHAUSEN
EDITH ERNST

SUE GALLOWAY
DICK KIMBALL
MARTHA SUTTON

FRANCES ROUNTRIFE

FRESHMEN

VIRGINIA CONYES

MARGARET GALLOWAY

JACQUE BROTHERS

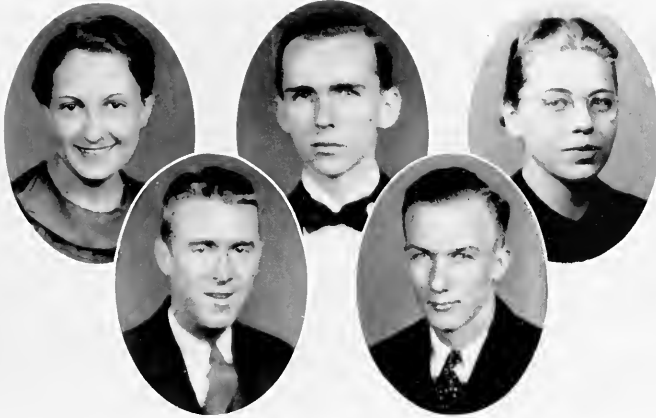


TAU ZETA PHI SORORITY

JUANITA MORGAN
HILDA LEE HEATWOLE
DELLA SORRELL
DORIS GRAHAM
BEATRICE WILKINS
SARA VIRGINIA HOOK
VIRGINIA BLACK
KATHRYN WHITAKER

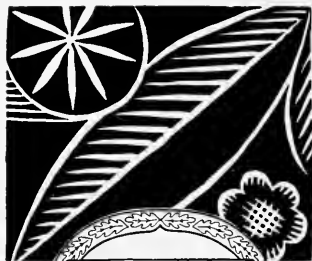
ESTHER HOPPENSTEDT
HELEN BARNEY
MARGARET WALKER
EVELYN BOONE
ERMA LLOYD
MARGARET HOOPER
EMMA WOODSON
LOUISE BRENDLER

MIRIAM HOXIE



PAN-HELLENIC COUNCIL

- EUGENIA BOYD *Delta Upsilon Kappa*
BEN T. HOLDEN, II *Iota Tau Kappa*
ESTHER HOPPENSTEDT *Tau Zeta Phi*
WILLIAM COOPER *Sigma Phi Beta*
WILLIAM ANDES *Kappa Psi Nu*



FINE ARTS CLUB

LILA CLARE NEWMAN, *Instructor*

BILL COBB MOSS	<i>President</i>
EMMALINE RAWLS	<i>Vice-President</i>
AURELIA FUTRELL	<i>Secretary-Treasurer</i>

MEMBERS

LILLY HORNE
 JULIA WOODSON
 FRANCES ROUNTREE
 NANCY CADDELL
 HAZEL MARTIN
 BILLY FERRELL, JR.
 EDWARD SHUMAKER
 MARGARET WALKER
 BILL COBB MOSS
 L. E. SMITH, JR.
 MYRTLE ISLEY
 BRONNA WALKER

ETHEL TRUITT
 SOPHIE POWELL
 MARY FRANCES MARTIN
 BEVERLY HAYES
 AURELIA FUTRELL
 EMMALINE RAWLS
 DELLA SORRELL
 OLLIE DEMOSS
 GRACE KLAPP
 ELIZABETH APPLE
 MERRITT FOUCHEE
 HAROLD MCCARN

1935 :: PHIPSICLI

Experience

LYNCHBURG ENGRAVED ANNUALS ARE
BUILT UPON YEARS OF EXPERIENCE
AS SPECIALISTS IN THE FIELD OF
SCHOOL PUBLICATIONS



IN successfully fulfilling the requirements of the modern College Annual Staff we have combined a comprehensive and systematic servicing program with that high standard of quality so essential in the production of fine yearbooks. Lynchburg engraved annuals are built by an organization specializing on school annuals exclusively, thereby assuring each staff of the personal and intelligent assistance so necessary in the planning and designing of a truly satisfactory book.

**LYNCHBURG
ENGRAVING
· COMPANY ·**

LYNCHBURG · VIRGINIA

Builders of Better Annuals



Unusual Excellence is Never the Result of Chance

In producing school publications, we endeavor to render a helpful and constructive service directed toward enabling a student staff to issue a representative and distinctive publication.

In connection with our new and modern printing plant we maintain a large Art and Service Department where page balance, typography and complete decorative and illustrative motifs are created and worked out.

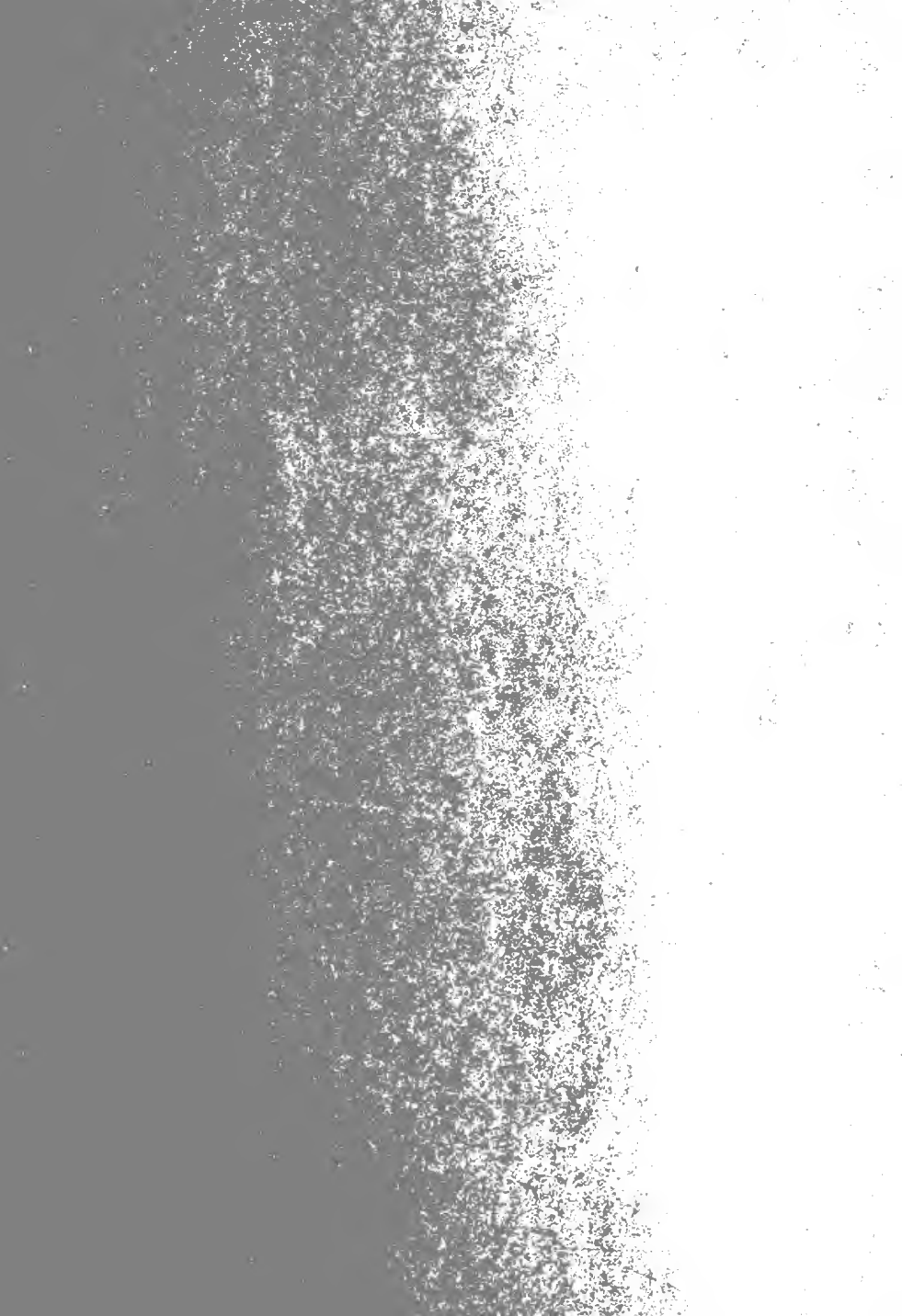
QUEEN CITY PRINTING COMPANY

A Complete Service for School Publications

CHARLOTTE, N. C.

*Printers of the
1935 Phipsicli*





378.14

22741

E268

V. 20

Elon College Senior Class

AUTHOR

PhiPsiChi, 1935

TITLE

Must not be taken from the library

378.14

22741

E268

V. 20

DOES NOT CIRCULATE

