



*Phi*

*Phi*

*Chi*

*Elon's 1939*



Digitized by the Internet Archive  
in 2009 with funding from  
University of North Carolina at Chapel Hill

<http://www.archive.org/details/phipsicli1939elon>





*Lon's*

1939

**P h**  
**P**

*Published by*

FRANK X. DONOVAN

*Editor-in-Chief*

LOUIS E. HUBBARD, JR.

*Business Manager*

Art work by Albert Mastrobattisto

**i**

**si**

**cli**

# **D**edica

Elon College, in her comparatively short history, has been favored by many loyal sons; several of whom have gone out into the world to become leaders in whatever field they pursued. None, however, has attained greater heights than the man who was a student in her first class in 1889, and who is still with her in 1939, not as a student but as a professor. He is Dr. Walton Crump Wicker.

Dr. Wicker has been an important part of Elon College in every one of her forty-nine years, and his influence will be a definite part of Elon for the remainder of her history. He will be remembered not only as a professor, but as a scholar and a christian gentleman.

May he live many more years so hundreds of future students will have the benefit of his teachings and personality, as have thousands of others whom he has already inspired.



**ted**

*to*



*Dr. Walton Crump Wicker*

# **C**ontents

|                   |                   |
|-------------------|-------------------|
| <b>BOOK ONE</b>   | <b>College</b>    |
| <b>BOOK TWO</b>   | <b>Classes</b>    |
| <b>BOOK THREE</b> | <b>Athletics</b>  |
| <b>BOOK FOUR</b>  | <b>Activities</b> |
| <b>BOOK FIVE</b>  | <b>Features</b>   |

# Preface

This, the 1939 edition of the Phi-Psi-Cli which we offer you is the twenty-fourth volume.

In it we have strived to present in modern tempo the most outstanding events in this, the forty-ninth, year of Elon College. May this humble effort prove a tangible instrument to help us recall loving memories we will never forget.

This year, the gates of Elon will close behind many of us for the last time. We, the 1939 staff, hope this will act as the key to reopen those gates in our again years. This thought has provided the inspiration, without which we could not have endured.

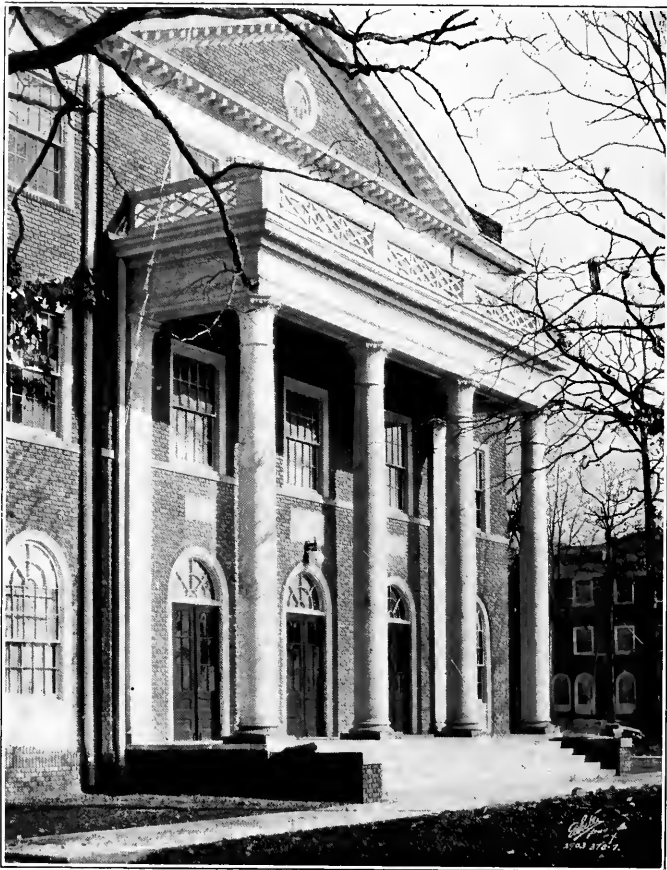


# Collegé

**BOOK I**

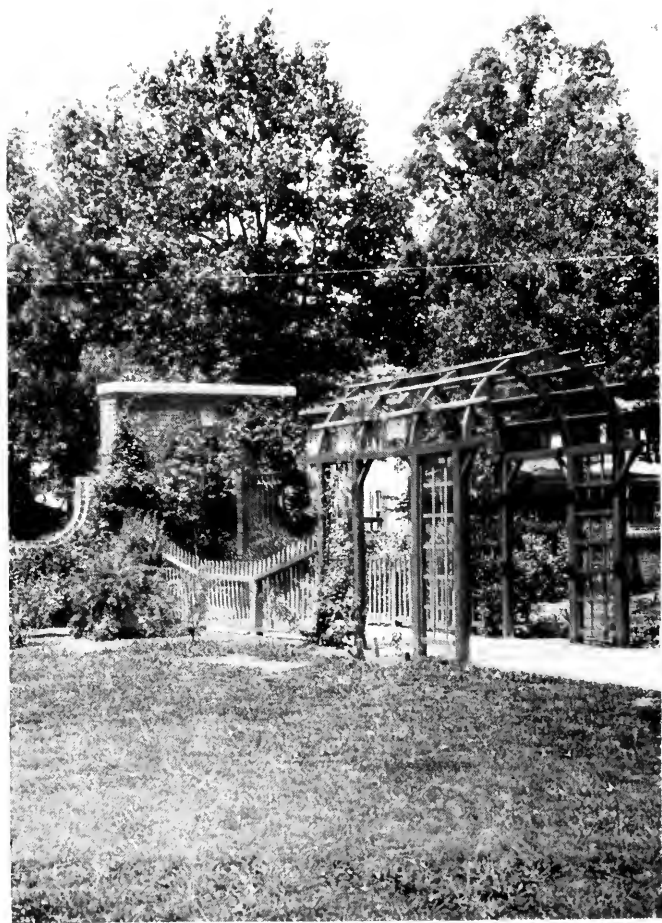














## ADMINISTRATION



DR. LEON EDGAR SMITH  
*President*

Elon College is proud of its student body. Beginning with an enrollment of 231 in 1932, we boast today of a total enrollment not including summer school of 625. Not only have we made gratifying progress from the standpoint of enrollment, but our achievements in the field of education have been superior. In competition with other colleges in the state, we won first prize in play composition. In competition with other colleges and other musical organizations within the state, we won first honors in musical composition. In competition with other colleges, Elon won the oratorical Inter-collegiate Peace Award. In competition with the graduates of other institutions of higher learning, our graduates usually stand scholastically with the first ten.

Elon's record in the field of teaching and other professions is unquestioned. Here on the campus we are not only acquiring information, but we are learning to relate profitably the facts of the past to the solutions of the problems of today and tomorrow. We proceed on the theory that we learn effectively by doing acceptably.

The administration wishes to express its appreciation of the fine type of student enrollment in the college today, of the desire on the part of the students to help govern themselves and to cooperate with the college in attaining the high ideals promoted by the institution.

# ELON COLLEGE

*To the Class of 1939,*

My kindest thoughts and best wishes to you as a class and individually.

JULIA MAE OXFORD,

*Dean of Women.*

*Seniors,*

We came here together. Now you are being graduated and I, your contemporary, am not sufficiently brilliant, but am to carry on. You must not forget us, but return often and think of us continually. I shall continue to treasure you in my memory and shall delight in your success. Whatever you elect to do, do that with all the potentialities at your command. Remember that Godliness is great gain, and in all your acquirements, may your Creator be the great inspiration of your life. If I can ever assist you command me.

Fraternally yours,

J. D. MESSICK,

*Dean of Men.*



J. D. MESSICK  
*Dean of Men*



JULIA MAE OXFORD  
*Dean of Women*

# FACULTY OF

J. W. BARNEY

GEORGE BEECHER



M. F. BRANNOCK

D. J. BOWDEN



J. A. CLARKE

G. D. COLCLOUGH



FLETCHER COLLINS

L. C. DICKINSON



THOMAS EDWARDS

MERTON FRENCH



H. L. GRAVETT

H. J. HENDRICKSON

MRS. H. J. HENDRICKSON



# ELON COLLEGE



W. W. HOWELL

MRS. W. W. HOWELL



MRS. O. U. JOHNSON

ROBERT MORGAN



LIDA MUSE

J. U. NEWMAN



LILA NEWMAN

THOMAS POWER



MARY J. RUSSELL

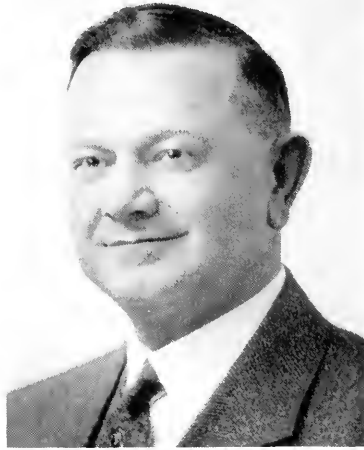
J. H. STEWART



M. E. WHITE

W. C. WICKER

## In Memoriam



DR. J. E. RAWLS, leading alumnus and one of the most prominent of all Elon sons, died in October. Dr. Rawls was chairman of the Elon Board of Trustees, President of Elon College Alumni Committee, and a famous physician in the Lakeview Hospital, Suffolk, Virginia.

Dr. Rawls was outstanding in his work for the growth and progress of Elon and so it is with great sorrow that we reflect upon the passing away of one of the College's most beloved sons.



# **Classes**

# 1939 SENIOR CLASS



## *Class Officers*

JESSE HARRINGTON  
*President*

ANNETA SMITH  
*Secretary*

HENRY SATTERFIELD  
*Vice President*

BEATTIE MASHBURN  
*Treasurer*

# ELON COLLEGE



MAVERT ARNOLD  
Fuquay Springs, N. C.

*A quiet lad, but with the quietness of still water running deep. The surface betrays no hidden secret of his soul, but withal, his true character and dignity cannot be hidden.*



EDITH RUTH BRANNOCK  
Elon College, N. C.

T Z Φ

Home Economics Club 1, 2, 3, 4; Student Christian Association 1, 2, 3, 4; Day Students Association 1-4.

*A dignified, miniature brain trust, Fink is widely respected and admired by teachers and students alike. One would think, judging from her high scholastic record, that she had time only for studying. However, if he had ever tasted any of her remarkable cakes he would realize that everything this little lady does is done well.*

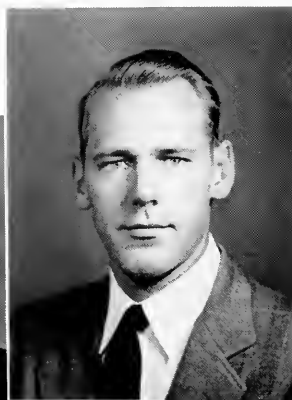


# 1939 SENIORS



THURMAN FOSTER BOWERS  
Box 93, Greensboro, N. C.  
Maroon and Gold Staff; Ministerial Association.

*A big man, our Thurman, as large of heart as of stature. He will be missed, both himself and his beloved auto that was everybody's taxi to Greensboro. Thurman is conclusive proof that the good minister is no long-faced, cold individual but a living, amiable fellow who has met life, and met it with a hearty hand-shake.*



CLEVELAND CAMPBELL  
202 N. Main Street  
Danville, Va.  
Σ Φ Β

Transfer from N. C. State College; President Freshman Class; Intramural Sports; S.C.A.

*To say that Cleve was less than extraordinary would do him gross injustice. Finishing the required work half a year earlier than the rest, he took additional history (via correspondence), and further got the jump on us by acquiring a wife and family. Success we wish you, Cleve, and full measure of it.*



# ELON COLLEGE



RUTH PAGE CLARK  
700 Graham St.  
Raleigh, N. C.  
Δ T K

Pi Gamma Mu; Secretary Freshman Class; Choir 1; S.C.A.; Senior Cabinet 4; Student Council 4; Dramatic Club 4; Honor Roll 2, 3; Chapel Monitor 3; Vespers Committee 4; Secretary Pi Gamma Mu; May Day 3.

*Her even personality and sunny disposition first attracted us to R. P. Since then her excellent character and generous manner have won for her many true friends.*

*Students and faculty members alike have shown their admiration by selecting her for many responsible campus positions and bestowing on her signal honors.*



MILDRED CRAVEN  
Ramsour, N. C.  
E O B

Choir 1, 2, 3, 4; Dramatic Club 1, 2, 4; Festival Chorus 1, 2, 3, 4; *Maroon and Gold* Staff 1, 2; Girls' Athletic Association 2; May Day Festival 1, 2.

*You can't fool us, Craven! We know that blond head and effacious grin hide a brain as capable of analyzing difficult situations as it is of producing your own inimitable brand of humor.*

*Carefree, and happy as the day is long, you have given to all some part of your joy that makes life more worth the living.*



# 1939 SENIORS



HELEN DAILEY  
306 Tarpley St.  
Burlington, N. C.

T Z Φ

Band 3, 4, Secretary 4; Choir 3, 4, Secretary 4; Phi-Psi-Clu Staff 3; Pan-Hellenic Council 4; Student Christian Association 3, 4; Commencement Marshal 3.

*Helen is dependable down to her feet, but there dependability stops, for one never knows what those frisky toes are apt to do next. They may be running some serious errand, keeping time to some band selection or happily dancing around in silver slippers.*



FRANK X. DONOVAN  
50 Pansy Ave.

Floral Park, N. Y.

Editor-in-Chief Phi-Psi-Clu; Sports Editor *Maroon and Gold* 2, 3, 4; Intramural Basketball 4; Intramural Baseball 1, 2, 3, 4; Delegate N.C.C.P.A. 3, 4; Honor Roll.

*Hail-fellow, well-met, characteristically describes Frank, Peculiar habits, "Rambling," and a Yankee brogue distinguish him. He entered journalism in a big way his freshman year, and his ability has led him directly to ranking positions in both Phi-Psi-Clu and "Maroon and Gold." A boost to Frank: a printer deserving the best we can print.*



# ELON COLLEGE



THOMAS SPENCER EARP  
Milton, N. C.  
K Ψ N

Dr. Johnson's Literary Society 2, 3; Debating Team 3; Intramural Sports 3, 4; Honor Roll 2.

*Tommy's personality is a painted contradiction to his flaming red hair. An even temper and an agreeable outlook on life are his rather than the fiery temperamental one might expect. Yet he's not a passive soul just poke one of his pet prejudices and see him rise, ready for whatever comes.*



WALTER FONVILLE  
Burlington, N. C.  
Σ Φ Β

Delta Psi Omega 2, 3, 4; President 4; Football 3; Intramural Basketball, Football, and Softball 1, 2, 3, 4; Dr. Johnson's Literary Society 1, 2, 3, 4; President Student Body 4.

*Cherry, smiling, willing, braggling, that's Wally. He descended upon Elon and immediately proceeded to gather in some of the most coveted offices. He has made a name for himself as president of Delta Psi Omega and the Elon Student Body. But the best thing about Wally is that he's everybody's pal.*



# 1939 SENIORS



TOM FURNESS, JR.  
2 Terrace Drive  
Canton, N. C.

K Ψ X

College Band 2, 3; Glee Club; Maroon and Gold Staff; Intramural Basketball and Football; Dramatic Club. Transfer from Lee's McRae Junior College.

*Here's to Tom, the nearest Elon has to silent sophistication! Tom's primarily interested in philosophy, sociology, and "a certain one," but he finds time to join in some of the fun, managing, however, to keep that well-groomed look—come what may.*



TOMMIE GAYLORD  
Jamesville, N. C.

I T K

Pi Gamma Mu; Baseball 3, 4; S.C.A.; Dr. Johnson's Literary Society; Pan-Hellenic Council 4; Manager Football 4; Maroon and Gold Staff 4; Intramural Football 3, 4; Intramural Basketball 3, 4; May Day Festival 3; Cheer Leader 3; Dr. Messick's Educational Society 3, 4; S.C.A. Transfer from Campbell College.

*Bubbling along like a cork on a lake, with cares and worries tucked out of sight, smiles polished and put out where all may see, jolly thoughts expressed on all occasions, goodwill radiated like the sun—you've guessed it! That's Tommie!*





# ELON COLLEGE



JAMES W. GILLESPIE  
Haw River, N. C.  
Σ Φ Β

S.C.A. 1, 2, 3, 4; Intramural Football 1; Intramural Basketball 1, 2, 3, 4; Intramural Softball 1, 2, 3, 4; Football 3; President Day Students 2; Business Club 2, 3, 4.

*"There's something about Elon that's irresistible," says he. "And Jimmy, too," we add. We are glad you found it convenient to visit us often after completing your academic work, for we like you much too much to have you stay away.*



JESSE HARRINGTON  
Merry Oaks, N. C.  
I T K

Choir 1, 2; Glee Club 2; Intramural Sports 1, 3, 4; President Senior Class; Senate 4; Honor Roll 2, 3.

*His likable manner and unobtrusive personality have won many a friend for Jesse. He is a hard worker and willing to do any task, big or small. As president of our Senior Class, he has led us through with flying colors.*



# 1939 SENIORS



CHARLES HAMBRICK  
Boiling Springs, N. C.  
K Ψ X

S.C.A. 3, 4; Delta Psi Omega  
4; Dramatic Club 3, 4; Choir  
3, 4; Band Director 4. Transfer  
from Shenandoah College.

*Long after the shadow of his  
twirling baton has vanished and  
the echo of his music has ceased,  
Charlie's fame will linger at  
Elon. His swing band made  
history and his versatile per-  
sonality brought forth admira-  
tion from all who had the pleas-  
ure of knowing him.*



A. W. HAYNES  
701 South Summit Ave.  
Charlotte, N. C.  
Σ Φ B

Choir 1; Intramural Football  
3, 4; Intramural Baseball 2, 3,  
4; Intramural Basketball 3, 4;  
S.C.A.

*To essay characterization of  
A. W. would be to describe  
"lumph" in one sentence, for he  
will not be fitted into one cate-  
gory. Some of everything yet  
all of no one thing—that's  
A. W., and therein lies his  
charm.*



# ELON COLLEGE



J. PARKS HACKNEY  
Siler City, N. C.

Ministerial Association;  
Christian Association; Dr.  
Johnson's Literary Society.

*This big fellow will be remembered by us all not for his outstanding achievements, but for his steady, well-mannered personality. Of Bill Shakespeare gave Parker his chance to shine in several local productions.*



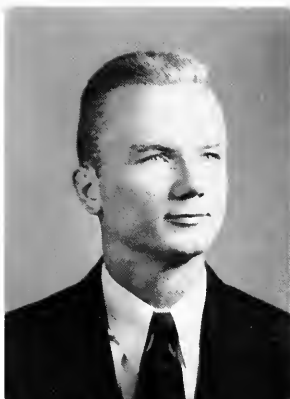
EMMANUEL HEDGEBETH  
Holland, Va.

Ministerial Association 1, 2,  
3, 4, President 4; Dr. Johnson's  
Literary Society 4, 2, 3, 4;  
Debating Team 3, 4; Intra-  
mural Basketball 2, 3.

*Hedgebeth, our aspiring young orator, has for two years held an important position on the debating team. Recently he has been busy maintaining order in that august assembly, the Student Ministerial Association. Rated "tops" by all, he will ever be one of Elon's favorite sons.*



# 1939 SENIORS



HARRIS L. HENDRICKS  
213 McRew St.  
Laurinburg, N. C.

Α U Δ

S.C.A. Cabinet 3, 4; Intramural Tennis, Football, Basketball; Physics Laboratory Instructor 4.

*If you want it done right, see Harris, for his is that rare ability to achieve near perfection without fuss or confusion, and, having achieved it, take up life just where he left off without loss of a step or thought in it all.*



GEORGE T. HOLMES  
Snow Hill, N. C.

Honor Roll 2, 3.

*If the less one says be a true indication of how much he knows, George is a veritable encyclopedia, for he never says much—that is, not to the general public. But he must have done some tall talking at one time or another to get himself as far along as he is.*



# ELON COLLEGE



CHRISTINE HOLT  
Route 1  
Graham, N. C.

Pi Gamma Mu 3, 4; S.C.A.  
1, 2, 3, 4; Treasurer Pi Gamma  
Mu 4; Debating Team 2;  
Library Staff 3, 4.

*The determined way in which she attacks every obstacle, and, we might add, easily surmounts them, reveals a character strong enough to withstand the knocks that come, yet pliable enough to lend ready aid to those less strong than she.*



LESTER HOWARD  
Harrison, N. C.  
Α Η Δ

Intramural Basketball, Soft-  
ball and Football; Dr. Johnson's  
Literary Society; S.C.A.

*Lester is another of those rare individuals who put study first, foremost and finally. Just how he managed to make so many friends while studying so diligently, we wonder, but evidence cannot be denied, and there are those scattered over the campus to bear witness that he has made true and lasting friends.*



# 1939 SENIORS



MANINE HIGGINS  
838 W. 34th St.  
Norfolk, Va.  
B O B

Delta Psi Omega; Dramatic Club 3, 4; S.C.A.; Commencement Play 3; Transfer Chowan College 3.

*In the brief two years that she has been one of us, Manine has acquired the position of No. 1 actress. No matter the role or the play; "straight" or character, modern farce, Shakespearian comedy or Greek tragedy, she's there, and there with an interpretation which brings admiration and generous applause from her audience.*



LLOYD GEORGE HEFPINES  
Elon College, N. C.  
I T K  
S.C.A.

*Cobbler and his green Ford are as much a part of Elon as West Dormitory or the Drug. Personally, he is a typical student, taking fun along with drudgery and laughter along with life.*



# ELON COLLEGE



GRAHAM HUNT  
Oxford, N. C.

Α Η Δ

S.C.A.; Intramural Sports;  
Senate 4; Pan-Hellenic Council  
4; Wrestling 3.

*If one didn't look, he'd never  
know Graham was about—he's  
that unassuming and quiet. But  
he is there; when things press  
hard and the sky seems low,  
Graham will push both up a bit  
and then go his way, never wait-  
ing for praise.*



ARCHIE ISRAEL  
115 Park Terrace  
Waterbury, Conn.

Pi Gamma Mu 3, 4, President  
4; Football 1, 2, 3, 4, Captain;  
Honor Roll 3, 4; Intramural  
Basketball, Baseball.

*What can we say of him who  
holds high place in everybody's  
heart? Not half as much as  
we'd like, but let it suffice to  
say that his capable leadership  
has advanced his fame in  
scholastic as well as athletic  
circles, and that we give him  
as he leaves us sincere wishes  
for continued success in all that  
he does.*



# 1939 SENIORS

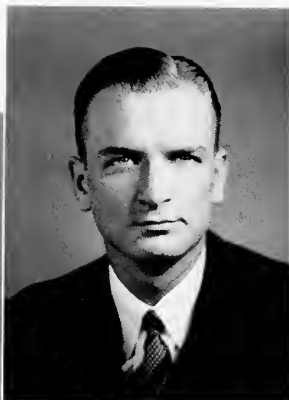


MELVIN EUGENIA JAMES  
Haw River, N. C.

Δ Τ Κ

Dramatic Club 1, 2, 3, 4, Secretary 2; Home Economics Club 1, 2, 3, 4, Secretary 2, 3, 4; English Club 1; Pan-Hellenic Council 1, 4; Delta Psi Omega; Commencement Play 1, 2, 3; Commencement Marshal 3; Honor Roll 1, 2, 3; Expression Certificate Recital 3; Girls Literary Society 4.

*Smiling, friendly, capable Melvin—how we all like her! Judging from her many activities she has successfully divided her time between counting pulses and making a place for herself in everybody's esteem.*



WILLIAM T. JONES  
Holland, Va.

I T K

Treasurer Freshman Class; President Freshman Sunday School; Y.M.C.A. Cabinet 1, 2, 3; Intramural Basketball 1, 2, 3, 4; President Junior Class; Intramural Softball 1, 2, 3, 4; Intramural Football 2, 3, 4; Biology Laboratory Instructor 3, 4.

*Bill bears that famous name, "Jones," and if you would keep up with this particular Jones, prepare to hurry, for Bill moves with alarming speed—he must to accomplish all that he does in the short span of time we call a day.*

*The Joneses have an enviable reputation at Elon—Bill has not only equaled it, but pushed it a bit higher.*





# ELON COLLEGE



VINCENT KAZLOW  
1714 Boulevard Ave.  
Cumbola, Penn.

I T K

Football 1, 2, 3, 4; Baseball 2, 3; S.C.A. 4; Dramatic Club 1; Intramural Basketball 2, 3, 4; "E" Men's Club 2, 3, 4; Honor Roll.

*Aptest of phrases to spread his fame, we choose for Vince this: "True to his word, his work and his friend—in all, a perfect gentleman."*



R. L. KIDD  
Hemp, N. C.  
S.C.A.

*Moore wrote, "When hearts are true few words will do"—Roy took it literally. A calm countenance and a soft, infrequent voice supplement rather than detract from his interesting personality.*



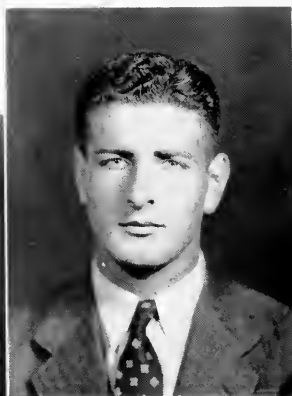
# 1939 SENIORS



ELIZABETH MARKHAM  
Route 4  
Durham, N. C.  
T Z Φ

Home Economics Club;  
S.C.A.; Education Club; Dramatic Club.

*Lib is conspicuous for her quietude; however, her favorite extra-curricular activities tend toward the dramatic field which is anything but quiet. Just get her started on this subject and you'll soon change your opinion as to her silent nature.*



ALBERT MASTROVATTISTO  
103 Divinity Street  
Bristol, Conn.

Della Psi Omega; Football 1, 2, 3, 4; Orchestra; Glee Club; Art Club; Intramural Baseball and Basketball; Phi-Psi-Cli Staff 2, 3, 4; "E" Men's Club, Vice president.

*The little Bahctest selected as his motto, "Nothing is impossible," and promptly set about proving it. From the collective results won't you agree that, for one with the ability and perseverance of the Bahctest, "Nothing is impossible"?*



# ELON COLLEGE



BEATRICE MASHBURN  
Star, N. C.

B O B

Choir 1, 2, 3, 4; Council 3, 4;  
S.C.A. 3, 4; Girls Athletic  
Association 2.

*Those who have known her  
longest love her best. This is  
the secret of Beaty's charm; she  
became more interesting, more  
likable and a more invaluable  
friend as time moved on. She  
deserves much of the richness  
of life, and her friends are con-  
fident that she will have it.*



N. W. McINNIS  
West End, N. C.

S.C.A.; Education Club.

*Must joy be always in doing?  
N. W. seems to be a shining  
example that little effort can  
bring great joy. Everyone may  
not be able to see it so, but  
this young man believes it and  
gives his approval by a cheery  
smile.*



# 1939 SENIORS



JACK HARRELL NEESE  
43 Montgomery Street  
Reidsville, N. C.  
K Ψ X

Delta Psi Omega; Secretary Freshman Sunday School; Freshman Class President; Sophomore Class President; Dr. Johnson's Literary Society 1, 2, 3, 4; S.C.A. Cabinet 1, 2, 3, 4; President S.C.A. 4; Senate 4; Phi-Psi-Clu Staff 1, 2, 3; Member State Executive Board of Y.M.C.A. and Y.W.C.A.'s; Vice President Senate 4.

*Thinking of a certain brisk, chivalrous fellow, Jack Neese, one may remember him moving about the classroom, shaking the hammer over his freshmen classmates, or assuming, with Jack's dignity, weighty responsibilities as the Student Christian Association president. Shaping his own fate without superstition, he even finds pleasure in crooked pins.*



JAMES WESLEY PARKER  
1530 Barron Street  
Portsmouth, Va.  
Α Π Δ

Pi Gamma Mu; Honor Roll 1, 3, 4; Manager Tennis 2; S.C.A. 1, 2, 3, 4; Treasurer S.C.A. 2; Dr. Johnson's Literary Society 1, 2, 3, 4; Vice President Dr. Johnson's Literary Society 2; Student Senate 2; Orchestra 1, 3, 4; Band 2, 3, 4; Glee Club 2, 3; Secretary Sunday School 2; Intramural Baseball 2, 3, 4; Intramural Basketball 4; Intramural Football 3, 4; Commencement Marshal 3; "E" Men's Club, Secretary 4; Business Administration Club 3, 4; Education Club.

*James Parker, Elon's most energetic senior, is easily spotted by his plaid coats and jaunty ties. He crated himself into the Literary Society, sported himself into the "E" Men's Club, honored himself onto the Honor Roll, sang himself into the Glee Club, and managed to be the manager of the Tennis Team all in four short years.*

# ELON COLLEGE



LOUISE PENDER  
611 Maple Avenue  
Burlington, N. C.  
T Z Φ

Day Student Association;  
Transfer Campbell College 3.

*Aspiring to be a feminine  
Dionaea, Lou goes earnestly  
on her search for truth, light,  
and good in every thing. One  
looks at her pleased counte-  
nance, and one knows that she  
is finding in goodly measure  
that for which she seeks.*

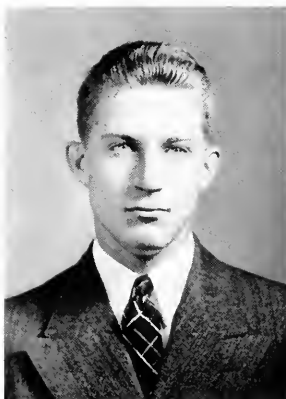


HORACE PENN  
Richland, Georgia  
Transfer High Point College  
I. S.C.A. Dramatic Club.

*Horace has been with us only  
one year, but one month was  
enough to learn to like him and  
regret that High Point, and not  
Elon, claimed him for herself  
for three years.*



# 1939 SENIORS



T. M. PERRY, JR.  
Jonesboro, N. C.

I T K

Delta Psi Omega; *Maroon and Gold* 3, 4; Editor *Maroon and Gold* 4; Spring football '35; Dr. Johnson's Literary Society 1, 2, 3, 4; President Dr. Johnson's Literary Society 4; S.C.A. Cabinet 4.

*Who is that imposing looking gentleman who struts about with a portfolio under his arm? Nobody but the editor of "Maroon and Gold" could maintain such an air of importance. Girls shyly peep from behind all corners at Tom, whose sparkling eyes and Chesterfield manner make him everybody's favorite.*



JOHN PUGLISI  
56 Dewey Avenue  
Huntington, Long Island, N. Y.

I T K

Honor Roll.

*Since school is a place to learn and grades are an indication of learning, great praise should be in store for Johnnie who has breezed through Elon, acquiring a string of A's and a reputation for remarkable philosophical ability. He couples with this remarkable record a pleasing personality and sly humor.*



# ELON COLLEGE



RUBY ETHELINE REYNOLDS  
Leaham, N. C.

T Z Φ

Home Economics Club 1, 2,  
3; S.C.A. 1, 2, 3.

*In years to come we predict for Ethelene widespread fame for her ability to keep a cool head in any situation, a feat reserved for few. But don't think she's solemn; those twinkling blue eyes behind her specks belie any such assumption.*



E. J. SANDERSON  
Newmarket, Ontario, Canada

Ministerial Association 1, 2,  
2, 4; Debate Team 2, 3, 4; N. C.  
State Oratory Trophy 3; Pi  
Gamma Mu; Dramatic Club 4.

*If in need of words for any occasion, see Sandy—he has them in boundless quantity. And they're good words, too—good enough to bring home blue ribbons, medals, money, and silver loving cups.*



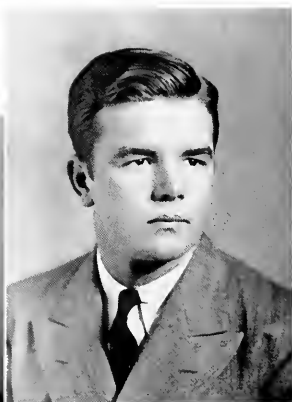
# 1939 SENIORS



HENRY DAVID SATTERFIELD  
Prospect Hill, N. C.  
Α Η Δ

S.C.A. 1, 2, 3, 4; Assistant Business Department 2, 3, 4; Glee Club 3; Dr. Johnson's Literary Society 1, 2, 3; Vice President Senior Class.

*The unpretentious manner would never lead one to suspect that Red is a level-headed business man and a cracking-good jilterboy, but he does list these among other equally unsuspected accomplishments. If he could only cook!*



AMOS SHELTON  
705 Railroad Street  
Greensboro, N. C.

I T K

E Men's Club 1, 2, 3, 4; Football 1, 2, 3, 4; Baseball 1, 2, 3, 4; S.C.A. 4; Manager of Wrestling 1; Intramural Basketball 1, 2, 3, 4.

*For four years Amos has had a share in Elon's glory. One wonders if that happy contented look could be the prize he merits for working long and hard for an Alma Mater who proudly names him as a favorite son.*





# ELON COLLEGE



JORDAN A. SLOAN  
Route 2  
Sanford, N. C.  
Α Η Δ

Dr. Johnson's Literary Society; Vice President Class 2; Class Treasurer 3; Senate 3; Pan-Hellenic Council 3; Member S.C.A. 2, 3, 4; S.C.A. Cabinet 3, 4; President Sunday School Class.

*A debate might well be staged as to whether Jordan's name belongs with the faculty or with the Seniors for he so frequently assumes the role of math instructor. He is a good teacher, for he has as his prize possession the ability to make people work and like it.*



ANNETA SMITH  
Brown Summit, N. C.

Home Economics Club 2, 3, 4; Vice President 1; Dramatic Club 3; Athletic Association 1, 2; Vice President 2; S.C.A.

*Poise and good humor are characteristics of Anneta. The upturned corners of her mouth express her knowledge of something about something, namely, people. A perfect lady, always; that's Anneta!*



# 1939 SENIORS



VERNON L. SOMERS  
Elon College, N. C.

*Working on the assumption that it doesn't matter how you do it just so it's done well, Vernon proceeds to work quietly and quickly, turning up at the right time with the right thing done just right.*



CRATON STEPHENS  
66 Market Street  
Hertford, N. C.

I T K

Intramural Sports; S.C.A.

*The dapper manner and subtle humor sported by Craton are his ways of showing that he is pleased with his friends, his luck, and the world in general. There is for him a rosy glow on all that he surveys, and for his friends a reflection of the same here.*



# ELON COLLEGE



ONA MARY STEPHENS  
66 Market Street  
Hertford, N. C.

A T K

Choir 1; Festival Chorus 1, 2; Dramatic Club 1, 2, 3; Secretary Student Council 4; May Day Festival 1, 2.

*When we say "Polly" we always want to suffer "anna," for her helpful and cherry demeanor reminds us constantly of that little miss of fairy tales who made everywhere she went sunnier and everyone she met happier.*

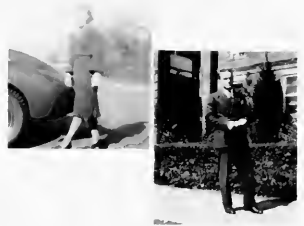


WILEY SIDNEY TAYLOR  
Aberdeen, N. C.

I T K

Pi Gamma Mu; S.C.A.; Band 1, 2, 3, 4; Senate 4; Business Administration Club 3, 4; President 3; Vice President Pi Gamma Mu 4; Dr. Johnson's Literary Society 3, 4; Proctor Club House 4; Intramural Football and Softball.

*Fond parents had an idea that their son would be called Wiley Sidney Taylor, but his friends decided differently. Just "Sid" suits the droll little fellow much better than the stilted appellation. Known for his ability to entertain, he is at his best at story-telling.*



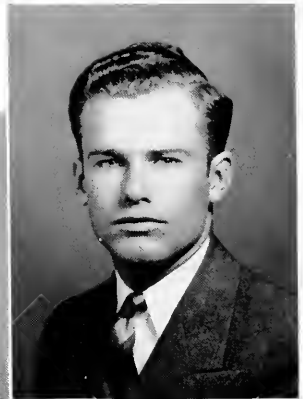
# 1939 SENIORS



GWENDOLYNE PAULA TILLMANNS  
3035 Park Avenue  
Bridgeport, Conn.  
Δ Τ Κ

Transfer Smith College 2; Delta Psi Omega; Vice President Girls' Literary Society 4; Y Cabinet 3, 4; Dramatic Club 2, 3, 4, President 3, 4; Vice President Council 3, President 4; S.C.A. 2, 3, 4; Co-editor *Maroon and Gold* 4; *Elon Colonnades* Staff 2, 3, 4; Commencement Marshal 3; Commencement Play 3.

*From the day Gwen hung up her hat at Elon she has been looked upon as the young lady who does everything; and she does it remarkably well, too. Friendly, diplomatic, and energetic, she has been an ideal president of the Student Council.*



RUFUS UNDERWOOD  
Yanceyville, N. C.  
Α Η Δ

Dramatic Club 2, 4; Dr. Johnson's Literary Society 3; Senate 4; Intramural Sports 3, 4.

*Though his solemn face and part of his name would have you think Rufus is under something or the other, he is literally on top of the world. For some mysterious reason, things always turn out just right for him. He must have a secret, but he won't tell.*



# ELON COLLEGE



MARY FRANCES WALKER  
605 Fountain Place  
Burlington, N. C.

B O B

Day Student Association 1,  
2, 3, 4; S.C.A. 3, 4; *Maroon and  
Gold* 3, 4, Business Manager 1.

*Interests in Burlington occupy a large part of Mary Frances' time, and we see her seldom. But present or not, she has successfully managed the business department of the "Maroon and Gold," and impressed us with her ability to do her job quickly, quietly, and efficiently.*



GALLOWAY WALKER  
Elon College, N. C.

I T K

Senate 2; Vice President of  
Junior Class 3; Cheer Leader  
4; Intramural Basketball, Foot-  
ball and Baseball 1, 2, 3, 4;  
Pi Gamma Mu.

*Galloway, by virtue of a dusty pink complexion and bright blue eyes, is presented as one of Elon's most handsome. Moreover, he's a hard working man and has successfully tackled the duties as head writer and cheerleader. It's just as much fun to yell, he maintains, as it is to carry the ball.*



# 1939 SENIORS



ALLEN WATSON  
Morven, N. C.  
K Ψ X

Dr. Johnson's Literary Society; Transfer High Point College 3; Intramural Sports.

*Another one of High Point's sons arrived here his Junior year and became one of us, which is adequate proof that he is an excellent mixer and pathmaker. Allen's quiet dependability is noticeably outstanding.*



JUANITA AZILE WAUGH  
105 South Mebane Street  
Burlington, N. C.  
T Z Φ

Transfer Mars Hill 3. Student Council 4; Commencement Marshal 3; Secretary of Day Students 3; Delta Psi Omega 3, 4; Cabinet 4.

*"Nita," to us, is a synonym for sincerity. She takes an accurate interest in dramatics, her sorority, and "someone else." Most sincerely she admits she likes to study.*



# ELON COLLEGE



GEORGE DANIEL WEBSTER  
Elon College, N. C.  
K Ψ X

Pan-Hellenic Council; Chemistry Lab. Assistant 4; Day Student Association, 1, 2, 3, 4.

*George is, in a very complimentary sense, Elon's Jack-of-all-trades. If you can't do it yourself let George do it, for he can with little apparent effort.*



FLOYD WEST  
Enfield, N. C.  
Σ Φ Β

President Student Government; Football 3, 4; Baseball 3, 4; S.C.A.; "E" Men's Club; Pan-Hellenic Council 3; Pi Gamma Mu; Senate 3. Transfer from Louisburg College.

*fleet-footed Floyd. This West is a swift worker, always lending a hand where needed, and a jolly good fellow. As president of the Senate he holds down capably and easily a job that lesser men could not. Maybe that engaging laugh has something to do with it.*



# 1939 SENIORS



LUCY MAE WRIGHT  
Star, N. C.

B O B

Home Economics Club 1, 2, 3, President 4; Secretary of Girls Athletic Association 2; Choir 1; Student Council 4; Proctor 4; S.C.A. 1, 2, 3, 4.

*No one knows better than the sick-a-beds just what Lucy Mae's liltin' "g' mornin'," as she brings in her tray, can mean. Samchoz aches aren't so bad, and pains disappear as she cuters and starts her all-too-short morning chat. The Lucy Maes of the world are in minority, but they fill a major place in life.*



MYRON WRIGHT  
1201 M Street N. W.  
Washington, D. C.

I T K

Dr. Johnson's Literary Society.

*Most people think Myron is a quiet shy fellow—but they just don't know. Just approach him on the second law of thermo dynamics or creative evolution and you'll get some strange, even bombastic at times, opinions. But let's not be too harsh; he loves beauty, too.*





# ELON COLLEGE



E. W. YARBROUGH  
Dunn, N. C.

Physics Assistant 3; *Maroon and Gold* Staff 4; Phi-Psi-Clu Staff 3; Dr. Johnson's Literary Society 1.

*Walter, one of our mild-mannered friends, doesn't exactly impress one as being of huge significance. But don't let his quiet unassuming nature fool you, for he is one of Elon's outstanding students of science.*

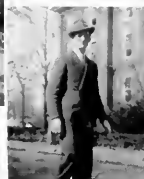


SAM B. FORSHÉE, JR.  
Elon College, N. C.

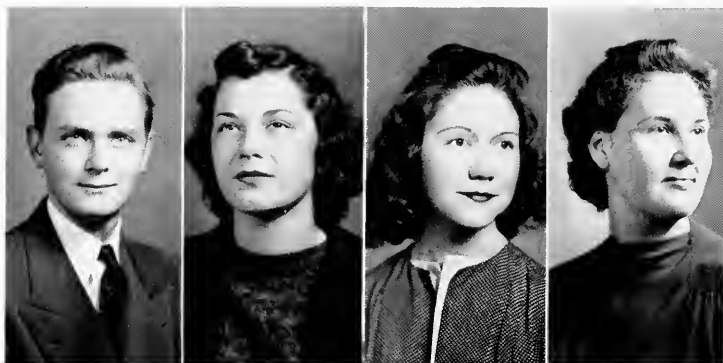
Α Η Δ

Intramural Football 2, 3, 4; Intramural Basketball 2, 3, 4; Intramural Softball 2, 3, 4; S.C.A. 1, 2, 3, 4; Secretary-Treasurer Education Club 4; Vice President Business Administration Club 3.

*Sam B. aspires to a business career sometime in the near future. We predict a rapid rise to heights in any field. While he makes no great display of his tasks, they are always done well. You'll never find him avoiding fun, but you'll find he enjoys it wisely.*



# 1939 JUNIOR CLASS



## *Class Officers*

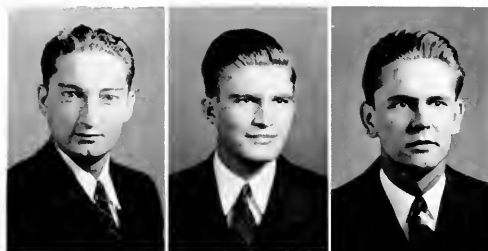
DUANE VORE  
*President*

MARY LOU HAYES  
*Treasurer*

FLORENE RAY  
*Vice President*

EDNA FITCH  
*Secretary*

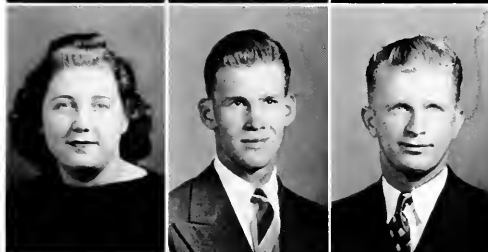
# ELON COLLEGE



ANSCHLEWITZ, ARNOLD  
Belmont, N. J.

ASKEW, ALLEN EDGAR  
Rothco, N. C.

BASNIGHT, JACK HOMER  
Stokes, N. C.



BEAN, FRANCES  
Spencer, N. C.

BLUE, HUBERT NELSON  
Carthage, N. C.

BRANNON, HORACE  
Mill Springs, N. C.



CAPILLARY, HENRY  
Freeport, Pa.

CHASON, MARY HELEN  
Lumber Bridge, N. C.

COLE, CLIFTON WORTH  
Julian, N. C.



COBLE, JAY CLINE  
Julian, N. C.

CONGLTON, JAMES BEVERLY  
Stokes, N. C.

DIVERS, RICHARD MARTIN  
Stuart, Va.

# 1939 JUNIORS

EDWARDS, JOEL  
Stantonsburg, N. C.



FESMIRE, ISAAC LEN  
Greensboro, N. C.

FITCH, EDNA MURIEL  
Burlington, N. C.

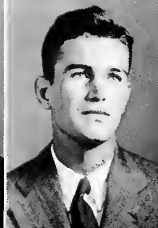
FITZGERALD, FERN  
Whiteville, N. C.



FLEMING, ARCHIE  
Grimesland, N. C.

FLORY, EDWIN BRUCE  
Georgetown, Ohio

FONVILLE, DEROY RANSOME  
Burlington, N. C.



BRITTS, JAMES  
Lexington, N. C.

FULLER, ANDREW WADE  
New Bern, N. C.

GARIAN, JAKE  
Richmond, Va.



GARNER, RALPH PRESTON  
Newport, N. C.

HALL, JOSEPH WILLIAM  
Mount Ulla, N. C.

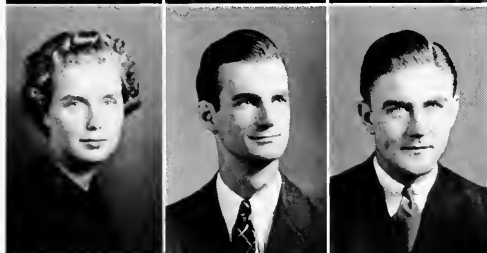
# ELON COLLEGE



HARDISON, JOE HENRY  
Greensboro, N. C.

HARRINGTON, HILLI S. BLACK  
Sanford, N. C.

HAYES, MARY LOU  
Cincinnati, Ohio



HOFFMAN, VIOLET GRAHAM  
Burlington, N. C.

HOLLAND, GRIFFIN JAMES  
Shelby, N. C.

HOLLAND, WESLEY C.  
Trenton, N. C.



HOOPER, DEWEY G.  
Mebane, N. C.

HUBBARD, LOUIS EDWARD, JR.  
Farmville, Va.

HUYTTNES, KENNETH  
Elon College, N. C.



JAMES, CATHERINE CAMPBELL  
Staunton, Va.

JOHNSON, ROBERT SEXTON  
Fuquay Springs, N. C.

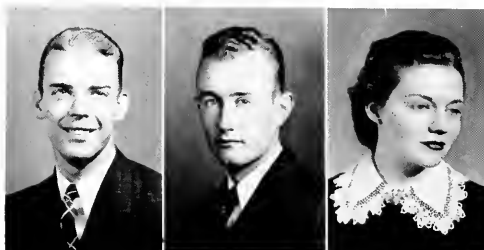
JONES, CURTIS HUGHES  
Hurdle Mills, N. C.

# 1939 JUNIORS

JONES, OSCAR CARL  
Boltou, N. C.

KING, WILLIAM RALEIGH  
Gates, N. C.

LEATH, JESSE FRANCIS  
Burlington, N. C.



LEE, WALTER FINLEY  
Rocky Mount, N. C.

MALBON, EUGENE ROBERT  
Portsmouth, Va.

MCCAULEY, CHARLES L.  
Burlington, N. C.



McFARLAND, LEIGHTON WILSON, JR.  
Greensboro, N. C.

MCPHERSON, WILLIAM STEADMAN  
Burlington, N. C.

NGON, MARTIN G.  
Floral Park, N. Y.



PARKER, JAMES LINWOOD  
Portsmouth, Va.

PEEBLES, RANDOLPH STAFFORD  
Oxford, N. C.

PILAND, IDA MAE  
Suffolk, Va.



# ELON COLLEGE



RAY, HELEN FLORENCE  
Elon College, N. C.

REED, WILLIAM  
Lyndbrook, N. Y.

SHEPHERD, JULIUS R.  
Elon College, N. C.



STEWART, WILLIAM M.  
Derita, N. C.

THOMPSON, AZARIAH GRAVES  
Reidsville, N. C.

THOMPSON, GEORGIA, MRS.  
Elon College, N. C.



TYSOR, FREDDY NATHAN  
Greensboro, N. C.

VORE, DUANE NATHAN  
Elon College, N. C.

WALKER, NESTER GLENN  
Brown Summit, N. C.

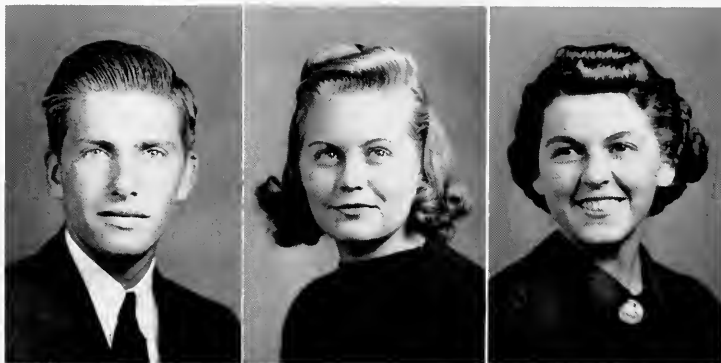


WARREN, DOROTHY MAE  
Staley, N. C.

WHITLEY, LLOYD ELMO  
High Point, N. C.

WOMBLE, LORA ELLEN  
Sanford, N. C.

1939 SOPHOMORE CLASS



*Class Officers*

JOHN HENRY PEARCE  
*President*

MARY WALKER  
*Secretary-Treasurer*

DOT EDWARDS  
*Vice President*



# ELON COLLEGE



BARNEY, WINIFRED  
Elon College, N. C.  
BAKSTICHT, HARRY CHRISTIE  
Ridgewood, N. J.  
BIVINS, MARY  
Hillsboro, N. C.



BLANKS, JOE YOUNGER, JR.  
Roxboro, N. C.  
BOONE, HELEN  
Burlington, N. C.  
BOTTOMS, HENRY BAXTER  
Morgantown, N. C.



BRENN, WILLIAM CLAUDE  
Hertford, N. C.  
BROOKS, WESLEY HALL  
Roxboro, N. C.  
BROWN, HOWARD GRIER  
Charlotte, N. C.



BUSICK, RUSSELL FARRE  
Brown Summit, N. C.  
CARUSO, SILVIO WILSON  
Riverside, N. J.  
CAUSEY, WILLIAM GARLAND  
High Point, N. C.



CLARKE, ELLIS NUSOME  
Waverly, Va.  
CLAYTON, MARY BORLAND  
Hillsboro, N. C.  
COBLE, ALBERT VERNON  
Burlington, N. C.



COOPER, NATHAN JOSEPH  
Valdese, N. C.  
CRITCHFIELD, MOSES  
Greensboro, N. C.  
DAMERON, JULIA  
Yanceyville, N. C.



DAY, JOEL LEE  
Woodsdale, N. C.  
DORN, GEORGE EDWARD  
Winsted, Conn.  
EAVES, CHRISTINE DANIEL  
Henderson, N. C.  
EDWARDS, DOROTHY ELIZABETH  
Portsmouth, Va.

# 1939 SOPHOMORES

FAGAN, IVAN  
Forest City, N. C.  
FOST, JAMES A.  
Graham, N. C.  
FOWLKES, JOHN WESLEY  
Yanceyville, N. C.



FREELAND, ESTELLE  
Effland, N. C.  
FULCHER, CLAYTON, JR.  
Atlantic, N. C.  
GARLAN, CHARLES  
Richmond, Va.



GARNER, HARRY COLLINS  
Reidsville, N. C.  
GENSBY, DWIGHT LONNIE  
Rosboro, N. C.  
GOODES, MARION  
Burlington, N. C.



GORDON, DORIS  
Brown Summit, N. C.  
HAMILTON, ROBERT  
Gastonia, N. C.  
HARDEN, CHARLES REYNOLDS  
Graham, N. C.



HEATWOLE, HUBERT ZICKLE  
Burlington, N. C.  
HOLMES, EVELYN  
Creedmoor, N. C.  
HOOK, CEPHUS GARVIS  
Capon Bridge, W. Va.



HOOK, JESSIE IRENE  
Elon College, N. C.  
HOWARD, ROBERT LEE  
Harrison, N. C.  
HOYLEMAN, NANCY  
Clifton Forge, Va.



HURST, IONE  
Pittsboro, N. C.  
ISMAN, ROGER WISFEE, JR.  
Mount Airy, N. C.  
ISMAN, THOMAS GRAYSON  
Mount Airy, N. C.  
ISELEY, ALLEN ALFORD  
Burlington, N. C.



# ELON COLLEGE



JAMES ALBERT PORDAM  
Roxboro, N. C.  
JOHNSON, ESSIE  
Windsor, Va.  
JOHNSTON, JAMES LEE  
Haw River, N. C.



JOHNSTON, JAMES WARD  
Yanceyville, N. C.  
KERSOBLE, GEORGE WALLACE  
Elon College, N. C.  
KIVETTE, CAMILLE  
Gibsonville, N. C.



KIVETTE, EDNA  
Burlington, N. C.  
LAUGHAN, WALTER  
Portsmouth, Va.  
LAWRENCE, CLAUDE HAYNES  
Mount Airy, N. C.



LAWSON, GLENN MOORE  
Portsmouth, Va.  
LEE, FRANCES JONES  
Virgillina, Va.  
LITCHFIELD, JOHN STOCKHARD  
Airdorf, N. C.



LOWE, EARLY FRED, JR.  
Elon College, N. C.  
MANGUM, MARIE  
Burlington, N. C.  
MANN, REX WILLIAM  
Kipling, N. C.



MANSFIELD, ROY  
Sanford, N. C.  
MARTIN, ROBERTA PEMBLE  
Eagle Rock, N. C.  
MAY, JOHN ALLEN, JR.  
Greensboro, N. C.



MCCAPLEY, LON  
Burlington, N. C.  
MCCOTTER, JOSEPH CARSMORE  
Suffolk, Va.  
MCDADE, JIMMIE PASS  
Hillsboro, N. C.  
MCDUFFIE, ALBERT GLENN  
West End, N. C.

# 1939 SOPHOMORES

MEACHUM, JAMES ROBERT  
Moyock, N. C.



MOORE, OSCAR DAUGHTON  
Burlington, N. C.

MORGAN VOIGT FRITZ  
Gibsonville, N. C.

NASH, MARGARET  
Elon College, N. C.



NEWTON, ELIZABETH LYON  
Jupiter, Fla.

PACE, HELEN ELIZABETH  
Burlington, N. C.

PARKER, CHARLIE  
Portsmouth, Va.



PEARCE, JOHN HENRY  
Suffolk, Va.

PENNINGTON, MARGARET TEAGHT  
New London, N. C.

POTTER, EDWARD  
Beaufort, N. C.



POWELL, HAROLD LLOYD  
Morganton, N. C.

POWELL, SHIRLEY MADELINE  
Norfolk, Va.

PRITCHETTE, MARY ELIZABETH  
Elon College, N. C.



QUACKENBUSH, JOY BELLE  
Graham, N. C.

RAWLS, CHARLES HOLLAND  
Suffolk, Va.

RECTOR, JOSEPH, JR.  
Valdese, N. C.



REGISTER, KENNETH  
Sauford, N. C.

RICHARDSON, ALLAN HOWARD  
Silver Springs, Md.

RIDSON, MARY  
Gibsonville, N. C.

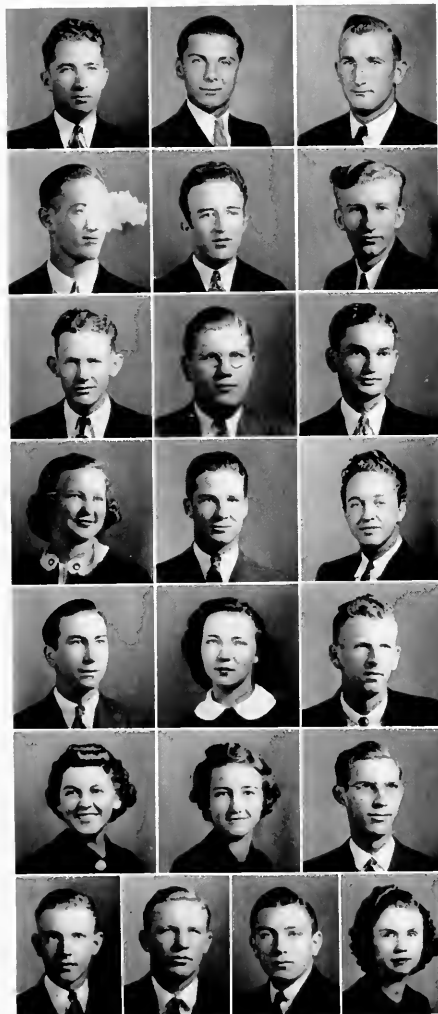


RIGNEY, VASEY SUE  
Elon College, N. C.

ROGERS, JAMES FRANKLIN  
Mebane, N. C.

ROYSTREE, LILLIE  
Gibsonville, N. C.

# ELON COLLEGE



REDD, HURLEY  
Yanceyville, N. C.  
RUMLEY, JAMES  
Elon College, N. C.  
RUSSELL, WILSON DOUGLAS  
Roxboro, N. C.

SALCKER, WELLINGTON MILLS  
Portsmouth, Va.  
SECRET, PAUL  
Drexel, N. C.  
SMITH, EDWARD  
Haw River, N. C.

SMITH, ROSS LEA  
Burlington, N. C.  
STEPHENSON ROBERT HUGH  
Seveth, N. C.  
STEWART, DAVID CARLTON  
Summerfield, N. C.

STOKES, MARTHA CAROLINA  
Lexington, N. C.  
TAYLOR EARLE C.  
Harrisburg, N. C.  
TRUITT, ROBERT WESLEY  
Greensboro, N. C.

TYSON, ARCHIE BYRD  
Stokes, N. C.  
VANDERFORD, MAHLE  
Burlington, N. C.  
WALKER, W. T.  
Brown Summit, N. C.

WALKER, MARY LEWIS  
Brown Summit, N. C.  
WALKER, NANNIE VIRGINIA  
Elon College, N. C.  
WALTERS, CHARLES MANLEY, JR.  
Burlington, N. C.

WESTMORLAND, JOHN SOMERS  
Gibsonville, N. C.  
WILKINSON, JACK BROADUS  
Portsmouth, Va.  
WILLIAMSON, JAMES ARCHIE  
Raeform, N. C.  
WRIGHT, GLADYS REE  
Star, N. C.

## 1939 FRESHMAN CLASS



### *Class Officers*

STEVE ALLISON  
*President*

LIB ARMFIELD  
*Secretary*

CHARLES DONATO  
*Vice President*

JACK BOONE  
*Treasurer*

# ELON COLLEGE



Abernethy, Talmadge, Mebane, N. C.  
 Abner, Hazel, Burlington, N. C.  
 Allison, Melvin Leslie, Hillsboro, N. C.



Anderson, Frances, Haw River, N. C.  
 Anderson, James, Burlington, N. C.  
 Anderson, Ruth, McLeansville, N. C.



Apple, Pauline, Elon College, N. C.  
 Apple, Ripton Dixon, Jr., Greensboro, N. C.  
 Archer, John William, Greensboro, N. C.



Arnfield, Elizabeth Grace, Leaksville, N. C.  
 Austin, Henry Marshal, Jr., Albemarle, N. C.  
 Avent, Jenie Douglas, Burlington, N. C.



Aysene, Perry Lee, Henderson, N. C.  
 Bagley, Joseph Henry, Jr., Suffolk, Va.  
 Barney, John Willis, Elon College, N. C.



Baynes, Byrdann, Reidsville, N. C.  
 Bell, Earl Edward, Portsmouth, Va.  
 Bell, Edna Mae, Burlington, N. C.



Bell, John Bruce, Warrenton, N. C.  
 Best, Mildred, Enfield, N. C.  
 Black, Joyce Edith, Burlington, N. C.



Boone, Robert Lee, Portsmouth, Va.  
 Bradley, Charles Davis, Lillington, N. C.  
 Bradshaw, Floyd Benjamin, Suffolk, Va.  
 Bray, Dorothy Louise, Norfolk, Va.

# 1939 FRESHMEN

Briggs, William Holt, Greensboro, N. C.  
 Brown, Anderena, Elon College, N. C.  
 Bryan, Celeste, Burlington, N. C.



Bryan, Curry E., Jr., Charleston, S. C.  
 Bunch, John Sevier, Arlington, Va.  
 Burton, D. C., Jr., Reidsville, N. C.



Burwell, J. W., Jr., Rural Hall, N. C.  
 Byrum, John Erskin, Jr., Charlotte, N. C.  
 Carroll, Margaret Juanita, Reidsville, N. C.



Casey, John Stewart, Clifton Forge, Va.  
 Chase, Dorothy, Fremont, N. C.  
 Clapp, John Boyd, Greensboro, N. C.



Clarke, John Vernon, Snow Camp, N. C.  
 Clayton, Julius Lee, Danville, Va.  
 Coble, Joseph Holliday, Snow Camp, N. C.



Coble, Worth Dewey, Jr., Burlington, N. C.  
 Comer, Claude Valentine, Reidsville, N. C.  
 Coneby, Alma, Washington, D. C.



Cooper, James Roy, Sanford, N. C.  
 Coplin, James Elbert, Burlington, N. C.  
 Corbitt, Sara Margaret, Sunbury, N. C.  
 Corey, David A., Jamesville, N. C.



Cox, Edna, Sanford, N. C.  
 Craft, Maurice Montague, Jr., Norfolk, Va.  
 Daher, Bernard George, Bridgeport, Pa.  
 Davis, Frances, Elon College, N. C.





# ELON COLLEGE



Day, Dorothy Mociie, Burlington, N. C.  
Deale, Rupert Edward, Aurora, N. C.  
Dean, Mildred, Wendell, N. C.



Dixon, Margaret Dedie, Graham, N. C.  
Dobbs, Hazel White, Shenandoah, Va.  
Donato, Charles, Waterbury, Conn.



Eshelman, Anne Marie, Everett, Pa.  
Evans, Kathryn, Burlington, N. C.  
Fann, Wilmer, Elon College, N. C.



Faulk, Pattie Belle, Mount Olive, N. C.  
Felton, Margaret Edith, Irvington, N. J.  
Fleming, Sylvester, Grimesland, N. C.



Flythe, Lokie Milton, Conway, N. C.  
Folger, Robert Cleve, Dobson, N. C.  
Fonville, Doris Lee, Burlington, N. C.



Ford, Glenwood Colbert, Portsmouth, Va.  
Forchand, John Thomas, Portsmouth, Va.  
Forlines, Sara Elizabeth, Virgilina, Va.



Foushee, Jack, Elon College, N. C.  
Fowler, Nancy, Mebane, N. C.  
Fowler, Virginia Mae, Burlington, N. C.  
Franklin, Minnie Mae, Stem, N. C.



Franks, Jack William, Elon College, N. C.  
Frazier, Frances Margaret, Ashelboro, N. C.  
Freeman, Solie Virginia, Charlotte, N. C.  
Friedman, Sanford, Greensboro, N. C.

# 1939 FRESHMEN

Fulcher, Edna Leone, Norfolk, Va.  
 Garber, Harold Hawthorne, Clifton Forge, Va.  
 Gardner, Jack, Portsmouth, Ohio



Gilliam, Frederick Keene, Elon College, N. C.  
 Goode, Grace, Virgilina, Va.  
 Hamum, Alvin, Henderson, N. C.



Harper, Joseph John, Route 1, Whitakers, N. C.  
 Harrington, Cornelius Mildred, Merry Oak, N. C.  
 Hatfield, Maxine, Shenandoah, Va.



Hawkins, Betty, Burlington, N. C.  
 Hayden, Vernon B., Portsmouth, Va.  
 Hayes, James Williard, Godwin, N. C.



Hayworth, Mary Sue, Asheboro, N. C.  
 Henry, Angie, Portsmouth, Va.  
 Herritage, James William, Trenton, N. C.



Heritage, Thomas Price, Burlington, N. C.  
 Hiatt, Mary, Burlington, N. C.  
 Hilliard, William Nathaniel, Cary, N. C.



Hobby, Julian, Burlington, N. C.  
 Hobson, W. L., Jr., Ramseur, N. C.  
 Holden, John Staley, Louisburg, N. C.  
 Hopkins, Joseph Howard, Arlington, Va.



Hopkins, Margaret, Hampton, Va.  
 Houston, Margaret, Kenansville, N. C.  
 Hoyt, Betty, Walpole, Mass.  
 Huffstetler, William Harvey, Haw River, N. C.



# ELON COLLEGE



Humble, Vida, Liberty, N. C.  
 Hunter, Marjorie Rose, Elon College, N. C.  
 Ireland, Eloise, Elon College, N. C.



Jenkins, Herbert, Maiden, N. C.  
 Jennette, Mary, Calypso, N. C.  
 Johnson, Henry Harden, Jr., Mount Airy, N. C.



Jones, Charles L., Jr., Greensboro, N. C.  
 Jones, John, Elon College, N. C.  
 Kearns, Mozelle, Asheboro, N. C.



Kearns, Jewell Elizabeth, Asheboro, N. C.  
 King, Mahlon Haynes, Asheboro, N. C.  
 King, Paul, Elon College, N. C.



Kravitz, Isidore, Belmar, N. J.  
 Lackey, Imogene, Shelby, N. C.  
 Laws, Hubbard, Hillsboro, N. C.



Leifer, Martin, New York, N. Y.  
 Lighthourne, James Horn, Jr., Burlington, N. C.  
 Liles, Thomas, Charlotte, N. C.



Lilley, Evelyn, Williamston, N. C.  
 Long, Helen, Elon College, N. C.  
 Looney, William, Rocky Mount, N. C.  
 Malloy, Cornac Joseph, Philadelphia, Pa.



Martin, Carl, Burlington, N. C.  
 Maxwell, Harold E., Falcon, N. C.  
 Maynor, W. O., Jr., Mt. Gilead, N. C.  
 McDade, Mary Ruth, Hillsboro, N. C.

# 1939 FRESHMEN

McDade, Millard, Burlington, N. C.  
 McGee, William Hardin, Germanton, N. C.  
 McGougan, Dorothy, Lumber Bridge, N. C.



McIntyre, Hazel Anne, Greensboro, N. C.  
 McPherson, Grace, Snow Camp, N. C.  
 McPherson, Sarah, Liberty, N. C.



Mebane, Katherine, Yanceyville, N. C.  
 Milvin, George, Portsmouth, Va.  
 Messick, Turner Paul, Burlington, N. C.



Michael, Graham, Kernersville, N. C.  
 Milbury, Wilnot A., Frenchtown, N. J.  
 Miller, Pansy Maude, Mount Airy, N. C.



Morgan, Ogburn Lee, Elon College, N. C.  
 Morton, John, Altamahaw, N. C.  
 Murphy, June Paige, Suffolk, Va.



Neal, Virginia Lee, Winston-Salem, N. C.  
 Norris, William Henry, Burlington, N. C.  
 Owens, Spencer, Portsmouth, Va.



Pamplin, Douglas R., Clifton Forge, Va.  
 Petric, Clarence Wesley, Lenoir, N. C.  
 Phillips, Claire, Burlington, N. C.  
 Phillips, Marvin, Asheboro, N. C.



Piberg, Millard, Elizabeth, N. J.  
 Poerschke, Paul, Pittsburg, Pa.  
 Pollard, John Francis, Jr., Greensboro, N. C.  
 Price, Paul, Ellenboro, N. C.



# ELON COLLEGE



Pritchett, James, Elon College, N. C.  
 Progar, Albert Joseph, Springdale, Pa.  
 Rascoc, Emma, Reidsville, N. C.



Rascoc, Marian, Reidsville, N. C.  
 Routh, William, Arlington, Va.  
 Rawls, Marcella, Suffolk, Va.



Rawls, Travis Murray, Jr., Verona, N. C.  
 Rhyme, Brice, Alexander, Va.  
 Rich, Judith Parker, Newport News, Va.



Roch, Julia, Snow Camp, N. C.  
 Rochelle, Talmadge Vernon, Asheboro, N. C.  
 Rollings, J. S., Jr., Suffolk, Va.



Sauer, Edward, Bellevue, Pa.  
 Schwob, Helen, Orlando, Fla.  
 Seymour, Frances, Alamance, N. C.



Sharp, H. Warrington, Portsmouth, N. C.  
 Shaw, Edward, Rosemont, Pa.  
 Sigmon, James W., Newton, N. C.



Slaughter, Frances, Graham, N. C.  
 Smith, Mary Eliza, Rockingham, N. C.  
 Snead, Ann, Burlington, N. C.  
 Somers, Lester Irvin, Burlington, N. C.



Somers, Lucille, Elon College, N. C.  
 Spence, Royall Herman, Jr., Burlington, N. C.  
 Spence, William David, Jr., Trenton, N. C.  
 Sprinkle, Roy, Arlington, Va.

# 1939 FRESHMEN

Stallings, David, Durham, N. C.  
 Steinitz, Frank, Irvington, N. J.  
 Stephens, Lila Budd, Hertford, N. C.

Steverson, Enoch Benjamin, Portsmouth, Va.  
 Straughn, Arline, Siler City, N. C.  
 Sutton, Millard, Burlington, N. C.

Thomas, Charles Cecil, Jonesboro, N. C.  
 Thompson, Polly, Suffolk, Va.  
 Thornburn, Walter Bruce, High Point, N. C.

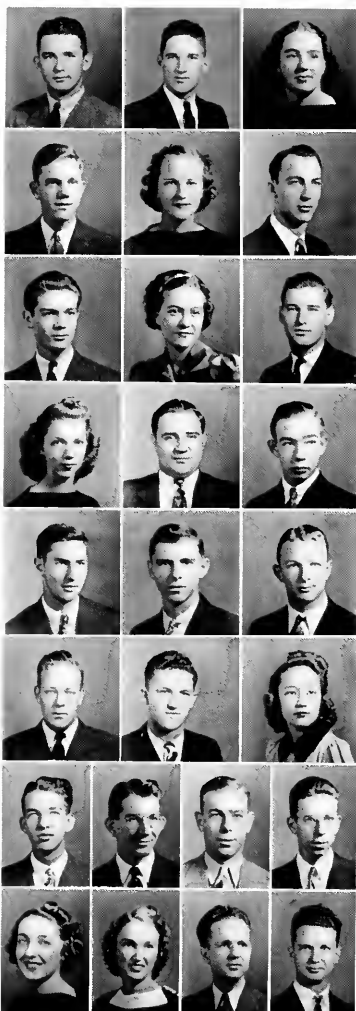
Tingen, Nell, Burlington, N. C.  
 Troxler, Irvin, Burlington, N. C.  
 UH, Claude Kenneth, Winston-Salem, N. C.

Van Lear, Charles, Clifton Forge, Va.  
 Wagoner, Mont Claire, Brown Summit, N. C.  
 Walker, John, Burlington, N. C.

Ward, Floyd, Clifton Forge, Va.  
 Weant, William, Salisbury, N. C.  
 Webster, Elsie Mae, Burlington, N. C.

White, Harold, Burlington, N. C.  
 Wickline, Cecil, Clifton Forge, Va.  
 Wilkins, Luther, Suffolk, Va.  
 Willard, Paul, Forestville, Conn.

Williams, Elmer, Richmond, Va.  
 Wilson, Louise, Lemon Springs, N. C.  
 Wise, Henry B., Newport News, Va.  
 Wyrick, Hosea, Burlington, N. C.



**A** thletics

# FOOT



MARY BYVINS



EMIL SHOWFETY WELLINGTON SAECKER  
*End End*

GARLAND CAUSEY BEN HURST  
*Tackle Tackle*

JAMES FRITTS CHARLIE DONATO  
*Guard Tackle*

JACK BOONE  
*Half Back*



ARCHIE ISBAEL  
*Captain*

The 1938 football season for Elon will not go down as the most successful in history, but it will go on record as one of the most thrilling and one which will long be remembered. The Cannonade once again soared to the top of the North State Conference, a position it had relinquished but once in eight years. The spotlight this time was, however, shared with Catawba; and although a post season game was sought to play off the tie, none was played. The gridiron campaign was also featured by four non-conference games, one of which was an inter-sectional encounter that carried the Christians above the Mason-Dixon line to Philadelphia. The record of five wins, three over conference foes, and two over non-conference; and three losses only, one of which was to a conference team, is one of which any school might well be proud.

Coaches Hendrickson and Powers had at the beginning of the season only six regulars around whom they were to build their team. They were: Captain Archie Israel at center; Horace "Goat" Brannon, guard; Ben Hurst, tackle; Art Lea, end; Amos Shelton, quarterback; and Joe Golembek, full-back. As time for the first game rolled around "Jaybird" Fritts, guard; Garland Causey, tackle; and Wellington Saecker, end; had won the other starting berths on the line. Vince Kazlow and Leroy Fones copped the two open positions in the backfield. Other linemen who performed well during the season were: ends, Emil Showfety, John Henry Pearce, Jack Gardner, Charles Van Lear, Bill McGee, Bill Weant, and Lloyd Whitley; tackles, "Bird eggs" Palantonio, "Rebel" Shaw, and Charlie Donato; guards, Curry Bryan, Joe Bagley,



# BALL



GALLOWAY WALKER

Joe Blanks, Robert Dellinger, Glen Lawson, Dong Pamplin, Millard Piberg, Al Progar, and Douglas Russell; centers, Jack Wilkerson, Hubbard Laws, and Floyd Ward. Backfield replacements were: Jack Boone, Charlie Pittman, Bernie Daher, Steve Allison, John Casey, "Squat" Garner, Walter Laughn, Wilmont Milbury, John Bunch, Ed Sauer, Roy Sprinkle, Bruce Thorburn, and Floyd West.

The season did not start off as well as was hoped. The Keydets of Virginia Military Institute proved too strong for the Cannonade and hung a stinging 33 to 7 defeat upon them. Dismayed not the slightest by this setback, the Maroon and Gold eleven came back the following week with a 40 to 0 victory over the High Point Panthers. October 1 saw Elon's colors flying over Philadelphia, where the second defeat was suffered; this time at the hands of Lasalle Explorers, to the tune of 13 to nothing. After a week's rest, the Christians started out anew and garnered a 14 to 6 win over the Lenoir-Rhyne Bears. Playing under the arc lights in the beautiful Greenshoro Memorial Stadium, Elon avenged its lone defeat of the previous season by eking out a 7 to 6 decision over the Appalachian Mountaineers in the most thrilling game of many a season. It was up in the Tidewater section of Virginia that the Cannonade played its best brand of ball all year and walked off the field with a 19 to nothing victory, this time at the expense of the Naval Apprentice Shipbuilders. The most crushing disappointment was received the following week when for the first time in ten years the Catawba Indians were the victors in a gridiron contest with Elon. The final score



FLOYD WEST      CHARLIE PITTMAN  
*Half Back*      *Half Back*

VINCE KAZLOW      HORACE BRANSON  
*Full Back*      *Guard*

AMOS SHELTON      ART LLA  
*Quarter Back*      *End*

LEROY FOXES  
*Half Back*



HORACE "HORSE" HENDRICKSON  
*Head Coach*

TOM "MO" POWER  
*Assistant Coach*



LEE FESSURE  
*Manager*

was 20 to 6 in favor of Catawba. Playing in a veritable sea of mud, the Davis-Elkins Senators were virtually drowned by a 6 to nothing score in a game which will never be forgotten by anyone who sat through the torrents and witnessed it. The season was brought to a close with the annual Turkey day classic with Guilford. Elon again had the advantage and wound up a very brilliant season with a 19 to nothing victory.

Post season awards were aplenty, so far as Elon was concerned. For the second year in a row, the Cannonade dominated the voting for the all-conference team and four wearers of the Maroon and Gold were placed on this mythical team. Archie Israel recognized for not only his playing ability, but his leadership qualities, too, was for the second successive year chosen to center this team. Art Lea, a



*Standing, left to right:* Jack Boone, Joe Golembek, Vince Kazlow, Amos Shelton, and Lee Fones.

*Kneeling:* Wellington Saecker, Garland Causey, Ben Hurst, Horace Brannon, Archie Israel, Curry Bryant, and Art Lea.

# BALL

sterling end for two years, was elected a flank position. Ben Hurst, who played three years of brilliant football, held down a tackle berth. Big Joe Golembek received the fullback position, and was the only sophomore on this all-star aggregation. James Fritts and Garland Causey, two men who will be counted on heavily next year, received guard and tackle positions of the second all-conference team; as did Vince Kazlow in the backfield.

After a state-wide vote conducted by the *Greensboro Daily News*, final tabulations saw Joe Golembek winning the fullback post on the all-state eleven. There are two factors which make this achievement very remarkable. Joe was the lone sophomore on the team, and the only member of a North State aggregation to gain such an honor. Archie Israel trailed Duke's all-American center, Hill, and polled second honors for the pivot job. A most splendid way to conclude a brilliant four year football career.

In true Elon tradition, the annual football banquet sounded the official finals to an extra fine season. Highlights of this auspicious occasion were the awarding of gold footballs to the graduating members of the grid squad, and the election of Art Lea of High Point as captain of the 1939 team.



SQUAD

# BASKET



DAVID "SHORTY" COREY



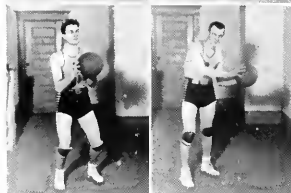
FRANK STEINTZ

LINCOLN MANZI



W. L. HOBSON

"MOOSE" KRAVITZ



S. CLAUDE LAWRENCE

HOMER SPRINKLE

Basketball enthusiasts were provided with a highly interesting season during 1938 and 1939. The cannonading Christians wound up their campaign with an enviable record of nineteen wins against six defeats. Two of the defeats, however, were suffered at the hands of the High Point Panthers who garnered the championship from the Maroon and Gold quintet.

Captain Ike Fesmire led the locals throughout the entire season, and was very ably assisted by sophomore John Henry Pierce and three freshmen: Lincoln Manzi, Jack Gardner, and Max

# BALL



"LIB" ARMFIELD

JOHN HENRY PIERCE

"FIBBER" MCGEE



LOCKIE FLYTHE

JACK GARDNER



DOUG MOSS

MAX ZIVITH



Zivith. Lloyd Whitley who was counted on to carry the brunt of the Elon attack was out for the greater part of the season due to illness. Others who performed very well, show great promise for future years. They are: Hobson, Flythe, Moss, Causey, Kravitz, McGee, Sprinkle, Lawrence, Deale, and Steinitz.

Post season awards were received by Jack Gardner, a freshman from Portsmouth, Ohio, who, besides being placed on the mythical all-conference team, was the recipient of the annual Fix award.

# BASKET

a beautiful white sweater with a large block "E" which is given each year to the player voted the squad's most outstanding performer.

Leading scorers for the season were Jack Gardner with 204 points, Ike Fesmire, 163, and John Henry Pierce, 135.

## BASKETBALL SCHEDULE

1939

|         |                   |
|---------|-------------------|
| Elon 50 | McCrary 40        |
| Elon 38 | Morris-Harvey 42  |
| Elon 27 | Apprenfice 32     |
| Elon 47 | Randolph-Macon 41 |
| Elon 35 | Catholic Univ. 32 |
| Elon 42 | McCreary 34       |
| Elon 33 | Roanoke 46        |
| Elon 46 | E.C.T.C. 20       |
| Elon 41 | Lenoir-Rhyne 36   |
| Elon 22 | Appalachian 47    |
| Elon 61 | Guilford 17       |
| Elon 41 | Lenoir-Rhyne 26   |



*Left to right: Link Manzi, Jack Gardner, John Henry Pierce, Ike Fesmire, and Lloyd Whitley*

# BALL

IKE FESMIRE  
*Captain*

JOE HARDISON  
*Manager*



## BASKETBALL SCHEDULE- *Continued*

1939

|         |                |
|---------|----------------|
| Elon 50 | W.C.T.C. 30    |
| Elon 47 | Catawba 34     |
| Elon 34 | High Point 47  |
| Elon 39 | A.C.C. 24      |
| Elon 38 | E.C.T.C. 31    |
| Elon 40 | A.C.C. 19      |
| Elon 42 | Catawba 21     |
| Elon 48 | Appalachian 38 |
| Elon 76 | Guilford 24    |
| Elon 30 | High Point 45  |
| Elon 32 | W.C.T.C. 28    |
| Edon 45 | W.C.T.C. 11    |



SQUAD

# BASE



Steve Castura  
*Third Base*



Joe Hardison  
*Right Field*



Jack Gardner  
*First Base*

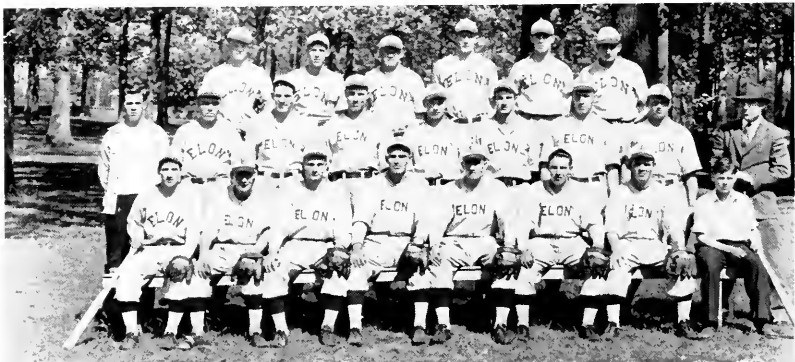


Ed Sauer  
*Left Field*



Emil Showfety  
*Center Field*

Diamond doings this year promised to be ultra fine. Early season workouts unearthed one of the best balanced outfits this institution has seen in many a year. It boasts a mound department headed by Captain Andrew "Dopey" Fuller, one of the leading college pitchers in this section. Herbie Jenkins, R. D. Apple, and Bob Hamilton were also expected to share the hill duties. The infield was tentatively set with Jack Gardner at first, Lee Fones at second, Ed Sauer at third, Kenny Beaman at short, and Homer Sprinkle utility. The outer garden spots were going to be patrolled by such famous fence busters as Emil Showfety, Frank Steinitz, Freddy Tysor, Joe Hardison and Hobson. Amos Shelton, playing for his fourth straight year, was going to handle the major portion of the catching. Al Progar and Steve Castura, a freshman, expected to see plenty of action behind the plate. Others vying for positions were pitchers: Abernathy, King, Zivith, and Craft; infielders: Bernie Askins; outfielders: Allison, and Daher.



SQUAD



# BALL



Andrew "Dopey" Fuller  
*Captain*

**BASEBALL—1939**

Elon—Colby  
Elon—Duke  
Elon—Ohio  
Elon—Guilford  
Elon—Michigan  
Elon—Guilford  
Elon—High Point  
Elon—Atlantic Christian  
Elon—High Point  
Elon—High Point  
Elon—Lenoir-Rhyne  
Elon—Lenoir-Rhyne  
Elon—Guilford  
Elon—Lenoir-Rhyne  
Elon—Lenoir-Rhyne  
Elon—High Point  
Elon—Catawba  
Elon—Catawba  
Elon—Atlantic Christian  
Elon—Atlantic Christian  
Elon—Western Carolina  
Elon—Catawba  
Elon—Catawba



R. D. Apple  
*Pitcher*



Lefty Abernathy  
*Pitcher*



Bob Hamilton  
*Pitcher*



Travis Rawls  
*Manager*



W. L. Hobson  
*Short Stop*



Maurice Craft  
*Pitcher*



Frank Steinitz  
*Center Field*



Mahlon King  
*Pitcher*



Albert Progar  
*Catcher*

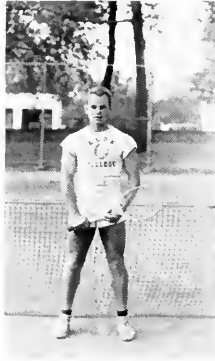


Holt Briggs  
*Third Base*



Homes Sprinkle  
*Second Base*

# TENNIS

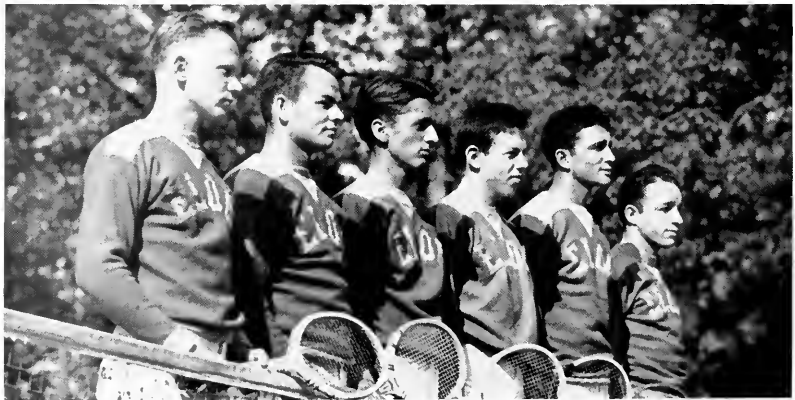


Charlie Pittman  
*Captain*



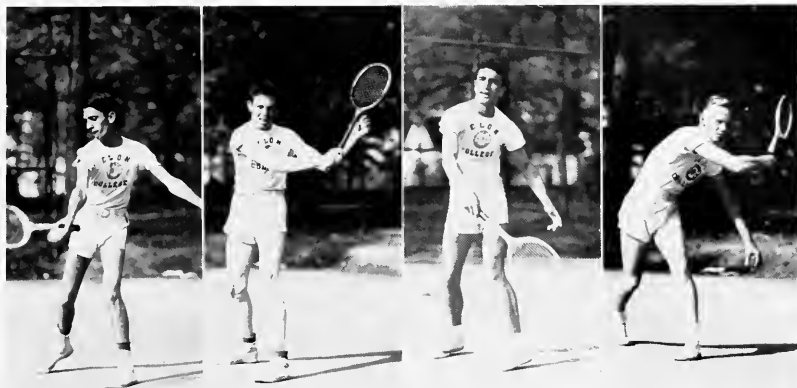
Vince Kazlow  
*Manager*

The Elon Tennis team for the Spring season of '39 is looking forward to a real season of tennis with a most difficult schedule ahead of them. Under the capable leadership of Charlie Pittman as student coach and Vincent Kazlow as manager the team is rapidly getting in shape. The personnel of the team as it now stands appears to be Bruce Flory at the No. 1 position with Eugene Malbon No. 2, Charlie Pittman No. 3, Jimmie Light-



*Left to right: Bruce Flory, Charlie Pittman, Gene Malbon, John Barney, Lloyd Whitley, and Vince Kazlow.*

# TEAM



Gene Malbon

John Barney

Lloyd Whitley

Bruce Flory

bourne No. 4, Lloyd Whitley No. 5, and John Barney No. 6. In the Doubles Combinations are Pittman and Malbon at No. 1 and Flory and Lightbourne at No. 2.

The team is looking forward to a trip South during the Spring holidays when they will meet some of the outstanding schools and universities and going as far South as Rollins College in Winter Park, Florida.

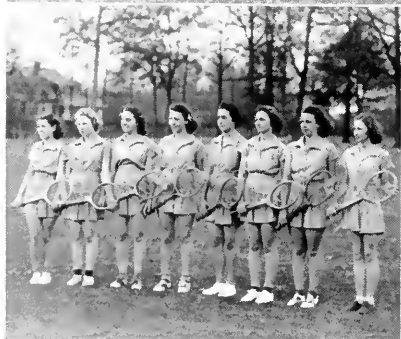
The team has also scheduled such prominent schools as American U. from Washington, University of Newark from Newark, New Jersey, and Colby College from Maine.

The North State Conference Championship which the Elon Tennis team has monopolized for the last four years will be at stake this year, and the team is concentrating its efforts on the threatening teams of Guilford and Lenoir Rhyne. For the past five years Elon has been undefeated in the conference and in the past three years, out of a total schedule the team has lost 12 out of 80 matches played.

## Girls Athletic Association



IMOGENE LACKEY  
EVELYN HOLMES  
MARGARET CARROL



Angie Henry, Virginia Neal, Whitey Dobbs, Emma Rascoe, Mildred Harrington, Ruth Anderson, Berdine Baynes, and Doris Farmer.



The "first nine" and a few more, ready to dash off a few innings of baseball.

MOZELLE KEARNS  
VIRGINIA FREEMAN  
SARAH FROLINES  
FRANCES LEE



MINNIE MAE FRANKLIN  
JUNE MURPHY  
MARY BIVINS  
MARCELLA RAWLS  
ARLINE STRAUGHN  
LIZ ARMFIELD



CARROL

HOLMES

LACKEY



The Girls Athletic Association, under the supervision of Mrs. Lene Hendrickson, promotes the healthful athletic recreational activities of the campus girls by participating in various intramural sports, gym classes, and May Day exercise.

The sports offered are: volleyball, shuffle-board, ping-pong, basketball, archery, tennis, horseshoes, baseball, badminton, and folk-dancing.

A keen interest has been shown by all and there has been good entertainment and wholesome exercise. Mrs. Hendrickson was very ably assisted by Miss Evelyn Holmes throughout the year.

# **A** **ctivities**



STUDENT GOVERNMENT

WALTER FONVILLE, *President of Student Body*



# Student Government Officers

## SENATE

FLOYD WEST  
*President*

JACK NEESE  
*Vice President*

CURTIS JONES  
*Secretary*

MOSES CRUTCHFIELD  
*Treasurer*

Graham Hunt  
Walter Fonville  
Charles Walters  
Jessie Harrington

Charles Donato  
Mahlon King  
Sidney Taylor  
Rufus Underwood

## COUNCIL

GWENDOLYNE TILLMANN  
*President*

BEATRICE MASHBURN  
*Vice President*

ONA MARY STEPHENS  
*Secretary*

MARY WALKER  
*Treasurer*

Ruth Page Clark  
Mary Claytor  
Roberta Martin

Mary Ruth McDade  
Dorothy Warren  
Jannita Waugh

Lucy Mae Wright

## Senior Cabinet of S. G. A.

JACK NEESE  
*President*

JAMES L. PARKER  
*Vice President*

FLORINE RAY  
*Secretary-Treasurer*

James W. Parker  
Christine Eaves  
Dot Edwards  
Evelyn Holmes  
Ruth Page Clark  
June Leath

Nathan Cooper  
Helen Boone  
Roberta Martin  
Irene Hook  
Sam B. Fouchee  
Edith Brannock  
Hall Brooks

James Rogers  
Jimmy McDade  
Tom Perry  
Gwen Tillmanns  
Mary Walker  
Juanita Waugh



## Junior Cabinet

KENNETH UTT  
*President*

TAL ROCHELL  
*Vice President*

MINNIE MAE FRANKLIN  
*Secretary-Treasurer*

Mary Ruth McDade  
Sara Forlines  
Frances Fraizer

Henry Wise  
Margaret Felton  
Ceil Thomas  
Marian Phillips

Mahlon King  
Susie Hayworth  
Lib Armfield

## The Band

Charles Hamrick was this year's student-director of the Elon College band. This organization played an important part in many of the college's function. Led by drum major Evelyn Lilley, the Maroon and Gold clad musicians made a striking picture during the halves of football games. They also performed at the basketball and baseball games, and gave several special concerts during the year.

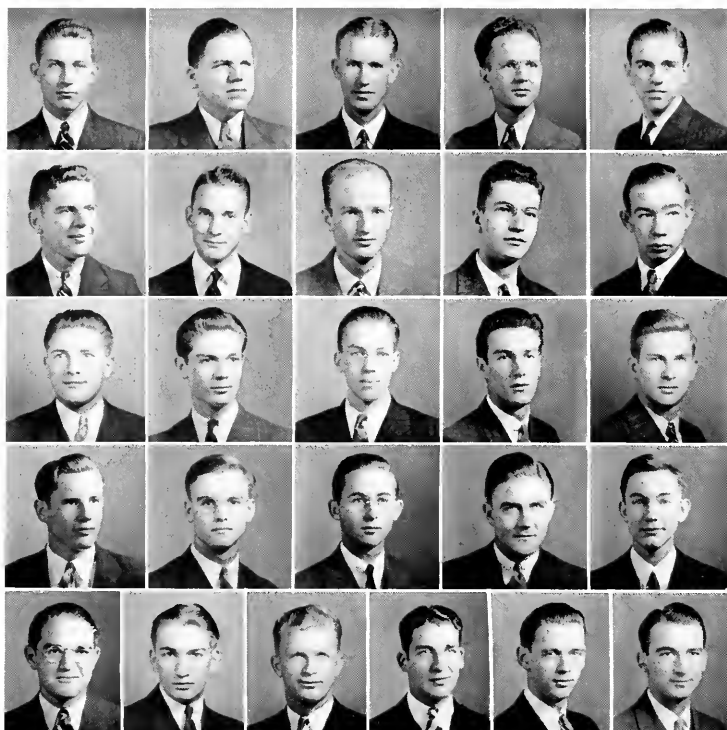


## The Orchestra

Something entirely new made a very favorable impression on the Elon campus this year. This was the college orchestra under the leadership of Charlie Hamrick.

The boys achieved the thing that they all were striving for—that is, a good dance band. They played for the fraternity and sorority parties besides fulfilling many outside engagements.

The personnel includes: Howard Brown, Louie Hubbard, Tommy Heritage, Jummy Parker, Ben Steverson, Jimmy Lightbourne, Buddy Hayden, Charlie Hamrick, Bob Truitt, John Pollard, Al Mastro, and Fred Gilliam.



## Dr. Johnson's Literary Society

TOM PERRY

*President*

Nathan Cooper  
 Henry B. Wise  
 Roy Mansfield  
 James L. Parker  
 Jack Neese  
 E. Hedgebeth  
 James W. Parker  
 Kenneth Utt  
 Henry Capillary  
 Charles Thomas  
 Julius Shepherd  
 Horace Penn

J. P. HACKNEY

*Secretary*

Dwight Gentry  
 Carl Martin  
 Jimmie Rogers  
 Jimmie McDade  
 Wesley Holland  
 'Fal' Rochelle  
 Jack May  
 Clifton Michael  
 Horace Brannon  
 Sil Cruso  
 Robert Meachum  
 Bill Hillard

W. Fonville

*Not Photographed*

Hall Brooks

W. T. Walker



NANCY LEE HOLYMAN    ESSIE LUCILLE JOHNSON    MARY EUGENIA BIVINS    MARIE MANGUM  
*President*                      *Vice President*                      *Secretary*                      *Treasurer*

## Commercial Club

### ROLL

Hazel Ruth Abner, Dorothy May Anderson, Margaret Frances Anderson, Ruth Virginia Anderson, Dorothy Pauline Apple, Byrdean Baynes, Mildred Elizabeth Best, *Reporter*; Anderena Brown, Celeste Bryan, Dorothy Chase, Alma Pauline Comely, Edna Lucy Cox, Lillie Frances Davis, Mildred Bernice Dean, Annie Dare Dixon, Nannie Fowler, Grace Wilkins Goode, Marion Edith Goodes, Alvin Ray Hamm, Elizabeth Hawkins, Ralph Julian Holby, Margaret Virginia Hopkins, Elizabeth Hoyt, Vida Humble, Iris Eloise Ireland, Harvey Augustus Jeffrey, Jr., Essie Lucille Johnson, John C. Jones, Mozelle Kearns, Edna Murray Kivette, Imogene Laura Lackey, Evelyn Lilley, John Everette Norton, Claire Laurentine Phillips, Paul Weaver Price, Emma Rachel Rascoe, Marion Gray Rascoe, Judith Parker Rich, Julia Anne Roache, Helen Elizabeth Schwob, Mary Elizabeth Smith, Annie Ruth Sneed, Aline Straughn, Margaret Elizabeth Thompson, Sara Frances Trollinger, Irvon Troxter, Mabel Vanderford, Luther Woodrow Wilkins, Jane Louise Wilson.

### SECOND-YEAR COMMERCIAL

Mary Eugenia Bivins, Nancy Lee Holyman, Marie Mangum, Margaret Nash, Mary Elizabeth Rierson, *Assistant Secretary*; Lillie Neal Rountree, MRS. W. W. HOWELL, *Sponsor*.



The aim of this club is to establish a closer relationship between its personnel and the business world. To accomplish this end the club sponsors: (1) Inspection trips to business offices, (2) Talks by active business executives, and (3) Actual office participation in Elon, Burlington, and Greensboro offices. Through these contacts club members learn something of the demands of the business world.



## Choir

Prof. Stuart Pratt, Director; Robert Morgan, Accompanist; Prof. Thomas Edwards, James White, Duane Vore, Helen Daily, and Henry Wise, Soloists.



## Day Students' Association

Charlie Walters, President; Wallace Kernodle, Vice President; Edna Fitch, Secretary; and Marie Mangum, Treasurer.

The Day Students' Association was organized to promote friendly feeling between day students and campus students. The Day Students are active throughout the year sponsoring intramural teams for all events, and are quite prominent on the campus. They promote numerous social functions, most notable of which are the spring and fall dances.



## Home Economics Club

The officers of the Home Economics Club are Lucy Mae Wright, President; Annetta Smith, Vice President; Melvin James, Secretary-Treasurer; Edith Brannock, Chairman Program Committee; Miss Lida Muse, Faculty Adviser.

The club is composed of all students who have had as much as three hours of Home Economics. Meetings are held once each month, at which time a program related to some phase of Home Economics is presented, and a social is held afterwards. The club has twenty active members this year. It is the purpose of this club to further the study of Home Economics outside the classroom, and to give special attention to the phases in which the girls are especially interested.





## Phi Psi Cli

FRANK X. DONOVAN  
*Editor-in-Chief*

LOUIS E. HUBBARD, JR.  
*Business Manager*

*Junior Editors*

JUNE LEATH, DUANE VORE, BRUCE FLORY

*Advertising Editor*  
MARTIN G. NOON

*Art Editor*  
ALBERT MASTRO

*Photography Editor*  
VERNON HAYDEN

*Business Staff*  
ALMA CONEBY      ELIZABETH HOYT      CHARLES PARKER

*Faculty Adviser*  
DR. FLETCHER COLLINS



# Maroon and Gold

TOM PERRY  
Editor

GWEN TILLMANN'S  
Co-Editor



## *Editorial Staff*

Frank Donovan  
*Sports Editor*

Tommy Gaylord  
*Assistant*

Vince Kazlow  
*Assistant*

Louis Hubbard  
*Radio Editor*

## *Business Staff*

Tom Furness  
*Advertising Manager*

Dr. Fletcher Collins  
*Faculty Adviser*

## *Production Staff*

Wesley Holland  
*Production Manager*

Frank Donovan  
*Assistant Manager*

James Heritage  
*Assistant*

## *Columnists*

Frank Donovan    Louis Hubbard  
Wesley Holland    June Leath

## *Associates*

Allen Askew, Vincent Kazlow, Lloyd Huffines, Beverly Congleton, Tommy Gaylord, Walter Yarbrough, Emmanuel Hedgebeth, Ike Fesmire, June Murphey, Marjorie Hunter, Evelyn Lilly, Roy Mansfield, Stanley Lowe.





## The Ministerial Association

The Association this year has a larger membership than usual. The roll shows 25, four of whom are young ladies.

Officers for the year are: President, Emmanuel Hedgebeth; Vice President, Duane Vore; Secretary-Treasurer, E. J. Sanderson. During the year, ministers visiting the campus have brought interesting and inspirational messages to well-attended meetings. The experience of older ministers is valuable as a guide for those in training. Members of the group have delivered "practice" sermons for constructive criticism.

Our social activities consist of two annual events: the oyster stew in the Y.W. and the fish fry at "Sandy's."



## “E” Men’s Club

This year the “E” Men’s was reorganized for the fourth time. It is an organization of all men who have earned “Blocks” in the major sports. The purpose of the club is to promote fellowship among the athletes, and to regulate such matters as awarding of letters. Since its reorganization it has been functioning well, and promises to be a leading group on the campus.

The “E” Men chose John Henry Pearce, president; Lloyd Whitley, vice president; and James W. Parker, secretary and treasurer.



## Pan-Hellenic Council

The Pan-Hellenic Council is composed of representatives from each of the social clubs on the campus. Their duty is to regulate all matters dealing with interfraternal relationships. Each semester, the council acts as host to an interfraternal social.

The members of the council are:

HELEN DAILEY  
Tau Zeta Phi Sorority  
THOMAS S. EARP  
Kappa Psi Nu Fraternity  
IKE FESMIRE  
Iota Tau Kappa Fraternity

NANCY HOLYMAN  
Beta Omicron Beta Sorority  
GRAHAM HUNT  
Alpha Pi Delta Fraternity  
MELVIN JAMES  
Delta Upsilon Kappa Sorority

CHARLES E. PITTMAN  
Sigma Phi Beta Fraternity



## Kappa Psi Nu

### *Seniors*

|                 |              |
|-----------------|--------------|
| Horace Brannan  | Jack Neese   |
| Tommy Earp      | Horace Penn  |
| Charles Hamrick | Allen Watson |
| George Webster  |              |

### *Juniors*

|                |             |
|----------------|-------------|
| Bruce Flory    | Dewy Hooper |
| DeRoy Fonville | Duane Vore  |

### *Sophomores*

|                 |              |
|-----------------|--------------|
| Howard Brown    | Cephus Hook  |
| Claytor Fulcher | Ken Register |
| Bob Truitt      |              |

### *Freshmen*

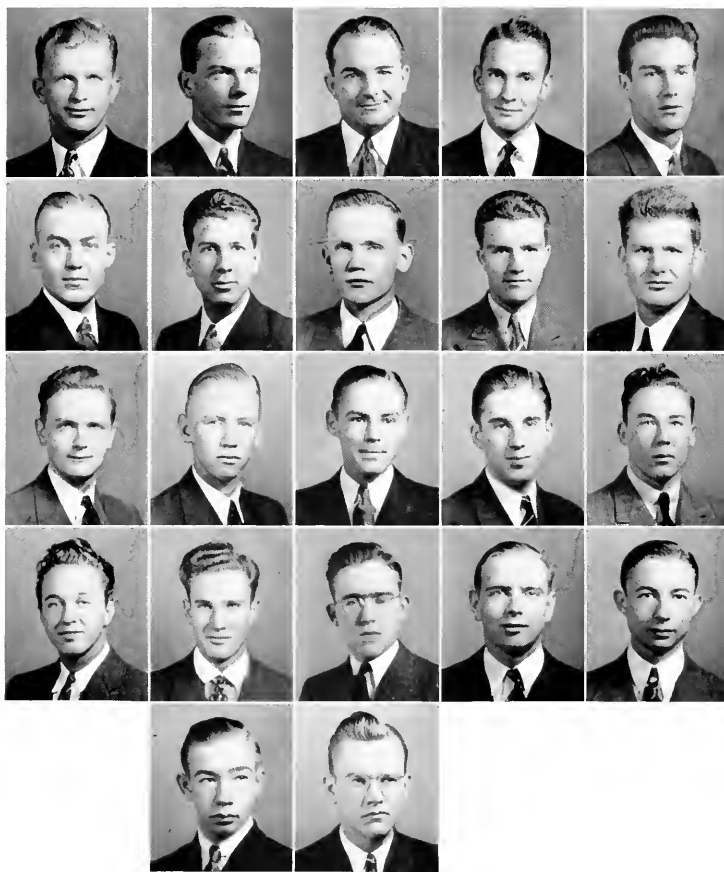
|                   |                |
|-------------------|----------------|
| Frederick Gilliam | Royal Spence   |
| James Heritage    | Kenneth Utt    |
| John Pollard      | Thomas Furness |

### *Not Photographed*

James White



L. C. DICKINSON  
*Sponsor*



Kappa Psi Nu held its annual banquet at the King Cotton Hotel on Saturday evening, April 22, 1939.



## Sigma Phi Beta

### *Seniors*

Walter Fonville                      Floyd West

L. W. McFarland                      Bill Reid  
Raleigh King                      "Azzie" Thompson  
James L. Parker                      Freddy Tysor

### *Sophomores*

Bob Hamilton                      John H. Pearce  
Wallace Kernodle                      Charles Rawls  
Fred Lowe                      Wellington Saecker  
                                                 Jack Wilkinson

### *Freshmen*

Jack Boone                      Charlie Donato  
Curry Bryant                      Bill Looney

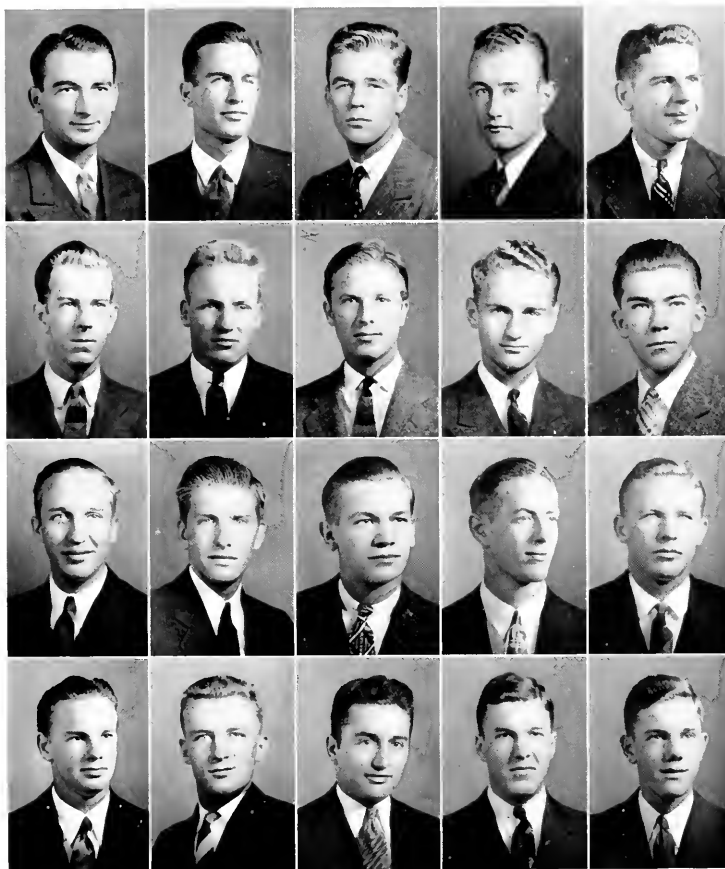
### *Not Photographed*

A. W. Haynes                      Charlie Pittman  
Allen Askew                      Hall Brooks  
                                                 Ben Stevenson



D. J. BOWDEN  
*Sponsor*





The Sigma Phi Beta fraternity held its annual banquet at the Masonic Temple on Saturday evening, April 8, 1939.



## Alpha Pi Delta

### *Seniors*

Sam Foushee  
Harris Hendricks  
Thomas Holmes

Lester Howard  
Graham Hunt  
James Parker

Henry Satterfield  
Jordan Sloan  
Rufus Underwood

### *Juniors*

Jack Basnight  
Jake Garian

Griffin Holland  
Curtis Jones

Stafford Peebles

### *Sophomores*

Harry Banknecht  
Moses Crutchfield

Jack Foushee  
Grayson Inman

Roger Inman  
Claude Lawrence

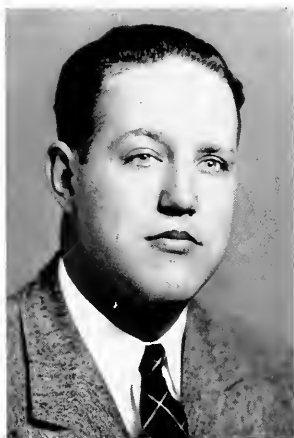
### *Freshmen*

Boyd Clapp  
Maurice Craft

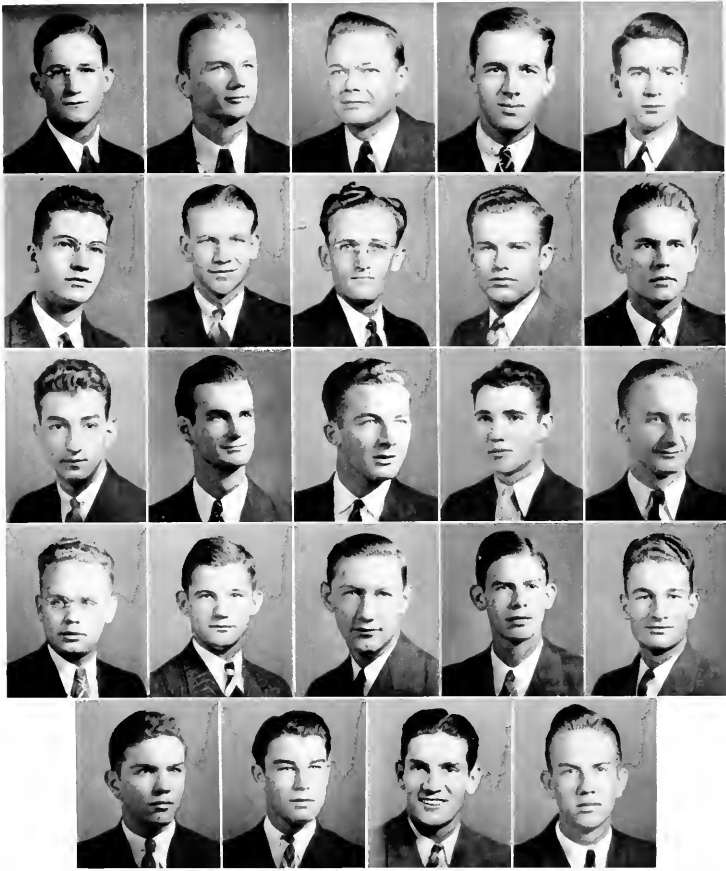
Jack Gardner  
Douglass Moss

### *Not Photographed*

A. P. James



THOMAS POWER  
*Sponsor*



The Alpha Pi Delta fraternity held its annual banquet at the O'Henry Hotel on Saturday evening, April 15, 1939.



## Iota Tau Kappa

### *Seniors*

Tommy Gaylord  
Jesse Harrington  
Lloyd Huffines  
William Jones

Vincent Kazlow  
Tom Perry  
John Puglisi

Sidney Taylor  
Craton Stephens  
Galloway Walker  
Myron Wright

### *Juniors*

Andrew Fuller  
Joe Hardison

Kenneth Huffines  
Finley Lea

Amos Shelton  
Lloyd Whitley

### *Sophomores*

Silvio Caruso  
Joel Day  
Herbert Jenkins

### *Freshmen*

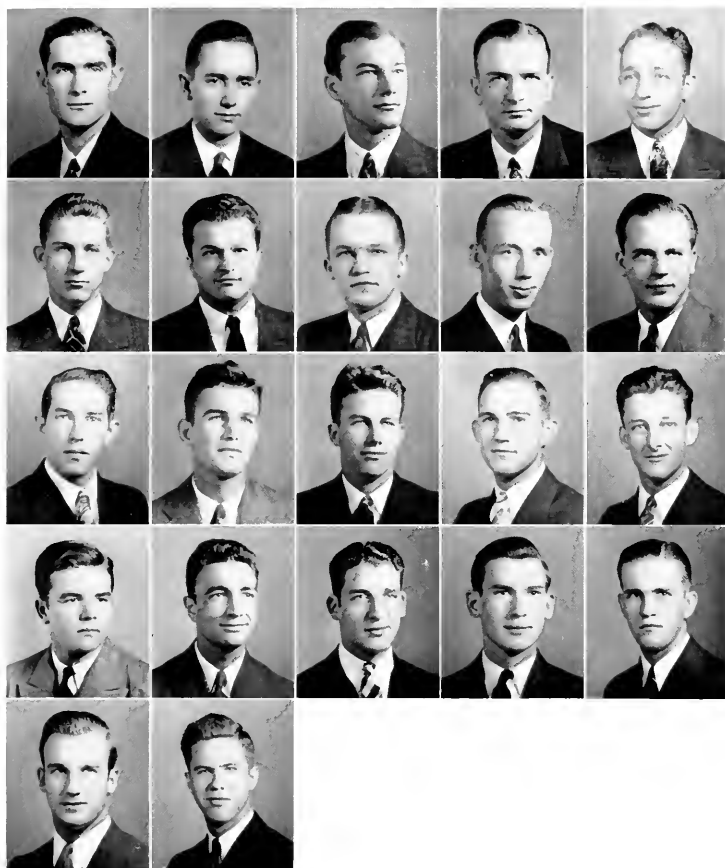
W. L. Hobson  
W. O. Maynor

### *Not Photographed*

Ike Fesmire  
Roland Longest  
Eugene Malbon



J. H. STEWART  
*Sponsor*



The Iota Tau Kappa fraternity held its annual banquet at the O'Henry Hotel on Saturday evening, April 22, 1939.



## Tau Zeta Phi

### *Seniors*

|                   |                   |
|-------------------|-------------------|
| Edith Brammoch    | Louise Pender     |
| Elizabeth Markhan | Etheline Reynolds |
| Juanita Waugh     |                   |

### *Juniors*

|                   |                |
|-------------------|----------------|
| Mary Helen Chason | Mary Lou Hayes |
| Edna Fitch        | Florine Ray    |

### *Sophomores*

|                 |                |                     |
|-----------------|----------------|---------------------|
| Helen Boone     | Roberta Martin | Elizabeth Newton    |
| Christine Eaves | Margaret Nash  | Helen Pace          |
| Irene Hook      |                | Margaret Pennington |

### *Freshmen*

|                    |                     |
|--------------------|---------------------|
| Joyce Black        | Margaret Felton     |
| Pattie Belle Faulk | Minnie Mac Franklin |

### *Not Photographed*

|              |                 |
|--------------|-----------------|
| Helen Dailey | Mary Jeannette  |
| Mary Walker  | Frances Seymour |



MRS. OMA V. JOHNSON  
*Sponsor*



The Tau Zeta Phi sorority held its annual banquet at the Jefferson Roof Garden, Saturday evening, April 29, 1939.



## Delta Upsilon Kappa

### *Seniors*

Ruth Page Clark                      Ona Mary Stephens  
Melvin James                          Gwendolyn Tillmanns

### *Juniors*

June Leath                              Ida Mae Piland  
Dorothy Warren

### *Sophomores*

Mary Claytor                          Evelyn Holmes  
Dorothy Edwards                      Essie Johnson  
Frances Lee

### *Freshmen*

Margaret Carroll                      Marcella Rawls  
Kathryn Evans                          Lila Budd Stephens  
Sara Forlines                              Nell Tingen

### *Not Photographed*

Margaret Miller



MRS. W. W. HOWELL  
*Sponsor*





The Delta Upsilon Kappa sorority held its annual banquet at the O'Henry Hotel on Saturday evening, April 29, 1939.



## Beta Omicron Beta

### *Seniors*

Mildred Craven                      Beatrice Masliburn  
Maxine Hudgins                    Mary Frances Walker  
                                                 Lucy Mae Wright

### *Sophomores*

Estelle Frecland                    Marie Mangum  
Doris Gordon                        Martha Stokes  
Nancy Hoylman                      Mable Vanderford

### *Freshmen*

Hazel Dobbs                         Virginia Freeman  
                                                 Maxine Hatfield



MISS MARY SOC RUSSELL  
*Sponsor*

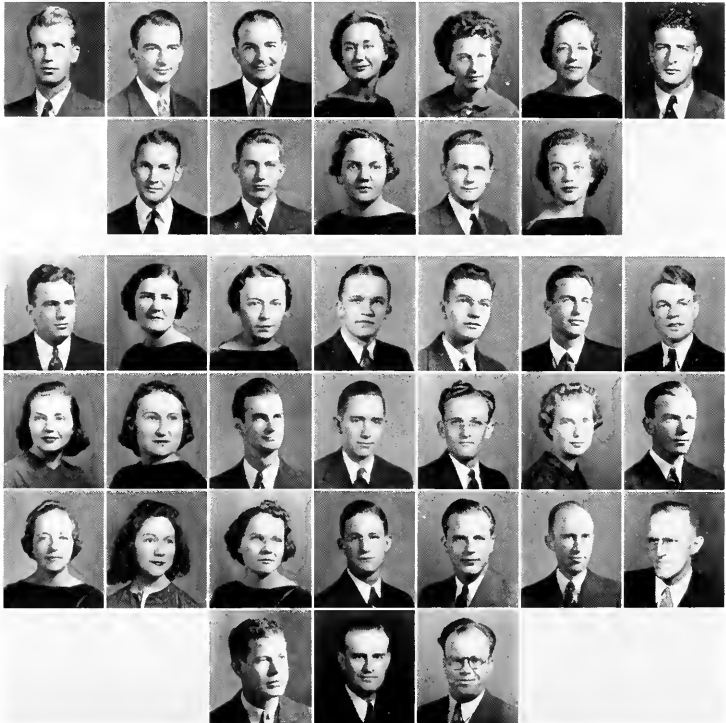


The Beta Omicron Beta sorority held its annual banquet at the Jefferson Roof Gardens on Saturday evening, May 6, 1939.

Dr. Fletcher Collins, Jr.  
 Walter Fonville  
 Charles Hamrick  
 Maxine Hudgins  
 Catherine James  
 Melvin James

## Delta Psi Omega

Albert Mastro  
 Jack Neese  
 Thomas Perry  
 Gwendolyn Tillmanns  
 Duane Vore  
 Juanita Waugh



ARCHIE ISRAEL  
*President*  
 RUTH PAGE CLARK  
*Secretary*

## Pi Gamma Mu

CHRISTINE HOLT  
*Treasurer*  
 SIDNEY TAYLOR  
*Vice President*

James W. Parker  
 Floyd E. West  
 Emerson J. Sanderson  
 Jane Francis Leath  
 Elizabeth Markham  
 Griffin Holland  
 Jesse W. Harrington

Jordan Sloan  
 Violet Graham Hoffman  
 Thomas Spence Earp  
 Melvin James  
 Edna Muriel Fitch  
 Edith Brannock

Sam Foushee  
 Galloway Walker  
 Prof. W. W. Howell  
 Dr. D. J. Bowden  
 George Coleclough  
 Dr. M. B. French  
 Dr. L. C. Dickson

# **Features**



MRS. W. FONVILLE  
*Sponsor of Student Body*

MISS PEGGY JOYCE  
*Sponsor of Maroon and Gold*

MISS ADELAIDE LOVE  
*Sponsor of Football Team*



Phi Psi Cli Sponsors

MRS. L. E. HUBBARD

MISS NITA M. DONOVAN

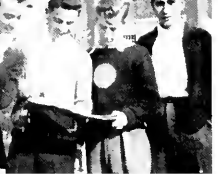
MISS MARIE WATERS

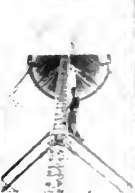


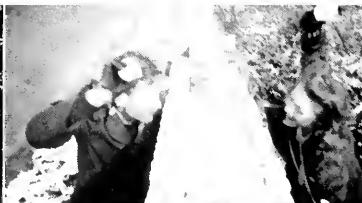
NELL FRANCES LOY  
*May Queen 1938*











# THE NATIONAL BANK OF BURLINGTON, N. C.

MEMBER OF FEDERAL RESERVE SYSTEM  
AND  
FEDERAL DEPOSIT INSURANCE CORPORATION

## Statement of Condition at Close of Business December 31, 1938

### ASSETS

|                                                                                            |                       |
|--------------------------------------------------------------------------------------------|-----------------------|
| Cash on Hand and due from Federal Reserve and Member Banks.....                            | \$1,002,553.67        |
| United States Government Bonds and Home Loan Bonds,<br>guaranteed by U. S. Government..... | 349,587.50            |
| State of North Carolina Bonds.....                                                         | 281,176.27            |
| Municipal and County Bonds.....                                                            | 149,800.00            |
| Stock in Federal Reserve Bank.....                                                         | 7,500.00              |
| Loans.....                                                                                 | 1,146,651.19          |
| Bank Building.....                                                                         | 33,748.36             |
| Furniture and Fixtures.....                                                                | 12,197.21             |
| Other Assets—Interest Accrued on Bonds not due, etc.....                                   | 10,325.34             |
| <b>TOTAL.....</b>                                                                          | <b>\$2,993,539.54</b> |

### LIABILITIES

|                                                            |                       |
|------------------------------------------------------------|-----------------------|
| Capital Stock.....                                         | \$ 100,000.00         |
| Surplus.....                                               | 150,000.00            |
| Undivided Profits and Reserves for Contingencies, etc..... | 89,376.05             |
| Deposits and Other Liabilities.....                        | 2,674,163.49          |
| <b>TOTAL.....</b>                                          | <b>\$2,993,539.54</b> |

Correct: Everett, Zane and Muse, Certified Public Accountants.

#### INFORMATION

Present market value of all bonds,  
more than the cost figures  
shown above.

DEPOSITS INSURED UP TO  
\$5,000 FOR EACH ACCOUNT

"OUR POLICY—SAFETY FIRST"

#### OFFICERS

L. J. BLAKEY, President  
C. V. SELLARS, Vice President  
C. V. LONG, Cashier  
B. S. STACK, Assistant Cashier  
G. H. GIBSON, Assistant Cashier

#### DIRECTORS

L. J. BLAKEY      E. M. LONG  
R. A. COBLE      G. D. MOORE  
W. S. COULTER    C. V. SELLARS  
C. V. LONG      W. W. SELLARS  
CLAIBORNE YOUNG

We solicit your business based upon the strong financial condition shown. We render every service possible commensurate with the policies of safe banking.

Yours very truly,  
L. J. BLAKEY,  
President and Trust officer.



Extending our appreciation to the faculty and student body of Elon College for their splendid cooperation in helping us to produce the photographic work in this annual.



## **DUNBAR AND DANIEL STUDIO**

**RALEIGH, NORTH CAROLINA**

Meet Your Friends at . . .

### **SHAW'S SODA GRILL**

Here you can enjoy a tasty lunch or crisp butter toasted sandwich with your favorite drink.

**Next to Paramount Theatre**

PHONE 1588

### **T. N. BOONE**

Carolina's Leading Tailor

Burlington, North Carolina

*Compliments of*

**ALAMANCE  
LAUNDRY  
and  
DRY CLEANING**

"WE DO IT BETTER"

Phones 560-561-740

BURLINGTON, N. C.

WELCOME  
STUDENTS

**ELON  
GROCERY**

J. C. McADAMS,  
Elon College, N. C.

Compliments of

**MAY  
HOSIERY  
MILL**

**MATLOCK'S STORE**

TEXACO GAS AND OIL

Elon College, N. C.

---

*COMPLIMENTS OF*

**K. K. HUGHES  
ELON SODA SHOP**

---

**Trollinger's Florist**

*Flowers For All Occasions*

Main Street  
BURLINGTON, N. C.



# ELON COLLEGE



One of the five new and modern administrative buildings  
on the Elon Campus

**"An Educational Privilege and Financial Opportunity  
for Alamance County Students"**

---

Address

**DR. L. E. SMITH, Pres.**

**ELON COLLEGE, N. C.**

---

ATTENTION: Learn more about your local institution of Higher Education  
before you make your plans for College.

## CAROLINA THEATRE

First Runs and Stage Shows at Popular Prices

## ALAMANCE THEATRE

"We Bring The Best Ones Back"

Where Elon Meets Burlington!

... Compliments of ...

## PARAMOUNT THEATRE

"SHOWPLACE OF ALAMANCE COUNTY"

First Run Pictures of Every Main Studio. Popular Prices!

YEAR 'ROUND AIR-CONDITIONED

## AUTOGRAPHS



The Annual  
with  
PERSONALITY.  
Unusual Beauty  
and Dignity; the Reflector  
of the Spirit and Ideals of  
Your School is obtained  
through the Services of

The  
Bush Krebs Co.  
INCORPORATED  
ARTISTS ~ ENGRAVERS  
LOUISVILLE Ky



## BUILDERS DREAMS

VISIONS created by the imagination precede the achievement of any really great accomplishment. The ability to weave the threads of imagination into the finished fabric is equally important.

It has been the privilege of the EDWARDS & BROUGHTON COMPANY to cooperate with the staff in creating their vision into material form.

Such cooperation is one of the "visions" which precede the building of a successful business, and is a part of the working policy of the EDWARDS & BROUGHTON COMPANY.

To those Staffs desiring complete cooperation, we offer unexcelled service.

You, too, may be proud of your annual.

*Correspondence is Invited*

EDWARDS & BROUGHTON CO.

RALEIGH, NORTH CAROLINA







