

Dhipsicki

1943

Digitized by the Internet Archive
in 2009 with funding from
University of North Carolina at Chapel Hill

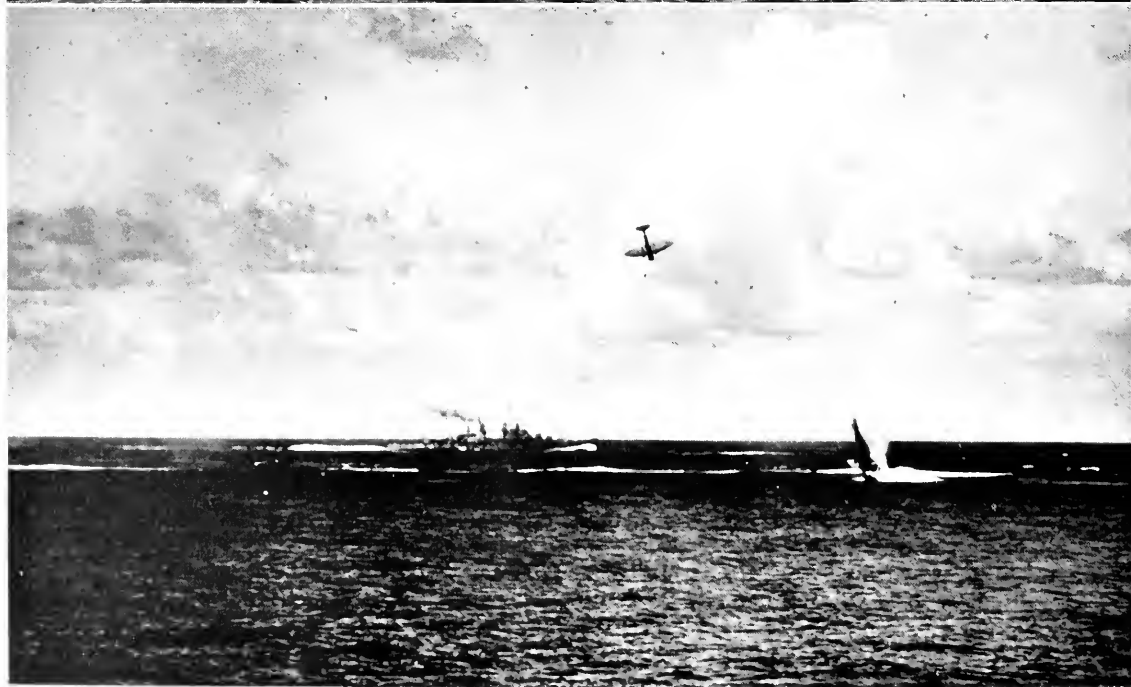
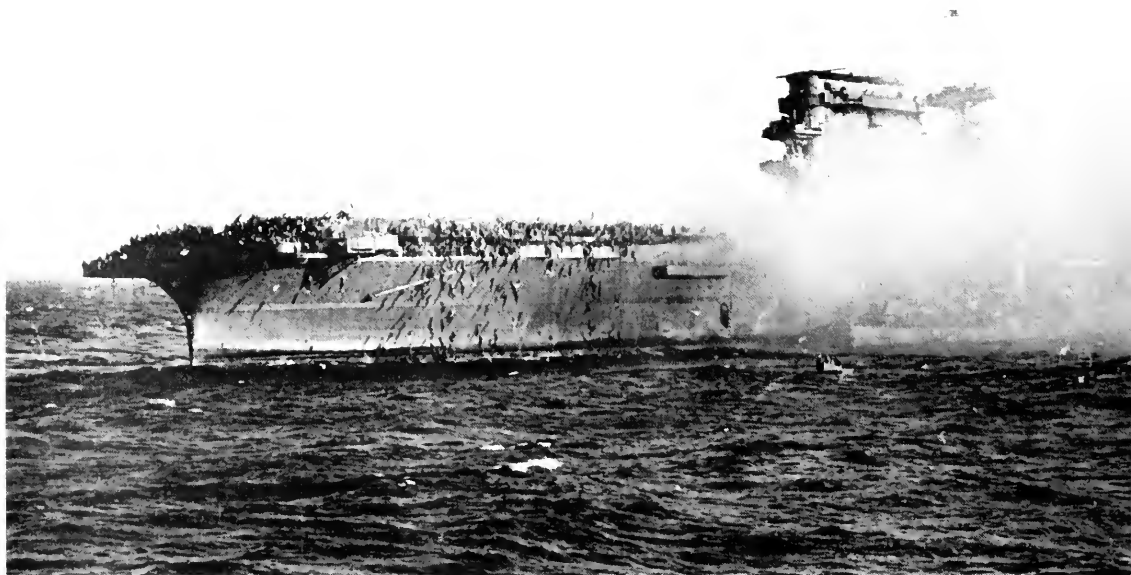
<http://www.archive.org/details/phipsicli1943elon>

The Missive

PUBLISHED ANNUALLY
by the SENIOR CLASS
of ELON COLLEGE . . .

1943

JOHN POLLARD, Editor



Official U. S. Navy photograph

"Over There!"

The PHI-PSI-CLI

In this war, as in all wars, many peace-time materials become scarce or completely unavailable for civilian consumption. This year this is especially true of many of the materials necessary in the production and publication of annuals. And until it is over "over there" these materials and many others will not be available.

However, in spite of the many difficulties encountered, it has been the desire of the college and the Phi Psi Cli staff, if possible, to publish an annual that will come as close to the high standards of quality set by previous Phi Psi Cli's as present conditions warrant.



*Official U. S. Navy
photograph*



*Official U. S. Marine Corps
photograph*

*Official U. S. Marine Corps
photograph*



O.E.M. photo

**COLONEL EDWARD
EVERETTE HOLLAND**

Statesman, Churchman, At-
torney, Banker, Legisla-
tor, Congressman, and
College Trustee



DEDICATION

Colonel Holland was a man of integrity, honor, and high purpose. Few men have served Church and State with more effectiveness and humility than he. He was a member of the original Board of Trustees of our college and served the institution faithfully for more than fifty years.

In recognition of his ability, consecration, and service we, the members of the Class of 1943, take peculiar pleasure in dedicating the *Pmi Psi Cli*, our college annual, to his memory.



In MEMORIAM

This page is dedicated to the memory that we all retain for E. W. "Vick" Vickers. From his undergraduate days until his untimely death last fall "Vick" was an ardent supporter of Elon College and of the things for which Elon College stands.



The PRESIDENT'S MESSAGE

TO THE CLASS OF 1943:

It is most unfortunate that the Class of 1943 has been so seriously disturbed during its junior and senior years. War is always disturbing. Concentration on personal development is almost impossible. Yet under circumstances that try men's souls, the Class of 1943 has persevered with convincing determination. Individually they shall receive their diplomas in due time. In the conflict of society and the fury of battle they shall remain loyal to country and devoted to Alma Mater.

In this book, our college annual, the members of this class have preserved scenes, circumstances, sayings, and achievements that mean much to them and which shall prove to be precious memories in after years.

Wherever you may be and whatever the circumstances your Alma Mater shall be with you and shall be praying for you. May God bless and keep you through all the years.

L. E. SMITH, *President.*

DEANS . . . *Elon*

Dear Seniors:

As the members of the Class of 1943 pass another milestone on Commencement Day, may you find the Elon standards of friendliness, clear thinking, honor and goodwill deeply engraved upon your heart. May our College tradition of faith in God and love for our fellowmen give you confidence to believe that these standards which we have demonstrated together during our college experiences may likewise be shared and lived by all peoples of the earth. May each of you in your own way dedicate your knowledge, your time and your talents in helping to achieve these ends.

Cordially your friend,

HELEN BOYD, *Dean of Women.*



Dear Seniors:

You are in many different places from your anticipation of four years ago. Some of you are still at the college carrying on. Others are in armed service working for another desired goal. Whether here or there we shall all be mutually connected.

Remember always that there is a warm spot in my heart and an ardent prayer for your success wherever you may be. You will not be forgotten, and remember this, whenever you return to the campus may your conscience haunt you so severely that you cannot stand still until you enter the doors of the office designated, "DEAN." He will be expecting you.

Yours as always,

J. D. MESSICK, *Dean.*





Barney
Hook

Bartley
Howell

Bowden
Johnson

Boyd
McClure

Brannock
Messick

The FACULTY

1943

JOHN WILLIS BARNEY, Department of English; A.B., Elon College; Graduate Work, Columbia University, University of Virginia, University of North Carolina.

IRVING D. BARTLEY, Department of Music; Diploma in Piano and Organ, New England Conservatory; B.Mus., M.Mus., Syracuse University.

D. J. BOWDEN, Department of Religion and Philosophy; B.S., Virginia Polytechnic Institute; B.D., Ph.D., Yale University.

HELEN BOYD, Dean of Women, Department of Religious Education; A.B., University of Washington; M.A., Columbia University.

NED FAUCETTE BRANNOCK, Department of Chemistry; A.B., M.A., Elon College; M.S., Columbia University; Litt.D., Defiance College; Additional Graduate Work, Johns Hopkins University, University of North Carolina.

HERBERT F. DONALDSON, Department of Music; B.M., M.M., Piano, Chicago Conservatory.

MERTON FRENCH, Department of Religion and Greek; A.B., Washburn College; M.A., Ph.D., Brown University.

HOWARD S. GRAVETT, Department of Biology; A.B., James Millikin University; M.A., Ph.D., University of Illinois.

HANS HIRSCH, Department of Modern Languages and History; Hoehere Reifeprüfung Realgymnasium Mannheim; University of Frankfurt-on-the-Main; University of Heidelberg; University of Vienna; Ph.D., University of Munich.

MARION L. HOCKRIDGE, Department of Modern Languages; A.B., Smith College; M.A., Middleburg French School.



Donaldson
Schultz

French
Muse

Gravette
Newman

Hirsch
Phillips

Hockridge
Pierce

Hoffman
Rouff

VIOLET HOFFMAN, Commercial Department, A. B., Elon College.

ALONZO LOHR HOOK, Registrar, Department of Physics; A.B., M.A., Elon College; M. S., Cornell University; Additional Graduate Work, Johns Hopkins University; University of Chicago; Duke University.

MRS. SUE CRAFT HOWELL, Commercial Department; A.B., La Grange College; M.S., North Carolina State College.

WALTER W. HOWELL, Department of Business Administration; A.B., Elon College; M.A., University of North Carolina

MRS. OMA U. JOHNSON, Librarian; Ph.B., A.B., Elon College; B.S., Columbia University.

LILA LE VAN, Department of Music; Mus.B., Mus.M., Kansas University; Graduate Work, Juilliard School of Music.

FREDERICK LOADWICK, Department of Music; Mus.B., Syracuse University.

CHARLES R. McCLURE, Department of English; B.A., Maryville College; M.A., Ohio State University; Candidate for Ph.D., Indiana University.

JOHN DECATUR MESSICK, Dean, Department of Education; Ph.B., Elon College; University of North Carolina; Ph.D., New York University.

MARY REED MOORE, Department of Education; A.B., Winthrop College; M.A., Furman University; Graduate Work, University of California; Columbia University; College of William and Mary.

LIDA MUSE, Department of Home Economics; B.S., University of Tennessee; M.A., Columbia University.

LILA CLAIRE NEWMAN, Department of Art; Ph.B., Elon College; Graduate Work, Columbia University; Harvard University.

MARGARET A. CASTO PHILLIPS, Departments of Mathematics and Physics; B.A., Marshall College; M. A., Duke University.

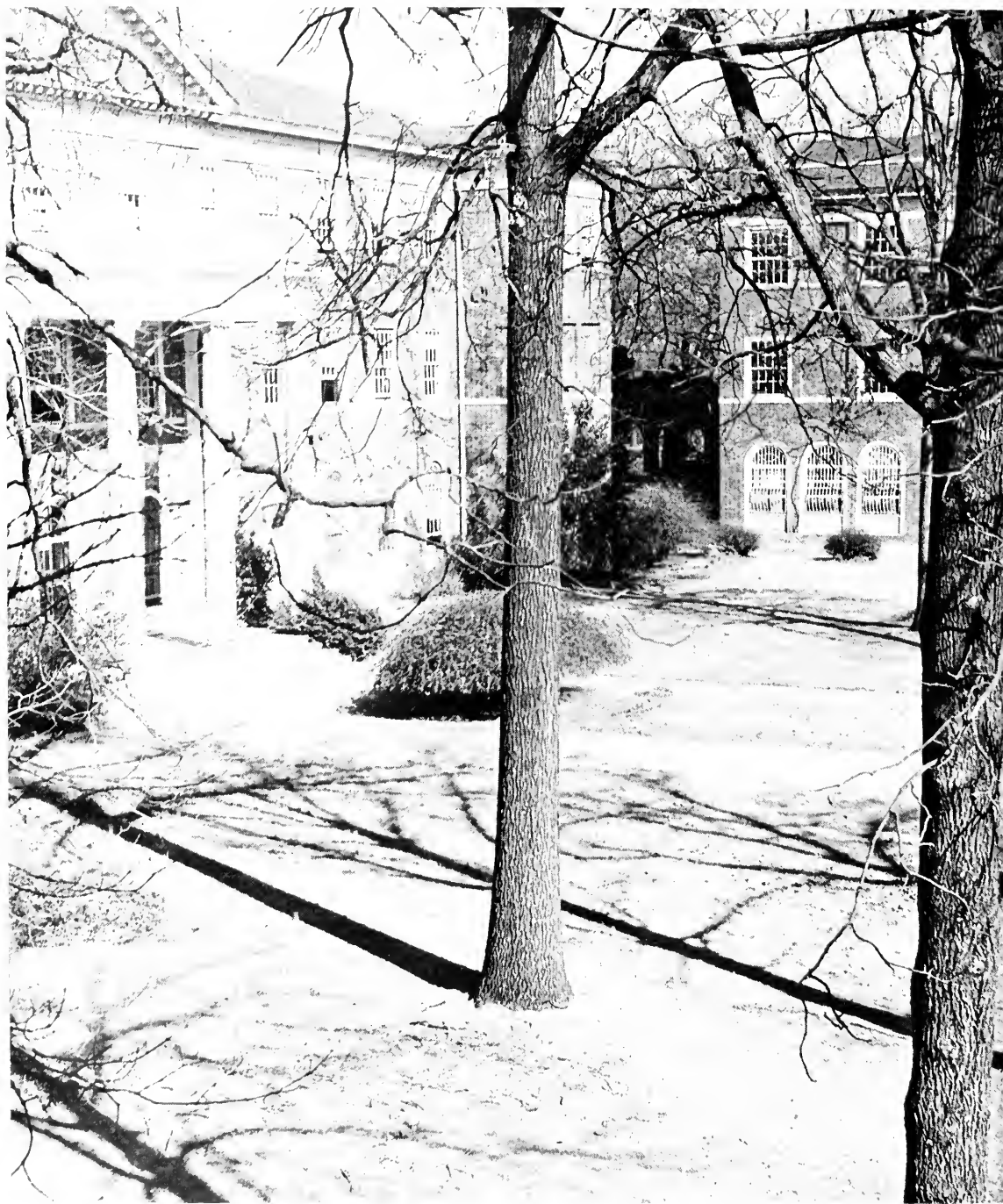
J. L. PIERCE, Director of Athletics; A.B., High Point College; M.A., University of North Carolina.

ELIZABETH ROUFF, Commercial Department; A.B., Bowling Green Business University; Liberal Arts Degree, Georgetown University.

HAROLD SCHULTZ, Department of History; A.B., Columbia University; M.A., Candidate for Ph.D., Duke University.

LEON EDGAR SMITH, President; A.B., Elon College; M.A., Princeton University; D.D., Elon College; LL.D., Marietta College.

ARTHUR F. SMULLAN, Department of Mathematics; A.B., College of the City of New York; M.A., Ph.D., Harvard University.



"A Beginning

7/2

Remember?

Lending "Bud" a helping—hand
(?).

Farm—labor(?).

King and Queen of the Freshman
Class—Mary "Hair" Denson
and Fred "Love In Bloom" Gray.

WHO'S WHO or did you know?
(What happened to the girls?)

Getting up in the world.

The Marines landed and the situa-
tion was, as usual, well in hand.

"Easy" Jones lauds the Navy.

Hallowe'en—or thwarted ideas.

A going away present for Tom.

"Smile please."

The beginning of a great contribu-
tion to the Red Cross Blood
Plasma Bank.

"In the land of cotton."







Student Body Officers

If nothing else the student body has had variety in its Student Presidents this year. We were blessed (?) with three Presidents—Tom Smythe, who left early in the year; Bill Johnston, who left shortly after this picture was made, to enter Medical School; and John Pollard, who became the third Student Body President by virtue of his office of Vice President. The other student body officers were: Edward “Buster” Butler, Treasurer, and Dwight Kernodle, Secretary.



Senior Cabinet

Student Christian Association

The Student Christian Association is composed of two cabinets, the Senior Cabinet and the Freshman Cabinet. The functions of the Senior Cabinet are to direct Christian activities of the student body, to conduct Morning Watch and Vespers, to plan socials, and to sponsor or conduct religious holiday services. The Freshman Cabinet promotes the work of the Association among the Freshman class.

Under their President for this year, Helen Margaret Messick, the Association has continued to do a very fine and commendable job of directing student religious activities.



HELEN MARGARET MESSICK
President



The Senate

The Senate, or the "Elon Police Force," is charged with the often undesirable but necessary task of enforcing the few restrictions that are imposed on the male members of the student body. However under the capable guidance of George Bullard, President, the Senate experienced one of its quietest and therefore one of its most successful years.



GEORGE BULLARD
President



The Council

The Council is the governing body of all campus girls and Day Student girls when on campus. With the aid of the Dean of Women, it reviews offenders of college rules and regulations and administers the necessary reprisals.

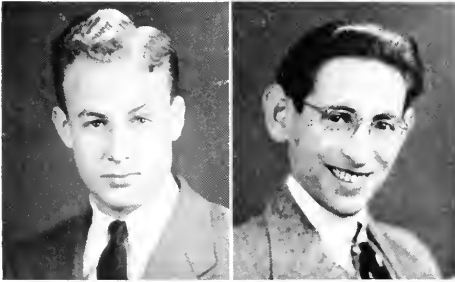
The Council has experienced the capable and fair leadership of two Presidents this year. Luvene Holmes was President until she graduated at the end of the first quarter. After Luvene left Amerith Nichols took over for the remainder of the year. The other council officers were: Rachel Crowell, Vice President; Mary Deane Browne, Secretary; and Eliza Boyd, Treasurer.



AMERITH NICHOLS
President



Student Service Organization



EDWIN WATTS
Chairman

DR. HANS HIRSCH
Adviser

War activities are rightly assuming a place of increasing importance in the lives of Elon students and on the Elon Campus. It was to coordinate these activities that the Student Service Organization was organized shortly after the outbreak of war during the past school year.

Although not yet out of its embryonic stages of development it has done much to accomplish its purpose by stimulating activity in several fields. Under its direction, over 100 students contributed a pint of blood for a blood bank set up in Greensboro. Forty over-seas' kits were purchased and placed in the hands of the American Red Cross for distribution to men en route to foreign soil. An air raid system,

surgical dressing, and other projects too numerous to mention were developed and carried out by the organization during the year.

Freshmen Class Officers



GENE POE *President*
MARGARET RAWLS *Vice President*
BONNIE DAVIS *Secretary*
HARRY MERROW *Treasurer*

Freshmen



ALBRIGHT, MARY CAROLYN, Mebane, N. C.;
 APPLE, ANNIE ELIZABETH, Elon College,
 N. C.; ARMFIELD, CAREY HAHN, Greensboro,
 N. C.; AYSUE, HELEN BURNS, Warrenton,
 N. C.; AYSUE, MELVIN WASHINGTON, Hen-
 derson, N. C.

BARRIER, ELLEN STEWART, Spedcet, N. C.;
 BATTEN, PEBSON ALEX, Portsmouth, Va.;
 BEAUFORD, MATTIE LEE, Haw River, N. C.;
 BENNETT, MARY EMILY, Whiteville, N. C.;
 BIDDIX, CLARENCE, Marion, N. C.

BIALOCK, HELEN ROSCOE, Gibsonville, N. C.;
 BLUE, GERALDINE STEWART, Elon College,
 N. C.; BOLAND, IRIS CELESTIA, Elon College,
 N. C.; BOONE, JAMES WOOD, Jackson, N. C.;
 BOUNDS, ANN HOLLAND, Holland, Va.

BRADY, ELIZABETH ALSTON, Burlington,
 N. C.; BRAXTON, ESTHER FLORINE, White-
 ville, N. C.; BRIDGERS, RALPH FRANCIS,
 Princeton, N. C.; BROOKS, RUBY GRAY,
 Oxford, N. C.; BROWER, MARY JEAN, Liberty,
 N. C.

BUSICK, MARGARET LOUISE, Brown Summit,
 N. C.; CAHOON, JEAN POWELL, Clifton Forge,
 Va.; CALLAHAN, EDMOND, Falcon, N. C.;
 CANNON, DORIS LUCILLE, Canton, N. C.;
 CANNON, MARY LOUISE, Canton, N. C.

CARDEN, DOROTHY ELAINE, Haw River,
 N. C.; CHANDLER, CLAUDE EDWIN, Broadway,
 N. C.; COBLE, THOMAS WORTHY, Gra-
 ham, N. C.; COLCLOUGH, NITA DARE, Dur-
 ham, N. C.; COMER, CAROLYN FRANCES,
 Brown Summit, N. C.

COOPER, ELSIE JEAN, Falcon, N. C.; CRAW-
 FORD, GRACE PEARL, Chadbourne, N. C.;
 CRITCHER, MARY ALICE, Oxford, N. C.; CUM-
 MINGS, PATTIE MAE, Madison, N. C.; DANIEL,
 EDWIN LEWIS, Virgilina, Va.

DARDEN, MARY LOUISE, Siler City, N. C.;
 DAVIS, BONNIE GRACE, Eureka, N. C.; DAY,
 MAUDE EVELYN, Burlington, N. C.

Freshmen

DENSON, MARY KATHRYN, Jacksonville, Fla.;
 DICKEY, GERALDINE ELIZABETH, Elon Col-
 lege, N. C.; DIXON, RACHEL, Brown Summit,
 N. C.; DURHAM, ALTON THOMAS, Burling-
 ton, N. C.; EAVES, JOSIE BURT, Henderson,
 N. C.

EGERTON, LEOLA MAE, Norlina, N. C.;
 ELLINGTON, WINIFRED POWELL, Reidsville,
 N. C.; FISHER, STACEY ALICE, Bryson City,
 N. C.; FLINCHUM, NELL REID, Carthage,
 N. C.; FLOYD, J. LYNWOOD, Atlanta, Ga.

FOLTZ, DOROTHY NELL, Surry, Va.; FORBES,
 CHARLES ALFRED, Greenville, N. C.; FOSTER,
 DOROTHY LEE, Altamahaw, N. C.; FOSTER,
 MARY JANE, Yanceyville, N. C.; FOWLKES,
 FRANCES ANNE, Yanceyville, N. C.

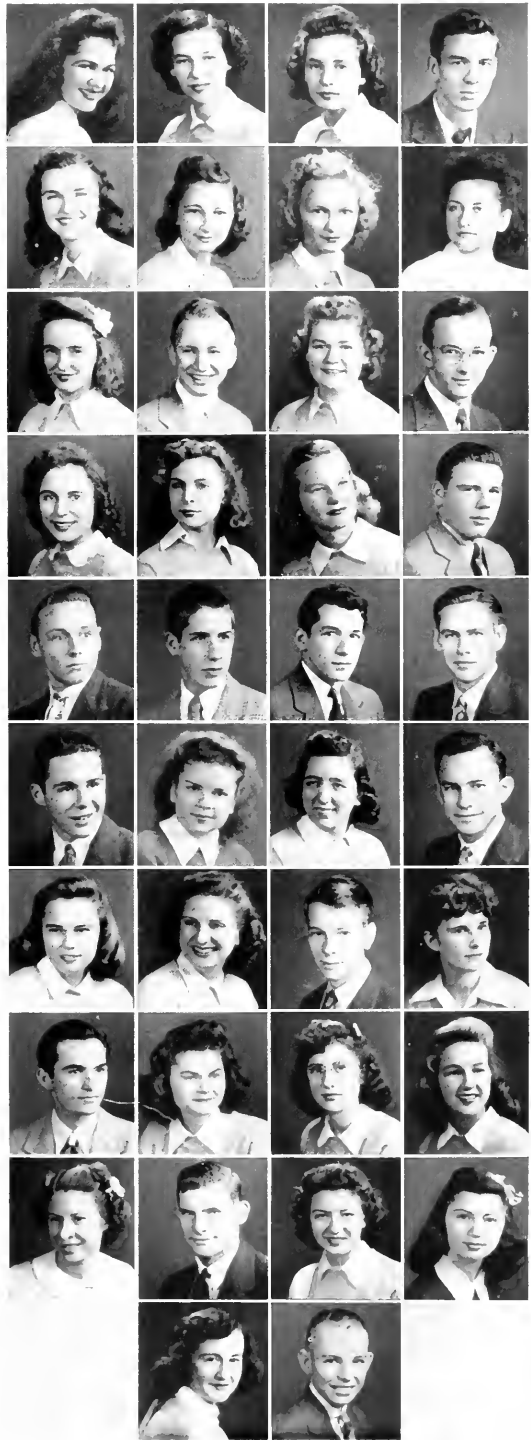
FRAZIER, FORREST LIVINGSTON, Shenandoah,
 Va.; FULLER, FLETCHER B., Henderson,
 N. C.; GIBBS, CLAYTON LEON, Reidsville,
 N. C.; GILL, ROBERT TRUMBULL, New
 Beth, N. C.; GRAY, ALLEN THURMAN, La
 Grange, N. C.

GRAY, FRED EARLE, Charlotte, N. C.; GRAVES,
 MARGARET ELIZABETH, Burlington, N. C.;
 GRIFFIN, ETHALINDA, Summerfield, N. C.;
 GRIMES, RETHEL WALES, Mount Olive,
 N. C.; GUNTER, FRANCES CATTISHAL, Suf-
 ford, N. C.

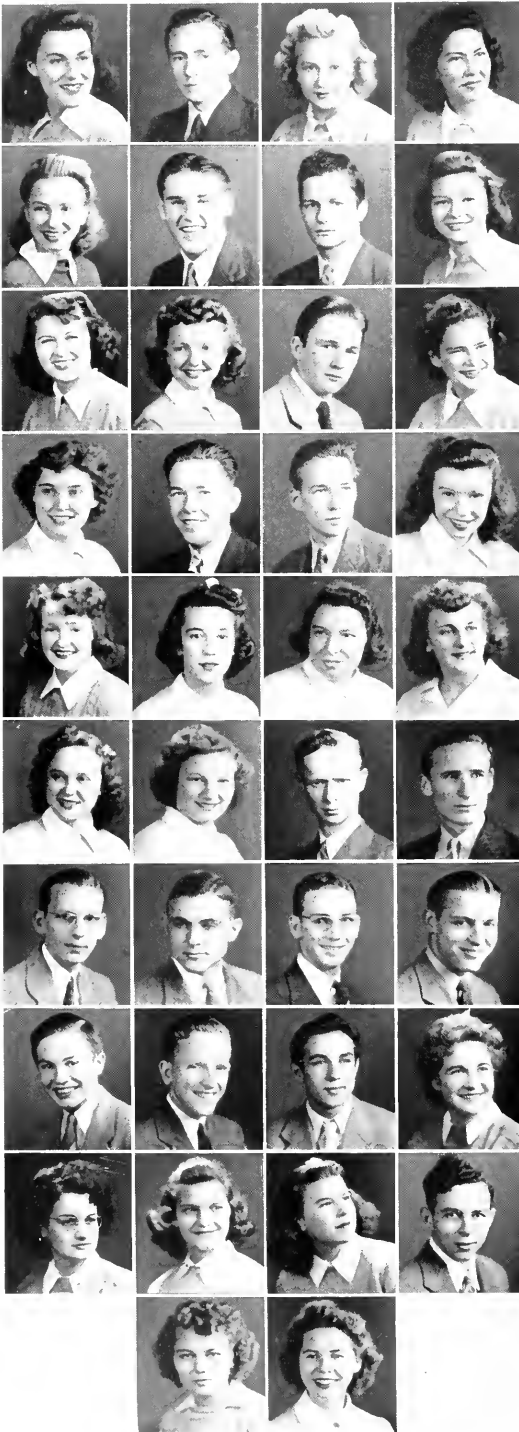
HALEY, FRANCES ESTELLE, Hillsboro, N. C.;
 HARRELL, D. B., Mount Olive, N. C.; HAR-
 RELSON, EVELYN SUE, Tabor City, N. C.;
 HARRIS, CORE CHARLES, Burlington, N. C.;
 HARRIS, BETTY JEANNE, Burlington, N. C.

HENDRY, BETTY JEANNE, Haw River, N. C.;
 HOLT, EUNICE ELIZABETH, Graham, N. C.;
 HOLT, LENA DARE, Reidsville, N. C.; HOOKS,
 HUGH BECTON, Fremont, N. C.; HUNDLEY,
 MAGGIE MAE, Norlina, N. C.

JERNIGAN, NORMA BLONDE, Elon College,
 N. C.; JONES, SENORA VIRGINIA, Milton,
 N. C.; KIMBRO, DAVID VERNON, Prospect
 Hill, N. C.



Freshmen



KINGSLAND, ELSIE LOUISE, Burlington, N. C.;
LIVERMAN, HENRY JOE, Columbia, N. C.;
MALONE, HILDA LEE, Prospect Hill, N. C.;
MAY, KATHERINE YOCELL, Burlington,
N. C.; MAY, VIRGINIA LEE, Burlington, N. C.

McADAMS, JAHU CORNELIUS, Mebane, N. C.;
McCAULEY, JOSEPH FRANKLIN, Henderson,
N. C.; McCLENNY, DOROTHY JOSEPHINE,
Chadbourn, N. C.; McDANIEL, MARTHA
ANNE, Aidseson, S. C.; McVEY, HILDA
CHRISTINE, Graham, N. C.

MERROW, HARRY FRANKLIN, Bristol, Conn.;
MILLER, ALICE ROLLIN, Chadbourn, N. C.;
MIZE, CARRIE ROWLAND, Burlington, N. C.;
MOORE, RICHARD JOSEPH, Burlington, N. C.;
MOORE, ROBERT SAMUEL, Burlington, N. C.

MORTON, ERMA ELIZABETH, Burlington,
N. C.; NEESE, ELEANOR BEATRICE, Haw
River, N. C.; NEWSOM, MARY HELEN,
Lynch, N. C.; NEWTON, MARGARET LOUISE,
Lafayette, Va.; NICHOLS, PHYLLIS HALIBURTON,
Durham, N. C.

OAKES, ELIZABETH FLOYD, Oxford, N. C.;
PARKER, ELIZABETH HOLLAND, Sunbury,
N. C.; PARNELL, WALLACE AARON, Florence,
S. C.; PATTERSON, FRED HARTWELL, Danville,
Va.; PEEDIN, JUNIS HUGH, Glendon, N. C.

PERRY, WORTH EDWARDS, Jonesboro, N. C.;
POE, GENE, Rockingham, N. C.; POHL, JOHN
EMERSON, Kenmore, N. Y.; PRICE, CLEO
HAMPTON, Summerfield, N. C.; PRITCHARD,
WILLIAM WHITE, Henderson, N. C.

PRUETT, ANDREW WILLIAM, Casper, N. C.;
RADER, BETTY MAUDE, Burlington, N. C.;
RADER, JEANNE M., Burlington, N. C.;
RAWLS, MARGARET ELIZABETH, Suffolk, Va.;
READ, WILLIE CATHERINE, Norlina, N. C.

REYNOLDS, HAL LEACH, Troy, N. C.; RICE,
VIVIAN BLANCHIE, Burlington, N. C.; RIGGS,
ELIZABETH MUSSETTE, Prospect Hill, N. C.

Freshmen

RIGGS, FRANK COLEMAN, Prospect Hill, N. C.; ROBERTS, HAZEL EARL, Jonesboro, N. C.; ROOK, CARBIE HETTIE, Gibsonville, N. C.; ROSSI, JOHN ALBERT, Vineland, N. J.; ROSS, VERNON LEE, Alamahaw, N. C.

RUSSELL, BETTY JANE, Graham, N. C.; SELF, NORMAN FAUCETTE, Burlington, N. C.; SIMPSON, MARGIE LOUISE, Elon College, N. C.; SMITH, SILAS BANKS, Mebane, N. C.; SMITH, HELEN FRANCES, Kipling, N. C.

SMITH, JAMES CLAUDE, Mt. Airy, N. C.; SMITH, MARY LILLIAN, Durham, N. C.; SMITH, VIRGINIA CAROLINE, Rockingham, N. C.; SMITH, WALENA, Goldsboro, N. C.; SNEAD, MARY ELIZABETH, Henderson, N. C.

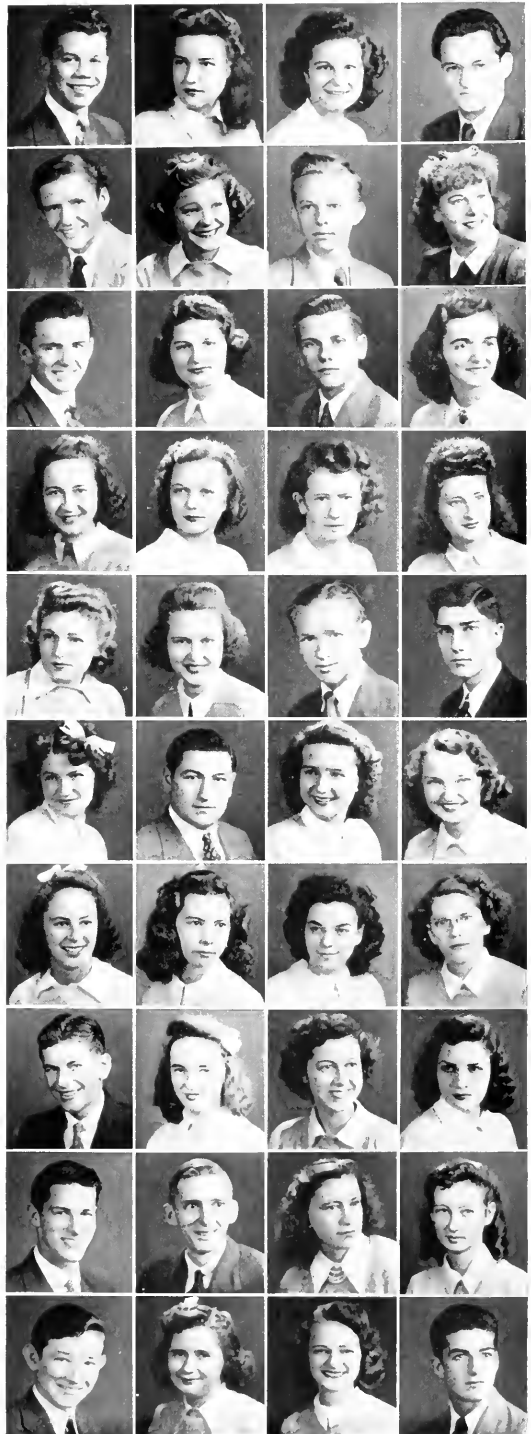
SPITZER, OLETHA, Harrisonburg, Va.; SPRINKLE, ALMA ROSE, Pfafftown, N. C.; STONE, BETTY BOB, Siler City, N. C.; STRADER, VICTORY LAWRENCE, Kernersville, N. C.; SUMNER, ARNOLD CLIFFORD, Shorts Creek, Va.

SUTTON, ALENE ALTA, Brown Summit, N. C.; SUTTON, THOMAS DANIEL, Gibsonville, N. C.; SWINK, ETHEL LOYENIA, Haw River, N. C.; THOMPSON, MARY ALICE, Goldsboro, N. C.; THURECHT, JESSIE DALE, Elizabeth City, N. C.

TOWERY, GRACE NELL, Asheboro, N. C.; TURNER, MARY ELIZABETH, Mebane, N. C.; WALKER, LILLIAN CELESTIAL, Milton, N. C.; WALKER, STEPHEN EDWARD, Milton, N. C.; WEBSTER, BETTY JOE, Boulogne, N. C.

WELCH, SARAH ELIZABETH, Elon College, N. C.; WHEELER, VIRGINIA ROBERTA, Loudnicadow, Mass.; WHELESS, PERRY, Louisa, N. C.; WHITE, FRANKLIN ROSS, Siler City, N. C.; WHITE, KATE RAWLING, Scottsville, Va.

WHITE, VIRGINIA LEE, Elon College, N. C.; WOOD, ELMER VIRGIL, Stokesdale, N. C.; WRENN, HARRIETTE EMILY, Durham, N. C.; YANCEY, MILDRED LYON, Oxford, N. C.; ZEISSNER, JOHN WILLIAM, Spring Valley, N. Y.





First row: Elder, Farrell, Harrell, Basnight, Hussey, McAdams, and McCauley.
Second row: Meacham, Meredith, Morgan, Ollis, Parker, Perry, and Poe.
Third row: Snyder, Stevens, Tripp, Wheelless, Whisnant, Schmidt, and Floyd.
Fourth row: Walker, Boone, and Smith.

Dr. Johnson's Literary Society



HAROLD SCHULTZ
Faculty Sponsor

This year was a year of great progress for the Dr. Johnson Literary Society. With the aid of its three Presidents, Joe Tom Stevens, Ivan Ollis, and V. B. "Spike" Harrell, the Society was able to bring into full swing the principal ideals upon which it was founded—these ideals being to introduce young men to public speaking, debating, and a better appreciation of social life.

The effective changes seen in the Society this year are the revision of the Society Constitution and the adoption of a Society song.



First row: Rice, Greene, Towery, Walker, Black, Breeze, and Matthews.
Second row: D. Cannon, M. Cannon, Fisher, Newton, Miller, Thompson, and Sprinkle.
Third row: Haley, Webster, Fleneham, Gunter, Roberts, Nichols, and Reitzel.
Fourth row: Griffin, Brower, Holt, Browning, Parker, and Thurecht.
Not shown: Brooks, Oakes, Riggs, and Sutton.

Panvio Literary Society

OFFICERS

SARAH RICE
President

LURA MAE GREEN
Vice President

LILLIAN WALKER
Treasurer

STACEY FISHER
Secretary

The Panvio Literary, companion organization to the Dr. Johnson's Literary Society, operates on much the same plan as the brother organization.

Speakers for the programs consist of members of the faculty and off-campus visitors. Occasionally there is a joint meeting of Dr. Johnson's and Panvio which is sometimes in the form of a debate on campus conditions and current affairs.

One of the main events of this year was the joint banquet held with the Dr. Johnson's Literary Society at the Alamance Hotel in Burlington.



MRS. OMA U. JOHNSON
Sponsor



Phi-Psi-Cli

Came September and we were all filled with "brilliant," "new," "novel," "colossal," "stupendous," and a few "good" ideas as to how the 1943 Phi Psi Cli might be made to show up its predecessors. But as time sped by these ideas escaped into oblivion or were brought down to earth by a few essential-like conferences with the printer, engraver, photographer, a reduced budget, and fewer students; and then the latter part of February we were told that we could go ahead with plans for the annual.

It has been our sincere desire to publish an annual, even with the necessary restrictions, that will serve to bring back to all of us in years to come memories of the 1942-1943 School year, a year that has seen many changes made in the college and in that integral part of the college, the students.

Phi-Psi-Cli Staff

If this issue of the Phi Psi Cli creates a favorable impression, the credit can well go to the members of the staff listed below. If it does not—(and it is possible!)—then it was a lot of fun for the Editor anyway.



EDITORIAL STAFF

- JOHN POLLARD *Editor-in-Chief*
CHARLOTTE HUSTED *Assistant Editor*
LIB HOLLAND *Editorial Assistant*
MILLER BASNIGHT *Chief Office Boy*
WALENA SMITH *Copy Editor and Typist*
VIRGINIA JEFFREYS *Typist*

BUSINESS STAFF

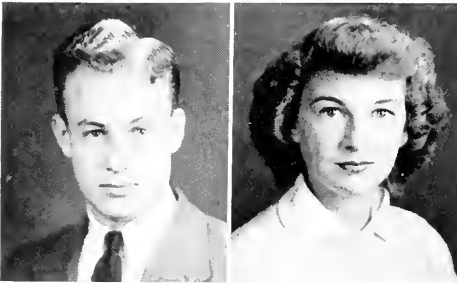
- JOE TOM STEVENS *Business Manager*
EDWIN WATTS *Advertising*
KENT DENNAN *Advertising*



C. R. McCLURE
Faculty Adviser



Maroon and Gold



ED WATTS
Editor

JUDY HOLOMAN
Co-editor

The *Maroon and Gold* is the official student newspaper and is a bi-weekly publication of the journalism class and other students on the campus. The Editor is elected by the student body and he selects his staff.

The *Maroon and Gold* is a unique publication in that it is the only college newspaper in the state, and possibly in the South, that is published in its entirety by students. It is linotyped and seen through the press in the college print shop, which gives students first-hand technical and practical newspaper knowledge.

Through the *Maroon and Gold*, Elon has sent many writers into the newspaper field and has established a reputation which has made its staff members much sought after throughout the state.



H. Messick, R. Messick, Smith, Arnfield, Boyd,
Crowell, Thomas, Hook, Koontz, Wright, Rumley, Warren.

Women's Athletic Council

The Women's Athletic Council was organized to promote a greater interest in women's athletics. With Rachel Crowell, Student-Director, and Helen Margaret Messick, President, the Council planned and completed an intramural program that aroused much interest among the students and the participants and was a definite success.

Other members of the Council were Mary Deane Brown, Mary Warren, Ruby Wright, Maxine Smith, Ruth Koontz, Faye Thomas, Polly Arnfield, Jeanne Hook, Goldie Morris, Eliza Boyd, Edna Rumley.



RACHEL CROWELL
Student Director



Pollard, Pierce, Hussey, Kern, Askins.
Parker, Kernodle, Watts, Perry, Hooper, Gilliam, and Walker.

Men's Athletic Council



J. L. PIERCE
Director

Intramural athletics rose to their greatest heights this year on the Elon campus. This was partially due to the abolition of inter-collegiate athletics, but by far most of the credit should go to Coach Pierce and the Council for their untiring efforts and diligent work in coordinating and rounding out the intramural program.

The Council maps out and carries through the athletic program, and in all cases its decisions are final on the status of players and teams. As an incentive to both individual players and team groups, it set up a point system under which individual and team awards were made.

Members of the Council were Ed Watts, President; Elroy Hooper, Vice President; Dwight Kernodle, Secretary; Steve Walker, John Pollard, Tracy Hussey, James Parker, Ike Perry, Ray Kern, Lennings Howard, John Gilliam, and Bernie Askins.

Fall Intramurals

Football honors in the fall sports program were divided between the Kappa Psi Nu and I T K elevens after the two clubs had played to three scoreless ties trying to settle the dispute as to which was the better pigskin combination. The two teams met twice during regular season play and a third time in a championship contest, and thrice the story was the same — they were evenly matched.

Alpha Pi and the East Eagles were runners-up to the Co-champs.

In girl sports, Ladies Hall walked off with the volley ball trophy after running into plenty of competition from B O B, Tau Zeta, and the West Dormitory teams.





A Middle Part

Winter

Among Other Things

"When do we eat?"

"This is the South" or "Cleaning up Mother Nature's Mess."

"Kibitzing."

"When I first came here. . ."

"King and Queen of Hearts."

"The Big Shots."

"Check to Check."

"Vice Versa."

"The Incentive for Broken Bones."

"I'm scared, but. . ."







Elon Players

Under the direction of a new dramatic coach, Professor C. R. McClure, the Elon Players proved to one and all that they were no slouches when it came to capturing the spirit of drama. The Players acquitted themselves masterfully with their first production "King Henry IV," and with their other production, "Sweet Genevieve," they had the audience "rolling in the aisles."



C. R. McCLURE
Director

Sophomore Class Officers



NELSON SNYDER *President*
DWIGHT KERNODLE *Vice President*
IRENE HOOK *Secretary*
TEX LISMAN *Treasurer*



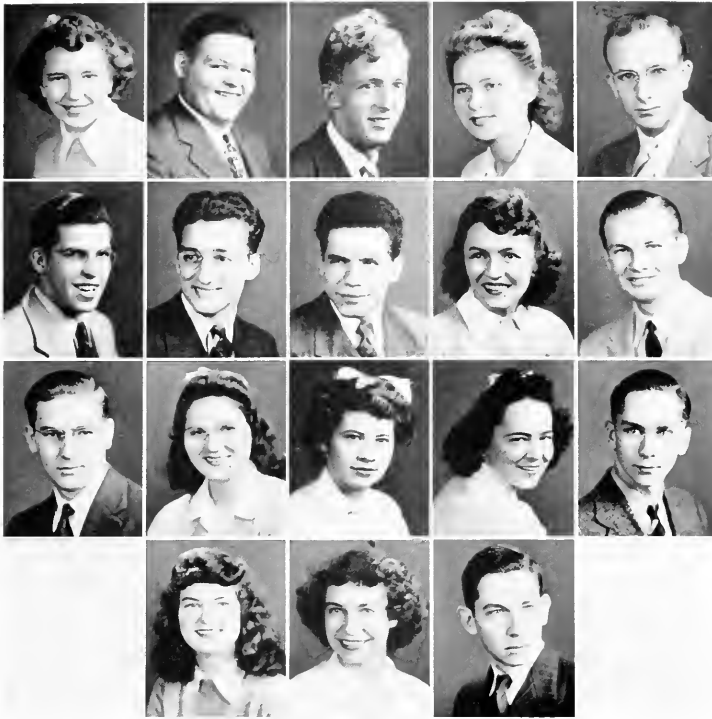
Sophomores

ALBRIGHT, FRED WALTER, Albemarle, N. C.; ALLEN, LEMUEL CARL, Binlevel, N. C.; BAKER, IRENE ALFREIDA, Carthage, N. C.; BARBER, JOHN WILLIAM, Charlotte, N. C.; BAYNES, DORIS MARIE, Burlington, N. C.

BOSTWICK, WILLIAM MORLEY, Vineland, N. J.; BOYD, ELIZA, Henderson, N. C.; BRADSHAW, HUGH TATE, Old Fort, N. C.; BRINSON, JOHN FRANK, New Bern, N. C.; BROWN, RICHARD AUSTIN, Trinity, N. C.

BROWN, WALTER HENRY, Kannapolis, N. C.; BROWNING, MELBA COLEEN, Burlington, N. C.; BYRD, MARY HILL, Franklin, Va.; CATES, JESSIE HOWARD, Burlington, N. C.; CHANDLER, DORIS MAE, Burlington, N. C.

CHELI, MARCO JOSEPH, Vineland, N. J.; COBLE, RACHEL LOUISE, Burlington, N. C.; COLEMAN, ALLEN GORHAM, Morehead City, N. C.



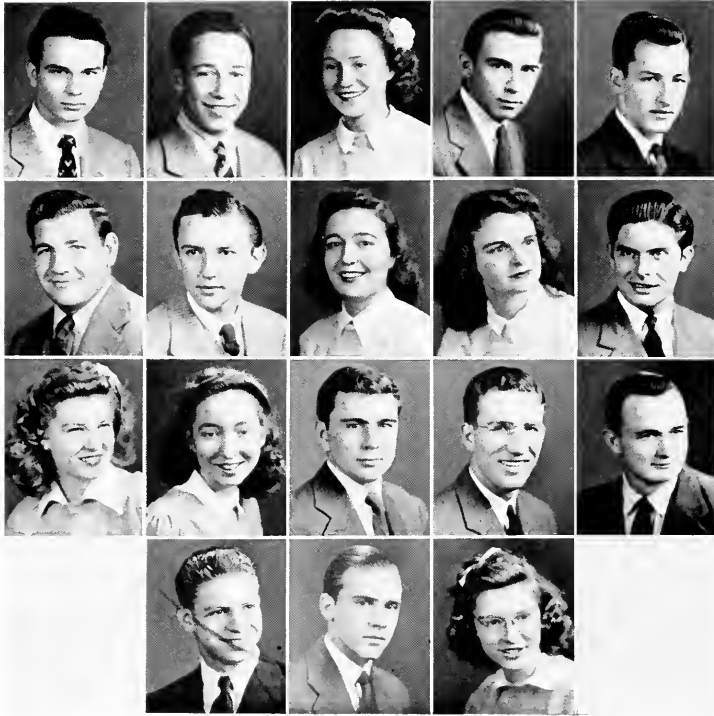
Sophomores

CRENSHAW, NELL, Burlington, N. C.; DANIELY, JAMES EARL, Burlington, N. C.;
 DICKSON, ARTHUR WILLIAM, Mircola, N. Y.; DODDS, MARY AGNES, Bradenville,
 Pa.; ELLINGTON, WARREN LEACESTER, Reidsville, N. C.

EVANS, ROY NATHANIEL, Greensboro, N. C.; FARRELL, EARL THOMPSON, Pittsboro,
 N. C.; FESTA, ANTHONY JOSEPH, Vineland, N. J.; FRAZIER, HILDA ALICE, Virginia,
 Va.; GARRETT, JOHN MAX, Julian, N. C.

GILLIAM, JOHN JACOB, Elon College, N. C.; HALL, EDITH ELIZABETH, Woodleaf,
 N. C.; HAYES, FRANCES VIOLA, Norlina, N. C.; HYATT, MARY ELIZABETH, Burling-
 ton, N. C.; HIPPS, JAMES TENNYSON, Elon College, N. C.

HOLLAND, ELIZABETH ALICE, Shelby, N. C.; HOOK, MARY JEANNE, Elon College,
 N. C.; HOOK, JOHN WILLIAM, Capon Bridge, West Va.



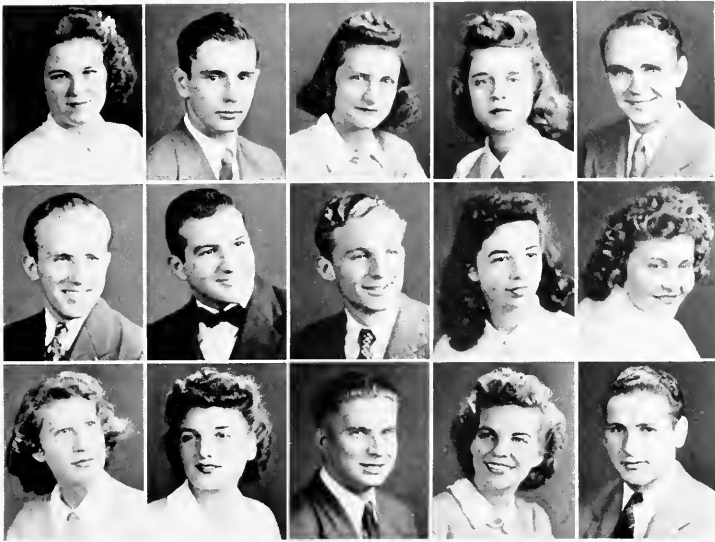
Sophomores

HUFFMAN, WADE HERBERT, Burlington, N. C.; HUNTLEY, FRANK LITTLE, Morven, N. C.; JENNINGS, NORMA, Water Mill, N. Y.; KERNODLE, DWIGHT TALMADGE, Elon College, N. C.; LATTI, WILLIAM C., Burlington, N. C.

LISMAN, MAURICE ONIS, Ebbis, Texas; MALONE, FRANK JABEZ, Prospect Hill, N. C.; MATTHEWS, JULIA ANNE, Portsmouth, Va.; McCANTS, MARY ELLEN, Anderson, S. C.; MEACHAM, WILLIAM FRANKLIN, Chapel Hill, N. C.

MESSICK, RITA SHIRLEY, Washington, N. C.; OAKLEY, MARY FRANCES, Elon College, N. C.; PAIGE, LAWRENCE EARL, Elon College, N. C.; PARKER, JAMES HALLETTE, Sunbury, N. C.; PERRY, ISAAC PEYTON, Elizabeth City, N. C.

POHL, CHARLES, Kchidoc, N. Y.; QUALLS, EYERETTE CHARLES, Burlington, N. C.; REIDT, MARJORIE ELEANOR, Waltham, Mass.

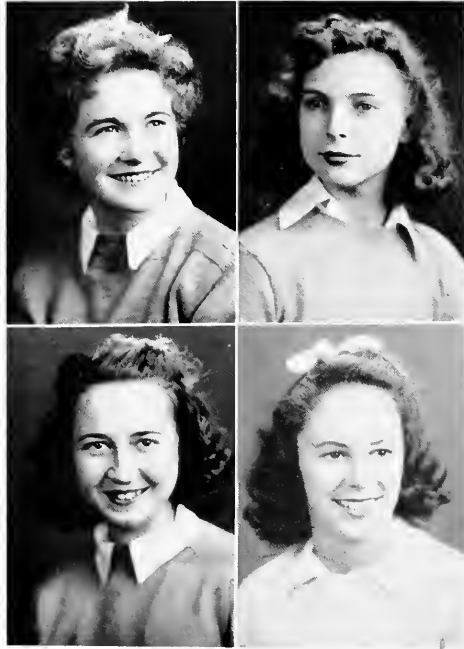


Sophomores

REITZEL, EDNA LOUISE, Hillsboro, N. C.; ROUTH, SYLVAN ROSCOE, Franklinville, N. C.; RUMLEY, EDNA VIRGINIA, Eloh College, N. C.; SIMPSON, MARGIE LOUISE, Eloh College, N. C.; SNYDER, WALSTEIN WELCH, Elkton, Va.

SNYDER, JOHN NELSON, Charlotte, N. C.; SPIVEY, HERBERT CLYDE, Portsmouth, Va.; WALKER, WOODROW WILSON, Burlington, N. C.; WARREN, MARY MAGGIE, Staley, N. C.; WATSON, REBECCA ELIZABETH, Morven, N. C.

WEBSTER, MARGARETTE RUTH, Eloh College, N. C.; WESTBROOK, IRIS GREY, Duin, N. C.; WILSON, JAMES LOFTIN, Burlington, N. C.; WRIGHT, RUBY CAROLYN, Reidsville, N. C.; ZODDA, VICTOR ALFRED, Spring Valley, N. Y.



OFFICERS

BETTIE M. RADER *President*
MARY JANE FOSTER *Vice President*
CAROLINE SMITH *Secretary*
JESSIE THURECHT *Treasurer*

The Commercial Club

Elon College welcomes the Commercial Club as a badly needed campus organization representing one of the largest departments in the College. The high standards maintained have created an ever increasing demand for graduates, thus making Elon one of the best known business schools in this section of the country.

This year, a number of speakers have appeared before the group, giving inspiring and helpful talks which have contributed toward gaining a better insight into their chosen occupation. Open forums at these meetings have afforded an opportunity for the students to seek solutions to their individual problems.

MEMBERS

Mary Albright
Polly Armfield
Rena Blue
Florine Braxton
Ruby Brooks
Margaret Busick
Jenn Cahoon
Nita Dare Colclough
Dot Carden
Mary Alice Critcher
Bonnie Davis
Evelyn Day
Geraldine Dickey
Winnifred Ellington
Stacey Fisher
Mary Jane Foster
Betty Jeanne Hendrey
Emice Holt
Maggie Hundley
Norma Gernigan
Senora Jones



Virginia May
Hilda McVade
Alice Miller
Eleanor Neece
Margaret Newton
Elizabeth Oakes
Virginia Oakley
Bettie Rader
Jeanne Rader
Caroline Smith
Helen Smith
Walena Smith
Alene Sutton
Louvenia Swink
Jessie Thurecht
Mary Turner
Lillian Walker
Sarah Welsh
Peggy White
Harriette Wrenn





The Elon Singers

Under the guidance of a new director, Professor Irving D. Bartley, the Elon Singers have continued to give us the fine singing that has become a tradition with them.

This year they gave us two beautiful performances, Handel's "The Messiah" and Gault's "The Holy City." In addition to special performances the Singers provide music for church and other religious occasions.



IRVING D. BARTLEY
Director



Ministerial Association

The Ministerial Association is composed of those students who plan to do religious work. Many members of this group are now in the Armed Services because they felt that they could be of better service there to their fellow man and to God. The Association is noted for the coöperation and enthusiasm which it displays in all college activities.

Most of the members hold positions as regular pastors in neighboring churches.

Members of the Association are: Johnson Griffin, President; Shannon Morgan, Vice President; Earl Farrell, Secretary; Billy Meacham, Treasurer; Wally Snyder, Ray Day, Weldon Madrin, Thomas Sutton, Mark Andes, Martin Grissom, Fred Patterson, Spike Harrell.



D. J. BOWDEN
Adviser



MISS LIDA MUSE
Adviser

Household Arts Club

The membership of the Household Arts Club is drawn from the Home Economics majors and others interested in this type of work. They have regular meetings at which time subjects relating to Home Economics are discussed.

In addition to their regular club work they plan and serve banquets, participate in fashion shows, aid the Red Cross, and perform any other worthwhile duties.

Members of the club are Sara Rice, President; Charlotte Husted, Vice President; Lucille Blalock, Secretary-Treasurer; Christine Crutehfield, Nell Breeze, Colcen Browning, Nita Perdue, Mary Warren, Rebecca Watson, Elizabeth Apple, Louvinia Kerns, Majorie Reidt, Mary Ellen McCants, Betty Bob Stone, Elizabeth Parker, Jean Brower, and Miss Lida Muse, Faculty Adviser.



Junior Class Officers

MILLER BASNIGHT *President*
ELROY HOOPER *Vice President*
RACHEL CROWELL *Secretary*
LUCILLE BLALOCK *Treasurer*

Juniors



AGRESTA, LOUIS THOMAS
Massapequa, N. Y.

ANDES, MARK WINSTON
Harrisonburg, Va.

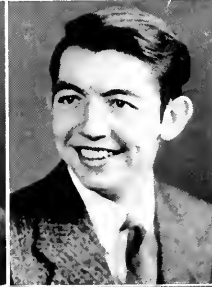
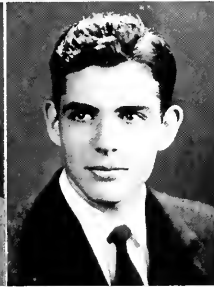
BASNIGHT, MILLER CAROWAN
New Bern, N. C.



BLALOCK, LUCILLE BREEZE
Durham, N. C.

BOONE, ELSIE SPIVEY
Jackson, N. C.

BREEZE, NELLE GENTRY
Hurdle Mills, N. C.



BURNS, WARREN THEODORE
Creshill, N. J.

BUTLER, EDWARD
Burlington, N. C.

CARROLL, ADRIAN MEREDITH
Burlington, N. C.



COBLE, MILDRED
Burlington, N. C.

COMER, CLAUDE VALENTINE
Reidsville, N. C.

COX, MARGARET LUCILLE
Burlington, N. C.



CROWELL, RACHEL GERTRUDE
Spencer, N. C.

Juniors

DAY, EDWARD RAY
Norfolk, Va.

DUNCAN, WILLIAM HENRY
New York, N. Y.

HARRELL, JR., VIVIAN BROWN
Suffolk, Va.

HILL, MARY ELIZABETH
Norfolk, Va.

HISEY, HENRY CLYDE
Shenandoah, Va.

HOOKE, BREVIET
Capon Bridge, West Va.

HOOVER, JR., ELMER JONES
Elizabeth City, N. C.

HUFF, HENRY TAYLOR
Oxford, N. C.

HUSSEY, TRACY ELTON
Hemp, N. C.

HUSTED, CHARLOTTE ELAINE
Indiana, Pa.

JEFFREYS, VIRGINIA DARE
Burlington, N. C.

JOHNSTON, ROBERT ELLINGTON
Elon College, N. C.

KEENS, LOUVINA
Ether, N. C.



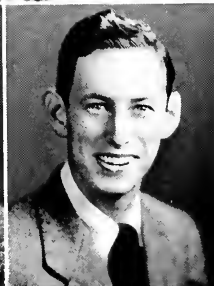
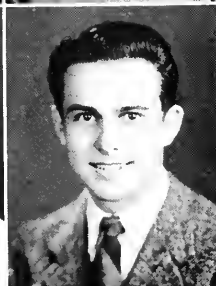
Juniors



KIDD, JOSEPH HOWARD
Hemp, N. C.

KOONTZ, RUTH EDITH
High Point, N. C.

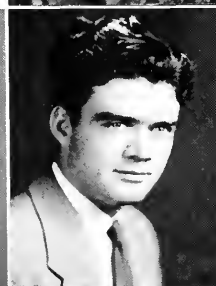
LIGHTBOURNE, PEG CARROLL
Burlington, N. C.



LITTLE, MARY LOUISE
Burlington, N. C.

MANN, CHARLES O'HARA
Cypress Chapel, Va.

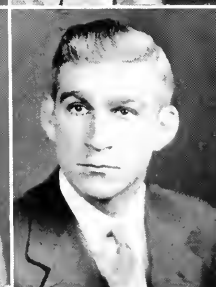
MEBANE, ALEXANDER MURPHY
Burlington, N. C.



McKENZIE, EDWARD CLYDE
Jackson Springs, N. C.

MORGAN, COLBY SHANNON
Eagle Springs, N. C.

MORRIS, GOLDIE MARIE
Jackson, N. C.



NANCE, LEWIS ALEXANDER
Charlotte, N. C.

NORMAN, JOHN ROY
Reidsville, N. C.

POLLARD, GAYLE HENRY
Greensboro, N. C.



RATH, M. CARROLL
Wilmington, N. C.

Juniors

RIDGE, PAUL HAROLD
Gibsonville, N. C.



ROBERTS, JAMES RIMMER
Jonesboro, N. C.



SCHMIDT, ELLIOT
Pelham, N. Y.



SENER, JAMES PEARCE
Kipling, N. C.



TERRELL, FANNIE MYRTLE
Burlington, N. C.



THOMAS, FAYE
Greensboro, N. C.



TRUTT, EDNA MAE
Burlington, N. C.



TRUTT, HAZEL IRENE
Burlington, N. C.



WALKER, FLORA HAZEL
Burlington, N. C.



WHISNANT, DENNY CORDELL
Polkville, N. C.



WHISNANT, POLLYANNA
Hollis, N. C.



WOOD, EVERETT VAUGHN
Burlington, N. C.



YATES, MARILYN JANE
Durham, N. C.



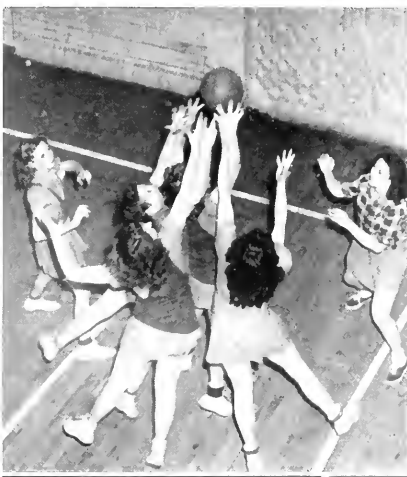


Winter Intramurals

With the coming of Old Man Winter, Elon sports enthusiasts moved indoors to the college gym for a round of that most popular of all games, basketball. The hardwood season was by far the most successful intramural program ever carried out at Elon. From one hundred to three hundred spectators were in the stands to see practically every regularly scheduled contest and interest ran high throughout the winter.

In boys basketball, Alpha Pi copped championship honors with North North and Kappa Psi Nu running close seconds.

The Ladies Hall girls were victors in the Women's league, barely nosing out Second Floor West, Third Floor West, and B. O. B.





—And An End”

Spring

Here and There . . .

"Sluggers."

"Showing Off."

"Just like Home."

"Look this way."

"Guess Who?"

"That Red Convertible."

"Alma Rose accepts for Ladies Hall."

"Calisthenics."

"Vic accepts for Alpha Pi."

"Gas Rationing."

"Swingin' Gates."

"It's Free!"

"Muscles."

"Turnabout" or "Ski-jump Denson Again."

"You're in the Army now."

"Kiss the boys goodbye."



The pictures on these two pages were contributed by the following: John Hooke, Winifred Ellington, Ray Kern, Agnes Walker, Goldie Morris, Vic Zozda, Bernie Askins, and the Editor.





Senior Class Sponsor

The Class of 1943 has indeed been fortunate in having as its sponsor Dr. N. F. Brammoch. The class and the college owe "Uncle Ned," as he is known, a debt of gratitude that can never be paid in full. Because of the deep love he has for Chemistry, that Department has become one of the best in the college and as good as that of any other small college. Even more impressive to his students and admirers is his natural humor, a trait that has not worn thin in the thirty-three years he has been a member of the College faculty. So it is that we dedicate this page to "Uncle Ned," a leader, an authority, a scholar, a humorist, a philosopher, an alumnus, and above all a gentleman of whom the Class of 1943 and Elon College are proud.

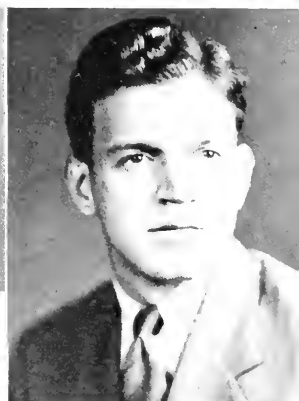


Senior Class Officers

BERNIE ASKIN *President*
GEORGE BULLARD *Vice President*
KERON WALKER *Secretary*
IVAN OLLIS *Treasurer*

Seniors . . . 1943

- BERNARD ASKIN, Washington, D. C.; I T K; H Γ M; *History*; Football 1, 2, 3; Baseball 1, 2, 3, 4; Basketball 1, 2; "E" Men's Club; Intramurals 1, 2, 3, 4; President of the Senior Class.
- RENA GILMER BLACK, College Corner, Ohio; I T K; H Γ M; *Business Administration*; Panvivo Literary Society 3, 4, Treasurer 3; Education 2, 3, 4; S.C.A. 1, 2, 3, 4; Pan-Hellenic Council 4, Vice President 4; Commercial Club 4; Honor Roll 2; German Club 2; N.C.E.A. 3, 4.
- MARY DEANE BROWNE, Rainscur, N. C.; H K T; *English*; Choir 1, 2, 3; S.C.A. 1, 2, 3, 4; Education Club 3, 4; Honor Roll 1, 4; Panvivo Literary Society 1; Commencement Marshal 3; Treasurer of Senior Class 4.
- GEORGE MINSON BULLARD, Rosboro, N. C.; K Ψ N; H Γ M; *Science*; S.C.E. 1, 2, 3, 4, President of Freshman Cabinet; Honor Roll 2; Choir 1, 2, 3, 4; Orchestra 1, 2; Dr. Johnson's Literary Society 1, 2; Intramurals 1, 2, 3, 4; Class President 3; Vice President 4; State Secretary 4; President Pi Gamma Mu 4; May Day Escort 3; Commencement Marshal 3; Executive Committee 4; Elon Players 4; Student Service Organization 4; "Who's Who Among Students in American Universities and Colleges."
- RICHARD MATTHEW CASEY, Clifton Forge, Virginia; I T K; *History*.
- MARY CHRISTINE CRUTCHFIELD, Graham, N. C.; H Γ M; *Fine Arts and Home Economics*; Home Economics Club 3, 4, Vice President 4; Honor Roll 4.
- RINALDO RAYMOND D'ANTONIO, Wayne, Pa.; I T K; H Γ M; *History*; Student Government 1, 4; Baseball Manager 1, 2; Education Club 3, 4; Intramurals 2, 3, 4.
- JAMES FENTON DARDEN, Suffolk, Va.; K Ψ N; Δ Ψ Ω; *English and Music Theory*; Choir 1, 2, 3, 4; *Maroon and Gold* 4; Dr. Johnson's Literary Society 1, 2; Senate 3, Vice President 4; May Day Court 3, 4; Intramurals 1, 2, 3, 4; S.C.A. 1, 2, 3, 4; Elon Players 2, 4; Church Organist Summer '42; "Who's Who Among Students in American Universities and Colleges."
- KENT DENNAN, White Plains, N. Y.; Σ Φ Β; *English and Business Administration*; Phi Psi Cli 4; *Maroon and Gold* 3, 4; S.C.A. 1, 2, 3, 4; Elon Players 3.
- RACHEL LEE EARP, Albemarle, N. C.; *History*; Panvivo Literary Society 1; Choir 1, 2, 4; French Club 1; S.C.A. 1, 2, 4; Council 4; Education Club 4; Dramatics Club 4; *Maroon and Gold* 2.
- JAMES WYTCHE ELDER, Pensacola, Fla.; I T K; H Γ M; *English*; Dr. Johnson's Literary Society 2, 3, 4; *Maroon and Gold* 2, 3, Managing Editor 4; *Colouades* 2, 3, Editor 4; Honor Roll 1, 2, 3, 4; Band 1, 2, 3, 4.
- JOSEPHINE EVANS, Franklinton, N. C.; *Piano and Public School Music*; Transfer Louisburg College 2; Choir 3, 4; S.C.A. 1, 3, 4.



Askin
Casey
Denman

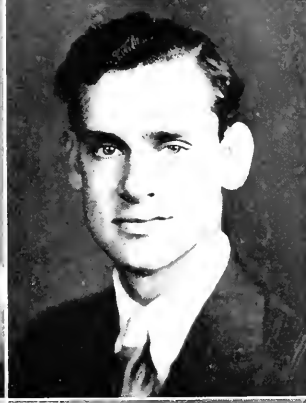
Black
Crutchfield
Earp

Browne
D'Antonio
Elder

Bullard
Darden
Evans

Seniors . . . 1943

- SALVATORE ANTONIO FESTA, Vineland, N. J.; A H Δ; H Γ M; *Chemistry and Biology*; Intramurals 1, 2, 4; Chemistry Instructor 4; Biology Instructor 4; Honor Roll 1; Senate 4; Pan-Hellenic Council 4; Vice President Senior Class; "Who's Who Among Students in American Universities and Colleges."
- NANCY WILLIAMSON FOWLKES, Yanceyville, N. C.; T Z Φ; *English*; Choir 1; S.C.A. 3, 4; Education Club 3, 4; Council 3, 4.
- MINNIE BELLE FRYE, Carthage, N. C.; T Z Φ; *Home Economics*; S.C.A. 1, 2, 3, Cabinet 4; Panvio Literary Society 1, 2, 3, 4; Home Economics Club 1, 2, 3, 4; Choir 2, 3, 4; Student Council 2.
- DOROTHY GALLOWAY, Hamlet, N. C.; Δ Y K; *English*; S.C.A. 4; Council 4; Pan-Hellenic Council 4; Education Club 3; Vice President Class 2; May Day Court 3.
- LAURA MAE GREENE, Clyde, N. C.; *English and History*; Education Club 4; Panvio Literary Society, Vice President; S.C.A. 1, 2, 3, 4.
- JOHNSON I. GRIFFIN, Windsor, Va.; H Γ M; *Religion*; S.C.A. 1, 2, 3, 4, Cabinet 1, 4; Ministerial Association 1, 2, 3, 4, President 4; Senate 3; "Who's Who Among Students In American Universities and Colleges."
- MARTIN LUTHER GRISSOM, Henderson, N. C.; *Religious Education*; S.C.A. 1, 2, 3, 4; Ministerial Association 1, 2, 3, 4.
- FORREST CHALMERS HALL, Burlington, N. C.; *History*; S.C.A. 1, 2, 3, 4; Aviation Club 2; Day Students Organization 1, 2, 3, 4.
- MARGARET LOUISE HAUSER, Greensboro, N. C.; H K T; *Music and Education*; Choir 1, 2, 3, 4; Panvio Literary Society 1, 2; Education Club 4.
- LUVENE HOLMES, Franklinton, N. C.; T Z Φ; *Home Economics*; S.C.A. 1, 2, 3, 4; Home Economics Club 1, 2, 3, 4; Dramatics Club 2; Choir 2, 3; Panvio Literary Society 2; May Court Attendant 3; Education Club 3, 4; Student Service Organization 4; Student Executive Committee 4; Secretary Senior Class; President Womens Student Council.
- JUDITH HOLOMAN, Rich Square, N. C.; B O B; *English*; Transfer W.C.U.N.C.; Dramatic Club 2, 3, 4; Cheer Leader 3; S.C.A. 3, 4; Co-editor *Maroon and Gold* 3, 4; May Day Attendant 3; Publications Board 4; Pan-Hellenic Council 4; Intramurals 4; S.C.A. Cabinet 3; "Who's Who Among Students in American Universities and Colleges."
- LENNINGS M. HOWARD, Hemp, N. C.; I T K; *Business Administration*; S.C.A. 1, 2; Intramurals 1, 2, 3, 4; Intramural Council 4.



Festa
Greene
Hauser

Fowlkes
Griffin
Holmes

Frye
Grissom
Holoman

Galloway
Hall
Howard

Seniors . . . 1943

- DONALD CLAYDE ISLEY, Burlington, N. C.; I T K; *Physics*; S.C.A. 1, 2, 3; Day Student Organization 1, 2, 3, 4; Photography Club 2.
- JAMES WILLIAM JOHNSTON, Elon College, N. C.; Σ Φ B; H Γ M; *Biology and Chemistry*; Tennis 1, 2, 3, Captain 3; Intramurals 1, 2, 3, 4; German Club 1, 3, Secretary 2; Treasurer Junior Class 3; Band 1, 2, 3, President 3; S.C.A. 1, 2, 3, 4, Senior Cabinet 1; Honor Roll 1, 2, 3, 4; Day Students Organization 1, 2, 3, 4; "E" Men's Club 3, 4; Biology Laboratory Assistant 3, 4; Chemistry Laboratory Assistant 3, 4; Commencement Marshal 3; Pan-Hellenic Council 1, Treasurer 4; Chairman of Electoral and Executive Committees; President of Student Body; "Who's Who Among Students in American Universities and Colleges."
- RAYMOND HEAD KERN, Washington, D. C.; I T K; *English*; Transfer from Georgetown University; Intramurals 3, 4; Pan-Hellenic Council 4; Student Service Organization 4; Intramural Council 4.
- BETTY LILLIAN LYNCH, Elon College, N. C.; H Γ M; *English and History*; Education Club 4; S.C.A. 1, 2, 3, 4; Honor Roll 1, 2, 3, 4.
- WELDON THOMAS MADREN, Burlington, N. C.; *Religious Education*; S.C.A. 1, 2, 3, 4; Ministerial Association 1, 2, 3, 4; Day Student Organization 1, 2, 3, 4.
- JESSE HEDGEPEETH MEREDITH, Fancy Gap, Virginia; Σ Φ B; *Chemistry-Pre-Med*; Dr. Johnson's Literary Society 3, 4, Vice President 4; Senate 4; S.C.A. 3, 4, Cabinet 4; Student Service Organization 4.
- EDITH LEIGH McDADE, Burlington, N. C.; Δ Y K; H Γ M; German Club 1, 2; Day Students Organization 1, 2, 3, 4, President 4; S.C.A. 1, 2, 3, 4; Honor Roll 1, 4.
- RUTH LEA McPHERSON, Burlington, N. C.; B O B; *Music*.
- HELEN MARGARET MESSICK, Elon College, N. C. Δ Y K; *Music and English*; S.C.A. 1, 2, 3, President 4; President of Women's Intramural Council 4; Commencement Marshal 3; Executive Committee 4; Recreation Council 4; Electoral Committee 4; Choir 1, 2, 4; Band 1, 2, 4; Panvivo Literary Society 1; Dramatic Club 1, 2, 4; Secretary Education Club 4; Son's and Daughters Club; Lieutenant Military Drill 4; "Who's Who Among Students in American Universities and Colleges."
- DONALD DAVID MILLER, Mt. Pleasant, Pa.; *Biology*; Football Manager 1, 2, 3; Basketball Manager 1, 2; Intramurals 1, 2, 3, 4.
- AMERITH LETTIE NICHOLS, Durham, N. C.; H K T; *English*; German Club 2; Dramatic Club 1, 2; Honor Roll 2, 3, 4; Council Secretary 3, President 4; Education Club 3; Pan-Hellenic Council Secretary 4; S.C.A. 1, 2, 3, 4; N.C.E.A. 3, 4.
- VIRGINIA OAKLEY, Elon College, N. C.; H K T; H Γ M; *Business Administration and English*; Student Christian Association 1, 2, 3, 4; Commercial Club 1, 2, 4; Day Student Organization 1, 2, 3, 4; Education Club 3, 4; *Maroon and Gold* 4; Honor Roll 4.



Isley
Madren
Messick

Johnston
Meredith
Miller

Kern
McDade
Nichols

Fynn
McPherson
Oakley

Seniors . . . 1943

IVAN OLLIS, Frank, N. C.; K Ψ N; *English*; S.C.A. 1, 2, 3, 4, Vice President 4; Dr. Johnston's Literary Society 1, 2, 3, 4, President 4; Senate 4; German Club 3; Student Service Organization 4; *Maroon and Gold* 4; Class Treasurer 4.

JOHN FRANCIS POLLARD, JR., Greensboro, N. C.; K Ψ N; *English*; S.C.A. 1, 2, 3, Cabinet 4; Intramurals 1, 2, 3, 4; Orchestra 1, 2, 3; Aeronautics Club 3; *Maroon and Gold* 1, 2, 3, 4, Business Manager 4; Phi Psi Cli 2, 3, Editor 4; Student Body Vice President 4, President 4; Intramural Council 4; Publications Board 3, 4; Photography Club 2; Photography Laboratory Instructor 3, 4; Elon Players 1, 3; Son's and Daughters' Club; Executive Committee 4; Electoral Committee 4; Student Service Organization 3, 4; Senate 4; Administration Problem Child 1, 2, 3, 4; "Who's Who Among Students in American Universities and Colleges."

REUBEN REID, Campobello, S. C.; *Business Administration*; Transfer Wofford College; S.C.A. 2, 3, 4.

SARAH FLORENCE RICE, Hurdle Mills, N. C.; *Home Economics*; Transfer from W.C.U.N.C.; Home Economics Club 3, 4, President 4; Panvo Literary Society 2, 3, 4, President 4; S.C.A. 2, 3, 4; Honor Roll 4.

WILLIAM DENNIS RIPPY, Gibsonville, N. C.; Σ Φ B; Π Γ M; *Chemistry and Biology*; Honor Roll 1, 3; Day Students Organization 1, 2, 3; Band 2; Assistant Chemistry Laboratory Instructor 4.

ADA MILDRED SHOOK, Banner Elk, N. C.; Π K T; *Home Economics and General Science*; Household Arts Club 1, 2, 3, 4; Education Club 3, 4; Panvo Literary Society 2, 3, 4; S.C.A. 1, 2, 3, 4; Honor Roll 1, 2, 3, 4.

MARIE MAXINE SMITH, La Grange, Ga.; Δ Y K; *English*; S.C.A. 1, 2, 3, 4; Panvo Literary Society; Phi Psi Cli 3; Vesper Committee 4; Marshall 3; Dramatics Club 3; La Grange College 2.

JOE TOM STEVENS, Roadoke, Ala.; K Ψ N; *English*; Transfer from Southern Union College, Wadley, Ala.; Education Club 3, 4, Vice President 4; Dr. Johnston's Literary Society 3, 4, Secretary 3, President 4; Secretary of North Carolina State Student Group 4; Cheer Leader 3, 4; Business Manager Phi Psi Cli 4; S.C.A. Cabinet 3, 4, Vespers Chairman 3, Fellowship Chairman 4; Elon College Players 3, 4; Choir 3; French Club 3; Student Service Organization 3, 4; Air Raid Warden 4; Recreation Council 4; Marshal 3.

HARRY STOLTE, Pleasantville, N. Y.; *History*.

ANNIE LAURA TATE, Effand, N. C.; Π Γ M; *English*; Education Club 4; S.C.A. 1, 2, 3, 4; Honor Roll 4.

BRYANT TRIPP, Bethel, N. C.; *Mathematics and History*; Dr. Johnson's Literary Society 3, 4; French Club 2; Education Club 4; Intramurals 1, 2, 3, 4.

MILDRED FRANCES TRONLER, Elon College, N. C.; *English and Art*; Education Club 2, 3, 4; Day Students Club 1, 2; Art Club 1, 2, 3, 4; S.C.A. 1, 2, 3, 4; May Day 3.



Ollis
Rippy
Stolle

Pollard
Shook
Tate

Reid
Smith
Tripp

Rice
Stevens
Troxler

Seniors . . . 1943

HELEN GAFF TRUITT, Burlington, N. C.; H K T; *History*; Day Student Organization 1, 2, 3, 4; S.C.A. 1, 2, 3, 4; Education Club 3, 4; Honor Roll 4.

AGNES RUTH WALKER, Burlington, N. C.; Δ Y K; *English*; Home Economics Club 1; Day Students 1, 2, 3; Phi Psi Cli 3; Education Club 3, 4.

FLORENCE KERON WALKER, Burlington, N. C.; H K T; H F M; *English*; Education Club 3, 4; Day Students Organization 1, 2, 3; Council 4; Secretary of Senior Class; Art Club 2; S.C.A. 1, 2, 3, 4; Dramatic Club 4; Honor Roll 3, 4; May Day Attendant 3, 4.

EDWIN WATTS, Peachland, N. C.; K Ψ N; *General Science*; Intramurals 1, 2, 3, 4; S.C.A. 1, 2, 3, 4; *Maroon and Gold Sports* Editor 3, Editor 4; Commencement Marshal 3; Phi Psi Cli Sports Editor and Advertising Manager 4; President Intramural Council; President Pan-Hellenic Council 4; Member Publications Board 4; Member Recreation Council 4; President Student Service Organization 4; Electoral Committee 4; "Who's Who Among Students in American Universities and Colleges."

JOSEPH FAIRLEY WHITAKER, Bennettsville, S. C.; Σ Φ B; *Physics*; S.C.A. 1, 2, 3, 4; Intramurals 1, 2, 3, 4; Movie Projectionist 3, 4; Aeronautics Club 2, 3.

JOHN CRAIG WIGINGTON, Philadelphia, Pa.; *History*.



Trutt
K. Walker
Whitaker

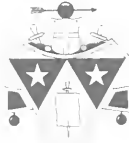
A. Walker
Watts
Wigington



Pan Hellenic Council

The Pan Hellenic Council is the mediating body among Fraternities and Sororities, and is composed of one member from each club.

Members of the Council are: Ed Watts, $\kappa \Psi \Sigma$, *President*; Rena Black, $T Z \Phi$, *Vice President*; Amerith Nichols, $\Pi \kappa \tau$, *Secretary*; Billy Johnston, $\Sigma \Phi \beta$, *Treasurer*; Peg Galloway, $\Delta Y \kappa$; Judy Holoman, $B O B$; Ray Kern, $I T \kappa$; and Sal Festa, $\Lambda \Pi \Delta$.



Kappa Psi Nu

ORGANIZED 1920

SENIORS

George Bullard, James Darden, Ivan Ollis, John Pollard, Joe Tom Stevens, Edwin Watts.

JUNIORS

Miller Basnight, Edward Butler, Brevitt Hook, Elroy Hooper, Bobby Johnston, Charles Mann, Lewis Nance, Gayle Pollard.

SOPHOMORES

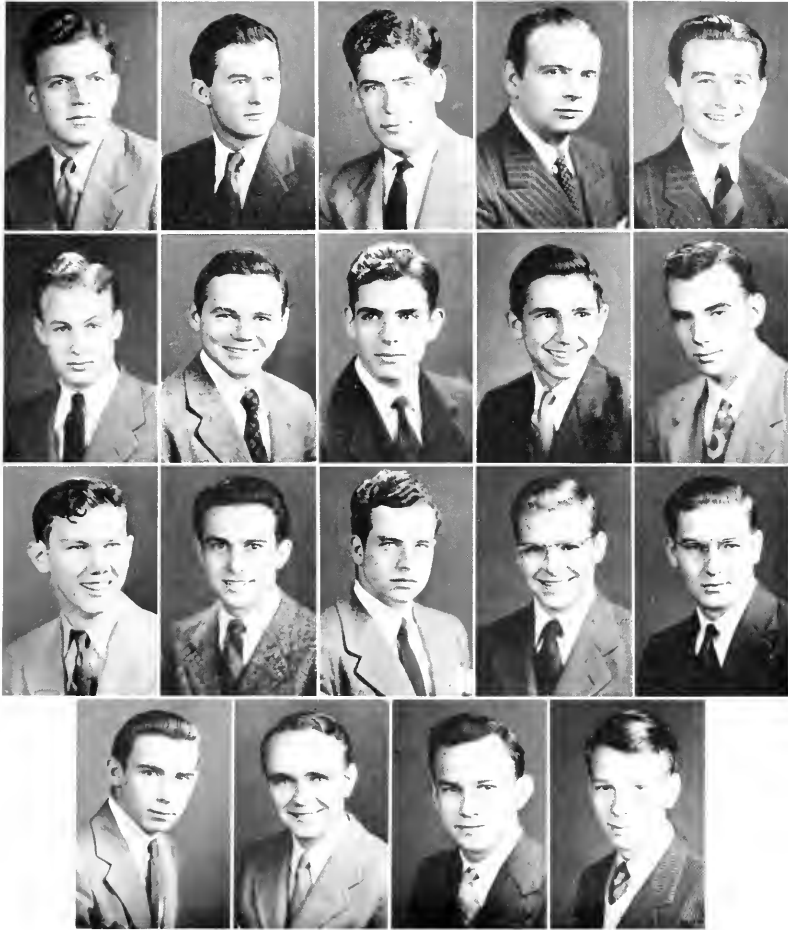
John Gilliam, Dwight Kernodle, and Nelson Snyder.

FRESHMEN

Rethel Grimes, D. B. Harrell.

J. L. PIERCE
Sponsor





K Ψ N

First row: Bullard, Darden, Ollis, J. Pollard, Stevens.

Second row: Watts, Basnight, Butler, Hook, Hooper.

Third row: Johnston, Mann, Nance, G. Pollard, Gilliam.

Fourth row: Kernodle, Snyder, Grimes, Harrell.



Tau Zeta Phi

ORGANIZED 1920

SENIORS

Rena Black, Nancy Fowlkes, Minnie Belle Frye, Luvenc Holmes.

JUNIORS

Lucille Blalock, Charlotte Husted, Virginia Jeffreys, Peggy Lighthouse.

SOPHOMORES

Doris Chandler, Jeanne Hook, Mary Ellen McCants, Faye Thomas, Majorie Reidt, Mary Warren.

FRESHMEN

Iris Boland, Elizabeth Brady, Martha Ann McDaniels, Betty Bob Stone.

MRS. O. U. JOHNSON
Sponsor





T Z Φ

First row: Black, Fowlkes, Frye, Holmes, Blalock.

Second row: Husted, Jeffreys, Lightbourne, Chandler, Hook.

Third row: McCants, Thomas, Reidt, Warren, Boland.

Fourth row: Brady, McDaniels, Stone.



Sigma Phi Beta

ORGANIZED 1918

SENIORS

Kent Dennon, Bill Johnston, Jessie Meredith, Bill Rippy, Joe Whitaker.

JUNIOR

H. C. Hisey.

SOPHOMORES

Arthur Dickson, Earl Farrell.

FRESHMEN

James Wood Boone, Joe Liverman.

D. J. BOWDEN
Sponsor





Σ Φ Β

First row: Demman, Johnston, Meredith, Rippy.

Second row: Whitaker, Hisey, Dickson, Farrell.

Third row: Boone, Liverman.



Delta Upsilon Kappa

ORGANIZED 1918

SENIORS

Peg Galloway, Edith McDade, Helen Margaret Messick, Maxine Smith,
Agnes Walker.

JUNIOR

Goldie Morris.

SOPHOMORES

Eliza Boyd, Mary Agnes Dodds, Hilda Frazier, Edna Rumley.

FRESHMEN

Mary Denson, Louise Kingsland, Helen Newsome, Margaret Rawls.

MRS. FREDERICK LOADWICK
Sponsor



Δ Y K

First row: Galloway, McDade, Messick, Smith.

Second row: Walker, Morris, Boyd, Dodds.

Third row: Frazier, Rumley, Denson, Kingsland.

Fourth row: Newsome, Rawls.



Iota Tau Kappa

ORGANIZED 1927

SENIORS

Bernie Askins, Richard Casey, Raymond D'Antonio, James Elder,
Lennings Howard, Donald Isley, Ray Kern.

JUNIORS

Louis Agresta, Warren Burns, Claude Comer, William Duncan, Joseph
Kidd, James Roberts.

SOPHOMORES

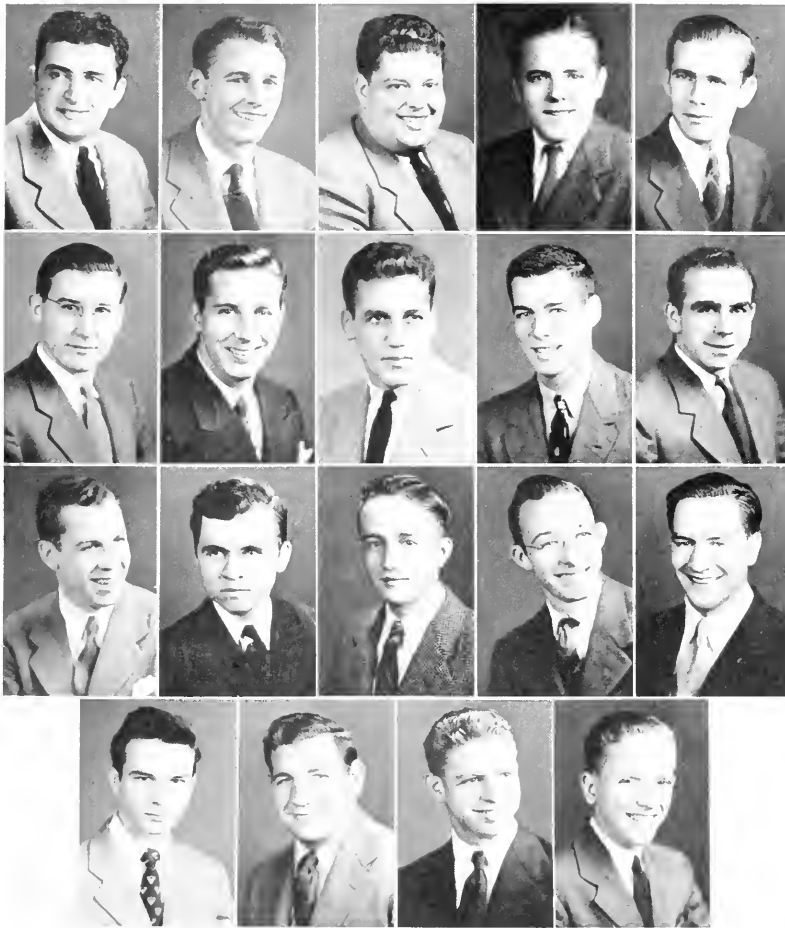
Fred Albright, Carl Allen, Wade Huffman, Maurice Lisman, Charles
Pohl, Woodrow Walker.

FRESHMAN

William Pritchard.

H. L. SCHULTZ
Sponsor





I T K

First row: Askin, Casey, D'Antonio, Elder, Howard.

Second row: Isley, Kern, Agresta, Burns, Comer.

Third row: Duncan, Kidd, Roberts, Allen, Albright.

Fourth row: Huffman, Lisman, Pohl, Pritchard.



Beta Omicron Beta

ORGANIZED 1920

SENIORS

Judy Holoman, Ruth McPherson, Louise Stevens, Mildred Troxler.

JUNIORS

Eleanor Barnwell, Elsie Boone, Rachel Crowell, Ruth Kooutz, Edna Truitt.

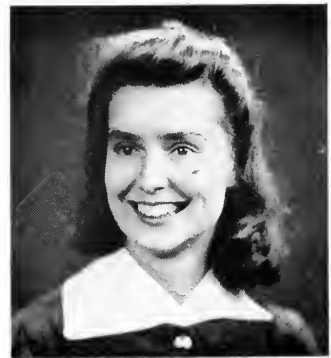
SOPHOMORES

Alfreda Baker, Rita Messiek, Ruby Wright.

FRESHMEN

Virginia Wheeler, Frances Gunter.

MISS VIOLET HOFFMAN
Sponsor





B O B

First row: Holoman, McPherson, Stevens, Troxler.

Second row: Boone, Crowell, Koontz, Truitt.

Third row: Baker, Messick, Wright, Gunter.

Forth row: Wheeler.



Alpha Pi Delta

ORGANIZED 1936

SENIOR

Salvatore Festa.

JUNIORS

Tracey Hussey, Paul Ridge, Pearce Senter.

SOPHOMORES

Hugh Bradsher, Warren Ellington, Tony Festa, Max Garret, Frank Malone, William Meacham, Sylvan Routh, Victor Zodda.

FRESHMEN

Ralph Bridgers, Forrest Frazier, Allen Gray.

DR. HANS HIRSCH
Sponsor





Α Π Δ

First row: Festa, Hussey, Ridge, Senter.

Second row: Bradsher, Ellington, Festa, Garrett.

Third row: Malone, Meacham, Routh, Zodda.

Fourth row: Bridgers, Frazier, Gray.



Pi Kappa Tau

ORGANIZED 1924

SENIORS

Mary Deane Brown, Louise Hauser, Amerith Nichols, Virginia Oakley,
Mildred Shook, Helen Truitt, Keron Walker.

JUNIORS

Nell Breeze, Margaret Cox, Hazel Walker.

SOPHOMORES

Frances Hayes, Mary Hiatt, Julia Ann Matthews, Rebecca Watson.

FRESHMEN

Dorothy Foltz, Hilda Maloue, Grace Nell Towery.

MRS. JOHN PHILLIPS
Sponsor





Π Κ Τ

First row: Brown, Hauser, Nichols, Oakley, Shook.
Second row: Truitt, K. Walker, Breeze, Cox, H. Walker.
Third row: Hayes, Hiatt, Matthews, Watson, Foltz.
Fourth row: Malone, Towery.

Delta Psi Omega

NATIONAL HONORARY DRAMATIC
FRATERNITY

Elon Chapter

Charter Granted 1935



MEMBERS

Miller Basnight
Ruth Koontz
Edna Truitt
George Bullard

James Darden
Peg Galloway
Jeanne Hook
Mary Deane Brown

Prof. C. R. McClure
Faculty Adviser

Pi Gamma Mu

NATIONAL HONORARY SOCIAL SCIENCE FRATERNITY

North Carolina Alpha Chapter

Organized 1924

OFFICERS

GEORGE BULLARD, *President*
RENA BLACK, *Secretary*

BERNARD ASKINS, *Vice President*
RAYMOND D'ANTONIO, *Treasurer*

MEMBERS

Eleanor Smith Barnwell
Mary Christine Crutchfield
James Wythe Elder
Salvatore Antonio Festa
Johnson Linwood Griffin
James William Johnston
Mary Louise Little
Betty Lillian Lynch
Edith Leigh McDade
Margaret Virginia Oakley
William Dennis Rippy
Elliott F. Schmidt
Annie Laura Tate
Florence Keron Walker
Everette Vaughn Wood
Minnie Belle Frye



This year, because of the many difficulties involved, it was decided that the traditional "May Day" be changed to "Play Day," with a gala sports festival substituted for the usual dances.

In the election Helen Margaret Messick was elected Queen and George Bulard, King. But due to the induction of all Army Reserves George had to leave school. Another election was held and Ed Watts was elected as his successor.

Play Day . . . 1943



HELEN MARGARET MESSICK
QUEEN



Attendants

Senior Attendants

Keron Walker
Helen Truitt

Sal Festa
James Darden

Junior Attendants

Rachel Crowell
Virginia Jeffreys

Miller Basnight
Edward Butler

In the selection of attendants to the "Play Day" King and Queen the loss of three attendants had to be remedied, so Sal Festa and James Darden were elected to replace Ivan Ollis and Joe Tom Stevens as Senior Attendants and Miller Basnight to "look pretty" for Elroy Hooper, Junior Attendant.



Mrs. T. P. BULLARD, *Sponsor*
The President of the Student Senate



Mrs. J. F. POLLARD, *Sponsor*
The Editor of the 1943 Phi Psi Cli

SPONSORS

Mrs. J. C. WATTS, *Sponsor*
The Editor of the *Maroon and Gold*



Mrs. BERNARD ASKINS, *Sponsor*
The Senior Class President





MISS EDITH McDADE, *Sponsor*
The President of the Student Body, II



MISS WALENA SMITH, *Sponsor*
The President of the Student Body, III

ELON 1943

MRS. J. D. MESSICK, *Sponsor*
The President of the S.C.A.



MRS. G. C. JONES, *Sponsor*
The Junior Class President

We Appreciate Elon College



Enroll at Elon College and DRINK
ROCK CREEK DAIRY MILK while
you prepare for your life work.



ROCK CREEK DAIRY

Operated by Gibsonville Development Company
GIBSONVILLE, NORTH CAROLINA

We Believe in Elon College

***We Appreciate What She Has Meant to
Our Community***

We wish for her strength and security as
she goes about her work in the future.



THE ELDER HOSIERY MILLS

BURLINGTON, NORTH CAROLINA

W. C. ELDER, '25

Get a Liberal Education in Thrift
by Shopping at

BELK & BECK CO.

"Burlington's Largest Department Store"

Entrances . . . Main, Davis and Worth Streets

***Keep Trim and Smart
Expertly Laundered
Shirts***

They Stay Fresh Longer

**ALAMANCE LAUNDRY
and DRY CLEANING**

Phones 560 - 561 - 562

Burlington, N. C.

Compliments of

UNITED DOLLAR STORE

BURLINGTON, N. C.

For a Lifetime Invest in Health

— At —

HOOD SPORTING GOODS

Elon's and Alamance County's
Headquarters for Athletic Equipment

PHONE 864

Opposite Fire Station

Compliments of

THE JEWEL BOX, INC.

BURLINGTON, N. C.

T. N. BOONE

=====

Carolina's Leading Tailor

=====

BURLINGTON, N. C.

Compliments of

ELON SODA SHOP

*Where Students Meet
to Gab and Eat*

KENNETH HUGHES, Manager

Winning a Diploma for DOING THINGS RIGHT



Fairchild has something in common with the young people receiving Elon diplomas this year. Both have been training for a long time to *do things right*. Fairchild is as confident of the way in which you are going to perform as it is of the performance of the airplanes and aircraft engines which it has designed and is producing for the United Nations.

There is much work for all of us to do. We know it will be *done right*.



FAIRCHILD AIRCRAFT

Division of

FAIRCHILD ENGINE & AIRPLANE CORPORATION



Burlington Coca-Cola Bottling Co.

BURLINGTON, NORTH CAROLINA

Compliments of

PARAMOUNT THEATRE

"Showplace of Alamance County"

First Run Pictures of Every Major Studio
Popular Prices

Year 'Round Air-Conditioned

CAROLINA THEATRE

First Runs and Stage Shows
At Popular Prices

ALAMANCE THEATRE

"We Bring the Best Ones Back"

WHERE ELON MEETS BURLINGTON

**GLEN RAVEN
KNITTING MILLS**



Full Fashion
Hosiery



GLEN RAVEN, NORTH CAROLINA

Compliments of

B. A. SELLARS & SONS, Inc.



Burlington's Oldest,
Largest and Most
Modern Department
Store.

BURLINGTON, NORTH CAROLINA

Compliments of

Neese-Shoffner Furniture Co.



Burlington, N. C.

Greetings from

CITY DRUG COMPANY
CUT-RATE DRUGS

A Friendly Independent Drug Company

Burlington, North Carolina

Alamance Printing Company

***General Commercial Printing
and Engraving***

Jos. F. Sheets

Guy B. Ephland

Telephone 384

Five Twenty-three South Main Street

BURLINGTON, NORTH CAROLINA

Compliments of

S P E N C E
M O T O R S

Your Permanent
DODGE-PLYMOUTH DEALER

Service That Satisfies

BURLINGTON, N. C.

Compliments of

EFIRD'S
DEPARTMENT STORE

•
Burlington, N. C.

Compliments of

MATLOCK'S GROCERY

ELON COLLEGE, N. C.

•
Bill Matlock, Owner

Somers, Garrison & Coltman

Serving in

Real Estate : Mortgage Loans

General Insurance

Rentals

Phone 2401 Office Opposite Postoffice

BURLINGTON, NORTH CAROLINA

CHARLES
DEPARTMENT STORE

★ Your "One-Stop Shopping
Center in BURLINGTON"

★

INVEST IN VICTORY!
BUY U. S. WAR BONDS
& WAR STAMPS... NOW!



REG. U.S. PAT. OFF.

Burlington Pepsi-Cola Bottling Co.

Burlington, North Carolina



CHARLOTTE ENGRAVING CO.

School Annual Engravers

Charlotte, North Carolina

BUILDERS DREAMS

VISIONS created by the imagination precede the achievement of any really great accomplishment. The ability to weave the threads of imagination into the finished fabric is equally important.

It has been the privilege of the EDWARDS & BROUGHTON COMPANY to cooperate with the **Phi-Psi-Cli** staff in creating their vision into material form.

Such cooperation is one of the "visions" which precede the building of a successful business, and is a part of the working policy of the EDWARDS & BROUGHTON COMPANY.

To those Staffs desiring complete cooperation, we offer unexcelled service.

You, too, may be proud of your annual

Correspondence is Invited

EDWARDS & BROUGHTON COMPANY

Raleigh, North Carolina



AUTOGRAPHS



