

PHOENIX



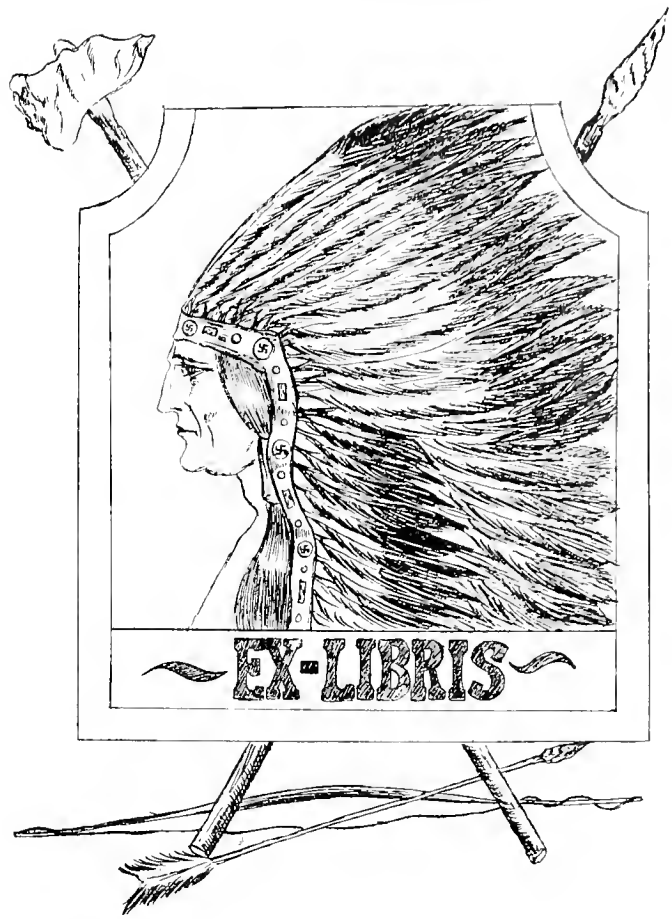
19



30

Digitized by the Internet Archive
in 2010 with funding from
Lyrasis Members and Sloan Foundation

<http://www.archive.org/details/phoenix1930cumb>



WILLIAM ALLEN BUCKOWY

Editor in Chief

CHARLES WILSON WALLER

Business Manager



The
PHOENIX

Published by

The Students

of

Cumberland University

1930

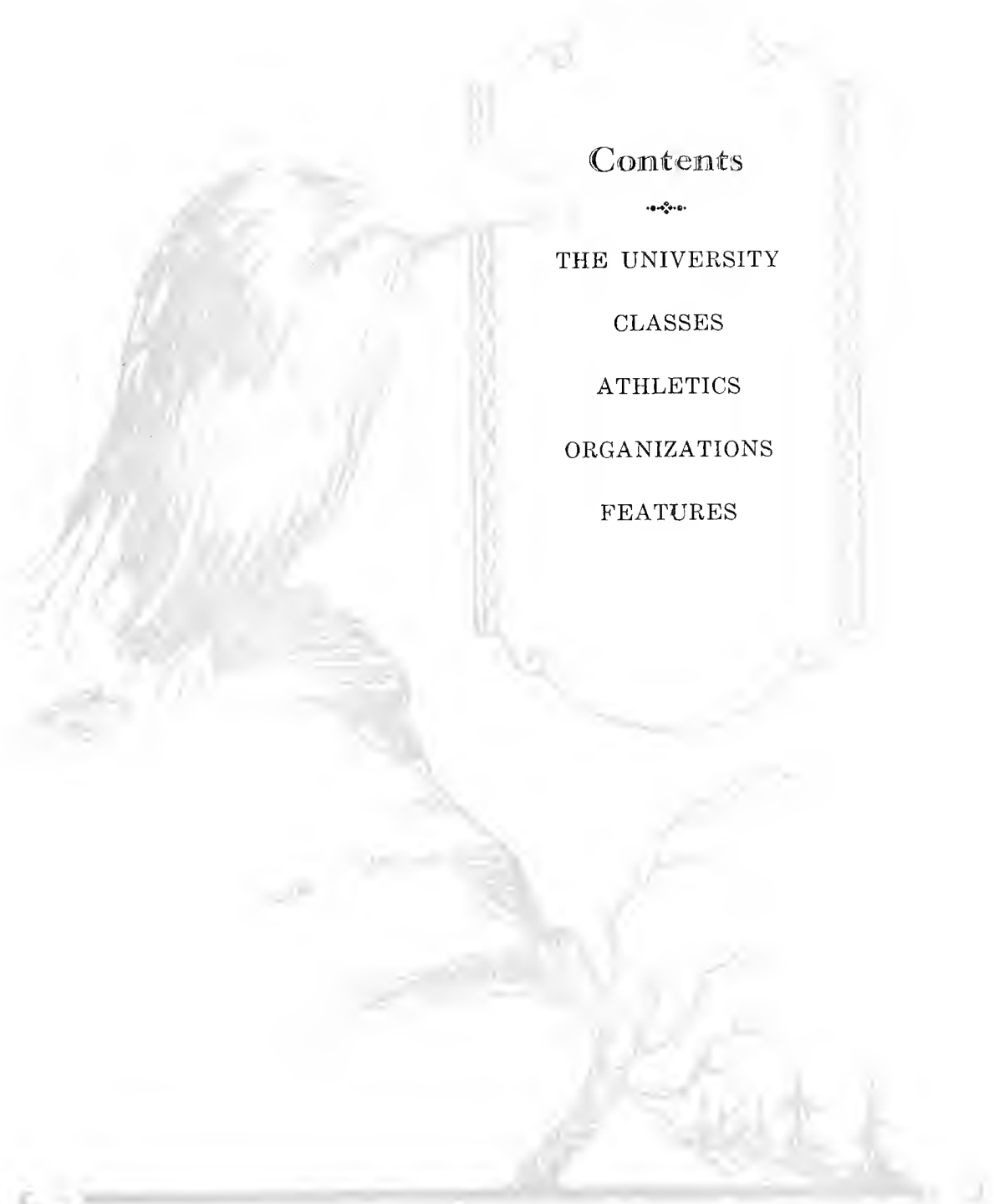
Foreword



No greater treasure has man on earth than memories, and no sweeter memories exist for one than those centered round his or her college days; and so it has been the aim and purpose of the staff to catch and to instill through the general theme of this PHENIX the spirits and atmospheres of life at the college in order that these days may be recalled to mind at will by only a glance within its pages. If we fail in realizing our ambitions, we hope that the reader will forgive and realize the gigantic scope of such a task; but if we succeed, we shall feel that our efforts have not been in vain.

WILLIAM A. BUCKOWY,
Editor.





Contents



THE UNIVERSITY

CLASSES

ATHLETICS

ORGANIZATIONS

FEATURES

DEDICATION

In grateful recognition of his long and unselfish service to Cumberland University, and of his earnest effort to preserve its finest traditions; in acknowledgment of the debt the students owe him for understanding and helpfulness; in appreciation of the broad culture, the sense of honor, and the high ideals he has impressed on all, the 1930 PHOENIX is dedicated to

JAMES OSCAR BAIRD

PHOENIX



JAMES OSCAR BAIRD



To Cumberland

A CHALLENGE

In front of our Alma Mater
Stand ready now, bugler, and blow—
Give notes of encouragement—daily—
For the students who are weary and slow;
For those who are dreaming of castles
Blow it easy from morning to night;
The day's treated some of them badly—
Oh, blow them at least a good-night.

A man's but a man in the daytime,
With studying and playing for gain;
Then at night when lying there sleeping
He lives it all over in vain,
When the shadows creep over the campus,
And the stars are twinkling o'erhead,
Then dream of the Cumberland spirit,
Show that life has come from the dead.

So blow for him gently and easy—
For him who is battling along,
Who faces the sunshiny morning
With the happiest kind of a song;
At the first streak of dawn appearing
Arouse for the task of the day—
Encourage his heart for the labor
Which is his on any highway.

Then near each teacher's snug dwelling
Each note blow steady and clear,
For they are the shapers of soul-life
To all who are eager to hear;
Blow loudly the note of enchantment
Lead on their thoughts of the day
To fashion youth's highest ambitions
To live on heaven's highway.

Then blow for the fathers and mothers
Who lieth at nighttime awake,
Thinking oft of youth's aspirations—
(Blow soft for the old time's sake).
And the old, old love of their childhood
Is their young, young love again,
And the years sweep them back into sunlight
On the music of your glad refrain.

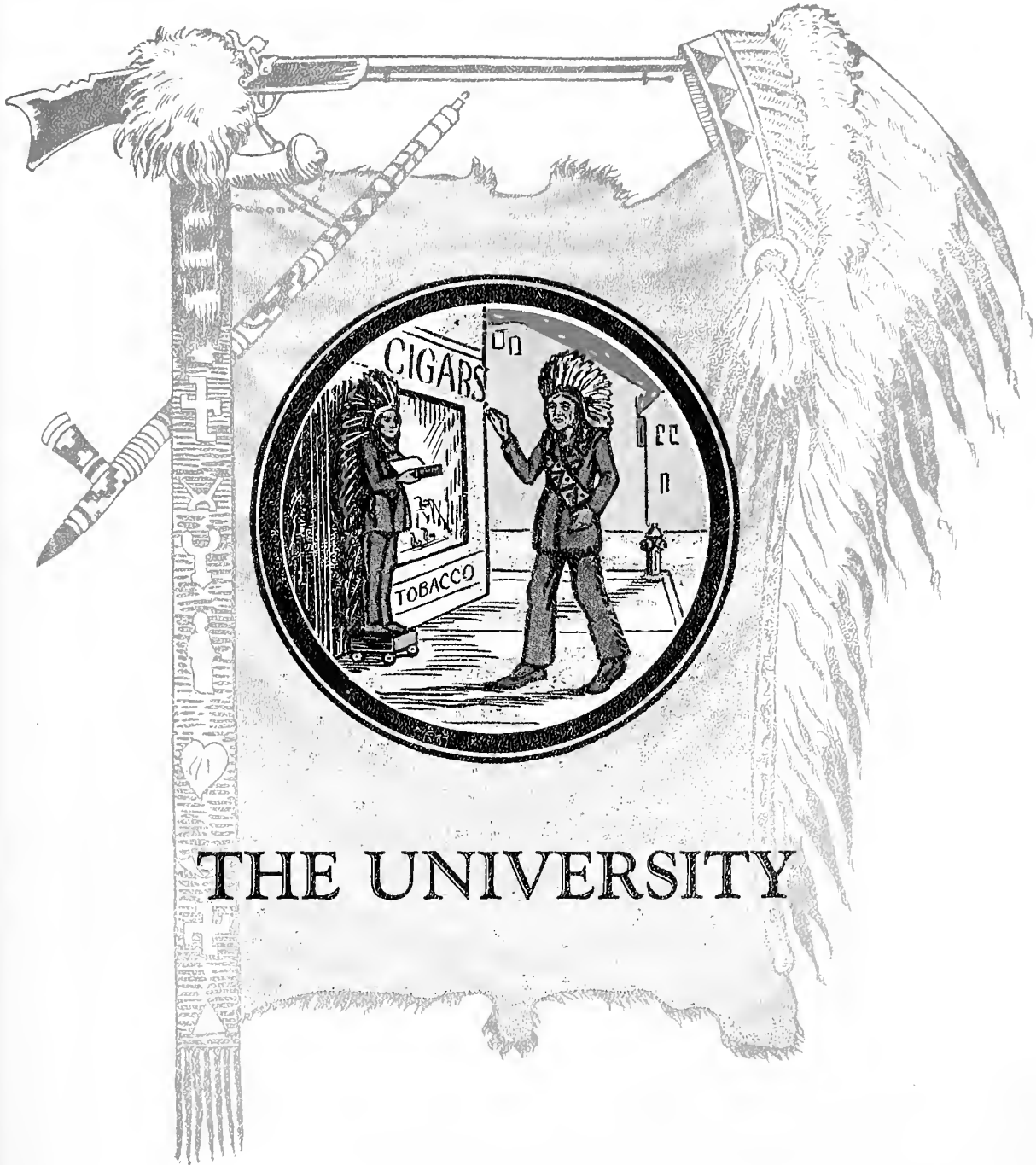
But, arise in office and classroom—
Day dawneth—night cometh—then rest;
For dreams are dearer to laborers
Who do their duty best.
Arise—fling far the banner and colors,
Ye students of Cumberland—a host;
And—God, the stars, and the angels
Can see thee guarding thy post.

Then front of the battle-scarred gridiron,
The diamond, the basket ball gym,
Three times—blow loudly and clearly—
Show presence of courage and vim;
How bravely they fought for colors
Of Cumberland—the school of renown,
And fought to the finish of battle
With never a grimace nor frown.

Hark, sir, and the day's work is over,
The restless is resting deep,
And God has ready nothing better
For a man that's tired—than sleep,
The things that he did are recorded,
Past longing—and passing regret,
But they who would, maybe somewhere
There's a chance of doing them yet.

Arise—dream dreams—and slow to the finish,
Give echoes a chance to ring;
With God and the stars and the angels
The night is an awful thing,
Awake, ye heralds of knowledge,
Before you is the Pathway Untrod,
Some day heaven issues the orders
To make your report to God.

(Beloved late Professor G. Frank Burns at Cumberland University)



THE UNIVERSITY



CAMPUS VIEW

A splendor falls on Cumberland halls, a scene of beauty, a joy forever.



GIRLS' DORMITORY

*Trees, along the sun-peppered streets, welcome thy coming, glorious Spring!
And in thy stately halls, labor the minds of Southern maids.*



DORMITORY

"Companionship gives man the power to develop all that lies within him."



CAMPUS VIEW

Spreading maples cast their shadows on this oft-trodden path to the halls of knowledge.

Administration

President Ernest L. Stockton

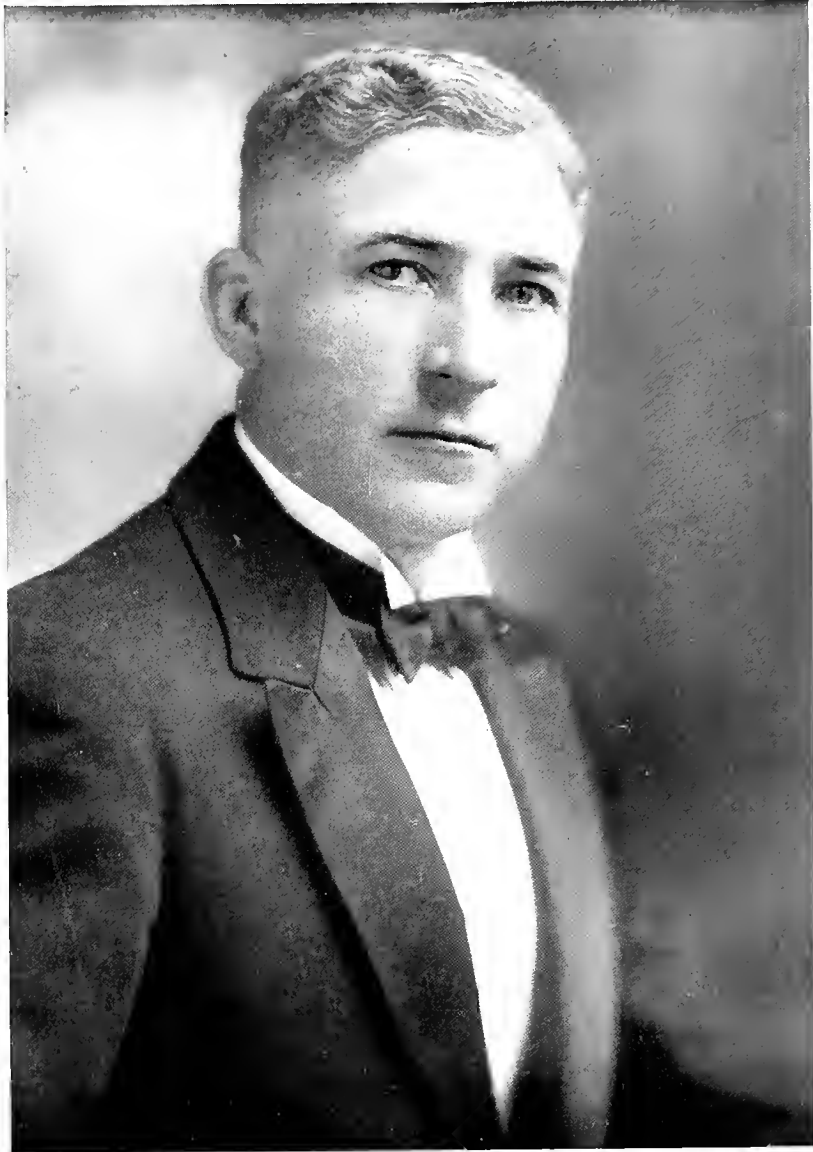


Rising from the student ranks to Professor, Dean, and finally to the highest position his Alma Mater could offer him, the Presidency of the "Old Cumberland" he loves so well, Ernest L. Stockton has won the admiration, confidence, and love of every student and friend of this historic institution. In the brief span that has passed since the beginning of his term of office in 1927, he has more than lived up to the expectations and requirements of those who advocated his selection.

President Stockton's love for "Old Cumberland" is more than sentiment, his plans are more than air-castles, and his expectations are more than empty hopes. Truly imbued with the Bulldog Spirit that has made Cumberland University great, his energies, his dreams, and his every thought are for his Alma Mater. He has spent most of the past year in a careful yet forceful drive in New York City, in an attempt to obtain means for the realization of his noble ideals. His long experience in various capacities in the University has equipped him thoroughly to understand the problems and difficulties that face it. His ability in building up constructive plans to meet the need, has already been proved. He has raised the scholastic standards of the institution to a plane worthy of recognition throughout the educational world. The success that is anticipated in his present drive should really bring "Old Cumberland" to her own. Truly the beginning of his term of office marked a new era of progress in the history of his Alma Mater.

His high character, his intellectual attainments, his magnetic personality, and his noble ideals have combined to win a respect and admiration that is somewhat mingled with awe; and his personal touch and his individual interest in each student, faculty member, and friend, have softened this respect into love. A scholar, a friend, a gentleman, and a real man—he holds a sacred spot in the heart of every student who has learned to know him.

PHOENIX



PRESIDENT ERNEST L. STOCKTON





PHOENIX



WILLIAM D. YOUNG
A.B., M.A.

*Dean of College of Arts and Sciences
Professor of History*

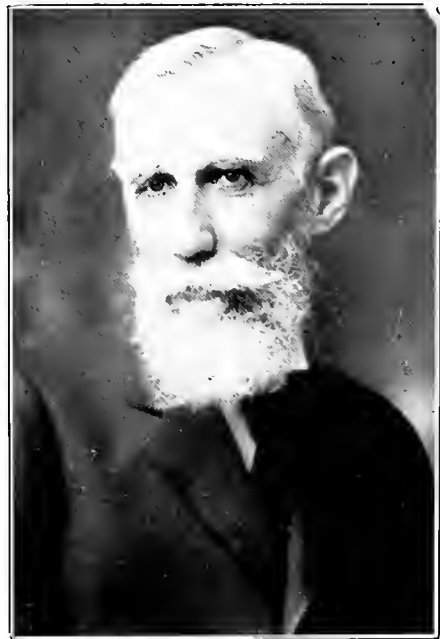
A.B., M.A., Cumberland University; Postgraduate work, Peabody College.



FREDERIC S. MENDENHALL
M.A.

*Dean of the School of Music—Piano, Organ,
Theory*

B.A., M.A., Ohio Wesleyan University; Ph.D. work completed at Columbia University; one year at Oxford University, England.



WILLIAM R. CHAMBERS
A.B., LL.B., LL.D.

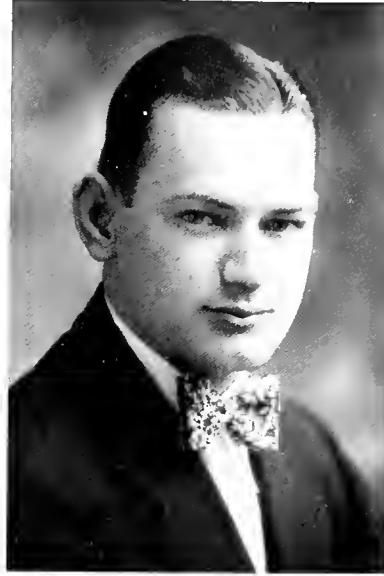
Dean of Law School

A.B., Cumberland University; LL.B., Vanderbilt University; LL.D., Cumberland University.

PHOENIX



A. J. CASH
A.B.
University Secretary
A.B., University of West Virginia



THOMAS E. BRYANT
A.B.
Registrar
A.B., Cumberland University



WINSTEAD P. BONE
A.B., M.A., B.D., D.D.
Professor of Biblical Literature
A.B., M.A., Trinity College; B.D., D.D., Cumberland University; Union Theological Seminary; University of Berlin; University of Chicago.



RALPH T. DONNELL
A.B., M.A.
Professor of Mathematics
A.B., Cumberland University; M.A., University of Tennessee.



PHOENIX



JAMES O. BAIRD
A.B., M.A., LL.B.

Professor of Chemistry

A.B., M.A., LL.B., Cumberland University; Postgraduate work, Peabody College, University of Chicago.



MABEL C. JONES
A.B., M.A.

Professor of English

A.B., M.A., Cumberland University. Postgraduate work, Peabody College and Columbia University.



ROBERT J. WHERRY
A.B., Ph.D.

Professor of Economics and Psychology
A.B., Ph.D., Ohio State University

PHOENIX



JACOB E. BOETHIUS
A.B., M.A.
Professor of Modern Languages
A.B., Bethany College; M.A., University of Kansas.



EUDORA B. ORR
A.B.
Professor of French
A.B., William and Mary College; Postgraduate
work at McGill University.



J. KENNETH FAXON
Ph.B., M.A., J.D.
Professor of Law
University of Chicago.



ALBERT WILLIAMS
A.B., LL.B.
Professor of Law
A.B., Vanderbilt University; LL.B., Cumberland
University.



PHOENIX



J. ALBERT BEAM
A.B., M.A., M.D.

Professor of Biology

A.B., M.A., College of Worcester; M.D., University of Illinois



FLOYD R. WILLIAMS
A.B., A.M., Th.B.

Professor of Latin and Greek

A.B., Cumberland University; A.M., Th.B., Princeton University; Postgraduate work at Vanderbilt University.



MRS. Y. P. WOOTEN
A.B., M.A.

Professor of Education

A.B., Peabody College; A.M., Cumberland University; Postgraduate work, Peabody College.



AGNES TILLEY
A.B.

Instructor in Typewriting and Shorthand

A.B., Cumberland University; Postgraduate work at Temple University.

PHOENIX



MRS. ROUSSEAU

Instructor in Dramatic Art

Postgraduate work at Schuster School of Public Speaking and Dramatics; Flowers Academy of Speech and Dramatic Art, Cincinnati, Ohio.



MRS. HILL

Matron of Men's Dormitory



MRS. EDMONDSON

Matron of Girls' Dormitory



MRS. WEST

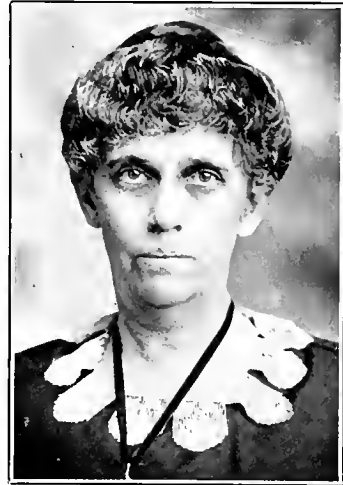
Matron of Girls' Dormitory



PHOENIX



MISS MADGE HARDISON
Assistant to the University Secretary



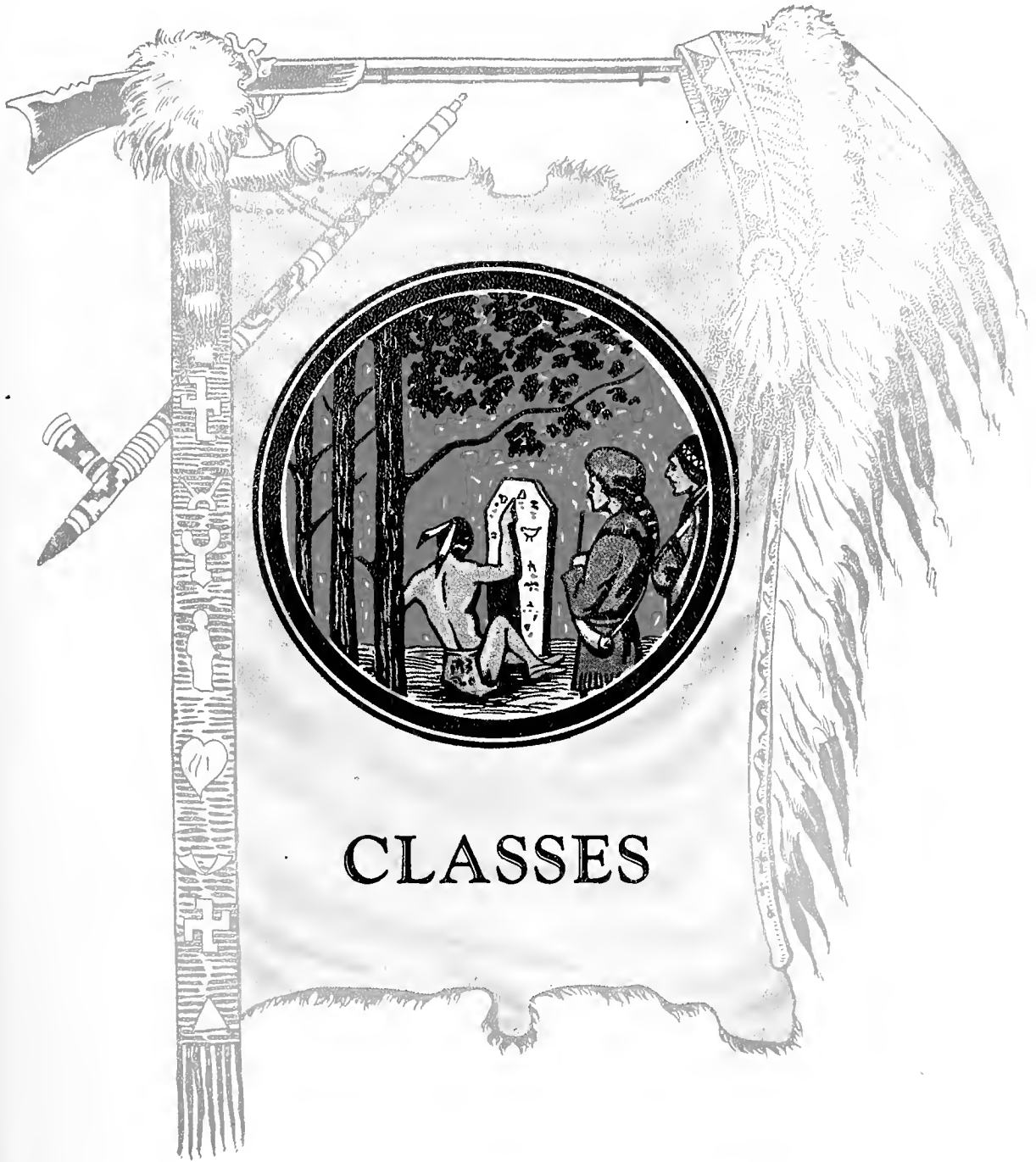
MISS MARTHA HARRIS
Librarian



MISS AILEEN COOK
Secretary to the President



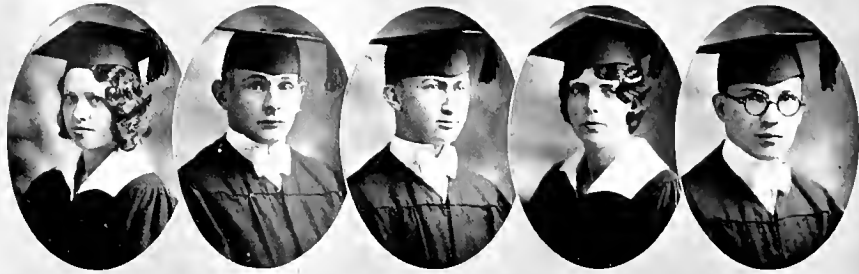
MISS SARAH HARDISON
Law Librarian



CLASSES



SENIOR



Senior Class

College of Arts and Sciences

ALEXANDER, ELSIE MAI, A.B. Lebanon, Tenn.
 Sigma Delta Sigma; *Collegian* Staff; Cumberland Cardinals; Basket Ball, '25, '27, '28, '29, '30;
 Y.W.C.A.; Tennis Club; Vice-President Class; Cheer Leader.

Our first verse is about Red,
 Of whom enough can be said,
 She bade Billy around,
 And gave him a hound
 To sic off any other co-ed.

ASH, HARRY RALPH, B.S. New York City, N. Y.
 Manager of Baseball, '30.

There was a fellow named Ash
 Who dearly loved biscuits and hash.
 To eat all he would
 He never quite could
 For lack of enough ready cash.

BAKER, WILLIE LEWIS, B.S. Lebanon, Tenn.
 Y.M.C.A.; Amasagassean Literary Society; Life Service Group.

Now Baker wouldn't pass on his looks,
 But he learned while out selling books
 That a man can get by
 With the fire in his eye
 If his line runs along like the brooks.

BARBER, FLOREINE, A.B. Springfield, Tenn.
 Delta Phi Omega; Iota Tau Tau; Secretary of Class; Philomathean Literary Society.

Oh, what about our friend Floreine,—Ahem!
 If you know the right words, kindly say 'em.
 She makes loyal friends.
 Here our limerick ends;
 If you wish further tributes, why pay 'em.

BUCKOWY, WILLIAM ALLEN, B.S. New York City, N. Y.
 Lambda Chi Alpha; Kappa Epsilon Phi; Editor-in-Chief of *PHOENIX*; Manager of Baseball, '29; President of
 Class, '29; *Collegian* Staff, '29; Y.M.C.A.; Amasagassean Literary Society.

Mr. Buckowy fashioned this book;
 Now just carefully take a good look.
 He loved little Kissy
 And tho she was prissy,
 He believed she would make a fine cook.



Senior Class

College of Arts and Sciences

COOK, W. W., A.B. Carlisle, Ky.
 Kappa Alpha; Cardinal Club; Football, '26, '27, Captain, '28, '29; Baseball, '26, '27, '28, '30.

Wee Willie Cook's from Kentucky,
 And so that state is quite lucky
 To claim this athlete
 Who's so hard to beat—
 Red-headed Cook from Kentucky.

FREEMAN, RUTH A., B.S. Lebanon, Tenn.
 Delta Phi Omega; Amasagassean Literary Society; Basket Ball, '28, '29, '30, Captain, '29; Hiking Club;
 Tennis Club.

Ruth Freeman, just one thing about her,
 Took all the hard work was allowed 'er;
 Take praise from our lips,
 She didn't hop crips;
 Of what praise could student be prouder?

GREGORY, JESSE E., A.B. Carthage, Tenn
 Lambda Chi Alpha; Football, '29; Baseball, '30.

From Middle Tennessee Normal came Jess,
 A likeable lad, we must confess;
 But why in the dence
 They let him a-loose
 From his cage we never could guess.

HANCOCK, KATHERINE, A.B. Lebanon, Tenn.
 Delta Phi Omega; Williamson Scholarship, '28; Secretary International Relations Club; Secretary Athletic
 Association, '29, '30; Secretary of Amasagassean Literary Society.

We're told that her mother and father
 Had this daughter of theirs christened Katherine,
 But we couldn't stand that;
 To us she's just Kat,
 And a longer name is more than a bother.

HEREFORD, NANNIE McLEAN, B.S. Lebanon, Tenn.
 Sigma Delta Sigma; President Life Service Group; Y.W.C.A.

Miss Hereford came from Japan
 With cherries and sandals and fan;
 We'll let everyone know
 She can cook, she can sew—
 This fine little girl from Japan.



Senior Class

College of Arts and Sciences

HILL, O. REED, B.S. Lebanon, Tenn.
 Managing Editor of *Collegian*; Y.M.C.A.; Amasagassean Literary Society.

Young O. Reed Hill as a rule
 Was always acting the fool;
 A sweet little kiss
 That he stole from a miss
 Caused some trouble in this school.

HUDDLESTON, HOYTE CORDELL, A.B. Lebanon, Tenn.
 President of Y.M.C.A.; President Life Service Group; Amasagassean Literary Society; President International
 Relations Club; Delegate to Student Volunteer Movement, 1927; Student Council.

Young Huddleston we'll now have you meet
 Who won fame by moving his feet;
 As brothers will do
 He followed his two,
 And as "Y" leader he cannot be beat.

JARRARD, MARGARET LOUISE, A.B. Lebanon, Tenn.
 Cecelia Club, '27, '28, '29; Amasagassean Literary Society; Hiking Club.

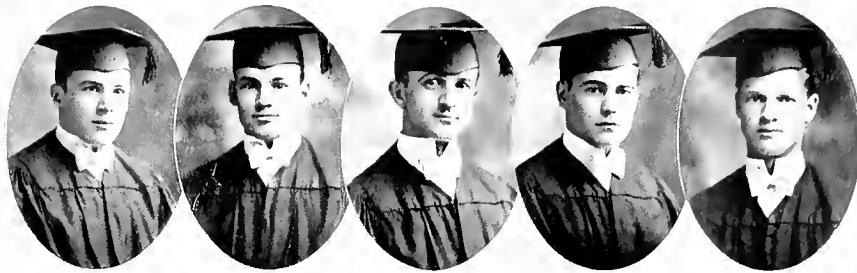
This young miss named Jarrard
 Always stayed in her own yard;
 But she went thru the grill
 With the Class of '30 at will,
 And to forget her will be very hard.

JENNINGS, CLEON, A.B. Watertown, Tenn.
 Sigma Delta Sigma; *Collegian* Staff; PHOENIX Staff; President, Y.W.C.A.

To line out a lim'rick for Cleon,
 A difficult task, as you know, to dwell on;
 She really is rare,
 For 'Bama she didn't care;
 But finish with '30 was her ambition.

JETER, RUTH LOUISE, B.S. Dresden, Tenn.
 Sigma Delta Tau; Iota Tau Tau.

This little lass called Jeter,
 We will now have you meet 'er;
 Out in town she stayed,
 And a L.L.B. she made,
 We'll admit 'tis hard to beat her.



Senior Class

College of Arts and Sciences

LITTLE, WILLIAM L., A.B.

Sparta, Tenn

Delta Kappa Phi; Football, '28, '29; Glee Club, '27.

Let us pause and add just a word
About Bill, whose name you have heard;
He tries to obtain
A date, but in vain,
He returns, a deceived cedar bird.

McARTHUR, ROBERT S., B.S.

Meridian, Miss

Amasagassean Literary Society; Y.M.C.A.; University Quartet; Football, '27, '28, '29.

This is the good-natured Mac,
Who, from Mississippi, came back.
He lived in the dorm,
And labored till morn,
Safely steering his bark from the shack.

PIERCE, ROMMIE, A.B., B.M.

Marshville, N. C.

Amasagassean Literary Society; Y.M.C.A.

Young Pierce came forth from the sticks,
With the other students to mix,
But life in the dorm
Was sad and forlorn
To teach such a fellow new tricks.

SEXTON, THOMAS ALLEN, A.B.

Lebanon, Tenn

Let the people of Lebanon get sore,
While we present Tom Sexton once more;
I'll "wager" he knows
About Santa Claus,
For the *Collegian* taught him some of that lore.

STRONG, WILLIAM BRUCE, A.B.

Madisonville, Ky

Delta Kappa Phi; Kentucky Club; Amasagassean Literary Society.

There was a young fellow named Billy
Who came from a section quite hilly.
The way he loved Red,
So every one said,
Was quite altogether silly.



Senior Class

College of Arts and Sciences

THACKSTON, RUBY NELL, B.S. Lebanon, Tenn.
 Sigma Delta Sigma; Amasagassean Literary Society; Hiking Club; G. ee Club.

She's a capable girl, Ruby Nell,
 Though she really isn't a belle;
 For she's no time, you see,
 For frivolitee;
 But she does hard jobs very well.

TURNER, ROBERT F., A.E. Watertown, Tenn.
 Lambda Chi Alpha; Business Manager of *Collegian*; Winner of State Oratorical Contest; International Relations Club.

And now we present with hollars
 Young Robert who's after the dollars.
 A grafter is he
 And with the girls quite a bee;
 With a scarf he saves laundry on collars.

VAN HOOK, RILEY C., B.S. Norene, Tenn.
 President Class; International Relations Club; Y.M.C.A.; Amasagassean Literary Society.

There once was a fellow named Riley
 Whose face was quite cheerful and smiley;
 He married a wife
 And the rest of his life
 His friends all regarded him highly.

WALLER, CHARLES WILSON, A.B. Nashville, Tenn.
 Delta Kappa Phi; Business Manager of PHOENIX; President Athletic Association; Cheer Leader; International Relations Club; Y.M.C.A.; Amasagassean Literary Society; Manager of Basket Ball Team.

Just one other word about Cholly,
 And we hope you will take it as folly;
 He walks on his toes,
 As everyone knows,
 And his line is plum rotten, by golly.

WOOTEN, TOMLINSON PAUL, B.S. Lebanon, Tenn.
 Manager of Football; International Relations Club.

Here is a young fellow named Paul
 Who's supple and slender and tall—
 His I. Q. is high,
 And that is just why
 In credits he never did fall.



LAWYERS



College of Law

January Class

ARCHIBALD, ALBERT E., LL.B.
Seminole, Okla.
Philomathean Literary Society.

BISBEE, CHARLES LAWRENCE, LL.B.
Jacksonville, Fla.
Vice-President Senior Law Class; Philomathean
Literary Society.

BOWMAN, CLYDE K., LL.B.
Chuckey, Tenn.
Royal Arch Mason; Sigma Delta Kappa; Elk

BRADLEY, ROBERT W., LL.B.
El Dorado, Ark.
Sigma Alpha Epsilon; Philomathean Literary Society

BRANDON, MALCOLM R., LL.B.
Dover, Tenn.
Sigma Delta Kappa.

COFFMAN, GEORGE WAYNE, JR., LL.B.
San Antonio, Texas
Kappa Epsilon Phi; Philomathean Literary Society;
Texas Club.

CURCIO, NICHOLAS, LL.B.
West New York, N. J.

DAVIS, JOHN FRANKLIN, LL.B.
Okemah, Okla.
Sigma Delta Kappa.

FULLER, ALMOND N., LL.B.
Springville, N. J.
Philomathean Literary Society.

GARDNER, CLAYDE D., LL.B.
Evairt, Texas

GREENE, JESSE DOBBS, JR., LL.B.
Tupelo, Miss.
Lambda Chi Alpha; Student Council; Delta Sigma
Pi; Mississippi Club.

HIETT, MAJOR B. H., LL.B.
Clarksville, Tenn.
Sigma Delta Kappa.

HOFFMAN, WILLIAM, LL.B.
New York City, N. Y.
Sigma Alpha Epsilon.





College of Law

January Class

- | | |
|---|---|
| <p>HOWSER, HAROLD, LL.B.
<i>LaFayette, Tenn.</i>
Lambda Chi Alpha.</p> <p>KELLER, GORDON, LL.B.
<i>Jonesboro, Ark.</i>
Sigma Delta Kappa; President Student Body.</p> <p>LANGSTON, B. C., LL.B.
<i>Oklahoma City, Okla.</i>
Philomathean Literary Society.</p> <p>LESH, TED STANLEY, LL.B.
<i>Perth Amboy, N. J.</i>
Kappa Epsilon Phi.</p> <p>LEWIS, LE ROY, LL.B.
<i>Thornton, Texas.</i>
Sigma Delta Kappa; Philomathean Literary Society.</p> <p>MANDELL, ARTHUR, LL.B.
<i>Miami, Fla.</i>
Philomathean Literary Society.</p> | <p>MILLER, PAUL RAYMOND, LL.B.
<i>Winfield, Kans.</i>
Philomathean Literary Society.</p> <p>OWENS, ROBERT E., LL.B.
<i>Oklahoma City, Okla.</i>
Sigma Delta Kappa.</p> <p>PETITJEAN, N. CURTIS, LL.B.
<i>Kayuc, La.</i>
Sigma Nu; Sigma Delta Kappa; President Senior Law Class; Secretary Philomathean Literary Society.</p> <p>PHILLIPS, BARRON E., LL.B.
<i>Greenville, Texas.</i>
Sigma Delta Kappa.</p> <p>PIPKIN, JAMES W., LL.B.
<i>Seminole, Okla.</i>
Sigma Delta Kappa; Pi Kappa Alpha; Philomathean Literary Society.</p> <p>POINTER, THOMAS SAMUEL, LL.B.
<i>New Albany, Ind.</i>
Lambda Chi Alpha.</p> <p>POLSTON, FELIX E., LL.B.
<i>Nashville, Tenn.</i>
Delta Kappa Phi; Philomathean Literary Society.</p> |
|---|---|





College of Law

January Class

SADLER, ROBERT E., LL.B.
Selinsgrove, Pa.

SCHEVITZ, NATHAN, LL.B.
Jacksonville, Fla.

Class Historian; Philomathean Literary Society;
Associate Editor *Collegian*.

SHARP, JOSEPH, LL.B.
Plainsville, Texas
Sigma Delta Kappa.

SHEALY, HENRY G., LL.B.
Ocala, Fla.

SIMMONS, ROBERT L. C., LL.B.
Paris, Tenn.
Lambda Chi Alpha.

SMITH, ASYNIX DOUGLASS, LL.B.
Fort Sumner, N. M.
Delta Kappa Phi.

STAHL, ELMER WARE, LL.B.
San Antonio, Texas

Sigma Delta Kappa; President Junior Law Class.

TEMPLETON, ROBERT, LL.B.
Wellington, Texas

TURNER, SAM R., LL.B.
Elaine, Ark.

Sigma Alpha Epsilon; Class Orator; Student Council; Law Editor PHOENIX; Philomathean Literary Society.

WARD, DAVID ELMER, LL.B.
Fort Myers, Fla.

Secretary and Treasurer Senior Law Class; Philomathean Literary Society.

WILSON, EUGENE, JR., LL.B.
San Antonio, Texas

Philomathean Literary Society.

WILSON, J. HAYS, LL.B.
Knoxville, Tenn.

WOOD, WILLIAM O., LL.B.
Fort Worth, Texas

Sigma Delta Kappa; President Philomathean Literary Society.





College of Law

June Class

- | | |
|---|--|
| <p>ADAMS, ROBERT WESLEY, LL.B.
<i>Selmer, Tenn.</i>
Lambda Chi Alpha; Baseball, '26, '27, '28, '29;
Winner of Freshman Cup; Editor of PHOENIX,
'29; Associate Editor <i>Collegian</i>, '29, '30.</p> <p>ANDERSON, WILBUR F., LL.B.
<i>Bronson, Fla.</i></p> <p>ANDREWS, G. W., LL.B.
<i>Boulder, Colo.</i></p> <p>APPLEY, JOSEPH A., LL.B.
<i>Jackson, Tenn.</i>
Philomathean Literary Society.</p> <p>ARCHER, DOKKIS DAVID, LL.B.
<i>Oklahoma City, Okla.</i></p> <p>ARCHER, VAN HENRY, LL.B.
<i>San Antonio, Texas</i>
Kappa Epsilon Phi.</p> | <p>AVULI, ARTHUR L., LL.B.
<i>Dade City, Fla.</i>
Kappa Epsilon Phi; Florida Club; Philomathean
Literary Society.</p> <p>ASHLEY, CARLOS C., LL.B.
<i>San Saba, Texas</i>
Vice-President Junior Class; Texas Club; Philoma-
thean Literary Society.</p> <p>BAKER, JAMES F., LL.B.
<i>East Orange, N. J.</i>
Lambda Chi Alpha; Kappa Epsilon Phi; Philo-
mathean Literary Society.</p> <p>BARBER, FLOREINE, LL.B.
<i>Springfield, Tenn.</i>
Delta Phi Omega; Iota Tau Tau.</p> <p>BARKER, JESSE D., LL.B.
<i>Canyon, Texas</i>
Philomathean Literary Society.</p> <p>BARRY, DAVID R., LL.B.
<i>Lebanon, Tenn.</i>
Philomathean Literary Society.</p> <p>BERGSON, SYDNEY S., LL.B.
<i>Brooklyn, N. Y.</i></p> |
|---|--|





College of Law

June Class

- | | |
|--|--|
| BIVINS, JOHN H., JR., LL.B.
<i>Meridian, Miss.</i>
Football, '27, '28, '29; Basket Ball, '27, '28. | BUCHANAN, HARRY L., LL.B.
<i>Jefferson City, Mo.</i> |
| BLAKELY, THOMAS W., LL.B.
<i>Prescott, Ark.</i> | BUCHANAN, WILL C., LL.B.
<i>Lebanon, Tenn.</i> |
| BOND, BATE, LL.B.
<i>Brownsville, Tenn.</i>
Sigma Alpha Epsilon. | BUNTING, FRANK, LL.B.
<i>Henrietta, Texas</i>
Alpha Tau Omega; President Texas Club. |
| BRETZ, LESLIE JOHN, LL.B.
<i>San Antonio, Texas.</i>
Sigma Alpha Epsilon; Kappa Epsilon Phi; Texas Club. | BUTLER, N. ELMER, LL.B.
<i>Blue Eye, Mo.</i> |
| BREW, JAMES W., LL.B.
<i>Nashville, Tenn.</i>
Delta Kappa Phi. | CARDWELL, JOHN F., LL.B.
<i>Paragould, Ark.</i>
Sigma Nu. |
| BROWN, L. W., LL.B.
<i>Bradley, Miss.</i> | CARPENTER, ROY, LL.B.
<i>O'Donnell, Texas</i> |
| | CARSSOW, WILLIAM B., LL.B.
<i>San Antonio, Texas</i>
Texas Club. |





College of Law

June Class

CHAMBERS, ALSTON B., LL.B.
Victoria, Texas

CHAPA, J. M., LL.B.
Mercedes, Texas

CHELF, E. W., LL.B.

Flint Hill, Va.
Lambda Chi Alpha; Philomathean Literary Society

CHELF, WALTER B., LL.B.
Elizabethtown, Ky.

Phi Delta Theta; Sigma Delta Kappa; Philomathean Literary Society.

CHILDERS, MARK T., LL.B.
Autlers, Okla.

CLINE, WILLIAM A., LL.B.
Wharton, Texas
Sigma Alpha Epsilon.

CONNELLY, ROBERT C., LL.B.
Lyles, Tenn.

Philomathean Literary Society.

CRON, MILLARD W., LL.B.
Gallatin, Tenn.
Delta Kappa Phi.

CURTIS, JAMES R., LL.B.
Fort Worth, Texas

Sigma Alpha Epsilon; Collegian Staff; Texas Club; Philomathean Literary Society

DAVIS, RAYMOND O., LL.B.
New Albany, Ind.

Lambda Chi Alpha; Kappa Epsilon Phi.

DEMERRIT, ROY A., LL.B.
Key West, Fla.

Philomathean Literary Society; Florida Club.

DERRIS, J. ROY, LL.B.
Seminole, Okla.
Kappa Epsilon Phi.

DU DOSE, EMEREE H., LL.B.
Winston-Salem, N. C.





College of Law

June Class

- | | |
|--|--|
| DUKE, CLARENCE E., LL.B.
<i>Silver Point, Tenn.</i> | FLOWERS, GEORGIA, LL.B.
<i>Tampa, Fla.</i>
Iota Tau Tau. |
| DUTY, JEFFERSON DAVIS, LL.B.
<i>Rogers, Ark.</i> | FRAZIER, SARAH RUTH, LL.B.
<i>Chattanooga, Tenn.</i> |
| ENGLAND, L. RAY, LL.B.
<i>Neosho, Mo.</i> | FUNDIS, CHARLES E., LL.B.
<i>Wanette, Okla.</i>
Alpha Sigma Phi. |
| ETHEKEDGE, E. Y., LL.B.
<i>Sebring, Fla.</i>
Sigma Delta Kappa. | GARZA, F. G., LL.B.
<i>Edinburg, Texas</i>
Texas Club. |
| EVANS, CHARLES, LL.B.
<i>New Britain, Conn.</i> | GERHARDT, ROSA, LL.B.
<i>Mobile, Ala.</i>
Philomathean Literary Society. |
| FISHER, EDWARD, LL.B.
<i>Oklahoma City, Okla.</i>
Kappa Epsilon Phi. | GIBSON, WILLIAM C., LL.B.
<i>Stuttgart, Ark.</i>
Lambda Chi Alpha; Kappa Epsilon Phi; Philomathean Literary Society. |
| | HANSON, LESLIE E., LL.B.
<i>Newport News, Va.</i>
Sigma Alpha Epsilon; Philomathean Literary Society. |





College of Law

June Class

HARMON, EMMET A., LL.B.
O'Neill, Nebr.

HARRIS, ROBERT L., LL.B.
Columbia, Tenn.
Sigma Alpha Epsilon

HARTLEY, CLARENCE D., LL.B.
Maben, Miss.

HAYRON, JAMES COWAN, LL.B.
Nashville, Tenn.
Sigma Delta Kappa

HAWKINS, E. H., LL.B.
Fort Lauderdale, Fla.

HAWKINS, ERMA V., LL.B.
Fort Lauderdale, Fla.
Iota Tau Tau

HAYNES, CLIFTON C., LL.B.
Wichita Falls, Texas

HENNESSEE, JOHN M., LL.B.
Tulsa, Okla.

HOLLENSWORTH, C. C., LL.B.
Warren, Ark.
Kappa Epsilon Phi

HONTS, JOHN B., LL.B.
Durant, Okla.
Philomathean Literary Society; Texas Club.

HOUSTON, G. P., LL.B.
Hebirt Springs, Ark.
Philomathean Literary Society.

JACKSON, ORVILLE KELLY, LL.B.
Sau Antonio, Texas.

JETER, RUTH, LL.B.
Presden, Tenn.
Sigma Delta Sigma; Iota Tau Tau; Philomathean
Literary Society.





College of Law

June Class

JOHNSON, JORDAN, LL.B.
Valdosta, Ga.

JONES, JOEL M., LL.B.
Mt. Vernon, Ky.

JONES, MACYE, LL.B.
Corinth, Miss.

KILDUFF, FRANK E., LL.B.
Pittsburg, Kans.

KITTLE, OTIS A., LL.B.
Los Angeles, Calif.
Kappa Epsilon Phi.

KINNEAR, W. E., LL.B.
Beaumont, Texas.
Philomathean Literary Society; Texas Club.

KRANNAWITTER, RICHARD M., LL.B.
Santa Fe, N. M.

Lambda Chi Alpha; Kappa Epsilon Phi; Texas Club; Philomathean Literary Society.

LANCASTER, W. H., LL.B.
Memphis, Tenn.

LANG, JOSEPH L., LL.B.
Santa Maria, Calif.
Kappa Epsilon Phi.

LASLEY, CHARLES G., LL.B.
Nashville, Tenn.
Delta Kappa Phi.

LAWRENCE, WAYNE S., LL.B.
Coraopolis, Pa.
Sigma Alpha Epsilon; Texas Club.

LEGG, JAMES S., LL.B.
Mayfield, Ky.
Sigma Alpha Epsilon; Philomathean Literary Society.

LILES, J. ROBERT, LL.B.
Conroe, Texas.
Kappa Epsilon Phi.





College of Law

June Class

LOWKY, LOUIS L., LL.B.
Beaumont, Texas
Texas Club.

LOWKY, MAYBELLE, LL.B.
Beaumont, Texas
Sigma Delta Sigma; Iota Tau Tau.

LUMPKIN, SAMUEL EDGERTON, LL.B.
Tupelo, Miss.
Lambda Chi Alpha; President of Mississippi Club;
President Freshman Class, '28; Freshman Basket
Ball Coach; Football, '28, '29; Philomathean
Literary Society; Secretary "C" Club.

MABRY, WILLIAM OTIS, LL.B.
Goodman, Miss.
Philomathean Literary Society.

MANDLE, IDA, LL.B.
Danville, Va.
Philomathean Literary Society.

MARLOW, JOHN WILLIAM, LL.B.
San Antonio, Texas.
Sigma Alpha Epsilon; Kappa Epsilon Phi; Texas
Club.

MCCABE, J. E., LL.B.
Nashville, Tenn.

MCCORRY, THOMAS, LL.B.
Jackson, Tenn.
Sigma Alpha Epsilon.

MCCREERY, ROBERT W., LL.B.
Erick, Okla.

MCCUTCHEM, J. N., LL.B.
Clarksville, Tenn.
Delta Kappa Phi; Philomathean Literary Society.

MENDEL, PHILIP HENRY, LL.B.
Saxenburg, Penna.

MILLER, M. H., LL.B.
Fort Worth, Texas
Kappa Epsilon Phi.

MONTGOMERY, PAUL GARNETTE, LL.B.
Nashville, Tenn.





College of Law

June Class

MOYER, JACK A., LL.B.
Sau Antonio, Texas
 Kappa Epsilon Phi.

MURPHY, N. PRESLEY, LL.B.
Nashville, Tenn.
 Delta Kappa Phi.

MYSINGER, DALE A., LL.B.
Greenville, Tenn.
 Sigma Delta Kappa.

NEFF, G. N., LL.B.
Kansas City, Mo.
 Philomathean Literary Society.

ORMOND, SEABORN E., LL.B.
Forest, Miss.
 Lambda Chi Alpha.

PEACOCK, ALTON T., LL.B.
Tampa, Fla.
 Kappa Epsilon Phi.

PETERS, C. C., JR., LL.B.
Fort Worth, Texas
 Sigma Alpha Epsilon; Texas Club.

PETTIT, C. PEMBROKE, LL.B.
Fredericks Hall, Va.
 Lambda Chi Alpha; Philomathean Literary Society.

PIERCE, JUDSON H., LL.B.
Neosho, Mo.
 Sigma Nu; Philomathean Literary Society.

RATLIFF, L. D., JR., LL.B.
Haskell, Texas
 Kappa Epsilon Phi

RUMBAUGH, L. C., LL.B.
Albion, Ind.
 Philomathean Literary Society.

RINEHART, IVAN L., LL.B.
St. James, Mo.

ROBERTS, W. CLARENCE, LL.B.
Franklin, Tenn.





College of Law

June Class

ROGERS, N. L., LL.B.
Wickliff, Ky.
 Kappa Epsilon Phi.

ROSS, CLYDE F., LL.B.
Pauls Valley, Okla.
 Sigma Delta Kappa; Philomathean Literary Society.

SCOTT, WALTER, JR., LL.B.
Weldon, N. C.
 Chi Psi; Kappa Epsilon Phi.

SIMRELL, ELLIOT, LL.B.
Spencer, Tenn.

SISCO, THEODORE BASCOM, LL.B.
Nevada, Texas
 Philomathean Literary Society.

SMITH, ALBERT J., LL.B.
Anson, Texas.
 Lambda Chi Alpha; Philomathean Literary Society.

SMITH, E. E., LL.B.
Lebanon, Tenn.
 Lambda Chi Alpha.

SMITH, J. HILTON, LL.B.
Oklahoma City, Okla.

SMITH, MAXWELL F., LL.B.
Ames, Iowa.
 Delta Tau Delta.

SMITH, WILLIAM THOMAS, LL.B.
Russell, Ky.

SPAULDING, W. HOWARD, LL.B.
Coral Gables, Fla.

STOCK, JOSEPH W., LL.B.
Newark, Ohio
 Kappa Epsilon Phi; Philomathean Literary Society.

SULLIVANT, CARROLL F., LL.B.
Gainesville, Texas
 Kappa Epsilon Phi; Texas Club.





College of Law

June Class

SWAIM, VANCE, LL.B.
Crowell, Texas.
 Kappa Epsilon Phi.

VAUGHN, ROBERT GWYNN, LL.B.
Lebanon, Tenn.
 Lambda Chi Alpha; Kappa Epsilon Phi.

WADE, R. N., LL.B.
Rockwall, Texas
 Kappa Alpha.

WALKER, GORDON B., LL.B.
Atmore, Ala.

WEST, RAPHAEL BENJAMIN, LL.B.
Nashville, Tenn.

WHITE, HAROLD W., LL.B.
Tampa, Fla.
 Kappa Epsilon Phi.

WHITEHURST, LEON, LL.B.
Brookville, Fla.

WHITEHURST, ONAN, LL.B.
Brookville, Fla.

WILSON, GLENN, LL.B.
Nocoua, Texas

WITTSCHEN, O. H., LL.B.
Jacksonville, Fla.

YOKELY, E. CLINTON, LL.B.
Nashville, Tenn.
 Delta Kappa Phi.





JUNIOR



PHOENIX



Junior Class

College of Arts and Sciences

BRADLEY, LELAND D., A.B.
Brush Creek, Tenn.

Delta Kappa Phi; Y.M.C.A.; International Relations Club.

This boy is from Brush Creek,
Very industrious, active and meek.

BRYANT, MILDRED, A.B.
Flat Creek, Tenn.

Delta Phi Omega; Basket Ball, '28, '29, '30; Y.W.C.A.; Amasagassean Literary Society; Hiking Club.

Now here we have a little girl named "Polly,"
No matter when you see her she is always jolly.

BROWN, EDDIE E., A.B.
Hartsville, Tenn.
Cecelia Club

This little maiden called Brown,
On the campus can hardly be found.

DUNCAN, ELIZABETH JOSEPHINE, A.B.
Bevier, Ky.

Sigma Iota Chi; Delta Phi Omega.

While from Kentucky comes this peach,
The nice things we want to say are out of our reach.

GERNT, ANNETTA, B.S.
Allardt, Tenn.

Delta Phi Omega; Treasurer of Class; Y.W.C.A.; Hiking Club.

This is none other but Nettie,
Who around Bob is seen plenty.

GERNT, ESTHER, B.S.
Allardt, Tenn.
Delta Phi Omega.

Esther, as we all can see,
Is as fine as a girl can well be.



PHOENIX



Junior Class

College of Arts and Sciences

HARRIS, JOSEPHINE REA, A.B.

Lebanon, Tenn.

Delta Phi Omega; *Collegian* Sponsor, '29; Amasagassean Literary Society; PHOENIX Staff, '30; Cardinal Club

The jolly langhter, the usual mirth,
The whisper in your ear of all the dirt.

JOHNSON, LOIS MERLE, A.B.

Forbus, Tenn.

Delta Phi Omega.

There was a Junior named Lois, ah!
Who still gets her mail from Oklahoma

JONES, MARTHA DESHA, A.B.

Orlinda, Tenn.

Sigma Delta Sigma; International Relations Club; Amasagassean Literary Society.

I guess I'll not pull any bones,
For Fount is my man, I know, says Jones.

MAJOR, VIRGINIA, A.B.

Lebanon, Tenn.

Delta Phi Omega; International Relations Club; *Collegian* Staff.

Try and find a good sport like this Major,
And I know you can't find one like her, I'll wager.

MASON, WALTER SCOTT, A.B.

Mayfield, Ky.

Lambda Chi Alpha; PHOENIX Staff

There aren't any girls in Cumberland to suit me,
So I'll take the bus to Nashville to see Dorothy.

PAYNE, LA VELLE, A.B.

Lebanon, Tenn.

Many don't know this maiden's name,
So we present to you La Velle Payne.

ROBINSON, FOUNT L., A.B.

Wink, Texas

Sigma Alpha Epsilon; Basket Ball, '27, '28, '29; Football, '27, '28, '29; Vice-President Junior Class.

Oh! what a miserable life it is for me,
When we play our games out of Tennessee.





PHOENIX



Junior Class

College of Arts and Sciences

ROGERS, FLORENCE, A.B.
Lebanon, Tenn.

Rogers' silverware is very precious stuff,
Florence, as we all know, is surely sweet enough.

SCOGGIN, KATHRYN, B.S.
Russellville, Ky.

Sigma Iota Chi; Delta Phi Omega.

Here is this little miss from old Kaintuck,
That ensnared this fellow they call Euck.

TAYLOR, ROBERT, B.S.
Birmingham, Ala.

Lambda Chi Alpha; Football, '27, '28, '29; Baseball, '28, '29, '30; Alternate Captain
Football Team.

About Bunk we will not use the hooks,
For he's not such a fool about hooks.

THOMPSON, THOMAS EARL, A.B.
Lebanon, Tenn.

You can tell by the hair on his head,
This youth is none other than Ned.

TROXLER, REBEKAH, A.B.
Chattanooga, Tenn.

Sigma Delta Sigma; Y.W.C.A.

Now Becky you will agree is good nature',
But we can't say why she sings "Almost Persuaded."

YOUNG, WILLIAM P., A.B.
Nashville, Tenn.

President Y.M.C.A.; Vice-President Amasagassean Literary Society.

This boy Young will come out on top,
For his kind is a hard one to stop.





SAPIHOKOKE



PHOENIX



Sophomore Class

College of Arts and Sciences

BURKITT, HENRY R., B.S.
Nashville, Tenn.

Delta Kappa Phi; Cumberland Cardinals, Football,
'29, '30.

BYARS, AMY JO, B.S.
McMinnville, Tenn.

Honor Roll, '29, '30; Hiking Club; Cumberland
Cardinals; International Relations Club.

COVINGTON, J. JAMES, A.B.
College Grove, Tenn.

DAVIS, PERRY PHILLIPS, A.B.
Watertown, Tenn.

FREEMAN, ELIZABETH, A.B.
Lebanon, Tenn.

Secretary of Class; International Relations Club;
Hiking Club; Basket Ball, '29, '30.

GOLLADAY, VIRGINIA, A.B.
Lebanon, Tenn.
Sigma Delta Sigma.

JENNINGS, GARLAND, B.S.
Watertown, Tenn.

Lambda Chi Alpha; International Relations Club;
Amasagassean Literary Society.

JENNINGS, PAUL SMITH, A.B.
Watertown, Tenn.

Sigma Alpha Epsilon; *Collegian* Staff.

KERR, KING, A.B.
Kenton, Tenn.

Y.M.C.A.; *Collegian* Staff; Athletic Association;
Life Service Group.

LE ROY, CARLETON H., A.B.
Danville, N. Y.

Delta Kappa Phi; *Collegian* Staff; International
Relations Club; Y.M.C.A.

LIGON, HELEN, A.B.
Mt. Pleasant, Tenn.
Sigma Delta Sigma.

LIGON, STEWART, A.B.
Mt. Pleasant, Tenn.
Sigma Delta Sigma.

MCCULLY, JOHN T., A.B.
Louisville, Miss.



PHOENIX



Sophomore Class

College of Arts and Sciences

NEWMAN, THOMAS, A.B.
Delrose, Tenn.

Lambda Chi Alpha; President of Class.

PHILLIPS, HARRY, A.B.
Watertown, Tenn.

Sigma Alpha Epsilon; President Amasagassean Literary Society; Editor of *Collegian*; International Relations Club; Y.M.C.A.; Athletic Association; Student Council.

PREHODA, JAMES E., A.B.
Pittsburgh, Penna.
Delta Kappa Phi.

PRICE, WILLIAM T., B.S.
Lebanon, Tenn.
Amasagassean Literary Society.

REID, OTIS L., A.B.
Orlinda, Tenn.

ROBINSON, WILLIAM, B.S.
Carthage, Tenn.
Lambda Chi Alpha; Football, '29, '30; Basketball, '29, '30; Baseball, '29, '30.

SINCLAIR, J. C., B.S.
Meridian, Miss.

Delta Kappa Phi; *Collegian* Staff; Football; Phoenix Staff; Y.M.C.A.

SUMMERS, LINNIE SUE, A.B.
McMinnville, Tenn.
Sigma Delta Sigma.

VAUGHN, KATHERINE, A.B.
Lebanon, Tenn.
Delta Phi Omega; Basketball, '29, '30.

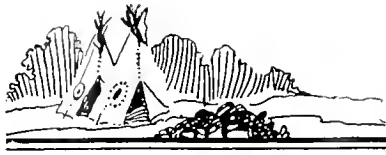
VOORHIES, CLIFFORD W., B.S.
Orlando, Fla.
Sigma Alpha Epsilon.

WALKER, MATTIE, A.B.
Lebanon, Tenn.
Delta Phi Omega; Amasagassean Literary Society.

WILKES, HARLIE, B.S.
Stantonville, Tenn.

YELTON, JOHN CHARLES, A.B.
Mt. Juliet, Tenn.
Amasagassean Literary Society; Y.M.C.A.





PHOENIX

Ancient History



The Seniors have won part at last;
If they were Freshmen once, 'tis past;
Through stormy seas with sails unfurled;
They've brought their wisdom to the world.

The jaunty Juniors now are near
The haven, yet a warning hear.
The light reveals a dreadful shape;
The Rock of Failure they escape.

In troubled waters, tossed and blown,
Ship Sophomore ploughs slowly on;
Suspense amid the waiting throng,
Lest winds perverse should guide her wrong.

The Freshmen start forth on their way;
With gleaming sails and colors gay;
Little they reck of hidden shoals
Between them and their destined goals.





FRESHMEN



PHOENIX



PHOENIX



Freshman Class

OFFICERS

J. PHILLIP CLEVELAND	President
JAMES SPECK	Vice-President
PEGGY HARRISON	Secretary
JOHN TROXLER	Treasurer

ROLL

ADAMS, AMELIA	Selmer, Tenn.	MARTIN, DEAN	Lebanon, Tenn.
ALLEN, GEORGE M.	Dixon Springs, Tenn.	MARTIN, JAMES	Lebanon, Tenn.
BAKER, EARL F.	Lebanon, Tenn.	MARTIN, THOMAS	Lebanon, Tenn.
BELDING, VIRGINIA	Hot Springs, Ark.	MCCORD, HARRY	Corinth, Miss.
BOND, NINA	Lebanon, Tenn.	MACDANIEL, REBECCA	Springfield, Tenn.
BOND, LENA	Lebanon, Tenn.	MOORE, THOMAS	Louisville, Miss.
BOOK, GEORGE	Tullahoma, Tenn.	MOSLEY, MILDRED	Lebanon, Tenn.
CLARK, EMERY	Carlisle, Ky.	NIX, JOHN	Watertown, Tenn.
CLEVELAND, J. P.	Lebanon, Tenn.	PERKINS, FAY	Adamsville, Tenn.
COX, MILDRED	Lebanon, Tenn.	PORTER, MARTHA	Orlinda, Tenn.
DILLARD, LOUISE	Lebanon, Tenn.	RAMSEY, VIRGINIA	Viola, Tenn.
DONNELL, ROBERT	Lebanon, Tenn.	REDD, JOE	Florence, Ala.
GILL, MARY	Lebanon, Tenn.	ROBERTSON, LOUIS	Lebanon, Tenn.
GLASGOW, WILLIAM	Ashland City, Tenn.	ROGERS, MARIAN	Lebanon, Tenn.
GREENE, HARRY	Lebanon, Tenn.	SADLER, IRA	Gainesboro, Tenn.
GRIGG, GLENN	Carthage, Tenn.	SMITHWICK, WALTER	Lebanon, Tenn.
HAMBLIN, MARY	Mt. Juliet, Tenn.	SPECK, JAMES	Blue Springs, Miss.
HARRISON, PEGGY	Lebanon, Tenn.	STEVENSON, ROBERT	Pittsburgh, Penna.
HEREFORD, JULIA	New Market, Ala.	SWEATT, HOWARD	Nashville, Tenn.
HILL, JUNE	Lebanon, Tenn.	SPERRY, BENNIE LEE	Mt. Juliet, Tenn.
HOBSON, RUTH	Lebanon, Tenn.	TAYLOR, FORKEST	Florence, Ala.
HOUSER, HELEN	Lafayette, Tenn.	THACKSTON, MARIE	Lebanon, Tenn.
IVY, ELSIE M.	Lebanon, Tenn.	TILGHMAN, MAX	Kenton, Tenn.
HUMPHREYS, JULIA	Lebanon, Tenn.	TROXLER, JOHN	Chattanooga, Tenn.
HAGEN, BERRY	Lebanon, Tenn.	VANTREASE, TOMMIE	Lebanon, Tenn.
JENNINGS, LOIS	Watertown, Tenn.	WALLACE, JOHN	Huntsville, Ala.
JOHNS, ARTHUR	Winchester, Tenn.	WILLIAMS, ALLIE D.	Harris, Tenn.
JOHNSON, IONE	Lebanon, Tenn.	WINFREE, ELSIE	Silver Point, Tenn.
JONES, WINIFRED	Orlinda, Tenn.	WINHAM, MILTON	Portland, Tenn.
KING, EVERETT	Louisville, Miss.	WITHERSPOON, THELMA	Lebanon, Tenn.
LIGON, EMMA MAE	Lebanon, Tenn.	WHITEHURST, MRS. ONAN	Brookville, Fla.
LYNE, ROBERT	Hopkinsville, Ky.	YOUNG, ESTHER	Shop Springs, Tenn.





PHOENIX

The Freshman Class

Freshmen are supposed to be green,
And very different—we are told—
So we vary from the custom—
And place herein a poem—so bold!

We arrived in Cumberland
In the fall of '29;
Since we came on the campus,
The school has been running fine!

Sixty-five new faces,
All donned with tiny green hats,
And scorned by upper classmen
By "I wish you would look at that!"

We soon snapped out of this baby stage
And organized into a bond;
Why, who could quench the peg of such a
group
Assembled from all over the land?

We had a uniform organization
With a president of A-1 brand—
Little Jay Phillip Cleveland,
In Cumberland a leading man!

J. Phillip, a D. K. P. man—
Has led us thru thick and thin—
A scholar, a sportsman—
Loyal to C. U. to the end!

Not for a minute did we hesitate
To get right down to work,
From the first day of school to the last,
None of our scholastic work did we shirk!

All of the C. U. activities
We supported with all we had,
C. U. without the Freshman class
Her condition would have been sad!

Our Freshman boys' basket ball team!
Why, it's been the talk of the South!
Our boys really played ball
Beyond the shadow of a doubt!

On the football field, yes—
And on the girls' basket ball team
Our class placed the boys and girls
That have won for C. U. esteem.

We gave picture shows, stunt nites and parties
And helped C. U. in that way,
Not only did we help her financially
But showed her where the talent lay!

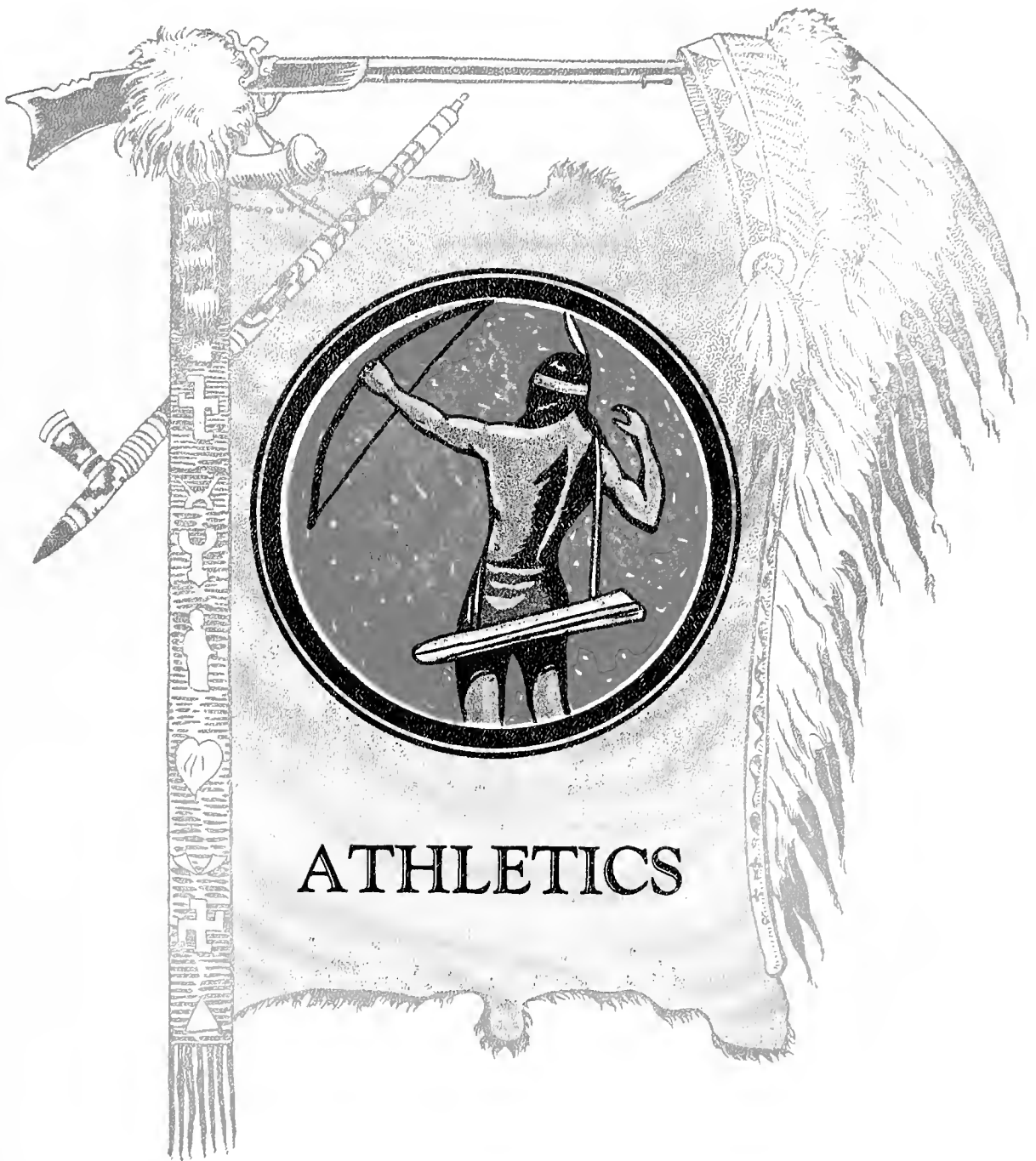
In the scholastic life
Our record was unsurpassed:
Of all the other classes in school
Ours was the leading class!

You see what we've done for C. U.,
By just being here this year,
Our minds, talents, and pep
Should never be forgotten here!

Don't think we're egotistical,
These are the facts of the case.
We've shown you we've laid a record
That none can ever erase!

All we will say for Cumberland
Is that we think she is better than our class;
And I guess you see that says
That we know our Alma Mater is unsurpassed!





ATHLETICS

PHOENIX



MONTE McDANIEL
DIRECTOR OF ATHLETICS

"Coach," as he is commonly known to his boys, is completing his fourth year as Cumberland's mentor. Faced with a goodly number of letter men back, and a good squad of new material on the field, things looked bright for a banner year on the gridiron. But the boys were never able to get going, and the season was disastrous. "Coach" fought with them to the end, however, and was always there with his conscientious, untiring ability to do what he thought best for the school and team. Football is not "Coach's" major sport, for he has considerable more experience on the diamond. He has managed several successful teams in Florida, and we are looking forward to another great season on the baseball field.

WILLIE WOOD COOK
CAPTAIN

The "Red Line" would not be the same without "Red" in there at tackle, plunging, blocking, tackling, and pushing a gap through every opposing line. "Red" was handicapped by a bad knee, but in the hard games he was in there to the finish, and never complained. Such a fighting spirit was one of "Red's" greatest attributes. His strong character and pleasing personality marked him as one of Cumberland's greatest captains.

PAUL WOOTEN
MANAGER

As a manager, Paul had no peer in all of Cumberland's list of "midget" managers. They all have been small in stature, but large in ability and those things which go to make up a keen business manager. Paul has been with us in all his school work, and in this last year he had a chance to give forth some of that spirit—and how he did!





PHOENIX



ROBERT TAYLOR, QUARTERBACK

With "Bank," coolness under fire, swiftness, and broken-field running are personifications. A wizard on the offense, a bulwark of strength on defense, ever encouraging his men toward victory, Taylor proved himself to be a football player of the highest caliber.



EMERY CLARK, FULLBACK

Although he is a Freshman and supposed to be rather green, Emery showed his football training and ability, and proved to be one of the greatest running backs ever in Cumberland. He is small, but his drives and broken-field runs show his ability. He was the chief ground-gainer for the Bulldogs.



FOUNT ROBISON, END

Fount played his third year as a Bulldog, and was a most essential cog in the success of his team. Possessed of the qualities of a true sportsman, a born fighter, and versatility in getting down on punts, receiving passes, and smearing enemy plays, Fount was a constant threat.



WILLIAM BAIRD, END

Bill was shifted from Quarterback to End, and showed that his football ability and knowledge of the game would come out, wherever the Bulldogs needed him most. His work at end was of the highest type, and Bill's spirit and co-operation have always been a decided factor in the Bulldog success.



PHOENIX



WILLIAM ROBINSON, HALFBACK

Bill was prevented from showing his wares while a Freshman on account of a shoulder injury, but came to the backfield this year and proved his ability. One of the fastest men on the field, a most accurate passer, and the sprit of a leader branded Bill as valuable to the Bulldog squad for two years longer.

R. S. MCARTHUR, CENTER

"Bob" played his second year in the pivot position of the Bulldog line, and always gave his best. His passes were made with uncanny accuracy. There was no variation in his play, always characterized by clean sportsmanship and conscientious play.

GLENN WEBB, GUARD

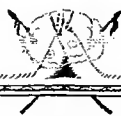
One of the most stubborn fighters ever to wear the Maroon jersey, Glenn proved a big obstacle in every enemy's path. A fighting spirit, in addition to his brawn, are Glenn's most noteworthy attributes.

CHARLES FLOYD, HALFBACK

"Doc" developed into the role of a punter on several occasions this year, and performed nobly. He increased his ability in running, blocking and passing, and retained the personality which inspired his teammates.

CHARLES SWEATT, END

"Swede" came over from Nashville, and in his Freshman year, ran side by side with the other Freshmen who bore the brunt of the Bulldog attack. A dog for punishment, and a knack for hard tackling, makes us appreciate "Swede" for three more years.





PHOENIX

JOHN RIVINS, END

Jack shared his position this year, but was always in there fighting when the chance came. He was a terror to enemy end plays, and death when a pass came his way. A great offensive player, but a greater defensive man, this Jack.



RICHARD KLINE, CENTER

Brain and brawn from Pennsylvania fought with the "Red Line" in the pivot position. Even though handicapped by an injured hand during most of the season, Dick's passes were true, his defense steady, and his insight into enemy plays won a name for him.



ROBERT DONNELL, HALFBACK

A Freshman, but heavy and fast, Robert was always good for yardage through the line. A plunger of no mean ability, a clean gentleman on the field, and a natural fighter. Always on his toes to back up the line, and his conscientious work brought results.



CLARK SINCLAIR, GUARD

Another Freshman to uphold the traditions of the "Red Line." Clark was high strung, eager to charge, and always alert, a constant threat to enemy line plays. Clark will be back, and will undoubtedly gain greater recognition in the future.

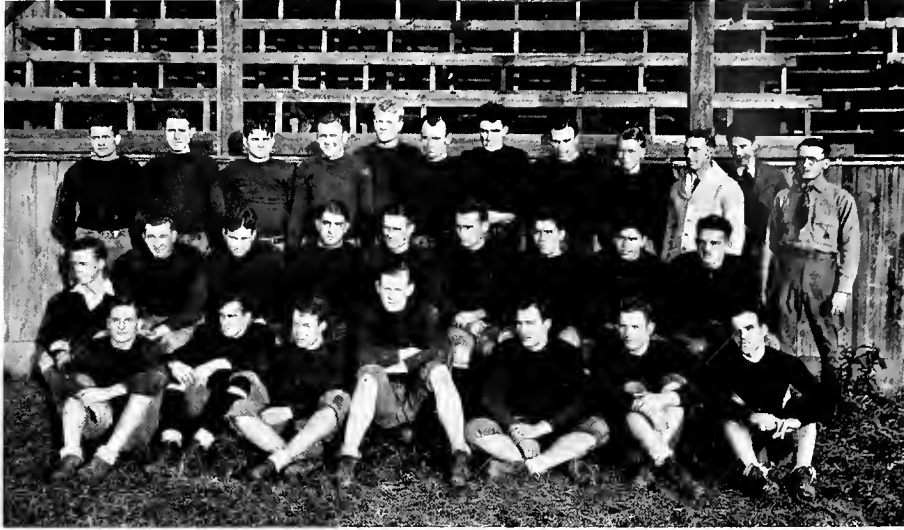


SAM LUMPKIN, TACKLE

Along with Captain Cook, "Father" Lumpkin took care of all enemy off-tackle plays. His playing throughout the entire season was of the highest type, and his presence in the "Red Line" made that branch all the more powerful. Big, and perhaps a bit awkward, but never to be run over—was this Sam.



PHOENIX



Football Record, 1929

Cumberland	0	Howard College	41
Cumberland	0	M. T. S. T. C.	6
Cumberland	7	Tennessee Tech	25
Cumberland	6	Sewanee	33
Cumberland	6	W. T. S. T. C.	12
Cumberland	19	Bethel College	6
Cumberland	26	Murray State Normal	14
Cumberland	7	Alabama State Normal	13
Cumberland	9	Millsaps College	33





PHOENIX

Football Review, 1929

Every school has great aspirations for its boys on the athletic field, yet no matter how the result of the season turns out, they are proud of some phase of the season's work. We can be thankful for a fighting spirit, and a squad of Bulldogs that always gave the best that was in them.

It would be unwise, and untruthful to say that the season was successful—at least from a percentage standpoint, for the Bulldogs only won two games out of nine, and as percentage, that is next to what the little boy shot at. Nevertheless, a review of the season will be made for record, and for the sake of memories of a campaign that was marked with injuries, substitutions, lack of training and bigger and better teams.

The first game was lost to Howard College, of Birmingham, Alabama, by a score of 41 to 0. This was the first night encounter for many of the boys,—on the gridiron—and it proved that you can or can't do more than gaze at the moon. So much for that.

On October 5, our old rivals from Murfreesboro came over with a lighter and weaker team, and took home the long end of a 6-0 count. Revenge was sweet, no doubt, for they could not have forgotten the 13-0 defeat they tasted last year at the hands of the Bulldogs on their home field. Neither will the Bulldogs forget the defeat this year, and this fact will be in the charge and attack of the "Red Line" next fall.

The third game brought another rival from up in the mountains, in the attack of the Yellow Eagles from Tennessee Tech. The first quarter of this game was played as that "Red Line" should play. The ball was never in Bulldog territory, and one touchdown was registered by the Bulldogs, out of four good chances. But alas! The beginning of the second quarter found an inspired eleven of Eagles, which clawed the Bulldogs throughout the remaining part of the game until they looked like terriers. Loose playing, lack of spirit, and lack of either defense or offense after the first quarter, allowed the Eagles to march through to a 25-7 decision. Spectacular runs, passes and a victorious attack completely wrecked the Bulldogs.

Sewanee was slated to give the Cumberland boys a drubbing, and no one was disappointed—except probably those who gave 50 points. The score was 33-6. As in other games, the Bulldogs spent their strength and attack at the first, and scored the first marker, but the same old story tells the remainder of the game.

The fifth game was another of those moonlight affairs over in Memphis, and again a defeat of last year was avenged. This time the West Tennessee Teachers emerged victors in a close and hard-fought game by one touchdown, 12-6. Little Emery Clark came into his own in this game, and as a result caught the eye of mentors of larger schools.

Then at last, a game was won. The Bethel Corporals from McKenzie, Tennessee, came up to Kirk Field and gave the Bulldogs a taste of victory to the tune of 19-6. Even in victory the Bulldogs were fighting stubbornly against a weaker team, and but for a let-down, the score would have been twice as large. Nevertheless, it was a win, and there was great rejoicing, for the team was almost on the verge of experiencing one of those "Believe It or Not" seasons.

And when the strong Murray State eleven from Kentucky fell before the Bulldog attack on the following Saturday, it was almost a "Believe It or Not" experience. The score in this instance was 26-14. Real teamwork and true fighting spirit characterized the most impressive win of the season in this game. Clark was the outstanding luminary, sharing honors with Floyd, Robinson, Stanart, Green, and, of course, the "Red Line."

The Alabama State Normal, from somewhere in said state, came up the next Saturday, and after getting off to a good start, the Bulldogs finally gave up and left the field with the small end of a 13-7 score. It was in this game, played in a sea of mud, that just before dark, Emery Clark made that memorable 40-yard run around end, slipping, jumping, and ploughing his way across the last white marker to put the Bulldogs in a tie, and a moment later a boot from Stanart gave the Bulldogs a one-point margin.

But alas again! After the kick-off, the coach from down in Alabama took it into his head that something should be done about it, persuaded the referee that the touchdown should not be allowed on account of hurdling. After much discussion, pro and con, mostly pro, the ball was recalled two plays and the Bulldogs were penalized 15 yards. It was a break that happens once in a lifetime, but it cost the Cumberland eleven a victory, and seemingly to all the fans, most unjust.

Nevertheless, the season closed on Thanksgiving, with a decisive 33-9 defeat at the hands of the Millsaps College team at Jackson, Mississippi.

Conclusion: SAD. Consolation: Better Luck Next Season.

Score: Cumberland 113, Opponents 160. So much for that.



PHOENIX



COACH MONTE McDANIEL

It is a difficult job to coach football, basket ball and baseball in one college year of nine months, and do justice to them all, but this is just what "Coach" is equal to. With untiring efforts he took over the basket ball squad at the close of the football season, and with three letter men back, he formed a hard-fighting, courageous five to represent Cumberland on the hardwood floor. Always able to instill into his men spirit, courage, ability and clean fighting, "Coach" is well liked and fought for by each of his teams.

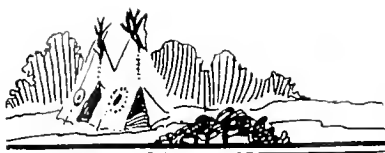
CAPTAIN WILLIAM ROBINSON

"Bill" went right from football togs to a forward berth on the Maroon five, and, as last year, was one of the flashiest little forwards on the floor. He was shifted to center in some contests, but always displayed his ability and his aim for the basket was unerring.

MANAGER CHARLES WALLER

Charlie arranged all the games, but after the holidays, when he dived into the sea of matrimony, his assistant took most of the care of the team. Charlie brought some of the best teams of the neighboring states to the Cumberland gym, and gave the fans a good schedule. His Cumberland spirit and enthusiasm all through his four years here mark him as one among the Maroon's truly successful managers.





PHOENIX



WILLIAM ROBINSON, FORWARD

"Bill" was one of the three letter men returning, and again placed on the team at a forward and center berth. He plays the floor like a veteran, and his knack for hitting the basket from the foul line is seldom equaled. He will be with the team two more years, lucky for us.

FOUNT ROBISON, CENTER

Fount is also playing his second year on the team, and as he plays more, his ability grows. An ideal pivot man, a clean fighter, and a goal shot of no mean ability, make him a most valuable cog in the Maroon machine. He has one more year.



ROBERT WOODY, GUARD

After being out of the game for half the season on account of non-eligibility, Woody came back in time to be an essential in the trouncing of the Burk Terrors 44-30. He was one of the mainstays of the team last year, and his return strengthened the team greatly this year. More success to you, "Bob."

HARRY GREEN, GUARD

Harry came from Castle Heights where he starred on the championship team of that school last year. He formed part of a defense that was hard to penetrate, and his passing and dribbling worked the ball to the Maroon basket for the counters. His shooting from distance was also a feature.



PHOENIX



THOMAS MARTIN, FORWARD

This Martin formed half of the most sensational pair of forwards ever to wear Maroon jerseys. He, with his twin brother, James, worked together like a real pair. The opposing team could never tell them apart, and often would chase one and think it was the other.

JAMES MARTIN, FORWARD

And this is the other half of the twin combination. Even we here could hardly tell them apart. Both had a keen eye for the basket, and their passing was excellent. These two boys were star forwards on the championship Castle Heights team. They will be back with us, and just watch them!



HOWARD SWEATT,

GUARD

"Swede" came over from a star year on the Central High team in Nashville. This blonde guard was fast, and his passing and pivoting were of the highest caliber. He has several years with us, and will always be a valuable man. His long-distance shooting featured many contests.

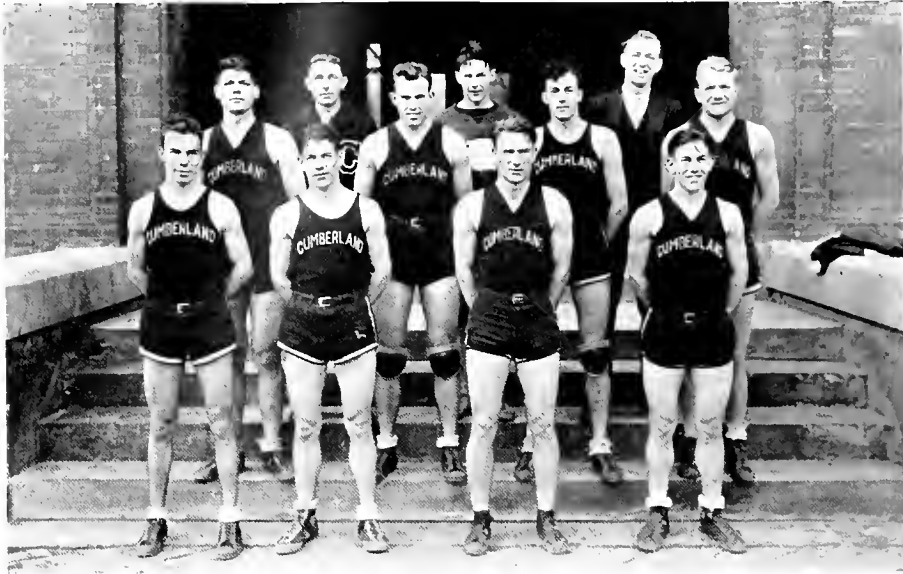
RICHARD McCUTCHEON, FORWARD

This flashy little lawyer was in there fighting when he was needed. His floor work was excellent, and his eye for the basket marked him as a valuable man. What "Dick" lacked in stature he made up for in clever floor work and ability to hit the basket.





PHOENIX

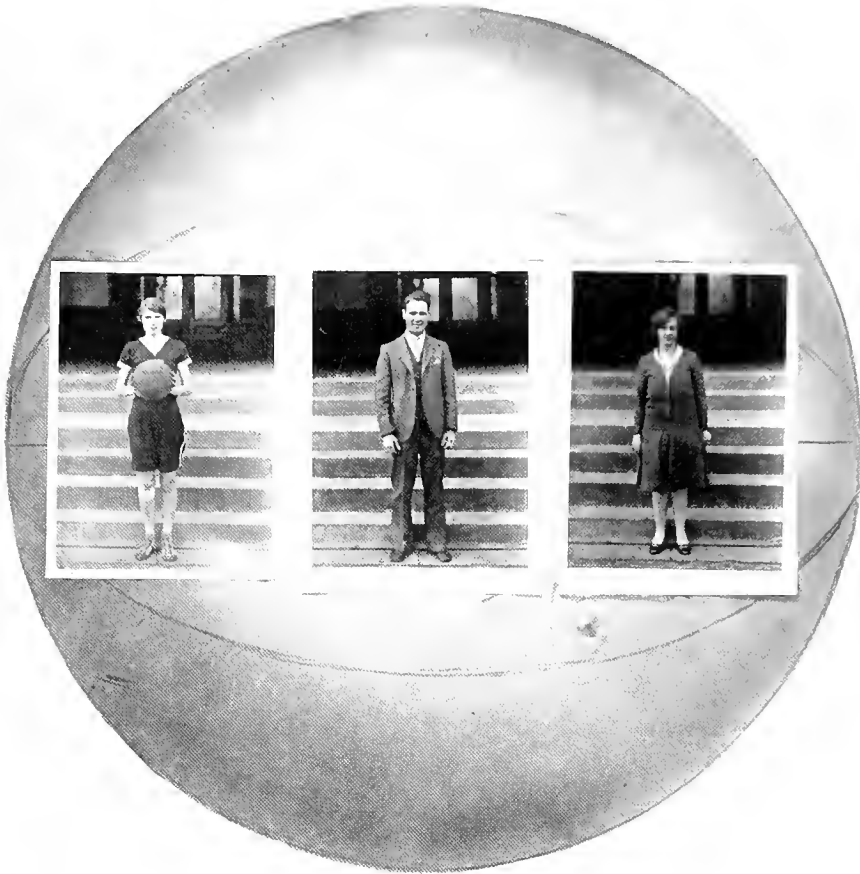


The Schedule and Results

Cumberland	25	Burk Terrors	41
Cumberland	27	Dallas Y	28
Cumberland	28	Bemis Y	42
Cumberland	33	Murray State Teachers	45
Cumberland	37	Bethel College	51
Cumberland	18	Dallas Y	23
Cumberland	10	Huntsville Y	24
Cumberland	17	Huntsville Y	22
Cumberland	30	M. T. S. T. C.	38
Cumberland	44	Burk Terrors	30
Cumberland	28	T. P. I.	43
Cumberland	24	M. T. S. T. C.	42
Cumberland	32	U. T. Juniors	24
Cumberland	48	Huntsville Y	31
Cumberland	29	Bemis Y	29
Cumberland	30	U. T. Juniors	15
Cumberland	30	Murray State Teachers	60
Cumberland	23	Bethel College	25
Cumberland	29	T. P. I.	30



PHOENIX



COACH D. D. ARCHER

Coach Archer thought he was able to carry the law course and also train the Maroonettes, and his idea was right. He trained them to a small, but fighting bunch of lassies, and they were always flashy, fast, and fighting to the last whistle. He had the confidence of his team, and they all fought for him. Although hampered by injuries and non-eligibles, Archer did himself credit with the splendid record made.

CAPTAIN ELIZABETH FREEMAN

Center, mainstay, hardest worker, pivot, and high scorer explains the position held by our admirable captain. "Lib" was easily the outstanding player on the team this year, and covered the entire floor without faltering, every minute during the entire season. A captain like this is greatly to be desired, and "Lib" will always be remembered for her work this year.

MANAGER KATHERINE HANCOCK

Katherine has never played basket ball, but has always confined herself to diligent work in the classroom. Hence her appointment as manager gave her a chance to display her brilliance, and she was more than equal to it. Not only as a basket ball manager, but it will be hard to lose "Kat" from her place in the hearts of those who see her and think, "There goes a real Cumberland follower."





PHOENIX

ELSIE MAI ALEXANDER, GUARD

"Red" has played everywhere on the team in her years here, and has always covered herself with glory. She is one of the hardest fighting players ever to wear the Maroon, and her defensive work is almost impregnable. Her eye is always on the ball, and her following up seldom gives the opponents a second shot at the basket.



RUTH FREEMAN, FORWARD

Ruth played her second year on the team, but not in such a blaze of glory as last. She was always fighting, though, and her willingness to pass and work for the team stamped her as one to be valued. Her long-distance shooting thrills an audience wherever the Maroonettes play.



ELIZABETH FREEMAN, CENTER

Whether playing five or six on a side, "Lib" was always the mainstay in the Maroonette attack. She covered the floor like a carpet, and her passing and shooting were of the highest type. She was high scorer for the year, and accounted for more points, many times, than the entire opposing team. It is well that she will be back.



KATHERINE VAUGHAN, FORWARD

This little girl can really use a hard-luck story as an alibi. Knee injuries, a broken toe, finger, and illness kept "Kay" from being at her best, but even then she was always in the thick of the fight. One of the fastest players on the floor, and an offensive player of great ability. It is her second year, and we are glad she will return.



PHOENIX



MILDRED BRYANT, GUARD

Mildred was placed on the team for the third year, and was one of the hardest fighters on the squad. "Polly" is one of the cleanest sports and most consistent players to wear the Maroon jersey. Mildred has spirit, ability, determination, and basket ball brains, and will be a valuable asset for next year.



JULIA HUMPHREYS, GUARD

By far the smallest member of the team in size, but not in fighting ability. Julia hawked her forward like a cat, and often when she was larger and a goal seemed inevitable, Julia was all over the opponent. Julia received her share of the hard knocks, but always came back with greater fight and determination.



VIRGINIA GOLLADAY, FORWARD

Playing her first year on the first five Virginia displayed ability and spirit and will be useful in her remaining years. Her shooting was very much on the style of a boy, and her floor work was good. Nonchalant and easy-going but always on the ball, and an accurate passer.

HELEN LIGON, GUARD

Another first year player who covered herself with admiration from the fans. Helen got around like a quail, but she was always there and fighting for the ball. Nimble as a cat and sticking like glue, Helen was always between her opponent and the basket.





PHOENIX



The Schedule and Results

Cumberland	19	M. T. S. T. C.	43
Cumberland	35	South Side Park	20
Cumberland	16	M. T. S. T. C.	45
Cumberland	14	West End Methodist	35
Cumberland	21	Dupont	28
Cumberland	20	Dupont	33
Cumberland	17	Tennessee Tech	35
Cumberland	56	B. T. I.	29
Cumberland	7	Tennessee Tech	32
Cumberland	37	Hello Girls	22
Cumberland	19	West End Methodist	31





In Memoriam



The great teams of the past, the great dreams of the future, will live, at least temporarily, in the hearts of Cumberland baseball followers, in memory. There will be no more intercollegiate baseball with Cumberland as a representative. At least for a while.

This announcement occasioned much regret in the hearts of the students and backers of the Great American Pastime. But the committee deemed it wise to discontinue this major sport in favor of other spring recreations, and as the committee says, so shall it be.

Since the University was organized, and baseball became known as a game, Cumberland baseball teams have not failed to make a good record. Baseball was one of the two earlier sports, football sharing the early honors. After two years of intercollegiate baseball, this sport was abandoned in 1896 on account of the severe rules handed down by the faculty. Allison B. Humphreys, '94 A.B., '95 LL.B., was coach during the few years in this period.

Baseball was reorganized in the spring of 1897, and interest continued to grow. No notable achievements are on record until the team of 1902 lost only two games, both to Milwaukee, Wisconsin. When Cumberland won the S.I.A.A. title in football in 1903, winning eleven games and tying one, the authorities desired a better baseball club, and secured the services of Wilkie Clark, Southern League player.

Baseball climbed to the top in 1908, when Cumberland won the Southern College championship, without the loss of a single game. No teams have made this record since that time, though several have come near it. The great team of 1924, coached by the memorable Byrd Douglas and Mims Tyner, established the most enviable record of recent times, with victories over larger schools in the South and Middle West.

The names of such coaches as Humphreys, Clark, Tyner, Douglas, and MacDaniel will go down in Cumberland annals as among those who led the sport to success. Many players have become known far and wide by their stellar work at Cumberland and scattered over the states in many leagues are players who claim Cumberland as their Alma Mater.





PHOENIX

C.U.

Pups

HAYS
Center



NIX
Center



MARTIN D

Guard



COACH LUMPKIN



Cumberland's Greatest Fresh Basket Ball Team



TILMAN
Forward



SPECK
Guard



GLASCOW
Guard



MOORE
Forward



KING
Manager



TROXLER
Forward

19

30





Freshmen Basket Ball Season

When the chilling winds of winter called a halt to gridiron battles, all eyes were turned in the direction of the gym. It was here that Coach Lumpkin was putting all those boys who had responded to the call through the preliminary drills of basket ball technique. A large squad of promising material worked hard in order to gain a berth on the team and be among those to carry the burden of the battles for the Cumberland Rats.

The first game of the season was with the Vanderbilt Freshmen in their gym. Although it was a hard-fought game, the frosh had not yet found their stride and lost by a score of 23-18.

But "Lady Luck" still turned against them in the second game, for the Frosh were unable to drop enough baskets to overcome their opponents, Castle Heights, who defeated them by a score of 17-15.

It seemed as though the Cumberland Rats couldn't get going, because along came the Vanderbilt Rats, and again defeated them 27-14.

But in the next game the Frosh started out with a rally that the Tennessee Industrial School was not able to overcome. Although it was close, the Pups had their first taste of victory.

Riding on the crest of good fortune, the Pups encountered the David Lipscomb College, only to be turned back by a score of 28-27. After leading at the half with a 16-point lead, and a tie resulting at the end of the game, a five-minute period was played. It was disheartening to see one of the opponents drop a foul in the basket, thus setting the Frosh back by one point.

Now old "Lady Luck" returned, and the Frosh hit their stride, when they avenged the defeat of David Lipscomb College by a score of 27-23. It was a sweet victory for the Rats, for now they were hitting the winning column.

Having the last game fresh in their minds, they handed the Swift & Company Independents, of Nashville, a sound drubbing to a tune of 24-8. And then the Tennessee Industrial School bowed to them by a score of 24-20.

After playing foreign talent, the Rats decided to take the Wilson County Independents, who were praised with an unblemished record. These boys also fell before the heavy onslaught of the Freshmen, trailing by a score of 34-20.

The M. T. S. T. C. Reserves decided to try the Rats, and after the final whistle was blown the Frosh emerged victorious with a 40-33 lead.

It seemed as if the Pups could not be defeated, for they again turned the Wilson County Independents back with a 39-13 score.

And then the Rats came to the supreme test of the year when they were matched up with the C. U. Bulldogs. A fast game was played between the two teams and when the final whistle was blown, the Freshmen had another scalp under their belts, the score being 28-22.

The Schedule and Results

C. U. Freshmen	18	Vanderbilt Freshmen	23
C. U. Freshmen	15	Castle Heights	17
C. U. Freshmen	14	Vanderbilt Freshmen	27
C. U. Freshmen	10	T. I. S.	9
C. U. Freshmen	27	David Lipscomb	28
C. U. Freshmen	27	David Lipscomb	23
C. U. Freshmen	24	Swift & Co. Independents	8
C. U. Freshmen	24	T. I. S.	20
C. U. Freshmen	34	Wilson County Independents	20
C. U. Freshmen	40	M. T. S. T. C. Reserves	33
C. U. Freshmen	39	Wilson County Independents	13
C. U. Freshmen	28	C. U. Varsity	22





Tennis Club

School had scarcely begun in the fall, when a large group of tennis enthusiasts began their annual trek to the campus tennis courts. Great interest was manifested throughout the fall on this campus, only to be halted by the chilly November winds and rains.

However, interest did not lag during the winter and plans were formulated for a successful tennis season in the spring. Several important meetings were held in which these plans were worked out carefully.

A local tournament is being planned and it is expected that a large group of students will enter. A team will be chosen representing Cumberland's best players, who will be matched with tennis teams of other leading institutions in this section of the state, including Vanderbilt. It is also very probable that a fraternity tournament will be held this spring.

Although many students have taken an interest in tennis this year, the writer wishes to mention a few in particular who have kept high the spirit and interest of the club during the winter months and are highly instrumental for its ultimate success. Among these are Maybelle Lowery, Billy Strong, Reid Hill, Bill Little, David Barry, J. P. Cleveland, Peggy Harrison, Charles Waller, Professor Williams, and Dean Young.

Tennis is a great game, requiring much skill and deception to be played at its best, yet all who wish to learn will be heartily welcomed at all times and gladly accepted in the ranks of one of Cumberland's most active outdoor sports.





ORGANIZATIONS

PHOENIX

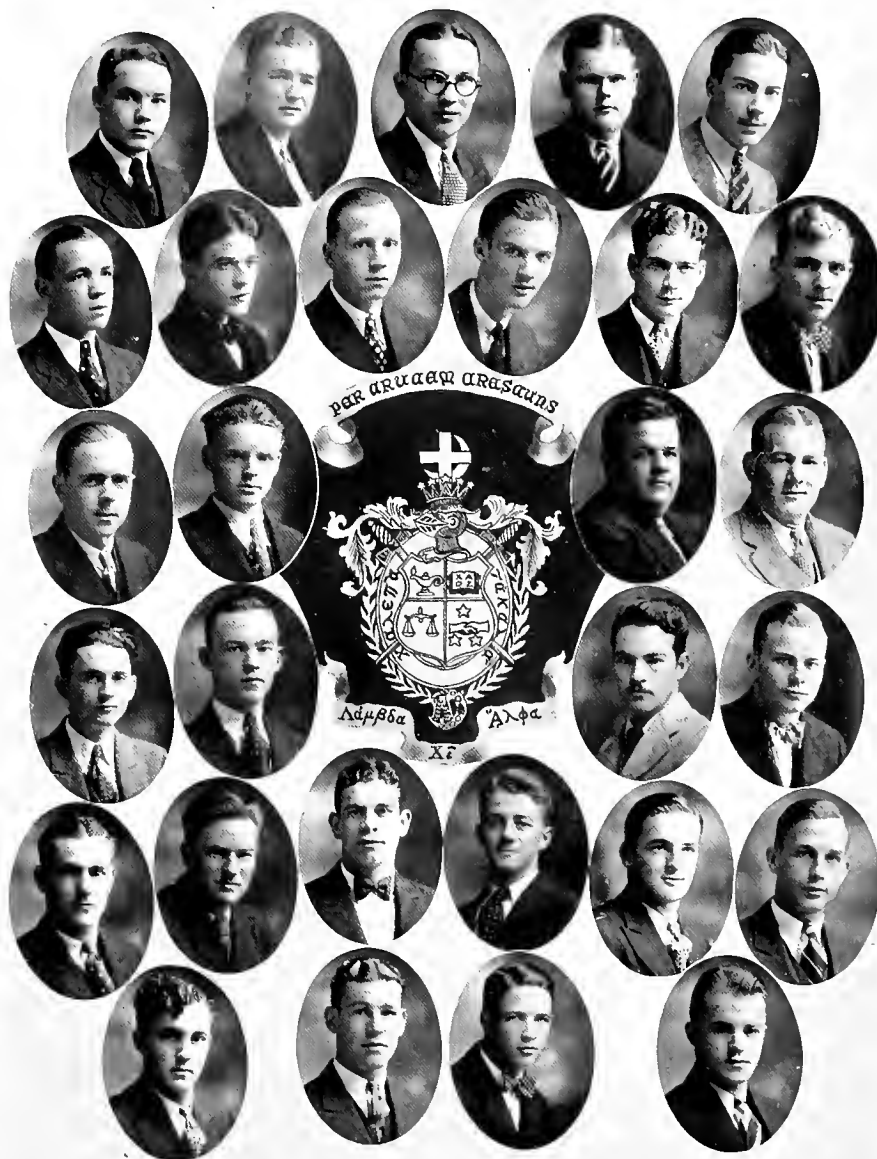


LAMBDA CHI ALPHA HOME





PHOENIX



PHOENIX



Lambda Chi Alpha



Founded at Boston University

1909

Colors: Purple, Green, and Gold

Flower: Violet

ALPHA SIGMA ZETA

Established at Cumberland University

April 17, 1917

FRATRES IN FACULTATE

RALPH T. DONNELL

JAMES O. BAIRD

FRATRES IN UNIVERSITATE

ADAMS, ROBERT W.	Tennessee	LUMPKIN, SAMUEL E.	Mississippi
BAKER, JAMES F.	New Jersey	MASON, WALTER S.	Kentucky
BISHOP, JAMES	Kentucky	MOORE, FRANK	Texas
BUCKOWY, WILLIAM A.	New York	ORMOND, SEABORN	Mississippi
CHELF, E. W.	Virginia	PETITT, C. PEMBROKE	Virginia
DAVIS, RAYMOND	Indiana	POINTER, THOMAS	Indiana
GIBSON, WILLIAM C.	Arkansas	ROBINSON, WILLIAM	Tennessee
GREEN, HARRY	Tennessee	SIMMONS, ROBERT	Tennessee
GREENE, JESSE D.	Mississippi	SMITH, A. J.	Texas
GREGORY, JESSE	Tennessee	SMITH, E. E.	Tennessee
HOWSER, HAROLD	Tennessee	TAYLOR, FORREST	Alabama
JENNINGS, GARLAND	Tennessee	TAYLOR, ROBERT	Alabama
KRANNAWITTER, R. M.	New Mexico	TURNER, ROBERT F.	Tennessee
LEVY, GERALD	Texas	VAUGHN, GWYNN	Tennessee

FRATRES IN URBE

WINSTEAD P. BONE

JIMMIE BRYAN

COMER DONNELL

DR. R. DEAN WILKINSON

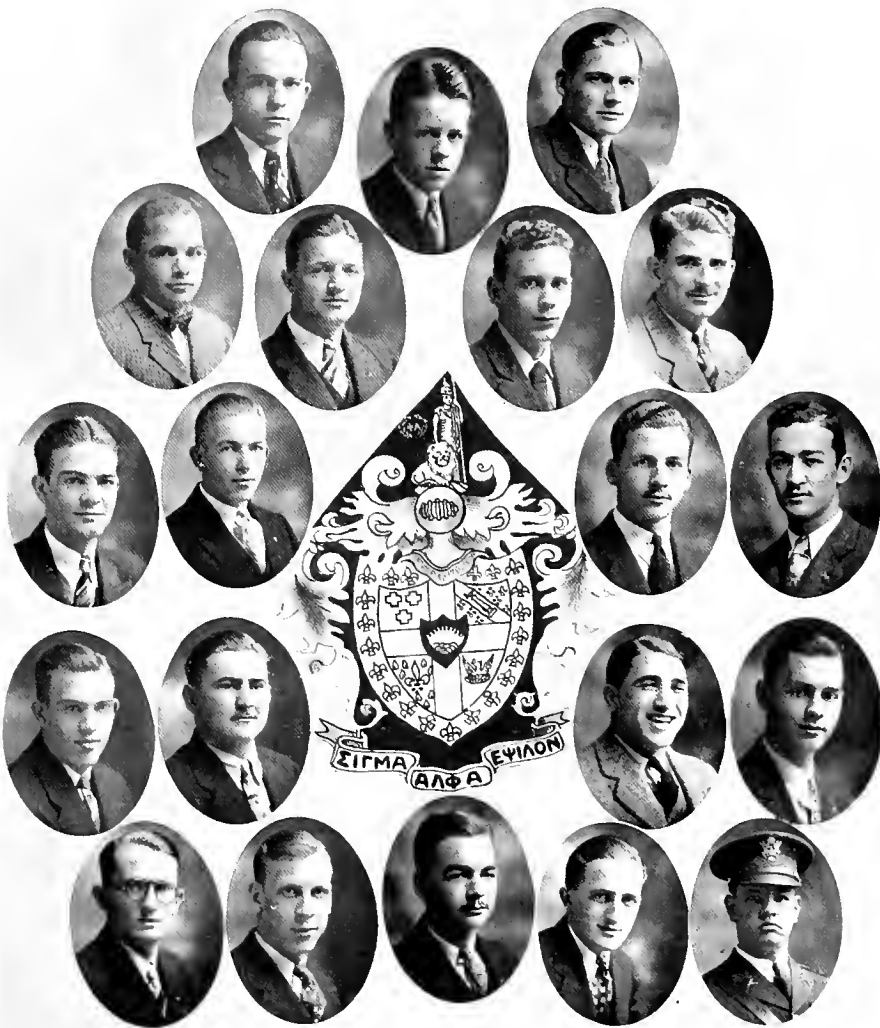
PALMER JAMES

W. RALPH PATY





PHOENIX



PHOENIX



Sigma Alpha Epsilon

Founded at University of Alabama
March 9, 1856

TENNESSEE LAMBDA CHAPTER

Founded, 1860

FRATRES IN FACULTATE

DEAN WILL D. YOUNG

FRATRES IN UNIVERSITATE

BOND, BATE	Texas	LAWRENCE, WAYNE	Pennsylvania
BRADLEY, ROBERT W.	Arkansas	LEGG, JAMES	Kentucky
BRETZ, LESLIE	Texas	MARLOW, JOHN	Texas
CARTER, NELSON	Florida	MCCORRY, THOMAS	Tennessee
CLARK, ALLAN	Mississippi	MOORE, S. TRIGG	Tennessee
CLINE, WILLIAM	Texas	PETERS, C. C.	Texas
CURTIS, JAMES	Texas	PHILLIPS, HARRY	Tennessee
HANSON, RICHARD	Virginia	REDD, JOE	Alabama
HARRIS, OREN	Arkansas	ROBISON, FOUNT	Texas
HARRIS, ROBERT	Tennessee	TURNER, SAM R.	Arkansas
HOFFMAN, WILLIAM	New York	VOORHIES, CLIFFORD	Florida
JENNINGS, PAUL S.	Tennessee	WILLIAMS, ROBERT	Tennessee
KLINE, RICHARD	Georgia		

FRATRES IN URBE

ALEXANDER ANDERSON	J. H. GRISSIM
J. CARR ARNETT	REV. C. E. HAWKINS
COL. HARRY L. ARMSTRONG	FRANK HOWITT
ROBERT ASKEW	ALLISON HUMPHREYS
CLAY BARRY	H. B. MACEY
RUFUS DOAK	R. Q. MACEY
C. B. EVERTSON	D. E. MITCHELL
SERGEANT WINSTON FLINT	HOMER SHANNON
WILLIAM GREEN	JAMES SHANNON

Sigma Alpha Epsilon is the oldest fraternity organization represented on the Cumberland campus, and Tennessee Lambda is the fourth oldest chapter in S.A.E. Tennessee Lambda was organized in 1860, four years after the fraternity was born at the University of Alabama. Dying during the dark days of the Civil War but rising again soon after the wearers of the grey returned home to beat their swords into plowshares, the chapter celebrated her sixty-ninth birthday in the fall of 1929. Tennessee Lambda has at present more than seven hundred alumni, outnumbering those of any other chapter of Sigma Alpha Epsilon.

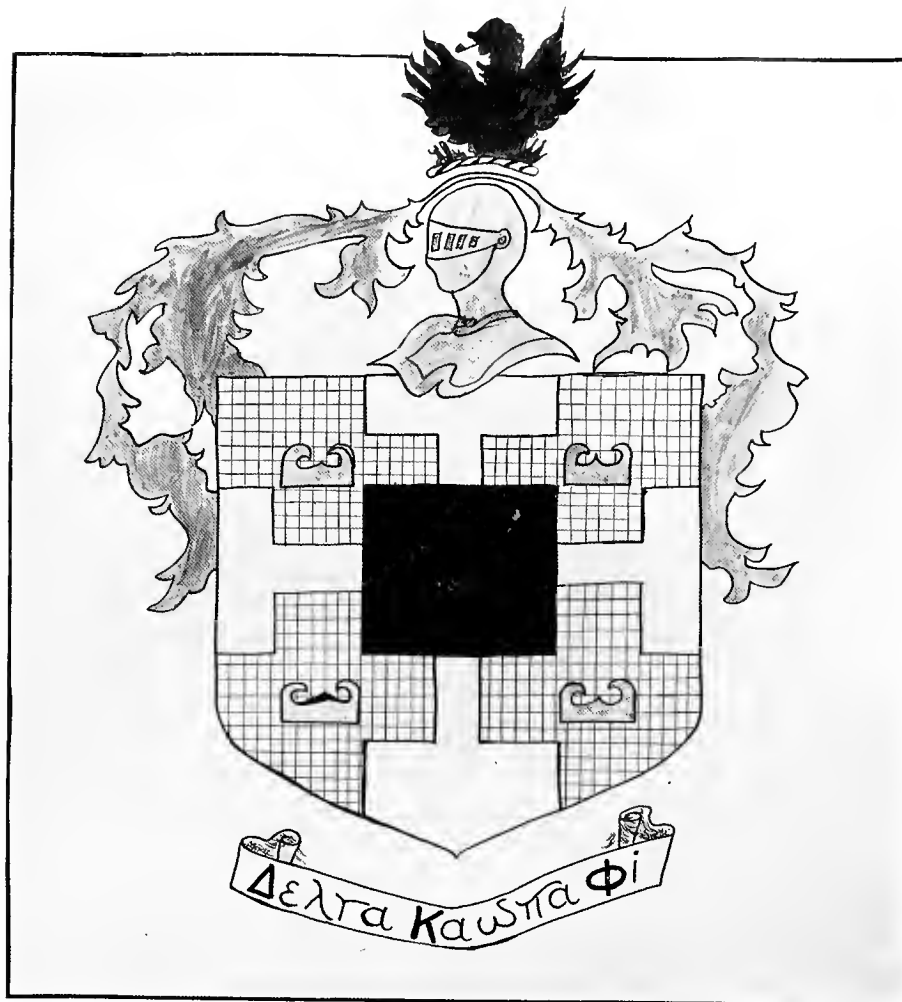




PHOENIX

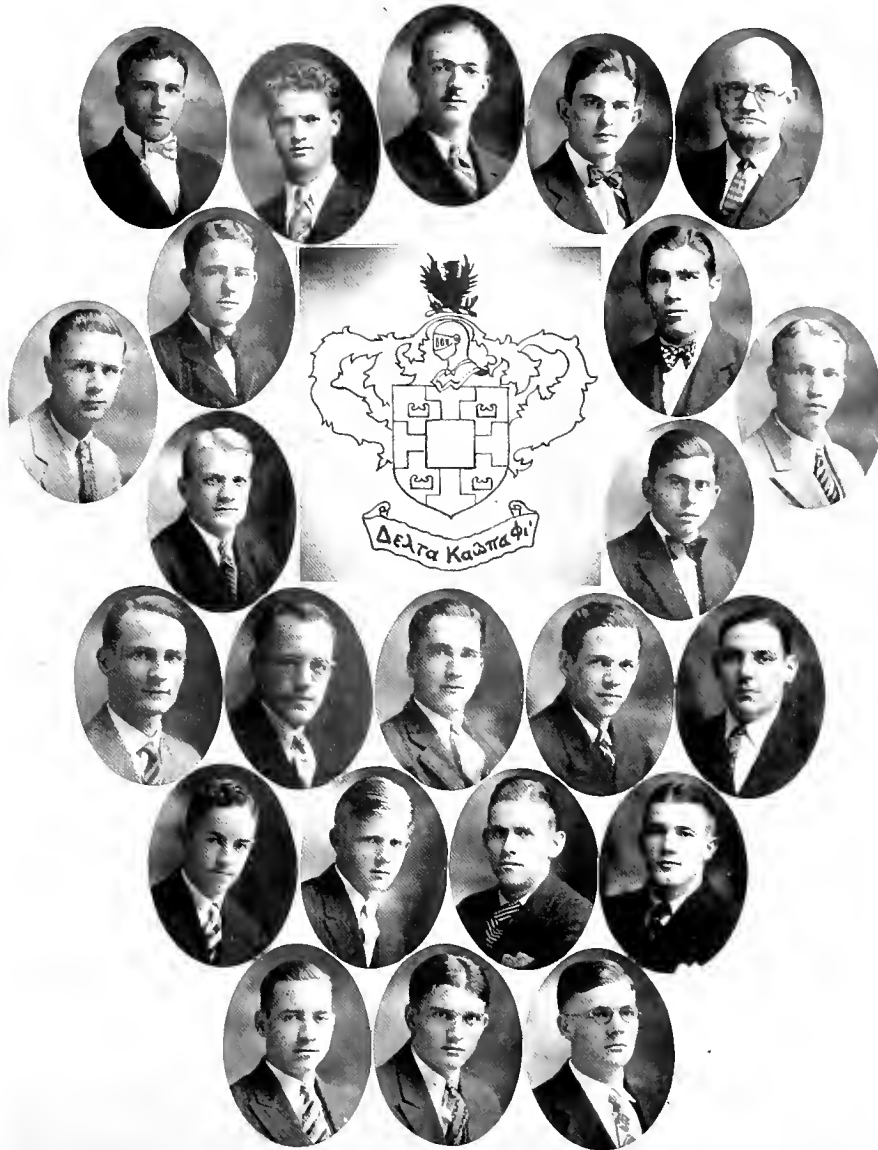


PHOENIX





PHOENIX



PHOENIX



Delta Kappa Phi



Founded at Marshall College, West Virginia
March 31, 1929

TENNESSEE EPSILON CHAPTER

March 31, 1929

Colors: Red, Gold, and Black

Flower: Red Rose

FRATRES IN FACULTATE

DR. R. J. WHERRY
PROF. F. R. WILLIAMS

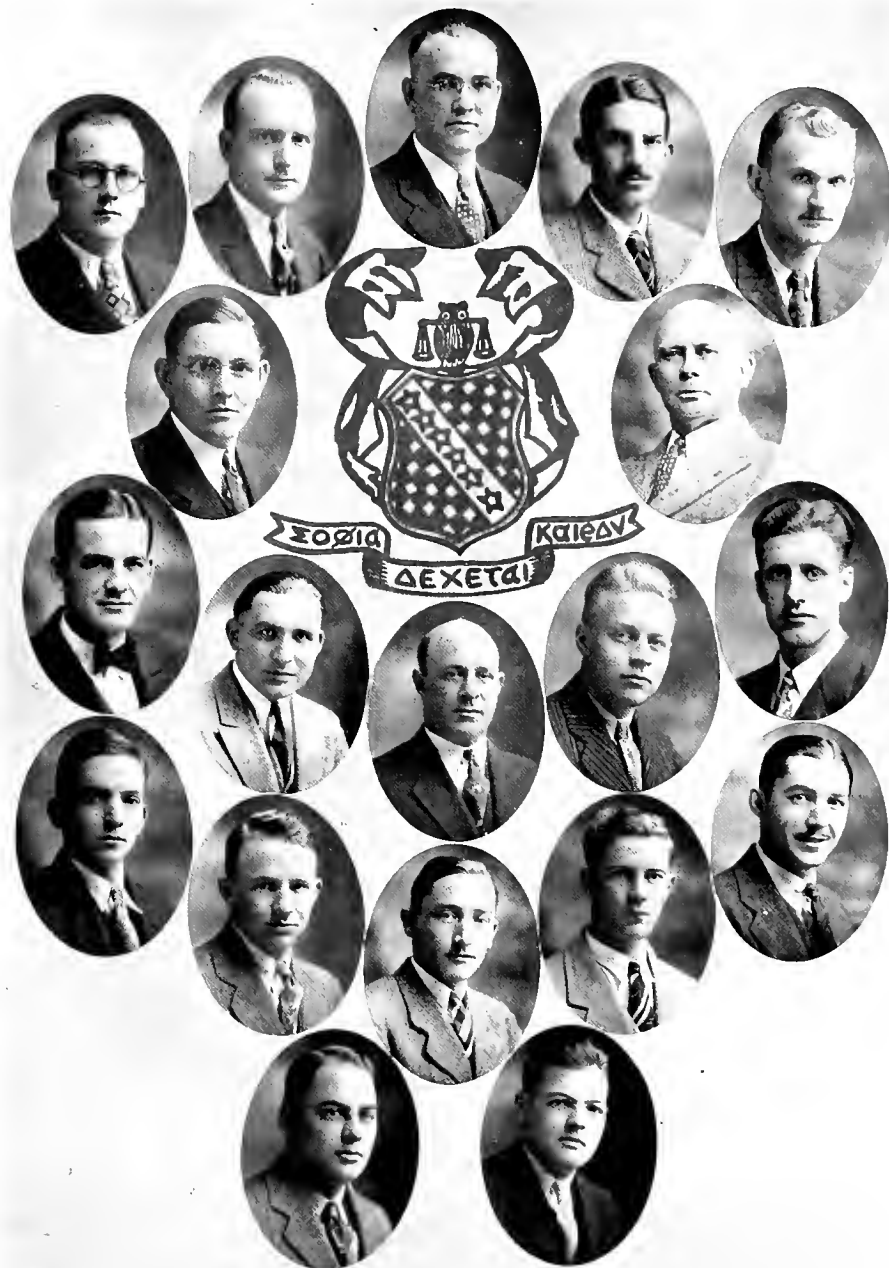
FRATRES IN UNIVERSITATE

BRADLEY, LELAND D.	Tennessee	MORE, THOMAS	Mississippi
BREW, JAMES	Tennessee	MURPHY, PRESLEY	Tennessee
BURKITT, HENRY R.	Tennessee	PREHODA, JAMES	Pennsylvania
CLEVELAND, JAY PHILLIP	Tennessee	POLSTON, FELIX	Tennessee
FLOYD, EARL	Tennessee	SINCLAIR, CLARK	Mississippi
GLASSGOW, WILLIAM	Tennessee	SMITH, A. D.	New Mexico
GRIGG, GLENN	Tennessee	STRONG, WILLIAM B.	Kentucky
HIGH, JAMES	Tennessee	SWEATT, HOWARD	Tennessee
LASLEY, CHARLES	Tennessee	TILGHMAN, MAX	Tennessee
LEROY, CARLETON H.	New York	WALLER, CHARLES	Tennessee
LITTLE, WILLIAM L.	Tennessee	WOODY, ROBERT L.	Tennessee
MCCUTCHEON, JAMES	Tennessee	WOKELY, CLINTON	Tennessee





PHOENIX



PHOENIX



Sigma Delta Kappa



Founded at University of Michigan
1914

PI CHAPTER

Established at Cumberland University
February 5, 1924

Colors: Red and Black

Flower: Red Rose

FRATRES IN UNIVERSITATE

BOWMAN, CLUDE K.	Tennessee	LEWIS, ROY	Texas
BRANDON, MALCOLM R.	Tennessee	LINDGREN, T. L.	Illinois
CHELF, WALTER B.	Kentucky	MONTGOMERY, PAUL G.	Tennessee
COON, WILLIAM H.	Texas	MORSE, IRVING F.	Florida
CREED, MURREL F.	Oklahoma	MURRAY, ROBERT H.	Tennessee
DAVIS, JOHN F.	Oklahoma	MYSINGER, DALE A.	Tennessee
DEAN, R. W.	Texas	OWENS, ROBERT E.	Oklahoma
DILLON, R. C.	Arkansas	PETITJEAN, N. CURTIS	Louisiana
DUNCAN, P. W.	Kentucky	PHILLIPS, BARRON E.	Texas
ETHEREDGE, E. Y.	Florida	PIPKIN, JAMES W.	Oklahoma
FRY, ROBERT D.	Tennessee	REID, G. P.	Texas
HAVRON, J. C.	Tennessee	ROSS, CLYDE F.	Oklahoma
HIETT, B. H.	Tennessee	SHARP, JOSEPH	Texas
HICKERSON, G. FRANKLIN	Tennessee	WILSON, EUGENE	Texas
KELLER, GORDON	Arkansas	WOOD, WILLIAM OTHER	Texas
KIRKPATRICK, WILLIAM	Tennessee		





PHOENIX



PHOENIX



Kappa Epsilon Phi



Founded at Boston University
1925

GAMMA CHAPTER

Established at Cumberland University
November 23, 1929

Colors: White, Gold, and Black

Flower: Rose

FRATRES IN UNIVERSITATE

ARCHER, V. H.	Texas	LILES, J. R.	Texas
AUVIL, ARTHUR L.	Florida	MARLOW, J. W.	Texas
BAKER, JAMES F.	New Jersey	MILLER, M. H.	Texas
BRETZ, L. J.	Texas	MOYER, JACK	Texas
BUCHANAN, H. L.	Missouri	McCREERY, R. W.	Oklahoma
BUCKOWY, WILLIAM A.	New York	PEACOCK, A. T.	Florida
COFFMAN, G. W.	Texas	PORTER, JOHN	Tennessee
CURTIS, JAMES R.	Texas	RATLIFF, L. D.	Texas
DAVIS, R. O.	Indiana	ROGERS, N. L.	Kentucky
DORRIS, J. R.	Oklahoma	SCOTT, W. L.	North Carolina
FISCHER, EDDIE	Oklahoma	STOCK, J. W.	Ohio
GIBSON, W. C.	Arkansas	SULLIVANT, C. F.	Texas
HOLLENSWORTH, C.	Arkansas	SWAIN, VANCE	Texas
KITTLE, O. A.	California	TEFT, G. A.	New York
KRANNAWITTER, R. M.	New Mexico	TEMPLETON, L.	Texas
LANG, J. L.	California	VAUGHN, GWYNN	Tennessee
LESH, TED	New Jersey	WHITE, H. W.	Florida





PHOENIX



Kappa Epsilon Phi legal fraternity was founded in 1925, at Boston University, and while only a comparatively young fraternity, it is today one of the most exclusive and growing fraternities in America. Petitions have been received from a number of the leading colleges throughout the United States, and will be considered at the national convention of the Grand Council to be held at Boston, Massachusetts, during the Thanksgiving holidays. Twenty chapters are enrolled in the fraternity to date. With the installation of the local chapter, the roll is extended to twenty-one. The fraternity at present occupies a beautiful home located on East Main Street and though the fraternity is young, a great future lies before it.



PHOENIX



Sigma Delta Sigma



Founded at Cumberland University
November 9, 1926

Colors: Rose and Silver

Flower: Rose

ALPHA CHAPTER

SORES IN URBE

MARGARET EATHERLY

MRS. WILL D. YOUNG

LOUISE RIEBA

SOROR IN FACULTATE

MISS MABEL C. JONES

SORES IN UNIVERSITATE

Class of 1930

ALEXANDER, ELSIE MAE	Tennessee	JETER, RUTH	Tennessee
HEREFORD, NANNIE	Tennessee	LOWERY, MAYBELLE	Texas
JENNINGS, CLEON	Tennessee	THACKSTON, RUBY NELL	Tennessee

Class of 1931

JONES, MARTHA	Tennessee	TRONLER, REBEKAH	Tennessee
---------------	-----------	------------------	-----------

Class of 1932

GOLLADAY, VIRGINIA	Tennessee	LIGON, EMMA STEWART	Tennessee
LIGON, HELEN	Tennessee		

Class of 1933

HUMPHREYS, JULIA	Tennessee	SUMMERS, SUE	Tennessee
JONES, WINIFRED	Tennessee	THACKSTON, MARIE	Tennessee

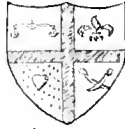
HONORARY

BILLIE TAYLOR





PHOENIX



Backy, 'tis hard to tell of
your great worth,
O, your friendliness, and your mirth.



Icon - with her sweet smiles
puts you entranced in her smiles



Neatly red-gold curls,
eyes are gay,
Sparkling with fun is Elsie Mae.



Miss Mabel Jones
To one



Sponsor

Who ever has the interest of the sorority
at heart; - When we respect as a
teacher, love as a friend we lovingly
dedicate these three pages.

ΣΔΣ



Winifred, gracious and sweet,
charming, from her head to her feet

The if you'd never before seen Ruth Weller,
You'd know she's sweet from the smile you meet her

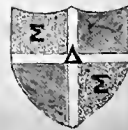


Beautiful, stately, dignified, too -
M. Helen, the gods have smiled on you

Composer of these rhymes I be,
Spoken from the heart of me.



A bit of mystery - rosy eyes -
Julia, cause of many merry nights.



PHOENIX



Beauty and wit here have combined,
One like Marie is hard to find



Now Stewart's eyes are of the deepest blue,
Sparkling personality (the top one here, too)



Petite and ever so chic is Billy,
With a skin that'll say "Gawd a hilly"



Maybelle aspires a larger robe,
Her case is won, when they peers her o'er



Exquisite Martha's in her face
Character and sympathy have
their place



Sue, with a crown of joy curls...
Lovely eyes, and teeth so pearls



Ruby Nell is a jewel as her name doth imply
Shyness and modesty in herself do lie

1930



The furies endowed Nan at her birth,
With a strong mind and peerless worth





PHOENIX



PHOENIX



Delta Phi Omega



Founded at Cumberland University
November 30, 1926

TENNESSEE ALPHA CHAPTER

Colors: Orchid and Silver

Flower: White Rose

SPONSOR IN URBE

J. KENNETH FAXON

SORORES IN UNIVERSITATE

ADAMS, AMELIA	Tennessee	HARRISON, MARGARET	Tennessee
BARBER, FLOREINE	Tennessee	JOHNSON, LOIS	Tennessee
BRYANT, MILDRED	Tennessee	MAJOR, VIRGINIA	Tennessee
DUNCAN, ELIZABETH	Kentucky	McDANIEL, REBECCA	Tennessee
GERNT, ANNETTA	Tennessee	PORTER, MARTHA	Tennessee
GERNT, ESTHER	Tennessee	SCOGGIN, KATHRYN	Kentucky
HANCOCK, KATHERINE	Tennessee	VAUGHN, CATHERINE	Tennessee
HARRIS, JOSEPHINE	Tennessee	WALKER, MATTIE	Tennessee

SORORES HONORARIA

MISS GEORGIA FLOWERS
MRS. VANCE TILLEY

SORORES IN URBE

MRS. RALPH PATY

MRS. VICTOR MILLER

PATRONESSES

MRS. ERNEST L. STOCKTON
MRS. Y. P. WOOTEN
MRS. C. TRAVIS BONNER
MRS. J. CARR ARNETT

MRS. HANEY ELAM
MRS. DEAN WILKERSON
MRS. C. R. GRESHAM
MRS. CLEMSON MEANS





PHOENIX



PHOENIX



Iota Tau Tau



National Honor Legal Sorority

Founded at Southwestern University
Los Angeles, California, 1925

ZETA CHAPTER

Established at Cumberland University May 21, 1929

Colors: Purple and Gold

Flowers: Violet and Yellow Rose

ADVISOR

DR. J. K. FAXON

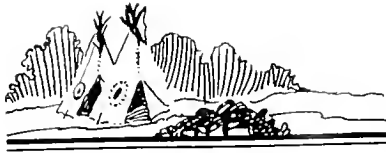
SORORES IN UNIVERSITATE

BARBER, FLOREINE	Tennessee
FLOWERS, GEORGIA	Florida
FRAZIER, SARAH RUTH	Tennessee
HAWKIN, ERMA YOE	Florida
JETER, RUTH LOUISE	Tennessee

SORORES EX UNIVERSITATE

BEASLEY, LOUISE	South Carolina
BOYER, MILDRED	Oklahoma
CLOUSE, EUNETTA	Tennessee
FULBRIGHT, SUDIE	Missouri
HARDISON, SARA	Tennessee
MORSE, ELIZABETH	Oklahoma
MORTON, CARRIE	Tennessee
STEWART, GLADYS	Missouri

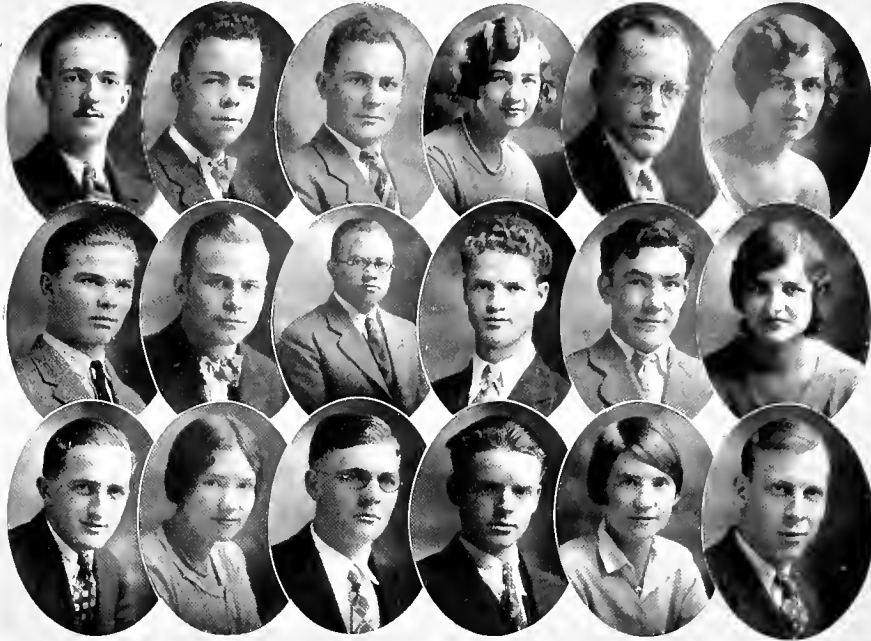




PHOENIX



PHOENIX



The International Relations Club of Cumberland University was organized in the fall of 1926 and is under the auspices and support of the Carnegie Endowment for International Peace. It is one of many such organizations among colleges and universities of the United States. The semi-monthly meetings of the club are devoted to discussions of events of national and international importance, the chief object being the preparation of the members for a more intelligent citizenship in America and the world. A high scholastic standing and a year's resident study in Cumberland are prerequisites to consideration for membership.

OFFICERS

HOYTE HUDDLESTON	President
KATHERINE HANCOCK	Vice-President
VIRGINIA MAJOR	Secretary
WILLIAM STRONG	Treasurer
WILLIAM D. YOUNG	Faculty Sponsor

MEMBERS

LELAND BRADLEY	GARLAND JENNINGS	HARRY PHILLIPS
MARY BRITTLE	PAUL SMITH JENNINGS	WILLIAM STRONG
AMY JO BYARS	MARTHA JONES	ROBERT TURNER
ELIZABETH FREEMAN	CARLETON LEROY	RILEY VANHOOK
KATHERINE HANCOCK	VIRGINIA MAJOR	CHARLES WALLER
HOYTE HUDDLESTON	THOMAS NEWMAN	PAUL WOOTEN





PHOENIX



PHOENIX



Philomathean Debating Society



The Philomathean Debating Society holds a meeting every Tuesday evening from 7:00 to 8:00 o'clock for the purpose of becoming more proficient in the art of speaking before an audience, and, as indicated by the name, debating is emphasized.

A B.O. degree is granted to each member who attends regularly and takes part on the program at least twice. Several Presidents of the United States have honorary degrees from the Philomathean Debating Society.

OFFICERS

OREN HARRIS	President
CLYDE ROSS	Vice-President
MAYBELLE LOWRY	Secretary and Treasurer

ROLL

ANDREWS, G. W.	COFFMAN, G. W.	JONES, J. M.	POLSTON, F. E.
APPLEBY, J. A.	CONNELLY, H. C.	JONES, MACYE	PORTER, J. C.
ARCHER, D. D.	DARBY, C.	KINNEAR, W. E.	RUMBAUGH, L. C.
ARCHER, V. H.	DEMERITT, R. A.	KIRKPATRICK, W.	ROBERTS, W. C.
ARCHIBALD, A. E.	DORRIS, J. R.	KRANNAWITTER, R. M.	ROGERS, N. L.
ASHLEY, C. C.	ENGLAND, L. R.	LANGSTON, B. C.	ROSS, C. F.
AUVIL, A. L.	FISHER, EDDIE	LAWRENCE, W. S.	SAMS, J. N.
BAKER, J. F.	FULLER, A. N.	LEGG, L. S.	SCHEVITZ, N.
BARKEE, J. D.	GARZA, F. G.	LEWIS, LE ROY	SELLS, L. B.
BARRY, D. R.	GERHARDT, ROSA	LEVY, G.	SIMRELL, E.
BERGSON, S. S.	GIBSON, W. C.	LOWRY, L. L.	SISCO, T. B.
BISBEE, C. L.	GILMARTIN, M. J.	LOWRY, MAYBELLE	SMITH, A. J.
BIVINS, J. H.	GREEN, M.	MABRY, W. O.	SMITH, A. D.
BLACK, J. L.	GREENE, J. D.	MANDELL, A.	SMITH, J. H.
BOND, BATE	HALL, E. N.	MANDLE, JDA	SMITH, M. F.
BRADLEY, R. W.	HANSON, L. E.	MARLOW, J. W.	SMITH, W. T.
BRETZ, L. J.	HARMON, E. A.	MILLER, P. H.	SPAULDING, W. H.
BROWN, L. W.	HARRIS, R. L.	MILLER, P. R.	STAHL, E. W.
BUCHANAN, H. L.	HARTLEY, C. D.	MCCUTCHEN, J. N.	STOCK, J. W.
BUNTING, F.	HAVRON, J. C.	MENDEL, P. H.	TEMPLETON, L.
BUSSER, D. E.	HAWKINS, E. H.	MONTGOMERY, G. P.	TURNER, S. R.
CARDWELL, J. F.	HAWKINS, E. Y.	MOYER, J. A.	WADE, R. N.
CARPENTER, ROY	HICKERSON, C. F.	MYSINGER, D. A.	WALKER, G. B.
CARSSOW, W. B.	HONTS, J. B.	NEFF, G. N.	WARD, D. E.
CHAMBERS, A. B.	HOUSTON, G. P.	PEACOCK, A. T.	WATTS, H.
CHAPA, J. M.	JACKSON, O.	PETERS, C. C.	WILSON, E.
CHELF, E. W.	JAMES, E. P.	PETITJEAN, N. C.	WILSON, G.
CHELF, W. B.	JETER, RUTH	PIERCE, J. H.	WOOD, W. O.
CHILDERS, M. T.	JOHNSON, J.	PIPKIN, J. W.	YOKLEY, E. C.





PHOENIX



PHOENIX



The Amasagassean Literary Society



NOS PALMA MANET
Organized 1837

The Amasagassean Literary Society can truly claim the distinction of being the oldest organization on the campus. It was founded six years before old Cumberland College was transferred to Lebanon under the name of Cumberland University. Five charter members were included in the society when it was established in 1837 in the early days of Cumberland at Princeton, Kentucky. The youthful organization became a permanent part of this institution in 1848, when a new charter was obtained from the General Assembly of Tennessee, six years after its removal to Lebanon. Judge Robert L. Caruthers was chosen to deliver the first address and Judge Nathan Green, Sr., was elected first honorary member.

As the Amasagassean Society approaches the century mark, it shows no sign of advancing old age; in fact, its birthday last fall, when ninety-two candles betokened the long, enviable record of the organization as a part of Cumberland University, was one of the liveliest and most favorable ever enjoyed in its history. During the past year the society has been very prominent in literary activities, producing some of the outstanding debaters and orators of the school. Eighteen thousand students have passed directly or indirectly under its influence during the past ninety-two years, and now *nos palma manet*, "the palm awaits us," is more truly than ever before the motto of the organization. The palm of victory is awarded for worth-while service.

OFFICERS

HARRY PHILLIPS President
WILLIAM YOUNG Vice-President
KATHERINE HANCOCK Secretary and Treasurer
Parliamentarians: PAUL S. JENNINGS, EARL E. THOMPSON, CLAY PULLIAS

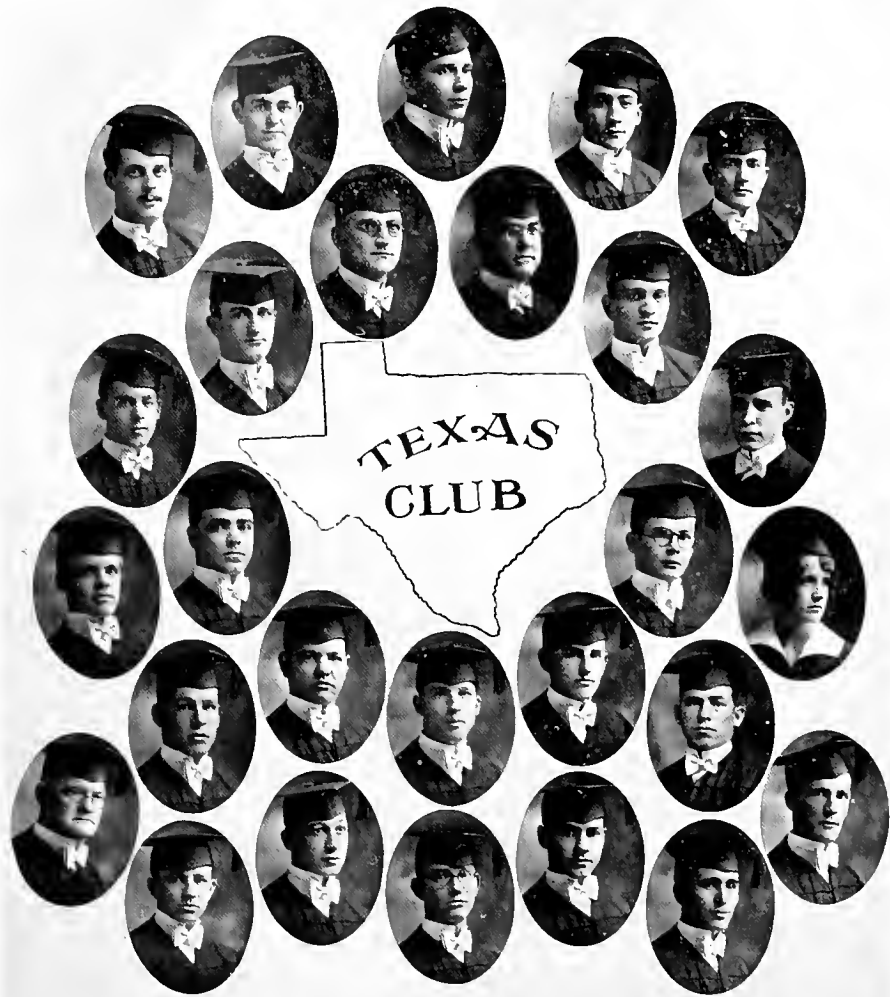
MEMBERS

ADAMS, AMELIA	KERR, KING	STEVENSON, ROBERT
BAIRD, WILLIAM	LYNE, ROBERT	SULLIVAN, ROBBYE
BAKER, WILLIE LEWIS	MAJOR, VIRGINIA	SUMMERS, LINNIE SUE
BUCKOWY, WILLIAM A.	MCARTHUR, ROBERT	THOMPSON, EARL
FREEMAN, RUTH	MCDANIEL, REBECCA	TRONLER, JOHN
GOLLADAY, VIRGINIA	MCCORD, HARRY	TRONLER, REBEKAH
HANCOCK, KATHERINE	NEWMAN, THOMAS	VAN HOOK, RILEY
HARRIS, JOSEPHINE	PAYNE, LAVELLE	VANTREASE, ALLENE
HUDDLESTON, HOYTE	PHILLIPS, HARRY	WALLER, CHARLES
JARRARD, MARGARET	PERKINS, FAY	WINHAM, MILTON
JENNINGS, LOIS	PIERCE, ROMMIE	WALKER, MATTIE
JENNINGS, PAUL S.	PRICE, WILLIAM	YOUNG, ESTHER
JONES, WINIFRED	PORTER, MARTHA	YOUNG, W. P.
JORDAN, GUY	SPERRY, BENNIE LEE	





PHOENIX



PHOENIX



Texas Club



The State of Texas boasts the largest representation in the Law School of Cumberland University of any state in the Union. For the year 1929-30 the official roll includes the names of forty-five stalwart young men and one charming young lady who call the Lone Star State their home.

It is only natural that students from Texas should be banded together, and this they proceeded to do immediately after the opening of the Fall Semester by organizing the TEXAS CLUB. Regular meetings were held the first and third Fridays of every month throughout the year, at which times splendid programs were presented, consisting of interesting and important facts peculiar to the law of Texas. The meetings were always well attended and conducted with never-flagging enthusiasm, thus making the TEXAS CLUB one of the most active organizations in the University.

In the common cause of preparing for the practice of law in Texas these students joined hands, and by virtue of the comradely association and brotherly helpfulness, benefits have been derived and friendships have been moulded that will live on throughout the years. The TEXAS CLUB reflects credit upon the great old Law School of Cumberland University; it manifests that spirit of loyalty of which Texas is so justly proud, and upon the goodly number who compose it are showered the blessings of their own conscientious endeavors and the benediction of their native state.

OFFICERS

FRANK BUNTING	President
P. S. WOLFE	Vice-President
MAYBELLE LOWRY	Secretary
JACK MOYER	Treasurer
G. W. COFFMAN, JR.	Editor

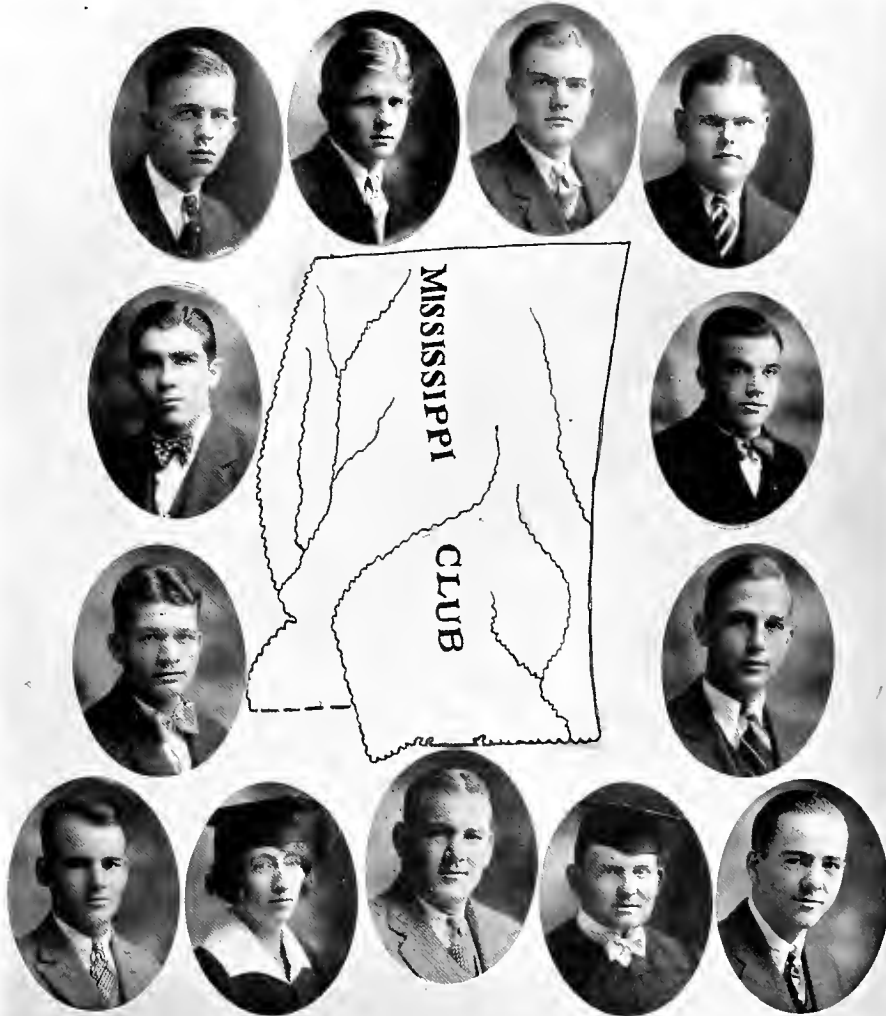
MEMBERS

ARCHER, V. H.	LOWRY, LEWIS
ASHLEY, CARLOS C.	LOWRY, MAYBELLE
BARKER, J. D.	MARLOW, J. W.
BRETZ, L. J.	MILLER, M. H.
BUNTING, FRANK	MOYER, JACK
CAIN, C. D.	PHILLIPS, B. E.
CARPENTER, ROY	RATLIFF, L. D.
CARSO, W. B.	SHARP, JOSEPH
CHAPPA, J. M.	SISCO, T. B.
CHAMBERS, AL.	SMITH, A. D.
CLINE, BILL	SMITH, A. J.
COFFMAN, G. W., JR.	STAHL, E. W.
CURTIS, J. R.	STARK, R. H.
GARZA, F. G.	SULLIVANT, C. F.
GARDNER, E. CLYDE	SWAIN, V. L.
HONTS, J.	WADE, R. N.
KINNEAR, WILLIAM	WATTS, HARRY
KRANNAWITTER, RICHARD	WILSON, EUGENE
LAWRENCE, W. S.	WILSON, GLEN
LEWIS, LE ROY	WOLFE, P. S.
LILES, ROBERT	WOOD, W. O.





PHOENIX



OFFICERS

SAMUEL E. LUMPKIN	President
JOHN T. McCULLY	Vice-President
THOMAS MOORE	Secretary and Treasurer

MEMBERS

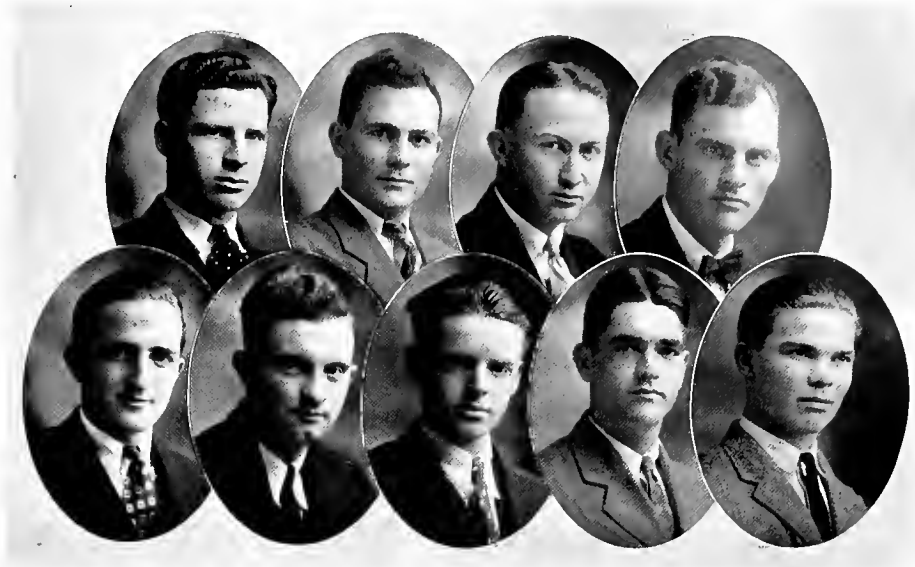
BIVINS, JOHN
 BROWN, L. W.
 CLARK, ALLAN
 GREENE, JESSE
 HARTLEY, C. D.
 JONES, MAYCE

KING, EVERETTE
 McARTHUR, R. S.
 McCORD, HARRY
 ORMOND, SEABORN
 SAMS, JOE
 SINCLAIR, J. C.

SPECK, JAMES



PHOENIX



The Ananias Club

(Tennessee Utella Chapter of Anania Pevaricatia Fraternity)
Organized 4000 B.C. by A. Adam

Colors: Black and White (Mostly Black)

Aim: Bigger and Better Lies

Motto: Never tell the truth when it is possible to tell a lie.

Membership: Confined entirely to young ministers and present or former book-agents; all members of the fair sex excluded from consideration. During the ten years that women were admitted to membership, there was not a male winner of the annual oratorical or essay contests. Women considered well enough qualified in the aim of the fraternity without any further training.

OFFICERS

HOYTE HUDDLESTON	Supreme Falsifier
WILLIAM YOUNG	Assistant Supreme Falsifier
CHARLES YELTON	Supreme Recorder of Falshoods
WILLIE L. BAKER	Supreme Keeper of the Faisehood Fund
GARLAND JENNINGS	Supreme Liar Recorder
RILEY VAN HOOK	Liarmentarian
WILLIAM PRICE	Goat Master

FRATRES IN UNIVERSITATE

BAKER, WILLIE L.	PULLIAS, CLAY
HUDDLESTON, HOYTE	THOMPSON, EARL
JENNINGS, GARLAND	YELTON, CHARLES
PHILLIPS, HARRY	YOUNG, WILLIAM
PRICE, WILLIAM	VAN HOOK, RILEY

FRATRES IN FACULTATE

PROF. F. REVELL WILLIAMS	DR. R. J. WHERRY
--------------------------	------------------

FRATRES IN URBE

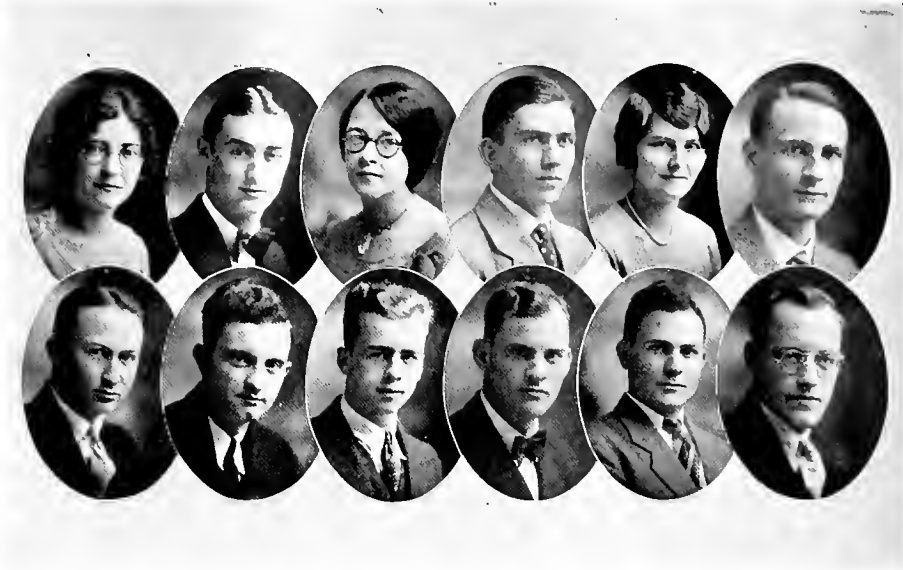
IRBY C. PULLIAS

PLEDGES

O. REED HILL	D. KING KERR
--------------	--------------



PHOENIX



Life Service Group

Requirement for Membership: All students who purpose to enter some form of Christian life service
Purpose: To unite all those of this common purpose in fellowship with Christ and each other

OFFICERS

NANNIE HEREFORD	President
CARLETON LEROY	Vice-President
KING KERR	Secretary and Treasurer
REVELL WILLIAMS	Faculty Advisor

MEMBERS

CHARLES VELTON	JOHN TRONLER
HOYTE HUDDLESTON	ROBERT STEVENSON
WILLIAM P. YOUNG	JAMES SPECK
JULIA HEREFORD	ALLIE D. WILLIAMS





The Cumberland Cardinals, as the name implies, are the red heads of the University. The organization was formed in '29 because "United we stand; divided we fall." The members have come together for protection against the usual insults hurled against them by others not so favored by nature. Many of the less fortunate have taken to a sure method—"Golden Glint." The officers of this club are chosen according to the shades of red.

OFFICERS

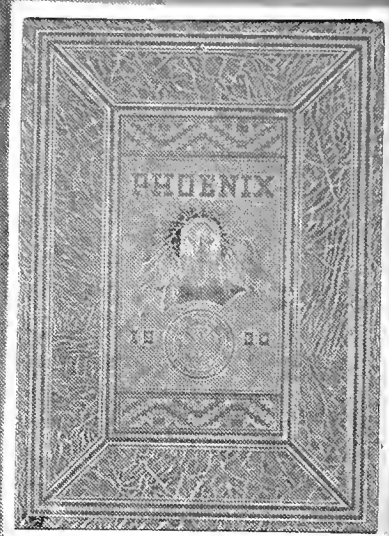
JOE REDDE	President
HENRY BURKETT	Vice-President
JOSEPHINE HARRIS	Secretary and Treasurer
ELSIE MAE ALEXANDER	Reporter

MEMBERS

ALEXANDER, E. M.	JENNINGS, GARLAND
BURKETT, HENRY	THOMPSON, EARL
COOK, WILLIE	WILLIAMS, ROBERT
HARRIS, JOSEPHINE	SPECK, JAMES
HUMPHREY, JULIA	REDD, JOE



PHOENIX

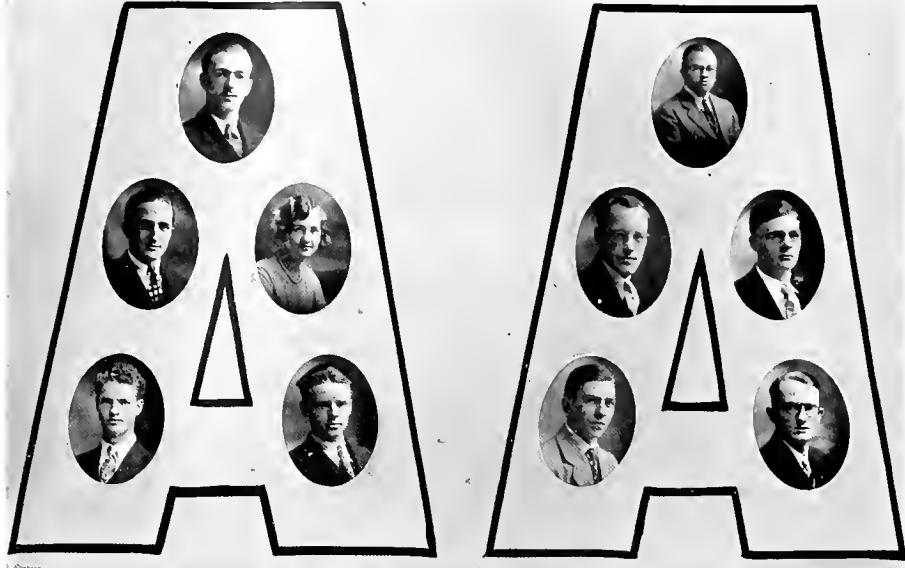


SEAT'S STUDIO
LEBANON TENN.





PHOENIX



Student Athletic Association

OFFICERS

CHARLES WALLER	President
WILLIAM STRONG	Vice-President
KATHERINE HANCOCK	Secretary-Treasurer
GARLAND JENNINGS	Business Manager
HARRY PHILLIPS	Publicity Manager
CARLETON LEROY	Field Manager
LELAND BRADLEY	Assistant Field Manager
KING KERR	Advertising Manager
JOE REDD	Assistant Advertising Manager
W. D. YOUNG	Faculty Advisor

The Student Athletic Association was organized in the fall of 1927. During the current year of 1927-28 the Association gave two plays, and with the proceeds constructed bleachers on Kirk Field to seat the Cumberland rooters. The Association handles all the advertising and publicity for games, conditions the field for home games and aids in every way possible. The purpose of the organization is to foster and encourage school spirit. Although as yet in its infancy the Athletic Association plans to enlarge and play a bigger part in the athletic life of the University in the future.



PHOENIX



Y. M. C. A.

The Y.M.C.A. was organized at Cumberland in 1856. The Association has for its aim: Bringing young men to Christ and sharing with them the joys of Christian fellowship.

Like other Y.M.C.A. organizations, this one, with the aid of Prof. Ralph Donnel, has attempted a new project, that is, the Employment Bureau. Carleton LeRoy was given charge of this work. The aim of the Bureau is to give employment to those students in school that otherwise would not be permitted to attend college. It is expected that this agency will have accomplished something during the year by offering positions to boys for the coming year.

OFFICERS

WILLIAM P. YOUNG	President
CARLETON LEROY	Vice-President
LELAND BRADLEY	Secretary and Treasurer

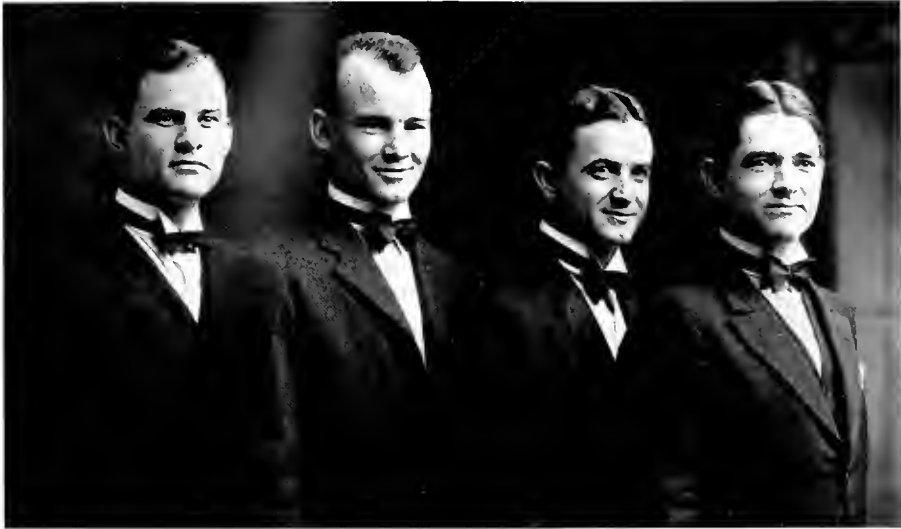
MEMBERS

BAKER, WILLIE L.	KLINE, RICHARD	SINCLAIR, J. CLARK
BRADLEY, LELAND D.	LEROY, CARLETON	SMITHWICK, WALTER
BUCKOWY, WILLIAM A.	MCCARTHRU, ROBERT	SPECK, JAMES
BURKITT, HENRY	MCCORD, HARRY	STEVENSON, ROBERT
FLOYD, EARLE	MCCULLEY, JOHN	THOMPSON, THOMAS
HUDDLESTON, HOYTE	PIERCE, ROMMIE	TROXLER, JOHN
JENNINGS, PAUL SMITH	PHILLIPS, HARRY	WOOTEN, PAUL
KERR, KING	PRICE, WILLIAM	VELTON, CHARLES
KING, EVERETTE	REDD, JOE	YOUNG, WILLIAM P.
	ROBISON, FOUNT	





PHOENIX



The Cumberland Quartet

VELTON, McARTHUR, PIERCE, PRICE



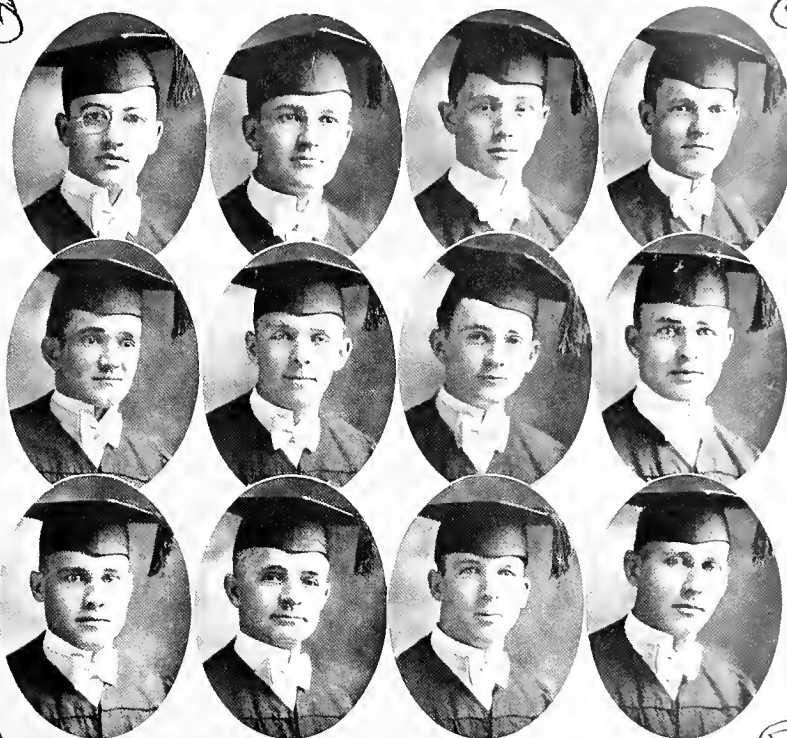
The Cumberland Sextet

GERNT, BARBER, THACKSTON, HEREFORD, PAYNE, ALEXANDER





DEMOSTHENES CLUB



CUMBERLAND UNIVERSITY

The Cumberland Demosthenes Club

The Cumberland Demosthenes Club is the first organization of its kind on the campus. It was organized on February 1, 1930, for the purpose of promoting the art of forensic oratory. By its constitution its membership is limited to twelve in number.

MEMBERS

BARTLEY, HOMER
COLLINS, LEROY
CONNELLY, H. C.
CHELF, E. W.
DEMERRIT, ROY A.
GIBSON, WILLIAM C.

HIRSCHFIELD, R. M.
HAWKINS, E. H.
KINNEAR, W. E.
MENDEL, PHILLIP H.
WALKER, GORDON
WITTSCHEN, OTTO H.



PHOENIX

On Activities



If you've merely come to college
In pursuit of hectic knowledge
As professors hand it out from day to day;
If you fail, don't lose your patience;
With the pep that comes from hook-worm
I would say that you'd better stay away.

Study well your Greek Phonetics,
But compete in school athletics,
Even though you think you'd never make a team;
Try your hand at publications;
If you fail, don't lose your patience;
You are victor though you only learn to dream.

Be musician or debator;
Do your best for Alma Mater;
Find your place somewhere and fill in the strife,
Get that breath of an eager stand,
Get the spirit of old Cumberland,
And, my friend, you'll get the most from college life.





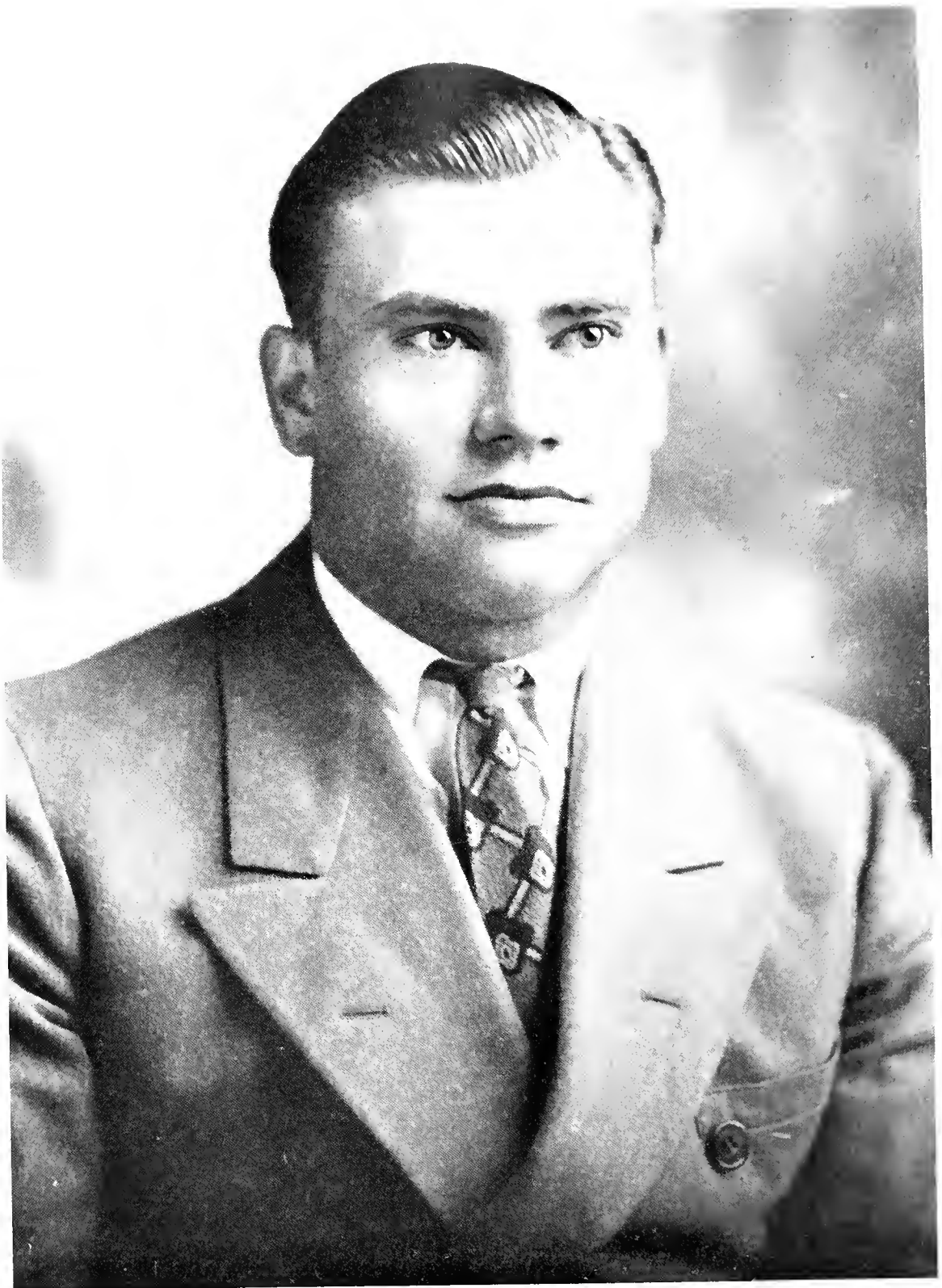
FEATURES



MISS KATHRYN SCOGGIN
PHOENIX SPONSOR



MISS ELIZABETH MORSE
Miss CUMBERLAND



MR. HOMER KNEE
BACHELOR OF UGLINESS



MISS MARGARET HARRISON
PRETIEST GIRL
Chapel Selection



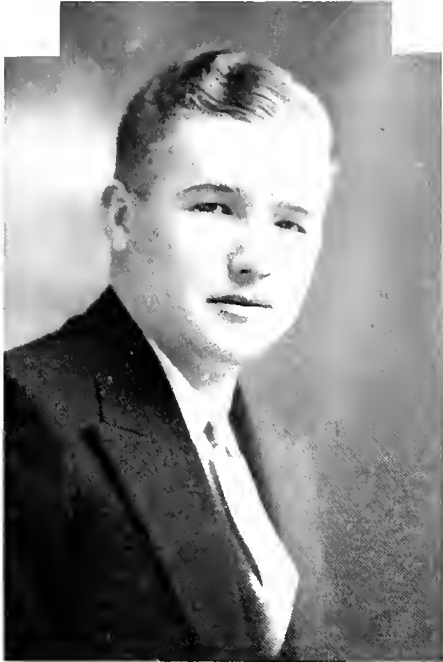
MISS WINIFRED JONES
Most Popular Girl
Chapel Selection



MISS AMELIA ADAMS



MISS JULIA HUMPHREYS



ROBERT W. ADAMS
BEST ALLROUND STUDENT



MISS FLOREINE BARBER
MOST REPRESENTATIVE GIRL

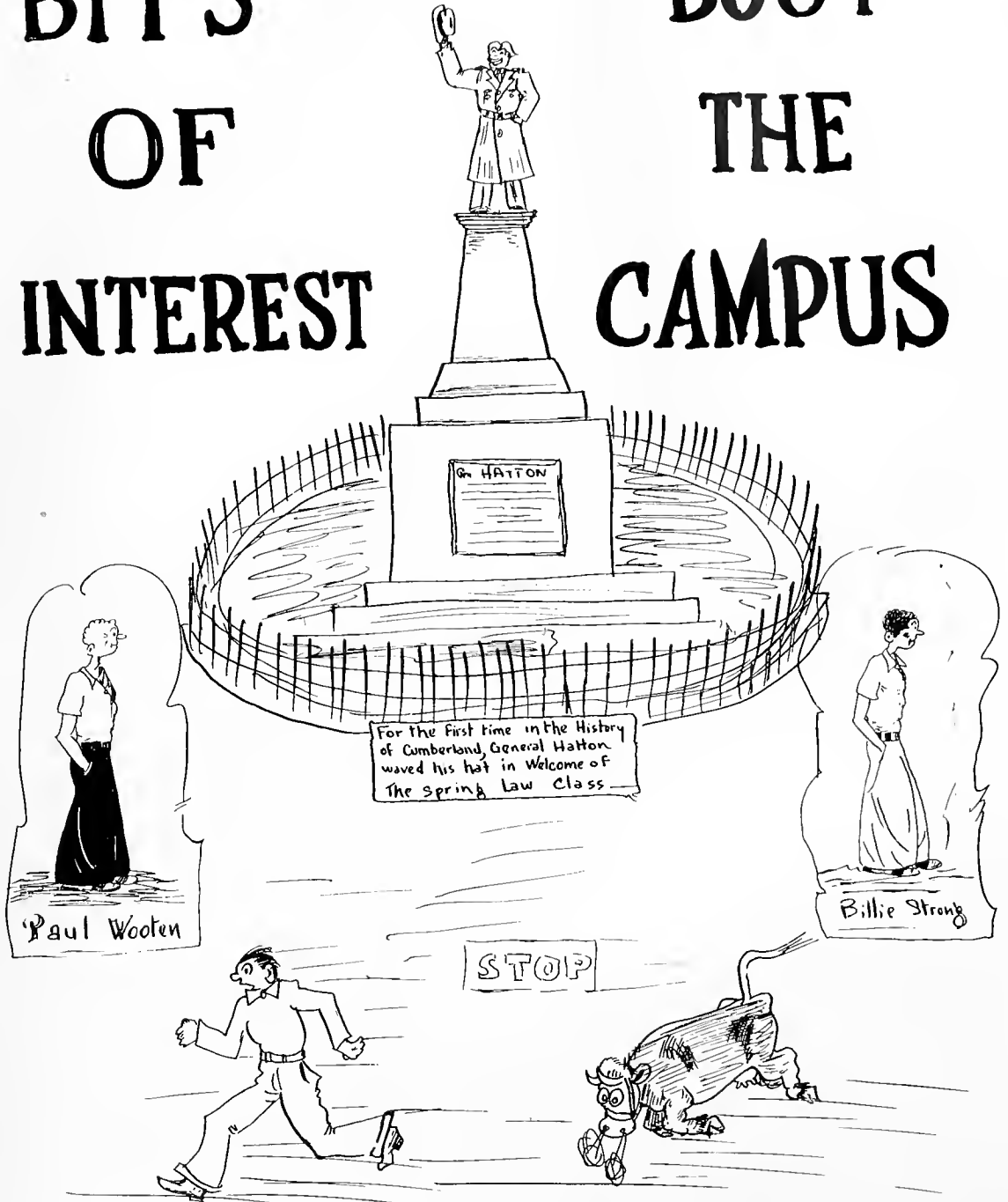


GORDON KELLER
PRES. STUDENT BODY

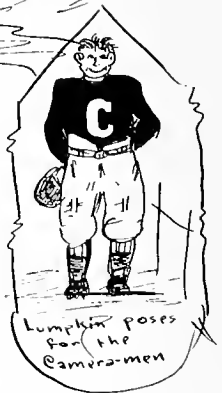
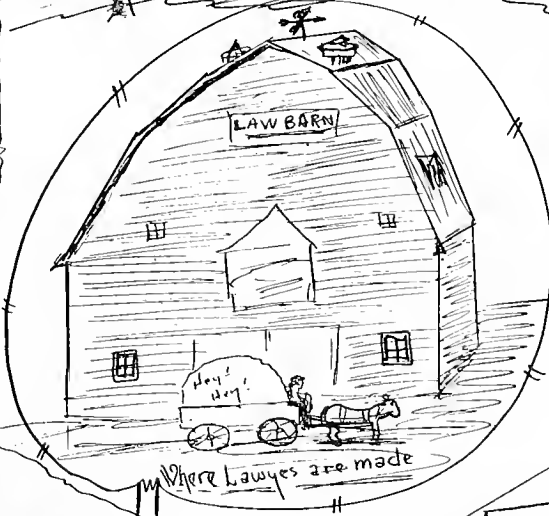


MISS EMMA STEWART LIGON
JOLLIEST GIRL

BITS 'BOUT OF THE INTEREST CAMPUS



Jeff Cardwell got in Dutch with Mrs. Bull for shooting her husband



P. S. S. S.

KURMBELAND KOLLEGE BULLETIN

1492-1776 "THE ANNUAL BULLALOGUE" Lebanon, Zion City or Sam Picks

APRIL 1, 1861-65

BEAUTIFUL WEDDING AT FILLING STATION

Miss Lizzie Ford Weds
Mr. John Henry

At West Main, the beautiful home of Mr. Ford, Miss Lizzie Ford became the bride of Mr. John Henry. Prior to the ceremony, Miss Essex sang in a charming contralto voice, "It's a Fast, Fast World." Then Mr. Hudson sang a tenor solo, "The Little Ford Rambled Right Along." To the strains of the wedding march, "Strut, Miss Lizzie," the bridal party entered.

The ushers, Messrs. Buick and Reo, entered first and crossed themselves before the improvised altar. Then Miss Cole entered with Mr. Cadillac. The little flower girls were Misses Chevrolet and Maxwell. The bride entered with her maid of honor, Miss Paige, and was met at the altar by the groom. The beautiful piston-ring ceremony was used by the Reverend Willys-Knight.

The bride was lovely in her traveling suit of midnight black, with accessories to match. Her only ornament was a valuable Diamond tire, the gift of the groom.

After the ceremony, Mr. and Mrs. Ford gave an informal reception. Mesdames Lincoln and Dodge presided at the punch-bowl where delicious Polarine was served. The happy married pair left almost immediately in their Marmon to go Overland to National Park. Upon the departure of the bridal couple, Mr. Fisk announced that it was time to retire.

NEW BOOKS RECEIVED BY COLLEGE LIBRARY

Miss Martha Harris, the blustering boss of the Liberry, is being complimented on her securing a valuable set of Horatio Alger's works. The series is almost complete, and includes "Paul, the Boot-black." The set has been placed in the vault for safe keeping.

An autographed copy of the *Cumberland Alumnus* has also been secured, and has been insured for \$5,000 against fire or theft.

"Who Killed Cock Robin," by Mr. Bo Arrow, is also a valuable accession, which the liberrian prizes highly.

BEARS AND BULLS HAVE HEAVY DAY ON WALL'S FEET

Severe Fluctuations Characterize Trend of Stocks— Book Room 760

There have been several drops and increases in the local market during the past two weeks. These fluctuations have been due to several incidents.

In view of the fact that mid-term examinations have just been completed, Flunks have had a tremendous increase. On account of the purchase of books for the beginning of the second term, Book Room, 1st pfd., has made a great increase, which almost reached the figure at the opening of school.

No quotations can be obtained on Diploma, 1930 issue, since the faculty will not submit a balance sheet for the underwriters to study their prospects. Co-Ed Dates Ltd., is low at present on account of the approach of Easter.

Cumberland Alumnus Common continues to drop since it was reported that the spring advertising issue would be published late.

A few of the quotations are given below:

Co-ed Dates Ltd.	26
Y.M.C.A. Common	750
Honor Roll pfd.	90
Book Room 1st pfd.	760
Cumberland Alumnus Common	10
Collegian Common	50
Phoenix Common	Par
Student Government	Off the market
Flunks Ltd.	250
Moonshine	800
Diploma 1930 issue ..	???

DIRECTORY OF FRATERNITIES AND SORORITIES

Lambda Chi Alpha—Universally known. Get one of our pins from Ralph Paty at the Drug Store. Only a limited number given out. Come early and avoid the rush.

Sigma Alpha Epsilon—Twenty million Freshmen can't

be wrong. Rudy Vatee is one of us. Join us and be a brother to everybody.

Delta Kappa Phi—If you are from Nashville, see us before you pledge. We have some good all-around fellows and one or two with remarkable athletic abilities.

Sigma Delta Kappa—We pledge both night and day, and have quite a number of chapters. We never sleep. Success assured.

Kappa Epsilon Phi—On the way to the Post Office. Drop in to see us. We have a radio and two chairs. Terms reasonable. For information write Pathe White.

Delta Phi Omega—The girl with winning ways is the one we need. If you care anything for boys, see us. We care not for family connections.

Sigma Delta Sigma—Only conservative girls need apply. All "flappers," "vampires," and those who show any signs of "pep" absolutely excluded.

Say

The Annual's a great invention—

The school gets all the fame,
The printer gets all the money,
And the Editor gets all the blame.

He kissed her as he dressed
her—

He hugged her and caressed
her—

Such pretty things he bought
her—

Why not? She was his daughter.

"Do I bore you?" said the mosquito as he sank a half-inch shaft into a man's leg. "Not at all," replied the man, squashing him with a book. "How does that strike you?"

They say that a student should have eight hours sleep a day. That may be true, but who wants to take eight classes a day?

Prof: "You made 99 in that last exam—why didn't you make a hundred?"

Jennings: "There must have been a misprint in the book, sir."

Conductor: "This is the smoking car, lady."

Co-ed: "Good, gotta match?"

KURMBELAND COLLEGE BULLETIN

Heard at the Roman Arena

First Spectator: "Just got here. How's the game?"

Second Spectator: "The lions got two down and are chewing the devil out of them; the bases are still loaded with Christians, though; some lion just went up in the stands after some bird for booing; that lion up there now just swung on two fast ones and fouled one into the bleachers and missed the other by a mile; here comes the last Christian by him now. . . . Wow, he missed him by a mile. . . . TAKE THAT LION OUT. HE'S LOUSY."

The Fine Art of Conversation in the Year 1930

"Listen, you big bohunk, I hope you have lumps in your potatoes and all your children are radio announcers."

"Oh, ye-ahhh?"

"Ye—ahhh!"

"Well, I hope your wife has adenoids and eats crackers in bed!"

"Oh, ye-ahhh—"

"Ye—ahhh!"

"Oh—ye-ahhh."

Contents of the Average Chem Notebook

- 16 Telephone numbers
- 12 Drawings, girl's heads
 - 1 Imaginative drawing, the dean
 - 1 Imaginative drawing, prexy
 - 1 Preliminary draft, letter to Susan
 - 1 Preliminary draft, letter to dad
- 13 Nashville addresses
- 6 pages, chemistry notes

How to Get a Bid

This advice is particularly vital to those freshmen who wish to join a fraternity. The main thing is to be nonchalant. Be indifferent. Be hard to get.

When you enter the house, look all around and then say: "What is this dump, the wood shed? Let's go into the fraternity house."

Then turn to the president, who is standing to welcome you, and say: "My gosh, are all the rest as wet as you? I thought you had some human beings around here."

After you pick yourself up out of the gutter, send five dollars to our office and we'll mail you some cotton and adhesive tape.

Modern fraternity house furniture becomes antique before it is paid for.

Miss Jones: "Are you familiar with Shakespeare's works?"

Frosh: "No, what kind of a factory is it?"

Perhaps it was just the power of suggestion but, anyway, the Cheer Leader shouted at the girls' rooting section: "Come on, girls, show 'em you're supporters."

Frosh: "Every time I learn something I store it away."

Upper Classman: "Well, I hope you learn how to play your saxophone."

Ash: "I drove my father to drink."

Dean Young: "How come?"

Ash: "Every time I write home for money he gets tight."

When asked who the four horsemen were, a freshman replied: "Paul Revere, Teddy Roosevelt, Jesse James, and Barney Google."

Dean Young: "I wish we could organize the Democrats in this district."

Sam Turner: "Righto! I'll telephone headquarters tonight for a barrel of whiskey and an orator."

Buck: "How do you like Kriesler?"

Pettit: "Fine! Fast pickup, eighty horsepower, smooth running, and twenty miles to a gallon."

Campus Echoes

"Has the bell rung?"

"Is that the breakfast bell?"

"I haven't cracked the book."

"I know I passed—out."

"Did I get a special?"

"What are we going to have for dessert?"

"Save your forks for pie."

"Will the following girls please report to my office?"

"Where is Mrs. West?"

"Let's go to town."

"What's on at the show?"

"Let's cut Dr. Bone's class."

"Gimme a cigarette."

"I hate Saturday classes."

A Hundred Years Ago

A hundred years ago today

A wilderness was here.

A man with powder in his gun

Went forth to kill a deer.

But now the times have changed somewhat.

Are on a different plan.

A deer with powder on her nose,

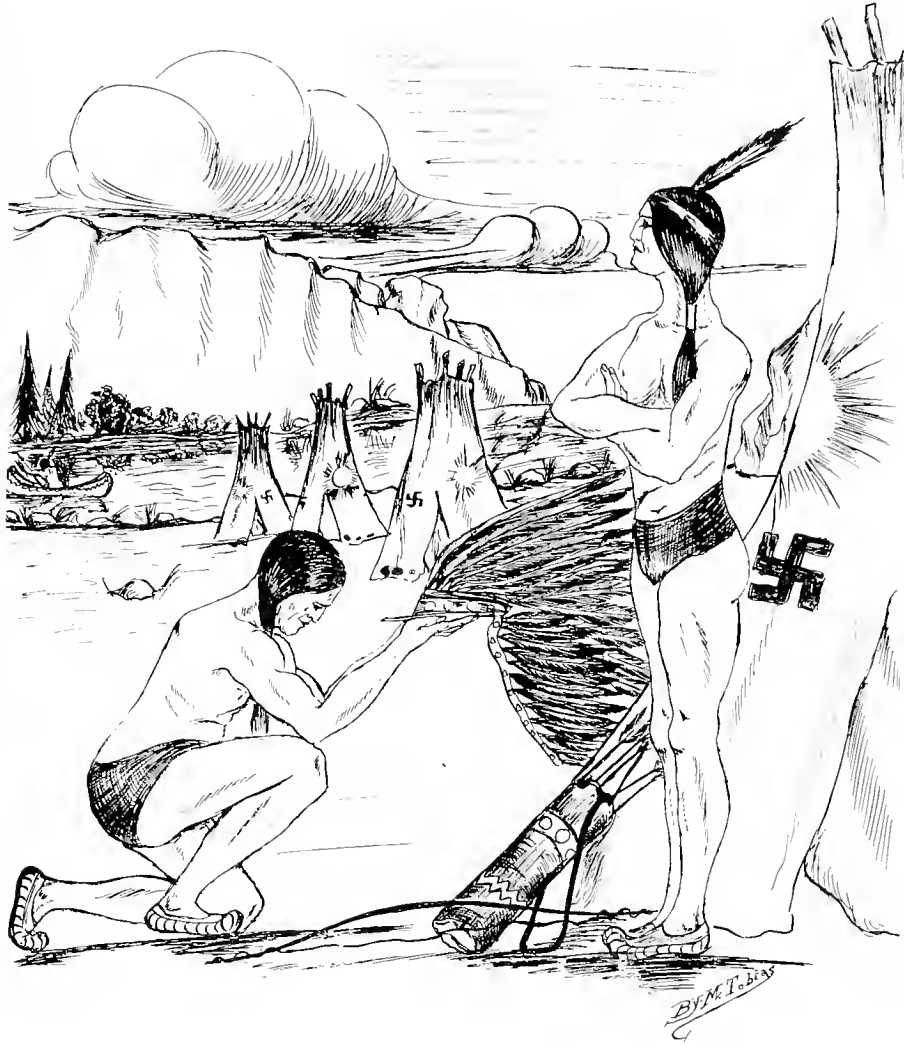
Goes forth to hunt a man.

Lives of Seniors all remind us

That they have not lived in vain;

For, although they're going to leave us,

Their notebooks will still remain.



*University Training is the
Foundation of Success and*

CUMBERLAND UNIVERSITY

Founded in 1842

Offers you not only the many educational advantages obtainable at other colleges, but additional training in special courses in different lines, that will thoroughly and properly prepare you for the greatest success in your particular vocation or chosen profession. The greatest success cannot be made without the proper foundation. College Trained Men Succeed Best.

Situated thirty miles east of Nashville, in an unusually fine community, with a beautiful campus of fifty acres, attractive, well-appointed buildings.

MANAGEMENT — Thoroughly reliable, efficient, Christian instruction in moral, Christian atmosphere.

DEPARTMENTS — The College of Arts offers courses leading to the degrees of A.B. and B.S. Excellent advantage for undergraduate work. Law School offering course leading to the degree of LL.B. Music, Public Speaking, School of Commerce and Administration and Summer School.

Laboratories for Chemistry, Physics, Biology, a Museum of Natural History, a Museum of Missions, and a Library of 15,000 volumes bespeaks the splendid equipment.

ATHLETICS — Clean, fair athletics, free from professionalism and commercialism.

ENTRANCE REQUIREMENTS — Fifteen units. Standard four-year course. Bible study of all regular students.

EXPENSES APPROXIMATELY \$362.50 A YEAR

For Catalogue or further information write

CUMBERLAND UNIVERSITY
LEBANON, TENNESSEE

QUALITY

SERVICE

"Where Service is a Habit"

J. L. Shannon & Sons

LEBANON, TENN.

Prescription Druggists

PHONE 180

PHONE 345



W. S. Scheuerman

Perfection Ice and
Ice Cream
Pastries, Bread and
Bakery Supplies



Watson & Beasley

Jewelers

Gifts for Every Occasion

By-Path Cafe

It's Ready

HOME OF GOOD THINGS
TO EAT

Students' Headquarters

Princess Theatre

"The Beauty Spot of Lebanon"
Reservations for Theatre
Parties

GROCERIES
AND FRESH MEATS
BAKERY

ESKEW'S

Telephones 104, 105, 314

Cumberland University Law School

"One of the Oldest Law Schools in the Country"

Its Reputation for Thoroughness is Established — Its Graduates
Number Many Thousands — They Have
Reached the Bench of the

GREATEST COURTS ON EARTH

—the Supreme Court of the United States, the Supreme and In-
ferior Courts of over one-half the States in the Union, and many
have been, and many are now members of both the House and
Congress.

*Its Courses Cover More Than Twelve Thousand Pages
of Living American Law and It Is
Accomplished in*

ONE COLLEGE YEAR

For catalogue address The Registrar

CUMBERLAND UNIVERSITY

LEBANON, TENNESSEE

WE APPRECIATE YOUR BUSINESS

SEAT'S STUDIO

Photographs That Please

LEBANON, TENN.

SCHOOL WORK A SPECIALTY



McCLAIN & SMITH

"The College Store"

Society Brand Clothes

Dobbs Hats

Florsheim Shoes

Vassar Underwear



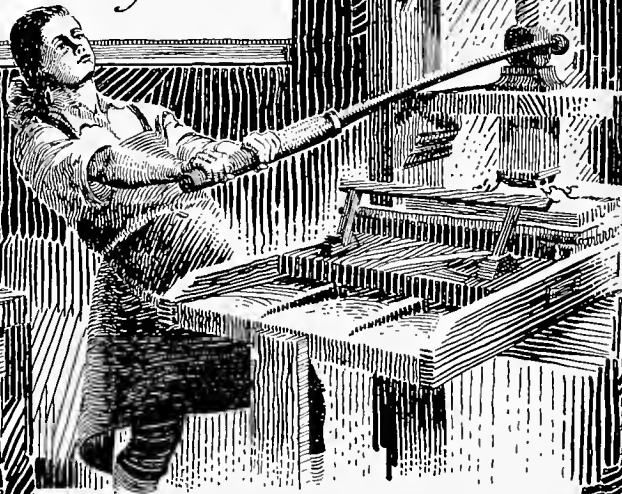
American Bank & Trust Company

LEBANON, TENN.

With Our Compliments



SCHOOL
AND
COLLEGE
CATALOGS
AND
YEAR
BOOKS



McQUIDDY  **PRINTING COMPANY**
NASHVILLE, TENN.

