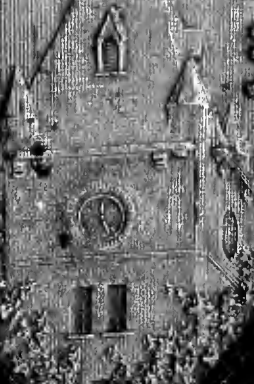


PHOENIX

1933



Digitized by the Internet Archive
in 2010 with funding from
Lyrasis Members and Sloan Foundation

<http://www.archive.org/details/phoenix1933cumb>





Copyright

ROBERT H. HARALSON, JR.

LYNDON B. JENNINGS

THE PHOENIX



Published by the

STUDENTS OF CUMBERLAND UNIVERSITY

1933



Dedication

- *To Ralph Tinsley Donnell in partial reward for his untiring efforts, as athletic committeeman, as debate coach, as teacher, and as student advisor.*
- *Largely through his efforts varsity football returned to Cumberland this year, and to him alone goes the credit for the excellent showing of the debating teams. His religious guidance has been a beacon to many and his friendly advice welcome for the asking.*
- *Cumberland can never fully pay for the noble services this energetic instructor has rendered her, hence we the PHOENIX staff, as a token of appreciation, dedicate, as flowers for the living, this book to him, who is devoting the best of himself to the perpetuation of his Alma Mater and to the enhancement of her great name.*



Foreword

- *In compiling this volume the staff has endeavored to depict the activities of the University, its students and organizations.*
- *Unfortunately all noteworthy incidents and all notable individuals do not find mention. So it is for this book, in later years, to serve as a stimulus to a complete memory of old friends and associates and of their deeds and doings.*
- *No better factor to innervate recall than the picture has been found. With this view in mind we have incorporated as many representative photographs as space would permit.*

THE STAFF



Contents

•
THE UNIVERSITY

•
CLASSES

•
ORGANIZATIONS

•
ATHLETICS

•
FEATURES

- *In recognition of the notable work of the University Woman's Club. ● Their work in supplementing the fiction department of the University library has been exceptionally beneficial to student readers. ● Cumberland's present beauty is due largely to their work in planting of shrubbery and young trees.*
- *We pay tribute to their energy and efficiency in serving the University and the students.*



UNIVERSITY





ADMINISTRATION BUILDING

Constructed in 1892-96



CARUTHERS HALL

Built in 1875 and named for Judge Robert L. Caruthers, first President of Board of Trustees



MEN'S DORMITORY
Rebuilt in 1923



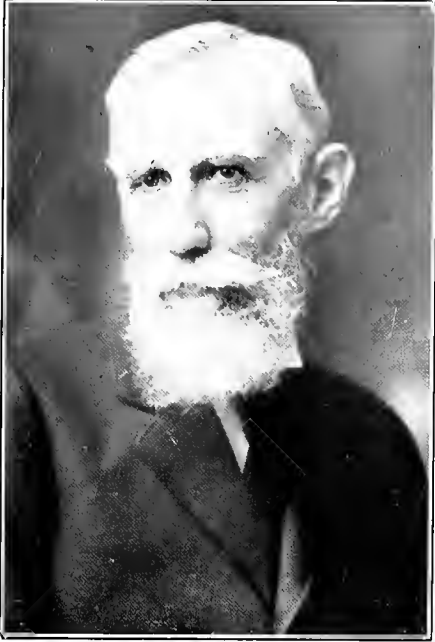
GIRLS' DORMITORY



FACULTY



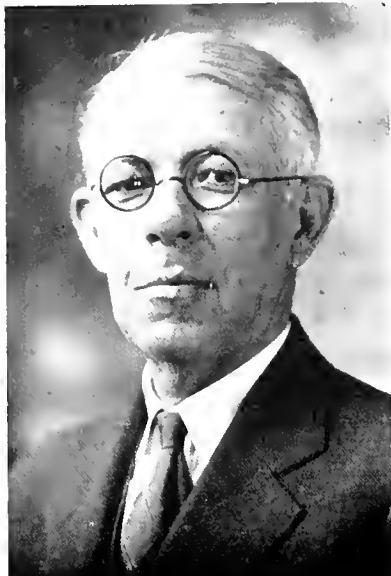
ERNEST L. STOCKTON
President



WILLIAM R. CHAMBERS
A.B., LL.B., LL.D.
Dean of Law School
A.B., Cumberland University; LL.B., Vanderbilt University; LL.D., Cumberland University.



WILLIAM D. YOUNG
A.B., M.A.
Dean of College of Arts and Sciences; Professor of History
A.B., M.A., Cumberland University; Graduate Work, Peabody College.



JUDGE A. B. NEIL
A.B., LL.B.
Professor of Law
Winchester Normal College, Cumberland University.



PROF. SAM GILREATH
Professor of Law
Cumberland University.



JUDGE ALBERT WILLIAMS
A.B., LL.B.
Professor of Law
A.B., Vanderbilt University; LL.B., Cumberland University.



MISS SARAH HARDISON
B.Mus., LL.B.
Law Librarian
B.Mus., Schubert Conservatory of Music;
LL.B., Cumberland University.



JAMES O. BAIRD
 A.B., M.A., LL.B.
Professor of Chemistry
 A.B., M.A., LL.B., Cumberland University;
 Graduate Work, Peabody College; Uni-
 versity of Chicago.



ROBERT J. WHERRY
 A.B., Ph.D.
Professor of Economics and Psychology
 Ohio State University.



MISS MABEL C. JONES
 A.B., M.A.
Professor of English
 Cumberland University; Graduate Work, Pea-
 body College; Columbia University.



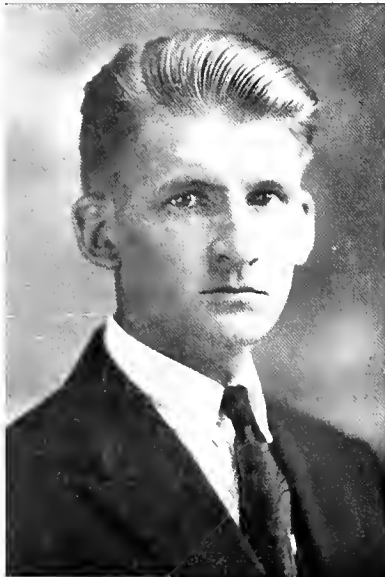
RALPH TINSLEY DONNELL
 A.B., M.A.
Professor of Mathematics
 A.B., Cumberland University; M.A., University
 of Tennessee.



E. GEORGE SAVERIO
 A.B., M.A., Ph.D.
Professor of Modern Languages
 A.B., M.A., College of Montana; Ph.D., University of Texas.



MISS SYDNEY VIRGINIA ADAMS
 A.B.
Assistant Instructor, Romance Languages
 A.B., Hollins; Postgraduate Work, Cumberland.



LAWRENCE M. DICKERSON
 B.S., M.S., Ph.D.
Professor of Biology
 B.S., William and Mary; M.S., Ph.D., University of Virginia.



WINSTEAD P. BONE
 A.B., M.A., B.D., D.D.
Professor of Biblical Literature
 A.B., M.A., Trinity College; B.D., D.D., Cumberland University; Union Theological Seminary; University of Berlin; University of Chicago.



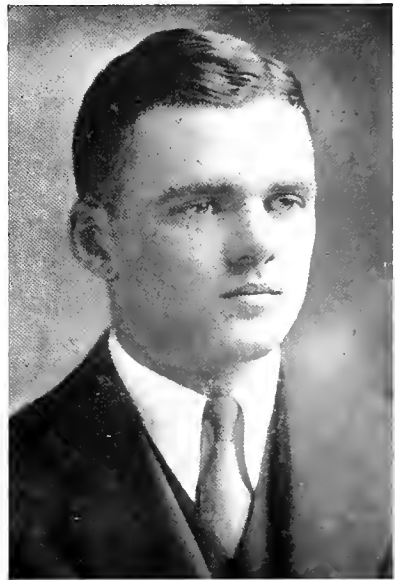
MRS. Y. P. WOOTEN
A.B., M.A.
Professor of Education
A.B., Peabody College; M.A., Cumberland University; Graduate Work, Cumberland University.



MISS SUE FINLEY
A.B., B.Mus.
Instructor in Piano
A.B., Cumberland University; B.Mus., Nashville Conservatory of Music.



MRS. MAY GREGORY ROUSSEAU
Instructor in Dramatic Art
Graduate Work, Schuster School of Public Speaking; Flowers Academy of Speech and Dramatic Art, Cincinnati, Ohio.



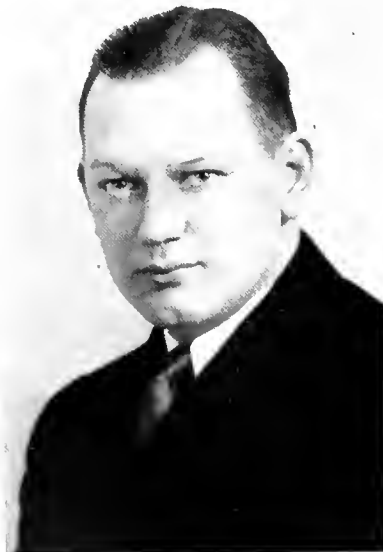
GRAVES HAYDON THOMPSON
A.B., A.M., Ph.D.
Professor of Greek and Latin
A.B., Hampden-Sydney College; A.M., Ph.D., Harvard University.



MRS. THEORA B. FERRELL
Instructor in Voice
Nashville Conservatory of Music; Advanced
Work under De Luca



A. J. CASH
A.B.
University Secretary
University of West Virginia



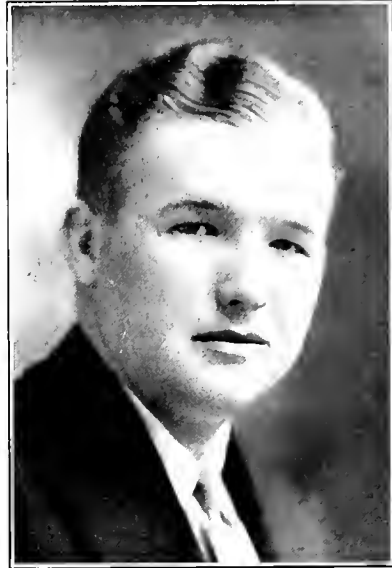
THOMAS E. BRYANT
A.B.
Registrar
A.B., Cumberland University.



MISS MADGE HARDISON
Assistant to the University Secretary



MISS AILEEN COOK
Secretary to the President



ROBERT W. ADAMS
A.B., LL.B.
Alumni Secretary
A B., LL.B., Cumberland University.



MRS. REED
Matron of Hinds House



MRS. WEST
Matron of McClain House



MARTHA BETSY MASON
BS
Matron of Boys' Dormitory
B.S., Simmons College, Boston, Mass.



MISS MARTHA HARRIS
Librarian



EDWARD LOYD
Superintendent of Buildings

CLASSIFIED

[The following text is extremely faint and illegible due to the quality of the scan. It appears to be a list or a set of instructions.]



SENIORS



SENIOR CLASS

College of Arts and Sciences

EARL FRANCIS BAKER, B.S.
LEBANON, TENNESSEE

FRANCES BRUCE, A.B.
LEBANON, TENNESSEE
Miss Cumberland; Y. W. C. A.;
Literary Editor, PHOENIX.

ELIZABETH CLARK, A.B.
LEBANON, TENNESSEE
Y. W. C. A.

HELEN GASTON, A.B.
GASTONBURG, ALABAMA
Y. W. C. A.; Secretary-Treasurer,
Senior Class; May Queen.

MARY MARGARET HAMBLIN,
A.B.
LEBANON, TENNESSEE
Y. W. C. A.; Secretary, Ladies Public
Speaking Class.

ROBERT H. HARALSON, JR.,
B.S.
LEBANON, TENNESSEE
Blue Key; Basketball, '31-'32-'33;
Business Manager, PHOENIX, '32;
Editor, PHOENIX, '33; Vice
President, Senior Class.



SENIOR CLASS

College of Arts and Sciences

JULIA HEREFORD, A.B.
LEBANON, TENNESSEE

President, Y. W. C. A., '32; Treasurer
Y. W. C. A., '33; Secretary-
Treasurer, Sophomore and
Junior Class; Basketball.

MARIE THACKSTON, B.S.
LEBANON, TENNESSEE

GARLAND JENNINGS, B.S.
LEBANON, TENNESSEE

Lambda Chi Alpha; Debating Team.

MAX TILGHMAN, A.B.
KENTON, TENNESSEE

Delta Kappa Phi; President, Senior
Class; Business Manager, Col-
legian; Basketball, '31-'32-
'33; PHOENIX Staff;
Bachelor of Ugliness.

HARRY McCORD, A.B.
CORINTH, MISSISSIPPI

Life Service Group.

JOHN TRONLER, A.B.
CHATTANOOGA, TENNESSEE

Sigma Alpha Epsilon; Blue Key; Y.
M. C. A.; Coach, Girls' Basket-
ball Team, '31-'32-'33; Life
Service Group; Mana-
ger, Football Team,
'32.



SENIOR CLASS

College of Arts and Sciences

GEORGE SADKA, JR., B.S.
MERIDIAN, MISSISSIPPI
President, Delta Kappa Phi Fraternity.

FRANCES SHERRELL, A.B.
FAYETTEVILLE, TENNESSEE
Sigma Delta Sigma.

WALTER SMITHWICK, JR., B.S.
LEBANON, TENNESSEE
Delta Kappa Phi.

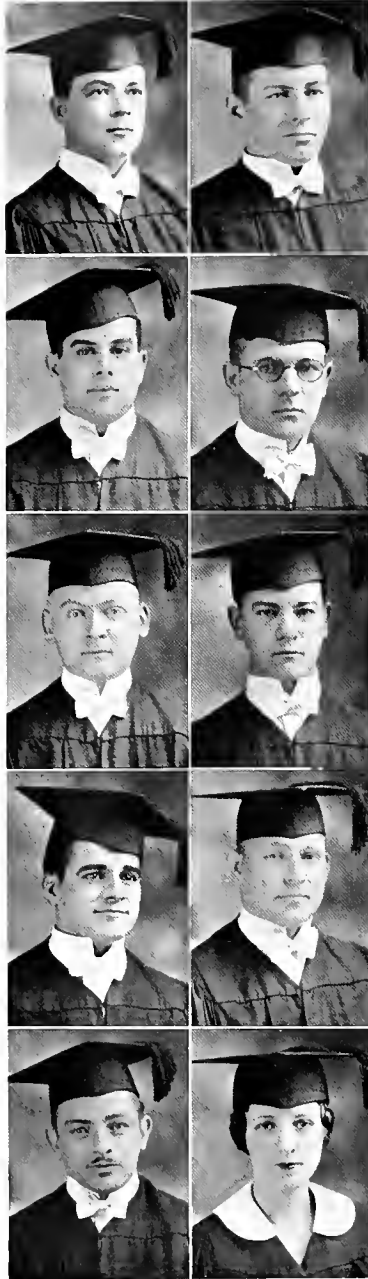
JAMES K. SPECK, A.B.
BLUE SPRINGS, MISSISSIPPI
Y. M. C. A.; President, Life Service Group.

ALLIE WILLIAMS, B.S.
UNION CITY, TENNESSEE
President, Life Service Group, '31-'32; Treasurer, Y. W. C. A. '32.

ELSIE WINFREE, A.B.
SILVER POINT, TENNESSEE
Basketball, '30-'31-'32-'33; Y. W. C. A.

COLLEGE
OF
LAW

COLLEGE OF LAW—JANUARY CLASS



ASHMORE, ROBERT W., JR., LL.B.
TALLAHASSEE, FLORIDA
Sigma Delta Kappa; Blue Key; Vice President,
Shrine Club; Vice President, Square and Com-
pass Club, Barrister's Club, Philomathean.

ANDERSON, E. L., LL.B.
GAINESBORO, TENNESSEE

BADDOUR, GEORGE J., LL.B.
COVINGTON, TENNESSEE
Tennessee Club, Philomathean.

BRADLEY, LELAND DALE, LL.B.
BRUSH CREEK, TENNESSEE
Delta Kappa Phi, Blue Key; Collegian Staff.

BRATTON, FRANK N., LL.B.
COWAN, TENNESSEE
Blue Key; Historian of Senior Class; Barrister's
Club; Philomathean.

BRUKS, RICHARD H., LL.B.
DOTHAN, ALABAMA
Sigma Delta Kappa; Circle Club.

CARNUS, GERARD, LL.B.
TAMPA, FLORIDA
Philomathean; Florida, Alabama, Mississippi Club.

COWEN, CHESTER MELCENIA, LL.B.
CHICKASHA, OKLAHOMA
Philomathean; Barrister's Club, Square and Com-
pass Club, Shriner's Club; Oklahoma Club.

DEMPSEY, HAROLD A., LL.B.
NEW ORLEANS, LOUISIANA
Sigma Delta Kappa; Philomathean; Barrister's
Club.

FISHER, MRS. MARION KIRK, LL.B.
KANSAS CITY, MISSOURI
Iota Tau Tau; Secretary-Treasurer, Missouri Club;
Sponsor, Delta Phi Omega.

COLLEGE OF LAW—JANUARY CLASS

FISHER, ROY L., LL.B.

KANSAS CITY, MISSOURI

Vice Chancellor, Sigma Delta Kappa; Blue Key;
President, Philomathean; Historian, Junior
Class; Barrister's Club; Missouri Club.

FLANAGAN, LA VERGNE, LL.B.

TARPON SPRINGS, FLORIDA

GARTHWAITE, HARLOW, LL.B.

TRACY CITY, TENNESSEE

Chancellor, Sigma Delta Kappa; Class Orator;
Critic, Philomathean; Square and Compass
Club, Circle Club; Barrister's Club; Blue
Key.

GREEN, PAUL BUFORD, LL.B.

RANGER, TEXAS

Lambda Chi Alpha, Secretary-Treasurer, Senior
Class; Vice President, Barrister's Club; Vice
President, Philomathean; Blue Key.

GREGORY, CLYDE W., LL.B.

HAVANA, FLORIDA

GRIZZELL, GERALD R., LL.B.

McMINNVILLE, TENNESSEE

Circle Club; Philomathean.

HAUGHLAND, LEVI S., LL.B.

SHELBYVILLE, TENNESSEE

Reserve Officers; Philomathean.

JEFFERS, LEE M., LL.B.

OAKDALE, TENNESSEE

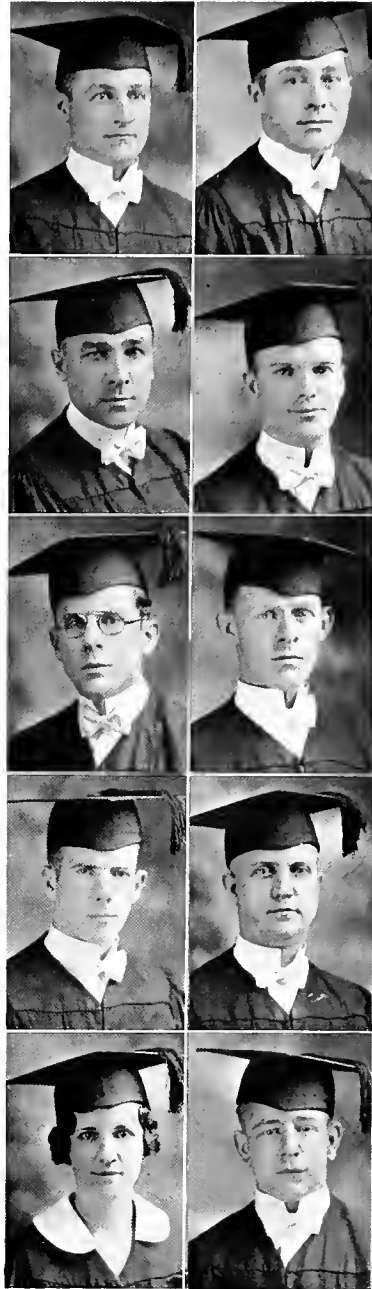
KELLAM, INA MAE, LL.B.

SAN ANTONIO, TEXAS

KELLY, WILLIAM DONALD

STAMPS, ARKANSAS

Sigma Delta Kappa.



COLLEGE OF LAW—JANUARY CLASS



LITTLE, PAUL Y., II, LL.B.
SPARTANBURG, SOUTH CAROLINA
Lambda Chi Alpha, Philomathean.



LOVETT, THOMAS D., LL.B.
LOVETT, FLORIDA



LYTAL, LAKE H., LL.B.
WEST PALM BEACH, FLORIDA
Treasurer, Sigma Delta Kappa; President, Blue Key; Philomathean; Circle Club; Barrister's Club.



MARTIN, CORNETT LIVINGSTON, LL.B.
HARLAN, KENTUCKY
Sigma Alpha Epsilon; Vice President, Senior Class; President, Barrister's Club; Philomathean; Circle Club; Blue Key.



MEEKER, MAHLON M., LL.B.
MARSHALLTOWN, IOWA
President, Square and Compass Club, Sigma Delta Kappa; Philomathean; Blue Key; Barrister's Club; Secretary-Treasurer, Shrine Club.



MOODY, MILTON PAUL, LL.B.
JOHNSON CITY, TENNESSEE
Sigma Delta Kappa; President, Senior Class.

PASTERNAK, AARON B., LL.B.
HARTFORD, CONNECTICUT
Philomathean

REES, FLOYD L., LL.B.
HUTCHINSON, KANSAS
Secretary-Treasurer, Circle Club; Philomathean

RIDDLE, ELMER A., LL.B.
VAN BUREN, ARKANSAS
Sigma Alpha Epsilon; Barrister's Club; Blue Key; Secretary, Philomathean.

COLLEGE OF LAW—JANUARY CLASS

ROBERTSON, FRED, LL.B.
MEMPHIS, TENNESSEE

ROBINSON, JIM T., LL.B.
ELK CITY, OKLAHOMA
Oklahoma Club.

ROSS, ELIJAH, LL.B.
SAVANNAH, TENNESSEE

SAUVE, NATHANIEL BERNARD, LL.B.
DENVER, COLORADO
Sigma Delta Kappa; Blue Key.

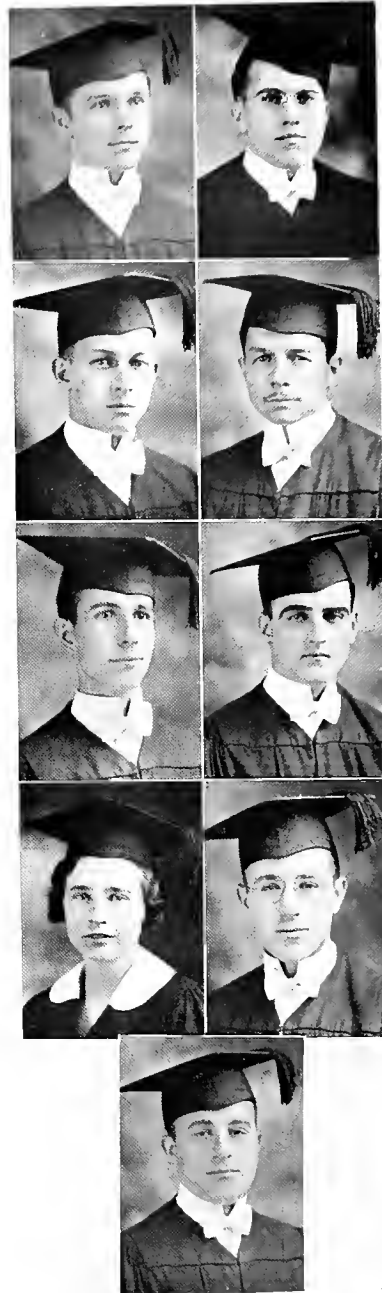
SEXTON, MAXWELL, LL.B.
HUNTSVILLE, TENNESSEE

SPECK, BLAND F., LL.B.
LIVINGSTON, TENNESSEE

VINES, GERALDINE, LL.B.
JOHNSON CITY, TENNESSEE
Iota Tau Tau; Philomathean.

WHITE, JACK POINDENTER, LL.B.
CHICAGO, ILLINOIS
Lambda Chi Alpha; Philomathean.

ZWANG, WILLIAM MURRAY
NEW YORK CITY, NEW YORK
Circle Club; Collegian Staff; Philomathean.



COLLEGE OF LAW — JUNE CLASS



ADAMS, GILBERT, LL.B.
JASPER, TEXAS
Sigma Alpha Epsilon; Texas Club.

ALLEN, EDMUND B., JR., LL.B.
MURFREESBORO, TENNESSEE
Sigma Alpha Epsilon; Sigma Delta Kappa; Barrister's Club; Tennessee Club; Philomathean.

ANDERSON, WILLIAM C., LL.B.
GAINESBORO, TENNESSEE
Square and Compass Club; Tennessee Club.

ANGLEA, H. SANDERS, LL.B.
NASHVILLE, TENNESSEE

ASHMORE, C. N., LL.B.
TALLAHASSEE, FLORIDA
Florida, Alabama, Mississippi Club; Barrister's Club; Band

BAIRD, CLAYTON R., LL.B.
JELICO, TENNESSEE
Lambda Chi Alpha; Sigma Delta Kappa.

BARE, CLIVE W., LL.B.
ERWIN, TENNESSEE
Philomathean; Tennessee Club.

BARRY, CARALISA, LL.B.
GREENWOOD, MISSISSIPPI
Iota Tau Tau; Honorary Member Delta Phi Omega.

BERSTON, E. LAWRENCE, LL.B.
ST. PAUL, MINNESOTA
Caruthers' Bible Class.

BLOUGH, WILLIAM H., LL.B.
MARYVILLE, TENNESSEE
Lambda Chi Alpha; President, Philomathean; Blue Key; Barrister's Club; Tennessee Club.

BOGGS, THOMAS H., LL.B.
SELMA, ALABAMA
Florida, Alabama, Mississippi Club; Philomathean; Young Democratic Club; Secretary, Public Speaking Class.

BOOTHE, OSCAR HUDSON, LL.B.
RICHMOND, VIRGINIA
Sigma Delta Kappa; Barrister's Club.

COLLEGE OF LAW — JUNE CLASS

BOYD, DON HAGLER, LL.B.
MILLER, MISSOURI
Square and Compass Club; Secretary-Treasurer,
Senior Class.

BRADLEY, JOSEPH WELDON, LL.B.
FORT WORTH, TEXAS
President, Texas Club; President, Barrister's Club;
Blue Key.

BROWDER, JACK B., LL.B.
RICHMOND, VIRGINIA

BROWN, CLARENCE LOGAN, LL.B.
OLIVER SPRINGS, TENNESSEE

BURKETT, JOE, JR., LL.B.
SAN ANTONIO, TEXAS
Texas Club; Philomathean.

BURTON, ROBERT S., LL.B.
MT. JULIET, TENNESSEE
Tennessee Club.

BUTLER, LONDON GAINS, LL.B.
MOUNTAIN CITY, TENNESSEE

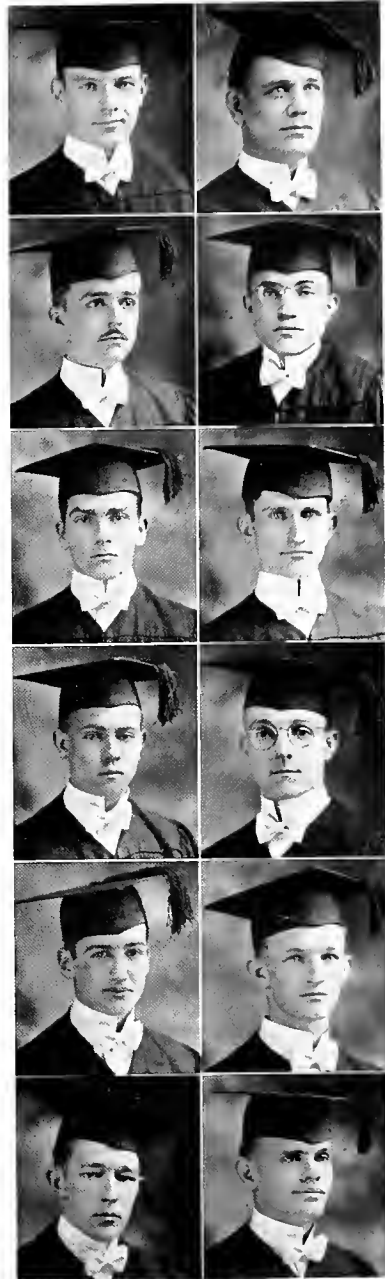
CALHOUN, ROBERT L., LL.B.
MT. OLIVE, MISSISSIPPI
Florida, Alabama, Mississippi Club; Sigma Alpha
Epsilon; Square and Compass Club; Forum;
Philomathean; President, Senior Class;
Barrister's Club; Collegian Staff.

CARR, BILLY, LL.B.
FULTON, KENTUCKY
Barrister's Club.

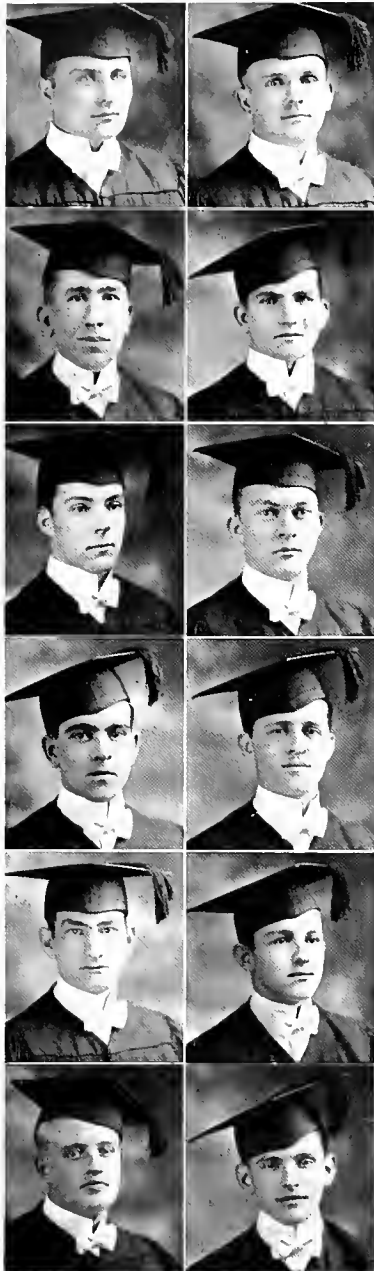
CARR, E. ANDREW, LL.B.
SPRINGFIELD, MISSOURI
Barrister's Club; Missouri Club; Philomathean.

CARR, J. D., JR., LL.B.
NEWTON, MISSISSIPPI
Florida, Alabama, Mississippi Club.

CARRELL, STEPHEN EDWARD, LL.B.
LAWRENCEBURG, TENNESSEE



COLLEGE OF LAW — JUNE CLASS



CARTER, CHESTER B., LL.B.
INDIANAPOLIS, INDIANA

CARRUTH, S. G., LL.B.
PORT ARTHUR, TEXAS
Square and Compass Club; Texas Club.

CAUFIELD, STANLEY, LL.B.
EL PASO, TEXAS
Philomathean.

CHADICK, T. C., LL.B.
WINNSBORO, TEXAS

CHEATHAM, DAVID EDWARD, LL.B.
PULASKI, TENNESSEE
Philomathean; Tennessee Club.

CHESTNUT, JOHN LEE, LL.B.
CENTRE, ALABAMA
Barrister's Club; Florida, Alabama, Mississippi
Club; Forum.

CLIFT, HUGH WILLIAM, JR., LL.B.
TUPELO, MISSISSIPPI
Florida, Alabama, Mississippi Club; Amassagassean.

COLE, CHARLES EDWARD, LL.B.
ROCKWOOD, TENNESSEE
Sigma Alpha Epsilon; Tennessee Club.

COOPER, JOHN D., LL.B.
CHAPEL HILL, TENNESSEE
Philomathean; Tennessee Club.

CORBITT, JOHN CABLER, JR., LL.B.
NASHVILLE, TENNESSEE
Delta Kappa Phi; Philomathean.

COPPIN, DAN C., LL.B.
ST. LOUIS, MISSOURI
Missouri Club; Philomathean; Barrister's Club.

CRAIG, BRALY E., LL.B.
LEWISBURG, TENNESSEE
Tennessee Club; Philomathean; Cheer Leader.

COLLEGE OF LAW — JUNE CLASS

CROCKETT, DAVID, LL.B.
FREEPORT, TEXAS

COX, BOYD WILLIAM, LL.B.
KNOXVILLE, TENNESSEE
Tennessee Club.

CROSBY, W. L., LL.B.
BRAWLEY, CALIFORNIA
Lambda Chi Alpha.

DAVIS, HARVEY BURKS, LL.B.
RIPLEY, TENNESSEE

DINNING, FORREST ADAIR, LL.B.
FRANKLIN, KENTUCKY

DISMUKES, BRADLEY LEE, LL.B.
OKLAHOMA CITY, OKLAHOMA
Oklahoma Club; Philomathean; Young Democratic
Club.

DONOHUE, JOSEPH J., LL.B.
DETROIT, MICHIGAN

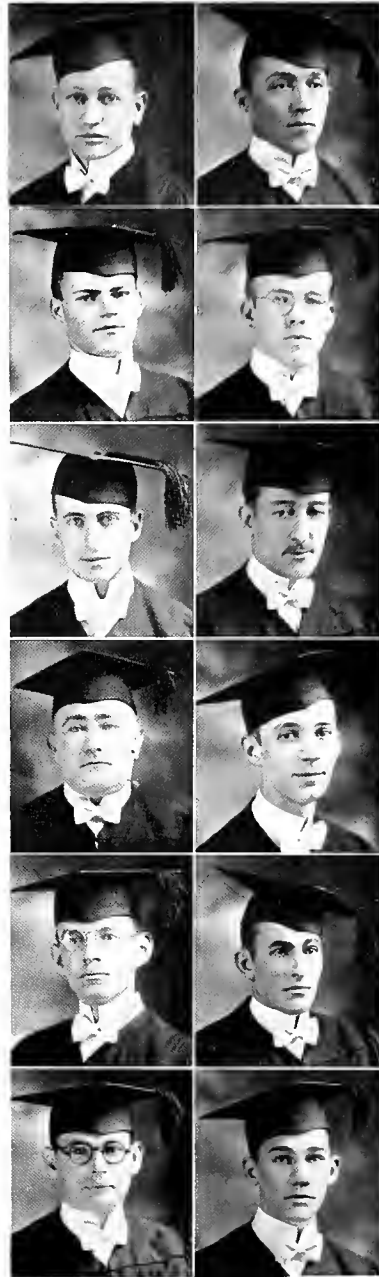
DOVER, RAYMOND H., JR., LL.B.
TUSCUMBIA, ALABAMA
Barrister's Club; Square and Compass Club;
Shrine Club.

DOW, NEAL, LL.B.
BELFAST, MAINE

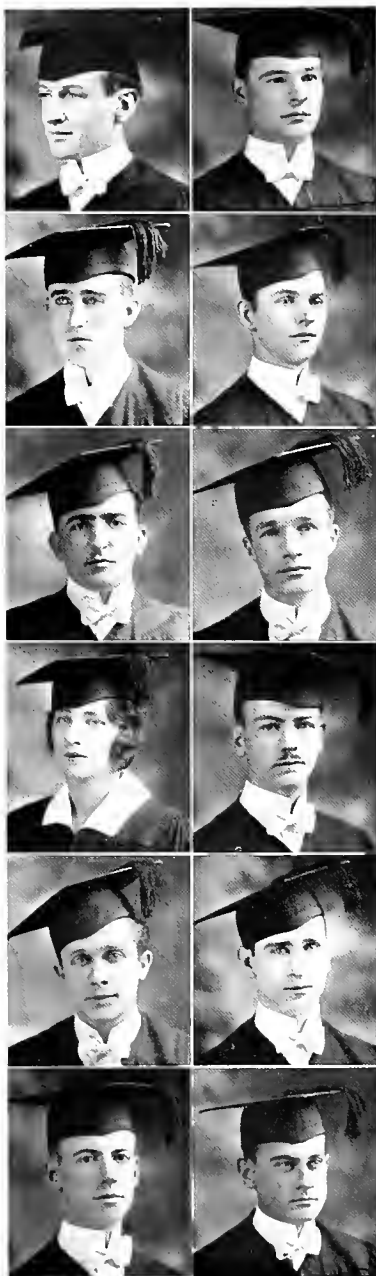
DRINNON, JARVIS, LL.B.
MORRISTOWN, TENNESSEE
Sigma Alpha Epsilon.

EARY, EMERSON E., LL.B.
CHARLESTON, WEST VIRGINIA
Vice President, Republican Club.

ELLIS, HOMER, JR., LL.B.
NASHVILLE, TENNESSEE
Barrister's Club; Philomathean; Treasurer, Tennes-
see Club.



COLLEGE OF LAW — JUNE CLASS



FERGUSON, JAMES E., LL.B.
HASKELL, TEXAS
Vice President, Texas Club.

FREEMAN, ALTON T., LL.B.
LAMESA, TEXAS
Texas Club; Philomathean

GAINES, GEORGE B., LL.B.
FRANKLIN, KENTUCKY
Philomathean.

GAYLORD, W. RONALD, LL.B.
PLYMOUTH, NORTH CAROLINA
Circle Club, Philomathean

HALEY, ALBERT C., LL.B.
LEBANON, TENNESSEE
Sigma Alpha Epsilon; Assistant Business Manager,
Collegian.

HALEY, FREDERICK M., LL.B.
JACKSON, MISSISSIPPI
Sigma Alpha Epsilon; Vice President, Junior Class;
Blue Key; Barrister's Club; Philomathean,
Florida, Alabama, Mississippi; Club.

HARRIS, JOSEPHINE REA, LL.B.
LEBANON, TENNESSEE
Delta Phi Omega; Iota Tau Tau, Philomathean.

HARTSFIELD, PORTER D., LL.B.
COMO, MISSISSIPPI
Sigma Delta Kappa, Vice President, Florida,
Alabama, Mississippi; Club; Philomathean.

HAUB, JOHN C., LL.B.
PACIFIC, MISSOURI

HAWKS, PRESTON ALLAN, LL.B.
CLINTON, OKLAHOMA
President, Junior Class; President, Oklahoma Club;
Blue Key; Philomathean; Barrister's Club.

HEAGERTY, JOHN R., LL.B.
HALLTOWN, MISSOURI

HENSLEY, ELIAS TURNER, JR., LL.B.
PORTALES, NEW MEXICO

COLLEGE OF LAW — JUNE CLASS

HENRY, CHARLES LUKE, JR., LL.B.
SEATTLE, WASHINGTON

HIGHT, GEORGE W., JR., LL.B.
NASHVILLE, TENNESSEE

HILL, JOSEPH T., LL.B.
NASHVILLE, TENNESSEE
Barrister's Club; Philomathean; Class Orator,
Junior Class.

HOPKINS, WILLIAM B., LL.B.
TALLAHASSEE, FLORIDA
Philomathean; Florida, Alabama, Mississippi Club.

HUME, JOHN RO, LL.B.
DONIPHAN, MISSOURI

JACKSON, GEORGE J., LL.B.
NASHVILLE, TENNESSEE
Sigma Alpha Epsilon.

JACKSON, GRACE WAVERLYN, LL.B.
COLUMBIA, TENNESSEE
Secretary, Tennessee Club; Philomathean; Iota
Tau Tau.

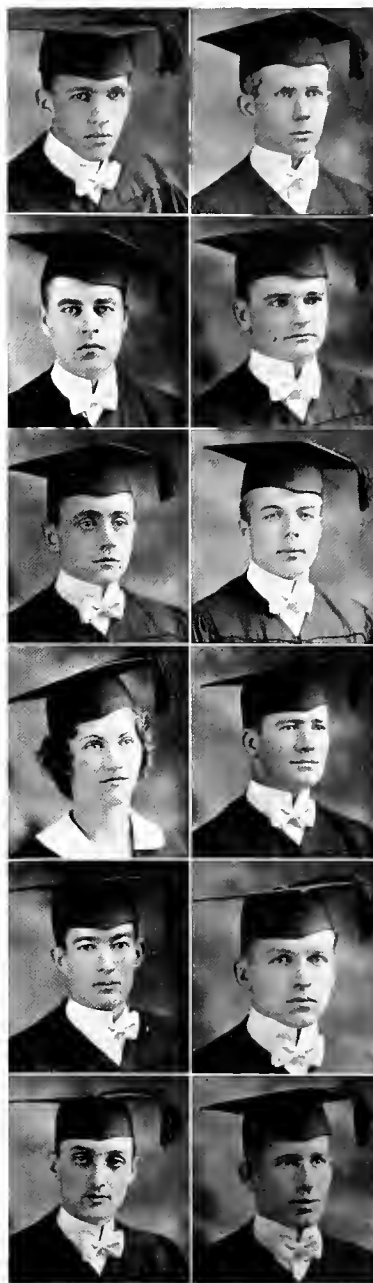
JACKSON, J. C., LL.B.
COLUMBIA, TENNESSEE
Tennessee Club; Reserve Officers' Club; Philoma-
thean; Secretary, Senior Class.

JOHNSON, MORGAN N., LL.B.
SACRAMENTO, CALIFORNIA

JOHNSON, MURRAY M., JR., LL.B.
NASHVILLE, TENNESSEE

KAVANAUGH, MINOR J., LL.B.
BROADWAY, VIRGINIA
Philomathean; Young Democratic Club.

KELTON, RALPH McLAIN, LL.B.
MURFREESBORO, TENNESSEE



COLLEGE OF LAW — JUNE CLASS



KERR, H. DIXON, LL.B.
MURFREESBORO, TENNESSEE
Lambda Chi Alpha; Tennessee Club; Philomathean.

KOEHLER, RAYMOND W., LL.B.
SANTA BARBARA, CALIFORNIA

KRAMER, A. P., LL.B.
NEW YORK CITY, NEW YORK

LAMB DIN, DONALD BRUCE, LL.B.
AMARILLO, TEXAS
Young Democratic Club; Texas Club; Philomathean.

LASSITER, WILLIAM HANCE, LL.B.
HUNTINGDON, TENNESSEE
Sigma Delta Kappa; Barrister's Club.

LATTIMORE, JIMMY, LL.B.
WACO, TEXAS
Secretary, Texas Club; Philomathean.

LEWIS, EVERETTE M., LL.B.
HAZLEHURST, MISSISSIPPI
Florida, Alabama, Mississippi Club.

LINEBARGER, C. A., LL.B.
BELLA VISTA, ARKANSAS
Lambda Chi Alpha; Sigma Delta Kappa.

LOFTON, JOHN D., LL.B.
DAYTON, OHIO
Sigma Alpha Epsilon; Philomathean; Sergeant-at-Arms, Young Democratic Club.

LUSTGARTEN, EDWARD LOUIS, LL.B.
MIAMI BEACH, FLORIDA
Florida, Alabama, Mississippi Club, Philomathean.

MARTIN, E. C., LL.B.
KANSAS CITY, MISSOURI
Lambda Chi Alpha; Sigma Delta Kappa; Vice President, Missouri Club; Barrister's Club; Philomathean.

MASTERS, OTTO P., LL.B.
COOKEVILLE, TENNESSEE

COLLEGE OF LAW — JUNE CLASS

MAY, LEONARD T., LL.B.
YALE, OKLAHOMA
Philomathean; Oklahoma Club.

MAYFIELD, EARLE B., JR., LL.B.
TYLER, TEXAS
President, Blue Key; Texas Club; Barrister's
Club; Philomathean; Circle Club.

McCULLY, JOHN T., LL.B.
LOUISVILLE, MISSISSIPPI

McKISSICK, ROBERT W., LL.B.
DALLAS, TEXAS
Lambda Chi Alpha; Philomathean.

MENAS, JOHN D., LL.B.
TALLAHASSEE, FLORIDA

MERRICK, JAMES S., LL.B.
MORRILTON, ARKANSAS

MILLER, ROBERT B., LL.B.
COLLEGE SPRINGS, IOWA
Florida, Alabama, Mississippi Club; Vice President,
Young Democratic Club; Philomathean.

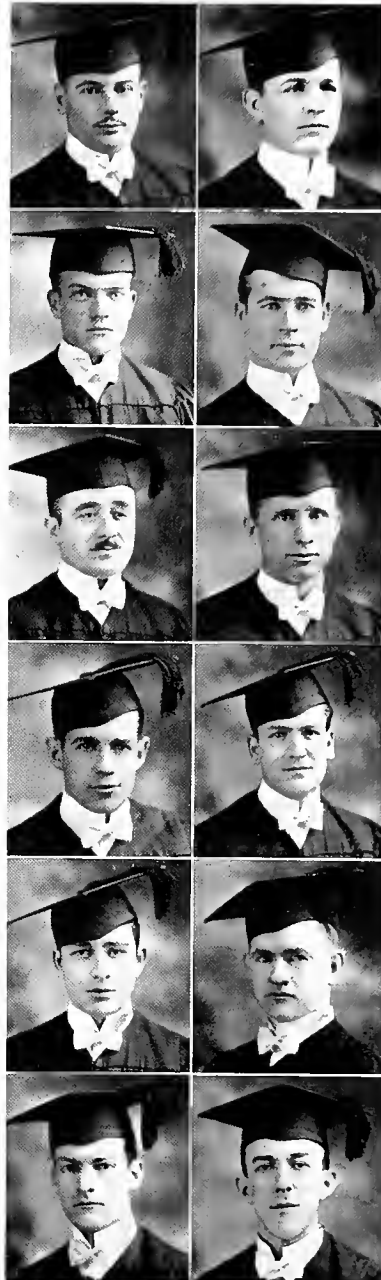
MOORE, ALBERT S., LL.B.
CAMDENTON, MISSOURI
Missouri Club.

MOORE, HENRY E., LL.B.
MARIANNA, FLORIDA
President, Florida, Alabama, Mississippi Club;
Lambda Chi Alpha; Barrister's Club; Philoma-
thean.

MORRIS, THOMAS DUDLEY, LL.B.
FULTON, KENTUCKY
Tennessee Club.

MOYER, M. M., LL.B.
GAGE, OKLAHOMA
Barrister's Club; Philomathean.

MURPHEY, ROY K., LL.B.
MORRISTOWN, TENNESSEE



COLLEGE OF LAW — JUNE CLASS



MURRELL, CHAPPEL, LL.B.
STERLING CITY, TEXAS

MYERS, J. LESLIE, LL.B.
BAXTER, TENNESSEE
Critic, Philomathean.

NESBIT, ARTHUR P., LL.B.
COLUMBIA, TENNESSEE
Shrine Club; Barrister's Club; Historian, Junior
Law Class; Philomathean; Square and Com-
pass Club; Reserve Officers' Club.

NESBIT, W. E., LL.B.
DECATUR, ALABAMA
Philomathean.

O'BRYAN, ROBERT, LL.B.
BROWNSVILLE, TEXAS
Lambda Chi Alpha.

OGDEN, JOHN B., LL.B.
AMARILLO, TEXAS
Texas Club; Philomathean; Young Democratic
Club.

PATTERSON, RAYMOND HILTON, LL.B.
OZARK, MISSOURI
Square and Compass Club; Philomathean.

PEARL, FRANCIS M., JR., LL.B.
HIAWATHA, KANSAS
Oklahoma Club; Philomathean.

PHILLIPS, HOWARD, LL.B.
MILLERTON, OKLAHOMA
Oklahoma Club; Philomathean.

POWELL, JOHN WILLIAM, LL.B.
MESILLA PARK, NEW MEXICO

PURSLEY, CHARLES R., LL.B.
LEBANON, TENNESSEE
Lambda Chi Alpha; Barrister's Club; Philoma-
thean.

RAUGH, WILLIAM L., LL.B.
COLUMBUS, OHIO

COLLEGE OF LAW — JUNE CLASS

REXFORD, CHESTER C., LL.B.
JAMESTOWN, NEW YORK

RHINE, H. C., LL.B.
WATHENA, KANSAS
Square and Compass Club.

RICHARD, ERNEST C., LL.B.
SPRINGFIELD, TENNESSEE

RILEY, JAMES T., LL.B.
JEFFERSON CITY, MISSOURI
Barrister's Club.

ROBERTSON, ROBERT W., LL.B.
BRISTOL, FLORIDA
Florida, Alabama, Mississippi Club.

ROBINSON, R. H., LL.B.
VICKSBURG, MISSISSIPPI
Florida, Alabama, Mississippi Club.

ROSE, WILLIAM LAMAR, LL.B.
PUNTA GORDA, FLORIDA
Florida, Alabama, Mississippi Club; Square and
Compass Club; Philomathean; Young Demo-
cratic Club.

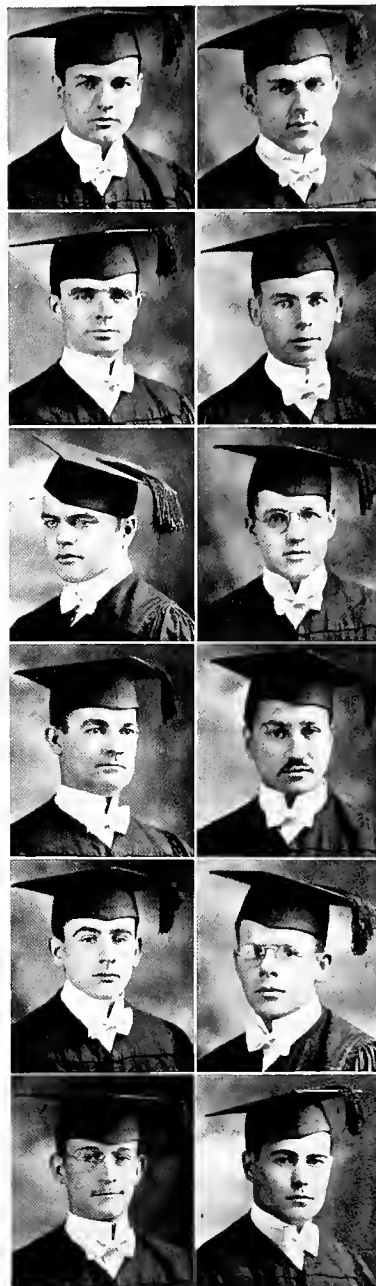
ROTHMAN, HERMAN L., LL.B.
PITTSBURGH, PENNSYLVANIA

SADLER, JOHN D., LL.B.
CLARKSVILLE, TENNESSEE

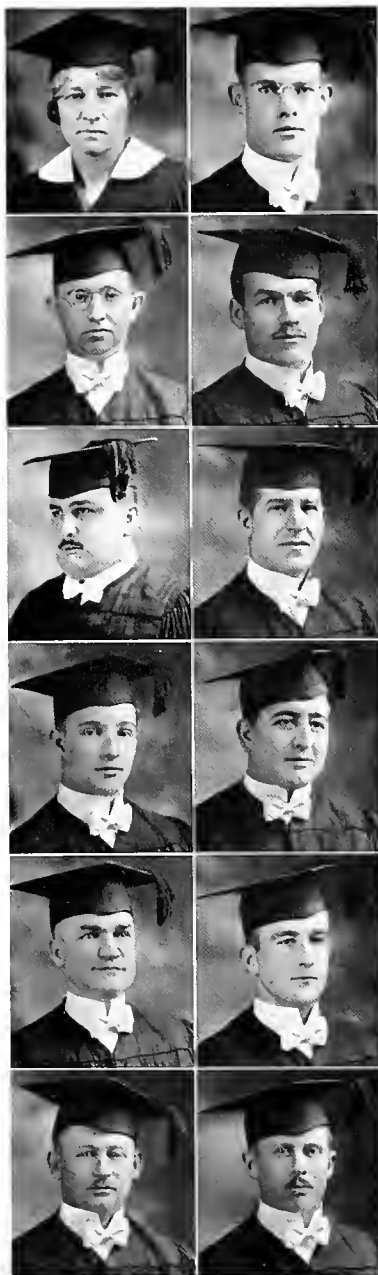
SANDERS, CLIFFORD E., LL.B.
ELK CITY, OKLAHOMA

SEWELL, N. L., LL.B.
OKLAHOMA CITY, OKLAHOMA

SEXTON, THOMAS A., LL.B.
LEBANON, TENNESSEE
Young Democratic Club; Philomathean.



COLLEGE OF LAW — JUNE CLASS



SCHNEIDER, MARY R., LL.B.
LAKELAND, FLORIDA
Florida, Alabama, Mississippi Club; Iota Tau Tau.

SCOFIELD, D. ORLANDO FRANK, LL.B.
INVERNESS, FLORIDA
Lambda Chi Alpha, Florida, Alabama, Mississippi Club.

SHARP, J. ODUS, LL.B.
CUMBERLAND GAP, TENNESSEE
Square and Compass Club.

SHELDON, RAYMOND, LL.B.
TAMPA, FLORIDA
Treasurer, Florida, Alabama, Mississippi Club.

SHERMAN, ABRAHAM, LL.B.
CLARKSDALE, MISSISSIPPI

SKILLMAN, ROY G., LL.B.
FAYETTE, MISSOURI
Barrister's Club; Philomathean.

SMITH, GEORGE R., LL.B.
NASHVILLE, TENNESSEE

SMITH, J. D., JR., LL.B.
HUNTSVILLE, ALABAMA

SMITH, LAWRENCE O., LL.B.
VAN VLEET, MISSISSIPPI
Florida, Alabama, Mississippi Club.

SINGLETON, JAMES A., LL.B.
RED SPRINGS, NORTH CAROLINA
Young Democratic Club; Philomathean.

STOKES, BRYER R., LL.B.
SPRINGFIELD, MISSOURI
Missouri Club; Philomathean.

STOKES, LYNN A., LL.B.
SPRINGFIELD, MISSOURI
Missouri Club; Philomathean.

COLLEGE OF LAW — JUNE CLASS

STONE, GLADYS, LL.B.
MARLOW, OKLAHOMA
Secretary, Oklahoma Club.

STUMP, BEN E., LL.B.
CASSVILLE, MISSOURI

TALLMAN, PAULINE ELECTA, LL.B.
COOKEVILLE, TENNESSEE
Tennessee Club; Philomathean.

TAYLOR, ROBERT, LL.B.
LEBANON, TENNESSEE
Tennessee Club; Philomathean.

TEMPLETON, EWIN C., LL.B.
FAYETTEVILLE, TENNESSEE
Tennessee Club.

TEMPLETON, HARRY C., LL.B.
WINCHESTER, TENNESSEE
Barrister's Club.

TERRY, JAMES C., LL.B.
LEBANON, TENNESSEE
Young Democratic Club.

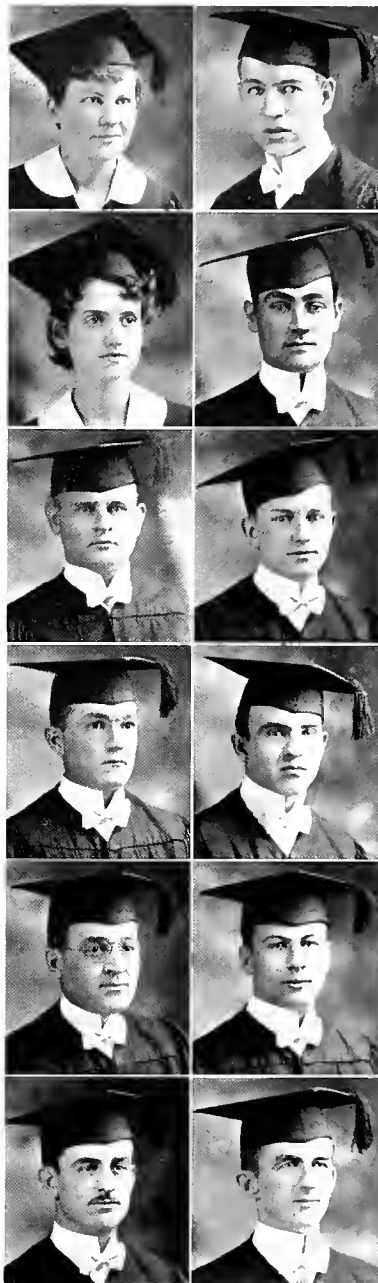
THACKSTON, GUY C., LL.B.
LEBANON, TENNESSEE
Lambda Chi Alpha.

THARP, MILTON, LL.B.
NASHVILLE, TENNESSEE

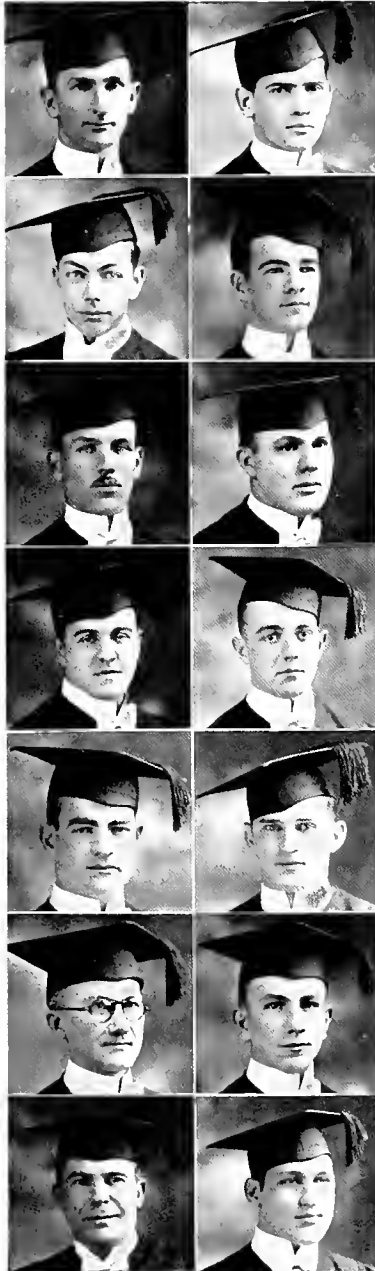
TROELL, ARTHUR R., LL.B.
PLEASANTON, TEXAS
Philomathean; Texas Club.

TUNSTILL, GRANVILLE G., LL.B.
FORT WORTH, TEXAS

TUTEN, EDGAR L., LL.B.
FOLEY, FLORIDA
Square and Compass Club; Florida, Alabama,
Mississippi Club; Philomathean.



COLLEGE OF LAW — JUNE CLASS



UNDERWOOD, ROBERT B., LL.B.
DE FUNIAK SPRINGS, FLORIDA
Florida, Alabama, Mississippi Club; Circle Club

WALTERS, MAHLON L., JR., LL.B.
MARSHALL, TEXAS
Lambda Chi Alpha; Philomathean; Texas Club.

WEAR, HUNTER, LL.B.
SPRINGFIELD, MISSOURI
Vice President, Philomathean; Barrister's Club.

WELSH, ROBERT F., LL.B.
SPRINGFIELD, MISSOURI
Barrister's Club; Missouri Club; Philomathean.

WICHMER, FRED B., LL.B.
ST. JOSEPH, MISSOURI

WINE, CHARLES C., LL.B.
CARTHAGE, MISSOURI
Circle Club; Missouri Club; Philomathean; Square
and Compass Club.

WOLFE, MARTIN ROGER, III, LL.B.
MARTINS FERRY, OHIO

WHITSITT, HORACE W., LL.B.
PARAGOULD, ARKANSAS

WILLIAMS, JACK T., LL.B.
LONGVIEW, TEXAS
Sigma Alpha Epsilon.

WILSON, JAMES E., LL.B.
NASHVILLE, TENNESSEE
Lambda Chi Alpha; Tennessee Club.

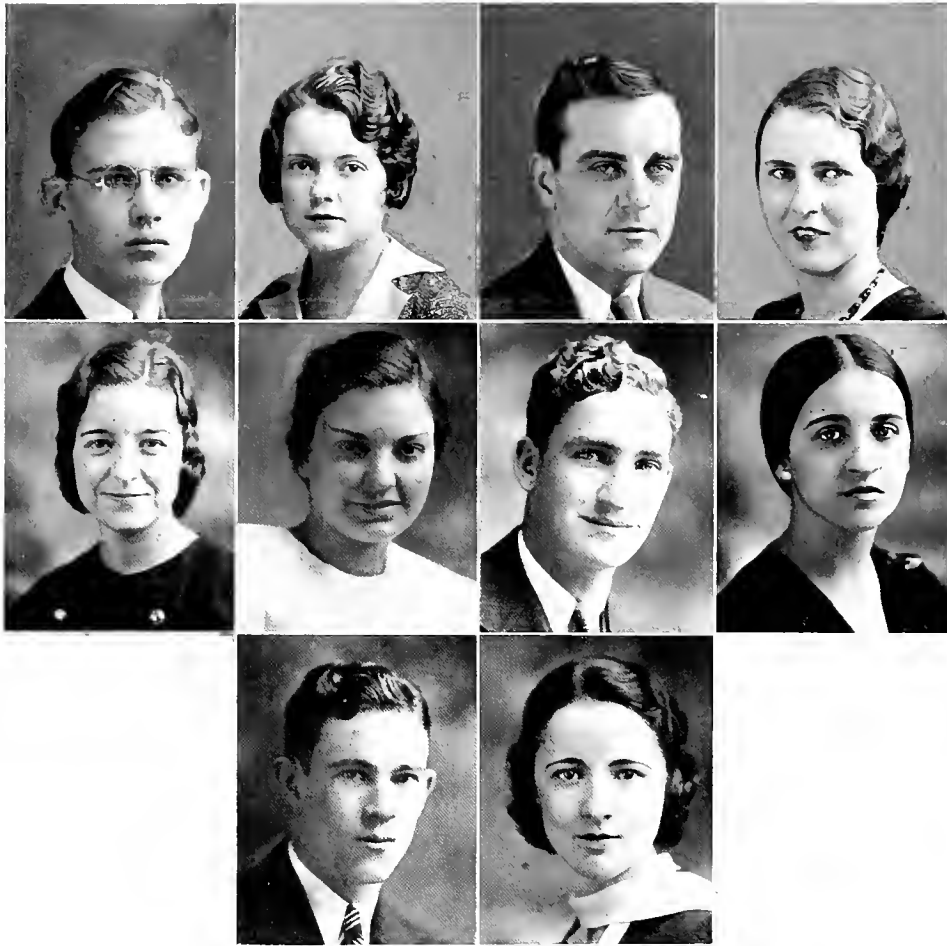
WINTERS, M. O., LL.B.
SPRINGFIELD, TENNESSEE

WOOD, ALBERT W., LL.B.
SWEETWATER, TENNESSEE

WRIGHT, NOLEN L., LL.B.
NASHVILLE, TENNESSEE
Sigma Delta Kappa; Shrine Club; Philomathean;
Band; Square and Compass Club.

YANSKEY, JOHN J., LL.B.
JEFFERSON CITY, MISSOURI
Philomathean; Missouri Club.

JUNIORS



JUNIOR CLASS

College of Arts and Sciences

WILLIAM KERR
BASSETT
PROVIDENCE, KY.
Sigma Alpha Epsilon

SARAH FLOWERS
KENTON, TENN.
Delta Phi Omega.

HELEN DAVIS
LAGUARDO, TENN.
Sigma Delta Sigma.

EMMA HIBBETT
LEBANON, TENN.
SHANNON ROBISON
OAKLAND, MISS
Sigma Alpha Epsilon.

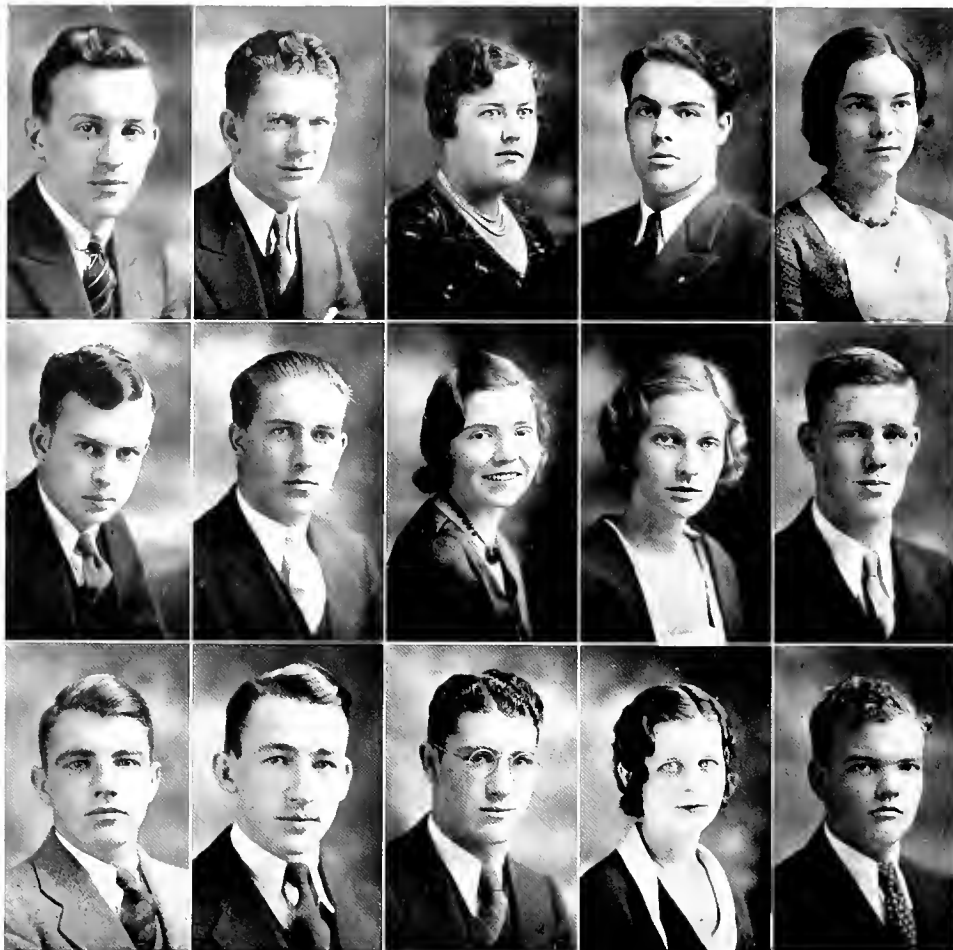
BEN C. DAVIS
WATERTOWN, TENN.

LYNDON JENNINGS
LEBANON, TENN.
MARY ETHEL TUCKER
ASHLAND CITY, TENN.
Sigma Delta Sigma

MABEL DAVIS
WATERTOWN, TENN.

MILDRED MAPLES
ATHENS, ALA.

SOPHOMORES



SOPHOMORE CLASS

College of Arts and Sciences

JACK ALBERA
BELLEVILLE, N. J.
Delta Kappa Phi.

JAMES BOMAR
TULLAHOMA, TENN.

ELANOR BURNETT
MT. JULIET, TENN.

FRANK
CARPENTER
WATERBURY, VT.
Sigma Alpha Epsilon.

BETTY CHILDS
SPENCERPORT, N. Y.

JAMES CLARK
FAYETTEVILLE, TENN.
Delta Kappa Phi.

LESTER MATHER
LANGHORNE, PENN.

CATHERINE
McCLAIN
LEBANON, TENN.
Sigma Delta Sigma.

AGNES McDANIEL
LEBANON, TENN.
Sigma Delta Sigma.

JAMES ORR, JR.
ROCKWOOD, TENN.

RICHARD PALMER
LEBANON, TENN.

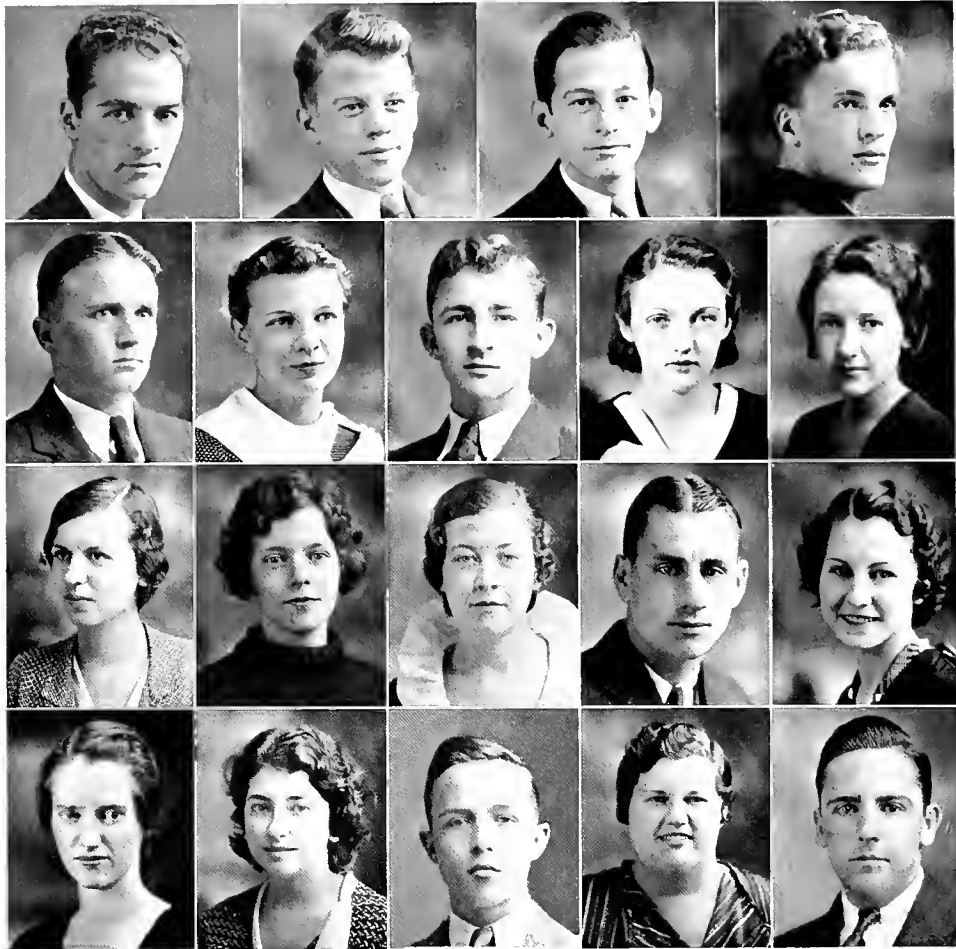
ROY SMITH
PETERSBURG, TENN.

HAROLD STEPHENS
SHELBYVILLE, TENN.

CORRINE TRAMEL
LIBERTY, TENN.

CON. WELSH
SAVANNAH, TENN.

FRESHMEN



FRESHMAN CLASS

College of Arts and Sciences

JERRY R. BONAVIDA
BELLEVILLE, N. J.

NAP BRIGHAM
DYERSBURG, TENN.

NIP BRIGHAM
DYERSBURG, TENN.

HOWARD BUCKLEY
BELLEVILLE, J. J.

WOODSON CLAY
LEBANON, TENN.

HELEN DOHERTY
DONIPHAN, MO.

LINDSEY DONNELL
LEBANON, TENN.

FREDA ELLIS
POMPTON SPRINGS, N. J.

CHRISTINE ESKEW
LEBANON, TENN.

FRANCES ESKEW
LEBANON, TENN.

DOROTHY FULTS
TRACY CITY, TENN.

BARBARA GWIN
HARTSVILLE, TENN.

BRICE HALL
LEBANON, TENN.

OPHELIA HALL
LEBANON, TENN.

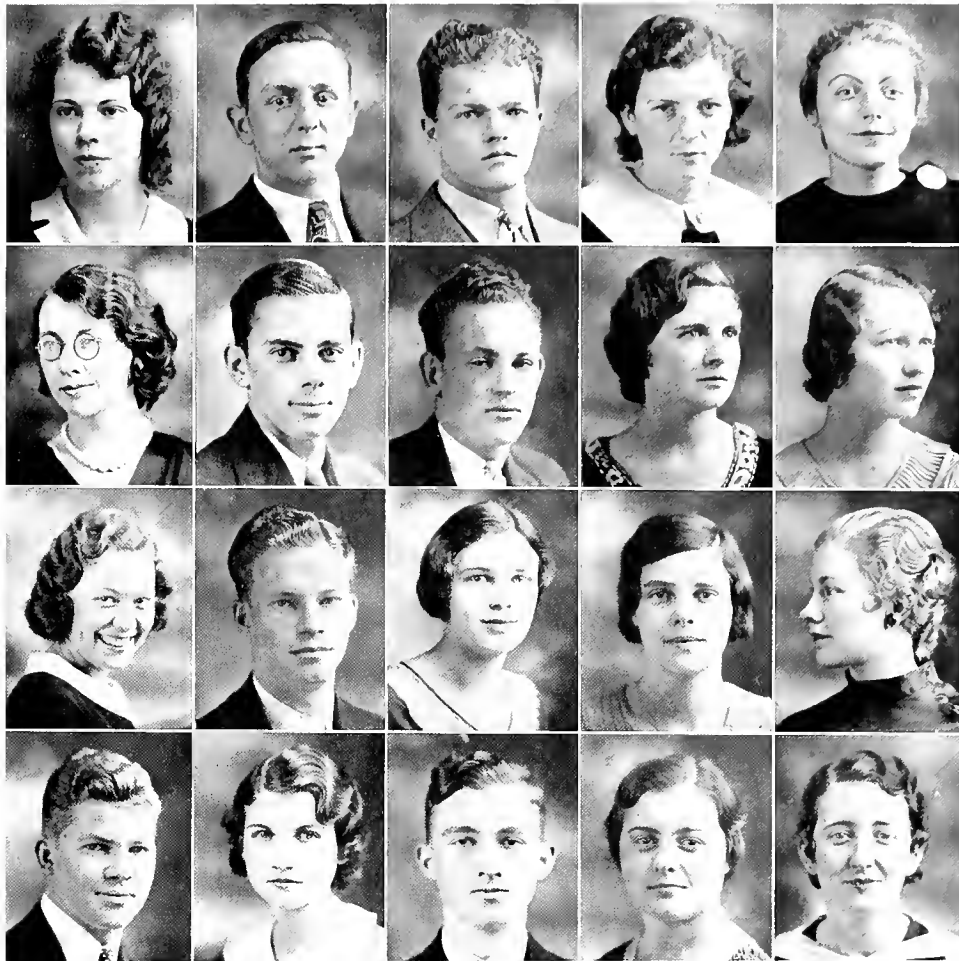
SARAH HARRIS
LEBANON, TENN.

ADA HEREFORD
LEBANON, TENN.

WILLIAM HINSON
LEBANON, TENN.

ELIZABETH
HOWARD
COWAN, TENN.

SAM JARVIS
S. CANALTON, KY.



FRESHMAN CLASS

College of Arts and Sciences

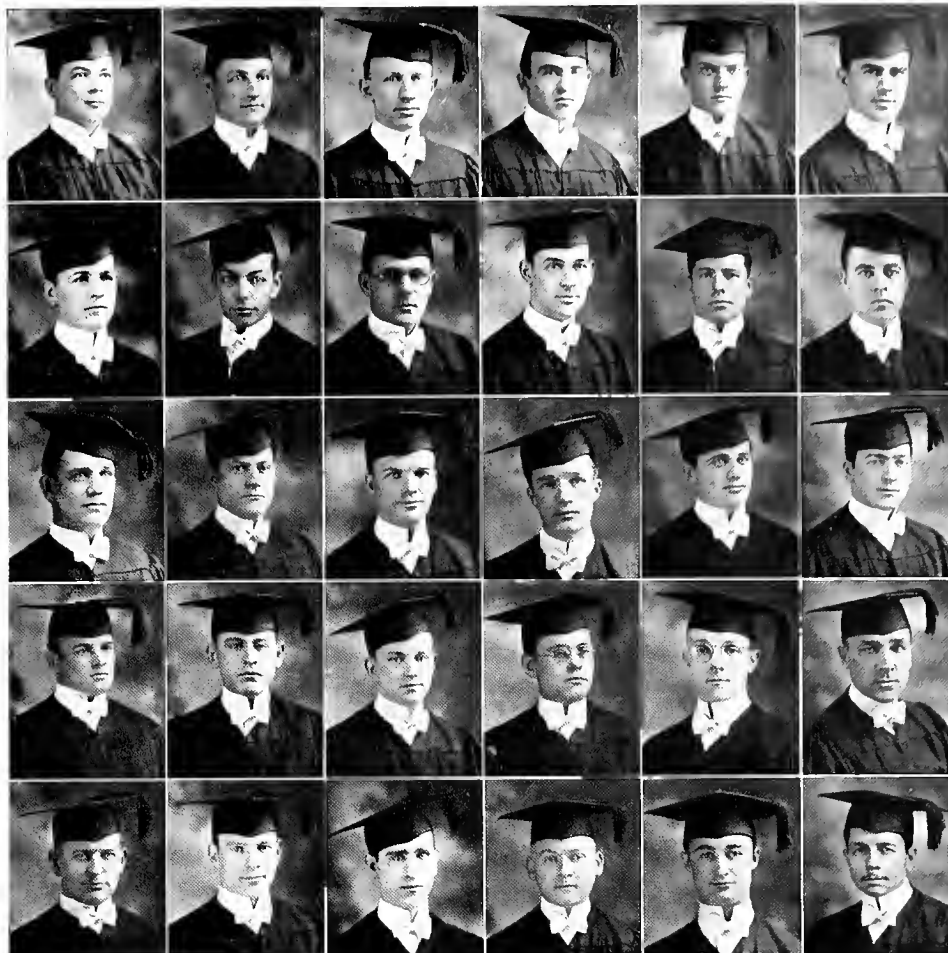
DOROTHY JOHNSON LEBANON, TENN.	JAMES KANNON CULLEORA, TENN.	ROBERT LEWIS NIOTA, TENN.	MARTHA LIST SODDY, TENN.	DOROTHY LOUDON CINCINNATI, OHIO
FLORENCE MCALISTER DETROIT, TEXAS	JAMES MCFARLAND LEBANON, TENN.	PRENTICE MOREY BARABOO, WIS.	LAURA OWEN HARTSVILLE, TENN.	BLANCHE PATY LEBANON, TENN.
EVELYN PRITCHARD LEBANON, TENN.	LOVELL ROUSSEAU LEBANON, TENN.	ALINE SPEARS LEBANON, TENN.	CARRIE SPEARS LEBANON, TENN.	JESSIE STUBBLEFIELD HARTSVILLE, TENN.
DAVID TAYLOR, JR. DYERSBURG, TENN.	MARY NEIL THACKSTON LEBANON, TENN.	GODWIN WILLIAMS, JR. DYERSBURG, TENN.	VIOLET WILSON MCMINNVILLE, TENN.	HELEN WARE YOUNG SMITHVILLE, TENN.

In Memoriam
BROWN RAMSEY
SMOOT



ORGANIZATIONS





BLUE KEY NATIONAL HONORARY FRATERNITY

ASHMORE, FISHER, HARALSON, THACKSTON, McCULLY, GILBERT
 MAYFIELD, WEIR, L. BRADLEY, MEEKER, C. MARTIN, HILL
 W. BRADLEY, BLOUGH, GREEN, HALEY, LITTLE, NESBIT
 LYTAL, BAIRD, TEMPLETON, REES, CALHOUN, GARTHWAITE
 E. C. MARTIN, BOYD, HAWKS, BRATTON, TROXLER, SUAVE

Officers of First Semester

LAKE H. LYTAL *President*
 JOHN TROXLER *Vice President*
 DOC MASSIE *Secretary-Treasurer*

Officers of Second Semester

EARLE B. MAYFIELD, JR. *President*
 HARRY TEMPLETON *Vice President*
 FRED HALEY *Secretary-Treasurer*

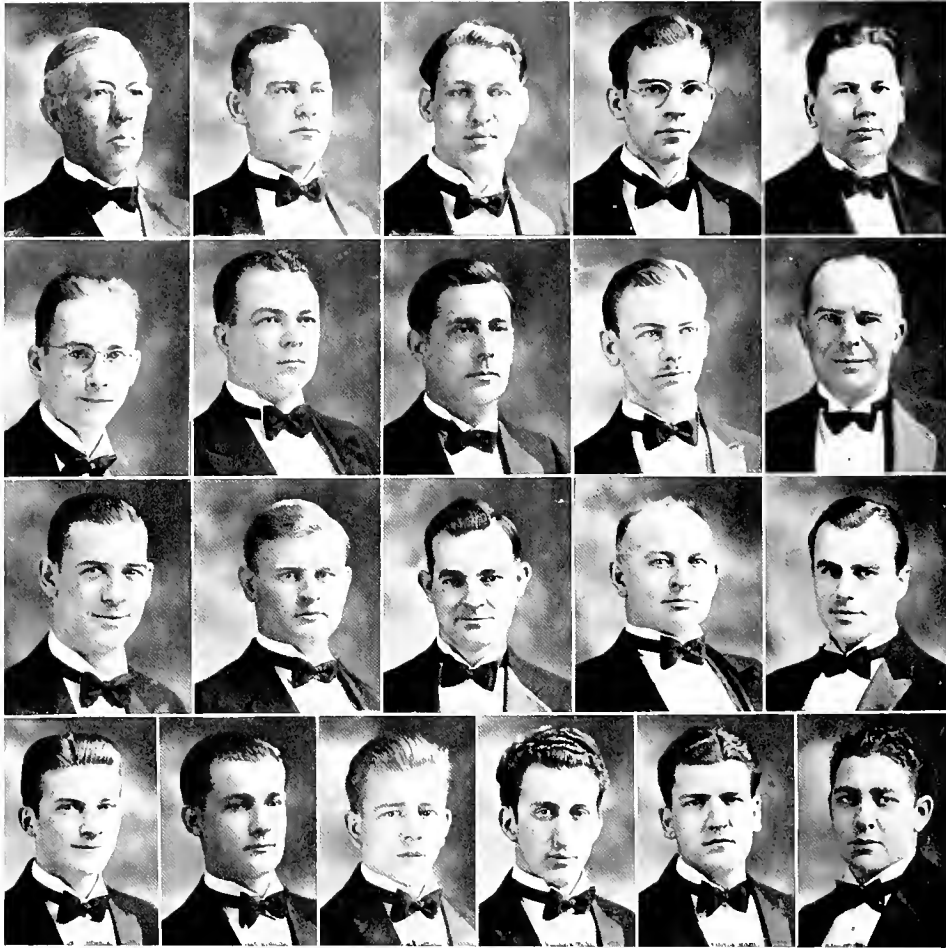
ROLL

ROY FISHER
 LAKE LYTAL
 ELMER RIDDLE
 ROBERT ASHMORE
 H. B. GARTHWAITE
 M. M. MEEKER
 LELAND BRADLEY
 JOE B. CUMMINGS

FRANK BRATTON
 DOC MASSIE
 PAUL B. GREEN
 JOSEPH W. BRADLEY
 FRED HALEY
 ELMER MARTIN
 HARRY TEMPLETON
 CLAYTON BAIRD

EARLE MAYFIELD, JR.
 JOSEPH HILL
 HUNTER WEIR
 ALBERT MOORE
 WILBUR DE ARMAN
 WILLIAM BLOUGH
 ROBERT CALHOUN
 DON BOYD

FRANK HARGIS
 ARTHUR NESBIT
 ROBERT HARALSON, JR.
 NOLEN WRIGHT
 JOHN STEVENS
 HENRY LA RAIA
 JOHN TROXLER
 GUY THACKSTON



SIGMA DELTA KAPPA LEGAL FRATERNITY

JUDGE A. B. NEIL, BAIRD, YANSKEY, LASSITER, HARGIS
ALLEN, ASHMORE, BOOTH, HARTSFIELD, WRIGHT
MEEKER, TEMPLETON, ROSE, MARTIN, GILBERT
O'DONNELL, WARREN, KELLEY, GLASSCOCK, A. MOORE, H. MOORE



SIGMA DELTA KAPPA

Intercollegiate Legal Fraternity

Founded at University of Michigan, 1914



Pi Chapter

Established at Cumberland University, February 5, 1924



J. FRANK HARGIS, Tenn.	<i>Chancellor</i>	C. A. LINEBARGER	Arkansas
ALBERT S. MOORE, Mo.	<i>Vice Chancellor</i>	O. H. BOOTH	Virginia
PORTER HARTSFIELD, Miss.	<i>Chaplain</i>	WILLIAM D. RELLY.	Arkansas
WILLIAM HANCE LASSITER, Tenn.	<i>Secretary</i>	ROBT. B. GILBERT	Georgia
NOLEN L. WRIGHT, Tenn.	<i>Treasurer</i>	MIKE GLASSCOCK	Texas
E. B. ALLEN, JR., Tenn.	<i>Bailiff</i>	WILLIAM L. ROSE.	Florida
HENRY G. WARREN	Mississippi	PHILLIP O'DONNELL	Pennsylvania
E. C. MARTIN.	Missouri	MAHLON M. MEEKER.	Iowa
CLAYTON R. BAIRD.	Tennessee	JOHN J. YANSKEY.	Missouri
ROBERT W. ASHMORE.	Florida	EDWIN C. TEMPLETON	Tennessee
		JUOGE A. B. NEIL.	<i>Faculty Member</i>

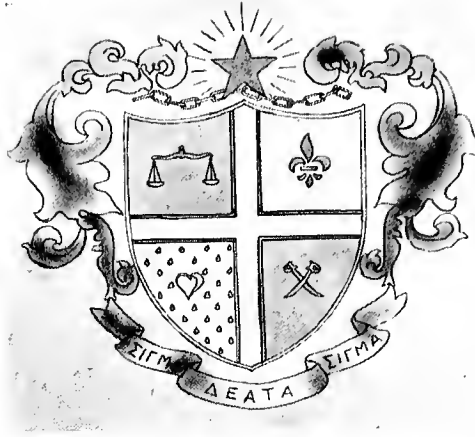


SIGMA DELTA SIGMA SORORITY

CATHERINE McCLAIN, MARGARET TURNER, SUE SUMMERS, HELEN DOHERTY

FRANCES SHERRELL, MARY ETHEL TUCKER, HELEN DAVIS

JESSIE STUBBLEFIELD, HELEN ELKINS, AGNES McDANIEL, RUTH TRONLER



SIGMA DELTA SIGMA

Founded at Cumberland University, November 9, 1926

Alpha Chapter

Colors: Silver and Rose

Flower: Sweetheart Rose

SPONSOR IN URBE

Mrs. WINSTEAD P. BONE, JR.

SORORES IN URBE

Mrs. ROBERT ADAMS
Miss ELSIE MAE ALEXANDER

Mrs. DENTON ROSAMOND
Mrs. WILL D. YOUNG

SOROR IN FACULTATE

Miss MABEL C. JONES

SORORES IN UNIVERSITATE

HELEN DAVIS
HELEN DOHERTY
HELEN ELKINS
CATHERINE McCLAIN
AGNES McDANIEL

ROB NEBLETT
FRANCES SHERRELL
JESSIE STUBBLEFIELD
SUE SUMMERS
MARY ETHEL TUCKER

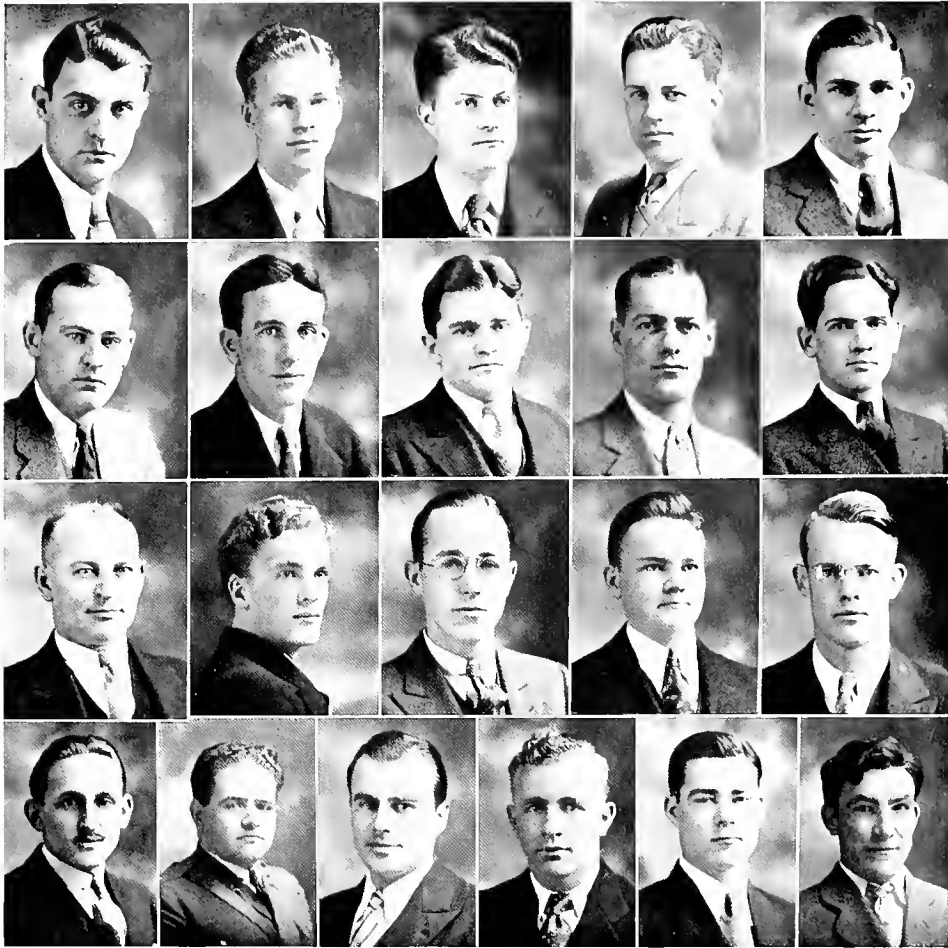
SORORES IN HONORIA

Miss VIRGINIA ADAMS
Mrs. MINERVA FENTON

PATRONESSES

Mrs. EDWARD GRAHAM
Mrs. JOHN HOOKER
Mrs. ALLISON HUMPHREYS
Mrs. DAN INGRAM

Mrs. CHARLES WILLIAMSON
Mrs. GEORGE GOLLADAY
Mrs. GEORGE McDANIEL
Mrs. SCOTT McCLAIN



LAMBDA CHI ALPHA FRATERNITY

CHARLES PURSLEY, LOVELL ROUSSEAU, WILLIAM BLOUGH, THOMAS TORBETT, WILLIAM CLARK
CLAYTON BAIRD, DEAN MARTIN, LAFAYETTE SIMMS, FRANK HICKOX, MAHLON WALTERS
E. C. MARTIN, HOWARD BUCKLEY, JACK WHITE, WILBUR KNAPE, FRANK SCOFIELD
PAUL LITTLE, DANIEL KENDALL, BOB GILBERT, EBIN GILBERT, ROBT. PEDEN, M. NEWMAN



LAMBDA CHI ALPHA

Founded at Boston University, 1909

Colors: Purple, Green, Gold

Flower: Violet

Alpha Sigma Zeta

Established at Cumberland University, April 17, 1917

FRATRES IN FACULTATE

RALPH T. DONNELL, JAMES O. BAIRD

FRATRES IN UNIVERSITATE

ROBERT D. DONNELL
 JACK P. WHITE
 PAUL Y. LITTLE
 GARLAND JENNINGS
 GUY THACKSTON
 HARRY GREEN
 DEAN MARTIN
 THOS. MARTIN
 JAMES MARTIN
 LOVELL H. ROUSSEAU
 WILLIAM H. BLOUGH

FREDERICK C. BLAKE
 WILBUR T. KNAPE
 ROBERT B. GILBERT, JR.
 E. C. MARTIN
 C. A. LINEBARGER
 ROBERT F. PEDEN
 CHAS. R. PURSLEY
 MAHLON L. WALTERS
 CLAYTON R. BAIRD
 ROBERT L. O'BRYAN
 FRANK SCOFIELD

H. V. CHAPMAN
 FRANK F. HICKOX
 ROBERT LINDSEY DONNELL
 WILLIAM CARL CLARK
 WILLIAM HENRY HINSON
 DANIEL DAVID KENDALL
 THOS. J. TORBETT
 HOWARD POWERS BUCKLEY
 MELVILLE THOS. NEWMAN
 DAN LAFAYETTE SIMMS
 EBEN GILBERT
 TOM A. KELLY

FRATRES IN URBE

ROBERT ADAMS
 WINSTEAD P. BONE
 COMER DONNELL
 RALPH W. PATY

DR. R. DEAN WILKERSON
 R. GWYNN VAUGHAN
 ERNEST WOLFENDEN
 CAPT. J. COVERDALE

MARCUS CLEMER
 W. G. CATRON
 ROBERT LESTER

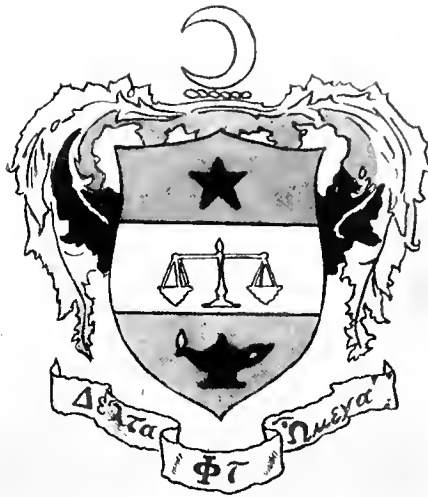


DELTA PHI OMEGA SORORITY

ANN SINGER, LUCY CONNELL, MARGIE ADAMS, EUGENIA FREEMAN

CARALISA BARRY, MADELYN McADOO, JOSEPHINE HARRIS

CLAUDINE SEAGRAVES, DOROTHY LOUDON, SARAH FLOWERS, SARAH HARRIS



DELTA PHI OMEGA

Founded at Cumberland University, November 30, 1926

Tennessee Alpha Chapter

Flower: White Rose

Colors: Orchid and Silver

SPONSOR IN URBE

Mrs. Frank Hickox

SORORES IN UNIVERSITATE

MARGIE ADAMS	Texas	SARAH HARRIS	Tennessee
LUCY CONNELL	Tennessee	MARY KATHERYN KLEYENSTEUBER	Tennessee
HARRIET EDGERTON	Tennessee	DOROTHY LOUDON	Ohio
SARAH ELEANOR FLOWERS	Tennessee	MADELYN McADOO	Tennessee
EUGENIA FREEMAN	Tennessee	CLAUDINE SEAGRAVES	Tennessee
JOSEPHINE HARRIS	Tennessee	ANN KRAFT SINGER	Kentucky

SORORES IN URBE

Mrs. RALPH PATY
Mrs. A. C. HALEY
Mrs. VICTOR MILLER

MATTIE WALKER
KATHERYN VAUGHAN
VIRGINIA MAJOR

SORORES IN HONARIA

Mrs. WILLIAM BLOUGH

Mrs. VANCE TILLEY

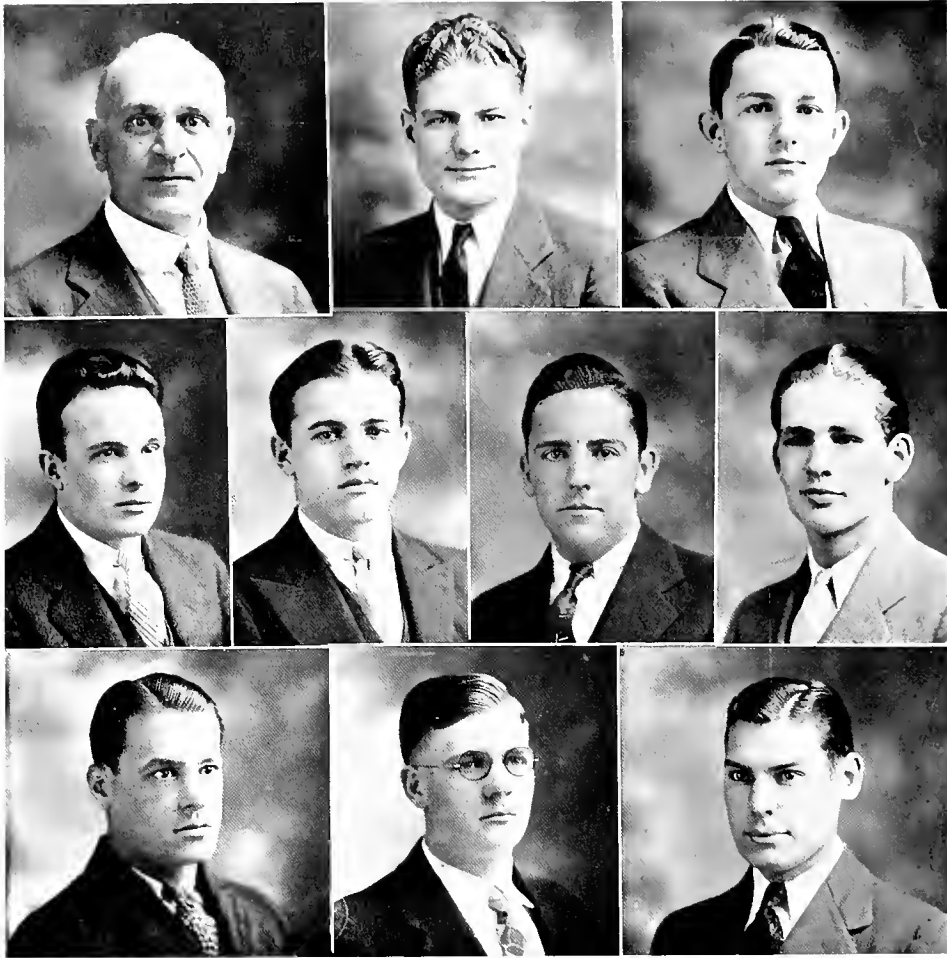
CARALISA BARRY

PATRONESSES

Mrs. C. TRAVIS BONNER
Mrs. MARK CLEMER
Mrs. DEAN WILKINSON

Mrs. GWYNN VAUGHAN

Mrs. SAM S. BONE
Mrs. EDWARD WALDRUM
Mrs. J. CARR ARNETT



DELTA KAPPA PHI FRATERNITY

DR. GEORGE SAVERIO, WINTHROP BALLARD, JOHN CORBITT, JR.
BURRITT F. SMITH, WOODROW WILSON, SAMUEL JARVIS, BERNARD S. CLOSE
GEORGE N. SADKA, LELAND BRADLEY, WALTER SMITHWICK



DELTA KAPPA PHI

Founded at Marshall College, Huntington, West Virginia, March 31, 1929

Colors: Gold, Red, and Black

Flower: Red Rose

Eleven Active Chapters



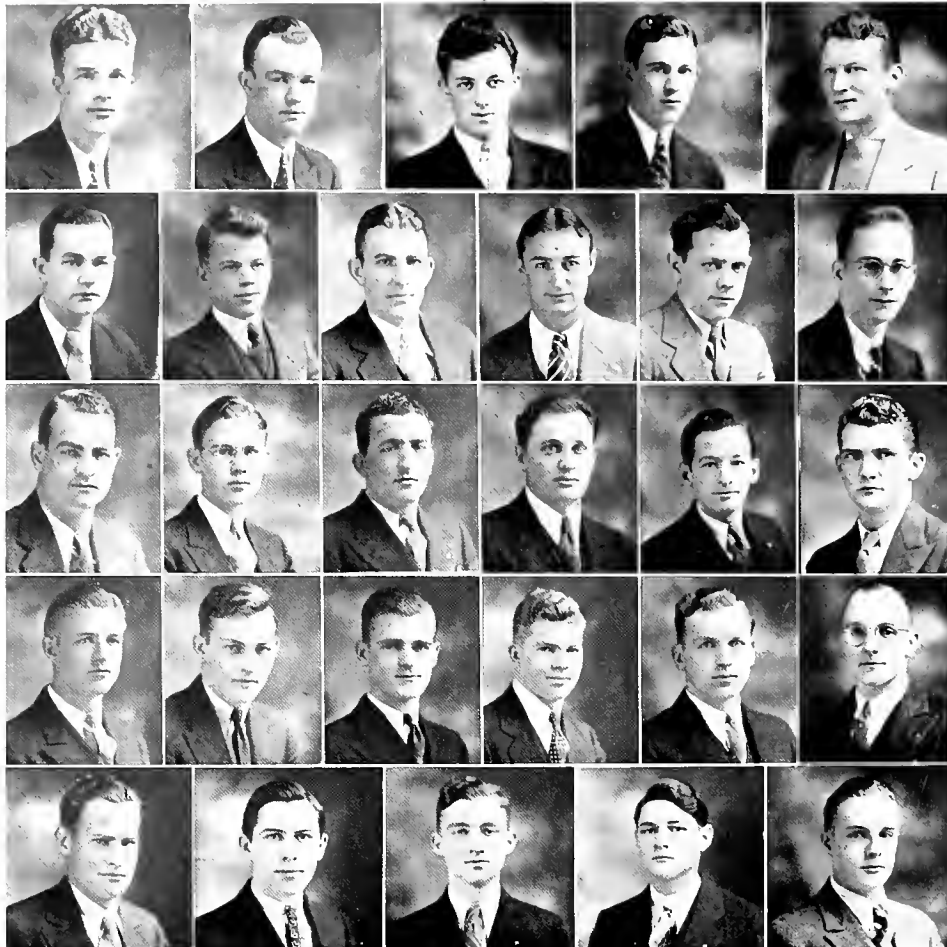
Epsilon Chapter

Founded, March 31, 1929

GEORGE N. SADKA	<i>President</i>	Meridian, Mississippi
BURRITT F. SMITH	<i>Vice President</i>	S. Hadley Falls, Massachusetts
JOHN CABLER CORBITT, JR.	<i>Secretary</i>	Nashville, Tennessee
BERNARD S. CLOSE	<i>Corresponding Secretary</i>	Belleville, New Jersey
WOODROW WILSON	<i>Treasurer</i>	McMinnville, Tennessee
WALTER SMITHWICK	<i>Guard</i>	Lebanon, Tennessee
WINTHROP J. BALLARD	<i>Custodian</i>	Barre, Vermont
JAMES P. CLARK	<i>Reporter</i>	Fayetteville, Tennessee
DR. E. GEORGE SAVERIO	<i>Advisor</i>	Lebanon, Tennessee
DR. ROBERT J. WHERRY		Lebanon, Tennessee
W. CORNELIUS BREEDLOVE		Nashville, Tennessee
DAVID PREHODA		Turtle Creek, Pennsylvania
JAMES PREHODA		Turtle Creek, Pennsylvania
SAMUEL JARVIS		Central City, Kentucky
GEORGE PRICE		Belleville, New Jersey
MAX TILGHMAN		Kenton, Tennessee
WILSON WEST		Nashville, Tennessee
DENTON ROSAMOND		Meridian, Mississippi

• Epsilon Chapter of DELTA KAPPA PHI was founded at Cumberland University on March 31, 1929. Since the installation of Epsilon Chapter, the fraternity has gone forward with leaps and bounds and numbered among its members each year have been students active in all affairs of the university.

• Prominent in its membership this year are Max Tilghman, president of the senior class and Bachelor of Ugliness of the academic department and Business Manager of "The Collegian"; Woodrow Wilson, president of the freshman class and quarterback on the football team; Wilson West, secretary-treasurer of the freshman class and center on the Bulldog eleven; Dave Prehoda, captain of the basketball team and member of the football squad; and Bernard S. Close, W. Cornelius Breedlove and Wilson West, Publicity Directors for the university.



SIGMA ALPHA EPSILON FRATERNITY

F. HALEY, HOPKINS, KNOX, ROBISON, LOFTON
 THOMPSON, BRIGHAM, DRINNON, TROXLER, ADAMS, ALLEN
 WILLIAMS, BASSETT, A. C. HALEY, RIDDLE, BRIGHAM, APPLEBY
 DAVIS, CURTISS, ALCOTT, TAYLOR, JOHNSON, CALHOUN
 PITCHFORD, FLEMMING, WILLIAMS, CUMMINGS, ASKEW



SIGMA ALPHA EPSILON

Founded at the University of Alabama, March 9, 1856

Colors: Purple and Gold

Flower: Violet

Tennessee Lambda Chapter

Founded in 1860

FRATER IN FACULTATE
DEAN WILL D. YOUNG

FRATRES IN UNIVERSITATE

THOMAS GILBERT ADAMS.	Texas	GEORGE JACKSON.	Tennessee
A. D. ALCOTT, JR.	Tennessee	MURRAY JOHNSON.	Tennessee
EDMUND B. ALLEN, JR.	Tennessee	WILLIAM DONALD KNOX.	Pennsylvania
CECIL APPLEBY.	Tennessee	JOHN LOFTON.	Ohio
JAMES ASKEW.	Tennessee	FRANK LONG.	Tennessee
WILLIAM KERR BASSETT.	Tennessee	K. C. MILLER.	Texas
JAMES BLACKBURN.	Tennessee	LOGAN FRANCIS MOCK.	Missouri
NAP BRIGHAM.	Tennessee	HARRY PHILLIPS.	Tennessee
NIP BRIGHAM.	Tennessee	J. R. PHIPPS.	Kentucky
ROBERT L. CALHOUN.	Mississippi	JACK PITCHFORD.	Oklahoma
CHARLIE COLE.	Tennessee	BASIL PRESTON.	Kentucky
JOE BROWN CUMMINGS.	Tennessee	ELMER RIDDLE.	Arkansas
WILLIAM J. CURTIS.	Kansas	SHANNON ROBISON.	Mississippi
FREDERICK DAUGHERTY.	Oklahoma	CLIFFORD E. SANDERS.	Oklahoma
T. J. DAVIS.	Florida	DAVID TAYLOR.	Tennessee
PAUL D. DOLLARHIDE.	Texas	JAMES THOMPSON.	Tennessee
JARVIS DRINNON.	Tennessee	JOHN A. TROXLER.	Tennessee
JOHN FLEMMING.	Pennsylvania	JAMES A. VINES, JR.	Tennessee
I. L. GARLAND.	Tennessee	JOHN H. WALLACE, III.	Alabama
A. C. HALEY.	Tennessee	GODWIN WILLIAMS.	Tennessee
FREDERICK M. HALEY.	Mississippi	JACK WILLIAMS.	Texas
JOHN HOPKINS.	Texas		

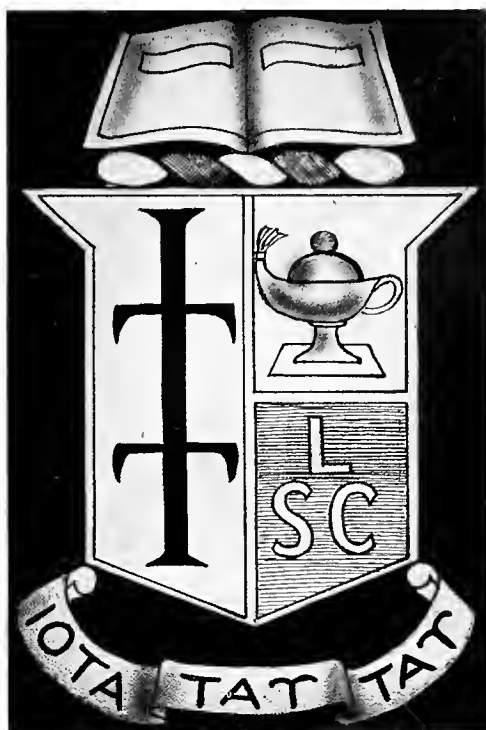
FRATRES IN URBE

ALEXANDER ANDERSON	JAMES ELAM	BURTON W. HUMPHREYS
COL. HARRY L. ARMSTRONG	COL. R. V. ERWIN	JOE SCOTT McCLAIN
ROBERT ASKEW	WILLIAM GREEN	JOHN RUSHING
CURRY DODSON	J. H. GRISSIM	HOMER SHANNON
RUFUS DOAK	M. T. HEARN	GOULD SMITH
E. F. DOAK	ALLISON HUMPHREYS, JR.	SAM R. TURNER



IOTA TAU TAU LEGAL SORORITY

JOSEPHINE HARRIS, SARAH HARDISON, EUGENIA FREEMAN
MRS. MARY SCHNEIDER, GERALDINE VINES, MRS. ROY FISHER, CARALISA BARRY



IOTA TAU TAU

NATIONAL LEGAL HONOR SORORITY

Founded at Southwestern University, Los Angeles, California, 1925

Zeta Chapter

Established at Cumberland University, May 21, 1929

Colors: Purple and Gold

Flowers: Violet and Yellow Rose

SORORES IN UNIVERSITATE

MRS. CECIL ALLEN	Michigan	SARAH HARDISON	Tennessee
CARALISA BARRY	Mississippi	MRS. GEORGE SAVERIO	Tennessee
MRS. HELEN BERRIDGE	Michigan	MRS. MARY R. SCHNEIDER	Florida
MRS. ROY FISHER	Missouri	JULIA TIPPINS	Alabama
EUGENIA FREEMAN	Tennessee	JERRY VINES	Tennessee
JOSEPHINE HARRIS	Tennessee		

OFFICERS—1932

MRS. GEORGE SAVERIO	Dean	EUGENIA FREEMAN	Secretary
MRS. ROY FISHER	Associate Dean	JERRY VINES	Treasurer

OFFICERS—1933

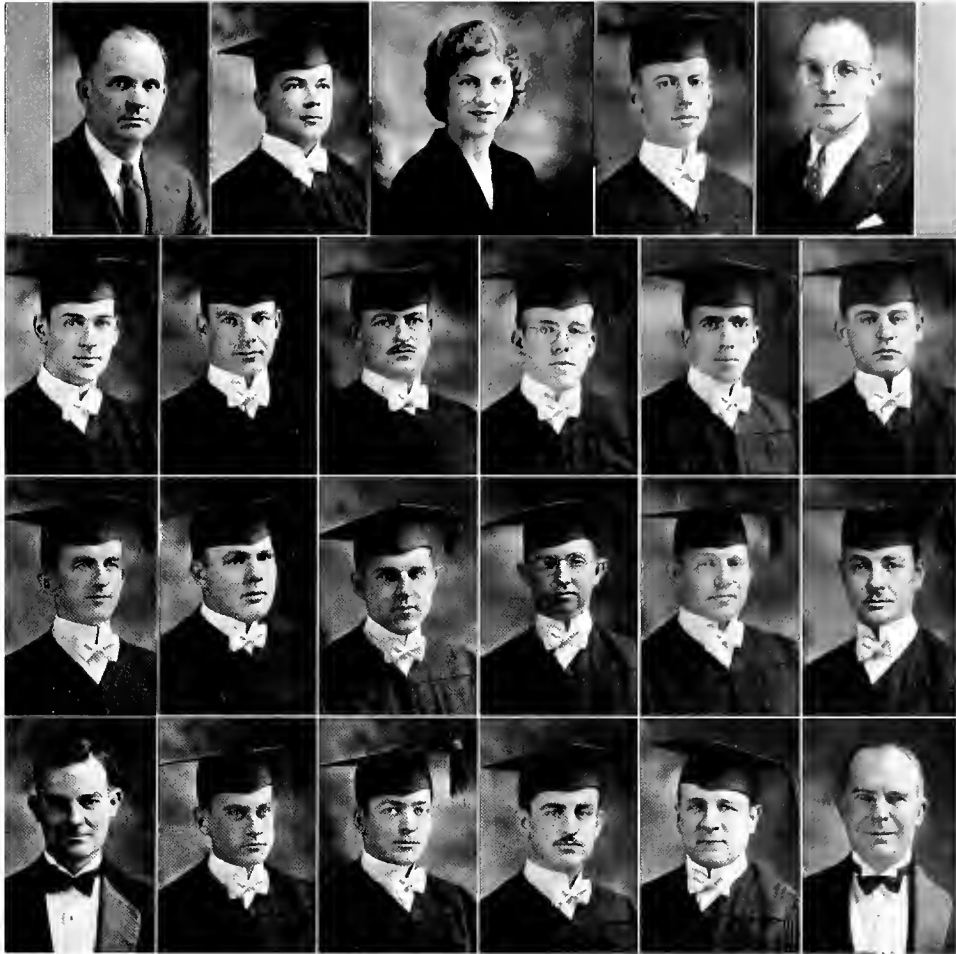
MRS. MARY R. SCHNEIDER	Dean	JOSEPHINE HARRIS	Secretary
MRS. ROY FISHER	Associate Dean	CARALISA BARRY	Treasurer



FLORIDA, ALABAMA, MISSISSIPPI CLUB

HOPKINS, LEWIS, CHESTNUT, HARRIS (Sponsor), H. MOORE, R. ROBERTSON, SHERMANN
BOGGS, TUTEN, J. D. SMITH, BARRY, CALHOUN, R. H. ROBERTSON, LUSTGARTEN
CLIFF, ROSE, HARTFIELD, SCHNYDER, NESBIT, DOVER, SCOFIELD
HALEY, McCULLY, MANNUS, SHELDON, UNDERWOOD, ASHMORE, L. O. SMITH

Organized at Cumberland University, 1933



SQUARE AND COMPASS CLUB

S. G. CARRUTH, ROBERT ASHMORE, GRACE JACKSON (Sponsor), JOHN HEAGERTY, ROBT. CALHOUN
 M. M. MEEKER, DON BOYD, RAYMOND PATTERSON, BURKES DAVIS, W. C. ANDERSON, C. BAIRD
 E. L. TUTON, CHARLES WINE, H. C. RHINE, ODUS SHARP, CHESTER COWAN, CLAUDE WILLIAMS
 WM. ROSE, E. T. HENSLEY, ARTHUR NESBIT, GRANVILLE TUNSTILL, CLAUDE TOLER, N. WRIGHT

Officers of First Semester

M. M. MEEKER President
 ROBERT ASHMORE Vice President
 CHESTER COWAN Secretary-Treasurer

Officers of Second Semester

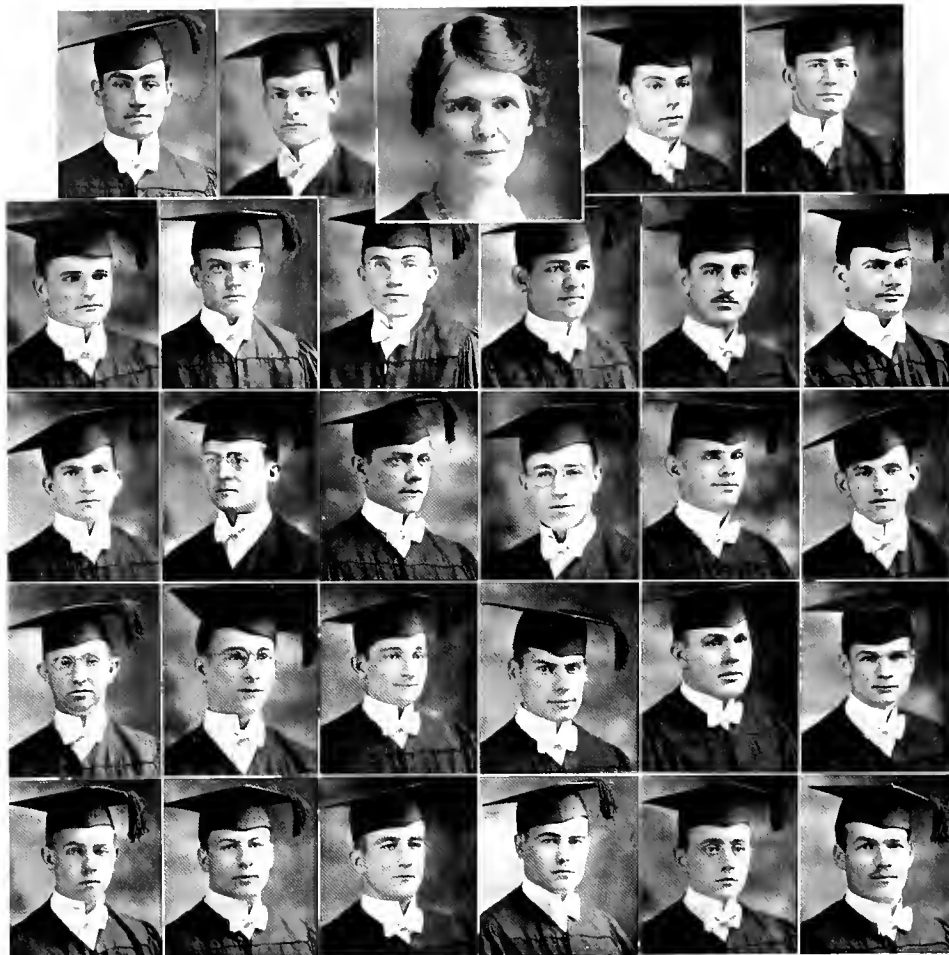
WILLIAM ROSE President
 GRANVILLE TUNSTILL Vice President
 ODUS SHARP Secretary-Treasurer

W. C. ANDERSON
 CLAYTON BAIRD
 DON BOYD
 L. D. BRADLEY
 S. G. CARRUTH
 ROBERT CALHOUN
 BURKES DAVIS
 RAYMOND DOVER
 H. B. GARTHWAITE
 JOHN R. HEAGERTY
 E. T. HENSLEY
 L. D. HOYT

ROLL



J. L. JONES
 R. K. MATTHEWS
 SAM MAY
 ARTHUR NESBIT
 H. L. NEUFFER
 RAYMOND PATTERSON
 H. C. RHINE
 GUY THACKSTON
 CLAUDE TOLER
 E. L. TUTON
 CHARLES WINE
 NOLEN WRIGHT

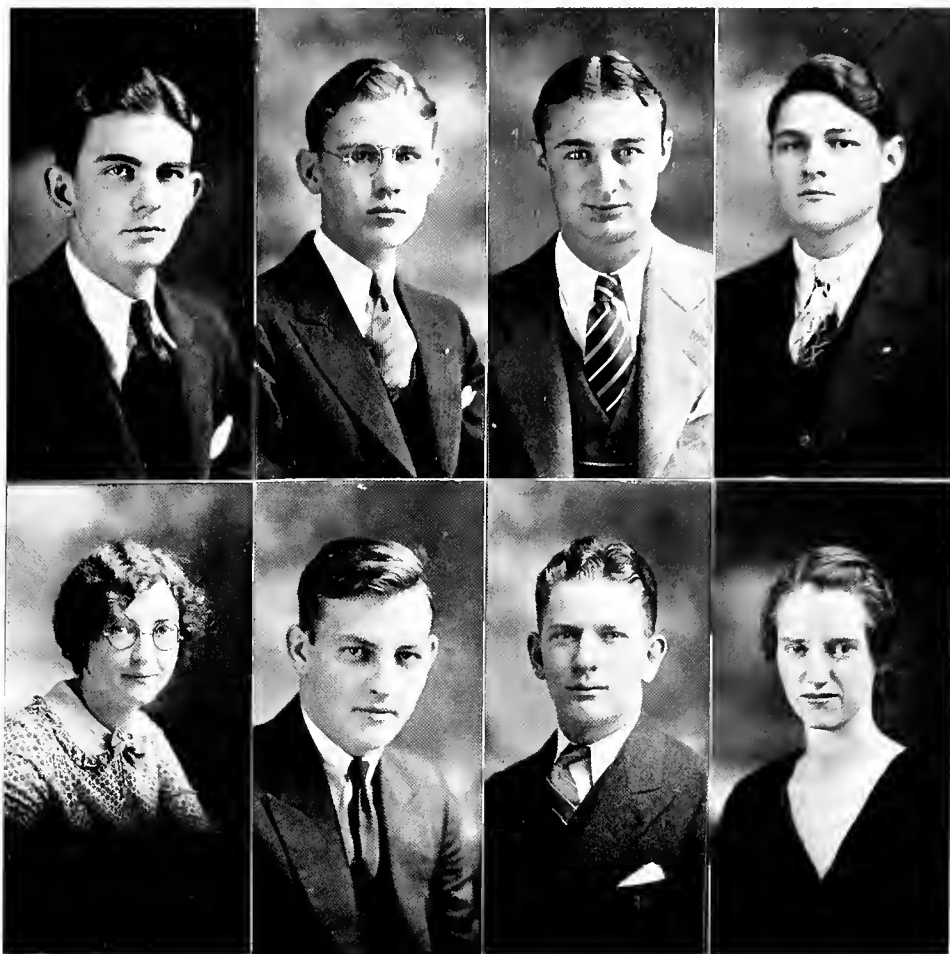


PUBLIC SPEAKING CLUB

MRS. MAE GREGORY ROUSSEAU *Director*

CLINTON N. ASHMORE Florida
 CLARENCE L. BROWN Tennessee
 S. E. CARROLL Tennessee
 DAVID CHEATHAM Tennessee
 WILLIAM HOPKINS Florida
 JOHN HUME Missouri
 OTTO MASTERS Tennessee
 MELVIN MOYER Oklahoma
 JACK RECTOR Tennessee
 JOHN SHARP Tennessee
 WALTER SMITHWICK Tennessee
 GRANVILLE TUNSTILL Tennessee
 JACK WHITE Illinois
 CHARLES WINE Missouri
 SHING NAN WU China
 T. G. ADAMS Texas

E. B. ALLAN Tennessee
 THOMAS BOGGS Alabama
 L. G. BUTLER Tennessee
 BRALY CRAIG Tennessee
 LIEUT. J. C. JACKSON Tennessee
 MURRELL CHAPPEL Texas
 FLOYD QUOTA Texas
 THOMAS SEXTON Tennessee
 JAMES SINGLETON North Carolina
 ARTHUR TROELL Texas
 HULEN WALKER Tennessee
 JOHN MCCULLY Mississippi
 CLARENCE WILSON South Carolina
 ROBERT TAYLOR Tennessee
 RAYMOND SHELDON Florida
 W. CHADDICK Texas



COLLEGIAN STAFF

MAX E. TILGHMAN
Business Manager

WILLIAM KERR BASSETT
Sports Reporter

JOHN TROXLER
Reporter

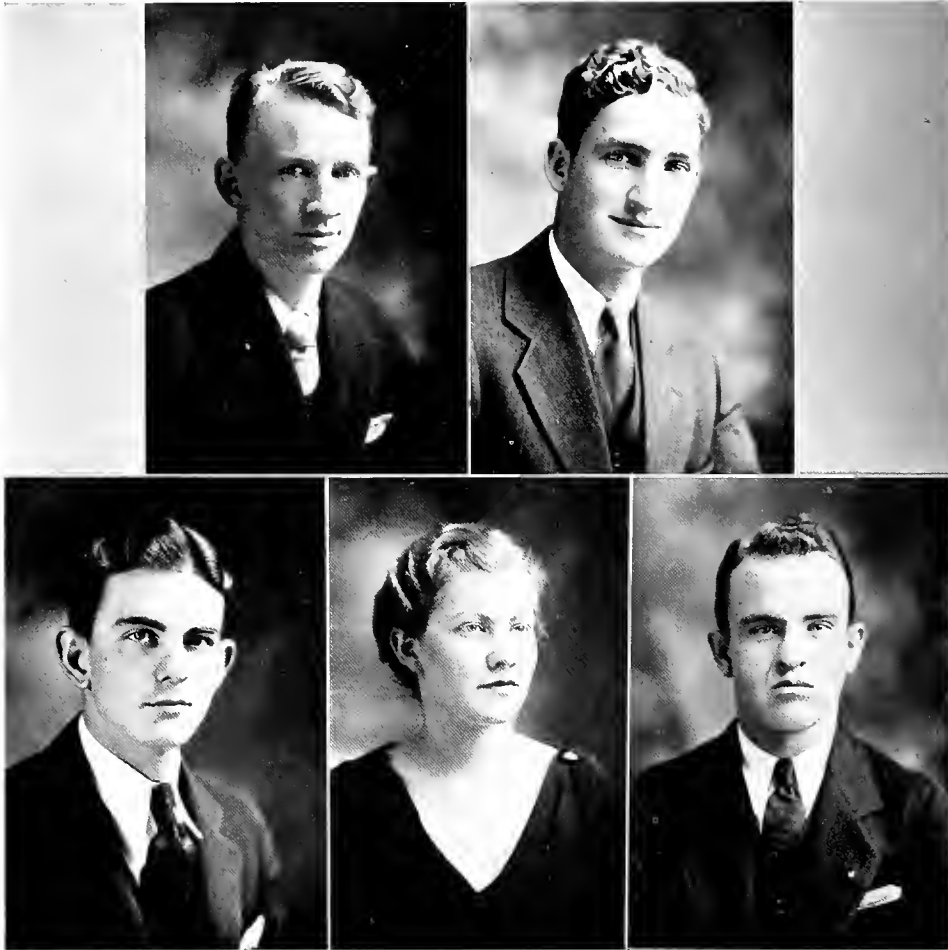
JOE B. CUMMINGS
Editor-in-Chief

JULIA HEREFORD
Associate Editor

BILL CURTISS
Sports Reporter

JAMES BOMAR
Reporter

SARAH HARRIS
News Reporter



PHOENIX STAFF

ROBERT H. HARALSON, JR.
Editor-in-Chief

LYNDON B. JENNINGS
Business Manager

MAX E. TILGHMAN
Sports Editor

JESSIE STUBBLEFIELD
Associate Editor

GUY CARLETON THACKSTON
Law Editor

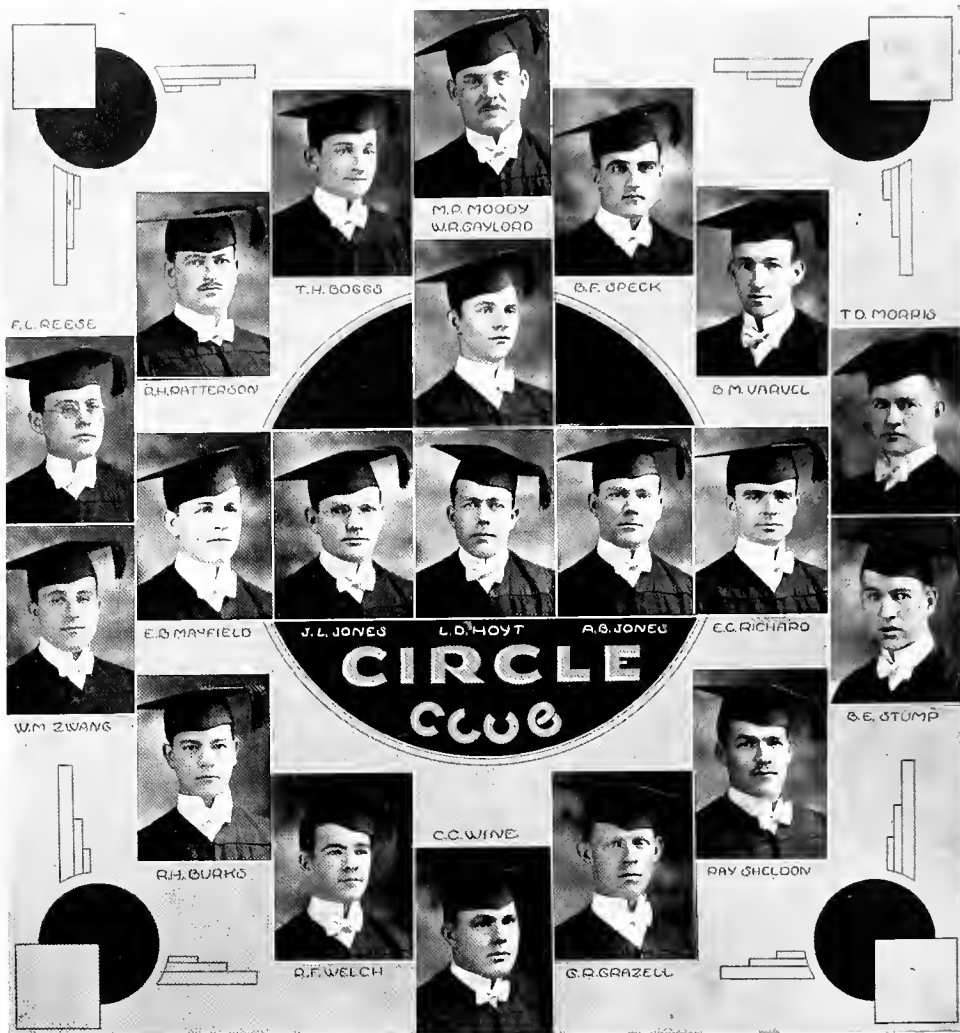


YOUNG WOMEN'S CHRISTIAN ASSOCIATION



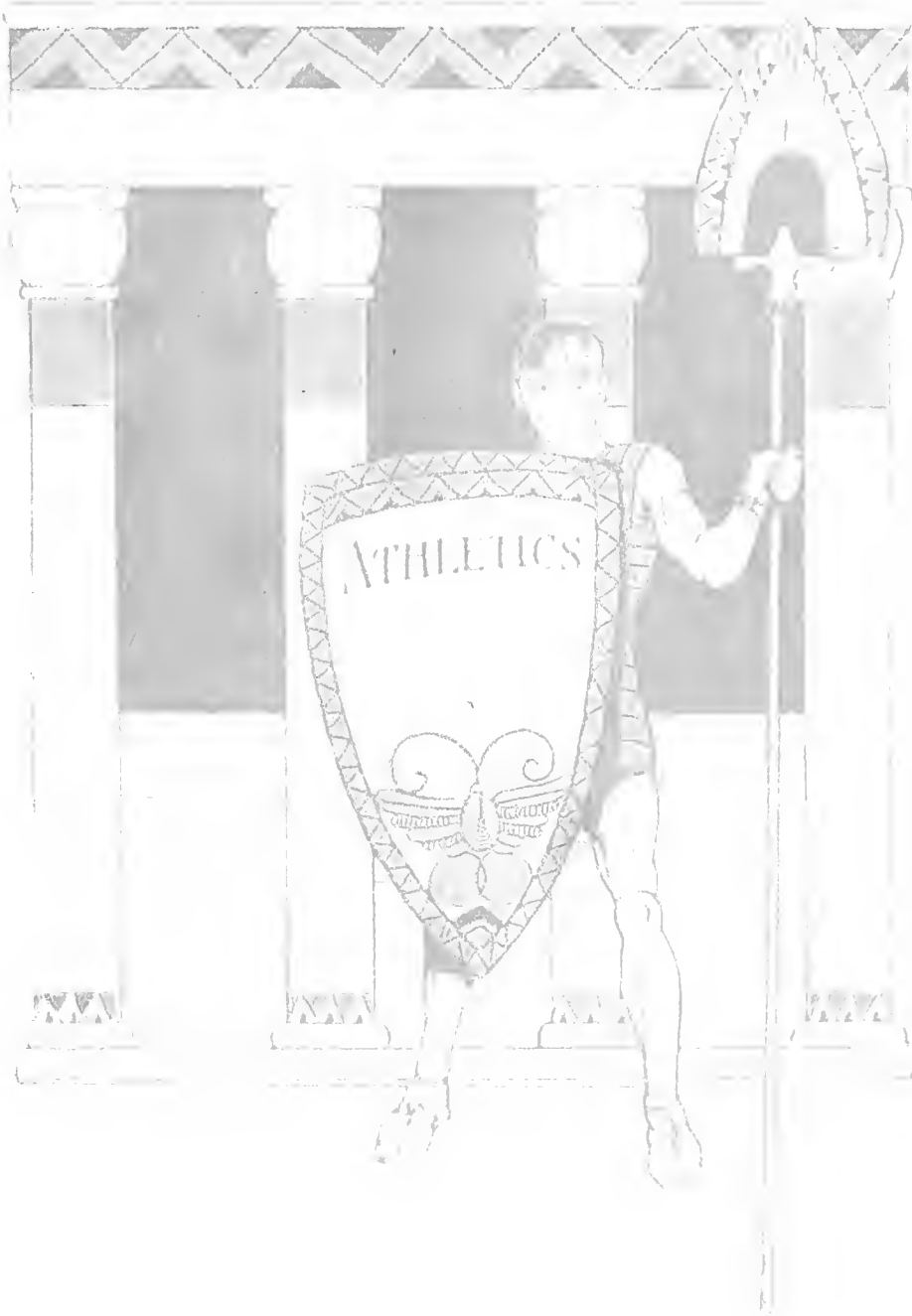
GLEE CLUB

MRS. THEORA FERRELL *Director*



CIRCLE CLUB







GARLAND MORROW *Director of Athletics*



FOOTBALL TEAM

RECORD FOR SEASON

Cumberland	7	Vanderbilt Freshmen	19
Cumberland	0	Hiwassee	13
Cumberland	0	Alabama Teachers	6
Cumberland	13	U. T. Juniors	0
Cumberland	23	Tennessee Wesleyan	0
Cumberland	26	Sewanee Freshmen	14
Cumberland	13	Rollins College	19
Cumberland	7	Austin Peay Normal	0



HOWARD BUTLER
Guard

Howard was the smallest man on the squad and just about the smartest one in the line when it came to diagnosing plays. He was a hard fighter with the true Bulldog spirit. Butler was acting captain in the Alabama game.

CECIL APPLEBY
Guard

Cecil is listed as a guard but he could also play center and was the best man on the team for intercepting passes. He led his team in their first victory of the season against U. T. Junior College.

R. J. MILLER
Halfback

On a sustained march down the field R. J. was the man called on to make those last needed yards. He was a good blocker and a hard man to stop in open field. He captained the Bulldogs in the Vanderbilt game.

WOODROW WILSON
Quarterback

This boy was fast as greased lightning and the best passer on the team. He won a name for himself by his stellar play in the Alabama game.

HARRY GREEN
End

Converted from a back to an end, Harry continued his deadly tackling and devastating blocking. He covered punts well and was a good pass receiver. Harry led the Bulldogs in their first home game against Hiwassee.

BILL LOOMIS
Tackle

An All-State man and Bill lived up to advance information. He was always alert to break through the line and block a punt. His play was of the highest type all during the season and he captained the team in the Wesleyan game.



DAVID AARON
Tackle

This lad was a mountain of strength in the Red line. Fast, aggressive, and hard charging, Dave could be counted on to open up a hole in the line for one of his teammates. He was captain of the team in their victory over Sewanee.



LINDSEY DONNELL
Halfback

Lindsey was heralded as the greatest running back ever to matriculate at Cumberland and he more than lived up to his reputation. As a broken field runner he is unexcelled.

JERRY BONAVIDA
Fullback

Jerry was the inspiration of the team and did a fine job of running, kicking, and blocking. He was the nearest thing to a triple-threat man the Bulldogs had. The team elected him captain for the Rollins game.



EBEN GILBERT
Halfback

"Towhead" was a cool, calm player who always did the right thing. He was always eager to learn and his ability in running and blocking increased as the season advanced.

JIM STRAWBRIDGE
End

Jim was a natural-born end, tall, rangy, and fast. He was a terror at breaking up plays coming his way and his pass receiving throughout the season was sensational.



BOB LEWIS
End

Bob is another smart, alert player who has a bright future. He was one of the best wingmen on the squad and was always in the thick of the fight.



WILSON WEST

Center

Wilson was a hard fighter and a player who handled his pivot position nicely. His passes were always accurate and his tackling sure. He had the honor of leading the team in the Turkey Day classic against Austin Peay.

WALLACE COUCH

Tackle

Wallace was a player who put everything he had in the game and he could always be counted on to stave off a rally. He threw fear into the opponents every time he stalked out on the field.



TOM MARTIN

Halfback

Tom was one of the few men on the squad who had had previous college experience. He was a good passer and a hard man to stop after getting in the open.



CARL CLARK

Guard

Carl was not a flashy player but he was one of the most dependable men on the squad. He took his football seriously and could always be depended upon to do his best under all conditions.



DAN SIMMS

Guard

Dan followed in the footsteps of his brother as an illustrious wearer of the maroon and white. His play was of the highest calibre and he was always an important factor in the Bulldog drives.



WOMEN'S BASKETBALL TEAM

RECORD FOR SEASON

Cumberland 38	East End Methodist 44
Cumberland 34	Belleview Independents 39
Cumberland 39	Methodist All-Stars 22
Cumberland 35	Belleview Independents 14
Cumberland 34	Andrew Jackson College 21
Cumberland 24	Martin College 42
Cumberland 32	Mt. Juliet Independents 30
Cumberland 13	Austin Peay Normal 31
Cumberland 27	Austin Peay Normal 41
Cumberland 34	Mt. Juliet Independents 28

MARY ETHEL TUCKER

. . . was a newcomer to the ranks of the Co-ed team but she soon made her presence felt and clinched a place in the starting lineup with ease. She was an excellent shot and played hard, clean basketball all the season. She will return next year and continue her fine work for Cumberland.

OPHELIA HALL

. . . a veteran member of the team, continued to shoot, pass, and follow with the skill of old. She made an enviable record this season and she will be back again next year to keep her old place on the team.

DOT FULTS

. . . is another yearling, who with a little more seasoning will make a top-notch player. She has plenty of enthusiasm and she makes basketball a business, which goes a long way in the development of a player. She will be back for three more years.





CATHERINE McCLAIN

... finished her second year of activity and was a starter in every game. Her playing was of the highest type and she was always quick to get the ball out of dangerous territory back to where it belonged.

EVELYN PRITCHARD

... was without a doubt the best shot on the team, she can sink them from any angle on the floor. Evelyn is just a freshman and we predict that she will cause much anguish to opposing guards for the next three years.

MARTHA LIST

... while small of stature, was a demon on defense. She was a tenacious and persistent type of guard and always had plenty of fight. She was a smart, heads-up player ready to take advantage of the breaks that came her way.

NANNIE HIBBETT

... was the prize player of the guards. She finished a brilliant career in high school and continued her spectacular work as a member of the Co-ed team. She was the best in the lot of the guards and showed plenty of ability and previous good coaching by her play in every game.

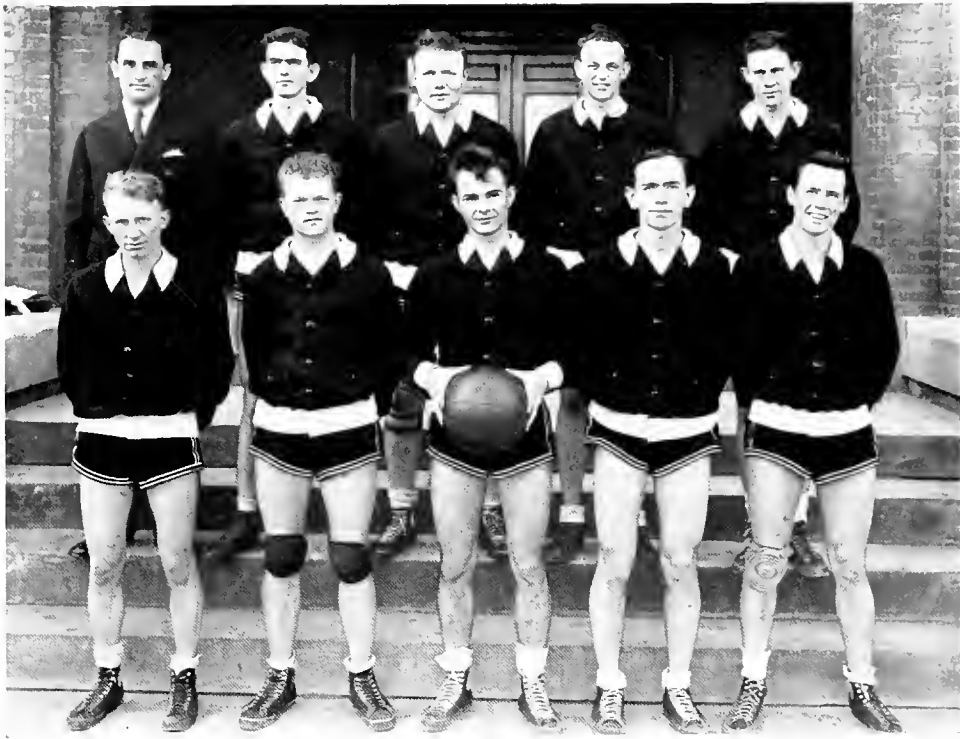
SARAH FLOWERS

... was a temperamental player and when she was right she could not be stopped. Her height was of value to an otherwise short team. She has another year and if she will apply herself seriously to playing she will make a real player.

ELSIE WINFREE

... was the same wild, rough player who always makes life miserable for opposing forwards. Whenever Elsie was injected in a game she was not long in making her presence felt in one way or another. This was her last season as a member of the team.





MEN'S BASKETBALL TEAM

RECORD FOR SEASON

Cumberland	40	Carthage Burleys	31
Cumberland	63	David Lipscomb	28
Cumberland	24	T. P. I.	31
Cumberland	58	Mt. Juliet Rangers	15
Cumberland	49	David Lipscomb	41
Cumberland	28	M. T. S. T. C.	32
Cumberland	38	Bethel College	40
Cumberland	18	T. P. I.	41
Cumberland	26	Maryville College	38
Cumberland	39	E. T. S. T. C.	42
Cumberland	20	Carson-Newman	30
Cumberland	36	Carson-Newman	42
Cumberland	33	Carthage Burleys	44
Cumberland	20	M. T. S. T. C.	44
Cumberland	55	William Jennings Bryan	23
Cumberland	55	Austin Peay Normal	28
Cumberland	58	William Jennings Bryan	27
Cumberland	30	Austin Peay Normal	27
Cumberland	44	Y. M. C. A. Ramblers	42

CAPTAIN DAVID PREHODA

... was again the same cool player who has dominated the scoring column in the Bulldog games for the past three seasons. When David was right there was no stopping him. He is a good floor man and is always full of fight and pep.



MAX TILGHMAN

... a veteran member of the Bulldog squad, wound up his career as a wearer of the maroon and white. His height and defense work aided materially in the fights of the Bulldog, and his presence will be sorely missed when the first call goes out to candidates next year.



JACK TYNER

... as a freshman, showed rare promise of becoming a future star for Cumberland. Jack always managed to get in the open for a clear shot at the basket and he scored many points during the season.





ROBERT HARALSON

... was the smallest man on the squad but he had no trouble in cutting his man down to his own size. Robert was a player who strove for teamwork, he was a good passer and a clever floor man. He will also be among those missing next year and his place will be hard to fill.



SHANNON ROBISON

... cannot be considered an offensive threat but his defense work stood out in every game. The ball coming off the backboard usually came to rest in his possession. The tip at center was always controlled by Shannon and he will be back again next year to continue his good work.



BOB LEWIS

... turned out to be one of the most dependable guards on the squad. He was a good floor man and covered loose balls like a hawk. Bob has that indomitable courage and fight which go into the making of a successful athlete.

JAMES SPECK

... was the same spectacular scorer that he has been during his four years' sojourn at Cumberland. He started many a Bulldog rally when injected in the lineup. He was the favorite of local fans with his famous follow shots and he usually obliged. His place will not likely be filled.



PRENT MOREY

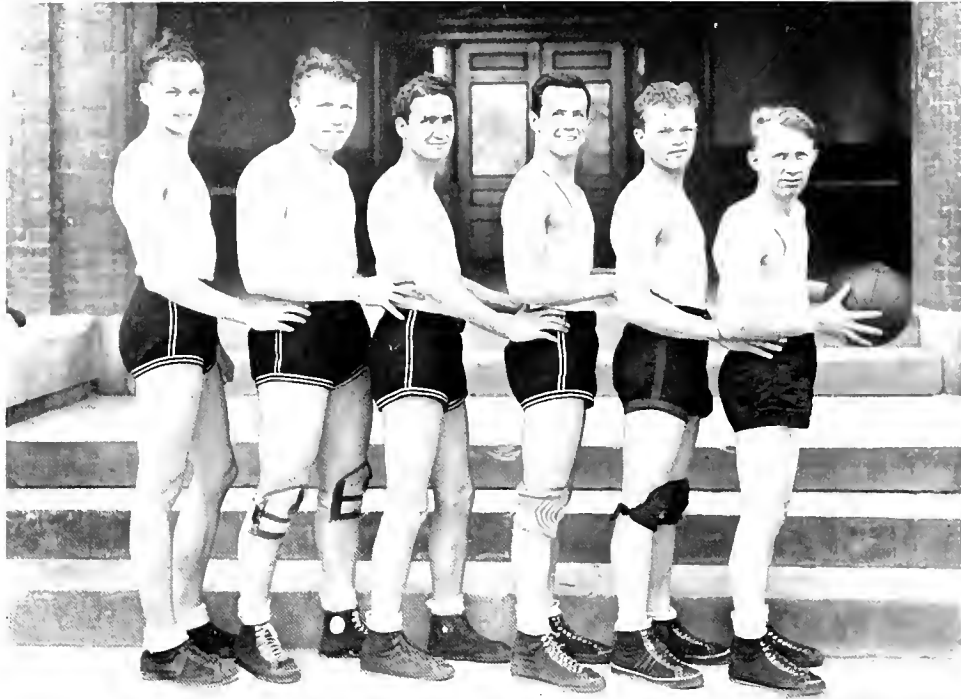
... has the qualifications necessary to make a real star. He performed creditably this season and a bright future seems assured him in Smoky Mountain Conference play. He is the rangy type of player, gets off a nice shot and follows well.



DAVID AARON

... is the most adept handler of the ball on the squad. He was the hub of the Bulldog attack, his ability to handle the spot position was all that could be asked. He was not a defensive man but his offense and passing were of the highest calibre.





COFFEE SHOP CLUB

Intramural Basketball Champions



FRESHMEN

Interclass Basketball Champions



JERRY BONAVITA
GOLF CHAMPION



MORGAN JOHNSON
RUNNER-UP
AND
LOW-MEDALIST





“C”
CLUB





ANNE KRAFT SINGER
Prettiest Girl
COLLEGE OF ARTS AND SCIENCES



GRACE JACKSON
Goddess of Love and Beauty
COLLEGE OF LAW



FRANCES BRUCE
Miss Cumberland
COLLEGE OF ARTS AND SCIENCES



MAX E. TILGHMAN

Bachelor of Ugliness

COLLEGE OF ARTS AND SCIENCES



E. C. TEMPLETON

Bachelor of Ugliness

COLLEGE OF LAW



VIOLET WILSON
Football Sponsor



MILDRED MAPLES
Festival Queen



HELEN GASTON
Queen of May



THROUGH
THE
PORTAL





Use . . .

PHILLIPS 66

*More Power
Less Cost Per Mile*



R. A. BRIDGWATER, *Distributor*
LEBANON, TENNESSEE

W. F. Scheuerman
Ice Cream Mfg.
Company

North Cumberland Street

For That . . .

GOOD PERFECTION
ICE CREAM

Telephone 453

*For ICE
Call 100*

P R O M P T S E R V I C E

J. L. Shannon
Drug Co.



*Prescriptions Prepared
from*

PUREST DRUGS

by

BEST CHEMISTS

Telephones 180 and 345

"Let Us Do Your Work"

Lebanon
Bank &
Trust
Co.

Service With Safety



LEBANON, TENNESSEE

H. G. HILL
GROCERY
COMPANY

East Side Square

Telephone 3



EVERYTHING GOOD
TO EAT

Prompt and Courteous Service

Established 1858

Phillips & Buttorff
Mfg. Co.

Complete furnishers of

KITCHEN *and* DINING

ROOM OF

HOTELS, CAFETERIAS,

and

INSTITUTIONS

NASHVILLE, TENNESSEE

Baird-Safley
Hardware
Co.

North Side Public Square

Telephone 144



*Everything in the
Hardware line*

**ELLIS PRODUCE
ASSOCIATION**

INC.

SOUTH MAPLE STREET

Phone 698

*Best Prices — Phone us for
quotations*

Drink . . .

Coca-Cola

IN BOTTLES

**CASH and CARRY
GROCERY CO.**

EAST MAIN STREET

Phone 508

*The Best Groceries That
Money Can Buy at
Reasonable Prices*

O. B. TUCKER

Agent

N. C. & St. L. Railway

Travel by

N. C. & St. L. Railway

*Safest — Surest
Best Accommodations*

**CASTLE HEIGHTS
MILITARY ACADEMY**

*One of the Nation's Best
Schools for Boys*

LEBANON, TENNESSEE

BAIN'S GARAGE

ELECTRIC AND ACETYLENE

WELDING

FILLING STATION

ONE STOP SERVICE

*"No Wreck Beyond Our
Repair"*

North Cumberland Phone 204

Princess Theatre

"The Beauty Spot of Lebanon"

•

RESERVATIONS FOR
THEATRE PARTIES

Baird & Crips

LAW BOOKS

INSURANCE

Compliments of
J. B. OLIVER

District Agent
TEXAS COMPANY

South College Street

Telephone 10



*Texaco Products are
Dependable and
Economical*

**JENKINS
TRUCK CO.**

Office GAY STREET

Lebanon

Phone 89-W

•
HEAVY AND LIGHT
HAULING

•
PROMPT AND EFFICIENT

**COAPLEN
BeautyShoppe**

East Main Street

Telephone 86

•
*All Lines of Beauty
Culture*

•
EXPERT OPERATORS
MODERN PRICES

**M. E. Derryberry
Company**

WHOLESALE
GROCERS

NASHVILLE, TENNESSEE

WEST SIDE HOTEL

"Lebanon's Best"

REASONABLE RATES

C. C. ASKEW, *Manager*

Phone 23

West Main Street

Cash Drug Co.

We Appreciate Student Trade

OUR PRICES
ARE RIGHT

West Side of Square

Phones 46—47

Consolidated Bus Line, Inc.

West Main Telephone 244

RIDE THE BUS

Cheap—Convenient—Comfortable

Frank Taylor

"The Tailor"

DRY CLEANERS

WE CLEAN

110 East Main Street

Phone 426

McAdoo Bros. Dry Goods Co.

East Side Square Telephone 253

QUALITY MERCHANDISE AT
REASONABLE PRICES

*Lebanon's Style Center. Outfitters for
Women and Children*

G. B. Ellis Grocery Company

North College Street Telephone 395

STAPLE AND FANCY GROCERIES

Courteous and Prompt Service

Compliments of

McGee & Jennings

Jewelers

LEBANON, TENNESSEE

C. J. AXELSON

Flowers for All Occasions

Telephone 109 167 Park Avenue

Compliments of

ED CLIMER

Sheriff of Wilson County

CARNATION COMPANY

Woodland St.—Watertown, Tenn.

L. L. BOLSTEAD, *Manager*

Phone 102

•
*We appreciate your patronage
and it's our purpose to
please you*

E. L. CARSON

Insurance

Phone 440—S. Cumb. St.

Lebanon, Tennessee

L. E. GREEN
Fresh Fruits and Vegetables

Everything in Season

East Main Street Phone 537
Special attention given to University Students

•
A WELCOME AWAITS YOU

**HAMBLIN CAWTHON
& THOMPSON**

Log Yard

South College St.—Phone 575
Lebanon, Tennessee

*Inquiries gladly answered
Phone or Write*

DRAPER & DARWIN
Dry Goods

East Main Street Phone 116

•
*More for your money . . .
Polite and courteous service*

**GRISHAM RADIATOR
SHOP**

263 West Spring Street Phone 471

*Regardless of what your radiator
needs we can fix it. Bring it to us.
Quick and Efficient Day Service*

**ALL OUR WORK
ABSOLUTELY GUARANTEED**

SOUTH SIDE PHARMACY
DRUGS — SUNDRIES

Everything a Good Drug Store Should Handle
Accurate Prescription Department
DR. JOE SCOTT, Proprietor
Public Square — Watertown, Tenn.
Phone 69

The . . .
PHOENIX
STAFF

Wishes
to Thank
Our
Advertisers
for
Helping
Make This
Issue of
The Phoenix
a Success

SCHOOL
and
COLLEGE
ANNUAL
PUBLISHERS
PERSONAL SERVICE
AND
CO-OPERATION

"The Modern Printers"

McQUIDDY
PRINTING & COMPANY

PRINTERS & PUBLISHERS

NASHVILLE ~ ~ TENNESSEE





