

1940



THE PHOENIX

Lisa Anderson









MEMORANDUM  
UNIVERSITY  
MEMPHIS, TN

# THE PHOENIX



# The

BILL STEELE, Editor  
ALEXANDER ANDERSON, JR., Business Manager



# Phoenix!

PUBLISHED BY THE STUDENTS  
OF CUMBERLAND UNIVERSITY,  
LEBANON, TENNESSEE

1 . 9 . 4 . 0

• W O R D  
E  
R  
O  
F

In Egyptian mythology the Phoenix was a sacred bird fabled as coming every five hundred years out of Arabia to Heliopolis, where it burned itself on the altar and rose again from its ashes young and beautiful. Thus it became a symbol of resurrection and immortality.

• During the Civil War Cumberland was burned to the ground and, of course, later rebuilt. When the first annual came out in 1885, it was named "The Phoenix" because Cumberland seemed to possess the qualities of resurrection and immortality that were characteristic of the Phoenix bird.

• May this Phoenix, which has risen from the ashes of the burnt 1939-40 school year, be a pictorial reminder of the Cumberland mythology which you have helped to create.







ALMA MATER  
FACULTY  
THE CLASSES  
ATHLETICS  
FEATURES  
ORGANIZATIONS

• CONTENTS •

# DEDICATION

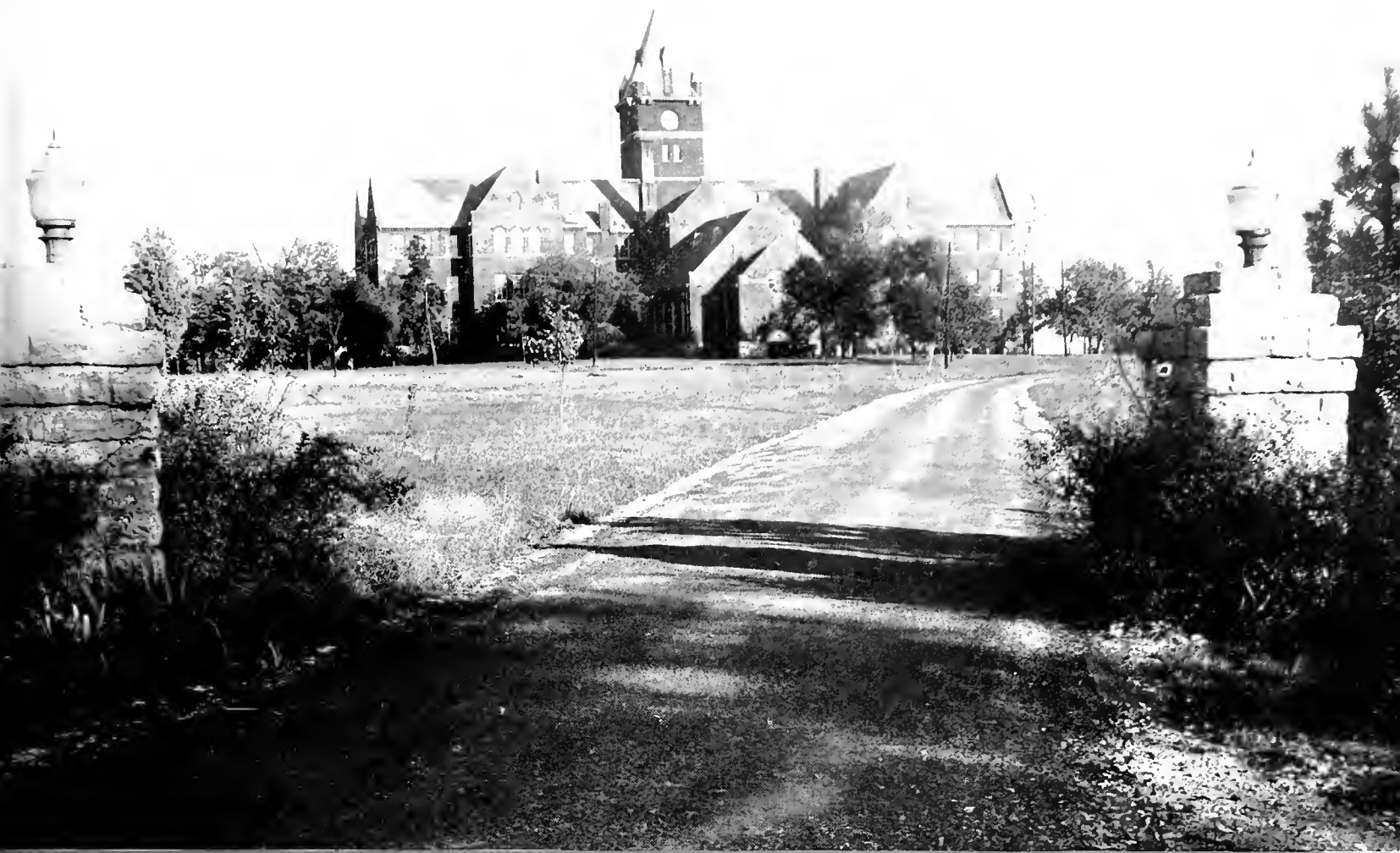
To the passing parade. Your face and ours. In step with the spirit of Cumberland. Shouldering its tradition. Marching. Youth on parade. The blare of trumpets. The beat of drums. The tramping of feet. Your parade and ours. Passing through the hurrahs of today to hear them die slowly in the distance—the future. Today's cheers becoming tomorrow's heart-aches.

To the Senior class in both colleges. It's your parade. Your march of time. Your problem to keep the passing parade from becoming a military parade.

Hats off today to the Senior classes marching by. Tomorrow brings another passing parade.







# DEAR OLD CUMBERLAND

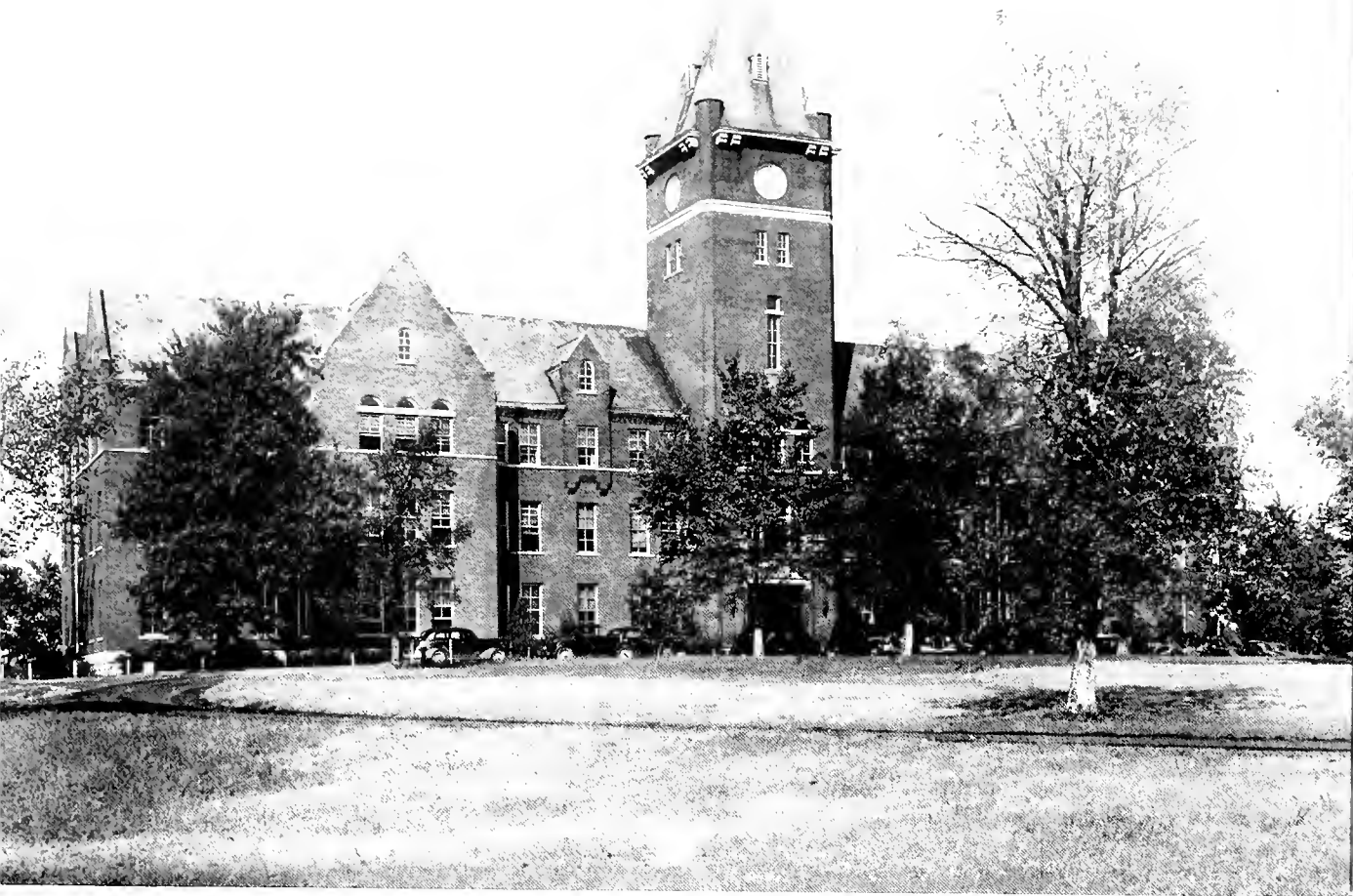
*Lyric and music by* CHARLES H. WESLEY ROBERTSON

*In the heart of sunny Tennessee  
There is a school so fair;  
Marching ever on to victory,  
Her colors grace the air.  
Truth and virtue are her heritage,  
And priceless is her worth;  
We sing applause and cheer the cause  
Of the finest school on earth.*

## CHORUS

*Let's lend a helping hand  
To dear old Cumberland;  
And to her warriors bold  
Let's be true blue.  
Undaunted at her side  
We must protect her pride.  
Her teachings golden old  
We must pursue;*

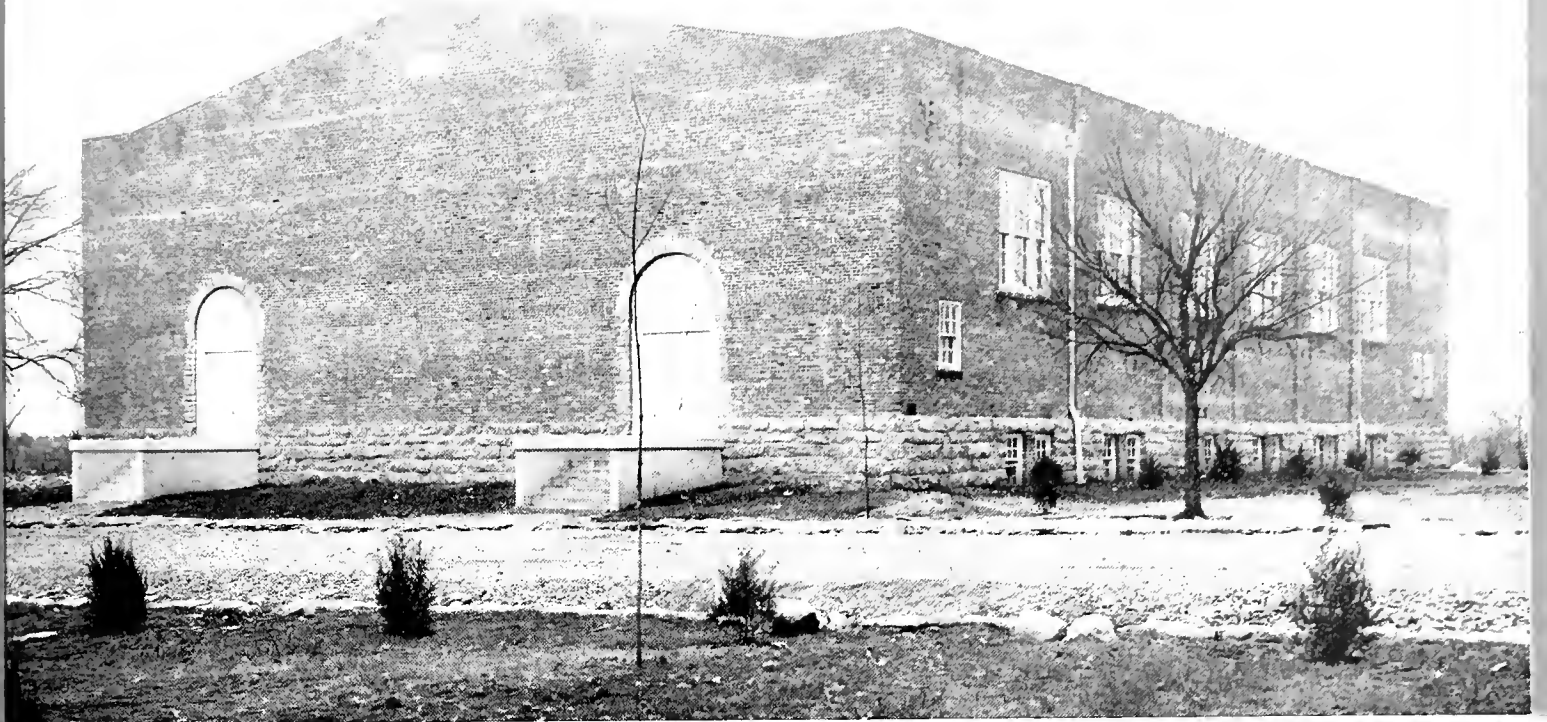
*Through victory and strife  
She's led a noble life;  
And her traditions grand  
Shall ever stand  
For the maroon and white.  
We'll always work and fight  
For dear old Cumberland.  
Let's lend a hand!*



M A I N      B U I L D I N G







GYMNASIUM

BOY'S DORMITORY





LAW BUILDING  
GIRL'S DORMITORY







ERNEST LOONEY STOCKTON  
President of the University  
A.B., LL.B., M.A., Cumberland, 1914, 1915, 1916; LL.D., Centre, 1930.

## PRESIDENT'S MESSAGE

*To the Graduating Class of 1940:*

At the Ninety-seventh Commencement you will receive your baccalaureate degrees and diplomas imprinted with the seal of Alma Mater as a symbol of her faith in your present achievements and your potentialities for worthy service to society. Your years in the historic halls of Cumberland have been filled with rare friendship, enriching experience and intensive search for truth, goodness and beauty. This quest for the highest and most enduring values is only begun but you have discovered the Glory of the Imperfect. The unattainable idealism of life will lure you on to larger horizons. May what you "aspired to be but are not" comfort and inspire you to more heroic adventure.

You face a chaotic and swiftly changing world. Such conditions, though not so acute and alarming as today, have always confronted idealistic and courageous youth who are discontented with WHAT IS because they dream of WHAT OUGHT TO BE. This is the perennial process of social progress. So to you "the flaming torch we throw, be yours to hold it high." All who labor to perpetuate the ideals and traditions of Alma Mater give you assurances of unfaltering faith in your future happiness, success and valiant service to humanity.



THE CHANCELLOR  
AND THE  
BUSINESS MANAGER  
OF THE  
UNIVERSITY

LABAN LACY RICE  
B.A., Ph.D., Cumberland, 1891, 1894.



SAM S. BONE  
B.A., Cumberland, 1925.



# THE FACULTY

VIRGINIA T. WOOTEN

*Dean of Women, Professor  
of Education*

B.A., George Peabody College,  
1920; M.A., Cumberland, 1923.

LEROY VOGEL

*Dean of the College, Profes-  
sor of History*

B.A., Calvin College, 1932; Th.M.,  
Princeton, 1936; Ph.D., Heidelberg,  
1938.

ALBERT B. NEIL

*Dean of the School of Law,  
Professor of Law*

LL.B., Cumberland, 1896.

JAMES OSCAR BAIRD

*Registrar, Professor of  
Chemistry*

B.A., M.A., LL.B., Cumberland,  
1900, 1901, 1921.

JAMES LOUIS ADAMS

*Professor of Business Admin-  
istration*

B.A., LL.B., Cumberland, 1925,  
1926.

WINSTEAD PAINE BONE

*Professor of Philosophy and  
Religion*

B.A., M.A., D.D., Trinity, 1883,  
1894, 1907; B.D., LL.D., Cum-  
berland, 1886, 1932.



# THE FACULTY

MARY VIRGINIA BRYANT

*Professor of Home Economics*

B.A., University of Tennessee,  
1936.

FRANK T. FANCHER

*Professor of Law*

LL.B., Cumberland, 1893.

VERA E. FLORY

*Professor of Ancient Language and Fine Arts*

B.A., M.A., Northwestern, 1923,  
1924; Requirements for Ph.D. completed, Cornell.

PAUL M. FLORY

*Professor of Psychology*

B.A., M.A., Northwestern, 1923,  
1924; Ph.D., Cornell, 1934.

SAM B. GILREATH

*Professor of Law*

LL.B., Cumberland, 1925.

V. A. SYDENSTRICKER

*Professor of English*

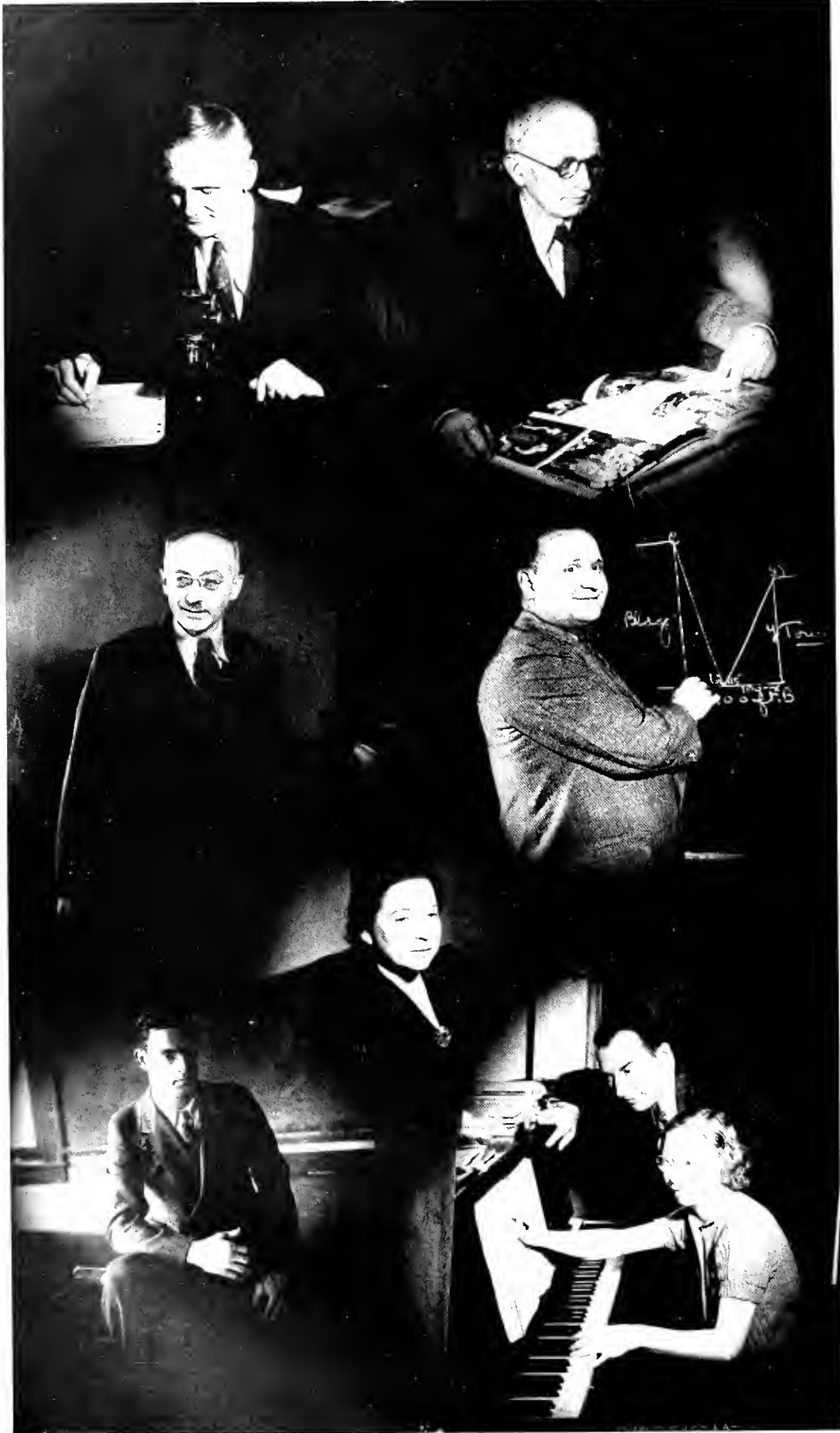
B.A., Presbyterian College of South  
Carolina, 1924; M.A., George  
Washington University, 1929; Re-  
quirements for Ph.D. completed,  
George Peabody College.

MABLE C. JONES

*Professor of English*

B.A., Cumberland, 1924; M.A.,  
Cumberland, 1925.





# THE FACULTY

PAUL L. HOLLISTER

*Professor of Biology*

B.A., Cumberland, 1915; M.S., University of Chicago, 1929; Ph.D., George Peabody College, 1939.

DIXON MERRITT

*Professor of Journalism*

George Peabody College.

LUTHER A. PFLUEGER

*Professor of Spanish and German*

B.A., Muhlenberg College, 1906; M.A., University of Indiana, 1913; Ph.D., University of Wisconsin, 1923.

JOSEPH M. SYNNERDAHL

*Professor of Mathematics*

B.S., M.S., Northwestern, 1919, 1921; Ph.D., Northwestern, 1934.

NED VAUGHAN

*Assistant Professor of Physical Education*

B.A., Cumberland, 1936.

KATHLEEN YOUNG

*Professor of French*

B.A., Cumberland, 1928.

BURTON WILSON

*Professor of Voice*

Cumberland University, Nashville Conservatory of Music.

EUNICE CUTLER

*Professor of Piano*

B.M., Grinnell, 1932.

# OTHER OFFICERS

NELLE KILLEN  
*Secretary to the Chancellor*

MADGE HARDISON  
*Assistant to the Business  
Manager*

ELIZABETH COWLES  
B.A.  
*Assistant to the Registrar*

ISABELLE MOSS  
*Acting Secretary to the  
President*

MRS. FLOSSIE SCOTT  
*Matron of Girls' Dormitory*

MARY OWEN HOLMES  
B.A.  
*Dietitian*

MRS. V. A. SYDENSTRICKER  
B.A.  
*Librarian of the College*

SARAH HARDISON  
LL.B.  
*Librarian of the School of  
Law*

PHILLIP JOHNSON  
*Superintendent of Buildings  
and Grounds*









# CLASSES

STARCH  
STANTON  
KOERTH







Top: OAKLEY, ANDERSON, McLEAN  
 Bottom: CASE, JUDD, MANGUM, ORR

**SENIOR CLASS OFFICERS**

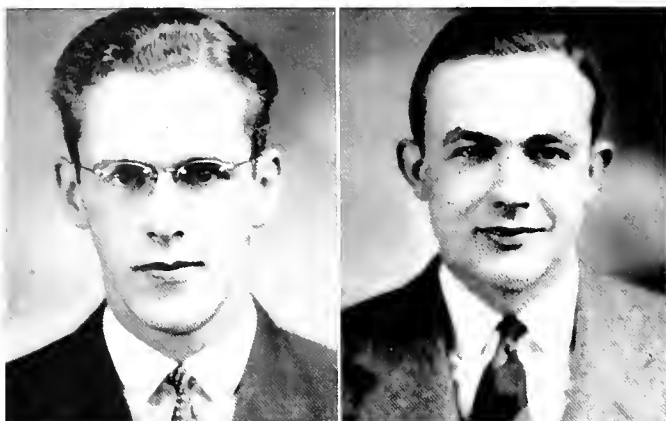
*(Literary School)*

- HUGH McLEAN . . . . . *President*  
 ALEXANDER ANDERSON, JR. . . . . *Vice-President*  
 HAROLD OAKLEY . . . . . *Secretary*  
 DOROTHY ORR . . . . . *Treasurer*

**SENIOR CLASS OFFICERS**

*(Law School)*

- WILLIAM EDWIN ORR . . . . . *President*  
 JOSEPH H. JUDD, JR. . . . . *Vice-President*  
 ROBERT B. MANGUM . . . . . *Treasurer*  
 WARD R. CASE, JR. . . . . *Secretary*



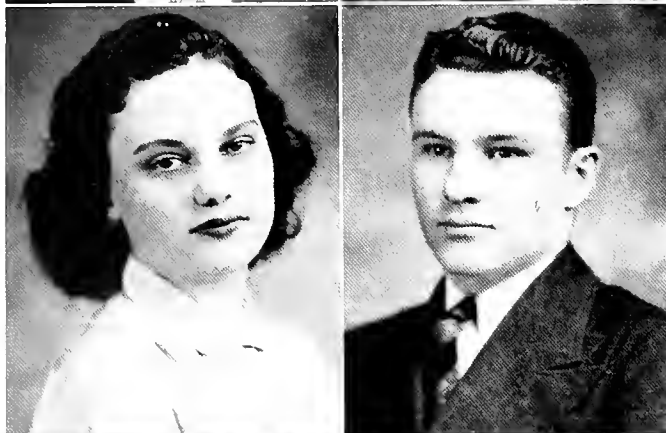
## SENIOR CLASS (LITERARY)

JAMES HUDSON ALEXANDER

MILAN, TENNESSEE

*Candidate for Degree B.S.*

Sigma Alpha Epsilon Fraternity; Tennis Team, '38; Vice-President Glee Club, '37, '38, '39, '40; K. P. Club, '36, '37, '38.



ALEXANDER ANDERSON, JR.

LEBANON, TENNESSEE

*Candidate for Degree B.A.*

Sigma Alpha Epsilon Fraternity; Treasurer S. A. E., '38, '39; President S. A. E., '39; Vice-President of Senior Class; Business Manager PHOENIX; Math Club, '37, '38.

MARJORIE BASSETT

PROVIDENCE, KENTUCKY

*Candidate for Degree B.A.*

Sigma Delta Sigma, President S. D. S., '38, Treasurer S. D. S., '37, '38; Honor Roll, '37, '38, '39, '40; Secretary Student Council, '39; Y. W. C. A., '37, '38, '39; International Relations Club, '38, '39, '40; Assistant Editor PHOENIX, Vice-President I. R. C., '39; Who's Who Among Students in American Colleges and Universities, '39; Vice-President of Class, '39; Dean's List, '38, '39.



CHARLES HENRY BEESLEY

WARTRACE, TENNESSEE

*Candidate for Degree B.A.*

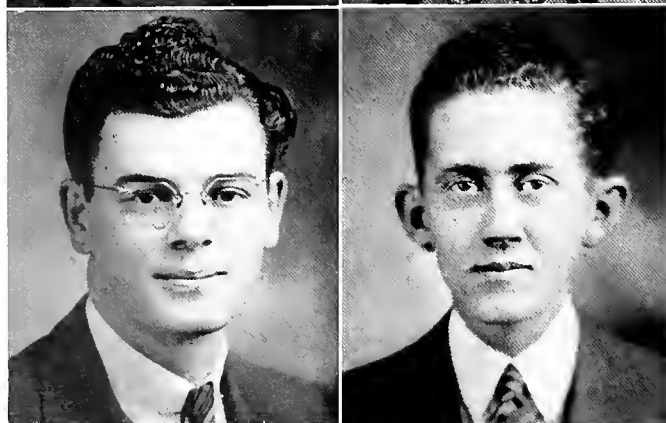
Blue Key Fraternity; Football, '37, '38, '39, Co-alternate Captain Football, '39; Basketball, '38, '40; Second All-Conference Football Team, '39; International Relations Club; "C" Club President, '40.

EMERSON R. BONER

NASHVILLE, TENNESSEE

*Candidate for Degree B.S.*

Wrestling Team, '37, '38, '39; Football, '37, '39; Science Club, '40.



IRENE CALLIS

LEBANON, TENNESSEE

*Candidate for Degree B.S.*

Commuters Club, '38, '39, '40; Math Club, '39, '40; Vice-President Math Club, '40.

SAMUEL COAPLEN

OLD HICKORY, TENNESSEE

*Candidate for Degree B.S.*

Sigma Alpha Epsilon Fraternity; B. S. U., '37, '38, '39, '40; Y. M. C. A., '37; Public Speaking Class, '39; Science Club, '40; K. P. Club, '39, '40; French Club, '40.

WYATT CUNNINGHAM

HORNBEAK, TENNESSEE

*Candidate for Degree B.S.*

Sigma Alpha Epsilon Fraternity; Y. M. C. A., '36, '37, '38; Math Club, '39; K. P. Club, '37, '38, '39.

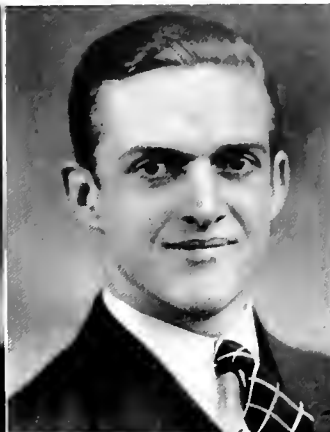
# SENIOR CLASS (LITERARY)

PAUL DAKE

ATHENS, TENNESSEE

*Candidate for Degree B.S.*

Sigma Alpha Epsilon Fraternity; Public Speaking Class, '39, '40; Science Club, '40; Math Club, '39, '40; Glee Club, '40; French Club, '40.

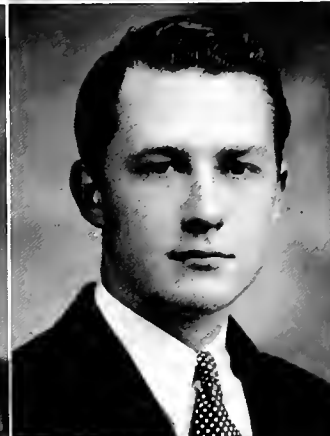


JEAN STONE DENNEY

MILAN, TENNESSEE

*Candidate for Degree B.A.*

Sigma Alpha Epsilon Fraternity; Football, '36, '37, '38; Glee Club, '36, '37, '38.



WILLIAM FUSON DYER

LEBANON, TENNESSEE

*Candidate for Degree B.A.*

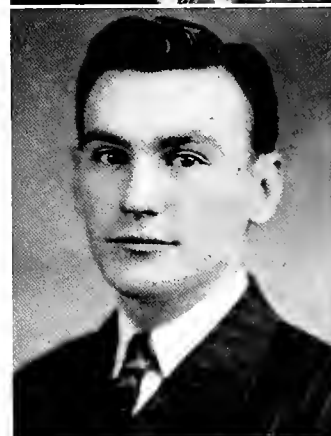
Secretary Commuters Club, '39, '40; Debate Squad, '39, '40; Cumberland Players, '39, '40; Associate Editor *Collegian*, '39, '40; Sports Editor PHOENIX; English Club, '38, '39, '40.

WILLIAM SENTER FIELDS, JR.

MILAN, TENNESSEE

*Candidate for Degree B.S.*

Sigma Alpha Epsilon Fraternity; Eminent Deputy Archon, S. A. E., '39; Transfer from Vanderbilt University; International Relations Club, '39, '40; Who's Who Among Students in American Colleges and Universities, '40; Delegate I. R. C. Conference, '40.



DEWEY JENNINGS FITE

LEBANON, TENNESSEE

*Candidate for Degree B.S.*

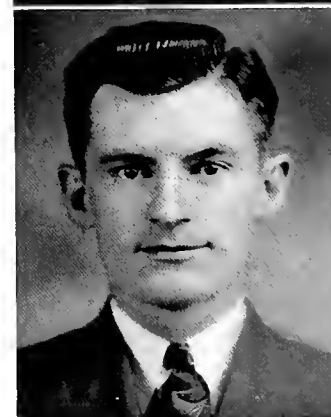
Lambda Chi Alpha Fraternity; Blue Key Fraternity; President Class, '37, Honor Roll, '37, '38, '39, '40; International Relations Club; Cumberland Players, '36.

MARY RANKIN GWYNN

MARTHA, TENNESSEE

*Candidate for Degree B.A.*

Delta Phi Omega Sorority, President D. P. O., '38; Y. W. C. A., '37, '38; International Relations Club, '37, '40; Vice-President, I. R. C., '38; Honor Roll, '37, '38, '40; Treasurer Class, '38.



EDWARD HALE

LIBERTY, TENNESSEE

*Candidate for Degree B.A.*

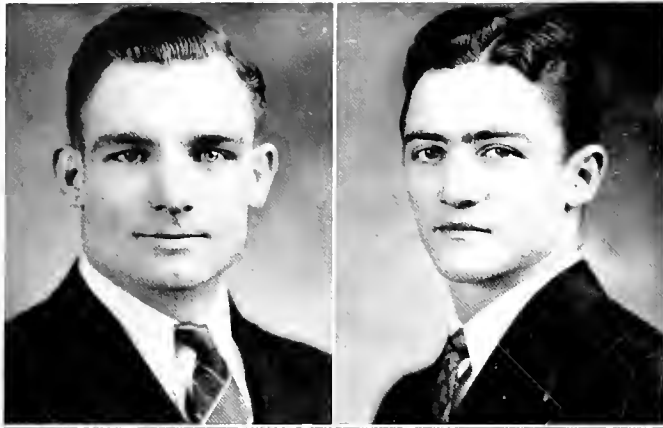
Honor Roll, '38; French Club, '40; International Relations Club, '39, '40; Y. M. C. A., '37, '38; K. P. Club, '38, '39, '40.

FRANCES ELIZABETH HARPER

ASHLAND CITY, TENNESSEE

*Candidate for Degree B.A.*

Sigma Delta Sigma Sorority, Secretary S. D. S., '38, '39, President S. D. S., '39, '40; Secretary and Treasurer Panhellenic Council, Honor Council of Girls' Dorm; Cumberland Players, '39; Honor Roll, '39, '40.



## SENIOR CLASS (LITERARY)

**JIMMY R. JOHNSON**

MT. PLEASANT, TENNESSEE

*Candidate for Degree B.S.*

Football, '36, '37, '38, '39, All-Conference Football Guard, '37, '39; Secretary "C" Club, '36, President "C" Club, '40; Wrestling Team, '36, '37.



**HUGH McLEAN**

MILAN, TENNESSEE

*Candidate for Degree B.A.*

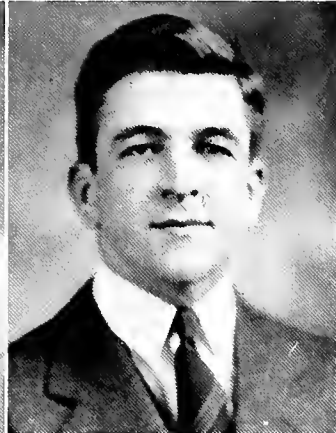
Sigma Alpha Epsilon Fraternity; Blue Key Fraternity; K. P. Club, '37, '38, '39, '40; Vice-President Class, '37; President Senior Class; Secretary S. A. E., '38, '39; Vice-President S. A. E., '40; Honor Roll, '38, '39; Student Council, '39; President Panhellenic Council, '40; International Relations Club, '38, '39, '40; Vice-President I. R. C., '39; President Blue Key, '40; Who's Who Among Students in American Colleges and Universities, '40.

**MARGARET MAI MORSE**

LEBANON, TENNESSEE

*Candidate for Degree B.A.*

Honor Roll, '37, '38, '39, '40; Dean's List, '38, '39; Commuters Club, '36, '37, '38, '39; French Club, '38.



**JAMES HAROLD OAKLEY**

NASHVILLE, TENNESSEE

*Candidate for Degree B.A.*

Blue Key Fraternity; International Relations Club, '38, '39, '40; Treasurer I. R. C., '39; K. P. Club, '37, '38, '39, '40; Treasurer Class, '35; Secretary Senior Class; All-Intramural Basketball Team, '38, '39; Class Editor PHOENIX; Who's Who Among Students in American Colleges and Universities; Student Council, '38; Delegate I. R. C. Conference, '40.



**DOROTHY ADELE ORR**

BATESVILLE, MISSISSIPPI

*Candidate for Degree B.A.*

Glee Club, '36, '37, '38; International Relations Club, '37, '38, '39, '40; Secretary I. R. C., '38, '39; Football Sponsor, '38, '39; Secretary Class, '37, '38; Treasurer Class, '39; Y. W. C. A., '36, '37, '38.



**CHARLES JAMES OSBORN**

HARRISON, NEW JERSEY

*Candidate for Degree B.A.*

Sigma Alpha Epsilon Fraternity; Transfer from Upsala College; Football Manager Upsala College, '38; Christian Brotherhood Upsala College, '37, '38; Glee Club, '39, '40; Honor Roll, '39, '40.

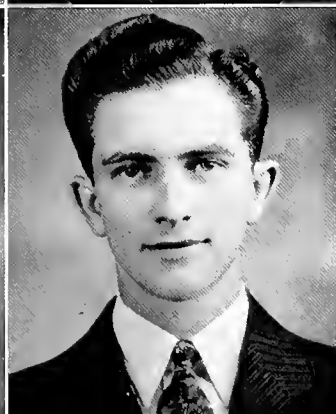


**VICTOR T. PETTY**

CARTHAGE, TENNESSEE

*Candidate for Degree B.S.*

Blue Key Fraternity; Math Club, '37, '38, '39, '40; A. S. C. E. at Vanderbilt; Honor Roll, '36, '39, '40; Commuters Club, '37, '38, '39, '40; President Commuters Club, '40.



**JAMES L. RIGGINS**

HARTSVILLE, TENNESSEE

*Candidate for Degree B.A.*

Sigma Alpha Epsilon Fraternity; Blue Key Fraternity; Baseball, '37; "C" Club, '37, '40; International Relations Club, '39, '40; President S. A. E., '40; Treasurer S. A. E., '39.



# SENIOR CLASS

## (LITERARY)

WALTER KIRK SAVAGE, JR.  
CARTHAGE, TENNESSEE

*Candidate for Degree B.S.*

Surveyors Club, '37, '38; Honor Roll, '37, '38, '39, '40; Commuters Club, '37, '38; French Club, '40; Math Club, '37, '38, '39; Science Club, '40; Smith County Club, '40; Y. M. C. A., '37.

HUBER W. STALEY  
SIDNEY, OHIO

*Candidate for Degree B.A.*

Transfer from Ohio Northern University; Theta Alpha Phi National Honor Dramatic Fraternity; Glee Club, '39, '40; English Club, '39, '40; Cumberland Players, '39, '40.

BILL STEELE  
FRANKLIN, TENNESSEE

*Candidate for Degree B.A.*

Lambda Chi Alpha Fraternity; Blue Key Fraternity; Secretary L. X. A., '37, '38, Vice-President L. X. A., '38, '39; English Club, '37, '38, '39, '40, President English Club, '37, '38; International Relations Club, '38, '39, '40, I. R. C. Conference Delegate, '39; Assistant Manager Football, '38, Football Manager, '39; Who's Who Among Students in American Colleges and Universities, '39, '40; Reporter *Collegian*, '37, Associate Editor *Collegian*, '37, '38, Sports Editor *Collegian*, '38, '39, '40; Editor PHOENIX; Bachelor of Ugliness; Student Council, '38; Honor Roll, '37, '38.

WILLIAM L. STRYKER  
BELLEVILLE, NEW JERSEY

*Candidate for Degree B.S.*

Sigma Alpha Epsilon Fraternity; Blue Key Fraternity; International Relations Club, '38, '39, '40; Glee Club, '37, '38, '39, '40; Surveyors Club, '38; President of Christian Endeavor, '38; Y. M. C. A., '37.

WILLIAM ROGERS SUMMERS  
RIDGELY, TENNESSEE

*Candidate for Degree B.S.*

Football, '37, '38, '39, Captain Football Team, '39; "C" Club, '38, '40.

BEN HERMAN THOMAS  
CARTHAGE, TENNESSEE

*Candidate for Degree B.S.*

Blue Key Fraternity; Surveyors Club, '37, '38; Smith County Club, '40; Honor Roll, '37, '38, '39, '40; Commuters Club, '37, '38, '39; French Club, '40; Math Club, '40; Science Club, '40.

DAVID WAGSTER  
COLUMBIA, TENNESSEE

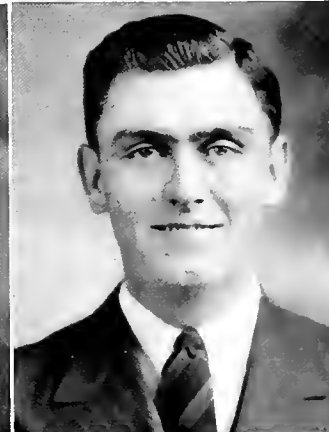
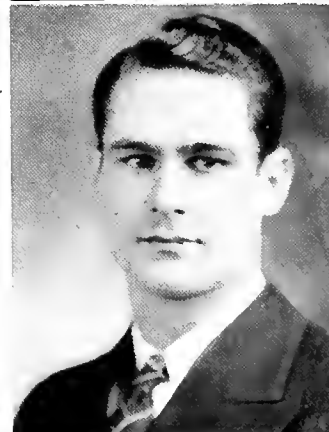
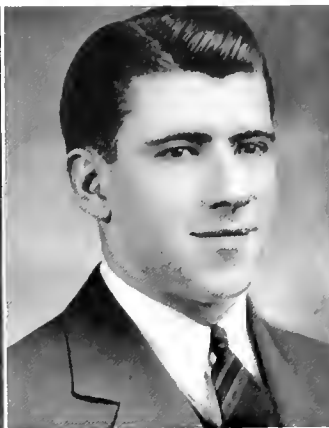
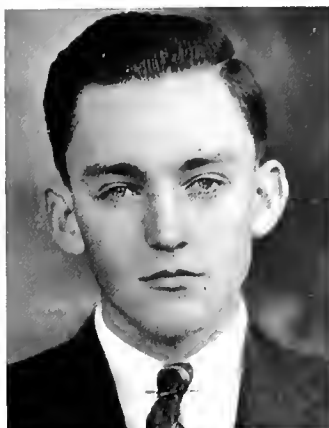
*Candidate for Degree B.S.*

Football, '36, '37, '38, '39; Honorable Mention All-Conference Football, '39; "C" Club, '37, '40; Baseball, '37; Math Club, '38; French Club, '38.

GRISSIM HILL WALKER  
LEBANON, TENNESSEE

*Candidate for Degree B.A.*

Lambda Chi Alpha Fraternity; Blue Key Fraternity; International Relations Club, '38, '39, '40, President I. R. C., '39, I. R. C. Conference Delegate, '39, '40; Secretary L. X. A., '37, Treasurer L. X. A., '37, '38, '39; Treasurer I. R. C., '38; Secretary Blue Key, '39; Councilman Junior Law Class, '40; Public Speaking, '38; Barristers Club, '40.





## SENIOR CLASS

(LITERARY)

BILLIE WARREN . . . . . Lebanon, Tennessee

*Candidate for Degree B.S.*

Commuters Club, '37, '38, '39, '40; Senior Candidate for Carnival Queen, French Club.



## SENIORS NOT IN PICTURES

RUBY COTHERN ARMSTEAD . . . . . Gordonsville, Tenn.  
*Candidate for Degree B.A.*

MRS. ANNETTE BEASLEY . . . . . Lebanon, Tenn.  
*Candidate for Degree B.A.*

PORTIA BENTLEY . . . . . Lebanon, Tenn.  
*Candidate for Degree B.A.*

MARY GIBONY FRISSELL . . . . . Cape Girardeau, Mo.  
*Candidate for Degree B.A.*

MARGARET GANNAWAY . . . . . Nesbitt, Miss.  
*Candidate for Degree B.A.*

Y. W. C. A., '36, '37, '38, '39, Vice-President Y. W. C. A., '38, President Y. W. C. A., '39; *Collegian* Staff, '37, '38, '39; Student Council, '38; Who's Who Among Students in American Colleges and Universities, '39, '40; Glee Club, '36, '37, '38, '39, President Glee Club, '38, Secretary Glee Club, '39; Girl's Sextet, '36, '37, '38; International Relations Club, '38, '39, '40, I. R. C. Conference Delegate, '39; Honor Roll, '37, '38, '39, '40; Y. W. C. A. Conference Delegate, '37; Miss Cumberland,

LOUISE HOPKINS . . . . . Watertown, Tenn.  
*Candidate for Degree B.A.*

AMY REBECCA JENNINGS . . . . . Milton, Tenn.  
*Candidate for Degree B.A.*

FRANCES HENRIETTA KESSENGER . . . . . Sheridan, Wyo.  
*Candidate for Degree B.A.*

Alpha Gamma Delta Sorority; Transfer from Northwestern University, '39; Honor Roll, '40.

WILL T. MALONE . . . . . Watertown, Tenn.  
*Candidate for Degree B.A.*

EDNA REED . . . . . Lebanon, Tenn.  
*Candidate for Degree B.A.*

CLAIR SUDDARTH . . . . . Lebanon, Tenn.  
*Candidate for Degree B.A.*

# SENIOR CLASS

## (LAW)

J. B. ALEXANDER

CARTHAGE, MISSOURI

Sigma Delta Kappa Fraternity; Councilman, Cumberland Players; Blue Key Fraternity.



HARRY H. ALLEN, JR.

BALBOA, CANAL ZONE

Sigma Alpha Epsilon Fraternity; Barristers Club; Vice-President Debating Club; Friar's Club.



A. VERNON BELCHER

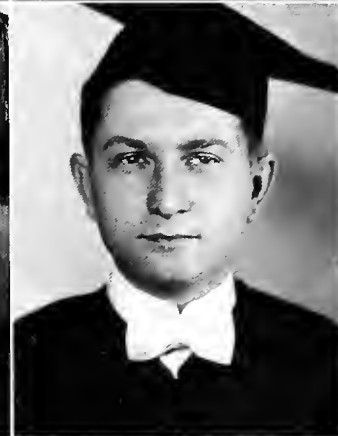
BRUNDIDGE, ALABAMA

Barrister Club.

C. R. BENNETT, JR.

HOLLIS, OKLAHOMA

Barrister Club; Oklahoma Club.



DWAIN D. BOX

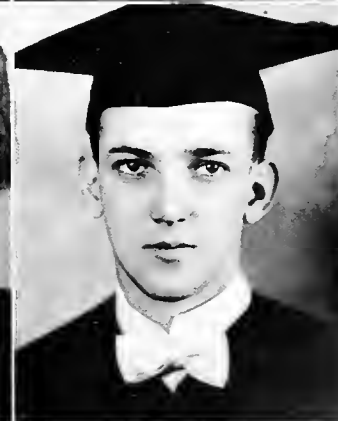
OKLAHOMA CITY, OKLAHOMA

Sigma Alpha Epsilon Fraternity; Barrister Club.

RANDALL P. BURCHAM

UNION CITY, TENNESSEE

Phi Kappa Psi Fraternity; Stray Greek Fraternity; Barrister Club.



WARD R. CASE, JR.

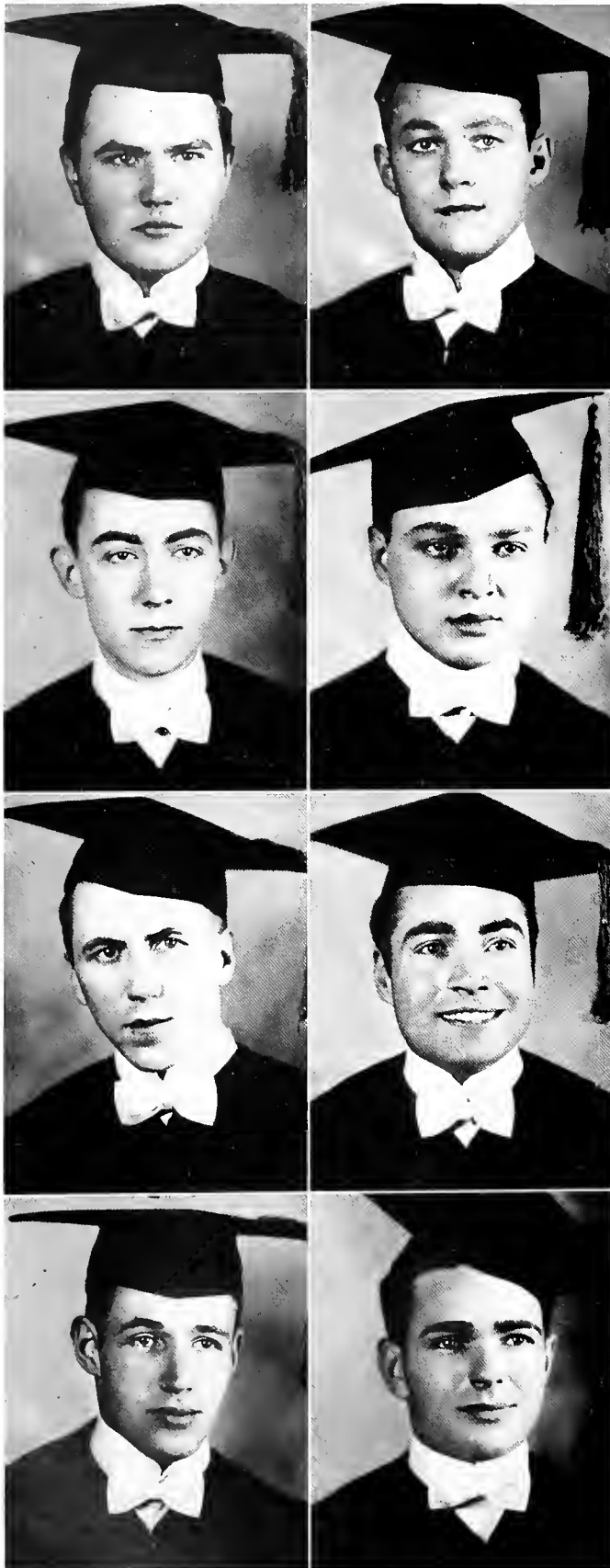
JAMESTOWN, TENNESSEE

Sigma Delta Kappa Fraternity; Secretary Senior Law Class; Chancellor S. D. K.; Blue Key Fraternity.

PRENTICE COLE

JACKSON, TENNESSEE

Sigma Alpha Epsilon Fraternity.



## SENIOR CLASS (LAW)

JOHN C. COX

SPRINGFIELD, MISSOURI

Lambda Chi Alpha Fraternity; Sigma Delta Kappa Fraternity; Barrister Club; Chaplin S. D. K.

LEONARD SUMNER COX

JACKSONVILLE, FLORIDA

Lambda Chi Alpha Fraternity; Barrister Club; Vice-President L. X. A.

MABRY COVINGTON, JR.

COLLEGE GROVE, TENNESSEE

Lambda Chi Alpha Fraternity; Barrister Club; President L. X. A.

JAMES L. CREASY

WESTMORELAND, TENNESSEE

Blue Key Fraternity; Barrister Club.

ROBERT M. DONIHI

CLEVELAND, OHIO

Sigma Alpha Epsilon Fraternity; Sigma Delta Kappa Fraternity; Vice-Chancellor S. D. K.; Associate Justice Southern District of S. D. K.

BILL DOTSON

MOUNTAIN CITY, TENNESSEE

Blue Key Fraternity; "C" Club; Barrister Club; Class Orator; Bachelor of Ugliness Law School.

JAMES N. FISHER

CARTHAGE, TENNESSEE

Basketball Team, '39, '40.

LOUIS GOODRICH

MIAMI, FLORIDA

Sigma Alpha Epsilon Fraternity; Blue Key Fraternity; Barrister Club.



# SENIOR CLASS (LAW)

FRANK GROENENDYKE  
NORMAN, OKLAHOMA



CARL E. HAMMOND, JR.  
NASHVILLE, TENNESSEE  
Sigma Alpha Epsilon Fraternity; Barrister Club.



E. M. HAWKINS, JR.  
CORINTH, MISSISSIPPI  
Sigma Alpha Epsilon Fraternity.



FRED H. HEIDER, JR.  
MIAMI, FLORIDA  
Lambda Chi Alpha Fraternity; Barrister Club.

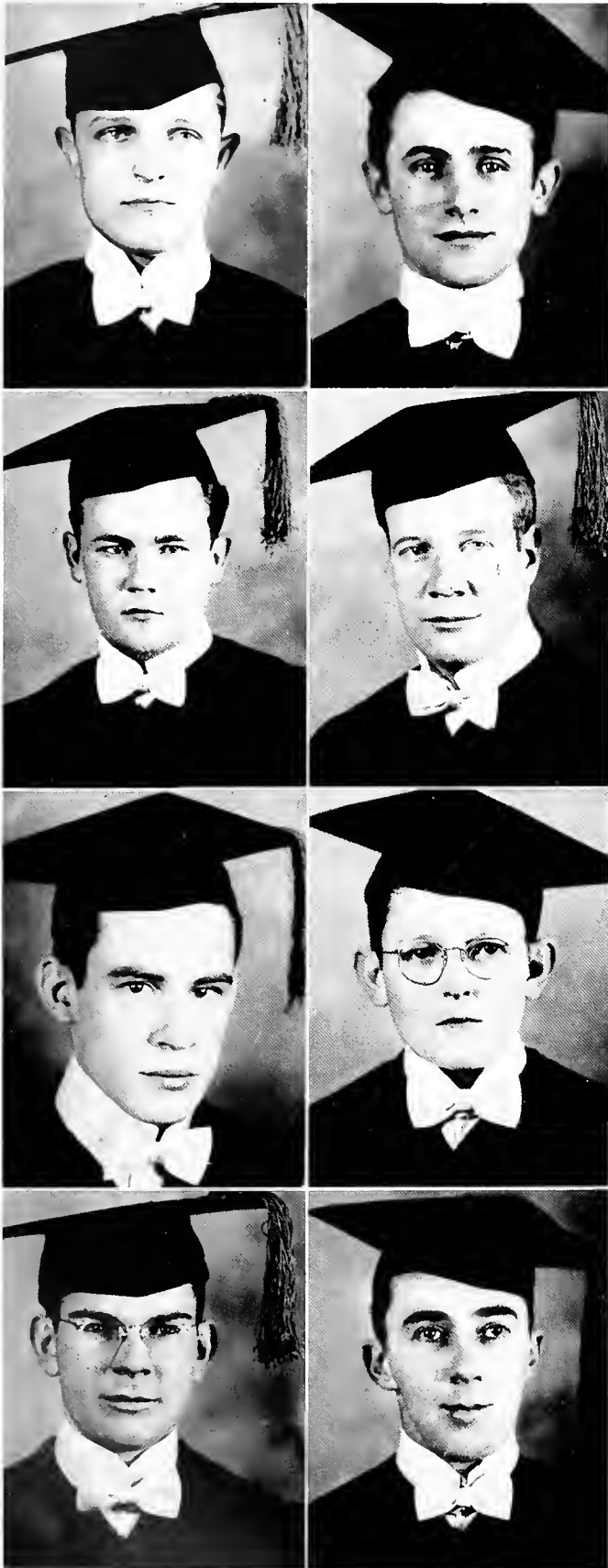
CARLTON GEORGE HOTALING  
ENID, OKLAHOMA



LYMAN INGRAM  
MARSHALL, TEXAS  
Barrister Club; Football; Wrestling; Boxing; Glee Club;  
Student Council.

JOSEPH H. JUDD, JR.  
NASHVILLE, TENNESSEE  
Blue Key Fraternity; Barrister Club; Vice-President  
Senior Class.

WALTER A. LAMPLEY  
NASHVILLE, TENNESSEE



## SENIOR CLASS (LAW)

JOE LINEBAUGH

VICTORIA, TEXAS

Sigma Alpha Epsilon Fraternity; Sigma Delta Kappa Fraternity.

WILLIAM STUART McARTHUR

ASHFORD, ALABAMA

Lambda Chi Alpha Fraternity; Historian Senior Class; Barrister Club; High Epsilon L. X. A.

BILL McQUEEN

FOLKSTON, GEORGIA

Sigma Alpha Epsilon Fraternity.

ROBERT BARLOW MANGUM

SAVANNAH, TENNESSEE

Treasurer Senior Class; Barrister Club.

JOE P. MOSS

NASHVILLE, TENNESSEE

Beta Theta Pi Fraternity; Reporter Stray Greek Fraternity; Blue Key Fraternity; Barrister Club.

OMAR BROWN OLIVER

STROUD, OKLAHOMA

Sigma Delta Kappa Fraternity; Senior Class Chancellor; Barrister Club; Cumberland Players; Past Treasurer S. D. K.

W. EDWIN ORR

BUFORD, GEORGIA

Lambda Chi Alpha Fraternity; President Senior Class; Barrister Club; Student Council.

E. L. OTT

LEBANON, TENNESSEE

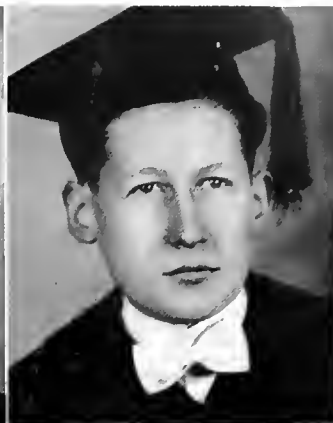
Barrister Club.

# SENIOR CLASS (LAW)

GARTH W. PETERSON

FARGO, NORTH DAKOTA

Sigma Delta Kappa Fraternity; Barrister Club; Yankee Club.



PHIL D. POLOWE

BATAVIA, NEW YORK

Barrister Club.



FRANCIS A. SADOWSKI

GILBERTVILLE, MASSACHUSETTS

Barrister Club.

SYLVAN SMALL

NASHVILLE, TENNESSEE

Barrister Club.



DAVID H. SNODGRASS

SPARTA, TENNESSEE

Barrister Club.

GEORGE SUTHERLAND

HOMINY, OKLAHOMA

Sigma Delta Kappa Fraternity.



W. D. STAMBAUGH

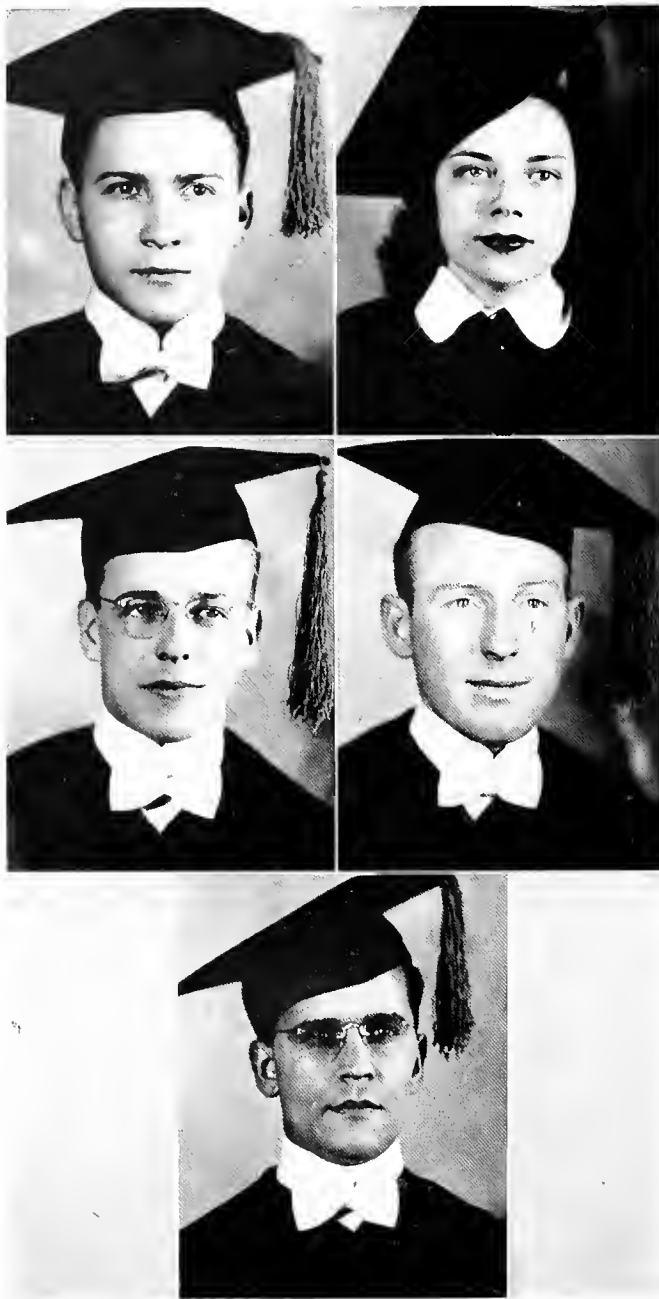
ST. PETERSBURG, FLORIDA

Barrister Club.

ANDREW G. SUTTON

SEATTLE, WASHINGTON

Sigma Phi Sigma; Delta Theta Phi (local); President Stray Greek Fraternity; Barrister Club.



## SENIOR CLASS (LAW)

T. E. SYVERSON  
ST. PETERSBURG, FLORIDA  
Barrister Club.

REBECCA WEAKLEY  
SMYRNA, TENNESSEE  
Delta Phi Omega Sorority; Barrister Club.

JOE WHEELER  
JAMESTOWN, TENNESSEE  
Sigma Delta Kappa Fraternity; Kappa Beta Phi Fraternity.

JAMES G. WHITE  
MIDLAND, TEXAS  
Sigma Alpha Epsilon Fraternity; Blue Key Fraternity;  
Student Council; Football, '39, '40; Barrister Club.

MITCHELL VAN ZICARELLI  
FAIRFIELD, ALABAMA  
Sigma Delta Kappa Fraternity; Barrister Club.

### SENIOR LAWYERS NOT IN PICTURES

★

JACK BURRIS . . . . .	Locust Grove, Oklahoma
HARRY C. CHAPMAN . . . . .	Lebanon, Tennessee
HERBERT KELSO CLARKSON . . . . .	San Antonio, Texas
ANDREW L. DARBY, JR. . . . .	Kansas City, Missouri
JAMES FRANKLIN FARRAR . . . . .	Shelbyville, Tennessee
W. R. GERALD . . . . .	Radford, Virginia
ALFRED E. MILLIGAN . . . . .	Navarro, Texas
JAMES V. MORROW . . . . .	Altamont, Tennessee
SAM C. OLIVER . . . . .	Paris, Tennessee
ROBERT B. PASLEY, JR. . . . .	Spartanburg, South Carolina

★





# CLASS OFFICERS

## JUNIOR CLASS OFFICERS

JAMES EDWARDS . . . . . *President*  
 J. B. LEFTWICH . . . . . *Vice-President*  
 ISABELLE MOSS . . . . . *Secretary*  
 KATHRINE ANDERSON . . . . . *Treasurer*  
 Leftwich, Anderson, Edwards, Moss

## SOPHOMORE CLASS OFFICERS

MILES CHRISTIAN . . . . . *President*  
 JOE WRIGHT . . . . . *Vice-President*  
 GELA EVERETT . . . . . *Secretary*  
 LOUISE CORLEY . . . . . *Treasurer*  
 Christian, Everett, Wright

## FRESHMAN CLASS OFFICERS

WILLIE HACKETT . . . . . *President*  
 R. G. RATCLIFFE, JR. . . . . *Vice-President*  
 CLAIRE JACKSON . . . . . *Secretary*  
 ELWOOD WARREN . . . . . *Treasurer*  
 Hackett, Warren, Jackson, Ratcliffe

## FIRST YEAR LAW CLASS OFFICERS

MCDONALD TERRY . . . . . *President*  
 JIM KELLEY . . . . . *Vice-President*  
 DOROTHEA BROADBENT . . . . . *Secretary*  
 HARRY ALLEN . . . . . *Treasurer*  
 Allen, Broadbent, Terry



# JUNIOR CLASS



KATHERINE ANDERSON  
LEBANON, TENNESSEE

MILDRED NEAL BAIRD  
NEW MIDDLETON, TENNESSEE



WATSON T. BARKER  
NASHVILLE, TENNESSEE

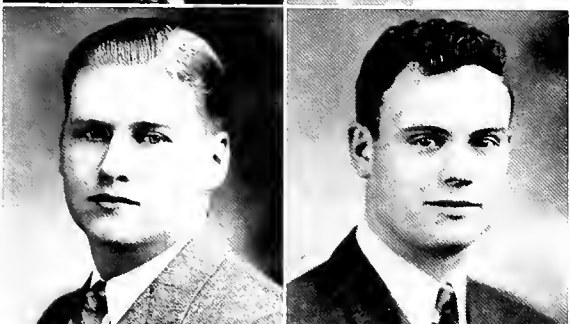


MYRA BURNETT  
LEBANON, TENNESSEE



DORIAN CLARK  
NASHVILLE, TENNESSEE

FRANCES COLEMAN  
LEWISBURG, TENNESSEE



RAMON DAVIS  
LEBANON, TENNESSEE

JAMES EDWARDS  
DICKSON, TENNESSEE



ROBERT L. FORRESTER, JR.  
WATERTOWN, TENNESSEE

SARA KATHERINE GRANDSTAFF  
LEBANON, TENNESSEE



EUGENE HESTER  
NASHVILLE, TENNESSEE

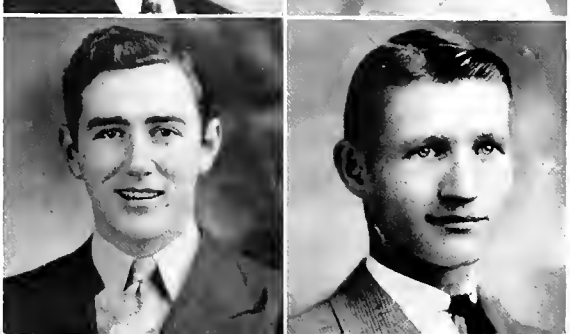


ANNIE KATE KELLEY  
GARNER, ARKANSAS



JOHN B. LEFTWICH  
BAXTER, TENNESSEE

EDWARD MARTIN  
LIBERTY, TENNESSEE



# JUNIOR CLASS

EDWIN MARTIN  
LIBERTY, TENNESSEE

ISABELLE MOSS  
LEBANON, TENNESSEE



JOSEPHINE MURPHY  
LEBANON, TENNESSEE

CLAIBORN MERRELL NIXON  
ELIZABETH CITY, NORTH CAROLINA



THOMAS RICHARD PURYEAR  
LEBANON, TENNESSEE

ERWIN REED  
LEBANON, TENNESSEE



IRA H. SADLER  
LEBANON, TENNESSEE

G. T. SCOTT  
DICKSON, TENNESSEE



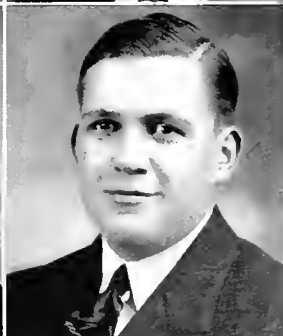
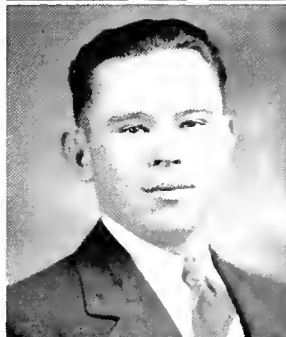
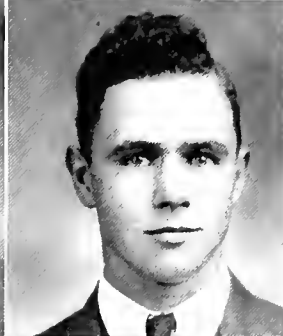
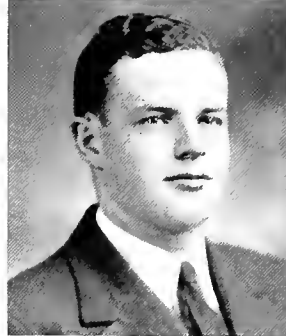
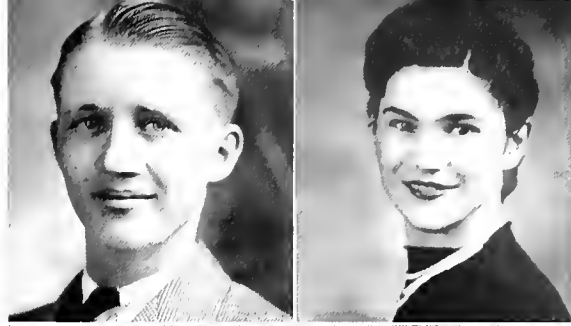
ROYCE SULLIVAN  
BELLS, TENNESSEE

LUTHER JOE THOMPSON  
WATERTOWN, TENNESSEE



SARA HELEN WHITEFIELD  
WATERTOWN, TENNESSEE

C. H. WARREN, JR.  
LEBANON, TENNESSEE





## SOPHOMORE CLASS

### *First Row*

J. LESTER ABELS . . . . . Belleville, N. J.	BETSY BEARD . . . . . Lebanon, Tenn.
EMMA RUTH AMONETTE, Buffalo Valley, Tenn.	BERNIE SANFORD BASS . New Middleton, Tenn.
VIVIAN ARRINGTON . . . . . Lebanon, Tenn.	G. FRANK BURNS . . . . . Lebanon, Tenn.

### *Second Row*

NELLE CAROLINE BURTON . Mt. Juliet, Tenn.	MARY CASEY DAVIS . . . . . Sturgis, Ky.
SARA LUCILLE CRAGWELL . . . Lebanon, Tenn.	DORINDA DERRYBERRY . . . . Columbia, Tenn.
HAZEL DANCE . . . . . Tullahoma, Tenn.	RACHEL EATHERLY . . . . . Lebanon, Tenn.

### *Third Row*

MARIANA ERWIN . . . . . Sturgis, Ky.	JAMES E. FITZSIMMONS . . . . . Chicago, Ill.
GELA EVERETT . . . . . Mt. Juliet, Tenn.	RICHARD FREEMAN . . . . . Bells, Tenn.
VIRGINIA FITTS . . . . . Hickman, Tenn.	HERSCHEL GOWER . . . . . Nashville, Tenn.
LURENE GREER . . . . . Cowan, Tenn.	





## SOPHOMORE CLASS

### *First Row*

PAUL HALL . . . . . Donelson, Tenn.	CARL HOBBS . . . . . Lebanon, Tenn.
LOUISE HAMM . . . . . Rockwood, Tenn.	BERTHA ELOISE HUNTER, Ashland City, Tenn.
DOUGLAS ALFRED HEREFORD . . . Gurley, Ala.	MARIAN JACKSON . . . . . Lebanon, Tenn.

### *Second Row*

BENTON JENNINGS . . . . . Lebanon, Tenn.	GORDON PETTY . . . . . Carthage, Tenn.
EVELYN JENNINGS . . . . . Lebanon, Tenn.	BETTY KATE PRITCHARD . . . Lebanon, Tenn.
GEORGIA NICHOLSON . . . Ashland City, Tenn.	WILLIAM F. SIMPSON . . . Locust Valley, N. Y.

### *Third Row*

ELEANOR SWEENEY . . . . . Columbia, Tenn.	JANEY WINFREE . . . . . Smithville, Tenn.
EVELYN WELTY . . . . . Lebanon, Tenn.	ANCIL NEAL WOMACK . . . Watertown, Tenn.
MARGARET WILLIAMS . . . . . Lebanon, Tenn.	JOE EDWARD WRIGHT . . . Martha, Tenn.
BILLIE ZARECOR . . . . . Lebanon, Tenn.	



## FRESHMAN CLASS

### *First Row*

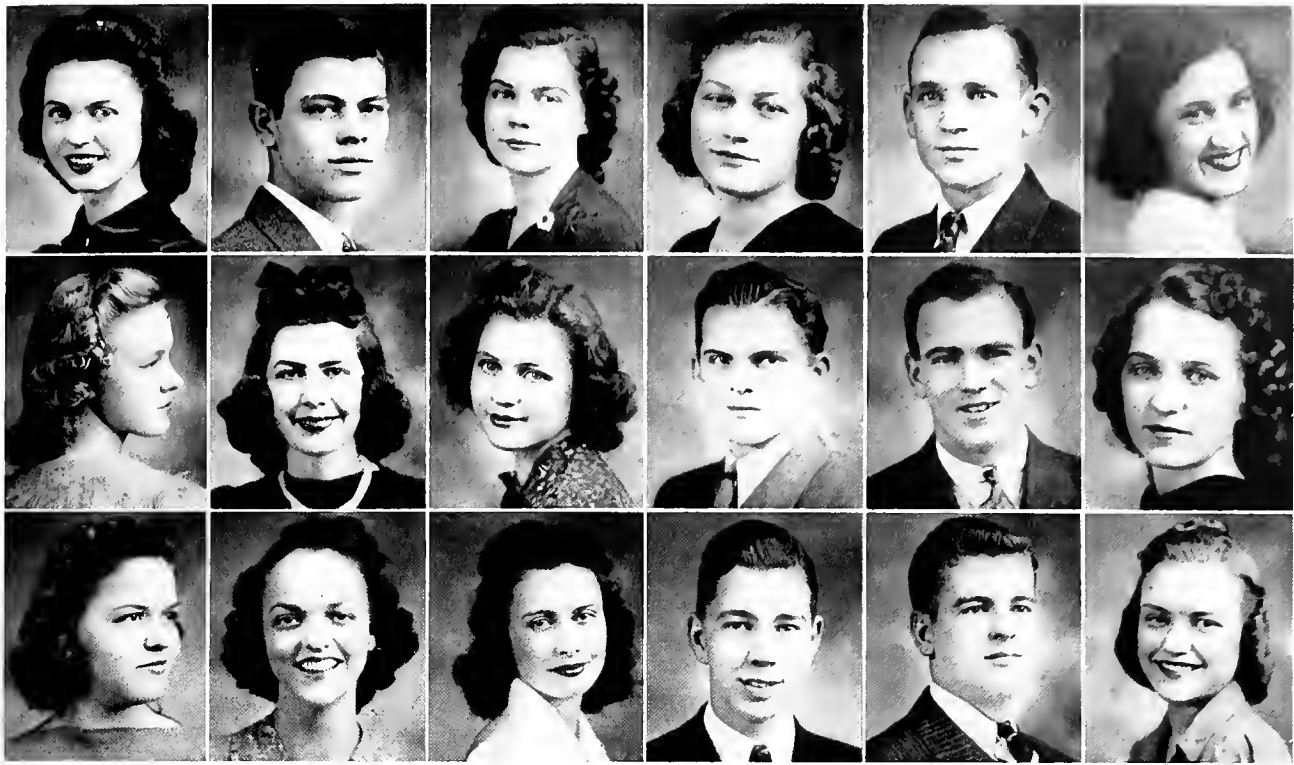
VIRGINIA ARNOLD . . . . . Lebanon, Tenn.	ROBERT EARL BOMAR . . . Tullahoma, Tenn.
JEANNE BARR . . . . . Owensboro, Ky.	FRANCES ELIZABETH BOYD . Columbia, Tenn.
JAMES BASS . . . . . New Middleton, Tenn.	MARY NELLE BRYAN . . . Shop Springs, Tenn.

### *Second Row*

HEWLETT BURTON . . . . . Mt. Juliet, Tenn.	BEN DENNEY, JR. . . . . Milan, Tenn.
WALTER S. CARTWRIGHT . Gladeville, Tenn.	JACK T. DENNEY . . . . . Milan, Tenn.
BETTY COOPER . . . . . Columbia, Tenn.	JAMES THOMAS DONNELL, Greenwood, Tenn.

### *Third Row*

PAUL LEE DORAN, JR. . . . . Sparta, Tenn.	FRANCES FORRESTER . . . Watertown, Tenn.
JOHN THOMAS EDWARDS . . Franklin, Tenn.	VIRGINIA FOSTER . . . . . Milan, Tenn.
FRANCES EVINS . . . . . Smithville, Tenn.	WILLIE HACKETT . . . . . Gallatin, Tenn.



## FRESHMAN CLASS

### *First Row*

DORIS HASSELL . . . . . Humboldt, Tenn.	ANNA CLAIRE JACKSON . . . . . Lebanon, Tenn.
THOMAS IRVIN HOLMAN . . . . . Springfield, Tenn.	MARTIN W. JENKINS . . . . . Lebanon, Tenn.
FRANCES HEWGLEY . . . . . Greenwood, Tenn.	RUTH JOHNSON . . . . . Lebanon, Tenn.

### *Second Row*

EDNA LEE KELLEY . . . . . Lebanon, Tenn.	WILLIAM NELSON LLOYD . . . . . Lewisburg, Tenn.
REBECCA KENNEDY . . . . . Lynnville, Tenn.	LAWRENCE MCCOY . . . . . Belleville, N. J.
KATHERINE KILLEN . . . . . Milan, Tenn.	KATHERINE M. MCDOWELL, Lebanon, Tenn.

### *Third Row*

MARGARET ELOISE McEWEN, Columbia, Tenn.	LAWRENCE MORTON, JR. . . . . Springfield, Tenn.
MARION E. McEWEN . . . . . Columbia, Tenn.	JOHN REZNER ORR . . . . . Lewisburg, Tenn.
HELEN RUTH MANNER . . . . . Milan, Tenn.	CHARLENE PRICHARD . . . . . Lebanon, Tenn.



## FRESHMAN CLASS

### *First Row*

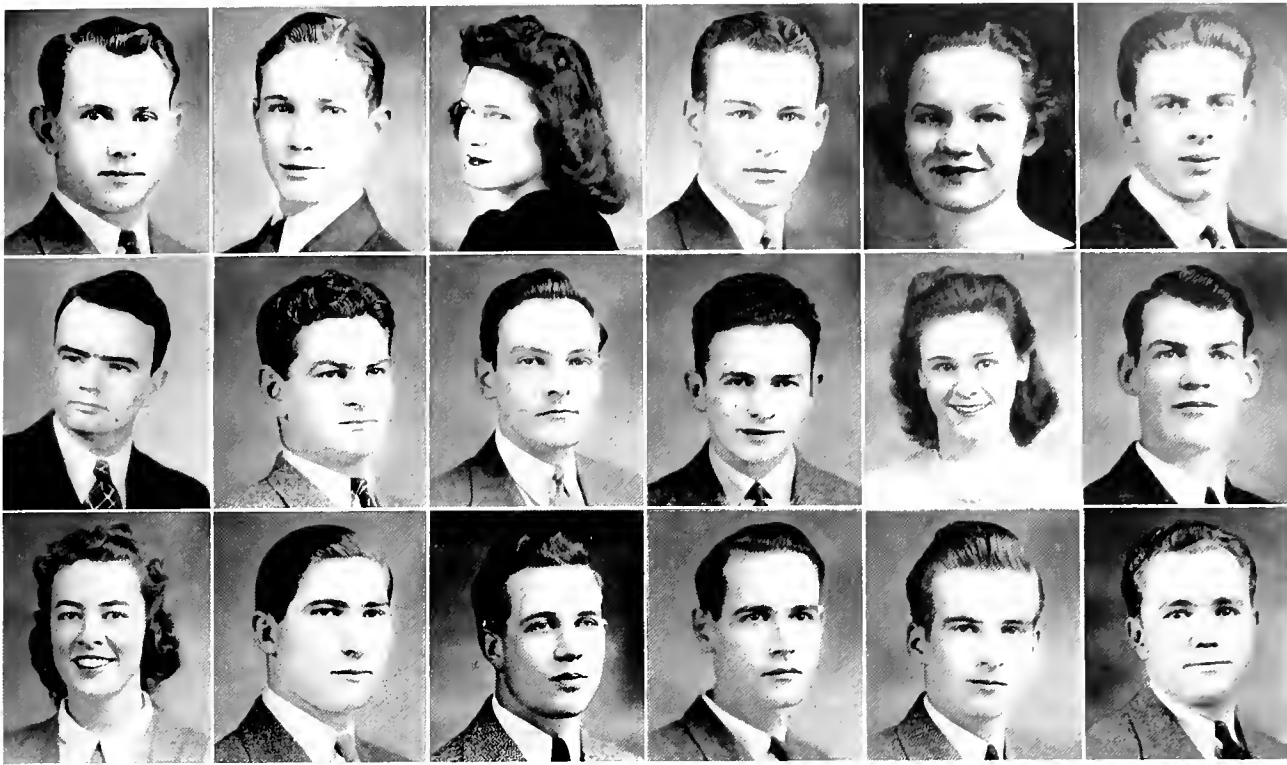
ROBERT G. RATCLIFFE, JR. . . . . Gastonburg, Ala.	JOHN HOWARD ROE . . . . . Springfield, Tenn.
BILLIE REEKS . . . . . Ashland City, Tenn.	RUTH ROLAND . . . . . Lebanon, Tenn.
MARGARET REEKS . . . . . Ashland City, Tenn.	IMOGENE ROSS . . . . . Lynnville, Tenn.

### *Second Row*

MARGERIE ROUSSEAU . . . . . Lebanon, Tenn.	SHIRLEY SHANNON . . . . . Lebanon, Tenn.
MARGARET SANDERS . . . . . Santa Barbara, Calif.	HELEN LUCY SIMMONS . . . . . Franklin, Tenn.
ANNETTE SELLARS . . . . . Lebanon, Tenn.	WILLIE E. SPEAR . . . . . Celina, Tenn.

### *Third Row*

REBECCA STALLWORTH . . . . . Canoe, Ala.	VIRGINIA NELLE WARREN . . . . . Lebanon, Tenn.
VIVIAN STALLWORTH . . . . . Canoe, Ala.	DOROTHY MAYES WHITE . . . . . Lebanon, Tenn.
VIRGINIA THOMPSON . . . . . Watertown, Tenn.	RUTH WILLIAMS . . . . . Lebanon, Tenn.
BLAKIE WINFREE . . . . . Smithville, Tenn.	



## FIRST YEAR LAW CLASS

### *First Row*

HARRY H. ALLEN . . . . . Balboa, Canal Zone	WILLIAM K. FILLAUER . . . . . Cleveland, Tenn.
D. LAWRENCE AUVIL . . . . . Dade City, Fla.	PEGGY DEAN HALL . . . . . Hartsville, Tenn.
DOROTHEA BROADBENT . . . . . Ocala, Fla.	HOWARD RUSSELL HUNKE . . . . . Cleveland, Ohio

### *Second Row*

JOHN A. JAMISON . . . . . Society Hill, S. C.	JAMES MAXWELL . . . . . Cleveland, Tenn.
LIONEL W. MAHONNEY . . . . . New Orleans, La.	KATHLEEN PHILLIPS . . . . . Balboa, Canal Zone
DONALD MERDOCH MCSWEEN, Newport, Tenn.	MCDONALD TERRY . . . . . Henderson, Tenn.

### *Third Row*

PHYLLIS VAN AKEN . . . . . Jamesburg, N. J.	HARRY WYNNS . . . . . Dickson, Tenn.
ROBERT E. VAN SICLEN . . . . . Balboa, Canal Zone	ALLEN WYATT . . . . . Marshall, Texas
GRISSIM HILL WALKER . . . . . Lebanon, Tenn.	B. V. YOUNT . . . . . Coffeerville, Kan.







FEATURES





## CORONATION OF THE QUEEN

LOUISE HAMM, Queen

BACK Row (left to right): Isabelle Moss, Frances Coleman, Evelyn Jennings, Betty Kate Prichard, Hugh McLean, Dr. E. L. Stockton, Georgia Nicholson, Billie Warren, Eloise Hunter, Helen Simmons.

FRONT Row: Louise Hamm, Queen, John Beard, Crown Bearer.

## FLOAT WINNER

The Delta Phi Omega float, which won first place in the Football-Armistice Day Parade.





Margaret Gannaway

MISS CUMBERLAND





Bill Steele

BACHELOR OF UGLINESS



Rebecca Weakley

MISS LAW SCHOOL



William Dotson

BACHELOR OF UGLINESS. LAW SCHOOL



Louise Hamm

PRETTIEST GIRL



Annette Sellars

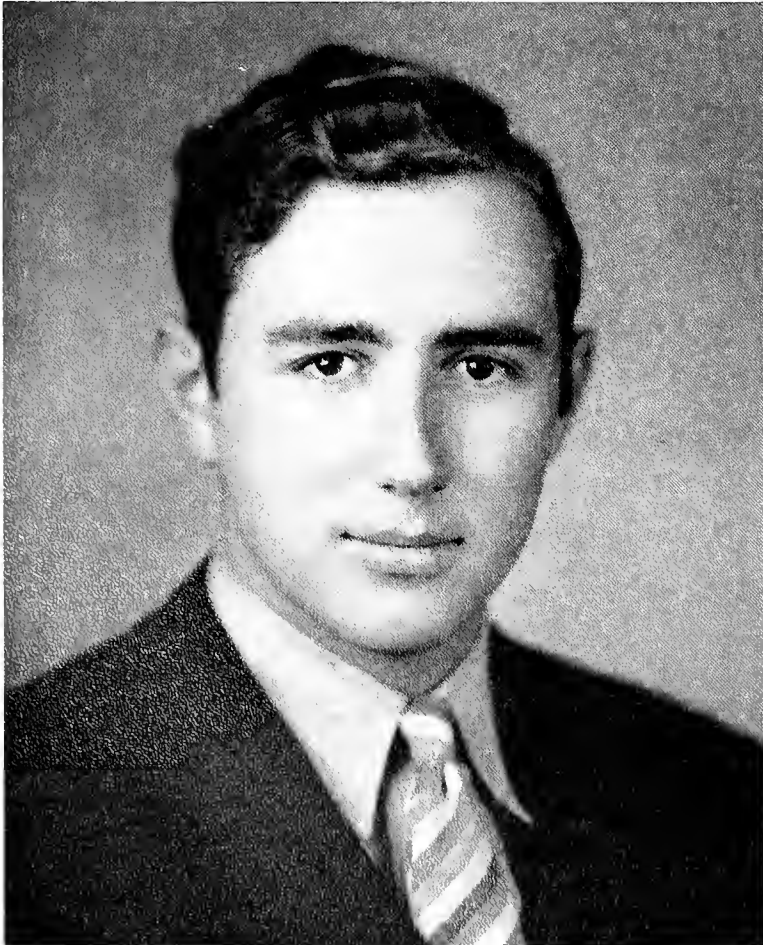
PRETTIEST GIRL. As Selected by Earl Carroll





Nellie Caroline Burton

MOST REPRESENTATIVE GIRL



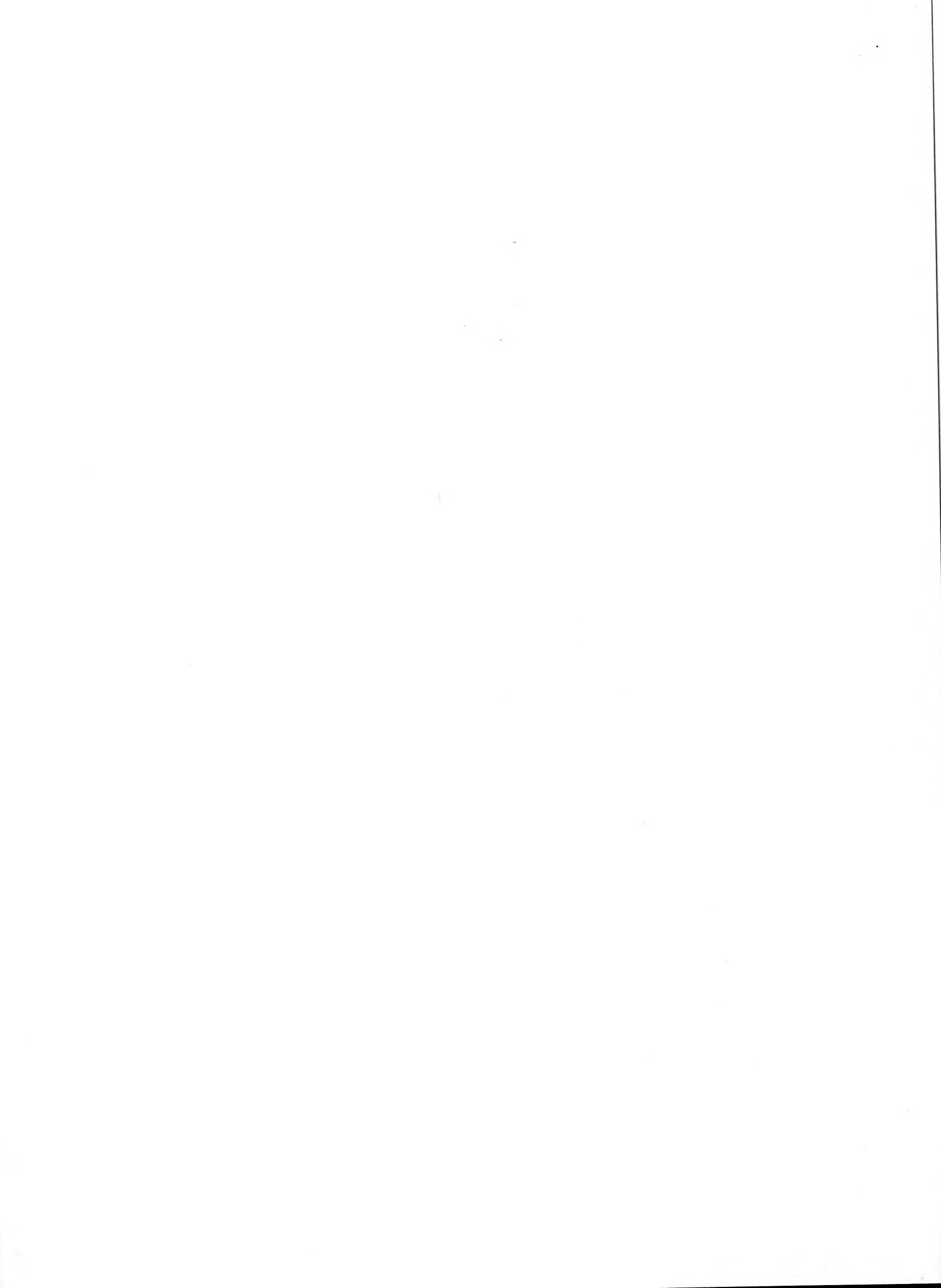
John B. Leftwich

MOST REPRESENTATIVE BOY





ATHLETICS





Front Row: Stambaugh, Simpson, Baker, Wade  
Second Row: Jones, White, Hammond, Adams, Morton

# THE GOLF TEAM

With the yelling of "Fore" on the sports roster, students looked and were surprised to discover a new sport on the Cumberland campus—golf. Cumberland has not had a golf team in years and years. In fact, it was never learned whether the last team was caught in some sand trap or lost in a rough for it just passed silently away.

But this spring a new grip was taken on golf clubs and golfing is here to stay. This year's team was formed more as ground-work for next year's team; a nucleus around which to mold a sport that in a few years of building-up should prove to be one of the most popular on the campus.

A golf club was formed with Bill Simpson as president. Its object was to combine all interested in mashie wielding into a group to champion the return of golf to the Cumberland sports department and to build toward the future.

Professor Louis Adams, as coach of the team, arranged a schedule with some of the top golf teams of the South. Sewanee, University of Mississippi, University of Georgia, and Western Kentucky Teachers are among those teams on the Cumberland docket.



COACH NED VAUGHAN

Coach Ned Vaughan started his career as a coach in 1936 as assistant to Gene McIlwain, then the Bulldog head coach. Upon the latter's dismissal Vaughan was elevated to head coach, this being just three years after his gridiron career had ended. As a player Coach Vaughan left behind him a colorful record. In 1928 he was all-state guard at Castle Heights Military Academy. Before coming to Cumberland he attended New Mexico Military Institute where he was all-Southwestern. At Cumberland

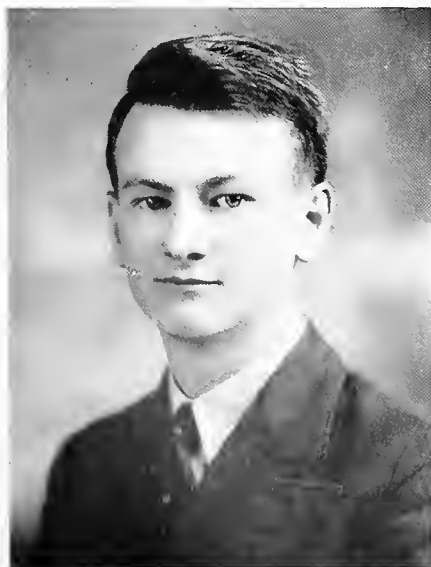
# F O O T

## 1939 RESULTS

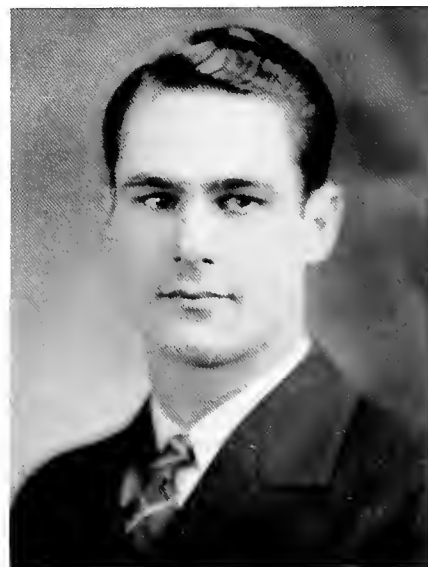
Cumberland . . . . .	0; Milligan . . . . .	12
Cumberland . . . . .	0; Eastern Kentucky . . . . .	20
Cumberland . . . . .	6; E. T. S. T. C. . . . .	8
Cumberland . . . . .	12; Tusculum . . . . .	7
Cumberland . . . . .	14; M. T. S. T. C. . . . .	6
Cumberland . . . . .	0; Ouichita . . . . .	32
Cumberland . . . . .	0; Carson-Newman . . . . .	31
Cumberland . . . . .	0; Maryville . . . . .	20
Cumberland . . . . .	0; King . . . . .	25

he was all-conference guard of the Smoky Mountain Conference in 1935.

Due to the fact that he was new at the game of head coach, Vaughan has not rung up a very impressive record for the past two seasons. But now that he has found his best plays and players around which to build next year's team, it is expected that he will cut loose with some real scoring punch.



BILL STEELE  
Manager



BILL SUMMERS  
Captain



# B A L L

## 1940 SCHEDULE

September 20 . . . . . Milligan, at Lebanon  
 September 28 . . . . . Maryville, at Lebanon  
 October 5 . . . . . Sewanee, at Sewanee  
 October 13 . . . . . Tusculum, at Lebanon  
 October 20 . . . . . M. T. S. T. C., at Murfreesboro  
 October 27 . . . . . Carson-Newman, at Jefferson City  
 November 2 . . . . . E. K. S. T. C., at Richmond, Ky.  
 November 9 . . . . . E. T. S. T. C., at Johnson City  
 November 16 . . . . . Union, at Jackson (pending)  
 November 23 . . . . . King, at Bristol

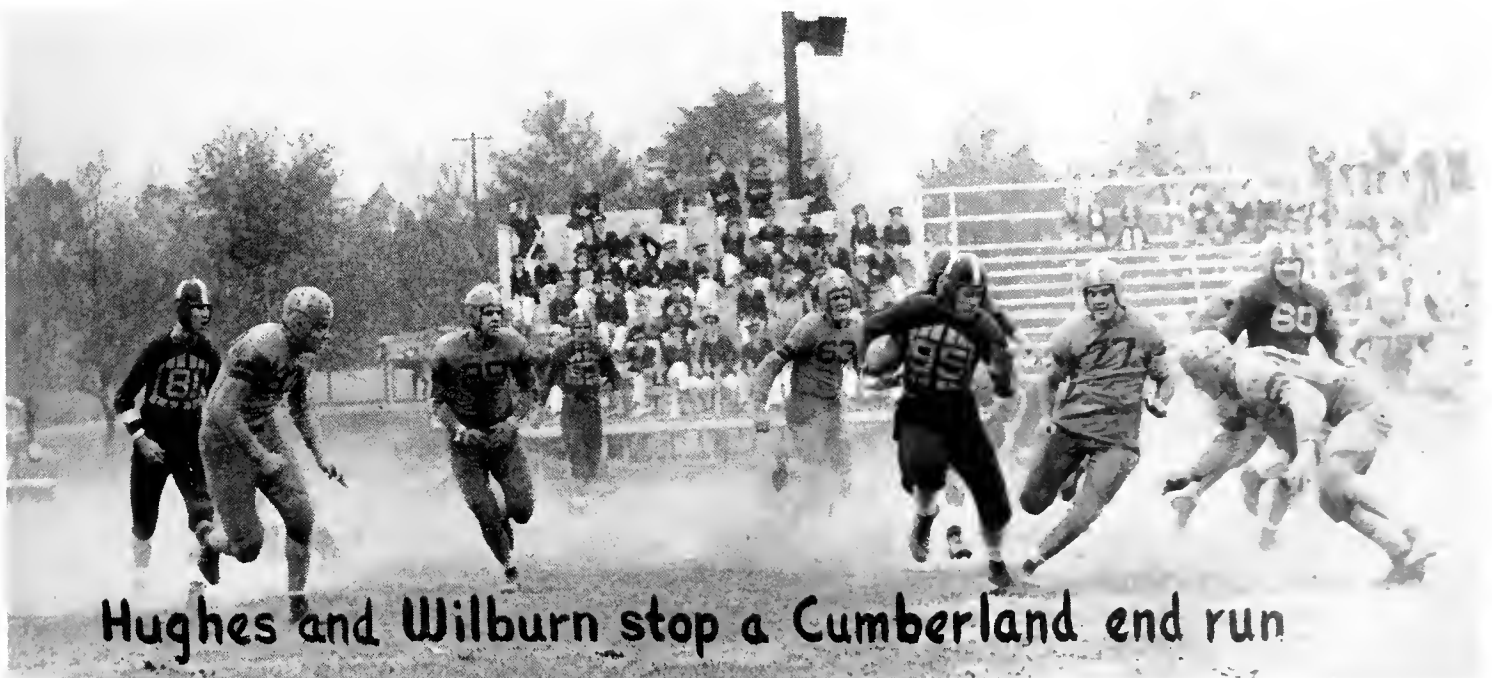


ASSISTANT COACH BILLY PEEBLES

Assistant Coach Billy Peebles received his playing experience at Vanderbilt University where he was a stellar backfielder. Peebles secured his post at the same time as Coach Vaughan and it was his initial chance in a coaching status. He was in charge of the backfield

during his two-year stay here, having resigned after the 1939 schedule had been completed.

Manager Bill Steele was in charge of all equipment and turned in an admirable job in this capacity. Charles Feeney, freshman from New Jersey, served as trainer for the squad.



Hughes and Wilburn stop a Cumberland end run

# F O O T B A L L

## BULLDOGLAND

In an ancient annual of Cumberland University, to be exact, 1895, a prediction was made that, "There is coming a sunnier day for athletics in Cumberland University." Whoever wrote this evidently did not mean 1939, for this was one of the worst seasons in the history of the football team.

Although the team won very few games and lost by scores that were entirely too large, it was not the fault of the men or the coach. No, it was not their fault! It was because they were not strong enough to face such competition as was handed them this year. Considering the teams encountered, without exception as strong as any team ever tackled, our team did very good.

This is not meant to be an opology, neither is it a compliment—it is to be facts. Not one of the men who fought to uphold the tradition of Cumberland this year would like to have a bouquet thrown at them, nor would they appreciate a shower of rotten tomatoes, such as was often handed them during the past fall. They gave the best they had in an effort to win, never failing to play the game in the most sportsmanlike manner as possible.

Optimism was at the boiling point at the first of the

year, especially during the pre-school training. It was generally conceded that the '39 varsity would be one of the best in Cumberland's long and enviable history. But alas! as Robert Burns is wont to say, "The best-laid schemes o'mice an' men gang oft a-gley," and the C. U. football team was no exception.

The first game was a pushover—for the other team—and six of the best Cumberland men bit the dust under the onrush of "The Thundering Herd." But even this failed to dampen the spirits of the Bulldogs, nor of their most ardent backers—the student body. No, their spirits were not dampened—they were thoroughly soaked. They were in fact as wet at dry gin. This was especially true of the student body. And it did not stop here for the team quickly suffered two more serious defeats.

No one felt these defeats more than did Coach Vaughan. This was Coach Ned's second year and much had been expected of him. Coach Ned, who had been assistant coach under McIlwain, was appointed head coach when McIlwain left Cumberland. But the blame for the disastrous season cannot be placed on one man's shoulders—the competition was too much.

Three Cumberland men were recognized by the Smoky Mountain Conference. They were: Jimmy Johnson, who



CAPTAIN SUMMERS  
End

CLAUDE KERR  
Tackle

LYMAN INGRAM  
Utility

JIMMY JOHNSON  
Guard

ALT.-CAPT. BEESLEY  
End

# R E S U M M E

was unanimous choice for All-Conference in the guard slot; Charlie Beesley, who was named on the second All-Conference team; and Dave Wagster, who received honorable mention.

Cumberland ended the '39 season with the King College game on November 24 with a record of seven losses and two wins. One hundred and sixty-one points were scored by the opposition, compared with thirty-two for Cumberland's share. By a curious coincidence one hundred and sixty-one points were scored by the opposition in 1937. A brief game-by-game summary follows:

## BUFFALOES TRAMPLE BULLDOGS

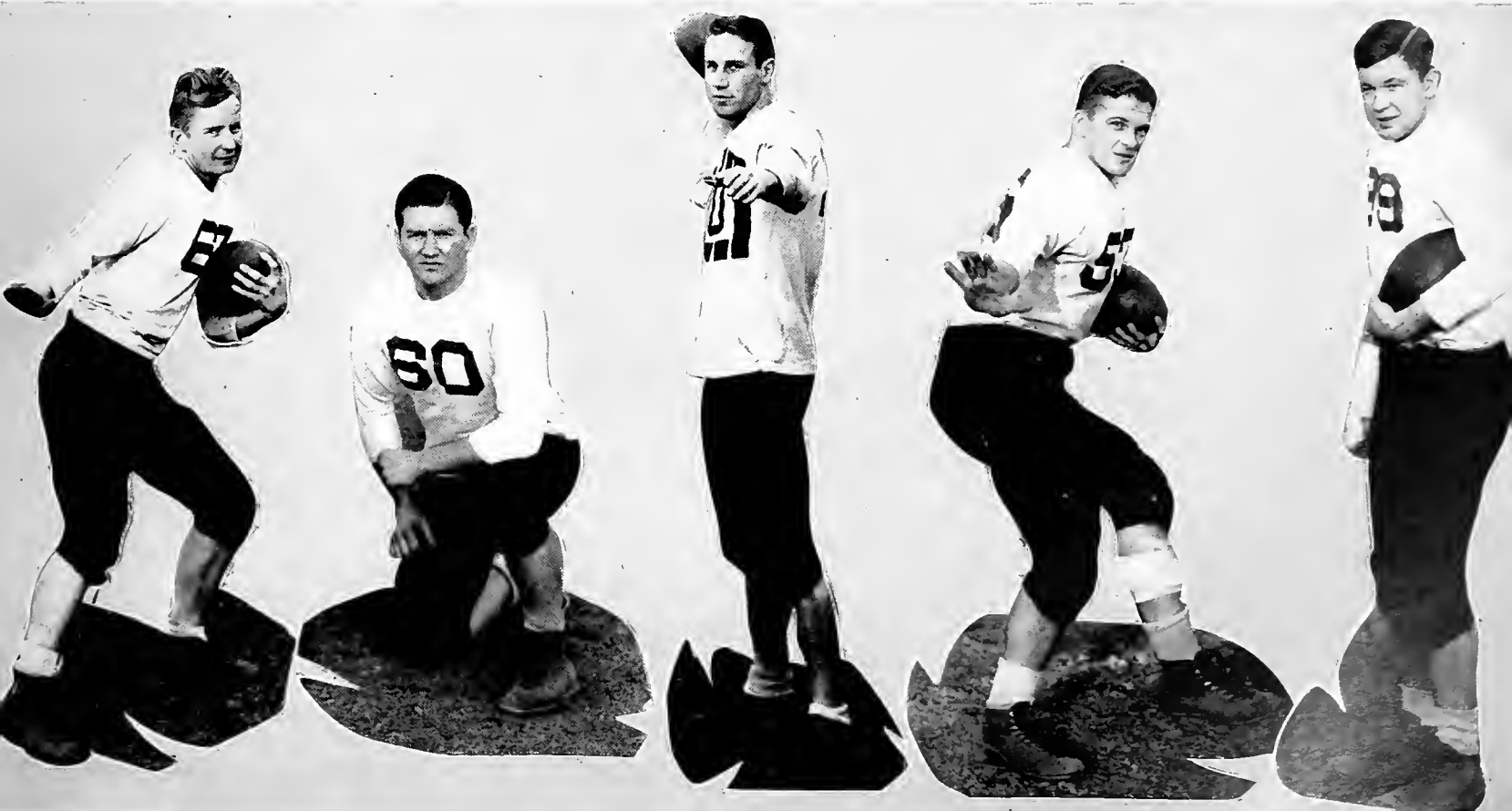
In the initial game of the season against Milligan, C. U. received a touch of real football, or better, football in the rough. Before the game had proceeded very far six of Cumberland's crack players were on the bench suffering from injuries. Consequently Coach Vaughan was forced to play inexperienced men. During the first half both teams see-sawed back and forth with no results. But in the second half the Milligan Buffaloes broke loose and won twelve to nothing.

## TEACHERS TEACH BULLDOGS TRICKS

With a badly crippled team Coach Vaughan journeyed to Richmond, Kentucky, to accept the second defeat of the season. The only time in the game that the East Kentucky State Teachers were challenged was in the third quarter. Eastern was clipping on a punt and Cumberland took the ball on the Teachers' 27. A pass, White to Lloyd, gained nine and then White made a first on Eastern's 12, but their goal line was impregnable. The game ended twenty to nothing in favor of Eastern.

## BULLDOGS GROWL IN VAIN

Luck of the sort none of us like was responsible for the defeat at the hands of East Tennessee State Teachers College. While the game was still in its infancy a Cumberland fumble was recovered by the Teachers, resulting in a touchdown. In the fourth quarter Lloyd broke loose and ran twenty-eight yards. This was C. U.'s first score of the year. But luck waited until the closing minutes of play to strike when Lloyd was downed behind his own paystripe, giving the game to Teachers eight to six.



PAUL SMITH  
Back

BOB SHAUGHNESSY  
Guard

DAVE WAGSTER  
Back

BILLY LLOYD  
Back

ALT.-CAPT. VAUGHN  
Back



JIM CHAPPELL  
Back

ROSS LUSK  
Tackle

JAMES WORK . Center

DOUG HEREFORD . Back

JOE CARTER . Tackle



### BULLDOGS FLOAT THROUGH THE AIR

With many of their number on the ailing list, the Bulldogs traveled to Greenville and licked Tusculum twelve to seven. This, the first win of the season, was probably due to the aerial attack C. U. threw at the Tusculum team. Out of twenty-four tries, eighteen passes were completed—a feat that is, or comes close to being—a college record. So swift and sure was this aerial circus accomplished by tossers Miles Christian and Little Dave Wagster and catchers Captain Summers and “Toughy” Chappell that Tusculum was from the beginning in the dark.

### TEACHERS BITTEN BAD

Cumberland was well compensated for losing her other games by winning this one. For several weeks a verbal war of uncomplimentary innuendos had been waging between the students of both schools via their school papers, until rivalry reached the tense point. Came the game: Soon after the opening kickoff Carter recovered a fumble for the Bulldogs and Vaughn passed a quick one to Wagster far down the field. Weaving in and out and running as only Wagster can, he evaded all Teachers and crossed the six-point marker. Until the last minutes of the game play shifted back and forth with C. U. adding another score. Then S. T. C. flashed across for their only touchdown, ending the game 14 to 6.

### BULLDOGS PLAY DEAD

With victory fresh on their trail the Vaughanmen hit the highway for Arkadelphia, Arkansas, where they suffered their worst defeat of the season. The Ouichita team was by far the superior and most of the battle was played in C. U. territory. The Ouichita gridders added Cumberland's scalp to their winning streak by a



ROBERT COPELAND  
Guard



WILLIE HACKETT  
Center



JIM WHITE . Back

MILES CHRISTIAN . Back

GORDON JONES . Tackle

thirty-two to nothing score. Three C. U. men were injured: Jimmy Vaughn, Charlie Beesley, and Jim "Whizzer" White.

### EAGLES CLAW BULLDOGS

The screaming Golden Eagles of Carson-Newman swooped down on the helpless Bulldogs and downed them under an avalanche of touchdowns. During the first quarter the Vaughanmen held their own, but in the second the Holtboys showed the stuff Eagles are made of, tearing the Bulldogs to pieces. C. U. never threatened and the game ended thirty-one to nothing.

### SCOTTIES WIN CANINE BATTLE

The wee wee Scotties off the mountain put up one of the stiffest fights experienced by the Bulldogs of any school in their class. In the first quarter C. U. did most of the playing, but failed to gain pay dirt. During the second a pass was intercepted which resulted in Maryville's first touchdown. Then with an aerial attack reminiscent of such as is used by Morrison of Vanderbilt, Maryville was able to shoot over two more. Outstanding for C. U. were Charlie Beesley, Work, Christian, Orr and Chappell, but still Maryville won, twenty to nothing.

### TORNADOES MAKE BULLDOGS CHASE TAIL

Facing a faster and by far a more powerful team, the Bulldogs ended their season in a glorious defeat. In the first quarter it was a question of give and take—and King took a nice touchdown. In the second Wagster kept the King Tornadoes away by good kicks, but the King speed demon, Shockley, insisted on returning them with beautiful exhibitions of running. The remainder of the game was repetition of the first half and the game closed with King twenty-five and C. U. nothing. Summers, Lusk, Johnson, Shaughnessy, and Wagster were on the outstanding list for Cumberland.







Front Row: Johnson, Sutton, Copeland, Allen, Hackett, Work, Shaughnessy, Phillips, Freeman.  
 Second Row: Steele, Summers, Beesley, Kenny, Ingram, Kerr, Thompson, Lusk, Jones, Carter, Dotson, Coach Vaughan.  
 Back Row: Assistant Coach Peebles, Chappell, Vaughn, Lloyd, Orr, Smith, Wagster, White, Milligan, Christian, Hereford, Whitfield.

## THE SQUAD

What quality is there about football that makes it so enjoyable to college men? Bone crushing tackles. Bodies hitting the ground. Twisted knees. Broken bones. Sprained ankles. All terrifying in themselves. Yet fellows strain, slave, and train to get these body contacts. Psychologists would probably say that it is caused by an instinct or urge that is a hangover from cave man days when men had to fight for survival. When rough and ready tactics were the rules of the time.

For example, there must have been some motivation that kept the above squad interested in the game. This picture was taken the day before the last game of the season, yet thirty men were still out in spite of the disastrous season. It's too bad that they could not have had more rewards for their efforts for this year's squad contained plenty of good material and better results should have been obtained.

B  
A  
S  
K  
E  
T



BOB GERALD, Basketball coach, pointing out the opposition's weakness to Captain Edwards.

J. V. MORROW, manager, and RASCAL, the mascot. Rascal is the only mascot in the world with an LL.B. degree.



T  
B  
A  
L  
L

# B A S K E T

Coach Bod Gerald is finishing his second year of law work in Cumberland, but had had plenty of experience with basketball before enrolling here. He had coached high school basketball and varsity ball at Lynchburg College, where his team racked up an impressive record. Last year he took over the Bulldog coaching duties and won seven games, losing six. This season the cagesters were only able to capture five games out of twelve, but they managed to outscore their opponents in total points by 522 to 466. Out of the total points scored by the C. U. quint, 340 tallies were rung up by two men—Patrick and Edwards.

James Edwards, always called "Droopy," hails from Dickson, Tennessee, and captained the hoop throwers this season. For the second straight year "Droopy" carries away top honors in scoring with a total of 178 points, sinking 72 field goals and 34 foul shots—an average of 14.8 points per game.

D. L. Patrick, "Slim" to his fans, is a sophomore from Radford, Tennessee. Getting off to a late start in scoring honors, "Slim's" erratic shooting ranks him second in scoring with 162 markers, 65 field goals and 29 free throws for a 13.5 average.

James Fisher is from Carthage, Tennessee, and is the only member of this year's varsity not returning next year. Low in scoring ability with only 24 points, he is tops in guarding.

Bernie Bass, fast little guard from Gordonsville, Tennessee, is a sophomore. Third in scoring with 89 points, Bernie is an all-around player and as smooth a ball handler as the team possesses.

Charlie Beesley, Wartrace, Tennessee, reported for the varsity in mid season but still



# T B A L L

manages to rate fourth in scoring with 30 tallies. Charlie is a good floor man.

Joe "Old Duck" Carter, Nashville, Tennessee, rings the bell for 16 points during the short time that he played. "Old Duck" is one of two players having 100 per cent in foul shots made, netting four out of four. He was not present for a picture.

Richard Freeman, sophomore from Bells, Tennessee, saw very little service, but should see more next year for his guarding ability.

Kenneth Kenny, Paris, Kentucky, is another second stringer who played very little. He also has a 100 per cent in foul shots made.

John Orr, freshman from Lewisburg, Tennessee, is one of the trickiest ball handlers on the squad. Fast and small, he should be detrimental to opposition next season.

Barry Sutton, Carthage, Tennessee, had to quit early in the season to train for Golden Gloves and played only a few minutes.

Huber Staley, referee, helps the team in practices.

## SEASON'S RECORD

Cumberland . . . 51; Vanderbilt . . . . . 54
Cumberland . . . 50; Union University 27
Cumberland . . . 41; Lipscomb . . . . . 43
Cumberland . . . 38; M. T. S. T. C. . . . 34
Cumberland . . . 48; Lambuth . . . . . 33
Cumberland . . . 38; M. T. S. T. C. . . . 40
Cumberland . . . 32; Western Kentucky 40
Cumberland . . . 39; Vanderbilt . . . . . 51
Cumberland . . . 31; Union University . 34
Cumberland . . . 45; Lambuth . . . . . 26
Cumberland . . . 34; Sewanee . . . . . 35
Cumberland . . . 75; Lipscomb . . . . . 43



# B O X I N G



BARRY SUTTON, last year winner of Middle Tennessee Golden Gloves event, sparring with CLAIBORNE NIXON, former Virginia Golden Gloves welterweight champion.

Boxing, as a sport at Cumberland, is in its infancy. A limited sport budget provides very little reimbursement for fisticuff and so handicaps anything that may resemble a boxing team. Having scheduled no college foes, those who were out for boxing pointed for the Golden Gloves tournament that was held in Nashville.

Seven were entered in the tourney. In the 135-pound division both Billy Lloyd and Fred Rowsey slugged through one opponent before losing out. And when the tourney reached the finals, there were five Cumberland boxers in it: Barry Sutton, Claiborne Nixon, Lester Abels, Ross Lusk, and Robert Copeland. In some close decisions that could have easily been decided either way, the C. U. boys lost all bouts: i. e. the judges thought so, but not the Cumberland students. But all in all, they made a good showing, considering.



Standing: Copeland, Lusk, Sutton, Nixon.  
Thompson, Baker, Freeman.







**S. A. E. TEAM**  
Winner of Intramural  
Tournament

Front Row: Phillips,  
Cunningham, E. Warren.  
Back: S. Fields, G. Fields,  
Jean Denny, Jack Denny,  
C. Warren.

## MEN'S INTRAMURAL BASKETBALL

The basketball tourney continued to be the number one intramural sport attraction at Cumberland. Seven teams were entered in one of the fastest and best contests held in recent years. There was a gnashing of teeth when the drawing placed two of the strongest teams in the same bracket—the Gym team and the S. A. E.'s. The Gym had won the tournament the previous year and had practically the same bunch back, while the S. A. E.'s had assembled what railbirds believed to be the best balanced club in the race. Then the L. X. A.'s, the runner-up the previous year with most of its team back, looked as if it had a gravey train to the finals, drawing a bye the first round and meeting the winner of two unimpressive, so far as pre-tourney dope went, teams—Commuter-Stray Greeks.

In the opening game the Stray Greeks proved they were worth watching by beating the Commuters, 25 to 16. In their next game they easily downed the L. X. A.'s, 22 to 16, to place as one contestant in the finals.

In the lower bracket games weren't passing away as easily. While the Gym boys had little trouble ringing

up a 24 to 13 victory over the Lawyers, the S. A. E.'s were hard pressed to deadlock the K. P.'s 8-8. When the latter game was played over, the S. A. E.'s started their championship march by winning 29-20. Came the Gym-S. A. E. contest, a preliminary championship battle. It turned out to be mostly a defensive game. With all they could muster bet on the outcome of the game the Gym team was too tight and nervous to play the type of ball that had made them win the previous year. They lost to the S. A. E.'s 14 to 15.

In the finals, paced by E. Warren, the S. A. E.'s handed the Stray Greeks a 29-22 defeat to be crowned intramural champions.

The Cumberland Collegian picked an all-tournament team that was as follows:

<i>First Team</i>	<i>Second Team</i>
Cunningham, S. A. E. . . . F . . . .	Steele, L. X. A.
E. Warren, S. A. E. . . . F . . . .	Melton, Stray Greeks
Terry, Stray Greeks . . . . C . . . .	Summers, Gym
Sutton, Gym . . . . . G . . . .	Freeman, Gym
Wright, Commuters . . . . G . . . .	Oakley, K. P.

# WOMEN'S INTRAMURAL BASKETBALL



Front Row: Burton, Warren, Orr.  
Back Row: Johnson, N. C. Burton, Forrester, Burnett.

The call for the teams for the fairer sex intramural tournament produced only three teams, but the bevy of beauties and their shapely legs more than made up for the lack of teams. While none of the games were close or exciting, they were fast enough to keep the girls panting.

In the first rouge and powder game the D. P. O.'s slapped the S. D. S.'s down to the tune of 18 to 5 with Becky Weakley sharp shooting for 15 points for the D. P. O.'s. The following night the Commuters won the lipstick classic by a one-sided score of 10 to 3.

The Collegian all-star team included: Forwards: Burnette, Commuters; Weakley, D. P. O.; Moss, S. D. S. Guards: Burton, Commuters; Zarecor, D. P. O.; Forrester, Commuters.



## CELLULOID WINNER

With a shiny silver trophy giving added impetus to play, table tennis zoomed to stratospheric heights this year. Never before had there been such a widespread interest in this game at Cumberland. Two tables were occupied at all times, and when the tourney came the cream of the crop entered. Bill Simpson, sophomore in Lit school, won the coveted trophy. After drawing a bye in the first round Simpson downed Baker, Terry, and Kelly to reach the finals, where he outpinged Patrick, a dark horse, three out of five games.



BILL SIMPSON  
Campus table tennis champion



MARKET

ORGANIZATIONS





Front Row: Bass, Vaughan, Carter, Smith, Orr  
 Second Row: Wagster, Jones, Johnson, Shaughnessy, Chappell, Beesley, Hackett, Lloyd, Summers  
 Third Row: Edwards, Thompson, Hereford, Work, Freeman.

## THE "C" CLUB

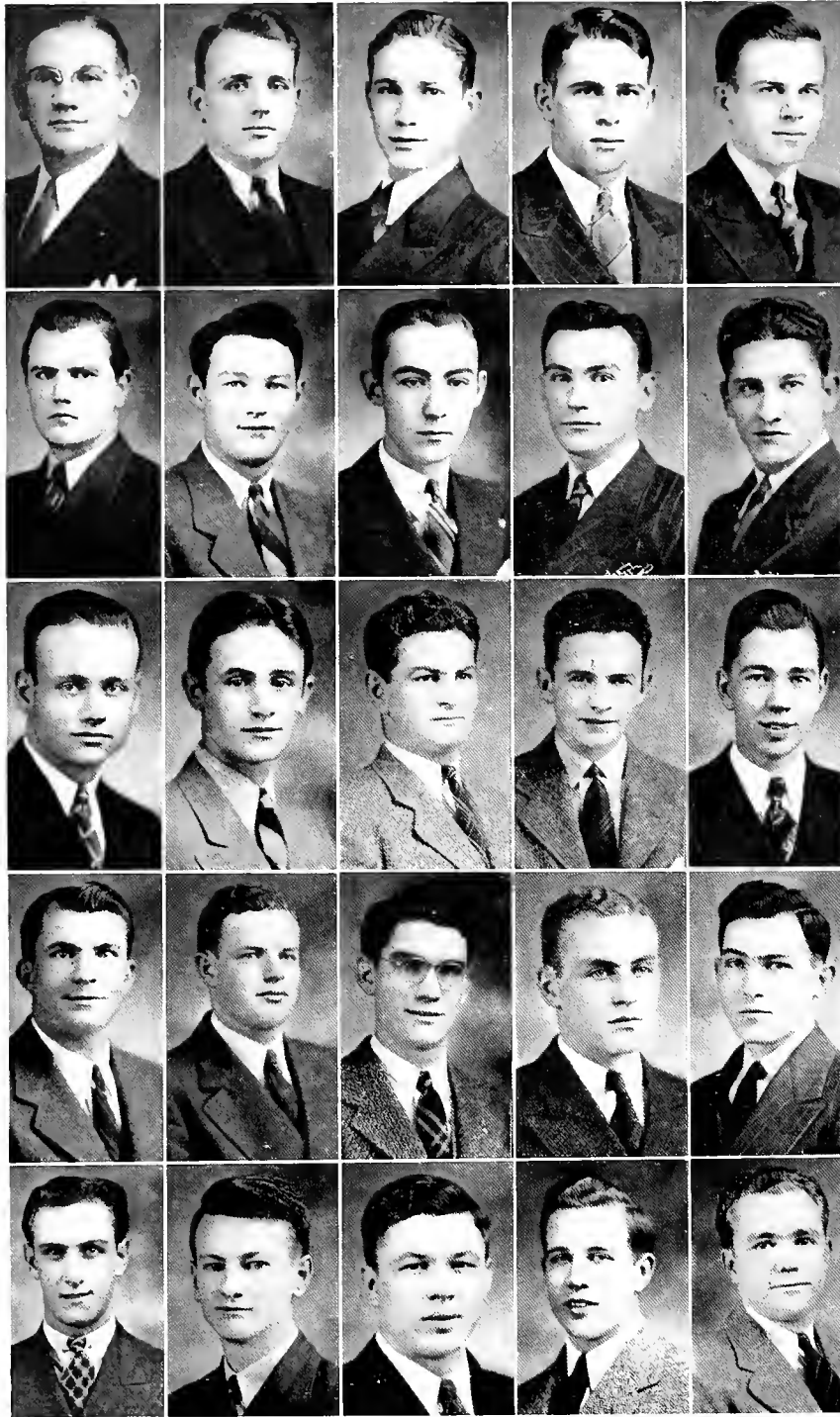
### OFFICERS

JIMMY JOHNSON . . . . . *President*  
 CHARLIE BEESLEY . . . . . *Vice-President*  
 JOE CARTER . . . . . *Secretary-Treasurer*

### MEMBERS

DICK FREEMAN	JAMES WORK	DAVID WAGSTER	BILL SUMMERS
JAMES EDWARDS	GORDON JONES	WILLIE HACKETT	BILL STEELE
C. H. WARREN	JOE CARTER	BOB SHAUGHNESSY	JAMES RIGGINS
LYMAN INGRAM	JIM CHAPPELL	DUANE PATRICH	JIM WHITE
JARVIS KERR	BILL DOTSON	KENNETH KENNY	JAMES FISHER
CLAUDE KERR	BERNIE BASS	JOHN ORR	JIMMY JOHNSON
JIMMY VAUGHAN	CHARLIE BEESLEY	MILES CHRISTIAN	ROBERT MANGUM





Adams, Austin, Auvil, Boyd, Clark  
 J. Cox, L. Cox, Covington, Fite, Heider  
 Hester, McArthur, Mahoney, Maxwell, Moiton  
 Nixon, Puryear, Ratcliffe, Robertson, Roe  
 Simpson, Steele, Vaughn, Walker, Yount



Founded at Boston University, 1909.  
 Colors: Purple, Green, Gold  
 Flower: White Rose

### ALPHA SIGMA ZETA

Established at Cumberland University,  
 April 17, 1917.

#### FRATRES IN FACULTATE

J. LOUIS ADAMS                      J. O. BAIRD

#### FRATRES IN UNIVERSITATE

JAMES AUSTIN . . . . . Canada  
 HOWARD BOYD . . . . . Tennessee  
 DORIAN CLARK . . . . . Tennessee  
 MABRY COVINGTON . . . . . Tennessee  
 JOHN COX . . . . . Missouri  
 LEONARD COX . . . . . Florida  
 FRED HEIDER . . . . . Florida  
 EUGENE HESTER . . . . . Tennessee  
 DEWEY FITE . . . . . Tennessee  
 STUART McARTHUR . . . . . Alabama  
 LAWRENCE MORTON . . . . . Tennessee  
 RICHARD PURYEAR . . . . . Tennessee  
 ROBERT RATCLIFF . . . . . Tennessee  
 BILL SIMPSON . . . . . New York  
 BILL STEELE . . . . . Tennessee  
 JAMES VAUGHN . . . . . Tennessee  
 GRISSIM WALKER . . . . . Tennessee  
 NEIL ROBERTSON . . . . . Tennessee

#### PLEDGES

LAWRENCE AUVIL . . . . . Florida  
 LIONEL W. MAHONEY . . . . . Louisiana  
 JAMES MAXWELL . . . . . Tennessee  
 CLAIBORN NIXON . . . . . North Carolina  
 JOHN HOWARD ROE . . . . . Tennessee  
 TOM HOLMAN . . . . . Tennessee  
 B. V. YOUNT . . . . . Kansas

#### OFFICERS

##### First Semester

NEIL ROBERTSON . . . . . High Alpha  
 BILL STEELE . . . . . High Beta  
 DORIAN CLARK . . . . . High Gamma  
 GRISSIM WALKER . . . . . High Tau  
 MABRY COVINGTON . . . . . High Epsilon  
 BILL SIMPSON . . . . . High Phi  
 CHARLES PURSLEY . . . . . High Pi

##### Second Semester

MABRY COVINGTON . . . . . High Alpha  
 LEONARD COX . . . . . High Beta  
 BILL SIMPSON . . . . . High Gamma  
 DORIAN CLARK . . . . . High Tau  
 STUART McARTHUR . . . . . High Epsilon  
 JAMES AUSTIN . . . . . High Phi  
 J. LOUIS ADAMS . . . . . High Pi

L A M B D A      C H I      A L P H A



Founded at the University of Alabama,  
March 9, 1856.

Colors: Purple and Gold

Flower: Violet

**TENNESSEE LAMBDA CHAPTER**

Founded 1856.

**FRATRES IN UNIVERSITATE**

HUDSON ALEXANDER	Tennessee
HARRY ALLEN	Canal Zone
ALEXANDER ANDERSON	Tennessee
WATSON BARKER	Tennessee
G. FRANK BURNS	Tennessee
SAM COAPLEN	Tennessee
BOB COCHRAN	Tennessee
P. C. COLE	Tennessee
WYATT CUNNINGHAM	Tennessee
PAUL DAKE	Tennessee
RAMON DAVIS	Tennessee
BEN DENNY	Tennessee
GORDON FIELDS	Tennessee
SENYER FIELDS	Tennessee
JIM FITZSIMMONS	Tennessee
BOB FORRESTER	Tennessee
DICK FREEMAN	Tennessee
L. E. GOODRICH	Florida
CARL HAMMOND	Tennessee
HARRY HEATH	Michigan
BOB HOLBROOK	Oklahoma
ELLIS JONES	Tennessee
JOE LINEBAUGH	Texas
BILLY LLOYD	Tennessee
LARRY MCCOY	New Jersey
ALFRED MCFARLAND	Tennessee
HUGH MCLEAN	Tennessee
BILL MCQUEEN	Georgia
ALFRED MILLIGAN	Texas
JOHN R. ORR	Tennessee
CHARLES OSBORN	New Jersey
JAMES RIGGINS	Tennessee
G. T. SCOTT	Tennessee
SHIRLEY SHANNON	Tennessee
BILL STRYKER	New Jersey
BILLY WADE	Tennessee
C. H. WARREN	Tennessee
JIM WHITE	Texas
HARRY WYNN'S	Tennessee

**PLEDGES**

BILL CROW	Arkansas
JIM KELLY	Texas
JIM PHILLIPS	Tennessee
DICK STANBAUGH	Florida
JACK BURRIS	Oklahoma
JIM CHAPPELL	Arkansas
LEWIS DANN	Oklahoma
JACK DENNY	Tennessee
RUSS HUNKE	Ohio
FRED ROWSEY	Texas
TOM RUMPH	Texas
ROBERT VAN SICLEN	Canal Zone

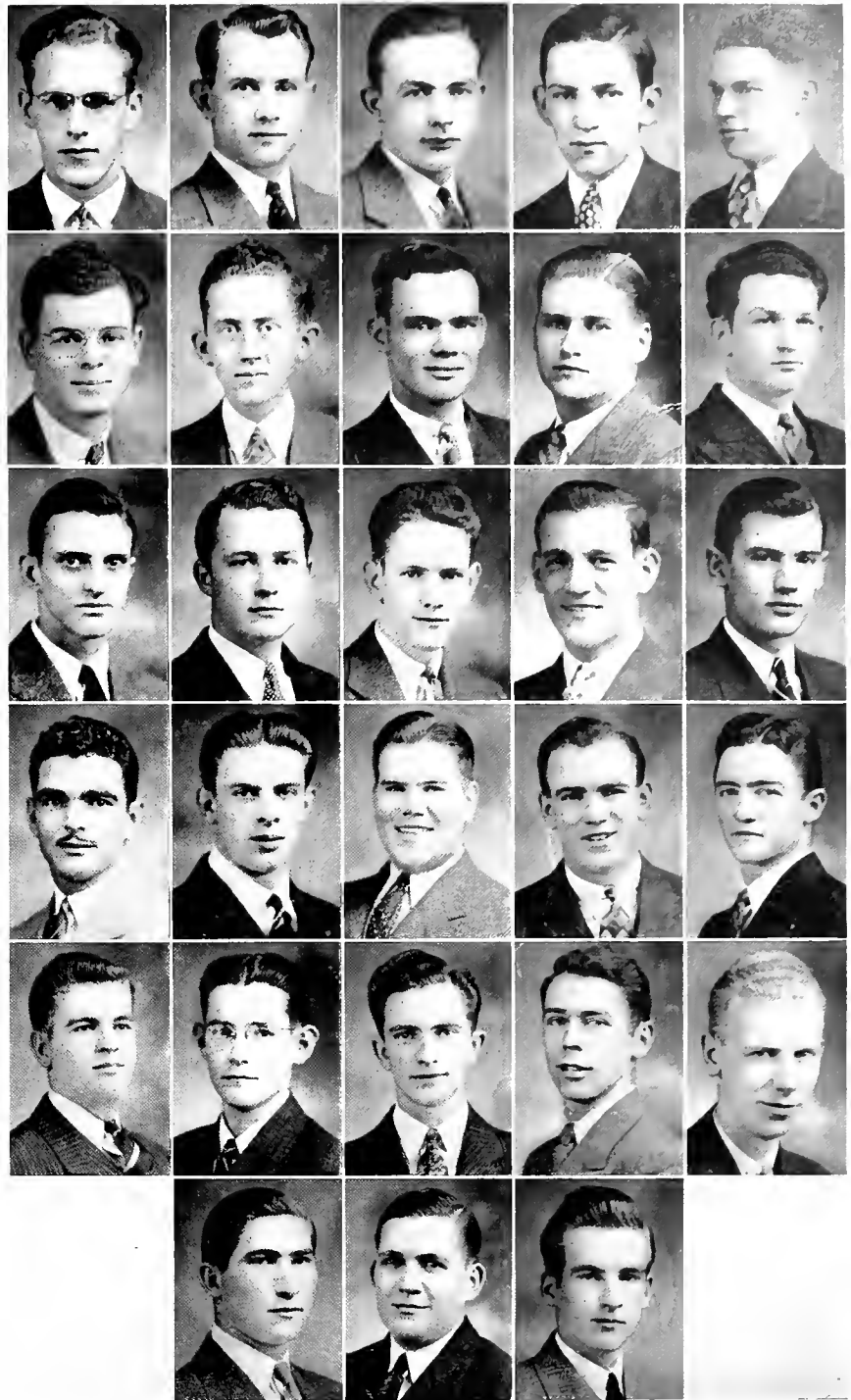
**OFFICERS**

*First Semester*

ALEXANDER ANOERSON, JR.	Eminent Archon
HUGH MCLEAN	Eminent Deputy Archon
JAMES RIGGINS	Eminent Treasurer
FRANK BURNS	Eminent Recorder
RAYMOND DAVIS	Eminent Herald
ROBERT FORRESTER	Eminent Chronicler
BILL STRYKER	Eminent Correspondent
CARL HAMMOND	Eminent Warden

*Second Semester*

JAMES RIGGINS	Eminent Archon
ALFRED MCFARLAND	Eminent Deputy Archon
ROBERT FORRESTER	Eminent Treasurer
FRANK BURNS	Eminent Recorder
JOE LINEBAUGH	Eminent Herald
WATSON BARKER	Eminent Chronicler
BILL STRYKER	Eminent Correspondent
CARL HAMMOND	Eminent Warden
Alumni Adviser	HOMER SHANNON
Chapter Mother	MRS. KATE MOSS
House Mother	MRS. J. O. JOHNSON



Alexander, Allen, Anderson, Barker, Burns  
Coaplen, Cunningham, Dake, Davis, B. Denny  
J. Denny, Fields, Fitzsimmons, Forrester, Freeman  
Goodrich, Hunke, Jones, McCoy, McLean  
Orr, Osborn, Riggins, Scott, Stryker  
Van S.clen, Warren, Wynns

**S I G M A A L P H A E P S I L O N**





Founded at the University of Florida,  
1924.

*Motto:* Serving, I live.  
*Colors:* Azure and Gold

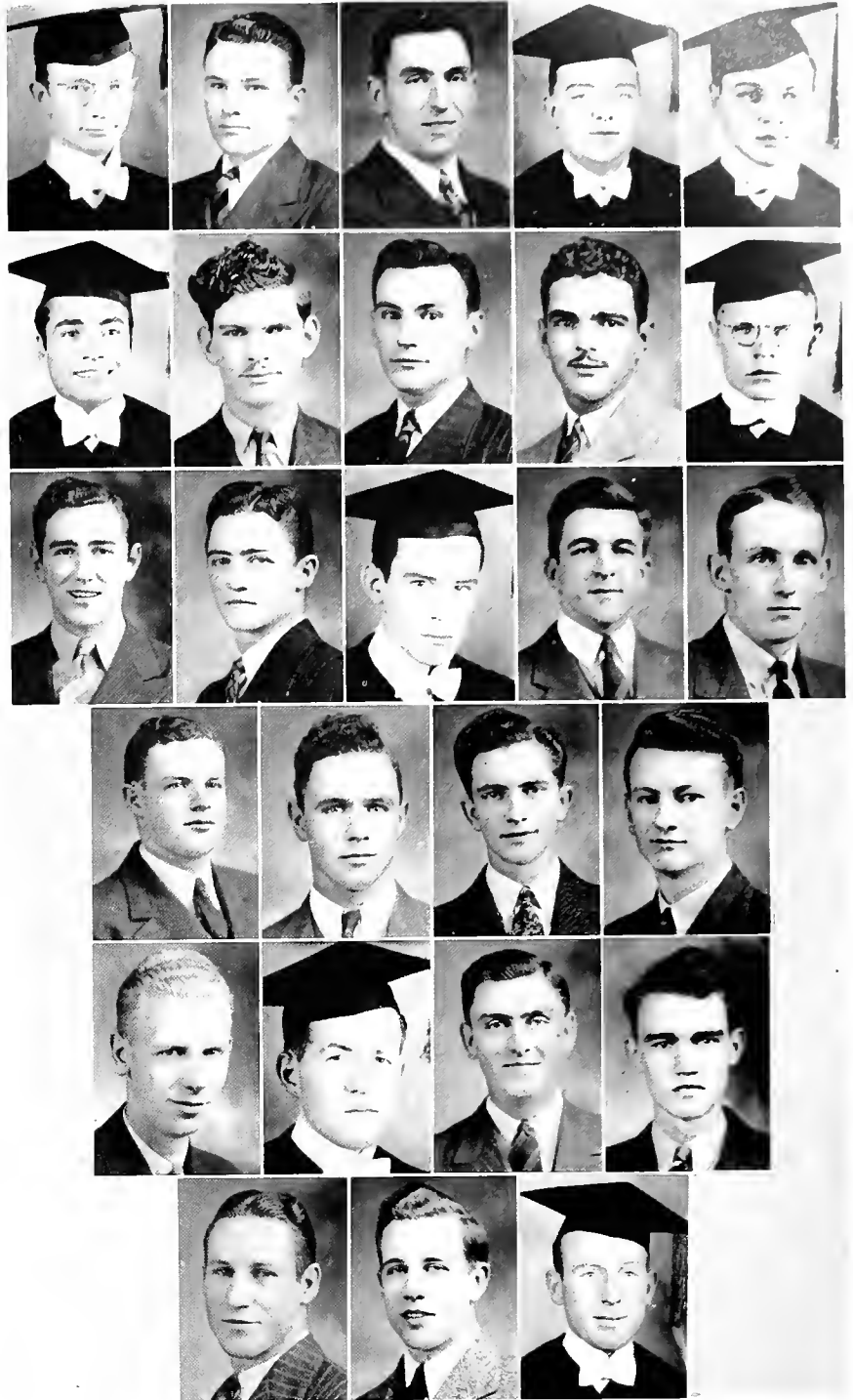
FRATER IN FACULTATE  
SAM B. GILREATH

FRATRES IN UNIVERSITATE

- |                        |                       |
|------------------------|-----------------------|
| DEWEY FITE             | BEN HERMAN THOMAS     |
| BILL STEELE            | DAN FREDERICK WHITE   |
| WILLIAM DOTSON         | JAMES GARBER WHITE    |
| LEWIS E. GOODRICH, JR. | LUTHER JOE THOMPSON   |
| HUGH K. McLEAN         | VICTOR PETTY          |
| GRISSIM HILL WALKER    | DAVID WAGSTER         |
| JOE BEN ALEXANDER      | BILL DYER             |
| CHARLES HENRY BEESLEY  | CLARENCE WELLS        |
| JAMES L. CREASY        | RICHARD PURYEAR       |
| WILLIAM PAGE DONAN     | EMERSON BONER         |
| JAMES FRANKLIN FARRAR  | BILL STRYKER          |
| TALMADGE M. HAGEE      | JACK BURRIS           |
| JOSEPH H. JUDD, JR.    | ANDREW JACKSON SUTTON |
| J. B. LEFTWICH         | WARD R. CASE          |
| JAMES HAROLD OAKLEY    | LEWIS DAY             |
| JOE ERWIN REED         | PAUL W. BOGUSCH       |
| JAMES LESLIE RIGGINS   | JOE MOSS              |
| RICHARD N. SATTERFIELD | SAM OLIVER            |

OFFICERS

- |                        |                |
|------------------------|----------------|
| HUGH K. McLEAN         | President      |
| WILLIAM DOTSON         | Vice-President |
| LEWIS E. GOODRICH, JR. | Treasurer      |
| GRISSIM HILL WALKER    | Secretary      |



Alexander, Beesley, Boner, Case, Creasy,  
Dotson, Dyer, Fite, Goodrich, Case,  
Leftwich, McLean, Moss, Oakley, Petty,  
Puryear, Reed, Riggins, Steele,  
Stricker, Sutton, Thomas, Thompson,  
Wagster, Walker, White.

# BLUE KEY NATIONAL HONOR FRATERNITY



Bryan, Coleman, Cooper, Derryberry  
 Eatherly, Hamm, Hassell, Hatcher  
 Hewgley, Jennings, Lemons, Prichard  
 Sweeney, Weakley, Welty  
 Williams, Van Aken, Zarecor

Founded at Cumberland University, No-  
 vember 30, 1926.

TENNESSEE ALPHA CHAPTER

Colors: Orchid and Silver  
 Flower: White Rose

SOROR IN FACULTATE

EUNICE CUTLER

SORORES IN UNIVERSITATE

- MARY NELLE BRYAN . . . . . Tennessee
- FRANCES COLEMAN . . . . . Tennessee
- BETTY COOPER . . . . . Tennessee
- DORINDA DERRYBERRY . . . . . Tennessee
- RACHEL EATHERLY . . . . . Tennessee
- LOUISE HAMM . . . . . Tennessee
- DORIS HASSELL . . . . . Tennessee
- JEANNE HATCHER . . . . . Tennessee
- FRANCES HEWGLEY . . . . . Tennessee
- EVELYN JENNINGS . . . . . Tennessee
- NETTIE LEMONS . . . . . Tennessee
- BETTY KATE PRICHARD . . . . . Tennessee
- ELEANOR SWEENEY . . . . . Tennessee
- REBECCA WEAKLEY . . . . . Tennessee
- EVELYN WELTY . . . . . Tennessee
- MARGARET WILLIAMS . . . . . Tennessee
- PHYLLIS VAN AKEN . . . . . New Jersey
- BILLIE ZARECOR . . . . . Tennessee

OFFICERS

First Semester

- BILLIE ZARECOR . . . . . President
- REBECCA WEAKLEY . . . . . Vice-President
- MARGARET WILLIAMS . . . . . Secretary
- LOUISE HAMM . . . . . Treasurer

Second Semester

- FRANCES COLEMAN . . . . . President
- REBECCA WEAKLEY . . . . . Vice-President
- MARGARET WILLIAMS . . . . . Secretary
- LOUISE HAMM . . . . . Treasurer

D E L T A P H I O M E G A



Founded at Cumberland University, No-  
vember 9, 1926.

### TENNESSEE ALPHA CHAPTER

*Colors:* Silver and Rose  
*Flower:* Sweetheart Rose

#### SORORES IN FACULTATE

KATHLEEN YOUNG                      MABEL C. JONES

#### SORORES IN UNIVERSITATE

FRANCES HARPER	Tennessee
KATHRINE ANDERSON	Tennessee
MARY CASEY DAVIS	Kentucky
ELOISE HUNTER	Tennessee
GEORGIA NICKOLSON	Tennessee
BILLIE REEKS	Tennessee
MARGARET REEKS	Tennessee
MARJORIE BASSETT	Kentucky
LURENE GREER	Tennessee
IZZY MOSS	Tennessee
NELLE WARREN	Tennessee
RUTH JOHNSON	Tennessee
PEGGY HALL	Tennessee
LONNIE WALLING	Tennessee
JEANNE BARR	Kentucky
MARGARET SANDERS	California
FRANCES EVINS	Tennessee
REBECCA KENNEDY	Tennessee
IMOGENE ROSS	Tennessee
HAZEL DANCE	Tennessee
KITTY KELLY	Arkansas
HELEN SIMMONS	Tennessee
KAY PHILLIPS	Canal Zone
KATHRINE KILLEN	Tennessee
ANNETTE SELLARS	Tennessee
CHARLENE PRICHARD	Tennessee
DOROTHY ALLEN LONG	Michigan
NELLE KILLEN	Tennessee

#### PLEDGES

VIRGINIA FOSTER                      Tennessee  
DORTHY BROADBENT                      Tennessee

#### OFFICERS

##### First Semester

FRANCES HARPER	President
KATHRINE ANDERSON	Vice-President
ELOISE HUNTER	Secretary
IZZY MOSS	Treasurer

##### Second Semester

FRANCES HARPER	President
KATHRINE ANDERSON	Vice-President
ELOISE HUNTER	Secretary
MARY CASEY DAVIS	Treasurer



Anderson, Barr, Bassett, Broadbent, Dance  
Davis, Evins, Foster, Greer, Hall  
Harper, Hunter, Johnson, Kelly, K. Killen  
N. Killen, Kennedy, Moss, Nickolson, Phillips  
Pritchard, B. Reeks, M. Reeks, Ross, Sanders  
Sellars, Simmons, Walling, Warren

S I G M A     D E L T A     S I G M A

# THE PHOENIX



Anderson, Steele

## STAFF

- BILL STEELE . . . . . *Editor*  
MARJORIE BASSETT . . . . . *Assistant Editor*  
J. B. LEFTWICH . . . . . *Assistant Editor*  
BILL DYER . . . . . *Sports Editor*  
HAROLD OAKLEY . . . . . *Class Editor*  
JOE ALEXANDER . . . . . *Law Editor*  
ALEXANDER ANDERSON, JR. . . . . *Business Manager*  
J. LOUIS ADAMS . . . . . *Faculty Adviser*

Oakley, Anderson, Adams, Leftwich, Steele, Bassett, Dyer.



# THE COLLEGIAN

## STAFF

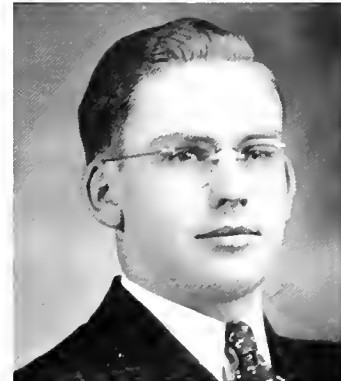
J. B. LEFTWICH . . . . . *Editor-in-Chief*  
 JOSEPHINE MURPHEY . . . . . *Associate Editor*  
 BILL DYER . . . . . *Associate Editor*  
 BILL STEELE . . . . . *Sports Editor*  
 BILL SIMPSON . . . . . *Associate Sports Editor*  
 JOE CARTER . . . . . *Associate Sports Editor*  
 J. V. MORROW . . . . . *Law Editor*  
 JOE EVANS . . . . . *Staff Photographer*  
 PAUL HALL . . . . . *Business Manager*

## REPORTERS

DORINDA DERRYBERRY  
 MARGARET WILLIAMS

HERSCHEL GOWER  
 MARION JACKSON  
 G. FRANK BURNS

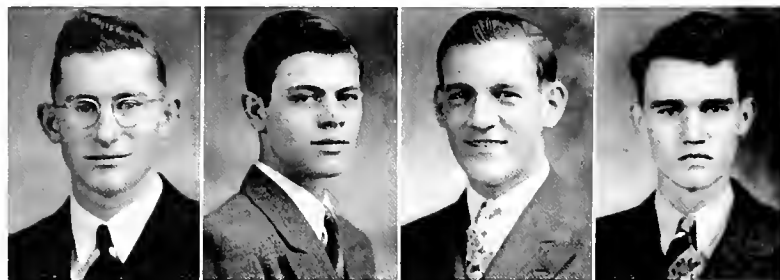
SLIM PATRICK  
 LESTER ABELS



Leftwich, Hall

*Standing: Gower, Patrick, Leftwich, Hall, Jackson, Morrow  
 Seated: Derryberry, Murphey, Evans, Steele, Simpson, Dyer, Williams*





Cartwright, Holman, Forrester, Thompson

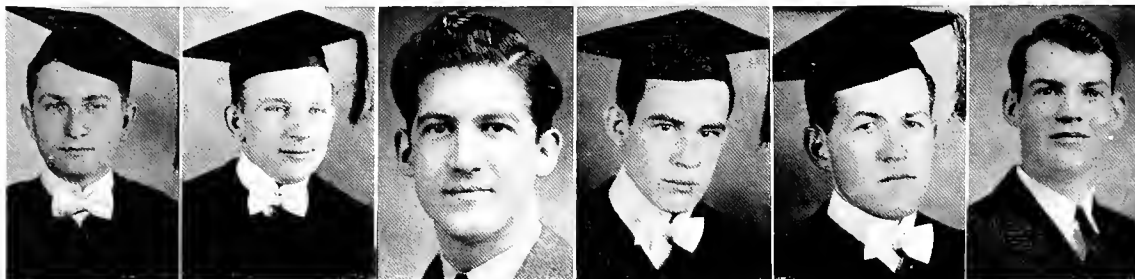
## FORENSIC CLUB

### OFFICERS

ROBERT FORRESTER . . . . . *President*  
 ALFRED MACFARLAND . . . . . *Secretary*  
 DR. JOSEPH SYNNERDAHL . . . . . *Faculty Instructor*

There was a new outlook for debating on the campus this year. Two purposes were accomplished; the first was to give training in public speaking and leadership to all debaters; the second purpose was to develop the highest quality of debating attainable by experience. To carry out this scheme the debaters were headed by Dr. Synnerdahl as coach and Robert Forrester as president.

In the spring conference debate tournament at Carleton-Newman, Robert Forrester and Alfred MacFarland debated on the affirmative squad and Luther Joe Thompson, Thomas Holman, and Walter Cartwright took the negative. These teams reached the semi-finals in the tournament.



Burcham, Hotaling, Melton, Moss, Sutton, Terry

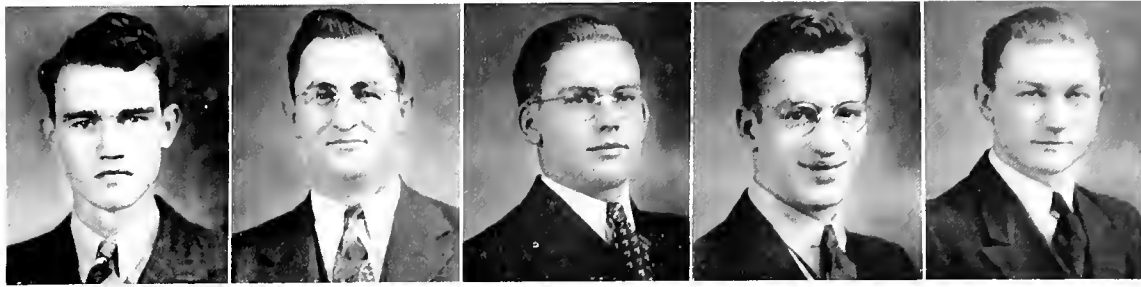
## STRAY GREEK FRATERNITY

### OFFICERS

<i>First Semester</i>		<i>Second Semester</i>	
RANDALL BURCHAM . . . . .	<i>President</i>	ANDREW G. SUTTON	
MCDONALD TERRY . . . . .	<i>Vice-President</i>	RICHARD N. SATTERFIELD	
CARLTON G. HOTALING . . . . .	<i>Secretary-Treasurer</i>	FRANK MELTON	
THOMAS L. HURT . . . . .	<i>Reporter</i>	JOE P. MOSS	

### MEMBERS

ANDREW G. SUTTON . . . . .	<i>Sigma Phi Sigma</i>	THOMAS L. HURT . . . . .	<i>Chi Phi</i>
RICHARD N. SATTERFIELD . . . . .	<i>Kappa Sigma</i>	MCDONALD TERRY . . . . .	<i>Phi Kappa Sigma</i>
FRANK MELTON . . . . .	<i>Theta Xi</i>	CARLTON HOTALING . . . . .	<i>Beta Theta Pi</i>
JOE P. MOSS . . . . .	<i>Beta Theta Pi</i>	RANDALL P. BURCHAM . . . . .	<i>Phi Kappa Psi</i>
HERBERT CLARKSON . . . . .	<i>Sigma Nu</i>	PAUL BRUMLEY . . . . .	<i>Sigma Chi</i>
JOE H. MCADAMS . . . . .	<i>Kappa Alpha</i>		



Thompson, Sadler, Hall, Doran, Donnell

## MINISTERIAL STUDENT'S CLUB

### OFFICERS

IRA H. SADLER . . . . . *President*  
 PAUL DORAN, JR. . . . . *Secretary*  
 PAUL HALL . . . . . *Reporter*

### MEMBERS

J. T. DONNELL                      FRED H. BLANKENSHIP                      LUTHER JOE THOMPSON                      IRA H. SADLER  
 PAUL BLANKENSHIP                      PAUL HALL                      VERN POWERS



Callis, Cragwall, Derryberry, Fitts, Leftwich, G. Petty, V. Petty  
 Reed, Savage, Summers, Thomas, Wagster, Warren, Wright

## MATH CLUB

### OFFICERS

J. B. LEFTWICH . . . . . *President*                      DORINDA DERRYBERRY . . . . . *Secretary*  
 IRENE CALLIS . . . . . *Vice-President*                      VIRGINIA FITTS . . . . . *Treasurer*  
 JOSEPH M. SYNNERDAHL . . . . . *Faculty Sponsor*

### MEMBERS

J. B. LEFTWICH                      C. H. WARREN                      DORINDA DERRYBERRY                      SARAH CRAGWALL  
 VICTOR PETTY                      JAMES BATES                      PAUL SMITH                      IRENE CALLIS  
 BILL SUMMERS                      WILSON BATES                      JOE WRIGHT                      IRVIN REED  
 DAVID WAGSTER                      VIRGINIA FITTS                      GORDON PETTY                      KIRK SAVAGE  
 BEN THOMAS



# PAN-HELLENIC COUNCIL

## OFFICERS

### First Semester

NEIL ROBERTSON,  $\Lambda X \Lambda$  . . . . . *President*  
 ALEXANDER ANDERSON,  $\Sigma A E$  . . . . . *Vice-President*  
 BILLIE ZARECOR,  $\Delta \Phi O$  . . . . . *Secretary-Treasurer*

### Second Semester

HUGH McLEAN,  $\Sigma A E$  . . . . . *President*  
 McDONALD TERRY, Stray Greeks . . . *Vice-President*  
 FRANCES HARPER,  $\Sigma \Delta \Sigma$  . . . . . *Secretary-Treasurer*



Clark, McLean, Harper, Case, Coleman, Terry, Riggins

## MEMBERS

FRANCES HARPER  
 McDONALD TERRY  
 JOE. B. ALEXANDER  
 HUGH McLEAN  
 FRANCES COLEMAN  
 WARD CASE  
 MABRY COVINGTON  
 JAMES RIGGINS

Abels, Derryberry, Dyer, Gower  
 Leftwich, Murphey, Staley, Steele

# THE ENGLISH CLUB

(THE QUILL)

## OFFICERS

### First Semester

J. B. LEFTWICH . . . . . *President*  
 DORINDA DERRYBERRY . . . . . *Vice-President*  
 JOSEPHINE MURPHEY . . . . . *Secretary*  
 BILL DYER . . . . . *Treasurer*

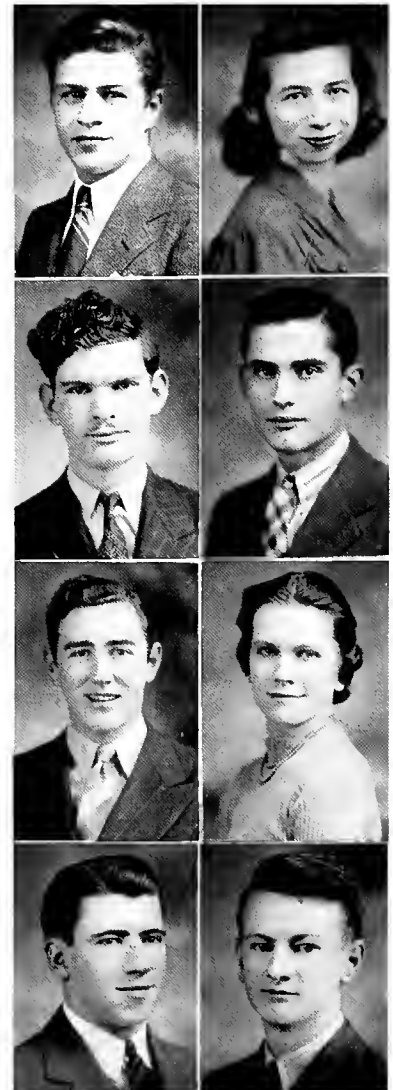
### Second Semester

JOSEPHINE MURPHEY . . . . . *President*  
 DORINDA DERRYBERRY . . . . . *Vice-President*  
 BILL DYER . . . . . *Secretary*  
 J. B. LEFTWICH . . . . . *Treasurer*  
 MABEL C. JONES . . . . . *Faculty Sponsor*  
 V. A. SYDENSTRICKER . . . . . *Faculty Sponsor*

## MEMBERS

HERSCHEL GOWER  
 LESTER ABELS  
 J. B. LEFTWICH  
 BILL DYER

BILL STEELE  
 JOSEPHINE MURPHEY  
 HUBER STALEY  
 DORINDA DERRYBERRY



# T H E Q U A R T E T

The Quartet is composed of C. H. Warren, first tenor; J. Lester Abels, second tenor; Burton Wilson, baritone; Lyman Ingram, bass; and Eunice Cutler, accompanist. It has proven itself quite a contact and publicity agent for Cumberland University. Having literally sung the name of Cumberland into the ears of thousands of high

school students in Middle, East and West Tennessee and Kentucky, it has been a successful good will tour. And it is not entirely a business venture because the quartet provides plenty of entertainment with singing that is strictly in the groove on spirituals, light classics, or just plain harmonizing.

Warren, Abels, Cutler, Wilson, Ingram



## Sopranos

CLAIRE JACKSON	LOUISE HAMM
MARIAN JACKSON	SARAH H. GRANDSTAFF
MILDRED BAIRD	FRANCES HEWGLEY
HEWLETT BURTON	RUTH JOHNSON
HAZEL DANCE	VIVIAN STALLWORTH
MARY C. DAVIS	ELEANOR SWEENEY
DORINDA DERRYBERRY	GEORGIA NICHOLSON
MARGARET GANNAWAY	REBECCA BASKIN

## Basses

WILLARD ALLEN	WILLIS SPEAR
HUDSON ALEXANDER	HUBERT STALEY
TOM HURT	HARRY WYNNS
LYMAN INGRAM	GRISSAM WALKER
LAWRENCE MORTON	J. T. DONNELL
PERKINS FREEMAN	

## Altos

RUTH AMONETTE	EDNA L. KELLEY
FRANCES COLEMAN	REBECCA STALLWORTH
MARGARET SANDERS	SARAH H. WHITEFIELD

## Tenors

LESTER ABELS	IRA SADLER
PAUL DORAN	C. H. WARREN
LAWRENCE MCCOY	ALLEN WYATT
CHARLIE OSBORN	JEAN DENNY



Wilson, Amonette, Cutler, Johnson, Dance, Hewgley, Whitefield, Spears  
Doran, Donnell, Osborne, M. Jackson, McCoy, Abels, Baird, Gannaway, V. Stallworth, Morton, C. Jackson  
Forrester, Burton, Alexander, R. Stallworth, Ratcliffe, Grandstaff, Sadler, Warren, Hurt

## OFFICERS

LYMAN INGRAM . . . . .	President	MARGARET GANNAWAY . . . . .	Secretary-Treasurer
HUDSON ALEXANDER . . . . .	Vice-President	LOUISE HAMM . . . . .	Librarian

# T H E G L E E C L U B

# HOME ECONOMICS CLUB

## OFFICERS

### First Semester

SYLVIA CLEVELAND . . . . . *President*  
 SARA K. GRANDSTAFF . . . . . *Vice-President*  
 RACHEL EATHERLY . . . . . *Secretary-Treasurer*  
 Miss VIRGINIA BRYANT . . . . . *Faculty Sponsor*

### Second Semester

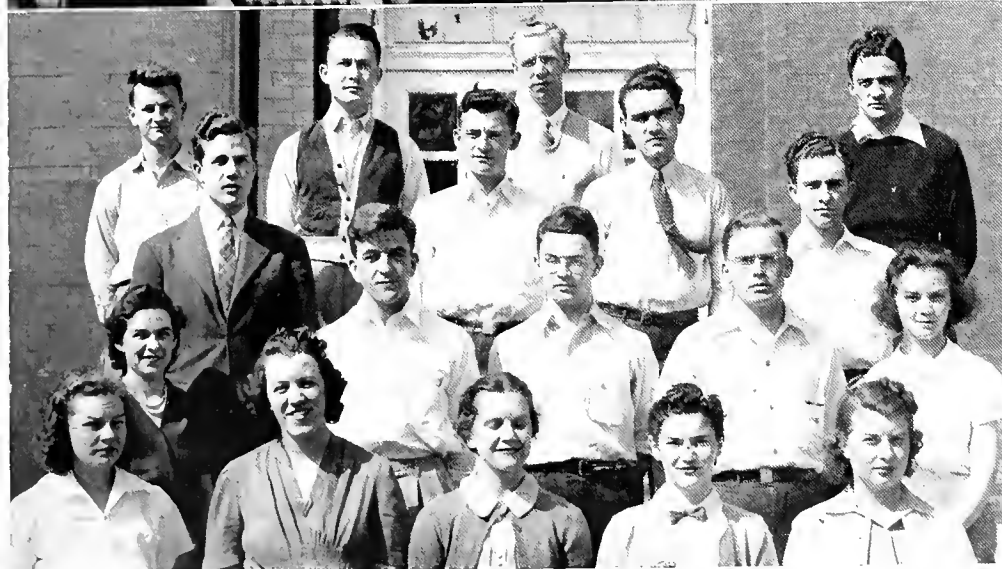
SARA K. GRANDSTAFF . . . . . *President*  
 SARA HELEN WHITEFIELD . . . . . *Vice-President*  
 RACHEL EATHERLY . . . . . *Secretary-Treasurer*

Whitefield, Hardin, Johnson, Killen, Kelly  
 M. Jackson, C. Jackson, Forrester, Eatherly, Ross  
 Grandstaff, Bryant, Burnett



## MEMBERS

ANNA CLAIRE JACKSON	KATHRINE KILLEN
SARA HELEN WHITEFIELD	VIVIAN ARRINGTON
EVELYN WELTY	EVELYN JENNINGS
IMOGENE ROSS	RUTH JOHNSON
EDNA LEE KELLY	ANNETTE SELLARS
MARION JACKSON	ELOISE HUNTER
ROBBIE HARDIN	GLAYDIS SNYDER
REBECCA BASKINS	MYRA BURNETT
LOUISE CORLEY	FRANCES FORRESTER



## MEMBERS

BETSY BEARD	HERSCHEL GOWER
CHARLIE BEESLEY	ROBERT FORRESTER
MARJORIE BASSETT	SENER FIELDS
FRANK BURNS	MARION JACKSON
FRANCES COLEMAN	HUGH MCLEAN
DORINDA DERRYBERRY	ISABELLE MOSS
BILL DYER	JOSEPHINE MURPHEY
MARGARET GANNAWAY	HAROLD OAKLEY
SARA K. GRANDSTAFF	DOROTHY ORR
EDWARD HALE	JAMES RIGGINS
PAUL HALL	BILL STEELE
MARY GWYNN	BILL STRYKER
BILLY WRIGHT	LUTHER JOE THOMPSON
MARGARET WILLIAMS	GRISSIM WALKER

Jackson, Grandstaff, Murphey, Moss, Williams  
 Cowles, Oakley, Burns, Hall, Beard  
 Walker, Hale, Thompson, Riggins  
 Steele, S. Fields, Stryker, McLean

## OFFICERS

GRISSIM WALKER . . . . . <i>President</i>	ISABELLE MOSS . . . . . <i>Secretary</i>
HUGH MCLEAN . . . . . <i>Vice-President</i>	HAROLD OAKLEY . . . . . <i>Treasurer</i>

# INTERNATIONAL RELATIONS CLUB

# GIRL'S COMMUTER CLUB

## OFFICERS

NELLE CAROLINE BURTON . . . . .	<i>President</i>	SARAH CRAGWALL . . . . .	<i>Treasurer</i>
SARAH HELEN WHITEFIELD . . . . .	<i>Vice-President</i>	FRANCES FORRESTER . . . . .	<i>Reporter</i>
GELA FERREL EVERETT . . . . .	<i>Secretary</i>	MYRA BURNETT . . . . .	<i>Sergeant-at-Arms</i>

Moore, Whitefield, Fitts, N. Burton, Hardin, Hays, McDowell  
 R. Stallworth, Williams, A. C. Jackson, Everett, Eatherly, White, Thompson  
 M. Jackson, H. Burton, Forrester, Arnold, Burnett, Graves  
 Callis, Grandstaff, V. Stallworth, Cragwall

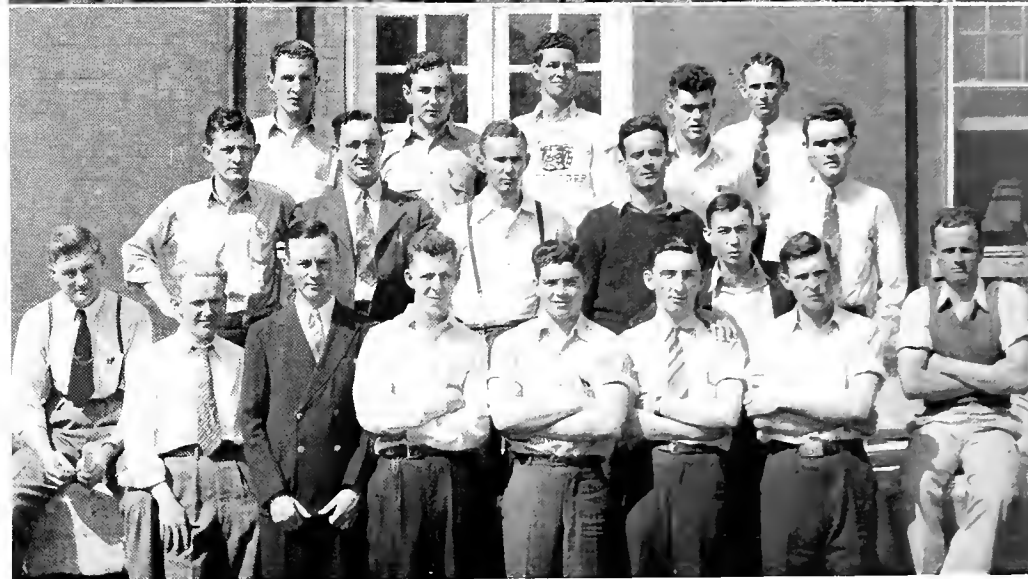
## MEMBERS

CARL HOBBS	WILSON BATES
ORVILLE MOREHEAD	JOE WRIGHT
JAMES BATES	BUNDY BRATTON
AUCIL WOMACK	WILSON CRIPPS
GORDON PETTY	IRA SADDLER
RICHARD SHELTON	LUTHER J. THOMPSON
DANNY BUTTERBAUGH	V. B. POWERS
J. T. DONNELL	J. L. ROY
NAT MCKINNEY	HOWARD HILDRETH
J. B. LEFTWICH	ELBY JENNINGS, JR.
BILL DYER	JOE EVANS
VICTOR PETTY	ERVIN REED
RAYMOND DENSON	FRED BLANKENSHIP



## MEMBERS

ANNA CLAIR JACKSON	ROBBIE HARDIN
MARGARET MORSE	NELLE CAROLINE BURTON
EVELYN WELTY	MYRA BURNETT
VIVIAN STALLWORTH	MARY NELLE BRYAN
REBECCA STALLWORTH	SARAH K. GRANDSTAFF
GRACE BADGETT	SARAH H. WHITEFIELD
HELEN HAYS	DOROTHY WHITE
FRANCES HEWGLEY	GLADS SNYDER
VIRGINIA THOMPSON	OPAL GRAVES
KATHERINE MCDOWELL	REBECCA BASKIN
IRENE CALLIS	GELA FERRELL EVERETT
ALETA MOORE	SARAH CRAGWALL
VIRGINIA ARNOLD	RACHEL EATHERLY
VIRGINIA FITTS	VIVIAN ARRINGTON
EDNA LEE KELLY	LOUISE CARLEY
MARIAN JACKSON	JANIE WINFREE
HEWLETTE BURTON	FRANCES FORRESTER



Donnell, Powers, Hildreth, Jennings, Hobbs, Womach, G. Petty, Wright, W. Bates  
 Butterbaugh, Saddler, Shelton, J. Bates, Thompson  
 Evans, Leftwich, McKenny, Denson, V. Petty

## OFFICERS

VICTOR PETTY . . . . .	<i>President</i>	ORVILLE MOREHEAD . . . . .	<i>Vice-President</i>
BILL DYER . . . . .	<i>Secretary-Treasurer</i>		

# BOY'S COMMUTER CLUB

# YOUNG WOMEN'S CHRISTIAN ASSOCIATION

## OFFICERS

### First Semester

MARGARET GANNAWAY . . . . . *President*  
 CLARA McCORD . . . . . *Vice-President*  
 SARA KATHERINE GRANDSTAFF . . . *Secretary-Treasurer*

### Second Semester

SARA KATHERINE GRANDSTAFF . . . . . *President*  
 MARGARET WILLIAMS . . . . . *Vice-President*  
 MILDRED BAIRD . . . . . *Secretary-Treasurer*

Hayes, Fly, Ammonette, Dance, R. Stallworth  
 Cooper, Sweeney, Baird, V. Stallworth, Greer, Williams  
 Burton, Murphey, Gannaway, Grandstaff



## MEMBERS

NELLE C. BURTON	DORINDA DERRYBERRY
JOSEPHINE MURPHEY	SARA K. GRANDSTAFF
BETTY COOPER	CLARA McCORD
VIVIAN STALLWORTH	HELEN HAYES
MARGARET GANNAWAY	ELEANOR SWEENEY
MARGARET WILLIAMS	LURENE GREER
MILDRED BAIRD	REBECCA STALLWORTH
BETSY BEARD	HAZEL DANCE
EMMA R. AMMONETTE	



## MEMBERS

REBECCA BASKIN	MARION JACKSON
MARY NELL BRYAN	BILL SIMPSON
HEWLETTE BURTON	LUTHER J. THOMPSON
SAM COAPLEN	VIRGINIA THOMPSON
LOUISE CORLEY	NELLE WARREN
GELA EVERETTE	C. H. WARREN, JR.
VIRGINIA FITTS	RUTH WILLIAMS
HAZEL FLY	ANCIU NEAL WOMACK
MARGARET FLY	JOE WRIGHT
FRANCES FORRESTER	HELEN RUTH MANNER
OPAL GRAVES	MILES CHRISTIAN
PAUL HALL	RUTH CANTRELL
FRANCES HEWGLEY	ROBERT COCHRAN
HOWARD HILDRETH	JERRY JOHNSON
CLAIRE JACKSON	CARL HOBBS
ANNIE KATE KELLEY	ELBY JENNINGS, JR.
EDNA LEE KELLEY	BEN THOMAS
CONNIE LOOMIS	ROBERT BOMAR
ALETA MOORE	JOE BEN EVANS
VERN POWERS	JAMES BATES
ROYCE SULLIVAN	WILSON BATES
HELEN HAYES	



Thompson, Moore, Fitts, Bryan, Hewgley, Burton, Williams, Graves, Fly  
 Forrester, Kelley, C. Jackson, Thompson, M. Jackson, Warren, Scott  
 Womack, Powers, Everett, Sullivan, Simpson, Hildreth, Coaplen, McKinney  
 Hall, Jennings, Hobbs, Butterbaugh, Wright, J. Bates, Donnell, W. Bates

## OFFICERS

LUTHER JOE THOMPSON . . . . . <i>President</i>	CONNIE LOOMIS . . . . . <i>Treasurer</i>
ROYCE SULLIVAN . . . . . <i>First Vice-President</i>	FRANCES HEWGLEY . . . . . <i>Secretary</i>
MARION JACKSON . . . . . <i>Second Vice-President</i>	BILL SIMPSON . . . . . <i>Reporter</i>
REBECCA BASKIN . . . . . <i>Third Vice-President</i>	NELLE WARREN . . . . . <i>Pianist</i>
VERN POWERS . . . . . <i>Chorister</i>	

# BAPTIST STUDENT UNION



# T H E K . P . C L U B

## OFFICERS

HUGH McLEAN . . . . . *President*      EDWARD HALE . . . . . *Vice-President*  
 MRS. MARY OWEN HOLMES . . . . . *Secretary-Treasurer*

Bass, Martin, Warren, Scott, Abels, Moss  
 Horn, Boyd, Cunningham, Bomar, Martin  
 Denney, Holt, J. T. Edwards, McLean  
 Hale, J. Edwards, Oakley

## MEMBERS

JAMES BASS	ELWOOD WARREN
R. C. HORN	WYATT CUNNINGHAM
JACK DENNEY	J. T. EDWARDS
EDWARD HALE	HAROLD OAKLEY
EDWARD MARTIN	G. T. SCOTT
EDWIN MARTIN	ROBERT E. BOMAR
HOWARD BOYD	HUGH McLEAN
RALPH HOLT	LESTER ABELS
JAMES EDWARDS	JOE MOSS



## MEMBERS

HARRY ALLEN	HARRY W. HEATH
JAMES ASKEW	MARTIN JENKINS
HOWARD BOYD	CECIL LILLY
WALTER S. CARTWRIGHT	LAWRENCE MILLER
ROBERT COCHRAN	DONALD MCSWEEN
PAUL DAKE	BYRD POLLARD
BILL DOTSON	MARGERY ROUSSEAU
WILLIAM DYER	JAMES STERRETT
WILLIAM FILLAUER	BOONE TILLET
PAUL HALL	ROBERT VAN SICLEN
PEGGY HALL	ROBERT WHITE
DORIS HASSELL	AUCIL NEAL WOMACK



Boyd, Fillauer, Hassell, McSween, Rousseau, Dake, Mrs. Rousseau  
 Van Siclen, Heath, Dotson, Hall, Jennings  
 Cartwright, Lilly, Wemack, Dyer, Cochran, Poilard

## OFFICERS

DONALD MCSWEEN . . . . . *President*      MARGERY ROUSSEAU . . . . . *Second Semester Secretary*  
 DORIS HASSELL . . . . . *First Semester Secretary*      MRS. MAY GREGORY ROUSSEAU . . . . . *Instructor*

# PUBLIC SPEAKING CLUB



Front Row: McClain, Cutrell, Dr. Sydenstricker, Mrs. Sydenstricker, Kash, Hughes, Taylor, Sanders, Simmons  
 Second Row: Bentley, Jones, Sellars, Dyer, Van Siclen, Staley, Oliver, Alexander, Sutherland  
 Back Row: Pfleuger, Gower, Murphy

## CUMBERLAND PLAYERS

### OFFICERS

HERSCHEL GOWER . . . . .	<i>President</i>	JAMES BOMAR . . . . .	<i>Second Vice-President</i>
LUTHER A. PFLEUGER . . . . .	<i>First Vice-President</i>	JOSEPHINE MURPHEY . . . . .	<i>Secretary</i>
MRS. E. L. STOCKTON . . . . .	<i>Treasurer</i>		

### MEMBERS

#### *Resident Members*

CAPTAIN JAMES BOMAR	DR. E. L. STOCKTON	DR. R. C. KASH	CHARLEEN HUGHES	HUGH WALKER
MISS MABEL C. JONES	MRS. E. L. STOCKTON	MISS MARY VIRGINIA BRYANT	JOE MCCLAIN	ANNETTE SELLARS
DR. LUTHER PFLEUGER	DR. V. A. SYDENSTRICKER	DR. PAUL FLORY	DR. LEROY VOGEL	LEORA TAYLOR
	MRS. V. A. SYDENSTRICKER	MRS. PAUL FLORY	JOSEPHINE BENTLEY	

#### *Student Members*

HERSCHEL GOWER	<del>FRANCES COLEMAN</del>	DORINDA DERRYBERRY	OMAR OLIVER	MARGARET SANDERS
JOSEPHINE MURPHEY	JOE ALEXANDER	BILL DOTSON	GEORGE SUTHERLAND	MARY CASEY DAVIS
	HUBER STALEY	CARL HAMMOND	BILL DYER	

# THE BARRISTER CLUB

## OFFICERS

### First Semester

BILL DOISON . . . . . *President*  
 DICK STANBAUGH . . . . . *Vice-President*  
 C. R. BENNETT . . . . . *Secretary-Treasurer*  
 LEWIS GOODRICH . . . . . *Reporter*

### Second Semester

HARRY CLAIBORNE . . . . . *President*  
 DICK SATTERFIELD . . . . . *Vice-President*  
 T. H. HAGEE . . . . . *Secretary-Treasurer*  
 JOHN A. JAMISON . . . . . *Reporter*

## MEMBERS

DOROTHEA ALLEN LONG	LEONARD COX	TALMADGE M. HAGEE	SAM OLIVER	ROBERT E. VAN SICLEN
LAWRENCE AUVIL	MABRY COVINGTON	FRED HEIDER, JR.	OMAR OLIVER	PHYLLIS VAN AKEN
JOE ALEXANDER	WILLIAM DOTSON	CARL E. HAMMOND, JR.	WILLIAM EDWIN ORR	DAN WHITE
HARRY H. ALLEN	LEWIS H. DAY	KARL I. HENDERSON	KATHLEEN PHILLIPS	JOHN DAVIS WILKES
DOROTHEA BROADBENT	ANDREW DARBY	JOHN A. JAMISON	MAXINE PORTER	ALLEN WYATT
DWAIN BOX	BYRLE DUNN	EDWIN JORDAN	WALTER B. POLLARD, II	HARRY WYNNE
JAMES H. BROWN	JAMES G. DENTON	JOSEPH H. JUDD, JR.	PHIL D. POLOWE	VAN MITCHEL ZICARELLI
F. E. BOONE	GEORGE DAVIS	JAMES KELLEY, JR.	THOMAS H. RAOSDALE	PAUL BROMLEY
PAUL W. BOGUSCH, JR.	WILLIAM EASTON	CECIL LILLY, JR.	THOMAS RUMPH	C. E. ROWSEY
VERNON BELCHER	WILLIAM K. FILLAUER	JOHN E. LAROCK	ROGGIE RAY	B. W. WILLIAMS
C. R. BENNETT	JAMES FRANKLIN FARRAR	STUART McARTHUR	FRANCIS A. SADOWSKI	DOUGLAS C. JOHNSON
RANOALL BURCHAM	EUGENE F. FISHER	ALFRED MACFARLAND	RICHARD SATTERFIELD	GARIEH PETERSON
WILLIAM BECKING	LEWIS E. GOODRICH, JR.	LIONEL WILLIAM MAHONNEY	DAVID H. SNODGRASS	JAMES MAXWELL
OLLIE F. COBB	WILLIAM L. GORMAN	DONALD M. McSWEEN	ANDREW G. SUTTON	JAMES MABRY, JR.
HARRY CLAIBORNE	PEGGY HALL	ROBERT B. MANGUM	LYMAN SMITH	JOE BENNETT
H. K. CLARKSON	HARRY W. HEATH, JR.	J. V. MORROW	THOMAS JAMES STERRITT	B. V. YOUNT
WILLIAM CROW	ROBERT L. HOLBROOK	JAMES F. MELTON	WILLIAM DICK STAMBAUGH	DAVID HARRISON
HARRY CHAPMAN	HOWARD RUSSELL HUNKF	JOE P. MOSS	TED SYVERSON	WHIT J. NEWBERRY
JOHN COX	THOMAS L. HURT	HOWARD W. MOORE	SYLVAN SMALL	RICHARD TULLIS
	CARLTON G. HOTALING	J. W. MELVIN	MCDONALD TERRY	BOONE TILLET, JR.



# BEHIND THE

College has its hours of study; its play moments; its bits of work; and its fleeting pieces of pleasure. We have tried to capture these little informalities with the camera, to bring you student life behind the scenes.



## THESE LITTLE PIGGIES STAYED HOME

While others frolic, these coeds perform two necessary do's—ironing and studying



## RESEARCH WORK IN THE DORM

Boys catch up in their home work by Esquiring.

# SCENES AT C.U.



## WHERE INDIGESTION OFTEN STARTS

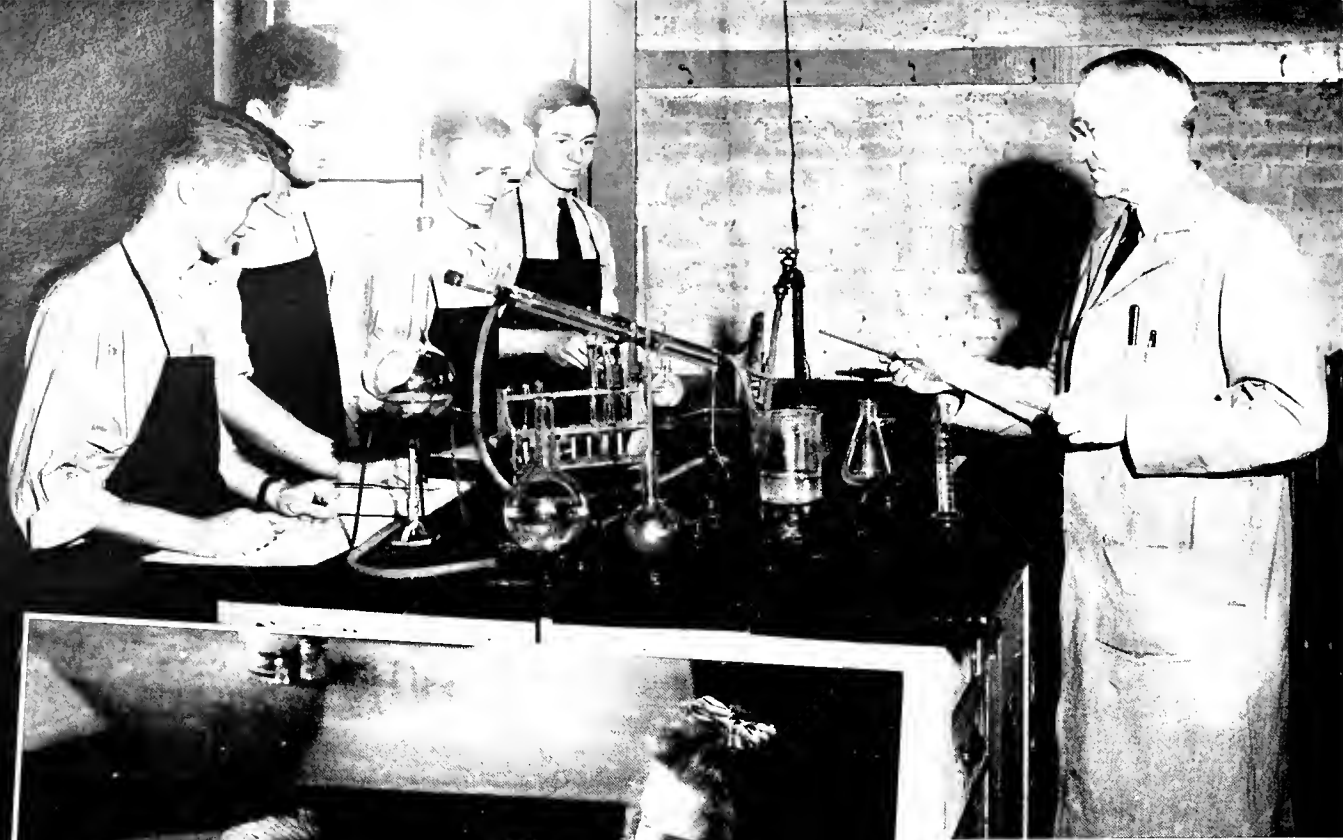
This is the first published photo of the kitchen and was smuggled out in a piece of cornbread.

## LAUGHING GAS FOR DINNER

Shoot the shubert to 'em, Hubert, they're hungry.







**GREAT CHEMISTS IN THE MAKING**  
 Professor explains what's happening in all that maze of glassware or something.



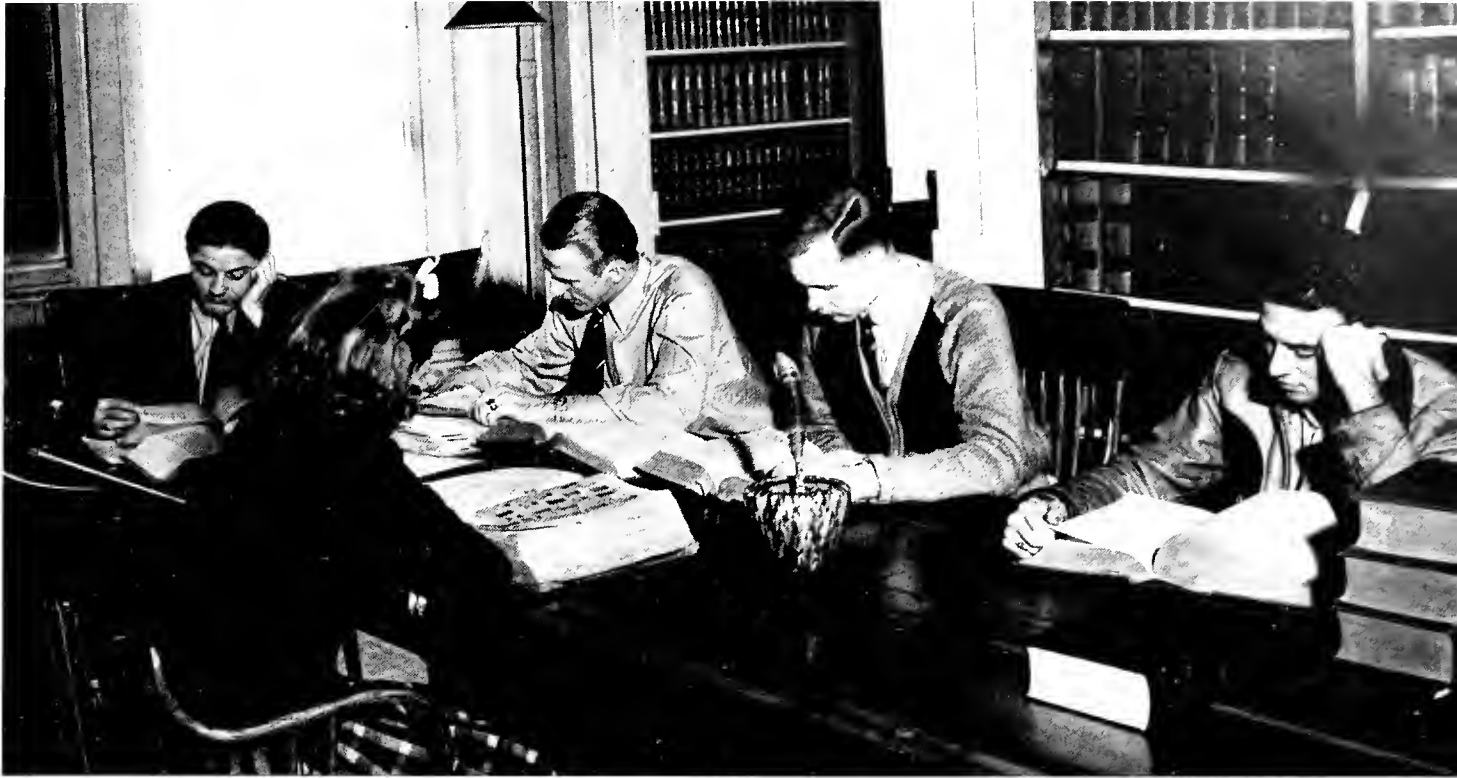
**ANALYZING ANTICS IN ANOTHER WORLD**  
 Boy talking to coed: "Hot dog! He's chasing her again."

**ONE WAY TO A MAN'S HEART**  
 Learning to cook is one way, but a pretty leg is a much easier way.



LEGAL LIBRARY LURKERS

Shysters learning how to take people's money? No, buning for the bar.



WHAT'S WRONG WITH THIS PICTURE?

Too many students know the answer, something must be wrong.



CROSSED LEGS AND A PRETTY  
FACE MEAN ACQUITTAL

Even this works in a moot court  
trial.

IS THIS YOUR HANDWRITING?

Poor girl, the mean old lawyer is  
trying to mix her up.



WITNESS LOOKS GUILTY

But the jurymen in the fore-  
ground says to neighbor,  
"Who is that redhead on  
the second row?"



PAGING MR. CUPID IN RECEPTION ROOM  
What, no smooching? Maybe the matron is looking.

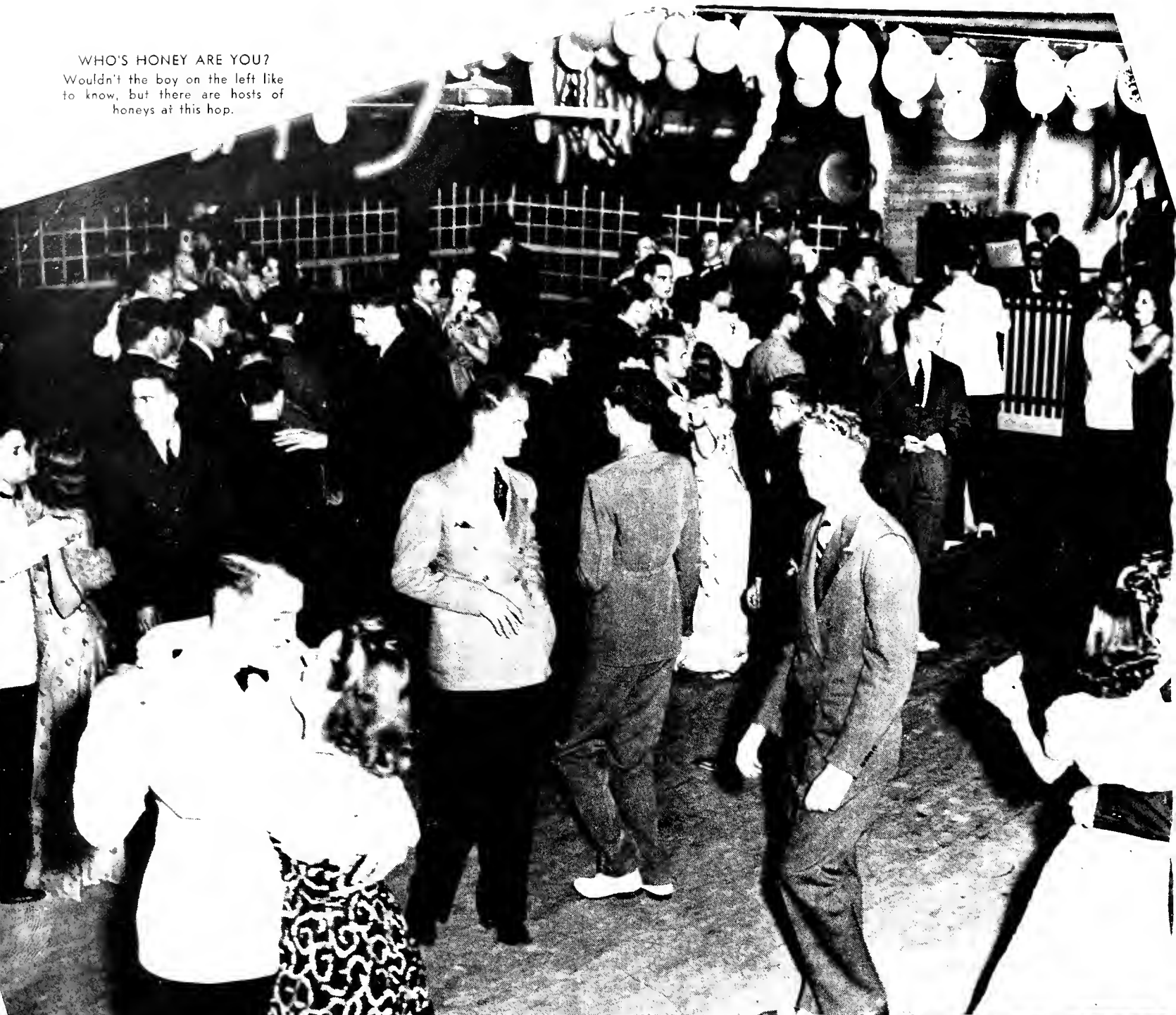


LISTENING TO LITTLE ORPHAN ANNIE ON RADIO  
Sandy's barking thrills fraternity men. Aw shucks!



WHO'S HONEY ARE YOU?

Wouldn't the boy on the left like to know, but there are hosts of honeys at this hop.



COMMISSARY PESTS—  
JITTERBUGS

It's the Jim Jam Jump and every man for himself as the jute box gives out.







#### HOW TO BRIDGE AN AFTERNOON

Bridge in the commissary brings out all the schools' Eli Gulbertsons. If a pack of cards can be found



#### LAZY MAN'S TENNIS

But it's lots of fun knocking the celluloid ball over the net, in the corner and under all the chairs.



#### CHASERS AT THE COMMISSARY WINDOW

These boys could be women chasers and this could be the pause that refreshes.

We Appreciate Your Business

# SEAT'S STUDIO

School Work a Specialty



PHOTOGRAPHS THAT PLEASE



Lebanon, Tennessee

## BRADSHAW DRUG CO.



"Dependable Drugs"

PRESCRIPTIONS FILLED WITH GREATEST CARE



PHONES 46—47

## McCLAIN & SMITH

"The College Store"



VARSITY-TOWN CLOTHES

FLORSHEIN SHOES

DOBBS HATS

ARROW SHIRTS

## LIGHTHOUSE INN

Cumberland Students Always Welcome

Coldest Drinks in Town

STEAKS

SANDWICHES

## SHANNON'S DRUG STORE

"Students' Friends"



Prescriptions a Specialty

Our fountain drinks the best

"Make this store your headquarters"

Phone 180

Phone 345

## BAIRD-SAFLEY HARDWARE CO.

LEBANON, TENN.



Wallpaper, Paints and Varnish

Plumbing and Electrical Supplies

## ASKEW & GRISSIM

OUTFITTERS FOR MEN AND BOYS

Stetson Hats—Nunn-Bush Shoes—Manhattan Shirts—  
Edgerton Shoes—Nor-East and Botany Neckwear—  
Kahn National Tailored Suits

## LEBANON FLOWER SHOP



In Sunshine or Shower—"Say it with Flowers"

Compliments of

## PRINCESS THEATRE

"We Print The "Collegian"

## THE LEBANON DEMOCRAT

Compliments of

## REICH TAILORING COMPANY

## BAIRD & CRIPS

"Law Books, Sales and Rentals"

Compliments of

**CONSOLIDATED  
BUS LINES, INC.**

•

"Nineteen years continuous operation  
carrying more than five million passengers  
without a single passenger fatality."

•

Phone 244

Lebanon, Tennessee

■  
**IN MEMORY OF**

Our prosperous Lebanon Merchants  
who refused to help us by not adver-  
tising in this Edition of the Phoenix.

■

Compliments of

**A FRIEND**

"Guess Who"

*Autographs*

**World's Largest Publishers**

THIS BOOK DESIGNED AND PRINTED BY

*Benson*

PRINTING COMPANY ☆ NASHVILLE

**of College Annals**



# *Autographs*

# *Autographs*

# *Autographs*











