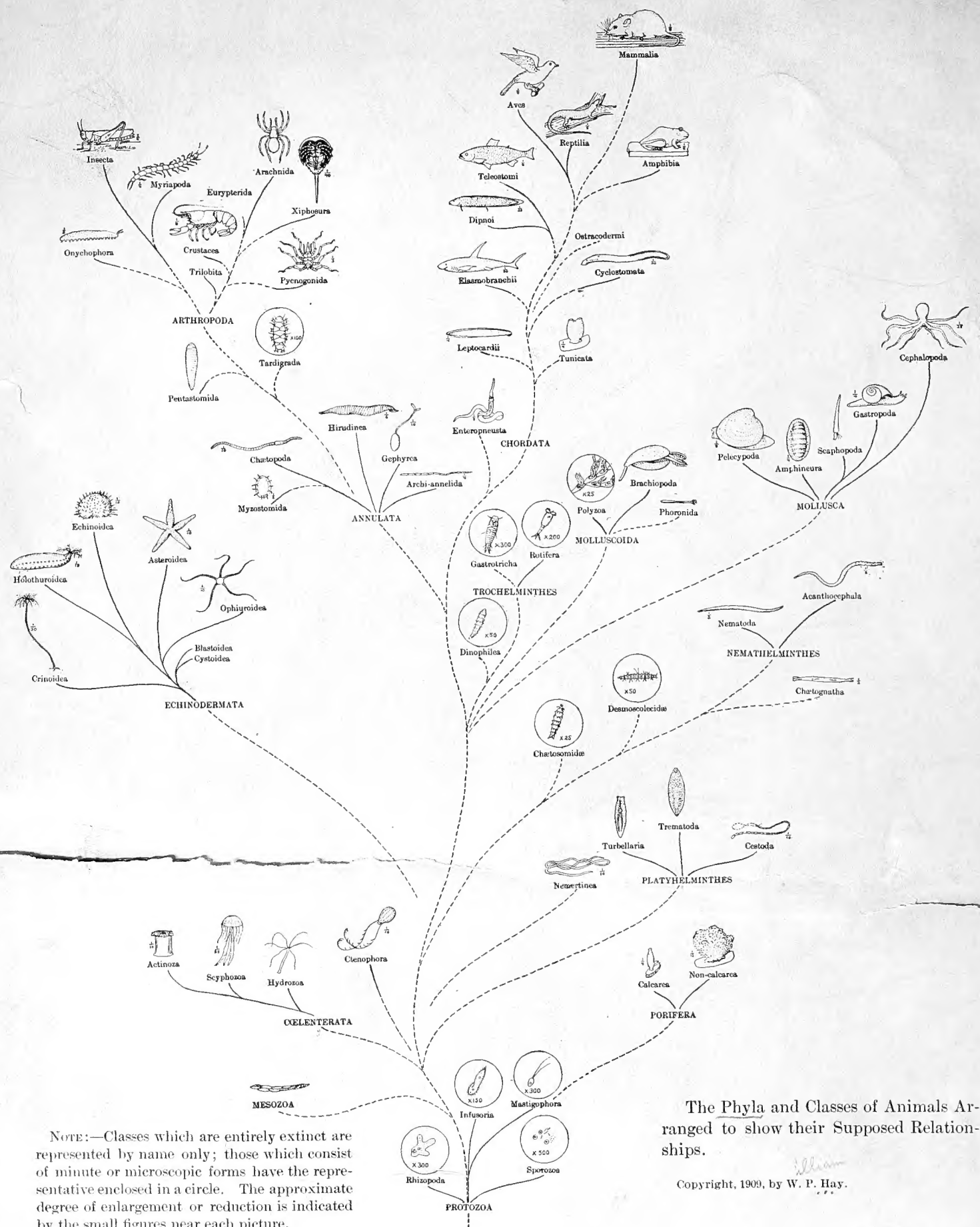


9 QL
351
H39
1909
SCNHRB

Hay



NOTE:—Classes which are entirely extinct are represented by name only; those which consist of minute or microscopic forms have the representative enclosed in a circle. The approximate degree of enlargement or reduction is indicated by the small figures near each picture.

The Phyla and Classes of Animals Arranged to show their Supposed Relationships.

Copyright, 1909, by W. P. Hay.



SMITHSONIAN INSTITUTION LIBRARIES



3 9088 01348 9281