

ART LIB.
*DA
624
P58

D
0
0
0
4
1
1
7
2
5
5



UNIVERSITY OF NORTH CAROLINA LIBRARY

PICTURES OF
LONDON

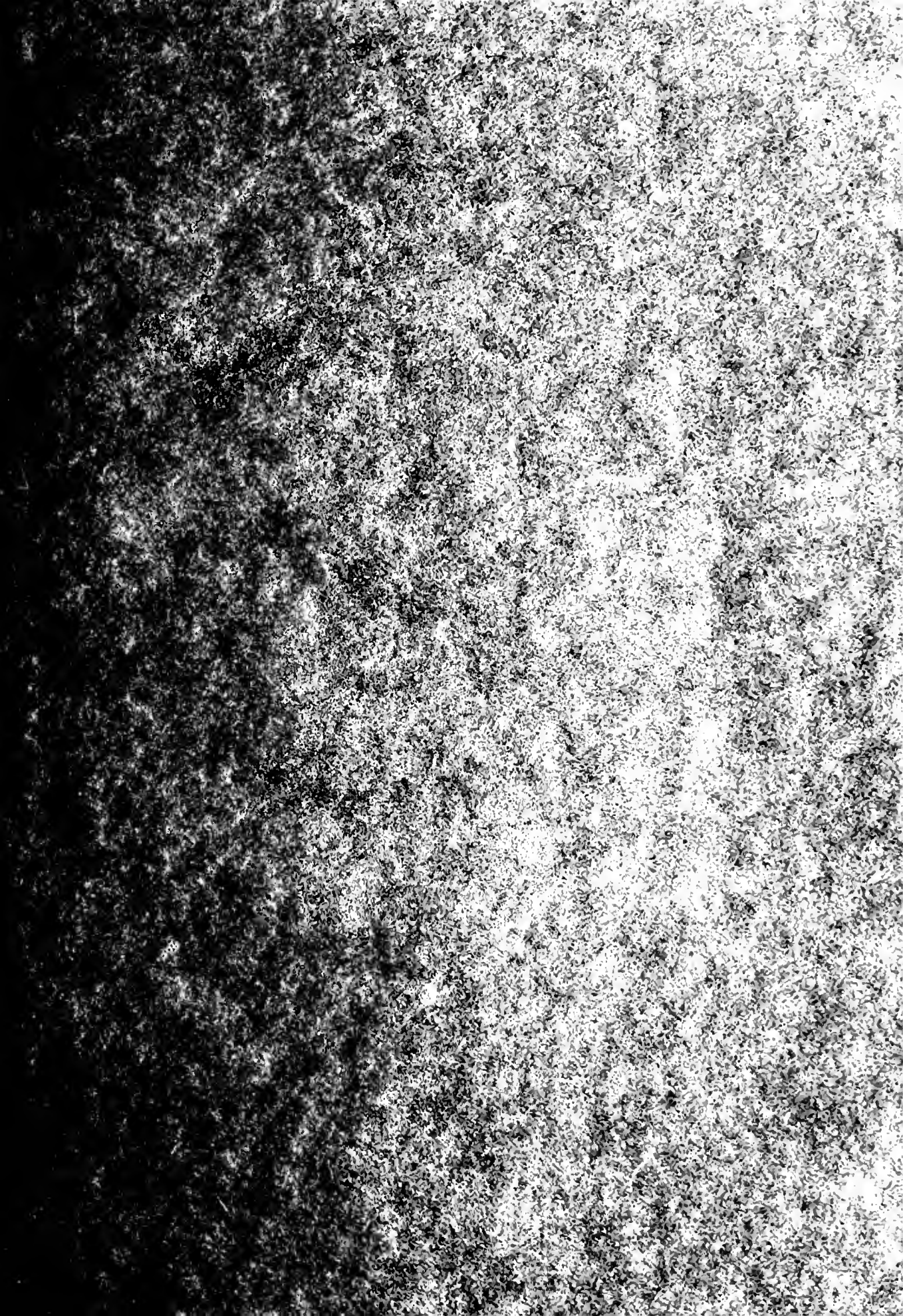
BY CELEBRATED ARTISTS

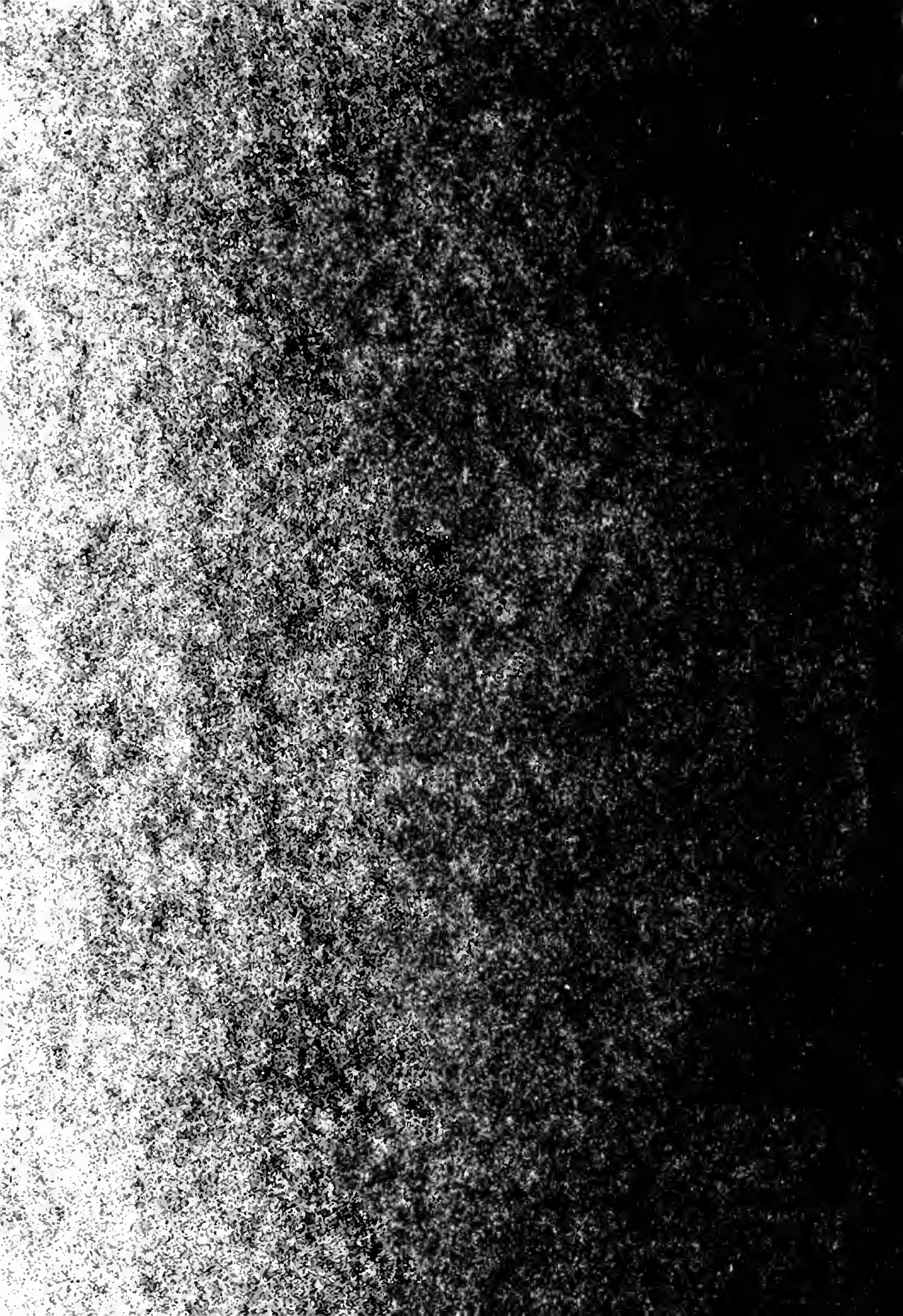
JOHN HUNT & CO. NEW YORK

a



THE LIBRARY
OF
THE UNIVERSITY
OF CALIFORNIA
LOS ANGELES





PICTURES OF LONDON

BY CELEBRATED ARTISTS

MCMXIX : 'THE
STUDIO,' LTD.
LONDON, PARIS
& NEW YORK

D.W.T.H.

to William Jones Smith
Send to you Jones
Bill.

Art
Library
*DA
684
F55

CONTENTS

ILLUSTRATIONS IN COLOURS

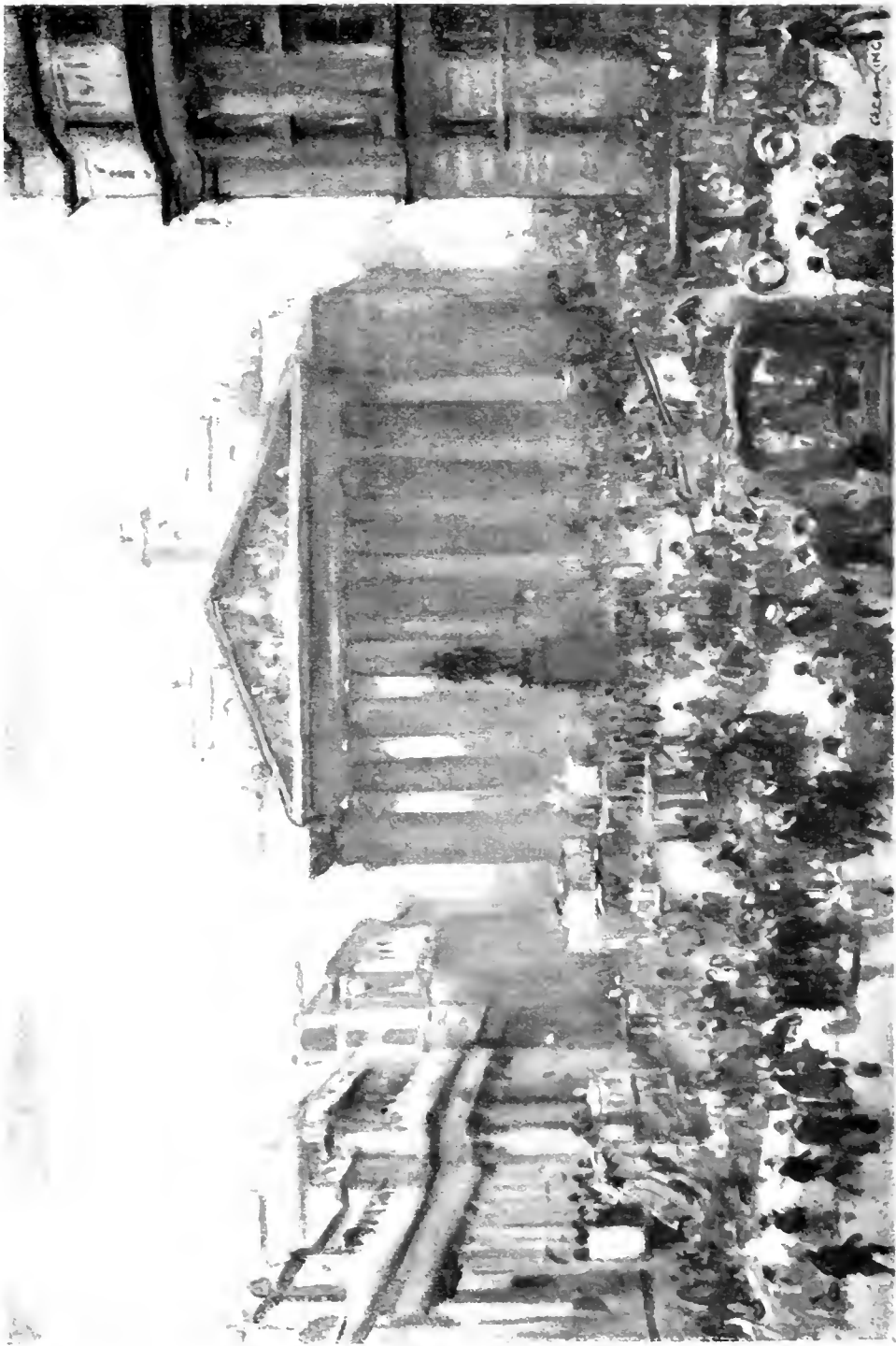
	PAGE
The Bank Crossing. Drawing by Cecil King	1
Rotherhithe. Drawing by Cecil King	7
Rough Weather. Painting by Emile Claus	13
Waterloo Bridge—A Rainy Day. Painting by Emile Claus	19
Leicester Square—March Sunshine. Painting by Emile Claus	25
Trafalgar Square—" King Charles's Day." Painting by Arthur Hacker, R.A.	31
Westminster Abbey. Henry VII's Chapel—" Banners of the Bath." Drawing by Cecil King	37
Spring in Hyde Park. Painting by Alice Fanner	43

ILLUSTRATIONS IN MONOTONE

London from Greenwich. Drawing by Anthony R. Barker	3
Snow on the Roofs. Painting by Emile Claus	4
The Tower of London from Battle Bridge Stairs. Etching by William Monk, R.E.	5
Tower Bridge. Drawing by George Clausen, R.A., R.W.S.	6
Tower Bridge from Old Swan Pier. Drawing by Albert Chanler	9
The Monument. Etching by Stanley Anderson, A.R.E.	10
The Thames from the Monument. Etching by Edgar Wilson	11
The Guildhall. Etching by William Monk, R.E.	12
St. John's Gate, Clerkenwell. Etching by William Monk, R.E.	15
St. Paul's Cathedral. Drawing by Tony Grubhofer	16
St. Paul's Cathedral. The Reredos. Drawing by Albert Chanler	17
Waterloo Bridge. Etching by Percy Robertson, R.E.	18
A Morning in May. Painting by Emile Claus	21
Cloth Fair. Drawing by P. Noel Boxer	22
Fleet Street. Drawing by Albert Chanler	23
Temple Church. Drawing by J. W. Archer, R.I.	24
Staple Inn, Holborn. Etching by Percy Robertson, R.E.	27
The Strand from Wellington Street. Drawing by Frank L. Emanuel	28
The Victoria Embankment. Drawing by P. Noel Boxer	29
Charing Cross. Lithograph by J. Kerr Lawson	30
Trafalgar Square—" Nelson Day." Drawing by Cecil King	33
The Horse Guards. Lithograph by G. M. Ellwood	34
Westminster from County Hall. Drawing by Cecil King	35

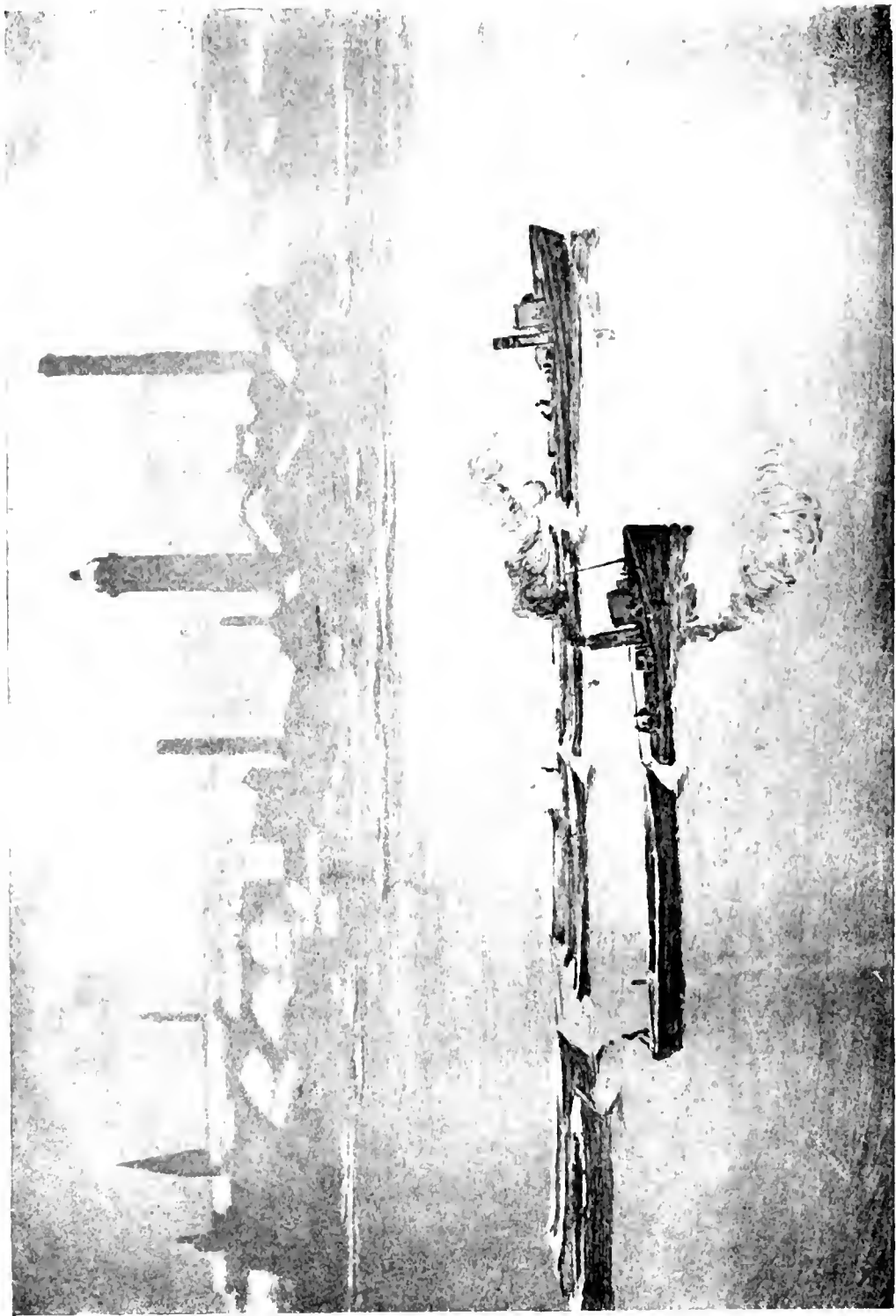
	PAGE
The Clock Tower, Westminster. Drawing by Yoshio Markino	36
Westminster Abbey. Looking from the South Ambulatory, showing the Shrine of Henry V. Drawing by A. E. Newcombe	39
Westminster Abbey. Entrance to Chapel of St. Erasmus. Drawing by A. E. Newcombe	40
Westminster Abbey. Edward the Confessor's Chapel, showing Tombs of Henry III (left) and Eleanor of Castile (centre). Drawing by A. E. Newcombe	41
Regent Street and Piccadilly Circus at Night. Drawing by William T. Wood, R.W.S.	42
Piccadilly Circus. Drawing by Cecil King	45
St. James's Palace. Etching by William Walker, A.R.E.	46
St. James's Palace. Drawing by Tony Grubhofer	47
Buckingham Palace. Etching by Percy Robertson, R.E.	48

The Editor desires to acknowledge his indebtedness to the artists and owners who have kindly allowed their works to be reproduced in this volume; also to the publishers who have permitted him to include their copyright subjects amongst the illustrations.

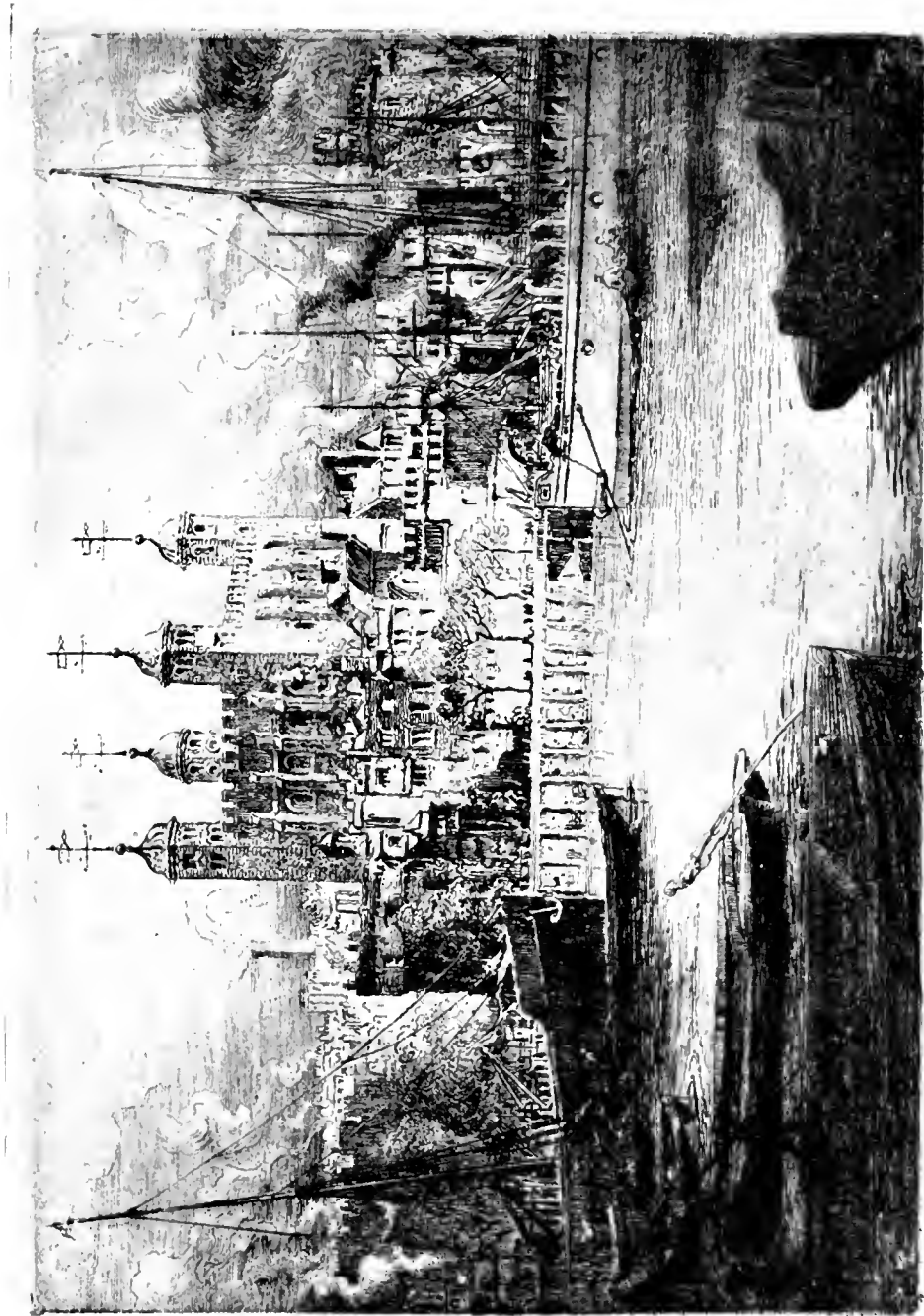




LONDON FROM GREENWICH DRAWING BY ANTHONY R BARKER



SNOW ON THE ROOFS PAINTING BY EMILE CLAUS



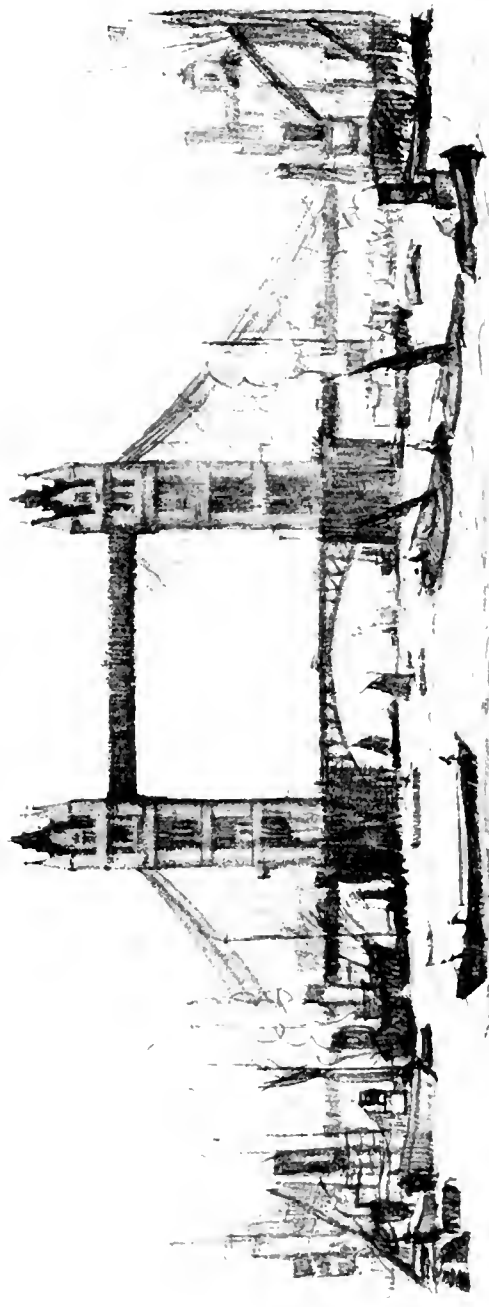
THE TOWER OF LONDON FROM BATTLE BRIDGE STAIRS
ETCHING BY WILLIAM MONK. R. E.



TOWER BRIDGE DRAWING BY
GEORGE CLAUSEN, R.A., R.W.S.



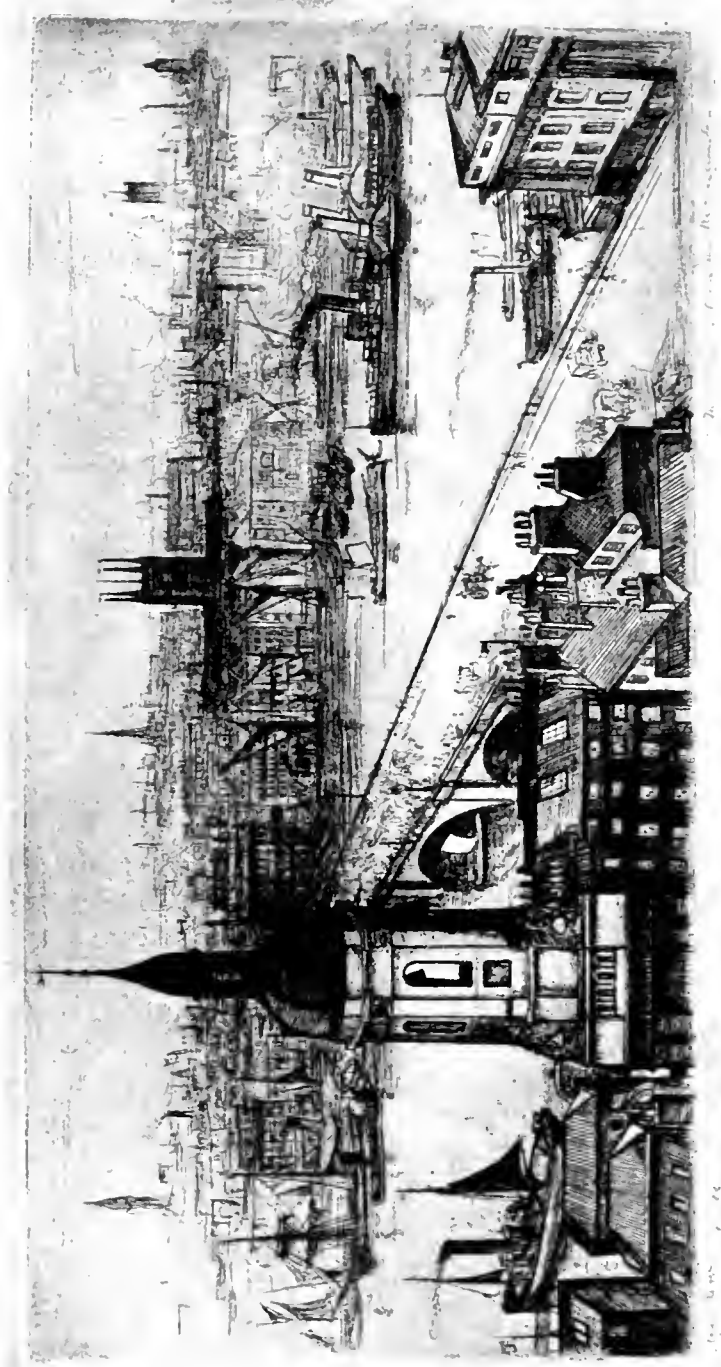
ROTHERTHME. DRAWING BY CECIL KING.



TOWER BRIDGE FROM OLD SWAN PIER DRAWING BY ALBERT CHANLER

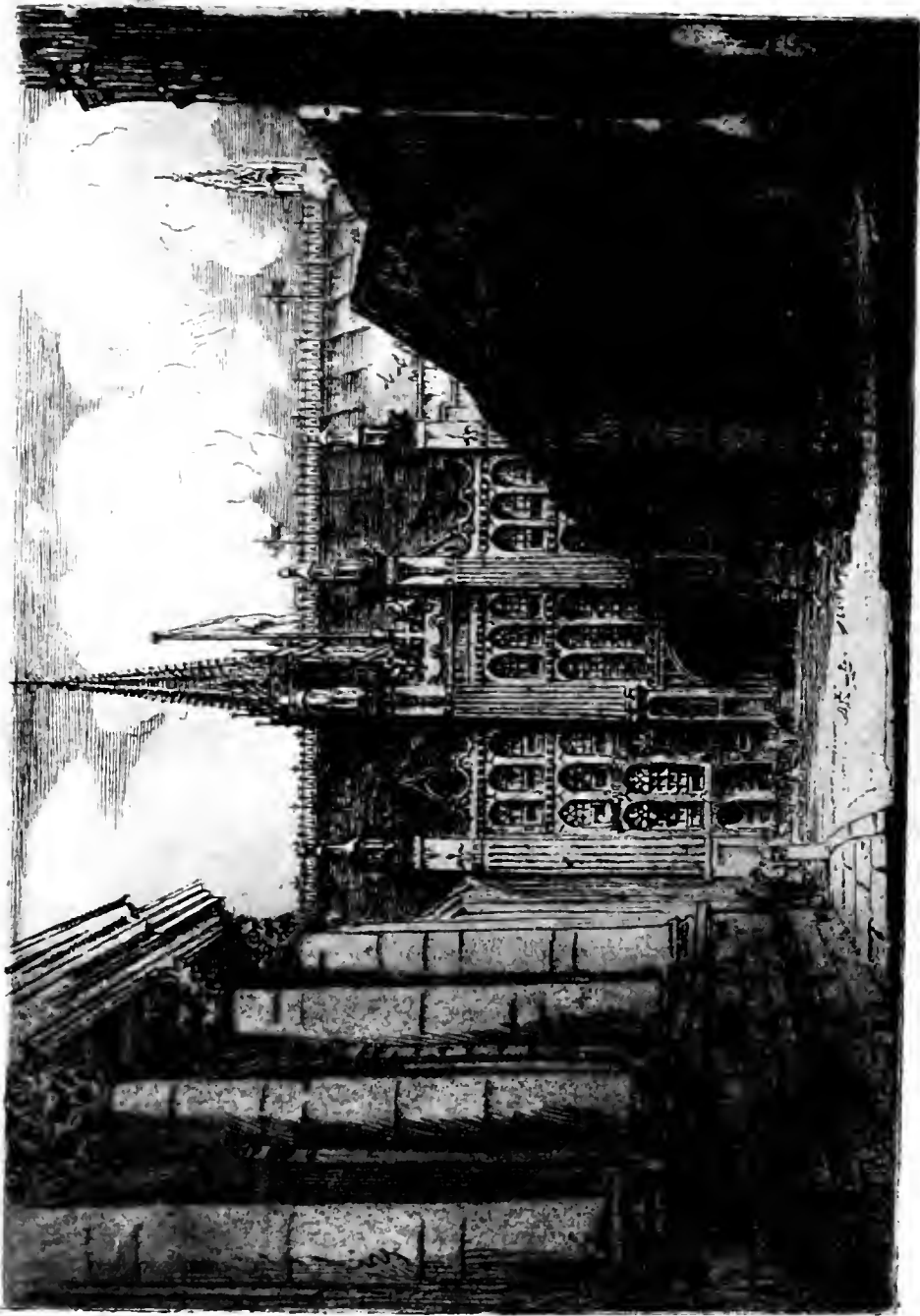


THE MONUMENT ETCHING BY
STANLEY ANDERSON A.R.E.



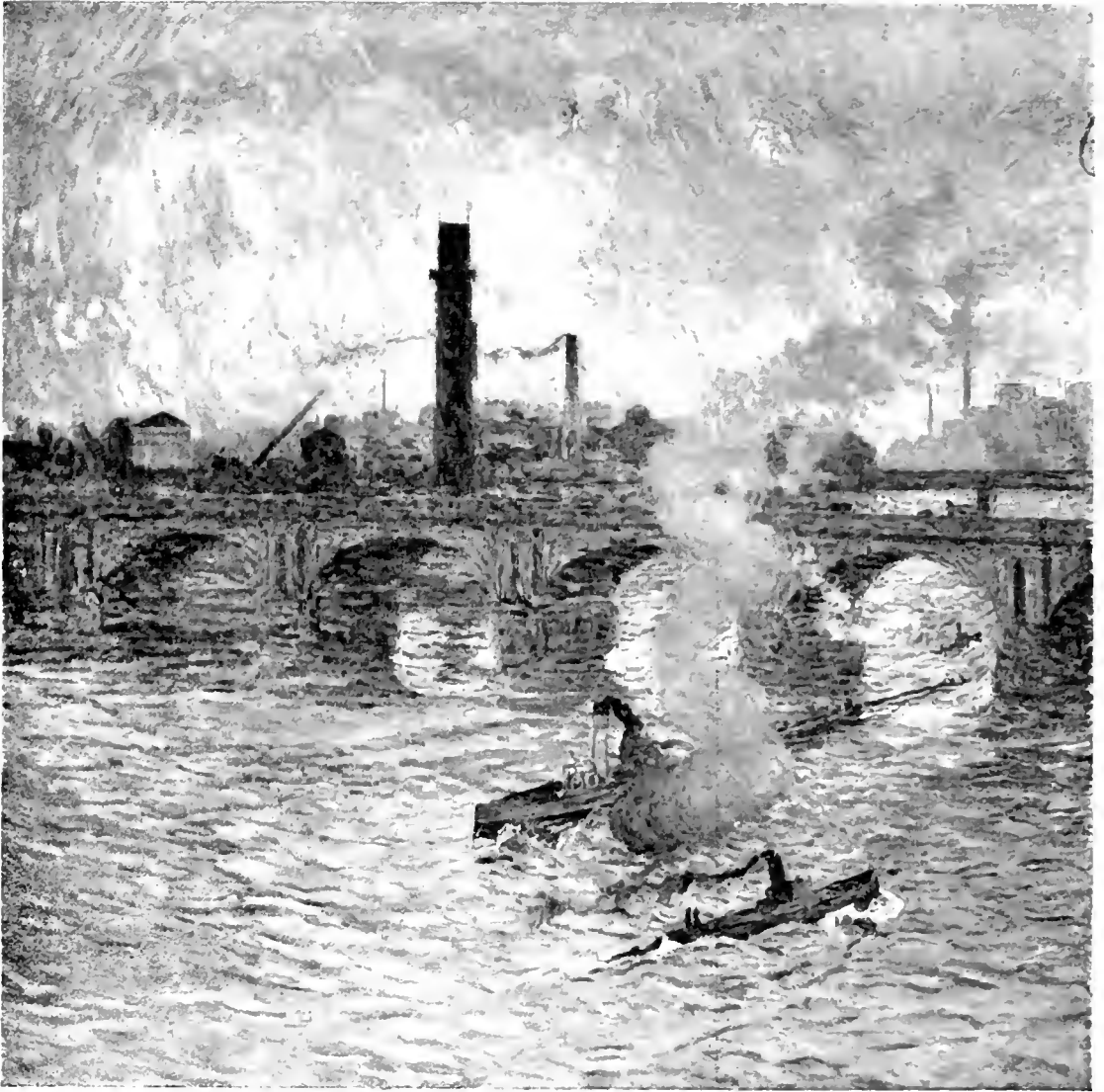
*(From a Front in the Possession
of the "Twenty-one Gallery")*

THE THAMES FROM THE MONUMENT ETCHING BY EDGAR WILSON

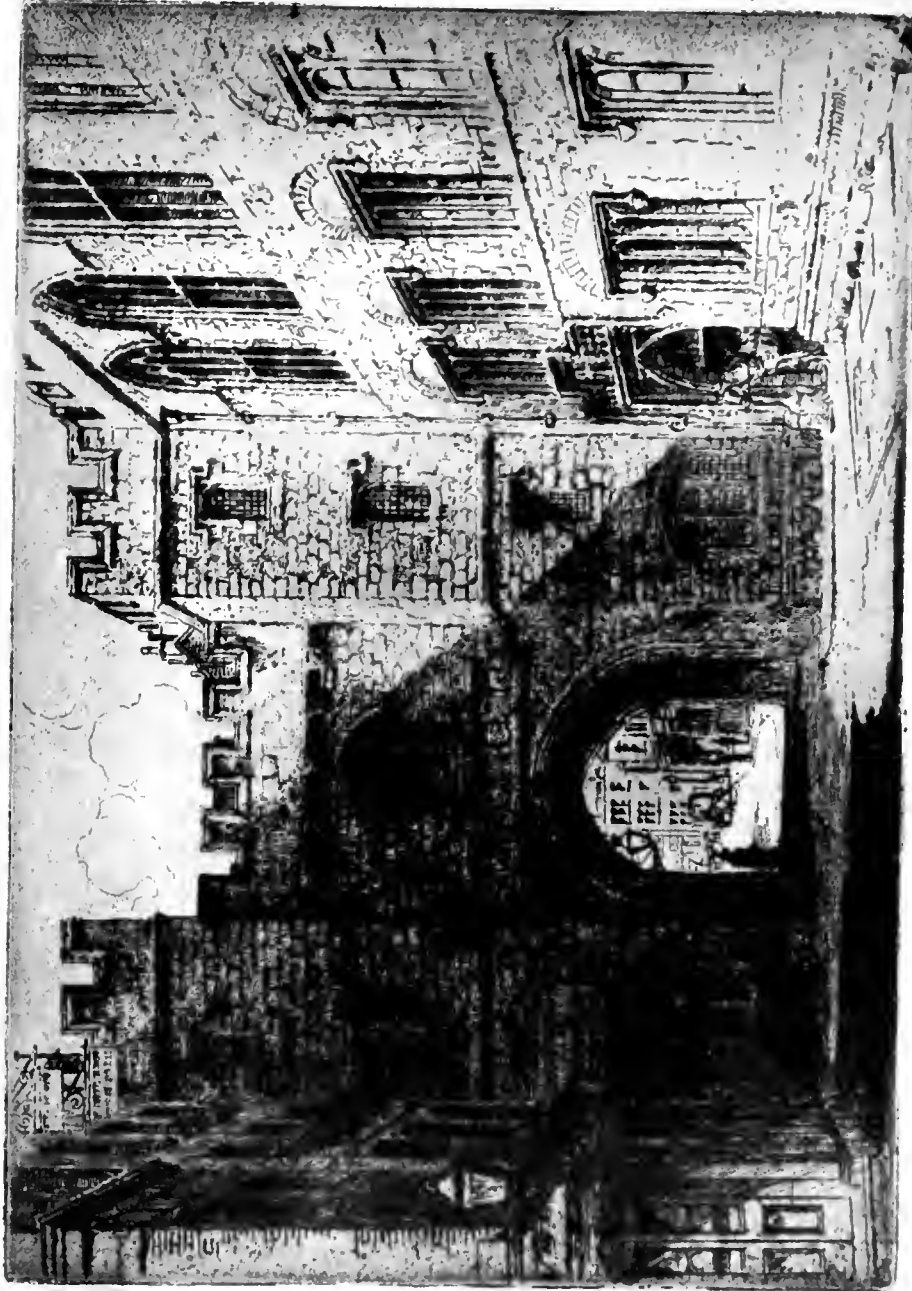


(From the "Calendarium Londinense," 1913)

THE GUILDHALL ETCHING BY WILLIAM MONK, R.E.



ROUGH WEATHER
PAINTING BY EM. LE. CLAU

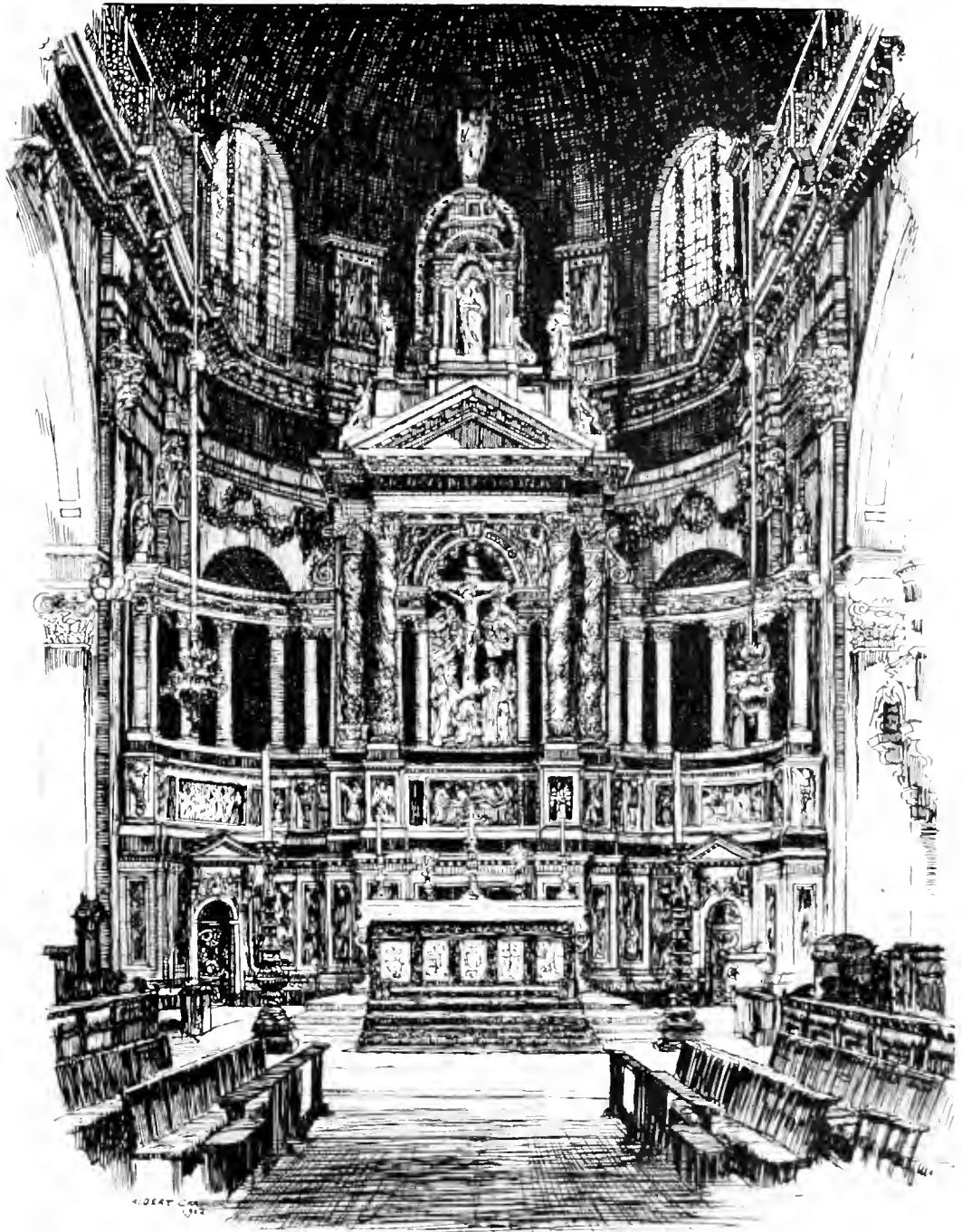


From the Calendarium Londinense. 1444

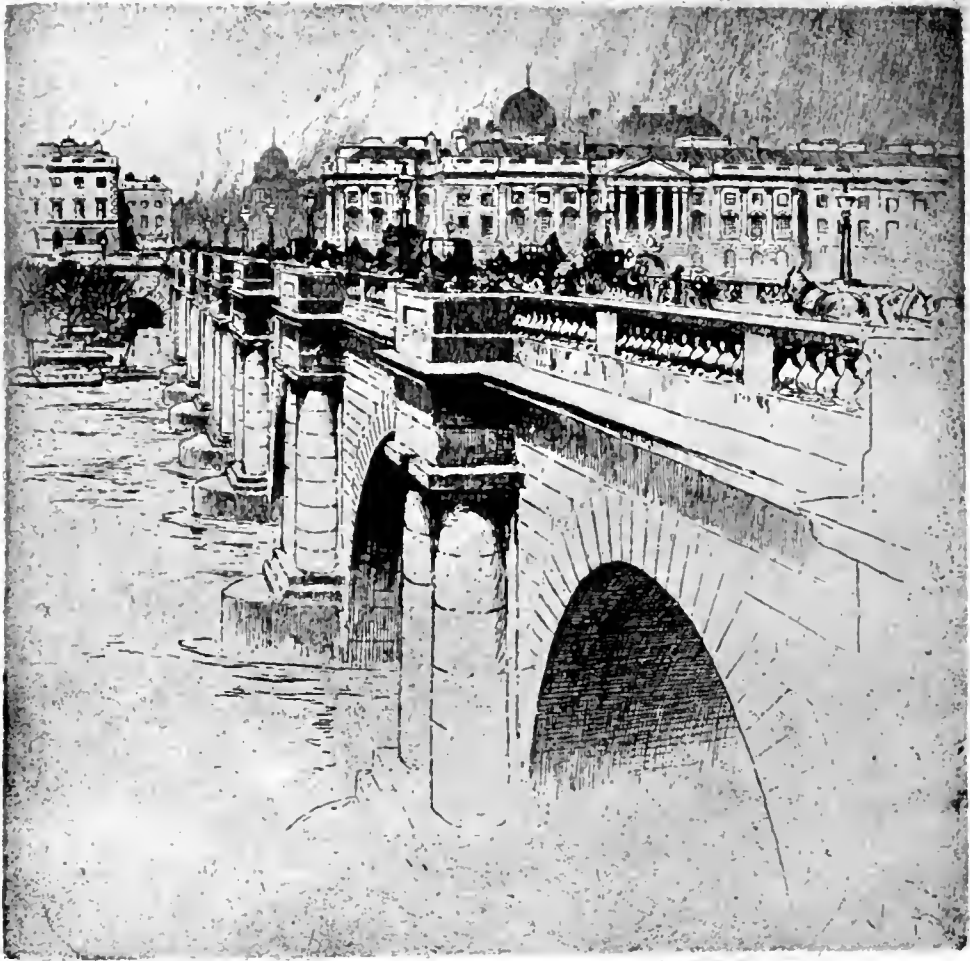
ST. JOHN'S GATE, CLERKENWELL. ETCHED BY WILLIAM MONK, R.E.



ST. PAUL'S CATHEDRAL DRAWING
BY TONY GRUBHOFER

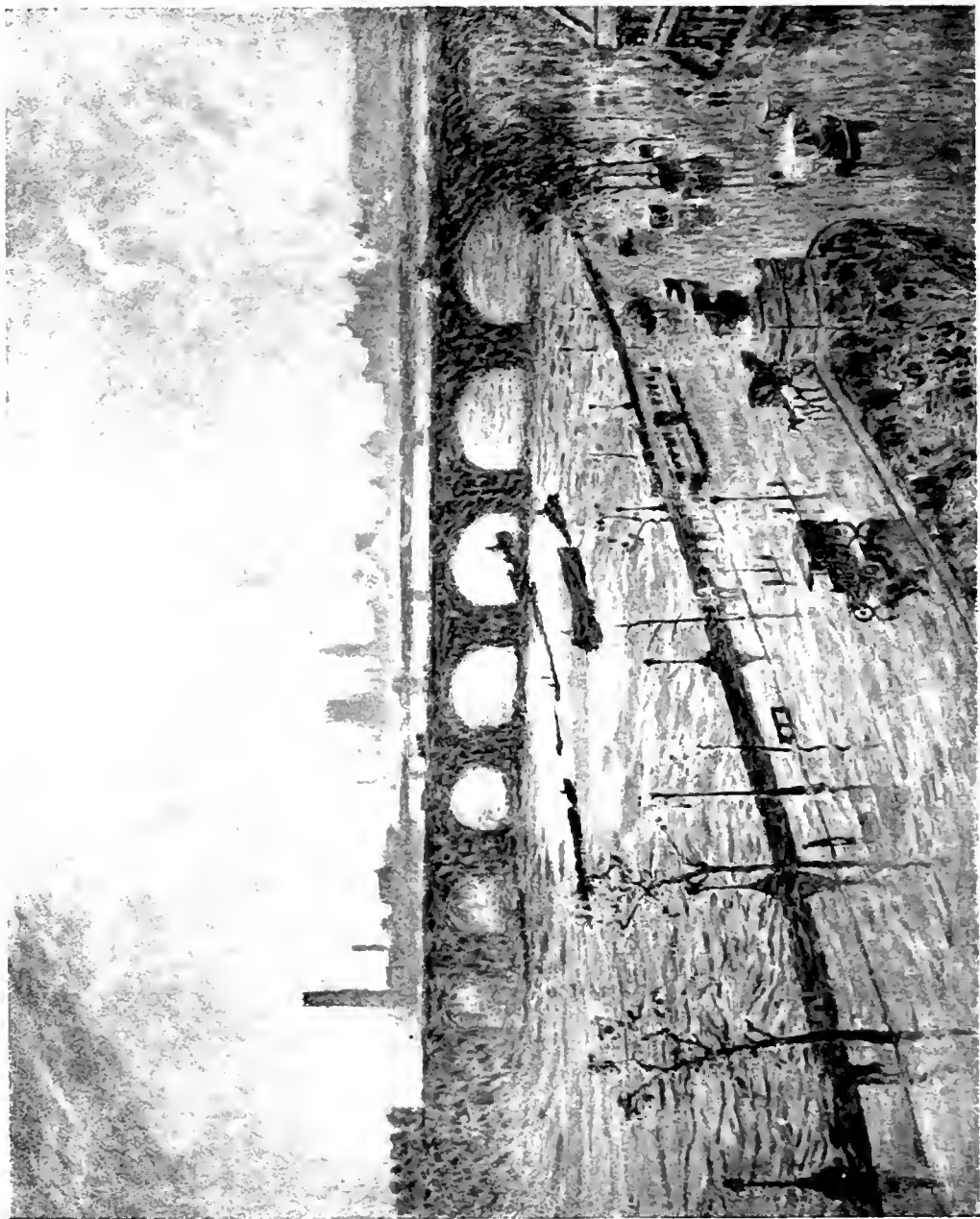


ST PAUL'S CATHEDRAL THE REREDOS
DRAWING BY ALBERT CHANLER



WATERLOO BRIDGE ETCHING
BY PERCY ROBERTSON R.E.

*Reproduced by permission of the Publisher,
Mr. C. Klauner, 20 Old Bond St., London
and 7 West 27th St., New York. Copyright*



WATERLOO BRIDGE. A RAINY DAY. PAINTING BY EMIL CLAUDS.



A MORNING IN MAY PAINTING BY EMILE CLAUS



CLOTH FAIR DRAWING
BY P. NOEL BOXER



FLEET STREET DRAWING
BY ALBERT CHANLER

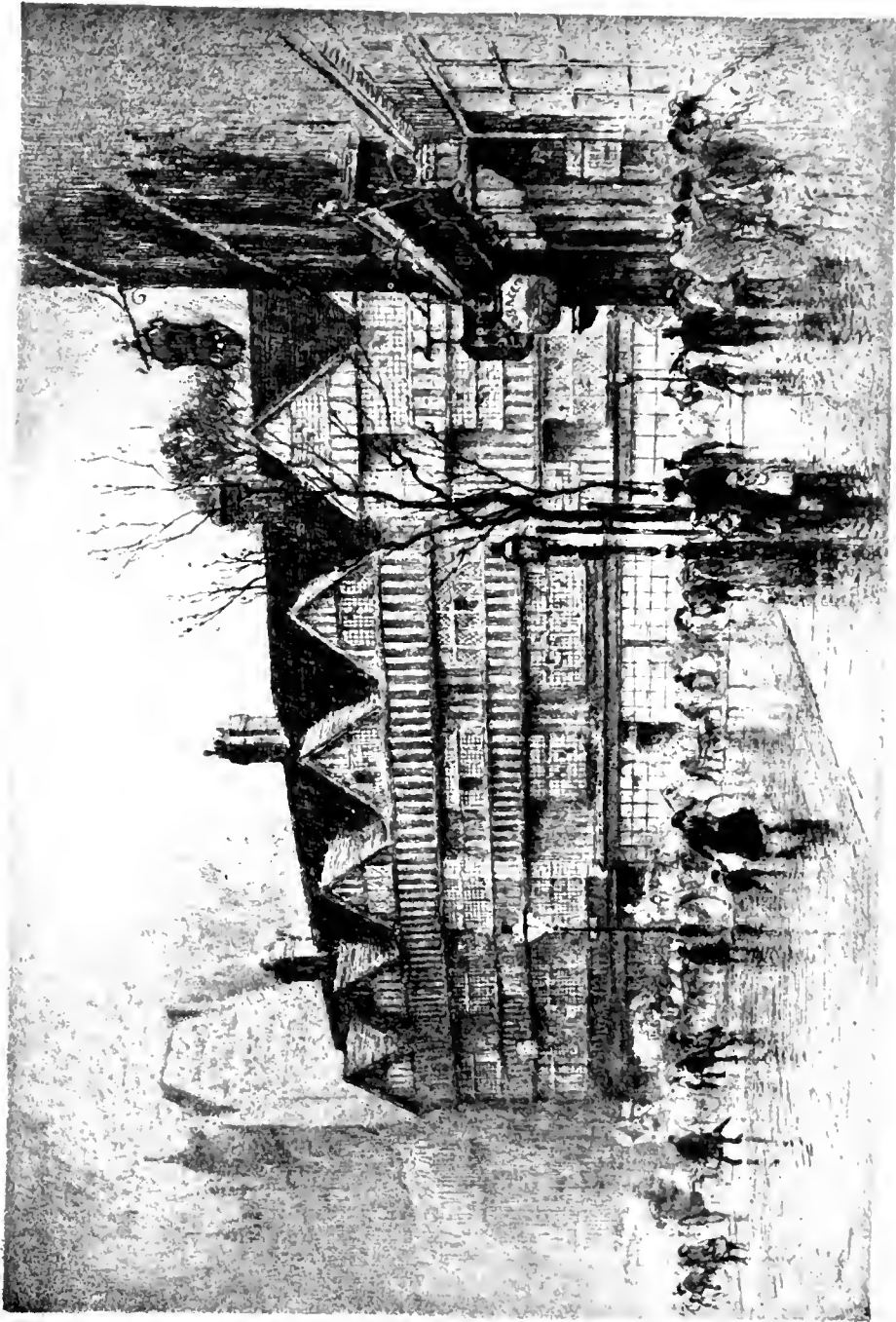


Temple Church in the British Museum

TEMPLE CHURCH DRAWING BY J. W. ARCHER. R.I



LEICESTER SQUARE MARCH-SUN-HINE PAINTING BY EMILE CLAUPE

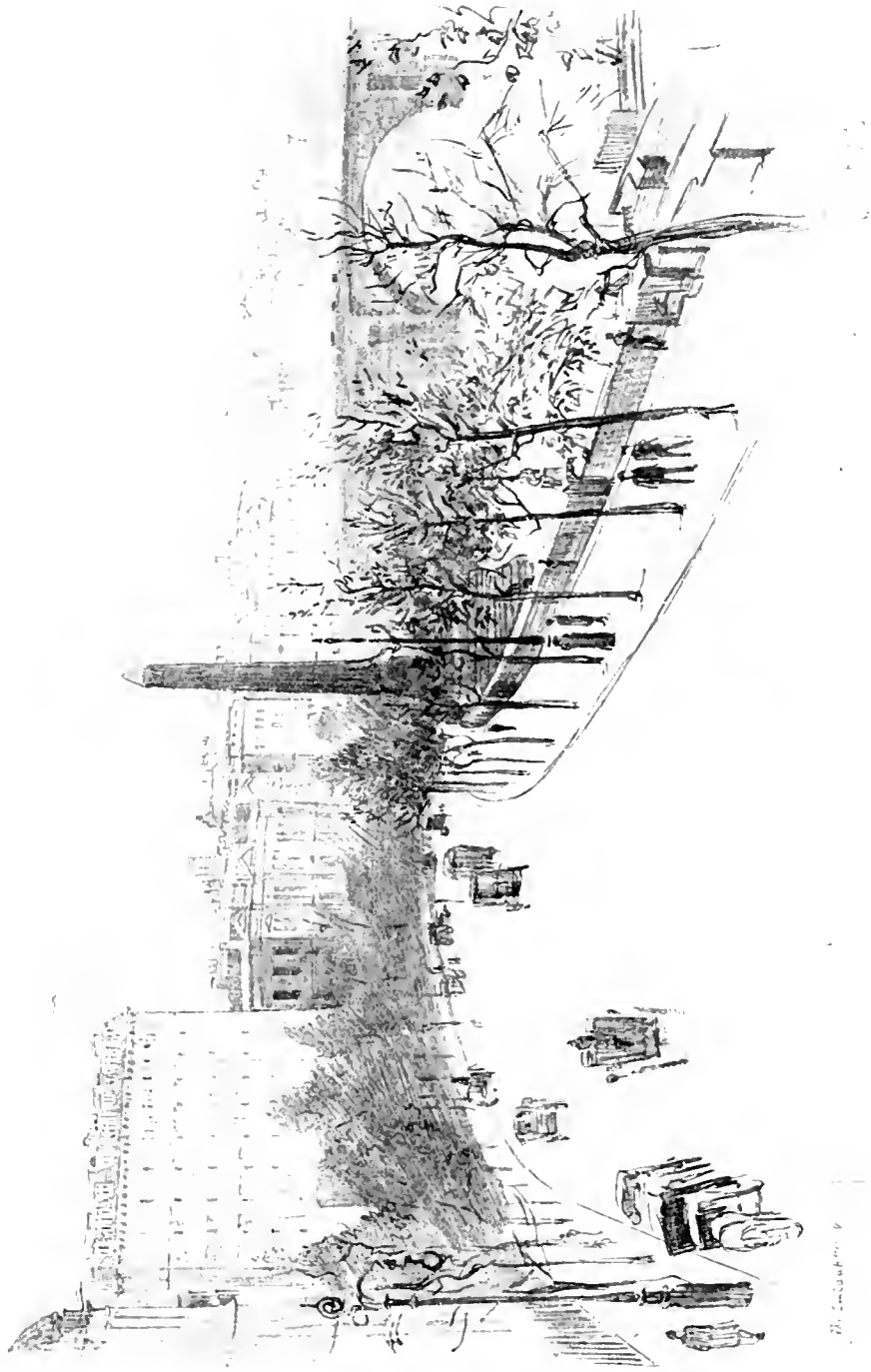


STAPLE INN, HOLBORN ETCHING BY PERCY ROBERTSON, R.E



THE STRAND FROM WELLINGTON STREET
DRAWING BY FRANK L. EMANUEL

(From "A Londoner's London"
Published by Messrs. Methuen & Co.)



THE VICTORIA EMBANKMENT DRAWING BY P. NOEL BOXER

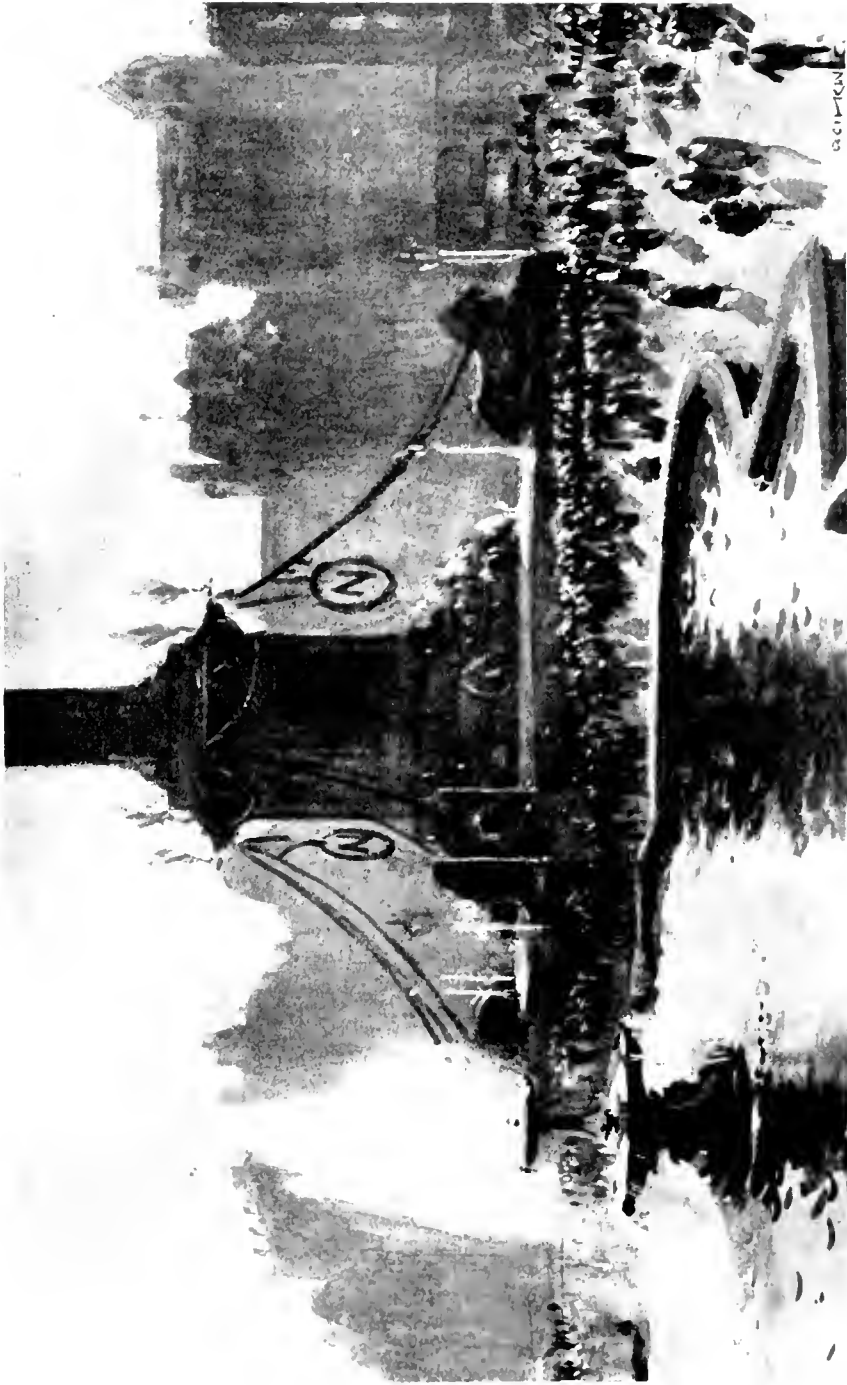


CHARING CROSS LITHOGRAPH
BY J. KERR LAWSON

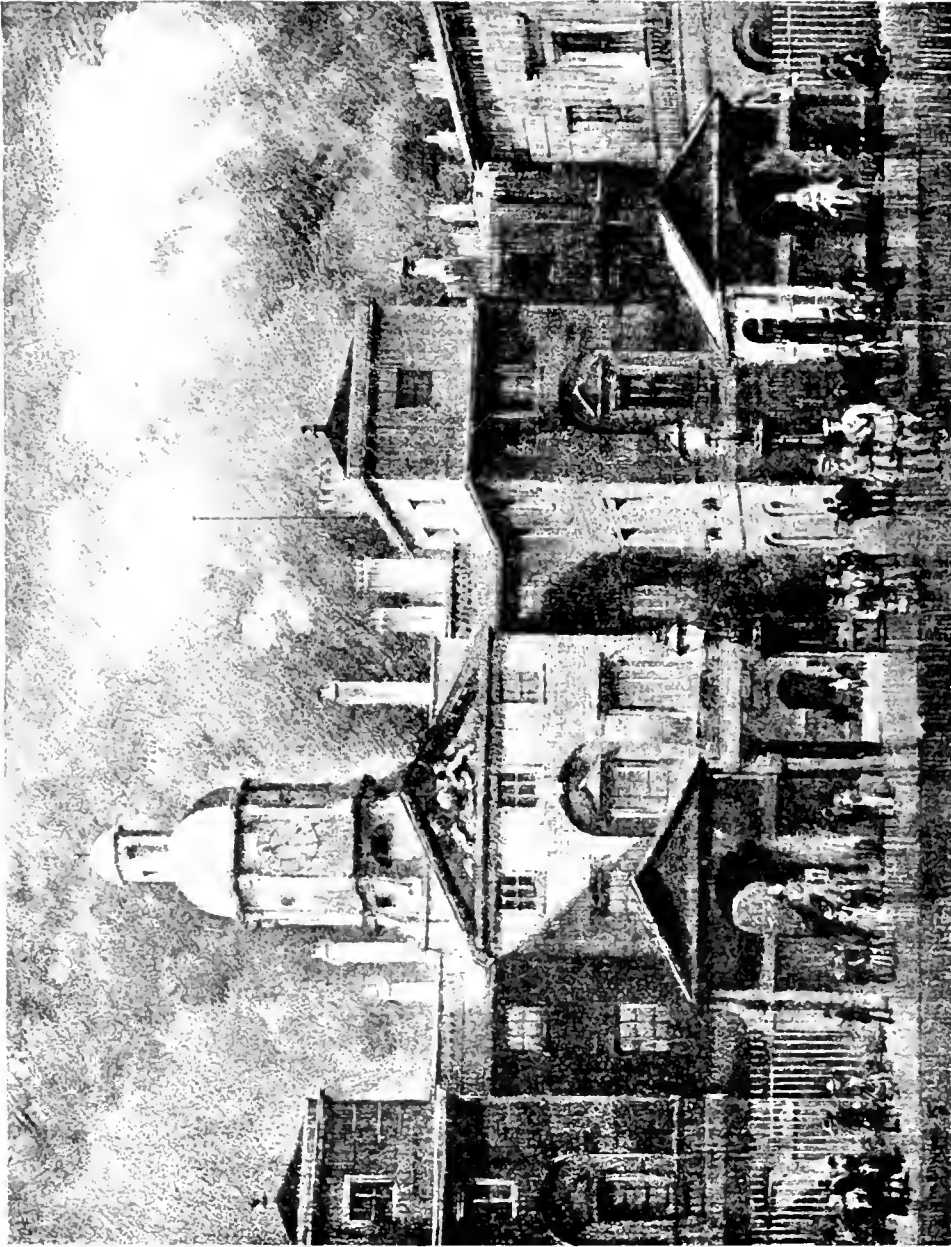
*(By permission of the London
Underground Railways)*



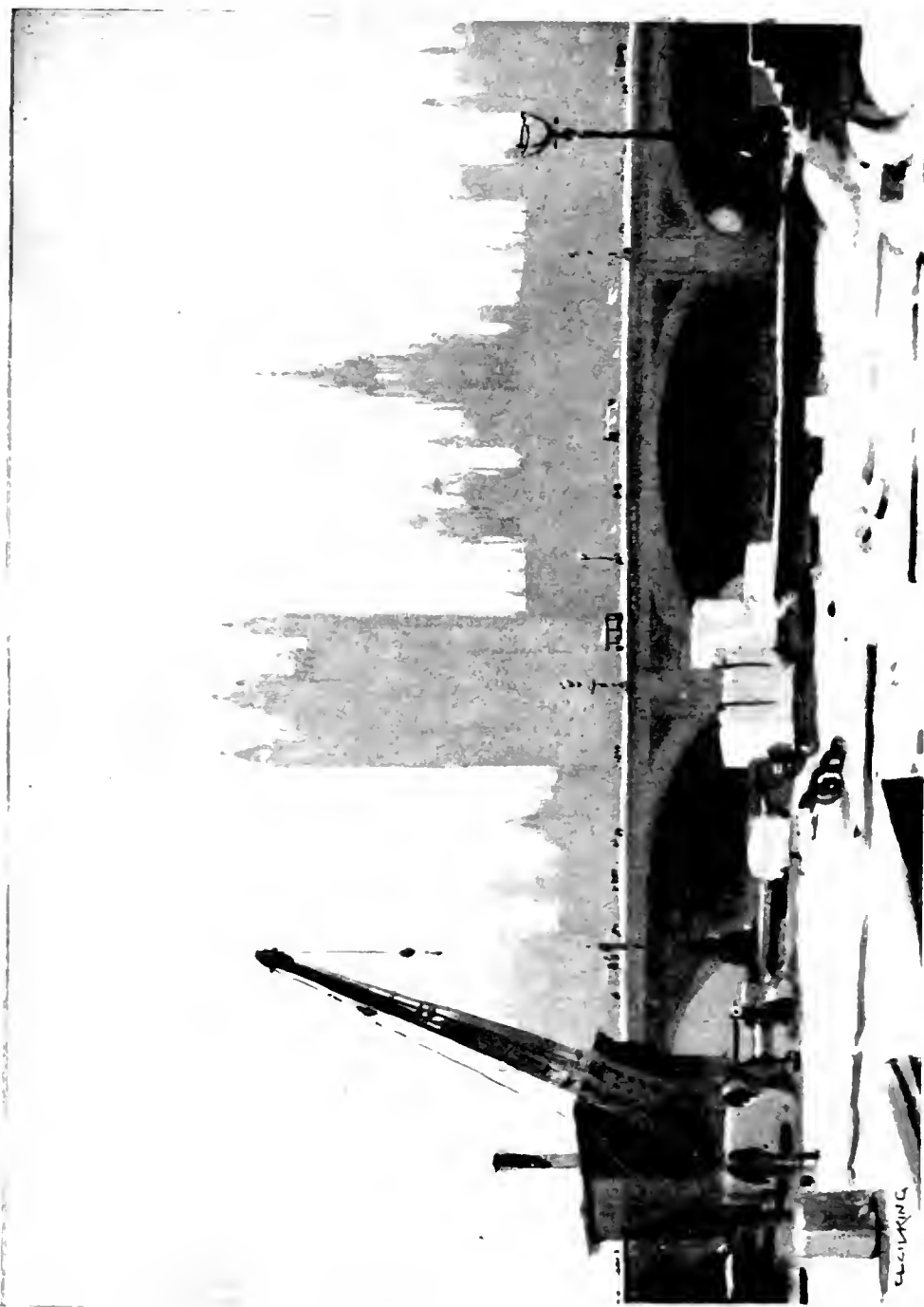
TRAFALGAR SQUARE — KING CHARLES'S DAY — PAINTING BY ARTHUR HAVER, R.A.



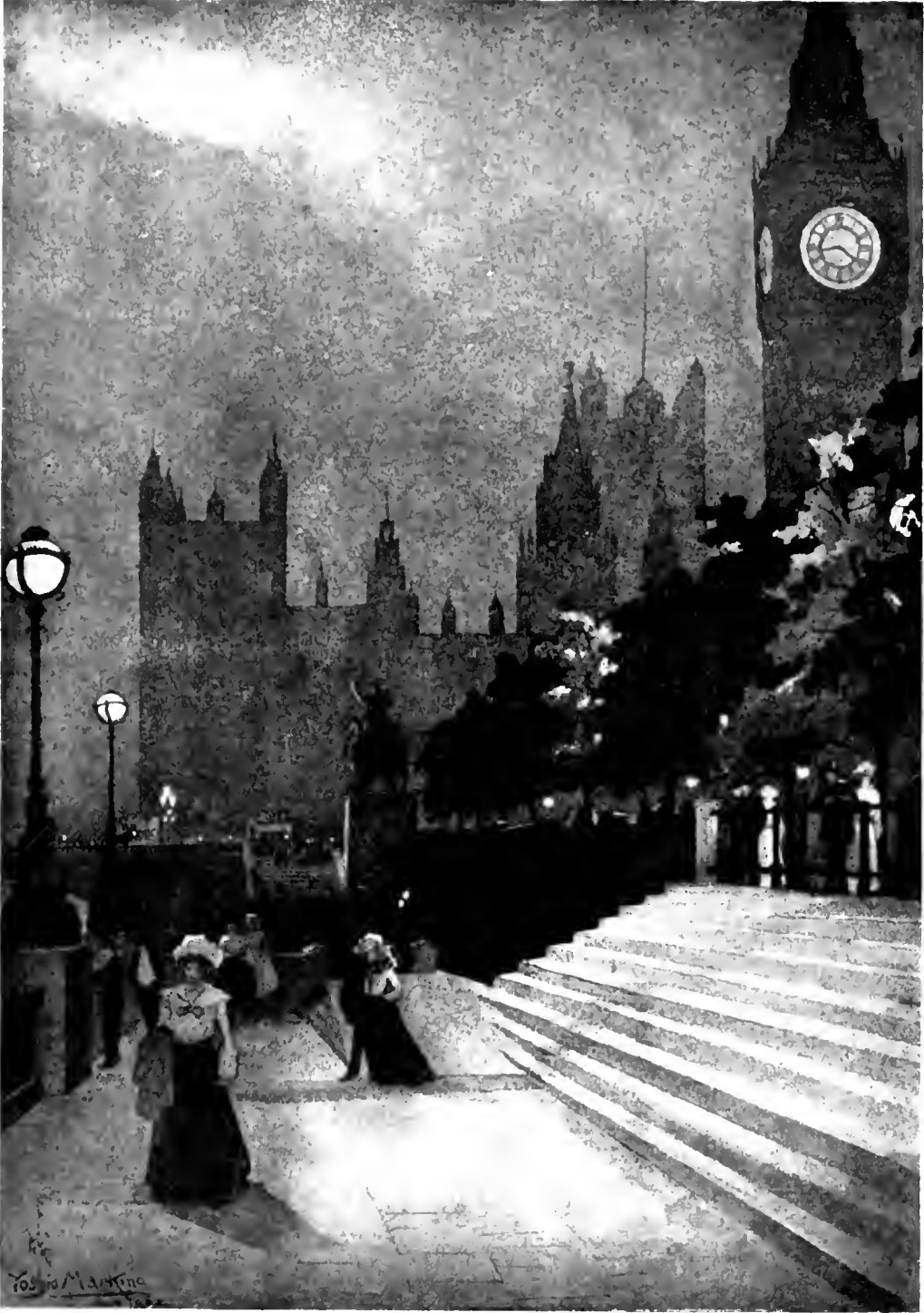
TRAFALGAR SQUARE NELSON DAY DRAWING BY CECIL KING



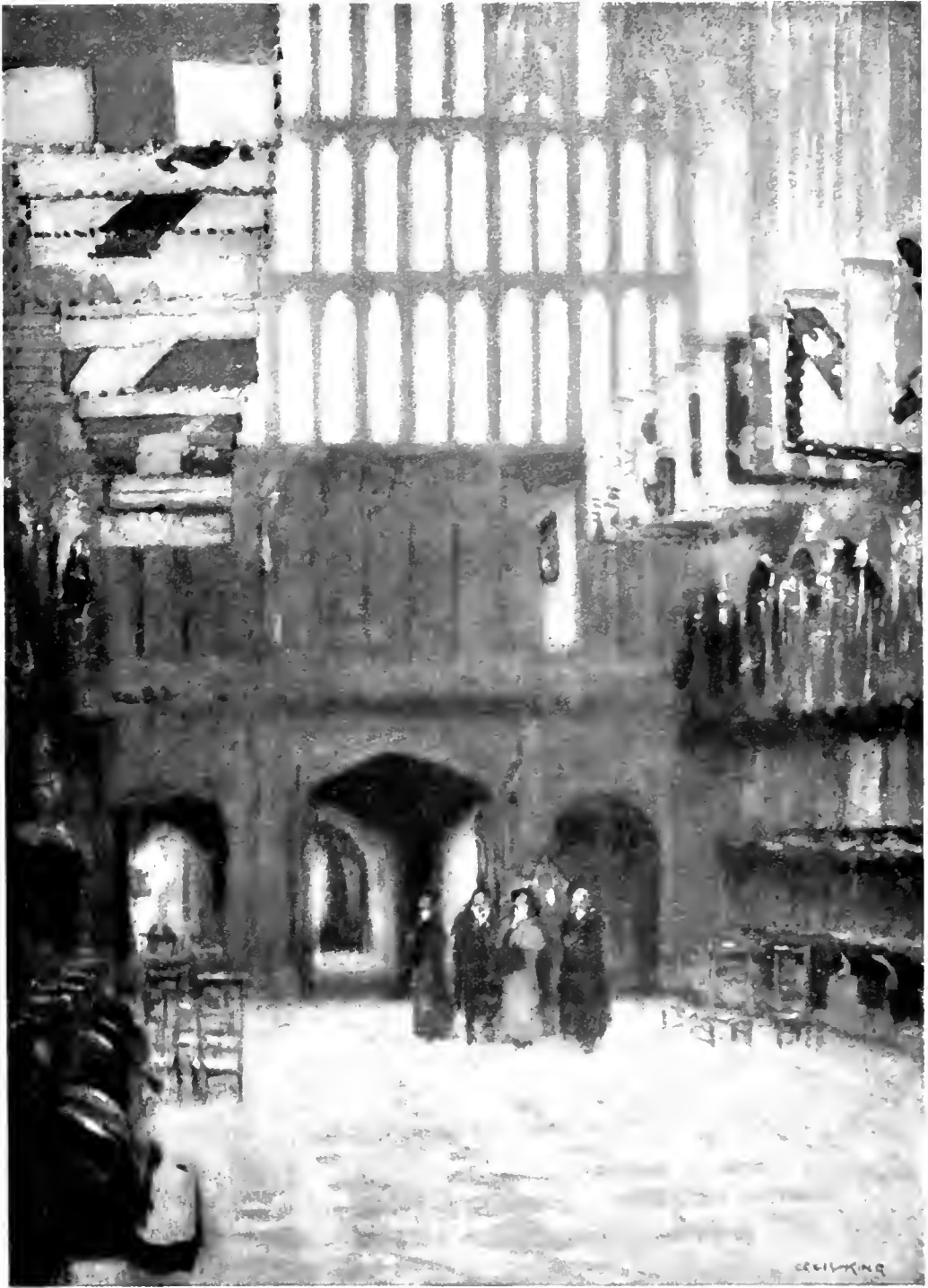
THE HORSE GUARDS LITHOGRAPH BY G. M. ELLWOOD

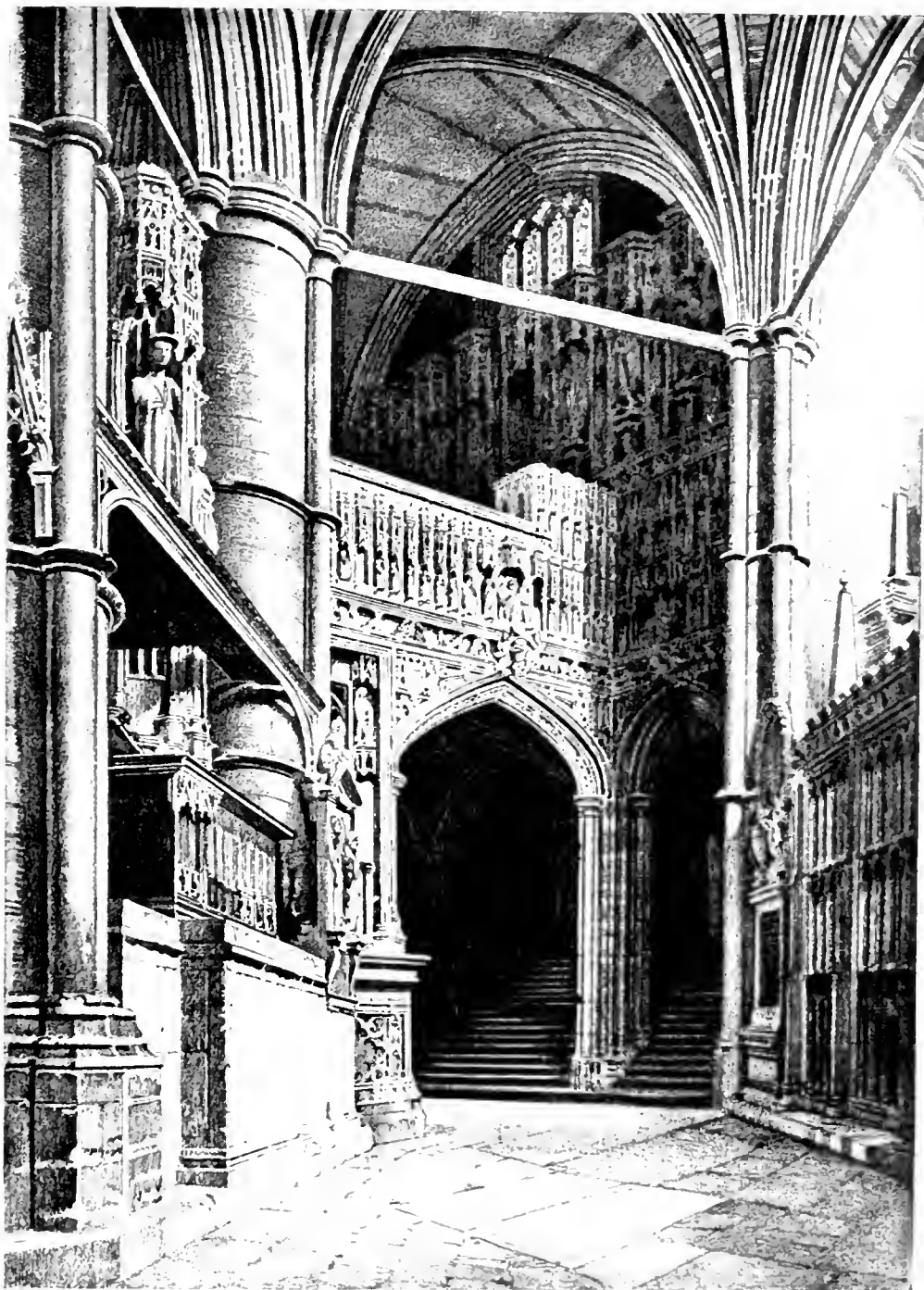


WESTMINSTER FROM COUNTY HALL DRAWING BY CECIL KING

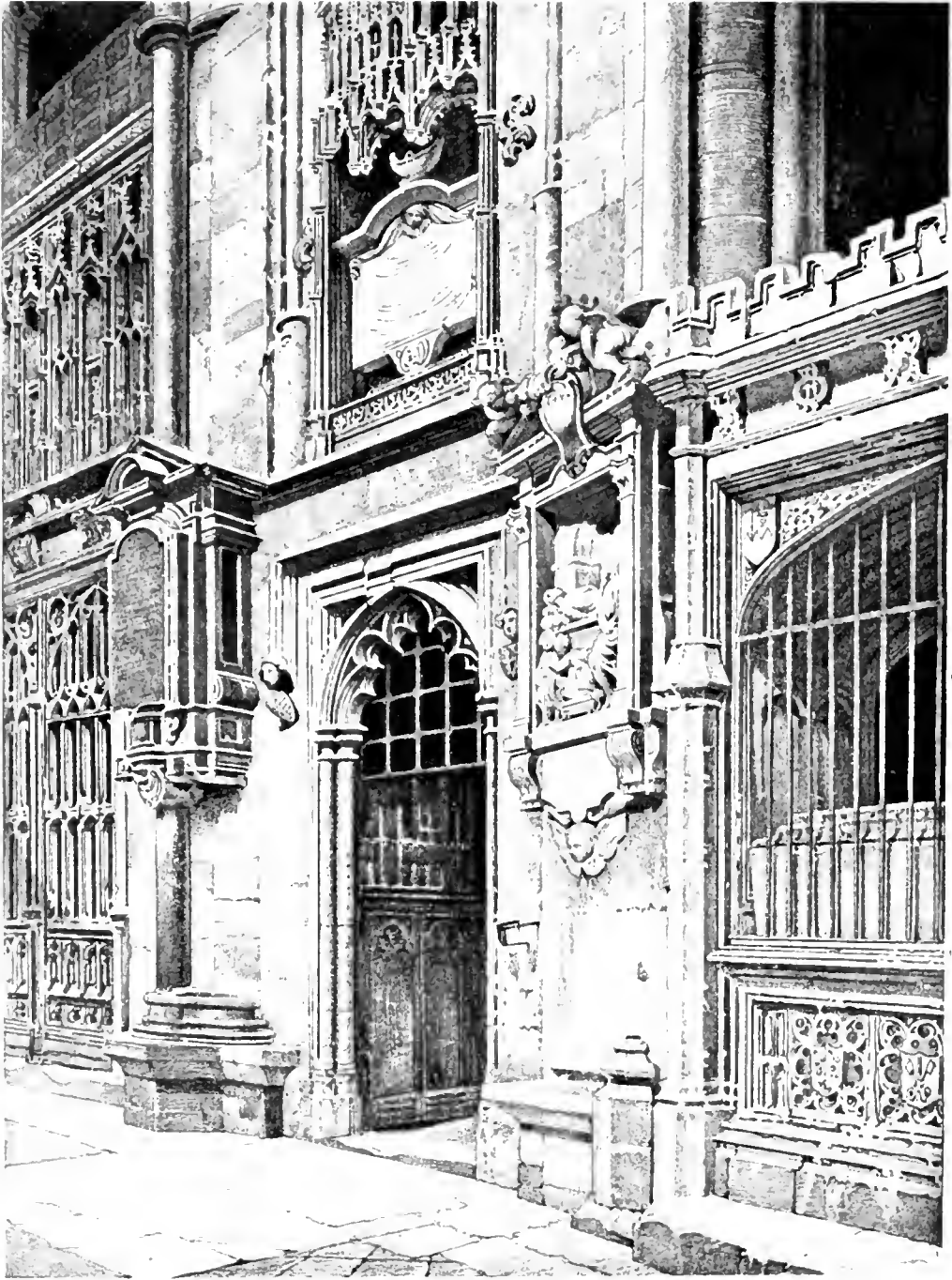


THE CLOCK TOWER WESTMINSTER
DRAWING BY YOSHIO MARFINO

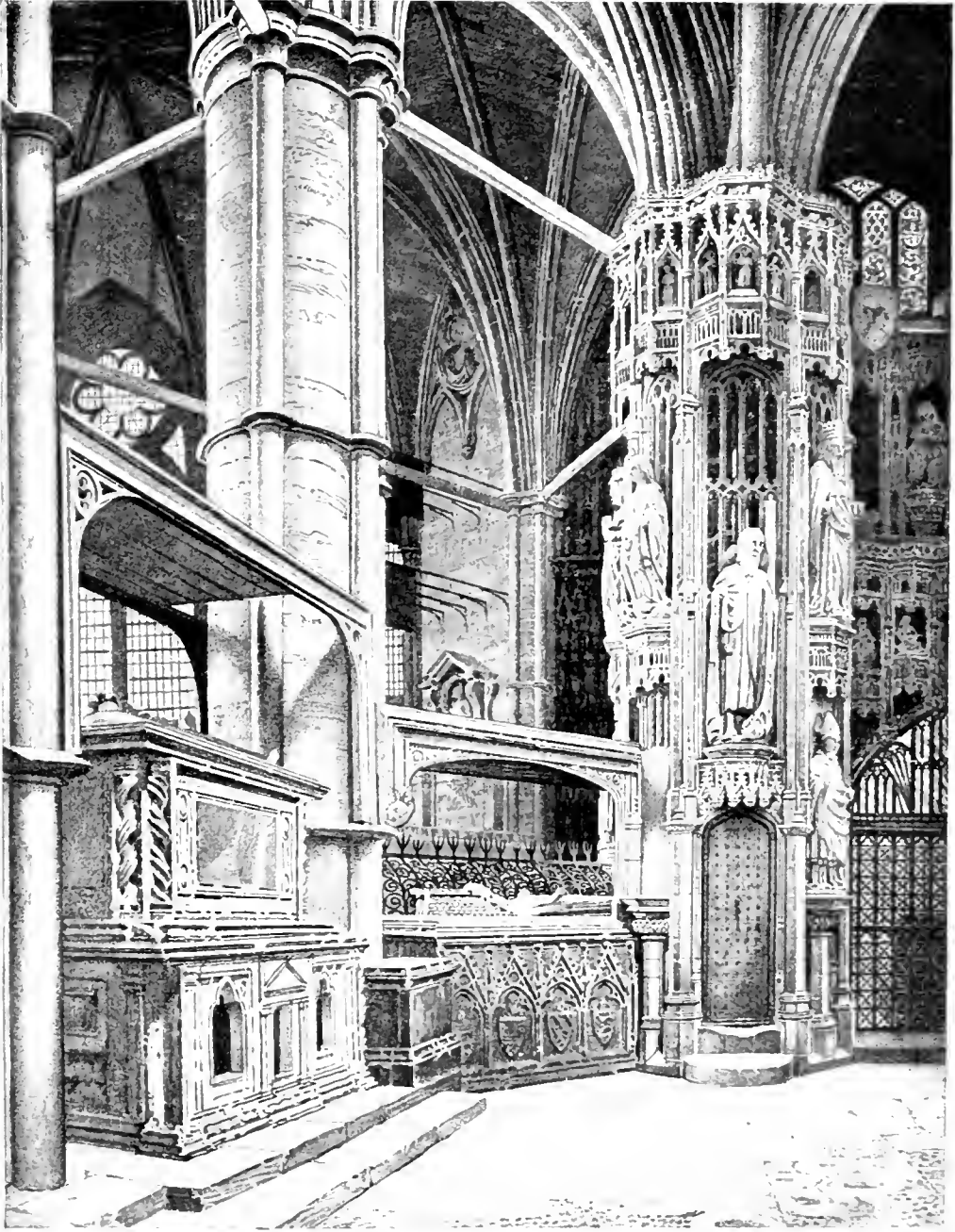




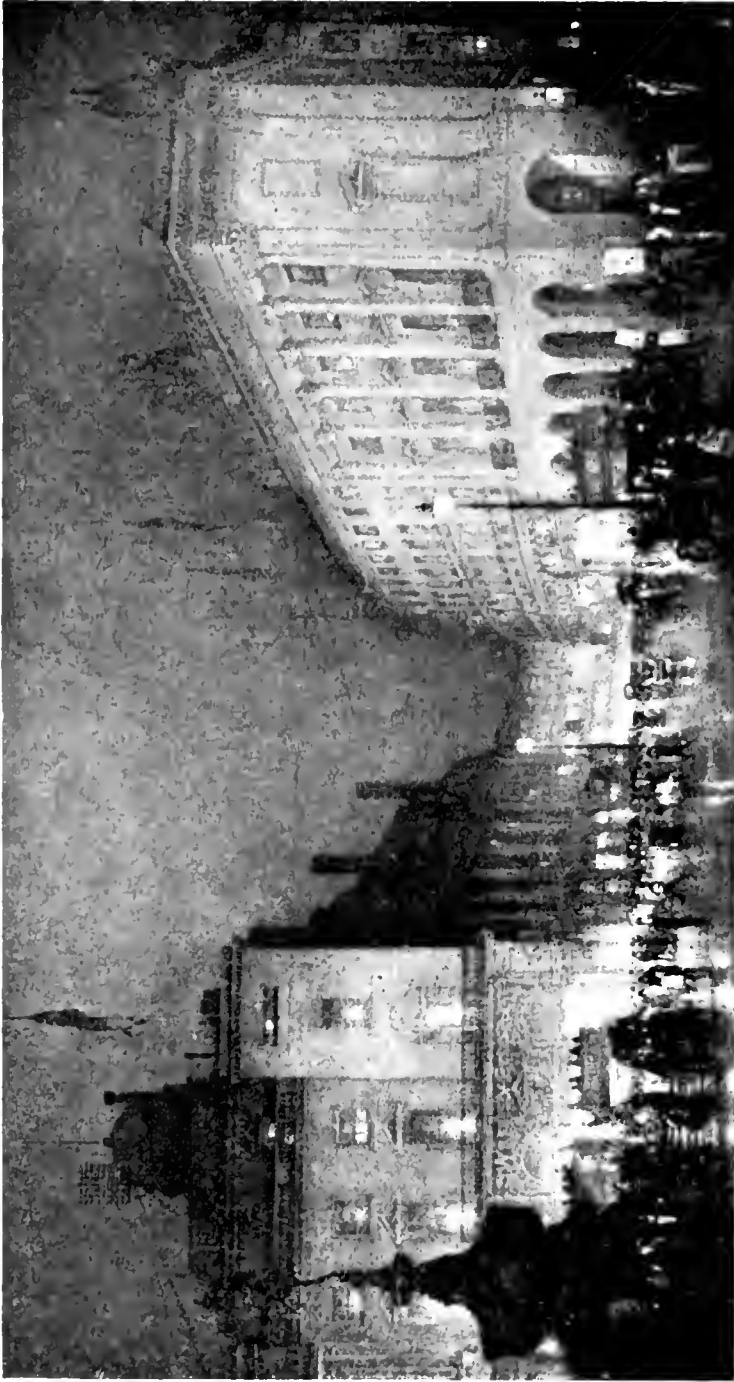
WESTMINSTER ABBEY. LOOKING FROM THE SOUTH AMBULATORY
SHOWING SHRINE OF HENRY V. DRAWING BY A. E. NEWCOMBE



WESTMINSTER ABBEY. ENTRANCE TO CHAPEL OF
ST ERASMUS. DRAWING BY A. E. NEWCOMBE



WESTMINSTER ABBEY EDWARD THE CONFESSOR'S CHAPEL
SHOWING TOMBS OF HENRY III (LEFT) AND ELEANOR OF
CASTILE (CENTRE). DRAWING BY A. E. NEWCOMBE

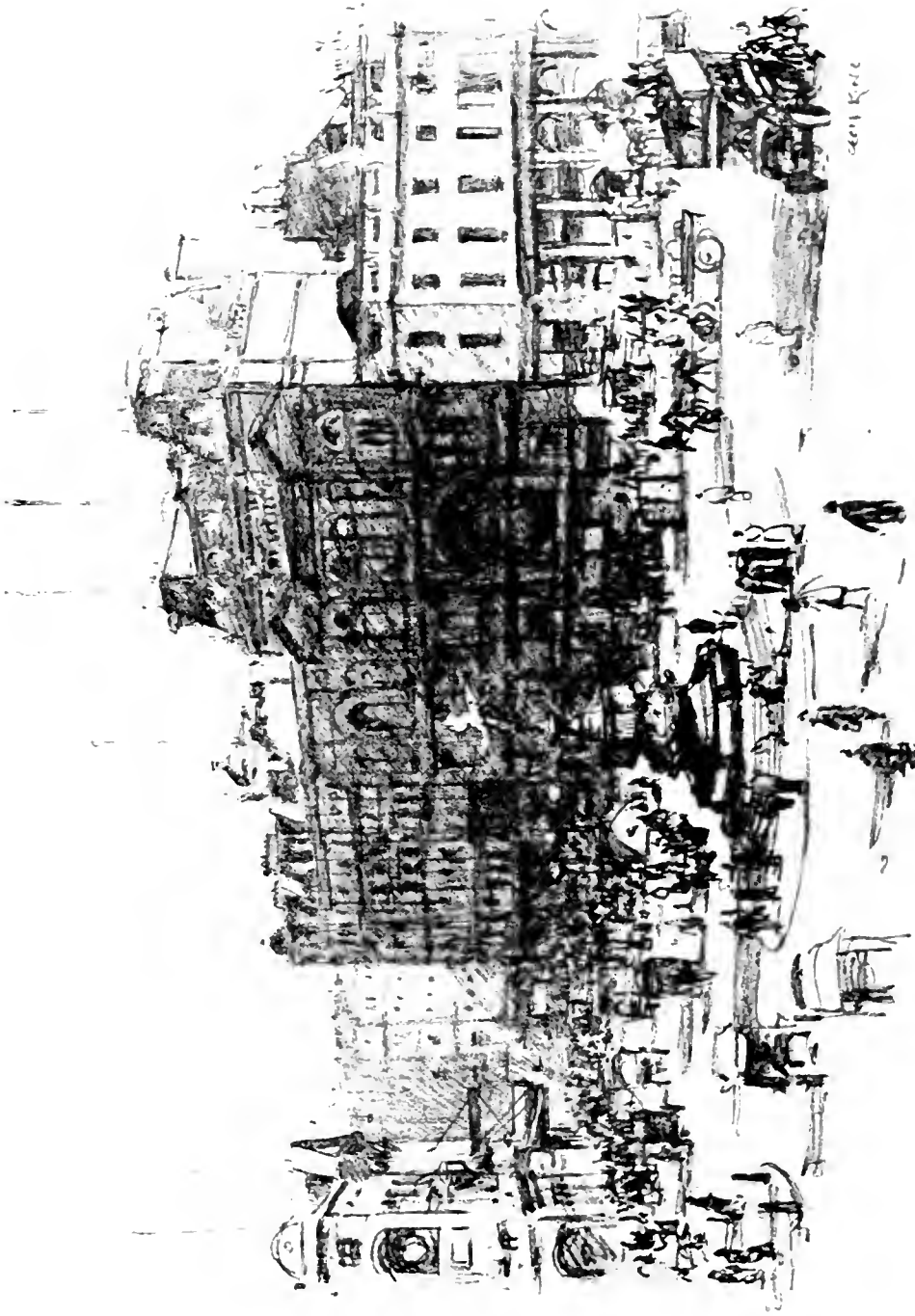


(From a drawing in the London Museum)

REGENT STREET AND PICCADILLY CIRCUS AT NIGHT DRAWING BY WILLIAM T WOOD RWS



SPRING IN HYDE PARK
PAINTING BY ALICE FANNER



PICCADILLY CIRCUS DRAWING BY CECIL KING



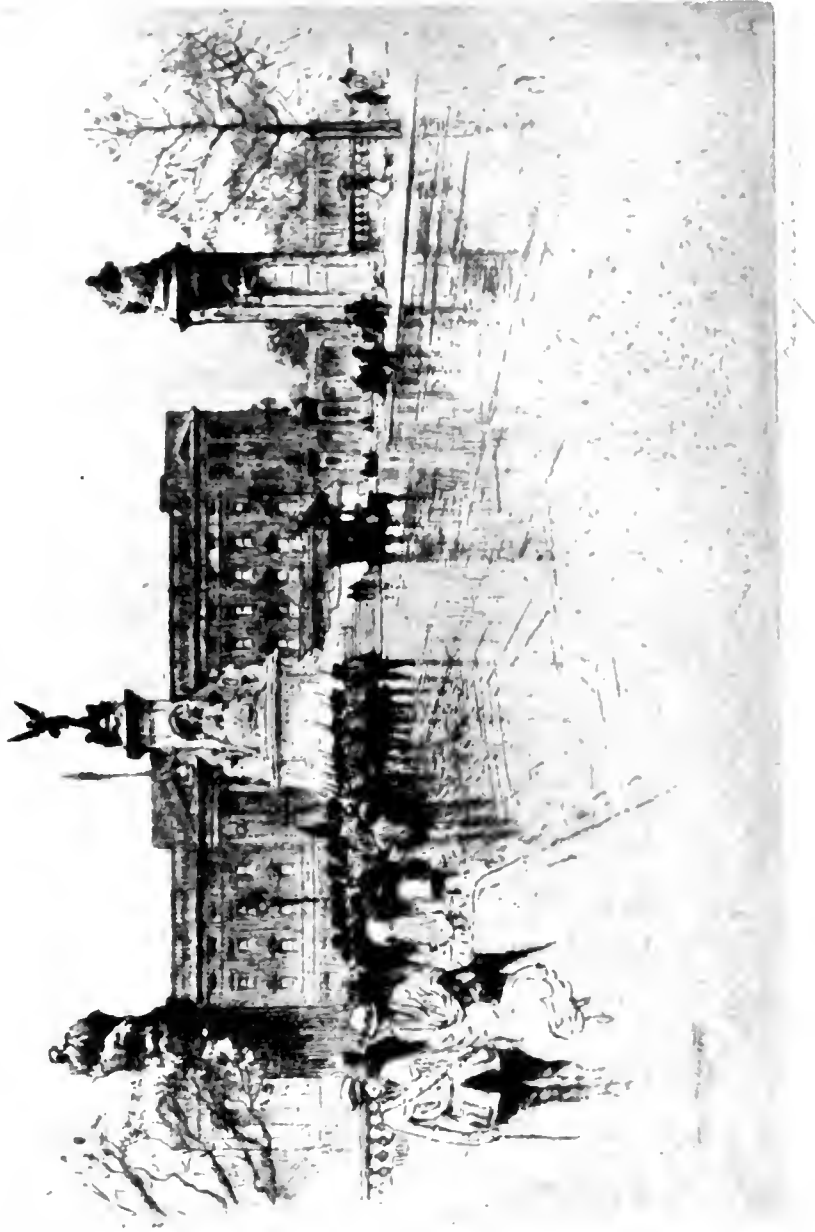
ST. JAMES'S PALACE. ETCHING
BY WILLIAM WALKER, A.R.E.

(By permission of the Publishers
Messrs. James Cunnell & Sons)



St. James's Palace

ST. JAMES'S PALACE DRAWING BY TONY GRUBHOFFER



(By permission of the Publishers
Messrs. Teggell Bros.)

BUCKINGHAM PALACE ETCHING BY PERCY ROBERTSON R.E.

University of California
SOUTHERN REGIONAL LIBRARY FACILITY
305 De Neve Drive - Parking Lot 17 • Box 951388
LOS ANGELES, CALIFORNIA 90095-1388

Return this material to the library from which it was borrowed.

THE LIBRARY
UNIVERSITY OF CALIFORNIA
LOS ANGELES



D

000 411 725 5

