

F 74  
.S8 H8



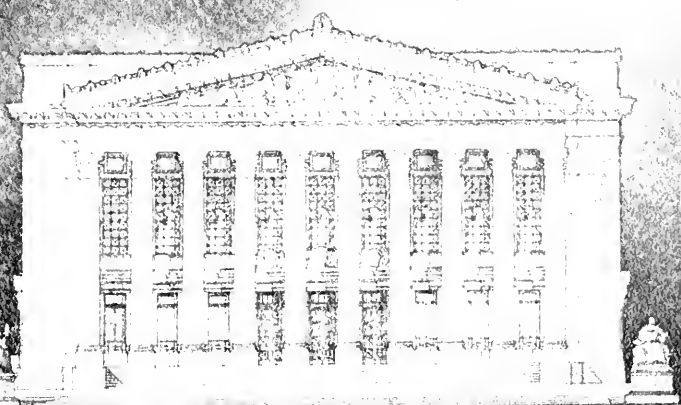
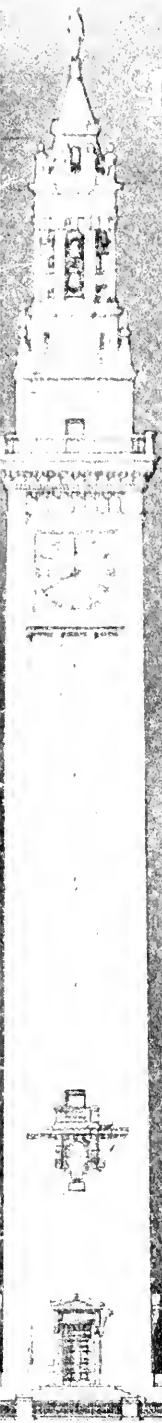








PICTURESQUE  
SPRINGFIELD  
AND  
WEST SPRINGFIELD  
MASSACHUSETTS



PUBLISHED BY  
HOTEL WORTHY, SPRINGFIELD, MASS.  
COMPILED BY GEORGE GRAYES



SPRINGFIELD'S LEADING COMMERCIAL AND TOURIST HOUSE.

HOTEL WORTHY, most centrally located of any hotel in Springfield, being opposite Post Office and only two blocks from Union Station. All lines of electric cars pass Union Station, going to HOTEL. THOROUGHLY FIREPROOF, enlarged, renovated and refurnished throughout. Homelike and inviting. For sixteen years under same ownership. TWO HUNDRED AND FIFTY ROOMS.

TWO HUNDRED ROOMS WITH BATH. Filtrated running water in every room.

FOR COMMERCIAL MEN one entire floor is provided, with spacious, well-lighted sample rooms.

AUTOMOBILISTS will find their particular wants CAREFULLY LOOKED AFTER.

FILTRATED LITTLE RIVER WATER from the Berkshire Hills, cooled with HYGIENIC ICE, made by Ramapogue Ice Company, used exclusively throughout HOTEL WORTHY. BOTH PURE—THAT'S SURE.

"THAT SATISFIED FEELING" IS YOURS WHEN A GUEST OF HOTEL WORTHY.

Worthy Hotel Company



# Picturesque Springfield and West Springfield

MASSACHUSETTS

Published by Hotel Worthip



A picture-conducted tour of 70 views, showing the picturesque features of Springfield and West Springfield, which make these places so attractive to the tourist and to those seeking a home.

Compiled by George S. Graves

Copyright, 1912, by George S. Graves.

All rights reserved.

Second Edition June, 1912.



---

## Springfield Stands in a Class by Itself

Twenty-seven states have a Springfield, but Massachusetts has the original. Founded by explorers from Springfield, England, in 1636, it is now AN ENTERPRISING, THRIFTY CITY of over 90,000 PEOPLE and steadily increasing about 4,000 a year. Within a radius of ten miles 250,000 people live and Springfield is the trading center—THE METROPOLIS OF WESTERN NEW ENGLAND.

BEAUTIFULLY LOCATED on the longest and noblest river in New England—the Connecticut—Springfield is at the gateway of the Berkshire Hills and White Mountains. SO CENTRAL AND ACCESSIBLE is Springfield that 3,500 TRAVELING MEN MAKE THEIR HOME HERE.

AUTOISTS find this picturesque region A PERFECT DELIGHT FOR TOURING and hundreds of them are tempted to extend their stay here, for such A WEALTH OF GOOD ROADS, in city and country, for driving, cannot be found in any like area of the United States.

OUR EDUCATIONAL ADVANTAGES have given the City a National reputation. A NEW CITY LIBRARY, built at a cost of \$355,000, with a capacity for 500,000 BOOKS, has recently been opened. OUR TECHNICAL HIGH SCHOOL for teaching USEFUL TRADES and our COMMERCIAL HIGH SCHOOL, are examples of our advance in this line. THIS WHOLE REGION, of which Springfield is the center, has MORE ENDOWED SCHOOLS AND COLLEGES THAN ANY OTHER EQUAL AREA IN THE WORLD.

SPRINGFIELD IS BLEST with over 50 PARKS AND SQUARES scattered throughout the city. ITS FOREST PARK, only 10 minutes distant by trolley from the crowded center, contains 500 ACRES, with 15 MILES OF DRIVES and walks through the woods and valleys, a fine zoo, aviaries, duck pond, etc. OVER A MILLION DOLLARS has been EXPENDED HERE for the PEOPLE'S PLEASURE. Speaking of parks, THE WHOLE CITY IS A PARK. Over 150 MILES OF BEAUTIFUL SHADED STREETS are ours, kept in as good condition as a state road.

SPRINGFIELD HAS THE BEST WATER WORKS SYSTEM OF ANY AMERICAN CITY—ALL THAT COULD BE DESIRED in this regard.

In its equipment of motor fire apparatus, SPRINGFIELD, MASSACHUSETTS, LEADS every other American city, having at present 17 machines.

SPRINGFIELD HAS A MODEL STREET RAILWAY SYSTEM which radiates all through this region and THOUSANDS OF PEOPLE COME HERE EVERY SUMMER TO ENJOY OUR UNSURPASSED TROLLEY RIDES.

Springfield has everything which makes a city attractive.



SPRINGFIELD'S SKY LINE. LOOKING SOUTH FROM ELMHURST, ON ARMORY HILL, TO LONGMEADOW AND CONNECTICUT RIVER. "A CITY IN THE FOREST."



SPRINGFIELD'S RIVER FRONT FROM LONGMEADOW BLUFFS, SOUTH OF CITY.

The South End Bridge to Agawam is seen in the foreground. In the background, 12 miles distant, rises the Mt. Tom range, one of Springfield's summer playgrounds.

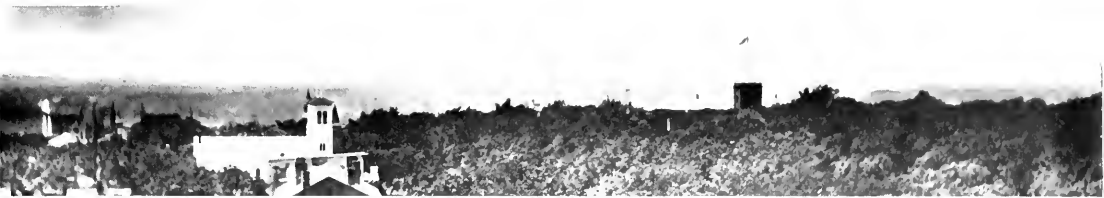
The Connecticut River has always been **SPRINGFIELD'S MOST ATTRACTIVE PHYSICAL FEATURE, AND ALWAYS WILL BE;** with its charming views of winding river, rich meadows and distant hills, it should be a "joy forever."

The New Haven Railroad extends along the city's river front and Springfield desires to reclaim it in order to make a "**MORE BEAUTIFUL SPRINGFIELD.**" When this goal is reached, Springfield will come into its own and the "joy forever" will be a reality.



VIEW FROM ELM STREET, SPRINGFIELD, LOOKING DOWN CONNECTICUT RIVER TO SOUTH END BRIDGE, BARNEY ESTATE AND LONGMEADOW BLUFFS.

The Barney estate is the westerly entrance to Forest Park which is famous all over the country for its natural scenery.



SPRINGFIELD'S SKY LINE LOOKING WEST TO ARSENAL TOWER AND BERKSHIRE HILLS. TRULY THIS IS A "CITY IN THE FOREST."



LOOKING NORTHWEST FROM SPRINGFIELD TO WEST SPRINGFIELD, showing the Connecticut River, the old toll bridge, built in 1816, by the proceeds of a lottery, Boston & Albany Railroad Bridge, North End Bridge and Mt. Orthodox, one of the Connecticut valley's noted landmarks.

This view covers the course over which on May 13, 1911, Pennsylvania beat Yale seven lengths in the fast time of 9 min., 10<sup>7</sup> sec.

Beyond is the beautiful hill country rising higher and higher till it ends in the noted Berkshires.

While Springfield is getting ready to expend millions for reclaiming her river front from the railroad, West Springfield is quite content with her 8 miles of river front which is largely in a natural state and "all her own."



THE PICTURESQUE CONNECTICUT RIVER FROM NORTH END BRIDGE LOOKING SOUTH TO BORDERS OF HAMPDEN PARK, SPRINGFIELD SHORE AND B. & A. R. R. BRIDGE TO WEST SPRINGFIELD.

SPRINGFIELD'S SKY LINE LOOKING NORTH FROM ELMHURST ON ARMORY HILL TO MT. TOM AND MT. HOLYOKE. AGAIN YOU SEE A "CITY IN THE FOREST."



ENTRANCE TO UNITED STATES ARMORY GROUNDS, STATE AND BYERS STREETS. Established for military purposes in 1795, when this section was mostly a primeval forest. It is now in the center of the city—one of its MOST ATTRACTIVE FEATURES and known the world over for the Springfield rifle, made here.



VIEW DOWN STATE STREET, FROM CORNER OF BYERS STREET.

State Street is the finest example of a picturesque thoroughfare that can be seen in Springfield. From the banks of the Connecticut River it extends the entire length of the city. At its easterly end it is known as Boston Road.



SPRINGFIELD'S SKY LINE LOOKING EAST FROM ELMHURST, ON ARMORY HILL, TO THE WILBRAHAM MOUNTAINS. MORE OF "A CITY IN THE FOREST."



MAIN ARSENAL, UNITED STATES ARMORY GROUNDS.

A visit to the tower of the main arsenal will show you, if the day is clear, one of the finest views to be had in New England. The tower is 160 feet above the Connecticut River, and 40 feet above the Armory Grounds. This arsenal was built in 1846, and is modeled after the East India house in London. Five hundred thousand rifles can be stored within its walls, and an equal number in other arsenals.



INSIDE THE UNITED STATES ARMORY GROUNDS.

No visitor to Springfield should fail to walk through the picturesque grounds of Uncle Sam's military preserve. It is a beauty spot of Springfield.



SPRINGFIELD UNDER THE TREES.  
MAPLE STREET LEADING TO CRESCENT HILL.

This is the avenue of magnificent modern homes, colonial mansions and beautiful grounds.

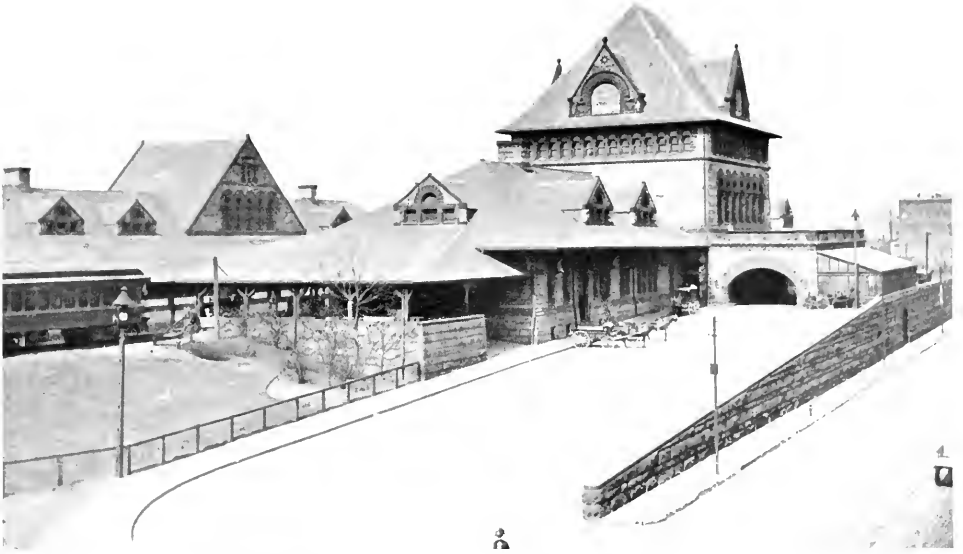
Not only on this street, but on the streets leading from it, the maple and elm trees are a feast to the eye.

From Crescent Hill at the upper end of Maple Street, one of the highest elevations in Springfield, may be had splendid views of the river, city and valley.



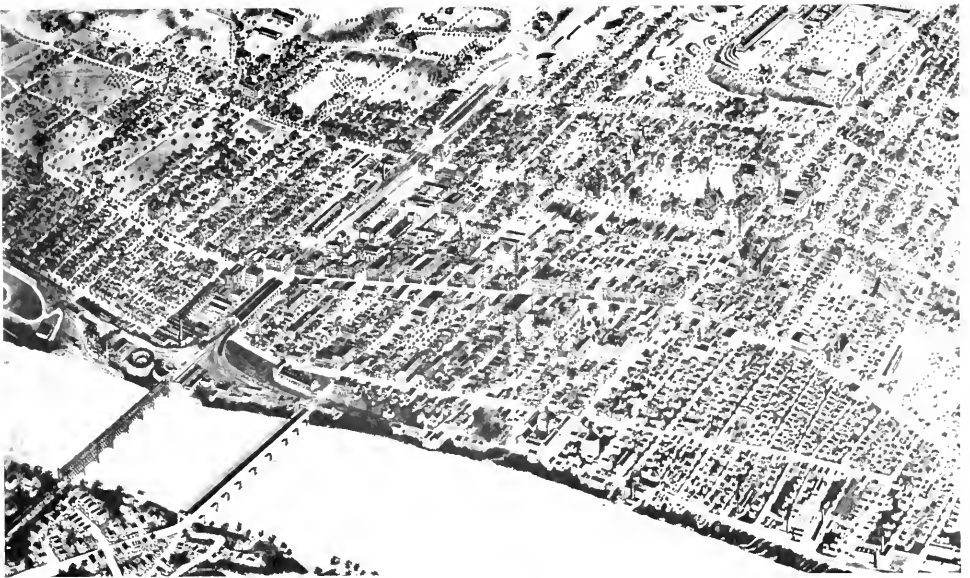
COURT SQUARE IN SPRINGFIELD'S BUSINESS CENTER.

This central breathing spot of the city was laid out in 1821, and in colonial days much interesting history was made around it. Parsons' Tavern, built 1776, stood near the present location of the historic First Church, and it was there that Gen. George Washington drank his "flip" when visiting Springfield. In this Square stands the statue to Miles Morgan, done by J. S. Hartley, sculptor of the "Whirlwind."



SPRINGFIELD'S UNION STATION, Lyman Street. One of the most commodious in the country for handling large crowds, having over 900 feet of platform room.

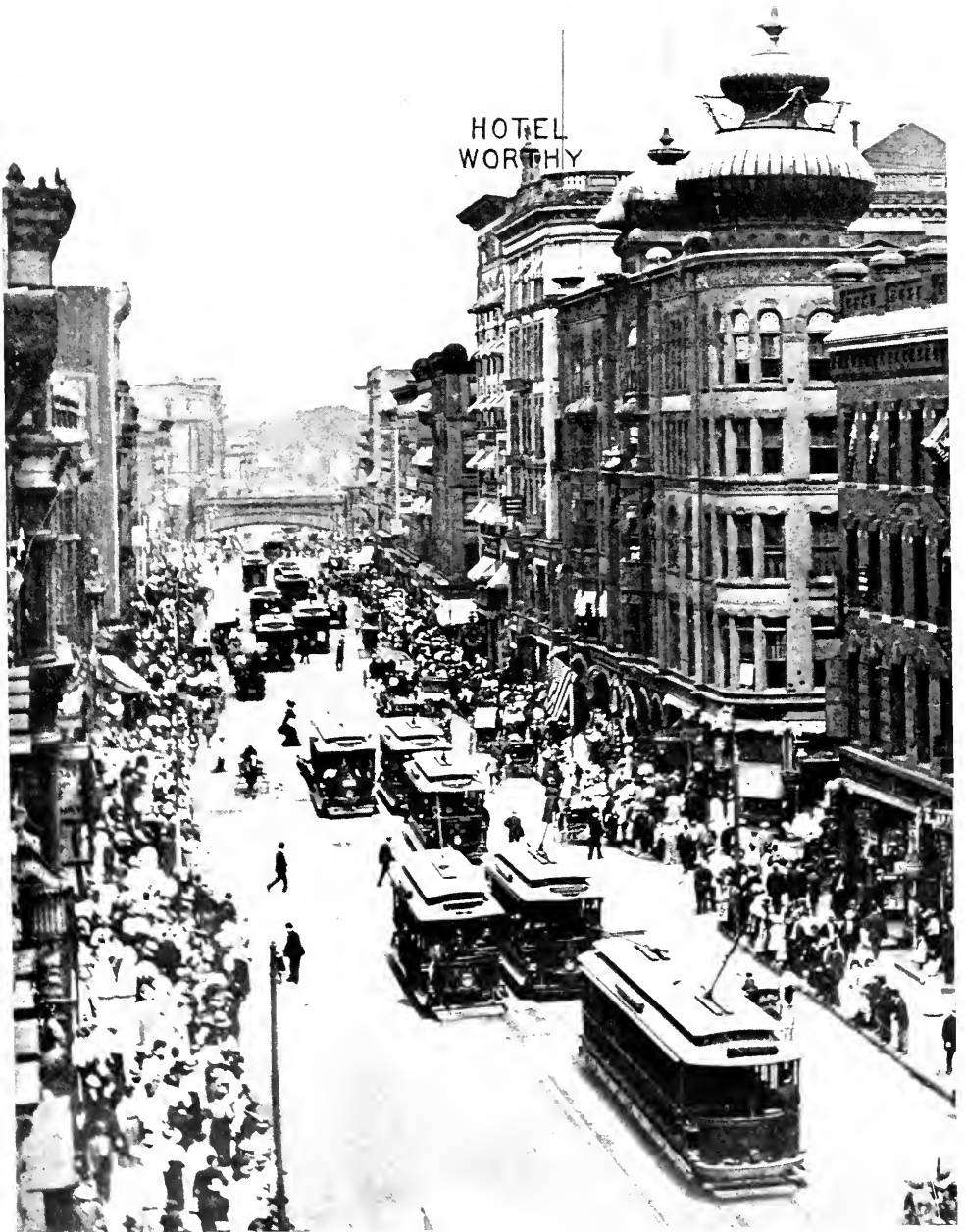
This station with its platform extends nearly to the granite arch over Main Street, which is seen in the picture on previous page. All trolley lines pass the station going direct to Hotel Worthy, or you can reach it in a three minutes' walk.



A UNIQUE PICTURE OF SPRINGFIELD.

This is a so-called bird's-eye view of the city in 1875. Nothing like it has ever been made and although not perfectly true, it has enough interesting features to warrant publication. It shows the general layout of the city as it was then and is now. It is worth studying. Without a magnifying glass many landmarks can be recognized. It was made by using a map of the city as a ground work, the buildings being filled in from pencil sketches made at street corners, and from roofs of tall buildings. It is very handy for use in studying our river front problem and is hereby offered for just what it is worth.

## The Center of Hotel Activity



THE BUSIEST PART OF BUSY MAIN STREET IN BUSY SPRINGFIELD.  
CONVENIENT TO EVERYTHING.

Here from Bridge Street north to the Railroad Arch during business hours in "any old day," this scene can be produced, for there is "always something doing"—rain or shine—for business or pleasure.

Right in the center of this picturesque business district sixteen years ago, the HOTEL WORTHY was built, and it's there now—SPRINGFIELD'S BUSIEST, BEST KNOWN AND MOST POPULAR HOTEL. Doubled in size, kept up-to-date, it's where the busy traveling man, or the pleasure seeker, can catch a trolley car passing every few seconds. The big department stores and theatres are right at hand—only two or three minutes' walk.



We did not see them on the stage.  
But Kodaked 'em on the street.

The finest flock of Lambs  
That you would wish to meet.

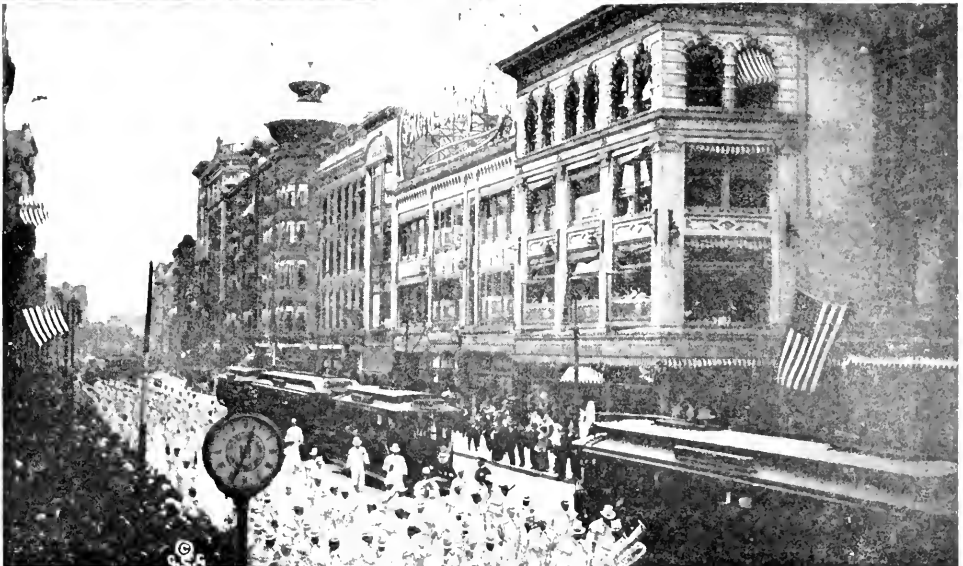
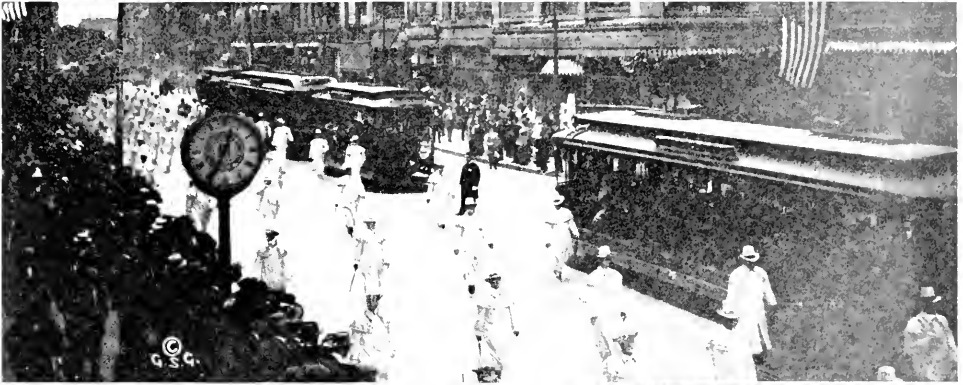
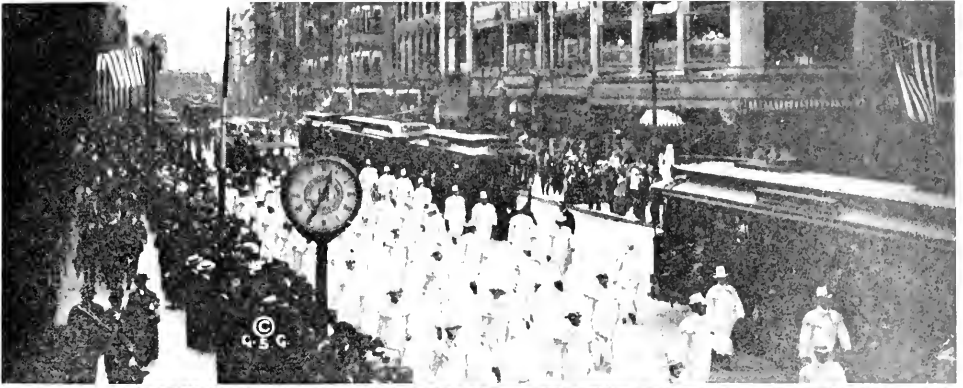


Photo by Geo. S. Gra

THE LAMB'S "GAMBOL," CELEBRATED STARS OF THE AMERICAN STAGE. Headed by Victor Herbert and his noted band, passing the Third National Bank on their march down Main Street from HOTEL WORTHY to Noyasset Club, Friday, May 31, 1912. PICK OUT YOUR FAVORITE.

Mayor Lathrop granted the Lambs the freedom of the city, and a notable audience filled the Court Square Theatre in the afternoon to enjoy a rare entertainment.

COME AGAIN, BOYS. SPRINGFIELD IS YOURS.



**THE HOTEL WORTHY ON MAIN STREET OPPOSITE POST OFFICE AND CUSTOM HOUSE.**

Showing new addition on Worthington Street. The Union Station is but two blocks distant, and there are four theatres within a block.

**THE HOTEL WORTHY HAS ALL NEEDED CONVENIENCES OF A MODERN HOTEL.** There are 200 ROOMS WITH BATH, and SPACIOUS SAMPLE ROOMS for traveling men.

**THE PUREST OF FILTERED WATER** from the Berkshire Hills for DRINKING AND BATHING RUNS DIRECT TO EVERY ROOM, and ALL ICE USED for every purpose is the HYGIENIC ICE made by Ramapogue Ice Company, from water that ANALYZES 99.15% pure. **WHEN THIS ARTIFICIAL ICE IS USED THERE IS NO POSSIBLE DANGER OF CONTAMINATION.**



**UNITED STATES POST OFFICE AND CUSTOM HOUSE.**

The Springfield Post Office stands second in Massachusetts in business importance and is third of all New England cities. Uncle Sam located his Post Office and Custom House on the opposite corner from Hotel Worthy, because he wanted to be in the business center.

WHEN PRESIDENT TAFT VISITED SPRINGFIELD, MASSACHUSETTS.



PRESIDENT TAFT AND PARTY PASSING HOTEL WORTHY, followed by most of the 20,000 people who heard him speak on Court Square Extension, April 25, 1912.



SPRINGFIELD'S NEW CITY LIBRARY BUILDING. IDEAL FOR USEFULNESS AND ATTRACTIVENESS.

(FROM MAYOR LATHROP'S ADDRESS ON THE OPENING DAY.)

"This library, holden in sumptuous and symmetrical walls, is ours. It will be the HEART and the BRAIN of the COMMUNITY, and GENERATIONS to come will FEEL ITS PULSATIONS swift and silent, without noise or tumult, SINGING THROUGH THEIR LIVES, and BECKONING them to LARGER IMPULSES and the ACCOMPLISHMENT OF HIGHER AND BETTER ATTAINMENTS—fit companion of the church."

"The oldest library is said to have been founded in Memphis, by an Egyptian King of the 12th dynasty, at the entrance of which was inscribed the words: 'THE HEALING OF THE SOUL.' What a profound and prophetic sentence. Out of the profound thought of some of the wise men must have come that immortal thought, 'The healing of the soul.'"

The new library is made possible through the munificence of Andrew Carnegie, with his gift of \$200,000, supplemented by gifts of \$155,000 from 378 public-spirited citizens of Springfield. The building at present has provided for 350,000 books, but has ample room for 500,000.

The general architecture of the Library Building is Italian Renaissance. The base of the building is Pink Granite from Grand Isle, Maine, and the principal material used is White Marble from Rutland, Vermont. White Terra Cotta supplied by the Atlantic Terra Cotta Co. makes an appropriate trim; the roof is a green tile of a pleasing shade.

For the beauty of this artistic structure, its strength and solidity, the city is indebted to the architect, Edward L. Tilton. This library is the climax of thirty years of study and practice. J. E. & A. L. Pennock of Philadelphia are the builders.

In a niche between two of the columns to the right of the door as one enters, is a bronze bust of Andrew Carnegie, which Nathan D. Bill has presented the Library as a mark of appreciation of the generosity of the man who has given \$200,000 for the building.

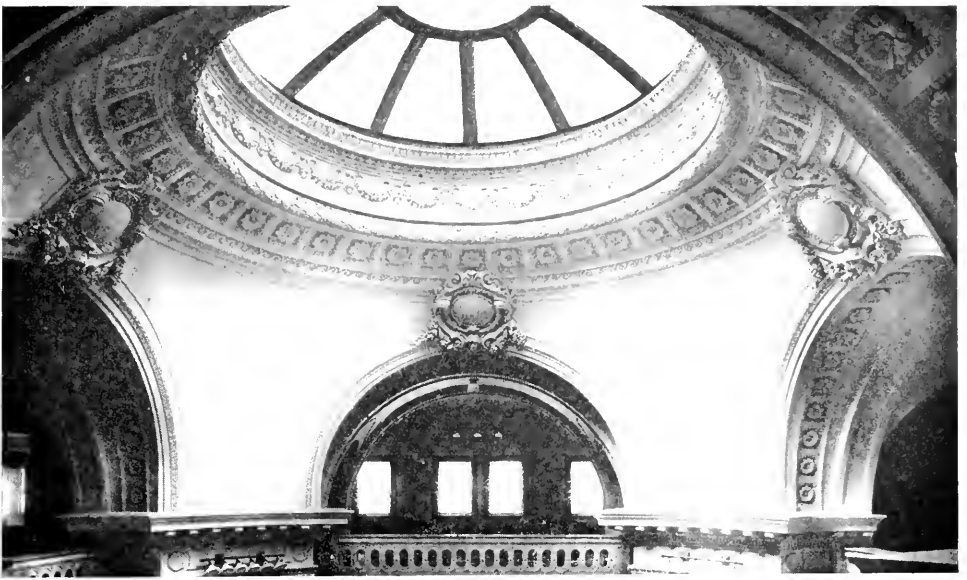
THE INTERIOR SHOWS A BUILDING OF BEAUTY AND DIGNITY.

In spite of its great proportions, THE ATMOSPHERE IS INVITING to the visitor, and MAKES HIM FEEL AT HOME, for ITS GREAT PURPOSE IS TO WELCOME ALL CLASSES OF PEOPLE TO MAKE FREQUENT USE OF ITS BOOKS.

THE MOST STRIKING THING in the entrance hall is a frieze which is a cast of the west FRIEZE OF THE PARTHENON, which runs across nearly three sides of the hall. Its horses and drivers portrayed in the power and wonderful action that is so well known, were well chosen for this part of the library.

ENTERING THE DELIVERY ROOM for the first time, one feels an irresistible impulse to look up, and he does well to yield to it, for this rotunda with graceful columns, extends in fine grace to the top of the building, where it culminates in an amber-tinted, glass dome, through which the large open space is flooded with light.

THIS ROTUNDA is one of the FINEST PARTS of the BUILDING. At its four corners are CORINTHIAN COLUMNS, two in each corner, sunken between which are GREAT WREATHS. Above these columns are OPEN ARCHES WHICH ADMIT LIGHT AND AIR. A balustrade is formed under each arch so that visitors can stand above and look down into the rotunda. HIGHER UP under the dome are FOUR HUGE SHIELDS with the HEAD OF MINERVA upon them.



THE HEAVENWARD DOME OF SPRINGFIELD'S NEW CITY LIBRARY.

THESE ARCHES ARE NOT ONLY ARTISTIC, and serve the practical purpose of LETTING LIGHT INTO THE HALLS above, but they also PREVENT REVERBERATION of sounds.

THE LIBRARY IS, THROUGHOUT, A BUILDING FOR PRACTICAL USE AND SPRINGFIELD HAS GOOD REASON TO BE PROUD OF IT.



SPRINGFIELD'S NEW MUNICIPAL BUILDINGS.

Now being erected on Court Street, opposite Court Square. The estimated cost of these classic buildings is \$1,500,000 and THEY WILL BE WORTH IT.

These "Up-to-date" Municipal Buildings will do more to advertise the "City of Homes" than any other one agency. The building on the right is for the City Offices. The Auditorium on the left will have a seating capacity of 4,200. These buildings will be equal in size, having frontage of 115 feet on Court Street, and a depth of 175 feet, extending to Pynchon Street. Corinthian Columns, 41 feet high. Height to apex of pediments, 75 feet. Material, Indiana limestone.

The clock tower or "Campanile," 300 feet high, is a unique feature of the Group that will attract thousands of visitors to enjoy the grand view of the city and Connecticut valley.

See larger view on outside cover pages.



#### UPPER LAKE AND DRIVEWAY, FOREST PARK.

This view is typical of Springfield's wonderful Forest Park, the larger portion of which is in the dense woods, left as far as possible in a natural state, with modern roads and walks to make it accessible and pleasant. All through the valley, extending the entire length of the Park, are lakes, streams and duck ponds, where many varieties of wild fowl are to be seen.



#### THE BARNEY ESTATE AND AQUATIC GARDENS.

This picture shows the leading feature of FOREST PARK, known as the BARNEY ESTATE, at the southerly entrance to Springfield. In the immediate foreground are the wonderful aquatic gardens with the Pecousic Brook flowing through to the Connecticut. Next comes Laurel Hill. From the Lookout on this hill can be seen Springfield, the river, the foothills of the Berkshires and the Mt. Tom range, about twelve miles away. On the Barney Estate are cultivated nearly every known variety of plant and shrub indigenous to this climate. Thousands of dollars and work of years have been expended here, for the public to enjoy "without money and without price,"—all within a few minutes' walk of the heart of a hustling city.



SPRINGFIELD UNDER THE TREES.

FORT PLEASANT AVENUE, LOOKING FROM JUNCTION OF SUMNER AVENUE.

This avenue is the entrance to Springfield from the south in the Forest Park district, which is growing by leaps and bounds.

From its elevation of 200 feet overlooking the Connecticut River, some unequalled views of the river, valley and mountains are obtained. Being adjacent to Forest Park with its 500 acres of natural scenery it offers advantages that no other part of Springfield can possess.



DRIVE IN THE LAKE DISTRICT, FOREST PARK.

Leading from the Aquatic Gardens in the Barney Estate, this road through the lakes takes one to the upper portion of the park which has in all fifteen miles of fascinating drives through dense woods and open valleys.



Copyright 1912 By Geo. S. Graves.

**PICTURESQUE WEST SPRINGFIELD ON THE CONNECTICUT RIVER** viewed from Rockrimmon Heights, Chicopee.

Bordering on the river are the rich meadow lands of West Springfield. Here Miles Morgan, whose statue is in the Springfield Court Square, tilled his original allotment; here the Brooks, Ashleys, Baggs, Elys, Smiths and other native farmers have taken wealth from the soil. Looking west beyond the meadows, begins the beautiful hill country that ends in the noted Berkshires.



Copyright 1912 By Geo. S. Graves

**VIEW OF CONNECTICUT RIVER ABOVE NORTH END BRIDGE**, looking to Mt. Orthodox, Springfield Country Club, and the Springfield shore near the northerly line of Springfield. This is the first part of the course over which Pennsylvania and Yale raced in 1911.



**VIEW OF CONNECTICUT RIVER BELOW NORTH END BRIDGE** looking to West Springfield shore. Middle portion of the Pennsylvania-Yale course of 1911. Yale crew off for the starting line.





LOOKING TOWARD MT. ORTHODOX, SPRINGFIELD COUNTRY CLUB AND UPPER WEST SPRINGFIELD.

Winding through the hills and valleys are the pleasantest drives imaginable, and here also are the ideal situations for country homes. **TEXTHAM HILL**, on the western edge of the town, overlooking the Westfield valley, is the highest land in West Springfield. Every part of this section is accessible from Springfield's center in 20 minutes by trolley.



THE CONNECTICUT RIVER IS WEST SPRINGFIELD'S MOST CONSPICUOUS ELEMENT OF NATURAL BEAUTY, and she is the fortunate possessor of 8 miles of river front, the larger part of it ready for beautiful homes, parks and drives.



VIEW OF CONNECTICUT RIVER BELOW OLD TOLL BRIDGE;—end of Pennsylvania-Yale course, finishing opposite center of Springfield, near Yacht Club moorings. Pennsylvania finished race in fast time of 9 minutes, 10 $\frac{1}{2}$  seconds.



VIEW OF SOUTH END BRIDGE looking from Long Hill, Springfield, to Agawam, where the Agawam River comes into the Connecticut. If the River Front Plan, now being considered by the City Government is carried out, the N. Y., N. H. & H. R. R. will cross the Connecticut River below this bridge and have its freight terminal on the West Springfield meadows, adjoining the N. Y. Central yards, thus doing away with the present tracks on Springfield's river front.



VIEW DOWN CONNECTICUT RIVER TO LONGMEADOW BLUFFS FROM SOUTH END BRIDGE, SPRINGFIELD.



#### WHAT SPRINGFIELD IS WORKING FOR.

Reclaiming the river front is not the only great problem before Springfield. The navigation committee of the Springfield Board of Trade have been working for years TO GET THE CONNECTICUT RIVER MADE NAVIGABLE from Holyoke to Hartford, for steamers of 7 foot draft.

The Connecticut was the first great north and south highway of the country, but navigation then was confined to flat-bottom boats and barges which were poled slowly up-stream and floated down-stream. That will not do now. NAVIGATION WILL COME IN DUE TIME.



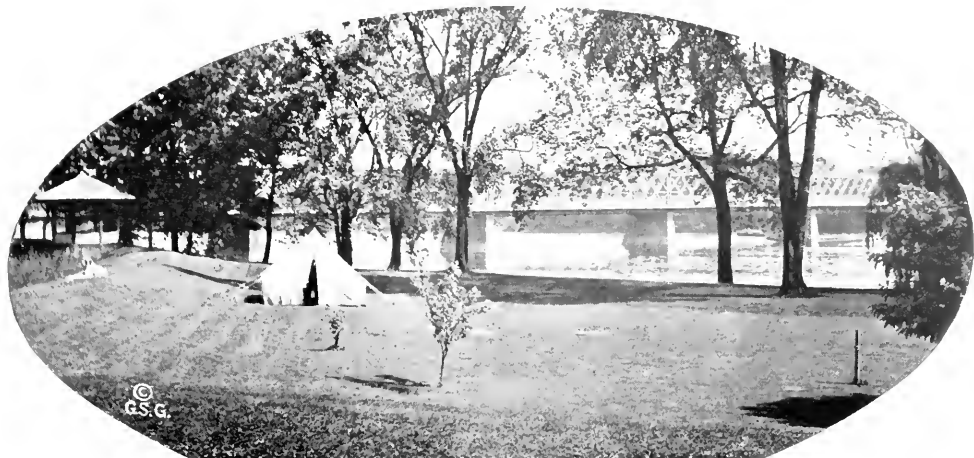
A VISTA THROUGH THE TREES ON THE RIVERDALE ROAD LEADING TO THE COUNTRY CLUB IN WEST SPRINGFIELD.

Mt. Tom, 1,200 ft. high, is seen in the distance—10 miles away.



©  
G.S.G.

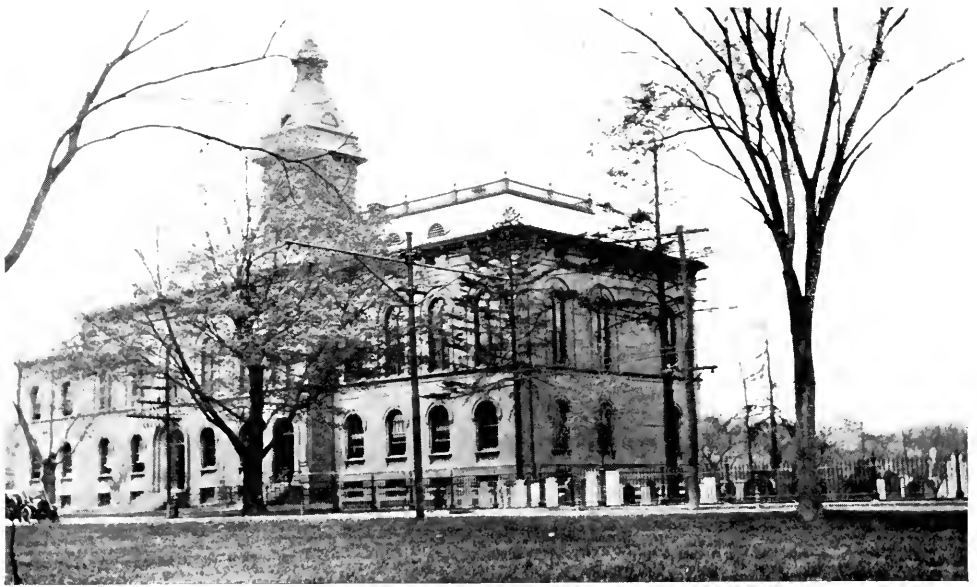
WEST SPRINGFIELD'S BEAUTIFUL RIVERDALE ROAD ALONG THE CONNECTICUT, going north after crossing the North End Bridge. This is the oldest and most beautiful river drive in Hampden County. In the early days it was called "Shad Lane Meetin' Road."



©  
G.S.G.

NORTH END BRIDGE OVER THE CONNECTICUT RIVER FROM GROUNDS OF FRANK L. WORTHY.

This is a fair example of how West Springfield residents utilize their river front.



WEST SPRINGFIELD'S TOWN HOUSE AND SCHOOL BUILDINGS,  
Facing its Beautiful Common.

## Picturesque West Springfield

Among the towns of the Connecticut valley RICH IN ALL ELEMENTS that go to make THIS SECTION ATTRACTIVE, NONE CAN SURPASS WEST SPRINGFIELD, which is separated from Springfield only by the Connecticut River and its own town government. Crossing the spacious and airy North End Bridge, we come to the BEAUTIFUL COMMON of West Springfield—the town's center.

In Revolutionary days this common was the camping ground of two British armies and this event has been commemorated by the placing of a bowlder suitably marked with a tablet on the historic spot. Attracted by its advantages, a large number of the soldiers settled in this vicinity, their descendants, the Morgans, Days, Baggs, Ashleys and others, being of well known families in this valley. Miles Morgan, whose statue adorns Court Square in Springfield, made his mark in the growing town and his namesakes have done likewise. For instance, J. Pierpont Morgan, who was born in Hartford, and is a life member of the Connecticut Valley Historical Society.

West Springfield was incorporated as a town in 1774 and has now a population of about 10,000, which is RAPIDLY INCREASING. It is wisely governed, taxes are low, there are good schools and churches and the BEST OF WATER from the celebrated Bear Hole spring, which analyzes 99 $\frac{4.5}{100}$ % pure.

With 11,000 ACRES OF MEADOW, HILL AND FOREST of the MOST ATTRACTIVE KIND and with 50 MILES OF CHARMING DRIVES OVER ROADS KEPT IN THE BEST OF CONDITION, THERE'S PLENTY OF ROOM FOR MORE CITIZENS, as hundreds are discovering each year.

SPRINGFIELD PEOPLE WILL HAVE TO COME OVER THE RIVER, if they want a PLEASANT COUNTRY HOME AT A REASONABLE PRICE, WITH PICTURESQUE SURROUNDINGS THAT ARE UNEQUALLED.

IN 10 TO 15 MINUTES BY FREQUENT TROLLEY SERVICE, ONE CAN REACH SPRINGFIELD'S CENTER.



ENTRANCE TO WEST END OF COMMON, WEST SPRINGFIELD.

When you come on the trolleys from Hartford, Westfield or Holyoke, you enter the Common here, passing on your left the Town House, Park Street Church and historic Day house.



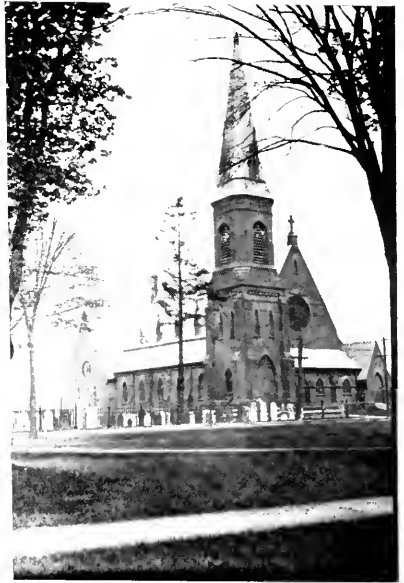
THE COMMON, WEST SPRINGFIELD, LOOKING TO NORTH END BRIDGE.

From whatever direction you come to West Springfield's center, its beautiful Common or public square at once attracts you. Its generous breadth lined with pleasant homes, the Town Hall, Park Street Church and historic Day house, incites a desire to linger, and get better acquainted with picturesque West Springfield.

All trolley lines going through the town pass through the common and a cozy station is provided on the grounds for waiting travelers.



THE OLD WHITE MEETING HOUSE, MOUNT ORTHODOX.



PARK STREET CHURCH, FACING THE COMMON.

#### THE OLD WHITE MEETING HOUSE.

This stately edifice is one of the few well preserved churches of the olden time now standing in the Connecticut valley and it is a BEAUTIFUL LANDMARK FOR MILES AROUND. It was located here as a gift from John Ashley, who stipulated that it should remain there for 100 years from 1800. The contract price was \$1,400 and 10 gallons of good rum. The turrets of these old churches were used as a lookout for hostile Indians. In the early days of this church there was an unwritten law that no young woman should occupy a front seat in the gallery where the unmarried women sat, unless attired in a silk gown.



THE COMMON, WEST SPRINGFIELD, LOOKING TO THE WEST.

Commons like West Springfield's are a feature of most New England towns and in Colonial days were used for musters and as a public grazing place for the village live stock. Pastures away from the center were not safe in those days, on account of the hungry Indians.



MAIN STREET LEADING TO MERRICK DISTRICT AND OLD TOLL BRIDGE TO SPRINGFIELD, from east end of the Common. Nearly every home on the east side of this street borders on the Connecticut River with shade in abundance.



THE OLD DAY HOUSE, BESIDE WEST SPRINGFIELD COMMON. This mute witness of the stirring events of Colonial days has been visited by thousands of people and it bids fair to make West Springfield as famous in this way as the Longfellow residence has made Portland, Maine, noted.

Built in 1754 and occupied by the Day family for 150 years, it is now the property of the Ramapogue Historical Society and used as a center for historical and social work. It is well worth a visit. The collection of relics handed down from early times is constantly being added to by gifts from friends.



ELM STREET—MAIN ROAD TO HOLYOKE AND WESTFIELD, leading from the Common, bordered with beautiful elms and maples for miles. No such fine specimens of elms are found anywhere in this country as in the Connecticut valley. West Springfield has 50 miles of roads like these, all kept in prime condition and passing through the most picturesque country imaginable. No pleasanter trolley rides anywhere than are found here.



© C. S. G.

IN EARLY SPRING, APPROACHING THE COMMON from Hartford and the West. This Common extends for half a mile to the Connecticut River and North End Bridge.





ON THE BEAUTIFUL BEAR HOLE DRIVE from Tatham Hill to West Springfield's Reservoir and the Crystal Lake Reservoir of Holyoke. In an hour's drive from Springfield you can reach the primeval forest country of West Springfield. Here are rugged hills, fertile valleys, rippling streams, and the dense woods with occasionally a thrifty farm—here you can forget your troubles and the city rush and wonder why you are "hustling for a million."



APPROACHING MOUNT ORTHODOX AND KING'S HIGHWAY, on the road to Springfield Country Club and beyond to Holyoke, the Mt. Tom and Mt. Holyoke ranges of mountains.



THE COUNTRY CLUB OF SPRINGFIELD, IN THE BEAUTIFUL HILLS OF WEST SPRINGFIELD, OVERLOOKING THE VALLEY.

A short distance above Mt. Orthodox, you pass the grounds of the Springfield Country Club. The club house stands on an eminence from which a series of landscape pictures can be had. It is the center for Springfield's social life in the open air season.



VIEW OF THE CONNECTICUT VALLEY FROM MEETING HOUSE HILL, WEST SPRINGFIELD. THE MT. TOM AND MT. HOLYOKE RANGES, TEN MILES AWAY.

Mt. Tom is 1,200 feet above sea level and an electric car takes you to the summit where you can spend hours enjoying the finest cultivated views to be seen in the world.

On your way there, you will pass through West Springfield's beautiful residential and farming section and see the model town of the Connecticut valley.



#### ON THE PEACEFUL WATERS OF AGAWAM RIVER.

Coming from the Berkshire Hills the Agawam's waters are mostly used to turn the wheels of industry. For two miles above its outlet into the Connecticut, opposite lower Springfield, "industry" has no use for it, and it there becomes

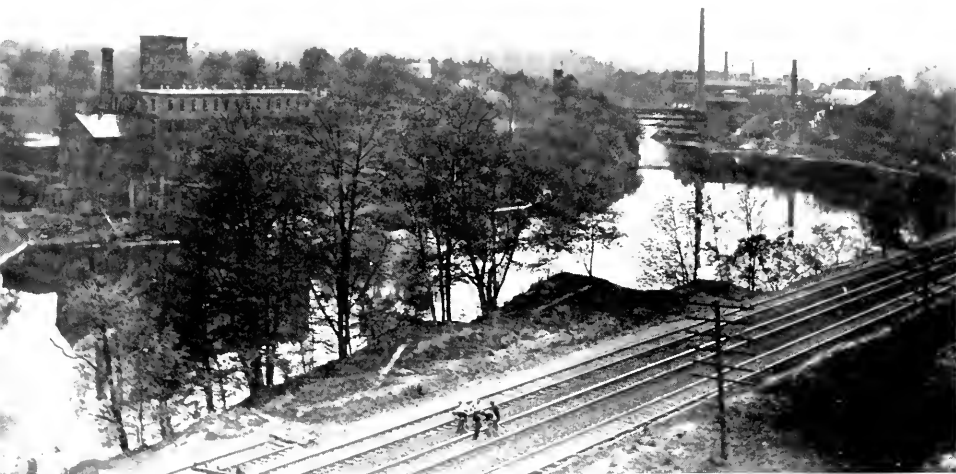
#### A PARADISE FOR BOATING

Its quiet waters and willow-fringed banks with their constantly changing views make it ideal for canoeing and rowing. Its attractions are fully appreciated by our aquatic-loving set.



THE AGAWAM RIVER AND BRIDGE which you cross going to Agawam, Feeding Hills and Hartford.

When General George Washington visited Springfield in Colonial Days, his coach and four horses forded the Agawam River and crossed the Connecticut River on a Ferry Boat. Do YOU long for the "Good old days"?



VIEW LOOKING UP AGAWAM RIVER TO MITTINEAGUE.

Here are concentrated four large paper mills, the Worthy Paper Company, Strathmore Paper Company, Agawam Paper Company, The Southworth Company. These mills are West Springfield's largest industries and their products go to all parts of the United States.



NEW YORK CENTRAL FREIGHT YARDS, WEST SPRINGFIELD.

Very few people realize the magnitude of these great yards, but they are the MOST IMPORTANT EAST OF BUFFALO. Even Albany and Boston not being excepted. It's a GREAT CLEARING HOUSE for the immense business of the New York Central lines.

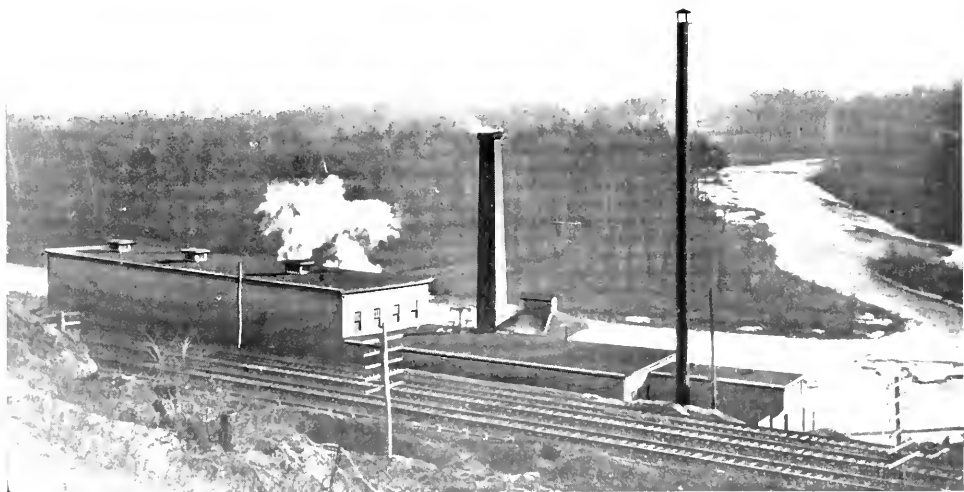
Here are FORTY-ONE MILES OF SIDE TRACKS on which 5,400 CARS CAN BE STORED, and on these tracks alone West Springfield receives a tax of \$22,500. Here also are two round houses for engines, and the big shops for repairing engines and cars, for all the New England lines of the New York Central system.

When the great changes in Springfield's railroad center are made, WEST SPRINGFIELD WILL BE ONE OF THE LARGEST RAILROAD CENTERS IN THE COUNTRY. It is proposed to have the freight terminal of the New Haven system located here, and in that event the freight for these two roads and the Boston & Maine will be interchanged here.



### BEAR HOLE RESERVOIR, WEST SPRINGFIELD.

Water that analyzes 99 $\frac{45}{100}$ % pure is supplied to this town. Its source is the celebrated spring at Bear Hole and **NO BETTER WATER IS OBTAINED ANYWHERE.**

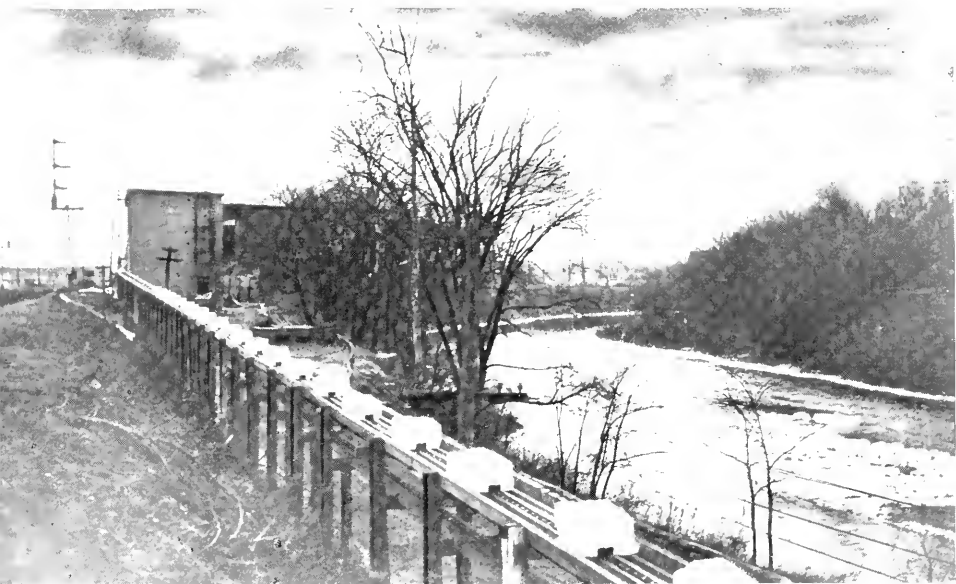


### WHERE HYGIENIC ICE IS MADE.

**MANUFACTURING PLANT OF RAMAPOGUE ICE COMPANY,** on Agawan River, West Springfield. This company is the only one in this vicinity manufacturing artificial ice, which is in great demand in these days of hygienic living.

The water used comes from Bear Hole Reservoir, illustrated above, and from artesian wells. The purity of either supply cannot be questioned.

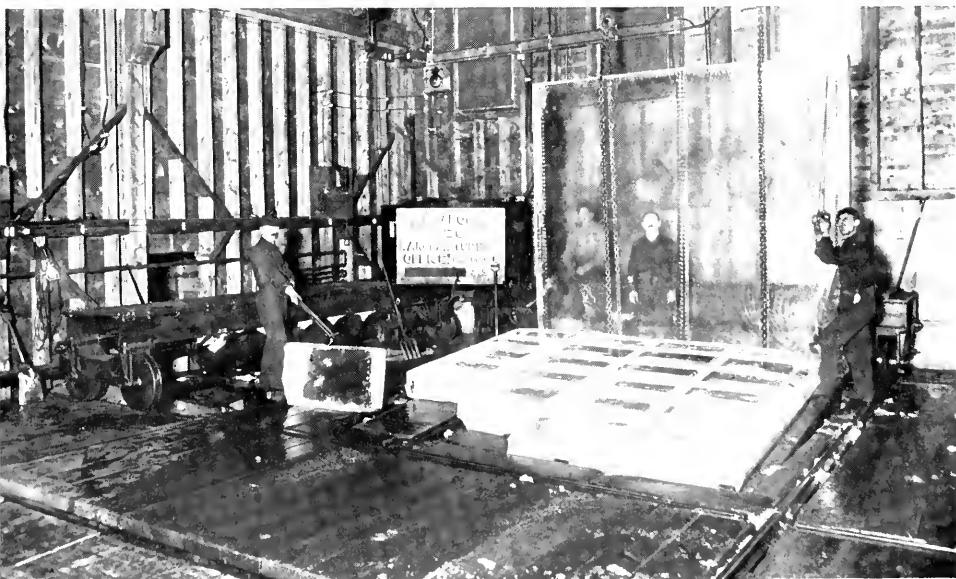
The Ramapogue Company's Hygienic Ice can be used in drinking water, or in preserving food supplies, without danger of contaminating substances, which are often found in pond ice.



HYGIENIC ICE ON THE RUNWAY, TO STORAGE HOUSE OF THE RAMAPOGUE ICE COMPANY, WEST SPRINGFIELD.

From the Storage House, auto trucks take this absolutely pure product to the hotels and private houses of Springfield and West Springfield.

Anyone desiring a regular supply of Hygienic Ice should apply to Ramapogue Ice Company, Phoenix Building, Springfield. Their telephone is 4395.



PICTURESQUE BLOCKS OF HYGIENIC ICE, CLEAR AS A CRYSTAL.

This interesting picture was taken in the harvesting room of the Ramapogue Ice Company. It shows a three-ton cake of ice just cut into blocks and another three-ton cake ready for the saws. Through the latter you can see clearly two of the operators standing behind the ice.

IT REQUIRES HYGIENIC ICE MADE FROM PURE SPRING WATER TO PRODUCE SUCH RESULTS.

THERE IS NO DANGER OF CONTAMINATION FROM THE HYGIENIC ICE MADE BY THE RAMAPOGUE COMPANY.

THE BEST OF ANY AMERICAN CITY.  
SPRINGFIELD'S TWO MILLION DOLLAR WATER SYSTEM IN THE BERKSHIRE HILLS.



BORDEN BROOK RESERVOIR which has a capacity for storing eighteen months' supply of water.



SPRINGFIELD'S MODERN FILTRATION BEDS WHERE LITTLE RIVER WATER IS MADE ABSOLUTELY PURE.

These beds cover THREE ACRES, divided in sections of one-half acre each.



INSIDE THE FILTRATION BEDS BEFORE THE WATER WAS LET IN.

Several layers of sand and gravel of varying sizes are placed on the bottom to a height of 5 feet, allowing for five feet of water above. Filtering through this gravel THE WATER IS CLEANED OF ALL IMPURITIES, ready for consumption.

THE ACTUAL PURITY of Little River water COMPARES WELL with that of any city WITHOUT FILTRATION. WITH OUR MODERN SYSTEM OF FILTRATION it is PURE AS HUMAN MEANS CAN MAKE IT.

NOT OVER ONE-THIRD OF THE UNITED STATES IS SUPPLIED WITH FILTERED WATER. FORTUNATE IS PICTURESQUE SPRINGFIELD.



COLONIAL DINING ROOM OF HOTEL WORTHY.  
HOME OF GOOD LIVING.

FURNISHED IN SUMPTUOUS STYLE. TIME TRIED AND TABLE TESTED.

THE BEST VENTILATED DINING ROOM in Springfield, with accommodations for THREE HUNDRED AND FIFTY GUESTS.

THE FAVORITE PLACE FOR BANQUETS.

To its cuisine HOTEL WORTHY owes much of its envied reputation.

Only the CHOICEST FOOD PRODUCTS are used. They are cooked RIGHT, served RIGHT, and the prices are moderate.

Music a regular feature at luncheon and dinner hours.

THE WORTHY'S TABLE D'HOTE LUNCH from 12 to 2 has for years been a popular feature of midday life in Springfield.

SUITES OF DINING ROOMS on second floor, lately redecorated and re-furnished, afford the privacy and atmosphere of a home for SMALL DINNER PARTIES.

The Rathskeller offers to men an ideal place, for more seclusion than is to be had in the main dining room.

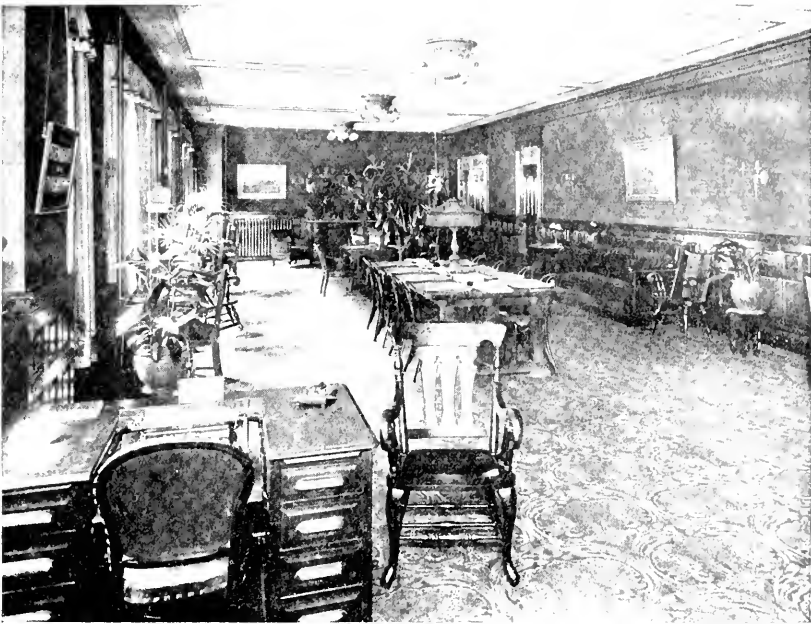
YOU DINE RIGHT IF YOU DINE AT HOTEL WORTHY.

FILTRATED LITTLE RIVER WATER from the Berkshire Hills, cooled with HYGIENIC ICE, made by Ramapogue Ice Company, used exclusively throughout HOTEL WORTHY. BOTH PURE—THAT'S SURE.

"THAT SATISFIED FEELING" IS YOURS WHEN A GUEST OF HOTEL WORTHY.

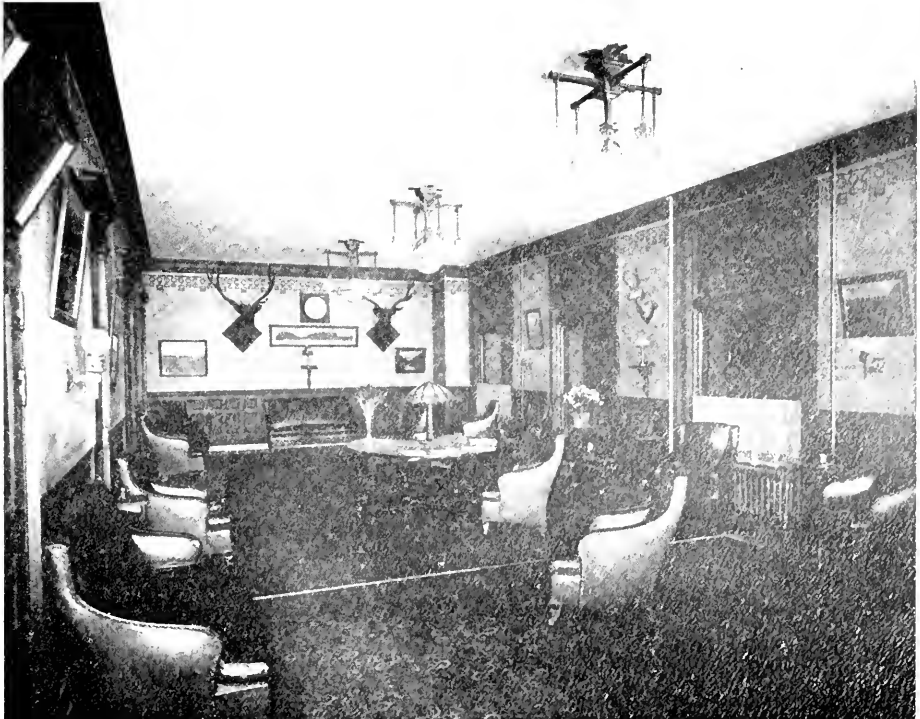
**PD 181**  
HOTEL WORTHY has been, and is now, THE LEADING COMMERCIAL AND TOURIST HOUSE BETWEEN NEW YORK AND BOSTON. It is CONDUCTED ALONG LIBERAL LINES, and solicits the patronage of the traveling public.





WRITING ROOM OF HOTEL WORTHY.

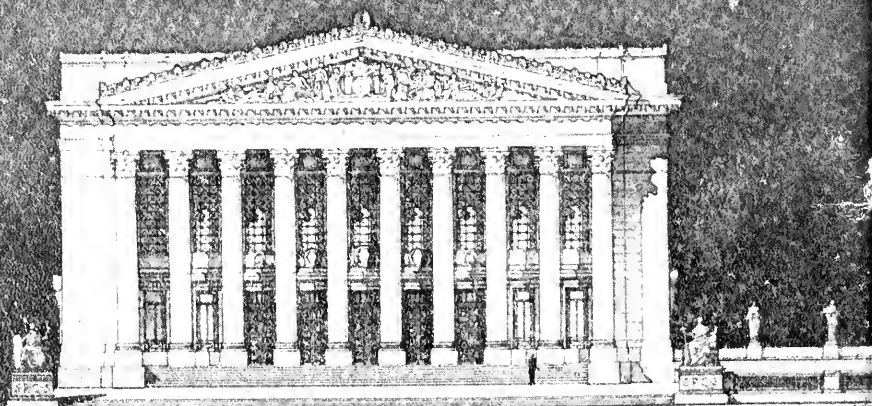
A quiet spot with homelike furnishings on the second floor, where the successful commercial man writes or dictates his long list of orders from the busy merchants of busy Springfield.



LOUNGING ROOM OF HOTEL WORTHY.

At Worthington street entrance, Main Floor. The room where you can take solid comfort.

SPRINGFIELD  
AND  
WEST SPRINGFIELD  
MASSACHUSETTS



PUBLISHED BY  
**HOTEL WORTHY SPRINGFIELD, MASS.**  
COMPILED BY GEO. S. GRAVES.





**DOBBS BROS.**  
**LIBRARY BINDING**

**ST. AUGUSTINE**



**FLA.**

**32084**

LIBRARY OF CONGRESS



0 014 079 594 A