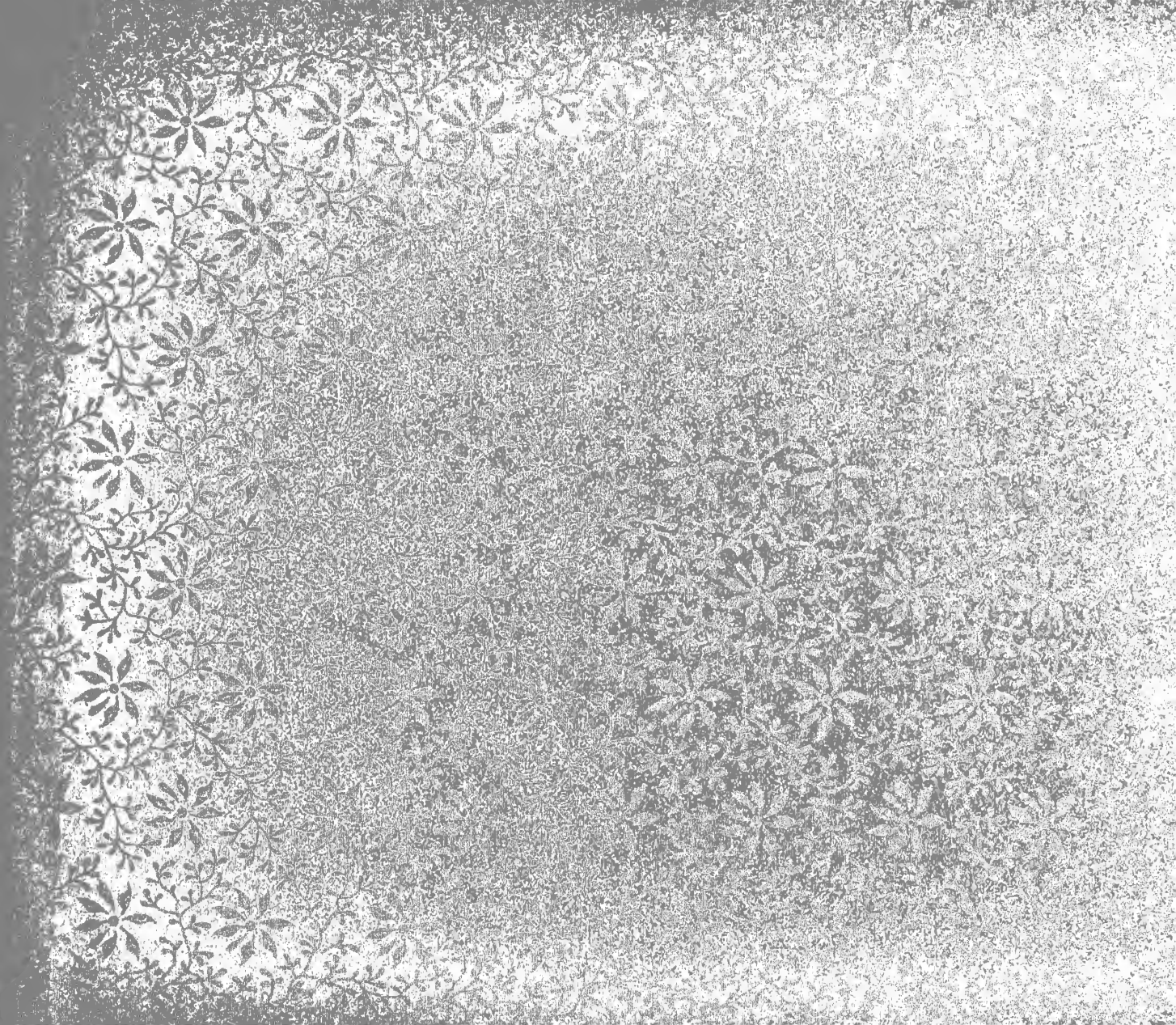


The
BIRKBE'S
BIBLE
RELIGION



The Bancroft Library

University of California • Berkeley



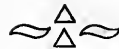


2004
60.00

THE PIKE'S PEAK REGION

~COLORADO~

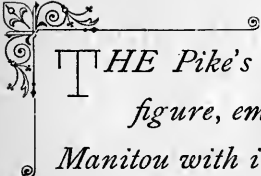
FROM ORIGINAL NEGATIVES AND PHOTOGRAPHS.



COPYRIGHT, 1893, BY CHAS. S. LEE, 720 BOSTON BUILDING, DENVER, COLORADO.

THE ALBERTYPE CO. NEW YORK





THE Pike's Peak Region, with the famous old mountain towering skyward as the central figure, embraces Colorado Springs, with its numerous and beautiful environments, and Manitou with its wonderful and romantic surroundings, including Cheyenne Cañon, Broadmoor, Garden of the Gods, Monument Park, Crystal Cañon, Ruxton Cañon, Engleman Cañon, the famous Ute Pass, Cascade Cañon, Ute Park, Green Mountain Falls and Woodland Park, together with their thousand natural beauties and wonders, offering an endless source of pleasure, healthful recreation and pastime.

*"Health and pleasure here combine
To render mortal life divine."*

Digitized by the Internet Archive
in 2007 with funding from
Microsoft Corporation

<http://www.archive.org/details/pikespeakregionc00leecrich>



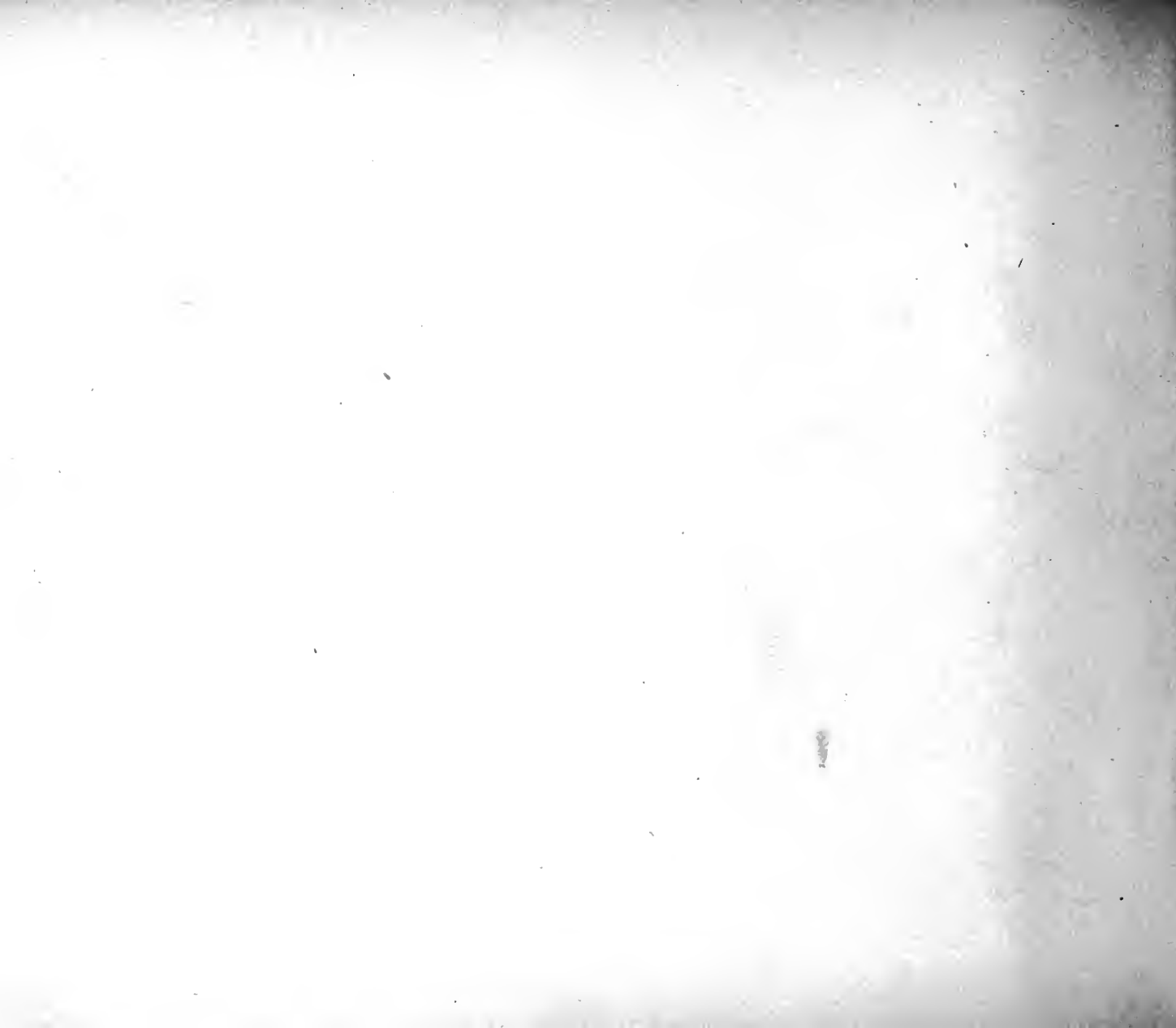
THE ANTLER'S HOTEL.

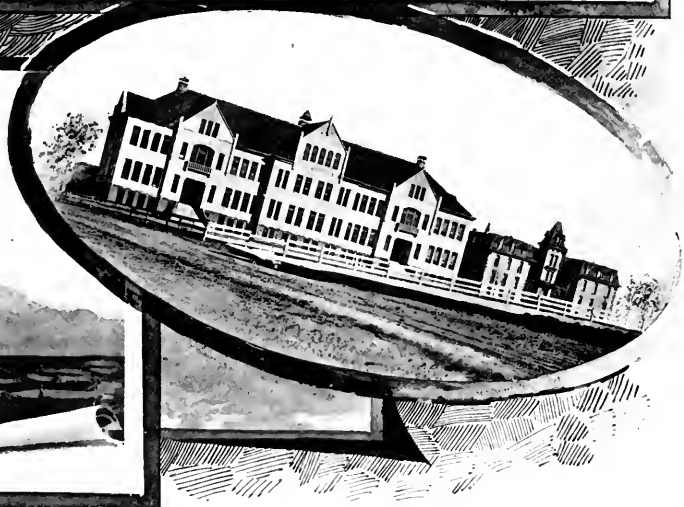
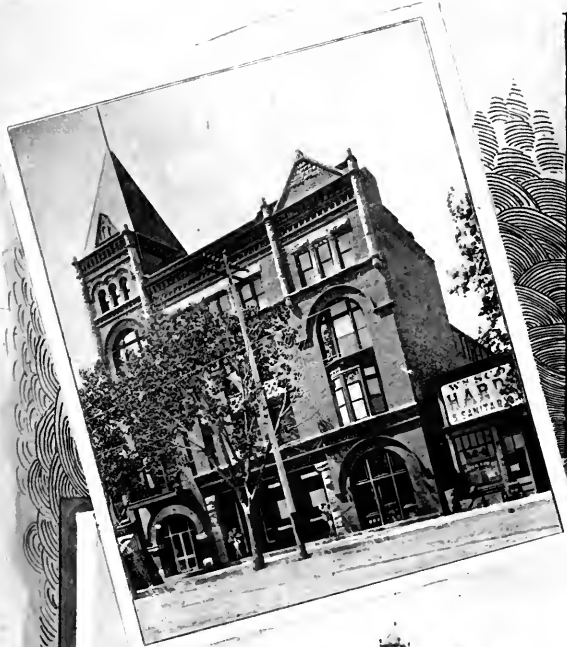
COLORADO SPRINGS AND PIKE'S PEAK.





CASINO AND LAKE—BROADMOOR.





NEW ALAMO HOTEL.
COLORADO COLLEGE.

PRINTERS' HOME.
DEAF AND DUMB INSTITUTE.

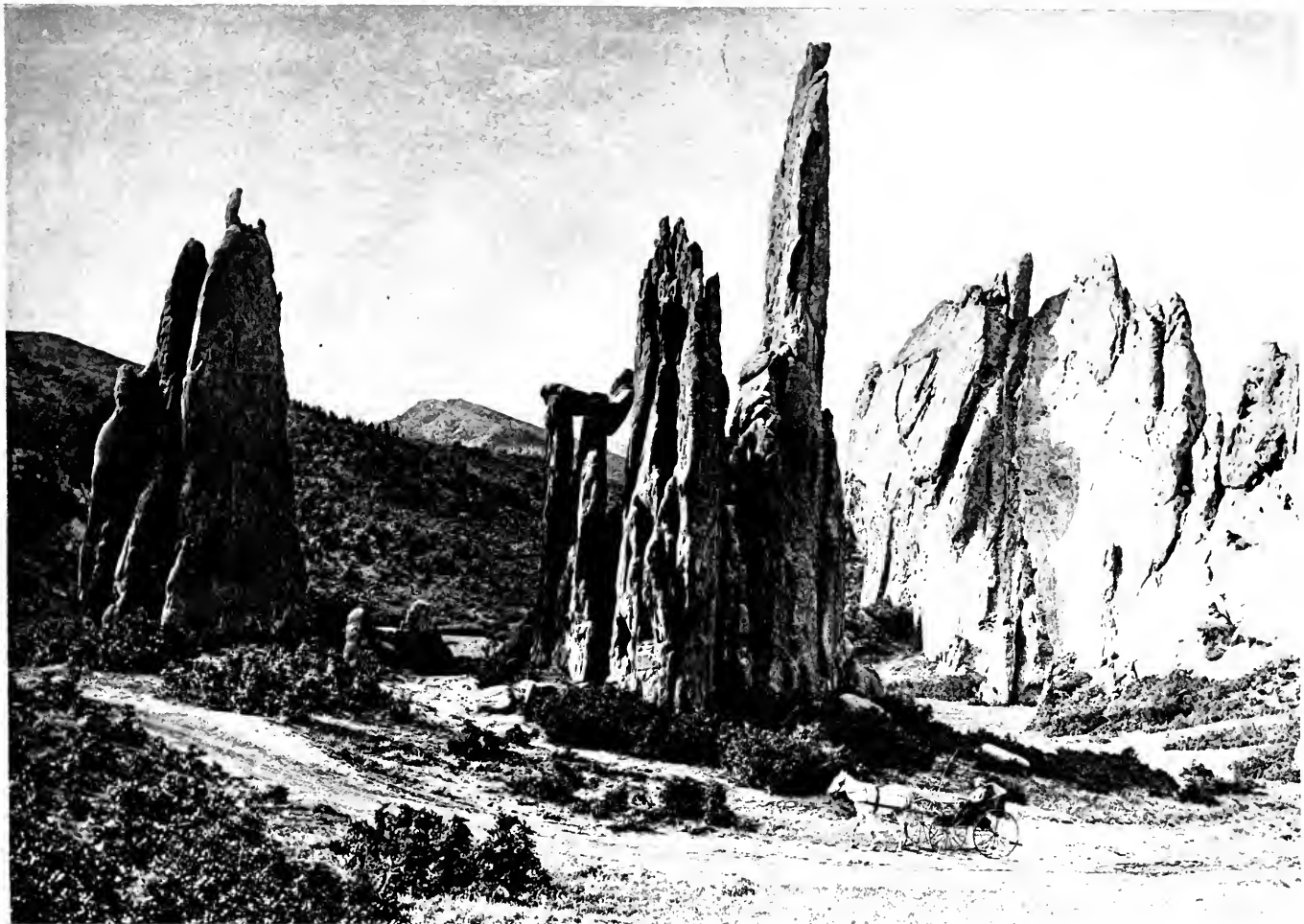
COLORADO SPRINGS.





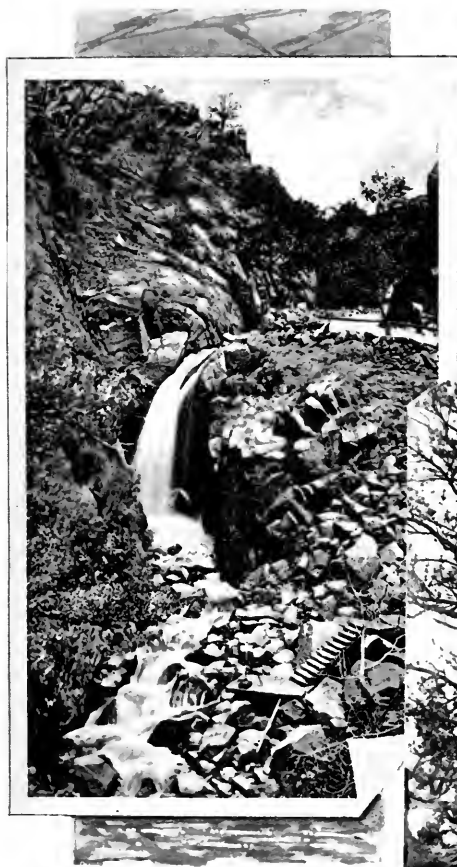
PIKE'S PEAK FROM GARDEN OF THE GODS.



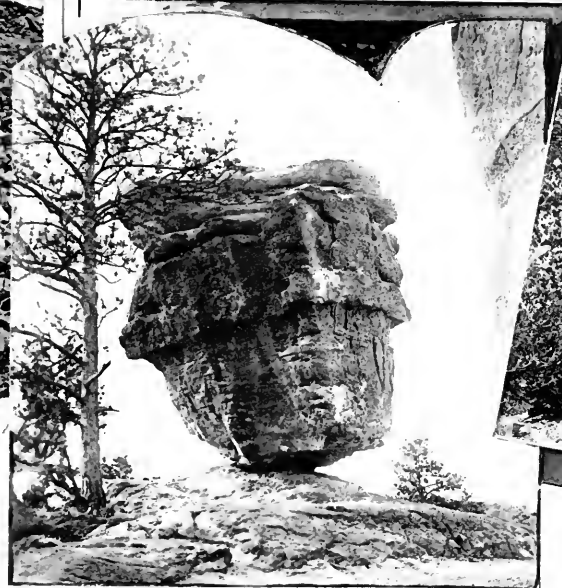
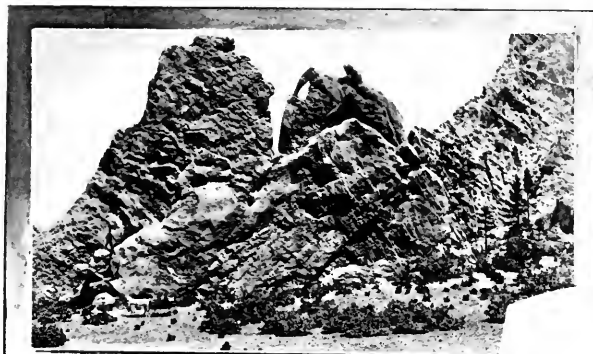


CATHEDRAL SPIRES—GARDEN OF THE GODS.





RAINBOW FALLS UTE PASS.

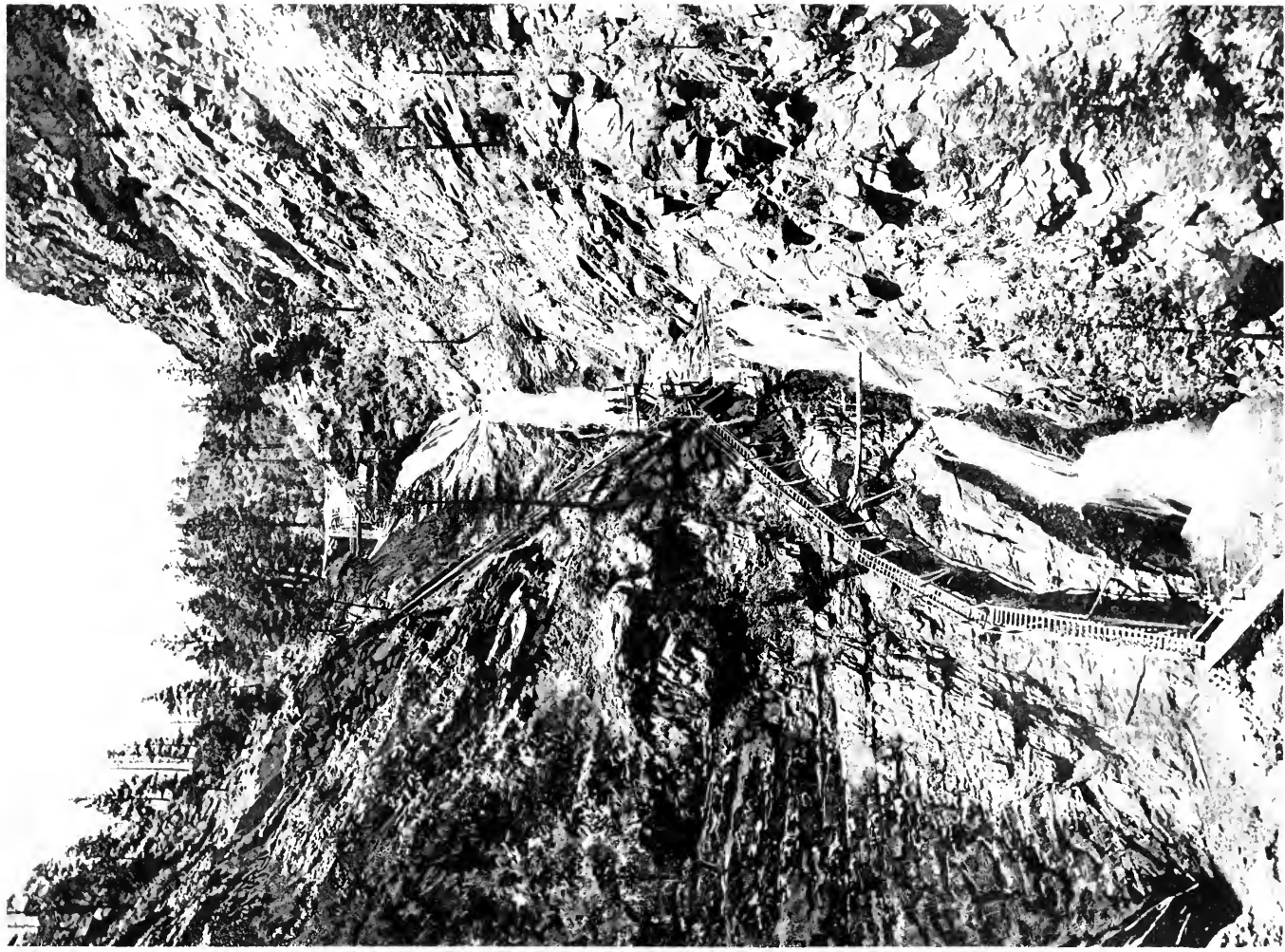


BEAR AND SEAL ROCK—GARDEN OF THE GODS.
BALANCED ROCK—GARDEN OF THE GODS.



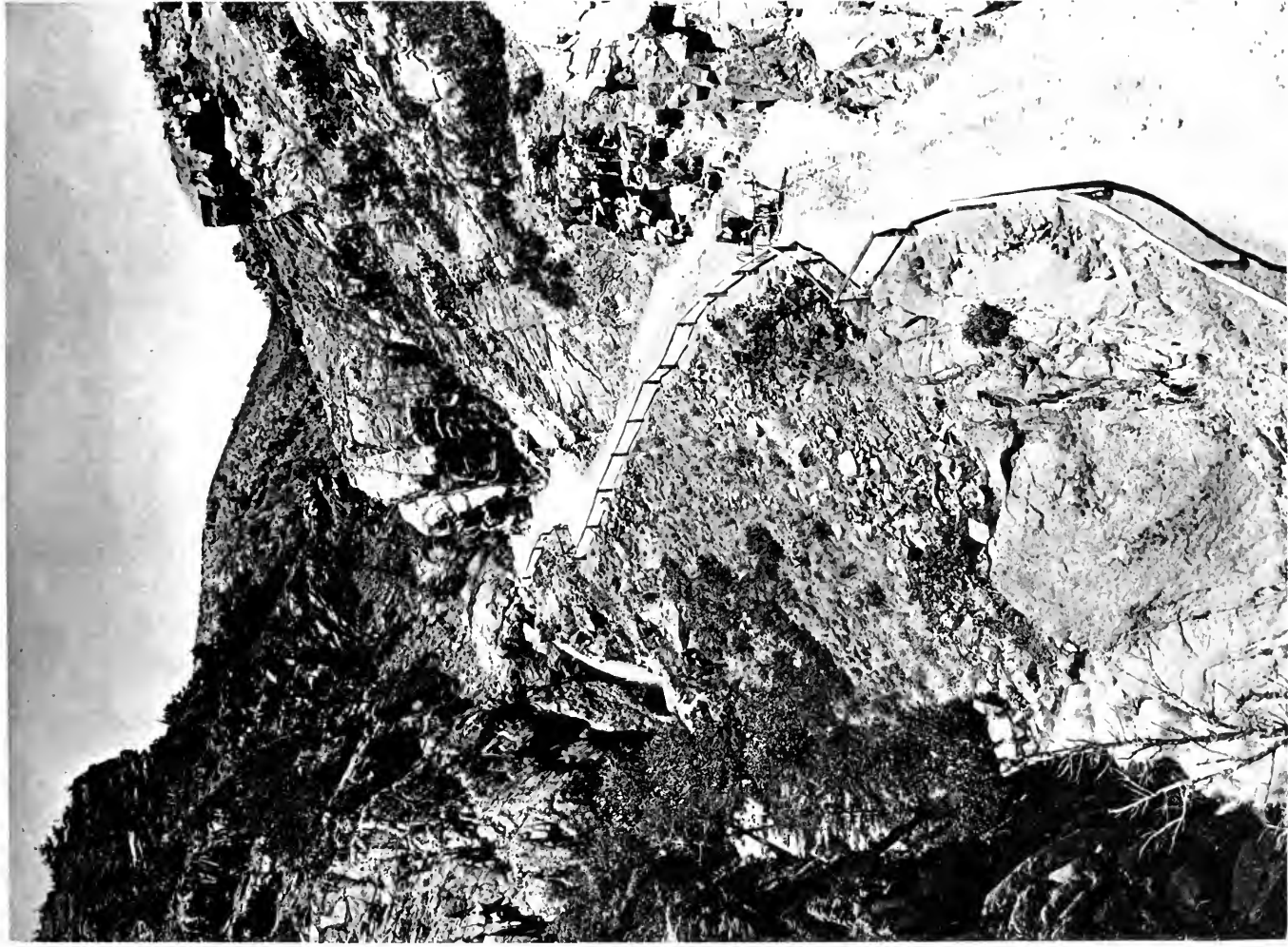
GRAND CAVERN—UTE PASS.





SEVEN FALLS OF CHEYENNE CAÑON.



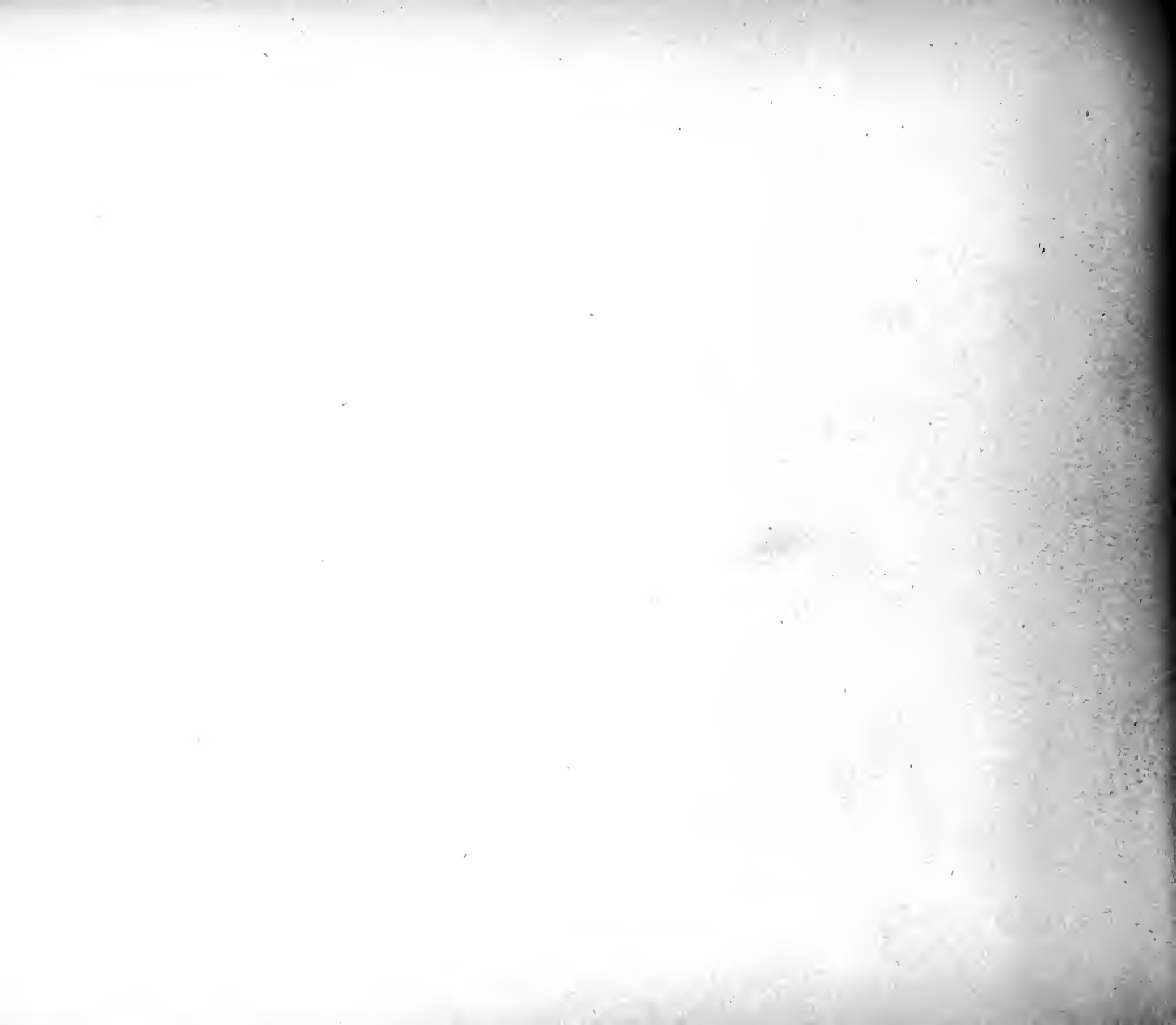


UTE PASS.





MANITOU.



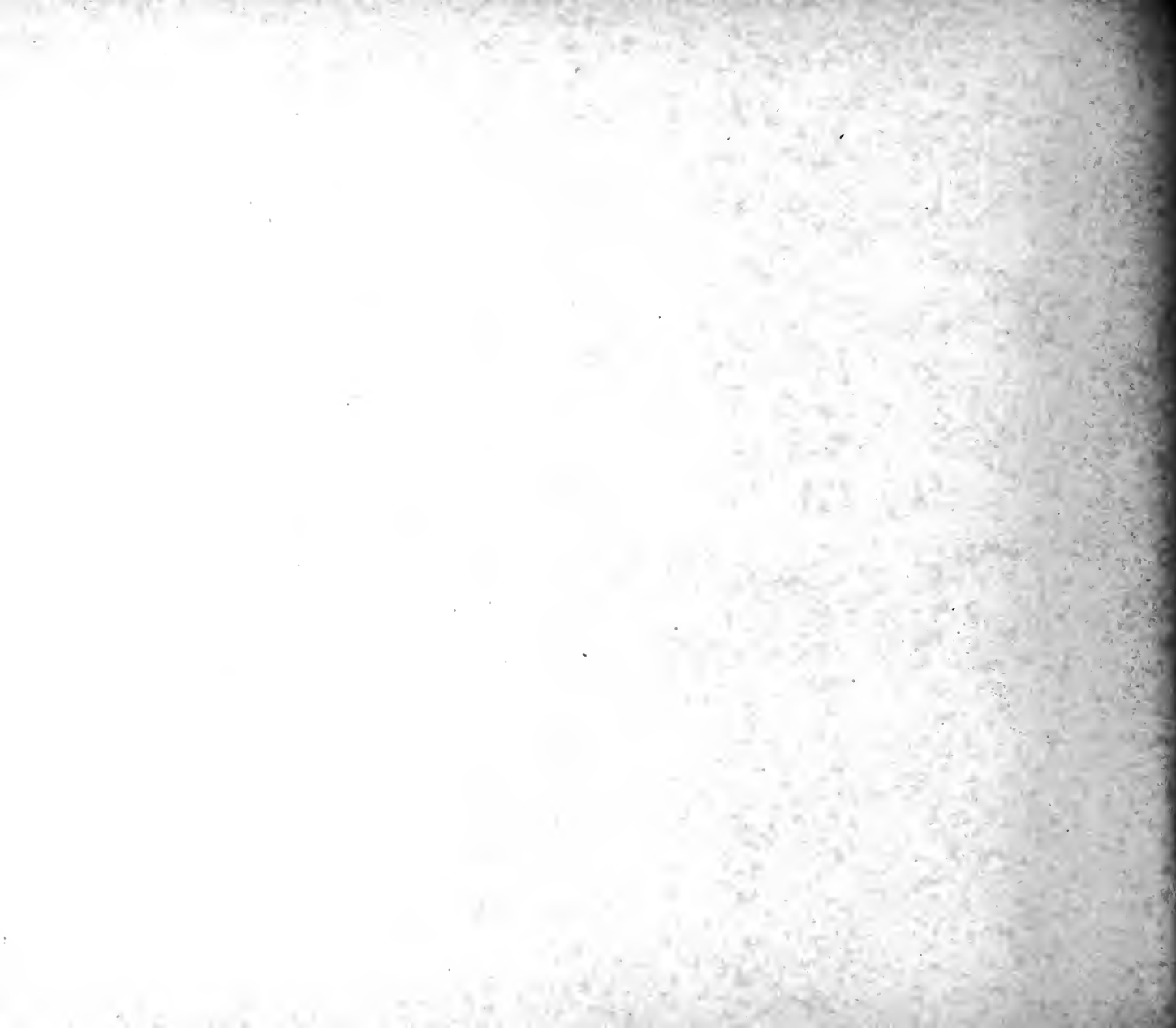


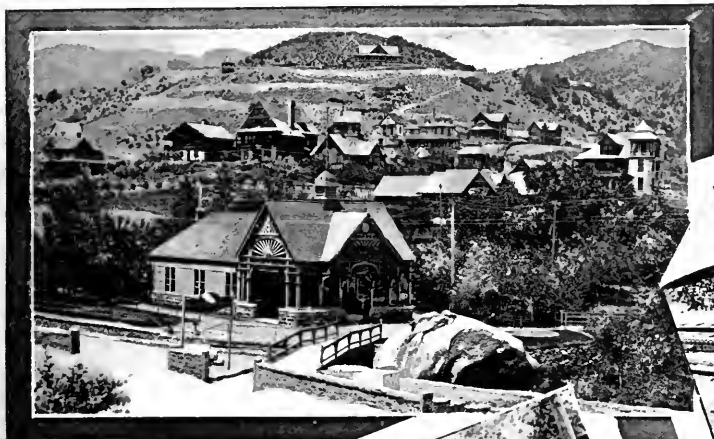
NARROWS.



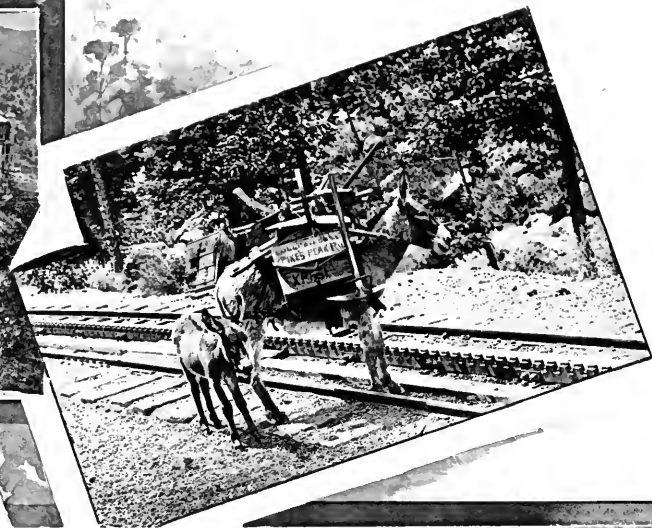
AMPHITHEATRE.

WILLIAMS CAÑON.





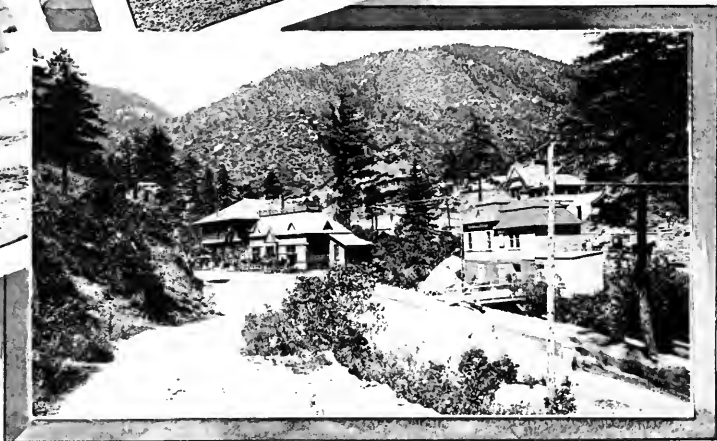
MANITOU SODA SPRINGS.



"WE HELPED TO BUILD THE PIKE'S PEAK RAILWAY."

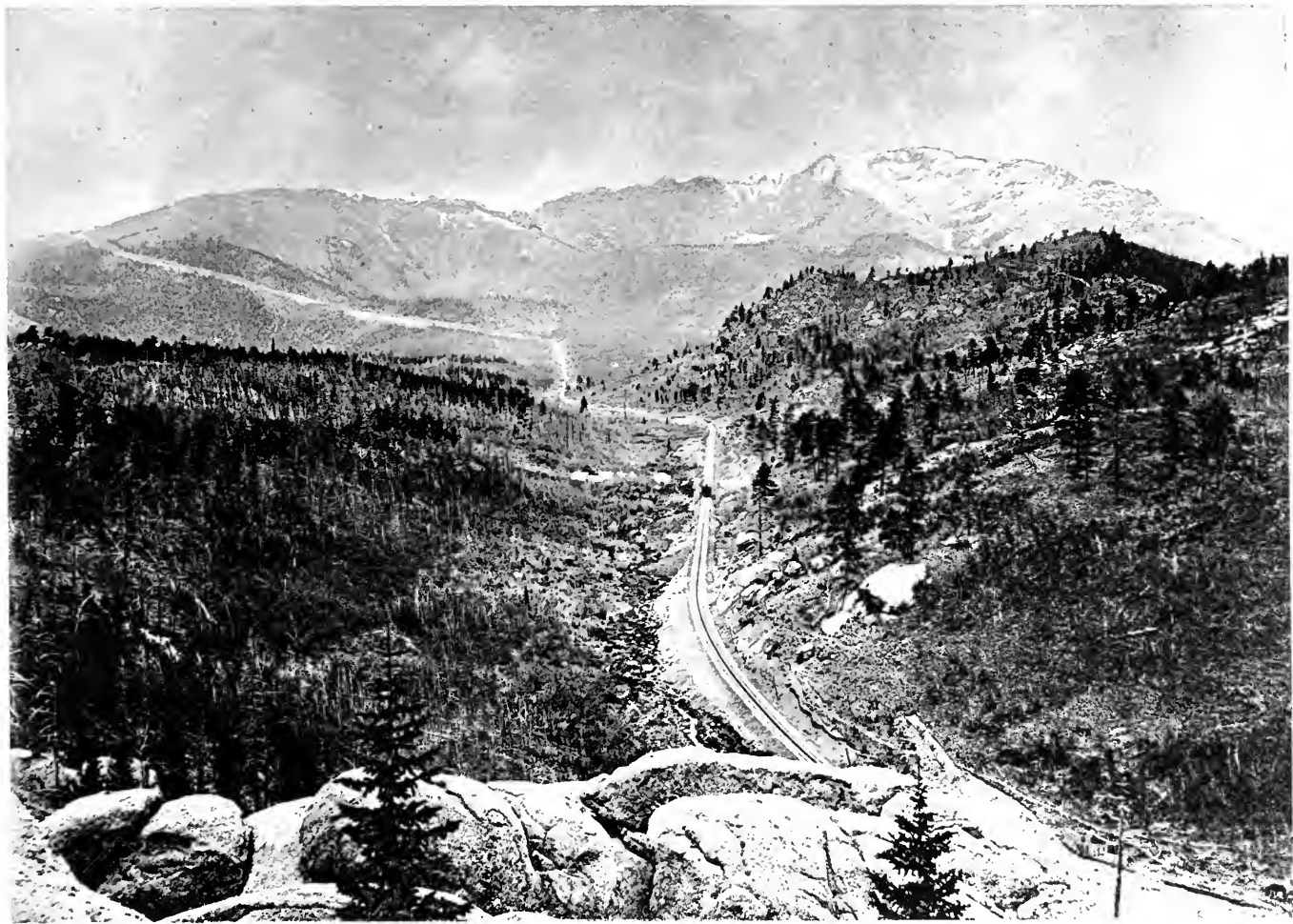


"LOADED"—CHILDREN'S SUMMER SPORTS.

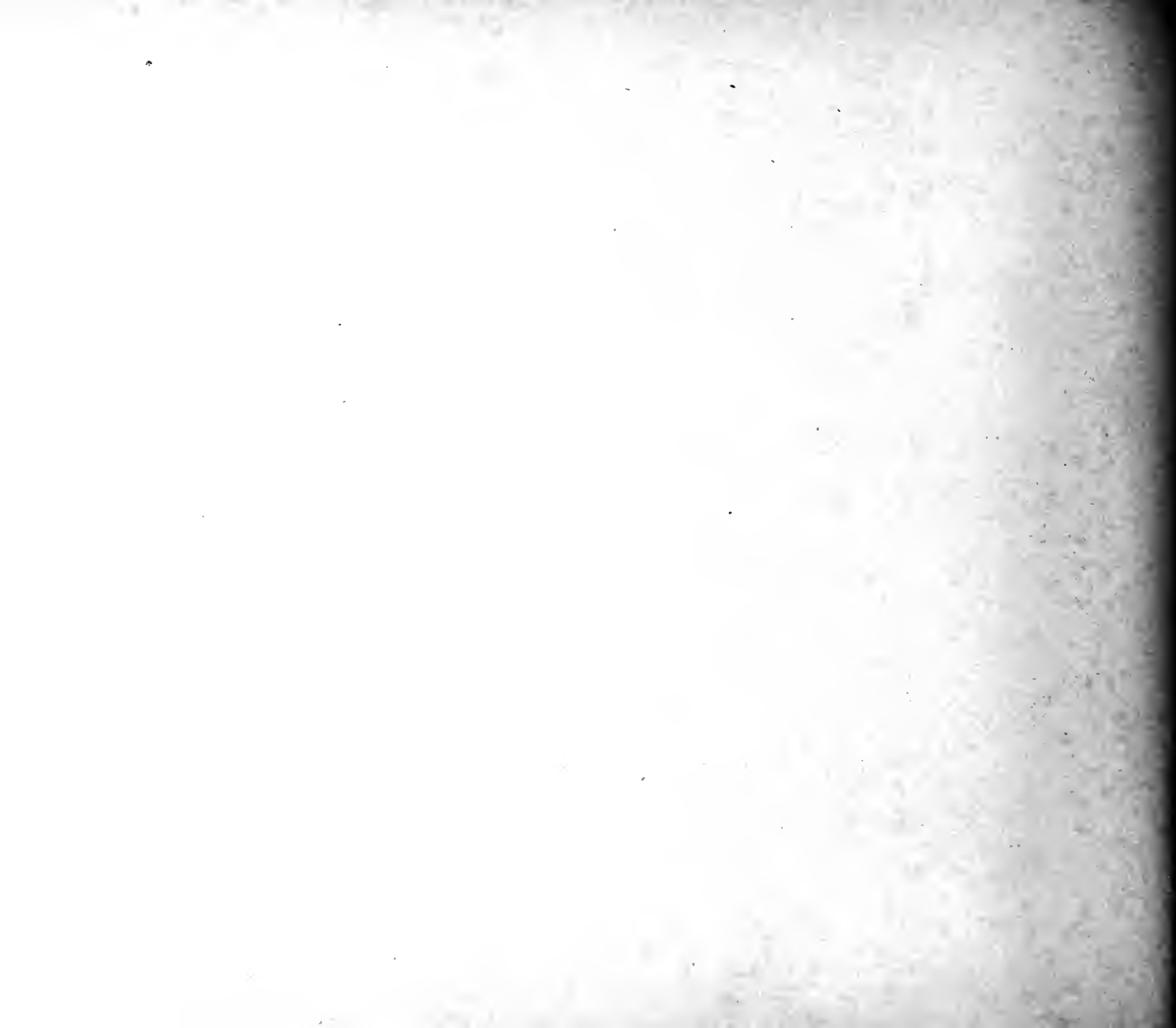


MANITOU IRON SPRINGS.





THE "COG ROAD" UP PIKE'S PEAK.





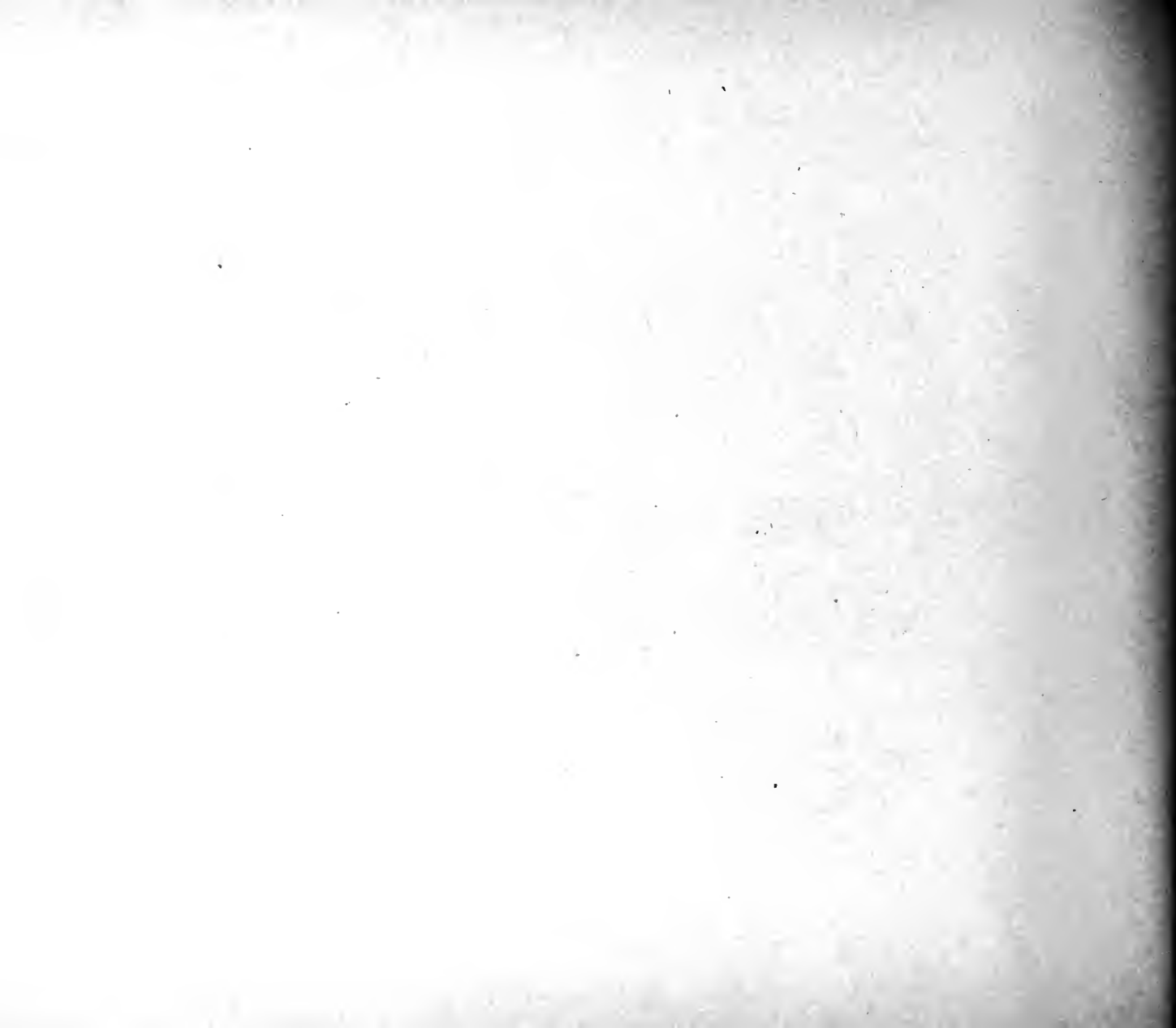
PIKE'S PEAK RAILWAY--AROUND WINDY POINT.

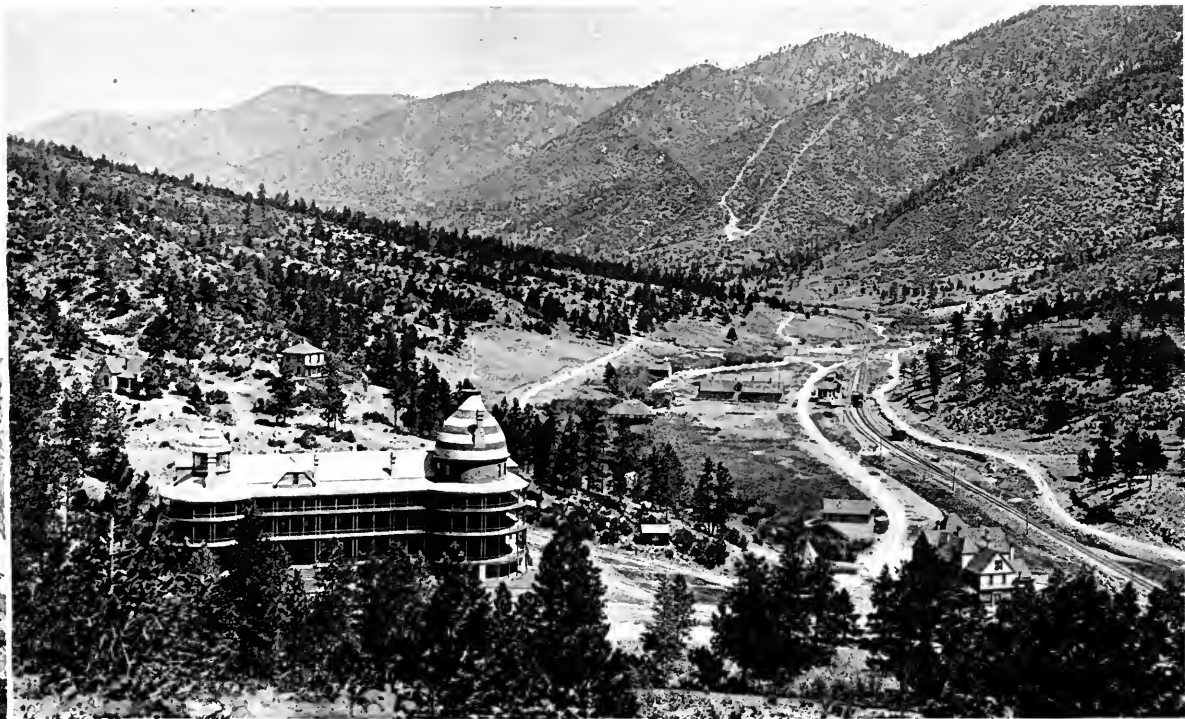
SUMMIT OF PIKE'S PEAK, ALTITUDE 14,174 FEET, (THE STORM PASSING BELOW).

SUMMIT OF PIKE'S PEAK, M. & P. P. RY.

PIKE'S PEAK RAILWAY--AROUND WINDY POINT.

SUMMIT OF PIKE'S PEAK.



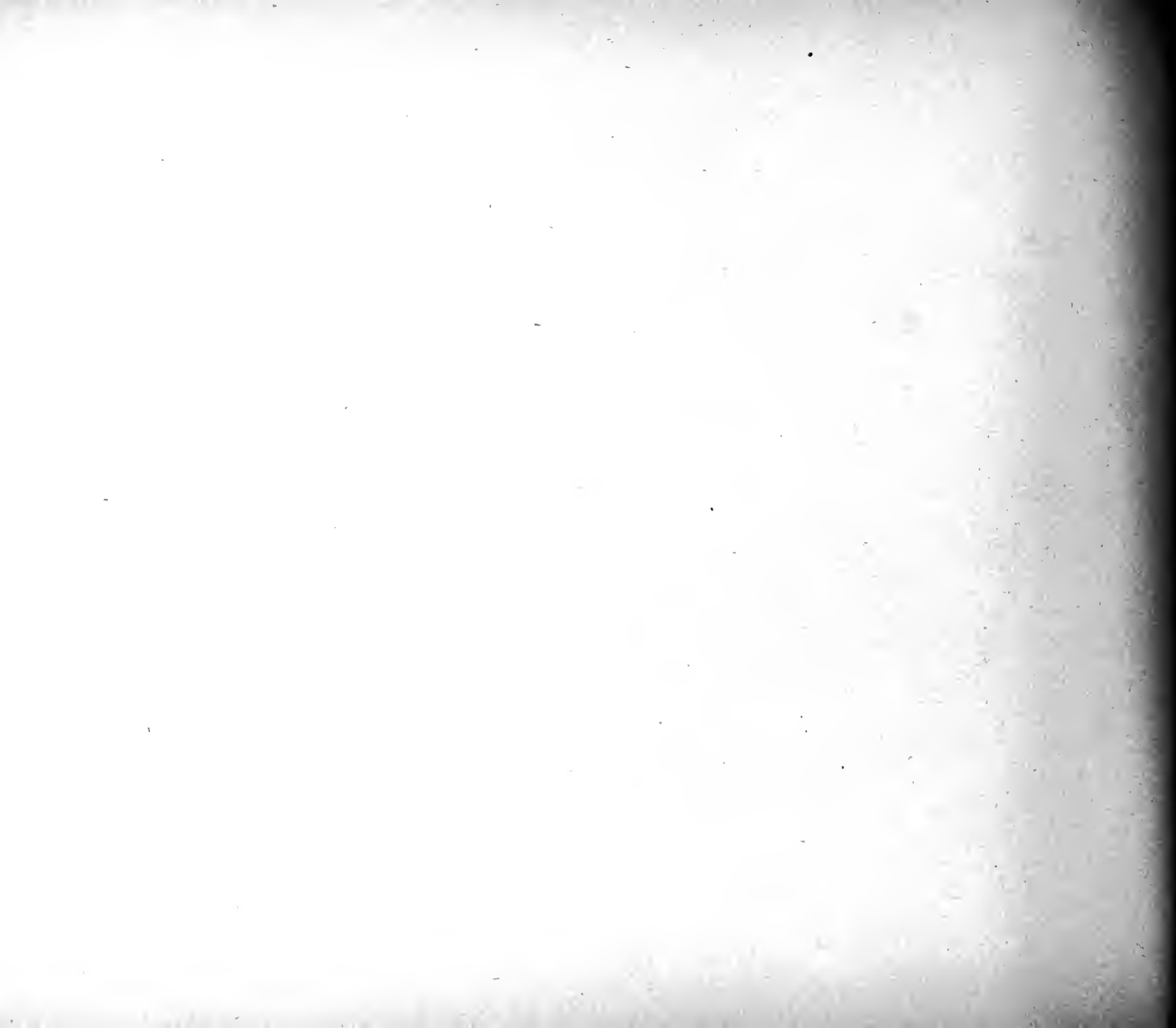


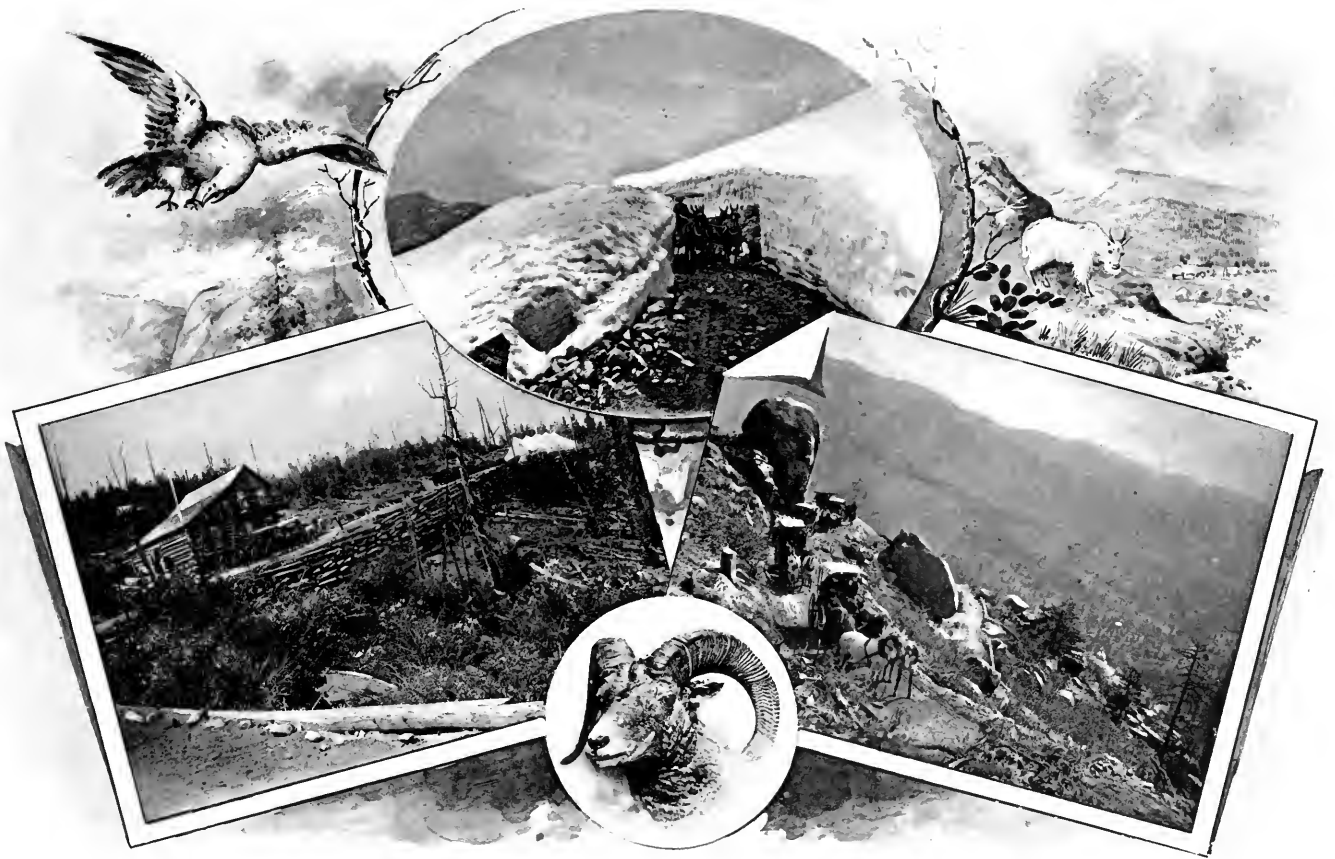
CASCADE.





CARRIAGE ROAD - UP PIKE'S PEAK.



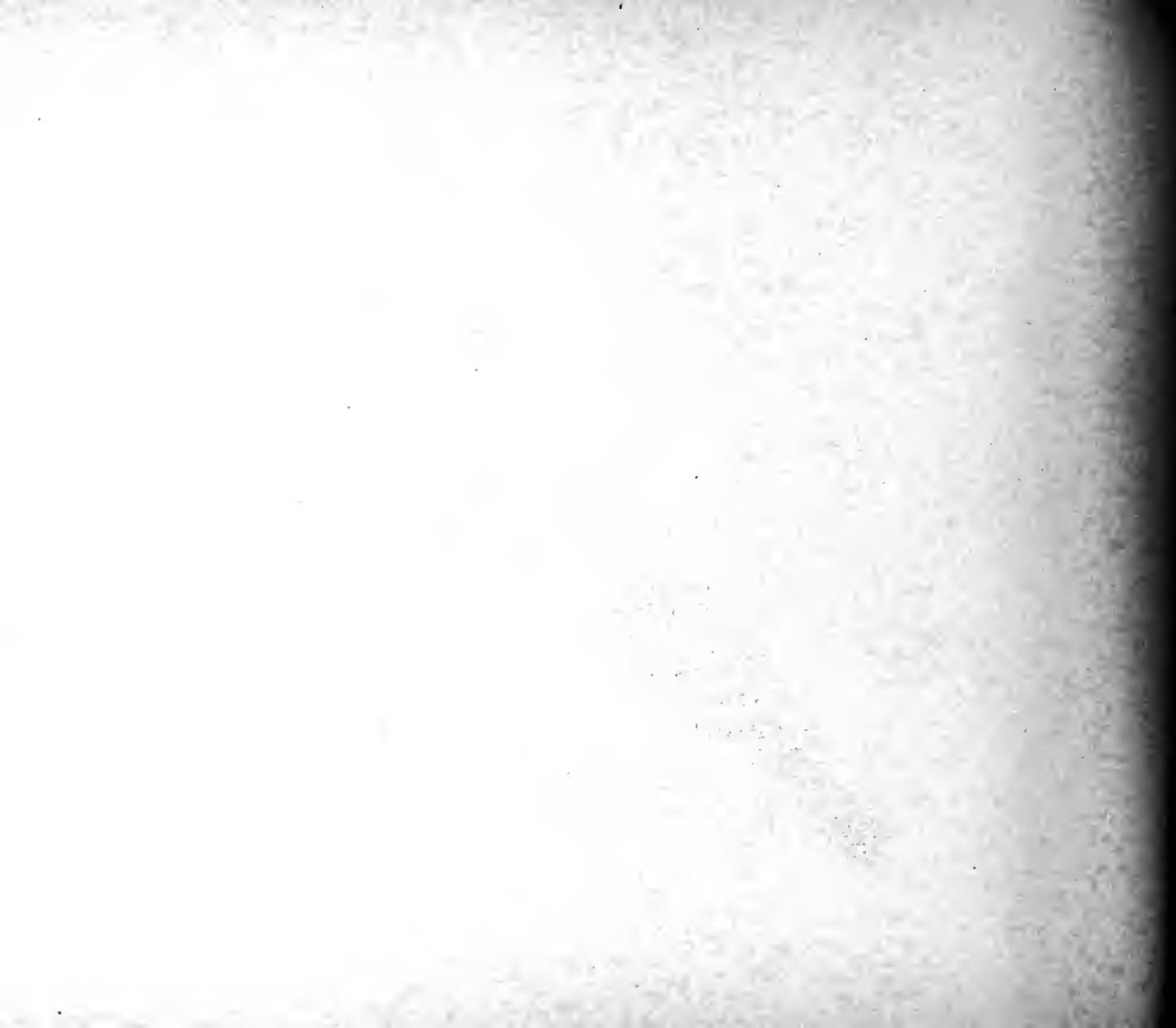


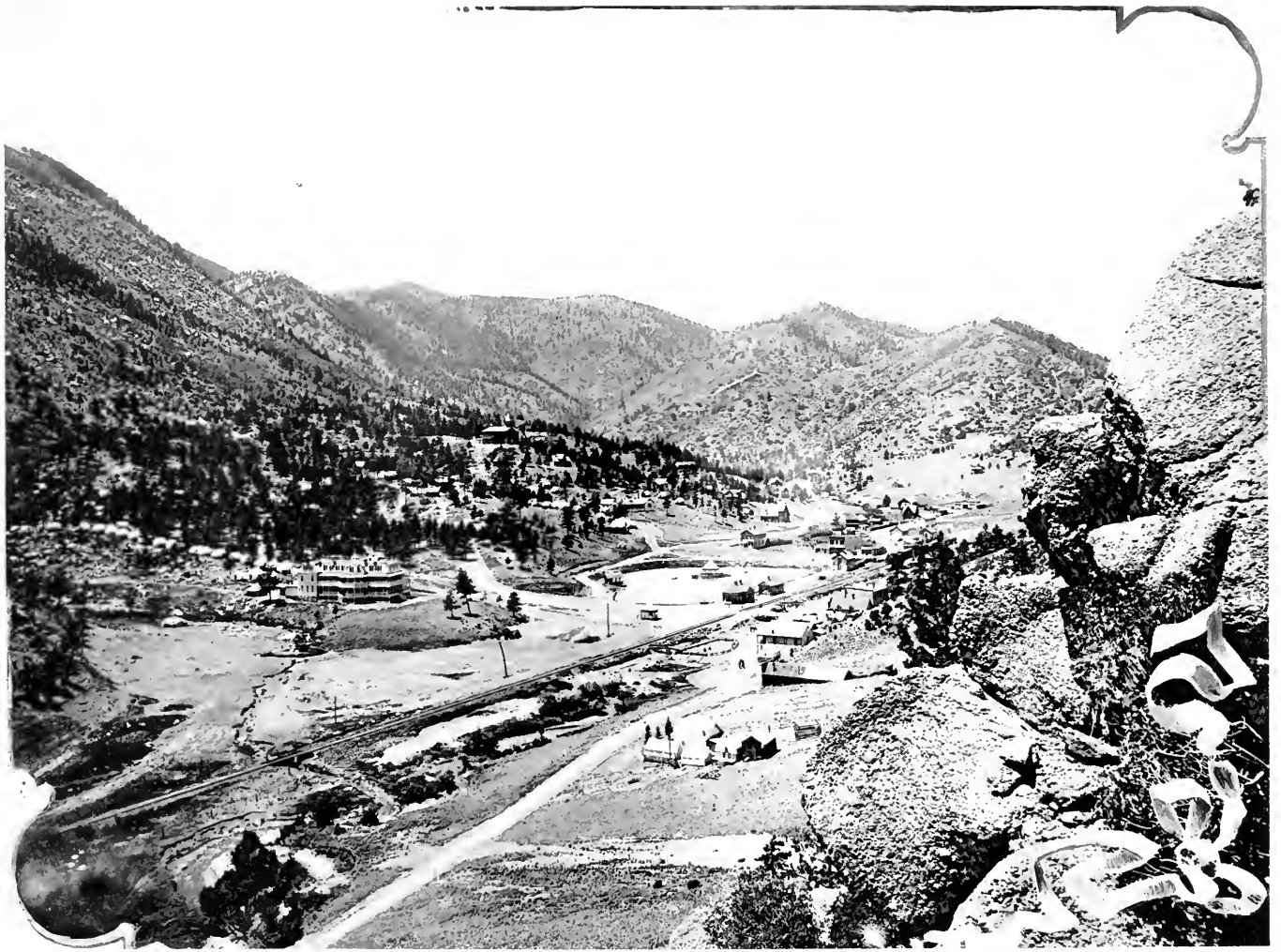
HALF-WAY HOUSE.

NEAR SUMMIT.

LAST GLIMPSE OF CASCADE.

PIKE'S PEAK CARRIAGE ROAD.





GREEN MOUNTAIN FALLS.



PIKE'S PEAK FROM WOODLAND PARK.

F784

P6L21

1893



