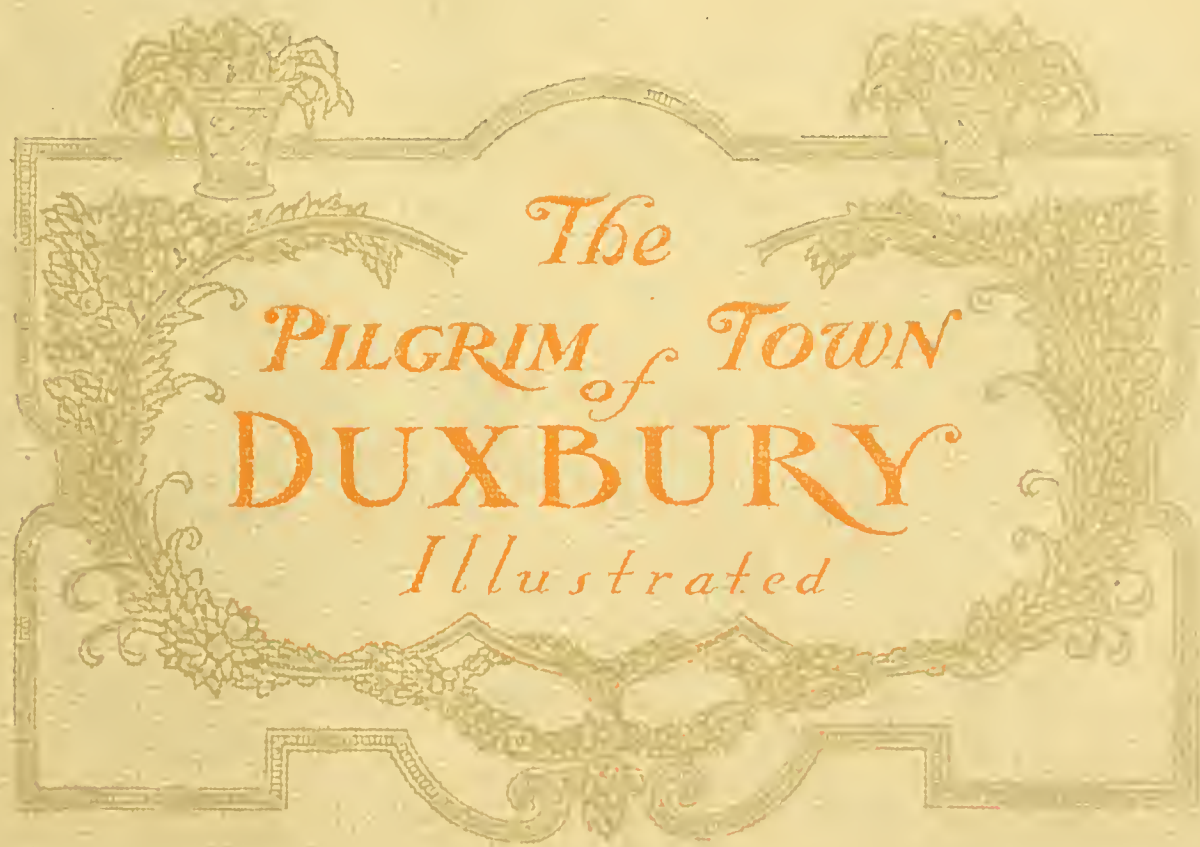
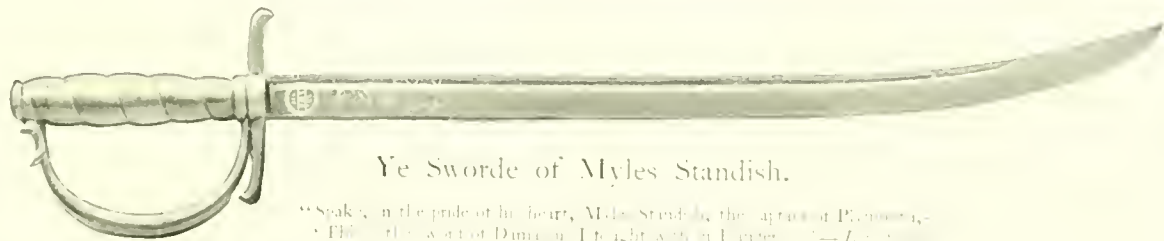


F 74
.D95 P6
Copy 2



The Pilgrim Town of Duxbury



Ye Sworde of Myles Standish.

"Spake, in the pride of his heart, Miles Standish, the Captain of Plymouth,
"This is the sword of Duxbury, I bought with a Purse." — *L. 100*



Published by A. S. Burbank, Pilgrim Bookstore, Plymouth, Mass.

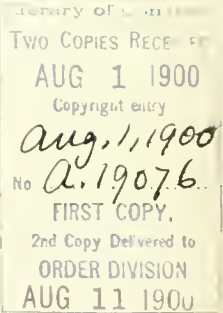
List of Illustrations.

PAGE

- 1 Sword of Myles Standish.
- 2 Powder Point Bridge.
- 3 Captain's Hill.
- 4 The Mayflower in Plymouth Harbor.
- 5 Clark's Island. The Gurnet.
- 6 Myles Standish Spring Hotel.
- 7 Standish Monument, etc.
- 8 Statue of Myles Standish and National Monument to Pilgrims.
- 9 Site of Standish House.
- 10 Priscilla and John Alden. The Courtship.
- 11 John Alden House, 1653.
- 12 Winslow House.
- 13 Fireplace, Secret Closet, and Doorway, Winslow House.

PAGE

- 14 Group of Winslow Relics, Pilgrim Hall.
- 15 Winslow Gravestone. Grave of Daniel Webster.
- 16 The Embarkation of the Pilgrims.
- 17 Pilgrim Exiles.
- 18 Mayflower Relics.
- 19 Duxbury Town Hall. Powder Point School. Site of Daniel Webster House. Fanny Davenport House.
- 20 Partridge Academy.
- 21 View of Duxbury from Standish Monument.
- 22 Standish Street, South Duxbury Post-office.
- 23 Site of Peregrine White House.
- 24 "The Old Oaken Bucket" House, Scituate.



COPYRIGHT, 1906, A. S. BURBANK, PLYMOUTH, MASS.

PRESS OF GEO. H. ELLIS, BOSTON



POWDER POINT BRIDGE, DUXBURY



CAPTAIN'S HILL was so named for the famous Pilgrim Captain, Myles Standish, who removed from Plymouth to Duxbury in 1631. His farm comprised several acres covering the slope of the hill. The house shown in this picture was built by his son Alexander in 1666. The hill is one hundred and eighty feet high; and the monument which surmounts it, erected to the memory of Myles Standish, is one hundred and sixteen feet in height.



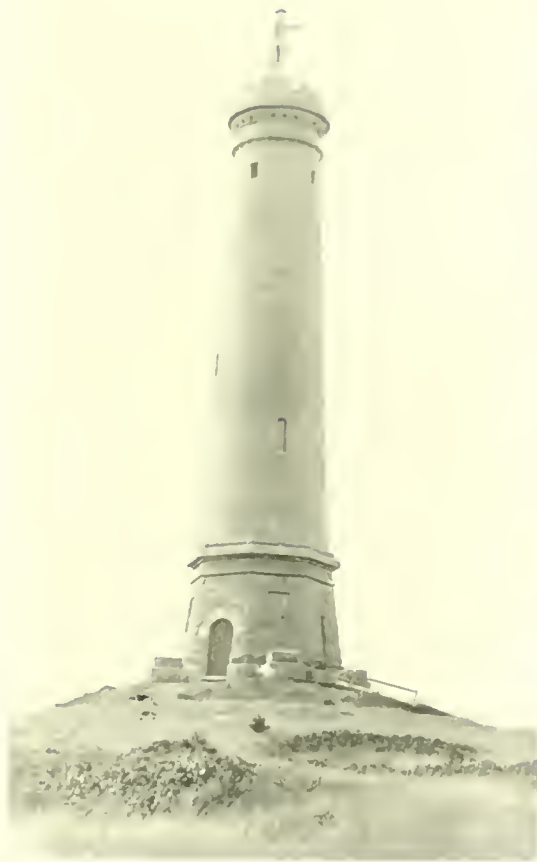
THE MAYFLOWER IN PLYMOUTH HARBOR. This painting, by W. F. Halsall, is among the art treasures of Pilgrim Hall. The Mayflower dropped anchor in Plymouth harbor on Dec. 26, 1620, just a hundred days from the time she left Old Plymouth in England. The vessel lies midway of the broad channel. Plymouth beach is seen in the distance.



CLARK'S ISLAND. THE GURNET. Clark's Island is known to all readers of Pilgrim history as the spot where the exploring party from the Mayflower spent their first Sabbath, Dec. 26, 1625. From Pulpit Rock on this island, says the legend, their first sermon was preached. The Gurnet headland at the entrance to the harbor has a lighthouse and a life-saving station.



MYLES STANDISH SPRING HOTEL, situated upon a bluff of the old Myles Standish farm, celebrated now as a high-class summer resort. Directly on the property is the famous MYLES STANDISH SPRING, which supplies all the water for the hotel, and is sold throughout the United States.



MEMORIALS OF MYLES STANDISH. The monument erected to the memory of the Pilgrim leader is on Captain's Hill, Duxbury. It is surmounted by a statue of Standish. The Standish house was built in 1660 by Alexander Standish, son of Myles. The grave of Myles Standish, discovered in recent years, is in the old burial-ground at South Duxbury.



THE STATUE OF MYLES STANDISH. The statue which surmounts the Standish Monument at Duxbury was designed by S. J. O'Kelly, of Boston. It is of Cape Ann granite, fourteen feet in height, the total height of the monument being one hundred and sixteen feet. It faces the east, the right hand holding the charter of the Pilgrim Colony, pointing across the waters of the harbor towards Plymouth.

THE NATIONAL MONUMENT TO THE PILGRIMS. The Pilgrim Monument at Plymouth, dedicated in 1889, is of solid granite, eighty-one feet in height. The statue of Faith is thirty-six feet. On each of the smaller pedestals is a seated figure, emblematic of Morality, Law, Education, and Freedom.



SITE OF STANDISH HOUSE. Capt. Myles Standish settled in Duxbury about 1631, and the following year built a house on the peninsula from which arises the hill known to this day as Captain's Hill. The house was situated to the south east of the hill on a knoll near the shore, and was occupied by him until his death in 1656. His son Alexander succeeded to the estate. The dwelling was destroyed by fire about 1665.— *Winsor's History of Duxbury*.



JOHN ALDEN AND PRISCILLA. THE COURTSHIP. "Archly the maiden smiled, and with eyes overrunning with laughter, said in a tremulous voice, 'Why don't you speak for yourself, John?'" "Homeward together they walked, with a strange, indefinite feeling . . . in the blessing and smile of the sunshine." — *Longfellow's "Courtship of Myles Standish."*



THE ALDEN HOUSE. John Alden settled in Duxbury about the same time as Standish. He built a house in 1632, a little to the eastward of the present Alden homestead, which was erected by his grandson, Col. John Alden. The house has always remained in the Alden family, and is still occupied by a descendant of John and Priscilla.



THE WINSLOW HOUSE. This dwelling was built about the year 1700 by Hon. Isaac Winslow, son of Gov. Josiah Winslow. His son, Gen. John Winslow, who inherited the estate, was commander in charge at Fort William Henry on Lake Erie in 1756. Dr. Isaac Winslow, who died in 1819, was the last of the name who resided in the old mansion. The house is located in Marshfield about half a mile south of the Daniel Webster house.



DOORWAY AND SECRET CLOSET, WINSLOW HOUSE. Within the old Winslow house not many years ago a secret chamber was discovered. The entrance is from the south east corner room of the second story, through a closet at the right of the fireplace. A sliding panel at the top of the closet discloses a large apartment extending from the roof to the cellar. Tradition has it that it was intended as a possible refuge for the Tories, who were numerous in Marshfield in Revolutionary days.



WINSLOW RELICS, PILGRIM HALL. Winslow coat of arms; picture of Gen. Josiah Winslow; mortar and pestle, and pewter plate, brought in the Mayflower by Edward Winslow; dressing-case, once owned by Penelope, wife of Gov. Josiah Winslow; ancient Winslow salt-cellar; ancient porringer, which belonged to the Warren family; gold ring of Gov. Edward Winslow; bracelets and mourning ring of the Warren family; sword, once belonged to Gen. John Winslow; ancient Bible, long owned in the Winslow family; shoes, worn by Gov. Josiah Winslow when an infant; table, once owned by Gov. Edward Winslow; bead purse, wrought by Penelope, wife of Gov. Josiah Winslow.



THE WINSLOW TOMBSTONE. Near the centre of the hill in the old burial-ground at Marshfield is the Winslow tomb, supposed to have been constructed by Isaac Winslow, son of Gov. Josiah, whose remains were exhumed and deposited therein.

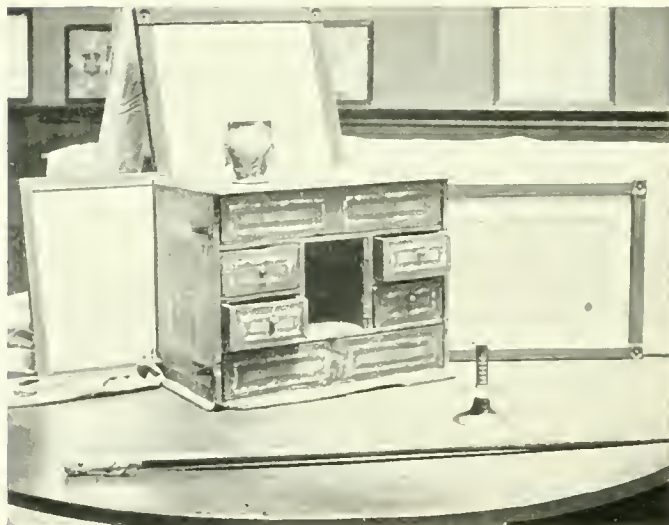
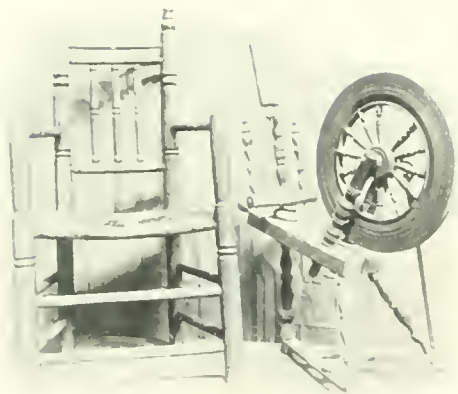
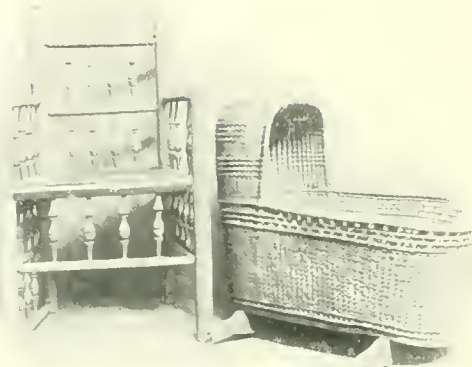
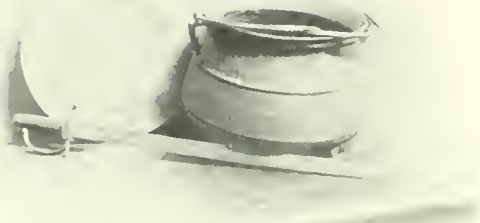
THE GRAVE OF DANIEL WEBSTER is in the Webster lot at Burial Hill, Marshfield. The inscription reads, "Daniel Webster, born January 18, 1782, died October 24, 1852."



THE EMBARKATION OF THE PILGRIMS. This painting, a copy of the original by Weir, hangs in Pilgrim Hall. It shows the Pilgrims at their devotions, as they are about to leave Delft-Haven. John Robinson is offering prayer. William Bradford is at his left, Myles Standish and his wife, Rose, at the extreme right, and William Bradford holds the open Bible.



PILGRIM EXILES. It was a sad moment when the little Pilgrim band watched the Mayflower set sail on her homeward voyage, about the middle of April, 1621. It was the severing of the last link that bound them to the fatherland. George H. Boughton has made this scene the subject for his painting.



MAYFLOWER RELICS, PILGRIM HALL. One group represents the sword, pot and platter of Myles Standish; another, an ancient spinning-wheel, and Gov. Carver's chair; a third, Elder Brewster's chair, and the cradle of Peregrine White, the first white child born in New England; and the fourth, articles of furniture owned by William White.



Town Hall



Powder Point School



Site of Daniel Webster House



Fanny Davenport House

THE ORIGINAL WEBSTER MANSION was purchased by Daniel Webster of Capt. John Thomas in 1838. It was famous in 1774-75 as the headquarters of Capt. Balthour, commanding the Queen's Guards. Mr. Webster enlarged the house, and added to his estate until it amounted to fifteen hundred or more acres. The house was burned in 1876, and the present building erected on the site.



PARTRIDGE ACADEMY. The Academy was founded by Hon. George Partridge, who died in 1828, and left ten thousand dollars for this purpose. It was opened January 28, 1845. In April, 1874, the Academy was turned over to the town of Duxbury to be used as a high school.



DUXBURY FROM STANDISH MONUMENT. From the summit of Captain's Hill a beautiful view is obtained of the harbor and surrounding country. At its foot are the towns of Duxbury and Marshfield, the homesteads of Standish, Alden, Brewster, Winslow, and others of the famous Mayflower voyagers. To the south is Clark's Island, scene of the first Pilgrim Sabbath, the Saquish, the Gurnet, and in the distance the harbor and town of Plymouth.



STANDISH STREET, HALL'S CORNER. Duxbury was first settled about the year 1632 by the people of Plymouth. Among the earliest settlers were Standish, Brewster, Alden, Eaton, Soule, Sampson, and Prence. It received the name of Duxbury out of respect for Captain Standish, from Duxbury Hall, one of the seats of the Standish family in England. The town was incorporated in 1637.



PEREGRINE WHITE HOUSE. Peregrine White, known as the first Pilgrim baby, was born on board the Mayflower. His father died the first winter, and his mother married Edward Winslow. Peregrine's boyhood was spent in Plymouth and on the "Careswell" estate at Marshfield, where Winslow settled in 1632. He married Elizabeth Bassett in 1648, and settled on a farm not far from "Careswell." His homestead is marked by a house half a mile east of Telegraph Hill, and is often the scene of the reunions of his numerous descendants.



THE OLD OAKEN BUCKET HOUSE. "The Old Oaken Bucket" premises are situated on Pond Street, Scituate, and owned by Henry Northey. On this site stood the house of Henry Ewell, which was burned by the Indians in 1676, during King Philip's War; and the babe left in the cradle was the ancestor of Samuel Wadsworth, the author of the poem of world-wide fame.

627. AUG 1 1960

LIBRARY OF CONGRESS



0 014 069 623 7

