

Digitized by the Internet Archive  
in 2010 with funding from  
University of North Carolina at Chapel Hill

<http://www.archive.org/details/pineburr1928camp>



# The Pine Burr

Volume Seven

1928



Published Jointly by the  
College Sophomores and High School  
Seniors  
Campbell College  
Wue's Creek, North Carolina



FRED N. DAY



## Dedication

Though love is deeper than expression, we wish this to be a token of our high regard and sincere esteem for one who has in many ways proven himself a valuable, steadfast friend of this institution; because we have found him to be a generous benefactor, a loyal friend, and a jeweler of the most precious, priceless stones—souls, we dedicate this, the 1928 volume of

PINE BURR

TO

FRED N. DAY



## Prologue

Come hither, Comrades all, and turn  
These leaves with reverent hand. We'll  
yearn

Some day, when we have wandered  
ways

Remote from these of College days,  
To see once more our student friends;  
Lit with the glow that memory lends,  
These pages then will serve to show  
The friends and scenes we used to  
know.



# Contents

BOOK I

**Administration**

BOOK II

**Classes**

BOOK III

**Organizations**

BOOK IV

**Athletics**



# In Memoriam

Zachary Taylor Kivett

BORN SEPTEMBER 25, 1848

DIED MARCH 20, 1928

Builder of Old Tabernacle.  
Maker of Brick and Builder of Old Administration  
Building.  
Member of Executive Committee of Trustees of  
Campbell College.  
Member of Local Board of Education.  
An Unfailing Friend of this Institution.

*"God took care to hide that country till  
He judged His people ready,  
Then He chose me for His whisper, and I  
Found it, and it's yours."*

Hearing the call of a homeless institution, ravaged by the fire of 1900, Z. T. Kivett left his quiet home on the red banks of the Cape Fear to cast his lot with Buie's Creek Academy in its hour of supreme need. With hope of little financial reward he directed the burning of the brick and the erection of our Old Administration Building. Through three long years he built, as money was provided, a monument to himself that shall survive in the hearts of thousands that were blessed at its feet.

In the years that have followed other thousands have found in this pioneer a call "to dare and do." To him the untried paths, the secrets of man and God, the promised lands of truth, bore an interest unusual in a man of his years.

Though unwavering in his loyalty to Campbell College and all its interests, perhaps his most conspicuous allegiance was to his church, which for years he served as its Senior Deacon. This white-haired patriarch seated regularly at the front—

*"With meek and unaffected grace  
His looks adorned the place."*—

has been a benediction to many.

*"How beautiful it is for man to die  
Upon the walls of Zion! to be called  
Like a watch-worn and weary sentinel  
To put his armor off, and rest in Heaven."*





# ADMINISTRATION

Forty-one years ago on Jan. 5, Buie's Creek Academy opened with sixteen students in a small one-room house 48x22 feet, shown above. The founder, still its President, providentially, it seems, responded to the appeal of a small group of citizens led by William Pearson to teach a community school for a few months. This human need was evidently God's call to found a great institution, as its subsequent history would indicate. In this volume of the Pine Burr is portrayed imperfectly many manifestations of divine leadership and approval. What it shall be can be prophesied only from a résumé of its miraculous beginning, preservation, and progress.

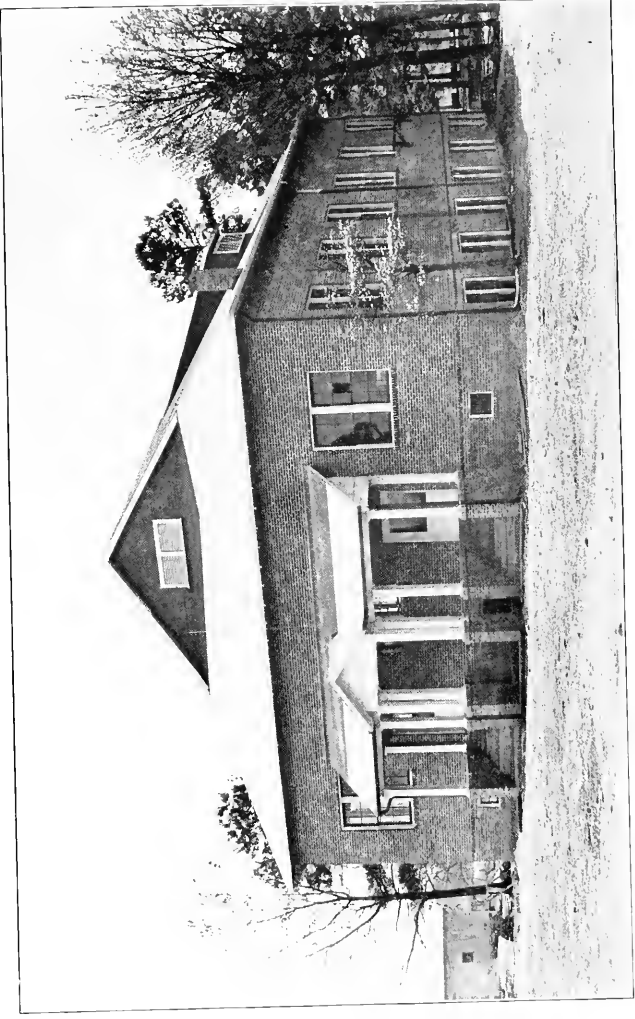


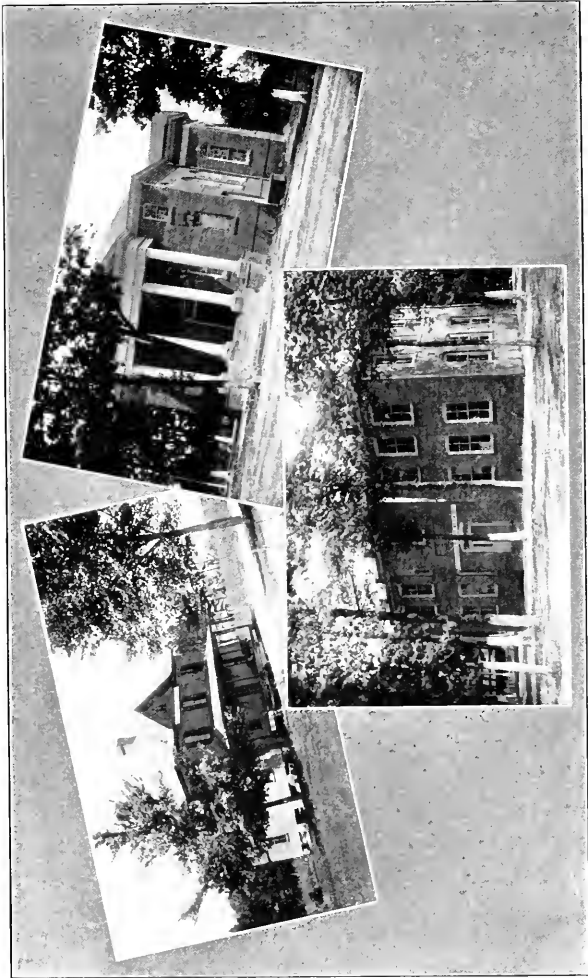


*"Don't cry, teacher," said Herman Stevens, as the home of Buie's Creek Academy, enlarged through sacrifices of its friends, on December 20, 1920, lay smoking in ruins. "We boys are going to build you a brick building." On this rock of faith the friends of the institution came to the help of the Principal, and after years of toil, often through mists and shadows, Campbell College, secure in the hearts of North Carolina Baptists, emerged.*



















PRESIDENT JAMES ARCHIBALD CAMPBELL, B.A., D.D.





MR. MARSHBANKS



MISS POWELL



MR. CAMPBELL



MR. RICHARDS



MISS STRICKLAND



MR. AYSCOTE



MR. BRANDON



MRS. PARKER



MR. PETTIGREW

FACULTY



MR. AYERS



MRS. AYRES



MRS. OVERDY



DR. DUNCAN



MRS. BONSTEEL



MRS. MOON



MR. DUNCAN



MR. EDWARDS

FACULTY



MR. LYNCH

MRS. LYNCH

MRS. HARRIS

MR. WALLACE

MRS. EDWARDS

MISS BURT

MISS CHEEK

MISS BROOKS

FACULTY



GRADE TEACHERS



# FACULTY

**JAMES ARCHIBALD CAMPBELL**

B.A., D.D.

*President*

President Buie's Creek Academy, 1887; Superintendent Harnett County Public Schools, 1890-1894, 1897-1898; B.A., Wake Forest College, 1911; D.D., Wake Forest College, 1926; Baptist Pastor since 1886.

**BURGESS PINCKNEY MARSH-**

**BANKS, M.A., L.L.B.**

*Vice-President*

B.A., Wake Forest College, 1908; M.A. and L.L.B., Wake Forest College, 1909; Assistant in Physics, Wake Forest College, 1908-'09; Graduate Student State College, 1924; Mathematics, Campbell College, 1909—

*Mathematics*

**LESLIE HARTWELL CAMPBELL**

M.A.

*Dean*

B.A., Wake Forest College, 1911; M.A., Wake Forest College, 1916; Graduate Student University of North Carolina, 1912, 1926; Graduate Student Columbia University, 1913, 1924; English and Latin, Campbell College, 1911—

*English*

**MABEL POWELL, B.A.**

B.A., Georgetown College, 1924; Graduate Student University of North Carolina, 1926, 1927; Chair of English, Saint Mary's Seminary, 1920-1921; English and Latin, Campbell College, 1924—

*Latin*

**RICHARD CAMPBELL PETTI-**

**GREW, M.A.**

B.A., Furman University, 1925; M.A., University of North Carolina, 1926; Graduate Student Duke University, 1926; Graduate Student Columbia University, 1927; English and Latin, Campbell College, 1925—

*English*

**GEORGE GREER RICHARDS, B.A.**

B.A., Wake Forest College, 1927; Latin and Greek, Campbell College, 1926—

*Latin and Greek*

**GLADYS STRICKLAND, M.A.**

B.A., Meredith College, 1924; M.A., Cornell University, 1927; French and English, Salem-High School, 1924-1925; French and English, Campbell College, 1925-1926; Campbell College, 1927—

*English and Modern Language*

**S. O. BRANDON, B.A.**

B.A., Wake Forest College, 1926; Mathematics, Mountain View College, 1924-1925; Mathematics, Mars Hill College, 1925-1926; Mathematics and Assistant in Athletics, Campbell College, 1926—

*Mathematics and Assistant in Athletics*

**JOHN EDWARD AYSKUE, M.A., B.D.**

M.A., Wake Forest College, 1903; B.D., University of Chicago, 1905; Pastor Greenville Baptist Church; Bible and History, Campbell College, 1926—

*Bible and History*

**MRS. JESSIE ALLEN PARKER**

B.A.

B.A., Meredith College, 1923; Graduate Student University of North Carolina, 1924, 1926, 1927; French and German, Wingate Junior College, 1923-1926; Modern Languages, Campbell College, 1926—

*Modern Languages*

**SANFORD E. AYERS, B.A.**

B.A., Wake Forest College, 1921; Student School of Medicine, Wake Forest College, 1925-1926; Instructor in English, Peking School of Commerce and Finance, 1915-1916; Teacher in School for Illiterates, A. E. F. University, Beaune, France, 1919; Head of Science Department, North China Baptist College, 1921-22; Principal Pingtu Christian Institute, Pingtu, North China, 1922-1925; Biology and Chemistry, Campbell College, 1927—

*Biology and Chemistry*

**GEORGE LOREN EDWARDS, B.S.**

B.S., Wake Forest College, 1927; Principal Junior High School, 1922-1924; Science and History, Campbell College, 1924—

*History and Science*





# FACULTY

## MRS. ABBIE BENTON BONSTEEL B.A.

B.A., Bessie Tift College, 1926; Diploma Training School, Louisville; S. S. Field Worker; Author "Hidden Pearls"; English and Education, Campbell College, 1926—

*English*

## MRS. BESSIE CAMPBELL LYNCH Diploma in Music

Diploma in Piano, Meredith College, 1916; Student New York School of Music and Arts, 1924; Head of Music Department, Campbell College, 1916—

*Piano*

## ARCHIBALD EDGAR LYNCH

Shenandoah Institute, 1914-1915; Student New York School of Music and Arts; Student Moody Training School; Student Winona Lake; Evangelistic Singer Home Board, 1919-1922; Vocal Music, Campbell College, 1922—

*Piano*

## NELLE RIVES CHEEK

Buie's Creek Academy, 1923; Diploma in Piano, Meredith, 1927; Member of Faculty, Campbell College, 1927—

*Piano*

## LULA FRANCES BROOKS

Graduate Brookman School of Music, 1898. Graduate Baptist Bible Institute, 1923; Student of Alfred Wooler; Graduate Student, Moody Bible Institute, 1926; Teacher of Violin, Baptist Bible Institute; Member of Faculty, Campbell College, 1924—

*Piano and Orchestral Instruments*

## MRS. ETHEL THOMAS EDWARDS

Oxford College; New York University; Teacher of Art, Fruitland Institute, 1922-1924; Teacher of Art, Campbell College, 1924—

*Art*

## ESTELLE BURT

Graduate Averette College, 1924; Student Florence Adams, Washington, D. C., 1926; Columbia University, 1927; Member of the Faculty, Campbell College, 1924—

*Expression*

## I. M. WALLACE, B.S., B.C.S.

B.S., Ohio Valley College; B.C.S., Bowling Green Business University; Teacher Commercial Department, Oklahoma City Schools; Principal Commercial Department, Clinton College, Kentucky; Commercial Department, Campbell College, 1915—

*Commercial Department*

## NETTIE MOON

Graduate Buie's Creek Academy, 1917; Student Meredith College, 1917-1918; Student University of North Carolina, Wake Forest College and Duke University; Member of Faculty, Campbell College, 1919-1921, 1922-1924, 1925—

*Dean of Women*

## STACY ALLEN DUNCAN, B.A., M.D.

B.A., Wake Forest College, 1921; Tulane University, 1924.

*School Physician*

## ADA OVERBY

*Secretary to the President*

## MRS. SANFORD EMMETT AYERS

Graduate Mississippi State Teachers' College, 1917; B.M.T., W. M. U. Training School Louisville, Ky., 1920; Religious Secretary and Athletic Director Mississippi Woman's College, 1920-1921; English, Pinetu Christian Institute, China, 1921-1925; Campbell College, 1927—  
*History and Director of Girls' Athletics*

## THEOPHILUS YATES SEYMOUR

B.A., Wake Forest College, 1909; Campbell College, 1927—

*History and Keeper Boys' Dormitory*

## MRS. MARY E. HARRIS

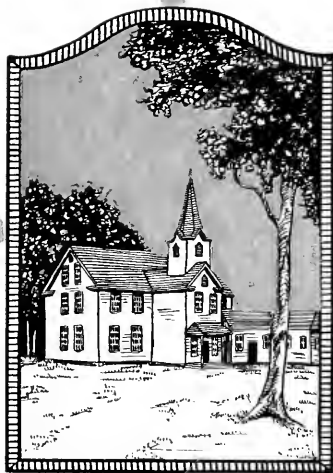
Will Mayfield College; Missouri State Teachers' College; Librarian Will Mayfield College, 1921-1922; Campbell College, 1926.

*Librarian*

## MRS. G. C. SAUNDERS

*Matron Girls' Dormitory*





## CLASSES

The humble birthplace of Campbell College grew by additions in the summer of 1887, in 1893, and again in 1896 "into the house beautiful." The one-room structure had swelled into a three story building of six commodious recitation rooms, Art Hall, Commercial Hall, Library, and Society Halls, nicely carpeted and furnished. The pride of teachers, students, and friends, this temple of learning proudly and defiantly lifted its head heavenward. It embodied the achievements of the past as well as the hope for future years. Thus, often we pin our hope to the perishable things of life that pass in the night.



PINE

BURR

"What CAN I do for you, little world?"



College  
Sophomore

Page twenty five



L. H. Campbell  
Faculty Adviser



Katherine Campbell  
Mascot



HARDY



BLAND



DEWAR

# College Soph Officers



BELL

2



DARREN



RICH

8



HARRELL



DANNER



McDONALD





# CLASS ORGANIZATION

## MOTTO:

*"And, departing, leave behind us  
Footprints on the sands of time."*

FLOWER: *Rose*

COLORS: *Old Rose and Silver*

## OFFICERS

J. B. HARDY  
KATHERINE BLAND  
MARY DEWAR  
SPENCER BELL  
JACK DARDEN  
CLAY RICH  
FRONIE HARRELL  
FLORENCE McDONALD  
G. D. DANNER

*President*  
*Vice-President*  
*Secretary*  
*Treasurer*  
*Historian*  
*Prophet*  
*Poet*  
*Testator*  
*Orator*



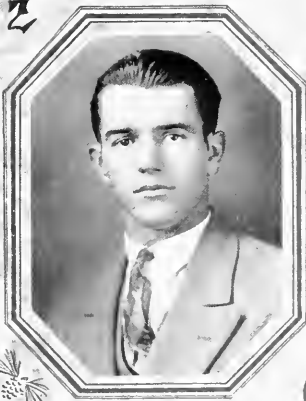
## CLASS POEM

*O Intellect of mind, Wisdom of soul,  
Composite of the best in God-made man,  
Abide with us in life—it's just a span—  
And give an aim which leads to a worthy goal.  
O thou Desired, while sands from the hour-glass roll  
Leave thy seclusion and reveal the plan  
Entrusted to Nature, turned over to man;  
Linger, enlighten, calm, then, too, control.  
As thus we commune in this trusting place  
To seek thy truths, thy chastity and grace,  
We would erect an hallowed shrine to tell  
How here we learned to live nobly and well.  
Still flash the gleam of thy torch forever;  
Give us the light that will grow dim never.*

—POET.



Z



G

S



G

SPENCER A. BELL, *Eu*

CYCLE, X C

Age 21, height 5 ft 11 in., weight 170.

Activities: Varsity Football, '26, '27; Varsity Baseball, '26, '27; Varsity Basketball, '27, '28; Treasurer of College Class, '28.

*"Not too serious, not too gay.  
But a rare good fellow when it comes to play."*

"Spence" hails from Yadkin County, where railroad casualties never happen. He is a typical mountaineer, and belongs to the fraternal society composed of Martin, Phillips, and Bell. His attractive personality has won its way into the hearts of those he has mingled with during the years he has spent here.

Just to look at him, one would think that he is a hard, sophisticated woman-hater, but here you are wrong. "Spence" is rather quiet, and people often get an impression that he is bashful, which is a mistake. If you don't believe it, ask "Bill."

In his athletic career "Spence" has done well for his Alma Mater. If he fights the old world as he fought on the athletic field here, the world has a place for him.

MARY ELIZABETH ADAMS, *Sappho*

COLERAIN, X C

Age 19, height 5 ft. 6 in., weight 116.

Activities: English Critic in Society, '26; Sappho Improvement Medal, '27; Sappho Society Supervisor, '27; William and Mary Club, '27, '28.

To know Mary is to love her. Dignity, refinement, culture, and modesty are elements possessed by her that blend into a beautiful character.

The world will know about her good deeds not by the noise that she makes, but by the deeds themselves. Her grades—you should see them! She does not work for a seventy-five, but "hitches her wagon to the stars" and climbs beyond the nineties.

*"And still we gazed, and still the wonder grew  
That one small head could carry all she knew"*

Another poet well described Mary when he said:

*"Yet graceful ease, and sweetness void of pride  
Might hide her faults, if Mary had faults to  
hide;*

*If to her share some female errors fall,  
Look on her face, and you will forget all."*



ZULA ELLEN ROGERS, *Astro*

LILLINGTON, N. C.

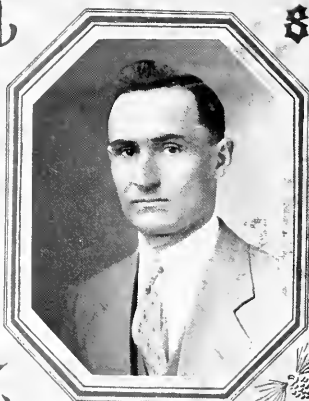
Age 20, height 5 ft. 4 in., weight 134.

Activities: General B. Y. P. U. Secretary, '26, '27; Astro Improvement Medal, '27; Y. W. A. Secretary, '26, '27; B. Y. P. U. President, Fall '27; Y. W. A. President, '27; Vice-President of Volunteer Band, '27, '28; Harnett County College Club, '28.

*"High erected thoughts seated in a heart of love."*

Here's a Harnett County girl who for determination to get an education, loyalty, and zeal in Christian work, is rarely excelled. Though a self-help student, she has always found time to serve her B. Y. P. U. in addition to her school studies. While not unusually brilliant, she has fought a winning fight against ignorance, as is shown by her class record.

Zula possesses the qualities that make for lasting friendship. She is sincere and uncompromising in her conduct, but not offensive to those who disagree with her. Her ways are the ways of peace. Even her burdens are borne submissively. So here's to our friend, everybody's friend, success and happiness through life's longest day.



GEORGE DEWEY DANNER, *Phi*

CATAWBA, N. C.

Age 29, height 5 ft. 11 in., weight 150.

Activities: General Director of B. Y. P. U., '26, '27; President of Class, '26, '27; Advertising Manager of Pine Barr, '28; Member of B. S. U. Council, '27, '28; President of Ministerial Conference, '27; Chairman of B. Y. P. U. Extension Committee, '27, '28; Phi Orator Commencement, '27.

*"Oh, it's good to be merry and wise—  
It's good to be honest and true"*

A man with convictions. His firmly set jaw is an index to his determination and steadfastness. His serious purpose has urged him to re-enter school rather late and has enabled him to make his own way through college by following the carpenter's trade. "G. D." is one of the hardest workers in the class. What many others get without much effort, he pays for by burning the midnight oil, but he gets it.

Danner is one of our most loyal Campbellites. He has served his Alma Mater well in the many responsible positions which have been entrusted to him. While unable to represent the college on the athletic field, he has enthusiastically backed the teams from the side lines. His biggest contribution has been made through his society and the religious organizations. When he leaves, there'll be a big place for somebody to fill.



MARGARET CORNELIA TAYLOR  
BUIE'S CREEK, N. C.

Age 19, height 5 ft. 6 in., weight 120.

Activities: Basketball, '26, '27; Harnett County College Club, '28.

*"Her joys are as deep as the ocean,  
Her troubles as light as the foam"*

Cornelia has the distinction of being the first community girl to graduate from our College Department. Having received her training through high school and college at this institution, she has learned the Campbell Spirit from long association. In the meantime, she has made a host of friends by her happy disposition and her companionate nature.

While Cornelia leaves behind a creditable scholastic record, her interest in the social and athletic life of the College is keen. In the year 1927 she represented her Alma Mater on the winning basketball team that dropped only two contests of a twelve game schedule. She goes out with the good will of all her associates, who wish for her success and happiness in her search for life's enduring trophies.

HENRY DOWELL JONES, *Phi*  
CAMERAN, N. C.

Age 18, height 5 ft. 11½ in., weight 160.

Activities: Class Basketball, '26, '27; Vice-President Society, Fall of '27; English Critic, Fall of '27; Football Squad, '27.

*"My business is not to remake myself,  
But to make the absolute best of what God made."*

Quiet and easy, rather timid at times, but always in a good humor—that's "Deacon." Probably his name has not been heard so often as others, but when we look for a clean upright young man, we find him in Henry Dowell. If it's fun, he's in for it. As a freshman, he would neither hide nor dodge; on the contrary, he seemed to welcome all newish tricks, even measles and mumps.

But more than this can be said of him. He always filled his place in church, Sunday School, and other places of duty. Though his name ever appeared in the football headlines, he stuck to the gridiron and did his best for the men who faced the toe. In basketball he served his class well, and we are justly proud of his record there.

Because of his honesty and faithfulness during these two years, we predict for him a place of honor and service that only comes to men who are made from boys of his type.





**JAMES B. HARDY, *Eu***  
 BURLINGTON, N. C.

Age 20, height 5 ft. 11 in., weight 172.

Activities: President of Class, '27, '28; President of Society, '27; Vice-President of College Freshman Class, '26, '27; Treasurer of Western North Carolina Club, '26; Varsity Football Team, '27; Track Team, '26, '27; Supervisor of Society, '26; Class Basketball, '26; Manager of Bachelor's Club, '27; Pearson Building Club, '28.

*"Always ready to do what there is to be done."*

Because he rates high with the more athletic-loving students at this institution, he was chosen captain of the football team; because he rates high with the literary type of students, crary Society; because he rates high with the class as a whole, he was made president of the College Sophomore Class; and because he is a good, all-round fellow, he is liked by every boy and girl on the Campus.

Due to the fact that he is a regular attendant on Mrs. Parker's after-school lectures, we feel sure that "Jack" will some day look back with pride on the days he spent at good old Campbell. His favorite German saying is "Ich kenne nicht." "Jack" is a typical Campbell College man. He always boasts his Alma Mater wherever he goes.



**MARY FRANCES TILLEY, *Astro***  
 DURHAM, N. C.

Age 19, height 5 ft. 6 in., weight 105.

Activities: President B. Y. P. U., '26; Vice-President Astro Society, '27; Secretary Astro Society, '27; Vice-President B. S. U., '27, '28; President of Durham County Club, '28; Class Editor for Pine Burr, '28; Tennis Club, '28; William and Mary Club, '27, '28.

*"A perfect woman, nobly planned,  
 To warm, to comfort, and command;  
 And yet a spirit still, and bright,  
 With something of angelic light."*

If you want to see a living symbol of loyalty and fidelity, look at our Mary. Intangible as the terms may seem, she has made them tangible and real to us by her constancy of purpose and reliability. The class room, the society hall, and the religious units on our campus have found "Jack" to be a diligent, enthusiastic, earnest worker. In all the activities of our school life, she has proved her willingness to lend a helping hand; her part has been played nobly and well. In truth, Mary goes among her associates doing good. "Jack's" very gentleness is suggestive of a deep, determined will power and forcefulness.





MARY LILLIE DEWAR, *Astro*  
FUQUAY SPRINGS, N. C.

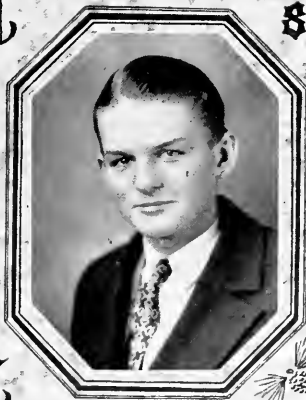
Age 18, height 5 ft. 7 in., weight 127.

Activities: Editor-in-Chief of Pine Burr, '28; Secretary of Class, '28; Supervisor of Society, Spring of '27; English Critic of Society, Fall of '27; Chaplain of Society, '28; Harnett County College Club, '28; William and Mary Club, '28.

*"A creature not too bright or good  
For human nature's daily food."*

The cheery, sunny disposition, and keen sense of humor of this prominent member of our class have made it easy to win the love of all her classmates. She is a sunbeam which makes its way into the gloomy corners of this earth. That she holds in the hearts of her classmates a high place, was obvious last spring when she was elected to be Editor-in-Chief of this volume of the PINE BURR. Mary is capable and she does not shirk her duties. The monthly honor rolls and the report cards give evidence of her zeal and diligence as a praiseworthy student.

Although she has the distinction of being one of our A students, she is as unassuming and modest as a violet. Quietly she lives right in our midst, giving us something of the good and beautiful.



BENJAMIN A. DARDEN, *Eu*  
FAYETTEVILLE, N. C.

Age 17, height 5 ft. 11 in., weight 155.

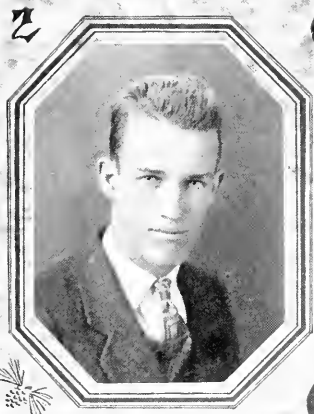
Activities: Class Basketball, '27; Class Historian, '28; Dramatic Club, '26, '27; Pearson Building Club, '27, '28; Cumberland County Club, '26, '27.

*"The power of thought—the magic of the  
mind."*

Two years ago "Jack" left his home down on the farm to start his career at Campbell College. He settled over in the Pearson Building and has proved a loyal clansman against every outside attack. A keen sense of humor supported with an unending line of jokes has helped to make him a typical college favorite. He takes life pretty much as he finds it, without worrying or feeling constrained to reform it.

While possessed with this easy-going disposition, Jack has a quick mind that is eager to find the truth. He has shown his classmates how to make a high scholastic record without burning the midnight oil. He will argue for his convictions with anybody; and is just as ready to submit, if he finds himself in the wrong.





**ALBERT JENNINGS MARTIN, *Et***  
HAMPTONVILLE, N. C.  
Age 20, height 6 ft. 2 in., weight 170.

Activities: Three letter man; Athletic-Scholarship Medal, '27; Varsity Football, '26, '27; Varsity Basketball, '27, '28; Varsity Baseball, '27, '28; Captain of Basketball Team, '28; Sport Editor of Creek Pebbles, '27; Publicity Director for Campbell, '27, '28; Sport Editor of the Pine Burr, '28.

*"Happy am I, from care I am free;  
Why aren't they all contented like me?"*

This good-natured, likable fellow has always been an enigma to us. Though he belongs to that group that never believes in his studies interfering with his pleasures, he manages to absorb enough to head off failure in his classes. And he's not an ignoramus at that. If he doesn't know his German, he can open the eyes of Senator Jim Reed with his prodigious knowledge of Republican corruption.

During his two years on the campus "Abt" has established himself as a three-sport athlete. In football, basketball, and baseball he has been a consistent, hard-working letter man.

"Ya-as, sir," he still wears the "m-a-n-n-e-r-s" of a mountaineer. It makes no difference how thick the polish, the heart of the hills beats warmly in his breast.

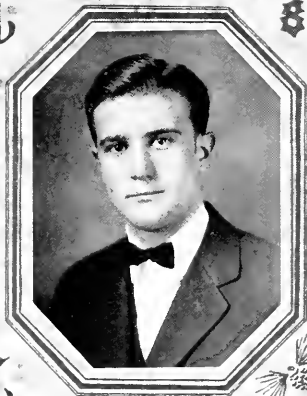
**KATHERINE FLORENCE BLAND**  
*Sappho*  
RALEIGH, N. C.

Age 18, height 5 ft. 3 in., weight 123.

Activities: Secretary Dramatic Club, '27, '28; Secretary Class, '27; Editors-in-Chief Pine Burr, '27; President Society, '27; English Critic Society, '28; President Wake County Club, '28; Assistant Director Intermediate B. Y. P. U., '28; Editor-in-Chief Creek Pebbles, Spring, '28; Mid-Term Debater, '28; Anniversary Debater, '28; Glee Club, '27, '28.

From nobody knows where, a gale, which was not a bad one, has blown a girl of many talents to Campbell College. Of all the energetic, never ceasing, and perpetual-motioned ones, "Kat" has everybody at Campbell beaten. She can perform her home duties, do lots of outside work, have a good time, and lead her class in such a short time that we wonder if there isn't a little bit of brilliancy about her.

Her interests are many and varied. With her voice or at the piano she can thrill you with strains of melody that find inspiration in a heart moved by harmony. With the brush she might convince you that her major talent was in art; yet her ability of leadership in the various student organizations brings her to the front as an undisputed leader.



THELMA FAY MORGAN, *Sappho*

CARY, N. C.

Age 21, height 5 ft. 6 in., weight 150.

Activities: Chaplain of Sappho Society, '27; Journalism Class, '28.

"She's true to her world, her work, and her friends."

In Fay we find a combination of all the qualities that are sure to produce a good student. Cheerful, smiling, persevering, she has quietly pursued her way among us. Dependable, loyal, sincere, Fay has won her way into our hearts, as she has made a high place for herself in her classwork.

If you want something done, you'll find Fay a willing and capable helper; and whatever she does, you may be sure she will put her best into it. She has been a valuable asset to the *Creek Pebbles* staff; we wonder how the B. Y. P. U. could have done without her.

We aren't sure what Fay has chosen as a career, but we think—that would be telling. She says she is going to teach next year.

BENNY CRAWFORD, *Phi*

EURE, N. C.

Age 24, height 5 ft. 10 in., weight 140.

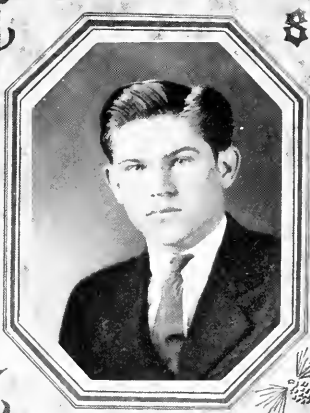
Activities: Secretary of Ministerial Conference, '27; Vice-President of Ministerial Conference, Spring, '27; Secretary of Society, '26; Vice-President of Phi Society, '27; Class Basketball, '26; '27; Dramatic Club, '26, '27; Track Team, Spring, '27; Secretary of Phi Society, Fall, '27.

"None but himself can be his parallel."

A good all-round fellow. With his fiddle he can, with a few graceful movements, waft you out of the dismal world of Latin, Algebra, and German into a realm where elvish spirits dance with never a care. Or should this charm insufficient be, he can swell the harmony with vocal strains that will move you in some direction. From his capers you might think him an actor, and so he is. Nor does his love for music diminish his love for those "endearing charms" about the girls' dormitory. With the ladies, he's a "social knockout."

But "Bennie" is more than a musician and ladies' man. He's a hard-working, conscientious student, ever ready to do his best. He divides his working hours between his college courses, his society, and the religious activities of the school.





ANNIE WORTH ODUM  
ST. PAULS, N. C.

Age 19, height 5 ft., weight 95.

Activities: Roberson County Club; Supervisor of Society, '28.

*"She is little, she is spry,  
But there's mischief in her eye."*

Here's to "Scrub." The old adage holds true again: "little but loud." "Scrub" came to us at the first of the year from Meredith College. She has developed a very strong liking for "trombone music" and we feel sure that some day she will attain a high place in the music world. While much interested in all the activities of the school, Worth has a peculiar fondness for "football."

Worth goes about her work with a vim, and as a result has established a high record for herself. Though she enjoys a good laugh when it's time to laugh, she has a serious purpose and can always be depended on.

We hope that Worth will attain that goal for which she is striving, but we predict that she will launch her boat into the sea of Matrimony soon after she attains her B.A.

DURHAM E. ALLEN  
ST. PAULS, N. C.

Age 19, height 5 ft. 11 in., weight 170.

*"We leave the praises unexpressed;  
We leave thy greatness to be guessed."*

Many good things could be said about this well-known member of our class, but to keep Durham from feeling his importance too much, only the most outstanding traits will be mentioned. Suffice it to say that Mr. Allen likes women, music, a good time and—studies. He is one of the most extreme optimists in our class—he always sees the sunny day ahead. When he laughs, it is the rollicking, good-natured laugh of one who thoroughly enjoys life as he goes along. He is very bright in his studies, and although they are the least of his troubles, he manages to maintain a fair average.

Durham "rates" high with all the members of the faculty also. In fact, he rarely, if ever, misses a faculty meeting. We all envy him this honor.





FRONIE VANDELIA HARRELL

*Astro*

WILMINGTON, N. C.

Age 20, height 5 ft. 2 in., weight 98.

Activities: Associate Director of B. Y. P. U., '26, '27; Circle Leader of Y. W. A., '27; President of Astro Society, '27; President of Volunteer Band, '27, '28; Poet of Class, '28; Volunteer Representative on the B. S. U. Council; Associate Editor of Creek Pebbles, '27; Editor-in-Chief of Creek Pebbles, Fall, '27.

*"There is none like her, none—  
Nor will be when our summers have decreased"*

To know Fronie is to love her. When she is once a friend, she is always a friend, regardless of the sacrifice required to prove it. One with higher ideals, more determination to succeed, or one who is fairer in everything can't be found—of that we are sure, and her Alma Mater is proud of her

Among her valued talents is the ability to write anything from a poem to a one-act play. Her ability along this line was demonstrated by the way she edited *Creek Pebbles* last Fall



ATHEL PAUL PHILLIPS, *Eu*

OOVAL, N. C.

Age 22, height 5 ft. 11 in., weight 185.

Activities: Two letter man; Varsity Football, '26, '27; Varsity Basketball, '27, '28; Baseball, '27, '28; Vice-President Western North Carolina Club, '28.

*"But now my task is smoothly done,  
I can fly or I can run."*

From some little place nestled away in the heart of Western North Carolina there came an aspiring young chap who gave up mountain climbing for life at Campbell.

"Louis" pretended that he was married the first year he was with us, but during his last year actions spoke louder than words, and we found that he was like the rest of the boys—trying to find a mate. We wonder what "Dancy" would say if she knew that "Louis" had a girl here at the Creek.

He has made for himself an enviable place in the hearts of his classmates by his care-free disposition, his friendly nature, and his integrity.

In his athletic career, Phillips has done well for his Alma Mater, participating in practically every form of sport.





CLAY RICH, *Phi*

CENTRAL FALLS, N. C.

Age 21, height 5 ft. 9 in., weight 130.

Activities: Track Team, '27; Supervisor of Society, Spring, '27; Assistant Laboratory Instructor in Chemistry, '26, '27.

*"Be a man above all things."*

His classmates hail him as a modern Cavendish. He is at home in the Chemistry laboratory, where last year he won distinction as student assistant.

Determination, will, and purpose are elements of success, richly combined in this young son from Randolph. Midnight oil has done for him that which his host of friends could not.

Those of his circle will remember him as a serious, conscientious student, but not too serious to laugh at a good joke. Clay is a great admirer of the girls, and some day, perhaps, he will succeed in—oh, well, we will not predict that far.

He has chosen to cast his lot among chemical elements in which field we confidently predict a brilliant future.



## CLASS HISTORY

**I**n the fall of 1926, fifty-four distinguished Freshmen entered through the newly-opened gates of Buie's Creek Junior College, very soon afterward changed to Campbell College. As charter members of the College we felt and showed our importance in every act and word. After chasing butterflies, as it were, for a few weeks, we came down out of the seemingly ethereal regions back to this hard and cruel earth. This desired consequence (desired by the faculty) was brought about mainly by the efforts of a certain mathematics teacher, who had maliciously flunked nearly every member of our distinguished class on a whole month's work. After a number of such calamities struck us in their full fury, we realized the need of pilots to lead us through the wilderness of Learning and carefully chose the following officers: Dewey Danner, President; J. B. Hardy, Vice-President; Katherine Bland, Secretary; and M. A. Williams, Treasurer. These officers served us wisely and well for the remainder of the year.

A brilliant page in our history for this year was the record of our part in athletics. Campbell put forth winning teams in all three of the major sports, half or more of every one of which teams were college students. Chief among these athletes were Hardy, Reaves, Martin, Simpson, Bell, Hawkins, Phillips, and McNeill. The girls also produced some athletes worthy of notice, of whom Gurganus, Taylor, and Jones were outstanding.

\* \* \* \* \*

"What?" Of course we registered as Sophomores! "Freshmen?" Why, no! "Them days is gone forever!" These and other snatches were caught as we registered for our second year at Campbell College. As we expected, we missed several faces from our band of the year before, but new faces more than made up for the old ones that were missing. Soon we fell into the old routine of study, eat, and sleep.

We chose as our officers this year: J. B. Hardy, President; Katherine Bland, Vice-President; Mary Dewar, Secretary; and Spencer Bell, Treasurer.

In athletics this year, we shone equally as well as we did last year. The athletes, however, were nearly every one letter men of last year. We are confident that we will hear much more of our athletes in the years to come, both from the athletic and the literary side of life. For, along with their ability in athletics, they have shown wonderful ability in their studies.

We are proud of the fact that a Sophomore, Mary Dewar, was chosen as the editor-in-chief of our 1928 Annual, and that several other officers on the Annual staff were Sophomores. Also, the *Creek Pebbles*, our school paper, had as its editors, Fronie Harrell and Katherine Bland, from the Sophomore class, both of whom have honored our whole class.

And now as we come to the end of our stay here, it is with the deepest regret that we must lose the companionship that we have found with our teachers, fellow-students, and classmates. We realize now as never before what they have meant to us. Every departing sight fills our eyes with poignant memories. The very deepest feeling of the whole class is embodied in this wish: May the experiences in future life be as helpful and happy as the ones we experienced while students in Campbell College.



PINE    BURR

## CLASS PROPHECY

I WILL now tell you of one of the strangest incidents that ever occurred to me, which for special reasons I have never revealed before.

Hallowe'en night! Midnight had passed, and the wee, small hours of the morning had come. There was no moon, and everything was dark as pitch and still as death—the kind of night on which the witches like to ride. I was all alone in the laboratory where the thrill from working on a new and dangerous experiment sent cold waves up and down my spine. My object was to determine the effect which trinitrotoluene had upon the radio-activity of certain elements when in the presence of paradichlorobenzene.

I had set my solution of paradichlorobenzene on one end of the desk, and while I was toiling and sweating over some apparatus on the other end, I heard an animal bound upon the desk. Upon turning my head there was a cat as black as coal; and before I could get to the thirsty animal, she had taken two or three swallows of my solution. Immediately the cat stood on its hind legs, stiffened its body, raised its head, and began to point its front paws in almost every direction as if it saw something high and marvelous.

After seeing this wonderful effect upon the cat, I decided that whether it be for better or for worse I was going to get in this cat's state of mind. I raised the beaker to my mouth and tasted; how delightfully cool and pleasant it was. Then, I took a large draft; the beaker slipped from my hand, and I fell into a swoon.

Everything around me seemed to be undergoing a change. The walls of the laboratory swept back from me several paces; new apparatus appeared; and great bottles of chemicals were springing up on many new shelves. I ran out on the campus, where I saw old buildings crumbling, and towering skyscrapers shooting up all around.

I entered one of the buildings in an effort to find out what all the confusion was about, and just as I opened the door leading into the hall I bumped into a lady. She told me that I was naughty to slip away from her upon our silver wedding anniversary. Then, I saw from the lines of her mouth and the blinking of her eyes that it was Annie Worth Odum. She explained that it was Commencement Day at Campbell University, May 17, 1955. We stood facing a great mirror, and for the first time I saw that my hair was gray and my body looking old.

The exercises had begun when we found ourselves seated in the immense auditorium. Fay Morgan, President of the University, opened the exercises. To my joy Bennie Crawford was directing the music. Facing him sat a choir of birds unaccompanied by human voice save by Bennie's, and his could not be distinguished in that pæan to Alma Mater.

The address, delivered by Rev. Durham Allen, was brought to an abrupt conclusion at the beck of his wife—formerly Annie Dove Wilson.

Our next attraction was a demonstration by two artists. Fronie Harrell had won fame by erecting skyscrapers; while Spencer Bell, the mountain engineer, won his distinction by raising mountains from mole hills.

I was surprised to hear that Pluto Jones was the chief coach of Campbell's athletics.



Another remarkable sight! I found Cornelia Taylor clinging to her old home town and bewailing the fact that scientists had eliminated leap year from the calendar.

As I was strolling through the reading-room, I discovered a daily paper by the name of "Campbellonian Times." Underneath a large picture on the front page was the caption, "J. B. Hardy, The New Editor."

At seven o'clock the class of '28 gathered for a reunion in a room specially equipped with a radio-television apparatus for the purpose of communicating with the absent members.

Everything was set, and the first picture on the screen was from Hades. Rev. Paul Phillips was there on a missionary tour in an effort to convert Satan, but his first convert was Jack Darden. Although Jack was a co-worker with Phillips on the side line, he won distinction there by his discovery of an antitoxin for laziness.

A Chinese laundry pushed Hades out of the way; then, a manufacturing plant loomed up, and a loud voice introduced G. D. Danner, head of the corporation for the creation of new soles. He was determined that the Chink should we well shod.

Now there came a scene from Idaho with those purple mountains beneath an azure sky. Mary Adams appeared in the foreground with a handsome man. As I found most women, she, too, was a leader—a business lady, in fact, looking after the manufacture and distribution of rainbows.

Now Joe Meador appeared next, bearing a beautiful collection of wedding bells and wedding costumes. He was running a matrimonial bureau over in Sampson County.

The next picture was a peace conference with that fiery debater, Willa Stevens, as presiding officer. As the President of the League of Nations she displayed plenty of dash and zeal.

Farmer Katherine Bland sent us a little chorus of barnyard noises along with her Greenland scenery. She was devoting her spare time to raising cane.

Our next call came thundering in from the scene of a building high upon "Pikes Peak" amid the snow and ice. That's where Mary Dewar was running a hospital for broken hearts.

Mary faded away, and a mighty airship wavered into our view, plowing its way through space in the direction of Mars. Henry Jones was the pilot. One of the passengers was Mary Tilley, a wealthy manufacturer on the planet, who first introduced Limberger cheese to the inhabitants there.

A giant monoplane swept across the sky in a different direction, bearing a love-sick girl, Pauline Askew, who fell for the man-in-the-moon. Up there she expects to spend the rest of her days reading Romeo and Juliet and drinking moonshine.

This delightful program was now to be terminated by a real lively dance. We found ourselves in a brilliantly lighted hall with a floor as slick as glass. The music sounded and the dance began, led by the graceful dancing master and his wife, who was formerly Zula Rogers. Annie Worth and I swung right into the dance with plenty of pep, but she flitted around too fast for me. I became dizzy, swooned, and fell prostrate on the floor. Then, in a vision I was floating down the Mississippi; but before I reached New Orleans I gained complete control of my mind and found that I was lying in a pool of water on the floor of the laboratory.





# LAST WILL AND TESTAMENT

STATE OF NORTH CAROLINA,  
COUNTY OF HARNETT.

*We, the first graduating class of Campbell College, feeling that after two years and more of life here, we have accumulated experiences and possessions which might help those less learned than we, do hereby take this method, by the publication of this our Last Will and Testament, of passing on the lessons taught us by the best of all teachers and by experiences; and do hereby dispose of these peculiar possessions, that have made the history of the said class the joyful and happy one it has been, to various persons where they will do the most good, thereby escaping an inheritance tax.*

## SECTION I

*Article 1*—To our school as a whole we wish to express our deepest and sincerest love. We wish to let it be known that we, the class of 1928, will ever be true to the ideals that have been instilled in us while here in school.

## SECTION II

*Article 1*—To Dr. J. A. Campbell, our beloved College President, we wish to express our love, gratitude, and deepest appreciation for all he has meant to us during our years here.

*Article 2*—To Professor Leslie Campbell, in appreciation of the many services he has rendered us during the year as our guardian, adviser, sponsor, and friend, we express our sincerest thanks.

## SECTION III

*Article 1*—To the class of 1929 we will and bequeath the joy of seniorhood, the dignity as well as the responsibilities. May your senior year be filled with happiness and success, as great as ours on this occasion.

*Article 2*—Fay Morgan, from her youth undernourished and underweight, having found a secret formula for supplying flesh, does hereby will the prescription to Edythe Barnhardt.

*Article 3*—Zula Rogers does hereby will and bequeath her supply of cosmetics along with distinction of being the campus vamp to Agnes Stephenson.

*Article 4*—Paul Phillips deeds the space occupied by his big feet to the girls for a basketball court.

*Article 5*—Mary Tilley presents her “boyish bob” to little Rosa Edwards.

*Article 6*—Albert Martin does bequeath his table manners, appetite and athletic letters to Annie Kerr.

*Article 7*—Katherine Bland bestows upon Ryburn Stancil her natural ability to talk, chew gum, and operate a typewriter all at once.



*Article 8*—Mary Dewar extends to Mac Satterwhite the right-hand of fellowship into the exclusive Society of Sophs with all the privileges appertaining thereto.

*Article 9*—Jack Darden surrenders to Keywood Cheves his knack of begging nickels to buy candy.

*Article 10*—Fronie Harrell, realizing the beauty of her golden locks and earnestly desiring to see the same forever established on the campus, does hereby will and bequeath her curls to Charles Earp.

*Article 11*—G. D. Danner conveys the copyright on his illustrated lecture on "How to Get Married and Stay So" to Edith Pearson, all profits from which to be used for developing an arboretum for love-sick students.

*Article 12*—Florence McDonald, recognizing the excruciatingly painful efforts of Horace Jones to sing and the baneful effects of his attempts on the Music Department, hereby bequeaths to him her charming contralto voice to be used under the direction of Miss Cheek.

*Article 13*—Worth Odum confers upon Esther Moon all the dignity and privileges pertaining to the office of potentate of the "flunkers club."

*Article 14*—Mary Adams, being privately examined before Justice of the Peace "Doc" Hardwicke, does hereby without mental reservation bequeath to Constance Midkiff her love for Alonzo Earp, on the one condition that she promise to care for him in sickness and health and to cleave unto him until he graduates at Campbell University.

#### SECTION IV

*Article 1*—Again we give and bequeath to our beloved faculty all the amazing knowledge and startling information that we furnished them from time to time in our various examination papers. We know that much which we have imparted to them in this way must have been entirely new to them, as well as to teachers and students everywhere, and that it will throw much new light on many hitherto obscure lines of thought, both in science and art.

If the faculty see fit they are hereby authorized to give out such of this information to the world as they feel the world is ready to receive. We trust they will also feel at perfect liberty to make use of all such bits of wisdom and enlightenment for the education of the classes to come after us. This, of course, is left entirely in their discretion.

#### SECTION V

That this last Will and Testament may be carried out to the last letter of the law, we do hereby appoint the class as executors.





*That the erection of this temporary auditorium in 1898, seen above, was an act of Providence seems certain, as the Old Tabernacle became the only home of Buic's Creek Academy for three years. Many fine boys and girls eager for truth, date their entrance into a new life of hope and promise from these unattractive surroundings. Is it not significant that this old refuge in the hour of peril gave place later to the beautiful New Administration Building situated on the same site?*

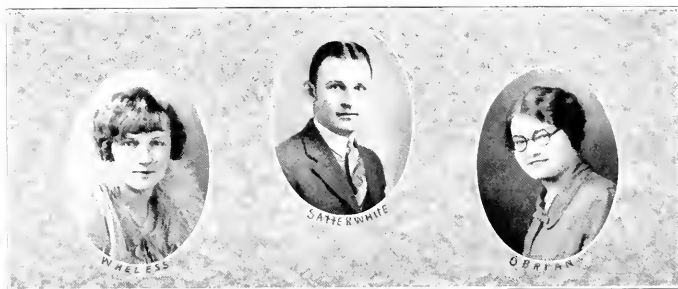




"What CAN I do for you, little MAN?"



College  
FRESHMEN



# COLLEGE FRESHMAN CLASS



MOTTO:

*"With the ropes of today,  
Ring the bells of tomorrow."*

FLOWER: *Violet*

COLORS: *Purple and gold*

## OFFICERS

MAC SATTERWHITE

*President*

AUDREY O'BRIAN

*Vice-President*

MAYBELLE WHELESS

*Secretary*

REBA MILLS

*Historian*

RYBURN STANCL

*Poet*

EVERETTE MILLER

*Prophet*



DELLA HOBSON  
YADKINVILLE, N. C.

O. W. CANADY  
INGOLD, N. C.

JEVELYN MOORE  
POLLOCKSVILLE, N. C.

CLAYTON ROUSE  
SEVEN SPRINGS, N. C.

J. O. WALTON  
SALISBURY, N. C.

JAMES BURTON  
GARLAND, N. C.

THAD CILANEY  
GREENSBORO, N. C.

JAMES ROUSE  
SEVEN SPRINGS, N. C.

HOWARD GARDNER  
ANGIER, N. C.

ESTHER MOON  
FRANKLINVILLE, N. C.

HORACE PARKER  
EURE, N. C.

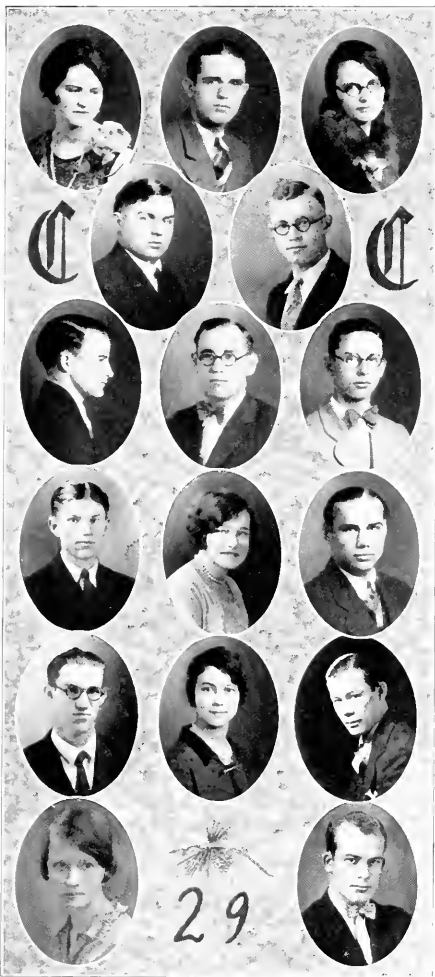
HORACE JONES  
BUIE'S CREEK, N. C.

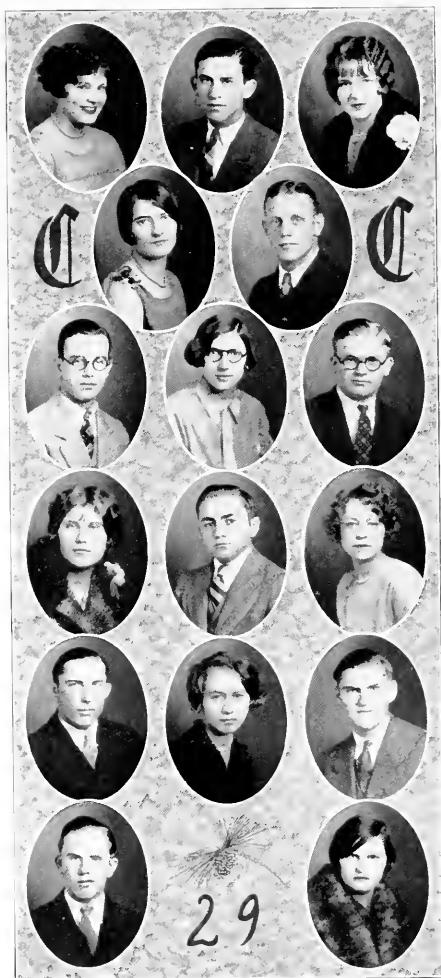
MARTHA STALLINGS  
ST. PAULS, N. C.

J. C. ADAMS  
LINDEN, N. C.

STELLA TILLEY  
BAHAM, N. C.

ROBERT REAVES  
FAYETTEVILLE, N. C.





EDITH LEE  
GREENSBORO, N. C.

DOUGLAS BYRD  
BUNNLEVL, N. C.

RUTH ALBRITTON  
CALYPSO, N. C.

HELEN JOHNSON  
ST. PAULS, N. C.

WALLACE TEW  
COOPER, N. C.

HASSEL ABERNATHY  
JONESBORO, N. C.

CONSTANCE MIDKIFF  
MT. AIRY, N. C.

EDWARD W. GREENE  
OXFORD, N. C.

DOLORES HALL  
BAHAMA, N. C.

EARL JORDAN  
TYNER, N. C.

EUNICE McCLEOD  
LINDEN, N. C.

J. ELDRED ADAMS  
JONESBORO, N. C.

ALMA CARTER  
FALLENVILLE, N. C.

ROY YATES  
MORRISVILLE, N. C.

FINTON CORDLE  
SLABOARD, N. C.

GLADYS WARREN  
DUNN, N. C.

JOHN DAWKINS  
STANLEY, N. C.

OTHELLA PATTERSON  
HIDDENITE, N. C.

KEYWOOD CHEVES  
BUNN, N. C.

LYNDA O'QUINN  
MAMERS, N. C.

HERCY EVANS  
POWELLSVILLE, N. C.

ANNIE WARREN  
DUNN, N. C.

RYBURN STANCIL  
GARNER, N. C.

VERGIE WALLER  
GARYSBURG, N. C.

LOUISE LESLIE  
VASS, N. C.

WILLIAM LYNCH  
WINSTON-SALEM, N. C.

ANNIE DOVE WILSON  
DUNN, N. C.

MAYBELLE WHELESS  
BUNN, N. C.

W. D. MORRIS  
SUNBURY, N. C.

MAC SATTERWHITE  
ST. PAUL, N. C.

GEORGE CULLIPHER  
MERRY HILL, N. C.

WILLIAM HAMILTON  
JONESBORO, N. C.





PAUL HARRELL CALE  
TYNER, N. C.

AUDREY V. O'BRIAN  
OXFORD, N. C.

WILLIAM S. ADAMS  
COLERAIR, N. C.

ROSA MAYE EDWARDS  
WINSTON-SALEM, N. C.

JAMES K. SHERRON  
FUQUAY SPRINGS, N. C.

JOSEPH E. ANDERSON  
WOODLAND, N. C.

SUSIE ALICE DANNER  
CATAWBA, N. C.

CAREY H. OLIVE  
CHAPEL HILL, N. C.

EDYTHE BARNHARDT  
SPENCER, N. C.

W. RANSOM WHITTENTON  
BENSON, N. C.

MARGARET DUNCAN  
CRESWELL, N. C.

INEZ JOHNSON  
BENSON, N. C.

GRADY SOUTHER  
KINGS MOUNTAIN, N. C.

BERTHA WOODRUFF  
THELMA, N. C.

JANIE BARBEE  
MAYSVILLE, N. C.

JOHN MORRIS  
STANLEY, N. C.



J. EVERETTE MILLER  
AHSOKIE, N. C.

WILLA STEPHENS  
LILLINGTON, N. C.

CARL HILLIARD  
MORRISVILLE, N. C.

EDISON LENNON  
DELCO, N. C.

REBA MILLS  
APEX, N. C.

CHRISTINE BARBEE  
MAYSVILLE, N. C.

ROBERT MITCHELL  
POWELLSVILLE, N. C.

FANNIE ROSS  
FALLSTON, N. C.

KESLER B. JOHNSON  
ST. PAULS, N. C.

VAUDA SAUNDERS  
SPRING HOPE, N. C.

ROBERT SLOAN  
APEX, N. C.

FRANCES WOODY  
OXFORD, N. C.

GARY TRIPLETT  
STANLEY, N. C.

OPHELIA JOHNSON  
LILLINGTON, N. C.

WILLIE O'QUINN  
MAMERS, N. C.

MARVIN BETHUNE  
BUNNLEVEL, N. C.





# COLLEGE FRESHMAN CLASS



Hassel Abernathy  
J. Eldred Adams, Jr.  
John Carson Adams  
William Adams  
Ruth Frances Albritton  
Joseph E. Anderson  
Edythe Mae Barnhardt  
Christine Barbee  
Martha Jane Barbee  
Marvin S. Bethune  
Fred Blount  
J. L. Burton  
Floyd Butler  
Douglas Byrd  
Alma Carter  
Finton Cordle  
Paul Harrell Cale  
Paul Preston Cullipher  
Odius W. Canady  
Keywood C. Cheves  
Thad Chaney  
Susie Danner  
Margaret E. Duncan  
Rosa Maye Edwards  
Hercy Alton Evans  
Douglas Freeman  
Ralph E. Fryar  
Sidney Howard Gardner  
Edward W. Greene  
Dolores Violet Hall  
William M. Hamilton  
Carlyle Harmon

Robert Carl Hilliard  
Della Hobson  
Helen Johnson  
Kesler B. Johnson  
Inez Johnson  
Ophelia Johnson  
Horace Jones  
Earl Jordan  
Annie Virginia Kerr  
William Larkin Lynch  
Louise Leslie  
J. Edison Lennon  
Edith Lee  
James Everette Miller  
B. F. Mauldwin  
Mildred Reba Mills  
Eunice McLeod  
Robert Lee Mitchell  
Constance Jones Midkiff  
Esther Moon  
S. T. Morris  
W. Desmoud Morris  
Jevelyn Moore  
Juanita Naylor  
Audrey O'Brian  
Cary Henderson Olive  
Lynda O'Quinn  
Willie O'Quinn  
Horace F. Parker  
Othella Patterson  
Edith Ann Pearson

R. B. Raynor  
Robert Reaves  
Fannie Ross  
James A. Rouse  
Clayton Alonzo Rouse  
Edward R. Rhodes  
Vauda Saunders  
T. Francis Savage  
Martha Stallings  
Willa Stephens  
Julia Agnes Stephenson  
Ryburn Stencil  
Grady Albert Souther  
Jim Kemp Sherron  
Robert M. Sloan  
Mac Satterwhite  
Stella Passmoore Tilley  
Wallace Tew  
Gray Marvin Triplett  
Vergie Sutton Waller  
John Odell Walton  
Mrs. C. T. Weston  
Annie Dove Wilson  
Frances Woody  
Maybelle Wheless  
Bertha Woodruff  
Graham Wilburn  
Herbert C. Williams  
Ransom Whittenton  
Roy James Yates





FRESHMAN CLASS POEM



We tread the road that some have trod,  
Upon life's rugged, rocky way:

And too, like some, we trust in God  
To lead us onward day by day  
To that great light, whose shining ray  
Inspired our hearts long years ago,  
And stirred us from our childhood play  
With longings in our hearts to know  
Upon what road our lives would go.

Now as our minds go drifting back  
To these great men, passed on before,

We fear that in our hearts we lack  
The grit to bear the load they bore.  
We wonder will we ever soar  
To that great height which they have gained.  
Can we upon life's other shore  
Look back upon our work attained  
And see success where Jesus reigned?

Ah yes, if they in darker days  
Have won success by constant prayer,

We now can profit by their ways  
And spiral to a higher air.  
So, Lord, pray take us as thy ware  
And shape us in thy casting molds,  
And place before our eyes our share  
In that great work of saving souls.  
What greater, Lord, might be our goals?

—POET.

## CLASS HISTORY



SEPTEMBER 6, 1927, will be a day long remembered in the minds of the students of the second College Freshmen class at Campbell; for it was on this date we entered college with a strong determination to fulfill the dreams of our high school days. Still dreaming, we set our motto, "With the ropes of today we ring the bells of tomorrow," as a goal for the future. So far every student has participated in bringing to pass the greatest year of real honest work in the history of this Institution.

To promote the best possible work, we organized our class as soon as a wise selection could be made from our enrollment of ninety-six. For president we chose Mac Satterwhite; for vice-president we elected Audrey O'Brian; for secretary and treasurer, Maybelle Wheless and Esther Moon, respectively, were selected. Later in the year our accomplishments required the services of a poet and historian, who are R. L. Stancil and Reba Mills, respectively.

It is interesting to note that many of our Freshmen have taken leading roles in the school drama for 1927-'28. Among the religious groups the College Freshmen hold prominent places.

J. O. Walton, as the general B. Y. P. U. director, heads our largest, single student organization, while Howard Gardner, Edith Lee, Desmond Morris, Reba Mills, and Constance Midkiff hold similar places of leadership in the individual unions. On the B. S. U. Council, Carey Olive, William Lynch and Audrey O'Brian are from our goodly number. The Volunteer Band and Ministerial Conferences are practically made up of College Freshmen, including Della Hobson, Rosa Edwards, Reba Mills, Desmond Morris, J. O. Walton, J. L. Burton, H. E. Jones, William Lynch, R. E. Fryer, Edward Greene, Clayton Rouse and J. E. Lennon.

We are proud of those among us who have won distinction in athletics. In football, basketball, and track our boys are hard to beat. Our list of athletes with promise in some sport includes Cullipher, J. Anderson, Cale, Hamilton, Rhodes, John C. Adams, Yates, Hayden Stewart, Lennon, Robert Mitchell, Chaney, Carlyle Harmon, Parker, Canady, Sherron, Triplett, Howard Gardner, Byrd and Bethune. With these fine prospects Campbell College should have no worries for her future prowess in athletics.



# SENIORS





## SENIOR CLASS



MOTTO:

*"To strive, to seek, to find, and not to yield"*

COLORS: *Pink and White*

FLOWER: *Sweet Pea*



### OFFICERS

JIMMIE KENNEDY  
 SAM STRICKLAND  
 VIRGINIA CAUGHEN  
 BELLE KELLY  
 MEREDITH MOORE  
 JACK OLIVE  
 VIOLET KINCAID  
 VERNON PHILLIPS  
 FLORA LEE HOLLOWAY  
 LYMAN SEYMOUR

*President*  
*Vice-President*  
*Secretary-Treasurer*  
*Historian*  
*Testator*  
*Poet*  
*Giftorian*  
*Prophet*  
*Class Editor*  
*Author of Class Song*

**B. C. LAMB, *Phi***

GREENSBORO, N. C.

President B. S. U., '27-'28; President B. Y. P. U., '27; Football, '27; Baseball, '28.

In his character is embodied all those manly traits which go to make up a thoroughbred "Campbellite." He is reliable and capable, and his sterling qualities have won for him great popularity.

**SUSIE CLARK, *Astro***

WASHINGTON, N. C.

Eastern Carolina Club, '27-'28; B. Y. P. U., '27-'28; S. W. S. Club, '28.

"Sue's" attractive personality is admired by all as with her winning smile she meets everyone coming her way. She is always kind, cheerful and entertaining. Much luck to you, "Sue."

**JAMES MATTHEW KENNEDY, JR. *Eu***

RALEIGH, N. C.

Vice-President Society, '27; Football, '27; Assistant Baseball Manager, '27; Football Manager, '27; President Senior Class, '28; Dramatic Club, '27-'28; C. C. Club, '28; Wake County Club, '28; Basketball Manager, '28.

"Jimmie" is one of the few boys of our class who has "grown up with the country." The long list of activities under his name attest to the confidence in which he has been held by all. He has proved worthy of the trust at all times.

**CATHERINE TAYLOR, *Astro***

BUIE'S CREEK, N. C.

Grandchildren's Club, '28; Harnett County Club, '28; Basketball, '27.

An "attractive brunette" with a sunny disposition. She takes a deep interest in everything relating to Campbell, especially basketball. We feel sure that she will make her mark in the world.

**WILLIAM HARRY LANGSTON, *Eu***

GOLDSBORO, N. C.

Football, '27; Baseball, '26; Track, '27-'28; Class Basketball, '27.

"Dirty's" wit is almost as famous as his ability to make touchdowns. While he is an all-round athlete, his work on the football team especially has been a great joy to all Campbell students. There is probably no better liked boy in our class.





**J. RAYMOND McDANIEL, *Eu***

GARLAND, N. C.

President Ministerial Conference, '28; President B. Y. P. U., '27; Vice-President Society, '27; B. S. U. Council, '28.

Here is a ministerial student of the highest type. You admire his bearing, clean living, and sympathetic nature.

**LOUIS STUART, *Eu***

LILLINGTON, N. C.

President B. Y. P. U., '27; Vice-President B. Y. P. U., '28; Grandchildren's Club, '28.

Rarely does he get in a hurry; he nevertheless can be depended on. Always ready for a good joke, he is still a good, conscientious student.

**JOHN SALMON**

DURHAM, N. C.

Durham County Club.

John is an easy-going fellow with never a worry. Yet he seems to get somewhere. Durham is the pride of his heart.

**GEORGE WILLIAM BRITTON, *Phi***

ELIZABETH CITY, N. C.

Orchestra, '27; Track, '27; B. Y. P. U., '27-'28; William and Mary Club, '28; Assistant Manager Basketball, '28; Secretary Society, '28.

During his two years with us William has made many friends. He mixes work and pleasure in such proportions that life wears a rosy tint for him.

**MATTHEW N. TEACHEY, *Phi***

WALLACE, N. C.

Ministerial Conference, '27-'28.

"When curfew tolls the knell of parting day," we shall see him as shepherd of his flock winding slowly over the hills, and leading the sheep to a place of security.

**KATHLEEN RIDDLE, *Astro***

FAYETTEVILLE, N. C.

B. Y. P. U., '27-'28; Y. W. A., '27-'28; Music Club, '28; Grandchildren's Club, '28.

Kathleen is an earnest girl, that may always be found the same true friend. She doesn't have much to say, but her spirit of graciousness and sweetness has won a place in our hearts.

**THEODORE ALABASTER, *Phi***

OVERHILLS, N. C.

B. Y. P. U., '27-'28; Dramatic Club, '27-'28; Track, '27.

Theodore is a boy so full of physical energy that confinement is irksome to his restless spirit. No doubt the pep and good luck that have carried him through high school will bring him to the end of a prosperous career.

**CLARA ELIZABETH MATTHEWS**

BUIE'S CREEK, N. C.

B. Y. P. U., '27; Y. W. A., '27-'28; Harnett County Club, '27-'28; Grandchildren's Club, '27-'28.

If "Lib" expects to be an old maid school teacher, she'll have to lose some of her winning ways.

"None knew her but to love her,  
None named her but to praise her."

**DANIEL JACKSON OLIVE, *Eu***

CHAPEL HILL, N. C.

Creek Pebble Staff, '27-'28; Senior Class Poet, '28; Lincoln Essay Medal, '27; B. Y. P. U., '27-'28.

The Seniors could not get along without Jack. We have an idea that about two-thirds of the themes written in the dormitory are his products. There are not many boys made like Jack, so we're glad we have the original.

**FLORENCE MARLEY, *Astro***

FRANKLINVILLE, N. C.

Volunteer Band, '27-'28; B. Y. P. U., '27-'28; Y. W. A., '27-'28; Western North Carolina Club, '28.

Florence is the kind of girl one would like to confide in. She takes everything that comes up with a good natured smile and has endeared herself to all by her devout Christian life.





LYMAN HADDON SEYMOUR, *Eu*

RALEIGH, N. C.

Dramatic Club, '27-'28; Orchestra, '28; Grandchildren's Club, '28.

Here's a boy whose soul with rapture swells with the heavenly harmony of music. We confidently predict that this willing subject of Apollo will be rewarded for his devotion.

MARION STEWART

BUIE'S CREEK, N. C.

Harnett County Club, '28; Grandchildren's Club, '28.

"Bill" is a jolly good sport without a care in the world. She works from a sense of duty, then drowns it all in fun.

GEORGE WARREN, JR., *Eu*

BUIE'S CREEK, N. C.

Grandchildren's Club, '28; Harnett County Club, '27-'28; B. Y. P. U., '27-'28.

At once you are impressed with his serious purpose. Work is his only hobby, but we predict that his girl-shy disposition will give place some day to a new enchantment.

MINNIE HALL, *Sappho*

STEDMAN, N. C.

Y. W. A., '27-'28; Society Improvement Medal, '26; B. Y. P. U., '27-'28.

You might mistake her reticence for weakness; but to know her is to discover a loyal devotion to duty, a kindly and studious nature that augurs success in life.

JOHN L. PEARCE, *Eu*

EDENTON, N. C.

President Society, '27; Debaters Medal, '27; B. Y. P. U., '27-'28; Orator, '27; Truck, '28; Secretary Ministerial Conference, '27; Anniversary Debaters, '27; Orator, '28.

When one beholds this lanky orator with his rugged features approach the speaker's stand, he's likely to recognize a youthful Lincoln in the making.



**JOHN MEREDITH MOORE, *Eu***

GREENVILLE, N. C.

Football Squad, '26-'27; President Pearson Building Club, '27-'28; Eastern Carolina Club.

Outside his circle of friends he is rather stoical, but Meredith is a loyal clansman, as every member of the Pearson Building Club can testify. He is a conscientious student, though always interested in Campbell's campus life.

**DOLLY AYCOCK, *Sappho***

ELBERON, N. C.

B. Y. P. U., '27-'28; Y. W. A., '27-'28; Latin Club, '28; Basketball Team, '27-'28.

Here's another of the class standbys. Dolly has helped to uphold the Senior standard in every way. When it comes to athletics, she is always there. If you want anything put across, just call on Dolly.

**VERNON L. PARKER, *Phi***

PORTSMOUTH, VA.

Dramatic Club, '27-'28; Track Squad, '28; Out-of-State Club, '27-'28; B. Y. P. U., '27-'28.

"A friend in need" is Vernon. He looks for the fellow in trouble--and does his best to cheer him.

**MARGARET KELLY, *Sappho***

WINSTON-SALEM, N. C.

President Tither's Band, '26-'27; President Y. W. A., '27-'28; Vice-President Society, '27; Assistant Director B. Y. P. U., '27-'28; Latin Club, '28; B. S. U. Council, '28; Glee Club, '28.

A ready smile, a strong personality, and a studious nature, all combined make Belle a leader in school life. Her interests include all the school activities and make her an all-round student.

**MILTON OWEN LEE, *Phi***

RALEIGH, N. C.

President Society, '27; Anniversary Debater, '28; Commencement Debater, '28; Track Team, '28; B. Y. P. U., '27; Wake County Club, '27-'28; Pearson Building Club, '28; Dramatic Club, '28.

This is a boy whose real worth can hardly be fully appreciated. He is a steady, staunch supporter of the College. A combination of good common sense with a delicate vein of humor leads everyone who knows him to like him.





WILEY LLOYD GILBERT, *Phi*  
DUNN, N. C.

B. Y. P. U., '27-'28.

If silence is golden, Lloyd must certainly be a pauper, for we seldom see him that he is not talking. A jolly disposition, an agile mind, and universal popularity are a few of his assets.

RUBY MAE DEAN, *Sappho*

CHAPEL HILL, N. C.

Y. W. A., '27-'28; Tennis Club, '28; B. Y. P. U., '27-'28.

We don't think Ruby is going to have any trouble reaching her ambition, i. e., to change her name. With her pleasing personality and winning smile she has won a choice place in all our hearts.

HARRY CLIFTON CARTER, *Eu*

WALLACE, N. C.

President Eastern Carolina Club, '27-'28; Class Basketball, '27-'28; Dramatic Club, '27-'28; B. Y. P. U., '27-'28.

"Sleepy" is a popular member of the graduating class, who has kept up with his school work as well as all social activities, especially among the girls. How we shall miss this "Campus Sheik"!

JOSEPHINE BRITTON, *Astro*

ELIZABETH CITY, N. C.

Dramatic Club, '28; Basketball Team, '28; Eastern Carolina Club, '28; S. W. S. Club, '28; B. Y. P. U., '27-'28.

Her many friends among the girls as well as boys attest to "Joe's" popularity. A jolly laugh, a bright smile, and a good pal, are characteristic of her.

LUCY ELIZABETH CAIN

BUHE'S CREEK, N. C.

B. Y. P. U., '27; Y. W. A., '27-'28; Harnett County Club, '27-'28.

Lucy is another of our steady workers. There's no danger of Lucy not attaining her ambition—to graduate. Although a community student, and not on the campus very much, she has found time to endear herself to her schoolmates.



**GILBERT BLUE, *Phi***

CARTHAGE, N. C.

B. Y. P. U., '28.

While Gilbert has been with us only a short time, he has had time to make friends with all the Campbellites. Thoughtfulness of others, loyalty to his Alma Mater, and manliness of conduct have won for him the hearts of his teachers and fellow-students.

**LUCILLE HARMON**

BUIE'S CREEK, N. C.

Grandchildren's Club, '28; Harnett County Club, '28.

In Lucille we find a good pal. We recommend that she exercise freely and eat a light diet, if she wishes to realize her ambition to reduce.

**RAYMOND TILLEY, *Eu***

BAHAMA, N. C.

Supervisor Society, '27-'28; Piano, '27-'28; B. Y. P. U., '28; Durham County Club, '28.

Hard work has never spoiled this chap's good nature. With Goldswith he decries:

"A world where strong temptations try  
And since 'tis hard to combat, learns to fly."

**CATHERINE ALDERMAN, *Sappho***

DUNN, N. C.

B. S. U. Council, '27-'28; Hikers Club, '28; Sampson County Club, '27-'28; Tennis Club, '28; B. Y. P. U. Secretary, '27-'28; Grandchildren's Club, '28; Orchestra, '27-'28; President Society, '27.

"Kat" is one of the busiest bees in our class and one of the sweetest girls to be found. She expects to be a graduate nurse, and—well, we envy her patients.

**WILLIAM F. MOORE, *Phi***

SWANNSBORO, N. C.

Quiet and unassuming, he follows the call of duty without apparent effort. His two years with us give assurance that he will meet life's problems with continued success.





**JAMES ALBERT LEWIS, *Phi***

DUNN, N. C.

Albert lives in a realm of profound thought; he delights in the solitary and not the frivolous aspects of life. His soul responds to the call of the nightingale.

**MILDRED BUTTS**

LILLINGTON, N. C.

Grandchildren's Club, '28; Harnett County Club, '29

We expect great things of Mildred, for she has applied herself diligently to her studies. Though unobtrusive in her nature, she somehow steals her way into the hearts of her associates.

**PAGE HURLEY, *Eu***

B. Y. P. U., '27-'28.

His pleasant smile and kind words have won the admiration of his classmates. We are indeed glad to recognize him as one of our number. Good luck, "ole pal."

**NELLIE BLAIR ABBOTT**

ANGIER, N. C.

President Latin Club, '28; Harnett County Club, '27-'28.

Nellie is a consistent student, whose name appears regularly on the honor roll. She is smart without boasting of it; and although very unassuming, she has made a record here that will not soon be forgotten.

**ERNEST WILLIAMS, *Phi***

DUNN, N. C.

Vice-President B. Y. P. U., '28; Class Basketball, '27.

Ernest is not one who goes in for show and talk, but in his quiet way he accomplishes much. We predict for him success



### EARL JOHNSTON DEES, *Phi*

GREENVILLE, N. C.

B. Y. P. U., '27-'28; Commencement Marshal, '26; Latin Club, '28.

Johnston is the kind of boy we have to like. He studies hard and minds his own business. Success should crown his devotion to duty.

### VIRGINIA CAUTHEN, *Sappho*

LANCASTER, S. C.

President Society, '28; Secretary Senior Class, '27-'28; Secretary Society, '28; B. Y. P. U., '27-'28; Y. W. A., '27; Tennis Club, '28.

Virginia's original wit and humor are always the life of the party. However, underneath the exterior of frivolity lies good common sense and ability. Everybody likes Virginia, and she likes everybody.

### FREDERICK BAREFOOT, *Eu*

HALLSBORO, N. C.

B. Y. P. U., '27-'28; Class Basketball, '27.

Here is a fellow who suffers all the discomforts of red hair. Rarely, however, do we find a happier combination of qualities that make for a winning personality.

### SHERRILL F. YOUNG, *Eu*

ANGIER, N. C.

Basketball, '27; Track Squad, '28; Tennis Club, '27-'28; Harnett County Club, '28.

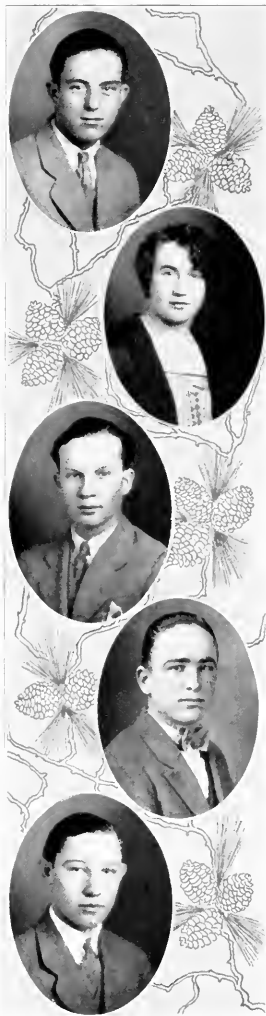
The Senior Class presents Sherrill for the distinction of being the greatest ladies-man on the campus. He is a friend to everybody and has won the esteem of the students.

### LACY COLLIER, *Eu*

LINDEN, N. C.

B. Y. P. U., '27-'28.

Lacy may be found at his post of duty with an optimistic view of life. "Slow but sure" fits this quiet lad from Cumberland.





**W. STYRON HARRIS, *En***

VIRGINIA, VA.

B. Y. P. U., '28.

Anything that takes common sense, honesty, and diligence can be done by Styron. If respect from the faculty and popularity with the students portend success, we are sure it awaits him

**ELSIE STEWART**

BUIE'S CREEK, N. C.

Harnett County Club, '28; Grandchildren's Club, '28.

Elsie is a quiet girl who attends strictly to her own business. Nevertheless, to those who know her, she is a true friend and a faithful student. Elsie, we wish you much happiness.

**JULIAN HARMON, *En***

AHOSKIE, N. C.

His thoughts are aloft, with the desire to perform deeds even greater than those exhibited by our famous "Lindy." Here's to you, Julian, for a great career.

**WILMER L. CHAMBERS, *En***

SANDERSVILLE, GA.

President Society, '26; Treasurer Society, '27-'28; Vice-President B. Y. P. U., '28; Vice-President Ministerial Conference, '26; President Bachelor's Club, '27-'28.

If you are looking for a boy of high ideals, intellectual vigor, and strong moral stamina, see Wilmer. He has won many friends, while with us, all of whom hope for his ultimate release from bachelorhood.

**CARLOS THOMAS**

BROADWAY, N. C.

Football, '27.

Although his pronunciation of French may be slow, he can charge a football line with a dash. Noble impulses show this manly fellow the high role of life.



**JUANITA MITCHELL, *Astro***  
RALEIGH, N. C.

Y. W. A., '28; Tennis Club, '28; B. Y. P. U., '27-'28; President Society, '27; Treasurer Y. W. A., '27-'28.

With her bright, sunny ways and her helpful comradeship "Nita" has captivated the hearts of all her classmates. Besides being a good student, she is a loyal member of her class and her school, always ready to help.

**WILLIAM SAMPSON STRICKLAND, JR., *Phi***

DUNN, N. C.

President Society, '27; Vice-President Senior Class, '28; Class Basketball, '27; Baseball Club, '27; B. Y. P. U., '27-'28.

Sam has never been accused of being an angel, but he possesses a wonderful spirit. His untamed energy finds expression through his saxophone, on the football field, and in the performance of his managerial duties.

**KATHLEEN McDANIEL, *Sappho***

HOPE MILLS, N. C.

Secretary Society, '27; Choir, '27-'28; Cheer Leader, '27-'28; President B. Y. P. U., '27; Tennis Club, '28; Pine Burr Staff, '28.

"Kat" never has a grouch; she may always be found with a jolly laugh or a funny story. She has a quick and ready wit that has made her well liked by all. Here's to you "Kat."

**VICTOR EMMANUEL BROWN, *Phi***

GREENSBORO, N. C.

President B. Y. P. U., '27; Vice-President B. Y. P. U., '27; Secretary Society, '27-'28; Pine Burr Staff, '28; Cheer Leader, '27-'28; Phi Declaimer, '27; Excelsior Medal, '27; Phi Debater's Medal, '27; Vice-President Society, '28.

Victor's excellent qualities, together with his winning personality, have made him a student of the highest type. Though a self-help student he has found time to win honors in the classroom and in the society hall, as well as enjoy the best in student life.

**FLORA LEE HOLLOWAY, *Astro***

DURHAM, N. C.

Reporter Creek Pebbles, '27-'28; Senior Editor Pine Burr, '28; Vice-President Durham County Club, '27-'28; President Society, '28; President Class, '26-'27; Latin Club, '28; Hikers Club, '28; Tennis Club, '28; Midterm Debater, '27; General Secretary B. Y. P. U., '27-'28; B. S. U. Council, '28.

With an ambition undaunted by a too delicate physique, this girl is now about to realize her ambition to graduate with distinction. Her energy has sought expression in various school activities, and her high sense of honor has merited the confidence of her associates.





## HISTORY OF SENIOR CLASS

**F**OUR years ago on a bright autumn morning in September, an ignorant, but happy and eager group of boys and girls were carefully ushered into the great cruiser, "The Freshmen," anchored in the harbor of Buie's Creek Academy, with the sole hope and consolation that a green thing must grow. After being assigned our duties aboard the ship, we realized that the journey had begun in earnest; so we settled down to quietude and work. Under the cold and haughty eyes of the upper deck-men, we struggled for nine long months in perfect misery over the waters of hardships and discontent. If it had not been for the guiding hands of our most worthy captains, Campbell and Marshbanks, our hopes and ambitions might have vanished like ships that pass in the night.

After three months in which our great ship had undergone repairs and had acquired the more dignified title, "The Sophomore," a boastful crew of Sophomores on another morning in September pushed out on the second lap of the journey. To the well-known Greek word, "sophor," meaning wise, add the word "more" and behold! you have a word of great significance. We had traveled over a rough and perilous sea in the pursuit of knowledge, or at least we thought so, though we learned soon afterwards that there was yet a greater distance to be explored. We decided to assume the responsibilities and dignity usually expected of a sophomore and acted accordingly. With the generous aid of our upper deck-men, we were soon to learn the stupendous folly of our ignorance. Again we attribute the success of our journey to our most faithful and patient captains.

In a much more powerful ocean liner, we launched out on our third lap towards the islands of graduation, fondly anticipating the time when we were to occupy the more stately and dignified ship, "Seniorism." Anxious that we might learn the skill of this famous crew, who unceasingly pointed out our faults and weaknesses instead of encouraging us by discovering our virtues, we kept the speed of our ship almost on equal with the one steered by that all wise *hidy*. As the result of the brilliant affair in which they were our most gracious guests, we were put on a higher level in the eyes of the high and mighty. But "all is well that ends well," thus we had gained our long sought for and deserved recognition in this momentous event. With the exception of a few storms and some difficult sailing under the clouds of discontent, we finished the last of the lap without any serious losses and arrived in the beautiful port at Campbell College.

The most critical period—namely, the last lap of our journey—finds us still radiant with fun and frolic, but calmed to that steadiness which can be so readily relied upon, having at last obtained the most coveted of all degrees, "Dignified Seniors." Many of our crew who were with us at the beginning have dropped from our number of seafarers, having found life on land more pleasant; while others have fallen victims to Cupid's darts. But to those who have remained with us, this will prove a time of progress and achievement in every respect. We shall be glad to look back upon our senior voyage with satisfaction afforded by a task, well done.

To those who have piloted us so successfully through the dangerous and unknown regions of the past four years, we pay our last tribute and respect.

It is with a deep sigh of regret that we approach the end of our voyage and turn our dignified roles to those who follow us.





# LAST WILL AND TESTAMENT

STATE OF NORTH CAROLINA,  
TOWN OF BUIE'S CREEK,  
CAMPBELL COLLEGE.

**WE**, the High School Seniors of Campbell College, being of reasonably sound mind, in consideration of the sleepless nights we have caused our teachers, as we are about to depart for regions unknown, do hereby make this our "Last Will and Testament" to be read on the sixteenth day of May, 1928:

ARTICLE I.—To our Alma Mater we bequeath our deepest love and admiration for her and hers.

ARTICLE II.—To Dr. Campbell, our beloved President, we do will and bequeath the hope that his life may ever be a constant inspiration to the following Senior Classes, as it has been to us.

ARTICLE III.—To the faculty as a whole, we will the sweetest memories of our Senior year, and our heartfelt sympathy in their endurance of our dumbness.

1. To Professor Leslie we bequeath an oversize pair of horn-rimmed glasses, in the hope that they may enable him to see things as the boys see them.

2. We leave to Professor Marshbanks five Rhode Island Red hens, hoping that they will help him solve the problem of feeding the basketball boys eggs at their yearly banquet.

3. To Mrs. Parker we leave a vest pocket dictionary to be used in discriminating between "Miss Allen" and "Mrs. Parker."

4. To Miss Powell we bequeath an "evergreen" wreath to be placed on the tomb of her dead language.

5. To Professor Pettigrew, for his never-ending service we will and bequeath:

(a). Sixty bright red pencils with which to mark errors in future poems, manuscripts, themes, etc.

(b). A tennis racket five feet in diameter, so that he will stand some chance in his game with Miss Strickland and Miss Parker.

(c). A tightly-sealed den, five feet by seven feet, in which he can practice on his violin to his heart's content, and at the same time not disturb passers-by.

6. To Miss Strickland we will a trip to Paris, hoping that she will win a French nobleman, who will keep her well versed in French slang.

7. We will to Professor Edwards Rip Van Winkle's gun with which to kill time until his theories materialize.

8. To Miss Burt we will a "Clay" mirror with the hope that it will aid her students in their practice of expression.

ARTICLE IV.—To the deserving Junior Class we leave all our invisible privileges, hoping that they will be more successful in finding them than we have been. We also bequeath them the studious habits of the entire Senior Class, with the request that they make a brilliant record next year.

ARTICLE V.—Last, but not in anyway least, we will to all our very fondest farewell.

This document is hereby signed and sealed; and it is declared by the Senior Class of Nineteen Hundred and Twenty-eight, this the sixteenth day of May, in the year of our Lord and Master, Nineteen Hundred and Twenty-eight, as their last will and testament.

(Signed) SENIOR CLASS OF 1928.

J. MEREDITH MOORE, *Testator.*

## CLASS POEM

*On first sailing from her cove, the ship  
Was but of wooden frame,  
From grammar school harbor her tour began,  
A sea-port of great repute.  
And a right gallant little vessel, the  
Freshman was her name,  
The crew was gay and jolly; its loyalty  
I'll not confute.*

*Upon this brave little craft the gods  
Most surely ne'er did frown;  
For there descended a marvelous gift,  
Most wonderful it seems,  
After each year of honest success, this  
Ship may change her gown  
To something nearer the beautiful,  
Pure white pearl of her dreams.*

*Beginning the second year of her sailing,  
She is christened anew.  
After braving the deep-sea perils  
And tempests called exams  
Her outward substance seems to change  
And becomes a creamier hue.  
Then her new name of Sophomore  
Is spread by cablegrams.*

*Next the third year has gone on past  
And Junior our bright brig's name,  
Greater and finer she has grown  
Sailing down Campbell's river,  
Flaunting all dangers, her courage high,  
Bearing her crew on to fame.  
With sails all set to the world of the future,  
People of worth she'll deliver.*

*Though many have left her, still is she sound,  
And Senior she is this year,  
Of beautiful, pure white pearl, and  
Though buffeted, she has won.  
Serene she is, and powerful  
With not a thing to fear.  
Ready to sail undaunted, bravely  
Through life's great ocean.*

—POET.



JUNIORS  
1929





W.A.C.C.  
1914

PINE HOUSE SURR

## CLASS POEM



### “MEMORIES”

*Back to the sea of yesterday, a tiny ship set sail,  
Across the tide of mem'ry on a sea set free from gale,  
More precious than gold or diamonds is the cargo it bears,  
“Thoughts”—worth many millions—of joy, sorrow and care.*

*Along the coast of '26 the sails were hanging low;  
The tide was high; the tempest raged; our barque rather slow.  
On board the crew was all alarmed; no harbor could be near,  
They steered their course with heavy hearts in pity, doubt, and fear.*

*They plundered “Sophomore” harbor there and sailed again to sea,  
Just sailing on at reckless pace in high delightful glee.  
They entered “Junior” harbor, disdainful all dignity,  
Devouring Tennyson's Idylls, mockingly they sail to sea.*

*The great white ship is anchored now, it sails the main no more;  
The crew in solemn dignity march out from deck to shore.  
At “Senior-land” they're stranded; so impatiently they wait—  
To meet the king of intellect who passes out their fate.*

—POET.



CLASS OFFICERS

CHARLES EARP

*President*

FRED LOWE

*Vice-President*

ANNIE LAURIE HARRELSON

*Secretary-Treasurer*

EDWIN HUMPHREY

*Historian*

MYRTLE HUGHES

*Poet*

MEMBERS

Eugenia Cain

Myrtle Hughes

Wade Privett

Inez Coppedge

Jack Johnson

Virginia Picklesimer

Leland Cox

Olla Fay Johnson

Marjorie Ryals

Charles Earp

Virginia Jones

Sherwood Shuler

Olive Geddie

Ruth Lipscomb

Theron Stewart

Rhoda Gregory

Alma Long

Mabel Stewart

Tracy Grisson

Avis Marks

Geraldine Stewart

Clyde Glosson

Annie Matthews

Mary Seymour

Clarence Gainey

Eunice Mehaffy

Edythe Sears

John Hocutt

Marsh Myers

Sara Bess Scott

Annie L. Harrelson

Luther Nall

Gladys Simpkins

Estelle Howell

Margaret Perry

Bradley Smith

Edwin Humphrey

Eutoka Page

Dorothy Talley

Clenard Hudson

Carl Wells





JUNIOR CLASS



TALLEY

MOULT

SCOTT

STUART

GAINY

GREGORY

HUMPHREY

JOHNSON

COPELAGE

SEYMOUR

HARRIS

JOHNSON

HALL

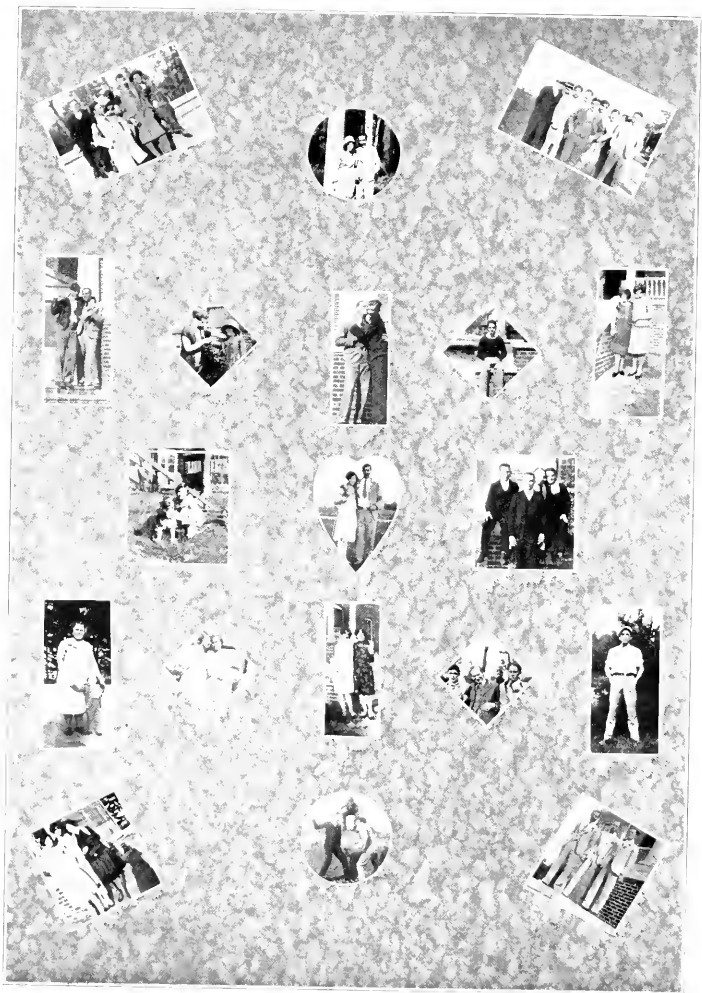
SEARS

BARP

HARRISON

JUNIOR CLASS









# SOPHOMORE



FINE ARTS BUILDING

# SOPHOMORE CLASS

## OFFICERS

THEODORE LEE  
ALONZO EARP  
GUY KIRK  
HAZEL MORGAN  
JOSEPHINE HYDE

*President*  
*Vice-President*  
*Secretary*  
*Treasurer*  
*Poet*

## MOTTO:

*Push—Pull together*

FLOWER: *Violet*

COLORS: *Orchid and Yellow*

## ROLL

Ruth Burns	French Baker	Berles Johnson
Ernestine Collier	Lee Beal	Guy Kirk
Eugenia Currin	Eugene Bryan	George Langston
Annie Mae Doshier	I. D. Britt	Theodore Lee
Gurlie Guy	Clifford Boswell	Henry Morton
Josephine Hyde	Wayland Britton	Cecil Marks
Callie Hight	Clyde Crissman	Ray Meadows
Euna Mae Jones	Rody Clemmons	M. L. Mott
Eloise Johnson	Mack Duke	Lewis McLeod
Gertrude Johnson	Ernest Warren	James Mitchell
Marguerite Johnson	Alonzo Earp	John Ousley
Ethel Mae Matthews	Charles Taylor Edgerton	Alton Parker
Pauline Matthews	Bill Ellington	Edward Powell
Myrtice McPhail	David Harris	Dodson Reardon
Marie Matthews	Theo. Honeycutt	Arthur Robertson
Hazel Morgan	Howard Hight	T. R. Spell
Hazel Stewart	Charles Hassell	Leon Stocks
Mary Talley	Burgess Hitchings	O. N. Swanson
Elsie Tyner	D. L. Humphery	Jack Tedder
Leola Willis	Blanton Hartness	Herbert Taylor
Amantha Ward	Rudolph Johnson	Mack Wallace
Roger Lee Avent		James Weaver



SOPHOMORE CLASS



## CLASS POEM



*As Sophomores at Campbell  
We wear a big, broad grin.  
Our aim is "Always do things well,"  
For then the "dip." we'll win.*

*Sure, we are loyal Campbellites,  
Trying to do our best.  
We hope to ever do the right  
And leave alone the rest.*

*Beyond us lies our shining goal  
That we all try to reach.  
Striving to us will ne'er grow old  
So long as Campbells teach.*

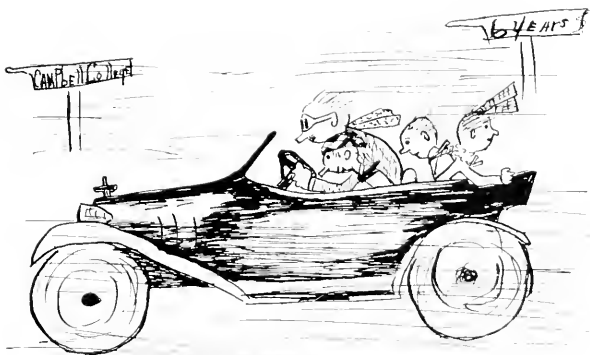
*We Sophomores have our little troubles  
That sometimes brings the little tear;  
But they will vanish just like bubbles,  
For we'll be Juniors, sure, next year.*

*Keep struggling on? We will, you bet,  
And fight our battles through.  
But ne'er will we these days forget  
Tho' to Sophomore days we bid "Adieu."*

—POET.

PINE

BURR





# FRESHMAN CLASS



## MOTTO:

*I am the Master of my fate,  
I am the Captain of my Soul.*

FLOWER: *White Rose*

COLORS: *Red and White*



## OFFICERS

R. M. GILBERT  
MARY MAYNARD  
I. T. NELSON

*President*  
*Vice-President*  
*Secretary-Treasurer*



## ROLL

Ralph Arnold  
Lucy Ayscue  
Ernest Behre  
Thomas Boykin  
Preston Butts  
Hortence Chamblee  
Arthur Capps  
Inez Currin  
John C. Dail  
Reta Dean  
Ellis Dew  
Chester Ennis  
Judd Ennis  
Warren Everett  
Douglas Fisher  
Ceburn Galloway

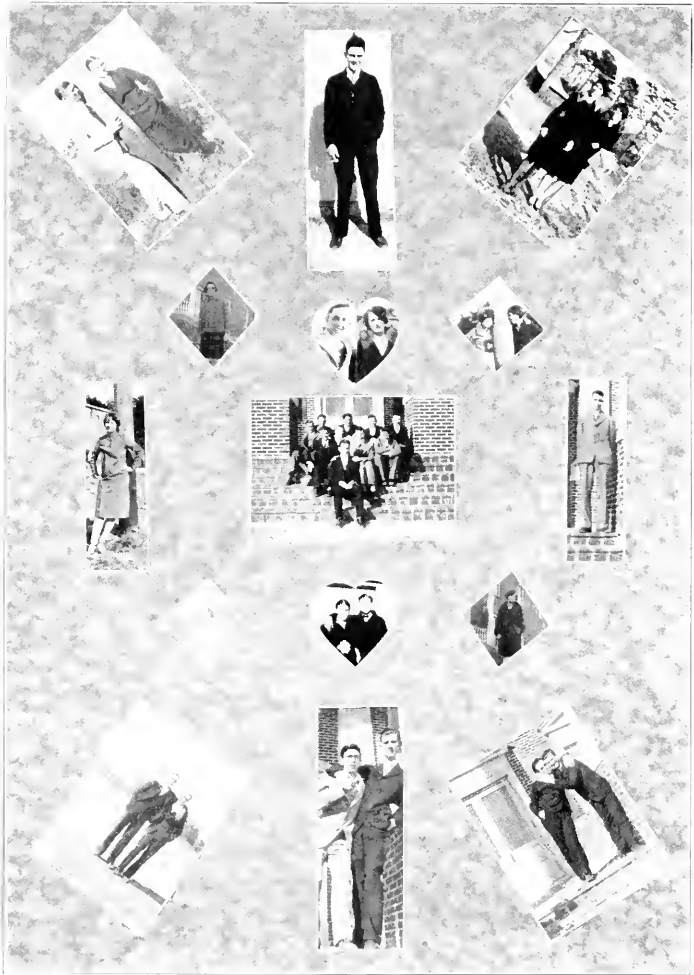
R. M. Gilbert  
Nancy Green  
Madie Gregory  
Marvin Hight  
Levie Jones  
Smoot Johnson  
Iva Johnson  
Kathleen Jones  
Jean Keim  
Lillie Long  
Louise Long  
Leland Matthews  
Gretchen Matthews  
Agnes Marks  
Mary Maynard  
Virginia Mehaffey

James Murray  
I. T. Nelson  
James Perry  
James Archie Smith  
Frances Saunders  
Viola Simmerson  
Evelyn Sexton  
Howell Stewart  
Ernestine Stewart  
Hubert Taylor  
Ralph Thomasson  
Reginald Vernon  
F. E. Wilson  
C. G. Weston  
Grace Yarbro  
Essie Young



HIGH SCHOOL FRESHMAN CLASS









# BUSINESS DEPARTMENT





## COMMERCIAL CLASS

MOTTO:

*No victory without labor*

FLOWER: *Sweet Pea*

COLORS: *Orchid and White*

### OFFICERS

C. R. MATTHEWS  
PERRY THOMAS  
IRENE HUDSON  
ROY COLTRAIN

*President*  
*Vice-President*  
*Secretary*  
*Treasurer*

### CLASS ROLL

#### *Candidates for Diploma*

Melene Burroughs  
Carrie Lee Baxley  
Myrtle Crowder  
William E. Carlton  
James B. Grimmer  
Elizabeth Harris  
Irene Hudson  
Thelma Hawkes  
K. B. Johnson

Violet Kincaid  
Thelma Matthews  
C. R. Matthews  
J. E. Martin  
Vera Patterson  
Hamby Vernon Phillips  
L. H. Sutton  
Larry R. Stox

Perry Thomas  
Wallace Tew  
Rena Thomas  
Iva West  
C. G. Waller  
Mary Claude Spruill  
Virginia Edgerton  
Mildred Kivette  
Norwood McCullen

#### *Candidates for Certificate*

Stacy Britt  
Amos Lee Carter  
Roy Coltrain  
Dorothy Gertrude Currin  
Sarah Duncan  
Lena Maie Dorman

Ruth Gregory  
Eugene Jeffreys  
W. C. Willis  
Catherine Lewis  
Hampton Moffitt  
James McAden

Betty Maie Dean  
Lucile Owen  
Fountain Ragland  
Harold Turlington  
William G. Teal  
Carey Wright





COMMERCIAL CLASS



C. R. MATTHEWS

BUIE'S CREEK, N. C.

"Use the margin."

President Commercial Class; President Harnett County Club; Graduate Buie's Creek Academy.

VIOLET KINCAID, *Astro*

LAURINBURG, N. C.

Violet, better known as "Ikey," is always ready to answer that which others do not know.

Supervisor Society; Treasurer Dramatic Club; B. Y. P. U. Group Captain; Group Chorister Y. W. A.; Class Giftorian. Graduate Laurinburg High School.

MILDRED KIVETTE

BUIE'S CREEK, N. C.

Pleasure is a necessity in her life, but—work before pleasure.

Graduate Campbell High School.

MARY CLAUDE SPRUILL, *Astro*

ROPER, N. C.

Give to the school the best you have, and the best will come back to you.

Society English Critic; Class Editor Creek Pebbles; Group Treasurer Y. W. A. Graduate Roper High School.

THELMA MATTHEWS, *Astro*

LILLINGTON, N. C.

"Be square."

Graduate Lillington High School.



LARRY STOX, *Eu*  
GREENVILLE, N. C.

Larry always views life from the sunny side. He's a pal worth having.

Member Orchestra, 1926-'28. Graduate Campbell High School.

WALLACE TEW, *Phi*  
COOPER, N. C.

Wallace, known as "Country," original and always ready.

Graduate South River High School.

VERA PATTERSON, *Astro*  
BROADWAY, N. C.

Quiet with her work, but always doing her best.

Secretary Society; Y. W. A. Group Captain. Graduate Broadway High School.

JAMES B. GRIMMER, *Phi*  
HALIFAX, N. C.

Service rather than praise.

Graduate Weldon High School.

MELENE BURROUGHS, *Astro*  
GREENSBORO, N. C.

Serious in all things but always ready for a "Trip"—that's Melene.

Vice-President Society. Graduate Greensboro High School.

PERRY THOMAS, *Eu*  
BROADWAY, N. C.

Always on the job with a smile.

Winner Eu Improvement Medal; Assistant Treasurer Society; Vice-President Commercial Class. Graduate Broadway High School.





MR. AYSUCHE  
College Freshman Class

MISS BURT  
Senior Class

MISS CHEEK  
Junior Class

J. R. McDANIEL, Jr.  
Senior Class Mascot

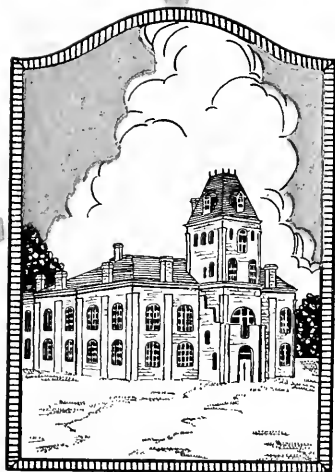
MISS STRICKLAND  
Sophomore Class

MRS. BONSTEEL  
Freshman Class

MR. WALLACE  
Business Class

FACULTY ADVISERS





# ORGANIZATIONS

"And from the ground there  
blossoms red Life that shall  
endless be."

From 1901 to 1904 the Old Administration Building, seen above, arose slowly out of the debris. This period of Reconstruction is replete with heroic sacrifices, and examples of great faith and love. Towering above all other supporters in this epochal achievement is the name of the late Zachary Taylor Kivett, who molded the brick and erected the building at less than a living wage.

With the exception of Mr. M. C. Treat's gift, which amounted to \$500, the cash contributions were small in dollars. Truly this building marks the beginning of permanency.







# ART CLASS

MOTTO:

*To make the world more beautiful*

FLOWER: *Violet*

COLORS: *Purple and Gold*

MASCOT

GEORGE EDWARDS, JR.

ANNIE LAURIE HARRELSON  
DELLA HOBSON  
JAMES BURTON

*President*  
*Vice-President*  
*Secretary-Treasurer*

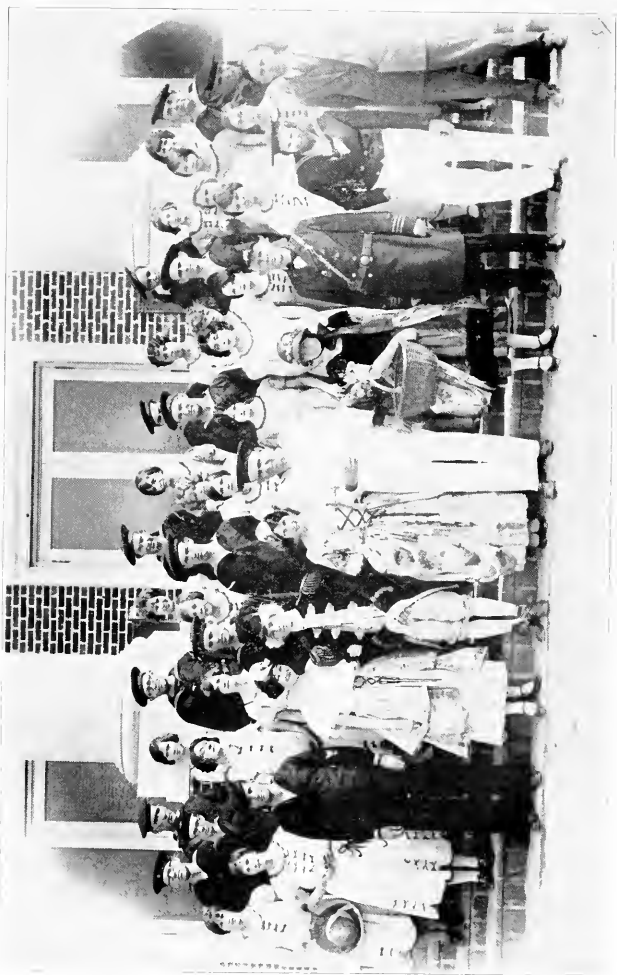
MEMBERS

Lucy Ayscue  
James Burton  
J. P. Caulter  
Virginia Cauthen  
Nelle Cheek  
Fronie Harrell

Annie Laurie Harrelson  
Frank Johnson  
Earl Jordan  
Mildred Kivette  
Grace Yarbro  
Jimmie Kennedy  
Kathleen McDaniel

Ruby McLeod  
Constance Midkiff  
Wendell Miller  
William Powell  
Gladys Strickland  
Annie Williams





CAST OF THE PINE BLOSSOM, OPERA 1927 COMMENCEMENT



MUSIC DEPARTMENT



# DRAMATIC CLUB

## OFFICERS

ROSA EDWARDS  
VIOLET KINCAID  
MAC SATTERWHITE  
ESTELLE BURT

*President*  
*Secretary*  
*Business Manager*  
*Director*

## MEMBERS

Mabel Albritton  
Katherine Bland  
Josephine Britton  
Victor Brown  
Melene Burroughs  
Thad Chaney  
Inez Coppedge  
Susie Danner  
Sarah Duncan  
Margaret Duncan  
Rosa Edwards  
Charles Earp

Della Hobson  
Estelle Howell  
Frank Johnson  
Jack Johnson  
Horace Jones  
Violet Kincaid  
Jimmie Kenedy  
Jean Keim  
B. C. Lamb  
Eunice Mehaffey  
Reba Mills  
Esther Moon  
Evelyn Murray

Everett Murray  
Willie O'Quinn  
V. L. Parker  
Robert Reaves  
Lymon Seymour  
Mac Satterwhite  
Frances Saunders  
Sherwood Shuler  
Edythe Sears  
Elsie Tyner  
Amantha Ward  
Ernest Williams





## INSTRUMENTAL CLASS

MISS LULA FRANCES BROOKS, *Director*



### *Violins*

R. C. Pettigrew  
Nettie Moon  
Thelma Parker  
Katherine Alderman  
May Marshbanks  
Hartwell Campbell

Juanita Stewart  
Lyman McLeod  
Jack Broadhurst  
Larry Stox  
David Harris  
Blanton Hartness

Mary Seymour  
Fred Barefoot  
Margaret Bland  
Lucy Collier  
Thelma Flowers  
Erma Gregory

### *Saxophone*

Sam Strickland

### *Clarinet*

Grantham Ward

### *Cornet*

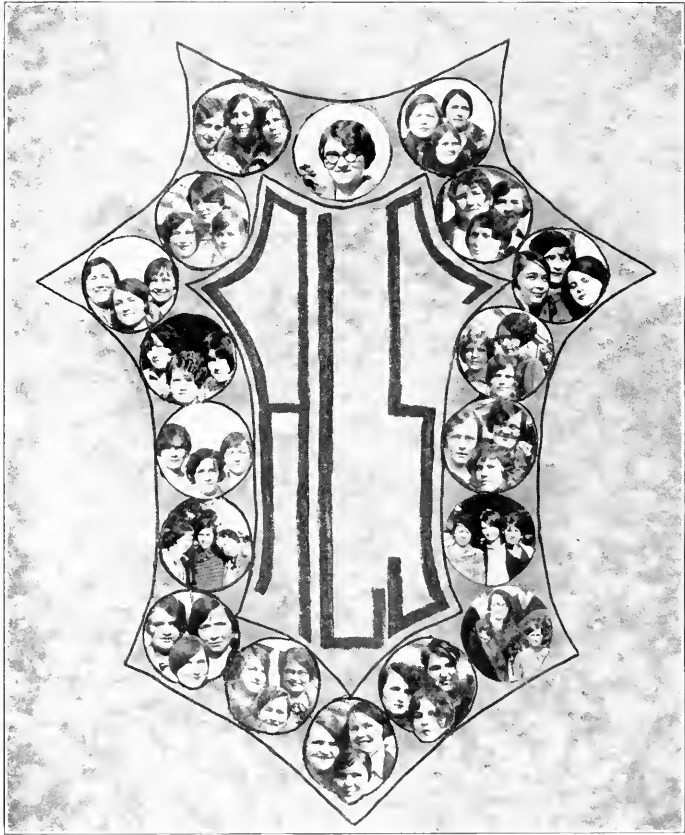
Julian Harmon

### *Trombone*

Guy Kirk

### *Pianist*

Lyman Seymour



ASTRO LITERARY SOCIETY





# ASTRO LITERARY SOCIETY

## OFFICERS

### *First Quarter*

FRONIE HARRELL  
 VERA PATTERSON  
 ANNIE LAURIE HARRELSON

*President*  
*Secretary*  
*Supervisor*

### *Second Quarter*

MARTHA STALLINGS  
 MARY TILLEY  
 HAZEL MORGAN

*President*  
*Secretary*  
*Supervisor*

### *Third Quarter*

ANNIE LAURIE HARRELSON  
 WILLIE O'QUINN  
 VIOLET KINCAID

*President*  
*Secretary*  
*Supervisor*

### *Fourth Quarter*

FLORA LEE HOLLOWAY  
 MARY SEYMOUR  
 ANNIE WORTH ODUM

*President*  
*Secretary*  
*Supervisor*

### *Representatives*

GERTRUDE FERRELL  
 FLORA LEE HOLLOWAY  
 WILLA STEPHENS  
 FRONIE HARRELL  
 EDYTHE SEARS  
 WILLIE O'QUINN  
 MISS GLADYS STRICKLAND

*Anniversary Speaker*  
*Mid-Term Debater*  
*Anniversary Debater*  
*Mid-Term Debater*  
*Reciter's Medal '27*  
*Chief Marshal*  
*Sponsor*

## MEMBERS

Ruth Albritton  
 Mabel Albritton  
 Christine Barbee  
 Janie Barbee  
 Josephine Britton  
 Melene Burroughs  
 Susie Clark  
 Inez Coppedge  
 Mary Dewar  
 Sarah Duncan  
 Annie Laurie Harrelson  
 Fronie Harrell  
 Dolores Hall  
 Flora Lee Holloway  
 Irene Hudson  
 Mazie Johnson  
 Ophelia Johnson  
 Helen Johnson

Virginia Jones  
 Jean Keim  
 Violet Kincaid  
 Alma Long  
 Juanita Mitchell  
 Hazel Morgan  
 Florence Marley  
 Florence McDonald  
 Esther Moon  
 Thelma Matthews  
 Jevelyn Moore  
 Audrey O'Brian  
 Lynda O'Quinn  
 Willie O'Quinn  
 Annie Worth Odum  
 Virginia Picklesimer  
 Vera Patterson  
 Othella Patterson  
 Fannie Ross

Kathleen Riddle  
 Zula Rogers  
 Willa Stephens  
 Sara Bess Scott  
 Martha Stallings  
 Mary Seymour  
 Mary Spruill  
 Edythe Sears  
 Agnes Stephenson  
 Rena Thomas  
 Stella Tilley  
 Mary Tilley  
 Vergie Waller  
 Maybelle Wheelless  
 Francis Woody  
 Amanda Ward  
 Annie Dove Wilson  
 Grace Yarbro



EUTROPHIAN LITERARY SOCIETY





# EUTROPHIAN LITERARY SOCIETY

MOTTO: *Fides*

COLORS: *Orange and White*

## OFFICERS

### First Quarter

J. B. HARDY  
CARY OLIVE  
R. L. TILLEY

*President*  
*Secretary*  
*Supervisor*

### Second Quarter

J. L. PEARCE  
J. R. McDANIEL  
CECIL MARKS

*President*  
*Secretary*  
*Supervisor*

### Third Quarter

H. S. SHULER  
JOHN HOCUTT  
R. L. TILLEY

*President*  
*Secretary*  
*Supervisor*

### Fourth Quarter

T. R. LEE  
EARL JORDAN  
H. F. PARKER

*President*  
*Secretary*  
*Supervisor*

### Representatives

J. E. LANIER  
GEORGE CULLIPHER, CARY OLIVE  
CARY OLIVE, J. E. ADAMS, J. L. PEARCE  
CECIL MARKS  
W. H. ABERNATHY, W. L. HARRIS, W. H. HAMILTON, CECIL MARKS

*Alumni Anniversary Orator*  
*Anniversary Debaters*  
*Commencement Orators*  
*Chief Marshal*

*Commencement Declaimers*

## MEMBERS

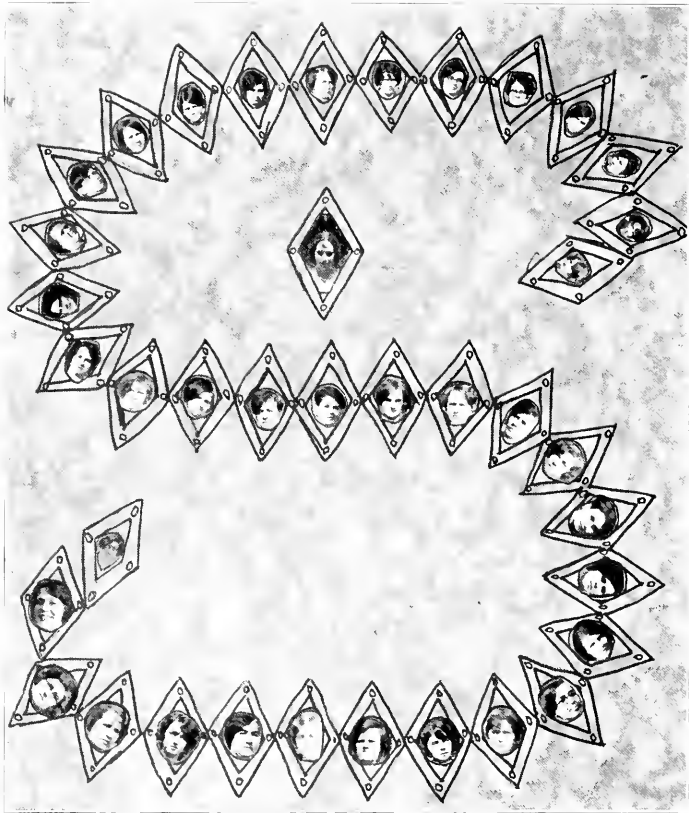
W. H. Abernathy  
J. E. Adams  
Joseph Anderson  
Lee Beal  
Fred Barefoot  
Spencer Bell  
Thomas Boykin  
C. W. Boswell  
Herbert Brown  
J. I. Bradley  
L. H. Cox  
Harry Carter  
W. L. Chambers  
P. H. Cale  
R. C. Coletrain  
Bill Carlton  
George Cullipher  
J. C. Dail  
Mack Duke  
C. L. Earp

Warren Everett  
H. A. Evans  
R. M. Gilbert  
Edward Greene  
C. N. Galloway  
Blanton Hartness  
John Hocutt  
W. M. Hamilton  
J. B. Hardy  
D. L. Humphrey  
Edward Humphrey  
Page Hurley  
J. I. Honeycutt  
Burgess Hitchings  
T. E. Jordan  
Jack Johnson  
Jimmie Kennedy  
W. H. Langston  
George Langston

T. R. Lee  
J. R. McDaniel  
Ray Meadows  
A. B. Martin  
J. M. Moore  
M. L. Mott  
R. L. Mitchell  
J. H. Moffitt  
Cecil Marks  
Marsh Myers  
I. T. Nelson  
J. H. Norman  
Cary Olive  
Jack Olive  
Lewis Overton  
J. L. Pearce  
F. E. Pope  
H. F. Parker  
Dudley Powell

H. V. Phillips  
J. F. Perry  
William Royster  
F. B. Raynor  
T. F. Savage  
Grady Souther  
Ryburn Stencil  
Theron Stewart  
L. H. Seymour  
L. B. Stewart  
H. S. Shuler  
R. H. Sutton  
L. R. Stox  
R. L. Tilley  
Perry Thomas  
Hubert Taylor  
W. G. Teal  
Carl Wells  
Cary Wright  
C. G. Waller





SAPPHO LITERARY SOCIETY



PINE HOLLOW BURR

# SAPPHO LITERARY SOCIETY

## OFFICERS

### *First Quarter*

KATHLEEN McDANIEL  
MARGARET DUNCAN  
MARY ADAMS

*President*  
*Secretary*  
*Supervisor*

### *Second Quarter*

CONSTANCE MIDKIFF  
WILLARD HEMINGWAY  
EDYTHE BARNHARDT

*President*  
*Secretary*  
*Supervisor*

### *Third Quarter*

LUCILE OWEN  
VIRGINIA CAUTHEN  
RUBY DEAN

*President*  
*Secretary*  
*Supervisor*

### *Fourth Quarter*

VIRGINIA CAUTHEN  
SUSIE DANNER  
MINNIE HALL

*President*  
*Secretary*  
*Supervisor*

### *Representatives*

BERDIE HAIGWOOD  
CONSTANCE MIDKIFF  
KATHERINE BLAND  
MYRTLE HUGHES  
KATHLEEN McDANIEL  
MISS ESTELLE BURT

*Anniversary Speaker*  
*Mid-Term Debater*  
*Anniversary Debater*  
*Mid-Term Debater*  
*Chief Marshal*  
*Sponsor*

## MEMBERS

Mary Adams  
Katherine Alderman  
Dolly Aycock  
Pauline Askew  
Edythe Barnhardt  
Katherine Bland  
Carrie Baxley  
Ruth Burns  
Alma Carter  
Virginia Cauthen  
Hortence Chamblee  
Susie Danner  
Margaret Duncan  
Ruby Dean  
Rosa Edwards

Nancy Green  
Minnie Hall  
Della Hobson  
Estelle Howell  
Josephine Hyde  
Inez Johnson  
Kathleen Jones  
Belle Kelly  
Louise Leslie  
Ruth Lipscomb  
Mary Maynard  
Eunice Mehaffey  
Virginia Mehaffey  
Constance Midkiff

Reba Mills  
Kathleen McDaniel  
Fay Morgan  
Juanita Naylor  
Lucile Owen  
Eutoka Page  
Edith Pearson  
Frances Saunders  
Vanda Saunders  
Louise Simerson  
Gladys Simpkins  
Elsie Tyner  
Bertha Woodruff  
Annie Warren  
Gladys Warren



PHILOLOGIAN LITERARY SOCIETY





# PHILOLOGIAN LITERARY SOCIETY

MOTTO: *Vici*

COLORS: *Pea Green and Old Rose*

## OFFICERS

### *First Quarter*

M. O. LEE	President
H. D. JONES	Vice-President
V. E. BROWN	Secretary
G. D. DANNER	Supervisor

### *Second Quarter*

H. GARDNER	President
J. A. ROUSE	Vice-President
B. CRAWFORD	Secretary
C. GLOSSON	Supervisor

### *Third Quarter*

M. SATTERWHITE	President
A. W. EARP	Vice-President
W. LYNCH	Secretary
J. O. WALTON	Supervisor

### *Fourth Quarter*

B. CRAWFORD	President
V. E. BROWN	Vice-President
W. BRITTON	Secretary
J. E. MILLER	Supervisor

### *Representatives*

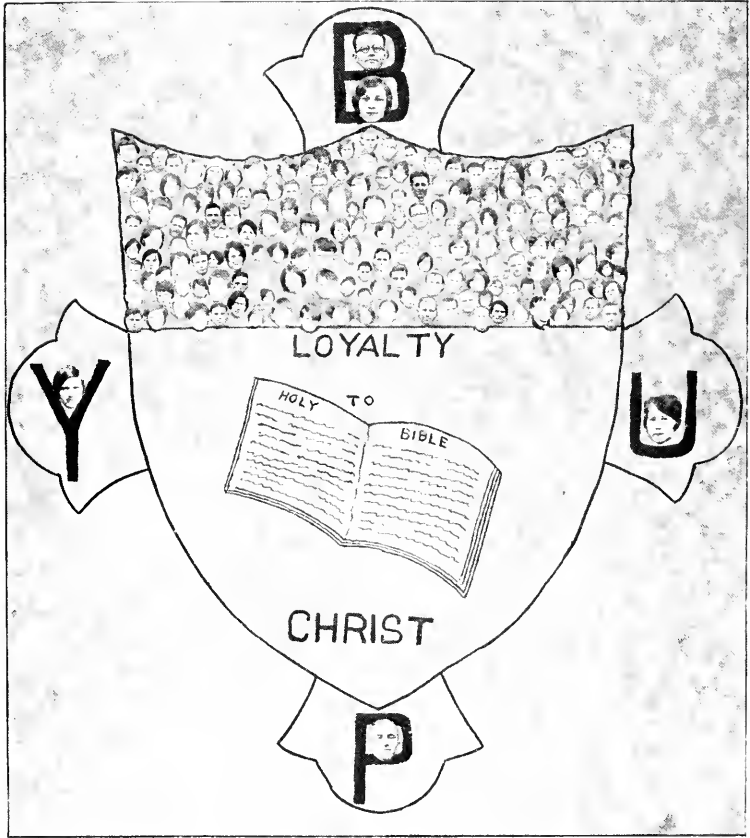
PAUL GREEN	<i>Alumni Anniversary Orator</i>
V. E. BROWN, M. O. LEE	<i>Anniversary Debaters</i>
J. O. WALTON, C. OUSLEY, B. CRAWFORD	<i>Commencement Orators</i>

## WE CAME; WE WORKED; WE CONQUERED

During its history the Philologian Literary Society has accomplished many wonderful works. Its beneficiaries, now scattered throughout the world, have done much through the training received in her walls. She seeks the homage of all her noble sons, so that through their submission to her rites, magic eloquence may flourish. Her spirit, like the first rays of the morning sun, soft, gentle and life-giving, has quickened the souls of many a dormant youth. Blessed is he who has known her ways.

Perhaps, dear friend, you'd like to know  
 How we came to be so strong;  
 I will tell you what I know:  
 Little by little we became a throng,  
 Onward, onward we strove and worked,  
 Linked together in brotherhood;  
 Onward we went and never shirked,  
 Giving our time and what we could,  
 In a little while we grew so great—  
 And we never stopped to rest—  
 Now we've advanced to far in state,  
 Something tells us we're the BEST.







# THE GENERAL B. Y. P. U. ORGANIZATION

J. O. WALTON  
BELLE KELLEY  
FLORA LEE HOLLOWAY  
GUY KIRK  
PAULINE ASKEW

*Director*  
*Assistant Director*  
*Secretary-Treasurer*  
*Chorister*  
*Pianist*

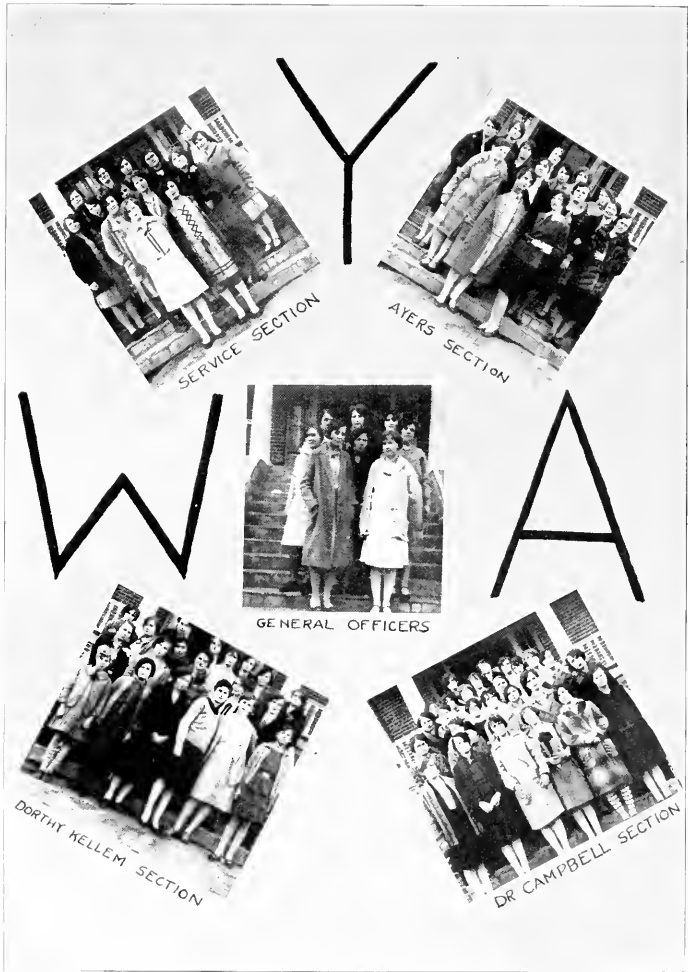
◆ ◆ ◆  
*"Study to show thyself approved unto God"*

The B. Y. P. U. is one of the most wide-awake, enthusiastic, functioning organizations on the Campbell campus. Just before Commencement of '27 the general officers, who were to serve this year, were elected and at the beginning of the fall semester began work in earnest. They, with many other students, came together and reorganized the B. Y. P. U. into five different unions. Since that time our enrollment has increased to such an extent that two new senior unions have had to be organized, all of which are doing splendid work.

The main purpose of the B. Y. P. U. is to train Christians for active service in the Master's harvest. In order for this to be done effectively, it is necessary to give the students a comprehensive view of Baptist doctrines, and of B. Y. P. U. methods. In the early fall the largest study course ever conducted at Campbell was put on, enrolling three hundred and thirty students besides the members of the faculty and visitors. Seven books were taught by an able group of teachers, including Mrs. A. B. Bonsteel, Mrs. S. E. Ayers, Prof. B. P. Marshbanks, and Prof. J. E. Ayscue of our own faculty; Misses Rickett and Harrison and Mr. Perry Morgan, of Raleigh, N. C. The study courses were enjoyed greatly by both faculty and students.

When the convention was held at Meredith last summer, the Campbell unions were found far behind in extension work. We resolved that this should not recur, and to avoid this unfortunate neglect, an extension committee was appointed having as its chairman G. D. Danner, which committee has aided the several unions in a broad program. In our group are those who teach Sunday School classes, help in the various religious exercises on our campus, and assist nearby pastors. It is being demonstrated that a real B. Y. P. U. worker can stand any test put to him.

The socials provided by the B. Y. P. U. have been pleasant. Many delightful memories of them have been left in our minds. The training and the wholesome fun that the B. Y. P. U. offers makes it an ideal organization for young people.







TILLEY



LAMB



LYNCH



OBRIEN

# H. S. U.



DANNER



OLIVE



STRICKLAND



M'DANIEL



ALDERMAN



KELLY

# Council



HARKNELL



WALTON



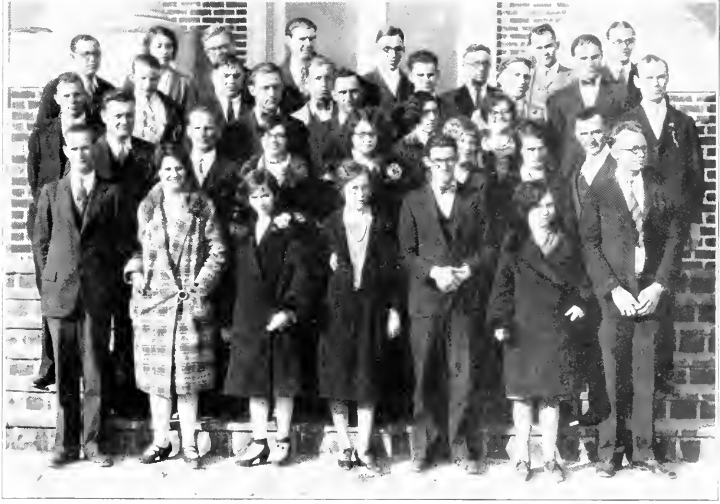
HOLLOWAY



WILLIAM AND MARY CLUB

WILLIAM  
MARY  
WILLIAM  
MARY

*President*  
*Vice-President*  
*Secretary*  
*Treasurer*



MINISTERIAL AND VOLUNTEER STUDENTS



## CAMPBELL'S GRANDCHILDREN

### OFFICERS

EDITH PEARSON  
 THEODORE LEE  
 SAM STRICKLAND  
 ANNIE LAURIE HARRELSON

*President*  
*Vice-President*  
*Secretary-Treasurer*  
*Reporter*

### MEMBERS

*Faculty*

Gladys Strickland

*College Sophomores*

Cornelia Taylor

*College Freshmen*

Alma Carter  
 Louise Leslie  
 Edith Pearson  
 Reba Mills  
 Mazie Johnson  
 Carlyle Harmon  
 Douglas Byrd  
 Hayden Stuart

*High School Seniors*

Sherril Young  
 Lucille Harmon  
 Kathleen Riddle  
 Sam Strickland  
 Gilbert Blue  
 Mildred Butts  
 Katherine Alderman  
 Marion Stewart  
 Elizabeth Matthews  
 Cathryn Taylor  
 Louis Stuart  
 Lyman Seymour  
 Elsie Stewart

*High School Juniors*

Mabel Stewart  
 Olla Fay Johnson  
 Mary Seymour  
 Annie Laurie Harrelson  
 Rhoda Gregory  
 Avis Marks

*High School Sophomores*

Herbert Taylor  
 Charles Edgerton  
 Theodore Lee  
 Cecil Marks  
 Louis McLeod  
 Marie Mathews

Ernest Warren  
 James Mitchel  
 Berles Johnson  
 Rudolph Johnson

*High School Freshmen*

Amantha Ward  
 Agnes Marks  
 Chester Ennis  
 Madie Gregory  
 Euna Mac Jones  
 Evelyn Sexton  
 Eloise Johnson  
 Marguerite Johnson  
 Louise Long  
 Ernestine Stewart



## Western North Carolina Club

### OFFICERS

CLYDE GLOSSON  
PAUL PHILLIPS  
DELLA HOBSON  
ALBERT MARTIN

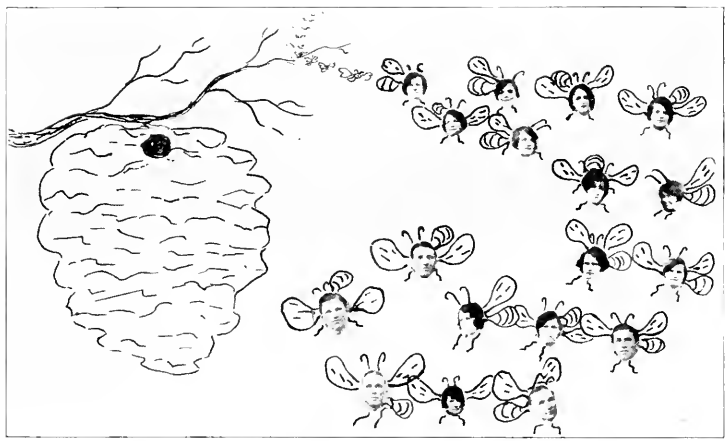
*President*  
*Vice-President*  
*Secretary*  
*Treasurer*

### MEMBERS

"Sid" Arnold  
Edythe Barnhardt  
Spencer Bell  
Victor Brown  
Thad Chaney  
G. D. Danner  
Susie Danner  
Rosa Edwards  
Clyde Glosson  
John Hancock  
J. B. Hardy  
Fronie Harrell  
Della Hobson

Smoot Johnson  
Belle Kelley  
B. C. Lamb  
Edith Lee  
William Lynch  
Albert Martin  
Mary Maynard  
Joe Meador  
David Melvin  
Constance Midkiff  
Esther Moon  
M. L. Mott  
John Morris

M. H. Myers  
Othella Patterson  
Virginia Picklesimer  
Paul Phillips  
William Royster  
Fannie Ross  
Grady Souther  
Gary Triplett  
John O. Walton  
Mr. C. L. Weston  
Mrs. C. L. Weston  
Cary Wright  
Frank Wilson



# Harnett County College Club



## OFFICERS

HOWARD GARDNER  
 MARVIN BETHUNE  
 FLORENCE McDONALD  
 HAYDEN STEWART  
 WILLA STEPHENS

*President*  
*Vice-President*  
*Secretary*  
*Treasurer*  
*Reporter*



## MEMBERS

Marvin Bethune  
 Douglas Byrd  
 Mary Dewar  
 Howard Gardner  
 Carlyle Harmon  
 Mazie Johnson  
 Ophelia Johnson

Horace Jones  
 Florence McDonald  
 S. T. Morris  
 Lynda O'Quinn  
 Willie O'Quinn  
 Edith Pearson  
 Zula Rogers

Willia Stephens  
 Agnes Stephenson  
 Hayden Stewart  
 Cornelia Taylor  
 Annie Dove Wilson  
 Gladys Warren  
 Graham Wilburn



## HARNETT COUNTY CLUB

### OFFICERS

C. R. MATTHEWS  
MILDRED KIVETTE  
ANNIE DOVE WILSON

*President*  
*Vice-President*  
*Secretary-Treasurer*

### MEMBERS

Ruth Burns	Marvin Hight	Dutch Matthews	Mabel Stewart
M. L. Bethune	Mazie Johnson	Cecil Marks	Geraldine Stewart
Douglas Byrd	Ophelia Johnson	James Mitchell	Agnes Stephenson
Lucy Cain	Olla Fay Johnson	Lucile Owen	Hayden Stuart
Eugenia Cain	Eloise Johnson	Lynda O'Quinn	Louis Stuart
Ernestine Collier	Mildred Kivette	Willie O'Quinn	Cornelia Taylor
Myrtle Crowder	Elizabeth Matthews	Edith Pearson	Cathryn Taylor
Dorothy Currin	Marie Matthews	Zula Rogers	Perry Thomas
Mary Dewar	Myrtice McPhail	Mary Seymour	Amantha Ward
Rhoda Gregory	Avis Marks	Ernestine Stewart	Gladys Warren
Gurlie Guy	Agnes Marks	Hazel Stewart	Annie D. Wilson
Howard Gardner	Annie Matthews	Frances Saunders	Mack Wallace
Carlyle Harmon	C. R. Matthews	Marion Stewart	Graham Wilburn
Callie Hight			Sherrill Young



# OUT-OF-STATE CLUB

## OFFICERS

CHARLES EARP  
 DAVID HARRIS  
 W. L. CHAMBERS  
 I. D. BRITT  
 VIRGINIA CAUTHEN

*President*  
*Vice-President*  
*Secretary*  
*Treasurer*  
*Reporter*

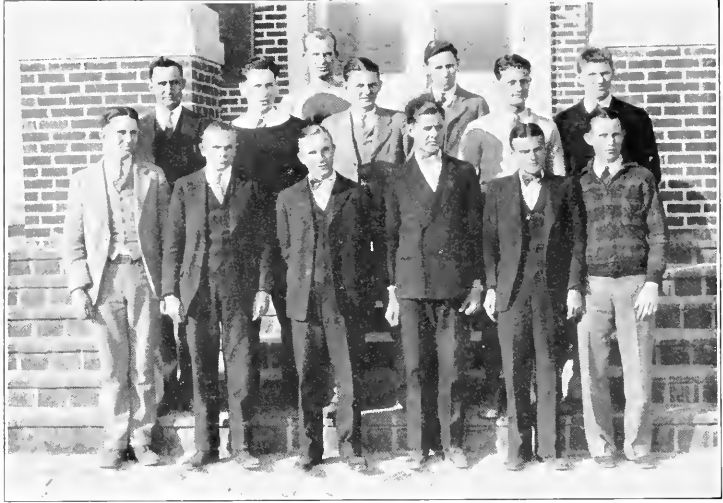
## MEMBERS

I. D. Britt  
 Virginia Cauthen  
 W. L. Chambers  
 Rody Clemmons

Sarah Duncan  
 Charles Earp  
 R. M. Gilbert  
 Carson Gregory  
 David Harris

Eunice Mehaffey  
 Jean Keim  
 Catherine Lewis  
 James Weaver





## PEARSON BUILDING CLUB

MOTTO:

*"Get up! Get up! The sun's up!"*

FLOWER: *Cauliflower*

COLOR: *Red Bow Ties*

### OFFICERS

J. M. MOORE  
M. O. LEE  
J. B. HARDY  
H. S. GARDNER  
B. A. DARDEN  
R. H. SAPSUCKER

*President*  
*Vice-President*  
*Secretary*  
*Treasurer*  
*Janitor*  
*Mascot*

### ROLL

M. O. "Molly" Lee  
J. M. "Dago" Moore  
H. X. "Owl" Williams  
B. A. "Dairyman" Darden  
J. B. "Jack" Hardy

J. McX. "Britt" Johnson  
K. B. "Kess" Johnson  
R. L. "Railroad" Reaves  
G. D. "G. D." Danner  
P. C. "Pinch" Gainey

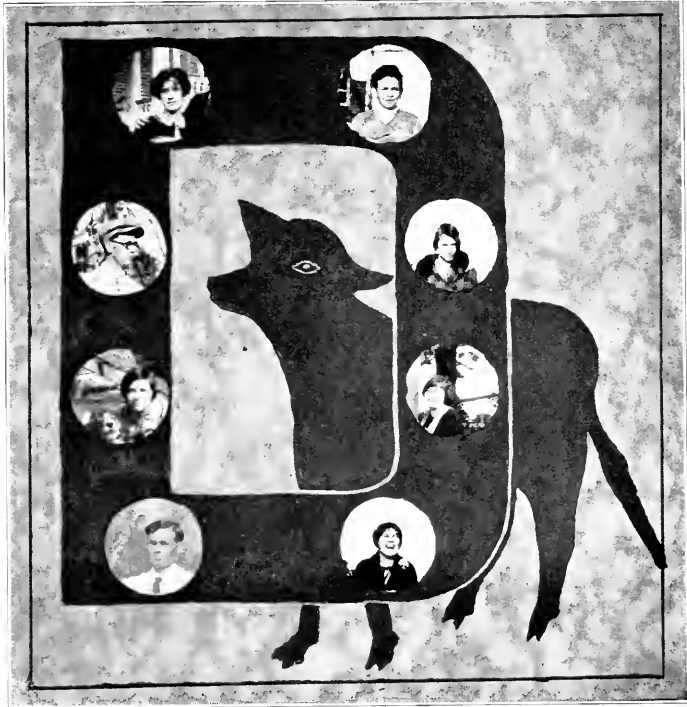
H. S. "Launzy" Gardner  
G. M. "Kink" Kirk  
R. H. "Red" Vernon  
K. C. "Pleg" Cheaves  
G. W. "Bill" Britton

YELL: *"Come on, Rob"*

SONG: *"I don't bother work"*







# "BULL" DURHAM

## OFFICERS

MARY TILLEY  
FLORA LEE HOLLOWAY  
STELLA TILLEY

*President*  
*Vice-President*  
*Secretary-Treasurer*

## MEMBERS

Raymond Tilley  
Ruth Lipscomb  
Wendell Miller

John Salmon  
Stella Tilley  
Eugene Bryan

Flora Lee Holloway  
Dolores Hall  
Mary Tilley

## MOTTO:

*Work like Helen B. Happy*

FLOWER: *Cockle Burr*

COLOR: *Vandyke Brown*





## THE PINE BURR STAFF

MARY L. DEWAR

G. D. DANNER

KATHLEEN MCDANIEL

VICTOR BROWN

ALBERT MARTIN

MILDRED KIVETTE

L. H. CAMPBELL

*Editor-in-Chief*  
*Advertising Manager*  
*Circulation Manager*  
*Business Manager*  
*Sport Editor*  
*Art Editor*  
*Faculty Adviser*



### CLASS EDITORS

MARY TILLEY

ESTHER MOON

FLORA LEE HOLLOWAY

EDYTHE SEARS

ELSIE TYNER

HORTENCE CHAMBLEE

WILLA HEMINGWAY

*College Sophomore*  
*College Freshman*  
*Senior*  
*Junior*  
*Sophomore*  
*Freshman*  
*Commercial*



DANIEL

DANER

HART

HAYES

HAYES

HOLLOWAY

HUBBS

JOHN BROWN

KAMRLEE

TINEK

# Staff





## CREEK PEBBLES STAFF



FRONIE HARRELL  
KATHERINE BLAND  
RYBURN STANCL  
CARY OLIVE  
THAD CHANEY

*Editor-in-Chief, First Semester*  
*Editor-in-Chief, Second Semester*  
*Associate Editor, Second Semester*  
*Business Manager, Second Semester*  
*Assistant Business Manager, Second Semester*



### ASSISTANT EDITORS

David Harris  
Everette Miller  
Clay Rich  
Juanita Naylor

Horace Jones  
Esther Moon  
Della Hobson  
Fay Morgan  
Constance Midkiff

Fronie Harrell  
B. C. Lamb  
Jack Olive  
Flora Lee Holloway



PINE

HIGH SCHOOL

BURR



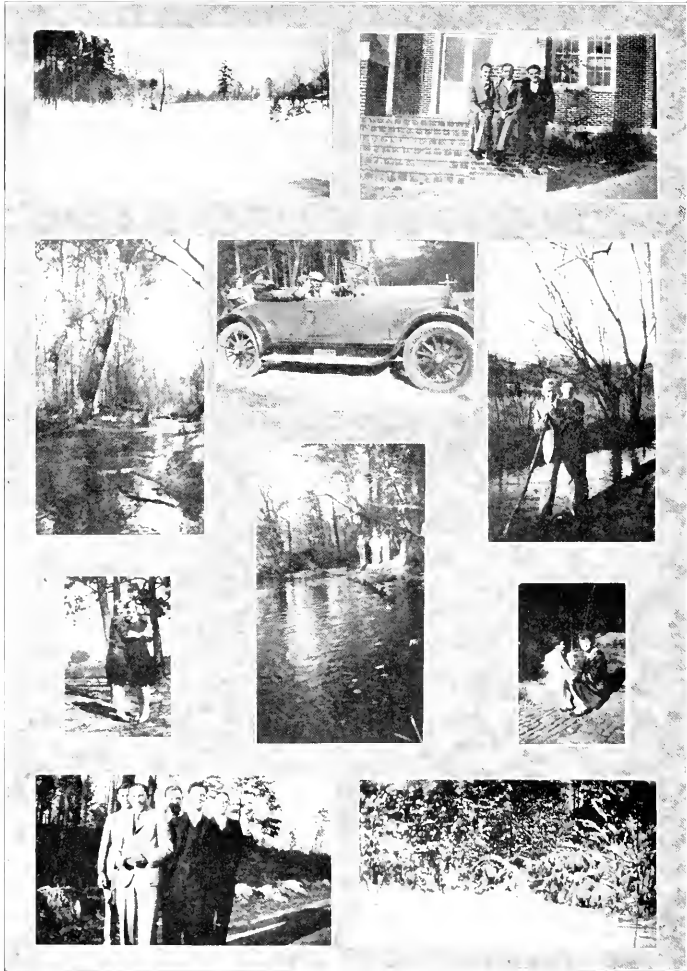
LATIN CLUB

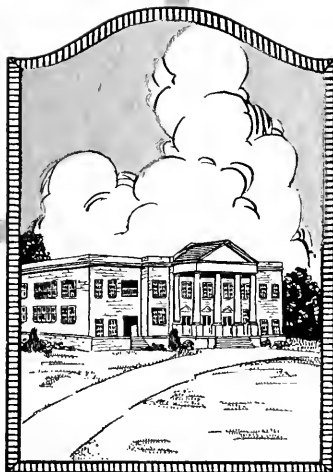


PINE

HOUSES

BURR





# ATHLETICS

Three buildings, the Treat Dormitory for Girls, the William Pearson Building, and the Fred N. Day Annex, measure the material growth of the institution from 1904 to 1922. Gifts of D. Rich, Fred N. Day, B. N. Duke, and others, including the Carrie Rich Memorial Library, the Boys' Dormitory, and the D. Rich Memorial Administration Building, shown above, all belonging to this short period, more than doubled the value of the school plant. The generous donations of Mr. Duke for the installation of sewerage and for endowment, and the incorporation of this school, now Campbell College, into the system of schools and colleges owned by the Baptist Denomination.







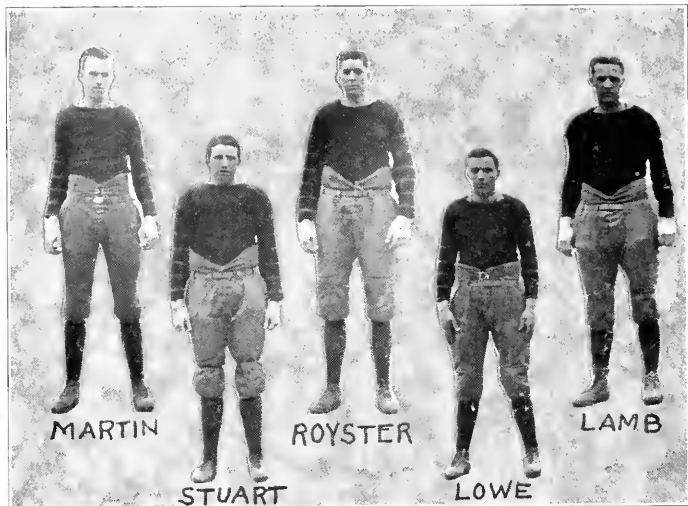
ROBERT S. HAYS, *Director of Athletics*



ASSOCIATES

S. O. BRANDON  
G. L. EDWARDS  
MRS. S. E. AYRES  
A. E. LYNCH

*Football*  
*Track*  
*Girls' Athletics*  
*Physical Education*



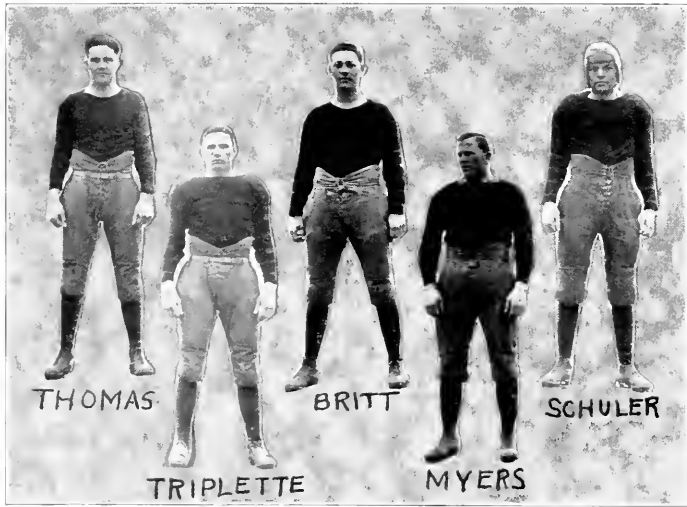
**MARTIN, End**—"Abb" excelled when it came to receiving passes. He was ever alert, though perhaps he showed his best in the Wingate game. He graduates this year.

**STUART, Tackle**—Playing his first year at Campbell, he proved to be a hard fighter, especially strong on the defensive. He has another year here. He was, on account of his size and grit, one of the best linemen on the squad and should be a valuable man next year.

**ROYSTER, Center**—This tall boy from Leaksville filled the vacancy left by Captain Hawkins in a very commendable way. Bill feared none of 'em.

**LOWE, Quarterback**—A cool headed little general from Charlotte. He played under a handicap of injuries part of the time, and next year should be a regular.

**LAMB, Guard**—This big boy showed up well in his first year of football. He has the size and ability. With a little experience, he will be superb.



THOMAS, *Halfback*—In the backfield, Carlos carried on the work which he started when with the State High Champions of Sanford.

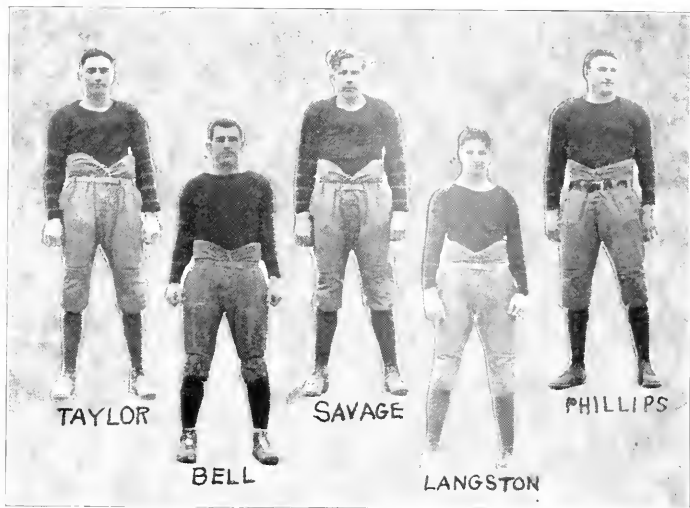
TRIPLETTE, *Halfback*—This was "Tripp's" first year in football. A born athlete he showed ear-marks of a coming ball carrier.

BRITT, *Guard*—Playing a position that does not often stand out, "I. D." proved an exception. Big in size, he is powerful on defense.

MYERS, *Captain, End*—"Red" was the most consistent player on the team, starting in practically every game. He was a good leader, running the team from the "huddle."

SCHULER, *End*—Schuler was the hardest tackler on the squad. Getting a late start, he proved himself worthy at every chance.





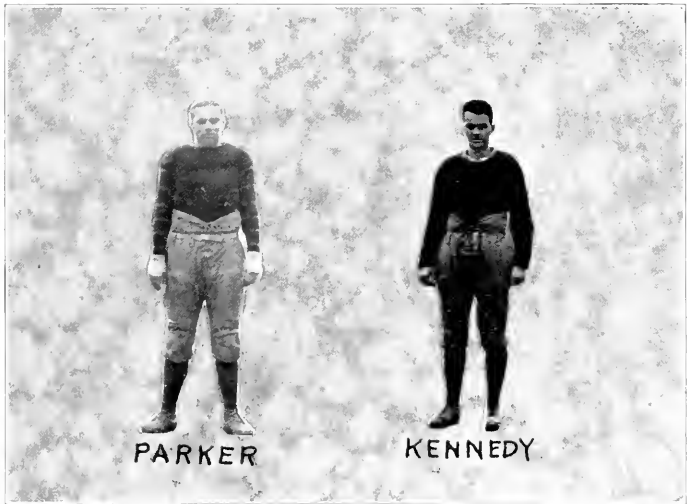
TAYLOR, *Halfback*—Not until this year did Herbert really show his merits on the gridiron. He played well in the games which he entered, and we expect him to shine in the future.

BELL, *Fullback*—“Spence’s” “long suit” is bucking the line; however, he can pass with distance and accuracy. He played in every quarter of every game, in many of which he stood out prominently.

SAVAGE, *Tackle*—Although not playing in many varsity games, Savage proved valuable in a pinch. He has plenty of determination.

LANGSTON, *Quarterback*—“Dirty” was not so good this year as last, but he was still the best broken field runner on the team. Langston is young, and has a chance to become great.

PHILLIPS, *Tackle*—This mountaineer from Ashe was steady and heady. Injuries hurt his playing ability somewhat, but he was a mighty warrior, feared by his opponents.



PARKER, *Guard*—"Beef" has plenty of size and fearlessness. It was his initial gridiron achievement. He ought to take a regular line position next year.

KENNEDY, *Center*—"Jimmie" made up for his diminutive size with a superabundance of fighting spirit. He's a good reserve man for backfield or line.





## FOOTBALL SQUAD

S. O. BRANDON  
MARSH MYERS  
JAMES KENNEDY

*Coach*  
*Captain*  
*Manager*



### SQUAD

Hayden Stuart  
Carlos Thomas  
William Langston  
I. D. Britt  
Marsh Myers  
Jimmie Kennedy  
Herbert Taylor  
Spencer Bell

Horace Parker  
Sherwood Shuler  
Gary Triplett  
Paul Phillips  
Albert Martin  
B. C. Lamb  
William Royster  
David Harris

Coach Brandon  
Howard Gardner  
Tim Savage  
Sam Strickland  
George Langston  
George Cullipher  
Henry Jones  
Ralph Arnold





## REVIEW OF 1927 FOOTBALL SEASON

**H** OPE mingled with much uncertainty describes the opening of our 1927 football season. The coaching task, shared by LeRoy Martin in 1926, this year fell upon the shoulders of Coach Brandon with practically no assistance. In addition to this handicap, only six letter men reported for duty when the call was issued. It soon developed, however, that several promising new men were candidates for the positions left unclaimed, and thus the struggle began.

With some misgivings, therefore, the faculty and students sent the Orange and Black eleven away to meet Atlantic Christian College, champions of the Little Five among the North Carolina Colleges for 1926, for our opening game. The fortunes of war for a time were fickle, slightly favoring our enemy. Near the close of the second half, spurred on by a successful defensive game, our team assumed the offensive, drove across the last marker for a touchdown, and won the game by a 6 to 0 score.

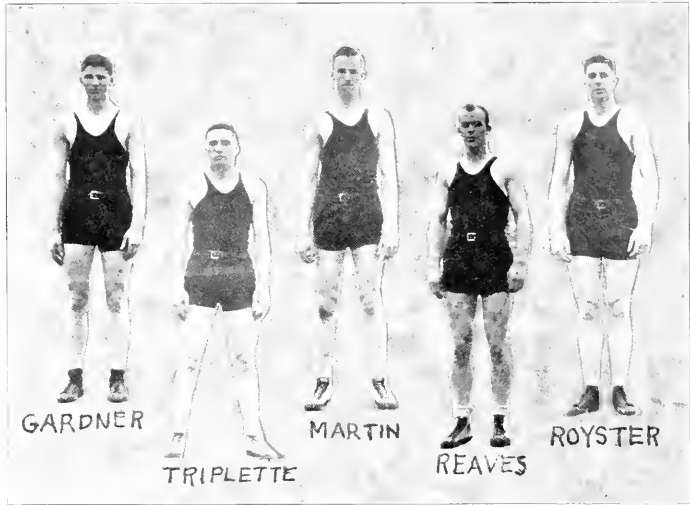
This victory was followed by a thrilling decision over Wingate College on their field by the score of 9 to 7. Only after an appeal from the referee's decision to the National Rules Committee was our victory established.

The team was not able to maintain the record promised in its early attempts. Injuries took out some of the best men on the squad, without sufficient reserve material to fill the gaps. In spite of heroic efforts on the part of Coach Brandon and his men, the morale of the team was shaken by successive defeats at the hands of Wilmington Light Infantry and the Wake Forest Freshmen. Though somewhat steadied by a scoreless tie with the Elon Reserves, the season closed with crushing defeats from Weaver College and Oak Ridge Institute. For lack of opponents, the season closed on November 12th with only six games on the schedule, of which two were won, three lost and one tied.



### OUR RECORD

- September 15—Campbell 6—A. C. C. 0.
- October 1—Campbell 9—Wingate 7.
- October 8—Campbell 0—Wilmington Light Infantry 6.
- October 15—Campbell 7—Wake Forest Freshmen 54.
- October 23—Campbell 0—Elon Reserves 0.
- October 29—Campbell 0—Weaver 26.
- November 12—Campbell 0—Oak Ridge 63.



GARDNER, *Guard*—Howard is a good offensive as well as a fast defensive man. He can hit a long shot when it's needed and scores with exceptional accuracy for a guard.

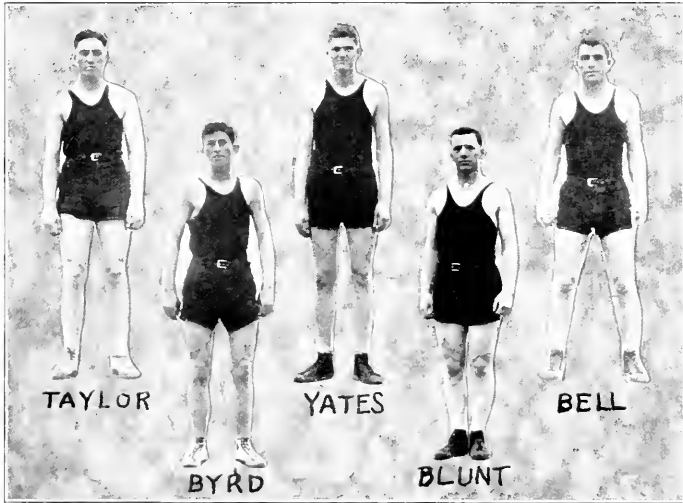
TRIPLETTE, *Forward*—"Tripp" was high scorer for the 1928 season. He is quick, pivots easily, and makes a very difficult man to guard. His shots won many games, and he was brilliant in all of them.

MARTIN, *Captain, Guard*—"Abb" was shifted this year from center to guard, and he proceeded to hold down that position with credit. He was a cool leader, powerful on defense. He wound up his basketball career at Campbell.

REAVES, *Forward*—Bob was in the game fighting all the time. He was second in points scored, and, besides, played second in many a scoring maneuver.

ROYSTER, *Center*—Bill was "rangey" man, getting the tip off every opponent. In many games Bill was high scorer, and in all he fought with dogged determination.





**TAYLOR, Forward**—Herbert is a flashy but rather inconsistent player. He was forced to quit school, and thereby ended his work on the floor.

**BYRD, Forward**—Byrd proved his value as a plucky reserve man. He is a good offensive player.

**YATES, Center**—Though handicapped at the first of the season by injuries, he was a valuable man both at center and forward.

**BLOUNT, Guard**—“Red” played a steady game as a guard on the reserve string. He will probably be a regular next year.

**BELL, Forward**—Spence was a hard fighting substitute. His only trouble is his inability to shoot. He played in most of the games.



## BASKET BALL SQUAD

ROBERT S. HAYS

*Coach*

S. O. BRANDON

*Graduate Manager*

JIMMIE KENNEDY

*Student Manager*

ALBERT MARTIN

*Captain*



### SQUAD

Robert Reaves  
Fred Blount  
Gary Triplett  
Charles Hassell

Spencer Bell  
Douglas Byrd  
Roy Yates

Howard Gardner  
William Royster  
Albert Martin  
Jimmy Kennedy



## BASKET BALL

**B**ASKETBALL this year was a huge success. Coach Hays in his initial appearance at Campbell proved beyond a doubt that the school made no mistake in securing his service. He turned out a winner. Of course, the material which he had at his command was pleasing. Six lettermen were back for the team, and there was almost as much new material as old.

Only three games were lost out of eighteen, to establish a record comparable only with the record made by the team of last year, when seventeen of twenty were won. However, the opponents of this year were of much higher caliber. Victories that were outstanding were: two over Oak Ridge, two over Wingate, one over Carolina Fresh, and an overwhelming defeat of Appalachian State Normal.

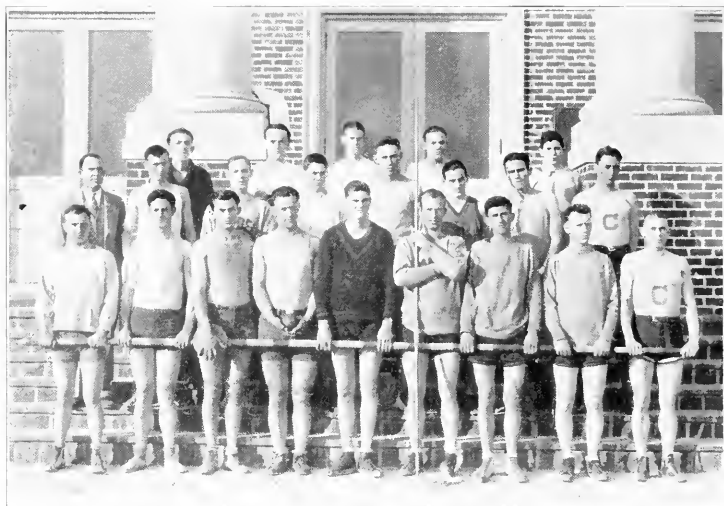
The only five men that proved to be our master were Wake Forest Freshmen, with two wins over the Orange and Black.

Four junior college and two prep school games were annexed to our credit. Backed by this record, we claim the Junior College-Prep School championship of the State.

### OUR RECORD

December 10—Campbell 62—Micro 11.  
 December 19—Campbell 38—Dunn 19.  
 December 22—Campbell 26—Fremont 22.  
 January 6—Campbell 45—Sanford 8.  
 January 19—Campbell 28—Fayetteville "Y" 10.  
 January 20—Campbell 23—Raleigh High 19.  
 January 25—Campbell 23—Fayetteville "Y" 20.  
 January 28—Campbell 63—Appalachian Normal 12.  
 January 30—Campbell 25—Wake Forest Fresh. 28.  
 February 4—Campbell 31—Oak Ridge 23.  
 February 8—Campbell 27—Wake Forest Fresh. 35.  
 February 11—Campbell 47—Wingate 10.  
 February 14—Campbell 49—Wingate 13.  
 February 15—Campbell 42—Raleigh High 12.  
 February 22—Campbell 30—Carolina Fresh. 14.  
 February 23—Campbell 39—Oak Ridge 29.  
 February 24—Campbell 42—Rutherford 21.  
 February 25—Campbell 18—Appalachian Normal 21.  
 Total—Campbell 658—Opponents 339.





## TRACK SQUAD

G. L. EDWARDS

MARVIN BETHUNE

ROBERT REAVES

*Coach*

*Manager*

*Captain*

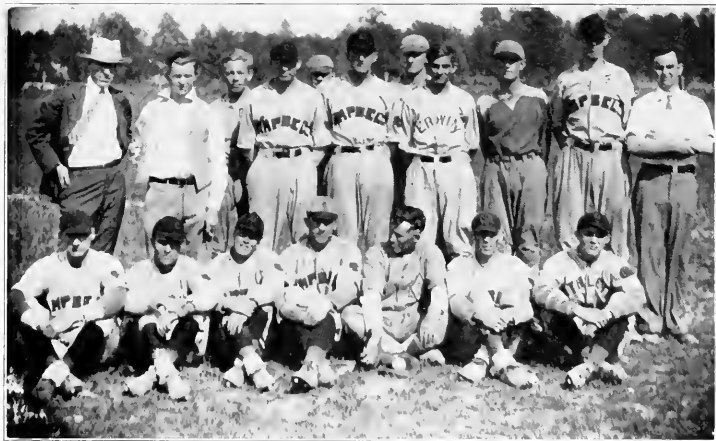


### CANDIDATES

Fred Lowe  
 John Lennon  
 Alonzo Earp  
 B. C. Lamb  
 Roy Yates  
 "Bob" Reaves  
 Douglas Byrd  
 Fred Blount  
 Marvin Bethune  
 Eugene Bryan

J. A. Smith  
 Wayland Britton  
 Mack Duke  
 Arthur Robertson  
 W. H. Hamilton  
 Herbert Taylor  
 Rogerlee Avent  
 Edward Powell  
 David Harris  
 John Pearce  
 M. O. Lee

Cary Olive  
 R. L. Tilley  
 J. C. Dail  
 G. P. Cullipher  
 Henry Morton  
 H. E. Jones  
 John Hocutt  
 William Britton  
 James Perry  
 Grady Anderson



## BASEBALL SQUAD, 1927

Upon the resignation of Coach LeRoy Martin in the spring of 1927, Mr. Harry Hartsell, for years Director of Athletics at State College, was secured to direct the baseball squad. Without a single letter man to draw upon, Mr. Hartsell set to work with a promising squad of new men and produced a creditable team, winning ten out of fourteen games.

### RECORD

- Campbell College 28—Raleigh High School 0.
- Campbell College 7—Wingate 5.
- Campbell College 3—Atlantic Christian College 13.
- Campbell College 10—Erwin High School 4.
- Campbell College 6—Fort Bragg 4.
- Campbell College 3—Fort Bragg 9.
- Campbell College 4—Clayton High School 3.
- Campbell College 5—Red Oak 7.
- Campbell College 15—Clayton High School 1.
- Campbell College 2—Wake Forest Freshmen 3.
- Campbell College 16—Erwin High School 1.
- Campbell College 6—Fort Bragg 2.
- Campbell College 5—Wake Forest Freshmen 3.
- Campbell College 6—Fort Bragg 3.





"SPENCE"



THE SQUAD



"TRIP"

# FIELD AND COURT



"LAUNZY"



"RED"



CHAS. SAUNDERS  
Basketball mascot



"DAGO"



"Jimmy"



"AB"



Rever



# Friends are Priceless



*"THE PINE BURR" WISHES THE BEST FOR ALL  
WHO TURN ITS PAGES, AND INSISTS THAT  
YOU TURN A FEW MORE AND MEET  
SOME BUSINESS MEN WHO WISH  
THE BEST FOR US*



PINE BURR

# Meredith College

RALEIGH, NORTH CAROLINA

*A Standard College  
for  
Young Women*

Offers courses of study leading to the A.B. and to diplomas  
in Music and Art.

For catalogue or further information write

CHAS. E. BREWER, *President*,  
RALEIGH, N. C.

## The Duff - Gore Corporation

Retail Warehouse, Fayetteville St.

RALEIGH, NORTH CAROLINA

*Greetings to the Famous Campbell College*

THE KNABE CONCERT GRAND PIANO

*In the auditorium of Campbell College was sold by*

**“THE DUFF-GORE STORE”**

(Knabe Warerooms at Raleigh)

Visit “The Duff-Gore Store” and see the latest in high  
grade Pianos, Victrolas, Records, etc.





PINE COLLEGE BURR

# COKER COLLEGE

Fully Accredited      Attractively Equipped  
Liberally Endowed

\$460 pays total expenses for the year, including fees for registration, laboratories and literary tuition, board and room, laundry, infirmary service, athletics, student activities.

Student body limited to 300. Approximately 115 Freshmen can be accepted for the new year. Applications for admission should be made before July 1.

*Catalogue and book of views on request*

**CARLYLE CAMPBELL, President**  
HARTSVILLE, SOUTH CAROLINA

## CAROLINA COACH COMPANY

Furnishing  
Efficient Motor Coach  
Transportation  
between  
Raleigh and Rocky Mount  
Wilson, Fayetteville  
Durham, Chapel Hill  
Greensboro  
and intermediate points

## B A E R ' S

Dunn's Leading Department  
Store

Ten Per Cent Discount to  
Students and Teachers

Always Something New  
Distributors of Reliable  
Merchandise

Your Patronage Highly  
Appreciated

DUNN, N. C.



YOU  
 Will find a full line of  
**HARDWARE**  
 At

**H. H. H.**

Lillington, N. C.      Fayetteville, N. C.      Dunn, N. C.  
 Roseboro, N. C.      Whiteville, N. C.

**MONTAG BROTHERS, INC.**

Manufacturers of

**Montag's Fashionable Writing Papers, Composition  
 Books, Student Supplies, College Papers  
 Tablets, Fillers**

Main Factory      Sales Offices  
**ATLANTA, GEORGIA      NEW YORK CITY**  
 Western Factory  
**LOS ANGELES, CALIFORNIA**

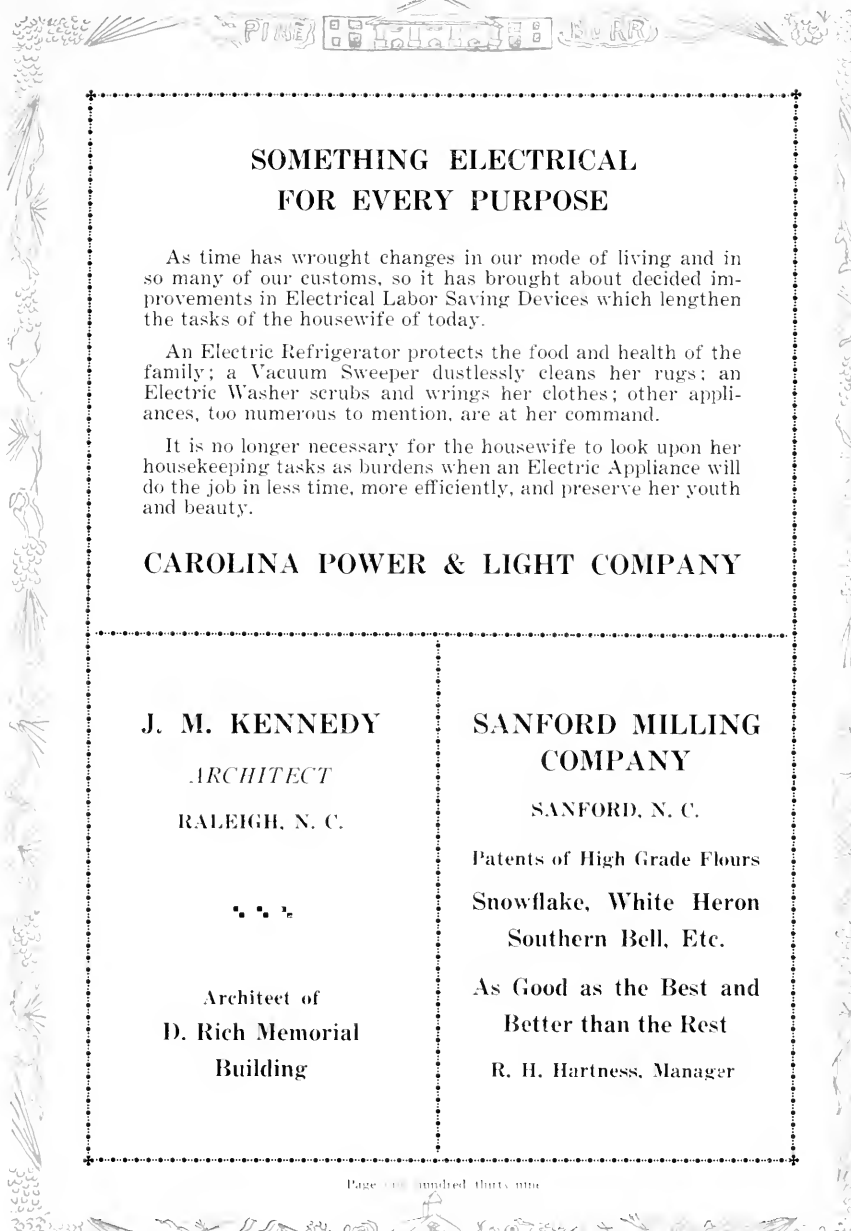
**WAKE FOREST COLLEGE**

Founded in 1834 by the Baptist State Convention of North Carolina, Wake Forest is a standard College, offering fifteen departments of instruction, leading to B.A., B.S. in Medicine, M.A. and LL.B.

**Solid Work in Wholesome Environment at Moderate Cost**  
 Summer Law School, June 5-August 18.  
 Summer School for Academic Students, June 11-August 10.  
 Regular session begins September 10, 1928.

**Francis P. Gaines, President      Wake Forest, N. C.**





PINE HOTEL (S. RR)

## SOMETHING ELECTRICAL FOR EVERY PURPOSE

As time has wrought changes in our mode of living and in so many of our customs, so it has brought about decided improvements in Electrical Labor Saving Devices which lengthen the tasks of the housewife of today.

An Electric Refrigerator protects the food and health of the family; a Vacuum Sweeper dustlessly cleans her rugs; an Electric Washer scrubs and wrings her clothes; other appliances, too numerous to mention, are at her command.

It is no longer necessary for the housewife to look upon her housekeeping tasks as burdens when an Electric Appliance will do the job in less time, more efficiently, and preserve her youth and beauty.

### CAROLINA POWER & LIGHT COMPANY

**J. M. KENNEDY**

*ARCHITECT*

RALEIGH, N. C.



Architect of  
**D. Rich Memorial  
Building**

**SANFORD MILLING  
COMPANY**

SANFORD, N. C.

Patents of High Grade Flours  
**Snowflake, White Heron  
Southern Bell, Etc.**

**As Good as the Best and  
Better than the Rest**

R. H. Hartness, Manager

**FIRST NATIONAL BANK**

DUNN, NORTH CAROLINA

Capital and Surplus, \$70,000.00

We Solicit Your Account

**SERVICE**

**GAS, OIL, TIRES, ACCESSORIES AND REPAIR  
WORK**

**ENNIS FILLING STATION AND GARAGE**

BUIE'S CREEK, NORTH CAROLINA

*for Economical Transportation*



Buy a  
"Bigger and Better"  
Chevrolet

From

**Lillington Motor Com-  
pany**

LILLINGTON, N. C.

*Where you get real service*

Our line of Ladies' and  
Misses' wearing apparel is  
more attractive than ever.

We cordially invite you  
to come in and inspect the  
newest styles in Coats,  
Dressing Ensembles, Hats,  
Shoes, Hosiery, Etc.

As usual our prices are  
reasonable.



**B. FLEISHMAN & SONS**

*"The Dependable Store"*

DUNN, N. C.



**"YOUR HOME SHOULD COME FIRST"**

**Let Us Make Your Home Come First**

**With**

**Quality Furniture**

**LEE FURNITURE COMPANY**

**SANFORD**

**LILLINGTON**

**H. W. PETERS COMPANY**

**Boston, Massachusetts**

**Official Jewelers**

**Class Rings, Pins, Emblems, Invitations**

**District Manager**

**J. H. Miller**

**District Office**

**Durham, N. C.**

**Skill—Integrity—Responsibility**

**JEWELL-RIDDLE COMPANY, INC.**

**GENERAL CONTRACTORS**

**SANFORD, N. C.**

*Builders of*

**D. Rich Memorial Administration Building**



**J. J. FALLON COMPANY**

(Incorporated)

*"Largest Growers of Cut Flowers in North Carolina"*

Corsages, cut flowers, funeral designs, large assortments of pot plants in season.

*"We grow the flowers we sell"*

**RALEIGH**

and

**FAYETTEVILLE**

**BANK OF HARNETT**

**A Roll of Honor Bank**

**Capital \$35,000.00**

**Surplus and Profits \$50,000.00**

**ERWIN, N. C.**

**BRANCH BANK AT COATS, NORTH CAROLINA**

**PROCTOR-BARBOUR COMPANY**

**HARDWARE — FURNITURE**

**R. C. A. RADIO**

**VICTOR AND EDISON PHONOGRAPHS**

**FUQUAY SPRINGS, NORTH CAROLINA**





*North Carolina's Largest Photographic Concern*

# Siddell Studio

Raleigh, North Carolina

Official Photographer for the Pine Burr 1927 and 1928

For Building Material, Paints, Varnishes, Enamels,  
Builders' Hardware, Sash, Doors, Roofing,  
Automobile Tires and Tubes

*See*

**LEE HARDWARE CO.**  
SANFORD, N. C.

**LILLINGTON LUMBER COMPANY**  
LILLINGTON, N. C.

We carry a full line of finish Building Materials,  
Kiln-Dried Flooring and Ceiling, Oak and Pine Doors,  
Sash, Mouldings of all Kinds.

Your Business Appreciated

W. M. Wadsworth, Manager





# Bynum Printing Co.

BETTER PRINTING



Phone 692-693

RALEIGH, N. C.

## HILLIARD'S FILLING AND BUS STATION

Gas, Oil, Greases, Tires and Accessories  
Visit our Fountain and Lunch Counter


Students always Welcome, and made to feel at Home

*Agency for*

**VELVET ICE CREAM**

"The Cream of the South"

**R. P. HILLIARD, Manager**



*Take the Welcome News of Harnett With You When You Graduate*

**LET THE FOLKS AT HOME KNOW**

# Harnett County News

LILLINGTON, N. C.

\$1.50 Per Year

You'll Often Read Good News from Campbell College If You Read Harnett County News

---

## Campbell College

**Two Years Standard College Work**

Strong Literary Societies for Boys and Girls

Several Religious Organizations for Christian workers

Excellent Coaching Staff in all Major Sports

**PRICES VERY REASONABLE**

For Information Apply to

**J. A. CAMPBELL, President**

**BUIE'S CREEK, N. C.**

PINE HOUSE SPR



# “Jahn & Ollier Again”

WE are America's largest school annual designers and engravers because we render *satisfaction* on more than 400 books each year. Intelligent co-operation, highest quality workmanship and on-time deliveries created our reputation for dependability.

JAHN & OLLIER ENGRAVING CO.

*Photographers, Artists and Makers of  
Fine Printing Plates for Black or Colors.*

817 W. Washington Boulevard • Chicago

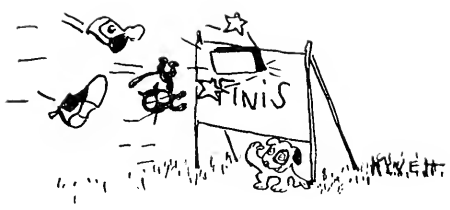
Telephone MONROE 7080



*We do not sub-let any  
art or engraving*

Printed on Imperial Forty Seven





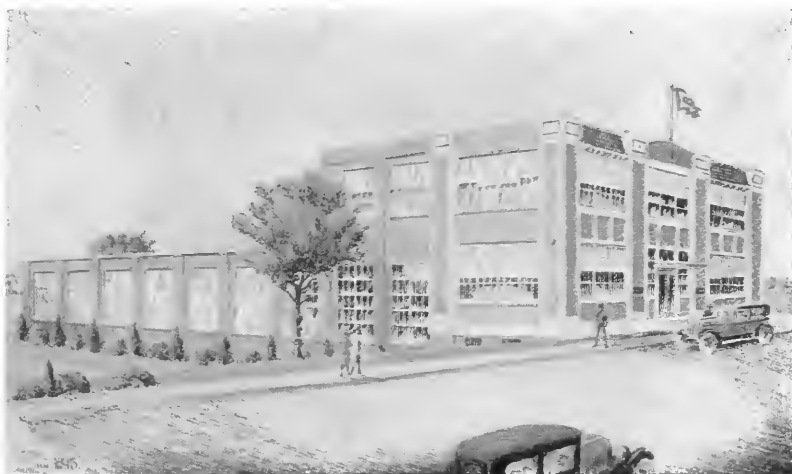
# THE TRUE ATMOSPHERE OF SCHOOL AND COLLEGE



WE endeavor, in producing school annuals, to render a helpful and constructive service directed toward enabling a student staff to get out a representative, distinctive book *within their budget.*

In connection with our new and modern printing plant we maintain a large Art and Service Department where page borders, cover designs, division pages, and complete decorative and illustrative motifs are created and worked out.

*The*  
**QUEEN CITY PRINTING COMPANY**  
*Where Better Printing Costs Less*  
**CHARLOTTE, N. C.**



**A COMPLETE SERVICE FOR SCHOOL PUBLICATIONS**











