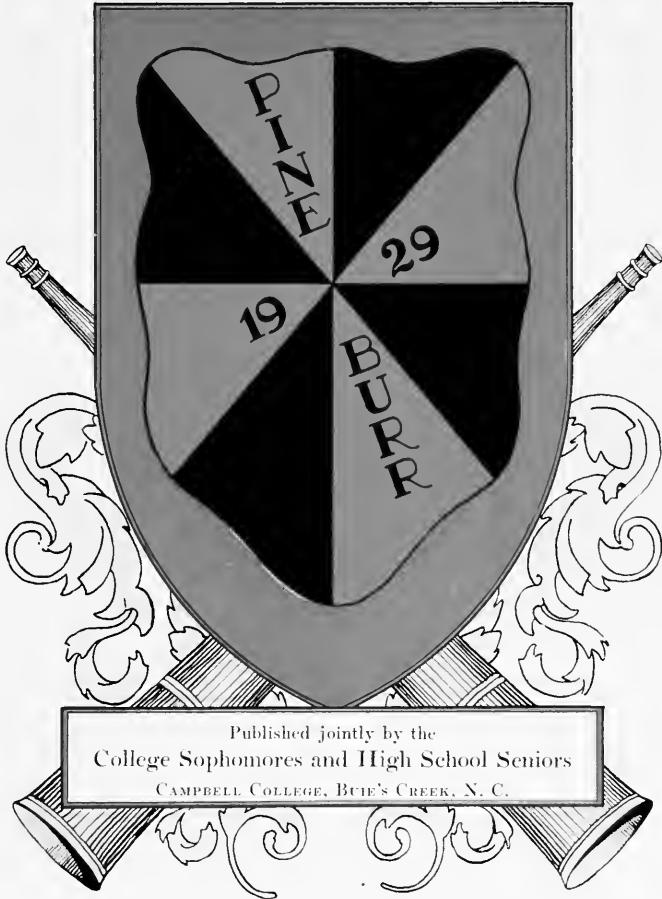


Digitized by the Internet Archive  
in 2010 with funding from  
University of North Carolina at Chapel Hill

<http://www.archive.org/details/pineburr1929camp>

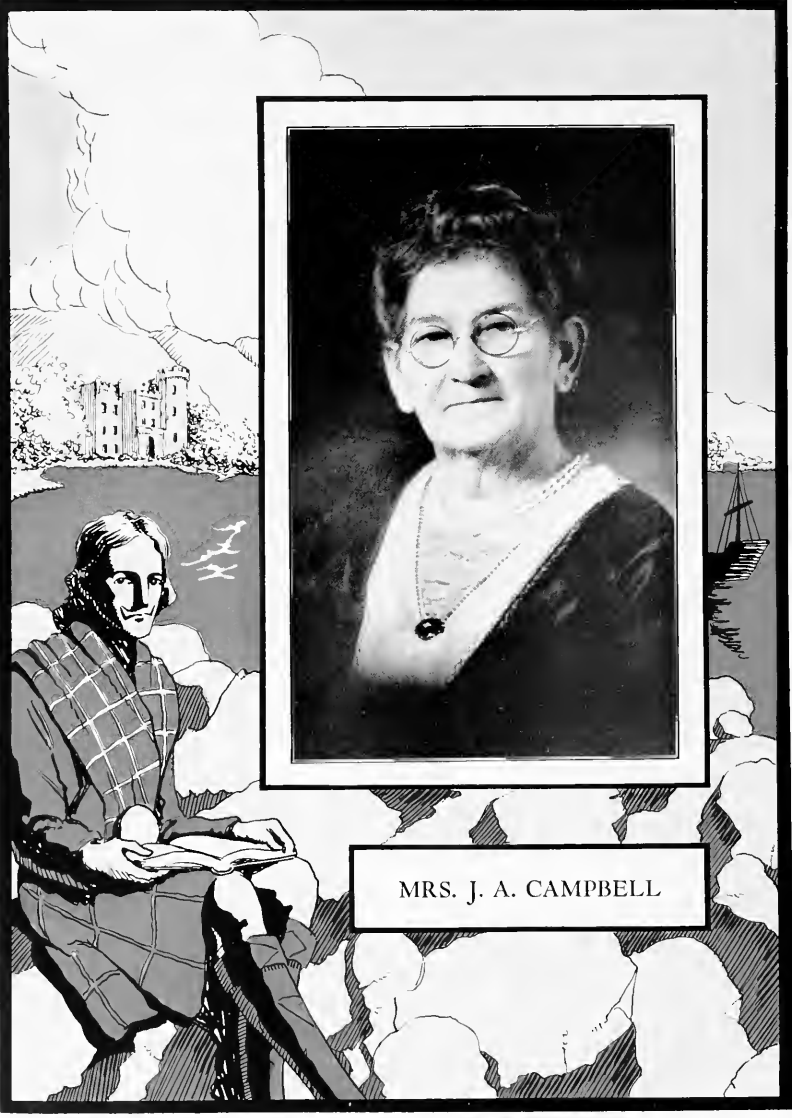


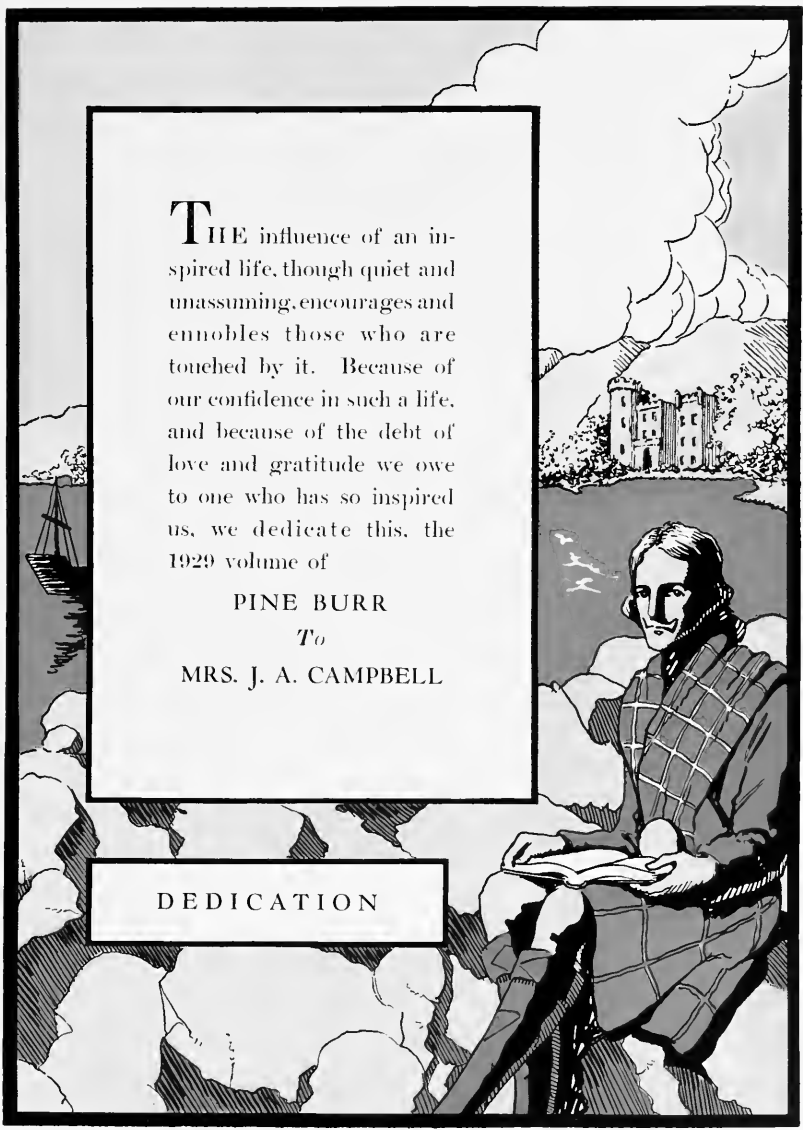
Published jointly by the  
College Sophomores and High School Seniors  
CAMPBELL COLLEGE, BUE'S CREEK, N. C.

VOLUME EIGHT



MRS. J. A. CAMPBELL





**T**HE influence of an inspired life, though quiet and unassuming, encourages and ennobles those who are touched by it. Because of our confidence in such a life, and because of the debt of love and gratitude we owe to one who has so inspired us, we dedicate this, the 1929 volume of

PINE BURR

*To*

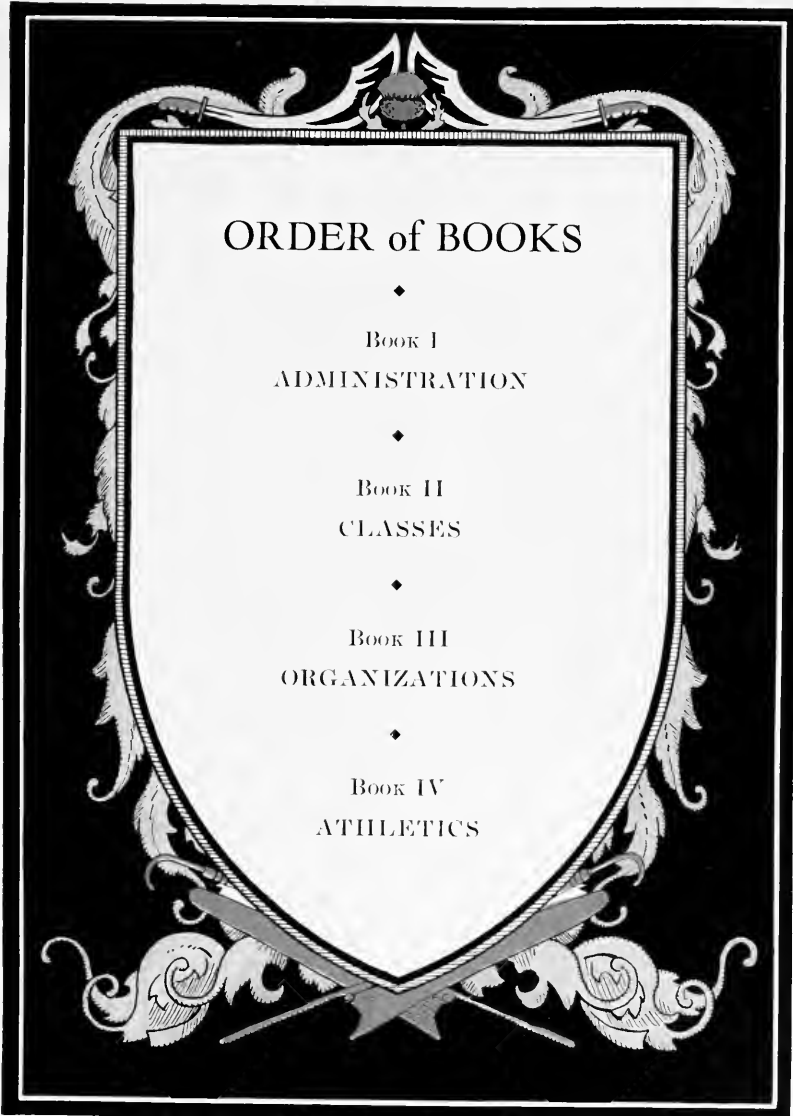
MRS. J. A. CAMPBELL

DEDICATION



## FOREWORD

**I**N this volume we have endeavored to preserve each class with its every member; to portray accurately the varied activities of the year; and to crystalize something, at least, of the Campbell College spirit as we have found it. Linked, as is the fair name of Campbell, with the illustrious period of Scottish history when knights were bold and true, we have tried to incorporate the spirit of the present in the mold of the romantic past. Though conscious of imperfection, we submit  
this honest endeavor for  
your approval.



ORDER of BOOKS



BOOK I  
ADMINISTRATION



BOOK II  
CLASSES



BOOK III  
ORGANIZATIONS



BOOK IV  
ATHLETICS

# IN MEMORIAM



Benjamin N. Duke



Born April 27, 1855

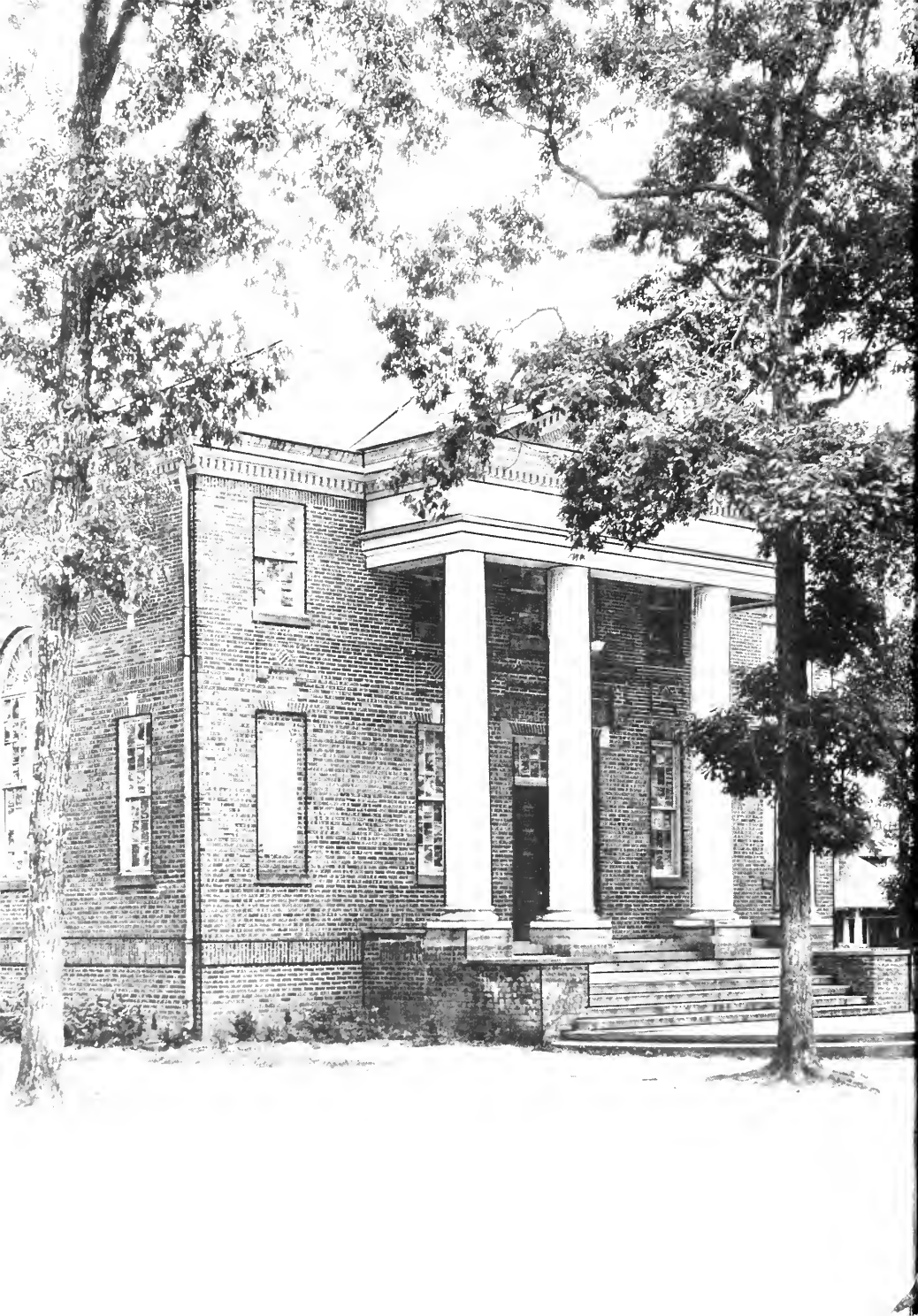
Died January 8, 1929



Benefactor and  
Friend of Campbell College

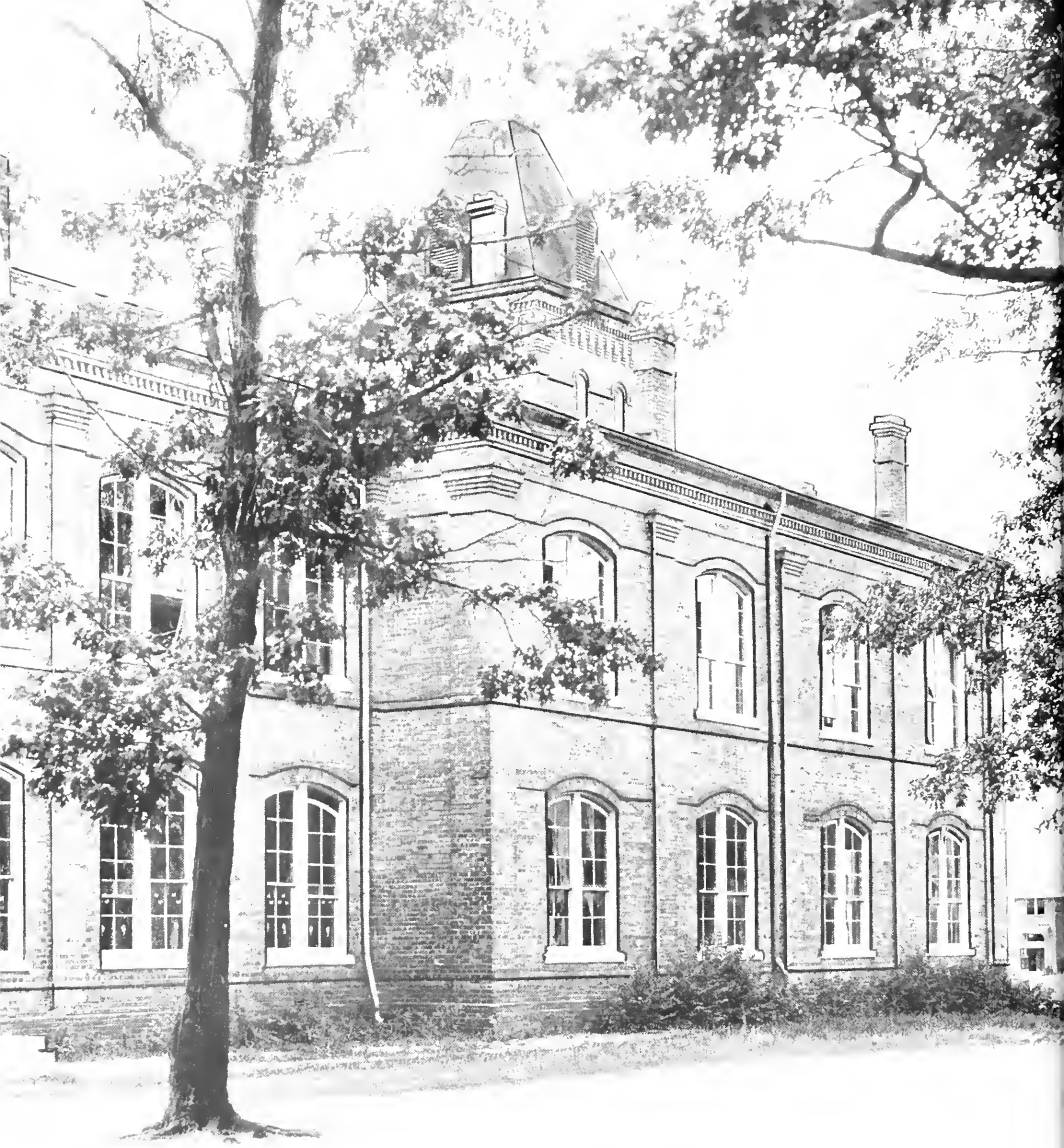








D. RICH MEMORIAL







CARRIE NICH MEMORIAL











ADMINISTRATION







[SEVENTEEN]



*President, JAMES ARCHIBALD CAMPBELL, B.A., D.D.*

[EIGHTEEN]

Faculty

LESLIE HARTWELL CAMPBELL, M.A.  
*English and Education*

BURGESS PICKNEY MARSHBANKS,  
M.A., L.L.B.  
*Mathematics*

JOHN EDWARD AYSUE, M.A., B.D.  
*History and Bible*

GLADYS STRICKLAND, M.A.  
*English and French*

NELSON A. HAYS, M.A.  
*Science*

MABEL POWELL, B.A.  
*Latin*

RICHARD CAMPBELL PETTIGREW, M.A.  
*English*

MRS. JESSIE ALLEN PARKER, B.A.  
*French and German*



Faculty



GEORGE LOREN EDWARDS, B.A.  
*History and Science*



S. O. BRANDON, B.A.  
*Mathematics*



R. L. HENRY, B.A.  
*English and French*



GEORGE GREER RICHARDS, B.A.  
*Latin and Mathematics*



THEOPHILUS YATES SEYMOUR, B.A.  
*History*



MRS. ABBIE BENTON BONSTEEL, B.A.  
*English*



MRS. MARY E. HARRIS  
*Librarian*



NETTIE MOON  
*Dean of Women*



ROBERT S. HAYS  
*Director of Athletics*

## Faculty

ARCHIBALD EDGAR LYNCH

*Voice*

LULA FRANCES BROOKS

*Violin*

HENRY T. McDUFFIE

*Piano*

FLORA B. CANNADY, B.M.

*Piano and Organ*

MRS. ETHEL THOMAS EDWARDS

*Art*

ESTELLE BURT

*Expression*

ADA OVERBY

*Secretary to President*

J. F. BLACKMON

*Manager of Boys' Dormitory*

I. M. WALLACE, B.S., B.C.S.

*Commercial Department*





MRS SEYMOUR



MRS AYSUCUE



MRS EDERTON



MRS BLAND



MISS BURT



MISS CHITTY



MRS NELSON



MRS. BROADHURST



MRS HUSSEY

GRADE TEACHERS





**CLASSES**

A decorative grid background consisting of a light gray grid with alternating white and black squares. The black squares are filled with diagonal hatching lines. In the center of the grid is a white shield with a black border. Inside the shield, the word "CLASSES" is written in a bold, black, serif font. Below the text is a small, solid black downward-pointing triangle.



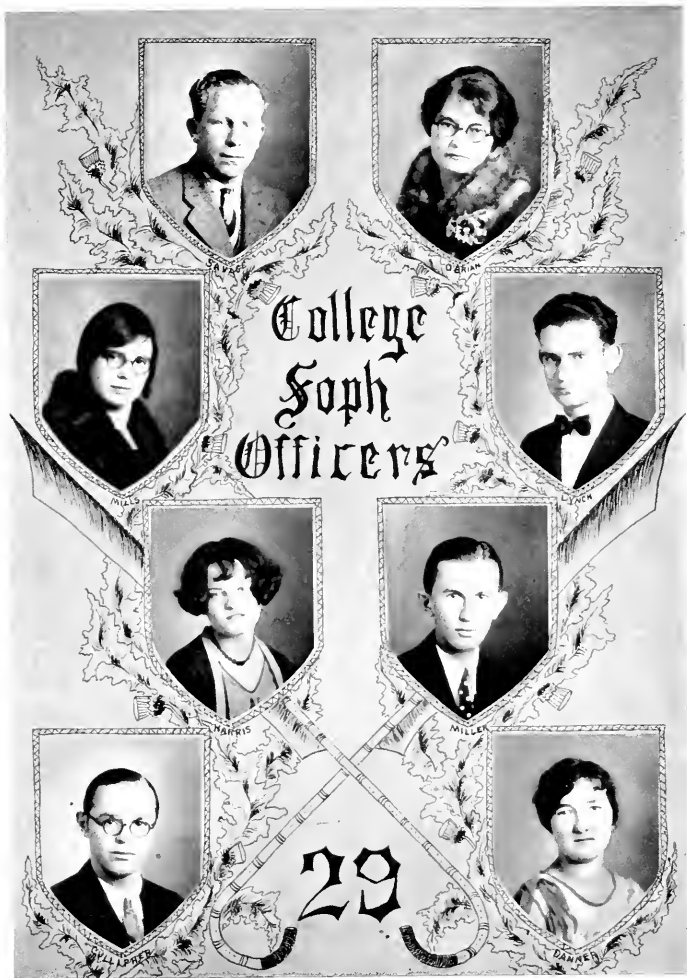


# College Soph

L. H. Campbell  
Faculty Adviser



Berdine Blackman  
Mascot



College  
Soph  
Officers

29

# Pine Burr

## Class Organization

### MOTTO:

*"We have crossed the bay, the ocean lies ahead."*

*Flower: Sweet Peas*

*Colors: Orchid and Pink*

### OFFICERS

TIM SAVAGE  
WILLIAM LYNCH  
AUDREY O'BRIAN  
REBA MILLS  
SUSIE DANNER  
EVERETTE MILLER  
GLADYS HARRIS  
GEORGE CULLIPHER

*President*  
*Vice-President*  
*Secretary*  
*Treasurer*  
*Historian*  
*Prophet*  
*Poet*  
*Testator*



## Class Poem

*O Time! Too fickle far thy state,  
Thy ever restless wings too swift  
To judge us fairly now—but wait  
Until this world has had our gift.*

*Thy pages tell of wrongs we've done,  
Of faults we've had, beyond control;  
O, blot them out, yes, one by one,  
And give us now a fresh, pure scroll.*

*Time, help us build our shrine on high,  
A spot where love forever dwells  
Where burns the torch to passers-by  
Who leave below life's prison cells.*

POET.



THOMAS EARL JORDAN

TYNER, N. C.

*Eu.*

English Critic in Society, '27 and '28; Secretary of Society, '28; Treasurer of B. Y. P. U.; Member of Honor Society.

*"The Power of thought—the magic of the mind."*

Like Zaccheus, Earl is easily lost in the multitude because of his short stature. It is perhaps his low stature that has suggested to his fertile mind a very plausible excuse for his defects in reading; viz, a short tongue. But even if he be lost in a crowd he would not long remain hid. Before a great while a broad smile would break the judge-like sternness of his face, which is to serve notice that Earl is about to add some bright remarks to the conversation. Though not prodigal with his comments, what he does say is usually original in expression, pungent, and apropos, leaving you with the feeling that there's a hat full of information left.

Dependable, loyal, thorough in his preparation, likeable—these are some of the qualities that have won for him a place in that very select group, the honor society.

CONSTANCE J. MIDKIFF

MOUNT AIRY, N. C.

*Sappho*

President Sappho Society, '28, '29; President B. Y. P. U., '28; Latin Club, '28; B. S. U. Council, '29; Honor Society, '29; Editor Pine Burr, '29; Secretary Debate Council, '29; Intercollegiate Debater, '29.

*"You have deserved  
High commendation, true applause, and love"*

Not a clown, not a prude, but a mixture of common sense, purposefulness, and "go-to-it." And for dessert, she has a "delicious" sense of wit and originality, which makes her company a pleasure.

That "Connie's" stay with us has not been entirely a holiday may be seen from her list of activities and honors. Faculty and students alike have learned to rely upon her to get things done in an efficient way. Not the least of her achievements is the editorial work of this Pine Burr.

And still ambition calls. She's going to study medicine! Do you doubt but that success is just around the corner?



HOWARD GARDNER  
ANGIER, N. C.

*Phi*

B. Y. P. U. Director, '29; B. S. U. Council, '29; Vice-president Society, '28; President Harnett County Club, '28; Football, '27, '28; Basketball, '27-'28-'29; Track, '28-'29; Mgr. Pearson Building, '29; Intercollegiate Debater, '29.

Howard applies this year for his second diploma from his alma mater, having received two years ago the certificate for high school graduation. During his three years here he has inscribed his name high in the student's hall of fame. While not the most brilliant student in the class of '29, his contribution to the extra-class activities on the campus hardly finds a parallel. He has been an ardent worker in the literary society, winning distinction for himself and his Society. As president of the B. Y. P. U. this year, he has brought to a climax years of active service in the religious life of the institution. But probably his brilliant record on the basketball court for three years and his fighting spirit on the football field for two seasons have endeared him most to his fellow students. Voted by the student body to be the "best athlete"; elected frequently to represent his society; entrusted with the leadership of the largest student religious organization; thus Campbell stamps Howard as an all-round manly fellow.

ESTHER MOON  
FRANKLINVILLE, N. C.

*Astro*

Section Secretary B. Y. P. U., '28; Member Dramatic Club; President Y. W. A., '29; Circle President Y. W. A., '28; Secretary Honor Society '29; President Astro Society, '28; Member Annual Staff, '28; Intercollegiate Debater, '29.

*"Skill will enable us to succeed in that which sheer force could not accomplish."*

Here is one girl that will be sorely missed on the campus. Her willingness to help a struggling classmate, to serve unselfishly on numerous committees, to champion every righteous course has won for her during her four years here an increasingly important place in student councils. Despite her youthful appearance and almost childish simplicity in her manners, she has demonstrated a wisdom and soberness of judgment becoming one much older.

That Esther is one of our most capable girls is proven by the distinction she has won. In scholarship she ranks with the chosen few. As President of the Y. W. A., she has demonstrated marked executive ability, as well as the faculty to prepare interesting programs. Her high ideals, cheerful disposition, and scholarship make a character indeed worthy of a true girl.





**FRED BLOUNT**

ROPER, N. C.

*Eu*

Basketball, '27, '28; Baseball, '28; Vice-President B. Y. P. U., '28; Basketball, '28, '29; Baseball, '29.

*"To truth's house there is a single door which is experience."*

"Red" hails from the lowland county of Washington. After shipping for a term with Uncle Sam's Navy from coast to coast, he decided that his preparation for life was incomplete without another sip from the picnic spring. He possesses a mind ever hungering for knowledge, finding a source of interest even in art. Like one who knows that he knows, "Red" carries with him an air of self-confidence that might be mistaken for conceit. He possesses more than ordinary ability to discover truth and has the courage to advocate his own point of view.

Fred's interest in life is many-sided. He is a good athlete, particularly brilliant as a basketball guard. His fine physique, developed probably in the Navy would fit him for the ring, should his ambitions lead him in that direction. Furthermore, Fred has found an attraction at the girl's dormitory that takes up a part of his leisure hours.

**MILDRED REBA MILLS**

APEX, N. C.

*Sappho*

President in B. Y. P. U., '28; Mid-term Debater, '28; Chairman of B. Y. P. U. Extension Work, '28, '29; President Volunteer Band, '29; Circle Leader Y. W. A., '28; President Sappho Society, '28; B. S. U. Council, '29.

*"If there there's a will, there's a way."*

Anything hard to be done? Tell Reba. She's not afraid of hard work; we'll almost dare to say she enjoys it. She'll shoulder a burden with a smile and apply the "elbow grease" with a vim. Her courage plays a large part in getting for her the important places she holds in our midst. A determination like hers, backed by such high ideals, can't help but make the world sit up and take notice.

But Reba doesn't court dullness by overworking. Her "pop" asserts itself in college life outside the classroom. If you doubt her "boosting" proclivities, mention Wake County. She is not adverse to social life. (She particularly likes red hair.)



**TIMOTHY FRANCIS SAVAGE**  
TEACHEY, N. C.

*Eu*

President Sophomore Class, '29; Honor Society, '29; Football, '28, '29; Secretary Eu. Society, '29; Manager Football, '29; Intermediate E. Y. P. U. Leader, '29; Sports Editor Pebbles, '29; Treasurer Eastern North Carolina Club, '29; Intercollegiate Debater, '29.

*"I dare do all that becomes a man;*

*If he dares do more is none."*

"Tim" gets our nomination for combining most happily the physical, intellectual, and spiritual side of life. He has employed well his powerful physique on the football field for two years, winning the admiration of friend and foe. At the same time, his scholastic record for last year entitled him to membership in the honor society. In the religious life he has participated also, taking active part in B. Y. P. U. and Sunday School.

His extra-class activities have been numerous and varied, testifying further to his capability. He has been an aggressive president of the class of '29, winning the respect of the entire college in this commanding position. That he has dramatic ability is proven by his part in the Senior Class play of this year. While he has not had much time for society work, he speaks with positiveness and convincing tones. Such a record has won for him the highest esteem of everybody.

**GLADYS IDELLA HARRIS**

CULLEN, VA.

*Astro*

Circle President of Y. W. A., '28; Member of B. Y. P. U.; Astro Society Reporter fall '28; Class Poet, '28; Vice-President Astro Society, '28; Member Out-of-State Club; Intercollegiate Debater, '29.

*"Virtue is increased by the smile of approval,*

*And the love of renown is the greatest incentive to honorable acts."*

From the hills of "Ole Virginay" a lucky wind has blown a girl of dignity, pep, and talent into our school. With her cheerful, winsome ways and her ability to lead in her school work, in her society, and in the social and religious activities, we begin to think that she is just that kind of girl who can tackle almost anything and make a good job of it.

The old adage that a person of note will never remain in the background has been proved to us by this girl, who has so quickly won distinction in the music department and in society work, as well as in the literary department. She finds a place for service among her fellows.

So here's to the girl whom Campbell College is proud to call her own.



**WILLIAM LARKIN LYNCH**  
WINSTON-SALEM, N. C.

*Phi*

Supervisor of Society, '29; Secretary of Society, '28; Commencement Declaimer, '28; Commencement Orator, '29; President Ministerial Conference, '28; B. S. U. President, '29; Sunday School President, '28; Vice-President B. Y. P. U., '28; 2nd Vice-President B. S. U., '28; Vice-President Sophomore class, '29.

*"The need of life is not knowledge, but action."*

If there is one member of the class that is liked and honored by all who know him, it is William. He has shown his determination to get an education by working his way behind the barber's chair. He is at the same time an excellent student and society worker. While deprived of the chance to participate in athletics because of his outside duties, he is a loyal booster of all college activities.

William's ambition is to become a preacher, and he is preparing himself for the weightier tasks ahead by being faithful in the smaller tasks at hand. His readiness to serve and his ability may be seen in the B. Y. P. U., in the councils of the B. S. U., and elsewhere when the call for help comes. Such devotion to duty will certainly bring its reward in after years.

**BERTIA WOODRUFF**

THELMA, N. C.

*Sappho*

Secretary Society, '29; Treasurer Y. W. A., '29; English Critic Society, '28; Secretary B. Y. P. U., '29.

*"Her voice was soft and low,  
In excellent thing in a woman."*

Her words, "like nature half reveals and half conceals the soul within." Here's a girl, who might have employed her personal charms to become a leader in the social life of the institution, if she had so desired. Her very quiet self-effacing disposition, however, prefers hard work to attracting attention, and for that reason she is usually busily engaged with her books.

Un'neath this outward reserve and modesty Bertia possesses some of the finest traits of true womanhood. Dignity and poise characterize her course when all around is in the turmoil and confusion. She is loyal to her friends, persistent in her efforts, and successful in her achievements. She brought with her to this institution two years ago the unqualified praise of her high school instructors; she carries away this same record unscathed. We are glad to claim her membership in the class of '29, and wish for her "good luck."



GEORGE PRESTON CULLIPHER

MERRY HILL, N. C.

Football, '27; Assistant Manager Football, '28; Track, '28; Secretary Society, '28; Anniversary Debater, '28; Vice-President of B. Y. P. U. Section, '29; Opera, '28; Class Testator, '29.

*"I had rather have a fool to make me merry Than experience to make me sad."*

George is a fellow that is never down and out. He possesses a rare sense of humor and an equal amount of wit. A frequent saying of his is that there are only three fools (in the Shakespearean sense) in Bertie County and he is two of them. George is a great booster of athletics, being cheer leader and manager of the 1928 football team. In this respect we all envy him, for last Thanksgiving Coach Hays included him at the annual turkey dinner for the team. They say George got three pounds of turkey, and two days sea-sickness. He has the same rapacious appetite for studies; in music he has a bright future. He stands for what Campbell College stands for, and is liked and respected by all.

LYNDA O'QUINN

MAMERS, N. C.

*Astro*

Supervisor Society, '28; General Critic Society, '28; Secretary Society, '28; Section President B. Y. P. U., '27, '28, '29; Member Harnett County Club.

*"By repeated blows even the oak is felled."*

From the first we are impressed by her sweet, modest disposition; she is just the kind of a girl one likes for a friend, for she will stick by you through thick and thin.

On better acquaintance the bond of friendship is strengthened by her loyalty to duty and willingness to help every worthy cause. What she lacks in brilliancy, she strives to make up for with sheer pluck and hard work.

Judging by her record with us at Campbell College, we are confident that she will win in life's long struggle the prize by her hard work and persistence.



**SUSIE ALICE DANNER**

CATAWBA, N. C.

*Sappho*

Section Secretary B. Y. P. U. '28; Secretary Society, '28; Member Dramatic Club, '28; Secretary B. S. U. Council, '28, '29; Mid-term Reciter, '28; Member Western North Carolina Club; Class Historian, '29; Alternate Intercollegiate Debater, '29.

*"Constancy is the basis of virtue."*

Embodying the spirit of the Western hills, Susie is ever civil, kind, sturdy and always ready to do her bit. Hard work has won for her its meed of honor. She is a good student, because she takes her work seriously and at the same time finds a great pleasure in studying.

That Susie holds in the hearts of her classmates a high place is proven by her selection as secretary of the B. S. U. Council. Wherever you put her, you can count on her to fill her place to the best of her ability.

As we associate with her we are reminded of the old Greek myths that tells of the daughters of Zeus musing over a small bit of clay and wondering what should be done with it. They decided at last to make one who should be fair, modest and intelligent. They blended in the clay the upright, sterling qualities of girlhood in such a way as to create a future leader of people—thus we have Susie.

**AUDREY O'BRIAN**

OXFORD, N. C.

*Astro*

Secretary B. S. U. Council, '28; Vice-President Class, '28; Supervisor Society, '28; Secretary Class, '29; Vice-President Society, '29; Secretary Society, '28; Alternate Inter-Collegiate Debater, '29.

*"I hear, yet say not much, but think all the more."*

Calmly this girl directs her course thru life's most stormy day. Equanimity and poise are readily outstanding characteristics in her nature. In fact, so quietly does she scale the rocky peaks of knowledge, that you may not observe her at first. Everything she does is a "mess," Audrey says, which assertion proves only her unassuming nature. She wastes few words, and gives little time to the less important frivolous side-shows of student life.

But the picture is only half finished. Underneath this modesty lies courage, good sense, and marked ability. In fact, she is easily one of the leading members of her class. Her scholarship, dependability and service to her alma mater have won for her a place in the honor society. This position of eminence in student life was gained while others slept during the night.



JORDAN ELDRED ADAMS, JR.  
JONESBORO, N. C.  
*Ea*

English Critic Society, '27, '28; Anniversary Debater, '28; Business Manager of the Pine Burr, '28, '29; Vice-President Society, '28, '29; Assistant English Critic Society, '28, '29; Track squad, '29.

*"Turn him to any cause of policy,  
The Gordian's knot of it he will unloose."*

This distant descendant of the first Adam appears to know something about everything that has happened since the creation. Examine him on Biology, English, or any other subject in his course, and you will be surprised with his breadth of understanding. This fund of knowledge he makes to serve him effectively in his literary society, of which he is a loyal and influential member. Furthermore, he has proven himself a capable director of business by his management of this Pine Burr.

"J. E." is liked and respected by the faculty and students, especially by certain of the girls at Treat Dormitory. Those who profess to know, say that even this sophisticated student of the classics is a victim of Cupid's crafty designs.

VAUDA EARLE SAUNDERS  
SPRING HOPE, N. C.

*Sappho*

Sappho Society; Eastern Carolina Club, '27, '28, '29.

*"Hang sorrow, care will kill a cat,  
And therefore let's be merry."*

"Don't let a day pass without some fun," is Vauda's motto. Her keen sense of humor which seems instinctively to grasp a humorous situation, is her cardinal virtue.

Hold your man, girls, because she will "vamp" him, if you don't look; then break his heart and sling him back at you.

Deep underneath her fun-loving nature, those who know her best say she has a serious side which makes her friendship all the more attractive. Her studies constitute the least of her worries, but she manages to maintain a sufficiently high average to "make time" every first Sunday afternoon from three to four bells. Who knows but that most of her study is toward her M.R.S. degree?



**FANNIE DYTULA ROSS**

FALLSTON, N. C.

*Astro*

Y. W. A., '27, '28; Section Treasurer and Group Captain B. Y. P. U., '28; Tennis Club, '28.

*"Many graceful and generous qualities of wonderful womanhood are blended in her nature."*

Those who know Fannie have found in her those sterling qualities which constitute true character, and her dauntless determination and sunny disposition have won the admiration, love, and respect of the faculty and students alike.

Though chemicals and irregular verbs do not possess a superfluous amount of charm for her, she is steady in her work, meeting every task with a willingness that is characteristic of her alone.

We are more than glad that she came this way to school, and we are confident that she will find a place of usefulness as she goes on her career.

**GLADYS MURIEL MELVIN**

CLARKTON, N. C.

*Astro*

Pebbles Staff, '29; Group Captain B. Y. P. U., '29; Y. W. A., '28-'29.

*"Honor is purchased by the deeds we do; Honor is not won until some worthy deed is done."*

From Clarkton a girl has come to us with malice toward none, with charity for all, with firmness in the right—as God gives us to see the right.

Search where you may you can hardly find a student in whose life is blended more admirable qualities than we find in the character of Gladys.

Among her many talents is her ability to write. Quietly she came into our midst and found a place on the *Pebbles Staff*, which she has filled creditably.

That she is an all-round, capable student is proven by her scholastic record and especially her work in the French department. She has the name among her classmates as "Mademoiselle French."



**ALMA CARTER**  
 FAYETTEVILLE, N. C.  
*Sappho*

Member B. Y. P. U., '28, '29; Y. W. A., '28, '29; Music Club, '28; Member Grandchildren's Club.

*"To have the same likes and dislikes, therein consists the finest bonds of friendship."*

A quiet worker, a conscientious student, and a sympathetic pal—that's Alma.

When Alma entered Campbell College as a freshman two years ago, we were not long in finding that she is a loyal girl and just the kind that we are glad to have around.

Alma also possesses that rare talent of making friends. But she does not stop with this; she has the distinction of keeping them. We need not prophesy success, for every characteristic of hers foretells it.

Alma's happiest moments are spent with her violin. In her leisure she turns to music for recreation and inspiration. She is a loyal member of the McDowell Music Club, to which she frequently contributes expression of her musical talent.

**EDYTHE MAIE BARNHARDT**  
 SPENCER, N. C.  
*Sappho*

Supervisor of Society, '27; Vice-President Y. W. A., '28; Member Western North Carolina Club, '27, '28, '29.

*"If'through love, frolic and a good time life is nothing."*

Rarely do you find a combination of more genuine wit, humor, and scholarship than you find in Edythe, a girl from Western North Carolina. She is one whom you come to love more and more the longer you know her. With her willingness and zeal, stumbling blocks on the road cannot cause her to lose sight of her goal. She will find a way or make one.

Is she intellectual? Visit her class. Is she studious? Observe her in the library. Is she industrious? Notice her as she works. Has she ability? Witness her achievements. Has she friends? Try to count them. Endowed with these qualities, Edythe will be an asset to any college she may attend.





**PAUL HARREL CALE**  
 TYNER, N. C.  
*Eu*

President of B. Y. P. U., '28; Position Critic in Society, '27, '28; Sport Editor of Pine Burr, '28, '29; President Honor Society, '28, '29; Assistant Instructor in Biology, '28, '29.

*"Who broke no promise, served no private end,  
 Who gained no title and who lost no friend."*

Paul is one of our elongated six-footers, who has earned the reputation of "hitting on six." By force of merit proven by hard work he has gained the confidence and esteem of both faculty and students. In the religious life he is active, having held several B. Y. P. U. offices; in society, he is considered one of the leading Euthrophians; in scholastic work, he holds the institution's highest honor, as president of the honor society. In addition to his love for his work, he holds a warm place for one of those "helles esprits" who reside in Miss Moon's realm; "and that's his weakness now."

A distinction that he justly deserves is that of doing anything that he undertakes well. Though by no means a proverbial "hookworm," he is by nature serious-minded and calculating. We confidentially predict a brilliant career for him.

**JANIE BARBEE**  
 MAYSVILLE, N. C.

*Astro*

Assistant Circulation Manager of Creek Pebbles, '29; Chorister Astro Society, '28; Member Eastern North Carolina Club, '28, '29.

*"Of a cheerful look, a pleasing eye,  
 And a most noble carriage."*

Looking for a possessing type? Well, here's one for you. Not a flip, not a long faced "goodie-goodie," but a combination of vivacity, wit, beauty, and charm—that's Janie. She's the girl you look at twice, then ask, "Who is that girl?" Just a little different somehow from the ordinary run of folk and possessed with a striking dignity and poise. It's Janie, who, in developing her mind to become a teacher—(she has not yet decided upon the "one" she will teach)—has not neglected to develop to an equal extent those traits of character and qualities of friendship which attract people.

Broad-minded, that's the word. She is always ready to see the other fellow's point of view. She has the sympathetic understanding of a true friend and the sportsmanship and fun of a good acquaintance.

We shall remember her as the girl one always likes better every time he sees her.



MARVIN LESTER BETHUNE  
BENNLEVEL, N. C.

Basketball, '28, '29; Baseball, '28, '29; Manager Track Team, '28; Track, '29; Vice-President Harnett County Club, '28; Orchestra, '29.  
"Too low, thy aim, who aims beneath the stars."

"Blundy" hails from the county of Harnett and is indeed proud of that fact. Incidentally, we might say that his homefolks are justly proud of this lad. His clear eye and honest face are a clear index to a clean manly character. Endowed with a strong, active body and a love for sports, he plays with distinction, and ever above the slightest suspicion. In basketball, track, and baseball his lightning-like speed has won him recognition wherever he has gone. His honors he wears lightly, obtaining therefrom incentives to greater crowns in the future.

But Marvin is no ordinary athlete. In his breast there burns a spark of celestial fire that points him to lofty endeavor. His eagerness for an education prompts him to drive thirteen miles from home each morning in time to meet an eight o'clock class frequently. Because of his fidelity to duty, his cleanness of life, and his sportsman-like conduct, he is a general favorite among students and teachers.

ALMA CHRISTINE BARBEE  
MAYSVILLE, N. C.

*Astro*

Circulation Manager Creek Pebbles, '29; Member Eastern Carolina Club, '28, '29.

*"A smile for all, a greeting glad,  
A lovable, jolly way she had."*

If we may accept the statement, "As welcome as sunshine in every place, so is the beaming approach of a good natured face," then Christine must indeed be welcome at all places and at all times; for jollity and good nature are her most noticeable traits. She is a real girl in the complimentary sense of the word, and there are few of the typical joys of girlhood which she has missed. Her motto is, "Smile and the world smiles with you," and she certainly lives up to it. A true and loyal friend is she, and one who believes that in order to have a friend, you must be one. She is "it" in the game of fun-hunting and equally in her element at exchanging confidences, and in measuring up to the duties of college life.

In her we find a warm heart, a likeable disposition and sympathetic mind.



VERGIE SUTTON WALLER  
GARYSBURG, N. C.

*Astro*

Assistant Circulation Manager of Creek Pebbles, '28, '29; Chaplain Society, '27, '28; General Critic Society, '28; Member Eastern North Carolina Club, '27, '28, '29.

*"Tis not what man does that exalts him,  
But what man would do."*

The causal observer who meets Vergie on the Campus or in the classroom, will probably consider her dignified and reserved, or perhaps sensitive to approach. A better acquaintance will reveal a fine sense of humor, and a deep devotion to duty. In fact, she is jolly, a good companion, adding zest and happiness to those about her.

While her interests are varied we are confident that home-building is among her chief subjects of thought. We predict that the home over which she presides will embody her high ideals and will be the happier for her presence. Her alma mater wishes for her the full realizations of her happiest dreams.

ANNIE CAROLYN WARREN  
NEWTON GROVE, N. C.  
*Sappho*

Society Officer, '28, '29; Dramatic Club, '28; Y. W. A., '28; B. Y. P. U. Officer, '28; Member Creek Pebbles Staff, '28; Treasurer Honor Society, '28.

*"He grieves more than is necessary who  
grieves before any cause for sorrow  
has arisen."*

Annie is small of stature, but those who know her, admire her qualities and love her as a friend. She is a consistent and earnest worker at whatever she attempts. This earnestness, coupled with a high order of natural ability, ought to carry her far along the road of success and usefulness.

Her membership in the Honor Society is evidence of a splendid scholastic record, and her prominence in many phases of the school life—the B. Y. P. U., the literary society, and the dramatic club—is evidence of the excellent work she has done. So well does she divide her time that she can carry a "heavy course," attend "after school" meetings and then have time to mingle with her friends. Someone has described her as "a little of the angel joined to qualities more humane, and we call the product—Annie."



**RYBURN TYLER STANCHIL**  
GARDNER, N. C.

Ev

Associate Editor, *Peoples*; 24 Editor-in-Chief, *Federal*; 25 E. Y. P. C. Group Captain; 24 Secretary, Society of Class Poets; 25 '21

Program and the most of them has done that in their history, for that the matter is the only program and the only matter that has been done in the history of the world. The program and the matter are the only things that have been done in the history of the world. The program and the matter are the only things that have been done in the history of the world.

The program and the matter are the only things that have been done in the history of the world. The program and the matter are the only things that have been done in the history of the world. The program and the matter are the only things that have been done in the history of the world. The program and the matter are the only things that have been done in the history of the world.

**LOUISE LESLIE**  
VASS, N. C.

Sopran

Choir President of Y. W. A. 24 25 Member Grandchildren's Choir Member McDowell Music Club Member E. Y. P. U.

The program and the matter are the only things that have been done in the history of the world. The program and the matter are the only things that have been done in the history of the world. The program and the matter are the only things that have been done in the history of the world.

The program and the matter are the only things that have been done in the history of the world. The program and the matter are the only things that have been done in the history of the world. The program and the matter are the only things that have been done in the history of the world. The program and the matter are the only things that have been done in the history of the world.



EDITH PEARSON

CHALYBEATE SPRINGS, N. C.

*Sappho*

Pianist B. Y. P. U.; President B. Y. P. U.;  
Vice-President Sappho Society; Pianist Y. W. A.;  
Hornet County Club; Grandchildren's Club.

*"None but herself can be her parallel."*

Edith is an unusual combination of intellect, energy and wit. Although her school life has been somewhat interrupted on account of ill health, she still manages to get there with the rest of us.

In the Society hall Edith is ever doing her bit, and is easily one of the outstanding Sapphos. She has represented the society on public programs many times. Her musical talent has brought to her invitations that other Sophs longed for—the Junior-Senior reception, for instance.

Edith has made many and lasting friends on the campus, because she has showed herself friendly. The good wishes of her classmates are ever hers.

OTHELLO PATTERSON

CHARLOTTE, N. C.

*Astro*

President Y. W. A. Group; Pianist Society;  
Music Club; Western North Carolina Club.

*"The only evidence of personal qualities"*

Othello doesn't make much fuss about what she does, but she does it just the same and in everything she does she shows unselfish ideals of service. Othello is one of our truest class members. During her two years at Campbell she has won the love and respect of student and teacher alike.

Those who know Othello best find many true qualities which are not seen by an outsider and for each of these, they love her.



MARTHA STALLINGS

SAINT PAULS, N. C.

*Astro*

*"So mild, so merciful, so strong, so good,  
so patient, peaceful, loyal, loving, pure."*

Martha doesn't live in the dormitory, but this does not mean that she is not popular with all her fellow students. She has the true Campbell spirit, and her class is proud to claim her as one of its most loyal and faithful members. Those who know her know that she possesses an unlimited amount of wit, and a well developed sense of humor. We love her for these and other qualities, and we do not need to prophesy success—her every characteristic foretells it

GLADYS WARREN

DUNN, N. C.

*Sappho*

Member Harnett County Club, '28, '29; Pianist Society, '28; Member B. Y. P. U., '28, '29; Supervisor Society, '28.

*"And thus art worthy, full of power, gentle,  
Liberal-minded and consistent."*

Quiet, but not too quiet; cheerful, but not a giggler; studious, but not a bookworm; smart, but not too smart; sympathetic, sincere, loyal—a friend worth having is Gladys. And abundance of originality is hers, also the faculty of knowing how and when to do things. Her ideals are of the highest type; she is noted for her faithfulness to duty and the things that are right. She is gracious in manner and spirit, and is always the same sweet girl.

Gladys is above par in the more essential characteristics—good scholarship, serious purpose, and real friendliness. She is that happy mixture of good humor and earnestness that makes its possessor destined to succeed. And so she loves and is loved by the college.



**MARGARET DUNCAN**  
 CRESWELL, N. C.  
*Sappho*

Section President B. Y. P. U., '29; Member Dramatic Club; Secretary Society, '28; Commencement Reader, '28; Tennis Club, '28.

*"Though nature weight out our talents and dispense*

*To every man his modicum of sense;  
 And conversation in its better part,  
 May be esteemed a gift and not an art;  
 Yet much depends as in the tiller's toil  
 On culture and the sowing of the soil.*

Margaret comes to us from the sandy loams of the coast bringing repose, modesty, and patience. Fascinating in features and in voice, she still possesses a little air of indifference. With her high sense of humor, her witty remarks, and her good judgment she has won a place among her fellow students that none but her can fill.

She goes about her work with a light hearted and carefree attitude, and she leaves us to guess what work she likes best. If you should see her work in the art room; or watch her as she takes the part of an old man or a small child in the dramatic club, or hear her as she takes charge of her B. Y. P. U. on Sunday evenings, you too would be puzzled as to what her career will be. Her alma mater is proud of her.

**JAMES EVERETTE MILLER**  
 AHOOSKIE, N. C.  
*Phi*

President B. Y. P. U., '29; President Sunday School Class, '29; Supervisor Society, '28; Vice-President Society, '28; Pianist Society, '28, '29; Business Manager Pebbles, '28; Class Prophet, '29.

*"Who mixed reason with pleasure, and wisdom with wit."*

"Sis" personifies those virtues of a polished gentleman, such as modesty, politeness, cleanliness of mind and body, and gentility. Tho popular with the girls because of his suavity, he is closely attentive to his scholastic duty, and is leaving the institution with two years of honorable achievement. During his stay he has contributed freely to the college paper, serving on its staff for much of the time. But with all his interest, he has found time to win honorable mention for his thorough class work. His hobby is Latin.

Mention should be made of his fidelity to the religious organizations of student life. He has served acceptably as B. Y. P. U. President, among his many positions of trust. So easily does he go about his work that what others do with difficulty, seems easy to him.



ROSA MAYE EDWARDS  
WINSTON-SALEM, N. C.

*Sappho*

Leader of Intermediate B. Y. P. U., '27, '28; Circle President Y. W. A. '27, '28; Choir, '27, '28; President Dramatic Club, '27, '28; Latin Club, '28; Western North Carolina Club, '28, '29; Commencement Reciter, '28; Associate Director B. Y. P. U., '28; Honor Society, '29.

*"I swear she is true-hearted, and a soul  
None better in our Kingdom is."*

Class of '29, what would you have done without Rosa? Jumping from the sixth grade to college graduation in six years, and winning distinction by selection to the honor society, tells only a small part of the achievement of "our old reliable." Whether it is leading a religious organization, assisting in the Church Choir or College Operas, acting as supply teacher, or washing dishes to pay expenses, Rosa is ever ready to answer the emergency call.

Her busy life has not kept her from winning a warm place in the hearts of her fellow students. With "service" as her motto she has been a friend to the homesick, a counselor to the wayward, and a participant in all student projects. She is possessed of fine sense of humor, which often finds expression in whole souled laughter that's contagious. In truth we shall miss her.



## Class History

SINCE the days of the prophets men have sought in vain to unroll the destinies of mankind. But even to us of average intelligence the deeds of yesterday are a common possession. Particularly well known to Campbell College friends are the bright achievements of this graduating class during its residence here. In fact, so illustrious are its acts that a rehearsal can be justified only for the instruction of posterity and for the glory of alma mater, which this chronicle will greatly enhance.

The class of '29 arrived at Buie's Creek during the fall of 1927, bearing in ecstasy the laurels and bouquets of high school graduation still fresh in our memory. "Surely such a class," we fondly dreamed, "so wise in thought and fair in features, never before has entered the halls of learning." And yet, ere long we realized that the bed of roses, which our imagination had woven out of the glamour of college life, had disappeared before the cold light of reality. We had to go to work!

Will do we remember the first class meeting held in the boys' study hall, where, as we believed, we chose from our class of ninety-three, those best prepared to lead us into the green fields of truth. Mac Satterwhite was chosen president; Audrey O'Brian, vice-president; Mayhelle Wheelless, secretary; and Esther Moon, treasurer.

As we review the record of this first year, we find it resplendent with brilliant achievements. In athletics our class took the lead, presenting in all three of the major sports a majority of the successful candidates. In scholarship, our members so impressed the faculty that they relied upon us heavily when in perplexity over the knotty tangles of new thought. In the religious life and in other extra-curricula activities, the freshmen of 1928 were right there with co-operation, initiative, and leadership.

When the sixth of September, 1928, rolled around, an overwhelming majority of the class of 1929 were found on registration day ready to go the second mile of Collegiate training. Taking the places of those who fell during the barrage from the faculty examinations in the spring, came a number of aspiring candidates from other institutions, attracted doubtless by the widening fame of our class.

No less spectacular have been the accomplishments of the college during the period of our ascendancy to seniority. Our football team has scalped our strong rivals, the Wake Forest Freshmen for the first time, subdued Mars Hill College, and vanquished Atlantic Christian College for the second successive year. This year, too, marks our entrance into the realm of inter-collegiate debating, which we predict will dignify public speaking in student life and eventually restore the literary societies to first place in our affections.

In student life our class has presented a brilliant array of actors. Constance Midkiff was elected editor-in-chief of the 1929 *Pine Burr*. Ryburn Stancil well guided the editorial policy of *Creek Pebbles*, official publicity organ of Campbell College. Furthermore, six of the B. S. C. Council were selected from the Sophomore class, as follows: Constance Midkiff, Reba Mills, Esther Moon, Susie Danner, William Lynch, and Howard Gardner.

And now as we come to the end of our stay at this beloved place, we bid farewell to our alma mater with the hope that she will continue to do for others what she has done for us.

## Class Prophecy

IT was midnight—eight hours before the examination on Shakespearean tragedies in English CII. Julius Caesar, in all his pomp and glory, lay dying at my feet. Romeo, filled with disappointment, stood by his dead Juliet in the shady cemetery. Hamlet, was exchanging death for dissatisfaction. I repeated again the dates, "1564-1616." Finally, after many a yawn, I gave up the ghost—I suppose. I must have dreamed.

"Ladies and Gentlemen, this is station FATE, Buie's Creek, N. C., broadcasting the vitaphone picture, "The Review of '29." We trust that your dial is clear, and that you will both hear and see the play with pleasure. It is now eight o'clock, Friday, December 13, 1919. Thank you."

Timothy Francis Savage then appeared upon a painted stage as master of ceremonies. After announcing that the play was a portrayal of the accomplishments of the members of the class of '29 at Campbell College, he quoted—as if especially for me—from my old friend Shakespeare: "All the world's a stage and all the men and women merely players."

In a procession, the playmakers, my classmates, presented themselves.

Softly and sweetly the tones of music began to swell in my ears as harmonious chords brought forth "Among My Souvenirs." Louise Leslie and Edith Pearson at the piano were giving the prelude, as they were to accompany the playmakers.

The curtain slowly rose, and there way up in the sky hung Howard Gardner, an astronomer, ever studying the powerful phrase, "O Esther, ever thou art the Moon."

Through the mist came Edythe Barnhardt, posing as a teacher of "Classroom Behavior."

Paul Cale and Earl Jordan appeared side by side in their own science laboratory. Paul was trying to prove to Earl that love made the world go "round." It used to be "square."

Lawyer Annie Warren was well situated in the bar, since she found constant work in pleading for a certain "Pat."

Graham Wilbur came in on a bicycle, announcing bankruptcy. He had tried to make a fortune selling German, Latin, and Trig. books to Campbell's collegians.

The scene changed and I saw in the jungles of Africa Fred Blount, sweeping cobwebs off the cocoanuts. I have heard recently that he went to the uninhabited section of that country to take practice lessons in voice.

Little Rosa Edwards appeared just a few miles beyond the "Red section," where it was revealed that she was on a walking tour of the world for reduction of—prices, maybe. Her next stop was China.

My old Latin friend, J. E. Adams, was sitting around with a "Uke" in his hands, accompanying the chords with his own philosophical notes.

Gladys Harris, counting her fingers—oh, yes, tracing relationship with David. Back of it all, though, she was city librarian in the rural district of Cullen, Virginia.

Quickly a contrast flashed as I peeped into the cozy home of Vergie Waller, who was at that hour entertaining the Barbee girls, Jamie and Christine—they

having attained fame in the movie world. They were at the time seeking information for their next picture, "She Got Her Man."

Was that Bertha Woodruff? If it was, she was a home "ee" teacher supervising in a kitchen. Rather sadly, though, it was a college kitchen.

A peep behind the bars then explained why some of our classmates could not participate in the review.

Blinky-blank, I missed that pose. Maybe it was Susie Banner, using the first step of the Charleston as a method of enlightenment to little heathens. Perhaps it was Alma Carter, spilling ink on somebody's eyebrows. She always did want to be a beauty specialist. I don't know, I reckon the curtain was pulled for change of scenes.

It was worth it. The second act opened in a Greek Cafeteria. In walked Dr. Timothy Savage, Superintendent of Schools in Teachey. Going over to his usual table, he surprisingly greeted Dr. Constance Midkiff, physician of financial "ills" and patches. The professionals enjoyed that meal—but now, they tell me, they are "souping" together.

George Cullipher was suspended by means of vines entwined about the trees in Pelmel, ever preaching the way of deliverance to the forsaken inhabitants of that country.

The head of the democratic donkey soon became apparent. He was enjoying usual happiness, simply being "pushed" by farmer "Doug" Byrd.

"Get set," and Marvin Bethune said "Go." A track coach gets his pay also.

With clasped hands and curved lips Margaret Duncan was informing her students on the latest pronunciation of a and â. Expression.

Carl Hilliard simply asked, "Would there be anything else today? Special reduction on gas at Hilliard Filling Station."

Grady Souther with his brush was attracting daily throngs to his studio to witness his latest hit in painting, "Campbell's Creek."

Edison Lennon posed by the side of his teletypesetter in the *Pebbles* office at Buie's Creek.

"Now hush, that letter is a." I recognized these words from the school room of Vanda Saunders.

Ryburn Stancel presented to his fellow classmates the latest edition of his monthly journal, "Married Life." Did Martha Stallings influence the naming of her husband's magazine? I believe Martha was doing light house keeping.

Gladys Warren was relieving the pains of "fast" drivers and such. Not yet had she soothed the broken heart of a love-sick patient.

Othello Patterson with some "Merchant of Venice" had established a jewelry store. The store began when he gave her the first diamond, and then another.

I next looked into the beautiful Memorial Hall at Campbell. There, in a round table discussion on disciplinary affairs, sat Esther Moon, Audrey O'Brian and Lynda O'Quinn. These girls in the man-less profession were now determining the fate of our little "Jrs."

My classmates joined in a finale chorus, "We're sitting at the foot of the rainbow." Harken, classmates, who knows? A lie may be the truth.

## Last Will and Testament

**K**NOWING that by nature our departure from the world of Junior College education is close at hand, we the class of 1929 at Campbell College, being of sound minds and bodies, after two hard years of continuous study, hereby make our last Will and Testament.

In setting forth this disposition of all our possessions, we further proclaim it to be our purpose to acknowledge our debt to our beloved teachers, to distribute our belongings among those whom they will help most, and to escape the enormous income tax, which otherwise would accrue.

### SECTION I

*Article 1*—To our dear old Alma Mater we wish to express our deepest and sincerest love; we wish to let it be known that as we pass out into other walks of life, this class will be true to the high ideals for which this institution stands.

### SECTION II

*Article 1*—To Dr. J. A. Campbell, our dearly beloved president, we wish to express our deepest appreciation for the many things he has done for us during our stay here.

*Article 2*—To Professor L. H. Campbell we wish also to express our appreciation for the many kindnesses he has shown us as our sponsor, advisor and friend.

### SECTION III

*Article 1*—To the class of 1930 we will and bequeath the joys, responsibilities, and dignity of our graduating class.

*Article 2*—Paul Cale wills and bequeaths his place as Biology laboratory instructor to Freshman Sam Hood.

*Article 3*—Tim Savage wills to Freshman Sam Strickland his ability to learn history.

*Article 4*—Esther Moon wills and bequeaths to Dolly Aycock her power to vamp boys.

*Article 5*—Earl Jordan wills to Freshman James Hockaday his very keen sense of humor.

*Article 6*—Ryburn Stencil wills to Freshman Joe Martin his place as Campus sheik.



# Pine Burr

*Article 7*—Bob Reaves wills and bequeaths that portion of his hair lying between the desert area above his eyebrows to the barren wastes of the North Pole at the top of his head, to Professor Edwards.

*Article 8*—J. E. Adams wills and bequeaths to Professor Leslie his spectacles, so that he may detect all the mistakes in the English papers.

*Article 9*—Everette Miller wills his place on the football team to "Big Hank."

*Article 10*—Reba Mills wills to Ruth Savage her love for red hair.

*Article 11*—Audrey O'Brian wills and bequeaths to Annie Kerr her place as campus flirt.

## SECTION IV

*Article 1*—To our beloved faculty we bequeath all of the research investigations, previously reported on our examinations, as our appreciation for what they have done for us.

## SECTION V

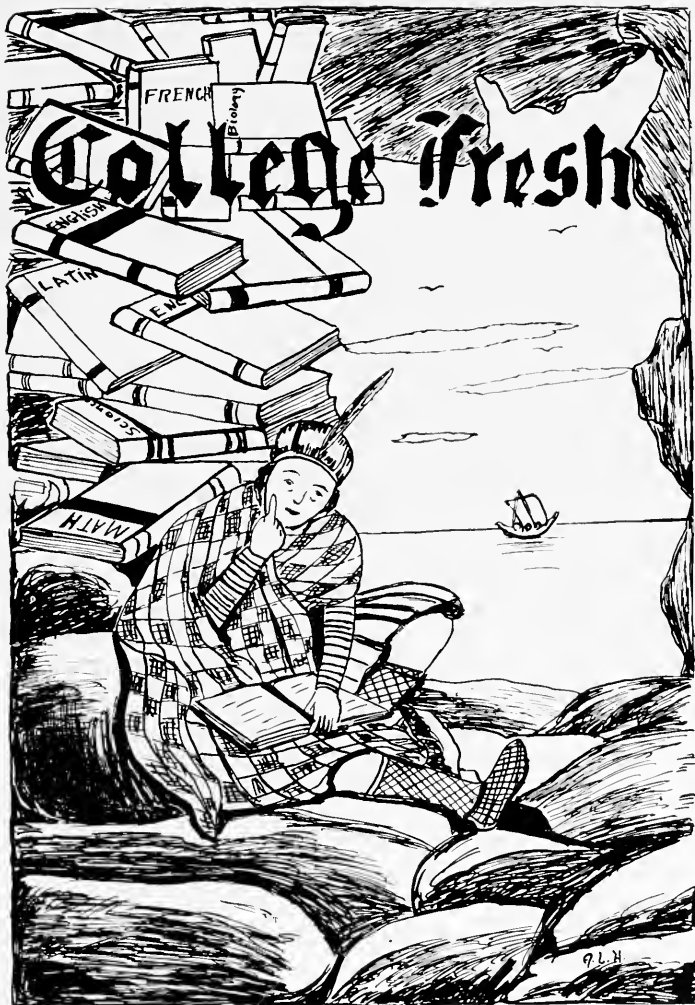
*Article 1*—To our parents we wish to show our deepest appreciation for the sacrifices they have endured to make it possible for us to be in school.

## SECTION VI

The class as a whole is made executor of this last Will and Testament and is hereby authorized to carry it out to the last letter.

# Pine Bluff







## College Freshman Class

### MOTTO:

*"Climb, though the heights be rugged."*

*Flower: White Rose*

*Colors: Green and White*

### OFFICERS

LLOYD GILBERT

*President*

MILTON LEE

*Vice-President*

DOLLY AYCOCK

*Secretary-Treasurer*

JOHN EDWARDS

*Historian*

RUBY GRIFFIN

*Poet*

KATHLEEN RIDDLE

*Editor*



FANNIE BELLE SMITH  
*Enquay Springs, N. C.*

LACY COLLIER  
*Linden, N. C.*

HATTIE GARDNER  
*McBee, S. C.*

GURNEY HENSON  
*Franklinville, N. C.*

VIRA LEE  
*Benson, N. C.*

WILLIAM CARROLL  
*Warsaw, N. C.*

LILLIAN GILES  
*Linden, N. C.*

JAMES LINEBERRY  
*Randleman, N. C.*

EARL PRIVOTT  
*Edenton, N. C.*

EDITH STEVENSON  
*Willow Springs, N. C.*

WATSON MILLEKAN  
*Randleman, N. C.*

ELECTA COATS  
*Coats, N. C.*

MURPHY CANNADY  
*Hope Mills, N. C.*

SPENCER BLANCHARD  
*Wilmington, N. C.*

LYMAN SEYMOUR  
*Bnie's Creek, N. C.*





RUTH NEWSOME  
*Harrelville, N. C.*

ERNEST WILLIAMS  
*Dunn, N. C.*

WILLIE M. NEWSOME  
*Harrelville, N. C.*

SAM STRICKLAND, JR.  
*Dunn, N. C.*

KATHLEEN McDANIEL  
*Hope Mills, N. C.*

LOYD GILBERT  
*Dunn, N. C.*

EVELYN COX  
*Staley, N. C.*

GRADY TUNSTALL  
*Wendell, N. C.*

PAULINE BRAY  
*Shiloh, N. C.*

RAYMOND GRISSOM  
*Henderson, N. C.*

ETHEL WARREN  
*Newton Grove, N. C.*

FOREST NEWTON  
*Oxford, N. C.*

KATHLEEN RIDDLE  
*St. Pauls, N. C.*

BENSON JOHNSON  
*St. Pauls, N. C.*

STYRON HARRIS  
*Virginia, Va.*

FLORA L. HOLLOWAY  
*Durham, N. C.*

MARJORIE LESLIE  
*Vass, N. C.*

JACK LEAKE  
*Rich Square, N. C.*

MARY OVEDA BOWDEN  
*Spring Hope, N. C.*

PEARL MAE DUPREE  
*Angier, N. C.*

T. G. CHANEY  
*Greensboro, N. C.*

LOIS MAY  
*Centerville, N. C.*

GEORGE BAKER, JR.  
*Tyner, N. C.*

MARY ROGERS  
*Timberlake, N. C.*

MILTON LEE  
*Raleigh, N. C.*

ANNIE L. VESTAL  
*Mt. Vernon Springs, N. C.*

REECE HARRINGTON  
*Sanford, N. C.*

EUDINE ZIMMERMAN  
*Advance, N. C.*

JOHN EDWARDS  
*Louisburg, N. C.*





EDWARD L. REAVIS  
*Yadkinville, N. C.*

MILDRED THOMAS  
*Jacksonville, N. C.*

GEORGE WARREN  
*Buie's Creek, N. C.*

JOSEPH A. MARTIN  
*Brooks' Cross Roads, N. C.*

BEATRICE BENNETT  
*Raleigh, N. C.*

ANNIE P. GRIFFIN  
*Raleigh, N. C.*

RALPH D. ARNOLD  
*Enquay Springs, N. C.*

RUBY GRIFFIN  
*Albemarle, N. C.*

MURPHYE CANNADY  
*St. Pauls, N. C.*

LELA G. PLEASANT  
*Angier, N. C.*

RAYMOND CANNADY  
*Parkton, N. C.*

RUTH SAVAGE  
*Atkinson, N. C.*

J. R. McDANIEL  
*Garland, N. C.*

LOUISE MUSSELWHITE  
*St. Pauls, N. C.*

JACK OLIVE  
*Chapel Hill, N. C.*

IRMA RAGAN  
*New Hill, N. C.*

# Pine Bluff

J. C. THORNE  
*Selma, N. C.*

DOLLY P. AYCOCK  
*Elberon, N. C.*

LEWIS LUDLUM  
*Shallote, N. C.*

CLAYTON ROUSE  
*Seven Springs, N. C.*

MINNIE HALL  
*Stedman, N. C.*

QUEENIE RICHARDSON  
*Gresham, S. C.*

VERNON PARKER  
*Portsmouth, Va.*

MARGARET SATTERWHITE  
*Orford, N. C.*

JAMES HOCKADAY  
*Lillington, N. C.*

FLORENCE WILLIAMS  
*Gresham, S. C.*

ALVA CLARK  
*Linden, N. C.*

MARY ADAMS  
*Willow Springs, N. C.*

CARL OUSLEY  
*Baie's Creek, N. C.*

GAYNELLE GREENE  
*Thelma, N. C.*

ALLEN BYRD  
*Erwin, N. C.*

MILDRED BUTTS  
*Lillington, N. C.*



[ FIFTY-SEVEN ]

1929

## College Freshman Class

### ADDITIONAL MEMBERS

Katherine Alderman	J. G. Godwin	Irvin Page
A. B. Bethune	James Gordon	J. L. Pearce
Cecil Blount	Grace Graves	Harold Petty
Emma Bullard	Eugene Harper	Queenie Richardson
Alman Butler	Grace Harris	Vergil Rollins
Louaine Byrd	Dovie Herndon	Willard Sexton
William Carroll	Newland Jackson	Alex Sneed
Archie Hardy	J. A. Lewis	Owen Tharrington
Lucile Harmon	James Lineberry	Carlos Thomas
C. R. Harrington	Rosemary Marshburn	Mrs. J. M. Wallace
W. R. Day	Elizabeth Matthews	George Warren
Theo Eason	Lois May	Florence Williams
Wynona Fowler	H. L. Montague	Monroe Williamson
	Linwood Murphy	

### *Freshman Class Poem*

*When Ponce de Leon boldly crossed the sea  
In search of youth, that none should ever know  
Old age, but always young and handsome be,  
His face was tinted with the sunset's glow,  
He sailed for many a weary day and night,  
Endured the roughness of the stormy sea,  
To seek that fount whose magic waters might  
Restore to him his youth eternally,  
Now just as Ponce de Leon hoped to gain  
The fount of youth immortal in his day,  
So come we students, hoping to attain  
I drink from wisdom's fountain, if we may,  
We seek a fountain nobler far than he,  
Whose potency is best of all that be.*

—Poet.

# Pine Bluff



## Freshman Class History

**W**HILE only posterity can truly evaluate the events of the present time, certain decisions in human life are ever fraught with destiny. Such an event was the entrance of the Freshman Class of 1928-29 at Campbell College on last September 4. The influence of that step, both on the College and the members of this class, can in no certain way be measured.

Shortly after our arrival we met for organization. The roll of members revealed the fact that this is the largest Freshman Class in the history of the institution—one hundred eleven in number, gathered from several states. After spirited balloting the following officers were selected to guide the work of the class for the year: Lloyd Gilbert, President; Milton Lee, Vice-President; Dollie Aycock, Secretary-Treasurer.

Much of the work of this class, like that of every class, has had little of the spectacular in it. The gap between high school and college is wide, and much quiet study has been required to establish ourselves in our new position. Naturally, too, as Freshmen we have had to win our place in the life of the institution by proving our merit, and this has required some time. With all these handicaps, we have achieved a record that we believe would do credit to any similar organization. We have representation in the new Honor Society; high officers in the Literary Societies, religious organizations, and other clubs of a literary nature. We are especially proud of the record of Lyman Seymour as chairman of the program committee of the McDowell Music Club. In athletics our class has presented such popular heroes as Monroe Williamson, "Hank" Harrington, Bob Harrington, and Joe Martin.

One of our happy memories of the year is Freshman-Sophomore picnic, which we staged in honor of the college graduating class. We entered into it with all the enthusiasm of our membership, and we believe that our guests will admit that it was a success.

But the record of the class belongs more to prophecy than to history. Our faces are toward the future; and inspired by our success in the days of beginning, we face the future, full of confidence and hope. Next year we shall plan greater things for ourselves and for our Alma Mater.



# Senior





## Senior Class

MOTTO:

*"More bright from obscurity"*

*Flower: White Rose*

*Colors: Pea Green and White*

### OFFICERS

DAVID HARRIS  
MABEL STEWART  
VIRGINIA JONES  
DAVID HARRIS  
OLLA FAY JOHNSTON  
BILLYE HOBGOOD  
HARVEY MILLER  
MYRTLE HUGHES

*President*  
*Vice-President*  
*Secretary*  
*Prophet*  
*Testator*  
*Poet*  
*Giftoorian*  
*Editor*

## DAVID HARRIS

*Phi*

MIAMI, FLA.

President Senior Class, '29; President Out-of-State Club, '28; Secretary Society, '28; Football, '27-'28; Track, '28; Sports Editor Pebbles, '28; Music Club, '28; Assistant Baseball Manager, '28-'29; Associate Editor Pebbles, '29.

As our class president, David has guided us with marked executive ability and thoughtfulness. We admire his pluck not only in the classroom, but on the athletic field where he has not feared to tackle the fiercest football aggressors.

## ELIZABETH BAUCOM

*Astro*

WILMINGTON, N. C.

Music Club, '29; Grandchildren's Club, '29.

"Why worry" inquires Elizabeth between laughs. With this philosophy as her guide she fills each day with merriment. There are, however, in her life "enough shadows to temper the glare of the sun."

## FRANKLIN DUPREE

*Phi*

ANGIER, N. C.

The baby of the class in size, but not in intellect. When he speaks, the class listens expectantly. He has high ideals and will doubtless win distinction in his profession.

## GERELDINE STEWART

BUE'S CREEK, N. C.

Grandchildren's Club.

Geraldine's profession we are sure will be that of a Latin teacher. Even at that we envy her pupils. With such determination she must win in her undertaking.

## FRED LOWE

*Phi*

STANLEY, N. C.

Football, '27-'28; Baseball, '28-'29; Baseball Manager, '29; Junior Class President, '28.

Fred's first love is football, though basketball and baseball are close rivals. He is clean in his habits, and manly. Though he has not led in scholarship, he is faithful to his duty.



# Pine Burr

## MYRTLE HUGHES

*Sappho*

HENDERSON, N. C.

President Society, '27; President Y. W. A., '29; B. S. U. Council, '29; Music Club, '29; Pine Burr Staff, '29; President B. Y. P. U., '27; Latin Club, '27.

Though small of stature, Myrtle's unbounded enthusiasm radiates through an assembly and marks her for leadership. She has a good word for everyone, and consequently has a large circle of friends. Her ambition spurs her on to hard work.

## CLYDE GLOSSON

*Phi*

GREENSBORO, N. C.

President Ministerial Group, '25-'26; Secretary Society, '26; Supervisor Society, '27; President B. Y. P. U., '28; Pine Burr Staff, '29; Honor Society.

A true Campbellite in every respect. Quiet, dignified, wise, and studious, he carries his honors well. "Still water runs deep." Clyde has realized this truth, and if ignorant upon a subject, no one is the wiser.

## VIRGINIA JONES

*Astro*

RALEIGH, N. C.

Chorister Society, '25; Society, Chaplain, '26; Secretary Y. W. A., '27-'28; Vice-President Society, '28-'29; Secretary Senior Class, '29; Pine Burr Staff, '29.

We are lucky to have a classmate so happy of disposition, so capable of mind, and so sincere in friendship. Her open face reflects a heart free from guile. Though child-like in her simplicity of manner, she possesses a seriousness of purpose becoming one of maturer years.

## THEODORE LEE

*Eu.*

ROCKY MOUNT, N. C.

President Class, '27-'28; President Society, '28; Vice-President Grandchildren's Club, '27-'28; Vice-President B. S. U., '28-'29; B. Y. P. U.; Treasurer Society, '28-'29; Honor Society.

If you're looking for honesty, sincerity, and dependability, find Theodore. His activities speak for him. He has made an enviable record, and his many friends are proof of his loyalty.

## WILLIE GLOSSON

*Sappho*

GREENSBORO, N. C.

Vice-President Y. W. A., '26; Pianist Society, '26; B. Y. P. U.; Western North Carolina Club.

"Bill!" deeds will not be known by what she says, but her silent force has been a help to everyone. She has proven dependable and loyal in every respect.

## ELSIE TYNER

*Sappho*  
Gulf, N. C.

Meet our greatest fun producer. She has a laugh for your every ill. Cheerful herself, she inspires faith in a better day ahead. Not so studious as to make one sad, she nevertheless by the kindness of her intellect has made a good record in her classes.

## LELAND COX

*Eu.*  
Belton, S. C.

B. Y. P. U.; Out-of-State Club.

Here's our puzzle. How he has become so great, the class hardly knows. He has won many friends. Always jolly and ready for work.

## MARY SEYMOUR

*Astro*  
BUE'S CREEK, N. C.

Secretary Society, '28; Pianist Society, '28; Grandchildren's Club, '28-'29; Latin Club, '28; B. Y. P. U.; Music Club, '29; Harnett County Club, '27-'28; Y. W. A.

If you are looking for a girl of talents, here is one. If you are looking for a girl with brains, find this one. If you want a girl that fits in any place, you'll find her in Mary.

## JOHN HOCUTT

*Eu.*  
Ashton, N. C.

Secretary Society, '27; Track, '28-'29; Vice-President Class, '27; Treasurer, '28-'29; Supervisor Society, '28-'29.

His ability to learn easily has saved him much hard study. While his grades are creditable, he finds time to mix with his fellows, exchange wit, and participate in several extra-class activities.

## ANNIE LAURIE HARRELSON

*Astro*  
WINNABOW, N. C.

President Society, '28-'29; President Art Club, '27-'28; B. Y. P. U.; Secretary Class, '28; Secretary Latin Club, '28; Supervisor Society, '27; Pine Burr Staff, '29; Honor Society; Vice-President Eastern Carolina Club, '29; Y. W. A.

Though one of the most honored and best loved members of our class, she wears her distinctions lightly. She is loyal to every duty, and careful in the execution of the smallest details.





## MABEL STEWART

BUE'S CREEK, N. C.

Vice-President Class, '29; Grandchildren's Club.  
Bue's Creek born and bred, Mabel comes to the end of her high school career with a well-rounded preparation for college days. Her popularity extends even beyond her girl associates—doesn't it, boys?

## CARL WELLS

*Eu.*

HALLSBORO, N. C.

Baseball, '28-'29; Assistant Football Manager.  
With exams near at hand, Carl has still to find the secret of how to compress into one twenty-four hours time enough to prepare five lessons and meet all the mails from Raleigh. But it must be done.

## OLLA FAY JOHNSON

BUE'S CREEK, N. C.

Grandchildren's Club; Harnett County Club; Latin Club, '27; Music Club, '28.

Quiet, unassuming, capable—three words that unlock the heart of this lovable girl. Though the pet of her home, she has not been spoiled. Her love for the beautiful in art and music has had a refining influence upon her nature.

## MARSH MYERS

*Eu.*

JENNINGS, N. C.

Captain Football, '27-'28; B. Y. P. U.; Baseball '28.

All hail the noble captain of our football team. Sincere, honest, a good fellow and a true friend—that's Myers.

## RHODA GREGORY

BUE'S CREEK, N. C.

We expect great things of Rhoda, because she has applied herself diligently to her work here. She believes that "silence is golden," and she also has a way of attending strictly to her own business. Nevertheless her quiet manner has won for her a host of friends.

## RUTH LIPSCOMB

*Sappho*

DURHAM, N. C.

Volunteer Band, '28-'29; B. Y. P. U.; Y. W. A.;  
Chaplain Society, '27-'28; Music Club, '28; Durham  
County Club, '27-'28.

How could Buie's Creek exist without Ruth? Some say we won't have to. Starting in the sixth grade, she has at the end of five busy years come to graduation. In the various activities open to girls she has taken a prominent place.

## OLIVE GEDDIE

*Phi*

STEADMAN, N. C.

Society Pianist; B. Y. P. U.; President Music Club, '29; Latin Club; Cumberland County Club.

Hats off to Olive. He has been one of the mainstays of the class musical, witty, and a lover of a good time. His pleasing personality has won him many friends.

## ALLIE BLUE

*Astro*

CARTHAGE, N. C.

B. Y. P. U.; Y. W. A.

Allie inherited from her brother who was here last year, a warm place in our affections. But she has strengthened the bond on her own account. Along with her "good looks" she has brains and a big heart.

## HERBERT HOOD

*Eu.*

SANDERSVILLE, GA.

Bachelor's Club.

A genuine "Georgia cracker," possessing a determination to get an education that does not balk even at a job cooking. He does his task without murmuring, whether solving intellectual problems or working for expense money.

## SARA BESS SCOTT

*Astro*

RALEIGH, N. C.

B. Y. P. U.; Y. W. A.; Chorister Society, '28;  
Wake County Club, '26-'27; Basketball, '27-'28.

Of all the things Sara Bess does do, worry is not one. If a merry heart does good like a medicine, send for her. Her musical talent has often had happy expression on our programs.





## LILLIAN HAWLEY

*Sappho*

COLUMBIA, S. C.

"Why think twice before you speak, you'll say it any how." Her impulsiveness only adds to her lovely disposition. Thank you, South Carolina, for such a gift.

## GROVER HAWLEY

*En.*

COLUMBIA, S. C.

B. Y. P. U.; Bachelor's Club; Track Team '29.

Grover hails from South Carolina, with the avowed purpose of working out an education. His resolution is so firm that obstacles fail to terrify. He deserves success.

## AVIS MARKS

BUE'S CREEK, N. C.

Fortune has been kind indeed to this Harnett County girl, having bestowed upon her both beauty and brains. Quietly and yet cheerfully, she does her work well. Those who know her life feel that she richly deserves the high esteem of her classmates.

## HARVEY MILLER

*Phi*

CARTHAGE, N. C.

Assistant Football Manager.

From the city of Carthage comes this aspirant for graduation honors. In his one year with us he has demonstrated the attractiveness of fun tempered by a firm conviction of duty.

## RUTH BURNS

*Sappho*

DUNN, N. C.

Harnett County Club;

Steadiness characterizes this deserving girl. By her excellent examples she has one the highest respect and esteem of her fellow students and teachers. Her record is spotless.



## BERLES JOHNSON

*En.*

BUIE'S CREEK, N. C.

Grandchildren's Club, '29.

Rarely does he get in a hurry, but he is a good student just the same. Earnest good-natured, and conscientious, he is a popular member of our class.

## LEWIS OVERTON

*En.*

POWELLSVILLE, N. C.

His words convey little of his achievement. Always there and always willing—that's Overton. We hope him a bright future.

## GORDON STALLINGS

GOLDSBORO, N. S.

Gordon is the "Tarzan" of our class, fits well everywhere. His room is the rendezvous for all fun-loving fellows. He graduated from our class after one year in residence, but indelibly impressed himself on our memories.

## JOHN BRYD

COATS, N. C.

John isn't a roommate but still he's a handy ladies man. "All work and no play" says the adage, "makes Jack a dull boy;" consequently John prefers play.

## EUGENIA CAIN

BUIE'S CREEK, N. C.

Time never stands still, neither does Eugenia. Always going and always getting there—which proves haste does not make waste.

## JACK McKAY\*

DURHAM, N. C.

\*Photo on page fifty-five.



# Pine Burr



[SEVENTY]

1929

## Senior Class Prophecy

DAY after day our giant dirigible zoomed through space. We were passing through the solar system, and I was leaning over the rail to examine a small planet. Suddenly, the ship gave a lurch and I fell headlong over the rail. I heard the cry—"Man Overboard" ring from the plane. Though for a moment terror-stricken, I was set at ease by the thought of the ship's life boat, which would be dispatched to rescue me. But it would take several days to locate me in that immensity of space! At that moment I was rushing past the moon. Being hungry I cut off a large piece of cheese of which that planet is composed. I devoured this strange substance eagerly, which immediately gave me a sensation of lightness and power. My eyesight was multiplied ten million times. I saw the earth, a mere dot in the solar system, yet sufficient unto itself. I saw the glittering whiteways of the great cities and finally—Campbell University with all its grandeur and glory. There I had spent my happy days during my school life. This sight reminded me of my old schoolmates. With my all-seeing eyes I began to look the universe for them. I gazed through jails, insane asylums, slums and mansions of wealth. I saw traces of them everywhere, even in the milky Way. These are the facts which I discovered in my search:

In the up-side-down empire of China I saw several of my old comrades, among them was Olive Geddie. He had given up music and was coaching football at the University of Hong-Kong. Gordon Stallings was rooming with Olive, and in the meantime was working on an invention which would greatly reduce the size of feet. Across the street Virginia Jones was teaching little boys not to throw stones, because she lived in a glass house of her very own.

Most of the revered Seniors of '29 had remained in the U. S. Of course, all of them had obtained fame and riches. Carl Wells, the great algebra professor, had discovered the meaning of the unknown quantity of X. Myrtle Hughes, President of the United States, was seaching through the freak sideshows of the world for a man large enough to be her husband. On the very day that Myrtle found a suitable husband, Leland Cox organized a world's society for the prevention of laughter and wise-cracks.

Many classmates had clung to the home town of their alma mater. Mabel Stewart was one of them. She decided that Buie's Creek was too small for one of her great talents, so she constructed a city there which rivaled and finally surpassed New York in size. Herbert Hood, after years of experience carried on at the Bachelors' Club, had discovered a new variety of beans. Harvey Miller found out that two could live cheaper than one, so he married Professor Leslie's daughter, Katherine, and then built a house on the banks of the "Creek," living happily ever after. Across the Creek was the research laboratory of Annie Laurie Harrelson. She was investigating the appeal which red hair exerts over the feminine mind. Lewis Overton had assumed control of Campbell University. He had made his million, as had his predecessors (?).

Over in Europe was Lillian Hawley. She was teaching English grammar in Jugo-Slavia. Franklin Dupree, alias "The Bloody Tarheel" champion heavy weight boxer of the earth and moon, was in England looking for someone who would fight him.

In a great office in New York was Berles Johnson, President of the United Farms Corporation, which owned and operated every farm in the United States. He often went to see the Ziegfeld Follies, which were directed by Allie Blue. Allie, in turn, often went to hear Clyde Glosson, the second Billy Sunday. Sara Bess Scott was thrilling Clyde's audiences with her beautiful voice. Olla Fay Johnson was composing new jazz songs in Tin Pan Alley.

Carl Ousley, as a result of an unsuccessful effort to teach the theory of evolution to the monkeys of South America, had just met an untimely end at the hands of a giant orang-outang. While attending Carl's funeral services Ruth Lipscomb and Elsie Tynor met and later married the Prince of Wales and the King of Japan, respectively.

Many other wonderful sights of former schoolmates met my gaze, which would require volumes to record. Concerning these I shall report later.

## Senior Class Poem

### THE VOICE OF THE FUTURE

*Looking out, before us  
We see new vistas of life;  
Love, sorrow, happiness, strife,  
Singing an everlasting chorus:  
"Come, come," they seem to say;  
"Hurry, hurry, life is approaching.  
You had your pleasures yesterday  
You've not had the best of coaching."*

*Now enter Life.  
"Work, my boy, struggle, my girl;  
It's the only way to get things  
In this life's giddy whirl.  
Come, my children, come and strive;  
The weak die; the strong survive."  
Insistently the voice in our ears sings.*

*We stand before the brink  
Of a new life, waiting  
For the signal to go, hating  
The thought of leaving it all, but drink—  
One and all, one last sweet drought;  
Think of the past—the true friends*

*We've had. But now we're caught  
In the mesh of life—and it sends  
Thoughts of love, hate, and sorrow.  
Now! Now! We can't wait 'til tomorrow!  
We've had our petty foibles and things,  
But now we hear the voice of Life—*

*"Come, come" it says, "the past  
Is only a bucket of ashes. Forget  
And live for the future. At last  
You shall gain your lasting,  
Laughter or tears, it's all the same;  
The passing of years doesn't change the game.  
The end of it all is in eternity.  
Come, my children, Life is an old mystery."  
Insistently the voice in our ears sings.*

—POET.

## Last Will and Testament

STATE OF NORTH CAROLINA,  
 COUNTY OF HARNETT,  
 CITY OF BUIE'S CREEK.

We, the High School Seniors, being about to expire, and a large number of us being occasionally sane and in our right minds, do, in this, one of our moments of sanity, will and bequeath the following items:

ITEM I—To the faculty we leave a sigh of relief, to be given by them at our departure.

ITEM II—To the Juniors we bequeath our teachers and our subjects, with the hope that they may be of more benefit to them than they have been to us.

ITEM III—To the school we leave our best wishes for its continued success.  
*The following individual items are cheerfully bequeathed:*

ITEM I—To Miss Powell we will a stable to shelter her dearly beloved Latin "ponies."

ITEM II—(a) To Miss Moon we bequeath a book of etiquette, for reference in compiling student talks. (b) To Miss Moon we bequeath again a new bell, the glasses being sorely in need of a rest.

ITEM III—To Professor Edwards we will one good science student to carry out his theories and brighten his days.

ITEM IV—To Professors Marshbanks and Brandon we will new handkerchiefs to be used as black-board compasses.

ITEM V—We will to the postoffice a phonograph and two records named respectively "The mail has come" and "The mail has not come" for the benefit of its inquisitive patrons.

ITEM VI—We will to "Doc" Hardwick some new post-card pictures of Buie's Creek.

ITEM VII—David Harris wills his position as "Campus Fool" to anyone in search of work who may possess a goodly store of wanderings.

ITEM VIII—Theodore Lee leaves his scholastic record to the Juniors to be used as a model on which to pattern their records.

ITEM IX—Harvey Miller wills his ebony locks to Rody Clemmons, cursed by fate with flaxen curls.

ITEM X—Mary Seymour bequeaths her rights to kiss "Lib" Bancom to some bold, bad man of the future.

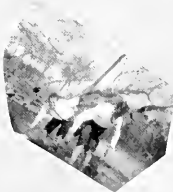
ITEM XI—Alma Long, Allie Blue and Annie Laurie Harrelson leave their sweetest smiles with all good wishes to the boys of the Junior class.

*In witness whereof, we, attesting this to be the last Will and Testament of the departing Senior Class, do offer our hand and seal, this, the seventh day of January in the year of our Lord, nineteen hundred and twenty nine.*

(Signed) SENIOR CLASS OF 1929

OLLA FAY JOHNSON, Testator

# PineBurk



Pine Burr

# Junior



[SEVENTY-FIVE]

1929



## Junior Class

### OFFICERS

ALONZO EARP	.....	<i>President</i>
THURMAN SPELL	.....	<i>Vice-President</i>
MARY MAYNARD	.....	<i>Secretary-Treasurer</i>
MYRTICE MCPHAIL	.....	<i>Poet</i>
EUGENE BRYAN	.....	<i>Editor</i>

### MEMBERS

Waylon Britton	Cecil Marks
Eugene Bryan	Louis McLeod
Hortence Chamblee	James Mitchell
Dophin Clayton	Mary Maynard
Rody Clemmons	Myrtice McPhail
Engenia Currin	James Moore
Alonzo Earp	Doris Poole
Charles Taylor Edgerton	Thurman Spell
Herman Everette	Gladys Sturdivant
Leone Hayworth	Mack Wallace
Eloise Johnson	Harry Williamson
Rudolph Johnson	Mary Tally
Gertrude Johnson	William Salmon
Marie Matthews	Ernest Warren
Ethel Mac Matthews	Leon Reavis
Bob Welch	M. J. Satterwhite
Hal Thomas	



# Pine Bluff



[SEVENTY-SEVEN]

*Junior Class Poem*

*We are a happy, jolly lot,  
Campbell's Juniors, don't you know?  
We always like to do things well;  
Sometimes to make a show.*

*Our goal is far beyond the sun;  
Troubles sore do lie between.  
Our aim is work and ne'er give up  
Till the promise land be seen.*

*To all of our dear teachers true  
Our many thanks we give  
For the plenteous store of knowledge  
With which our heads we fill.*

*In Seniorville we hope to land  
Upon our next adventure;  
But there the things that we will learn  
Are quite too hard to picture.*

—Poet.



# Sophomore



## Sophomore Class

### OFFICERS

I. T. NELSON	.....	<i>President</i>
SADIE IPOCK	.....	<i>Vice-President</i>
ORVILLE McIVER	.....	<i>Secretary-Treasurer</i>
JEAN KEIN	.....	<i>Poet</i>
VIRGINIA MEHAFFEY	.....	<i>Editor</i>

### MOTTO:

*"Master difficulties through perseverance."*

*Flower: Sweet Pea*

*Colors: Green and White*

### MEMBERS

Lucy Ayscuc	Virginia Moss
Thomas Boykin	Orville McIver
I. C. Clark	I. T. Nelson
Inez Currin	Lillian Parker
Jack Dail	Dodson Reardon
Chester Ennis	Ruby Riddle
Robert Hiatt	Frances Saunders
Sadie Ipock	Linwood Scott
William Janoske	Ben Stainback
Marguerite Johnson	Howell Stewart
Kathleen Jones	Ernestine Stewart
Jean Kein	Hazel Stewart
Robert King	Oleta Strickland
Frank Lee	Coy Pate
J. B. Little	O. N. Swanson
Lillie Long	Hubert Taylor
Agnes Marks	Pat Taylor
Virginia Mehaffey	E. M. Tyson
Cecil Marks	Frank Wilson
Rodney Marshburn	Cedric Woodall



SOPHOMORE CLASS

## Class Poem

*Two years in "high" our race we've run;  
So swiftly have those years been spent;  
The tangled threads of life undone  
Oft foil our steps in aimless bent.*

*As Freshmen first we made debut  
Unskilled in learned paths to walk;  
Many falls had we with our boohoo hoo  
Before as Sophs we learned to stalk.*

*As Sophomores we strut our stuff  
Before the tin'rous Freshmen kids;  
It's fun to counterfeit a bluff  
And watch their hair push off their lids.*

*As Juniors next we'll put away  
Our childish tricks for sage's gold;  
For soon will dawn that gladsome day  
When we shall reign as Seniors bold.*

—Poet.



# Freshman



## Freshman Class

### MOTTO:

*"We came, we saw, we conquered."*

*Flower:* Sweet Pea

*Colors:* Blue and White

### OFFICERS

WINSTON PEARCE

*President*

MARGARET BLAND

*Vice-President*

ALBERT ARANGO

*Secretary-Treasurer*

MARGARET WALLACE

*Poet*

CLEO STEPHENSON

*Editor*

### ROLL

Albert Arango  
Margaret Bland  
Jack Broadhurst  
Clellan Butts  
Hartwell Campbell  
Joe Coats  
Selma Denning  
Glenn Fish  
Doyle Grady  
Durwood Hatcher  
Norman Hatcher  
Larry Hudson  
Mildred Hood  
Myrtle Humphrey  
Clara Williams  
Baxter Johnson

May Marshbanks  
Mendall Marks  
David Matthews  
Tom Matthews  
Graham Mitchell  
Winston Pearce  
Virginia Roberts  
Lois Saunders  
Cleo Stephenson  
Jannita Stewart  
Mary Upchurch  
Woodrow Upchurch  
Louise Ward  
Marion Vestal  
Watson Wilkinson





FRESHMAN CLASS

[ EIGHTY-FIVE ]

1929

## *High School Freshman Poem*

*We're the class of thirty-two,  
A jolly band are we;  
We're always glad and happy,  
Though troubles we may see.*

*Blue and White, our colors,  
Lead us on to ideals high.  
And the sweet pea, our flower,  
Gloxes with tints of southern sky.*

*We're new, we're young—as yet,  
We haven't done so much;  
But passing time will find, we bet,  
Us Freshmen standing high.*

*No middle ways for us will do  
And from the two we have to choose  
We'll follow the aims of our school so true,  
You'll hear from us, ere yet. Adieu.*

—POET.



Pine Burr



Business Dept.

[ EIGHTY-SEVEN ]

1929

# Pine Bluff



## Commercial Class

### MOTTO

"No victory without labor."

Flower: Dorothy Perkins Rose

Colors: Green and White

### OFFICERS

ROBERT L. MITCHELL  
ALBERT P. GRIFFIN  
MARTHA McDUFFIE  
J. H. MINTZ

President  
Vice-President  
Secretary  
Editor

### ROLL

#### Candidates for Diploma

Burnette Ashley  
Blythe Ausband  
Sucwina Bullock  
Pritchard Bowen  
W. R. Britt  
Edna E. Brown  
Mary Bundy  
Mabel Cochran  
Finton Cordle  
Doris Gardner  
Willie Glosson  
Dorothy Grindstaff

Albert Griffin  
Emma Newton  
Lacy Hannon  
Martin Hannon  
Robert Harrington  
Sam Hood  
K. B. Johnson  
Robert Lanier  
Thelma Matthews  
Wayne S. Martin  
Ruth Medlin  
Martha McDuffie  
J. H. Mintz

O. A. Mitchell  
R. L. Mitchell  
Luola Page  
Harold Reading  
Mary Claude Spruill  
Louis Stewart  
Wallace Tew  
Marvin Tyndall  
E. H. Wilkinson  
Lizzie Williams  
Roy Yates  
Ben D. Wilson

#### Candidates for Certificates

Irene Honeycutt  
Allen Carrington  
Katharine Womble  
Paul Sleeper  
Ruth Gregory  
Ida Mae Talley  
Clara Talley

[ EIGHTY-EIGHT ]

1929



COMMERCIAL CLASS

[ EIGHTY-NINE ]

1929



**MARTHA SUEWINA BULLOCK**

FLOUAY SPRINGS, N. C.

Graduate Rock Ridge High School.

*"Sincere and true in all things."*

Bright brown eyes! She has them and such a charming personality! "Sue" has made good records in the business department, and we hope she will continue to make them after she leaves school.

**O. A. MITCHELL, Eu.**

POWELLSVILLE, N. C.

B. Y. P. U.; Graduate Mars Hill High School.

"Freshman" is a very energetic worker. Everyone likes him and evidently he likes everyone. He will certainly be a success if we may judge him from his early start.

**DOROTHY M. GRINDSTAFF**

*Sappho*

BARERSVILLE, N. C.

B. Y. P. U. Group Captain; Y. W. A.; Graduate Goldsboro High School.

*"The way to have friends is to be one."*

"Dot" is a quiet, cheerful worker, and has a good word for everyone, even in the worst of circumstances. Good luck, "Dot."

**PRITCHARD BOWEN, Eu.**

MERRY HILL, N. C.

B. Y. P. U.; Treasurer B. Y. P. U.; Track Squad, '29; Graduate Merry Hill High School.

*"A regular ladies' man."*

"Red" is a sincere, steady student. His cheerful words and smiles have won for him a place in everyone's heart.

**EDNA EARL BROWN, Sappho**

FAYETTEVILLE, N. C.

Y. W. A.; B. Y. P. U.; Cumberland County Club; Graduate Seventy-first High School.

*"Everybody's friend."*

It is seldom we find a sweeter girl than Edna. To be a friend of hers is a honor. Life is what we make it: Edna makes it happy and successful.

**LACY BRAGG HANSON, Eu.**  
**CARTHAGE, N. C.**

B. Y. P. U.; Graduate Sandhill Farm Life; Commencement Debater, '29.

*"A proud possessor of many fine traits."*

Wise? Yes. Studious? Sure. Prudish? No. In spite of his love for studying and making good grades, Lacy is a "sure-nuff" boy, and a friend worth having.

**RUTH AILEEN MEDLIN, Sappho**  
**BENSON, N. C.**

B. Y. P. U. and Y. W. A.; B. Y. P. U. Group Captain; Graduate Benson High School.

*"I'm so thrilled—I'm going home."*

Rufus is a very interesting girl who is ever ready to help without complaining. She loves fun too, as her many friends will tell you.

**JOHN HAMILTON MINTZ, Eu.**  
**CHARLOTTE, N. C.**

Commercial Class Representative on Annual Staff; Track Squad, '29; Position Critic Society, '29; Graduate Southport High school; Mgr. Track team, '29; Member Eastern N. C. Club; Commencement Orator, '29; President of Class Spring term.

*"A just ruler for the mighty ones."*

He is a sincere friend to all who know him and a personification of congeniality. With this personality he has made a host of friends throughout the school.

**MARTHA P. McDUFFIE, Astro**  
**BISHOPVILLE, S. C.**

Grandchildren's Club, Y. W. A.; B. Y. P. U.; Out-of-State Club; Secretary Commercial Class; Group Leader B. Y. P. U.; Supervisor of Society; Anniversary Reciter; Graduate Fairview High School.

*"Always ready to do what there is to be done."*

The cheery, sunny disposition, and keen sense of humor of this prominent member of our class have made it easy to win the love of all her classmates.

**ROBERT W. LANIER, Eu.**  
**WALLACE, N. C.**

B. Y. P. U.; President Sunday School Class; Secretary Society, '29; President Eastern North Carolina Club; Graduate Wallace High School; Orchestra.

*"Wherever I go, my smile goes with me."*

Everyone knows that "Bob" is a fine boy. He has the real school spirit all through. The optimism expressed by this motto, "I may be down, but I am never out," has much to do with his popularity.





**MARY KATHERINE BUNDY, *Astro***  
**BENNETTSVILLE, S. C.**

B. Y. P. U.; Y. W. A.; Secretary Society, '29;  
 Pres. Out-of-State Club; Cheer Leader; Elected  
 Most Popular Student.

*"I ask you confidentially—ain't she cute!"*

We know her by her merry laughter and original remarks. She is fond of bright ties; her chief food supply comes from the Hershey Company. She is a good sport and is always on the job when it comes to leading cheers. Good luck, Bundy!

**ALBERT GRIFFIN, *Eu*.**  
**WOODLAND, N. C.**

B. Y. P. U.; Vice-Pres. Commercial Class; Basketball squad, '29; Graduate Woodland High School.

*"I have three questions to ask and I want the facts."*

Although he is generally believed to be bashful among the ladies, we know him differently. He cannot, however, claim bashfulness in books, for he possesses a mind that will carry him to success.

**WILLIE GLOSSON, *Sappho***  
**GREENSBORO, N. C.**

**ROBERT L. MITCHELL (Bob) *Eu*.**  
**POWELLSVILLE, N. C.**

B. Y. P. U.; Supervisor of Society; President Commercial Class; Graduate Mars Hill High School.

*"She's in the Junior Class."*

A diligent worker in his studies and outside activities, "Bob" is well thought of by all who know him. He is especially interested in the Junior Class—or rather one of its members.

**BURNETTE ASHLEY, *Eu*.**  
**WAXHAW, N. C.**

B. Y. P. U.; Assistant Supervisor Society, '29; Graduate Waxhaw High School.

*"Accommodation means everything."*

He has by his accommodating, cheerful disposition, and his manly determination, won the love and respect of all his fellow students.



**HAROLD F. READLING, Phi  
CORNELIUS, N. C.**

B. Y. P. U.; Graduate Cornelius High School.  
"Prof. Wallace's right hand man."

When looking for a boy who is ready to help, call at Harold's door. He's a good fellow, ready for any good joke or serious story. He is no dumb-bell either, for he makes good in everything he attempts to do.

**LUOLA PAGE, Sappho  
AURIVILLE, N. C.**

B. Y. P. U.; and Group Leader B. Y. P. U.  
"Silence sometimes means thought."

If you ever have Luola for a friend, you will know what true friendship is. She is a willing worker and very capable. Graduate Clement High School.

**FINTON CORDLE, Phi  
SEABOARD, N. C.**

B. Y. P. U.; Graduate Seaboard High School.  
"Combines personal dignity with common sense."

Through his quiet nature there always beams a look of intelligence. And if he can only be made to talk, his thoughts are found to be sound and sincere.

**EMMA NEWTON, Astro  
YOUNGSVILLE, N. C.**

B. Y. P. U.; Y. W. A.; Chaplain Society, '29.  
"Quiet, companionable, and funny."

Emma is one of those quiet, even tempered, unruffled persons occasionally met in this life. In addition she is a good sport, and never meddles with the affairs of others. She works with a will.

**MARVIN TYNDALL, Eu.  
STANTONSBURG, N. C.**

B. Y. P. U.; Graduate Snow Hill High School.  
"And still the wonder grows that one small head could carry all he knew."

When you see a little, short boy with a serious demeanor enter the class room, that's Marvin. He is small in stature but large in ability.



# FinchBURK



MISS BURT  
Senior Class

MR HAYS  
College Freshman Class

MISS STRICKLAND  
Junior Class

ANNABELL RHEA BRANDON  
Senior Mascot

MR EDWARDS  
Freshman Class

MR HENRY  
Sophomore Class

MR WALLACE  
Business Class

## CLASS SPONSORS

[NINETY-FOUR]



ORGANIZATIONS







# ORGANIZATIONS

A. L. H.



ORCHESTRA



### MacDowell Music Club

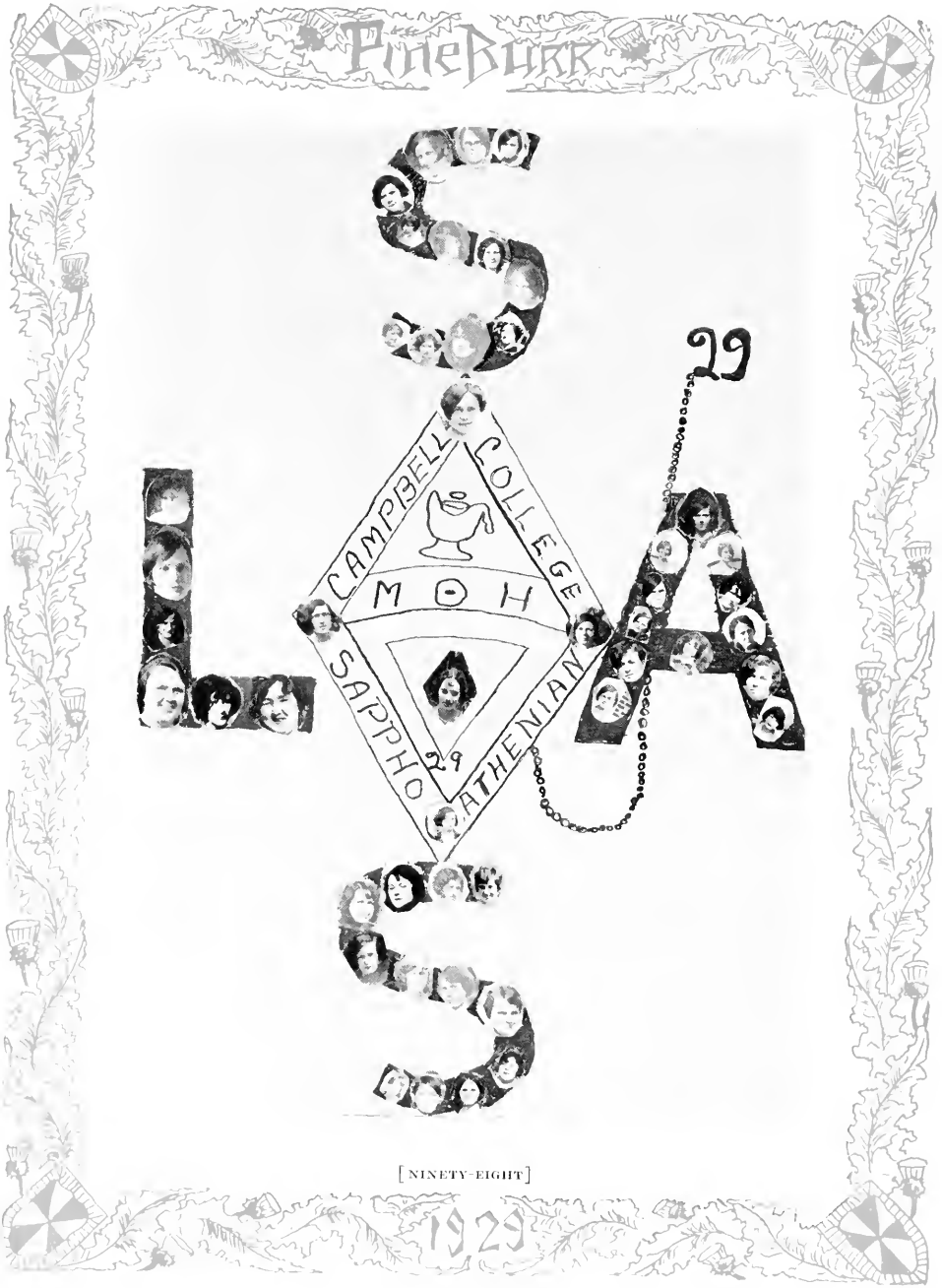
*(Organized October, 6, 1928. Member of North Carolina Federation Music Clubs)*

*Object: The study and practice of the best music.*

*"The man that hath no music in himself  
And is not moved by the concord of sweet sounds  
Is fit for treasons, stratagems and spoils,—  
Let no such man be trusted."—SHAKESPEARE.*

#### OFFICERS

- |                       |                               |
|-----------------------|-------------------------------|
| LYMAN SEYMOUR         | President                     |
| ELIZABETH BAUCOM      | Vice-President                |
| RUBY GRIFFIN          | Recording Secretary           |
| LOUISE LESLIE         | Corresponding Secretary       |
| L. B. REAVIS          | Treasurer                     |
| MISS FLORA B. CANNADY | Chairman Program Committee    |
| MARY SEYMOUR          | Chairman Membership Committee |
| H. T. McDUFFIE        | Music Editor                  |



[NINETY-EIGHT]

1929



## Sappho Literary Society

### OFFICERS

#### First Quarter

Kathleen McDaniel	President
Bertha Woodruff	Secretary
Dolly Aycock	Supervisor

#### Second Quarter

Reba Mills	President
Edith Stephenson	Secretary
Gladys Warren	Supervisor

#### Third Quarter

Constance Midkiff	President
Annie Warren	Secretary
Ruby Griffin	Supervisor

#### Fourth Quarter

Oveda Bowden	President
Fannie Bell Smith	Secretary
Florence Williams	Supervisor

### Representatives

DELLA HOBSON  
 GAYNELLE GREEN  
 MISS ESTELLE BURT

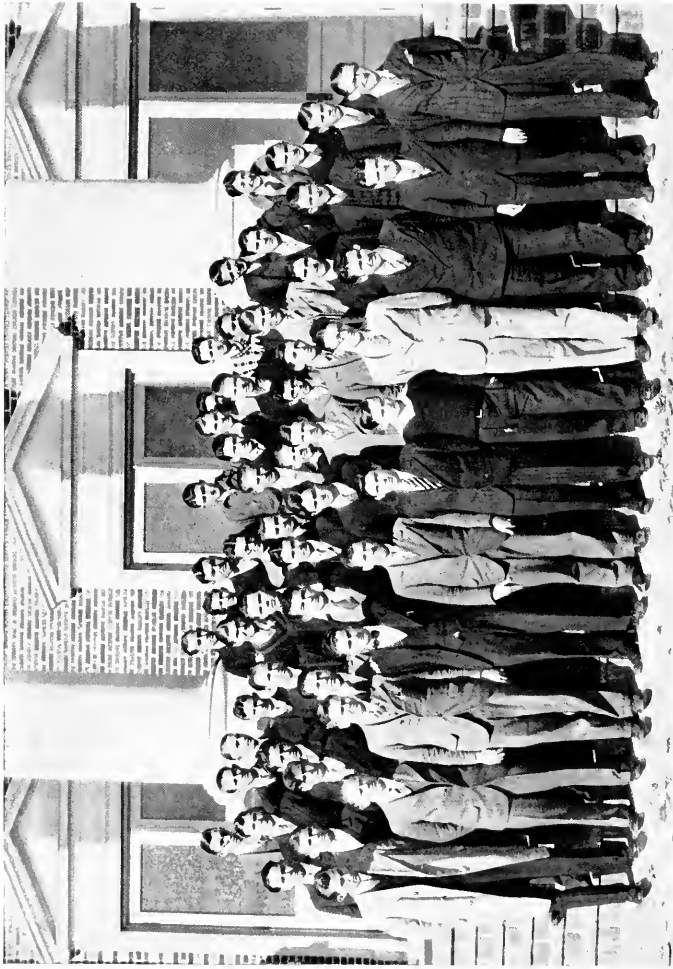
*Anniversary Speaker*  
*Mid-Term Debater*  
*Sponsor*

### MEMBERS

Mary Adams  
 Katherine Alderman  
 Dolly Aycock  
 Edythe Barnhardt  
 Oveda Bowden  
 Pauline Bray  
 Margaret Bland  
 Edna Brown  
 Alma Carter  
 Hortence Chamblee  
 Susie Danner  
 Margaret Duncan  
 Rosa Edwards  
 Hattie Gardner  
 Grace Graves  
 Gaynelle Green  
 Ruby Griffin  
 Minnie Hall  
 Lillian Hawley  
 Dovie Herndon  
 Estelle Howell  
 Myrtle Hughes  
 Inez Johnson

Kathleen Jones  
 Louise Leslie  
 Marjorie Leslie  
 Ruth Lipscomb  
 Agnes Matthews  
 Lois May  
 Mary Maynard  
 Kathleen McDaniel  
 Ruth Medlin  
 Emmie Mehaffey  
 Virginia Mehaffey  
 Constance Midkiff  
 Reba Mills  
 Virginia Moss  
 Louine Musselwhite  
 Edith Pearson  
 Ima Ragan  
 Queenie Richardson  
 Ruby Riddle  
 Vanda Saunders  
 Frances Saunders  
 Lois Saunders

Fannie Belle Smith  
 Edith Stephenson  
 Cleo Stephenson  
 Gladys Sturdivant  
 Elsie Tyner  
 Mildred Thomas  
 Louise Ward  
 Annie Warren  
 Ethel Warren  
 Gladys Warren  
 Florence Williams  
 Bertha Woodruff  
 Beatrice Bennett  
 Oleta Strickland  
 Vira Lee  
 Luola Page  
 Pearl Dupree  
 Gladys Pleasant  
 Dorothy Grindstaff  
 Rosemary Marshburn  
 Willie Glosson  
 Virginia Epling  
 Eudine Zimmerman



PHILOLOGIAN LITERARY SOCIETY

[ONE HUNDRED]

## Philologian Literary Society

*Motto:* Vici

*Colors:* Pea Green and Old Rose

### OFFICERS

#### *First Quarter*

Lloyd Gilbert . . . . . President  
 Howard Gardner . . . . . Vice-President  
 M. O. Lee . . . . . Secretary  
 Alonzo Earp . . . . . Supervisor

#### *Third Quarter*

Thurman Spell . . . . . President  
 M. O. Lee . . . . . Vice-President  
 Winston Pearce . . . . . Secretary  
 William Lynch . . . . . Supervisor

#### *Second Quarter*

Howard Gardner . . . . . President  
 J. E. Miller . . . . . Vice-President  
 John Edwards . . . . . Secretary  
 Sam Strickland . . . . . Supervisor

#### *Fourth Quarter*

William Lynch . . . . . President  
 L. C. Murphey . . . . . Vice-President  
 Clyde Glosson . . . . . Secretary  
 J. E. Lennon . . . . . Supervisor

### *Representatives*

REV. H. W. BAUCOM . . . . .  
 HOWARD GARDNER, C. OUSLEY . . . . .  
 WILLIAM LYNCH, LEON REAVIS . . . . .

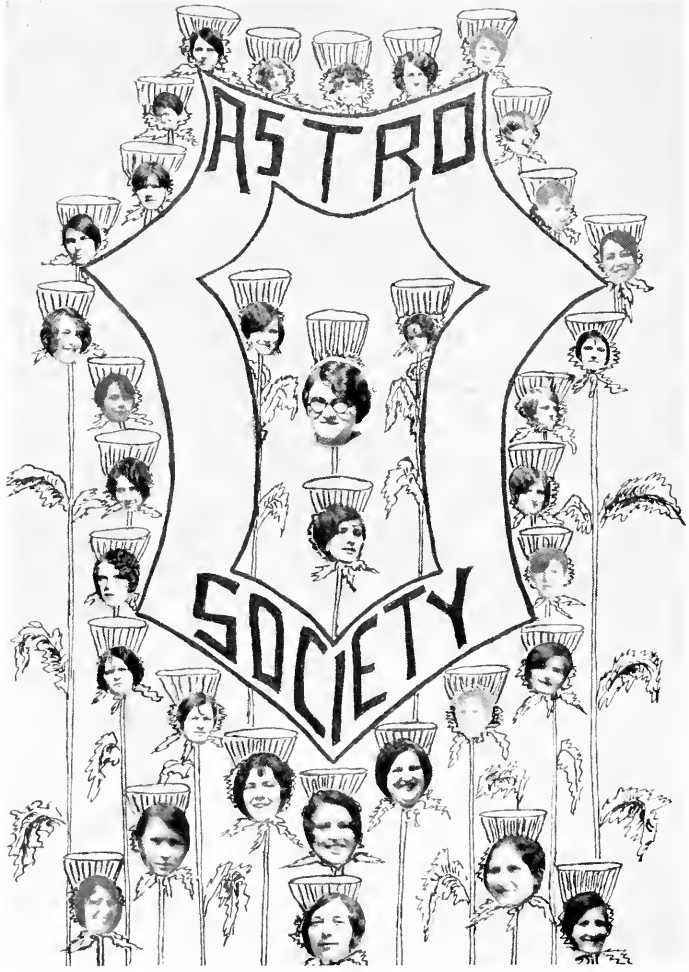
*Alumni Anniversary Orator*  
*Anniversary Debaters*  
*Commencement Orators*

### MEMBERS

Theo Eason  
 E. J. Bryan  
 Thad Chaney  
 Finton Cordle  
 Rody Clemmons  
 Dolphin Clayton  
 W. H. Carroll  
 Franklin Dupree  
 A. W. Earp  
 John Edwards  
 H. F. Eagles  
 Olive Geddie  
 Lloyd Gilbert  
 Raymond Grissom  
 J. S. Godwin  
 James Gordon  
 C. R. Harrington

James Hockaday  
 Martin Hannon  
 Sam Hood  
 Howard Gardner  
 D. W. Harris  
 W. L. Hudson  
 J. A. Lewis  
 M. O. Lee  
 Fred Lowe  
 Robert Lineberry  
 J. B. Little  
 J. H. Lineberry  
 Frank Lee  
 Louis Ludlum  
 L. C. Murphey  
 G. W. Millikan  
 J. E. Miller  
 Forest Nowton

Carl Ousley  
 Winston Pearce  
 V. L. Parker  
 C. A. Rouse  
 L. B. Reavis  
 V. R. Rollins  
 Pat Taylor  
 D. W. Tunstall  
 E. B. Williams  
 H. T. Miller  
 J. E. Lennon  
 Roy Yates  
 R. C. Hilliard  
 A. H. Butler  
 Doyle Grady  
 R. E. Fryar  
 A. W. Marshburn



ASTRO LITERARY SOCIETY

# Pine Bluff

## Astro Literary Society

### OFFICERS

#### *First Quarter*

Esther Moon . . . . . President  
Lynda O'Quinn . . . . . Secretary  
Flora Lee Holloway . . . . . Supervisor

#### *Second Quarter*

Annie Laurie Harrelson . . . . . President  
Audrey O'Brian . . . . . Secretary  
Martha McDuffie . . . . . Supervisor

#### *Third Quarter*

Gladys Harris . . . . . President  
Mary Bundy . . . . . Secretary  
Doris Poole . . . . . Supervisor

#### *Fourth Quarter*

Esther Moon . . . . . President  
Martha Stallings . . . . . Secretary  
Othello Patterson . . . . . Supervisor

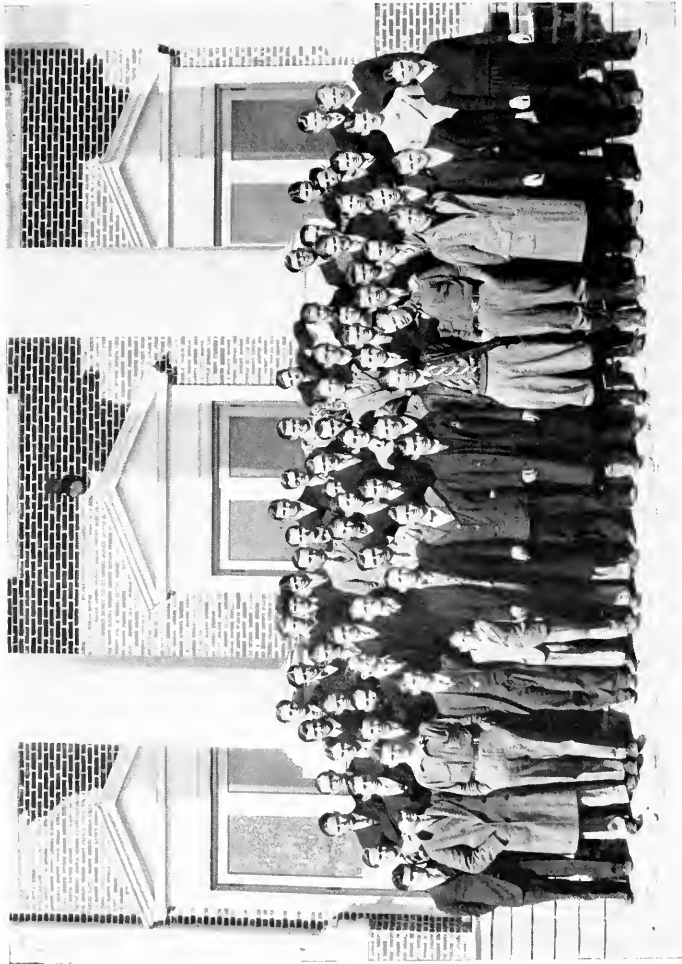
### *Representatives*

WILLIE O'QUINN  
RUTH SAVAGE  
JEAN KEIM  
WILLIE O'QUINN  
MISS GLADYS STRICKLAND

*Anniversary Speaker*  
*Anniversary Debater*  
*Chief Marshal*  
*Reciter's Medal '28*  
*Sponsor*

### MEMBERS

Allie Blue  
Mary Bundy  
Elizabeth Baucom  
Christine Barbee  
Janie Barbee  
Evelyn Cox  
Annie Pearl Griffin  
Lillian Giles  
Gladys Harris  
Annie Laurie Harrelson  
Dolores Hall  
Sadie Reid Ipoek  
Virginia Jones  
Jean Keim  
Alma Long  
Martha McDuffie  
Gladys Melvin  
Esther Moon  
Thelma Matthews  
Emma Newton  
Willie Mae Newsome  
Audrey O'Brian  
Lynda O'Quinn  
Doris Poole  
Othello Patterson  
Mary Rogers  
Virginia Roberts  
Fannie Ross  
Kathleen Riddle  
Ruth Savage  
Margaret Satterwhite  
Sara Bess Scott  
Martha Stallings  
Mary Seymour  
Mary Claude Spruill  
Stella Tilly  
Annie Laurie Vestal  
Margaret Wallace  
Vergie Waller  
\*May Marshbanks



EUTROPHIAN LITERARY SOCIETY

## Eutrophian Literary Society

Motto: *Fides*

Colors: Orange and White

### OFFICERS

#### First Quarter

William Hamilton  
Spencer Blanchard  
Cecil Marks

President  
Secretary  
Supervisor

Ryburn Stancil  
Robert Lanier  
Earl Jordan

President  
Secretary  
Supervisor

#### Third Quarter

#### Second Quarter

J. R. McDaniel  
George Cullipher  
John Hocutt

President  
Secretary  
Supervisor

Paul Cale  
Tim Savage  
John Pearce

President  
Secretary  
Supervisor

#### Fourth Quarter

### Representatives

F. HUNTER CREECH  
WILLIAM HAMILTON, M. E. TYSON  
ROBERT LANIER

*Alumni Anniversary Orator*  
*Anniversary Debaters*  
*Anniversary Declaimer*

### MEMBERS

W. H. Abernathy  
J. E. Adams  
Joseph Anderson  
Burnette Ashley  
Lee Beal  
S. R. Blanchard  
French Baker  
Cecil Blount  
Alden Best  
Pritchard Bowen  
Thomas Boykin  
George Cullipher  
Paul Cale  
Fred Collier  
Alva Clark  
Leland Cox  
Lacy Collier  
J. C. Dale  
W. R. Day  
H. A. Evans  
Calvin Eakes  
H. M. Gentry  
Albert Griffin  
Styron Harris  
Lewis Humphrey  
John Hocutt

Theodore Honeycutt  
William Hamilton  
Norman Hollowell  
Gurney Henson  
Archie Hardy  
Grover Hawley  
Julian Harmon  
Herbert Hood  
Lacy Hannon  
Robert Hlatt  
Earl Jordan  
Baxter Johnson  
Burl Johnson  
Theodore Lee  
Jack Leake  
Robert Lanier  
Marsh Myers  
Robert Mitchell  
Cecil Marks  
O. A. Mitchell  
James Moore  
Orville McIver  
Joe Martin  
J. R. McDaniel  
Rodney Marshburn

J. H. Mintz  
J. W. McKay  
Louis McLeod  
I. T. Nelson  
Jack Olive  
C. L. Overton  
L. L. Porter  
Robert Reaves  
J. B. Reavis  
M. J. Satterwhite  
Ryburn Stancil  
Tim Savage  
Grady Souther  
Lyman Seymour  
Herbert Smith  
Paul Sleeper  
Henry Styers  
William Salmon  
Herbert Taylor  
M. E. Tyson  
Marion Tyndall  
Robert Vann  
Ernest Warren  
Carl Wells  
George Warren  
Cedric Woodall



## Campbell's Grandchildren

### MEMBERS

#### *Faculty*

Gladys Strickland

#### *College Sophomores*

Edith Pearson  
 Carlyle Harmon  
 Louise Leslie  
 Alma Carter  
 Reba Mills  
 Hayden Stewart  
 F. D. Byrd

#### *College Freshmen*

Elizabeth Matthews  
 Sam Strickland  
 Marjorie Leslie  
 Irma Ragau  
 Kathleen Riddle  
 Allen Byrd

#### *High School Seniors*

Ruth Burns  
 Mildred Butts

Mabel Stewart  
 Geraldine Stewart  
 Elizabeth Baucom  
 Mary Seymour  
 Lyman Seymour  
 Theodore Lee  
 Rhoda Gregory  
 Allie Blue  
 Avis Marks  
 Annie Laurie Harrelson  
 Berles Johnson  
 Olla Fay Johnson

#### *High School Juniors*

Marie Matthews  
 Louis McLeod  
 Mack Wallace  
 James Mitchell  
 Rudolph Johnson  
 Eloise Johnson

#### *High School Sophomores*

Ernestine Stewart

Lillian Parker  
 Howell Stewart  
 Agnes Marks

#### *High School Freshmen*

Graham Mitchell  
 Juanita Mitchell  
 Mildred Hood  
 May Marshbanks  
 Margaret Wallace  
 Judd Ennis  
 Hartwell Campbell  
 Mary Upchurch  
 Ruth Taylor  
 Callie Stewart  
 Lizzie Williams

#### *Business Department*

TheMa Matthews  
 Louis Stuart  
 Martha McDuffie  
 Luola Page

[ONE HUNDRED SIX]





## Western North Carolina Club

*Motto:* "Western breezes wafted eastward."

*Flower:* Rhododendron

*Colors:* Green and White

### OFFICERS

WILLIAM LYNCH  
M. H. MYERS  
MARY MAYNARD

..... *President*  
..... *Vice-President*  
..... *Secretary-Treasurer*

### MEMBERS

Burnette Ashley  
Edythie Barnhardt  
Thad Chaney  
Susie Danner  
Rosa Edwards  
Willie Glosson  
Clyde Glosson  
William Lynch  
Fred Lowe

Mary Maynard  
Wayne Martin  
Esther Moon  
Constance Midkiff  
M. H. Myers  
Watson Millikan  
Rosemary Marshburn  
Joe Martin

Othello Patterson  
Leon Reavis  
Grady Souther  
Ben Wilson  
Bob Welch  
Harold Reading  
Fannie Ross  
Eudine Zimmerman  
Frances Saunders



## Eastern North Carolina Club

*Motto:* "From the ocean to the plains; rising toward the stars"

*Flower:* Peach Blossoms

### MEMBERS

Virginia Moss  
Elizabeth Baucum  
Janie Barbee  
Mary Claude Spruill  
Pritchard Bowen  
George Cullipher  
J. Everett Miller  
Tim Savage  
H. L. Miller  
Gordon Stallings  
Sadie Reid Ipock  
John Hocutt

Elsie Tyner  
Allie Blue  
Jack Leake  
H. A. Evans  
J. L. Pearce  
Finton Cordle  
Bill Carroll  
Annie Laurie Harrelson  
Hubert Taylor  
Cedric Woodall  
Harold Eagles

Vauda Saunders  
Alva Clark  
Murphy Cannady  
Christine Barbee  
Robert Lanier  
Willie Mae Newsome  
Earl Jordan  
Marvin Tyndall  
Benson Johnson  
Lewis F. Ludlum  
Dolly Aycock  
Mildred Thomas



## Nurses and Doctors Club

*Motto: Cure or kill, live or die*

### OFFICERS

THEODORE LEE  
REESE HARRINGTON  
VIRGINIA JONES  
EUNICE MEDAFFEY

*President*  
*Vice-President*  
*Secretary*  
*Treasurer*

### MEMBERS

Mary Maynard  
Harry Williamson  
Boswell Bethune  
Reba Mills  
William Salmon  
Lloyd Gilbert

Annie Matthews  
Jean Keim  
Eugenia Cain  
Grover Hawley  
Ruby Riddle  
Oleta Strickland  
Robert Hiatt

James Gordon  
Doris Poole  
Virginia Roberts  
Sadie Ipock  
Allen Byrd  
Constance Medkiff



## Pearson Building Club

Motto: "Freedom"

Flower: Pea Blossom  
Song: "Sonny Boy"

Mascot: Woodpecker

Color: Pea Green  
Yell: "Rah! Rah!  
Ten Minute Bell"

### OFFICERS

S. H. GARDNER	<i>President</i>	J. A. LEWIS	<i>Corresponding Secretary</i>
M. O. LEE	<i>First Vice-President</i>	F. L. NEWTON	<i>Treasurer</i>
L. B. REAVIS	<i>Second Vice-President</i>	G. W. TUNSTALL	<i>Assistant-Treasurer</i>
F. L. DUPREE	<i>Third Vice-President</i>	R. L. REAVIS	<i>Janitor</i>
J. E. LENNON	<i>Secretary</i>	C. B. WELLS	<i>Assistant-Janitor</i>
T. G. CHANEY	<i>Assistant-Secretary</i>	J. E. LENNON	<i>Waiter</i>

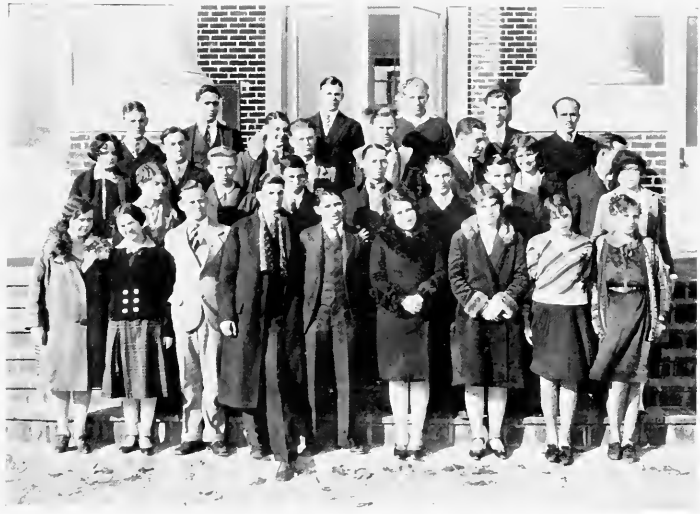
### MEMBERS

#### Pearson University

<i>President</i> .....Howard Gardner, Ph.D., R.F.D.	<i>French</i> .....F. Newton, B. A., F.O.B.
<i>Education</i> ....Frank Dupree, Ph.T., R.A.T.	<i>Math</i> .....G. Tunstall, M.S., N.O.D.
<i>German</i> .....J. E. Lennon, M.A., P.D.Q.	<i>Latin</i> .....L. Ludlum, M.A., H., O
<i>Bible</i> .....Thad Chaney, D.D., B.A.D.	<i>Latin Instructor</i> .....M. O. Lee, L.L.B.
<i>Science</i> .....J. A. Lewis, B.S., M.A.D.	<i>English</i> .....C. Wells, Ph.D., A.C.L.
<i>Voice</i> .....L. B. Reavis, B. M., B.U.L.	

#### Athletics

*Head Coach*.....Robert Reaves, B.A., B.V.D.



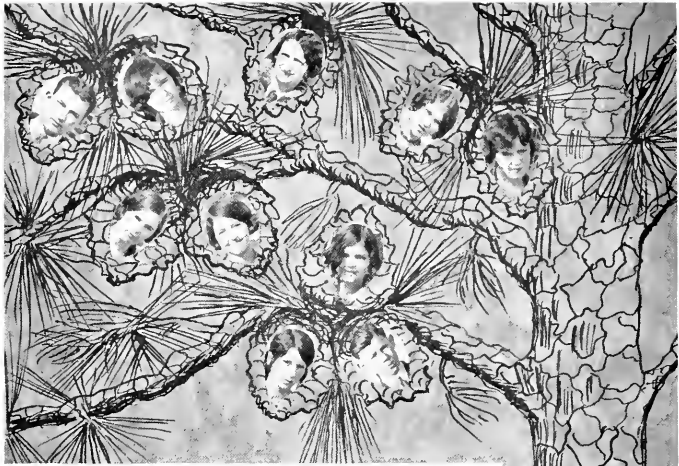
Out-of-State Club

OFFICERS

MARY BUNDY .....	..... <i>President</i>
EUNICE MEHAFFEY .....	..... <i>Vice-President</i>
"PAT" McDUFFIE .....	..... <i>Secretary-Treasurer</i>

MEMBERS

- |                   |                    |
|-------------------|--------------------|
| Jack Satterwhite  | Pat McDuffie       |
| Rody Clemmons     | Queenie Richardson |
| Eunice Mehaffey   | Gladys Harris      |
| Virginia Mehaffey | David Harris       |
| Albert Arango     | Charles Cherry     |
| Mario Tomasino    | Annie Kerr         |
| Hattie Gardner    | James Moore        |
| Grover Hawley     | Florence Williams  |
| Lillian Hawley    | Leland Cox         |



Johnston County Club

OFFICERS

ALONZO EARP

*President*

GLADYS PLEASANT

*Vice-President*

EDITH STEPHENSON

*Secretary*

RUTH MEDLIN

*Business Manager*

MEMBERS

Miss Flora Belle Cannady

Vira Lee

Mary Adams

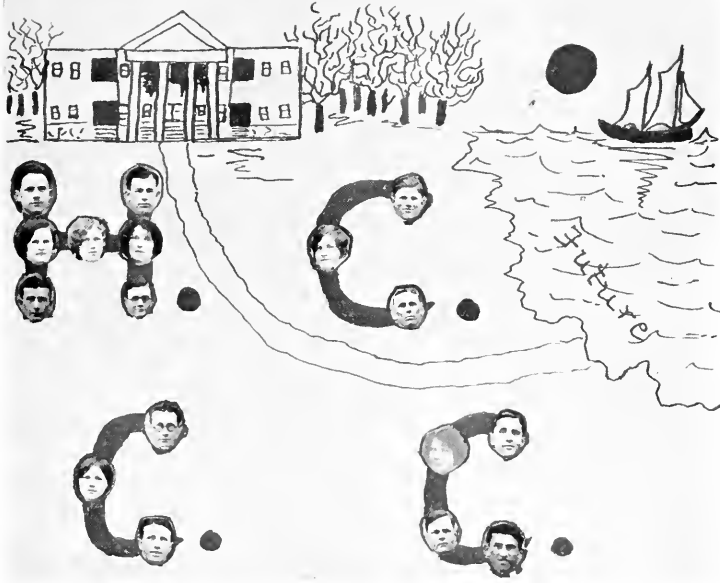
Glenn Fish

Leola Pleasant

Pearl Dupree

Sam Hood

Ruth Gregory



## Harnett County College Club

### MOTTO

*"We've crossed the bay, the ocean lies ahead!"*

*Flower: White Rose*

*Colors: White and Green*

### OFFICERS

MARVIN BETHUNE  
LYNDA O'QUINN  
ELIZABETH MATTHEWS

*President*  
*Vice-President*  
*Secretary-Treasurer*

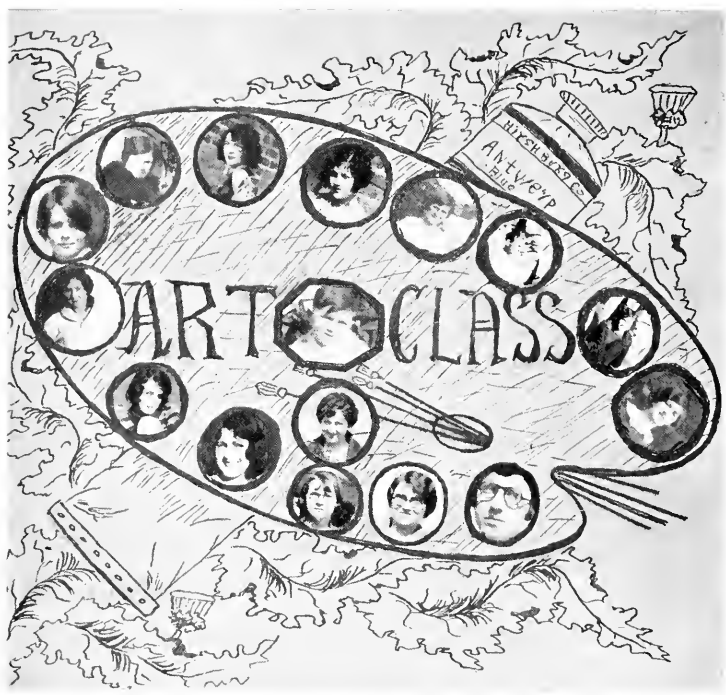
### MEMBERS

Ralph Arnold  
Mildred Butts  
Marvin Bethune  
Douglas Byrd  
Allen Byrd  
Howard Gardner

Carlyle Harmon  
Elizabeth Matthews  
Lynda O'Quinn  
Carl Ousley  
Edith Pearson

Hayden Stewart  
Fannie Belle Smith  
George Warren  
Council Williams  
C. H. Williams  
Gladys Warren

[ONE HUNDRED THIRTEEN]



Art Class

MOTTO

"To make the world more beautiful"

OFFICERS

ANNIE LAURIE HARRELSON  
 MISS NETTIE MOON  
 IRMA RAGAN  
 GEORGE EDWARDS  
 MRS. G. L. EDWARDS

*President*  
*Vice-President*  
*Secretary-Treasurer*  
*Mascot*  
*Instructor*

MEMBERS

Irma Ragan  
 Annie Laurie Harrelson  
 Miss Nettie Moon  
 Virginia Moss  
 Mary Maynard

Lois May  
 Mildred Kivette  
 Sadie Reid Ipock  
 Arthur Robertson

Ruth Medlin  
 Irma Rich  
 Mary Frances Mauldwin  
 Lillian Giles  
 Margaret Duncan

[ ONE HUNDRED FOURTEEN ]





SELF-SUPPORTING STUDENTS



MINISTERIAL AND VOLUNTEER STUDENTS

[ ONE HUNDRED FIFTEEN ]



GARDNER



EDWARDS

# B. Y. P. U. Officers



AYCOCK



OUSLEY



GRIFFIN

## B. Y. P. U. Officers

HOWARD GARDNER

ROSA EDWARDS

DOLLY AYCOCK

CARL OUSLEY

RUBY GRIFFIN

*General Director*

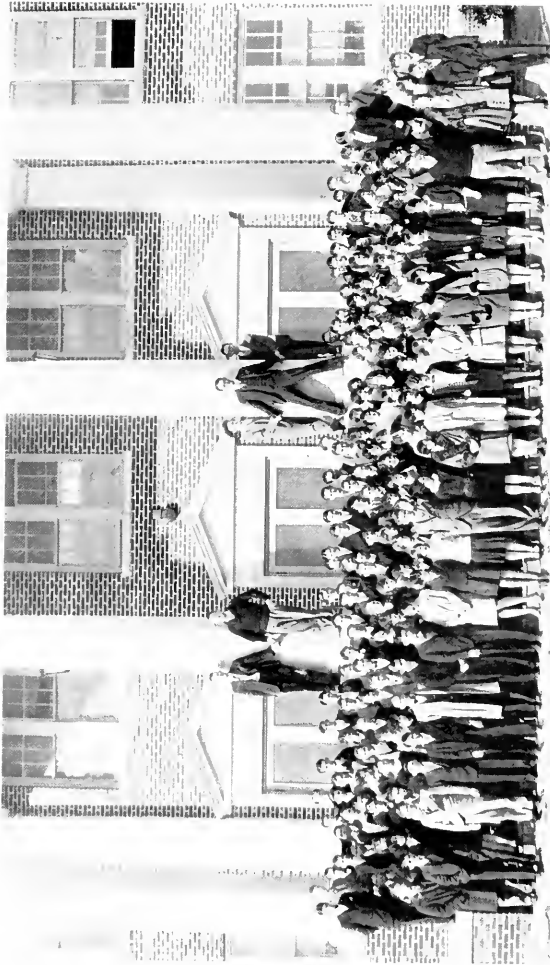
*Associate Director*

*Secretary-Treasurer*

*Chorister*

*Pianist*

# Pine Bluff



B. Y. P. U.

[ONE HUNDRED SEVENTEEN]

1929

# Pine Bluff



BARNHARDT



MOON



WOODRUFF

Y.



W.

A.



PEARSON



MISS MOON



LIPSCOMB

[ONE HUNDRED EIGHTEEN]

1929



HUGHES



LEE



DANNER



MIDNIF

B. S. W.



MISS STRICKLAND



HOLLOWAY



LYNCH



MILLS

Council



McDANIEL



GARDNER



MOON



CALE



HARRELSON



SAVAGE



MOON



WARREN

# Honor



CHANEY



MISS STRICKLAND



L. H. CAMPBELL



MISS MOON



O'BRIAN

# Society



JORDAN



GLOSSON



LEE



EDWARDS



HOLLOWAY



MIDKIFF



BARBEE



STANCL



BARBEE



HARRIS

# Creek



OLIVE



SAVAGE



MISS STRICKLAND



SOUTHER



WARREN

# Pebbles



WALLER



GRIFFIN



MILLER



EDWARDS



MELVIN



Campbell

MIDKIFF

ADAMS

## Pine Burr Staff

CONSTANCE MIDKIFF .....	<i>Editor-in-Chief</i>
CLYDE GLOSSON .....	<i>Advertising Manager</i>
VIRGINIA JONES .....	<i>Circulation Manager</i>
J. E. ADAMS .....	<i>Business Manager</i>
PAUL CALE .....	<i>Sport Editor</i>
ANNIE LAURIE HARRELSON .....	<i>Art Editor</i>
L. H. CAMPBELL .....	<i>Faculty Adviser</i>

## Class Editors

EARL JORDAN .....	<i>College Sophomore</i>
KATHLEEN RIDDLE .....	<i>College Freshman</i>
MYRTLE HUGHES .....	<i>Senior</i>
EUGENE BRYAN .....	<i>Junior</i>
VIRGINIA MEEAFFEY .....	<i>Sophomore</i>
CLEO STEVENSON .....	<i>Freshman</i>
J. H. MINTZ .....	<i>Commercial</i>





# Staff

CALE

JONES

GLOSSON

RIDDLE

HARKELSON

JORDAN

BRYAN

McMAFFEY

STEVENSON

MINTZ

HUGHES



MOST POPULAR  
MARY BUNDY



MOST DIGNIFIED  
EVERETTE MILLER



BIGGEST BLUFF  
JACK LEAKE



FRANKEST  
DORIS POOLE



MOST SOPHISTICATED  
JE ADAMS

PRETTIEST  
ANNIE LAURIE HARRELSON



WITTIEST  
LELAND COX



MOST STUDIOUS  
AUDREY O'BRIAN



PEPPIEST  
KAT MCDANIEL



BEST ATHLETE  
HOWARD GARDNER

MOST DEPENDABLE  
THEODORE LEE



BEST MIXER  
MYRTLE HUGHES

SUPERLATIVES

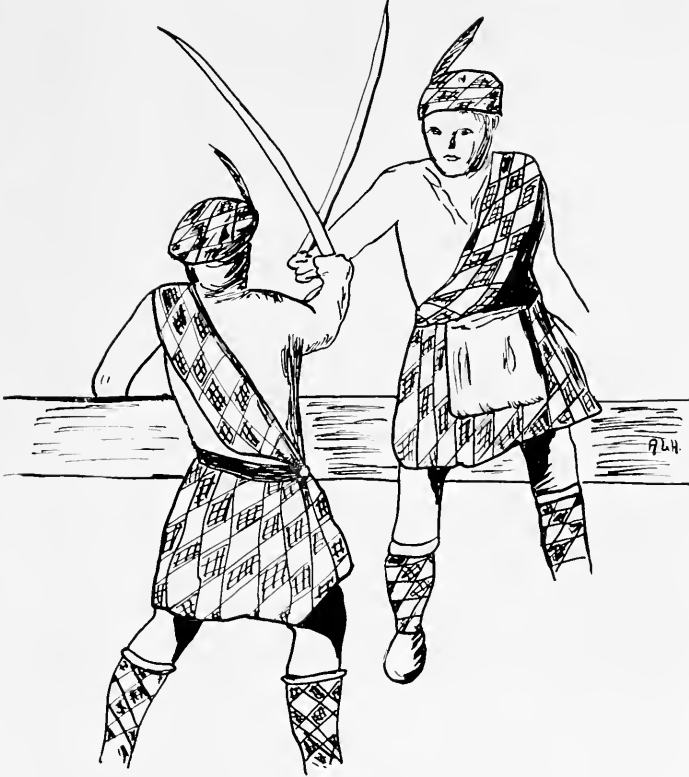
[ ONE HUNDRED TWENTY-FOUR ]

The image features a background grid of squares. Each square is filled with diagonal hatching lines. A central shield-shaped emblem is positioned on the right side of the grid. The shield is white with a black border and contains the word "ATHLETICS" in a bold, serif font. Below the text is a small, solid black downward-pointing triangle.

**ATHLETICS**



Pine Burr



# ATHLETICS

[ONE HUNDRED TWENTY-FIVE]

1929



ROBERT S. HAYS

*Director of Athletics*

ASSOCIATES

S. O. BRANDON

*Football*

G. L. EDWARDS

*Track*

MISS NETTIE MOON

*Girls' Athletics*



## Football Squad

S. O. BRANDON  
MARSH MYERS  
LLOYD GILBERT

*Coach*  
*Captain*  
*Manager*

### SQUAD

Hayden Stewart	Willard Sexton
Bob Welch	M. Williams
Tim Savage	H. Williamson
Marion Vestal	Reece Harrington
Thad Chaney	Marsh Myers
Howard Gardner	Fred Lowe
Allen Byrd	H. Gurganus
Cy Harrington	Alex Sneed
Bob Reaves	



STAURT, *Tackle*

"Love" was a stone in the line. You just couldn't pass him.

WELCH, *Halfback*

Bob started late; but when he did get going, he proved that he was a real football player.

SAVAGE, *Guard*

This big man could always be depended upon to play a steady, reliable game.





VESTAL, *Quarterback*

"Wigs'" cool headed and excellent passing and kicking contributed much towards our victories this year.

CHANEY, *Tackle*

"Lon" played a clean, hard game. We can't say better than that for anyone.

GARDNER, *Guard*

"Lonzy" played as a regular this year for the first time. He proved to be unusually good as a defensive guard.



BYRD, *Halfback*

"Rain" shows promise of developing into a real "triple-threat man." He can run, kick, or pass equally well.

REAVES, *Halfback*

This man had a combination of size and speed, hard to beat.

HARRINGTON, *Tackle*

"Big Hank" had plenty of grit and determination to make up for his lack of avoidupois. He played at this difficult position for the first time.

SEXTON, *Center*

Although Sexton didn't get to play regularly, he is a good man. He is young and will develop into a regular.

# Pine Bluff



WILLIAMS, *Guard*

Cortez is another new football player. He should be a valuable man next year.

WILLIAMSON, *End*

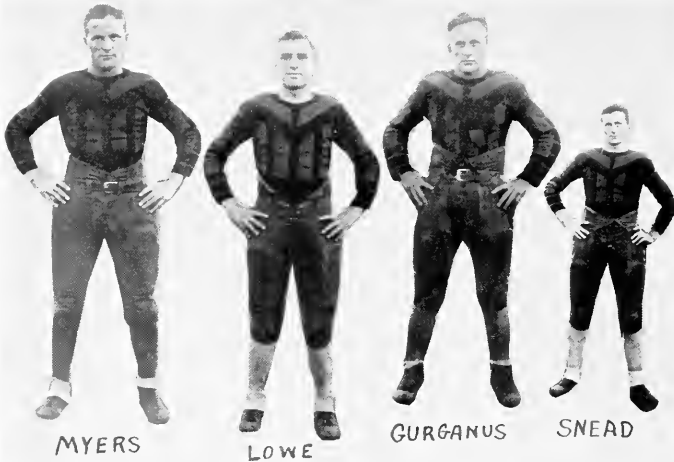
"Roc's" ability to catch passes helped us to win several games.

HARRINGTON, *Center*

"Little Hank" looked good even against Oak Ridge's heavy linesman. He starred in the line.

[ONE HUNDRED THIRTY-ONE]

1929



*MYERS, End*

Captain "Red" was the ideal man to pilot our team through a hard season. He was especially good on defense.

*LOWE, Fullback*

With Fred backing up the line, few gains were made in his territory.

*GURGANUS, Fullback*

When "Gooley" hit the line, something had to give way in front of him.

*SNEAD, Halfback*

Alex made more points than any other man on the team. He featured on line buck plays.

## Football Review

VERY early Coach Hayes, assisted by Coach Brandon, had two full teams on the field for training to prepare for the schedule of the season. Only four letter men were back this year—Myers, Savage, Lowe, and Stewart—but using these as frame work, the coaches built around them a winning team.

The season opened with Guilford College, who carried away a 19 to 0 victory. This defeat did not cause the men to lose heart, but only inspired them to put forth renewed effort. The next game, which was with Wingate, was a hard fought one, finally ending in a 6 to 6 tie.

On the 13th of September was Campbell's first real victory, which was won over 16th Field Artillery of Fort Bragg by a score of 12 to 6. This was followed the next week by a 14 to 0 victory over Wake Forest Freshmen. Weaver soon played at Asheville, and Campbell came away with 6 to 13 defeat. She soon regained this loss by defeating the 17th Field Artillery of Fort Bragg 14 to 6.

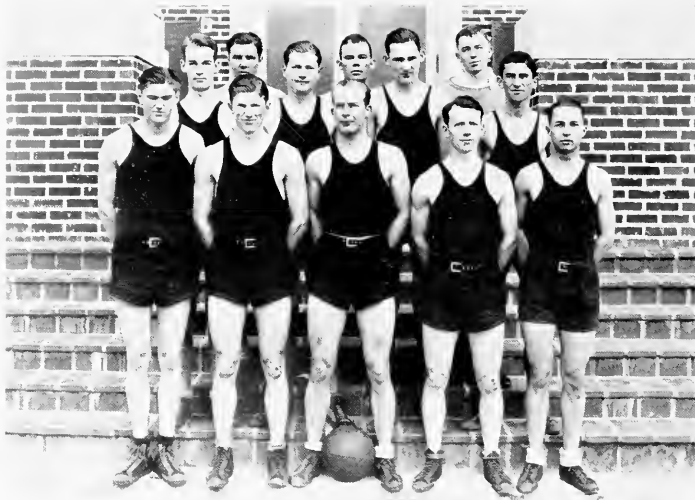
Against Oak Ridge, the following week, the Campbellites showed forth manly playing, but were unable to withstand the onslaught of their opponents, the score being 20 to 0 in their favor. Considering the 63 to 0 defeat of last year and the record of Oak Ridge for the past two years, this could not well be termed a defeat.

In the next two games Campbell came out on top; winning from Mars Hill 31 to 6, and from A. C. C. 9 to 0. Five games were won, three lost, and one tied.

### OUR FOOTBALL RECORD

September 29	Campbell	0	Guilford	19
October 6	Campbell	6	Wingate	6
October 13	Campbell	12	Fort Bragg	6
October 20	Campbell	14	Wake Forest Freshmen	0
October 27	Campbell	6	Weaver	13
November 3	Campbell	14	Fort Bragg	6
November 12	Campbell	0	Oak Ridge	20
November 19	Campbell	31	Mars Hill	6
November 26	Campbell	9	A. C. C.	0

WON	5
LOST	3
TIED	1



Basket Ball Squad

ROBERT S. HAYS

S. O. BRANDON

J. B. LITTLE

ROBERT REAVES

Coach

Graduate Manager

Student Manager

Captain

SQUAD

Robert Reaves  
Fred Blount  
Robert Welch  
Styron Harris  
Douglas Byrd  
Roy Yates

Howard Gardner  
W. S. Martin  
W. R. Day  
Joe Martin  
R. Canady  
N. Hollowell

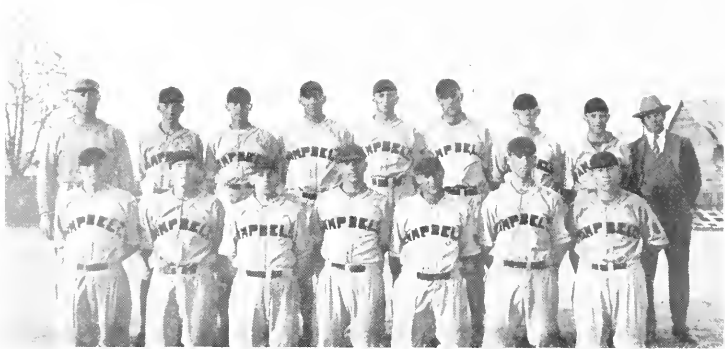
## *Basket Ball*

COACH Hays' team this year, consisting of four letter men of last year—Reaves, Yates, Blount, and Gardner—proved to be another success. The places left vacant from last year were ably filled by old and new material. The schedule was not as heavy as it was last year, but the games which were played, showed Campbell to have a strong team.

### OUR RECORD

After an easy win over Fuquay All-Stars, the team went to Wingate and played one of the closest games of the season. It was a hard fought game throughout, finally terminating into a 35 to 36 victory for Wingate. The next game, played with Fayetteville "Y," was just as close; 31 to 30 in Fayetteville "Y's" favor. From this game until the close of the season not a game was lost. Campbell soon revenged the early defeat by Wingate by defeating them 24 to 16 on our home court. Perhaps the most cherished victory of the season was won over Guilford, the score being 29 to 17. The Guilford boys soon after this game won over Wake Forest Varsity.

Wake Forest Freshmen were easily conquered. Last year they were the only ones to defeat us; but this year the tables were turned and Campbell outplayed them in every quarter, winning a 39 to 13 victory over them. Vass All-Stars were defeated 84 to 8. The season ended in a 62 to 15 victory over 17th Field Artillery from Fort Bragg. The final record was 6 won and 2 lost.



## Record of Baseball 1928

Campbell	13	Wingate	1
Campbell	5	Oak Ridge	2
Campbell	3	Oak Ridge	12
Campbell	13	Wake Forest Freshmen	9
Campbell	18	Blackstone Military Academy	11
Campbell	1	Oak Ridge	2
Campbell	8	State Freshman	11
Campbell	5	State Freshmen	8
Campbell	9	Catawba College	12
Campbell	1	A. C. C.	10
Campbell	7	Wingate	1
Campbell	4	Catawba	5
Campbell	4	Fort Bragg	5
Campbell	5	A. C. C.	3
Campbell	2	Fort Bragg	0
Won	7		
Lost	8		

[ONE HUNDRED THIRTY SIX]





## Track Squad

G. L. EDWARDS  
DOUGLAS BYRD  
J. H. MINTZ

*Coach*  
*Captain*  
*Manager*

### CANDIDATES

George Cullipher	Allen Byrd
Gurney Henson	Amzia Ward
Albert Griffin	Harry Williamson
Eugene Bryan	Alva Clark
Vernon Parker	James Gordon
William Carroll	Grover Hawley
Tim Savage	Willard Sexton
Reece Harrington	Delphin Clayton
Douglas Byrd	H. E. Evans
Pritchard Bowen	William Janoske
Marvin Bethune	Jack MacKay
James Moore	Murphy Cannady
Howard Gardner	D. R. Cannady
Monroe Williamson	Lewis Ludlum
Benson Johnson	Roy Yates
Carl Wells	



HIGH SCHOOL SOPHOMORES

[ONE HUNDRED THIRTY-EIGHT]

PLEASE  
MEET OUR FRIENDS  
THE ADVERTISERS



*"THE PINE BURR" REQUESTS ITS MANY FRIENDS  
TO SHOW THEIR APPRECIATION FOR THE  
KINDNESS OF OUR ADVERTISERS BY  
READING THE FOLLOWING  
INTERESTING AN-  
NOUNCEMENTS*

## MEREDITH COLLEGE

for  
YOUNG WOMEN

*Standard Courses in Arts and Sciences, In Music, In Art,  
In Home Economics*

**C**ONFERS the degree of Bachelor of Arts and Bachelor of Music. Delightful environment on a high plateau on the western boundary of North Carolina's Capital City.

Room reservations are now being made for session 1929 and 1930. For catalog or further information write

CHARLES E. BREWER, *President*  
Raleigh, N. C.

## WAKE FOREST COLLEGE

**F**OUNDED in 1834 by the Baptist State Convention of North Carolina, Wake Forest is a standard College offering fifteen departments of instruction, leading to B.A., B.S. in Medicine, M.A. and LL.B.

**SOLID WORK IN WHOLESOME ENVIRONMENT AT MODERATE COST**

Summer Law School opens June 4. Summer School for Academic Students opens June 10. Regular Session begins September 16, 1929.

FRANCES P. GAINES, *President*  
Wake Forest North Carolina

# COKER COLLEGE

*A College of Distinction*

**F**ULLY accredited liberal arts college with Christian ideals dominant. Attractive provision for the happiness and symmetrical development of the individual student. Stimulating scholastic program. Distinguished record of student honors and achievement.

Students from 14 states last year. Total college expenses for the year, \$490. Reservations are being made now. Write for catalog and book of views.

CARLYLE CAMPBELL, *President*

HARTSVILLE

SOUTH CAROLINA

---

## BAER'S

*Dunn's Leading Department Store*

Our Wearing Apparel is More Attractive Than Ever.  
Always Something New. Distributors of Reliable Merchandise

*Your Patronage Highly Appreciated*

DUNN, N. C.

---

*We Make Shoes New*

Our shop is especially pleased to serve College boys and girls. Fine ladies' shoes and men's dress shoes receive special attention.

LILLINGTON SHOE SHOP

W. H. LEE, *Manager*

Take the Welcome News of Harnett With You When  
You Graduate

*Let the Folks at Home Know*  
**HARNETT COUNTY NEWS**

\$1.50 Per Year

LILLINGTON North Carolina  
You'll Often Read Good News from Campbell College  
If You Read Harnett County News.

**SERVICE**

**GAS — OIL — TIRES — ACCESSORIES AND REPAIR WORK**

**ENNIS FILLING STATION AND GARAGE**

**BUIE'S CREEK**

North Carolina

**LILLINGTON LUMBER COMPANY**

LILLINGTON

North Carolina

We carry a full line of finish Building Materials, Kibb-  
Dried Flooring and Ceiling. Oak and Pine Doors, Sash,  
Mouldings of all Kinds.

*Your Business Appreciated*

W. M. WADSWORTH, *Manager.*

**BANK of HARNETT**

*A Roll of Honor Bank*

Capital \$35,000.00 — Surplus and Profits \$50,000.00

ERWIN, N. C.

Pine Burr

*Enjoy Health by Eating Our Wholesome Foods*

PEARCE'S

Bread, Apple pies, Kake, Eats, Rolls, Yz and w

PHONE 88

DUNN, N. C.

CAROLINA HOTEL

*Coffee Shop*

*Dining Room*

*Student Headquarters*

MODERN—FIRE PROOF—EUROPEAN PLAN

RATES \$1.50—\$2.25

GEORGE R. EATON, *Manager*

SANFORD, N. C.

[ONE HUNDRED FORTY-THREE]

1929

# Pine Bluff



HIGH SCHOOL FRESHMAN

[ONE HUNDRED FORTY-FOUR]

1929



Pine Burr

*North Carolina's Largest Photographic Concern*

## SIDDELL STUDIO

RALEIGH

NORTH CAROLINA

*Official Photographer for the Pine Burr*

## BYNUM PRINTING CO.

BETTER PRINTING

Phone 692-693

Raleigh, N. C.

[ONE HUNDRED FORTY FIVE]

1929

*Something Electrical for Every Purpose*

**A**S TIME has wrought changes in our mode of living and so many of our customs, so it has brought about decided improvements in Electrical Labor Saving Devices which lighten the tasks of the housewife of today.

An Electric Refrigerator protects the food and health of the family; a Vacuum Sweeper dustlessly cleans her rugs; an Electric Washer scrubs and wrings her clothes; other appliances, too numerous to mention, are at her command.

It is no longer necessary for the housewife to look upon her housekeeping tasks as a burden when an Electric Appliance will do the job in less time, more efficiently, and preserve her youth and beauty.

CAROLINA POWER AND LIGHT COMPANY

**SENORITA JACQUINE DORMINY**

*Director of Dramatics and Dancing*

Zinzendorf Hotel

Winston-Salem, N. C.

**LYNCH'S**

Cash and Carry—Fresh Meats and Groceries

ELECTRIC SHOE SHOP

All Work Guaranteed

**THE J. F. LYNCH COMPANY**

ERWIN

N. C.

Buie's Creek Wake Forest Siler City Rocky Mount  
Fairmont Vass Coats St. Pauls  
Whiteville Raleigh (4)

## WIGGINS DRUG STORE

BUIE'S CREEK, N. C.

*The Rexall Store*

Drugs, Stationery, Toilet Articles, Combs, Brushes, Sick  
Room Necessities, Sodas, Cigars

*Agents for*

Edison and Sheaffer Fountain Pens, Eastman Kodaks  
and Films, Whitman's Candy, Ever-Ready Flashlights,  
Foister's Kodak finishing.

We Serve Exclusively White's

*"Surety of Purity"*

ICE CREAM

Prescriptions Carefully Compounded from Pure Drugs  
by a licensed Pharmacist

*Telephone Connections*

ST. JOHN H. HARDWICKE, *Manager*

J. B. ADAMS

LACY COLLIER

*Students Welcome*

Pine Burr

# Jonesboro Sash and Blind Co.

MANUFACTURERS

DRESSED LUMBER, SASH, DOORS, BLINDS, MOULDINGS,  
BRACKETS, Etc.

JONESBORO, N. C.

**W**E SPECIALIZE in the better grades of millwork. We refer you to Prof. L. H. Campbell, and Prof. B. P. Marshbanks, Campbell College, Buie's Creek, N. C., as we have recently sold these parties some of our products. When in need of millwork send us your inquiries and orders. They will have personal attention.

*You Will Find a Full Line of*

## HARDWARE

*at*

## H. H. H.

Lillington, N. C.    Fayetteville, N. C.    Dunn, N. C.  
Roseboro, N. C.    Whiteville, N. C.

[ONE HUNDRED FORTY-EIGHT]

1929

The  
**DUNN FAMILY LAUNDRY**

DUNN, N. C.

Does the Laundry and Dry Cleaning for Campbell  
College

PHONE 378

*"We clean everything but the baby"*

**MONTAG BROTHERS, Inc.**

*Manufacturers of*

Montag's Fashionable Writing Papers, Composition  
Books, Student Supplies, College Papers, Tablets, Fillers

*Main Factory*  
ATLANTA, GA.

*Sales Office*  
NEW YORK CITY

*Western Factory*  
LOS ANGELES, CALIFORNIA

**H. W. PETERS COMPANY**

BOSTON, MASSACHUSETTS

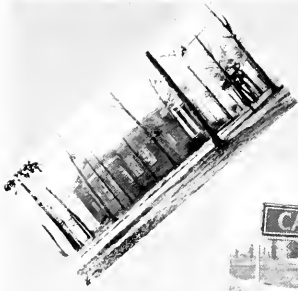
*Official Jewelers*

Class Rings, Pins, Emblems, Invitations

District Manager  
J. H. Miller

District Offices  
Durham, N. C.

# Pine Bluff



[ ONE HUNDRED FIFTY ]

1929

PINE BURR

CHARLOTTE  
ENGRAVING  
Co.

CHARLOTTE, N.C.

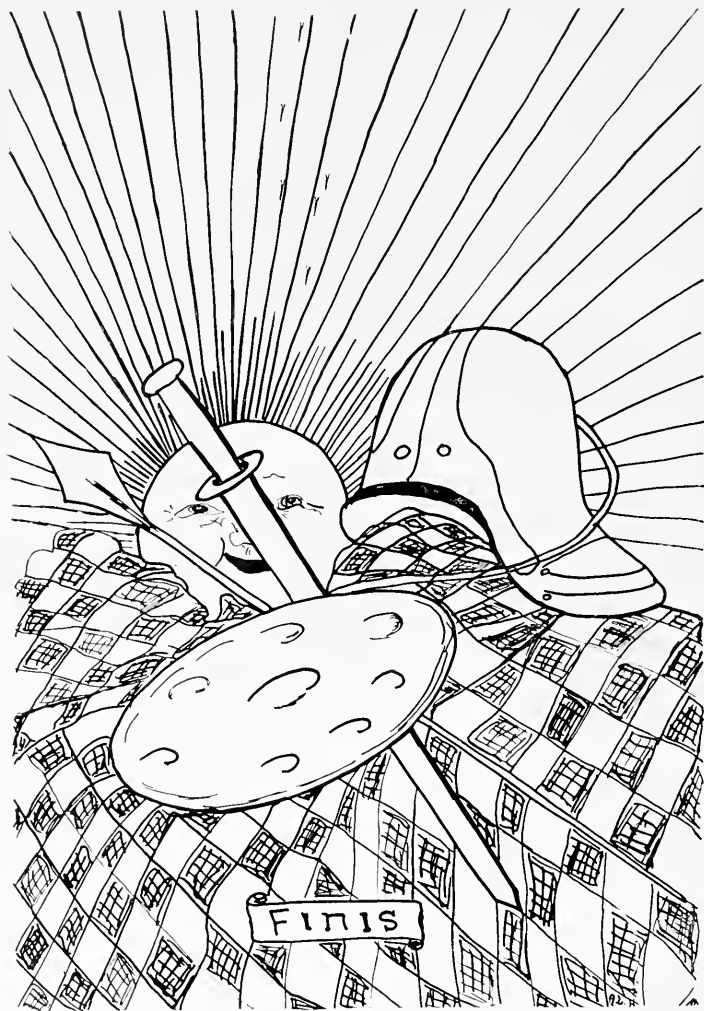
*Carolinas'  
Outstanding School  
Annual Engravers*

*Engravers  
1929*

PINE BURR

[ONE HUNDRED FIFTY-ONE]

1929





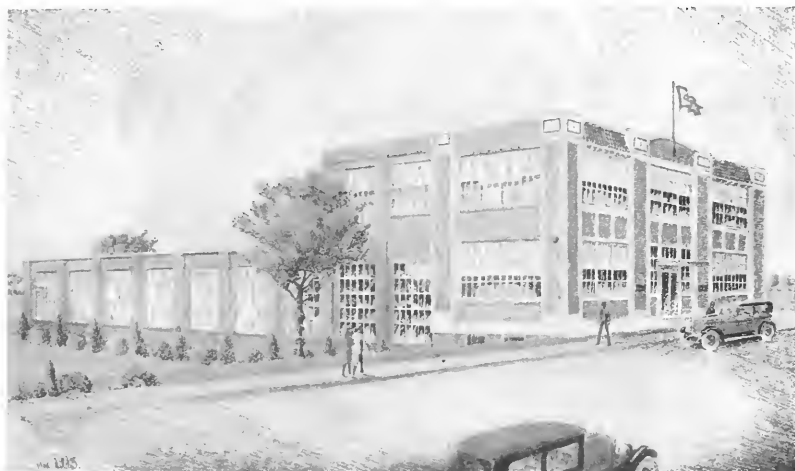
# THE TRUE ATMOSPHERE OF SCHOOL AND COLLEGE



**W**E endeavor, in producing school annuals, to render a helpful and constructive service directed toward enabling a student staff to get out a representative, distinctive book *within their budget.*

In connection with our new and modern printing plant we maintain a large Art and Service Department where page borders, cover designs, division pages, and complete decorative and illustrative motifs are created and worked out.

*The*  
**QUEEN CITY PRINTING COMPANY**  
*Where Better Printing Costs Less*  
**CHARLOTTE, N. C.**



**A COMPLETE SERVICE FOR SCHOOL PUBLICATIONS**









