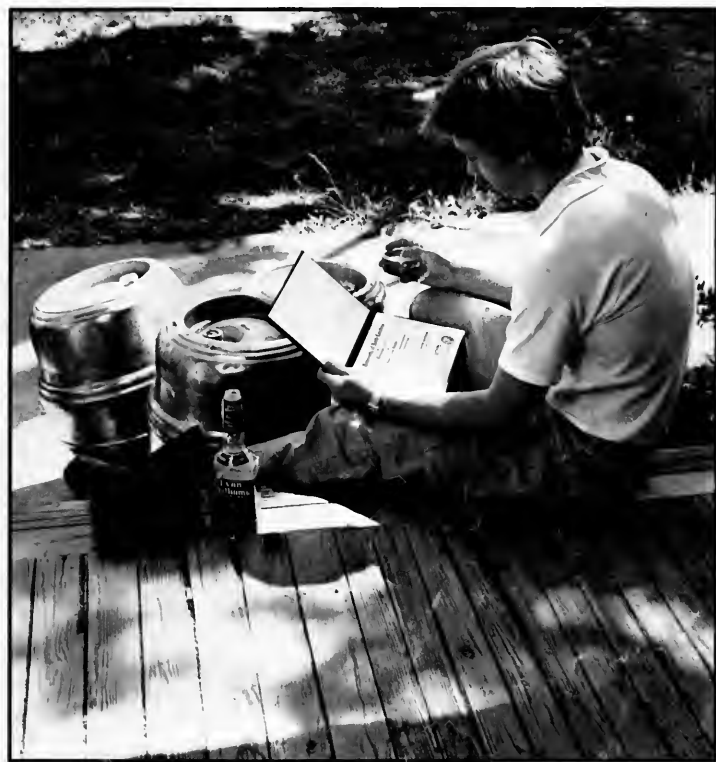


HERE'S TO FOUR YEARS




or  
HELLO WANT ADS

The University of North Carolina  
at Greensboro  
JACKSON LIBRARY

CO  
N86p  
1979  
c.2

UNIVERSITY ARCHIVES



Digitized by the Internet Archive  
in 2010 with funding from  
University of North Carolina at Chapel Hill

<http://www.archive.org/details/pineneedles1979nort>





# Pine Needles

Kenneth W. Kollscher, in conjunction with  
the University Medical Board of the  
University of North Carolina at  
Greensboro, 1970

Volume 67 Greensboro, North  
Carolina 27412 Walsworth Publishing  
Company, Warceline, Missouri





## Spring Fling, 1978



The last major social event of the Spring semester is Spring Fling, a weekend long festival during which students attempt to work off a combination of excessive energies brought about by the improved weather after a long, cold winter and excessive anxieties due primarily to impending exams.

Last year's event, sponsored by Elliot Center Council and the Student Government, overcame a great hurdle to be among the most successful ever. Living as we do in one of the last bastions of the Women's Christian Temperance League, students were prohibited from using their activity fees towards the purchase of beer. However, as the needs of the populace cannot be easily ignored, the dorm students took it upon themselves to provide the necessary lubricant for any fling.

In addition to the beer, students were entertained by the UNC-G mime troupe, there was a picnic in the quad and the Stroh's people sponsored new and unusual sporting endeavors. While WUAG provided music for the quad, Rugby players indulged their tendencies towards masochism by descimating themselves on the athletic field.

The weekend also provided the occasion for some good, old time rock 'n rollers as the Drifter's, Chuck Berry, and at Chuck's invitation, more than a few UNC-G students took over the stage at Aycokk Auditorium for an evening.

In short, Spring Fling '78 provided a necessary and thoroughly enjoyable respite from the rigors of academic life.

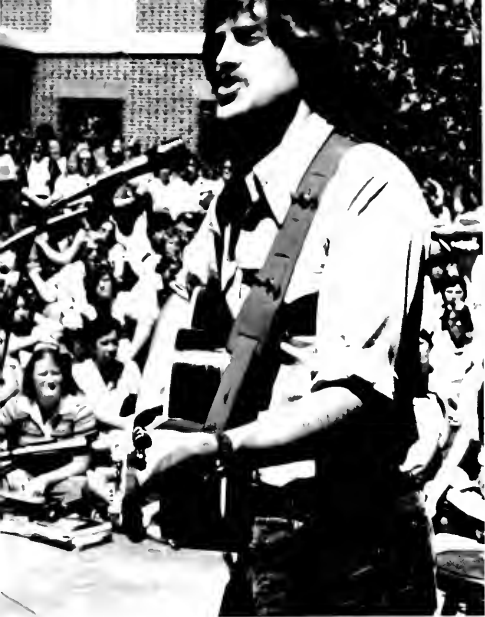


# Tate Street Fair

Of the many campus and community activities in the Spring of 1978 the Tate Street Fair was included. For this annual event, the city of Greensboro allowed the Tate Street merchants to barricade the block of Tate Street from Walker Avenue to Carr Street. Local and visiting craftsmen then set up booths to exhibit wares which included such things as paperback books, handcrafted jewelry and leathersgoods. The Belstone Fox provided cut-rate beer, while the Hong Kong House and Friar's Cellar offered those in attendance a multitude of delectable goodies upon which to feast. Local musicians were on hand to provide continous music throughout the afternoon and the Janus Wings showed free movies intermittently during the Fair. All in all, it was a good day for sounds, suds, and fun.







## Tom Chapin Concert



# Operation Rescue

Last April there was a "collision" involving several cars and passengers on the UNC-G golf course. University Police, Greensboro City Fire Department, and Guilford County Emergency Transportation Service responded to the scene of the accident, extricated the victims and stabilized them. What was going on? It was "Operation Rescue", a simulated accident and rescue operation sponsored annually by the Emergency Medical Association.

After stabilizing the "victims", they were transported to an appropriate hospital by a US Military Assistance to Safety and Traffic helicopter from the US Army 57th Medical Detachment which operates out of Fort Bragg. This detachment provides emergency air transport and evacuation to all citizens within 180 miles.

"Operation Rescue" is only one facet of the Emergency Medical Association's public education program whose motto is "Saving Lives Through Education." EMA sponsors and coordinates projects throughout the year for the education of students, faculty, the community, and EMA members. Medic I - Medic II is a program aimed at teaching cardiopulmonary resuscitation to one thousand students a year.

The Life Support Tactical Team provides medical coverage to concerts and events held on campus while the





Physician's Assistant Symposium held in November allows interaction between students and medical personnel from around the state.

An organization open to all students interested in emergency medical care, EMA provides a vital function at UNC-G.

Lexi Dunn





# **Pine Needles**

**Introduction**

**Features**

**Sports**

**Seniors**

**Underclassmen**

**Organizations**

**Closing**



# HELLO, DOLLY!

There are too many musicals these days with exclamation points in their titles: OLIVER!, FIORELLO!, OKLAHOMA! . . . but the UNC-G Theatre's production of HELLO, DOLLY! is one musical which definitely requires such punctuation! How does one sort out all the superlatives that this production so richly deserves? To begin with, Hello, Dolly! is a jewel; an absolute gem of a performance from overture to finale. Director John Joy's mastery of musical comedy is unmatched by any director in this state. Dr. Joy, a veteran of the Broadway stage, has created a huge valentine that is his special gift to each and every member of the audience. Judging from the standing ovations that the show received after every performance, it is obvious that the audience was thrilled and enchanted with his work.

The production's real star is, of course, Dolly. She was superbly portrayed by Miss Beth Leavel, a graduate student from Raleigh who is working toward a M. F. A. in Theatre. Miss Leavel has captured the true essence of Dolly Levi with a unique warmth and style that makes one forget the existence of the likes of Channing and Bailey. As one high-ranking source in the Department of Communication and

Theatre put it, "This is the best performance given by a UNC-G Theatre student in the last decade." This is an understatement.

The other principles in HELLO, DOLLY! were exceptionally well cast. Charles Jeffers as Horace Vandegelder was especially marvelous opposite Miss Leavel with John Felix and Curtis Harwell giving outstanding performances as clerks in Vandegelger's store. They set out for the big city in search of love and adventure and happily find both in Mrs. Irene Molloy and Miss Minnie Fay, convincingly portrayed by Miss Della Thompson and Miss Emily Green. Keith Martin and Jennifer Johnson combined in a secondary love story that beautifully complimented the main action of the play. But superlatives are also in order for the exuberant chorus, full of life, who positively sparkled as they took over Aycock Auditorium, in and out of doors, up and down the aisles, winning the hearts' of the audience right and left. Space does not allow listing all their names, but their brilliance and hard work is well worth mentioning.

Keith Martin must be given a huge bravo for his outstanding choreography; never has a UNC-G musical been so skillfully choreographed. Mr. Martin has a natural ability for creating dances that are

smooth, precise, and professional. HELLO, DOLLY! has over a dozen production numbers, many of which brought the audience to their feet, and Keith Martin is to be commended for his creativity and expertise.

The settings, designed by Randall McMullen, were imaginative and colorful as were the period costumes executed by Susan Lambeth. Gavin Smith followed the action flawlessly with his lighting design, and Kathi Boyette, as Stage Manager, coordinated all the technical elements with accomplished skill. An impressive orchestra, extremely rare for a amateur production, was capably directed by Arvid Knutson.

The UNC-G Theatre's 56th season is off to yet another promising start and HELLO, DOLLY! will long be remembered as a valentine that captured the heart of every person who was fortunate enough to see it!











# FALDERAL

Falderal, the UNC-G fall celebration of Founder's Day included fireworks, beer, and fun this year. There were bands in the quad for the Sunday afternoon portions of the festivities.

SG President Ralph Wilkerson and his staff organized a drive earlier in the semester to solicit donations from the student body in order to facilitate the purchase of beer for the event. This was necessitated by the fact that State law prohibits the use of student activity fees for the purchase of alcoholic beverages on state supported campuses.

Elliot University Council in conjunction with the Greensboro Coliseum sponsored discount tickets to students for a concert given by the Doobie Brothers.

The weather for the Falderal Weekend provided the perfect compliment for the celebration.











## Chancellor Ferguson Announces Resignation

On September 15, 1978, Chancellor James Ferguson announced his resignation effective July 31, 1979. Beginning as Acting Chancellor in 1964, Ferguson decided to resign his position to fulfill "a sincere desire to return to a full-time teaching assignment" as a history professor.

Ferguson accepted the Chancellorship when the former Women's College was becoming a multipurpose, coeducational University. With the Chancellor and his Administration, the Margaret C. Moore Nursing Building, a new Business and Economics Building, Raymond Taylor Theatre, the Music Annex, the William D. Carmicheal, Jr. Television Unit, a new wing to Elliott Center and several other projects have been completed.

Before 1962, graduate degrees at UNC-G were restricted to Education, certain professional areas, and the Fine Arts. Now, UNC-G offers Doctoral Degrees in twelve areas and Master Degrees in seventy different programs. UNC-G's Graduate School constitutes the highest percentage of "total institutional enrollment" in the entire University system.

When asked what he would miss most, the Chancellor replied, "I have regrets even now, but I have examined my decision and I feel this is the time to do it. Teaching is my greatest satisfaction in life. I enjoyed the associations with different groups, even though I was never called an extrovert. The reduced contacts will be missed, because they are reduced."



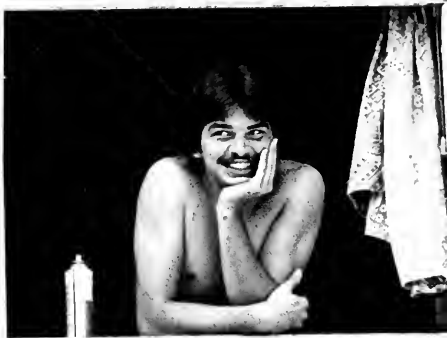






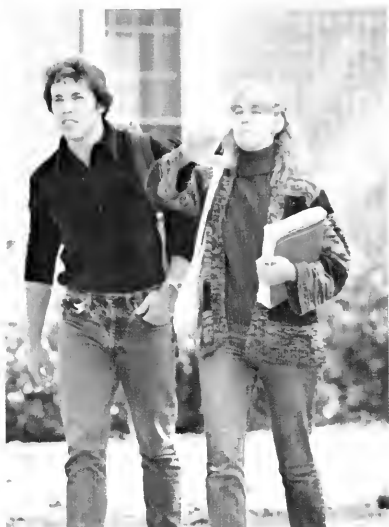
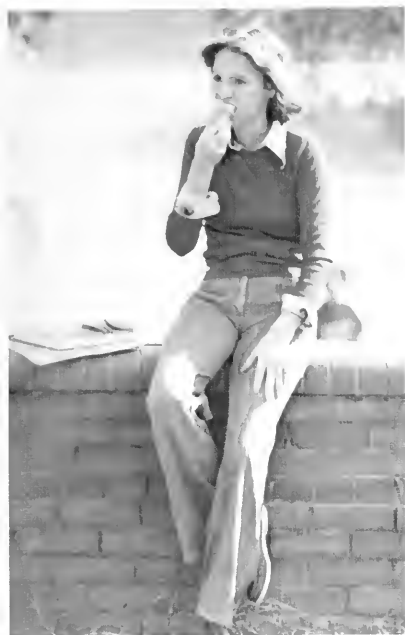


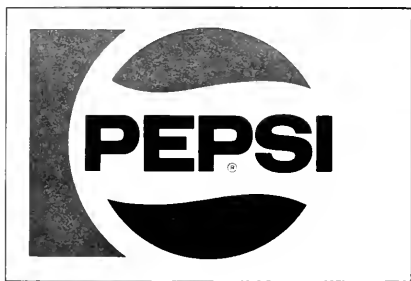












**Have  
a Pepsi  
day**



# Best tilt of the day!



Good times are great times for the easy taste of

# Budweiser



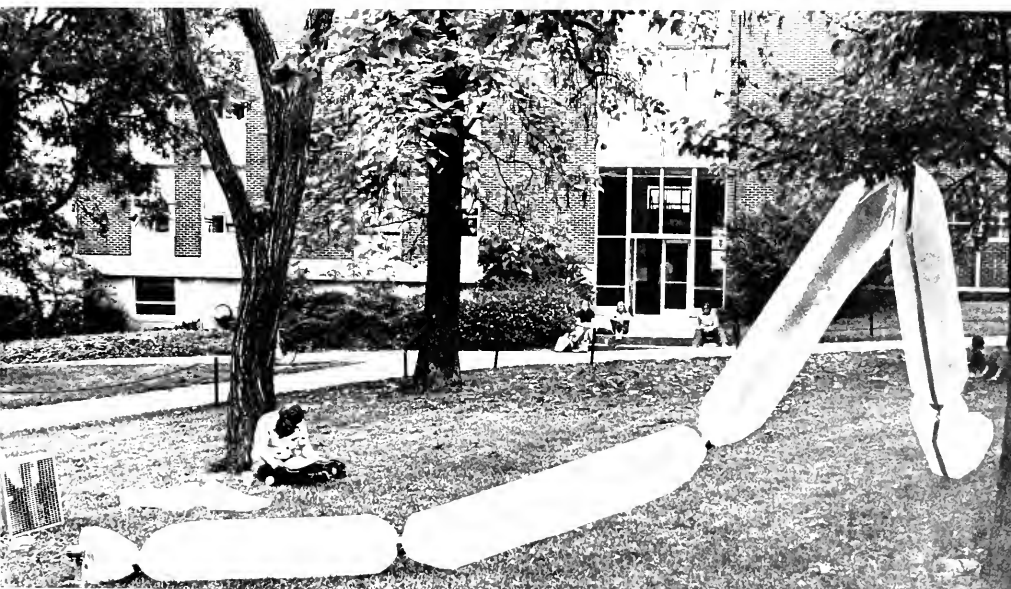
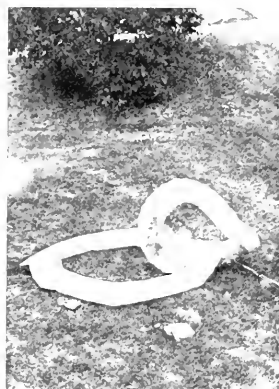




# Surprises on Campus

Students in Jim Gallucci's Design 240 were given the assignment of designing plastic figures while keeping the environment in mind. The results were the inflatables which took the campus by surprise on the morning of September 21.









# August

As the month of August began to unwind, many students began making preparations for the move back to campus.

The Orientation Committee moved back into the dorms in order to prepare for newly arriving students. Among the committee's planned events were the devouring of the world's largest banana split and a performance by Uneeda Biscuit.

On August 19, the remaining dorm students made their presence known through crowded parking, countless boxes, long lines, and conversations filled with news of the summer.









# September

During the month of September, a variety of events were offered for the entertainment and involvement of the UNC-G community.

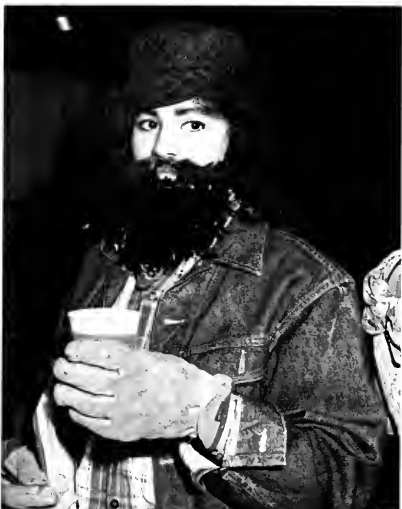
On campus, the University Concert/Lecture series sponsored pianist Emmanuel Ax on September 1 and the Billy Taylor Jazz Trio on September 8. Both of these events were held in Aycock Auditorium. The EUC Orientation Dance was held in Cone Ballroom on September 7 featuring the group "Songbird". Finally, APO, and Gamma Sig in conjunction with the American Red Cross sponsored a Bloodmobile visit to Campus on September 26.

Off campus, the Greensboro Coliseum hosted singer-songwriter Jackson Browne on September 1 and "Yes" on September 14.





# October



Halloween brought out the spirits of campus as many of us exhibited our finer creative abilities and our inhibitions in costumes that ranged from a loveable Donald Duck to a not so edible pair of M&M's. For many the change was a temporary disguise; for others, it was an improvement. It was October and the semester had passed its halfway point. For that reason we were justified in treating ourselves to the insanities of the season; and that meant a dance with Maurice and the Zodiacs, parties, and a few frightening movies. But most of all it meant release.





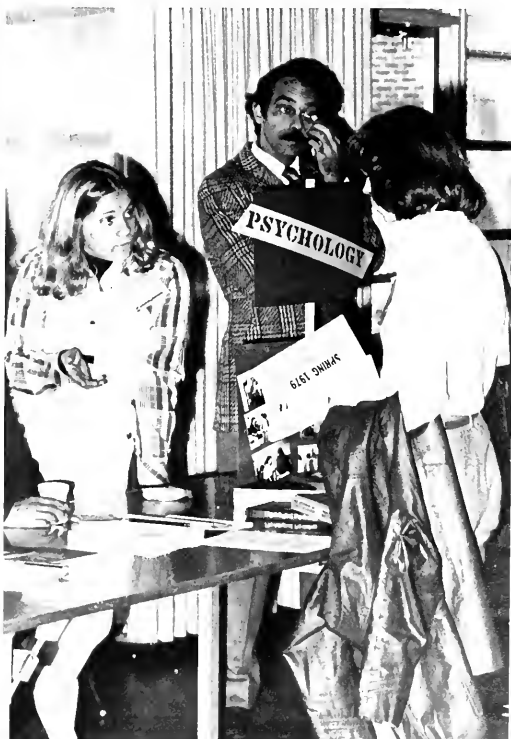
# November

During the month of November, UC/LS presented students and the community with three events. On November 2 the Royal Winnipeg Ballet performed in Aycock Auditorium. Two days later, the Merce Cunningham Dance Company appeared on campus. Music students enjoyed guest pianists Ferrante and Teicher on November 11.

The UNC-G Theatre displayed their talents with "The Beeple" to capacity crowds November 15-19. Children in the surrounding public schools were guests to matinee performances.

Operation '83, held November 18, was a successful venture to familiarize incoming students with the campus area.

Prior to the December rush of projects and finals, students and faculty received a four day Thanksgiving Break.





# December

December; a month of parties, projects, and finals. But that is not all that happened in December.

On December 1 & 2, UC/LS presented UNC-G Dance Division Concert. Then, December 4, 5, 6 the EUC Council sponsored the annual Lovefeast and Candlelight Service.

Finally, after all the confusion, a well earned vacation.

















## January

Students began returning to school January 8. Amid the lines at the bookstore, the cafeteria, the police station, and the ID revalidation, friends talked about their holiday.

An off-Broadway production of "The Wiz" was presented at the Greensboro Coliseum January 13.

This month UC/LS presented The Tamburitans, January 12; the Budapest Symphony, January 16; Albee Directs Albee, Jan. 26; and Anna Moffo, Soloist, with the Greensboro Symphony Orchestra, Jan. 29.



# February

Besides the traditional ideas about romances beginning in the month of February, UNC-G had several unique events. UC/LS presented a Russian Festival of Dance, February 1; Tokyo String Quartet, February 13; and the Moscow Philharmonic Orchestra February 19.

Another Operation '83 was sponsored by the Orientation Committee, February 2 with a Minority Orientation, February 1.

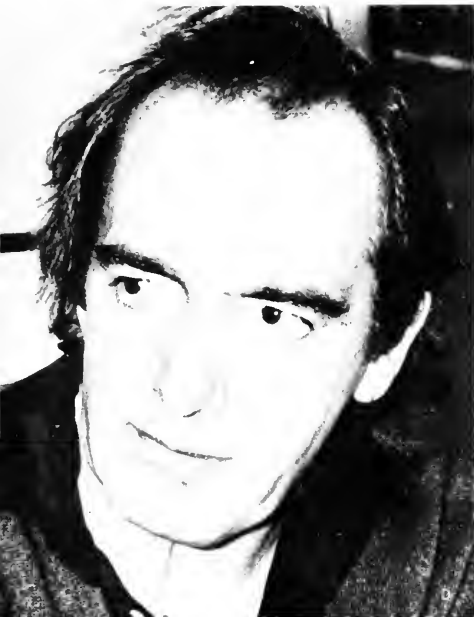
Valentine's Day, February 14, was celebrated by EUC with a Social. The Valentine's Day Dance was held in Cone Ballroom, February 16.











## Spring

Beginning the month of March, Elliot University Center celebrated the 26th year of its existence. Students took a well-deserved Spring Break officially from Saturday, March 3 till Monday March 12.

UC/LS presented the Janacek Chamber Orchestra, March 16; Newport Jazz Festival All Stars, March 17; UNC-G Dance Division Concert, March 21 and 23; and Clive Barnes on March 27.

Spring Fling, an annual holiday held on campus, was celebrated April 19-April 22. EUC hosted the Semi-formal Spring Dance, April 20.

UC/LS brought the Acting Company: "Antigone" to campus April 6.

Students preregistered for Summer School, and Fall Semester April 9-13.

May 1, was the last day of class. May 2 students spent the day studying for exams, and lying in the sun. Seniors officially graduated May 13 at ceremonies held at the Greensboro Coliseum.





F

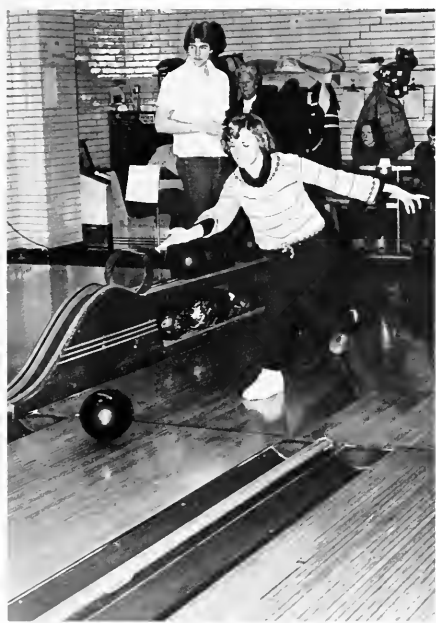


G



- A Marcel Marceau
- B ANTIGONE
- C Janacek Chamber Orchestra
- D Clive Barnes
- E Murray Louis
- F Trinidad Dancers
- G Trinidad Dancers
- H ANTIGONE
- I ROMEO AND JULIET





at graduation  
you'll be  
gladuatesome



**Coke** *adds life to...*  
Trade-mark U.S.

*"late" school nights*



Coca-Cola and Coke are registered trade-marks which identify the same product of The Coca-Cola Company

**AIRPORT LIMOUSINE SERVICE, INC.**

THE OFFICIAL GROUND TRANSPORTATION CARRIER  
TO AND FROM  
GREENSBORO - HIGH POINT - WINSTON-SALEM  
AIRPORT

P.O. BOX 8475                      GREENSBORO, N.C. 27410

GREENSBORO	HIGH POINT	WINSTON-SALEM
294-9054	454-2512	724-1268





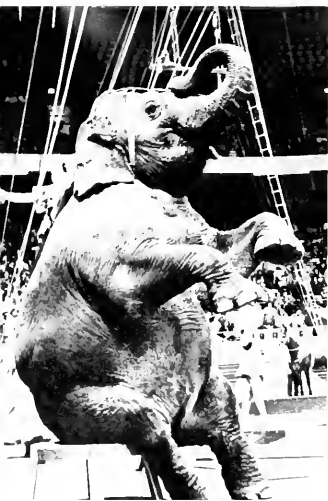
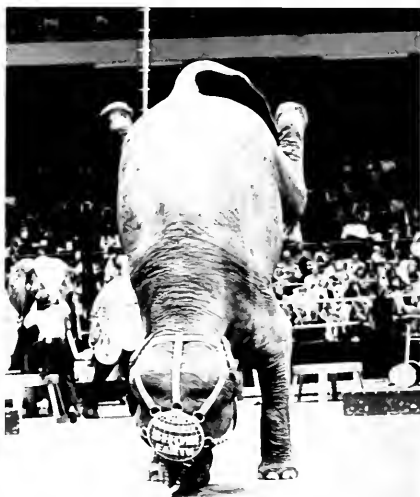


## Black Arts Festival

The Neo Black Society sponsored a Black Arts Festival in Cone Ballroom, February 4-10, here at UNC-G. Talent Shows, Spook Houses for children, Dance Groups, Martin Luther King, Sr., and a Fashion Show were presented to students as well as the community.

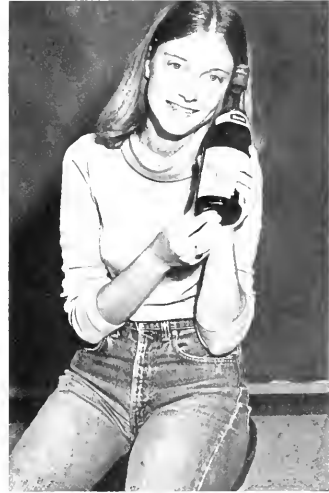


# Ringling Brothers and Barnum and Bailey Circus

















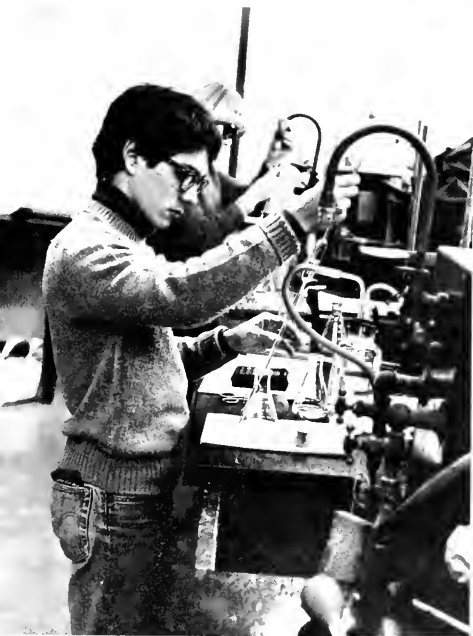
























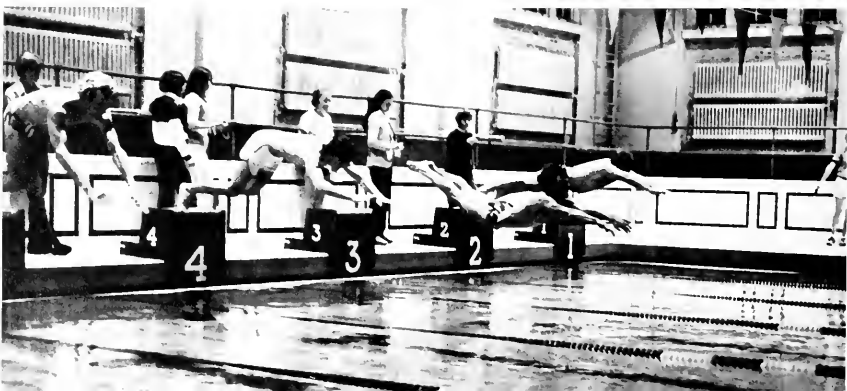
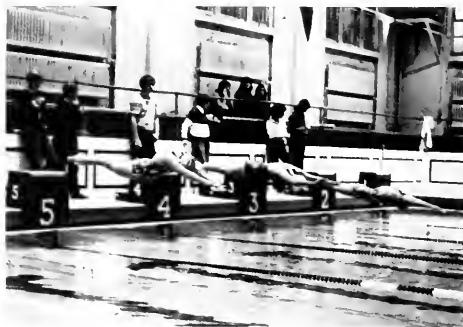


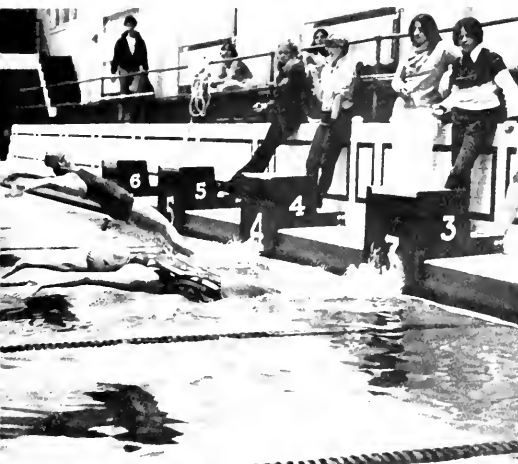


In its fourth year of existence, the Swim Team, coached by Jo Degraw exhibited much team spirit as members practiced for a minimum of two hours each afternoon and continually strived for perfection in style and efficiency in time.

Among the teams accomplishments were a third place finish in the Medley Relay of the State Finals and a second place finish in the backstroke by Jeanne Peck, also during the State Finals.

While the team continues to set goals for its growth, an extended season involving more meets is one such objective for the future.





## Swim Team

Row 1. Jo Degraw, Susan McLester, Megan Goodwin, Ruth Emma Wright, Yvonne Machileck, Robyn Ramsdill, Sandy Peacock, Buffy Wood, Katherine Jenkins. Row 2: Phil McCaul, Sean Lynch, Tim Dayton, Marshall Caldwell, Jeanne Peck, Ken Walker, Pete Hendy, Howard White, Gary Lowell  
Not pic: Laura Williams



# Men's RFU







As a recently organized club on campus, the UNC-G Men's Rugby Football Club has had many headaches with funding, playing areas, and other problems. But, with all the drawbacks, each game draws more supporters.

For many students this is the first time they have seen a game because Rugby is a relatively new sport in this area. Originating in England, Rugby has not changed very much. It is still a game of durability, physical stamina, and ruggedness.



# Women's Rugby: I Hear Thunder.





The Women's Rugby Football Club was organized fall 1978 as the youngest team in the state. From the beginning, the team's organization was faced with obstacles such as playing areas, coach, insurance, funding, and other problems.

Although they started the season with drawbacks, the Thunders finished their Fall Season with a perfect 3-0. The team was coached by the Greensboro City Rugby Football Union and will be coached by them again for the Spring Season which began on February 27.

Row 1: Kristine Berling, Jackie Gladstone, Denise Day, Cheryl Carpenter, Donna Thomas, Nita Sealey. Row 2: Susan Barnes, Sam Stephens, Kim Churchill, Malinda Ellis, Johnny McLean, Ann Bailes, Rick Halstead, Allison Relos, Jackie Faw, Tammy Pressley, Dorothy Nelson. Not Pic., Cindy Till, Teresa Collins, Lisa Beckley, Clarice Presnell, Anita McNeilly, Albert Stevens: Coach.



# Spartan Soccer

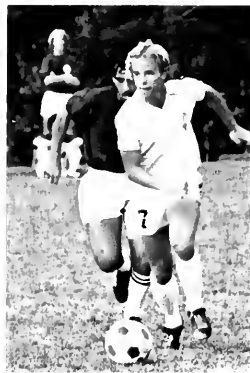


The Spartan soccer team, coached by Geoff Bird, finished with a record of eight wins, ten losses, and one tie. The record was an improvement over last year's record and the Spartans can look forward to more improvements in the season to come.

The Spartans showed that they could play some fine ball with big wins over High Point and Guilford College; but, the team lacked the drive needed to win consistently.

Coach Geoff Bird plans on working with the players throughout the winter and spring in order to prepare them for the next season. With the acquisition of a few recruits, UNC-G can look forward to a successful year in 1979.

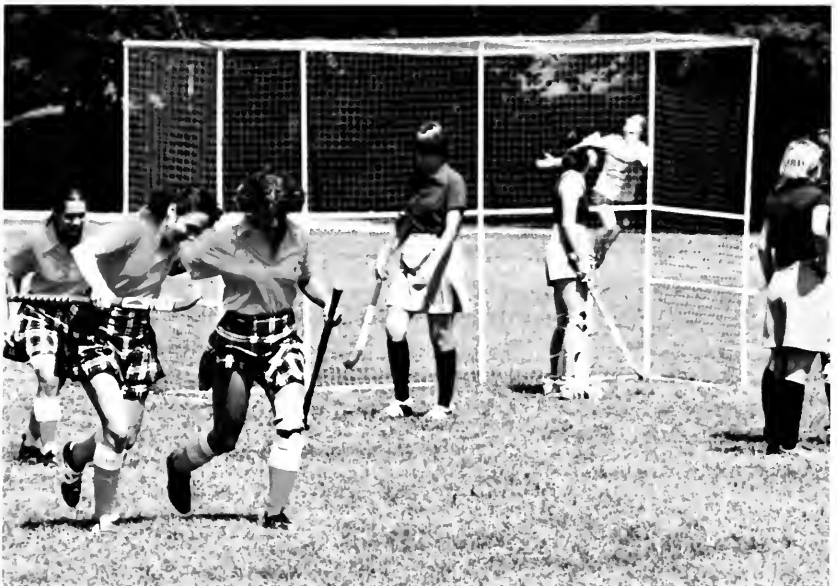








# Field Hockey





1978 proved to be a somewhat disappointing year for the Field Hockey team, which finished with a record of 6-12-4. However, disappointment over the performance of the team was compensated for by outstanding individual performances. Five team members were selected to play on the Deep South team because of their extraordinary abilities. These players were: Leslie Carron, Chassis Chald, Tina Lee, Alyson Br inser, and Cindy Wilhemy Cassie Chald went on to be selected to play on the Southeast II team which represented this region at the national tournament.

Prospects of next year's team are optimistic even though seven members of the team will be graduating in the spring. Coach Caryl Dix feels confident that the experience of the remaining players combined with the enthusiastic new players always bring to the team will definitely provide a winning combination for the next season.











24 hour



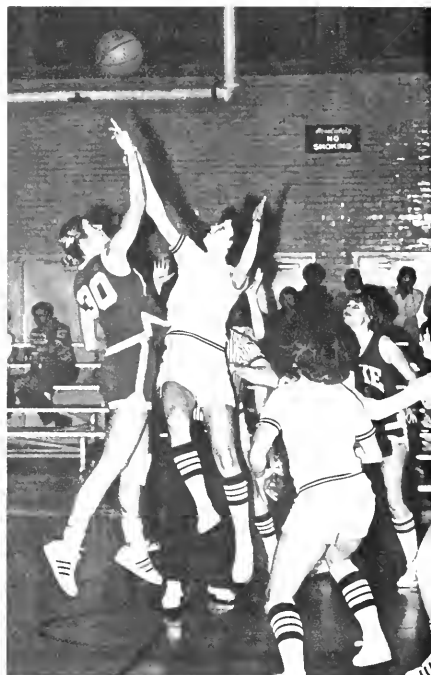
# KIRK'S SINEATH

MOTOR COMPANY, INC.

305 WEST LEE STREET  
GREENSBORO, N. C. 27401

PHONES 272-3456  
272-1574  
272-7381

# Women's Basketball

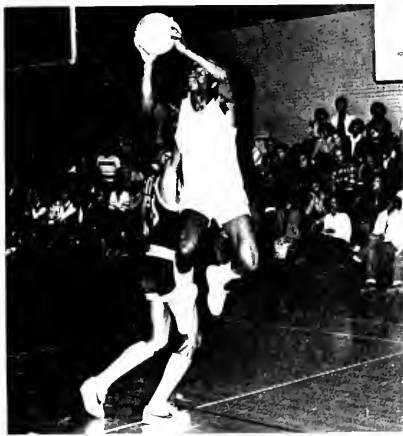
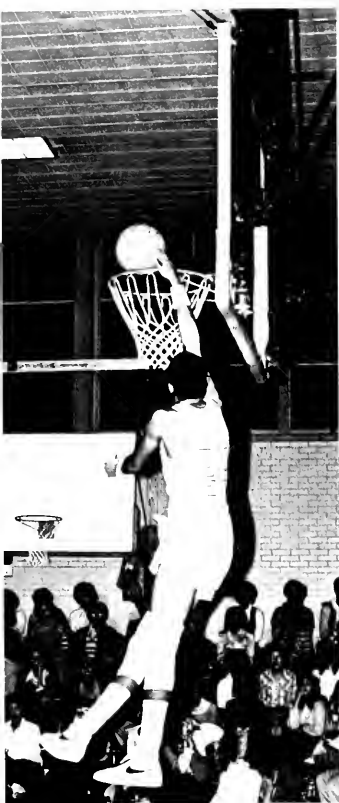




# Men's Basketball



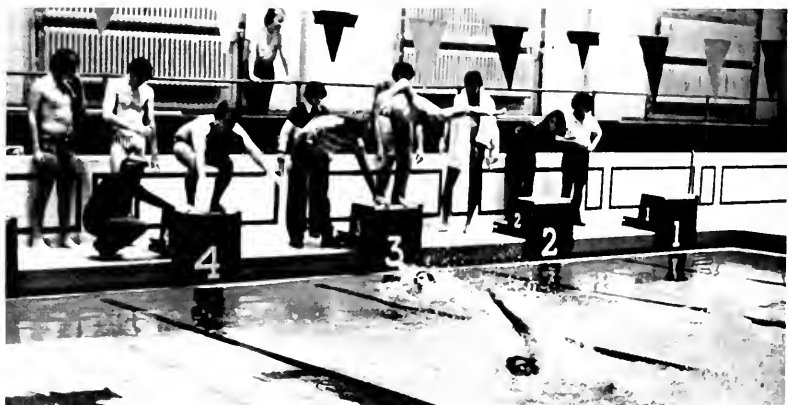




# UNC-G Volleyball









# Anthropology



Susan Carlisle



Kim Garmon





Valerie Nicas-Owens



Kenneth Prichard



Angus Stephens

# Art







Barbara Bailey  
James Baskett  
Karen Davis  
Mark Deaton  
Parricia Decker



Rosemary Bennetts  
Phyllis Blackburn  
Sandra Boswell  
Sylvia Brady  
Barbra Brink  
Tyrus Faust  
Catherine Fisher  
Beth Fox



Patricia Bryant  
Christina Camesas  
Terri Carpenter  
James Cheshire  
Ann Cockerham  
Teresa Frazier  
Frank Garnier  
Janet Gergel



Jane Grant  
Ann Grier  
Robert Hall, Jr.





Nancy Hankin  
Jayne Henderson-Simpson  
Mona Hill  
Charlotte Hurst  
Ronda Jordan  
Nancy Murphy  
Sharon Murphy  
Kim Neal



Debra Keels  
Scott Keener  
Vera Knight  
Janet Lassiter  
Melanie Logan  
David Newlon  
Sherry Poole  
Lisa Reavis



Debra Long  
Katheryn Madigan  
Elaine Marley  
Sally McKee  
Kimberly Mercer  
Allison Relos  
Vickie Satterwhite  
Martine Sherrill



James Miller  
Catina Suarez  
Deborah Wray  
Teresa Wray

# Biology





Terrisita Boone  
 Aubrey Calhoun  
 Christel Farley  
 George Finch  
 Belinda Flinchum



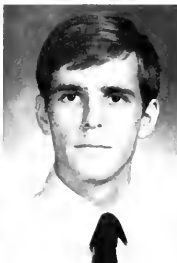
Polin Chung  
 Phyllis Cousin  
 Cynthia Crowder  
 Kevin Crumpton  
 Becky DeBorde  
 Deborah Graves  
 Timothy Greene  
 Cheryl Gresham

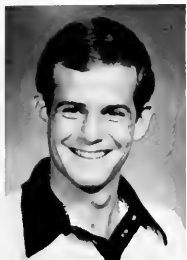


Linda Harrill  
 Ray Haupt  
 Sandra Johnson



Mark Karlok  
 Yolanda Kornegay  
 Trent McQueen

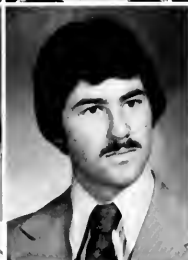




Sharon Mooney  
John Morrow  
Brenda Norville  
Gina Pasquale  
Michael Russell  
Paul Shamel  
Sally Sharp



Vera Shelton  
Shirley Shipton  
Patti Stafford



Marty Summey  
Paulette Sutphin  
Timothy Tolson



Carol Turner  
Matt Williams  
Katheryn Wilson

# Chemistry







Karen Brady  
Martha Crowell  
Leslie Foster  
Cheryl Guyer  
Helen Klutz



Bonnie Love  
Michael Mitchell  
Benjamin Richardson  
Crystal Smith



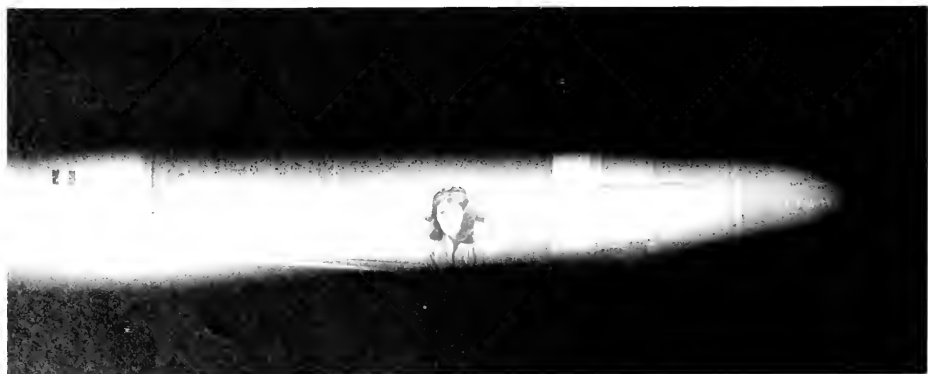
Denise Speaks  
Jeannette Warren  
Miraim Watkins  
Scott Watson





Jonathan Berkelhammer

# Classical Civilization



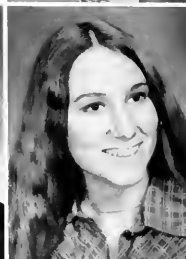


Carol McCall

## German And Russian



# Communication And Theatre





Andrew Asnip  
Montressa Barbee  
Michael Bartlett  
Lori Blum



Deborah Boyd  
Kathleen Boyette  
Dora Buchanan  
Kevin Butler  
Rebecca Callicutt  
Thomas Connolly  
Coy Covington  
Conley Cribb



Leslie Culbertson  
Paulette Doin  
Ronald Eggleston  
Charles Embler



Jennifer Faw  
Susan Garrard  
Carolyn Haas  
Kim Harrison





Curtis Hertwig  
Gayle Hinson  
Thomas Hirschman  
Nenreitta Ingram  
Waverlyn Jones  
Kristie Ketchum  
Kathie Keves  
Iva Kreiling



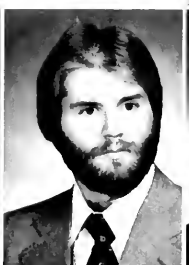
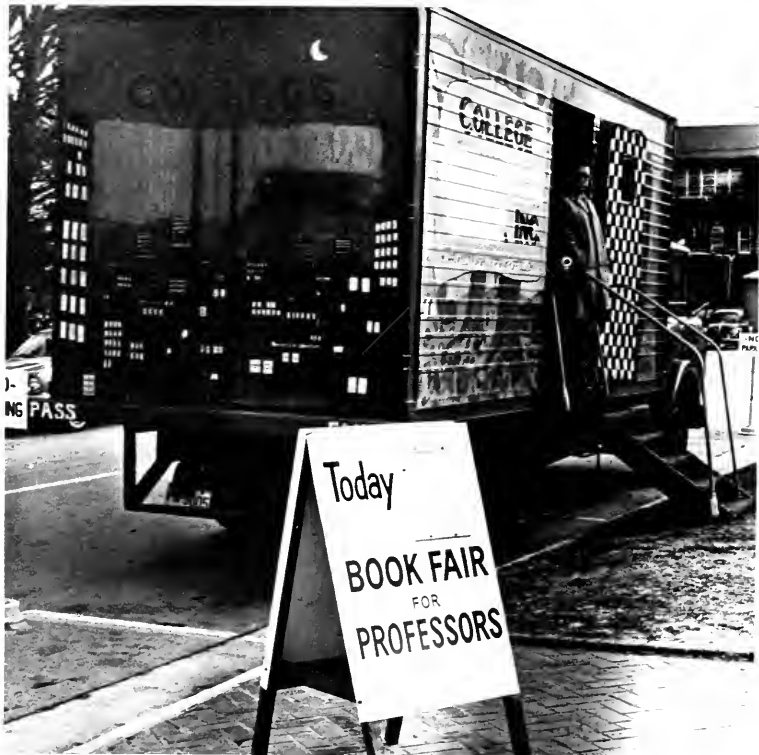
Richard Lamb  
Susanne Lomax  
Keith Martin  
Rebecca Martin



Elizabeth Mal  
John McCann  
Andrew McKav  
Don Murphy



Cynthia Pahnke  
Tia Palmisano  
Brenda Pennington  
Joel Perry







Carol Poole  
James Porter  
Susan Rand  
David Reavis



Betty Reed  
Patricia Phyne  
Jack Riggs  
Dale Robertson



Cheryl Setzer  
Jean Sinclair  
Ronald Skenes  
Joey Smith



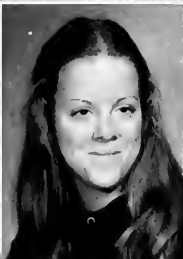
Kathleen Smith  
Karen South  
Gary Todd  
Martin Wagner  
Lynne Walker  
Ann Wells  
Arthur Winkler

# English





Martha Adcock  
Leasa Birmingham



Janet Blackburn  
Janette Bolton  
Katherine Carpenter  
Mary Chiles  
Susan Chisholm  
Nathanael Dresser



Rusef Foster  
Anna Green  
Anthony Hatcher  
Katherine Holmes  
Valerie Kinard  
Deborah Lane



Nora Lewis  
Teri Lewis  
Bette Llewellyn  
Amy Loope  
Jean Maffrey  
Robin McAfee

Susan Moorhead  
Suzanne Moss  
Glenda Owens



Jane Patrick  
Cheri Pickett  
Ellen Queen



Dee Simmons  
Amy Sloop  
Patricia Tallent



Olivia Walker  
Dorothy Waterfill  
Amelia Wetherill







## Geography

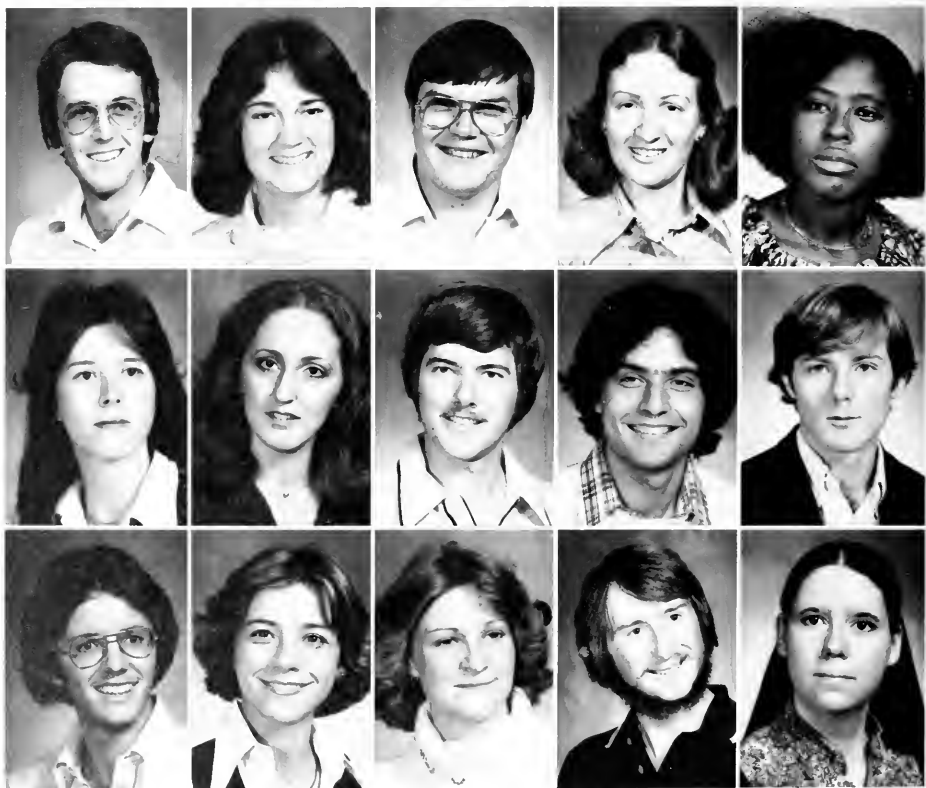




Joy Cayton  
Alan Driskell  
Carl Flick  
William Freeman  
Kimberly Westergaard



# History







Clyde Albright  
Susan Ballinger  
Carl Bjork  
Alison Boles  
Wanda Brooks  
Rosaleen Clark  
Onda Collins



Jo Coltrane  
Ellen Cox  
Gorden Craighead  
Clayton Draper  
Chris Exline  
William Ingram  
Gary Mededith  
Sarah Murphy



Ched Neal  
Polly Peirce  
Kimberly Price  
Jimmy Saunders  
Janice Thompson  
Michael Throop  
Mary Watkins  
Crystal Weaver

# Mathematics

Sharon Baker  
Zafer Balkan  
Valerie Bass



Nan Bowman  
Sue Carlton  
Kim Carswell  
Roy Curry



Lisa Curtis  
Lillian Glasgow  
Edythe Green  
Margorie Guilford  
Teresa Guinn  
June Holloman



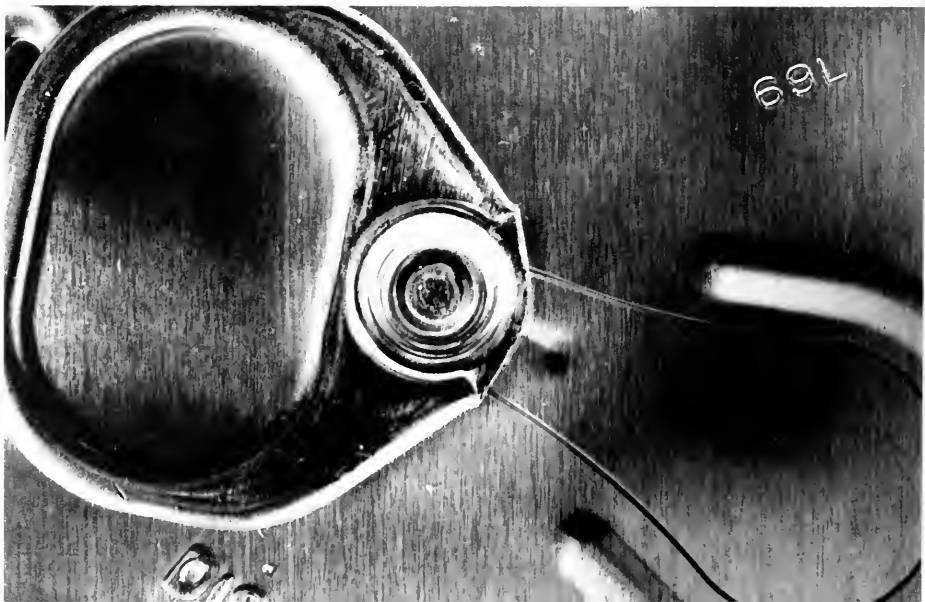
Janet Maness  
Margaret Martin  
Laura McKaskel  
Jean Mitchell  
Alma Ward  
Ruth Watson





# Philosophy

Allan Kaplan



# Political Science



Carolyn Abbott  
Natarlin Best  
Denise Brooks



Brenda Byers  
Anthony Caudle  
Susan Cheadle



Mark Collins  
James Ennis  
Elizabeth Ervin

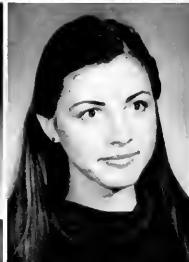
Richard Ferebee  
Randal Foster  
Denita Hampton  
Lonnie LeBlang



Amelia Lennon  
Jann Lund  
Roman Lyczkowski  
Jeff Mabe  
Joseph Newbold



Sammy Parsong  
John Pugh  
Susan Sears  
Gwendolyn Torain  
Margaret Wright





# Psychology

Carolyn Arsher  
Christy Allen  
Margarita Azmitia  
Keith Barron  
John Bartlett  
Matresse Best



Daniel Black  
Linda Boyette  
Patrick Brown  
Janet Burns  
Nancy Chappell  
Eric Clifton



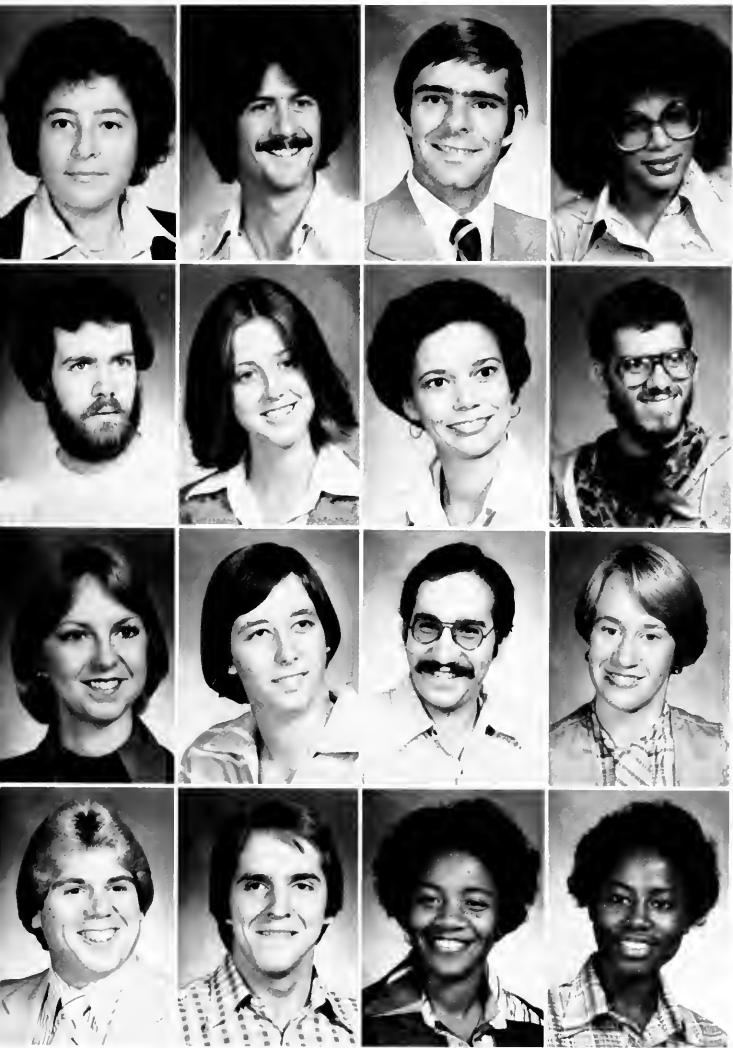
Mary Connelly  
Jeffery Craver  
Terri Culler  
Marjorie Disoway  
Art Dowsky  
Sandra Fletcher



Valerie Clascock  
Debra Graves  
Darell Grisson  
Jim Hewitt  
Ruth Johnson  
Annie Jones











Vicki Kendrick  
Debra List  
Jennifer McCann  
Vickie Mitchell



Guy Morrison  
Alison Pratt  
Mike Raisig  
Mary Rhyne



Karyl Roberts  
Iva Shelton  
Teresa Shoffner  
Crystale Stevenson



Stephanie Stohr  
Anna Strickland  
Anthony Weddington  
Roger Williams

# Romance Language

Linda Foster  
Sabrina Frye



Donald Kennedy  
Carol Kruger



Mary Maclin  
Margaret Oakley  
Cindy Ring



Aimee Seay  
Sherry Spivey  
Ramona Villani





# Sociology

Nancy Bates  
Cynthia Berlin



Teresa Brinkley  
Carol Brown



Debbie Buffaloe  
Cynthia Caldwell  
Michele Campbell  
Jeanna Campbell  
Esther Corbett  
Cathrine Curtis



Rita Dingle  
Lisa England  
Pamela Fitch  
Jonathin Gill  
James Harris, Jr.  
Barry Hooker











Kim Hunt  
Larie Lambe



Christopher Laughter  
Steven Lehman



Alice Marshall  
Joy McCadems  
Sandra Merritt  
Denise Miller  
Dinah Richardson  
Ann Simpson



Carol Simpson  
Janet Stauber  
Julie Stokes  
Yolanda Waisner  
Susan Wilder  
Angela Wooten

# School Of Business





Pricilla Anderson  
Theron Anderson  
Nathan Andrew  
Karen Austin  
Jennifer Bane  
Linwood Barbour  
Dudley Bokowski



Frances Booth  
Terrisa Bowers  
Alice Bynum  
Barbara Burrell  
James Butt  
Elizabeth Byrd  
John Campbell



Dale Caviness  
Lydia Clark  
Cathy Cobb  
Gayle Cochran  
Kathleen Cochran  
Carolyn Cole  
Kathy Collins





Sherrie Cook  
Gloria Cooper  
Linda Crowder  
Robert Crutchfield  
Marilyn Cummings  
David Dickens  
Mary Dombrowski

Estella Dulsa  
Steven Dunlap  
Carol Dunn  
Karol Everette  
Karen Fagg  
Susan Fox  
Katheran Fulcher





Dennis Funk  
 Carolyn Gainer  
 Carolyn Goforth  
 Sandra Goode  
 Teresa Gray  
 James Gresham  
 Ron Griffin



Terry Hanes  
 Gorden Hanson  
 Janet Hayes  
 Theresa Haitt  
 Tamsen Hicks  
 Douglas Hoffman  
 Harold Hopkins



Norma Houston  
 Melinda Hansucker  
 Betty Ivester  
 Joey Jackson  
 Austin Jones  
 Mary Jones  
 Pearlie Kelly



Robert Kennedy  
 Wayne Landford  
 Dianne Layton  
 Susan Little  
 Reva Maness  
 Dennis Marsh  
 John Matzkin

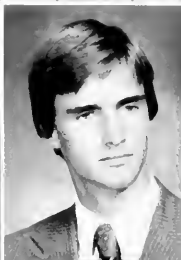
James McArthur  
 Sherry McQueen  
 Casey Meyer  
 Dorothy Moore  
 David Morrow  
 Walid Nicolin  
 Deborah Noris



Cynthia Oakley  
 Linda Parks  
 Kelly Parris  
 Sandra Penderson  
 Cindy Pettit  
 Jeff Pfaff  
 Karen Pickler



Faye Price  
 Harry Price  
 Joyce Pugh  
 Donald Putnam  
 Bernetta Randall  
 Jeffery Rieves  
 Eddie Rhodes



Mary Rulli  
 Thomas Settemyre  
 Greg Scott  
 Kim Scott  
 Susan Sherwood  
 Roger Smith  
 James Stanley



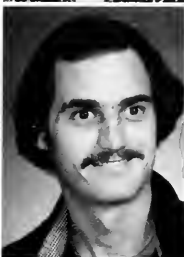




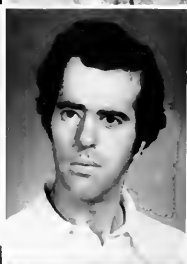
Carol Stapleton  
Linda Strader  
Dale Strikler  
Richard Sugrue  
Howard Tailey  
David Thompson



David Thorton  
Deborah Tripp  
Ernest Tromness  
Emma Turner  
Jeff Vance  
Sharon Vaughn

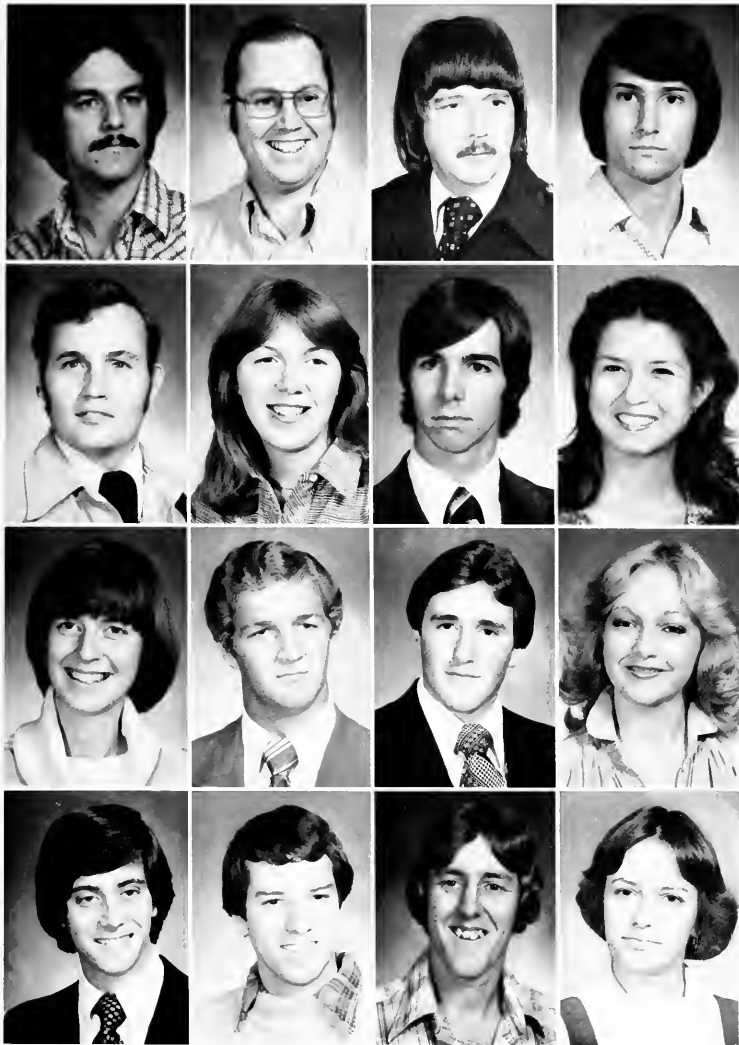


Gary Vernon  
Lee Walker  
Dianne Wall  
Leamon Ward, III  
Timothy Weavil  
Lark Welborn



Cindy Whicker  
Doris Wilkerson  
David Williams  
Mark Wilson  
Rooster Wilson  
Deborah York





# School Of Education





Glenda Alexander  
 Sharlien Alston  
 Sarah Andrews  
 Beverly Bernard  
 Cyndy Boughton  
 Martha Boyeite



Vickie Bradley  
 Cynthia Brower  
 Barbara Brown  
 Beth Burton  
 Cheryl Carter  
 Anne Clark  
 Karen Clal



Mary Connolly  
 Cheryl Davis  
 Kimberly Davis  
 Linda Doby  
 Robbie Earl  
 Gregory Fears  
 Ruth Gehrke

Debra Gordon  
 Teresa Grimes  
 Margaret Hamilton  
 Elisabeth Harper  
 Deborah Harrington  
 Marilyn Hines  
 Roslyn Holbrook



Karen Hoover  
 Karen Johnson  
 Susan Jones  
 Sarah Kritzer  
 Alma Lane  
 Theresa Larkin  
 Michelle Luck



Susan Manning  
 Angela Martin  
 Beverly Martin  
 Catherine Martin  
 Nancy McDonald  
 Gail McLaughlin  
 Cynthia More



Brenda Murray  
 Bonita Newsome  
 Margaret Nicholson  
 Amanda Olshinski  
 Deborah Parr  
 Robin Propst  
 Terri Richey





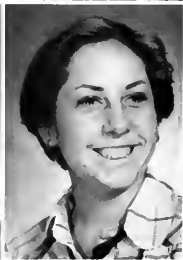
Patricia Roberts  
Marsha Royal  
Beth Sanders



Jarmila Santos  
Audrey Scott  
Carol Sloan



Patsy Smith  
Donna Spainhour  
Robin Starolitz  
Jan Strickland  
Betty Taylor  
Laverne Totten  
Lisa Uzzell



Pattie Wall  
Emily White  
Mary Willard  
Kim Woodruff  
Susan Wyatt  
Rebecca Young







# School Of Health, Physical

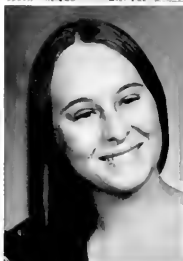
Elizabeth Allen  
Caroline Baldwin  
Elizabeth Benforado  
Laura Boerum  
Allyson Brinser  
Judith Bullard



Patricia Cadle  
Debra Cameron  
Carol Carothers  
Cindy Carraway  
Sandra Case  
Lu-Anne Chandler



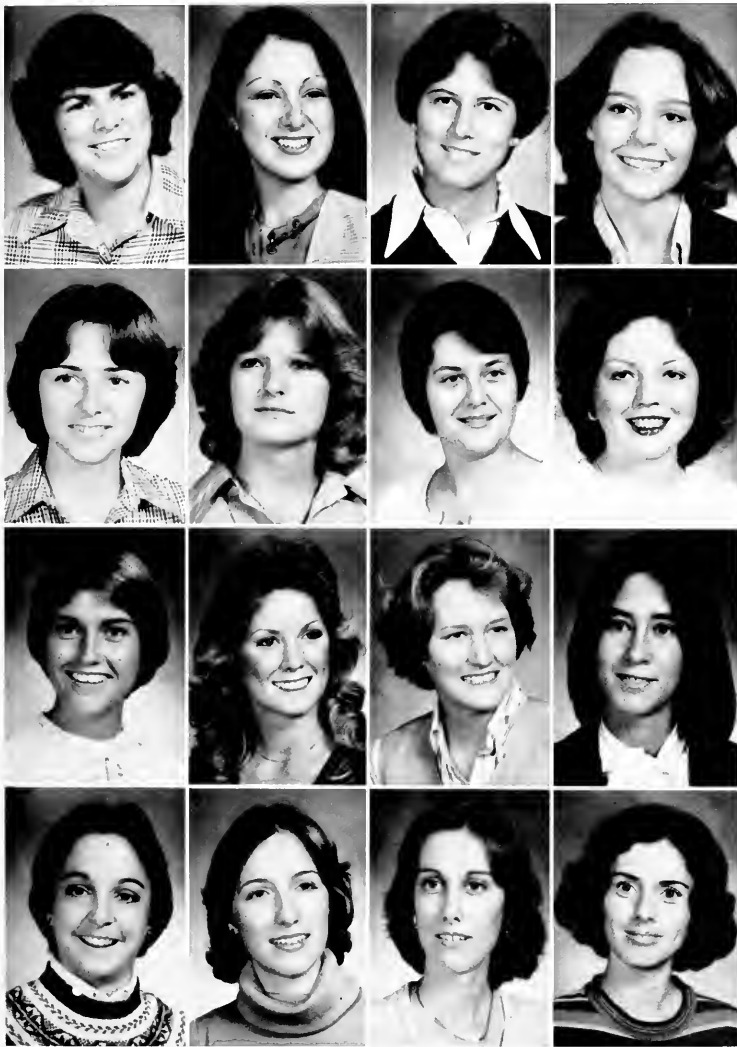
Holly Chester  
Cynthia Cloward  
Vickie Cloninger  
Susan Coln  
Paula Coss  
Elizabeth Creel



Susan Crews  
Lynne Davidson  
Linda Dickerson  
Karen Dorsett  
Janice Edgerton  
Deborah Felton



# Education, and Recreation







Nancy Fletcher  
Katherine Fort  
Cynthia Graham  
Carol Green  
Brenda Hall  
Peggy Henderson



Tony Henson  
Linda Holliday  
Sandra James  
Sallee Kelly  
Debbie Kendrick  
Gloria Lasley



Vanessa Lewis  
Barbara Lind  
Ava McKinney  
Alice McMichael  
Kristin Merack  
Helen Mikkin



Charlene Morgan  
Karen Moseley  
Carla Mull  
Valeria Nixon  
Cathy Owens  
Jeanne Peck

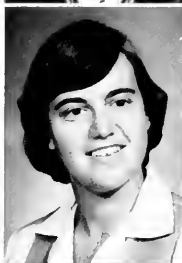
Cheryl Peters  
Margaret Pittman  
Gwen Poole  
Nancy Raynor  
Cynthia Reeves



Sherry Ridenhour  
Rick Robinson  
Elizabeth Safrit  
Ronnie Sapp  
Mary Sears-Morrison  
Donna Shively  
Anita Stines



Peggy Stortstrom  
Keith Strader  
Pamela Tesh  
Syliva Tidline  
Cheryl Tucker  
Jodi Upchurch  
Carla Veasey

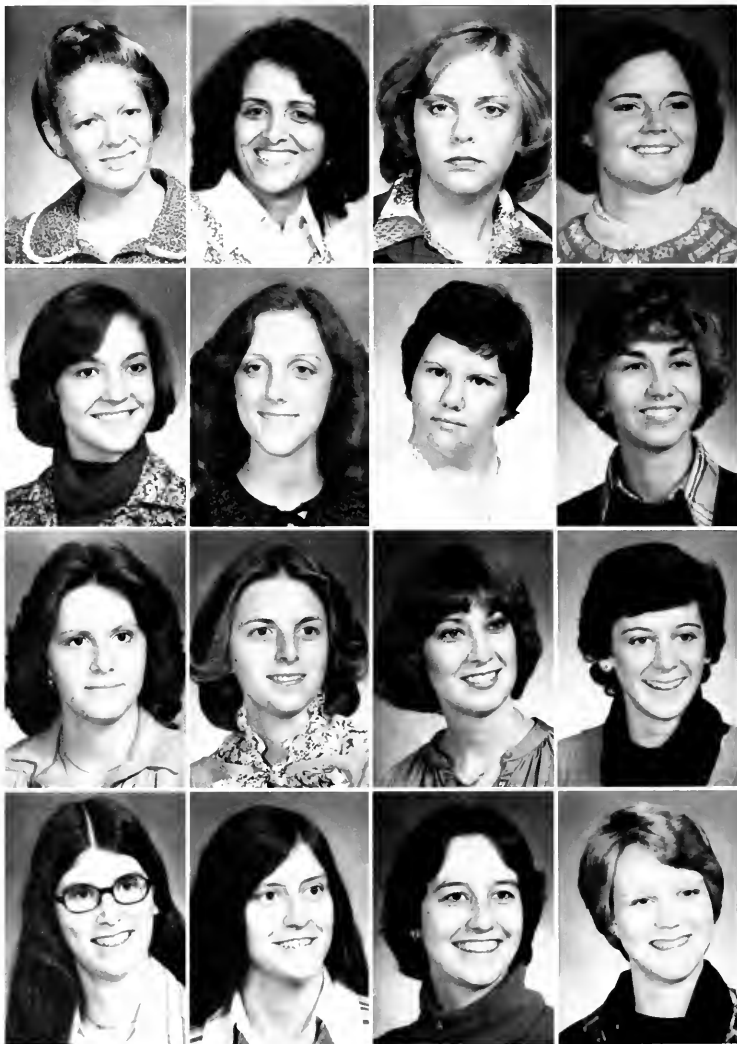


Helen Walker  
Mitizi Warren  
Susan Watson  
Cynthia Wilhelm  
Donna Winchell  
Tracy Wishon  
Frances Woodward





# School Of Home Economics







Christine Abernethy  
Imbarka Addala  
Cheryl Allen  
Betsy Allen  
Lana Allread  
Sharon Allred  
Laura Arnold



Donna Ayscue  
Dawn Ashmore  
Jenny Baker  
Robin Baynes  
Susan Bjork  
Dale Bolick  
Carol Bowers



Francis Bradford  
Cynthia Brady  
Brenda Briggs  
Marsha Bright  
Cindy Broadwell  
Betty Bryant  
Peggy Bryant



Ellen Bryson  
Paddy Burcham  
Rebecca Callahan  
Nancy Carrier  
Denise Cavin  
Linda Clark  
Carolyn Cobb





Cynthia Cole  
Sheryl Cooke  
Darleen Cunningham  
Tamela Dabbs  
Carole Davis



Cynthia Davis  
Susan Davis  
Keith Dillon  
Karen Dill  
Cindy Drake  
Cynthia Eanes  
Susan Elliot



Lorraine Ellis  
Kim Fann  
Vergie Faust  
Deborah Fedrizzi  
Lela Ferguson  
Linda Ferry  
Mary Fesperman



Charles Floyd  
Cathy Foster  
Tangela Frost  
Dorothy Funches  
Gurnadean George  
Deborah Gering  
Shirley Goodnight

Gwendolyn Gore  
 Karen Gray  
 Gail Green  
 Teresa Gurdziel  
 Martha Harrington  
 Jeannie Harris  
 Martha Harrison



Nina Henry  
 Margaret High  
 Sara Hill  
 Deborah Hillard  
 Ann Hodges  
 Karen Holt  
 Rebecca Horn



Connie Johnson  
 Jennifer Jolly  
 Sandra Jones  
 Evelyn Kahner  
 Virginia Key  
 Betty King  
 Frances King



Susan Kipping  
 Mary Lambert  
 Mary Landen  
 Barbarann Long  
 Venida Macklin  
 Annette Manning  
 Pamala Mason





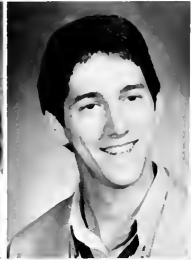
Cindy Mayse  
 Virginia McAdams  
 Patsy McEntire  
 Deborah McGann  
 Geneva McIntyre  
 Cheryl McQueen



Barbara Mendelson  
 Deborah Merrill  
 Brenda Milteer  
 Karen Monteith  
 Maureen Moran  
 Ella Morgan



Patricia Morgan  
 Elyn Morrow  
 Richard Muser  
 Sandra Mull  
 Faye Nance  
 Linda Oliver



Rebecca Olsen  
 Vivian Perkins  
 Pamela Phillips  
 Betty Poore  
 Helen Powell  
 Madeleine Powell











Mary Quick  
Mary Raiter  
Pamela Rogers  
Debbie Ross  
Susan Royals  
Marjorie Sanderson  
Galve Searcy



Luanne Shober  
Sharon Simpson  
Annette Singleton  
Cynthia Slack  
Mary Small  
Martha Smith  
Nancy Spratt



Liza Sprinkle  
Susan Stark  
Jane Starns  
Dale Stine  
Melissa Stinson  
Houstina Story  
Sue Stutzman



Shelly Sullivan  
Joan Tarduogno  
Jean Taylor  
Laura Taylor  
Robert Taylor  
Annette Terrell  
Sarah Thompson

Mildred Townsend  
Kammie Veeder



Karianne Walker  
Carol Wallin  
Kathleen Walters



Margaret Ward  
Melia Washburn  
Rona Wetherhill  
Ann Wheless



Lori Whitley  
Linda Wright  
Kathy Wood  
Carol Zeylez



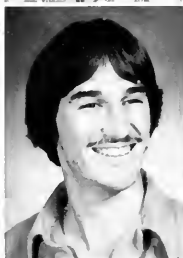


# School Of Music

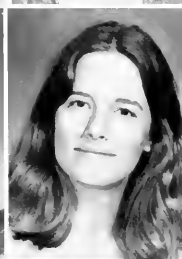
Lucy Bowman  
Donna Bray  
Sherree Brooks  
Wendy Brown  
Cynthia Brush  
Teresa Cain  
Jeanne Cannady  
Anna Cranford



Jimmy Dickson  
Thomas Floyd  
Kathryn Garrett  
Caryl Goertler  
Bernard Hall  
Kevin Hayes  
Wanda Hicks  
Mark Hodges



Kea Holloman  
Rebecca Huffman  
Gregory Hurley  
William Ingold  
Gregory Thomas  
Felecia Maynor  
Jon McCachren  
Sarah Morgan



Jeffrey Mueller  
Samuel Newlin  
Debra Plyler  
Leslie Reim  
Tracey Richards  
Harry Roland  
Andrew Russell  
Jo Simpson







Mary Spry  
Ronnie Stephens  
Wiley Sykes



Lydia Taylor  
Brooks Troxler  
Jody Underwood



Jeffery Whicker  
Pamela Whitfield  
Barbara Wilkinson



# School Of Nursing



Patricia Allen  
Denise Arthur  
Pat Barfield



Rhonda Barbee  
Jane Barr  
Camille Beam



Susan Belch  
Nancy Boling  
Anita Cameron



Myra Carlisle  
Wendy Clark  
Cathy Cox

Elizabeth Creech  
 Dusty Dale  
 Robin Davis  
 Pamela Dickerson  
 Carolyn Faluo  
 Sharon Ford  
 Teresa Foster  
 Jeanette Foushee



Karen Frye  
 Cynthia Geouge  
 Hanly Grabow  
 Helen Graves  
 Elizabeth Griffin  
 Robin Hartman  
 Debra Hendren  
 Ara Hester



Doris Haitt  
 Margaret Higgins  
 Gail Ilse  
 Leia James  
 Joy Kelly  
 Diana Kent  
 Cindy Kreeger  
 Paula Lagle



Beth Lane  
 Terry Lineberger  
 Donna Little  
 Kathy Mathison  
 Kathy May  
 Terry Moir  
 Dorothy Moose  
 Joyce Moretz







Caryl Morgan  
Sarah Mouen  
Roberta Murray  
Mary Neal  
Carol Neighbours



Anita Nichols  
Martha Nicholson  
Shirley Parks  
Patricia Patterson  
Catherine Payne  
Carolyn Pegram  
Robert Ross  
Toni Sessoms



Debra Shipe  
Cheryl Sloan  
Alice Smith  
Pamela Smith  
Meloney Stack  
Larry Stephenson  
Mary Tesh  
Catherine Tinnin



Donna Vaughn  
Stephen Vaughn  
Joan Vest  
Teresa Walker  
Kathy Weavil  
Karen Weeks  
Susan Wilson  
Joanna Wooten





# Juniors

Janet Abernathy  
Collin Abbott, III  
Louis Abramovitz  
Cheryl Abrams  
Susan Ackerson  
Kathy Albright



Donna Alexander  
Frances Alexander  
Ginger Allen  
Judy Allen  
Cynthia Alley  
Roger Allison



Gladys Anderson  
Ann Andrew  
Amy Andrews  
Carol Andrews  
Mary Andrews  
Nancy Andrews



Michael Armstrong  
Thomas Asumendi  
Daniel Atkins  
Sonya Auman  
Doretha Avery  
Donna Aycoth



Juron Ayers  
Susan Babb  
Laura Bailey  
Patricia Bailey  
James Bailiff  
Richard Baker





Zina Baidwin  
Susan Bailles  
Vickie Barber  
Kathy Barker  
Sharon Barker  
Cynthia Barnette



Jan Barrett  
Wendy Barricks  
Tanzy Barrow  
Eileen Basquill  
Joanne Bayha  
Freida Beamer



Janice Beaver  
Koreen Bell  
Linda Benedict  
Sheila Bennett  
Holly Bent  
Judith Bernanke



Laura Bess  
Gregory Bickel  
Frankie Biggs  
Frank Bird  
Sharon Bishop  
Cathy Blackard



Allyson Blackman  
Janet Blackwell  
Christine Blanton  
Susan Blanton  
Cathy Bogle  
Kathi Bogus

Susan Boles  
 Laura Bond  
 Clayton Boozer  
 Caroline Bounous  
 Cynthia Campbell  
 Jane Campbell  
 Maura Canoles  
 Suzanne Carroll



Shannon Boyd  
 Susan Bradley  
 Keith Bradsher  
 Dianna Bradford  
 Leslie Carron  
 Tina Carter  
 Graydon Cartmell  
 Vernor Case



Teresa Bray  
 Eugene Breeze  
 Gail Brenner  
 Ronald Bridges, Jr.  
 Susan Cash  
 Kim Cato  
 John Cecil  
 Cynthia Childers



Mary Brodie  
 Johnny Brooks  
 Anita Brown  
 Dawns Brown, Jr.  
 Carol Childress  
 Debbie Chryskos

James Clapp, Jr.  
 Marolyn Clarillo  
 Eric Clark  
 Janer Clark  
 Kin Clark  
 Neil Clay



Mary Brown  
 Rebecca Brown  
 Stephanie Brown  
 Janet Broyhill  
 Harriet Clayton  
 Carney Clegg

Jody Clodfelter  
 Joretta Coble  
 Cathy Collins  
 Jamey Collins  
 Kelly Collins  
 Susan Collins





Denise Bryant  
 Louis Bumpass  
 Elizabeth Burchell  
 Janice Butler  
 Pamela Combs  
 Caroline Comyns  
 Cynthia Connell  
 Margaret Connell

Leigh Byrd  
 Nena Cadie  
 Joseph Caldeira  
 Michael Callahan  
 Leon Cook, III  
 Tracy Cook  
 Randy Cooke  
 Phyllis Cooper

Rebecca Copley  
 Camille Costa  
 Dale Courts  
 Mary Courts  
 Holly Jean Coward  
 Karen Cox



David Cranford  
 Martha Cranford  
 Danette Crawford  
 Katie Creech  
 Roslyn Crosby  
 David Crouse



Veryan Cumberbatch  
 Sharon Cuthbertson  
 Marion Dail  
 Wayne Dalton  
 Carl Damron, Jr.  
 Susan Dark



Kimberly Daves  
 Teresa Davidson  
 Leah Davis  
 Lisa Davis  
 Rhonda Davis  
 Rick Davis



Sarah Davis  
 Virginia Davis  
 Denise Day  
 Patrick Day  
 Susan Deaton  
 Lorraine DeCunzo



George DeVane  
 Gail Dezern  
 Theresa Dillender  
 Layla Dillon  
 Bobby Dixon  
 Pamela Dobbins



Carolyn Dodson  
 Larke Driggers  
 Karen Dull  
 Margaret Duncan  
 Tsuyako Dunn  
 Elizabeth Eaker







Linda Eason  
David Eddinger  
Valerie Edozien  
Jane Edwards  
Kenneth Elkins  
Paul Elliott



Michael Ellis  
Robin Ellis  
Paul Elosser  
Rosemary Embler  
Mary Emerson  
Steve Engebretsen



Marina Ervin  
Thomas Erwin  
Lydia Eskridge  
Paulette Evans  
Kimberly Ewing  
Lois Faggart



Joyce Feldman  
Cheryl Ferguson  
Deborah Filipksi  
Amy Findley  
Betsy Flagg  
Richard Flagg



Bonita Fleming  
 Susan Fleming  
 Pavla Fleming  
 Amy Flinchum  
 Julie Flowers  
 Kathleen Flynn



Kathy Foushee  
 Penelope Foushee  
 Mary Foust  
 Connie Fowler  
 Cheryl Franklin  
 Andrea Frazier



Karen Fredrickson  
 Kathy Fretwell  
 Deborah Friia  
 Clifton Frye  
 June Fulton  
 Virginia Funderburke



Cecelia Gaines  
 Hazel Gaither  
 Carol Gallagher  
 Julie Galston  
 Thomas Galt, Jr.  
 Emily Gardner



Gwendolyn Gatlin  
 Venessa Gatling  
 Melanie Gear  
 Monique German  
 Susan Gilchrist  
 Mary Gillespie





Jan Gilliam  
Teresa Gilliam  
Michael Golden  
Sandra Good  
Cora Goodman  
David Goodrum



Megan Goodwin  
Bruce Graham  
James Graham  
Sharon Grainger  
Barbara Grant  
Nancy Graper



Gregory Greer  
Carol Gregory  
Ara Griffin  
Beth Griffin  
Pattie Griffin  
Sharon Grindstaff



David Grogan  
Lester Gross  
Janet Guest  
Janet Gwaltney  
Charles Hager  
Dorothy Hall



Julia Hall  
Alma Hallisey  
Peter Handy  
Tina Hanes  
Susan Hanford  
Deborah Hanna



Stephen Hardy  
Ellen Hare  
Julie Hargrove  
Rebecca Harlan  
Janice Harper  
Vicky Harrington



Karen Harris  
Kathryn Harrill  
Pamela Harris  
Rebekah Harris  
Linda Harrison  
Donna Harwood



Margorie Hatch  
Larry Haughton  
Cynthia Hayes  
Thomas Haynes  
Crystal Hearne  
Beth Heathershaw



Richard Helms  
Debbie Henderson  
Karen Hennings  
Glenda Hensley  
Anne Herbert  
Billy Herndon



Cheryl Herndon  
La Vena Hatt  
Dana Higdon  
Cheryl Hill  
Linda Hill  
Sue Hilton



Sarah Hines  
Anthony Hinnant



Agnes Hoar  
Avis Hobbs





Patricia Hodge  
 Billie Hodges  
 Jean Hodges  
 Karen Hogan  
 Sarah Holmes  
 Lisa Holder



Shari Holland  
 Susan Holland  
 Melody Holshouser  
 Tameila Holt  
 Richard Honeycutt  
 Benny Hooker



Kasie Hope  
 Jane Hopkins  
 Tracy Hopkins



Michele Hoppe  
 Rebecca Hornaday  
 Karen Howell



Sandra Howell  
 Elizabeth House  
 Diane Howlett



Elaine Hubbs  
 Allison Huffman  
 Tony Huffman  
 Grace Huggins  
 Joan Huggins  
 Richard Huizenga



Karen Humphrey  
 Cynthia Humphreys  
 Anna Hunsucker  
 Carol Hunt  
 Louise Hunt  
 Cindy Hunter

Michelle Hunter  
Lynn Huntington  
Lydia Huskins



Rick Hutchens  
Andrea Hutchinson  
Jon Hylton



Robin Inman  
Cheryl Jackson  
Bruce Jacobson



Sheila Jeffreys  
Susan Jenkins  
Katherine Jenkins



Cheryl Jenks  
Forrest Jenkins  
Janet Jessup



Angela Johnson  
Julie Johnson  
Kathy Johnson



Laura Johnson  
Robert Johnson  
Sharon Johnson





Susan Johnson  
Elizabeth Johnson  
Joni Johnson  
Judy Jones  
Kimberly Jones  
Beth Jordan



Karen Joyner  
Robert Keenum  
Teresa Keiger  
Beverly Kellam  
Susan Keller  
Jeffrey Kelly



Kim Kepley  
Ginnie Kepreades  
Teresa Kerns  
Lynne Kibler  
Wanda King  
Jill Kinton



Dawn Kirschenman  
Susan Kiser  
Karen Koehler  
Mary Konster  
Rosalynn Kornegay  
Jennifer Kreis



Marjorie Lamb  
Steve Lambert  
John Lancaster  
Jane Lane  
Sandra Lane  
Steve Lapping



Krista Lassiter  
Myra Laughter  
Mike Laukhart  
Mary Lavender  
Karen Laver  
Patty Lazenby



Christine Lee  
Cynthia Lee  
Kay Leeper  
Elizabeth Lewis  
Lifeta Lewis  
Susan Lewis

Anne Lesniak  
Jerry Liles



Edmond Limer, III  
Sheryl Link



Terry Linthicum  
Debra Livengood



Melanie Lockhart  
Angela Loizides  
Gloria Lojko  
Joseph Longo  
Anne Lowder  
Rebecca Lowder



Hoby Lowe  
Rodney Luck  
Bonnie Mabe  
Walter Mabe  
John Manly  
Kathi Manning



Linda Martin  
Rebecca Martin  
Terri Martin  
Melinda Martindale  
John Mason  
Laura Mason



Anne Massey  
Lisa Mastantuono  
Julie Matthews  
Lyn Matthews  
Mona Maurice  
Cathy Maxley







Robn Mayberry  
Bruce Maynard  
Erin McAndrew  
Cathleen McCall  
Beverly McCarty  
Susan McCaskill



Mary McElwee  
Teresa McKee  
Kathryn McKinney  
Nancy McKinney  
Janice McKoy  
Annabel McLean



Kimberly McLean  
Susan McMullen  
Mary McNair  
Tim McNeal  
Karen McNeil  
Anita McNeilly



Jo Meador  
Jay Merrill  
Dana Mespelt  
Tammy Metz  
Anne Miller  
Maria Miller



Rebecca Miller  
Ruth Miller



Susan Miller  
Candice Mills



Sonya Minter  
Donald Mitchell

Jeanne Mitchell  
 Rebecca Mitchell  
 Lawrence Mock  
 Tanya Monroe  
 Robert Montgomery  
 Annette Moore



Dara Moore  
 Donnah Morre  
 Jeanne Moore  
 Kathy Moore  
 Sandra Moore  
 Donna Moran



Deborah Moretz  
 Peggy Morgan  
 Ciarence Morris  
 Laura Morris  
 Myra Morris  
 Sandra Morrissey



Karen Morrison  
 Catherine Mott  
 Sandra Mowery  
 Cheryl Mozeley  
 Jody Mullis  
 Caroline Murphy



Debra Murphy  
 Laura Murphy  
 Robert Nadler  
 Nancy Nelson  
 Connie Nesheim  
 Gary Neustel



Tina Newman  
 Kimberly Newsome  
 Susan Nicholson  
 John Nickerson  
 Vanessa Noggle  
 Janet Nordby



Phyllis Nunn  
 Cynthia Oehler  
 Vicki Oldham  
 Julie Olive  
 Susan Osborne  
 Colleen Osgood





Georian Ostapchenko  
Sherry Overton  
Neda Owen  
Debra Page  
Anna Parker  
Kathryn Parks



Kathy Parsons  
Betty Patrick  
Anne Patterson  
David Payne  
Kimberly Pearson  
Katherine Peck



Rosanne Peeler  
Sharon Pelt  
Joseph Pettiford  
John Phillips  
Lisa Phillips  
Susan Pickett



Deborah Pittman  
Randy Pitts  
Kerry Poff  
Pamela Potter  
Patrice Propst  
Linda Pridgen





Walter Pritchett  
 Rolland Pugh  
 Louise Putnam  
 Cynthia Payne  
 Janet Payne  
 Karen Pence



Arturo Perper  
 Heidi Perryman  
 Laura Phillips  
 Janice Pierce  
 Keith Pierce  
 Linda Pitts



Lisa Poteat  
 Lisa Potter  
 Nancy Powell  
 Susan Preddy  
 Joyce Priddy  
 Bret Ralston



Lee Randal  
 Donna Rascoe  
 Randy Ratliffe  
 Katharine Rauss  
 Cindy Ray  
 Cochitha Ray



Donna Ray  
 Susan Register  
 Sherry Reynolds  
 Albert Reynolds  
 Paula Reynolds  
 Julia Rhodes





Ellen Rhodes  
Cindy Richard  
Margaret Richards  
Kathy Richardson  
Belinda Rives  
Angela Robbins



Stephanie Roberts  
Kathy Robinette  
Mary Robins  
Cynthia Robson  
John Rollins  
Diane Roseman



Betsy Ross  
Sharon Ross  
Phanaophie Rhue  
Benjamin Rood  
Sherrill Rudy  
Marla Rutter



Lonnie Sahlie  
Elias Said  
Reba Saylor  
Rebecca Scales  
Virginia Scheller  
Sarah Schintzel



Francis Sciolino  
Elizabeth Scott  
Willis Scott  
Marguerite Seate  
Patricia Sekula  
Robin Self



Valerie Sellers  
Addie Sexton  
Linda Sharpe  
Mary Sheek  
Gwendolyn Sheridan  
Myra Shook



Leslie Sides  
Teresa Sigmon  
Henry Simmons  
Linda Sink  
Sheila Sloan  
Cherry Smith



Jamey Smith  
Lorraine Smith  
Rita Smith  
Sarah Smith  
Scott Smith  
Susan Snead



Holli Snyder  
Kathy Southard  
Gloria Spaugh  
Donna Spiess  
Sharon Springs  
Paula Stathakis





Shryl Stadler  
Deborah Staley  
Pam Stegall  
Ellen Steinmann  
Mary Steltzer  
Stephen Stewkowski



Catherine Stephens  
Carolyn Stewart  
Mitch Stiles  
Alice Stone  
Amy Story  
Connie Strickland



David Stubbs  
Gail Sucharski  
Marly Sudor  
Valerie Summers  
Benjamin Sutton  
Lisa Swaim



Diane Swann  
Wanda Swicegood  
Tina Swift  
Lucinda Sykes  
Pamela Tapp  
Elaine Taybrow



Camille Taylor  
Janet Taylor  
Melinda Teague  
Thomas Temples  
Karen Templeton  
Tricia Tepper





Cindy Thomas  
Kimberly Thomas  
Ruth Thomas  
Sylva Thomas  
Susan Thorne  
Phoebe Threadgill



Lori Throckmorton  
Patricia Tierney  
Stephanie Tingler  
Vincent Tosco  
Joseph Tracy  
Sandy Trull



Cordelia Tucker  
Linda Tucker  
Jill Turner  
Susan Tutlerow  
Lynda Tuttle  
Anne Tyner



Marsha Tyree  
Marie Underhill  
Annette Vaden  
Tom Valentino  
Lori Vaughn  
Lisa Vaughter



Caroline Veno  
Hilda Vernon  
Norma Vincent  
Hanh Vu  
Debra Waddell  
Dee Waddell







Ann Waden  
Nancy Wagner  
Joanie Walker  
Malinda Walker  
Warren Walters  
James Ward



Kathleen Ward  
Ronald Warden  
Lynne Ware  
Cynthia Washborn  
Cathy Watson  
Danny Weavil



Regina Webster  
David Weill  
Deborah Welborn  
Larry Wertz  
Melanee Wheeler  
Charles White



Sheree White  
Gwendolyn Whitfield  
Gertrude Whitney  
John Wicker  
Virginia Widenhouse  
Wanda Wiggins



Ann Wild  
Vicki Wilhelm  
April Wilkerson  
Ralph Wilkerson  
Dante Wilkins  
Mary Williams



Patricia Williams  
Penelope Williams  
Rosita Williams  
Terry Williams



Vickie Williams  
Charles Williamson  
Joan Willard  
Barbara Willford



Ann Wilson  
Donna Wilson  
Lisa Wilson  
Rick Wilson



Nancy Witt  
Sheila Winborne  
William Wofford  
Claudia Wolfe



Denise Womack  
Michael Wood  
Kathy Wooten  
Gwenette Worthington



Jacqueline Wright  
Rebecca Wright  
Richard Wright  
Sheila Wright



Jeff Yoder  
Alfred York  
Elizabeth York  
Denise Young  
Susan Yount





# Sophomores



Margaret Abbe  
Sandra Adams  
Laura Albergotti  
Cynthia Allen



Donna Allen  
Karen Allen  
Leisa Allen  
Lydian Altman



Carole Andrews  
Carla Annas  
Janet Armstrong  
Anna Atkins



Maria Atwood  
Kyle Auman  
Debra Austin  
Pamela Babb



Ann Bailes  
Pam Baines  
Patricia Bard  
Susanne Baker

Etta Baldwin  
Gaye Barbour  
Teresa Bass  
Tamra Batton  
Patti Beard  
Susan Beatty



Debra Beckwith  
Karen Behler  
Clara Bell  
Stacey Bell  
Brenda Bennett  
Carolyn Bennett



Susan Bennett  
Andrew Bereznak  
Kristine Berling  
Martha Berry  
Terri Berry  
Lavicia Bigelo



Jay Bissett  
Sherry Blankenship  
Amy Blythe  
Thomas Bodkin  
Jeannine Boger  
Richard Booth





Robin Bost  
Barbara Brady  
Bonnie Brawley  
Kathryn Breeze  
Barbara Brewer  
Richard Bridges



John Bright  
Elizabeth Briley  
Nancy Brockmann  
David Brooks  
Linda Brooks  
Rhonda Brooks



Delisa Brown  
Lisa Brown  
Michelle Brown  
Sue Brown  
Angela Bruns  
Karen Bryant



Lisa Buff  
Nancy Bullington  
Sherry Burch  
Jeffrey Burchette  
Barbara Burka  
Darlene Burnette



Teresa Burrage  
Sherri Burris  
Valerie Burrows  
Deborah Butler  
John Butler  
Marian Butler



Barbara Buxton  
Cathy Byerly  
Teresa Byrd  
Virginia Caffey  
Celie Campbell  
Laura Cardell



Tanya Cardwell  
Bettie Carmon  
Teri Carpenter  
Eleanor Carroll  
Lisa Carter  
Thomas Carter

Sherry Cartner  
Eugenia Cashwell  
Linda Cates  
Tammi Causey  
Sherry Cecil  
Wanda Chamberlain



Deborah Chambers  
Diane Chamblee  
Pamela Channell  
Debra Chavis  
Laurie Cheeseman  
Minnie Cherry



Felicia Clack  
Martha Clapp  
Anita Clark  
Polly Clark  
Valerie Clark  
Lisa Claudon



Cathy Clayton  
Sharon Clements  
Teresa Clifton  
Marc Clinard  
Eric Clodfelter  
Tammy Coble



Carol Cochran  
Amanda Colie  
Alyson Collins  
Kathryne Collins  
Lisa Conley  
Kimberly Cook





Teresa Cook  
Gwendolyn Cooley  
Barbara Cooper  
Janet Cooper  
Cynthia Corrigan  
Cheryl Coston



Cynthia Cothren  
Sallie Coughenour  
Karen Coulter  
Margaret Council  
Debra Covinnet  
Karen Cox



Terry Cox  
Dawn Crabtree  
Luanne Craven  
Milton Crotts  
Alfreda Crutchfield  
Gina Cutri



Tammy Cutri  
Janie Cox  
Alease Daniels  
Jacque Daniels  
Deborah Darden  
John Daugherty



Mark Daughtrey  
Susan Davant  
Denise Davis  
Edna Davis  
Joy Davis  
Kimberly Davis





Reedy Davis  
 Tim Davis  
 Sandra Dawson  
 Angela Dean  
 Marla Deaver  
 Jill Degennaro



Kim DeJarnatt  
 Donna Depperschmidt  
 Diana Derrick  
 Ana Detorres  
 Sheri Detweiler  
 Sharon Dixon



Leslie Doane  
 Olga Dobbs  
 Susan Domnitz  
 Tommy Dorsett  
 Danny Doss  
 Cynthia Dowd



Patty Doyle  
 John Draper  
 Rebecca Dresser  
 Steven Drew  
 Jeffrey Driver  
 Geoffrey Dudley



Tammy Dull  
 Nancy Duniap  
 Deborah Dunn  
 Joan Dunning  
 Barbara DuRant  
 Randal Durham







Dan Durkee  
Nancy East  
Robert Echerd  
Joseph Edmonds  
Carolyn Eike  
Lee Elder



Brenda Elliott  
Lauran Ellis  
Jamie England  
Frank Ernest  
Betty Evans  
Sandra Evans



Robin Everhart  
Kathy Farmer  
Sherlynn Farrish  
Jackie Faw  
Blalock Faye  
Letricia Fichera



Nancy Fincannon  
Janet Finch  
Karen Finch  
Lisa Finley  
Ellen Figard  
Elizabeth Fischer



Alfred Florence  
Paul Florence  
Cristy Flores  
Becky Flynn  
Joseph Forbes  
Jefferson Fortner

Debbie Foster  
Tina Foster  
Jane Foushee  
Gregory Fowler  
Larry Fowler  
Candy Fox



Jocelyn Foy  
Jennifer Frazier  
Laura Frederick  
Sarah Freeman  
Elizabeth French  
Ricky Frizzell



Melissa Fry  
Sharon Fulghum  
Jane Galloway  
Gnne Gardiner  
Elizabeth Gardner  
Linda Gaster



Barbara Gawarkiewicz  
Marjorie Gaye  
Mark Ghirardelli  
Annette Gifford  
Jackie Gladstone  
Sharon Glenn



Laura Glennie  
Sandra Golden  
Tony Goldston  
Joanne Goldwater  
Sabrina Goode  
Joyce Gorham



Deborah Grady  
Deborah Grant  
Martha Graybeal  
Edgar Green  
Terry Green  
Laura Greens



Randy Greenson  
Patricia Gregory  
Connie Gresham  
Kathy Griffin  
Pamela Griffin  
Eileen Griffith





Dorothy Grubb  
Steven Gundersen  
Cynthia Gurganus  
Sharon Guyer  
Willa Hackney  
Maria Haley



Marsha Hall  
Andrienna Hampton  
Elaine Hamrick  
Deborah Hancock  
Lou Haneline  
Janet Hanks

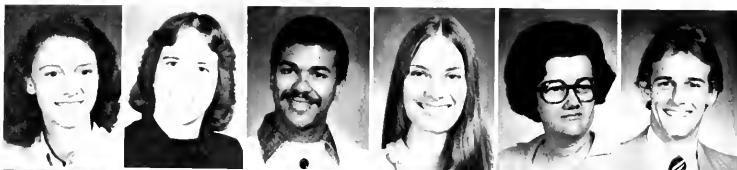


Judith Harbers  
Jan Harding  
Ethel Harman  
Cynthia Harrill  
Debora Harris  
Floarine Harris



Mary Harris  
Susan Harrison  
Karen Hart  
Rhonda Hartgrove  
Sharon Hartman  
Karen Hatheid

Susan Hathcock  
Jackie Hawkins  
Samuel Hawley  
Janice Healy  
Rebecca Heflin  
Timothy Helms



Tanya Henderson  
Elizabeth Hennis  
Sharon Hentz  
Lisa Hicks  
Kathryn Hight  
Teresa Hilderbran



Janet Hill  
Kathy Hill  
Sarah Hill  
Sandra Hill  
Renee Hillard  
Mary Hitchcock



Constance Hodges  
Richard Hodges  
Deborah Hodgkin  
Tina Holland  
Cynthia Hoiel  
Karen Hollifield



Kimberly Holmes  
Myra Holt  
Nancy Holt  
Robin Holton  
Marsha Hlotzclaw  
Sheree Hollyfield





Micheal Hooks  
Cynthia Hooper  
Stephen Hopkins  
Franses Horton  
Lobat Hosseini  
Pamela Houston



Kathleen Howard  
Gina Howell  
Sharon Howell  
Melissa Hudgins  
Alicia Huff  
Kathy Huffman



Pamela Huffman  
Susan Huffman  
Susan Hughes  
Megg Honeycutt  
Nancy Hurley  
Amelia Hutchens



Wilburn Hutchens, Jr.  
Il Hwa Hwang  
Jamie Isenhour  
Michelle Isenhour  
Carolyn Jackson  
Ernie Jackson



Lewis Jackson  
Patricia Jackson  
Sherry Jackson  
Kimberly Jarrett  
Janene Jeffers  
Gaye Jester

Carolyn Johnson  
Leile Johnson  
Loretta Johnson  
Yvette Johnson  
Craig Jones  
Patti Jones



Sigrid Jones  
Selvyn Jordan  
Angela Joyce  
Bill Joyce  
David Julian  
Judy Jurney



Steven Kahn  
Diane Kearney  
Suzanne Kearns  
Vhatt Kelly  
Deborah Kemp  
Raymond Kennedy



Patricia Kempley  
Kirk Kibler  
Carole King  
Steve Kirkman  
Melisa Klingel  
Sandra Knight



Cynthia Koontz  
Mark Lambeth  
Janice Lane  
William Lane  
Renee Latour  
Margaret Latta



Betty Lawson  
Teresa Lecornu  
Ann Leggett  
Sandra Lemon  
Peggy Leonard  
Anita Lewis



Brenda Lewis  
Lisa Lile  
Jane L Lile  
Aubry Linville  
Johnny Little  
Lester Little





Margaret Little  
 Carole Livengood  
 Daniel Lloyd  
 Leslie Lockwood  
 Sharon Locus  
 Dianne Loftin



Kurt Lorenz  
 Joyce Lowe  
 Deberah Luck  
 Thich Luong  
 Carol Lynch  
 Terry Lynch



Tammy Lyon  
 Ann Madden  
 Gennette Madison  
 Thahnaz Malek  
 Nina Maness  
 Tommy Maness



Thomas Manwiller  
 Robin Marion  
 Robin Marley  
 Dennis Marrow  
 Michael Marsh  
 Tammy Marshall



Sabrina Martin  
 Teena Martin  
 JoAnne Mater  
 Steven Mathews  
 Kitty Matkins  
 Mary Matsik



Gayle May  
 Cheryl Mazak  
 Della McAdams  
 Helen McAuley  
 Susan McBane  
 Gloria McCollum



Natalie McCullach  
 Laura McCraw  
 Archer McDuffie  
 Miriam McElueen  
 Cammie McGinnis  
 Claire McGinnis

Thomas McGowan  
 Laura McHargue  
 William McLwain  
 Teresa McIntosh  
 Marsha Molsinger  
 Dan Mullally  
 Mary Mulligan  
 Lisa Munn



James McIntyre  
 Judy McKinney  
 Patricia McKinney  
 Beth McKissick  
 Cynthia Murphy  
 Frederick Murphy  
 Linda Murphy  
 Linda Murray



L'Tanya McMillan  
 Karen McNeil  
 Cathy Medlin  
 Jan Middleton  
 Melodie Murray  
 David Myer  
 Esther Myers  
 Rhonda Myrick



Meissa Midgett  
 Carol Miller  
 Mary Miller  
 Tammy Miller



Anne Millikan  
 Zulene Minga  
 Kathy Minton  
 Catherine Mitchell







Lynn Myszak  
Ina Nail  
Debbie Nance  
Chelita Neal  
Bob Neely



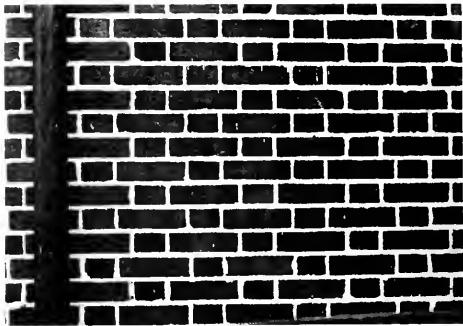
Carroll Neely  
Mary Neidlinger  
Mark Newell  
Chuck Newman  
Melinda Newsome



Sue Moon  
Ann Moore  
Karol Moore  
Venecia Morehead  
Mark Newsome  
Anita Nichols  
Teresa Nixon  
Becky Norris  
Carolyn Nowell



Terrie Morgan  
Donna Morphis  
Michele Morris  
Barbara Morrison  
Moira Nygreen  
Martha O'Briant  
Rebecca Odom  
Ricky Oliver  
Kathryn Ortan



Rosalin O'Rear  
David Osborne  
Frances Otterbourg  
Joyce Overby  
Linda Owens  
Denise Pace



Janet Packett  
Melva Padgett  
Teresa Page  
Elizabeth Page  
Cindy Parker  
Laura Parker



Sara Parker  
Betty Parwell  
Syed Pasha  
John Pasquine  
Mayumi Patience  
Christine Patty



Carolyn Paul  
Lynn Payne  
Tim Payne  
Beth Peeler  
Therese Peeler  
Bobbie Penny



Belinda Peoples  
Evelyn Perkins  
Judie Philbeck  
Kim Phillips  
Charolotte Pickett  
Scott Pierce





Evelyn Pitchford  
Katherine Pittman  
Patricia Pitts  
Beverly Plott  
Clint Popper  
Kathy Porter



Barbara Powell  
David Prehn  
Monica Price  
Tamra Price  
Pamela Pridgen  
Beverly Pringle



Christopher Presson  
Catherine Pruett  
William Pugh  
Mary Rabil  
Joan Radosevich  
Evelyn Ramger



Mark Ramsey  
Debra Raynor  
Victoria Reck  
Judith Redding  
Tony Reeves  
Jeannine Reid



Venessa Reid  
Beth Reitzel  
Anna Rice  
Donna Ricks  
Melanie Rideout  
Alison Ridge



Carolyn Rierson  
 Joan Rigsbree  
 Alyson Rim  
 Jo-Anne Schcott  
 Sandra Schurrer  
 Donald Scott  
 Sandra Scott



David Ritch  
 Marilyn Roach  
 Elaine Robbins  
 Marion Roberson  
 Samuel Scudder  
 Karen Sebastian  
 Betty Seelbinder  
 Sharon Sensabaugh

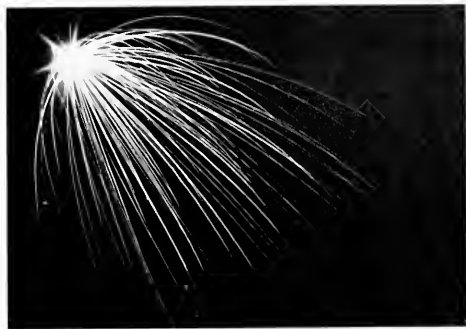


Parks Roberts  
 Edward Rubertson  
 Bambi Robinson  
 Barbara Robinson  
 Jo Robinson  
 Lucy Rodgers



Deborah Rogers  
 Rebecca Rogers  
 Vicki Roller  
 Kathy Romanowsky  
 Patricia Roorback  
 Yvonne Rorie





Dora Sequeira  
Elizabeth Serafin  
Mary Setliff  
Martha Settlemyre

Darden Shackelford  
Kenneth Shamberger  
Anita Shaw  
Loretta Shaw

Debbie Rouse  
Nancy Routh  
Kathy Rowe  
Mark Rucker  
Lyle Shaw  
Leila Shepherd  
Penny Snowwaller  
Lisa Shook

Richard Rumley  
Lynne Runyans  
Holly Ryals  
Richard Samson  
Lisa Shuping  
Alen Simons  
Angela Sinclair  
Lois Singleton

Beverly Sandy  
Stephanie Sardyotes  
Mark Sarno  
Felecia Satterfield  
Marsha Sittton  
David Smodberh  
Beverly Smith  
Dawn Smith

Gary Smith  
 Lauren Smith  
 Michael Smith  
 Mitz Smith  
 Robin Smith  
 Willie Smith



Wendy Smoak  
 Cheryl Snider  
 Margaret Snider  
 Linda Snow  
 Elizabeth Snyder  
 Dorothy Somers



Tanya Sparks  
 Vickie Speer  
 Sandra Spratt  
 Sandra Springs  
 Lori Sprosty  
 Sandra Squires



Debbie Stafford  
 Deborah Stainback  
 William Starke  
 Sandra Stas  
 Felisa Steel  
 Nancy Stephens





Richard Stephens  
Lynn Stevens  
Brenda Stewart  
Sarah Stout  
Brenda Strayhorn  
Teresa Strickland



Julie Strong  
Timothy Sturtevant  
Nancy Sultan  
Kelly Suratt  
Kimberly Swann  
Shannon Sykes



Sandra Tarlton  
Ahmet Tataragasi  
Sarah Tate  
Caren Tatum  
Deborah Taylor  
Susan Taylor



Laura Thaxton  
Deborah Thomas  
Ranessia Thomas  
Julie Thompson  
Teresa Thompson  
Cynthia Thrasher



Natalie Thrift  
Cindy Till  
Tammy Tolbert  
Carol Tompkins  
Crista Touchton  
Ann Truitt



Sheila Tucker  
Alice Tuttle  
Robin Tuttle  
Nancy Tyson  
Vickie Underwood  
Bruce Vail



Carla Vance  
Martha Vance  
Frances Varner  
Joni Varner  
Cammie Vaughn  
Patty Vernon

Cati Vietorisz  
Norma Vines  
Sondra VunCannon



Danny Waden  
Tracy Walin  
Doless Walker



Rebecca Walker  
Ruth Walker  
Sherrn Walker



Susan Walker  
Debra Wall  
Leslie Wall



Robin Wall  
Jodi Ward  
Regina Ward  
David Ward  
Patti Warner  
Ophelia Warren



Debbie Watson  
Sharon Weaks  
Jeannie Weatherford  
Melinda Welch  
Carol Wells  
Charles Wells, Jr



John Wells  
Patricia Wells  
Catherine Wesolowski  
Julie Wessinger  
Kim West  
Nancy Wester







Heather Whann  
Lisa Whisnant  
Sandra Whitaker



Bernadette White  
Ellen White  
Lou White



Mack White  
Sonja White  
Jennifer Wilder



Leslie Wilkerson  
Jeanette Williams  
Linda Williams



Peggy Williams  
Rhonda Williams  
Sherrie Williams



Tammie Williams  
Teresa Williams  
Deborah Williford



Mary Wills  
Carol Wilson  
Eric Wilson

Janet Wilson  
 Mary Wilson  
 Parry Wilvers  
 Bill Winfrey  
 Janice Winfrey  
 David Winkler



Claudia Winslow  
 Sandra Warwicz  
 Kathleen Wlazlo  
 Judith Woodard  
 Richard Woodham  
 Helen Woodlief



Mary Wooten  
 Lynn Worden  
 Cindy Worley  
 Rose Wray  
 Donna Wright  
 Janet Wright



Sharon Yarley  
 Melissa Yenney  
 Randi Ziegler  
 Steve Zoufaly  
 Minga Zulene  
 Suzanne Zur



# Freshmen



Amy Alberly  
Bonnie Albright  
David Albright  
Cathy Aldridge  
Annette Alford  
Sharon Allen



Sherry Ames  
Veronica Andrews  
Rebecca Anthony  
Kay Auman  
Cathy Ausdenmoore  
Amy Austin



Susan Austin  
Vivian Avery  
Sheryl Aycock  
Karen Ayers  
Leshia Allen  
Karen Badgett



Beth Bailey  
Brenda Baker  
Lillie Baker  
Rebecca Baker  
Wendy Banner  
Elizabeth Barger



Beverly Barnes  
Clara Barnes  
Sharon Barnes  
Terri Barnhill  
Laura Batts  
Deanna Bauer

Sarah Baylor  
 Kimberly Beaman  
 Betsy Beamer  
 Vickie Beard  
 David Beeber  
 Toni Beckwith



Stephaie Beers  
 Menda Beeson  
 Martha Bell  
 Cheryl Benfield  
 Michelle Bennett  
 Roshelle Benton



Letitia Berlin  
 Helen Bialek  
 Donna Biddy  
 Martha Binkley  
 Cheryl Black  
 Sherrilyn Black



Mary Blacknall  
 Scott Blackwood  
 Amanda Blair  
 Emily Blanchard  
 Mary Blanks  
 Robert Blanks



Sharon Blue  
 Fiona Blythe  
 Kimberly Blythe  
 Lisa Boado  
 Arlene Boesel  
 Lish Bobbitt





Janet Bogus  
Elizabeth Bolling  
Cynthia Boister  
Patience Bosley  
Tammy Bovender  
Sharon Bowman



Tamela Boyd  
Susan Bradley  
Jenetta Bradshaw  
Harold Brandon  
Gina Branch  
Martha Braswell



Anna Bray  
Lynne Bray  
Stacey Brazeay  
Lucy Bridge  
Nellie Bridges  
Karen Briggs



Harriett Bright  
Beth Brinkley  
Mary Britt  
Teresa Brittain  
Barbara Brown  
Donna Brown



Robert Brown  
Susan Brown  
Tom Bruce  
Clay Bulport  
Donna Burmitt  
Julie Bryant



Sharon Bryant  
 Suzann Bryant  
 Cyrette Bullard  
 Janet Bullock  
 Guy Bunton  
 Kathey Bunton



Michele Burke  
 Sara Burkhead  
 Mitzi Bureson  
 James Burton  
 Jay Busick  
 Jean Caldwell



Susie Caldwell  
 Carolyn Campbell  
 Jennifer Campbell  
 Rebecca Campbell  
 Martha Canipe  
 Steve Candy



Cindy Capps  
 Renee Carden  
 Jan Carden  
 Beth Cardwell  
 Carolyn Carpenter  
 Bertha Carter



Jeanne Castor  
 Melody Caudle  
 Deborah Caulder  
 Anna Causey  
 Glenn Chaney  
 Barbara Chapman



Ronda Chapman  
 Pamela Cheek  
 Phyllis Cheek  
 Ronald Cherry  
 Ota Cheston  
 Janet Childers



Janet Childers  
 Eric Shildress  
 Kim Churchill  
 Robert Clay  
 Jennifer Cline  
 Kimberly Clodfelter





Cheryl Glyburn  
Kimberly Cobb  
James Cobbler  
Lisa Cockerham  
Teresa Cockerham  
Lauren Coffin



Elizabeth Cogburn  
Julie Cohen  
Barbara Cole  
Rebecca Coleman  
Roger Coleson  
Suzanne Collier



Darby Collins  
Gina Collins  
Karen Collins  
Laurie Collins  
Teresa Collins  
Caroline Cook



Tamara Cook  
Vicky Cooke  
Laura Cooper  
Scarlet Coulter  
Anthony Covington  
Nancy Cox





Anya Crowe  
Phyllis Crumbley  
Jessie Culberson  
Rose Cutuli  
Julia Dale  
Donna Dampier



Nancy Daniels  
Tammy Daniels  
Donna Darden  
Thurnell Dargan  
Elizabeth Daum  
Judy Daven



Cheryl Davis  
Lisa Davis  
Margaret Davis  
Tina Davis  
Edwina Dawson  
Melody Day



Robert Day  
Susan Deans  
David Deaton  
Susan Decker  
Holly Deese  
Patricia Delp



Kimberly Denton  
Rose DePinto  
Dawn Desourdy  
Drusilla Devoe  
Ralph DiCarlo  
Tom Dickens







Debbie Dixon  
Genie Doar  
Susan Dockery  
Laura Dodd  
Sheena Donnell  
Susan Doty



Sandra Douglass  
Bryant Dula  
Brian Duncan  
Iris Dunlop  
Alexandra Dunn  
Cindy Dunton



Lynn Dupree  
John Durham  
Melissa Earle  
Barbara Edwards  
Gail Edwards  
Sallie Edwards



Erica Elam  
Anthony Elingburg  
Sherri Eller



Jan Elliot  
Jennifer Elliot  
Joni Ellis



Lucia Engel  
Camille England  
Catherine Evans



Kimberly Evans  
Lisa Faison  
Gwendolyn Fant

Brenda Farley  
 Debora Farmer  
 Michael Farrow  
 John Faulkenbury  
 Lori Faust  
 Tanya Ferguson



Ellen Fesmire  
 Janice Fields  
 Elizabeth Fischer  
 Lisa Fletcher  
 Anthony Finchum  
 Patricia Flowers



Renee Floyd  
 Robin Flynn  
 Tonia Flynt  
 Patricia Foster  
 Judy Fox  
 Lennie Foy



Pandora Frank  
 Gwen Frazier  
 Sherry Frease  
 Angie Freeman  
 Charlene Freeman  
 Heidi Fritzier



Amy Fulk  
 Paul Fuller, Jr.  
 Deborah Fullwood  
 Cynthia Fulton  
 Gina Fulton  
 Pamela Funderburk



Opal Funk  
 Constance Futrell  
 Tricia Gall  
 Angela Gallimore  
 Sandra Gallimore  
 Monica Gamble



Kimberly Gant  
 Mary Gardner  
 Deanna Garner  
 Sheila Galling  
 Elizabeth Gentry  
 Alison Gilliam





Sara Gilliam  
 Roberta Glasgow  
 Deborah Glover  
 John Glover  
 Angela Godwin  
 Valerie Godwin



Donna Goforth  
 Deborah Goldstein  
 Joerg Gomez  
 Eduardo Gonzales  
 Becky Goodling  
 Sarah Goodnight



LeAnna Graves  
 Barbara Gray  
 Betsy Gray  
 Mary Gray  
 Christopher Green  
 Sharon Green



Susan Green  
 Karen Gregory  
 Crystal Grier  
 Maru Griffin  
 Shirley Griffin  
 Pamela Grigsby



Ronald Grooms  
 Mary Guess  
 Sherry Gupton  
 Sonya Haley  
 Deborah Hall  
 Twyla Hall



Darlene Halsey  
 Linda Hamilton  
 Norma Hamlett  
 Jane Hampton  
 Angela Hancock  
 Corina Handy



Tamera Hardison  
 Anita Harper  
 Elaine Harrill  
 Gina Harris  
 Lorranda Harris  
 Barbara Harrison

Martha Harrison  
Shari Harrison  
Jane Hart



Janice Hart  
Marla Hart  
Janis Hartfield



Ellen Harvell  
Elizabeth Haselberger  
Barbara Hayes  
Gaylen Hayes  
Anne Haywood  
Natalie Heaggans



Ramona Heggins  
Lisa Heilig  
Trudy Heineman  
Billy Helms  
Kimberly Helms  
Alfreda Henderson



Any Henderson  
Kathryn Herbert  
Angie Herman  
Kimberlee Herring  
Prudence Herring  
Connie Herzberg



Shirley Hicks  
Claudette Hicks  
Deborah Hill  
Katherine Hill  
Leroy Hill  
Starr Hill



William Hill  
Katherine Hilton  
Jan Hinton  
Timothy Hiskey  
Janet Hitchens  
Anne Hobbie





Melissa Hobson  
Susan Hockaday  
Jackie Hodges  
Elizabeth Hodgkin  
Susan Hodgkin  
Nancy Hogarty



Bonita Holland  
Melissa Hollis  
Arthenia Holmes  
Dianne Holmes  
Lee Holsclaw  
Patty Hondros



Jackie Horn  
Emily Houston  
Cindy Howell  
Paula Howell  
Mary Huffman  
Ramona Huffman



Marsha Humphrey  
Diane Hunike  
Judy Hunsucker  
Sheila Hunter  
Amy Hurwitz  
Cynthia Hutchinson



David Isreal  
Debbie Jackson  
William Jackson



Jeri Jarvis  
Barbara Jeffcoat  
Karen Jefferson



Glenda Jensen  
Carol Jewell  
Amy Johnson



Jane Johnson  
Jean Johnson  
Kimberly Johnson



Linda Johnson  
Loretta Johnson  
William Johnson



Vincent Johnson  
Joe Jolley  
Jennifer Jones



Lauren Jones  
Patricia Jones  
Rhonda Jones





Roxanna Jones  
Kim Joyce  
Leesa Joyce  
Mary Kahn  
Judith Keating  
Mary Keech



Diane Kenny  
Moone Kim  
Leah Kinder  
Joyce King  
Laura King  
Lucille King



Tammy King  
Kerry Knight  
Lucy Kolb  
Katrina Kostic  
Karen Krall  
Steve Kramer



Lori Kuhlwind  
Theodore Labosky  
Wanda Lacey  
Anne Laguex  
Loretta Lambeth  
Laurie Lammert



Crystal Lane  
Nellie Lane  
Teresa Lane



Heidi Lassiter  
Cecelia LaValle  
Jeffery Lawson



Cynthia Layell  
Toni Leak  
Christina Le Beau  
Marcia Lecos  
Mary Lennon  
Julia Lentz



Michael Leonard  
Robert Lewis  
Nodra Lineberger  
Sonya Lipscomb  
Ann Liverman  
Winifred Lowder



Nancy Lucas  
Co Luong  
Sherri Lynn  
Yvonne Machilek  
Martha Malloy  
Joel Maness



Mitzi Maness  
Randy Maness  
Sybil Mann



Michael Mapp  
Kristin Markland  
Carolyn Marley







Bobbie Marshall  
Rebecca Martin  
Sarah Martin  
Winona Massey  
Mary Mastin  
Carol Matthews



Julie Matthews  
Martha Matthews  
Katherine May  
Kitty Mayberry  
Addie McAuley  
Terri McCall



Sheila McCants  
Elizabeth McCracken  
Lisa McDaniel



Kimberly McDonald  
Randall McElroy  
Debra McGee



Yvonne McHorney  
Anna McKoy  
Ursula McLean



Virginia McCelland  
Susan McLester  
Debra McMahan  
Alice McNebb  
Sheila McRae  
Tracy Mebane



Sheryl Mello  
Steve Melton  
Tamara Meredith  
Jan Metcalf  
Sandra Miles  
Cheryl Miller

Cynthia Miller  
 Morris Miller  
 Sandra Miller  
 Irene Miquilarena  
 Angelyn Mitchell  
 Kim Monk



Patricia Moon  
 Angela Moore  
 Annette Moore  
 Joseph Moore  
 Mary Moore  
 Susan Moore



Ann Moose  
 Grace Morgan  
 Susan Morgan  
 Sharon Moriarty  
 Angela Morris  
 David Morris



Melanie Morris  
 Janet Morrison  
 Christine Morrissey  
 Martha Moscheler  
 Marranne Moskowitz  
 Susan Mullins



Lesia Murdock  
 Denise Myers  
 Debbie Nelson  
 Nadine Nelson  
 Kathy Nesbit  
 Roy Nesbitt



Julian Nichols  
 Catherine Noell  
 Rhonda Norwood  
 Carolyn O'Connor  
 Wayne Oakley  
 Susan Oates



Sandra O'Dea  
 Siobhan O'Donnell  
 Annette Ogeltree  
 John Oliver  
 Martha O'Neil  
 Scotta Orr





Jennifer Orsett  
 Jeff Ortman  
 Debra Outlaw  
 Catherine Owen  
 Angela Paige  
 Gwendolyn Paisley



Theresa Palerino  
 Paul Patoos  
 Cassandra Parker  
 Lawrence Parker  
 Jill Pavey  
 Sonya Peace



Marion Pearce  
 Elizabeth Peeler  
 Lisa Pegg  
 Susan Pender  
 Gregory Pendergrass  
 Phillip Pennell



Donna Perry  
 Sabrina Perry  
 Debbie Petrich  
 Kimberly Pickard  
 Joyce Pickler  
 Fred Pierce

Vangi Pierce  
 Julie Pinkston  
 Tamara Pittman  
 Alina Pianos  
 Sheila Playforth  
 Shaunielle Plummer



Nancy Poe  
 Sandra Poe  
 Mary Polecastro  
 Dean Porcaro  
 Ellin Porterfield  
 Sharon Powell



Patti Powers  
 Tammy Presnell  
 Cynthia Preston  
 LaFran Price  
 Victoria Price  
 Robin Priddy



Penelope Prout  
 Annette Pruitt  
 Mary Pugh  
 Marion Puzan  
 James Pyecha  
 Janet Quinn





Carmen Quinonez  
 Gray Ragland  
 Suzette Randolph  
 Wanda Rankin  
 Elizabeth Ray  
 Susan Raynor



Tereé Reading  
 Jewel Reavis  
 Julianne Rece  
 Gail Redden  
 Lucretia Reece  
 Susan Reese



Mark Reeves  
 Paul Register  
 Judith Reid  
 Dina Remenar  
 Micheal Rengiar  
 Pamela Reveille



Jane Rhoades  
 Wanda Rhodes  
 Sharon Rhue  
 Renee Rice  
 Denise Richard  
 Billee Richards



Eric Riggins  
 Diane Riley  
 Andrea Reppoy  
 Sandra Ritter  
 Kenneth Roberson  
 Debbie Roberts



Lisa Robertson  
 Cora Robinson  
 Catherine Rogers  
 Mary Rogers  
 Caroline Rohrbacker  
 Sue Rosenblatt



Laurie Ross  
 Sandra Ross  
 Theresa Rossi  
 Donna Routh  
 Marsha Rumley  
 Janet Rushing

Sarah Russell  
Douglas Rutter  
Tammie Sakran  
Melinda Sanford  
Jane Sargent  
Zeke Schofield



Josephine Schulz  
Leslie Scott  
Skye Seago  
Donna Sechrist  
Robin Self  
Susan Sexton



Mary Shackelford  
Aspa Shah  
Lynda Sharpe  
Molly Sharp  
Carnilla Shelton  
Anne Shepard



Randye Shoaf  
Marcia Short  
Beth Shughart  
David Shumate  
Donald Shumate  
Star Shuping



Cathy Sigman  
James Sinclair  
Teresa Simmons



Tiea Simmons  
Deborah Smart  
Christie Smith



Dierdre Smith  
Diana Smith  
Diedra Smith





Edwin Smith  
Elizabeth Smith  
James Smith



Mary Smith  
Nancy Smith  
Pamela Smith



Penny Smith  
Steve Smith  
Susan Smith



Tony Smith  
Miriam Smoot  
Alice Snipes  
Charlene Sorrell  
Janet Southern  
Julene Southern



Brian Sparks  
Donna Sparks  
Ann Spillane  
Deborah Spragins  
Beatrice Springs  
Demestris Squires



Sheila Stanaland  
Teresa Stanfield  
Donna Stanley  
Jennifer Stanley  
Gina Staples  
Sandra Steed



Karen Steele  
Marilyn Steele  
Gail Steelman  
Jefferson Steen  
Blanche Stevens  
Patricia Stewart

Lynn Stone  
 Kimmie Stuart  
 Suzanne Suhr  
 Cynthia Swann  
 Lisa Swann  
 Sharon Swift



Suzanne Swiggett  
 Diane Swinson  
 Bonnie Sykes  
 Rita Taggart  
 Jerre Taylor  
 Rebecca Taylor



Shelley Taylor  
 Jennifer Temple  
 Myra Terrell  
 Cindy Thomas  
 Susan Thomas  
 Jean Thompson



Mark Thompson  
 Stanley Thompson  
 Towi Thompson  
 Linda Theatt  
 Mary Thies  
 Glonia Timberlake







Eric Todd  
 Amy Tomberlin  
 Cheryl Torbit  
 Tammy Toslosky  
 Betty Towe  
 Lora Traywick



Martha Trexler  
 Roberta Troknya  
 Lynn Trout  
 Susan Troxler  
 Donna Troy  
 Donna Turner



Jewel Turner  
 Kathy Tyner  
 Neil Underwood  
 Vicki Vance  
 Aundra Vanhook  
 Leigh Vanstory



Emma Vaughters  
 Bruce Vernon  
 Beth Vestal  
 Sara Voelker  
 Cynthia Vogler  
 James Walker



Patricia Walker  
 Philip Walker, Jr.  
 Cindy Wall  
 Pamela Ward  
 Deborah Watkins  
 Donna Watson



Elizabeth Watts  
 Cynthia Wayne  
 Russell Weadon  
 Sharon Webb  
 Margaret Webber  
 Debra Weeks



Linda Weitzel  
 Karen Wenner  
 Carolyn West  
 Colleen Whalen  
 Sandra Wheeler  
 Janet Whetstine



Kenneth Whisenant  
Lsa Whisnant  
Kerry Whitaker  
Joel White



Sharon Whitener  
Marcia Wilhelm  
Eleanor Williams  
Jann Williams  
Jennifer Williams  
Joan Williams



Kris Williams  
Lsa Williams  
Lynda Williams  
Rhonda Williams  
Robert Williams  
Rodney Williams



Tammy Williams  
Eugenia Willington  
Kimberly Willis  
Anne Willson  
Cathia Wilson  
Jeannine Wilson





Jeffery Wilson  
Judy Wilson  
Mary Wilson  
Susan Wilson  
Mark Winch  
Bonnie Winchester



Tara Winston  
Janet Woodard  
Ella Woods  
Jeffery Wooten  
David Womack  
Thomas Wrenn



Ruth Wright  
Tammy Wright  
Suzanne Wyttenbach  
Ronna Yates  
Phillis York  
Martha York



Leslie Young  
Sherril Young  
Ann Zachary  
Nancy Zink  
Carrie Zinsmeister  
Susan Zybko



# Graduate Students

Orie Akao  
Betty Ayala  
Debra Baggett  
Gary Barger



William Berger  
John Black, III  
Cruz Bruguera  
Pamela Bullard



Thomas Bundros  
Renee Cannady  
Laura Cook  
Jo Cox



Debbie Deaton  
Pham Duong  
Georgette Durand  
Judith Durham





Gail Grin  
Ruth Goodling  
Daniel Graham  
Ivey Green



Marianne Guy  
Randall Hall  
Tommie Hall  
Cynthia Hanford



Sharon Franck  
Barbara Froeschle  
Brinda Gavin  
Linda Gavin  
David George  
Garland Hardin  
Julia Henry  
Iris Jimenez  
Thomas Johnson

Cary Jones  
 Mary Jones  
 Dwight King  
 Margaret Knott  
 Hamid Ohadi  
 Janet Oussaty  
 Sharron Owens  
 Paul Pell  
 Jocelyn Pharr



David Kostenko  
 Kathleen Lee  
 John Lingard  
 Michelle Linster  
 Stephanie Pigford  
 Elmira Powell  
 Aamir Qureshi  
 Harris Randall  
 Gayle Roberson



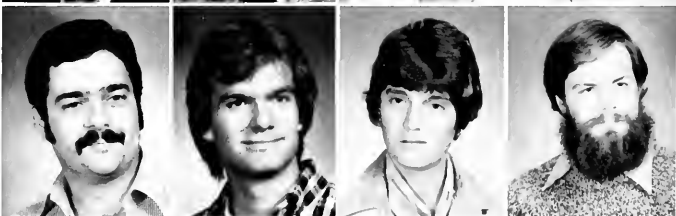
Gregory Liles  
 James Livingston  
 Isidra Lopez de Lean  
 Lynette Lucas  
 Pansy Rumley  
 Teresa Schilling  
 Joseph Sholy  
 David Siler  
 Suzanne Simmons



Stephen Mathis  
 John May  
 Peggy McCoy  
 David Millsaps  
 Katherine Sink  
 Benjamin Smedberg  
 Martha Smith  
 Cindy Stager  
 Bijan Tohidy



Gustavo Miquilarena  
 Phillip Morrow  
 Lynn Moss  
 Alan Myrick  
 Robert White  
 Howard Westmoreland  
 Janet Yates  
 Henry Younts









# Organizations



# Arts and Letters Society

The purpose of this organization is to promote camaraderie among English majors and other students with an interest in English; to better the relationship and act as a liaison between the English Department faculty and students; to provide interesting programs and activities to publicize literary arts on campus and to initiate and perpetuate two honorary organizations - one for literary achievement and one for scholastic achievement. This organization is open to all students of the University.



Jane Patrick, Martha Adcock, Dorothy Waterfill, Stephanie Tingler, Chuck Hager, Debbie Lane, Harold Williams

# Anthropology



Stephen Hopkins, Ray Korman, Dr. Louise Robbins, Jamie Englund, Steve Paquette, Angus Stephens, Jenny Newell, Anne Brandon, Victoria Friedensen, Nancy Butler, Cindy Garner, Dr. Joseph Mountjoy, Julia Rhodes.

# Chess Club

The Chess Club meets every Tuesday night from 7:30-11:00. Anyone is welcome to join the club or merely to come by and play. For those who do not know how to play, instruction is provided upon request with sets, boards, clocks, books, and materials at your disposal. For the serious player, the Chess Club sponsors a Chess Team consisting of the top players in the North Carolina Chess League and the Intercollegiate Chess League of America. We are also full-time active members and affiliates in the United States Chess Federation and the North Carolina Chess Association.



Row 1; Paul Pavlides, Randy Dolinger, Martie Canada, Holly Allison, Karen Weiner, John, Jim Karrigan. Row 2: Dennis Boring, John Heavner, Bob Spurrier. Row 3; Paul Pavlices, Jr., Ray Clark, Paul Brooks.

# EMA



Teresa Collins; Public Information/Relations Officer, Resusi-S Anne; Dummy, Susan Hathcock; CPR/Medic II Officer, Marina Ervin; Field Operations, Sue Thorne; CPR/Medic II Officer, Ann Talley; Records Officer, Dan Summers; Director, and Betty Seelbinder; Finance Officer.

During 1975, the University of North Carolina at Greensboro became the home of North Carolina's first University Emergency Medical Association. The UNC-G Emergency Medical Association (EMA) is an organization composed of UNC-G students, faculty members, and the general public that are devoted to future advances in emergency medicine within the United States. During the first year of EMA operations, over 200 UNC-G students from seven states and 51 of North Carolina's 100 counties became involved in EMA programs. While EMA should be of special interest to pre-medical and nursing students, present figures show that over seventy-two percent of the EMA members are from majors unrelated to medicine. EMA student leadership is composed of officers voted into office by their fellow students. In addition to the student officers, EMA also has a voluntary Board of Medical Advisers composed of persons involved in professional medical roles. Through these medical advisers, EMA members are able to obtain information and training at all levels of the emergency medical care system. It is through this educationally based concept that the EMA motto, "Saving Lives Through Education," is born.

Further information may be obtained in the EMA office in Room 276, Elliott University Center or by calling 379-5179.

# American Home Economics Association



The aims of this organization, which is an affiliate of the state and national association, include providing a professional organization on the local level, promoting an understanding and appreciation of home economics by encouraging participation in activities and meetings and creating a spirit of fellowship.

Students enrolled in a home economics program leading to a baccalaureate degree in home economics are eligible for membership. Monthly programs related to the various majors within home economics are planned. Activities have included Freshman Orientation Picnic, Senior Induction Picnic, service projects and an Honors Convocation.



Christine Blanton, Vice President, Kathy Spratt, President, Jody Mullis, Secretary

# UNC-G Recreation Society



The U.N.C.-G Recreation Society is organized to provide an effective system for student membership and service for the Recreation Division students and faculty of U.N.C.-G.

## OFFICERS

President: Joe Attayek  
Vice-President: Gwen Poole  
Secretary: Nancy Fletcher  
Treasurer: Robin Harrell  
Parliamentarian: Pat Cadle

## CLASS REPRESENTATIVES

Senior Class: Cookie Nixon  
Junior Class: Len Williams  
Sophomore Class: Alease Daniels

## U.N.C.-G students serving as officers in N C

Recreation and Park Society  
Student Branch Pres.: Joe Attayek  
Student Branch Vice: Eva Cowan  
Student Liaison: Gwen Poole

U.N.C.-G student serving as officer in The  
National Recreation and Park Association  
Student Liaison to Lay/Board  
Commission: Joe Attayek



# Outing Club

The Outing Club is a student organization which brings together people who enjoy sharing outdoor experiences and who are interested in learning more about nature. It is a way to become more familiar with the wilderness areas of North Carolina and surrounding states, as well as with the problems which plague these areas. Meetings are fun and informative, covering such subjects as: first-aid, natural foods, past and future trips, hang gliding, and conservation problems.



Members include: Marsha Humphrey, Scott Reynolds, Robin Canterbury, John Jackson, Jan Nordby, Dale Caviness, Ed Saleem, Les Drinkard, Steve Kramer, Ronda Chapman, Rick Wilson, Phil Leonard, Christie Ketchum, Ray Rimer, Richard Lamb, Charlie Graham, Jo Coble, Ann Guyton, Bill Gracey, Gene Roberts, Nena Cadle, Susan Beaty, John Owen, Cindy Hoff, John Drinkard





Some of our activities include: mountain climbing, caving, hiking, back-packing, canoeing, skydiving, Scuba diving, sailing, skiing, camping, kayaking, and more. Expeditions have been made to Mexico, Vermont, and the Bahamas. The Outing Club also sponsors a semi-annual Pig Roast, a festival for all students

to enjoy. Most equipment needed can be provided to the members at no charge. Novice as well as experienced students are encouraged to attend. Instructions and leadership training are available. Come up to Elliot University Center any and every Wednesday night at 7:00 p.m.



# Phi Mu Alpha



Row 1, Ronnie Stephens, Jonathan Smith, Dillard Moss, Brooks Troxler, Pete Cook, Romulus Murrell, Benjy Springs, Paul Tiller, Randy Ingold, Ted Hunter, Lee Mabe. Row 2, John McCachren, Dave Doyle, Keith Dillon, Bernie Hall, Terry Lightfoot, Mark Rainsay, Bruce Orcutt, Milton Crotts, Steve Kelly, Don Holtzer, Melvin Jones Not Pictured Steve Amowitz, David Miles, Larry Thomas, Brian Gray, Faculty Advisors Jack Masarie, John Weigand



# EUC Council

Vice President Faith Holder  
 President Laverne Totten  
 Secretary Mary Harris

## COFFEEHOUSE

Margaret Little  
 Joanne Goldwater  
 Susan Walker  
 David Grogan

## CONCERTS

Dennis Marrow  
 Randy Crabb  
 Cathy Watson  
 Patty Bryant  
 Leslie Wilkerson  
 Jackie Hodges  
 Betsy Blank  
 Cathy Medlin  
 Peggy Bryant  
 Regina Bridges  
 Kathy Flynn  
 Alina Planes  
 Kathi Wlazlo

## DANCE AND SOCIAL

Lorrah Brown  
 Lorraine CeCunzo  
 Helene Bialek  
 Melanee Wheeler  
 Mary Brodie  
 Sheila Tucker  
 Debbie Chavis  
 Jocelyn Foy  
 Kathy Ortman  
 Jennifer Wilder  
 Sabrina Martin  
 Lillie Baker  
 Marilyn Steele  
 Sherrie Williams  
 Jonathan Gill  
 Yvonne Pence  
 Randy Ingold

## DAYTIME PROGRAMMING

Tressa Barbee  
 Roger Coleson  
 Laura Gilchrist  
 Sharon Yarley

## DISCO

Vickie Satterwhite  
 Kitzi Tuten  
 Bill Joyce  
 John Faulkenbury  
 Leona Faust  
 Patti Lake  
 Mary Ann Pugh

## LECTURES

Jill Farmer  
 Faith Holder

## MOVIES

Scott Harkins  
 Willie Smith  
 Teresa Gray  
 Cindy Whicker  
 Lauren Coffin  
 John Phillips  
 Jane Johnson

## PROMOTIONS

Deb McGann  
 Rene Cole  
 Linda Murphy  
 Gail McLaughlin  
 Beth Peeler  
 Susan Rhyne  
 Sheila Wright  
 Phyllis York  
 Sandra Whitaker  
 Vicky Reck  
 Gary Smith  
 Rebecca Livingston  
 Marty Wagner  
 Phil Maukdin

## SPECIAL EVENTS

Jeff Vance  
 Jeff Erwin  
 Mary Paul Pilley  
 Valere Bass  
 Sheryl Aycock  
 Phyllis Cheek  
 Lisa Bobbitt  
 Lynn Stone  
 Denise Brooks  
 Deborah Hall

Cary Bernstein  
 Valerie Godwin  
 Cindy Oehler  
 Elaine Taybron  
 Chris Patty  
 Emily Blanchard  
 Tonita Flynt  
 Ellen Harvell  
 Austin Jones

## VIDEO

Ben Richardson  
 Ann Wilson  
 Kathy Carpenter  
 Terry Williams  
 Lynn Cockerham  
 Katrina Kostic



EUC is our student center, a living room away from home. It's a place where you can relax, study, play pinball, eat or just get away from it all. The EUC Council sponsors activities such as dances, socials, coffeehouses, discos, concerts, lectures, and many special events throughout the year. We're always doing something. It's a terrific way to meet people and to become involved in university living.

- A Officers
- B Coffeehouse
- C Concerts
- D Dance and Social
- E Daytime Programming
- F Disco

- G Promotions
- H Lecture
- I Special Events
- J Movie
- K Video



# Gamma Sigma Sigma

Gamma Sigma Sigma is a service sorority with high ideas of friendship and equality. The purpose of the sorority is to assemble college and university students in the spirit of service to humanity not only on campus but also in community and national affairs. The sorority serves to develop friendships among people of all races and creeds, through working side by side through the fulfillment of these goals common to all.





# The Carolinian

THE CAROLINIAN is the student newspaper of UNC-G. It is published twice weekly, except during holidays, and is paid for by student activity fees and advertisements. All students are welcome to work on the newspaper, regardless of previous experience.



Jeff Erwin, Business Manager;  
Hobie Lowe, Photography Editor;  
John McCann, Editor; Terry Williams,  
Sports Editor; Andy Ling, Associate  
Editor; Bill Holden, News Editor; Skip  
Ruzicka, Ad Manager

# The Carolinian



Mark Deaton, Barbra Gawarkiewicz, John McCann, Vanessa Ried, Dorothy Waterfield, Ginny Gardner, Jennifer McCann, Mary Gray, Sandra Poe, Teresa Britain, Pete Walker, Jennifer Orsett, Stewart Robinson, Pam Phillips, Al DeCarlo, Guillermo Valasco, Jeff Erwin, Jane Kraemer, Alison Pratt, Jim Vestal, Craig Rubin, Hobie Lowe



# Coraddi

SO WHY A CORADDI? In 1919 the name was created as an acronym for the three literary societies which administered it. And ever since then, every single year . . . you guessed it . . . CORADDI. That's why.

And whence? This year, 1978-79, every other month. And changes abounded, and the magazine included articles on theatre, dance, and music as well as

the traditional poetry, fiction and artwork. With advertising to help finance it all. And the staff, most of them captured above both individually and collectively by the sharp pen and wit of UNC-G artist Guillermo Velasco, worked hard and mightily to produce something just a little . . . well . . . different. Remember?



Elizabeth House, Beth Morecock, Guillermo Velasco, John Jones, Beth Petrochuk, Elain Christensen, Kent Robertson, Bill Boericke, Ric Marshall (Editor), Scott Dodgson, Clyde Smith, Elizabeth Hutchinson, Anne Windhorst, Bob Murdock, Eric Ries Not shown, Lisa Brown, Joseph Carter, Karen Dimpling, Richard B. Ferebee, Frank Hautzinger, Rich Innes, John Pope, Larry Rivenbark, Marion Roberson, Stephanie Tingler, Dorian Trout.

# Pine Needles

Editor - Keith Kolischak  
Associate Editor - David Reavis  
Business Manager - Karen Fagg  
Advertising Manager - Janice Martin  
Layout Editor - Anita McNeilly  
Staff: Betsy Flagg  
Robert Day  
Eileen Basquill  
Allen Fox  
Linda Murphy  
Mary Kay Moore  
Janet Jessup  
Joni Johnston  
Clara Barnes  
Photography Editor - Bill McIlwain

Staff: Craig Rubin  
David Reavis  
Mike Ellis  
Hoby Lowe  
Louis Abramovitz  
Tim McNeal

Special Thanks to Our Friends:  
Martha New  
Paul Cecere  
Cliff Lowery  
The Carolinian  
Coraddi  
Media Board  
UNC-G News Bureau

Your University Dining Service

Steve W. Bucko, Sr.  
Resident District Manager  
Office 275-4591

**A-R-A**  
**FOOD SERVICES CO.**

Headquarters at  
Independence Square, S. W.  
Philadelphia, Pennsylvania

ARA Food Services joins the University yearbook, its staff, and student volunteers, in support of its programming.

Our continuous Dining Service is from 7:00 AM until 7:00 PM Monday through Friday. Saturday and Sunday hours are 8:00 AM until 6:15 PM. A Study Break is offered from 9:00 PM until 10:00 PM Monday through Thursday at no extra charge to Dining Card holders.

The University Community is invited to visit the Dogwood Room and the Snack Bar in Elliott Center and to visit the Dining Hall during the regularly scheduled hours, especially for festive occasions such as

**Founders Day Picnic**  
**Mexican Night**  
**Down Home Country Cookin'**  
**Captain Seafood Night**  
**Halloween Extravaganza**

**THE ROBOT ROOM:** Vendors display food and drinks and serve them at the drop of a coin. The hours are: Monday through Saturday 7:00 AM-11:00 PM.

**SODA SHOP:** The soda fountain and grill offer snacks during all hours of operation. A limited selective menu offers cafeteria-style service. The hours are: Monday through Friday 7:30 AM-7:00 PM.

**THE DOGWOOD ROOM:** Provides table service and buffet. A more selective menu may be reserved for meals by groups, official or private. The hours are 11:00 AM-1:30 PM Monday through Friday.

**THE STATE ROOM:** A new adventure in fast food dining, providing the University a unique fast-service menu with flair; also private booths to give students a more relaxed atmosphere.

We encourage all University organizations to have their banquets on campus. Please call our office for information, 275-4592.



# WUAG - FM

WUAG-FM is the student funded, student operated radio station at UNC-G. The station is on the air seven days a week, all day and most of the night. Our volunteers at WUAG-FM have a little of something for everyone: classical music, traditional and progressive jazz, rock and folk music, news, sports and a minimum of talk.

You need not have had previous experience in Broadcasting to work

with us. We will gladly teach you the necessary skills. However, we are only as flexible and creative as you are.

No matter what your interests, you are always welcome to work with us.

A member of the National Association of Educational Broadcasters and the Southeast College Radio Association.



Row One: Amy Sloop, Monica Snyder, Teresa Williams, Marion Roberson, Marianne Moskowitz, Joni Varner, Anne Wilson  
Row two: Ray Tucker, Billy Morris, Joey Jackson, Dick Stephens, Eric Clark, David Neal, Jon Matzkin, Suzanne Moss, Ross DePinto, David Isreal, John Starr, Byron Woods, Ed Shepherd, Lee Dudley, Steve Shamel  
Row three: Calvin Cole, Butch Fuller, Ronald Skenes, Lynn Barbee, Steve Hardy, Ted Llewilyn Not in Picture, Jill Pavey, Rich Dries, John Lannacone, Carole Kruger, Bob Turley, Sherwood Jones, Marty Wagner, Edith Langley, Peter Tenny, Julie Cohen, Eric Todd, Andy Ansp, John Jackson, Forest Jerkins, Sharon Llewilyn, Julia McIver, Steve Putnam, Carole Smith, Bob Stuber, Gary Todd, John Pare, Chief Eng: Woody McDougald

- A Ronald Skenes-Program Director
- B Calvin Cole-News Director and David Isreal-Production Director
- C Paul Franklin-D.J. Representative
- D Joey Jackson - Business Manager
- E. Teresa Williams-Traffic Director
- F. Edward Shepherd-Music Director
- G. Eric Clark - Station Manager



## IRIS' BRIDAL BOUTIQUE



Iris Boswell - Owner

Gowns  
Accessories  
Formals

Shoes Dyed to Match

Pageant Gowns by  
Mike Benet

Custom made Veils

**292-8911**

3908 W. Market St.

*Thalhimer's*  
THE FASHION STORES

DURHAM, FAYETTEVILLE, GREENSBORO,  
HIGH POINT, RALEIGH, WINSTON-SALEM









## Judicial





# Studio Theatre

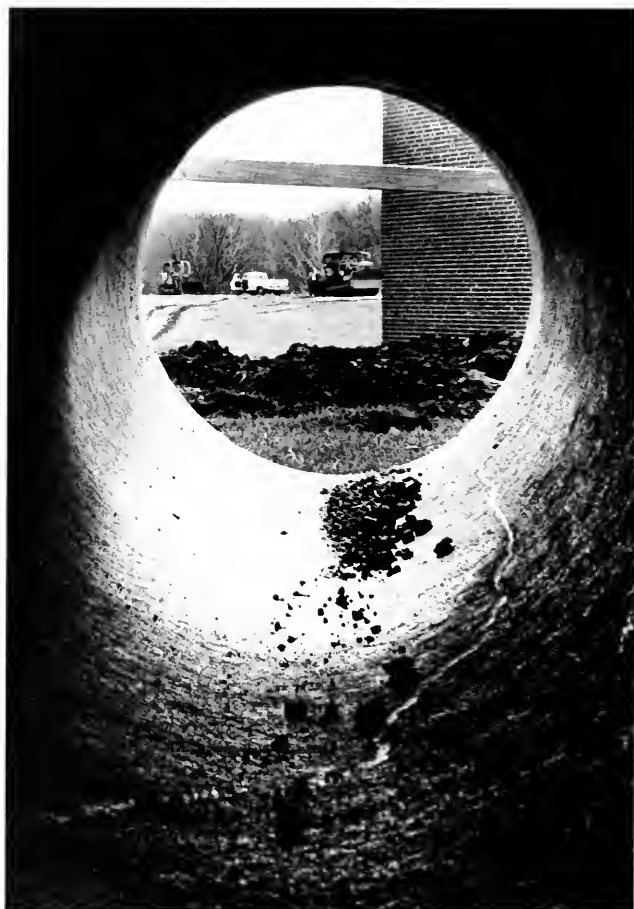






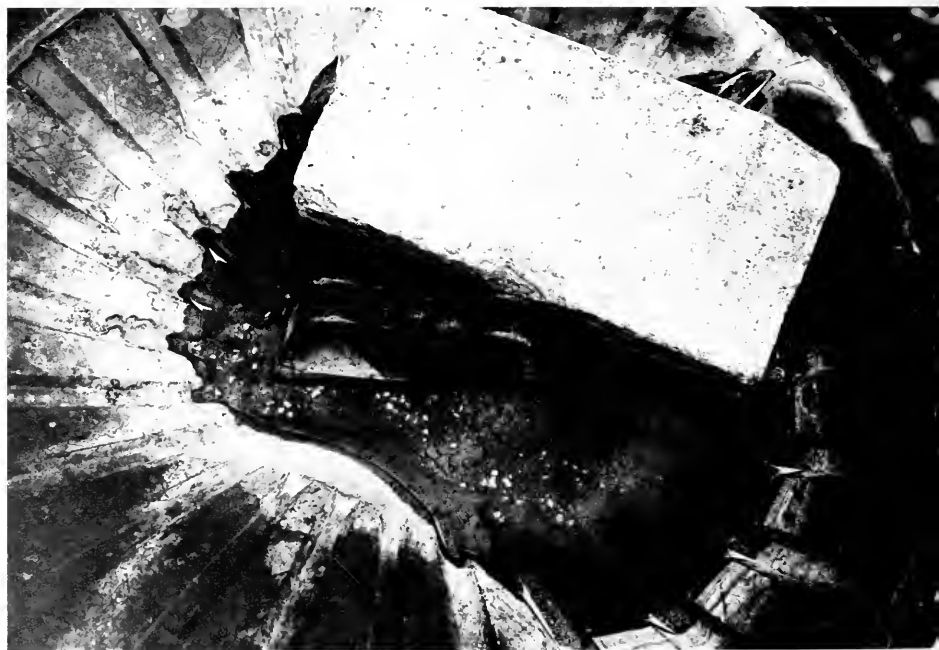















A black and white photograph of a dirt road winding through a dense forest of trees. The road is the central focus, leading the eye into the distance. The trees on both sides are tall and leafy, creating a canopy effect. The lighting is bright, suggesting a sunny day, with some overexposure in the upper part of the image.

In Memory of  
Mrs. Frances Cottrell Ferguson  
1918-1978







