

BR A
2227
✓

Property of
BOSTON REDEVELOPMENT AUTHORITY
Library

COMMONWEALTH OF MASSACHUSETTS
DEPARTMENT OF PUBLIC WORKS
RIGHT-OF-WAY BUREAU

BOSTON PUBLIC LIBRARY

Preliminary
Relocation
Survey

ROXBURY DISTRICT
OF THE
CITY OF BOSTON

Roxbury/N.
Dorchester
M382 PW
P

Publication with - UNITED STATES DEPARTMENT OF COMMERCE - BUREAU OF PUBLIC ROADS



The Commonwealth of Massachusetts

Department of Public Works

100 Nashua Street, Boston 14

May 4, 1965

Francis W. Sargent, Commissioner
Massachusetts Department of Public Works
100 Nashua Street
Boston, Massachusetts

Dear Commissioner Sargent:

I am forwarding herewith for your information the Preliminary Survey of the Relocation Section of the Right of Way Bureau, of that section of the Roxbury district of Boston which will be affected by the Inner Belt.

Perhaps no section of the Inner Belt will raise as severe a question of adequate relocation assistance as this. It represents the hard core of the relocation problem in Metropolitan Boston.

The severity of a problem, however, by no means suggests that it is insoluble. What is needed is sufficient advance information to allow for adequate programming to alleviate, so far as possible, the hardships that surround any relocation of such magnitude and character.

This report represents the second Preliminary Relocation Study conducted by the Department of Public Works. Preliminary Studies are now part of the new program of the Right of Way Bureau's Relocation Section. In this regard, we have been working in close cooperation with the Bureau of Public Roads, which has expressed an intense interest in the Preliminary Study which we have already completed for Somerville

in connection with Route I-93. It is my hope that by the development of such studies, the Massachusetts Department of Public Works can pioneer a strong advance in the area of relocation assistance connected with the Federal Interstate Highway Program.

In conducting this Study, it has been necessary to view the problem from the perimeter, as common sense and Bureau policy prohibit interviewing in the area to be impacted until such time as the design and programming have reached a point of practical implementation. Fortunately, the Relocation Section has been assisted by "internal" studies made by other agencies and Departments of State and Municipal Government.

It is obvious from the data here collected that a critical shortage of housing available to the low income, racial and ethnic groups located in this section exists and will continue to exist. It therefore will become necessary for the Department to expand the geographical area within which the search must be made to locate such housing. It is also apparent that public housing is not the solution as the experience of this Bureau clearly indicates a great antipathy on the part of low-income families toward relocation in public housing projects. The experience of Boston Redevelopment Authority and the Housing for the Aged programs clearly indicate that older citizens generally prefer public housing, but that younger families do not.

The Department of Public Works should avoid at all costs the mistakes made by other relocation agencies which occur when people from an impacted

area are moved into another area which is slated for a further taking either by the taking agency or by some other taking agency.

The proper preparation of this section of the Inner Belt will require much "social engineering" before the civil engineering can begin.

The Relocation Section has been directed to conduct a study of job opportunities both within and without the Metropolitan Area, and will seek the cooperation of the Division of Employment Security in this regard. In like manner, preliminary exploration has already taken place in conjunction with the Poverty Program of the National Administration. Although that program is as yet embryonic, it would appear to be a vital factor in this particular relocation project.

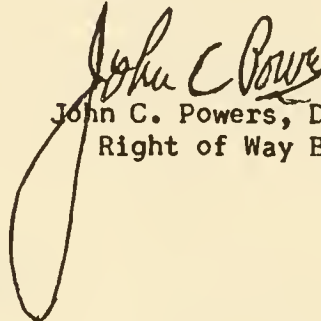
If our experience means anything, we can assume that when preliminary interviewing is authorized, we will be able to narrow the relocation problem down to a clearly defined number of difficult cases requiring social work and other special care and handling. The figures in this preliminary report give some idea of the number of such cases that are to be found in this particular section.

Improper relocation programs (for the most part conducted by other agencies throughout the Commonwealth) have created a tarnished public image of any taking agency. The West End Project is a national monument to the failure of Public Works programs in heavily urban areas to recognize the socio-economic factors in our society. More than 3/4 of the bills dealing with public works which have been filed this year in the Legislature address themselves to this failure.

This Department has an enviable record in the area of relocation assistance.

I urge your serious and intensive study of this report.

Very truly yours,


John C. Powers, Director
Right of Way Bureau

CONTENTS

PAGE

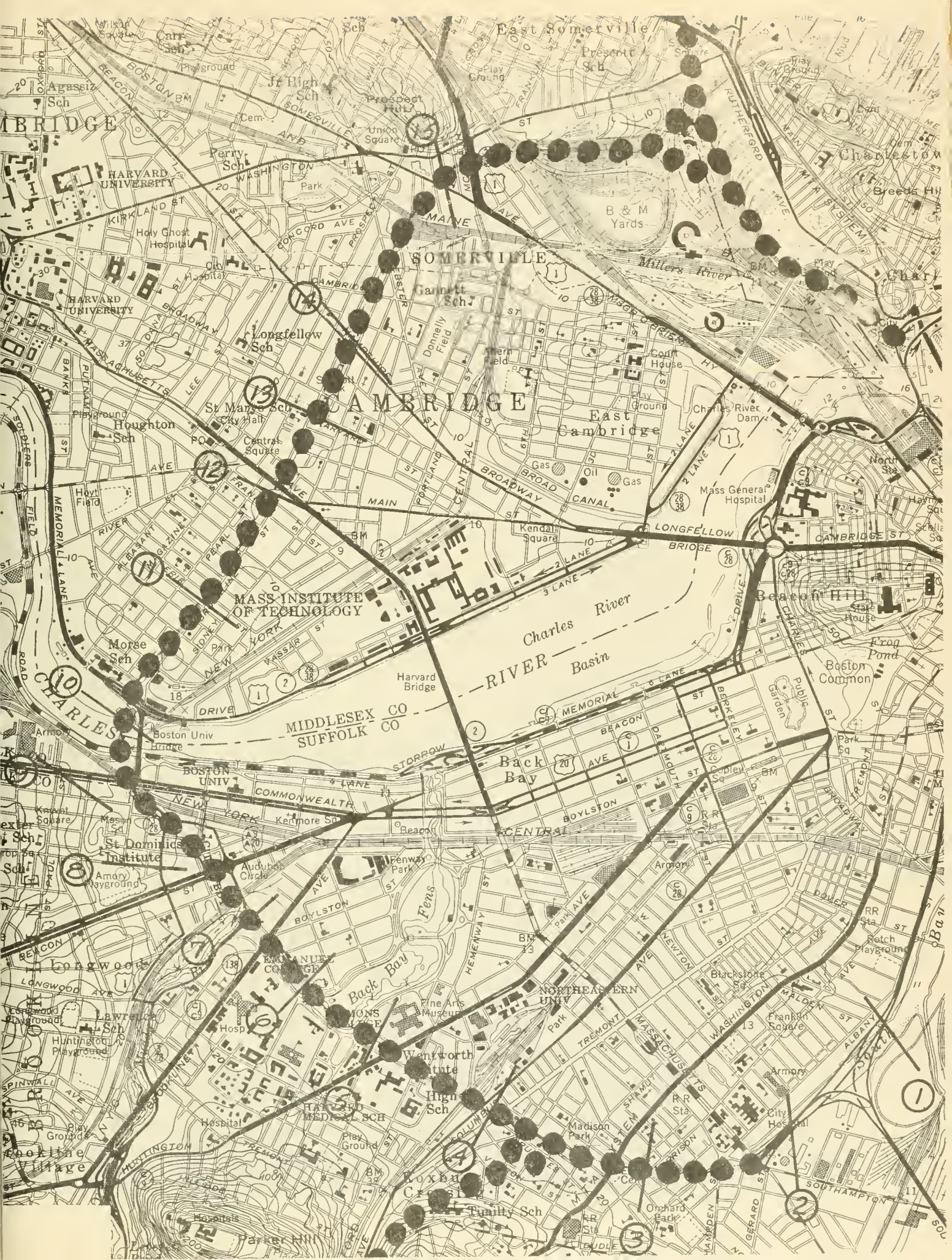
Aerial Photo Identification Plan	1
Aerial Photo 1, 2, 3, 4, 5	2, 3, 4, 5, 6
Perimeter of Study Map	7
Project Area Map	8
Relocation Activities of the Department of Public Works - Right of Way Bureau	9, 10, 11, 12, 13, 14
Roxbury Relocation Problems	15, 16, 17
Socio-Economic Study of Project Area, Phase #1	18, 19, 20, 21, 22, 23
Socio-Economic Study - Phase #2	24, 25, 26, 27, 28, 29
Typical Buildings	30, 31
Welfare Statistics	32, 33, 34
Public School Data	35, 36, 37, 38, 39, 40 41, 42, 43, 44, 45
Highway Data Crime Statistics	46, 47, 48, 49, 50, 51 52, 53, 54, 55, 56, 57
Availability of Housing	58, 59, 60
Exhibit 1 - List of Tenants	
Exhibit 2 - List of Owners	

The first part of the document discusses the importance of maintaining accurate records of all transactions. It emphasizes that every entry should be supported by a valid receipt or invoice. This ensures transparency and allows for easy verification of the data.

In the second section, the author outlines the various methods used to collect and analyze the data. This includes both primary and secondary data collection techniques. The primary data was gathered through direct observation and interviews, while secondary data was obtained from existing reports and databases.

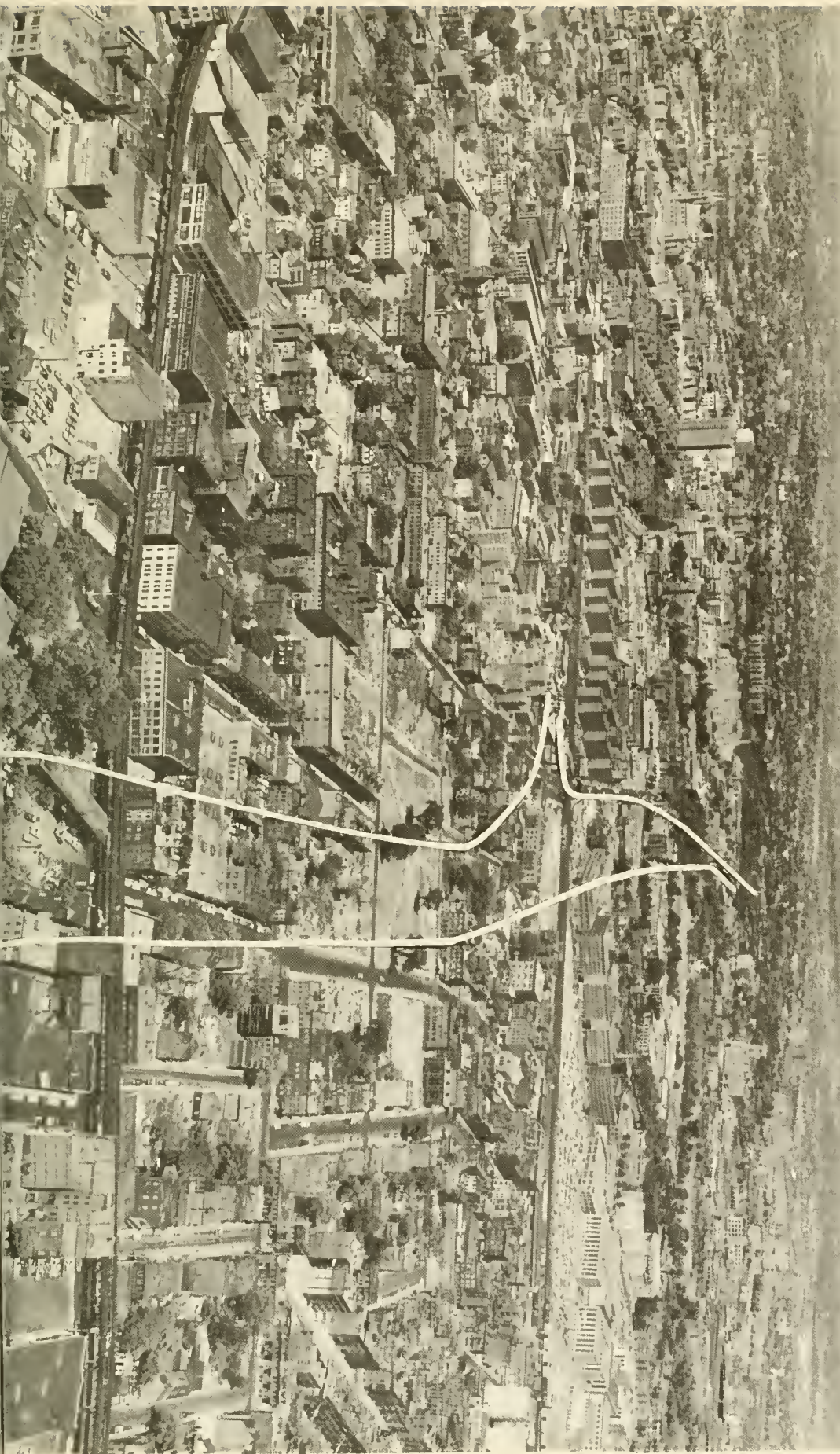
The analysis phase involved a thorough review of the collected information to identify trends and patterns. Statistical tools were used to quantify the data, and the results were compared against industry benchmarks to assess performance.

Finally, the document concludes with a series of recommendations based on the findings. These suggestions aim to improve operational efficiency and reduce costs. The author also notes that the data is subject to change and that regular updates will be provided as more information becomes available.



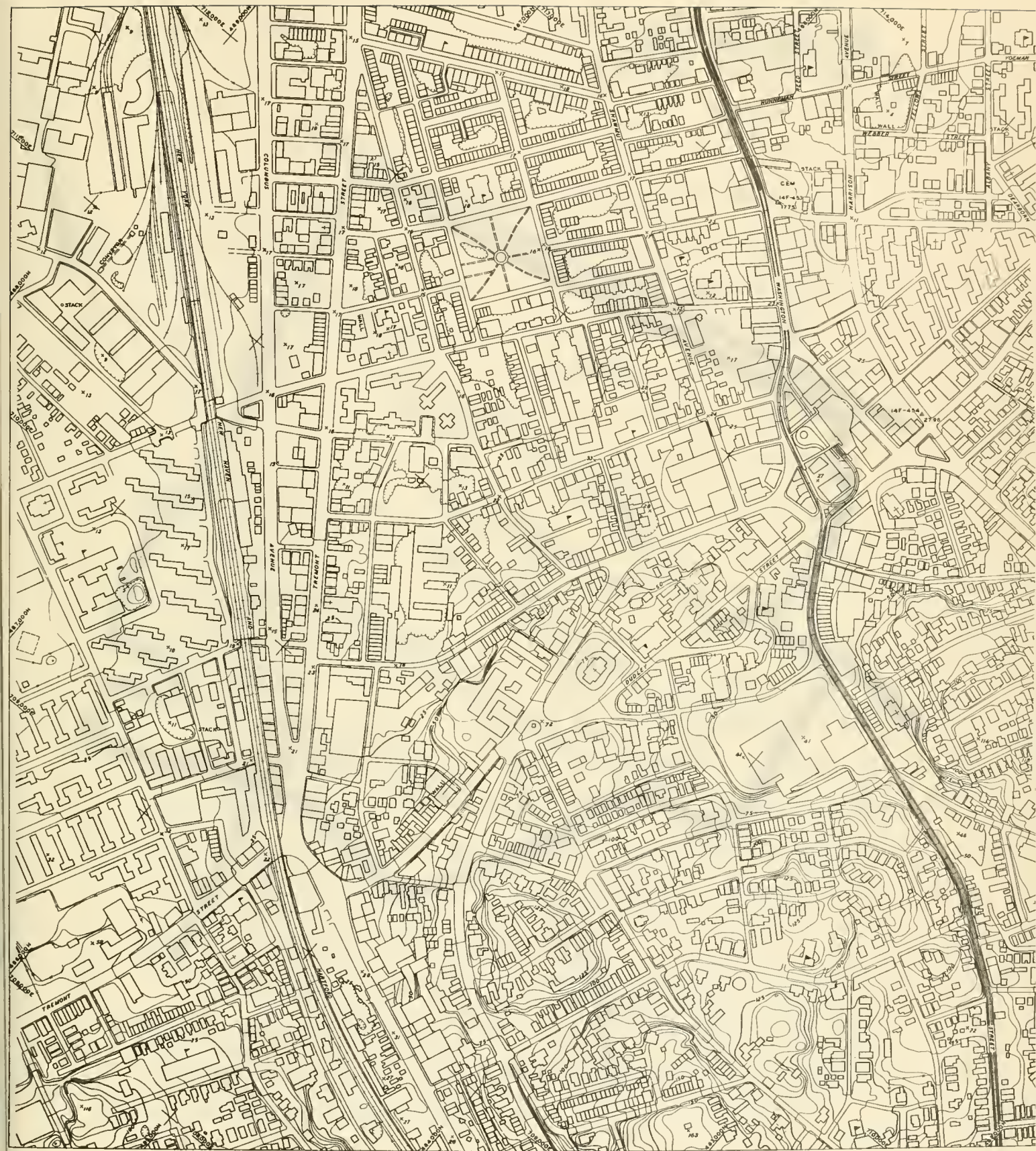




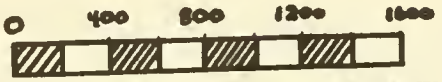




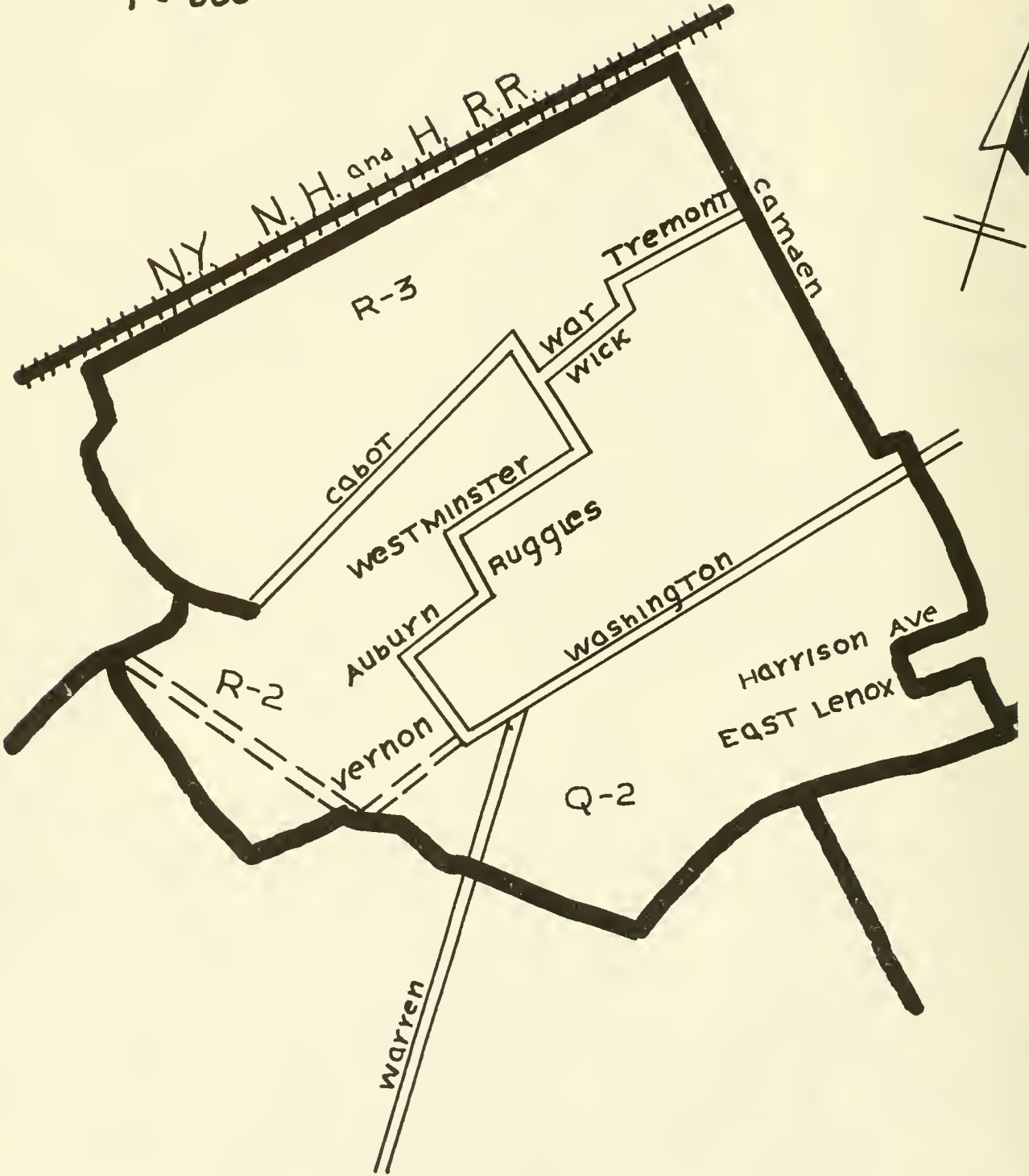




ROXBURY



SCALE IN FEET
1" = 800'



RELOCATION ACTIVITIES OF THE DEPARTMENT OF PUBLIC WORKS

- RIGHT OF WAY BUREAU -

In the field of land taking by eminent domain, an important and vital problem is that of relocating the persons or businesses which are displaced by public action of this kind. Advance planning in land taking operations will allow for more humane treatment in regard to the relocation of those affected. The great acceleration of the Department's Highway Construction programs have greatly expanded the problem of relocation. The great majority of families displaced are in low income, minority groups. It is the Department's, if not the Community, responsibility to insure that these persons do not relocate in sub-standard housing.

It is estimated that as many as ³⁸⁴³7,500 families would be displaced by the Boston Inner Belt and its connecting radials. Many of these families belong to minority groups, have a high crime rate in the area, recipients of public aid, elderly persons and in general, people who are in need of assistance and counseling.

Relocation activities of the Department of Public Works date back to September 19, 1962, at which date the Department first engaged in the development of a program for relocation assistance.

(Continued) As the program schedule of Right of Way acquisition has developed, more and more activity in heavily urban areas has been forecast. It has become necessary, therefore, to up-date and expand the relocation assistance rendered by the Department.

Because of the increased importance of relocation assistance, a relocation section of the Right of Way Bureau has been organized into a separate entity under the direction of a Relocation Supervisor, who reports directly to the Director of Right of Way.

A Relocation Assistance Advisory Committee, consisting of Joseph F. Courtney, Esq., Research Associate Professor of Government, Boston University Area Development Center; Attorney Lawrence Sullivan, Foley, Hoag, and Elliot; Robert DiGregorio, Acting Deputy Commissioner, Division of Housing, Department of Commerce and Development; John Carney, Acting Deputy Commissioner, Division of Urban Renewal, Department of Commerce and Development; James J. Colarusso, Urban Development Department, United Community Services; Richard G. Huber, Professor of Law, Boston College Law School; Commissioner of Public Welfare Robert F. Ott; Charles Liddell, Executive Director, Federation of South End Settlements, has been formed by the Department for the purpose of obtaining a broad view of relocation problems and activities, not only as they affect this Department, but also as they affect all other taking agencies in the Commonwealth.

(continued) Recognizing that the Urban Relocation program is of necessity a multi-agency problem, the Department has been following closely the reports of the Low Income Housing Commission, the Boston Redevelopment Authority, the Poverty Program, and others. In addition, much attention has recently been given to the urban planning features, which so vitally affect mass relocation. Studies have also been made of the relocation programs and performance of other States and of some foreign countries, notably Great Britain.

The Department has discussed the problem of relocation payments with the Bureau of Public Roads, and makes continuing studies of Federal legislation. As a result of this activity, the Department has welcomed the cooperation of the Bureau of Public Roads in developing a relaxation of the Policy and Procedure Memorandum connected with relocation payments, in order that such payments can be made prior to the time the relocatee actually leaves his home.

The following specific procedures are now utilized by the Department's Relocation Section:

1. A preliminary survey to establish need for determining composition of projects, areas, as regards number of tenants and owners, average rentals, values of homes, sizes of families, etc.

(continued)

2. The Department develops material for locating new homes from newspaper ads, realty boards, landlords, builders, and a close working liaison with local re-development agencies, housing authority and welfare agencies.
3. The Department has requested the Mayors or Town Managers to establish a local committee which will cooperate with the Department's Relocation Section to aid in relocating persons displaced by highway taking.
4. The Department's Relocation Section has relocation standards which attempt to match the needs of applicants with housing units available with reference to the condition of substitute properties, the price and the location.
5. The needs and desires of applicants in seeking new location, are ascertained by distributing the Department's information form for relocation advisory assistance.
6. The Department inspects all available housing in a given project area to assure a suitable replacement inventory.
7. After receiving the information forms from applicants, the Department processes each specific request for assistance.

(continued)

8. Personal interviews are conducted when required.
9. The Department of Public Works, through the Relocation Advisory Assistance Program, maintains or provides a tenant placement service in which there are recorded lists of untenanted suitable dwellings available to displaced families.
10. The Department maintains records and statistical data to measure the extent of the relocation program and to guide future improvements of program.
11. The Department advises displaced persons of benefits they are entitled to under the Federal Housing Administration laws, Section 221, of the Housing Act, as amended in 1961.
12. Department has compiled a list of building movers; The Department contacts local realtors, of the various communities, to aid displaced persons who will require relocation advisory assistance. The realtors have, in the past, cooperated fully in our efforts of obtaining suitable replacement housing for these persons.
13. The State's Relocation Advisory Assistance Service main office is located at 100 Nashua Street, Boston; its major responsibility is the providing of relocation assistance to displaced persons on a State-wide basis; a subsidiary office is established for each project where there are 25 or more eligible families to be relocated; on projects where there will be

(continued) fewer than 25 families to be relocated, relocation service is rendered by individual contacts with the eligible persons by representatives from the central or other relocation assistance offices; listings of properties for sale, available rental properties, public housing projects and any other available replacement housing are maintained; the Department furnishes to displaced persons the addresses of other agencies operating in the general field of endeavor, such as:

Social Welfare Agency	Chamber of Commerce
Urban Renewal Agency	Citizens Advisory Comm.
Redevelopment Agency	Federal Housing Authority
Public Housing Auth.	Public Loan Agencies

14. The Department's Relocation Section works closely with the Federal Housing Authority, real estate boards, multiple listing services, builders, local public housing authorities, and others in obtaining information concerning available housing that is suitable in condition, price and/or rental range for the relocation of eligible persons.
15. The Department now requires that advance socio-economic studies be made in those urban areas where a heavy concentration of relocatees are anticipated.

"ROXBURY RELOCATION PROBLEMS"

This report has been developed for the purpose of studying the impact of the Inner Belt upon the Roxbury area. It is felt that such a study is mandatory in order to procure the data needed to develop both staffing and programming adequate to assist the affected families and businesses in their relocation needs.

Roxbury is located south of Downtown Boston and the South end. Its area covers about two and one quarter square miles.

Roxbury is an older, densely developed urban area, with many of the characteristic problems of such an area; indiscriminately mixed land uses, insufficient recreation facilities, and sub-standard housing.

Over 81,000 people resided in Roxbury in 1960, this figure represents a decrease of over 25 per cent between 1950 and 1960. However, during this same period, there was an increase in the number and proportion of Negroes moving into the area. It can be estimated from school records, police listings, and the 1950 and 1960 U. S. Census; that 20,421 Negroes moved into this area, or 32.3% increase.

Roxbury was annexed within the present limits of the City of Boston on January 6, 1868, by St. 1867, C.359 and accepted September 9, 1867. Roxbury received its name by order of the Court of Assistants, October 8, 1630. It was incorporated as a City, March 12, 1846, C.95, accepted March 25, 1846.

(continued) The greatest challenge that the Department of Public Works will face in the near future will be the relocating of the families displaced by the Inner Belt and the Southwest Expressway and the ramp connections thereto in the Roxbury section of the City of Boston. To add to this great problem, the Boston Redevelopment Authority is presently working on the Washington Park Project which covers 472 acres. This project was scheduled to be Boston's first major effort at rehabilitation and conservation under the provisions of the U.S. Housing Act of 1949 as amended. The Boston Redevelopment Authority expected to dislodge 1,689 families in this project of which 1200 families are Negro.

Recently real estate sales in this area, and north of the New Haven Railroad main line have been influenced by the activities of the Greek Orthodox Church, Wentworth Institute and Northeastern University in acquiring land for purposes of future expansion.

Northeastern has purchased land on Columbus Avenue, dwellings and other properties as they become available. The area purchased by Northeastern from the United Realty Company, covered the entire block between Ruggles, Forsyth, Greenleaf, and Leon Streets, as well as considerable land between Leon and Tavern Road.

Personable observation discloses most of this section is made up of sub-standard housing. There is a prosperous area south of Townsend Street. In general, the area is a poor one and residential and family displacement will be difficult because these families will not be able to find new housing

(continued) accommodations adjacent to the project area at the rents they can afford.

The following social statistics can be helpful for relocation purposes and the study will be presented in two parts.

The FIRST being a socio-economic study of the entire Roxbury District and then a study of tracts involved in the proposed takings for the ramp connections of the Inner Belt and Southwest Expressway.

The SECOND part of the study concerns itself with the listing, street by street, of owners and tenants who will be affected by the taking, school census, recreation areas, police divisions and welfare report.

SOCIO-ECONOMIC STUDY

Phase #1

ENTIRE ROXBURY DISTRICT

General characteristics of the population:

1. Population (1960) 84,924
2. Population (1950) 112,936
3. Percentage of Change - 24.8
4. Male Population (1960) 38,591
5. Non-White 37,530
6. Foreign Stock 28, 571
7. Number of Married couples - 14,487
8. Couples with own household - 14,055
9. Couples with own children under 18 yrs. - 7,644
10. Population in group quarters - 3,773
11. Population five years & over - 74,984
12. Twenty-five years & over - Median school
years completed
13. Total number of families - 19,975
14. Number incomes under \$3,000 - 5,472
15. \$3 - 5999 - 7,748
16. \$6 - 9999 - 5,149

General characteristics of the population (continued)

17. \$10,000 - over	1,606
18. Median family income	\$4,631.-

AGE AND ECONOMIC CHARACTERISTICS

1. Persons under five years old	9,931
2. Persons 5 - 14 years old	15,384
3. Persons 65 and over	10,039
4. Persons 21 and over	52,456
5. Persons 14 years & over	60,800
6. Number of item 5 in Civilian Labor Force	34,500
7. Number of item 6 employed	32,318
8. Professional, Technical, Managers, Officials and proprietor	3,740
9. Clerical & Sales	5,847
10. Craftsman, Foreman	2,949
11. Operatives	7,859
12. Private Household, Service, Laborers	7,424
13. Married women in labor force-husband present	5,645
14. Automobile to work	9,433
15. Railroad, subway, bus to work	14,471
16. Walk to work	3,974

CHARACTERISTICS OF DWELLING UNITS

1. Total Housing Units	28,802
2. Total occupied units	26,074
3. Owner occupied units	4,421
4. Number of units in one unit structure	3,518
5. No. of units in 5 or more Unit struc.	9,710

Characteristics of Dwelling Units (continued)

6.	Number deteriorating	8,708
7.	Number dilapidated	3,028
8.	Units built 1950- March 1960	945
9.	Units under Construction 1962-64 1-4 bedrooms; rent \$75 - \$105(BRA)	376
10.	Units with 1.01 persons per room or more	2,827
11.	Units reporting Rent	21,673
12.	Number rentals under \$40	1,196
13.	Number rentals \$40 - \$79	12,314
14.	Number rentals \$80 and over	8,028
15.	Median gross rent	71
16.	Number reporting number auto available	15,597

Study of tracts involved in the proposed takings, including the following Streets: Tavern Road, Bills Court, Field Street, Leon St., Motley St., Ruggles St., Tremont St., Columbus Ave., Weston St., Weston Place, Cabot St., Warwick St., Westminster St., Shawmut Ave., Harrison Ave., Webber St., Fellows, Street, Hemenway St., Wall St., Washington St., Madison St., Champney Place, Williams St., Albany St. Some adjacent areas are also included in this tract study.

CHARACTERISTICS OF THE POPULATION

1.	Population -1960	8,489
2.	Population -1950	16,456
3.	Percentage of Change	47.3%
4.	Male Population - 1960	3,832

Characteristics of the Population (continued)

5.	Non-white population	7,008
6.	Total Foreign Stock	1,496
7.	Number of married couples	1,153
8.	Couples with own household	1,121
9.	Couples with own children under 18 years of age	555
10.	Population in group quarters	273
11.	Population five years & over	7,474
12.	Item 11, same res. 1955	3,760
13.		
14.	25 years or over - Median School years completed	8.8
15.	Total number families	1.919
16.	Number incomes under \$3,000	916
17.	\$3 - 5999	716
18.	\$6 - 9999	245
19.	\$10,000 and over	42

AGE AND ECONOMIC CHARACTERISTICS

1.	Persons under five years old	1,016
2.	Persons 5-14 years old	1,562
3.	Persons 65 and over	1,194
4.	Persons 21 and over	5,305
5.	Persons 14 years & over	6,045
6.	Number of Item 5 in Civilian Labor force	3,119
7.	Number of Item 6 employed	2,802
8.	Professional, Technical, Managers, Officials & Proprietors	148

Age and Economic Characteristics (continued)

9.	Clerical & Sales	216
10.	Craftsmen, Foremen	237
11.	Operatives	711
12.	Private Household, service, laborers	827
13.	Married women in labor force, husband present	443
14.	Automobile to work	534
15.	Railroad, bus, subway	1,242
16.	Walk to work	390

CHARACTERISTICS OF DWELLING UNITS

1.	Total Housing Units	3,740
2.	Total occupied units	3,055
3.	Owner occupied units	321
4.	Number of units in 1 unit struc- ture	557
5.	Number units in 5 or more	1,045
6.	Number deteriorating	1,398
7.	Number dilapidated	978
8.	Units built 1950 -March 1960	200
9.	Median persons per occupied unit	2.1
10.	Units with 1.01 persons per room or more	359
11.	Median Number rooms	4.4
12.	Units reporting rent	2,734
13.	Number rentals under \$40	283
14.	Number rentals \$40 to \$79	2,158
15.	Number rentals \$80 and over	260

Characteristics of Dwelling Units (continued)

16. Median Gross Rent	57.6
17. Number reporting no auto available	2,393

PUBLIC BATHS Cabot Street

LIBRARIES:

Egleston Square	2440 Columbus Ave.
Memorial	205 Townsend Street
Mount Pleasant	12 Vine Street
Parker Hill	1497 Tremont Street

WELFARE DEPARTMENT - CITY OF BOSTON

Research and Statistics Section - August, 1964 - Roxbury

<u>CATEGORY</u>	<u>CASES</u>
Old Age Assistance	2,329
Medical Assistance for Aged	583
Aid to Families with Dependent Children	1,931
Disability Assistance	604
General Relief	<u>351</u>
	5,964

"SOCIO-ECONOMIC STUDY"

Phase #2

The study concerns itself with the listing, street by street, owners and tenants who will be affected by the taking. This information is accurate as of January 1, 1964, and represents the most detailed information available in the matter. Included in this report is data on the number of welfare recipients, school census reports.

The following streets were surveyed: Bills Court, Field Street, Tavern Road, Leon Street, Williams Street, Shawmut Avenue, Ruggles Street, Westminster Street, Warwick Street, Cabot Street, Tremont Street, Weston Street, Newburn Street, Columbus Avenue, Carlow Street, Vernon Street, Massachusetts Avenue, Southampton Street, Reading Street, Albany Street, Hunneman Street, Harrison Street, Island Street, Hampden Street, Chadwick Street, Yeoman Street, Spring Court, Treadwell Court, Washington Street, and Sterling Street.

SECTION I Beginning with Bills Court and including Field Street, Tavern Road, Leon Street, Williams Street, Shawmut Avenue, Ruggles Street, Westminster, Warwick Street and Cabot Street, it has been determined that 238 families will be displaced from 71 structures.

There are 22 business establishments in this area that will be displaced.

(continued) Of the 71 structures, there are 11 structures with more than 8 families, 3 with 8 families, 3 with 6 families, 9 with 4 families, 10 with 3 families, 9 with 2 families, 17 with one family, 2 churches, 1 school and 6 businesses. The properties in this portion of the proposed taking are very old structures and in general the area is in a blighted neighborhood. The average rent is approximately \$30 per month, not including utilities. 85% of the dwellings in this section have no central heating and are dependent on space heaters, oil or gas stoves.

The range in assessed valuations in this area are as follows:

One Family Dwelling - Assessment	\$1,200
Two Family Dwellings - Assessment	2,000
Three Family Dwellings - Assessment	4,000
Four Family Dwellings - Assessment	5,500
Six Family Dwellings - Assessment	6,500

Business structures assessments, \$12,000 and building owned by Northeastern University, \$900,000. Condition of the properties in this area are poor.

SECTION II The next section of the area includes the following streets: Cabot Street, Tremont Street, Weston Street, Newburn Street, Columbus Ave., Carlow Street, Vernon Street, Massachusetts Ave., Southampton Street, and Reading Street.

Here it has been determined that 264 families will be displaced from 106 structures, 45 businesses, and one

(continued) V.F.W. Post will be displaced in this area.

Average rent is approximately \$30 a month, no utilities. This neighborhood can also be classified as blighted. Of the 106 structures, 21% are one family dwellings; 28% are two family dwellings; 30%, three family dwellings; 9% four or more families, and 12% are mercantile or business structures.

The range in assessed valuations in this area are as follows:

One Family Dwellings	-	Assessment	\$2,000
Two Family Dwellings	-	Assessment	2,800
Three Family Dwellings	-	Assessment	4,000
Four or more Families	-	Assessment	5,800
Business Structures	-	Assessment	10,000

SECTION III The next section includes the following streets: Island Street, Hunneman Street, Harrison Street, Spring Court, Treadwell Court, Hampden Street, Chadwick Street, Yeoman Street, Albany Street, Washington Street, and Sterling Street. Here it has been determined that 117 families will be displaced from 66 structures, 40 businesses will be displaced from this area. Of the 66 structures, 60% are three family dwellings; 20%, two family dwellings; 12%, one family dwellings, and 8% mercantile or business structures.

The average rent is approximately \$35 per month, no utilities. However, there are a few structures that are better than in Section I and II.

(continued) The range in assessed valuations in this area are as follows:

One family dwellings	- Assessment	\$1,400
Two Family dwellings	- Assessment	2,000
Three Family dwellings	- Assessment	3,000
Business Structures	-	15,000

The total assessments of properties involved in this project amount to \$3,100,200.00. Most of the structures in this entire area are obsolete and in some districts are marked by extensive blight and demolition.

Following is a list of the various businesses conducted in this area:

1. Chemical Sales Co.
2. Mercury Products.Co.
3. L. H. Gross Associates
4. Royal Distributing Co.
5. Auto Body Repair (Chadwick)
6. Plumbing Supply Co.
7. Chocolate Company
8. Gas Station
9. Gas Station
10. Gas Station
11. Auto Repair Service
12. Gas Station
13. Crane Service Co.
14. Storage Area
15. Repair Shop

Businesses (continued)

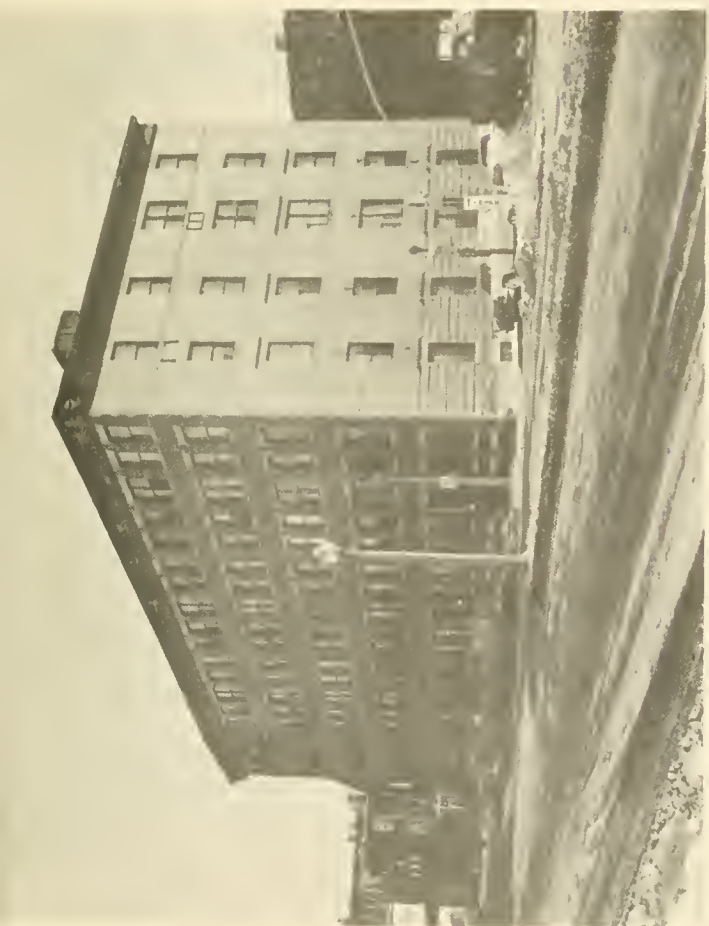
16. Barber Shop
17. Gas Station
18. Tire & Rubber Co.
19. Foundations Co.
20. Gas Station
21. Paint Finishing Shop & Foundry
22. Garage
23. Machine Shop
24. Venetian Blind Co.
25. Metal Stamp Co.
26. Boston Edison Transformer Station
27. Insulation Co.
28. Junk Shop
29. Harrison Refrigeration Co.
30. City Plumbing & Stove Co.
31. Atlantic Junk Co.
32. A. B. Used Auto Parts
33. Building & Wrecking Co.
34. Warehouse
35. Junk Yard
36. Statuary Products
37. Refrigerator Motors
38. Transportation Co.
39. Printer
40. Venetian Blind Co.
41. Gas Station

Businesses (continued)

- 42. Cafe
 - 43. Liquor Distributor
 - 44. Bakery
 - 45. Restaurant
 - 46. Shoe Company
 - 47. Auto Parts
 - 48. Uniform Company
 - 49. Church
 - 50. Post Office
 - 51. Vending Machine Co.
 - 52. Masonic Hall
 - 53. Restaurant
 - 54. V. F. W. Post #953
-
- | | |
|-------------------------------|-----------------------|
| 55. Free Albania Organization | 66. Shoe Company |
| 56. Gas Station | 67. Gas Station |
| 57. Concrete Company | 68. Laundry Equipment |
| 58. Boston Lamp Company | 69. Pharmacy |
| 59. Gas Station | 70. Gas Station |
| 60. Variety Store | 71. Gas Station |
| 61. Electric Supply Co. | 72. A & P Store |
| 62. Prentiss Luncheonette | 73. Social Club |
| 63. Heating Supply Co. | 74. Grocery Store |
| 64. Fuel Company | 75. Church |
| 65. Gas Station | 76. School |







HIGHWAY RELOCATION DATA

The following Welfare statistics were compiled by the Research and Statistics Section of the City of Boston's Welfare Department. Mr. Edward Real, Supervisor of Research and Statistics, cooperated fully in obtaining this material from the Social Workers in the areas to be affected by our taking.

1. Old Age Assistance	18 cases
2. Medical Assistance for Aged	4 "
3. Aid to families with Dependent Children	25 "
4. Disability Assistance	6 "
5. General Relief	4 "
	<hr/>
	57 Cases

(See Attached breakdown of cases by streets)

ACTIVE CASES IN INNER BELT SELECTED AREA

-33-

STREET DESCRIPTION	OAA	MAA	AFDC	DA	GR
Massachusetts Avenue 850-854-841-809-805-790-785					
Southampton Street 2-4-14-16-20-26-34-19-29-33-35-47-53					
Reading Street 8-10-14-18-26-30-36-37-44-46					
Island Street 5-7-9-11-15-12-14-18-22-26					
Hampden Street 33-37-41-37-49-51-53 36-38-40-44-48-52-53-56-58					
Chadwick Street 1-3-4-7-9-11-13-15-17-19-21-23-25-27 29-37-39 2-8-10-12-14-16-20-22-24					
Yeoman Street 6					
Albany Street 804 to 897 inclusive					
Hunneman Street 515-517-523-525-533-537 71-73-75-77-79-81-85-87-89-91-93-95-97-99	2	2	2	1	1
Fellow Street 126 and 129					
Harrison Avenue 971-1020 inclusive					
Washington Street 2017 to 2101 inclusive	3		1		1
Spring Street					
Treadwell Court					
Larmarr Place				1	
Madison Street					
Sterling Street 3 to 49 and 49 to 138					

ACTIVE CASES IN INNER BELT SELECTED AREA

STREET DESCRIPTION	OAA	MAA	AFDC	DA	GR
Williams Street 37-38-40	1				
Shawmut Avenue 677-753 inclusive	1		6		
Ruggles Street 59-61-64-65 189 to 211; 273 to 325	1			1	
Westminster Street 52-76 inclusive					
Warwick Street 73-105					
Cabot Street 98-135					
Tremont Street 1089 to 1285 (odd numbers) 1080 to 1144 (even numbers)	3	1	5		
Weston Street 7 to 76 inclusive	1		2		
Newton Street 16 to 36					
Lincoln Place					
Sarsfield Street 8-10-12					
Columbus Avenue 853 to 1054	3		8	1	2
Prentiss Street 3 to 11	1			1	
Field Street	1	1			
Leon Street				1	
Tavern Road	1				
Bills Court					
Carlow Street 1 to 12			1		
Aaron Place					
57	18	4	25	6	4

PUBLIC SCHOOL DATA

Public School enrollments between 1950 and 1960 followed a different pattern of changes from that of the general population of Roxbury. The percentage decrease was only 10 per cent, from about 15,500 pupils in 1950 to about 14,000 in 1960. During this period, elementary enrollments remained static, while the 1,550 loss occurred in the secondary grades, particularly in the high school years. This suggests that with the decrease in total population, the composition of the population has changed to families with more and younger children and for families more likely to send their elementary school-age children to public school.

It is expected that the trend of the past ten years will be reversed so that public school enrollments will increase over the next decade; this estimate is based on the following assumptions ... that a large in-migration of Negroes into this section of Boston will continue to occur, and that this population characteristically has many children and a large proportion of adults in the child producing age groups.

The proposed construction of an interchange for the Southwest Expressway and the Inner Belt in the Roxbury District was discussed at length with School Committeeman, Joseph Lee and with Mr. Louis Digiacommo. Mr. Digiacommo and Mr. Lynch gave me a great deal of data relating to this area. It seems that the Asa Gray School, located at 36 Weston St., would be within our taking.

(continued) This school was built in 1877, containing 8 classrooms, 2 1/2 stories and brick exterior. Its 8 classrooms have a capacity of 230 pupils.

However, due to a fire at the Sherwin, its capacity has doubled; safety limitation inherent in its wood frame construction, along with other deficiencies of design, age disrepair and limited capacity, recommend the abandonment of the building. This school has a student body comprised of 98% Negroes. Other schools which will be affected by our takings in this area are the Hyde School, the Timilty, the Dillaway, Dudley, Bacon, Dearborn and Palmer. The Palmer and the Dearborn Schools have approximately 65% Negro student body.

The majority of the schools in this area are located in the midst of structures in a deteriorated condition and are slated for abandonment within the next few years. Construction of new schools in this area is essential.

I attempted to obtain a roster of all the school children in this area and due to the system used, such a roster was not available.

CENSUS

(September 30, 1963)

District		James P. Timilty Jr. High			Building		Same	
Grade in Numerical Order	No. of Pupils in Room	No. of Room	Floor	No. of Desks in Rm.	Dimensions of tops of Desks	Lid or Box Type	Full Name of Teacher	
7	23	100	1	35	24 x 18	Lid	Robert Bogiages (T.T.)	
7	30	101	1	35	"	"	Roscoe Baker (T.T.)	
7	26	102	1	35	"	"	Paul E. Golden (T.T.)	
7	28	103	1	35	"	"	Thomas O. Collins (T.T.)	
7	29	200	2	35	"	"	Eleanor F. Fallon	
7	29	201	2	35	"	"	Francis H. Lennon (T.T.)	
7	34	215	2	35	"	"	Mary B. Harris	
7	33	216	2	35	"	"	Carter Lowe (T.T.)	
7	5	302	3	Special moveble for cons. of eyesight			Marion R. Shea	
8	36	203	2	35	24 x 18	"	Matilda M. Smith	
8	34	214	2	35	"	"	Elizabeth H. Moloney	
8	34	217	2	34	"	"	J. Warren Sennott	
8	32	218	2	35	"	"	Paul J. O'Toole	
8	34	301	3	35	"	"	Walter T. Hannigan (T.T.)	
8	33	304	3	35	"	"	James L. Eagan	
8	33	305	3	35	"	"	Frances M. Thibaut	
8	3	303	3	Special movable for cons. of Eyesight Classes			Arnold L. Marder	
9	3	303	3	"	"	"	" "	
9	37	105	1	35	24 x 18	Lid	Paul A. Harrington	
9	35	202	2	35	"	"	Mary J. Carroll (A.P.)	
TOTALS (continued next page)								

October 18, 1963

Signature of Principal

CENSUS

(September 30, 1963)

District James P. Timilty Jr. High Building Same

Grade in Numerical Order	No. of Pupils in Room	No. of Room	Floor	No. of Desks in Rm.	Dimensions of tops of Desks	Lid or Box Type	Full Name of Teacher
9	35	205	2	35	24 x 18	Lid	Francis A. Romeo (A.P.)
9	35	213	2	35	"	"	Alfred J. Lennon
9	31	312	3	35	"	"	William J. Hart (A.P.)
9	33	319	3	35	"	"	Agnes A. O'Neil
SP.	17	300	3	20	"	"	Joseph Middleton (T.T.)
"	17	315	3	20	"	"	Adeline C. Cannemela
"	16	316	3	20	"	"	Alice M. Hopkins
"	20	318	3	20	"	"	Catherine H. O'Neill
TOTAL	755						
H.Ed.		104	1	35	"	"	Frederick J. Gumbs
H.Ed.		204	2	35	"	"	Alice Y. Worthley
Print.		107	1	10	20x 40 case stands		John P Sweeney (Fore-Man)
Sh. Metal		108	1	4	10½ x 2'	benches	Henry J. Mealwitz
Elec.		109	1	2	10' x 4'	benches	Francis X. Neely
Woodwork.		110	1	20	24"x42"	benches	Raymond J. Pemberton
Cooking		114	1	6	44"x34"	tables	Elsie M. Sullivan
Cooking		115	1	6	"	"	Grace F. Morrill
Sewing		117	1	9	54"x27"	"	Thomasina Macchia
Sewing		118	1	9	" "	"	Gertrude Todesca
Art		317	3	35	24"x18"	Lid	Eleanor B. Kelley-3 days
Mech.Draw.		No Classroom					
TOTALS							

Signature of Principal

CENSUS

(September 30, 1963)

District HYDE-EVERETT

Building Everett

Grade in Numerical Order	No. of Pupils in Room	No. of Room	Floor	No. of Desks in Rm.	Dimensions of tops of Desks	Lid or Box Type	Full Name of Teacher
III	27	2	1	36 1	21 x 14 21 x 14	Port. Box	Marie I. Meyers
III	25	4	1	33	21 x 14	Box	Jane White
IV	27	5	2	36	23 x 16	Lid	Violet X. Meredith(A.P.)
IV	28	7	2	35	23 x 15	Box	Hattie J. Steward (T)
IV	25	12	3	42	23 x 15	Box	Helen M. Leonard
V	26	1	1	35	26 x 19	Lid	Eileen S. Hanley
V	18	8	2	1 35	23 x 15 23 x 16	Port. Lid	Joyce Scott (T)
V	25	9	3	35	23 x 16	Lid	Sherrie Teplitz
VI	27	3	1	1 34	23 x 15 23 x 17	Lid	Julia C. McAndrew A.P.
VI	21	10	3	35	23 x 16	Lid	Gail O'Neil
Special	16	6	2	5 18	21 x 16 23 x 16	Box Lid	Judith Blum (T)
Rem. Reading		Office	2	-	-	-	Catherine R. Day
Sewing		11	3	-	-	-	Josephine P. Whalen
Vacant		13	4	} NO FURNITURE			
"		14	4				
"		15	4				
"		16	4				
"		17	4				
TOTALS	265						

Signature of Principal

CENSUS

(September 30, 1963)

District Samuel W. Mason School
Hugh O'Brien District

Building _____

Grade in Numerical Order	No. of Pupils in Room	No. of Room	Floor	No. of Desks in Rm.	Dimensions of tops of Desks	Lid or Box Type	Full Name of Teacher
Kdg. A.M.	28	3	1				McCormick, Virginia Groutt
Kdg. P.M.	26	3	1				McCormick, Virginia Groutt
1	34	4	1	43	21" x 13"	Box	Tracey, Selma E.
1	32	2	1	33	23" x 18"	Movable Box	Barrett, Judith Mehrhof (T)
II	27	8	2	42	21" x 13"	Box	Jordan, Mary
II	28	9	2	42	21" x 13"	Box	Hunt, Lucille B. (T.)
III	28	7	2	42	21" x 13"	Box	Josephson, Harriet
III	20	14	3	42	21" x 15"	Box	Campbell, June (T.)
IV	31	6	2	42	21" x 15"	Box	McGill, Helen C.
V	25	11	3	42	21 x 15"	Box	Kearns, Agnes G.
VI	29	13	3	42	23" x 17"	Lid	Soule, Kenneth
VI	19	1	1	42	23" x 14"	Lid	Thornton, Frank J. (A.P.)
Special Class	18	5	2	18	23½" x 18"	Lid	Ward, M. Paul
" "	15	10	2	20	21" x 15"	Box	Desrochers, Albert (T.)
Speech Class		12	3	42	21" x 15"	Box	Safran, Marilyn (1 day)
Sewing Room		12	3	42	21" x 15"	Box	McPeake, Edith (1½ days)
Health Room			1				Leonard, Mary V. (Nurse)
TOTALS	360						

Signature of Principal _____

CENSUS

(September 30, 1963)

District Hugh O'BrienBuilding Ralph Waldo Emerson School

Grade in Numerical Order	No. of Pupils in Room	No. of Room	Floor	No. of Desks in Rm.	Dimensions of tops of Desks	Lid or Box Type	Full Name of Teacher
Kdg. A.M.	38	2	1				Blumsack, Ruth Conway, Margaret (T.)
Kdg. P.M.	35	2	1				Blumsack, Ruth Conway, Margaret (t.)
I	39	4	1	42	21" x 13"	Box	Condry, Patricia A.
I	38	5	1	42	21" x 13"	"	Wood, Elaine H. J.
II	30	6	1	"	"	"	Arnold, Helen M.
II	31	12	2	"	"	"	Barnet, Eve
III	26	7	1	"	"	"	Cazanove, Frances S. (A.P.)
III	28	13	2	44	"	"	Carew, Mary T.
IV	33	9	2	42	"	"	Sullivan, Christine M.
IV	31	3	1	42 6	23" x 16" 23" x 16"	Lid Lid	Weiner, Laurence R. (A.P.)
V	23	10	2	36	21" x 15"	Box Movable	McQueeney, Agnes L.
V	29	11	2	34	24" x 19"	Lid	Gaughen, Richard F. Lynch, Robert J. (assigned from Dept. of Physically Handicapped)
VI	25	8	2	35	23" x 16"	Lid	
Remedial Reading		Assembly Rm. Annex					McCarthy, Marjorie
Speech Class		Teachers' Room 2					Safran, Marilyn (1 day)
Sewing Class		Teachers' Room 2					McPeake, Edith (1½ days)
Shop Class			Basement Level				Finn, James T.
Conf. & Movie Room			Basement Level				
Health Room		1	1				Leonard, Mary V. (Nurse)
TOTALS							

Signature of Principal

CENSUS

(September 30, 1963)

District DUDLEYBuilding William Bacon School

Grade in Numerical Order	No. of Pupils in Room	No. of Room	Floor	No. of Desks in Rm.	Dimensions of tops of Desks	Lid or Box Type	Full Name of Teacher
Sub.-Sp.	13	8	2	12	Movable	Box	Gwendolyn S. Goodrum
Kdg. A.M.	25	4	1	-	Tables	-	Frances G. Byrd
Kdg. P.M.	20	4	1	-	Tables	-	Frances G. Byrd
I	30	1	1	40	13 x 21	Box	Ann M. Burmon
I	31	3	1	42	13 x 21	Box	Costella B. Laymon
II	29	7	2	42	13 x 21	Box	Frances D. Thatcher
II	26	10	2	42	13 x 21	Box	Patricia Cardillo
III	21=	6	2	42	13 x 21	Box	Mabel L. Revaleon
III	23	5	1	36	12 x 18	Box	Helen D. Watson
IV	41	9	2	42	18 x 24	Lid	Joseph S. Mariani
V	35	2	1	35	Movable		James L. Sullivan
Rem. Reading							Florence R. Carry
Speech							Lois J. Simmons
TOTALS	294						

Signature of Principal

CENSUS

(September 30, 1963)

District	DUDLEY			Building			Dudley
Grade in Numerical Order	No. of Pupils in Room	No. of Room	Floor	No. of Desks in Rm.	Dimensions of tops of Desks	Lid or Box Type	Full Name of Teacher
Sub.-Sp.	12	2	1	12	21 x 13	Lid	Sarah E. Kenney
Special	18	8	2	20	23 x 15½	Lid	Robert Carson (T)
I	35	6	1	42	23 x 15½	Lid	Sara H. Houston
II	23	B15	B	42	21 x 15	Lid	Olive P. Craigwell
III	34	5	1	42	21 x 15	Box	Esther W. Needle
IV	34	14	3	42	21 x 15	Lid	Elizabeth F. Curran
IV	35	11	2	42	21 x 15	Box	Maureen M. Cluff
V	31	12	2	42	23 x 15½	Lid	Joseph F. Stanton
V	31	9	2	46	21 x 15	Box	John L. Spadazzi
V	30	13	3	42	23 x 15½	Lid	Samuel J. Khirallah
VI	33	10	2	42	23 x 15½	Lid	Joseph P. Donovan
VI	25	4	1	42	23 x 15½	Lid	David H. Reardon (A.P.)
VI	34	7	2	41	23 x 15½	Lid	Marilyn M. Kiely
Rem. Rd.		1	1				Florence R. Carry
Speech		Hall	3				Lois J. Simmons
W.Work		3	1				Walter J. Bonetzky
Music Bugle		B					James MacDonald
Drum		B					William McHugh
Fife		H					Juste Maurice
TOTALS	375						

Signature of Principal

CENSUS

(September 30, 1963)

District DILLAWAYBuilding Dillaway

Grade in Numerical Order	No. of Pupils in Room	No. of Room	Floor	No. of Desks in Rm.	Dimensions of tops of Desks	Lid or Box Type	Full Name of Teacher
Kdg. A.M.	21	3	1				Evelyn N. Zintz
Kdg. P.M.	24	3	1				Evelyn N. Zintz
I	14	1	1	42	20 x 13	Box	Mary V. Doherty
I	14	2	"	"	"	"	Lottie M. Butler
II	27	5	2	"	20 x 15	"	Katherine M. Carey
II	30	7	2	"	"	"	Ann P. Gumbs
III	37	6	2	45	"	"	Ann R. Barkowitz (A.P.)
IV	37	8	2	48	16 x 23	Lid	Helen P. Hourihan
V	30	11	3	48	"	"	Patricia Troy
V	29	10	3	46	"	"	Pearl W. Lane (T)
VI	36	9	3	42	"	"	Anne K. Townsend
VI	33	4	1	47	"	"	Helen M. Nolan - (A.P.)
Spec. Class	18	12	3	20	"	"	Jessie S. Copman
TOTALS	350						

Signature of Principal

CENSUS

(September 30, 1963)

District DILLAWAY

Building Nathan Hale

Grade in Numerical Order	No. of Pupils in Room	No. of Room	Floor	No. of Desks in Rm.	Dimensions of tops of Desks	Lid or Box Type	Full Name of Teacher
Kdg. A.M.	36	2	1				Mary W. Pisciotto
Kdg. P.M.	37	"	"				" "
I	26	3	1	36	21 x 13	Box	Anna McD.Pizzano
I	30	5	1	38	"	"	Margaret B. Carlin
I	28	6	1	38	"	"	Marjorie L. Eure
II	29	4	1	38	"	"	Charity M. Brunson
II	29	8	2	35	"	"	Janet M. Murphy (Prov.)
II	29	12	2	37	"	"	Antoinette C. Conroy
III	37	7	2	38	"	"	Frances McGee
III	35	9	2	40	"	"	Catherine C. Leonard
IV	26	1	1	26	23 x 16	Lid	Mary C. Seally
IV	23	11	2	40	"	"	Pamela T. Cronin
V	33	10	2	35	"	"	Anna T. Shea (A.P.)
TOTALS	398						

Signature of Principal

HIGHWAY DATA-CRIME STATISTICS

The Roxbury District of the City of Boston has two Police Stations; one at Dudley Street, designated as District 9; the other at Roxbury Crossing, designated as District 10.

The total number of persons arrested by these Districts and other units for all types of offenses, covering both pending and completed cases, for the year ending December 31, 1963, were 12,997. This number is broken down as follows:

District 9 - Males: 7,536 Females: 1,268

District 10 - Males: 3,856 Females: 337

The following crime statistics for 1964, covering the project area of the proposed interchange were compiled with the assistance of Captain West and Sargeant Bulger of the planning division of the City of Boston Police Department. The names and residence of the offenders were not available. However, I was informed that 90 percent of the offenders lived in that area of our proposed construction.

R.A. 276 - Washington St., Sterling St., Westminster St., Ruggles St.

R.A. 284 - Columbus Ave., Mass Ave., R.R. Tracks, Ruggles St.

R.A. 286 - Columbus Ave., Ruggles St., Westminster St., Ruggles St.

R.A. 287 - Ruggles St., Washington St., Vernon St., Cabot St.

R.A. 289 - Ruggles St., Cabot St., Linden St., R. R. Tracks

R.A. 589 - R.R. Tracks, Prentiss St., Parker St., Ruggles St.

R.A. 590 - Ruggles St., Huntington Ave., Forsyth St.

HIGHWAY DATA-CRIME STATISTICS (continued)

<u>REPORTING AREA</u>	<u>MONTH</u>	
276	<u>JANUARY</u>	
	Drunk	2
"	<u>FEBRUARY</u>	
	Drunk	2
	Arr. for other Dept.	<u>1</u>
	TOTAL	3
"	<u>MARCH</u>	
	Drunk	1
	Minor Drunk	<u>1</u>
	TOTAL	2
"	<u>APRIL</u>	
	Drunk	2
"	<u>MAY</u>	
	Larceny	3
	S.P. Larc. M.V.	<u>1</u>
	TOTAL	4
"	<u>JUNE</u>	
	Drunk	3
"	<u>JULY</u>	
	B & E	2
	Drunk	<u>1</u>
	TOTAL	3
"	<u>AUGUST</u>	
	S.P. A & B D.W.	1
	Drunk	<u>1</u>
	TOTAL	2
"	<u>SEPTEMBER</u>	
	Auto Theft	1
	Non-Support	<u>1</u>
	Drunk	<u>2</u>
	TOTAL	4

HIGHWAY DATA-CRIME STATISTICS (continued)

REPORTING AREA

MONTH

276

OCTOBER

Drunk 1

"

NOVEMBER

Drunk 2

DECEMBER

Ind. A & B on Child 1

A & B 1

Drunk 1

TOTAL 3

284

JANUARY

S.P. Gross Lewd 2

A & B 1

Drunk 3

TOTAL 6

"

FEBRUARY

S.P. Robbery 1

S.P. Drug Viol. 1

S.P. Gross Lewd 3

Idle & Disorderly 1

Drug Violation 1

Non-Support , , , 1

Drunk 2

Arr. Other Dept. 1

TOTAL 11

"

MARCH

None

"

APRIL

None

"

MAY

S.P. Gross Lewd 1

Prostitute 1

Drunk 1

TOTAL 3

HIGHWAY DATA-CRIME STATISTICS (continued)

REPORTING AREA

MONTH

284

JUNE

None

"

JULY

None

"

AUGUST

None

"

SEPTEMBER

S.P. Larc. auto	2
S.P. Gross Lewd.	1
A & B	1
Drunk	<u>1</u>

TOTAL 5

"

OCTOBER

S.P. B & E	1
Drunk	<u>1</u>

TOTAL 2

"

NOVEMBER

None

"

DECEMBER

Trespassing	1
-----------------------	---

286

JANUARY

Larceny	1
Der. Supp. Prost.	2
Prostitute	1
Adultery	1
S.P. gross Lewd	1
Drunk	<u>3</u>

TOTAL 9

"

FEBRUARY

Drunk	2
-----------------	---

HIGHWAY DATA-CRIME STATISTICS (continued)

REPORTING AREA

MONTH

286

MARCH

S.P. A & B D.W.	1
S.P. Misc.	1
Arr. Other Dept.	1
Drunk	<u>3</u>

TOTAL 6

"

APRIL

Drunk	1
-----------------	---

"

MAY

Non-support	1
Drunk	<u>2</u>

TOTAL 3

JUNE

Drunk	4
Auto viol.	<u>1</u>

TOTAL 5

"

JULY

Non-support	1
Drunk	<u>1</u>

TOTAL 2

"

AUGUST

Drunk	3
-----------------	---

"

SEPTEMBER

Stat. Rape	1
Drunk	<u>5</u>

TOTAL 6

"

OCTOBER

Stat. Rape	1
Illegit.	1
Drunk	<u>7</u>

TOTAL 9

HIGHWAY DATA-CRIME STATISTICS (continued)

REPORTING AREA

MONTH

286

NOVEMBER

Illegit.	1
Drunk	<u>1</u>
TOTAL	2

"

DECEMBER

Illegit.	1
------------------	---

287

JANUARY

None

"

FEBRUARY

Drunk	2
-----------------	---

"

MARCH

A & B	1
Drunk	3
Arr. Other Dept.	<u>1</u>
TOTAL	5

"

APRIL

S.P.Larc. M.V.	1
Non-Support	1
Drunk	<u>1</u>
TOTAL	3

"

MAY

Viol Wgt. & Mea.	1
Drunk	<u>3</u>
TOTAL	4

"

JUNE

Robbery	1
Arr. Other Dept.	<u>1</u>
TOTAL	2

HIGHWAY DATA-CRIME STATISTICS (continued)

<u>REPORTING AREA</u>	<u>MONTH</u>	
287	<u>JULY</u>	
	Drunk2.
"	<u>AUGUST</u>	
	Sodomy	1
	Drunk	<u>1</u>
	TOTAL	2
"	<u>SEPTEMBER</u>	
	A & B	1
	Drunk	<u>2</u>
	TOTAL	3
"	<u>OCTOBER</u>	
	Non-Support	2
	Drunk	<u>5</u>
	TOTAL	7
"	<u>NOVEMBER</u>	
	Non-Support	1
	Drunk	<u>1</u>
	TOTAL	2
"	DECEMBER	None
<hr/>		
289	<u>JANUARY</u>	
	S.P. Larc. M.V.	1
	Drunk	<u>1</u>
	TOTAL	2
"	<u>FEBRUARY</u>	
	Non-Support	2
	Drunk	<u>5</u>
	TOTAL	7

HIGHWAY DATA-CRIME STATISTICS (continued)

REPORTING AREA

MONTH

289

MARCH

Non-support , 2
 Drunk 2

TOTAL 4

"

APRIL

Using w/o Auth. 1
 Drunk 4
 Arr. Other Dept. 1

TOTAL 6

"

MAY

Using w/o Auth. 2
 A & B 2
 Drunk 3
 Vagrant 1
 Misc. 1

TOTAL 9

"

JUNE

Larceny 2
 Using w/o Auth. 1
 Drunk 4

TOTAL 7

"

JULY

S.P. B & E 2
 Non-support 1
 Drunk 2
 Auto viol. 1

TOTAL 6

"

AUGUST

Using w/o auth. 1
 Non-support 2
 Drunk 1
 Arr. Other Dept. 1

TOTAL 5

HIGHWAY DATA-CRIME STATISTICS (continued)

REPORTING AREA

MONTH

289

SEPTEMBER

S.P. Larc. Auto 1
 Drunk 2

TOTAL 3

"

OCTOBER

S.P. Robbery 1
 Obscene Lit. 1
 Using w/o auth. 1
 A & B 1
 Non-Support 1
 Drunk 3

TOTAL 8

"

NOVEMBER

A & B Dan.Weap. 1
 Larceny 2
 Illegit. 2
 Non-Support 2
 Drunk 1
 Arr. Other Dept. 1

TOTAL 9

"

DECEMBER

Larceny 1
 Non-support 1
 Drunk 5
 S.P. Misc. 1

TOTAL 8

589

JANUARY

Ind. A & B Child 1
 Drunk 4

TOTAL 5

"

FEBRUARY

A & B 1
 Drunk 5
 Illegit. 1

TOTAL 7

HIGHWAY DATA-CRIME STATISTICS (continued)

REPORTING AREA

MONTH

589

MARCH

Non-support	2
Drunk	5
Arr. Other Dept.	<u>2</u>

TOTAL 9

"

APRIL

Fraud	1
-----------------	---

"

MAY

S.P. Larc. M/V	1
Non-support	1
Drunk	3
Stubborn Child	1
Vandalism	1
Arr. Other Dept.	<u>1</u>

TOTAL 8

"

JUNE

S.P. Drug Vio.	1
Using w/o auth	<u>4</u>

TOTAL 5

"

JULY

Drunk	1
-----------------	---

"

AUGUST

S.P. A & B D.W.	1
Non-support	3
Drunk	4
Arr. Other Dept.	<u>1</u>

TOTAL 9

"

SEPTEMBER

Drunk	1
Arr. Other Dept.	<u>1</u>

TOTAL 2

HIGHWAY DATA-CRIME STATISTICS (continued)

REPORTING AREA

MONTH

589

OCTOBER

A & B	1
Non-support	2
Drunk	5
Vandalism	1
	<u>1</u>
TOTAL	9

"

NOVEMBER

Non-support	1
Drunk	1
	<u>1</u>
TOTAL	2

"

DECEMBER

A & B	2
Drunk	2
Stubborn Child	1
Arr. other Dept.	4
	<u>4</u>
TOTAL	9

590

JANUARY

Drunk	1
-----------------	---

"

FEBRUARY

Ind. A & B Child	1
Drunk	2
	<u>2</u>
TOTAL	3

"

MARCH

.	None
-----------	------

"

APRIL

.	None
-----------	------

"

MAY

Drunk	1
-----------------	---

"

JUNE

A & B	1
-----------------	---

"

JULY

.	None
-----------	------

HIGHWAY DATA-CRIME STATISTICS (continued)

<u>REPORTING AREA</u>	<u>MONTH</u>	
590	<u>AUGUST</u>	
	Drunk	2
"	<u>SEPTEMBER</u>	None
"	<u>OCTOBER</u>	
	S.F. Larc. M/V	1
"	<u>NOVEMBER</u>	
	Att. Larc. M/V	1
	Drunk	<u>1</u>
		TOTAL 2
"	<u>DECEMBER</u>	
	Non-support	1

Attached hereto is the 1963 annual report of the Police Department of the City of Boston.

AVAILABILITY OF HOUSING

The Roxbury Section of the City of Boston, is the proposed location for the ramp connections for the Southwest Expressway and the Inner Belt. The adjacent areas are made up of most sub-standard housing. The families displaced by our highway takings, and the Boston Redevelopment Authority projects cannot find new housing accommodations in this area at rents they can afford.

It was therefore necessary to study available housing data of the entire City of Boston. Available facts show that as Boston's growing Negro population looks for space to live, it has reached from Roxbury, where Negroes settled after World War II, into parts of North Dorchester and toward Mattapan.

According to Alan Gartner of Boston's Congress of Racial Equality, and others, ownership of some buildings to which Negroes have moved is retained by the original white owner. There is a fair amount of cutting up of these dwellings into several apartments; then charging quite a hefty rent - equal in some cases to what the rent for the original un-split apartment was. No current figures are available, but the 1960 census shows that in Boston, rents for sub-standard housing for whites average \$57 per month; sub-standard for non-whites averaged \$65 - a 14% difference. Low cost housing hasn't been able to keep up with the needs of the low income groups, whatever their color.

Unless suburban cities and towns change their zoning policies to make presently vacant land outside the city available for low and middle income housing, the time required for eliminating sub-standard housing in the Metropolitan area will be extended and continue the non-white ghettos in the City of Boston.

AVAILABILITY OF HOUSING (continued)

There are approximately 19,000 rundown apartments in that area, radiating out from the central business up to the proposed Inner Belt route in Roxbury, which should be renovated for better urban living. The 1960 census shows total housing units in Boston at around 238,500. The Boston Redevelopment Authority consider these figures usable, finding that as new units have been put up, urban renewal has demolished others. The census lists 61,000 dwellings as owner occupied and 163,000 as rented. Vacant dwellings for rent or for sale number about 9,000, and all other, 5,400. The census also lists 32,700 occupied sub-standard dwellings. It can be stated that these statistics have not decreased.

Rents for efficiency apartments (one room & bath) range from \$47 to \$185; that one bedroom apartments have a monthly rent of \$65 to \$330; two bedroom apartments run from \$60 to \$430 and three bedroom apartments from \$55 to \$550. You don't get much usually, for \$55. The demand for moderate cost, privately developed apartments appears to be greater than the supply.

PUBLIC HOUSING

In the City of Boston, there are 15 Federally-aided families of low-income projects, containing 10,156 apartments; 6 Federally-aided elderly families of low-income projects containing 400 apartments; 10 State-aided Veteran's families of low-income projects containing 3,681 apartments.

The Boston Housing Authority also has a Development Program involving 10 Federally-Aided, elderly families of low-income projects, containing 775 apartments; and 1 Federally-aided, Rehabilitation for families of low-income project, containing 200 apartments.

PUBLIC HOUSING (continued)

At the present time, there are limited number of vacancies in all of the projects under the control of its Boston Housing Authority.

There is a large waiting list for all of these projects.

COLUMBUS AVENUERESIDENCE
JANUARY 1, 1963
If DifferentNAME AND RESIDENCEOCCUPATION

<u>NAME AND RESIDENCE</u>		<u>OCCUPATION</u>	<u>RESIDENCE</u> JANUARY 1, 1963 <u>If Different</u>
Beckett, John T.	853	Postalworker	
Butler, Adele	853	Housewife	
Stuart, Edward	853	Clerk	
Stuart, Myrtle	853	Housewife	
Bell, Catherine	855	Sorter	
Bell, Theodore	855	Baker	
Dudley, Lydia A.	855	Hosp. Worker	
Johnson, Dora L.	855	Housewife	
Johnson, Homer	855	Laborer	
McCooty, Margaret R.	855	Attendant	
Owens, Amie	856	Housewife	253 Harold St.
Owens, Robert	856	Presser	253 Harold St.
Grady, Carol	857	Domestic	21 Cobb
Joseph, Elvira	857	Housewife	
Joseph, George G.	857	Cook	
White, Bessie	857	FactoryWkr.	
Young, Eli	857	Laborer	
Alford, Clara	860	Nurses Aide	49 Hollander
Cumby, Elma	860	Home	
Johnson, Frances	860	Domestic	203 W. Spfld.
Kelley, Lucylle M.	860	At Home	
Long, Harrison	860	Salesman	
Rose, Charles	860	Porter	Cambridge
Rose, Phillip	860	Factory Wkr.	74 Compton
Sapp, Pearl	860	Clerk	
Smith, John R.	860	Operator	
Thornton, Roy	860	Laborer	Virginia
Young, Alberta	860	Domestic	
Almeida, Albert R.	864	Salesman	
Almeida, Alice	864	Factory Wkr.	
Almeida, Elizabeth T.	864	Housewife	
Bond, Marion H.	864	Packer	
Chrisfield, Edward	864	Clerk	Wakefield
Clarke, Louise M.	864	At Home	222 W. Newton
Durette, Nancy A.	864	At Home	
Franklin, Dorothy	864	Housewife	Mississippi
Gillum, John	864	Laborer	62 St. James
Golden, Beatrice	864	Cook	
Lerner, Marion	864	Housewife	
McCauley, Haywood	864	Presser	Virginia
Smith, Dave E.	864	Laborer	
Smith, Ruby	864	At Home	
Taylor, Dorothy A.	864	At Home	
Taylor, Herbert	864	Retired	
Whaley, Rudolph	864	Laborer	
Boddie, Margaret	868	At Home	Georgia
Crockett, Mary A.	868	At Home	
Daughtry, Florence	868	Housewife	
Hicks, Betty Jo	868	At Home	599 Columbus Ave.
Jackson, Helen	868	At Home	

COLUMBUS AVENUE (continued)

<u>NAME AND RESIDENCE</u>		<u>OCCUPATION</u>	<u>RESIDENCE</u> <u>January 1, 1963</u> <u>IF DIFFERENT</u>
Jackson, Robert E.	868	Chauffeur	
Kelsey, Lena A.	868	Supervisor	
O'Hagan, Thomas J.	868	Retired	
Reed, Lizella	868	Housewife	
Spights, Bertha	868	Housewife	220 W. Spfld.
Spights, Herbert	868	Retired	220 W. Spfld.
Swain, Elisha	868	Clerk	
Young, Vivian D.	868	Clerk	
Bacchus, John	872	Laborer	
Bryant, Minnie May	872	Housewife	
Bryant, Sylvester	872	Laborer	
Gilchrist, Alice	872	Housewife	
Graves, Virginia	872	At Home	
Ledbetter, Carlton	872	Laborer	226 W. Canton
Ledbetter, Helen L.	872	Housewife	226 W. Canton
McBride, Leonard	872	Laborer	
Pratt, Minnie	872	At Home	
Robinson, John	872	Laborer	Cambridge
Turner, Andrew	872	Shipper	
Willis, Ethel L.	872	Housewife	
Willis, James	872	Laborer	
Young, Nathaniel	872	Painter	
Young, Ruth	872	Housewife	
Baxter, Annie D.	973	Waitress	
Morgan, Florence	973	Housewife	
Morgan, Robert	973	Accountant	
Bryant, Frank	975	Cashier	
Foley, Elizabeth	975	Housekeeper	
Foley, William	975	Laborer	
Morrissey, Catherine	979	Housewife	
Morrissey, Gerald E.	979	Shipper	
St. Lawrence, Agnes	981	Housewife	
St. Lawrence, Edward A.	981	Cutter	
Fain, Chemmie P.	984	Packer	
Fain, Dorothy M.	984	Housewife	
Williams, Moses	984	Baker	
Williams, Sara	984	Housewife	
Cosby, Dan	988	Laborer	
Cosby, Zulia W.	988	At Home	
Cummings, Walter	988	Clerk	
Porter, Alfred	988	Houseman	
Porter, Estelle	988	Housewife	
Cummings, Julia	992	At Home	Georgia
Moses, Annie	992	Housewife	
Moses, Roman	992	Laborer	
Bailey, Louis	1038	Retired	
Dixon, Melvin J.	1040	Cook	141 Cabot St.
Williams, Robert	1040	Laborer	
Williams, Savannah	1040	Housewife	

COLUMBUS AVENUE (continued)

<u>NAMES AND RESIDENCE</u>		<u>OCCUPATION</u>	<u>RESIDENCE</u> January 1, 1963 <u>IF DIFFERENT</u>
Andrews, Frank G.	1046	Laborer	
Andrews, Lena	1046	Domestic	
Barrows, Antonio	1046	Laborer	
Barrows, Louise	1046	Housewife	
Aikens, Bertha	1048	Housewife	
Clark, Geneva	1048	Factory Wkr.	
Clark, Ralph A.	1048	U. S. A.	
Wiggins, Orttermese	1048	Housewife	
Wiggins, William B.	1048	Laborer	
Wills, Agnes	1048	Housewife	1947 Wash. St.
Holt, William J.	1101	Chef	
Straus, Theodore C.	1101	Draftsman	
Pasilides, Isaac	1107A	Factory Wkr.	
Varetimos, Christos	1107A	Painter	
Ritchie, Isabelle	1134	Housewife	48 E. Lenox
Ritchie, William	1134	Custodian	48 E. Lenox
Nyhan, Francis William	1173	Manager	
Gnezdilow, Illja	1190	Hosp. Wkr.	

STERLING STREET

<u>NAMES AND RESIDENCE</u>		<u>OCCUPATION</u>	<u>RESIDENCE</u> January 1, 1963 <u>IF DIFFERENT</u>
Milliner, Willie M.	28	Housekeeper	
Nixon, Comelia M.	28	Housewife	
Nixon, Mayo	28	Mechanic	
Elliott, Ethel	30	Housewife	
Elliott, Marion E.	30	Factory Wkr.	
Thompson, Beatrice	30	Housewife	
Weeks, William G.	30	Retired	
White, Lillian R.	30	Housekeeper	
White, Richard C.	30	Laborer	
Scott, Fannie	36	Factory Wkr.	
Scott, Moses	36	Laborer	
Scott, Seaboren	36	Molder	
Egleston, Mary	40	Housewife	
Miller, William	40	Retired	
Brown, Marie	53	Packer	64 Williams
Hayes, Norman	53	Laborer	
Wilson, Maria	53	At Home	
Crichlow, Hyacinth L.	55	Domestic	
Harper, Cliner	55	Housewife	
Harper, David B.	55	Clerk	
Howell, Ida	55	Housewife	686 Shawmut
Howell, Robert	55	Retired	686 Shawmut
Dore, Daniel H.	135	Retired	
Dore, Harriet E.	135	Housewife	

CHADWICK STREETRESIDENCE
January 1, 1963
IF DIFFERENT

<u>NAME AND RESIDENCE</u>		<u>OCCUPATION</u>	
Biel, Joseph	9	Retired	
Biel, Nellie	9	Housewife	
Boyce, Beverly R.	9	Housewife	346 Norfolk
Boyce, Vincent A.	9	Mechanic	571 Park
Jones, Ida	9	At Home	
Lavends, Anna	29	Housewife	
Lavends, Arthur	29	Carpenter	
Cella, Gennaro	20	Laborer	
Cella, Raffaella	20	Clerk	
Mcelroy, Jeannette I.	20	At Home	
Franckiewicz, Joseph J.	30	Foreman	
Franckiewicz, Joseph	30	Baker	
Anderson, Ginger	32	Housewife	
Anderson, William	32	Laborer	
Boudreau, Catherine	36	Housewife	
Boudreau, Donald	36	Cutter	
Campbell, Evelyn B.	36	Housewife	
Campbell, Thomas V.	36	Chauffeur	
Cousino, Eugene	36	Laborer	31 Adams St.
Martin, Helen	36	Housewife	
McCauley, William F.	37	Shipper	
Zitkus, Margaret	37	At Home	
McDonald, George C.	39	Roofer	
McDonald, Judith A.	39	Housewife	
Huffman, Theodore	40	Laborer	Ohio
Magner, Marie M.	40	Housewife	
Swanson, John H.	41	Laborer	
Swanson, Martha D.	41	Housewife	
Sheppard, Edna	42	Housewife	
Williams, Richard E.	42	Laborer	
Williams, Veronica	42	Housewife	
Daniels, Abbie W.	50	Housewife	
Daniels, Eugene	50	Cobbler	
Daniels, Robert E.	50	Cook	
Bergen, Florence	54	Housewife	
Bergen, Henry T.	54	Custodian	
Gibbons, John	54	Factory Wkr.	

VERNON PLACE - COURTRESIDENCE
January 1, 1963
IF DIFFERENT

<u>NAME AND RESIDENCE</u>		<u>OCCUPATION</u>	
Ball, Delia - (Place)	2	At Home	
Hansen, Alma "	2	At Home	
Coutsufis, Manny (Court)	3	Clerk	
Gerald, Agnes (Place)	4	Chauffeur	
Gerald, Ervin "	4	Baker	
Austin, Preston (Street)	100	Custodian	
Davis, Alfonso (Street)	100	Laborer	
Rogers, Loretta "	100	Factory Wkr.	

BILLS COURT

<u>NAME AND RESIDENCE</u>		<u>OCCUPATION</u>
Stamoulis, Arthur E.	1	Chef
Stamoulis, Eva	1	Housewife

RESIDENCE
January 1, 1963
IF DIFFERENT

ALBANY STREET

<u>NAME AND RESIDENCE</u>		<u>OCCUPATION</u>
Keohane, Bridget	834	Housewife
Keohane, Edmund	834	Laborer
Kelly, Joseph	847	Laborer
Jenkins, Helen E.	847	Housewife
Jenkins, Walter	847	Painter
Jenkins, William L.	847	Operator
Girardi, Filomena	847	Housewife
Eaton, Louis F.	849	Machinist
Eaton, Regina E.	849	Housewife
Masutto, Alice M.	849	Housewife
Masutto, Frank	849	Custodian
Gurzik, Walter	850	Clerk
Foster, Edward A.	851	Operator
Foster, Harriet L.	851	Housewife
Foster, James J.	851	Chauffeur
Foster, Robert A.	851	Mechanic
Sevene, Albina L.	851	At Home
Stoltz, Francis H.	852	Inspector
Stoltz, Marie E.	852	Housewife
Cavassa, Helen	854	Clerk
Cavassa, Frank	854	Operator
Crommett, Helen N.	854	Operator
Gray, Manuel A.	854	Chauffeur
Myatt, Agnes	854	Housewife
Griffin, Alice H.	R-858	Social Worker
Hooley, James	R-858	Student
Hooley, Veronica J.	R-858	Supervisor
Rowland, Elsie	R-858	Clerk
Maurs, Eizens	864	Laborer
Maurs, Emilija	864	Housewife
Maurs, Richard	864	Laborer
Glennie, Rita E.	876	Housewife
Kildare, Walter	876	Retired
Murphy, Esther	876	At Home
Aylward, Anna L.	883	Housewife
Hughes, Elizabeth A.	883	Housewife
Hughes, Thomas J.	883	Porter
Weaver, Earl	883	Cook
Weaver, Earl	883	Laborer
Weaver, Frances	883	Housewife
Kelleher, Janet H.	885	Clerk
Kelleher, Sylvia E.	885	Housewife

RESIDENCE
January 1, 1963
IF DIFFERENT

25 Chadwick
52 Cliff
Ohio
52 Cliff

197 Eustis
197 Eustis

124 Cushing Ave.
14 Windmere Rd.

187 Shawmut

19 Newland
19 Newland

WESTON STREETNAME AND RESIDENCE

Collins, Joe	23	Mechanic
Jefferson, Katherine	23	Domestic
Pearson, Melvin	23	Shoemaker
Rancourt, John A.	23	Cook
Fitzpatrick, Hattie A.	28	At Home
Dotson, Raymond	33	Janitor
Mills, Victor	33	Retired
Smith, Manuel, Jr.	33	Hosp. Wkr.
German, Irene	35	Domestic
Palmer, Classie M.	35	At Home
Thomas, Leroy	35	Nurse
Thomas, Zerdies	35	Housewife
Gause, Cinderella	37	At Home
Gause, Gonza	37	Clerk
McNary, Mamie	37	Domestic
Pruitt, Aaron	37	Clerk
Pruitt, Bertha	37	Factory Wkr.
Busby, Cecil M.	41	Factory Wkr.
Busby, Florence	41	Housewife
Busby, Mabel	41	Housewife
Busby, Warren	41	Technician
Tischlow, Sergei	69	Technician

RESIDENCE
January 1, 1963
IF DIFFERENT

1133 Tremont

33 Sterling
599 Columbus
Waltham

CARLOW STREETNAME AND RESIDENCE

Dresser, Anna M.	5	Housewife
Dresser, George N.	5	Operator
Liburdi, Edith P.	7	Housewife
Liburdi, Joseph F.	7	Cutter
Brown, Catherine E.	9	Clerk
Brown, James M.	9	U. S. N.
Atwood, Catherine T.	10	Domestic
Croft, Georgianna	11	Housewife
Croft, Melvin C.	11	Packer
Lavigne, Barbara E.	12	Housewife
Lavigne, Edward G.	12	Policeman
Hanscom, Anna	13	Housewife
Hanscom, Gary P.	13	Laborer
Hanscom, Robert F.	13	Roofer
Hanscom, William A.	13	Roofer
Hanscom, William A.	13	Roofer
Nolan, William	14	Retired

RESIDENCE
January 1, 1963
IF DIFFERENT

HUNNEMAN STREET

RESIDENCE
 JANUARY 1, 1963
 If
 Different --

<u>NAME AND RESIDENCE</u>		<u>OCCUPATION</u>
Defillippo, Annie	71	Housewife
Fiorenzi, Mary R.	71	Housewife
Shannon, Florence	71	Housewife
Shannon, Thomas	71	Clerk
Carusone, Enrico	73	Retired
Carusone, Genevieve	73	Housewife
Carusone, John	73	Foreman
Carusone, Margaret	73	Housewife
Tiso, Mary R.	73	Housewife
Grillo, Mary H.	95	Operator
Pagano, Frank	95	Clerk
Pagano, Mary	95	Housewife
Quartoro, Lena	95	Housewife
Calcagno, Joseph A.	97	Attendant
Calcagno, Pauline	97	Housewife
Cox, Anna	97	Housewife
Cox, Walter A.	97	Milkman
Verna, Carmela N.	97	Laundress
Arsenault, Edmund J.	99	Laborer
Arsenault, Martha	99	Housewife
Delvendo, Cosmo	99	Laborer
Stoltz, Walter A.	99	Clerk

NEWBERN STREET

RESIDENCE
 January 1, 1963
IF DIFFERENT

<u>NAME AND RESIDENCE</u>		<u>OCCUPATION</u>
Bailey, Hazel	15	Housewife
Canada, Viola	15	Housewife
Moore, Van N.	15	Laborer
Ellis, Albert	16	Retired
Ellis, Lillian W.	16	At Home
Martin, Edward A.	16	At Home
Sisco, Marion D.	16	At Home
White, Bernice	16	Presser
Wade, Robert	18	Laborer
Webb, Elsie M.	18	At Home
Lee, Sarah Eliza	27	Housewife
Ellis, George	30	Laborer
Ellis, Lucille	30	Domestic
Layne, Bernell	31	Presser
Perkins, Mary L.	34	Technician
McKnight, Ella	36	Domestic
Payne, John L.	36	Stitcher
Payne, Marie K.	36	Domestic

1068 Tremont

10 Albion

HARRISON AVENUE

<u>NAME AND RESIDENCE</u>		<u>OCCUPATION</u>	<u>RESIDENCE</u> January 1, 1963 <u>IF DIFFERENT</u>
Gregory, Julie	985	Housewife	New Bedford
Gregory, Paul	985	Clerk	118 Bower
Smith, Bernice	985	Housewife	New Bedford
Brown, Evelyn	1106	Housewife	
Bunti, Doris	1106	Clerk	
Campbell, Nelson L.	1106	Retired	
Carrion, Herminia H.	1106	Housewife	135 W. Newton
Carrion, Jesus	1106	Clerk	135 W. Newton
Clark, Amos M.	1106	Shipper	
Collins, Annie	1106	At Home	
Ingram, Grace T.	1106	Clerk	
Ingram, John C.	1106	Clerk	
Jones, Mary	1106	Housewife	
Murchison, Alexander	1106	Clerk	
Murchison, Nellie R.	1106	Housewife	
Nyman, Anne E.	1106	Housewife	
Peddell, Frederick J.	1106	Chauffeur	1142 Harrison
Peddell, Mildred J.	1106	Housewife	1142 Harrison
Powers, Mabel J.	1106	Domestic	
Randall, Margaret	1106	Housewife	
Sexton, Barbara	1106	Housewife	
Gaulin, Ida M.	1107	Operator	
Hart, Curtis	1107	Laborer	
McDuffie, Jonnie	1107	Housewife	
Andracchio, Dorothy	1109	Housewife	
Andracchio, Salvatore	1109	Cutter	
Roberts, Matilda	1109	Housewife	
Springer, Beresford	1109	Retired	
Walker, Helen	1109	Housewife	4 Champney Pl.
Walker, Horace	1109	Bartender	4 Champney Pl.

WASHINGTON STREET

<u>NAME AND RESIDENCE</u>		<u>OCCUPATION</u>	<u>RESIDENCE</u> January 1, 1963 <u>IF DIFFERENT</u>
Priest, Lillian	2049	Operator	
Catlin, Marie	2075	Housekeeper	
Catlin, St. Aubin	2075	Janitor	
Collins, Harry P.	2075	Cook	
Collins, Mattie	2075	Domestic	
Sampson, Julia	2079	Housewife	
Sampson, William	2079	Waiter	
Williams, Montine	2079	Factory Wkr.	
Durham, Julius	2083	Chauffeur	
McIver, Emily	2083	Waitress	96 Camden
Pettie, Dora R.	2083	Waitress	33 Bower
Potter, Harry L.	2083	Clerk	
Johnson, Eva H.	2085	Housewife	2075 Wash.
Johnson, Helen M.	2085	Student	
Johnson, Riley	2085	Retired	2075 Wash.
Wrenn, Curtis William	2085	Mover	
Wrenn, Lillian T.	2085	Housewife	

RUGGLES STREETRESIDENCE
January 1, 1963
IF DIFFERENT

<u>NAME AND RESIDENCE</u>		<u>OCCUPATION</u>	
Brown, Ella M.	190	At Home	
Brown, George	190	Laborer	
Clark, Beulah M.	190	Housewife	
Fuller, Howard L., Sr.	190	Laborer	
Fuller, Latrella	190	Housewife	
Johnson, Earline	190	Housewife	155 Cabot
Johnson, Thomas	190	U. S. N.	155 Cabot
Owens, Odell	190	Printer	
Owens, Virginia N.	190	Housewife	
Tyrance, Ellis W.	190	Laborer	
Delaney, Lorraine	200	Housewife	
Hall, Jesse	200	Mechanic	
Hall, Sylvia	200	Housewife	
Hall, Viola	200	Housewife	
Lewis, Anita M.	200	Housewife	
Sledge, Barbara	200	Housewife	
Sledge, Frank	200	U. S. N.	
Smith, Eleanor B.	200	Housewife	
Smith, Terrill A.	200	Packer	
Harftbosh, Martha	216	At Home	
Redish, Rita Marie	216	At Home	
Thompson, Elfreda	270	Housewife	
Thomas, Lonnie	270	Porter	
Thomas, Myril	270	Housewife	
Wade, Dorothy A.	270	Clerk	
Wade, Mack M.	270	Clerk	
Walker, William A.	270	Laborer	
White, Laura A.	270	Housewife	
Wright, Armantin	270	Housewife	
Raynor, Marie	287	Attendant	1 Fountain Pl.
Roberts, Melvyn	287	Clerk	1 Fountain Pl.
White, Edward R.	287	Bookkeeper	1 Fountain Pl.
Anderson, Portia	290	Nurse	
Blue, Ruth L.	290	Housewife	
Bresnahan, Mary J.	290	Saleswoman	
Cameron, Edson	290	Mechanic	48 Annuncatn Rd.
Cameron, Everline	290	Housewife	48 Annuncatn Rd.
Divenuti, Frances G.	290	Housewife	
Divenuti, Warren J.	290	Laborer	
Dooley, Margaret E.	290	Operator	
Hollingsworth, Cyril D.	290	At Home	
Lougee, Georgia	290	At Home	
Lougee, Sarah E.	290	At Home	
Mendez, Martin	290	Laborer	New York
Mendez, Marie	290	Housewife	
Robinson, Minnie	290	At Home	
Smith, Doris Mordalins	290	At Home	
West, Jane A.	290	Housewife	
McDevitt, Florence M.	295	Factory Wkr.	
McDevitt, Patrick	295	Factory Wkr.	
Stathakes, Catherine	295	Housewife	
Stathakes, Christopher	295	Attendant	
Brennan, Mary	300	At Home	
Ebraico, Carmelo	300	Housewife	
Ellis, Amy	300	Housewife	

RUGGLES STREETNAME AND RESIDENCEOCCUPATIONRESIDENCE
January 1, 1963
IF DIFFERENT

Espirito, Domingo	300	Laborer	
Goodings, Cora	300	Housewife	250 Ruggles
Goodings, Roosevelt	300	Mechanic	250 Ruggles
Green, Georgia	300	Housewife	
Green, James	300	Restaurateur	
Harris, Bessie	300	At Home	
Henry, Robert E.	300	Tailor	
McMillion, James	300	Student	
McMillion, Susie	300	Housewife	
Monterio, Manuel	300	Retired	
Myars, Elmar	300	Housewife	
Smith, Mary	300	Housewife	68 Annunca'tn Rd.
Smith, Sheldon	300	Retired	68 Annunca'tn Rd.
Reiser, Frederick J.	325-	Retired	
Reiser, Minnie E.	325	Housewife	

TREMONT STREETNAME AND RESIDENCEOCCUPATIONRESIDENCE
January 1, 1963
IF DIFFERENT

Bradshaw, James D.	1081	Porter	
Bradshaw, Mary E.	1081	Housewife	
Brown, Nettie S.	1081	Domestic	
Dozier, Virginia	1081	Housewife	
Dunbar, Richard	1081	Retired	1083 Tremont
Herring, Elizabeth	1081	Housewife	1083 Tremont
Morris, Joseph R.	1081	Packer	
Murray, Louise	1081	Housewife	
Murray, Ralph	1081	Welder	
Thompson, Harvey M. C.	1081	Mechanic	
Thompson, Ora	1081	Nurse	
Thompson, Ponnice	1081	At Home	
Fisher, Walter	1083	Chauffeur	
Galloway, Geneva	1083	Housewife	
Smith, Nellie	1083	Housewife	
Smith, Thomas	1083	Laborer	
Vass, Paul	1083	Retired	
Duarte, Caroline	1086	Housewife	
Duarte, Francisco S.	1086	Laborer	
Seaman, Juanita	1086	Housewife	
Walker, Joseph	1086	Porter	
Walker, Margaret	1086	At Home	
Williams, Frances D.	1086	Student	
Bussey, Lulu	1117	St Home	
Dacruz, Pheophilus Z.	1117	Laborer	
Davis, Mamie	1117	Housewife	
Davis, Robert	1117	Factory Wkr.	
Davis, Sallie	1117	Housewife	
Fields, John	1117	Cutter	
Harier, Laura	1117	Factory Wkr.	
Hussey, Sarah	1117	Housewife	1 Webber Pl.
Mateo, Lorenzo	1117	Factory Wkr.	

TREMONT STREET (continued)

<u>NAME AND RESIDENCE</u>	<u>OCCUPATION</u>	<u>RESIDENCE</u> January 1, 1963 <u>IF DIFFERENT</u>
McGee, Delphina A.	1117 Domestic	
Tunnell, Elizabeth	1117 Laundry Wkr.	
Wright, Louise	1117 Housewife	154 Warren
Graves, Alline	1125A Housewife	
Graves, Flora Marie	1125A Housewife	
Graves, Woodrow	1125A Clerk	
Holt, Betty J.	1125A Housewife	
Holt, James	1125A U. S. N.	
Jackson, Mildred A.	1125A Assembler	
Moseley, Lizzie	1125A Domestic	
Rogers, Mamie Mims	1125A Housewife	
Scott, Geraldine	1125A Stitcher	
Thornton, Howard L.	1125A Laborer	
Thornton, Mildred	1125A Housewife	
Walker, Armitine	1125A Domestic	
Ashford, Gene	1133 Clerk	
Baynes, Clarence K., Jr.	1133A U.S.A.F.	
Baynes, Mildred	1133A Housewife	
Conway, Susan C.	1133A Hosp. Wkr.	
Costello, Mary M.	1133A Housewife	
Costello, Thomas F.	1133A Machinist	
Costello, William F.	1133A Clerk	
Ellison, Ledell	1133A Laborer	
Ellison, Queen	1133A Housewife	
Kelley, Alonzo C.	1133A Operator	
Lord, Mary	1133A Housewife	
Prear, Francine	1133A Clerk	248 Warren
Willis, Eddie	1133A Operator	
Willis, Janie	1133A Housewife	
Arkord, Mattie	1137A Matron	
Brown, James T.	1137A Custodian	
Clark, Fannie	1137A Housewife	
Clark, Leon	1137A Painter	
Lewis, Elizabeth C.	1137A At Home	
Smith, Frances L.	1137A Waitress	
Speaker, Bernard	1137A Porter	Rhode Island
Walker, James F.	1137A Clerk	
Benders, Joseph	1138 Laborer	
Holloway, Grace	1138 Domestic	
Johnson, Mildred V.	1138 Domestic	Cambridge
Thomas, Robert	1140 Laborer	Cambridge
Bennett, Maude	1158 At Home	6 Warren Pl.
Brown, Karen L.	1158 Factory Wkr.	
Brown, Mary L.	1158 At Home	
Clark, Edith	1158 Housewife	
Clements, Fannie	1158 Domestic	
Couch, Joseph E.	1158 Laborer	
Jackson, Catherine	1158 Housewife	
Jackson, Henry	1158 Cobbler	
Landrum, Annie Mae	1158 Clerk	
Landrum, Charles	1158 Mover	

TREMONT STREET (continued)RESIDENCE
January 1, 1963
(IF DIFFERENT)

<u>NAME AND RESIDENCE</u>		<u>OCCUPATION</u>
Ramos, Frances	1158	Clerk
Reid, Henry G.	1158	Laborer
Reid, Sallie	1158	Housewife
Adams, Harold B.	1170	Laborer
Adams, Marie	1170	Housewife
Barrett, Sibyl	1170	Housewife
Battle, Blanche	1170	Housewife
Battle, Elijah	1170	Butcher
Battle, Major	1170	Laborer
Battle, Vivina	1170	Housewife
Black, Rose L.	1170	Clerk
Cotrone, Ellen	1170	Housewife
Cox, Julia	1170	Housewife
Davis, Jeannette	1170	Housewife
Davis, Walter J.	1170	Presser
Drayton, John	1170	Laborer
Edmead, Inez	1170	Factory Wkr.
Fenno, Gertrude	1170	Housewife
Fulton, Kathy	1170	Housewife
Fulton, Sherman	1170	Clerk
Harrison, Anita E.	1170	Housewife
Jackson, Frances	1170	Housewife
Jackson, Robert	1170	U.S.C.G.
Johnson, Jacob R.	1170	Operator
Johnson, Lawrence R.	1170	Student
Johnson, Maria	1170	Domestic
Jones, Clarence	1170	Retired
Jones, Elizabeth M.	1170	Housewife
Lee, Mabel	1170	Housewife
McCarthy, Hazel L.	1170	Housewife
Morris, Mary	1170	At Home
Pina, Elizabeth	1170	Operator
Randolph, Beatrice	1170	Domestic
Ryner, Eleanor G.	1170	Housewife
Sumpter, Ella	1170	Housewife
Taylor, Florence	1170	Housewife
Grant, Quincy	1282	Laborer
Kimble, Annie B	1282	Housewife
Kimble, James	1282	Operator

FIELD STREETRESIDENCE
January 1, 1963
(IF DIFFERENT)

<u>NAME AND RESIDENCE</u>		<u>OCCUPATION</u>
Goldmeer, Arthur	5	Clerk
Saunders, John	5	Artist
Marcoccio, Lidia	8	Factory Wkr.
Marcoccio, Pietro	8	Clerk
Marcoccio, Umberto	8	Waiter
Stathakes, Anita	10	Cashier
Stathakes, George	10	Proprietor
Locke, Catherine F.	11	At Home
Locke, Charles E.	11	Laborer

FIELD STREET (continued)

<u>NAME AND RESIDENCE</u>		<u>OCCUPATION</u>	<u>RESIDENCE</u> <u>January 1, 1963</u> <u>(IF DIFFERENT)</u>
Smith, Louise D.	13	At Home	
Manson, Harry	15	Salesman	
Manson, Violet J.	15	Clerk	
Crawford, Edward J.	31	Clerk	
Outerbridge, David R.	31	Chauffeur	New Jersey
Cowie, Jillian R.	31	Student	
Downey, Emily	33	Secretary	
Kast, Joseph	33	Laundry Wkr.	
Zahara, Catherine T.	33	Maid	
Davis Alice G.	37	Domestic	
Doucette, Joseph F.	37	Clerk	
Giles, Rosa N.	37	Housewife	
Gordon, Ann B.	37	Teacher	
Gillmor, George W.	39	Student	153 Hemenway
Hannaford, Georgina	39	At Home	
Hyde, Christina P.	39	At Home	
Longo, Richard	39	Clerk	
Palmer, Dorothy	40	At Home	
Palmer, Katheryn E.	40	At Home	
Palmer, Thomas H.	40	Laborer	

TAVERN ROAD

<u>NAME AND RESIDENCE</u>		<u>OCCUPATION</u>	<u>RESIDENCE</u> <u>January 1, '63</u> <u>(IF DIFFERENT)</u>
Farris, Richard A.	4	Operator	
Gilmore, Edward	4	Lawyer	Wellesley
Sullivan, Patrick J.	4	Operator	
Chagaris, Anthony	15	Retired	
Chagaris, John N.	15	Clerk	
Chagaris, Nicholas J.	15	Retired	
Klesaris, Fannie	15	Factory Wkr.	
Klesaris, Nicholas	15	Grocer	
Young, Eleanor	17	Entertainer	New York
Joseph, Erik	19	Tailor	
Tiews, Johanna F.	19	Librarian	
Grigoropoulos, George	21	Shoemaker	
Lambros, Anna	21	Factory Wkr.	
Lambros, Arthur	21	U. S. N.	
Lambros, Nicholas	21	Chauffeur	
McAdoo, Myra	23	Operator	
Wollent, Edna M.	23	Nurse	
Juffer, Leo D.	23A	Musician	
Mandolfo, Anthony L.	23A	Student	
Amarasingham, Chandra R.	25	Doctor	
Amarasingham, Gwendolyne E.	25	Teacher	
Bennett, Terry	24	Student	14 L. Psteur Av.
Robbins, Martin	25	Teacher	Belmont

SHAWMUT AVENUE

<u>NAME AND RESIDENCE</u>		<u>OCCUPATION</u>	<u>RESIDENCE</u> January 1, 1963 <u>(IF DIFFERENT)</u>
Carter, Emma J.	679	At Home	561 Mass. Ave.
Green, Fletcher	679	Bartender	
Rice, Benzena	679	Presser	
Rice, John Ray	679	Shipper	
Robinson, Finley	679	Clerk	
Robinson, Olive	679	Clerk	
White, Janet L.	679	Clerk	
Badger, W. M.	679	Cook	
Kelley, Alberta	681	Housewife	
Kelley, William H.	681	Laborer	
Scott, Annie	681	At Home	96 Hammond
Siplin, Anne	681	Domestic	
Burrill, Edward N.	683	Retired	84 Sterling
George, Dorothy, M.	683	Housewife	North Carolina
George, Richard	683	Mechanic	North Carolina
Hicks, Jane	683	Housewife	19 Hammond
Hicks, Joseph	683	Operator	19 Hammond
Ridley, Margaret A.	683	At Home	84 Sterling
Walker, Agnes	683	Housewife	84 Sterling
Walker, Clifford L.	683	Laborer	84 Sterling
Bishop, John E.	685	Cook	
Bishop, Luke	685	Cook	
Bishop, Sallie	685	At Home	
Downey, Alice M.	685	Domestic	Canada
Greene, Georgia M.	685	Housewife	
Greene, William H.	685	Sexton	
Leoney, Susie	685	Domestic	
Henry, Frances E. A.	686	Social Wkr.	
Lewis, Florence J.	686	Factory Wkr.	
Nevels, Humphreys B.	686	Porter	
Richardson, Eva M.	686	Housewife	
Williams, Juanita	686	At Home	
Brown, Emily C.	687	At Home	
Brown, Stanley	687	Foundry Wkr.	
Herbin, Howard	687	Laborer	
Herbin, Julius	687	Clerk	
Jerkins, Joe I.	687	Clerk	
Jerkins, Mattie P.	687	Housewife	
Mann, Grace T.	687	Teacher	
Mann, Helen E.	687	Clerk	
Mann, John E.	687	U. S. A. F.	
Edwards, Moses	688	Supt.	
Edwards, Rudolph	688	Laborer	
Squash, Dorothy	688	Presser	
Ashley, Barbara	689	At Home	741 Shawmut Av
Johnsie, Mickey L.	689	Secretary	
Johnson, Lucinda	689	Housewife	
Johnson, Phyllis	689	Housewife	
Murchison, Russell	689	Laborer	72 Williams St.
Murchison, Ruth	689	Housewife	72 Williams St.
Brown, Mildred	690	Operator	
Carney, Julia L.	690	Housewife	
Carney, Martha L.	690	Supervisor	
Cheatham, Anna Lee	690	Waitress	

SHAWMUT AVENUE (continued)

<u>NAME AND RESIDENCE</u>	<u>OCCUPATION</u>	<u>RESIDENCE</u> January 1, '63 <u>(IF DIFFERENT)</u>
Cheatham, Martha	690 At Home	
Cheeks, Lillian E.	690 Laundry Wkr.	
Collins, Elijah H.	690 Laborer	
Fortune, Emmett W., Jr.	690 Clerk	
Gibson, Corrine	690 Stitcher	
Gibson, Raymond	690 Presser	
Lopez, Joseph F.	690 Chauffeur	
Lopez, Ruth A.	690 Examiner	
Simpson, Albert	690 Cook	
Thompson, Fred	690 Waiter	
Thomson, Keturah P.	690 Housewife	
Wells, Mabel	690 Housekeeper	
Wilson, Magnolia	690 Housekeeper	
Bennett, George	691 Laborer	40 Sterling St
Fernandez, Jack	691 Factory Wkr.	Africa
Humphries, Eugene	691 Laborer	
Humphries, Mary B.	691 Operator	
Irvine, Andrew	691 Chauffeur	2161 Wash. St.
Irvine, Mary	691 Housewife	2161 Wash. St.
Mendez, Jose L.	691 Merchant	
Pina, Antonio	691 Factory Wkr.	Africa
Pinckney, Harold M.	691 Laborer	
Pinckney, Inez	691 Housewife	
Pinckney, Stanley B.	691 Student	
Crawford, William H.	694 Steel Wkr.	
Green, Doris S.	694 At Home	
Jenkins, Irene	694 Domestic	
Neal, Lonnis P.	694 Signmaker	
Jacobs, Grover C.	696 Chauffeur	Mississippi
Jordan, Caral	696 Rubber Wkr.	
Jordan, William	696 Salesman	
DeSilva, Manuel A.-	696 Manager	
Fuller, Nelson	704 Laborer	
Mack, Willie	704 Student	
McElroy, Mettie	704 Factory Wkr.	Georgia
Neal, Diane	704 Housewife	Maine
Neal, Lownie	704 Laborer	696 Shawmut
James, Evelyn A.	708 Housekeeper	
Kelley, James W.	708 Presser	
Steward, Beatrice	708 Presser	
Heyward, Balonte F.	710 Shipper	12 Windsor
McElroy, John C.	710 Clerk	
McElroy, Nathile	710 Stitcher	
Peterson, Charles	710 Laborer	
Darden, Mary	714 Factory Wkr.	716 Shawmut
Darden, Samuel	714 Factory Wkr.	Alabama
Jones, Henry	714 Janitor	
Jones, Ida	714 Housewife	
Littlejohn, Adam B.	716 Presser	
Littlejohn, Dorothy	716 Clerk	
Murphy, Juanita	716 Clerk	
Gordon, Mary Ida	718 Housewife	
Gordon, Robert	718 Retired	
Stevens, Marie	718 Housewife	
Stevens, Wilson	718 Retired	

SHAWMUT AVENUE (continued)

<u>NAME AND RESIDENCE</u>		<u>OCCUPATION</u>	<u>RESIDENCE</u> January 1, 1963 (IF DIFFERENT)
Armstrong, Mary	720	Beautician	
Clegg, John F.	720	Presser	
Clegg, Mary	720	Beautician	
Howard, James	720	Supervisor	South Carolina
Howard, Mary	720	Housewife	South Carolina
Scruggs, Marionette	720	Beautician	
Hayes, Naomi	722A	At Home	120 Cedar
Newett, Vera	722A	At Home	
Ellison, Beulah	724A	Stitcher	
Ellison, Willie Tate	724A	Laborer	
Banks, Lottie	741	Housewife	
Banks, William	741	Laborer	
Murphy, Louise M.	741	Housewife	4 Claremont Pk.
Murphy, Willie A.	741	Shipper	4 Claremont Pk.
Ward, Bessie	741	Presser	
Ward, Jimmie L.	741	Factory Wkr.	
Hoffman, Clara	742	Housewife	
Hoffman, James A.	742	Laborer	
Houston, George	742	Laborer	
Juitt, Eva	742	Housewife	
Williams, Dorothy	742	Housewife	
Williams, Edgar	742	Rigger	
Dale, Will H.	745	Retired	
Davis, Evon D.	745	Laborer	
Joyner, Louise	745	Factory Wkr.	
McDale, Will H.	745	Retired	
Ray, Lorraine M.	745	Coater	
Woods, Rose Lee	745	At Home	
Aikens, Bertha	746	At home	1048 Columbus
Baley, Jenny	746	Domestic	
Bernard, Roger	746	Laborer	
Boume, Dorothy	746	Presser	
Dubose, Carrie	746	Laundry Wkr.	Florida
Jones, Carrie M.	746	Housewife	New York
Jones, Mary Lee	746	Housewife	Alabama
Jones, Roy	746	Laborer	New Hampshire
Jones, William	746	Clerk	
Mills, Margaret R.	746	Housewife	
Morrison, Jean	746	Housewife	
Rucker, Irene	746	Domestic	782 Parker
Trusty, Calra A.	746	Housewife	
Trusty, Ernest E.	746	Laborer	
Watson, Carrie	746	Factory Wkr.	46 Circuit
Watson, John R.	746	Student	46 Circuit
Williams, Lee	746	Janitor	
Barnwell, Ogreatea	747	Housewife	
Barnwell, Sally M.	747	At Home	
Hinds, Ernestime	747	Domestic	
Nelson, Henry	747	Policeman	5 Auburn
Nelson, Virginia	747	Housewife	5 Auburn
Smith, Flora B.	747	Housewife	
Bell, Rosie	749	Assembler	21 Pembroke
Clapp, Julie	749	Housewife	16 Hammond

SHAWMUT AVENUE (continued)NAME AND RESIDENCEOCCUPATIONRESIDENCE
January 1, 1963
(IF DIFFERENT)

Colon, Narcisco Pina	749	Presser	
Wells, Gloria A.	749	Housewife	
Wells, Oscar A.	749	Warehouseman	
Brown, Arthur	750	Electrician	8 Dorr
Brown, Caudis	750	Housewife	
Brown, James	750	Shipper	8 Dorr
Brown, Lelia	750	Housewife	8 Dorr
Carr, Marvin	750	Installer	
Carr, Mildred	750	Housewife	
Daniels, Thelma R.	750	At Home	
English, Ida A.	750	Domestic	
Forest, Guy	750	Retired	8 Dorr
Forest, Reddie	750	At Home	8 Dorr
Miller, Flossie	750	Domestic	
Patterson, Pat	750	Machinist	8 Dorr
Simmons, Bessie R.	750	Domestic	
Smith, Junior Lee	750	Laborer	North Carolina
Smith, Mabel	750	Housewife	North Carolina
Sorrell, Beverly A.	750	At Home	
Alves, Emma	751	At Home	
DaSilva, Andrew M.	751	Machinist	
DelValle, Jacob	751	Waiter	746 Shawmut Av
Jenkins, Donal M.	751	Student	
Jenkins, Mildred	751	Restaurant Wkr.	
Jenkins, William A.	751	U. S. A.	
Smith, Clarone	751	Housewife	
Smith, Joseph E.	751	Porter	
Smith, Joseph E., Jr.	751	Laborer	

Commonwealth of Massachusetts

Department of Public Works

RELOCATION DATAList of Owners

<u>LOCATION</u>	<u>DESCRIPTION AND USE OF STRUCTURES</u>	<u>TOTAL ASSESSMENT</u>
4 Tavern Road Marion H. Gilmore	3 Family Wood 3.5 Story	4,500
15 Tavern Road John N. Chagaris	3 Family 3.5 Story Wood	2,000
17 Tavern Road John N. Chagaris	1 Family 3.5 Story Wood	1,600
19 Tavern Road John N. Chagaris	2 Family 3.5 Story Wood	2,000
21 Tavern Road Nicholas A. Lambros	2 Family 3.5 Story Wood	3,000
23 & 23A Tavern Road Theodore A. Greene Trustee Park Deb. Realty Trust	1 Family - 2 Story 3 Family - 3 Story	4,000
25 Tavern Road K & K & Gloria Itirbodsheimer	3 Family 3 Story Wood	4,300
1 Bills Court Arthur Stamoulis	1 Family 2 Story Wood	1,100
5 Field Street Lucy Goldmeer	1 Family 2 Story Wood	7,000
8 Field Street Umberto Marcoccio	2 Family 2 Story Wood	1,200
10 Field Street George Stathakes	1 Family 2 Story Wood	1,200
11 Field Street Catherine F. Locke	1 Family 2 Story Wood	1,200
13 Field Street Louise D. Smith	2A 2 Story Wood	1,600
15 Field Street Harry Manson	1 Family 2.5 Story Wood	1,600

Highway Relocation Data.

List of Owners

Location	Description & Use of Structure	Assessment
99 R Warwick St. (Par. 2199)	Berman, Walter & Tillie Trsts. of Berman Realty Trust 8 fam. 4 st. Brick	\$5500.00 Cond. Fair
01 & 97 Cabot St. (Par. 2219)	Chartkoff, Alan J. 5 fam. st. 3 st. Wood	\$3500.00. Cond. Poor
137 Cabot St. (Par. 2269)	DeSoto, Ariska A. 2 fam. 2 st. 5 st. Wood	\$1800.00
096 Tremont St. (Par. 2253)	Adams & Co., Inc. (Mass. Corp.) 4 fam. & st. 3 st. Wood	\$3500.00 Cond. Poor
23 Weston (Par. 2227)	Adams & Co., Inc. (Mass. Corp.) 3 fam. 3 st. Brick	\$1800.00 Cond. Fair.
27 Weston (Par. 2228)	Adams & Co., Inc. (Mass. Corp.) 2 fam. & 3 st. 5 st. Wood	\$2100.00 Cond. Poor
16 Newbern (Par. 2239)	Lillion Trust (Bessie Napolion) 3 fam. 3 st. Wood	\$1400.00 Cond. Fair
18 Newbern 'Par.#2238)	Webb, Exie & Henry J.T. 3 fam. 3 st. Wood	\$1300.00 Poor
29 Western to Newbern (Par. 2229)	Adams & Co., Inc. Mass. Corp. 3 fam. 3 stores 5 st. W & Brick	\$2000.00 Cond. Poor
36 Newbern St. (Par. 2230)	Farrington, Evelyn A. 2 fam. 2-1/2 Wood	\$1200.00 Cond. Poor
34 Newbern St. (Par. 2231)	Ryan, Mary C. & Leroy 2 fam. 2-1/2 st. Wood	\$1200 Cond. Poor
32 Newbern (Par. 2232)	Ellis, George C. & Lucille 1 fam. 2-1/2 st. Wood	\$1200.00 Cond. Poor
30 Newbern (Par. 2233)	Ellis, George C. & Lucille 1 fam. 2-1/2 st. Wood	
27 Newbern (Par. 2266)	Lee, Sarah E. 1 fam. 2 st. Wood	\$2200.00 Cond. Poor
31 Newbern (Par. 2267)	Hadley, William 2 fam. 2 st. Wood	\$2400.00 Cond. Poor
1 Howe Ct. Cor. Tremont St. 'Par. 2287)	Lucas, George P. 2 fam. 3 st. Wood	\$5500.00 Cond. Fair

HIGHWAY RELOCATION DATA

<u>Parcel No.</u>	<u>List of Owners</u>	<u>Total Assessment</u>
2310	Stuart John J. 136 Cabot Cor. Weston 3 Family 3 sty. Wood - Fair	\$ 2,500.00
2819	Boston Lamp Co., Inc. Colubmus Ave. S. Cor. Prentess and 1285 Tremont Street- Factory	20,000.00
2790	Socony Oil Co. Gas Station	19,000.00
2792	Karas Ida 965 Columbus Ave. Building 1st C.B.	4,500.00
2793	Herthill, Louise F. 967 Columbus 3 - 3 Family - 3 sty. Wood -. Fair	6,000.00
2794	Smith, Maurice L. & Lucille D. 973 Columbus Ave. 1 Family 2 sty. Wood - Fair	2,000.00
2795	Griffin, Keith J. 975 Columbus Ave. 1 Family 2 sty. Wood - Fair	2,000.00
2797	Callahan, Cath. H. 979 Columbus Ave. 1 Family 2½ sty. Wood - Fair	2,200.00
2798	Saint Laurence Agnes 981 Columbus Ave. 1 Family 2½ sty. Wood = Fair	2,000.00
2969	Koshgarian Geo. B. 1212 Tremont Cor. Vernon 2 Family st. 3 sty. Wood - Fair	3,800.00

HIGHWAY RELOCATION DATA

<u>Parcel No.</u>	<u>List of Owners</u>	<u>Total Assessment</u>
2968	Koshgarian , George 1216 Tremont St. 1 sty Wood - Fair	\$ 2,000.00
2801	Central Fuel Co. 995 A Columbus Ave. 1 sty. wood Bus.	1,900.00
2802 & 2803	Central Fuel Co. Office	11,400.00 8,500.00
2804	Zwick Melvin, Evelyn & Nicholas 1021 Columbus Ave. Business	4,300.00
2816	Prentiss Apartments Inc. 1042 - 1048 Columbus Ave. 11 Houses 3 Family - Poor	20,000.00
2891	Gateman Ephraims 1067 Columbus Ave. Gas Station Business	3,100.00
2007	Anderson, Albert E. 135 Sterling Cor. 94 Cabot 3 Family 2½ Wood 1 Family 2½ Wood - V.Poor	3,600.00
2010	Luacaw, Edward J. 84 Cabot Cor. Windsor 1 Family 1½ Sty. Wood - V.Poor	2,500.00
2020	Hershman, Rose 70 Warwick 3 Family 3 Sty. Brick - Poor	2,300.00
2811	Vrattos, Steve 1235 Tremont St. - Fair 4 Family 3 sty. 3½ sty. W.& B.	7,000.00

HIGHWAY RELOCATION DATA

<u>Parcel No.</u>	<u>List of Owners</u>	<u>Total Assessments</u>
2691	City of Boston - Boarded Up Requires renovation 109 Sterling Street 4 Story brick, 24 apts. - Poor	3,000
	William C. Currier 1060 Tremont St. 5 Story Brick, 8 family - Fair	9,600
	G. Currier 1062 Tremont St. 5 Story brick - 8 family - Fair	5,700
	C. Johnson 1064 Tremont Street 3 Story Brick 2 Family & Store	4,200
	1066 Tremont Street 3 Story Brick 2 Family & Store	4,200
	1070 Tremont Street 3 Story Brick Store & 2 Family	4,400
	1076 Tremont St. S. Harvit American Chocolate Co. 1 Story Mercantile	13,000
2126	B. & Starr Co., Inc. 2093 Washington St. 1 St., 1 Story W. B.	7,500
2041	Robert Green 53A Sterling St. 3 Family - Poor	2,900
2042	55 Sterling Street 3 Family, 3 St. B. - Ppor	2,900
2007	Albert Anderson 135 Sterling St. 1 Family 2.5, W, - Poor 3 Family " " - V. Poor	3,600
2204	Walter Berman Trustees 134 Sterling St. 4 Family, 4 St. B. - Poor	1,300

HIGHWAY RELOCATION DATA

<u>Parcel No.</u>	<u>List of Owners</u>	<u>Total Assessment</u>
2954	Karpoff, Pearl 1280 Tremont St. 6 Family & store, 4 St., Brick - Fair	9,200
2753	Prince Hall Masonic Lodge 6 Sarsfield St. 1089 Tremont St. Bldg. - 5 stories brick (Tenants)	
1095	Masonic Hall - 3 stories, 2,3,4,5 fl.	
1093	Restaurant - Dorothy's Snack Bar	
1091	V. F. W. Post #953	
1089	Free Albania Organization - Fair	23,000
2738	Prince Hall Masonic Lodge 1103 Tremont St. Gas Station - 1 st. C.B. Flying A Gas, etc. 1 lube 1 stall 2 pumps - Fair Lessee - Woodrow Concrete Co.	14,000
2737	Insoft Realty Corp. 7772 62 Weston St. 546 1113 Tremont St. 1119 Tremont St. Mercantile 2 St. B. 33 F, 4 St. B. 9 Stalls - Poor	42,000
2691	Insoft Realty Corp. 1198 Tremont Street 13A 4 St., B & W 2 St. - Fair	17,000
	O. Maier Plumbing Supply Co. (Occupies store) 985 Harrison Ave. 3 St., 2 Family & 1 Store - Fair	3,200

Relocation Data

Parcel Nos.	List of Owners	Total Assessment
902	803 Massachusetts Ave. Mer. 1 story B.	13,800.
903	Cottle Edgar W. Trs. 809 Massachusetts Ave. Mer. 1 story Wood	10,500 good
904	Marie R. Kenney Amoco Sta. 817 Mass. Avenue 42 Southampton Street Gas 1 st. W.	8000.
905	Ivy B. Boxman 32 Southampton St. Mer. 1st Mason	3800 Fair
906	Aldo Mangherini Auto Repair Shop 18 Southampton Street Mer. 1 M.	8000 Poor
907 ✓	Charles A. Higgins dr. Trustee Charles Brook Realty Trust 26 Reading mer. 1st C.	15,800
910	Kepnes, Jacob 2 Reading 29 Southampton Mer. 1 st. Brick	Rent Auto Body 1080 Auto Top 1800 Poor 8000
911	Harry and David Krivitsky 45 Southampton St. Mer. 1 st. Brick	<u>7106</u> <u>551</u> 8000
912	47 Southampton St. Mere. 1 st. B.	Showroom & Office 14,000 good
1913	53 Southampton St. Mer. 1st B. Paint - finishing shop	15,000 foundry' excellent condition
1914	Albert D. Coppola <u>7649</u> <u>600.</u> 841 Mass. Avenue 1 story	<u>Pre Fal.</u> <u>New Bldg.</u> 14,000
892	National Boston Lead Co. 37 Reading N. Car. 1 family l. 5. Wood	Building Use of Caretaker of Co. 3000 Poor

Relocation Data

Parcel Nos.	List of Owners	Total Assessments
1980	John Karalaskis Harrison Refrig. 58 Hunneman 996 Harrison Ave. Mer. 2. W.	7000 Poor
1981	Pauline Forman Junk Shop 994 Harrison Ave. Mer. 1st.	3000 Poor
1983	Beatrice Goldman 988 Harrison Ave. Mer. 1 C.B.	6000 excellent
2406	Virginia Yeterain 895 Albany 1 family 2 st. W.	2,000 V. Poor
2407	899 Albany St. 2 family 2 st. W.	2.7. Poor
2449	Myer M. Shapiro 1007 Harrison Ave. Mer. 1 st. W.	1900 Poor
2380	Abraham G. Berman Atlantic Junk 1020 Harrison Ave. Mer. 2st. B.	27,000 Fair
2389	Michael Racioppi 7 Spring Ct. Mer. 1st. C.	4200.
2390	Sarah M. Braverman 11 Spring Ct.	
2393	Mer. 1 story. C. 14 Spring Ct. Mer. 1st. Mass.	4.5 V. P. 7.00 V.P.
2435	Max Weinstein 1 Treadwell Ct. Mer. 2 St. W.	3000 Poor
2427	General Bakery Sale and Service Co. 6 Lamarr Place Mer. 3 story B.	12000 Fair
2434	Eustis Junk Corp. 971 Harrison Ave. 1. story. C. B.	25,000 good
2435	Max Weinstein 979 Harrison Ave. Mer. 2st. Wood	3000 Poor

Relocation Data

<u>Parcel Nos.</u>	<u>List of Owners</u>	<u>Total Assessments</u>
2084	George and Anna Dresser 5 Carlow Street 1 Family, 1.5 Story W. - V. Poor	1,000
2085	Joseph F. Liburdi 7 Carlow Street 2 Family, 3 Story W. - V. Poor	1,400
2086	Catheryn Brown 9 Carlow Street 1 Family, 1.5 W., - V. Poor	1,000
2087	Joran Realty Inc. 11 Carlow Street 13 Carlow Street 4 Family, 2 Stories, V. Poor	2,200
2128	Bessie David 10 Carlow Street 1 Family, 2.5 - V. Poor	2,000
2127	12 Carlow Street 1 Family, 2.5 W. - V. Poor	8,000
3067	Mary T. Pappas 3 Vernon Street 1 Family, 2 St., W., - V. Poor	1,300
3062	Sarah Taylor 100 Vernon Street 2 & 4 Vernon Place - V. Poor	12,000
1017	Esso Standard Oil Co. Del. Leased 850 Mass. Ave., Southampton Fair Gas 1 Story C. B. 3 pumps, 1 lift outside	A. Plunkett 23,000
899	Socony Mobile Oil Company, Inc. 783 Massachusetts Ave. Gas Station, 1 Story C. B.	17,000
900	Ivy B. Bouxman 791A Massachusetts Ave. Gas, 1 Story C. B.	10,700
901	795 Massachusetts Ave. Mer. - 1 Story B. M.	6,600
2124	Grace E. Foy 852 Albany Street 1 Family - 2 stories W. - Poor	1,400

RELOCATION DATA

<u>Parcel No.</u>	<u>List of Owners</u>	<u>Total Assessment.</u>
2170	Mary Figuoirra 36 Chadwick 3 Family 2. 5. st. wd.	2800 Poor
2138	Jacob Kepnes and Louis F. 65 Hampden Street Mer. 2 st. Brick	8,500
2109	John Signorello & Mary 8 Yeoman St. 1 Family 1.5 wd.	1,600 Poor
2070	Jacob Kepnes 802 Albany 3 Hampden Mer. 3. B.	9,000 Fair
2051	Mass. Machine Shop Inc. Garage Good 817 Albany Power Plant Fair Mer. 5 stories B. Tenants Rex Venetain Blind Mass Mach. Shop Metal Stamp	80,000 Fair
2094	Boston Edison Company 822 Albany Transformers Sta.	19,000
2090	Edward Keohane 834 Albany St. 2 family 2. 5. W.	3,000 Fair
2091	Merrill Beem 832 Albany St. 3 Family 3 st. B.	3,500 Very poor
2033	New England Insulation Co. 839 Albany St. Mer. 1 & 1/2 St. B.	8,500 Poor
2016	Joseph Libirdi 845 Albany St. 2 fam. story, 3 stories B.	3,400 Poor
2017	Ralph J. Eaton \$30 Month 849 Albany St. 3 family 3 stories B.	3,000
2081	Joseph F. Liburdi 7 Carlow St. 2 Family 3 sty. W.	1,400 V. Poor
2125	Walter Gurzik 850 Albany St. 1 sty. R. 2nd R. 3rd. R. 1 family S. 2 stories W.	2,500 V. Poor

HIGHWAY RELOCATION DATA

<u>Parcel No.</u>	<u>List of Owners</u>	<u>Total Assessment</u>
2812	New England Electric Supply Co. 1247 Tremont Mercantile 2 Sty. B. - Business	8,000
2817	Prentiss Apartments, Inc. 2 Family 1 store - 3 sty. w. 2 Family 1 store - 3 sty. w. 4 Family 2 1/2 sty. b. 4 Family 1 story - 3 sty. w. - Fair	32,000
2813	Prentiss Apartments, Inc. 1283 Tremont, cor. of Prentiss St., No. 5. Store 1 sty. b & w - Fair	8,500
2819	Boston Lamp Company Columbus Ave., Cor. Prentiss 6 stories, brick - Business	20,000
2806	Cheses, Barnet 1251 Tremont St., Cor. Medina Way Store, 1 st, w & b. - Business	15,000
2965	Dell & Garte, Inc. 1234 Tremont St. Mercantile 1 st. B & C - Business	48,000
2963	DiGervasi, Anthony - 2 Family & Store - Poor 3 stys., W. & B.	3,500
2962	Rutstein, Hyman M., Trustee of Winter Realty Trust 1246A Tremont St. 2 1/2 Stories, W. & B. Poor	3,100
2961	Automatic Heating Supply Corp. 1250A Tremont St. 3 Family Store, 4 Sty. b. - Poor	8,000
2959	Rectory Church Warden and Vestryman 1262 Tremont Street Church Stucco - Church	30,100
2955 2950 2956	Karpoff, Pearl 1274-78 Tremont St. P. O. 1, St, Brick	4,800

HIGHWAY RELOCATION DATA

<u>Parcel No.</u>	<u>List of Owners</u>	<u>Total Assessment</u>
2019 R.L. 58916	Green Shoe Mfg. Co. 853 Albany St. -(Garage & Storage Whse.) 863 Albany St. Mer. - 1 Story brick - Fair	\$53,000
2023	Pauline C. Pizziferri Mary A. Saia 883 Albany Street 3 Family-3 Story brick - V. Poor	3,400
2123-	Dante Baravella 854 Albany St. 1 Family 2 Sty. wood - Poor	1,400
2116	Robert E. Mauds 866 Albany Street 2 Family-2 Sty. wood - Poor	2,500
2111	Domenic Pezziferri 876 Albany Street 2 Family, 2.5 sty. - V. Poor	2,600
2110	Mary A. Comstock 2 Yeoman Street 878 Albany Street 3-Family - Poor	3,500
2240	Adams and Co., Inc. Mass Corp. Newbern Cor. Weston 3 Family, 3 Sty. brick - Fair	3,000
2241	Adams and Co., Inc. Mass Corp. 35 Weston 3 Family, 3 Sty Brick - Fair	2,700
2242	Adams and Co., Inc. Mass. Corp. 37 Weston 3 Family, 3 Sty Brick - Poor	3,000
2243	Busby, Cecil and Mabel 41 Weston 2 Family, 2 1/2 Story Wood - Poor	2,000

HIGHWAY RELOCATION DATA

<u>Parcel No.</u>	<u>List of Owners</u>	<u>Total Assessment</u>
	60 Weston - Dean Transport Tremont 1117+19 Konis Alec 1121 - Vac. 1125+1135 C.H. Babb, Inc. 1135 - Vac. 1131 - Kris, Ann 1133 - Vac. 1139 - Salem Press 1117 - N.E. Venetian	
3739	Marion Eaton <u>7770</u> 549 63 Weston St. 3 Family 3 st. Fire Shell - Poor	3,000
2724	Sabac Realty Co., Inc. 7261/432 880 Columbus Ave. Gas Station	47,800
2721	Garland Corp. 1141 Tremont 199 Ruggles 4 s. 1 story W.B. - Fair 1143-45 Ted's Cafe 1147 K.W. Co. 1149 Murphy Liquor Co., Inc.	15,500
2709	John and Peter Lucioni 7615/293 208 Ruggles St. 1153 Tremont St. 2 st. 1 story brick Mecuri Baker - Putnman Rest.-Fair	15,000
2710	Jane F. Shoolman 1161 Tremont St. 3 st. brick Med. 3 st. - fair	19,000
2704	Jane F. Shoolman 1169 Tremont St. Corner <u>Whittier</u> - Fair	22,000
Tenants	Daniel Fieurtine - 1169 1173-75 Bell Auto Parts 2nd va cancy 3rd Boston White Uniform	

RELOCATION DATA

<u>Parcel Nos.</u>	<u>List of Owners</u>	<u>Total Assessments</u>
923	Benedict Warghria et rix 50 Reading Street 1 Family, 2.5 St. wood	1,400 Poor
882	Michael Morgan, 1/2 and Carol B. Traficante, 1/2 7. Inc. Pete's Service Station 40 Hampden St., Cor. Island Gas Station, 1 Story c.b., 2 prays and office	6,000 Poor
883	Wilson J. Columbare, et ux 9 Island Street 2 Family, 2.5 Story	2,000 Poor
884	Albert J. & Lillian E. Dold 11 Island Street 3 Family, 3 Story Wood	$\frac{7077}{265}$ 3,000 Poor
885	Lee Crane Service, Inc. Reg. Land - 17 Island Street Commercial 1 Sty. b. office - Poor 1 story N. Reading St. Storage - Fair 1 " " Island St. Shop - Fair	21,200 Fair
894	Paul & Harold Gsavlner Ten in. Comm. 12 Island Street Mer. 3 Story B. Mer. 1 Story C.B.	$\frac{7728}{564}$ 30,000 Fair
880	Patsy Sturnido 48 Hampden St. 2 Story-4 Family, 3 Stories	$\frac{7797}{222}$ Barber Shop 5,000 Poor
2133 2134	Melvin A. Kaner, et. 57 Hampden Street Gas Station - Chevron	11,000 Fair
2077	Biel, Joseph & Nellie 9 Chadwick Street 3 Family, 2.5 Story Wood	3,000 Poor
2076	Louis J. Hardy, et 5 Chadwick Street 2 Family, 2 Story Wood	4,000 Poor

Relocation Data

<u>Parcel Nos.</u>	<u>List of Owners</u>	<u>Total Assessment</u>
2444	Otto Maier 983 Harrison Ave. 2 Family, S. 3 Stories B. - Poor	3,200
2426	2078 Washington St. - Poor 995 Harrison 1 Hunneman 2066 Washington - Fair Mer. 2 St. B.	20,400
2424	Rose Davidson 1002 Harrison Ave. Mer. 1 Stor. W.	9.5
2448	Myer Shapiro 1005 Harrison Ave. Warehouse	4,000
	R. Davidson Junk Yard 1002 Harrison Ave.	9,500
	G. Webb 18 Newbern Street 3 Story Wood 3 Family - Poor	1,300
	B. Napoleon 16 Newbern Street 3 Story Wood - 3 Family - Poor	1,400
	C. Hoffman 2017 Washington St. 1 Story Brick - Mercantile	16,000
2756	Henry G. Bernhard 9 Sarsfield St. 3 Family St. Brick - Poor	6,300
2751	Bessie Napoleon 10 Sarsfield Street 3 Family - 2.5 St. - Poor	1,800
2748	Matthew Millined 20 Sarsfield St. 2 Family, 2.5 st. - Poor	2,300
2687	Abraham Cogan 201 Vernon 1210 Tremont - Fair Mer. 3 st. B.	10,000
2693	Samuel Sogame 1188 Tremont St. 4 Family - 3 St. W. - Fair 2 St. - Refrig. Motors, Inc.	7,000

Relocation Data

Parcel Nos.	List of owners	Total Assessmen
2082	M & M Chemical Sales Corp. 17 Chadwick Mer. 3 story Brick Tenants O. Mercury Products L. H. Gross Assoc. Royal Distrib.	7.5. Fair
2097	Sylvia Gottlieb 21 Chadwick Gar 1 C.B. Chadwick Auto Body	4,700.-- Fair
2099	Louis A. Adams et ux 29 Chadwick 1 family 2.5 st. Wood	2,000
2101	Joaquim Figueira \$30 mo. Rent 37 Chadwick 2 family 2.5 Wd.	2,300 Poor
2177	Orazio & Raffaella Messina 20 Chadwick 2 family 2.5. W.	<u>7301</u> 358 2,000 Poor
2174	Jacob & Louis Kepnes Tuiconi 26 Chadwick 2 family 2.5	VAC 1,000 Poor
2171	Marie Fegueira rents \$30 32 R. Chadwick 2 family 2.5. W. Gar. - 2 car 28-30 Duplex - 2 family 2.5.	4800 Poor Poor Poor

RELOCATION DATA

<u>Parcel Number</u>	<u>List of Owners</u>	<u>Total Assessment</u>
2132	Scrubbs, Marionette 720A Shawmut Ave. 4 Fam. & Store 3 St. B.	\$ 7,000.00 Fair
2401	Roxbury Storage Warehouse 723-33 Shawmut Ave. 4 St. Brick	61,500.00 Fair
2441	Marsum Realty Inc. 724A Shawmut Ave. 2 Fam. & Store 3 St. B.	9,000.00 Poor
2376	Adams & Co. Inc Mass Corp. 739 Shawmut Ave. 6 Fam. 2 Stores 4 St. B.	19,200.00 Fair
2436	Zober Morris 744 Shawmut Ave. 6 Fam. 2 St. 4 St. Brick	11,000.00 Fair
2456	Holden Apts. Inc 746 Shawmut Ave. 16 Fam. 4 Stories Brick	16,000.00 Fair
2377	Richman Abraham Trustee of the N. & S Realty Tr. 747 Shawmut Ave. 4 Fam. 4 St. Brick	7,100.00 Fair
2378	Richman, Abraham Trust of the N. & S. Realty Tr. 749 Shawmut Ave. 4 Fam & Store 4 Stories Brick	7,200.00 Fair
2455	Daley, Walter E. 750 Shawmut Ave. 8 Fam. 4 St. Brick	13,500.00 Fair

RELOCATI3N DATA

<u>Parcel Number</u>	<u>List of Owners</u>	<u>Total Assessment</u>
	Berger, C. L. & Sons, Inc. 37 Williams Street Fac. 3 stor. B.	50,000.00
	White, Charles & Edith 38 Williams St. 2 Fam. 3 Stories	4,500.00 Fair
	Charles H. Lewis 40 Williams St. 2 Fam. 3 story	5,000.00 Fair
	Hong Wong 10 Windsor 679 Shawmut Ave. 6 Apt. & Store 4 stories Brick	8,700.00 Poor
	Nell J. Green 681 Shawmut Ave. 4 fam. 4 stories Brick	5,500.00 Poor
	George Romanos, M.D. $\frac{7682}{368}$ 683 Shawmut Ave. Trustee Alpha Realty 4 Fam. 4 stories Brick	5,500.00 Poor
	George Romanos 685 Shawmut Ave. 4 Fam. 4 stories Brick	5,000.00 Poor
	George Romanos 687 Shawmut Ave. 4 Fam. 4 stories Brick	5,000.00 Poor
	Charlestown Realty Corp. 689 Shawmut Ave. $\frac{7685}{335}$ 4 Fam. 4 story Brick	5,000.00 Poor
	George Romanos, Trustee. Alpha Realty Trust 692 Shawmut Ave. 8 Fam. 4 Stor. B 1 Fam 2.5 Stor. B. 1 Fam. 2.5 Stor. B.	19,000.00 Poor
	Joseph L. Mendes 691 A. Shawmut Ave. 3 Fam. & Store 4 Stories B 3 & 4 Rm. Apts. \$30 mo. Club -\$600 yr.	5,000.00 Poor

Highway Relocation Data

List of Owners

Location	Description & Use of Structure	Total Assessment
60 A Ruggles St. (Par.#2509)	6 fam. & st. 3 st. Brick Kadish, Sadie	\$8500.00 Cond. Fair
61 Ruggles St. (Par.#2351)	4 fam. 4 st. Brick Neustadt, Samuel	Vacant Cond. Poor \$6,300.00
62 Ruggles St. (Par.#2508)	3 fam. st. 3 st. Brick Lerner, Sophia	\$3600.00 Cond. Fair Vacant
63 Ruggles St. (Par.#2352)	Neustadt, Betsey 8 fam. 4 st. Brick	\$8000.00 Cond. Poor
64 Ruggles St. (Par.#2507)	Lerner, Sophia 3 fam. & st. 3 st. Brick	\$3600.00 Cond. Fair Vacant
175 Ruggles St. (Par.#2279)	Mackieman, Ethel E. 2 fam. 2 st. 5 st. Wood	\$1700.00 Cond. Fair
704 Shawmut Ave. (Par.2139)	Fuller, Nelson 3 fam. st. 4 st. Brick	\$6400.00 Cond. Fair
40 Sterling (Par.#2140)	Kaplan, Harry 2 fam. 2 st. 5 st. Wood	\$1700.00 Cond. Fair
38 Sterling (Par.#2141)	Gusenoff, Joseph D. 2 fam. 2 st. 5 st. Wood	\$1500.00 Cond. Fair
36 Sterling (Par. 2142)	2 fam. 2 st. 5 st. Wood Scott, Fanny	\$1500.00 Cond. Fair
132 Sterling St. (Par.22 & 5) o	Berman, Walter & Tillie Trsts. of Berman Realty Trust 3 fam. & st. 4 st. Brick	\$6000.00 Cond. Poor
95 Warwick St. (Par. 2206)	Berman, Walter & Tillie Trsts. of Berman Realty Trust 4 fam, 4 st. Brick	\$5000.00 Cond. Fair
97 Warwick St. (Par. #2207)	Berman, Walter & Tillie Trsts. of Berman Realty Trust 4 fam. 4 st. Brick	\$5000.00
99 Warwick St. (Par.#2198)	Berman, Walter & Tillie Trsts. of Berman Realty Trust 7 fam. 4 st. Brick	\$6500.00 Cond. Fair

Highway Relocation Data

<u>Location</u>	<u>Description & Use of Structure</u>	<u>Total Assessment</u>
1138 Tremont Incl. 2 Howe Court	Way, Charles G. 1 Family st. 3 st. Wood Poor Condition	2,800.
1140A Tremont St. (Par. #2284)	Way, Charles G. 2 stores wd., 2 1/2 stories Poor condition	3,700
1150 Tremont St. (Par. #2282)	MacKiernon, Ethel E. Gas Station	
28 Weston, Cor. Pratt Ct. (Par. #2295)	Fitzpatrick, Harriet E. 1 Family, 2 st. wood Fair condition	2,100
275-277-281 Ruggles Street	Better Equipment Laundry Centers, Inc. - 1 sty. conc. block (281) Garage	12,000 30,000
287-289 Ruggles St.	Lucy Goldmeer 287 Vacant 289 Prospect Pharmacy, Inc.	7,000
295 & 201 Ruggles St.	Christopher Statlakes	3,000 8,000
305 Ruggles Street	Gas Station	
315 Ruggles Street	Nickels B. Huston Gas Station - Brick	10,000
323, 325 Ruggles St.	Frederick J. Reiser 2 A & P Store 3 stories	6,000

LIST OF OWNERS

Relocation Data

<u>LOCATION</u>	<u>DESCRIPTION AND USE OF STRUCTURES</u>	<u>TOTAL ASSESSMENT</u>
31 & 33 Field Street Walter H. Turner	6 Family 3 Story Brick	10,000
37 & 39 Field Street Walter H. Turner	6 Family 3 Story Brick	10,300
40 Field Street Maria E. Palmer	1 Family 1.5 Story Wood	2,200
12 Leon Street Hugh McGrail, et al Hrs.	1 Family 2.5 Story Wood	2,100
14 Leon Street Frank E. Blasser	2A - 3 Story Wood 2S, 2.5 Story Wood	5,000
16 Leon Street George Blasser Ina Blasser	1 Family Wood Chauffeur & Housewife	2,100
11 & 40 & 73 Leon St. United Realty Inc. Sold N. E. U.	Brick Mercantile	989,300 80,000

Relocation Data

Parcel Nos.	List of Owners	Total Assessments
1703	Caswell Hoffman 2017 Washington St. 1 st. Brick	16000 Fair
1704	2021 Washington St. 1 st. Brick	
1705	2023 Washington St. 5 st. 1st. B.	17000
2145	Paul E. Mire Trustee 30 Sterling St. 3 family 3 st. B.	4000 Fair
2122	Irving Bello 2073 Washington St. 1 st. 3 family B. 4 stories	11,500 Fair
2123	Harry C. Charter 2077 Washington St. \$35 Mo. 1 st. - Vac \$50 Mo. 3 family 4 stories B.	8500 Fair
2124	Frederick Rothstein 2081 Washington St. 3 family 1 story 4 stories B.	8500 Fair
2125	Curtis Wrenn 2085 Washington St. 3 family 4 stories B. 1 Story	8500
2084	Stamatia, Soligan 2055 Washington 2065 cor. 1 sterling - 3 mer. 1 st. Brick 7 stories	27000 Poor
2083	Morris Burofsky 2039 Washington St. 2049 " 2 f. 3 st. W. 4 stories 4 family 3 st. W.	20,000 Poor
2130	Rink Realty Inc. <u>7711</u> 329 17 Williams 2 S. thru to 24 Sterling 16 Gar. 1 B.C.	30,000 Fair

Relocation Data

Parcel Nos.

List of Owners

Total
Assessments

3146

Edward Diggs Trustee
28 Sterling St.
3 family 3 st. B.

4200
Fair

DATA SOURCES

Reports Briefed

1. New Bedford Relocation Report 8/15/62
2. Legislative Research Council Report 1/8/62
3. New Jersey Highway Report 1964
4. Boston Redevelopment Authority Relocation Report 12/10/62
5. City of Somerville Report on Relocation by Mary Ford 1/31/61
6. Roy Wenzlick Research Corp. Housing for the aged report 1962
7. Port of New York Authority 10/14/59
8. Boston Globe Files 1964
9. Boston Redevelopment Authority Study - Washington Park Area
10. Relocation from Urban Renewal Project Areas 1965
11. Housing and Home Finance Agency
12. Boston Traveler - Boston Redevelopment Authority Report
13. U. S. Department of Commerce 1960 Census Report
14. Report on Racial Imbalance in the Boston Public Schools
by the Massachusetts Advisory Committee to the United States
Commission on Civil Rights - January 1965
15. Special Commission on Low-Income Housing - 1965



BOSTON PUBLIC LIBRARY



3 9999 06316 337 0

Roxbury/N. Dorchester
Mass. DPW. M382PW P
Preliminary relocation survey
Roxbury district of the City
of Boston.

DATE	ISSUED TO
	JP



