

77

# PRESBYTERIAN COLLEGES



THE COLLEGES CO-OPERATING WITH  
THE COLLEGE BOARD OF THE  
PRESBYTERIAN CHURCH IN THE  
UNITED STATES OF AMERICA

LC579  
.P7C684  
1913



LC579  
P75684  
913











# PRESBYTERIAN COLLEGES

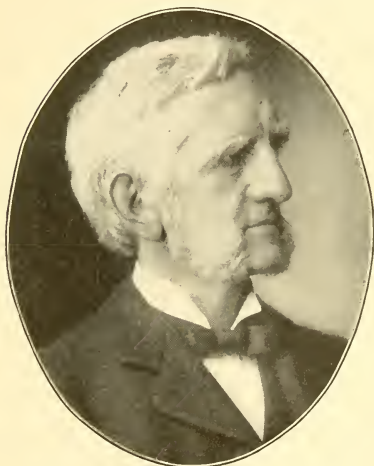


THE COLLEGES CO-OPERATING WITH  
THE COLLEGE BOARD OF THE  
PRESBYTERIAN CHURCH IN THE  
UNITED STATES OF AMERICA

THE COLLEGE BOARD  
OF THE PRESBYTERIAN CHURCH IN THE U. S. A.  
156 FIFTH AVENUE, NEW YORK  
1913



THIRTIETH ANNIVERSARY  
OF THE  
COLLEGE BOARD



THE REV. HERRICK JOHNSON, D.D., L.L.D.  
President Emeritus  
Founder of the College Board, 1883

## The Growth of Thirty Years

This issue of "Presbyterian Colleges" celebrates the end of the third decade of the life and work of the College Board. Organized in 1883 the Board hands to the General Assembly of 1913 its thirtieth annual report, and it may be well for the devoted servants of the church who are giving their lives to the cause of Christian education to take a brief survey of the past and note what progress has been made in thirty years.

**An  
Anniversary**

By no means does the College Board claim for itself the credit for all that has been accomplished. The Board has been but the hand-maiden of the church and the fellow-laborer of the college presidents and instructors who, by their sacrificing and persevering labors, assisted by loyal and liberal Presbyterians in pulpit and pew, have wrought mightily for the upbuilding of our institutions of learning. It has been by the grace of God and by the grit of consecrated men and women that so much has been accomplished—much

**By Grace  
and Grit**



J. H. MacCRACKEN, Ph.D.,  
President



J. ROSS STEVENSON, D.D.  
Vice-President

more than most of us realize while our eyes are fixed upon the great work which remains to be done.

It was about the year 1880 that there occurred within the Presbyterian Church a great revival of interest in the cause of Christian education.

**The Revival  
of 1880**

Speaking on the subject in 1882, Dr. D. S. Gregory, then President of Lake Forest University, affirmed that within the preceding five years—"perhaps I should say in the last year or two"—more had been said and done to further the cause of higher Christian education than during the previous quarter century. He and others, notable among them Dr. Herrick Johnson, the founder of the College Board and still its honored President-Emeritus, were prophets of a new era, and several successive Assemblies gave unusual attention to this subject. There was need of revival. It was pointed out that whereas the Presbyterian Church had long stood in the forefront as the exponent and promoter of Christian education, it had been seriously distanced as a builder of colleges by Methodists, Baptists, and Congregationalists. In his address, Dr. Gregory gave statistics to show that in 1879 the Presbyterian Church had but thirteen institutions of higher learning which it might call its own, and this number included Princeton, Hamilton, and Washington and Jefferson, which were not ecclesiastically under Presbyterian control. He reported the real estate and endowment of these thirteen institutions as aggregating only \$4,537,000, while each of the other denominations mentioned held college property of double this value.

As an outcome of this revival of interest came the organization of the College Board in 1883. At this time, according

**In 1883**

to the report of the Commissioner of Education, there was a total of twenty Presbyterian Colleges, including Princeton, Hamilton, and New York University (then reported as non-sectarian), and the total value of their real estate and endowment amounted to \$5,541,000. Several of these institutions were not really of college grade, but there was about an equal number reported as secondary schools in 1883 (for instance, Park and Coe) which soon reached college rank, so that twenty may fairly be considered the correct number of real colleges at that time. It would not be fair to conclude that these twenty colleges represented the total results of Presbyterian activity in education during the life of the church, for there were a number of institutions connected with the Southern Presbyterian church in 1883 which had been fostered by the church before its division, and Presbyterians had assisted greatly in the establishment and maintenance of colleges which were affiliated with other denominations, particularly Congregationalists. Yet these twenty colleges were all that the denomination had to show in 1883 as the result of its educational effort during a period of 137 years—since the founding of Princeton in 1746. The contrast between that period and the last thirty years may be thus stated:

During the 137 years from 1746 to 1883, the Presbyterian Church built up twenty institutions of higher learning and gathered for their use property and endowment to the value of \$5,541,000.

### **Threefold Growth**

During the thirty years from 1883 to 1913, the Presbyterian Church has added forty institutions of higher learning and put \$24,000,000 into the property and endowment of its colleges.

In round numbers the Presbyterian Church has three times as many colleges and six times as much college property as it had thirty years ago. There is certainly reason for much encouragement and for profound gratitude to the great Head of the Church in this splendid

#### BOARD



LOUIS H. SEVERANCE



FREDERICK W. GARVIN



ELISHA H. PERKINS



JAMES H. POST



REV. MINUT C. MORGAN  
MEMBERS

BOARD



JAMES G. K. MCCLURE, D.D., LL.D.



JOHN B. LAIRD, D.D.



T. A. WIGGINTON, D.D.



HON. JAMES A. BEAVER, LL.D.



HON. THOMAS E. HODGES  
MEMBERS

development. The chart herewith appended puts this growth in graphic form:

## Growth of Presbyterian Colleges

In 30 Years, Since the Organization of the College Board

### INCREASE IN NUMBER OF COLLEGES

1883	██████████	20 Colleges
	Including Hamilton and Princeton Colleges	
1913	████████████████████	60 Colleges
	Not Including Hamilton and Princeton Colleges	

### VALUE OF PROPERTY AND ENDOWMENT

1883	██████████	\$5,541,000
	Including Hamilton and Princeton Colleges	
1913	██	\$31,886,679
	Not Including Hamilton and Princeton Colleges	

### STUDENTS IN COLLEGE DEPARTMENTS

1883	██████████	2,212
	Including Hamilton and Princeton Colleges	
1913	██	7,770
	Not Including Hamilton and Princeton Colleges	
Total number of students in all departments in 1913		21,731

Of course, comparatively little of all that has been accomplished is directly due to the activities of the College Board;

### The Board a Stimulant

but a study of the development goes to show that the organization of the Board gave a great impetus to the forward movement, and that the Assembly was eminently wise in appointing a denominational agency to further this cause. Its very existence stimulated local activity and induced the establishment of some of our best schools in places where institutions of learning were needed but where the local friends of the enterprises were loath to begin without some indication that assistance would come from the church at large. At the same time, the steady educational work of the Board has been the means of stimulating the churches to contribute for the support of the colleges which had been organized, and has brought the needs of these institutions to the attention of distant friends of the cause. Without the existence of the Board, the churches would not have been trained to make offerings for the maintenance



of colleges, and without the aid of these gifts some colleges could scarcely have survived.

The organization of the College Board was the signal for the beginning of new colleges and

**Birth of New Colleges** for preparatory schools to raise their standards. Of the colleges now on our list, seven were organized in 1883 and 1884, and seven others which were previously little more than academies blossomed out into colleges at about the same time. At the end of its third year, the College Board reported to the Assembly that it was assisting ten institutions which had come into existence since it was organized, some of these being academies. It is interesting to observe that of the sixty colleges now affiliated with the College Board:

- 17 were in existence as colleges in 1883.
- 3 were counted as non-sectarian in 1883.
- 8 were received with the Cumberland Presbyterian Church.
- 32 were organized or grew from academies into colleges since the organization of the College Board.

A few of the Presbyterian colleges in existence when the College Board began its career

**Changes** are no longer numbered among the living; some of those which sprang up in the early years were unwisely located or starved for lack of support; in some cases unions have been effected, and various other changes have occurred. Many academies once flourishing have closed because of the rapid development of public high schools; but on the whole the money contributed by the church has been wisely and effectively used, and numerous well-established institutions stand as monuments to the patriotism and generosity of Presbyterians and are steadily raising their standards and increasing their output of strong Christian citizenship, and the church has reason to rejoice in what it has been privileged to do.

Although such great progress has been made, there is need of a new awakening to the

**New Revival Needed** importance of Christian education. The rapid development of secular institutions makes it imperative that the endowment of all our Presbyterian colleges should be largely and

BOARD



PROF. J. C. EGBERT



JAMES S. HUBBARD



HENRY B. MCCORMICK



JOHN R. RUSH

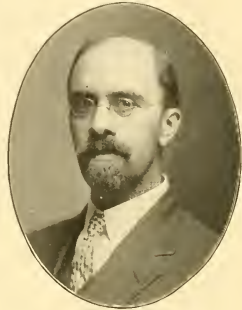


REV. FREDERICK E. STOCKWELL  
MEMBERS

quickly increased, that they may perfect their equipment and provide facilities which are in every respect equal to the best. This is particularly true of those institutions in the West and Southwest where the country was more recently settled, but where the population is rapidly increasing, and where the same kind of educational pioneering is needed that did so much for the East and Middle West a century or more ago. Through its colleges the Presbyterian Church has given to the older portion of the country a great host of skilled Christian leaders in all walks of life. Just such



REV. ROBERT MACKENZIE, D.D.  
Secretary



REV. JAMES E. CLARKE, D.D.  
Associate Secretary

leadership is needed even more in the newer West, which is still in the formative period, and to secure it our hope is in the Christian college.

The statement will scarcely be questioned that the present power, leadership, vision, and world-wide service of Presbyterianism is due to that

### **Fruits of Education**

Christian culture on which the church placed such emphasis in its early days. (Christian education is the wide-spreading root from which grows the vigorous and fruitful tree of Christian civilization, and it is only as churches have been blessed with the leadership of educated men that they have caught the vision of their Master and given freely of their wealth and of their manhood to extend the kingdom unto the uttermost parts of the earth.) Of such fundamental importance did the early Presbyterians of America consider this work of Christian education, that there was a time when it was ordered that all of the benevolent offerings of the denomination should go to the establishment of Princeton College. The condition which prevailed in the East at that time and which called for a concentration of effort upon this single benevolent cause is closely duplicated in parts of the newer West to-day. The people are struggling to establish the institutions of civilization, beginning with their own homes. The church does not counsel these pioneers to concentrate upon the establishment of Christian schools. On the contrary, they are urged to devote the greater portion of their benevolent gifts for other purposes. The church cannot well do otherwise. It cannot well

have two policies. Yet a policy which is appropriate to the church in the older settled portions of the land, where Christian schools are numerous and well endowed, would not have been a fitting policy in any part of the republic in its youth, and is not now adapted to the development of a strong Christian citizenship in the newer West. (If that portion of our land is to give to the future that type of Christian citizenship which has been produced by the Christian schools of the East it must have similar schools suitably equipped.) It *must* have them.



HENRY L. SMITH  
Treasurer



GEORGE R. BRAUER  
Office Secretary and Asst. Treas.

If this imperative need of the West *must* be met, and if the church cannot change its uniform policy without detriment, what is to be done? The problem constitutes an urgent appeal to men and women of wealth in the older parts of the church. Their rich heritage is in large part due to the broad vision and liberal spirit of their forefathers. Out of their abundance they can provide for the youth of the newer parts of the country what their own fathers provided for them in its more settled portions. We are told that the time is coming when the West shall dominate the East. What kind of a power will it be which rules the country then? The answer depends largely upon the kind of training which is given the youth of the present generation and the generations to follow, and training of the right kind—the kind which made the Presbyterian Church what it is—comes only from the strong Christian school. Every sentiment of true patriotism—which is true Presbyterianism—calls upon our men and women of large means to invest their possessions in the production of that type of Christian manhood and womanhood which is the output of the Christian college.

**A Call to  
Patriotism**

# The Colleges

On the following pages will be found statements of the several Presbyterian colleges. These reports are for the college year which closed in June, 1912, and show the condition and operations of the colleges at that date. Many of these colleges are actively at work increasing their endowment. This is an added expense to the college for the time being, and sometimes interferes with the regular income for the annual maintenance.



STUDENTS FOR THE MINISTRY IN ONE OF OUR COLLEGES

Several colleges report indebtedness but explain that this indebtedness was incurred by the purchase of additional campus and equipment which were needed. These increasing expenses are unavoidable as a college grows and raises its standard of education.

At the annual conference of the college presidents held at Louisville, Ky., May, 1912, the following plan of standardization of Presbyterian colleges was adopted:

A standard college must meet the following requirements:

1. It must have six professors, giving full time to college or university work, and offer a course of four full years in the liberal arts and sciences; and must require for admission not less than the usual four years of academic or high-school preparation or its equivalent, in addition to the pre-academic or grammar school studies.

2. Its heads of departments must have the Baccalaureate degree and M.A. degree, or, in lieu of the M.A. degree, conspicuous teaching ability.

3. It must have \$200,000 of productive funds, or an income for maintenance of not less than \$15,000 per annum.

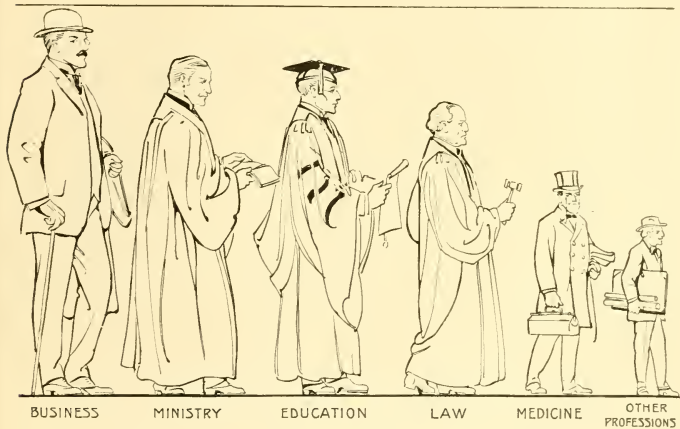
4. It must have a library of not less than 5,000 volumes.

5. It must have a laboratory equipment sufficient for at least two years' work each in physics, chemistry, botany, and zoology, according to modern methods of instruction in these subjects.

6. It must have one hour a week at least of Biblical instruction in all the liberal arts classes.

7. It must have only such professors and teachers as are of positive Christian character and influence.

The Board and college presidents are now engaged in the task of classifying the colleges and of bringing all fully up to the standard.

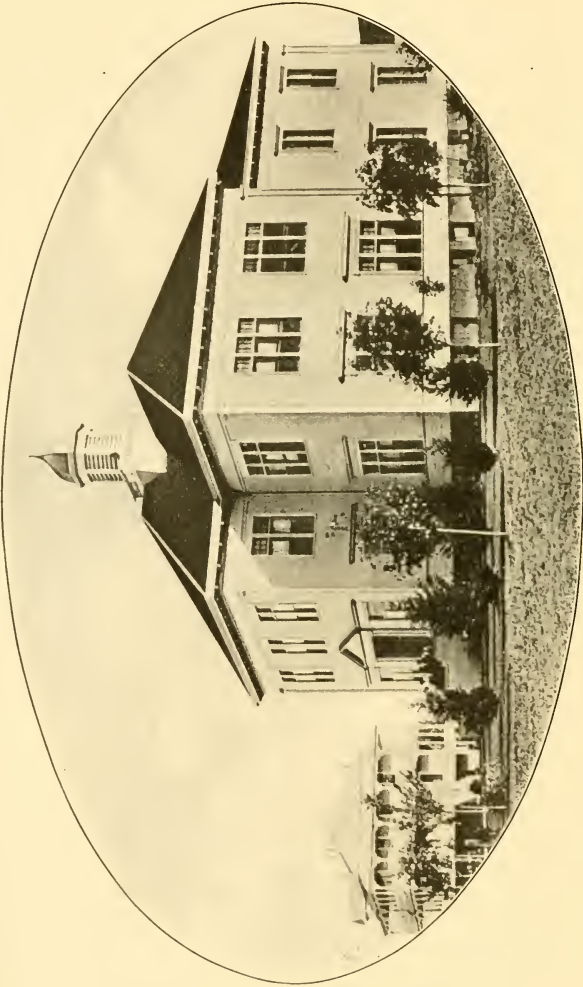


#### DISTRIBUTION OF PRODUCT OF PRESBYTERIAN COLLEGES

BASED UPON THE STATISTICS OF ALUMNI AND ALUMNÆ GIVEN BY THE COLLEGES IN THE FOLLOWING PAGES

The total number of graduates by occupations is as follows: Business, 6,134; Ministry, 5,532; Education, 5,366; Law, 4,014; Medicine, 2,405; Other Professions, 1,785.

Several of the larger colleges have not given details as to graduates by occupations and are not considered in the above summary; and a few colleges noted above cover not the entire product but graduates of recent years. Graduates of Maryville College in the above summary are for the period 1866-1912.



ALBANY COLLEGE



# ALBANY COLLEGE, Albany, Oregon

Co-educational. Organized 1866

**Government.**—By Twenty-four Trustees elected by the Synod of Oregon.

**Period covered by this Report.**—June 10, 1911—June 10, 1912.

**Faculty.**—Number of Members..... 14

<b>Property.</b> —Land (Acres, 58).....	\$66,800.00	
Buildings (No. of, 2).....	23,000.00	
Furniture and Equipment.....	5,000.00	
Library: No. of Books, 3,600; Value.....	1,500.00	
Total Property.....	\$96,300.00	

<b>Endowment.</b> —		
Income Producing.....	\$21,369.00	
Non-income Producing.....	11,192.00	
(Pledges toward additional Endowment, \$124,100)		
Total Endowment.....	32,561.00	

Campaign to increase Endowment to \$250,000 completed Jan. 1, 1913

**Other Funds**.....

<b>Total Assets</b> .....	\$128,861.00	
<b>Less Net Indebtedness</b> (\$34,200 for new campus).....	51,338.00	

**Net Assets**..... \$77,523.00

**Gifts Received During Year.**—For Endowment..... \$1,420.00

<b>Expenses of Maintenance.</b> —		
Faculty Salaries, \$12,300; Other Salaries, \$850.....	\$13,150.00	
All other Expenses.....	5,255.62	
Total Expenses.....	\$18,405.62	

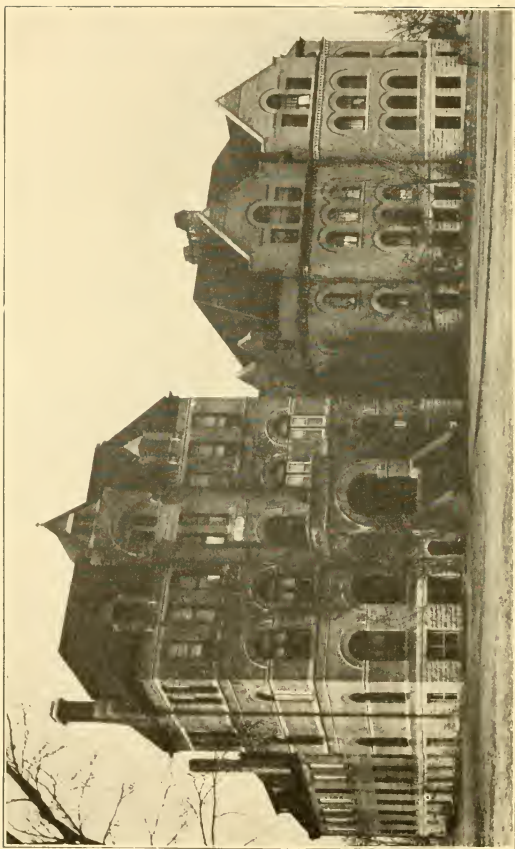
<b>Income for Maintenance.</b> —		
From Endowment.....	\$1,151.77	
Student Fees.....	4,608.15	
Room Rent, ———; Boarding Department, ———	.....	
Individuals, \$1,340; Other Sources, \$200.....	1,540.00	
Churches: Direct or through College Board.....	971.47	
College Board.....	3,000.00	
Total Income.....	11,271.39	

**Deficit**..... \$7,134.23

<b>Students.</b> —College.....	16	
Preparatory.....	33	
Others (Special).....	127	
Total (Men, 24; Women, 25).....	176	
Graduates 1911-12 (Men —; Women, 2).....	2	

**Bible Study.**—Required of all regular students.

<b>Alumni and Alumnæ.</b> —Since the year 1873:		
Ministers.....	12	
Students now in Theological Seminaries.....	2	
Foreign Missionaries.....	2	
Women in Mission Work.....	3	
Other Christian Workers.....	..	
Teaching.....	72	
Law.....	9	
Medicine.....	10	
Other Professions.....	12	
Business, 29; all Others, 44.....	73	
Total, Less 12, counted twice.....	183	



ALBERT LEA COLLEGE



# ALBERT LEA COLLEGE, Albert Lea, Minnesota

For Women. Organized 1884

**Government.**—By Twenty-one Trustees who elect their successors, but they must elect six trustees nominated by the synod of Minnesota.

**Period covered by this Report.**—September, 1911—September, 1912.

**Faculty.**—Number of Members. . . . . 15

**Property.**—Land (Acres, 8, value included in Building total) . . . . .

Buildings (No. of, 3) . . . . .	\$142,842.83	
Furniture and Equipment . . . . .	7,577.08	
Library: No. of Books, 3,000; Value . . . . .	3,781.30	
Total Property . . . . .		\$154,201.21

**Endowment.**—

Income Producing . . . . .	\$59,360.00	
Non-income Producing . . . . .	10,017.55	
(Pledges toward additional Endowment, \$231)		
Total Endowment . . . . .		69,377.55

**Other Funds.** . . . . .

Total Assets . . . . .		\$223,578.76
Less Net Indebtedness . . . . .		50,997.40

Net Assets . . . . .		\$172,581.36
----------------------	--	--------------

**Gifts Received During Year.** . . . . .

**Expenses of Maintenance.**—

Faculty Salaries, \$9,924.85; Other Salaries, \$1,000	\$10,924.85	
All other Expenses . . . . .	11,438.36	
Total Expenses . . . . .		\$22,363.21

**Income for Maintenance.**—

From Endowment . . . . .	\$2,986.77	
Student Fees . . . . .	5,134.26	
Room Rent, —; Boarding Department, —		
Individuals, \$1,950.15; Other Sources, \$543	2,493.15	
Churches: Direct or through College Board . . . . .	92.62	
College Board . . . . .		
Total Income . . . . .		10,706.80

Deficit . . . . .		\$11,656.41
-------------------	--	-------------

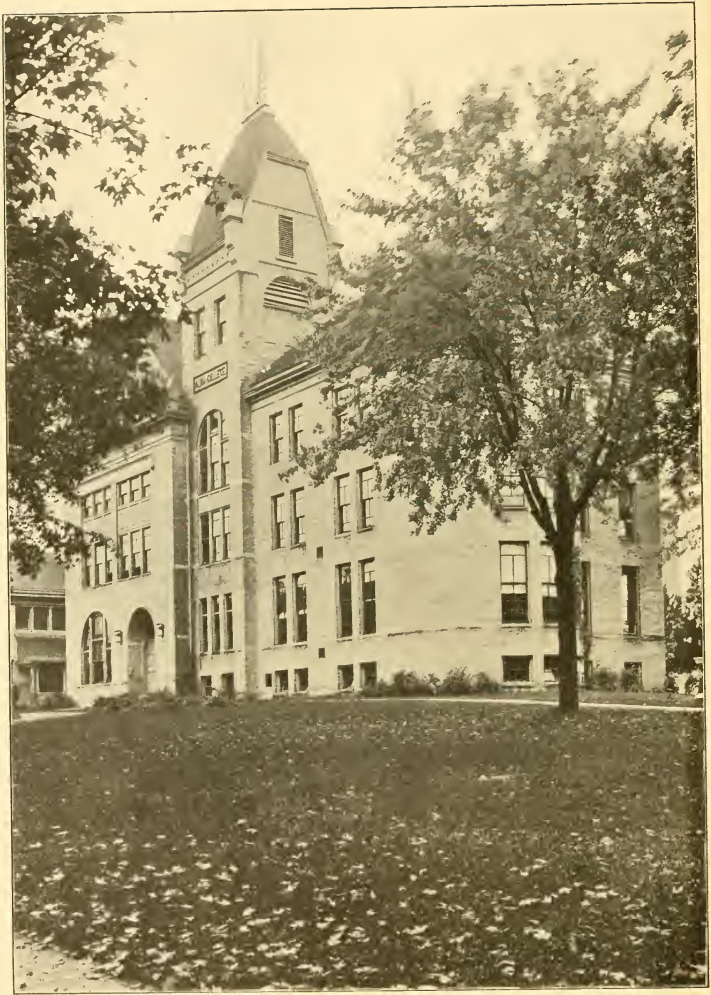
**Students.**—College . . . . . 19

Preparatory . . . . .	21	
Others (Special) . . . . .	120	
Total . . . . .		160
Graduates 1911-12 . . . . .		8

**Bible Study.**—Required of all students.

**Alumnæ.**—Since 1884-1912:

Ministers . . . . .		
Students now in Theological Seminaries . . . . .		
Foreign Missionaries . . . . .	2	
Women in Mission Work . . . . .	4	
Other Christian Workers . . . . .		
Teaching . . . . .	100	
Law . . . . .		
Medicine . . . . .		
Other Professions . . . . .		
Business, —; all Others, —		
Records Incomplete . . . . .		



Administration Building

ALMA COLLEGE

# ALMA COLLEGE, Alma, Michigan

Co-educational Organized 1887

**Government.**—By Twenty Trustees elected by the Synod of Michigan.

**Period covered by this Report.**—September 1, 1911—September 2 1912.

**Faculty.**—Number of Members . . . . . 23

**Property.**—Land (Acres, 30) . . . . . \$13,983.44  
 Buildings (No. of, 9) . . . . . 137,103.57  
 Furniture and Equipment . . . . . 13,797.00  
 Library: No. of Books, 24,391; Value . . . . . 20,370.83  
 Total Property . . . . . \$185,254.93

**Endowment.**—  
 Income Producing . . . . . \$373,566.83  
 Non-income Producing . . . . . 25,200.00  
 Total Endowment . . . . . 398,766.83

**Other Funds** . . . . .

**Total Assets** . . . . . \$584,021.76  
**Less Net Indebtedness** . . . . . 500.00

**Net Assets** . . . . . \$583,521.76

**Gifts Received During Year.**—  
 For Land, \$500; Building, \$625 . . . . . \$1,125.00  
 Equipment, \$1,210; Endowment, \$1,470.62 . . . . . 2,680.62  
 Total . . . . . \$3,805.62

**Expenses of Maintenance.**—  
 Faculty Salaries, \$22,315.46; Other Salaries, \$500 . . . . . \$22,815.46  
 All other Expenses . . . . . 9,134.57  
 Total Expenses . . . . . \$31,950.03

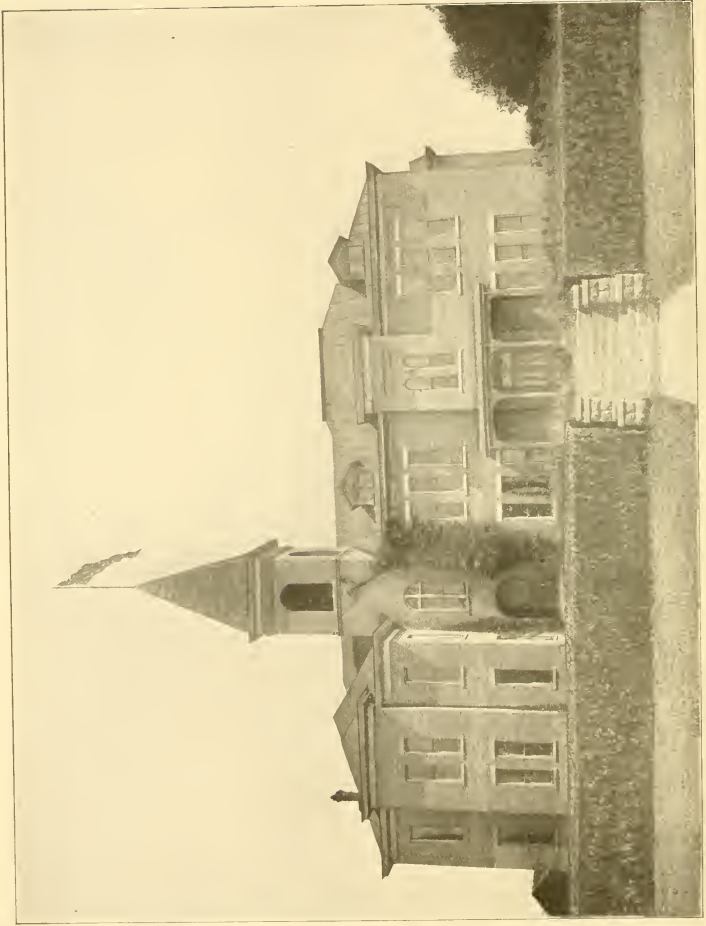
**Income for Maintenance.**—  
 From Endowment . . . . . \$20,485.17  
 Student Fees . . . . . 7,744.90  
 Room Rent, ———; Boarding Department, ——— . . . . .  
 Individuals, \$307; Other Sources, \$2,585.30 . . . . . 2,892.30  
 Churches: Direct or through College Board . . . . . 409.50  
 College Board . . . . . 50.00  
 Total Income . . . . . 31,581.93

**Deficit** . . . . . \$368.10

**Students.**—College . . . . . 136  
 Preparatory . . . . . 19  
 Others (Special) . . . . . 90  
 Total (Men, 100; Women, 145) . . . . . 245  
 Graduates 1911-12 (Men, 6; Women, 12) . . . . . 18

**Bible Study.**—Required of all regular students.

**Alumni and Alumnae.**—Since the year 1887:  
 Ministers . . . . . 29  
 Students now in Theological Seminaries . . . . . 2  
 Foreign Missionaries . . . . . 3  
 Women in Mission Work . . . . . 4  
 Other Christian Workers . . . . . 4  
 Teaching . . . . . 60  
 Law . . . . . 4  
 Medicine . . . . . 1  
 Other Professions . . . . . 8  
 Business, 17; all Others, 63 . . . . . 80  
 Total, Less 3, counted twice . . . . . 192



Main Building

# ARKANSAS CUMBERLAND COLLEGE

Clarksville, Arkansas

Co-educational. Organized 1891

**Government.**—By Nine Trustees, elected by the Synod of Arkansas.

**Period covered by this Report.**—September 1, 1911—August 30, 1912.

**Faculty.**—Number of Members. . . . . 11

**Property.**—Land (Acres, 51) . . . . . \$ 5,300.00  
 Buildings (No. of, 5; 2 are valued in Endowment) . . . . . 25,000.00  
 Furniture and Equipment . . . . . 2,250.00  
 Library: No. of Books, 4,000; Value . . . . . 1,500.00  
 Total Property . . . . . \$34,050.00

**Endowment.**—  
 Income Producing . . . . . \$29,019.00  
 Non-income Producing . . . . . 8,874.16  
 Total Endowment . . . . . 37,893.16

**Other Funds.** . . . . .

**Total Assets.** . . . . . \$71,943.16  
**Less Net Indebtedness.** . . . . . 4,500.00

**Net Assets.** . . . . . \$67,443.16

**Gifts Received During Year.**—

For Equipment, \$605.50; Endowment, \$2,477.84 . . . . . \$3,083.34

**Expenses of Maintenance.**—

Faculty Salaries, \$4,807.76; Other Salaries, \$300 . . . . . \$5,107.70  
 All other Expenses . . . . . 1,830.96  
 Total Expenses . . . . . \$6,938.72

**Income for Maintenance.**—

From Endowment . . . . . \$753.26  
 Student Fees . . . . . 3,643.30  
 Room Rent, \$164; Boarding Department, . . . . . 164.00  
 Individuals, \$246.67; Other Sources, \$162.94 . . . . . 409.61  
 Churches: Direct or through College Board . . . . . 197.60  
 College Board (Total Grant, \$750) . . . . . 375.00  
 Total Income . . . . . 5,542.77

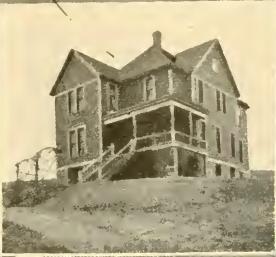
**Deficit.** . . . . . \$1,395.95

**Students.**—College . . . . . 28  
 Preparatory . . . . . 82  
 Others (Special) . . . . . 40  
 Total (Men, 72; Women, 78) . . . . . 150  
 Graduates 1911-12 (Men, 4; Women, 1) . . . . . 5

**Bible Study.**—Required of all students.

**Alumni and Alumnae.**—Since the year 1891:

Ministers . . . . . 8  
 Students now in Theological Seminaries . . . . . 4  
 Foreign Missionaries . . . . .  
 Women in Mission Work . . . . .  
 Other Christian Workers . . . . .  
 Teaching . . . . . 23  
 Law . . . . .  
 Medicine . . . . . 2  
 Other Professions . . . . . 7  
 Business, —; all Others, 12 . . . . . 12  
 Total . . . . . 56



Rankin Hall  
Hamilton Hall  
Philadelphia Hall

BELLEVUE COLLEGE

Clarke Hall  
Lowrie Hall  
Fontenelle Hall



# BELLEVUE COLLEGE, Bellevue, Nebraska

Co-educational. Organized 1880

**Government.**—By Thirty-nine Trustees, who elect their successors; two-thirds must be members of the Presbyterian Church.

**Period covered by this Report.**—June 1, 1911—June 1, 1912.

**Faculty.**—Number of Members . . . . . 22

<b>Property.</b> —Land (Acres, —) . . . . .	\$73,700.00	
Buildings (No. of, 11) . . . . .	72,157.99	
Furniture and Equipment . . . . .	10,579.91	
Library: No. of Books, 5,800; Value . . . . .	6,430.00	
Total Property . . . . .		\$162,867.90

<b>Endowment.</b> —		
Income Producing . . . . .		42,080.00

**Other Funds** . . . . .

<b>Total Assets.</b> . . . . .		\$204,947.90
<b>Less Net Indebtedness</b> . . . . .		22,912.36

**Net Assets.** . . . . . \$182,035.54

<b>Gifts Received During Year.</b> —		
For Land, ———; Building, \$40,005 . . . . .	\$40,005.00	
Equipment, \$16,000; Endowment, \$230 . . . . .	16,230.00	
Total (Received in Cash, \$235) . . . . .		\$56,235.00

<b>Expenses of Maintenance.</b> —		
Faculty Salaries, \$15,731.90; Other Salaries, \$5,329.92 . . . . .	\$21,061.82	
All other Expenses . . . . .	14,813.84	
Total Expenses . . . . .		\$35,875.66

<b>Income for Maintenance.</b> —		
From Endowment . . . . .	\$1,849.19	
Student Fees . . . . .	8,492.55	
Room Rent, \$4,286.79; Boarding Department, \$231.96 . . . . .	4,518.75	
Individuals, \$3,522.95; Other Sources, \$1,053.31 . . . . .	4,576.26	
Churches: Direct or through College Board . . . . .	353.84	
College Board . . . . .	3,040.00	
Total Income . . . . .		22,830.59

**Deficit.** . . . . . \$13,045.07

<b>Students.</b> —College . . . . .	99	
Preparatory . . . . .	43	
Others (Special) . . . . .	6	
Total (Men, 68; Women, 80) . . . . .		148
Graduates 1911-12 (Men, 8; Women, 8) . . . . .		16

**Bible Study.**—Required of all students.

<b>Alumni and Alumnae.</b> —Since the year 1880: —		
Ministers . . . . .	38	
Students now in Theological Seminaries . . . . .	4	
Foreign Missionaries . . . . .	8	
Women in Mission Work . . . . .	..	
Other Christian Workers . . . . .	2	
Teaching . . . . .	45	
Law . . . . .	8	
Medicine . . . . .	8	
Other Professions . . . . .	15	
Business, 7; all Others, 53 . . . . .	60	
Total, Less 3, counted twice . . . . .		185



Main Building and Science Hall



The Campus

BLACKBURN COLLEGE



# BLACKBURN COLLEGE, Carlinville, Illinois

(Legal Name, Blackburn University)

Co-educational. Organized 1857

**Government.**—By Sixteen Trustees, who elect their successors; but nominations for election must be approved by the Synod of Illinois.

**Period covered by this Report.**—July 1, 1911—June 30, 1912.

**Faculty.**—Number of Members..... 11

**Property.**—Land (Acres, 33)..... \$ 5,000.00  
 Buildings (No. of, 3)..... 37,500.00  
 Furniture and Equipment..... 11,750.00  
 Library: No. of Books, 4,000; Value..... 1,500.00  
 Total Property..... \$ 55,750.00

**Endowment.**—  
 Income Producing..... 107,500.00  
 (Pledges toward additional endowment, \$8,000)

**Other Funds.**—Ann Brebner Fund for Candidates for Ministry.... 23,000.00

**Total Assets**..... \$186,250.00

**Less Net Indebtedness**..... 1,000.00

**Net Assets**..... \$185,250.00

**Gifts Received During Year**.....

**Expenses of Maintenance.**—  
 Faculty Salaries, \$5,355; Other Salaries, ..... \$5,355.00  
 All other Expenses..... 3,746.09  
 Total Expenses..... \$9,101.09

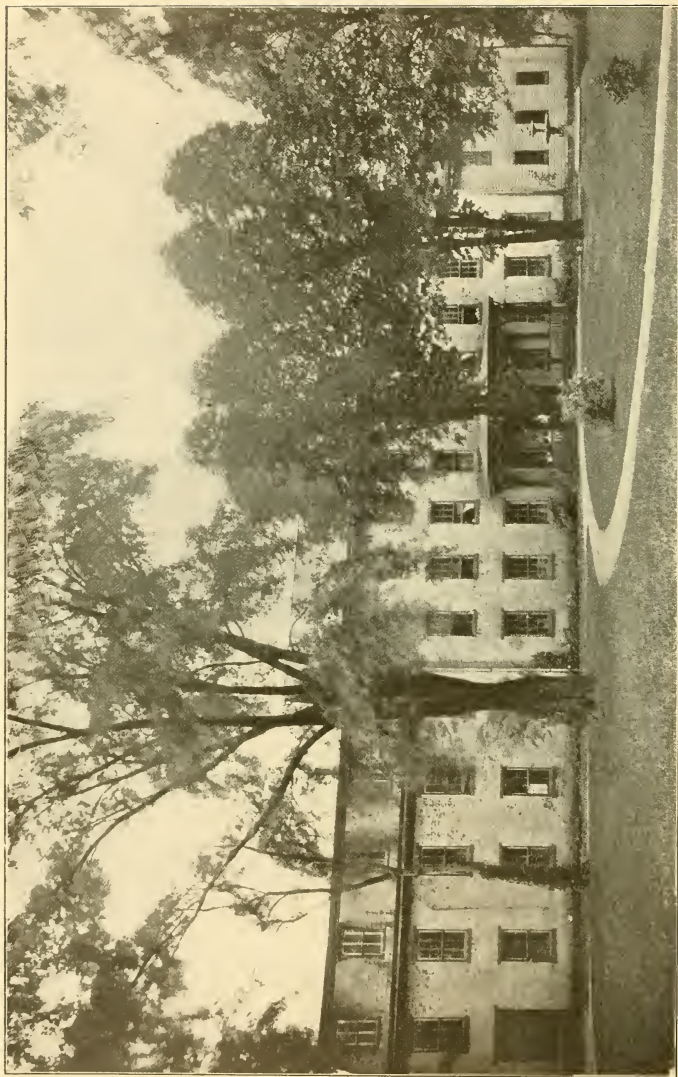
**Income for Maintenance.**—  
 From Endowment..... \$4,868.69  
 Student Fees..... 2,004.00  
 Room Rent, .....; Boarding Department, .....  
 Individuals, .....; Other Sources, \$1,100..... 1,100.00  
 Churches: Direct or through College Board..... 414.00  
 College Board (Total Grant, \$1,000)..... 500.00  
 Total Income..... 8,886.69

**Deficit**..... \$214.40

**Students.**—College..... 30  
 Preparatory..... 22  
 Others (Special)..... 94  
 Total (Men, 48; Women, 98)..... 146  
 Graduates 1911-12 (Men, 1; Women, 3)..... 4

**Bible Study.**—Required of all students.

**Alumni and Alumnæ.**—Since the year 1870:  
 Ministers..... 40  
 Students now in Theological Seminaries..... ..  
 Foreign Missionaries..... 3  
 Women in Mission Work..... ..  
 Other Christian Workers..... ..  
 Teaching..... 43  
 Law..... 33  
 Medicine..... 15  
 Other Professions..... 15  
 Business, —; all Others, —..... 149  
 Total..... 298



BLAIRSVILLE COLLEGE

# BLAIRSVILLE COLLEGE, Blairsville, Pennsylvania

For Women. Organized 1851

**Government.**—By Twenty-one Trustees, who elect their successors.

**Period covered by this Report.**—September 1, 1911—June 4, 1912.

**Faculty.**—Number of Members. . . . . 10

**Property.**—Land (Acres, 2) . . . . . \$10,000.00  
 Buildings (No. of, 4) . . . . . 34,500.00  
 Furniture and Equipment . . . . . 5,630.00  
 Library: No. of Books, —; Value . . . . . 630.00  
 Total Property . . . . . \$50,760.00

**Endowment.** . . . . .  
**Other Funds** . . . . .

**Total Assets.** . . . . . \$50,760.00  
**Less Net Indebtedness** . . . . . 26,180.00

**Net Assets.** . . . . . \$24,580.00

**Gifts Received During Year** . . . . .

**Expenses of Maintenance.**—  
 Faculty Salaries, \$5,450; Other Salaries, \$800 . . . . . \$6,250.00  
 All other Expenses . . . . . 5,836.25  
 Total Expenses . . . . . \$12,086.25

**Income for Maintenance.**—  
 From Endowment . . . . .  
 Student Fees . . . . . \$7,603.48  
 Room Rent, —; Boarding Department, — . . . . .  
 Individuals, \$505; Other Sources, \$138.50 . . . . . 643.50  
 Churches: Direct or through College Board . . . . . 667.23  
 College Board . . . . . 1,000.00  
 Total Income . . . . . 9,914.21

**Deficit** . . . . . \$2,172.04

**Students.**—College . . . . . 26  
 Preparatory . . . . . 20  
 Others (Special) . . . . . 22  
 Total . . . . . 68  
 Graduates 1911-12 . . . . . 7

**Bible Study.**—Required of all students.

**Alumnæ.**—Since the year 1853:  
 Ministers . . . . .  
 Students now in Theological Seminaries . . . . .  
 Foreign Missionaries . . . . . 53  
 Women in Mission Work . . . . .  
 Other Christian Workers . . . . .  
 Teaching . . . . . 200  
 Law . . . . .  
 Medicine . . . . .  
 Other Professions . . . . .  
 Business, and all Others . . . . . 200  
 Total . . . . . 453



Main Building

# BUENA VISTA COLLEGE, Storm Lake, Iowa

Co-educational. Organized 1891

**Government.**—By Thirty-six Trustees, elected by the Synod of Iowa.

**Period covered by this Report.**—July 1, 1911—June 15, 1912.

**Faculty.**—Number of Members. . . . . 17

<b>Property.</b> —Land (Acres, 4) . . . . .	\$13,800.00	
Buildings (No. of, 4; 2 are listed in Endowment) . . . . .	35,000.00	
Furniture and Equipment . . . . .	13,000.00	
Library: No. of Books, 7,500; Value . . . . .	10,300.00	
Total Property . . . . .		\$72,100.00

<b>Endowment.</b> —		
Income Producing . . . . .	\$71,350.00	
Non-income Producing . . . . .	10,000.00	
Total Endowment . . . . .		81,350.00

**Other Funds.** . . . . .

<b>Total Assets.</b> . . . . .		\$153,450.00
<b>Less Net Indebtedness.</b> . . . . .		27,120.00

**Net Assets.** . . . . . \$126,330.00

<b>Gifts Received During Year.</b> —For Equipment . . . . .	\$ 500.00	
Endowment . . . . .	3,000.00	
Total . . . . .		\$3,500.00

<b>Expenses of Maintenance.</b> —		
Faculty Salaries \$14,191; Other Salaries, \$410 . . . . .	\$14,601.00	
All other Expenses . . . . .	2,820.00	
Total Expenses . . . . .		\$17,421.00

<b>Income for Maintenance.</b> —		
From Endowment . . . . .	\$2,330.00	
Student Fees . . . . .	7,011.65	
Room Rent, \$375; Boarding Department, — . . . . .	375.00	
Individuals, \$1,400; Other Sources, \$525 . . . . .	1,925.00	
Churches: Direct or through College Board . . . . .	2,725.00	
College Board . . . . .		
Total Income . . . . .		14,366.65

**Deficit.** . . . . . \$3,054.35

<b>Students.</b> —College . . . . .	54	
Preparatory . . . . .	35	
Others (Special) . . . . .	114	
Total (Men, 108; Women, 95) . . . . .		203
Graduates 1911-12 (Men, 6; Women, 6) . . . . .		12

**Bible Study.**—Required of all students.

<b>Alumni and Alumnae.</b> —Since the year 1891:		
Ministers . . . . .	12	
Students now in Theological Seminaries . . . . .	4	
Foreign Missionaries . . . . .	1	
Women in Mission Work . . . . .	2	
Other Christian Workers . . . . .	4	
Teaching . . . . .	73	
Law . . . . .	10	
Medicine . . . . .	7	
Other Professions . . . . .	3	
Business, 130; all Others, 60 . . . . .	190	
Total, Less 1, counted twice . . . . .		305





Main Hall



Rankin Hall of Science

CARROLL COLLEGE

# CARROLL COLLEGE, Waukesha, Wisconsin

Co-educational. Organized 1846

**Government.**—By Twenty-four Trustees, elected by the Synod of Wisconsin.

**Period covered by this Report.**—June 1, 1911—June 1, 1912.

**Faculty.**—Number of Members. . . . . 18

<b>Property.</b> —Land (Acres, 14) . . . . .	\$ 48,000.00	
Buildings (No. of, 6) . . . . .	193,000.00	
Furniture and Equipment . . . . .	11,000.00	
Library: No. of Books, 7,000; Value . . . . .	10,000.00	
Total Property . . . . .	\$262,000.00	

<b>Endowment.</b> —		
Income Producing . . . . .	\$261,582.64	
Non-income Producing . . . . .	19,294.40	
Total Endowment . . . . .	280,877.04	

**Other Funds** . . . . .

**Total Assets** . . . . . \$542,877.04

**Less Net Indebtedness** (Reduced by \$1,615 surplus and \$3,000 pledges) . . . . . 19,200.00

**Net Assets** . . . . . \$523,677.04

**Gifts Received During Year.**—

For Endowment \$8,500; Gift subject to Annuity \$3,500 . . . . . \$12,000.00

**Expenses of Maintenance.**—

Faculty Salaries, \$21,134; Other Salaries, \$300 . . . . .	\$21,434.00	
All other Expenses . . . . .	8,400.52	
Total Expenses . . . . .	\$29,834.52	

**Income for Maintenance.**—

From Endowment . . . . .	\$ 6,592.22	
Student Fees . . . . .	11,801.28	
Room Rent, \$2,250; Boarding Department, — . . . . .	2,250.00	
Individuals, \$5,261.20; Other Sources, \$1,847.25 . . . . .	7,108.45	
Churches: Direct or through College Board . . . . .	2,147.91	
College Board . . . . .	1,550.00	
Total Income . . . . .	\$31,449.86	

**Surplus** . . . . . \$1,615.34

<b>Students.</b> —College . . . . .	191	
Preparatory . . . . .	40	
Other (Special) . . . . .	53	
Total (Men, 164; Women, 120) . . . . .	284	
Graduates 1911-12 (Men, 5; Women, 10) . . . . .	15	

**Bible Study.**—Required of all students.

**Alumni and Alumnae.**—Since the year 1857-60, 20; 1905-12, 66.

Ministers . . . . .	14	
Students now in Theological Seminaries . . . . .	2	
Foreign Missionaries . . . . .	2	
Women in Mission Work . . . . .	..	
Other Christian Workers . . . . .	..	
Teaching . . . . .	46	
Law . . . . .	3	
Medicine . . . . .	1	
Other Professions . . . . .	5	
Business, 17; all Others, 1 . . . . .	18	
Total, Less 5, counted twice . . . . .	86	



Old Centre



Main Building

CENTRE COLLEGE  
OF CENTRAL UNIVERSITY OF KENTUCKY



# CENTRE COLLEGE OF CENTRAL UNIVERSITY OF KENTUCKY, Danville, Kentucky

For Men. Organized 1819

**Government.**—By Twenty-four Trustees, who elect their successors.

**Period covered by this Report.**—June 1, 1911—June 1, 1912.

**Faculty.**—Number of Members . . . . . 19

**Property.**—Land (Acres, 43) . . . . . \$ 70,000.00  
 Buildings (No. of, 10) . . . . . 124,000.00  
 Furniture and Equipment . . . . . 22,000.00  
 Library: No. of Books, 25,000; Value . . . . . 20,000.00  
 Total Property . . . . . \$236,000.00

**Endowment.**—  
 Income Producing . . . . . \$477,950.00  
 Non-income Producing . . . . . 53,950.00  
 (Pledges toward additional Endowment, \$19,000)  
 Total Endowment . . . . . 531,900.00

**Other Funds.** . . . . .                     

**Total Assets.** . . . . . \$767,900.00

**Less Net Indebtedness.** . . . . .                     

**Net Assets.** . . . . .                     

**Gifts Received During Year.**—For Building, \$20,000 (in Cash,  
 \$9,649.69) . . . . . \$20,000.00

**Expenses of Maintenance.**—  
 Faculty Salaries, \$25,223.14; Other Salaries, \$5,855 \$31,078.14  
 All other Expenses . . . . . 10,397.79  
 Total Expenses . . . . . \$41,475.93

**Income for Maintenance.**—  
 From Endowment . . . . . \$23,146.17  
 Student Fees . . . . . 6,274.45  
 Room Rent, \$929.95; Boarding Department, — 929.95  
 Individuals, —; Other Sources, \$4,924.89 . . . . . 4,924.89  
 Churches: Direct or through College Board . . . . .  
 College Board . . . . .  
 Total Income . . . . . 35,275.46

**Deficit.** . . . . . \$6,200.47

**Students.**—College . . . . . 97  
 Preparatory . . . . . 55  
 Others (Special) . . . . . 9  
 Total . . . . . 161  
 Graduates 1911-12 . . . . . 17

**Bible Study.**—Required of all students.

**Alumni.**—Since the year 1819:  
 Ministers . . . . . 251  
 Students now in Theological Seminaries . . . . . 6  
 Foreign Missionaries . . . . . 11  
 Women in Mission Work . . . . . ..  
 Other Christian Workers . . . . . ..  
 Teaching . . . . . 113  
 Law . . . . . 495  
 Medicine . . . . . 150  
 Other Professions . . . . . 63  
 Business, 277; all Others, 146 . . . . . 423  
 Total, Less 11, counted twice . . . . . 1,411



A Group of Buildings



The Science Hall  
COE COLLEGE

# COE COLLEGE, Cedar Rapids, Iowa

Co-educational. Organized 1881

**Government.**—By Thirty Trustees, who elect their successors.

**Period covered by this Report.**—August 1, 1911—August 1, 1912.

**Faculty.**—Number of Members. . . . . 34

**Property.**—Land (Acres, 10). . . . . \$150,000.00  
 Buildings (No. of, 7). . . . . 205,511.51  
 Furniture and Equipment . . . . . 60,376.92  
 Library: No. of Books, 12,300; Value. . . . . 13,000.00  
 Total Property. . . . . \$428,888.43

**Endowment.**—  
 Income Producing. . . . . \$420,000.00  
 Non-income Producing. . . . . 38,473.02  
 Total Endowment. . . . . 458,473.02

**Other Funds.** . . . . .

**Total Assets.** . . . . . \$887,361.45  
**Less Net Indebtedness.** . . . . . 144,000.00

**Net Assets.** . . . . . \$743,361.45

**Gifts Received During Year** . . . . .

**Expenses of Maintenance.**—

Faculty Salaries, \$32,532.02; Other Salaries,  
 \$7,555.80. . . . . \$40,087.82  
 All other Expenses. . . . . 36,955.83  
 Total Expenses. . . . . \$77,043.65

**Income for Maintenance.**—

From Endowment. . . . . \$24,573.27  
 Student Fees. . . . . 20,855.10  
 Room Rent, \$1,224.50; Boarding Department, —  
 Individuals, —; Other Sources, —. . . . . 1,224.50  
 Churches: Direct or through College Board. . . . .  
 College Board. . . . . 50.00  
 Total Income. . . . . 46,702.87

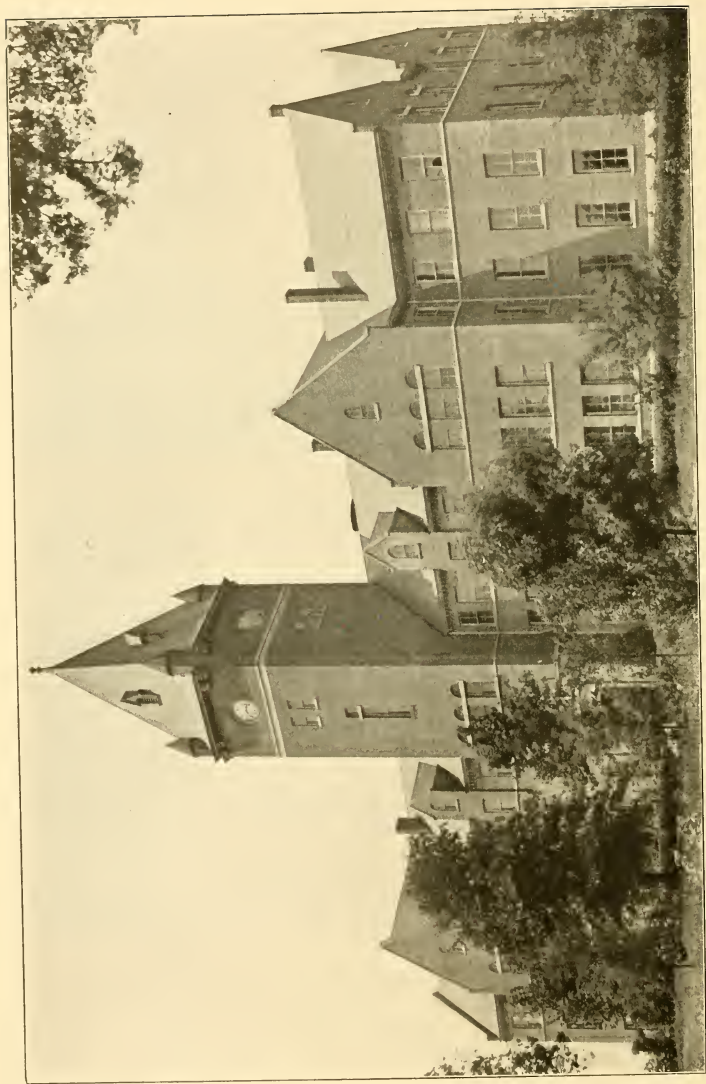
**Deficit.** . . . . . \$30,340.78

**Students.**—College. . . . . 267  
 Preparatory. . . . . 65  
 Other (Special). . . . . 126  
 Total (in College: Men, 109; Women, 158). . . . . 458  
 Graduates 1911-12 (Men, 9; Women, 26). . . . . 35

**Bible Study.**—Required of Freshmen and Sophomores, elective with Juniors and Seniors. Students may major in Bible Study.

**Alumni and Alumnae.**—Since the year 1881:

Ministers. . . . . 38  
 Students now in Theological Seminaries. . . . . 5  
 Foreign Missionaries. . . . . 15  
 Women in Mission Work. . . . . 6  
 Other Christian Workers. . . . . 6  
 Teaching. . . . . 127  
 Law. . . . . 22  
 Medicine. . . . . 20  
 Other Professions. . . . . 27  
 Business, 34; all Others, 178. . . . . 212  
 Total. . . . . 478



Memorial Hall

# CUMBERLAND UNIVERSITY, Lebanon, Tennessee

Co-educational. Organized 1842

**Government.**—By Nine Trustees, who elect their successors, but their election must be confirmed by the General Assembly.

**Period covered by this Report.**—June 15, 1911—June 15, 1912.

**Faculty.**—Number of Members. . . . . 22

**Property.**—Land (Acres, 51) . . . . . \$ 27,000.00  
 Buildings (No. of, 5; 1 valued in Endmt. total) . . . . . 130,000.00  
 Furniture and Equipment . . . . . 11,000.00  
 Library: No. of Books, ———; Value . . . . . 15,000.00  
 Total Property . . . . . \$183,000.00

**Endowment.**—  
 Income Producing . . . . . 150,500.00  
 (\$75,000 not productive for college maintenance)

**Other Funds** . . . . .

**Total Assets** . . . . . \$333,500.00  
**Less Net Indebtedness** . . . . . 1,575.00

**Net Assets** . . . . . \$331,925.00

**Gifts Received During Year.**—For Equipment . . . . . \$500.00

**Expenses of Maintenance.**—  
 Faculty Salaries, \$11,810; Other Salaries, \$250 . . . . . \$12,060.00  
 All other Expenses . . . . . 3,030.84  
 Total Expenses . . . . . \$15,090.84

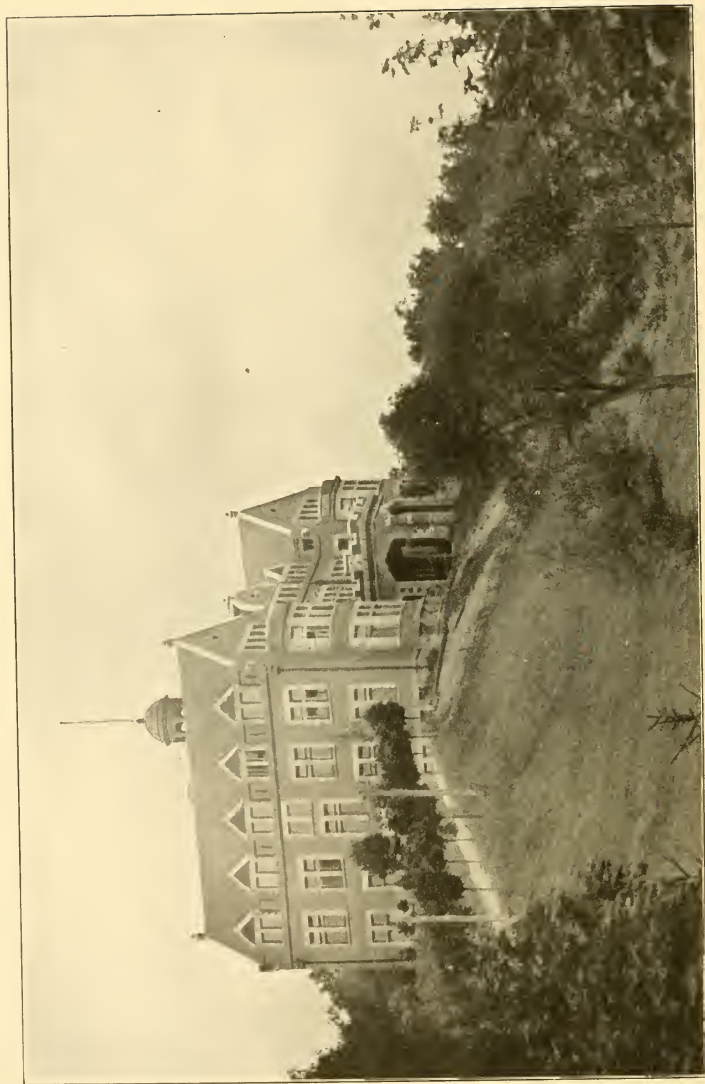
**Income for Maintenance.**—  
 From Endowment . . . . . \$1,423.98  
 Student Fees . . . . . 6,951.00  
 Room Rent, \$1,350; Boarding Department, ——— . . . . . 1,350.00  
 Individuals, \$728; Other Sources, ——— . . . . . 728.00  
 Churches: Direct or through College Board . . . . . 551.63  
 College Board . . . . . 2,975.85  
 Total Income . . . . . 13,980.46

**Deficit** . . . . . \$1,110.38

**Students.**—College . . . . . 77  
 Preparatory . . . . . 60  
 Others (Special) . . . . . 231  
 Total (Men, 258; Women, 110) . . . . . 368  
 Graduates 1911-12 (Men, 8; Women, 1) . . . . . 9

**Bible Study.**—Required of all regular students.

**Alumni and Alumnae.**—Since the year 1842:  
 Ministers . . . . . 175  
 Students now in Theological Seminaries . . . . . 10  
 Foreign Missionaries . . . . . 8  
 Women in Mission Work . . . . . ..  
 Other Christian Workers . . . . . ..  
 Teaching . . . . . 238  
 Law . . . . . 159  
 Medicine . . . . . 73  
 Other Professions . . . . . 92  
 Business, 150; all Others, 30 . . . . . 180  
 Total, Less 178, counted twice . . . . . 757



DAVIS AND ELKINS COLLEGE



# DAVIS AND ELKINS COLLEGE, Elkins, West Virginia

Co-educational. Organized 1904

**Government.**—By Eighteen Trustees, who elect as their successors candidates nominated by the Presbyteries of Lexington and Winchester of the Presbyterian Church in the United States, and the Synod of West Virginia of the Presbyterian Church in the United States of America.

**Period covered by this Report.**—July 1, 1911—June 30, 1912.

**Faculty.**—Number of Members..... 10

**Property.**—Land (Acres, —)..... \$25,000.00  
 Buildings (No. of, 2)..... 70,000.00  
 Furniture and Equipment..... 3,360.00  
 Library: No. of Books, —; Value..... 2,700.00  
 Total Property..... \$101,060.00

**Endowment.**—  
 Income Producing..... 100,000.00

**Other Funds**.....

**Total Assets**..... \$201,060.00

**Less Net Indebtedness**..... 1,111.31

**Net Assets**..... \$199,948.69

**Gifts Received During Year**.....

**Expenses of Maintenance.**—  
 Faculty Salaries, \$8,118; Other Salaries, \$788..... \$8,905.00  
 All other Expenses..... 4,687.36  
 Total Expenses..... \$13,593.36

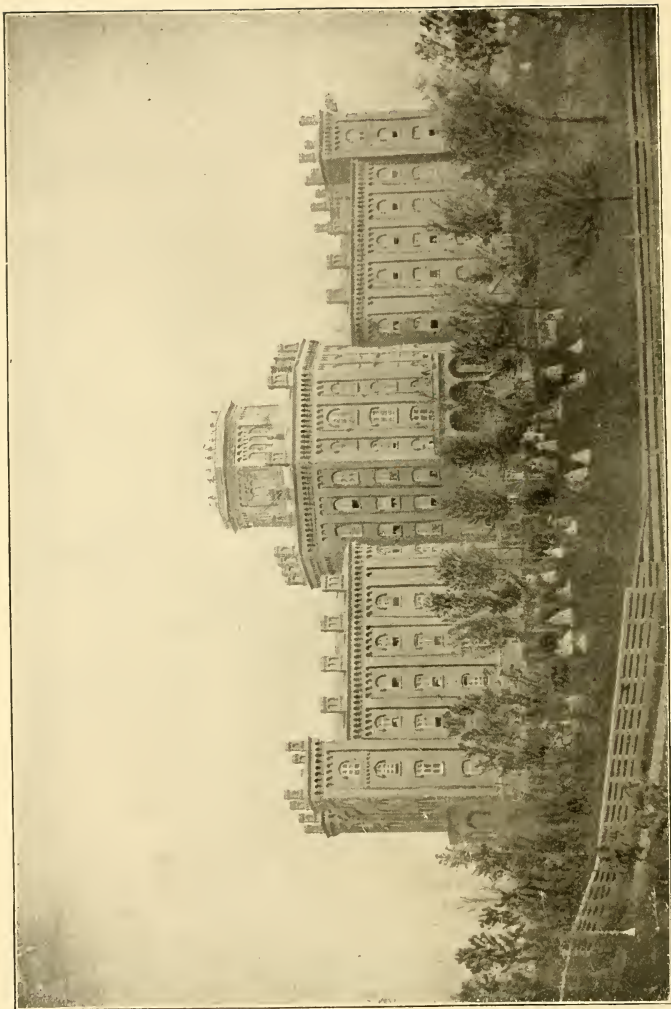
**Income for Maintenance.**—  
 From Endowment.....  
 Student Fees..... \$3,166.75  
 Room Rent, \$724.31; Boarding Department, —..... 724.31  
 Individuals, \$6,750; Other Sources, \$430..... 7,180.00  
 Churches: Direct or through College Board..... 404.28  
 College Board..... 1,500.00  
 Total Income..... 12,975.34

**Deficit**..... \$618.02

**Students.**—College..... 30  
 Preparatory..... 22  
 Other (Includes Summer School Students)..... 91  
 Total, Regular (Men, 57; Women, 33)..... 90  
 Graduates 1911-12 (Men, 3; Women, —)..... 3

**Bible Study.**—Required of all regular students.

**Alumni and Alumnae.**—Since the year 1904:  
 Ministers.....  
 Students now in Theological Seminaries.....  
 Foreign Missionaries.....  
 Women in Mission Work.....  
 Other Christian Workers.....  
 Teaching..... 2  
 Law..... 1  
 Medicine.....  
 Other Professions.....  
 Business, 3; all Others, 1..... 4  
 Total..... 7



ELMIRA COLLEGE



# ELMIRA COLLEGE, Elmira, New York

For Women. Organized 1855

**Government.**—By Nineteen Trustees, who elect their successors.

**Period covered by this Report.**—June 1, 1911—January 1, 1912.

**Faculty.**—Number of Members (10 women; 7 men)..... 17

<b>Property.</b> —Land (Acres, —).....	\$ 60,000.00	
Buildings (No. of, 6).....	170,000.00	
Furniture and Equipment.....	48,500.00	
Library: No. of Books, 10,600; Value.....	10,600.00	
Total Property.....	\$289,100.00	

<b>Endowment.</b> —		
Income Producing.....	240,949.16	
<b>Other Funds.</b> .....		

<b>Total Assets.</b> .....	\$529,149.16	
Less Value of buildings given in endowment.....	114,306.66	

<b>Net Assets.</b> .....	\$414,842.50	
--------------------------	--------------	--

<b>Gifts Received During Year.</b> —For Building.....	\$22,657.11	
---	-------------	--

<b>Expenses of Maintenance.</b> —		
Faculty Salaries, \$24,924; Other Salaries, \$7,500....	\$32,424.00	
All other Expenses.....	18,696.08	
Total Expenses.....	\$51,110.08	

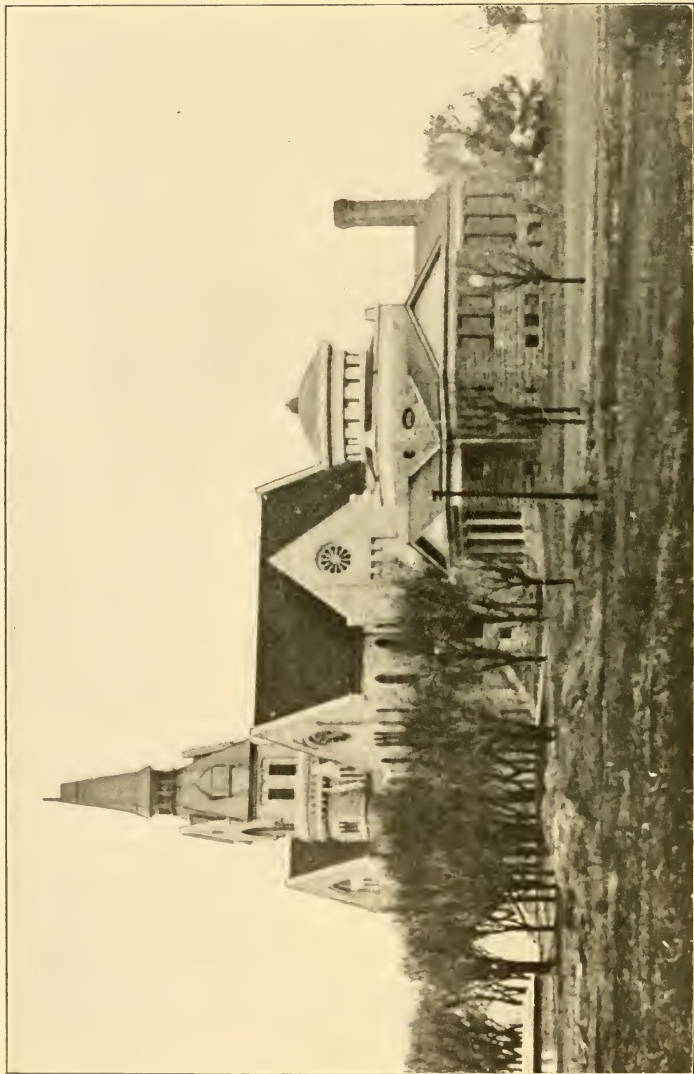
<b>Income for Maintenance.</b> —		
From Endowment.....	\$ 5,599.40	
Student Fees.....	21,758.68	
Room Rent, —; Boarding Department.....	30,762.50	
Individuals, —; Other Sources.....		
Churches: Direct or through College Board.....		
College Board.....		
Total Income.....	\$58,120.67	

<b>Surplus</b> .....	\$7,010.59	
----------------------	------------	--

<b>Students.</b> —College.....	205	
Preparatory.....		
Others (Special).....		
Total.....	205	
Graduates 1911-12.....	43	

**Bible Study.**—Required of all students.

<b>Alumnæ.</b> —Since the year 1855:		
Ministers.....		
Students now in Theological Seminaries.....		
Foreign Missionaries.....		
Women in Mission Work.....		
Other Christian Workers.....		
Teaching.....		
Law.....		
Medicine.....		
Other Professions.....		
Business, —; all Others, —.....		
Total.....	800	



The College and Anderson Memorial Library

THE COLLEGE OF EMPORIA

# THE COLLEGE OF EMPORIA, Emporia, Kansas

Co-educational. Organized 1882

**Government.**—By Twenty-one Trustees, elected by the Synod of Kansas.

**Period covered by this Report.**—June 15, 1911—June 15, 1912.

**Faculty.**—Number of Members. . . . . 21

**Property.**—Land (Acres, 38) . . . . . \$ 25,000.00  
 Buildings (No. of, 5) . . . . . 180,000.00  
 Furniture and Equipment . . . . . 20,000.00  
 Library: No. of Books, 12,000; Value . . . . . 10,000.00  
 Total Property . . . . . \$235,000.00

**Endowment.**—  
 Income Producing . . . . . \$30,141.56  
 Non-income Producing . . . . . 81,000.00  
 Total Endowment . . . . . 111,141.56

**Other Funds** . . . . .

**Total Assets** . . . . . \$346,141.56  
**Less Net Indebtedness** . . . . . 27,650.00

**Net Assets** . . . . . \$318,491.56

**Gifts Received During Year.**—For Building, \$23,060; Endowment, \$4,561.91 (Received in Cash, \$25,621.91) . . . . . \$27,621.91

**Expenses of Maintenance.**—  
 Faculty Salaries, \$14,400; Other Salaries, \$1,850 . . . \$16,250.00  
 All other Expenses . . . . . 14,342.15  
 Total Expenses . . . . . \$30,592.15

**Income for Maintenance.**—  
 From Endowment . . . . . \$ 650.48  
 Student Fees . . . . . 5,035.00  
 Room Rent, ———; Boarding Department, ———  
 Individuals, \$8,320; Other Sources, \$6,500 . . . . . 14,820.00  
 Churches: Direct or through College Board . . . . . 7,330.12  
 College Board . . . . . 3,000.15  
 Total Income . . . . . 30,835.75

**Surplus** . . . . . \$243.60

**Students.**—College . . . . . 152  
 Preparatory . . . . . 44  
 Others (60 short time) . . . . . 117  
 Total, Regular (Men, 109; Women, 135) . . . . . 244  
 Graduates 1911-12 (Men, 16; Women, 16) . . . . . 32

**Bible Study.**—Required of all students.

**Alumni and Alumnæ.**—Since the year 1882:  
 Ministers . . . . . 50  
 Students now in Theological Seminaries . . . . . 10  
 Foreign Missionaries . . . . . 14  
 Women in Mission Work . . . . . 5  
 Other Christian Workers . . . . . 5  
 Teaching . . . . . 94  
 Law . . . . . 9  
 Medicine . . . . . 14  
 Other Professions . . . . . 11  
 Business, 33; all Others, 88 . . . . . 121  
 Total, Less 16, counted twice . . . . . 317



In the Quadrangle

GROVE CITY COLLEGE

# GROVE CITY COLLEGE, Grove City, Pennsylvania

Co-educational. Organized 1884

**Government.**—By Thirty Trustees, who elect their successors.

**Period covered by this Report.**—June 12, 1911—June 11, 1912.

**Faculty.**—Number of Members. . . . . 25

**Property.**—Land (Acres, 40) . . . . . \$133,000.00  
 Buildings (No. of, 10) . . . . . 274,000.00  
 Furniture and Equipment . . . . . 20,000.00  
 Library: No. of Books, 8,000; Value . . . . . 10,000.00  
 Total Property . . . . . \$437,000.00

**Endowment.**—  
 Income Producing . . . . . 75,000.00  
 (Pledges toward additional Endowment, \$90,000)

**Other Funds** . . . . .

**Total Assets** . . . . . \$512,000.00  
**Less Net Indebtedness** . . . . . 55,300.00

**Net Assets** . . . . . \$456,700.00

**Gifts Received During Year** . . . . .

**Expenses of Maintenance.**—  
 Faculty Salaries, \$24,570; Other Salaries, ——— \$24,570.00  
 All other Expenses . . . . . 17,832.13  
 Total Expenses . . . . . \$42,402.13

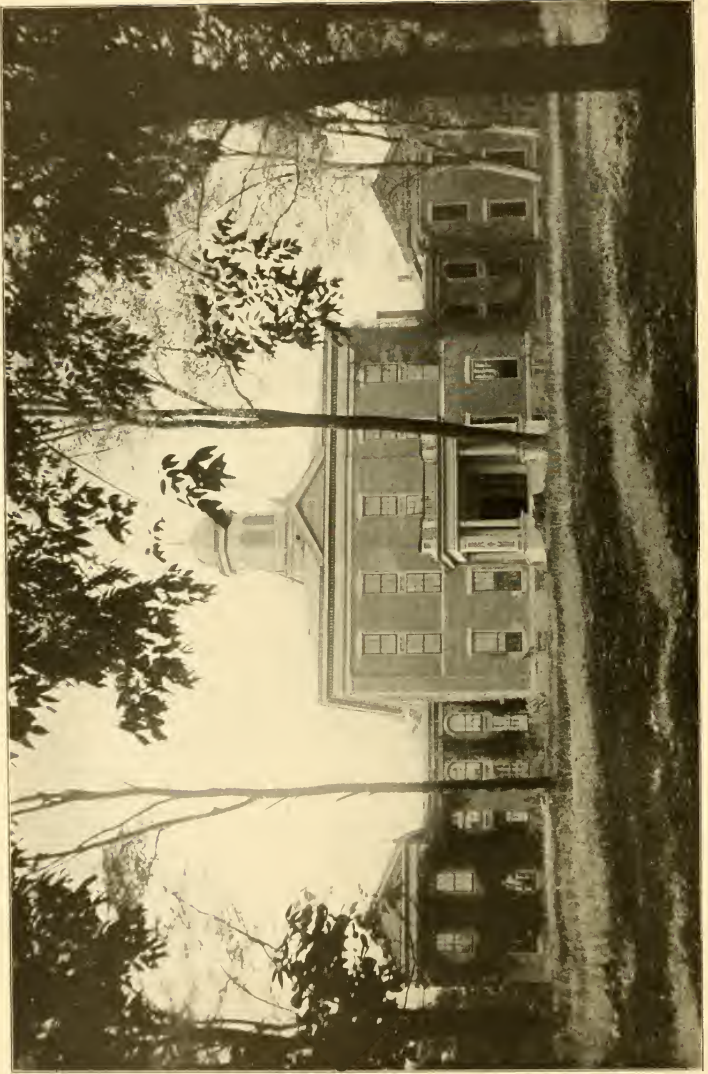
**Income for Maintenance.**—  
 From Endowment . . . . . \$ 4,250.00  
 Student Fees . . . . . 37,599.55  
 Room Rent, ———; Boarding Department, ———  
 Individuals, \$1,500; Other Sources, \$1,550 . . . . . 3,050.00  
 Churches: Direct or through College Board . . . . .  
 College Board . . . . . 537.50  
 Total Income . . . . . 45,437.05

**Surplus** . . . . . \$3,034.92

**Students.**—College . . . . . 284  
 Preparatory . . . . . 140  
 Others (142 are Short Term) . . . . . 400  
 Total, Regular (Men  $\frac{2}{3}$ ; Women,  $\frac{1}{3}$ ) . . . . . 772  
 Graduates 1911-12 (Men, 26; Women, 13) . . . . . 39

**Bible Study.**—Required of all regular students.

**Alumni and Alumnae.**—Since the year 1884:  
 Ministers . . . . . 290  
 Students now in Theological Seminaries . . . . . 34  
 Foreign Missionaries . . . . . 35  
 Women in Mission Work . . . . . 40  
 Other Christian Workers . . . . .  
 Teaching . . . . . 600  
 Law . . . . . 325  
 Medicine . . . . . 310  
 Other Professions . . . . .  
 Business, 2,900; all Others, 1,400 . . . . . 4,300  
 Total . . . . . 5,934



Classis Hall



# HANOVER COLLEGE, Hanover, Indiana

Co-educational. Organized 1829

**Government.**—By Thirty-two Trustees, who elect their successors.

**Period covered by this Report.**—June 1, 1911—June 1, 1912.

**Faculty.**—Number of Members. . . . . 17

**Property.**—Land (Acres, 40) . . . . . \$ 5,200.00  
 Buildings (No. of, 10; 3 are valued in Endowment) 116,000.00  
 Furniture and Equipment . . . . . 8,000.00  
 Library: No. of Books, 22,000; Value . . . . . 25,000.00  
 Total Property. . . . . \$154,200.00

**Endowment.**—  
 Income Producing . . . . . 225,591.50  
**Other Funds.** . . . . . 17,500.00

**Total Assets.** . . . . . \$397,291.50  
**Less Net Indebtedness.** . . . . . 5,000.00

**Net Assets.** . . . . . \$392,291.50

**Gifts Received During Year.** . . . . .

**Expenses of Maintenance.**—  
 Faculty Salaries, \$14,834.75; Other Salaries, \$1,600 \$16,524.75  
 All other Expenses . . . . . 4,823.78  
 Total Expenses (13 Months) . . . . . \$21,348.53

**Income for Maintenance.**—  
 From Endowment . . . . . \$11,804.03  
 Student Fees . . . . . 5,646.20  
 Room Rent, \$968.07; Boarding Department, ——— 968.07  
 Individuals, \$1,415; Other Sources, ——— 1,415.00  
 Churches: Direct or through College Board . . . . . 32.89  
 College Board . . . . . 50.00  
 Total Income (12 Months) . . . . . 19,916.19

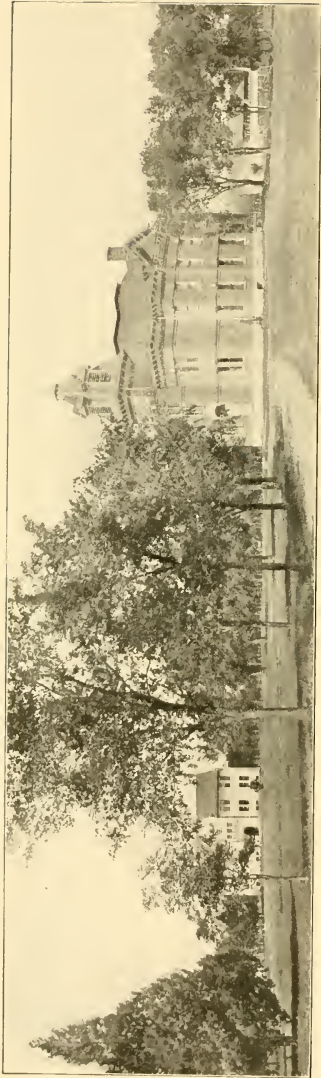
**Deficit (Due to paying 13 months' expenses out of 12 months' income)** \$1,432.34

**Students.**—College . . . . . 104  
 Preparatory . . . . . 61  
 Total (Men, 140; Women, 115) . . . . . 255  
 Graduates 1911-12 (Men, 11; Women, 8) . . . . . 19

**Bible Study.**—Required of all students.

**Alumni and Alumnae.**—Since the year 1829:  
 Ministers . . . . . 339  
 Students now in Theological Seminaries . . . . . 4  
 Foreign Missionaries . . . . . 33  
 Women in Mission Work . . . . . 6  
 Other Christian Workers . . . . . 1  
 Teaching . . . . . 183  
 Law . . . . . 135  
 Medicine . . . . . 59  
 Other Professions . . . . . 38  
 Business, 86; all Others, 87 . . . . . 173  
 Total, Less 27, counted twice . . . . . 944





HASTINGS COLLEGE

# HASTINGS COLLEGE, Hastings, Nebraska

Co-educational. Organized 1873

**Government.**—By Twenty-seven Trustees, elected by the Synod of Nebraska.

**Period covered by this Report.**—June 1, 1911—June 1, 1912

**Faculty.**—Number of Members. . . . . 13

<b>Property.</b> —Land (Acres, 25) . . . . .	\$22,000.00	
Buildings (No. of, 6) . . . . .	76,650.85	
Furniture and Equipment . . . . .	8,930.75	
Library: No. of Books, 17,445; Value . . . . .	7,638.03	
Total Property . . . . .	\$115,219.63	

<b>Endowment.</b> —		
Income Producing . . . . .	\$114,437.88	
Non-income Producing . . . . .	4,000.00	
(Pledges toward additional Endowment, \$22,000)		
Total Endowment . . . . .	118,437.88	

**Other Funds** . . . . .

<b>Total Assets</b> . . . . .	\$233,657.51	
<b>Less Net Indebtedness</b> . . . . .	22,590.92	

**Net Assets** . . . . . \$211,066.59

<b>Gifts Received During Year.</b> —		
For Land, —; Building, \$4,020.71 . . . . .	\$4,020.71	
Equipment, \$54.65; Endowment, \$5,200. . . . .	5,254.65	
Total . . . . .	\$9,275.36	

<b>Expenses of Maintenance.</b> —		
Faculty Salaries, \$13,720; Other Salaries, \$6,095 . . . . .	\$19,815.00	
All other Expenses . . . . .	8,349.24	
Total Expenses . . . . .	\$28,164.24	

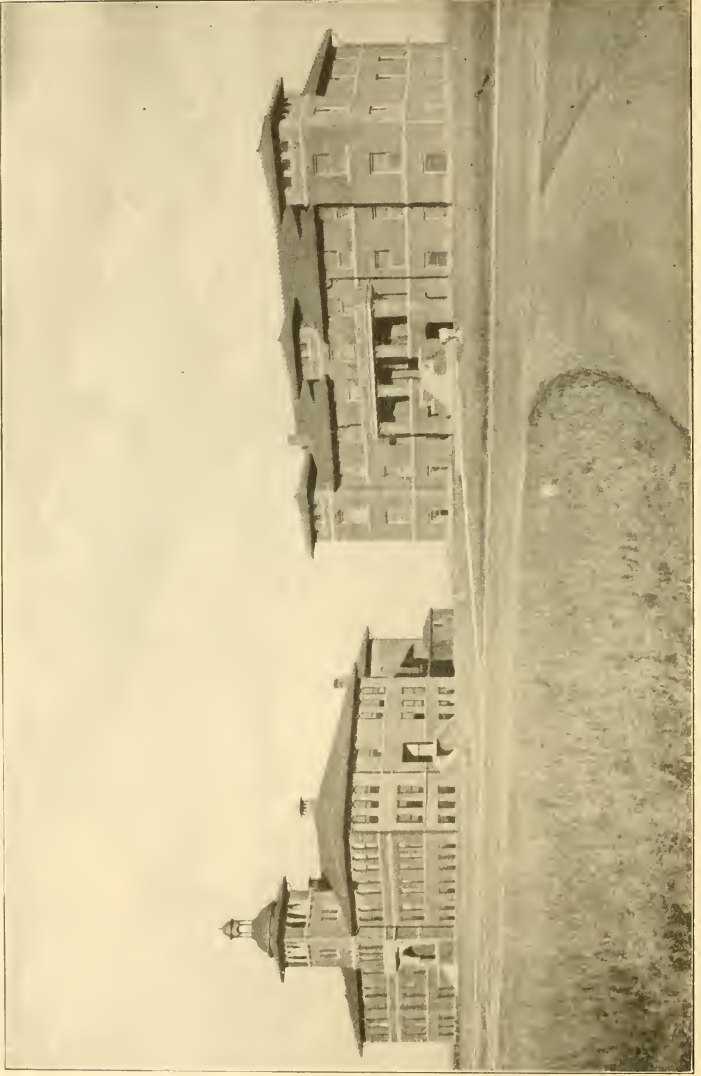
<b>Income for Maintenance.</b> —		
From Endowment . . . . .	\$6,383.93	
Student Fees . . . . .	3,775.00	
Room Rent, —; Boarding Department, — . . . . .	1,026.50	
Individuals, \$2,266.50; Other Sources, \$2,221.18 . . . . .	4,487.68	
Churches: Direct or through College Board . . . . .	2,182.48	
College Board . . . . .	3,520.91	
Total Income . . . . .	21,376.50	

**Deficit** . . . . . \$6,787.74

<b>Students.</b> —College . . . . .	63	
Preparatory . . . . .	29	
Others (Special) . . . . .	75	
Total (Men, 76; Women, 91) . . . . .	167	
Graduates 1911-12 (Men, 1; Women, 7) . . . . .	8	

**Bible Study.**—Required of all students.

<b>Alumni and Alumnae.</b> —Since the year 1873:		
Ministers . . . . .	18	
Students now in Theological Seminaries . . . . .	1	
Foreign Missionaries . . . . .	3	
Women in Mission Work . . . . .	..	
Other Christian Workers . . . . .	..	
Teaching . . . . .	37	
Law . . . . .	5	
Medicine . . . . .	6	
Other Professions . . . . .	13	
Business, —; all Others . . . . .	55	
Total . . . . .	138	



HENRY KENDALL COLLEGE

# HENRY KENDALL COLLEGE, Tulsa, Oklahoma

Co-educational. Organized 1894

**Government.**—By Seventeen Trustees, elected by the Synod of Oklahoma.

**Period covered by this Report.**—June 1, 1911—June 1, 1912.

**Faculty.**—Number of Members. . . . . 15

<b>Property.</b> —Land (Acres, 21).....	\$50,000.00	
Buildings (No. of, 3).....	86,000.00	
Furniture and Equipment.....	5,300.00	
Library: No. of Books, 3,500; Value.....	2,000.00	
Total Property.....		\$143,300.00

<b>Endowment.</b> —		
Income Producing.....		92,500.00

<b>Other Funds</b> .....		
--------------------------	--	--

<b>Total Assets</b> .....		\$235,800.00
<b>Less Net Indebtedness</b> .....		34,800.00

<b>Net Assets</b> .....		\$201,000.00
-------------------------	--	--------------

**Gifts Received During Year**.....

<b>Expenses of Maintenance.</b> —		
Faculty Salaries, \$12,275; Other Salaries, \$1,110.....	\$13,385.00	
All other Expenses.....	3,374.00	
Total Expenses.....		\$16,759.00

<b>Income for Maintenance.</b> —		
From Endowment.....	\$7,800.45	
Student Fees.....	4,566.00	
Room Rent, ———; Boarding Department, ———.....		
Individuals, \$45.50; Other Sources, \$630.....	675.50	
Churches: Direct or through College Board.....	444.55	
College Board (Total Grant, \$1,000).....	500.00	
Total Income.....		13,995.50

<b>Deficit</b> .....		\$2,763.50
----------------------	--	------------

<b>Students.</b> — College.....	10	
Preparatory.....	55	
Others (Special).....	86	
Total (Men, 43; Women, 108).....		151
Graduates 1911-12 (Men, 2; Women, —).....		2

**Bible Study.**—Required of all regular students.

<b>Alumni and Alumnae.</b> —Since the year 1898:		
Ministers.....		
Students now in Theological Seminaries.....	1	
Foreign Missionaries.....		
Women in Mission Work.....		
Other Christian Workers.....		
Teaching.....	9	
Law.....	2	
Medicine.....		
Other Professions.....		
Business, —; all Others, 19.....	19	
Total.....		31



Old University Building



New College Hall

HIGHLAND COLLEGE

# HIGHLAND COLLEGE, Highland, Kansas

(Legal Name, Highland University Co.)

Co-educational. Organized 1857

**Government.**—By Twenty-seven Trustees, elected by the Synod of Kansas.

**Period covered by this Report.**—September, 1911—June, 1912.

**Faculty.**—Number of Members. . . . . 14

**Property.**—Land (Acres, 13) . . . . . \$20,000.00  
 Buildings (No. of, 4) . . . . . 51,000.00  
 Furniture and Equipment . . . . . 8,000.00  
 Library: No. of Books, —; Value . . . . . 5,000.00  
 Total Property . . . . . \$84,000.00

**Endowment.**—Income Producing . . . . . 40,000.00

**Other Funds** . . . . .

**Total Assets** . . . . . \$124,000.00

**Less Net Indebtedness** . . . . . 11,727.64

**Net Assets** . . . . . \$112,272.36

**Gifts Received During Year.**—

For Land, \$300; Equipment, \$1,800 . . . . . \$2,100.00

**Expenses of Maintenance.**—

Faculty Salaries, \$5,700; Other Salaries, \$50 . . . . . \$5,750.00

All other Expenses . . . . . 4,565.00

Total Expenses . . . . . \$10,315.00

**Income for Maintenance.**—

From Endowment . . . . . \$2,338.80

Student Fees . . . . . 2,837.60

Room Rent, \$46.50; Boarding Department, — . . . . . 46.50

Individuals, \$1,817.20; Other Sources, \$2,020.97 . . . . . 3,838.17

Churches: Direct or through College Board . . . . . 400.00

College Board . . . . .

Total Income . . . . . 9,461.07

**Deficit** . . . . . \$853.93

**Students.**—College . . . . . 40

Preparatory . . . . . 75

Others (Special) . . . . . 75

Total (Men, 93; Women, 97) . . . . . 190

Graduates 1911-12 (Men, 6; Women, 6) . . . . . 12

**Bible Study.**—Required of all regular students.

**Alumni and Alumnae.**—Since the year 1857:

Ministers . . . . . 27

Students now in Theological Seminaries . . . . . 2

Foreign Missionaries . . . . . 13

Women in Mission Work . . . . . 5

Other Christian Workers . . . . . 1

Teaching . . . . . 30

Law . . . . . 7

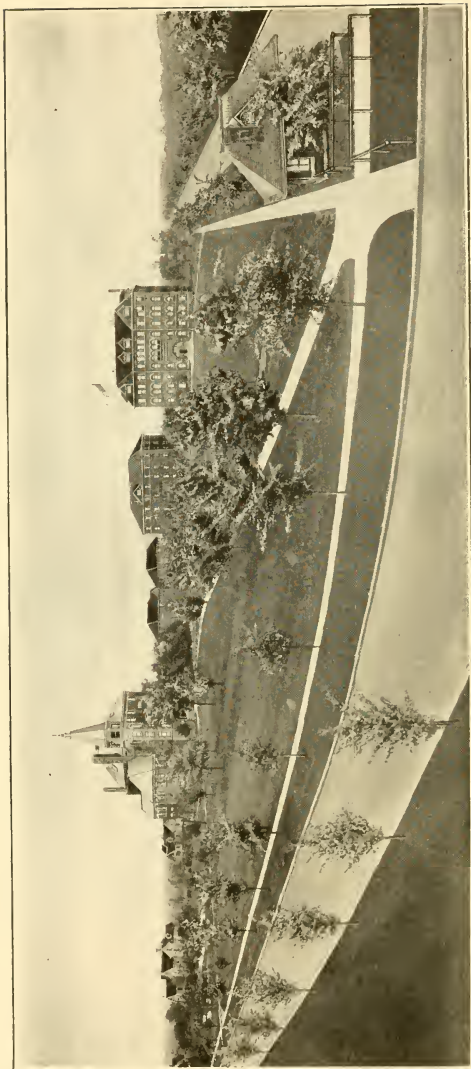
Medicine . . . . . 6

Other Professions . . . . . 11

Business, 10; all Others, 23 . . . . . 33

Total, Less 17, counted twice . . . . . 118





HIGHLAND PARK COLLEGE AND GROUNDS



# HIGHLAND PARK COLLEGE, Des Moines, Iowa

Co-educational. Organized 1892

**Government.**—By Fifteen Trustees, who elect their successors.

**Period covered by this Report.**—Year ending July 1, 1912.

**Faculty.**—Number of Members. . . . . 30

**Property.**—Land (Acres, 13) . . . . . }  
 Buildings (No. of, 9) . . . . . } \$184,302.00  
 Furniture and Equipment . . . . . 68,835.00  
 Library: No. of Books, 7,000; Value. . . . . 5,300.00  
 Total Property . . . . . \$258,437.00

**Endowment.**—  
 Income Producing . . . . . 14,532.53

**Other Funds.**—Bills Receivable and Home Study Contracts. . . . . 14,532.53

**Total Assets.** . . . . . \$272,069.53

**Less Net Indebtedness.**—Bonds, \$165,000; Bills, \$17,705; Loan, \$15,000 . . . . . 197,705.00

**Net Assets.** . . . . . \$75,264.53

**Gifts Received During Year.**—  
 Equipment, \$10,000; Building, \$20,000. . . . . \$30,000.00

**Expenses of Maintenance.**—  
 Faculty Salaries, \$56,000; Other Salaries, \$21,548.48 . . . . . \$77,548.48  
 All other Expenses, includes improvements and new equipment . . . . . 75,890.29  
 Total Expenses . . . . . \$153,447.77

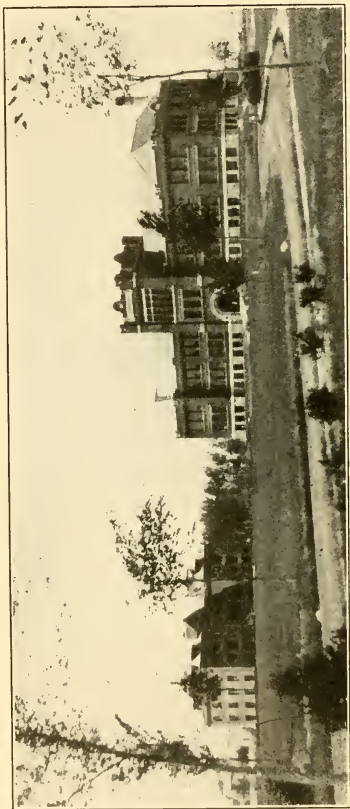
**Income for Maintenance.**—  
 From Endowment . . . . .  
 Student Fees, Tuition . . . . . \$72,365.99  
 Room Rent, \$17,900.92; Boarding Department, \$39,119.53 . . . . . 57,020.45  
 Individuals, ———; Other Sources, \$16,792.80 . . . . . 16,792.80  
 Churches: Direct or through College Board. . . . .  
 College Board . . . . .  
 Total Income . . . . . 146,179.24

**Deficit incurred by reason of improvements, etc.** . . . . . \$7,268.53

**Students.**—College. . . . . 45  
 Preparatory . . . . . 15  
 Others: 757 Technical; 185 Music . . . . . 942  
 Total (Men, 765; Women, 237) . . . . . 1,002  
 Graduates 1911-12 (Men, 145; Women, 130) . . . . . 275

**Bible Study.**—Elective.

**Alumni and Alumnae.**—  
 Ministers . . . . .  
 Students now in Theological Seminaries . . . . .  
 Foreign Missionaries . . . . .  
 Women in Mission Work . . . . .  
 Other Christian Workers . . . . .  
 Teaching . . . . .  
 Law . . . . .  
 Medicine . . . . .  
 Other Professions . . . . .  
 Business, —; all Others, — . . . . .  
 Total . . . . .



HURON COLLEGE

# HURON COLLEGE, Huron, South Dakota

Co-educational. Organized 1883

**Government.**—By Twenty Trustees, elected by the Synod of South Dakota.

**Period covered by this Report.**—September 1, 1911—August 31, 1912.

**Faculty.**—Number of Members . . . . . 17

**Property.**—Land (Acres, 15) . . . . . \$ 50,000.00  
 Buildings (No. of, 3) . . . . . 184,296.13  
 Furniture and Equipment . . . . . 12,641.98  
 Library: No. of Books, 7,600; Value . . . . . 6,080.00  
 Total Property . . . . . \$253,018.11

**Endowment.**—  
 Income Producing . . . . . \$358,526.56  
 Non-income Producing . . . . . 167,102.44  
 Total Endowment . . . . . 525,629.00

**Other Funds.** . . . . .

**Total Assets.** . . . . . \$778,647.11  
**Less Net Indebtedness.** . . . . . 33,422.11

**Net Assets.** . . . . . \$745,225.00

**Gifts Received During Year.**—Endowment . . . . . \$349,352.09

**Expenses of Maintenance.**—  
 Faculty Salaries, \$17,211; Other Salaries, \$4,817 . . . . . \$22,028.00  
 All other Expenses . . . . . 26,919.73  
 Total Expenses . . . . . \$48,947.73

**Income for Maintenance.**—  
 From Endowment . . . . . \$ 7,959.50  
 Student Fees . . . . . 8,136.57  
 Room Rent, \$1,394.50; Boarding Department, — . . . . . 1,394.50  
 Individuals, \$9,435.75; Other Sources, \$17,263.81 . . . . . 26,699.56  
 Churches: Direct or through College Board . . . . . 1,007.60  
 College Board . . . . . 3,750.00  
 Total Income . . . . . 48,947.73

**Deficit or Surplus.** . . . . .

**Students.**—College . . . . . 74  
 Preparatory . . . . . 64  
 Others (Special) . . . . . 346  
 Total (Men, 156; Women, 328) . . . . . 484  
 Graduates 1911-12 (Men, 8; Women, 7) . . . . . 15

**Bible Study.**—Required of all students.

**Alumni and Alumnae.**—Since the year 1883:  
 Ministers . . . . . 13  
 Students now in Theological Seminaries . . . . . 6  
 Foreign Missionaries . . . . . 4  
 Women in Mission Work . . . . . .  
 Other Christian Workers . . . . . 1  
 Teaching . . . . . 20  
 Law . . . . . 4  
 Medicine . . . . . 6  
 Other Professions . . . . . 11  
 Business, 1; all Others, — . . . . . 1  
 Total, Less 3, counted twice . . . . . 63



Serry Hall



Finney Hall

THE COLLEGE OF IDAHO

# THE COLLEGE OF IDAHO, Caldwell, Idaho

Co-educational. Organized 1891

**Government.**—By Thirteen Trustees, who elect their successors, two-thirds of whom must be members of the Presbyterian Church.

**Period covered by this Report.**—June 15, 1911—June 15, 1912.

**Faculty.**—Number of Members. . . . . 12

**Property.**—Land (Acres, 25). . . . . \$17,000.00  
 Buildings (No. of, 4). . . . . 82,370.00  
 Furniture and Equipment. . . . . 8,439.00  
 Library: No. of Books, 2,500; Value. . . . . 2,200.00  
 Total Property. . . . . \$110,009.00

**Endowment.**—  
 Income Producing. . . . . 52,654.93  
 (Pledges toward additional Endowment, \$21,000)

**Other Funds.** . . . . 29,168.85

**Total Assets.** . . . . \$101,832.78  
**Less Net Indebtedness.** . . . . 1,858.27

**Net Assets.** . . . . \$189,974.51

**Gifts Received During Year.**—  
 Building, \$10,000; Equipment, \$956.70. . . . . \$10,956.70

**Expenses of Maintenance.**—  
 Faculty Salaries, \$9,800; Other Salaries, \$328. . . . . \$10,128.00  
 All other Expenses, \$5,449.71; Deficit of 1910-11, \$5,300. . . . . 10,749.71  
 Total Expenses. . . . . \$20,877.71

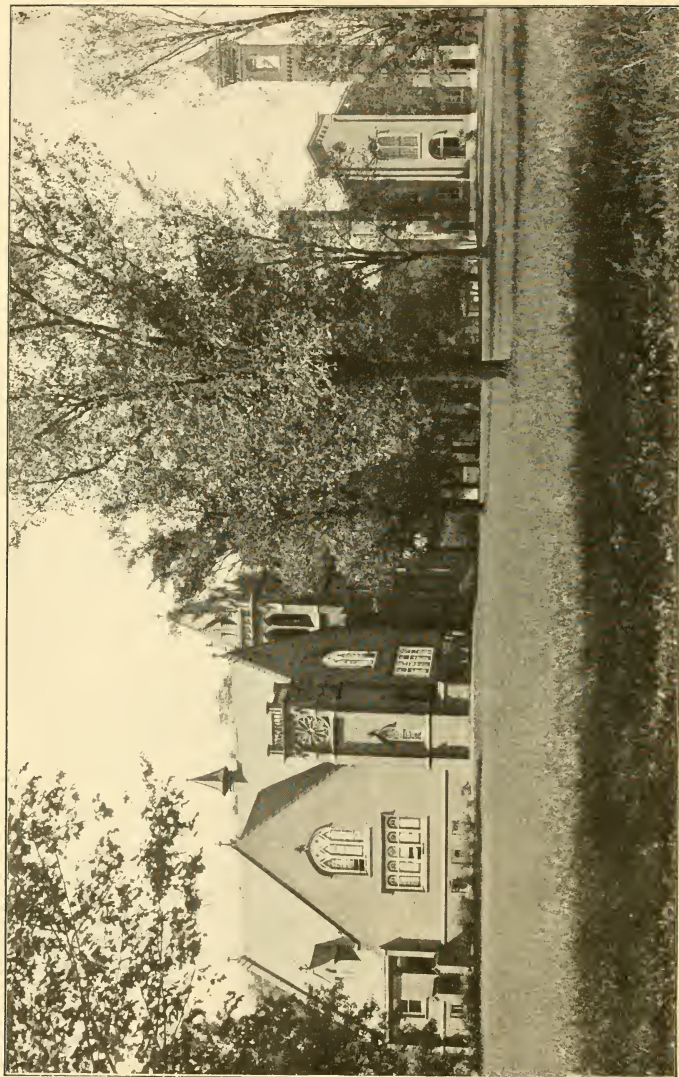
**Income for Maintenance.**—  
 From Endowment. . . . . \$ 1,938.84  
 Student Fees. . . . . 1,730.00  
 Room Rent, \$298.25; Boarding Department, ——— 298.25  
 Individuals, \$11,557; Other Sources, \$340.10. . . . . 11,897.10  
 Churches: Direct or through College Board. . . . . 304.01  
 College Board. . . . . 3,235.40  
 Total Income. . . . . 19,403.60

**Deficit.** . . . . \$1,474.11

**Students.**—College. . . . . 32  
 Preparatory. . . . . 39  
 Others (Special). . . . . 46  
 Total (Men, 43; Women, 74). . . . . 117  
 Graduates 1911-12 (Men, 5; Women, 9). . . . . 14

**Bible Study.**—Required of all regular students.

**Alumni and Alumnae.**—Since the year 1891:  
 Ministers. . . . . 4  
 Students now in Theological Seminaries. . . . . ..  
 Foreign Missionaries. . . . . ..  
 Women in Mission Work. . . . . ..  
 Other Christian Workers. . . . . ..  
 Teaching. . . . . 35  
 Law. . . . . 2  
 Medicine. . . . . 3  
 Other Professions. . . . . 8  
 Business, 40; all Others, 123. . . . . 163  
 Total. . . . . 215



Chapel

ILLINOIS COLLEGE

Surtevant Hall



# ILLINOIS COLLEGE, Jacksonville, Illinois

Co-educational. Organized 1829

**Government.**—By Twenty Trustees, who elect their successors. A majority must be members of the Presbyterian Church.

**Period covered by this Report.**—May 15, 1911—May 15, 1912.

**Faculty.**—Number of Members..... 19

<b>Property.</b> —Land (Acres, 21).....	\$112,735.00	
Buildings (No. of, 11).....	177,400.00	
Furniture and Equipment.....	16,155.00	
Library: No. of Books, 15,000; Value.....	9,000.00	
Total Property.....	\$315,290.00	

<b>Endowment.</b> —		
Income Producing.....	\$382,267.39	
Non-income Producing.....	3,159.40	
Total Endowment.....	385,426.79	

**Other Funds**.....

<b>Total Assets</b> .....	\$700,716.79	
---------------------------	--------------	--

**Less Net Indebtedness**.....

**Net Assets**.....

**Gifts Received During Year**.....

<b>Expenses of Maintenance.</b> —		
Faculty Salaries, \$13,895; Other Salaries, \$1,200...	\$15,095.00	
All other Expenses.....	13,254.86	
Total Expenses.....	\$28,349.86	

<b>Income for Maintenance.</b> —		
From Endowment.....	\$18,579.77	
Student Fees.....	7,415.17	
Room Rent, \$706.50; Boarding Department, \$213.38	919.88	
Individuals, —; Other Sources, \$2,184.60....	2,184.60	
Churches: Direct or through College Board.....	47.73	
College Board.....		
Total Income.....	29,147.15	

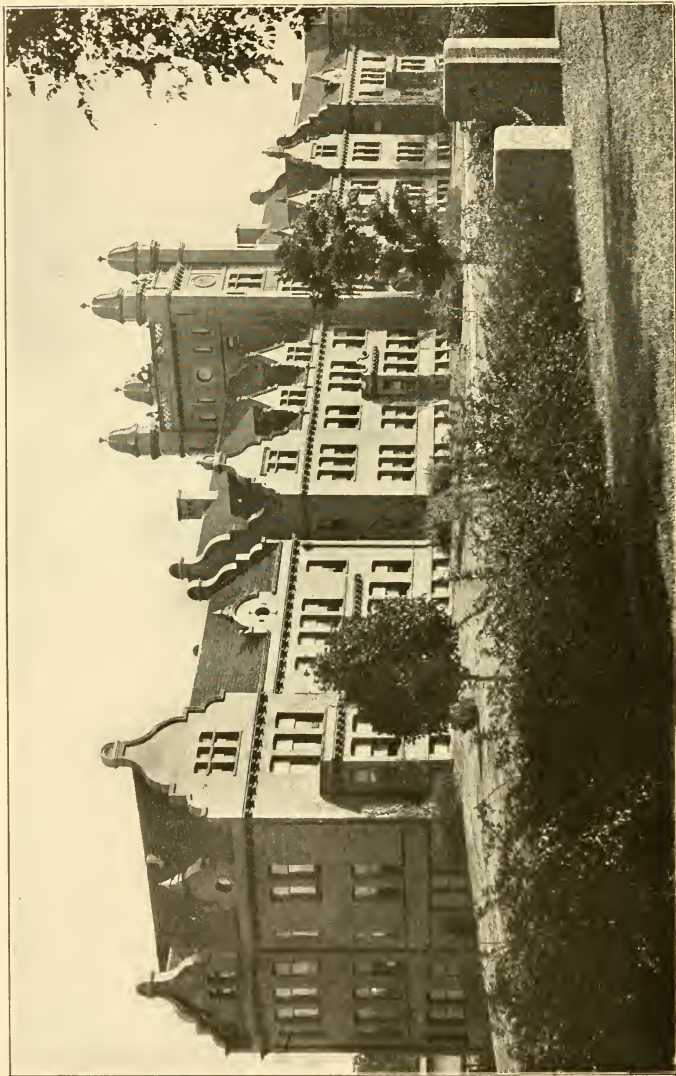
<b>Surplus</b> .....	\$797.29	
----------------------	----------	--

<b>Students.</b> —College.....	62	
Preparatory.....	86	
Others (Special).....	150	
Total (Men, 141; Women, 157).....	298	
Graduates 1911-12 (Men, 15; Women, 4).....	19	

**Bible Study.**—Required of all students.

<b>Alumni and Alumnae.</b> —Since the year 1829:		
Ministers.....	114	
Students now in Theological Seminaries.....	..	
Foreign Missionaries.....	..	
Women in Mission Work.....	..	
Other Christian Workers.....	..	
Teaching.....	83	
Law.....	140	
Medicine.....	120	
Other Professions.....	..	
Business, 101; all Others, 271.....	372	
Total.....	829	





Main Building

DECATUR COLLEGE AND INDUSTRIAL SCHOOL OF JAMES MILLIKIN UNIVERSITY

**JAMES MILLIKIN UNIVERSITY**  
**DECATUR COLLEGE AND INDUSTRIAL SCHOOL**

Decatur, Illinois

Co-educational. Organized 1901

**Government.**—By Fifteen Trustees, elected by the Synods of Indiana, Illinois, and Iowa.

**Period covered by this Report.**—July 1, 1911—July 1, 1912.

**Faculty.**—Number of Members. . . . . 65

**Property.**—Land (Acres, 35). . . . . \$100,000.00  
 Buildings (No. of, 7) . . . . . 422,700.00  
 Furniture and Equipment . . . . . 61,568.19  
 Library: No. of Books, 6,800; Value . . . . . 9,000.00  
 Total Property. . . . . \$593,268.19

**Endowment.**—  
 Income Producing . . . . . 210,615.44

**Other Funds.** . . . . .                     

**Total Assets.** . . . . . \$803,883.63

**Less Net Indebtedness.** . . . . .                     

**Net Assets.** . . . . .                     

**Gifts Received During Year.** . . . . .                     

**Expenses of Maintenance.**—  
 Faculty Salaries, \$64,484.09; Other Salaries,  
 \$3,964.57 . . . . . \$68,448.66  
 All other Expenses . . . . . 20,763.11  
 Total Expenses . . . . . \$89,211.77

**Income for Maintenance.**—  
 From Endowment, \$11,004.84; James Millikin Es-  
 tate, \$35,250.59 . . . . . \$46,255.43  
 Student Fees . . . . . 41,951.17  
 Room Rent, ———; Boarding Department, \$159.31 . . . . . 159.31  
 Individuals, \$50; Other Sources, \$313.33 . . . . . 363.33  
 Churches: Direct or through College Board . . . . .                       
 College Board . . . . . 482.53  
 Total Income . . . . . \$9,211.77

**Deficit.** . . . . .                     

**Students.**—College . . . . . 419  
 Preparatory . . . . . 175  
 Others (Special) . . . . . 507  
 Total (Men, 295; Women, 806) . . . . . 1,101  
 Graduates 1911-12 (Men, 12; Women, 29) . . . . . 41

**Bible Study.**—Given throughout Preparatory and College year, open to all but elective.

**Alumni and Alumnæ.**—Since the year 1901:  
 Ministers . . . . . 4  
 Students now in Theological Seminaries . . . . . 1  
 Foreign Missionaries . . . . . 2  
 Women in Mission Work . . . . . 1  
 Other Christian Workers . . . . . 4  
 Teaching . . . . . 66  
 Law . . . . . 4  
 Medicine . . . . . 2  
 Other Professions . . . . . 34  
 Business, 39; all Others, 32 . . . . . 71  
 Total, Less 3, counted twice . . . . . 186



Chapel Hall

LINCOLN COLLEGE OF JAMES MILLIKIN UNIVERSITY

University Hall

# JAMES MILLIKIN UNIVERSITY

## LINCOLN COLLEGE

Lincoln, Illinois

Co-educational. Organized 1865

**Government.**—By a Board of Nine Managers which acts for the Board of Trustees of James Millikin University. The Board of Trustees of James Millikin University is elected by the Synods of Iowa, Illinois, and Indiana.

**Period covered by this Report.**—June, 1911—June, 1912.

**Faculty.**—Number of Members. . . . . 15

<b>Property.</b> —Land (Acres, 11) . . . . .	\$20,000.00	
Buildings (No. of 2) . . . . .	80,000.00	
Furniture and Equipment . . . . .	5,000.00	
Library: No. of Books, 7,000; Value . . . . .	4,000.00	
Total Property . . . . .	\$109,000.00	

<b>Endowment.</b> —Income Producing . . . . .	118,166.31	
<b>Other Funds.</b> —Annuity . . . . .	10,000.00	

<b>Total Assets</b> . . . . .	\$237,166.31	
<b>Less Net Indebtedness</b> . . . . .		

**Net Assets** . . . . .

<b>Gifts Received During Year</b> (Subject to Annuities) . . . . .	\$10,000.00	
--	-------------	--

<b>Expenses of Maintenance.</b> —		
Faculty Salaries, \$6,850; Other Salaries, \$670.32 . . . . .	\$7,520.32	
All other Expenses . . . . .	1,434.02	
Total Expenses . . . . .	\$8,954.34	

<b>Income for Maintenance.</b> —		
From Endowment . . . . .	\$5,496.68	
Student Fees . . . . .	2,197.20	
Room Rent, ———; Boarding Department, ——— . . . . .	. . . . .	
Individuals, \$25; Other Sources, \$863.52 . . . . .	888.52	
Churches: Direct or through College Board . . . . .	. . . . .	
College Board . . . . .	482.53	
Total Income . . . . .	9,064.93	

<b>Surplus</b> . . . . .	\$110.59	
--------------------------	----------	--

<b>Students.</b> —College . . . . .	54	
Preparatory . . . . .	68	
Others (Special) . . . . .	186	
Total (Men, —; Women, —) . . . . .	308	
Graduates 1911-12 (Men, 2; Women, 8) . . . . .	10	

**Bible Study.**—Required of all regular students.

<b>Alumni and Alumnae.</b> —Since the year 1865:		
Ministers . . . . .	44	
Students now in Theological Seminaries . . . . .	2	
Foreign Missionaries . . . . .	3	
Women in Mission Work . . . . .	5	
Other Christian Workers . . . . .	2	
Teaching . . . . .	61	
Law . . . . .	43	
Medicine . . . . .	17	
Other Professions . . . . .	24	
Business, 50; all Others, 150 . . . . .	200	
Total . . . . .	401	



Library Hall



Sandford Dormitory

JAMESTOWN COLLEGE



# JAMESTOWN COLLEGE, Jamestown, North Dakota

Co-educational. Organized 1883; Closed 1893; Reopened 1909

**Government.**—By Eighteen Trustees, who elect their successors, but their election must be approved by the Synod of North Dakota.

**Period covered by this Report.**—July 1, 1911—July 1, 1912.

**Faculty.**—Number of Members..... 16

**Property.**—Land (Acres, 108 campus, 80 of other land) \$ 16,000.00  
 Buildings (No. of, 5)..... 103,000.00  
 Furniture and Equipment..... 5,800.00  
 Library: No. of Books, 2,250; Value..... 2,200.00  
 Total Property.....                      \$127,000.00

**Endowment.**—  
 Income Producing..... \$103,000.00  
 Non-income Producing..... 3,500.00  
 (Pledges toward additional Endowment, \$41,000)  
 Total Endowment.....                      106,500.00

**Other Funds**.....                     

**Total Assets**.....                      \$233,500.00

**Less Net Indebtedness**.....                     

**Net Assets**.....                     

**Gifts Received During Year.**—

For Land, ———; Building, \$10,000..... \$10,000.00  
 Equipment, \$2,000; Endowment, \$20,000..... 22,000.00  
 Total (Received in Cash, \$18,000).....                      \$32,000.00

**Expenses of Maintenance.**—

Faculty Salaries, \$12,904; Other Salaries, \$413.69.. \$13,317.69  
 All other Expenses..... 10,488.67  
 Total Expenses.....                      \$23,806.36

**Income for Maintenance.**—

From Endowment..... \$1,788.45  
 Student Fees..... 5,109.75  
 Room Rent, \$1,699; Boarding Department, \$991.57 2,690.57  
 Individuals, \$8,883.87; Other Sources..... 8,883.87  
 Churches: Direct or through College Board..... 3,534.07  
 College Board..... 2,000.00  
 Total Income.....                      24,006.71

**Surplus**.....                      \$200.35

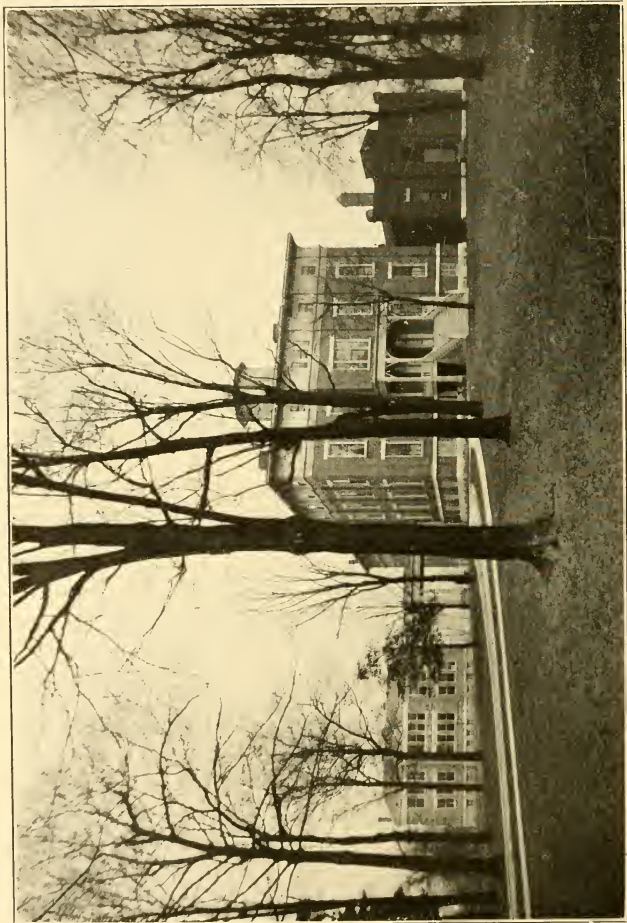
**Students.**—College..... 76  
 Preparatory..... 42  
 Others (Special)..... 47  
 Total (Men, 76; Women, 89).....                      165  
 Graduates 1911-12 (Men, 2; Women, 2)..... 4

**Bible Study.**—Required of all students.

**Alumni and Alumnae.**—Since the year 1909:

Ministers..... ..  
 Students now in Theological Seminaries..... ..  
 Foreign Missionaries..... ..  
 Women in Mission Work..... ..  
 Other Christian Workers..... ..  
 Teaching..... ..  
 Law..... ..  
 Medicine..... ..  
 Other Professions..... ..  
 Business, —; all Others, —..... ..  
 Total.....                      4





KENTUCKY COLLEGE FOR WOMEN

# KENTUCKY COLLEGE FOR WOMEN

Danville, Kentucky

Organized 1854

**Government.**—By Twenty Trustees, who elect their successors, two-thirds of whom must be members of the Presbyterian Church.

**Period covered by this Report.**—September 1, 1911—September 1, 1912.

**Faculty.**—Number of Members..... 23

<b>Property.</b> —Land (Acres, 18).....	\$41,645.06	
Buildings (No. of, 5).....	79,044.42	
Furniture and Equipment.....	5,187.25	
Library: No. of Books, 411; Value.....	524.23	
Total Property.....	\$126,400.96	

**Endowment.**—

**Other Funds.**.....

**Total Assets.**..... \$126,400.96

**Less Net Indebtedness.**.....

**Net Assets.**.....

**Gifts Received During Year.**.....

**Expenses of Maintenance.**—

Faculty Salaries, \$9,970; Other Salaries, \$972.90...	\$10,942.90	
All other Expenses.....	6,583.03	
Total Expenses.....	\$17,525.93	

**Income for Maintenance.**—

From Endowment.....		
Student Fees.....	\$13,796.35	
Room Rent, ———; Boarding Department, \$882.80	882.80	
Individuals, \$100; Other Sources, ———.....	100.00	
Churches: Direct or through College Board.....	455.25	
College Board.....	1,500.00	
Total Income.....	16,734.40	

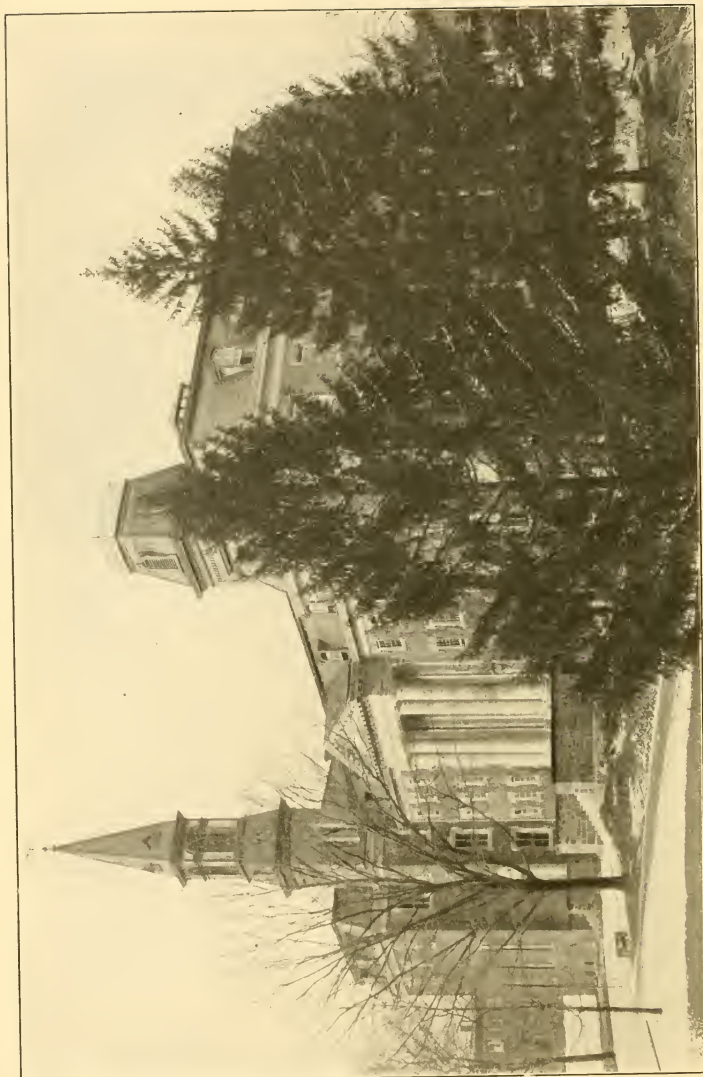
**Deficit.**..... \$791.53

<b>Students.</b> —College.....	73	
Preparatory.....	46	
Others (Special).....	116	
Total.....	235	
Graduates 1911-12.....	20	

**Bible Study.**—Required of all regular students in the College Department

**Alumnæ.**—Since the year 1900:

Ministers.....		
Students now in Theological Seminaries.....		
Foreign Missionaries.....		
Women in Mission Work.....	10	
Other Christian Workers.....		
Teaching.....	42	
Law.....		
Medicine.....		
Other Professions.....		
Business and all Others.....	158	
Total.....	210	



South College

LAFAYETTE COLLEGE

# LAFAYETTE COLLEGE, Easton, Pennsylvania

For Men. Organized 1832

**Government.**—By Twenty-nine Trustees, who elect their successors, but their election must be approved by the Synod of Pennsylvania.

**Period covered by this Report.**—July 1, 1911—June 30, 1912.

**Faculty.**—Number of Members. . . . . 55

**Property.**—Land (Acres, 70) . . . . . \$158,573.90  
 Buildings (No. of 22) . . . . . 732,726.84  
 Furniture and Equipment . . . . . 192,988.74  
 Library: No. of Books, 45,000; Value . . . . . 58,694.03  
 Total Property . . . . . \$1,142,983.60

**Endowment.**—Income Producing . . . . . 656,506.12  
**Other Funds** . . . . .

**Total Assets** . . . . . \$1,799,489.72  
**Less Net Indebtedness** (Purchase of land and expense of buildings) . . . . . 95,357.25

**Net Assets** . . . . . \$1,704,132.47

**Gifts Received During Year.**—  
 For Building, \$20,229.60; For Endowment, \$9,260 . . . . . \$29,489.60

**Expenses of Maintenance.**—  
 Faculty Salaries, \$62,992.50; Other Salaries, \$5,770. . . . . \$68,762.50  
 All Other Expenses . . . . . 57,309.80  
 Total Expenses . . . . . \$126,072.30

**Income for Maintenance.**—  
 From Endowment . . . . . \$33,869.46  
 Student Fees . . . . . 81,783.38  
 Room Rent, —; Boarding Department, — . . . . .  
 Individuals, \$4,248.01; Other Sources, \$808.27 . . . . . 5,056.28  
 Churches: Direct or through College Board . . . . .  
 College Board . . . . .  
 Total Income . . . . . 120,709.12

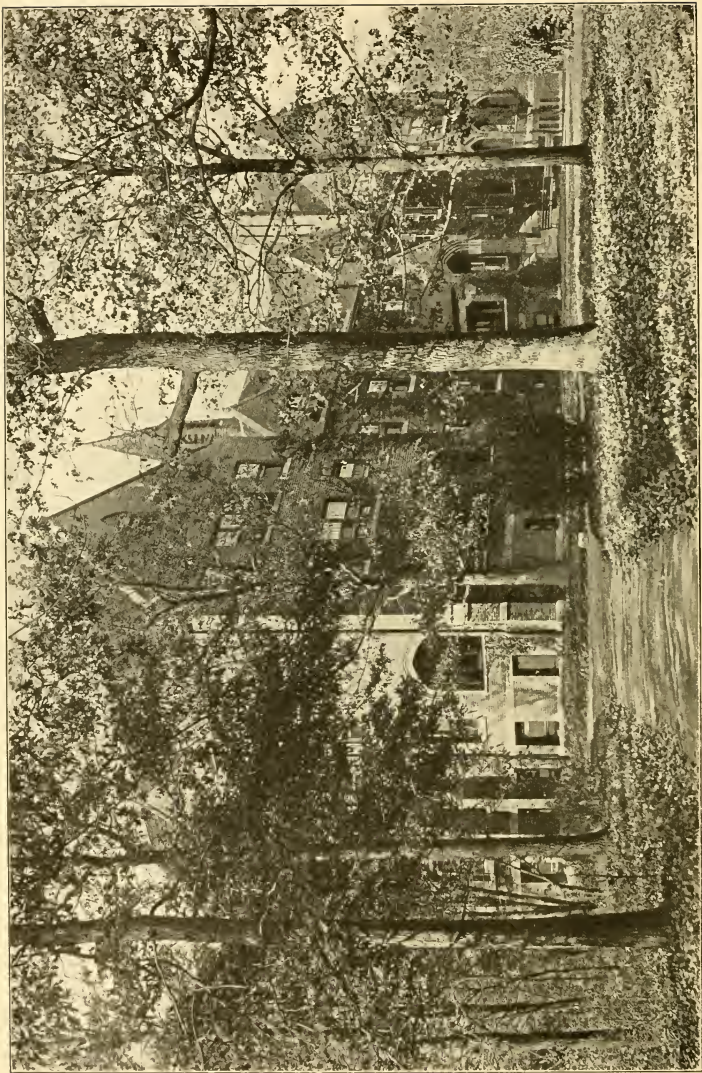
**Deficit** . . . . . \$5,363.18

**Students.**—College . . . . . 538  
 Preparatory . . . . .  
 Others (Special) . . . . . 22  
 Total . . . . . 560  
 Graduates 1911-12 . . . . . 71

**Bible Study.**—Required of all students.

**Alumni.**—Classes 1836 to 1912:  
 Ministers . . . . . 627  
 Foreign Missionaries . . . . . 51  
 Teaching . . . . . 521  
 Law . . . . . 780  
 Medicine . . . . . 453  
 Other Professions . . . . . 868  
 Business . . . . . 1,259  
 All Others . . . . . 1,155  
 Total, Less 51, counted twice . . . . . 5,663





Lois Durand Hall

# LAKE FOREST COLLEGE, Lake Forest, Illinois

(Legal Name, Lake Forest University)

Co-educational. Chartered 1857. Opened 1876

**Government.**—By Nineteen Trustees, who elect their successors, but their election must be confirmed by the Synod of Illinois.

**Period covered by this Report.**—Is for College only, Oct. 1, 1911—Sept. 30, 1912.

**Faculty.**—Number of Members..... 19

<b>Property.</b> —Land (Acres, 58).....	\$167,380.00	
Buildings (No. of, 16).....	442,500.00	
Furniture and Equipment.....	30,500.00	
Library: No. of Books, 25,000; Value.....	25,000.00	
Total Property.....	\$665,380.00	

<b>Endowment.</b> —		
Income Producing.....	747,710.98	

<b>Other Funds</b> .....		

<b>Total Assets</b> .....		\$1,413,090.98
---------------------------	--	----------------

<b>Less Net Indebtedness</b> .....		
------------------------------------	--	--

<b>Net Assets</b> .....		
-------------------------	--	--

**Gifts Received During Year.**—

Equipment, \$2,350; Endowment, \$2,500.....		\$4,850.00
---	--	------------

**Expenses of Maintenance.**—

Faculty Salaries, \$35,250; Other Salaries, \$4,200..	\$39,450.00	
All other Expenses.....	26,966.51	
Total Expenses.....	\$66,416.51	

**Income for Maintenance.**—

From Endowment.....	\$33,247.94	
Student Fees.....	10,550.65	
Room Rent, \$11,226.85; Boarding Department, \$150.....	11,376.85	
Individuals, \$9,844.65; Other Sources, \$788.89..	10,633.54	
Churches: Direct or through College Board.....	75.00	
College Board.....	532.53	
Total Income.....	\$66,416.51	

<b>Deficit or Surplus</b> .....		
---------------------------------	--	--

<b>Students.</b> —College.....	204	
Preparatory.....	..	
Others (Graduate).....	4	
Total (Men, 115; Women, 93).....	208	
Graduates 1911-12 (Men, 16; Women, 9).....	25	

**Bible Study.**—Required of all students.

**Alumni and Alumnae.**—Since the year 1879-1912:

Ministers.....	72	
Students now in Theological Seminaries.....	4	
Foreign Missionaries.....	13	
Women in Mission Work.....	..	
Other Christian Workers.....	6	
Teaching.....	125	
Law.....	47	
Medicine.....	24	
Other Professions.....	40	
Business, 90; all Others, 117.....	216	
Total, Less 14, counted twice.....	542	





Recitation Hall



Clark and Doolittle Halls

LENOX COLLEGE

# LENOX COLLEGE, Hopkinton, Iowa

Co-educational. Organized 1856

**Government.**—By Thirty-six Trustees, who nominate their successors, but the Synod of Iowa elects them; a majority must be members of the Presbyterian Church.

**Period covered by this Report.**—June 1, 1911—August 31, 1912.

**Faculty.**—Number of Members . . . . . 12

**Property.**—Land (Acres, 20 Campus; 25 other land) . . . \$13,200.00  
 Buildings (No. of, 4) 2 are valued in Endowment . . . 39,784.18  
 Furniture and Equipment . . . . . 8,702.43  
 Library: No. of Books, 10,000; Value . . . . . 15,000.00  
 Total Property . . . . . \$ 76,686.61

**Endowment.**—  
 Income Producing . . . . . \$156,022.50  
 Non-income Producing . . . . . 19,500.00  
 Total Endowment . . . . . 175,522.50

**Other Funds** . . . . .

**Total Assets** . . . . . \$252,209.11

**Less Net Indebtedness** . . . . .

**Net Assets** . . . . .

**Gifts Received During Year.**—  
 For Deficit, \$42,317.55; Building, \$12,000. . . . . \$54,317.55  
 Equipment, \$3,332; Endowment, \$55,000. . . . . 58,332.00  
 Total (Received in Cash, \$11,923.45) . . . . . \$112,649.55  
 Amount received subject to Annuities not in above . . . . . \$750.00

**Expenses of Maintenance.**—  
 Faculty Salaries, \$9,655; Other Salaries, \$725 . . . . . \$10,380.00  
 All other Expenses . . . . . 5,223.25  
 Total Expenses . . . . . \$15,603.25

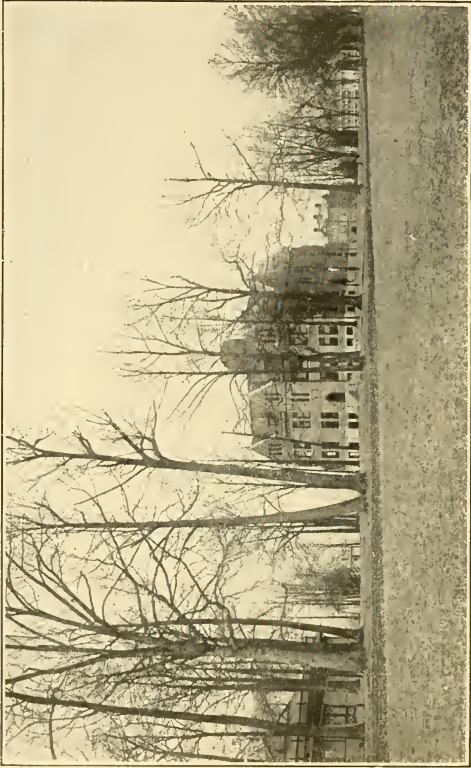
**Income for Maintenance.**—  
 From Endowment . . . . . \$4,358.73  
 Student Fees . . . . . 5,277.26  
 Room Rent, \$207.19; Boarding Department, ———— 207.19  
 Individuals, ————; Other Sources, ———— . . . . .  
 Churches: Direct or through College Board . . . . . 10.00  
 College Board . . . . . 1,050.00  
 Total Income . . . . . 10,903.18

**Deficit (Provided for by subscriptions)** . . . . . \$4,700.07

**Students.**—College . . . . . 35  
 Preparatory . . . . . 35  
 Others (Special) . . . . . 61  
 Total (Men, 70; Women, 61) . . . . . 131  
 Graduates 1911-12 (Men, 3; Women, 5) . . . . . 8

**Bible Study.**—Required of all regular students.

**Alumni and Alumnæ.**—Since the year 1856:  
 Ministers . . . . . 42  
 Students now in Theological Seminaries . . . . . 2  
 Foreign Missionaries . . . . . 11  
 Women in Mission Work . . . . . 6  
 Other Christian Workers . . . . . 8  
 Teaching . . . . . 210  
 Law . . . . . 29  
 Medicine . . . . . 22  
 Other Professions . . . . . 43  
 Business, 26; all Others, 5 . . . . . 31  
 Total, Less 64, counted twice . . . . . 340



LINCOLN UNIVERSITY

# LINCOLN UNIVERSITY, Lincoln University, Pennsylvania

For Colored Men. Chartered 1854. Opened 1857

**Government.**—By Twenty-one Trustees, who elect their successors.

**Period covered by this Report.**—Is for College Department only—October, 1910—October, 1911.

**Faculty.**—Number of Members. . . . . 13

**Property.**—Land (Acres, 70)..... \$ 23,500.00  
 Buildings (No. of, 14)..... 165,050.00  
 Furniture and Equipment..... 5,136.00  
 Library: No. of Books, 18,000; Value..... 9,000.00  
 Total Property..... \$202,686.00

**Endowment.**—Income Producing..... 260,653.00

**Other Funds**.....

**Total Assets**..... \$463,339.00

**Less Net Indebtedness**.....

**Net Assets**.....

**Gifts Received During Year.**—

Equipment, \$22,296.41; Endowment, \$6,000..... \$28,296.41

**Expenses of Maintenance.**—

Faculty Salaries, \$10,207.33; Other Salaries,  
 \$3,255.72..... \$13,463.05  
 All other Expenses, includes cost of free tuition.... 19,338.26  
 Total Expenses..... \$32,801.31

**Income for Maintenance.**—

From Endowment..... \$13,146.80  
 Student Fees, Room Rent, etc..... 5,230.45  
 Individuals, \$9,480.57; Other Sources, \$4,455.90... 13,936.47  
 Churches: Direct or through College Board.....  
 College Board..... 487.50  
 Total Income..... \$32,801.31

**Deficit or Surplus**.....

**Students.**—College..... 134

Preparatory.....

Others (Special).....

Total..... 134

Graduates 1911-12..... 31

**Bible Study.**—Required of all students.

**Alumni.**—Since the year 1901-11:

Ministers..... 96

Students now in Theological Seminaries..... 27

Foreign Missionaries..... 5

Women in Mission Work.....

Other Christian Workers..... 1

Teaching..... 48

Law..... 26

Medicine..... 49

Other Professions.....

Business, 44; all Others, —..... 44

Total, Less 5, counted twice..... 291



Jubilee Hall



Sibley Hall

LINDENWOOD COLLEGE

# LINDENWOOD COLLEGE FOR WOMEN

(Legal Name, Lindenwood Female College)

St. Charles, Missouri

Organized 1831. Chartered 1853

**Government.**—By Fifteen Trustees, elected by the Synod of Missouri.

**Period covered by this Report.**—First Term 1912-13.

**Faculty.**—Number of Members. . . . . 15

**Property.**—Land (Acres, 30) . . . . . \$ 32,620.00  
 Buildings (No. of, 4) . . . . . 106,000.00  
 Furniture and Equipment . . . . . 27,001.00  
 Library: No. of Books, 2,100; Value . . . . . 2,500.00  
 Total Property . . . . . \$168,121.00

**Endowment** . . . . . 21,000.00  
**Other Funds** . . . . .

**Total Assets** . . . . . \$189,121.00  
**Less Net Indebtedness** . . . . .

**Net Assets** . . . . .

**Gifts Received During Year** . . . . .

**Expenses of Maintenance** (For six months).—  
 Faculty Salaries, \$5,387.50; Other Salaries, ——— \$ 5,387.50  
 All other Expenses . . . . . 14,612.50  
 Total Expenses . . . . . \$20,000.00

**Income for Maintenance** (For six months).—  
 From Endowment . . . . . \$ 360.00  
 Student Fees . . . . . 19,640.00  
 Room Rent, ———; Boarding Department, ———  
 Individuals, ———; Other Sources, ———  
 Churches: Direct or through College Board . . . . .  
 College Board . . . . .  
 Total Income . . . . . \$20,000.00

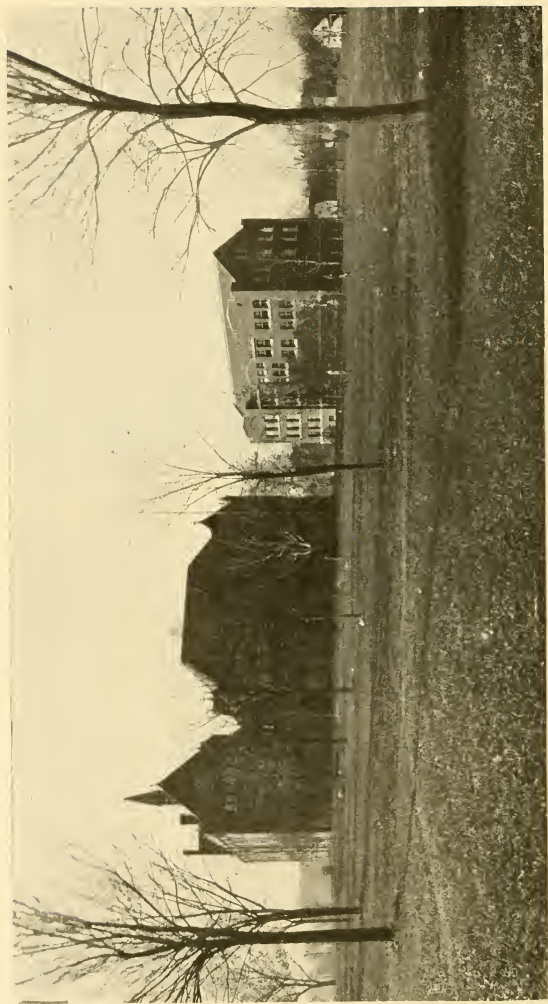
**Deficit or Surplus** . . . . .

**Students.**—College . . . . . 29  
 Preparatory . . . . . 85  
 Others (Special) . . . . .  
 Total . . . . . 114  
 Graduates 1911-12 . . . . .

**Bible Study.**—Required of all students.

**Alumnæ.**—  
 Ministers . . . . .  
 Students now in Theological Seminaries . . . . .  
 Foreign Missionaries . . . . .  
 Women in Mission Work . . . . .  
 Other Christian Workers . . . . .  
 Teaching . . . . .  
 Law . . . . .  
 Medicine . . . . .  
 Other Professions . . . . .  
 Business, —; all Others, — . . . . .  
 Total . . . . .





MACALESTER COLLEGE

# MACALESTER COLLEGE, Saint Paul, Minnesota

Co-educational. Organized 1885

**Government.**—By Fifteen Trustees, who elect their successors, but two-thirds must be members of the Presbyterian Church.

**Period covered by this Report.**—May 31, 1911—May 31, 1912.

**Faculty.**—Number of Members..... 28

**Property.**—Land (Acres, 41)..... \$100,800.00  
 Buildings (No. of, 10)..... 237,500.00  
 Furniture and Equipment..... 27,542.21  
 Library: No. of Books, 12,600; Value..... 7,000.00  
 Total Property..... \$372,842.21

**Endowment.**—  
 Income Producing..... 306,828.52  
**Other Funds**..... 10,160.34

**Total Assets**..... \$689,831.07  
**Less Net Indebtedness**.....

**Net Assets**.....

**Gifts Received During Year.**—  
 Equipment, \$2,025.98; Endowment, \$15,206.38..... \$17,232.36

**Expenses of Maintenance.**—  
 Faculty Salaries, \$18,879.89; Other Salaries,  
 \$4,934.69..... \$28,314.69  
 All other Expenses..... 35,362.12  
 Total Expenses..... \$63,676.81

**Income for Maintenance.**—  
 From Endowment..... \$16,100.95  
 Student Fees..... 9,073.65  
 Room Rent, \$1,413.50; Boarding Department,  
 \$12,390.86..... 13,804.36  
 Individuals, \$7,765.87; Other Sources, \$12,949.97.. 20,715.84  
 Churches: Direct or through College Board..... 957.31  
 College Board..... 3,024.70  
 Total Income..... \$63,676.81

**Deficit or Surplus**.....

**Students.**—College..... 172  
 Preparatory..... 102  
 Others (Special)..... 35  
 Total (Men, 156; Women, 153)..... 309  
 Graduates 1911-12 (Men, 11; Women, 18)..... 29

**Bible Study.**—Required of all students.

**Alumni and Alumnae.**—Since the year 1885:  
 Ministers..... 74  
 Students now in Theological Seminaries..... 15  
 Foreign Missionaries..... 13  
 Women in Mission Work..... 3  
 Other Christian Workers..... ..  
 Teaching..... 67  
 Law..... 10  
 Medicine..... 9  
 Other Professions..... 7  
 Business, 21; all Others, 65..... 86  
 Total..... 284



MARYVILLE COLLEGE

# MARYVILLE COLLEGE, Maryville, Tennessee

Co-educational. Organized 1819

**Government.**—By Thirty-six Trustees, elected by the Synod of Tennessee.

**Period covered by this Report.**—May 15, 1911—May 15, 1912.

**Faculty.**—Number of Members. . . . . 39

<b>Property.</b> —Land (Acres, 232).....	\$ 25,000.00	
Buildings (No. of 13).....	253,875.00	
Furniture and Equipment, \$19,650; Improvements, \$11,115.....	30,765.00	
Library: No. of Books, 20,500; Value.....	13,250.00	
Total Property.....		\$322,890.00

<b>Endowment.</b> —		
Income Producing.....	\$444,692.17	
Non-income Producing.....	19,500.00	
Total Endowment.....		464,192.17

**Other Funds**.....

**Total Assets**..... \$787,082.17

**Less Net Indebtedness**.....

**Net Assets**.....

**Gifts Received During Year.**—

For Land, ——; Building, \$14,130.....	\$14,130.00	
Student Help, \$10,653.99; Endowment, \$4,952.82.....	15,606.81	
Total.....		\$29,736.81

**Expenses of Maintenance.**—

Faculty Salaries, \$23,908.55; Other Salaries, \$1,500.....	\$25,408.55	
All other Expenses, including Annuity and Repairs.....	23,540.94	
Total Expenses.....		\$48,949.49

**Income for Maintenance.**—

From Endowment.....	\$22,451.13	
Student Fees.....	20,158.75	
Room Rent, ——; Boarding Department, ——.....		
Individuals, ——; Other Sources, \$2,472.....	2,472.00	
Churches: Direct or through College Board.....	4,125.00	
College Board.....		
Total Income.....		49,206.88

**Surplus**.....

## ERRATA

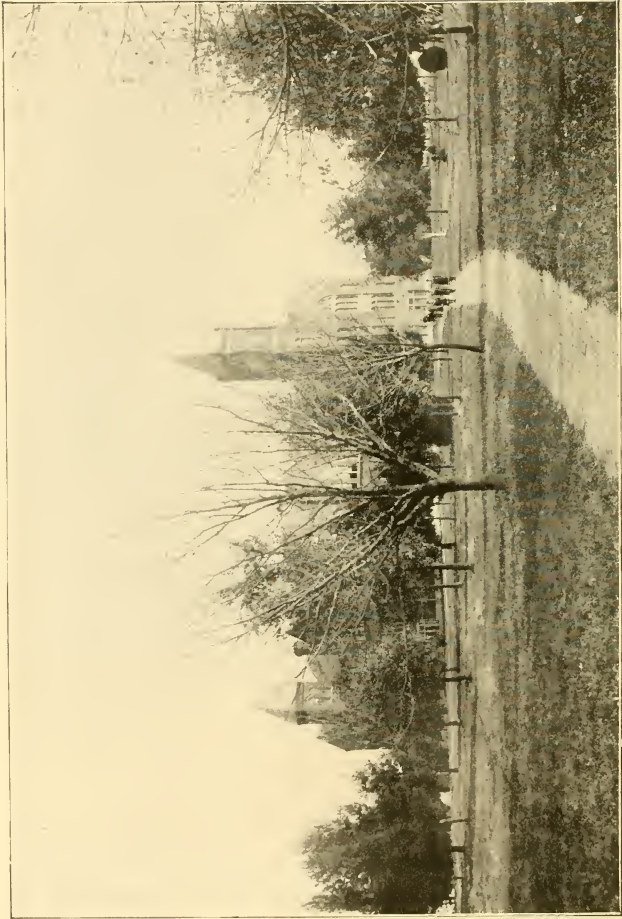
**Students.**—College (regular full term)..... 154

**Alumni and Alumnae.\***—

Ministers, 1819-1912..... 285

Foreign Missionaries since 1866.....	20
Foreign Missionaries, including Undergraduates since 1866.....	45
Women in Mission Work since 1866.....	31
Other Christian Workers since 1866.....	7
Teaching since 1866.....	206
Law since 1866.....	26
Medicine since 1866.....	17
Other Professions since 1866.....	4
Business since 1866.....	40
All others since 1866.....	26
Net total since 1866, 460; total since 1819.....	710

\* Records previous to 1866 lost during the Civil War.



The Main Building and Shady Campus  
MISSOURI VALLEY COLLEGE

# MISSOURI VALLEY COLLEGE, Marshall, Missouri

Co-educational. Organized 1889

**Government.**—By Thirteen Trustees, elected by the Synods of Kansas and Missouri.

**Period covered by this Report.**—May 31, 1911—May 31, 1912.

**Faculty.**—Number of Members..... 14

**Property.**—Land (Acres, 40)..... \$ 52,410.00  
 Buildings (No. of, 4)..... 117,940.00  
 Furniture and Equipment..... 26,359.01  
 Library: No. of Books, 141,541; Value..... 32,720.75  
 Total Property..... \$229,429.76

**Endowment.**—  
 Income Producing..... \$184,525.09  
 Non-income Producing..... 5,166.00  
 Total Endowment..... 189,691.09

**Other Funds**..... 2,181.98

**Total Assets**..... \$421,302.83  
**Less Net Indebtedness**..... 3,350.00

**Net Assets**..... \$417,952.83

**Gifts Received During Year**.....

**Expenses of Maintenance.**—

Faculty Salaries, \$14,716.56; Other Salaries, \$1,540 \$ 16,256.56  
 All other Expenses..... 12,429.39  
 Total Expenses..... \$28,685.95

**Income for Maintenance.**—

Cash balance from last year..... \$ 1,642.10  
 From Endowment..... 10,145.44  
 Student Fees..... 8,855.93  
 Room Rent, \$700; Boarding Department..... 700.00  
 Individuals, —; Other Sources, \$3,501.48..... 3,501.48  
 Churches: Direct or through College Board.....  
 College Board..... 3,841.00  
 Total Income..... \$28,685.95

**Deficit or Surplus**.....

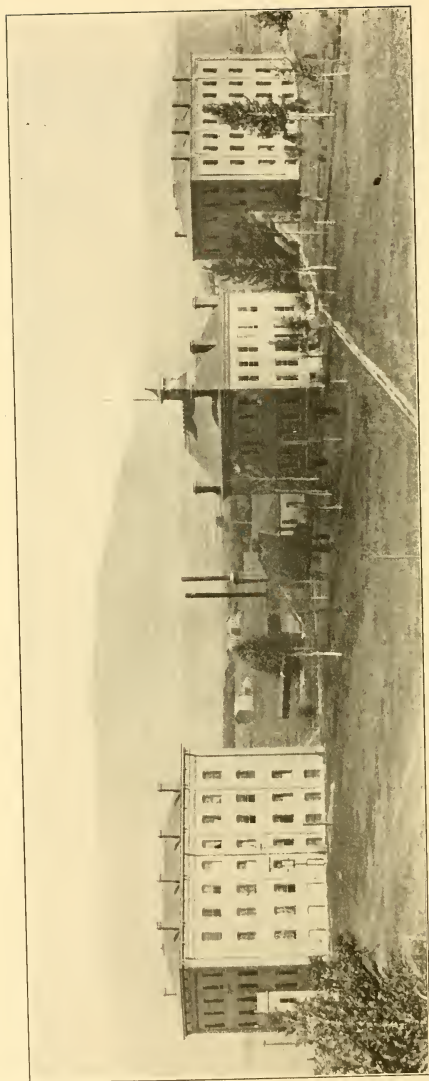
**Students.**—College..... 94  
 Preparatory..... 70  
 Others (Special)..... 58  
 Total (Men, 109; Women, 113)..... 222  
 Graduates 1911-12 (Men, 10; Women, 6)..... 16

**Bible Study.**—Required of all students.

**Alumni and Alumnae.**—Since the year 1889:

Ministers..... 79  
 Students now in Theological Seminaries..... 12  
 Foreign Missionaries..... 11  
 Women in Mission Work..... 6  
 Other Christian Workers..... 2  
 Teaching..... 104  
 Law..... 9  
 Medicine..... 11  
 Other Professions.....  
 Business, —; all Others, —..... 36  
 Total, Less 4, counted twice..... 266





THE COLLEGE OF MONTANA

# THE COLLEGE OF MONTANA, Deer Lodge, Montana

Co-educational. Organized 1885. Closed 1900-4. Reopened 1905

**Government.**—By Fifteen Trustees, who elect their successors, two-thirds of whom must be members of the Presbyterian Church; their election must be confirmed by the Synod of Montana.

**Period covered by this Report.\***—Year 1911-12.

**Faculty.**—Number of Members. . . . . 13

**Property.**—Land (Acres, 15) . . . . . \$ 11,000.00  
 Buildings (No. of, 4) . . . . . 100,000.00  
 Furniture and Equipment . . . . . 5,000.00  
 Library: No. of Books, ———; Value . . . . . 100.00  
 Total Property . . . . . \$116,100.00

**Endowment.**—  
 Income Producing . . . . . 99,072.00  
 (Pledges toward additional Endowment, \$50,000)

**Other Funds.** . . . . .

**Total Assets.** . . . . . \$215,172.00

**Less Net Indebtedness.** . . . . . 13,619.19

**Net Assets.** . . . . . \$201,552.81

**Gifts Received During Year.**—For Buildings, \$4,375; (In cash, \$1,675) \$4,375.00

**Expenses of Maintenance.**—  
 Faculty Salaries, \$11,459; Other Salaries, \$2,020 . . . \$13,479.00  
 All other Expenses . . . . . 6,904.79  
 Total Expenses . . . . . \$20,383.79

**Income for Maintenance.**—  
 From Endowment . . . . . \$7,343.46  
 Student Fees . . . . . 3,103.78  
 Room Rent, \$1,943.48; Boarding Department, \$900 . . . . . 2,843.48  
 Individuals, \$1,435.50; Other Sources, ——— . . . . . 1,435.50  
 Churches: Direct or through College Board . . . . . 193.62  
 College Board . . . . . 2,050.00  
 Total Income . . . . . 16,969.84

**Deficit.** . . . . . \$3,413.95

**Students.**—College . . . . . 15  
 Preparatory . . . . . 40  
 Others (Special) . . . . . 50  
 Total (Men, 32; Women, 73) . . . . . 105  
 Graduates 1911-12 (Men, 1; Women, 1) . . . . . 2

**Bible Study.**—Required of all regular students.

**Alumni and Alumnæ.**—

Ministers . . . . .  
 Students now in Theological Seminaries . . . . .  
 Foreign Missionaries . . . . .  
 Women in Mission Work . . . . .  
 Other Christian Workers . . . . .  
 Teaching . . . . .  
 Law . . . . .  
 Medicine . . . . .  
 Other Professions . . . . . 13  
 Business, —; all Others, — . . . . .  
 Total . . . . .

\* Report subject to modifications.



*Scenes AT Commencement*

NEW YORK UNIVERSITY

# NEW YORK UNIVERSITY, New York, N. Y.

Co-educational in part. Organized 1831

**Government.**—By a Council of Thirty-two members who elect their successors.

**Period covered by this Report.**—July 1, 1911—June 30, 1912.

**Faculty.**—Number of Members (Professors, Assistant Professors, Lecturers, Instructors, Assistant Instructors) . . . . . 385

**Property.**—Land (Acres, 40) . . . . . \$1,262,886.35  
 Buildings (No. of, 21) . . . . . 2,175,221.40  
 Furniture and Equipment, etc. . . . . 121,090.30  
 Library: No. of Books, 70,278; Value . . . . . 153,102.73  
 Total Property . . . . . \$3,712,300.78

**Endowment.**—  
 Income Producing . . . . . 1,277,454.95

**Other Funds** . . . . . 89,003.54

**Total Assets** . . . . . \$5,078,759.27

**Less Net Indebtedness** . . . . . 54,806.71

**Net Assets** . . . . . \$5,023,952.56

**Gifts Received During Year.**—

For Buildings, \$10,000; Endowment, \$25,000 . . . . . \$35,000.00

**Expenses of Maintenance.**—

Faculty Salaries, \$281,411.06; Other Salaries, \$83,841 . . . . . \$365,252.06  
 All other Expenses . . . . . 126,240.90  
 Total Expenses . . . . . \$491,492.96

**Income for Maintenance.**—

From Endowment . . . . . \$ 53,755.19  
 Student Fees . . . . . 353,718.34  
 Room Rent . . . . . 16,235.91  
 Individuals, \$23,758.21; Other Sources, \$2,707.25 . . . . . 26,465.46  
 Churches: Direct or through College Board . . . . .  
 College Board . . . . .  
 Total Income . . . . . 450,174.90

**Deficit** . . . . . \$41,318.06

**Students.**—College . . . . . 786  
 Preparatory . . . . .  
 Others, Professional and Graduate . . . . . 3,579  
 Total (Men, 3,645; Women, 720) . . . . . 4,365  
 Graduates 1911-12 (Men, 532; Women, 52) . . . . . 584

**Bible Study.**—Elective only.

**Alumni and Alumnæ.**—Since the year 1831:

Ministers . . . . .  
 Students now in Theological Seminaries . . . . .  
 Foreign Missionaries . . . . .  
 Women in Mission Work . . . . .  
 Other Christian Workers . . . . .  
 Teaching . . . . .  
 Law . . . . .  
 Medicine . . . . .  
 Other Professions . . . . .  
 Business, —; all Others, — . . . . .  
 Total . . . . . 22,103



OCCIDENTAL COLLEGE

# OCCIDENTAL COLLEGE, Los Angeles, California

Co-educational. Organized 1887

**Government.**—By Twenty Trustees, who elect their successors; all must be professing Christians.

**Period covered by this Report.**—Year 1911-12.

**Faculty.**—Number of Members..... 24

<b>Property.</b> —Land (Acres, 195).....	\$231,900.00	
Buildings (No. of, 4).....	145,000.00	
Furniture and Equipment.....	20,000.00	
Library: No. of Books, 8,000; Value.....	8,000.00	
Total Property.....		\$404,900.00

<b>Endowment.</b> —		
Income Producing.....	\$296,722.65	
Non-income Producing.....	14,585.75	
(Pledges toward additional Endowment, \$40,412.65)		
Total Endowment.....		311,308.40

<b>Other Funds.</b> —New Building Fund.....		250,000.00
---	--	------------

<b>Total Assets</b> .....		\$966,208.40
<b>Less Net Indebtedness</b> .....		83,500.00

<b>Net Assets</b> .....		\$882,708.40
-------------------------	--	--------------

<b>Gifts Received During Year.</b> —		
For Land, ———; Building, \$250,000.....	\$250,000.00	
Equipment, \$5,500; Endowment, \$30,000.....	35,500.00	
Total (Received in Cash, \$285,500).....		\$285,500.00

<b>Expenses of Maintenance.</b>		
Faculty Salaries, \$27,970; Other Salaries, \$8,100...	\$36,070.00	
All other Expenses.....	14,335.00	
Total Expenses.....		\$50,405.00

<b>Income for Maintenance.</b> —From Endowment.....		
Student Fees.....	\$13,500.00	
Room Rent, \$115; Boarding Department, ———.	24,000.00	
Individuals, \$2,243; Other Sources, \$85.....	115.00	
Churches: Direct or through College Board.....	2,328.00	
College Board.....	2,532.00	
Total Income.....		42,475.00

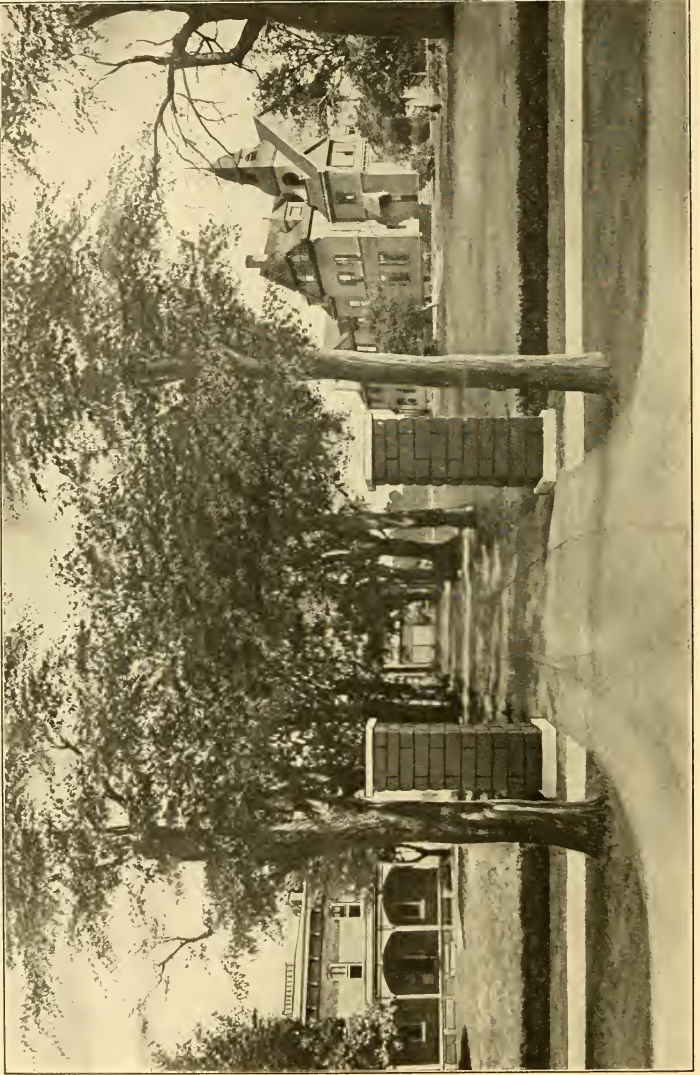
<b>Deficit</b> .....		\$7,703.00
----------------------	--	------------

<b>Students.</b> —College.....	220	
Preparatory.....	73	
Others (Special).....	6	
Total (Men, 151; Women, 148).....		299
Graduates 1911-12 (Men, 14; Women, 16).....		30

**Bible Study.**—Required of all students.

<b>Alumni and Alumnae.</b> —Since the year 1887:		
Ministers.....	16	
Students now in Theological Seminaries.....	7	
Foreign Missionaries.....	14	
Women in Mission Work.....	..	
Other Christian Workers.....	5	
Teaching.....	79	
Law.....	7	
Medicine.....	6	
Other Professions.....	..	
Business, 38; all Others, 63.....	101	
Total, Less 6, counted twice.....		229





OSWEGO COLLEGE

# OSWEGO COLLEGE, Oswego, Kansas

(Legal Name, Oswego College for Young Ladies)

For Women. Chartered 1883. Opened 1886

**Government.**—By Nine Trustees, elected by the Synod of Kansas. Charter provides for control by the General Assembly of the Presbyterian Church and the Presbytery of Neosho, Kansas.

**Period covered by this Report.**—June 1, 1911—June 1, 1912.

**Faculty.**—Number of Members. . . . . 14

**Property.**—Land (Acres, 10) . . . . . \$ 2,000.00  
 Buildings (No. of 4) . . . . . 31,000.00  
 Furniture and Equipment . . . . . 5,000.00  
 Library: No. of Books, 1,200; Value . . . . . 1,000.00  
 Total Property . . . . . \$39,000.00

**Endowment** . . . . .  
**Other Funds** . . . . .

**Total Assets** . . . . . \$39,000.00  
**Less Net Indebtedness** (Indebtedness provided for by subscriptions) . . . . . 7,091.15

**Net Assets** . . . . . \$31,908.85

**Gifts Received During Year** . . . . .

**Expenses of Maintenance.**—  
 Faculty Salaries, \$4,452.50; Other Salaries, ———. \$4,452.50  
 All Other Expenses . . . . . 7,391.68  
 Total Expenses . . . . . \$11,844.18

**Income for Maintenance.**—  
 From Endowment . . . . .  
 Student Fees . . . . . \$6,914.09  
 Room Rent, ———; Boarding Department, ——— . . . . .  
 Individuals, \$4,298.50; Other Sources, \$116.46 . . . . . 4,414.96  
 Churches: Direct or through College Board . . . . . 171.02  
 College Board . . . . .  
 Total Income . . . . . 11,500.07

**Deficit** (Made up by local subscriptions) . . . . . \$344.11

**Students.**—College . . . . . 10  
 Preparatory . . . . . 56  
 Others (Special) . . . . . 37  
 Total . . . . . 103  
 Graduates 1911-12 . . . . . 3

**Bible Study.**—Required of all students.

**Alumnæ.**—Since 1886:  
 Ministers . . . . .  
 Students now in Theological Seminaries . . . . .  
 Foreign Missionaries . . . . .  
 Women in Mission Work . . . . . 4  
 Other Christian Workers . . . . .  
 Teaching . . . . . 16  
 Law . . . . .  
 Medicine . . . . .  
 Other Professions . . . . . 6  
 Business, —; all Others . . . . . 22  
 Total . . . . . 48



Lecture Hall



Men's Dormitory

PARK COLLEGE

# PARK COLLEGE, Parkville, Missouri

Co-educational. Organized 1875

**Government.**—By Twenty-one Trustees, who elect their successors.

**Period covered by this Report.**—June 1, 1911—May 31, 1912.

**Faculty.**—Number of Members. . . . . 24

**Property.**—Land (Acres, 100 Campus; 1,005 acres other lands) . . . . . \$143,625.00  
 Buildings (No. of, 38) . . . . . 288,800.00  
 Furniture and Equipment, Public Service Equipment . . . . . 105,984.00  
 Library: No. of Books, 24,560; Value in Buildings . . . . .  
 Total Property . . . . . \$538,409.00

**Endowment.**—  
 Income Producing . . . . . 435,908.57  
**Other Funds.**—Non-Productive Assets . . . . . 45,600.00

**Total Assets.** . . . . . \$1,019,917.57  
**Less Net Indebtedness.** . . . . .

**Net Assets.** . . . . .

**Gifts Received During Year.**—For Improvements, etc., \$31,414.30;  
 Building, \$8,000; Endowment, \$25,301.02 . . . . . \$64,715.32

**Expenses of Maintenance.**—  
 Faculty Salaries, \$25,950; Other Salaries, \$13,520 . . . \$39,470.00  
 All other Expenses . . . . . 65,515.70  
 Total Expenses . . . . . \$104,985.70

**Income for Maintenance.**—  
 From Endowment . . . . . \$19,974.08  
 Student Fees . . . . . 12,472.28  
 Room Rent, —; Boarding Department, — . . . . .  
 Individuals, \$39,414.30; Other Sources, \$6,220.92 . . . . . 45,635.22  
 Churches: Direct or through College Board . . . . .  
 College Board . . . . .  
 Total Income . . . . . 78,081.58

**Deficit paid from undesignated funds.** . . . . . \$26,004.12

**Students.**—College . . . . . 220  
 Preparatory . . . . . 136  
 Others (Special) . . . . . 25  
 Total (Men, 209; Women, 181) . . . . . 390  
 Graduates 1911-12 (Men, 21; Women, 16) . . . . . 37

**Bible Study.**—Required of all students.

**Alumni and Alumnae.**—Since the year 1875:  
 Ministers . . . . . 181  
 Students now in Theological Seminaries . . . . . 11  
 Foreign Missionaries . . . . . 91  
 Women in Mission Work . . . . . 53  
 Other Christian Workers . . . . . 26  
 Teaching . . . . . 160  
 Law . . . . . 28  
 Medicine . . . . . 36  
 Other Professions . . . . .  
 Business, 60; all Others, 149 . . . . . 200  
 Total . . . . . 795





Foster Science Hall



Library Hall

PARSONS COLLEGE

# PARSONS COLLEGE, Fairfield, Iowa

Co-educational. Organized 1875

**Government.**—By Thirty Trustees, who elect their successors. Their election must be approved by the Synod of Iowa.

**Period covered by this Report.**—June 1, 1911—June 1, 1912.

**Faculty.**—Number of Members..... 18

**Property.**—Land (Acres, 35)..... \$ 29,606.20  
 Buildings (No. of, 12; 4 valued in Endowment).... 150,124.98  
 Furniture and Equipment..... 39,323.60  
 Library: No. of Books, 7,192; Value..... 5,567.00  
 Total Property..... \$224,621.78

**Endowment.**—  
 Income Producing..... \$234,189.03  
**Other Funds and Assets.**..... 7804.64

**Total Assets**..... \$466,615.45  
**Less Net Indebtedness** (Pledges for same in hand)..... 63,330.54

**Net Assets**..... \$403,284.91

**Gifts Received During Year.**—.....

**Expenses of Maintenance.**—  
 Faculty Salaries, \$18,551; Other Salaries, \$2,220... \$20,771.00  
 All other Expenses..... 12,096.85  
 Total Expenses..... \$32,867.85

**Income for Maintenance.**—  
 From Endowment..... \$ 8,807.56  
 Student Fees..... 10,686.67  
 Room Rent, \$1,023.25; Boarding Department,  
 \$625.60..... 1,648.85  
 Individuals, \$4,946.83; Other Sources..... 4,946.83  
 Churches: Direct or through College Board..... 135.60  
 College Board..... 25.00  
 Total Income..... 26,250.51

**Deficit.**—To be paid by subscriptions made..... \$6,617.34

**Students.**—College..... 94  
 Preparatory..... 60  
 Others (Special)..... 138  
 Total (Men, 121; Women, 171)..... 292  
 Graduates 1911-12 (Men, 6; Women, 5)..... 11

**Bible Study.**—Required of all regular students.

**Alumni and Alumnæ.**—Since the year 1875:  
 Ministers..... 79  
 Students now in Theological Seminaries..... 1  
 Foreign Missionaries..... 24  
 Women in Mission Work..... 9  
 Other Christian Workers..... 1  
 Teaching..... 106  
 Law..... 36  
 Medicine..... 28  
 Other Professions..... 20  
 Business, 50; all Others, 67..... 117  
 Total, Less 2, counted twice..... 419





PIKEVILLE COLLEGE

# PIKEVILLE COLLEGE, Pikeville, Kentucky

Co-educational. Organized as Academy 1889. Organized as College 1909

**Government.**—By Eleven Trustees, elected by the Synod of Kentucky upon nomination by the Presbytery of Ebenezer.

**Period covered by this Report.**—June 1, 1911—June 1, 1912.

**Faculty.**—Number of Members..... 10

<b>Property.</b> —Land (Acres, 7).....		\$15,000.00	
Buildings (No. of 3).....		55,000.00	
Furniture and Equipment.....		4,950.00	
Library: No. of Books, 1,600; Value.....		1,100.00	
Total Property.....			\$76,050.00

<b>Endowment.</b> —			
Income Producing.....			400.00
<b>Other Funds</b> .....			

<b>Total Assets</b> .....			\$76,450.00
<b>Less Net Indebtedness</b> .....			1,500.00

<b>Net Assets</b> .....			\$74,950.00
-------------------------	--	--	-------------

**Gifts Received During Year**.....

<b>Expenses of Maintenance.</b> —			
Faculty Salaries, \$5,570; Other Salaries, \$665.....		\$6,235.00	
All other Expenses.....		1,300.96	
Total Expenses.....			\$7,535.96

<b>Income for Maintenance.</b> —			
From Endowment.....			
Student Fees.....		3,026.09	
Room Rent, \$76; Boarding Department, —.....		76.00	
Individuals, \$910.12; Other Sources \$1,290.....		2,200.12	
Churches: Direct or through College Board.....		455.31	
College Board.....		600.00	
Total Income.....			6,357.52

<b>Deficit</b> .....			\$1,178.44
----------------------	--	--	------------

<b>Students.</b> —College.....		4	
Preparatory.....		222	
Others (Special).....		20	
Total (Men, —; Women, —).....			246
Graduates 1911-12 (Men, 3; Women, 1).....			4

**Bible Study.**—Required of all students.

<b>Alumni and Alumnae.</b> —			
Ministers.....			
Students now in Theological Seminaries.....			
Foreign Missionaries.....			
Women in Mission Work.....			
Other Christian Workers.....			
Teaching.....			
Law.....			
Medicine.....			
Other Professions.....			
Business, —; all Others, —.....			
Total.....			43



Recitation Hall



Dormitory

REYNOLDS COLLEGE

# REYNOLDS COLLEGE, Albany, Texas

Co-educational. Organized 1909

**Government.**—By Seven Trustees, elected by the Presbytery of Abilene.

**Period covered by this Report.**—June 15, 1911—June 15, 1912.

**Faculty.**—Number of Members..... 7

<b>Property.</b> —Land (Acres, —).....	\$ 2,000.00	
Buildings (No. of, 2).....	25,000.00	
Furniture and Equipment.....	1,800.00	
Library: No. of Books, 600; Value.....	1,000.00	
Total Property.....	\$29,800.00	

Endowment.....		
Other Funds.....		

<b>Total Assets</b> .....		\$29,800.00
Less Net Indebtedness.....		

**Net Assets**.....

**Gifts Received During Year**.....

<b>Expenses of Maintenance.</b> —		
Faculty Salaries,* \$1,490.20; Other Salaries.—	\$1,490.20	
All other Expenses.....	591.20	
Total Expenses.....	\$2,081.40	

<b>Income for Maintenance.</b> —		
From Endowment.....		
Student Fees.....	\$1,452.75	
Room Rent,——; Boarding Department.——		
Individuals, \$111.50; Other Sources, ——	111.50	
Churches: Direct or through College Board.	26.00	
College Board.....	500.00	
Total Income.....	2,091.15	

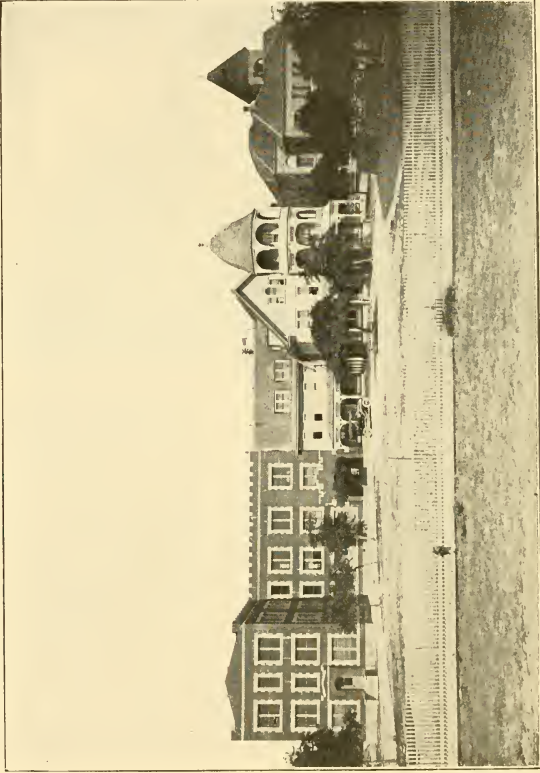
<b>Surplus</b> .....		\$9.75
----------------------	--	--------

<b>Students.</b> — College.....	15	
Preparatory.....	25	
Others (Special).....	10	
Total (Men, 33; Women, 26).....	50	
Academy Graduates 1911-12 (Men, 10; Women, 1).....	11	

**Bible Study.**—Required of all students.

<b>Alumni and Alumnae.</b> —Since the year 1909:		
Ministers.....		
Students now in Theological Seminaries.....		
Foreign Missionaries.....		
Women in Mission Work.....		
Other Christian Workers.....		
Teaching.....	4	
Law.....		
Medicine.....		
Other Professions.....	3	
Business, 9; all Others, 9.....	18	
Total.....	25	

\* The literary teachers have other means of support than salary.



TEXAS FAIREMONT SEMINARY

# TEXAS FAIREMONT SEMINARY, Weatherford, Texas

For Women. Organized 1890

**Government.**—By Nine Trustees, elected by the Synod of Texas.

**Period covered by this Report.**—May 30, 1911—May 30, 1912.

**Faculty.**—Number of Members. . . . . 10

<b>Property.</b> —Land (Acres, 8).....	\$ 2,500.00	
Buildings (No. of, 3).....	46,000.00	
Furniture and Equipment.....	3,500.00	
Library: No. of Books, 980; Value.....	500.00	
Total Property.....	\$52,500.00	

**Endowment**.....

**Other Funds**.....

**Total Assets**..... \$52,500.00

**Less Net Indebtedness**..... 7,775.00

**Net Assets**..... \$44,725.00

**Gifts Received During Year.**—For Building..... \$5,200.00

<b>Expenses of Maintenance.</b> —		
Faculty Salaries, \$4,130; Other Salaries, ——...	\$4,130.00	
All other Expenses.....	5,635.00	
Total Expenses.....	\$9,765.00	

<b>Income for Maintenance.</b> —		
From Endowment.....		
Student Fees.....	\$7,570.00	
Room Rent, ——; Boarding Department, ——		
Individuals, ——; Other Sources, ——		
Churches: Direct or through College Board.....		
College Board.....	750.00	
Total Income.....	8,320.00	

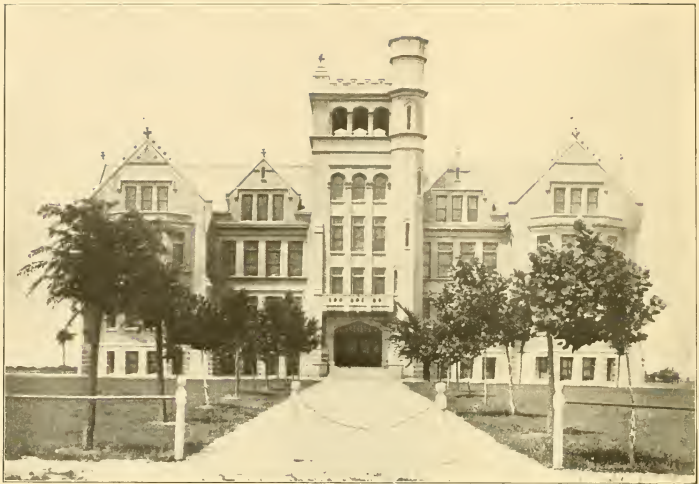
**Deficit**..... \$1,445.00

<b>Students.</b> —College.....	27	
Preparatory.....	26	
Others (Special).....	110	
Total.....	163	
Graduates 1911-12.....		9

**Bible Study.**—Required of all students.

<b>Alumnæ.</b> —Since the year 1890:		
Ministers.....		
Students now in Theological Seminaries.....		
Foreign Missionaries.....		
Women in Mission Work.....		
Other Christian Workers.....		
Teaching.....		
Law.....		
Medicine.....		
Other Professions.....		
Business, —; all Others, ——		
Total.....	142	





Administration Building



Frank Drane Women's Building

TRINITY UNIVERSITY

# TRINITY UNIVERSITY, Waxahachie, Texas

Co-educational. Organized 1869

**Government.**—By Nine Trustees, elected by the Synod of Texas.

**Period covered by this Report.**—College year, 1911-12.

**Faculty.**—Number of Members..... 22

**Property.**—Land (Acres, 33)..... \$ 25,000.00  
 Buildings (No. of, 5)..... 172,000.00  
 Furniture and Equipment..... 15,000.00  
 Library: No. of Books, 5,500; Value..... 5,000.00  
 Total Property..... \$217,000.00

**Endowment.**—  
 Income Producing..... \$81,318.17  
 Non-income Producing..... 9,387.12  
 Total Endowment..... 90,705.29

**Other Funds**..... 3,600.00

**Total Assets**..... \$311,305.29  
**Less Net Indebtedness** (\$16,512 of notes received to apply on debt)..... 28,000.00

**Net Assets**..... \$283,305.29

**Gifts Received During Year.**—  
 For Land, \$175; Building, \$52,078..... \$52,253.00

**Expenses of Maintenance.**—  
 Faculty Salaries, \$21,790; Other Salaries, \$2,143..... \$23,933.00  
 All other Expenses..... 12,413.00  
 Total Expenses..... \$36,346.00

**Income for Maintenance.**—  
 From Endowment..... \$ 1,800.00  
 Student Fees..... 24,646.00  
 Room Rent, —; Boarding Department, —.....  
 Individuals, \$465; Other Sources, \$6,105..... 6,570.00  
 Churches: Direct or through College Board..... 330.00  
 College Board..... 3,000.00  
 Total Income..... \$36,346.00

**Deficit or Surplus**.....

**Students.**—College..... 171  
 Preparatory..... 108  
 Others (Special)..... 67  
 Total (Men, 169; Women, 177)..... 346  
 Graduates 1911-12 (Men, 9; Women, 8)..... 17

**Bible Study.**—Required of all regular students.

**Alumni and Alumnae.**—Since the year 1871:  
 Ministers..... 97  
 Students now in Theological Seminaries..... 7  
 Foreign Missionaries..... 6  
 Women in Mission Work..... 3  
 Other Christian Workers..... ..  
 Teaching..... 99  
 Law..... 43  
 Medicine..... 9  
 Other Professions..... 2  
 Business, 48; all Others, 53..... 101  
 Total, Less 13, counted twice..... 354



McCormick Hall



Men's Dormitory

TUSCULUM COLLEGE

# TUSCULUM COLLEGE, Greeneville, Tennessee

Co-educational. Organized 1794

**Government.**—By Twenty-one Trustees, who elect their successors.

**Period covered by this Report.**—June 1, 1911—June 1, 1912.

**Faculty.**—Number of Members..... 14

**Property.**—Land (Acres, 48)..... \$ 8,000.00  
 Buildings (No. of, 10; 2 are valued in Endowment) 83,000.00  
 Furniture and Equipment..... 8,100.00  
 Library: No. of Books, 8,500; Value..... 8,000.00  
 Total Property.....                      \$107,100.00

**Endowment.**—  
 Income Producing..... 35,300.00  
 (Pledges toward additional Endowment, \$58,000)

**Other Funds**.....

**Total Assets**.....                      \$142,400.00

**Less Net Indebtedness**.....

**Net Assets**.....

**Gifts Received During Year.**—Equipment, \$3,000..... \$3,000.00

**Expenses of Maintenance.**—  
 Faculty Salaries, \$12,518.33; Other Salaries, \$2,138 \$14,656.33  
 All other Expenses..... 6,713.21  
 Total Expenses.....                      \$21,369.54

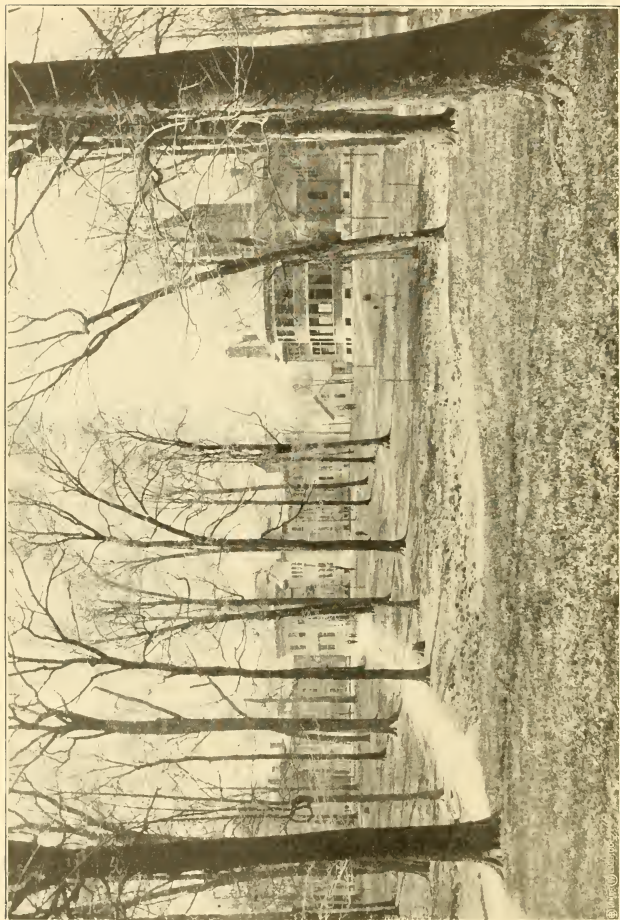
**Income for Maintenance.**—  
 From Endowment..... \$ 2,201.91  
 Student Fees..... 3,724.65  
 Room Rent, \$1,674.96; Boarding Department,  
 \$163.10..... 1,838.06  
 Individuals, \$10,252.50; Other Sources, \$1,147.75 11,400.25  
 Churches: Direct or through College Board..... 197.87  
 College Board..... 1,500.00  
 Total Income.....                      20,862.74

**Deficit**.....                      \$506.80

**Students.**—College..... 27  
 Preparatory..... 115  
 Others (Special)..... 40  
 Total (Men, 89; Women, 93).....                      182  
 Graduates 1911-12 (Men, 4; Women, 4)..... 8

**Bible Study.**—Required of all students.

**Alumni and Alumnæ.**—Since the year 1794:  
 Ministers..... 149  
 Students now in Theological Seminaries..... 15  
 Foreign Missionaries..... 4  
 Women in Mission Work..... 4  
 Other Christian Workers..... 38  
 Teaching..... 292  
 Law..... 82  
 Medicine..... 53  
 Other Professions..... 48  
 Business, 65; all Others, 86..... 151  
 Total.....                      836



Campus

WABASH COLLEGE

# WABASH COLLEGE, Crawfordsville, Indiana

For Men. Organized 1834

**Government.**—By Twenty-one Trustees, who elect their successors, except four members elected by the Alumni.

**Period covered by this Report.**—June 1, 1911—June 1, 1912.

**Faculty.**—Number of Members.....

<b>Property.</b> —Land (Acres, 33).....	\$	2,500.00
Buildings (No. of, 6).....		104,800.00
Furniture and Equipment and Museum.....		40,927.00
Library: No. of Books, 48,000, Value.....		60,000.00
Total Property.....		\$378,427.00

<b>Endowment.</b> —		
Income Producing.....		700,000.00
(Pledges toward additional Endowment, \$41,000)		

<b>Other Funds</b> .....		3,000.00
--------------------------	--	----------

<b>Total Assets</b> .....		\$1,081,227.00
<b>Less Net Indebtedness</b> .....		

<b>Net Assets</b> .....		
-------------------------	--	--

<b>Gifts Received During Year.</b> —Endowment.....		\$30,000.00
--	--	-------------

<b>Expenses of Maintenance.</b> —		
Faculty Salaries, \$31,419; Other Salaries, \$5,889.80.	\$37,308.80	
All other Expenses.....	8,363.16	
Total Expenses.....		\$45,671.96

<b>Income for Maintenance.</b> —		
From Endowment.....	\$39,534.00	
Student Fees.....		
Room Rent.....; Boarding Department,.....	15,000.00	
Individuals.....; Other Sources,.....		
Churches: Direct or through College Board.....		
College Board.....		
Total Income.....		54,534.00

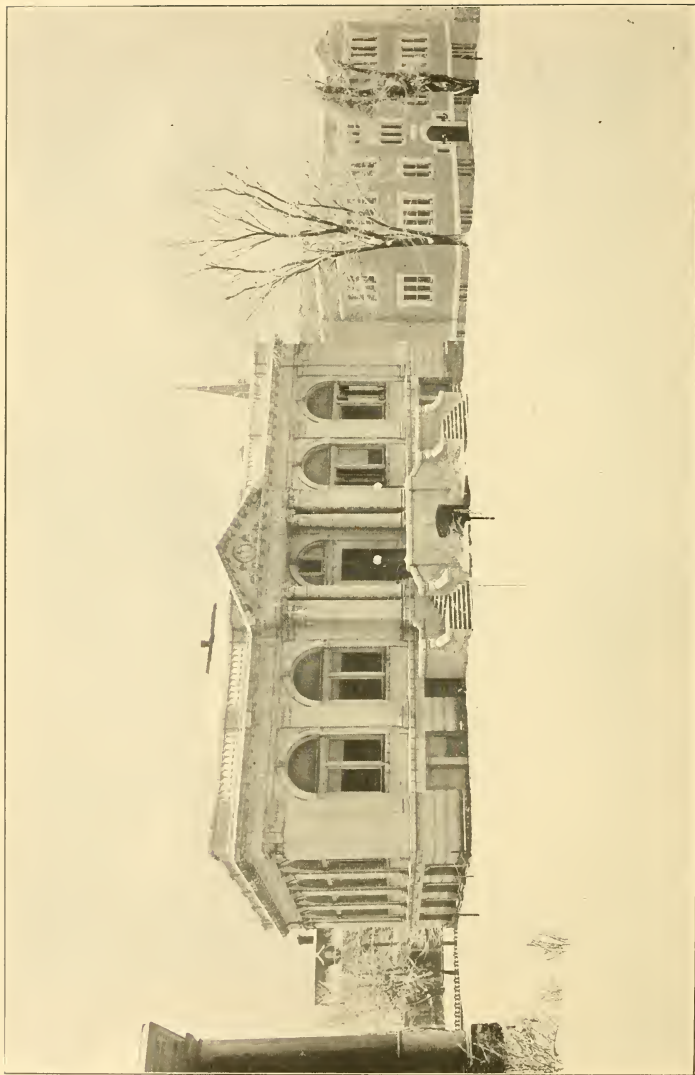
<b>Surplus</b> .....		\$8,862.04
----------------------	--	------------

<b>Students.</b> —College.....	349	
Preparatory.....		
Others (Special).....		
	349	
Graduates 1911-12.....		58

**Bible Study.**—Elective.

<b>Alumni.</b> —Since the year 1834:		
Ministers.....	210	
Students now in Theological Seminaries.....	10	
Foreign Missionaries.....	12	
Women in Mission Work.....	..	
Other Christian Workers.....	..	
Teaching.....	124	
Law.....	175	
Medicine.....	75	
Other Professions.....	34	
Business, 227; all Others, 329.....	556	
Total, Less 10, counted twice.....		1,186





The Library and Physical Laboratory  
WASHINGTON AND JEFFERSON COLLEGE

# WASHINGTON AND JEFFERSON COLLEGE

## Washington, Pennsylvania

For Men. Organized as Classical School 1780. Organized as Academy 1787.  
Organized as College 1802.

**Government.**—By Thirty-one Trustees, who elect their successors.

**Period covered by this Report.**—June 30, 1911—June 30, 1912.

**Faculty.**—Number of Members. . . . . 29

**Property.**—Land (Acres, 16) . . . . . \$158,200.00  
Buildings (No. of, 8) . . . . . 308,800.00  
Furniture and Equipment . . . . . 20,000.00  
Library: No. of Books, 22,779; Value . . . . . 55,000.00  
Total Property . . . . . \$542,000.00

**Endowment.**—  
Income Producing . . . . . \$577,772.00  
Non-income Producing . . . . . 61,983.00  
Total Endowment . . . . . 639,755.00

**Other Funds.** . . . . .                     

**Total Assets.** . . . . . \$1,181,755.00  
**Less Net Indebtedness.** . . . . . 26,680.00

**Net Assets.** . . . . . \$1,155,066.00

**Gifts Received During Year.**—

Building, \$34,918; Endowment, \$2,735 . . . . . \$37,653.00

**Expenses of Maintenance.**—

Faculty Salaries, \$45,350; Other Salaries, \$3,425 . . . \$48,775.00  
All other Expenses . . . . . 31,102.00  
Total Expenses . . . . . \$79,877.00

**Income for Maintenance.**—

From Endowment . . . . . \$33,177.00  
Student Fees . . . . . 29,363.00  
Room Rent and Boarding Department . . . . . 12,543.00  
Individuals, \$4,500; Other Sources, \$100 . . . . . 4,600.00  
Churches: Direct or through College Board . . . . .  
College Board . . . . . 50.00  
Total Income . . . . . 79,733.00

**Surplus.** . . . . . \$144.00

**Students.**—College . . . . . 315  
Preparatory . . . . . ..  
Others (Special, 5 are short term students) . . . . . 20  
Net Total (Men, 325; Women, 5; in summer school) . . . . . 330  
Graduates 1911-12 . . . . . 34

**Bible Study.**—Required of all Freshmen and Sophomores; elective for Juniors.

**Alumni.**—Since the year 1802:

Ministers . . . . . 1,727  
Students now in Theological Seminaries . . . . . ..  
Foreign Missionaries . . . . . 104  
Women in Mission Work . . . . . ..  
Other Christian Workers . . . . . ..  
Teaching . . . . . 83  
Law . . . . . 1,118  
Medicine . . . . . 570  
Other Professions . . . . . ..  
Business, —; all Others . . . . . 835  
Total . . . . . 4,437



College Park

# WAYNESBURG COLLEGE, Waynesburg, Pennsylvania

Co-educational. Organized 1851

**Government.**—By Twenty-seven Trustees, who elect their successors; a majority must be members of the Presbyterian Church.

**Period covered by this Report.**—July 1, 1911—July 1, 1912.

**Faculty.**—Number of Members. . . . . 9

**Property.**—Land (Acres, —) . . . . . \$ 68,950.00  
 Buildings (No. of, 3) . . . . . 175,000.00  
 Furniture and Equipment . . . . . 15,000.00  
 Library: No. of Books, 8,500; Value . . . . . 8,500.00  
 Total Property . . . . . \$267,450.00

**Endowment.**—  
 Income Producing . . . . . \$68,375.00  
 Non-income Producing . . . . . 5,125.00  
 Total Endowment . . . . . 73,500.00

**Other Funds** . . . . . 340,950.00

**Total Assets** . . . . . \$340,950.00  
**Less Net Indebtedness** (Reduced on Feb. 3, 1913, to \$5,000) . . . . . 10,300.00

**Net Assets** . . . . . \$330,650.00

**Gifts Received During Year** . . . . .

**Expenses of Maintenance.**—  
 Faculty Salaries, \$7,665; Other Salaries, \$800 . . . . . \$8,465.00  
 All other Expenses . . . . . 2,073.00  
 Total Expenses . . . . . \$10,538.00

**Income for Maintenance.**—  
 From Endowment . . . . . \$2,350.00  
 Student Fees . . . . . 6,092.82  
 Room Rent, \$232.57; Boarding Department, — . . . . . 232.57  
 Individuals, \$478.37; Other Sources, — . . . . . 478.37  
 Churches: Direct or through College Board . . . . .  
 College Board . . . . . 1,500.00  
 Total Income . . . . . 10,653.76

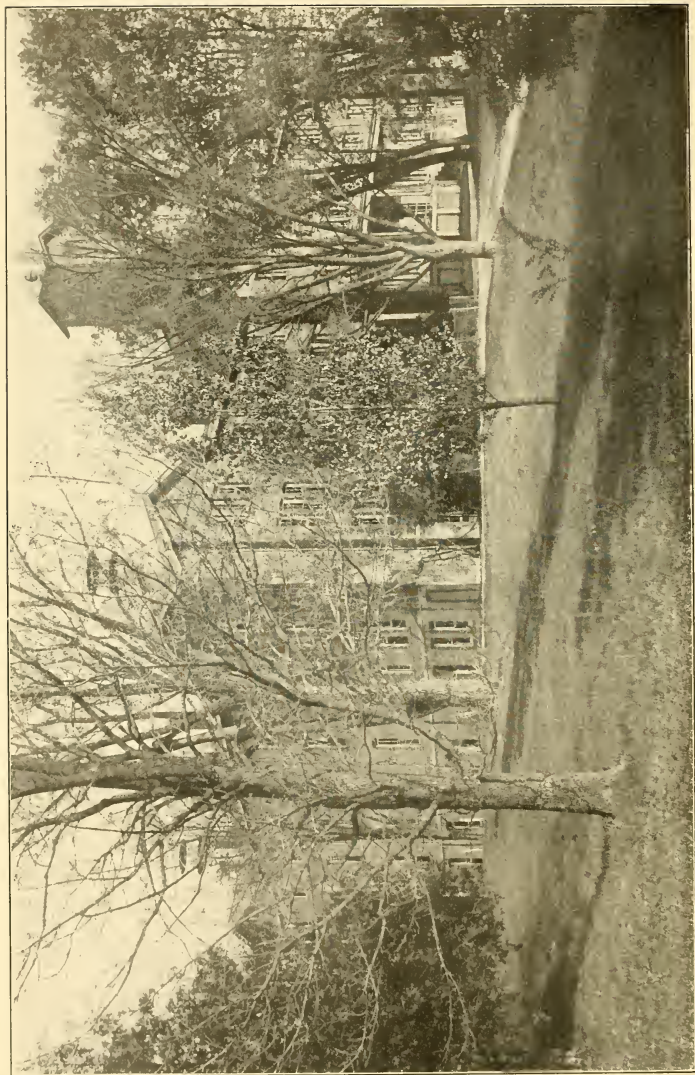
**Surplus** . . . . . \$115.76

**Students.**—College . . . . . 55  
 Preparatory . . . . . 63  
 Others (Special) . . . . . 154  
 Total (Men, —; Women, —) . . . . . 272  
 Graduates 1911-12 (Men, 7; Women, 6) . . . . . 13

**Bible Study.**—Required of all college students.

**Alumni and Alumnae.**—Since the year 1851:  
 Ministers . . . . . 106  
 Students now in Theological Seminaries . . . . .  
 Foreign Missionaries . . . . . 5  
 Women in Mission Work . . . . .  
 Other Christian Workers . . . . .  
 Teaching . . . . . 114  
 Law . . . . . 68  
 Medicine . . . . . 54  
 Other Professions . . . . .  
 Business, —; all Others . . . . . 442  
 Total, Less 122, counted twice . . . . . 667





Helen Peabody Hall

WESTERN COLLEGE

# THE WESTERN COLLEGE FOR WOMEN, Oxford, Ohio

Organized 1853

**Government.**—By Fifteen Trustees, who elect their successors. All must be Protestants and a majority members of some evangelical church.

**Period covered by this Report.**—June 1, 1911—May 31, 1912.

**Faculty.**—Number of Members. . . . . 33

**Property.**—Land (Acres, 80) . . . . . \$ 24,000.00  
 Buildings (No. of, 9) . . . . . 287,709.63  
 Furniture and Equipment . . . . . 33,314.82  
 Library: No. of Books, ———; Value . . . . . 20,250.00  
 Total Property . . . . . \$374,274.45

**Endowment.**—  
 Income Producing . . . . . 293,342.54  
**Other Funds** . . . . . 12,000.00

**Total Assets** . . . . . \$679,616.99  
**Less Endowment invested in Dormitory** . . . . . 55,000.00

**Net Assets** . . . . . \$624,616.99

**Gifts Received During Year.**—  
 Building, \$7,000; Endowment, \$84,199.11 . . . . . \$91,199.11  
 Amount received subject to Annuities not in above \$50,000.00

**Expenses of Maintenance.**—  
 Faculty Salaries, \$25,490; Other Salaries, \$2,400 . . . \$27,890.00  
 All other Expenses . . . . . 51,814.07  
 Total Expenses . . . . . \$79,704.07

**Income for Maintenance.**—  
 From Endowment . . . . . \$13,091.45  
 Student Fees . . . . . 27,933.93  
 Room Rent, \$15,225; Boarding Department,  
 \$26,023.75 . . . . . 41,248.75  
 Individuals, \$168; Other Sources, \$3,689.57 . . . . . 3,857.57  
 Churches: Direct or through College Board . . . . .  
 College Board . . . . .  
 Total Income . . . . . \$6,131.70

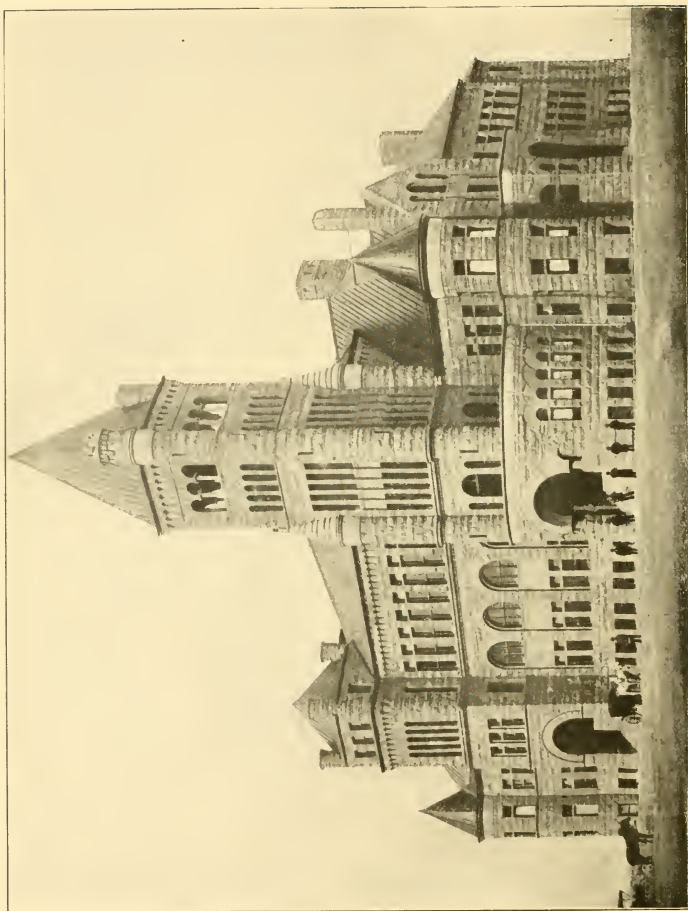
**Surplus** . . . . . \$6,427.63

**Students.**—College . . . . . 212  
 Preparatory . . . . . 19  
 Others (Special) . . . . . 4  
 Total . . . . . 235  
 Graduates 1911-12 . . . . . 24

**Bible Study.**—Required of all students.

**Alumnæ.**—Since the year 1853:  
 Ministers . . . . . ..  
 Students now in Theological Seminaries . . . . . ..  
 Foreign Missionaries . . . . . ..  
 Women in Mission Work . . . . . 97  
 Other Christian Workers . . . . . 6  
 Teaching . . . . . 120  
 Law . . . . . ..  
 Medicine . . . . . 3  
 Other Professions . . . . . 9  
 Business, —; all Others . . . . . 637  
 Total . . . . . 872





Main Building

WESTMINSTER COLLEGE

# WESTMINSTER COLLEGE, Denver, Colorado

(Legal Name, Westminster University Association)

Co-educational. Organized 1907

**Government.**—By Twenty-five Trustees, who elect their successors; two-thirds must be members of the Presbyterian Church.

**Period covered by this Report.**—September 15, 1911—June 1, 1912.

**Faculty.**—Number of Members..... 8

**Property.**—Land (Acres, 400)..... \$140,000.00  
 Buildings (No. of, 5; 3 are listed in Endowment)..... 207,000.00  
 Furniture and Equipment..... 2,365.62  
 Library: No. of Books, 3,100; Value..... 3,100.00  
 Total Property..... \$352,465.62

**Endowment.**—  
 Income Producing..... \$35,790.47  
 Non-income Producing..... 26,645.00  
 (Pledges toward additional Endowment, \$50,000)  
 Total Endowment..... 62,435.47

**Other Funds**.....                     

**Total Assets**..... \$414,901.09  
**Less Net Indebtedness**..... 22,732.48

**Net Assets**..... \$392,168.61

**Gifts Received During Year.**—  
 For Endowment, \$73,400.50 (In Cash, \$6,090.50)..... \$73,400.50

**Expenses of Maintenance.**—  
 Faculty Salaries, \$7,840; Other Salaries, \$1,153.85 \$8,993.85  
 All other Expenses..... 9,039.16  
 Total Expenses..... \$18,033.01

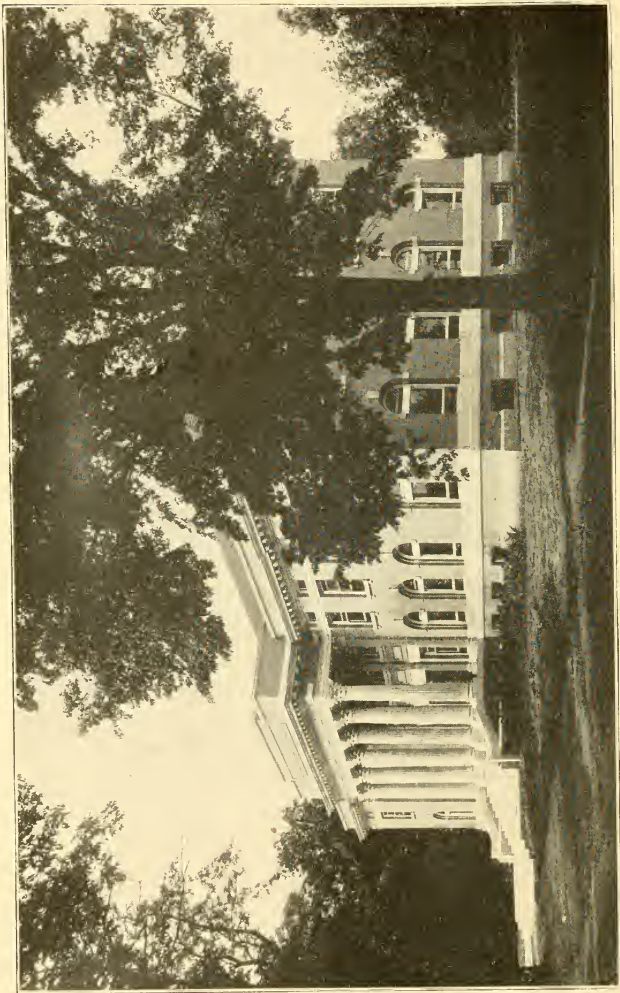
**Income for Maintenance.**—  
 From Endowment..... \$ 1,482.90  
 Student Fees..... 1,689.55  
 Room Rent, —; Boarding Department, \$123.18 123.18  
 Individuals, \$1,975.31; Other Sources, \$9,850.64... 11,825.95  
 Churches: Direct or through College Board..... 911.43  
 College Board..... 2,000.00  
 Total Income..... \$18,033.01

**Deficit or Surplus**.....                     

**Students.**—College..... 16  
 Preparatory..... 44  
 Others (Special)..... ..  
 Total (Men, 34; Women, 26)..... 60  
 Graduates 1911-12 (Men, 2; Women, —)..... 2

**Bible Study.**—Required of all students.

**Alumni and Alumnae.**—Since the year 1907:  
 Ministers..... 2  
 Students now in Theological Seminaries..... ..  
 Foreign Missionaries..... ..  
 Women in Mission Work..... ..  
 Other Christian Workers..... ..  
 Teaching..... 2  
 Law..... 1  
 Medicine..... 1  
 Other Professions..... ..  
 Business, —; all Others, 3..... ..  
 Total..... 9



Westminster Hall

WESTMINSTER COLLEGE

FULTON, MISSOURI

# WESTMINSTER COLLEGE, Fulton, Missouri

For Men. Organized 1849

**Government.**—By Twenty-four Trustees, elected by the two Synods of Missouri, Presbyterian Church in the U. S., and Presbyterian Church in the U. S. A.

**Period covered by this Report.**—September 1, 1911—July 1, 1912.

**Faculty.**—Number of Members..... 12

<b>Property.</b> —Land (Acres, 38).....	\$ 33,800.00	
Buildings (No. of, 6).....	148,634.95	
Furniture and Equipment.....	12,060.81	
Library: No. of Books, 4,150; Value.....	4,924.07	
Total Property.....	\$199,419.83	

<b>Endowment.</b> —		
Income Producing.....	\$195,314.77	
Non-Income Producing.....	26,800.00	
Total Endowment.....	222,114.77	

**Other Funds.**.....

<b>Total Assets.</b> .....	\$421,534.60	
<b>Less Net Indebtedness.</b> .....	29,624.63	

**Net Assets.**..... \$391,909.97

**Gifts Received During Year.**—For Building, \$525; Endowment, \$2,000 \$2,525.00

<b>Expenses of Maintenance.</b> —		
Faculty Salaries, \$12,200; Other Salaries, \$3,870....	\$16,070.00	
All other Expenses.....	10,422.03	
Total Expenses for twelve months.....	\$26,492.03	

<b>Income for Maintenance.</b> —		
From Endowment.....	\$11,576.94	
Student Fees.....	5,473.00	
Room Rent, \$394.25; Boarding Department, ——	394.25	
Individuals, \$90; Other Sources, ——	90.00	
Churches: Direct or through College Board.....	597.07	
College Board.....	.....	
Total Income for ten months.....	18,131.26	

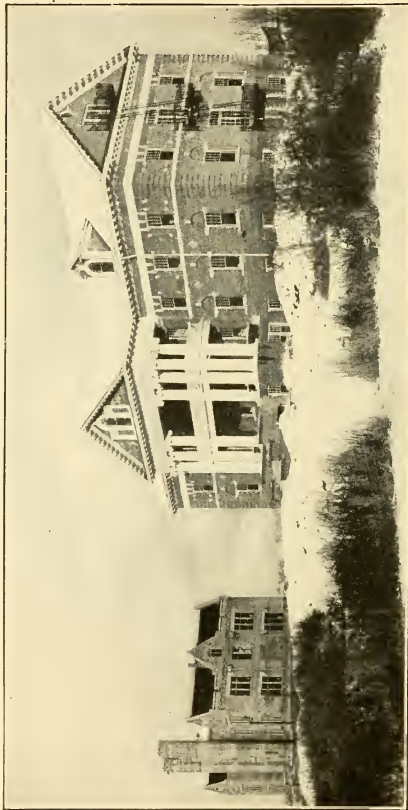
**Deficit.**..... \$8,360.77

<b>Students.</b> —College.....	67	
Preparatory.....	53	
Others (Special).....	1	
Total*.....	121	
Graduates 1911-12.....	12	

**Bible Study.**—Required of all students.

<b>Alumni.</b> —Since the year 1849:		
Ministers.....	114	
Students now in Theological Seminaries.....	..	
Foreign Missionaries.....	15	
Women in Mission Work.....	..	
Other Christian Workers.....	5	
Teaching.....	59	
Law.....	63	
Medicine.....	50	
Other Professions.....	26	
Business, 88; all Others, ——	88	
Total, Less 23, counted twice.....	397	

\* Total students this year, 1912-13:—158.



Converse Hall

Ferry Hall

WESTMINSTER COLLEGE  
SALT LAKE, UTAH

# WESTMINSTER COLLEGE, \* Salt Lake City, Utah

Co-educational. Organized 1897

**Government.**—By Eighteen Trustees, who elect their successors, but their election must be confirmed by the Presbyterian Ministers of Utah.

**Period covered by this Report.**—June 1, 1911—June 1, 1912.

**Faculty.**—Number of Members: . . . . . 6

**Property.**—Land (Acres, 20) . . . . . \$ 60,000.00  
 Buildings (No. of, 4) . . . . . 116,700.00  
 Furniture and Equipment . . . . . 1,250.00  
 Library: No. of Books, 2,000; Value . . . . . 1,000.00  
 Total Property . . . . . \$178,950.00

**Endowment.**—Income Producing . . . . . 3,778.55

**Other Funds** . . . . .                     

**Total Assets** . . . . . \$182,728.55

**Less Net Indebtedness** . . . . .                     

**Net Assets** . . . . .                     

**Gifts Received During Year** . . . . . \$4,056.50

**Expenses of Maintenance.**—

Faculty Salaries, \$7,000; Other Salaries, — . . . . . \$7,000.00  
 All other Expenses . . . . . 3,224.43  
 Total Expenses . . . . . \$10,224.43

**Income for Maintenance.**—

From Endowment . . . . . \$1,004.50  
 Student Fees . . . . . 1,711.10  
 Room Rent, —; Boarding Department, \$463.35 . . . . . 463.35  
 Individuals, \$4,056.50; Other Sources, — . . . . . 4,056.50  
 Churches: Direct or through College Board . . . . . 110.00  
 College Board (Total Grant, \$1,000) . . . . . 500.00  
 Total Income . . . . . 7,935.45

**Deficit** (Provided for by special funds) . . . . . \$2,288.98

**Students.**—College . . . . .  
 Preparatory . . . . . 66  
 Others (Special) . . . . .  
 Total (Men, 31; Women, 35) . . . . . 66  
 Graduates 1911-12 (Men, 1; Women, 5) . . . . . 6

**Bible Study.**—Required of all students.

**Alumni and Alumnae.**—

Ministers . . . . .  
 Students now in Theological Seminaries . . . . .  
 Foreign Missionaries . . . . .  
 Women in Mission Work . . . . .  
 Other Christian Workers . . . . .  
 Teaching . . . . .  
 Law . . . . .  
 Medicine . . . . .  
 Other Professions . . . . .  
 Business. —; all Others, — . . . . .  
 Total . . . . .                     

\*Not yet formally operating as a college.





Administration Building and Library



Ladies' Hall

WHITWORTH COLLEGE

# WHITWORTH COLLEGE, Tacoma, Washington

Co-educational. Organized 1890

**Government.**—By Twenty-four Trustees, who elect their successors. Two-thirds must be members of the Presbyterian Church, and election must be approved by Synod.

**Period covered by this Report.**—July 1, 1911—August 30, 1912.

**Faculty.**—Number of Members. . . . . 17

**Property.**—Land (Acres, 14) . . . . . \$52,000.00  
 Buildings (No. of, 6) . . . . . 87,500.00  
 Furniture and Equipment . . . . . 8,000.00  
 Library: No. of Books, 5,500; Value . . . . . 4,000.00  
 Total Property . . . . . \$151,500.00

**Endowment.**—  
 Income Producing . . . . . \$67,450.00  
 Non-income Producing . . . . . 10,000.00  
 (Pledges toward additional Endowment Fund,  
 \$50,000)  
 Total Endowment . . . . . 77,450.00

**Other Funds.** . . . . .

**Total Assets.** . . . . . \$228,950.00

**Less Net Indebtedness** (\$5,526.85 subscription payable before  
 January 1, 1913, toward debt) . . . . . 27,176.35

**Net Assets.** . . . . . \$201,773.65

**Gifts Received During Year.** . . . . .

**Expenses of Maintenance.**—

Faculty Salaries, \$17,739.43; Other Salaries, \$2,750 . . . . . \$20,489.43  
 All other Expenses . . . . . 10,705.35  
 Total Expenses (13 Months) . . . . . \$31,194.78

**Income for Maintenance.**—From Endowment . . . . . \$ 1,091.25  
 Student Fees . . . . . 7,058.82  
 Room Rent, \$1,718.45; Boarding Department,  
 \$809.74 . . . . . 2,528.19  
 Individuals, \$5,656.18; Other Sources, \$7,300 . . . . . 12,956.18  
 Churches: Direct or through College Board . . . . . 601.08  
 College Board . . . . . 2,050.00  
 Total Income . . . . . 26,285.52

**Deficit.** . . . . . \$4,909.26

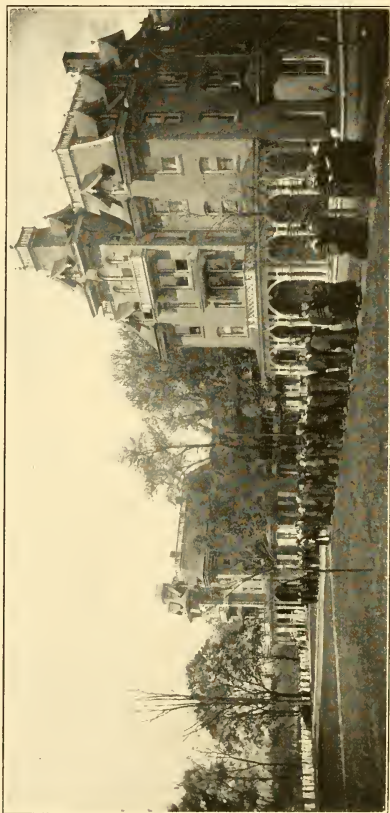
**Students.**—College . . . . . 61  
 Preparatory . . . . . 51  
 Others (Special) . . . . . 39  
 Total (Men, 61; Women, 90) . . . . . 151  
 Graduates 1911-12 (Men, 3; Women, 5) . . . . . 8

**Bible Study.**—Required of all regular students.

**Alumni and Alumnae.**—Since the year 1890:

Ministers . . . . . 4  
 Students now in Theological Seminaries . . . . . 3  
 Foreign Missionaries . . . . . 1  
 Women in Mission Work . . . . . ..  
 Other Christian Workers . . . . . ..  
 Teaching . . . . . 26  
 Law . . . . . 6  
 Medicine . . . . . 7  
 Other Professions . . . . . 10  
 Business, 8; all Others, 21 . . . . . 29  
 Total, Less 1, counted twice . . . . . 85

NOTE:—Whitworth College lays emphasis upon scholastic attainments. Two of her graduates have qualified for the Rhodes Scholarship.



A Section of the Campus

WILSON COLLEGE

# WILSON COLLEGE, Chambersburg, Pennsylvania

(Legal Name, Wilson Female College)

For Women. Organized 1869. Opened 1870

**Government.**—By Twenty-nine Trustees, who elect their successors; a majority must be members of the Presbyterian Church.

**Period covered by this Report.**—July 1, 1911—July 1, 1912.

**Faculty.**—Number of Members. . . . . 30

**Property.**—Land (Acres, 50) . . . . . \$ 41,540.00  
 Buildings (No. of, 14) . . . . . 232,584.15  
 Furniture and Equipment, Machinery and Fixtures . . . . . 60,705.25  
 Library: No. of Books, 12,000; Value . . . . . 10,633.30  
 Total Property . . . . . \$354,463.60

**Endowment.**—Income Producing . . . . . 67,628.00

**Other Funds** . . . . .

**Total Assets** . . . . . \$422,091.60

**Less Net Indebtedness** . . . . . 10,000.00

**Net Assets** . . . . . \$412,091.60

**Gifts Received During Year** . . . . .

**Expenses of Maintenance.**—

Faculty Salaries, \$19,538.58; Other Salaries,\* \$11,863.63 . . . . . \$31,402.21  
 All other Expenses . . . . . 4,566.55  
 Total Expenses . . . . . \$35,968.76

**Income for Maintenance.**—

From Endowment . . . . .  
 Student Fees . . . . . \$ 3,272.00  
 Room Rent and Boarding Department . . . . . 20,948.70  
 Individuals, ———; Other Sources, \$4,541.14 . . . . . 4,541.14  
 Churches: Direct or through College Board . . . . .  
 College Board . . . . .  
 Total Income . . . . . 28,762.02

**Deficit** . . . . . \$7,206.74

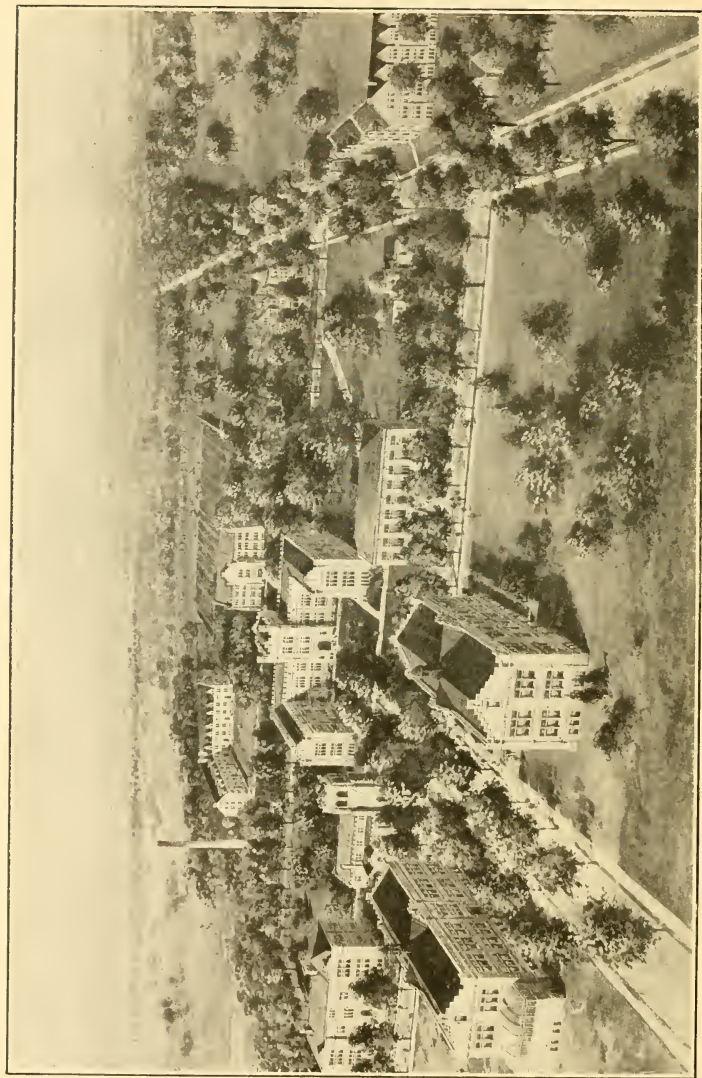
**Students.**—College . . . . . 184  
 Preparatory . . . . .  
 Others (Special) . . . . . 78  
 Total . . . . . 262  
 Graduates 1911-12 . . . . . 50

**Bible Study.**—Required of all students.

**Alumnæ.**—Since 1869; Alumnæ details being prepared:

Ministers . . . . .  
 Students now in Theological Seminaries . . . . .  
 Foreign Missionaries . . . . .  
 Women in Mission Work . . . . .  
 Other Christian Workers . . . . .  
 Teaching . . . . .  
 Law . . . . .  
 Medicine . . . . .  
 Other Professions . . . . .  
 Business, —; all Others, — . . . . .  
 Total . . . . . 742

\* Includes President's salary for six months.



THE UNIVERSITY OF WOOSTER

# THE UNIVERSITY OF WOOSTER, Wooster, Ohio

Co-educational. Organized 1866

**Government.**—By Twenty-seven Trustees, elected by the Synod of Ohio.

**Period covered by this Report.**—May 31, 1911—June 1, 1912.

**Faculty.**—Number of Members. . . . . 39

**Property.**—Land (Acres, 55) . . . . . \$ 67,122.83  
 Buildings (No. of 24) . . . . . 967,613.00  
 Furniture and Equipment . . . . . 31,437.58  
 Library: No. of Books, 33,500; Value . . . . . 25,000.00  
 Total Property . . . . . \$1,091,173.41

**Endowment.**—  
 Income Producing . . . . . \$1,112,217.11  
 Non-income Producing . . . . . 972.56  
 Total Endowment . . . . . 1,113,189.67

**Other Funds.** . . . . . 38,439.46

**Total Assets.** . . . . . \$2,242,802.54  
**Less Net Indebtedness,** \$6,094.58; and Salaries due, \$13,880. . . . . 19,974.58

**Net Assets.** . . . . . \$2,222,827.96

**Gifts Received During Year.**—  
 For Various Funds, \$3,000; Building, \$81,437.50. . . \$ 84,437.50  
 Equipment, \$51,675.03; Endowment, \$106,455.67. . . 158,130.70  
 Total . . . . . \$242,568.20

**Expenses of Maintenance.**—  
 Faculty Salaries, \$54,120; Other Salaries, \$11,361.40 \$65,481.40  
 All other Expenses . . . . . 43,357.15  
 Total Expenses . . . . . \$108,838.55

**Income for Maintenance.**—  
 From Endowment . . . . . \$61,620.21  
 Student Fees . . . . . 33,975.34  
 Room Rent and Boarding Department, net . . . . . 3,884.60  
 Individuals, —; Other Sources, \$8,377.57 . . . . . 8,377.57  
 Churches: Direct or through College Board . . . . . 598.66  
 College Board . . . . . 50.00  
 Total Income . . . . . 107,606.38

**Deficit.** . . . . . \$1,232.17

**Students.**—College . . . . . 463  
 Preparatory . . . . . 169  
 Others (including 1,025 short term students) . . . . . 1,375  
 Total, (Men, 358; Women, 274, regular students) . . . . . 2,007  
 Graduates 1911-12 (Men, 44; Women, 51) . . . . . 95

**Bible Study.**—Required of all regular students.

**Alumni and Alumnae.**—Since the year 1866:  
 Ministers . . . . . 279  
 Students now in Theological Seminaries . . . . . 20  
 Foreign Missionaries . . . . . 67  
 Women in Mission Work . . . . . ..  
 Other Christian Workers . . . . . 26  
 Teaching . . . . . 399  
 Law . . . . . 130  
 Medicine . . . . . 98  
 Other Professions . . . . . 259  
 Business, 128; all Others, 101. . . . . 319  
 Total, Less 10, counted twice . . . . . 1,587



## “Finally, Brethren”

You have read the story.

You have learned of what has been accomplished.

You have been given a panoramic view of what is being done, though this book can give no conception of the sacrifices and the heartaches which have accompanied and still accompany the doing.

By faith, in much self-denial, through consecrated toil, noble men and women have made possible your sense of pride in your Church as you close this book.

Similar men and women are still toiling in a similar manner to accomplish yet more for Christ and the Church.

Much more is yet to be done by Presbyterians.

## Will You Help Do It?

## *Did You*

have some part  
in the work  
of the past ?

## *Will You*

do your part  
in the work  
of the future ?

# Index

## THE COLLEGE BOARD

	PAGE
An Anniversary . . . . .	3
Organization of Board, 1883 . . . . .	5
Growth of Presbyterian Colleges . . . . .	6

## THE COLLEGES

Product of Presbyterian Colleges . . . . .	11
Albany College . . . . .	13
Albert Lea College . . . . .	15
✓ Alma College . . . . .	17
Arkansas Cumberland College . . . . .	19
Bellevue College . . . . .	21
✓ Blackburn College . . . . .	23
Blairsville College . . . . .	25
✓ Buena Vista College . . . . .	27
✓ Carroll College . . . . .	29
✓ Central University of Kentucky . . . . .	31
✓ Coe College . . . . .	33
Cumberland University . . . . .	35
✓ Davis and Elkins College . . . . .	37
Elmira College . . . . .	39
✓ Emporia, College of . . . . .	41
✓ Grove City College . . . . .	43
✓ Hanover College . . . . .	45
✓ Hastings College . . . . .	47
✓ Henry Kendall College . . . . .	49
Highland College . . . . .	51
Highland Park College . . . . .	53
✓ Huron College . . . . .	55
✓ Idaho, College of . . . . .	57
✓ Illinois College . . . . .	59
✓ James Millikin University	
Decatur College and Industrial School . . . . .	61
Lincoln College . . . . .	63
✓ Jamestown College . . . . .	65
Kentucky College for Women . . . . .	67
✓ Lafayette College . . . . .	69
✓ Lake Forest College . . . . .	71
Lenox College . . . . .	73
Lincoln University . . . . .	75
✓ Lindenwood College . . . . .	77
✓ Macalester College . . . . .	79
✓ Maryville College . . . . .	81
✓ Missouri Valley College . . . . .	83
✓ Montana, College of . . . . .	85
+ New York University . . . . .	87
✓ Occidental College . . . . .	89
Oswego College . . . . .	91
✓ Park College . . . . .	93
✓ Parsons College . . . . .	95
✓ Pikeville College . . . . .	97
Reynolds College . . . . .	99
Texas Fairmont Seminary . . . . .	101
✓ Trinity University . . . . .	103
✓ Tusculum College . . . . .	105
+ Wabash College . . . . .	107
+ Washington and Jefferson College . . . . .	109
✓ Waynesburg College . . . . .	111
Western College . . . . .	113
Westminster College, Colorado . . . . .	115
✓ Westminster College, Missouri . . . . .	117
✓ Westminster College, Utah . . . . .	119
✓ Whitworth College . . . . .	121
✓ Wilson College . . . . .	123
✓ Wooster, University of . . . . .	125

56  
16













LC579 .P7C684 1913  
Presbyterian colleges : the colleges

Princeton Theological Seminary-Speer Library



1 1012 00066 4765

