

Digitized by the Internet Archive
in 2009 with funding from
Allen County Public Library Genealogy Center

<http://www.archive.org/details/programofprogres00fort>

Fort Wayne Christian East St. I-2

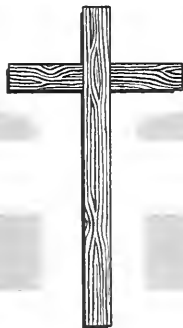


GENEALOGY
977.202
F771M6E

PUBLIC LIBRARY
FORT WAYNE & ALLEN CO., IND.

Program of Progress

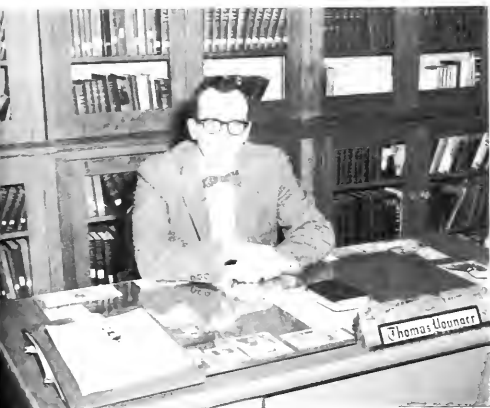
INDIANA COLLECTION



Immanuel Baptist Church

1201 McKee Street
Fort Wayne, Indiana





Dear Friend:

Through the years past many changes and advancements have been made in the ministry of our church. Though a small and very humble beginning, it has grown until today we feel the need of another step of advancement.

As your pastor, I am convinced that the time is at hand for our beloved church to boldly advance the cause of Christ through our PROGRAM OF PROGRESS. I am also mindful of the fact that, without God, we can do nothing that will be of abiding value.

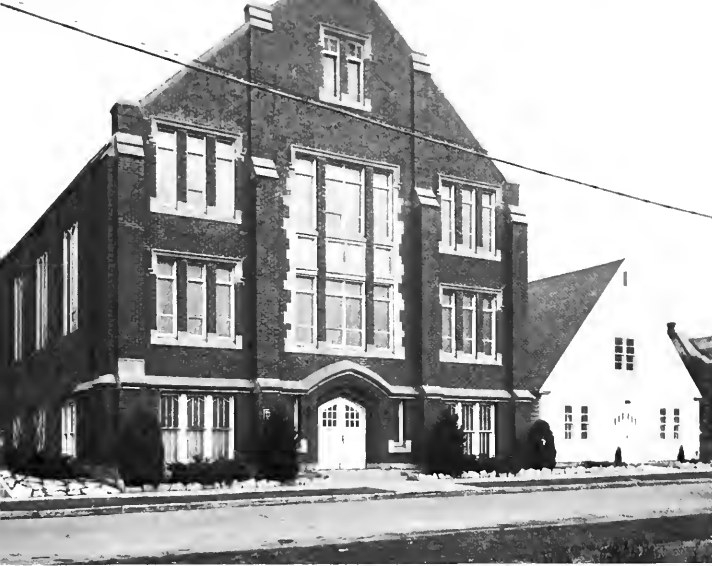
"EXCEPT THE LORD BUILD THE
HOUSE, THEY LABOR IN VAIN
THAT BUILD IT." Psalm 127:1

We are about to take our first step toward the ultimate goal of erecting a new church building. With your help this can be accomplished. All the members and friends of the church are asked to make a generous weekly investment in the PROGRAM OF PROGRESS for the next three years.

Every covenant to the PROGRAM OF PROGRESS is a vote of confidence in our church and in the cause of Christ to which it is dedicated.

Yours for Victory,

W. Thomas Younger
Pastor



Present Situation

Our facilities are very crowded and inadequate. Our present Sunday School attendance is up 135% from 1949. Projected 10 years, we will increase to an average of 700 plus. Average attendance over the last five years is 318. With these figures in mind, we must increase our facilities to meet present and future needs.



● Crowded Conditions

Beginner Department

Junior high boys in Annex kitchen for Sunday school





He who plans, and
works, and only works
his work, and

"The Exodus" after morning services



only plans, is a dreamer; he who
ks, is a drudge; but he who plans
orks his plan, is a conqueror.



Christian Education Director, Joyce McNamee



...y between Sunday school
and church service



Ushers greet folks at church entrance



Mrs. A. C. Peek, Primary superintendent, in her hall
"office"



● Inadequate Facilities

Parking problem

Church office



Purposes

To purchase land (3 acres - \$27,000)

To retire present debt of \$9,000

To engage architect

To erect new building

Present Objective

\$60,000

in 3 years

My Personal Participation

I will PRAY daily for this project.

I will PLAN to share the responsibility.

I will PLEDGE financial support.

My Pledge Should...

...be determined after prayer for God's guidance;

...bring inner conviction for His approval;

...be measured by my sense of stewardship;

...represent my devotion to Christ.

It's Easy To Give Weekly!!!

Weekly, regular contributions result in more active interest on the part of the contributor. This chart will help you to decide your contributions:

Weekly Pledge	Approximate Total in 156 Weeks
\$16.05	\$2,500.00
10.00	1,560.00
6.42	1,000.00
5.00	780.00
4.00	624.00
3.21	500.00
2.00	312.00

Tax Exemptions

The government now allows exemptions up to 30% for contributions under certain circumstances to churches and charitable organizations.

For every dollar one gives to the Church, a part of the burden is borne by the government, and if one's income is in the higher brackets, then a very large percentage of the gift would go to the government, if not given to the Church. The government needs help, but so does the Church.

Suggested Methods of Investment

Two Seas

Standing on the shore of the Dead Sea our Arab guide said, “Dip your finger in the water and touch it to your tongue, but do not swallow even a drop.” We followed his instructions and promptly spit the water on the ground, yet the bitter taste lingered in our mouths for a long time.

The sea is rightly called “Dead” for no life can survive in it, no animals slake their thirst with it and no human beings select its shores for their dwelling place.

To the north of its poisoned waters lies another sea, famed the world over. Its sweet waters teem with fish, the beasts of the field and the birds of the air refresh themselves with cooling draughts. The laughter of children is heard upon its shores. The Man of Galilee dwelt on the banks of this little sea. He preached from a fishing boat in its blue waters; He taught the multitudes, healed the sick and fed the hungry on its inviting shores.

Why are the two seas so different? They have a common source, the River Jordan. The difference lies in the fact that the Sea of Galilee receives the water from the flowing Jordan and gives it forth again, but the Dead Sea has no overflow. It receives and holds. The only water taken from its dead body is snatched through the process of evaporation. Because Galilee receives and gives, it lives. The sea called Dead receives and holds.

There are Galilee Christians in the world whose lives overflow with generosity and kindness. Never too busy to think of the needs of others, never too occupied with their own importance that they forget the dignity of their fellow men. Never greedily clutching earth's tarnished coin in their hands. They are stewards of all they possess. Their time, their talents and their earthly possessions they gladly give for the glory of God and the good of their fellow man.

