



3 1761 02463680 5



**LIBRARY**  
**FACULTY OF FORESTRY**  
**UNIVERSITY OF TORONTO**

Digitized by the Internet Archive  
in 2007 with funding from  
Microsoft Corporation





*The Trees*  
*of*  
*Great Britain*  
*& Ireland*

BY  
Henry John Elwes, F.R.S.

AND  
Augustine Henry, M.A.

Edinburgh: Privately Printed

MCMVI







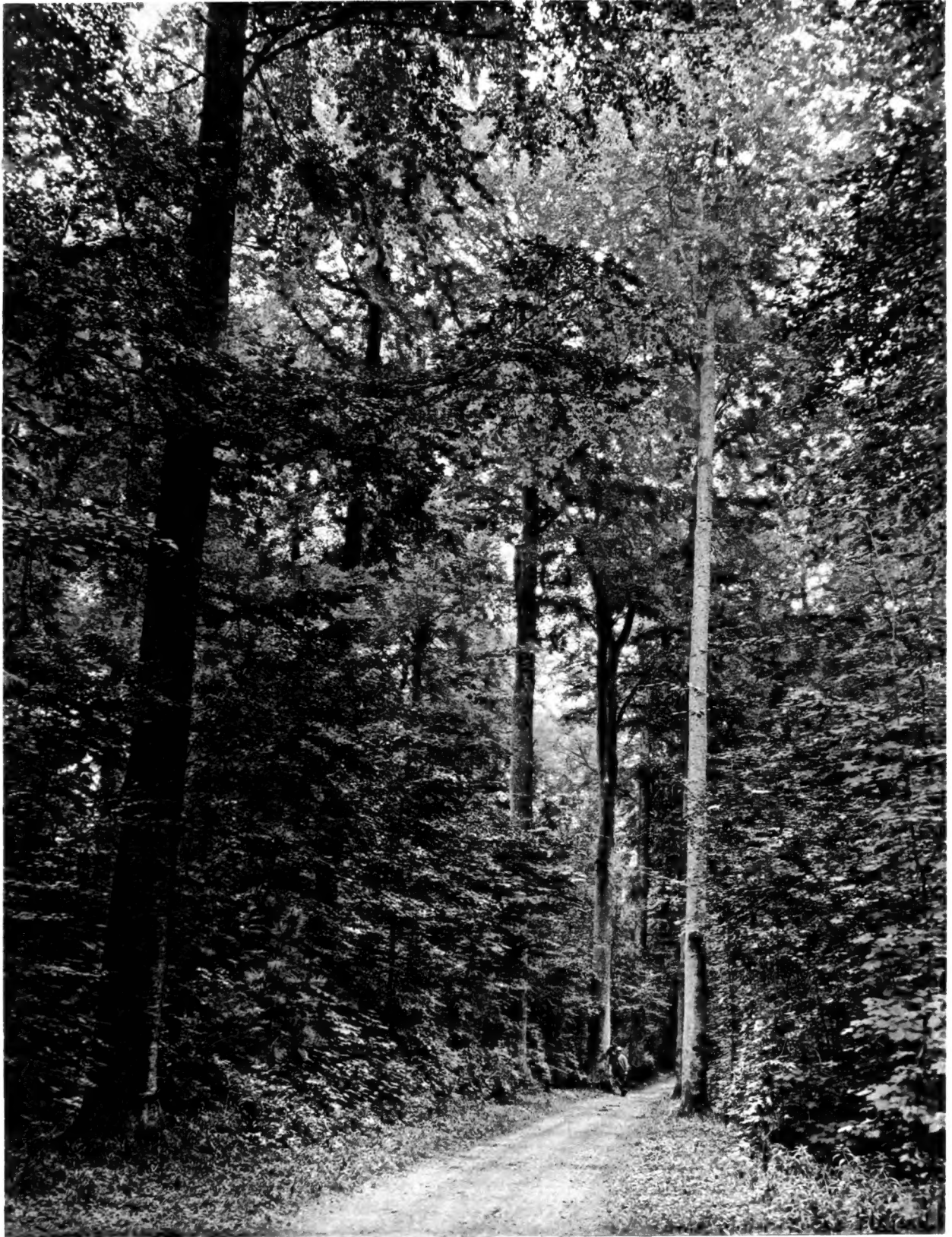


PLATE I.

BEECH DRIVE AT CIRENCESTER

123446  
w | 7 / 12





BEECH AVENUE AT WATFORD

PLATE 2.





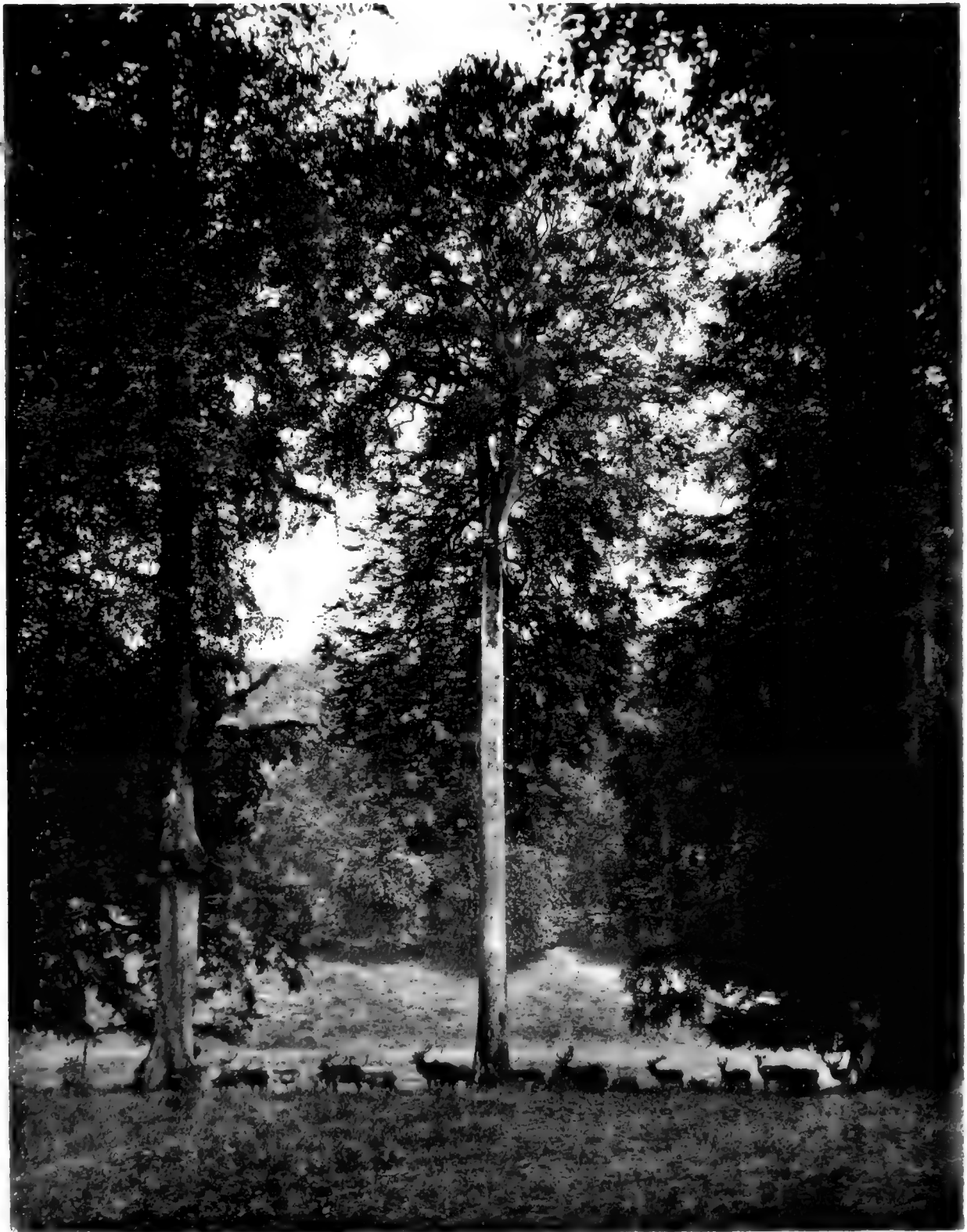


PLATE 3.

QUEEN BEECH AT ASHRIDGE





INARCHED BEECH AT ASHRIDGE

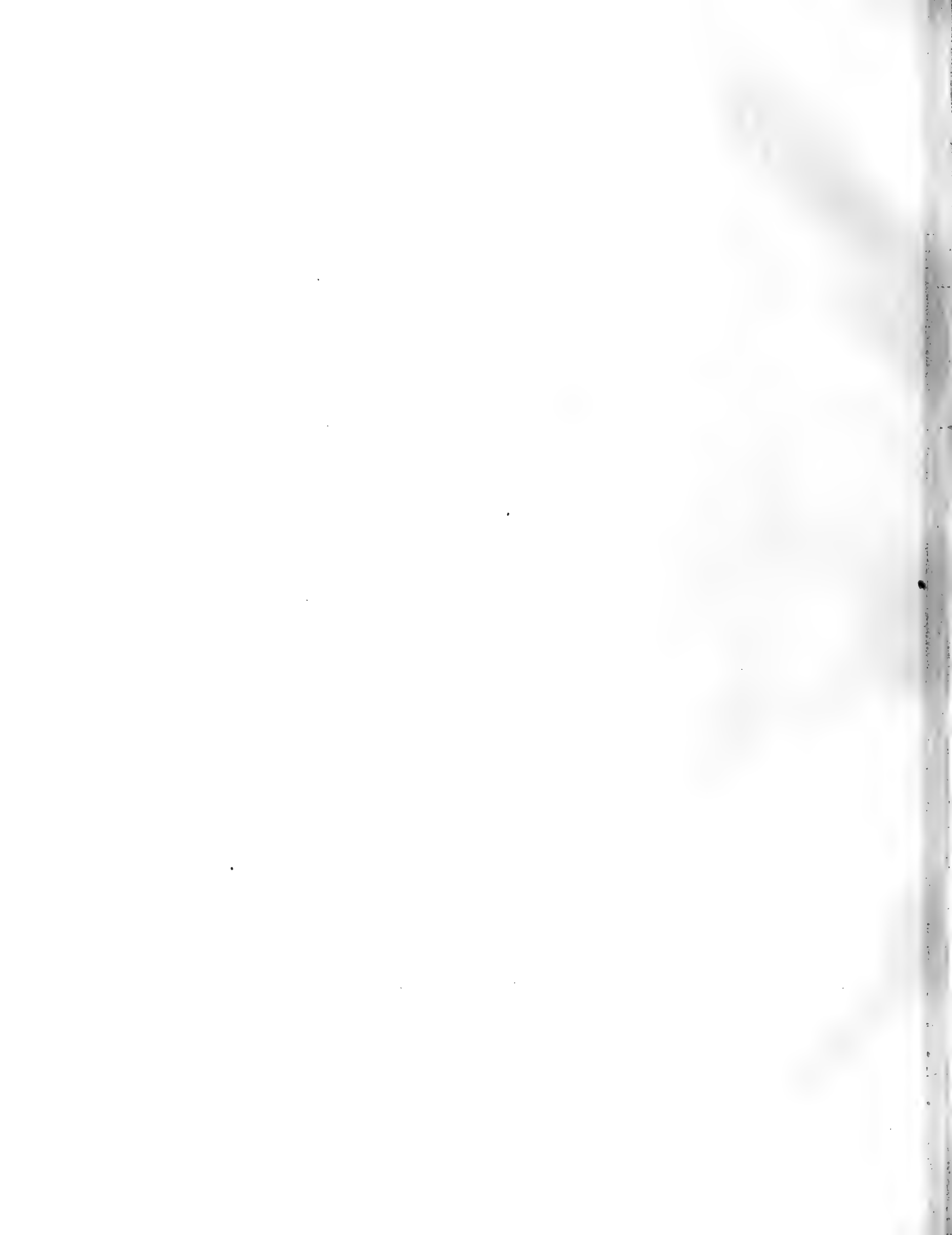






PLATE 5.

BEECH, WITH BURR, AT ASHRIDGE





BEECH WOOD AT SLINDON





PLATE 7.

GIANT BEECH AT CORNBURY







PLATE 8.

BEECH AT NEWBATTLE





PLATE 9.

TRUNK OF NEWBATTLE BEECH







PLATE 10.

BEECH AT GORDON CASTLE





PLATE II.

BEECH HEDGE AT MEIKLEOUR





PLATE 12.

KING BEECH AT KNOLE







PLATE 13.

AILANTHUS AT BROOM HOUSE





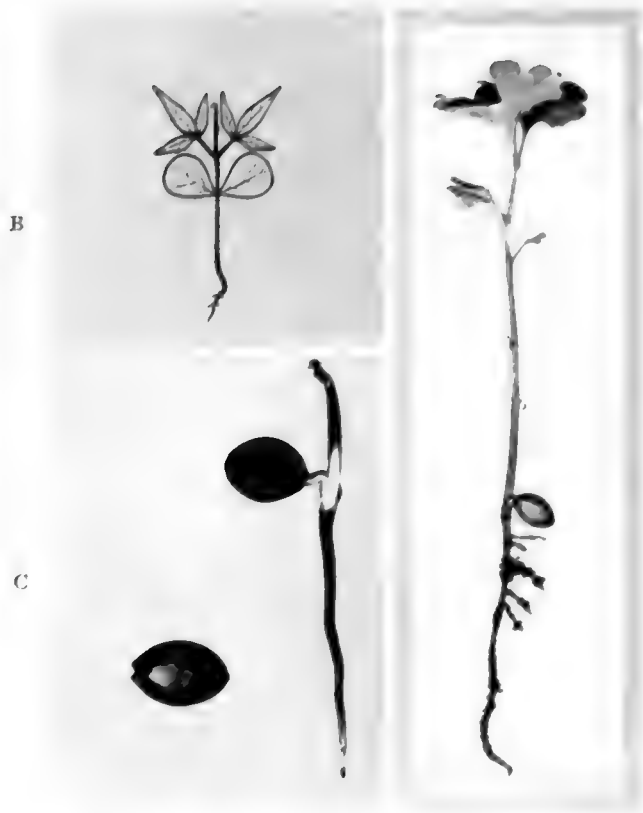
AILANTHUS AT BELTON

PLATE 14.





A



B

C

D



E



F

SEEDLINGS

A B, AILANTHUS.

C D, GINKGO.

E F, ARAUCARIA.







PLATE 16.

SOPHORA AT CAMBRIDGE





PLATE 17.

ARAUCARIAS IN CHILE





PLATE 18.

ARAUCARIA FOREST IN CHILE





PLATE 19.

ARAUCARIA AT DROPMORE







ARAUCARIAS AT BEAUFORT





PLATE 21.

MAIDENHAIR TREE AT KEW





PLATE 22.

MAIDENHAIR TREE AT FROGMORE







PLATE 23.

MAIDENHAIR TREE IN CHINA





PLATE 24.

TULIP TREE IN NORTH CAROLINA





TULIP TREE AT WOOLBEDING







TULIP TREE AT KILLERTON





PLATE 27.

TULIP TREE AT HORSHAM PARK



TULIP TREE AT LEONARDSLEE



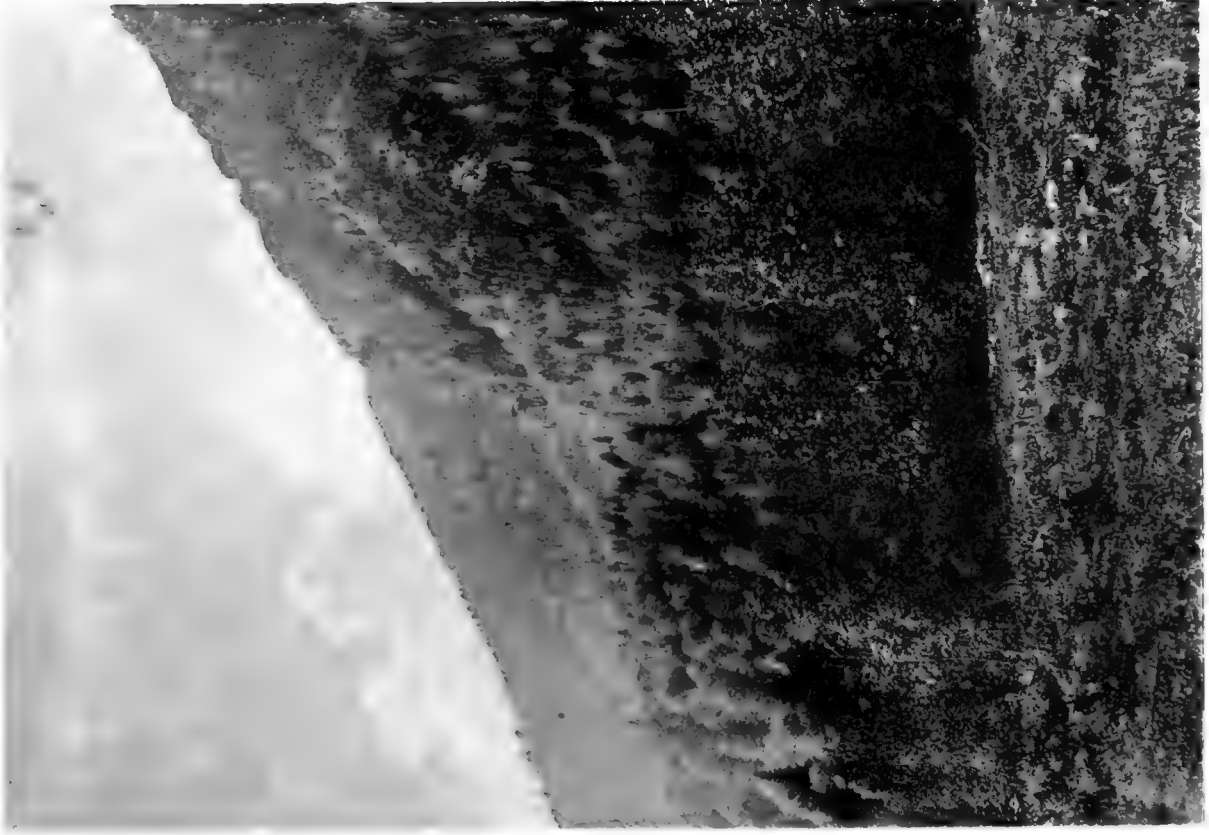
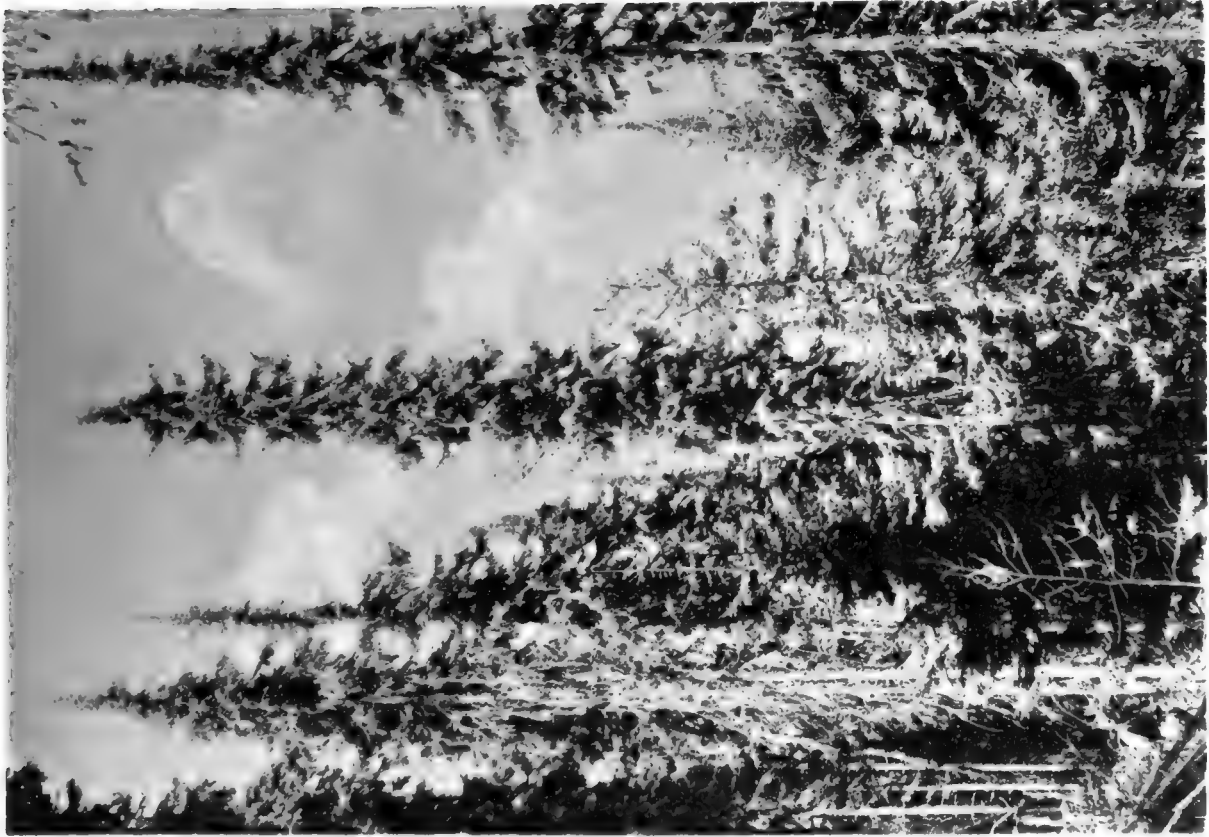
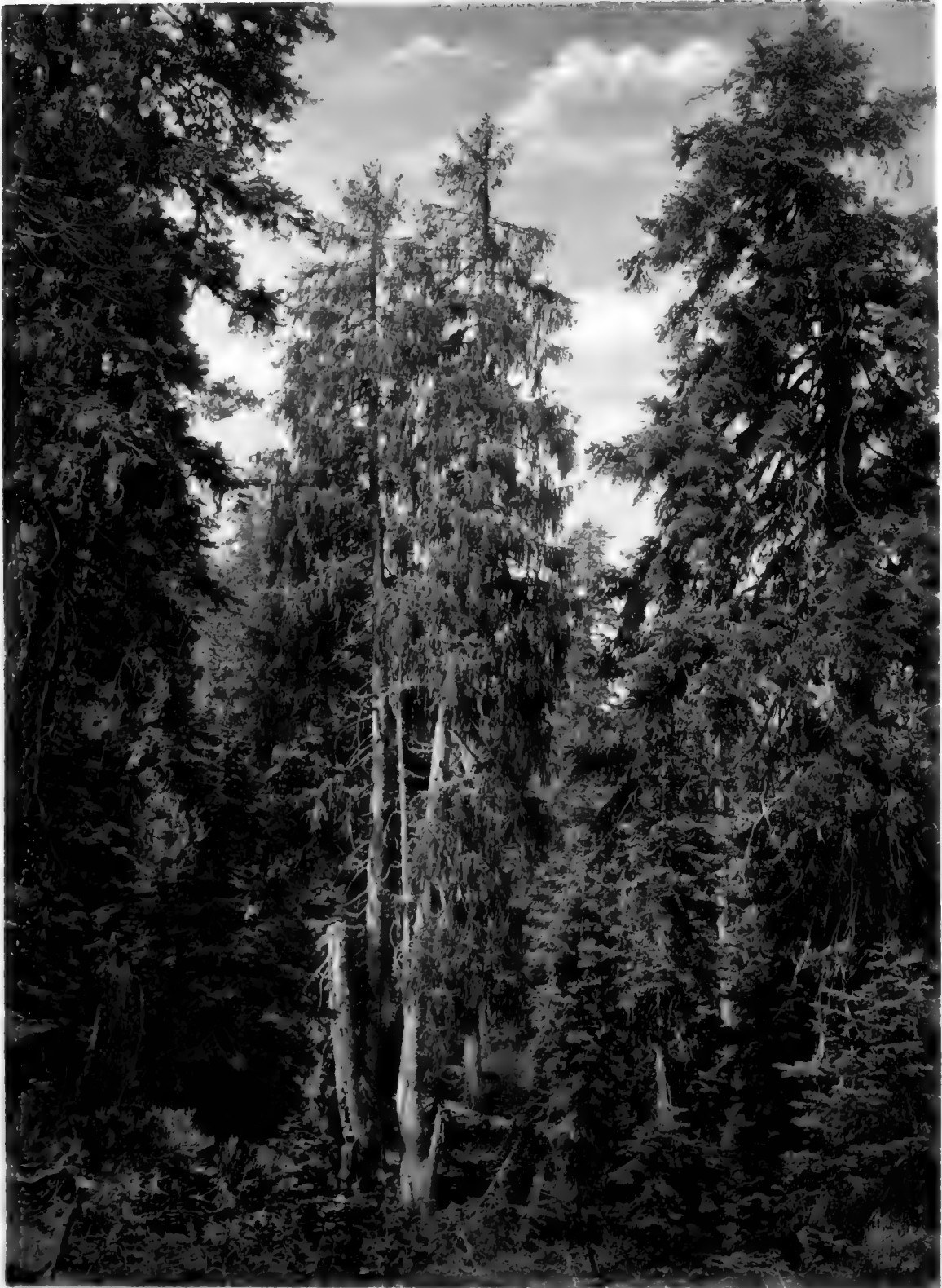


PLATE 28.

SERVIAN SPRUCE IN BOSNIA







BREWER'S SPRUCE IN AMERICA





PLATE 30.

MENZIES' SPRUCE AT BEAUPORT





PLATE 31.

JAPANESE YEW AT NIKKO







PLATE 32.

YEW AVENUE AT MIDHURST





PLATE 33.

YEW GROVE AT MIDDWINTER





PLATE 34.

IRISH YEW AT SEAFORDE





VIEW AT TISBURY







PLATE 36.

VIEW AT WHITTINGHAME





PLATE 37.

CRYPTOMERIA ELEGANS AT TREGOTHNAN





CRYPTOMERIA FOREST IN NORTH JAPAN







A



B

PLATE 39.

CRYPTOMERIAS IN JAPAN



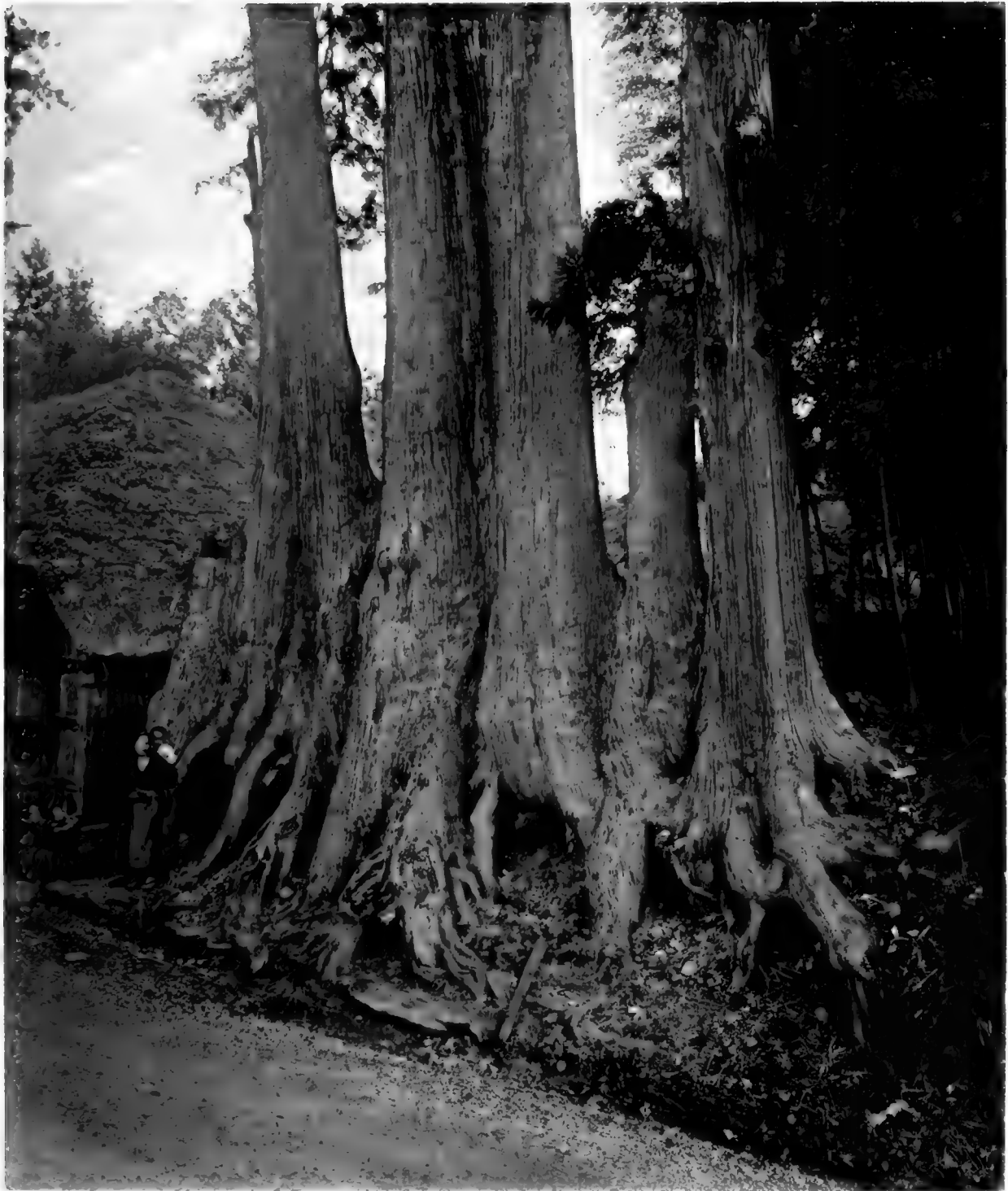


PLATE 40.

CRYPTOMERIAS AT IMAICHI



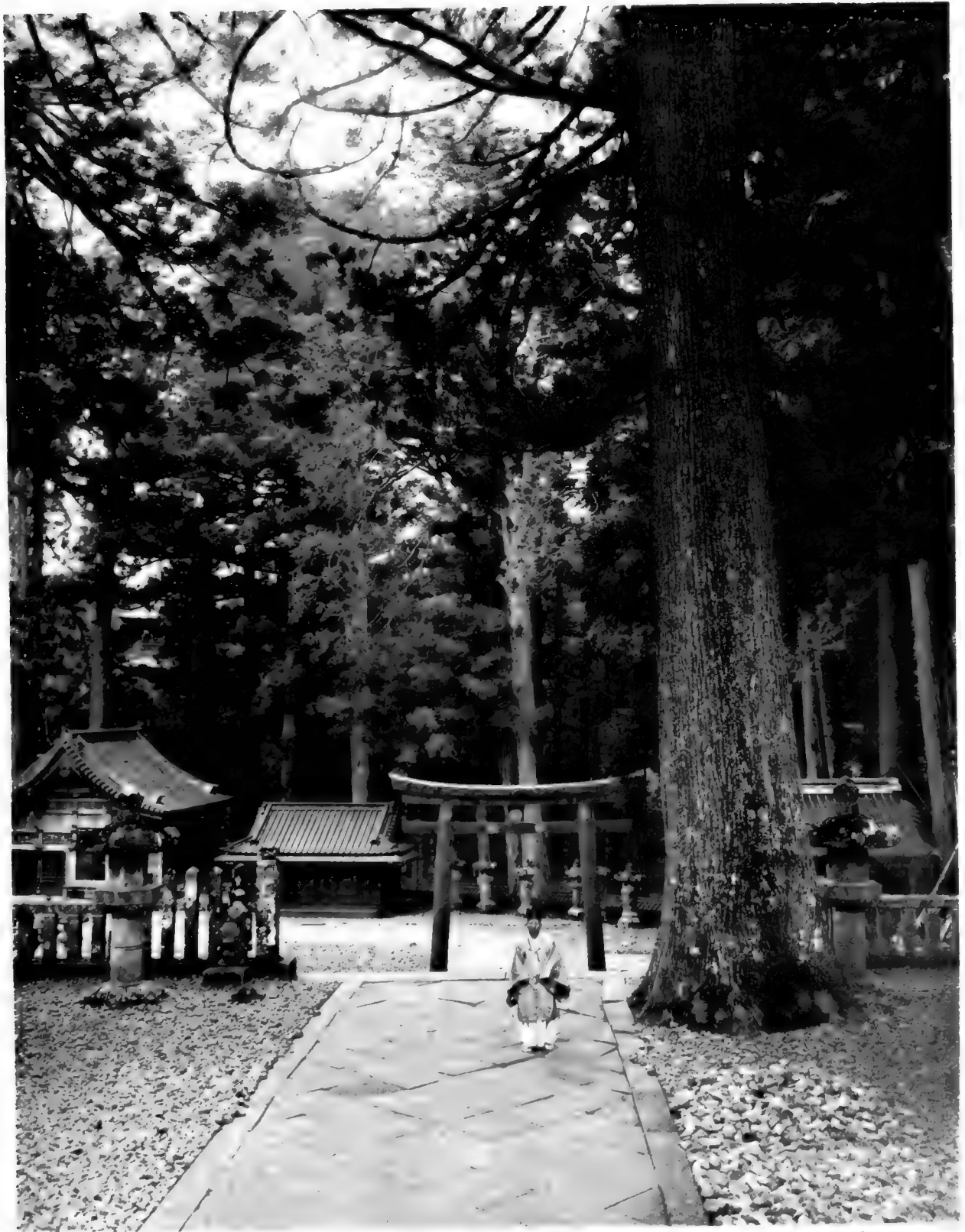


PLATE 41.

CRYPTOMERIAS AT NIKKO



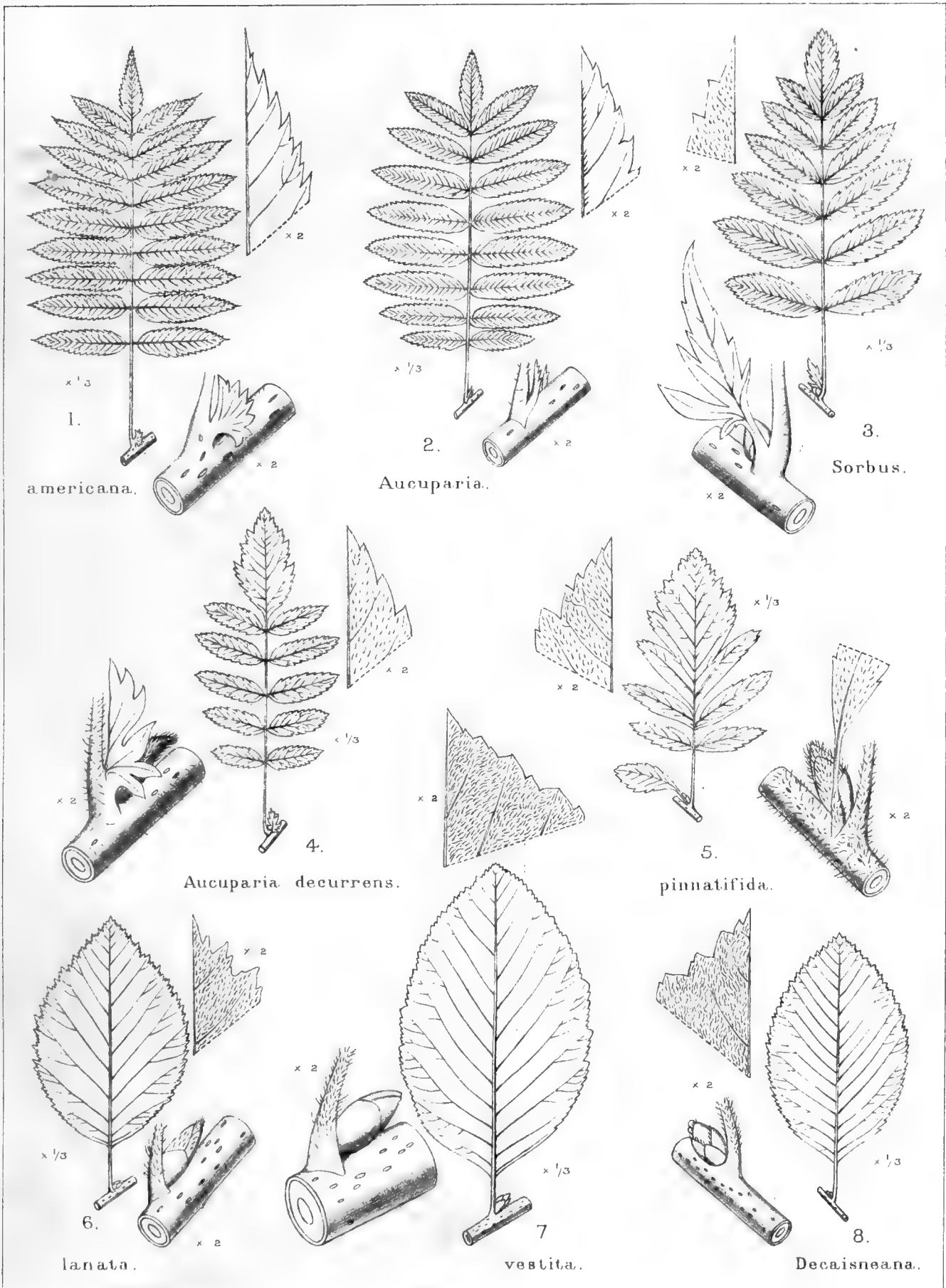


PLATE 42.

CRYPTOMERIA AT HEMSTED

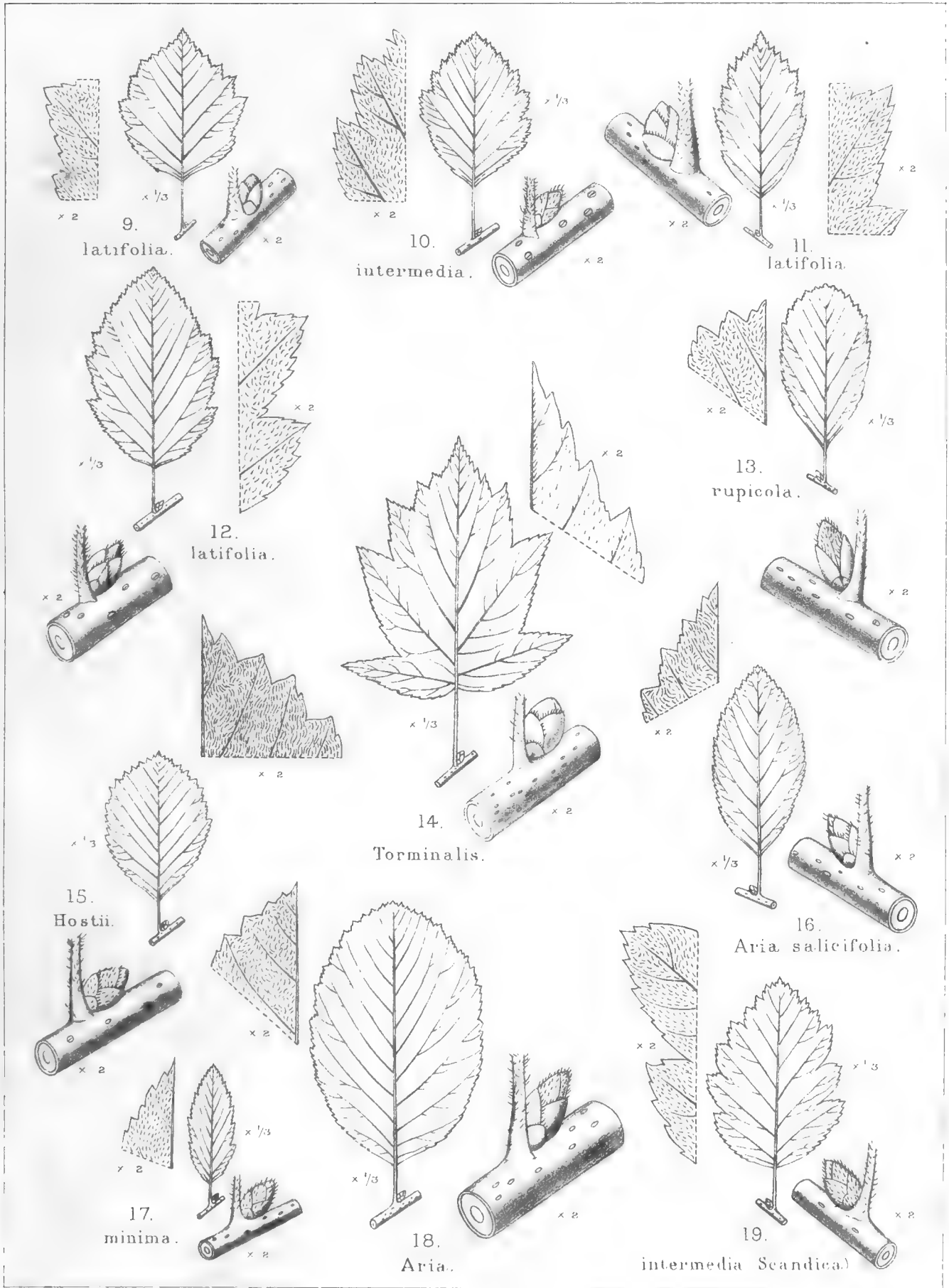






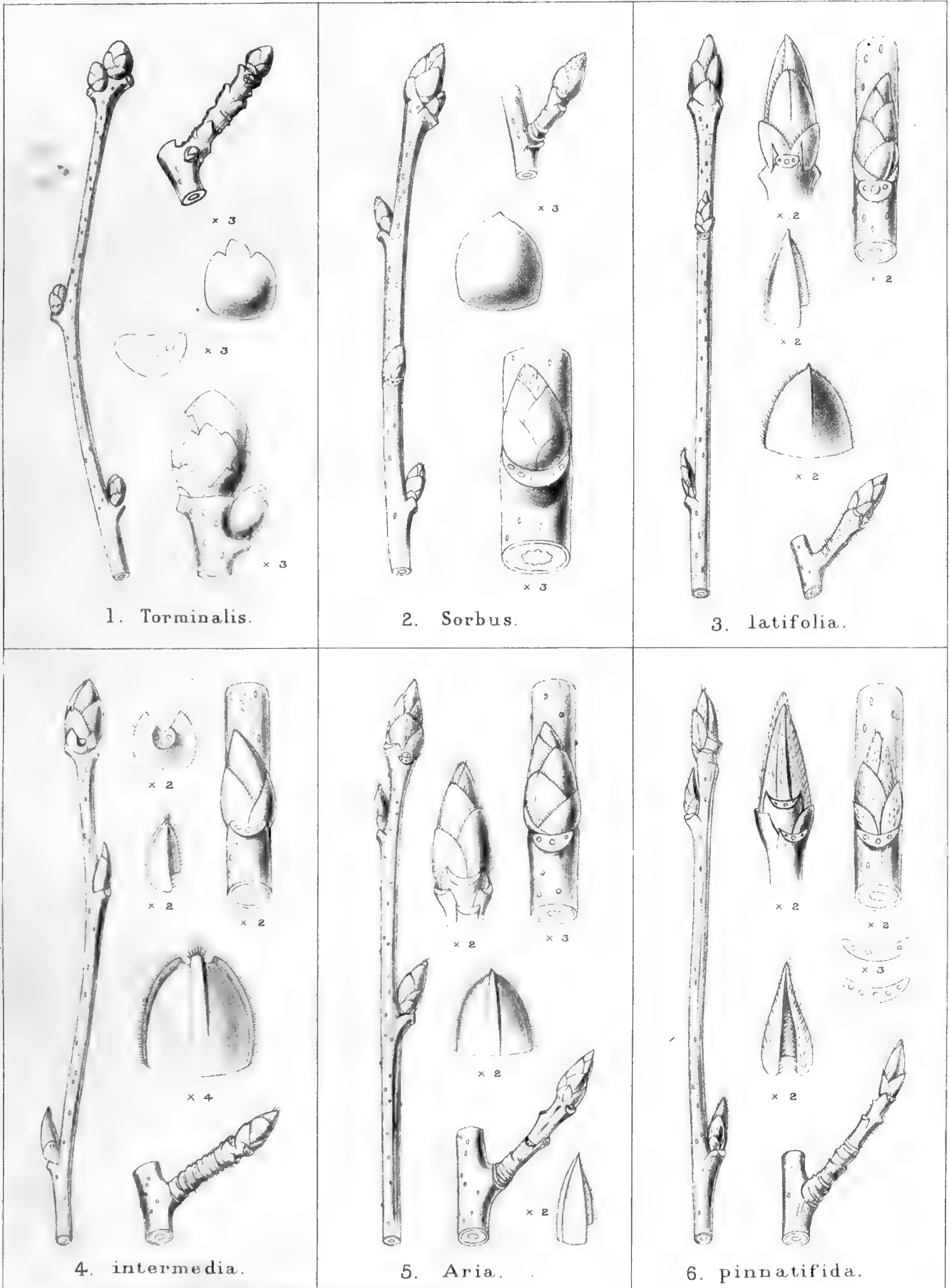
PYRUS.





PYRUS.





Hurt. del. Huth. lith.

PLATE 46.

PYRUS







PLATE 46.

SORB TREE AT ARLEY





PLATE 47.

SERVICE TREE AT TORTWORTH





PLATE 48.



SERVICE TREE AT RICKMANSWORTH



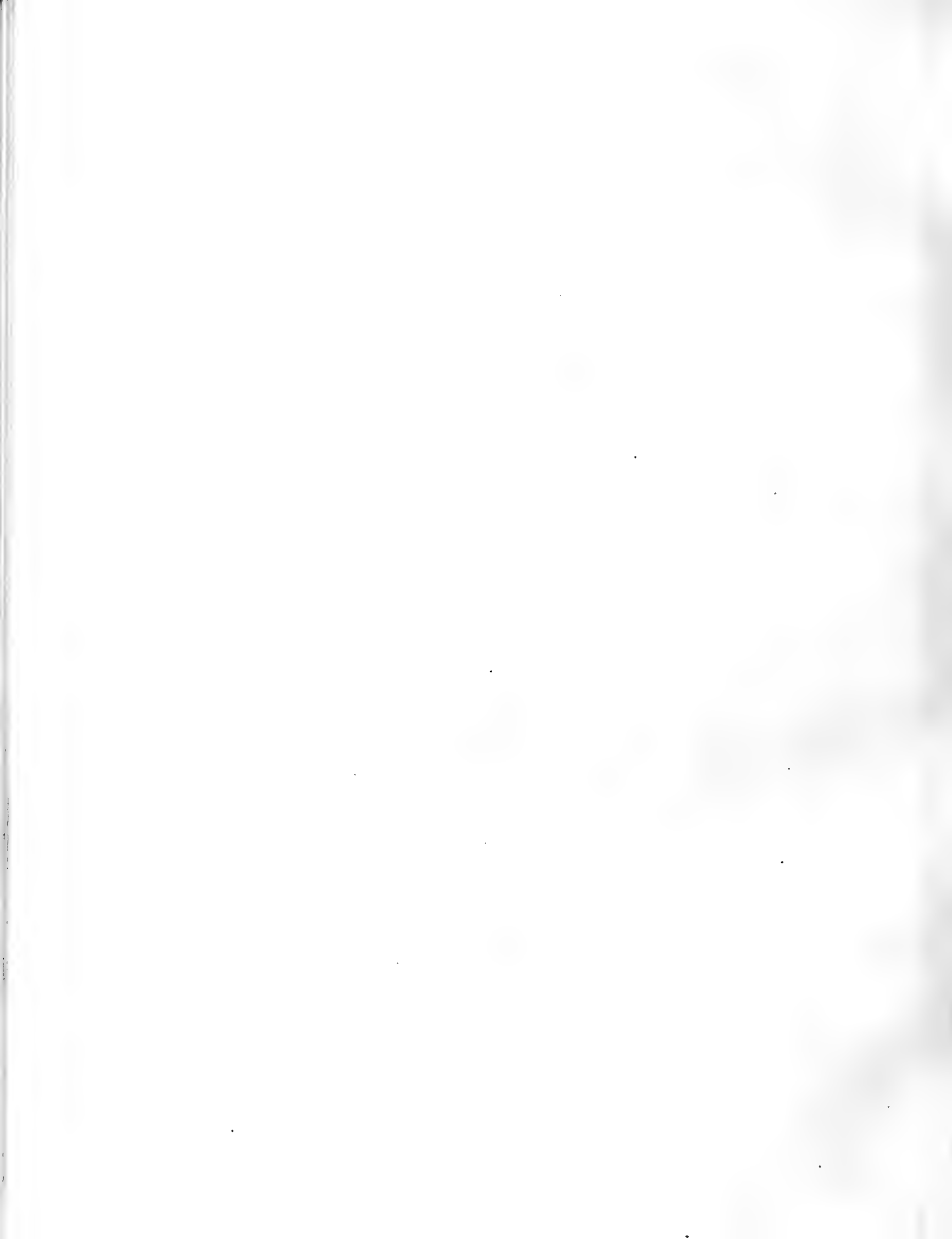




PLATE 49.

SERVICE TREE AT OAKLEY PARK



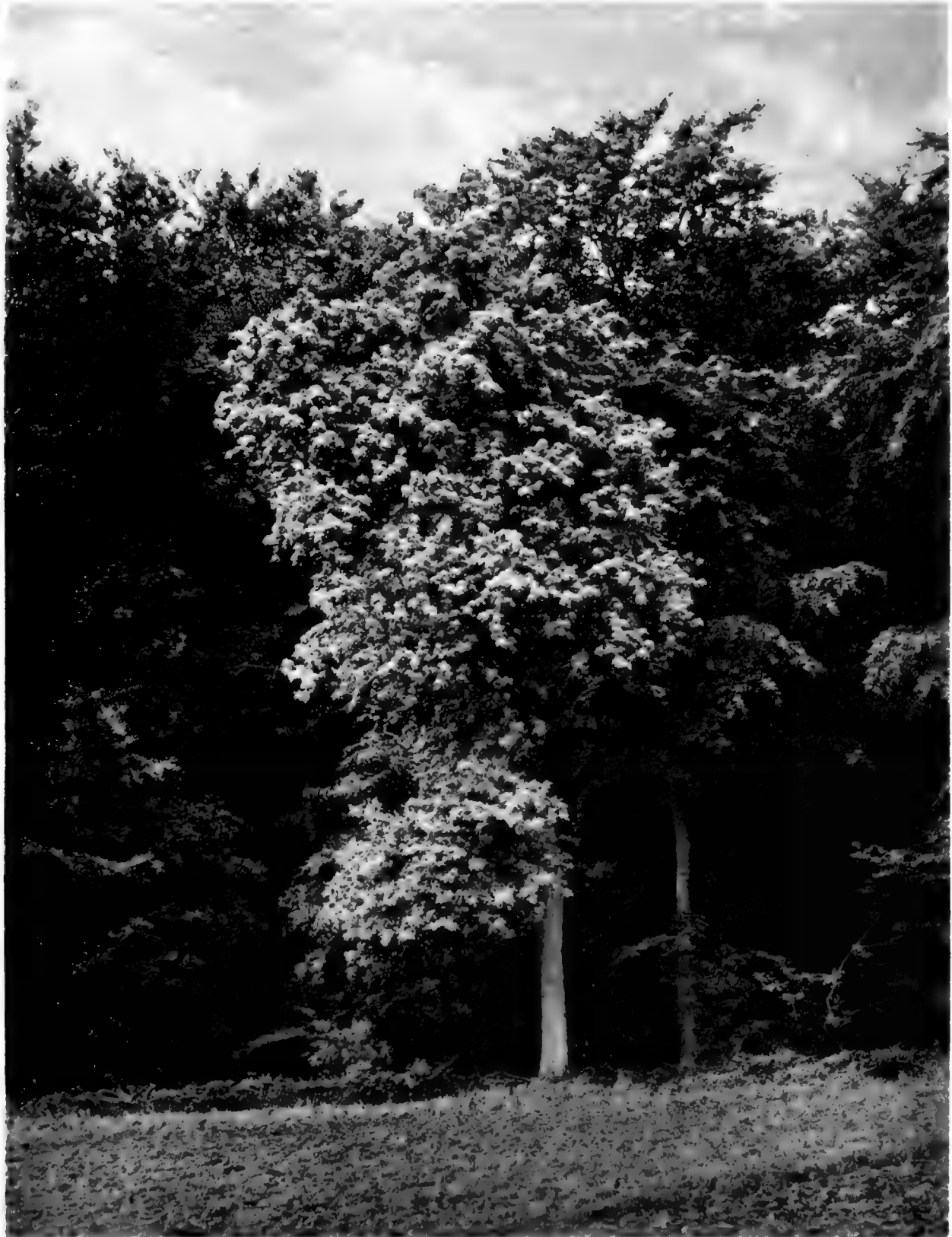




SERVICE TREE AT SYON

PLATE 50.





WHITEBEAM AT CAMP WOOD

PLATE 51.

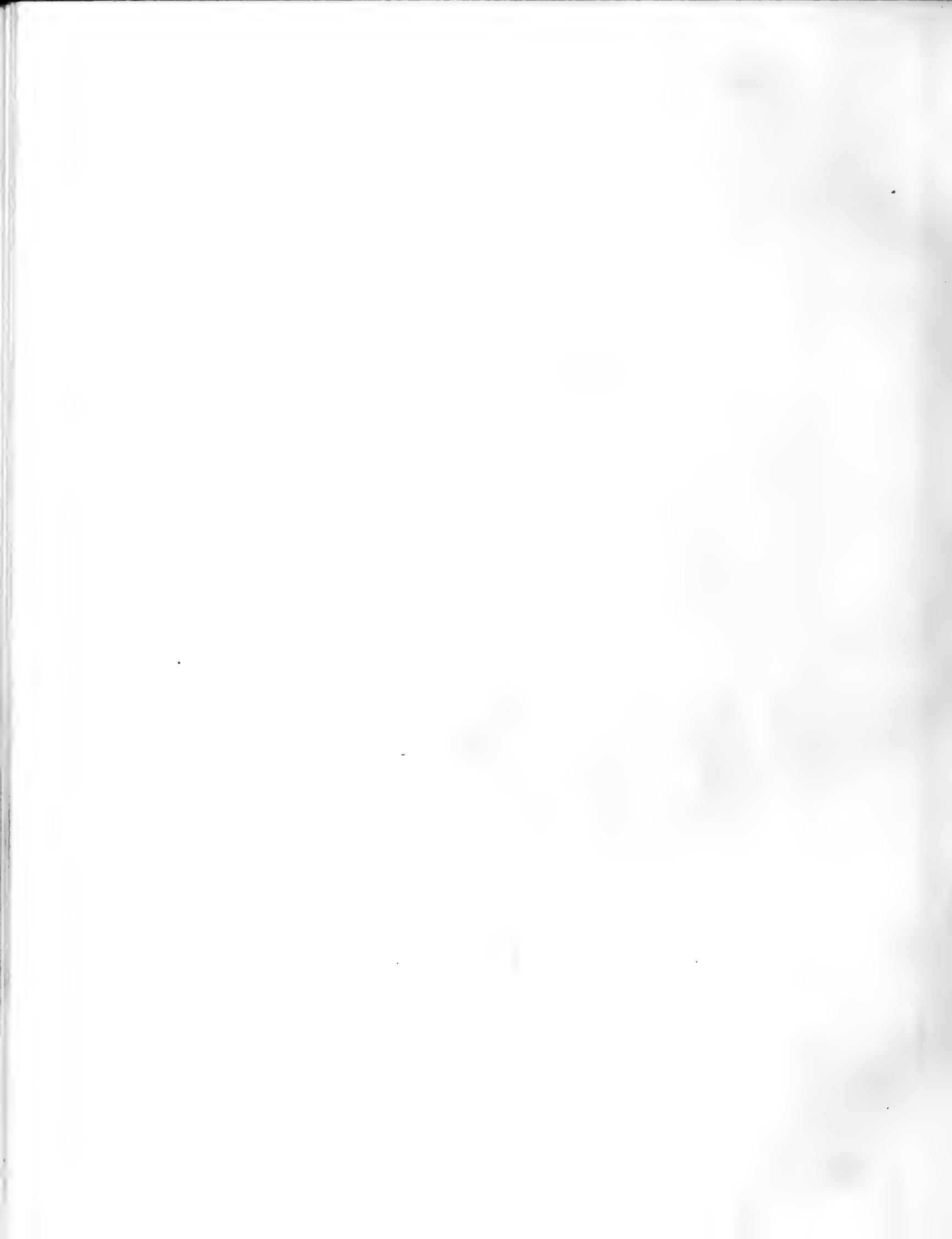




PLATE 52.



DECIDUOUS CYPRESS IN VIRGINIA







CYPRESS SWAMP IN NORTH CAROLINA





PLATE 54.

DECIDUOUS CYPRESS AT SYON

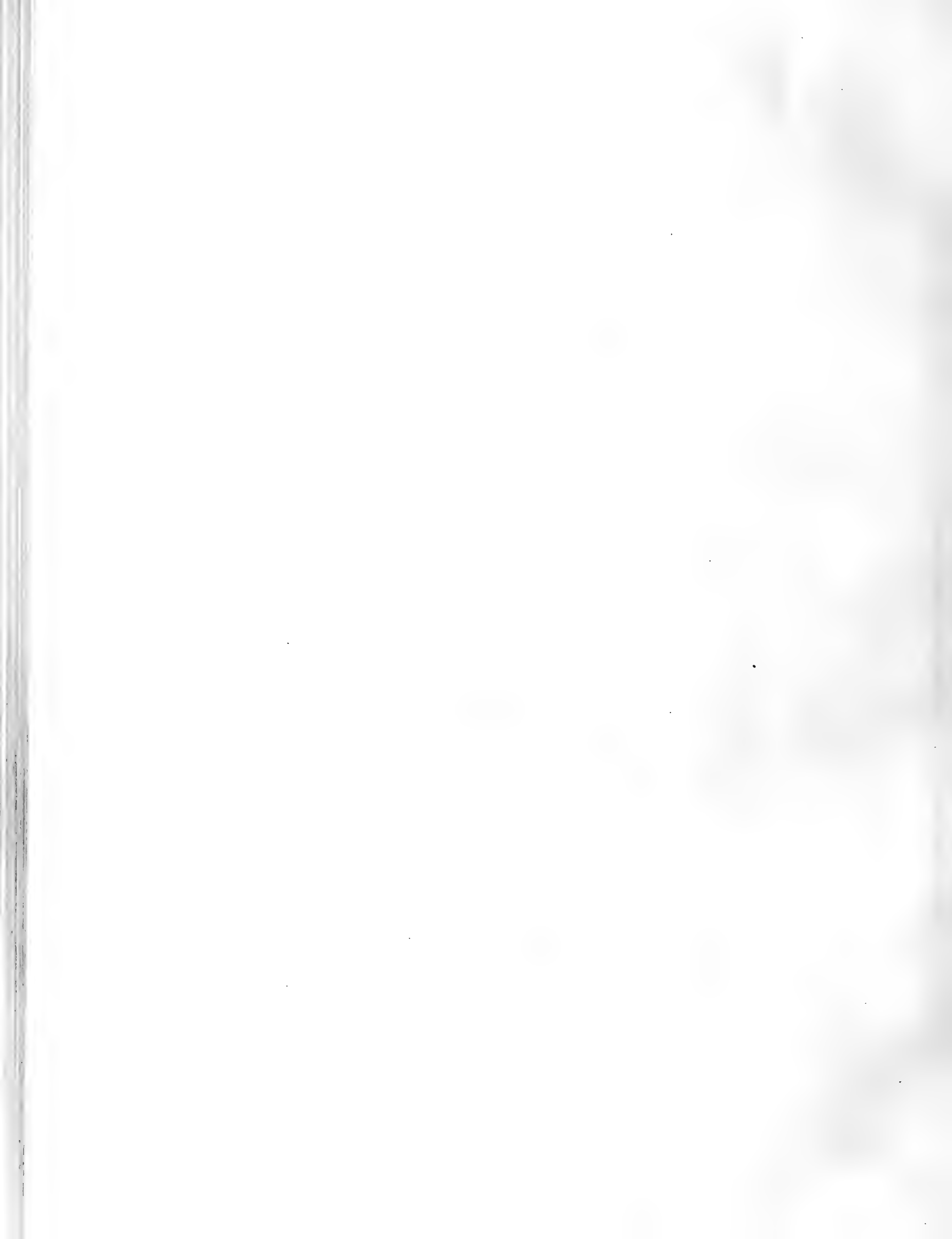




PLATE 55.

DECIDUOUS CYPRESS AT WHITTON





PLATE 56.

GIANT THUYA IN VANCOUVER'S ISLAND







PLATE 57.

GIANT THUYA AT FONTHILL



67<sup>6</sup>

Plate 58 represents the trunk of what I believe to be the finest beech in Gloucestershire, which is known as "The Gladstone Beech," having been specially admired by the late Mr. Gladstone when staying at Cirencester House. It grows near Pinbury Park, formerly the seat of Sir Robert Atkyns, author of *The History of Gloucestershire*, and now the summer residence of Earl Bathurst. It measures about 110 feet high by 19 feet 9 inches in girth at the smallest part of the trunk, and though a very old tree, past its prime, is still a magnificent object. I am indebted for the negative to Mr. T. A. Gerald Strickland.

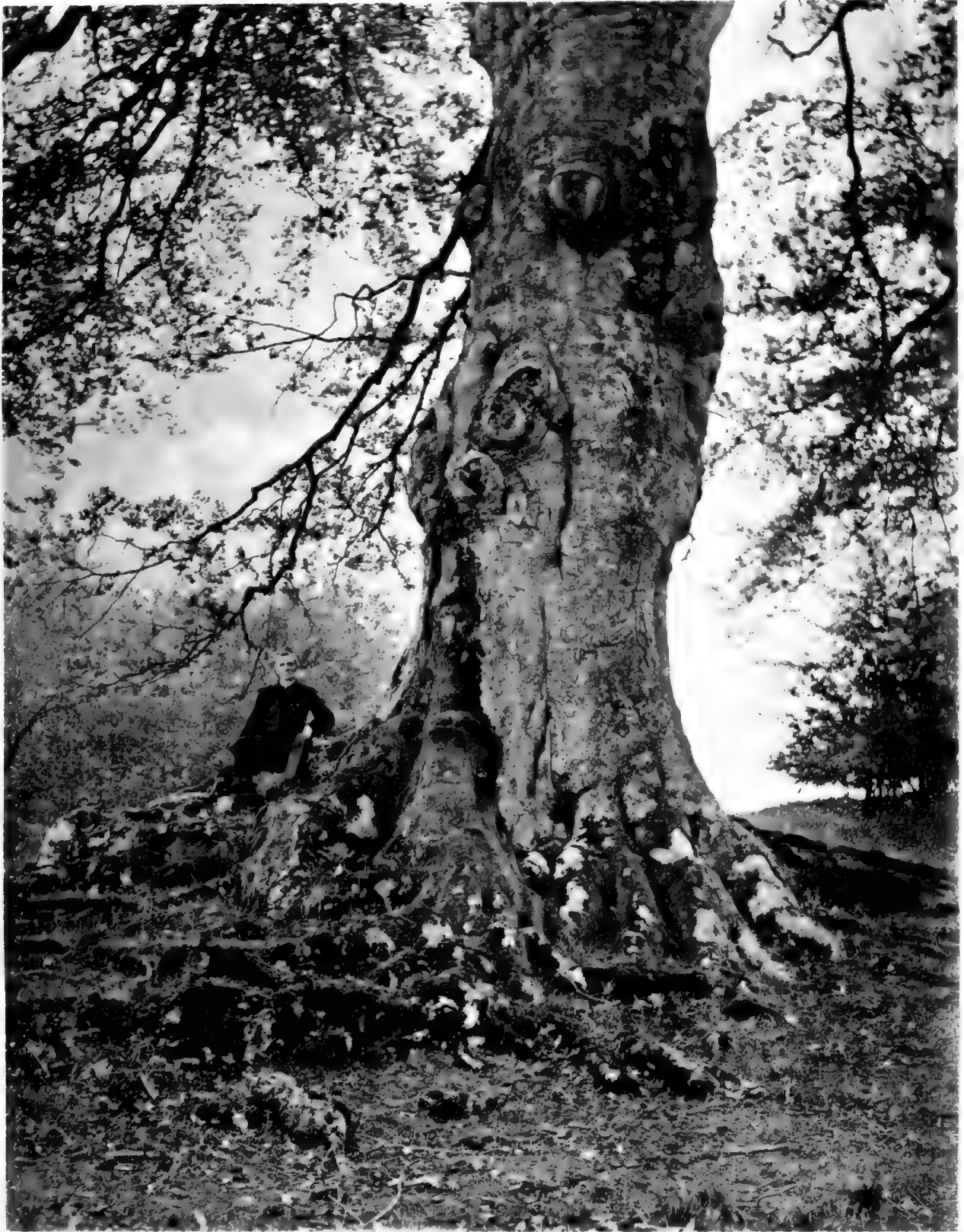


PLATE 58.

THE GLADSTONE BEECH AT PINBURY PARK







PLATE 59.

WESTERN HEMLOCK GROWING ON FALLEN LOG OF GIANT THUYA IN AMERICA



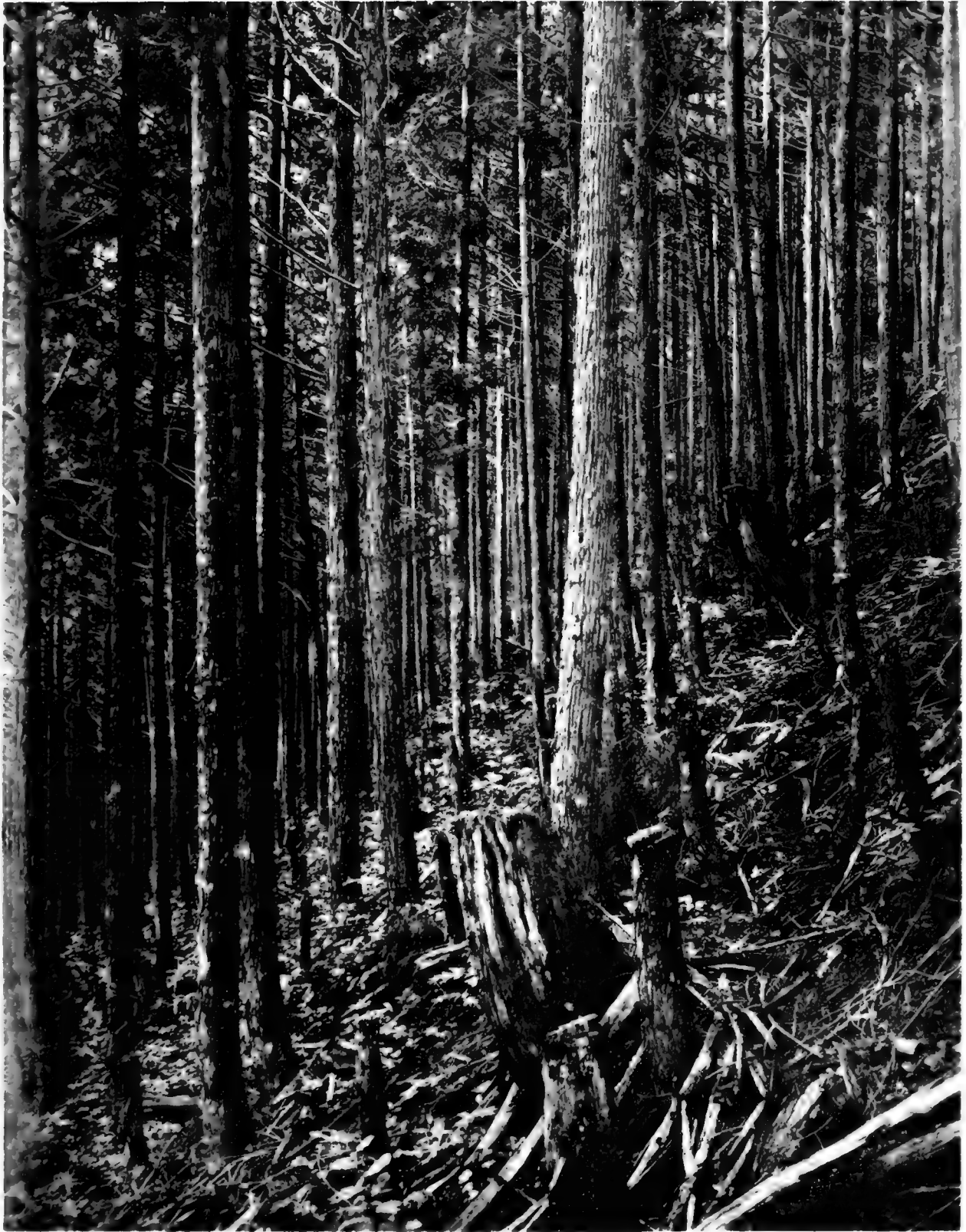


PLATE 60.

THUJOPSIS DOLOBRATA IN JAPAN







LIBRARY  
 FACULTY OF FORESTRY  
 UNIVERSITY OF TORONTO

*OVERSIZE: Rare Bk. Cabinet*

QK Elwes, Henry John  
 488 The trees of Great  
 E5 Britain & Ireland  
 1906  
 Plates  
 v.1

<i>OVERSIZE:</i>	
{123446}QK	
Forestry	ELWES, H.J. <i>Rare Bk. Cabinet</i> 488
	AUTHOR E5
	Trees of Great Britain 1906
	TITLE
	and Ireland. Vol.1(plates) v.1
DATE	ISSUED TO

[123446]



