

G.C.
The Quaker



1927

Quaker
LH
2091
G4.5
Q8

1927



GUILFORD COLLEGE
LIBRARY



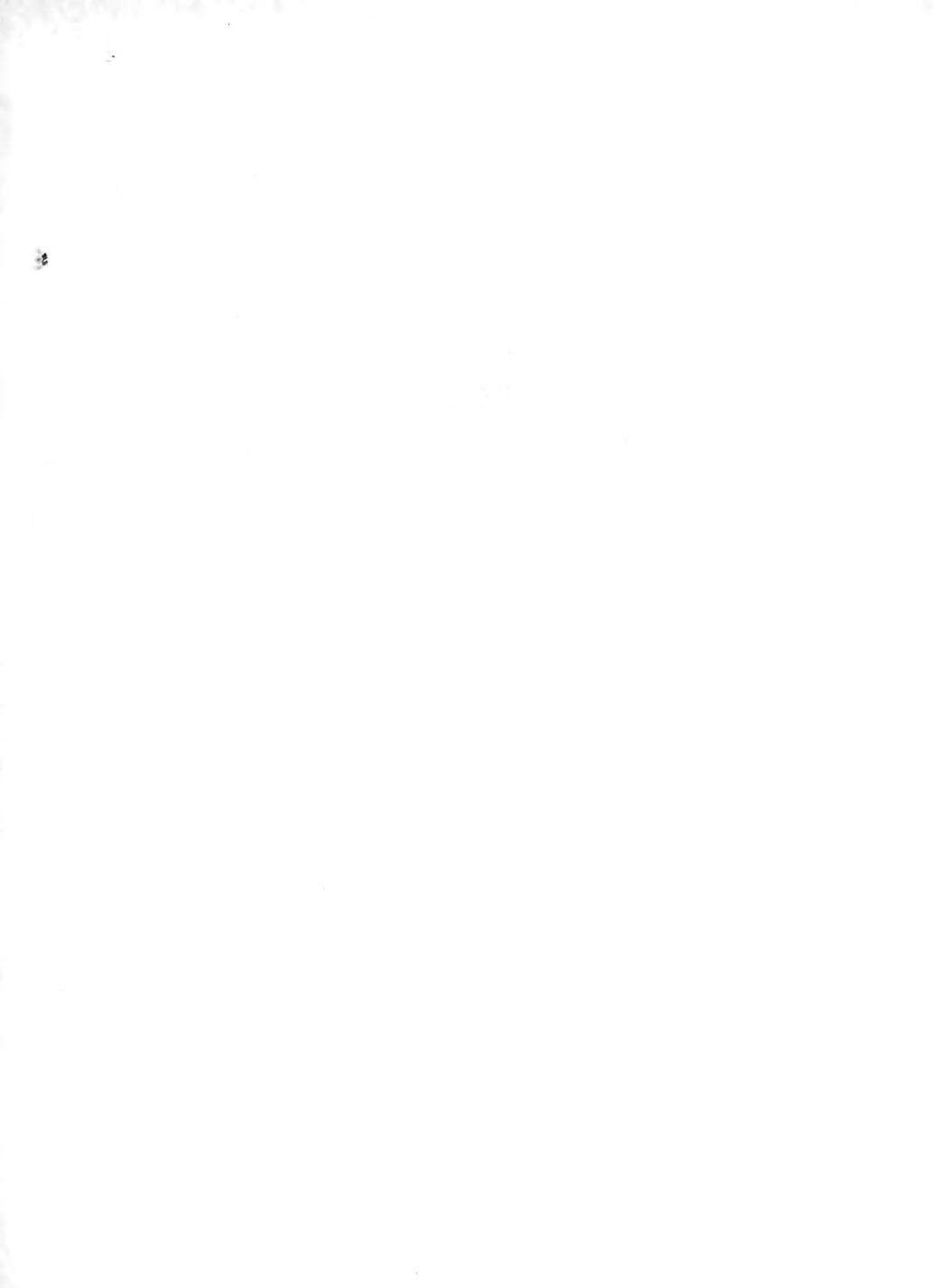
CLASS  BOOK 

ACCESSION 10386

GIFT



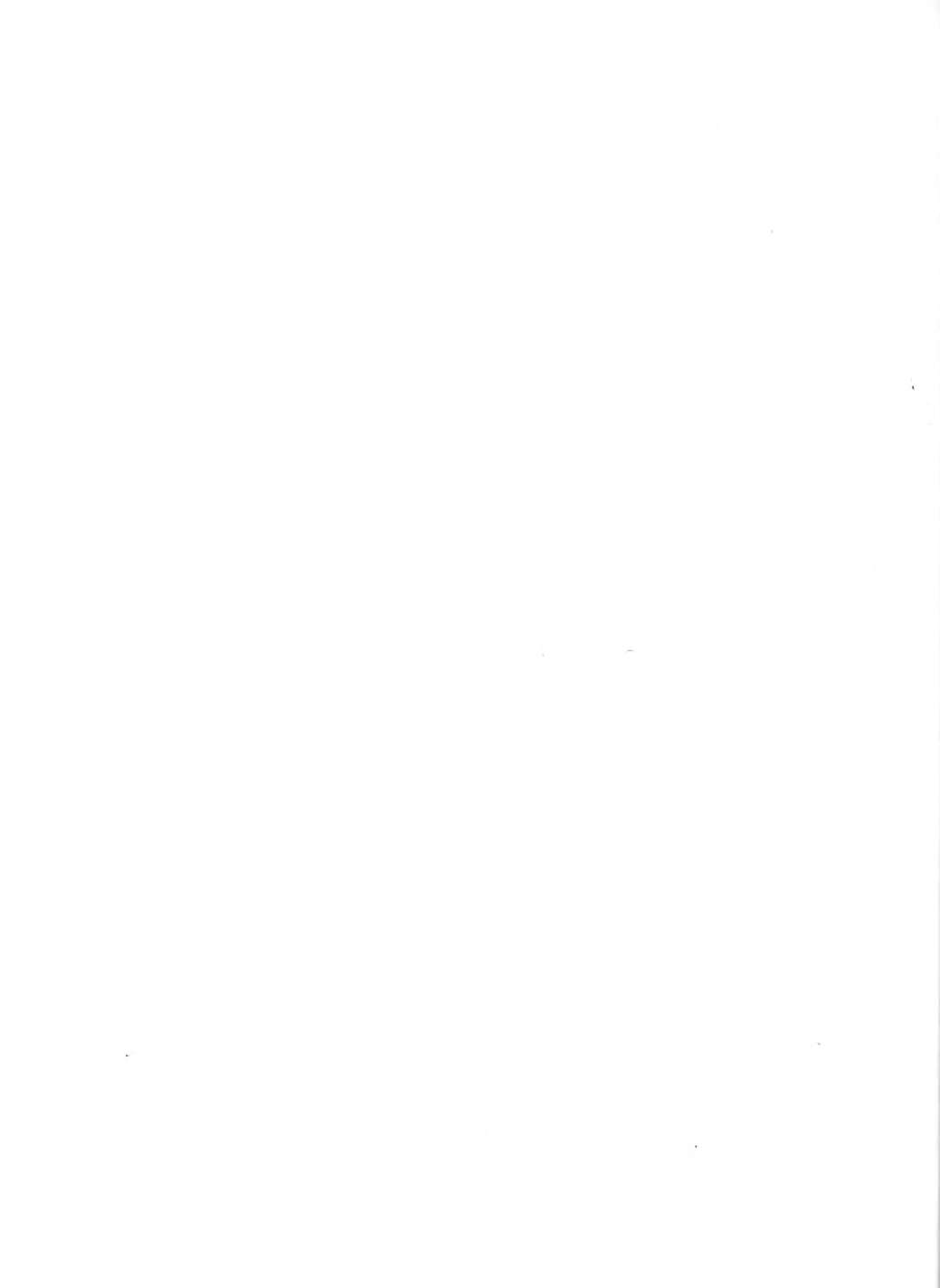




Digitized by the Internet Archive
in 2010 with funding from
University of North Carolina at Chapel Hill

<http://www.archive.org/details/quaker1927guil>





G.C.

The Quaker

1927

THE QUAKER

VOLUME SEVEN

1927



PUBLISHED BY

THE STUDENT BODY

OF

GUILFORD COLLEGE

GUILFORD COLLEGE, N. C.

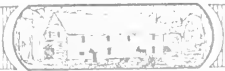




G.C.
The Quaker
1927

DEDICATION

BECAUSE OF
HER THIRTY-FOUR YEARS OF FAITHFUL
SERVICE TO GULFORD COLLEGE AS DEAN
OF WOMEN AND LATIN INSTRUCTOR
HER INTEREST IN THE WELFARE OF EACH
INDIVIDUAL
HER THOROUGHNESS IN HER CHOSEN
PROFESSION
HER LOVE FOR ALL HER GIRLS
HER UNDYING WIT
WE HEREBY DEDICATE THIS SEVENTH
VOLUME OF *THE QUIKER*
TO
H. LOUISA OSBORNE



IN MEMORIAM

THE death of Lyndon Lea White, which occurred on February 16, 1925, was mourned by the entire student body and faculty. By his diligence and fitness of mind he had become a great teacher; by his faithful services, upright life, and love for his neighbor he became a beloved leader.

IN MEMORIAM

MISS Sarah E. Benbow, who died April 6, 1926, had for twenty years been closely identified with Guilford College. To the students who came under her tender care while Matron of Guilford College she was lovingly known as "Miss Sallie"; and her life and work among the students in every-day life, in sickness and in health, made her seem like a good mother.



IN MEMORIAM

THE unfailing and generous support of the College by Gertrude Whittier Mendenhall, who died April 15, 1926, has been a great source of strength to all. In addition to her service to the College she established a valuable scholarship, preferably for students who major in mathematics.

IN MEMORIAM

JEREMIAH S. COX, for nearly fifty years a trustee of Guilford College, and always a devoted friend and faithful supporter, occupied a place of high esteem in the hearts of those who knew him.

The Quaker has reserved this space in memory of one who contributed freely to the cause of Guilford College; who gave and endowed Cox Hall dormitory and ably helped to accomplish his hopes and his prayers.



G.C.
The Quaker
1927

CONTENTS



I. FAMILIAR SCENES

II. ADMINISTRATION

III. STUDENT BODY

IV. ORGANIZATIONS

V. ATHLETICS

FOREWORD

THE primary purpose of this, the seventh volume of *The Quaker*, is to give such expression to every phase of college life as will recall fond memories of the year of 1926-27 at Guilford College. In bringing to you the spirit of Guilford, we have attempted to make this annual a true representation of the Quaker life. Throughout its pages you will find general features, scenes, pictures, history, and ideals that will enable you to catch the Quaker spirit. Although we may not accomplish our purpose, we hope that we have added to the glory of our Alma Mater by this publication.

For the work of Hugh Dixon, our artist, and all others who have contributed to this annual, we express our grateful appreciation.

G.C.
The Quaker
1927



RAYMOND THOMAS
EDITOR IN CHIEF



JOSEPH J. COE
BUSINESS MANAGER



NELL OSBORNE
MANAGING EDITOR



Amen Mater

Andante

mp

Hail! Dear old Guilford! Thy loyal sons are we,

And we will ever be Loyal to thee,

Through every changing time through all the future time

Our hearts will ever be Loyal to thee.



HISTORY OF GUILFORD COLLEGE



SINCE the beginning of the Society of Friends, an outgrowth of the doctrines and teachings of George Fox, it has ever been an outstanding concern of Friends that the youth in their midst should have all the possible advantages and benefits pertaining to the development and growth of the mental and spiritual being. The Quakers of North Carolina were especially interested and intent upon the establishment of a Friends' Boarding School.

After much consistent effort on the part of a number of Friends, New Garden Boarding School was opened the first of the Eighth month, 1837, with an enrollment of fifty, twenty-five boys and twenty-five girls.

The existence of the Boarding School covers a period of fifty-two years, during which time many hardships were encountered, chief among which were fires and lack of finance. But despite these difficulties the institution continued to grow under the leadership of teachers of eminent scholarship and of firm influential character, outstanding among whom are Dr. Nereus Mendenhall and Professor A. Marshall Elliott.

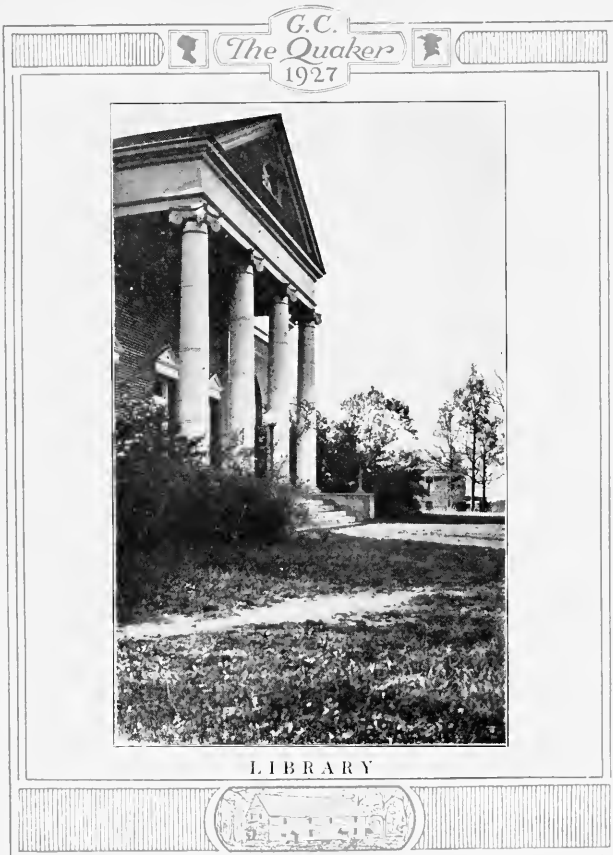
In 1885, as a consequence of a fire which destroyed King Hall, Archdale Hall was erected and a new King Hall was built on the site of the old one.

By this time the need for extending the course of study, enlarging the faculty, and increasing the endowment was greatly in demand. Work was begun, a new charter being drawn up by Dock Benbow and J. Van Lindley and presented to the Board, and in 1888 New Garden Boarding School became Guilford College.

Since the school became a college, the equipment has been greatly increased. In 1897, as a result of a gift of ten thousand dollars by James B. and B. N. Duke, of Durham, Memorial Hall was erected in memory of their sister, Mrs. Mary Elizabeth Lyon. Through the efforts of the women of North Carolina Yearly Meeting, New Garden Hall, a dormitory for girls, was built in 1907. In 1913, Cox Hall, a new dormitory for boys, was erected. In 1909, a new Library, which is the pride of every Guilfordian, was built. The same year, as a result of a second fire, a third King Hall was erected for class rooms and laboratories for the departments of Physics and Home Economics. Founders' Hall was also remodeled.

By the persistent work of the Board of Trustees and President Raymond Binford, the endowment has been increased to five hundred and fifty thousand dollars. On account of this increased endowment and the standing of the College as an institution of higher learning, Guilford College was admitted on December 3, 1926, as a member of the Southern Association of Colleges and Secondary Schools, a step which carried the one-time Friends' little Boarding School into the realm of National recognition.





CAMPUS

G.C.

The Quaker

1927



AEROPLANE VIEW



MEMORIAL HALL.





CAMPUS SCENE



G. C.
The Quaker
1927



Y. M. C. A. BUILDING





FOUNDERS HALL





NEW GARDEN HALL





COX AND ARCHDALE HALLS



G.C.
The Quaker
1927



FOUNDERS DOOR



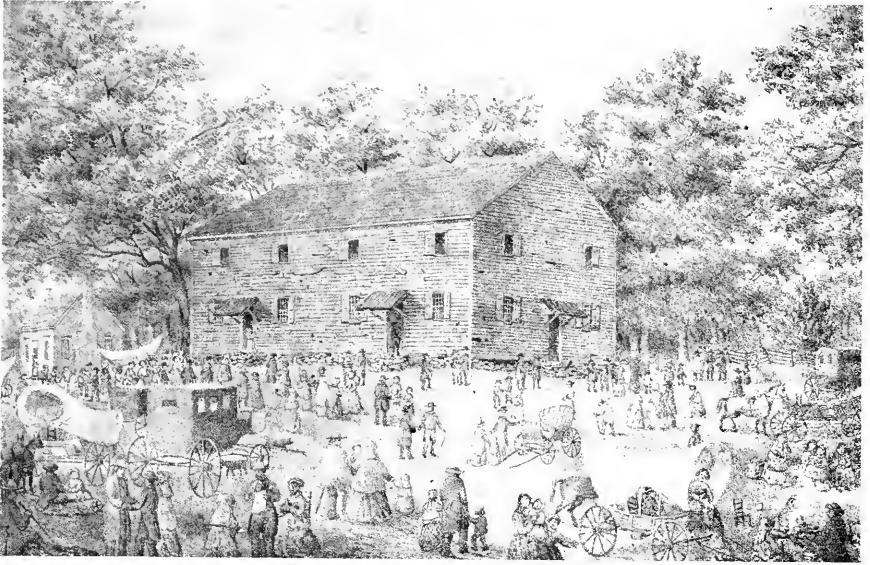


THE CHURCH



KING HALL





NEW GARDEN MEETING HOUSE

THIS large structure, known as the old New Garden Meeting house, was erected on the south side of the present cemetery in 1791 for the purpose of holding sessions of the North Carolina Yearly Meeting. This building took the place of the original little log house built in 1751, and which, after the battle of Guilford Court House, according to tradition, was approved by Friends and converted into a temporary hospital for wounded soldiers.

ADMINISTRATION



J. ELWOOD COX, *Chairman*

BOARD OF TRUSTEES

	<i>Term Expires</i>
D. D. Carroll, Chapel Hill, N. C.	1927
C. E. Tomlinson, High Point, N. C.	1927
Joseph D. Cox, High Point, N. C.	1928
Paul C. Lindley, Pomona, N. C.	1928
H. A. White, High Point, N. C.	1929
D. R. Parker, High Point, N. C.	1929
J. Elwood Cox, High Point, N. C.	1930
C. P. Frazier, Greensboro, N. C.	1931
W. E. Blair, Greensboro, N. C.	1931
R. L. Hollowell, Greensboro, N. C.	1932
Zeno Dixon, Elkin, N. C.	1932
David White, Greensboro, N. C.	1932



G.C.
The Quaker
1927



PRESIDENT RAYMOND BINFORD



G. C.
The Quaker
1927

LEWIS LYNDON HOBBS, A. M., LL. D.

LATIN

A. B., Haverford College, 1876; A. M., Haverford College, 1881; LL. D., University of North Carolina and Haverford College, 1908; Principal New Garden Boarding School, 1878-1884; President Guilford College, 1888-1915; President Emittus, since 1915.

JAMES FRANKLIN DAVIS, A. M.

GREEK AND BIBLICAL LITERATURE

A. B., Haverford College, 1875; A. M., Haverford College, 1879; Graduate Student Johns Hopkins University in German and Greek, 1877; Student in Germanic Philosophy, Universities Leipzig and Strasbourg, 1879-1880; Assistant Professor Haverford College, 1877-1879; Guilford College, since 1888.

ELWOOD CHAPPELL PERISHO,
M. S., LL. D.

LECTURER AND DIRECTOR OF COLLEGE

EXTENSION

B. S., Earlham College, 1887; M. S., Earlham College, 1889; S. M., University of Chicago, 1893; Fellow University of Chicago, 1894-1895; LL. D., Earlham College, 1910; Assistant in Science, New Garden Boarding School, 1887-1888; Professor of Mathematics, Guilford College, 1888-1893; Assistant in United States Geological Survey (field work), 1894; Professor of Zoology and Physics, Wisconsin State Normal, 1895-1903; Professor of Geology, University of South Dakota, and State Geologist of South Dakota, 1903-1914; Dean of the College of Art and Sciences, University of South Dakota, 1907-1914; President of the State College of Agriculture and Mechanical Arts, South Dakota, 1914-1919; Educational Administrator and Lecturer, U. S. Army Educational Corps, 1919-1920; Member of Faculty American Army University, Beaune, France, 1919; Lecturer, since 1920.

HELEN TITSWORTH BINFORD, A. B.
(Mrs. Raymond Binford)

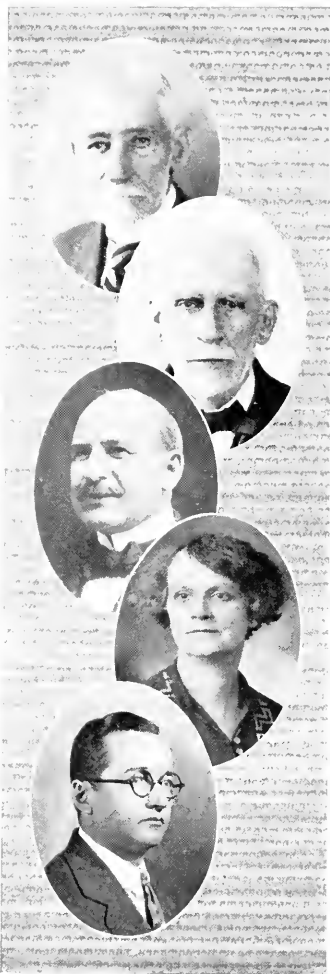
ENGLISH

Earlham College, 1907; European language study, 1909-1910; German and French, Friends University, 1908-1909; German, Maryland College for Women, 1910-1911; German and French, Friends University, 1912-1913; English, Guilford College, Spring, 1926; English, Guilford College, 1926-1927.

GEORGE P. WILSON, A. M.

ENGLISH

A. B. Grad certificate in English), University of North Carolina, 1913; A. M. (English), Columbia University, 1919; two years' graduate work (English and Philosophy), University of Wisconsin; Instructor in English, A and M. College of Texas, 1913-1917; Instructor in English, Indiana University, 1917-1919; Head of English and Director of Summer School, Besse Tift College, 1919-1920; Instructor in English, University of Wisconsin, 1920-1922; Mary Adams Fellow in English, University of Wisconsin, 1922-1923; Guilford College, since 1924.



G. C.
The Quaker
1927



GLADYS TAPLEY, A. M.

LATIN AND DEAN OF WOMEN

LaFayette College, Ala., 1915; George Peabody College for Teachers, Nashville, Tenn., 1917; A. B., George Washington University, 1924; A. M., George Washington University, 1925. Graduate work toward Ph. D., George Washington University, 1925-26; Principal, Beulah High School, Ala., 1916-18; Head of Foreign Language Department, High School, Bradenton, Fla., 1921-1922; English Department, Alexandria, Va., 1922-1925; Head of Foreign Language Department, High School, Alexandria, Va., 1925-1926; Dean of Women at Guilford College, 1926-1927.

HEDWIG HOFFMANN RUSACK, Ph. D.

FRENCH AND SPANISH

B. A., University of Toronto, 1919; A. M., French, *ibid.*, 1920; A. M. German, Columbia University, 1921; Ph. D., Carl Schurz Fellow, *ibid.*, 1920-1922; Instructor, Columbia University, 1921-1922 and 1924-1925; Instructor, Hunter College, summer 1923; French and Spanish, Guilford College, 1922-1924, and since 1925.

MILTON CORNWELL DAVIS, A. M.

LATIN AND GERMAN

A. B., Harvard College, 1917; A. M., Harvard University, 1918, with Friends' Mission in France, 1919-1920; Graduate Student at Harvard University, 1920-1923; Guilford College, since 1923.

COLETTE DE DURAS-HOFFMANN, B. es L.

FRENCH AND SPANISH

B. es L., Geneva University; Student at Sorbonne; Special work at University of Heidelberg, and Columbia University; Principal, Anglo-French School, Toronto, 1910-1920; Instructor of Romance Languages and German, Toronto Conservatory of Music, 1915-1920; French and Italian, Kayson School, New York City, 1921-1922; Guilford College, since 1922.

CHARLES N. OTT, Ph. D.

CHEMISTRY

A. B., Penn College, 1921; M. S., Ph. D., University of Iowa, 1926; Professor of Chemistry at Guilford College, since 1926.



G. C.
The Quaker
1927

EVA GALBREATH CAMPBELL, A. M.

BIOLOGY

A. B., Ohio Wesleyan University, 1915, M. A., Ohio State University, 1919; Graduate Student, University of Chicago, summer, 1916; Marine Biological Laboratory, Woods Hole, Mass., summer, 1922; Graduate Student, Ohio State University, summer, 1924; Instructor in Biology, North Carolina College for Women, 1919-1924, Guilford College, since 1924.

GEORGE HERBERT COLE, M. S.

PHYSICS

B. S., McGill University, 1904, M. S., 1905; Special work, Yale University, 1905; Educational work, China and Japan, 1905-1917; Two years study Chinese language and literature; lecturer in science, school principalship; H. O. Administrator Educational work, Canadian Army, in Great Britain, 1917-1918; H. O. Administrator, Chinese Y. M. C. A. in American, French and British armies, 1918-1919; National Educational work, Y. M. C. A., China, 1920-1923; two years graduate work, science and education, Columbia University, 1923-1925; Guilford College, 1925-1926.

MINNIE KOPF, A. B.

HOME ECONOMICS

A. B., Cornell College, 1918; Graduate Student Columbia University, summer, 1919; Graduate Student University of Chicago, 1921; Head of Home Economics Department, Mt. Vernon High School, Iowa, 1918-1921; Critic Teacher in Normal School, Postville, Iowa, 1921-1922; Head of Home Economics Department Normal Central College, 1922-1923, Guilford College, since 1923.

J. WILMER PANCOAST, B. S.

MATHEMATICS

B. S., Swarthmore College, 1901; Special Work at University of Pennsylvania, University of Cornell, University of Chicago; Instructor of Mathematics, George School, Bucks County, Pennsylvania, 1902-1918; Guilford College, since 1919.

SAMUEL L. HAWORTH, A. M.

BIBLICAL LITERATURE AND RELIGIOUS EDUCATION

Ph. B., Chattanooga University, M. A., Brown University; Graduate Student Chattanooga University, 1908; Professor of Biblical Literature, Wilmington, Ohio, 1908-1911; Graduate Student Brown University, 1911-1913; Minister of Friends Meeting, Minneapolis, Minn., 1913-1919; High Point, N. C., 1919-1923; traveler and student in Europe, 1923-1924, Guilford College, since 1924.



G. C.
The Quaker
 1927



HENRY T. TINSLEY, A. M.

HISTORY

B. A., Baylor University, 1923; A. M., Chicago University (History), 1926; Head of History Department at Guilford College since 1926.

D. RILEY HAWORTH, A. M.

EDUCATION

A. B., Maryville College, A. M., Maryville College; A. M., Columbia University; Superintendent of City Schools, Jonesboro, Tenn., 1905-1908; Morristown, 1908-1911; Johnson City, 1918-1924; Head of the Department of Rural Education, East Tennessee State Normal School, 1913-1924; Professor of Education, Guilford College since 1925.

DOROTHY L. GILBERT, A. B.

ENGLISH AND DIRECTOR OF PHYSICAL EDUCATION FOR WOMEN

A. B., Earlham College, 1925; English and Director of Physical Education for Women, Guilford College since 1926.

ROBERT S. DOAK, A. B.

MFN'S PHYSICAL DIRECTOR

A. B., Guilford College; Coach, Elon College, 1911-1915; Coach Basketball and Track, Trinity College, 1916; Coach, Guilford College, 1916-1918; Athletic Work for Y. M. C. A., with A. E. F., in France, 1919; Guilford College, since 1919.

BERTHA YOCUM

HEAD OF PIANO AND THEORETICAL MUSIC

Philadelphia Musical Academy (entire curriculum); American College of Musicians; University of the State of New York, 1898; Leschetzky and Assistants; Wienz-Kowska, Prentner, New York, Paris, Vienna, 86 years; Certified, 1898-1905, 1906-1909; Director of Music, Southern Colleges, ten years; Summer Normal, San Antonio, five years; Guilford College, 1926-1927.



G. C.
The Quaker
1927

JAMES WESTLEY WHITE

VOCAL

Student at International School of Vocalists, Boston; Private Teachers, New York; Soloist in leading churches of Boston and New York, in festivals and tours; Director of Chorus and Choir; Instructor in Vocal Music, Guilford College, since 1919.

P. EVANS COLEMAN, A. M.

ECONOMICS AND BUSINESS ADMINISTRATION

B. S., Ohio Wesleyan University, 1912; B. of Education, University of Cincinnati, 1924; A. M., University of Chicago, 1914; Teacher in Ohio Elementary and High Schools for four years; Salesman and Sales Supervisor, Aluminum Cooking Utensil Co., Cincinnati, Ohio, 1913-15; Employment Secretary, Y. M. C. A., Cincinnati, Ohio, 1916-1917; Employment Manager, Pittsburgh Employers Association, 1917-1919; Insurance Underwriter, Equitable Life Insurance Society, Chicago, Ill., 1920-1924; Instructor, College of Business Administration, Northeastern University, Boston, 1925-1926; In charge of Business Courses, Guilford College, since 1926.

F. HILL TURNER, A. M.

BUSINESS MANAGER AND INSTRUCTOR
IN EDUCATION

A. B., Vanderbilt, 1917; A. M., Columbia University, 1924; Graduate Student, Columbia University, 1923-1926; Co-Principal Massey School for Boys, Palisade, Tenn., 1915-1917; Business Manager, Y. M. C. A., Overseas, 1917-1920; New York City; Director, Wunsdorf School for Russian Refugees, Germany, 1920-1924; Business Manager, British Y. M. C. A., and Member of Municipal Rent Commission, Jerusalem, Palestine, 1921-1922.

KATHARINE C. RICKS, B. S.

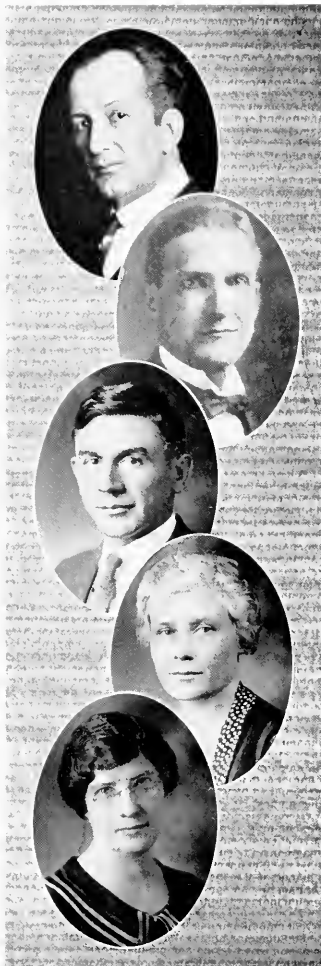
LIBRARIAN

B. S., Guilford, 1904; Librarian since 1922.

NANCY ERA LASLEY, B. S.

REGISTRAR

B. S., Guilford College, 1913; Registrar, Guilford College, since 1923.



G.C.
The Quaker
1927



MAUD L. GAINAY
TREASURER

Stenographer, 1900-1911; Secretary to the President, 1911-1917; Treasurer since 1917.

EMILY R. LEVERING

Matron and House Mother of New Garden Hall since 1919.

LAURA DELPHINA WORTH, B. S.

B. S., Guilford College, 1892; Graduate Boston Normal School of Gymnastics, Boston, 1895; Student Woman's Medical College, Baltimore, 1899-1900; Graduate of Training School for Nurses, Presbyterian Hospital, Charlotte, 1904; Taught at Guilford College, 1895-1898; Matron and Nurse, Guilford College, 1926-1927.

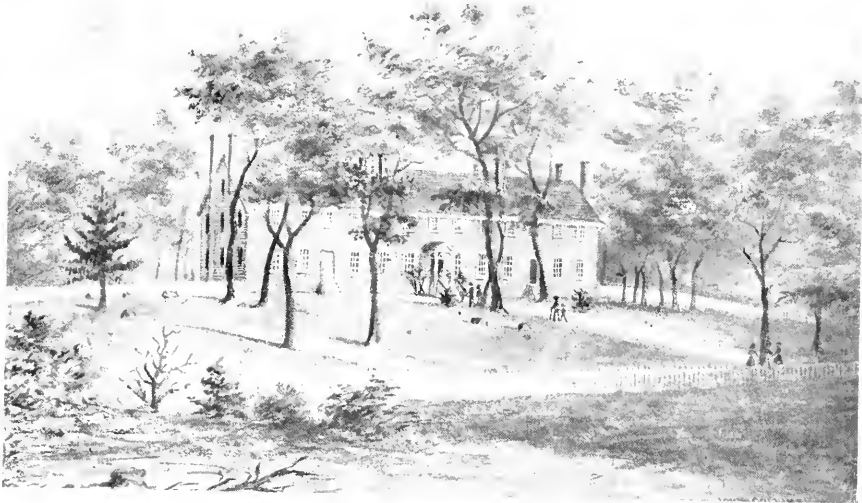
ELMA RAYLE

Assistant Matron, Founders' Hall since 1915.

EDITH L. MEREDITH, A. B.

A. B., Earlham College, 1925; Post graduate Dietetics, 1925-1926; Indiana University Hospitals - Dietitian, Guilford College, 1926-1927.





NEW GARDEN BOARDING SCHOOL

THE present Founders Hall as it looked in 1836, the year it was completed. This piece of masonry, one hundred and twenty feet long and forty feet wide, was built for the New Garden Friends Boarding School. The west end was used for the girls' dormitory and class rooms, and the east end was used for the boys' dormitory and class rooms. In the room known as the students' parlor, the present college library had its beginning in a valuable collection of Quaker histories. The superintendent's office occupied what is now known as the faculty parlor.

When the boarding school became Guilford College, a third story was added to this building, which was then converted into a dormitory for girls.

STUDENT BODY

SENIORS



WHERE OH WHERE ARE THE STATELY
SENIORS ?
WHERE OH WHERE ARE THE STATELY SENIORS ?
WHERE OH WHERE ARE THE STATELY SENIORS ?
GONE NOW IN THE WIDE WIDE WORLD.
— GUILFORD SONG



G.C.
The Quaker
1927



HENRY F. TEW

Fall Term

PRESIDENT: Henry F. Tew
VICE-PRESIDENT: R. E. Ebert
SECRETARY: Chandos Kimrey
TREASURER: Ruth Malpass
MARSHAL: Charlie Friddle

CLASS FLOWER: *Sweet Pea.*



SIDNEY A. WINSLOW

Spring Term

PRESIDENT: Sidney A. Winslow
VICE-PRESIDENT: Charlie Friddle
SECRETARY: Anna May Newlin
TREASURER: Ruth Malpass
MARSHAL: Raymond E. Ebert

CLASS COLORS: *Blue and White*

MOTTO:

"Whosoever findeth knowledge, findeth life."





MARGARET A. BEESON, A. B.
Randleman, N. C., Route 1

ACTIVITIES: Z. L. S., President, 4; Secretary, 3; Student Council, 3; Treasurer Y. W. C. A., 4; House President, 4; Track Manager, 3; Varsity Baseball, 1, 2; Varsity Hockey, 2, 3; Class Basketball, 2, 4; Class Track Team, 2; College Marshal, 3.

A jolly good sport is Ailene; business-like, serious, sympathetic, as the occasion demands. She is interested in all student activities, especially in athletics, where she usually holds a prominent place. It is probable that she will be a successful athletic coach in the near future. Ailene loves them from the East and loves them from the West, but really from observation, she loves Easterners best.

WILLIAM T. DOUB, A. B.
Winston-Salem, N. C., Route 2

ACTIVITIES: H. C. L. S., President, 4; Oratorical Contest, 3; Class Treasurer, 3; Peace Oratorical Contest, 3; Class Marshal, 3; Men's Student Council, 4; Debating Council, 4; Class Volley, and Basket Ball Teams, 3; Class Historian, 4.

"Ivory" hails from the Twin City. He has been one of Guilford's most consistent students during the past four years. It may well be said that he always thinks before speaking. Probably this is one reason that he does not talk as much as some people. We think of him as a human "gradometer" in which the mental column of mercury is always near 100%.





LOLA GERTRUDE BEESON, A. B.
Rundleman, N. C., Route 1

ACTIVITIES: Z. L. S., President, 4; Oratorical Contest, 1, Student Council, 3, 4; Choral Society, 1, 2, 3; Art Club, 3; College Play, 2; Jamestown Club, 1, 2, 3, 4; Class Baseball, 1, 2, 4; Class Basketball, 2, 4; Class Hockey, 2, 3, 4; Hockey Varsity, 4

Lola should have lived in the era of "women's rights" and lady-like suffragette parades. As it is, she suffers from a repressed inambition complex, which partly finds expression in holding sundry offices, sitting in the high council, and on off-times, taking over the responsibilities of New Garden Hall. Has high hopes of becoming a lawyer. Prior to that looked-for happiness, she must perforce content herself with being chief fun maker, a good sport on every other occasion, and a most engaging and interested visitor in the "after light's out" gossiping clubs.



RAYMOND E. EBERT, B. S.
Winston-Salem, N. C.

ACTIVITIES: W. L. S., Treasurer, 4; President, 4; Treasurer Y. M. C. A., 4; Baseball Manager, 3; Student-Faculty Social Committee, 2, 4; Vice-President of Class, 4; Varsity Football, 4.

"Red" is a flaming-headed youth from Winston-Salem. Fate has played a trick on him in refusing to make him hard-boiled or to give him a temper to match his hair. He has shown a keen interest in athletics and in social life; yet these have never interfered with his studies. On class he prefers to furnish new material from his own brain rather than look it up in dry textbooks.

His social career has been no meager one. We can say for him that his interest in Zoology is worthy of mention, since he is brave enough to capture our only wild animal. "Red" is one of the most popular boys on the campus, and as a good-natured, congenial fellow, he just can't be beat.





ANNA JOSEPHINE FINCH, A. B.
Guilford College, N. C.

ACTIVITIES: P. L. S. Secretary, 3; President, 4; Vice-president, W. A. A., 4; Class Hockey Team, 2, 3, 4; Art Club, 2, 3; Class Basketball, 1, 4; *Quaker* Staff, 4.

Anna is a decided brunette; and in common with this type possesses dark curly locks, sparkling eyes, and a vivacious disposition.

To the above mentioned qualities she owns the distinction of being one of the Senior stand-bys in basketball, and one of the few in the class with a leaning toward the artistic calling. We venture to say that an old-rose smock, an artist's palette, and a studio should be her calling, but knowing the disposition of most embryonic artists (of the brunette type) toward matrimony—we shall not dare prescribe any definite career for Anna.

CHARLES FRIDDLE, A. B.
Summerfield, N. C.

ACTIVITIES: H. C. L. S. Secretary, 2; Improvement Medal, 1; Oratorical Contest, 2; Debating Council, 4.

Since Charlie hails from Summerfield, he is naturally sunny in disposition, takes life easy and gets by with it. He can work if necessity requires it. At all times he is humorous, observant, and generous. Charlie has a bad habit of lying often, but only on the bed.

Friddle, although not overly industrious, obtains his degree in three years at college by doing summer school work. He did or didn't (as the case may be) successfully instruct the youth of North Carolina during his absence from school.





ARTENA COX JACKSON, A. B.
111 West Lee St., Greensboro, N. C.

ACTIVITIES: P. L. S.

We herewith present our one class example of a sweet little girl who rebelled at playing a demure rôle any longer. She suddenly astonished the college powers by an overnight change into a very flappy flapper. Now she rouses, dances, plays havoc with the masculine hearts, helps give the student council an excuse for being, and—majors in French, makes "A" grades, and holds a certificate in music by her Sophomore year. Oh, that all of us might finish our scholastic work at the end of the first semester!



CHANDOS L. KIMREY, B. S.
Guilford College, N. C.

ACTIVITIES: P. L. S. President, 4; Secretary, 3; Class Secretary, 4; Cheer Leader, 3; Choral Society, 1, 2, 3, 4; Secretary, 3; Freshman Oratorical Contest, 1; College Plays, 1, 2, 3.

"A laugh is worth a hundred groans in any market."

Does she ever laugh? Can she cook? Can she sing? Has she ever played the leading rôle in college plays? Only take a look at one of the most accomplished girls in our class. If "Chan" ever saw a blue day, it must have been during an eclipse of the sun. Without this real life of jolliness what would we do?





RHODA MAE HOLLADY, A. B.
 1205 Spring Garden St.,
 Greensboro, N. C.

ACTIVITIES: Z. L. S. Secretary, 3; President, 4; Student Council, 1, 2; Y. W. C. A. Cabinet, 2, 3; President Y. W. C. A.; Varsity Hockey, 3, 4; Captain Class Hockey Team, 3, 4; Class Secretary, 3; Superintendent College Sunday School, 3; College Plays, 3; Student Volunteer Group Leader, 3; *Quaker* Staff, 4.

Never judge a girl by her looks. To look at Maie, one would be ready to go on record that her name was Prudence or Priscilla; and that she was very quiet and demure, very sweet, good, and very studious. However, she is a thoroughly human girl of 1927 and apt to be full of whims and contradictions. In between times of mischief she works in really serious matters, such as society, student government, and who should be President of Y. W. C. A.—but the Maie with many responsibilities?

WINIFRED R. MALPASS, A. B.
 205 South William St.
 Goldsboro, N. C.

ACTIVITIES: P. L. S. Secretary, 3; President, 4; Assistant Tennis Manager, 2; Faculty-Student Social Committee, 3, 4; *Guilfordian* Board, 3; W. A. A. Cabinet, 3; Class Hockey Team, 3; Vice-President Y. W. C. A., 4; Treasurer of Class, 4; Student Council, 3, 4.

"Happy am I, from care I'm free,
 Why aren't they all contented like me?"

"Petite" is a brunette of the rarer type with hair that glistens in its blackness, and eyes that talk for themselves. As for studying, it is just not her line, and it is not necessary. Nothing ever worries "Petite" except her undying interest in the "Sterner Sex." One day she wishes to be married at once, the next day she is a conformed man-hater. We know that her highest ambition is to have a wee little home just made for two.





LENA MAE MARSHBURN, B. S.

Guilford College, N. C.

ACTIVITIES: P. L. S., Treasurer, W. A. A., 2; Tennis Championship, 1, 2; Tennis Manager, 3; Basketball Manager, 4; High Scorer Field Day, 2; Treasurer of Class, 3; Varsity Basketball, 2; Varsity Baseball, 2; Varsity Hockey, 3, 4; Captain Hockey Class Team, 2.

Lena, on first acquaintance, is very quiet, gentle, and dignified. Yet she is very alert and always ready for fun, always the same, means what she says and does what no one else can do, plays baseball, basketball, tennis, hockey, and bridge. She has won the tennis championship every year. If she is not the manager of every athletic team on the campus, she ought to be—everyone expects it. But she is not only an athlete, but is full of math, formulas and German verbs. Underneath the outward business-like appearance she is a true friend, one that anybody would be glad to claim. Just an all round girl, what more could we say?



HARDIN S. KIMREY, B. S.

Guilford College, N. C.

ACTIVITIES: H. C. L. S. President, 4; Football, 2, 3, 4; College Play, 3; Chemistry Club, 4; Glee Club, 2, 3, 4; Operetta, 1, 2.

"Little but loud."

Hit the line, "Hard," as we know this little quarterback, or perhaps more familiar among his team mates as "Monkey." In football, in surmounting the impediments of a successful career in Chemistry, or in the field of the fairer sex, he is known as a hard hitter. His interest in Chemistry and Greek is the criterion by which we predict for him a brilliant and happy career. Hardin is an all-round good fellow and friend.





ANNA MAY NEWLIN, A. B.
Saxapahaw, N. C.

ACTIVITIES: P. L. S. Secretary, 3; Treasurer, 3; President, 4; Oratorical Contest, 1; Captain Class Baseball, 1, 2; Varsity Baseball, 1, 2; Class Hockey Team, 2, 3, 4; Varsity Hockey, 3; Secretary of Student Government, 3; President Y. W. A. A., 4.

"For if she will, she will;
You may depend on't.
And if she won't, she won't;
And here's an end on't."

No situation is too difficult for Anna May because she is saying, "I thought so all the time." Her keen interest and vigorous participation in athletics have formed a valuable background for her work as W. A. A. President. She has many desirable characteristics not clearly perceived by a casual observer, but "a noble purpose, high ideals, and reverence for the best things of life"—that's Anna May.

HENRY FAISON TEW, B. S.
Goldsboro, N. C.

ACTIVITIES: W. L. S.; President Men's Student Council, 4; Vice-President Men's Athletic Association, 3; President Men's Athletic Association, 4; President Senior Class, 4; Varsity Football, 2, 3, 4; Varsity Basketball, 1, 2, 3, 4; Captain Basket Ball, 2; Track Manager, 3; Letter Men's Club, 2, 3, 4.

The dictionary, or any near-bright Sophomore, can define the word "paradox," the meaning of which eventually leads up to the subject of Hank Tew. How else can one decide a football, baseball, and basketball star who never talks about himself or his exploits; the best dressed man in the senior class, and yet one who is not a snob or dandy; a good student, but not a book worm; and lastly, the most silent and unassuming man on the hill. Henry is studying to become a doctor, and we have the greatest assurance of his success in his chosen profession.





MARY FRANCES TURNER, A. B.
Gaillard College, N. C.

ACTIVITIES: Z. L. S. Secretary 3; President, 4.

"She'll have her say if the whole world is against it."

"Fanny" is never "down and out," but is striving for something better. She is just serious minded enough to make you love her and always has a smile and a "Hey" for everyone. We find her acting as a mother to the day girls by giving them advice and words of cheer when they are in trouble. We hardly think that "Fanny" will be an ordinary "school marm," but that she will become great and noble.

RAYMOND G. THOMAS, A. B.
King, N. C.

ACTIVITIES: H. C. L. S., President, 4; Secretary, 3; Oratorical Contest, 3; Vice-President, Y. M. C. A., 3; President, Y. M. C. A., 4; Editor-in-Chief, *Quaker*, 4; Manager, Football, 3; Assistant Manager, Basketball, 2; Class President, 3; Glee Club, 4; Student Council, 3; Peace Oratorical Contest, 3; College Marshall, 3; Men's Letter Club, 3, 4.

"I'd rather be right than President."

Don't judge Raymond by his size. His small stature is the physical basis of a broad mind and an ambition that will defy failure. He pursues his task with diligence and a tone of optimism which makes life pleasant. His genuine courtesy and hospitality gain the friendship of everyone he meets. "Raym," speaking in collegiate terms, is a lady's man. He paddles his own canoe. May all good fortune prosper him.





MARY A. ROBERTSON, A. B.
Gulford College, N. C.

ACTIVITIES: P. L. S.; Class Basketball, 4.

Allen is tall, slender, and distinguished in appearance. She has been Madame's "A" French student for four years, and now—

"She can parlez-vous Français
As well as she can drive a
Chrysler Coupe."

One would think from observation that Allen is very care-free, but underneath is found calmness and deliberation. She is always prompt, which probably explains her executive ability. With these qualities to aid in her work, it is inevitable that Allen's chosen career will be successful.

ALLISON A. WHITE, A. B.
326 Tate St., Greensboro, N. C.

ACTIVITIES: H. C. L. S., Secretary, 3; Improvement Medal, 1; Freshman-Sophomore Debate, 1, 2; Y. M. C. A. Cabinet, 2; Track Team, 2; Volley Ball Team, 2; Class Representative Field Day, 2; College Debating Council, 3.

"He can who thinks he can."

"Pete" is a jack of all trades. He can do anything except hypnotize an eagle. (He cannot catch them.) Ladies and gentlemen, meet a man who doesn't stay out late at night, not even on Saturday or Sunday night, nor does he stay out after eight. He doesn't even correspond with any fair dame. (He's married).

Here's the most talented cartoonist of the college. Industrious and business-like. Allison debates, orates, and seldom prevaricates. Our knowledge of his ability and thrift permits no hesitancy in predicting for him a happy and successful career.





RUTH V. SAMPSON, A. B.
512 S. Mendenhall St.
Greensboro, N. C.

ACTIVITIES: President P. L. S., 4; Student Council, 3, 4; House President Founders, 4.

Like the famous Biblical prototype of her name, Ruth's strength must lie in her long tresses, for she alone, of all the senior girls, refuses to have them shorn. If they help give her that ever-ready spirit of fun and ability to play pranks on others; if she draws her power of giving pointed, ludicrous criticisms, and other mannerisms of thinking from them, we most heartily advocate keeping them long. Ruth's ability to convulse a room full of listeners by the take-offs on classmates and faculty is too well known to be discussed here. If she likes you, nothing can sever her friendship—and you will do well to keep her on your side.



LOUISE WHITE, A. B.
Climax, N. C.

ACTIVITIES: P. L. S., Secretary, 3; President, 4; Secretary Student Government, 3; Secretary of Class, 3; Class Hockey Team, 4; President, Student Government, 4.

How is one ever to describe Louise satisfactorily? Time and again you get her labeled "demure, shy, sweet, affectionate, lovable, and quiet," only to have someone, better informed than you, suggest some disturbing qualities that cannot and will not ever be reconciled to any of the epithets above. Louise heads Student Government (can you imagine it!) She is full of fun and jokes; really doesn't study half as seriously as the Prof. believe. If we had taken her in hand before she acquired Senior dignity, we are sure that she would have made a great athlete.





JULIA E. WOLFF, A. B.
Greensboro, N. C., Route 7

ACTIVITIES: Z. L. S., President, 4; Treasurer, 3; Oratorical Contest, 1; Class Baseball, 1, 2, 3, 4; Chess Basketball, 2; Varsity Hockey, 2, 3, 4; Manager Hiking, 3; Manager Baseball, 4; Vice-President Student Government, 4; College Marshal, 3.

Julia is enthusiastic, ever ready to help in college activities. She is like an April day with her varying moods of clouds and sunshine. She does not give a rap for your opinion or mine, always speaking what she thinks, and thus is frequently misunderstood, but beneath this she has a kind heart. Julia has been active in athletics and is not without honor scholastically. Her chief hobby is getting on the good side of the faculty. She claims to have majored in History, but from all observation her campus course seems to be predominant.



SIDNEY A. WINSLOW, A. B.
Belvidere, N. C.

ACTIVITIES: H. C. L. S., President, 4; Treasurer, 3; Oratorical Contest, 3; Peace Oratorical Contest, 2; Y. M. C. A. Cabinet, 3, 4; Student Council, 4; College Marshal, (Chief), 3; College Debating Team, 3; Sophomore Debating Team, 2; Class President, 2, 3; Gospel Team, 4; Superintendent College Sunday School, 3; Glee Club, 3, 4; President, 4.

"To be, rather than to seem."

"Windy," as he is better known, is a person whom you only have to know to like. He possesses dignity, poise, and is enthusiastic in whatever he undertakes. He is always ready to do you a favor. As an orator he has much ability and can rely on his innate knowledge, whether it be in oratory, in debating, or preaching. We see no reason why he shouldn't have a great future, since his love for the fairer sex is purely platonic.



SENIOR CLASS HISTORY



As we approach the time when these dear old college days shall be no more, it is fitting that we should record some of the things that have been to us most dear, that not only we in future times may turn to them and live over again the experiences that mean so much to us, but that others, too, may know the history of the class of '27.

For convenience, we shall divide our history into four periods: viz., the green period, the wise period, the jolly period, and the dignified period.

The green period began September 12, 1923, at which time one hundred and ten green Freshmen stood in line for their first time and signed up for their Math. I and Freshman English. A few days later the Sophomore class formally initiated us into the Freshman class with all the rights and duties thereunto attached, laying special stress upon the duties, all of which they codified and presented to us in a special manuscript.

On October 9, 1923, we met in Memorial Hall to hold our first class meeting. Miss Louise was present, and no doubt, acting upon her experience with our predecessors, rightly surmised that we were too green to organize without council. She proceeded to tell the purpose of our assemblage and concluded her remarks with the assurance that should we fail to adjourn at eight o'clock, there would not be another meeting for eight long weeks. The most aggressive of the class now attempted to carry out Miss Louise's instructions. They, however, seemed to have been born in the objective case, and it was only after much deliberation that the class was finally organized.

Piloted by Gilmer Strange, we supported the publication of the sixth volume of *The Quaker* and unanimously contributed to the endowment campaign.

This period ended with the annual Freshman-Sophomore picnic, at which we were endowed with the inherent prerogatives with which to guide the next year's Freshmen.

We accepted in the wise period these prerogatives as a noble heritage and strove with cautious wisdom to instill into each Freshman the true Guilford spirit.

Our claim to omniscience received a set back, however, in the Freshman-Sophomore debate.

In keeping with the established traditions, it became necessary to liberate our advisees. This liberation was accomplished by a formal ceremony which took place at Hamilton Lakes.

In the third period we felt quite relieved and care-free. Jolly Juniors! We allowed nothing to interfere with our "jollity," not even an occasioned D grade. We

were sufficient unto ourselves. We reveled in planning for the good times we expected to have.

Of course the Junior-Senior banquet claimed our special attention. This we decided to have at High Point Country Club. Not content that Philadelphia should have all the glory, we arranged a Sesqui-Centennial program and carried our guests back to the stirring times of '76. We shall not forget our Junior picnic; neither shall we forget the thrill of wearing for the first time that envious ring of distinction which closed our Junior career.

We have been dignified now only a short time, but we realize that a tragedy has happened in our history. Of the one hundred and ten, only twenty-two now answer the roll call.

At our first class meeting in the dignified period we elected president our most dignified Senior, Henry Tew. The question, "Why not an annual?" was lively debated, and we feel that it is an honor to have taken the first step leading to its publication. We also deem it an honor to have one of our members elected Editor-in-Chief of its staff.

On November 2, we journeyed to Pilot Mountain to enjoy our first picnic of the year. We are looking forward with pleasure to the good times we expect to have before graduation and especially to the Junior-Senior banquet.

Of college activities we have had our fair share. Six of our boys have played on varsity teams in football, seven in basket ball, three in tennis, and six in track. The record of the girls is equally enviable. During these four years they have had thirty representatives on varsity teams. They have been defeated only once in hockey, and thus far are undefeated champions in baseball, tennis, and track.

During our four periods of greenness, wisdom, jollity, and dignity, we have aspired and in a measure we have achieved. We have learned to love our college, and although we feel that we can never pay our debt to her, we resolve to be ever loyal and true to our Alma Mater.

THEODORE DOUB,

Historian.



LAST WILL AND TESTAMENT



We, the members of the Senior Class of 1927, solemnly realizing the end of our existence at Guilford College, and in order that such valuable possessions as we do now cherish may descend upon their rightful heirs, do make, publish, and decree this, our last Will and Testament, before entering upon the perilous journey of life.

Be it known that the aforesaid Senior Class do declare this to be its last Will and Testament:

Item I. To the next large and promising Senior Class, we do bequeath:

1. Those special privileges which tradition and precedent have led each Senior Class to expect, such as chaperoning lower classmen, going to the store at will, presiding over organizations, holding sway over tables at meals, and occupying the front seats in chapel, with the understanding that they use the sound judgment that we displayed in exercising these privileges.

2. To the class of '28 we will the A's we failed to get, providing they study more diligently than we did.

3. The privilege of being a shining example to the lower classmen in such things as dignity in the dormitories and superiority on the campus.

4. We generously bequeath all "Bib-Lit" papers, French resumés, Greek books, Geology, Biology, and Math note books to our beloved successors, provided they handle with care and let them be heard and not seen on class.

Item II. A few of our most striking and noticeable characteristics and belongings, we do bequeath to some of the most responsible of the incoming Seniors:

1. The headlight of our class, now owned by Theodore Doub, we bequeath to Glenn Boose, hoping he will light the pathway of the Class of '28 in its noble pursuit of learning.

2. The thundering, silver-tongued, oratorical ability of "Sid" Winslow, we bequeath to all self-inspired orators, chief among whom we single out Waldo Williams.

3. The "A's" on French, acquired by Allen Robertson, we bequeath to all the needy incoming French students.

4. Upon Berta Hollady we bestow the privilege, formerly owned by Louise White, of keeping "tab" on all the girls.

5. Hoping G. C. will take the State championship in football next year, we bequeath the unexcelled ability of "Hank" Tew, "Red" Ebert, and Hardin Kimrey to Joe Cox, Paul Reynolds, and Tom Hadley.



G. C.
The Quaker
1927

6. We leave Mary Frances Turner's and Lola Beeson's gift of "gab" to anyone who has a sufficient amount of nerve to get away with it.

7. We bequeath to anybody who needs it, Julia Wolff's and Anna Finch's art of bluffing.

8. We bequeath Chandos Kimrey's powder puff to someone who will give it a rest.

9. The dainty voice of Ruth Malpass we bestow upon Sudie Cox.

10. The curly locks of which Maie Hollady disposed this year we leave to Mabel Chappell.

Item III. To those beloved ones who have so carefully guided our faltering footsteps up the narrow path of graduation we leave:

1. A sweet and unbroken succession of restful nights and peaceful dreams. No longer need they lie awake through the long watches of the night to worry over the uncertainty of whether this one is doing his night work, or that one will have his history in morning class, or the other one will remember every iron-clad rule of compositional technique in the preparation of a theme, or whether all French verbs will be learned.

2. We give and bequeath to our beloved Faculty all the amazing knowledge and startling information that we have furnished them from time to time in our various examination papers. We know that much which we have imparted to them in this way must have been entirely new to them, as well as to all other teachers and students elsewhere, and would throw much new light on many a hitherto familiar line of thought, throughout the whole of science and learning. If the faculty see fit, they are hereby authorized to give out such of this information to the world as they may feel the world is ready to receive.

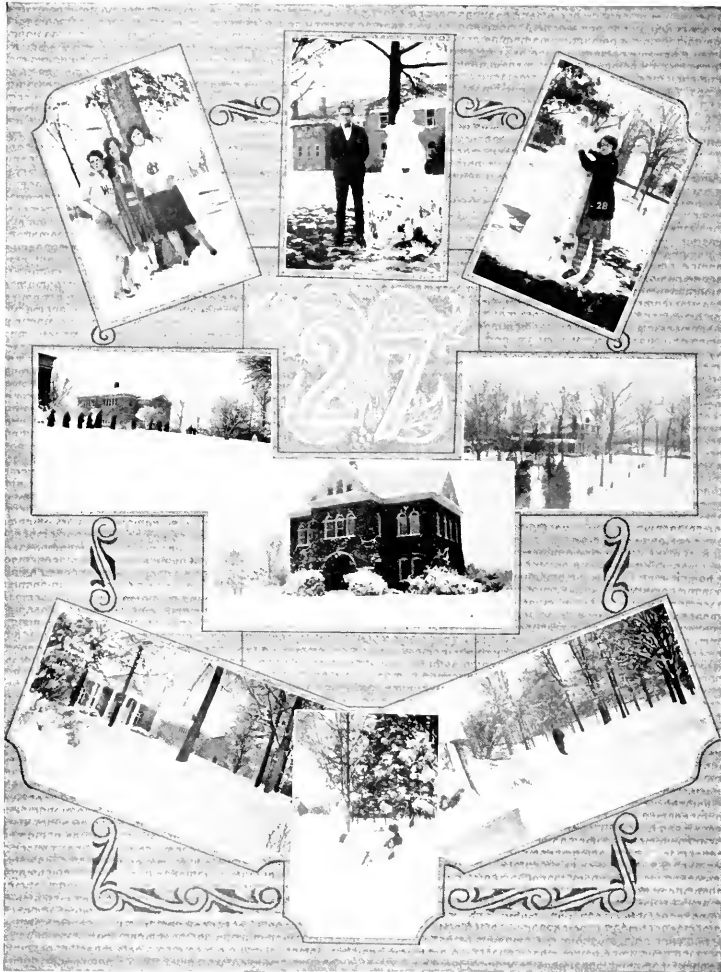
Item IV. To our Alma Mater, we bequeath our undying loyalty and everlasting respect.

In witness whereof, we set our hand and seal, this, the first day of June, 1927.

(Signed) SENIOR CLASS.



G.C.
The Quaker
1927





G.C.
The Quaker
1927



WALDO WILLIAMS

Fall Term

PRESIDENT: Waldo Williams

VICE-PRESIDENT: Paul Reynolds

SECRETARY: Annie Wagoner

ASS'T SECRETARY: Adalia Futrell

TREASURER: Sallie Wilkins

MARSHALS: Ethel Chadwick and
Paul Swadson.

CLASS FLOWER: *Marshall's Rose.*



BYRON HAWORTH

Spring Term

PRESIDENT: Byron Haworth

VICE-PRESIDENT: Paul Reynolds

SECRETARY: Alma Hassell

ASS'T SECRETARY: Doris Joyner

TREASURER: Sudie Cox

MARSHALS: Evelyn Braxton and
Glenn Boose

CLASS COLOR: *Green and Gold.*

MOTTO:

"We launch tonight; where shall we anchor?"





LOIS MYRTLE ATKINSON

Gulford College, N. C.

Z. L. S.

Lois thinks that "he" may be German, French, or even Spanish; so she is majoring in languages to be able to answer the question in any language. Even then she may have to resort to a life of single bliss. Her favorite pastime is looking up French words.



LAURA IDA BALLINGER

Greensboro, N. C.

P. L. S.

Some call her a flapper, but beneath that veneer of ultra-modernism is to be found the best characteristics that we look for in a well-rounded girl. She excels in all the major sports, and it wouldn't be "Chug" if she didn't come out on top in everything. She uses her amazing ability to capture the hearts of all the "Prince Charmings" only to fling them back again.

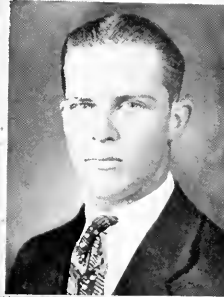


GLENN OSCAR BOOSE

Winston-Salem, N. C.

H. C. L. S.

There can't be much said about Glenn but what is the best. During the three years of his college career dignity and composure have dwelt on his countenance until now they sit permanently upon his brow, back of which lies a world of undeveloped resources.





EVELYN HOPE BRAXTON

Shore Camp, N. C.

Z. L. S.

Mamma's pet; dreamy but wide awake; sees the beautiful side of life; strangely accomplishes much with little effort—these are her traits. "Evelina" is purely feminine, which may be observed when she begins blinking those big brown eyes at the opposite sex.



ETHEL JEWELL CHADWICK

Jamestown, N. C.

P. L. S.

If practice makes perfect, then "Chad" has reached perfection in the baby-talk line. She is always pulling off some "new yarn," which is incidentally larger than the one preceding it. "Let's not hurry; there's another day a'comin'" is her motto. She has taken heed to the words of the philosopher and is always just herself.



JOSEPH JOHN COX

High Point, N. C.

H. C. L. S.

"Of course you realize that I feel my inability." Joe is undoubtedly the busiest man in college, but he always does his work when no one is around (if he does any). His accomplishments in his major subject, "campus course," and as Editor-in-chief of the *Gulfordian* indicate an excess of talent.



SUDDIE DRAUGHON COX

Princeton, N. C.

Z. L. S.

"Sue" has a way, a curiosity, and an opinion all of her own, which she doesn't mind letting the other fellow know about if he gives her a chance by conflicting his opinion with hers. It is a good advantage to have a class with this lady, for by the time the instructor has answered all her questions, one is educated. But one of these days "Sue" will be known by her achievements as a result of these questions.



ADALIA TAYLOR FUTRELL

Woodland, N. C.

P. L. S.

Lovable, dependable, and intellectual—that's Adalia. What a confidence everyone puts in her when she is assigned a special task, for she always delivers the goods! Although she has spent one year in the field of pedagogy, we are quite lucky in having her return in time to graduate with us.



ROBERT BROWN GRIFFIN

Woodland, N. C.

H. C. L. S.

Notwithstanding the fact that "Bob" is cubically the smallest man in the class, he is mentally one of the biggest. As an experienced authority on the care of the mind and the body, he highly recommends that one should study as little as possible and get all necessary sleep if it requires thirty minutes or all of a class period.



G. C.
The Quaker
1927



RUBY RIVERS HALL

Rosboro, N. C.

P. L. S.

Among the "Halls" of our college Ruby stands at the front. She's tiny, but only in stature. We take off our hats to her, for her winning personality demands it. She is always ready to lend a rescuing hand, whether it be in Sunday School, Y. W. C. A., or literary work. She is our only real poetess, and a real "Ruby"—that's all.

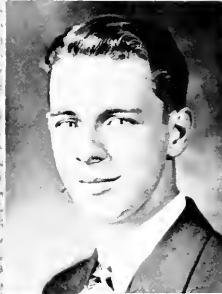


ALMA LOLENE HASSELL

Jamestown, N. C.

P. L. S.

A jolly good girl; an excellent impersonator; will try anything once; "jack of all trades and good at them all"—that's Alma. A good student she is, firm in her convictions, and as original as safety will let her be; and as is the case with many such people, she does more than her share.



BYRON ALLEN HAWORTH

Burlington, N. C.

H. C. L. S.

As Editor-in-chief of the *Gulfordian* and the head of the college publicity department, Byron is apparently too busy a fellow to indulge in such nonsense as studying, but he always finds time to converse. Somehow he has that great desired ability of getting along with all the ladies and refraining from falling in love.



ESTHER CATHERINE HEDGECOCK

High Point, N. C.

Z. L. S.

We don't know whether the lad whom this lassie idealizes and dreams about is quite a reality or not, but we do know that she has a vein of sentiment in her nature that centers on someone. She has been with us three years, and yet we can't very well define her; so we will just say, "Esther, we love you for many reasons, but mainly because you are you."



ANNIE SMITH HODGIN

Guilford College, N. C.

P. L. S.

Annie believes in the saying, "Silence is golden"; and we find in her the ideal of gentleness, simplicity, and dignity.

Dutifully she pursues a scholarly way,
And finds much joy from day to day
As she plods the time-worn trail
Of those who tried and did not fail.



MARY EUGENIA HODGIN

Guilford College, N. C.

P. L. S.

We often wonder what she is thinking about when that far-away expression comes into her face; perhaps she is thinking about all her disappointments in love, or "racking" her brain trying to invent some way to use her knowledge in Home Ec. in which department she majors.



G. C.
The Quaker
1927



BERTA RHOENA HOLLADY

Greensboro, N. C.

Z. L. S.

How fortunate we are as a Junior Class to have a "holiday" every day in the year! Berta is just a little Quakeress, whose blue eyes reflect sincerity and determination.

If in doubt, and need of cheer
To chase away life's gloom,
Her social tactics are always near
And in her circle there's always room.



RUTH ANNE HORNEY

High Point, N. C.

P. L. S.

Never loud, never immodest, never in a hidgeet—always slow and sure! She is a real friend in need, the one to "kiss the bumps away"; in fact, Ruth is one of the kind that goes to make up the "salt of the earth," and if you don't believe she is, just give her a trial.



SARAH GERTRUDE JINNETTE

Bentonville, N. C.

Z. L. S.

"It is better to be small and helpful than to be large and cast a dark shadow." We suppose "Babe" had this in mind when she stopped growing. However, her size is not proportionate to her wit, for she confirms the truth of the statement that "women always have the last word."



DORIS CHASE JOYNER

Sedley, Va.

Z. L. S.

"Divinely tall, and divinely fair," as the poets say, and "eyes as blue as the sky." These are only a few of the characteristics which we use in describing her. The expression "lucky as a blonde" may also be added, for she always keeps on hand a collection of poems entitled "To My Secret Love." Studios? Well, yes, when she has to be, or when there's a test next period; but no one doubts her ability to pull straight "A's" on English.



LOUISE KENDALL

Gulfport, N. C.

Z. L. S.

Is she a good sport? Well, in fact, she is one of the best yet. Has perseverance that puts things across and ability to put pep into anything called athletics. Louise also plays this game of life well and looks on the sunny side of everything.



RUTH ELIZABETH LANE

Tyner, N. C.

Z. L. S.

Patient, modest, and sincere to perfection; dignified beyond perfection—these characteristics, with others, make Ruth an "A" grade student of our class. Her pleasant smile and kind disposition cause others to admire her and almost envy her.



G. C.
The Quaker
1927



TURNER MOON

Detroit, Mich.

H. C. I. S.

We never knew that there was such a man in North Carolina as Turner Moon until the first football game of '26, but then we met him in full force; and ever since then it is hard to realize that this is his first year as a Gillfordian. The more we know him, the more like a puzzle he becomes, and we dare not prophesy as to just what fame will introduce him to the world at large.

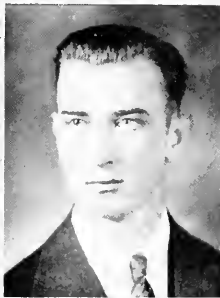


ESBIE NORAH NERCE

Chmar, N. C.

P. E. S.

Here is to "Ep," who has a wonderful ability of shifting gears in her head, for just as often as the wind changes, just so often does she change her mind. Oh! no, she is not fickle, for she can back up her latest notions with more sane reasons than Aristotle ever knew.



IRA GUTHRIE NEWLIN

Saxapahaw, N. C.

H. C. I. S.

"A talented person is one who is wise enough to play the fool and do it well." With his dry wit, and the ability to act the part of either the fool or the gentleman, "Bansen" has been able to star in dramatic productions. His present ambition is to know as much Chemistry as Dr. Ott.



ORLIN CHARLES NEWLIN

Savannah, N. C.

H. C. L. S.

Orlin is another one of those students who shyly slipped in through the college gate lest someone should see him. Although he is a great lover (of boys), the one great nuisance to his studious life and long periods of quiet in the physics lab, is required class attention.



LILLIE QUINN

Starr, N. C.

Z. L. S.

Lillie is like a book; one has to read her to know her. With her good spirits she can always cheer one on the dreariest day. She never worries; but when she has a task to do, she sets about doing it. She changes her mind as seldom as possible ("Ah, what's the use to?"), but when once changed the thing is settled.



FLOYD PATE

Goldshoro, N. C.

W. L. S.

The reticent character of this young man makes it difficult to deal with him satisfactorily. Floyd is a varnished article. Chemistry is his hobby, and he rides it well. He is such a stinging compound that when placed in a test tube he gives off "B.S."





PAUL REYNOLDS

Randleman, N. C.

H. C. L. S.

Modern, up-to-date cook and housekeeper, bureau of information and adviser on all subjects. We don't know whether it's bluff, horn lucky, or down-right brilliancy, but "Rack" takes all the honors. In fact, how could any organization on the hill (except athletics) exist without his help? Music is his greatest delight (and he does full justice to his practice periods, and will continue until the Dean of Women gets wise).



ETHEL RICHARDSON

Benaja, N. C.

Z. L. S.

Ethel, the female chemistry star of our class, can spring more bluff on any teacher in one day than the rest of us can in a month. She talks incessantly and sincerely about things of which she knows nothing, and would die rather than agree with her opponents on anything.



LILLIE MYRTLE RICHARDSON

Benaja, N. C.

P. L. S.

Questions! Well, if you don't believe she can ask them, just give her a trial. Her greatest amusement is fretting someone. But in spite of all this, she is a math. genius and a good athlete, and the department is yet to be found in which she can't make an "A."



GENATUS WARREN TAYLOR

Spring Hope, N. C.

W. L. S.

Some say it is real, some say it isn't—between you and me, it is. The beauty parlors make no profit from "Muddy." Along with these good looks he has an unusual degree of genial spirit and enthusiasm which makes him ready to perform the necessary tasks, whatever they may be.



ANNIE ELIZABETH WAGONER

Gibsonville, N. C.

P. L. S.

If brilliance were bliss, "Tap" would be a blister. Calm, calculating, thorough, and consistent in all that she undertakes; she goes out for college plays, takes a heavy off-campus correspondence course, and makes straight "A" reports all at the same time. Yes, by her ability to do a number of things at once, she may be termed a modern Caesar.



NANCY MOORMAN WHITE

Franklin, Va.

P. L. S.

Here's Irish wit to a "T"; what else could we expect in a combination of black hair and blue eyes, and she always keeps us guessing what is back of those eyes. Nancy believes "Virginia" is Heaven on earth; but since North Carolina is also a bit attractive, she has decided to educate herself with us.





PAUL REYNOLDS

Randleman, N. C.

H. C. L. S.

Modern, up-to-date cook and housekeeper, bureau of information and adviser on all subjects. We don't know whether it's bluff, born lucky, or down-right brilliancy, but "Rack" takes all the honors. In fact, how could any organization on the hill (except athletics) exist without his help? Music is his greatest delight (and he does full justice to his practice periods, and will continue until the Dean of Women gets wise).



ETHEL RICHARDSON

Benaja, N. C.

Z. L. S.

Ethel, the female chemistry star of our class, can spring more bluff on any teacher in one day than the rest of us can in a month. She talks incessantly and sincerely about things of which she knows nothing, and would die rather than agree with her opponents on anything.



LILLIE MYRTLE RICHARDSON

Benaja, N. C.

P. L. S.

Questions! Well, if you don't believe she can ask them, just give her a trial. Her greatest amusement is fretting someone. But in spite of all this, she is a math. genius and a good athlete, and the department is yet to be found in which she can't make an "A."



GENATUS WARREN TAYLOR

Spring Hope, N. C.

P. L. S.

Some say it is real, some say it isn't—between you and me, it is. The beauty parlors make no profit from "Muddy." Along with these good looks he has an unusual degree of genial spirit and enthusiasm which makes him ready to perform the necessary tasks, whatever they may be.



ANNIE ELIZABETH WAGONER

Gibsonville, N. C.

P. L. S.

If brilliance were bliss, "Tap" would be a blister. Calm, calculating, thorough, and consistent in all that she undertakes; she goes out for college plays, takes a heavy off-campus correspondence course, and makes straight "A" reports all at the same time. Yes, by her ability to do a number of things at once, she may be termed a modern Caesar.



NANCY MOORMAN WHITE

Franklin, Va.

P. L. S.

Here's Irish wit to a "T"; what else could we expect in a combination of black hair and blue eyes, and she always keeps us guessing what is back of those eyes. Nancy believes "Virginia" is Heaven on earth; but since North Carolina is also a bit attractive, she has decided to educate herself with us.



SALLIE VANN WILKINS

Rose Hill, N. C.

P. L. S.

Red hair, brown eyes, and plenty of dry wit mixed together in the proper proportions resulted in Sallie Wilkins. "S.I." sometimes but not often, aspires to sensibility, especially if there's a reason: does as she pleases and "doesn't give a hang" how others take it; but the beauty of it is she usually knows what pleases.

WILLIAM WALDO WILLIAMS

East Bend, N. C.

H. C. L. S.

Never laughing outside his own room; never saying a word to anyone; never taking a stride but the most graceful; never attempting to wax eloquent; in fact never doing anything worth while—all this might be said of him if he were different, but he isn't, he's just as is.

DORIS TEW

Goldsboro, N. C.

P. L. S.

"Big Doc" is a rare combination of golden hair and brown eyes. Loves to study when there is nothing else to do, and delights in wearing "specs" in class to make sure she sees all that goes on. Talks forever about her secret love and changes her mind about him every day. Her highest ambition is to be an opera singer and make "oodles" of money.

HOWARD VANDYKE TRIVETTE

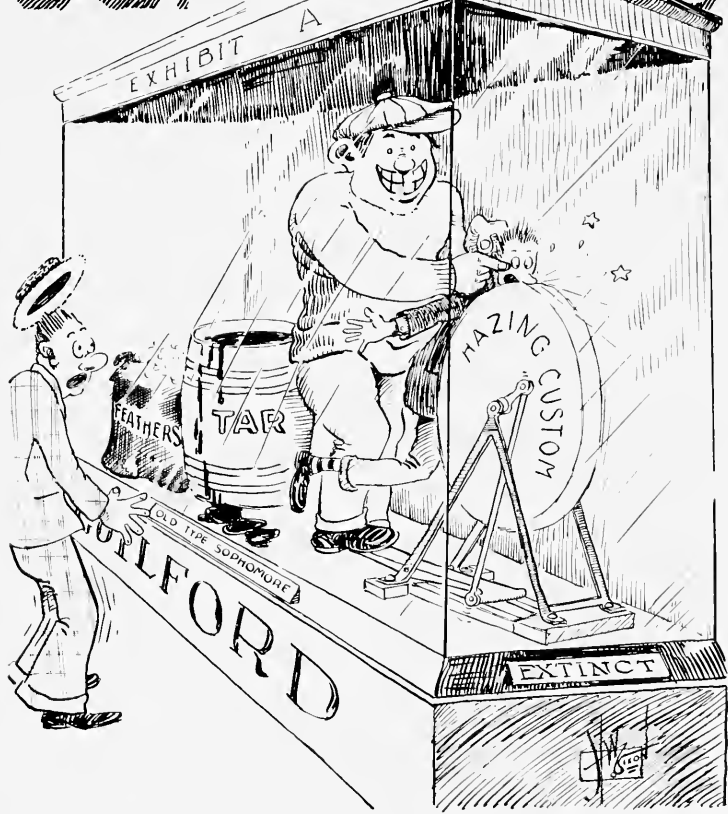
Winston-Salem, N. C.

H. C. L. S.

"Indian" has a peculiar way of taking life easy and getting by with it. When occasion requires, he does his work with the least possible amount of energy. He admits his preference for the fair sex and never misses an opportunity to entertain them.



SOPHOMORE



G.C.
The Quaker
1927



EDWIN ROZELL

BERNICE HENLEY

PRESIDENT: Edwin Rozell
SECRETARY: Bernice Henley

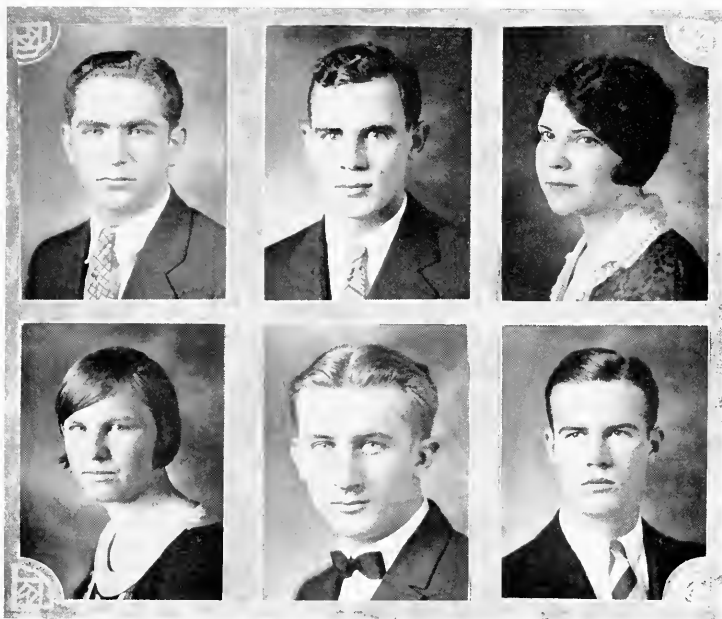
VICE-PRESIDENT: Walter Davis
TREASURER: Della Shore

CLASS FLOWER: *White Rose*. CLASS COLORS: *Green and White*.

MOTTO:
"Esse Quam Videre."



G. C.
The Quaker
1927



ROBERT H. ATKINSON,
Freemont, N. C.

LOIS RUTH BEACHOM,
Star, N. C.

ROBERT AYERS,
Summerfield, N. C.
JOSEPH EVERETT BEAMAN,
Elizabeth City, N. C.
Route 6.

MARIE ANTOINETTE
BARNES,
Roxobel, N. C.
MILLO SCOTT BENTON,
Sunbury, N. C.



G.C.
The Quaker
1927



RUTH BUNDY,
Jamestown, N. C.

PAULINE CHAFFIN,
Calahan, N. C.

PAUL THOMAS CHANDLER,
Broadway, N. C.

MABEL LEORA CHAPPELL,
Tyner, N. C.

CHARLES SAMUEL COBLE,
Guilford College, N. C.

GURNEY LEE COLLINS,
Goldsboro, N. C.



G.C.
The Quaker
1927



RAYMOND COLTRANE,
Guilford College, N. C.

BESSIE COOK,
*Kernersville, N. C.
Route 3.*

ALEXANDER McNEIL COX,
Greensboro, N. C.

FLOYD MILTON COX,
Climax, N. C.

MARJORIE CUDE,
Winston-Salem, N. C.

WALTER RAY DAVIS,
Yadkinville, N. C.



G. C.
The Quaker
1927



WINNIE ELSIE DAVIS,
Mocksville, N. C.

SARA J. EDGERTON,
Trenton, N. J.

FRAZIER EDWARDS,
Panama, N. C.

MARY LOU ELLIS,
Star, N. C.

EDGAR WILSON FARLOW,
*Guilford College, N. C.,
Route 2.*

MATTIE MYRAY GAMBLE,
Randleman, N. C.



G. C.
The Quaker
 1927



AILEEN GILMORE,
Sanford, N. C.

LEAH HAMMOND,
Farmer, N. C.

ALICE BLANCHE HAZARD,
Union Springs, N. Y.

BERNICE DIFEE HENLEY, GEORGE J. HENDRICKSON,
Greensboro, N. C.

GEORGE HINSHAW,
Yadkinville, N. C.



G. C.
The Quaker
1927



GERTRUDE ELIZABETH
HIRE,
Winston-Salem, N. C.
Route 1.

WILLIAM ALDEN HUNT,
East Bend, N. C.
Route 3.

AZILE HOLLOWELL,
Mount Olive, N. C.

WILLIAM PATTERSON
HUTCHINS,
East Bend, N. C.

ISAAC FRENCH HOLT,
Sarapahaw, N. C.
Route 1.

RACHEL ELIZABETH IVES,
North Wilkesboro, N. C.



G.C.
The Quaker
1927



PAUL CUESTOS JASSMEDES
New York, N. Y.

MILDRED MAE KIMREY,
High Point, N. C.

THELMA K. KING,
Greensboro, N. C.

ELIZABETH LEVERING,
Gaillard College, N. C.

ARTHUR L. MACKIE,
Gaillard College, N. C.

WORTH MACKIE,
Yadkinville, N. C.



G. C.
The Quaker
1927



REGINALD MARSHALL,
Germantown, N. C.

NANCY EDITH MARSHBURN,
Guilford College, N. C.

EDWARD A. McNEIL,
Jefferson, N. C.

BERNICE MITCHELL,
King, N. C.

D. STANLEY MOORE
Greensboro, N. C.

JESSIE W. McBASE,
Snow Camp, N. C.



G. C.
The Quaker
1927



EUNICE McPHERSON,
Snore Camp, N. C.

CLAUDIA NEAL,
Walnut Cove, N. C.

MARY NEAL,
Meadows, N. C.

FRANCES OSBORNE,
Pleasant Garden, N. C.

MARY O. OSBORNE,
Gulford College, N. C.

KATHRYN OWEN,
Mt. Airy, N. C.



G.C.
The Quaker
1927



A. SCOTT PARKER,
High Point, N. C.

V. RAY PARRISH,
Caraway, N. C.

JOSEPHINE PAUL,
Elkin, N. C.

MARY N. PEARSON,
Dudley, N. C.

ROSA MAE PROCTOR,
Spring Hope, N. C.

WILLIAM MOORE RABB,
Lenoir, N. C.



G.C.
The Quaker
1927



VIRGINIA RAGSDALE,
Jamestown, N. C.

ESTHER REECE,
Swire Camp, N. C.

KATHLEEN REYNOLDS,
Greensboro, N. C.

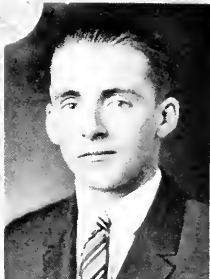
EDWIN H. ROZELL,
Salt Point, N. Y.

VIRGINIA M. SAUNDERS,
Mt. Airy, N. C.

FANNIE DELLA SHORE,
*Boonville, N. C.,
Route 2.*



G.C.
The Quaker
1927



DAVID RUDOLPH SNIDER,
Tobaccoville, N. C.
JUSTICE W. STRICKLAND,
Bailey, N. C.
Route 2.

BLANCHE E. SPENCER,
Ivor, Va.
CARRIE TAGUE,
Snorc Camp, N. C.

NELL STINSON,
Goldston, N. C.
NELLIE V. THOMAS,
King, N. C.



G. C.
The Quaker
1927



WILLIAM WARD,
Rich Square, N. C.

RICHARD GOODE WHARTON,
Ruffin, N. C.

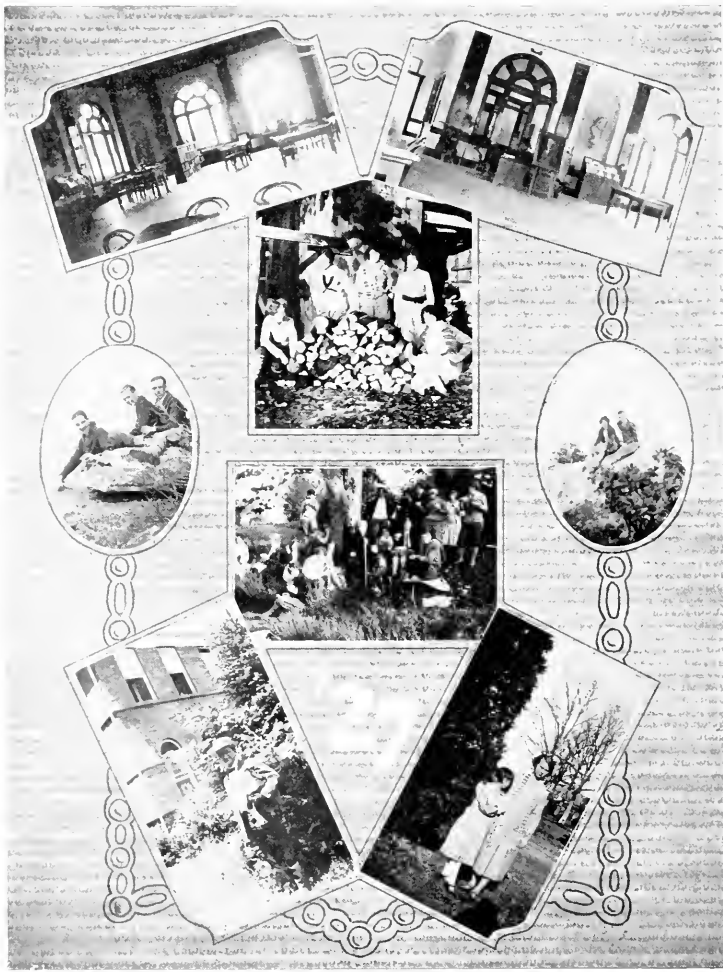
NORMA BELLE WILSON,
Pikeville, N. C.

RUTH COFFIN YATES,
Guilford College, N. C.

HAZEL ZACHERY,
Snore Camp, N. C.
Route 1.



G.C.
The Quaker
1927



G.C.
The Quaker
1927



G.C.
The Quaker
1927



FRANZ PAMPERIN

HALE NEWLIN

Fall Term

Spring Term

- PRESIDENT: Franz Pamperin
- VICE-PRESIDENT: Alton Tew
- SEC.-TREAS.: Mary Ellen Lassiter

- PRESIDENT: Hale Newlin
- VICE-PRESIDENT: Curry Spivey
- SEC.-TREAS.: Eunice Lindley

CLASS FLOWER: *Sweet Pea.* CLASS COLORS: *Pink and Green.*

MOTTO:
"Onward and Upward."



G. C.
The Quaker
 1927

GRAHAM LESTER ALLEN
Snow Camp, N. C.

JOSEPHINE BEALE
Snow Camp, N. C.

ANNIE LEE BOND
Windsor, N. C.

NINA MAE BOULDIN
*Trinity, N. C.
 Route 2*

MARY ELIZABETH BRASWELL
McFarland, N. C.

GORDON BROOKS
Bonlee, N. C.

REUBEN OSCAR BUNDY
Jamestown, N. C.

HOWARD LEE CANNON
Guilford College, N. C.

SARAH CATHERINE COX
Clarkton, N. C.

HAROLD COX
Graham, N. C.

HARRY CALVIN DENNEY
Greensboro, N. C.

LENA GERTRUDE FARLOW
*Guilford, N. C.
 Route 2.*



G.C.
The Quaker
1927



NAOMI RUTH FARLOW
High Point, N. C.

LUCY BELLE FINCH
Gaillard College, N. C.

JAMES HOLT FINISON
Ramseur, N. C.

LUTHER EDGAR FRANCIS
Francisco, N. C.

MARY ALICE FUTRELL
High Point, N. C.

CHARLES WILLIAM GOUGH
*Yadkinville, N. C.
Route 3.*

HIDA HARRIS
Thomasville, N. C.

EVELYN HAYWORTH
Jamestown, N. C.

CLIFTON HEFFNER
Maiden, N. C.

ROBERT B. HODGINS
Gaillard College, N. C.

EUGENE H. HODGINS
Gaillard College, N. C.

MIL0 HOOTS
Yadkinville, N. C.



G.C.
The Quaker
 1927

ARTHUR JAMES HUGHES
Greensboro, N. C.

ISABELLA JINETTE
Bentouville, N. C.
Route 1.

JEANNE AGNES JONES
Greenville, S. C.

SHERMAN ALLEN LAYTON
Graham, N. C.

EUNICE ELIZABETH LINDLEY
Snow Camp, N. C.

PAULINE McBANE
Snow Camp, N. C.

LOLA MONROE
Star, N. C.

EDWARD BURROUGH MOORE
Liberty, N. C.

LESLIE MURPHY
Davis, N. C.

ANNIE KATE NEAL
Walnut Cove, N. C.

SAMUEL BRUCE NEESE
Graham, N. C.

BARCLAY NEWLIN
Savannah, N. C.





DELMAS NEWLIN
Sarapham, N. C.

HALE NEWLIN
Sarapham, N. C.

FRANZ WILHELM PAMPERIN
Greensboro, N. C.

ANNIE RAPER
High Point, N. C.

ANNIE JOSEPHINE RAY
*Gibsonville, N. C.
 Route 2.*

RALPH RICHARDSON
Greensboro, N. C.

LOY E. SELF
Lincolnton, N. C.

WILBUR SHERRILL
Greensboro, N. C.

SAMUEL OTIS SHORT
*Greensboro, N. C.
 Route 2.*

OLIN WARD SINK
*Lexington, N. C.
 Route 2*

CURRIE B. SPIVEY
Cameron, N. C.

EFFIE G. STEVENS
*Goldsboro, N. C.
 Route 4*



G.C.
The Quaker
1927

WILLIAM ALTON TEW
Goldsboro, N. C.
Route 5.

MYRA VICKERY
Greensboro, N. C.
Route 1.

ROBERT VAN DER VOORT
Pittsburg, Pa.

JULIA VERNER
Brevard, N. C.

JOSEPH WESTMORELAND
Rural Hall, N. C.

ELWOOD WHITE
Belvidere, N. C.
Route 1.

ELIZABETH BURKE WHITE
Tyner, N. C.

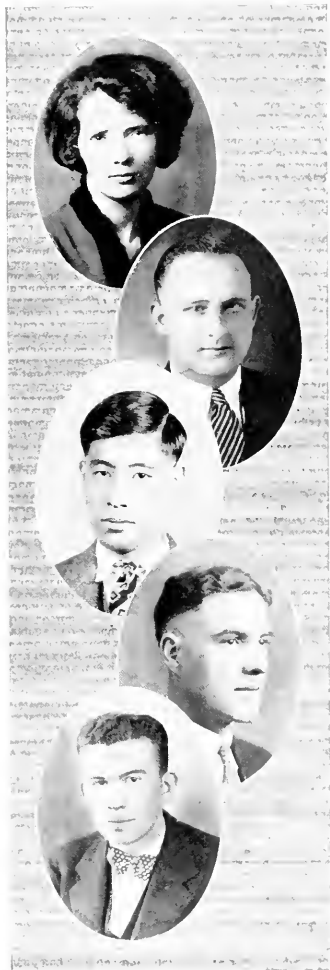
KATHLEEN WILKINSON
Richmond, Va.

GEORGE ALDON VELVERTON
Freemont, N. C.

NAOMI MYRICK
Los Angeles, Cal.



G. C.
The Quaker
1927



LORENA BOOKER
High Point, N. C.

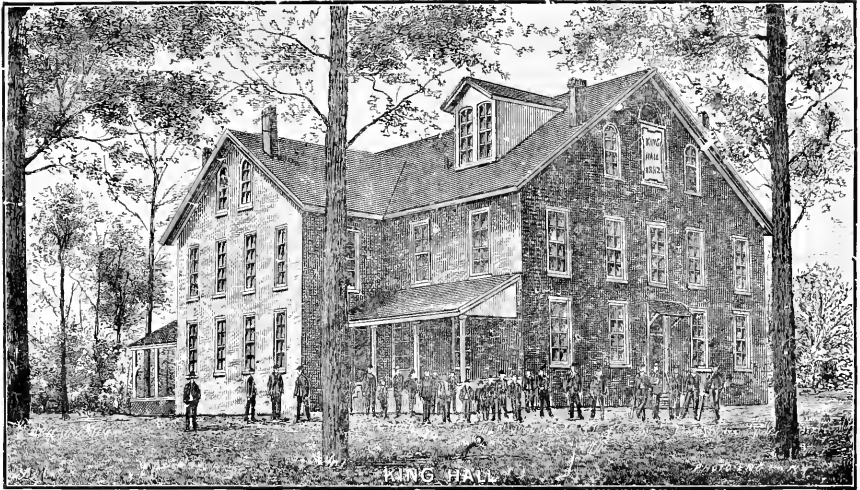
THOMAS MCKINLEY HADLEY
Graham, N. C.

TAMENORI HARA
New York City

CLIFTON C. PEARSON
Route 6
Goldboro, N. C.

FRANKLIN P. WILSON
Purcellville, Va.

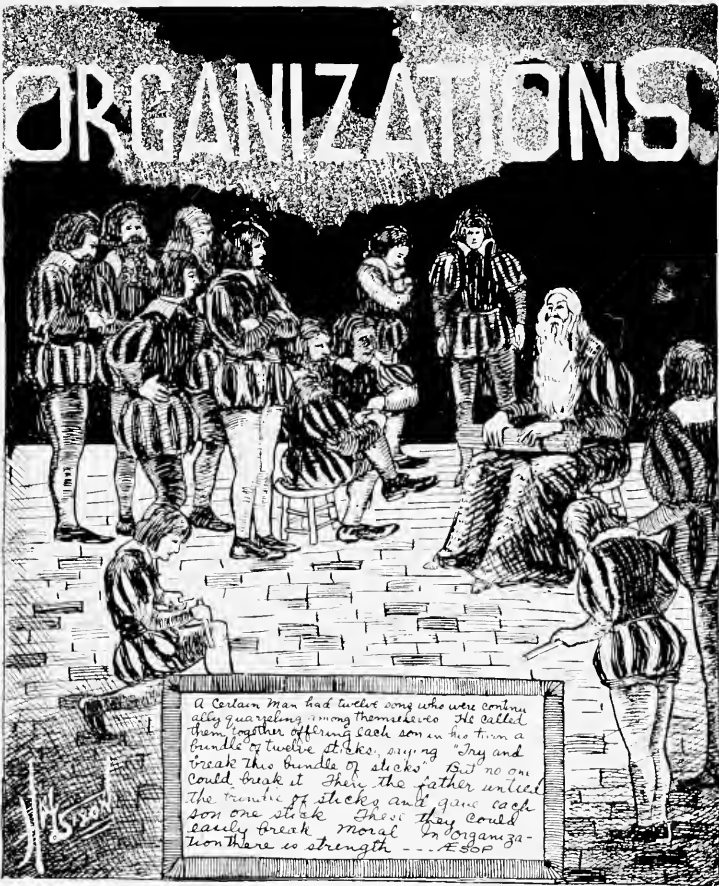




FIRST KING HALL

THIS building was originally the second Yearly Meeting house, built on the spot where the Library now stands. After its completion it contained one of the most spacious and attractive church auditoriums of its time. In 1871, due to the increased necessity for more school rooms, the Yearly Meeting gave this meeting house for a school building. The first floor of the large brick house was then cut up into class rooms, assembly hall and study hall. The second floor was converted into dormitory space for young men. The building was called King Hall in honor of Francis T. King, of Baltimore.

ORGANIZATIONS



ORGANIZATIONS

A Certain Man had twelve sons who were continually quarreling among themselves. He called them together offering each son an inheritance of twelve sticks, saying "Try and break this bundle of sticks." But no one could break it. Then the father unloosed the bundle of sticks and gave each son one stick. Then they could easily break. Moral: In organization there is strength. --- E.S.P.

W. Sisson





Mrs. Perisho, N. White, E. Reece, F. Osborne, Mrs. Cole,
B. Hollady, A. Beeson, E. Levering, M. Hollady, E. Neece, R. Malpass, A. Hassell,
R. Hall, A. Hazard, Miss Rieks.

Y. W. C. A. CABINET

Pres., Maie Hollady; *V-Pres.*, Ruth Malpass; *Secy.*, Alma Hassell; *Treas.*, Ailene Beeson
Undergraduate Representative, Frances Osborne

CHAIRMEN OF COMMITTEES

Religious Meetings, Alice Hazard; *World Fellowship*, Ruby Hall; *Bible Study*, Elizabeth
Levering; *Social*, Berta Hollady; *Publicity*, Nancy White; *Social Service*, Espie
Neece; *Membership*, Ruth Malpass; *Music*, Esther Reece.

Faculty Advisers, Mrs. Perisho, Mrs. Cole, Miss Rieks.





F. Osborne, A. Ray, M. Lassiter, M. Futrell, C. Cox, W. Davis, E. Braswell, C. Neal, A. Raper,
 M. Outland, N. Myrick

Y. W. C. A. BABY CABINET

<i>President</i>	Frances Osborne	<i>Secretary</i>	Mary Alice Futrell
<i>Vice-President</i>	Margaret Outland	<i>Treasurer</i>	Annie Ray

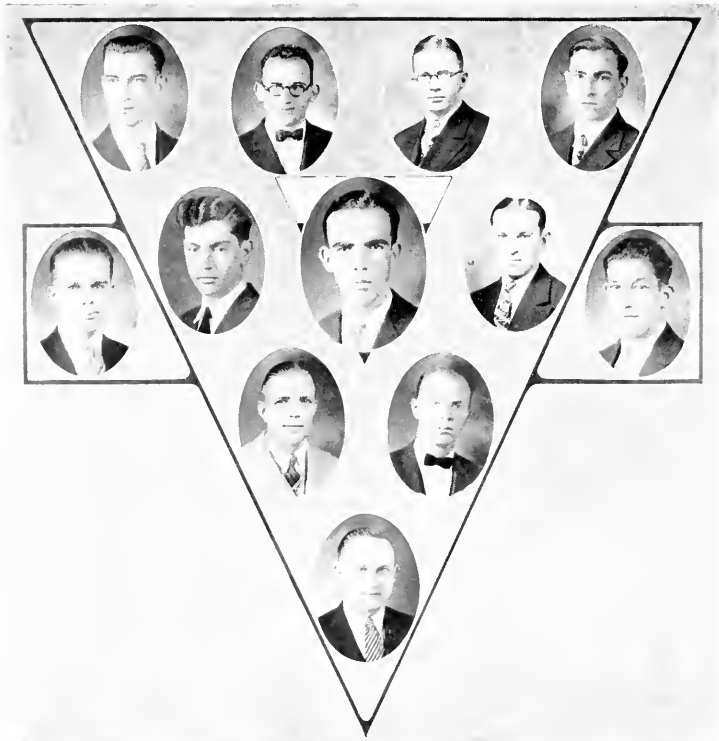
CHAIRMEN OF COMMITTEES

<i>Religious Meetings</i>	Elizabeth Braswell	<i>Publicity</i>	Annie Raper
<i>World Fellowship</i>	Winnie Davis	<i>Social Service</i>	Claudia Neal
<i>Bible Study</i>	Naomi Myrick	<i>Membership</i>	Margaret Outland
<i>Social</i>	Mary Ellen Lassiter	<i>Music</i>	Catherine Cox

The Baby Cabinet was organized in the fall by the Under Graduate Representative of the Y. W. C. A. cabinet. It is the purpose of this young cabinet to become trained in the duties pertaining to the various fields of Y. work, so that they may be ready to take up the duties of the older members when necessary. This cabinet works subordnately with the larger cabinet.



G. C.
The Quaker
1927



I. Newlin, G. Collins, E. Ebert, O. Newlin, P. Reynolds,
W. Williams, R. Thomas, S. Winslow, H. Trivette,
C. Coble, W. Mackie, T. Hadley.

Y. M. C. A. CABINET

<i>President</i>	Raymond Thomas	<i>Treasurer</i>	Raymond Ebert
<i>Vice-President</i>	Ira Newlin	<i>Marshal</i>	Orlin Newlin
<i>Secretary</i>	Gurney Collins	<i>Faculty Adviser</i>	Prof. H. G. Cole

CHAIRMEN OF COMMITTEES

<i>Religious Meetings</i>	Sidney Winslow	<i>Membership</i>	Waldo Williams
<i>Bible Study</i>	Worth Mackie	<i>Musical</i>	Paul Reynolds
<i>Social</i>	Thomas Hadley	<i>New Students</i>	Howard Trivette
<i>Missions</i>	Charles Coble	<i>Finance</i>	Raymond Ebert





GOSPEL TEAMS

H. White, W. Steele, E. Neese, F. Osborne, O. Sink, P. Reynolds, A. Tew, L. Kendall, B. Haworth, E. Levering, A. Hazard, N. Myrick, G. Saunders, E. White, M. Gamble, S. Cox, N. Thomas, S. Winslow, Dr. Perisho, M. Hollady, B. Hollady, M. Copeland, Ruby Hall, Ailene Pegg, C. Coble, R. Laue, T. Hadley, E. Reece, P. Jassimedes, N. Wilson, W. Williams.

THROUGH the help of the Rev. Louis McFarland, evangelistic superintendent of North Carolina Yearly Meeting, the Rev. Joseph Peele, and Dr. Elwood C. Perisho, members of the Y. M. C. A. and Y. W. C. A., originated what is known as the Guilford Gospel Teams.

This band of about fifty students is divided into groups of five or more members. Two Sunday nights in a month the teams go to various churches within a radius of seventy-five miles of the college and hold religious services. Through these meetings the students come in direct contact with the outside world, and more outsiders have a chance to become personally acquainted with the students. Much spiritual uplift has come about through the Gospel team work.





ZATASIAN LITERARY SOCIETY

ROLL

Marie Barnes
Josephine Beale
Ailene Beeson
Lola Beeson
Lorena Booker
Evelyn Braxton
Mabel Clappell
Lema Clinard
Catherine Cox
Sudie Cox
Lois Dawson
Sarah Edgerton
Myray Gamble
Aileen Gilmore
Hilda Harris
Alice Hazard
Bernice Henley
Esther Hedgecock
Berta Hollady
Maie Hollady
Isabella Jinnette
Sarah Jinnette
Doris Joyner
Jean Jones
Ruby Johnson
Mildred Kimrey

Ruth Lane
Mary Ellen Lassiter
Elizabeth Levering
Eunice Lendley
Mabel McCollum
Bernice Mitchell
Naomi Myrick
Annie Kate Neal
Mary Neal
Claudia Neal
Frances Osborne
Lillie O'Quinn
Kathryn Owen
Hazel Patterson
Aileen Pegg
Annie Ray
Esther Reece
Ethel Richardson
Virginia Saunders
Lockie Sears
Della Shore
Mabel Shipp
Carrie Teague
Mary Frances Turner
Elizabeth White
Julia Wolff





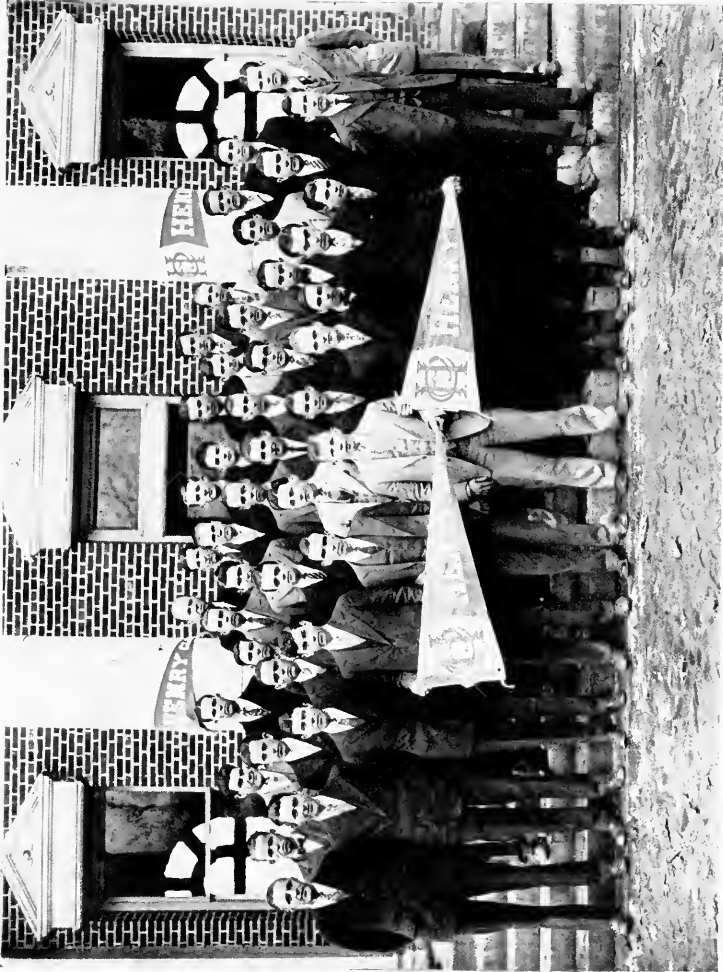
ZATASIAN LITERARY SOCIETY





HENRY CLAY LITERARY SOCIETY
ROLL

- | | |
|--------------------|----------------------|
| Everette Beamon | Ira Newlin |
| Scott Benton | Orlin Newlin |
| Glenn Boose | Hale Newlin |
| Howard Cannon | Franz Pamperin |
| Charles Coble | Scott Parker |
| Alexander Cox | Moore Rabb |
| Joseph Cox | Paul Reynolds |
| Walter Davis | Edwin Rozell |
| Theodore Doub | Rudolph Snider |
| Holt Finison | Currie Spivey |
| Robert Griffin | Justice Strickland |
| Byron Haworth | Patrick Stuart |
| French Holt | Raymond Thomas |
| Alden Hunt | Howard Trivette |
| Patterson Hutchins | Robert Van der Voort |
| Hardin Kimrey | Richard Wharton |
| Worth Mackie | Charles White |
| Turner Moon | Elwood White |
| Barclay Newlin | Waldo Williams |
| Delmas Newlin | Sidney Winslow |



HENRY CLAY LITERARY SOCIETY





PHILOMATHEAN LITERARY SOCIETY

ROLL

Laura Ballinger	Emmie McPherson
Gertrude Blow	Emily Monroe
Annie Lee Bond	Lola Monroe
Elizabeth Braswell	Espie Neece
Annie Bullard	Annie Mae Newlin
Ruth Bundy	Margaret Outland
Ethel Chadwick	Josephine Paul
Pauline Chaffin	Mary Pearson
Mary Rhodes Copeland	Rosa Mae Proctor
Majorie Cude	Virginia Ragsdale
Ruth Farlow	Annie Raper
Anna Finch	Kathleen Reynolds
Alafia Futrell	Myrtle Richardson
Mary Alice Futrell	Ruth Sampson
Viola Garner	Katie Stuckey
Ruby Hall	Doris Tew
Alma Hassell	Nellie Thomas
Evelyn Hayworth	Julia Verner
Azile Hollowell	Annie Wagoner
Gertrude Hire	Sallie Wilkins
Ruth Horney	Kathleen Wilkinson
Rachel Ives	Norma Wilson
Chandos Kinrey	Nancy White
Thelma King	Ruth Yates
Ruth Malpass	Hazel Zachary
Jessie McBane	Nell Stinson

Louise White





PHILOMATHEAN LITERARY SOCIETY





WEBSTERIAN LITERARY SOCIETY

ROLL

Graham Allen
Robert Atkinson
Robert Ayers
Kenneth Beatty
Gordon Brooks
Reuben Bundy
Paul Chandler
Gurney Collins
Harold Cox
Floyd Cox
Harry Denny
Raymond Ebert
Thomas Hadley
Tamenori Hara
Charles Heffner
Robert Hodgkin
Milo Hoots
Cranford Hoyle
Arthur Hughes
Dan Ireland
Paul Jassimedes
Sherman Layton
Reginald Marshal

Dwight Matthews
Loyless Melvin
Edward Moore
Leslie Murphy
Bryce Neese
Ray Parrish
Ralph Richardson
Walter Robertson
Loy Self
Wilbur Sherrill
Otis Short
Olin Sink
Wilmer Steele
Paul Swanson
Warren Taylor
Henry Tew
Alton Tew
Bradley Ward
William Ward
Joe Westmoreland
Herman White
Murry White
George Yelverton





WEBSTERIAN LITERARY SOCIETY





SYMPHONY CLASS
DIRECTION OF BERTHA YOCUM

Beethoven Centenary, December 17, 1770—March 26, 1827

Symphony No. 3 (Eroica)

- | | |
|--------------------------|-----------------------------|
| 1. Allegro con brio | 5. Scherzo and Trio Allegro |
| 2. Marcia Funebre Adagio | 4. Finale. Allegro molto. |

The first manuscript bore the inscription

NAPOLÉON BONAPARTE

Beethoven, hearing "Vive l'Empereur," destroyed the title page. The work finally appeared in print. "Composed to celebrate the memory of a great man"; namely, the heroes, in its widest sense.

Admitting in the first movement the strife, the battle, and the Marcia Funebre; the grandest dirge ever sung, whom do we follow to the grave—the hero of the play—Napoleon?

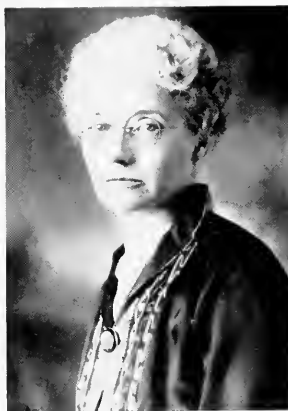
Marx conceives the symphony is a battle piece. In the Scherzo he sees the busy life of the camp; in the Finale, the joys and festivities of Peace.

CATHERINE COX
MYRAY GAMBLE
EDNA GRAY
CLIFTON HEFFNER

NAOMI H. MYRICK
ESTHER REECE
PAUL REYNOLDS
VIRGINIA SAUNDERS

BLANCHE SPENCER
ROBERT VAN DER VOORT
ELIZABETH WHITE
RUTH YATES





LESCHETIZKY CLASS IN PIANO

BERTHA YOCUM, Head of Piano and Theoretical Branches.

Miss Yocum comes to Guilford College with a well established reputation as a certified exponent of the Leschetizky School of Vienna. Her early training covered the entire curriculum of the Philadelphia Musical Academy, after which she was artist pupil and associate of the late Mme. de Wienzkowska, principal and authorized preparer of pupils for Prof. Theodore Leschetizky. Miss Yocum had opportunity to make critical study of the Method under Leschetizky and Prentner in Vienna.

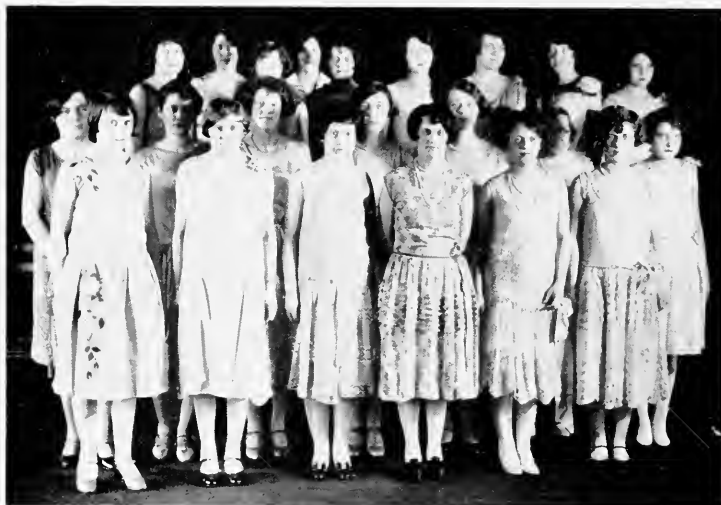
Miss Yocum made her debut in New York under concert management. She has also appeared in many cities of America.

PRESS NOTICES

Miss Yocum is an unusually talented pupil of Leschetizky. Her work last Thursday proved her to be a most interesting player. She is a conscientious artist and her playing of the program numbers gave evidence of talent of high order. Her work was always accurate and she impressed the audience with her repose and reserve power.—Musical America on New York Recital.

All who are conversant with the Leschetizky method know that to teach it means to employ a running accompaniment of harmonic analysis, theory and chord analysis and of musical insight based on cause and effect. Miss Yocum makes practical application of all these principles in her teaching of the method, and the results are proving her to be one of the few legitimate exponents of this excellent method.—London Critic in The Musical Courier.





C. Neal, K. Owen, I. Jinnette, T. King, R. Spencer, R. Proctor, A. Ray, I. Braxton, M. Barnes, L. Monroe, S. Edgerton, M. Gamble, E. Braswell, S. Cox, V. Saunders, H. Harris, E. Stevens, D. Stone, P. McBane, C. Teague, J. Paul, A. Futrell

GIRLS' CHORAL CLUB

THIS year, for the first time, the Choral Club is strictly a woman's organization, the men having all of their time occupied with the Glee Club.

In the future, the Club will present a cantata in the fall and an operetta in the spring.

Under the direction of James Westley White, the Club presented, March 19, "The Feast of the Little Lanterns," a Chinese fantasy by Paul Bliss.

CHARACTERS

PRINCESS CHAN	<i>A Chinese Heiress</i>	CHANDOS KIMREY
MAI KU	<i>A Japanese Juggler Maid</i>	JOSEPHINE PAUL
OW LING	<i>Governess to the Princess</i>	ESPIE NEECE
WEE LING	<i>Maid to the Princess</i>	ISABELLA JINNETTE
MRS. RAYMOND BINFORD, <i>Accompanist</i>		





ORCHESTRA

THE Guilford College Orchestra is one of the most important musical organizations on the campus. It is composed of a group of men who possess musical instruments and who have an interest in orchestral work. In the spring the organization goes with the Glee Club on various tours, and has an important part in the program. The orchestra furnishes the music for the dramatic production and movies.

PERSONNEL

1926-1927

Piano—Paul Reynolds

Violin—Holt Finson

Trumpet—Joseph J. Cox

Saxophone—Wilson Farlow

Drums—Franklin Wilson, Jr.

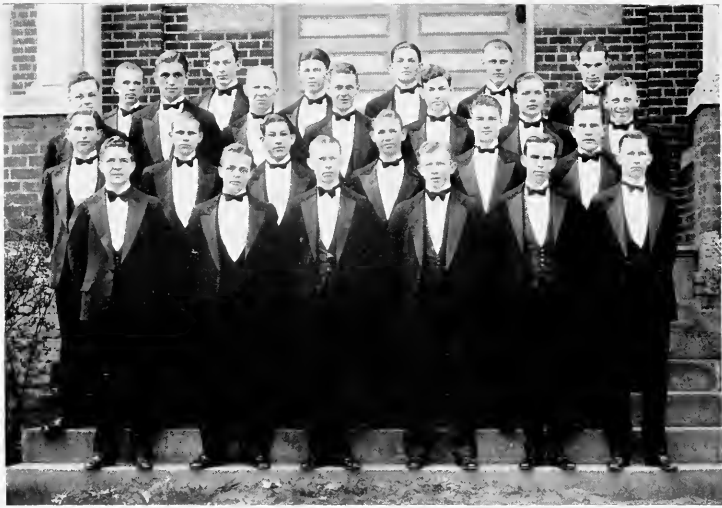
Flute—Byron Haworth

Clarinet—Wilson Farlow

Saxophone—Franz Pamperin



G.C.
The Quaker
1927



MEN'S GLEE CLUB

P. Reynolds, F. Holt, J. Strickland, M. Rabb, W. Steele, S. Winslow, T. Moon, L. Murphy, W. Mackie, B. Haworth, W. Williams, W. Davis, G. Hendrickson, R. Atkinson, F. Pamperin, H. Trivette, R. Bundy, R. Van der Voort, P. Stuart, R. Richardson, H. Fimison, W. Farlow, H. Kimrey, R. Thomas, I. Cox.



GLEE CLUB

Officers

<i>President</i>	SIDNEY WINSLOW
<i>Vice-President</i>	BYRON HAWORTH
<i>Secretary</i>	HOWARD TRIVETTE
<i>Accompanist</i>	PAUL REYNOLDS
<i>Business Manager</i>	JOSEPH COX
<i>Director</i>	GRADY MILLER

THE Guilford College Glee Club, although one of the youngest in the state, is now one of the most reputable. In the spring of 1922 the Club was begun with only about fifteen members. It has gradually grown until it now has nearly thirty members.

The greatest thing that the Guilford Gleemen have to be proud of is the fact that they have won more honors than any other similar club in the state. In the two state contests held at Durham, six silver cups have been given, three of these were won by Guilford College. No other club in the state has more than one cup. Two of these trophies were won on the best features presented in the contests, while the other was given for the best quartette in the second contest. The outstanding points in these numbers were their originality and the unique way in which they were given.

Each year the Glee Club prepares a program which is presented from ten to twenty times during the season. The programs are always especially notable for their variety. Sacred, secular, popular, and feature numbers, both instrumental and vocal, have found places in them. Quite noticeable, indeed, are the costume and lighting effects that are always used in several numbers.

The Glee Club takes at least one trip each year in touring the state for a week. So far it has gone through the eastern part principally, but it hopes to introduce itself to other sections in the future. Besides this one-week trip the Club goes out for evening concerts to the neighboring towns and schools.





Left to right: Turner Moon, Robert Ayers, Prof. Hill Turner, Walter Robertson, Frances Osborne, Miss Kopf, Sallie Wilkins, Mrs. Binford.

THE DRAMATIC COUNCIL

THE Dramatic Council is one of the youngest organizations on the campus, having been organized in the fall of 1921. The membership is made up of three representatives from the Faculty Literary Club, who work in co-operation with three student representatives from the Y. W. C. A., and three student representatives from the Men's Athletic Association. The purpose of the Dramatic Council is to produce plays of high literary merit for the benefit of the Y. W. C. A., and the Men's Athletic Association, and also to promote interest in and appreciation of dramatics.

"Seven Keys to Baldpate," by George M. Cohan, was successfully produced by the council in the fall of 1926. Stanley Moore played the leading role. The council will produce a spring play in March.





"SEVEN KEYS TO BALDPATE." by *George M. Cohan.*



"SEVEN KEYS TO BALDPATE." by *George M. Cohan.*



G.C.
The Quaker
 1927



J. WOLFE, I. WHITE, R. LANE
 MISS TAPLEY, A. BEESON, E. REECE, R. SAMPSON, MISS RICKS,
 R. MALPASS, I. BEESON, E. BRAXTON, A. FUTRELL, M. NEAL,
 B. HENLEY, A. RAY, N. BOULDIN

LOUISE WHITE, President
 JULIA WOLFE, Vice President

RUTH LANE, Secretary
 ESTHER REECE, Treasurer

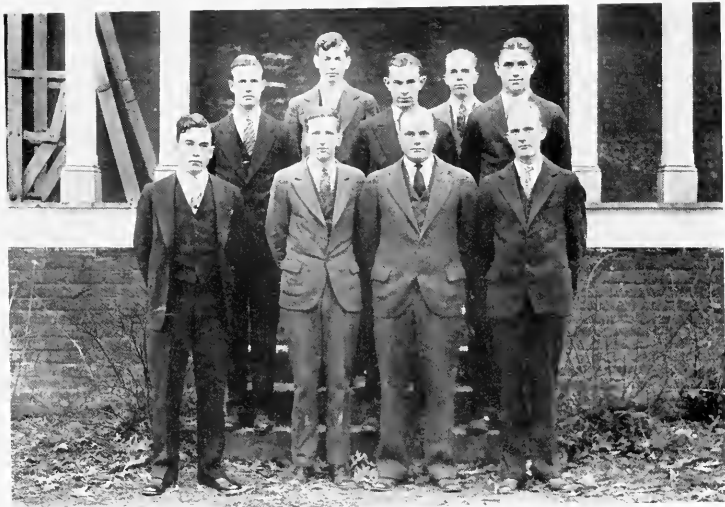
ADVISORY COMMITTEE
 MISS GLADYS TAPLEY
 MISS KATHERINE RICKS

HOUSE PRESIDENTS
 NEW GARDEN HALL,
 Alene, Beeson
 FOUNDERS HALL,
 Ruth Sampson

CLASS REPRESENTATIVES

Ruth Malpass, '27, Lola Beeson, '27, Evelyn Braxton, '28, Alabi Futrell, '28; May Neal, '29; Bernice Henley, '29; Annie Ray, '30; Nma Bouldin, '30.





Benton, Williams, Winslow, Reynolds, Murphy, Heffner, Rozell, Tew, Doub.

MEN'S STUDENT COUNCIL

President

Secretary

Senior Representative

Senior Representative

Junior Representative

Junior Representative

Sophomore Representative

Sophomore Representative

Freshman Representative

Freshman Representative

HENRY TEW

EDWIN ROZELL

SIDNEY WINSLOW

THEODORE DOUB

PAUL REYNOLDS

WALDO WILLIAMS

SCOTT BENTON

EDWIN ROZELL

CLIFTON HEFFNER

LESLIE MURPHY





THE GULFORDIAN BOARD

EDITORIAL STAFF

1926		1927
BYRON A. HAWORTH.....	<i>Editor-In-Chief</i>	JOSEPH J. COX
JOSEPH J. COX.....	<i>Managing Editor</i>	IRA G. NEWLIN
FRANCES OSBORNE.....	<i>Associate Editor</i>	FRANCES OSBORNE
IRA G. NEWLIN.....	<i>Associate Editor</i>	ROBERT ATKINSON
MISS ERA N. LASLEY.....	<i>Humor Editor</i>	MISS ERA N. LASLEY
GEORGE P. WILSON.....	<i>Faculty Adviser</i>	GEORGE P. WILSON
MISS DOROTHY GILBERT.....	<i>Faculty Adviser</i>	MISS DOROTHY GILBERT

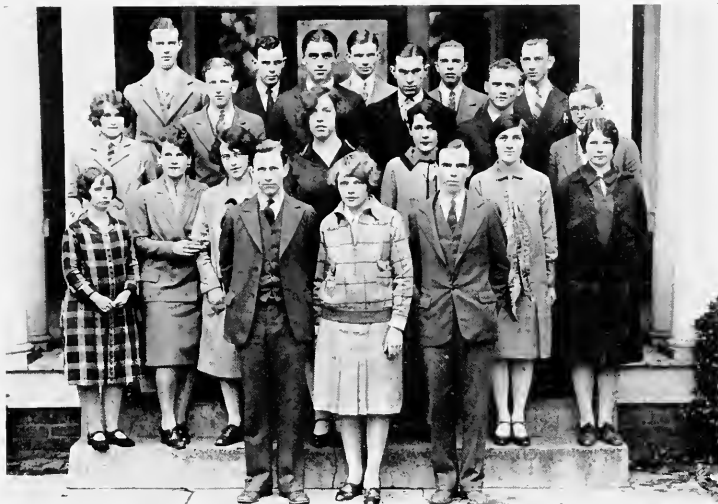
REPORTERS

Marie Barnes	Sudie Cox	Robert Atkinson
Sara Edgerton	Sallie Wilkins	Alma Hassell
Gurney Collins	Elizabeth Braswell	Paul Reynolds
Reginald Marshall	Edwin Rozell	Turner Moon

BUSINESS STAFF

SCOTT PARKER.....	<i>Business Manager</i>	SCOTT BENTON
ALICE HAZARD.....	<i>Secretary</i>	
THELMA KING.....	<i>Circulation Manager</i>	





QUAKER STAFF

<i>Editor-in-Chief</i>	RAYMOND THOMAS
<i>Managing Editor</i>	FRANCES OSBORNE
<i>Business Manager</i>	JOSEPH J. COX
<i>Photographic Manager</i>	SCOTT BENTON
<i>Circulation Manager</i>	SCOTT PARKER
<i>Subscription Manager</i>	EDWIN ROZELL
<i>Athletic Editor</i>	WALTER ROBERTSON
<i>Calendar Jokes</i>	JULIA WOLFF

COMMITTEES

<i>Senior</i>	M. HOLLADY, R. MALPASS, S. WINSLOW
<i>Junior</i>	P. REYNOLDS, I. NEWLIN, RUBY HALL
<i>Sophomore</i>	MARIE BARNES, ROBERT AYERS
<i>Freshman</i>	LESLIE MURPHY, NAOMI MYRICK
<i>Art</i>	A. FINCH, L. BALLINGER, S. EDGERTON

FACULTY ADVISERS

GEORGE P. WILSON

F. HILL TURNER

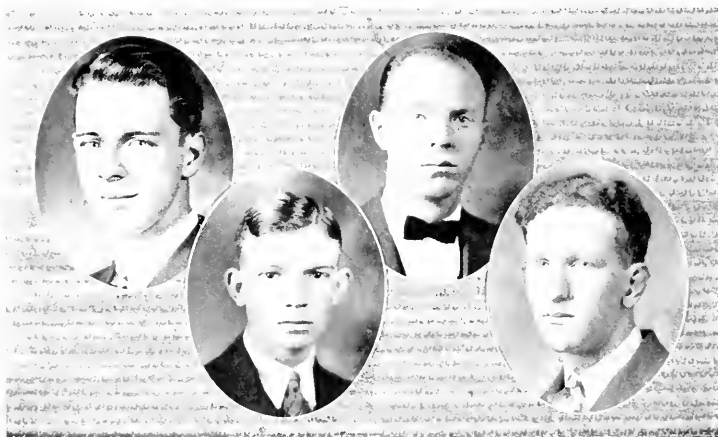


G.C.
The Quaker
 1927



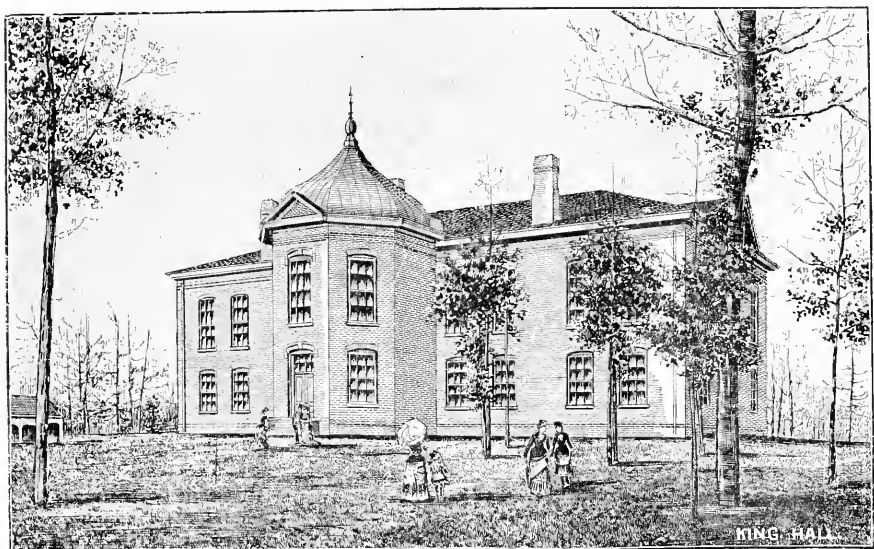
DEBATING COUNCIL

*Dr. Perisho, Charlie Friddle, W. Steele, Prof. Tinsley, P. Swanson, O. Neelin,
 Thomas Hadley, Theodore Doub.*



DEBATERS *Haworth, Parker, Mackie, Rozelle*



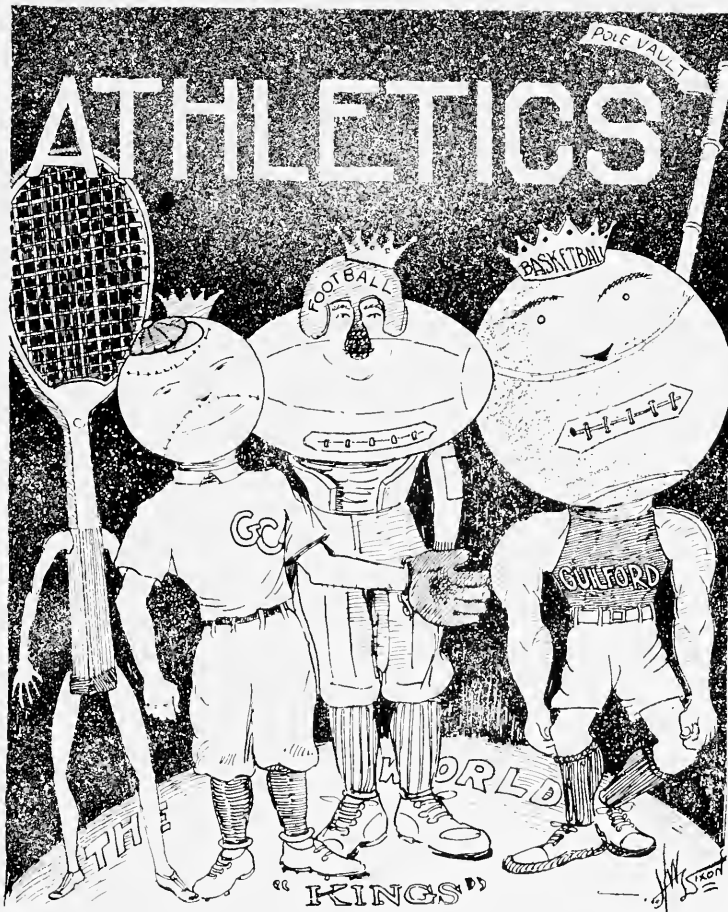


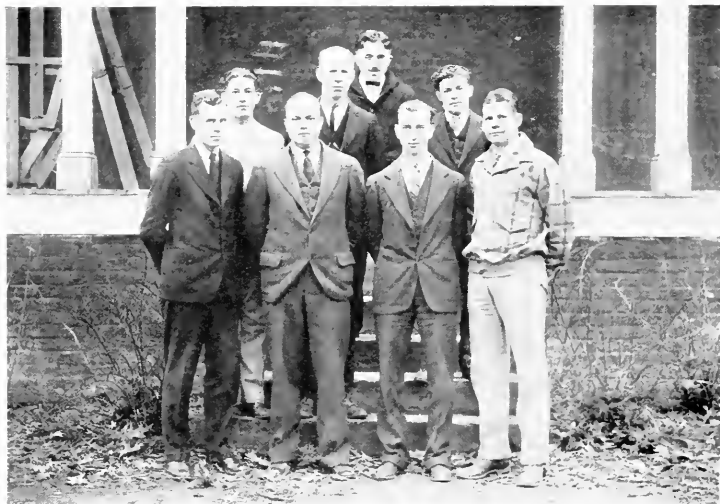
SECOND KING HALL.

ONE year after the destruction by fire of the first King Hall in 1886, this building, a second King Hall, was built on the site of the first. The new brick building was used for class rooms, library, and principal's office, which was located on the second floor of the stairway-tower shown in the above cut.

In 1908 this second hall was destroyed by fire with a considerable portion of the college library.

ATHLETICS





MEN'S ATHLETIC CABINET

*Dr. Ott, H. Trivette, W. Mackie, R. Griffin, R. Ayers, H. Tew, I. Newlin,
 W. Lindley.*

President

Vice-President

Secretary

Faculty Representative

Manager of Basket Ball

Manager of Football

Manager of Baseball

Manager of Tennis

Manager of Track

HENRY TEW

ROBERT AYERS

IRA NEWLIN

DR. OTT

WADE LINDLEY

ROBERT GRIFFIN

HOWARD TRIVETTE

WORTH MACKIE

HENRY TEW

OFFICERS OF LETTER MEN'S CLUB

President

Secretary

Treasurer

NEREUS ENGLISH

ELTON WARWICK

E. H. MCBANE





FOOTBALL SQUAD

Griffin, Finch, Pate, H. Needlin, Mathewes, Benton, Layton, Rabb, Murphy, B. Needlin, Short, Hinshaw, Coe, Toss, Marshall, Moon, Beatty, Cannon, Robertson, Fridde, Moore, Lindley, Coach Doak, Kinrey, Ebert, Parrish, Chandler, Winslow, J. Needlin, Trivette, Hoyle, Hughes, Neese, Turner.



G.C.
The Quaker
1927



MURRAY WHITE, *Captain*
High Point, N. C.

Captain White has won a letter and two stars while playing on the Quaker eleven. "Father" is a real fullback, having proved his ability to drive and plunge through any and all lines. As this year's captain, he led his team with an admirable spirit.

COACH DOAK
Guilford College, N. C.

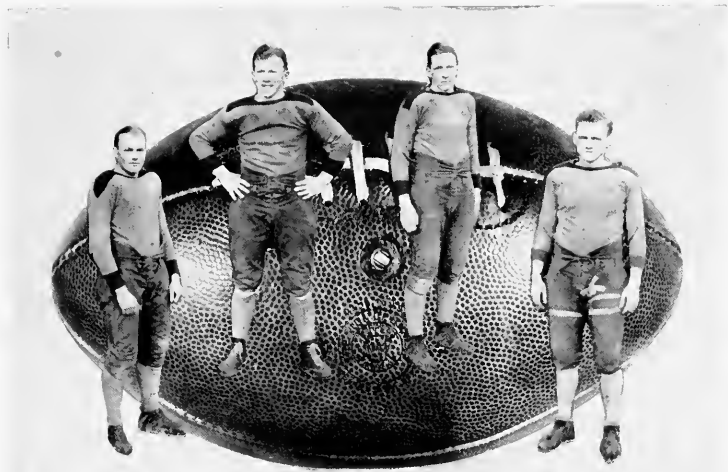
Here is a man to whom we owe much for his consistent work for Guilford and her athletics. Coach is very popular among the entire student body. He is firmly convinced of the truth in the old saying "the little things in life count," because he has produced commendable teams from the available material.

ROBERT GRIFFIN, *Manager*
Woodland, N. C.

One dollar gone, two dollars gone, three dollars gone, but not a frown from "Bobby." He knew whence they came and that for which they were going, and from where he could get replacements. Bob was always on hand with the needed article whether it was advice, liniment, or sympathy.



G.C.
The Quaker
1927



HENRY TEW
Goldshoro, N. C.

Tew has been a star on the Quaker squad for the past four seasons. At guard he was an indispensable cog in the machine. His dependability made him a valuable man to the squad. On the offense and defense he was also very proficient. "Hank" has played more quarters than any other man on the team. He will be missed next year.

HARDIN KIMREY
Guilford College, N. C.

"Monkey" is always in there playing the quarter back rôle, hard, fast, and furious. When a few feet are needed, we invariably call on him. In addition to his smashing the line, he passes well and is a neat drop-kicker. Remember the Elon game? This is his last year, and we regret it.

RAYMOND EBERT
Winston-Salem, N. C.

Ebert playing guard during his senior year was found to be a dependable lineman, and always fought with the Quaker spirit. "Lightning Red," a name he won on the grid field, was competent on both the offense and defense.

WALTER ROBERTSON
Mount Airy, N. C.

Guilford has little to fear when "Robbie" has the ball. At halfback he is a triple threat man, but most of all, we like to see him in one of his smashing off-tackle plays. Robertson is our captain next year and we have great confidence in his ability to lead the Quakers to greater success.



G.C.
The Quaker
1927



WADE LINDLEY

State Camp, N. C.

For the past three seasons "Parse" has been an outstanding player at tackle. He gets credit for our second touchdown at our annual Thanksgiving game with Elon by going through Elon's strong offense to break up Englebock's would-be 60-yard punt. Lindley has been a real mainstay on the team, always willing to make good when called upon.

CRANFORD HOYLE

Guthrie, N. C.

"Grott" has just ended his second successful year as guard on the Quaker eleven, for which he received a "G" and a star. Hoyle has plenty of drive and is a real scrapper, a regular demon for defense and hard work. The Quaker eleven would be incomplete without him.

KENNETH BEATTY

Mount Holly, N. C.

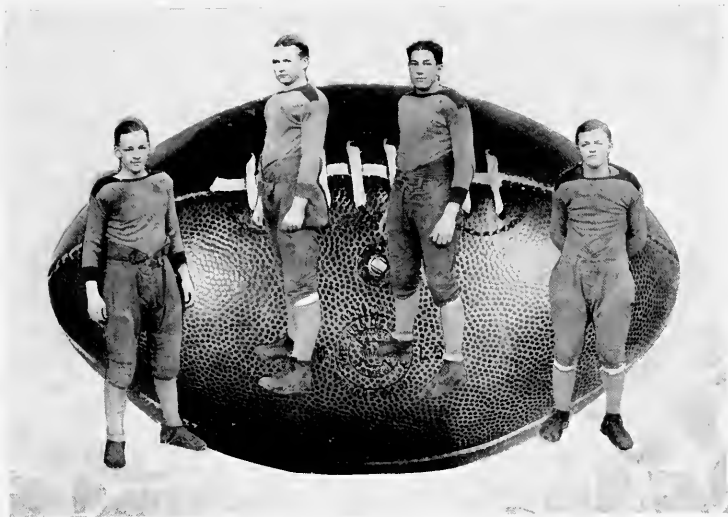
Beatty came to us this season bringing with him a splendid record from last year's State Freshman Wolf-Pack. At quarter he played eleven ball and showed himself to be a real field general and clever ball carrier.

RAY PARRISH

Trinity, N. C.

There goes a yell from the grand stand! Ray has snatched a long pass from the air. He is feared by all his opponents. They find it difficult to gain around his end of the line. "Rachel" is a fighter and always fights with grim determination to win. He delights in aerial work, a job at which he is peculiarly adept.





TURNER MOON

Detroit, Mich.

"Mullins" has much ability at diagnosing his opponents' plays and passes. He plays tackle, and has the never-die spirit. In addition to playing in the line, he was the Quaker's outstanding punter. On account of his remarkable football record he was given right tackle on the all-state team of the "Little Six."

REGINALD MARSHALL

Germantown, N. C.

"Reg" is not to be deceived; he is always alert and fights with his head up. Many times he broke through the opposing line stopping the runner in his tracks. As an end, Marshall should make a valuable man during the next two years.

HOWARD TRIVETTE

Winston-Salem, N. C.

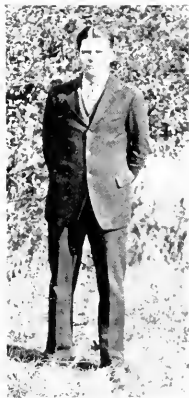
Trivette is a hard fighting, "irony" little lineman, playing both center and end. "Indian" is always ready to uncork something. He is usually seen to fight until the last whistle blows. His speciality is defense work, and he is a hard-hitting tackle.

BRYCE NEESE

Graham, N. C.

Neese is a first-year man. He comes from Graham High with much experience, and as full back shows his ability of becoming one of the Quaker's valuable backs. When it comes to plunging a line, he always makes the needed gain. He has the weight and speed needed to make the yardage required.





Manager Lindley

RESUME OF BASKETBALL

BASKETBALL at Guilford is a sport in which the Quakers have the record of holding their own. Many times in the last few years the larger colleges and universities of this state and others have been humiliated by defeats handed them by the much smaller institution.

In looking back over the very creditable basketball records of Guilford we find she has produced several championship teams and at one time held the championship of North Carolina, Ten-

nessee, and Virginia. In addition to this honor, many all-state men have been named from the Quaker teams.

During the season of 1926 we had on the basketball court a team composed of strong, aggressive men who always fought to the last minute. The season started off with a blue losing streak, which was due to lack of organization in the team. This losing streak did not continue long, however, for before the season ended our team had won over Duke University, 35-20, and Wake Forest, 22-21. Both games were played off the home court. Several other equally important victories were ours also. It was only after two extra periods that N. C. State, state champions, were able to defeat us by a two-point margin. The ability of our team to win was due to the fact that there existed in the team a spirit of co-operative team work which is bound to show itself in any kind of athletics.

This year our team shows the loss of its two forwards, namely, "Shirt" Smith and "Rick" Ferrell. Because of the loss of these men the team is losing more games than it is winning. We hope, however, that the team will find its last year's stride and turn in more victories before the season ends.



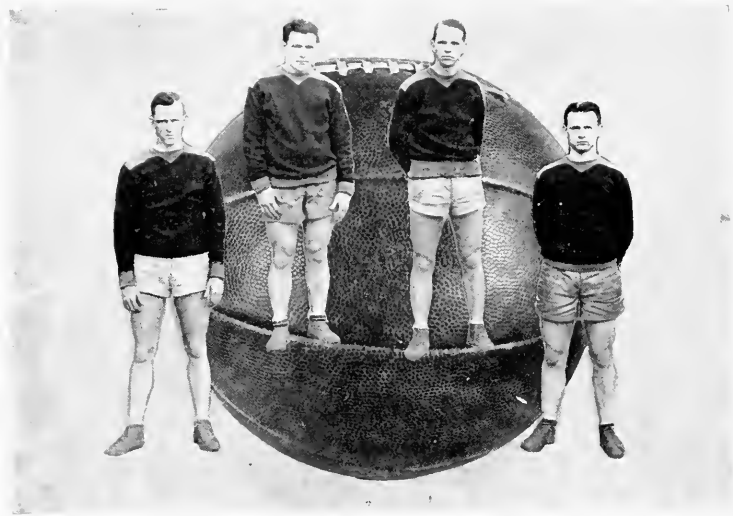


BASKETBALL SQUAD

Lindley, (Mar.) Marshall, Ayers, Van der Voort, Coach, Brook, Smith, Helt, Pamperin, Velverton, Griffin, Goble, Goffene, Abant, Tew, Parker, (Capt. Met.)



G.C.
The Quaker
1927



PAUL COLTRANE
Captain, Guard

Coltrane proved himself a very capable guard this year, as well as last year. His playing has won for him the admiration of teammates and spectators alike. As a mark of this esteem, he was elected captain for the past season. Paul always played to the limit of his ability.

ROBERT GRIFFIN
Forward

Basketball is life to Bob. He is quick on his feet and an all-round good player. His play at forward was one of the high lights of an otherwise dull season from the standpoint of thrills. He played his third season on the Guilford Quint at forward, and was an experienced teammate for the rest of the five.

FRANZ PAMPERIN
Forward

"Pamp" finished his first year on the varsity quint, making a place for himself at forward that was hard to beat. His lack of strength lay mainly in his inexperience against smooth team play of the opposition. He will make a whirlwind in another year despite his slender build.

REGINALD MARSHALL
Guard

Marshall has played basketball for Guilford for the past two seasons. His position at guard was one that required ability to handle. His breaking up of plays kept the opposing forwards busy.



G.C.
The Quaker
1927



HENRY TEW
Guard

Tew finished his basketball career at Guilford this season and will be missed in the future. Dependable, perseverant, quiet playing and gentlemanly is Hank. His guarding was good at all times.

GEORGE YELVERTON
Guard

Yelverton played his first year on the Quaker quint at guard. A scrappy player, quick to take advantage of breaks, which made him respected by all fellow players. His dribbling ability was a valuable asset in enabling him to make an entrance on the varsity.

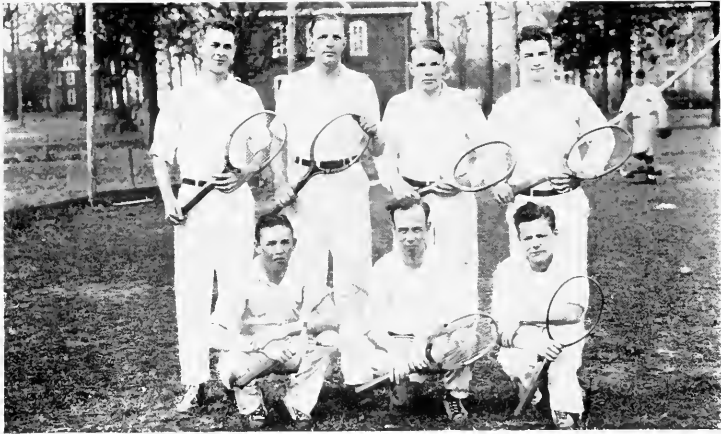
CHARLES COBLE
Forward

Coble and Coltrane made the job of shooting a hard proposition as they were uncanny guards. Coble's main ability lies in his breaking up of swift passing attacks and shooting from the middle of the floor.

STANLEY MOORE
Center

"Stan" is not large, but he has a knack of out-jumping his opponent at center. He could always be relied on to get the tip-off. His work was a feature of every game. He was never still, but he played all over the floor and shot from all angles.





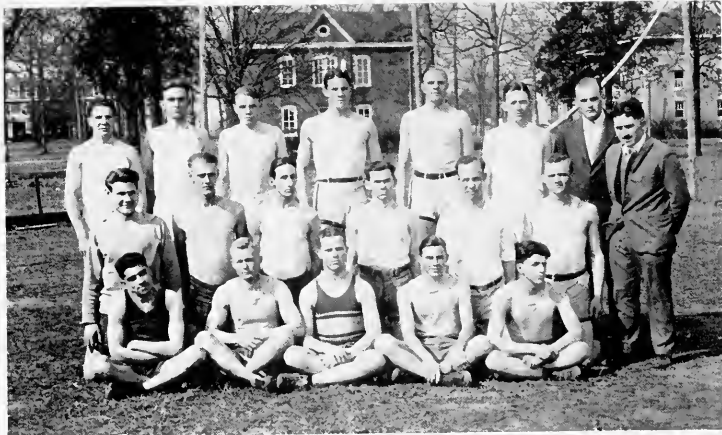
B. Haworth, C. Coble, S. Moore, R. Van der Voort, R. Bundy, C. Friddle, E. McNeil.

TENNIS

TENNIS ranks with baseball and basketball as a major sport. This clay court sport is very popular and claims the attention of many of the men during the tennis seasons. Not only is tennis of local interest, but several intercollegiate games are played each year. Last year the Quaker netmen met Wake Forest, Duke, Lenoir-Rhyne, Elon, and Atlantic Christian College. A very creditable record was made against these teams.

An elimination tournament was held in the fall of 1926 in which several men participated and showed their ability to wield a racket. From the prospects in view, Guilford should be able to put out a very formidable team this spring.





Richardson, Swanson, Moore, Hoyle, Coble, Ebert, Tew, Mgr., Francis, Steele, Westmoreland, Ward, Friddle, Robertson, Dr. Ott, Coach, Jassimedes, Pate, Boose, Spivey, Allen.

TRACK

TRACK at Guilford has received very little attention for the past few seasons on account of the small number of men and intense interest taken in other phases of college athletics. However, there has been enough interest taken to convince us that we have some fine material from which to build a winning cinder squad. Tew and Pate are the only old trackmen we have at present, and around these two men Coach Ott expects to build a creditable team. Manager Tew has been busy renewing the interest, and we hope that a number of men will go in action this spring. A number of intercollegiate meets have already been scheduled.



Hodgin, Pomperin, Benton, Needlin, Hinshaw, Gough, Moore, Short, Hughes, Coach Doak, Parrish, Murphy, Stuart, Cor, Marshall, Trivette (mgr.), Whisenant, Coltrane, Needlin, Layton, Hendrickson, Melvin, Neese, Edwards, Taylor, Lindley, Mackie, Rabb, Griffin, Hoyle (asst. mgr.)

BASEBALL SQUAD





Coach Doak



Captain Lindley

BASEBALL SCHEDULE
 1926-27

April 1.....	Wake Forest, at Wake Forest
April 2.....	A. C. C., at Wilson
April 4.....	Winston-Salem, at Winston-Salem
April 7.....	Wake Forest, at Guilford
April 9.....	Elon, at Elon
April 16.....	Emory & Henry, at Greensboro
April 18.....	Lenoir Rhyne, at Hickory
April 19.....	Catawba, at Salisbury
April 20.....	A. C. C., at Guilford College
April 22.....	Carolina, at Greensboro
April 26.....	Wofford, at Guilford College
May 2.....	High Point College, at High Point
May 4.....	Lenoir Rhyne, at Guilford College
May 7.....	Elon, at Elon
May 9.....	N. C. State
May 10.....	High Point College, at Guilford College
May 13.....	Hampden-Sidney, at Hampden-Sidney
May 14.....	Roanoke College, at Salem, Va.
May 16.....	Quantico Marines, at Quantico, Va.
May 17.....	Georgetown University, at Washington, D. C.
May 18.....	William and Mary College, at Williamsburg, Va.

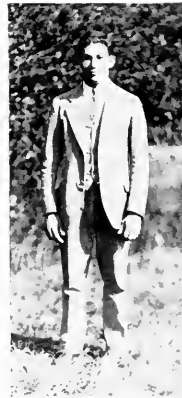


RESUME OF 1926 BASEBALL SEASON

AMONG the major sports at Guilford, baseball has no doubt been the most outstanding athletic activity of the College. A glimpse into the athletic history of the institution, which is dotted with several championship teams, brings to light a fair record for Guilford's baseball career. Tom Zachary, Ernest Shore, and others are worthy of mention as types of the most distinguishing pitchers the College has ever had.

The 1926 baseball team, although not a championship team, made a fair record in competing with teams of larger institutions. Although the absence of "Shirt" Smith from the team during a considerable part of the season deprived the team of one of its veteran pitchers and spirited players, Paul Coltrane ventured in and made a record as an ideal level-headed pitcher.

In 1925 Guilford defeated the State College in a 2-1 victory featured by "Shirt's" pitching ability. Last year Wake Forest lost to Guilford 2-0 in Greensboro. This loss kept the former team from getting the state champion-



Manager Trivette

ship. Last spring the Quakers won from the Quantico Marines 2-0, a team which was defeated by no other college team in this state. Davidson College was also defeated 11-2 in Winston-Salem. Because of his splendid pitching, Moore Rabb deserves much credit for the latter victory.

Despite the fact that four of the 1926 Quaker nine are not back, with the new material and the reserves of last year, the possibilities for the development of a winning team are very bright for this spring.



GIRLS' ATHLETIC CABINET

- | | |
|--------------------------------|-------------------|
| <i>President</i> | ANNA MAY NEWLIN |
| <i>Vice-President</i> | ANNA FINCH |
| <i>Secretary and Treasurer</i> | NANCY WHITE |
| Sarah Jimette | Hockey |
| Lena Marshburn | Basketball |
| Berta Hollady | Tennis |
| Julia Wolff | Baseball |
| Ethel Chadwick | Track |
| Annie Wagoner | Hiking |
| Espie Neece | Health |
| Marie Barnes | Social Chairman |
| Thelma King | Cheer Leader |
| Miss Dorothy Gilbert | Athletic Director |



Miss Gilbert

G.C.
The Quaker
1927



Varsity

Left to right: Lola Beeson, Anna Mae Newlin, Julia Wolff, Lena Marshburn, Louise Kendall, Leah Hammond, Ennice McPherson, Nell Thomas, Laura Ballinger, Maie Hollady, Sarah Jinnette.



Manager Jinnette

CAPTAINS OF CLASS TEAMS

Seniors: MAIE HOLLADY

Juniors: LAURA BALLINGER

Sophomores: NELL THOMAS

Freshmen: MARY ELLEN LASSITER

SUMMARY OF GAMES

Senior-Junior	2-0
Senior-Sophomore	0-2
Senior-Freshmen	1-1
Junior-Sophomore	0-4
Junior-Freshmen	0-1
Sophomore-Freshmen	3-1



RESUME OF HOCKEY SEASON

THREE years ago the game of hockey was introduced into the girls' Athletic Association of Guilford College. Since that time throughout the fall season, girls with shin-guards buckled on and with hockey sticks held firmly, have been driving balls into the goal cage with such a remarkable degree of success that it is now one of the most popular sports on the campus.

On account of the efficient direction of Miss Gilbert and Manager Jinnette, 1926 has been the outstanding season for hockey. Since each class was well represented, there was much competition, and great problems arose for the captains in choosing the teams. After the teams were chosen, the members worked diligently, each team going out for three practice periods a week, and learning from experience the technique and art of the real game. Then came the class tournaments in which each team had an unconquerable plan by which to win the championship. However, there could be only one champion team; so the Sophomores carried off this honor of holding supremacy on the hockey field, not having been defeated in a single game during the season. The Seniors and Freshmen tied for the runners-up of the tournament and the Juniors held a clear record of losing all games.

The spirit of the tournament, however, did not die with the final game, as the class contests were followed by an afternoon tea for the teams. Sarah Jinnette, manager, introduced the team captains as speakers for the evening. Maie Hollady, Senior, gave a ludicrous talk on "Sticks," Laura Ballinger, Junior, spoke on "Roll-in." Nellie Thomas, Sophomore, captain of the winning team, developed the appropriate subject of "Goal." Mary Ellen Lassiter, Freshman, mastered her subject of "Bully." The members of the varsity team were announced, and thus the season ended, each girl holding in her memory the events of the successful year.





Ailene Besson
Senior Captain

Louise Kendall
Junior Captain

Jessie McBane
Sophomore Captain

Annie Ray
Freshman Captain

BASKETBALL

THE basketball season was strikingly successful this year due to the unusual amount of enthusiasm exhibited, and 100 out of 130 girls participating in this sport.

There was a series of twelve games played to decide which class would win the championship. Much competition was shown, but the Sophomores were the victors, winning all the games with the exception of the last one with the Seniors.

After much debating over the candidates for the Varsity Team, the following were selected:

Lena Marshburn, Ailene Besson, Jessie McBane, Azile Hollowell, Eunice McPherson, Ruth Horney.



J. Wolff, L. Mashburn, L. Beeson, A. Newlin, A. Finch, A. Beeson, (Capt.)

SENIOR BASKETBALL TEAM



E. Neese, L. Kendall, (Capt.) S. Jimette, A. Fretell, M. Richardson, R. Horney.

JUNIOR BASKETBALL TEAM





*H. Zachary, E. McPherson, A. Hollowell, J. McBane, (Capt.) N. Thomas,
F. Osborne.*

SOPHOMORE BASKETBALL TEAM



S. Best, G. Blow, M. Lassiter, A. Ray (Capt.) E. Braswell, P. McBane.

FRESHMAN BASKETBALL TEAM





Hollady, Myr., E. Reece, L. Marshburn, L. Ballinger.

TENNIS VARSITY

LENA Marshburn has the honor of being champion on the tennis court for four years. By her skill and gracefulness she has won much admiration.

Laura Ballinger, the runner-up in the fall tournament, possesses a wicked serve; and when receiving, she goes after 'em with a vim.

Esther Reece, the Sophomore class champion, is wise in the choice of placing and swift in driving her balls—just where you are not expecting them.

Ruth Earlow, Freshman champion, must have a special talent for playing tennis, for if she can't hit the ball with one hand, she uses both.





Lena Marshburn, Senior Captain; Ruth Horney, Junior Captain; Leah Hammond, Sophomore Captain; Margaret Outland, Freshman Captain.

BASEBALL

WHEN the balmy breezes of spring issue forth their calls to the open, a large percentage of the girls respond to the call and soon hasten out to the baseball diamond, ready for a real practice.

Later in the spring the class teams are chosen and the final games are played with a great deal of enthusiasm. It is during the class games that such expressions as these are ringing in your ears: "Batter up," "Knock a homer," "I'm bettin' on you," "We've got to win," "You're out," "Whice," "We won!"





A. Beeson, J. Wolff, L. Ballinger, E. Chadwick, L. Marshburn.

TRACK

TRACK can hardly be classed as a major sport, but there is a great deal of interest and enthusiasm shown in it by the girls. This is probably due to the variety of activities included in the track and field events.

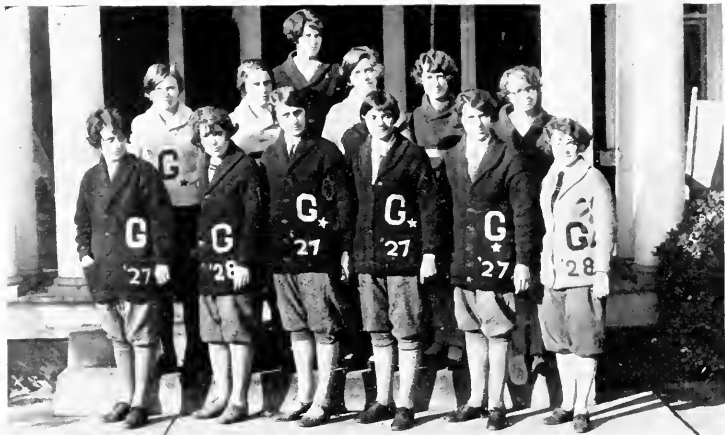
The main activities in track are: baseball, basketball, javelin, and discus throws, the fifty- and one hundred-yard dash, and the high and low hurdles. As a usual thing those who cannot run in the dashes and hurdles have the ability to take part in the various types of throws.

At the close of the season a field day or track meet is held, and representatives from the four classes compete in these events for honors.

The honors are points which are given for first, second, and third place in each event. The person winning the most points in the track meet is given extra points.

Since the spirit of athletics is so splendid this year, a great track season is contemplated.





MONOGRAM GIRLS

Marshburn, Kendall, M. Richardson, E. Richardson, Braxton, B. Holliday, M. Holliday, Hassell, L. Benson,
Newby, A. Benson, Jimmetts



CHEER LEADERS

R. Bandy, T. King, W. Steele



G.C.
The Quaker
1927



JOKES & ADS





TWO CAROLINLANS!

GUILFORD COLLEGE
AND
THE PILOT LIFE INSURANCE COMPANY
OF GREENSBORO, N. C.

Both Institutions Are Filling a Very Definite Need

**SOUTHERN REAL
ESTATE COMPANY**

Real Estate, Loans and Insurance



W. E. BLAIR, Treasurer and Manager
T. D. SHARPE, Assistant Secretary
S. FULLER, Assistant Treasurer
H. P. HARDIN, Sales Manager
MISS RUBY PREDDY, Loan Clerk



GREENSBORO, N. C.

TRIBUTE TO GUILFORD

To thee, dear Guilford, let me sing,
My heart is ever full of praise;
I would that I might honor bring
To thy name, as oft on thee I gaze.

As the oaks still stand upon thy
ground,

Still in my heart thy mem'ry stays;
And on and on, as homeward bound,
My voice in song for thee I'll raise.

—J. P. R.



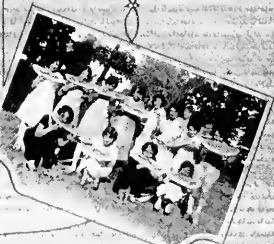
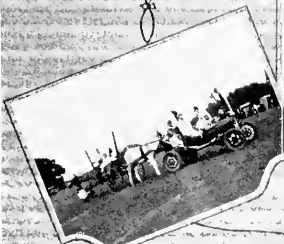
G.C.
The Quaker
 1927



The Philagoreans



The College Foundation





G.C.
The Quaker
 1927



STYLES THAT APPEAL TO
 THE COLLEGE MEN!

HERE in the Carolina's greatest clothes shop are featured just such styles as will appeal to all ages of men, whether in the classes at college or in the business world.

Thirty-seven years of service to the men of old Guilford has made *Vanstory* clothes their favorite.

Vanstory
CLOTHING COMPANY
 C. H. McKnight, Pres. & Mgr.

JOS. J. STONE & CO.

*Printers, Engravers,
 Binders*



Office Equipment and Supplies

GREENSBORO, N. C.

AN ODE TO LADY CHARLES

I am dreaming of you, Lady,
 Of the times we used to have,
 When I'd climb upon your back
 And you'd serve me like a slave.

I would tell you all my secrets,
 For I knew you'd never tell,
 You would listen very closely,
 And seemed to understand so well.

But I must turn from dreaming,
 For there's something at my knee
 It's Livey's blamed old pony,
 And he pleads to talk to me.

He's a brilliant little fellow;
 Yet he's very impolite.
 He contradicts my every word,
 But I know that he is right.

But never mind, dear Lady Charles,
 For even though in college,
 I'll never trade my love for you,
 For all this tiresome knowledge.

—M. R. C.



G.C.
The Quaker
1927



SPECIAL PRICES TO STUDENTS

Florsheim Shoes

Schloss Bros. Clothes

Complete Line of Furnishings

See Ours Before Buying

ISAACSON'S

308 S. Elm St.

Opposite National Theatre

'Phone 566

AMERICAN COMMISSION COMPANY

WHOLESALE GROCERIES AND PROVISIONS

Phone 653 and 976

305-307 South Davie Street

P. O. Box 697

A few of our specialties: Pillsbury flour, Quaker City flour, Ready-to-bake flour, Herches' pickles and condiments, Dally's jams, Van Camp's canned goods and catsups.

A PREACHER DURING A REVIVAL

A preacher during a revival at a church in Indiana once asked his audience, "All who wish to go to Heaven please stand." Everyone stood except a visiting North Carolinian. He then asked, "All who wish to go to hell please stand." No one stood. Looking directly at the visitor he said, "Well, friend, since you do not wish to go to Heaven or to hell, would you please be so kind as to tell us where you want to go?" In a broken voice the reply came—"Back to North Carolina." (Told by Uncle Joe Cannon in his address at the laying of the corner stone of New Garden Hall.)

"Everything that hits is history; everything that is missed is mystery."

—Told in class by D. Riley.

HERE is a specialized service for college girls and boys, providing smart, attractive apparel and accessories at moderate prices.

Meyer's

GREENSBORO, N. C.



SOUTHERN COACH COMPANY

Hourly Service

GREENSBORO-CHARLOTTE



Modern Equipment



Busses Chartered for Athletic Teams and Glee Club Trips

"The combined ages of Mary and Anne are 44 years. Mary is twice as old as Anne was when Mary was half as old as Anne will be when Anne was three times as old as Mary was when Mary was half as old as Anne. How old is Anne?"

MATHEMATICS

A dusty son of Alabama was busily engaged in a cootie hunt. When asked by a sergeant what he was doing, he replied,

"Ese huntin' fo' den 'rithmetic bugs."

"Why do you call them 'rithmetic bugs?"

"'Cause dey adds to ma misery, dey subtracts from my pleasure, dey divides ma attention and dey multiplies like hell!"

Almanac.

THE FEAST

I know of a city in Asianna,
Near the beautiful Mediterranean
Whose name is Alexandretta
After the Great Alexandrian.

Here the King of Atgharistan,
Gave a banquet to the King of Balchistan;
Enjoyment they had of the best.
The peace, the joy, the contentment, and the rest.

- P. C. J.

TO HOLD THE BUTTER

Willie: "Pa sent me for a piece of rope like this."

Hardware Dealer: "How much does he want?"

Willie: "Just enough to reach from the goat to the fence."



W. I. Anderson & Co.

*The place to get your bananas,
fruits, and all kinds of
produce.*



PHONE 1912 AND 1914
GREENSBORO, N. C.

KENDALL

The Printer

*The best printing—
the best service*

Official printer for the Guilford
College Glee Club and other organ-
izations for four years.

216 NORTH ELM STREET
GREENSBORO, N. C.

THE QUAKER PHOTOGRAPHER 1926-1927

trusts that the pictures in your attractive annual will serve to remind
you of many happy and profitable days spent at Guilford College.

DUPLICATE PRINTS

of all pictures may be ordered from our New Bern Studio.



WOOTTEN-MOULTON

NEW BERN, N. C.



LUMBER WOODWORK



OETTINGER LUMBER CO.
Greensboro, N. C.

The McClamroch Co.

ESTABLISHED 1894

*Interior Marble, Tile, Terrazzo,
Composition, Mantels and Fire-
place Furnishings*



PHONE 161
GREENSBORO, N. C.

THE WIFE

A man once had a hard-boiled wife,
A tragic thing to have in life—
What horror!

His daily vigil without, within,
Was dodging the cruel rolling pin
What horror!

He washed the silver and the plates
As one who had been cursed by fate -
What horror!

He swept the house and beat the rugs,
And buried his sorrow in little brown rugs
What horror!

D. W. L.



RAINBOW CAFE



Eating Headquarters for Guilford
Men Day and Night



*Opposite Jefferson Standard
on Market Street*

EVERYTHING it takes to furnish the home on easy terms, or liberal discounts for cash—

at

*Johnson-Forbis-
Simmons Co.*

OPPOSITE CITY HALL

Phone 224 Greensboro, N. C.

The only time a horse gets scared now-a-days is when he meets another horse.—*North Jersey Motorist.*

The honeymoon is over when she wants a heater in the coupe to keep her warm.—*Penn. State Froth.*

Lady (to taxi driver): "How much will you charge to take me to the cemetery?"

Taxi Driver: "One way?"—*Carolina Motorist.*

"I haven't a thing to wear," has been the cry of the women all thru the ages, but the modern women are the first to wear it.—*Judge.*

*Fire Place Fixtures, Mantels,
Tile and Grates, Finish-
ing Hardware*



**SOUTHSIDE
HARDWARE CO.**

Greensboro, N. C.



YOU will find a complete line of radios, hardware and sporting goods at this store.

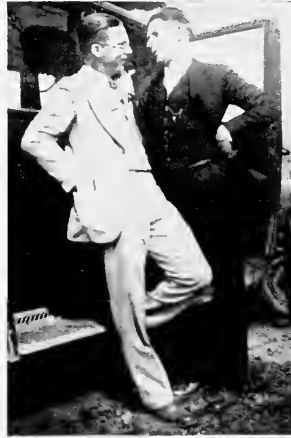


Buy At—

ODELL'S

—Where Quality Tells

GREENSBORO, N. C.



CAROLINA
 WAREHOUSE

Manufacturer's Agents and Distributors of
 Fertilizers, Farm Implements and General
 Merchandise.

Recommended by the officials of the Farmers'
 Union of North Carolina.

S. E. COLTRANE, Pres.
 R. W. H. STONE, Vice-Pres.
 A. J. JONES, Sec. and Treas.
 V. M. KIRKMAN, General Manager

GREENSBORO, N. C.

ELK'S CAFE

STUDENT HEADQUARTERS

Good Home Cooking

VERY REASONABLE PRICES

Club Breakfast	35c
Special Dinner	50c
Light Lunch	35c
Sunday Chicken Dinner	75c



Demetrelis Bros., Prop.



College Organizations

*Our facilities are
always at your
disposal.*

Schiffman Jewelry Co.

SYKES FLORISTS

INCORPORATED

Say it with flowers

QUAKER QUALITY IN FLOWERS

SUCCESSORS TO VAN LINDLEY

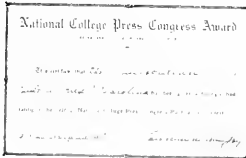


Greensboro

Winston-Salem

High Point

Won by the Guilfordian



1926-27

WHITE REALTY CO.



*A Quaker Firm
and a Guilford Firm*



American Exchange Building

PHONE 1022

GREENSBORO, N. C.



G.C.
The Quaker
1927



POMONA TERRA COTTA CO.
POMONA, N. C.

Manufacturers of

CLAY PRODUCTS, VITRIFIED TERRA COTTA SEWER
PIPE, CONDUITS, FLUE LINING, ETC.



Annual Capacity 3000 Carloads (1927)

TO "MEM" HALL

Your walls have stood for ninety years,
And yet they're strong and sound,
'Most every act that is performed,
'Tis you it's centered 'round.

To you we go to matriculate
At the beginning of each year,
To you we go when work is done,
And commencement time is here.

You reveal to us great secrets
In science, lab and lecture, too,
'Tis they that help us every day,
To look at life anew.

The museum is another thing
Intrusted to your care;
Full many of its specimens
Cannot be found elsewhere.

We climb your stairways every day,
And take our chapel seats
To listen with the greatest care,
When an interesting visitor speaks.

We love to drift to music-land
And list enchanted there
To strains that come from each small room,
And float upon the air.

There's yet another vital place
We visit without fail,
For every morn and every eve,
We come to you for mail.

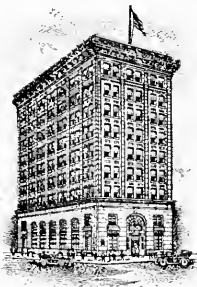
A very unique place 'tis true,
But really after all,
You're only what we call you,
You're just our own "Mem" Hall.

- M. M. K.



G.C.
The Quaker
1927

THE COMMERCIAL NATIONAL BANK
of HIGH POINT, N. C.



Co-operation With Your Business Progress

MANY business firms have found the service of this bank a helpful factor in their successful progress.

We are glad to welcome others who need banking accommodations of a practical, constructive nature.

The size of the account at the beginning is less important to us than the integrity of the men behind it.

Call and talk with us. Tell us your banking needs and let us explain how we can serve you.

Officers

J. ELWOOD COX, President; C. M. HAUSER, Vice-Pres.; V. A. J. IDOL, V-Pres. & Trust Officer;
C. H. MARRINER, Cashier; E. B. STEED, Asst. Cashier; W. T. SAUNDERS, Asst. Cashier;
J. W. HIATT, Asst. Cashier.

CAPITAL <i>and</i> SURPLUS	\$ 2,000,000.00
TOTAL RESOURCES	\$12,000,000.00



G.C.
The Quaker
1927

A. S. PARKER
1st Vice-Pres. and Treas.

R. F. DALTON
President

W. E. SNOW
2nd Vice-Pres. and Supt.

SNOW LUMBER COMPANY

Lumber, Sash, Doors, Blinds, Etc.

HIGH POINT, N. C.

H. M. ARMENTROUT
Secretary

CARTER DALTON
Vice-Pres. and Gen'l Counsel

PESSIMIST OR OPTIMIST

Say, old fellow, I'd like to ask
What you think the Fates have decreed
for your task?
From all appearances, it looks to me
That you think you should frown on all
you see.
Why do you think God gave you a
smile?
No use to save it for "after a while."
They don't keep long, I've oft been told.
Don't spoil with the using
Nor crack in the cold.
So come, throw aside that mask on your
face
And allow your smile
Its own true place.

—E. R.

Farlow Insurance & Realty Co.

High Point, N. C.

CO-OPERATING WITH
THE UNITED AUCTION COMPANY

DEVELOPERS OF	DEPARTMENTS
Beverly Hills	Auction
Trinity Park	Insurance
Spring Valley	Loans
Lake Triangle Park	Real Estate
United Acres	Building
Pamlico Shores	

"Carolina's Most Progressively Aggressive
Land-Selling Organization."





G.C.
The Quaker
1927



J. W. Sechrest

R. H. Sechrest

ESTABLISHED 1897

J. W. SECHREST & SON

FUNERAL DIRECTORS
AND EMBALMERS

Ambulance Service



HIGH POINT, NORTH CAROLINA

TELEPHONE 349



*Catalogs—Booklets—Cards—Stationery and
Engraving*

No matter what your printing requirements, our big modern plant is able to suit your needs at prices that are no higher than you have paid for inferior service.

BARBER-HALL PRINTING CO.

High Point, N. C.



Printing
That's our business

Father—(Looking over Johnny's not-so-good report card): "My son, when George Washington was your age he was at the head of his class."

Son—"Yes, Dad, and when he was your age he was President of the United States."

WHY TEACHERS GO MAD

Last night as I was sitting at my desk,
Just a thinking and a thinking,
My mind was not functioning at its best,
While my eyes were winking and blinking.

I was trying to write an English poem,
Just a little rhyme or verse;
But the best that I could hope to do,
Seemed no better than the worst.

And as I sat there thinking,
And wondering what to write,
I couldn't seem to get an inkling,
Of what was wrong or right.

And now at last the start is made,
But everybody calls it bunk;
And I wish that I had stayed,
Where I couldn't feel so punk.

But now at last the end's in sight,
But it isn't corn or rye;
For this'll bring me strength and might,
Yet haunt me till I die.

—A. S. P



The Young Men's Store

INCORPORATED
ROBERT L. HARRIS, Manager

Clothiers - Hatters - Haberdashers



125 S. MAIN ST.
HIGH POINT, N. C.



ETHEL CHADWICK, Track Manager

SPORTING GOODS

BASEBALL

TENNIS

GOLF

We have in stock the largest stock of ball goods ever carried in High Point. Let us equip your team with D. & M. supplies.



SPECIAL PRICES TO CLUBS



BEESON HARDWARE COMPANY
HIGH POINT, NORTH CAROLINA





JULIA WOLFF, Baseball Manager

*J. Elwood Cox Mfg.
Company*

ESTABLISHED 1868

Manufacturers of
HARDWOOD DIMENSION STOCK
DOGWOOD, PERSIMMON,
HICKORY



J. ELWOOD COX, President
JOSEPH D. COX, Sec. & Treas.

HIGH POINT, N. C.

The
ARCADE CAFETERIA

A GOOD PLACE TO EAT

*Guilford Students, make this your
meeting place when in Greensboro
during meal time.*



PATTERSON'S
GROCERY CO.

Greensboro, N. C.

TO A G. C. GIRL

Thy face is so rosy and round,
It never carries a sad frown.
Thine eyes put me in a good mood,
For my own eyes they are fine food.
Yes, they nourish my eyes, too,
They are such a beautiful blue.
Oh, how I would like to look at them
And would that mine were their pattern!

Something there is I highly prize,
Its value another cannot realize.
With money it cannot be bought,
From your sex only it is sought.
Did you ever just stop and think
What power there is in one wink?
If I be sad and tired, too,
What cheers me most is a smile from you.
—R. G. W. "Red."



G.C.
The Quaker
1927



R. K. STEWART & SON

Contractors

Member Associated General Contractors of America, Inc.



Commercial National Bank Building, High Point, N. C.

PHONE 2659



G.C.
The Quaker
1927

In High Point it's

RANDALL'S

When in High Point we want you to make this store your headquarters. Here you will find everything that a first-class drug store offers—plus SERVICE.

"It's the Meeting Place in High Point"



RANDALL'S PHARMACY

"Never Waste a Good Thirst on a Poor Drink"



Southern Mortgage Loan & Land Co.

LOANS AND REAL ESTATE

INQUIRIES SOLICITED



HIGH POINT OFFICE
Wachovia Bldg.

GREENSBORO OFFICE
Jefferson Bldg.



GUILFORD COLLEGE

(ESTABLISHED 1837)

On the Friendly Road in Guilford County, North Carolina



A COLLEGE of LIBERAL ARTS



CO-EDUCATIONAL

ACCREDITED—Membership in the Southern Association.

A RECORD of Ninety Years of Uninterrupted Service.

The College buildings, ten in number, are situated in the midst of a tract of three hundred acres. The campus is located in the rolling oak and hickory woodland of the Piedmont region noted for its mild and healthful climate.



ADDRESS ALL INQUIRIES TO

RAYMOND BINFORD, President

Guilford College, on the Friendly Road,

In Guilford County, North Carolina



H. C. BARTHMAIER CO.

Interiors

FURNITURE

CARPETS

DRAPERIES

120½ S. MAIN ST., HIGH POINT, N. C.

Sketches Prepared

Estimates Submitted

DUMBNESS OF THE PRESENT GENERATION

A superintendent once went to a country school to inspect the progress that had been made. In a casual manner he remarked to the teacher that the children of the present generation were dumb compared to those when he was growing up. The teacher failed to grasp his meaning.

To make his point more clear he called on a little boy to give a number. The kid hollered out "67," and the superintendent wrote "76" on the board. No comment was made. Turning to the teacher, he said, "You see, they do not know what I have done. Let me try another." He then called on a second boy. This time the number was "92," and "29" was written on the board. Still there was no comment. While further attempting to explain his point, the superintendent spied a freckle faced, red-headed, fidgety little boy in a corner of the room. The boy was Tim O'Brien, who talked on the end of his tongue. In an abrupt manner the superintendent said, "Well, Tim, son, you give me a number." The reply came, "Theventy theven, you darn fool, thee if you can thurn that around."—*Country Gentleman.*



ROGUES' GALLERY

LAWFUL NAME	ALIAS	OCCUPATION	EXCLAMATION	AMBITION
Jassmedes, Paul	Worth	Moving	"I got so tickled I thought I'd die"	To become a bathing beauty
Reah, Josephine	Beah	Chewing gum	"Shot another line"	To be an old maid
Reesem, Lola	Lolie	Getting news	"I want to ask you a question"	To become a lawyer
Braxton, Evelyn	Evelyn	Being childish	"Thank you, honey"	To grow up
Chadwick, Ethel	Chad	Baby talking	"Be courageous"	To catch up an internal growth
Chappell, Mabel	Mabel	Stacking rooms	"I'll declare"	To get Ph. D. in Math.
Cox, Catherine	Cat	Attending to own business	"Don't let the dog bite me"	To become a star songstress
Cox, Joseph	Joe	Running the college	"Oh, yes, yes, I know"	To become president of a bank
Doubt, Theodor	Ivory	Thinking	"So's your old man"	To become a historian
Edgerton, Sarah	Energy	Moving slowly	"Has the bell rung?"	To get there on time
Friddle, Charles	Charlie	Playing checkers	"I've started to Madams"	To teach the youth of the State
Hadley, Thomas	Tom	Anything	"There will be a movie this Saturday night"	To secure model social affairs
Hire, Eugene	Napoleon	Studying	"I must get this lesson"	To be highly educated
Hoyle, Grantford	Grudde	Criticizing	"Love me, honey?"	To become a preacher
Ireland, Dan	Dan	Dancing	"How, how?"	To run a robbing academy
Jassmedes, Paul	Jazz	Colloquial	"Any more shoes?"	To smoke cigarettes
Landley, Wade	Parse	Singing	"I'll swan"	To become a revivalist

Malpass, Ruth	Petite	Using her head	"Probably"	To be serious.
McBane, Pauline	Poll	Taking life easy	"I don't know a thing"	To play always.
Neese, Espie	Epp	Collecting dimes	"I don't care, it made me mad"	To become a social service worker.
Krawlin, Annie Mae	Annie Mae	Private delating	"I thought so at first"	To become a great athlete
Newlin, Ira	Ira	Sleeping with a book	"Is that so?"	To be a sheik.
Parker, Scott	Siki	Warning radiators	"Interesting it true"	To write a new U. S. constitution.
Perrish, Kay	Rachel	Aggravating	"La, la, sweet"	To run an old maid's home
Proctor, Rose Mae	Rose	Re-search work	"So am I"	To look for the new moon.
Paul, Josephine	Chicader	Asking questions	"Oh, what did he say?"	To become a millionaire's wife
Rabb, Mae	Killey	Shelking	"Yes?"— <i>It</i>	To become a Walker Johnson.
Reynolds, Paul	Rack	Playing piano	"Well, did you ever?"	To become a living piano.
Simpson, Ruth	Grandma	Gossiping	"Get to your room"	To throw rolling pins at a husband.
Shopp, Mabel	Pha	Making noise	"Oh, I just couldn't help it"	To have a good time.
Steele, Wilmer	Sherrif	Arguing	"Well now"	To become a Federal judge.
Swanson, Paul	Gloria	Delating	"Just a blow out"	To become a U. S. senator.
Tenny, Carrie	Jun	Reading amusement	"You hush"	To get to heaven.
Wharton, Richard	Rod	Writing poetry	"I don't have my ring"	To become a second Keats.
White, Nancy	Pants	Home Ec hell cop	"How did I escape this time?"	To be an old maid.
White, Louise	Liza	Talking	"I guess so"	To become an English professor.
Williams, Waddo	Podo	Making chemical compounds	"La! la! ha! ha!"	To learn to laugh louder than anyone else.
Wilson, Franklin	Jack	Sleeping	"Kill the rising hell!"	To sleep until noon every day.
Winslow, Sidney	Sid	Carrying soap	"Never fear"	To become a renowned philosopher.

The Year 1926

SEPTEMBER

10. A large number of Freshmen enroll.
14. Sophomores, Juniors and Seniors register, finding eight new faculty members on the campus.
15. School work begins!
18. New students formally welcomed at opening Reception given by the Y. W. C. A. and Y. M. C. A.
23. The Y. W. holds an impressive candle service.
25. Defeated by Duke in the first football game of the season.
28. Miss Beatrice Byrd gives a voice recital.
30. Riley Scott, the wandering poet of Kentucky, gives us some of his poetry, in chapel.

OCTOBER

1. Dr. Binford shows interest in football by giving advice to trainers.
2. Miss Bertha Yeom interests students in piano with a recital.
3. Lewis McFarland opens a six weeks' revival.
6. Lewis McFarland tells how Guilford was founded on prayer and faith by Nathan Hunt and his friends.
9. Re-exams!
9. Mrs. Charles Doak entertains with various musical numbers and readings.
13. Students eager to back football team. Coach Doak explains "brains of football" in chapel.
16. Hike to the memorial Guilford Battle-ground. Features Lecture by Dr. Perisho: hot dogs and coffee.
20. Lyceum program opens with the *Russian Cossack Chorus*.
23. Rah! Rah! Catawba football team defeated 32-0. Student body enthusiastic over the snake dance between halves.
30. Witches, cats, and spooks reigned at the old school-house during an exciting Hallowe'en party.

NOVEMBER

1. Organized gospel teams go out on their first trips.
3. Annual staff elected and real work begins.
11. G. C. has the honor of playing in the first game in Greensboro's Memorial Stadium. Only cloud. High Point wins 7-3. At any rate, we made the first score in the Stadium!
12. Zatsians entertain the Websterians with a characteristic "Carolina" program.
13. Frederic Sainty, from Zotenham Monthly Meeting held in London, England, with us for a few days.
15. Hockey Tournament ends with the Sophomores as victors.
15. Seniors are guests at reception of Mr. and Mrs. R. L. Hollowell, in Greensboro.
16. Frederic Sainty discusses "Strikes in England"
20. Several colleges meet at Guilford and organize a Forensic League.
24. All ready to beat Elon!
25. Beat Elon, 14-0! Big Thanksgiving dinner, and then a bonfire on Hobbs' field.

DECEMBER

2. The important day of the year! Guilford is admitted into the Association of Colleges and Secondary Schools of the Southern States. We want to thank *everybody* who has aided us in this achievement!



G. C.
The Quaker
1927

3. Professor and Mrs. Trueblood, of Earlham, visit us.
3. The Philomatheans entertain the Henry Clays with a "Quaker" program.
4. Lorena Booker wins the Zatasian Oratorical Contest with "Shall we abandon the 18th Amendment?"
6. *Mme.* Ponalidine tells of her life in Soviet Russia, and her thrilling escape from that country.
10. Senior boys win the volley-ball meet, coming out undefeated.
11. The fall play, "The Seven Keys to Baldpate," given under auspices of the Y. W. C. A.
18. The students are guests of the Faculty at the annual Christmas Banquet.
20. Seven stars, and seven letters, awarded to the football men.
21. Everyone leaving for a wonderful Christmas at home!

1927

JANUARY

3. P. Evans Coleman, head of our department of Business Administration, marries Miss Clara McCracken. Handkerchiefs are passed around!
4. Work is joyfully (?) resumed.
8. "The Vanishing American" is entertaining as well as educational to the students.
8. Passmore Elkington, of Pa., visits us. He discusses "United Quakerdom."
20. Susan Keener entertains us with a wonderful voice recital.
- 22-29. Mid-term exams! Be sure your sins will find you out!
31. Majority of the students enroll for another term of it. We have some newcomers.

FEBRUARY

4. Basket ball seems hopeful when we beat Proximity "Y" 47-32.
6. The first session of the six weeks "Mission Study Classes" is held. Elbert Russell, of Duke University, speaks on "Mohammedism."
9. Dr. Barnes, of Smith College, gives an interesting lecture on "World Peace."
- 10-25. Basket ball is the chief topic of conversation.

MARCH

5. Websterian Oratorical Contest.
12. Re-exams!

APRIL

9. Philomathean Oratorical Contest.
14. Classes end at 11:30 for us to leave for the Easter vacation.
20. Return from Easter vacation with more pep but less interest in work. (Is it really possible?)

MAY

21. Henry Clay Oratorical Contest.
30. We again face our Waterloo—final exams, begin.

JUNE

4. Final exams, end. (The students feel the same way!)
5. Baccalaureate Service. Sermon by Elbert Russell.
5. Farewell sermon before the Christian Associations.
6. Annual meeting of the Alumni.
6. Class Day Exercises.
7. Conferring of degrees and the Commencement address. Many tears! And some wedding bells!



Register of Students

SENIOR CLASS

Beeson, Lela Gertrude	Route No. 1, Randleman	X	C
Beeson, Margaret Allen	Route No. 1, Randleman	X	C
Doak, William Theodore	Route No. 2, Winston-Salem	X	C
Ebert, Raymond Eugene	Route No. 6, Winston-Salem	X	C
Finch, Anna Josephine	Guilford College	X	C
Froelich, Charles R.	Stokesdale	X	C
Hollady, Rhoda Mae	Greensboro	X	C
Jackson, Arden Cox	411 W. Lee St., Greensboro	X	C
Kimrey, Chandos Layell	Guilford College	X	C
Kimrey, Harlin Shelby	Guilford College	X	C
Malpass, Ruth	205 S. William St., Goldsboro	X	C
Marshburn, Lona Mae	Guilford College	X	C
Newlin, Anna May	Saxapahaw	X	C
Robertson, Mary Allen	Guilford College	X	C
Simpson, Ruth Virginia	712 S. Mendenhall St., Greensboro	X	C
Tew, Henry Eanson	Route No. 5, Goldsboro	X	C
Thomas, Raymond Gray	King	X	C
Tutmer, Mary Frances	Guilford College	X	C
White, Allison Almon	Oak St., Glenwood, Greensboro	X	C
White, Louise	Chimax	X	C
Wynshaw, Sydney Arthur	Behndere	X	C
Wolfr, Julia Elizabeth	Route No. 7, Greensboro	X	C

JUNIOR CLASS

Atkinson, Lois Myrtle	Guilford College	X	C
Balinger, Laura Ida	417 N. Spring St., Greensboro	X	C
Roose, Glenn Oscar	Route No. 2, Winston-Salem	X	C
Braxton, Evelyn	Snow Camp	X	C
Chadwick, Ethel Jewell	Jamstown	X	C
Cox, Joseph John	High Point	X	C
Cox, Suthie Daughton	Route No. 2, Princeton	X	C
Luttrell, Alaha Taylor	Woodland	X	C
Hall, Ruby Rivers	Roseboro	X	C
Hassell, Alma Edith	Jamstown	X	C
Haworth, Byron Allen	West Davis St., Burlington	X	C
Holgan, Annie Smith	Route No. 1, Guilford College	X	C
Holgan, Mary Etterna	Guilford College	X	C
Lane, Ruth Elizabeth	Tyner	X	C
Niece, Espie Norah	Chimax	X	C
Newlin, Tea Gerline	Saxapahaw	X	C
Newlin, Orin Charles	Route No. 1, Saxapahaw	X	C
Reynolds, Josina Paul	Route No. 1, Randleman	X	C
Richardson, Ethel	Route No. 1, Benana	X	C
Richardson, Lillie Myrtle	Route No. 1, Benana	X	C
Robertson, Walter Lee	172 Grant St., Mt. Airy	X	C
Swanson, Paul R.	Wilksboro	X	C
Wagoner, Anne Elizabeth	Gilboville	X	C
Wilkins, Sallie V.	Route No. 1, Rose Hill	X	C
Williams, William Walter	East Bend	X	C

SOPHOMORE CLASS

Ayers, Robert Dick	Summerfield	X	C
Barnes, Mary Antoinette	Roswell	X	C
Beacham, Lois Ruth	Star	X	C
Beamon, Joseph Everett	Route No. 6, Elizabeth City	X	C
Benton, Mills Scott	Sunbury	X	C
Citamm, Pauline	Colabain	X	C
Chandler, Paul Thomas	Broadway	X	C
Chappell, Mabel Leona	Tyner	X	C
Coker, Charles Samson	Guilford College	X	C
Collins, Gertie Lee	Route No. 1, Goldsboro	X	C
Coltrane, Pam Gertrude	Guilford College	X	C

G. C. The Quaker 1927

Coletrane, Raymond Field.....	Guilford College, N. C.	X, C
Cooke, Bessie Ann.....	Route No. 3, Kernsville, N. C.	X, C
Cox, Floyd Milton.....	Winston-Salem, N. C.	X, C
Cude, Marjorie Gardener.....	Winston-Salem, N. C.	X, C
Davis, Walter Ray.....	Yadkinville, N. C.	X, C
Davis, Winnie Elsie.....	Route No. 3, Mocksville, N. C.	X, C
Edgerton, Sara J.....	137 Elmhurst Ave., Trenton, N. J.	X, C
Ellis, Mary Lou.....	Stora, N. C.	X, C
Farlow, Edgar Wilson.....	Route No. 2, Guilford College, N. C.	X, C
Gamble, Matie Myray.....	Randleman, N. C.	X, C
Gilmore, Aileen.....	112 Hawkins Ave., Sanford, N. C.	X, C
Griffin, Robert Brown.....	Woodland, N. C.	X, C
Hadley, Thomas M. Kinley.....	Graham, N. C.	X, C
Hammond, Leah Elizabeth.....	Farmer, N. C.	X, C
Hazard, Alice Blanche.....	Union Springs, N. Y.	X, C
Hedgecock, Esther Catherine.....	Box 230, High Point, N. C.	X, C
Henley, Bernard.....	Guilford College, N. C.	X, C
Hire, Gertrude Elizabeth.....	Route No. 1, Winston-Salem, N. C.	X, C
Hollady, Berta Rheoche.....	1205 Spring Garden St., Greensboro, N. C.	X, C
Horney, Ruth Anna.....	Route No. 2, High Point, N. C.	X, C
Boyle, J. Cranford.....	Greensboro, N. C.	X, C
Hunt, William Allen.....	Route No. 3, East Bend, N. C.	X, C
Ives, Rachel Elizabeth.....	North Wilkesboro, N. C.	X, C
Jassmides, Paul Christos.....	437 East 147th St., New York, N. Y.	X, C
Jinnette, Sarah Gertrude.....	Route No. 1, Bentonville, N. C.	X, C
Kendall, L. Louise.....	Guilford, N. C.	X, C
Kinney, Mildred Mae.....	Route No. 1, High Point, N. C.	X, C
King, Thebma May.....	Greensboro, N. C.	X, C
Levering, Elizabeth Berta.....	Guilford College, N. C.	X, C
McPherson, Emma.....	Snow Camp, N. C.	X, C
Mackie, Walter Worth.....	Yadkinville, N. C.	X, C
Marsburn, Nancy Edith.....	Guilford College, N. C.	X, C
Mitchell, Sara Bernice.....	King, N. C.	X, C
Moon, Turner Frances.....	2900 Montgomery Ave., Detroit, Mich.	X, C
Moore, Daniel Stanley.....	168 Library Place, Greensboro, N. C.	X, C
Neal, Claudia Belle.....	Summit Ave., Walnut Cove, N. C.	X, C
Neal, Mary Matthews.....	Meadows, N. C.	X, C
O'Quinn, Lillie.....	Route No. 1, Star, N. C.	X, C
Osborne, Frances Harisell.....	Pleasant Garden, N. C.	X, C
Osborne, Mary Beach.....	Guilford College, N. C.	X, C
Owen, Kathryn Amanda.....	136 Pine St., Mt. Airy, N. C.	X, C
Parker, Scott Alvin.....	Hillcrest, High Point, N. C.	X, C
Pate, Floyd C.....	Route No. 5, Goldsboro, N. C.	X, C
Paul, Joseph King.....	Elkin, N. C.	X, C
Pearson, Mary Newlin.....	Dudley, N. C.	X, C
Proctor, Rose Mae.....	Spring Hope, N. C.	X, C
Ragsdale, Virginia.....	Jamieson, N. C.	X, C
Reynolds, Margaret Kathleen.....	Greensboro, N. C.	X, C
Rozell, Edwin H.....	Salt Point, N. Y.	X, C
Shupp, Mabel Byrdell.....	1404 E. Walnut St., Goldsboro, N. C.	X, C
Shore, Fannie Della.....	Route No. 2, Boonville, N. C.	X, C
Smith, Albert Lee.....	Pikeville, N. C.	X, C
Smith, Ruth.....	Guilford College, N. C.	X, C
Snyder, David Rodolph.....	Tobaccoville, N. C.	X, C
Spencer, Blanche Elizabeth.....	Ivon, Va.	X, C
Steele, Wilmer.....	Kelton, Penn.	X, C
Stinson, Nell Eliza.....	Route No. 1, Goldsboro, N. C.	X, C
Strickland, Willie Justice.....	Route No. 2, Bayley, N. C.	X, C
Taylor, Genative Warren.....	Spring Hope, N. C.	X, C
Teague, Carrie Nation.....	Snow Camp, N. C.	X, C
Thomas, Nellie.....	King, N. C.	X, C
Thompson, Hena.....	Snow Camp, N. C.	X, C
Trivette, Howard V.....	Winston-Salem, N. C.	X, C
Wharton, Richard Goshel.....	Ruffin, N. C.	X, C
White, Nancy.....	Franklin, Va.	X, C
Wilson, Norma Belle.....	Pikesville, N. C.	X, C

FRESHMAN CLASS

Allen, Graham Lester.....	Snow Camp, N. C.	X, C
Barnes, Epp, Robert.....	Sims, N. C.	X, C
Beale, Josephine.....	Route No. 3, Snow Camp, N. C.	X, C
Beatty, Charles Kenneth.....	Route No. 1, Mt. Holly, N. C.	X, C



G.C.
The Quaker
1927

Best, Sallie Bell	Route No. 1, Bentonville	X	C
Blow, Bertha Gertrude	Route No. 1, Rich Square	X	C
Bond, Annie Lee	Windsor	X	C
Bouldin, Nina Mae	Route No. 2, Trinity	X	C
Braswell, Mary Elizabeth	McFarland	X	C
Brooks, Gordon	Ronlee	X	C
Bullard, Annie Ruth	Roseboro	X	C
Bundy, Reuben Oscar	Jamestown	X	C
Bundy, Ruth	Jamestown	X	C
Butner, Mattie Lou	East Bend	X	C
Cannon, Howard Lee, Jr.	Guilford College	X	C
Cass, Rev. Ray	Harmony	X	C
Clumard, Lena Evans	Wallburg	X	C
Coltrane, Leata Mae	Route No. 2, Guilford College	X	C
Coltrane, Reece A.	Guilford College	X	C
Copeland, Mary Rhoads	Windsor	X	C
Cox, Alexander McNeal	Greensboro	X	C
Cox, Harold	Route No. 2, Graham	X	C
Cox, Sarah Catherine	Clarkton	X	C
Craig, William Howard	Route No. 2, Greensboro	X	C
Dawson, Floyd Leamon	Route No. 4, Dinn	X	C
Dawson, Jessie Louise	Dinn	X	C
Denny, Harry Calvin	Route No. 2, Greensboro	X	C
Edwards, Frazier McLean	Guilford College	X	C
Farlow, Lena Gertrude	Guilford College	X	C
Farlow, Naomi Ruth	502 Jones St., High Point	X	C
Finch, Lucy Belle	Guilford College	X	C
Finch, Thomas Glenn	Guilford College	X	C
Finson, James Holt	Ramscur	X	C
Francis, Luther Edgar	Francisco	X	C
Futrell, Mary Alice	203 Maple St., High Point	X	C
Garnor, Viola Mae	Chmax	X	C
Gough, Charles William	Route No. 3, Yadkinville	X	C
Griffin, Hannah Jane	Woodland	X	C
Harris, Hula	Thomasville	X	C
Hayworth, Evelyn Elizabeth	Jamestown	X	C
Heffner, Clifton	Maiden	X	C
Hendrickson, George Jacob	Republic Ave., Gmstown	X	C
Hinshaw, George	Yadkinville	X	C
Hire, Eugene Salathiel	Route No. 1, Winston-Salem	X	C
Hodgen, Eugene N.	Guilford	X	C
Hodgen, Robert B.	Route No. 1, Guilford College	X	C
Hollowell, Azile	Route No. 3, Mt. Olive	X	C
Holt, Isaac French	Route No. 1, Sixapahaw	X	C
Hoots, Milo Tait	Yadkinville	X	C
Hughes, Arthur James	1115 Ashboro St., Greensboro	X	C
Hussey, Stephen Curtis	Route No. 1, Spies	X	C
Hutchins, William Patterson	East Bend	X	C
Immette, Isabella	Route No. 1, Bentonville	X	C
Johnson, Ruby Gold	Siler City	X	C
Jones, Jeanie Agnes	1316 Woolsale Ave., Greensville	X	C
Keen, Samuel M., Jr.	601 W. 24th St., Wilmington, Del.	X	C
Lane, Iva Pauline	Belyndere	X	C
Lassiter, Mary Ellen	Rich Square	X	C
Layton, Sherman Allen	Graham	X	C
Leonard, Robert C.	311 Tate St., Greensboro	X	C
Ludley, Fumice Elizabeth	Snow Camp	X	C
McBane, Jessie Willard	Route No. 1, Snow Camp	X	C
McBane, William Pauline	Route No. 1, Snow Camp	X	C
McCollum, Mabel	Route No. 1, Madison	X	C
McNeil, Edward Alexander	Jefferson	X	C
MacKie, Arthur Lawrence	Guilford College	X	C
Marshall, Reginald Spenton	Germannton	X	C
Matthews, Dwight Vernon	Bessmer City	X	C
May, Cecil Henry	Spring Hope	X	C
Melvin, Howard Loyless	1055 Ashboro St., Greensboro	X	C
Monroe, Emily Jane	Star	X	C
Morrow, Eda	Star	X	C
Moore, Edward Burroughs, Jr.	Liberty	X	C
Murphy, Leslie	Davis	X	C
MYRICK, Naomi Harrison	1814 S. Norton Ave., Los Angeles, Cal.	X	C
Neal, Annie Kate	Summit Ave., Walnut Cove	X	C
Nessee, Samuel Bruce	Graham	X	C

G.C.
The Quaker
 1927

Newlin, Benjamin Barclay	Route No. 1, Saxapahaw	N. C.
Newlin, Delmas Burton	Route No. 1, Saxapahaw	N. C.
Newlin, Mahlon Hale	Saxapahaw	N. C.
Outland, Margaret Elizabeth	Woodland	N. C.
Pamperin, Franz Wilhelm	913 Caldwell St.	Greensboro, N. C.
Parish, V. Ray	Guilford College	N. C.
Payne, Paul Pleasant	Route No. 1, Guilford College	N. C.
Pegg, Julia Aileen	Snow Camp	N. C.
Raper, Annie	High Point	N. C.
Ray, Annie Josephine	Route No. 1, Gildonsville	N. C.
Reece, Esther Griffith	Snow Camp	N. C.
Robertson, Charles Edwin	Guilford College	N. C.
Sears, Lockie Moss	East Bend	N. C.
Self, Loy E.	Lincolnton	N. C.
Shaw, Alvis V.	Guilford	N. C.
Shermer, Perry Isaac	Yadkinville	N. C.
Short, Samuel Otis	Route No. 1, Greensboro	N. C.
Smk, Olin Ward	Route No. 1, Lexington	N. C.
Spivey, Currie B.	Cameron	N. C.
Stevens, Effie Gertrude	Route No. 4, Goldsboro	N. C.
Stout, John Harold	Guilford	N. C.
Stout, Theron Trent	Greensboro	N. C.
Stuart, Patrick M., Jr.	Guilford College	N. C.
Stuckey, Katie Pearl	Route No. 4, Kenly	N. C.
Tew, Wm. Alton	Route No. 5, Goldsboro	N. C.
Vance, Fred F.	Kernersville	N. C.
Verner, Julia Phillips	Route No. 1, Brevard	N. C.
Vickrey, Myra Lynette	Route No. 1, Greensboro	N. C.
Van der Voort, Robert	949 N. Lincoln Ave., North Side, Pittsburgh, Pa.	
Wark, Bradley Ridgeway	Elk Park	N. C.
Westmoreland, Joseph	Rural Hall	N. C.
Whisenant, Johnson Curtis	Claremont	N. C.
White, Charles Kenneth	Route No. 4, Greensboro	N. C.
White, Elizabeth Burke	Tyler	N. C.
White, Elwood Quinton	Route No. 1, Belvidere	N. C.
White, Herman Ray	Route No. 1, Elizabeth City	N. C.
Wilkinson, Kathleen Frances	417 S. Davis Ave., Richmond Va.	
Winslow, Lena Belle	Route No. 1, Belvidere	N. C.
Yates, Ruth Coffin	Guilford College	N. C.
Yelverton, George	Fremont	N. C.
Zachary, Hazel	Route No. 1, Snow Camp	N. C.

IRREGULAR STUDENTS

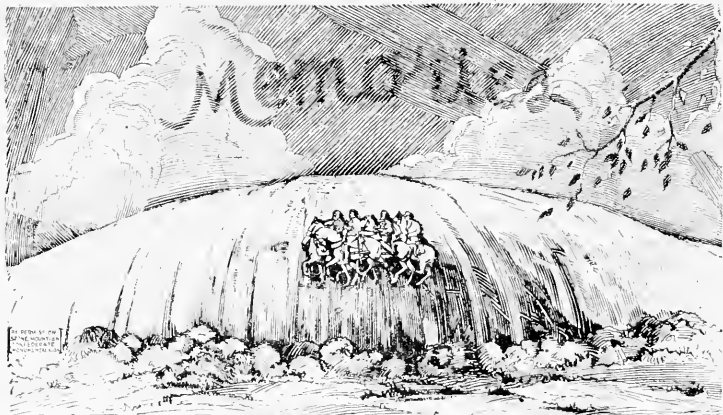
Atkinson, Robert H.	Fremont	N. C.
Chan, Hugh	Canton Kwangton, China	
Duncan, Herman Franklin	Oak Ridge	N. C.
Flowers, Kate	Sims	N. C.
Hara, Tamefort	323 West 108 St., New York	N. Y.
Johnson, Galen Walter	Crossnore	N. C.
Johnson, Joseph Norman	623 Farmont St., Greensboro	N. C.
Joyner, Doris Chase	Walters, Va.	
Lindley, Wade Hampton	Snow Camp	N. C.
Rabb, Wm. Moore	Lenoir	N. C.
Saunders, Virginia Mae	201 Church St., Mt. Airy	N. C.
Sherrill, Wilbur Austin	Greensboro	N. C.
Smith, Hassie Alton	Route No. 1, Dunn	N. C.
Tew, Doris Estelle	Route No. 5, Goldsboro	N. C.
Trueblood, James Percy	Hatfield	N. C.
Turner, John Maurice	524 Guilford Ave., Greensboro	N. C.
Ward, William Alpheus	Rich Square	N. C.
White, Murray Meader	315 Lindsay St., High Point	N. C.

SPECIAL STUDENTS

Andrew, Kimber Teague	Staley	N. C.
Booker, Lorena P.	106 Va. Ave., High Point	N. C.
Gray, Edna Susie	Guilford College	N. C.
Ireland, Dan W.	Route No. 6, Burlington	N. C.
Pearson, Clifton C.	Route No. 6, Goldsboro	N. C.
Wilson, Franklin P.	Purcellville, Va.	

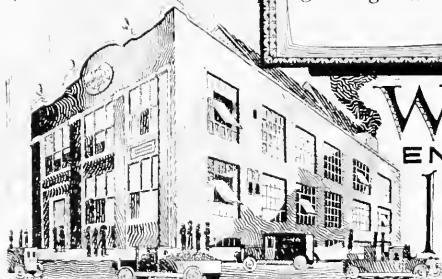


G.C.
The Quaker
1927



Successful memoirs combine the enthusiasm of hard working editors and staffs with the scientific skill of photo-engraving art.

Offering such skilled service, the Wrigley specialists give to Annual Staffs assurance of success —we work closely with you and your printer.



WRIGLEY
ENGRAVING CO.

*Artists ~
Photo-Engravers
Electrotypers*

OFFICE • STUDIO AND PLANT • 78 • 80 W. GAIN ST. • ATLANTA, GEORGIA.



G.C.

The Quaker

1927

F
J
M
J
C

THE TRUE ATMOSPHERE *of* SCHOOL *and* COLLEGE

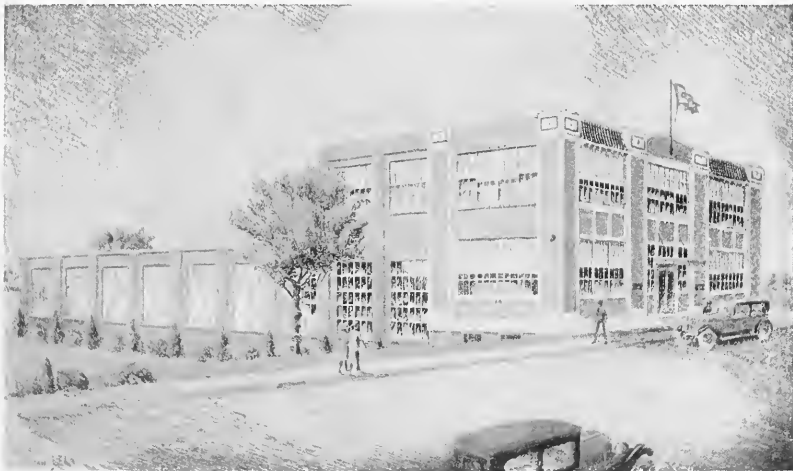


WE endeavor, in producing school annuals, to render a helpful and constructive service directed toward enabling a student staff to get out a representative, distinctive book *within their budget.*

In connection with our new and modern printing plant we maintain a large Art and Service Department where page borders, cover designs, division pages, and complete decorative and illustrative motifs are created and worked out.

The QUEEN CITY PRINTING CO.

Where Better Printing Costs Less
CHARLOTTE, NORTH CAROLINA



A COMPLETE SERVICE FOR SCHOOL PUBLICATIONS





