



THE
QUAKER
1932

Quaker
#1
2091
G4.5
G8

1932

GUILFORD COLLEGE



0 2931 0237066 6

FOR USE IN THE LIBRARY ONLY

**GUILFORD COLLEGE
LIBRARY**



CLASS

BOOK

ACCESSION

15128

GIFT

1932, v. 12



○ LIBRARY ○

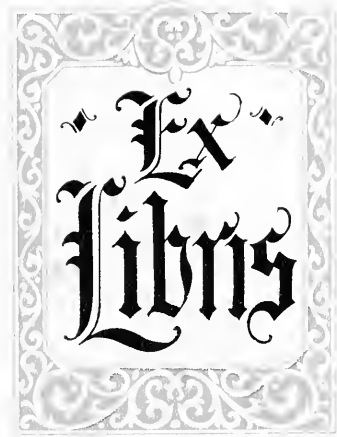
I love your cool brick walls,
The rain that chugs and trailing falls
along the mortar in between—
Your windows, hidden by the dogwood
boughs in spring—
Your polished floors, reflecting lights
and shadows—

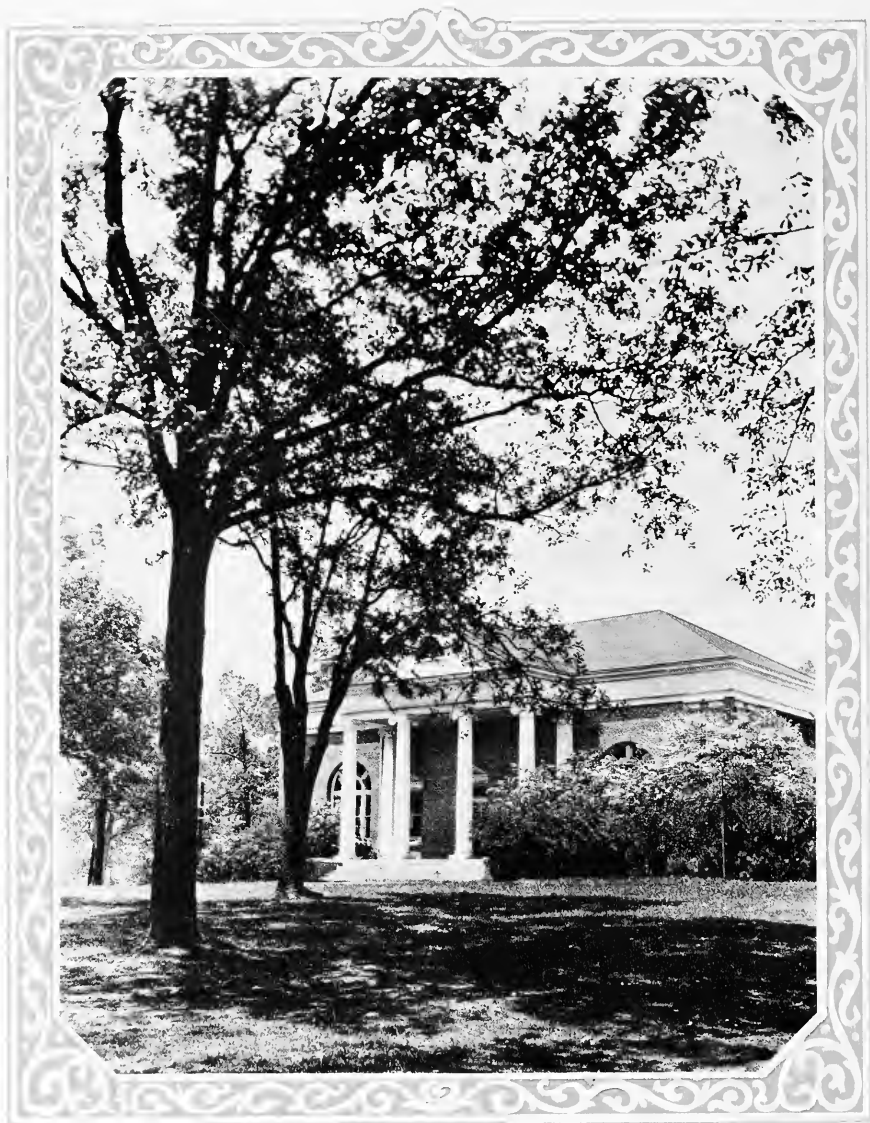
Your books, that keep imprisoned, in
covers blue and green and red,
Their tales of warriors, kings and em-
perors dead,
Whose titles, gold and silver spread,
As sunlight glints along the marshalled
shelves.

Library, majestic, silent guide,
We ask thee, lead us as we find our-
selves.

E. G.







The 1932 QUAKER



QUAKER
LD
2071
2415
DK
1932

GUILFORD COLLEGE

Guilford College, North Carolina



PUBLISHED BY THE STUDENT BODY



FOREWORD

And thus another volume of the Quaker comes into existence. May it be a treasure house of valued memories, a portrait gallery of old friends, a true chronicle of the lives and events of this brief college year.



CONTENTS

Book One ✓ *The Administration*

Book Two ✓ ✓ ✓ *The Classes*


Book Three ✓ ✓ *Athletics*

Book Four ✓ ✓ ✓ *Organizations*



DEDICATION

*To the future of our Alma
Mater, to the success of the
Centennial Program, surely
to the richness of our intel-
lectual center, our library, we
dedicate this, the twelfth
volume of
The Quaker*





ADMINISTRATION

In Memoriam



H. Elwood Cox
1932



DR. RAYMOND BINFORD
President

Board of Trustees

- J. ELWOOD COX, *Chairman* High Point, N. C.
D. R. PARKER High Point, N. C.
R. L. HOLLOWELL Greensboro, N. C.
C. P. FRAZIER Greensboro, N. C.
W. E. BLAIR Greensboro, N. C.
ZENO H. DIXON Elkin, N. C.
DAVID WHITE Greensboro, N. C.
D. D. CARROLL Chapel Hill, N. C.
C. F. TOMLINSON High Point, N. C.
JOSEPH D. COX High Point, N. C.
PAUL C. LINDLEY Pomona, N. C.



Faculty

LAWIS LYNDON HOBBS	<i>President Emeritus</i>	ELIZABETH C. BRUCE	<i>Home Economics</i>
JAMES FRANKLIN DAVIS	<i>Professor Emeritus</i>	FREDERICK CARLYLE SHEPARD	<i>Education</i>
ELWOOD C. PERISHO	<i>Lecturer</i>	JOHN P. ANDERSON	<i>Physical Education</i>
J. WILMER PANCOAST	<i>Mathematics</i>	(Men)	
KATHARINE C. RICKS	<i>Librarian</i>	CLYDE A. MILNER	<i>Dean of the College</i>
EVA G. CAMPBELL	<i>Biology</i>	ERNESTINE C. MILNER	<i>Personnel Director</i>
SAMUEL L. HAWORTH	<i>Religion</i>	JAMES L. FLEMING	<i>French</i>
ALGIE I. NEWLIN	<i>History</i>	GAIL WILBUR	<i>Piano and Music</i>
DOROTHY GILBERT	<i>English</i>	ELIZABETH O. MEINUNG	<i>Home Economics</i>
DUANE MCCRACKEN	<i>Economics</i>	HELEN T. BINFORD	<i>French and German</i>
PHILIP W. FURNAS	<i>English</i>	HARVEY A. LJUNG	<i>Chemistry</i>
E. GARNES PURDOM	<i>Physics</i>	STANLEY WALES PRESTON	<i>Economics</i>
MAX STEPHEN NOAH	<i>Music</i>	KATHERINE JONES	<i>Physical Education</i>
EVA MILES NEWLIN	<i>Modern Languages</i>	(Women)	
		MARSHALL H. BARNEY	<i>Spanish</i>



THE CLASSES



SENIORS

From The End Of The Trail. By James Earl Fraser



THE 1932 QUAKER

Seniors



ELEANOR GRACE BANGS

DEEP RIVER, CONN.

A.B. English

Activities: Z. L. S., 2; Women's Athletic Association, 3; Secretary, 3; Student Affairs Board, 2, 3, 4; Secretary, 3; President, 4; Associate Editor of "Quaker," 3; Varsity Hockey, 3, 4; Varsity Basketball, 3, 4; Varsity Baseball, 3, 4; Tennis, 4; Honor Roll, 3, 4; High Honors, 3.

Dainty and dependable, sportsmanlike and sweet, Egie has danced her way into the hearts of her fellow-students. Wise and witty, friendly and far-sighted, she has won an eminent place in the fields of scholarship and student activities. Surmounting Egie's varied success is her optimum accomplishment—herself, still growing.

○



WILLIAM LINWOOD BEAMON

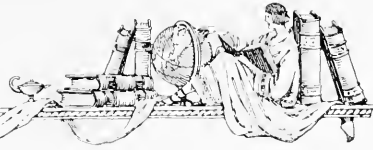
ELIZABETH CITY, N. C.

A.B. Philosophy

Activities: H. C. L. S., 1, 2, 3, 4; Secretary, 3; Class President, 3; Play Cast, 3, 4; Glee Club, 2; Football Squad, 3, 4; Baseball Manager, 4; Monogram Club.

Leamons, Ellwood, Nero, Willie, Beamon—call him what you will, he answers to them all. His ready wit and happy disposition make him a favorite with his fellow students and always the life of any party. He has given four years of loyal service to his football team, and what he doesn't know about philosophy and philosophers isn't worth knowing. Here's wishing you success, Willie.





Seniors

RACHEL HILDA BEASLEY

PILOT MOUNTAIN, N. C.

A.B. History

Activities: Meredith College, 1; P. L. S., 2, 3, 4; President, 4; Euphonian Glee Club, 2; A Capella Choir, 2, 3; Choral Club, 2, 3; Play Cast, 3, 4; Maid of Honor, 4.

Someone young, someone gay,
Someone charming as a fée',
Someone tall and someone blonde,
Someone of whom all are fond—
That's Rachel.

○

EDWARD PUGH BLAIR

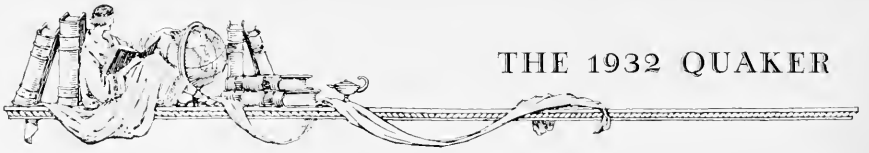
GREENSBORO, N. C.

A.B. History

Activities: H. C. L. S., 1, 2, 3, 4, Treasurer, 2, Vice-President, 3; College Debating Team, 1, 2, 3, 4; College Debating Council, 2, 3, 4, Secretary, 2, President, 3, 4; Henry Clay Orator's Prize, 2; College Peace Oratorical Prize, 2; State Peace Oratorical Contest, 2; Football Squad, 1, 2, 3; Soccer Team, 4; "Quaker" Staff, 1, 3, 4, Assistant Business Manager, 3, Business Manager, 4, Dramatic Council, 2, 3, 4; Play Cast, 1, 2, 3, 4; Student Affairs Board, 4; Social Committee, 1, President of Christian Endeavor, 3.

Ambition, enthusiasm, wit, humor—a string of such descriptive words have knit themselves into the personality of "Tubby." Grit and ability are pronounced in him. Evidence? Glance at that list of activities. We see a delightful actor, a forceful debater and orator, a successful business manager. We wish you in the future what has been yours in the past—success.





THE 1932 QUAKER

Seniors



WILBERT LEO BRAXTON

SNOW CAMP, N. C.

B.S. Physics

Activities: H. C. L. S., 1, 2, 3, 4, Secretary, 2, President, 3; Debating Council, 2, 3, 4; College Debating Team, 2; Class President, 2; Y. M. C. A. Cabinet, 2, 3, 4, Treasurer, 2, Vice-President, 3, President, 4; "Quaker" Staff, 2, 3, 4, Managing Editor, 3, Editor-in-Chief, 4; Varsity Tennis, 2, 3, 4, Captain, 3; North State Singles Champion, 3; Monogram Club, Library Assistant, 2, 3, 4; Physics Lab, Assistant, 4; William Overman Scholarship, 4; Candidate for Rhodes Scholarship, 4; College Chief Marshal, 3; Honor Roll, 2, 3, 4; High Honors, 3.

Despite the fact that "Brack" is an "A" student, this has not excluded him from other activities—on the tennis court, with the Y. M. C. A. and the Quaker, or in the classroom, an earnestness of efforts and ability have characterized his undertakings. The variety of his interests make him one of Guilford's best-rounded students. We prophesy for him worthy attainments in future ventures.

O

BERA ARLITA BROWN

HIGH POINT, N. C.

A.B. English

Activities: P. L. S., 1, 2, 3, 4, Marshall, 2, Secretary, 3, President, 4; "Guilfordian" Board, 2, 3, 4; Young Women's Student Government, 3, 4, President, 4; Community Chorus, 1, 2; Play Cast, 1, 2.

The gods of fortune smile on many people, but they laughed on Bera. She does everything well, even to playing the piano. Her daily admonition is, "Yield not to 'Temptation'." None can compare with Bera for smiles, efficiency and personality.





Seniors

OLIVE BUMGARNER

WILKESBORO, N. C.

A.B. History

Activities: Appalachian Teachers' College, 1; Lincoln Memorial University, 2, 3; Secretary Carolina Club, 2, 3; Vice-President Arts Club, 3; Pop Club, 2, 3; Kappa Pi Omega, 3, 4; S. O. S., 2, 3; Z. L. S., 3, 4.

After being a part of two other colleges, Olive came to Guilford to receive her degree—showing her late but wise choice. Her pleasant personality and her constant jollity has been an asset to our group.



○

JAMES ALLEN BUNN

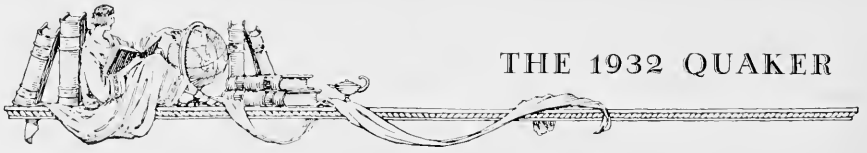
SPRING HOPE, N. C.

B.S. Biology

Activities: Class President, 3; Student Council, 1, 2, 3, 4; President of Men's Athletic Association, 3; Varsity Football, 1, 2, 3, 4; All-State Halfback, 2, 3, 4; Varsity Baseball, 1, 2, 3, 4; Monogram Club; Business Club, 2.

The name is one of magic. Like a moving picture screen it flashes before memory's vision a series of vivid pictures. Pictures of a gridiron deep in Carolina mud—of a streak of 'liveness, bespattered almost beyond recognition. Pictures of an appealing young grin—a wind-blown forelock—wicked, intelligent eyes. But other pictures, too—of a man's level, steady glance, a man's squared jaw, a man's heavy shoulders, braced and ready to meet life. Jimmie's the real thing.





Seniors



JESSE C. CARSON, JR.

GERMANTON, N. C.

A.B. History

Activities: Class Treasurer, 1; Class President, 1; Football Manager, 2, 3; Varsity Basketball, 2, 4; Play Cast, 3; Monogram Club.

"Kit" Carson. No, not the frontier pioneer of a few decades ago. But, being a pioneer class president and having that quality of endurance with silence, as exemplified in being football manager for two years, he might well be classed with that frontiersman. He is our college's most polished gentleman. Good looks and likable manners; what can he not gain with those traits?

O



SOPHIA CECILE CATHEY

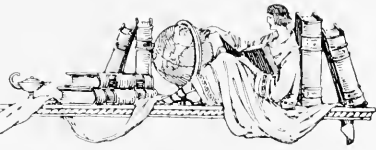
DAVIDSON, N. C.

B.S. Home Economics

Activities: Z. L. S., 1, 2, 3, 4, President; 4; Chorus, 2; Glee Club, 2; Assistant Dietitian, 4.

When one thinks of Sophia one thinks of stately, dignified beauty which poets praise. Sophia is beautiful—but dumb? Never! She is very capable, efficient, busy, but finds time for sociability. As a result she has a host of friends who did gladly crown her Queen of the May.





Seniors

HERBERT DILLARD CHISHOLM

RAMSEUR, N. C.

B.S. Biology

Activities: Class Vice-President, 3; W. L. S., 2, 4; Student Council, 3, 4; Varsity Football, 1, 2, 3, 4; Varsity Basketball, 1, 2, 3, 4; Alternate Captain, 3, 4; Varsity Baseball, 1, 2, 3, 4; Captain, 4; Athletic Council, 2, 3; Vice-President, 3; Monogram Club.

"Tip" is one of our few 100 per cent athletes. He certainly has built for himself an enviable record, not only on the campus, but in Conference circles, both in football, basketball, and baseball. And, too, it wouldn't be fair to him not to mention the creditable way in which he acquitted himself in his major—campus course—or was it Biology? Wit?

Yes. May his success continue.



○

IRA SHEPPARD CHOLERTON

DIMOCK, PA.

J.B. Economics

Activities: W. L. S., 2, 3, 4; Class President, 4; "Gullordian" Board, 3, 4; Sports Editor, 4; Dramatic Council, 3, 4.

Not often does a transfer student come to us and become so universally and immediately accepted into our midst as did "Deac." We wouldn't exactly call him a plug-horse, or either a war-horse, but we certainly can say that no matter what he tackles he fights his way in and plugs his way out very effectively.

Here's to a Yankee who made good!





Seniors

LUCY VIRGINIA CLAYTON

RURAL HALL, N. C.

R.S. Chemistry

Activities: P. L. S., 1, 2, 3, Secretary, 3; Reading for Honors, 3; Basketball Manager, 4; Baseball Team, 1, 2, 3; Chemistry Lab. Assistant, 4; Y. W. Social Committee.

Virginia's winning manner and sweet disposition has endeared her to the hearts of her classmates and the student body. Such a charming and modest personality as hers is as beautiful as it is rare. We have missed her cheery smile and greeting these past weeks. Her grades show what she is able to accomplish.



O

ADA ANN CLINARD

WALLBURG, N. C.

A.B. English

Activities: Z. L. S., 3, 4; Soccer Team, 3; Basketball Manager, 4; Basketball Team, 4; Community Chorus, 3, 4.

Ada Ann spent the first two of her college years at Salem, but we are glad she came to spend her junior and senior years with us, because she has helped to make our college life more enjoyable.

Ada Ann not only excels in her scholastic work, but she has taken a part in outside activities. She has a very amiable disposition which has won for her sincere friends at Guilford. Ada, you have our very best wishes in all your undertakings.





Seniors

JEAN DOROTHY COCHRAN

KERNERSVILLE, N. C.

A.B. English

Activities: P. L. S., 1, 2, 3, 4, President, 4; Y. W. C. A. Cabinet, 2, 3, 4, Vice-President, 4; Baby Cabinet, 1; Superintendent Sunday School, 4; Secretary Christian Endeavor, 3; "Gullfjordian" Board, 2; Women's Student Council, 2; Women's Athletic Cabinet, 3; Hockey Team, 2, 4; Monogram Club, 4; Community Chorus, 1, 2, 3, 4; Euphonia Glee Club, 1, 2, Treasurer, 2; A Capella Choir, 1, 2, 3, 4; Honors, 2; Honor Roll, 2, 3, 4; College Marshal, 3.

To some Jean may appear dignified, but they haven't seen her in the role of "Charlie, Me Boy." Her nonsense has furnished much entertainment for her friends. An Honor Roll student since her freshman year, yet she has found time for extra-curricular activities. The Choir will lose one of its best members, the "Y" will lose a willing and efficient worker. For everyone she has a friendly smile. Jean, we wish you happiness and success,

○

WELLINGTON D. FONG

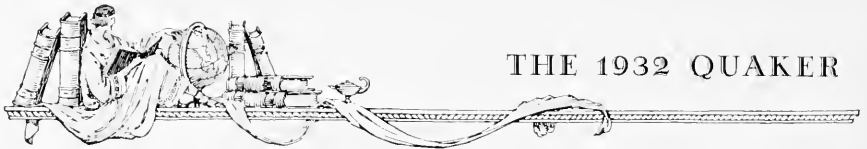
RENFREW, CANADA

A.B. History

Activities: Rutherford College, 1, 2; Debating Council, 2; Y. M. C. A., 1, 2; Vice-President Platonic Literary Society, 2; "Rectangle," Feature Editor; Citadel, 3; "Dulldog" Staff, 3; International Relations Club, 4.

Enriching the life at Rutherford College for two years, enjoying a year of hard work at Citadel, Fong, in this his fourth year at college, has enlightened our campus on international relations. With his poetic ability and his practice at writing letters, "Ambassador" may well fulfill his ambition with credit to any country.





THE 1932 QUAKER

Seniors

AVA FISH FRAZER

RICHMOND, VA.

A.B. Religion

Activities: University of Richmond; Penn College; Z. L. S., 4; Y. W. C. A. Cabinet, 4; Sunday School Teacher, 4.

Though she's only been with us this year, Mrs. Frazer has won many friends. Even though her "better half" is in Richmond, she manages to keep a cheerful disposition—and if you like afternoon tea! H-mmm!



○

ANNIE ELIZABETH GRAY

RUTHERFORDTON, N. C.

A.B. English

Activities: Life Service Band 1, 2; Epworth League Cabinet, Secretary, 2; Literary Editor of "Mountaineer," 2; Eastern Literary Society, 1, 2; Rutherford-Henderson County Club, 1, 2; Secretary and Treasurer, 2; Weaver College, 1, 2.

Although Annie came here from Weaver College in her junior year, she has made many friends during her two years' stay. Many girls make her their confidante, which fact is not strange, for she is very sympathetic, and has a sweet disposition. She is never too busy to help those who ask her. Universally liked, good natured, fond of literature, sincere, no wonder she was voted the sweetest girl at Weaver College. Can look aristocratic if she cares.





Seniors

ELEANOR SHIELDS GRIMSLEY

KERNERSVILLE, N. C.

J.B. English

Activities: Z. L. S., 1, 2, 3, Secretary, 3; "Quaker," 1, 2, 3, 4; Dramatic Council, 1, 2, 3, 4; A Capella Choir, 1, 2, 3, 4; Chorus, 1, 2, 3, 4; Glee Club, 1, 2; Student Affairs Board, 4; Hockey Team, 1, 2, 3, 4; Baseball Team, 1, 2, 3, 4.

Eleanor is the girl who has a smile for every one, along with a pleasant hello! She has a sympathetic interest for all and her pleasing personality will not soon be forgotten. She has excelled in class sports for four years, but her power as an artist in drawing sketches for the QUAKER or for play posters is her greatest contribution to Guilford's outside activities. She is an all-round sport and a real girl who will be greatly missed next year.



O

EDNA RODEMA GUTHRIE

SNOW CAMP, N. C.

J.B. French

Activities: P. L. S., 3, 4; Women's Athletic Association, 4; Volley Ball Manager, 4; Basketball Team, 4; Library Assistant, 4.

Edna, through kindness, has made many friends here. She is sincere in all she undertakes. Her work in the library, her participation in athletics, and fidelity as a classmate, have won her the respect and esteem of her fellow-students. Much success to you, Edna!





Seniors

J. CARLYLE HACKNEY

GREENSBORO, N. C.

B.S. Chemistry

Activities: Chemistry Lab. Assistant, 3, 4.

The briefness of his college course, four years in three, has made it a busy one for Carlyle, but it has established him as our one promising "shining light" in the field of science. His intellectual conversations with faculty and students, his knowledge of chemistry, with the unit Hackney himself, have brought many acquaintances for him. It's another case of "a local boy makes good."



o

GRACE ELIZABETH HASSELL

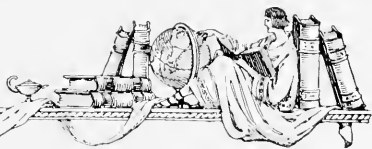
JAMESTOWN, N. C.

A.B. History

Activities: P. L. S., 1, 2; Girls' Glee Club, 1, 2; Community Chorus, 1, 2; A Capella Choir, 1, 2; Y. W. C. A. Baby Cabinet, 1, 2; Y. W. C. A. Cabinet, 3, President, 1; Secretary of Class, 2; Secretary of Women's Student Council, 3.

Grace has contributed to every phase of our college life. As president of "Y," her work has been most outstanding, but always we find her supporting the other organizations. Her years spent here have brought out three distinct traits in her character: unselfishness, dependability, and tolerance. How can we estimate this value?





Seniors

MABEL N. HOLTON

YADKINVILLE, N. C.

A.B. English

Activities: Z. L. S., 1, 2, 3, 4; Chorus, 1, 2, 4; Tennis Team, 4.

The sweet girl graduate, innocent and optimistic, untainted with the cynicism which college seniors sometimes affect—Guilford will miss Mabel when she graduates.



O

RUTH I. HILLER

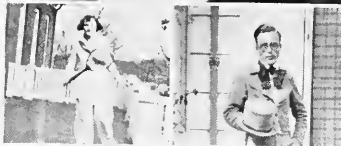
MATTAPOISETTE, MASS.

A.B. English

Activities: Z. L. S., 1, 2; Y. W. C. A. Cabinet, 3; Dramatic Council, 1, 2, 3; "Guilfordian" Board, 2; Class Secretary, 2; Glee Club, 1; Choir, 2; Varsity Hockey, 3; Marshal, 3.

Take superior intellect, common-sense, a bit of frivolity and fastidiousness, charming personality, ability to make adjustments, appreciation of simplicity, love for children, a slight tendency toward procrastination, and mix well. The result is Ruth Ida Hiller.

We expect great things of you, Ruth.





Seniors



JOSEPHINE KIMREY

MEBANE, N. C.

A.B. Piano

Activities: P. L. S., 1, 2, 3, 4; Choir, 2, 3, 4; Glee Club, Accompanist, 2; "Messiah" Accompanist, 2, 3, 4; Class Secretary and Treasurer, 3; Y. W. C. A. Cabinet, 4; Piano Recitals, 1, 2, 3, 4; Chapel Accompanist, 3; Class Hockey Team, 1, 2, 4; Class Volley Ball Team, 1, 2; May Queen Attendant, 4; Director of Sunday School Music, 4.

Jo's a sweet kid. With those wide blue eyes and that cherubim mouth to haunt his memory, it is small wonder that State College—Jim's heart—beats for Jo alone. And then there are Jo's fingers, too! You see they have music and can woo beauty from ivory keys. We're going to miss her soft voice and her winning temperament. You're a sweet kid, Jo.

○



PEARLE KIMREY

MEBANE, N. C.

A.B. French

Activities: P. L. S., 3, 4; Treasurer, 3; Volley Ball Team, 3; Soccer Team, 3; Hockey Team, 4; Varsity, 4; Honors, 1, 2; High Honors, 3; Honor Roll, 2, 3, 4; Marvin Hardin Scholarship, 2; Secretary of Sunday School, 3; "Guilfordian" Board, Secretary, 3; Managing Editor, 4; Play Cast, 4.

Accomplishments: Ability to make "A" grades; a flirt; "a golden-haired angel"; a thorough worker; a good actress on stage and off; Spanish prof.

Worries: Practice teaching; Summer School episodes; the *Guilfordian*; rings.

Ambition: Once to be a doctor; then to become a nurse of many; now to be the nurse of a red head.





Seniors

MAUDE LINEBERRY

SILER CITY, N. C.

B.S. Home Economics

Activities: Z. L. S., 1, 2, 3; Hockey Team, 1, 2; Home Economics Lab, Assistant, 1; Athletic Board, 1.

The girl whom nobody knows; at least very few know her intimately, worse luck for the majority. Maude is one of those "blush unseen" types, but she is no alloy. Those beautiful blue eyes are penetrating, but kind.

o



JOHN NORWOOD LOVE

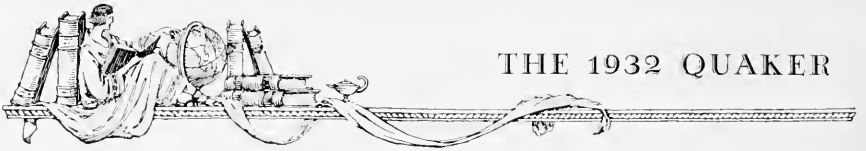
AMORY, MISS.

A.B. Economics

Activities: H. C. L. S., 2, 3; Student Affairs Board, 3; Student Council, 1, 2, 3, 4, President, 4; Play Cast, 1; Biology Lab, Assistant, 1; Varsity Football, 1, 2, 3, 4, Captain, 4; Track Team, 3, 4; Monogram Club.

Johnny possesses that "intangible asset" known as vim, vigor, and vitality. Anyone doubting it has never seen him in action on the gridiron. As the captain of the football team, all-state end, or president of the student body, Johnny functions equally well and efficiently. Ole Mississippi should feel proud of her representative to G. C., as we feel proud to have known and lived with him for four years.





Seniors



ELIZABETH DOLORES McVEY

SNOW CAMP, N. C.

A.B. English

Activities: Z. L. S., 2, 3, 4; Honor Roll, 4; Basketball, 4.

Another Quaker maid who has done her share as a student to make a better Guilford. Elizabeth stands high in her scholarly attainments.

She uses to an advantage her art of making friends and her ability to keep them. We need more like Elizabeth to create a better feeling toward E'on, especially through athletics.

Elizabeth, we feel assured of your success in life, and we wish for you the realization of your fondest hopes and dreams.

○



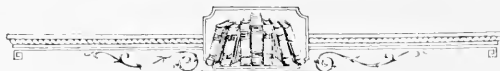
WADE MACKIE

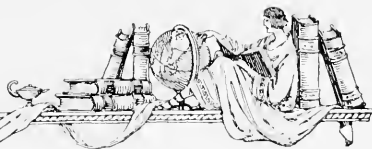
YADKINVILLE, N. C.

A.B. Economics

Activities: H. C. L. S., 1, 2, 3, 4; "Guilfordian" Board, 2, 3; Business Manager, 3; Business Club, 2; Student Council, 1, 2, 3; Y. M. C. A., 2, 3; Class President, 1.

Wade reaches his highest round of satisfaction by being different. If the masses say "nay," that's reason enough for Wade to say "yea." Wade's easy acquaintance and ready wit make him desired socially; his seriousness in acquiring facts, especially in the field of economics, ranks him as a scholar. Whenever real help is needed, Wade is always at hand.





Seniors

CHARLES BRODIE MONEY

YADKINVILLE, N. C.

B.S. Mathematics

Activities: College Marshal, 3; Treasurer of International Relations Club, 4; Assistant in Biology; Honor Roll, 2, 4.

Few knew when Brodie silently tripped inside the college gates. The Class of '33 knew him not as a "b'ody Soph." But what math student isn't familiar with him and gracious for that friendship? Red headed, but no hard-boiled disposition. Brodie's achievements have been gotten by a consistency of work, a doggedness, a methodicalness, an accuracy seen in his every act, which cannot fail to make him a successful research worker.



○

DAYTON GILBERT NEWLIN

SAXAPAHAW, N. C.

B.S. Physics

Activities: H. C. L. S., 1, 2; Social Committee, 3; Y. M. C. A. Cabinet, 4; Physics Lab. Assistant, 4; College Marshal, 3; Honor Roll, 4.

Never speaking to anyone; never doing an act or taking a step but the most graceful; never making a noise but the most pleasing; never saying a word but the most eloquent; all this might be said of him if he were different. But he isn't, he's just plain Dayton. A more practical worker, whether on the campus, in the physics lab, or on his books, just isn't.





Seniors

ELIZABETH GRAHAM PARKER

BLACK MOUNTAIN, N. C.

A.B. English

"Biltmore College, Asheville, N. C., 1, 2. Can't remember much I did there except attend the Philean Literary Society and be secretary-treasurer of the Graduating Class of '29-'30. Was one of four outstanding students announced at graduation—believe it or don't! G. C., 3, 4. Summer schools a specialty. I have the habit. Secretary of *The Guilfordian* last year and this. Secretary of Zatasian Literary Society, '32. Never made over a second team in athletics—made thoe in volley ball and hockey. Spent all my spare moments in the President's office in an effort to become an efficient stenog."—*Excerpts from the Diary of Lib Parker.*



○

JESSE AMOS PHILLIPS

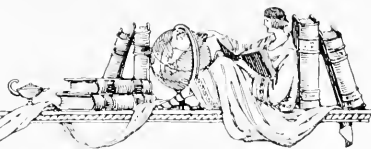
LEAKSVILLE, N. C.

A.B. Economics

Activities: Business Club, 2.

Jesse Phillips came to our institution in the spring of '28. His speed may not be equal to that of his brother of track fame, but we were glad to welcome this good-natured, ever-agreeable economist to help our class "bust" the tape. His drawing speech pronounces him a typical Southerner. The Class of '32 wishes him luck.





Seniors

WILLIAM ARRELL PIERCE

HALLSBORO, N. C.

J.B. Economics

Activities: W. L. S., 1, 2, 3, 4; Class Vice-President, 4; Baseball Squad, 1, 2; Baseball Varsity, 3, 4; Football Squad, 2, 3; Business Club, 2; Monogram Club, Head Walter, 4.

"Jeky" not only knows the kind of ball to throw to the batter, but he has ready judgment in many other matters, both in the classroom and with the ladies. Despite his frequent visits to Germanton, he has found time to make friends with everyone on the campus. In his future undertakings the Class of '32 wishes him the best of luck.



O

MARY ELIZABETH PITTMAN

KENLEY, N. C.

B.S. Biology

Activities: P. L. S., 1, 2; Marshal, 2; A Capella Choir, 1, 2, 3, 4; Community Chorus, 1, 2, 3, 4; Euphonium Club, 1, 2; Women's Student Government, 4; Hockey, 1; Honor Roll, 3; "Guilfordian" Board, 2, 3, 4.

Mary Lib, when you get to be a great technician in some large hospital, we will remember you as a dear pal of our college days. These will be fond memories, too, because you have made us all love and admire you. Loving, gentle, kind, accommodating—that's Mary Lib. She is a bright student, a good sport, and a desirable friend. Guilford will be the loser when Commencement Day comes.





THE 1932 QUAKER

Seniors



JULIA M. PLUMMER

DENTON, N. C.

J.B. English

Activities: P. L. S., 1, 2, 3, 4, Secretary, 3; "Fullfordian" Board, 1; Student Affairs Board, 1; Y. W. C. A. Cabinet, 2, 4; Play Cast, 4; Secretary of International Relations Club, 4.

The girl for whom good sportsmanship and a mind of one's own is the supreme virtue—the prerequisite. "Jut" is a Tarheel, Democrat, and a Southerner, but she wants to go further south into "Georgia-h." The most famous of her correspondences are John Galsworthy, at whose shrine she worships and . . .

○



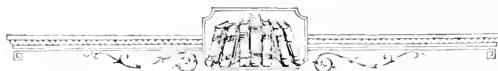
BLANCHE SILVER

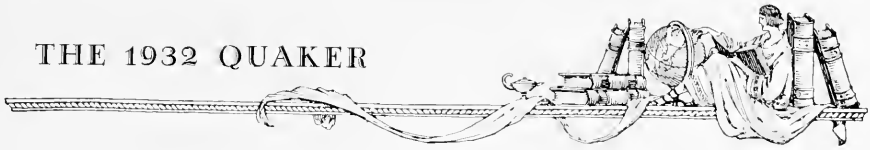
HORSE SHOEF, N. C.

J.B. English

Activities: Z. L. S., 2, 3, 1, Marshal, 2, President, 4; Founders' House President, 4; Play Cast, 4; Hockey Team, 1, 2; Volley Ball Team, 1, 3; Soccer Team, 3; Basketball Team, 1, 2, 3, 4.

Unaffected, unassuming, calmly and thoroughly she does her task, whatever it is. She has a variety of interests; not the least among them are long distance calls. Her favorite color is "Red."





Seniors

MARGUERITE PRISCILLA SLATE

MIZPAH, N. C.

J.B. Music

Activities: P. L. S., 1, 2, 3, 4, President, 1; Women's Student Council, 4; Y. W. C. A. Cabinet, 3, 4, Secretary, 3; Student Affairs Board, 4; A. Capella Choir, 3, 4; Community Chorus, 1, 2, 4; Class Secretary, 1; Play Cast, 4.

Marguerite, with her smiles and nimble fingers, wins the heart of great and small. She must have her friends away from school as well as on the campus—for she's always looking for the "mailman." She is a pleasing combination of artistic and practical qualities. But it wasn't her practicalness that won for her the name "Jolie Petite Marguerite."



○

LOTTIE MAY STAFFORD

GREENSBORO, N. C.

J.B. English

Activities: Z. L. S., 1, 2, 3, 4, Secretary, 3, President, 4; Secretary of Student Affairs Board, 2; Y. W. C. A. Baby Cabinet, 1; Glee Club, 2; Choir, 3; Chorus, 1, 2, 3; Track Manager, 2; Baseball Manager, 3; Class Hockey Team, 1, 2, 3, 4, Varsity, 4; Class Baseball Team, 1, 2, 3, 4; Class Soccer Team, 4; Basketball Team, 4; President of Women's Athletic Association, 4; Class President, 4.

Lottie disproves the theory that whistlers are morons. Charm, gaiety, breadth of view, efficiency and versatility characterize this little atom of femininity. Lottie is by no means a back number, but she does prefer a "Model T".





THE 1932 QUAKER

Seniors

IMOGENE STRICKLAND

BAILEY, N. C.

A.B. English

Activities: F. L. S., 1, 2; Baseball Team, 1, 2, 3, 4; Soccer, 2; Hockey, 4; Basketball, 4; Tennis, 3, 4; Tennis Manager, 4; Volley Ball, 2; Glee Club, 2; A Capella Choir, 2; Community Chorus, 1, 2; Student Affairs Board, 3; Class Secretary, 2; Women's Student Council, 4; New Garden House, President, 4; Y. W. C. A. Baby Cabinet, 2; Women's Athletic Board, 4; Monogram Club.

"Emmy" can't be judged by the serious position she held as president of New Garden Hall this year. Only those who know her best find a serious nature underneath. She is extremely fond of athletics and has been outstanding in this field. She has always put more thought on her "off-campus activities" than on any extra-curricular activity. She's a good sport and can certainly chase away the blues with her original wit and happy-go-lucky manner.

○

EDITH IRENE TRIVETTE

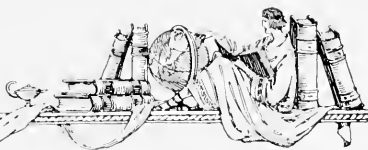
GUILFORD COLLEGE, N. C.

B.S. Mathematics

Activities: Z. L. S., 1, 2, 4; A Capella Choir, 1, 2, 3, 4; Glee Club, 1, 2; Secretary, 2; Community Chorus, 1, 2, 3, 4; Treasurer of Y. W. C. A., 4; Y. W. C. A. Baby Cabinet, 4; Women's Athletic Council, 4; "Guilfordian" Board, 1, 2, 3, 4; Student Affairs Board, 4; Honor Roll, 4; Monogram Club, 4; Baseball Team, 2, 3, 4; Hockey Team, 1, 4; Class Secretary, 4; Social Committee, 4; Volleyball, 2.

The senior day girl and part-time resident of New Garden, the golden-toned voice of the Senior Class, and a mathematician, this is Edith. She is a very able person and has many friends. We are glad to have her in our class.





Seniors

MARGARET ANNABELLE WARNER

WEST GROVE, PA.

A.B. French

Activities: P. L. S., 1, 3, 4; President, 1; Secretary, 3; Hockey Team, 1, 2, 4; Varsity, 4; Volley Ball Team, 2, 3; Basketball Team, 1, 4; Baseball Team, 1, 2, 3; Tennis Team, 1, 3; Soccer Team, 3; Women's Athletic Board, 3; Monogram Club, 3, 4; Honors, 1, 2; High Honors, 3; Honor Roll, 2, 3, 4; Women's Student Council, 1, 2, 3, 4; Treasurer, 2; Vice-President, 4; College Marshal, 3; "Guilfordian" Board, 4; Student Affairs Board, 4.

Marg's Westtown background put her a step ahead of the rest of us when we came to Guilford, and she has been a superior student all four years. Her work in extra-curricular activities, especially in athletics and Student Government, has been outstanding. In spite of all this, Marg has a frivolous streak in her—she's a marvelous chap-ron at State College.



O

ALLEN J. WHITE

BELVIDERE, N. C.

A.B. Religion

Activities: H. C. L. S., 1, 2, 3, 4; Y. M. C. A. Cabinet, 4; President of Christian Endeavor, 3; International Relations Club President, 4; Student Affairs Board, 4; Vice-President, 4; Play Cast, 4.

How could we have gotten along without Allen on our campus? Christian Endeavor was stimulated by him. Y. M. C. A. and Student Affairs Board felt his influence. The girls could always find excuses for going to town with "Little White," and many were the thrills there and back. His generous disposition, his sense of loyalty to his friends, his straight-forwardness in all his duties, make him a favorite on the campus. Happiness, success—may they be yours, Allen.





Seniors



JAMES HAROLD WHITE

CLIMAX, N. C.

A.B. Economics

Activities: H. C. L. S., 1, 2, 3, 4; Secretary, 3;
A. Capella Choir, 3; Class Secretary, 2; Track,
3.

On first acquaintance Harold's quiet, easy-going and pleasant disposition appears to be his outstanding quality. But upon better acquaintance we find in Harold extremely worthy ideals and great ambitions which will some day burst forth and conquer the world. He is a good student, a capable leader, and a loyal friend who keeps a pleasing smile for everyone.

○



ROBERT WALTON WILDMAN

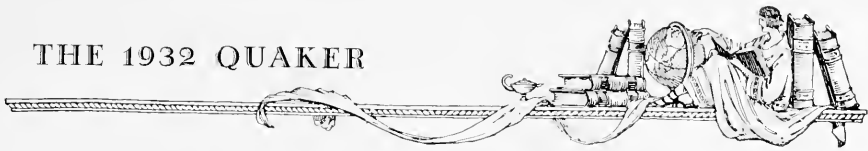
CEDARVILLE, OHIO

B.S. Biology

Activities: H. C. L. S., 1, 2, 3, 4; Basketball Varsity, 3, 4; Squad 1, 2; Track, 2; Class Vice-President, 2; Class President, 3.

If being stingy with what one knows will cause a person to grow rich in knowledge, Bob is certainly a wealthy person. He says very little and keeps what he knows to himself, but when he does speak his words are golden. He spends much of his time in the biology lab, and what he knows about horticulture would fill many volumes. A flash of speed on the basketball court.





Seniors

H. S. WILLIAMS, JR.

CONCORD, N. C.

B.S. Biology

Activities: H. C. L. S., 1, 2, 3, 4; President, 4; Class Vice-President, 1, 4; Glee Club, 1, 2; Choir, 2, 3, 4, 5; "Guilfordian" Board, 1, 2, 3, 4; Associate Editor, 2; Sports Editor, 3, 4; "Quaker" Board, 4; Dramatic Council, 3, 4; Biology Lab, Asst., 3, 4; Track, 2, 3, 4; Football Squad, 2, 3, 4; Manager Basketball, 3; Monogram Club.

When a genial bass softly greets you, you immediately know that it is "Sonny," for he has a friendly word, a slow smile, and a twinkling eye for everybody. "Sonny" is rather susceptible to feminine charm, and he exhibits a remarkable degree of perspicacity, especially when it comes to co-eds. He has done so many things well on the campus, both academic and extra-curricular, that we can't help but predict a success for him in his future life, which we know will be truly worthwhile.



○

GRACE ELIZABETH WINNEKIN

SALUDA, N. C.

A.B. English

Activities: P. L. S., 2, 3, 4; Class Marshal, 2; Y. W. A. A., Vice-President, 4; Basketball Team, 1, 4; Volley Ball Team, 2, 3; Baseball Team, 1, 2, 3, 4.

Half German, half electricity and motion. No wonder this pert little creature is a paragon of success! When she has a thing to say she is no respecter of persons or mincer of words.





Seniors

DOROTHY ALICE WOLFF

GREENSBORO, N. C.

B.S. Biology

Activities: Z. L. S., 1, 2, 3, 4, President, 4, Secretary, 3, Marshal, 2; High Honors, 3; Honor Roll, 2, 3, 4; Biology Laboratory Assistant, 3, 4; "Guilfordian" Board, 1, 2, 3, 4, Associate Editor, 2, Managing Editor, 3, Editor-in-Chief, 4; Student Affairs Board, 2, 3, Vice-President, 3; Dramatic Council, 2, 3, 4, Secretary, 3; Y. W. C. A. Cabinet, 2; W. A. A., 2; Archery Manager, 2; College Marshal, 3; Campus Committee, 2, 3, 4, Secretary, 2; Sponsor "Guilfordian," 3; Class Secretary, 1; Class Vice-President, 3; Class Hockey Team, 2, 3, 4; Varsity Hockey Team, 4; Play Cast, 3, 4; May Queen Attendant, 4.

If grades were given on a campus course, Dot would rate even higher than she does in scholastic attainments. Such a combination of beauty, good grades, and innumerable outside activities has rarely been seen on the Guilford campus. Her playground work in Philadelphia proves her great love of children; her general campus activities prove her great love of Jimmie—Jim-m-nie, if you please.

To the Faculty

Oh, great and good faculty, four years thou hast been our friend. Thou hast borne our weaknesses and our stupidity. Thou hast opened the doors to knowledge and hast wept that we stepped not over the threshold. Thou hast taught us that we might learn thine own great wisdom, and we lift up our eyes and honor thee with adoration and bless thee for thy goodness. But even thou, oh, mighty intellects, have thy faults. That they might be corrected, we, after much pondering, do speak to thee saying:

Thou shalt have compulsory chapel attendance, that thy example may be followed by thy lambs.

Thou shalt give thy marks according to the amount of work done, and not according to the name of thy student.

Thou shalt reach thy classes on time, that thou mayest expect thy students to do likewise. But that thy popularity may increase, thou mightest cut thy class when thou dost feel in the mood for a pop quizz.

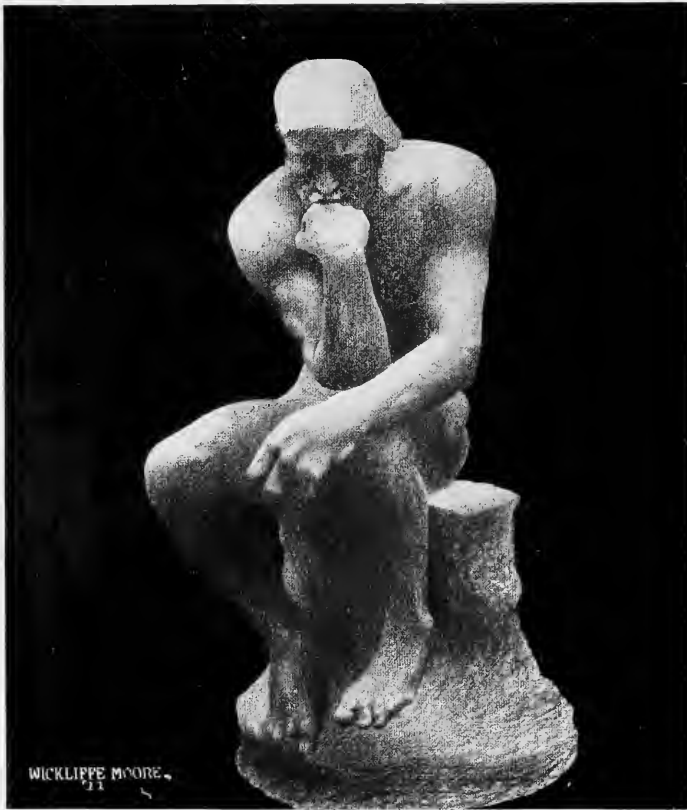
Thou shalt be cheerful, that thy mouth may assume an upward curve and thy facial muscles may be allowed to relax in a smile.

Thou shalt not remark about thy neighbor faculty members.

Thou shalt meet with thy students socially, that they may know thee personally.

Think well on these things which we have spoken unto thee, that thy faults may decrease, for we do love thee exceedingly.





JUNIORS

From The Thinker. By Rodin



THE 1932 QUAKER

Juniors



CHARLES FLETCHER ALLEN

Reason enough for believing good things come in small packages.

FRANK POPE ALLEN

Fifteen Rahs for the Chef de Rah Rahers, The Yankee Yipser, alias Quaker Quipsier, Frankie.



MARIE BEACHUM

She minds her own business—a virtue as valuable as it is rare. Marie comes smiling through to success.

EARL HALL BRENDALL

Brendall is a genuinely good sort. Ask any choir member.



JAMES MATTHEW BRIDGER

The Cavalier who made good away from home. The center of Archdale Socialism.

MARY ADELINE CANNON

President of the Day Dodgers Den, capable, friendly, and loved by all.



FRANCES EVELYN CARTER

She uses her artistic and literary ability to an advantage, if and when she likes.

JEWELL MOCK CONRAD

Brilliant student, pleasing personality, the possessor of a lovely, silver-toned voice.



MILDRED E. CONRAD

Friendliness seems unbounded in her personality.

MARY EDITH COOKE

Firm and determined, yet she abhors thirteen (13) and black cats.





Juniors

SARAH AUGUSTA DAVIS

Sarah—delicate, vivacious, sparkling—is a wonderful pianist and a pleasing acquaintance.

R. VERNON FULK

Willie has spent many an hour in contemplation of the easiest way.

SIMPSON GARNER

A Voltairistic attitude and a philosophy that beats Shopenhauser, but both are camouflages.

GEORGE PRALL GREENE

One who stands in the social background and the intellectual foreground, always lending a hand.

ALBERT WILLIAM HIRE

He doth wax eloquent and sway the populace even as a mighty storm.

LILLIAN A. HOLDER

Athletic, beauty, capability; those are Lill's A, B, C's. She knows her Al-phabet! You bet!

ROBERT BASHFORD JAMESON

An athlete and a scholar is a rare and admirable combination in any individual.

MARY HELEN JOHNSON

Mary Helen has a surplus amount of energy that isn't all used on the typewriter.

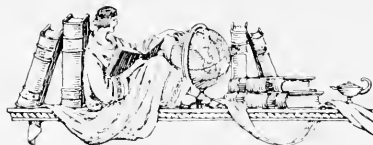
CARL WHITE JONES

You can fool some of the people some of the time, but you can't bluff Bad Eye.

JAMES MARVIN LINDLEY

One of Snow Camp's supreme gifts as a song-bird, "heart-smasher," and net star.





THE 1932 QUAKER

Juniors



MELVIN H. LYNN

A great, big, handsome boy who works hard and shows it in spite of his weight.

CHARLES FREMONT MILNER

A real collegian, serious under a veneer of jollity and wit.



RUTH MILDRED MARSHBURN

Quarterback of the Day Girls' athletic contributions.

HARRIS CONRAD MOORE

To have a mind very much your own and the ability to use it is an admirable trait.



HARVEY ROSELAND NEWLIN

One who conquers all tasks by the way of persistence and hard work.

WENDELL NEWLIN

Pavo Nurmi is getting old and needs a rest. We nominate our Captain.



DAVID HENRY PARSONS, JR.

A tennis star, a scholar, a polished gentleman; these make Dave an eminent collegian.

MORGAN B. RAIFORD

Speaking of sharks—here's one for work, and he likes it.



MARY GRAY RICHARDSON

Mary is ever cheerful today, confident of tomorrow, ready and willing for her task.

ESTHER FLORA ROACH

Calm, cool, collected, she will surely rise in this world.





Juniors

AVA MARGARET ROBERTS

The san' lapper with a mania for Sand'.

DORIS EVELYN SAPP

Sapp is a misnomer for Doris. With her qualities she may change it at will.

JOHN CURTIS SWAIM

If you are looking for someone earnest, sincere, and willing to lend a hand, here he is.

ETHEL MARIA SWAIM

A typical four-letter girl, with emphasis on Y. W. C. A.

ALIENE THOMPSON

"A perfect woman, nobly planned,
To warn, to comfort, and command."

IVAN THOMPSON

Brown-eyed Ike is a favorite among the ladies. Punctual, courteous, friendly.

CATHERINE HENLEY TURNER

Another Day-Dodger, with a genuinely good personality.

HARRY ALVAH WELLS

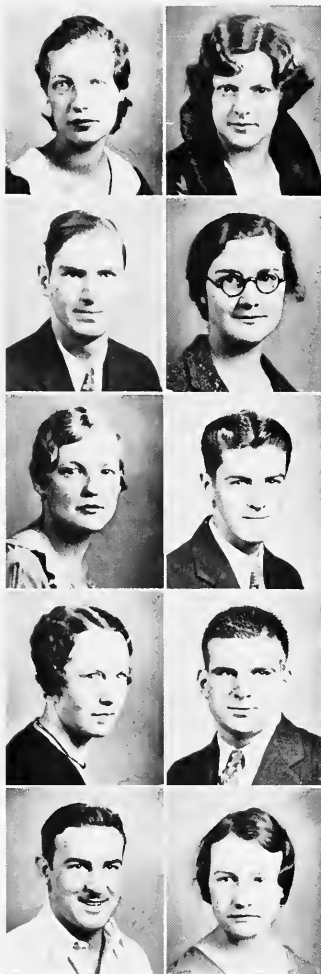
Despite his frequent off-campus visits, Harry maintains his on-campus popularity.

DAVID HICKMAN WEST

Talk to Dave about Jacob's ladder and he would ask the number of steps.

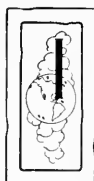
ANNIE EVELYN WILEY

Jamestown sent us this Junior, and we willingly acknowledge our indebtedness.





Candle Light Service



IT'S evening and the campus is quiet—hushed by the warm drug of an early autumn, under tall, shadowy trees girls are walking. Their dresses of filmy white blot the twilight with blurs of pearl. The breeze is like slow, warm breath.

Presently, inside the church, the girls have gathered silently, waiting to take part in one of the most impressive ceremonial occasions of college tradition—the candle light service of the Y. W. C. A.

The church is lighted entirely by candles, that flare gracefully at each tall window and upon the pulpit. On the platform are seated a small group of girls. These are the members of the "Y" Cabinet. Each holds an unlighted taper. One girl, the leader, stands alone by the pulpit as she offers a simple prayer for blessing, and reads with genuine feeling the old appealing legend of the grail. Its beautiful symbolism grips her hearers, and they listen intently, moved and yet conscious of a sweet sense of pervading peace and fulfillment.

The story done, the leader lights her great white candle at the flame of that which burns so brilliantly upon the pulpit, and lights in turn the slightly smaller tapers of her cabinet members.

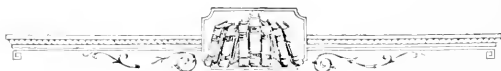
To the strains of soft lovely music these bearers of light descend to the audience, and at their flames are lit the many tiny candles—one in each girl's hand. Reverently all heads are bowed as flame gives birth to flame, and the miracle of light evolves again and again.

A moment more and the entire group has filed silently out of the church and is slowly forming a wide semicircle in the yard.

The night is darker now. Away to the east a platinum moon is just beginning its gradual ascent. Under these huge trees, a crescent of diamond fire-jets twinkle back at the pecking stars high overhead.

Young girl-voices sing softly, sweetly, with a shy sort of reverence.

I think God hears and is glad!





SOPHOMORES

From Atlas. Antique Sculpture



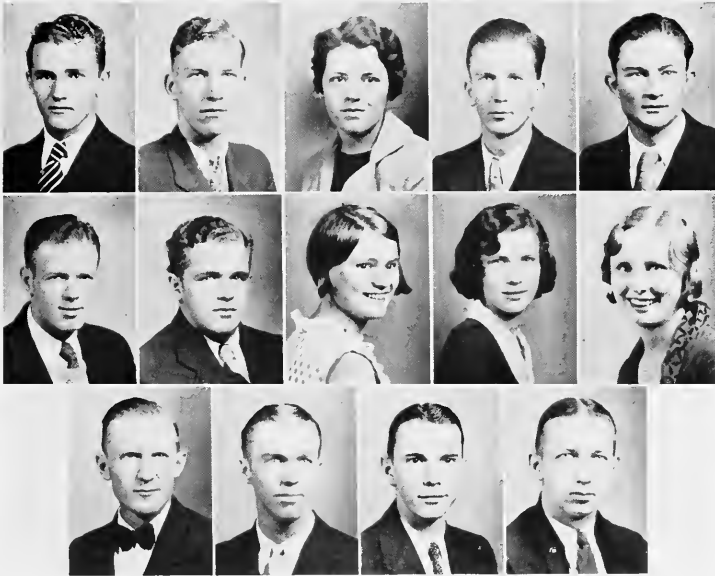
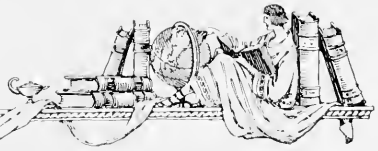
THE 1932 QUAKER



Sophomores

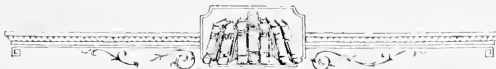
LEWIS ABEL	ELIZABETH ALEXANDER	ROSE ASKEW
ROSA LEE BELL	MARSHALL BUDD	
MARY BELL BUCHANAN	FLORA BUMGARDNER	JOHN BURGWIN
MILDRED BURTON	VIRGINIA CAVENAUGH	
WILLIAM COPELAND	ESTHER LEE COX	ELWOOD COX
	RUBY CREWS	

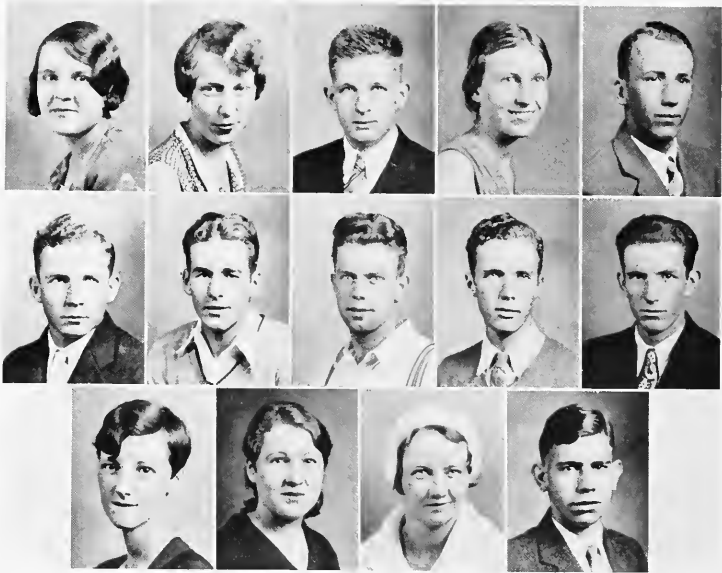
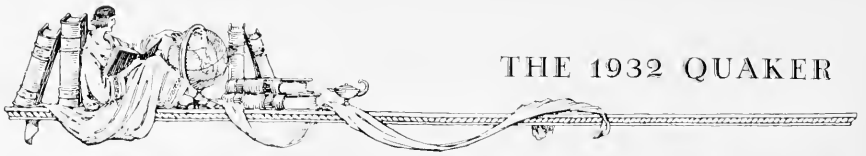




Sophomores

- | | | |
|------------------|---------------|-----------------|
| CLARENCE DAVIS | GEORGE DENNY | NELL ELLINGTON |
| LAURISTON EZZELL | JACK GLISSON | |
| BLAINE GOUGER | DAVID GRIFFIN | MAUDE HOLLOWELL |
| EDNA JOHNSON | MARIHA LANE | |
| TALMADGE LEWIS | THURMAN LONG | LEROY MILLER |
| | HOWARD MILNER | |

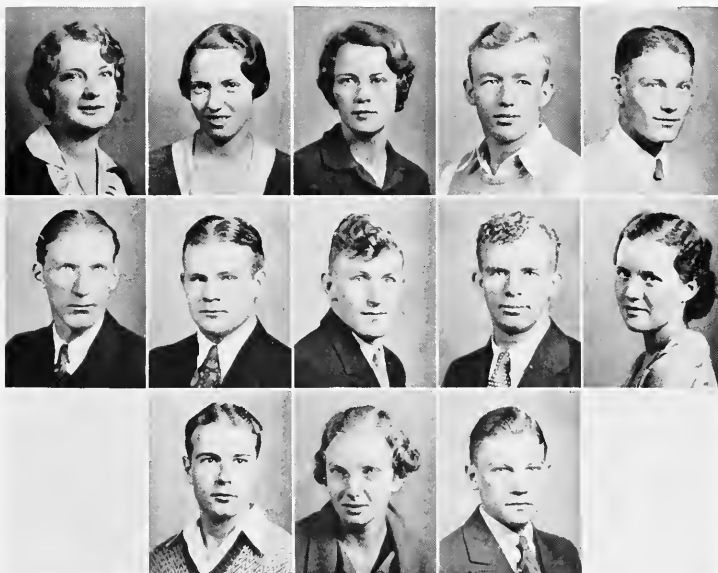




Sophomores

EUNICE OTWELL	JULIA PARKER	BRANTLEY PEACOCK
MARGARET PEGRAM	HAROLD POINDENTER	
JOHN PRAIT	HAROLD PURNELL	HORACE RASLEY
NATHAN REYNOLDS	GRADY ROYAL	
GENEVIEVE SHEFFLZ	NADINE SIGMON	OTTIE SLAYTON
	SAMRA SMITH	

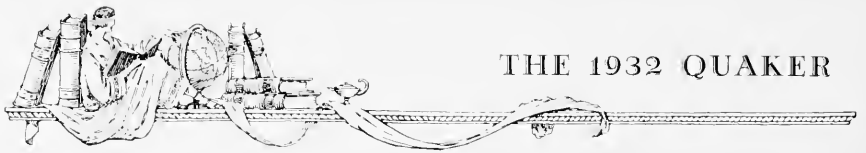




Sophomores

REBECCA TAYLOR	MILLICENT TEAGUE	MOZELLE TEAGUE
MASSEY TONGE	HERMAN TRIVETTE	
THOMAS TRIVETTE	WARD TROGDON	HENRY TURNER
FRANK WEBSTER	CLARA BELLE WELCH	
ERVIN WERNER	MARTHA GRAY WHITE	JOHN HUGH WILLIAMS







FRESHMEN

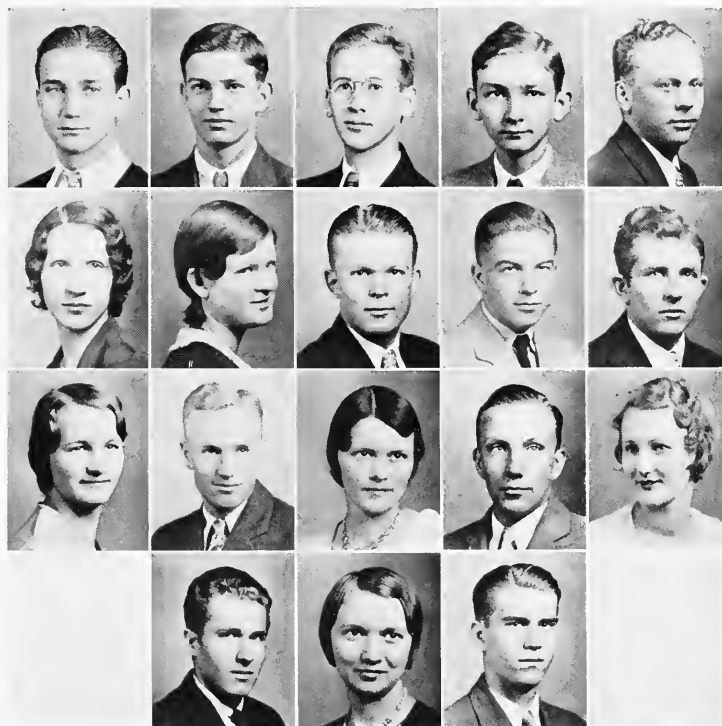
From Meditation. By Ghiloni



Freshmen

- | | | |
|-------------------|-----------------|---------------|
| GERALD ALLEN | BRYANT BAKER | LOIS BEVIL |
| CHARLES BIDDLE | RENA BIVENS | |
| VINA BIVENS | JAMES BLACKBURN | ELEANOR BLAIR |
| PHILIP BOUTON | JESSE BOWEN | |
| HERBERT BRETT | EYAN BROWN | GLADYS BRYAN |
| PAULINE BUMGARNER | LILLIE BUTLER | |
| ETHEL CHILTON | LADD COBLE | DEWITT COBLE |





Freshmen

WILLIAM COLLIER	SOLOMON COLTRANE	WALTER COPELAND
ELDON COX	MILTON CULLIPHER	
NELL DODSON	MILDRED DURHAM	WILLIAM DURHAM
WILLIAM EDGERTON	MAURICE FARMER	
CATHERINE FARLOW	JESSE FINCH	HELEN FLYNN
JAMES FULP	RUTH FUQUAY	
R. J. GOINS, JR.	FRANCES GREGG	THEODORE GRIFFIN

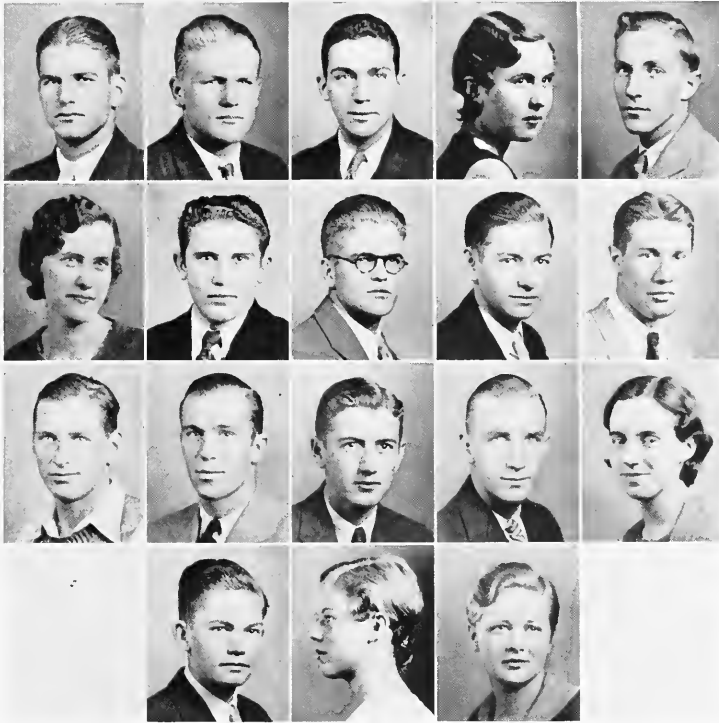
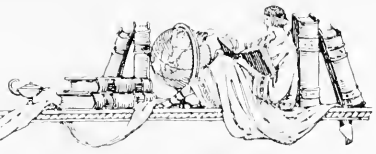




Freshmen

CARSON HILL	JULIA BLAIR HODGIN	GEORGE JONES
LUCILLE JONES	HOWARD KOONIZ	
EIVA LEONARD	IMOGENE LEWIS	GERTRUDE McCOLLUM
MAMIE ROSE MCGINNIS	CHARLES MACKENZIE	
PELIX MEARS	GERTRUDE MEARS	JOHN MYRICK
WILLIAM NEAVE	ORPHY NEWLIN	
FRID NEWMAN	MABEL OEHMAN	GEORGE PARKER





Freshmen

GEORGE PARKS	DUNCAN PARSONS	RALPH PASTINE
MARGARET PRINGLE	THEODORE POLLOCK	
FELSH RIDDLE	FRED RUDISILL	TEX SAITERFIELD
ROBERT SEITAN	EDWARD SHAFN	
WILLIAM SICHOL	DAN SILGER	VON SINK
WILLIAM SROFE	CLEO STACK	
CLEWELL SURRATT	MARILIA TAYLOR	LONA TRAGLE

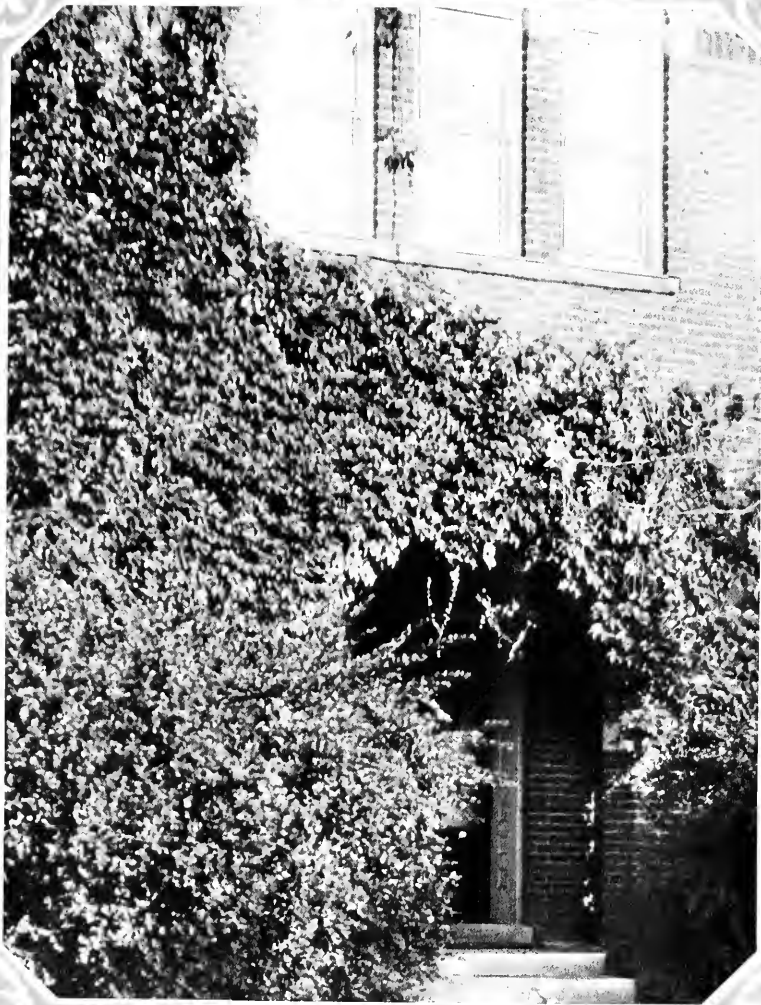




Freshmen

JOE TESH	MINNIE THOMAS	THELMA THORNE
GORDON TROGDON	REX VENABLE	
CHARLIE WARD	LOUISE WARD	RALPH WARD
HAZEL WHITE	JOHNNIE WHITE	
PRISCILLA WHITE	FRANCES WILEY	GORDON WILKIE
JOSEPH WOODARD	EMILY WRAY	
EUNICE WRAY	DONNIE YOUNCE	HOWARD YOW





ATHLETICS



Men's Athletic Cabinet

- H. ELVIN HAWORTH *President*
 WENDELL NEWLIN *Vice-President*
 SAMUEL BASS *Secretary*
 F. CARLYLE SHEPARD *Faculty Manager*
 JOHN P. ANDERSON *Coach*

STUDENT MANAGERS

- MORGAN RAIFORD *Football*
 LINWOOD BEAMAN *Baseball*
 CARL JONES *Tennis*
 WALDO WOODY *Basketball*
 SIMPSON GARNER *Basketball*
 TOM TRIVETTE *Track*





Guilford, 6; Emory and Henry, 13

Playing an alert, fighting lot of huskies, supreme in weight but not in spirit, the Quakers went down in defeat in their first game of the season at Emory and Henry by the count of 13 to 6. It was here that "Smiley" Wilkie, making his debut into college football, caused a sensation by his play in the opposing team's backfield. The whole team performed superbly; lacking only the scoring drive to win the game.

Guilford, 0; William and Mary, 32

Flashy Red Maxey of William and Mary wrought havoc with the Guilford machine by his elusiveness and scoring genius to lead his team to a decisive victory over the fighting Crimson and Gray of the Virginians' mud-soaked gridiron.

Guilford, 0; Randolph-Macon, 7

After three closely contested periods in which neither team was able to score, the Yellow Jackets opened a passing attack which carried the ball over the Quaker goal for the only tally of the game. Love and Harvath were strong on defense; and Bunn, Wellons and Sattenfeld created the threats.

Guilford, 19; Naval Apprentice School, 6

Led by the speedy pair of backs, Wellons and Jamieson, the Guilford aggregation ended its losing streak to tally 19 points at three long runs. Wellons made two dashes for touchdowns, one a seventy and one of forty-five yards. Jamieson checked off ninety two for his part in the scoring.

Guilford, 0; Roanoke, 6

Four periods of fast and interesting football on the Roanoke gridiron featured by many Quaker threats at the Maroon goal line ended as Roanoke checked out a six to nothing victory over Guilford. Eudisell, Scholt and Wilkie played well in the line. The entire backfield turned in a good performance.



Guilford, 13; High Point, 0

Getting off to a flying start with two scores in the first half, the Quakers, in their first contest on Tar Heel soil celebrated by a 13 to 0 victory over the Purple Puck from High Point. Starting off in a business-like way, the Crimson marched down the field in great fashion to a quick decision as to how the first half should go. The second period was closely played.

Guilford, 25; Lynchburg, 13

Powerful drives into the Home-C's territory, with frequent scoring, gave the Quakers a measure of revenge against defeats suffered at the hands of other Virginians. Haworth scored twice, and Sam, Jamieson, and Chisholm did nice runnings.

Guilford, 18; Lenoir-Rhyne, 6

Holding the highly-touted Newton well under cover, the Quakers crasped a good big chew of Bear meat as they ran roughshod over Lenoir-Rhyne for three periods in the dust of Hobbs Field. The Bears came from under cover in the last quarter to score once on long runs. Captain Lee's work at end was outstanding.

Guilford, 21; Langley Field, 7

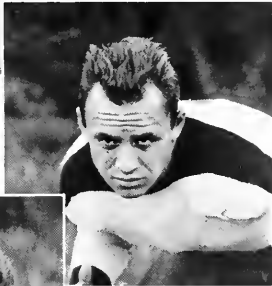
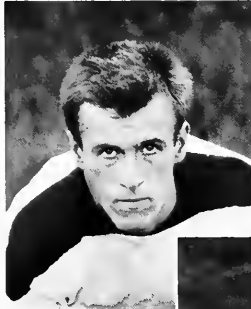
Using an aerial attack which quite baffled even the Aviators, the Crimson and Gray marched down the grid to the tune of 21 to 7.

Guilford, 6; Elon, 19

The Annual Home-Coming Classic gave many Guilfordians one of the biggest thrills of the year. The Quakers' defeat may well be summed up in two words, Pete Williams, Jimmy Bam, playing his last game for the Alma Mater, kept the crowd of Guilfordians on their feet by his spectacular play throughout the entire game. The scrapping Quakers made many threats at scoring, but failed to click except for one tally.

Guilford, 12; Moravian College, Pa., 6

An inter-sectional charity game which showed Guilford with steam-roller force packing down the boys from Pennsylvania.





FOOTBALL SQUAD

1932 Football Schedule

September 17	Emory and Henry
September 24	Langley Field
October 1	Randolph-Macon
October 8	William and Mary
October 15	Roanoke
October 22	High Point Co.
October 29	Catawba
November 4	Lenoir Rhyne
Thanksgiving Day	Elon



THE 1932 QUAKER





Basketball

Captain Haworth and four other letter men, Chisholm, Jamieson, Purnell, and Wildman, reported at the first call to form a fast working, smoothly running combination which started off with speed and gained accuracy as the season progressed.

The outfit working most for Guilford this year was: Haworth, high scorer for the Conference, and Purnell, close second in the race, forwards; Jamieson, brilliant floor man and defensive power at center, and Chisholm, star defensive man, and Pastine, guards. C. Milner, Shrofe, and Wildman all played nice games at forward, and Carson showed up well, especially on defense at the guard position.

Bob Jamieson will lead the team next year. Haworth, Chisholm, and Wildman will be lost by graduation and by service.

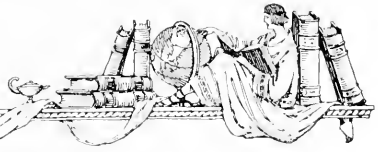
The past season's games and results were as follows:

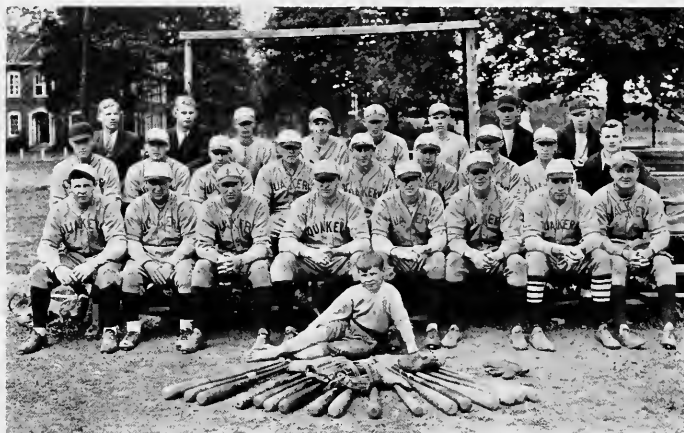
Guilford	23;	University of North Carolina	49
Guilford	22;	Elon	23
Guilford	71;	High Point "Y"	38
Guilford	34;	College of Charleston	44
Guilford	27;	Paris Island Marines	28
Guilford	33;	Paris Island Marines	12
Guilford	21;	Wake Forest	33
Guilford	25;	Elon	38
Guilford	57;	College of Charleston	31
Guilford	33;	Atlantic Christian	31
Guilford	18;	Davidson	22
Guilford	19;	Lenoir Rhyne	18
Guilford	34;	Appalachian	38
Guilford	35;	High Point College	28
Guilford	61;	Lenoir Rhyne	29
Guilford	29;	Elon	24
Guilford	31;	Catawba	30
Guilford	23;	Catawba	28
Guilford	53;	Appalachian	43

Guilford also hung up a series of victories against commercial teams in Greensboro, High Point, and Winston.



THE 1932 QUAKER





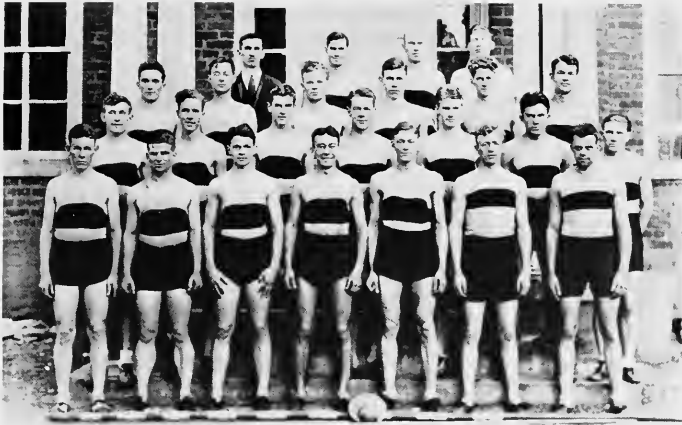
1931 Baseball

Starting the season minus the usual roster of veterans, the Quaker squad seemed doomed for a slow season; 1930 took more than ten lettermen from the willow-wielding group and left Coach Anderson with a camp of new men. Despite gloomy prospects at the start, Coach has groomed a hard-hitting and fast-fielding crew that is showing up well against every opponent thus far encountered.

Captain Chisholm has been out of the game physically most of the season, but his spirit is leading the team through a series of victories.

The nucleus of this year's team was made up of Davis, Pratt, Martin, Pierce, Webster, Nelson, and Long from last year's squad; and the remainder came from new-comers. Bill Durham has shone brilliantly for Guilford and promises to turn in many more beautifully pitched games in the next three years. Finch has played a snappy brand of ball at the initial sack, and Parker and Coble share honors at the hot corner. Griffin and Satterfield are the new men in the outfield. All told, a good team this year, and prospects for even better, much better, next.





1931 Track

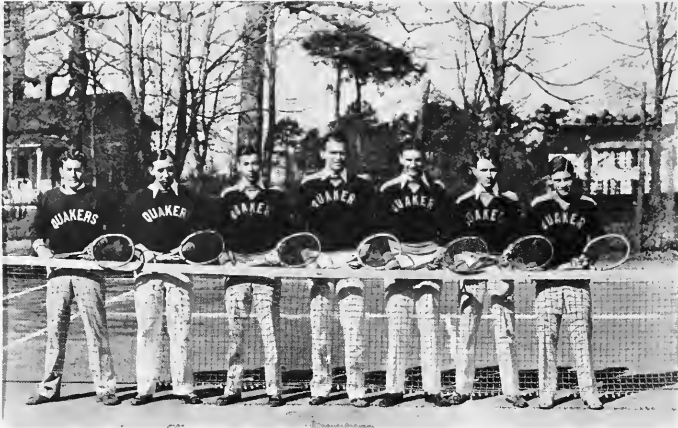
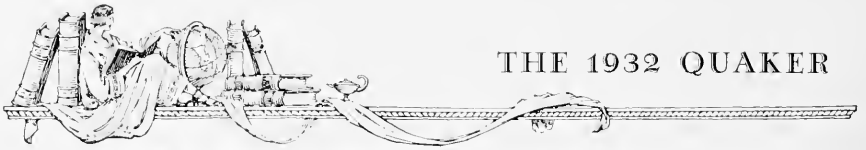
Due to the fact that Guilford was the only school in the Little Seven Conference to sponsor a track team this year, Coach Shepard set his men against the forces of larger schools, both in the Tar Heel regions and in Virginia.

The invasion into Virginia gave the team a victory over Lynchburg and the first defeat that team had suffered on their home field. William and Mary proved a little too fast competition for the Quakers, but had to put forth their best in order to win.

Guilford lost to the Lynchburg boys on Hobbs Field by a very close score, but made amends in their home work by doubling the score on the Wake Forest team.

Captain Newlin, Singletary, Haworth, Allen, Thompson, Trivette, Budd, Turner, Williams, and Swain came back from work with the squad last year, and with the addition of several new men who have made splendid showing this season, have made up one of the strongest track aggregations ever developed at Guilford.



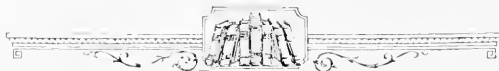


Tennis

The Quaker net team, composed of the same five men who turned in an unbroken record last year, has begun what appears to be a successful drive for another Little Seven championship this year.

Braxton, singles champ of the Conference, is playing a fine brand of tennis at the first position, and Captain Parsons, Milner, Williams, and Lindley have all demonstrated their ability with a racket in the early matches.

A schedule made up of well over a dozen matches has been built up by Manager Jones. V. P. I., Wake Forest, and Roanoke College are on the list, besides four members of this Conference. The team will also represent Guilford in the North State Tournament at Appalachian State Normal on April 29-30.



THE 1932 QUAKER



Lettermen

FOOTBALL

JOHN LOVE
JAMES BUNN
DILLARD CHISHOLM
FRED RUDISILL
WILLIAM SICHOL
JOE TESH

SINCLAIR WILLIAMS
DAN SILBER
SAMUEL BASS
HARRY WELLONS
ELVIN HAWORTH
PLIN MEARS

ROSELAND NEWLIN
CHARLES BIDDLE
PHIL BOUTON
JOHN BURGWIN
TEX SATTIERFIELD
ROBERT JAMIESON

FRANK WEBSTER
HAP PURNELL
GORDON WILKIE
JOHN PRATT
LINWOOD BEAMAN
ED SHAEEN
FRED NEWMAN

BASKETBALL

ELVIN HAWORTH
ROBERT WILDMAN

HAROLD PURNELL
DILLARD CHISHOLM

ROBERT JAMIESON
CHARLES MILNER

RALPH PASTINE
BILL SHROFE
KIT CARSON

TENNIS

WILBERT BRAXTON

DAVID PARSONS

CHARLES MILNER

JOHNNY WILLIAMS

BASEBALL

JOHN PRATT
ONIS NELSON

CLARENCE DAVIS
DILLARD CHISHOLM

JAMES BUNN
FRANK WEBSTER

"ICKEY" PIERCE

TRACK

WENDELL NEWLIN
WILLIAM SINGLETARY
IVAN THOMPSON

MATTHEW BRIDGER
FRANK ALLEN
ELVIN HAWORTH

HARRY WELLONS
MAT RASELY
MASSEY TONGE

SINCLAIR WILLIAMS
HENRY TURNER
HERMAN TRIVETT

MANAGERS OF SPORTS

MORGAN RAIFORD

WALDO WOODY

CARL JONES

SIMPSON GARNER

TOM TRIVETTE





Resumé of Athletics

Taken as a whole, athletics at Guilford had a good year, although only one championship, tennis, was brought here. In football, basketball, and baseball the Quakers finished the season in second place in the North State Conference. The Guilford track team was the only one in the loop this season.

Last football season Guilford lost only to Elon in the state, breaking even in the ten-game schedule. Only one other game was lost by more than one touchdown, and that to William and Mary. Five Quaker gridgers, Love, Haworth, Bunn, Jamieson, and Bass, were named for all-star honors.

Winning more conference games in basketball than any team, the Quaker five piled up a percentage second to Elon again. The Anderson men led the loop in team scoring. Haworth and Purnell were the first and second individual point-makers of the conference.

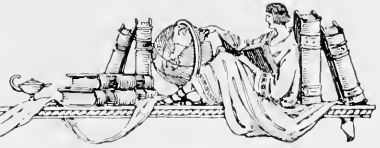
With a team made up almost entirely of freshmen and sophomores, the baseball team also placed second, winning every home game.

Despite the heavy competition taken on by the track squad, excellent results were obtained, winning over Wake Forest and Lynchburg, and losing to William and Mary and Lynchburg.

The tennis team, state champions for the second time, lost only one match in the state, winning the others by good margins. Braxton again won the North State singles, while Parsons and Williams won the doubles.



THE 1932 QUAKER



Women's Athletic Board

LOTTIE STAFFORD *President*
 GRACE WISEKEN *Vice-President*
 LILLIAN HOLDER *Secretary*

SPORTS MANAGERS

DORIS SAPP *Health*
 MARY RICHARDSON *Hockey*
 MAUDE LINBERRY *Hiking*
 VIRGINIA CLAYTON *Basketball*
 IMOGENE SIRICKLAND *Tennis*
 EDITH TRIVETTE *Baseball*
 EDITH COOKE *Archery*



Miss JONES





HOCKEY CHAMPS

Girls' Hockey

Hockey is a major sport which holds the major interest of the faculty, every class team, and the alumni of Guilford. This fall the Senior Class won the championship by playing and eliminating the other classes in a "Round Robin" tournament, a series of six games. Not once was this team defeated. Their team work was excellent. Four years had made it so.

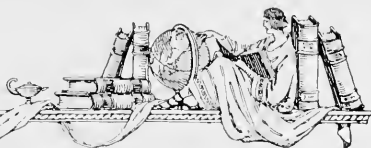
A varsity eleven was chosen from the different class teams and this squad succeeded in defeating a well chosen alumni team on Home-Coming Day.

Then the faculty, who give an annual exhibit of picturesque costumes and excellent technique, demonstrated their prowess on Thanksgiving.

Hockey fascinates each player. Like football it holds and grips one's interest as no other game can.

The success of the hockey season this fall was due largely to the efforts of Miss Dorothy Gilbert, who coached and developed a fine spirit of play and team work in each class group.





BASKETBALL CHAMPS

Basketball

The Freshman girls triumphed in six decisive basketball battles, winning the intermural championship for this year. This sport was newly introduced by the Physical Education Department and recognized as a means to aid in the development of precision, alertness, and provide physical activity as well.

The first team finals were played during the latter part of February and were followed by the second team games. Basketball provides participation of a large number of young women. A total of over seventy played in the various games during the elimination tournament.





BASEBALL CHAMPS

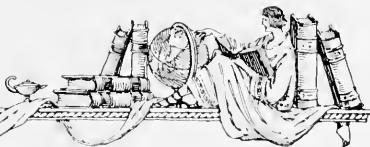
Girls' Baseball

This championship team clinched their bats and title when they were freshmen. Since that time they have not "struck out" with either; that is, they have played four years without being defeated by any class team. Last spring this team was bothered considerably by Connie Mack's scouts. If these scouts could have bought any of these players, more than likely the victory in the World's Series would not have been with the Cardinals. Bryon Haworth preserved their technique in a series of moving pictures.

Baseball at Guilford is one of the major sports. Each class produces several teams and the intraclass games are played off with much enthusiasm and interest.



THE 1932 QUAKER



TENNIS SQUAD



MONOGRAM CLUB





Women's Athletics

Under the directorship of Miss Katherine Jones, recently elected head of the Physical Education Department, athletics for girls has been on the upward trend. Besides the major sports of hockey, soccer, basketball and baseball, new ones have been introduced in the athletic program of electives. These are golf, tennis, archery, volley ball, paddle tennis—a reduced form of lawn tennis—and hiking.

With such a variety of sports offered, each girl has the opportunity to either excel in one, or just participate for the enjoyment of physical activity. However, there has been a conscious effort made to motivate interest and emphasize activity in "carry over" sports, such as tennis, golf, and archery.

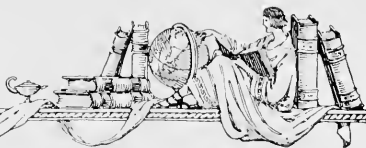
Means for developing poise and grace in movements are provided for by the classes in rhythmic and folk dances. These dances are used in the May Day festival, an annual event held on the natural stage of the campus.

To act as an aid to the Director and her department is the Women's Athletic Board, composed of a president, vice-president, secretary, faculty advisor, and a manager for each of the sports that the Board sponsors. Intercollegiate athletics are not engaged in, but this does not lessen the spirit of the sports, as an abundance of exacting competition is always shown on the field and in the gym during the tournaments. The efforts are materially rewarded with honor awards of numerals, stars, monograms, and loving cups, as provided by the Association point system.





ORGANIZATIONS



Student Affairs Board

ELEANOR G. BANGS *President*
ALLEN WHITE *Vice-President*
SARAH DAVIS *Secretary*

REPRESENTATIVES

LEWIS ABEL	ROBERT JAMIESON
SAM BASS	MARVIN LINDLEY
EDWARD BLAIR	DAVID PARSONS
ELWOOD COX	JULIA PLUMMER
ELEANOR GRIMSLEY	MARGUERITE SLATE
ELVIN HAWORTH	EDITH TRIVETTE
MARGARET WARNER	

FACULTY ADVISORS

MISS DOROTHY GILBERT	MISS ERA LASLEY
MR. E. G. PURDOM	





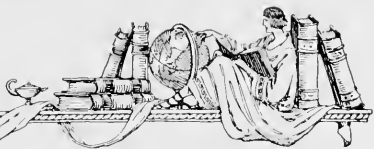
Women's Student Council

- BERA BROWN *President*
 MARGARET WARNER *Vice-President*
 LILLIAN HOLDER *Secretary*
 CLARA BELLE WELCH *Treasurer*
 BLANCHE SILVER *Founders House President*
 IMOGENE STRICKLAND *New Garden House President*
 MARY CANNON *Day Student President*

REPRESENTATIVES

- MARGUERITE SLATE, '32
 MARY E. PITTMAN, '32
 MARIE BEACHUM, '33 SARAH JARRETT, '34
 JEWELL CONRAD, '33 MILDRED BURTON, '34
 PRISCILLA WHITE, '35
 GLADYS BRYAN, '35





Men's Student Council

JOHN LOVE *President*
 JAMES BUNN *Vice-President*
 HARRY WELLONS *Secretary*

CLASS REPRESENTATIVES

JAMES BUNN, '32
 DILLARD CHISHOLM, '32

FLETCHER ALLEN, '33 ELWOOD COX, '34
 HARRY WELLONS, '33 HOWARD MILNER, '34

PLIN MEARS, '35
 FRED NEWMAN, '35





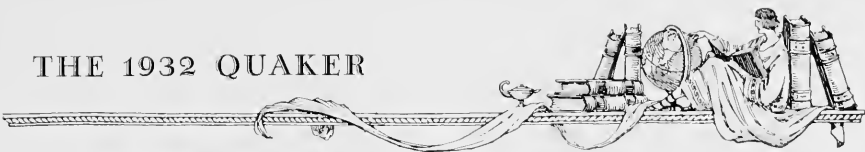
The Young Women's Christian Association

GRACE HASSELL *President*
 JEAN COCKRAN *Vice-President*
 SARAH KEARNS *Secretary*
 EDITH TRIVETTE *Treasurer*

CABINET

MARY RICHARDSON *Social*
 MARGUERITE SLATE *Service*
 MRS. AVA FRAZIER *Religious Meetings*
 EDITH COOKE *Bible Study*
 MARIHA LANE *World Fellowship*
 JEAN COCHRAN *Membership*
 GLYNN BANE *Publicity*
 JOSEPHINE KIMREY *Music*
 EDITH SWAIM *Undergraduate Representative*
 JULIA PLUMMER *Interest Groups*





The Young Men's Christian Association

- WILBERT BRAXTON *President*
- HARRY WELLONS *Vice-President*
- CARL JONES *Secretary-Treasurer*

CABINET

- ALLEN J. WHITE *Religious Meetings*
- MARSHALL BUDD *Bible Study*
- DAVID PARSONS *Mission Study*
- CURTIS SWAIM *Membership*
- DAYTON NEWLIN *Social*
- MARVIN LINDLEY *Music*
- MATHEW BRIDGER *Publicity*





Dramatic Council

P. W. FURNAS, *Director*

PLAY CASTS

Fall

"DARICK CLAUSEN"

THEODORE POLLOCK
ELEANOR BANGS
DUNCAN PARSONS
WADE MACKIE
RACHEL BEASLEY

JULIA BLAIR HODGIN
LEWIS ABEL
EDWARD BLAIR
WILLIAM NEAVE
WILLIAM SINGLETARY
PEARLE KIMREY

BLANCHE SILVER
ESTHER LEE COX
LEROY MILLER
GERTRUDE MEARS
SIMPSON GARNER

Spring

WILLIAM EDGERTON
DOROTHY WOLFF
BOBBY FURNAS
ELEANOR BANGS
ALEX WHITE
ROSE ASKEW
DAVID PARSONS
EARL KUYKENDALL
BERA BROWN

AVA ROBERTS
ELMA MCCANLESS
MILDRED BURTON
MARTHA LANE
EDWARD BLAIR
RACHEL BEASLEY
JULIA PLUMMER
LEWIS ABEL
IRA CHOLERTON

LINWOOD BEAMON
JOHN LOVE
SIMPSON GARNER
EVAN BROWN
JOSEPH WOODARD
WILLIAM SICHOL
BLANCHE SILVER
MARGUERITE SLATE
PEARLE KIMREY





Debating

Debating seemed to have something of a renewed vigor with the small group of hopefuls that began work for the 1932 season. The query for discussion was the national Pi Kappa Delta query, "Resolved, That Congress Should Enact Legislation Providing for the Centralized Control of Industry, Constitutionally Waived."

The affirmative team, composed of William Hire and David Parsons, with Talmadge Lewis as alternate, lost a close decision to High Point's negative team. The negative team, composed of Len Weston and Edward Blair, won unanimous decisions over Lenoir Rhyne, Elon, and Wofford's affirmative teams.

The squad found capable and willing assistance in Mrs. Clyde A. Milner. The squad also appreciated the valuable services of Dr. Pershio, Dean Milner, Prof. Newlin, and Prof. Preston.





THE 1932 QUAKER



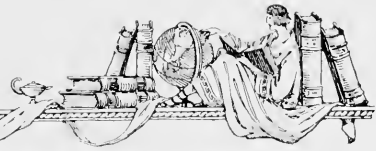
Quaker Board

- WILBERT L. BRAXTON *Editor-in-Chief*
 DAVID PARSONS *Managing Editor*
 LEROY MILLER *Photographic Manager*
 EDWARD P. BLAIR *Business Manager*
 CARL JONES *Assistant Business Manager*

CONTRIBUTORS

- BEBA BROWN
 FRANCIS CARTER
- HELEN FLYNN
 ELEANOR GRIMSLEY
- PEARLE KIMREY
 JULIA PLUMMER
- ALLEN J. WHITE
 SINCLAIR WILLIAMS





Guilfordian Board

STAFF

DOROTHY WOLFF	<i>Editor-in-Chief</i>
PEARLE KIMREY	<i>Managing Editor</i>
IRA CHOLERTON	<i>Sports Editor</i>
JOHNNY WILLIAMS	<i>Assistant Sports Editor</i>
FRANK ALLEN	<i>Feature Editor</i>
GEORGE GREENE	<i>Associate Editor</i>
EDITH COOKE	<i>Associate Editor</i>
MISS ERA N. LASLEY	<i>Alumni Editor</i>
MARY E. PITTMAN	<i>Assistant Alumni Editor</i>
MISS DOROTHY GILBERT	<i>Faculty Adviser</i>
PHILIP W. FURNAS	<i>Faculty Adviser</i>

REPORTERS

SARAH DAVIS	GEORGE PARKER	JULIA PLUMMER
BERA BROWN	CLARA B. WELCH	SAMRA SMITH
EMLA WRAY	ERWIN WARNER	MAUD HOLLOWELL
	PRISCILLA WHITE	

BUSINESS STAFF

MORGAN RAIFORD	<i>Business Manager</i>	FLORA BUMGARDNER	<i>Asst. Circulation Mgr.</i>
ROBERT JAMIESON	<i>Asst. Business Manager</i>	CARL JONES	<i>Asst. Circulation Manager</i>
DAN SILBER	<i>Advertising Manager</i>	MASSEY TONGE	<i>Asst. Circulation Manager</i>
LEWIS ABEL	<i>Advertising Manager</i>	MARY B. BUCHANAN	<i>Secretary</i>
MARGARET WARNER	<i>Proof Reader</i>	ELIZABETH PARKER	<i>Secretary</i>
CARL JONES	<i>Circulation Manager</i>	DUANCE MCCrackEN	<i>Faculty Adviser</i>





Philomathean Society

- | | |
|----------------------------------|------------------------------|
| ROSE ASKEW | EDNA JOHNSON, <i>Marshal</i> |
| MARIE BEACHUM | PEARLE KIMREY |
| RACHEL BEASLEY, <i>President</i> | ELVA LEONARD |
| BEA BROWN | IMOGENE LEWIS |
| LOIS BEVILLE | WILLIE LOU MCGEE |
| GLADYS BRYAN | GERTRUDE MCCOLLUM |
| ELEANOR BLAIR | GERTRUDE MEARS |
| PAULINE BUMGARDNER | MABEL OEHMAN |
| JEAN COCHRAN | EUNICE OTWELL |
| MILDRED CONRAD, <i>Secretary</i> | RACHEL PERKINS |
| ESTHER LEE COX | JULIA PLUMMER |
| RUBY CREWS | MARY RICHARDSON |
| HELEN FLYNN | ESTHER ROACH |
| RUTH FUQUAY | MARGUERITE SLATE |
| EDNA GUTHRIE | ETHEL SWAIN |
| LILLIAN HOLDER | MARGARET WARNER |
| MAUDE HOLLOWELL | GRACE WINEKEN |
| JULIA BLAIR HODGIN | LOUISE WARD |

SARA MAE WINSLOW





Zatasian Society

ELIZABETH ALEXANDER
MARY BELLE BUCHANAN, *Marshal*
SOPHIA CATHEY
ADA CLINARD
SARAH DAVIS
NELL DODSON
AVA FRAZIER
RUTH HILLER
SARAH JARRETT
ISABELLA JINNETTE
MARY HELEN JOHNSON, *Secretary*
MAUDE LINEBERRY
MAMIE ROSE MCGINNIS

ELIZABETH MCVY
ELIZABETH PARKER
FELSIE RIDDLE
AVA ROBERTS, *Treasurer*
BLANCHE SILVER
OTTIE SLAYTON
CLEO STACK
LOTTIE STAFFORD
MARTHA TAYLOR
ALIENE THOMPSON
FRISCILLA WHITE
DOROTHY WOLFF, *President*
EUNICE WRAY

EMLA WRAY





The A Capella Choir

The A Capella Choir continues this year to popularize the music department of Guilford College. In spite of the particularly difficult concert program, rigid entrance requirements, and vigorous training which the members of the choir undergo, more interest has been shown by the students than ever before. Mr. Noah has said that in tonal quality and finish the choir this year is an improvement over last.

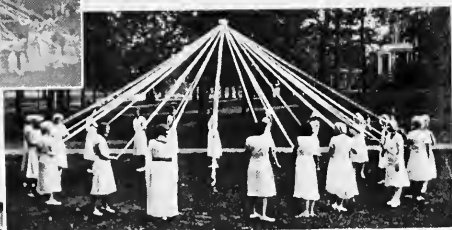
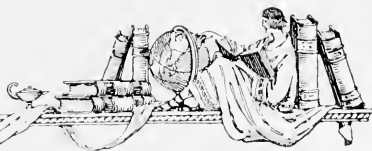
The Northern tour, which came during Spring Vacation and lasted eight days, extended as far north as Poughkeepsie, New York, and included nine concerts in Washington, Richmond, Wilmington, Delaware, Atlantic City, and other cities. Distinguished musicians and critics were enthusiastic over the performances, and the choir left a lasting impression of Guilford wherever it appeared.

Important concerts since the Northern tour have been those sponsored by the North Carolina Federation of Music Clubs, in Charlotte, and by the Euterpe Club during National Music Week, in Greensboro.

The brilliant work of the solo sopranists, Jewell Conrad, Edith Trivette, and Sara Mae Winslow, and of Mrs. Noah, has contributed much to the popularity of the programs.

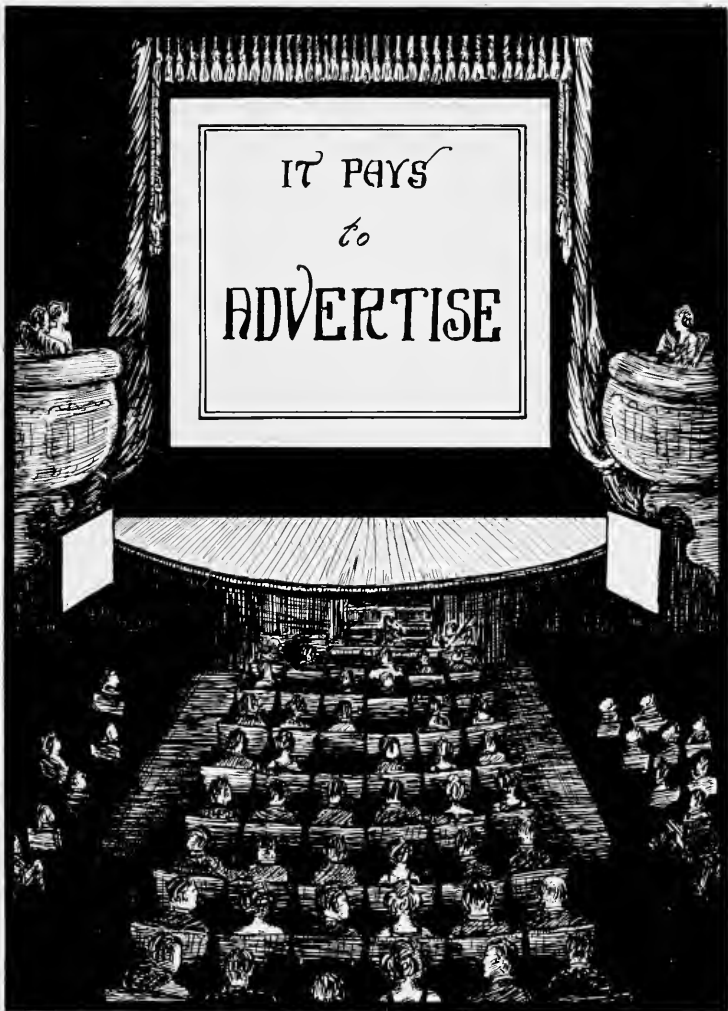


THE 1932 QUAKER





IT PAYS
to
ADVERTISE



*Some Stores Advertise That
They KEEP the Best Food—*

*We Don't—
We SELL It!*

PENDER'S



Fine Foods

Economical Prices

AIRPORT CAFE

*A Good Place
to Eat*



C. W. BAGLEY

Manager

**DOAK-CONNELLY
SPORTING GOODS
COMPANY**

*Sporting and Athletic
Equipment*

•

*Patronize Your
Advertisers*

•

125 South Greene Street
GREENSBORO, NORTH CAROLINA

Hornaday Seed Co.

SEEDS and FEEDS

227 E. Sycamore Street

GREENSBORO, NORTH CAROLINA



Compliments

**CAROLINA BAKING
COMPANY**

BAKERS OF

Southern-O-Boy Bread

AND

Southern Cake

GREENSBORO, NORTH CAROLINA

GREENSBORO

NEWS (Morning) RECORD (Evening)

24-hour newspaper service for Greensboro and the Central Piedmont section. Newspapers of the better type for the home, having at heart the interests of both subscriber and advertiser.

☪

CIRCULATION DEPARTMENT

**GREENSBORO
NEWS-RECORD**

GREENSBORO, N. C.

**The Wm. A. Roberts
Film Company**

MOTION PICTURES

**Commercial and College
Photography**

LANTERN SLIDES

*"We Appreciate Your
Patronage"*

111½ N. Greene St.

Greensboro, N. C.

MISS LAURA CLAPP

FANCY

**Hemstitching, Pleating
and Sewing**

305 W. Washington Street

GREENSBORO, NORTH CAROLINA

**THE ADVOCATE
PRINTING HOUSE**

**Printers, Engravers
Publishers**

The Friendly Printshop, Specializing in School
and College Work

429 W. Gaston St.

GREENSBORO, NORTH CAROLINA

STYLES THAT APPEAL TO THE COLLEGE MEN!



Here in the Carolinas' greatest clothes shop are featured just such styles as will appeal to all ages of men, whether in the classes at college or in the business world.

Forty-two years of service to the men of old Guilford has made Vanstory clothes their favorite.



CHAS. H. McKNIGHT, *President and Mgr.*

J. M. Hendrix Co.

GREENSBORO, N. C.

SHOES

We Fit Shoes Correctly and Scientifically
By Use of X-Ray Machine

J. M. Hendrix Co.

GREENSBORO, N. C.

A Great Future



Jefferson Standard Building

A life insurance policy in the Jefferson Standard will help you to guarantee your future success. There is a policy contract issued by this Company for every life insurance need.

We have attractive openings for college trained men and women with ambition.

W. H. ANDREWS, JR., *Manager*

HOME OFFICE AGENCY

JEFFERSON STANDARD BUILDING

Compliments of
ELLIS, STONE & CO.

"Greensboro's Best Store"

THE CAPS AND GOWNS

*Worn by the Graduating Class
of 1932 Were Furnished by*

The C. E. Ward Company
NEW LONDON, OHIO

Foremost in Fashion
Far Most in Value

NEALE'S

*Smart Apparel For Discriminating
Women—Moderately Priced*

127 W. Market St. GREENSBORO, N. C.

Jos. J. Stone and Co.

Office Supplies
Printing
Ruling

Davie at Hughes Street

Phone 2-0123

GREENSBORO, N. C.

KENDALL . . .

THE PRINTER

The Best Printing The Best Service

Official Printer for All Guilford College
Organizations

216 North Elm St. GREENSBORO, N. C.

▲
**PATRONIZE YOUR
ADVERTISERS**
▼

▲
*Best Wishes
to
The Class
of
1932*
▼

WHAT? IS OVER THE HILL FOR YOU?

The figurative poorhouse is somehow threatening and frightening—unless the other side of your hill is blessed with that foresight, a haven of financial independence.

WISE SAVING HOLDS THE ANSWER!

Home Building and Loan Shares offer a splendid means for accumulating a reserve fund. Regular weekly or monthly deposits will do the trick in just a few years' time.

New Series Open Monthly!

HOME BUILDING AND LOAN ASSOCIATION

214 W. MARKET STREET

JOS. J. STONE, President

DAVID J. WHITE, Secy-Treas.

OH, BOY, I KNOW WHERE TO GO!

TO

SMITH'S DAIRY

FOR

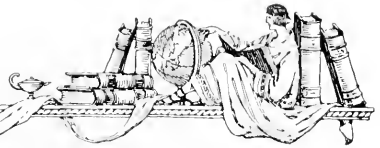
Good Ice Cream at Popular Prices



"We Appreciate Your Patronage"

ON THE OAK RIDGE ROAD

THE 1932 QUAKER



ANNUALS
of
QUALITY
and
DISTINCTION

PIEDMONT ENGRAVING CO.
Winston - Salem, N. C.

ARTISTS AND MAKERS
OF FINE PRINTING PLATES



THIS BOOK PRINTED BY.....



THE
WORLD'S
LARGEST
PUBLISHERS
OF
COLLEGE
ANNUALS



COLLEGE ANNUAL HEADQUARTERS

Highest Quality Workmanship Superior Extensive Service





