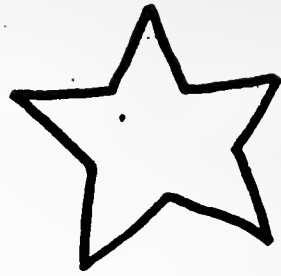
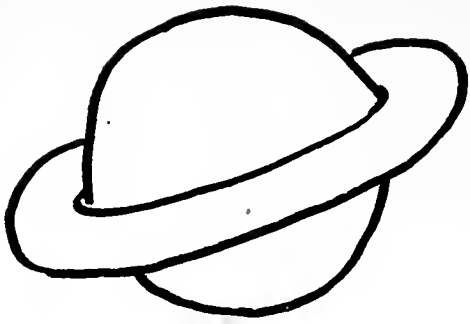
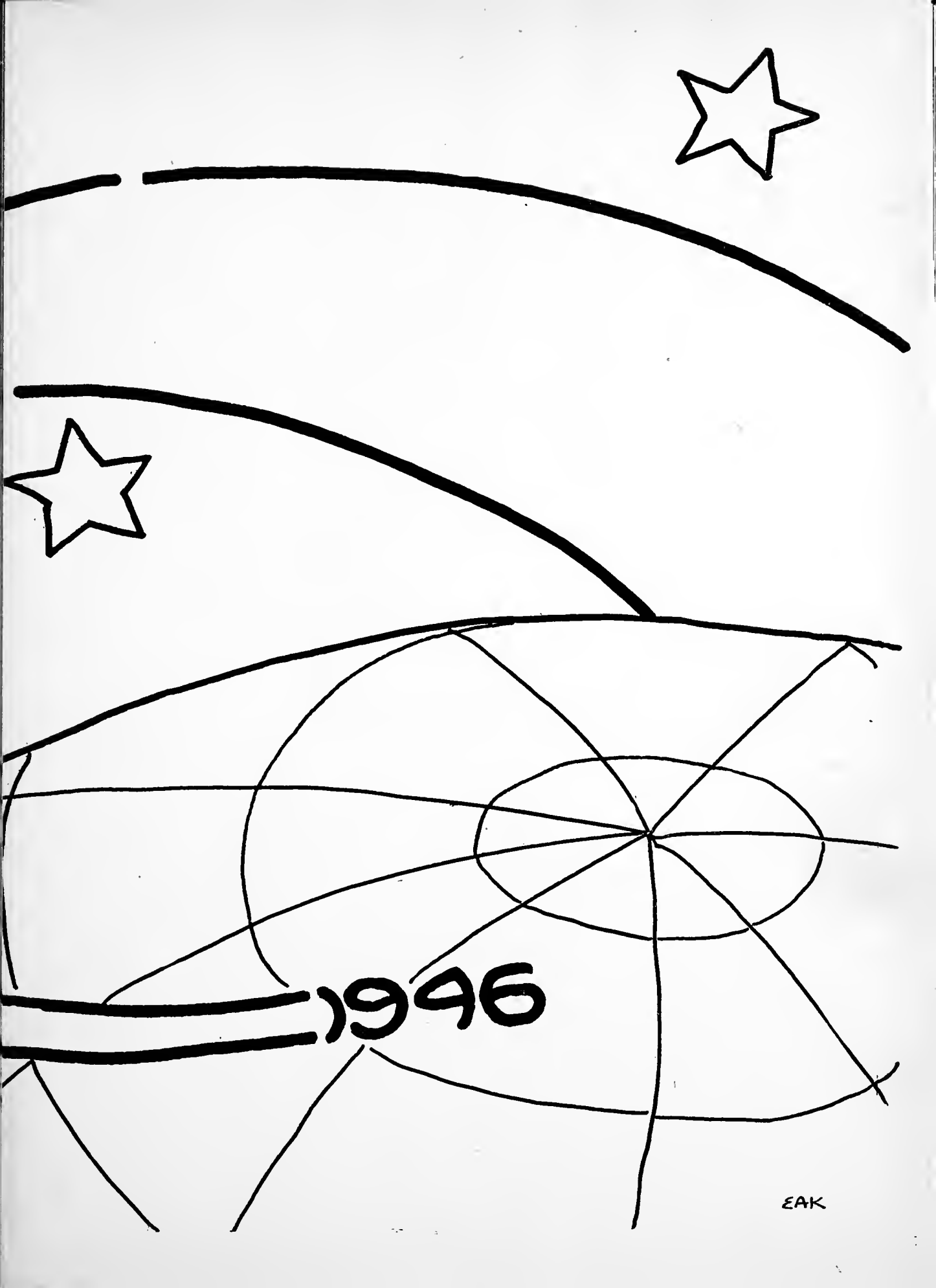


# *The* QUITTAPAHILLA



1946





1946

EAK





Digitized by the Internet Archive  
in 2011 with funding from  
LYRASIS Members and Sloan Foundation

# TABLE OF CONTENTS

	PAGE
FACULTY . . . . .	12
JUNIORS . . . . .	18
SENIORS . . . . .	42
SOPHOMORES . . . . .	48
FRESHMEN . . . . .	54
ADMINISTRATION . . . . .	57
ORGANIZATIONS . . . . .	61
CONSERVATORY . . . . .	74
BEAUTY . . . . .	87
DRAMATICS . . . . .	92
CAMPUS LEADERS . . . . .	96
SPORTS . . . . .	101

LEBANON VALLEY COLLEGE



QUITTAPAHILLA  
PUBLISHED BY THE CLASS OF  
1946



. . . a valley . . . and nestling between two mountains . . . Ann's village . . .  
. . . atmosphere of culture . . . learned buildings in the morning sun . . . one of quiet  
knowledge . . . another distracting sound . . .  
. . . the campus . . . green in spring . . . graceful trees whispering or listening . . .  
against a sky of blue-yellow in the fall . . . an etching in winter . . . delicate lace in  
spring . . .  
. . . winding pathways . . . lovers, students, profs alike . . . wearing down the snow  
on them . . . the dry hard base of them . . .  
. . . daffodils . . . and tardy snowflakes so surprised . . . melting from sheer sadness  
. . . finding that it's spring . . .  
. . . cardinal mating calls . . . dashes of red . . . nesting outside the Library . . .  
. . . voices . . . ringing, calling . . . stern, commanding, kind and soothing . . .  
happy hearts and sad . . . living now and hoping for tomorrow . . .  
. . . absent . . . husbands . . . brothers . . . sweethearts . . . profs . . . glaring spaces  
left unfilled . . . silent courage . . . waiting their return . . .  
. . . a silent flag . . . waiting too . . .  
. . . college year . . . 1945 . . .

# *Dedication . . .*

We want to write a thousand verses for him  
about the grayness of this morning's dawn,  
the whiteness of the yester-snow;  
about the things we feel when talking softly,  
he brings meaning to black and white of printed rows.

We want to tell the joy, the faith and love we feel  
when comes again the knowledge of Carlyle—  
the realization of a master's power;  
when lines from Wordsworth read of deeper faith  
and love seeps through the text in Browning's hour.

We want to have his spirit in ourselves enshrined  
to make our spirits soar as his does now—  
above the level of the thoughtless crowd;  
and some day mold with him from blood-stained soil  
the brotherhood of man—the union of the world.

—CHRISTINE MUMMA

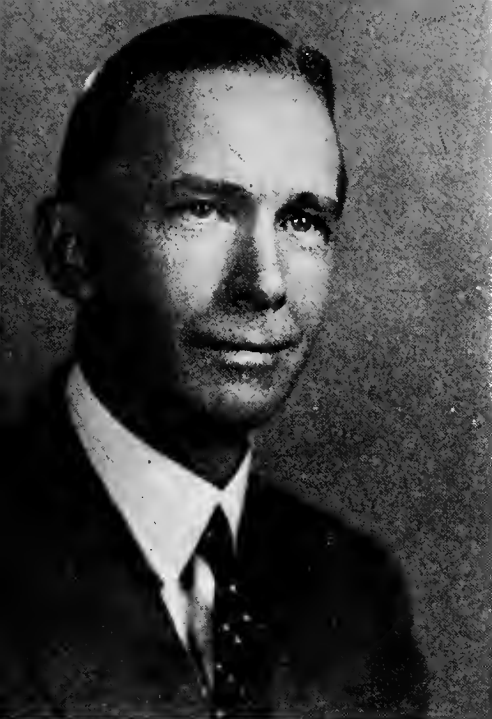


## *President Lynch . . .*

**D**IPLOMATIC personality . . . scholarly gentleman . . . peculiar genius for punning . . . Rotary Club enthusiast . . . understanding adviser . . . capable executive . . . feels the absence of "Foxy" keenly . . . inspiring Chapel discourses . . . proficiency plus at checkers . . . animated conversationalist . . . our popular Prexy.







IMPRESSIVELY imperturbable . . . stately bearing . . . intellectual tranquillity . . . lofty of stature . . . intermittent but effective grin . . . competent leader . . . versatile war-time prof. . . . quiet dignity . . . a man of high ideals.

*Dean Stonecipher . . . Dean Gillespie*

FIRST the teacher, she would have us learn: reason's force, wisdom's power, society's price . . . sound in judgment . . . the ideal of charm and grace . . . ever human: a dash of merriment, a tiny bit of forgetfulness . . . unfailing true advice . . . a lady—fascinating and unequaled . . . our dean.





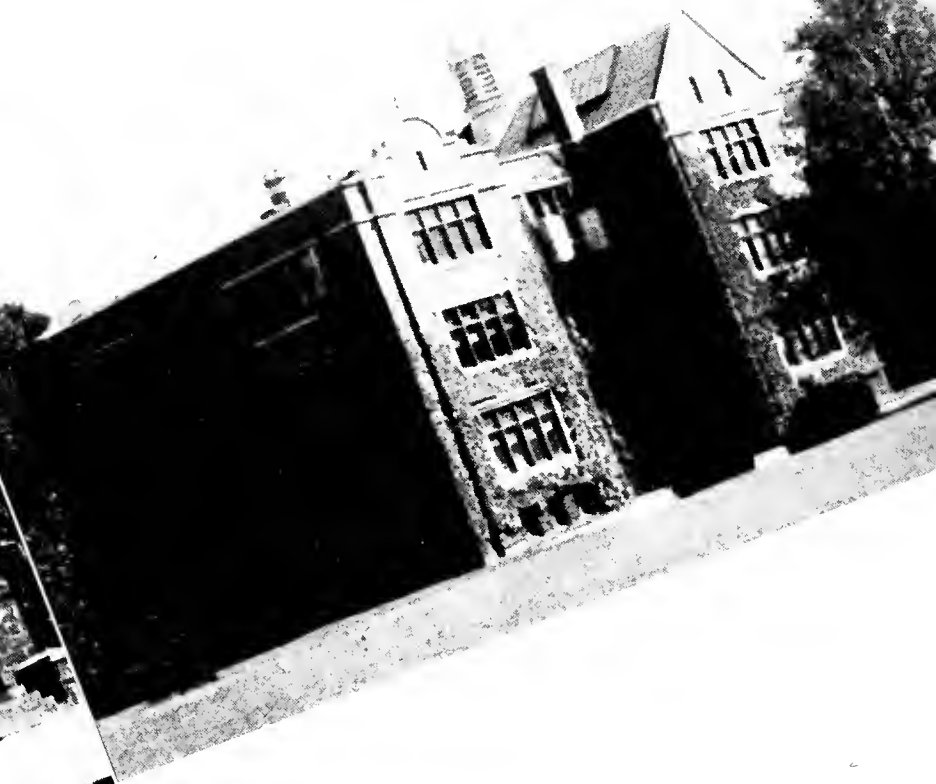
WEST HALL

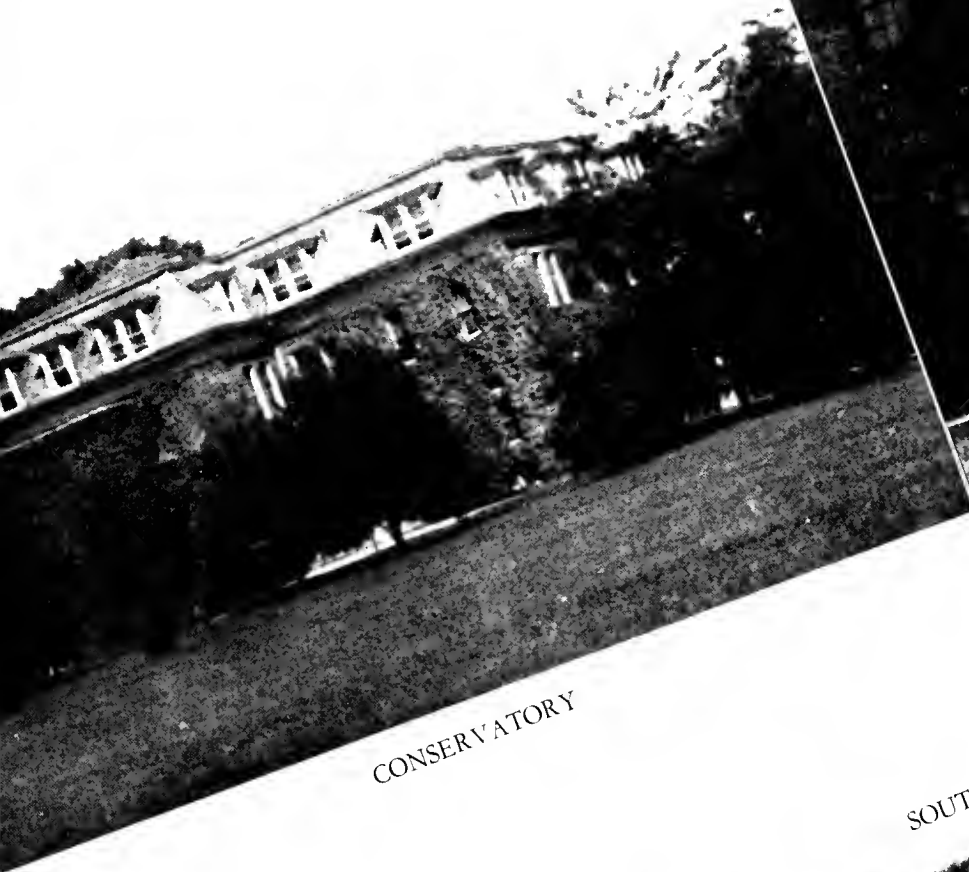


MEN'S DORM

ADMINISTRATION BUILDING

COLLEGE CHURCH





CONSERVATORY



LIBRARY

NORTH HALL

SOUTH HALL



# Faculty



BAILEY, L. G.

"Here's one—but no, you're only Freshmen—next year."



BENDER, ANDREW

"Now, let's solve a problem!"



BERNAT, LOUISE

Diminutive newcomer to the Conserv.

BENDER, MRS. RUTH ENGLE

"I was sleepy when I corrected these papers!"

BLACK, AMOS

"Oh, there's nothing to it!"

CAMPBELL, R. PORTER

Subtle humorist, capable teacher, polished musician.



# Faculty

GRIMM, SAMUEL O.  
"Good morning, boys."



HENDERSON, ESTHER  
"Best gang of Freshmen I  
ever had!"



CARMEAN, D. CLARK  
"Now, what's the pattern  
for this key?"



LIETZAU, LENA LOUISE  
"I'll drop in for a sauerkraut  
lunch any day!"



CRAWFORD, ALEXANDER  
Unusual teaching procedure,  
friendly mien.



DERICKSON, S. HOFFMAN  
*Prof Deri*—with matchless  
zeal in discovering and teach-  
ing the secret of nature.





LIGHT, V. EARL

Host at a corn-husking party  
—complete with red ears.



MALSH, HAROLD

*Pater familias* in a musical household.



MYERS, HELEN ETHEL

Our benevolent collector and guardian of potential knowledge.

MARSH, OZAN

Recent arrival on campus with magic finger.

RICHIE, G. A.

... What he *doesn't* say at basketball games!

RUTLEDGE, EDWARD P.

"That was just a rehearsal—now let's play it!"

# Faculty



# Faculty

STOKES, MILTON L.

"Here's a good one—the other day I . . ."



STRUBLE, GEORGE

Inspiration of Freshman writers and actresses.



SHENK, HIRAM H.

"What did they do before I. Q.'s were invented?"



WALLACE, PAUL

*As You Like It*—"beyond my highest expectations."



STEVENSON, MRS. S. J.

"Traduzca Vd., señorita Bittner!"



WILT, REV. WILLIAM A.

Have you seen "Meet Me in St. Louis"?



STINE, CLYDE S.

"Has *anyone* read a newspaper lately?"



# *Murder, Inc.!!*





# *Behind the scenes . . .*



# *The world grows smaller . . .*

*Somewhere in England*

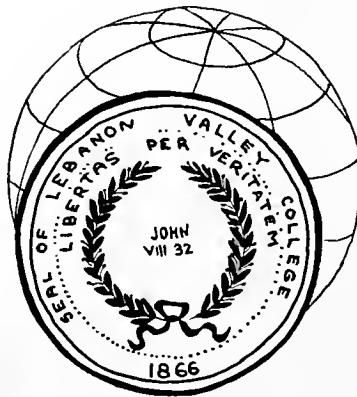
I AM now up in the wild blue . . . 10,000 feet over England. We are on a practice bombing mission . . . and as we roll through the skies, above the clouds, and on into the sunshiny blue, I cannot help feeling that this is a fine world in spite of all the bloodshed and strife and loss of human life. There is so much to live for—so much to go after in order to live the kind of life one desires. One day the world will be at peace, and then perhaps we who have survived may be able to mold that kind of world for which so many fine young men have given their lives.

. . . Today is a great day to be alive—and it would be an even greater day if the world were at peace . . . at present it seems to be very far away, but one day the dawn of the new day will be brighter and more glorious—and families and sweethearts will once again be together—this time, we hope, for good.

. . . If our people could see for themselves they would realize the exact situation that confronts every one of us these days. A few can't bring it to an end—it will take every one of the many millions to do it. It will be done, but many young men will have to give their all to make it possible.

. . . When this is all over, our leaders should be farsighted and prophetic when they begin laying the foundations for world peace. Every mission I go on, I see planes with buddies in them, go down to flaming destruction . . . and I can't help feeling that they may have died in vain. Let us hope and pray, and make certain that they *will not* have died in vain.

REYNOLDS MARQUETTE



# Juniors . . .



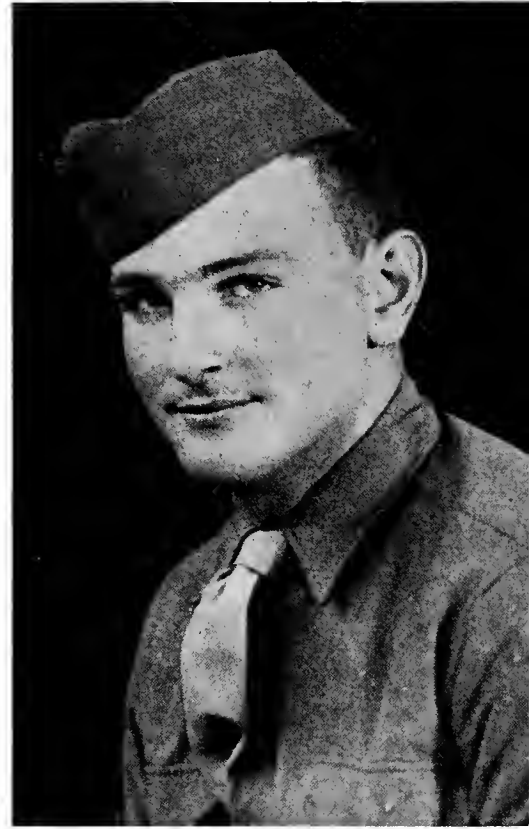
*President* . . . . . NANCY SATTAZAHN  
*Vice-President* . . . . . FRANCES WORKMAN  
*Secretary* . . . . . PHYLLIS SNYDER  
*Treasurer* . . . . . MARION HIMMELBERGER

WAR decreased its size but not its enthusiasm . . . jovial Juniors, aware that soon they will be sedate Seniors . . . Conservites become Methods-conscious . . . unusually accomplished thespians . . . "As You Like It" . . . largest representation on the Dean's List . . . for them, the worst is over . . . addicted to activity.

# *We pause to remember . . .*



T/SGT. CARL W. GRUBER



SGT. MARSHALL CORNELIUS, JR.

. . . those who will not be coming back—to classrooms and labs, to football field and the new gym; who will not tread the campus paths again—in golden autumn or in spring. We pause to remember those who gave their best—their lives, so that there might be a coming back for others.

Carl entered the service in February, 1943, with the Army Reserves. He trained in Florida, South Dakota, Texas, Utah, Arizona and Nebraska; and went overseas a year later as radio operator and aerial gunner on a Liberator bomber. He was killed in action on his 35th bombing mission on the way back to Italy from the Ploesti oil fields. He received the Air Medal with two oak leaf clusters, the D. F. C., the Presidential Citation, and the Purple Heart.

"Corny" was a paratrooper in the 82nd All-American Airborne Division. He was killed with small enemy fire and is buried in an American cemetery close to Nijmegen, Holland. To use the words of his mother, "His captain tells me he died saying the Lord's Prayer, and had peace of mind. I only hope all our sons are not dying in vain." And that is the sincere prayer of all of us; that we may make a world and a peace worthy of their sacrifice.

Simultaneous with President Truman's announcement of Japanese surrender, came the news of the death of Ned Horstick, '46, killed in performance of duty with the Air Corps in the China-Burma-India theater of war. The news was too recent for a picture, but we, his classmates, cannot forget Ned and his sacrifice that makes our words empty and insufficient.

# MEN OF '46 IN THE ARMED SERVICES

ARNOLD, MARK RAPHAEL, JR.  
BLYLER, DONALD WELLINGTON  
BOBBIN, EDWARD ALBERT  
CASSINO, JOSEPH FRANCIS  
COHEN, LEONARD MARLIN  
COMBS, MERLE RAYMOND  
DEVLIN, JAMES FRANCIS  
DIJOHNSON, ALBERT PATRIC  
DOMBACH, RICHARD DEMY  
DONAN, THOMAS MELTON  
DUKE, GEORGE MELVILLE  
EARLY, ROBERT F.  
EBLING, RICHARD DANIEL  
EBY, RICHARD YODER  
EDELMAN, ASHER SAMUEL  
FEGAN, LLOYD VICTOR, JR.  
FIORELLO, JOSEPH MICHAEL  
FLUSS, RICHARD MERRIL  
FRANK, GABRIEL BERNARD  
GEMBERLING, MARSHALL LUTHER  
GIBBLE, PHARES BENARD  
GOLLAM, ROBERT ALLEN  
HAINES, GEORGE G.  
HECK, WILLIAM EMERY  
KEELER, WILLIAM JONATHON  
KEMP, GORDON BLAIR  
KEPERLING, IRA CLAY  
KRAMER, CLYDE YOUNG  
KURTZ, ROLAND ALFRED  
LIGHT, SAMUEL FOWLER, JR.  
LLOYD, THOMAS, JR.  
MAHONEY, WALTER PETER  
MALEY, MATTHEW JOSEPH  
MANDERBACH, GORDON SEIBERT

MARQUETTE, GEORGE REYNOLDS  
MCGRAW, JAMES JOSEPH  
MEZE, FRANK ROBERT  
MIKIONIS, LEONARD  
MILLER, CHARLES WARREN  
MILLER, SIDNEY STANLEY  
OREL, IRVIN  
POOLE, HENRY LEONARD  
RAMSEY, LINCOLN F., JR.  
REED, CLARENCE, JR.  
ROHLAND, WAYNE ELLSWORTH, JR.  
ROTHROCK, WILLIAM ALGER, III  
ROTZINGER, EDMUND GEORGE  
RUHL, CHARLES STANLEY  
RUTT, GEORGE PETER  
SAMPSON, KENNETH LOVELL  
SCHAAK, THOMAS JAMES  
SHALLEY, JOHN HENRY  
SHAPPELL, KENNETH STEWART  
SHERMAN, JOHN ROY  
SHETTEL, PAUL OTTERBEIN, JR.  
STAUB, MASON  
STRICKLER, EDWARD PETER  
SWANGER, JOHN WILLIAM  
TATOL, JOSEPH ANTHONY  
THUMMA, WILLIAM MENTZER  
VON STETTEN, WAYNE  
WAGNER, JOHN WILLIAM  
WEISS, ARTHUR ARNOLD  
WERT, JAMES EDWARD  
WOLFE, HARVEY EDWARD  
ZERBE, WALTER GLENN  
ZIMMERMAN, THOMAS MILTON



## KATHRYN I. ALBERT

Lebanon, Pa.

"Kate" . . . animated conversations . . . roguish pleasantry . . . with intervals of sadness . . . stardust memories of "Chet" . . . vacation in Florida . . . an itching foot . . . member of harmonious family circle . . . sees the humor in every situation.

## JOANNE B. BITTNER

Lebanon, Pa.

"Josie" . . . *Hey* . . . hopping skirt . . . hours spent in a library . . . presides over Griper's Club . . . extols the "bloody Fifth" . . . Jeanne, Jayne, and Joanne!!! . . . "meditations" in Spanish . . . honest scholarship . . . graceful coördination in sports . . . looks out for "Lady."



ELIZABETH L. BOWMAN

Lebanon, Pa.

"Liz" . . . Praise the gods, and support the Republican party . . . critical explorations into "modern" literature . . . tendency toward cynicism . . . "O tempora! O mores" . . . fascinating voice . . . weakness for jewelry . . . odd glasses.



GRACE M. CULLY

Myerstown, Pa.

Individualist . . . Democrat from Myers-town . . . loves to argue . . . infectious giggle . . . appreciates humor . . . *Semper fidelis ad Marine Corps!* . . . dark hair curled by nature . . . desirable friendship . . . in any sport she cuts a graceful figure!



## JANET M. DIETZ

Mechanicsburg, Pa.

"Pepsi" . . . live-wire personality . . . an overwhelming Touchstone . . . entertains North Hall with daily broadcast . . . enviable locks . . . captivating smile . . . *Heck-O!!!* . . . eyes like a rhapsody in blue . . . paradoxical . . . surprised us with that engagement ring!

## VIRGINIA M. DROMGOLD

Duncannon, Pa.

"Ginnie" . . . Miss Quittie . . . like a haunting melody . . . indescribably gentle . . . winsome pug nose . . . toots a tricky trumpet . . . that Air Cadet! . . . portrayed *Adam* realistically . . . quiet attraction . . . coquettish smile . . . hidden talents.





BETTY C. EHRENGART

Linden, N. J.

*Don't call me by my last name!! . . . hair  
afire with beauty . . . thinking deeply  
on questions of philosophy . . . charmingly  
dissociated from the monotonous . . .  
disturbed with wanderlust . . . appealing  
personality . . . exotic nature.*



VIOLET M. FICCO

Hershey, Pa.

*"Vi" . . . Psych, language enthusiast . . .  
Hershey J. C. transfer . . . excellent stu-  
dent . . . good conversationalist . . . Now  
as I was saying . . . and then runs on for  
half an hour . . . well-dressed, well-  
groomed . . . dusky beauty . . . active,  
pleasant, friendly . . . she loves 'em all!*



## ELEANOR J. FREZEMAN

Reading, Pa.

"Squeakie" . . . what-y? . . . Rosalind . . . loafers; characteristic walk . . . inclines toward wanderlust . . . *Back in your box!* . . . assertive lady . . . as versatile as a safety pin . . . temperamental artist . . . witty and quicky . . . unequaled editor . . . amiable mien.

## JEAN M. GINGRICH

Palmyra, Pa.

*Ob-a* . . . congenial Conservite . . . mysteriously complex . . . one of the Gingrich trio . . . genuinely sympathetic . . . laughing eyes . . . appreciates corn . . . made shy love to "Audrey" . . . Palmyra share-a-ride club member . . . Sam's her man!!



## THOMAS A. HENSEL

Lykens, Pa.

L.V.'s man-about-town . . . dining-hall orator . . . suede jacket, yellow scarf . . . week-end commuter to Harrisburg . . . accomo-"dater" of Frosh fems . . . quest in the fields of science and religion . . . speaking in terms of inconceivable proportion.



## ELEANOR HERSHEY

Altoona, Pa.

"Bud" . . . typified by a contagious laugh . . . choral speaking organizer . . . summers in York and week-ends at Yale . . . Miss Gillespie's right-hand gal . . . p. k. . . works for "Y" . . . for further details: see Gerry!





# MARION L. HIMMELBERGER

Lebanon, Pa.

"Himmy" . . . *Don't be so facetious!* . . . full of surprises . . . squirrel escapade in '42 . . . knows the art of conversation . . . optimistic philosophy . . . those little anecdotes! . . . merry buffoonery . . . genuine friendship . . . prayers for "Kenny."

# JOSEPH P. KANIA

Elizabeth, N. J.

"Form" . . . synonym for personality . . . declaims on the merits of Joisey . . . *Tell me something!* . . . equally at home on grid-iron and dance floor . . . usually seen "turtling" along on campus . . . concocter of original Senate sentences . . . Frosh athletic instructor . . . friendly approach.



RUTH L. KARRE

Mt. Penn, Pa.

"Kitty-car" . . . prima donna of the Conserv . . . versatile child of muses . . . actress extraordinary . . . glamorous poise . . . writes nonsense verses . . . puts even Shakespeare to music . . . avid bridge player . . . and oh, that New York weekend!!



RUTH E. KILLIAN

Lebanon, Pa.

"Passenger in the world" . . . calmness of self-possession . . . faithful Lutheran . . . that Sunday the organ balked . . . Library frequenter . . . trustworthy friend . . . carries everything in that brief-case . . . conscientious student . . . world citizen.



## EDITH A. KREISER

Ono, Pa.

"Charlie" . . . modest intellectual . . . repairs anything with a safety pin . . . "considers" chemistry . . . artistic simplicity . . . phone calls from whole family . . . witty and wise . . . possessor of sculpturesque features . . . impromptu sketcher . . . Quittie artist.

## ERMA M. LOY

Pine Grove, Pa.

Chatterbox from the north . . . effervescent pertness . . . L.V.C. Bureau of Correspondence . . . *Heavens!* . . . individualistic titter . . . Dr. Stine's assistant . . . concerned with eating . . . Pennsylvania Dutch accent . . . consumes quantities of soup . . . capricious personality.



# JACQUELINE A. McDONALD

Lebanon, Pa.

"Jackie" . . . dentist's daughter . . .  
*Hello, kid!* . . . jocund Irish colleen . . .  
 gossip of chem lab . . . medical aspirations  
 . . . "tonight—at my house!" . . . a friend-  
 ship according to Plato . . . chronic in-  
 quisitiveness . . . adjusts the erring mech-  
 anisms of men's hearts.



# L. CHRISTINE MUMMA

Lebanon, Pa.

"Teenie" . . . inimitable Audrey . . . Dr.  
 Derickson's favorite artist . . . black  
 Chesterfield . . . non-conformist . . . poet-  
 realist . . . expressive eyes . . . U.S.O.  
 enthusiast . . . moody . . . *This is it, kids!!*  
 . . . falls in love twice a year . . . earnest  
 Quittie editor.



## MARJORIE NEMES

Harrisburg, Pa.

Newcomer to the Valley . . . doctor's daughter . . . enviable fur coat . . . dining-hall humorist . . . *When I was at Penn State*— . . . untiring laboratory studies . . . future M.D. . . . great-grandmother's pearls . . . "Marge."

## R. ELIZABETH REIFF

New Cumberland, Pa.

"Lys" . . . violin virtuoso . . . unassuming . . . a sense of responsibility . . . gentle grace . . . *Ya done noble!!* . . . early to bed—early to rise . . . original vocabulary . . . dislikes "cheese" . . . perfume from Paris . . . engaging smile . . . true friend.





HELEN L. SATTAZAHN

Lebanon, Pa.

Unwritten courage . . . heroic victory over darkness . . . gracious smile . . . knits for the Red Cross . . . seeks release in realm of music . . . conscientious student . . . talks about her nephew Billy.



NANCY M. SATTAZAHN

Lebanon, Pa.

"Nan" . . . look for her in the lab . . . she's waited for two years and a Hoff . . . extrovert . . . a capable executive with distinctive humor . . . banker dad . . . *Now, in Ohio—!* . . . serene effervescence . . . sister "Libby" . . . picturesque speech.



## CLARE C. SCHAEFFER

Lebanon, Pa.

"Cecelia" . . . *Let's not argue!!* . . . dashing  
 "hero" of Shakespearean comedy . . .  
 Broadway aspirations . . . dark beauty  
 . . . dreamer idealist . . . "George" . . .  
 "From the Halls of Montezuma—" . . .  
 supervised '46 Quittie finances . . . deep  
 faith in Catholic religion.

## RICHARD SEIDEL

West Reading, Pa.

"Dickel" . . . from old Reading to  
 Lebanon Valley . . . sincere . . . jovial  
 tenor . . . *Let's go to the inauguration!* . . .  
 incurable mimic . . . habitant of day-  
 student rooms . . . chauffeur for Reading-  
 ites . . . solicits candy for his dog . . .  
 director of Hitler "comedy" in Chapel.



FRANK SHUPPER

Rahway, N. J.

"Shupper-man" . . . Joe College . . . Rahway accent . . . Athlete with a capital "A" . . . *What am I—wood?* . . . a girl in every course . . . the ole Kid . . . clothes with a casual finesse . . . smooth dancer . . . irresistible.



PHYLLIS E. SNYDER

Paxinos, Pa.

"Phyl" . . . friendly glamor . . . early bird . . . dashing accessories . . . *Oh, I don't know!* . . . sweet 'n amiable . . . long list of admirers . . . exciting wardrobe . . . inspires thoughts of spring . . . a smile like turning on a light.



# SARAH E. STAUFFER

Harrisburg, Pa.

"Sally" . . . petite and precise . . . studious . . . *Oh, for goodness sakes!* . . . small but competent . . . appreciates good humor . . . merry and meticulous . . . accomplished musician . . . Phoebe . . . the sweetness of her smile.

# MARY J. STROCK

Mechanicsburg, Pa.

"Crockie" . . . efficient and tactful . . . wields a wicked wink . . . five brothers and a farm . . . unaffected, agreeable . . . a friend in need . . . *Oh, I had a wonderful week-end!!* . . . deep-voiced Vicar . . . cheerleader.



DOROTHY EVELEV THOMAS

Lebanon, Pa.

"Dottie" . . . that night—wedding bells in her ears, soft music, and "Gork" . . . peaches 'n cream complexion . . . *Speak wo-wo!* . . . straight-forward . . . applies her psychology . . . discursive talks in day-student rooms . . . New York week-ends.



JEAN C. THRUSH

Chatham, N. J.

"Cream" . . . study in pastel . . . willowy and serene . . . photograph collection superb . . . interest in psychology . . . *Hey, I wanna take your picture!* . . . poised and pleasant . . . dreams of "Ted" . . . chocolate syrup gal.



## GEORGE B. WAGNER

Millardsville, Pa.

Clarinet artist . . . friendly as a Great Dane . . . Chapel latecomer . . . good-humor man . . . his heart's at Ithaca . . . *Solid!!* . . . authority on jive and such . . . "Esquire" wardrobe . . . dance band energizer.

## MARY JANE WIELAND

Palmyra, Pa.

Always in the "swing" of it . . . an instinct for music and dancing . . . melodic tonsils . . . with something of a witchery in her personality . . . enthusiastic sports-woman . . . the latest in jokes . . . "Rocking Horse Song" . . . popular with the male species.



FRANCES E. WORKMAN

Reinerton, Pa.

"Fran" . . . came North this year . . .  
she's got Her-man and who's the Weiser?!  
. . . coöperative . . . sincere student . . .  
*Oh, my sword!* . . . poetry with keen  
insight . . . delicate sensitivity . . . Eng-  
lish major . . . sprightly sense of humor  
. . . and that week-end in Chicago!!

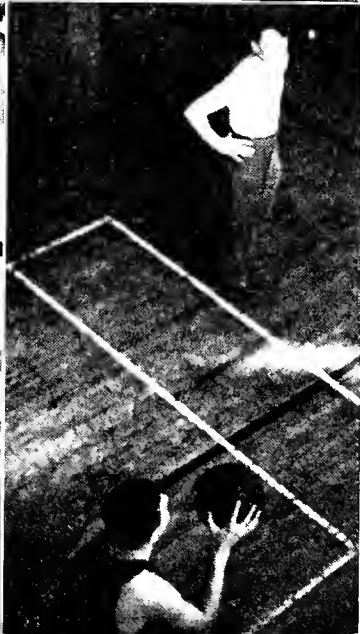
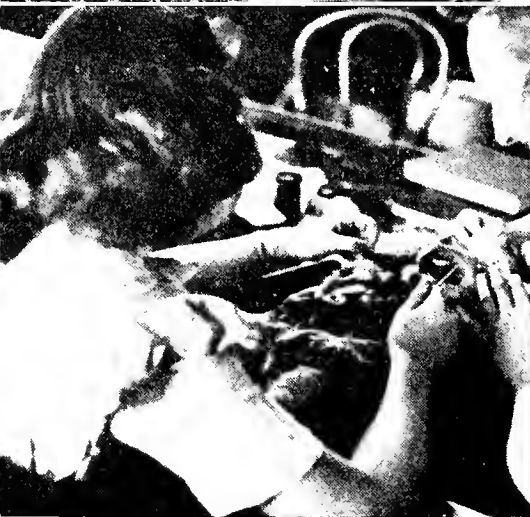
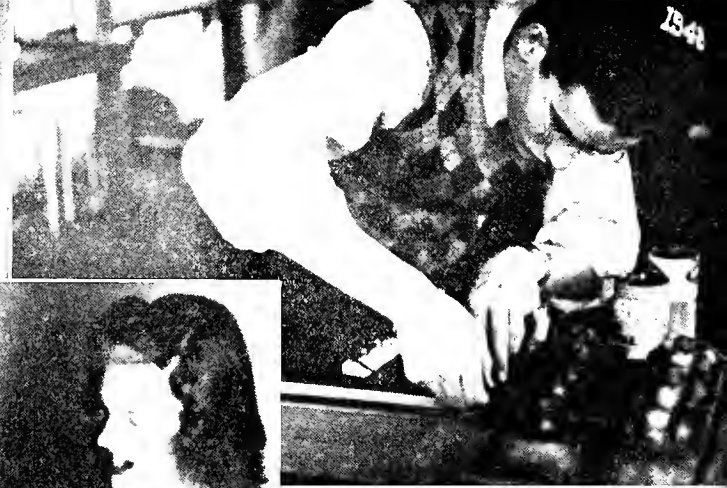


CATHARINE S. YEAGER

Dallastown, Pa.

Unmentionable middle name . . . with  
limitless faith in herself . . . neatness and  
dexterity in business . . . "suit-able" . . .  
accuracy in learning . . . subtle humor . . .  
finds diversion in active sports . . . warm  
and winning smile . . . Quittie editors'  
right-hand gal.









# From '45 in the service . . .

## Alsace

I SUPPOSE the thing that strikes you about war when you see it up close, is the incongruity of it all. You'll creep into a town with your helmet pushed down all over your neck, and your tommy gun loaded and cocked, feeling like a stone-age man hunting for a dinosaur when the inevitable Frenchman on a bicycle comes peddling down the street, followed by a lady with a perambulator. In a town absolutely *kaput*, without a roof anywhere—in the shadow of a ruined wall, an old woman feeds her rabbits.

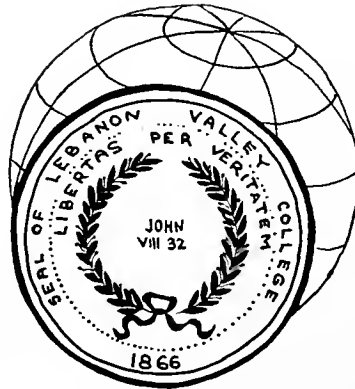
Wars are incongruous. They do not jive with the proper business of mankind, which is to build, to cultivate the land, to dominate nature for the common good of everyone. And the only reasonable proposal so far advanced for the removal of the threat of wars is the establishment of a United States of the world. I feel strongly enough about this to say that unless such a union is established quickly, civilization will fade like a garden in the winter storms and will not flourish again.

I have talked with my buddies in the Army, with American civilians, with French bourgeois and Catholic priests and Alsatian peasants, and they all say the same thing. These last know war more intimately than any of us. They have a long tradition of war and torture and pillage. And they know that it must go.

The first responsibility of every American—of every human being—is to see that this time we do end the possibility of another war. It is not good enough to say that there have always been wars, there always will be wars.

. . . Some of the fellows in the Class of '45 will never be coming home. The rest of us owe it to them to see that the ideal in whose name they died becomes a reality.

TONY WALLACE

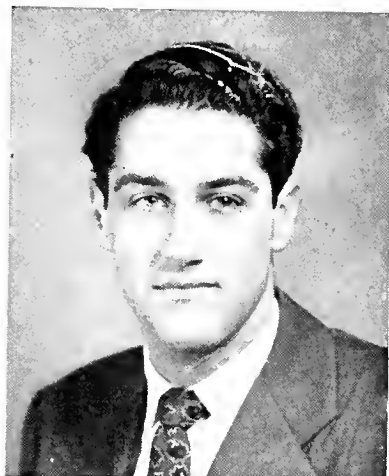


*Seniors . . .*



*President* . . . . . WILLIAM SCHINDEL  
*Vice-President* . . . . . DALE BEITTEL  
*Secretary* . . . . . MIRIAM JONES  
*Treasurer* . . . . . YVONNE RAAB

POETS, philosophers, musicians and scientists . . . sophisticated and learned—impressive personalities . . . downright good sports with a sense of humor . . . efficient organizers . . . initiative, originality and effective encouragement . . . solemn faces and a tenseness under cap and gown—a war-time graduation.



# *Seniors*

ETTA M. AYERS  
MARY JANE BROWN  
LIZETTE P. FISHER

PATRICIA M. BARTELS  
VERNA C. CASSATT  
MARJORIE L. FRANTZ

DALE R. BEITTEL  
BERENICE L. CORBALIS  
ELIZABETH A. GOODEN

EVELYN C. HIESTER  
MAEREDITH L. HOUSER  
NORMA V. KISCADDEN

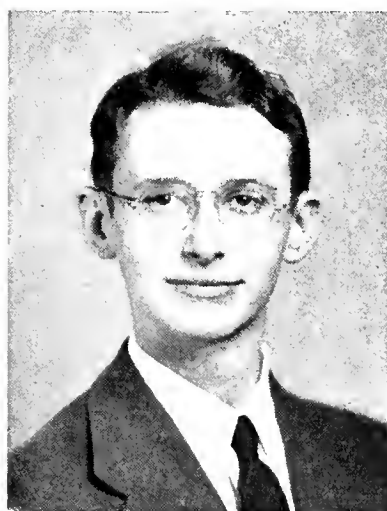
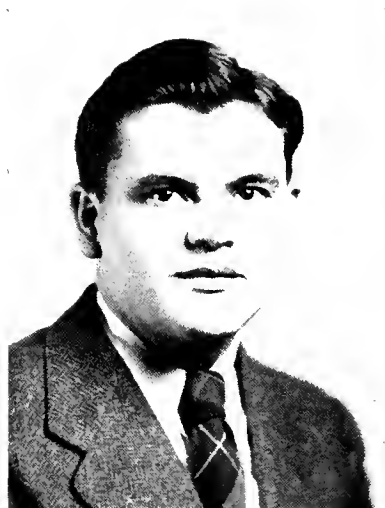
EDNA MAE HOLLINGER  
GERALDINE R. HUSS  
JOHANN L. KLINK

LLOYD J. HOUSEL  
MIRIAM L. JONES  
SARAH E. KOURY

# Seniors







# *Seniors*

CHARLOTTE K. MOHLER  
E. STEPHEN RABY  
WILLIAM H. SCHINDEL

ELIZABETH ANN MOYER  
F. ROSALIE REINHOLD  
NANCY K. SCHREIBER

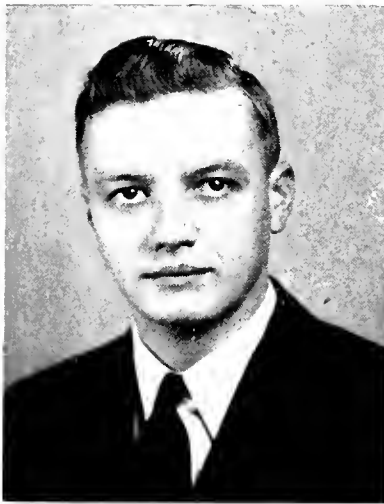
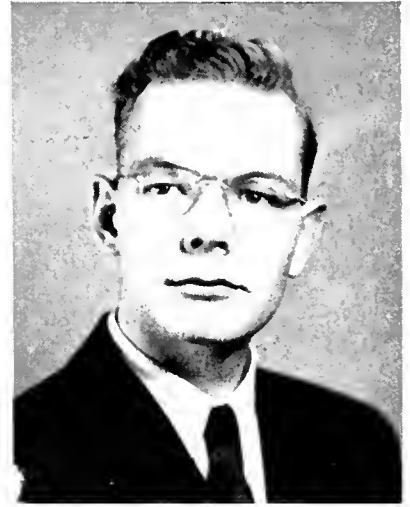
YVONNE L. RAAB  
DONALD D. RETTEW  
SARAH ELIZABETH SHEETZ

DONALD S. SMITH  
DORIS J. STERNER  
JEANNE A. WALLER

JANICE M. STAHL  
GILDA M. TULLI  
EUGENE B. WENGER

ARTHUR W. STAMBACH  
MARION E. ULMER  
ESTHER M. ZIMMERMAN

# Seniors



# *Sophs too have traveled far . . .*

*Somewhere in France*

DEAR FELLOW CLASSMATES:

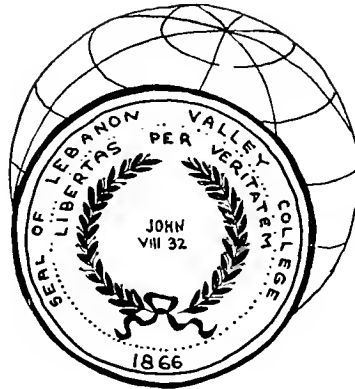
. . . Many times during the day I've caught myself dreaming of being on campus and associating with you all again. It is a pleasant thought to think about the classes and other affairs we enjoyed together. One can only fully realize the value of all of those incidents of fun and sadness when one is far from them . . .

. . . Though boys are considered to be not too sentimental, I still hold dear a picture of the college under a blanket of snow. Only then do I realize what L. V. C. and you mean to me.

God bless you all . . .

A former classmate,

FOSTER M. BRINSER





## *Sophomores . . .*



*President* . . . . . BETTY JEAN BUTT  
*Vice-President* . . . . . JEAN BEDGER  
*Secretary* . . . . . JEANNE KITCHEN  
*Treasurer* . . . . . MADALYN QUICKEL

**F**ROSH antagonizers . . . vivacious, lively gang . . . young enough to comprehend "sleep" . . . a healthy inquisitiveness . . . Freshman—where's your dink!! . . . retribution, sweet revenge . . . sportsters, ardent participators in everything . . . just the right age—between Frosh greenness and upperclass sophistication.



## CLASS ROLL

BEDGER, JEAN ELIZABETH  
 BICKEL, GEORGE WASHINGTON  
 BUTT, BETTY JUNE  
 COVER, RICHARD E.  
 DAZGICH, NIKOLAI D.  
 DICKEL, HELEN LUCILE  
 EBERSOLE, IRENE MAE  
 EMERICH, MILDRED MAE  
 ENGLE, ESTHER MARIE  
 EYSTER, KATHLEEN MAE  
 FLINCHBAUGH, GLADYS ERDINE  
 GINGRICH, BETTY JUNE  
 GINGRICH, JUNIOR RUSSELL

GOODLING, LOIS MARIE  
 GOODMAN, NORA MAE  
 HOUP, RICHARD  
 HUDYMA, JEAN ELLA  
 JOHNS, NANCY VIRGINIA  
 KAUFFMAN, MIRIAM JEANNE  
 KEIFER, WILLIAM LEWIS  
 KITCHEN, WINIFRED JEANNE  
 KOLB, BARBARA RUTH  
 MEASE, CAROLYN LYDIA  
 MULLIN, JOHN WILLIAM  
 MYERS, MARY ELIZABETH  
 PALMER, MILDRED MABELLE

PARMER, CHARLES EDWARD  
 QUICKEL, MADALYN VIRGINIA  
 RASHER, JOYE ANN  
 ROSS, MARTHA ISABEL  
 SAURMAN, NANCY  
 SCHADE, MARION LUCILLE  
 SCHLOSSER, ARLENE BETTY  
 SCHOTT, SARA AMANDA  
 SHEETZ, DAVID PATRICK  
 SMITH, DOROTHY MAY  
 SPITLER, EVELYN ARMISTINE  
 STONECIPHER, EVELYN MARIE  
 ZERBE, RICHARD STANTON



*It snowed—and snowed!*







# Freshmen...



<i>President</i>	HAROLD ZEIGLER
<i>Vice-President</i>	MILDRED NEFF
<i>Secretary</i>	ELAINE HEILMAN
<i>Treasurer</i>	VIRGINIA VOUGHT

YEARLINGS ... spirited funsters ... be-dinked ... pretty girls—and males, too ... becoming oriented under Bailey ... promising students and leaders ... original Freshmen themes ... gifted with gab-ility ... cosmopolitan ... gullibly green but growing grave.



## CLASS ROLL

BARNHART, FLORENCE ELIZABETH  
 BEECHY, VIVIAN JOYCE  
 BIELY, RENA MAE  
 BILLOW, RUTH ISABEL  
 BOEDDINGHAUS, CAROLYN  
 BUSH, BETTY ELEANORE  
 CLEMENTS, DORIS HELEN  
 DeWEES, LEON ALBERT  
 DUNHAM, JOHN WHITMAN  
 ECKERT, MARY JANE  
 FICKES, VERNON MERLE  
 FISTER, SYLVIA SUE  
 FLINCHBAUGH, MARY JANE  
 FRANK, MARY ELIZABETH  
 FROCK, ELAINE LOUISE  
 GAMBER, PETER, JR.  
 GARIS, MARY KATHLEEN  
 GEARHART, RUTH EVELYN  
 GRUBE, MARY LOUISE  
 HACKMAN, DOROTHY JOLINE  
 HECKMAN, FRANCIS AUSTIN  
 HEILMAN, NANCY ELAINE  
 HIMMELBERGER, HARRY J. PAUL  
 HORST, ELIZABETH JANE  
 HYMAN, DORIS LOUISE

IKEDA, KENJIRO  
 KAUFFMAN, DOROTHY MAE  
 KEENER, BETTY ARLENE  
 KEPERLING, IRA CLAY  
 KILHEFFER, BARBARA ANN  
 KLINE, JOYCE MARIAN  
 KREIDER, HENRY ELLIS  
 KREIDER, HOWARD BUCHER, JR.  
 LAMBROS, PHYLLIS ELPIS  
 LAWHEAD, JOANNA RAE  
 LIGHT, MYRLE KATHLYN  
 LONG, MARY HELEN  
 MILLER, PEARL SUVILLA  
 MYER, CHARLOTTE JEAN  
 NEFF, MILDRED ARLENE  
 NESTER, CONSTANCE VERONICA  
 NEWMAN, DORIS LEE  
 PAGE, MRS. LILLIAN R.  
 RHODS, ELLA KATHRYN  
 RUTH, JANE  
 RUTHERFORD, SAMUEL JAMES  
 SCHAEFFER, BETTY  
 SCHMIDT, MARTHA JOYCE  
 SCHMITTEL, LORNA EUTZY  
 SEIBERT, ROBERT LYMAN

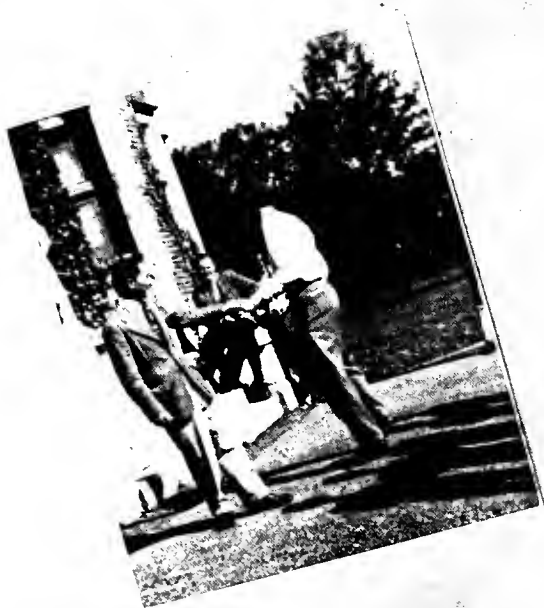
SEIDERS, MARLIN DAVID  
 SHARP, THELMA MAE  
 SHENK, IRA JAMES  
 SHUMATE, IRIS OPAL  
 SMITH, CORINNE CECILIA  
 SMITH, MARGARET ELIZABETH  
 SOUBIER, ROBERT JOSEPH  
 STAHL, MARYRUTH  
 STAHL, NOEL ZUVER  
 STANTON, MARJORIE MAE  
 STRASSBURGER, DOROTHY L.  
 STRICKLER, ANDREW PHILIP  
 URICH, FRANK EDWIN  
 VOUGHT, VIRGINIA MAE  
 WALTER, NELLIE MARILYN  
 WEBSTER, PATRICIA JEAN  
 WEHRY, MIRIAM REBECCA  
 WHITMAN, RUTH ELEANOR  
 WITHERS, IRENE MAY  
 ZEHNER, KATHRYN MAE  
 ZEIGLER, EVELYN ELIZABETH  
 ZEIGLER, HAROLD EDWIN  
 ZEIGLER, RHODA MAE  
 ZELLERS, SARA ANNE  
 ZIMMERMAN, THELMA FAY

### SECOND SEMESTER

BLACK, SHUMAN HARLAN  
 BOLAN, CHARLES DANIEL  
 BROMMER, WILLIAM EMANUEL  
 CLARK, DONALD FREDERICK  
 DANNETTELL, CHARLENE ANNE

GANTZ, FREDERICK  
 GINGRICH, MARK SMITH  
 GRIMM, KENNETH RICHARD  
 JOHNSON, EDNA CAROLINE  
 LEFFLER, EARL JONATHAN

MARKS, EARL RODGER  
 SPECTOR, ALAN MARVIN  
 TERR, PAUL LAWRENCE  
 WOLF, EARL LEON  
 YEAKEL, JOSEPH HUGHES





# *Administration . . .*



## STUDENT-FACULTY COUNCIL

**B**RIDGING the gap between student opinion and faculty authority . . . a representative from every campus organization . . . plans, improvements and innovations . . . decides on matters both great and small concerning the student body.

# Government...

## JIGGERBOARD

MIRIAM JONES

*President*

VIRGINIA DROMGOLD

*Secretary*

ELEANOR HERSHEY

*Treasurer*



## MEN'S SENATE

DALE BEITTEL

*President*

JOSEPH KANIA

*Vice-President*

STEPHEN RABY

*Secretary*

MEN'S DAY  
STUDENT CONGRESS

CHARLES PARMER  
*President*

RICHARD ZERBE  
*Vice-President*

RUSSELL GINGRICH  
*Secretary-Treasurer*



WOMEN'S COM-  
MUTERS COUNCIL

JOHANN KLINK  
*President*

GILDA TULLI  
*Vice-President*

CLARE SCHAEFTER  
*Secretary*

JOANNE BITTNER  
*Treasurer*



... of the people





... a few less organizations this year—one new one, too ... decreased ranks but increased energy on the part of each student remaining ... well-earned praise due to the girls who have courageously undertaken to fill the positions left vacant by the boys, and well done ...

... many changes ... many compromises ... many curtailments ... but satisfaction in knowing we are keeping a spirit—nursing a flame that was entrusted to us ... we will not fail in protecting it 'til peace brings new and more light.





## RED CROSS

L. V. accepts a challenge in war: she gave blood plasma for our wounded, provided food and medicine for suffering prisoners in enemy war zones, extended willing services to returned veterans . . . the long hard way of war—a few steps easier . . . L. V. receives her reward, too—the fun of wrapping 99 Christmas boxes at a party, national recognition as a college unit, the satisfaction of knowing our soldiers are a mite happier over there, and peace a little sooner.



### OFFICERS

*President*

BETTY JEAN BUTT

*Vice-President*

LIZETTE FISHER

*Secretary-Treasurer*

GERALDINE HUSS

*Publicity Chairman*

MIRIAM JONES



## WORLD CITIZENSHIP

A TIMELY moment for world citizens . . . conscious that all men are equal in opportunities . . . citizens weigh world problems . . . fervent followers of current events . . . post-war planners . . . objective analysis experts.

Realizing the need for a "permanent structure of peace upon which we can build, under God, that better world in which our children and grandchildren—yours and mine, the children and grandchildren of the whole world must live."\*

\*From the text of Pres. Roosevelt's Address to Congress, Mar. 1, 1945,  
after Conference at Yalta





<i>President</i> . . . . .	MARJORIE FRANTZ
<i>Vice-President</i> . . . . .	ELEANOR HERSHEY
<i>Recording Secretary</i> . . . . .	SARAH STAUFFER
<i>Corresponding Secretary</i> . . . . .	JEAN BEDGER
<i>Treasurer</i> . . . . .	MIRIAM JONES
<i>Day Student Representatives</i> . . . . .	BETTY JUNE GINGRICH MARTHA ROSS

## “Y”

FELLOWS and girls working together . . . a renovated “Y” room de luxe . . . hosts of jolly week-end parties . . . Christmas spirit aplenty . . . enlivened student Chapel programs . . . an active cabinet . . . unusual semi-weekly religious services . . . real Christian brotherhood.





<i>President</i> . . . . .	ARTHUR STAMBACH
<i>Vice-President</i> . . . . .	HAROLD ZEIGLER
<i>Treasurer</i> . . . . .	VERNON FICKES
<i>Secretary</i> . . . . .	JOHN DUNHAM
<i>Deputy Chairman</i> . . . . .	LEON DEWEES



## LIFE WORK RECRUITS

... "Go ye into all the world and preach my gospel unto every creature" ...  
religion in a war-shattered world ... a challenge—an opportunity ...

... "Lo I am with you always" ... missionary, ministerial students and others  
associate in Christian fellowship ... high ideals ...

... inspiring student Chapel meditations ... deputations to local churches ...  
genuine faith—true religion.





## CLIO

RUSHING season . . . teas to please Freshmen duly impressed . . . initiation: corn-flakes my-lasses, imitations of ballet, South Philly dance, peculiar profs . . . social life: festive formal at Hershey—alluring gowns, escorts from Carlisle, Army, Navy . . . precious memories—ranging from fashion shows to Red Cross benefits.



<i>President</i> . . . . .	JANICE STAHL
<i>Vice-President</i> . . . . .	CLARE SCHAEFFER
<i>Secretary</i> . . . . .	MARTHA ROSS
<i>Treasurer</i> . . . . .	ELIZABETH REIFF



## DELPHIAN

SOUTH Hallers . . . successful rushing season—hike along Quittie with usual antics, delightful tea . . . initiation of pledges, and later—clean-up committee—Freshmen!! . . . Anniversary dance . . . snowy dawn . . . transportation titters . . . men problems . . . Fifi's sheared gown . . . atmosphere of Hershey ballroom suggestive of romance . . . satisfying escorts.

<i>President</i> . . . . .	DORIS STERNER
<i>Vice-President</i> . . . . .	VERNA CASSATT
<i>Secretary</i> . . . . .	PHYLLIS SNYDER
<i>Treasurer</i> . . . . .	LOIS GOODLING
<i>Corresponding Secretary</i> . . . . .	HELEN DICKEL





*President* . . . . . DOROTHY EVELEV THOMAS  
*Vice-President* . . . . . JEAN BEDGER  
*Secretary* . . . . . JEAN THRUSH  
*Treasurer* . . . . . BETTY EHRENGART

## PSYCHOLOGY CLUB

L.V.'s newest group . . . charter members in a unique experiment . . . with many problems to surmount at first: a constitution, meetings, dues, membership, procedures . . . Prof. Bailey's professional advice and Dottie's leadership solve problems . . . meetings varied and interesting . . . psychology applied . . . first mistakes now stepping stones to success . . . advance in the "youngest science"—psychology.



*President* . . . . . EDITH KREISER  
*Vice-President* . . . . . NANCY SAURMAN  
*Secretary-Treasurer* . . . . . ELIZABETH SHEETZ



## CHEMISTRY CLUB

ZEALOUS students of chemistry . . . honest quest for the truth of the matter . . . monthly meetings: chemical warfare officer with his collection of smoke bombs and incendiaries; chocolatetown chemist showing cocoa beans and vanilla pods (but no candy!!); important science news . . . inspection tour of nearby industry . . . off the record—the night the movie projector balked . . . the Christmas party . . . cookies and cider . . . “food” chemistry.





## GREEN BLOTTER

ATMOSPHERE of Dr. Struble's fireside . . . masterpieces by Ink Spots—Marjorie's poetry with depths of feeling plus Little Willie, Bill's short stories, Yvonne's light pieces, Kitty's none-sense . . . challenging criticism . . . friendly arguments . . . amazing interpretations—"But I thought he was a girl!!" . . . Christmas meeting—spirit of season reflected in m.s.'s . . . refreshments by Mrs. Struble accompanied by Middy.

*Head Scop* . . . . . MARJORIE FRANTZ

*Keeper of the Word Horde* . . . . . FRANCES WORKMAN





*Co-Editors*

MARJORIE FRANTZ  
JOHANN KLICK

MANAGING BOARD:

*Associate Editor*  
FRANCES WORKMAN

*News Editor*  
CHRISTINE MUMMA

*Sports Editor*  
PEARL MILLER

*Conservatory Editor*  
RUTH KARRE

*Feature Editor*  
YVONNE RAAB

*Exchange Editor*  
LIZETTE FISHER

*Business Manager*  
ETTA AYERS

*Circulation Manager*  
JOHN DUNHAM

*Advisers*  
DR. STRUBLE  
DR. WALLACE  
PROF. RUTLEDGE

*Business Adviser*  
DR. STOKES

NEWS STAFF:

EDNA MAE HOLLINGER  
DORIS HYMAN  
BARBARA KILHEFFER  
ERMA LOY  
MADALYN QUICKEL  
CLARE SCHAEFFER  
MARYRUTH STAHL  
DORIS NEWMAN

SPORTS STAFF:

RENA MAE BIELY

CONSERVATORY STAFF:

EVELYN HIESTER  
ELINOR STRAUSS

FEATURE STAFF:

GILDA TULLI  
EDITH KREISER  
ELINOR STRAUSS

TYPISTS:

CLARE SCHAEFFER  
ELIZABETH GOODEN  
JEAN HUDYMA  
DORIS NEWMAN

BUSINESS STAFF:

*Assistant Business Manager*  
ELIZABETH BOWMAN



## LA VIE COLLEGIENNE

FRANTZ and Klick collaborating for a successful term . . .

bravely editing the news . . . powers behind the press . . . incongruities: writing heads 'til 2 A.M.—rising at 6 A.M. . . censorship of Monday night editor . . . looking for cuts . . . This-Could-Happen-To-You-Oh-No-Not-That all in one breath column . . .

Monday P.M.: *Where's your assignment? . . . Rejuvenate this article! . . . Write me a head for this . . . Hello, La Vie calling . . . Type this, Jean? . . . a parlor joke, Heckie!! . . . and Yvonne—tell me some gossip!*

. . . Tuesday: pasting the dummy . . . Wednesday: to press with last-minute changes . . . Thursday: La Vie's here, kids!!







## QUITTIE STAFF

PEOPLE of aspirin tablets and deadline dithers . . . headaches: no time, no money, no theme, no student photographer . . . compensations: unfailing coöperation of staff, Drs. Wallace and Struble, and Marg; satisfaction of seeing our Quittie take shape; superhuman effort—and results—of the business staff; prompt and skilful work of our photographers . . . fond memories: hitch-hiking in a bakery truck, indulgent amusement of McFarland's at our first dummy, the afternoon spent looking for Senior cuts, selling Millard an ad in front of the Annville bank . . . results in another war-time Quittie . . . no apologies . . . sincere dedication.

## EDITORIAL STAFF

*Co-Editors* . . . . . ELEANOR FREZEMAN  
CHRISTINE MUMMA

*Literary Staff* . . . . . NANCY SATTAZAHN  
ELIZABETH REIFF  
FRANCES WORKMAN  
EDITH KREISER  
PHYLLIS SNYDER  
ERMA LOY

*Conservatory Editors* . . . . . RUTH KARRE  
RICHARD SEIDEL

*Sports Editors* . . . . . JOANNE BITTNER  
MARY JANE WEILAND

*Art Editor* . . . . . EDITH KREISER

*Photography* . . . . . ELEANOR FREZEMAN  
CATHERINE YEAGER  
JEAN THRUSH

*Typists* . . . . . ELEANOR HERSHEY  
JEAN HUDYMA  
DOROTHY EVELEV THOMAS  
CLARE SCHAEFFER

## BUSINESS STAFF

*Business Manager* . . . . . CLARE SCHAEFFER

*Associate Business Manager* . CATHERINE YEAGER

*Advertising Manager* . . MARION HIMMELBERGER

*Advertising Staff* . . . . . ELIZABETH BOWMAN  
JACQUELINE MACDONALD





MIRIAM JONES

## *Conserv...*

ELIZABETH REIFF



RUTH KARRE



EVELYN HESTER





ELEANOR FREZEMAN



BARBARA KOLB



MARY JANE ECKERT

... *Artists*

MAEREDITH HOUSER





## SYMPHONY

... "The musicians have gone. The lilacs which they placed in the vases of Jade bend toward them and seem to listen still" . . .

... restless fingers . . . gentle strings . . . "fierce horn's brag" . . . cymbal crashes  
 . . . concert night . . . strains of immortal music . . . delicate impressions of  
 masters . . . premier of original composition—Reflective Rhapsody by L.V. student  
 . . . guest soloist . . . Finale from the immortal Fifth Symphony.





## COLLEGE ORCHESTRA

. . . inspiring tradition at Christmas—medleys of well-loved carols . . . comic impressions vividly attuned . . . invaluable part of music department . . . and of each music student's career . . . discords muffled—concord swelled . . . laurels to Prof. Carmean.





## COLLEGE BAND

... manpower shortage converts Boys' Band to College Band ... pretty co-eds maintain former quality ... intense pre-concert rehearsals ... they shine at Music Festival, enliven Friday morning pep sessions ... Allamen, Allamen, Allamen potashka, ish kitty boom boom, Ethyl, bethyl, Russia, Prussia, Spun-yah!!! ... invincible ... Lebanon Valley's pride.







## GIRLS' BAND

. . . strictly feminine with one exception—ties . . . *Who can tie a tie?* . . . saddle shoes . . . *Who has my uniform?!* . . . Tuesday afternoon rehearsals . . . martial music to the tune of victory at girls' hockey games and *the* football game . . . To Thee, Dear Alma Mater . . . presents "different" Chapel programs . . . carries on 'til the boys come home.





## CHORUS

. . . shoulder to shoulder—students, profs, and townspeople . . . Thursday afternoon rehearsals including raffles and such . . . *Baal, We Cry to Thee* . . . importation of tenors and basses . . . oratorio at its best . . . Sunday afternoons willingly devoted to perfecting interpretation . . . impressive spring performance of *Elijah* . . . a tribute to Prof. Rutledge's skilled leadership.





## GIRLS' GLEE CLUB

. . . "Sweet sounds, ah, beautiful music, do not cease! Reject me not into the world again!" . . . wine robes . . . white stoles . . . thirty-six voices blending, sounding, sibilant-murmuring, muting—the soul of song . . . Chapel rehearsals . . . delightful Negro spirituals . . . *Come on, seconds; give!!* . . . *Gee, four-thirty, already!* . . . enthusiastic personnel . . . concert in the spring.





## CHORAL SPEAKING

THE second year for an infant organization . . . this time they specialize in interpreting poetry—secular and sacred . . . *Modern Version of a Lullaby*—"ain't science grand?" . . . *The Sleigh*—the reproduction of all the beloved sounds that go with snow . . . *God's Symphony*—the story of creation—an inspiring masterpiece to the immortal music of Schubert . . . aspiration: gowns for the group, future choric speakers on L.V. campus—all worthy of realization.





## DANCE BAND

OUR favorite Friday a.m. Chapel performers . . . unearthing of unsuspected talent . . . organized and ably directed by George . . . lyrics smooth and mellow by Lois . . . dances in the gym made memorable . . . originators of that jive issuing from the Conserv . . . for our money—strictly solid!!



# DAILY TROMBON



L.V.'s newest, smallest, and least-known publication . . . Conserv news for Conserv service-men . . . origin: way back in '42 . . . purpose: morale-building . . . Kitty: jokes, gossip and "Little Willie" department . . . Squeak: art department . . . "Prof": adviser, originator, suggestions-from-the-fellows department . . . deservers of well-earned praise.







# MAY COURT

Early May morning . . . breakfast at dawn—with bacon and eggs! . . . dining hall metamorphosed into flowery bower . . . Queen Hazel and court looking wide-awake and lovely . . . disappearance of Maypole and subsequent search and discovery . . . barefoot Sophomores tripping lightly o'er the dewy (Brr!!) grass . . . memorable *execution* of traditional dance.

*Queen of May* . . . . . HAZEL FORNOFF  
*Maid of Honor* . . . . . ELIZABETH ANN HESS  
*Court* . . . . . GENE BOWMAN  
   MARIAN KREIDER  
   ANNE ADAMS  
   EMMA CATHARINE MILLER  
   BLOSSOM LEVITZ  
   SARA MCGEEHIN





M-SS-Q-T-T-E

*Virginia Dromgold*



MAEREDITH HOUSER

*Beauty . . .*



JANICE STAHL

# *Beauty...*

PHYLLIS SNYDER



CLARE SCHAEFFER



# *Beauty...*

IRENE EBERSOLE



BETTY JUNE GINGRICH





JOYCE BEECHEY



ELAINE FROCK

*Beauty...*



## WIG AND BUCKLE

*Ladies in Retirement* . . . the most powerful piece of dramatic acting we've seen on L. V. 's stage . . . gripping tragic mystery.

Scene: London, England . . . authentic setting . . . flawless atmosphere . . . tense scenes . . . Marjorie Frantz supreme as the murderess . . . Lizette Fisher in a perfect state of harmless insanity . . . Ruth Karre as the woman of the world . . . Richard Haupt, smooth and suave.

Late rehearsals . . . insane members of cast in character twenty-four hours before curtain time . . . orchids to Yvonne and Bill—partners in a successful directing team.

*Trifles* . . . another murder mystery . . . scene: kitchen of a farmhouse . . . unusual plot, surprising solution . . . unexpected: M. L. F.'s perfect characterization of a farmer! . . . Lawhead and Frank carrying suspense.



# "MATCH FACTORY HELP WANTED"



DORM Show . . . conceived in the Inner Sanctum . . . dedicated to "gals the draftees left behind" . . . including chorus routines, original song hits—lyrics, music, dialogue by M. L. F., Kitty, Gooden, and Waller . . . one-minute laughs . . . campus low-down . . . side-splitting imitations of Schindel, Herr, Miss Gillespie . . . success due to Marjorie—playwright-director, and to hard-working cast . . . a tradition born in the Men's Dorm in '43 and carried on by the gals in '44.





## “AS YOU LIKE IT”

ONE glorious night—and triumph . . . arduous rehearsals under Er. Wallace's masterly direction . . . every-day conversation slipping into Shakespeare vernacular . . . riotous dress rehearsal as the cast viewed itself in doubler and hose! . . . capacity crowd of proud parents . . . Dr. Wallace beaming proudly.

Clare Schaeffer as Orlando, the delightful hero . . . opposite her, Squeakie as Rosalind — with all the charm and cunning Shakespeare intended . . . Elizabeth Reiff as Celia, sweet coz . . . Touchstone, Shakespeare's beloved fool—by Pepsi . . . and Teenie as Audrey, country wench—addicted to scratching—and *not* a slut!! . . . Jean Gingrich as William, loser in the love argument . . . songs by Ruth Karre as Amiens—antidote to the melancholy Jacques (Fran Workman) who wanted “More, I prithee, more!” . . . gullible shepherd, Corin —Josie Bittner.

Tyranny interpreted by Liz Bowman as Duke Frederick, and democracy by Ruth Killian as Duke Senior . . . love element, classical style by Phyl Snyder and Sally Stauffer . . . Grace Cully as a paradoxical Oliver . . . the pompous priest, Mary Strock . . . Kate Albert as Charles the Wrestler . . . poor Adam, Ginny Dromgold . . . page and lord, Ermy Loy.

All over now but the memories—unforgettable ones . . . work, fun, and knowledge gained . . . characters we loved . . . these shall return “ever and anon!”

## *Campus...*



MARJORIE FRANTZ  
*Outstanding Woman Leader*



DALE BEITTEL  
*Outstanding Man Leader and  
Best-Looking Man*

... Leaders

WILLIAM SCHINDEL  
*Best-Dressed Man*



MAEREDITH HOUSER  
*Best-Dressed Woman*



BARBARA KOLB  
*Best-Looking Woman*

JEAN BEDGER  
*Best Woman Athlete*





FRANK SHUPPER  
*Best Man Athlete*









THE cheering section is still here . . . so sports at L. V. continue . . . minus men, minus equipment, minus jalopy and gas, but plus a lot of spirit and energy . . .

The dorm-day student football game in fall compensated in part for what we missed on the gridiron . . . the Axe League—Shupper's basketball team—created plenty of excitement in red-hot play-off games . . . girls' sports in the spotlight: a hockey team that beat Shippensburg, a victorious combination in basketball . . . W.A.A. behind the scenes . . .

"Ye sons of Lebanon Valley,  
Put forth your strongest might . . ."



*We did play football...*





## *Home-coming Day...*







## BASKETBALL

... delayed but vigorous opening game ... G-burg—the place with the self-service threat ... victory ... the episode of the hungry team and the tardy spaghetti dinner at Hershey ...

... a close game with St. John's girls at Reading ... one-point margin victory ... home game—pay-off; but Bedger almost lost her gum ... rest of season—very promising as Quittie goes to press ...

... next year—a veteran team ... less only one player, Jeanne Waller ... Champs, maybe?



February	10—Gettysburg	away
	13—St. John	away
	16—Dickinson	away
	23—St. John	home
March	5—Lebanon High School	home
	9—Elizabethtown	home
	17—Shippensburg	home
	20—Elizabethtown	away
April	7—Juniata	away



## HOCKEY

JUST the right weather . . . the old call . . . a boisterous wave and a new hockey season opens . . . the same old hill, slanting like last year and year before . . . same hooked sticks, worn-out shin guards, dirty old balls . . . the shed, white lines, the goals . . . familiar voices fill the air again . . . the whistle . . . Henderson's Freshmen . . . veteran players . . . tusseling, puffing . . . rusty joints and lots of kinks . . . then honor squad, serious practice and following rapidly a wonderful season of games.

	L.V.C.	OPP.
Juniata at Lebanon Valley . . . . .	1	2
Shippensburg at Shippensburg . . . . .	4	0
Shippensburg at Lebanon Valley . . . . .	4	0
Albright at Lebanon Valley . . . . .	3	1





## W. A. A.

W.A.A. is sporty—

W.A.A. is fine—

Look at the fun we're having—

Come on, get in line.

First you come to L.V.C.—

Then you get your points—

Comes next initiation—

To limber up your joints!

Hockey, archery, basketball,

Tennis, hiking, something for one and all!

Now you're in it, sister,

Here is what we say—

Let's say it all together:

Hurrah for W.A.A.!!

—EVELYN HIESTER

A GIRL in every sport and a sport for every girl . . . sportsmanship and teamwork . . . unforgettable moments of healthy fun . . . strong bodies for the mothers of future Americans and world citizens . . . unusual initiations . . . unforgettable hikes . . . hilarious banquet.







# OFFICERS AND COMMITTEES OF THE BOARD OF TRUSTEES

*President* . . . . . E. N. FUNKHOUSER

*Vice-President* . . . . . H. H. BAISH

*Secretary and Treasurer* . . . . . S. H. DERICKSON

## EXECUTIVE COMMITTEE

E. N. FUNKHOUSER	C. A. LYNCH, <i>Chairman</i>	S. H. DERICKSON
J. H. NESS	R. G. MOWREY	J. PAUL GRUVER
	D. E. YOUNG	
	H. E. MILLER	

## FINANCE COMMITTEE

E. N. FUNKHOUSER,	L. A. SATTAZAHN, 1945, <i>Chairman</i>	S. H. DERICKSON
<i>Pres., Trustees</i>	C. A. LYNCH,	<i>Treasurer</i>
H. H. BAISH, 1945	<i>Pres., College</i>	F. B. PLUMMER, 1947
G. C. LUDWIG, 1946	O. E. GOOD, 1946	J. E. GIPPLE, 1947
	HAROLD T. LUTZ, 1946	

## AUDITING COMMITTEE

J. E. OLIVER, <i>Chairman</i>	P. B. GIBBLE, <i>Chairman</i>	N. O. HUBER
-------------------------------	-------------------------------	-------------

## NOMINATING COMMITTEE

I. S. ERNST	H. E. SCHAEFFER, <i>Chairman</i>	G. C. LUDWIG
	J. L. APPENZELLAR	

## FACULTY COMMITTEE

C. A. LYNCH	D. E. YOUNG, <i>Chairman</i>	J. P. GRUVER
P. E. V. SHANNON	E. D. WILLIAMS	

## BUILDINGS AND GROUNDS COMMITTEE

C. A. LYNCH	S. C. ENCK, <i>Chairman</i>	H. H. SHENK
H. D. STRINE	E. D. WILLIAMS	J. E. OLIVER

## LIBRARY AND APPARATUS COMMITTEE

C. A. LYNCH	I. S. ERNST, <i>Chairman</i>	O. T. EHRHART
P. A. W. WALLACE		J. P. GRUVER

## FARM COMMITTEE

C. A. LYNCH	J. E. GIPPLE, <i>Chairman</i>	S. H. DERICKSON
P. E. V. SHANNON		C. W. HISER

## PUBLICITY COMMITTEE

C. A. LYNCH	H. T. LUTZ, <i>Chairman</i>	O. T. EHRHART
P. A. W. WALLACE	H. M. IMBODEN	E. D. WILLIAMS

# MANY THANKS

Mr. and Mrs. M. FRANK BITTNER  
Lebanon, Pa.

Mr. and Mrs. S. FRED SNYDER  
Paxinos, Pa.

Mr. and Mrs. CHARLES D. MAURER  
Sunbury, Pa.

A FRIEND  
York, Pa.

FLORENCE SMITH CROSS  
Dallastown, Pa.

Mr. and Mrs. C. DONALD EBERLY  
Dallastown, Pa.

DR. PAUL E. V. SHANNON  
York, Pa.

A FRIEND  
Dallastown, Pa.

Mr. and Mrs. WALTER R. THOMAS  
York, Pa.

Mr. and Mrs. LEROY SPANGLER  
York, Pa.

DR. and Mrs. JOHN R. ROJAHN  
Dallastown, Pa.

PROF. U. J. DAUGHERTY  
Dallastown, Pa.

REV. and Mrs. R. J. TYSON  
Mechanicsburg, Pa.

GEORGE F. MOTTER  
York, Pa.

Mr. and Mrs. GEORGE J. YEAGER  
Dallastown, Pa.

Mr. and Mrs. BENJ. H. THROOP  
York, Pa.

MRS. RAY I. SWANK  
Paxinos, Pa.

ROGER H. PERSING  
Paxinos, Pa.

Mr. DANIEL F. MOWERY  
Paxinos, Pa.

MRS. H. K. GOODMAN  
Camp Hill, Pa.

MISS FLORENCE C. MENTZ  
York, Pa.

Mr. and Mrs. W. L. DROMGOLD  
Duncannon, Pa.

Mr. and Mrs. FRED P. LAUSTER  
Duncannon, Pa.

A FRIEND

## T O O U R

PVT. JOSEPH L. MARKLEY  
Overseas

PROF. EDWARD P. RUTLEDGE  
Annville, Pa.

MRS. EDWARD P. RUTLEDGE  
Annville, Pa.

MISS ESTHER HENDERSON  
Annville, Pa.

Mr. and Mrs. GEORGE C. FREZEMAN  
Reading, Pa.

Mr. and Mrs. EARL V. STERNER  
Laureldale, Pa.

REV. and Mrs. R. R. ZEIGLER  
Duncannon, Pa.

MISS ELEANOR ZEIGLER  
Duncannon, Pa.

MISS ELIZABETH SATTAZAHN  
Lebanon, Pa.

Mr. and Mrs. RAYMOND S. KREISER  
Ono, Pa.

Mr. and Mrs. CALVIN HIMMELBERGER  
Lebanon, Pa.

MR. FRED GANTZ  
Lebanon, Pa.

Mr. and Mrs. G. WEIR STROCK  
Mechanicsburg, Pa.

MRS. ETHEL A. DARKES  
Lebanon, Pa.

Mr. and Mrs. WILLIAM V. DISSINGER  
Lebanon, Pa.

MISS MIRIAM DISSINGER  
Lebanon, Pa.

MR. WALTER C. BEELER  
Lebanon, Pa.

MR. C. BYRON BURGNER  
Lebanon, Pa.

MISS ELSIE STOHLER  
Lebanon, Pa.

MRS. MARY SCHAEFFER  
Lebanon, Pa.

Mr. and Mrs. JOSEPH B. MUMMA  
Lebanon, Pa.

DR. and Mrs. JOHN J. McDONALD  
Lebanon, Pa.

Mr. and Mrs. ROSCOE ALBERT  
Lebanon, Pa.

## PATRONS...



*Morning Sun on  
North Hall Portals*

Compliments

Ramere  
Portrait  
Studio



Penn Square

•

Reading

Pennsylvania

## J. H. TROUP'S

*The Leading  
Music Store*



FOR OVER SIXTY YEARS

HARRISBURG and LANCASTER

COMPLIMENTS OF

## A. & P. FOOD STORE

RUFUS S. KETTERING, Mgr.



ANNVILLE, PENNA.

COMPLIMENTS OF

*Delphian  
Literary  
Society*

## ARNOLD'S BOOT SHOP

*Exclusive Shoes*

HILL & DALE SHOES  
*For College Girls*

FLORSHEIM SHOES  
*"For the Man Who Cares"*

34 N. Eighth Street

LEBANON, PA.

# Ben Franklin Five and Ten Cent Store

E. W. WOLFE, Owner

37-39 MAIN STREET



ANNVILLE, PENNA.

S. A. BOMGARDNER'S  
*Dairy*

TRY OUR ICE CREAM

Phone: 8-5521

*40 East Main Street*

*Palmyra, Pa.*

Compliments of . . .

CHARLIE BAER'S  
*Army & Navy Store*



5-7 SOUTH EIGHTH STREET  
*Lebanon, Pa.*

SHOP AT . . .

**HAACK BROS.**

HEADQUARTERS FOR "NUWEAVE"

Socks • Anklets  
Athletic Socks

**JOHN L. BERNSTEIN**  
FLORIST AND DECORATOR

*"The Flower Shop"*

Corsages Our Specialty

Rear of Court House      LEBANON, PA.

*Flowers Telegraphed  
Anywhere, Anytime*

Phone: Lebanon 592

**SMITH and BOWMAN**

FLOOR COVERINGS  
VENETIAN BLINDS • DRAPERIES  
WINDOW SHADES  
AWNINGS • CURTAINS

742 Cumberland St., LEBANON, PENNA.

*Automatic Heating  
Stoker, Oil and Gas*

*Sherwin Williams  
Paints and Varnishes*

**SPENCER CASSEL**  
Plumbing, Heating, and Hardware

Phone: 8-5341  
209 N. Railroad Street  
PALMYRA

Phone: 7-5131  
14 E. Main Street  
ANNVILLE

Compliments of

*Fink's Bakery*



Have

You

Tried

Our

Filled

Doughnuts ?



# *Thomas' Restaurant*

603 CUMBERLAND STREET

Lebanon, Pa.

---

Your One-Stop Store for Everything

## **The Bon-Ton**

*Lebanon's Greatest Store*

*is Headquarters for All Your Summer Needs*

- VACATION CLOTHES
  - SUMMER FASHIONS
  - SUMMER FURNITURE
  - CHILDREN'S, GIRLS' AND INFANTS' NEEDS
  - EVERYTHING FOR YOURSELF, YOUR FAMILY AND YOUR HOME

---

Compliments of . . .

**KEYSTONE  
ENGINEERING CORP.**

●  
725 Scull Street  
LEBANON, PENNA.

**ANNVILLE  
MEAT MARKET**

PAUL S. MILLER

Groceries, Meats, Seafood, Produce

FREE DELIVERY

18 Main Street      Phone: 7-3451

# CLEONA PRETZEL BAKERY

Joseph C. Early, *Prop.*

*"TASTE THE DIFFERENCE"*

Cleona

Pennsylvania

---

## CHURCH CENTER PRESS

*Supplies for all branches of  
religious work*

Printing :: Publishing

MYERSTOWN, PENNSYLVANIA

## Shenk & Tittle

"EVERYTHING FOR SPORT"



313 Market Street

HARRISBURG, PENNA.

---

## EBERSOLE, Inc.

*Pontiac and Oldsmobile Motor Cars*

Modern Equipped Service Department



143 East Penn Street, CLEONA, PENNA.

# Davis' Pharmacy

*Greeting Cards ♦ Sodas ♦ Cosmetics*

PRESCRIPTIONS COMPOUNDED

103 West Main Street

ANNVILLE ♦ PENNSYLVANIA

---

## NORTH SIDE BANK

*Member Federal Reserve System*

7th and LEHMAN STREETS

LEBANON, PENNA.

---

*Compliments of*

Clionian  
Literary Society

## SNYDER'S

Lebanon's  
Smartest

*Men's and Boys' Shop*



735 Cumberland Street  
LEBANON, PENNA.

*Compliments of*  
**THE W. L. KREIDER'S SONS**  
**MFG. CO., Inc.**

MANUFACTURERS OF

*High Grade Juvenile Footwear*



**PALMYRA, PENNA.**

---

COMPLIMENTS OF

**BAILEY'S**  
*Restaurant and Bar*

922 Cumberland Street  
LEBANON, PA.

---

Phone: 826-M

**Mrs. Amy Mellinger**

*Metropolitan Insurance*  
*Agent*

27 E. Pershing Avenue  
LEBANON, PA.

---

COMPLIMENTS OF

**Baum's Bakery**



**PALMYRA, PA.**

---

**STOCKINGS**

AT EXCEPTIONALLY LOW PRICES

*We Specialize in*  
*Long Lengths*

**DAILY WEAR HOSIERY SHOP**  
611 Cumberland Street,      LEBANON, PENNA.

THE  
D. J. Grace Agency

*Every Form of Insurance*

16 S. Ninth St.  
LEBANON, PA.

30 E. Main St.  
PALMYRA, PA.

John Hirsh Store  
*Men's Furnishings*

MEN'S · LADIES' · CHILDREN'S  
SHOES

*Annaville, Penna.*

FUNCK'S GARAGE

*General Repairing*

OFFICIAL A. A. A. SERVICE

ATLANTIC PRODUCTS

J. C. FUNCK

*14-16 South White Oak Street*

*Annaville 7-5121*

Official Inspection Station No. 3068

Phone:

Annaville 7-3511

Hershey 1-0611

*Kingsley & Brown, Inc.*

CLEANERS  
AND DYERS

• DE LUXE SERVICE •

## A Christian Service

FOR CHURCH AND SCHOOL

BIBLES AND TESTAMENTS  
CHARACTER BUILDING BOOKS SACRED ART  
PLAQUES MOTTOES GREETING CARDS  
SUNDAY SCHOOL REWARDS

*Discounts to Sunday School Teachers  
and Ministers*

PURITY PUBLICATIONS

13 N. 7th St. LEBANON, PENNA.

QUALITY CLOTHES

## Shankroff and Shultz

*Men's and Boys'  
Clothiers*

Where 6th crosses Cumberland

LEBANON, PENNA.

### *Ice Cream Goes to War—Demand Exceeds Supply*

"We thank our distributors and customers for their  
cooperation and patience during these times when we must ration our production"

*Please inquire—if at all possible we will supply*

## C. B. Gollam Sons, Mfg'r's

6th and Maple Streets, Lebanon, Pa.

Phone: Lebanon 21

## THE PLACE FOR *Gifts, Stationery*

Leather Goods, Luggage, Greeting Cards

*Portrait and Commercial  
Photography*

## Harpel's

*Developing and Printing  
Enlarging and Framing*

757-759 Cumberland Street, LEBANON, PENNA.

## VISIT

## "Hot Dog" FRANK

Light Lunches and Sandwiches  
of All Kinds

ANNVILLE, PA.

M. B. KRUM

## Rohland's Funeral Service



LEBANON, PENNA.

*Compliments of the*

# Lebnadrome Roller Rink

North 6th & Willow Streets

Lebanon, Penna.

ROLLER SKATING EVERY EVENING EXCEPT MONDAYS

*To the Beautiful Music of the Hammond Organ and Solovox*

---

THE COMMUNITY OF HERSHEY SENDS ITS  
BEST WISHES TO THE STUDENTS OF  
LEBANON VALLEY COLLEGE AND WISHES  
THEM THE BEST OF EVERYTHING AS THEY  
START TO CARVE THEIR CAREERS IN THE  
BETTER WORLD TO COME.

HERSHEY ESTATES

---

*Do Your Banking With*

**The Peoples National Bank**



Eighth and Cumberland Sts.  
LEBANON, PENNSYLVANIA

Compliments of

*Lebanon News Agency*



SAMUEL S. ETTER, *Prop.*



Expert Permanent Waving

## HOCKLEY'S BEAUTY SALON

*Hair Stylists*

118 South 8th Street, LEBANON, PENNA.

PHONE: 478

*Compliments of*

**Arnold's Funeral Home**

712 Chestnut Street  
LEBANON, PENNA.

**DANIEL D. WERT**

628 Cumberland St.  
LEBANON, PENNA.

Phone: 2515

*Books, Bibles, Mottoes, Greeting Cards  
Bible School Material, Sunday School Supplies  
Stationery*

**SCHAEFFER'S**

720 Cumberland St.  
LEBANON, PENNA.

*New Dresses, Coats, Suits, and Sportswear  
Arrive Daily at Popular Prices*

**LINTZ'S**

Wearing Apparel for Men  
Women and Children

725 Cumberland St.  
LEBANON, PENNA.

**Pollyanna**  
**HEALTH SHOES**

MODERN  
HEALTH  
SHOES

**KREIDER SPORTS**

*"300" Juveniles*

*Manufactured by*

**The A. S. Kreider Co.**

ANNVILLE, PENNA.

# KREAMER BROS.

Furniture • Floor Coverings • Electrical Appliances

*Modern Funeral Home*

ANNVILLE

PENNSYLVANIA

*"A Fashion Institution"*

## LOGAN'S



816 CUMBERLAND STREET

*Lebanon, Pa.*

Tel. 836

Compliments of

*J. Landis Shoe Company*

PALMYRA, PENNA.

*Compliments of*

## Moyer's Restaurant

"A GOOD PLACE  
TO EAT"

8th and Willow Streets  
LEBANON, PENNA.

SEE

## Miller, The Tailor

FOR FORMAL WEAR  
TO LOAN

538 Cumberland Street  
Lebanon, Pa.

Phone: 1-479

## ANN'S SHOPPE

716 CUMBERLAND STREET

Lebanon, Pa.

Millinery

Hand Bags

Lingerie

THIS YEAR AS WE PAY TRIBUTE TO

*The Class of 1946*

THE PENNWAY  
RESTAURANT

joins all the members and faculty of Lebanon Valley College in saluting those of you who are serving in the Armed Forces of our country; and our only wish is that when Reunion Time rolls around again, those who anxiously wait at home will be proud to greet you.

# LEBANON NATIONAL BANK

*Sound Banking Since 1832*

MEMBER FEDERAL DEPOSIT INSURANCE CORPORATION

Ninth and Cumberland Sts., Lebanon, Pa.

---

*Laudermilch's*  
**LADIES' APPAREL**

607 CUMBERLAND STREET  
Lebanon, Penna.

*Junior Dresses, Sportswear*

*Compliments of . . .*

**BOWMAN'S  
INSURANCE AGENCY**

oo

PALMYRA, PENNA.

---

*Compliments of . . .*

**BRADERMAN'S**  
*Curtain and Linen Shop*

627 Cumberland Street  
LEBANON, PENNA.

---

**FIELD'S  
SWEET SHOP**

127 North 8th Street  
LEBANON, PENNA.

---

*Philadelphia Shoe Store*

Lebanon, Penna.

DIAMONDS

JEWELRY

## A. N. HOFFER

*Watches, Gifts*

5 NORTH NINTH STREET  
Lebanon, Pa.

## *Palace of Sweets*

SINCE 1917



N. P. Colban  
LEBANON, PENNA.

When in need of flowers think of

## VAVROUS



335 Guilford St. and 512 Cumberland St.  
LEBANON, PA.

*Producers of Poultry and Eggs   Quality Foods*

## Peiffer's Food Market

640 North Seventh Street  
LEBANON, PA.

*Ful-O-Pep Feeds   Birdseye Frosted Foods*

## H. E. MILLARD

HIGH CALCIUM LIME AND LIMESTONE PRODUCTS

*Ask Your Dealer for Millard's Agriculture and Mason's Lime*

Annville, Penna.

Telephone: 7-4801

*A. R. Shearer*

Mobilgas—Mobiloil—Service Station  
U. S. TIRES



MAIN AND WHITE OAK STREETS

*Annville, Penna.*

---

SIXTY YEARS OF  
PRINTING SERVICE



**SOWERS**  
Printing Company



SCHOOL ANNUALS  
PERIODICALS  
BOOKS



Lebanon, Pennsylvania

AIR STEP SHOES  
FOR WOMEN

ROBLEE SHOES  
FOR MEN

Compliments of

**Shultz and Bratton**

*BROWN bilt SHOES*

848 Cumberland Street  
LEBANON, PENNA.

---

*Compliments of*

**LEBANON HARDWARE  
COMPANY**

217 NORTH EIGHTH STREET  
Lebanon, Penna.

---

*Ramsey's*  
*Restaurant*



630 Cumberland Street  
LEBANON, PA.

---

**D. L. SAYLOR & SONS**

*Contractors and Builders*



COAL and LUMBER

ANNVILLE

PENNSYLVANIA

*Compliments of*

**J. Henry Miller Co.**

PAUL L. STRICKLER, Pres.

*"Insure in sure insurance"*

Eighth and Willow Streets

Lebanon, Pa.

Compliments of

**F AND W GRAND**

744 CUMBERLAND STREET

*Lebanon, Penna.*

*Buy it at*

**Seabold's Drug Store**



ANNVILLE

**Shearer & Becker**

**FOOD STORE**



Annville, Pennsylvania

*Bell Phone:*

Lebanon 3068

**Thomas A. Wagner**

*Manufacturer of*

**HIGH CALCIUM LIME**

R. F. D. No. 2

**LEBANON, PA.**



# IT IS NOT DONE:

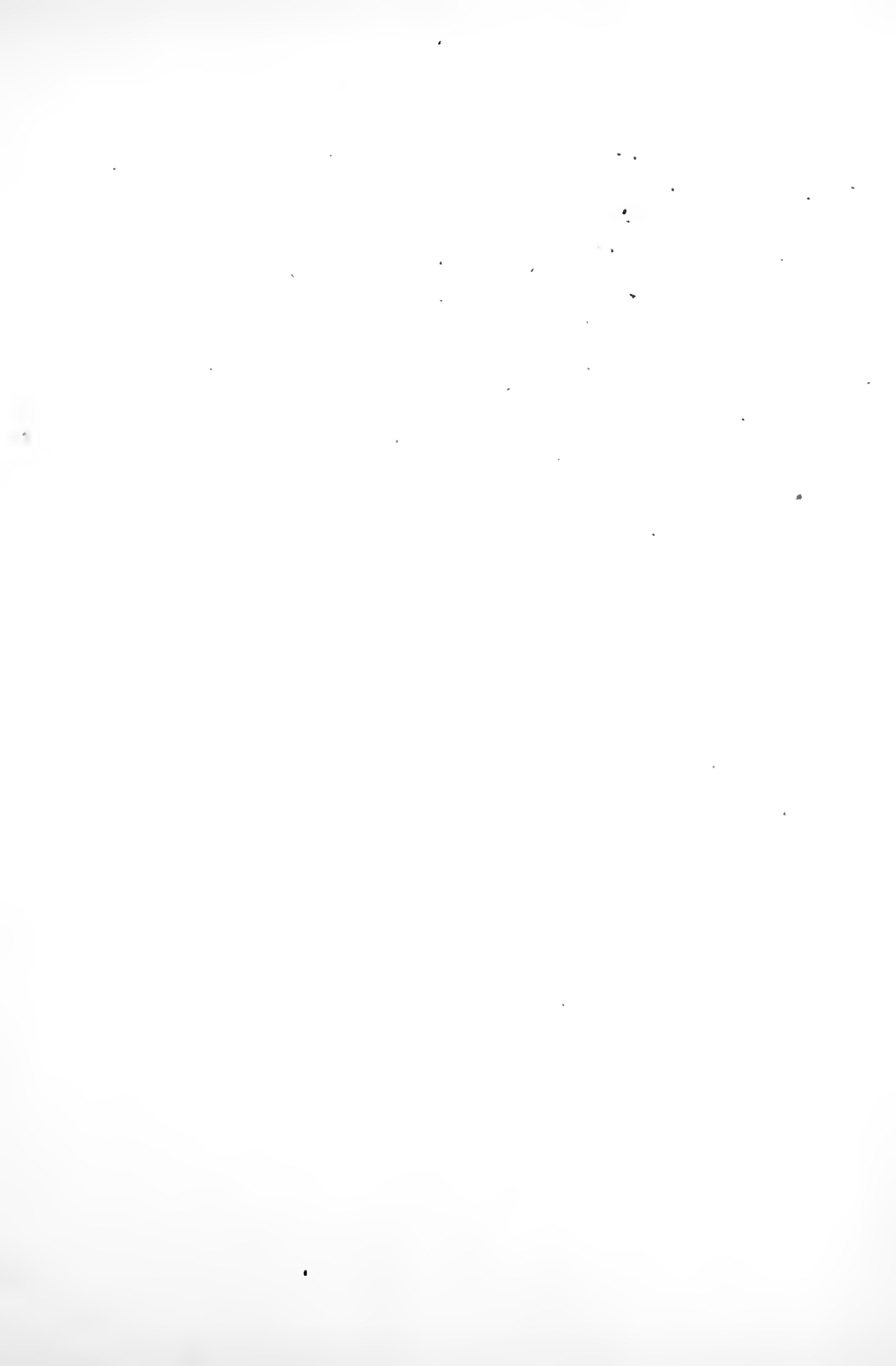
On the banks of the Quittie, uncertain we stand,  
A college class looking towards the future.  
Over the flower-filled meadows from the mountains,  
Our Quittie flows to the sea.

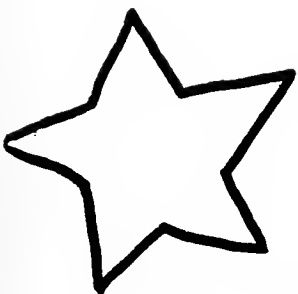
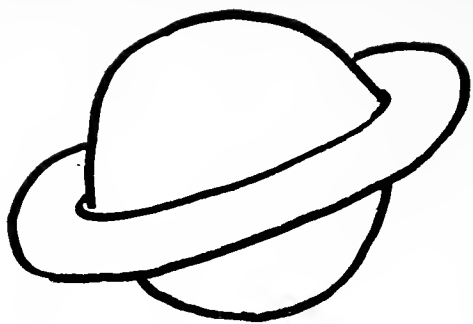
And while we watch, the twilight hour descends;  
The evening star in the west  
Pulsates there, between earth and heaven pending,  
And reflects its light upon the water.  
Suffering hearts beat fast in prayer:

"O thou stream of Lebanon Valley,  
Touching shores of nameless countries,  
Ebb tide from the sandy graves of bloody islands,  
Wash the red blood stains away."

On these banks we kneel, and watching silent in our prayer  
We lift our aching hearts  
Faith still undaunted leaps alternate with our heart throbs  
Thru the meadows, o'er the mill-falls, under the bridge  
The Quittie flows steadily to the sea.









1946

EAK

