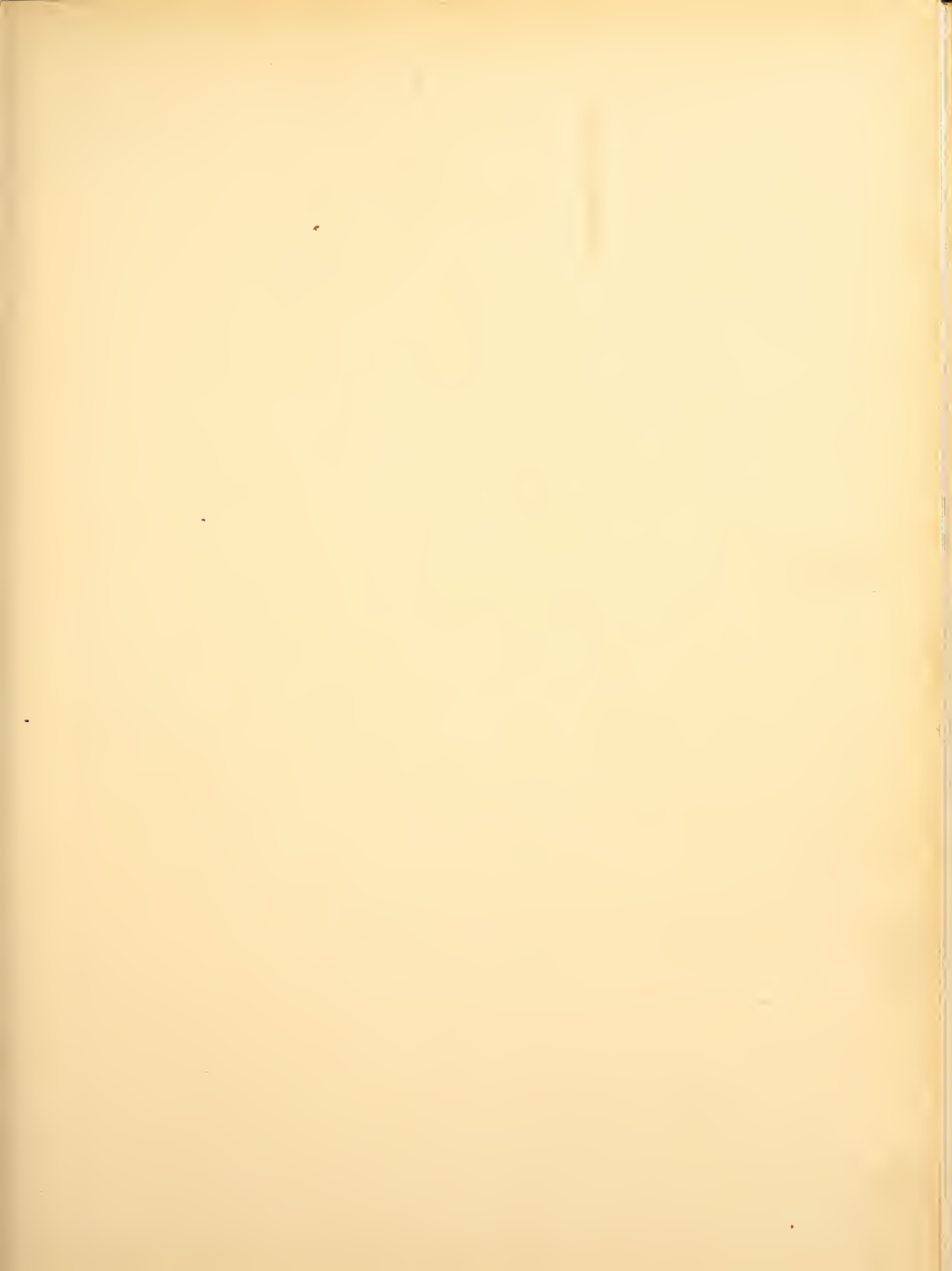


QUITAPAHILLA



1949










QUIZARILLYA





Digitized by the Internet Archive
in 2011 with funding from
LYRASIS Members and Sloan Foundation

<http://www.archive.org/details/quittapahilla1949leba>

TABLE OF CONTENTS

FOREWORD

DEDICATION

ADMINISTRATION AND FACULTY

THE CLASSES

GOVERNING BODIES

ORGANIZATIONS

CONSERVATORY

SPORTS

WE SALUTE . . .

ODDS AND ENDS

SPECIAL MENTION

PATRONS

ADVERTISEMENTS



THE GULLY FOLK

FOREWORD

All proper yearbooks, it seems, must be provided with a foreword and a theme. Vast amounts of research have failed to unearth just why this is so. Forewords sometimes explain the purpose of a book; but everyone knows that a yearbook is a sort of condensed diary, photo album, and scrapbook, and that it serves to freshen the memory of college life when one is middle-aged and staid.

The problem of theme was attacked somewhat in reverse of the usual procedure. Recognizing the near impossibility of doing anything really new, we ignored theme entirely at first, and began by looking at covers. Indians and log-cabins were looked at. Knights in armor and castles in the air were contemplated. Icebergs and stylized representations of the atomic age were inspected. There was a sunburst which we pictured on a brilliant vermilion jacket. Somehow we just couldn't see it. There was quite an assortment of charming death-heads which tempted us sorely. Finally we saw one which we liked, and being possessed of the conviction that cover and theme should match, we chose our Norse motif to go with it.

At this stage another problem presented itself. The road sign east of Annville clearly spells Quitapahilla with one "t", and the printers told us that this is the correct spelling. For years, here at Lebanon Valley, the name of the sacred stream has been spelled with two "t's." We were in doubt as to whether to follow hallowed tradition, or to introduce the new form. After some discussion we decided upon the latter course.

These problems being solved, the Staff started on the Book itself, but that, as Kipling would say, is another story.



CORNWALL FURNACE

DR. MILLER saved from destruction the very valuable historic records of the Cornwall Furnace. In his recent doctoral thesis, Dr. Miller devoted a chapter to the history of this monument of colonial times.



Dr. Frederick K. Miller

DEDICATION

To FREDERICK K. "FRITZ" MILLER, *Professor of History*, we dedicate the 1949 edition of the "Quittie." Those of us who have worked with him praise him for his sincerity and thoroughness, in the classroom and out. As a teacher of history he is the historian's delight. As an advisor to student organizations, he is the epitome of help, guidance, and inspiration.



ADMINISTRATION BUILDING



CARNEGIE LIBRARY





NORTH HALL

President



DR. CLYDE A. LYNCH

Dr. Lynch, to all who are acquainted with him, represents the zenith of college presidents. He maintains not only the dignity necessary to such a position, but combines with it the rare qualities of amiability and geniality. Without a doubt, the eloquence of oratory and conversation reaches supremacy in this, our capable executive. It is with extreme delight and pride that we the students salute him, our leader and friend.

Deans

MISS MARY E. GILLESPIE

Miss Mary E. Gillespie occupies two of the most important positions on our campus: Dean of Women and Director of the Conservatory. Her advice and counsel are welcomed by all because of her friendly manner and sincere interest in student problems. Through her dynamic personality and ability to organize, the Conservatory has been raised to a level of high distinction in the music world. Because of her willingness to accept new ideas and changing trends, as well as her ability to mix her work with her social life, she represents the symbol of modern versatility.



DR. A. H. M. STONECIPHER

Dr. Stonecipher, by both his appearance and temperament, exhibits dignity and friendliness. For the many problems of guidance our dean suggests workable solutions. He is not only our advisor and organizer, but a scholar in the true sense of the word. His characteristic chuckle produces a feeling of ease in his presence. In his genuine interest in student affairs and his remarkable zest for living, our dean remains unequalled.





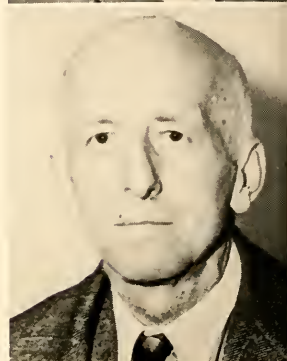
DR. EDWARD M. BALSBAUGH—An extremely quiet gentleman.



RUTH ENGLE BENDER—Piano teacher for the younger "fry."



MARGARET BARTHEL—Tops as a pianist.



WILLIAM M. BOND—"Father Time."



DR. AMOS H. BLACK—"Does anybody have any questions?"



R. PORTER CAMPBELL—Superb organist and competent teacher.



DR. ANDREW BENDER—A capable chemist with incessant enthusiasm.



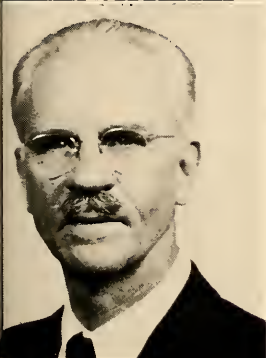
D. CLARK CARMEAN—Man of many skills.



WILLIAM B. CASTETTER—Informal
classroom discussions.



DR. SAMUEL H. DERICKSON—Keenly
interested in his work.



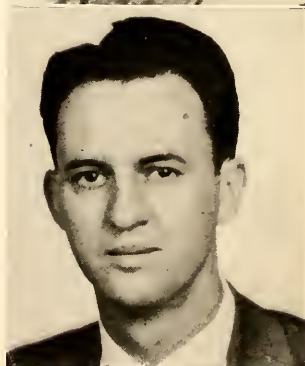
ALEXANDER CRAWFORD—Patriarch of
the Voice Department.



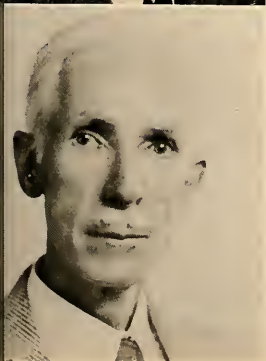
DORIS SPONAUGLE DRESCHER—Our
very attractive women's coach.



DR. JOHN I. CRETZINGER—"Micro-
scopia reveals nature in its true light."



WILLIAM H. EGLI—"It goes without
saying . . ."



DR. HUBERTIS CUMMINGS—Distin-
guished gentleman of the old school.



CARL Y. EHRHART—Dry wit and
resonant voice.



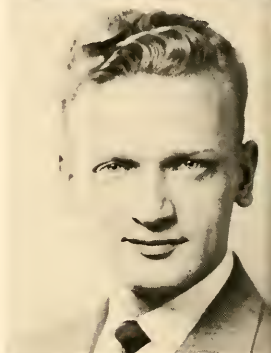
WILLIAM H. FAIRLAMB, JR.—Adds ar-
tistry to familiarity with the key-
board.

FRANCES T. FIELDS—Alternates be-
tween her Spanish class and the li-
brary with equal vim and vigor.



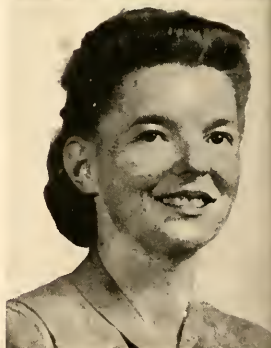
GRANT FEESER—"Now don't forget
to block."

PAUL H. FISHER—"Take to the
blackboards."



DR. CHESTER A. FEIG—Visual aid is
his strong point.

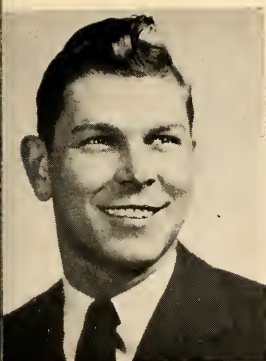
LUELLA UMBERGER FRANK—When
is she going to learn esperanto?



DR. DONALD FIELDS—Always ready
to help.

W. MERLE FREELAND—Faculty "Joe
College."





REV. DAVID GOCKLEY—He of the long prayer.



DR. MARI LUISE HUTH—Believes in laying a firm foundation the first year.



MARY C. GREEN—Personification of "teachers are human."



ELIZABETH E. KAHO—"In my merry Oldsmobile."



DR. SAMUEL O. GRIMM—"Now in the Hinglish system."



ANDREW KERR—Grand old man of football.



FLORENCE E. HOUTZ—She "strides" toward knowledge.



DR. HELENE KOSTRUBA—Her story reads like the *Arabian Nights*.



MAUD P. LAUGHLIN—Benevolent
despot who'll never grow old.



DR. JOHN F. LOTZ—L.V.'s Morgen-
thau.



DR. LENA LOUISE LIETZAU—Strict
disciplinarian but good natured.



HAROLD MALSH—Has a daughter
following in his footsteps.



DR. V. EARL LIGHT—"And anyone
who is late has to buy ice cream
for the class."



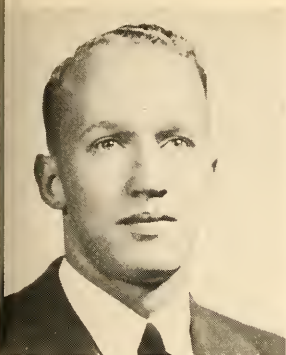
CHARLES MASSINGER—New Jersey
bachelor.



HILBERT V. LOCHNER—A predilection
for charts.



DR. FREDERICK K. MILLER—Veteran's
spokesman and factual historian.



RALPH MEASE—Poker-faced court mentor.



DR. G. A. RICHIE—Ardent attender of athletic functions.



CLARA A. MONISMITH—Unusual proctor of the Men's Dormitory.



REYNALDO ROVERS—In interpretation—the true artist.



HELEN E. MYERS—Helpful and enthusiastic "Y" advisor.



E. P. RUTLEDGE—Energy is his middle name.



ROBERT K. NESS—Former L.V.'ite who made good.



DR. HIRAM HERR SHENK—The corner-stone of Lebanon Valley.



REV. BRUCE SOUDERS—Versatile young instructor of English and speech.



DR. P. A. W. WALLACE—His subtle wit keeps every one on his toes.



FRANK E. STACHOW—Inspiration to his students.



DR. WILLIAM A. WILT—Kindly pastor of our college church.



DR. STELLA JOHNSON STEVENSON—Spanish with a southern accent.



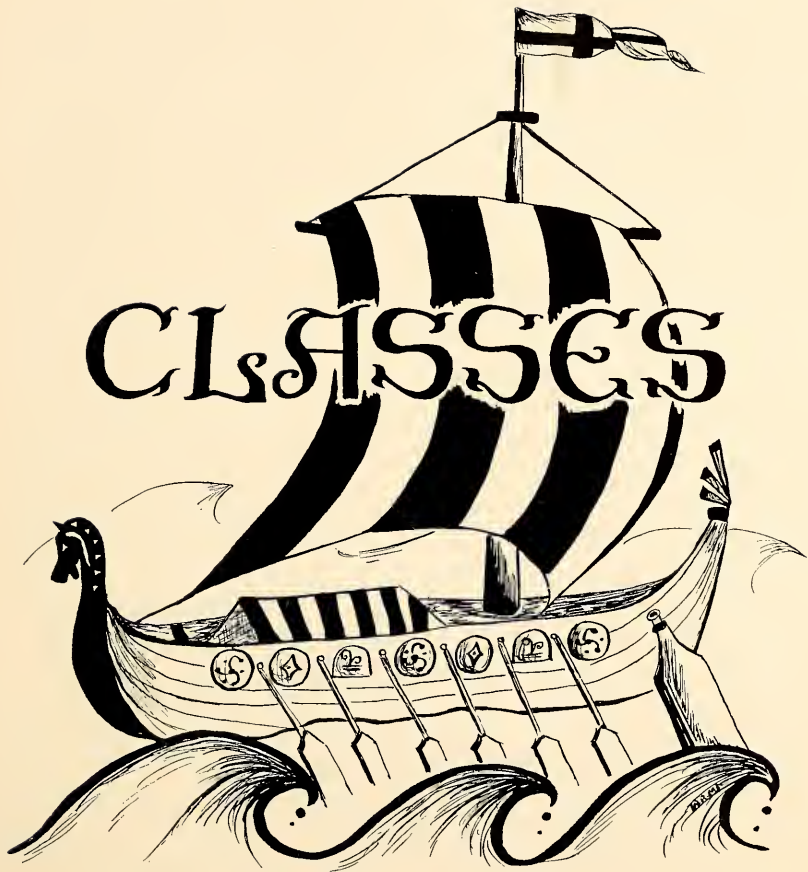
WILLIS WISSLER—The Dewey Decimal System as a way of life.

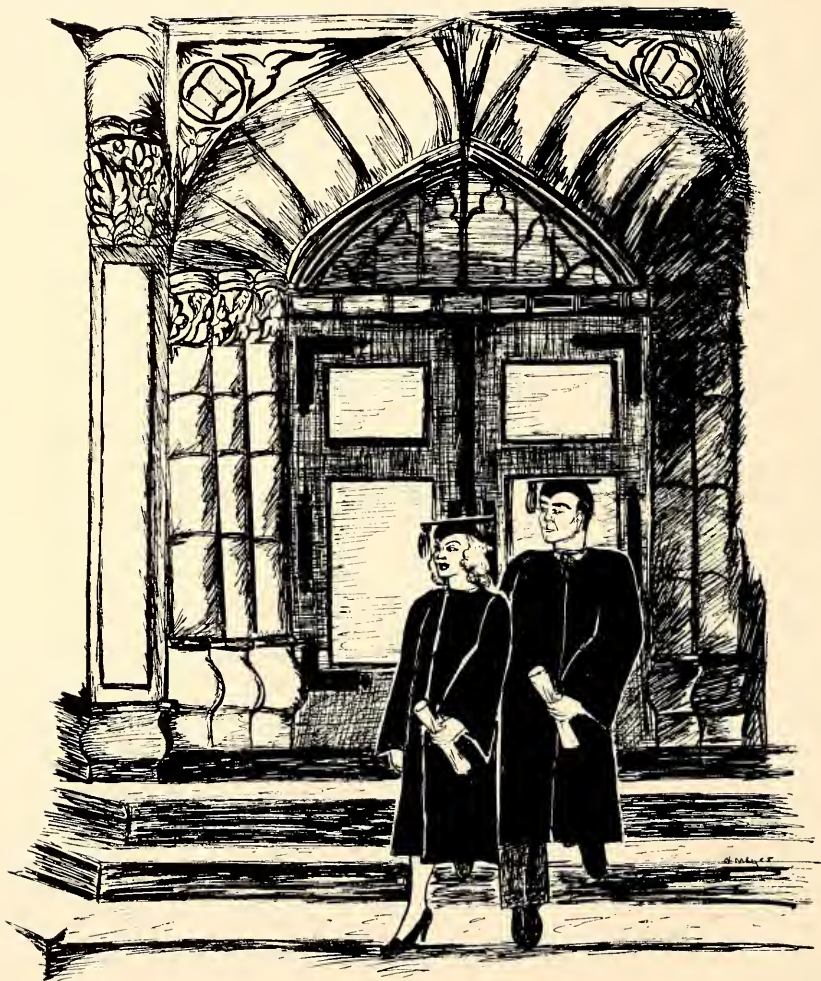


DR. GEORGE G. STRUBLE—Enthusiastic host to Green Blotter—himself a writer.



MARVIN E. WOLIGANG—Takes a great interest and pride in his students.







Senior Class Officers

<i>President</i>	EDWIN ENGLEHART
<i>Vice-President</i>	PAUL YINGST
<i>Secretary</i>	MILDRED NEFF
<i>Treasurer</i>	VIRGINIA VOUGHT

Class History

The year which we are now completing draws to a close the undergraduate history of the class of '48. There have been ups and downs and many thrilling experiences had by all who participated in the activities of L.V.C. during its rise from the dark days of 1944 to the sunny present.

Ask any member of the class of '48 to tell about the life at L. V. C. during the war. No men! that was the real trouble. Therefore no athletics or dramatics—no nothing! In just three short years Lebanon Valley has risen out of the dust that surrounded it to be an institution twice its pre-war size; to offer more courses in more departments than ever before; and to continue to be one of the centers of citizen building that has exemplified it in the past. The class of '48 has watched this progress. It has watched the lights go on again on the second and third floors of the Men's dorm. It has seen Washington Hall rise from a seemingly meaningless hole in the earth. It has seen Lebanon Valley push forward scholastically, athletically, and socially to attain a position far above its pre-war standards. This May marks the end of the class of '48, but through the efforts of many of its members Lebanon Valley College has become a better place in which to study and to live.

SENIOR CLASS



DAWN HORNBAKER ALBERT



WILLIAM MELVIN ALBRECHT



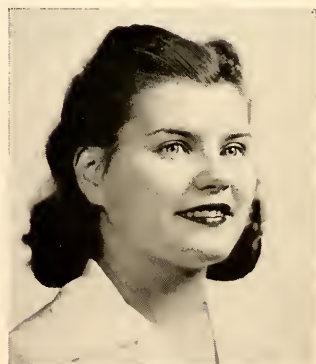
BERTHA BARBARA BARBINI



ROBERT FRANKLIN BECK



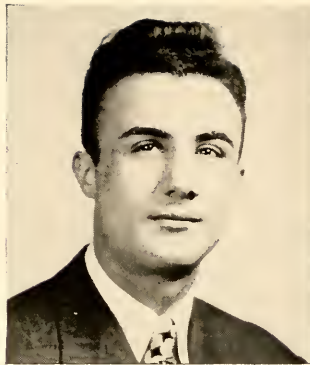
ALVIN CARL BERGER



MARY HELEN BICKEL



RUTH ISABEL BILLOW



ARTHUR IRWIN BODDEN



CAROLYN BOEDDINGHAUS



CHARLES DANIEL BOLAN



MELVIN RICHARD BOWMAN



JAMES STANTON BRULATOUR



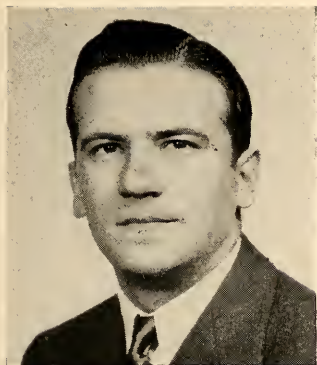
JOHN F. CEK



DORIS HELEN CLEMENTS



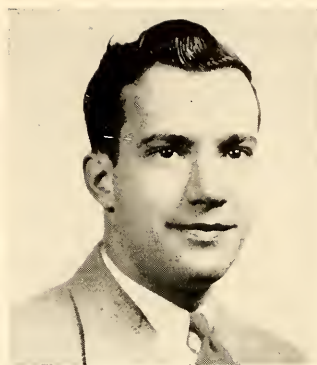
A. ALFRED DELDUCO



HERBERT ELTON DITZLER



MARY JANE ECKERT



ROBERT MELVIN ENGLE



EDWIN FRANCIS ENGLEHART



MARY JANE FLINCHBAUGH



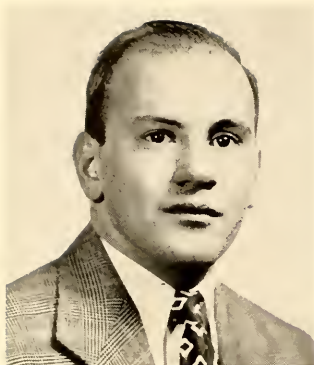
GABRIEL BARNARD FRANK



MARY ELIZABETH FRANK



ELAINE LOUISE FROCK



PETER GAMBER, JR



MARY KATHLEEN GARIS



JOHN WALTER GAUL



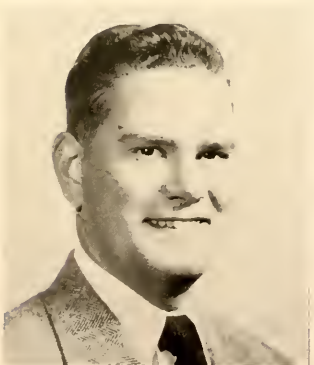
ANTHONY JOSEPH GERACE



MARK SMITH GINGRICH



MARY LOUISE GRUBE



GEORGE GILROY HAINES



HELEN LOUISE HARTZ



NANCY ELAINE HEILMAN



JOHN PAUL HUMMEL



DORIS LOUISE HYMAN



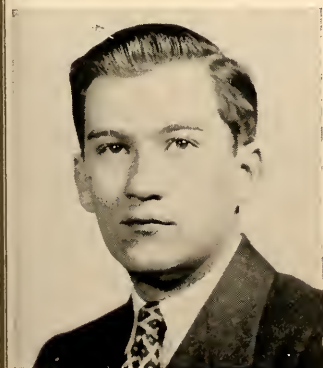
KENJIRO IKEDA



DOROTHY MAY KAUFFMAN



RUTH EVELYN KEECH



THEODORE DONALD KELLER



BURNELL LOVE KESSEL



BARBARA ANN KILHEFFER



FREDERICK DAVID KOONS



GRACE ELIZABETH LAVERTY



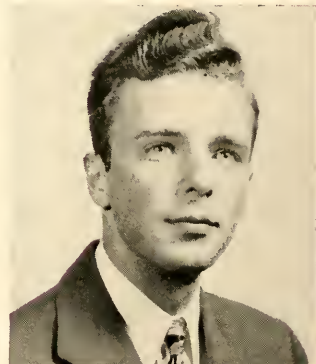
JOHN HENRY LIGHT



GEORGE REYNOLDS
MARQUETTE



JOYCE UNA MEADOWS



KARL EUGENE MILLER



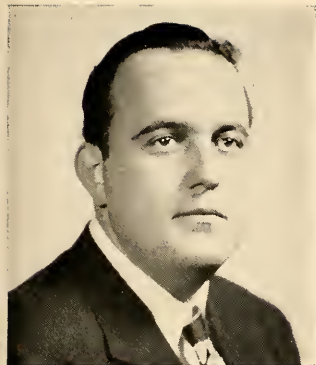
RENA MAE MILLER



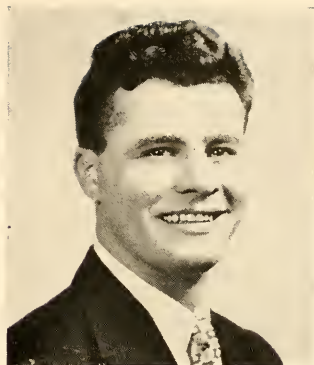
MILDRED ARLENE NEFF



CONSTANCE VERONICA NESTOR



BLAKE HAROLD NICHOLAS



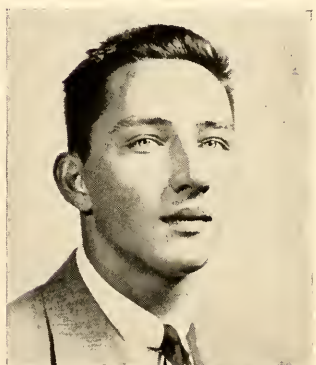
BERNARDO J. PENTURELLI



ELLA KATHRYN RHOADS



LUTHER EYLER ROBINSON



SAMUEL JAMES RUTHERFORD



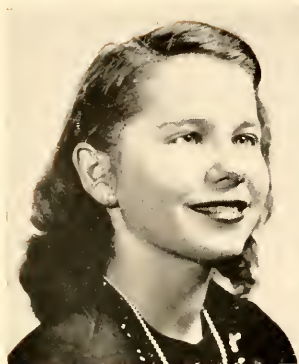
THOMAS JAMES SHAAK



FRANKLIN G. SENGGER III



THELMA MAE SHARP



THELMA ZIMMERMAN
SHEARER



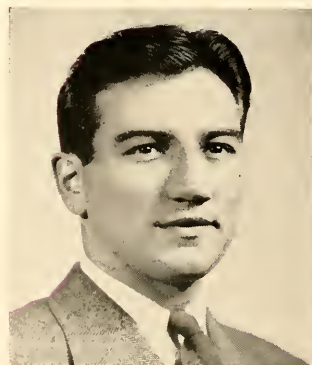
DAVID PATRICK SHEETZ



IRIS OPAL SHUMATE



ROBERT JOSEPH SOURBIER



EARL JONES SPANGLER



EDWARD RAYMOND STEINER



DOROTHY LOUISE
STRASSBURGER



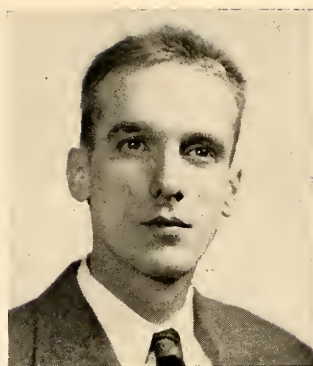
ROBERT DOUGLAS STREEPY



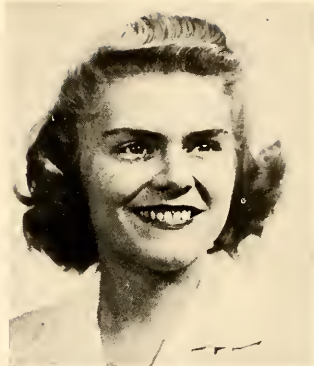
ANDREW PHILIP STRICKLER



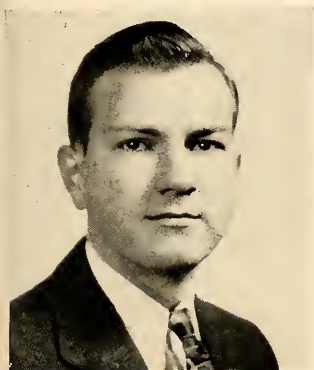
ARTHUR LEON TERR



FRANK EDWIN URICH



VIRGINIA MAE VOUGHT



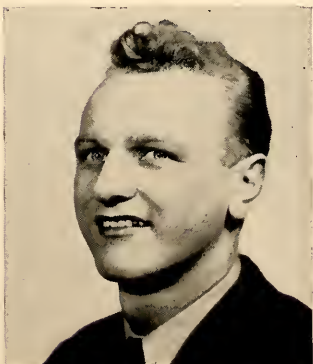
JOHN WILLIAM WAGNER



MIRIAM REBECCA WEHRY



DONALD EDWARD WEIMAN



JAMES EDWARD WERT



RUTH ELEANOR WHITMAN



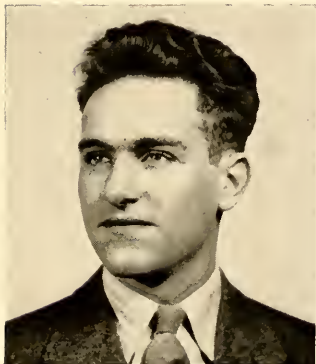
IRENE MAY WITHERS



CHARLES R. YEAGLEY, JR.



PAUL RICHARD YINGST



JOHN BALTHASER YODER, JR.



HAROLD EDWIN ZEIGLER



SARA ANN ZELLERS



RHODA MAE ZIEGLER





Junior Class Officers

<i>President</i>	GLENN HALL
<i>Vice-President</i>	HARRY HOFFMAN
<i>Secretary</i>	JOANE KESSLER
<i>Treasurer</i>	ALVIN HILDEBRAND

Junior Class History

The Class of '49 was the first class of which the vast majority of men students were veterans. The spirit these men injected into the campus had an effect which will require years to restore the campus life to the traditional college temperament.

These men, matured beyond their years, returned with a new, driving purpose. Education was their goal and all efforts were directed toward that end. It is only fair to say that the social and extra-curricular activities suffered greatly because of this factor. Campus leaders had great difficulty in gaining active support for school projects, but professors were tickled pink to lecture and teach classes which were very critical and thorough.

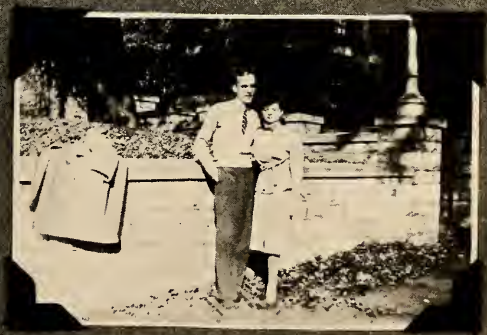
Gone were the days of the tie and dink, freshman rules, and the old college do-or-die. The Class claimed the glory for the achievements of the outstanding athletes it possesses and yet, at athletic contests was put to shame by the lack of enthusiasm when compared to the spirit shown by the opposing school. However, the intramural teams showed a fiery competitive attitude in the axe league and touch-football games.

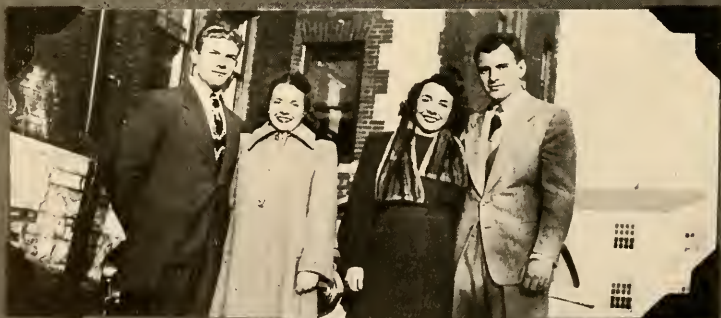
The dances were not the hits it was hoped they would be as the heavy load carried by so few proved too great and the helping hand of the bystanders was not extended.

The driving power behind the few successes can be credited to the clever co-eds. It seems that the class of '49 is possessed of an extraordinary amount of talented femininity. They have starred on the hockey field and basketball court; they have shown their literary talents and, most important, have proved to be the factor which somewhat counterbalances the effect of the veteran.











JUNIOR CLASS



JOHN EDWARD ADAMS

"Whatcha say?" . . . wife's from Ohio . . . slip-horn virtuoso . . . no time for the classics . . . has his own band . . . strong supporter of the musician's union . . . produces music of good quality.



MARION JEAN ACHENBACH

"Peepsie" . . . day student from Hummels-town . . . friendly disposition . . . tastefully dressed . . . good sport . . . popular soda jerk . . . political science enthusiast . . . usually found curled up in a soft chair . . . "Do you need a pair of Argyles?"



MARK R. ARNOLD, JR.

Always happy . . . likes to argue . . . super shoe salesman . . . hates English . . . shock of blond hair . . . operates from Lebanon . . . Business Ad. major.





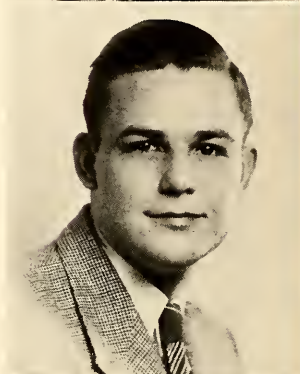
MARGARETTA ELIZABETH BAILEY

"Bailey" . . . dependable . . . studious . . . Walter Winchell's rival . . . working for her M.R.S. degree . . . not mathematically inclined.



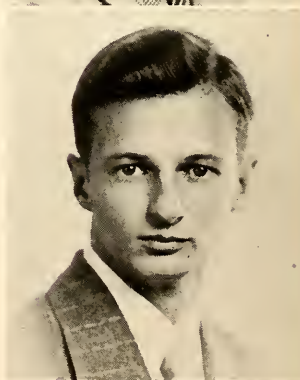
ROBERT EARL BAKER

Man of many moods . . . Chem. major . . . ardent lover of the Bar-bar-A . . . interesting speaker . . . "Anybody do his calculus?" . . . capable lab assistant . . . a staunch member of Philo . . . "Sure I'll have a cigarette."



RONALD LEE BAKER

Sports fan . . . iconoclast . . . surveyor of feminine pulchritude . . . advocate of realism in literature . . . cynical wit . . . the crusading editor . . . one of the Literati . . . "I was under pressure."



JAMES L. BARTO

Usually seen with a good friend! . . . always joking . . . takes studies seriously . . . friendly . . . happily married . . . Dr. Lochner's capable assistant . . . women and dogs his specialty . . . "If I could get my car."





ROBERT MERLE BASHORE

Excels in his studies . . . pleasing personality . . . well liked . . . following in his brother's footsteps . . . well known in the axe league . . . interested in sports . . . upholding family tradition it's Jeff. Med. for Bob next year.



HAROLD WAYNE BEAM

Theologian from Johnstown . . . Rodney's serious-minded, hard-working Daddy . . . shares his wife with the office . . . his winsome personality and religious convictions assure us of a promising spiritual leader.



ESTHER ROMAINE BELL

Full of fun . . . avid athlete . . . strictly lab-conscious . . . baby teeth . . . many nick-names . . . enviable hair . . . "Have you heard this one?" . . . a grand person to know . . . recognized by her giggle and accompanying grin.



HARRY ELMER BENEDICK

Serious, and yet easygoing . . . always composed . . . conscientious . . . never lets a night go by without writing to that girl back home . . . likes sports . . . determined . . . quiet and shy . . . in truth a "Hot Water Hero."





EUGENE RALEIGH BIEBER

Quiet . . . sincere . . . looking forward to his own home . . . studious . . . a papa . . . chem. major . . . plays in the axe league . . . confused by the intricacy of Math '48 . . . conscientious student . . . interested in all sports.



RUSSELL JACOB BIXLER

"Jake" . . . tennis enthusiast . . . conservite . . . superb violonist . . . everybody's friend . . . takes very good care of his car . . . sharp dresser . . . jokes!



BARBARA ANN BLAUCH

"Barb" . . . psycho-analyst of North Hall . . . speed demon with knitting needles . . . whistle-bait . . . jewelry galore . . . continually cutting her hair . . . her pet peeve: French . . . smooth dancer . . . abundance of common sense.



DEAN HENRY BOHR

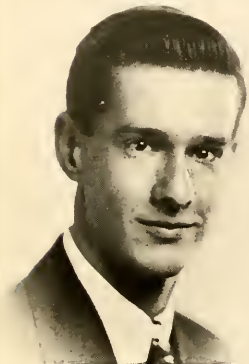
From the hills of "Tar" City . . . the huntsman . . . aspiring Chem teacher . . . ask him about his girl friends . . . increased egg production . . . "Did you do this calculus problem?" . . . ardent collector of old exams.





JOSEPH RICHARD BOLGER

"Dick" . . . sturdy, good-looking, impeccable dresser . . . Iturbi with shoulders . . . conserv's most eligible bachelor despite Palmyra's endeavors . . . infectious good nature . . . "Go get 'em Jack!" . . . destination, a teaching career.



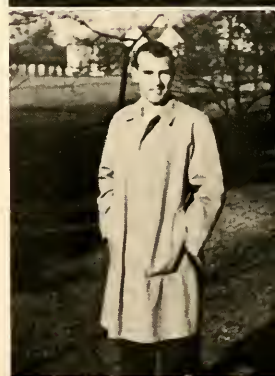
NICHOLAS HOLMBERGER BOROTA

Jitterbug . . . Math major . . . record collection . . . tall . . . nice new Chevvie . . . Steelton boy . . . "Not tonight, I was there last night" . . . tries to give Miss Houtz a bad time.



HAROLD EDWIN BOYER

"Kitty" . . . brilliant pre-dental student . . . should be an A-1 chopper-fixer . . . claims, "That's not right," then proves it . . . big spaghetti and Mt. Penn fan . . . good conversationalist . . . handy in the lab.



PETER PRICE BOYER

Married man . . . lives in Quentin . . . spends spare time sleeping in the day student room . . . man of large proportions . . . conserv student . . . "I'll do it tomorrow."





VERA JANE BOYER

Dark hair . . . attractive . . . always with a smile . . . oh, for another weekend at State . . . music is her field . . . finds the "rec hours" very interesting . . . an exceptionally talented organist . . . seen at all social functions.



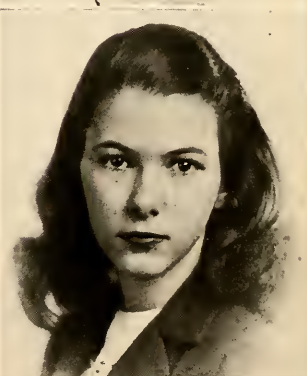
FOSTER MARTIN BRINSER

Conversationalist, and how . . . scatter-brain . . . those dance-band jobs . . . student teaching whiz? . . . engaged . . . What a driver! . . . plays a sax with gusto.



ELYZABETH ANN BRIODY

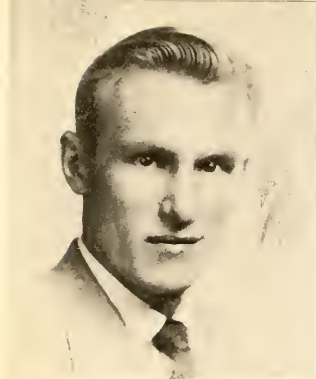
"Betz" . . . beautiful long, dark, wavy hair . . . industrious . . . attractive personality . . . frequent visitor to the library . . . Chet's the one and only . . . Russia's her pet peeve . . . looking forward to a teaching career . . . "May I help you, please?"



PAUL EUGENE BROOME

About to middle-aisle it with Joyce . . . wotta tenor . . . congenial . . . smile for everyone . . . dipping ice-cream is his arm breaker, but didn't affect his helping hand . . . get her Hershey kisses here.





WILLIAM JOSEPH BRUNNER

Tall blond . . . Varsity cager . . . knows his German . . . his airforce section was the "best" . . . augments his wardrobe by pilfering his brother's clothes . . . raises chickens . . . president of Deutsche Verein.



MARY ELLEN BUDESHEIM

"Budie" . . . jovial . . . low voice . . . rippling laughter . . . midnight gab-sessions . . . likes to tell you where Seven Valleys is . . . "I think I'll cut this class" . . . attractive . . . always game for a good time . . . carries the bass drum.



RAYMOND CLODOVEO

Business Ad. major . . . black wavy hair . . . likes to argue politics . . . part-time bartender . . . another of the married men . . . a big man for such a small car.



LEONARD MARLIN COHEN

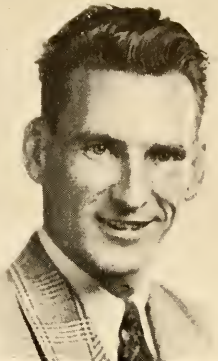
Friendly . . . studious . . . strong family ties . . . can discuss Psychology learnedly . . . enthusiastic V. P. of Psych. Club . . . commuter from Harrisburg . . . always dashing from class to class to class and home.





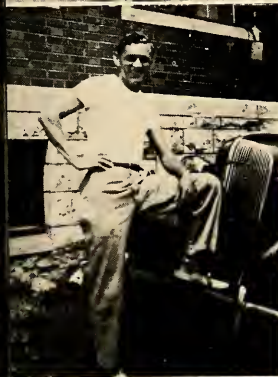
WILLIAM THOMAS CONWAY

House-painting four year project . . . English ace from South Cleona . . . pleasing personality . . . pretty wife and daughter . . . transportation by Nash . . . carefully evaluates his bridge hands.



HATTIE RUTH COOK

"Hat" . . . cheerful . . . great defender of womens' rights . . . psychology fiend . . . the printing profession has its advantages . . . musically inclined . . . ex-day student . . . blond hair.



GLENN E. COUSLER

One of the boys from York . . . dependable . . . conscientious . . . College band . . . interested in intra-mural sports . . . loves bull sessions . . . the "Eel" . . . hobby is sleeping through Monday eight o'clocks.



MICHAEL FELIX CRINCOLI

Exponent of New Jersey brogue . . . future history teacher . . . manager of the basketball team . . . well-dressed . . . "What is it wit chu?" . . . Rotund and boisterous, Mike's after "da marks."





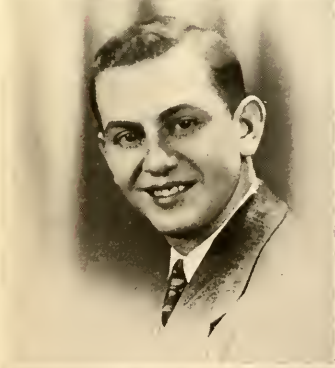
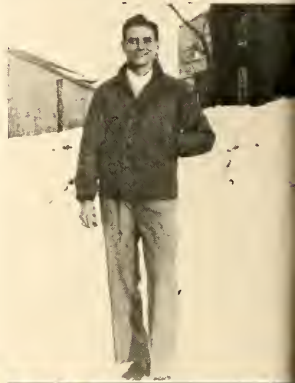
HARLAN AARON DAUBERT

The Pine Grove kid . . . excellent pianist . . . "The Brain" . . . shy . . . part owner of the new Astoria . . . consumer of the lighter beverages . . . infectious grin . . . the owner of a rare personality.



PHILLIP CALVIN DEARDORFF

Aggressive . . . likeable—after you know him . . . champion of right . . . steady and capable . . . well-dressed . . . pre-med, his wife will make a charming receptionist . . . plays a rough game of ping pong.



HENRY CHARLES DEENS

Chain letter fame . . . pre-med . . . military minded . . . Valley Forge grad . . . always prepared . . . terror of soph-upper-classmen football game . . . member of retaliatory junket . . . Painted F & M . . . kills frogs the hard way.



JOHN ADAM DETWEILER

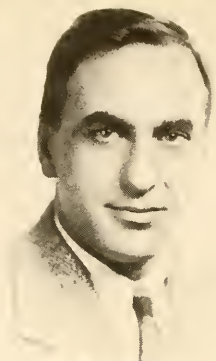
"Detweeter" . . . "Good old days at L. V. C." . . . the organizer of the men day students . . . reviver of Freshmen rules . . . another aspirant to be a doctor . . . well liked, good natured . . . helpful assistant to Dr. Derickson.





ALBERT PATRIC DIJOHNSON

Pinochle major . . . friendly . . . bachelor type . . . versatile . . . studious looking . . . life of the party . . . the voice that carries . . . "Have any nickles for the coke machine, Bub?"



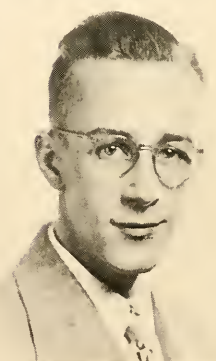
RALPH ARTHUR DOWNEY

Hails from Lititz . . . talented cornet soloist . . . "We'll take my car" . . . has frequented all dorms in past years . . . friendly and congenial . . . "Don't trifle with me."



JOSEPH CLAYTON DUBS

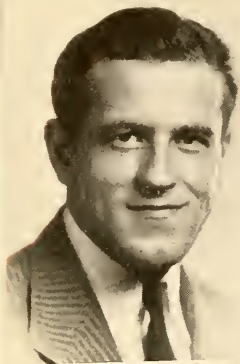
Plays trumpet . . . spends weekends in Carlisle . . . waiter . . . those Glee Club tours . . . small but mighty . . . has a "downey" room-mate . . . impressionable . . . a stalwart citizen.



JACOB E. EARTHART

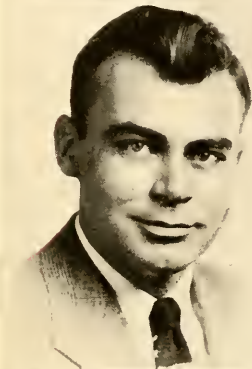
"Jake" . . . a pre-ministerial student of high caliber . . . has his own charge . . . well liked . . . makes friends easily . . . an industrious student . . . "Well, I have to study now" . . . takes exceptional care of his new car.





ROBERT EARLY

Jovial . . . proud of his "new car" . . . studies hard . . . well-groomed . . . many friends . . . polishes the floor in the axe league . . . speaks for himself . . . the scientific evangelist.



RICHARD YODER EBY

Studious and dependable . . . full of fun . . . high ideals . . . "Anybody wanna ride?" . . . one of the Palmyra boys . . . well up on current affairs . . . always ready to talk, in class or otherwise.



ASHER SAMUEL EDELMAN

Versatile leader . . . conscientious . . . "Y" Cabinet . . . Phi Lambda Sigma secretary . . . Glee Club . . . puts up with Abba Cohen . . . "You dirty dogs." . . . pipe smoker . . . red soup-strainer on upper lip.



DWIGHT CLIFFORD FAKE

Good athlete . . . conscientious and hard working . . . a definite school asset . . . hunter deluxe . . . majoring in social studies . . . hazy about economics . . . plays trumpet.





HAROLD LA MAR FEASTER

Zany wit . . . active in sports . . . classroom humor . . . lot of friends . . . amiable . . . obviously a very proud family man . . . and fellows, the baby has eight teeth . . . expects to become a math teacher.



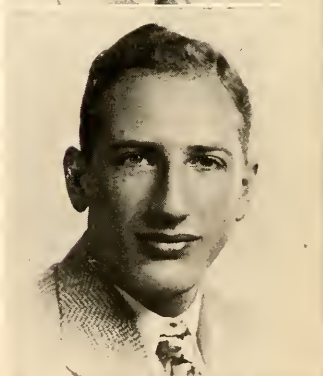
JOSEPH MICHAEL FIORELLO

Big Joe . . . handsome hunk of man . . . the "Mr. Anthony" of campus . . . accepted at Jefferson Medical College . . . determined to reach the heights of his ambitions . . . "Think I came here to give ya a thrill?"



DAVID FLEISCHER

Diligent student . . . the boy that slings the ten-syllable words—and knows what they mean . . . "Gotta go study" . . . avid chapel attender . . . "But what does he really have?" . . . rational thinker who carefully evaluates his beliefs.



DENNIS LIGHT FUNCK

"Time for a mass cut" . . . makes good grades as Chem major . . . seeing eye for chem students in organic lab . . . pin-ball artist . . . axe-man in the axe league . . . Fisher's buddy.





ERMA STRICKLER GAINOR

"Erm" . . . Bus. Ad. major . . . has a special interest in Annville . . . recently converted into goalie . . . unusual collection of stuffed animals . . . patience and fortitude . . . glistening black tresses.



MARION IDA GEIB

Attractive brunette from Rexmont . . . friendly . . . charming personality . . . chem lab tenant . . . efficient salesgirl . . . certain sparkle in her eyes and sparkler on that finger . . . looking forward to the chiming of wedding bells.



MARSHALL GEMBERLING

Tall . . . quiet . . . Varsity end . . . plays basketball and baseball, too . . . courts Janet Weaver . . . History major . . . poker player . . . midnight snack fan . . . pinochle shark.



PAUL JACOB GERHART

From Jonestown over . . . Psychology major . . . slow talker . . . conscientious in his work . . . rec hall kibitzer . . . tyro at bridge . . . anxious to get out . . . pleasant personality.





RUSSELL PAUL GETZ

Glee Club basso . . . big man, little clarinet . . . marvelous sense of humor . . . may be seen all fall on touch football field . . . *The Compleat Angler* . . . wash-room warbler.



ANNE GILBERT

"Charlie" . . . campus belle . . . Dr. Struble's right-hand girl . . . immaculate dresser . . . attractive personality . . . "Oh, which shall it be: Tom, Dick, or Harry?" . . . In class when the mood strikes . . . big wheel of Lebanon . . . Junior Women's Club.



MARY LEE GLOVER

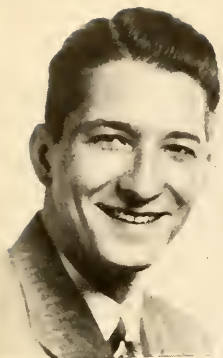
Typical Southern belle . . . hails from Harper's Ferry . . . special interest in the Air Corps band . . . adorable accent . . . red hair without the temper . . . turkey farm . . . original evening gowns.



CHARLES KENNETH GREENAWALT

"Greeny" . . . good conversationalist . . . Business Ad. major . . . father's little helper during the summer . . . gentlemanly ways with the ladies . . . "Oh, well, tomorrow is another day."





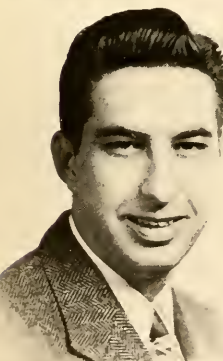
ROBERT RAY GROVER

Tries to be everybody's friend . . . extrovert . . . works at chemistry in his time off as president of Phi Lambda Sigma . . . Had a forced acquaintance with Gilbert and Sullivan . . . frustrated . . . loves to drive, has no car.



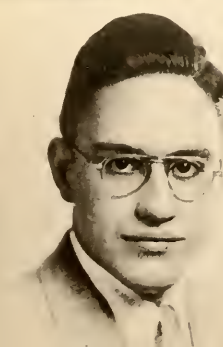
GLENN LESLIE HALL

President of Student Faculty Council and Junior Class . . . pleasant voice . . . quiet manners . . . affable . . . immaculate neatness in clothes . . . nice to know.



HARRY HERR HANSHAW

Tall and quiet . . . studious . . . can usually be found in the library . . . a way with women . . . "No more chemistry for me." . . . summer-time, truck jockey . . . eternal search for the ideal snap course . . . got stung in Geology.



SAMUEL A. HARTMAN

Quiet, soft spoken lad from Palmyra . . . studying to be a doctor . . . conscientious . . . a summer resident of Mount Gretna . . . swell guy when you get to know h'im.





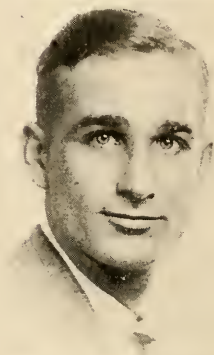
FRANCIS AUSTIN HECKMAN

"Hecky" . . . master of colloquial idiom
 . . . satirical wit . . . "gas costs money"
 . . . champion of the ex-GI . . . "Got
 anything to eat?" . . . Sam's buddy . . .
 radio club enthusiast . . . a knack for acting.



ROBERT EARNEST HESS

Three letterman, excels in all . . . married
 . . . most ardent fan is daughter Susie . . .
 always ready for a heated discussion . . .
 future history prof . . . found "Gold" in
 California.



WALTER WINFIELD HESS

"Wally" . . . never without a smile . . .
 another athletic Hess . . . married . . .
 popular . . . has intentions of becoming prof
 and coach . . . borrows his notes . . . argues
 with axe league refs.



ALVIN SYLVESTER HILDEBRAND

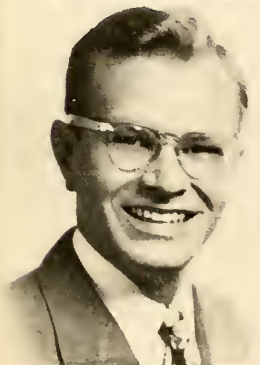
Treasurer of Junior class . . . pre-ministerial
 . . . nice smile . . . co-operative . . . quiet
 . . . latent sense of humor . . . life work
 recruits' prexy . . . ideas of his own . . .
 bats .380 and plays first base.





JEANNE LOUISE HISSNER

"Hiss" . . . sweet and petite . . . versatile . . . Bob's her man . . . beautiful complexion . . . neat in appearance . . . future English teacher . . . "Have you had your clothes cleaned recently?"



HARRY HARRIS HOFFMAN JR.

Future Jefferson Medical man . . . Texas convert . . . Two lovers: P'Way coffee and Fay . . . the "Mortcher" Sky-Rocket . . . "Let's go to movies." . . . snappy sport jackets and bow ties.



HENRY GLENN HOSTETTER

Former Air Force pilot . . . devoted husband and father . . . famed for his curly hair and congeniality . . . teaching history is his ambition . . . good student.



FRANK BRELSFORD HUFF

One-man Gallup poll . . . word-of-mouth publicity for L. V. C. . . . conscientious student . . . gaudy bow ties . . . dependable . . . "I've got an appointment." . . . constructive inquisitiveness . . . Shakespeare brain.





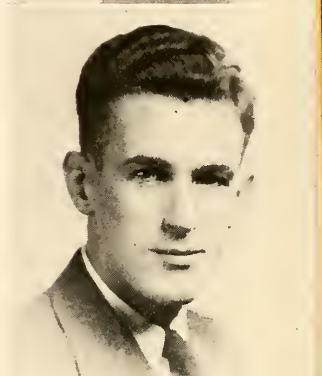
BETTY RUTH JONES

"Jonesie" . . . well-supplied with gray matter . . . adorable clothes . . . infectious laugh . . . never a free moment . . . well-rounded personality . . . outstanding pianist.



EARL FRY KAUFFMAN

Anville boy . . . Business Ad. major . . . dependable worker . . . quiet and pleasant . . . thinks before he acts . . . wavy hair . . . discusses national affairs thoroughly . . . war upset plans, hopes to graduate this time.



STANTON HARRY KELLER

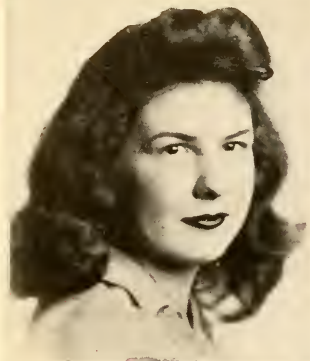
"Stan" . . . always a notable comeback . . . local boy . . . dependable and steady worker . . . business is his chosen career with an eye on statistics . . . hangs out at Hot Dog's.



JOANNE LUCILLE KESSLER

"Jo" . . . the "New Look" . . . one of Dr. Derickson's field trip enthusiasts . . . Green Blotter . . . jewelry addict . . . immaculate . . . original hair styles . . . lover of nature . . . fond of bicycling . . . writes poetry.





HAZEL JEAN KINNEY

Transfer from University of Denver . . .
 Bus. Ad. major . . . Long Island rwang . . .
 sparkling eyes . . . long black tresses . . .
 sports enthusiast . . . exuberant manner of
 speaking.



PETER PAUL KOZLOSKY

Former athlete . . . married and has an
 identical image named Tommy . . . congenial
 . . . star Hershey salesman . . . Business Ad.
 major . . . ex-Miami U. Football man . . .
 pipe smoker . . . beautiful wife.



HOWARD BUCHER KREIDER, JR.

"Hoppy" . . . pleasant . . . debater of
 some note . . . sense of humor . . . horses
 . . . jeep! . . . gentleman farmer . . . rounds
 up cattle with an Oldsmobile . . . wonders
 why he's in school.



WESLEY KREISER

Chem major following the family tradi-
 tion . . . dutchy . . . "Gertie Goes Plain"
 . . . quiet . . . hails from Ono . . . lab
 assistant . . . always talking about Chem
 Club . . . determined to pass calculus.





EDITH RADCLIFFE KROKENBERGER

Another Jersey-ite . . . enthused about zoology field trips . . . president of West Hall . . . good German student . . . May Day archer . . . blushes . . . conscientious Jersey-ite.



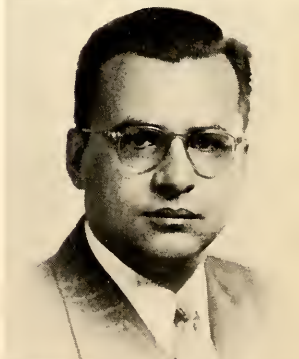
FAYE LUCILLE KROUT

Tiny of stature but big of heart . . . dancing feet . . . member of the Pennway Coffee Club . . . That Pretty Blue Hat . . . "Here 'tis!" . . . even temperament . . . unassuming and gay . . . a friend to all.



MICHAEL KURILLA

"Mickey" . . . future M. D. . . . biology bug . . . soft-spoken . . . well-dressed man of distinction . . . Honolulu memories . . . you should hear about Ira Guggenheim.



AUDREY COLLEEN LAU

Conservite . . . one of Crawford's prides . . . tall . . . big, blue eyes . . . quiet . . . rather shy . . . continually studying Sociology and Shakespeare . . . liked by all who know her.





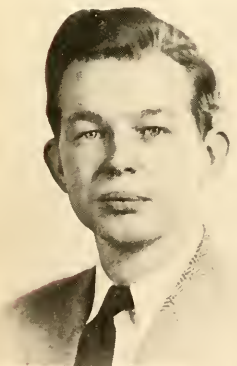
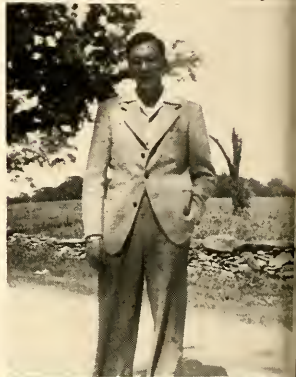
HOWARD FISHER LEBEGERN

Jack Green, the tennis queen, or L. V.'s threat to Alice Marble . . . Business Ad. major . . . sports enthusiast . . . Jack is as equally conscientious as a student as he is Verni's pin ball partner.



SLADE SMITH LINDEMON JR.

Tall and lanky . . . comes from Baltimore . . . Psychology major . . . art gallery in his room . . . "little Aristotle," the logic brain . . . a cliff dweller.



AMOS LONG JR.

Part-time clerk at Sears . . . Business Ad. major . . . conscientious student . . . grave as a judge . . . his mind works with the greatest facility . . . a truly well-liked Cleona man . . . quiet and sincere.



JOHN FOX LOSER

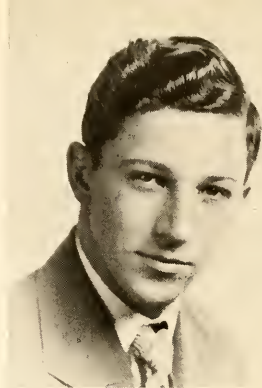
Another one of the schools many married men . . . has a second home at Hot Dog Frank's . . . a Business Ad. major . . . follows sports enthusiastically . . . his future is in the business world.





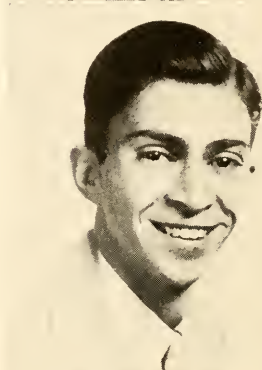
DONALD VERNON MALICK

"Don" . . . biology brain with the dark wavy hair . . . dependable . . . Bio. assistant . . . home every weekend to work? . . . vivid colored shirts . . . keeper of insect menagerie.



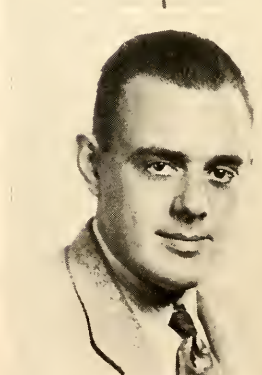
IRVING ALLEN MALL

Business Ad. major . . . hails from Harrisburg . . . authority on Le Havre . . . pleasant voice . . . well spoken of by his professors . . . can always be found playing cards in the day student room . . . a swell fellow to know.



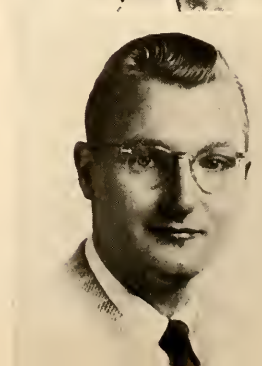
ROBERT HENRY MARQUETTE

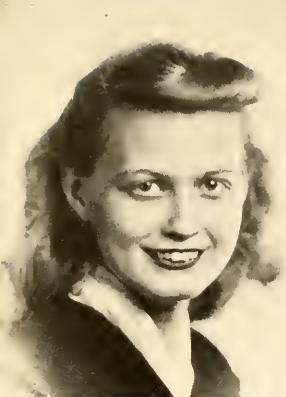
Jovial . . . well-rounded musician . . . a father . . . "My trousers seem to be getting smaller" . . . bass man . . . backbone of Johnny Adams rhythm section . . . possesses a jet-propelled "car" . . . spends many hours practice teaching.



JOHN EDWIN MARSHALL

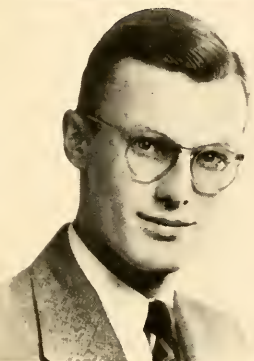
Never a dull moment . . . LaVie's business manager . . . well-dressed play boy . . . ambitious pre-med student . . . "Let's see, where was I?" . . . gigantic lunch bags—gaining weight fast.





MARTHA JEAN MATTER

Harassed editor of *La Vie* and the *Quittie* . . . impossible in the morning . . . psycho major and English . . . usually seen with Pete . . . non-conformist . . . blond hair . . . conscientious student.



ROBERT MCCOY

Industrious lad . . . enjoys social activities . . . outdoor sportsman . . . amateur auto mechanic . . . drives a Terraplane . . . likes history, music, and his pipes.



JAMES JOSEPH MCGRAW

"I'm not fat" . . . favorite haunt the sack . . . always a Buick . . . hot corner custodian . . . Miss Becker's pride and joy . . . intramural sports enthusiast . . . surprised the campus by recent revelation of his marriage.



GIRARD JOSEPH MCKENNA

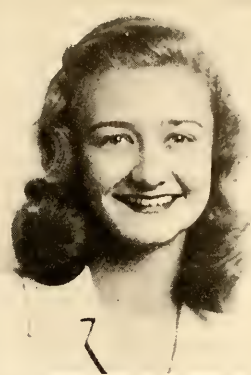
Conscientious Bus. Ad. student . . . those terrific weekends in Brooklyn . . . complacency at mealtime . . . mimicker deluxe . . . daily delites from P. O. . . . "Do you prep?" . . . loves the aesthetic in his room.





BEATRICE M. MEISER

"Beattie" . . . attractive blonde . . . loads of fun . . . score of friends . . . the life of the day students . . . a student of the microscope . . . socially active . . . always neatly dressed . . . Are you always collecting money?



NANCY REBECCA MEYER

Accomplished cellist . . . original hairdo . . . natural beauty . . . versatile person . . . conscientious . . . daily correspondence to a certain medical school . . . one of Dr. Derickson's girls . . . *Quittie's* faithful art editor.



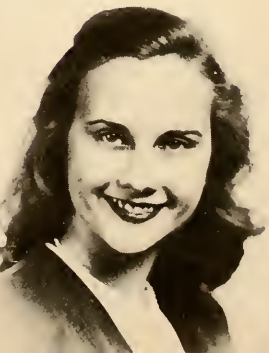
MARION A. MILLARD

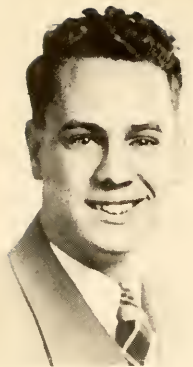
"Annvillite" . . . peaches and cream complexion . . . favorite subject: Cliff . . . abundance of energy . . . faithful friend . . . good conversationalist . . . myriads of clothes . . . pleasant voice.



MARTHA MAE MILLER

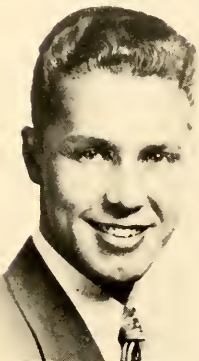
"Marcie" or "Marty" . . . hails from Harrisburg . . . her sparkling eyes are focussed on Benny . . . petite grammarian . . . has enduring memory and an abundance of brain matter . . . semi-vegetarian.





RICHARD JOHN MILLER

Pleasant personality . . . quiet . . . friendly . . . one of the Palmyra crowd . . . well liked by all . . . sells groceries on week-ends . . . consistently getting spring fever . . . studies hard . . . the business world has use for another tycoon.



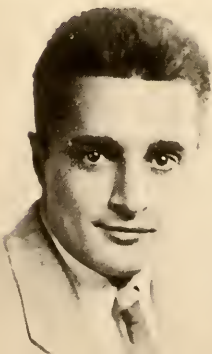
ROBERT HART MILLER

One of Doc. Bender's chem boys . . . Apollo when not titillating the campus with his pranks, and *La Vie* cartoons, can be found in his room hitting the books . . . No, the profs don't give him such good marks just because he has a dimple.



SIDNEY S. MILLER

Eager student . . . quiet . . . clarinet addict . . . army man . . . pre-med . . . rough with Chem lab equipment . . . spends half his life hitch-hiking . . . in business with his brother . . . desires to excell in his intended profession.



RICHARD WILLIAM MOLLER

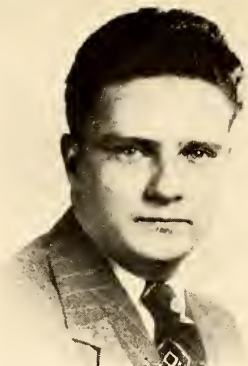
Keeps up with "Jonesey" . . . ex-Navy fly-boy . . . crew cut . . . temperamental . . . advertises via hand-bills distributed from a piper cub . . . preparing for the bar . . . Kalo's able secretary.





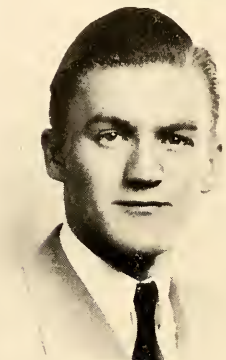
WILLIAM TRYEON MOORE

"Moose" . . . hails from Lebanon . . . interests in Harrisburg . . . tennis enthusiast . . . reliant . . . Soggy, the second . . . junior "vice" commander of Lebanon Legion . . . lots in common with Prof. Fisher.



DEAN SAYLOR MOORE

A quiet Business Ad. major who divides his time between studying accounting, and flying . . . misogynist—he says . . . has definite plans for the future, but he won't tell.



ERMA ROMAINE MURPHY

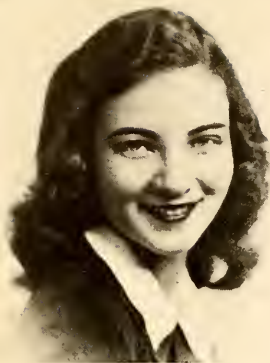
"Irish" . . . doubly protected by the "Bobbies" . . . musical versatility . . . quiet . . . hails from Peach Bottom . . . cello charmer.



JOANNA H. NORRIS

Striking red hair . . . classical dignity . . . magnificent soprano . . . faithful devotion to Yale . . . skirt and sweater addict . . . tall and stately . . . procrastinator.





MARY ALICE O'DONNEL

Capable drum majorette . . . favorite of the Conserv profs . . . Jim's her man . . . enticing eyes . . . winning smile . . . her kettle drums know who's boss . . . proud of her home, Waynesboro.



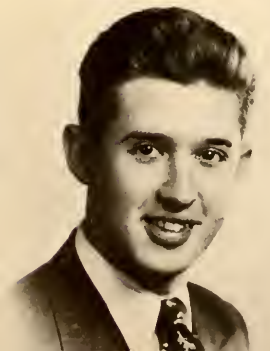
BRYCE OXENRIDER

Loyal Philo member . . . assistant student manager of basketball team . . . full of tricks . . . the "Ox" . . . always talks of the weekend with Red . . . always gets in that last word . . . self-styled comedian.



CHARLES ELMER POMERANIG

"I just flunked another one" . . . even tempered . . . "But, Dr. Lotz" . . . Oh, that Dutch Club . . . and those dreams . . . lots of personality . . . the economics brain . . . gifts of ties.



RICHARD GEORGE PYE

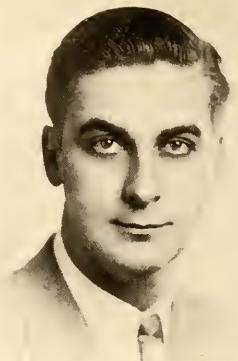
English major . . . an all-round guy . . . Philo . . . Wig and Buckle . . . main interests, a Chevrolet and Nancy . . . Gilbert and Sullivan fiend . . . apple polisher . . . "Where's my riders?" . . . amazing discussions with Huff.





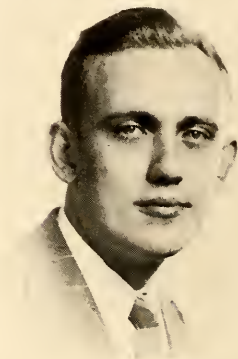
JOSEPH LEO RADAI

"Radar" . . . accepted for medical school
 . . . talks wisely on many subjects . . . quiet
 . . . studious . . . ex-Navy goldbraid . . .
 dislikes publicity . . . strives for exactness
 in the lab.



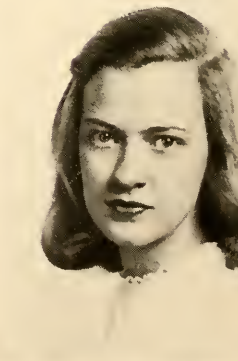
ELMER LEON REAMER

Eager chess enthusiast . . . hobby is radio
 . . . Harrisburg jokester . . . part-time disc
 jockey . . . nuclear physicist . . . recently
 became a papa . . . drums up business for
 WABX . . . highway menace.



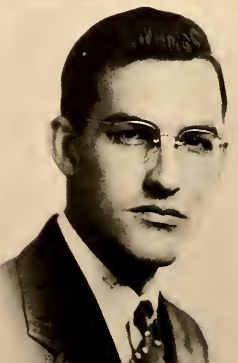
JANE ESTHER REED

Transfer from Randolph Macon . . . glis-
 tening blond hair . . . original wardrobe . . .
 psych major . . . horn-rimmed glasses . . .
 an inhabitant of West Hall . . . that co-ed
 look . . . knits beautiful argyle socks.



STUART KINSEL REMLEY

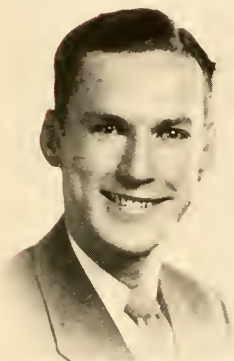
Calls Hummelstown home . . . terrorizer
 of women . . . pin ball artist . . . lab.
 jokester . . . pre-med . . . one track mind
 . . . "Howya doin', Mack?"





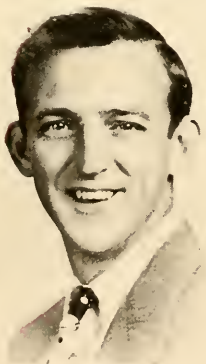
ANDREW RENNER

The silver flash . . . all night radio listener . . . "Gor a dollar?" . . . future medical missionary to his home: Africa . . . the early bird, up at five . . . careful with his passport—a British subject . . . amateur photographer.



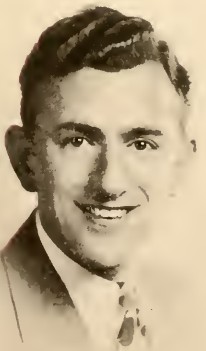
RICHARD PAUL REYNOLDS

Chemistry major . . . Mechanicsburg commuter . . . plays bridge with the best of them . . . whiz in calculus . . . plays in that famed axe league . . . excels in his studies . . . his future lies in the scientific world.



IRWIN JOHN ROEMIG

Former Air Force man . . . off we go into the wild blue yonder . . . wife is a nurse . . . "We only live once" . . . "How's my boy today?" . . . looking for snap courses . . . slinger of history books.



LAVERNE EUGENE ROHRBAUGH

Friendly . . . excellent student . . . sincere Christian . . . sharp eye on Shirley in York . . . ardent follower of sports . . . administrator of room 206 . . . successful student pastor.





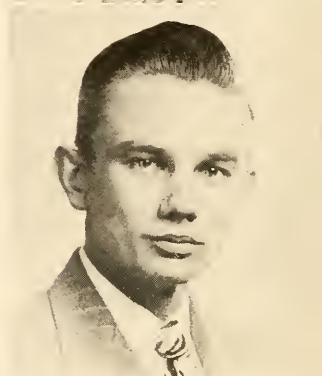
ROSE MARIE ROOT

"Rosie" . . . petite . . . expert with the cards . . . jitterbug fiend . . . assortment of fur coats . . . record enthusiast . . . pleasing personality . . . always eager for Friday's evening meal . . . unlimited wardrobe.



WILLIAM ALGER ROTHROCK, III

A plugger who knows where he's going and how to get there . . . a true sportsman with rod or gun . . . an open hearted fellow who'd literally give you the shirt off his back . . . his residence in Harrisburg is a second home to his friends.



PAUL H. SADLER

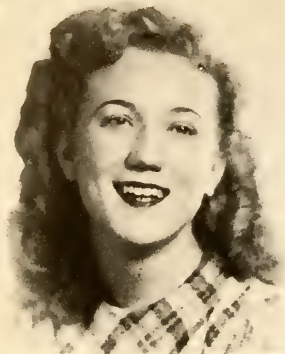
"Ohhhhhhhh" . . . man about town . . . smooth dresser . . . P-way gab session . . . "Say, did you hear the one about" . . . blushes easily . . . loads of fun . . . dependable . . . that's our Pablo.



MARYCAROL SALZMAN

Danseuse extraordinaire . . . life of the party . . . a dozen nicknames and a man for every mood . . . devotee of Dorothy Parker . . . *La Vie's* morale-builder . . . always has a snappy come-back . . . vivacious personality . . . "It *must* be sack!"





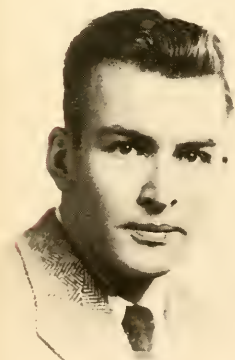
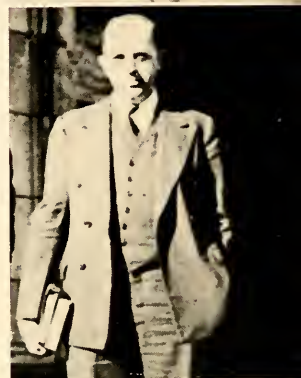
MARIAN ELEANOR SCHWALM

Intellectually stimulating . . . possesses career-woman qualities . . . Green Blotter . . . debating . . . social work her supreme objective . . . shy until you know her . . . engaged recently.



CHARLES R. SHOLLENBERGER

Man with ideals . . . conservative gentleman . . . versatile . . . dependable . . . studious . . . "Let's talk it over after class" . . . Business Ad. major . . . long distance commuter.



CHESTER JOHN SHERMAN, JR.

Partial to Fords . . . engaged to Betty Ann . . . enjoys the quiet life . . . junior executive . . . blinding socks . . . free taxi service to Lebanon . . . model airplane bug.



VINCENT ALLEN SHERMAN

Waring's associate . . . frequenter of the P-way . . . flashing red hair . . . holder of two copyrights . . . sergeant at "arms" . . . plays terrific guitar . . . has definite ideas . . . moody . . . borrows from Baker and Baker borrows back—confusing, ain't?





PAUL O. SHETTLE, JR.

Friendly . . . sociology major . . . ornithology is his hobby . . . interested in philosophy . . . proud family man . . . right at home in Annville.



ELLA MAE SHULTZ

Typical American girl . . . rare combination of Conservite and athlete . . . Blondie from Boston . . . two male interests, George and brother, Bob . . . keeps the post office buzzing.



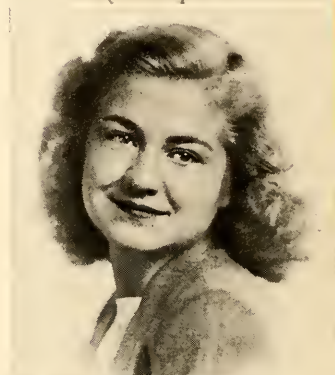
DOROTHY MARIE SMITH

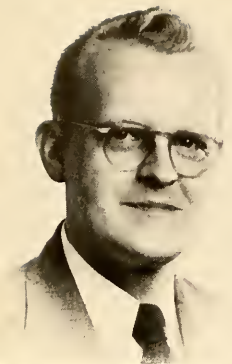
"Dot" . . . faithful assistant of Dr. Huth . . . easy going . . . pleasing personality . . . lover of civilization . . . frequent occupant of the library . . . roots for the "Philadelphia Athletics" . . . favorite pastime—sleeping.



JOSEPH DORSEY SMITH, JR.

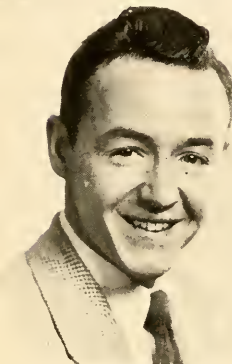
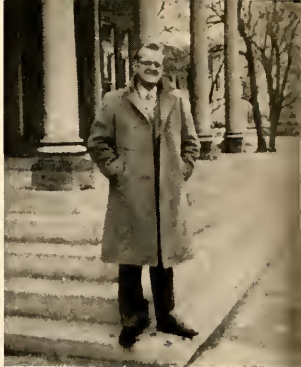
"Just call me Joe" . . . a sparkling personality . . . let's give 'em a charge, huh? . . . contagious laugh . . . capable leader . . . has qualities of a spiritual minister . . . Y. M. C. A. enthusiast.





GILBERT DONALD SNYDER

Played an excellent role in *The Fool* . . .
genial Gil . . . "Have a Kool?" . . . student
teacher . . . another one of those Palmyra
boys . . . married . . . blond . . . sociable
. . . community minded citizen.



PAUL J. SPANGLER

Biology and Phyllis consume most of his
time . . . a good lab assistant . . . answers
to a certain whistle outside the Men's dorm
. . . a sportsman at heart . . . his bug's on
display at Smithsonian.



RUSSELL IRWIN STEINER

Charter member of the Gas House gang
. . . sports fan . . . slow and sarcastic
conversationalist . . . Chem brain . . . lab cut-
up . . . high scorer in the axe league . . .
nocturnal meanderer . . . Harvey, the second.



CAWLEY RICHARD STINE

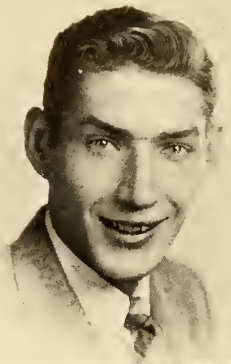
"Dick" . . . can always be found in the
Chem. lab . . . a pleasing personality . . .
married man . . . preparing for graduate
school . . . an ardent member of the pinball
06 class . . . knows something on all subjects.





JOHN DAVID STINE

Family man . . . reformed musician . . .
Business Ad. major . . . future graduate
student in political science . . . always cut-
ting classes and not getting a cut . . . a
graduate of pinball 76.



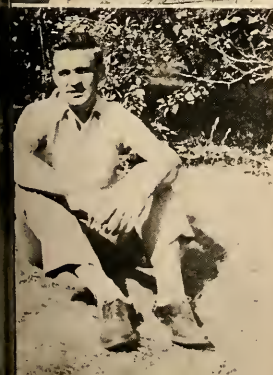
RUTH PATRICIA SUTTON

Favorite pastimes: sleeping and knitting
sox for Steele—Bob, that is . . . patriotic
New Jersey-ite . . . political science student
. . . she'd be a good lawyer.



FREDERICK SYDNEY TICE

"Fred" . . . a personality that would sell
the Brooklyn Bridge . . . a future Wall Street
broker . . . one of L. V.'s many married men
. . . interested in politics of Lebanon.



CHARLES W. TOME

Mel Torme . . . sports ed. . . . standing
reservation for love seat with Sid . . . L. V.'s
self-appointed football scout . . . a place for
everything and everything in its place.





NICOLA VERNI

"Nick" . . . "Get out of my sight" . . .
conscientious . . . hard working . . . sure
to get ahead in the business world . . . owner
of the iron head . . . "you're up."



DEAN THOMAS WALTERS

Medicine or bust . . . a very able student
. . . great collector of jazz records . . . would
like to know more about astronomy, with a
woman, if possible . . . "Oh, that stupid
game."



LUZETTA JANE WARFEL

"Lu" . . . faithful to Sheridan Hall . . .
gorgeous black hair . . . petite . . . obliging
waitress . . . pianist superba . . . jolly . . .
easy to know and like . . . romance with Bill.



JANET KERR WEAVER

"Jannie" . . . enviable curls . . . inex-
haustible supply of skirts and sweaters . . .
seldom seen without Marsh . . . superb
talent for playing popular music . . . mania
for jewelry . . . unusual athletic ability.





LOIS MAE WENGER

A new face on our campus . . . quiet . . . ambitious . . . sweet disposition . . . conscientious student . . . cherishes high ideals . . . carries an air of efficiency . . . future social worker.



DOROTHY ELIZABETH WERNER

"Dot" . . . our Palmyra pride . . . always dependable . . . studious . . . charming personality . . . always willing to help . . . dean's list standby.



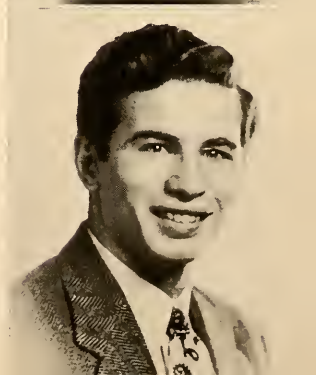
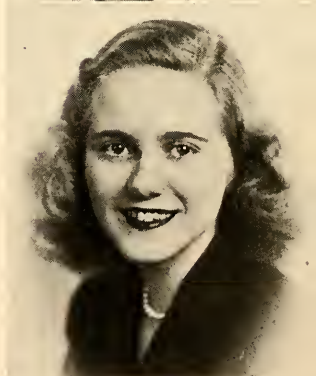
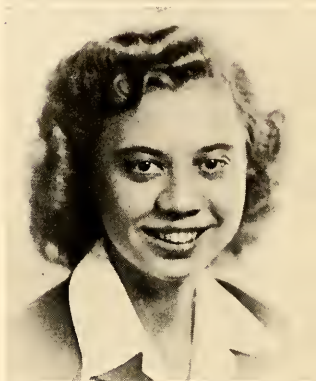
VIRGINIA MAE WERNER

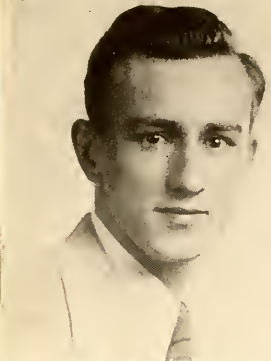
Our little radical idealist . . . concerned with the troubles of humanity . . . wants to go into social work and politics . . . likes people who are different.



RAYMOND JOHN WIDMANN

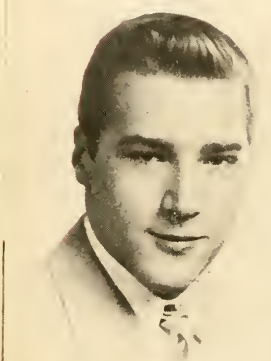
"Sleepy" . . . comfort can be found only in sleeping . . . a Hershey Jr. College alumnus . . . preparing for a career in medicine . . . talks without encouragement . . . "As I was saying."





CLARENCE WITT

Chem. major . . . pinball machine addict . . . married . . . shares house with "Whiskey" Weiman . . . mad driver . . . as witty as his name . . . "Yawker" . . . strong advocate for more Chapel cuts.



KARL L. WOLF, JR.

Terrific tenor sax . . . flashy clothes and a new Chevvy . . . a Kenton fan . . . speed-runs from Lebanon to South Hall . . . "Hi, Man."



MARY CATHERINE WOLF

Ephrata accent . . . short girl with long eyelashes . . . Glee Club contralto . . . "My lands, you mean you don't like limburger cheese?" . . . waitress . . . witty conversationalist . . . flutist.



JOSEPH HUGHES YEAKELE

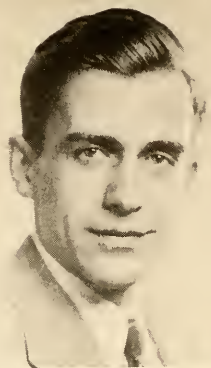
His heart belongs to Lois . . . energetic worker . . . one of our football men . . . good sport . . . Philosophy major . . . red-nosed Bardolph of Henry IV.





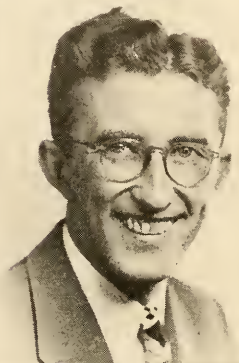
WILLIAM JAMES YINGST

Industrious business manager of the *Quittie* . . . Chem major and lab assistant . . . not only on the ball but chained to it, *i.e.* ring-wise . . . "Oh! I guess you want Paul" . . . next year's class treasurer . . . cares little for tradition . . . his future rests on the behavior of molecules.



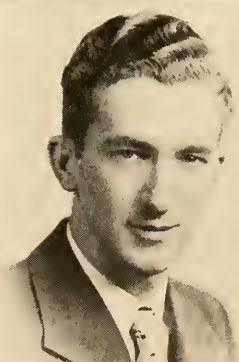
MELVIN RAY ZEIGLER

"Mel" . . . a married man . . . one of Lotz's star pupils . . . a personality that is hard to beat . . . adjutant of the Conner-Streicher Post . . . a local man and proud of it . . . his place is in high finance.



THOMAS MILTON ZIMMERMAN

One of Dr. Black's boys . . . intends to teach Math or Chemistry . . . ready sense of humor . . . consistently witty . . . blond . . . married.



DOROTHY ELIZABETH ZINK

"Dortie" . . . beautiful blue eyes . . . conductor of group singing . . . extremely co-operative . . . seven piano pupils . . . faculty waitress . . . knitting novice.







Sophomore Class Officers

<i>President</i>	SALVATORE FIORELLO
<i>Vice-President</i>	JOHN C. SMITH
<i>Secretary</i>	GERALDINE ROTHERMAL
<i>Treasurer</i>	STEPHEN CROWELL



Sophomore Class History

Never in the history of Lebanon Valley has one class brought about so many changes—both tangible and intangible—as the class which entered in September, 1946. In opening its doors to hundreds of ex-GI's the college, in common with every institution of higher learning in the country, felt the impact of a freshman class almost as large as its entire pre-war enrollment.

With the expansion of the physical plant and enlargement of the faculty came other changes which were destined to have a profound effect upon everyone associated with the college. Gone were many of the time-honored traditions long held to be an indispensable part of campus life. Serious-minded Joe Veteran replaced easygoing Joe College as the personification of the average college student; and the freshman class, because of its size and maturity, commanded enough respect to bring about virtual abandonment of freshman rules.

Early in its first year the Class of 1950 elected John Charles Smith to its presidency, and defeated the sophomore class 7 to 6 in their annual football game. The "Frosh Frolic" was held in the Annville High School gym in April.

At the beginning of this year the newly elevated sophomores reorganized, elected Sal Fiorello president, and set about formulating a class constitution.

In November the sophomores dragged the freshmen into the Quittie to win the annual tug-of-war, and defeated a younger, lighter freshman football team, 13 to 6.

Whether or not the tremendous influence the Class of 1950 has had upon the college in the two years just passed has brought about changes of a permanent nature is a matter of conjecture—but it is certain that it will continue to have a profound effect on campus life during its two remaining years at Lebanon Valley.











Freshman Class Officers

<i>President</i>	ROBERT SHULTZ
<i>Vice-President</i>	WILLIAM MILLER
<i>Secretary</i>	ELIZABETH ZIMMERMAN
<i>Treasurer</i>	DAVID MILLER



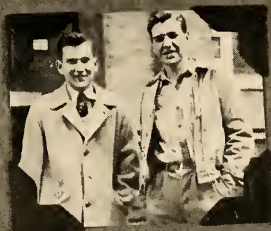
Freshman Class History

Almost equal in size to last year's record-shattering freshman class, the class of 1951 at first was uncertain of its social status as freshmen. An abortive attempt on the part of the upperclassmen to revive some of the defunct freshman rules met with defeat chiefly because the prestige of the veteran was still to be felt among both freshmen and upperclassmen.

Shortly after the beginning of the school year the class organized and elected Robert Shultz as its president.

For the first time in many years the freshman class was spared the ritual of feigning shock and horror at the drama of a not-so-secret campus murder.

As a class the freshmen have been at a disadvantage; the spotlight has continued to focus on the predominantly veteran upper classes.









GOVERNING BODIES





Senate

Because of the fine cooperation on behalf of the male dorm students, the Senate, as a governing body, was able to "walk softly and carry a big stick" during the '47-'48 term.

Outside of a few minor incidents the male dorm students caused the Senators little concern, thereby permitting much more freedom to each individual and allowing the Senators to be freed from the role of "trouble hunters." The faculty gave fine cooperation to the Senate during the past term, allowing the Senate to do just as it saw fit. By this means, much of the traditional trivial friction between student and Senate, and in like manner, between Senate and faculty, was eliminated.

Cooperating with the Jiggerboard, the Senate helped stage the Christmas banquet and dance. The Senate also supervised the intramural program in football and basketball.



Jiggerboard

Jiggerboard, the organization referred to occasionally as the "Gestapo," is the Women's Student Government Association. This group of girls entertains—usually Mondays before dinner—a chosen few of the freshman girls and others who accidentally (to give them the benefit of the doubt) break the rules made for them. Friendly, capable, and efficient, this group corrects all shortcomings after having discovered them. Some of its more pleasant activities include sponsoring the annual Christmas dance and "Gander Weekend."



Women's Commuters' Council

The duty of the Women's Commuters' Council, or W. C. C. as it is commonly known, is to generally direct and control the women day-students and to try to solve their problems.

In the fall of the year a mild initiation and a test of the "L" Book were planned by them for the new freshmen. The initiation was followed by a party for these same young women. As is the custom, a Christmas party was held in the day-student rooms on December eighteenth. The Christmas decorations, put up by the freshmen, greatly added to the spirit of the affair. Delicious refreshments were served. Christmas presents, which were exchanged by the girls, were placed under the Christmas tree.

Another party was held on February thirteenth at which time the "Heart Sisters" were revealed.

On March fifth the day-students held their annual semi-formal dance in the Spanish Room of the Hershey Hotel. This was, as usual, one of the high spots on the Lebanon Valley social calendar.



Men's Day Student Congress

This governing body is composed of four seniors, four juniors, three sophomores and one freshman. Its purpose is to promote day students' activities and to act as intermediary in disputes between the students and the administration. This year the Congress, in cooperation with the Women's Commuter Council, has held a dance at the Hotel Hershey, run a ping-pong tournament, held the annual "axe league" and dealt with a number of issues arising from problems peculiar to the day student. Also, upon obtaining faculty approval, the Congress has rewritten its constitution so as to enable the students to nominate their own candidates for election to the Congress.

The attempt to reinstitute freshman rules met with indifferent response from the students. It is felt by the Congress that one way to engender more school spirit and solidify the freshman class is to have a freshman program beginning in early fall.



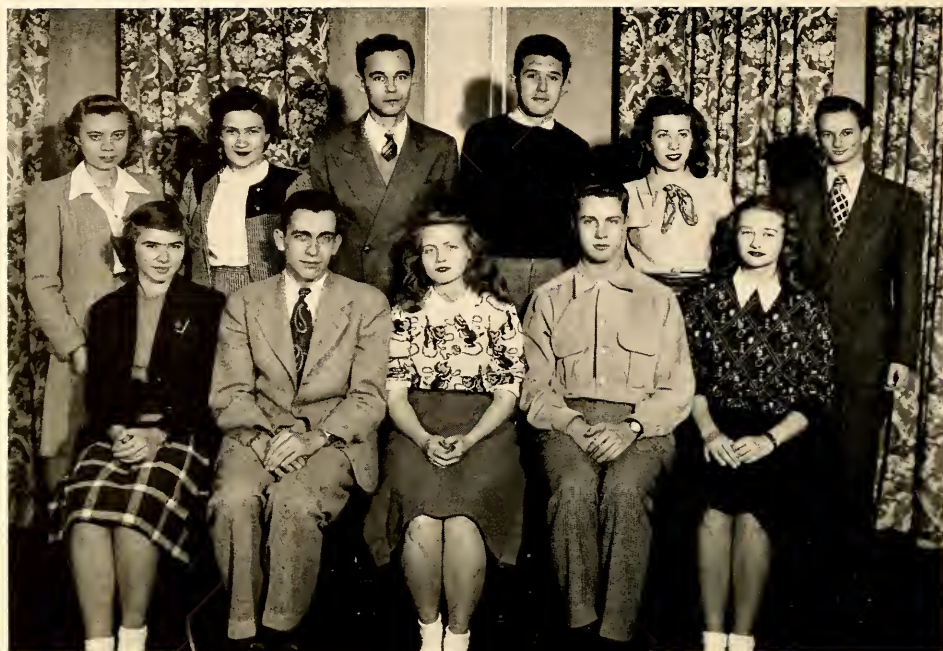
Student Faculty Council

The need for a centralized coordinating body on campus has become exceedingly imperative. The Student Faculty Council is now laying the foundations to alleviate this condition. With the approval of its new constitution it hopes to do more than serve merely as a channel to register dates for activities and as a clearing body for suggestions and criticisms from the student body.

The Council is composed of a representative from each organization and three faculty members. Its officers are Glenn Hall, Pres.; Karl Miller, V. Pres.; Elaine Heilman, Sec.; Virginia Vought, Treas.

ORGANIZATIONS





Quittie Staff

Editor MARTHA J. MATTER

Art Editor NANCY MEYER

Conservatory Editor BETTY RUTH JONES

Assistants GEORGE ELY
DOROTHY WERNER
GLENN HALL
MARTHA MILLER
MARYCAROL SALZMAN
LEONARD COHEN
MARY O'DONNELL
BETTY ANN BRIODY

Associate Editor ROBERT H. MILLER

Men's Sports Editor RONALD BAKER

Women's Sports Editor ESTHER BELL

Assistants RICHARD PYE
FRANK HUFF

Photography WILLIAM YINGST

Photography Assistants JOHN MARSHALL
ROBERT MCCOY
MICHAEL KURILLA
JAMES GREGG

Business Manager WILLIAM YINGST

Advertising Manager BEATRICE MEISER

Assistants CHESTER SHERMAN
ROBERT BASHORE
DENNIS FUNCK

The *Quittie*, like every other organization on campus this year, has suffered from the general apathy; however, there are always a faithful few who are willing to work and sacrifice that a dream might come true. Handicapped by the late elections, the staff, when finally chosen, set to work with enthusiasm. After a while copy slowly dribbled in, lines began to appear on blank sheets of paper, and the pile of photographs rose higher and higher. As the hectic months passed—too quickly so far as getting an infinite amount of things done, too slowly, inasmuch as the work seemed without end—the enthusiasm was slightly dampened, but never the determination.

Bill Yingst deserves all possible praise. Not only did he serve as business manager, but also solicited advertising, and performed many of the duties of an editor. Nancy Meyer is especially to be commended for her carefully executed drawings, as is Beattie Meiser for her splendid results with the advertising.

Bob Miller, George Ely, and Marycarol Salzman gave unstintingly of their time to help with the layout, do an enormous amount of typing, and write some of the articles. Bob Miller is also responsible for the cartoons. Ronnie Baker proved a very able, cooperative, and hard-working sports editor, while Martha Miller and Glenn Hall were the mainstays of the writing staff. Bob McCoy went out of his way to help with photographs and informals during the last minute rush.

All in all, the staff, though small, accomplished amazing things in the face of difficulties, including a minor war with the Student-Faculty Council, and deserves the praise and recognition of the student body.





La Vie Collegienne

La Vie Collegienne is put out by a handful of galley slaves whose toil is never ending and never rewarded. Once a bi-weekly, then a weekly, the paper's appearances this year have been more or less sporadic, according to its financial status and the whims of its editors. Lack of funds, and lack of interest on the part of the students during the second semester constituted great handicaps for the staff, but it is hoped that matters will improve next year.

LA VIE COLLEGIENNE

ESTABLISHED 1925

Vol. XXIV—No. 11

Thursday, February 12, 1948

LA VIE COLLEGIENNE is published weekly throughout the college year, except holiday vacations and examination periods, by the students of Lebanon Valley College, Annville, Pennsylvania.

LA VIE is a member of the Associated Collegiate Press and the Intercollegiate Press. National advertising is secured through the National Advertising Service, Inc., College Publishers Representative, New York, N. Y.

EDITOR

MARTHA MATTER

ASSOCIATE EDITORS

DORIS CLEMENTS

GEORGE ELY

DEPARTMENTS

News Editor..... Glenn Hall
Feature Editors..... Marycarol Salzman, Nan Urich
Sports Editors..... Charles Tome, William Fisher
Exchange Editor..... Ruth Gearhart
Staff Photographer..... James Gregg
Art Editor..... Robert Sourbier
Cartoonist..... Robert Miller
Advisors..... Drs. Struble, Wallace, and Rutledge

MANAGING BOARD

Business Managers..... Melvyn Bowman, John Marshall
Circulation Managers..... Robert McCoy, Howard Kreider
Advisor..... Dr. John F. Lotz

REPORTERS

Esther Bell
Robert Howard
James Parsons
Frank Huff
Glenn Woods

Rhoda Zeigler
Irving Mall
Helen Nicoll
Jeanne Bozarth
Jay Flocken

Donald Paine
Russell Getz
Robert Bomgardner
Joanne Kessler
Richard Pye

Vivian Werner
John Saylor
Richard Moller
Louis Fried
Samuel Rutherford





Wig and Buckle

It is to the Wig and Buckle Club that aspiring Thespians turn for outlet of their talents. Among the younger clubs on campus, it was organized in 1935 and has been increasing in popularity since its beginning.

Every phase of theater work is afforded to members of the Wig and Buckle Club. Membership participation in acting, directing, make-up, scenery, properties, or one of the other activities connected with presentation of a play is required. However, any student interested in dramatics is invited to club membership and the monthly meetings.

The club presented two one-act plays as part of the entertainment during home-coming weekend. "Who Killed Me?" and "The Bronze Lady and the Crystal Gentleman" provided a direct contrast to each other, the first being a serious study, while the second brought much laughter from the audience.

As its major production for the year the club chose Eugene O'Neill's "Ah, Wilderness," which, under the direction of the club's advisor Dr. George G. Struble, was very much enjoyed by the students.

The newcomers to Lebanon Valley's stage along with the tried and true members have cooperated to complete another year of dramatic activities.



Green Blotter

This campus institution holds forth intellectually every month during the school year as, at the meetings, the roll call moves inexorably on to each member for a reading of his latest effort, whether his muse has worked or not.

On these Wednesday nights are heard original poems, essays, short stories, and literary discussions where inspiration is the keynote and preparation is the password.

Criticism, by members, of each other's works, though vigorous and often unrelenting, is nevertheless impersonal and constructive.

Creative endeavor is made more enjoyable by the informal atmosphere of Dr. Struble's fireside and the hostess, Mrs. Struble.



Religious Coordinating Council

The Religious Coordinating Council has two duties to perform during the school year. They are: the coordinating of all Religious activities on the campus, and sponsoring the annual Religious Emphasis Week. The latter of these is the council's outstanding project.

Religious Emphasis Week on the campus is increasing in popularity each year. The council is doing its best to meet the special needs created by the increase in the college population. The council depends upon the student body to make its program a plus on campus. It is one of the few organizations on the campus which, although directed by a few, is run by and for the many.

It is composed of the following: President, Joseph H. Yeakel; Secretary, Erma Gainor; Virginia Vought, Roger Keech, Joseph Smith, Alvin Hildebrand.



Philokosmian

Philo's hope for a stronger organization has, in part, been realized. At the close of this, its seventy-ninth year of existence, Phi Lambda Sigma has at last made its long-awaited comeback?

Early in the year twenty-two men were initiated into the society. In their honor a hay ride and a joint dance with its sister society Clio, were staged. One of the year's outstanding activities was the gala dinner-dance held by Philo and Clio. The affair took place at the New Brunswick Hotel in Lancaster. Music for the occasion was provided by Johnny Adams' band. During the year the new constitution was written and presented to the faculty for approval. Pins and blue sweaters with gold insignia were ordered. The election of next year's officers was held in April.

With the help of the foothold it has obtained this year, Philo hopes in time to regain its former position of eminence on the campus.



Clionian

Clio, observing its 75th anniversary, is the oldest of the women's literary societies. Throughout many years it has possessed the ancient traditions of Minerva as its patron goddess, and has retained the owl, the symbol of wisdom and the olive branch of unchallenged victory.

Clio's rush week was the scene of many activities. Members and their guests, the freshman girls, hiked to the banks of the Quittie where they found a delicious lunch awaiting them. The annual tea held in Clio Hall featured a fashion show which presented a wardrobe especially designed for the college girl on L. V.'s campus. The models were attired in clothes for everything from hikes to dances. The hall was beautifully decorated with fall flowers, leaves, and ivy, while candles on the table lent a romantic atmosphere.

During the past year Clio Hall has been redecorated and the constitution revised. It was decided that in the future officers will not be changed at the end of each semester, but will be retained for the entire year. Clionians look back upon the Anniversary dinner dance held jointly with Philo at the Hotel Brunswick in Lancaster with pleasant glowing memories.



Kalozetean

Kalo is again going strong after the interruption due to the war. Some of the highlights for the year are: a smoker with Andy Kerr present to show movies of the East-West game, the Kalo sign at football games (no opposition from Philo), the potential excitement of a duel with Philo (dramatic of course), and then, the initiation with last year's pledges presiding. Incidentally, they proved to be quite an ingenious group! *Night of January 16th*, the play for Kalo-Delphian weekend, brought some new talent on the stage of L. V. C. The biggest event of the year came in January with the invasion of the campus by Kalo's new idea—L. V. JACKETS, designed by Kalo.



Delphian

"I want to be a friend of yours, zoom, zoom, and a little bit more." That's the way the Delphians greeted their "rushes" with a hike to Kreider's, where the ceremonial candles floated obligingly down the Quittie, and a tea, Chinese style, complete to tapestries on the walls and fans on the curtains. The initiation was a gruesome event, but miracle of miracles, everyone survived.

In March, during the long-planned and awaited anniversary weekend, an audience-jury gave the Kalo-Delphian cast of *Night of January 16th* its surprise climax. There are many still debating that decision. Could a weekend terminate in any better way than in a ballroom with happy couples in formal attire taking full advantage of the music of Johnnie Eckert? And so, this year is remembered, not only for its successful social functions, but for the friendships and ideals formed in so doing.



Psychology Club

Organized in 1945, the Psychology Club of Lebanon Valley has been ever growing in strength and scope of activity. Although the club was originally designed for those majoring in Psychology, anyone professing an interest in this field is welcome to attend and participate in the monthly meetings. This year the club program included a revision of the constitution, varied and interesting topics for discussion, and lectures—all pertaining to present day problems and opportunities in the many different phases of Psychology. In the future it is contemplated that the club's activities will be supplemented by field trips, and that new books will be added to the club library.



Chemistry Club

One of the most active organizations on campus, the Chemistry Club, under the energetic and capable advisorship of Dr. Bender, provides both entertainment and enlightenment for its members. Composed of students having an interest in the field of Chemistry, the club offers them the opportunity of keeping abreast of the latest developments in the chemical world. In addition to the "news," which is a part of every meeting, movies, guest speakers, and actual field trips, give the members an inside view of the chemical industries. Through the policy of having student speakers, the club offers its members the opportunity of gaining valuable experience in the preparation and presentation of reports.



Student Affiliate Chapter of A. C. S.

On December 6, 1947 a charter was granted by the American Chemical Society to the Lebanon Valley College Chapter of Student Affiliates. This marked the beginning of the first organization on campus with national affiliation. The Student Affiliate Chapter is one of the first places in which persons anticipating a career in Chemistry have the opportunity of working with those of like training and ambitions, thus starting the development of the professional side of the student.

Well organized under the direction of Dr. Bender, the Student Affiliate Chapter promises to become a "must" for those whose interest is "better things for better living through Chemistry."



Rifle Club

The Robin Hoods of the powder horn are represented on campus by members of the newly-formed Rifle Club. The club boasts membership in the National Rifle Association of America. Members may shoot on any N. R. A. range in the country. Intercollegiate matches are to be planned and dreams of an indoor range on campus grow with the treasury. The shooting this year was done at the National Guard indoor range in Lebanon.



Legionnaires of L. V. C.

Although less than three years have elapsed since its inception, the campus veterans' organization, for all intents and purposes, has ceased to exist. This year marked the dissolution of the Legionnaires of L. V. C. as an official campus organization, following a waning of interest which began last year. It is possible that the disinclination of Lebanon Valley ex-GI's to retain their identity as a campus entity is proof of their complete assimilation into civilian—and particularly, college—life.

Before its demise the Legionnaires made an abortive attempt to petition the college to extend the length of this year's summer session to twelve weeks instead of the six weeks originally planned.

Plans for its annual dinner-dance were abandoned largely because of a dearth of paid-up memberships. A last-minute fund-raising campaign produced negligible results, and those who had paid their dues had them returned.

With the closing-out of its accounts, the brief history of the Valley's most exclusive organization came to its unpublicized end.



Debating Club

This year for the first time in a decade, L. V. C. organized a debating society. Rev. Souders, the advisor, and Frank Huff, student manager worked hard to form some effective machinery with the hope of a permanent campus organization.

Debating the accepted topic for this year, "Resolved, that a Federal World Government should be established," the nuclear orators argued with teams representing Elizabethtown, Lock Haven State Teachers College, Juniata, Albright, and Temple University.

Members of the society alternated positions on the teams in actual debating. In their many sessions of argument, they managed to eliminate useless ideas and were able to include many new thoughts in the debates.

In spite of their inexperience, the debaters have shown promise and expect to bring home a few laurels for L. V. C. in the future.



Life Work Recruits

"And whatsoever ye do in word or deed, do all in the name of the Lord Jesus—" Col. 3:17.

The Life Work Recruits is one of the religious organizations on campus which carries on a two-fold purpose. It seeks, first of all, to enrich and stimulate Christian activities within the group through various religious programs. It endeavors to advance the spiritual atmosphere of Lebanon Valley College by a renewing of the mind and heart in the lives of all its members.

In addition to this, its members reach out to the Evangelical United Brethren Church, and various other churches in this vicinity, where they send deputations to conduct special musical numbers and the "spoken word." This service may only be for Sunday morning, it might be for the entire day, or it might be a service during the week.

The Life Work Recruits have also carried on some social action programs this year. They conducted a service at the Lebanon County Old People's Home in November and cooperated with the Y's in a service at the Masonic Homes in Elizabethtown just before the Christmas Holidays.



Y. W. C. A.

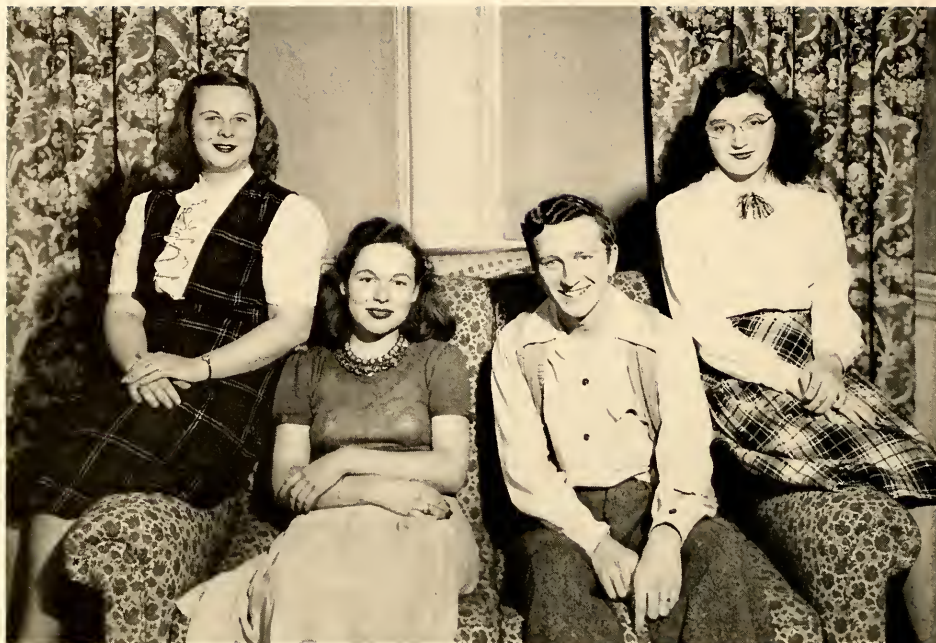
The Y. W. C. A. is the outstanding religious group on campus for women. The activities of the "Y" begin with a week-end retreat, held prior to the opening of school in the Fall, during which time plans are laid for Freshman Week as well as for the whole school year. During Freshman Week every effort is made to welcome the new members of our student body and help them to get acquainted with one another and with the school. Throughout the year the Y. W. C. A. and Y. M. C. A. work in cooperation to present weekly Thursday evening Fellowship Hour and Sunday evening Vesper services. They also sponsor the three pre-holiday early morning sunrise services. In addition to the religious work the Y. W. coordinates a social and recreational program and helps sponsor the Annual May Day fete. In the spring the Y. W. C. A. has charge of Heart Sister Week and Mother's Weekend.



Y. M. C. A.

"And Jesus increased in wisdom and stature, and in favor with God and man."

The Y. M. C. A. has always been a dominant force in college affairs. The Men's "Y" Cabinet has tried to plan a well-rounded program, physically, morally, and socially on the Lebanon Valley College campus. Each year it sponsors Dad's Day, keeps the "Y" room in the Men's Dormitory functioning and cooperates with the Y. W. C. A. and faculty in sponsoring the activities of Freshman Week as well as various programs throughout the school year. The "Y" has done its best to create a richer Christian spirit on the campus. The programs have been geared to the needs of every student, and its aim has been to be a benefit to the entire student body in every possible way.



Freshman "Y" Cabinet

The Freshman "Y" Cabinet consists of members of the Freshman Y. W. C. A. and Y. M. C. A. who work together as a unit under the guidance of their advisors, Hattie Cook and Harry Hoffman. They helped to arrange the activities for "Heart Sister Week," "Mother's Week-end," and "Dad's Day," and took charge of the Vesper Services and Fellowship Programs assigned to them.

Members of the Cabinet are: Pat Riihiluoma, Florence Dunkleberger, Detty Edelman, Dorothea Lynn, Jeanne Stine, Nancy Lutz, Miriam Fuller, and Ruth Gluck of the Y. W. C. A., and John Heck and Glenn Woods of the Y. M. C. A.



Red Cross

The American Red Cross College Unit provides an organization through which students are enabled to help to plan and administer their volunteer activities in the community, national, and international Red Cross programs.

Participation of Lebanon Valley students is under the guidance of the Lebanon chapter of the Red Cross. Members of the campus unit have gained experience in the development of a sense of social responsibility through the opportunities they have had for acquiring skills in planning, participation, and administration of civic activities.

One of the services of the Lebanon Valley unit this year was a class in swimming and water safety. Members served as instructors for students and others who were interested in this phase of safety.

An outstanding achievement was the work done for the Veterans' Administration Hospital in Lebanon. The Conservatory's dance-band and other campus talent cooperated in bringing entertainment to hospitalized ex-GI's. A number of card-parties were sponsored at the hospital for the patients.

Children at the Jonestown Orphanage were guests at an Easter party held for them by the campus unit.

The feeling that their work is appreciated by those to whom the Red Cross extends a helping hand will continue to keep the Lebanon Valley College Unit a motivating force for service to campus and community.



Radio Workshop

Appearing for the first time this year, the Radio Workshop is one of hundreds of similar organizations which have sprung up on college campuses throughout the nation as the result of the war-proven value of radio—not only as a powerful cultural, educational, and entertainment force, but as a career worthy of the consideration of college graduates.

With the cooperation of Station WLBR in Lebanon, Workshop members have had an opportunity to study the intricacies of commercial radio through actual broadcasting experiences. At the time of his enrollment in the Workshop each member is placed in a specialized group according to his interest in one or more of the manifold aspects of radio production, such as script-writing, announcing, producing, dramatics, music, or sound-effects. Under the guidance of WLBR staff personnel, and faculty members with radio experience, members are instructed in the preparation and production of a variety of types of radio programs.

Although its primary purpose is to provide its members with a practical working-knowledge of radio, Workshop broadcasts have had a secondary effect in bringing Lebanon Valley College into the homes of the people of nearby communities, thereby further acquainting them with the college.



Der Deutsche Verein

This year witnessed the rebirth of the *Deutsche Verein*, which for several years had been extinct due to World War II. The club is under the able advisorship of Dr. Huth, a new German professor on L. V.'s campus.

Since the reorganization meeting of the club, the group has sponsored varied activities. Meetings are held semi-monthly, at which the German language is used in conversation, German songs are sung, and interesting anecdotes are related by those members, who through war service, have had the opportunity of visiting Germany.

The outstanding project of the first semester was the presentation of a German Christmas play, *Das Krippenspiel*. The cast was well chosen, costuming was extremely realistic, acting was superb—in short, it was judged an overwhelming success by everyone present. The proceeds from the play were contributed in their entirety to the World Student Service Fund.

The second semester was devoted to the broadening of the members' appreciation of German culture through the medium of several *Kaffeeklatschen* and other interesting programs. During the *Kaffeeklatschen* German phonograph records furnished background music for German conversation over the coffee cups.

This organization has been the means of renewed interest in German tradition and culture.



ENGLE HALL

CONSERVATORY





French Horn

ROBERT STREEPY



Voice

MARY JANE ECKERT



Organ

CHARLES P. YEAGLEY



Piano

DOROTHY KAUFFMAN



Piano

BETTY RUTH JONES

Bass Clarinet
LESTER YEAGER



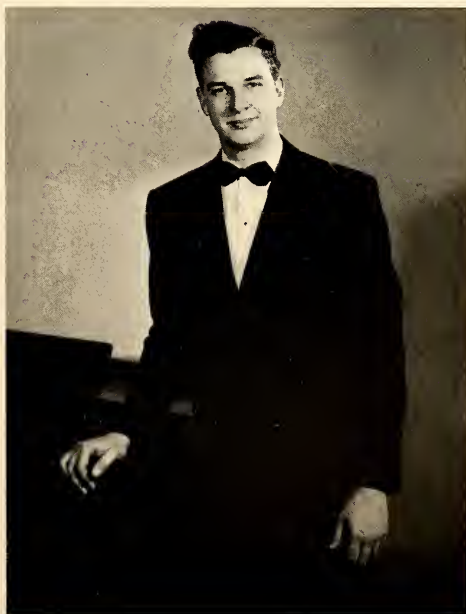


Drum Majorette

MARY O'DONNEL

Voice

RUSSELL GETZ





Flute

KATHERINE WERSEN



Clarinet

JACK SNAVELY



Piano

PATRICIA RIIHILUOMA

French Horn

BRUCE WISER





Symphony Orchestra

The Symphony Orchestra is the most advanced of the instrumental music groups on Lebanon Valley's campus. Membership in the orchestra is indeed an honor, making any Conservite swell with pride at this attainment. The Symphony concerts are anticipated by Conservatory students, alumni, and lovers of good music.

Members are taken from all classes, the criteria of selection being the ability of the student, and the needs of the orchestra in maintaining well-balanced instrumentation.

The concerts given in the past year, including such compositions as the "Overture to Oberon," by Von Weber, and Morton Gould's "Revival," were among the most difficult ever performed by the group. Professor Rutledge's demands for the best from every member, both in class periods and in long evening rehearsals, seemed to intensify each one's determination to present a highly successful performance.



Glee Club

The Glee Club deserves much praise, both for professional-like performances, and for the beautiful blending of its trained voices. This organization gave programs at Reading, West Lawn, New Holland, Philadelphia, Allentown, Lykens, and Millersburg, which were included in the spring concert tour. The Glee Club was also heard in a Sunday afternoon concert at the Forum in Harrisburg, and was featured in the Spring Music Festival.

The annual tour is a highlight of the year for members of the group, and is packed with good times (remember Asher and his umbrella?), good food, and good folks. It provides bull session material for weeks afterward.

A great honor was paid the Glee Club in being chosen to represent Pennsylvania at the Meeting of the Eastern Division of the National Music Educators Association, which was held at Scranton, Pa., last spring. "Dry Bones," and all the other fine numbers were met here, as elsewhere, with enthusiastic approval.



Girls' Band

This smart-stepping, streamlined group furnishes a real added attraction at our football games, and the girls work hard to perfect the colorful drills that are performed. Occasionally we hear a sour note, but practice (even at 8 A. M.) makes perfect, is their motto.

Under the capable baton of Professor Rutledge, the Girls' Band add that "extra touch" to all appearances of combined bands.



College Band

Worthy of much praise is the precisely-coordinated Marching Band, which enlivens all our football games. The band provides harmonious and peppy strains for the college rooters, and at the same time performs the drills with precision. Behind this scene are many hours of hard practice.

This year under the direction of Bandmaster Rutledge and the twirling Drum Majorette O'Donnell, the band was better than ever.

The Concert Band, which is supplemented by concert instruments, presents an equally striking picture in their blue and white uniforms; and their concerts receive much praise from critical audiences.



Chorus

The Lebanon Valley College Chorus, which is made up of approximately 100 voices, is a credit to Professor Rutledge's skilled leadership. The Music Festival performance included Mendelssohn's oratorio, *The Elijah*, and was notable for fine interpretation and fervent spirit.

Thursday afternoon rehearsals may feature a Conserv Formal skit, or even a generous visit from Santa Claus (in the person of Dick Moyer), and are open to all Conservatory students and any other interested college students.

SPORTS





Football

With Coach "Andy" Kerr, former Colgate University master mind, at the helm, Lebanon Valley College experienced its best season in almost ten years, winning five games, losing two, and tying one. It was a hectic and thrilling season made especially memorable by its utter unpredictability and topsy-turvy twists and turns.

Squeaking past Moravian, 21-20, in its opening contest, the Blue and White was resoundingly thumped 41-0, by Franklin and Marshall, but then went on to chalk up four straight victories, including a well-deserved and very satisfying triumph over the Albright Lions, 31-7.

The highlight of the season, along with the victory over Albright, was the Dutchmen's sensational 13-7 upset of Scranton University, a team which seemed slated for a bowl bid until disaster struck it in the form of a Blue and White thunderbolt.

The low-water mark of the year was the 41-0 lacing handed out by the rough-and-ready aggregation of Franklin and Marshall and the stunning 20-6 jolt delivered so neatly by the Juniata Indians; but the redeeming factor in the whole picture was the acquisition of "Andy" Kerr as head coach and the thought of his return next year with almost his entire squad. The future appears bright, indeed, for Lebanon Valley's pigskin warriors.

Brilliant line play by Captain Paul Mateyak, at tackle, and guards Walt Gage and Bill Keeler featured the activities of the fast, hard-charging forward wall, while the superb passing, kicking, and generalship of quarterback Herb Eckenroth provided the outstanding magic in the backfield as well as kept the Valley grid machine moving.

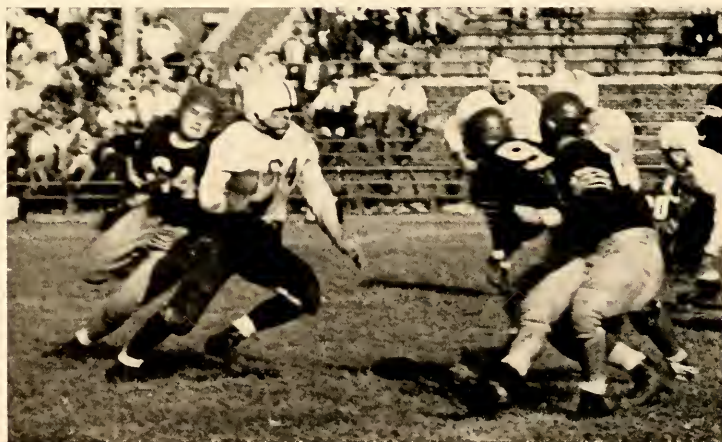
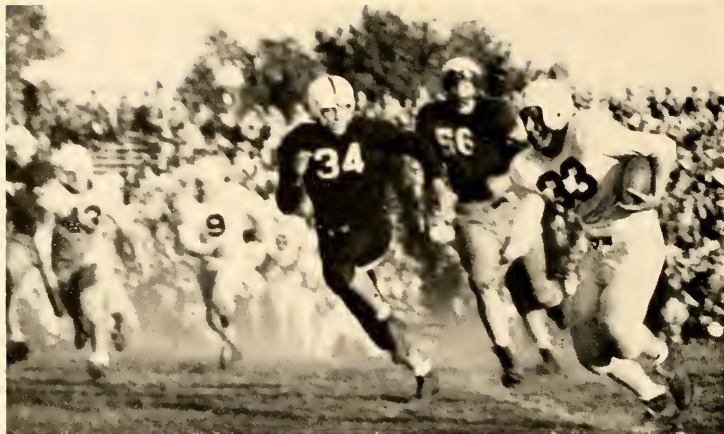
Walt Gage, speedy sophomore guard, whose "educated toe" was solely instrumental in one Blue and White victory, was honored in the All-State selections by being picked for the All-State third team.

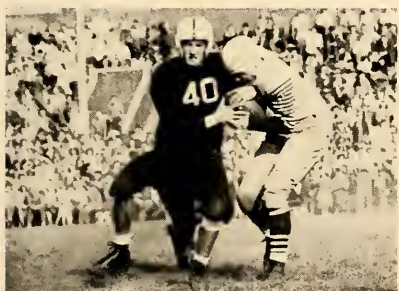
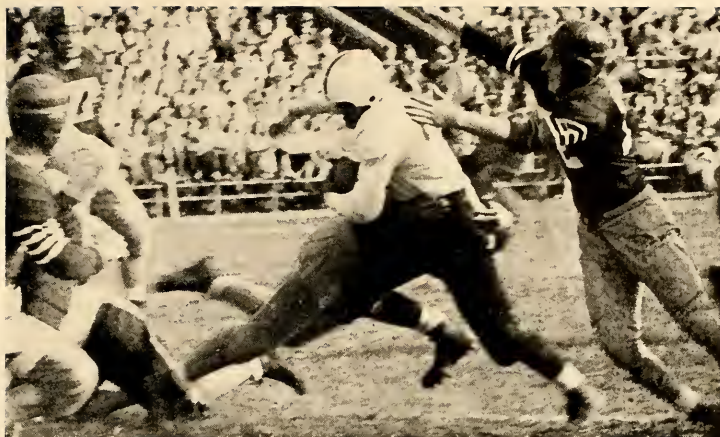


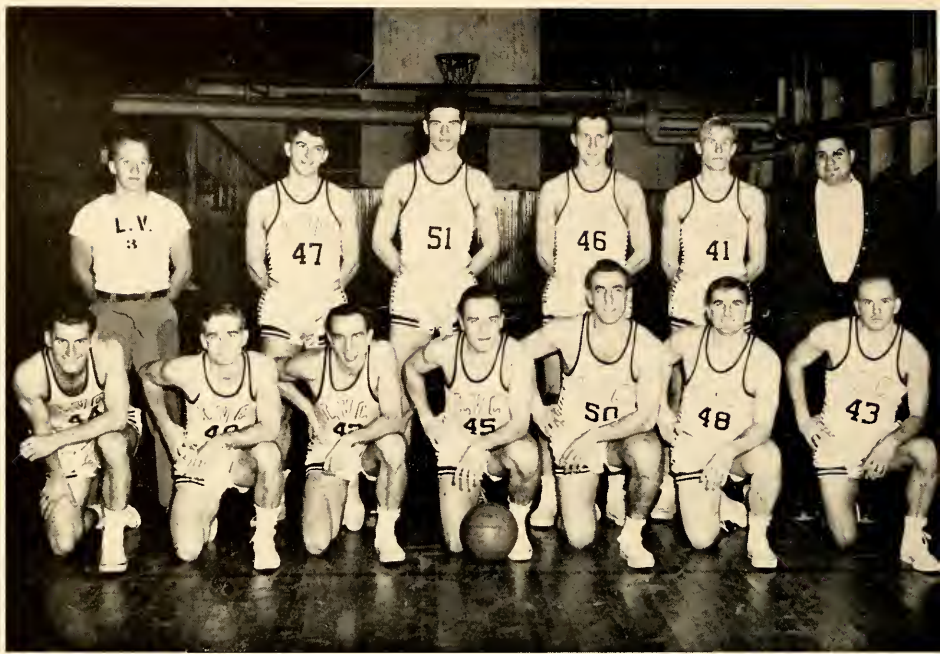
1947 Football Season

		L. V. C.	Opp
October	4—Moravian at Lebanon	21	20
October	11—Franklin and Marshall at Lancaster	0	41
October	18—Mt. St. Mary's at Lebanon	35	0
October	24—Hofstra at Lebanon (Night)	27	6
November	8—Albright at Reading	31	7
November	15—Penna. Military College at Lebanon	0	0
November	22—Juniata at Huntingdon	6	20
November	27—Scranton at Scranton	13	7

	SCORING	TD	EP	Total
BOB HESS	4		24
CHARLES WITMAN	4		24
HANK DIJOHNSON	3		18
WALT GAGE		13	13
GUY EUSTON	2		12
MARSH GEMBERLING	2		12
JIM MAGEE	2		12
PETER GAMBER	1		6
JIM McWILLIAMS	1		6
BILL KEELER	1		6







Varsity Basketball

Encountering the keenest competition in years, Coach Ralph Mease's "mity mites" redeemed what might be called a spotty, although fairly successful season, by their positively colorful and at times, sensational performances. Off to what seemed like a fine start, the Flying Dutchmen dropped two games after winning their first two, then won another, floundered and dropped three more straight, bounced back with an impressive 80-64 victory over Moravian, and went on to conclude a rather successful but erratic season.

Of the five games that the Mease-men lost early in the season, four of them, with the exception of the LaSalle debacle, were dropped by a total of only ten points.

Leading the way for the Dutchmen were Captain Rinso Marquette, a veritable whirlwind at guard, and Flashy Floyd Becker at forward, whose colorful floor play and uncanny shooting highlighted even the duller games and worst defeats.

Fine support from Bobby Hess, Hank DiJohnson, and Marsh Gemberling added to the sharp-shooting of Marquette and Becker, and a plentiful supply of reserves that grew stronger as the season progressed hold glittering promises for the future.

The low point for the team was its engagement with LaSalle College's crack artists of the court who dazzled the fans with their brilliant shooting and slippery-smooth passing. Working together like a well-oiled machine and possessing tremendous height, the LaSalle quintet completely outclassed the Dutchmen, whose prestige was partially restored by their performance against Moravian. Playing a free, wide-open style of ball with the accent heavily on offense, the Mease-men outpointed Moravian's supposedly point specialists, beating them at their own game, 80-64, to distinguish themselves for the first time during the year.



Junior Varsity Basketball

Under the splendid tutelage of Coach Danny Seiverling, Lebanon Valley's Basketball understudies, the Junior Varsity, chalked up a very successful season with but two losses to mar the record. Playing a steady, deliberate brand of ball, the Junior Varsity ran up scores that made even the Varsity stand up and notice them.

Starting at one time or another on the team were Larry Kinsella, George Mayhoffer, Charley Zimmerman, Jack Hoak, Ray Kline, Charley Witman, and Bob Fischer. Kline eventually moved up to the Varsity and was succeeded by Witman and Fischer, who held down the pivot point alternately.

Although Kinsella and Zimmerman bore the major brunt of the scoring, the team was well-balanced with everyone proving a potential threat.

With these players and the varsity holdovers, Lebanon Valley's team for the coming season will be a threat in the Middle Atlantic Conference.







Baseball

Turning in the best record in baseball in the history of the college, the Lebanon Valley College diamond stars posted an impressive eleven victories as against but two defeats for its 1947 season, as the Blue and White found itself knee-deep in all material except pitchers.

Although handicapped early in the season by the loss of Marsh Gemberling, the Dutchmen's stellar hurler, Charlie Miller, and Herm Seigel stepped into the breach and filled it in fine form. Handling the hitting chores were Hank DiJohnson, Al Hildebrand, Rinso Marquette, and "Shorty" Fields.

Coach Ralph Mease's Dutchmen ran into trouble only twice during the season, dropping one game, 8-3, to a very fine Franklin and Marshall outfit, and losing the other one, 8-7, to a scrappy Juniata club.

Composing the first nine were Charlie Miller, Herm Seigel, and Marsh Gemberling, pitchers, Hank DiJohnson, catcher, Alvin Hildebrand, first base, Rinso Marquette, second base, Bobby Hess, short-stop, Jim McGraw, third base, and Floyd Becker, "Shorty" Fields, and Walt Gage in the outfield.





"L" Club

The "L" Club is composed of athletes who have received their letters from the Director of Athletics in one of the three major varsity sports. In order to be eligible for membership a sports participant must meet the requirements set up by the Athletic Council for a varsity letter award. He automatically becomes an "L" Club member upon receipt of this award.

The main function of the "L" Club is to raise money to purchase sweaters for its members. It is one organization that solicits no money from its members. The group works as a whole to build up its award fund.

This past year the Club had charge of the football programs and by this medium raised enough money to meet all expenses. On November 15 the annual Homecoming Dance was held in the Annville High School Gym, and in early May the annual "L" Club dinner was held, at which time senior awards were presented to the following graduating athletes: Benny Penturelli, Herb Eckenroth, Jim McGraw, Pete Gamber, Marsh Gemberling, and "Rinso" Marquette.



Girls' Hockey

The candidates who reported for the 1947 hockey season consisted of a few experienced upperclassmen, and several willing but inexperienced freshmen. The prospects for the season looked glum, but the new and capable coach ordered persistent practice and gave excellent advice which resulted in a semi-successful season.

In the first game of the season the girls suffered a defeat at the hands of their opponents. Profiting by the mistakes made in the first game, they were victorious in their second encounter. After having had their first taste of victory, the girls began playing as a powerful unit, and at the close of the season the team had won two and lost three games.

	L.	V.	Opp.
Oct. 25—Lock Haven at L. V.	0	6	
Nov. 1—Penn Hall at L. V.	3	1	
Nov. 12—Shippensburg at L. V.	0	2	
Nov. 15—Moravian at L. V.	5	0	
Nov. 17—L. V. at Millersville	2	7	



Girls' Basketball

The 1947-1948 girls' intercollegiate basketball season could be classed by the onlooker as a very poor one. However, the spirit and enthusiasm which made the girls stick by the team in the face of many defeats, compensated for the lack of victories. The characteristics of true sportsmanship and sheer enjoyment of the game were displayed by everyone who participated in the sport.

Intra-mural basketball gave all girls who were interested in basketball a chance to display their ability and also to earn those needed athletic points.

Here's hoping next year's basketball team will show as much spirit and enthusiasm as their predecessors.

	L. V.	Opp.
Jan. 14—Albright at Lebanon Valley	32	36
Jan. 17—L. V. C. at Elizabethtown	19	44
Jan. 31—L. V. C. at Lock Haven	33	62
Feb. 9—Elizabethtown at L. V. C.	23	34
Feb. 12—Shippensburg at L. V. C.	29	46
Feb. 16—L. V. C. at Moravian	43	21
Feb. 19—L. V. C. at Millersville	23	28
Feb. 28—Millersville at L. V. C.	34	38
Feb. 24—Lock Haven at L. V. C.	31	51



Women's Athletic Association

The Women's Athletic Association consists of the girls on campus who are interested in sports, and who have displayed this interest by earning the required number of athletic points for membership. Founded in 1937, the W.A.A. has come to be one of the largest women's organizations on campus. Under the capable advisorship of the new physical education instructor, Mrs. Drescher, a program of varied indoor and outdoor sports and activities has been introduced. Doris Hyman, a popular and very enthusiastic senior, was its able and well-liked president.

During the past year the W. A. A. sponsored "Club 13," a night club dance, held on Friday, February 13, in Annville High gym. That evening will be remembered as one of the most entertaining of the year. The association also sponsors two hikes throughout the year, the spring hike being the annual initiation hike at which time new members are taken into the organization.



Cheerleaders

After three hard years of planning and perspiration, one dream of the not-so-long-ago-organized Cheerleaders has at last been realized: new uniforms. To that they—and they hope the whole student body—say Hallelujah! This year, for more practical functioning, the squad has been cut down. Plans are being made to set seven—three boys and four girls—as the official number, with a freshman squad trained in the fall to replace any outgoing members.

Those in the Senior Class agree that this year the spirit and support of the student body have increased immeasurably. For a while they were nearly discouraged . . . but who ever heard of Cheerleaders being discouraged?

WE SALUTE



Miss Quittie



Martha Miller



Janet Weaver



Nancy Meyer



Rufina Balmer



Phyllis Dale



Elaine Frock

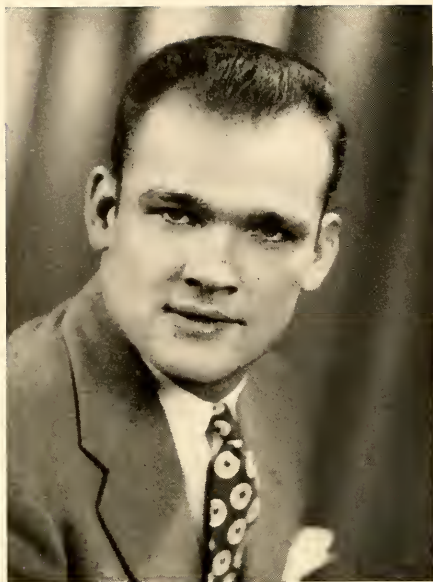


Who's Who

"Who's Who in American Universities and Colleges" is a nation-wide honor organization to which, every year, ten seniors from Lebanon Valley College may be elected. This year's outstanding seniors are: Melvyn R. Bowman, Mary Jane Eckert, Mary Elizabeth Frank, Nancy Elaine Heilman, Theodore D. Keller, George Reynolds Marquette, Thomas J. Schaak, Virginia M. Vought, Rhoda Mae Ziegler, and Robert A. Zimmerman.

Representatives are chosen from both the College and the Conservatory. Selection is made not only on the basis of scholarship, but also for service rendered to the school in the campus activities and all honor and social organizations of which the student may be a member. One of the features of the organization is the Student Placement Service, through which the students are recommended to American employers who are seeking capable college graduates to fill positions.

CAMPUS



Men's Sports Leader

PAUL MATEYAK



Women's Sports Leader

JANET WEAVER

LEADERS

Outstanding Man Leader

GEORGE R. MARQUETTE



Outstanding Woman Leader

MARY ELIZABETH FRANK



CAMPUS LEADERS

Best Looking Man

ROBERT H. MILLER

Best Dressed Man

ROBERT STREEPY



Best Dressed Woman



JOANNE KESSLER



May Day

The morning of May 3, 1947 was cloudy and bleak and caused much concern about the activities for the afternoon. However by noon the sun shone through and the May Day program went on as per schedule.

Set in a background of riotous color the pageant of King Richard and Robin Hood was enhanced by the lavish satins worn by the girls and the deep velvets of the costumes for the men. Selections from *Don Juan*, *Don Quixote*, *Robin Hood*, and *Swan Lake*, used as musical backing, were ably rendered by the college band under the baton of Professor Edward P. Rutledge.

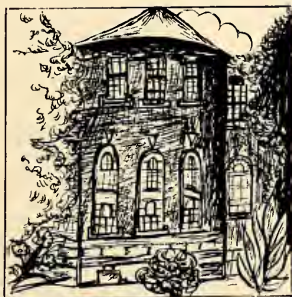
Near the end of the events the May Queen, Pearl Miller, and her court, with Virginia Stonecipher as maid of honor, made their appearance. For the first time the identity of the Queen and her court had been kept secret until shortly before the proceedings. The Queen and court presided over the *Swan Lake* ballet as interpreted by Miss Jesse Haag, producer, director, and choreographer for the program. The impressive and colorful may pole dance followed by the recessional comprised by the entire cast concluded the ceremonies.

The crowning of Queen Pearl by Robert Zimmerman as King Richard, the lively fencing match, gay antics of the tumbling clowns, and thrilling archery contest with John Henry Light as Robin Hood will remain as highlights to a successful May Day—1947.





ODDS AND ENDS









COLLEGE CHURCH



WASHINGTON HALL

DAY STUDENT ROOM



Special Mention to

ALVIN HILDEBRAND, ABBA COHEN, "RINSO" MARQUETTE, BETTY FRANK, VIRGINIA VOUGHT, SAMUEL RUTHERFORD, RUTH KEECH, JOSEPH SMITH, RUTH GLUCK, BERTHA BARBINI, ROBERT GROVER, WILLIAM ALBRECHT, ROBERT BAKER, ALBERT MORICONI and JOSEPH YEAKEL who, while not on the staff, contributed write-ups of some of the organizations.

PAUL YINGST and EDDIE ENGLEHART, last year's editor and business manager, for their helpful advice.

PROFESSOR RUTLEDGE, without whose assistance it would have been impossible to obtain pictures of the Conservatory organizations.

PROFESSOR CARMEAN, for allowing us to use his May Day pictures.

DAVE GOCKLEY, for valuable assistance in digging up last year's cuts and pictures.

MISS FENCIL, for answering innumerable questions and compiling endless lists. Also for helping to locate wandering students.

MRS. YINGST, for her valuable assistance in copyreading.

DORIS WHITMAN and GLADYS BOOKS, for the tremendous job of retyping all of the copy.

PROFESSOR FISHER, for forecasting the weather.

MR. HERR, for having change for cokes during those long nocturnal sessions.

THE NIGHT WATCHMAN, for not throwing us out of Washington Hall after ten o'clock.

Patrons

*HAROLD T. LUTZ

*E. N. FUNKHOUSER

*W. C. PLUMMER

*HARRY M. IMBODEN

*CHARLES L. BITZER

*LLOYD A. SATTAZAHN

*J. BALMER SATTAZAHN

MR. AND MRS. HARRY T. REMLEY

MR. AND MRS. ANTHONY FIORELLO

MRS. MARY KURILLA

MR. AND MRS. HARRY HOFFMAN

MR. AND MRS. JERRY MURPHY

MR. AND MRS. BURR O'DONNELL

MR. AND MRS. MORRIS MEYER, JR.

MR. AND MRS. WM. PAUL YINGST

MR. AND MRS. AMON FUNCK

MR. AND ROBERT BASHORE

MR. AND MRS. FRED B. MILLER

MR. AND MRS. WILLIAM A. ROTHROCK II

MR. AND MRS. CHARLES MEISER

*Members of the Board of Trustees

1949 QUITAPAHILLA



ENGRAVING
PRINTING and BINDING

by

J. HORACE McFARLAND COMPANY

Mount Pleasant Press

HARRISBURG • PENNSYLVANIA

SHENK & TITTLE

"Everything for Sport"

Play More - - Live Longer

313 Market St.

HARRISBURG, PA.

Compliments of - - -

Donmoyer's Book Store

41 N. EIGHTH ST. LEBANON, PA.

BOOKS - - STATIONERY
OFFICE SUPPLIES

Exterminating

Fumigating

Termite Control

J. C. EHRLICH CO.

Rear: 136 N. Mary Street
LANCASTER, PA.

Phone: 3-2489

Moving

- - -

Storage

H. A. HARTMAN & SON

537 N. Front Street
STEELTON, PA.

To and From Everywhere

Compliments of . . .

**BRANDYWINE IRON & METAL
COMPANY**

Salvage Material
LEBANON, PA.

We Build for Eternity



HALDEMAN AND SAVASTIO



Designers & Builders

Phone: 278

103 W. Chocolate Ave.
HERSHEY, PA.

Compliments of

J. Henry Miller Co.

PAUL L. STRICKLER, Pres. - - 1914
E. PETER STRICKLER, Assoc. - - 1947

"Insure in sure insurance"

Eighth and Willow Streets Lebanon, Penna.

Compliments of

Lebanon News Agency



SAMUEL S. ETTER, *Prop.*

*You have a completed house
When you furnish with Westing-
house*

*You never get stuck
When you buy from BEN TUCK.*

120-122 N. 8th St. Lebanon, Pa.

"As near as your nearest telephone"

**SAYLOR'S DRUG STORE
PRESCRIPTIONS**

47 South 8th Street, Near the Post Office
Phone: 140-J LEBANON, PA.

Compliments of

The DARI-DEL

*Dispensers of Delicious Dairy Delicacies
and Downy Flake Doughnuts*

781 Cumberland St. Lebanon, Pa.

Compliments of
**CALCITE QUARRY
CORP.**

LEBANON, PA.



*Stone, Sand and Transit
Mixed Concrete*



Phone: Lebanon 1201

EBERSOLE INC.

Pontiac Oldsmobile

Sales and Service

CLEONA, PA.

MURRAY'S

Ladies Wearing Apparel

*Dresses, Evening Gowns, Coats,
Suits, Fur Coats, Sportswear*

729 Cumberland Street, Lebanon, Pa.

Henry G. Carpenter Inc.

Mount Joy, Pa.



General Agent for
Mount Joy Mutual Insurance Company
City Mutual Insurance Company



Represented locally by: Fred G. Gilbert



318 South First Avenue--Lebanon, Pa.--Phone: 3150

Phone: 2453

1125 Willow Street

WALTER L. HARTZ

Philco

RADIO

Motorola

Television

*Philco Warranty Service
Electrical Appliances*

Compliments of

Fink's Bakery



Have

You

Tried

Our

Filled

Doughnuts?

All-American Dress Co.

Manufacturers of

DRESSES, BLOUSES and
SPORTSWEAR

Sixth and Willow

LEBANON, PA.

Compliments of . . .

JOSEPH DOOLEY Est.

Fresh Fruit and Vegetables

7th Street and Reading R. R.
LEBANON, PA.

The place for GIFTS · STATIONERY · LUGGAGE

Portrait and Commercial
Photography

Harpel's

Developing and Printing
Enlarging and Framing

LEATHER GOODS · GREETING CARDS

757-759 Cumberland St.

LEBANON, PENNA.

Compliments of . . .

McCrary's

LEBANON, PA.

DIAMONDS

JEWELRY

HOFFER'S

5 North Ninth Street
LEBANON, PA.

WATCHES

GIFTS

Compliments of

*Palace of Sweets
and
Restaurant*

LEBANON, PA.

JAY'S FLOWER SHOP

on the square

ANY OCCASION IS ONLY COMPLETE WITH FLOWERS.
BETWEEN OCCASIONS GIVE HER SOME JUST BECAUSE SHE'S WONDERFUL

PALMYRA

Phone: 8-6451

Compliments of . . .

YOUR **HERSHEY** MILK -DIST.

HERSHEY HOMOGENIZED MILK
"CREAM IN EVERY DROP"

Phone: 2216-J

Harry L. Meyer

CLEONA, PA.

SIMON S. KETTERING

Goodyear Tires



Life Guards

16th and Cumberland Streets

LEBANON, PA.

At ESSO Station



More Than 3,000,000 Legionnaires Say: YOU'RE INVITED ! !

*There's always room for one more in the greatest veterans' outfit.
There's sport . . . There's fun.*

And there's SERVICE . . . to your nation, your state and your community.

The American Legion's key to success is active Americanism. The Legion donated the first radium to veterans' hospitals. It has given \$62,500,000 for relief of needy families. It sponsors nation-wide Junior Baseball and 3,000 Boy Scout troops. It operates 2,000 citizenship schools for foreign born. That's just a sample of the fine service program you'll be supporting when you join your buddies in the Legion.

Prestige goes with your Legion button. The President . . . 8 justices of the U. S. Supreme Court . . . 252 members of congress . . . 28 governors are Legionnaires.

Your Post is the heart-beat of your town. You'll find the fellows you like there, doing the things you like to do. Come in and help yourself and your country.



Conner-Streicher Post No. 559
ANNVILLE, PA.

Kingsley & Brown Inc.

LAUNDERERS

CLEANERS and FURRIERS

PHONE: Annville: 7-3511
Hershey: 1-0611
Myerstown: 1-0611
Middletown: 74

◀ Deluxe Service ▶

If your chosen calling, or the inscrutable ways of Providence, leads you to New York City, and you find yourself (as have millions before you) founding a home here—remember that the workaday routine of homes is the business of CLEANART, Incorporated.

You'll find life happier, easier, smoother with our trucks rolling regularly to your door.

CLEANART

incorporated

11-23 St. Casimir Avenue . . . Yonkers, New York

LAUNDERING

DRY CLEANING

RUG SHAMPOOING

PILLOW CLEANING

COLD FUR STORAGE

*Automatic Heating
Stoker, Oil, and Gas*

*Sherwin Williams
Paints and Varnishes*

SPENCER CASSEL

PLUMBING

HEATING

HARDWARE

209 N. Railroad Street
Palmyra, Pa.
Phone: 8-5341

14 East Main Street
Annville, Pa.
Phone: 7-5131

ARNOLD'S BOOT SHOP

EXCLUSIVE SHOES

Collegbred Shoes
"For College girls"

Florsheim Shoes
"For the Man Who Cares"

34 N. Eighth Street LEBANON, PA.

WOLF FURNITURE CO.

*Appliances, Furniture
Floor Coverings*

754-756 Willow Street LEBANON, PA.

Phone: 326

"A Fashion Institution"

LOGAN'S



816 CUMBERLAND STREET
Phone: 836 LEBANON, PA.

Spinet Pianos

LESTER
KRANICH & BACH

LLOYD V. FEGAN

428 North 10th Street Lebanon, Pa.
Phone: 873

George Washington Tavern

STEAKS SEAFOOD
ITALIAN SPAGHETTI

10th and Cumberland Streets
LEBANON, PENNA.

*When in need of Flowers
think of*

VAVOROUS

335 Guilford St. 512 Cumberland St.
LEBANON, PA.

KREAMER BROS.

Furniture • Floor Coverings • Electrical Appliances

Modern Funeral Home

ANNVILLE

PENNSYLVANIA

"Demand Fresh Ice Cream"

Gollam's Supreme Ice Cream

Made Fresh Daily

Specializing for Parties, Picnics, Clubs,
Banquets or any other social functions.



C. B. GOLLAM SONS MFRS.

"Master Ice Cream Service"

6th and Maple Streets

Lebanon, Pa.

PHONE: 21

Compliments of . . .

BAILEY'S

Cocktail Lounge and Bar

922 CUMBERLAND STREET

Lebanon, Pa.

Hammond Organ Music Nightly

**SPECIAL DINNERS and LUNCHES
SERVED DAILY**

THE BON-TON

"Lebanon's Greatest Store"

DIAMONDS *of*
DISTINCTION



Jewelers

20 N. Ninth Street

Lebanon, Pa.

Compliments of . . .

TED KLOPP

Furniture Co.

1001 CUMBERLAND STREET
LEBANON, PENNA.

Compliments of . . .

M. BRATTON

QUALITY SHOES

848 Cumberland Street
Lebanon, Pa.

In Lebanon it's

HAAK BROS.

Department Store

Headquarters for

BERKSHIRE NYLONS,

CAROL KING FROCKS

JOHN L. BERNSTEIN

FLORIST AND DECORATOR

"THE FLOWER SHOP"

Corsages Our Specialty

Rear of Court House **LEBANON, PA.**

Flowers Telegraphed Anywhere, Anytime.

Phone: 592

Home-Cooked Meals

STONY'S RESTAURANT

Downy Flake Donuts

See Them Made—Always Fresh

Fountain Service, Magazines

ANNVILLE PENNSYLVANIA

FUNCK'S GARAGE

General Repairing

OFFICIAL A. A. A. SERVICE

ATLANTIC PRODUCTS

J. C. FUNCK

14-16 South White Oak Street

Annvile 7-5121

Official Inspection Station No. 3068

Refrigeration and Appliances

HAUER'S

Kelvinator

Bendix

Stromberg-Carlson

Commercial and Domestic Freezers



ABC Oil Burners

Electric work of all kinds

Authorized Sales and Service



23 S. 6th Street

LEBANON, PA.

PHONE: 2923-J

H. E. MILLARD LIME and STONE CO.

SERVING

Industry—Building—Agriculture

TOP QUALITY COURTEOUS SERVICE
REASONABLE COST

Annville, Pa.

GOLD CROSS

CAROLYN

R. E. KREIDER

Shoes for the Entire Family

FITTED BY X-RAY

PALMYRA • PENNA.

FLORSHEIM

WEYENBERG

T. H. HEILIG

Local and Long Distance Moving

Phone: 55

543 Weidman Street

LEBANON, PA.

DAVIS PHARMACY

103 W. Main Street ANNVILLE, PA.

*Parker Pens and Pencils
Schaeffer Pens and Pencils
Eversharp Pens and Pencils
Whitman's Candy
Double K Nuts
Prescriptions*

Compliments of . . .

**BOWMAN'S
Insurance Agency**

Palmyra Bank Bldg.

PALMYRA, PA.



*before
a girl
marries...*

SEE

J. B. BOWMAN

Palmyra, Pa.

If it's a Hit—It's Here

Compliments of

STATE THEATRE

511-515 Cumberland Street
LEBANON, PA.

*When building or buying a home . . .
Arrange Your Mortgage or Loan Thru*

Palmyra Bank and Trust Co.
PALMYRA, PA.

The Bank with the Chimes

MEMBER OF FEDERAL DEPOSIT
INSURANCE CORPORATION

VISIT

"Hot Dog" FRANK

Light Lunches
and Sandwiches of all kinds

BREYER'S ICE CREAM
"It's the Talk of the Town"

ANNVILLE, PA.

Compliments

LAUCK BROS.

Palmyra, Pa.

GIFTS STATIONERY

Pollyanna
HEALTH
SHOES

MODERN
HEALTH
SHOES

KREIDER SPORTS

"300" Juveniles

Manufactured by

The A. S. Kreider Co.

ANNVILLE, PENNA.

To a Graduate . . .

OUR WISH FOR YOU IS THIS:

MAY YOUR GOAL BE A WORTHY ONE,

MAY YOU HAVE THE COURAGE AND SELF-
CONFIDENCE TO STRIVE FOR IT,

MAY YOU HAVE SUCCESS AND HAPPINESS
WHEN YOU HAVE ATTAINED IT.

THE PENNWAY

LO-JAY SHOP

7th & Cumberland Streets

Lebanon, Pa.

Millinery
Hand Bags

Sportswear
Lingerie

Compliments of
an
IRISHMAN

Compliments of
JOHN H. LONG & SONS
QUALITY LUMBER MILLWORK
Phones: 2200, 2201
CLEONA, PA.

H. W. KREIDER
CLOTHIER

*Nationally known good
merchandise*

PALMYRA, PENNA.

Compliments of . . .

**RELIABLE COAT
AND
DRESS SHOP**

761 Cumberland Street LEBANON, PA.

Compliments of . . .

Ben Franklin Store

YOUR College Store

Open Friday and Saturday Evenings
37-39 W. MAIN ST.

E. W. Wolfe, Owner
ANNVILLE, PA.

J. Edward Gantz

photographer

LEBANON

PENNA.



CONDUCTED STUDENT TOURS OF EUROPE—May to October 1948

These tours are of interest to teachers as well as students. Visit all of Europe either on an economy tour or the Standard Five Country or Continental Tour.

For information call

LEBANON COUNTY TRAVEL BUREAU

Willow at Eighth St.

Phone: 1753

LEBANON, PA.

Harrisburg
COCA-COLA
Bottling Works, Inc.

17th and Holly Streets
HARRISBURG, PA.

Phone: 4-4151

S. A. BOMGARDNER'S
Dairy

TRY OUR ICE CREAM

Phone: 8-5521

40 East Main Street

Palmyra, Pa.

Compliments of the
ASTOR THEATRE
ANNVILLE, PA.

Watch the Dutchmen fly
this year . . .

Support your Team

La Vie is Having its
Face Lifted . . .

Watch for it







