

QUITTA RAHILLA

1953 • •



Digitized by the Internet Archive
in 2011 with funding from
LYRASIS Members and Sloan Foundation

<http://www.archive.org/details/quittapahilla1953leba>



The Quittapahilla Staff of 1953

Editor PATRICIA WOOD

Associate Editor . . . JOHN WALTER

Business Editor . . . PHILLIP HAYES

Financial Editor . . . DONALD KREIDER

Advertising Editor . HENRY EARLY

Assistants RUTH EVANS
 LEON MILLER
 WILLIAM SHOPPELL

Conservatory Editor JOYCE HAMMOCK

Sports Editor HARRY GRAHAM

Girls' Sports Editor JANE McMURTRIE

Photographer . . . HARRY BROWN

Literary Editor . . . DAVID NEISWENDER

Assistants JEAN STAHLE
 ALLEN KOPPENHAVER
 WILLIAM VOUGHT
 ALICIA WHITEMAN
 JAMES LEWIS
 PHYLLIS BARNHART
 GEORGE CURFMAN
 CHARLES BLAICH

Typists JOAN GILBERT
 RUBY HELWIG
 FLORENCE SAUDER
 KENNETH KEISER

Advisor G. G. STRUBLE

presents



THE 1953 OF LEBANON VALLEY

MAY • 1952



QUITTA PAHILLA

COLLEGE, ANNVILLE, PENNSYLVANIA

A JUNIOR CLASS PUBLICATION

DEDICATED TO



FREDERICK K. MILLER

Though it is but coincidence that we, the class of 1953, present our yearbook in the same year that Dr. Frederick K. Miller has been installed as president of our school, we are proud to be the first to salute him in that office in this manner.

With loyalty to the leader who in his inaugural address presented his belief that the task of the small liberal arts college "is to produce men and women who are Christian in their outlook, courageous in their living, and devoted in their service to those things which produce a better civilization," with admiration for the scholar, and above all, with appreciation of and affection for the man who has been a friend and guide throughout our years at Lebanon Valley, to him we dedicate this book.

ADMINISTRATION AND FACULTY





FREDERICK K. MILLER
President

PRESIDENT'S MESSAGE

You have our heartiest congratulations upon your fine achievements at Lebanon Valley College and our very best wishes for the future. A college education, like freedom, carries with it duties and obligations as well as rights and privileges. As you have so frequently lived up to those obligations on our campus, we trust you will likewise make every effort to assume the responsibilities of citizenship in your respective communities.

We live in times which have been characterized in many different ways—an era of decision, an age of crisis, a day of emergency. You will do well to accept this period of man's history as a challenge. Some of our most cherished beliefs and ideals are being challenged daily. We must rise to the challenges, whatever the cost. As inheritors of Christian western culture, we must not only preserve our way of life, we must exert ourselves to extend it and to insure it for our posterity.

College has undoubtedly given you many good friends. Make every effort to keep in touch with them. While you surely will take away with you upon graduation many intangible values, campus friendships can be among the most desirable. We urge you to become an active alumnus and to return to the campus often. It is always mutually beneficial to both the college and our alumni to welcome you back to the campus for visits, brief though they may be. You will be glad for the opportunity to renew friendships and relive your under-graduate days. We in turn need to know occasionally of your interest in us. So be an interested alumnus! Be assured of our continued interest in you and in your future.

FREDERICK K. MILLER

LEBANON VALLEY COLLEGE ADMINISTRATION

1952



A. H. M. STONECIPHER
Dean of the College



WILLIAM A. HAYES
Dean of Students



CONSTANCE DENT
Dean of Women



GLADYS FENCIL
Registrar



JAMES W. PARSONS
*Alumni Secretary and
Director of
Public Relations*



D. CLARK CARMEAN
Dean of Admissions



HELEN E. MYERS
Librarian



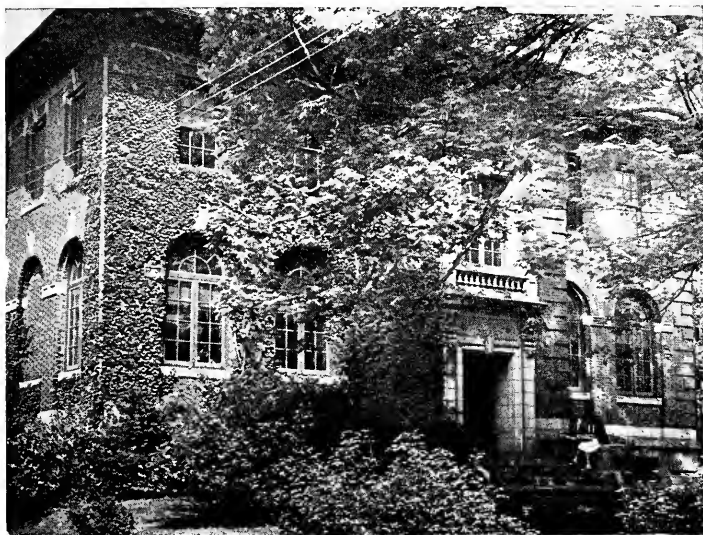
DONALD FIELDS
Associate Librarian



LIBRARY

Seated: Helen E. Myers.

Standing, left to right: Mrs. Frances Fields, Donald Fields, Isabel Smith.



BOARD OF TRUSTEES

Representatives from the East Pennsylvania U. B. Conference

PARIS HOSTETTER	Mt. Joy, Pa.	REV. O. T. EHRHART	
J. B. McKELVEY	Philadelphia, Pa.		Washington Boro. R.D.1, Pa.
REV. EDGAR HERTZLER	Harrisburg, Pa.	REV. D. E. YOUNG	Harrisburg, Pa.
HON. MILES HORST	Lebanon, Pa.	E. W. COBLE	Lancaster, Pa.
A. C. SPANGLER	Campbelltown, Pa.	REV. W. A. WILT	Annville, Pa.
REV. S. C. ENCK	Harrisburg, Pa.	REV. H. E. SCHAEFFER	Harrisburg, Pa.
REV. P. B. GIBBLE	Ephrata, Pa.	C. L. BITZER	Harrisburg, Pa.

Representatives from the Pennsylvania U. B. Conference

REV. S. B. DAUGHERTY	Carlisle, Pa.	ALBERT WATSON	Carlisle, Pa.
HAROLD T. LUTZ	Baltimore, Md.	HUBER D. STRINE	York, Pa.
H. W. SHENK	Dallastown, Pa.	REV. P. E. V. SHANNON	York, Pa.
REV. IRA S. ERNST	Washington, D. C.	REV. F. P. PLUMMER	Hagerstown, Md.
REV. MERVIE H. WELTY	Red Lion, Pa.	E. N. FUNKHOUSER	Hagerstown, Md.
J. STEWART GLEN	Baltimore, Md.	R. G. MOWREY	Chambersburg, Pa.
REV. F. T. KOHLER	Baltimore, Md.		

Representatives from the Virginia U. B. Conference

REV. J. PAUL GRUVER	Martinsburg, W. Va.	G. C. LUDWIG	Keyser, W. Va.
REV. PAUL J. SLONAKER		REV. CARL W. HISER	Winchester, Va.
	Berkeley Springs, W. Va.	REV. E. C. MILLER	Dayton, Va.
REV. J. E. OLIVER	Winchester, Va.		

Trustees at Large

BISHOP G. E. EPP	Harrisburg, Pa.	LLOYD A. SATTAZAHN	Lebanon, Pa.
MAURICE R. METZGER	Middletown, Pa.	W. H. WORRILOW	Lebanon, Pa.
HON. J. PAUL RUPP	Steelton, Pa.		

Alumni Trustees

E. D. WILLIAMS	Annville, Pa.	MISS ALMA MAE LIGHT	Annville, Pa.
WARREN H. FAKE	Ephrata, Pa.		



Seated, left to right: Alvin H. M. Stonecipher, Latin; George G. Struble, English.

Standing: Charles Sloca, English; Lena L. Lietzau, German; Luella U. Frank, Spanish and German; Theodore D. Keller, English.



Seated, left to right: S. O. Grimm, Physics and Mathematics; V. Earl Light, Biology.

Standing: John T. Woodland, Biology; Howard A. Neidig, Chemistry; O. P. Bollinger, Biology.



Seated, left to right: Hiram H. Shenk, Professor Emeritus of History; Gilbert D. McKleven, Education.

Standing: Ralph R. Ricker, History; Richard E. Fox, Economics; Maud P. Laughlin, History; Alex Fehr, Political Science; Robert Riley, Economics.



Seated, left to right: Ernestine J. Smith, Physical Education for Women; Constance Dent, Psychology.

Standing: Carl Y. Ehrhart, Philosophy; W. Maynard Sparks, Religion; Byron L. Harriman, Psychology; Marvin E. Wolfgang, Sociology; Ralph R. Mease, Physical Education for Men; G. A. Ritchie, Religion.



Seated, left to right: Ruth E. Bender, Piano; Mary E. Gillespie, Director of the Conservatory of Music.

Standing, left to right: D. Clark Carmean, Music Education; William H. Fairlamb, Piano; Robert W. Smith, Music Education; Alexander Crawford, Voice; Frank E. Stachow, Theory and Woodwinds; Jane Holliday, Music Education and Cello; Shirley E. Stagg, Piano; Edith N. Morris, Theory and Piano; Edward P. Rutledge, Director of Musical Organizations.



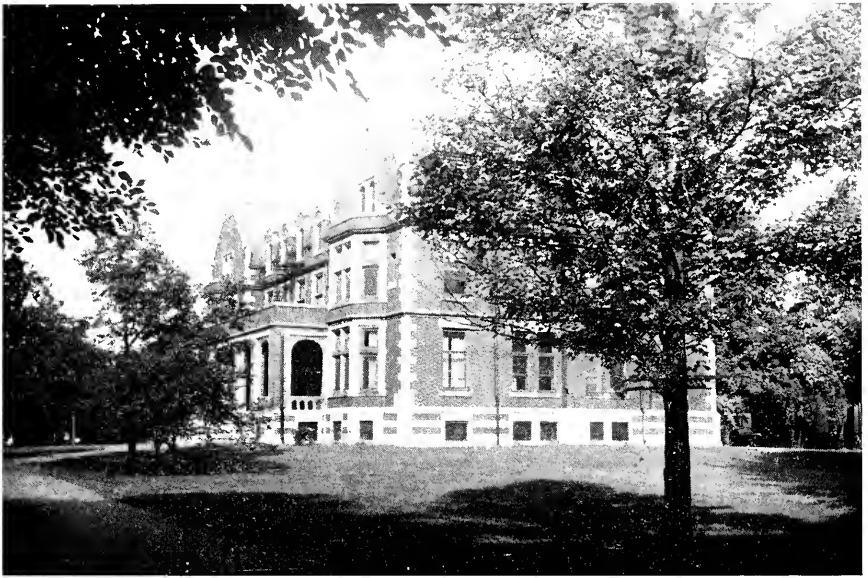
CONSERVATORY



WASHINGTON HALL



MEN'S DORMITORY



NORTH HALL



SOUTH HALL



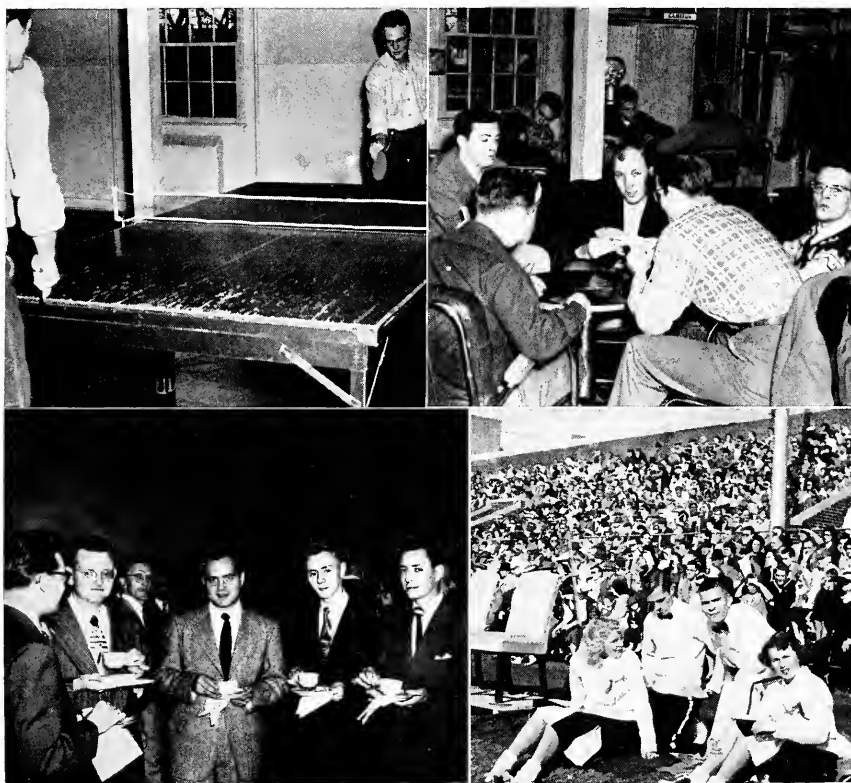
WEST HALL



SHERIDAN HALL

SENIORS

As the members of the Class of 1952 go through their graduation exercises they will become the eighty-second graduating class from Lebanon Valley College. Soon, to most of us, they will become rapidly fading memories whose names we cannot recall and whose features we cannot quite remember. Their records of progress through their four years of college activity will have become a permanent part of the College, both for future reference and for past proof of their capabilities. However, we are confronted with the task of portraying the individuals as we know them. The "Quittie" staff is proud to present the graduating class of Lebanon Valley College.





SENIOR CLASS OFFICERS

<i>President</i>	SHERDELL SNYDER
<i>Vice-President</i>	WILLIAM CRAIGHEAD
<i>Secretary</i>	BETTY BAKLEY
<i>Treasurer</i>	LEONARD CASPER



B. S.

LEE BAKER
JOSEPH BERING
SAMUEL BLACK
DONALD BLANKEN
FREDERICK BOLTZ
NICHOLAS BOVA, JR.
ROBERT BOWSER
GEORGE CARDONE
LEONARD CASPER
WILLIAM CRAIGHEAD
JAY DUTWEILER
PAUL EDWARDS
PHILLIP HAYES
ROBERT HEATH
ROBERT HOFFSOMMER

ROBERT HOWARTH
FRANK HOWE
THOMAS KIRCHOFF
GEORGE KNOBL, JR.
EUGENE KOBYLARZ
DONALD LANGSTAFF
DAVID LEVIN
JOSEPH LUTZ
SYLVESTER MACUT
DONALD McSURDY
GERALDINE MEASE
DONALD MILLER
MELVIN NIPE
JOSEPH OXLEY
MICHAEL PALAZZO

MICHAEL PAPP
JAMES QUICK
WALTER RUHL
DALE SCHEIB
JOSEPH SHEMETA
SHERDELL SNYDER
WILMA STAMBACH
STERLING STAUSE
JOHN SWEGARD
MICHAEL SZOLLOSE
WILLIAM TOMILEN
LOIS WHITE
JOHN WILKES, JR.
JAMES ZANGRILLI



A. B.

LOIS ADAMS
BETTY BAKLEY
ARMEN BANKLIAN
ELAINE BARRON
CLYDE BAVER, JR.
ADELE BEGG
ELIZABETH BEITTEL
ANN BLECKER
D. JEANE BOMGARDNER
ROBERT BOMGARDNER
DOROTHY BONTREGER
CLAIRE CASKEY
HARRY COOPER
HAROLD COOPERSMITH
ROBERT DAUGHERTY
ELAINE FAKE

JAMES FAWBER
MEREDITH FISHER
BERNARD FOGLE
JOANNE FOX
CLARENCE FUNK
GOLDEN GAITHER
JAMES GEISELHART
ROBERT GLOCK
JEANNE HUTCHINSON
PAUL LOWERY
ROBERT LOWERY
D. JANE LUTZ
NANCY MYERS
JAMES PACY
JOSEF PARKER
MELVIN PATRICK
DIANE RANDOLPH

PEGGY ROOK
MARY ROPER
FREDERICK SAMPLE
RICHARD SCHWANG
NANCY D. SEIDERS
RUTH SHAEFFER
WALTER SHONOSKY
RUTH SHUMATE
RITA STAILEY
PAUL STAMBACH
RUTH STAMBACH
ROBERT STEELE
THOMAS SULLIVAN
EDWARD TESNAR
STERLING THOMPSON
EVELYN TOSER



MUSIC

ALDEN G. BIELY

LYNN BLECKER

ELMA BREIDENSTINE

GLORIA DRESSLER

DAVID DUNDORE

LEE DUNKLE

JOHN GIACHERO

DONALD GINGRICH

I. SCOTT HAMOR

WILBERT HARTMAN

CLARA HOFFMAN

HENRY HOFFMAN

HARRY KEIM

JAMES KENDIG

JANE MARTIN

MARDIA MELROY

RICHARD MILLER

JOAN RICEDORF

GEORGE RUTLEDGE

MELVIN SCHIFF

ROBERT SCHREFFLER

RICHARD STEWART

JULIA THATCHER

JANET WEIDERHAMMER

DOROTHY WITMER

DOLORES ZARKER



1952 WHO'S WHO

BETTY BAKLEY

FRED SAMPLE

EDWARD TESNAR

LOIS ADAMS

ELMA BREIDENSTINE

GÉORGE RUTLEDGE

ALDEN BIELY

STERLING STRAUSE

DOLORES ZARKER

PHI ALPHA EPSILON

SAMUEL HAROLD BLACK

LEONARD A. CASPER

SYLVESTER MACUT

FREDERICK P. SAMPLE

STERLING F. STRAUSE



DEDICATED TO THE
MEMORY OF OUR
CLASSMATE,
"CHUCK" MASTON



CHARLES "CHUCK" MASTON

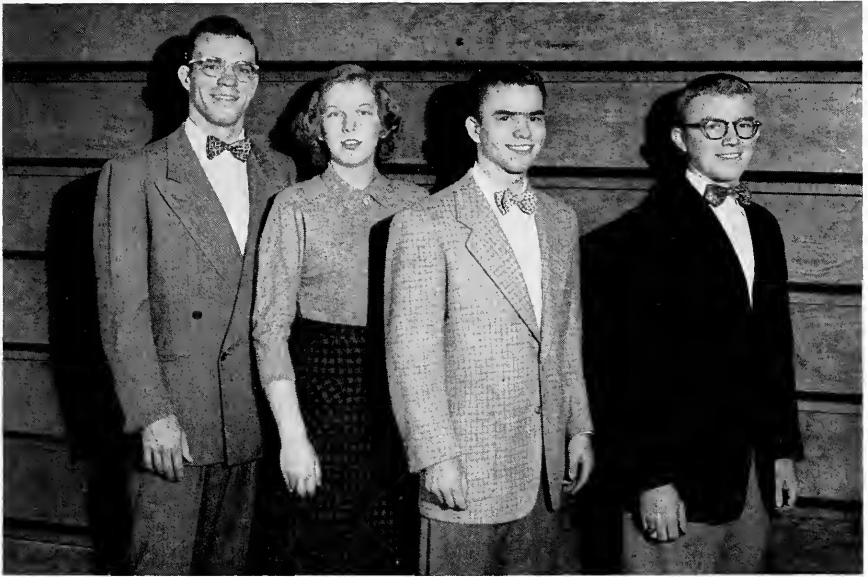
"CHUCK" was one of the greatest boys ever to graduate from Southside High School, Elmira, N. Y. He was a unanimous All-Southern Tier Conference halfback in 1948. He was a sectional champion in track. He also played basketball for the Green Hornets.

After graduation from high school "Chuck" entered Lebanon Valley college to continue his education. He finished two years in this institution where he made many friends both among students and faculty. He participated in football and track and was greatly interested in all of the activities of the school. He was a member of the "L" Club and the Knights of the Valley.

Just at the close of his sophomore year he was stricken with leukemia, the dread blood disease. "Chuck" fought valiantly for seven months to conquer this disease which was fatal from the start. His many friends both here and in Elmira donated blood to help him in his fight but on December 12 death overcame him.

"Chuck" was 21 years old and lived in Lemoyne with his parents, Mr. and Mrs. Paul Maston.

Moon Mullins, Chuck's coach in high school, paid him this tribute "I can't help feeling that if I took all the good characteristics of all the other boys I've coached and rolled them up, out would come Chuck Maston. Heaven must have badly needed a fine competitor for its football and track teams to ask for Chuck so soon." This is no doubt the sentiment of all those who knew him and were associated with him.

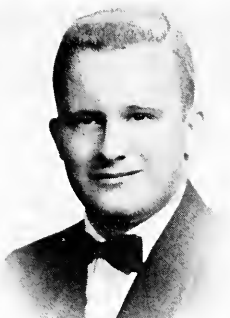


JUNIOR CLASS OFFICERS

President WILLIAM SHOPPELL
Vice-President JOHN WALTER
Secretary RUTH EVANS
Treasurer DAVID NEISWENDER

ROBERT W. AYRES

Kalozetean Society 2, 3.
 Intramural Basketball 1, 2, 3.
 Intramural Football 1, 2, 3.
 Intramural Softball 1, 2, 3.
 Intramural Volleyball 2, 3.
 Crew cut . . . Sports enthusiast
 . . . loves those Princeton parties
 . . . yellow convertible . . . give
 him a boat and that good of
 Jersey shore . . . rooms with
 Walt and Di . . . Economics.

**PHYLIS BARNHART**

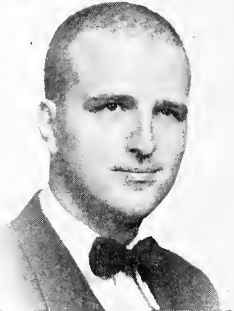
Girls' Band 2, 3.
 W.R.S.G. 1, 2, 3.
 S.C.A. 2, 3.
 Life Work Recruits 1.
 Religious Coordinating Council 3.
 Chionian Society, 1, 2, 3.
 Phyl . . . majoring in Music
 Education . . . a prospective
 music teacher . . . a dark brown
 haired, hazel eyed figure of im-
 portance on campus . . . 'S's' in
 height . . . one of "those" jig-
 ger-board members . . . where there
 is Phyl, there is life.

**JOAN RUTH BAIR**

College Chorus 1, 2, 3.
 String Quartet 1, 2, 3.
 College Orchestra 1, 2, 3.
 Symphony Orchestra 1, 2, 3.
 Delphin Society 1, 2, 3.
 Intramural Basketball 1.
 Music Education . . . outstanding
 violinist in the College and Sym-
 phony Orchestras . . . future
 music teacher . . . a friend to
 everyone . . . participated in
 intramural basketball . . . con-
 scientious student . . . an alto
 in the College Chorus.

**RICHARD B. BEARD**

Library Assistant 2.
 Psychology Assistant 3.
 Liberal Arts . . . Steelton . . .
 "Dick" is a psychology major
 . . . hobby is The Battle of
 Gettysburg . . . veteran of World
 War II . . . has his own views on
 world problems and sticks to
 them . . . family man.

**JAMES R. BAKER**

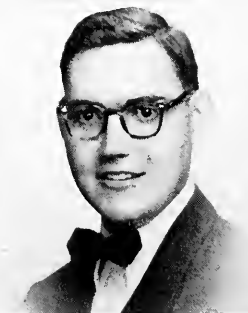
Future Teachers of America 3.
 History major . . . Palmyra . . .
 "Bakes" . . . after graduation
 wants to find a good teaching
 position and get married . . .
 specializes in Lietzau courses
 . . . friendly, talkative, jovial . . .
 always carrying a pile of big,
 heavy books.

**MARYANN L. BIEBER**

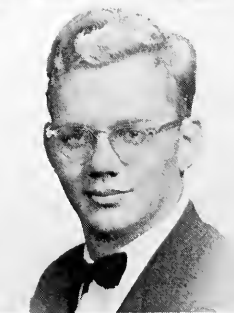
Basketball 2, 3.
 Physical Education major . . . a
 transfer from East Stroudsburg
 State Teachers College . . . plans
 to be a physical education teacher
 in an avid sports fan . . .
 "Hi - Kid" . . . a co-operative
 day student . . . a great asset to
 the women's basketball team.

**LEE K. BAKER**

Chemistry Club 1, 2.
 Student Affiliate of the American
 Chemical Society 1, 2.
 S.C.A. 1, 2.
 Studying business administration
 . . . grinds a camera . . . plans
 to enter graduate school down
 south . . . his advice is "Easy
 does it" . . . black haired, brown
 eyed . . . pleasant smile for
 everyone . . . quiet.

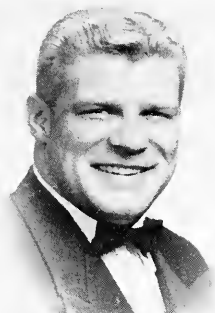
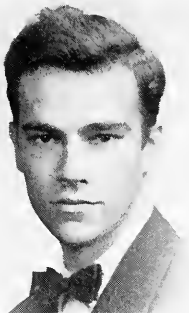
**CHARLES FREDERICK BLAICH**

College Chorus 2.
 Chemistry Club 1, 2, 3.
 Student Affiliate of the American
 Chemical Society 2, 3.
 Philoksmian Society 1, 2, 3.
 Vice-President of Class 1.
 "Quitite" Staff 3.
 "Charlie" . . . Chem major . . .
 is running a contest as to who
 has the most pipes . . . boards in
 the chem lab . . . graduate
 school prospect . . . in opinion
 replies, "Judas Priest" . . . a
 looming '63' guy with blond
 hair and blue eyes.



FREDERICK R. BOLTZ

"Fred" . . . "big business" look out . . . loves to take pictures . . . a bug with the camera . . . one of the better history students . . . member of the married class . . . Bus.Ad.

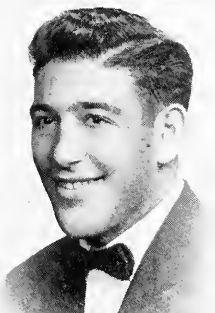
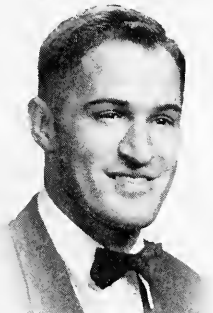


JOHN W. BUFFAMOYER

Political Science Club 3.
Future Teachers of America 3.
"L" Club 2, 3.
Varsity Football 1, 2, 3.
Varsity Baseball 2.
Intramural Handball 2.
"Buffie" . . . education major . . . seen most on the football field and at the dining hall table . . . plans to train and coach more strapping athletes . . . greets the girls with, "Hi, Baby!" . . . hails from Lebanon . . . is an engaged man.

ALLEN CHESTER BOYER

Chem major . . . Quentin . . . "Al" . . . may go on to graduate work . . . spends most of his spare time playing ping pong . . . handles himself very capably in almost any sport . . . always has a smile ready for you.

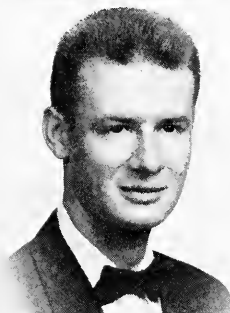


ALBERT CARELLI

Future Teachers of America 3.
"L" Club 2, 3.
Kalozeetan Society 2, 3.
Varsity Football 1, 2, 3.
Ah, those brown eyes . . . another stamper on the gridiron . . . always cooperative . . . easy going . . . Kalo's writing man . . . "Al" . . . "How's about that Pacy!"

HAROLD G. BRANDT

Future Sec. of Treasury . . . "Why not" . . . Expert marksman . . . "Slug" . . . easy going . . . able and ready . . . Economics.

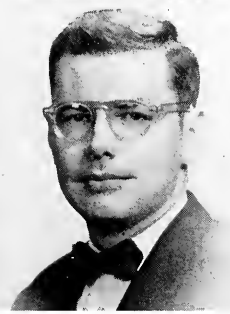


ROBERT YORTY CLAY

Marching Band 3.
College Orchestra 1, 2, 3.
Symphony Orchestra 1, 2, 3.
Music Ed . . . cellist excellent . . . talented musician with a taste for bass fiddle . . . modern chord writer in day room . . . beds down there every so often . . . crew cut . . . alleged home —Palmyra, Pa.

HARRY ARTHUR BROWN

Chemistry Club 1, 2, 3.
Stud. Affiliate Am. Chem Society 3.
Kalozeetan Society 1, 2, 3.
La Vie 3.
Quittie 3.
Chem major . . . Lebanon . . . hobby: photography . . . Leffler's sidekick . . . "Herk" is the photographer for the Quittie and La Vie . . . member of the Chem club and the Student Affiliate . . . plans to attend graduate school.

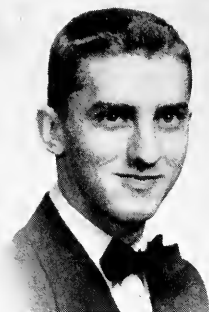


VERNON W. CORBY

Political Science Club 2, 3.
Knows his gov't . . . "coal crack-er" . . . Times Quiz whiz . . . not related to the whisky . . . married . . . political science is his major . . . "Vern."

WALTER COURTNEY

Varsity Basketball 3,
Varsity Baseball 3,
Business Ad. . . athletic hobby-
ist . . . "Walk" . . . aspires to be
a family man . . . "really?" . . .
member of the grey eyed family.

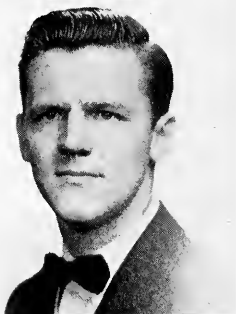
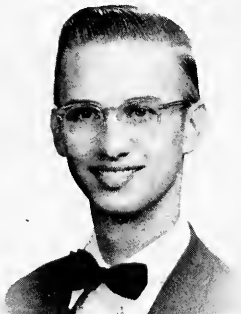


HENRY RICHARD EARLY

Annville . . . "Hank" . . . Re-
ligion . . . Plans to attend semi-
nary in Philadelphia . . . "Ja
Wohl, So Geh't's" . . . likes to
Putter in electric shop . . . one
of the married clan.

GEORGE DONALD CURFMAN

Glee Club 3,
College Chorus 1, 2, 3,
Marching Band - Color Guard 3,
"Molier Plays" 2,
Wig and Buckle Club 2, 3,
S.C.A. 3,
Music Education . . . "Georgie"
. . . possesses abundant piano
technique . . . good worker and
genial headwaiter for our college
dining hall . . . never at a loss
for words in a discussion . . .
acting fills in the few spare mo-
ments in his schedule . . . wants
to teach "down around home."

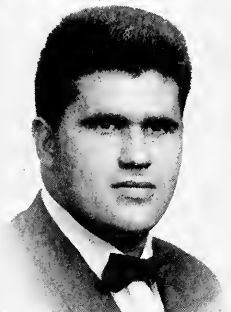


WARREN L. EARLY

Chemistry Club 1, 2, 3,
Lives dangerously . . . can be
seen "lying" here and there . . .
has ambitions to be a doctor . . .
Chem Club enthusiast . . . likes
those Ga. peaches . . . Dr.
Neidig's llea.

FRANK R. DeANGELIS

"L" Club 1, 2, 3,
Varsity Football 1, 2, 3,
Intramural Basketball 1, 2, 3,
Intramural Softball 1, 2, 3,
History . . . varsity football . . .
loves to eat . . . good looking
. . . "What a doll!" . . . aspires
to be an educator . . . last word
entertainment unanimous . . .

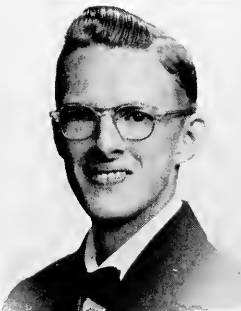


M. ROSS EVANS

College Chorus 1, 2, 3,
Marching Band 1, 2, 3,
Music Education . . . future in-
structor of woodwinds and school
music . . . collects stamps end-
lessly . . . day student of the
briefcase strata . . . sociable and
easy to talk with . . . one of
Stachow's striving students.

GLENN M. DIETRICH

S.C.A. 1, 2, 3,
Life Work Recruits 1, 2, 3,
Pre-ministerial student majoring
in sociology . . . sizes up the
situation with a camera . . . will
enter seminary after graduation
. . . a scurrying waiter of 5'3"
. . . pleasant person . . . one of
the smaller tribe at school.



RUTH ELLEN EVANS

Glee Club 3,
College Chorus 1, 2, 3,
Delphian Society 1, 2, 3,
Class Secretary 3,
Quitte 3,
Music Education . . . "Ruthie"
. . . a tall blonde from Lebanon
. . . a piano major . . . intends
to enter graduate school . . .
"Gee Whizz!" . . . dependable
secretary of the Junior Class.

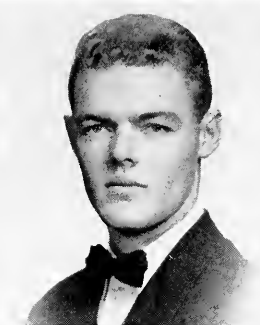
DANIEL W. FASNACHT

Chemistry Club 1, 2, 3.
Intramural Football 1, 2.
Veterinarian to be . . . upper
classmen's valient tackle . . .
"Dan" . . . aspires to U. of P.
. . . one of the chemistry bugs
. . . likes biology, too.



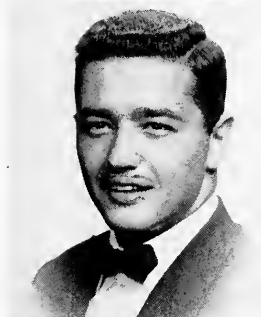
WILLIAM W. FRAZER

"L" Club 2, 3.
Football Manager 1, 2.
Baseball 1, 2, 3.
Intramural Basketball 1.
Intramural Football 1, 2, 3.
Intramural Volleyball 2.
Business Administration . . .
string bean baseball pitcher . . .
ardent pin-ball machine player
. . . used to like to take long
walks from Palmyra . . . believer
of "two can live as cheaply as
one" . . . never a dull moment
with "Wiyos" around . . . "Wait
till next year."



JOSEPH FERRER

"L" Club 2, 3.
Kalozetean Society 2, 3.
Varsity Football 1, 2, 3.
Varsity Baseball 2, 3.
Intramural Basketball 1, 2, 3.
Intramural Handball 1, 2, 3.
Math . . . "Jose" . . . Varsity
football and baseball . . . gruel-
ing lineman . . . happy go lucky
. . . "How the heck are yuh?"
. . . good looking.



GRACE HELEN FRICK

Wig and Buckle Club 3.
French Club 3.
Future Teachers of America 3.
Delphian Society 1, 2, 3.
Hazleton, Pa. . . Spanish . . .
Gracie . . . loves to take the bus
home . . . George and his stain-
less steel pins . . . one of the
gang . . . "I'll clue ya."



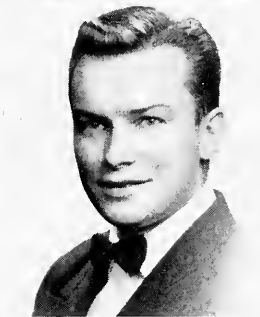
MEREDITH EUGENE FISHER

Glee Club 1, 2, 3, 4.
Chorus 1, 2, 3, 4.
Gene . . . Lemoyne . . . friendly
. . . a senior who missed out with
his picture last year . . . History
major . . . really likes to sing and
anything connected with music
. . . "It's terrific".



RICHARD J. FURDA

"L" Club 1, 2, 3.
Kalozetean Society 1.
Varsity Basketball 1, 2, 3.
Varsity Baseball 1, 2, 3.
Economics . . . "Richy" . . .
outstanding basketball player . . .
proves the adage that good things
come in small packages . . .
outfielder during baseball season
. . . studious . . . frequent visitor
to Sheridan Hall . . . laundry
dealer.



ALBERT FOSSA

Future Teachers of America 3.
Chemistry . . . "Al" . . . one of
Hot Dog Frank's helpers . . .
quiet . . . future teacher . . .
studies an ardent angler . . .
hails from Jersey.



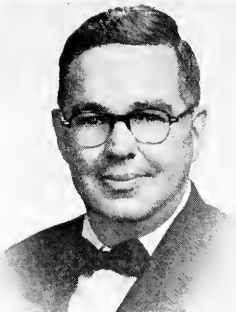
JOAN GILBERT

Biology Club 2, 3.
Women's Commutator's Council 3.
Delphian Society 1, 2, 3.
Intramural Basketball 1, 2.
Biology major . . . preparing to
be a laboratory technician . . .
a quiet and neat day student . . .
dependable . . . secretary-treas-
urer of Women's Commuter
Council . . . plans to attend a
hospital for technician training
after graduation . . . a con-
sistently good student.



AARON K. GINGRICH

Anville . . . Economics . . .
pleasant smile . . . building
contractor . . . one of the "kids"
of the class . . . really going to
school to get an education . . .
very friendly.

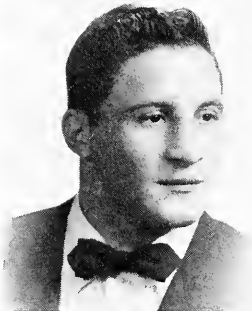


GLORIA GULLIVER

Biology Club 2, 3.
Chemistry Club 2, 3.
Varsity Hockey 1, 2, 3.
Delphinian Society 1, 2, 3.
Catewissa, Pa. . . . Science . . .
jolly . . . lots of fun . . . life's
goal, laboratory technician . . .
"Let's get this show on the road"
. . . "Bing."

RALPH GIORDANO

Political Science Club 3.
Kalexetean Society 1, 2, 3.
Varsity Football 1, 2, 3.
"Play it cool, Ace" . . . the
fellow with the friendly smile for
everyone . . . a real gridiron
king—loves the game . . . plays
his heart out . . . "our Ralphie"
. . . Economics . . . he'll make a
good salesman.

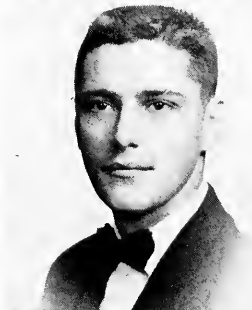


ROBERT ANDREW GUSTIN

"I" Club 1, 2, 3.
Varsity Football 1, 2, 3.
Business Administration . . .
"B.G." . . . one of L.V.'s gridiron
sons . . . "What's the play?"
. . . majority of interests center
around sports . . . another proud
son of Steulton . . . has found a
home in the men's dorm.

MARTIN L. GLUNTZ

Chemistry Club 2, 3.
"I" Club 2.
Kalexetean Society 1, 2, 3.
Varsity Football 2.
Varsity Basketball 2, 3.
Varsity Baseball 1, 2, 3.
Business Administration . . .
one of the boys from Steulton . . .
loves a chemistry lab . . . sharp
dresser . . . basketball player
. . . active on campus . . .
"Merle" and "Marty" . . . guard-
ian of the hot corner in the spring.

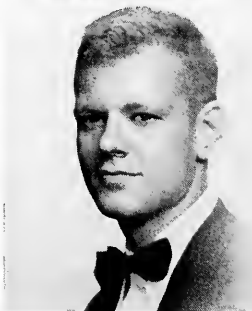


JOYCE HAMMOCK

Glee Club 3.
Varsity Basketball 1, 2, 3.
S. C. A. 2.
Delphinian Society 1, 2, 3.
Secretary of Sophomore class 2.
Quittie 3.
Front Royal, Va. . . . Music Ed.
. . . whiz at the ivories . . . wants
to teach . . . a smile for everyone
. . . Virginia, Earth's only Para-
dise . . . "Will you wait tables
for me?"

HARRY GRAHAM

Chemistry Club 1, 2, 3.
La Vie 1.
Kalexetean Society 1, 2, 3.
Varsity Track 1, 2, 3.
Quittie 3.
Intramural Basketball 1, 2, 3.
Pre-med . . . "H.G." . . . all
around sports enthusiast . . .
pleasing personality . . . "Ter-
rific" . . . does anything but
study . . . doesn't find it neces-
sary . . .



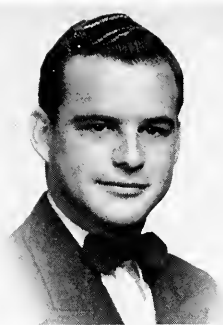
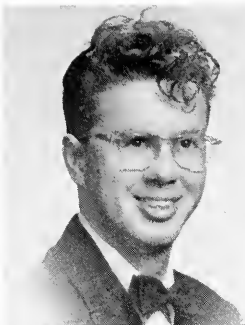
JAMES D. HANDLEY

Varsity Football 1, 2, 3.
Varsity Basketball 1, 2, 3.
Varsity Track 3.
Business Administration . . .
"Jabo" to those who know him
. . . lanky end on the football
team . . . proctor of the third
floor . . . basketball man . . .
pole vaulter in track . . . future
business man.

PHILLIP W. HAYES

Political Science Club 2.
Future Teachers of America 3.
Kalozetan Society 1.
La Vie 1, 2.
Quittie 3.

Business Administration . . .
"Phil" . . . commutes daily in
his Chevrolet coupe . . . majors
in Economics . . . likes to read
and go hunting . . . "Hi" . . .
plans to teach and do some post-
graduate work.



ALLEN H. HEIM

Cleona . . . "Al" . . . Biology
major . . . plays golf . . . future
teacher . . . good things come in
small packages . . . notice the
cushion he sits on in his Ford car.

MARK W. HEBERLING

"L" Club 1, 2, 3.
Varsity Baseball 1, 2, 3.
Intramural Basketball 1, 2, 3.
Economics and Business Assis-
tant 3.
Orwin, Pa. . . Economics . . .
"Let's get 'em" . . . "Ratex" . . .
one of the economics assistants
. . . Member of the "L" Club . . .
Lakes sports.

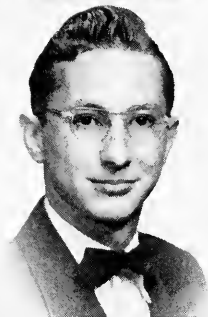
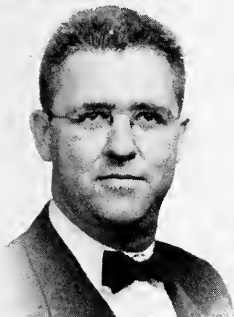


RUBY MARTHA HELWIG

College Chorus 1, 2, 3.
Girl's Band 1, 2, 3.
S. C. A. 1, 2, 3.
Mt. Joy, Pa. . . Music Ed. . . .
Dean's List Student . . . quiet
. . . Prof. Rover's protege . . .
Ruby and Grace . . . teaching in
view.

DONALD L. HEDGECOCK

Future Teachers of America 3.
Chemistry Club 1, 2, 3.
Student Affiliate American Chem-
istry Society 1, 2, 3.
Philokosmian Society 2, 3.
Treasurer of Congress 3.
Treasurer of Class 1.
Chemistry . . . class politician . . .
one of our more ardent students
. . . "Hedge" . . . Sophomore
football terror . . . pleasant
manner . . . after hours fre-
quenter of the Astoria.

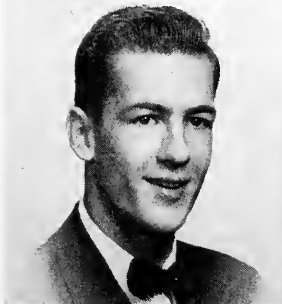


F. KENNETH HOFFER

Life Work Recruits 1, 2, 3.
Varsity Baseball 2.
Good student . . . active at the
college of the "Dutchman" . . .
member of Life Work Recruits
. . . an all round Joe . . . good
baseball pitcher . . . Dr. Ritchie's
golf partner.

WILLIAM HERBERT HEFFLEY

Political Science Club 2, 3.
Pi Gamma Mu 2, 3.
Lebanon . . . "Herb" . . . Presi-
dent of Pi Gamma Mu . . . plans
to enter Civil Service . . . Politi-
cal Science . . . one of the taller
members of the class . . . likeable
guy.

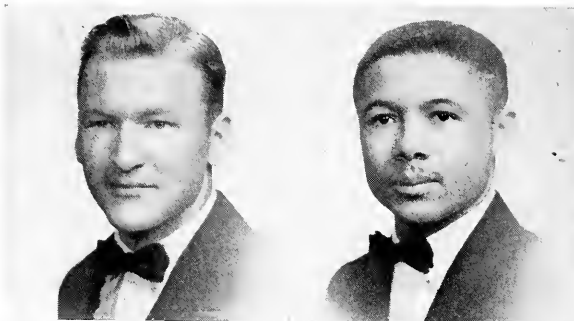


RICHARD W. HORNBERGER

College Chorus 1, 2, 3.
Marching Band 1, 2, 3.
Symphony Orchestra 2.
Philokosmian Society 2, 3.
Men Day Student Congress 3.
Dick . . . Music . . . impresario
of the tuba . . . gave her a ring
. . . roomies John Reister and
Ken Keiser . . . the accordion
and Dick—what a combination
. . . Reading, Pa.

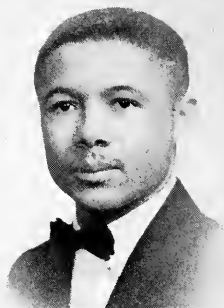
MELVIN E. HOSTETTER

Beautiful Yellow Convertible . . .
outstanding record in Germany,
the same at LV . . . football en-
thusiast . . . umm that smile . . .
everyone knows Mel . . . Bus.
Ad. major.



WINSLOW JOHNSON

Men Day Student Congress 2, 3.
Economics major . . . Sheridan
. . . wants to be a salesman after
graduation . . . veteran of World
War II . . . sometimes sings with
the Jubilee Singers . . . com-
mutes in a Studebaker . . .
friendly, helpful.



CHARLES EVANS HUGHES

College Chorus 2, 3.
Marching Band 3.
Future Teachers of America 3, 4.
Charlie . . . Music major . . .
future schoolmaster . . . dancing
fan . . . West Hall and . . .
white strapless swim suit and
high heels newest style with
Charlie . . . "you know it!"

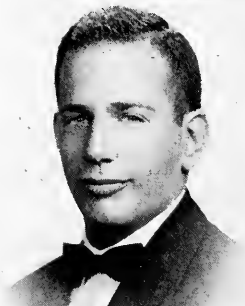
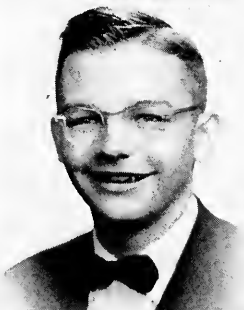


WILLIAM LLEWELLYN JONES

Knights of the Valley 2, 3.
Treasurer, Men's Senate 3.
Men's Senate 2, 3.
Varsity Baseball 2, 3.
Intramural Basketball 1, 2, 3.
Personality plus . . . officer of
Men's Senate . . . neat dresser,
knows everyone . . . enjoys life
. . . lives for the weekends . . .
interested in sports . . . Bus. Ad.

THOMAS ISRAEL

College Chorus 1, 2, 3.
French Club 1.
Tom . . . Music Ed . . . "swelli-
gen!" pipe organist . . . future
professor . . . loves opera—both
record and true opera . . . easy
to befriend and easy to like . . .
never excited or angry.

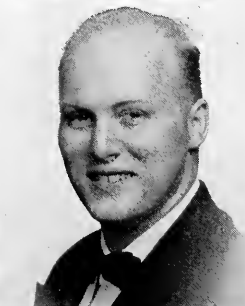
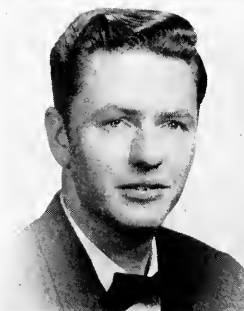


ROBERT L. KAUFMAN

Philokosmian Society 1, 2, 3.
Varsity Track 2, 3.
Intramural Basketball 1, 2, 3.
Intramural Football 1, 2, 3.
Intramural Softball 1, 2, 3.
"Poochie" . . . business adminis-
tration . . . likes to play the uke
. . . Watch yourself "youth"
. . . wants to go into the mer-
chandising field . . . likes sports
. . . faithful member of Philo.

DAVID H. IAUSS

Our Town 2.
Vice-President, Student-Faculty
Council 3.
Wig and Buckle—President 3,
Treasurer 2.
Psychology Assistant 3.
Natural on the stage . . . depend-
able . . . class leader . . . vice
pres. of Student Council . . .
Pres. of Wig and Buckle . . .
Miss you, serviceman!



JOHN KEISER

La Vie 2.
Political Science Club 2, 3.
Chemistry Club 2.
Philokosmian Society 2, 3.
Intramural Basketball 1, 2.
Intramural Softball 1, 2.
English . . . "Whitey" . . .
"Man, you should've been in
Mead's class today" . . . graduate
school . . . industrious . . .
Frank Sinatra's competitor for
Ava . . . sheepish smile, but
don't let it fool you . . .

KENNETH KEISER

College Chorus 1, 2, 3.
Marching Band 1, 2, 3.
Philokosmian Society 1, 2.
Ken . . . Music Ed . . . virtually unbeatable on the marimba . . . adores ping pong and Stan Kenton . . . would like to be a professional or teacher . . . always cheerful . . . always on the go.



SARA ELAINE LATSHA

College Chorus 1
Psychology Club 3.
Delphian Society 1, 2, 3.
Intramural Volleyball 2, 3.
Sociology major in liberal arts course . . . of the knitting clan . . . lively blond . . . likes to play volleyball . . . a loyal member of Delphian . . . remember the captain?



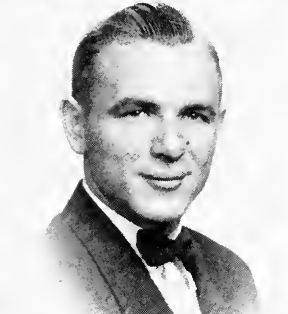
ALLEN JOHN KOPPENHAVER

College Chorus 1, 2, 3.
Marching Band 1, 2, 3.
College Orchestra 1, 2, 3.
Symphony Orchestra 1, 2, 3.
Koppy . . . Music Ed . . . a wood carver of renown . . . notorious dummy boy of big dining hall . . . fun loving tube player—great on the bass, also . . . second of the Ferocious Four (Birdie's the first) . . . listens to good music and reads a lot.



THEODORE WILLIAM LAUER

Varsity Football 3.
Varsity Basketball 3.
Varsity Baseball 3.
"Ted" to us . . . all round sportsman . . . football, baseball, basketball . . . cooperative . . . addition and asset to the school . . . one of Maud's proteges.



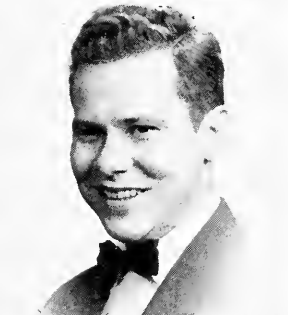
DONALD L. KREIDER

Wis and Buckle Club 1, 2, 3.
Knights of the Valley 3.
Philokosmian Society 1, 2, 3.
Class Treasurer 2.
Men's Senate 2.
Mathematics—Assistant 3.
Physics . . . "Don" . . . intelligence personified . . . frequenter of the Dean's list . . . active in many campus activities . . . outstanding track man . . . likes to indulge in lengthy debates.



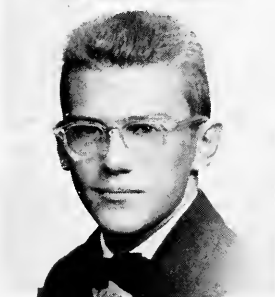
ABRAM I. LEAMAN

Future Teachers of America 2, 3.
Chemistry Club 1, 2, 3.
Kalozeotean Society 1, 2, 3.
Math-Physics Club 2, 3.
Varsity Football 1.
Hersey . . . "Abe" . . . Chem major . . . hunting enthusiast . . . married man . . . pleasant smile . . . plans to do grad work of Penn State.



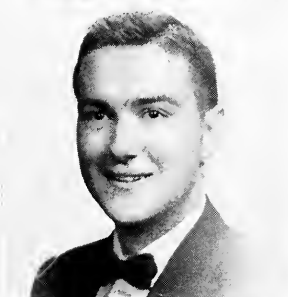
EDGAR D. LANDIS

Political Science Club 2.
Kalozeotean Society 2.
Myerstown . . . "Ed" . . . Bus. Ad. . . future insurance salesman . . . when you see a red convertible fly by—that's Ed. . . notice the short hair . . . speed demon.



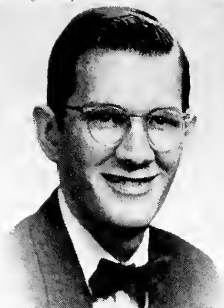
KEITH HENRY LERO

Biology Club 1, 2, 3.
Chemistry Club 1, 2.
Biology Assistant 2.
Intramural Basketball 2.
Lebanon . . . History . . . Basketball . . . Biology assistant . . . Biology Club . . . Headed for graduate school . . . one of the tall tribe.



WALTER LEFFLER

Chemistry Club 1, 2, 3.
 Intramural Basketball 1, 2, 3.
 Chem major . . . "Wally" . . .
 hitch-hikes and rides buses to
 and from Lebanon . . . ping pong
 enthusiast . . . wants to enter
 industry after graduation . . .
 handyman with figures (mathem-
 atics, of course) . . . gallantly
 defends his alma mater, LHS.

**JOHN A. McKENZIE**

College Chorus 1, 2, 3.
 Marching Band 1, 2, 3.
 College Orchestra 1, 2, 3.
 Music Education . . . "Mac" . . .
 skillful technician on the baritone
 . . . intends to teach out west . . .
 takes to water like a fish . . .
 always investigating new fields
 . . . very ambitious in all things
 that interest him.

**JAMES S. LEWIS**

Pi Gamma Mu 3.
 Men Day Student Congress 3
 Library Assistant 3
 Intramural Handball 2, 3.
 Quittie 3.
 English major . . . Palmyra . . .
 plans to teach after graduation
 . . . "Jim" . . . L.V. handball
 champion . . . drives a maroon
 Packard . . . likes to work out
 in the gym.

**THELMA GRACE McKINSTRY**

Political Science Club 3
 Biology Club 2.
 S.C.A. 2, 3.
 Chionian Society 1, 2, 3.
 English major . . . "Mickey" . . .
 plans to teach after graduation
 . . . collects pictures for a hobby
 . . . a friendly smile for everyone
 . . . "Oh, that French!"

**ALMA MARIANI**

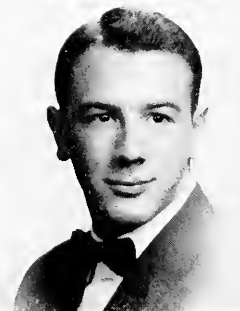
Biology Club 2, 3.
 Women's Commuter's Congress
 1, 2, 3.
 Chionian Society 1, 2, 3.
 Women's Commuter's Council—
 Vice-President 3.
 Women's Commuter's Council—
 Secretary 2.
 Intramural Basketball 1, 2, 3.
 Biology major . . . "Wait for me!"
 . . . member of Women's Com-
 muter Council for three years
 . . . intramural basketball player
 for day students . . . lively sense
 of humor . . . a future laboratory
 technician . . . resides in the
 metropolis of Hummelstown.

**JANE ELIZABETH McMURTRIE**

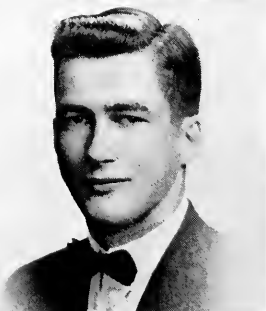
Glee Club 2, 3.
 College Orchestra 1, 2, 3.
 Hockey 1, 2.
 Quittie 3.
 Delphian Society 1, 2, 3.
 Women's Athletic Assoc. 1, 2, 3.
 Music Education . . . voice major
 . . . arduous conservie worker
 . . . women's sports editor for
 "Quittie" . . . chooses drawing
 for a hobby . . . a good student
 . . . future plans include gradu-
 ate school.

**DANIEL WALTER McGARY**

"I" Club 1, 2, 3.
 Knights of the Valley 3.
 Varsity Football 1, 3.
 Varsity Track 1, 2, 3.
 Biology—Assistant 3.
 Intramural Basketball 1, 2, 3.
 "Danny" . . . another of the
 player-managers in football . . .
 biology major . . . basketball
 manager . . . calls Steelton his
 home . . . subtle sense of humor
 . . . camera fiend.

**LEON MASON MILLER**

Chemistry Club 2, 3.
 "I" Club 3.
 Varsity Basketball 2, 3.
 Varsity Track 2, 3.
 Chem major . . . Palmyra . . .
 '62 sharpshooter on the varsity
 basketball team . . . intends to
 enter industrial chemistry . . .
 member of chem club (especially
 when food is to be had) . . . an
 advertiser on the Quittie staff . . .
 likes hot music, pretty girls, ice
 cream, basketball, and track . . .
 drives a '48 Plymouth.



GRACE MOHN

College Chorus 1, 2, 3.
Girl's Band 1, 2, 3.
College Orchestra 1, 2, 3.
Delphian Society 1, 2, 3.
Secretary of Class 1.
W.R.S.G. 2.

Gracie . . . Music Education major . . . in the market for knitting socks . . . will be teaching children to sing . . . her remark is "Oh, really?" . . . the shortest member of the crew at 4'11", with brown hair and eyes . . . have you heard Gracie and her flute?



MARTHA MARIE RAPP

College Chorus 2, 3.
PMEA 3.
Future Teachers of America 2, 3
S.C.A. 2, 3.

Martha . . . Music major . . . keeps the mailman busy by writing so many letters . . . future choir director and school teacher . . . in comment always says, "Isn't that terrific?" . . . 5'3", dark blond . . . blue-eyed transfer from Penn State . . . hobby—her dog.



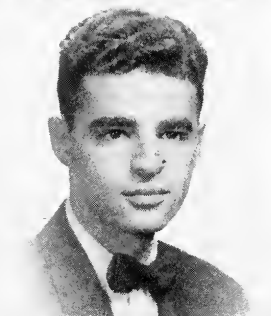
ALBERT E. MOSER

Glee Club 2, 3.
College Chorus 1, 2, 3.
Music Education . . . "Al" . . . husk of no little volume . . . generous with all his musical talents . . . plans to follow Greely's advice and go west to teach . . . photography is a secondary interest . . . proud father recently.



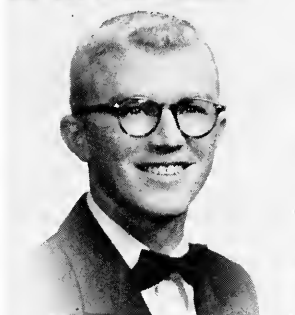
JAMES RESSLER

"Jim" . . . a head for business . . . "Why, sure!" . . . reserved . . . has an eye for women . . . Bus. Ad.



DAVID D. NEISWENDER

Chemistry 2, 3.
Student Affiliate of American Chemical Society 3.
Knights of the Valley 3.
Class Treasurer 3.
Men Day Student Congress 2, 3.
Chemistry—Assistant 3.
Chemistry . . . class treasurer . . . Dean's list student . . . makes the chem. lab his home . . . day student from Palmyra . . . Dave and Leon . . . in spare time builder of model airplanes . .



PAULINE ELIZABETH RITTLE

Glee Club 3.
College Chorus 1, 2, 3.
Girls' Band 1, 2, 3.
Clonian Society 1, 2, 3.
Intramural Basketball 1.
Music Education . . . , majoring in organ . . . "Polly" . . . an avid fan of baseball, especially the Athletics . . . liked by all . . . enjoys playing pinocle . . . a conscientious student who plans to teach music.



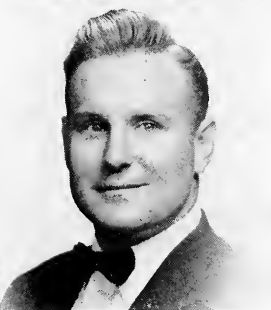
JOHN D. RALSTON

Glee Club 1, 2, 3.
College Chorus 1, 2, 3.
Marching Band 3.
Music Ed . . . plans to sing opera and in concerts . . . teaching comes later . . . Want to know about opera and its singers? Ask John . . . one of Crawford's products . . . member of near extinct species on campus—veterans . . . a Virginian who lives in Harrisburg.



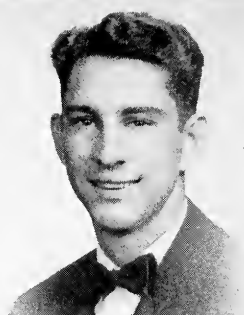
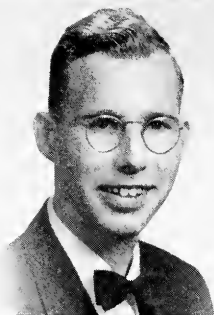
HAROLD A. ROTHENBERGER

College Chorus 1, 2, 3.
Marching Band 1, 2, 3.
College Orchestra 1, 2, 3.
Symphony Orchestra 1, 2, 3.
Philokomian Society 1, 2, 3.
Music Education . . . "Rothy" . . . joined the "Ball and Chain" club recently . . . Harold and his clarinet are a familiar twosome . . . plans to enter full-time teaching . . . won't part with that "Chevie" . . . "Do you think Edie will mind?"



GEORGE ROWE

S.C.A. 1, 2, 3.
Kalozetan Society 1, 2, 3.
Psychology Club 3.
Psychology . . . conscientious
. . . model ship builder . . .
"How about that" . . . future
Freud . . . "wolf in sheep's
clothing" . . . ambition—master's
degree.

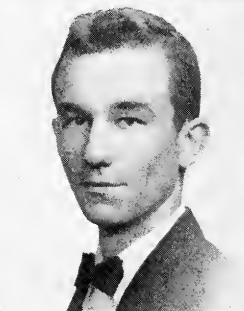
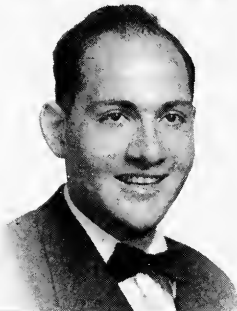


MARKUS SCHNEIDERHAN

College Chorus 1, 2, 3.
Marching Band 1, 2, 3.
Philokosmian Society 1, 2, 3.
Mark . . . Music major . . .
woodwinds future teacher and
Mark . . . looks good as ballerina
in petticoat . . . smile for every-
one . . . modest but good en-
thusiastic performer . . . Snyder
A. C. member.

MARIO I. RUSSO

College Chorus 1, 2.
Marching Band 1, 2.
Future Teachers of America 1.
Music Education . . . "Joe" . . .
prospective teacher . . . wife
possesses his major interests
. . . main field of instruments is
woodwind . . . has a professor
air . . . that smile he wears is
almost perpetual.



PHILIP SELTZER

Political Science Club 1, 2, 3.
Kalozetan Society 1, 2.
Intramural Basketball 1.
Political Science Major . . .
Lebanon . . . "Phil" is often seen
with the boys from Lebanon . . .
played intramural basketball . . .
has an accurate one handed push
shot . . . spends much time in
the library . . . future is un-
decided.

FLORENCE MARIE SAUDER

Marching Band 3.
Symphony Orchestra 2, 3.
Future Teachers of America 3.
Women's Resident Student Gov. 3.
S.C.A. 1, 2.
Delphian Society 1, 2, 3.
Highspire, Pa. . . . Music Ed.
. . . fascinating female . . . un-
usual hobby . . . collection of
china dogs . . . one of the few
girl trombonists . . . Flo . . .
"My word!"



CHESTER J. SHERMAN, JR.

Philokosmian Society 2, 3.
Lebanon . . . "Chet" . . . Bus.
Ad. . . says he, "Gad" . . .
one of those tied by a ring . . .
wants to have his own business
. . . his hobby—work?

SHIRLEY FAYE SCHAEFFER

Varsity Basketball 2, 3.
Varsity Hockey 2.
Delphian Society 2, 3.
Women's Athletic Assoc. 3.
Hummelstown, Pa. . . . Sociology
. . . snappy-eyed brunette . . .
Sara's roommate . . . one of the
WAA'ers . . . sports livewire.

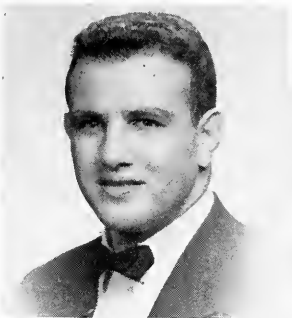


WILLIAM R. SHOPPELL, JR.

Glee Club 1, 2, 3.
Marching Band 1, 2, 3.
Future Teachers of America 2, 3.
Kalozetan Society 1, 2, 3.
Student-Faculty—Treasurer 3.
Class President 2, 3.
Music Education . . . "Bill" . . .
the voice with a future . . .
knows anything and everything
about reading . . . life guard with
a keen wit . . . very active on and
off campus . . . third of "The
Fercious Four."

GILBERT SMITH

Psychology Club 3.
Kalozetean Society 2.
Varsity Football 1, 2.
Psychology . . . "Gil" . . . co-
operative . . . varsity football
. . . veteran . . . always losing
things . . . see his notices on the
bulletin board.



ROBERT A. STEELE

Future Teachers of America 4.
Intramural Softball 2.
"Need a Dodge to be fixed?"
. . . a good friend . . . some his-
tory class will love him . . .
"Bok" . . . has a ball and chain
. . . likes to putter with woodwork.

ARLENE SNYDER

Psychology Club 2, 3.
Delphian Society 2, 3.
Psychology major . . . member
of the Psychology Club . . . loyal
Delphian . . . "Hey Doc!" . . .
quiet and reserved . . . one of the
two attractive college nurses . . .
watch your pulse, boys.

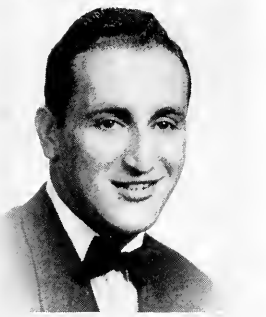


JANET STRAW

College Chorus 3.
Girl's Band 3.
Delphian Society 3.
Harrisburg Pa. . . Music . . .
Jan . . . transferred from Madison
College for Women . . . has
teaching in mind . . . short but
peppy . . . wants private piano
students.

JOAN McNEW SPANGLER

Glee Club 2, 3.
College Chorus 1, 2, 3.
Girl's Band 1, 2, 3.
S.C.A. 1, 2, 3.
Life Work Recruits 1, 2, 3.
Clionian Society 1, 2, 3.
Chambersburg, Pa. . . Music
Ed. . . one of the warblers in
Glee Club . . . gets a charge out
of life . . . a go-getter for Campus
Chest . . . where there is singing,
there's Jo . . . likes to swim.

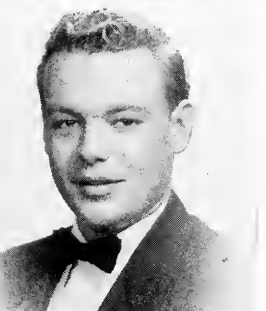


ROBERT TARANTOLO

"L." Club 3.
Kalozetean Society 2, 3.
Knights of the Valley 2, 3.
Basketball—Jr Varsity 2.
Varsity Baseball 1, 2.
Intramural Football 2, 3.
Economics . . . "Tin" . . . per-
sonality plus . . . patrols center-
field in baseball . . . smooth
dancer . . . calls Long Branch his
home . . . sharp dresser.

JEAN ARLENE STAHL

College Chorus 1, 2, 3.
Girl's Band 1, 2, 3.
Clionian Society 1, 2, 3.
Quitte 3.
Intramural Basketball 1.
Hershey . . . Music Ed. . .
makes the daily bus trip every day
. . . cute, brown eyes . . . has a
smile for everyone . . . where
there's Pauline there's Jean . . .
tickles the ivories.



NEIL TIMBERLIN

College Chorus 1, 2, 3.
Marching Band 1, 2, 3.
College Orchestra 1, 2, 3.
La Vie 2, 3.
Kalozetean Society 1, 2, 3.
Music Education . . . "Tiger"
"Snyder's A.C. Forever" . . .
Neil and trumpet are synonymous
. . . sports enthusiast and wrest-
ler ala Hershey . . . dreams of
the shore and the shark club . . .
writes newspaper columns in his
spare time.

EUGENE C. TRITCH

College Chorus 1, 2, 3.
 Marching Band 1, 2, 3.
 College Orchestra 2, 3.
 Symphony Orchestra 1, 2, 3.
 Softball 1, 2, 3, Snyder A. C.
 Music Ed. . . . trombone major
 who loves to fish come high water
 or . . . What-a- voice? . . .
 possessor of cool wit and a smooth
 dance band . . . a veteran, too
 . . . future teacher and composer
 . . . hails from Middletown, Pa.



JOHN A. WALTER

Glee Club 3.
 Vice-Pres. of Class 3.
 Varsity Track 1, 2, 3.
 Biology Assistant 2, 3.
 La Vie 2, 3.
 Quittie 3.
 Pre-med . . . "Johnnie" . . .
 Lebanon's gilt to the ladies . . .
 exceptional student . . . sport
 enthusiast . . . always ready to
 lend a hand . . . neat dresser . . .
 fourth of the "Four".

STANLEY VANSANT

Glee Club 2, 3.
 College Chorus 1, 2, 3.
 Marching Band 1, 2, 3.
 Stan . . . Music Ed. . . . future
 teacher . . . loves to sleep . . .
 director of social activities at
 Snyder's A.C. . . . star of Paula's
 Flight . . . velvet sax playing

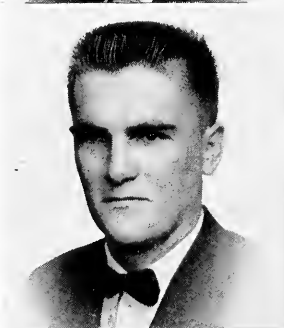


DAVID H. WETZEL

Business Administration . . .
 one of the Jersey gang . . .
 "Wetz" . . . future big business-
 man . . . owner of a snappy black
 Ford . . . "and in a Christian
 college yet!" . . . "Smoly Hokes."

WILLIAM STANLEY VOUGHT

Chemistry Club 1, 2, 3.
 Student Affiliate American Chem-
 ical Society 3.
 Knights of the Valley 2, 3.
 Men's Senate 3.
 Quittie 3.
 Football 1, 2, 3.
 Chemistry . . . "Big Bill" . . .
 outstanding student and worker
 . . . quite a basketball player
 . . . easy going, pleasant personality
 . . . versatile . . . mad Chemist.



PAUL H. WHITE

College Chorus 1, 2, 3.
 Marching Band 1, 2, 3.
 Music Education . . . "Whitey"
 . . . reserved but companionable
 . . . teaching seems to be his
 next goal . . . has a certain settled
 matrimonial look . . . prefers
 woodwinds to all other instru-
 ments . . . "Yeah"

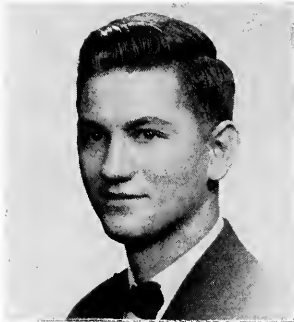
WILLIAM T. WALBORN

Political Science Club 1, 2, 3.
 Future Teachers of America 3.
 "Beautiful, beautiful brown eyes"
 . . . "Bill" . . . knows all the
 answers to the world's problems
 . . . a "pol-sci-er" of course . . .
 teaching is his love . . . play-
 ground supervisor.



ALICIA JANE WHITEMAN

College Chorus 1, 2, 3.
 Girl's Band 2, 3.
 Varsity Hockey 1, 2, 3.
 Delphian Society 3.
 W.A.A. 2, 3.
 Intramural Softball 1, 2, 3.
 Lee . . . a Music Education
 major . . . reads those mystery
 novels . . . will be a good music
 teacher some day . . . when
 questioning answers, "Oh, Yeah?"
 . . . the tricky, blond, blue-eyed
 "Miss Quittie" of the class . . .
 likes hockey.



MERLE LEON WISE

"L" Club 1, 2, 3.
Varsity Baseball 1, 2, 3.
Intramural Basketball 1, 2, 3.
Intramural Handball 2, 3.
Intramural Football 1, 2, 3.
Intramural Volleyball 2, 3.

Economics . . . what facial expressions . . . good battery mate to have around . . . always looking for ways to lose those pounds . . . player-manager . . . answers to the call of "Burlly" . . . sports enthusiast.



PATRICIA ANN WOOD

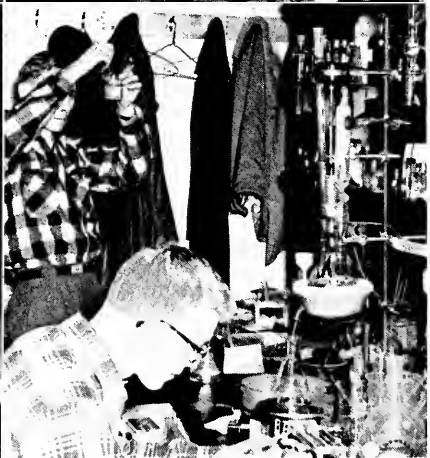
College Chorus 1, 2, 3.
Chemistry Club 2, 3.
La Vie 1, 2.
Clonian Society 1, 2, 3.
Quittie 3.
Library Assistant 2, 3.

Math major . . . "Pat" . . . editor of the "Quittie" . . . collects salt and pepper shakers . . . always busy . . . ambition is to teach and get married . . . already possesses a diamond on third finger, left hand . . . did marvelous job on yearbook.



WILLIAM H. WOOD

Lebanon . . . "Woodie" . . . Physics major . . . likes music . . . headed for radio research engineer . . . always a new car . . . spends his nights spinning discs for local radio station.





SOPHOMORE CLASS OFFICERS

<i>President</i>	GAIL EDGAR
<i>Vice-President</i>	WILLIAM KELLY
<i>Secretary</i>	BARBARA RANCK
<i>Treasurer</i>	PAUL HOLLIGAN



SOPHOMORE CLASS

The Class of 1954 certainly demonstrated in its freshman year that it means to make its presence felt at Valley. Under the leadership of president Lou Sorrentino, ably assisted by vice-president Calvin Haverstock, secretary Gail Edgar, and treasurer Jack Irvin this group contributed to a successful social year at L.V. the fine Frosh Hop with its South Sea Island Theme.

Later in the year they proved their unusual political views in electing their present diminutive but dynamic president, Gail Edgar. With her fellow officers, secretary Barbara Ranck, vice-president Bill Kelly, and treasurer Paul Holligan, she has carried on the good work of her predecessors. The class sponsored an enjoyable hay-ride and dance in the fall, and they are forwarding plans to sponsor a Jazz Concert later in the spring.

This class is another L.V. success. They're a success by means of hard work alone, with a total lack of pull. Ask the men of the class. They have no pull at all! Just give them enough rope and they'll end up in the Quittie!







FRESHMAN CLASS OFFICERS

<i>President</i>	ROSS FASICK
<i>Vice-President</i>	GEORGE SEIFERT
<i>Secretary</i>	VIRGINIA FEESER
<i>Treasurer</i>	RONALD GEESEY

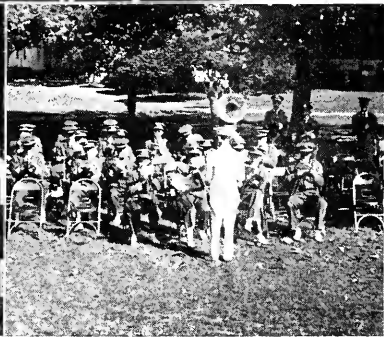
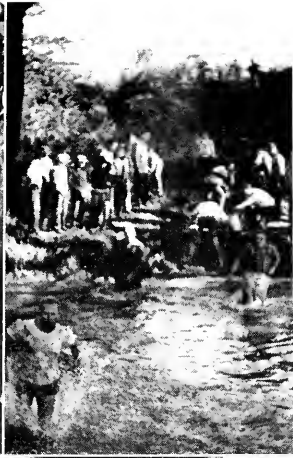


FRESHMAN CLASS

Here is a group in which we of the Junior Class recognize kindred spirits. They have exhibited as decided a taste in headgear as we had when freshmen.

The men of this class didn't stop with winning the Tug-o-war. They went on to wrap up the tag-football title and defeat the soph football team.

With spirit like this we feel that their officers, president Ross Fasick, vice-president George Seifert, secretary Virginia Feeser, and treasurer Ronald Geesey can lead them to take their place as an outstanding group on campus.







MISS QUITTIE
Alicia Whiteman



MISS QUITTIE COURT

Joan Gilbert



MISS QUITTIE COURT

Grace Mohn



MR. QUITTIE

Joseph Ferrer



MISS L. V. C.
Patricia Wood

MR. L. V. C.
John Walter





MAY DAY—1951



MAY DAY

"Lights—camera—action," yelled producer Rutherford Cripes as the cameras rolled on the 1951 May Day production of "Pirate Island." The scene was set for talented Darlene Moyer as the small-town girl who wins a ticket to Hollywood is "found" by the producer and captivates all movieland with her "captive maiden" dance. In glittering technicolor, pirates, cannibals, sailors, and skeletons danced their way into the hearts of the thrilled audience.

The gay festivities were led by the beautiful May Queen, Cynthia Johnson Bruaw, her maid of honor Ruth Ann Brown, and her court of lovely ladies—Rufina Balmer, Joyce Carpenter, Jeanne Edwards, Sara Etzweiler, Evelyn Long and Beatrice Royer. The honor of crowning the queen was held by Miss Mary E. Gillespie, dean of the Conservatory.

This elegant gaiety was climaxed by the May Pole Dance performed by the lords and ladies of the Junior class followed by the procession of the crowned queen and her court.

Due appreciation should be paid to Dr. George Struble and Mrs. Ernestine Smith for the script and excellent direction of the piracy which made the 1951 May Day one of the best.





CYNTHIA JOHNSON BRUAW
QUEEN—1951





STUDENT-FACULTY COUNCIL

OFFICERS

<i>President</i>	FRED SAMPLE
<i>Vice-President</i>	EDWARD TESNAR
<i>Secretary</i>	JANE LUTZ
<i>Treasurer</i>	WILLIAM SHOPPELL

The purpose of the Student-Faculty Council is to foster understanding and cooperation between the students and faculty of Lebanon Valley College, and to advance the welfare of the student body through the coordination of student activities.

The Student-Faculty Council is composed of one representative from each recognized student organization and three representatives from the faculty.



JIGGERBOARD

OFFICERS

<i>President</i>	LOIS ADAMS
<i>Vice-President</i>	DIANE RANDOLPH
<i>Secretary</i>	PHYLLIS BARNHART
<i>Treasurer</i>	JULIA THATCHER

Responsibility for conduct and welfare of dormitory girls is carried by the Resident Women's Student Government Association, better known as "Jiggerboard." This representative body is composed of dormitory girls from each class. Along with the solving of disciplinary problems, Jiggerboard sponsored Gander Week-end and the annual Christmas Dinner-Dance when the girls turned the tables and asked the boys of their choice to the dance.



THE MEN'S SENATE

OFFICERS

<i>President</i>	DAVE DUNDORE
<i>Vice-President</i>	JIM ZANGRILLI
<i>Secretary-Treasurer</i>	BILL JONES

The Men's Senate, composed of representatives of each of the four classes, has functioned throughout the year under the capable leadership of its president, Dave Dundore. The Senate serves not only to enforce the Freshman rules and the rules of the men's dormitory, but also deals with problems concerning the betterment of dormitory life. Some examples are the establishment of adequate parking facilities, improvements in the dorm, and the promotion of a more friendly atmosphere among the residents. The plans this year included the production of a dorm show to be presented by the residents of the dorm for the benefit of the dormitory. Much of the success of this year's program can be attributed to the splendid cooperation received by the Senate from all the residents of the dormitory.



W. C. C.

OFFICERS

<i>President</i>	LOIS WHITE
<i>Vice-President</i>	ALMA MARIANI
<i>Secretary-Treasurer</i>	JOAN GILBERT

The Women's Commuter Council is the governing body for the women day students. The new advisor was Miss Constance Dent who is the Dean of Women.

First on the list of events was the initiation of the Freshmen as they received an "L-Book" test. After the test the Frosh entertained the Upperclassmen.

In the beginning of November the W. C. C. participated in the annual campus activity, the County Fair.

When the spirit of Christmas hovered around the corner, the girls decorated the rooms and planned for a party before vacation began.

February was the month for Heart Sister Week, and also for the yearly occasion, the Valentine Dance, which was co-sponsored with the Men's Day Student Congress. A queen, chosen from the Day Students, reigned over the dance.



M. D. S. C.

OFFICERS

<i>President</i>	JAY DUTWEILER
<i>Vice-President</i>	DONALD BLANKEN
<i>Secretary</i>	ROBERT BOYD
<i>Treasurer</i>	DONALD HEDGECKOCK

The Men's Day Student Congress is the governing body of the Association of Men Day Students of Lebanon Valley College. This association is the largest of the four student organizations on our campus. The purpose of the Congress is to promote cooperation and harmony among the male day students.

A large part of the activities of the Congress are the disciplinary actions taken during the indoctrinary period for Freshmen. Such actions are more difficult to enforce among the day-students than among the dormitory students because of the looser ties between men of the association. However, several freshman violators were brought before the Congress in the past year. The Congress also acted on such issues as parking problems, wearing of dinks to dances, etc.

The Congress, together with the W. C. C., sponsors a dance each year which is one of the highlights of the social activities of the day students. The dance is usually in February and is called the Valentine Dance.



CLIONIAN LITERARY SOCIETY

OFFICERS

<i>President</i>	JANE LUTZ
<i>Vice-President</i>	JULIA THATCHER
<i>Secretary</i>	LOIS ADAMS
<i>Corresponding Secretary</i>	JOAN RINGLE
<i>Treasurer</i>	GERALDINE NICHOLS

New ideas and activities were the goals set by the members of the Clionian Literary Society, the oldest of the Women's Literary Societies.

Rush Week was first on the calendar of events. The Freshman girls were invited on a hike to become acquainted with the members of the society. The Frosh were also invited to the annual Clio Tea held at the home of Mr. and Mrs. Bender.

The Sophomores then decided, that as a part of their initiation, the new Clionian members should help to clean and redecorate the room recently founded as a place in which the Philo-Clio Societies can hold their business meetings.

Clio also participated in the County Fair program which is a traditional campus event. During the year a play was presented by a cast chosen from both societies.

The year was successfully completed with the annual dinner-dance held by Clio and her brother society, Philo.



PHI LAMBDA SIGMA

OFFICERS

<i>President</i>	ROBERT HOFFSOMMER
<i>Vice-President</i>	DONALD HEDGECOCK
<i>Corresponding Secretary</i>	DONALD KREIDER
<i>Recording Secretary</i>	WILLIAM KELLY
<i>Treasurer</i>	CHARLES BLAICH
<i>Chaplain</i>	ALLISON STELLA

During its eighty-fifth year Philo is continuing through its constitutional change. When Philo emerges from this transition it will be a stronger, more unified society than ever before in its history. The new constitution will make Philo a social organization with emphasis on brotherhood.

During the present year, along with its sister society, Clio, has presented successfully a pep rally—block dance, a comedy in three acts *So This Is London*, and a private party for their members. Through the co-operation of the administration, the joint societies have obtained a new social hall which will be decorated and furnished during the year. During the remainder of the year Philo plans to hold a stag night and a joint society night.

The culmination of the year's activities will come with the Philo-Clio week-end which will include the dedication of the new hall and the joint dinner-dance.



DELPHIAN LITERARY SOCIETY

OFFICERS

<i>President</i>	ELIZABETH BEITTEL
<i>Vice-President</i>	DOROTHY WITMER
<i>Recording Secretary</i>	GRACE MOHN
<i>Corresponding Secretary</i>	BARBARA RANCK
<i>Treasurer</i>	WILMA STAMBACH

Five foot two, eyes of blue, has anybody seen my gal? This tune swept the campus as the Delphian Initiates donned the garb of the 20's, and once again became Flappers for a day. This was highlighted by an original show featuring those gorgeous gals with such never to be forgotten songs as *Moonlight Bay*. Rushing season was carried on in its traditional fashion with the entire society hiking to the Quittie stream and attending an afternoon tea in Delphian Hall. Thus with another year successfully underway, Delphian had again become the leading women's social organization on campus; her membership increased to nearly one hundred.

Identifying our girls in all the phases of college life are our new sharp, white blazers, navy sport jackets, and of course the simple but good looking ΔΔΣ pins.

As always the long awaited highlight of the society season was K-D weekend held early in March. Beginning with a combined societies play Friday night, the festivities were climaxed Saturday evening with a formal dinner and dance held at the Brunswick Hotel in Lancaster. At this time Delphian with her brother society Kalo, picked a queen to reign over the dance. The evening shall long be remembered as an enjoyable one.

Leadership and capable guidance are the qualities necessary for the success of any organization. This was more than exemplified by the President "Liz" Beittel who again made Delphian one of the leading societies on campus.



KALAZETEAN LITERARY SOCIETY

OFFICERS

<i>President</i>	JAMES ZANGRILLI
<i>Vice-President</i>	JOSEPH SHEMETA
<i>Recording Secretary</i>	PAUL ALEPA
<i>Corresponding Secretary</i>	ALBERT CARELLI
<i>Treasurer</i>	ROBERT TARANTOLO
<i>Chaplain</i>	GEORGE KNOBL
<i>Sergeant-At-Arms</i>	NICHOLAS BOVA

Kappa Lambda Sigma, better known as Kalo, had an extremely productive year. After their first smoker which lacked nothing but enthusiasm, Kalo reared its head and started on the right path toward another successful year. The attendance of meetings increased 90% due to an amendment to the constitution whereby any member missing 3 regularly scheduled meetings was considered delinquent. Kalo and its sister society sponsored a big weekend which broke the winter monotony from mid-term to spring. The play "The Silver Whistle" presented by Kalo-Delphian starring Armen Banklian with Barbara Ranck and David Dundore who furnished the romantic scenes only hinted at what a "swelligant" time everyone was to have the following evening.

Thirty-five new members were accepted and initiated this past year. One odd thing that happened was that last year's two top officers just switched positions.

Possibly the high spot of the fall season was the program put on in Engle Hall by Kalo and sister Delphian featuring the environment of 1924. Remember the chorus line and cheerleaders?



THE KNIGHTS OF THE VALLEY

OFFICERS

<i>Lord of the Castle</i>	ED TESNAR
<i>Lord High Steward</i>	FRED SAMPLE
<i>Scribe</i>	STERLING STRAUSE
<i>Keeper of the Monies</i>	WILLIAM JONES
<i>Friar</i>	ROBERT TARANTOLO
<i>Keeper of the Gate</i>	SHERDELL SNYDER

The Knights of the Valley, serving this year under the Lord of the Castle, Ed Tesnar, have furthered their purpose of promoting fellowship and good will. In this, their second year of organization, the Knights have proven their worth by their contribution to all campus activities and the promotion of a better college spirit. During the year many social activities were held, which not only served as entertainment for the members, but also afforded an opportunity for the advancement of fellowship. Through the sale of Christmas cards, funds were raised for the annual dinner dance which climaxes the year's activities.



LA VIE STAFF

Editor BETTY BAKLEY

*Associate Editor
in charge of Sports* JIM PACY

Associate Editor BARBARA RANCK

Conservatory Editors JANE McMURTRIE
MARDIA MELROY

Exchange Editor ADORA RABIGER

News Editors LUCIE PORTIER
BETTY CRISWELL
JOHN WALTER

Business Manager JAMES QUICK

Circulation Editor ALLISON STELLA

Photographer ED TESNAR

Faculty Advisors G. G. STRUBLE
T. D. KELLER
E. P. RUTLEDGE

Business Advisor ROBERT RILEY

Reporters GAIL EDGAR
JO FOX
WILLIAM JONES
GLORIA GULLIVER
MELVIN NIPE
JACK KEISER
LUCIE PORTIER
JOYCE SHETTEL
FLORENCE SAUDER
RUTH SHAEFFER
FRED SAMPLE
ROBERT HOFFSOMMER



WIG AND BUCKLE

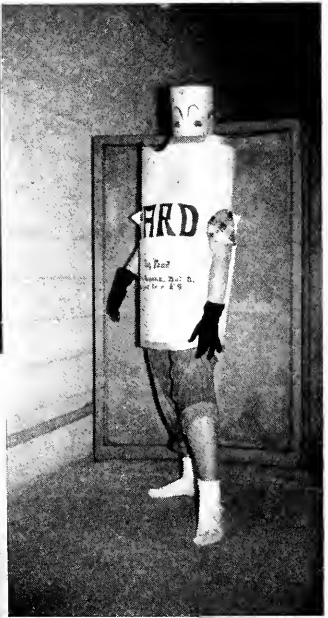
OFFICERS

<i>President</i>	ALLISON STELLA
<i>Secretary</i>	DARLENE MOYER
<i>Treasurer</i>	GEORGE CURFMAN

Each year the dramatics club, Wig and Buckle, dims the houselights on three productions for LVC entertainment. On stage and behind the scenes are those interested in acting, make-up, scenery, directing, set construction or writing. In October Wig and Buckle saluted prospective members with two skits, *The Monkey's Paw* and *Tea Pot on the Rocks*, which brought forth some new talent, student produced and student directed. The billboards acclaimed *The Glass Menagerie* as the first of the two major productions of the year and advertised it as the story of a crippled girl from a socially prominent Southern family. Her psychological maladjustment led her to worship one of several glass ornaments she had collected and later a young man who finally jilted her.

The highlights of the second semester news exploited the last major production. Last year *Hamlet* held this honor with a New York cast and supporting roles from *Wig and Buckle*. With Dr. George Struble and Professor Theodore Keller as its advisors and critics Wig and Buckle has the headlines in dramatic entertainment.







**MATH-PHYSICS
CLUB**

OFFICERS

President DONALD KREIDER
Vice-President FRED SAMPLE
Secretary-Treasurer HENRY HOLLINGER



**GREEN
BLOTTER**

OFFICERS

Head Scop BETTY BAKLEY
Keeper of the word Harde LUCIE PORTIER

POLITICAL
SCIENCE
CLUB



OFFICERS

President
Vice-President
Secretary
Treasurer
Parliamentarian

EVELYN TOSER
SAM YEAGLEY
LUCIE PORTIER
JOE SHEMETA
HERBERT HEFFLEY

PI GAMMA
MU



OFFICERS

President
Vice-President
Secretary-Treasurer

HERBERT HEFFLEY
BERNARD FOGLE
SHIRLEY SCHAEFFER



CHEMISTRY CLUB

OFFICERS

<i>President</i>	STERLING STRAUSE
<i>Vice-President</i>	ROBERT HOFFSOMMER
<i>Secretary-Treasurer</i>	DONALD HEDGECK



STUDENT AFFILIATE OF THE AMERICAN CHEMICAL SOCIETY

OFFICERS

<i>President</i>	STERLING STRAUSE
<i>Vice-President</i>	ROBERT HOFFSOMMER
<i>Secretary-Treasurer</i>	DONALD HEDGECK

**BIOLOGY
CLUB**



OFFICERS

<i>President</i>	WILLIAM CRAIGHEAD
<i>Vice-President</i>	MICHAEL SZOLLOSE
<i>Secretary</i>	BETTY BAKLEY
<i>Treasurer</i>	GLORIA GULLIVER

**PSYCHOLOGY
CLUB**



OFFICERS

<i>President</i>	ARLENE SNYDER
<i>Vice-President</i>	ELIZABETH BEITTEL
<i>Secretary-Treasurer</i>	CLYDE BAVER



F. T. A.

OFFICERS

<i>President</i>	FRED SAMPLE
<i>Vice-President</i>	EDWARD TESNAR
<i>Recording Secretary</i>	RUTH SHAEFFER
<i>Corresponding Secretary</i>	LOIS ADAMS
<i>Treasurer</i>	NANCY MYERS





COLLEGE CHURCH



THE STUDENT CHRISTIAN ASSOCIATION OF LEBANON VALLEY COLLEGE

OFFICERS

<i>President</i>	PAUL STAMBACH	<i>Secretary</i>	BARBARA RANCK
<i>Vice-President</i>	GEORGE CURFMAN	<i>Treasurer</i>	GLENN DIETRICH
<i>Vice-President</i>	PHYLLIS BARNHART		

Voluntary student Christian groups have been a part of college life since the founding of the first colleges in America. During Colonial days these groups were small secret societies for "mutual conversation and assistance in spiritual things." By 1856 there were religious societies in 70 of the 200 colleges and seminaries in America. Our S.C.A. arose from the merger of Y.M.C.A. and Y.W.C.A. two years ago to create a more compact and workable group than the former independent cabinets of the two groups.

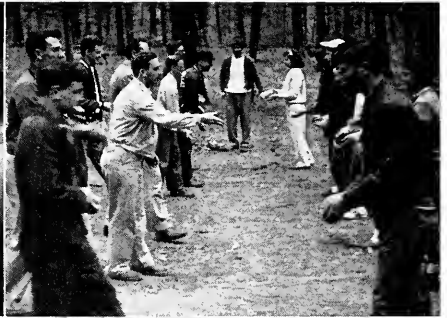
The Student Christian Association on campus plays an important part in the religious and social aspects of college life. Upon enrolling in the College each student automatically becomes a member of the S.C.A. The purpose is best expressed in the preamble:

We the members of the Student Christian Association of Lebanon Valley College, in order to provide for a coordinated program of religious and social activities, to advance the welfare and common interests of the students of the College, establish this Constitution.

The organization has an executive committee of a President, Vice-President for Men, Vice-President for Women, a Secretary, a Treasurer, and sub-chairmen such as for Fellowship Hour, Music, Social, Bible Study, Inter-collegiate, Inter-Church, Publicity, Special Services, Campus Chest, Calendar, Sunday School, and four commissions—Christian Heritage, Personal and Campus Affairs, Social Responsibility, and World Relatedness. Professor Carl Ehrhart is advisor.

In the course of this year it sponsored Freshman Week, Campus Chest Drive, County Fair, Parents Week-end, International Week-end, weekly Fellowship Hour, and special services and activities around holidays.

The S.C.A. is an organization of all students, and seeks to advance the welfare and common interests of the students and the college through a deeper faith in God.



LIFE WORK RECRUITS



OFFICERS

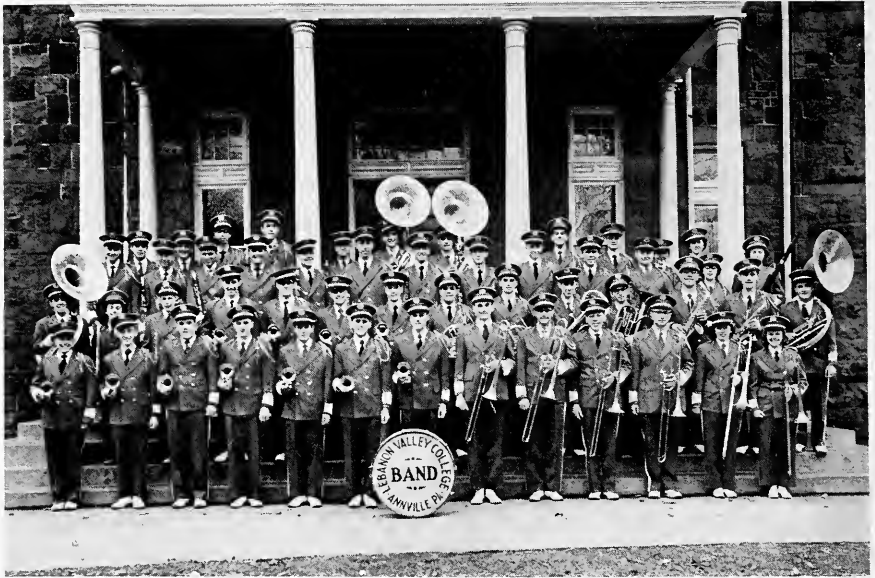
<i>President</i>	BERNARD FOGLE
<i>Vice-President</i>	ROBERT DAUGHERTY
<i>Secretary</i>	RUTH SHAEFFER
<i>Treasurer</i>	GOLDEN GAITHER
<i>R.D.C.</i>	RUTH M. STAMBACH

CONSERVATORY OF MUSIC



MISS GILLESPIE

Because of her unselfish and loyal devotion to the students and the school she has won the high esteem of students and faculty. Her high integrity as a teacher and her dedication to the ideal of giving "Music to the world" has and will continue to be a challenge to us.



COLLEGE BAND

Yea-a-a Band! This cheer heard at every football game gave evidence of the enthusiasm created by the snappy "Blue and Whites"—the Lebanon Valley marching band. Sparked by the majorettes, the band added zest and excitement to every game by their intricate, colorful formations carefully worked out each week.

Concerts given in the spring showed the high degree of musical interpretations attained by the band.



GLEE CLUB

"The lights grew dimmer—all talking ceased and the director raised the baton expectantly—a song was born! Yes, a song was born in the hearts of the Glee Club members, in the heart of the director and in the hearts of the listeners who thrilled to the music created for and given to them." This atmosphere was evident at the many concerts given by the Glee Club directed by Mr. Rutledge.

Climaxing the year's concerts was the annual tour of many cities in Pennsylvania and Maryland, including Washington, D. C., where the Glee Club demonstrated its fine quality with numbers such as "Song of America," "Go Down Death," and "The Battle Hymn of the Republic."



SYMPHONY ORCHESTRA

Good music, shared responsibilities, hard work and fun—that's what symphony means to its members. There are the routine weekly rehearsals. Then there's the shiver that goes up your spine before going on the stage to play. Next is Mr. Rutledge with his humorous manner and patient attitude.

The symphony gave its annual program in the spring.

Thus another year of work and excitement for the symphony ended. But more than these simple things will remain in the memory of its members. They will always remember the loyalty and devotion to an ideal of cooperation and to the creation of beautiful music which characterized the members and its leader.



CHORUS

Our thanks to Dr. Lara Hoggard, one of the finest directors in the U. S., now assistant to Fred Waring, for the inspiring moments given to us. His ability as a director was equaled by his ability to charm everyone with his magnetic personality. The L.V. chorus is grateful for the experience of performing the "Song of America" in its spring concert under the direction of Dr. Hoggard.



COLLEGE ORCHESTRA



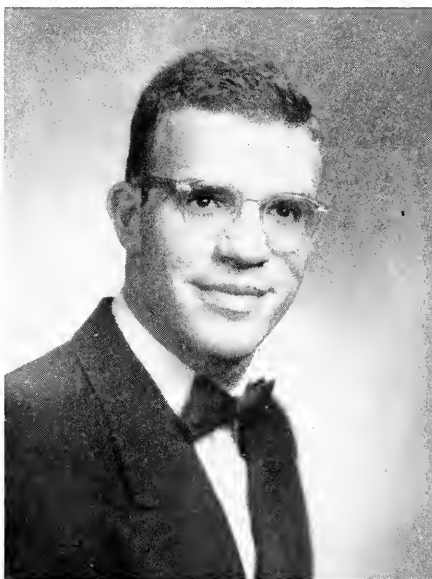
GIRLS' BAND DRUM MAJORS



OUTSTANDING VOCALISTS



PAULINE RITTLE



WILLIAM SHOPPEL

OUTSTANDING INSTRUMENTALISTS



JOYCE HAMMOCK

EUGENE TRITCH



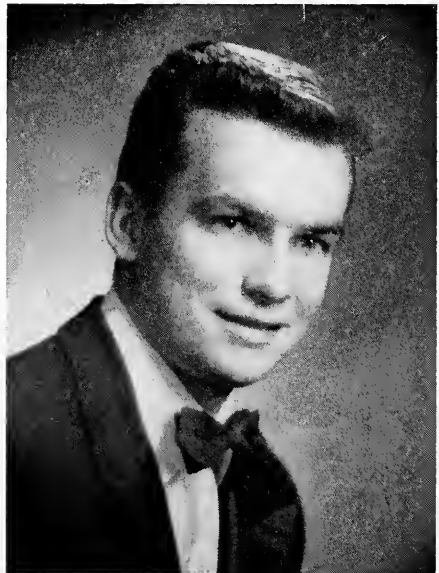
ATHLETICS



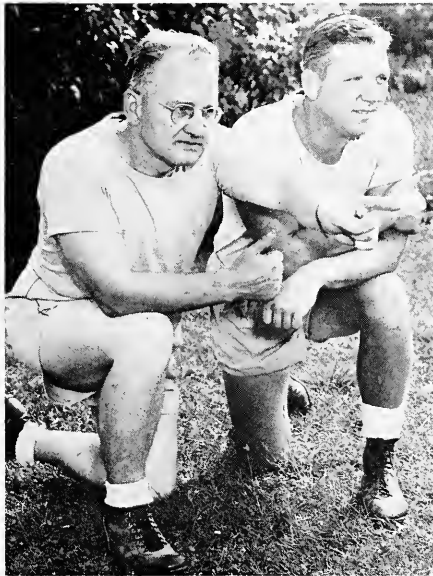
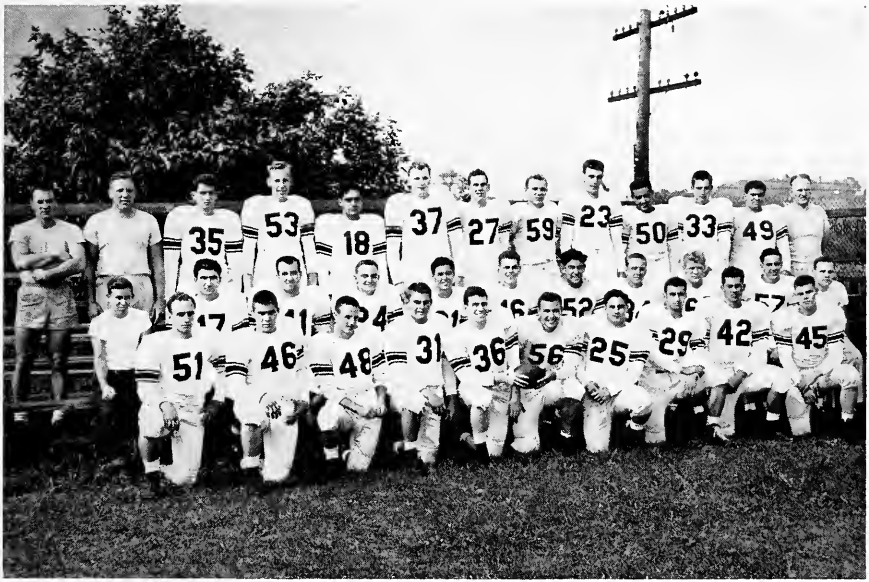


OUTSTANDING ATHLETES

SHIRLEY SCHAEFFER



RICHIE FURDA





FRED SAMPLE—Co-Capt. from Columbia, Pa. . . . married . . . all-round athlete, scholar and gentleman . . . "Who's who" . . . president of F.T.A. . . . Dean's List.



ED TESNAR—Co-Capt. of team . . . ex-G.I. . . . a supreme defensive player . . . elected to Who's who . . . popular all-round guy . . . a photographer.

FOOTBALL 1952

On the eve of September 21, prior to the opening game of the 1951 football season with a strong F. and M. team, boasting a long winning streak and an undefeated 1950 season, the outlook on the Lebanon Valley campus was one of uncertainty. The team was small in quantity but in pre-season scrimmages they showed they were well endowed with quality and plenty of scrap. The team was up for the game because they wanted to win it for a former teammate who was stricken with that dreaded disease of the blood, leukemia. They were intent on winning it for Chuck Maston. The next day a good-sized contingent of Valley rooters traveled to Lancaster and saw Coach Ricker's proteges play an inspired game and rock the Dips by a 25-6 score. It was a heads-up game from the Valley standpoint; they capitalized on every break, converting 2 of F. and M.'s five fumbles into T.D.'s, blocking a kick and intercepting 5 passes, and showing a well-coached team all around. The more experienced F. and M. team outgained them on the ground, in the air, and had more first downs but just couldn't dent the Valley line when they got inside the Dutchmens' 20 yard line. The Valley line play was superb throughout the whole game. Lou Sorrentino accounted for 122 of the Dutchmens' 182 yards total offense by completing 7 of 9 passes for 79 yards and running 43 more himself. He also threw one T.D. pass and scored two himself. In the closing minutes of the game John Buffamoyer showed his power when he intercepted a pass and roared 25 yards to score. After the game Co-capt. Fred Sample and Ed Tesnar took the autographed game ball down to Chuck which really climaxed a dramatic opening game.

The following week the Dutchmen traveled to Indiantown Gap and received their first setback at the hands of a huge, experienced Red Devil team. Boasting many former big-time college stars and a few pros, the Gap expected another one-sided victory and were finally content to emerge with a 12-7 victory. There were no individual LV stars in this game but the boys, up against really tough opposition, showed up well but couldn't quite get rolling in the clutches. Lebanon Valley's lone T.D. was scored on a pass from Sorrentino to Joe Oxley covering 20 yards.

Inaugurating their home season against the Mules of Muhlenberg College, the Dutchmen bounced back into the win column with a 12-6 victory. Muhlenberg had a great defensive club and were well ahead of the Valley in statistics in every department but the score and penalties. They gained 14 first downs to LV's 7, had a total of 293 yards against 189 for the Valley in total offense. All the scoring in the game was done on passes with Sorrentino completing passes to Joe Oxley and Don De Benedett for 25 and 78 yards respectively. Muhlenberg finally countered

in the fourth period with a 47 yard aerial for their lone T.D. This game was disastrous to the small Valley team because first stringers Nick Bova, a rock on the defense, Bob Gustin, another good lineman, and junior-flash Ted Lauer had to leave the game because of injuries.

The Upsala Vikings were next on the docket of conquest and the LV boys emerged with an easy 14-0 victory. The ball game was played sloppily by both sides; LV losing the ball six times on fumbles and Upsala having six passes intercepted. Bob Enders, the Freshman booter twice raced around the end for gains of more than twenty yards and gave the Valley something to cheer about. Defensively Sherdell Snyder had a field day at his defensive end post by throwing the runner or passer for long losses at least 10 times. George Cardone found the range and neatly booted two extra points. In the closing minutes Walt Shonosky grabbed an Upsala pass and bulled his way for twenty-five yards and a touchdown.

The next victim was a hapless Moravian club, whom the Flying Dutchmen flew over for a 40-0 score. Everybody saw action in this game. Assistant coach and scout Dick Fox had their every play mapped out to perfection and consequently Moravian could only garner 114 yards as their total offense while LV rolled up 485. Lou Sorrentino threw three T.D. passes to Bill Sawyer, Frank Retrievi, and Don De Benedett and scored one himself. When his passing hand was injured for awhile, Co-capt. Freddy Sample whipped another T.D. pass to George Radanovic. Walt Shonosky showed some nice running in getting 89 yards on 11 tries. Ralph Giordano, leading ground-gainer, garnered another 63 on 14 tries and Bob Enders got 53 yards on 7 tries. The Dutchmen showed a polished and crushing ground attack and hit on 16 of 26 passes to show superiority in the air also. This game also marked the return to the lineup of Dan McGary who missed one and a half seasons due to a brain concussion received in his freshman year. He was used sparingly but had some great defensive work to his credit. Co-capt. Ed Tesnar and Fred Sample played their usual brilliant defensive game as did Joe Ferrer and Frank DeAngelis.

Taking their three-game winning streak to Reading the boys beat a really fighting Albright team 7-6 in a thrilling dream type of ball game. The final margin of victory was made possible on George Cardone's perfect extra-point kick, following Sorrentino's toss to Fred Sample for the T.D. The game according to statistics was an even as could be with LV getting 13 first downs to 12 for the Lions; the Albright team rolling up 274 yards to the Valley's 250 in total offense. The first half saw LV ahead, by benefit of their T.D. pass, 7-0 and the second half scoring was taken care of by Albright, who heaved a long T.D. pass for a score in the third quarter. This gave LVC a log of five wins against one defeat and also an undefeated record against collegiate competition.

The Dutchmen, still fresh from their victory over Albright traveled to Chester to play the Cadets of Pennsylvania Military College. Not only did they have the soldiers to battle but also old man weather, who turned out to welcome the Valley with a freezing cold day and a field saturated with water. Nevertheless the Valley came away from the waterpolo game with a 15-6 victory. The Cadets scored in the first three minutes of play on a long pass but were throttled from then on. Don De Benedett and Fred Sample each gained over 125 yards on the ground.

Following that the Green Terrors from Western Maryland came to town and trimmed the Dutchmen 20-12. Both teams were undefeated in college competition and it was scheduled to be a great game. In the early moments of the game, Ralph Giordano rocked W. Md.'s star, Mitch Tullai, on a bone crushing tackle after the latter had received a punt and Tullai had to be removed from the game. W. Md., perhaps playing for revenge roared back and went on to win, scoring three times in ten minutes in the third quarter.

Traveling to Huntingdon the Valley engaged the Juniataans in the teeth of a biting snow storm and scalped them to the tune of 34-0. Coach Ricker took the wraps off a new sensation in Ted Lauer, transfer Junior from Potomac State, who had been sidelined most of the year with a dislocated shoulder. Ted exhibited some really shifty running and played a great game on defense. Ralph Giordano finally broke the ice and scored his first T.D. of the year in the second quarter on a nice 11 yard run.

Thanksgiving Day of 1951 will never be forgotten by Valley fans and players as they journeyed to Johnson City, Tennessee to play in the Annual Burley Bowl game. However the Golden Eagles of Morris Harvey were a little too hot for the Dutchmen and dumped them 27-20. Morris Harvey jumped off to a 27-7 lead but the Dutchmen caught fire and roared back with two T.D.'s. It was a great rally, capturing the hearts of all the fans, and fell just one touchdown short. Lou Sorrentino played a great game, completing 18 out of 30 passes and scoring two T.D.'s and throwing for another one. The Eagles were loaded with talent, boasting two Little All-Americans, more age, and more experience. The game was considered by the Burley Bowl Committee as the best one played to date—a fine credit to the team, coaching staff, managers, and fans—a fitting climax to the greatest year in Lebanon Valley football history.

BOB GUSTIN • STEELTON



BOB GUSTIN—Junior from Steelton . . . "BG" . . . sidelined with knee injury for majority of season . . . a great guard.

AL CARELLI • LONG BRANCH, N. J.



AL CARELLI—big tackle from Jersey . . . "L" Club . . . a diligent student . . . Secretary of Kalo.

**LOU SORRENTINO
SHARON HILL**



LOU SORRENTINO—Sophomore from Sharon Hill . . . basketball and baseball man . . . a great T-quarterback . . . second team All-State . . . eyes on pro-ball . . . some offers . . . scored 7 TD's.

**FRANK R. DeANGELIS
ORANGE, N. J.**



FRANK DeANGELIS—A real crooner and entertainer . . . excellent tackle . . . offense and defense . . . "L" Club . . . Jersey product.

**WALT SHONOSKY
ENDICOTT, N. Y.**



WALT SHONOSKY—Suave man from New York state . . . powerhouse F. B. . . great on defensive play . . . Senior.

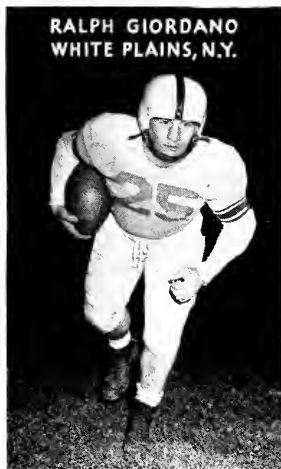
PAUL EDWARDS • SCRANTON



PAUL EDWARDS—Big man from Scranton . . . defensive end . . . "L" Club . . . 69 is his lucky number.



TED LAUER—Transfer from Potomac State . . . from West Virginia . . . basketball player . . . quiet and unassuming . . . sidelined for 6 games with a bad shoulder . . . fast halfback.



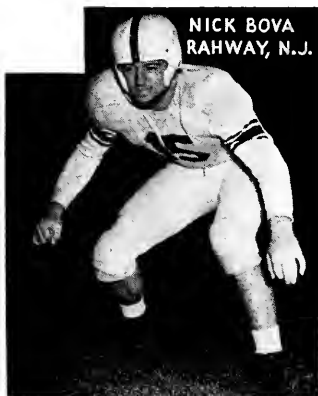
RALPH GIORDANO
WHITE PLAINS, N.Y.

RALPH GIORDANO—"Little dynamite" from White Plains, N. Y. . . . Junior . . . "L" Club . . . 5'5", 180 lbs. . . . bonecrushing down field tackles.



JOHN BUFFAMOYER - LEBANON

JOHN BUFFAMOYER—A farmer from Lebanon . . . "Buffy" . . . a rock on defense . . . baseball player . . . likes Tennessee . . . engaged . . . a coat model . . . good-natured.



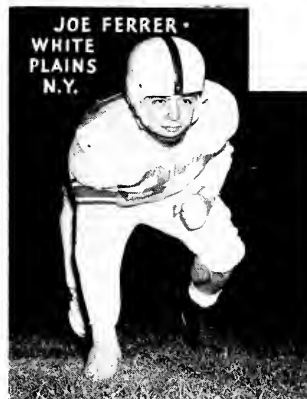
NICK BOVA
RAHWAY, N.J.

NICK BOVA—Big senior from Rahway, N. J. . . . first team All-State . . . ex G.I. . . . president of "L" Club.



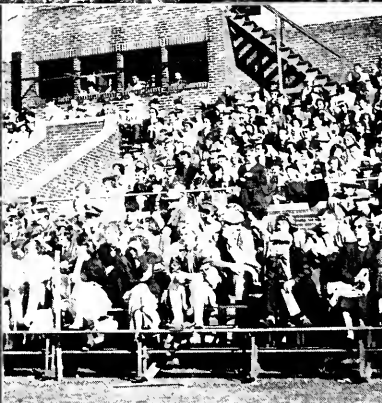
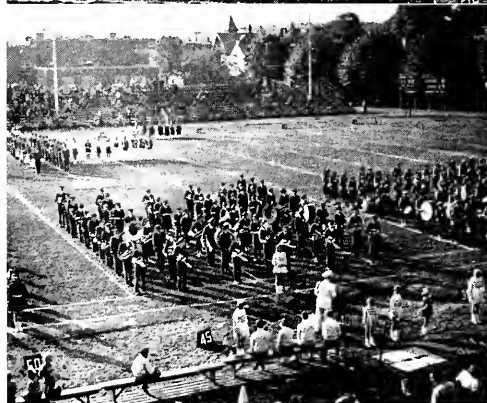
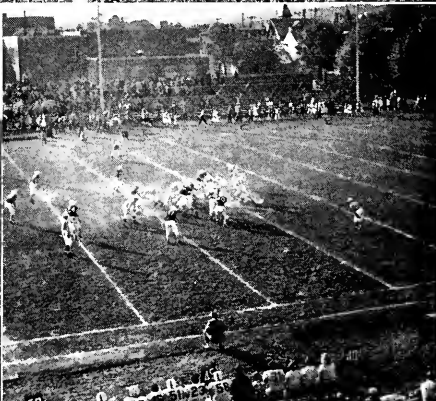
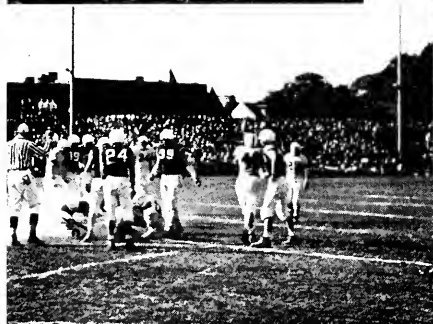
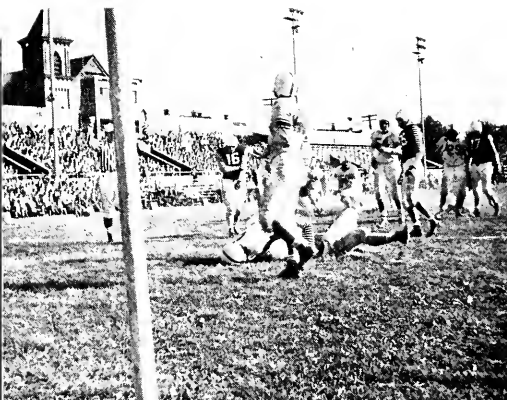
DICK MUSSELMAN
QUAKERTOWN

DICK MUSSELMAN—A Sophomore from Quakertown, Penna. . . . good defensive halfback . . . trackman . . . good student . . . a well liked, unassuming guy.



JOE FERRER
WHITE PLAINS
N.Y.

JOE FERRER—Aggressive tackle from White Plains, N. Y. . . . a big reason for excellent line of Valley . . . "L" Club . . . likes tan Fords.





BASKETBALL 1952

The greatest basketball season of Lebanon Valley College history came to a blazing finish as the Flying Dutchmen trounced Juniata in the season's finale 102-78. The complete record showed an 18-4 count. The team as a whole averaged 76.3 points for the 22 game span. The only losses were inflicted by Albright 75-77, Muhlenberg 82-86, Elizabethtown 68-70, and Gettysburg 72-77. Victories were over Scranton U., Albright, Franklin & Marshall, Gettysburg, Upsala, Dickinson, Lincoln U., Moravian, Indiantown Gap, and Western Maryland. Individual standouts included freshmen Howard Landa, Bob Bowman, and Herb Finkelstein. Landa had a 19.7 average for the year. Bowman averaged 10.1 and Finkelstein 13.6. Sophomore Lou Sorrentino and Leon Miller, a junior, rounded out the group with a 12.1 and a 14.8 average respectively. Valuable assistance was received from "Red" Langstaff, Bill Vought, Walt Courtney, Rich Furda, Jim Handley, Marty Gluntz, and Joe Oxley.



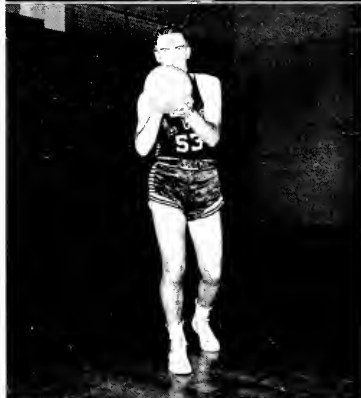
HOWARD LANDA— Freshman sensation from Philly's Central H. S. . . . 38 points against Gettysburg . . . 19.8 average . . . dog fancier . . . led the team in assists . . . draws fouls.



LOU SORRENTINO— Sophomore . . . all-round athlete from Sharon Hill, Pa. . . . 12.1 average . . . football and baseball man . . . playmaker . . . fancy dribbling and drive shots.



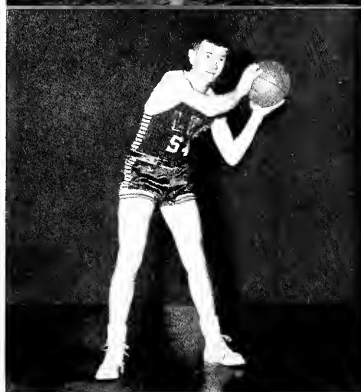
LEON MILLER— Tall forward from Palmyra . . . good rebounder . . . chem major . . . high jumper on track team . . . good mechanic? . . . 14.8 average.



BILL VOUGHT— Valuable 6th man . . . crew cut fanatic . . . chem major . . . dean's list . . . possesses uncanny accuracy on one handers . . . likes to beat Elizabethtown.



RICHIE FURDA— Diminutive trickster . . . baseball player . . . good set shot . . . another dog fancier . . . swears by Jersey.



BUCK BOWMAN— Freshman from Annville . . . likes trips to the big city . . . center . . . good defensive player . . . 10.6 average . . . crew cut.



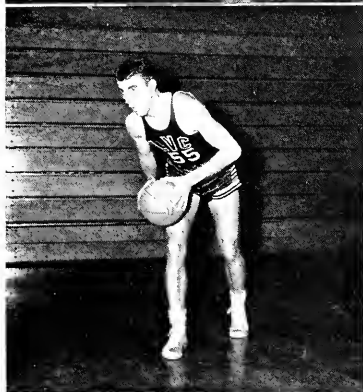
HERB FINDELSTEIN—
Freshman pre-med student
... possesses a great
drive shot ... jinxed
with injuries ... another
good rebounder.

MARTY GLUNTZ—
Fast replacement ... a
nice one hand stab ...
baseball player ... Steel-
ton boy ... chem. major.



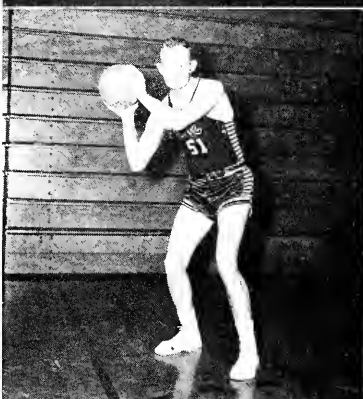
DON LANGSTAFF—
Captain from New Jersey
... married ... great
pivot man ... keeps 'em
guessing.

JOE OXLEY— Life-
guard Joe ... must get
that shot off ... football
player ... Jersey boy ...
track man ... "Cleaning
Man."



WALT COURTNEY—
Transfer junior from York
J. C. ... baseball pitcher
... aggressive defensive
man ... good set shot
... married and one
child.

JIM HANDLEY— A
Trenton boy ... pole
vaulter on track team ...
brother act ... football
end ... "Jambo" to his
friends.





J. V. BASKETBALL 1952

The J. V. record for the year was 16-4. Leading the J. V.'s were Noel Beebe and Ted Lauer. Kenny Ellis and Buzz Sachs also played consistent ball throughout the year. Rounding out the squad were Bob Tarantolo, Howard Kosier, Mark Wise, and Bob Handley.



BASEBALL 1951

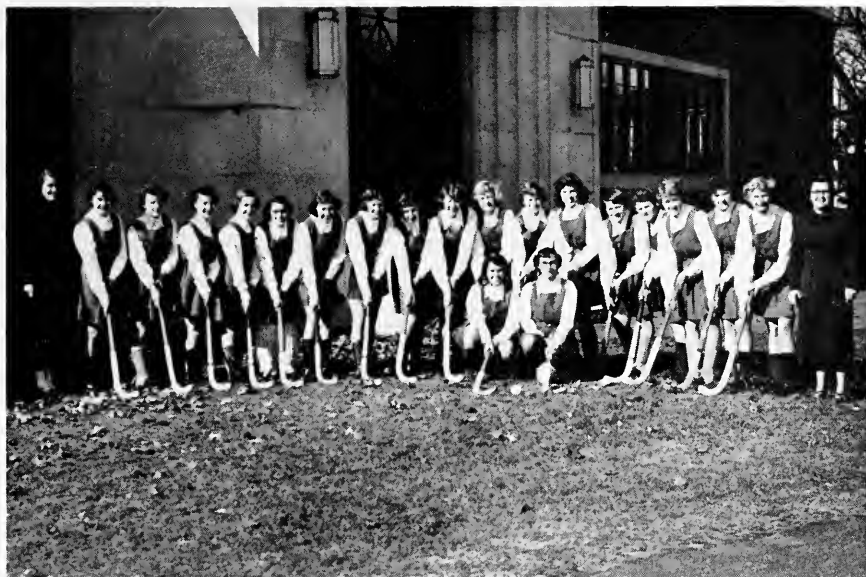
The 1951 baseball season showed the Valley coming away with a 9-5 record. Impressive victories were scored over La Salle and Temple. The season's opener showed the boys coming out on the short end of a 4-3 encounter with St. Josephs. Rebounding from the loss, the team overwhelmed Juniata 12-3. This seemed to have a stabilizing effect on the squad as they defeated Gettysburg 8-4, the Scranton U. 9-4. In the following game Albright knocked them off by a 6-3 count at Reading. The batting honors for the year went to Chuck Zimmerman, Mark Heberling, and Bob Tarantolo. The complete schedule was as follows:

L.V.C.		OPPONENT
3	St. Josephs	4
12	Juniata	3
8	Gettysburg	4
9	Scranton	4
3	Albright	6
2	La Salle	0
4	Moravian	2
10	Temple	6
4	Elizabethtown	3
2	Franklin & Marshall	3
8	Elizabethtown	4
3	Albright	13
3	Juniata	0
4	Moravian	11



TRACK 1951

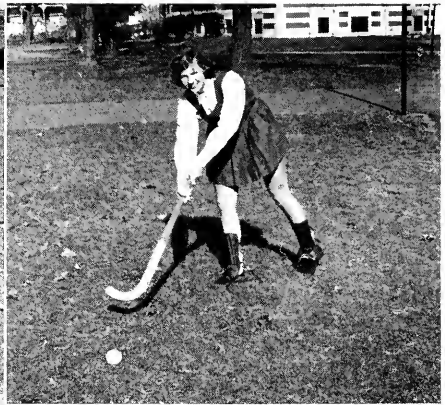
The track team, coached by Warren Gockley, showed a season's record of no wins, but that was not indicative of the calibre of the team. It was the start of a good track team for future years. Records were set by Don Kreider in the 120-yard high hurdles and Don De Benedett in the javelin throw. Also good times were turned in by Barret Oxley in the half-mile, mile, and 2-mile events. The team lost to Franklin & Marshall, Juniata, Albright, and Gettysburg.



HOCKEY 1951

The 1951 hockey season closed with a record of four solid hits and one miss for the Flying Dutch Girls under the coaching of Mrs. E. J. Smith. We pay special tribute to the girls who participated in the Mid-East and National tournaments. This year was a big one for the hockey girls because of the score they made for LVC by entertaining eight other college teams at the All-College tournament. Chosen, among others, to represent the Central Pennsylvania team were Libby Roper, Jeanne Hutchinson, Elaine Barron and Evelyn Eby. These girls traveled to Rochester, New York where the Mid-Eastern tournament was held. There Jeanne Hutchinson was named a candidate for the National hockey team which played in Boston, Massachusetts. Because of their hard hitting technique the Flying Dutch Girls have made a national name for themselves.

Hockey Schedule	Opp. LVC	
Millersville	1	2
Shippensburg	1	3
*Moravian	0	3
Gettysburg	2	1
Albright	1	3
*Home game		





WOMEN'S VARSITY BASKETBALL

With the coaching of Mrs. Ernestine Jagnesak Smith the varsity squad of Flying Dutch Girls racked up a tally of four wins, four losses, and one tie, giving the Valley a total of eighty-seven points more than this year's opponents.

	Opp. L.V.C.	
Moravian	28	45
*Elizabethtown	27	26
Gettysburg	27	8
*Shippensburg	34	30
Millersville	23	36
Penn Hall	43	43
*Millersville	23	42
Elizabethtown	19	28
*Lock Haven	36	32

*Denotes home games



WOMEN'S JUNIOR VARSITY BASKETBALL

	Opp.	L.V.C.
*Elizabethtown	8	23
Gettysburg	47	25
Shippensburg	26	15
Millersville	9	23
*Millersville	12	27
Elizabethtown	20	13



CHEERLEADERS

Experts say "unsung" is an overworked adjective. Yet, how else is one to describe the hard-working "holler-guys and gals" of LVC—the cheerleaders. Sociologists say a group becomes a crowd through interstimulation and response. We've got to give it to them, our cheerleaders have caused a great deal of the stimulation necessary to bring about organized cheering. Working up a sweat at all home games and only missing one away football game, these kids gave up the privilege of seeing a whole football game. They work very hard in pre-season practice also.

They made another step forward this year. The constitution was revised and recognized by the Student-Faculty council and the Faculty to finally become an organization. As in the past several years the cheerleaders were toasted at a banquet given by their capable advisor, Mrs. Smith. Letter awards were given at that time to those serving two years on the squad. Those receiving letters were Darlene Moyer and Paul Holligan.

The three freshmen members chosen from a very large group of candidates displayed the zip and dash expected of them and blended well in helping to make the squad the greatest in the annals of LVC. The Squad—Jeanne Hutchinson, Senior, Lee Whiteman and Captain Johnnie Walter, Juniors, Darlene Moyer and Paul Holligan, Sophomores, Betsy Ross, Jane Taylor and Dick Williams, Frosh.



WAA

OFFICERS

<i>President</i>	ELIZABETH ROPER
<i>Vice-President</i>	ELAINE BARRON
<i>Secretary</i>	DOROTHY WITMER
<i>Treasurer</i>	RUTH STAMBACH



L CLUB

OFFICERS

<i>President</i>	NICHOLAS BOVA
<i>Vice-President</i>	JOSEPH OXLEY
<i>Secretary</i>	WILLIAM FRAZER
<i>Treasurer</i>	RICHIE FURDA

PATRONS

MR. and MRS. NICHOLAS J. GUSTIN
MR. and MRS. ROBERT A. ROWE
MR. and MRS. HARRY M. BAKER
MR. and MRS. WARREN W. FRAZER
MR. and MRS. WARREN S. AYERS
MR. and MRS. RAYMOND G. SCHAFFER
MR. and MRS. JOSEPH GIORDANO
MR. and MRS. ARTHUR K. MOHN
MR. and MRS. ROBERT C. FRICK
MR. and MRS. DONALD G. KEISER
MR. and MRS. FRED GILBERT
MR. and MRS. HYMAN B. RESSLER
MR. and MRS. HARRY C. VANSANT
MR. and MRS. S. D. EVANS
MR. and MRS. OLIVER McGARY
MR. and MRS. DANIEL GREEN
ELIZABETH HOPPLE WOOD
STUART A. WOOD
MR. and MRS. PAUL P. RITTLE
MR. J. C. COURTNEY, JR.
MISS LILLIAN S. EARLY
MR. QUENTIN R. EARLY
DR. and MRS. FREDERIC K. MILLER
MR. and MRS. DANIEL E. WALTER
REV. and MRS. C. F. HELWIG

1953 QUITTAPAHILLA



ENGRAVING
PRINTING and BINDING

by

J. HORACE McFARLAND COMPANY

Mount Pleasant Press

HARRISBURG • PENNSYLVANIA

Yearbook Photography
by ☆ ☆ ☆

Harpels' Studio

☆ ☆ ☆ Portrait and Commercial
Photographers

*Our large modern facilities enable us
to offer unlimited photographic service*

~ ALL TYPES OF PHOTOGRAPHY ~

- PORTRAIT
- FAMILY GROUPS
- BANQUETS
- FORMAL AND CANDID WEDDINGS
- COPY SERVICE
- COMMERCIAL

757-759 CUMBERLAND ST.

LEBANON, PA.

EBERSOLE, INC.

Pontiac and Oldsmobile Motor Cars

Modern Equipped Service Departments



Phone: 5068

36-40 N. Ninth St.
Lebanon, Pa.

Phone: 5195

143 E. Penn Ave.
Cleona, Pa.

C. B. GOLLAM SONS

Manufacturers of

GOLLAM'S SUPREME ICE CREAM

"The Cream of Matchless Merit"

MASTER ICE CREAM SERVICE

Phone 21

6th and Maple Streets, LEBANON, PA.

THE BON TON

Lebanon County's Largest Store

JAY'S FLOWER SHOP

on the square

ANY OCCASION IS COMPLETE ONLY WITH FLOWERS.

BETWEEN OCCASIONS GIVE HER SOME JUST BECAUSE SHE'S WONDERFUL

PALMYRA

Phone: 8-6451

Compliments of

HARRY L. MEYER

Your Milk Distributor

Hershey's
Homogenized

Wengert's
Dairy Products

CLEONA

SMITH

Television Service

Hot Dogs-Confectionery-Soft Drinks

Drugs-Films & Developing-Tobaccos

Hours: 9 a.m.-11 p.m.

34 North Railroad Street

ANNVILLE, PA.

Compliments of . . .

BRANDYWINE IRON & METAL COMPANY

SAM CLARK, Class of '27
Salvage Material

ABE GROSKY
LEBANON, PENNA.

Tel.: 130

COMPLIMENTS OF

Automotive
Trade
Association

of

Lebanon County

Compliments of . . .

Donmoyer's Book Store

41 N. Eighth Street Lebanon, Pa.

College Outline Series

BOOKS · GREETING CARDS
GIFTS

HENDERSON'S

Card and Gift Shop

42 N. Eighth St.

LEBANON



Summer Shop at Mt. Gretna

WOLF FURNITURE CO.

Appliances, Furniture

Floor Coverings

754-756 Willow Street

LEBANON, PA.

Phone: 4010

Phone: 2453

1125 Willow Street

WALTER L. HARTZ

Philco RADIO Motorola
Television

Philco Warranty Service
Electrical Appliances

DIAMONDS

JEWELRY

HOFFER'S

5 North Ninth Street
LEBANON, PA.

WATCHES

GIFTS

Compliments of

Lebanon News Agency



SAMUEL S. ETTER, *Prop.*

Kohr's Book Store

Books — Rental Library — Greeting Cards

Stationery — Zipf's Candy — Parker Pens

Near the Post Office Lebanon, Pa.

Compliments of . . .

RELIABLE COAT AND DRESS SHOP

761 Cumberland Street LEBANON, PA.

If it's a Hit—It's Here

Compliments of

STATE THEATRE

511-515 Cumberland Street

LEBANON, PA.

Compliments of

J. Henry Miller Co.

PAUL L. STRICKLER, Pres. - - 1914

E. PETER STRICKLER, Pres. - - 1947

General Insurance

Eighth and Willow Streets Lebanon, Penna.

Compliments of

KARMEL KORN SHOP

718 Cumberland Street

LEBANON, PA.

ARNOLD'S BOOT SHOP

Exclusive Shoes

COLLEGBRED SHOES

"For College Girls"

FLORSHEIM SHOES

"For the Man Who Cares"

34 N. Eighth Street LEBANON, PA.

Telephone: 1715

In Lebanon it's

HAAK BROS.

Department Store

"The Store with the Escalator"

Headquarters for

BELLE SHARMEER NYLONS

CAROLE KING AND L'AIGLON DRESSES

"THE FLOWER SHOP"

Elizabeth Bernstein, Prop.

Corsages Our Specialty

Rear of Court House LEBANON, PA.

Flowers Telegraphed Anywhere, Anytime.

Phone: 592

SHENK & TITTLE

"Everything for Sport"

Play More — Live Longer

313 Market Street
HARRISBURG, PA.

Compliments of . . .

BOWMAN'S Insurance Agency

Palmyra Bank Bldg. PALMYRA, PA.

For Good Appearance

H. W. KREIDER CLOTHIER

*Nationally known good
merchandise*

PALMYRA, PENNA.

Compliments of . . .

BOYER BROS.

Fancy Fruits Vegetables
Sea Foods

123 East Main Street
Palmyra, Penna.

*When in Palmyra,
Stop and Shop at . . .*

LAUCK BROS. 30-34 E. Main Street

*Unusual Gift Selection
Complete Stationary Line*

Palmyra Bank and Trust Co.

PALMYRA, PA.

Serving the Community Since 1886

Checking Accounts — Savings Accounts

Safe Deposit Boxes

Mortgage, Commercial, Personal Loans

MEMBER OF FEDERAL DEPOSIT INSURANCE CORP.

Cleona Paper Box Company

CLEONA

CONDUCTED STUDENT TOURS OF EUROPE

These tours are of interest to teachers as well as students. Visit all of Europe either on an economy tour or the Standard Five Country or Continental Tour.

For information call

LEBANON COUNTY TRAVEL BUREAU

757 Willow St.

Phone: 1753

LEBANON, PA.

Congratulations

Class of 1953

The Hub
CLOTHIERS
LEBANON PA.

"As near as your nearest telephone"

SAYLOR'S PHARMACY PRESCRIPTIONS

49 South 8th Street, Near the Post Office
LEBANON, PENNA.

Phone: 104

DAVIS PHARMACY

9-11 W. Main Street ANNVILLE, PA.

Parker Pens and Pencils
Schaeffer Pens and Pencils
Whitman's Candy
Double K Nuts
Prescriptions

MILLER'S SELF-SERVICE FOOD STORE

Your One-Stop Food Shopping Center

18 EAST MAIN STREET
ANNVILLE, PA.

Groceries, Meats, Produce, Frozen Food

PHONE: ANNVILLE 7-3451 FREE DELIVERY

ANNVILLE LUMBER COMPANY

DEALERS IN

LUMBER AND MILLWORK BUILDER'S SUPPLIES

750 East Main Street
ANNVILLE, PA.

PHONE: 7-6611

See You at

Hot Dog Frank's

The Place Where Students Congregate
for a
Bite to Eat in a Cheerful Atmosphere

A. R. SHEARER

Mobilgas • Mobiloil
Service Station
U. S. Tires
Car Washing

MAIN AND WHITE OAK STREETS
ANNVILLE, PA.

Telephone: 7-4801

MAX LOVE

Dry Cleaning and Pressing

12 W. Main Street Anville, Pa.

Phone: 7-4852

Compliments of . . .

Pete and Ralph

Hotel Anville

•
ANNVILLE • PENNSYLVANIA

We extend our best wishes
to the Class of 1953



ASTORIA RESTAURANT

Paul H. Kettering

*Esso - Goodyear Service
Hunting and Fishing Supplies*

104 West Main Street
ANNVILLE, PENNA.

Phone: 7-6231

*Compliments of . . .
Your Local Insurance Man*

I. M. LONG

ANNVILLE, PA.

In Anville its

“THE CO-ED”

“The Home of the
Whistling Pig”



PHONE: Annville: 7-3511
Hershey Enterprise: 1-0611
Myerstown Enterprise: 1-0611
Middletown: 3151

FINK'S BAKERY

DELICIOUS LAYER CAKES • PIES

Filled and French Doughnuts

PECAN BUNS • BREAD • SHOOFLY PIES

Lily Ann Shoppe

DRESSES

SUITS

SKIRTS

TOPPERS

LADIES' WEARING APPAREL

207 W. Main St.

Phone: 7-9021

BLOUSES

HOSIERY

LINGERIE

ACCESSORIES

ANNVILLE, PA.

Compliments of

PETER HAWRYLUK JEWELER



40 EAST MAIN STREET • ANNVILLE, PENNA.

Kreamer Bros.

Furniture

FLOOR COVERINGS

ELECTRICAL
APPLIANCES

•
ANNVILLE, PENNA.

COMPLIMENTS OF

Ben Franklin Store

Your College Store

Open Every Evening

E. W. WOLFE, Owner

•
37-39 West Main Street
ANNVILLE, PENNA.

H. E. MILLARD LIME and STONE CO.

SERVING

Industry—Building—Agriculture



TOP QUALITY COURTEOUS SERVICE
REASONABLE COST



ANNVILLE, PA.

Compliments of
ANNVILLE FROZEN FOOD
SERVICE

Ice Cream • Locker Service
Meats and Groceries

400 E. MAIN ST.

PHONE: 7-7141

Compliments of . . .

A FRIEND

The Staff of the
1953 QUITTAPAHILLA

wishes to
express its appreciation
to our
Patrons and Advertisers

AUTOGRAPHS

AUTOGRAPHS

