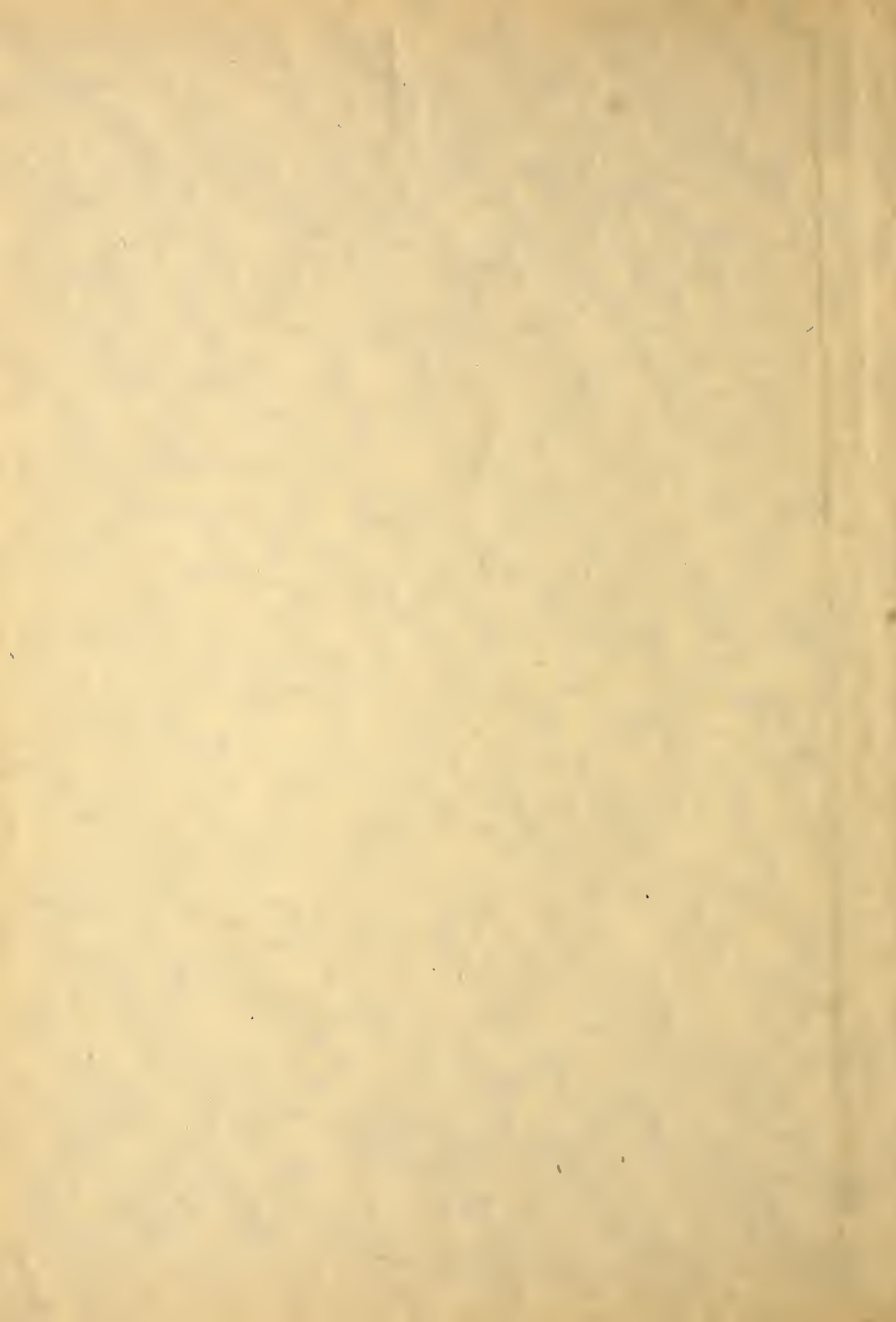





RAVELINGS







Digitized by the Internet Archive
in 2011 with funding from
CARLI: Consortium of Academic and Research Libraries in Illinois



"THE RAVELINGS"—1928

THE

1928

RAVELINGS

OF

MONMOUTH COLLEGE



VOLUME XXXIV

Published by the JUNIOR CLASS

"THE RAVELINGS"—1928



Huff
McPeak
Beste
Webster

Hogue
Rodgers
Warfield
Thom

Helmes
Speer
Laws
Howard

Paul
Wood
Meek
Fetherston

The 1928 Ravelings Staff

EXECUTIVE STAFF

RICHARD HOLMES	EDITOR-IN-CHIEF
HARLAND HOGUE	ASSISTANT EDITOR
WALTER PAUL	BUSINESS MANAGER
MARION HUFF	ASSISTANT BUSINESS MANAGER

EDITORIAL STAFF

John Meek	Organizations
Donald Beste	Literary
Alex Thom	Athletics
Martha McPeak	Athletics
Doris Fetherston	Dramatics
Elizabeth Howard	Society
Katherine Laws	Music
Ralph Speer	Miscellaneous
Max Rodgers	Jokes
Rosanna Webster	Chronology
Melba Wood	Art
Mary Warfield	Snapshots

Editorial

We believe that it should be the aim of each succeeding Junior Class to publish a better record of the year's incidents and progress than those published by the preceding Junior Classes. With this in mind, we have attempted to carry out our idea of a year book, hampered as we are by material circumstances, with the end of providing for the students of Monmouth College a true, official log of the events of the school year 1926-27. We do not pretend to proclaim to the world that it is a masterpiece among its kind,—that it is free from possible mistakes,—that it will never be surpassed; at the same time, we do not propose to disclose the mistakes we have made,—if there are any for which we must make admittance,—neither do we expect to apologize for anything contained herein.

It is the sincere hope of the entire staff that within the covers of this, the thirty-fourth issue of the Ravelings, you may in years to come thumb through her time-worn pages and be carried back to the days when the class of '28 was working toward the creation of this volume.

THE EDITOR.

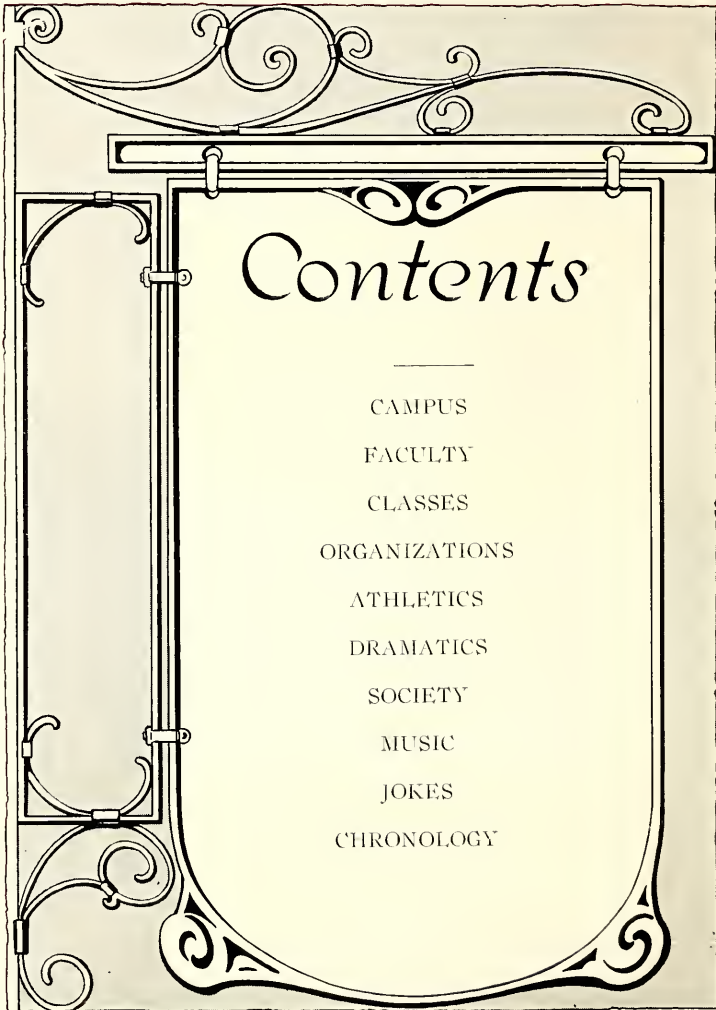


Dedication

To you, PROFESSOR GOODRICH, we dedicate this volume of the Ravelings, for through you we have come to a realization of the glory of Knowledge. You have held ever before us the significance of Truth. As a glorious example, you have inspired us to follow its ray that we may in later years merit that which you so abundantly possess: "honor, love, obedience, troops of friends."

Foreword

THE JUNIOR CLASS presents this volume of the "RAVELINGS" as a record of the school year 1926-27, in the hope that it will be, in later years, a solace to the yearnings of the alumni for living over their college life again and renew their interest in the progress of their Alma Mater.





WALLACE HALL

"Ye must set fire to the fagots we have brought".



THE AUDITORIUM—CHAPEL

“For the glory of the Creator,
and for the relief of man’s estate.”



THE LIBRARY

“Some books are to be tasted, others are to be swallowed
and some are to be chewed and digested.”



J. B. McMICHAEL SCIENCE HALL

"Books must follow sciences, and not sciences books"



THE NEW GYMNASIUM

"The game is better than the goal"



McMICHAEL HOME

"This hearth, 'tho all the world grow chill,
This hearth shall keep you warm".



SUNNYSIDE DORMITORY

“Strengthened by faith, these rafters shall
withstand the battering storm”.



WOODBINE—THE PRESIDENT'S MANSE

“He studieth his scholars as carefully
as they their books”



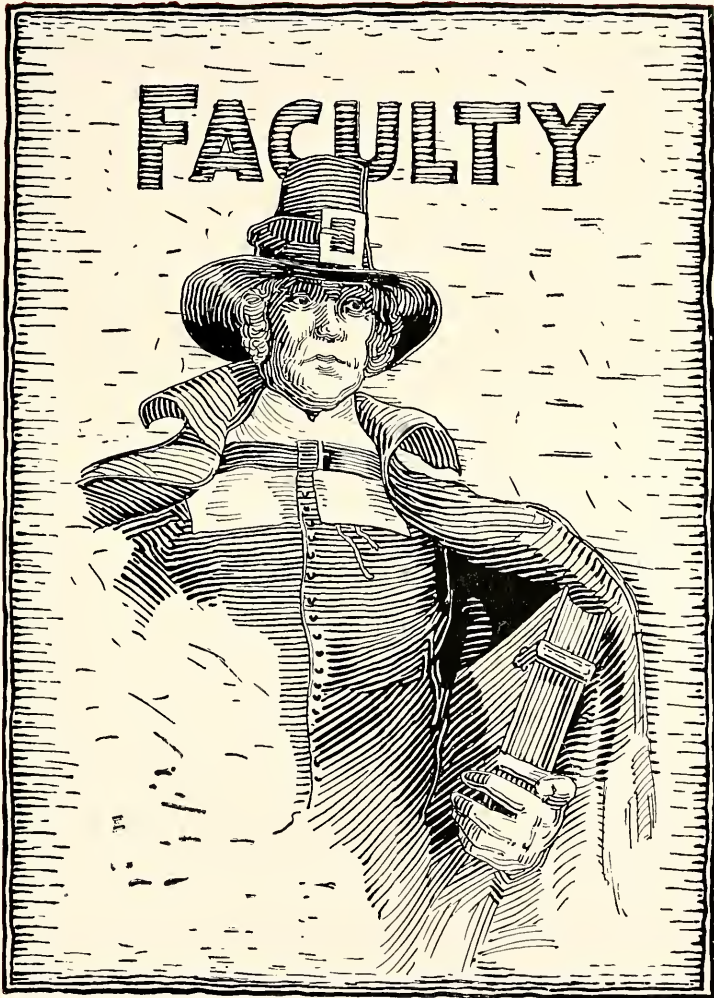
THE TERRACE

“Why should we worry about the weather
as long as we’re together”?



THE McQUISTON DORMITORY

“Though the shelter walls be thin, may they be
strong to keep hate out and love in”.





THOMAS HANNA McMICHAEL

PRESIDENT—1903

A. B., Monmouth College, 1886; A. M., *ibid.*, 1889; Xenia Theological Seminary, 1890; D. D., Westminster College, 1903.



MILTON M. MAYNARD

PROFESSOR OF PSYCHOLOGY AND
EDUCATION—1900

A. B. University of Oklahoma, 1908; A.
M. University of Illinois, 1920.

T. MERRILL AUSTIN

DIRECTOR OF CONSERVATORY OF MUSIC
VOICE, INTERPRETATION, HISTORY, ORGAN

A. B. Thiel College, 1882; A. M. *ibid.*
1888; Graduate New England Conservatory
of Music, Boston, 1887; Finishing courses
under Freb Sieber and Heinrich Ehrlich,
Berlin, 1890-91; Summer 1906 in London
in study with William Shakespeare and Alber-
to Randegger.

ALICE WINBIGLER

PROFESSOR OF MATHEMATICS AND
ASTRONOMY—1880.

B. S. Monmouth College, 1877; A. M. *ibid.*
1894; Astronomy at University of Chicago
1894, 1899; Sc. D. Monmouth College, 1924.

LUTHER E. ROBINSON

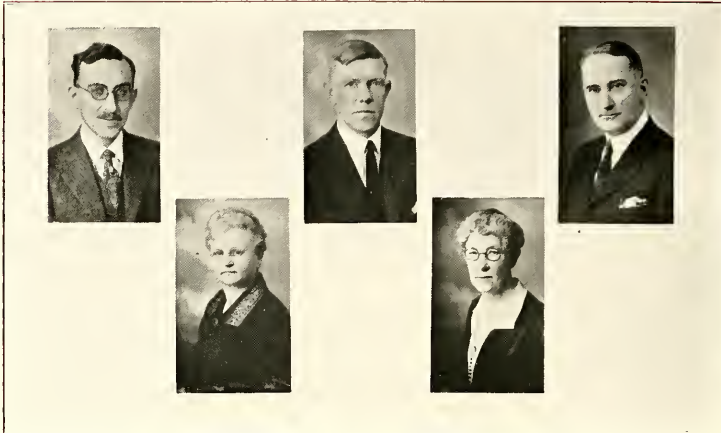
PROFESSOR OF ENGLISH—1901

A. B. Drury College 1884; A. M., *ibid.*
1887; Graduate Student at University of
Chicago, 1900; Research Student, Oxford
University, 1906-07.

JUSTIN L. VAN GUNDY

PROFESSOR OF GREEK AND LATIN—1914

A. B., Bucknell College 1887; A. M., *ibid.*
1890; Graduate Student John Hopkins Uni-
versity, 1892-93; Graduate Student Berlin
University, 1902-03; University of Jena,
1903-05; Ph. D., *ibid.*, 1905.



ARTHUR R. GERHART

PROFESSOR OF BIOLOGY—1925

B. S. Pennsylvania State College, 1913; M. S. University of Wisconsin, 1921; Graduate Student University of Chicago, summers of 1921, 1923, 1926.

FRANCIS M. McCLENAHAN

PROFESSOR OF PHYSICS AND GEOLOGY—1924

A. B. Tarkio College, 1896; A. B. Yale University, 1906; A. M. *ibid.*, 1901; University of Chicago, summers of 1897, 1905, and 1911; Graduate Student Yale University 1900, 1903, 1905-06.

HUBERT L. HART

DIRECTOR AND MANAGER OF ATHLETICS—
1924

B. S. Purdue University, 1918; A. M. University of Chicago, 1922.

NELLIE McKELVEY

SECRETARY TO THE PRESIDENT AND ACTING
TREASURER

JENNIE MAC. ELLIOTT

LIBRARIAN—1920

A. B. Pennsylvania College for Women, 1884; Library School, Colorado Agricultural College, 1920.



MARY AGNES NESBIT

INSTRUCTOR IN CHINA PAINTING—1913

Student Art Institute, Chiago; Prang Drawing School; Mrs. A. A. Frazer, Mrs. Ellen M. Iglehart, Miss Ellen M. Homes, all of Chicago; Mrs. Willits, Monmouth.

EVA M. HANNA

INSTRUCTOR IN ENGLISH—1923

A. B. and Graduate work in English, Washington State College, 1919; Graduate work in Sociology, *ibid*, one semester, 1923.

JAMES L. VAN ANTWERP

ASSISTANT COACH AND PHYSICAL TRAINING DIRECTOR—1925

A. B. Hanover College, 1922; Coaching School University of Illinois, 1921; Coaching School Superior Normal, 1924; Coaching School University of Iowa, summer session, 1925.

SAMUEL HAMILTON

SUPERINTENDENT OF BUILDINGS

CLAIR S. BORUFF

ASSISTANT PROFESSOR OF CHEMISTRY—1924

B. S. Monmouth College, 1923; M. S. University of Illinois 1925; Graduate Student University of Illinois, summer session, 1924.



SAMUEL M. THOMPSON

PROFESSOR OF PHILOSOPHY—1926

A. B. Monmouth College, 1924; A. M. Princeton University, 1926; Fellow in Philosophy, Princeton University, 1925-26.

SYLVESTER R. TOUSSAINT

PROFESSOR OF PUBLIC SPEECH—1926

A. B. Ripon College, 1923; Summer sessions at University of Michigan 1924, 1925, 1926.

WILLIAM F. KISSICK

ASSISTANT TO THE PRESIDENT—1925

B. S. Monmouth College, 1925; University of Iowa, summer sessions, 1923, 1924, and 1925.

LOUISE McCOY

INSTRUCTOR IN MATHEMATICS—1926

A. B. Monmouth College, 1924.

GRACE NICOLL THOMPSON

INSTRUCTOR IN SPANISH—1927

A. B. Tarkio College, 1923.



D. F. FLEMING

PROFESSOR OF SOCIAL SCIENCE—1921

A. B. University of Illinois, 1916; A. M. University of Illinois 1920; Graduate Student of University of Illinois, 1925-26.

WILLIAM S. HALDEMAN

PROFESSOR OF CHEMISTRY—1918

Graduate Keystone State Normal School, 1904; B. S. University of Pennsylvania, 1914; A. M. Harvard University, 1920; Graduate work at the University of Illinois, summer sessions, 1920, 1921, and 1922.

CHARLES G. GOODRICH

PROFESSOR OF MODERN LANGUAGES—1919

Ph. B. Wesleyan University, 1893; M. S. *ibid.*, 1904; Graduate Student Berlin, 1894; Bonn, Paris and Florence 1895-96; Travel Study abroad, 1908-10.

ESTHER M. HENRICKSON

DIRECTOR OF PHYSICAL EDUCATION FOR WOMEN—1923

Graduate Columbia School of Expression, Chicago, 1922; Summer Session, 1923, University of Wisconsin; A. E. Monmouth College, 1926.

EMMA GIBSON

ASSISTANT PROFESSOR OF LATIN—1920

Ph. B. Colorado State Teachers College, 1908; A. B. University of Nebraska, 1912; A. M. Columbia University, 1916; Graduate Student University of Chicago, Summer, 1924.



LOIS FOWLER GETTY

TEACHER OF VOICE AND METHODS

Graduate Monmouth College Conservatory, 1916.

EDNA B. RIGGS

TEACHER OF ADVANCED PIANO, ANALYTICAL

HARMONY, COUNTERPOINT, ORGAN
Graduate Denison University in Literary and Music Courses, 1895; Piano with Carl Faulton, Boston, 1896; Theoretical Subjects under Dr. Percy Goetschius and Louis C. Elson, Boston; Piano and Advanced Theory with Edward MacDowell, New York, 1899-1900; Graduate in Organ and B. M., Wooster University, 1913; Study in Europe, 1906-1907; Summer 1909 in Europe.

JOHN DALES BUCHANAN

PROFESSOR OF BIBLICAL LITERATURE—1923

A. B. Monmouth College, 1915; A. M., Princeton University, 1921; B. D., Princeton Seminary, 1921; Graduate Student University of Chicago, 1919; Graduate College of Theology, 1921; University of Edinburgh, 1921-1923; University of Marburg, Germany, 1922.

GRACE GAWTHROP PETERSON

TEACHER OF PIANO

Graduate of Monmouth College Conservatory, 1922.

DORA H. KETTERING

TEACHER OF VIOLIN AND PIANO

Graduate of Monmouth College Conservatory, 1917.



RUTH M. WILLIAMS

INSTRUCTOR IN PLAY PRODUCTION AND
LITERARY INTERPRETATION—1923

Graduate School of Speech, Northwest-
ern University, 1919; School of the Theatre,
Chicago, Summer Sessions, 1922-23.

MARY INEZ HOGUE

REGISTRAR—1923

B. L. Monmouth College, 1898; A. B.,
ibid, 1925; A. M., ibid, 1926.

EDITH J. MORTON

DEAN OF WOMEN AND ASSISTANT PROFESSOR
OF EDUCATION—1925

Graduate of Washington State Teachers
College; B. S. Muskingum College; Grad-
uate Student University of Washington, and
Columbia University.

DARWIN O. CLARK

PROFESSOR OF HISTORY—1921

A. B. Drury College, 1890; A. M. Uni-
versity of Illinois, 1909; Ph. D. University
of Illinois, 1921.

DAVID A. MURRAY

PROFESSOR OF BIBLE—1926

A. B. Monmouth College, 1885; A. M.
Monmouth College, 1888; D. D. Coe Col-
lege, 1902; Princeton University, 1887;
Princeton Seminary, 1888.

RUDOLPH NOTTLEMAN

ASSISTANT PROFESSOR OF SOCIAL SCIENCE—
1925

A. B. Monmouth College, 1912; M. A.
University of Illinois 1913; LL. B. Yale
University, 1922.

LOUISE GRISWOLD

INSTRUCTOR IN ENGLISH—1926

A. B. Oberlin College, 1904; A. M. Uni-
versity of Wisconsin, 1926.

MARIAN WHEELER GOODRICH

ENGLISH—1925

A. B. Whitman College; M. A. Monmouth
College; Phi Beta Kappa.

EVA LOUISE BARR

MODERN LANGUAGES—1922

B. S. Monmouth College; A. B. Goncher
College; M. A. University of Washington.



LOIS BLACKSTONE

OFFICE SECRETARY



CLASSES

Classes

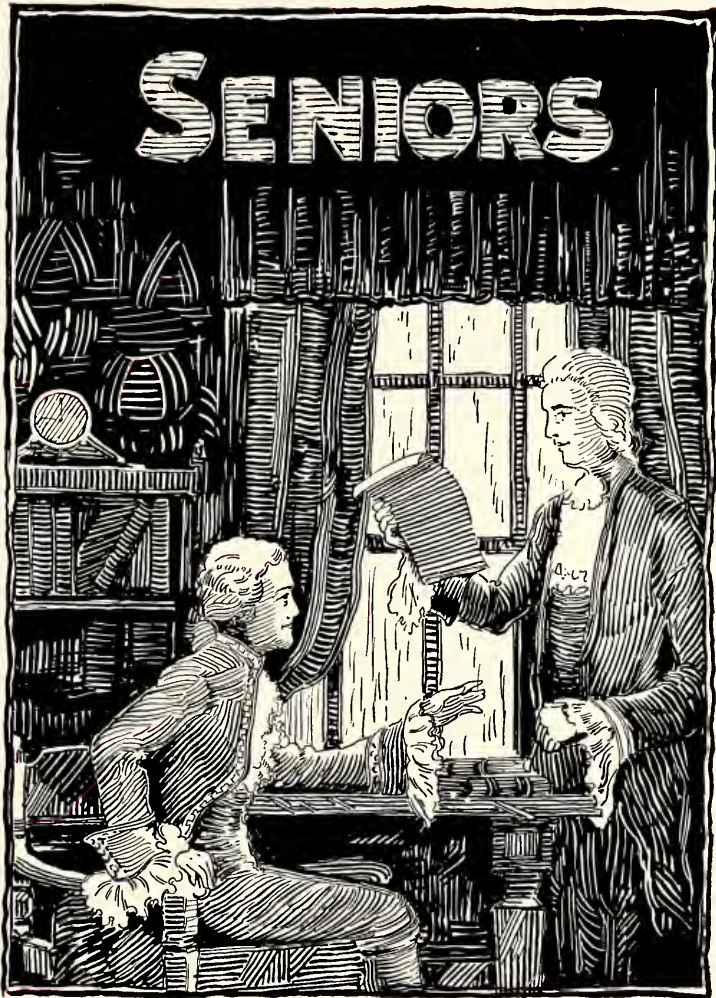
Everyone's college life begins in the Freshman class. It is probably rightly named. In most instances, college life envelops these people when they come fresh from their respective high schools. They are at that stage in life in which they believe themselves to be the conquerors, and that, with their proud, even perhaps blustering manner, college too can be subdued. But, in a few weeks they settle down and realize what they generally have failed to take into account,—that they must "prove" themselves if they are to inspire confidence among their fellows and the upper classmen. The Freshmen who "get off on the right foot" are well on their way. Those who do not, are seriously handicapped. By the end of the year, the characters that make up destiny of college life are fairly well established.

The Sophomore year at college is often a troublesome one. It is often the "testing" year. Within its limits may be decided whether or not a person can keep his head and weather the trials of school life. Once sophistication lays hold on an individual during his second year at college it is hard for him to recover. The Sophomore who triumphs over the obstacles as they come is a long way toward success in college life.

And then the Junior year looms up almost taking away our breath. It has come almost as if it had sprung upon us out of nowhere. It is hard for us to realize that half our college life is gone,—that two years have gone so swiftly, and we have only two years more. Oh! how we wish we had made the first two years count for more! But we can do a great deal in the two that are left.

We learn much more about the members of our class, and become better acquainted with them as the year rolls 'round. Exams come—are over with,—and this fact stares us in the face: when we return to school in the fall we will be Seniors.

As Seniors, the class begins its last year of school life. It is much smaller now than when it enrolled four years ago. It takes up less than half the room in chapel that it did during the Freshman year. But it is not so much the quantity as the quality of this group that is of paramount importance. The Seniors are the staunch, old pilots of campus life. They have been here longer than the others and they know that the responsibility is theirs. They have reached the time in life where they begin to realize how ill prepared they are for life. But they are ready to swallow this, along with the realization, which becomes stronger as the year wings onward, that they are soon to become alumni. Many hearts are heavy on commencement day, when the Seniors have completed the course of the Classes.





FRANK C. GOROM

LOVELAND, COLO. SOCIAL SCIENCE
 Phi Sigma Alpha; Pledge Master 4; Football 1-4; Acting Capt. 2; Basketball 1, 2, 3; Baseball 4; Track 1, 2; Intra-Mural Baseball 1, 2, 3; Y. M. C. A.; Scrap Committee 1; "M" Club 1-4.

JUDSON JONES

CASSA, WYO. MATHEMATICS
 Phi Sigma Alpha; Football 1-4; Captain 4; Basketball 2, 3, 4; Intra-Mural Basketball 1; Track 2, 3, 4; Glee Club 3.

EDITH SHIMMIN

MONMOUTH MATHEMATICS
 Kappa Alpha Sigma; Y. W. C. A. 1-4; Social Service Committee 1-4; Charter member Tau Sigma Alpha 1; A. B. L. 2, 3, 4; Secy. 2; Washington Banquet Committee 1, 2, 4; Junior Class Play; May Party Attendant 2.

LOIS HENDERSON

TRAER, IOWA LATIN
 Kappa Alpha Sigma; Y. W. C. A.; Cabinet 4; Treas. 4; Crimson Masque 3, 4; Charter member Tau Sigma Alpha 1; A. B. L.; Pres. 4; Charter member W. A. A.; Secy. 3; Inter-Society Contest 1; Ella Barnes Missionary Contest 2, 3; Winner 2; Junior Class Play; French Club 4; Geneva Conference 3; Christmas Play 4.

RENWICK W. SPEER

HANOVER, ILL. BIOLOGY
 Phi Sigma Alpha; Senior Class Pres.; Business Mgr. Ravelings 3; Student Council 4; Inter-Fraternity Council 4; Vice Regent Phi Sigma Alpha 4; Treas. 3; Decoration Committee Washington Banquet 2, 3; Y. M. C. A.



RAYMOND JOHNSON

GILLESPIE, ILL. CHEMISTRY
Beta Kappa; Laboratory and Experimental
Asst. 4.

DAVID GORHAM

GARDEN CITY, KANS. ENGLISH
Phi Kappa Pi.

LEONA MCKINNON

MONMOUTH BIOLOGY
Phi Delta Sigma; Pres. 4; Class Basket-
ball 1, 2; A. B. L.; Y. W. C. A.; Pres. Pan-
Hellenic Council 4.

MARCELLA FOSTER

OMAHA, NEB. ENGLISH
Kappa Alpha Sigma; Y. W. C. A.; A. B. L.;
Colonial School for Girls, Washington D.
C., 1, 2; Northwestern University 3; Mem-
ber Red Cross Life-Saving Corps.

NEAL SANDS

AINSWORTH, IOWA HISTORY
Beta Kappa; Vice Arkon 4; Ecritean;
Pres. 4; Vice Pres. 3; Crimson Masque 3,
4; Junior Class Play; Glee Club 1-4; Foot-
ball 3; Freshman Football Coach 4; Bas-
ketball 1, 2; Intra-Mural Basketball 3, 4;
Track 1, 2, 4; Class Capt. 4; Y. M. C. A.;
Christmas Play 4; "M" Club.



DELBERT SPEARS

DES MOINES, IOWA SOCIAL SCIENCE
Phi Sigma Alpha; Pres. 4; Football 1-4;
Basketball 1-4; Captain 3; Inter-Fraternity
Council 4; "M" Club 1-4; Y. M. C. A.

PAULINE WHALING

MONMOUTH LATIN
Zeta Epsilon Chi; Vice Pres. 4; Charter-
member Crimson Masque; Program Com-
mittee 3; Chairman Program Committee 4;
Glee Club 3, 4; Vice Pres. 4; Charter mem-
ber Tau Sigma Alpha 1; Secy. 1; A. B. L.
2, 3, 4; Secy. 3; Asst. Mgr. May Fete 3;
Women's Upper Class Council 4; Y. W. C.
A. 1-4; Junior Class Play; Christmas
Play 3, 4; Senior Ring and Pin Committee.

FREDERICK HUNSCH

WILMETTE, ILL. CHEMISTRY
Phi Sigma Alpha; Philo 2, 3; Intra-Mural
Basketball 2, 3, 4; Intra-Mural Football 2;
Intra-Mural Baseball 2, 3, 4; Glee Club 4;
Y. M. C. A.

LEVERETT K. WALLACE

WASHBURN, ILL. SOCIAL SCIENCE
Phi Sigma Alpha; Football 1-4; Basketball
1-4; Baseball 1, 2; Track 1, 4; Scrap Com-
mittee 1, 4; "M" Club 1-4.

JEANNE PATTISON

MONMOUTH
Zeta Epsilon Chi; Secy. 4; Sigma Omicron
Mu; Pi Kappa Delta; Girls' Debate Team
1, 4; Team Capt. 4; Crimson Masque; W.
A. A.; A. B. L.; Charter member Tau Sig-
ma Alpha; Charter Pres.; Censor 1; Class
Basketball 1, 2, 4; Championship Team 2;
A. B. L. Team 2; Lindenwood College 3;
Senior Invitation Committee; Y. W. C. A.;
Class Hockey 4.



JOHN H. GRAHAM

OMAHA, NEB. MATHEMATICS
Football 1, 2; Basketball 1; Baseball 1-4;
Captain 4; Pi Rho Phi, Pres. 3; Inter-Fra-
ternity Council 3, 4; Eccritean.

AINSWORTH BODEY

DAYTON, OHIO BIOLOGY
Phi Kappa Pi; Eccritean; Football 3, 4;
Intra-Mural Basketball.

LYMAN B. SUTTER

BURLINGTON, IOWA LATIN
Phi Kappa Pi; Secy. 3; Vice Pres. 4; Foot-
ball 2, 3, 4; "M" Club 2, 3, 4; Eccritean;
Electrician, Junior Class Play.

KEITH MOLESWORTH

WASHINGTON, IOWA SOCIAL SCIENCE
Pi Rho Phi; Football 1-4; Basketball 1-4;
Captain 4; Track 1, 2; Baseball 3, 4; Ec-
critean.

DAVID B. MOORE

ROCK ISLAND, ILL. SOCIAL SCIENCE
Pi Rho Phi; Eccritean; Glee Club 1-4;
Band 1-4; Y. M. C. A., Cabinet 4; Editor
Ravelings 3; Pres. Student Body 4; Secre-
tary 3.



HAROLD B. WALKER

COLLEGE SPRINGS, IOWA HISTORY
Pi Rho Phi; Football 3; Intra-Mural Basketball and Baseball; Tarkio College 1, 2.

J. EVERETT WINTER

SANDWICH, ILL. CHEMISTRY
Pi Rho Phi; Band 3; Muskingum College 1, 2.

FRANCIS KISSINGER

BRADFORD, ILL. SOCIAL SCIENCE
Pi Rho Phi; Ecritean Literary Society;
Intra-Mural Football; Intra-Mural Baseball.

RUTH ROBERTS

ARLINGTON, WIS. HISTORY
Zeta Epsilon Chi; Pres. 4; Pan-Hellenic Council 4; Y. W. C. A. Cabinet 2; Geneva Conference 3; Tau Sigma Alpha 1; A. B. L.; Pres. 3; House Council 3; Vice Pres. 4; Crimson Masque 3, 4; Junior Class Play; W. A. A. Executive Council 4; Mary Porter Phelps Prize 3; Basketball 1-4; Championship Team 2; A. B. L. Team 2, 3, 4; Capt. 4; Pi Kappa Delta 3, 4; Intercollegiate Debate 3; Class Hockey Team 4; Student Volunteer.

GRACE FETHERSTON

MONMOUTH ENGLISH
Zeta Epsilon Chi; Oracle Staff 1, 2, 3, 4; French Club; Sigma Omicron Mu; Crimson Masque; Y. W. C. A.; Cabinet 2; A. B. L.; Senior Recital 4; Post-Graduate Recital 4; Active Member Monmouth Music Club; Geneva Conference 1; W. A. A.



ROY DOTY

STUTTGART, ARK. CHEMISTRY
 Philo; Debate 1, 2, 3; James-Nevin Debate
 2, 3; Y. M. C. A.; Pres. 4; Cabinet 3; Sigma
 Omicron Mu; Student Volunteer; Class
 Speaker Washington Birthday Banquet 4;
 Laboratory Asst. 3, 4.

GRACE LENDGREN

ROWLEY, MASS. ENGLISH
 Zeta Epsilon Chi; Y. W. C. A. 1-4; Cabinet
 3; Pres. 4; Geneva Conference 3; Intercol-
 legiate Debate 2, 3, 4; Pi Kappa Delta; Pres.
 4; Charter member Crimson Masque; Jun-
 ior Class Play; Christmas Play 2, 3; Y. W.
 C. A.; Sponsor Christmas Play 4; A. B. L.
 2, 3, 4; Vice Pres. 2; Tau Sigma Alpha 1;
 Waid Contest 2; Oracle Staff 4; C. C. A.;
 National Council Y. W. C. A. 4.

MAURICE McCRACKIN

MONMOUTH ENGLISH
 Beta Kappa; Student Council 1; Editor of
 Freshman Issue Oracle 1; Asst. Editor Ravel-
 ings 2; Philo-Ecritean Contest, Declama-
 tion 2; Essay 4; Student Volunteer 2, 3, 4;
 Y. M. C. A. 1-4; Cabinet 3; Vice Pres. 4;
 C. C. A.; Crimson Masque 3, 4; Pres. 4;
 Vice Pres. 4; French Club 3; Vice Pres. 3;
 Ecritean 1-4; Vice Pres. 2; Pres. 3; Treas.
 3, 4; Glee Club 3, 4; College Choir 4; Home-
 coming Committee 4; Christmas Play 3.

LAURA SHUMAN

KIRKWOOD, ILL. ENGLISH
 Tau Sigma Alpha 1; Vice Pres. 1; A. B. L.
 Secy. 2; Y. W. C. A.; W. A. A.; Class Bas-
 ketball Team 1, 2.

CLIFFORD RAMSDALE

ALHAMBRA, CALIF. HISTORY
 Bible Institute of Los Angeles 1921; Xenia
 Seminary 1924; Kappa Phi Sigma 2, 3;
 Chairman Program Committee 4; Varsity
 Baseball Squad 4; Intra-Mural Basketball
 3, 4; Intra-Mural Baseball 3.



JOSEPH D. DINSON

STRONGHURST, LL. CHEMISTRY
Beta Kappa; Biology Lab. Asst. 3, 4; Band
2; Washington Banquet Committee 1, 2;
Class Treas. 4; Y. M. C. A.

CHARLES WELCH

MONMOUTH ENGLISH
Football 1, 2, 4; Glee Club 1, 2; Class Pres.
1; Track 1-4; Capt. 3; Gospel Team 1, 2, 3;
Student Council 2, 4; Christmas Play 2.

PERMELIA DONALDSON

MONMOUTH
Kappa Alpha Sigma; Y. W. C. A.; Charter
member Tau Sigma Alpha 1; A. B. L. 2, 4;
Lindenwood College 3.

JEAN LIEDMAN

PITTSBURGH, PA. HISTORY
Kappa Alpha Sigma; Treas. 2; Pres. 4;
Y. W. C. A. Cabinet 3, 4; Vice Pres. 4;
Crimson Masque; Reporter 4; A. B. L.;
Vice Pres. 4; Charter member W. A. A.;
Tau Sigma Alpha, Pres. 1; Speech Recital
4; Pi Kappa Delta 1-4; Secy.-Treas. 2, 3;
Member Girls' Debate Team 1-4; Team
Capt. 2, 3, 4; Pres. Forensic Board 4;
House Pres. 4; Oracle Board 4; Pan-Hel-
lenic Council 4; Mgr. May Party 3; Cos-
tume Mgr. 2; Member Student Council 3, 4;
Secy. 3; Pres. Junior Class 3; Pep Club 3,
4; C. C. A.; Ravelings Literary Editor 3;
French Club 4; Class Basketball 3, 4; Christ-
mas Play 3; Homecoming Play 4; Women's
Upper Class Council 4.

ESTHER LUCILLE STEVENSON

MONMOUTH ENGLISH
Sigma Omicron Mu; Secy.-Treas. 3, 4; Y.
W. C. A.; A. B. L., Censor 3; Charter mem-
ber Tau Sigma Alpha; Waid Contest 3;
Ella Barnes Missionary Contest 3; Student
Volunteer; Editor Union News Letter 4.



BLAKE S. ROOT

MONMOUTH SOCIAL SCIENCE
Beta Kappa; Secy. 2; Kappa Phi Sigma;
Crimson Masque; Homecoming Play 4;
Christmas Play 4; Band 1-4; Orchestra 4;
Intra-Mural Basketball 1-4; Varsity Foot-
ball Squad 3; Basketball Mgr. 3; Y. M. C.
A.; Scrap Committee 1; Oracle Staff 4.

SIMON VELLENGA

BELLEFONTAINE, OHIO CHEMISTRY
Philo 1, 2, 3; Chemistry Lab. Asst. 2, 3, 4;
Y. M. C. A. Cabinet 4; Sigma Omicron Mu;
Advertising Mgr. Ravelings 3.

ESTHER WOODBURN

ROCK ISLAND, ILL. ENGLISH
Tau Sigma Alpha; A. B. L.; Y. W. C. A.;
College Choir; Augustana College 2, 3.

BRUCE WRIGHT PURLEE

ALEXIS, ILL. CHEMISTRY
Kappa Phi Sigma 1-4; French Club; Foot-
ball 2, 4; Track 1-4.

EVELYN MCKELVEY

HARTFORD, WIS. CHEMISTRY
Kappa Alpha Sigma; Secy. 2; Y. W. C. A.;
Cabinet 3; Sigma Omicron Mu; Charter
member Crimson Masque; Charter member
Tau Sigma Alpha; Secy., Vice Pres.; A.
B. L.; Secy. 2; Inter-Society Contest Win-
ner 1; Winner Waid Contest 1; Student
Volunteer 1-4; Pres. 4; Junior Class Play;
Ravelings Staff 2; Pan-Hellenic Council;
Secy. 2; Geneva Conference 3; Sponsor of
Tau Sigma Alpha 4; Homecoming Play 4.



WENDELL FINLEY

SANTA ANA, CALIF. CHEMISTRY
Beta Kappa; Treas. 4; Philo; Secy. 1;
Treas. 2; Crimson Masque; Treas. 3; Y.
M. C. A. 1-4; Business Mgr. Junior Class
Play; Business Mgr. Christmas Play 3;
Student Council 2.

WARREN S. TAYLOR

NEWBURG, N. Y. MATHEMATICS
Beta Kappa; Pres. 4; Football 1-4; Capt. 3;
Halfback All-State Team 3; Quarterback
and Capt. All-State Team 4; Baseball 1-4;
All-State Baseball 2nd Team Shortstop 3;
Basketball 2; Student Council 4; Athletic
Board 4; Scrap Committee 2, 3; "M" Club
1-4.

CHARLES K. HAMILTON

LAGELOTH, PA. SOCIAL SCIENCE
Phi Sigma Alpha; Y. M. C. A.; Baseball 1-
4; Captain 3; Basketball 4; Athletic Board
3; Student Council 3; Intra-Mural Basket-
ball 1, 2, 3; "M" Club 1-4.

FLORENCE SMITH, A. B.

NEW YORK CITY ENGLISH
Zeta Epsilon Chi; Sigma Tau Delta; Char-
ter member Crimson Masque; Reporter 3;
A. B. L., 1, 2, 3; Censor 3; Oracle Staff 3, 4;
Charter member Tau Sigma Alpha; Ora-
tion 1; May Party Costume Manager. 1, 3;
French Club; Y. W. C. A.; Program Com-
mittee 1, 2, 3; Girls Work 4.

VICTORIA M. FISCHER

EVANSTON, ILL. ENGLISH
Phi Delta Sigma; Pres. 4; Y. W. C. A.;
Tau Sigma Alpha; A. B. L.; Glee Club 1;
Junior Play Committee; Ravelings Staff 3;
Spanish Club 1, 2; Pan-Hellenic Council;
Pres. 4; Northwestern University.



HAROLD HERMAN

STERLING, ILL.

English
Philo 1, 2, 3; Sigma Tau Delta; Laboratory Asst. 4; Y. M. C. A.

THOMAS IRWIN

CLARINDA, IOWA

SOCIAL SCIENCE

Kappa Phi Sigma 1, 2, 4; Band 1-4; Orchestra 3; Intra-Mural Basketball 2, 3, 4; Intra-Mural Baseball 2, 3, 4.

EDITH ELIZABETH FORSYTHE

ALBIA, IOWA

MATHEMATICS

Tau Sigma Alpha 1; A. B. L. 2, 3, 4; Y. W. C. A.; W. A. A.; Class Basketball 1, 2, 3, 4; Capt. 3; Society Basketball 1, 2, 3; Hockey 3, 4; Basketball Manager 4; College Orchestra 3.

DOROTHY CALVERT

JEFFERSON, IOWA

HISTORY

Tau Sigma Alpha 1; A. B. L. 2, 3, 4; Sigma Omicron Mu 4; Y. W. C. A. 1-4; W. A. A. 3, 4; Spanish Club 2; Class Basketball 2, 3, 4; Inter-Society Basketball 3.

JEAN YOUNG

COLN, IOWA

ENGLISH

Tau Sigma Alpha 1; A. B. L.; Crimson Masque; Spanish Club 3, 4; Y. W. C. A.



CHARLES DECKER

STRONGHURST, ILL. BIOLOGY
Phi Kappa Pi; Treas. 3; Intra-Mural Football 2, 3; Football 1.

ROBERT C. DOWNIE

COLUMBUS, OHIO SOCIAL SCIENCE
Phi Kappa Pi; Secy. 4; Eccritean 2, 3, 4; Vice Pres. 4; Charter member Crimson Masque; Charter Pres. 3; Pep Club; Pres. 4; Oracle Staff 2, 3, 4; Asst. Business Mgr. 3; Business Mgr. 4; Oracle Board 4; Inter-Fraternity Council 3, 4; Intercollegiate Debate 3, 4; James-Nevin Debate 3, 4; Philo-Eccritean Contest 3; Junior Class Play; Tau Kappa Alpha.

ROBERT TREGO

BLANDINSVILLE, ILL. ENGLISH
Phi Kappa Pi; Pres. 4; Eccritean; Oracle Staff 3; Stage Manager Junior Class Play; Inter-Fraternity Council 4.

MARY ELIZABETH McCULLOUGH

ST. LOUIS, MO. ENGLISH
Phi Delta Sigma; Vice Pres. 3; Pan-Hellenic Council 3; Ravelings Staff 3; Organizations Editor; Pep Club 3, 4; Glee Club 3, 4; Junior Class Play; Washington Banquet Committee 3; Y. W. C. A. 2, 3, 4; A. B. L. 2, 3; Class Basketball 2, 3.

LORRAINE NOLLEN

NEWTON, IOWA MATHEMATICS
Phi Delta Sigma; Treas. 3; Y. W. C. A., Cabinet 2, 3; Altheorean 2, 3, 4; President 4; Class Basketball 2, 3; Girls' Pep Club.



GLENN ARNOLD

STOCKTON, ILL. HISTORY
 Y. M. C. A.; Kappa Phi Sigma; Intra-Mural Football; Intra-Mural Basketball; Intra-Mural Baseball.

GERTRUDE BEAL

COLUMBUS JUNCTION, IOWA MATHEMATICS
 A. B. L.; Pi Kappa Delta; Girls' Debate 3, 4; Y. W. C. A.; Cabinet 2, 3, 4; W. A. A.; Pres. 3; McQuiston House Pres. 4; Class Basketball 1-4; Capt. 2; Hockey 3, 4; Capt. 3, 4; Society Basketball 1, 2, 3; Tennis Mgr. 4; Ravelings Staff 3.

CLIFFORD ORAL McCREEDY

AINSWORTH, IOWA CHEMISTRY
 French Club 1; Philo 1, 2, 3, 4; Treas. 4.

ESTHER BROCKETT

NORRIS CITY, ILL. HISTORY
 House Pres. Sunnyside 4.

HASKELL A. DYER

BROWNING, ILL. ENGLISH
 Oracle Staff 2, 3, 4; Editor 4; Charter member Sigma Tau Delta; Philo 2, 3, 4; Contestant 4; Sigma Omicron Mu; Track Squad 1, 2, 3; Washington Banquet Committee 4.



AIMEE HOWARD

Kewanee, Ill. ENGLISH
 Kappa Alpha Sigma; Pres. 4; A. B. L. 1-4;
 Secy. 2; Oracle Staff 2, 3; Y. W. C. A. 1-
 4; Cabinet 2; Glee Club 2; Washington
 Banquet Committee 2; House Council 2;
 Press Club 2; Spanish Club 2; Pan-Hel-
 lenic Council 3, 4; Charter member Sigma
 Tau Delta; Pres. 3, 4; College Choir 3, 4;
 Attendant May Fete 3.

CATHERINE BASS

Hazelhurst, Miss. ENGLISH
 Swimming instructor for Women; Sigma
 Tau Delta; Crimson Masque; Glee Club;
 Pep Club; College Choir; Y. W. C. A.;
 Whitworth College.

J. MARSHALL BRILEY

Monmouth ENGLISH
 Phi Kappa Pi; Secy. 2; Pres. 3; Tau Kap-
 pa Alpha; Secy. 3; Ecritean; Treas. 2;
 Pres. 3; James-Nevin Debate 1-4; Intercol-
 legiate Debate 1-4; Team Leader 2, 3, 4;
 Oracle Staff 1, 2; Asst. Editor 3; Press
 Club 1, 2, 3; Forensic Board; Secy. 2; Vice
 Pres 3; Chairman Cap Committee 2; Inter-
 national Relations Club 2; Forensic League
 1-4; Ecritean Contestant 1-4; Intra-Mural
 Basketball 2, 3, 4; Intra-Mural Baseball 2,
 3, 4; Alternate College Orator 2, 3; Intercol-
 legiate Orator 4; Cambridge Debate Leader
 3; National Constitutional Oratorical Con-
 test, Third 3; Winner Ronald Sociological
 Essay Contest 3; Track 2, 4; Pan Hellenic
 Council; Vice Pres. 3.

CHESTER CABLE

Monmouth ENGLISH
 Phi Kappa Pi; Sigma Omicron Mu; Sig-
 ma Tau Delta; College Choir; Glee Club.

EARLE DAVIS

Alexis, Ill. ENGLISH
 Phi Kappa Pi; Track 1-4; Capt. 4; Sigma
 Tau Delta; Philo; Crimson Masque; Junior
 Class Play; Ronald Essay Contest; Chemis-
 try Essay; McKinley Essay; Sigma Omicron
 Mu; Pres. 4; Glee Club 1, 2, 3; Col-
 lege Choir; Class Vice Pres. 4; Ravelings
 Staff 3.



ANNE ALLEWELT

SEWICKLEY, PA.

ENGLISH

Crimson Masque 3, 4; Intercollegiate Debate 3, 4; Ravelings Staff 3; Pi Kappa Delta 3, 4; W. A. A.; Executive Board 3; French Club; Y. W. C. A.; A. B. L.; Class Basketball 4; Tau Sigma Alpha 1.

CAROLINE SMITH

OMAHA, NEB.

MODERN LANGUAGE

Phi Delta Sigma; Treas. 3; Y. W. C. A.; Cabinet 3; Aletheorean Pres.; Secy.; Censor; French Club, Secy.; Tau Sigma Alpha, Treas.

ELIZABETH McFADDEN

MONMOUTH

ENGLISH

A. B. L.; Charter member Crimson Masque; Glee Club 3, 4; Junior Class Play; Christmas Play 3, 4.



CHARLES LAWRENCE

MONMOUTH

SOCIAL SCIENCE

Pi Rho Phi; Pres. 4; Class Pres. 2; Basketball 1, 3, 4; College Choir 3, 4; Glee Club 2, 3, 4; Pres. Glee Club 4; Junior Class Play; Secy. Inter-Fraternity Council 4; Student Council 2, 3; Tennis Team 3, 4; Senior Track Mgr. 4; Ecritean.

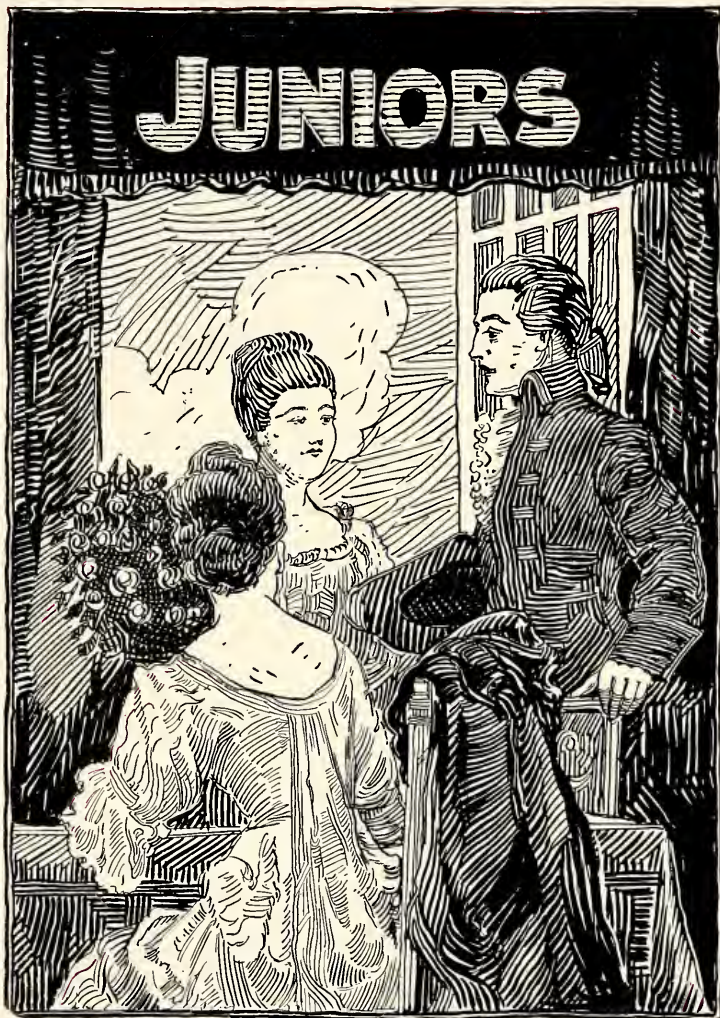


CHESTER CABLE		MARY WARFIELD	
MONMOUTH	PIANO	MONMOUTH	PIANO
GRACE FETHERSTON, B. M.		MARTHA DEEN	
MONMOUTH	PIANO	MONMOUTH	ORGAN



IRMA ARMSTRONG		EARL DAVIS, B. M.	
ALEXIS, ILL.	VOICE	ALEXIS, ILL.	PIANO, VOICE
HELEN BOOKER SAWYER		KATHERINE LAWS	
MONMOUTH	ORGAN	KIRKWOOD, ILL.	PIANO







RUTH NANTZ

One of Monmouth's most pleasing features is her friendliness and Ruth is a star along this line. To one who knows her she is surely a friend worth having.

KATHRYN FINDLEY

Kathryn is one of the girls that gentlemen prefer—and the college fellows like her too. She looks delicate, but look at the gang she runs around with! We'll wager she can hold her own. She's one of our champion wise-crackers and rates like Clara Bow.

MARION JACOBS

This boy used to be hard on dormitory telephones (ask the girls). This we'll say, he has stick-to-it-tiveness.

LOREN HAYS

"Baz" is a Monmouth product and proud of it. He really studies and makes good grades for all his seeming frivolity. He spends his vacations in Chicago and has to come back to Monmouth for a rest.

ROSS HANNA

He is quiet and does not broaden his acquaintanceship very much, but is a good, hearty friend to those who are his friends.



BERNICE SCHAFROTH

Every once in a while we see Bernice going places and she isn't alone either. Perhaps she makes up then for her silence on other occasions. When quiet people talk they are listened to. We suspect he listens. She makes A's too.

ELLEN ROOT

The nicest thing about Ellen,—and that must be pretty nice, you know,—is the way she holds open house anytime. Ellen is everybody's friend and we rather suspect that we impose on her a lot.

LOREN GRAHAM

The boy with the curly hair. Any girl would envy him his hair. He can play the piano like Zez Cufrey and run like Charlie Paddock. Besides all this his grades aren't so bad.

GLEN STANCLIFF

Glen is another one who lives in the Science Building. Some day we think that he will be finding a 10th dimension, but just now he is too busy trying to graduate. He has such pretty hair!

ANDY GORDON

Andy is one of the chuckling variety; has a Ford, and calls everyone "Pardner." He is one of the few fellows on the campus that everyone knows and likes.



DONALD BAILEY

Every Saturday morning we hear a "honk honk, rattle bang" and Don drives away from the dorm with a truck full of clothes for McMillans. Atta boy, Don! Let's have a Bigger and Cleaner Monmouth. (Note—Saturday morning isn't the only time that Don is out at the dorm.)

KATHERINE LAWS

If it's music that you want just ask Katherine—she'll have it. Here's a girl we are mighty glad to have in our class. The typical Junior girl. Don't you think?

LYNDEL CONREUX

Lyndel is another of the Cardinal rooters. He showed his talent as a songster in the Minstrel and in the Men's Glee Club. Besides this he swings a mean tennis racket.

LIETA CARRIS

Even though she is a good manager, she must possess a tendency toward Bolshevism, for she seems to be very fond of red.

FRANCES COLE

Frances knows Ainsworth very well (and it's not Ainsworth, Iowa, either). "Though she belongs to somebody else," still she is friendly with everyone. And oh, what a line!



DPHNE BENSON

Daphne has a pair of brown eyes which are never blue—and why? She and B. J. Palmer of Davenport, Iowa advocate the "Keep Smiling" theory. It seems to work for them.

ONNALEE HAWES

Onnalee decided Dorm rules were too much for her so she moved out in town this year. We miss her a lot in the dorm. She can sing and seems to have a certain moving picture quality about her.

LAWRENCE McVEY

Laurence is rivaling James as a psychologist. He is one of the deep thinking research workers in the Physics Department. He will no doubt be heard from if he keeps on as he is going now.

ROBERT McLOSKEY

"Red" just can't tear himself away from his dear old high school. It seems to call him back with a frequency not to pass unnoticed—every noon in fact. He is fond of his teachers (that is, *his teacher*) and is an intra-mural basketball star.

LLOYD SANDY

Lloyd is the kind of a boy that happens along in his Ford just as the dorm girls are commencing to be sure that they are going to be late for dinner—and compressed. He is also spending most of his afternoons in the science building.



LYLE MORROW

Lyle eats, sleeps, and drinks Economics. Still, he doesn't look poorly fed so there must be something to it. He makes grades that others envy him for.

WALTER LAWLESS

If names mean anything—but they don't, for Walter is still in old M. C. He doesn't waste much time running around the campus—but he does frequent the science building in the afternoon.

LOIS BRUNER

The name Stoney Brook seems to have a particularly musical and restful sound to us, but of Lois had happened to be a delegate to a convention there this past year, we doubt if she would have bothered to find out if the name had any significance.

DEAN CLARK

The boys say Dean is a "hard hitter", but they're speaking of tackles, not of baseball players.

JEANETTE McCLEERY

None know her but to love her, or name her but to praise.



DON BESTE

Shades of Daniel Webster and Henry Clay! Don enjoys a good debate as most people enjoy Hawcock's mince pie. He is one of the few who knows enough to argue with Robby—and he doesn't neglect his social life either.

HOWARD CONGDON

Since a preacher can use "spirits" only in case of a "tech o' sickness," and since he is progressing so well now,—we believe that someday the Class of '28 can boast of one good preacher at least.

MARGARET WILLIAMS

Margaret bids fair to become a future Mrs. Elliott—now Oswald, don't get excited—we mean that she is a fine librarian. She's one of the town girls for which Monmouth is famous.

BRUCE BARR

B. B. is one of our football stars. Thirty-two quarters in eight games is some record and we're proud of the Junior that holds it.

ELIZABETH KRUIDENIER

Elizabeth does her work quickly and efficiently, so she gained for herself a place on the Y. W. Cabinet and in M. C. Campus life.



EUGENE LISTER

An actor who will make any play he is in. Some day we expect that he will be as great in other places as he is now in dramatics on the M. C. Campus.

LAUREL STEWART

"Red" is what one might all "Flaming Youth" considering the color of his hair. He is seen on the dormitory porch often and seems to enjoy himself there.

CLIO McINTYRE

Clio is one of the "McQuistonites" who believe in having a good time and studying too. She seems to like Johnson's "malts", etc.

RALPH SPEER

When in doubt call Hawcocks—and Ralph is waiting at the other end of the telephone with a chicken salad sandwich in one hand and a bottle of Canada Dry in the other. He's also able to tell you the chemical constituents of everything from a glass of water to a Mulligan stew.

JANET WORK

When she came back from Colorado Janet brought back a bunch of cow-boy hats. Whatever she may know about cows she doesn't confine herself exclusively to them, for she's one of Maynard's best little old psychologists.



ROY FLETCHER

Here's a man we like to see go into the game. He is a fighter for M. C., both on the football and wrestling teams. His name is a well-known one in the activities of the campus and the class.

WALTER PAUL

He isn't quick to jump at conclusions, but when he does set his mind to a decision he keeps sight of the end all the time;—this is as truly a characteristic of Walter in *other* activities as well as his manager-ship of this book.

DORIS FETHERSTON

Athletics? She is a member of the Junior teams. Dramatics? Remember "Sun-Up"? Scholarship? That's Sigma Omicron Mu. Leadership? Yes, you can say most anything for Doris.

GERTRUDE TORRANCE

One of the Freshman girls thought that Gertch's last name was Andel because people are always saying—and Gertch-an-Del. Gertch has a ready made line, is custom built, and swims like a fish. Nize girl?

ELIZABETH HOWARD

"Lib" and "Red" must have their Dixons (however differently they may spell it). Lib is one of those extremely capable girls with firm convictions. She is evenly consistent about everything she does and she does about everything.



HELEN BRUNER

One of the "Bruner girls" who hold forth down East Broadway—talk about your heavy dates, Chuck (for last name see a famous grape juice ad) takes care of most of her spare time. She is one of the few girls who wear an "M" sweater.

KENNETH IREBY

Besides being a Science Major, Kenneth was manager of our 1926 football "machine" the first to hold that distinction and be awarded the manager's sweater under the new student manager system.

ALLAN McCASLIN

It would talk,
Oh, how it would talk!
Honestly, it makes about as much noise as
it's Ford. But we like it—(car or boy?).

RALPH PHELPS

Ralph is a Chemistry shark and he makes the lab. his club house. However we see him in the library quite frequently too, so chemistry isn't all he studies.

HELEN ESTHER LIVINGSTON

At the first of the year we wondered if we were hearing things, or if there really were two Helen Livingstons. We found out after a short time that there were two of them and we wonder which one of them was related to the famous missionary.



LAWRENCE REID

Commonly known as "Pie"—we don't know where he got his name but we can guess from the number of times he visits Kettering's. He just came to us last year, but we're glad he came because he is a dandy basketball player.

MYRA STICE

Some girls are just born lucky and among them is Myra. It must be nice to have beauty, distinction, a good disposition, your own ideas and—Lyman.

SARAH MARY WITTE

Sal is the original hard boiled girl,—has a mind of her own and doesn't care what anyone thinks about it. She has a line like the C. B. & Q.—swift and dependable. Sal and John D. Rockefeller are very much interested in Standard Oil.

HELEN BUCK

Helen seems to think that her Survey course is one in correspondence. Maybe it is, but we wonder if it surveys a large enough field.

BARR MILLER

Although Barr's aunt is teaching Spanish we don't believe he is majoring in it. He is another of our budding young actors. With his experience as electrician for the Crimson Masque plays, who knows but what he may be a second Edison some day?



CHARLES EVANS

He is quiet, and precise, and frequents the Biology Department. He is interested in dramatics and helped select the class play.

DORIS ARDREY

You've all heard about scattering sunshine and "saying it with flowers." Doris took charge of that line of work in Y. W. this year and she rivaled Old Sol and Mother Nature herself. She is also an important part of the dormitory life as she is of the W. A. A.

DOROTHY THOMPSON

Dorothy just came to us this year from Grimmel, but we hope that she will stay. She has shown her exceptional dramatic ability by her acting as Mrs. Cagle in the Junior Play. She also plays the cello like a professional.

BEATRICE BAIRD

Bee comes from the cleanest city in the state of muddy roads—see answer at the bottom of the page. The other important thing about her is that she drags around a diamond and spends most of her days hemming tea towels—or studying Greek—until the city-editor gets some time off.

JOHN MEEK

We thought John was a quiet, dignified boy, but did you see him in "The Sweetheart Game"? Oh, he was hard! But we heard it said, some liked him thus.



MARTHA McPEAK

Martha is "the Sunkist Girl from the Golden State." She is one of the big-hearted kind that will do anything for anybody. She is thinking of not coming back next year but we hope she changes her mind because we just couldn't get along without her.

EVERETT STARK

When the Norsemen stormed into Chesapeake Bay they were looking for just such people as Starky. He's a Swede and proud of it—and he doesn't come from Minnesota! Laff that off! Everyone admits that Everett "knows his groceries."

MARY KISSICK

Mary is a loyal Junior and the rest of us are glad we have her in the class. She doesn't say much, but "still waters run deep" and we would all enjoy knowing her better.

EUGENE LAU

Altho he came here just this year, this young man has entered into the activities of the school with great enthusiasm. He is a musician and we love to hear him play his guitar.

PAULINE WHITEMAN

No, this isn't Paul trying to disguise himself. If it is he has done some tall reducing since we last saw him. Pauline left us for the wilds of Biggsville after the first semester.



LOU ARNOLD

We've heard of the sweetness and beauty of the Kentuckians and Lou certainly is no exception.

CAROLINE SMITH

If we believed in re-incarnation we would venture to say that Caroline was the "golden haired lady" who launched a thousand ships and made Paris what he was. But Caroline knows too much to do anything like that and is managing, instead, to graduate in three years.

RICHARD HOLMES

Dick is a Wisconsin edition—one of the West Allis delegation and proud of it. He is editor of this book.

MARIAN YOUNG

Another reason why Traer is a notorious town. Marion can "parlez-vous" with the best of them and is one of the people professors enjoy calling on. She also manages to take in most of the Phi Sig Parties.

ROBERT ACHESON

Droleness is usually thought to be a characteristic belonging to people quite past the age of youth,—and yet "Robie" has it,—although he is considered quite young by some,—in fact "too young" by a few.



ROSANNA WEBSTER

Wonder what it feels like to look like a Madonna? Just the same they don't paint Madonnas with quite the twinkle in their eyes that Rosanna has. Perhaps she enjoys reading that College Humor with the rest of us.

ROY BRYAN

His friendly greeting of "Hi! Fellas!" may some day gain him friendships enough to permit him to follow in the footsteps of his uncle, William J.

MARY WARFIELD

Mary is a "vivacious little thing." She loves to take pictures at the most inopportune moments. She can play the piano like (the reader may supply the name of any great artist), and she can sing (for reference see the Girls' Glee Club).

WILLIAM THOMPSON

Can't you just hear some future Dr. McMichael saying, "Dr. Thompson of the class of '28 will conduct our devotions this morning." Bill is one hard-working boy, and Pinckneyville is expecting to be awfully proud of him some day.

RACHEL MARSHALL

The Pi Rho Phi's pride themselves on being a stag gang—but we'll sure hand it to Rachel, she beat them one time. Three cheers—we always knew that one Junior girl was worth more than any ordinary fraternity.



MARGARET STARR

Bible professors would have a hard life if it weren't for girls like Margaret. It must be nice to have profs. point at you and say, "Now I know that you can tell me," and really mean it. Guess it pays to think.

MAX RODGERS

Max is one of the best all around fellows in school, with a temperament that matches his size. Didja ever hear him talk when he wasn't telling a joke? He has a nice squinty smile, too.

EDMUND TUNSTALL

Eddie hails from the East and tho' many of us don't know him well, yet those who do say he is heaps of fun.

DORIS FINFROCK

Doris is one of our star basketball players. We have seen her in Anderson's Drug store, but don't know why. She is a person of surprise too. You wouldn't think that she'd talk much. But she does. You wouldn't think that she was particularly humorous. But she is. You wouldn't think that she's a good sport. But she is.

RANDALL HYDE

He is a big, pleasant fellow, but does not get to come to chapel and so we aren't all very well acquainted with him. We do know, however, that of the Junior roll his rank is toward the top.



LOIS DENNISON

—And her violin. Here's to you, Lois,—
may your fiddle mean success.

MELBA WOOD

Melba is to be seen waiting in front of
chapel frequently and when one certain
football captain appears she starts the car,
with a smile. Melba is good to look at
and has great artistic ability.

LESTER ORR

We overheard a girl on a train telling
another girl what wonderful eyes Lester
has. Ain't it the truth? If being cornfed
has anything to do with it, the price of corn
will probably be sky high by this time next
year.

ALEX THOM

Alex is out to prove that he is a member
of the stronger sex. He is a mighty fine
wrestler and swimmer, if we do say so our-
selves—as we shouldn't. And now we will
let you in on a secret. Alex is a favorite
with the picture show owners—he puts
across the Aesop's Fables every time.

RUSSELL McBRIDE

We never hear him sing "My Wife's
Gone to the Country"—nay—rather "Call
Me Back",—because he looks so lonesome
this year.



STEWART McCLANAHAN

Everyone knows him as Gus. He's the kind who greets others with, "Hello, my name's McClanahan, what's yours?" He spent a year in the windy city, but we are glad to have him back again.

HELEN LIVINGSTON

Helen could make A's if she cared to, but she is too busy with Oracle work and Greek. Don't think that she doesn't get good grades though, for she does. She can sing, write, or do almost anything that is asked of her. Helen is what we would call a popular girl.







Bryson
Tedd
Winfrey
Rief

Kniss
Balcoff
Bailey
Terrill

Miller
Henry
Clausen
Bohman

Hogue
Dunn
Humphreys
Gold



Vest
Millen
Moffett
Cork

Felske
McClenahan
Strong
McClellan

Conard
Hamilton
Tracey
Clark

Chapman
Duckwerth
Harkins
Moffett



Wallace
Lyons
Davidson
Van Nostrand

Reot
McKittrick
Wilson
Chalfant

Mead
Henderson
Evans
Gordon

Dixon
Roberts
Beveridge
Stewart



Wolfe
Brooks
Speer
Brown

McCutcheon
Finch
Swanson
Allison

Kelly
Hauhart
Finney
White

Feldt
Martin
Burnside
Mannan



Fulton
Matthews
Smith
Mitze

Jamieson
Carter
Davidson
Davis

Dickenson
Crackelt
Carson
Millen

McBride
Stevenson
Patterson
Davies



Stephenson
Graham
Haff
Franks

Morrison
Kobler
Firoved
Engdahl

Main
Petrie
Gibson
Mansfield

Lee
Finfrock
McDonald
Cataldo



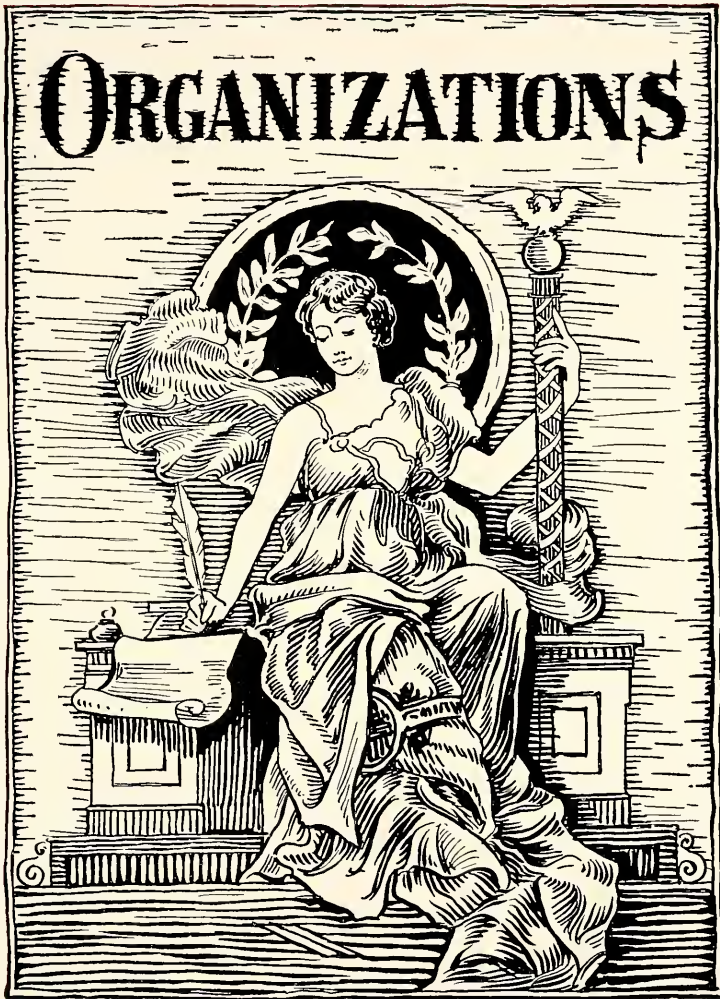






Freshman Roll

Dorothy Abbey	Robert Hyde	Hope Montgomery
Arthur Acheson	Lewis Hyett	Gladys Morris
Max Anwyl	David Ingraham	Wayne Morris
Lewis Aten	Thomas Ingram	Glendene Neill
George Bailey	Margaret Irwin	Esther Nesbit
Lois Bailey	Floy Isaacson	Mary Nevius
Harold Baird	Lois Isaacson	Nellie Nichols
Evelyn Barnett	Harritte Jewell	Evelyn Nied
Warren Beardslee	Merritt Jewell	Thomas Ogle
Thomas Bell	Donald Johnson	Edythe O'Neal
Ernest Bellis	Raymond Jones	Henry Oswald
Edward Bencini	Winifred Karr	Renel Owsley
Martha Berry	Louise Kelly	Robert Patterson
Charles Bisher	Marvin Kelsey	Harold Paull
William Boaz	Bernice Kennedy	Ethel Peterson
Margaret Brandon	George Kerr	Katherine Phelps
Alene Bratton	Samuel Kinnell	William Pogue
Margaret Buchan	Floyd LaGrow	Helen Reynolds
Doris Bullwinkle	Cyril Lamar	Margaret Richardson
Katherine Burgett	Willard Law	William Richey
Francis Earl Burke	Edwin Leader	Gordon Riedel
Frances Byarlay	Alice Ledlie	Myrtle Robinson
Harold Call	Glenn Lipp	Itha Robinson
Myra Campbell	Asa Lively	John Roddeffer
Alva Chalfant	Mable Livingston	Mary Russell
Edna Clark	Gladys Lundquist	Anna Schade
Avonelle Classen	Reba McAllister	Regula Schmid
Eleanor Cohen	Carolyn McCleery	Donald Sharpe
Dorothy Congdon	Irene McCleery	Robert Shauman
Robert Dains	Louise McClenahan	Theodore Shoberg
Floyd Davis	Stewart McClenahan	Jean Shontz
Leander Delabar	Marjorie McCloy	Dorothy Smith
Albert Dennison	Angus McCoy	Lester Smith
Roselle Doty	Mildred McCoy	Lyle Smith
Walter Downie	Donald McCray	Mary Smith
Eugene Duckworth	David McCreedy	Roberta Squires
Lucille Edgerton	Robert McCreight	Horace Stanley
Caryl Evers	Grace McCutcheon	George Steele
Arthur Fashender	Evagrace McFadden	Ada Streifthau
Verna Fiddler	Arlo McGowan	Silas Summers
Florence May Findley	Forrest McKee	Alice Tinkham
Finney, Ruth	Frederick McKelvey	Glenn Toland
Firoved, James	Morgan McKelvey	Dorothy Towl
Frans, Jean	Helen McLaughlin	Andrew Varns
French, Alice	Richard McMahon	Max Veech
Frew, Delbert	Lester McWhinney	Jacob Vallenga
Fulton, Ralph	Margaret Magnier	Willard Warnock
Gabby, Lester	Frances Mahaffey	Harold West
Gault, Margaret	Edna Maloy	Lucille Wheeler
Mabel Gibson	Warren Malone	Harold White
Edith Gillespie	James Marocco	Lloyd White
Louis Givens	Florence Martin	Alice Whitmyer
Robert Glenn	Helen Jane Martin	Wendell Williams
Gordon Goldthwaite	Helen Matson	Paul Williamson
John Graham	Josephine Metzgar	Bruce Wilson
Leroy Graham	Ella Meythaler	Donald Winbigler
Ralph Gunn	Margaret Miles	Levi Winfrey
Grace Hannum	Mary Elizabeth Millar	Thomas Wolfe
Mae Heap	Theodore Millen	Chaney Woodward
Agnes Henderson	Glen Millikan	George Worcester
Melville Hess	Lillian Mink	Dean Work
Glen Hilsenhoff	Mary Elizabeth Minter	Ellen Work
Margaret Holmes	Henry Mitze	Rotha Work
George Horner	Nell Modder	
Donovan Hughes	William Mohlenbrock	





Welch, Winbigler, Beste, Hogue
 Dyer, Liedman, Dixson, Taylor
 Dickson, Gunn, Moore, Speer, Holmes

Student Government

It has been the purpose of the student government this year to encourage a spirit of honor, loyalty, co-operation, and fellowship in the student body. Under the leadership of David Moore much has been accomplished in this direction. The members of the Student Council are as follows:

President	David Moore
Secretary	Doris Dixson
Senior Representatives	Renwick Speer, Jean Liedman
Junior Representatives	Donald Beste, Richard Holmes
Sophomore Representatives	Harland Hogue, Doris Dixson
Freshman Representatives	Donald Winbigler, Ralph Gunn
Editor of the Oracle	Haskell Dyer
Athletic Representatives	Warren Taylor, Carl Dickson

Student Body Officers

President	David Moore
Vice President	Charles Welch
Treasurer	Richard Holmes
Secretary	Russell McBride

Inter-Fraternity Council

Beta Kappa	Warren Taylor, Walter Paul
Phi Kappa Pi	Robert Trego, Robert Downie
Pi Rho Phi	Charles Lawrence, John Graham
Phi Sigma Alpha	Delbert Spears, Renwick Speer

Woman's Pan-Hellenic Board

President	Victoria Fischer, Phi Delta Sigma
Rosanna Webster	Phi Delta Sigma
Aimee Howard	Kappa Alpha Sigma
Lois Bruner	Kappa Alpha Sigma
Ruth Roberts	Zeta Epsilon Chi
Doris Fetherston	Zeta Epsilon Chi

Dormitory Organizations

MRS. EDITH MORTON DEAN OF WOMEN

McMICHAEL HOME

Jean Liedman	President
Ruth Roberts	Vice President
Rosanna Webster	Secretary-Treasurer

SUNNYSIDE

Miss Emma Gibson	House Director
Esther Brockett	House President

THE McQUISTON

Mrs. R. A. Elliott	House Director
Gertrude Beal	House President

The Oracle Staff



The Oracle

EXECUTIVE BOARD

H. A. DYEREDITOR-IN-CHIEF
ROBERT C. DOWNIEBUSINESS MANAGER

EDITORIAL STAFF

Helen LivingstonAssistant Editor
Mrs. A. L. GrahamAlumni News
Grace KomarekChapel
Grace FetherstonMusic
Roy BryanOrganizations
Florence SmithSociety
Harland HogueSports
Blake RootSports
Max CrockettSports
Walter DownieSports

REPORTERS

Charles Balcoff	Mary Russell
Dorothy Gold	Frederick Strong
Edwin Leader	Donald Winbigler
Grace Lengren	

BUSINESS STAFF

Donald BaileyAssistant Business Manager
Richard HolmesAssistant Business Manager

SOPHOMORE ASSISTANTS

Roger Henderson	Clair Smith
Donald Pringle	Clair Mead

Philo



LaMarr, Irwin, Clark, Phillips, Congdon, Stanciliff, Wilson, Hogue, McBride, Matthews, Gunn, Leader, Withipier, Purles, Gordon, Summers, Dyer, Moffett, McEwen, Metcalf, Finney, Milten, Graham, Goldthwaite, Stewart, Doty, McGowan, Lyons, Mend, Holmes, Crogdon, Stanciliff, Crockett, Hamhart, Sharpe, Love, Patterson, McCoy, Lister, Ramsdale, Bryan, Root, Findley, Fulton, Wilson, McCreedy, South, Mitchell, Jones, Lajelle, Cramer, Brown, Conreux, Glenn, Meek, Lau, Millen

Philo

Philadelphian Literary Society, a charter member of Kappa Phi Sigma national forensic fraternity, today may be justly proud of her attainments both social and scholastic. We have in our membership a great number of youthful "Mark Antonys" who combine social favor with scholarly class-room achievement. Among our members may be found the Freshman, Sophomore and Junior Class Presidents, the editor of the Ravelings, the editor-in-chief of the Oracle, president of the Y. M. C. A., eight out of eleven members of the "Y" Cabinet, and one-half of the officers of the Student Association. In addition, last year's most representative college man was a Philo, and our college competitor in the national oratorical contest, Edson Smith likewise was affiliated with our order.

Philo may well feel proud in her history, too. Graduating her first alumni in 1860, there has been a constant, persistent interest in her accomplishments and ex-Monmouthites look back with pleasure on their former days in Philo. In those days the spirit of rivalry with our local forensic rival, Ecclit, was even more intense than it has been in the immediate past, and in the opinion of Mr. Clair Boruff, of our faculty, has "died down more and more." In fact, twenty years ago, the rivalry could hardly be termed "friendly."

Our nationalization idea has stimulated the chapter, although we are only starting to feel this. Our reception of the delegates to the national conclave is a noteworthy achievement. Our intercollegiate contest idea was a good one. We furthermore had the privilege of presenting Edwin E. Slosson, Ph. D., LL. D., a noted scientist. He spoke on the subject, "Creative Chemistry". His lecture was well received and favorably criticised.

With a former editor of the Monmouth High School Annual, an editor of the High School magazine, and several debaters, as well as noted declaimers and orators from different parts of the country in our Freshman membership, Philo may well visualize herself as a future red in the spectrum of intercollegiate forensics!

PHILO ROLL

Fugene Moffett	Ross Hanna	Max Crockett
Harland Hogue	Bruce Purlee	Richard Holmes
John Matthews	Harry Clark	Dean McBride
Harry Tracey	Arlo McGowan	Glen Arnold
Fugene Lister	Edwin Leader	James Firoved
Clair Mead	Stewart McClanahan	Charles Baloeff
Clifford Ramsdale	Rex Love	Richard Petrie
Ralph Phelps	Donald Winbigler	Donald Roberts
Clifford McCreechly	Lynel Conreux	William Pogue
Roy Doty	Norval Hautart	Frederick Strong
Wendell Finley	Gordon Goldthwaite	George Kerr
John Meek	Donald Sharpe	Gordon Reidel
William Lovell	Blake Root	Angus McCoy
Roy Bryan	Charles Fulton	Robert McKee Patterson
John Wilson	Harold Lyons	Morgan McKelvey
Howard Congdon	Cyril Lamar	Samuel Millen
Haskell Dyer	Robert Glenn	Theodore Millen
Alfred Stephenson	Silas Summers	Eugene Lau
Laurel Stewart	Feroy Graham	Ralph Gunn
Glen Stancliffe	Tom Irwin	

Eccritean



Trego, Smith, Beste, Shoberg, Kinnell, Marucco, Ungrudt, Moore, Hill, Terrill, Downie,
Cable, Harf, McCreedy, McKee, Brooks, Bryson, Pringle, Malone, J. O. Graham,
Burnside, White, Dains, Woodward, McCrackin, Millikan, Barr, Bailey, Steele, Lawrence, Motesworth,
Rogers, Clark, Gorham, Briley, Downie, Sauter, Fiddi, Sands, Alton, Owsley, Fletcher, Kelsey.

Eccritean

The Eccritean Society, one of the two Monmouth College men's literary groups, has finished another year of successful forensic and literary history.

Eccritean went down in glorious defeat against Philo, by a 2-1 decision in a debate on "Resolved: That this house pities it's grandchildren." We do pity them, we Eccriteans, who heard that debate, but not to be compared with the pity and tender sympathy we hold for our Philo brothers.

The spring contest promises to be a battle royal. Briley, Beste, McCrackin and White, will struggle for old Eccrit's honor. Last year Philo was victor in the contest 7-3, the two years previous Eccritean was victorious 10-0.

The destinies of Eccritean have been piloted this past year by J. Marshall Briley, and Neal A. Sands. Both men displayed remarkable executive ability and to them as to no others goes the credit of making Eccritean what she was this last year.

"*Sic Itur ad Astra*"—"This Way to the Stars." Eccritean's glorious and inspiring motto is a beacon light to all men who work and struggle for Eccritean's supremacy and honor.

ECCRITEAN ROLL

Marshall Briley	Lyman Sutter
Bruce Barr	Robert Downie
Donald Beste	Frank Wilcox
Dean Clark	David Gorham
Roy Fletcher	Marion Huff
John Graham	Russell Terrill
Russell Graham	Chancy Woodward
Loren Hays	Glenn Millikan
Francis Kissinger	Theodore Allen
Charles Lawrence	Raymond Jones
Keith Molesworth	John Graham
David Moore	Ruel Owsley
Maurice McCrackin	James Morocco
Barr Miller	Harold White
Robert McLoskey	Walter Downie
Donald Pringle	Arthur Ritchie
Neal Sands	Theodore Shoberg
Robert Trego	Sam Kinnell
Max Rodgers	Ralph Ungrodt
Phillip Brooks	Louis Givens
Robert Feldt	George Steele
Robert Burnside	Ed Bailey
James Bryson	Robert Dains

A. B. L.



A. B. L. Roll

Anne Allewelt	Grace Lendgren
Anna Anderson	Jean Liedman
Lou Arnold	Margaret McClenahan
Beatrice Baird	Freda McClellan
Gertrude Beal	Greta McCutcheon
Martha Brownlee	Evelyn McKelvey
Helen Bruner	Leona McKinnon
Lois Bruner	Gertrude Miller
Dorothy Calvert	Fern Morrison
Leita Carris	Miriam Gordon
Margaretta Chalfant	Mable Gibson
Avonelle Clossen	Winifred Martin
Doris Dixson	Elizabeth Main
Permelia Donaldson	Jean Pattison
Grace Dunn	Helen Buck
Emily Chapman	Ruth Roberts
Grace Fetherston	Grace Rife
Doris Fetherston	Laura Shauman
Dorothy Finch	Edith Shimmin
Martha Firoved	Florence Smith
Edith Forsythe	Esther Stevenson
Marcella Foster	Iva Stevenson
Lois Henderson	Dorothy Thompson
Mildred Hamilton	Inez Wallace
Elizabeth Howard	Rosanna Webster
Ruby Kelly	Pauline Whaling
Mary Kissick	Esther Woodburn
Elizabeth Kruidenier	Jean Young
Dorothy Jamison	Marion Young
Katherine Laws	Victoria Fischer

Aletheorean



Engdahl, Moffatt, Livingston, Finney, McClerry, Allison,
Smith, Nollen, McPeak, Carson, Abbot, Mannon, Ardey, Shafroth

Aletheorean Roll

Lena Abbott	Marian Mannon
Hester Allison	Jeanette McCleery
Doris Ardrey	Lucille McKitrick
Laura Carson	Martha McPeak
Margaret Davidson	Virginia Moffett
Marian Davidson	Lorraine Nollen
Margaret Engdahl	Bernice Schafroth
Doris Finrock	Caroline Smith
Grace Finney	Margaret Starr
Helen Esther Livingston	Janet Work

Tau Sigma Alpha



Tau Sigma Alpha Roll

Lois Bailey	Frances Mahaffey
Evelyn Barnett	Josephine Metzger
Alene Bratton	Margaret Miles
Martha Berry	Helen Jane Martin
Margaret Brandon	Mary Elizabeth Minter
Margaret Buchan	Nell Modder
Alva Chalfant	Hope Montgomery
Edna Clark	Evo Mosely
Dorothy Congdon	Reba McAllister
Eleanor Cohen	Carolyn McCleery
Roselle Doty	Marjorie McCloy
Lucille Edgerton	Mildred McCoy
Carol Evers	Grace McCutcheon
Verna Fidler	Helen McLaughlin
Florence May Findley	Esther Nesbit
Jean Frans	Mary Nevius
Margaret Gault	Glendine Neill
Edith Gillespie	Edythe O'Neal
Grace Hamm	Katharine Phelps
Goldie Heap	Iola Robinson
Agnes Henderson	Helen Reynolds
Margaret Holmes	Mary Russell
Margaret Irwin	Anna Schade
Floy Isaacson	Regula Schmid
Lois Isaacson	Jean Shontz
Harriette Jewell	Dorothy Smith
Winifred Karr	Roberta Squires
Bernice Kennedy	Ada Striefthau
Willadean Kelly	Alice Tinkham
Mable Livingston	Dorothy Towl
Gladys Lundquist	Lucille Wheeler
Margaret Magner	Alene Whitmyer
Alice Ledlie	Ellen Work
Edna Maley	Rotha Young



Morrison, F. Finfrock, Russell, Fetherston, M. Smith,
Hughes, Graham, Lendgren, D. Finfrock, Dickinson,
Baird, Pattison, Whaling, G. Fetherston, Arnold, F. Smith,
Stephenson, Jamieson, Jewell, Roberts, Kruidenier, Metzger, Phelps

Zeta Epsilon Chi

(1889)

OFFICERS

PRESIDENT RUTH ROBERTS
VICE PRESIDENT PAULINE WHALING
CORRESPONDING SECRETARY JEANNE PATTISON
SECRETARY-TREASURER ELIZABETH KRUIDENIER

SENIORS

Ruth Roberts	Florence Smith
Grace Fetherston	Grace Lendgren
Jeanne Pattison	Pauline Whaling

JUNIORS

Beatrice Baird	Lyola Hughes
Louise Arnold	Doris Finfrock
Doris Fetherston	Elizabeth Kruidenier

SOPHOMORES

Ferne Finfrock	Iva Stevenson
Leanna Dickinson	Dorothy Jamison
Margaret Graham	Marjorie Morrison

FRESHMEN

Josephine Metzger	Katharine Phelps
Harriette Jewell	Mary Smith
Mary Russell	

Zeta Epsilon Chi





Kappa Alpha Sigma

(1902)

OFFICERS

PRESIDENT JEAN LIEDMAN
SECRETARY LOIS BRUNER
TREASURER DORIS DIXON

SENIORS

Jean Liedman	Marcella Foster
Evelyn McKelvey	Edith Shimmin
Lois Henderson	Pernelia Donaldson

JUNIORS

Elizabeth Howard	Helen Livingston
Onnalee Hawes	Helen Buck
Myra Stice	Martha Firoved
Mary Warfield	Lois Bruner
Ellen Root	Helen Bruner
Martha McPeak	

SOPHOMORES

Doris Dixson	Gertrude Miltier
Margaretta Chalfant	Elizabeth Main
Alice Graham	

FRESHMEN

Roselle Doty	Alva Chalfant
Alene Bratton	Mable Livingston
Agnes Henderson	Carolyn McCleery
Reba McAllister	Margaret Holmes
Florence May Findley	

Kappa Alpha Sigma





Torrance, Gold, Smith, Webster,
Chapman, McConnell, McCullough, Dunn, Wood, Young,
Nollen, Diehl, Witte, McKinnon, McCleery, Currie, Hamilton,
Mahaffey, McClenahan, Brownlee, Wallace, Laws, Davis, Thompson, Hannum

Phi Delta Sigma

(1903)

OFFICERS

PRESIDENTLEONA MCKINNON
VICE PRESIDENTMARIAN YOUNG
TREASURERCAROLINE SMITH

SENIORS

Leona McKinnon Victoria Fischer
Lorraine Nollen Mary Elizabeth McCullough
Caroline Smith

JUNIORS

Rosanna Webster Dorothy Thompson
Melba Wood Mildred Currie
Marian Young Jeanette McCleery
Sarah Mary Witte Katherine Laws
Gertrude Torrance Betty McConnell

SOPHOMORES

Grace Dunn Thelma Davis
Emilie Chapman Estella Diehl
Inez Wallace Mildred Hamilton
Martha Brownlee Dorothy Gold
Margaret McClenahan

FRESHMEN

Francis Mahaffey Grace Hannum

Phi Delta Sigma





Rodgers, Moore, Terrill, Henderson, Hetfield,
Kinnell, McWhinney, Graham, J. Graham, Bencini,
Lively, Kissinger, Warnock, Lawrence, R. Graham, Winter,
Shoberg, Smith, Molesworth, Reid, Malone, Richey, Speer

Pi Rho Phi

(1905)

OFFICERS

PRESIDENTCHARLES LAWRENCE
VICE PRESIDENTRUSSELL GRAHAM
SECRETARYLLOYD SANDY
TREASURERDONALD BAILEY

SENIORS

Charles Lawrence	David Moore
John H. Graham	Francis Kissinger
Harold Walker	Everett Winter
Keith Molesworth	

JUNIORS

Russell Graham	Lloyd Sandy
Donald Bailey	Max Rodgers
Lawrence Reid	Ralph Speer

SOPHOMORES

Kenneth Walker	Roger Henderson
Ewald Hetfield	Russell Terrill
Ralph Ungrodt	Herbert Ralston

FRESHMEN

John O. Graham	Edward Bencini
Lyle Smith	William Mohlenbrock
Theodore Shoberg	Lester McWhinney
Asa Lively	Warren Malone
Louis Givens	Willard Warnock
Arthur Richey	Forrest McKee
Samuel Kinnell	

Pi Rho Phi





Phi Kappa Pi

(1885)

OFFICERS

PRESIDENT	ROBERT TREGO
VICE PRESIDENT	LYMAN SUTTER
SECRETARY	ROBERT DOWNIE
TREASURER	DONALD PRINGLE

MEMBER IN FACULTY

Leo Costello

SENIORS

Robert Trego	Ainsworth Bodey
Lyman Sutter	Charles Decker
Robert Downie	Earle Davis
Marshall Briley	Chester Cable
David Gorham	

JUNIORS

Leo Costello

SOPHOMORES

Robert Burnside	Donald Pringle
James Bryson	Robert Felst
Marion Huff	Frank Wilcox
Edwin Bailey	John Matthews

FRESHMEN

Walter Downie	Hugh Patterson
Raymond Jones	Harold Baird
Reuel Owsley	Ray Peterson
George Steele	Theodore Allen
David McCreedy	Robert Dains
Dean Work	Donald Menely

Phi Kappa Pi





Fletcher, Ogle, Swanson, McLoskey,
 Lee, Clark, L. Smith, Root, Schaff, Hughes, LaGrow, Paterson,
 Barr, Paul, Sands, Graham, Beste, Winbigler,
 Dixon, McCaslin, Johnson, Taylor, Woodward, N. Wilson, C. Smith,
 Wilson, Tunstall, Meek, Whiteman, Kelsey, Stark, Findley, Hays, H. White

Beta Kappa

(1901) (1926)

OFFICERS

ARKON	WARREN TAYLOR
VICE ARKON	NEAL SANDS
SCRIBE	JOHN MEEK
TREASURER	WENDELL FINLEY
CHANCELLOR	DONALD BESTE
GUARD	BRUCE BARR

MEMBER IN FACULTY

W. S. Haldeman

SENIORS

Warren Taylor	Maurice McCrackin	Raymond Johnson
Neal Sands	Blake Root	Joseph Dixon

JUNIORS

John Meek	Allan McCaslin	Loren Hays
Bruce Barr	Robert McLoskey	Walter Paul
Loren Graham	Dean Clark	Roy Fletcher
Walter Lawless	Everett Stark	Donald Beste
	Edmund Tunstall	

SOPHOMORES

Ronald Swanson	Newton Wilson	Harold White
Owen Wilson	Elmer Lee	Clair Smith

FRESHMEN

Donald Winbigler	Lawrence Parli	Marvin Kelsey
Edwin Leader	Adam Kirk	Lester Smith
Chancy Woodward	Floyd LaGrow	Thomas Ogle
	Glen Millikan	

Beta Kappa





Phi Sigma Alpha

(1908)

OFFICERS

REGENT	DELBERT SPEARS
VICE REGENT	RENWICK SPEER
TREASURER	RICHARD HOLMES
SECRETARY	DEAN MCBRIDE

MEMBERS IN FACULTY

Samuel Thompson	William Kissick	Clair Boruff
	Bernard Smith	

SENIORS

Delbert Spears	Frederick Hunsche	Judson Jones
Renwick Speer	Charles Hamilton	Frank Gorom
	Leverett Wallace	

JUNIORS

Richard Holmes	Robert Acheson	Alex Thom
Russell McBride	Lester Orr	Stewart McClanahan

SOPHOMORES

Jack McIntosh	Henry Mitze	Richard Petrie
Harland Hogue	Luther Mansfield	Donald Roberts
Clair Mead	Dean McBride	Bernard Smith
James Speer	Howard Wolfe	

FRESHMEN

Robert Shauman	Thomas Bell	George Worcester
David Inghram	Harold Paull	Willard Law
Harold Call	Gordon Riedel	Robert Hyde
	Thomas Wolfe	

Phi Sigma Alpha





L. Stevenson, H. Bruner, Professor Goodrich, D. Fetherston,
C. Cable, Miss Griswold, E. Davis, Mrs. Goodrich, H. Dyer,
G. Fetherston, E. Howard, J. Pattison, L. Abbott, D. Calvert, E. McKelvey

Sigma Omicron Mu

This organization, known as Sigma Omicron Mu, is the Scholarship Fraternity of the school and maintains a high standard of excellence in academic work as a requirement for membership. Phi Beta Kappa has been petitioned and it is hoped that the national organization will see fit to grant a chapter within a short time. A Scholarship Day which was held in connection with Armistice Day last fall was sponsored by the local fraternity, and did much to create an interest in scholarship.

MEMBERSHIP

Dr. T. H. McMichael	Mrs. C. G. Goodrich
Prof. C. G. Goodrich	Louise Griswold
Dorothy Calvert	Earle Davis
Evelyn McKelvey	Jean Pattison
Haskel Dyer	Elizabeth Howard
Lena Abbott	Helen Bruner
Grace Fetherston	Chester Cable
Esther Stevenson	



Starr, Fetherston,
Work, McCleery, Lendgren, Miller, Liedman, Beal,
Berry, Pattison, Professor Toussaint, Allewelt, Streifthau

Pi Kappa Delta

The Illinois Zeta Chapter of Pi Kappa Delta is now five years old, and has taken a more prominent place on the campus with each year. Through the organization a great deal of interest has been created concerning debate among women. All women in Monmouth College who participate in inter-collegiate debate are eligible for membership. Both men and women belong to the national organization in most of the other colleges and universities where there are chapters, and Prof. Toussaint was a member while in Ripon.

MEMBERSHIP

Prof. S. R. Toussaint	Jeannete McCleery
Jean Pattison	Margaret Starr
Anne Allewelt	Gertrude Miller
Jean Liedman	Ada Steifthau
Gertrude Beal	Janet Work
Grace Lendgren	Martha Berry
Doris Fetherston	



Sigma Tau Delta

The Rho Alpha Chapter of Sigma Tau Delta was founded in Monmouth College in January, 1926, and in the year and a half of its activity it has accomplished much in the creation of an interest in creative writing. During the past year the organization undertook an experiment in the publication of "The Delta," a magazine devoted to those in the student body and faculty interested in creative work, and the results were very successful.

HONORARY MEMBERS

Dr. T. H. McMichael Takashi Komatsu

FACULTY MEMBERS

Emma Gibson	Louise Griswold
Edith J. Morton	L. E. Robinson
Eva M. Hanna	Samuel Thompson
Inez Hogue	

MEMBERS IN COLLEGE

Aimee Howard	Leo Costello
Elizabeth Howard	Harold Herman
Dorothy Gold	Charles Welch
Doris Dixson	Donald Beste
Florence Smith	Haskell Dyer
Jeanette McCleery	Earle Davis



Tau Kappa Alpha

Tau Kappa Alpha has been established in Monmouth College for twelve years and is the oldest honorary fraternity on the campus. All men who have represented the school in either debate or oration are eligible for membership. Because of the increased interest in forensic activities during the past few years the attainment of membership has been regarded as even higher honor than it was formerly.

MEMBERSHIP

Dr. T. H. McMichael
Prof. J. D. Buchanan
Prof. Clair S. Boruff
Prof. M. M. Maynard
J. Marshall Briley
Robert Downie
Roy Doty

Roy Bryan
Donald Beste
James Bryson
John Mathews
George Kerr
James Van Nostrand
Harold Baird



Nollen, Livingston, McCleery, McClellan, Gold, McCullough, Dunn, Torrance,
Warfield, Wallace, McPeak, Todd, Smith, Harkins, Kelly, Bass,
Miller, Bratton, Liedman, Shontz, Schmid, Findley, M. Livingston, Davis, Allewelt

Girl's Pep Club

One of the livest organizations on the campus during the past year was the Girls' Pep Club, composed of a limited twenty-five co-eds chosen from among the ranks of all four classes. During the football and basketball seasons they made their presence very much noticed and their programs in chapel were a great stimulus to arousing pep on the campus. Since the organization is self-perpetuating and its membership is limited, those selected consider it a high honor. The members purchased uniform sweaters this year with the Monmouth seal on the front which added greatly to the stunts which the club took charge of in chapel.

MEMBERSHIP

Lorraine Nollen
Helen Livingston
Carolyn McCleery
Freda McClellan
Dorothy Gold
Mary E. McCullough
Grace Dunn
Gertrude Torrance
Mary Warfield
Inez Wallace
Martha McPeak
Janet Todd
Florence Smith

Beatrice Harkins
Ruby Kelley
Catherine Bass
Gertrude Miller
Alene Bratton
Jean Liedman
Jean Shontz
Regula Schmid
Kathryn Findley
Mable Livingston
Thelma Davis
Anne Allewelt



McCrackin, Doty, McKelvey, Bryan,
Harkins, Work, Beery, Wheeler,
Thompson, McKelvey, Lendgren, Roberts, Stevenson

The Student Volunteers

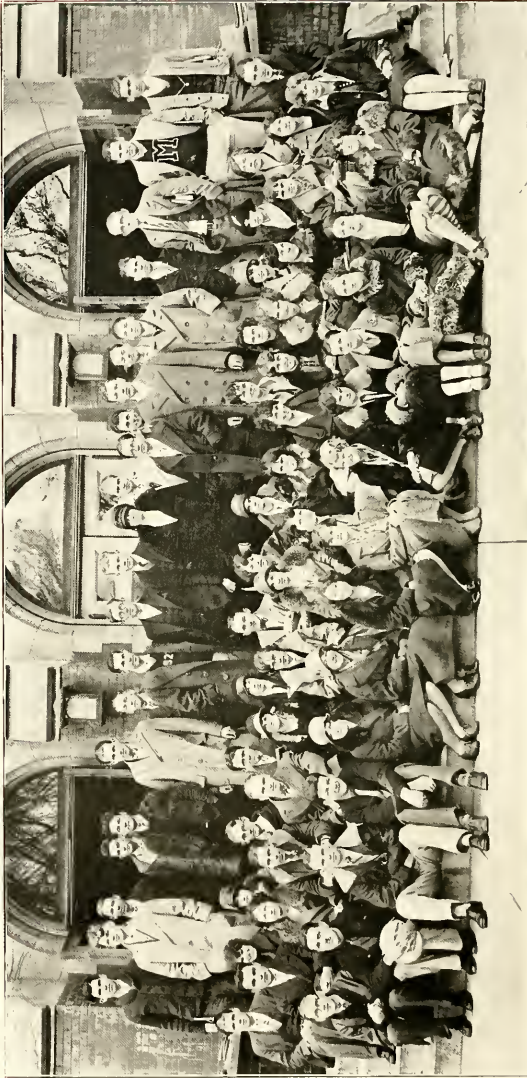
The Student Volunteer group is composed of all those students who are looking forward to Christian work in the Foreign Mission Field. There is no compact organization, but rather a loosely bound group who have a common interest and meet for the purpose of mission study and fellowship. This year they sent several representatives to the Milwaukee Conference, one of the largest international gatherings of its kind ever held. Delegations were also sent to smaller conferences, and several of the members helped to put on a play at Jacksonville, which has since been repeated by request several times.

MEMBERSHIP

Roy Doty
Maurice McCrackin
Evelyn McKelvey
Grace Lendgren
Ruth Roberts
Esther Stevenson
Dorothy Thompson

Janet Work
Martha Beery
Lucile Wheeler
Morgan McKelvey
Beatrice Harkins
Roy Bryan

The Crimson Masque



The Crimson Masque

The appreciation and production of the highest type of drama is the aim of the members of the Crimson Masque. In the closed programs of the club are presented plays of every kind—comedy, tragedy, and fantasy. Student directors are thus given an opportunity to direct different types of plays, to create various atmospheres, to experiment with lighting and scenery effects, and to aid others in portraying characters. One step in advance this year has been the production of plays with foreign settings. "The Merry Merry Cookoo" is a Welch play while "The Sweetmeat Game" is a scene in a Chinese home.

The members of the club receive the experience of creating characters and making them live. "The Rider of Dreams," the only negro comedy produced by the club, gave the opportunity of learning negro dialect and portraying negro characters. Mrs. Thompson in "Thompson's Luck" was a cripple, mistreated by her husband and broken-hearted with grief. Pierrot and Pierrette in "Hearts to Mend" were light fantastic characters.

It is one of the desires of the organization to include among its members creators as well as producers and actors. Encouragement is given to those interested in writing plays. This year two members have written plays well worthy of production. Dorothy Gold wrote "Manthus, the King", a play produced in an open program, and Charles Balcoff wrote "Counterfiet."

The Crimson Masque wishes to give dramatics a high place on the campus. Progress has been made toward this goal but at present the club feels the need of a large and well equipped building in which to produce its plays. It is the hope of the members that some day not too far in the future the old gymnasium may be remodeled and Monmouth College will have a Little Theatre of its own.

The officers of the Crimson Masque for the year were as follows:

President	Maurice McCrackin
Vice President	Donald Beste
Secretary	Rosanna Webster
Treasurer	John Wilson
Reporter	Jean Liedman
Program Committee Chairman	Pauline Whaling
Advisor	Miss Ruth Williams



Y. W. C. A.

It is the purpose of the Y. W. C. A. to bring the "finer self" of each girl into predominance and to develop in each a splendid four-fold personality. Regular weekly meetings are held in which questions touching the lives of the girls are discussed.

The Y. W. C. A. has assisted the Y. M. C. A. in social affairs and in the publishing of the Red Book.

The members of the Cabinet for the past year were as follows:

Grace Lendgren	President
Jean Liedman	Vice President
Jeanette McCleery	Music
Hester Allison	Secretary
Rosanna Webster	Religious Meetings
Elizabeth Kruidenijer	World Fellowship
Lois Henderson	Treasurer
Doris Ardrey	Social Service
Caroline Smith	Publicity
Elizabeth Howard	Girls' Work
Gertrude Beal	Undergraduate Representative
Doris Fetherston	Social



Y. M. C. A.

The Y. M. C. A. organization in Monmouth College is recognized as one of the strongest in the state. Its aim is to foster a better Christian Spirit on the campus by bringing the men together to study and discuss the ideals necessary for the development of the highest type of Christian personality.

In co-operation with the Y. W. C. A. the Y. M. C. A. has served the school in various capacities this year, namely, the publishing of the Red Book, the planning of many of the all-college parties and the helping of new students in getting settled at the first of the year.

The members of the cabinet for the past year were:

President	Roy Doty
Vice President	Maurice McCrackin
Secretary-Treasurer	John Matthews
Gospel Teams	William Thompson
Bible Study, World Fellowship	Roy Bryan
Social	Dean McBride
Campus Survey, Red Book	Don Beste
Membership	Simon Vellenga
Music	Laurel Stewart
Publicity	John Wilson
Advisor	Prof. J. Dales Buchanan

The Forensic Board

The Forensic Board of Monmouth College has charge of all forensic activities of the college, including the scheduling and financing of the debates for both men and women, and any oratorical contests which may occur during the year.

The Board is composed of a President, elected by the members of the two debating societies, and a representative from each of the four literary societies of the college.

The personnel of the Board is as follows:

- President Jean Liedman
who is finishing her fourth year of intercollegiate debate.
- Vice President Gertrude Beal
A. B. L. Representative, member of this year's debate team.
- Secretary-Treasurer James Bryson
Ecclitean Representative, in charge of financial work.
- Manager for Women's Teams Jeanette McCleery
Aletheorean Representative, who scheduled women's debates.
- Manager for Men's Teams John Matthews
Philo Representative, who arranged men's debates.

The Board owes a great deal to Professor Toussaint for his faithful assistance and co-operation.



State Oratorical Contest

Marshall Briley '27, representing Monmouth, won third place in the fiftieth annual contest of the Illinois State Oratorical Association held at Normal, Illinois, on February 18, 1927. First place went to Milton Dickens, a sophomore at Illinois Wesleyan University. Second place went to Herman Brockhaus of North Central College. Prizes this year were gold, silver, and bronze medals.

Mr. Briley's oration, "The Human Harvest," was a denunciation of war as the destroyer of the fittest human stock. This fresh subject was handled by him in a masterly way, his usual excellent delivery being at its highest excellence. The oration showed a great deal of historical insight and was exceptionally well organized.

Because we have won the contest the past two years it was generally conceded that our orator was fighting the handicap of past success. Those who heard the contest feel that while the winners of the first two places deserved their good fortune, Monmouth was more than well represented; and that in a contest in which nine schools were engaged third place is a great honor both to our orator and to our college.

The Ronald Essay Contest

The Ronald Essay Contest offers each year to the students of Monmouth College and of Dakota Wesleyan University of Mitchell, South Dakota, an opportunity to write essays on a given economic subject.

From the papers submitted, three are selected at each of these schools to represent it in the inter-school competition, for which prizes are awarded as follows: \$50.00 to the winning team; and an additional \$50.00, divided into three individual prizes of \$25.00, \$15.00 and \$10.00, to the first, second and third ranking papers.

The subject for competition this year was "The Influence of Corporate Wealth on American Politics During the Last Twenty Years." The three papers which were chosen by the local department of Social Science to represent the college were written by Lyman Sutter, Helen E. Livingston, and Frederick Strong.

The contest resulted last year in a victory for the Dakota Wesleyan team; first and second places also going to them. Marshall Briley of Monmouth received the prize for the third best paper.

This contest was instituted and is sponsored by Mr. Roy Ronald '08, editor of the Evening Republican, of Mitchell. The subject for competition is selected each year by him with the approval of the two colleges concerned. Since its inception this contest has stimulated interest in various economic aspects of our modern life.

Women's Inter-Society Contest

Aletheorean and Tau Sigma Alpha tied for first place in the Women's Inter-Society Contest which was held on the evening of March 14, in Philo Hall. By winning the debate decision Aletheorean received four points, while Tau Sigma Alpha won in Oration and placed second in short story, giving them four points also. A. B. L. by winning first in short story received three points.

The program was delivered as follows:

1. DEBATE

Resolved: That the higher education of women is the curse of the age.

Affirmative—Tau Sigma Alpha Agnes Henderson
Frances Mahaffey
Negative—Aletheorean Lena Abbott
Janet Work

2. ORATION

"Child Labor" Harriette Jewell, T. S. A.

3. SHORT STORY

"One Out of a Million" Elizabeth Kruidenier, A. B. L.
"The Runner-Up" Laura Carson, Aletheorean
"A Day in Mermaid Tavern" Nell Modder, T. S. A.

JUDGES

Mrs. S. M. McConnell, Judge L. E. Murphy, Rev. A. T. Lorimer

The McKinley Essay Contest

Through the generosity of the late United States Senator William B. McKinley, the English Department offers each year two prizes of \$50.00 each for the best two essays on designated subjects.

Last year the subjects were, "The Nature Essay in American Literature," and "The English Drama Since 1900." Prizes for the winning essays on these subjects were awarded to Earle Davis and Mrs. Margaret Buckey Graham, respectively.

As the Ravelings goes to press five students are preparing to submit essays in this year's contest. The subjects set are "John Galsworthy as a Man of Letters," and "The American Essay Since 1900."

Beginning this year a change in the system of judging the essays is to be followed in that they will be sent to competent authorities outside of this college community instead of being judged by a faculty committee as in the past. As before, the prizes will be awarded at the commencement exercises.

The James-Nevin Debate

Debate teams representing the Ecritean and Philo literary societies clashed on January 12th in the auditorium on the occasion of the annual James-Nevin Debate.

Philo this year continued its series of victories by defeating the Ecritean team. The three members of Philo who were responsible for this victory were Roy Doty, John Wilson and John Matthews. Donald Beste, Ecritean, was judged best individual debater, with Marshall Briley, also Ecritean, ranking second. Robert Downie was the third Ecritean speaker.

The question used for the debate was in a little lighter vein than those of past years. It was, "Resolved, That this House Pities its Grand-children." The affirmative case upheld by Ecritean sought to prove that the human race from a biological standpoint is degenerating. The Negative denied this and pointed out scientific, educational, and religious, and social advances that are leading the race to higher planes of life and living.

As would be expected, a debate on such an informal question provided unusual entertainment for the audience, some of whom expressed the hope that questions of similar nature would be used in the future.

The winning team was awarded \$30.00, and Donald Beste was awarded \$10.00, from the permanent endowment of Captain James and J. M. Nevin.



Women's Debate Season

Debating for women has commanded more interest this year than ever before. For the first time in history the women have debated two questions in one season; also for the first time in history, the women have had an honest-to-goodness trip, all of which has created a keener sense of enthusiasm than has been evinced previously in the forensic attempts of our women.

A team composed of Jean Liedman, Grace Lendgren, and Gertrude Miller debated the affirmative of, "Resolved: That the present system of trial by jury should be abolished." Under the skillful leadership of Jean Liedman this team invaded Wisconsin and began the season with two glorious victories for Monmouth; the first over Carroll College, Waukesha, Wisconsin, and the second over Marquette University, Milwaukee, Wisconsin. The only reason they failed to win another victory was that their third debate with Lawrence College, Appleton Wisconsin, was a non-decision one.

The second question debated this year was, "Resolved: That a Federal department of education with a secretary in the President's cabinet should be established." The first home debate for the women was held March 11, when Monmouth's negative team composed of Jeanne Pattison, captain, Martha Berry and Margaret Starr met North Central's affirmative team. There was no decision for this debate but Coach Toussaint was more than pleased with the manner in which the Monmouth team overcame the arguments advanced by North Central.

On the 17th of March, Monmouth met Normal University in a dual debate. The affirmative team debated Normal's negative on the home floor, while the negative team met Normal's affirmative team at Morton, Illinois. The affirmative team, composed of Gertrude Beal, captain, Jeanette McCleery and Ada Streifthau lost to Normal, but this defeat was compensated by the victory of Monmouth's negative team over Normal's affirmative.

The last debate of the season was held March 25 at Jacksonville, Illinois with the Illinois Woman's College. This resulted in a victory for Monmouth's affirmative team, composed this time of Gertrude Beal, captain, Jeanette McCleery and Anne Allewelt.

All in all it was a season full of a lot of hard work and fun. If you don't believe the latter it's just because you didn't go to Wisconsin with Mrs. Toussaint for a chaperon, or to Morton in the Toussaint Ford, or to Jacksonville in the same Ford—of you had—well, you'd know that the girls really did have a good time.

Five of the girls are Seniors and won't be back to help the cause along next year. The younger girls will miss the capable leadership of Jean Liedman, Jeanne Pattison, and Gertrude Beal, as well as the able assistance of the other two Seniors, Grace Lendgren and Anne Allewelt. With Jeanette McCleery, Margaret Starr, Juniors, Gertrude Miller, Sophomore, Martha Berry and Ada Streifthau, Freshmen, to form a nucleus for next year, Monmouth should have another successful season.



Men's Debate Season

The two men's debate teams set a remarkable record this year by engaging in six intercollegiate decision debates and losing only one of them, at Beloit. In addition, each team participated in one no-decision debate.

The subject of farm relief was used for debate this year, the question being "Resolved: That the Essential Features of the McNary-Haugen Bill should be Enacted into Law." Home audiences supported the teams unusually well, especially at the first of the season. A feature of this season's work was a debate between the Monmouth affirmative and a negative team from Beloit held at Roseville before farmers and friends of that community. It is hoped that more of this practical application of debating can be carried out in future years.

Work on debate was started early in December when preliminary try-outs were held. A selected squad of twelve men held bi-weekly meetings and practice debates until Christmas vacation when the squad was cut to the nine men who went through the season. Four worked on the affirmative and five on the negative.

A great deal of credit for the success of the season must go to the two team captains, Matthews of the affirmative, and Briley of the negative. Each was a power to be reckoned with in constructive speech; and each, in the third rebuttal speech for his team, succeeded in clarifying the issues and summing things up in a way that put the battle on ice. Matthews, who has two more years of varsity competition, is one of the most lucid and logical debaters our school has possessed in years.

Donald Beste, second speaker for the affirmative, was in every debate of his team and has one more year to compete. Roy Bryan, Junior, and George Kerr, Freshman, alternated at the first affirmative position and always opened up the case in fine shape.

Robert Downie and Harold Baird were two strong men on the negative. Baird, who is a Freshman, promises to make a name for himself in forensic work. James Van Nostrand and James Bryson, Sophomores, did some great debating at Augustana and will be valuable men for the next two years.

We will surely miss Briley and Downie, our two graduating debaters. Briley, who has been a formidable debater here for four years, rose to new heights of skillful debating in this his last season. Downie, the other senior, is an effective debater whom it will be hard to replace.

Too much cannot be said in praise of the untiring efforts of Professor S. R. Toutsaint who is our debate coach. To him, above all others belongs the credit of the teams put on the platform, and to him also belongs the honor of their uniform success.



Eccritean Contestants

On the evening of Monday, May 23, the annual Philo-Eccritean contest is scheduled to take place in the college auditorium. Although the interest in the contest has been somewhat lax during the past few years due to the inactivity of the Eccrits, the occasion has never failed to bring forth a real clash of talent. Philo was victorious last year, but Eccritean won the two previous years, so that neither society will have any room to let down in their efforts.

Donald Beste will represent the Eccrits in Debate, and with a splendid record of two years on the intercollegiate team he will be an able man for such an important place. In oration the standard bearer will be Marshall Briley who placed third in the state contest this year with a splendid piece of work. When it comes to essay a better choice could not have been made than Maurice McCrackin whose literary work has always been of a high order in this field. Harold White will take care of the declaiming with due justice, considering a good high school record and two years of college experience.



Philo Contestants

Roy Doty represents Philo in debate and with three years of experience of work on the college team behind him, will make an excellent man for the place.

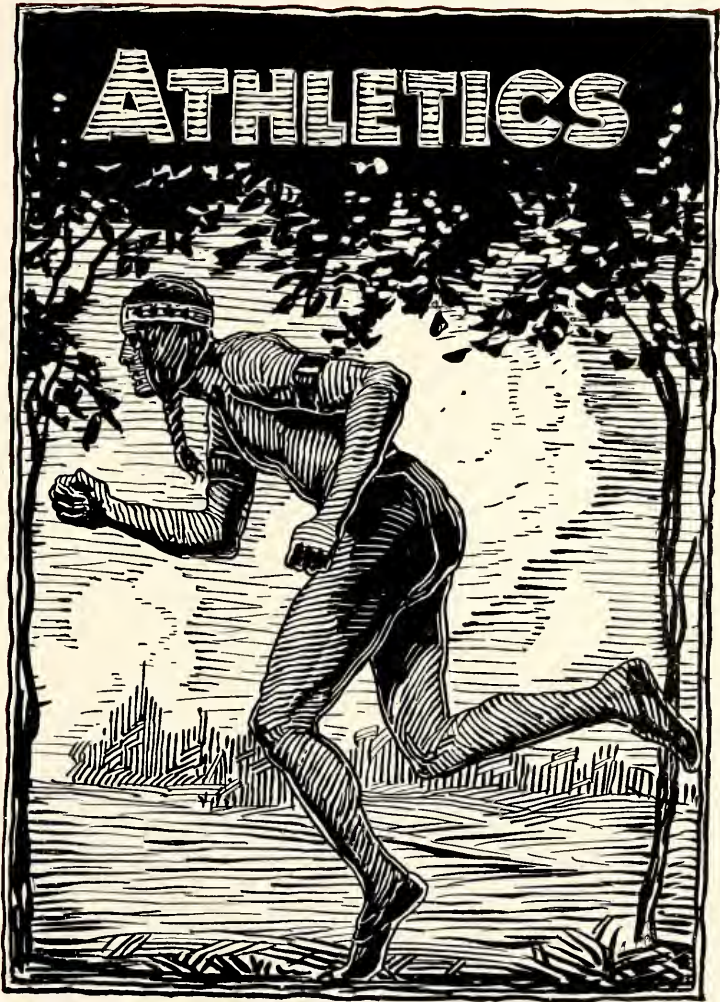
Haskel Dyer, who has been editor of *The Oracle* the past year, and has had an unusual amount of experience in literary work, will ably fill the position of Philo essayist in the contest.

John Matthews, although only a Sophomore, has made an enviable reputation on the platform, and because of his excellent voice and stage presence will be one of the strongest men in the contest as he upholds Philo in oration.

Donald Winbigler has the honor of being Philo's declaimer, and will undoubtedly do some outstanding work if we may judge from his excellent record in high school.

POLE SCRAP 1926





The Coaches

The coming of H. L. Hart to Monmouth as Physical Director ushered in a new era for Monmouth College Athletics. The standing of all teams has raised appreciably, and several championship and near-championship teams have been produced. Since his advent, swimming, boxing, and wrestling have been added to the athletic curriculum. Intra-mural sports have also been stressed, in order to give every man in school a chance for bettering his physical self.

Coach Hart has won a place in the hearts of all Monmouth students and friends. His ability and straightforward policy for clean athletics have earned the respect and love which he now commands. Monmouth is proud to have such a coach and man.

When one speaks of Coach Hart, one also thinks of Coach James F. Van Antwerp. Here are two coaches, who work in perfect unison for the common purpose of bettering Monmouth's athletics.

"Van" has proven himself a very capable director of basketball and baseball, as well as assistant in football. He, too, has won the reputation of a "square-shooter" in all his activities.

Football 1926

Coaches Hart and Van Antwerp developed a machine this year that was probably the strongest aggregation that ever represented Monmouth. Such a team was a credit to Monmouth, the coaches, and the players themselves. The schedule of 1926 was the hardest ever tackled. However, the team came through with flying colors, flipping them only once—and that to Coe by a score of 7 to 3. By virtue of these victories, Monmouth ranked first in "The Little Nineteen" and Central Illinois Conferences, while third place in the Midwest Conference was garnered.

Fourteen letter-men and about fifty candidates started working for berths on the team early in September. Prospects certainly looked good, and after two weeks of hard work the season started.

The first game was played on the Monmouth field with Wheaton College. It proved to be a walkaway for M. C., the score reading 55 to 0. This was rather unexpected and failed to show the coaches the weak points of the home team. Almost the whole squad was used during the game.

The next encounter was with Coe at Cedar Rapids. This was recognized as the hardest game on the schedule, and the Red and White clearly out-fought the Coe aggregation until the final minutes, when Coe pushed over a touchdown that gave them a hard-earned 7 to 3 victory. This game was a heart-breaker and many injuries were sustained.

The following week a badly battered team journeyed to Beloit, Wisconsin and handed them a 23 to 7 drubbing in spite of the fact that five Monmouth regulars sat on the bench with injuries. Three touchdowns and a field goal accounted for the Red and White's counters, while Beloit scored a touchdown via the aerial route.

The Homecoming battle was played before a large crowd and was a thriller. Although the home crew outplayed the Blue and White, and gained almost at will, a counter could not be pushed over and Illinois led 2 to 0 until the final two minutes of the game. Taylor was then sent in, despite his injured leg, and an 80 yard march was started which ended in a touchdown and a 7 to 2 victory. This game will long be remembered.

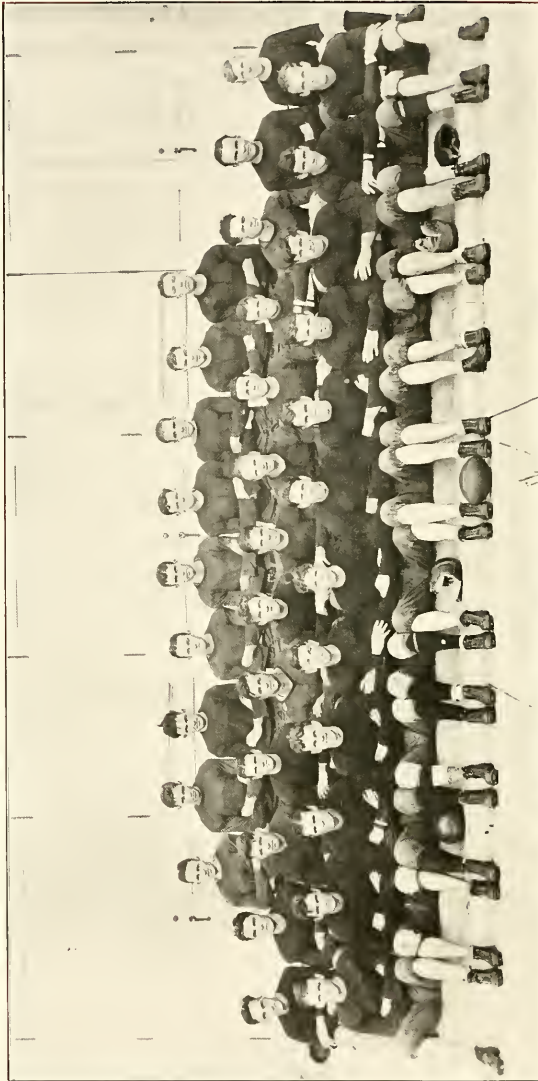
The following week Augustana was encountered at Rock Island. It was Homecoming and the "Terrible Swedes" were out for blood. Monmouth was not to be denied, however, and after a hard fought battle came through with a touchdown and a field goal for a 10 to 0 win. The Monmouth machine was functioning beautifully by this time.

Cornell came next with a determination to avenge the scoreless tie of the previous year. The Red and White clearly demonstrated that they were the best outfit, passing and running the ends to a 17 to 0 victory. The Monmouth wall could not be phased and everyone played a whale of a game. Coach Hart could well be proud of the perfectly-timed offense and stone-wall defense which his men displayed. This was probably the best game of the season.

A game that pretty nearly threw a wrench into the machinery was played at Eureka. The Christians were reported to be weak, and the gang was probably over-confident. Eureka woke them up, however, when she pushed over a touchdown in the first period. The Hartmen then came back and vindicated themselves by winning 21 to 6.

The remaining Turkey Day battle drew a large crowd in spite of bad weather. Although volunteers had scooped off the gridiron, it remained soggy and prevented spectacular play. Knox came over primed to knock off the Hart crew but fell before good, consistent thrusts through the line. The M. C. athletes completely outclassed the Siwash in all departments of the game. The contest ended with Monmouth on the long end of a 15 to 0 score. This brought to a close a season which will be long remembered. In this game nine seniors sang their "Swan song" as gridiron athletes in a blaze of glory.

Football Champs---1926



McCaslin, Whiteman, Raistun, Orr, Burnside, Hill, White, Reid, Lister,
Coach Van Antwerp, Barr, Rodgers, J. Graham, Cataldo, Cork, Wilcox, Heffield, Lee, Walker, Purlee, Root, Coach Hart,
Thom, Clark, Gorum, Taylor, Molesworth, E. Graham, Capt. Jones, Sutter, Fletcher, Wallace, Spoons, Boddy

Football 1926

(Continued)

These nine seniors have done much in bringing Monmouth's athletic teams to the fore. It is with regret that we see Captain Jones, Taylor, Gorom, Molesworth, Wallace, Spears, Bodey, Sutter, and Welch pass on. Besides these men, Graham, Wilcox, Rodgers, Thom, Barr, Fletcher, Burnside, Cork, Hetfield, Walker, Clark, and Cataldo received letters. With this crew as a nucleus and with several promising freshmen coming on, prospects look very bright for next year.

Monmouth was well represented on the all-star teams this year. In the Central Illinois Conference, Molesworth, Taylor, Gorom, and Thom were placed on the first team, Wallace and Sutter on the second, while Bodey, Spears, Graham and Jones were given honorable mention.

Brick Young's all-state team had Taylor and Molesworth on the first string, Gorom and Thom on the second, and Wallace on the third. Bodey, Spears, Sutter, and Jones received honorable mention.

In the Midwest Conference, a Cedar Rapids' selection chose Molesworth for the first crew, Taylor and Wallace for the second, while Graham, Gorom, Sutter, and Thom were given honorable mention. A Mount Vernon paper give Taylor and Thom first string positions, Molesworth a second, with Bodey, Jones, Spears, Graham, and Gorom on the honorable mention list.

That Monmouth's team is being recognized has been proved by the fact that Iowa U. has scheduled a game with Monmouth for October 1, 1927. This is a big advancement and means a lot for M. C. athletics.

The team received fine support from the student body and towns people. The two pep clubs were largely responsible for this enthusiasm. At the Exchange Club Banquet, Coaches Hart and Van Antwerp were presented with "M" Blankets as a token of appreciation from the team. The Kiwanis Club presented the nine seniors with "M" Blankets.

A new system of managers was inaugurated this year. Kenneth Irey received a manager's letter as an award for his efficient services.

The scores of the games are as follows:

MONMOUTH	OPPONENTS	
55	Wheaton.....	0
3	Coc.....	7
23	Beloit.....	7
7	Illinois.....	2
10	Augustana.....	0
17	Cornell.....	0
21	Eureka.....	6
15	Knox.....	0
—	—	—
151		22



Coach Van Antwerp, Paull, Ogle, Pogue, McWhinney, Ramsey, Call, Bell, Coach Sands,
Downie, Rodeffer, Williamson, Aten, Bellis, Lipp,
Kinnel, Worcester, Owsley, White, Burke, LaGrow

The Freshmen Squad

A great deal of credit is due the freshman squad. Thirty men turned out throughout the season and took the batterings of the varsity. Without their help, Monmouth could not have developed such a football machine. Little mention was made of their work, but it was certainly appreciated.

Numerals were awarded to the following: Kelsey, LaGrow, Kinnell, Ramsey, Williamson, Williams, Owsley, Ogle, Burke, Rodeffer, White, Pogue, Paull, Worcester, Call, Lipp, Peterson, and Aten.

State Champs 1926

CAPTAIN JUDSON JONES

CENTER—170

"Jud" was seriously handicapped with a broken ankle received during the summer, but he came through in fine shape. Later on he had a shoulder injured, and played anyway. That was characteristic of Jud's playing; he never quit. His cool head, accurate passing, and ability to size up the opponent's plays made him an excellent leader and pivot man. We all regret to see Jud go.



CAPTAIN-ELECT RUSSELL GRAHAM

QUARTERBACK—145

Russ was the smallest man on the squad, but was a heady consistent fighter. He specialized in running back punts for nice gains. He was also a clever receiver of passes, a fair punter, and fared well in open field running. Russ was chosen as one of the two captains of the 1927 eleven. He will make a good field general for next year's crew.

CAPTAIN-ELECT ALEX THOM

LEFT END—150

Alex will serve as the other captain next year. He used his speed to good advantage and got down under punts in good shape. He was a good blocker and tackler and especially strong on defense. He was chosen on several of the mythical teams.



LEV WALLACE

LEFT TACKLE—205

Lev was moved out to tackle this year where he used his 205 pounds like a veteran. He was a stone wall in defense, powerful on the offense, and got down under punts in fine shape. He will leave another hole to be filled next year.



WARREN TAYLOR
RIGHT HALFBACK—160

Taylor is another senior we will lose. Taylor is on the firing end of the much-feared Taylor to Molesworth pass combination. He, too, is a triple threat man. Taylor is a cool headed field general, and because of his all around ability was chosen captain of several mythical teams.

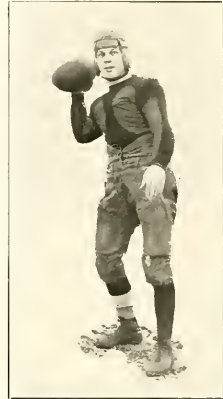


LYMAN SUTTER
RIGHT GUARD—175

Sutter had hard luck this year, and was out most of the season with injuries. What playing he did do was of high caliber. Lyman was a good blocker and could be depended on for a hole. He also leaves us this spring.

DELBERT SPEARS
RIGHT TACKLE—180

"Del" was the tallest man on the squad and used his size to advantage. He was fast in getting across the line and especially good on breaking up punts and passes. "Red Eye" closed his career at Monmouth by smearing everything that came his way in the Knox game. "Del" graduates this year.



AINSWORTH BODEY
RIGHT END—185

Bodey was also unfortunate in having injuries. However, he played in a majority of the games. He was fast, covered punts nicely, and was strong on defense. He, too, graduates with the crew of '27.



KEITH MOLESWORTH

LEFT HALFBACK—160

"Moley" is of the triple threat type. His specialty is on the receiving end of Taylor's passes, and he is an artist at this. His punts were well placed, and gave the ends plenty of time. He carried the ball equally as well. Moley made most all the all-star teams. He, too, will be missed next fall.



FRANK GOROM

FULLBACK—185

"Pop" is considered by many as the best fullback in the state. He was fast, handled the ball nicely, specialized in plunging, and was always reliable in backing up the line. Frank played a whale of a game against Knox, gaining 98 yards. His 185 pounds will be missed next season.

SAMUEL CATALDO

TACKLE—165

"Sam" returned this season after a year's absence. He was small but played a scrappy game. He was good on his feet, strong on defense, and got across the line fast. He is a sophomore.



BRUCE BARR

LEFT GUARD—195

Bruce stepped into this berth this year and filled it capably. He followed the ball nicely and put up a strong defense. Bruce was a strong blocker and with this year's experience, great things are expected of him next year.



DEAN CLARK

BACK—165

Dean was a driver and hit the line hard. He was a good blocker and tackler also. Dean was used a lot this year and always gave a good account of himself. He will be with us next year.



MAX RODGERS

GUARD—210

"Fat" was called upon to fill Sutter's place and surely did it. He was hard to move and met everything that came his way. He was also good on his feet for so big a man. He will fill one hole in the 1927 aggregation.



ROY FLETCHER

CENTER AND TACKLE—180

Roy could fill either the tackle or center positions efficiently, and was called upon to do this. He was a good offensive lineman. Great things are expected of Fletcher next season.



FRANK WILCOX

BACK—170

Frank was fast and a terror at running the ends. He was a good blocker and was strong at kicking off. This was his first year and next year he ought to go red hot.

WALTER CORK

BACK—163

"Jug" got in quite a few games this year and tore off some nice runs. He was a strong defensive back, and a sure tackler. Walt is one of the best prospects for next year's backfield. He, too, is a sophomore.



ROBERT BURNSIDE

END—170

"Bob" filled Bodey's shoes when "Ping" was injured. Although this was his first year, he developed rapidly into a good end. He was fast, and got down under punts nicely. He will be back next year.

EWALD HETFIELD

END AND TACKLE—180

"Hap" was the most versatile man on the squad. He was called upon to fill most every position, and performed well at all of them. "Happy" turned in his best game against Cornell. He will make a good lineman next year.



KENNETH WALKER

BACK—150

"Kenny" showed up mighty well for his first season. He was a heady scrapper, handled the ball nicely, carried it for some nice gains and punted when called upon. He will be with us next year.

CHARLES WELCH

END—155

This was "Chuck's" first year at end, but he developed fast, and got his chance in most of the games. Chuck was fast, and a good open-field blocker and tackler. "Chuck" graduates in June.

Basketball 1926-27

While not having a brilliantly successful season, Monmouth did recover from last year's disastrous record, and more than broke even on the season's games.

Coach "Jim" Van Antwerp took charge of basketball this season, and soon developed a team that was much feared in all three conferences. The team ran up against a very hard schedule, and did well in winning nine games while eight were lost.

Captain Molesworth led in the scoring department with a total of 177 points registered in seventeen games. Reid rated second place with 81 points, and Wallace third with 71 points.

Letters were awarded to Captain Molesworth, Wallace, Spears, Jones, Lawrence, Smith, Reid, and Hetfield. Two freshmen were awarded numerals for their services. Horner and Mohlenbrock received these awards and did some nice playing when they became eligible the second semester.

We regret that this is the last year that Molesworth, Wallace, Spears, Hamilton, Lawrence and Jones will be seen in action on the basketball floor.

Bernard Smith has been elected to lead the 1927-28 crew.



Stancliff (Student Mgr.), Hyde, Harmon, Lively, Richey, Hamilton, Lawrence, Coach Van Antwerp, Marocco, Millikan, Jones, Spears, Stanley, Horner, Coach Hart McBride, Smith, Mehlenbrock, Molesworth, Wallace, Reid, Williamson

The Season's Record

MONMOUTH	OPPONENT'S
23.....	Parsons25
38.....	Iowa Wesleyan14
37.....	Beloit12
37.....	Ripon25
32.....	Beloit21
22.....	Cornell32
21.....	Knox22
49.....	Eureka25
20.....	Cornell35
16.....	Coe24
22.....	Coe24
28.....	Millikin16
33.....	Illinois College18
32.....	Knox20
13.....	Illinois Wesleyan31
35.....	Augustana17
23.....	Augustana27
481	338



Dickson, Coach Van Antwerp, Taylor, Ramsdale, Swansen, Herbold, Mitze, Hetfield, J. Graham, McBride, Douglass, Molesworth, R. Graham, Davis, Hamilton

Baseball 1926

Baseball had another successful season under Coach Van Antwerp. By virtue of four Midwest victories, Monmouth finished in first place in the Midwest Conference, and also stood high in the Little Nineteen. Nine games were won while only three were dropped. The team was a heavy hitting outfit, running up a total of 126 counters to their opponents' 61.

Captain "Chuck" Hamilton ably shouldered the brunt of the pitching burden, rating with the best in all conferences. John Graham made a paramount first-sacker. Carl Dickson handled "Chuck's" offerings in nice shape, and few steals got past him. Taylor handled second base, while Molesworth filled shortstop in fine shape. Lake Douglass took charge of the hot corner with scarcely a bobble. Kenneth McBride, Warren Davis and Russ Graham made a fine trio for the outfield and did some nice stick work. Russ Graham led the sluggers with a season's average of .404.

Letters were awarded to Captain Hamilton, J. Graham, R. Graham, Taylor, Molesworth, Douglass, Dickson, Davis, McBride and Mitzie.

Douglass, McBride and Davis were lost by graduation. Their absence will be felt. John Graham was unanimously chosen to lead next year's team.

SEASON'S RECORD

MONMOUTH	OPPONENTS
20.....	Macomb
11.....	Northwestern
12.....	Augustana
11.....	Coe
8.....	Augustana
7.....	Coe
5.....	Northwestern
10.....	Macomb
11.....	Knox
3.....	Millikin
5.....	Knox
23.....	Knox
126	61



Stretet, Holmes, Mead, Moffett, Wolfe, Brown,
Sands, Bostwick, Roberts, Purlee, McIntosh, Whiteman, Edgar, Lee, Coach Hart,
Murnan, Thom, Wilson, Mann, Graham, Jones, Davis, Congdon, Welch

Track 1926

Monmouth was represented by a strong track squad in 1926. Coach Hart developed a well-balanced team which made a good record during the season.

A medley relay team was sent to the Illinois Relays, but they failed to place. This team was composed of Congdon, G. Graham, N. Wilson, and Lee.

Monmouth was also represented at Drake by a medley team but was beaten out of a place by a close margin. Congdon, Mann, A. Wilson and Davis ran this race.

The first dual meet was held April 23 with Macomb. The M. C. athletes amassed a total of $86\frac{1}{2}$ points to Macomb's $39\frac{1}{2}$. The Warren County Prep Meet was held the same day under the auspices of the college. Roseville won this meet with $37\frac{1}{2}$ points.

The team then journeyed to Jacksonville where it took Illinois College into camp $60\frac{1}{2}$ to $50\frac{1}{2}$ after a hard fight.

The strong Knox outfit was the next opponent and after a close contest finally won out 71 1-3 to 52 2-3. This was the only meet that was lost.

A triangular meet was then held on the local track. Monmouth again triumphed, scoring more points than both her opponents. The score read; Monmouth 84, Carthage 55, Augustana 22. The boys ran wild in this meet, four records going to the discard.

Monmouth placed fourth in the state meet. Mann won the low hurdles and took fourth in the high hurdles. Congdon placed second in the mile, Thom second in the hundred, Graham third in the two mile, and McIntosh tied for third in the pole vault. Davis pulled a muscle and failed to place.

A badly-crippled team entered the Midwest meet. Davis, Whiteman, Thom, and Wilcox were out with injuries. However, $21\frac{1}{2}$ points were scored for fourth place. McIntosh tied in the high jump at 6 feet to set a Midwest record, and also tied for first in the pole vault. Roy Mann took second in the low hurdles, third in the 440, and fourth in the javelin. Congdon counted 8 points with a first in the mile and second in the 880, while Graham placed fourth in the two mile.

Track 1926

(Continued)

Six Monmouth College records fell during the season. They were as follows:

220 Yard Dash—Davis	22.4
One Mile Run—Congdon	4:30.4
220 Yard Hurdles—Mann	24.9
High Jump—McIntosh	6 feet
Broad Jump—Davis	22 ft. 2¾ in.
Javelin Throw—Mann	166 ft. 6 in.

Letters were awarded to Mann, Congdon, Davis, Graham, McIntosh, Thom, R. Whiteman, and D. Whiteman.

Mann, Congdon, Graham, Smith, Sterett, and Leitman were lost by graduation.

Earle Davis was elected captain for the 1927 team.

INDIVIDUAL SCORING

Name	Anglic						Total
	Macomb	Ill. Col.	Knox	Carthage	State	Midwest	
Mann	15	16	11	10	6	6	64
Congdon	4	8	10	10	3	8	43
Davis	11	6½	4	14			35½
McIntosh	12	5	4½	7½	¾	6	35¾
Thom	6	6	4	5	3		24
Graham	5	5	5	5	2	1	23
R. Whiteman		4	4	3½			11½
D. Whiteman	6	5		3			14
N. Wilson	3	5	1				9
Welch			1	7			8
Lee	1	5		2			8
Bostwick	5	3					8
Roberts	½	3	½	3½			7½
Sterrett		1	3	2			6
Brown	3			3			6
Jones		1	3	1			5
Holmes	1			2			3
Moffet	3						3
Smith	3						3
Purlee			1	1			2
Wolfe				2			2
Mead			1				1
Leitman	1						1
Molesworth	1						1
Edgar				1			1



Hill, McIntosh, Congdon, Law,
Bellis, Thom, Cork, Call, Humphreys

The Dolphin Club

Swimming has developed this year and is becoming quite popular. The Dolphin Club took in Call, Bellis, Law, and McIntosh as new members and several exhibitions have been planned by this organization. Howard Congdon was elected president of the club.

An inter-class swimming meet was staged this year for the first time. The Freshmen won the meet with the Juniors, Sophomores, and Seniors following in order.

A team was entered at the Central Illinois Conference meet. McIntosh, Thom, and Congdon were entered in the free style, Bellis and Call in the dives, Bellis and Lau in the breast stroke, and Hyde in the back stroke. Hyde was the only man to place for Monmouth, and that a fourth.

Men's Tennis

The tennis season was marked by only fair success. Monmouth was represented by Ernest Lukens, Charles Lawrence, and Henry Leitman. The doubles team was not defeated all season, chalking up victories over Coe, Knox, and Augustana, and winning the district tournament held at Galesburg. The team also won part of the singles matches. A more extensive program is planned for the coming season. Leitman and Lukens were lost by graduation.

Boxing

Instruction was also given in the art of self defense. Although a team was not formed, a number turned out regularly for practice and learned the fundamentals of the game. Another year should find greater interest in this sport.



INTRA-MURAL BASKETBALL WINNERS

H. Walker, J. Graham, Mehlenbrock, Richey,
Graham, K. Walker, R. Graham, Bencini,
McWhinney, Smith, Kinnell, Lively

Intra-Mural Sports

A greater interest was shown in athletics this year as was shown in intra-mural competition.

Last spring baseball had its sway. Phi Sigma Alpha with three wins and no losses copped this sport.

Last fall two football games were played. Beta Kappa triumphed over Phi Kappa Pi, 6 to 0, while the Lynn Club defeated the Parrish aggregation by a similar score.

Basketball furnished a lot of competition with major and minor leagues. After many hot battles, Pi Rho Phi won the major league title while the Lynn Club conquered the minor league.

Such friendly competition which engages so many men is fast accomplishing the goal set forward, that of giving every man the benefit of physical training.

The "M" Club 1926-27



Whiteman, Spears, Jones, McIntosh, Bodey,
Irey, Barr, Hetfield, Dickson, Walker, J. Graham,
Wallace, Fletcher, Burnside, Sutter, Sands, Cork, Rodgers,
Hamilton, Clark, Molesworth, Taylor, R. Graham, Thom, Lawrence, Cataldo

Wrestling

This sport was introduced this year into Monmouth's athletic curriculum. Considerable interest was aroused, and twenty men responded to the sport. Three meets were held this year. The team defeated the local Y. M. C. A. in two meets, but were defeated by the crack Cornell team 11 to 5. The team was composed of Irey—135 pound class, Thom—145 pound class, Bailey—158 pound class, Fletcher—175 pound class, and Ogle—Heavyweight.

An extensive program is planned for next year in this sport.



The Norris Trophy

The Norris Candy Company offers yearly, in several colleges a silver loving cup as an award to the most distinguished athlete in school. Last year, through the efforts of the Spriggs and Bradshaw Drug Company, a cup was secured for a Monmouth athlete.

According to the rules of the contest, which were set down by the Norris Candy Company, the student body voted and the faculty selected one of the three men who carried the highest number of votes.

The 1926 cup was won by Roy Mann, who certainly deserved it. Roy was a member of Monmouth's football team. He also holds the college records for the 220 low hurdles and the javelin throw. Besides being a stellar athlete, Roy was a good student and a clean sportsman of whom Monmouth is proud.



Graham, Stevenson, Webster, Roberts, McPeak,
Beal, Forsythe,
Miss Henrickson, Harkins, Howard, Miller, Ardrey

The Women's Athletic Association

The Women's Athletic Association of Monmouth has become a definite, functioning organization within the last year. The purpose of the organization has been to promote the health education of the women of Monmouth College.

1. By means of encouragement in the formation of health habits.
2. By the promotion of interest and participation in games and all forms of physical activity which makes for health and efficiency.

Membership in the organization is open to all undergraduate women of Monmouth who maintain an average of "C" in their classroom work, and whose names have been approved by the Advisory Board of the organization. This board consists of eleven girls who are leaders in their type of sports, and the coach of women's athletics, who is a member of the faculty of the college.

Awards are made by the association to all women who are members of the association and who have succeeded in earning by participation in a certain number of athletic activities enough points to warrant the award. This year sweaters have been awarded to two of the senior members of the organization, who have each earned fifteen hundred points. These seniors, Gertrude Beal and Edith Forsythe, are the third and fourth girls to have received the award of a sweater, two being awarded to seniors last year.

The association has done a great deal of good in aiding the progress of women's sports in Monmouth and with our hearty aid and co-operation the W. A. A. is sure of a still greater advance this next year and in the years to come.

The officers for the past year have been:

President	Elizabeth Howard
Vice President	Rosanna Webster
Secretary	Doris Ardrey
Treasurer	Iva Stevenson

The department heads have been:

Hockey—Martha McPeak; Basketball—Edith Forsythe; Baseball—Gertrude Müller; Tennis—Gertrude Beal; Hiking—Ruth Roberts; Swimming—Alice Galtam; Track—Beatrice Harkins.

Women's Athletics

"Every day in every way, we are getting more women's sports and more women's sports." Women's athletics are on the upward trail to fame and prominence. The greatest change this year has been the organization of swimming, tennis, and base-ball.

Who knows but that we may have a Gertrude Ederle hiding her light in the darkness of the college? The swimming department has done its best this year to develop all this hidden talent. The two day meet that was held at the end of April is a satisfactory proof of the sincere effort that has been expended along this line. The meet, consisting of exhibitions of diving, life-saving, strokes, and endurance was, we hope, only the beginning of work along this line. The women have seen the great field of opportunity that has to be conquered and they are doing their best to do it.

The interest in tennis this year has been magnified by the fact that regular classes in instruction in this sport have been organized for all aspiring beginners. The classes were full to overflowing. The tennis team which has represented the college this year was picked by an intensely interesting elimination tournament, in which everyone with any ability made it her duty to take part.

Baseball, too, has claimed a large share of the attention of the women of the college who are athletically inclined. A very instructive series of games took place between the teams representing the different classes. These games would have proved a valuable source of information to all the men of the baseball team who took time to attend them, for they were an exhibition of the finer points of the game.

Women's athletics have been a huge success this year.



GIRLS' INTERCLASS BASKETBALL WINNERS

Felske, Stephenson, Gold, McClellan, Finch, Diehl,
Dixson, Graham, Gordon, Dunn, Morrison

Girl's Inter-Class Basketball

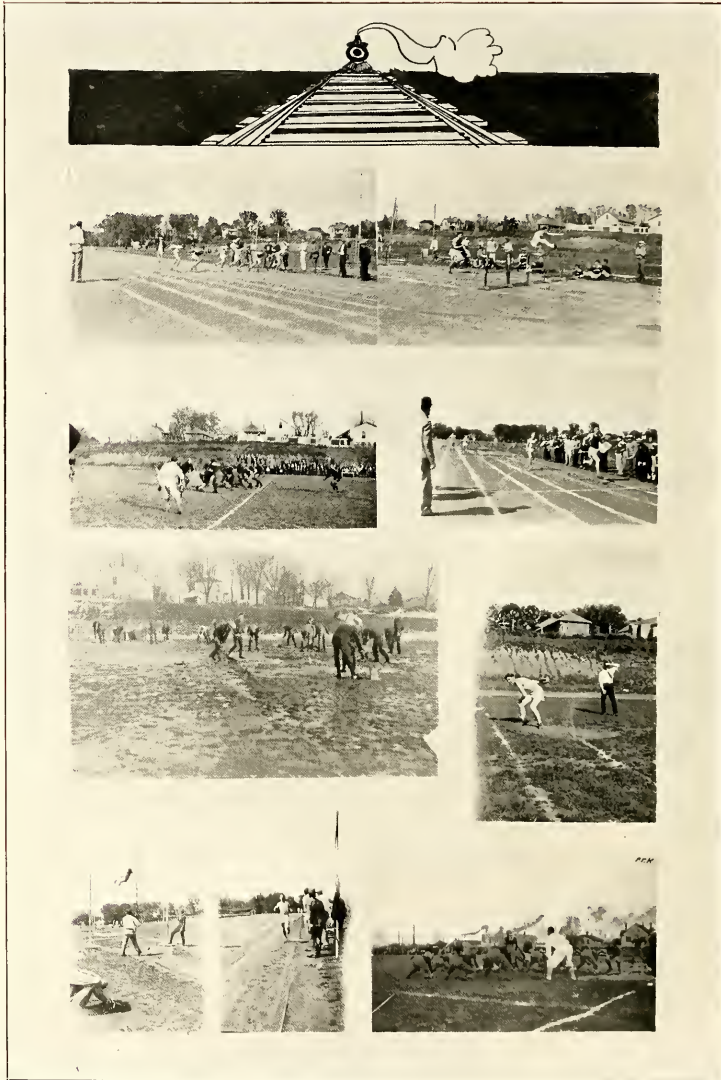
Interest in Women's basketball ran high this year, because it was only by the narrow margin of one point that the Sophomores, in the Freshman-Sophomore game, defeated the Freshmen and became the undefeated champions of the college.

On Saturday, January 15, the first round of the inter-class tournament was played off. The Seniors defeated the Juniors by a score of 28-5, and the Sophomores defeated the Freshmen by a score of 15-14.

On Saturday, January 22, the second round was played off and the Sophomores were successful in defeating the Seniors while the Freshmen downed the Juniors.

The last round of the tournament was played on Saturday, January 29. The Freshmen and Sophomores were again successful in defeating the Junior and Senior teams.

The high scorers for the tournament were Gertrude Beal, Miriam Gordon, Florence Martin, and Regula Schmid. Mary Russell, Ellen Work, Freda McClellan, and Gertrude Torrance proved themselves invincible as guards.







"The Goose Hangs High"

The "goose hung high" in the College Auditorium on the evening of Homecoming Day when the Crimson Masque presented the play, "The Goose Hangs High". It was a three act comedy by Louis Beach and was under the direction of Miss Ruth Williams of the College Faculty. The play portrays life in a typical American home and has for its theme the conflict between modern youth and conservative old age.

Real acting and ability was displayed and some excellent character work done by members of the cast which is as follows:

Bernard Ingals	Donald Beste
Mrs. Ingals	Jeanette McCleery
Noel Derby	Harland Hogue
Leo Day	James Bryson
Rhoda	Helen Buck
Julia Murdoch	Gertrude Torrance
Mrs. Bradley	Evelyn McKelvey
Hugh Ingals	Blake Root
Ronald Murdoch	Earle Davis
Lois Ingals	Jean Liedman
Bradley Ingals	Robert Downie
Dagmar Carroll	Rosanna Webster
Elliott Kimberly	James Speer



"Manthus the King"

Monmouth College took one step forward in the field of creative art when "Manthus the King," a play written by Dorothy Gold, a member of the Sophomore Class, was presented by the Crimson Masque in the college auditorium on December 14, 1926.

The play was built upon the story of "King Robert of Sicily" and was given for the benefit of the Y. W. C. A.

The main parts were taken by the following:

Manthus, The King	Elmer Lee
Angel King	Donald Winbigler
Jester	Donald McCray
Pompa	Grace Dunn
Calese	Elizabeth McFadden
Kakan	Eugene Lister
Hepson	Blake Root
Nefanus	James Bryson
Lethca	Caroline Smith
Lethra	Gertrude Torrance
Pages	
Pauline Whaling, Evagrace McFadden, Martha Brownlee	
Serfs	
Dorothy Jamison, Helen Bruner, Carolyn McCleery	
Virgin Mary	Rosanna Webster
Joseph	Lester Orr
Kings	Walter Paul, John Meek, Neal Sands
Shepherds	Ralph Gunn, Edwin Leader, Dean Work
Choir Boys	
Catherine Bass, Doris Dixson, Grace Lendgren, Lois Henderson	

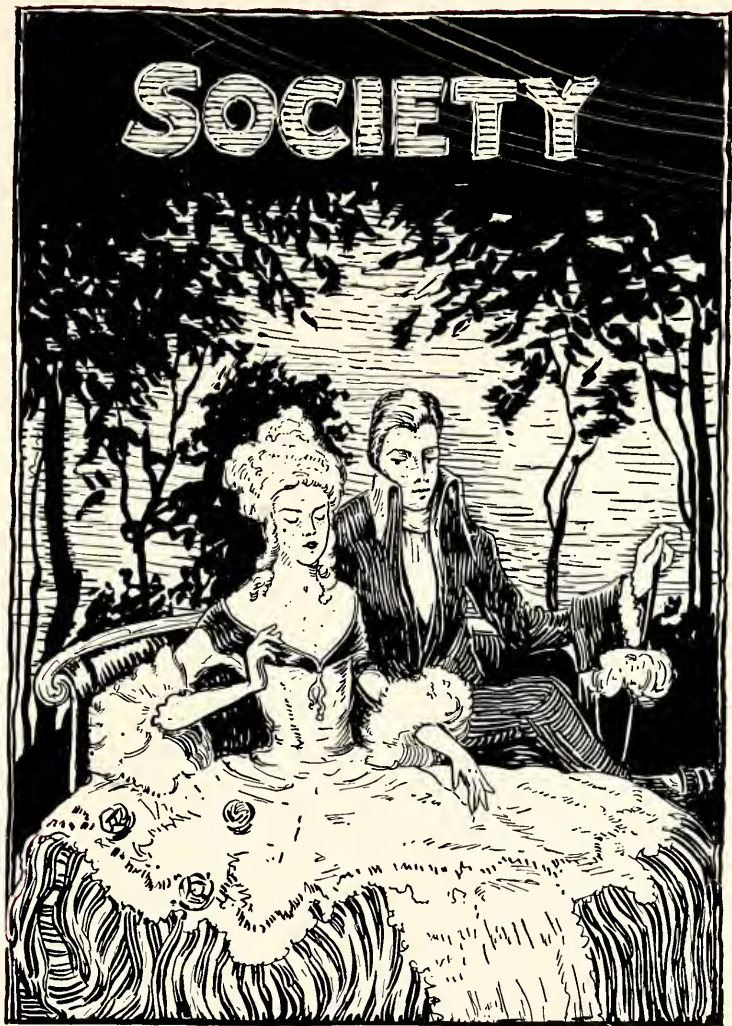


"Sun-Up"

The Junior Class had "Sun-Up" at eight o'clock on the evening of February 25, 1927, when the annual class play was given. "Sun-Up", a three act drama by Lulu Vollmer, was presented under the direction of Miss Williams. A rude cabin set far back in the North Carolina hills formed the setting and through the play the audience caught a glimpse of the deep love the great courage of the sturdy mountain folk.

The portraying of characters, which is an important element in the play, was well done by members of the cast. The cast was as follows:

Mrs. Cagle	Dorothy Thompson
Pap Todd	Ralph Phelps
Emmy Todd	Doris Fetherston
Bud Todd	Barr Miller
Sheriff Weeks	Lester Orr
Rufe Cagle	Richard Holmes
Preacher	Howard Congdon
The Stranger (Zeb Turner)	Lyndel Conreux
Bob	Kemeth Irej



Beauty Queen



DORIS DIXSON

Beauty Queen



THE 1927 VENUS OF MONMOUTH COLLEGE

The Womens Physical Education Department announces that Miss Doris Dixson most nearly approaches the standard of a modern Venus. The decision was based upon facts set forth in the records of the Doctor, the Nurse, and the Physical Director. The following points were considered: 1. Height; 2. Weight; 3. Carriage; 4. Poise; 5. General Health.



MAY

19



26



PARTY



Philo Peanut Banquet

"The only and best Peanut Banquet of the year" was the chief remark made by the guests of the Philadelphian Literary Society as they departed from the Galesburg Club on the evening of December 3. The guests included lady friends and twelve delegates to the Fifth Annual Conclave of Kappa Phi Sigma which was held on the campus on December 3 and 4. Professor and Mrs. Toussaint and Mr. and Mrs. F. W. Phillips chaperoned the gala party of some one hundred fifty persons.

With Professor Clair Boruff as toast-master it is unnecessary to say that a note of subtle humor was noticeable throughout the program. The program was arranged around the idea of a comic section. With "Maggie, Kin I Go Out Tonight?" as the subject of his toast, Harland E. Hogue eulogized the occasion. John M. Wilson, speaking on the "B. Y. Club," toasted the twelve delegates. Fred Hoskins, President of Kappa Phi Sigma, responded with "A Bigger and Better Katrina." At the close of his toast Mr. Hoskins presented a silver loving cup to James Mitchell, winner of the national essay contest. Mr. Mitchell is a member of Philomathean of the University of Illinois. Under the guise of "Mack vs. Whipple" Howard Congdon toasted the contestants. John Matthews delivered the toast to the ladies. The title of his toast was, "Oh, Min!". Doris Featherston gave a snappy response in "Smack Your Sassy Face." As a special feature of the program Eugene Lau favored the revelers with two numbers on the steel guitar. Special music was furnished by Fred Hunsche's Collegian Orchestra.

BETA KAPPA THEATRE PARTY

On December 11 the Beta Kappa fraternity entertained with a theatre party in Galesburg. A four-course dinner was served at the Galesburg Club to the twenty-five fraternity members and their guests who were present. A musical entertainer added to the pleasure of this part of the evening. Following the dinner the party visited the Orpheum theatre to enjoy the program there. Miss Williams and Mr. Haldeман of the faculty chaperoned the affair.

PI RHO PHI HOMECOMING PARTY

Pi Rho Phi fraternity held a luncheon at Hawcock's at noon Homecoming Day in honor of the alumni. In the evening the members, alumni and their lady friends were served a delicious four course dinner. After the dinner fraternity songs were sung and a social period was enjoyed.

PHI KAPPA PI THANKSGIVING PARTY

The annual Thanksgiving party of the Phi Kappa Pi was held at Hawcock's immediately after the Knox football game and was in the nature of a dinner celebration. There were about twenty-five couples present to enjoy the three course turkey dinner. Professor and Mrs. Arthur R. Gerhart were chaperones.

KAPPA ALPHA SIGMA THANKSGIVING INFORMAL

Kappa Alpha Sigma contributed to the season of Thanksgiving festivities an informal dinner at the home of Miss Elizabeth Main. The seven o'clock dinner in celebration of the Turkey Day victory was served on Friday evening, November 26, 1926 to the members of the sorority and their guests.

After singing a toast to Kappa the company was seated at quartette tables arranged in the reception rooms of the Main home. Decorations of Puritan light shades and autumn leaf candle holders and nut cups carried the suggestion of the holiday season. During the serving Mr. Charles Balcoff entertained with piano numbers and songs. The play "Old Homestead" at the theatre furnished the entertainment for the evening.

PHI KAPPA PI CHRISTMAS RECEPTION

On the afternoon of December 15 the Phi Kaps entertained at the chapter house with a Christmas party. The feminine guests were accorded the pleasure of inspecting the house at close range and a tour of the house revealed "how the other half lives." Moving pictures of the season's football games were shown by Mrs. J. L. Sherrick and were much enjoyed. Luncheon was served at five o'clock and was followed by the customary grab-bag with its load of Christmas favors for all. The house was appropriately decorated for the occasion with holly, mistletoe, and the traditional evergreens. Dr. and Mrs. T. H. McMichael were chaperones.

ZETA EPSILON CHI CHRISTMAS PARTY

The Zeta Epsilon Chi Sorority entertained at their annual informal with an Old English Christmas Festival at the home of Dr. and Mrs. Van Gundy on December 4th. All the Old English Christmas customs were observed.

The rooms were lighted only by tall white tapers and were decorated with fir, mistletoe and holly. There was a "Master of Revels" into whose care the English games played during the evening were given. After the games, presents for all, which were found beneath the Christmas Tree, were distributed by the Master of Revels.

During the course of the evening the "Wassail Bowl" was passed and the Plum Pudding cut and served. The finding of the thimble made possible the crowning of the King and Queen. A Yule-log was kept burning upon which the English chestnuts were roasted. Nothing but English food was served.

PI RHO PHI CHRISTMAS PARTY

On Saturday evening, December 11, members of Pi Rho Phi fraternity entertained their lady friends at the fraternity house. A grab bag was the feature of the evening. All received more or less valuable and helpful gifts.

PHI SIGMA ALPHA HOUSEWARMING PARTY

Thirty-five members, pledges, and alumni of the Phi Sigma Alpha fraternity entertained their lady friends at a very informal party on Saturday evening, October the second, at the beautiful, new fraternity house which had just been occupied by the organization for the first time last fall.

The entire fraternity house, which had formerly been the residence of Senator John S. Brown, was thrown open for inspection, and the guests were given an opportunity to see just how a fraternity on Monmouth's campus lives. During the evening a short program of music was enjoyed, after which delicious refreshments were served. Dr. and Mrs. T. H. McMichael were the chaperons.

PHI KAPPA PI MID-WINTER INFORMAL

The forty-first annual Mid-Winter Informal of Phi Kappa Pi was held at Hawcock's on the evening of February nineteenth. The rooms were transformed by beautiful decorations of tulips and the design was followed throughout. The tables were arranged in a large hollow square and a huge lighted tulip was suspended from the middle of the square. Heavily shaded lights and purple and gold tapers added to the atmosphere of the occasion. A five course dinner was served the twenty-seven couples by host Ernie Hawcock and was followed by a xylophone act from the Orpheum Circuit. The climax of the evening was the opening of the favors which had been concealed under purple and gold tulips at each place. These proved to be hammered silver jewel cases, with the fraternity monogram on the top. The chaperons were Dr. and Mrs. A. G. Patton.

PHI DELTA SIGMA INFORMAL

This year, Phi Delta Sigma entertained twenty-four couples at an informal dinner-theatre party, November 26, at Galesburg.

A three course dinner was served in the Japanese tea room of the Elk's Club. Dainty place-cards were used as guides for the guests who arranged themselves at octet tables. Just a suggestion of the sorority colors was carried out in having a vase of pink roses set in the center of each table. With Gordon Riedel entertaining at the piano, and with the sorors intermittently joining in on Phi Delta songs, a very convivial spirit was sustained throughout the course of the repast. As an informal affair there was splendid opportunity for old time chats and table conversation. Then accompanied by Ms. Morton and Professor Fleming, the chaperons, all assembled at the Orpheum Theatre. Here a bit of subtle diversion was enjoyed.

After the show and believing the evening well spent in merry-making, a crowd of high-spirited college folk returned to Monmouth to resume the cares of daily routine.

A. B. L. DOUGHNUT LUNCHEON

The annual A. B. L. Doughnut Feast was observed Monday noon, March 14 at Hawcock's. After a three course luncheon the following toast program was given with Anna Anderson as The Cook:

To the IngredientsLois Henderson
ResponseHelen Livingston, Margaret McClenahan
To the FlavorJean Pattison
ResponseElizabeth Kruidenier
To the DoughnutMrs. McMichael

PHI SIGMA ALPHA FALL INFORMAL

Phi Sigma Alpha fraternity entertained their lady friends as guests with a dinner party at their home on East Broadway, on Friday evening, November the nineteenth. A number of small quartet tables had been arranged in the four large downstairs living rooms, and blue and white candles decorated each, carrying out the colors of the fraternity. Dinner was served at 6 o'clock by Eliza Smith, and during the dinner hour music was furnished by Miss Rubye Hegelstine and her Mello-Blue band.

Following the dinner the party adjourned to the Rivoli theatre where a section of seats had been reserved. Mr. and Mrs. Samuel Thompson chaperoned the party.

TAU SIGMA ALPHA LUNCHEON

Tau Sigma Alpha Luncheon honoring their contestants was held at Hawcock's at noon on Friday, March 11. The honor guests were Agnes Henderson and Frances Mahaffey, debaters; Harriette Jewell, orator; and Nell Modder, short story writer. The contestants were presented with corsages. Margaret Holmes acted at toastmistress.

ALETHEOREAN LUNCHEON

Aletheorean luncheon honoring its contestants was held Saturday noon, March 12, at Hawcock's. The honor guests were Janet Work and Lena Abbott, debaters; and Laura Carson, short story writer. The contestants were presented with corsages.

A toast program followed the luncheon with Marian Davidson toasting the guests of honor and Lena Abbott giving the response.

WASHINGTON BIRTHDAY BANQUET

On Tuesday evening February 22, the students, faculty, members of the board of trustees, and alumni assembled in the gymnasium for the annual Washington banquet which was also designated the Charter banquet, celebrating the granting of the Monmouth College Charter by the Illinois State Legislature, February 16, 1857.

Dr. McMichael acted as toastmaster to the following toast program:

"ADDING A LINE TO THE CHARTER"

"Hopes" Robert Shauman, '30
"Fears" Harland Hogue, '29

Girls Glee Club

"Achievements" Donald Beste, '28
"Aspirations" Roy Doty, '27

Men's Glee Club

The outstanding feature of the Seventieth Anniversary Charter Banquet was Mr. Phidelah Rice, monactor, who read "The Taming of the Shrew."

Y. M. AND Y. W. PARTY

The Y. W. and Y. M. reception was held Saturday evening, September 11, at the gymnasium. The entertainment was thoughtfully planned and carefully executed, there was a big crowd and good refreshments; so taken all in all the evening was a success. Much credit is due Doris Fetherston and Dean McBride who had charge of the affair.

DORM. PARTY

The dormitory girls acted as hostesses to the young men of the college at their annual party Saturday evening, March 5, at McMichael Home.

The men were ushered through the dormitory by the girls dressed in red and white. After the rooms had been visited and the candy sampled, the crowd gathered in the gymnasium where a program, consisting of "The Sextet from Florodora" and a one act play, "Joint Owners in Spain" was given.

Following the program refreshments were served in the dining room.

SIGMA TAU DELTA GUEST NIGHT

On Friday evening, January 7, the members of Sigma Tau Delta entertained their friends at a four course dinner. Mrs. Sater of Rock Island spoke on the McDowell Artist Colony where she was a member for three years.

SIGMA OMICRON MU GUEST NIGHT

On Thursday evening, March 17, Sigma Omicron Mu entertained those Freshmen who made the Honor Roll the first semester, at a four course dinner at Hawcock's. After dinner Professor Goodrich gave a short talk on the aims and ideals of Sigma Omicron Mu.

PHI SIGMA ALPHA SPRING FORMAL

On Saturday evening, April sixteenth, the members and pledges of Phi Sigma Alpha entertained their lady friends at the spring informal at the new fraternity home on East Broadway.

The thirty-five couples attending were seated at small quartet tables which were scattered through the four downstairs living rooms. Each table was decorated with tall white candles set in artistic blue holders, thus carrying out the color scheme of the fraternity. The favors were beautiful leather bridge sets with the fraternity crest stamped in gold on the cover and also on the back of each card.

Music during the dinner was furnished by Frenchy and His Orchestra of Galesburg, while Mr. Graffouliere furnished a program later of popular selections which he presented in an enjoyable manner. Mr. William Kissick and Miss Esther Henrikson acted as chaperones for the occasion.

PI RHO PHI RIVER TRIP

The Pi Rho Phi river trip was held May twenty-first. Dinner and supper were served by the house mother in the Burlington boat house. About thirty couples enjoyed launch rides during the afternoon and early part of the evening.

KAPPA ALPHA SIGMA FORMAL

The evening of April twenty-third at six o'clock, witnessed the annual spring formal of the Kappa Alpha Sigma sorority and their alumnae.

The hall was decorated to resemble a Russian Ballroom, rich reds and blacks, the colors of that nation, predominating. The program consisted of a series of graceful Russian dances, while during the five course dinner the Orchestra played wierd melodies of Moscow.

Eack gentleman guest was presented with an engraved leather-backed clothes brush.

The chaperons were Prof. and Mrs. L. E. Robinson. In all some thirty-seven couples were present at the affair.

BETA KAPPA PLEDGE PARTY

The Beta Kappas were hosts to their lady friends upon December tenth, when they enjoyed a House Party sponsored by twelve pledges. A radio program and a musical revue presented by the pledges were the features of the evening. After the program refreshmnts were served by the pledges.

Mr. and Mrs. Frank W. Phillips acted as chaperones for the party.

ZETA EPSILON CHI FORMAL

The Zeta Epsilon Chi sorority entertained at their annual spring formal at the Elk's Club on April the ninth. Twenty-three couples were present. Dr. and Mrs. Van Gundy were the chaperones.

Decorations were carried out in pink and white. The electrically-lighted model of the Zeta pin was embowered in a garden on pink and white apple blossoms. Pink rosebuds graced the quartette tables. The favors were black fountain pen desk sets with the Zeta crest in silver.

Following the dinner, the guests were entertained by Miss Harriet Allyn, impersonator, of Chicago. Music during the evening was furnished by the Colonial Serenaders.

PHI KAPPA PI RIVER TRIP

Phi Kappa Pi held its annual spring river trip on June eighth. The party left early in the morning and went to Oquawka from where they took a launch down to Burlington. A picnic dinner was served at Crapo park, and the afternoon's entertainment was left to the ingenuity of the various members. The company took the boat back to Oquawka in the evening and arrived in Monmouth in ample time for commencement exercises the folowing morning.

BETA KAPPA SPRING PARTY

About forty active and alumni members of Pi Chapter of Beta Kappa entertained their lady friends at the annual spring party held at Hawcock's. After the dinner an Old Fashioned Garden Revue was presented for the entertainment of the guests.

Professor and Mrs. Toussaint were the chaperones for the party.

PI RHO PHI SPRING PARTY

The Pi Rho Phi fraternity held their annual spring party on April eighth at the Galesburg Club. There were twenty-two couples present. Silver candlesticks were given as favors. After the meal at the Club, the party adjourned to the Orpheum Theatre.

Mrs. Morton and Mr. Nottleman acted as escorts.

BETA KAPPA RIVER TRIP

Decoration Day was a gala day for the Beta Kappas as it was the day of the annual river trip held at The Burlington Launch Club. A long launch ride up the river was a feature of the day, while the bathing beach also attracted many to enjoy a basking upon the sands.

About forty couples, including several alumni, enjoyed the outing.

PHI SIGMA ALPHA RIVER TRIP

On Saturday, June the fourth, Phi Sigma Alpha held its annual river trip, driving to Burlington in cars and spending most of the day on the Mississippi. Dinner was served in the evening at the Hotel Burlington, and the thirty couples who attended arrived home at a late hour.

HOMECOMING





MUSIC

Girl's Glee Club



Hawes, H. Livingston, McCleary, Condon, Bowman, Smith,
Dunn, Laws, McPeak, Hannum, F. Finfrack, McClenahan,
Whaling, McLaughlin, Warfield, Mrs. Peterson, Finch, Miller, Chaffant,
D. Finfrack, Bass, Dixon, Davis, Krudener, Shontz.

Girls' Glee Club

The Monmouth College Girls' Glee Club of 1927 presented a program of great variety and universal interest. Mrs. Grace Gawthrop Peterson, director of the club, was largely responsible for its success. The Popular Song Stunt was one of the most novel features of the year's program. Marjorie Bowman accompanied the club as violin soloist. Elizabeth McFadden was the reader, and Ferne Finfrook the soprano soloist. The accompanists of the club were Carolyn McCleery and Katherine Laws.

Concerts were given at Kirkwood, Hanover, Elgin and Chicago, Illinois; Davenport and LeClaire, Iowa; and West Allis and Templeton, Wisconsin.

PERSONNEL

FIRST SOPRANOS—

Catharine Bass
 Thelma Davis
 Margaretta Chalfant
 Mary E. McCullough
 Katherine Laws
 Ferne Finfrook

FIRST ALTOS—

Doris Finfrook
 Doris Dixson
 Mary Ann Warfield
 Willie Grace Dunn
 Grace Hannum
 Mary Jane Smith

SECOND SOPRANOS—

Elizabeth Kruidenier
 Pauline Whaling
 Helen McLaughlin
 Jean Shontz
 Onnalee Hawes
 Helen Livingston

SECOND ALTOS—

Gertrude Miller
 Dorothy Finch
 Dorothy Congdon
 Martha McPeak

Mrs. Grace Gawthrop Peterson Director
 Ferne Finfrook President
 Pauline Whaling Vice President
 Martha McPeak Secretary-Treasurer
 Marjorie Bowman Violinist
 Elizabeth McFadden Reader
 Carolyn McCleery, Katherine Laws Accompanists
 Miss Esther Henrickson Chaperon
 Mr. Sam Hamilton Manager

Program--Girl's Glee Club

Bridal Chorus from "The Rose Maiden"*Cowen-Spicker*
THE GLEE CLUB

Piano Ensemble—Polnaise Militaire*Chopin*
MISSES LAWS, McCLEERY AND MILLER

Morning*O. Speaks*
Reveries*O. Speaks*
The Shadow March*Protheroe*
THE GLEE CLUB

Soprano Solo*Selected*
FERNE FINROCK

My Way's Cloudy*Page*
Honey Chile*Strickland*
There, Little Girl, Don't Cry*Champion*
THE GLEE CLUB

Violin—Rondino*Kreisler*
Canzonetta*Ambrosio*
MARJORIE BOWMAN

Popular Song Stunt*Selected*
THE GLEE CLUB

Reading*Selected*
ELIZABETH McFADDEN

The Snow Storm*Rogers*
The Lost Chord*Sullivan-Bartlett*
GRACE PETERSON AND THE GLEE CLUB

Alma Mater

College Choir

Dr. T. Merrill Austin, director of the Conservatory, has done much to promote the standing of Monmouth College. Not the least of his many projects is the vested choir, whose anthems are always a part of the College Vesper service. In addition to its work at Vespers, the choir sang in the Conservatory Concert, March 24, singing "Unfold Ye Portals" by Gounod.

PERSONNEL

SOPRANOS—

Catherine Bass
Myra Campbell
Margaretta Chalfant
Thelma Davis
Ferne Finrock
Onnalee Hawes
Katherine Laws
Helen Livingston
Glendine Neal
Edythe O'Neal
Virginia Pollard
Mrs. Dorothy Shaver
Dorothy Smith
Esther Woodburn
Marian Young
Mrs. Ruth Munson
Lucille Wheeler
Edna McClintock
Mable Livingston

TENORS—

Lyndel Conreux
Morgan McKelvey
Earle Davis
Laurel Stewart
Max Crockett
Donald McCray
Charles Lawrence
Stewart McClenahan

BASSES—

Glenn C. Shaver
Chester Cable
James Speer
Maurice McCrackin
Clair Mead
Jacob Vallenga
Horace Stanley
Donald Sharpe
Thomas Wolfe
Alfred Stephenson

ALTOS—

Grace Peterson
Grace Hannum
Regula Schmid
Doris Finrock
Miriam Gordon
Margaret Gault
Louise Arnold
Dorothy Congdon
Gertrude Miller
Grace Dunn

Men's Glee Club



Speer, Moore, Stanley, Graham, Winbigger, Sands,
McCright, Sharpe, Shauman, Frank, Stephenson, Mead,
Hansene, Lovell, Cernoux, Lawrence, Crockett, Mead,
McCray, Huff, Cahoe, Shaver (Director), Wolfe, McKeivey.

Men's Glee Club

The Men's Glee Club of 1927 lead by Mr. Glenn C. Shaver entertained their audiences with an interesting and varied program. Dramatic as well as musical talent was displayed in their production of the light operetta "Romeo and Juliet". Concerts were given at Alexis, Biggsville, Illinois; Winfield, Washington, Oskaloosa, Monroe, Clarinda, Albia, Iowa; Omaha, Nebraska; Monmouth, Illinois.

Soloists for the club were Mrs. Glenn Shaver, harpist; Chester Cable, pianist and accompanist; and Glenn Shaver, bass soloist.

PERSONNEL

FIRST TENORS—

Lyndel O. Conreux
 Kenneth L. Frank
 Charles F. Lawrence
 William A. Lovell
 Donald McCray

BARITONES—

Marion Huff
 Frederick Hunsche
 J. Clair Mead
 James R. Speer
 Horace R. Stanley

SECOND TENORS—

Max D. Anwyl
 L. Maxwell Crockett
 Loren R. Graham
 J. Morgan McKelvey
 Robert Shauman
 Neal A. Sands
 Donald Winbigler

BASSES—

R. Don McCreight
 David B. Moore
 Donald Sharpe
 Glenn C. Shaver
 Alfred L. Stephenson
 Thomas W. Wolfe

Glenn C. Shaver Director
 William F. Kissick Business Manager
 Charles F. Lawrence President
 James R. Speer Secretary-Treasurer

Program---Men's Glee Club

PART I.

A Song of Fellowship	<i>Gaul</i>
MCCRAY, MCKELVEY, SPEER, SHAVER	
Come to The Fair	<i>Martin</i>
THE GLEE CLUB	
Piano Solo	<i>Selected</i>
CHESTER CABLE	
Requiem	<i>Homer</i>
Sea Dirge	<i>Carter</i>
THE GLEE CLUB	
Bass Solo	<i>Selected</i>
GLENN C. SHAVER	
The Little Old Garden	<i>Hewitt</i>
THE GLEE CLUB	
Harp Solos—	
Priere	<i>Hasselmans</i>
Pattuglia Spagnvola	<i>Tedeschi</i>
Boat Song	<i>Dorothy Hallam Shaver</i>
DOROTHY HALLAM SHAVER	

PART II.

ROMEO AND JULIET (Up-to-Date)

A BURLESQUE OPERA BY JOHN W. BRIGHAM

Act I—College Campus near the Girls' Dormitory; midnight.

Act II—Same; the next day at dawn.

Act III.—Same; afternoon, two days later.

CAST

Romeo—a Perfect Jellybean	Donald McCray
Juliet—a Model Flapper	Lyndel O. Conreux
Apothecary—a Modern Pill Compounder	James R. Speer
Nurse—Juliet's Caretaker	Thomas W. Wolfe
Justice—of The Peace	David R. Moore
Tybalt, a Zealous Freshman	Horace R. Stanley
Mercutio—a Gallant Sophomore	L. Maxwell Crockett
Three Other Freshmen—also very zealous.	Lawrence, McKelvey, McCreight
Three Other Sophomores—also very gallant.	Winbigler, Stephenson, Mead
Capulet—Juliet's Dad	Robert Shauman
Paris—Juliet's Fiancee	J. Clair Mead
Pallbearers—Eight Sobbing Sympathizers	Stephenson, Sharpe, Mead, Hunsche, Huff, Winbigler, McKelvey.
Lovell	

Other Students

Time—Up-to-Date.

Place—Any College Community.



Sharpe, McCreight, Smith,
Moffett, Henderson, Stephenson, Kobler, Root, Anwyl, Glenn,
Congdon, Lyons, Stewart, Gabby, Crockett, Humphreys, Boas, Millen, McKelvey, Swanson, Toland

The Monmouth College Band

The band, faithful and untiring, under the direction of Glenn Toland, has successfully contributed pep and enthusiasm to the student body of Monmouth College. It has become an established feature of all pep meetings and athletic games. Although the weather was often unfavorable the members always proved an inspiration to the team.

PERSONNEL

CORNETS—

William Boaz
Morgan McKelvey
Robert Glenn
Max Anwyl
Glenn Toland
Robert Humphreys
Thomas Ogle

CLARINETS—

Roger Henderson
Thomas Irwin
Lester Gabby

ALTOS—

Blake Root
Frederick Strong

BARITONE—

Max Crockett

BASS—

Jack Henry

SAXOPHONE—

Clair Mead
Eugene Moffet
Gerald Stewart
Paul Kobler

TROMBONE—

Donald McCreight
Arlo Root
David Moore

DRUMS—

Harold Lyons
Ronald Swanson
Samuel Millen

PICCOLO—

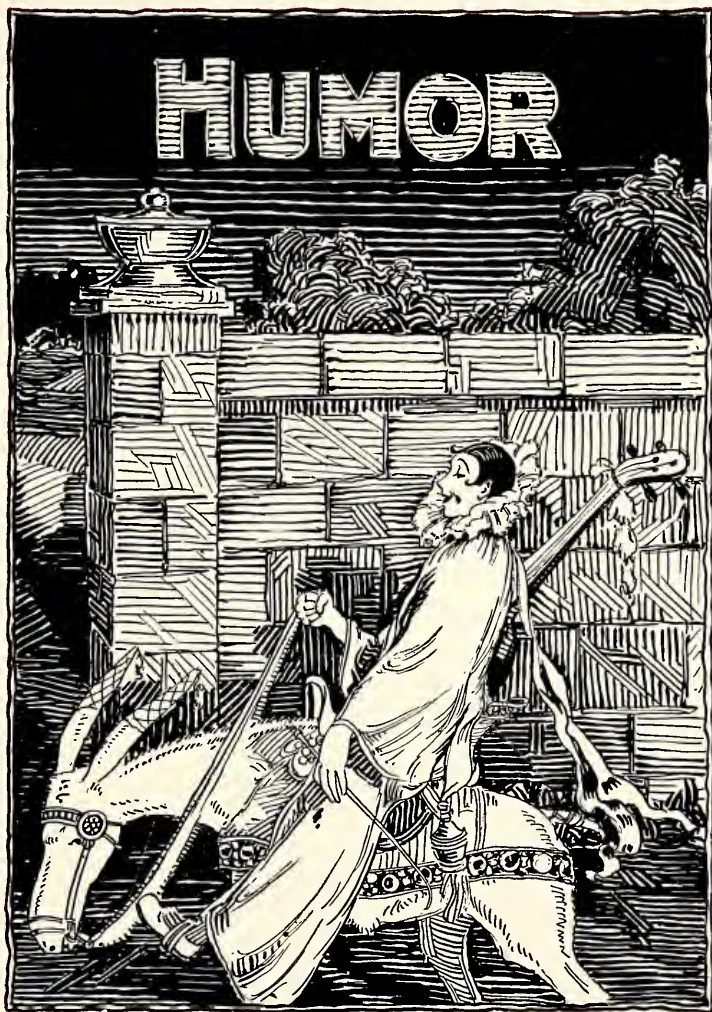
Hugh Patterson
Alfred Stephenson

The Artist's Course

Harry Fabman, ViolinistDecember 7, 1926
Ralph Leopold, PianistJanuary 21, 1927
Stanley Deacon, BaritoneMarch 15, 1927
Ina Bourskaya, Mezzo-SopranoApril 26, 1927

Graduate Recitals

- April 28 Martha Deen, Organ
May 12 Katherine Laws, Piano, assisted by Glen Shaver
May 17 ... Mary Warfield, Piano, assisted by Irwin Douglass
May 21 Helen Sawyer, Organ
May 24 Chester Cable, Piano
May 28 Irma Armstrong, Voice, assisted by piano quartet
May 31 Earl Davis, Bachelor of Music Recital



"That is Venus. It was named after a very beautiful woman."
"That must have been the star the Wise Men followed."

—®—

A slow movie—A freshman jumping for the telephone.

—®—

Alex Thom—"I threw a big party last night."
G. Bailey—"And what was his name?"

—®—

"I hear the Beta Kappas won a loving cup last night."
"When did they start giving prizes for that?"

—®—

They teach psychology at Monmouth. Barr Miller was asked if he liked his Prof.

"Uh, huh," he assented, "I have to."

—®—

It is easy to pick out freshmen. They cuss the studies instead of the profs.

—®—

Freda—"Did you ever stop to reflect?"
Émilie—"Every time there's a mirror to reflect in."

—®—

Fear the Greeks when they come bearing paddles.

—®—

Murray—"Do your students cut classes for any reason?"
Buchanan—"Certainly."
Murray—"For what reason?"
Buchanan—"Any reason."

—®—

There are modern girls that look backward and aren't.

—®—

Miss Barr—"Why are you so far behind your studies?"
Alex Thom—"So that I can pursue them better."

—®—

She was wearing a bridge gown that evening, but I can't see why it is called a bridge gown. At bridge one is only supposed to show her hand.

"I know a fellow that plays the piano by ear."
"Yeh, and his old man fiddles with his whiskers."

—®—

Dean—"Where are you going with that shovel?"
Red—"Going to bury my past."
Dean—"You need a steam shovel."

—®—

DEDICATED TO WILLARD LAW

Willard dressed up in his brother's clothes
And he was wondrous fair,
His brother came and took them off,
And left poor Willard bare.

—®—

"They call him the phantom player."
"How come?"
"The coach can't see him at all."

—®—

"Do you work here?"
"No, I'm the president."

—®—

"Haldeman is a prince of a fellow."
"Yeh, I've often wanted to crown him myself."

—®—

Mary P.—What are you doing now?
Marj. B.—I'm after a bachelor's.
Mary—Still chasing the men, eh?
Marj.—No, dear, this time it's a degree.

—®—

Nip—Skin, the Psychology prof, said there is a girl for every man.
Tuck—If that's the case, by tunket, I wish they'd trot mine out.

—®—

Sutter (being arrested for speeding)—But, Officer, I'm a college man.
Nevius—I'm sorry, but ignorance is no excuse.

—®—

Smith—You came by our house on the 4th.
Shoberg—You lie.
Smith—No, August.

SCENE AND UNSEEN



"But, John, you wouldn't marry Betty for her money?"
"Well, not if you can show me an easier way to get it."

—®—

Lady (to boy playing in a puddle)—My land, get out of that puddle at once!
Lev.—Aw, go find a puddle for yourself. I saw this one first.

—®—

DURING A DORM SESSION

"And did you let him kiss you?"
"Let him! My goodness, I had to help him."

—®—

McClanahan—What do you think of our town?
Boruff—Well, it's the first cemetery that I ever saw with paved streets.

—®—

"Robby"—Tenth floor, please.
Elevator Boy—Here you are, son.
"Robby"—You have a lot of nerve! What's the idea of calling me "son"? You're not my father.
Elevator Boy—Well, I brought you up, didn't I?

—®—

Dusty has a new one to make his students pay attention.
Now, it's "If you don't pay attention I'll ask you to name all the French Premiers since 1925 in the next oral quiz."

—®—

Molie—Your picture of the Fiery Dragon is a masterpiece.
Pie—Fiery Dragon? Where did you see that?
Molie—On the wall in your room.
Pie—Oh, that's a picture of my mother-in-law.

—®—

HEARD AT A COLLEGE PARTY

"Are you having a good time?"
"I think so, but this is my first party."

—®—

Martha Brownlee—"Ma, I want to go to a co-educational college."
Mr. Brownlee—"But, daughter, isn't there a good deal of flirting there?"
Martha—"Yes, but you don't have to take that course."

It would be impossible to call the complexion of a girl of today a straight flush.

—®—

A young lady who had done unusually well in Life of Christ, registered for Old Testament. Upon meeting her professor whom she liked, she said, "Gee, I wish you knew enough to teach me this year."

—®—

That just-after-beginning-semester feeling—99 44-100 per cent poor.

—®—

Bob B.—"Two tickets, please."

Ticket Seller—"What date?"

Bob—"Mabel."

—®—

Mitze—"My cousin is living in Herrin and says he is delighted."

Bozo—"Delighted to be living in Herrin?"

Mitze—"No! Delighted to be living."

—®—

Pious Aunt—"This is the Lord's Day, William."

William—"Well, he's welcome to it."

—®—

"I saw an unusual sight today—a girl who wasn't wearing a short skirt."

"Great Scott man, surely they haven't begun leaving them off altogether!"

—®—

MODERN HISTORY

"Who commanded the sun to stand still?"

"Mussolini."

Miss Winbigler—"Take four out of five and what do you have, Bernard?"

Bernard S.—"Pyorrhoea."

—®—

HEARD BEFORE SPRING VACATION

Van Antwerp—"We seem to be having a great deal of rain nowadays, John."

"Yes, the clouds don't seem to hold the water the same as they used to."

—®—

"I didn't care much for Maxine. Her neck was too long."

"Can't agree with you there. I enjoyed every minute of it."

INFORMATION THAT SHOULD BE IN EVERY COLLEGE CATALOG

1. Number of sandwich counters within a cigarette distance of campus.
2. Time tables of trains from neighboring cities between midnight and dawn.
3. House party facilities of the leading fraternities.
4. Garage facilities in the city.
5. Nearness of liquid refreshments.
6. Number of times an instructor is permitted to call on a student to recite in one semester.
7. Number and capacity of the motion picture theatres and whether managers enjoy rough house.
8. A map for the purposes in the spring and fall.
9. Whether the president is in favor of campus pranks as long as they aren't made on him.
10. Whether attendance in class is necessary for a degree.
11. Whether the dean of women objects to girls coming in late.
12. What are the social functions?

—®—

Truth is stranger than fiction,—in fact, to most people, it is a total stranger.

—®—

"I always keep men at arm's length."

"Don't you ever let them get farther away?"

—®—

"I got off something fine this morning."

"What was it?"

"The Mauretania."

—®—

Big Girl—"I'll give you a penny for a kiss."

Little Boy—"No, thank you, I can make more taking castor oil."

—®—

"When she travels she takes her servants and pets."

"Gracious, how scandalous!"

—®—

Prof. Nottleman—"What was the Sherman Act?"

Kissinger—"Marching Through Georgia."

Janet—"Why did the waiter bring the check with the cocktail?"
One—"That wasn't the check. That was the house chemist's certificate."

—®—

Roselle—"You remember, you told me that if I would put a piece of that wedding cake under my pillow, I would dream of my future husband?"

Alene—"Well, did you?"

Roselle—"That's what worries me; I dreamt about the Phi Kap fraternity."

—®—

Father—"I've never seen a report card like this before; aren't you ashamed of yourself?"

Chester—"Frankly, Dad, I'm not. You promised me ten dollars if I'd bring home a good report, but I thought you'd better economize."

—®—

HEARD AT 311

Johnson—"What time would it be if you saw sixteen dogs go running down the street."

Fletcher—"Oh, I don't know."

Raymond—"Fifteen after one."

—®—

(Soph talking about Onnalee).

Freshman—"Who is she?"

Soph—"She is the girl you see walking about with a fur coat and pushing a baby carriage."

—®—

HISTORY REPEATS ITSELF

(Boruff had returned from taking Bohman to a doctor to remove a piece of glass from his hand.)

Simon—"How did it happen?"

C. S. B.—"Same old song,—same tune,—same words,—same chorus,—trying to push a big glass tube through a small-holed rubber stopper."

—®—

Pringle—"Say, can I borrow your new suit?"

Sutter—"Sure, but why all the formality?"

Pringle—"I looked up in your room but I couldn't find it."

FAMILIAR SIGHTS



Maynard—"I remember arriving in Monmouth one cold January morning with only six cents in my pocket."

—®—

A CURE FOR DANDRUFF

Commit suicide.—Adv.

—®—

Monmouth is like Sir Harry Lauder says about the Scotch, "Not tight, just thrifty."

—®—

Rodgers—"You must be an epicurean."

Russell—"Yes, yes. We broke the handle off of that last year."

—®—

Waiter—"What is your order, sir?"

1st College Man—"A demi-tasse, please."

2nd Dumb-bell—"I'll take the same thing he did and a cup of coffee."

—®—

DORMITE TIME SCHEDULE

6:55—7:45—In the beginning—

7:45—11:40—Classes.

11:40—12:00—Read letters in chapel.

12:00—1:00—Lunch hour.

1:00—1:40—Dress for the afternoon.

1:40—3:00—Social expression. (Library or elsewhere).

3:00—6:00—Continuation, with trip down town. (Movies, Hawcock's, or shopping, mostly window.)

6:00—7:00—Dinner hour.

7:00—10:00—Study (confinement).

10:00—10:30—Return to starting point.

—®—

GREEK GREETINGS

"I'll knock you for a rho."

"Phi on you. Beta dime you don't."

Cop (to man driving past "Stop" sign)—Hey, there, can't you read?
College Man (in his old flivver)—Sure I can read, but I can't stop.

—(8)—

Rudy (in Transportation class)—"Mr. Ungrodt, how much weight will the traffic bear?"

Bud (hearing student next to him say, "He wants to know how much the Railroad will carry.")—"The Railroad will carry a train of two hundred cars."

—(8)—

Prof. Thompson—"We will have a test this morning."

Student—"Will it be a plus and minus test?"

Thompson—"No, write all that you know."

Bailey—"What will we do the rest of the hour?"

—(8)—

Boruff—(explaining strength of acids in terms of self)—"I am one-half as strong as you. How strong am I? It depends upon what I am talking about, probably not very strong."

—(8)—

Downie (Bible class)—"I do not see why Abraham was put to so many hard tests."

Murray—"Why does the coach take football men out on the field to drill them and leaves you here?"

Downie—"He is trying to make something out of them."

Murray—"That's it exactly. Why do I ask you all these questions and not the rest of the class?"

—(8)—

Miss Livingston (to waiter at Hawcock's)—"Have you any brains?"

Waiter—"Why-er- I will have to see."

Helen—"Oh, never mind, I just wanted a brain sandwich."

—(8)—

Prof. Thompson—"We cannot prove that anything exists. Here is a book; it is nothing but an idea."

Gus McClenahan—"If I hit you over the head with it would you say you were struck with an idea?"

Lev.—"I'd rather play baseball here at school than out on the farm."

Chuck—"How is that?"

Lev.—"Not near so many fowls."

—®—

Dorm Ethics: It is simpler to be bad since one does not have to learn so many rules in that case.

—®—

Brick McBride (announcing Y. M. and Y. W. carnival)—"We are going to have something new this Saturday evening. It is something that has never happened here before and it isn't dancing either."

—®—

Asst. Prof. Costello (to Miss Witte who comes in to class a few minutes late). "Have you a watch Miss Witte?"

Sal—"No, but I have a birthday next week."

—®—

Prof. Maynard—"There was only one "A" in the class and I won't tell who it was because it might embarrass Miss Beveridge."

—®—

MISTAKEN LOVE

He—"Maggie, I love you. I love you."

She—"In the first place, you don't love me. In the second place, my name isn't Maggie."

—®—

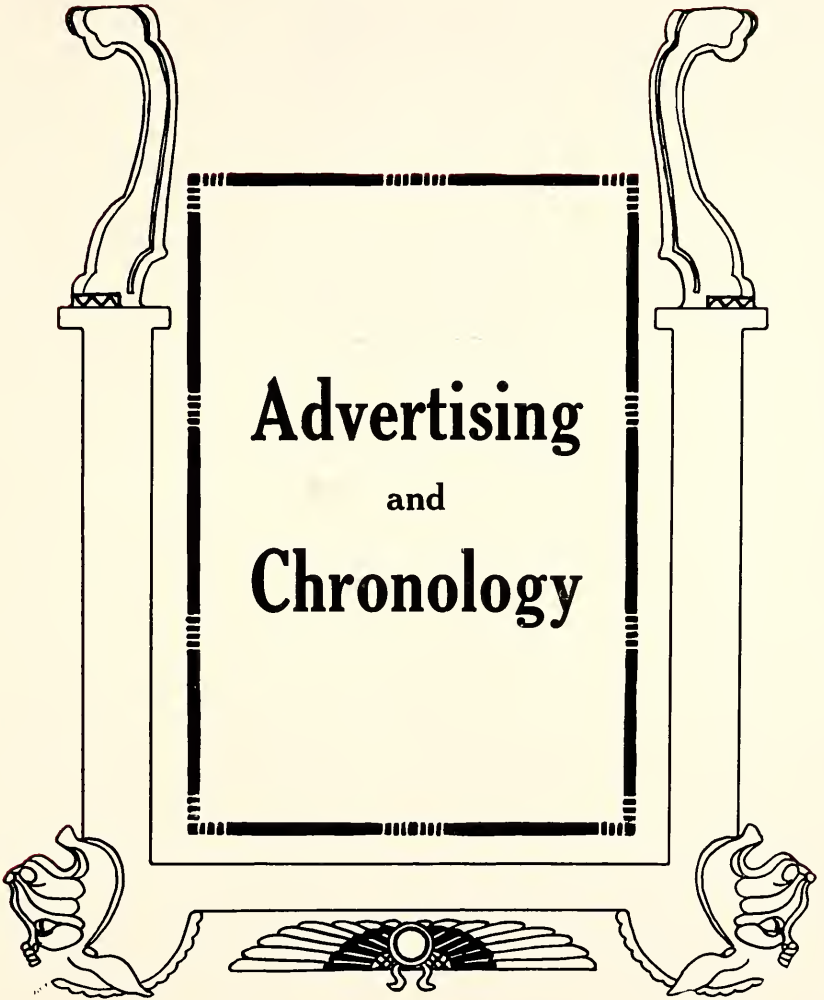
Hostess—"Are you two having a good time?"

Both—"Oh yes, we're getting along infamously."

—®—

He—"I've heard quite a lot about you."

She—"That's not strange. I've done quite a lot."





We dedicate this page to Luther Emerson Robinson, who for a quarter of a century has been an unfailing inspiration to thousands of students of Monmouth College.

Could we only broadcast this anniversary to the students of the last twenty-five years, thousands of voices would acclaim him a Prince among Men, men and women from every corner of the globe would send their greeting. Thousands of lives have been inspired, and many an ambition has been born thru contact with this subtle man of genius.

Have the labors of the last 25 years brot him wealth, fame or power? No. None of these things have been the fruits of the last quarter of a century, the best years of his life. He has watched the men in his college class climb to positions of wealth and importantee—he has seen students who were but a few years ago in his class room, become wealthy—grow to be great factors in their state and the nation. Little does he dream that much of the foundation of their future greatness was built in his classroom, and he was one of the architects of this building which pierces the sky.

Downtown as well as out on the campus, Prof. Robinson, or "Robbie" as we call him, is a great man and is loved by everyone. As he has these 25 years mingled with his fellow townsmen he has not only given them many things, but he has gained wealth—not in gold—but in love and trust of many friends.

"ROBBIE", WE THINK THAT THESE 25 YEARS YOU HAVE GIVEN TO MONMOUTH AND MONMOUTH COLLEGE HAVE BEEN WORTH WHILE

Written in appreciation of these years of service of our friend.

GEORGE O. WIRTZ.

JAMES C. FOSTER.

MONMOUTH COLLEGE STUDENTS
ARE NOT ESPECIALLY INTERESTED IN

GROCERIES

AT THIS TIME—

BUT THEY SOON WILL BE.

C. W. WOODS

GROCERIES & MILL FEEDS

**MONMOUTH'S
LARGEST DEPARTMENT STORE**

RELIABLE—DEPENDABLE MERCHANDISE

AT

LOWEST PRICES

OUTFITTERS FOR THE HOME AND THE PERSON

E. B. COLWELL CO.

DEPARTMENT STORE

MONMOUTH, ILLINOIS

September

8. Registration day. Chapel opened with a faculty procession.
9. Y. W. Service at the Woodbine.
10. The "Walkout" and big bonfire on athletic field.
11. Y. W. and Y. M. reception in the gym. Talk about paper sacks!
12. Vespers—Don't choose muddy roads next time girls, and maybe you'll get back in time.
13. Blake Root and Harold White breeze in from the West in their car "de luxe."
14. Class elections. The Philo's attempt a serenade at dorm.
15. First guest night at the dorm and Crimson Masque business meeting.
16. A. B. L. and Aletheorean reception to new girls. Lights went out at the dorm—sobs—"I can't study chem."
17. Zi Delta Theatre Party. Fall Festival—quite a few additions to the dorm, almost a whole festival (dogs, dolls, etc.).
18. Y. W. hike—sweltering day.
20. "Ding dong—Pole Scrap"—No—False alarm.
21. Hobo Hike given by the Y. W. Serenade—thrills and heart throbs.
22. Pole Scrap. Sophomores victorious. Billy Sunday there to root for the warriors.
23. Answers to "frat bids" are in. Billy Sunday spoke in chapel.
24. The whole college hits the "sawdust trail."
25. A freshman engagement is the rumor ? ? ? Quick work.
27. Phi Sig pig-roast.
28. Rain again. Homesick barometer rising steadily.
29. Crimson Masque receives new members at a reception. New "blessing" sung at the dorm.
30. Thursday—Oh what is so rare as a day in lab!

You Have Examined This Book---

A BOOK WHICH PORTRAYS IN PICTURES—

Life at Monmouth College---

HERE ARE PRESENTED A FEW FACTS—

WHICH THE PICTURES HAVE NOT TOLD—

MONMOUTH HAS A FACULTY OF SPECIALISTS—

Thirty-seven professors and instructors in the Faculty group, representing the strongest colleges and universities of America and Europe.

MONMOUTH HAS AN ENVIABLE SCHOLASTIC AND ATHLETIC STANDING

Member of the North Central Association of Colleges and Secondary Schools.

Member of the Association of American Colleges.

On the approved list, in a position of first rank, of the Association of American Universities.

Fully recognized by the American Association of University Women

Member of the Mid-West and the Illinois "Little Nineteen" Inter-collegiate Athletic Conferences.

MONMOUTH HAS AN UNEXCELLED PHYSICAL EQUIPMENT

Eleven buildings, campus of twenty-five acres, conservatively valued at \$900,000. In addition to this physical equipment, an endowment of more than One Million Dollars.

MONMOUTH HAS AN EVER LOYAL ALUMNI AND STUDENT GROUP

Over two thousand alumni have been graduated from Monmouth's halls. These are occupying positions of trust and honor the world over, Monmouth's student group of five hundred is drawn from all parts of the United States and from many foreign countries.

MONMOUTH HAS AN EXCELLENT CHRISTIAN ATMOSPHERE

Monmouth men are serving in every clime today as ministers of the Gospel. Nearly forty per cent of the young men who have graduated from Monmouth have entered the Ministry. Many others are serving as Christian educators, doctors, lawyers and in many other walks of life.

MONMOUTH HAS GOOD TRANSPORTATION FACILITIES

Accessibility is one of the prime values of modern life. Located on the main line of the great "Burlington" system, 180 miles west of Chicago, Monmouth is easy of access. Monmouth is also served by the St. Louis division of the Burlington, by the Minneapolis and St. Louis Railroad and by the Cannon Ball Motor Bus Company.

These are but a few of the many things that make Monmouth a desirable place to attend college. Opportunity awaits you educationally at Monmouth. Plan NOW to become a Monmouth Man or Woman.

For information Address

PRESIDENT T. H. McMICHAEL, Monmouth, Illinois

Monmouth College
SCHOOL OF MUSIC
and
CONSERVATORY

OFFERS

A BACHELOR OF MUSIC DEGREE

CORRESPONDING TO THE BACHELOR DEGREE OFFERED IN
OTHER COLLEGE COURSES.

COURSES IN

Interpretation, Analysis, History of Music, Harmony,
Analytical Harmony, Counterpoint, Double Counterpoint,
Canon, Free Composition, Fuge, Advanced Interpretative Analysis,
Advanced History of Music.

PRIVATE INSTRUCTION IN

Piano, Violin, Voice, Organ and Wind Instruments.

College Students will Find Splendid Opportunity
For Cultural Training.

BACHELOR OF MUSIC REQUIREMENTS

56 semester hours in Liberal Arts College.

24 semester hours on Theoretical Music.

44 semester hours in Practical Music.

Music Electives allowed in an A. B. or B. S. course:

14 semester hours in Theoretical Music.

10 semester hours in Practical Music.

Six for Junior Recital and four for Senior Recital).

For Catalog and Information address—

T. MERRILL AUSTIN, *Director*

Monmouth College, - - Monmouth, Illinois.

E. A. McMILLAN



113 South First Street

Colonial Hotel

(MODERN)

A LA CARTE AND TABLE DE HOTE

DINING ROOMS

GOOD SERVICE

GOOD ROOMS

RALPH FRASER, Prop.

Telephone 265 Monmouth, Ill.

MADE FOR YOU!
SHOES OF QUALITY
STYLE
COMFORT
PRICES RIGHT

Bowman Brothers
Shoe Store

"The Home of Good Shoes"

GRAHAM
TAILOR
MONMOUTH
MADE FOR YOU

October

1. Cupid makes a dorm raid as usual.
2. We beat Wheaton 55-0. Secret—there is a new fur coat on the campus.
4. The chapel problem discussed at prayer meeting.
6. Girls' Glee Club posted. "Second soprano?" "You lucky dog."
7. A Maytag Washer at the dorm! Doctor himself officiated at the clothes basket.
8. Friday. "Good-bye, Good luck." Everyone sees the team off for Coe.
9. Lost to Coe. 7-3.
11. Practice for Homecoming Drill begins.
12. French Club meets.
13. Special chapel program.
14. Two girls late, car got thirsty. Y. W. pageant of "Follow the Glean."
15. Team left for Beloit—"Get that old fight, now."
16. Beat Beloit. 23-7.
18. "Buy a Homecoming badge; it won't break you up, and think what it means to the school." "I'll bite."
19. "Hay foot, straw foot"—Gym classes take a hike.
20. Cold weather and then some.
21. "Hello Day."
22. Zi Delts become Beta Kappas.
23. Homecoming—Parade,—beat Illinois College 7-2,—"The Goose Hangs High," presented by the Crimson Masque.
25. Prizes awarded for floats, houses, and hobos in chapel.
26. Mr. and Mrs. Matthews of the Sunday party entertain at chapel. The only man we know who can play two pieces at one time on the piano.
27. Phi Kappas went as a delegation to the tabernacle.
28. College picture taken.
29. Pep meeting at chapel.
30. Beat Augustana. 10-0.

O. R. WISE

J. E. WARD

Maple City Electric Shop

"Service-with-a-Smile"

ELECTRICAL
CONTRACTORS

ELECTRICAL SUPPLIES

THE STUDENTS' ELECTRIC SHOP

Phone 2739 121 W. 1st Ave.

Hotel Burlington

BURLINGTON, IOWA

Only Fireproof Hotel in the City.

ROOMS \$1.50 TO \$3.50

Private Rooms for Parties
Large Ball Room for Dancing
Club Breakfasts 35c. to 55c.

Luncheon 50c. to 60c.

Dinner 75c. to \$1.00

R. E. PETTIGREW, *Mgr.*

ALL FLOWERS IN
SEASON
PLANTS AND CUT
FLOWERS

Prompt and Careful Service

CORSAGE BOUQUETS

Chas. A. Hewitt

COMPLIMENTS
OF

Pattee Plow Co.

Peoples National Bank

ESTABLISHED 1890

CAPITAL STOCK, \$75,000.00

SURPLUS AND UNDIVIDED PROFITS, \$159,000.00

4 Percent Interest Allowed on Savings

It Requires Only One Dollar to Open an Account

JOIN OUR CHRISTMAS SAVINGS CLUB

We Would Be Pleased to Have Your Business

Turnbull Funeral Home

FUNERAL DIRECTOR
AMBULANCE SERVICE

TELEPHONE 730
301-303 S. MAIN ST.

John Lugg

PRIVATE AMBULANCE

TELEPHONE 19
Monmouth, Illinois

The Big Event

In the Life of A College Student is

GRADUATION

Your friends will expect your photograph.
We will be glad to make more prints from
your negative,—Write us.

Remember to mail us your kodak films—

Prompt Service. Good Work. Mail Direct.
Any Distance.

LONG'S STUDIO

If You Don't

WHY DON'T YOU?

Buy Your Supplies Where

They Sell

EVERYTHING GOOD

TO EAT

CHASE & SANBORN'S COFFEE

Scott Bros. & Co.

McCullough
Lumber & Coal Co.

HEADQUARTERS FOR
BUILDING MATERIAL

AND COAL

101 East Fourth Ave.

PHONES 56 OR 59

November

1. The M. C. Band goes down to welcome Sousa at the station.
2. Did you know that you could sit in shirt sleeves in Greenland?
Ask Mr. Steffanson.
3. Our first snow.
4. Freshman picture taken with *caps on*.
5. Girls' Pep Club shows its metal at chapel.
6. Beat Cornell. 17-0. Mrs. Robinson gets the prize for the best disguise at the Dorm Hallowe'en party.
8. Conservatory recital.
9. Student body meeting. More snow.
10. Buenos noches—Spanish students at the dorm for dinner.
11. Dr. Shephard, vice president of Phi Beta Kappa, gave Armistice Day Address. Heinz's Dinner at the dorm,—Sour grapes? No.—pickles.
12. Team beats Eureka. 20-6.
13. Philo's visit Springfield and greet Queen Marie. How about tips?
15. John Matthews led prayermeeting.
16. Things about as usual.
17. Mr. Rich of Chicago Civic Opera gives concert in Auditorium. Janet Todd and Florence Smith report that he likes jazz.
18. Last years' Sunnyside girls went back for a spread. "Iodine."
19. Pi Rho Phi bob-sled party. More broken bobs (?).
20. McQuiston Open House. Talk about coziness, they're right there.
22. It is hard to study now for there is so much to look forward to.
23. Crimson Masque closed program was splendid. The fellows shovel snow off the field to get ready for Thursday. Doctor is reported to have gone out in overalls.
24. Pep meeting with girls wearing their new sweaters. Even a turtle would have been thrilled to the marrow.
25. BEAT KNOX. 1-0.
26. "M" blankets given to the nine senior members of the team in chapel. Expect some to show up at the dorm. Kappa Alpha Sigma and Phi Delta Sigma Informals.

Be Sure to Buy Good Clothes

What you invest in a suit determines what you will get out of it. There are always stores which chirp "cheap! cheap!", for there are people who actually think price is everything.

They forget that "how long it wears" is better measure of economy than "how cheap it was."

You can be sure of getting good wear, good looks and comfort in any suit you choose here.

The Model Clothing Co.

O. K. Cleaners

CHET SMITH, Prop.

M

CLEAN 'EM UP,

MONMOUTH!

110 W. First Ave. Phone 85

IF YOU WANT SOMETHING
GOOD IN THE

MEAT LINE

Fowler Market

WHOLESALE AND RETAIL

104 South Main Street

Telephone 54

Woodward

WALL PAPER

PAINT
GLASS

MONMOUTH

BUILD YOUR ESTATE

BY

MONTHLY SAVINGS

—
BECOME

A HOME OWNER

Monmouth Homestead
& Loan Association

62 Public Square C. S. Peacock

CLEANLINESS COMFORT

CONVENIENCE

HOTEL
MONMOUTH

G. A. BUCKLEY, *Prop.*

EUROPEAN MODERN

Auto Park in Connection

MONMOUTH, - - - ILLINOIS

Nichol's Poultry
Farm

PURE BRED BABY
CHICKS

12 BEST PAYING BREEDS

Write for Free Catalog and
Complete Price List

MONMOUTH, ILLINOIS

Lagomarcino- Grupe Co.

BURLINGTON, IOWA

WHOLESALE

FRUITS, VEGETABLES,
SPECIALTIES

Established in 1875

Bowker-Smith Co.

68—Phones—907

We hit you going and and hit you
coming—

ICE IN SUMMER
COAL IN WINTER

With either we give you

OUR SERVICE

The Best in the City

TRY US OUT

Gruen Watches

The rarest Watch Value ever of-
fered the public. In Green, White
Gold from \$25.00 to \$60.00.



D. W. O'CONNOR

"Monmouth's Reliable Jeweler"

PHONE 88

"SAY IT WITH FLOWERS"

Maple City Floral Company

1201 SOUTH MAIN STREET

FLORIST

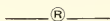
Downtown Office

SEATON'S MILLINERY SHOP

27. We are wondering how coaches Hart and Van Antwerp are enjoying the Army-Navy game.

29. Blue as indigo. Too much vacation.

30. How about leaving frat pins on suits when you lend them for stunts? Bashful Ed?—No.



December

1. Wednesday. Faculty guest night at the dorm. Candle-light and scintillating conversation.

2. A second successful day for the Japanese bazaar.

3. Philo Peanut Night at Galesburg. No peanuts, but a flask or two.

4. Inter-class swimming and diving meet under the supervision of the Dolphin Club. Zeta Christmas Party at Van Gundy's.

5. Vespers—slippery—watch your step.

7. Harry Farbman concert at the auditorium.

9. Wild hunt for Christmas gifts beginning. Conservatory term recital.

10. Exchange Club Football Banquet.

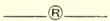
11. Beta Kappa Theatre Party.

12. Christmas praise service at prayer meeting.

14. The play, "Manthus the King," was presented by Crimson Masque for the benefit of the Y. W.

15. Professors hearten us with a few parting exams. Santa Claus visits the dorm.

17. Homeward bound!



January

5. Wednesday. We beat Beloit 37-12. Everybody back in the old harness.

6. We are beginning to notice the new diamonds.

7. Fraternity houses entered by burglars. Some boys had a hard time getting to class. Beat Ripon 37-25.

8. "Blessed be drudgery."

9. Vespers, and snow too.

The Second National Bank

MONMOUTH, ILLINOIS

ASSETS OVER TWO MILLION DOLLARS

ORGANIZED IN 1874

Barnes Grocerteria

200 EAST BROADWAY

WE APPRECIATE YOUR PATRONAGE
AND WILL ENDEAVOR TO MERIT IT BY GOOD SERVICE.

TELEPHONES 207, 253, AND 61

BUS Transportation

Travel

THE CANNON BALL
LINE

Between Burligton, Monmouth,
Galesburg and Galva.

Baggage Facilities
Good Clean Busses
Special Accomodations

CANNON BALL MOTOR TRANS-
PORTATION COMPANY

Telephone 82
MONMOUTH, ILLINOIS

SEND IT TO THE

Model Laundry

ALL SERVICES

*"We Return Everything But
The Dirt."*

LET US CLEAN YOUR RUGS BY
THE SHAMPOO PROCESS

GIVE US A RING

TELEPHONE 2 AND 318

Monmouth Trust & Savings Bank

CAPITAL, SURPLUS and UNDIVIDED PROFITS \$390,000.00

UNDER STATE SUPERVISION

Transacts a General Banking Business.

4 PERCENT INTEREST PAID ON SAVINGS ACCOUNTS

STUDENT ACCOUNTS SOLICITED

QUANTITY BUYING

VOLUME SALES

FOLKS BUY FURNITURE AT HOGUE'S BECAUSE
OF THE LARGE SELECTIONS OF FURNITURE

AT A
SAVING.

Monmouth, Illinois

The Hogue Furniture Co.

LARGE SELECTIONS

QUALITY FURNITURE

GEO. SLATER

WHOLESALE

CONFECTIONER

119 WEST FIRST AVE.

Distributor of

SCHRAFFT'S CHOCOLATES

ALLEN'S STORE

WE FURNISH THE HOME

COMPLETE

FURNITURE

RUGS

DRAPERIES

HOUSEHOLD LINENS & BEDDING

John C. Allen Co.

IRVINE & TORRENCE

STAPLE AND FANCY
GROCERIES

WE CATER TO COLLEGE TRADE

Phones 84 or 143

215 East Broadway

MONMOUTH COLLEGE
ATHLETIC TEAMS
ARE COMPLETELY EQUIPPED

BY

The Hood-Powell Company

LAHL BUILDING

10. Open forum discussion at prayermeeting on "Extra Curricular Activities."
11. Address by Whiting Williams in chapel. Boys and girls joint pep club formed.
12. James-Nevin Debate. Don Beste got the prize for the best individual debater.
13. Mothers' and Daughters' Banquet in the gym. Miss Riggs upheld the honor of the faculty at the dorm.
14. Monmouth beats Beloit here. 32-25.
15. Cornell beats M. C. here 32-22. Dr. Slosson gives lecture.
17. Tryouts for the Junior play.
18. Knox basket-ball team won here. 22-21.
19. The water main broke near the dorm—good excuse for not washing face before breakfast.
20. Exams. Exams.
21. Exams. Exams.
22. Brief respite.
24. EXAMS! EXAMS!
25. EXAMS!! EXAMS!!
26. Registration day. Phi Kappa pledges don't enjoy the show because the seats are too hard. "Paddle your own canoe."
27. Senior and Junior privileges granted to dorm girls.
28. Pocket books are getting transparent after buying a few books.
29. The "Green Plague" strikes the dorm. Thirty girls are quarantined. Monmouth beats Eureka 49-25.
31. Dr. Kelso spoke in chapel on "Palestine".

—®—

February

1. Tuesday. Seniors are getting quite domestic. They had a chicken dinner at the "Woodbine."
2. Sorority party bids go out.
3. Y. W. C. A. meets at 7:00 p. m.
4. Coe beats M. C. in basketball.

PICNICS

BANQUETS

ICE CREAM

Hawcock's Cafe

EVERYTHING EATABLE

SODA FOUNTAIN

DINNER PARTIES

JEWELER

Glenn E. Wilson

"Gifts that last"

**PEN MILLER
DECORATING CO.**

WALL PAPER
PAINT
WINDOW GLASS
and
PLATE GLASS

TELEPHONE 269
115 East First Ave.

Launches and Barge for Hire.
Cottages for Rent.

**BREMER'S
RUSH VIEW
BOAT LIVERY**

Foot of Columbia Street
BURLINGTON, IOWA.

Telephones
Office 3885W Residence 2747

Look for the Yellow Launches.



Before the Civil War the women of Monmouth were patronizing this store in the newly organized state across the Mississippi. We think of their granddaughters as being among our staunchest friends and customers today, and we invite the women of the College who do not already know of this institution to ask them about "Schramm's."

**DIFFENBAUGH
LUMBER & COAL CO.**

GLENDORA
THE WONDER COAL
LUMBER, AND ALL
BUILDING MATERIALS
PHONES 6 & 17

Smart Styles

SHOE MARKET STYLES keep you well dressed and in good taste. Their fine quality gives you long wear and saves you money.

The Shoe Market
STYLISH SHOES THAT WEAR
NORTHWEST CORNER SQUARE
MONMOUTH, ILL.

SMARTEST STYLES

CAREFUL FITTING

REASONABLE PRICES
MONMOUTH, ILL.

SPRING SUITS

NEW COLORS!

NEW STYLES!

REAL VALUES

\$25.00 \$30.00 \$35.00 \$45.00

U.S. CLOTHING CO.
Al Simon Manager

WEIR MOTOR CAR CO.

Motor Cars and Supplies

BUICKS

Garage—116-118 East Archer Ave.

Monmouth, Illinois.

5. Sophomore girls basketball team beats the Juniors.
6. Vespers—Messiah practice in the afternoon for the more talented and lucky dorm girls.
7. Gertrude Miller's car out of gasoline again. "Nize walk."
8. Literary societies hold sway,
Even though they've had their day.
9. Crimson Masque closed production.
10. Intra-Mural games.
11. We beat Millikin at Decatur. 26-18. A motor cycle, three red capped youths with paddles. Nuff sed.
12. Pledging of new members by sororities.
14. Valentines Day. Lots of specials at the dorm.
15. We beat Knox at Galesburg 33-21. Our Freshmen did their stuff
16. Dollar Day downtown. Miss Potter of the A. A. U. W. visits the college.
17. Miss Winbigler was invited to a luncheon in honor of Miss Potter, so that teaching of Math. class was excused.
18. Bea Kappa House Party. Program by the pledges.
19. Phi Kappa Pi Informal. Hint to the wise is sufficient. All the girls need now is something to put in the jewel cases.
21. We beat Augustana here. 35-17.
22. The Washington Banquet with toasts, yells, songs, and readings by Phidelah Rice.
23. The Honor Roll is printed. Embarrassing moments. "Are you one of the 'Intelligentsia'?"
24. M. C. debated at Naperville.
25. "Everyone get up, pep up, date up, and you'll be set up if you come to see "Sun-Up" at 8:00."
27. Play Fest under the direction of Miss Henrickson is a big success.
28. Galesburg Music Club gives a concert in the auditorium.

Illinois Bankers Life
INSURE WITH A HOME COMPANY

ASK WILCOX.

PLUMBING
and
HEATING
our
SPECIALTY



PROMPT
SERVICE
and
GUARANTEED
WORK

TELEPHONE 86

EXCELLENT QUALITY

REASONABLE PRICES

Root's Studio

IF YOU WANT TO GET PHOTOGRAPHS FOR YOUR FRIENDS OR KODAK

FINISHING OF COLLEGE SNAPSHOTS CALL AT

213 SOUTH MAIN STREET

Telephone 4213

Monmouth, Illinois

B - R - E - A - D

IS YOUR BEST FOOD

EAT MORE

CREAM OF ALL BREAD

AND STRAND'S SPECIAL BREAD

Strand Bros. Sanitary Bakery

Pittsburgh Theological Seminary

You were wise in choosing Monmouth, a school of your denomination, as your college. Be as wise in choosing your Seminary. Choose Pittsburgh and you will be grateful for your choice. There are 1624 who have made this choice.

WHY CHOOSE PITTSBURGH

HISTORY—It has 102 years of successful and noble history.

LOCATION—It is located in the heart of United Presbyterianism.

STANDARDS—It ranks scholastically among the first in the country.

INSTRUCTION—There are five full-time professors, three instructors, and special lecturers.

CURRICULUM—A complete theological course of highest standard.

LIBRARY—A good one, comprising 15,000 volumes.

DEGREES—The Th. B. and Th. M. are granted.

UNIVERSITY AFFILIATION—The Seminary has affiliated courses with the University of Pittsburgh, leading toward the M. A., M. S., and Ph. D. degrees.

PRIZES OFFERED—Six are given to the first year men totaling \$300.
Three are given to the third year men totaling \$350.

SCHOLARSHIPS—One of \$800 is given each year providing a fourth year's study and another of \$200.

EXPENSES—Tuition and room are free. Board at cost in eating club.

ADVANTAGES FOR WORK—There are many opportunities afforded by the Allegheny Y. M. C. A., the Heinz House, the First Church Community House, etc. Pastoral assistantships and many opportunities for preaching are to be had.

FINANCIAL AID—Every first year man receives financial help from the Seminary. The Board of Education provides further financial assistance to those who need it.

CULTURAL ADVANTAGES—Pittsburgh affords many of extra value.

SOCIAL FELLOWSHIP among the men is of the highest type.

If you want a thorough training for the ministry, come to Pittsburgh Seminary.

The 103rd Year opens September 21, 1927.

For catalog and information address—

PRESIDENT JOHN McNAUGHER

616 W. North Avenue, North Side, Pittsburgh, Pa.

March

1. Dr. Pollock opens week of special services.
2. Freshmen win interclass basketball tournament.
3. Monmouth debates Coe here.
4. Girls arrive home from victorious debate trip. Gertrude can tell you about the luggage.
5. "Open Night" at the dorm. Fudge and more fudge.
6. Dr. Pollock preaches Vesper sermon.
7. Dr. Pollock gives farewell speech in Chapel.
8. Student Body meeting. The "frat pin sisters" of dorm have meeting of embroidery club.
9. Tau Sigmas win in preliminary debate with A. B. L.
10. Why does Freda blush when we ask her where she got the blue pennant?
11. Women debate Augustana there, and North Central here.
12. Limp handshakes, strong handshakes, firm grips—Everybody welcome!—Faculty reception.
14. "Sin of Ahab" presented at prayer meeting by Crimson Masque—Cold shivers.
15. Aletheorean and Tau Sigma Alpha tie for first place in Literary Society contest.
16. Ornithologists are the only ones who are not glad to hear the birds chirping.
17. Girls debate with Normal University.
18. Everybody gets a "kick" out of "Minstrel Echoes" at the Fine Arts.
19. All College Carnival—white elephants, tigers, wolves, movie stars, fortune tellers, etc.
21. Prayer meeting discussion on college spirit.
22. Men debate with Augustana.
23. Crimson Masque presents plays.
24. French Club play—good interpretation.
25. Delegates leave for Y. W. Convention at Bradley.
26. Senior Kid party at Hawcock's.
28. Hurry up, minutes, hours, anything!
29. Spring Vacation!!!

XENIA THEOLOGICAL SEMINARY ST. LOUIS, MISSOURI

EASY OF ACCESS, GOOD LOCATION, PLEASANT SURROUNDINGS,
COMFORTABLE ACCOMMODATIONS, UNUSUAL OPPORTUNITIES

XENIA is a school for thorough Theological Training.
A Place for students who wish to do much and get much.

The Institution which requires much of the student—best prepares him
for Life's work.

Here is a complete Theological course of Highest Standard. Research
methods of study, and careful coordination of studies. Each student
is required to become an independent exegete of Greek and Hebrew;
to analyze every book in the English Bible.

Special attention is given to Philosophy of Religion, Psychology of Evan-
gelism, and Archaeology of Bible Lands.

Three years' course in Public Speaking and Sacred Rhetoric.

Advanced degrees in both Xenia Theological Seminary and Washington
University.

Graduate School of Highest Requirement.

Opportunity for Research Work in Bible Lands.

For catalog and information address

DR. MELVIN GROVE KYLE, President—6834 Washington, Ave.

Western Stoneware Company

LARGEST STONEWARE FACTORIES IN THE UNITED STATES.

Students are invited to visit our Plants. A gift of a
piece of ware from one of our Plants is always ap-
preciated. We will attend to packing and shipping.

GRADUATES, ALUMNI, STUDENTS,

are All Friends of the Monmouth College Clothiers,

SCHLOSS BROS. & COMPANY

JOHNSON'S CORNER

WHERE ALL COLLEGE STUDENTS

ARE MADE TO FEEL AT HOME.

Compliments
of the
"Oracle"

MANY, MANY THANKS!

TO ALL THE STUDENTS AND TEACHERS

for work and interest you have given my Studio.

Wishing you all a pleasant vacation and a happy return
in September.

J. H. Martin's Studio

Studio Phone 1188

Residence Phone 4575

"Photographs Live Forever."

WHO CAN TELL YOU AS MUCH ABOUT HIS GOODS?

The front of this store may look like others on the street. Perhaps our stock of merchandise may appear similar to that of other merchants. But we have this distinction: We know all about the merchandise we sell you.

If your prescription calls for quinine we can tell you where it comes from, or if belladonna is one of the ingredients, we can explain its history. We can tell you the effect of different drugs upon your system, whether a mixture is for internal or external use. The very nature of our business requires us to know these things.

You get the benefit of this knowledge when you trade here. Our professional service goes along with every purchase, whether it be a bottle of medicine or a bottle of toilet water. The Qualified Druggists emblem on our front door marks this store as a safe place to trade.

H. M. ANDERSON, - - - Monmouth, Illinois

WE INVITE YOU TO MAKE

National Bank of Monmouth

YOUR FINANCIAL HOME.

CAPITAL AND SURPLUS\$375,000.00

TOTAL RESOURCES OVER\$2,640,000.00

SAFE — RELIABLE — CONSERVATIVE

April

6. Everybody back from vacation except Girls' Glee Club.
7. Jean Liedman gives splendid speech recital.
8. Philo Open Night. Pi Rho Phi Party—Mrs. Morton and Mr. Nottleman try to go to Elk's Club instead of the Galesburg Club. We blame that on Rus.
9. Zeta Epsilon Chi formal at Elk's Club. Ornithology class takes trip to Burlington.
10. Vespers—Usual Easter style parade.
11. Mrs. Elliott posted notice that only one person can sit at tables in stacks. Too bad for the "steadies."
12. Girls' Glee Club Recital. "I can't get over a boy like you loving a girl like me?" How about it, Raymond?
13. Crimson Masque election of officers.
14. Representative of Kappa Kappa Gamma visits Kappa Alpha Sigma.
15. Prof. Goodrich and Wylie Stewart give special Easter program in Presbyterian Church.
16. Phi Sigma Alpha formal. The girls certainly enjoyed the garden by moonlight.
17. Easter Sabbath. Sunrise Service unusually beautiful.
18. Dress Rehearsal for Elijah.
19. First performance of Elijah with crowded church.
20. Lev Wallace motors to Stronghurst to hunt for job. Leo makes good use of his car for dorm girls since it is a rainy day.
21. Military Ball—forbidden fruit. Better men than Adam have fallen.
22. Earle Davis gives voice recital. Fatal night for five M. C. coeds.
23. Kappa Alpha Sigma Formal at Hawcock's. Mr. Fleming and other carload of dates get to Orpheum too late for performance.
25. Roller skates and tennis are the vogue, now.
26. Feeling at high tide, and much suspense—five girls campused until June.
27. Girls' Glee Club sings at the Armory for \$25.00. Eve had a look at the fruit.
28. Early morning tennis. Dorm girls don't need alarms any more.
29. Sophomore party—second one this year—quite the social crowd.
30. Baseball game with Saint Bede. We won 7-6. Jack McIntosh only Monmouth man to place at Drake.

Physicians

DR. RALPH GRAHAM

OFFICE—NATL. BANK BLDG.
Telephone 1280

DR. CHARLES P. BLAIR

OFFICE—111 W. 1st AVE.
Telephone 102

DR. J. D. WORRELL

OFFICE—LAHL BUILDING
Telephone 115; Res. 309

DR. J. L. SHERRICK

OFFICE—317 EAST BROADWAY
Telephone 2051

Specialists

DR. F. C. WINTERS

Eye, Ear, Nose, and Throat

OFFICE—LYNCH BUILDING
Telephones—

Office 871 Residence 2871

DR. E. A. FETHERSTON

Eye, Ear, Nose and Throat
Glasses Fitted

OFFICE—303-5 LAHL BLDG.
Telephones—

Office 3397 Residence 4850

Osteopath

DR. MARIE G. TURNBULL

OFFICE—406 LAHL BLDG.
Telephones—

Office and Residence 29.

Osteopathy and Abrams' Diag-
nosis and Treatment

Specializing in Post and Taplin
System of Foot Treatment.

Dentists

DR. H. W. STOTT

OVER WIRTZ BOOK STORE
Telephone 2035

DR. E. B. KNIGHTS

OFFICE LAHL BUILDING
Telephone 4145

DR. W. S. PHELPS

OFFICE—57 S. SIDE SQUARE
Telephone 1185

THE BEST IN
Motion Pictures
AND
Entertainments
Rivoli-Bijou
THEATRES

MONMOUTH, ILLINOIS

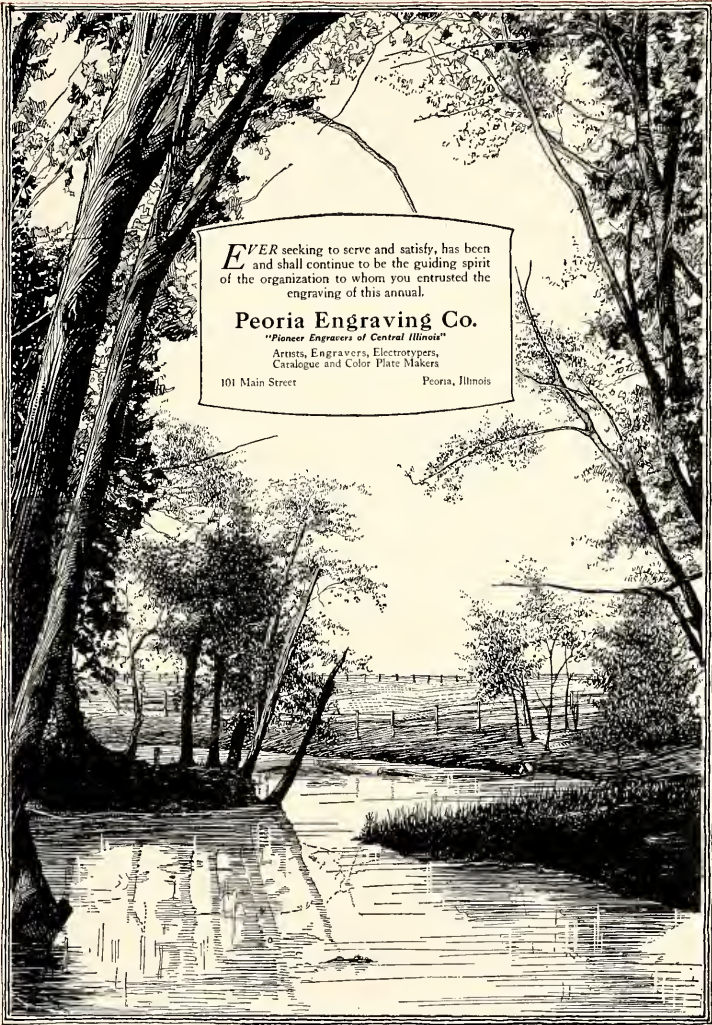
L. T. Hall & Sons

FORD PRODUCTS

CARS - TRUCKS - TRACTORS

LINCOLN CARS

MONMOUTH - KIRKWOOD - ALEXIS



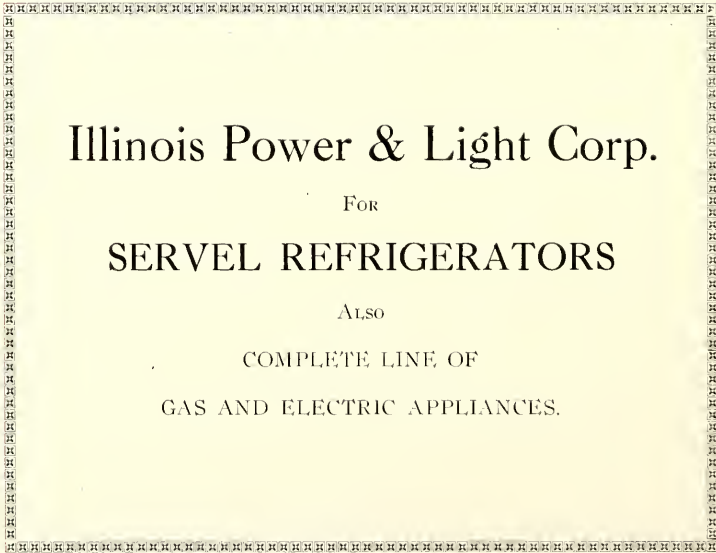
May

2. Gus McClenahan came back from Drake with an awful cold. He says, "Riding on freight cars isn't so good."
3. Crimson Masque installation dinner at Hawcock's. Miss Williams is anxious to make use of her new suitcase.
4. Men's Glee Club at Roseville. Perhaps Tom Wolfe may change the old adage that "Gentlemen prefer blondes."
5. Original M. C. Song Contest. Student Body publicly expresses disapproval of anonymous pros.
6. Beta Kappa Formal. Nothing like preparedness—"Yes, we'll write you this summer."
7. Macomb-Monmouth Dual Track Meet. Some of the Frosh boys seem to have become quite attached to grass, bricks and eggs.
8. Vespers. Mothers' Day. Rev. Mahaffey in charge.
9. Book reports, more book reports, most book reports!
10. Sigma Tau Delta. Grace Fetherston Recital.
11. Music Club. Request Program.
12. Conservatory Recital of Katherine Laws assisted by Glenn Shaver.
13. Band Concert. Baseball with Augustana. Won 16-1.
14. Junior-Senior Banquet. Baseball game at Coe.
15. Sabbath.
16. Bourskaya, Mezzo Soprano—recital.
17. Conservatory Recital—Mary Warfield assisted by Irwin Douglass.
18. Guest night at the dorm.
19. Y. W. Term papers. !! ?? — * ? !: *!
20. May Fete—Reign of the Seasons? ! ? !
21. State Track Meet at Peoria. Pi Rho Phi River Trip. Conservatory Recital of Helen Sawyer.
22. Sabbath.
23. Prayer meeting lead by Haskell Dyer. "The Open Door."
24. Conservatory Recital—Chester Cable.
25. Crimson Masque. May meeting. Closed program.
26. Y. W. Rain and fairer.
27. Philo-Eccritean Contest.
28. Conservatory Recital of Irma Armstrong, voice, assisted by Piano quartet, Miss Riggs, Mrs. Peterson, Mr. Cable and Mr. Davis. Mid-West meet at Monmouth.
29. Sabbath.
30. Beta Kappa River Trip. Sunburn—blisters—?!?!?!?
31. Conservatory Recital of Earle Davis.



June

1. Guest night at Dorm. No one drowned in swimming today. A red letter day for sure.
2. President's Reception.
3. Exams. Going down the home stretch—win or lose?
4. Phi Sigma Alpha River Trip.
5. Baccalaureate Sermon by President T. H. McMichael. Sermon for Christian Associations by Rev. R. R. Bryan, D. D., Omaha, Nebraska.
6. Prayermeeting. President T. H. McMichael in charge. "Life's Inventory."
7. Meeting of the Collège Senate. Conservatory Term Recital. Senior Class Play—"Honor Bright" by Kenyon.
8. Alumni Day. Literary Society Breakfasts. Class reunions. Alumni banquet in gym.
9. Commencement exercises. Address by Rev. W. E. McCulloch, '91, Los Angeles, California. "Bon Voyage—Class of '27."



Illinois Power & Light Corp.

FOR

SERVEL REFRIGERATORS

ALSO

COMPLETE LINE OF

GAS AND ELECTRIC APPLIANCES.

Edith Shimmie

"THE RAVELINGS"—1928

Autographs

Kenneth ...
Jean Frantz
Marion S. Young

Lois Henderson '29

Max Rodgers '28
Linneth J. Wallace '27

Lou M. Clanchon '28

Gerald Lee '28

Russell W. ...

Tom Morrison '27

Samuel W. Miller '28

Geo. B. Steel Jr. '30

Mary Warfield '29
Paul Kobler '28

Ann Jensen
Harold Call '30
Bill Boaz '30

Lynn ... '11
1927

Frances Cole

Mary ...
Alice ...
Kenneth ...
This is ...
I am ...
I am ...
I am ...

Autographs

Florence Smith '27 - Don't forget 1950 -
No matter where we live, we will
meet.

Esther C. ... '27
Kermit S. ... '27

Kenneth H. Wallace '27

Harold B. Walker '27

Charles ... '27

Pauline ... '27

Simon ... '27

... '27

G. Wilson '27

G. E. Winter '27

Jean M. Young '27

... '27

Catherine ... '27

Phyllis ... '27

... '27

... '27

Put in ...
Don't ever ...
Lorraine ... '27
Mary Beth Mc ...

6/27/27 -
Catherine ... '27
Elizabeth ... '27

Best luck in spite of ...
nervous and ...
the man at hand ...
I've enjoyed knowing you &
everybody.

To a fellow sufferer as to propriety
Let us hope I do not delay your mail.

Autographs

^{Such a tiny space to write so much}
 Helen Belle Beck '28 ^{My darling pal. These 4 yrs have been}
 Mary Olive Fincaid ^{the riches, but having Robinson, you}
 Don't forget to pick up the original
 vanity case. Love driving the
 machine over it.

Lois Henderson '27 Don't think I should write in here
 after such treatment. Thank goodness I'm
 used to it. I can't help but love you just the
 same and will always remember the good times
 we have had together.

Evelyn McKelvey '27 It was best to leave you
 thus dear, at the end of 4 years of close
 friendship. I have certainly learned a lot
 from you, for all I was doubtful about
 I consulted your taste. Didn't know that, eh?

Miss Howard K.A.E. - Even if we don't
 believe in "true love" — we may be just
 as true rest of them. I do wish you all
 happiness, though, true love or not. !!

Marcella Foster - K. A. E. Reference to April 20 + 26

you
 the
 original
 will be
 the same
 at least
 the
 women
 folk will
 be, we
 have been
 widows
 we waiting
 but they
 are worth
 waiting
 for.
 Remember
 the night
 the future
 wouldn't
 work?
 Here's to the
 meeting
 5 yrs hence
 H.P.

THE END







