


THE 1946 RAVELINGS









Digitized by the Internet Archive  
in 2011 with funding from  
CARLI: Consortium of Academic and Research Libraries in Illinois



**THE JUNIOR CLASS**

**OF**

**MONMOUTH COLLEGE**

**PRESENTS**

**THE 1946 RAVELINGS**



We, THE CLASS OF 1946, affectionately dedicate this RAVELINGS to the guardian angel and housemother of most of us, MISS JEAN LIEDMAN. Long to be remembered by both the Navy and the College, for her mischeivous grin, her insistence on the rules, her red coat, and her guilty love for candy, Miss Liedman was occasionally reviled, but less often than are most persons in positions of authority. We quaked when she came charging up the Teke House stairs to quell some disturbance, but we always drifted downstairs again to ask advice, gripe about the plumbing, or just talk about the latest book. Debate trips were anticipated, not only by the debaters, but by the whole house, because of the candy that she always managed to find and bring back. As Miss Liedman leaves Monmouth to go back to school herself, we wish her good luck and a speedy return. . . .

# DEDICATION





Hitting the books for the first time—this poor freshman symbolizes the industry with which M. C. students can study. And do, too, if the proper occasion arises. What does that expression signify? Boredom? Concentration? Dreaminess? It might be any one of them. In the following pages we present the names and faces of the students of Monmouth College in the historic year of war and victory in Europe. . . .

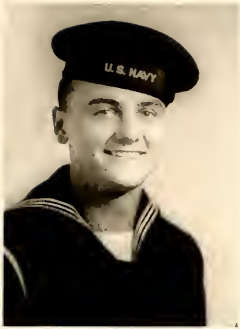
# CLASSES



CAREY      WEBER      QUON

Both the first and the last in everything, the Class of '45 experienced one year of honest to goodness college life, led by Bill Wells during which it was defeated in the last real pole scrap. It witnessed the beginning of the war, and the end of the war in Europe. Its ranks have been very hard hit by the war. "Lost, strayed, or stolen," the fellows left for service and the girls went to summer school in order to graduate early. Bob Elliott directed its second year. Then LeRoy King took over until he graduated at mid-year. Connie Carey carried on to the end of the year as President of the Senior Class. It taught us all the M. C. traditions and showed us how to carry on.

# SENIORS



BEN GREENWELL



LOUISE SHIMMIN

## SUMMER, 1944

Louise Shimmin, Vada Treloar, Peg Turner, Ellen Spinsby, and Ben Greenwell took advantage of the summer school and were able to finish their work a little ahead of time and graduate with the Class of 1944. They put their education to immediate good use, and went out into the world to make names for themselves. Shimmin is fast becoming that beloved red-haired Spanish teacher at Media High School. Treloar may become the leading laboratory technician of our time. Turner landed a man and settled down to blissful married life as Mrs. Gallop. Spinsby is trying to finish the war before she settles down; she's working with the Red Cross. Greenwell offered his newly

acquired knowledge to the navy, which is very appreciative. So we find the five summer school graduates are getting along fine in the world.

### Leaving familiar scenes and faces...



MARY LOUISE BRADFORD  
that wide-awake look....old line  
Crimson Masque-er.

CLAIRE BROWN VAN FASSEN  
worried about her hair....romance  
struck suddenly.

RACHEL BUCHANAN  
prescribed certain language rules  
for her roommates....mischief be-  
hind those angel eyes.

VIRGINIA BURRILL  
one of the *industrious* F. A. B.'ers  
gone after mid-year.



PHYLLIS FEDDERSON  
Phyl of the seven-league-boot gait  
....noted for slyly turning up un-  
expectedly.

MARY LU DRAYSON  
willing helper in lab....the smile  
with charm and voice with glamor.

SYDNEY CONWELL  
ready smile....dreamy Teke kitch-  
en worker, part times.

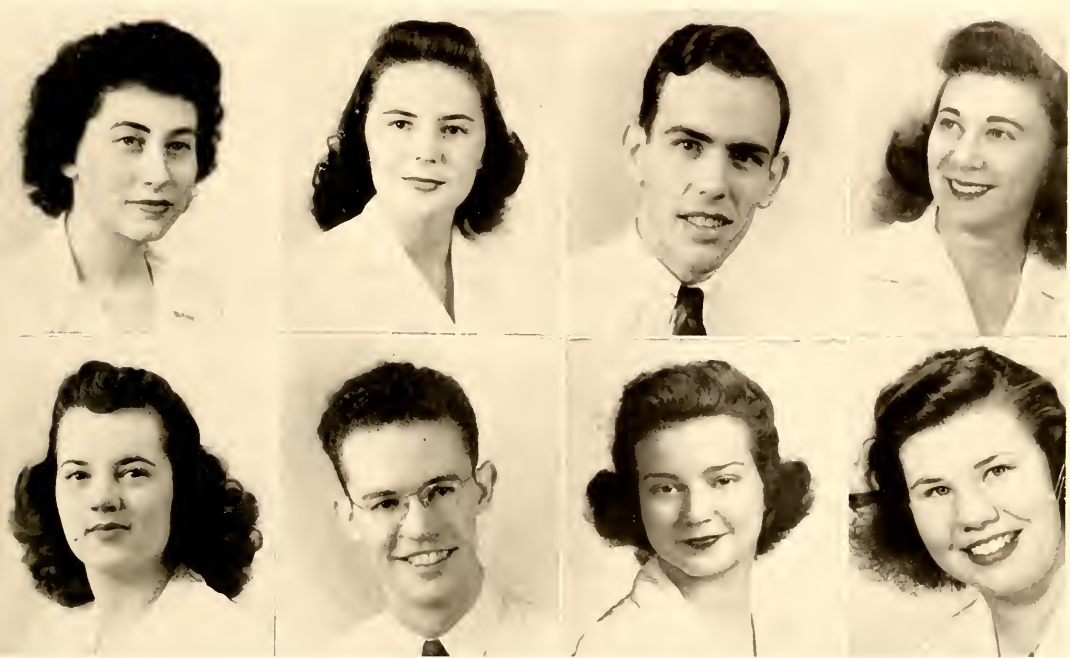
CONSTANCE CAREY  
Connie of the golden voice and  
golden hair....waiting for Dan.

VIRGINIA HYLER  
this capable exec's pleas for student  
order were informally stated...love  
bloomed the last semester.

CLAUDE GOULD  
the returning native...who spent  
most of his time on "Mother Hub-  
bard's" front steps.

SUZANNE GORDON  
the girl freshmen and sailors always  
asked about...gone too soon.

CLARIBEL GERHART  
how to put over a chapel stunt:  
have Geri in it...waiting resigned-  
ly for Ted.



BETTY JIRSA  
acceleration at Coe put her way out  
in front...always twisting some  
poor sailor around her finger.

LEROY KING  
missed by all after mid-year, espec-  
ially by one...his "Dese Bones..."  
will live in memory.

BETTY LAVEN  
little shy-eyes...but just ask an  
opinion about some debatable ques-  
tion.

MARTHA MCGINNIS  
slow talk that always has a point..  
slow grin always anxious to ap-  
pear.

ROBB McLAUGHLIN

whooshing around on his bike....  
working for the common good.

ROBERT MENEILLY

half of M. C.'s biggest pre-war  
style romance....always laughing  
unexpectedly.

MARY LOUISE NEIL

the genius of the senior class (or  
all Monmouth, for that matter)  
....quiet, but oh, the ideas she  
keeps to herself!

ARLINE PICKEN

the personification of energy in all  
worthwhile deeds....that unex-  
pected laugh.



DOROTHY SCHUMAKER

was left another NARU widow—  
with something to show for it....  
cheerful grin.

VESTA RODGERS

not half as lackadaisical as she  
looked....another mid-year loss.

DORA QUON

most studious person in her class  
—and we bet no one else will claim  
the title!—eager.

MARY ALICE PRESCOTT

one of the old faithful disciples of  
Doc Owen....always ready with  
the answer.

MAGDALENE STIEGHORST  
studyingest person in the Teke  
House...made some German ac-  
quaintances.

MARIAN SPEER  
practically a home gal—at least on  
week ends...known for certain  
typical remarks.

MARY SCHWALBERT  
Dolly, always abounding in energy  
for some strange project...there  
must have been a supply left over  
for studying.

MARGARET SCHUMAKER  
made happy by several visits from  
David...one inhabitant of the  
famed suicide room.



MARY ANN THOME  
always willing to argue ideas....  
or talk about Rog.

ELIZABETH VAN TUYL  
dignity, even with red hair.....  
buzzed back and forth from town.

DOROTHY VON ACH  
"My word!"—token of great joy  
or great distress.....Bill finally  
came through, to the detriment of  
Dottie's health.

VIRGINIA WEBER  
could be recognized for blocks by  
that healthy, bouncing gait...en-  
thusiasm plus, and plenty of outlets  
for it.



MITCHELL, STIEGHORST, MAYS, R. BUCHANAN, STREETER

They can remember their one semester of real college life, guided by that most handsome of men, Bob Surrat, as president. Their only homecoming—"Geared for Victory," fraternity open houses, "solid" dates on Friday nights, and no Saturday classes are only a pleasant memory now. By the next year under the leadership of President Bob Mencilly they had proved they had what it takes. . . . Battling their way to victory and well-earned recognition by winning the tug of war. Also the gals beat Knox in that hockey game. . . but where's the turkey? Their sophomore year is full of memories of K-det proms and cadets in general. Just as they were beginning to get used to things, it was time to leave and return to see the refreshers take over where the cadets left off. President Mary Lou Mitchell, Vice President Jean Mays, Secretary Virginia Streeter, Treasurer Rachel Buchanan, and Representative Ruth Franco stepped right in and led them through another successful year and back to Wallace Hall for classes and open houses.

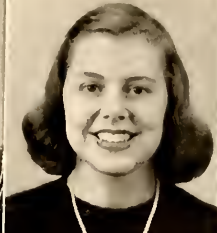
## JUNIORS



GLENNA LU ANGOVE  
Loveland, Colorado



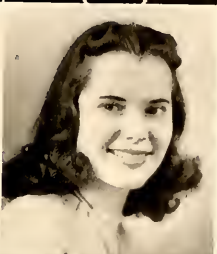
PEGGY BARTLING  
Rockford, Illinois



MARTHA SUE BELL  
Little Rock, Arkansas



BETTE BOWMAN  
Kewanee, Illinois



BETTY BROWN  
Chicago, Illinois



JENNIE MAY BROWN  
Lincoln, Nebraska



BETTY CHEANEY  
Springfield, Illinois



JOYCE COLVIN  
Dhariwal, Punjab, India



NORMA COMBS  
Springfield, Illinois



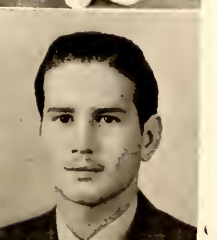
MARY ANN COOLEY  
Chicago, Illinois



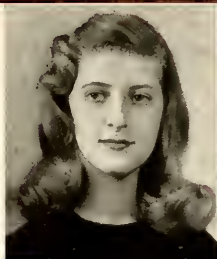
DOROTHY COOPER  
Arlington Heights, Illinois



OTTO CORRETJER  
Ponce, Puerto Rico



JANET FLUME  
Delmar, New York



RUTH FRANCO  
Winnetka, Illinois



GWEN HART  
Susanville, California



JEAN HILL  
Mendota, Illinois



MARY E. HOLLISTON  
Mendota, Illinois



BARBARA JOHNSON  
Richmond, Indiana



SHIRLEY JOHNSON  
Menomouth, Illinois



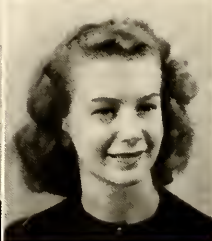
MARTHA K. OLSON  
Monmouth, Illinois



MARY MATHERS  
Media, Illinois



JEAN MAYS  
La Junta, Colorado



JEAN McINTYRE  
St. Louis, Missouri



MARY L. MITCHELL  
Pittsburgh, Pennsylvania



SHIRLEY NELSON  
Chicago, Illinois



JEAN PERSON  
Gary, Indiana



JEAN PHELPS  
Monmouth, Illinois



JAMES RICE  
Monmouth, Illinois



MELBA R. DAVILLA  
Oquawka, Illinois



ANN RYAN  
Albert Lea, Minnesota



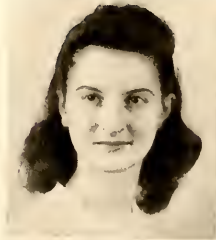
ELENE SCHLEICH  
Avon, Illinois



VIRGINIA STREETER  
New Windsor, Illinois



BONNIE THIEMANN  
Jackson Heights, Long  
Island, New York



JANET TIFFANY  
Mundelein, Illinois



GRACE WALKER  
Marengo, Illinois



ROBERTA WELLS  
Chicago, Illinois



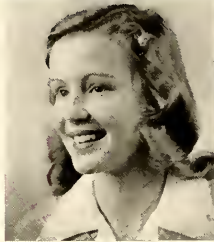
JOYCE WHITE  
Menmouth, Illinois



JANE WHITEMAN  
Little York, Illinois



BETTY WHITMAN  
Evanston, Illinois



MARJORIE WINBIGLER  
Monmouth, Illinois



NOT SHOWN—  
MARGUERITE YOICHEM HENRY  
Oakland, California



Quick on the trigger! Led by president-elect Dave Hill, they caught on to things right away.....especially upper class tactics. Other officers were Gloria Holland, vice president; Cherry Lauder, secretary; and

QUINBY, G. HOLLAND, STREEDAIN, LAUDER



Jane Quinby, treasurer. They weren't "green" freshmen for very long. Full of vim, vigor and vitality, they dashed right in and won the tug of war—there was a method in their madness—they didn't have to wear their caps any more. Also noted for their "hit and miss" methods of studying, their hilarious noisemaking and that never to be forgotten something called PEP. When President Hill left for the service, he left the class in the "good hands" (quoting him) of Gloria, his steady.

## FRESHMEN . . .

## SOPHOMORES .

Coming here as the first really "war time" class, it has never had a taste of typical college life.....only cadets and refreshers. Frank Testa ably served as their president for the first year. However, he is not to blame for their losing the tug of war,

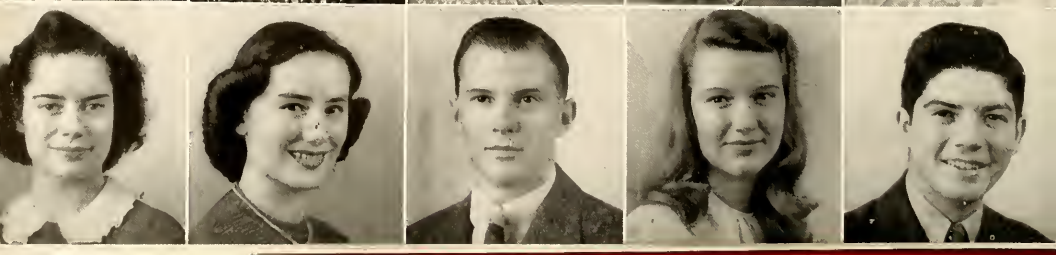
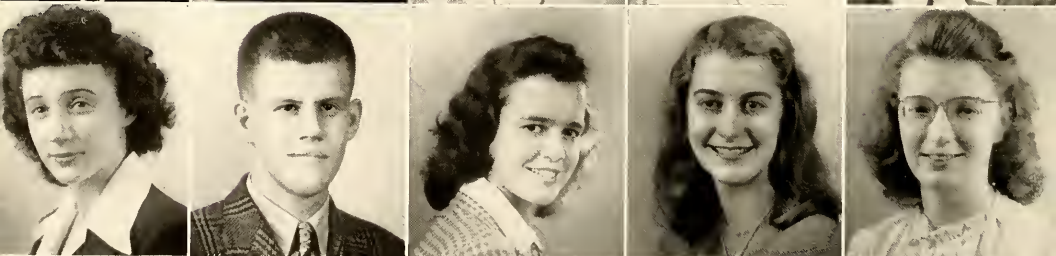
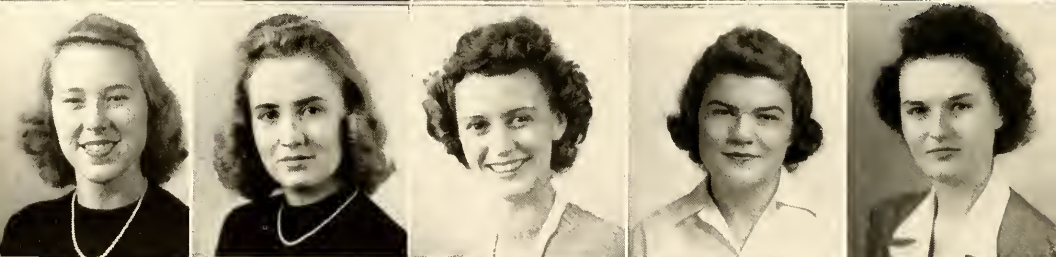
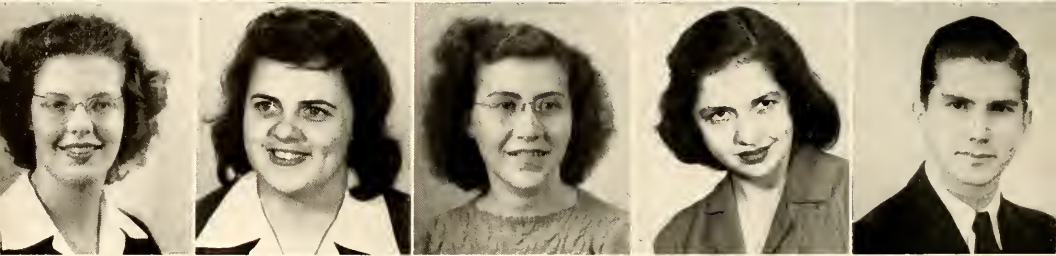
because they went ahead and lost it again this year under the leadership of Rae Barker. Too bad! Even Vice President Joan Hutchison, Secretary Shirley Dunlap, Treasurer Joyce Busby, and Council Representative Phyllis Renz weren't able to do anything



DUNLAP, HUTCHISON, BUSBY, RENZ, BARKER

about the situation. Regardless, they have proved that they are capable and ready to take over the responsibilities of keeping Monmouth traditions alive next year. And perhaps happy days will be here again by that time.

# UNDERCLASSMEN



*FIRST ROW*

RAE BARKER  
Mazon, Illinois

BETTY TURNER  
Flint, Michigan

ELEANOR BROWN  
Evanston, Illinois

DOROTHY JEAN BUCHANAN  
Monmouth, Illinois

JOYCE BUSBY  
Litchfield, Illinois

*SECOND ROW*

INEZ CATTRON  
Ellisville, Illinois

ESTHER CLARK  
Seaton, Illinois

RHODIA COOPER  
Viola, Illinois

MARY KAY COPPOTELLI  
Joliet, Illinois

TONY CORRETJER  
Ponce, Puerto Rico

*THIRD ROW*

SHIRLEY DUNLAP  
Pittsburgh, Pennsylvania

JEANE FERGUSON  
Evanston, Illinois

JANET FINDLEY  
Sioux Falls, South Dakota

LOIS FRANK  
Sherrard, Illinois

IMOGENE FULTON  
Tilden, Illinois

*FOURTH ROW*

BETTY GOODING  
Knoxville, Illinois

ALEXANDRA GRAHAM  
Fort Morgan, Colorado

JOANNE HALBERT  
Long Beach, California

MARGARET HALL  
Monmouth, Illinois

HELEN HOFSTETTER  
Whittier, California

*FIFTH ROW*

NINA JEAN HOLLAND  
Miami, Oklahoma

GLENN HUNSAKER  
Monmouth, Illinois

JOAN HUTCHISON  
Monmouth, Illinois

LORRAINE JANSEN  
Chicago, Illinois

BEATRICE KAEPPPEL  
Milwaukee, Wisconsin

*SIXTH ROW*

JOSEPHINE KILPATRICK  
Greenfield, Ohio

VIVIAN KNAUSS  
Chicago Heights, Illinois

BERNARD LA MONT  
Abingdon, Illinois

MARTHA JANE LEFLER  
Evanston, Illinois

CHARLES LESTER  
Tonlon, Illinois





*FIRST ROW*

JEAN LIGGETT  
Mount Ayr, Iowa  
MARILYN LINDBERG  
Oak Park, Illinois  
MARY FRANCES LISTER  
Monmouth, Illinois  
MIRIAM LOYA  
Rock Springs, Wyoming  
JEAN MACDONALD  
Rockford, Illinois

*SECOND ROW*

DOROTHY MATSON  
Monmouth, Illinois  
GLORIA MATSON  
Chicago, Illinois  
GAIL McCHESNEY  
Amawan, Illinois  
MARY FRANCES McKINNON  
Monmouth, Illinois  
VIRGINIA McLAUGHLIN  
Washington, Iowa

*THIRD ROW*

CHARLOTTE MEEK  
Jerseyville, Illinois  
PATRICIA O'CONNOR  
Monmouth, Illinois  
MARGARET ORR  
Columbus Junction, Iowa  
EONNIE ORBORNE  
Batavia, Illinois  
MAE OSBORNE  
Batavia, Illinois

*FOURTH ROW*

GLORIA PAULSON  
Sterling, Illinois  
MARGARET PETRAN  
Chicago, Illinois  
GRACE QUON  
San Diego, California  
PHYLLIS RENZ  
Richmond Heights, Missouri  
SHIRLEY ROBESON  
Monmouth, Illinois

*FIFTH ROW*

SARAH ROPER  
Springfield, Illinois  
RUTH MARGARET ROWLEY  
Seaton, Illinois  
SUE SHELLENBERGER  
Rockford, Illinois  
MARTHA SHINOFIELD  
Monmouth, Illinois  
GERALDINE SHORE  
Sterling, Illinois

*SIXTH ROW*

JANICE SMITH  
Glendale, California  
DAGMAR STEVENS  
Chicago, Illinois  
LILY ANN STICE  
Monmouth, Illinois  
FAYE THOMAS  
Chicago, Illinois  
MARILYN THOMPSON  
Monmouth, Illinois



*FIRST ROW*

MARGARET VITTORI  
Chicago, Illinois  
BETTY WALLACE  
Chicago, Illinois  
MARJIE WESTLAKE  
Kirkwood, Illinois  
MARJORIE WISE  
Monmouth, Illinois  
KARINE WORK  
Pittsburgh, Pennsylvania

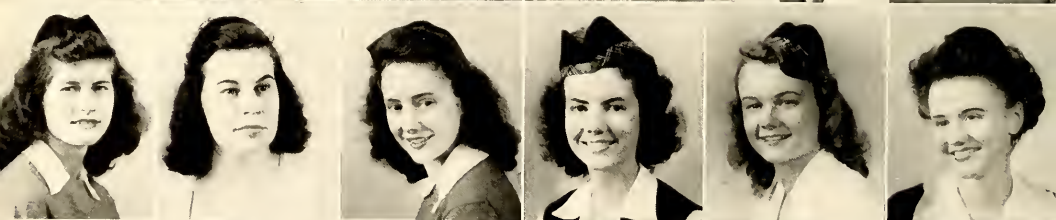
*SECOND ROW*

VIRGINIA WYATT  
Glenview, Illinois

*NOT SHOWN*

JEAN BAXTER  
Chicago, Illinois  
KENNETH SHORTS  
Oquawka, Illinois





*FIRST ROW*

ROBERT AMEEN  
Monmouth, Illinois

MARILYN ARADO  
Chicago, Illinois

ARLENE BAKER  
Aledo, Illinois

FAY BAST  
Lanark, Illinois

LILA JEAN BECKMAN  
Iowa City, Iowa

BARBARA BENSON  
Waukegan, Illinois

*SECOND ROW*

MARY JANE BLAKE  
Monmouth, Illinois

JEANNE BLAYLOCK  
Waukegan, Illinois

CORA ALICE BRAUNER  
Evanston, Illinois

JOYCE BRIGGS  
Toulon, Illinois

MARY INEZ BROOKS  
Marseilles, Illinois

JUNE BROWN  
Lincoln, Nebraska

*THIRD ROW*

ANNA BULLICK  
Forest Hills, Long Island, New York

EVELYN CAPP  
Zion, Illinois

MURIEL CARLESON  
Chicago, Illinois

THELMA CHRISTY  
New Kensington, Pennsylvania

SIBYL COEN  
Champaign, Illinois

BARBARA COOPER  
Arlington Heights, Illinois

*FOURTH ROW*

JUNE COVER  
Toulon, Illinois

JOANNE CURTISS  
Chicago, Illinois

HELEN DAVIS  
Arlington Heights, Illinois

JANE DAVIS  
Webster Groves, Missouri

MARJORIE DALACKER  
Park Ridge, Illinois

DOLORES DELLINGER  
Monmouth, Illinois

*FIFTH ROW*

DOROTHY DENNING  
Aledo, Illinois

MARGARET DONALD  
Chicago, Illinois

LOUISE DUBOIS  
Pittsburg, Kansas

GEORGIA DUNCAN  
Burnside, Illinois

SALLY DUTCHER  
Rockford, Illinois

ALICE EDWARDS  
Chicago, Illinois

*SIXTH ROW*

JOAN EGAN  
Park Ridge, Illinois

JEAN ERICSON  
Des Moines, Iowa

MELBA FERREBO  
Miami, Oklahoma

DOROTHY EYLER  
Monmouth, Illinois

LAILA GABRIEL  
Kewanee, Illinois

MYRLE GERKIN  
East Chicago, Indiana

*SEVENTH ROW*

GERALDINE GILBERG  
Chicago, Illinois

WILLIAM GLADSTONE  
Walton, New York

BETTY HAGEN  
Chicago, Illinois

MARIAN HANSEN  
Glen Ellyn, Illinois

JOANNE HEDSTROM  
Oneida, Illinois

JOAN HEINRICHS  
Highland Park, Illinois



*FIRST ROW*

JOYCE HEWETT  
Sheboygan, Wisconsin

DAVID HILL  
Biggsville, Illinois

DORIS HIPPLE  
Waukegan, Illinois

PATRICIA HOFSTETTER  
Whittier, California

GLORIA HOLLAND  
Highland Park, Illinois

DELBERT ICENOGLIE  
Monmouth, Illinois

*FOURTH ROW*

BARBARA LEVERING  
Chicago, Illinois

ROSEMARY MANCELL  
Monmouth, Illinois

HELEN MAR  
Fresno, California

JEANNE MARTIN  
Utica, Illinois

ALICE MARTZ  
Chicago, Illinois

JANET McCOSH  
Davenport, Iowa

*SECOND ROW*

CAROL INGRAM  
Zion, Illinois

LESLIE JOHNSON  
Chicago, Illinois

RICHARD JOHNSON  
Cameron, Illinois

BEVERLY JONES  
Kewanee, Illinois

JEAN KELLEY  
Morton Grove, Illinois

ROBERTA KIRKPATRICK  
Chicago, Illinois

*FIFTH ROW*

MARY JO McFARLAND  
Hoopeston, Illinois

IRENE McINTYRE  
Spartan, Illinois

JANE McWILLIAMS  
Toulon, Illinois

MIRIAM MAYBACK  
Davenport, Iowa

PHYLLIS MILLER  
Quincy, Illinois

LEON MOBURG  
Monmouth, Illinois

*THIRD ROW*

MARGARET KLING  
Dixon, Illinois

AUDREY KOZEL  
Chicago, Illinois

MANDE LAIDLAW  
Williams Bay, Wisconsin

BETH LANG  
Polo, Illinois

JEAN LANGE  
Chicago, Illinois

CHERRY LAUDTR  
Monmouth, Illinois

*SIXTH ROW*

HELEN MOORE  
Hanover, Illinois

HARRIET MURRAY  
Skokie, Illinois

KENNETH NELSON  
Chicago, Illinois

ANITA NOMELLINI  
Chicago, Illinois

GLORIA PILLMAN  
Chicago, Illinois

CECELIAMAE POSEY  
Chicago, Illinois

*SEVENTH ROW*

MIRIAM FRITCHARD  
Moline, Illinois

DOROTHY PROSSFR  
Evanston, Illinois

JANE QUINBY  
Monmouth, Illinois

JANE RAMSEY  
Oxford, Ohio

CARL RASMUSSEN  
Aledo, Illinois

NORMA RICHARDS  
Wilder, Idaho







Dressed in her uniform of the day, we have here Dr. Garwood. Caught off her guard, that scowl is caused by the sun, and not by any feeling of animosity. This informality is typical of the friendly relations between student and faculty at Monmouth. We have found our professors indeed to be quite human—their delight in the latest gossip; their almost student-like fondness for food—even their sadistic glee in giving exams. But seriously, Monmouth's faculty is noted no less for its popularity than for its erudition.

## FACULTY



**Dr.  
James  
Harper  
Grier**

In 1936 Dr. James Harper Grier undertook the job of guiding the policies of our college. "CoCo," his orange and white cocker spaniel, is as popular with the students as is his master. Woodbine, the humble abode of our president and his wife, is the scene of the formal senior reception in the spring and the Y. W. reception for freshman girls in the fall. Golf is one of Dr. Grier's favorite forms of relaxation.



Scene of gracious teas and wall-bursting Y. W. Woodbine parties in the fall. Woodbine is the beloved home of MC's president.

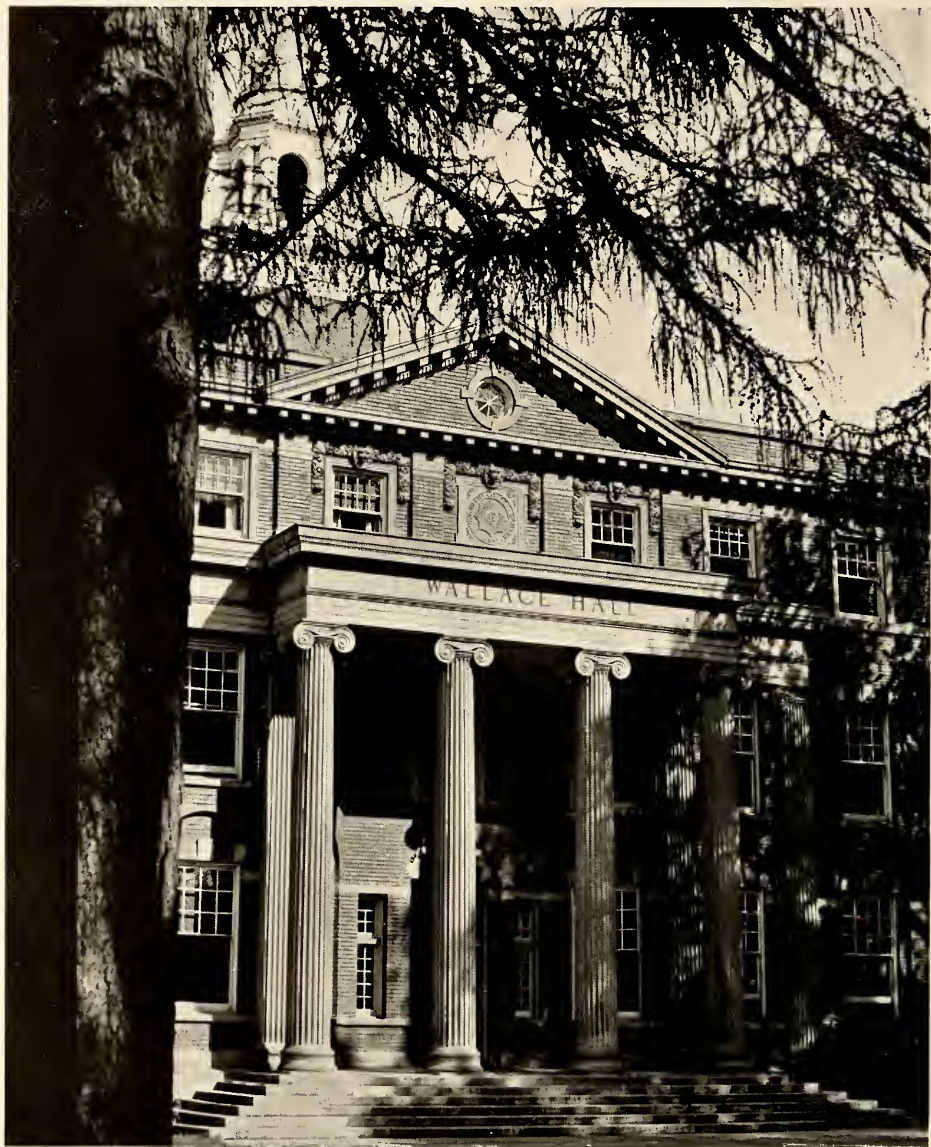
## Dean Cleland

The man with the handsome sons is Dean Cleland, who advises students as to whether it is better to take the required subjects at the beginning of college, or to put off the suffering as long as possible. This year, he became the proud possessor of the title "grandfather." The dignified dean is extremely interested in birds, and is always on the lookout for something new in feathered animals.



## Dean Gibson

The never-ending task of teaching Monmouth College girls to be charming, well-groomed young ladies, and explaining why the seemingly unreasonable rules are reasonable, belongs to Miss Emma Gibson. Her aversion to young women who clothe their limbs in jeans and plaid skirts, and who wear tin curlers in their hair in public, is well-known. Our distinguished Dean of Women has a talent for presenting her friends unique and useful gifts. Miss Gibson is quite domestic, and her whipped cream cake is long remembered by the freshman and senior girls who attend the annual teas given in her cozy apartment.



These impressive columns are part of Monmouth's temple of learning Wallace Hall, in which these professors spend a good deal of their time.....



RUSSELL BALDWIN ..... Music, German

HUGH R. BEVERIDGE ..... Mathematics

J. DALES BUCHANAN ..... Religion

MARY JANE DEVLIN ..... English

DOROTHY DONALD ..... Modern Languages





ELSIE JEVONS ..... Secretarial Science

HANNAH HINSHAW ..... English

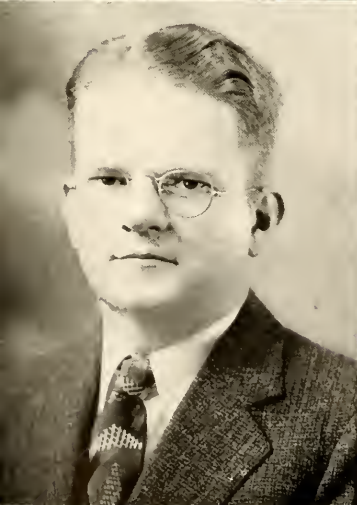
LOUIS S. GIBB ..... Business Administration

LYNN W. TURNER ..... History

S. M. THOMPSON ..... Philosophy, Psychology

H. M. TELFORD ..... Greek, Bible

W. ROBERT SMITH ..... Bible





EDWARD D. LEWIS ..... English

JEAN LIEDMAN ..... Speech

MILTON M. MAYNARD ..... Education

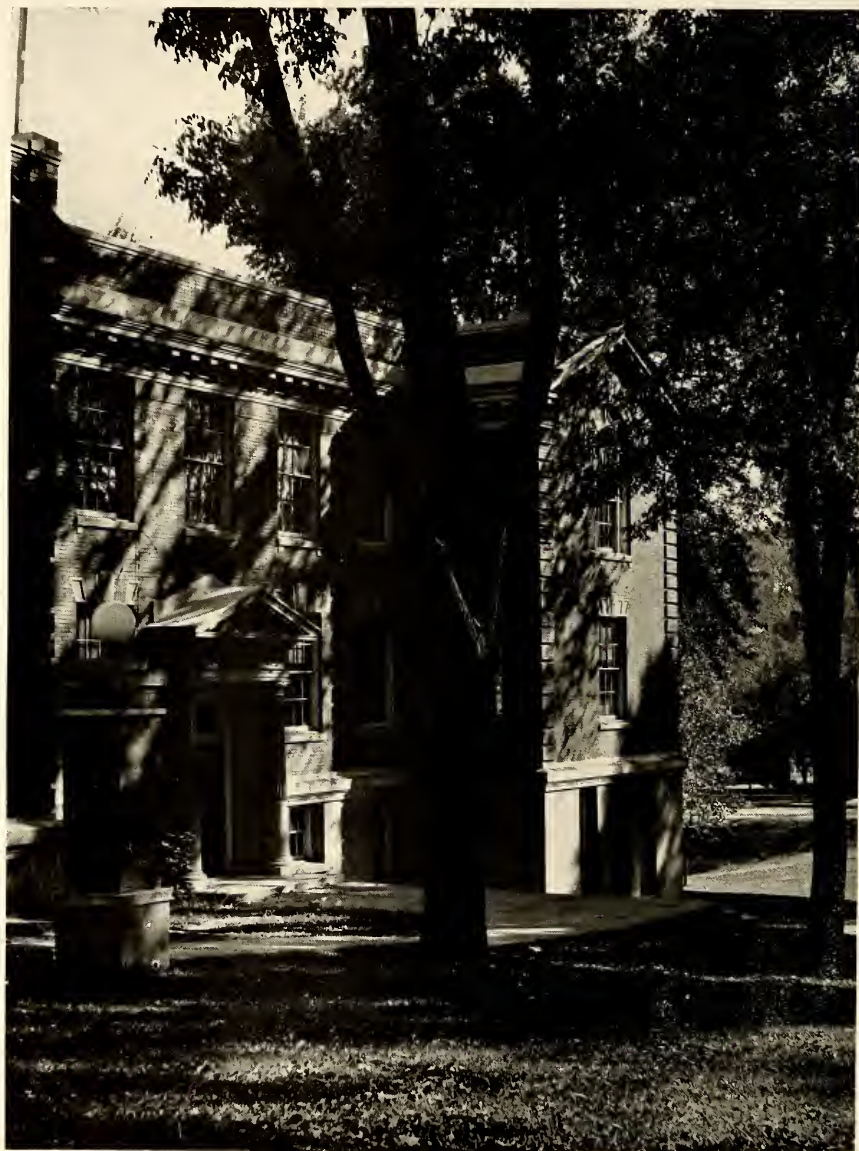
ROBERT W. McCULLOCH ..... Political Science

MARY MCKITTRICK ..... German, French

C. A. OWEN ..... English

GLENN C. SHAVER ..... Music





This building has the most distinctive smell of any place in Monmouth . . . and it changes every day, too. On the next page are the distinguished professors who inspire our budding scientists.





JOHN A. CATHCART .....Chemistry, Mathematics

LYLE W. FINLEY .....Physics

W. S. HALDEMAN .....Chemistry

F. M. McCLENAHAN .....Geology

W. MALCOLM REID .....Biology

GARRETT W. THIESSEN .....Chemistry





Studying sailors, helpful librarians and assistants, students reading. . . . . this is a picture of the second floor of the library. But the second floor is only a part of this nerve center of the campus. It houses also the alumni office, the business office, the ORACLE office, and headquarters of Deans Gibson and Cleland, Dr. Grier, and Mr. McMichael. Here are some of those who work within its ivy-covered walls.



MRS. MAUDE BAIRD . . . . . Assistant Librarian

INEZ HOGUE . . . . . Registrar

MARY E. MCCOY . . . . . Librarian

D. M. McMICHAEL . . . . . Vice President, Business Manager

RICHARD P. PETRIE . . . . . Director Admissions, Personnel





Home of the fine Waid Pool and an indoor track, M. C.'s gymnasium has many uses—including dances, swimming pageants, and navy P. T. "Bobby" and "Ticky" are the only ones on these two pages who can claim the gym as a second home.

ROBERT WOLL . . . . .Men's Physical Education, Athletics  
RUTH WILLIAMS . . . . .Speech, Drama  
MRS. EVE RODGERS . . . . .Nurse





MARION BURGESS ..... Women's Physical Education

MARTHA M. HAMILTON ..... Art

THOMAS H. HAMILTON ..... Art, Music

HEIMO A. LOYA ..... Music

HARRIET PEASE ..... Art

GRACE G. PETERSON ..... Music

EDNA B. RIGGS ..... Music





- MRS. R. A. HUTCHISON...Secy. to Director of Admissions  
 DOROTHY FULLER ..... Alumni Office Secretary  
 LOIS BLACKSTONE ..... Treasurer  
 DOROTHY WHALING ..... Secretary  
 MRS. C. W. MCGEEHON ..... Alumni Director  
 LOLA LAMBERT ..... Dietician

*NOT SHOWN*

- RUTH GARWOOD ..... Spanish





This is a composite picture of a thrilling moment in the lives of a lot of girls—the culmination of a summer of planning, and two feverish weeks of rushing. After the clever informals, the gustatory formals, and the heart-in-mouth silent period come the glory and heartbreak of pledge day. And then follows a year of activity—bridge parties, inter-sorority events, dances, culture meetings, pledge exams, and finally, the second great day in a sorority girl's life—initiation. And of course, Monmouth's one remaining active fraternity furnished many of the year's social events. Here follows a rough sketch of Greek life at Monmouth. . . . .

# ORGANIZATIONS



Combs, McIntyre, Schleich, Weber, Feddersen, Franco, Mitchell, Thome

# PAN-HELLENIC COUNCIL

The Pan-Hellenic Council is essential to successful cooperation among the sororities on campus. It is composed of the president and one other member of each group. It insures fair play in everything that concerns the four sororities, particularly during the rushing season.

It has been the custom, the last few years, for the Alpha Xi's, K. D.'s, Kappas, and Pi Phis to sponsor

a formal dance in the fall to take the place of the former traditional sorority formals. This year a very successful dance was planned by the Pan-Hellenic Council using "White Christmas" as its theme. Biddie Biddison and his orchestra provided the music, creating a spirit of Christmas gaiety as did the Christmas tree and icicles decorating the gymnasium, the attractive refreshment table and the snow-covered, pine tree-decorated dance programs.

- VIRGINIA WEBER, President
- MARY LOU DRAYSON .....Pi Beta Phi
- JEAN MCINTYRE, Vice President
- NORMA COMBS .....Alpha Xi Delta
- RUTH FRANCO, Treasurer
- PHYLIS FEDDERSON .....Kappa Delta
- MARY LOU MITCHELL Secretary
- MARY ANN THOME .....Kappa Kappa Gamma





Front Row: Eyer, Benson, Moore, Lindeberg, Levering, Gilberg, Paulson, Coen, Kilpatrick, Smith, Renz  
 Middle Row: Bradford, Frank, Prescott, Combs, Barker, H. Hofstetter, Roper, McIntyre  
 Back Row: Black, Curtiss, Voight, Hill, Egan, Petran, Dunlap, Pillman, Telford, McLaughlin, Thomas,  
 P. Hofstetter, Baxter, Davis

Beta Epsilon chapter of Alpha Xi Delta which was founded in 1893 at Lombard College, was established at Monmouth College in 1932 having first organized as a local sorority, Phi Delta Sigma, in 1903.

The "jolly Alpha Xi's" spent the year enjoying their monthly Pickle Mixes; culture meetings, their annual tea for the Alumnae; open house tea for the three other sororities on campus; and the exchange celebration of Founders' Day with Alpha Chapter at Knox College. In the spring, the alumnae chapter entertained the chapter at a tea in honor of the graduating seniors and their

families, and redecorated the chapter room in double blue and gold.

The chapter supported the war effort this year with a drive for old and new books for servicemen and a "junk" jewelry collection, and they gave their annual donation to the Alpha Xi Delta Red Cross project.

You will recognize the Alpha Xi by her golden quill. This year's officers were: president—Norma Combs, vice president—Jean McIntyre, secretary—Rae Barker, and treasurer—Mary Alice Prescott.

#### MEMBERS

Rae Barker  
 Jean Baxter  
 Mary Louise Bradford  
 Silyl Coen  
 Norma Combs

Joanne Curtiss  
 Jane Davis  
 Shirley Dunlap  
 Dorothy Eyer  
 Lois Frank

Jean Hill  
 Helen Hofstetter  
 Patricia Hofstetter  
 Josephine Kilpatrick  
 Marilyn Lindeberg

Jean McIntyre  
 Helen Moore  
 Gloria Paulsen  
 Margaret Petran  
 Gloria Pillman

Mary Alice Prescott  
 Phyllis Renz  
 Sarah Roper  
 Shirley Thomas  
 Phyllis Voight

#### PLEDGES

Barbara Benson  
 Mary Jane Blake  
 Joan Carol Egan  
 Geraldine Gilberg

Barbara Levering  
 Virginia McLaughlin  
 Dorothy Smith  
 Helen Telford



# ALPHA XI DELTA



Front Row: Brooks, Bullick, Duncan, I. White, E. Robeson, Edwards, S. Robeson, Capp, G. Holland, Ingram, Kirkpatrick, Tilton, McCosh, Terrey, Gabriel, Stass  
 Middle Row: Fulton, Rodgers, Schwalbert, Thiemann, Franco, Feddersen, Nelson, Loya, Jirsa, Neil, Busby  
 Back Row: Briggs, J. White, Van Tuyl, Heinrichs, D. Buchanan, McGinnis, Conwell, Streeter, Gooding, B. Brown, Hall, Nomellini

Rushing started the K. D.'s off in full swing last fall. The Pan-Hell Tea—Pirate Party—Formal Dinner all followed by a perfect pledge day. All year the K. D.'s have had a lot of fun at their weekly Kozy Korners and there are always those extra-special olive binges. Because of the war there were no sorority dances, but the four sororities got together and put on a smooth Pan-Hell formal. Yes, indeed, the girls

are proud of this year's K. D. cut ups.

OFFICERS

- President .....Phyllis Feddersen  
 Vice President and Pledge Supervisor ..Sydney Conwell  
 Secretary .....Martha McGinnis  
 Treasurer .....Virginia Streeter

MEMBERS

- |                       |                   |
|-----------------------|-------------------|
| Joyce Briggs          | Joyce Busby       |
| Mary Inez Brooks      | Evelyn Capp       |
| Betty Brown           | Sydney Conwell    |
| Fleanor Brown         | Georgia Duncan    |
| Dorothy Jean Buchanan | Alice Edwards     |
| Annie Bullick         | Phyllis Feddersen |

- Ruth Franco  
 Imogene Fulton  
 Laila Gabriel  
 Myrle Gerkin  
 Elizabeth Gooding  
 Margaret Hall

- Joan Heinricks  
 Carol Jean Ingram  
 Betty Jean Jirsa  
 Roberta Kirkpatrick  
 Martha Kniss  
 Miriam Loya

- Martha McGinnis  
 Mary Lou Neil  
 Shirley Nelson  
 Anita Nomellini  
 Ellen Robeson  
 Shirley Robeson  
 Vesta Rodgers  
 Mary Schwalbert

- Theo Stass  
 Virginia Streeter  
 Lois Terry  
 Bonnie Thiemann  
 Joyce White  
 Irma White  
 Elizabeth Van Tuyl



PLEDGES

- |                |                |
|----------------|----------------|
| Gloria Holland | Marilyn Tilton |
| Janet McCosh   | Betty Woods    |

**KAPPA DELTA**



Front Row: V. Smith, Ramsey, Blaylock, Bartling, Hutchison, Cooley, Shore, Shellenberger, Hipple  
 Middle Row: Brawner, Tommeraason, Graham, S. Johnson, Gerhart, Thome, Angove, D. von Ach, Hart, Rowley, Dutcher, Spencer  
 Back Row: Work, Lauder, Dellinger, Quinby, Tibbetts, M. von Ach, Errebo, DuBois, Stevens, Shields, B. Johnson, Pritchard, Person, Holliston, O'Connor, Mitchell, Wyatt, Flume, J. Smith, Murray, Halbert, Matson

Alpha Chapter of Kappa Kappa Gamma was led this year by Mary Ann Thome, president; Suzanne Gordon, pledge captain; and Dorothy von Ach, treasurer. Loyal "wearers of the key" attended monthly Pretzel Benders, and occasional pledge-active meetings where a faculty member told them "the score" on such subjects as national affairs, or charm. Then in turn the members would serenade said speaker with some of

Kappa's favorite songs. Kappa played hostess to the actives of the other sororities at a Valentine Bridge party held at the Fine Arts Building. The blue and blue fleur de lis in Kappa's flower. K. K. G.'s history tells of its founding at Monmouth in 1870, when six coeds marched into chapel with golden keys in their hair.

#### MEMBERS

Glenna Lu Angove  
 Peggy Bartling  
 Jeanne Blaylock  
 Mary Ann Cooley  
 Dolores Dellinger  
 Louise Claire DuBois

Melba Errebo  
 Janet Findley  
 Janet Flume  
 Geri Gerhart  
 Suzanne Gordon  
 Sandy Graham

Jo Anne Halbert  
 Gwen Hart  
 Doris Hipple  
 Mary Holliston  
 Joan Hutchison  
 Barbara Johnson

Shirley Johnson  
 Cherry Lauder  
 Dorothy Matson  
 Mary Lou Mitchell  
 Harriet Murray  
 Patricia O'Connor

Dagnar Stevens  
 Lily Ann Stice  
 Mary Ann Thome  
 Charlotte Tibbetts  
 Janet Tiffany  
 Jean Tommeraason  
 Dorothy von Ach  
 Maryalys von Ach  
 Karine Work  
 Virginia Wyatt

Jean Person  
 Marion Pritchard  
 Jane Quinby  
 Jane Ramsey  
 Margaret Rowley  
 Sue Shellenberger  
 Barbara Shields  
 Jerry Shore  
 Janice Smith  
 Vivian Smith

#### PLEDGES

Alice Brawner  
 Sally Dutcher  
 Rose Marie Spencer



# KAPPA KAPPA GAMMA



Front Row: B. Cooper, Dalacker, Carleson, B. Osborne, M. Osborne, Hagen, Arado, Streedain, Jones  
 Middle Row: Thomas, Jansen, Shinofield, Drayson, Hyler, Schleich, Carey, Weber, Stieghorst, Prosser,  
 Mayback, Laidlaw, Miller  
 Back Row: Mays, Bowman, Ryan, S. Whitman, Turner, Ferguson, Westlake, Lefler, Macdonald,  
 B. Whitman, Tessmann, Posey, D. Cooper, Walker

Pi Beta Phi is the name that the I. C. Sorosis girls took in 1888. It was the first national fraternity for women, founded at Monmouth in 1867.

Virginia Weber, president; Magdalene Stieghorst, pledge supervisor; Virginia Hyler, corresponding secretary; and Ann Ryan, treasurer; led the group through another successful year of Cookie Shines, Open Houses

at Holt House for the NARU boys, the traditional "Twelfth Night" dinner before the Pan-Hellenic Formal, and a bridge party for the actives of the other sororities at Holt House after rushing, the first party of its kind on the campus.

The wine carnation and the colors wine and blue are the favorites of the girls who wear the golden arrow.

#### MEMBERS

Marilyn Arado  
 Bette Bowman  
 Connie Carey  
 Muriel Carleson  
 Dorothy Cooper  
 Marjorie Dalacker  
 Mary Lu Drayson

Jean Ferguson  
 Betty Hagen  
 Virginia Hyler  
 Lory Jansen  
 Maude Laidlaw  
 March Lefler  
 Jean Macdonald

Miriam Mayback  
 Jean Mays  
 Bonnie Osborne  
 Mae Osborne  
 Ann Ryan  
 Hlene Schleich  
 Martha Shinofield

Magdalene Stieghorst  
 Beverlee Streedain  
 Marilyn Tessman  
 Betty Turner  
 Gracie Walker  
 Virginia Weber  
 Marjie Westlake  
 Betty Whitman



#### PLEDGES

Barbara Cooper  
 Beverly Jones  
 Phyllis Miller  
 Ceceliamae Posey

Dorothy Prosser  
 Faye Thomas  
 Sally Whitman

# PI BETA PHI



For the past two years, fraternity life at M. C. has been fading away. With all of their men in active service, the Phi Kaps are but a dream left in the hearts of the girls they have left behind. Quite often in the evenings one can hear the girls singing the old familiar words, "I see you now, wearing my pin....."

The girls have enjoyed living at the Phi Kap House especially in the spring when the sun turns the grass green on the large lawn. However, they are looking forward to the day when they can move back to Grier Hall and make room for the returning Phi Kaps.

PHI KAPPA PI



Only the large white house still stands to remind the students of the powerful force once exerted on the campus by the Tekes. Although all of its members are now in armed forces and girls have filled its rooms, somehow in spirit it still stands empty—waiting for the return of the Teke brothers. We are all looking forward to the day when the fellows can come back and again take over their big white house on the corner and their place in campus affairs.

**TAU KAPPA EPSILON**



Bob Meneilly, Delbert Icenogle, Bill Gladstone, Dick Johnson

Theta Chi is the only fraternity that has been able to remain active during the war. Last fall under the able leadership of LeRoy King and Bob Meneilly, the fraternity held a modified form of rush week and pledging. In December the boys held a Theta Chi formal at Holt House which was a great success. Later

when the time came for initiation there were not enough active pins for the new initiates so the Theta Chi sweethearts came to the rescue. Theta Chi pins were disconnected from the sorority pins and were loaned to the boys during those exciting weeks after initiation when everyone so loves to display his pin.

MEMBERS

Bob Ameen  
Bill Gladstone

Glenn Hunsaker  
Delbert Icenogle

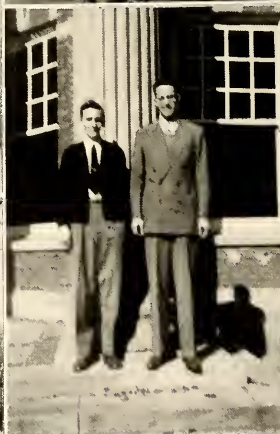
Richard Johnson  
LeRoy King

Robert Meneilly

OFFICERS

Ex-Arch ..... Robert Meneilly  
 Graphite ..... Richard Johnson  
 Treasurer ..... Bill Gladstone  
 Chaplain ..... Delbert Icenogle

**THETA CHI**







Above are pictured some of Monmouth's activities—but these are only the more informal ones, and there are lots of organizations, too. There is a club for specialists in almost every school department, and many of general interest. Also pictured in this section are the different departments of Monmouth's student government, which has functioned so effectively in the past year. And there are plenty of opportunities for majoring in extra-curricular activities.

# ACTIVITIES



Meneilly, Conwell, Hyler, Bradford

Ginny Hyler led M. C. through its 90th year with flying colors. The freshmen were really given a tough time when Ginny called for a freshman parade. She made such a strong plea for lights in the Wallace Hall Blue Room that we began to feel the gavel pressing against our conductcraniums.

Susie Gordon and Bob Meneilly shared the office of vice president. We owe them a vote of thanks, or should we say blame, for such stunts as "Spring Fashions for M. C. Coeds," presented by the fellows on campus.

Mary Lou Bradford took her share of minutes at student faculty meetings and student body chapels. Her signature has been impressed on the M. C. annals.

Note that we had no graft scandals this year—thanks to the presence of Syd Conwell in the department of Facts and Figures.

# STUDENT OFFICERS



Front Row: Hutchison, Kilpatrick, Baxter, Renz, Gordon, Hyler, Quon, Bradford, Neil, Conwell, McGinnis, Franco  
 Back Row: Mitchell, Laidlaw, Streedain, King, Petran, D. Hill, Bullick

The college government is in the capable hands of the Student Council. It has directed its efforts towards making our own democracy a project that is practical and a ideal to be cherished. This past year by chapel stunts and bulletins it has emphasized the importance of the honor system.

President .....Virginia Hyler  
 Vice President .....Suzanne Gordon  
 Secretary .....Mary Louise Bradford  
 Treasurer .....Sydney Conwell

Leroy King	Annie Bullick	Dora Quon
David Hill	Maude Laidlaw	Margaret Petran
B. J. Streedain	Joan Hutchison	Mary Louise Neil
Magdalene Stieghorst	Phyllis Renz	Ruth Franco
Mary Louise Mitchell	Rae Barker	Jo Kilpatrick

# STUDENT COUNCIL



McIntyre, Stieghorst, R. Buchanan, King, Schleich

This is Monmouth's Supreme Court. It deals with the violations of college regulations and in the roles of judges its members are a pretty stern bunch to come up against. They are indeed a respected group on campus and really quite human, too!

Chairman ..... Ilene Schleich  
 Secretary ..... Jean McIntyre

Rachel Buchanan                      Leroy King  
 Magdalene Steighorst              Robert Meneilly

# STUDENT COURT



Front Row: Dean Gibson, Colvin, Conwell, Weber, Combs, Bradford, Miss Liedman  
 Back Row: Dr. Owen, Dean Cleland, McLaughlin, Gould, Mencilly

The Student Faculty Committee serves to bring the faculty and students together so that each may more clearly see and understand each other's viewpoints and thus promote cooperation on the campus. The Student Faculty Committee takes action on any problems brought up in Student Council which it deems affect the college as a whole.

President .....Virginia Hyler  
 Vice President .....Suzanne Gordon  
 Treasurer .....Sydney Conwell  
 Secretary .....Mary Louise Bradford

Phyllis Fedderson	Virginia Weber
Mary Ann Thome	Joyce Colvin
Norma Combs	Robb McLaughlin

FACULTY

Dr. Grier	Dr. Owen
Dean Cleland	Miss Liedman
Dean Gibson	

# STUDENT-FACULTY COMMITTEE



Weber, McGinnis, Thome, Neil

Tau Pi is the honorary women's group on the campus. It is the Mortar Board of Monmouth. Each year outstanding girls who most closely meet the ideals of womanhood receive this coveted recognition. These girls may be identified on campus by the little gold and crystal necklaces they wear.

President ..... Virginia Weber  
Mary Ann Thome                      Martha McGinnis  
Mary Louise Neil

**TAU PI**



Neil, R. Buchanan, Ryan, von Ach, Thome, Stieghorst

We present the brains of Monmouth! If you wish to have Einstein's "Theory of Relativity" or Aristotle's "Conception of the Individual" explained to you these are the people who can do it! Each member has proven his scholastic ability here at Monmouth and fully deserves the honor given him as a member of the "Phi Beta Kappa" of our campus.

President ..... Mary Ann Thome  
Vice President ..... Mary Louise Neil

Rachel Buchanan  
Ann Ryan

Magdalene Steighorst  
Dorothy von Ach

# SIGMA OMICRON MU



Front Row: Gordon, Hyler, Picken, Weber, Thome, Conwell, J. White  
 Back Row: Mitchell, Stieghorst, B. Brown, Schleich, Mays, R. Buchanan, Combs, McIntyre, Angove

Have you ever thought how lonesome you'd have been when you were a Freshman without your Y. W. Big Sister?

Y. W.'s scope is broad and its program is capably planned and carried out under the leadership of the cabinet. Their ideals are the highest and best in Christian service.

- President .....Virginia Weber
- Vice President .....Mary Louise Neil
- Secretary .....Suzanne Gordon
- Treasurer .....Glenna Lou Angove
- Assistant Treasurer .....Jean Phelps

- |                      |                      |                  |
|----------------------|----------------------|------------------|
| Joyce White          | Jean Mays            | Mary Ann Thome   |
| Magdalene Steighorst | Mary Louise Mitchell | Jennie Mae Brown |
| Sydney Conwell       | Norma Combs          | Virginia Hyler   |
| Jean McIntyre        | Joyce Colvin         | Rachael Buchanan |
| Betty Brown          | Phyllis Fedderson    | Ilene Schleich   |
| Arline Picken        |                      |                  |

# Y. W. CABINET





Icenogle, Hunsaker, McLaughlin, Gladstone, Gould

Although the men of Monmouth College are rather few and far between, the Y. M. cabinet has carried on nobly with a program of practical and spiritual value.

Credit goes to the Y. M. boys for the work they did in getting ready the Student Lounge in Wallace. We really appreciate it! And remember their stunt on Stunt Night!

- |                               |                  |
|-------------------------------|------------------|
| President .....               | Claude Gould     |
| Vice President .....          | Delbert Icenogle |
| Secretary .....               | Glenn Hunsaker   |
| Treasurer .....               | Bill Gladstone   |
| C. C. A. Representative ..... | Robb McLaughlin  |

# Y. M. CABINET



Front Row: Loya, Lefler, Ferguson, Frank  
 Middle Row: Thome, von Ach, Angove, C. Brown, Picken, Burrill, Walker, Thiemann, Gerhart, Bradford  
 Back Row: Kaepfel, Hutchison, Person, Tiffany, D. Buchanan, Gould, Shore, Campbell, Halbert,  
 B. Brown, McIntyre, G. Matson

Curtain going up! And so the curtain has gone up on another successful season of Masque productions. The season opened with "Tomorrow the World" for which we enlisted the help of both the townspeople and the Navy. This was followed by the refreshing "Junior Miss," then the homey "Our Town," and, finally, climaxed with the gripping "Angel Street." Bouquets to all those who aided in these productions!

President ..... Arline Picken  
 Vice President ..... Glenna Lou Angove  
 Secretary ..... Jennie Mae Brown  
 Business Manager ..... Mary Ann Thome  
 Head Usher ..... Janet Tiffany

Mary Louise Bradford  
 Claire Brown  
 Betty Jirsa  
 Jean McIntyre  
 Mary Louise Neil  
 Bonnie Theiman

Dorothy von Ach  
 Betty Brown  
 Jean Person  
 Dorothy Jean Buchanan  
 Virginia Burrill  
 Jeane Ferguson

Lois Frank  
 Geri Gerhart  
 Jo Anne Halbert  
 Helen Hofstetter  
 Joan Hutchison  
 Beatrice Kaepfel

Miriam Loya  
 Gloria Matson  
 Geraldine Shore  
 Grace Walker  
 Gwen Hart  
 Kenneth Campbell  
 Claude Gould

# CRIMSON MASQUE



Bradford, Thome, Picken

National Collegiate Players is an honorary dramatic fraternity, whose basis for membership is 20 activity points, the vote of the active chapter, and the approval of national officers. It holds a banquet every spring for new initiates. Members this year were Mary Louise Bradford, Claire Brown, Arline Picken, and Mary Ann Thome.

# NATIONAL COLLEGIATE PLAYERS

MICHAEL CAJOLEE LEE, WITH  
SOME SUCCESS.



A TENSE MOMENT FOR  
MICHAEL FRAME AND  
HIS SISTER.



This year the combined Crimson Masque and Community Theatre with the assistance of the navy, put on four full-length plays, as well as several one-act ones.

The first play was the much-discussed "Tomorrow the World," which starred talented young Alan Larson as the Nazi-trained boy. Navy dream-boy Ev Freed as Michael Frame, the boy's uncle; Bonnie Thiemann as his spinster sister; and Arline Picken as his fiance also turned in stellar performances. Avis Youngberg as the Scandinavian maid did an especially convincing job.

The next performance was the popular "Junior Miss," starring Anne Kniss and Claire Brown as Judy Graves and Fuffy Adams, presented on December 6, 7, and 8. MC's matinee idol, Dr. Lynn Turner, played the part of Willis Reynolds, opposite Mary Lou Bradford as Ellen Curtis. Glenn Shaver as J. B. Curtis, the boss, was outstanding.

# MASQUE--THEATRE

IN THIS SCENE FROM JUNIOR MISS, J. B. IS NOTICEABLY CHAGRINED BY SOMETHING WHICH PLEASES WILLIS AND HELEN.



THE STAGE MANAGER JERKS A SODA FOR THE YOUNG LOVERS OF OUR TOWN.

Thornton Wilder's revolutionary *Our Town*, produced without scenery or props, was presented in March, with Leon Moburg and Jeanne Blaylock as George Gibbs and Emily Webb. Roy Fetherston played the part of the Stage Manager, always important, but more so in this play than usual. The college audience particularly enjoyed Thomas Hamilton as Simon Stimson, the choir director and chronic drunkard.

The final play of the season was *Angel Street*, from which the movie, *Gaslight* was made. Grace Walker and James Tippett as Mr. and Mrs. Manningham were so hysterically and cold-bloodedly right for their parts that the audience was inclined to wonder *who* was going mad. The setting and costuming for this play were particularly outstanding.

The Crimson Masque and Community Theatre enjoyed a very successful season, as every play was sesationally popular—with good reason.

# PRODUCTIONS



Front Row: Levering, Hill, Kilpatrick, McGinnis  
 Back Row: Curtiss, H. Hofstetter, P. Hofstetter, Spencer, Petran, Lauder, Ryan

"Resolved: That there should be compulsory arbitration of labor disputes!" If you've been wondering why all these girls have been dashing off here and there—to Northwestern and Knox—it's to debate the pros and cons of the compulsory arbitration question. They've had quite a successful season and Monmouth can be justly proud of them!

Those who have had two years of speech work and who have represented the college in intercollegiate forensics are chosen for Pi Kappa Delta.

#### MEMBERS

Ann Ryan	Jo Kilpatrick
Cherry Lauder	Helen Hofstetter
Martha Shinofield	Pat Hofstetter
Margaret Petran	Barbara Levering

#### PI KAPPA DELTA

Norma Combs	Charles Lester
Janet Findley	Ann Ryan
Jo Kilpatrick	

# DEBATE PI KAPPA DELTA



Front Row: Schleich, Mitchell, Bradford, Thome, Neil, Thiemann, Ryan, Picken  
 Back Row: Winbigler, Franco, Mays, Stieghorst, Shellenberger, R. Buchanan, Meek, Knauss, G. Matson

No, "Gone with the Wind" has ever been written by a student of Monmouth College. But just give us time! Sigma Tau Delta is the group on campus which recognizes interest and ability in creative writing and a great many praise-worthy poems and stories have been written by its members.

President .....Mary Louise Neil  
 Vice President .....Mary Ann Thome  
 Secretary .....Mary Louise Bradford  
 Treasurer .....Hlene Schleich  
 Social Chairman .....Arlene Picken  
 Program Chairman .....Mary Louise Mitchell

Magdalene Stieghorst  
 Marjory Winbigler  
 Bonnie Thiemann  
 Ann Ryan  
 Jean Mays

Betty Whitman  
 Ruth Franco  
 Charlotte Meek  
 Gloria Matson  
 Patricia O'Connor

Martha Shinofield  
 Tudie Shellenberger  
 Marjorie Wise  
 Rachael Buchanan  
 Vivian Knauss

# SIGMA TAU DELTA



Front Row. Winbigler, J. Brown, Bell, Thiemann, J. White, Angove, Flume, Mays  
 Back Row: Ryan, Hunsaker, Ferguson, McCulloch, Rodgers

Never let it be said that the history students are a dull lot, buried in the past! Not so long as a single Z K E still lives and breathes! You have no doubt heard thrilling tales of their mysterious initiation. And then there's the Gridiron Banquet "where students and faculty alike are roasted."

President .....Bonnie Thiemann  
 Vice President .....Glenna Lu Angove  
 Secretary .....Joyce White  
 Treasurer .....Jean Phelps

Marjory Winbigler  
 Martha Sue Bell  
 Jeane Ferguson

Janet Flume  
 Glenn Hunsaker  
 Jean Mays

Ann Ryan  
 Vesta Rodgers  
 Leroy King  
 Jennie Mae Brown

# ZETA KAPPA EPSILON





B. Brown, McCulloch, Ryan, D. Buchanan, P. Hofstetter, King, Picken, Schleich

These people are really in "the know" when it comes to world affairs! Perhaps they could give the Big Three a few suggestions regarding post-war plans. The club is composed of those students interested in the social and political sciences and the role they play in world affairs.

President ..... Arline Picken  
 Vice President ..... Dorothy Jean Buchanan  
 Secretary-Treasurer ..... Betty Brown

Ilene Schleich  
 Roberta Wells  
 Miriam Loya  
 Bonnie Thiemann

Ann Ryan  
 Patricia Hofstetter  
 Charlotte Meek  
 Glenna Lu Angove

# INTERNATIONAL RELATIONS



Schleich, Thome, Wise, Schwalbert, Neil, Ryan, Weber, Hyler

No Oracle!! Bebies of disappointed students tread wearily home if Thursday afternoon fails to bring an Oracle. Both N. A. R. U. and college students have worked to get out our bigger and better newspaper. Scandal and gossip in the column "Twice Told Tales" and more frequent features have really gone over. It has been fun too, to read the "News and Views of N. A. R. U." And while we are thinking about the services we want to give the Oracle three cheers for keeping in touch with our fighting "Scots."

Editor .....	Mary Louise Neil
Make-Up Editor .....	Marjorie Wise
Assistant .....	Virginia Hyler
Assistant .....	Virginia Weber
Society Editor .....	Ilene Schleich
Feature Editor .....	Mary Ann Thome
Assistant .....	Ann Ryan
Exchange Editor .....	Dolly Schwalbert
Business Manager .....	Patricia O'Connor
Assistant .....	Shirley Johnson
Circulation .....	Phyllis Fedderson
Assistant .....	Mary Jane Blake

# ORACLE STAFF



Front Row: Ferguson, Carleson, Hagen  
 Middle Row: H. Hofstetter, Petran, Pritchard, Tommeraason, Person, Thiemann, Tibbets, H. Davis  
 Back Row: Findley, Work, McFarland, DuBois, Stevens, Tessmann, J. Lange, P. Hofstetter, Mayback, Thomas

"Speech is silver, but silence is golden." But to put frankly, Mon-mouthites had better stick to the gold standard, as there seems to be a snooper in every nook and corner. Words and actions seem to have a way of just "popping up" in the Oracle. The reporters have done a good job this year in catching every function from the most insignificant dorm spread to the ultra formal affairs.

Bonnie Thiemann  
 Jean Person  
 Jeane Ferguson  
 Janet Findley  
 Karine Work  
 Dagmar Stevens

Helen Hofstetter  
 Margaret Petran  
 Betty Hagen  
 Mary Jo McFarland  
 Muriel Carleson  
 Marion Pritchard

Jean Tomeraason  
 Charlotte Tibbets  
 Shirley Thomas  
 Miriam Maybach  
 Pat Hofstetter  
 Marilyn Tessmann  
 Louise DuBois

# ORACLE REPORTERS



Front Row: Hart, Thiemann, Gerhart, Angove, Roper, Ryan, R. Buchanan, Person, Bowman, Lefler, Combs  
 Back Row: Mitchell, J. Brown, Schleich, Hill, Steighorst, Streeter, D. Buchanan, Mays, Holliston, Bartling, Franco, B. Brown

Books are wonderful for they tell us much. Books are also strange things, for we can not make of them exactly what we wish. They are no better and no greater than the individuals whom they mirror. It is you, fellow-students of Monmouth, who have written this book since it is a revelation of that institution of which you are a very real part. We have included your activities and goals, your pranks and pleasures. We hope we have told the whole story.

Editor .....	Ann Ryan
Business Manager .....	Rachael Buchanan
Assistant Business Managers .....	Dorothy Jean Buchanan, Jean Phelps
Assistant Editor .....	Sarah Roper
Organizations .....	Mary Louise Mitchell, Virginia Streeter
Activities .....	Jean Person, Geri Gerhart
Classes .....	Glenna Lu Angove, Betty Brown
Features .....	Jean Mays Ruth Franco
Servicemen .....	Peggy Bartling, Jean Hill
Faculty .....	Bonnie Thiemann, Jennie Mae Brown
Candidis .....	March Lefler, Bette Bowman
Navy .....	Gwen Hart, Mary Ellen Holliston, Norma Combs
Sports .....	Magdalene Stieghorst, Ilene Schleich

# RAVELINGS STAFF



Robeson, Colvin, Dunlap, Picken, Mencilly, Icenogle, McLaughlin

The Icthus Club is the organization on campus which keeps alive the religious spirit for which Monmouth was founded. The members are those who intend to devote a lifetime to Christian Service.

President ..... Robb McLaughlin  
 Secretary-Treasurer ..... Rachel Buchanan  
 Publicity ..... Arline Picken  
 Membership ..... Leroy King  
 Sponsor ..... Dr. Telford

Rachel Buchanan  
 Joyce Colvin  
 Shirley Dunlap

Claude Gould  
 Leroy King  
 Robb McLaughlin

Robert Mencilly  
 Arline Picken  
 Shirley Robeson

# ICTHUS CLUB



Front Row: Hedstrom, N. Holland, Ramsey, McFarland, Vi Smith, McIntyre, W. McLaughlin, Lefler, DuBois, Carey, Westlake, Pillman, Denning

Second Row: Osborne, Russell, Hipple, B. Cooper, Roos, Martin, Busby, Hagen, Levering, Rowley, M. von Ach, Egan, Johnson, Robeson, Miller, Turner, Winbigler

Third Row: Shaver, Renz, Curtiss, Robeson, Terrey, Rojer, Combs, Coen, Brooks, Duncan, Cover, Beckman, Errebo, Hansen, Coppatelli

Fourth Row: Osborne, N. Holland, Streedain, Baxter, Barker, Stass, S. Whitman, McChesney, MacDonald, Lindeberg, Prosser, Shore, Mar, Quon, Whiteman, Loya, Shaver

Adding that musical pinch of seasoning to the monthly vesper services is the Vesper Choir. This large group is a combined class and organization which manages to unite all kinds and qualities of voices into an harmonious whole.

## VESPER CHOIR



Front Row: Hipple, DuBois, V. McLaughlin, Whiteman, Buchanan, Angeve, Renz  
Back Row: Murray, Picken, Icenogle, Campbell, Hunsaker, R. McLaughlin, R. Johnson, Quon, Christy

The old familiar strains of "Whatever Things are True," introduce the Chapel Choir. Daily chapel services and the chapel choir have become so synonymous that if either were to disappear M. C. would really feel a loss.

Stepping out of their usual realm the choir took over the vesper services of January and presented an entirely musical program.

The choir, under the direction of Professor Hamilton, is made up of:

SOPRANOS:

Doris Hipple  
Jean MacIntyre  
Virginia McLaughlin  
Harriet Murray  
Arline Picken  
Melba Richmond

ALTOS:

Glenna Lu Angove  
Betty Brown  
Rachel Buchanan  
Myrle Gerkin  
Jean Liggett  
Grace Quon

TENORS:

Kenneth Campbell  
Richard Johnson  
Miriam Loya  
Phyllis Renz  
Jane Whiteman

BASSES:

Glenn Hunsaker  
Delbert Icenogle  
Leroy King  
Robb McLaughlin

# CHAPEL CHOIR



Front Row: Walker, Franco, Bowman, Mitchell, J. Smith, Stieghorst, Halbert, Pritchard  
 Back Row: Edwards, Flume, G. Holland, Mays, Hill, Gerhart, Martin, Arado, Lefler, Hagen, Shellenberger, Kirkpatrick, Ferguson

"Drown those freshmen." "Say, the end of that line looks dry; give it to 'em." Yes, it's the pep club girls with their fireman's equipment trying to drown the freshmen at the annual tug o' war. At the games you'll spot the girls with the red sweaters and Monmouth seals leading the cheers for victory. We hope the underclassmen will sometime get to see the pep club girls driving the fire truck in the Homecoming parade, and the chapel stunts before the "Siwash" turkey game.

President ..... Mary Lou Mitchell  
 Secretary-Treasurer ..... Geri Gerhart

Maggie Stieghorst  
 Phyllis Fedderson  
 Virginia Weber  
 Virginia Hyler  
 Jean Mays  
 Bette Bowman  
 Janet Flume  
 Jean Hill

Grace Walker  
 Ruth Franco  
 Patricia O'Connor  
 Susan Shellenberger  
 Jeane Ferguson  
 Janice Smith  
 Joan Halbert  
 March Lefler

Marion Pritchard  
 Roberta Kilpatrick  
 Alice Edwards  
 Gloria Holland  
 Terry Martin  
 Marilyn Arado  
 Betty Hagen

# PEP CLUB





Front Row: McFarland, Kirkpatrick, Berson, Dunlap, Lindeberg, Busby, Carleson, J. Brown, Streedain, Woods, Tolomeo, I. McIntyre, G. Holland, D. Buchanan  
 Middle Row: Walker, M. Osborne, E. Osborne, McLaughlin, Schleich, McGinnis, Hyler, Fedderson, Weber, Combs  
 Back Row: J. Brown, Colvin, Franco, Cooley, Thiemann, Streeter, Stass, Vittori, Petran, Barker, Renz, Findley, Knauss, MacDonald

The Women's Athletic Association invites any interested adherents who are willing to work for the number of points required for admission to membership. Its weird initiation includes going without makeup for a day and wearing pigtails and a necktie as a hair ribbon. The W. A. A. girls, led by McGinn this year, are famous for their pep and energy.

Jennie Mae Brown  
 Dorothy Jean Buchanan  
 Joyce Busby  
 Joyce Colvin  
 Mary Ann Cooley  
 Norma Combs  
 Phyllis Fedderson  
 Janet Findley  
 Ruth Franco  
 Virginia Hyler  
 Vivian Knauss

Marilyn Lindeberg  
 Martha McGinnis  
 Rae Barker  
 Phyllis Renz  
 Jean Macdonald  
 Bonnie Osborne  
 Mae Osborne  
 Virginia McLaughlin  
 Betty Woods  
 Prudence Tolomeo  
 Irene McIntyre

Shirley Nelson  
 Arline Picken  
 Mary Schwalbert  
 Ilene Schleich  
 Virginia Streeter  
 Bonnie Thiemann  
 Janet Tiffany  
 Margaret Vittori  
 Grace Walker  
 Virginia Weber  
 Mary Jo McFarland

Theo Stass  
 Margaret Petran  
 Roberta Kirkpatrick  
 Barbara Benson  
 Shirley Dunlap  
 Muriel Carleson  
 June Brown  
 Beverlee Streedain  
 Gloria Holland





Front Row: P. Eofstetter, Baxter, Barker, H. Hofstetter, K'patrick, Renz, Coppatelli, Combs  
 Back Row: Laven, B. Brown, McGinnis, Stieghorst, Streeter, Cooley, Gabriel, G. Matson, Tolomeo, Edwards

"Percy" is the middle man for the Rifle Club's tournaments with other schools. Matches with N. Y. U., Ohio State, Beaver College, and Drexell Institute have been carried on through the medium of the U. S. Postal service.

Dr. Thiessen's group may be found down in the indoor track aiming for those perfect bullseyes. The object of this club is to provide all those interested in sharpshooting with practice and to receive instruction under the sponsorship of the National Rifle Association.

President ..... Shirley Nelson  
 Vice President ..... Mary Ann Cooley  
 Secretary ..... Maggie Stieghorst  
 Treasurer ..... Betty Brown

Martha McGinnis  
 Norma Combs  
 Virginia Streeter  
 Inez Catron  
 Bonnie Thiemann  
 Betty Whitman

Lois Frank  
 Carl Rasmussen  
 Antonio Corretjo  
 Otto Corretjer  
 Bill Gladstone  
 Quentin Krantz

# RIFLE CLUB



Front Row. Gerhart, Schwalbert, Stieghorst, Tiffany, Person, Combs, Jirsa, Phelps  
 Back Row: J. White, Cooley, Streeter, R. Buchanan, B. Brown, Colvin

Monmouth College has gone English!! Just drop around to the Biology lecture room on Monday afternoons and sip a cup of tea. Tea and dissection of a "Whatchamajig" might not appear to mix, but, oh, how the Tri-Betas go for it.

The Biology Club received its charter as the Gamma Pi chapter of Beta Beta Beta, the national biological fraternity, this March. The formal initiation was held March 21 with the following as charter members:

Sponsor .....	Dr. Reid
President .....	Maggie Stieghorst
Vice President .....	Norma Combs
Secretary .....	Joyce White
Membership Chairman .....	Joyce Colvin
Treasurer .....	Betty Brown

Rachel Buchanan	Jean Person	Shirley Dunlap
Geri Gerhart	Jean Phelps	Sandy Graham
Betty Jirsa	Virginia Streeter	Gloria Paulson
Robert Mencilly	Jean Baxter	Janice Smith
Mary Ann Cooley	Rhodia Cooper	

**BETA BETA BETA**



Laven, Thome, Wells, Picken, Dunlap, Meneilly

What is your opinion of Einstein's theory of relativity or Aristotle's conception of the individual? These and other such weighty matters are doubtless meat for many a discussion of the Philosophy Club. The members, need we add, are the deep thinkers of the campus.

Robert Meneilly  
Shirley Dunlap  
Mary Ann Thome  
Betty Laven

Roberta Wells  
Arline Picken  
Glenna Angove

# PHILOSOPHY CLUB



Within the booklined walls, Navy blues and plaid skirts share tables and ideas.....whispers subdued into guilty glances at the desk, representing Authority.....sailors plaintively ask for "a good book" or aggressively demand almost anything.....Roses, pine branches, pussywillows, and forsythia blooming from the desk mark the changing seasons, mingling the new with the traditional.....the long-established tradition which lends an atmosphere of dignity, serenity, and infinite opportunity to those who seek what the library has to offer.

LIBRARY



At the left is Mary Lu Drayson making with a low-down version of the "St. Louis Blues," and above, right, Mary Ellen Holliston, Barbara Levering, March Lefler, Marjie Westlake, and Mary Lu Drayson ask please not to be fenced in. Lower right Joan Hutchison, Ilene Schleich, Peachie Combs, Grace Walker, Gwen Hart and Shirley Dunlap prove that a pretty girl is like a melody, in a scene from the romantic old South.

Fast becoming a Monmouth tradition is Gracie Peterson's annual musical show, using a picked chorus and special soloists. This year the show was called "Scandolls of 1945" and was a smash success, as always. The premier performance was here in Monmouth at the Rivoli Theater, and the girls made several trips—to Mayo General Hospital in Galesburg and Camp Ellis—to entertain servicemen.

## SCANDOLLS



The sailor at Monmouth is far from being on a vacation, though he is doing a different type of work here than he did at sea or at a Navy station. The above stack of books and unworn dress jumper show graphically the way most "refreshers" dig in, and reconcile themselves to the small amount of liberty. Monmouth has been a Navy college for a long time, and it is proud to be so—we like it!

NAVY



Lt. Stuart B. Christian, Lt. Merlin W. Schultz, Lt. Leon T. Fruin

When M. C. Students came back to school this fall, the old regime of the V-5 NFPS had passed on, and in its place had appeared the Naval Academic Refresher Unit. Lt. Stuart B. Christian has command of the NARU at Monmouth College. His home is in New York, and before the war he was affiliated with the New York City Telephone Company. Lt. (jg) Merlin W. Schultz, commonly known as the "exec," before the war was a high school teacher. His home is in Dundee, Michigan. He was transferred at the end of the school year. Medical officer at the base is Lt. Leon T. Fruin, of Normal, Illinois. He formerly practiced as both physician and surgeon.





Thomas F. Evans, PhM1c; Vernon G. Whitmarsh SK2c; Harry F. Townsend, CSp (A); Cyril G. Allen, CSp (A); John R. Hustedt, PhM3c; Jerry A. O'Neil, Y2c; Austin D. Massie, MaM2c

Ship's Company lost three personnel members this spring, A. D. Massie, MaM2c, J. R. Hustedt, PhM3c, and H. F. Townsend, CSp (A). NARU brought many changes to the military organization as last year's students knew it. The most obvious change, of course, was the sight of sailors studying in the library, and of the college students back in Wallace Hall for classes. The Navy occupied the first and third "decks" of Wallace, sharing the second with college classes.

The NARU policy has consistently been one of cooperation with the college activities. The Navy men participated in the college mem-

orial service in the chapel, held for President Roosevelt, the celebration of V-E Day, and in the Baccalaureate and Commencement exercises.

The Navy formals, four in number, have been the high lights of Monmouth's social life this year. The dances were planned and staged by a committee of both Navy and college students, with very good cooperation and gratifying results.

This close cooperation between Navy and college students has made college seem more like "old times," and is a forecast of the future, when things will be back to normal, and college life will go on as usual.



Embarrassed at first by marching to class under the scrutiny of forty or fifty college girls, new platoons soon settled into the daily routine of classes.



P. T., which included these and other specialized forms for talented men, as well as . . .



strenuous calisthenics and obstacle - course running for everybody.

At night, studying was a necessary evil, but then, too, . . .



friendships were made, to be continued at pre-flight, or dissolved by time and space.





# FAVORITE MEMORIES



Visits to sick bay were enjoyable if not made too long or too serious, and . . .



there was always time for a little gaiety and foolishness.



Liberty was scarce, but was made pleasant by college, townspeople, and overnights.

Every eight weeks there was a flurry of "Auld Lang Syne" singing, and



a few more platoons marched away down Broadway, past porches and balconies full of waving girls.





Athletics at Monmouth for the past two years have been uneven, both in quality and quantity. However, college students have been faithful in turnout for every event, from impromptu six-man football to regular basketball games. Our basketball team did shine this year, but probably the event most people will remember longest was the above-pictured football game, between the old and new Navy, on our one-day Thanksgiving vacation. Everyone stood, and it was bitter cold, but there was a big crowd, and the excitement kept us warm. . . . .

# ATHLETICS



Front Row: McNulty, Sisson, Bridge, Hartman, Ferguson, Coach Woll  
 Middle Row: Rasmussen, Butler, Stratemeyer, Prestifilippo, Hall, Hill  
 Back Row: Gladstone, Armstrong, King, Soard, Wickoff

In spite of the war and a drastically curtailed athletic program Fighting Scot sports fans in Monmouth have had the opportunity of seeing college teams in action this year. The small number of civilian men and a constantly changing Navy personnel would seemingly make a basketball season impossible, but not so with Coach Bobby Woll at the helm. Coach Woll has taken the direction of all athletic programs into his hands since the other coaches have gone into the armed services.

The squad which started out the basketball season represented some thirteen states and was made up of both NARU men and civilian students. The five civilian members were Leroy King, of Denver, Colorado; David Hill, Bioreville; Carl Rasmussen, Aledo; Paul Robinson, Troy; and William Gladstone, Walton, New York. All but King were freshmen. The other members of the squad were NARU men, many of whom were out of practice since most of them had served in the fleet for two years. Even with these handicaps, the Scots had a good season and came through with six games won and four lost.

The most remarkable player of the year was Leroy King who left just before the last game of the season to continue his studies at Boston Seminary. King tot-

aled more points during every game than any opponent or team mate. Six feet seven, "Highpockets" played the center position and gave sports fans their money's worth.

The schedule for the season:

- Monmouth 53; Burlington Junior College 23
- Monmouth 28; Camp Ellis 37
- Monmouth 45; St. Ambrose 25
- Monmouth 52; Macomb Teachers 58
- Monmouth 52; Mayo Hospital 24
- Monmouth 38; Burlington Junior College 24
- Monmouth 38; Camp Ellis 49
- Monmouth 34; St. Ambrose 47
- Monmouth 53; Mayo Hospital 47
- Monmouth 50; Macomb Teachers 48

On top of this complete schedule were these weekly intramural games held between the different Navy batts. No definite scores of these games, held, as we all remember, so frequently at 5:15 p. m., are available; however, Platoon 62 left Monmouth in April—The Victors!

Basketball lettermen of the year are as follows:

- Navy: Sisson, Fairchild, Butler, Bridge, Sorenson, Hartman, Soard, Armstrong, Watson, Dachs, Prestifilippo, Hayes, McNulty, Ferguson.
- Civilians: King, Hill.

# BASKETBALL



Front Row: Chief Townsend, Blanton, Møgel, Cecil, Shaffer, Fowler, Brower, Lain, Coach Woll  
 Back Row: McMahon, Sanders, Raddimaker, Wickoff, Corretjer, Brown, Ameen, Lunka

A successful Monmouth track season gained full swing on March 17 when our combined civilian and navy forces entered the Chicago Relays. At this event, the one mile relay in the college division was won by our team, composed of Compton, Brown, Lunka, and Raddimaker. The first meet was followed shortly by a second—the North Central Indoor Track Meet on March 24. Monmouth again shone forth by placing third out of a group of eleven competing schools, with a total of 26½ points.

The Triangle Meet of April 17 was our next challenge. This meet was held between the three schools—Augustana, Carthage and Monmouth, and once again culminated in success for our alma mater. Final scores

were: Monmouth, 93; Augustana, 65; Carthage, 0.

The last event on the track calendar was the strictly civilian meet of the Illinois College Conference, held on May 5 at Peoria. Monmouth collected a total of 14 points, on the merits of Bob Ameen, who came in first in the javelin throw. Our only entrants were Corretjer and Ameen, competitive scores therefore being worthless, since other schools had sent full teams.

Track lettermen for the years are:

Navy: Blanton, Brown Raddimaker, Lunka, Barrow, Wickoff, Lain, Fowler.

Civilian: Ameen, Corretjer.

# TRACK





# FOOTBALL

Nor was Monmouth at a complete loss for a football season this year. Indeed, we had all of one day of cracking football in our season. That was the NARU football game, held on the afternoon of Thanksgiving Day.

With the grit and fight that was born in them in the wide blue Pacific battle waters, the two NARU teams battled to a fiercely fought scoreless tie before 1,300 eager football fans on the college grid.

The entire game was a defensive one, with both teams failing to penetrate past the other's 20 yard line. For the white-jerseyed Old Navy, it was their surprisingly hard-hitting light line that threw up a barrier of defense that allowed the backfield of the New Navy to make but two first downs. But in true football irony, it was that same All-American led Red backfield which smothered the Old Navy's passing attack, and time and time again, stopped their fleet backs as they scampered past the line of scrimmage.

Fowler of the New Navy and Garber of the Old Navy brought the crowd to its feet many times. Fowler tucked the second half kick-off under his arm on his

own 10 yard line, and drove 50 yards up the sidelines before falling to Everett, the White's last man between him and a touchdown. Fullback Dauser was the work-horse of the Whites, for besides smashing through the Red's line for good gains, he played guard on defense and did his team's punting. It was his and Rooney's plunging that gave the Whites five first downs to the Reds' two.

For the New Navy, Georgia's All-American Blanton showed some of his Rose Bowl form by rifling two pass completions and watching in dismay as his team mates failed to hold on to at least three more. A New Navy center, Mullen, was injured in the second half and had to be helped from the field. The final gun left the crowd reminiscent of the many exciting games witnessed on that same field a few years ago. That was Monmouth before the war.

The football season included further, intramural touch games by the navy, complete records of these games being unavailable. The navy also held intramural competition in swimming, softball, and tennis; with evening softball games especially popular among the coed spectators.





The girls' hockey team helped to fill the gap left in sports by the men of the college this year. Banged elbows, skinned shins, and stubbed toes were the objects of sympathetic, but non-participating roommates' sympathy and bandages. However, addicts claim it is great sport, and the more scars, the more scores. The game between freshmen and upper class women entertained anxious parents on Parents' Weekend, and ended with a hard-fought tie, 3-3.

The swimming season was highlighted by the water pageant, Kalendar Kapers, directed by Ticky Burgess, girls' athletic instructor. King Neptune reigned on the

sidelines as his court of bathing beauties, symbolizing the months, formed a background for the numerous races and formations. The freshmen were victorious in the races, with the sophomores coming in a close second. NARU representatives and coeds exhibited some fancy diving and comedy relays. The swimming classes presented a number of formations and an exceptional wedding scene done in synchronized swimming.

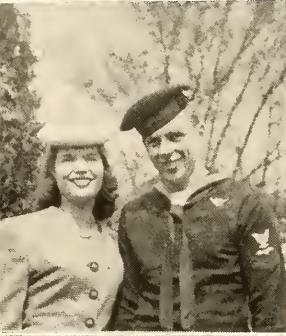
Another important item on the girls' athletic calendar was intramural basketball, featuring many hard-fought games between classes.

# GIRLS' SPORTS



Faithful sports fans turn out for every event, as do sailors when pretty legs are in view. They also take part in college athletics whenever possible.







Above is the first—and in some ways, most memorable—Navy prom of the year. But Navy Proms are not the only special events at Monmouth. There was the damp day of the Tug O' War, that unforgettable Sadie Hawkins weekend—a new experience for most of the sailors—, the college formals, the Christmas Carol program, the sorority and fraternity dances, as well as, of course, the weekly open houses and college movies. And we won't forget, either, the swimming pageant, impromptu parties in class, innumerable teas, and the Saturday night Open Houses at the different houses. We have had a lot of fun this year.....

## SPECIAL EVENTS



Monmouth enjoyed four Navy proms this year, and all were well attended. Something about seeing sailors in dungarees and girls in jeans working on decorations weeks ahead seems to inspire everyone with a desire to attend, and blind dates were plentiful, as well as the seeing kind. The first prom was the Harvest Frolic, pictured above. Bales of hay furnished prickly seats, and a pumpkin headed sailor was the centerpiece. Then in Desember came the Peppermint Prom, with delectable-looking candy canes. The February Sweetheart Swing was a lacy Valentine affair, but there was nothing like the blue and silver Evening in Paris in April. Every dance has special memories for different people, so we won't argue about which was the best!

## NAVY PROMS

"Come on, Freshmen, *pull* that rope!"



Surest way to get wet—try not to! Hill climbers got doused by the twisting hose, too.

The new tradition of a tug o' war is really only a mutation from the old one of the Pole Scrap. However, all the tomboys are glad of a change to get *their* fingers in the roughnecks' pie, and some of them can certainly scrap! The tug o' war this year pales into insignificance compared to the struggle for the hose afterwards between a bunch of tough upperclass girls and an overpowering number of sophomore boys. It was a wet day for old M. C.! And some rumors have it that perhaps the scheduled date for the affair was changed—inadvertantly—at the last minute. Well, history can record the events more fully.

## TUG - O' - WAR

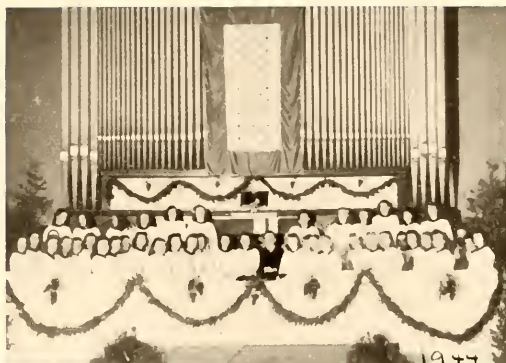


At the annual Coronation Ball this spring, students, Navy and faculty healed Constance Carey as she ascended the throne and was crowned 1945 Queen by Chancellor Robert Meneilly. Attending them on the court were Mary Ann Thome, Robb McLaughlin, Betty Jirsa, Leon Moburg, Rachel Buchanan, William Gladstone, Mary Louise Bradford and Carl Rasmussen. Following the coronation the queen and her chancellor, assisted by the court, led the grand march, bringing the traditional ceremony to a gala close. Throughout the rest of the evening Miss Carey and Mr. Meneilly reigned over a throng of happy couples enjoying one of MC's most delightful evenings of the year.

## COLLEGE PROMS



The old favorites ring out through the church, and

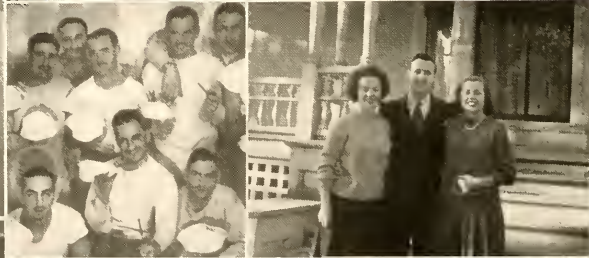


the different carols Gracie has found charm the audience's ears.

The annual Candlelight Service held at the Second United Presbyterian Church each year is not only one of Monmouth's outstanding traditions but it is an essential, living part of MC. Under the expert direction of "Gracie" Peterson the congregation in two services were inculcated with the Christmas spirit by the church choir and its soloists, Jean McIntyre, Betty Brown, Doris Hipple, Louise Dubois, Constance Carey, Ione Ketzle, and Everett Freed of the Navy, and by "Wandering Carolers": Connie Carey, Ione Ketzle, Betty Brown, Louise Dubois, Melba Errebo, Irma White, and Peggy and Nancy Nevius who sang a collection of carols from different lands.

# CHRISTMAS PROGRAMS

# LIGHTER MOMENTS

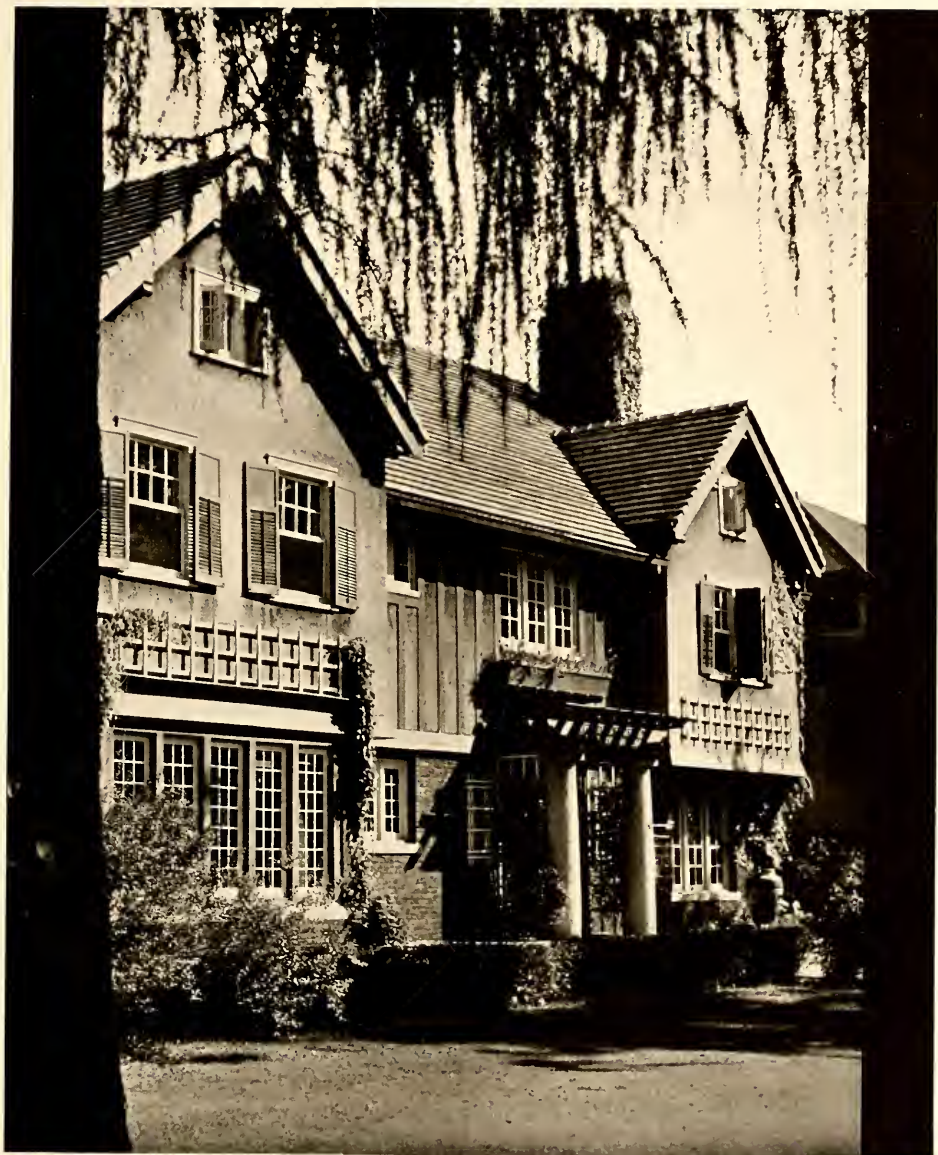












# CAMPUS SCENES



McMichael Home holds many memories for the Class of '45 and those before—but now it also means memories for countless Navy men, and even for the war-time students, the front walk has meaning!

East Hall is the only dorm which was converted and has already been reconverted. Working for the Navy, it housed everything from officers to recalcitrant cadets on their way to Great Lakes. Now completely redecorated, it holds a group of lucky freshman girls.







One of Monmouth's recent buildings, the gymnasium is a striking building—one of the best. We remember the formals held there, rather than the hours of exercise!



Van Gundy, like most of Monmouth's dorms now, used to be a private home, but it has been well-adapted—first for boys and now for girls. A recent new paint job spruced up the inside.

This little stone bench is one of the features of the campus—it makes a pretty picture under the trees. And through the years countless couples have sat upon it in snappy October weather or balmy spring breezes, to quarrel or make up.





There have now been two classes of freshmen who have not even seen the inside of Grier Hall, Monmouth's fine new freshman-senior dormitory. Filled completely at times with sailors or cadets it usually holds only Sick Bay and the staff.



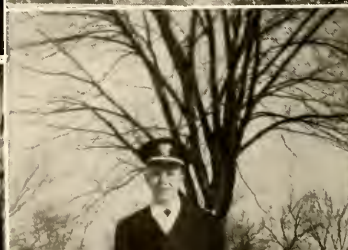
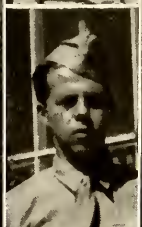
This winter view of East Hall is only one of the pretty scenes metamorphosed by a new snow. And there are usually plenty of snows, too!

Here a night shot of Theta Chi points up its massive columns and spacious porch. It looks almost like a miniature Wallace Hall.





Above is a composite picture of a few reasons why Monmouth's Fighting Scots are anxious to finish the war and return. And of course there are also the academic reasons. But Monmouth's campus is still as pretty—and so are the girls—as when they left. We are looking forward to seeing them again, too, and hope that perhaps the class of at least '50 will start with an even number of fellows and girls. If it does, we will give part of our thanks to Monmouth's own section of the armed forces.

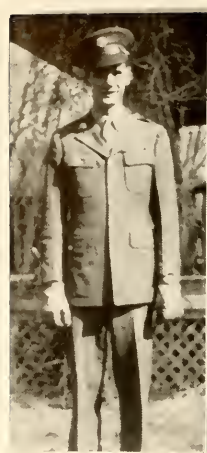


# SERVICE MEN

Warren Fernell, Jack Ross, Harold Hann, Glen Blythe, Frank Ryder, L. L. Roush  
James McConnell, Bill and Ray Hart, Joseph Eavey, Evan Gheen, Mel Schulmeister  
Frances Born, John Moore, Lowell Johnson, John Fidler, John C. Anderson  
Bob Snyder, Edwin Buzan, Vincent Johnson, Gillette Evans

Robt. W. Johnson, Bob Jahn, John Hambleton, J. R. Worley, Richard Smith, Lamar Dingwell, Merle Slayton  
Dick Stiller, Dave Fleming, Mary Bond, Cal McIntyre, Wally Porter, John Allaman  
Vehyl Cole, Dean Forsyth, Jim Zemek, William Hoover, James F. Welch, Morton Pratt









Robert Smith, Dick Hamilton, George Trotter, Jimmy Linman, Dick Lambert, Everett Liebendorfer,  
Richard Beck

Robert Hess, Howard Tally, Helen Young and friends, Tom McMichael

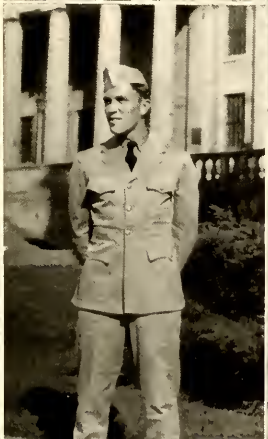
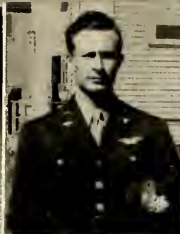
Don Porter, Bob Deuth, Harold Montgomery, Jim McInnes

Donald Hill, Charles Heisler, John Leary, Farwell Sawyer, Eugene McCreighton, Don Liggett

Roy Atherton, Floyd Milligan, Lee Bachanan, Milton Whiteman, Jim Wasson, Hal Hatch, Paul Gray

Gwen Smart, Bill Congdon, Bab Talkin and Bob Johnson, Lester Barkman

# S E R V I C E M E N



# SERVICE MEN

Harvey Miller, Fred Lipton, Bill Adams, John R. Turnbull, Dallas Bossart, Frank Heighway

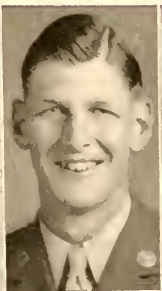
Harley Bergstrand, Bill and Norman Wells, George Hughes, Harold Fielder

Jim Peregoy, John Lawson, J. J. Weckcry, Evans and William Hayes, Rex Johnson, Donn Johnson,

Marvin Sullivan

Arthur McBride, Hugh McBride, William Butcher, Josiah Cattron, Weldon Yocum, Ken Nelson, John

Loos, Willard Wasson.





Bob Anderson, Dave Hill, Roger Johnson

Deploring our slowness and inefficiency;  
Lauding the hard work and cooperation of the staff;  
Seeing with amazement the patience and interest of the students and faculty;  
Thanking the engravers, printers, and binders for their help;  
And hoping for the best, we remain

Yours truly,

ANN RYAN,

RACHEL BUCHANAN.

# PHYSICIAN'S DIRECTORY

CHARLES P. BLAIR, M. D.

OFFICE

Corner South First Street and Broadway

TELEPHONES

Office: 102

Residence: 845

E. A. FETHERSTON, M. D.

EYE, EAR, NOSE AND THROAT

Room 303 Medical Arts Building

TELEPHONES

Office: 206

Residence: 2026

F. C. WINTERS, M. D.

EYE, EAR, NOSE AND THROAT

Room 401 Medical Arts Building

TELEPHONES

Office: 871

Residence: 2871

## OSTEOPATHIC PHYSICIANS

JOE T. THORNBURG, D. O.

OSTEOPATHIC PHYSICIAN

Rooms 306-307 Medical Arts Building

TELEPHONES

Office: 500

Residence: 241

JAMES D. DEVLIN, D. O.

OSTEOPATHIC PHYSICIAN

Rooms 405-406 Medical Arts Building

TELEPHONES

Office: 29

Residence: 2029

# DENTISTS' DIRECTORY

R. E. BARNARD, D. D. S.

OFFICE

211½ East Broadway

TELEPHONES

Office: 3264                  Residence 2422

---

HUBERT W. STOTT, D. D. S.

OFFICE

211½ East Broadway

TELEPHONES

Office: 2235                  Residence: 1557

---

E. B. KNIGHTS, D. D. S.

OFFICE

Room 413 Medical Arts Building

TELEPHONE

Office: 92

W. S. PHELPS, D. D. S.

OFFICE

57 South Side of Square

TELEPHONES

Office: 1185                  Residence: 2691

---

C. E. LAUDER, D. D. S.

OFFICE

East Broadway at South First Street

TELEPHONES

Office: 61                  Residence : 861

---

L. H. SHAFFER, D. D. S.

OFFICE

Second National Bank Building

TELEPHONE

Office: 885

## SEYBOLD PRINTING

COMPLETE PRINTING SERVICE

PHONE 951

## J. C. Penney Co.

SOUTH MAIN ST. MONMOUTH, ILLINOIS

## BARNES BROS.

GROCERIES — MEATS

FRESH FRUITS — VEGETABLES

200 NORTH MAIN STREET

## John Lugg

*SINCERE SERVICE AT MODERATE COST*

MONMOUTH, ILLINOIS

TELEPHONE 730

*"MADE FOR YOU!"*

\$35.00 AND UP

EAST SIDE SQUARE MONMOUTH, ILL.

## Graham

### Tailor

SINCE 1849

## PAROLEE'S

READY - TO - WEAR

*THE BETTER VALUE STORE*

*FOR WOMEN*

211 SOUTH MAIN STREET

INVITE YOUR FRIENDS TO STAY

AT THE

## COLONIAL HOTEL

208 EAST BROADWAY TELEPHONE 265

SPECIALISTS IN FRATERNITY,  
SORORITY, AND HANDMADE  
JEWELRY

*A GIFT TO REMEMBER!*

## Whit Craft Shop

WEINBERG ARCADE

GALESBURG, ILL.

## Knoxville Mining Company

DEALERS IN NO. 1 SEAM COAL

STOKER COAL A SPECIALTY—MAGNETICALLY CLEANED

OPTIONAL DUST TREATMENT—WHOLESALE AND RETAIL

Galesburg Union Telephone K-3806

KNOXVILLE, ILLINOIS

Glen F. Wilson

Jeweler

McCULLOUGH LUMBER

AND COAL CO.

HEADQUARTERS FOR

BUILDING MATERIAL AND COAL

101 EAST FOURTH AVE.      PHONE 56

COMPLIMENTS OF

W. A. Jordan Co.

WHOLESALE GROCERS

GALESBURG, ILLINOIS



You naturally hear Coca-Cola called by its friendly abbreviation "Coke". Both mean the quality product of The Coca-Cola Company.

GALESBURG COCA-COLA  
BOTTLING COMPANY

GALESBURG, ILLINOIS





110-112 SOUTH A STREET

TELEPHONE 60

Pasteurized  
Dairy  
Products

*WE APPRECIATE YOUR PATRONAGE.*

*BUY YOUR SCHOOL SUPPLIES*

AT

**KIMBLE'S**

5c. TO \$1.00 STORE

**Fred A. Martin**

INSURANCE

**Nancy Graham**

CLOTHES FOR CO-EDS

211 EAST BROADWAY

**CARTER'S PHARMACY**

J. H. Carter, R. Ph., Prop.

CORNER BROADWAY AND FIRST STREET

TELEPHONE 182

**G. & B. Diner**

DINNERS

LUNCHES

SHORT ORDERS

CLOSED ON MONDAY



## SEXTON SERVICE OFFERS YOU

- ◆ The only nationally advertised brand of foods prepared exclusively for the institutional market.
- ◆ The security of endorsement by all the leading trade associations in the institutional field in the United States.
- ◆ The facilities of the only wholesale grocery company operating plants in the two principal American markets—Chicago and New York.
- ◆ As rendered by America's largest distributors of number ten canned foods, a distinctive service on a complete assortment of quality foods packed in this institutional size container.
- ◆ Home recipe pickles, relishes and preserves from Sexton Sunshine Kitchens — delicious and appetizing.
- ◆ Carefully selected coffees — blends resulting from years of careful study — roasted fresh daily at Chicago and Brooklyn.
- ◆ A selection of your needs from the largest inventory ever assembled for the particular needs of those who feed many people each day.

**JOHN SEXTON & CO.**  
ESTABLISHED 1883

Manufacturing Wholesale Grocers  
**CHICAGO—BROOKLYN**  
**DALLAS—ATLANTA—PITTSBURGH**

## FORD HOPKINS

---

Spurgeon Mercantile Co.

MONMOUTH, ILLINOIS

---

DRY CLEANERS

### CUDD'S

106 EAST BROADWAY MONMOUTH, ILL.

---

### The Model Clothing Company

A GOOD PLACE TO TRADE

CLOTHING FOR MEN AND BOYS

---

## Broadway

## Sandwich

## Shop

205 EAST BROADWAY

# Monmouth College



*Serving the Nation in Peace  
and in War since 1853*

MONMOUTH,

ILLINOIS

# "JAHN & OLLIER AGAIN"



LOYAL

always, to the  
cause of better  
Yearbooks

JAHN & OLLIER  
ENGRAVING CO.

Makers of Fine Printing  
Plates for Black and Color.  
Artists - Photographers

817 W. WASHINGTON BLVD.  
CHICAGO

A STRONG, PROGRESSIVE INSTITUTION

*Illinois Bankers Life*

*Assurance Company*

MONMOUTH, ILLINOIS

A RECORD OF PROGRESS

FINANCIAL STATEMENT, DECEMBER 31, 1944

ASSETS		LIABILITIES	
*U. S. GOVERNMENT SECURITIES .....	\$11,691,647.34	POLICY RESERVES—To meet policy obligations as they become due by death, maturity or disability.....	\$21,979,508.21
*OTHER BONDS—		CLAIMS DUE AND UNPAID.....	NONE
Railroad .....	\$1,697,114.88	RESERVE FOR DEATH AND DISABILITY CLAIMS—	
Public Utility .....	915,606.47	Upon which proofs have not been completed .....	250,234.05
State and Municipal ..	703,005.16	RESERVE FOR CLAIMS—Upon which Notice of Death or Disability had not been received on December 31 .....	108,583.80
Industrial and		PRESENT VALUE OF INSTALLMENT CLAIMS .....	180,836.98
Miscellaneous .....	89,080.13	TRUST FUNDS—Association Policies.....	2,537,632.66
CASH .....	1,809,797.35	POLICYHOLDERS' FUNDS—	
FIRST MORTGAGE LOANS—		Dividends and Savings left on Deposit .....	\$892,597.87
Farms .....	1,083,877.18	Dividends Due and Declared .....	59,549.37
City Properties .....	2,076,632.50	Premiums and Interest Paid in Advance .....	109,688.05
REAL ESTATE—		1,061,835.29	
Farms .....	823,252.58	SURVIVORSHIP FUNDS .....	62,889.87
City Properties .....	1,567,023.39	RESERVE FOR TAXES .....	113,873.46
REAL ESTATE SOLD UNDER CONTRACT—		MISCELLANEOUS LIABILITIES .....	195,169.30
Farms .....	153,012.38	CONTINGENCY RESERVE FOR WAR	
City Properties .....	171,716.22	MORTALITY FLUCTUATION .....	300,000.00
POLICY LOANS AND INTEREST—		TOTAL POLICY RESERVES AND LIABILITIES	\$26,790,563.62
Secured by Policy Reserves .....	4,685,197.49	CAPITAL .....	200,000.00
STOCKS—		SURPLUS .....	1,607,817.03
Preferred and Common .....	476,209.95	SURPLUS TO POLICYHOLDERS .....	1,807,817.03
PREMIUMS—		TOTAL .....	\$28,598,380.65
Due and Deferred .....	501,956.32		
INTEREST AND RENTS—			
Due and Accrued and Other Assets	153,251.31		
TOTAL .....	\$28,598,380.65		

\*U. S. Government Securities and \*Other Bonds valued as provided by the National Association of Insurance Commissioners. Actual market values are more than \$385,000.00 in excess of values at which they are carried in the above financial statement.

LIFE INSURANCE IN FORCE.....\$110,308,880.00

BENEFITS PAID TO POLICYHOLDER AND BENEFICIARIES IN 1944..\$2,578,715.00

LIFE — ACCIDENT — HEALTH

# Peters Jewelry Company

Monmouth, Illinois

---

THINK OF US FOR

CAMPUS PARTIES

**MAPLE CITY FLORAL SHOP**

1201 SOUTH MAIN ST. TELEPHONE 89

Norris Office Equipment  
Company

"EVERYTHING FOR THE OFFICE"

107 East Broadway

Monmouth

Illinois

---

## Colwells Department Store

MONMOUTH, ILLINOIS

*RELAX! SEE A GOOD SHOW!*

THE UTMOST IN ENTERTAINMENT

MODREN AIR - CONDITIONING

# **Rivoli & Bijou**

## **Theatres**

---

They'll Treat You White

THE BEST FURNITURE

FOR THE BEST HOMES

*White's*

*FOR FINE FURNITURE*

# Turnbull Funeral Home

Telephone 19

---

## White House Dairies Company

WHITE HOUSE DAIRY PRODUCTS

*"THE PUREST KIND"*

TELEPHONE 792

318 SOUTH MAIN STREET

MONMOUTH, ILLINOIS

---

### • "The Ravelings"

IS A

TRADITIONAL INSTITUTION

IN M. C.

THAT MUST BE SUPPORTED—

I AM GLAD TO ASSIST.

**J. C. McCOY**

ANDERSON DRUG STORE

Phone 62

Monmouth, Illinois

DAVID R. McCREERY, R. PH.

---

**ADA M. SCOTT**

JEWELRY — SILVER

MONMOUTH, ILLINOIS

---

FLAVOR—

FRESHNESS—

QUALITY—

**Hayes Bake Shop**

109 SOUTH MAIN

---

**KNEPP'S**

LADIES' READY-TO-WEAR

104 SOUTH MAIN ST.

PHONE 634



# Wirtz Book Company

COLLEGE BOOKS

STATIONERY

SUPPLIES

For years we have been serving the students of Monmouth College.

For years hence we hope to be able to continue our fine relationship.

In our new location we hope to serve you better.

GIFTS

COLLEGE PENNANTS

GREETING CARDS

FOUNTAIN PENS

TYPEWRITER SALES AND SERVICE

NEW TRADE BOOKS

VICTOR, BLUEBIRD, COLUMBIA AND DECCA RECORDS

(Listening Booth to select your classics)

## Wirtz' Corner

"Where M. C. students always stop for a minute or two."



*your host . . .*

BURLINGTON TRAILWAYS IS YOUR HOST WHEN YOU TRAVEL THE ROUTE OF THE "DIESELINERS." SEATS MAY NOT ALWAYS BE AVAILABLE DURING WARTIME—BUT WE CAN AND WILL SERVE YOU AS A GUEST SHOULD BE SERVED—WITH COURTESY.



2 Chicago - California Routes

DWAIN L. HAWLEY  
Agent

← UNION BUS DEPOT →

105 EAST BROADWAY  
Phone 2-1



## ART POTTERY

is always appropriate and appreciated as a Gift. Students, relatives and friends of students are invited to visit our factories, display rooms and beautiful sunken gardens.

**Western Stoneware Co.**

---

## Pillsbury Clothing Company

---

*EXQUISITE CUT FLOWERS!*

**Chas. A. Hewitt**

TELEPHONE 88

---

## Hawcock's Cafe

---

MARTIN MOTOR SALES  
PLYMOUTH AND DESOTO  
SALES AND SERVICE  
116-118-122 South First Street  
Monmouth, Illinois

---

MAKE SURE OF A

# GOOD PAINT JOB

For over Fifty Years we have furnished Monmouth with Quality Paints and Workmanship. We are proud of our Record and Grateful for the Patronage given us.

MOORE AND DUPONT  
PAINTS

IMPERIAL  
WALL PAPERS

# WOODWARD'S

108 EAST BROADWAY

MONMOUTH, ILLINOIS

LUMBER — COAL — BUILDING MATERIAL

*EVERYTHING TO BUILD ANYTHING!*



## **Diffenbaugh Lumber & Coal Co.**

509 SOUTH FIRST STREET

MONMOUTH, ILLINOIS

---

## **Brown Lynch Scott Company**

TWO STORE FOR YOUR CONVENIENCE

*WE INVITE YOU TO CALL*

628 SOUTH MAIN STREET

Always Room to Park.

230 SOUTH MAIN STREET

A Convenient Place to Park

MIRRORS GLASS VARNISH

**CARWILE'S PAINT  
STORE**

224 S. MAIN STREET      PHONE 865  
DECORATING  
WALLPAPER PAINTS SUNDRIES

COVERS

FOR THIS BOOK

WERE MANUFACTURED BY

**S. K. Smith Co.**

CHICAGO, ILLINOIS

*"MOLLOY MADE"*

---

Compliments

Industrial Chemical Laboratories Ltd.

OMAHA, NEBRASKA

---

Compliments of

**JOHN BLAUL'S SONS CO.**

BURLINGTON, IOWA

*DISTRIBUTORS OF FINE FOODS*

---

COMPLIMENTS OF THE

**DAVENPORT FISH COMPANY**

PRODUCERS AND DISTRIBUTODS OF ALL TYPES OF

*FISH AND SEA FOODS*

228 EAST THIRD STREET

DAVENPORT, IOWA

IF YOU WANT THE BEST, TRY OUR MERCHANDISE  
**TORLEY HARDWARE COMPANY**  
*IRON FIREMAN STOKERS — PLUMBING — METAL WORK*

PHONE US TODAY — 336

---

FINE FOOTWEAR AT  
**BOWMAN BROS.**

SOUTHEAST CORNER OF PUBLIC SQUARE

MONMOUTH, ILLINOIS

---

## **“Bread and Butter”**

THERE'S NO KEEPING THEM APART.

*STRAND BREAD AND GOOD BUTTER*

*MAKE A PERFECT MATCH.*

## **Strand Baking Co.**

# ALL THROUGH THE YEARS

- SINCE 1901 -

## THE LONGS' STUDIO

*has contributed, wholly or in part to the building of the photographic department of*

### *THE MONMOUTH COLLEGE RAVELINGS.*

*In reminiscing back—shortly after that time we remember the induction of Dr. Tom McMichael as President of Monmouth College. We loved him through the years and his wife, Minnie, and took a picture of him turning the keys of the College over to Dr. Jim Grier, with their responsibility as President.*

*During those first years we remember so well some of the students of that time, viz., Dr. Charles Wagner, Thomas McCrackin, Neil McClanahan, Dr. Charles Blair, J. Clyde McCoy, Dr. Arch Owen, and many, many others who after graduation have gone out in their chosen professions into all parts of the world. Many of the children of these same people have returned to Monmouth College and graduated with honor.*

*We have watched the College grow from the burning of Old Main into a college of many fine buildings and departments.*

*So through the coming years may Monmouth College still be the same college of fine arts and fine people she has always been in the past, is our prayer.*

## LONGS' STUDIO

# NEWBURY BROS. CLOTHING

-- CO. --

VISIT US FOR YOUR NEW  
WARDROBE AFTER THE WAR.

114 SOUTH MAIN STREET

MONMOUTH, ILLINOIS

---

## MONMOUTH HOMESTEAD and LOAN ASSOCIATION

*YES, you can start buying your post-war home NOW!*

War Bonds are part of the answer. If you are buying them you have a good start.

We will be glad to assist you in your plans for the future.

*BUY WAR BONDS — HERE!*

Member of Federal Home Loan Bank System.

---

## TABONE'S SHOE SHOP

SHOE  
SUPPLIES

SHINE  
PARLOR

Read The  
Review Atlas





## List of Advertisers

---

- |   |                                       |
|---|---------------------------------------|
| Anderson Drug Store                     | Maple City Floral Shop                |
| Barnes Brothers Grocery                 | Maple City Dairy                      |
| John Blaul's Sons Company               | Fred Martin—Insurance                 |
| Bowman Brothers Shoe Store              | Martin Motor Sales                    |
| Broadway Sandwich Shop                  | McCoy, J. C.—Real Estate              |
| Brown Lynch Scott Company               | McCullough Lumber and Coal Company    |
| Burlington Transportation Company       | Model Clothing Company                |
| Carter's Pharmacy                       | Monmouth Homestead & Loan Association |
| Carwile's Paint Store                   | Newbury Brothers Clothing Company     |
| Coca-Cola Bottling Company              | Norris Office Equipment Company       |
| Colonial Hotel                          | Parolee's Ready-to-Wear Shop          |
| Colwell's Department Store              | J. C. Penny Company                   |
| Cudd's Dry Cleaning                     | Peters Jewelry Company                |
| Commercial Art Press—Printers           | Physician's Directory                 |
| Davenport Fish Company                  | Pillsbury Clothing Company            |
| Dentists' Directory                     | Review Atlas Printing Company         |
| Diffenbaugh Lumber and Coal Company     | Rivoli-Bijou Theatres                 |
| Ford Hopkins Drug Store                 | Seybold Printing Company              |
| G. & B. Diner                           | Ada Scott—Jewelry and Gift Shop       |
| Nancy Graham, Women's Wear              | John Sexton and Company               |
| Graham—Tailor                           | Spurgeon Mercantile Company           |
| Hawcock's Cafe                          | Strand Baking Company                 |
| Hayes Bakery                            | Tabone Shoe Repair Shop               |
| Hewitt's Flower Store                   | Torley Hardware Company               |
| Illinois Bankers Life Assurance Company | Turnbull Funeral Home                 |
| Industrial Chemical Laboratories        | Western Stoneware Company             |
| Jahn & Ollier—Engravers                 | White's Furniture Store               |
| W. A. Jordan Company, Grocers           | White House Dairies Company           |
| Kimb'e's Store                          | Whit Craft Shop                       |
| Knepp's Ready-to-Wear                   | Wilson, Glenn E.—Jeweler              |
| Knoxville Mining Company                | Wirtz Book Store                      |
| Lugg, John—Funeral Director             | Woodward Wallpaper and Paint Store    |









