






THE RAVELINGS

1950

Monmouth College

Monmouth, Illinois



Digitized by the Internet Archive
in 2011 with funding from
CARLI: Consortium of Academic and Research Libraries in Illinois

The Class of 1950 Presents

The Ravelings

Shad Reed - Editor

Don Johnson - Bus. Mgr.

WE DEDICATE



Any words that we might use to characterize Dr. Owen seem somehow insignificant, for he is not only a great teacher, but also a very great man. While teaching English to Monmouth students, he inserts into his courses a basis for a way of life. Perhaps the only thing we can say is "Thank you, Dr. Owen, for the privilege of studying under you."

FEATURES

ORGANIZATIONS

CLASSES

SPORTS

FACULTY

ADVERTISEMENTS



Here we study . . . Carnegie Library



We worship in the chapel



Appreciation for art and music may be cultivated in the Fine Arts Building



Scientists are trained in McMichael Science Hall



Healthy bodies and fine sportsmanship are developed in the Gymnasium



Here we attend classes . . . Wallace Hall

FEATURES

When you turn to this, the feature section,
we want you to remember Monmouth,
1949 the rush of registration meeting
old and new friends on the Walkout the
shriek of the whistle calling us to class
Polescrap spring and fall dances coffee
in the Union Knox games chapel
every morning cutting classes in the spring
. . . . a year of memories Monmouth
1949



Monmouth is justly proud of her science department, for it is here that men and women are trained to help make a better world.

"Let's have a cup of coffee" . . . easily the most popular phrase heard about campus. How many hours we spend in the Union each day!



*Through knowledge and understanding we become better
fitted for life, both now and in preparation for future years.*



Recreation is an important part of our life at Monmouth, for here we have found friendships which will continue throughout our entire lives.





WALKOUT

The Walkout is a tradition at Monmouth. Sponsored by the "Y", it helps the freshmen become acquainted both with members of their own class and the upperclassmen.



POLESCRAP

The annual Polescrap, between the freshman boys and sophomore men, occurs one day in the early fall. Bruises and mud bring back memories of the conflict.



HOMECOMING

The Suburban leads the Homecoming parade. Stunt Night, football games, return of the Clan, and the gay dance are all part of Homecoming.



CANDLELIGHT SERVICE

Another Monmouth tradition is the Christmas Candlelight Service. Singing carols of many lands, the choir gives us another memory of college life.



MESSIAH

Under the direction of Mr. Hayes, the annual presentation of the Messiah achieved a new high. A special attraction was presented by the performances of the four guest soloists.



THIS IS IT

Unquestionably the most popular event of the year is Gracie's show. Guys and gals work together to put on a truly professional production.

THE OCTOPUS CLUB

The Octopus, senior men's honorary society, was founded in the spring of 1927 by a group of seniors who saw the need of an organization to bind together in harmony the various groups on the campus, and to thus carry on, as a unit, the traditions and ambitions of Monmouth College.

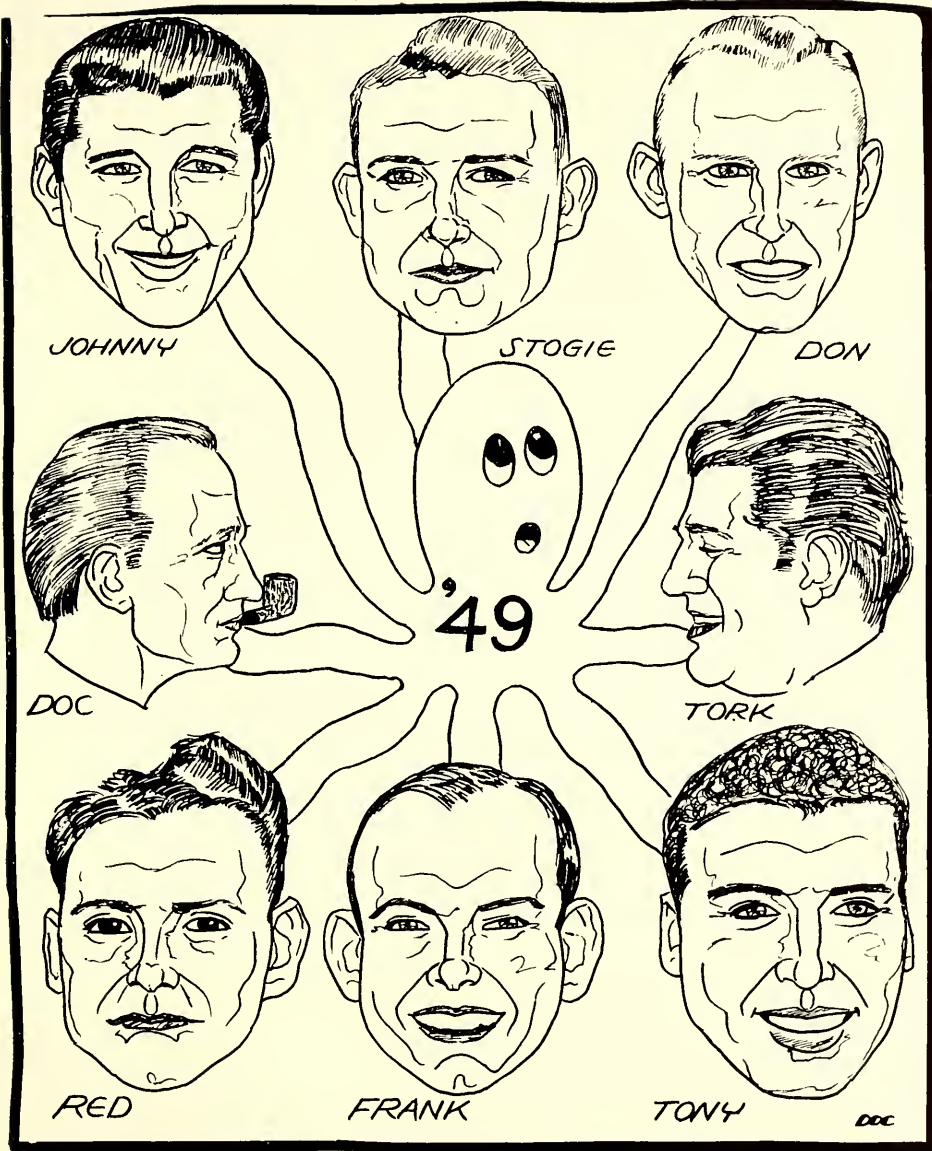
Banned from the campus in 1942 by a college order that forbade all secret organizations, the Octopus was reorganized and readmitted to campus recognition this year.

The eight seniors who comprise the Octopus are selected late in the spring of their junior year by members of the preceding class. The selection is based upon campus activities and contributions to campus life. The identity of members of the Octopus, by tradition, is revealed in the Ravelings that is published just prior to their graduation.

A scholarship fund to aid deserving underclassmen has been established this year. The award, in the amount of \$150, will be announced annually at the time of Commencement. The fund is provided by active and alumni members, who presently number 175.

Members of the Octopus for the past year were: John Goggin, Frank Testa, Don Tezak, Burrell Calhoun, Harold Poling, Don Whiteman, Don Johnson, and Tony Palese.

Professor Howard Jamieson is the faculty advisor for the group.



Tragedy



Trojan Women

CRIMSON MASQUE PRESENTS

Comedy



The Torchbearers

ORGANIZATIONS

PAN-HELLENIC COUNCIL



Row 1: Davis, Thompson, E. Buchanan, Pilchard.
Row 2: N. Buchanan, Enloe, Tubbs, Brown, Wilkin, Fuhr, Black, Felts.

Pan-Hellenic Council strives to maintain friendship and cooperation among the four national sororities on campus. This organization aids particularly during the busy rushing season. Activities can be planned by Pan-Hellenic Council which bring together the members of every group.

OFFICERS

President.....	Elsie Buchanan
Vice-President.....	Elaine Thompson
Secretary	Betty Davis
Treasurer	Margaret Pilchard

INTERFRATERNITY COUNCIL

This group meets once a month with the purpose of settling the differences, if any, which may arise between the men's organizations on campus. Two men from each of the four organizations are chosen to serve on the council. Unlike previous years, when the council sponsored an interfraternity formal dance, they decided to discontinue this practice.

OFFICERS

President.....Jim Torrence
Secretary-Treasurer.....Don Tezak

MEMBERS

Bud Lyman
Jack McGuire
Don Johnson

Ed Brown
Bud Kennedy
Jim Jirak



Row 1: Lyman, Torrence, Mr. Phillips, McGuire, Tezak.
Row 2: Jirak, Brown, Kennedy, Lynch.

PHI BETA PHI



Row 1: Schmetter, Thompson, Muirhead, Gardner, Larsen, Wehmiller.
 Row 2: Kern, Haun, Keating, E. Buchanan, McGinnes, Hatch, McBride, Gantner.
 Row 3: Trainor, Clark, Ray, Thiesen, Tubbs, Brattan, Ramsdale, Finley, Seidel, McCullough, Kimble, McBride, VanBershot, McDowell, N. Buchanan, Milward.

Illinois Alpha of Pi Beta Phi has had another successful year. In addition to her altruistic work at Settlement School in Gatlinburg, Tennessee, she has become the foster parent for a little Dutch girl. The Pi Phis have had a full social program which was highlighted by the traditional Twelfth Night Dinner.

OFFICERS

President.....	Elsie Buchanan
Vice-President.....	Jackie McGinnes
Corresponding Secretary.....	Martha Muirhead
Recording Secretary.....	Norma Kimble
Treasurer	Hazel Hatch

Pledge SupervisorGwen Keating
 Rush CaptainNancy Buchanan



Row 1: Latimer, Hilsenhoff, Phifer.
 Row 2: McDougall, McIntosh, Ranney, Peters.
 Row 3: Kopp, Clark.
 Row 4: M. Ramsdale, Lavine, Dailey, McKee, Weisner, Bradley, Shainer, V. Ray.

TAU KAPPA EPSILON



Row 1: C. Burke, LeVar, Brooks, Ford, Schwind, Santucci, Klug.
Row 2: Fenton, Alsen, Wade, Bruch, Slater, Shields, Keating.
Row 3: Heldermon, Kling, Thompson, Hoffman, Meyers, Anderson, Gray.
Row 4: R. Whiteman, Murray, Josephson, Schmetter, Adkisson, Gustafson, Ornst, A. Burke.



Row 1: Lemon, Gildemeister, McCaig, E. Brown, Mrs. Massingal, Torrence, Zimmerman, Kuntz, Scholten.
 Row 2: T. Johnson, Goggin, Whiteman, Picard, Forbes, F. Herschberger, Latham, R. Johnson, Morford.
 Row 3: Rechel, Kirck, Kendall, Hoover, McCaughey, Meloy, Fritz, Dorman, Struthers, Davis, Schweitzer.
 Row 4: Engstrom, Fosterling, N. Reid, D. Hershberger, Bastian, Fox, Forsythe, Wilcox, Avey, Wilford, Harkless.
 Row 5: Kleinkopf, Hartung, Burnett, Bruning, Ady, S. Brown, Yeager, Ward.

TKE came of age this year, having been activated here twenty-one years ago, in 1928. The TKE national organization also commemorated an important anniversary on January 10, with its "Golden Jubilee" celebration which signified fifty years of Tkedom. The big white house on Broadway was the scene of the annual pig roast in the fall, and festive open houses during the year.

TKE OFFICERS

Prytanis.....	James Torrence
Epiprytanis.....	John Lemon
Grammateus.....	Roger McCaig
Crysophylos.....	Edward Brown
Hypophetes.....	Joseph Zimmerman
Histor.....	William Kuntz
Pylortes.....	Henry Gildemeister
Hegemon.....	Richard Scholten

KAPPA KAPPA GAMMA



Row 1: VanDeusen, Davis, Turnbull, Burns, Tubbs, Gray.
 Row 2: Weakly, D. Goddard, Vidal, Wilkin, Danielson, Hocker.
 Row 3: Whiteman, Johnson.
 Row 4: Drayson, K. Goddard, Buschart, Pierce, Routsong, Wittberger, Plumer, Baehr, Walker, Schaniel, Sanderson, Beckwith, Brockway.

Alpha Chapter of Kappa Kappa Gamma has been kept busy this term with coffee clutches, rummage sales, formals, and other traditional activities. The Kappas are very proud of their newly decorated chapter room which was done this summer by their alumna. With charity work, social and scholastic activities, Kappa remains one of the busiest groups on campus.

OFFICERS

President.....	Mary Margaret Wilkin
Standards Chairman	Laura Vidal
Corresponding Secretary.....	Barbara Whiteman
Recording Secretary.....	Elizabeth Routsong
Treasurer.....	Dorothy Walker

Pledge Captain Dorothy Goddard

Membership Chairman..... Rica Tubbs



Row 1: Atkinson, Black, Denniston, Larson, Beaumont, McGrew, Halbert, McAllister.
Row 2: Acosta, Tunbull, Zinger, Cameron, Thompson, Wilmont, Noyes, Castle.
Row 3: Barnhart, Bischman, Ballentine, Deschwanden, White, D. Berry, B. Berry, Watt,
Hansen, Campagne, Wittberger, Phillips.

ALPHA TAU OMEGA

Members not shown in picture:

D. Wilkens

W. Ellerby

G. Brown

G. Stewart



Row 1: Bashaw, W. Anderson, Rambosh, Dyle.

Row 2: Vance, Bahm, Smit, Stiss, Hiett, Cobo, Knox.

Row 3: Brandt, Alden, Witter, Laydem, Danowitx, Matis, McCoy, Propernick, Miller,
Kelley, Strand.



Row 1: Ginter, D. Sachs, Bowman, Stewart, Clark, White, D. Tubbs, Towsley, Julinson.
 Row 2: Murphey, Scheldrup, Wasson, McClintoch, Calhoun, Schmitt, Frimire, Congdon, Pratt, Anderson.
 Row 3: Mikesell, Van Dyke, Matson, W. Robb, Johnson, Tezak, E. Sachs, Kost, Baird, Sauer.
 Row 4: Jackson, Fleming, Staudenbaur, Daw, Chew, Francis, Lynch, Cook, Porter, Camp, Hamnett, Holiday, C. Anderson, Marshall, Weymueller, Missavage, Grey, Carmichael, H. Tubbs, Davis, Cashin.

Residents of the "house on the hill," the ATO's have been active again this year in all phases of campus activities—Homecoming, placing members on the varsity basketball and football teams, entertaining guests at their traditional Christmas tea, and Hallowe'en party. A big event for the Alpha Taus is their annual journey to Terre Haute for "State Day."

OFFICERS

Worthy Master.....	Donald C. Tezak
Worthy Chaplain.....	Donald E. Johnson
Treasurer.....	Edward C. Sachs
Scribe.....	R. Walker Robb
Keeper of Annals.....	Ray Van Dyke
Worthy Usher.....	Donald W. Baird
Worthy Sentinel.....	Robert T. Matson
Social Chairman.....	William J. Cashin

KAPPA DELTA



Row 1: Shaw, Moffat, Stevenson, Pearson, Clark, Schmucker, Tarbox.
 Row 2: Rogers, McMicken, Johnson, Enloe, Ohlinger, Fulljames, Brown, Pilchard.
 Row 3: Ray, Simmons, Huey, Hogue, Heindrichs, Martin, Bovard, Oelze, Kleinsmith, Wagner, Jacobs, Dahlbo, Wilner, Price, Niemann, Premer, Dykhuizen, Jackson, Lamb.

Kappa Delta was founded on October 23, 1897 at Virginia State Normal, Farmville, Virginia. National Kappa Delta came to this campus in 1936, having existed previous to that time as local Theta Chi Mu. During the years that followed, the girls of the diamond pins have been workers, leaders, and followers of Monmouth.

OFFICERS

President.....	Roberta Enloe
Vice-President	Betty Ohlinger
Secretary	Elaine Johnson
Treasurer.....	Elaine Fulljames



Row 1: Ericson, Garst, Black, Trushinski, Jackson.
Row 2: Schlemmer, Hulsebus, Enloe, McDonal, Masher, Schlemmer.
Row 3: Tomlin, Collett, Huston, Bond, Long, Gustafson, Stewart, Carnaby, Gillette, Brown.

THETA CHI



Row 1: Wheeler, Nicholas, Ferguson, Benson, Statler, Symons, C. Jirak, D. Simon.
Row 2: Stanslaw, Chicoine, Shaft, Mrs. Ira Coulter, DeMorest, Shebeck, Miller.
Row 3: Grant, Christie, Lunoe, Emons, Moysey, Owen, Bull, Bengson, Atkinson, R. Foster,
F. Foster, R. Simon.



Row 1: N. Anderson, Shenenberger, Fosse, Eighmy, Chatfield, Chestnutt, Barker, Walker, Haskell.
 Row 2: Walton, Timmons, Ralston, Hughes, Lyman, Harvey, Jirak, McGaughy.
 Row 3: Testa, Basinger, Carlsten, Slayton, Follett, Putzier, Weber, Farrar, Fredrickson, Turnbull, Hayward, McCosh, Johnson, Ivey, Carpenter, Shaw.

The Theta Chi's began the 1948-1949 term with a bang, being outstanding in first of all the Homecoming events, taking first prize on their float and second in house decorations. Their social program has been filled with open houses, formal dances, and their traditional tea dances. A membership including 40 actives and 29 pledges has bolstered the "Ox Club" to a prominent place on campus.

OFFICERS

President.....	Walter Lyman
Vice-President	George Hughes
Secretary.....	William Harvey
Treasurer	James Jirak

ALPHA XI DELTA



Row 1: May, Rogers, Hessler, Calhoun, Peyton, Grabau, Haag.
 Row 2: Black, M. K. Hofstetter, Fuhr, M. Hofstetter.
 Row 3: Sineni, Meeks.
 Row 4: Forsythe, Felts, Thompson, Acheson, Smith, Shaver, Sweeny, Lambers, Spethman, Reineche, Gradous, Elliot, Sigfusson, B. Smith, Kilpatrick, Milow.

Alpha Xi Delta was founded in 1893 at Lombard College, Galesburg, Illinois. Beta Epsilon Chapter came to Monmouth College in 1932. Having completed another year of activities with teas and prize-winning floats, the girls of Beta Epsilon Chapter are looking forward to the Alpha Xi national project of helping underprivileged children of America.

OFFICERS

President	Laura Fuhr
Vice-President	Mary Kay Hofstetter
Recording Secretary.....	Jo Anne Black
Corresponding Secretary.....	Ruth Forsythe
Treasurer	Marilynn Hofstetter

Pledge Mistress.....Agnes Kilpatrick



Row 1: Johnson, Searle, Hill, Young.
 Row 2: Bertelson, Robertson, Bossow, Klang, Haas, Chatten.
 Row 3: Walker, Walden, Dickson, Owen, Brown, Howell, Lauer, Kinney, Calsen.

SIGMA PHI EPSILON



Row 1: Fleming, Miller, Callahan, Spirakes, H. Laferty, Leslie Foster.
Row 2: Vial, McDonald, Johnson, Lewis Foster, Davidson, J. Laferty, Tait, Dolan.
Row 3: Behnke, Thompson, Gladfelter, Carlsten, Swanson, Drake, Duvall, Goulden.
Row 4: Veitch, R. Laferty, Lantzy, Campbell, Felmley, Roper, Merido, Anderson, Miner, Logan.



Row 1: Cutler, Hofbauer, McGuire, Poling, Kennedy, Sympson.
 Row 2: R. Feeheley, Ken Ketcham, Linton, Fassett, Wickstrom, Sieving.
 Row 3: Mahler, Lehmann, Bradon, McKinley, Petrie.
 Row 4: Smick, Spirakes, Nixon, Keith Ketcham, Duxstad, Mathis, J. Feehley.

Sigma Phi Epsilon is the baby fraternity on campus. Starting as a local fraternity in the spring of 1948 it joined the national group, Sigma Phi Epsilon. Formal installation as the Illinois Gamma Chapter came May 22, 1948. The Sig Ep's acquired a house in the summer of 1948 and now takes its place among the brotherhood of fraternities on Monmouth's campus.

OFFICERS

President	Jack McGuire
Vice-President.....	Harold Poling
Secretary.....	Bud Kennedy
Comptroller	Bob Hofbauer
Historian.....	Bob Sympson

INDEPENDENT COUNCIL



Row 1: Heynecher, Wyson, McLean, Peasley.
Row 2: Wharff, Buchanan, Lesch.

The Independent men's and women's groups, meeting separately, function together through weekly meetings of the Independent Council composed of the officers of both groups. The organizations' chief aim is to provide social activities for non-fraternity and non-sorority students.

INDEPENDENT MEN

The reorganized Independent Men's Club came into being in September, 1948. This group is not connected with the Independent Women's Association as in past years, but the two groups co-operate in work and recreation. There are now more than forty members. The Independent Men's Club has proven its worthiness, and it faces the coming years with confidence.

OFFICERS

President.....	Keith Wharff
Vice-President	Bob Buchanan
Secretary	Walter Scott
Treasurer.....	Warren Lesch



Row 1: John Doe, Smallwood, Churchill, Smith, White, Hargraves, House, Chestnut, Gibson, Shields.
 Row 2: Miller, Robinson, Patton, Wharff, Johnson, Lesch, Hansen, Brown, Medhurst, Buchanan.
 Row 3: Hay, Ross, Leiper, Sage, Bailey, Vittori, Boggs, Laterbach, Wedan.



Row 1: Davis, Langford, Kennedy.
 Row 2: Beernick, Beck, Hackman,
 Moffat, Peterson.
 Row 3: Monahan, Davis, Thompson,
 Craig, S. Reed, Carlisle, Cornelius,
 Stewart.



Row 1: Turnbull, J. Stewart, McMullen.
 Row 2: Lammellie, Sjöholm, Negley,
 Milligan, Barnett.
 Row 3: Pool, Spicer, Arnold, Plunkett,
 Jean Metcalf, McClay, Peterson,
 E. Reed.



Row 1: Ericson, Sutherland, Morsch.
 Row 2: Jo Metcalf, Frueh, Baker,
 Hemmer, Johnson.
 Row 3: Holmquist, Meier, Lynn,
 Wolford, Lehera, Widule, Schultz,
 McWilliams.

INDEPENDENT WOMEN



Peasley, McLean, Wysong, Heyneker

Working in cooperation with the Independent Men's Club, the Independent Women plan social activities for the women of the campus who are not affiliated with the sororities. The annual fall and spring formals are among the social events, but their activities do not end here, for after-game parties, the Christmas party for under-privileged children, and skating parties are included in their calendar.

OFFICERS

President.....	Noreen Heyneker
Vice-President	Mary Peasley
Secretary.....	Marilyn McLean
Treasurer.....	Martha Wysong

TAU PI



Danielson, Enloe, M. K. Hofstetter, Hatch, Wilkin, Turnbull, Buchanan

Tau Pi is the local organization on the campus which corresponds to Mortar Board. It was founded by Mary Ross Potter and initiated its seventeenth class in May, 1948. Girls who achieve the finest ideals of womanhood are taken at the end of their junior year and make up the active membership during their senior year.

OFFICERS

President.....	Hazel Hatch
Vice-President.....	M. K. Hofstetter
Secretary-Treasurer.....	Nancy Turnbull

SIGMA OMICRON MU

Monmouth's honorary scholastic fraternity, Sigma Omicron Mu, each semester sponsors a Scholarship Day, when the juniors and seniors who have met the high requirements are invited into the society. The organization also gives a banquet for freshmen, in the spring. These are both impressive occasions, yet they are often equaled in the memories of members by a less formal picture of afternoons, after initiation, at Dr. Owens'—talking and eating Mrs. Owens' cookies.

OFFICERS

President.....Hazel Hatch
 Vice-PresidentMarion Danielson
 Secretary-Treasurer.....Jim Jirak



Row 1: Forsythe, Colvin, Hatch, Danielson, Johnson, Price.
 Row 2: Sympson, Whiteman, McLean, Ellsworth, Oyler, Poling, Jirak.

SIGMA TAU DELTA

Sigma Tau Delta is a national honorary English fraternity which fosters creative writing, appreciation of good literature, and stimulating fellowship. Membership in the chapter is limited to twenty-five student members. Monthly meetings are held at which original papers are read, and each spring the organization sponsors a freshman contest to promote interest in creative work. The group's faculty adviser is Dr. C. A. Owen.

OFFICERS

President.....	Roberta Enloe
Vice-President	Marion Danielson
Secretary	Audrey Meier
Treasurer	Jean Hodge



Row 1: Danielson, Hodge, Enloe, Meier, Hatch.
 Row 2: Hofstetter, Johnson, Pool, Turnbull, McClenahan, Ericson, Reed.
 Row 3: Calhoun, Robinson, Dr. Owen, Whiteman, Anderson.

BETA BETA BETA



Row 1: Hargrave, Patton, Milow, Boles, McKissick, Wysong, Nice, Lesch, Allaman.
 Row 2: Hemmer, VanBerschoot, Whiteman, Martin, Beernink, McMullen, Simmons, Boverde, Mrs. McIntyre.
 Row 3: Mr. Frazier, Fitch, Johnson, Ketchem, Feeheley, Shields, DeMorest, Carpenter, Hansen, Dr. Reid.

Tri-Beta is the national honorary biology fraternity. Its aim is to encourage and stimulate biological research. Membership is divided into active and provisional membership. Prospective active members must be provisional members for one year, and must undertake a project. It is generally, then, the programs in conjunction with these projects that make up the program at the regular meetings of the group.

OFFICERS

Sponsor.....	Dr. W. Malcolm Reid
President	Warren Lesch
Vice-President	Shirley Nice
Secretary.....	Martha Wysong
Treasurer.....	Loren Allaman
Historian.....	Barbara Whiteman

ZETA KAPPA EPSILON

Our local history society, ZKE, became "past history" at Monmouth on December 9th, 1948, when it was replaced by the installation of Beta Phi chapter of Phi Alpha Theta, the national honorary history fraternity. ZKE was formed in 1941, and it dedicated itself to the common interest of its members—the broad and exhaustive study in historical research. The local group felt itself fortunate in obtaining Phi Alpha Theta's charter, with membership substantially the same.

OFFICERS

Faculty Advisor.....	Dr. F. Garvin Davenport
President.....	Don Baird
Vice-President.....	Dick Garabrant
Secretary.....	Arlyn Verploeg
Treasurer.....	Rosemary Felts



Row 1: Ives, Felts, Dr. Davenport, Hofstetter, Verploeg.
Row 2: Shebeck, Moore, Wiley, Garabrant.
Row 3: Kuntz, Baird, Porter.

INTERNATIONAL RELATIONS CLUB



Row 1: Clark, VanBerschot, McWilliams, Moore, E. Buchanan, Kimble, Black, Haun.
 Row 2: Huey, Brattain, Carlson, Kern, McGinnis, Finley, Tubbs, Hofstetter.
 Row 3: Johnson, Duxstad, Brandon, Anderson, Lynch, Shebeck, Matson, Strand, Dr. Gamer.
 Row 4: W. Komatsu, M. Komatsu, Kost, Sachs, Porter, R. Buchanan, Camp, Veitch, K. Johnson.

The International Relations Club is affiliated with similar clubs all over the country which were established and are aided by the Carnegie Endowment. The purpose of the club is to foster an interest in international relations, and to promote knowledge and understanding of the problems which confront the young people as citizens of the world. The membership is made up of persons interested in the social and political sciences and the role they play in world affairs.

OFFICERS

President.....	Byron Moore
Vice-President	Paul Bird
Publicity	Bob Buchanan
Secretary-Treasurer	Marilyn Hofstetter
Faculty Advisor.....	Dr. Gamer

RIFLE CLUB

The Rifle Club is divided into two parts—the men's and the women's divisions. Each engages in inter-school matches, and each enters the National Collegiate Rifle Tournament, in the spring. The teams try to have at least one away from home trip, and one or two matches here. Two of these matches are usually with Knox College. The Rifle Club has been handicapped in recent years by the lack of students sufficiently interested in the organization.



Row 1: Rogers, Lauer, Davis, Thompson, J. Sachs, Hatch, Anderson, Carlson.
Row 2: J. McBride, Vidal, Schaniel, Dial, E. Sachs, Bowman, M. McBride, Atkinson.
Row 3: Mr. Frazier, Medson, Johnson, Anderson, McCoy, Lesch, Strand.

CAMERA CLUB



Row 1: Leiper, Dykhuizen, Lauer, Peterson, Morgan.
 Row 2: Petrie, Harvey, Brown, Johnson.
 Row 3: Yeager, Scott, Robinson, Struthers.

To further the interests of photography on campus is the purpose of the Monmouth College Camera Club. Open to all students and faculty who have an interest in photography, the club maintains a darkroom in the basement of the Fine Arts Building which is open to members at all times.

OFFICERS

President.....	Chuck Morgan
Vice-President	Bill Petrie
Treasurer.....	Bob Leiper
Secretary.....	Jane Dykhuizen
Advisor	Dr. Ralston

ORACLE



Row 1: Vidal, Pilchard, Wilkin, Burns, Forsythe, Beatty, Daley, Latimer, Hofstetter, Hatch, Tornquist.
 Row 2: Mercer, McGinnes, Shaw, Ohlinger, Pierce, Turnbull, Weakly, Walker, Wieser, Kapp, Matson.
 Row 3: E. Brown, Calhoun, Wharff, S. Brown, R. Johnson, Gardner, Robinson, Webster, Camp.
 Row 4: Layden, Kelly, R. Whiteman, Nichol, D. Whiteman, Porter, McGuire.

As usual, the *Oracle* was the favorite publication this year. Under the more than capable editorship of Ed Brown, the *Oracle's* popularity reached an all-time high. Ed and his staff did the proverbial sweating of blood to meet their deadlines, but the rush to Wallace Hall each Saturday testified to the fact that the finished product was worth their effort. Not many students noticed the change in size of the paper which added a column on each page. Did you?

OFFICERS

Editor.....Ed Brown
 Business Manager.....Stan Brown

BOARD OF PUBLICATIONS

Chairman.....Ed Brown

Secretary.....Dave Fleming

To act as publisher is the aim of the newly formed Board of Publications. Composed of the editor and business manager of the current *Oracle*, the editor and business manager of the previous *RAVELINGS*, Mr. Fleming, Mr. McMichael, and Mr. Jamieson, the board has as its purpose the unification of the college publications, although the members do not decide editorial policies.



Mr. Jamieson, Mr. McMichael, E. Brown, Mr. Fleming, S. Brown, J. Forbes.

RAVELINGS

Everything from shrieking for pictures of the students to soliciting for advertising goes into the publication of the book which you are now holding. The staff has worked many hours to be able to present the RAVELINGS of 1950 to Monmouth. Shan and Don have worked as trailblazers for, if not bigger, better books for the future.

EditorShan Reed
Business Manager.....Don Johnson



Row 1: Austin, Eggleston, Muirhead, Black, Reed, McConnell, McLean, McClenahan, Davis.
Row 2: Felmley, Gardner, Lynch, Routsong, Acosta, Robb, Stewart, Smith.
Row 3: Veitch, Buchanan, Foster, Johnson.

C. C. A. COUNCIL



Row 1: Carlson, Negley, Danielson, Howard, Haun, Bovard, Weakly.
Row 2: Robb, Scott, Kuntz, Ralston, Shields.

The Council of the Campus Christian Association is composed of the chairmen of the music, worship, and publicity committees of the Y.M. and the Y.W. Together they plan the Monday evening meetings of the Campus Christian Association and sponsor Religious Emphasis Week.

COLLEGE CHOIR

The primary purpose of the Monmouth College Vesper Choir is to provide the music—as their name implies—for the monthly vesper services in the chapel. From this group, approximately half are chosen for Monmouth's Tour Choir. This smaller group, chosen for voice, musicianship, and cooperation, consists of about thirty-two voices, and entertains in Illinois and Iowa, throughout the spring vacation, and later several weekends.



Row 1: Frymire, J. Shaw, Shebeck, W. Shields, Villalba, A. Johnson, D. Smith, Hayes, Arnold, Beaumont, Forsythe, Duncan, D. Ralston, Ruble, D. Hershberger.
Row 2: Jacobsen, Patton, Deal, Davis, Howard, Negley, A. Dykhuizen, McKissick, McIntosh, Black, Hilsenhoc, Schultz, Pierce, Calven, Bailey, Turnbull, Meloy, Pratt.
Row 3: B. Bailey, Meyer, Reineche, Lamberts, Sweeney, Snyder, F. Deal, Hogue, Hill, Felts, Carlson, Shaver, Matson, Wagner, Kennedy, Hoover, Behm.

CHORALE



Row 1: Schlemmer, Tubbs, Levine, Bonnema, Peters, McKelvey, Grabou, Thompson.
Row 2: D. Johnson, R. Johnson, Miller, Leiper, Matson.

MONMOUTH COLLEGE CHORUS



Row 1: Black, Ray, Clark, Cameron, Gillett, Mr. Hayes, Lauer, Ralston, Turnbull, Sutherland, Johnson.
Row 2: Garst, Metcalf, Enloe, Walker, McKee, Rosenbrang, McBride, M. Turnbull, Payne, Kopp, Stetson.
Row 3: Snyder, Brown, Shields, Webster, Klug, Brush, Kling, Quanstrom, Clark, Symons.

AMERICAN CHEMICAL SOCIETY

The student affiliates of the A.C.S. are organized for the benefit of all chemistry students with a professional interest in that field. Members are aided through mutual exchange of knowledge, cooperation in projects, and bringing the work at Monmouth College to the attention of prominent men in education, industry, and research.

OFFICERS

President	George Lauterback
Vice-President	Robert Feehley
Secretary	June Pearson
Treasurer	Fred Hanna



Row 1: Pearson, Achison, Burns, Campbell, Price, Shaw, Oyler, Schultz, Whiteley, Sjholm.
VanDusen.
Row 2: Lauterbach, Zimmerman, Patton, D. Johnson, Murman, Foster, Clark, Gossett,
Hannan, McIntyre.
Row 3: Mr. Thiessen, McDay, Sympson, Lesch, Hay, Medhurst, Hansen. McClintoch,
Mr. Haldeman.

ICTHUS CLUB

Ichthus is the Christian life-service club of Monmouth College. Its active members are those who plan to go into full time Christian service. The fellowship members are those actively interested in Christian work, other than professionally. The name refers to the early Christian symbol of Christ—Ichthus, the fish.

OFFICERS

President.....	Audrey Meier
Vice-President.....	Marilyn Clark
Secretary-Treasurer.....	M. K. Hofstetter
Social Chairman.....	Harry VanFleet



Row 1: Scott, Hofstetter, Meier, Clark, Gibson.
 Row 2: Colvin, Peterson, Hill, Lauer, Howard Widule, Tornquist, Peasley, Wysong, Beer-
 nick, Ericson, Gantner, McKissick, Metcalf, McLean, McMicken.
 Row 3: Sage, Danielson, Bovard, Wolford, Baehr, L. Anderson, Pool, Hogue, Bollman,
 Walden, Schumucker, Jacobs, Ohlinger, Sjolholme, Peters, Leiper.
 Row 4: DeVitalis, Meloy, Deegan, Deal, Bonnema, Carlson, McKinney, Rinder, Bond,
 Miller, Nordquist, Johnson, Churchill, Leiper.

Y. M. C. A. CABINET

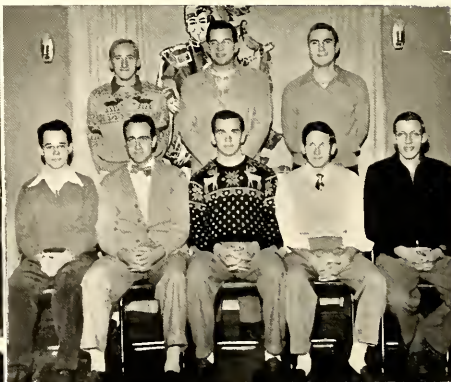
The Young Men's Christian Association is a fellowship of those who, by a common, supreme loyalty to Jesus Christ and His way of life are naturally and inevitably drawn together. As individuals and as a group, the members strive in the building of the Kingdom of God, which is the establishment of the rule of love, truth, right, and good will.

OFFICERS

President.....	Bill Kuntz
Vice-President.....	Roger Fritz
Secretary.....	Robert Walker
Treasurer.....	Art DeVitalis



Row 1: Shields, Gibson, Hartung, Carlsten, Anderson, Churchill.
Row 2: Johnson, Johnson, Calhoun, Sage.



Row 1: Scott, Wharff, VanFleet, Wehymueller, Ralston.
Row 2: DeVitalis, Kuntz, Fritz.

Y. W. C. A. CABINET

When the school year begins, the Y.W.C.A. Cabinet is busy welcoming the freshmen in the form of teas, mixers, and song-fests. Its Big Sister plan helps a lot of new students over the rough spots. Nearly every girl on campus is a member of the Y, which helps to make it one of the most active organizations on campus. Through cooperation, the girls seek to work deep of charity and come nearer to living a truly Christian life.

OFFICERS

President.....	Marion Danielson
Vice-President.....	Audrey Meier
Recording Secretary.....	Hazel Hatch
Corresponding Secretary.....	Mary K. Hofstetter
Treasurer.....	Roberta Enloe



Row 1: Haun, Negley, Howard, Brown, Clark, Price.
Row 2: Carlson, Hogue, Smith, Walker, Weakley,
Goddard, May, Bovard.



Row 1: Hofstetter, Meier, Danielson, Enloe, Mc-
Kissick.
Row 2: Keating, Wilkin, Hatch.

GOSPEL TEAMS



Row 1: Deegan, Churchill, Gibson, Hansen, Sage.
Row 2: Kuntz, Miller.



Row 1: Anderson, Howard, Hofstetter, Carlson, McKinney.
Row 2: Matson, Bailey, VanFleet, Anderson.

The Gospel Teams are sponsored by the Christian Heritage quarter of the Y.M.C.A. Circle of Faith. For some years Monmouth College has been represented in local and distant church pulpits by young men and women who have made use of this opportunity to do active witnessing during their undergraduate careers. The number of members reached an all time high this year. Each team has four members who offer a free will service to any church.

LEADERS

Harry VanFleet, Bill Kuntz, Justin Miller, Dick Gibson

SOCIOLOGY CLUB



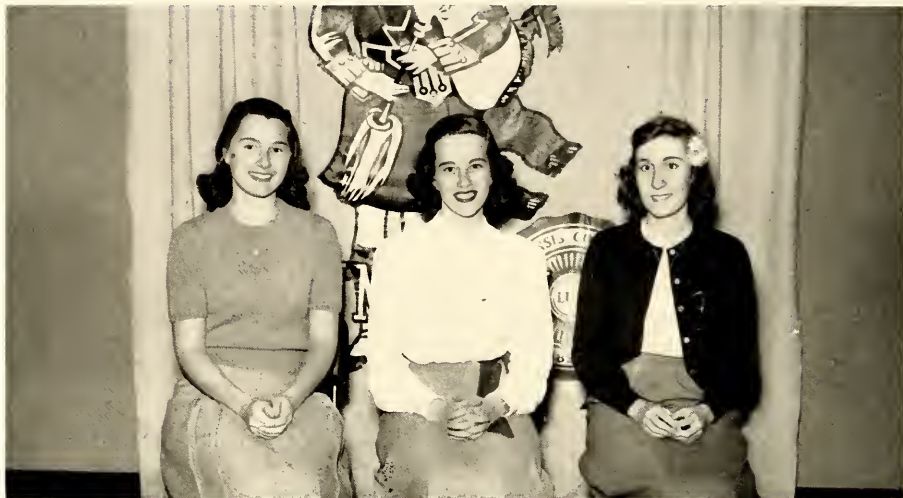
Row 1: Muirhead, Wysong, McWilliams, McGinnes, Haun, Keating, McMicken, Clark, Lamb, Gardner.
 Row 2: Huey, Young, Langford, Thompson, Speer, VanBerschoot, Kimble, Hart, Kern, Brattain.
 Row 3: Finley, Pierce, Sachs, Stewart, V. Stewart, Duncan, Black.
 Row 4: Felmley, Dolan, McQuisten, Lynch, Stewart, Johnson.

In its second year on campus, the Sociology Club has served its purpose well—that of acquainting interested students with the problems of our society, and giving an insight into the vast field of social work. Monthly meetings have centered around films and lectures by professional workers in the field of sociology. Membership is not limited; an interest in society and its problems is the sole requirement.

OFFICERS

President	Virginia Haun
Vice-President.....	Gwen Keating
Program Chairman.....	Ellen Robeson
Secretary-Treasurer.....	Lois McMicken
Publicity.....	Jackie McGinnes
Faculty Advisor.....	Dr. LeRoy Huff

NATIONAL COLLEGIATE PLAYERS



Doris Colvin, Elsie Buchanan, Betty Smith

The aim of the National Collegiate Players is to encourage participation in dramatic performances, play writing, and the study and appreciation of all phases of drama. Membership is by petition to the national organization, and eligibility requires varied and extensive drama and speech courses in school, liberal acting experience, and also experience in technical work in the legitimate theatre.

PI KAPPA DELTA

Pi Kappa Delta is the National Honorary Forensic Fraternity. The purpose of the fraternity is to encourage forensic activity on the campus. Students may become members after two years of speech work, and after representing the college in inter-collegiate forensics. The organization is allowed a certain budget by the college, and is even given the use of the college station wagon for out-of-town trips—uh, for ten cents a mile.

OFFICERS

PresidentRoger Fritz
 Secretary-Treasurer.....Elsie Buchanan



Row 1: Buchanan, Wilken, Burns, Vidal, Hofstetter.
 Row 2: Nixon, McGaughey, Whiteman, Patton, Fritz.

CRIMSON MASQUE

Crimson Masque has been and is trying to get good dramas—good literature—to the Monmouth stage. In its four plays this year it has also kept a good balance between comedy and tragedy. In addition to its weekly meetings, the Masque has special meetings, regularly, for the purpose of supplementing the stage knowledge of members. In addition to their schedule, the Masque sponsors one-act plays, which serve as Masque tryouts, and, in the spring, freshman plays.

OFFICERS

President.....	Betty Smith
Vice-President.....	Elsie Buchanan
Secretary	Martha McKissick
Business Manager.....	M. K. Hofstetter
Program Chairman.....	Jim Shields
Publicity.....	Glen Hunt, Doris Colvin



Row 1: Eggleston, McBride, M. K. Hofstetter, McKissick, Buchanan, Smith, Colvin, Van-Deusen, Peasley, Moffat, Boles, Sachs, Tubbs.
 Row 2: Lambers, Beernich, Muirhead, M. Hofstetter, Grados, Wilkins, Vidal, Burns, Faus, Calhoun, Ohlinger, M. Rogers, Neemann, L. Rogers, Peyton.
 Row 3: Jacobs, McCullough, Wilner, VanBershot, Keating, Sweeney, Sigfusson, McBride, Weakley, McClenahan.
 Row 4: Boles, Churchill, Lynch, Shields, Porter, Boggs, Hay, Bailey, Walker, Lesch, Hunt, Hansen, Bengson.

PI ALPHA NU



Row 1: Hayes, Reineche, Pierce, Tubbs, Shaver,
Hamilton.

Row 2: Davis, Carlson, Huey, Buchanan.



Row 1: Grabau, M. Johnson, Hogue, A. Johnson,
McKissick, Stewart.

Row 2: Shields, Gardner, Noyes, Hill, Anderson,
Gaudy.

Pi Alpha Nu is an organization of campus musicians organized to establish a closer fellowship among these individuals, to promote better standards of study, work and performance, and to further the cause of good music. One of their important projects has been to found an all-school music scholarship. The aim of this scholarship would be to encourage good musicians to come to Monmouth. In this direction, the organization gave a fund-raising Operetta-Minstrel this year.

OFFICERS

President	Rica Tubbs
Vice-President	Charlotte Pierce
Secretary	Joan Reinecke
Treasurer	Kenneth Giles

PEP CLUB

The purpose of the Pep Club is to promote a stronger feeling of school spirit among the members of the student body. The Pep Club sponsors the Highland Fling during the football season and also sells favors during basketball season. Membership is limited to twenty-five.

OFFICERS

PresidentJo Weakley
 Secretary-Treasurer.....Jeanne Black
 Sponsor.....Mrs. Mings



Row 1: Pilchard, Danielson, Weakley, Fuhr, Enloe, Smith.
 Row 2: Pierson, Rodgers, Wilkens, Price, Simmons, Brattain.



Row 1: Haun, Black, Grey, Faus, Fredenhagen, McCullough.
 Row 2: Speer, Heyneker, Turnbull, Plumer, Burns, Wilner.

WOMEN'S ATHLETIC ASSOCIATION



Row 1: Price, Davis, Sjöholm, Brockway, VanDeusen, Huselbuss, Lamb, Peterson, Whiteman, Campbell.
 Row 2: Anderson, Fuljames, Brown, Langford, Smith, Wilkins, Clark, Charlson, Calson, Walker.
 Row 3: Pilchard, Huey, Austin, Vidal, McClenahan, Burns, Dalbo, Wilner, Spethman, Weakley, McGrew.

The purpose of the Women's Athletic Association of Monmouth College is to encourage healthful recreation through participation in both individual and team sports. Membership is open to any woman after she has participated one semester in the varied program.

OFFICERS

President.....	Barbara Whiteman
Vice-President.....	Joann Weakley
Secretary.....	Ann Campbell
Treasurer.....	Linda Simmons

STUDENT BODY OFFICERS



Black, Whiteman, Wickstrom, Testa

Furthering student government was the big job of our four student body officers this year. President Don Whiteman, Vice-President Burney Wickstrom, Secretary Jo Black, and Treasurer Frank Testa accomplished many things during this term of office—not the least of which was the skating party for the entire student body that frosty January evening. Possibly some of their work was more important, but none so popular.

STUDENT COURT

The five people pictured below have had the most thankless task in Monmouth College during the past year. Their job was to judge the students, deciding whether or not they were guilty of dishonesty during examinations. This is an integral part of our student government, and worthy of much praise, although the group received little publicity.



Row 1: Danielson, Hatch.
Row 2: Wharff, Buchanan, Poling.

STUDENT FACULTY COMMITTEE



Row 1: Enloe, Miss Liedman, Wilkin, Buchanan, Mrs. McIntyre.

Row 2: Mr. Phillips, Dr. Grier, Mr. Jamieson, Wickstrom, Wharff, Whiteman, Tezak, Buchanan.

The Student-Faculty Committee brings the faculty and students of Monmouth College together, so that each may see more clearly the viewpoint of the other, thus promoting cooperation on the campus. This group takes action on any problems which are brought up in Student Council which may affect the college as a whole.

STUDENT COUNCIL

Practical experience in democracy is given to the students by the processes of the Student Council, for college government is in the capable hands of these people. Any broad change in the rules is usually suggested by the Council and then presented to the student body for acceptance or rejection. As in the past, this year it has tried to emphasize the importance of honesty on our campus.



Row 1: Wagner, Beaumont, Brown, Chattan, Black, Danielson, Whiteman.
Row 2: McGuire, D. Whiteman, Shields, Smith, Anderson, R. Whiteman, Testa, Nixon.
Row 3: Whatff, Brown, Torrance, Kuntz, Buchanan, Wickstrom, Lyman, Stewart, Tezak.

HOOT MEN



Row 1: Gibson, Sage, DeMorst, Shaft, W. Shields, Patton, Bermann.
 Row 2: McDade, Dolan, Daw, Ginter, Burnett, Engstrom, Carlsten.
 Row 3: Churchill, Hansen, Nixon, Sachs, J. Shields, Felmley, Kost, Schmidt.

To create a closer feeling among the students by rousing their school spirit, is the purpose of the boys who wear the little red beanies, better known as the Hoot Men. All members are volunteers, acquired by a quota system from all fraternities, classes, the M Club, and Independents.

OFFICERS

President	Smiley Burnett
Vice-President	Hugh DeMorest
Secretary-Treasurer	Rollin Bell
Faculty Advisor.....	Howard Jamieson

PI GAMMA PI



Row 1: Whitely, Schaniel, Mercer, Van Deusen, Oelze, Hill.
Row 2: Ericson, Pool.

Pi Gamma Pi is the freshman women's honorary scholastic sorority. To be eligible, a girl must carry at least twelve hours of college work, and make an average of 3.5 for the first semester of her freshman year or for the first and second semesters combined. The girl who is taken into Pi Gamma Pi remains an active member as long as she is a Monmouth student.

OFFICERS

President.....Dorothy Walker
Secretary-Treasurer.....Marilyn Clark



Row 1: Beernick, Wysong, Oyler, Price, Wagner, McClenahan.
Row 2: Campbell, Haag, Crow, Hemmer, Faus.



Row 1: Hofstetter, Colvin, Hatch, Burns, Johnson, Danielson.
Row 2: Forsythe, McLean, Meier, Walker, Goddard, Clark.

PHI ETA MU



Row 1: Stice, Bruhn, Shields, Foster, Foster, Churchill.

Row 1: Sympson, Lesch, Jirak, Brown, Ward, Whiteman.

Row 2: Lynch, Porter, Poling.

Phi Eta Mu, the freshman men's honorary scholastic fraternity boasts a membership of twenty men this year. To be eligible for initiation, a freshman must have a grade point average of 3.5 in either the first semester of his freshman year, or in his entire first year. His membership is then permanent. Dr. Hugh Beveridge is the faculty sponsor and founder of the organization. Phi Eta Mu gives the rightfully deserved recognition to those men in the freshman class who have conscientiously worked for an education.

OFFICERS

President.....Stan Brown

BAND

The Monmouth College Band, under Mr. Loya, serves the college in a dual role. It is both a service and a concert band. The organization begins life in the fall, during the football season, when it serves as a marching band; it continues through the winter, during the basketball season, when it becomes a pep band; and in the spring its metamorphosis is completed as it emerges to give a series of six indoor and outdoor concerts.



ORCHESTRA



Under Mr. Loya, the Monmouth College Orchestra keeps alive symphonic music on the campus. The orchestra gives two concerts annually, provides the orchestral accompaniment for Handel's *Messiah*, given at Christmas, and also for the Spring Oratorio—Mendelssohn's *St. Paul*, this year. The organization also provides an outlet for ensembles. Two string and one woodwind group is now practicing.

NERDOM CLUB

The Nerdom Club is a newcomer on Monmouth Campus. Ten girls who were interested in modern dance and felt there was a need and a place for it at Monmouth formed a club to further this activity. The purpose of the club is to instill a greater appreciation of the art in the layman. Membership is open to any girl who can pass the test given by the charter members.

OFFICERS

President.....	Gretchen Clark
Vice-President.....	Joan Weakly
Secretary	Suzy Hulsebus
Treasurer	Alice Sutherland
W.A.A. Representative.....	Linda Simmons



Row 1: Johnson, Mings, Southerland, Hulsebus, Weakly, Clark, Simmons, Van Deusen.
 Row 2: Black, Brown, Schmucker, Friedenhagen, Thompson, Acosta, Carlston, Kopp, McDougall.
 Row 3: Zinger, Wilner, Martin, McCullough, Wagner, Siedel, Buschart, Jackson.

DOLPHIN CLUB



McDouwell, Sjöholm, Brown, R. Tubbs, Smith, Davis, Reinecke, Pilchard, M. Tubbs, Campbell, Danielson, Fleming.

To promote swimming and swimming interests at Monmouth is the purpose of the Dolphin Club. To obtain membership, one must be a member of the W.A.A., must be in Senior Lifesaving, or participate in the annual water pageant, and must pass certain tryout requirements.

M CLUB

Constituted of the men who have won at least one varsity letter during the year, the M Club has made itself widely known on campus. It is this group which takes charge of the concessions at the games. Another of the chief interests of the group is the raising of money for a new stadium. As is their custom, they again put on a carnival the proceeds of which will go into the stadium fund.



Row 1: McDay, Grice, DeMorest, J. Feehley, Wickstrom, T. Johnson, McIlvain, Talkin.
Row 2: Sokovich, Linton, Fosterling, Palese, Brown, R. Feehley, Johnson, Yeager.
Row 3: Robinson, Krisfaluzi, Mahler, Carston, Fassett, Braden, Ketcham, DeVitalis, R. Johnson.

BOHEMIANS



Row 1: Burns, Schaniel, Turnbull, Weiser, Brattain, Kern.
 Row 2: Schultz, Simmons, Vidal, Klaersch, Sigfusson, Sachs.
 Row 3: Gradous, Matson, Miller, Calhoun, Van Berschot, Spethman.

The Bohemians was founded in the spring of 1948. Its purpose is to promote interest in applied art among students and to provide a studio in which techniques can be improved through practice. This fall a studio in the Fine Arts Building was procured and decorated.

OFFICERS

President.....Laura Vidal
 Program Directors.....Charles Nichols, Mary Beth Hocker
 Publicity.....Jo Schaniel
 TreasurerGordon Miller



For just such situations as this, we tried to procure covers with built-in magnifying glasses, but found they were unavailable, so get in a good light.

CLASSES

*First the indifferent seniors . . . then the
blase juniors . . . sophisticated sophomores
. . . and finally . . . the wee Scots . . .*

CLASS OF 1949

RAY ALBERT

DON BAIRD

CORRINE BARRON

JO ANNE BLACK

DON BRANDON

DELORES BRITT

EDWARD BROWN

GEORGE BROWN

ROBERT BUCHANAN

BURNETA BURNS

KENNETH BULL

ELIZABETH CALDWELL

KENNETH CHICOINE

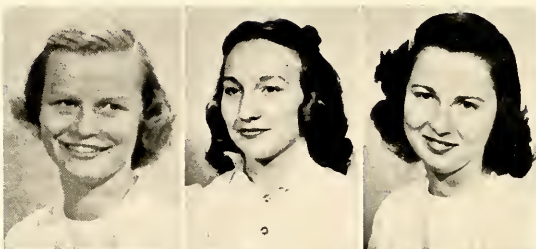
SHIRLEY CORNELIUS

MARGARET DAHLBO

A feeling of nostalgia . . . and possibly a few tears . . .

CLASS OF 1949

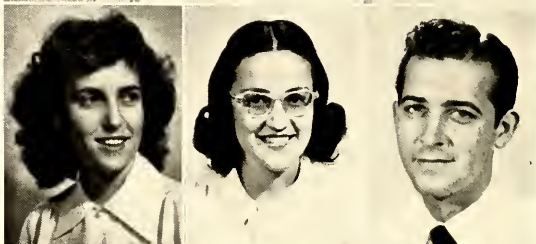
MARION DANIELSON
ELIZABETH DAVIS
ELIZABETH DAVIS



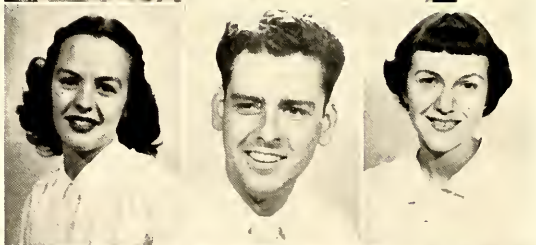
HUGH DeMORST
DOROTHY DAVIS
MARILYN EFFLAND



JEAN ELLSWORTH
ROBERTA ENLOE
JOHN FORBES



LAURA FUHR
LOUIS FULLERTON
ELAINE FULLJAMES



CHARLES GAVIN
(Personnel Office)
ROBERTA GAVIN
ROBERT GARDNER



the time was so short . . . only yesterday we were wearing the plaid caps . . .

CLASS OF 1949

DOROTHY GODDARD

JOHN GOGGIN

LAURA GAUDY

HARRIET GRANADE

DON GRANT

HAROLD HARKLESS

ANITA HART

WILLIAM HARVEY

HAZEL HATCH

JOAN HEINRICHS

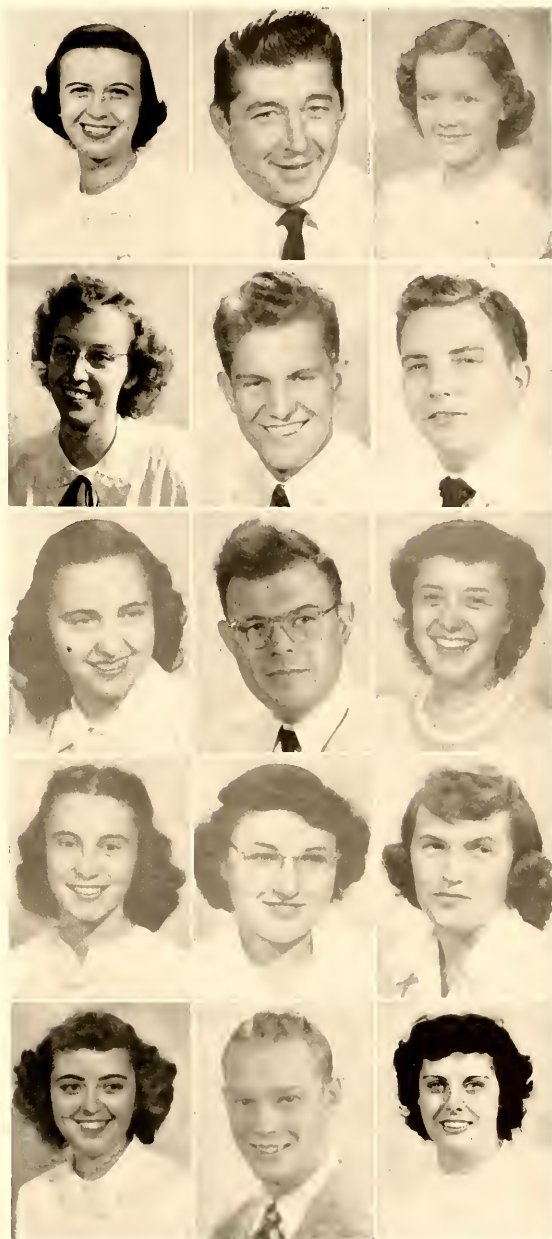
MARILYN HOFSTETTER

MARY KAY HOFSTETTER

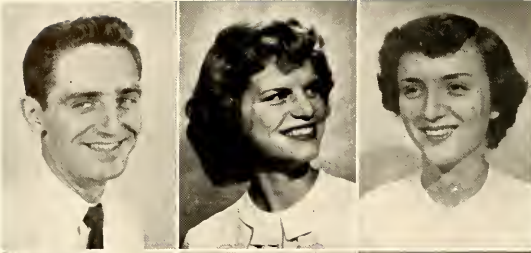
PHYLLIS HOLMQUIST

GLEN HUNT

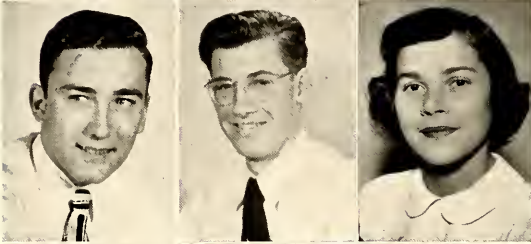
SHIRLEY IVES



CLASS OF 1949



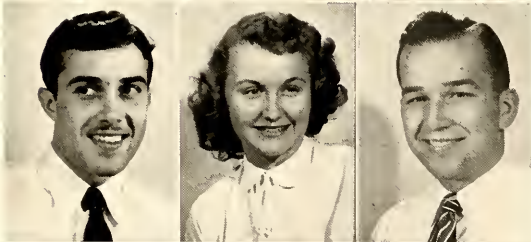
JAMES JIRAK
ANNE JOHNSON
ELAINE JOHNSON



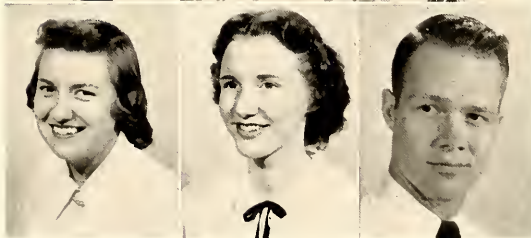
PAUL JOHNSON
RICHARD JOHNSON
MARION STRATEMEYER



RICHARD JOHNSON
GWEN KEATING
DOROTHY KERN



DEAN KLEINKOPH
NORMA KIMBLE
WILLIAM KUNTZ



BARBARA LAMB
AUDREY LATHAM
RALPH LATHAM

now we're leaving . . . of course, we must go . . .

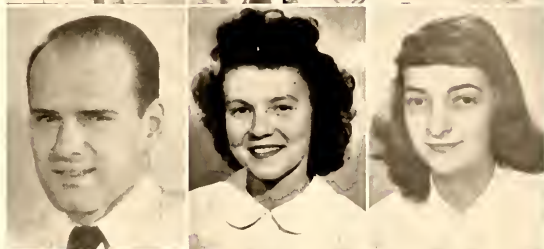
for along with students of other places . . .

CLASS OF 1949

CHARLES LESTER
WILLIAM LYNCH
CAROL McBRIDE



PAUL McILVAIN
MARY JEAN McEWEN
JACQUELINE McGINNES



MARTHA McKISSICK
LOIS McMICKEN
RICHARD MADSON



MARTHA MEEKS
AUDREY MEIER
LOCK MORFORD



SHIRLEY NICE
EARL NORDQUIST
BETTY OHLINGER

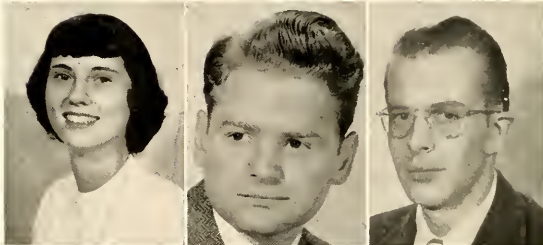


CLASS OF 1949

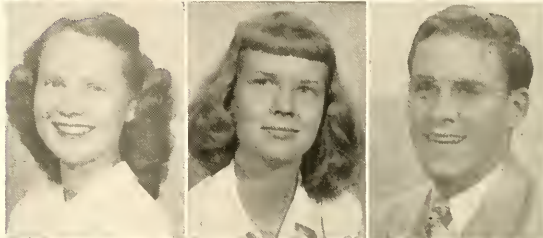
MARY PAT PEASLEY
WILLIAM PETRIE
JUNE PEARSON



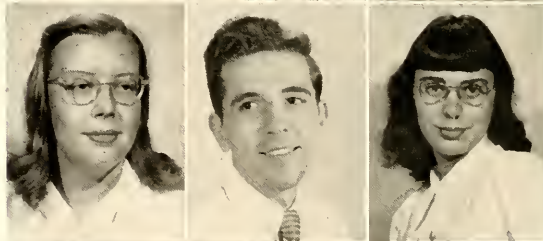
MARGARET PILCHARD
HAROLD POLING
ROBERT PORTER



ELLEN ROBESON
LOIS ROGERS
EDWARD SACHS



GLENDORA SHAVER
JAMES SHIELDS
FRANCES SINENI



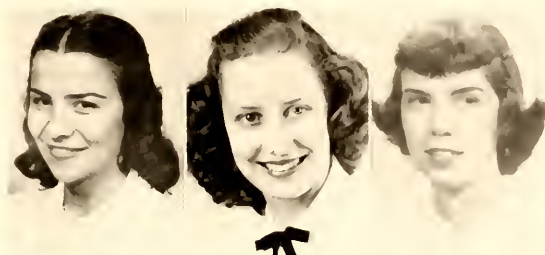
BETTY SMITH
LOIS STEWART
RAYMOND VANDYKE



we will make it a better world . . .

CLASS OF 1949

ELAINE THOMPSON
MARY LOU RINKER
NANCY TURNBULL



HARRY VANFLEET
ARLYN VERPLOEG
LAURA VIDAL



JOHN WARD
WILLIAM WASSON
CARL WEDAN



KEITH WHARFF
BARBARA WHITEMAN
DONALD WHITEMAN



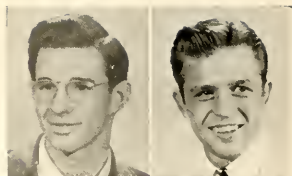
MARY MARGARET WILKIN
MOLLY WILKINS
IRMA NORRIS



and so . . . goodbye, Monmouth . . .

CLASS OF 1950

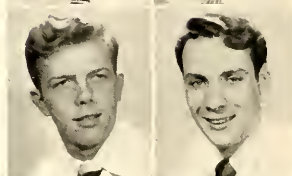
ROBERT ADY
ROBERT SHELDROP



GENE BASTIAN
LAWRENCE BECK



ROLLIN BELL
CHARLES BENGSON



JEANNE BLACK
WILLIAM BLONN



JANET BOLES
JOAN BOVARD



DON BOWMAN
DELORES BRATTAIN



JEAN BROWN
STAN BROWN



Blase juniors . . . proud of our class . . .



CLASS OF 1950

NANCY BUCHANAN
BURRELL CALHOUN
JOYCE CARLSON
RICHARD CARLSON

GRETCHEN CLARK
LAURENCE CLARK
MARILYN CLARK
ROBERT DEAL

DOROTHY DAVIS
BILL DAVIS
FRANCES DRAYSON
GEORGIA DUNCAN

ED DUXSTAD
CAMILLE EGGLESTON
ROBERT FELMLEY
ROSEMARY FELTS

MARGERY FINLEY
RUTH FORSYTHE
WALTER FORSYTH
RAYMOND FOSTERLING

JOHN FOWLER
KIRBY FYREMIRE
WILLIAM GEIGER
RICHARD GIBSON

KATHRYN GODDARD
DARRELL GOSSETT
DAVID HAMMET
WILLIAM GRICE

.... many activities leading in some

CLASS OF 1950

BRUCE HANSEN
GLEN HARGRAVE
KIRK HAY

DAVID HERSCHBERGER
JEANNE HODGE
ROSALIE HOWARD

VIRGINIA HAUN
JANET HOGUE
MARION HUEY

WESLEY IVEY
KARL JOHNSON (senior)
ROBERT JOHNSON

BUD KENNEDY
KEITH KETCHAM
MASAYOSHI KOMATSU

WILLIAM KOMATSU
CHARLES KRISFULSEY
MARILYN LANGFORD

WARREN LESCH
ROBERT LEIPER

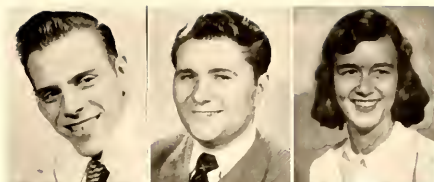
.... *busy working* *learning*

CLASS OF 1950

ROBERT LUNOE

ROBERT McCLINTOCH

PATRICIA KENNEDY



DENNIS McDADE

NANCY McDOWELL

CHARLES MORGAN



MARGERY McGREW

CLAIRE McINTOSH

DON McKINLEY



GRACE McKINNEY

MARILYN McLEAN

SHIRLEY McMULLEN



GERTRUDE McWILLIAMS

BOB MATSON

JOAN MAY



GORDON MILLER

PAUL MILLER

NORMA MILWARD



KATHRYN MONAHAN

DONNA MORSH

JAMES NIXON



looking forward to . . .



CLASS OF 1950

PATRICIA PETERSON
GORDON PETERSON
TOBY PATTON

EARL PICARD (senior)
CHARLOTTE PIERCE
MARTHA OYLER

ROYLENE PETERSON
SHAN REED
DON MCGAUGHEY

WALLACE RECHEL
JEWEL PRICE
MARY PLUNKETT

WALTER SCOTT
JOAN REINICHE
JAMES SHAW

LILLIAN SMITH
VIRGINIA ROBINSON
BARBARA SMITH

LINDA SIMMONS
JOHN SIMMERMAN
ROY SHEBECK

next year when we'll return as the best senior class ever . . .

CLASS OF 1950

MILLICENT STEWART
VIDA STEWART
ROGER STRAND



DWIGHT TUBBS
RICA TUBBS
MARJORIE TRAINOR



WILLIAM VIETCH
DOROTHY WALKER
JOAN WEAKLEY



WILLIAM WEYHMuELLER
PHILLIP WHEELER
DALE WHITE



LOIS WITTBERGER
PATRICIA WOLFORD
MARTHA WYSONG



STEWART ZIMMERMAN
GEORGE LAUTERBACH
JANE MARTIN



(Editor's note: As this is a junior publication, what do you expect?)

CLASS OF 1951



Row 2: Robb, Shields, Kost, Shaft, McGaughay, Rathbun, Anderson, Sage.

Row 1: Thesen, Sachs, Ruble, Kleinsmith, Siedel, Sanderson, Pool, Premier.



Row 2: Jacobs, Hackmann, Kennedy, Ginter, Chew, Elliott.

Row 1: Hulsebus, Gray, Hocker, Howell, Fredenhagen, Clark, Grabau.



Row 2: Putzier, Pardieck, Parkinson, Myers, Gray.

Row 1: Gullberg, Oelze, Plumer, Mercer, Rosenkrans, Negley, Niemann.

Sophisticated sophomores . . . worldly-wise . . .

CLASS OF 1951



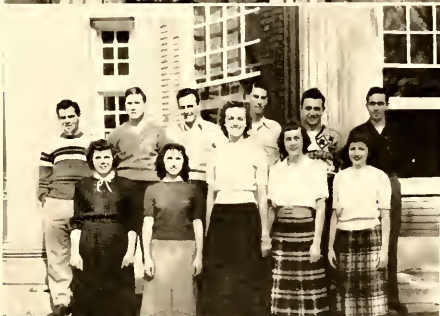
Row 2: Stewart, Anderson, Ross, McCosh, Parker.

Row 1: Lambers, Dykhuizen, Rogers, Hessler, Seepe.



Row 2: Patton, Gladfelter, Boggs, Carlsten, Carpenter.

Row 1: Castle, Faus, Crow, Cortelyou, Davis.



Row 2: Young, Weber, Stewart, Irion, Vittori, Yeagar.

Row 1: Charlson, Tarbox, Wagner, McBride, Tomlin.



Row 2: McLaughlin, Holliday, Davidson, Drake, Churchill.

Row 1: Erickson, Gardner, Gradous, Guernsey, Hastings, Calhoun.

... busy organizing all-school activities ...

CLASS OF 1951



Row 2: Bruhn, Bruch, Anderson, Dorman,
Walten, Brooks.



Row 3: Bird, Greenwood.

Row 2: Sanders, Fitch, Missavage, Walker,
Turnbull, Myers.

Row 1: Whitley, Ray, Rhea, Stevenson,
Schumacher, Wilner.



Row 2: Hansen, Eighmy, Farrar, Swanson,
Tate, Torricelli.

Row 1: Thompson, Sutherland, Carlsen,
Sweeney, Sigfusson, Spethman.



Row 2: Suydam, Hayward, Bowker,
Schweitzer, Pratt, Scholten, Rogers.

Row 1: Robinson, Gunderson, Noyes, Phillips,
Schaniel, Lindburg.

winners of the traditional Polescrap . . .

CLASS OF 1951

Row 3: Klug, Morris, Chestnut, Messmore,
Myers.

Row 2: Johnson, McCullough, McClenahan,
Kuss.

Row 1: Keyes, Kennedy, Moffat.



Row 3: Anderson, Shunick, Sorensen,
Strohbehn, Strohbehn.

Row 2: Hemmer, Speer, Klaersch, Baehr,
Shaw, Payton.

Row 1: Moffat, Schmetter.



Row 3: Bump, Hartung, Meloy, Kirk.

Row 2: Gildemeister, Engstrom, Reed.

Row 1: Johnson.



. . . . half college career ended



Row 1: Bowman, Bossow.
 Row 2: Bertelson, Brown, Bond, Calsen, Bradley,
 Bonnema, Campagne.
 Row 3: Callahan, Brewer, Brooks, Smith.



Row 1: Sekera, Mochel, Watt, Schultz, Thomp-
 son, Trushinski.
 Row 2: Smith, Simon, Toal, Lafferty, Schmetter,
 Smallwood, Romine.

CLASS OF 1952

Row 1: Patterson, Joie Metcalf, Jeanne Metcalf,
 Brown, Moser, Milligan, Munro.
 Row 2: Roper, Ornst, Nichol, Olesen, Frymire,
 Petschke.

Row 1: Robertson, Nordval.
 Row 2: Ranney, Ramsdale, Prugh, Ralston, Owen,
 Phifer, Payne.
 Row 3: Purdom, Smith, Nissen, Palmer, Pur-
 dom, Ruble.



Wee Scots . . . Monmouth, 1949 . . .



Row 1: J. Gustafson, Greenwood, Halbert, Dixon,
Hansen, Ballentine, Hass.
Row 2: Grace, R. Gustafson, Heldermon, Hielt,
Donahoe.
Row 3: Smith, Gray, Behm, Hamerly.

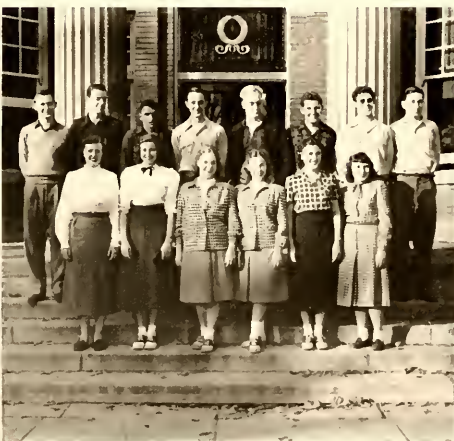


Row 1: Carlisle, Craig, Calhoun, Carnaby, Cam-
eron, Deschwanden, Denniston.
Row 2: Deegan, Bruer, Boles, Cherry, Smith,
Brown.

CLASS OF 1952

Row 1: Rossell, Schlemmer, Reed, Shaner, Snyder,
Searle.
Row 2: Shields, Kelly, R. Smith, S. Smith, Row-
an, J. Doe.
Row 3: Snyder, Ramsey, Schwind, Keating.

Row 1: Weiser, Stewart, B. Totten, J. Totten,
Walker, Stetson.
Row 2: Webster, McCoy, Smith, Vance, Swyers,
Thompson, Trowbridge.



... wearers of the plaid caps ... discarded them at Knox game ...



Row 1: Horner, Howell, Huston, Hilsenhoff, Jennings, Smith, Hinkley.
Row 2: Niklaus, Benson, Haskell, Hunter, Jacobson.



Row 1: Ericson, Daley, Collett, Clark.
Row 2: Chatfield, Duvall, Glawe, Gould, Dial, Feehley.
Row 3: Bruch, H. Burke, C. Burke, A. Burke.

CLASS OF 1952

Row 1: Garst, Frueh, Gillet, Fuller, Beatty, Enloe.
Row 2: Foley, Foster, Fleming, Fenton, Eisinger.
Row 3: Brush, Fosse, Smith.

Row 1: Acost, J. Black, Berry, Bischman, Beaumont, Barnett, Arnold, S. Black.
Row 2: Barnhart, Alden, Bashaw, K. Bailey, Ad-Kisson, Atkinson.



losers of the Polescrap . . . but only because the pole was greased . . .



Row 1: Tate, M. Turnbull, Stewart, Walker,
Walden, Tornquist, Mellon, K. Turnbull.
Row 2: Doe, D. Smith, Dannewitz, Quanstrom,
Propernick, Hilsenhoff, Waid.



Row 1: M. Young, L. Young, Wright, Wilmot,
Zinger.
Row 2: Witter, Whiteman, Smith, Wilson.

CLASS OF 1952

Row 1: Latimer, McDougall, Macdonald, Maza-
nec, Marcia McKee, Mary McKee, McKelvey,
McClay.

Row 2: Lantzy, Moretto, Kennedy, Layden, Mc-
Question.

Row 1: Kinney, Jackson, Kopp, Lauer, Mancell,
E. Miller, McBride, Long.

Row 2: LeVar, Kling, Knox, McDonald, K. Mil-
ler, Logan.



... soon we'll be the leaders of M. C.

SPO



SPORTS



COACHES



BOBBY WOLL
Athletic Director
Varsity Basketball
Golf

"JELLY" ROBINSON
Varsity Football
Varsity Track
Tennis
Frosh Basketball

"JAKE" JACQUET
Varsity Baseball
Frosh Football

Not able to be in the picture is Tom McMichael,
Coach of the Varsity Swimming Team.

These are the Monmouth Generals who led the banner of the Red and White in the sports arena, usually in victory, sometimes in defeat, but always in glory.





Hope College ball carrier headed for a fall.

Tackle low . . . hit the dirt . . . block . . . lower your tail . . . bite the dust . . . drive . . . smash harder . . . try again . . . With a fond remembrance we laud the gridders of 1948. Theirs was the meeting of minds, theirs was the shoulder to shoulder push to victory. The turkey will return!

Besides Jim Feehley the Midwest honored Sid Jackson, Bob Fuhr, and Donny Armstrong.



Seniors: Ted Johnson, "Tab" Talkin, and Bob Feehly.

JIM FEEHLEY



All-Conference
Halfback, '48



Top Row: B. Williams, J. Vittori, D. Chew, G. Missavage, D. Grey, R. Wilkens, K. Ketchum, J. Wilford, R. Smick, W. Forsythe, D. Sorenson.
 Third Row: J. Jacquet, J. Wilcox, R. Drake, J. Feehley, T. Palese, W. Ellerby, M. Reid, T. Talkin, L. Bogot, E. Benhke, J. Linton, B. Boggs, G. Robinson.
 Second Row: R. Woll, V. Robinson, J. Torrence, R. Feehly, R. Fuhr, J. Francis, T. Johnson, D. Armstrong, W. Davis, R. Fosterling, L. Jackson, C. Krisfalzy.
 Bottom Row: R. Burnett, L. Fassett, W. Walton, O. Kost, R. Franklin, H. Gildermeister, B. Anderson, C. Anderson, J. Yeager.

VARSITY

We		They
12	Culver-Stockton	7
6	Ripon	7
7	Hope	13
7	Coe	0
0	Lawrence	26
32	Cornell	14
7	Augustana	17
12	Beloit	0
6	Knox	15
89	TOTALS	99

FROSH

We		They
35	Knox	0
19	Augustana	0
54	TOTALS	0





Take Two!

VARSITY		
We		They
63	Alumni	32
69	Parsons	64
86	Moline Jr. College	29
60	Coe	55
74	Cornell	37
70	Iowa Wesleyan	51
66	Quincy College	64
57	Lawrence	69
71	Augustana	42
47	Beloit	67
62	Knox	54
66	Carleton	62
60	Ripon	63
65	Lawrence	59
61	Grinnell	53
88	Knox	45
59	Grinnell	62
55	Augustana	68
1174	TOTALS	976

WON 13 LOST 5



Jump Ball!

BASKETBALL '49

Fast-breaking Scots grab third in Midwest. The stands rattled as eager fans shouted and raved for additional scores. Knox was roundly trounced twice as the local "bucket brigade" went to work. M. C., The Ravelings, and the sports staff proudly doff their caps to the team with the new scoring record.

DON ARMSTRONG



Seniors: "Tab" Talkin, Paul McIlvain, and Dick Mings.



All-Conference '49
Breaks 1000 points



Top Row; J. Smedberg, H. DeMorest, J. Kruideneir, T. Johnson, G. Miller, P. McIlvain,
D. Brandon, J. Hoyt, L. Beck, G. Robinson.
Bottom Row: T. Patton, J. Campbell, R. Feehley, R. Struthers, J. Feehley, S. Brown, D. Sachs.

VARSITY TRACK

BASEBALL '48



Top Row: W. Brodd, R. Smick, C. Morgan, R. VanDyke, D. Walker, J. Sockowitz, R. Petherbridge.

Second Row: W. Mahler, R. Mings, J. Murphey, P. McIlvain, L. Jackson, L. Powell, J. Jacquet.

Bottom Row: J. Lemon, M. Slayton, P. Johnson, R. Hofbauer, T. Murphey, R. Anderson, R. Newberry, "Feet" Burkett.

SCHEDULE

We	They
11Augustana	7
13Iowa Wesleyan	14
4Iowa Wesleyan	5
21Ill. Extension	12
6Ill. Extension	7
1Eureka	10
0Western Teachers	21
14Western Teachers	8
3St. Ambrose	9
7St. Ambrose	9

WON 3 LOST 7
Percentage .300

Flashing spikes, torn tendons, split fingers, crack of the bats on a warm spring evening—that's baseball. Monmouth had its baseball and Monmouth's baseball had it. In spite of the availability of potential big leaguers, our squad just didn't manage to squeeze out their share of victories last spring. But in spite of the ledger, the fans received all of the diamond excitement they could ask for, even at Yankee Stadium.

S W I M M I N G

'49



Varsity

Top Row: W. Grice, W. Berman, H. Cook, W. Hayward.

Second Row: T. McMichael, M. Sage, J. Schweitzer, R. Walker, R. Miller.

Bottom Row: D. McDade, W. Mahler, T. Turnbull, D. Johnson.

While the varsity swim team this year didn't do too well, having but one victory under their belts, prospects are very bright for the future, with a fine group of freshmen coming up from below.

FROSH

Back Row: R. Behm, J. Nisson, J. Oleson, T. McMichael.

Front Row: R. Dial, W. Dewey, L. Benson.



Varsity

We		They
22	Bradley	53
15	U. of I. (Galesburg)	51
13	U. of I. (Galesburg)	54
49	Illinois Wesleyan	19
27	Knox	48
12	Augustana	56
15	Grinnell	60
19	Illinois Wesleyan	49
23	Knox	52

FROSH

We		They
58	Knox	17
60	Knox	15



S. Brown, J. Riggs, R. Carlsten, R. Irion, L. Marshall.

CROSS-COUNTRY '48

SCHEDULE

	WON 2	LOST 0	
We			They
28			Carthage 27
35			Cornell 22

TENNIS '48

There is no picture available of the 1948 Tennis team, but the following men were members of that squad: W. Rechel, J. Szmyd, J. Campbell, J. Hedberg, C. Jenkins, D. Brown, H. Poling, D. Pearson, R. McCaig, and J. Goggin.

SCHEDULE

Monmouth 1.....	Western Teachers	8
Monmouth 0.....	Western Teachers	9
Monmouth 0.....	Knox	9
Monmouth 0.....	Augustana	9
Monmouth 3.....	Carthage	4
Monmouth 0.....	Knox	9
Monmouth 3.....	Carthage	6

WON 0

LOST 7



Top Row: L. Bogot, D. Armstrong, R. Scholten, D. Chew.
 Second Row: B. Woll, L. Jackson, J. Torrence, P. McIlvain, R. Mings, C. Pratt, B. Williams.
 Front Row: R. Smick, K. Follett, R. Talkin, D. Brooks, W. Walton, J. Carpenter.

Back Row: J. Robinson, R. Bruchs, G. DuVall, L. Gray, W. Thompson, T. Hoffman,
 L. Brooks, R. Thompson, B. Wickstrom.
 Front Row: J. Glowe, C. Josephson, R. Hyatt, M. Knox, W. Witter, R. Propernick,
 D. Lavarr.



FROSH

We	They
56	Augustana "B" 53
48	Knox Frosh 55
38	Knox Frosh 54
56	Augustana "B" 63
198	TOTALS 225



Jud Kreideneir (R) leads the pack in the Quadrangular Meet against Augustana, Carthage, and Knox.

SCHEDULE

Monmouth 54.....	Beloit	77	QUADRANGULAR MEET	
Monmouth 75½.....	Augustana	55½	Augustana	63
Monmouth 89.....	Knox	42	Monmouth	61
Monmouth 113.....	Iowa Wesleyan	18	Carthage	20
Monmouth 60.....	Western Teachers	66	Knox	19

T
R
A
C
K
'48

The flying feet of Monmouth pushed the Red and White into the national eye last year. Despite the above record our cinder eaters placed fourth in the Midwest Meet and eighth in the Beloit Relays. Paced by the record-holding relay team and several point-getters, it was a good season. At the end of May and well into June several of the boys entered varied national meets and placed highly in their fields. Big Jud Kreideneir raced to sixth place in the Milwaukee Olympic tryouts as he hurdled in behind Dillard, Scott, and Porter. We have our greats here as well as anywhere—just look around.

GOLF '48

SCHEDULE

We		They
5½ Macomb	9½
5½ Augustana	9½
11 Iowa Wesleyan	4
13½ Carthage	11½
8½ Macomb	6½
6 Knox	15
7 Augustana	8
5½ Knox	9½
13 Illinois Tech	2
74½	TOTALS	73½

WON 4

LOST 5



H. Cason, T. Weber, C. Mosey, R. Hildreth, B. Wickstrom.



Lee Grabau, Bob Felmley, Jeanne Black, and Bud Lyman.

CHEERLEADERS '48 - '49

Pictured are four of the six lively individuals who led the cheering section of the '48-'49 season. The missing are Jane Black and Lou Brown.

FACULTY

Leading . . . Teaching . . . Guiding . . .

These are our men and women of distinction.



DR. JAMES HARPER GRIER

President



JOHN SCOTT CLELAND

Dean of the College



DAVID McMICHAEL

Vice-President and
Business Manager



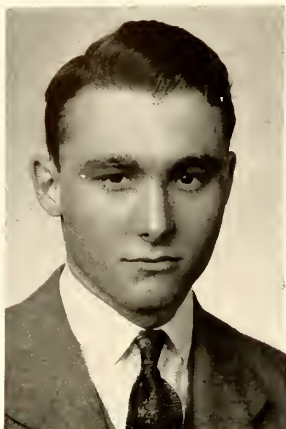
FRANK PHILLIPS

Dean of Men



JEAN LIEDMAN

Dean of Women



JAMES BECK
Economics



MRS. BARNARD
McMichael Hall Housemother



F. GARVIN DAVENPORT
History



BERNICE FOX
English



RALPH FULSOM
Speech



MARY GILLHAM
Assistant Librarian



MRS. JOHNSON
East Hall Housemother



JOHN WILSON
Speech



RHODA McINTYRE
Biology



CHARLES GAVIN
Public Relations



RUTH MITCHELL
Secretarial Science



RICHARD PETRIE
Director of Public Relations



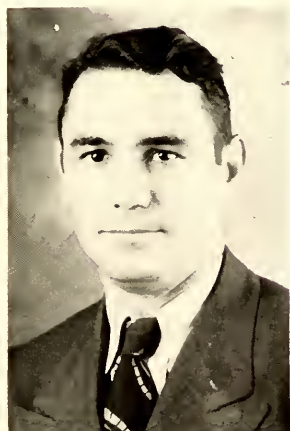
RALPH FRAZIER
Biology



MRS. JOSEPH KUPECK
Modern Languages



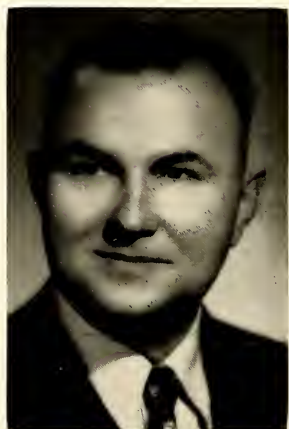
GLENN ROBINSON
Physical Education



ROBERT WOLL
Director of Athletics



JOHN MAGILL
Bible



ALBERT NICHOLAS
Education



GALE CUTLER
Physics



MARY BARTLING
History



JOHN EASTWOOD
Bible



MARY McCOY
Librarian



INEZ HOGUE
Registrar



LEROY HUFF
Sociology



LOIS BLACKSTONE
Treasurer



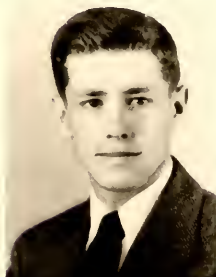
DR. JAMES MARSHALL
College Physician



ARCHER HAYES
Music



ROBERTA BROWNLEE
Public Relations



DAVID FLEMING
Associate Director of
Public Relations



BERNADINE MINGS
Physical Education



C. A. OWEN
English



EMMA GIBSON
Latin



THOMAS HAMILTON
Art



MRS. PAUL CRAMER
Mathematics



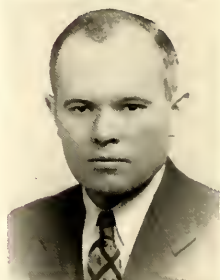
MRS. THOMAS
HAMILTON
Art



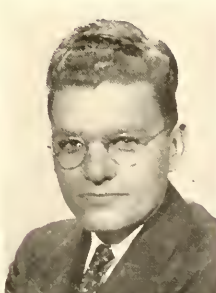
H. M. TELFORD
Greek



DOROTHY DONALD
Spanish



BENJAMIN SHAWVER
Chemistry



SIGFRED MATSON
Music



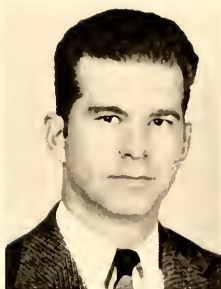
ADELE KENNEDY
English



LOUIS GIBB
Business Administration



LUELLA WILLIAMS
Home Economics



JACK JACQUET
Physical Education



PAUL CRAMER
Mathematics



CARL GAMER
Government



HOWARD JAMIESON
Bible



HAROLD RALSTON
Classics



F. M. McCLENAHAN
Geology



LYLE FINLEY
Physics



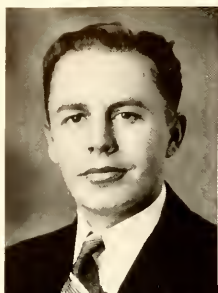
M. M. MAYNARD
Education



S. PORTER MILLER
Chemistry



MRS. J. W. BAIRD
Assistant Librarian



W. MALCOLM REID
Biology



MRS. BURGESS
Grier Hall Housemother



WILLIAM S. HALDEMAN
Chemistry



SAMUEL THOMPSON
Philosophy



DOROTHY WHALING
Accountant



MRS. HUTCHISON
Winbigler Hall
Housemother

One of Monmouth's more thankless positions is that which is held by Mr. Kenneth Craig, superintendent of the grounds. Few students realize how many things could go wrong if Mr. Craig weren't on the job. We of the Ravelings staff, in behalf of the entire student body, would like to express our appreciation for the fine work that Mr. Craig is doing.



We did become a bit carried away when we made out the scale for these!

Perhaps we should have scattered these throughout the book, so the shock wouldn't have been so great.



ADVERTISEMENT S

NEWBURY BROS. CLOTHING COMPANY

FOR MEN — LADTOWN FOR BOYS

114 S. Main

Monmouth, Ill.

PETERS JEWELRY COMPANY

MONMOUTH, ILLINOIS

"SAY IT WITH FLOWERS"

CHARLES A. HEWITT

223 South Main

Phone: 88

READ THE

REVIEW ATLAS

FINE FOOTWEAR

AT

BOWMAN BROTHERS

S. E. Corner Square

Monmouth

IF YOU WANT THE BEST, TRY OUR MERCHANDISE

TORLEY HARDWARE COMPANY

Iron Fireman Stokers — Plumbing — Metal Work

Phone Us Today 336

They'll Treat You White

THE BEST FURNITURE

FOR THE BEST HOMES

White's

FOR FINE FURNITURE

INVITE YOUR FRIEND TO STAY
AT THE

COLONIAL HOTEL

208 East Broadway Telephone 265

SEYBOLD PRINTING

COMPLETE PRINTING SERVICE

Phone 951

McCRERY DRUG STORE

David R. McCrery, R.Ph.

Phone 62 Monmouth, Ill.

THE PRESCRIPTION STORE

COLWELL'S DEPARTMENT STORE

Monmouth, Illinois

Maple City

DAIRY

110-112 South A Street

Telephone 60

Pasteurized
Dairy
Products



WE APPRECIATE YOUR PATRONAGE

KNEPP'S

LADIES' READY-TO-WEAR

104 Main St.

Phone 634

BARNES BROS.

GROCERIES — MEATS

FRESH FRUITS — VEGETABLES

200 North Main Street

SHOES

GLOVES

HOSIERY

HANDBAGS

Schantz Bootery

THE HOME OF RED GOOSE SHOES

202 So. Main St.

Monmouth, Ill.

GLENN E. WILSON

JEWELER

AFTER THE GAME OR AFTER THE SHOW
THE GANG MEETS

AT THE
CANDY KITCHEN

JOHNSON BROS.

CIGAR STORE

JAMES T. CONNELL, Prop.

MERRILL'S PHOTO SHOP

Conscientious 24-Hour

Photo Finishing

204 E. Broadway

**THE McCOY
INSURANCE AGENCY**

109 South First Street

RELIABLE INSURANCE OF ALL KINDS

Phone 803

H. W. HARTMAN

5c to \$1.00 Store

108 S. Main St.

Monmouth, Ill.

Think of Us
When Taking Pictures

KODAK — ARGUS
Developing
Printing

**SPRIGGS & BRADSHAW
DRUGS**

ANDY THE TAILOR

DISTINCTIVE CAMPUS CLOTHING

201 McQuiston Bldg.

Monmouth, Ill.

MOOSE'S SPORT STORE

COMPLETE LINE OF
WILSON SPORTING GOODS

111 West Broadway

Telephone 264

MONMOUTH, ILLINOIS

L. B. "Moose" Corgnati, Proprietor

PAROLEE'S

READY-TO-WEAR

The Better Value Store For Women

211 South Main Street

RANKIN-SHAUB

Home Killed Meats
Groceries & Vegetables

204 So. Main

Phone 149

GLENDORA SHOP

Everything for Children

Mabel Bowman Hallam

Dorothy Hallam Shaver

MEET YOUR FRIENDS AT

THE CORNER

Phone 356

115 So. Main

Monmouth, Ill.

MONMOUTH FRUIT CO., INC.

WHOLESALE

FRUITS AND VEGETABLES

615 S. First St.

Monmouth

Compliments

RIVOLI-BIJOU THEATERS

Monmouth Theater Company

McCulloch Lumber and Coal Co.

Headquarters For
Building Material
and Coal



101 E. Fourth Ave. Phone 56

SHAWS

321 South 6th Street

FOR THE BEST OF EVERYTHING
IN

FRUITS,
VEGETABLES, GROCERIES,
AND MEATS

ART POTTERY

Is always appropriate and appreciated as a gift

Students, Relatives and Friends of Students are invited to visit our Factories,
Display Rooms and Beautiful Sunken Gardens.

WESTERN STONEWARE COMPANY

MONMOUTH, ILLINOIS

TURNBULL FUNERAL HOME

Telephone 19

LUMBER — COAL — BUILDING MATERIAL

Everything To Build Anything



FULLERTON LUMBER COMPANY

519 South First Street

Monmouth, Illinois

LUGG MEMORIAL CHAPEL

SINCERE SERVICE

MONMOUTH

PHONE 730

Compliments of

BERSTED HOBBYCRAFT Inc.

MONMOUTH, ILLINOIS

NANCY GRAHAM

Clothes for College Women

211 East Broadway

CARTER'S PHARMACY

J. H. Carter, R.Ph., Prop.

Corner Broadway and First Street

Telephone 182

SHOES AND CLOTHING
FOR MEN

Be Value Wise — Economize At

HARRY SHAPIRO'S

87 N. S. Square

Phone 831

NORRIS OFFICE EQUIPMENT

"Everything for the Office"

EXPERT TYPEWRITER SERVICE

107 EAST BROADWAY

Monmouth

Illinois

"BREAD and BUTTER"

THERE'S NO KEEPING THEM APART.

STRAND BREAD AND GOOD BUTTER

MAKE A PERFECT MATCH



STRAND BAKING CO.

W. A. Jordan Co.

WHOLESALE
GROCER

Distributors of
Nationally Famous
Food Products
Since 1894

GALESBURG, ILLINOIS

PASTRIES AND ICE CREAM
For All Occasions

Complete Line of Fine Candies

HAWCOCK'S BAKE SHOP

R & D DINER

Just East of the Campus

Monmouth Bowling Lanes

436 North 11th Street

Phone 246

HAWCOCK'S CAFE

EAT THE BEST
WITH THE REST

PROP., G. A. SHARP

PILLSBURY'S

SERVES YOU IN STYLE

ON RECORDS

FOR FINEST IN MUSIC

RCA VICTOR — COLUMBIA — CAPITOL

DECCA — MERCURY

"The Leading Labels with the Most Famous Artists"

Available in Regular and Long Playing Discs

Wirtz Book Company

200 East Broadway

JOHNSON'S

WALLPAPER — PAINT — GLASS
DECORATING

Northwest Corner Square

O. K.

CLEANERS & LAUNDRY

120 S. 8th Street

Phone 85

Just South of the Campus

Compliments of

BECKETT'S GROCERY

Just South of the Campus

LARSON'S

FURNITURE MART

Monmouth — Stronghurst

TWO STORES

A STRONG, PROGRESSIVE INSTITUTION

ILLINOIS BANKERS LIFE ASSURANCE COMPANY

Monmouth, Illinois

FINANCIAL STATEMENT

December 31, 1948

Assets

U. S. Government Securities	\$17,324,306.44	
Other Bonds—		
Railroad	\$1,185,870.77	
Public Utility	816,556.03	
State and Municipal	507,827.69	
Industrial and		
Miscellaneous	29,400.00	2,539,654.49
Cash		1,721,208.26
First Mortgage Loans—		
Farms	642,029.01	
City Properties	2,637,934.34	3,279,963.35
Real Estate—		
Farms	150,671.79	
City Properties	323,272.43	473,944.22
Real Estate Sold Under Contract—		
Farms	72,565.00	
City Properties	127,079.50	199,644.50
Policy Loans and Interest—		
Secured by Policy Reserves	4,006,846.37	
Stocks—		
Preferred and Common		741,310.24
Premiums—		
Due and Deferred		495,751.23
Interest and Rents—		
Due and Accrued and other Assets	80,348.24	
TOTAL	\$30,862,977.34	

Liabilities

Policy Reserves—To meet policy obligations as they become due by death, maturity or disability	\$24,542,176.62
Claims Due and Unpaid	NONE
Reserve for Death and Disability Claims—Upon which proofs have not been completed	308,296.41
Reserve for Claims — Upon which Notice of Death or Disability had not been received on December 31	58,042.18
Present Value of Installment Claims	207,417.21
Trust Funds	1,947,590.12
Policyholders' Funds—	
Dividends and Savings left on Deposit	\$1,221,890.11
Dividends due and Declared	13,787.58
Premiums and Interest, Paid in Advance	159,557.20
Reserves for Taxes	75,477.03
Miscellaneous Liabilities	164,913.04
Special Contingency Reserves	300,000.00
Total Policy Reserves and Liabilities ..	\$28,999,147.50
CAPITAL	325,000.00
SURPLUS	1,538,829.84
Surplus Funds for Protection of Policyholders	1,863,829.84
TOTAL	\$30,862,977.34

Life Insurance In Force \$123,305,232.00

Increase of Life Insurance in Force in 1948 \$3,381,420.00

Payments to Policyholders and Beneficiaries in 1948 \$2,530,656.00



▶ SPECIALIZED PLANNING AND ENGRAVING
▶ SERVICE FOR YEARBOOK STAFFS . . .

when

W A G O N E R

prints your yearbook

. . . your staff is assured of the
finest in quality, service, and
workmanship.

Forty-nine years' experience
enables us to produce your
yearbook as you visioned it.



Wagoner Printing Company

306 East Simmons Street - Galesburg, Illinois

DEANS

FOR THE FINEST OF FOODS

322 North 11th Street

Phone 2988

AUTOGRAPHS

AUTOGRAPHS

AUTOGRAPHS

And so we write *fini* to another year and another Ravelings . . . Perhaps this isn't one of the better books published by the students of Monmouth College, but I have made a very sincere effort to present a panoramic version of Monmouth, 1949.

I want to thank each and every one of you for the help you have given me, and in particular I wish to express my appreciation for the fine work done by my sports editors, Bill Lynch and Buck Buchanan, and for the cooperation I have received from Dave Fleming, the advisor.

Like Thomas Edison, I now know ten thousand things not to do while publishing a yearbook, but learning has been fun. I hope you find as much pleasure in reading the Ravelings as I had putting it out.

SHAN



