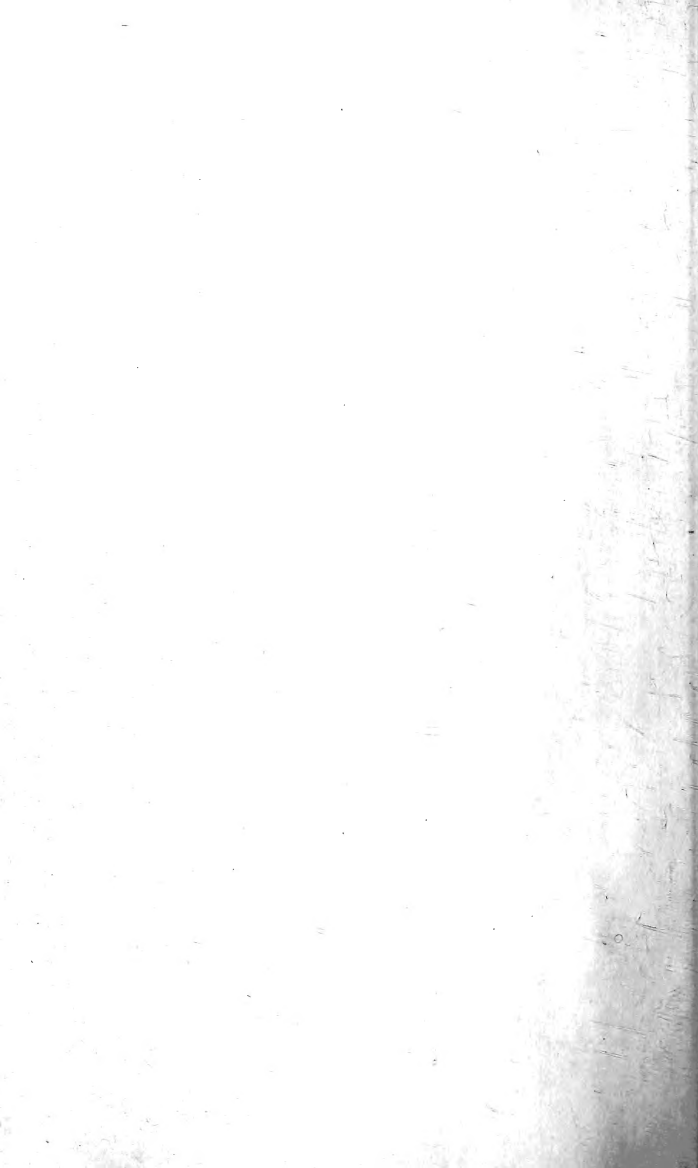
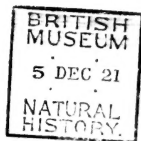


S 10

A





Balham and District
Antiquarian and Natural History
Society. K

(Eighth)

ANNUAL REPORT

AND

LIST OF MEMBERS

January, 1906.

BALHAM AND DISTRICT
Antiquarian and Natural History Society.
1906.

President:

SIR EDWARD BRABROOK, C.B., F.S.A.

Vice-Presidents:

F. G. FLEAY, M.A. G. G. CHISHOLM, M.A., B.Sc.
R. OVENDEN HARRIS, A.R.I.B.A.

Honorary Organising Secretary:

A. BONNER *23 Streathbourne Road, Upper Tooling, S.W.*

Honorary Financial and General Secretary:

A. L. BARRON, "*Clophill*," Wallington, Surrey.

Council:

The Above, and the following Elected Members:

J. HOLLAND ROSE, Litt.D.	J. J. FOSTER, F.S.A.	Mrs. WILSON.
G. A. T. MIDDLETON, A.R.I.B.A.	S. G. WARNER, F.I.A.	Miss A. G. BRABROOK.

Report of the Council for 1905.

SINCE its formation early in 1897, the Society has held seventy-seven meetings; and those of 1905 have been well up to the average in attendance and in the interest shown.

The winter meetings—three in number—have, by the kindness of the President, been held at his house, which has on so many occasions been hospitably opened to the Society. The first was the annual meeting on February 3rd; the report and accounts were passed and the officers of the Society were re-elected—the number of Vice-Presidents having been reduced to three by the deeply regretted death of Mr. T. W. Shore; and the President read a paper upon “The Serjeants-at-Law,” which, with its interesting illustrations, was much enjoyed. On March 17th a paper on “The Rolls House and the Jews,” by Rev. W. J. Loftie, B.A., F.S.A., was read in Mr. Loftie’s unavoidable absence by the President, who added the result of his own investigations in this subject; a second short paper, by Mr. S. W. Kershaw, M.A., F.S.A., on “Gatton in the Past,” was read by the Organising Secretary, and Mr. F. G. Fleay, M.A., completed the programme with some observations on the recently published reprint of the Henslow MS. The third winter meeting took place on December 15th, when Mrs. H. Bradlaugh Bonner gave a paper upon early alien immigrations into England.

The Society’s visits during the year have been as follows:—

May 20th, East Ham:—Green Street House (Tudor), with modern Reformatory attached, was shown by the Rev. Superintendent; and East Ham Church (twelfth century), was shown by the Vicar, Rev. J. H. Ware, M.A.

June 17th, Reigate:—The Church and its Library, the Castle Mound, Cavern and Grounds, and other points of interest were visited, under the guidance of Sir John Watney M.A., F.S.A., and Mr. Penfold (whose special knowledge, as local Surveyor, greatly added to the interest, and whose collection of local prints, etc., was shown at his office); and the company was entertained at tea with much kindness by Sir J. Watney and his family, in his charming garden.

July 15, Stoke D'Abernon and Bookham:—Stoke Church (first visited by the Society in 1900), with its Anglo-Saxon work, remarkable brasses, and numerous “points,” was shown by the Organising Secretary; Slyfield Manor House (Jacobean) was externally viewed; and after a drive or walk across Bookham Common, Bookham Church (twelfth century, etc.) was seen with the aid of the Vicar, Rev. G. S. Bird. Some of the party also visited Little Bookham Church (twelfth century) and its picturesque churchyard.

September 23rd, Fulham:—By the courtesy of the Bishop of London, Fulham Palace was visited by a large party, and in the fine old hall Sir Edward Brabrook read a paper upon this ancient Episcopal manor. Fulham and Putney Churches were also inspected.

October 28th, The Church of St. Lawrence Jewry, with its fine plate, carving, and decorations, was seen under the able guidance of the Rector, Rev. J. S. Barrass, M.A. The company were afterwards received by the Masters and Wardens of the Parish Clerks Company, in their quaint Hall; Mr. Deputy White read an interesting paper on this ancient Company, whose valuable records, books, etc., were shown; and tea was hospitably provided by the Master and Wardens.

The City of London College Science Society has courteously sent to this Society sixteen issues of their Journal.

RECEIPTS AND EXPENDITURE FOR 1905.

RECEIPTS.	£ s. d.	EXPENSES.	£ s. d.
Balance brought from 1904	14 8	Cost of Meetings	1 17 10
40 Subscriptions for 1905..	10 0 0	Printing	5 2 3
Extra Contributions ..	3 0	Postage	1 4 4
1 copy Mr. Shore's pamphlet	6	Stationery	15 0
		Subscription: S.E. Union of Scientific Societies ..	5 0
		Subscription: Photographic Survey and Record of Surrey ..	2 6
		Subscription: Croydon Antiquities Protection Committee	5 0
		Balance in hand	1 6 3
	£10 18 2		£10 18 2

List of Members, 1905.

- Angus, Mrs. J., Newholme, St. Nicholas Road, Upper Tooting, S.W.
 Barron, A. L., Clophill, Wallington, Surrey.
 Bonner, A., 23 Streathbourne Road, Upper Tooting, S.W.
 Bonner, Mrs., " " "
 Brabrook, Sir Edward, C.B., F.S.A., 178 Bedford Hill, Balham, S.W.
 Brabrook, Miss A. G., " "
 Brabrook, Miss I. M., " "
 Chisholm, G. G., M.A., B.Sc., 59 Drakefield Road, Upper Tooting, S.W.
 Clarke, A. H., Westerleigh, Elmbourne Road, Upper Tooting, S.W.
 Crow, P.A., 94, Romford Road, Stratford. E.
 Fenton, A. E., 10 Staple Inn, Holborn, W.C.
 Finny, Dr. W. E. St. L., Tamesa, Kingston Hill, Surrey.
 Fleay, F. G., M.A., 27 Dafforne Road, Upper Tooting, S.W.
 Fleay, J., " " "
 Foster, J. J., F.S.A., Offa House, St. Nicholas Road, Upper Tooting, S.W.
 Fox, C., The Pynes, Warlingham-on-the-Hill, Surrey.
 Gardiner, Miss Linda, Vilette, Emanuel Road, Balham, S.W.
 Gardiner, Miss Marian, " " "
 Gomme, Mrs., 24 Dorset Square, N.W.
 Harris, R. Ovenden, A.R.I.B.A., South Lodge, Upper Tooting Park, S.W.
 Hawkins, J. W., 104 Nightingale Lane, Balham, S.W.
 Holland, A., M.A., 5 Bellassis Avenue, Streatham Hill, S.W.
 Howlett, Richard, F.S.A., 95 Balham Park Road, S.W.
 Jones, J. W., 13 Dornton Road, Balham, S.W.
 Kershaw, S. W., M.A., F.S.A., The Library, Lambeth Palace, S.W.
 Klaassen, Miss A. C., Aberfeldy, Campden Road, Croydon.
 Klaassen, Miss E. F., " " "
 Macbeth, Donald, 92 Culverden Road, Balham, S.W.
 Middleton, G. A. T., A.R.I.B.A., 58 Dafforne Road, Upper Tooting, S.W.
 Palmer, G. F., 220 Barcombe Avenue, Streatham Hill, S.W.
 Peacock, Mrs., 60 Franciscan Road., Tooting Common, S.W.
 Roe, Mrs., 7 Veronica Road, Balham, S.W.
 Rose, J. Holland, Litt.D., 11 Endlesham-Rd., Balham, S.W.
 Sheppard, A. T., 54 Huron Road, Upper Tooting, S.W.
 Shore, Miss C. H., 157 Bedford Hill, Balham, S.W.
 Shore, Mrs., Heathfield, Alleyn Park, Dulwich, S.E.
 Smith, Miss. F. Toulmin, 32 Thurlow Hill, West Norwood, S.E.
 Smith, Frederick Wm., 33 Cavendish Gardens, Clapham Park, S.W.
 Stout, E. H., 75 Huron Road, Upper Tooting, S.W.
 Stout, Mrs., " " "
 Warner, S. G., F.I.A., Elmside, Wandsworth Common, S.W.

Warner, Mrs., Elmside, Wandsworth Common, S.W.
 Warren, A. O., 77 Ritherdon Road, Upper Tooting, S.W.
 Wilson, J., 21 Streathbourne Road, Upper Tooting, S.W.
 Wilson, Mrs., " " " "

No. of members, 45. [1905 list=48; loss by removal, lapse, and death, 9;
 new members, 6.]

*5 members elected since this list
 was printed. (T.B.)*

RULES.

1.—The Society shall be named "THE BALHAM AND DISTRICT ANTIQUARIAN AND NATURAL HISTORY SOCIETY," and its objects shall be to study and, as far as practicable, to record the Antiquities and Natural History of the district.

2.—The government of the Society shall be vested in a Council to be elected annually and to consist of the President, the Vice-Presidents, the Treasurer and Secretaries, *ex-officio*, and not more than six other members.

3.—Members shall be elected by the Council.

4.—Ladies shall be eligible for election as Members.

5.—The Annual Subscription shall be 5s. payable on the 1st January. Members may compound their Subscription by a cash payment of 21s. to cover five years, or 40s. to cover ten years.

6.—Each Member shall be at liberty to introduce one visitor to each ordinary meeting of the Society.

7.—The Rules may be altered or rescinded, and names removed from the list Members at general meetings specially called for the purpose by the Council.

*The following pamphlet issued by the Society may be obtained by members
 from the Hon. Financial and General Secretary—*

THE ARCHAEOLOGICAL REMAINS AND EARLY HISTORICAL ASSOCIATIONS OF
 STREATHAM, TOOTING, AND BALHAM. By Thomas W. Shore. 7d.
 (Post free).

BALHAM ANTIQUARIAN SOCIETY.

MEETINGS HELD AND PLACES VISITED BY THE SOCIETY FROM ITS FOUNDATION TO DECEMBER, 1904.

[NOTE.—The Society's visits are all "conducted." When possible, churches are shown by the Rector or Vicar, and other places by a local authority. Where not otherwise specified, the Hon. Organising Secretary (for the time being) has acted as conductor. Ch.=church.]

1897.

- May 1. Croydon : Ch. (by Canon Pereira) ; Archbps. Palace ; Whitgift's Hospital ; Town Hall and Museum. Conducted by Aldn. Sir F. Edridge.
- May 22. Beddington Palace and Ch. ; and Carshalton : ch. (by the Rector), ancient well, etc.
- June 19. Addington Hills. Natural History Ramble. Geological features described by W. Whitaker, Esq., F.R.S. (Pres. Herts. Field Club ; formerly Geol. Survey).
- July 17. Kew Gardens. Conducted by G. G. Chisholm, Esq., M.A., B.Sc., and T. W. Shore, Esq., F.G.S.
- Oct. 9. 1, Lincoln's Inn : Paper by the President on "The Honourable Society of Lincoln's Inn". 2, Soane's Museum, shown by Geo. H. Birch, Esq., F.S.A., Curator.
- Nov. 6. Lambeth Palace, including special portions (by Archbishop's permission), by S. W. Kershaw, Esq., F.S.A., Librarian.
- Nov. 22. Paper by T. W. Shore, Esq., F.G.S., on "The Archæological Remains and Early Historical Associations of Streatham, Tooting, and Balham" [published by the Society].

1898.

- Jan. 24. First Annual Meeting. Paper by F. G. Fleay, Esq., M.A., on "Queen Elizabeth, Croydon, and the Drama" [printed by the Society].
- Mar. 26. St. Saviour's, Southwark (formerly St. Mary Overey; now Southwark Cathedral), shown by the Rector and Canon Bristow.
- May 7. 1, Thames Ditton: Ch. 2, Kingston: Coronation Stone of Saxon Kings; Ch.
- June 11. Banstead. Ch. (by Rev. E. V. Buckle, Vicar); ancient yew tree; tumuli (Bronze Age), etc.
- July 23. 1, Leatherhead: Ch. (by Canon Utterton). 2, By River Mole to Norbury Park: "Druid's Walk" (yew trees, reputed age over 1,000 years).
- Oct. 8. Tooting Graveney Ch. (by Rev. E. H. Morton, M.A., Rector); Paper by W. E. Morden, Esq. (Author of "The History of Tooting Graveney") with old prints and drawings.
- Oct. 22. The Temple: Inner and Middle Temple Halls and Libraries, etc.; and Temple Church (by Canon Ainger, Master of the Temple).
- Nov. 17. Lecture by G. A. T. Middleton, Esq., A.R.I.B.A., on "Ancient English Architecture" (Lantern).
- Dec. 3. Guildhall: Library, Museum, Ancient Crypt, Hall, Council Chambers, etc. Conducted by Chas. Welch, Esq., F.S.A., Librarian.

NOTE.—During 1898 the Society induced the London County Council to place on the Common (near the Central Pond) the fossil tree trunk which Mr. Alfred Heaver had presented to the Society. The Council put a railing round the stone, with a board and descriptive notice.

1899.

- Jan. 30. Second Annual Meeting. Address by F. G. Fleay, Esq., M.A., Vice-Pres., on "The Stage, Southwark, and Shakespeare in 1592".
- Feb. 25. 1, Staple Inn, by A. G. Wiggins, Esq., with Paper by the President. 2, Gray's Inn, shown by W. R. Douthwaite, Esq., Librarian, who read a Paper on the Inn.
- April 8. Wandsworth. 1, Ch.; and Paper by G. Patrick, Esq., A.R.I.B.A., Hon. Sec. Brit. Archæol. Assn. 2, Public Library and collection of local prints, etc.; with Paper on "Old Wandsworth" by Cecil Davis, Esq., Chief Librarian.

- April 29. Chelsea : Ch. (by Rev. R. H. Davies, Rector) and Hospital.
- June 17. 1, Leith Hill : remains of entrenchments. 2, Coldharbour and Anstiebury (earthwork).
- July 8. Oxted : Ch., and Barrow Green ; Limpsfield : Ch. Geology by W. Whitaker, Esq., F.R.S., Pres. Geol. Soc.
- July 29. Mickleham : Ch., River Mole, and Box Hill.
- Oct. 21. Geological Museum, Jermyn Street, by F. W. Rudler, Esq., F.G.S., Curator. Model of London Geology shown by W. Whitaker, Esq., F.R.S., Pres. Geol. Soc.
- Nov. 4. 1, St. Bartholomew the Great, by Rev. Sir Borrodaile Savory, Bart., Rector. 2, The Charterhouse, by the Master, Rev. Dr. Haig Brown.
- Dec. 2. 1, St. Helen's, Bishopsgate, shown by Rev. H. L. Airey, Rector, and Canon Benham, F.S.A. ; Notes by the President. 2, Crosby Hall.

1900.

- Feb. 15. Third Annual Meeting. Lecture (Lantern) by G. A. T. Middleton, Esq., A.R.I.B.A., on "Ancient and Mediæval Architecture in France, Germany and Belgium in its Relation to that of England of the same date".
- April 21. Kingston : Town Hall (Municipal charters, etc.), Market Place, Lovekyn Chapel, etc. Conducted by Aldn. Dr. Finny.
- May 16. Westminster Abbey : Chapter House, Chapel of the Pyx, and Abbey Ch., by J. T. Micklethwaite, Esq., F.R.I.B.A., V.-P.S.A., Architect to the Abbey.
- May 26. Warlingham. Ch. (by Rev. F. N. Marriott, Vicar) ; Ancient Inn, etc. Botanical ramble.
- June 30. Chaldon Ch. (by the Vicar) and Farthing or Fairdean Downs.
- July 28. 1, Stoke D'Abernon : Ch. 2, Cobham : Ch., ancient mill and houses.
- Oct. 20. British Museum, Egyptian Rooms. Lecture and Chronological Notes by F. G. Fleay, Esq., M.A., V.-Pres.
- Nov. 3. Church of All Hallows Barking, Great Tower Street, E.C., by Rev. Dr. Robinson, Vicar.

1901.

- Jan. 26. Fourth Annual Meeting.
- Mar. 2. Clerkenwell: St. John's Gate; St. John's Ch. and Crypt (by the Rector, Rev. T. W. Wood, Chaplain of the Order of St. John).
- Mar. 30. Victoria and Albert Museum (Science Galleries), S. Kensington. Scientific models and experiments, conducted by T. Healey, Esq.
- May 17. Greek and Roman Galleries, British Museum. Conducted by G. A. T. Middleton, Esq., A.R.I.B.A.
- June 22. Ewell, Nonsuch, Cheam. EWELL: Peculiar springs of the Hogsmill river; ch. and tower of old ch. NONSUCH: Park; remnant of Tudor Palace, Queen Elizabeth's Oak. CHEAM: Ch., old houses, etc.
- Oct. 5. Horniman Museum, by R. Quick, Esq., Curator.
- Nov. 2. Tower of London, including portions not usually accessible; by special warder.
- Nov. 25. Paper on "The Folklore of Children's Games", by Mrs. G. L. Gomme.

1902.

- Feb. 10. Fifth Annual Meeting. Paper on "Mediaeval Lavatories", by E. W. Brabrook, Esq., C.B., F.S.A. (President).
- [NOTE.—Up to this date the meetings were arranged by Mr. T. W. SHORE, Founder of the Society, who now retired from the Hon. Organising Secretaryship.]
- May 3. 1, Christ Hospital, Newgate Street. 2, Chapel of St. Etheldreda, Ely Place, Holborn.
- May 13. Hampton Court Palace: Tudor portions, shown by E. Chart, Esq., resident Surveyor; Chapel (by Rev. Mr. Ingram, resident Chaplain), etc.
- June 14. Greenwich Park: Roman road, Roman remains, etc.; conducted by A. D. Webster, Esq., F.R.S.E., Supt. Geology treated—with paper—by T. V. Holmes, Esq., F.G.S. Remarkable private grounds on Blackheath Hill shown by the owner, illustrating the geological strata.
- July 12. West Wickham: Wickham Court (15th cent.); and ch.
- Sept. 27. Dulwich Gallery and Old College (Alleyne's foundation, 1613), shown by J. Hodgkins, Esq., Curator, and (Chapel) Canon Daniell.

- Nov. 1. 1, St. Olave's Church, Hart Street, E.C. 2, All Hallows Staining, Mark Lane (tower only), with adjoining Norman crypt.
- Nov. 29. Westminster Abbey: Domestic buildings remaining from the Benedictine Monastery; and Westminster School. Deanery (Abbot's House), shown by the Dean of Westminster; other portions by Rev. Dr. Gow, Headmaster of Westminster School.
- 1903.
- Jan. 23. Sixth Annual Meeting. Lecture (Lantern) by G. A. T. Middleton, Esq., A.R.I.B.A., on "English Domestic Architecture before the 18th Century".
- Feb. 13. Lecture: "The Monastic Orders in England, the Benedictine Monastery at Westminster, and Westminster School," by A. Bonner, Esq.
- Mar. 28. Westminster: 1, St. Margaret's Ch., shown by Canon Hensley Henson. 2, "Jewel Tower," remnant of the Royal Palace, with Standards Dept. Board of Trade, shown by H. J. Chaney, Esq. (Supt. Standards Dept.). 3, Ch. of St. John the Evangelist.
- April 25. Three City Churches: 1, St. Katherine Creechurch, by Rev. J. Miles, M.A., Rector. 2, St. Andrew Undershaft, with note on Stow by S. W. Kershaw, Esq., M.A., F.S.A. 3, St. Peter-upon-Cornhill, by Rev. G. B. Doughty, Rector.
- May 16. Richmond: Town Hall, Palace (Tudor), and Ch. Conducted (with Reception) by Albert Chancellor, Esq., J.P., Mayor.
- July 4. Holwood Park, Keston Ch. (by Rev. H. G. Wright, Rector), War Bank, and Hayes Common. Conducted by Geo. Clinch, Esq., F.G.S.
- Oct. 17. Strand: 1, St. Clement Danes Ch., by Rev. Sir Wm. Earle. 2, Roman Bath, by A. Bonner. 3, Chapel Royal, Savoy, by Rev. W. J. Loftie, B.A., F.S.A. 4, Water Gate to former York House.
- Nov. 14. Carpenters Hall: Reception by Master and Wardens of the Worshipful Co. of Carpenters, exhibition of frescoes, plate, charters, registers, etc. Paper by the President on the Company and the adjacent site of the Wall Brook and its Pile Dwellings.
- Dec. 11. Lecture: "Our Ancient Megalithic Monuments," by Walter Johnson, Esq.

1904.

- Jan. 22. Seventh Annual Meeting.
- Feb. 5. Lecture on Place Names, with Illustrations from Surrey and London, by A. Bonner, Esq.
- Feb. 26. Lecture (Lantern) : " A Chat about the Stuarts," by J. J. Foster, Esq.
- Mar. 26. City Churches : St. Ethelburga, Bishopsgate (Rev. Dr. Cobb, Rector) ; and Austin Friars ; with Notes by T. W. Shore, Esq., F.G.S., and A. Bonner, Esq.
- April 16. Public Record Office Museum, by Hubert Hall, Esq., F.S.A. ; and Clifford's Inn.
- June 11. Ashtead : Ch., park (with earthworks), and common.
- July 16. Gatton : House, gardens, park, and ch. (by the Rector, Rev. A. G. Rogers). 2, Merstham Ch. (by the Rector, Rev. R. J. Woodhouse).
- Oct. 16. Canonbury Tower, etc. ; with Paper by Chas. Townley, Esq.
- Nov. 5. City Churches : St. Mary Aldermary, by Prebendary Reynolds, with Paper by Mr. Deputy White ; and St. Mary-le-bow, with Paper by T. W. Shore, Esq., F.G.S.
- Dec. 9. Lecture : " The Life and Legends of Old London," by T. W. Shore, Esq., F.G.S.





Balham and District

Antiquarian and Natural History
Society.

ANNUAL REPORT

AND

LIST OF MEMBERS

January, 1907.

BALHAM AND DISTRICT
Antiquarian and Natural History Society.
1907.

President:

SIR EDWARD BRABROOK, C.B., V-P.S.A.

Vice-Presidents:

G. G. CHISHOLM, M.A., B.Sc.
R. OVENDEN HARRIS, A.R.I.B.A.

J. J. FOSTER, F.S.A.
J. HOLLAND ROSE, Litt.D.

Honorary Organising Secretary:

A. BONNER, 23 *Streathbourne Road, Upper Tooting, S.W.*

Honorary Financial and General Secretary:

A. L. BARRON, "*Clophill*," *Sandy Lane, Wallington, Surrey.*

Council:

The Above, and the following Elected Members:

Miss A. G. BRABROOK.
C. V. COATES, M.A.

S. W. KERSHAW, M.A., F.S.A.
G. A. T. MIDDLETON, A.R.I.B.A.

S. G. WARNER, F.I.A.
Mrs. J. WILSON.



RULES.

1.—The Society shall be named "THE BALHAM AND DISTRICT ANTIQUARIAN AND NATURAL HISTORY SOCIETY," and its objects shall be to study and, as far as practicable, to record the Antiquities and Natural History of the district.

2.—The government of the Society shall be vested in a Council to be elected annually and to consist of the President, the Vice-Presidents, the Treasurer and Secretaries, *ex-officio*, and not more than six other members.

3.—Members shall be elected by the Council.

4.—Ladies shall be eligible for election as Members.

5.—The Annual Subscription shall be 5s. payable on the 1st January. Members may compound their Subscription by a cash payment of 21s. to cover five years, or 40s. to cover ten years.

6.—Each Member shall be at liberty to introduce one visitor to each ordinary meeting of the Society.

7.—The Rules may be altered or rescinded, and names removed from the list of Members at general meetings specially called for the purpose by the Council.

Report for 1906.

THE Society's meetings have been eleven in number. The annual meeting was held at the President's house on January 19th, and after the usual business—which included the re-election of the officers and Committee—Mr. Walter Johnson favoured the Society with a lecture on "Our Oldest Industry: the Flint Workers of Brandon," illustrated with flints and implements.

On February 23rd, at 23 Streathbourne Road, the President read a paper on "Robin Hood," the interest in which was indicated in the ensuing discussion. This was followed by "Surrey before the Conquest," by Mr. Geo. Clinch, a valuable contribution which in Mr. Clinch's absence was read by the Organising Secretary. Sir Edward Brabrook's paper has since appeared in *The Antiquary*.

The third meeting was held on April 28th, when Lincoln's Inn was visited under the expert guidance of Mr. W. Paley Baildon, F.S.A., whose researches in the History of this ancient Inn are well known. The Gatehouse, Old Hall, Chapel, Library, Dining Hall, and Gardens were duly seen and dealt with. The party then proceeded to the Sardinian Chapel, Lincoln's Inn Fields, where Rev. Mr. Daniell kindly addressed them on this interesting remnant of 17th century London.

On May 19th a party of about thirty visited Beddington and Carshalton—a repetition of one of the first meetings of the Society in 1897. Beddington Place, with its fine Tudor Hall and Lock and Gardens, and its modern Orphanage, was shown by Mr. Brough Maltby, who also conducted the party through the handsome and well-kept Perpendicular Church adjoining. At Carshalton Church the Rector, Rev. G. B. Vaux, kindly officiated.

The fifth meeting took place at Guildford on June 16th. The monuments in the Loseley Chapel attached to St. Nicholas Church were explained by Mr. H. E. Malden, M.A., and, by permission of the Mayor and their respective owners, the quaint 17th century Town Hall, the Angel Inn, with its 13th century crypt, and the fine stairway and other 17th century work at 25 High Street, were seen and appreciated. The

beautiful woodwork and picturesque buildings of Abbot's Hospital were admirably shown by the Master, and a paper by Mr. S. W. Kershaw, M.A., F.S.A., on "Archbishop Abbot," was read by Mr. Bonner. After lunch, St. Mary's Church was seen (by courtesy of Rev. Canon Grant); Mr. Ralph Nevill, F.S.A., who had kindly consented to take charge of the party here, was unfortunately prevented attending by illhealth, but a paper by him on this ancient and interesting church was read by Mr. Bonner, who showed the various points. The party then proceeded to the Castle, where they were again met by Mr. Malden, who dealt with this important relic as only he can; and thence to Mr. Malden's house on St. Catherine's Hill, where tea was hospitably provided by Mr. and Mrs. Malden. After tea, Mr. Malden showed and explained the adjacent ruin of St. Catherine's Chapel. This concluded a most enjoyable day, and all present highly appreciated Mr. Malden's kindness and the advantage of his unrivalled knowledge, which he had so freely placed at their disposal. This was the first "whole day" meeting of the Society, and the experiment was so successful that it is to be repeated.

The next meeting was held on June 30th, when Merton, Malden, and Chessington were visited by road. The old church at Merton was shown by Mr. Bonner, who drew special attention to the fine 12th century door to the church, and spoke on the early history and name of the place; and a short halt was made at Malden Church, where the excellent modern carving was admired. At Chessington Church the Rev. G. W. Pratt kindly acted as guide; Chessington Hall was next visited, by the kindness of Mr. Horatio Chancellor, who, with his sister, most hospitably received the considerable party with tea, and showed his charming garden with the Fanny Burney arbour and mulberry trees. On the lawn, after tea, in the shade of these notable trees, Dr. J. Holland Rose gave a most interesting address on Fanny Burney and her connection with Chessington Hall. On leaving the Hall, the "Roman Camp" was visited, but owing to its overgrown condition and difficulty of access the earthwork was not favourably seen.

Walton-on-Thames was the next meeting place, on July 19th. The church—with its Trans. Norman work, "palimpsest" brass, and well-known "scold's bridle"—was shown by the Vicar,

Rev. W. Kemp Bussell, M.A.; who very kindly also conducted the visitors to and over the old Manor House—a picturesque Tudor timber-frame house connected in Stuart times with Bradshaw. Walton Bridge was visited, and the site of Coway Stakes viewed, on the way to St. George's Hill. Here, after tea under the trees by the Swiss Cottage on the summit, Sir Edward Brabrook dealt with Coway Stakes and Cæsar's crossing of the Thames; and Mr. Bonner gave an address with diagram on the fine British Earthworks. The lovely woods were much enjoyed. The return was made from Weybridge Station.

The eighth meeting of the year took place on September 15th at Norbury Park and Mickleham, which were reached *via* Box Hill Station. The "swallows" of the River Mole were visited, and in the dry bed of the stream our Vice-President, Mr. G. G. Chisholm, M.A., B.Sc., gave an address on the local disappearance of the stream and similar phenomena elsewhere. A delightful walk on the wooded slopes of Norbury Park, and through the "Druid's Grove" of ancient yew trees, was followed by tea at Mickleham and a glance at Mickleham Church, which unfortunately could not be properly seen for lack of time. Permission to visit Norbury was kindly granted by its courteous owner.

As an outcome of the Guildford meeting, the Society, through its Organising Secretary, had the pleasure and privilege of introducing Mr. Malden to the Balham Centre of the University Extension Lectures, with the result that under that scheme Mr. Malden delivered a course of ten lectures in the Congregational Lecture Hall, Upper Tooting, on "The History and Antiquities of Surrey." As this subject is so closely connected with the objects of the Society, the Council issued special circulars asking the co-operation of members, and other circulars to local members of the Surrey and London and Middlesex Archæological Societies, to the Battersea Field Club, and other suitable persons. The lectures, which took place in October, November, and December, were attended by a considerable proportion of our members. In connection with this course, the Society joined with those who attended in two conducted visits under the guidance of Mr. Malden: (1) to Kingston, on November 10th, and (2) to Southwark Cathedral and old St. Thomas's Hospital, on November 24th. These were well attended, and were distinguished by the addresses and elucidations.

tions of the conductor. At Kingston our member, Dr. W. E. St. L. Finny, J.P. (Alderman) co-operated with Mr. Malden.

The Society's last meeting was held on December 14th, when Mr. J. H. K. Todd delivered a highly interesting lecture on "Old Inns and Their Story." The numerous lantern illustrations were exceedingly good and admirably selected, and were well shown by the Rev. B. H. Lynes, M.A., Vicar of St. John's, who most kindly provided his fine lantern for the purpose. The Society was again indebted to the President for his hospitality on this occasion.

The Council note with regret the resignation of their much-esteemed colleague, Mr. F. G. Fleay, one of the first members of the Society and its first Vice-President, in which capacity he acted for nine years.

The Society now completes the tenth year of its existence, and this year may be marked—in this era of records and their making and breaking—by the first "whole day" excursion, the largest number of meetings, and the longest membership roll.

RECEIPTS AND EXPENDITURE FOR 1906.

RECEIPTS.		£	s.	d.		EXPENSES.		£	s.	d.
Balance brought from 1905		1	6	3		Cost of Meetings		2	4	1
2 Subscriptions for 1905			10	0		Printing		6	6	6
48 Subscriptions for 1906..		12	0	0		Postage		1	13	5
3 copies Mr. Shore's pamphlet			1	6		Stationery		2	0	
Tickets and Syllabus <i>re</i> Malden Lectures ..		2	14	0		Miss Foster: for tickets & syllabus <i>re</i> Malden Lectures		2	14	0
						Subscription: S.E. Union of Scientific Societies ..			5	0
						Subscription: Photographic Survey and Record of Surrey		2	6	
						Subscription: Croydon Antiquities Protection Committee ..			5	0
						Balance in hand		2	19	3
		<u>£16</u>	<u>11</u>	<u>9</u>				<u>£16</u>	<u>11</u>	<u>9</u>

List of Members, 1907.

- Adams, Miss, 2 Veronica Road, Balham, S.W.
 Angus, Mrs. J., Newholme, St. Nicholas Road, Upper Tooting, S.W.
 Barron, A. L., Clophill, Wallington, Surrey.
 Bonner, A., 23 Streathbourne Road, Upper Tooting, S.W.
 Bonner, Mrs., " " " "
 Brabrook, Sir Edward, C.B., F.S.A., 178 Bedford Hill, Balham, S.W.
 Brabrook, Miss A. G., " "
 Brabrook, Miss I. M., " "
 Brewer, Mrs., Bosvigo, Blenkarne Road, Wandsworth Common, S.W.
 Carter, J. R., Courtfield, Ross Road, Wallington.
 Carter, Mrs., " " " "
 Chisholm, G. G., M.A., B.Sc., 59 Drakefield Road, Upper Tooting, S.W.
 Clarke, A. H., Westerleigh, Elmbourne Road, Upper Tooting, S.W.
 Coates, C. V., 2 Brunswick Square, W.C.
 Coxwell, Dr. C. F., 4 Alleyn Park, West Dulwich.
 Coxwell, Mrs., " " " "
 Crow, P. A., 94 Romford Road, Stratford, E.
 Fenton, A. E., 10 Staple Inn, Holborn, W.C.
 Finny, Dr. W. E. St. L., Tamesa, Kingston Hill, Surrey.
 Foster, J. J., F.S.A., Offa House, St. Nicholas Road, Upper Tooting, S.W.
 Fox, C., The Pynes, Warlingham-on-the-Hill, Surrey.
 Gardiner, Miss Linda, 14a St. James's Road, Wandsworth Common, S.W.
 Gardiner, Miss Marian, " " " "
 Harris, R. Ovenden, A.R.I.B.A., South Lodge, Upper Tooting Park, S.W.
 Harris, Mrs., " " " "
 Harvey, A. B., 6 Balham Park Mansions, Balham, S.W.
 Harvey, Mrs., " " " "
 Holland, A., M.A., 5 Bellassis Avenue, Streatham Hill, S.W.
 Hughes, Miss, 12 Tooting Bec Road, Upper Tooting, S.W.
 Jackson, T. G., 11 Poynders Road, Clapham Park, S.W.
 Jones, J. W., 13 Dornton Road, Balham, S.W.
 Kershaw, S. W., M.A., F.S.A., The Library, Lambeth Palace, S.W.
 Klaassen, Miss A. C., Aberfeldy, Campden Road, Croydon.
 Klaassen, Miss E. F., " " " "
 Macbeth, Donald, 92 Culverden Road, Balham, S.W.
 Meelboom, Miss A. H., 34 Lessar Avenue, Clapham Common, S.W.
 Middleton, G. A. T., A.R.I.B.A., 58 Dafforne Road, Upper Tooting, S.W.
 Middleton, Mrs., " " " "
 Palmer, G. F., 220 Barcombe Avenue, Streatham Hill, S.W.
 Peacock, Mrs., 60 Franciscan Road, Tooting Common, S.W.

- Reburn, Miss C. M., 29 Beulah Road, Thornton Heath.
 Roe, Mrs., 7 Veronica Road, Balham, S.W.
 Rose, J. Holland, Litt.D., Ethandune, Parkside Gardens, Wimbledon.
 Sheppard, A. T., 54 Huron Road, Upper Tooting, S.W.
 Shore, Miss C. H., 157 Bedford Hill, Balham, S.W.
 Shore, Mrs., Woodlawn, 6 Kingswood Road, Upper Norwood, S.E.
 Smith, Miss F. Toulmin, 32 Thurlow Hill, West Norwood, S.E.
 Smith, Frederick Wm., 33 Cavendish Gardens, Clapham Park, S.W.
 Stephens, J., 88 Ritherdon Road, Upper Tooting, S.W.
 Stout, E. H., 75 Huron Road, Upper Tooting, S.W.
 Stout, Mrs., " " "
 Warner, S. G., F.I.A., Elmside, Wandsworth Common, S.W.
 Warner, Mrs., " " "
 Warren, A. O., 77 Ritherdon Road, Upper Tooting, S.W.
 Wellbye, R., 24 Murray Road, Ealing, W.
 Wilson, J., 21 Streathbourne Road, Upper Tooting, S.W.
 Wilson, Mrs., " " "

No. of members, 57. [1906 list=45; loss, 4, new members, 16.]

*The following pamphlets issued by the Society may be obtained from Mr.
 A. L. Barron (Hon. General Secretary)—*

THE ARCHÆOLOGICAL REMAINS AND EARLY HISTORICAL ASSOCIATIONS OF
 STREATHAM, TOOTING, AND BALHAM. By Thomas W. Shore, F.G.S.
 7d. (Post free).

QUEEN ELIZABETH, CROYDON, AND THE DRAMA. By F. G. Fleay, M.A.
 4d. (Post free).

BALHAM ANTIQUARIAN SOCIETY.

VISITS BY THE SOCIETY, 1897—1906.

[NOTE.—The Society's visits are all "conducted." When possible, churches are shown by the Rector or Vicar, and other places by a local authority. Ch.=church.]

- Addington Hills [with Geological demonstration], 1897.
Ashted [Ch., earthworks, and Common], 1904.
Banstead [Ch., tumuli on Downs], 1898.
Beddington [Beddington Place, Ch.], 1897, 1906.
Bookham, Great and Little [Churches, Common], 1905.
Box Hill, 1899.
Canonbury [Tower and other manorial remains], 1904.
Carshalton [Ch., etc.], 1897, 1906.
Chaldon [Ch., tumuli on Farthing Downs], 1900.
Cheam [Ch.], 1901.
Chelsea [Ch., Hospital], 1899.
Chessington [Ch., Hall, Earthworks], 1906.
Cobham [Mill, Ch., houses], 1900.
Coldharbour [Leith Hill, Anstiebury Camp], 1899.
Croydon [Ch., Archbps. Palace, Whitgift Hospital, Corporation Bldgs., and Museum], 1897.
Dulwich [Old College bldgs. and Chapel, Gallery], 1902.
East Ham [Green St. House, Ch.], 1905.
Ewell [Ch., Springs, remnant of Nonsuch], 1901.
Forest Hill [Horniman's Museum], 1901.
Fulham [Palace, Ch.], 1905.
Gatton [Hall, Ch., etc.], 1904.
Greenwich [Park, Roman remains, Blackheath Hill, with Geological demonstration], 1902.
Guildford [Castle, Abbot's Hospital, Churches, Crypt, St. Catherine's Chapel ruins, etc.], 1906.
Hampton Court [Tudor Palace, Chapel, etc.], 1902.
Hayes Common [prehistoric dwellings], 1903.
Keston [Common, Ch., Roman remains, Holwood Park (Earthworks, etc.)], 1903.
Kingston [Town Hall, Lovekyn Chapel, Coronation Stone, Ch., Museum, etc.], 1898, 1900, 1906.
Kew Gardens [botanical], 1897.
Lambeth Palace, 1897.
Leatherhead [Ch., River Mole, Norbury Park], 1898.
Leith Hill, Coldharbour, and Anstiebury, 1899.

- Limpsfield [Ch.], 1899.
 Malden [Old Ch.], 1906.
 Merstham [Ch., occasional "bourne," Pilgrim's Way], 1904.
 Merton [Old Ch.], 1906.
 Mickleham [Ch.], 1899, 1906.
 Do. [Mole "Swallows" and Norbury Park], 1906.
 Oxted [Ch., "Barrow"], 1899.
 Putney [Ch.], 1905.
 Reigate [Castle, Caverns, Ch., houses], 1905.
 Richmond [Palace, houses, Ch., Town Hall], 1903.
 Stoke D'Abernon [Ch.], 1900, 1905.
 Southwark [Cathedral], 1898, 1906; Old St. Thomas's Hospital, 1906.
 Thames Ditton [Ch.], 1898.
 Tooting Graveney [Ch.], 1898.
 Walton-on-Thames [Ch., Manor House, Coway, St. George's Hill], 1906.
 Wandsworth [Ch., Library], 1899.
 Warlingham [Ch., old Inn], 1900.
 West Wickham [Manor House, Ch.], 1902.
 London:—
 Charterhouse, 1899.
 Christ Hospital, 1902.
 Churches and Chapels: All Hallows Barking, 1900; All Hallows Staining (tower), 1902; Austin Friars, 1904; Sardinian, 1906; Savoy, 1903. Saints Andrew Undershaft, 1903; Bartholomew the Great, 1899; Clement Danes, 1903; Ethelburga, 1904; Etheldreda, 1902; Helen, 1899; Katherine Creechurch, 1903; Lawrence Jewry, 1905; Mary Aldermary, 1904; Mary-le-Bow, 1904; Olaves (Hart St.), 1902; Peter, Cornhill, 1902.
 Clerkenwell [St. John's Ch., Crypt, and Gatehouse], 1901.
 Halls: Carpenters' Co., 1902; Crosby, 1899; Guildhall, 1898; Parish Clerks, 1905.
 Inns of Law: Clifford's, 1904; Gray's, 1899; Lincoln's, 1897 and 1906; Staple, 1899; Temple, 1898.
 Museums: British (Egyptian, and Greek and Roman Galleries), 1900, 1901; Geological, 1899; Public Record Office, 1904; Soane's, 1897; S. Kensington (Science), 1901.
 Roman Bath, Strand Lane, 1903.
 Tower, 1901.
 Water Gate of York House, 1903.
 Westminster: Abbey and Monastic buildings, 1900, 1902; Jewel Tower, Churches of SS. Margaret and John, 1903.

LECTURES, PAPERS, AND ADDRESSES AT THE
SOCIETY'S MEETINGS.



- Sir Edward Brabrook, C.B., F.S.A. (Pres.): *Mediæval Lavatories*, 1902.
The Serjeants-at-Law, 1905.
Robin Hood, 1906.
The Honourable Society of Lincoln's Inn [at Lincoln's Inn], 1897.
Staple Inn [at Staple Inn], 1899.
The Carpenters' Company, and the site of the Wall Brook and its Pile Dwellings [at Carpenters' Hall], 1903.
 Also *Addresses or Notes at Bishopsgate*, 1899; *Fulham Palace*, 1905; *St. George's Hill*, 1906; etc.
- A. Bonner: *The Monastic Orders in England, the Benedictine Abbey at Westminster, and Westminster School*, 1903.
Place Names, Their Origin and Meaning, with illustrations from Surrey and London, 1904.
 Also *Addresses or Notes at various places visited by the Society*, 1902-6.
- Mrs. H. B. Bonner: *Early Alien Immigrations into England*, 1905.
- G. G. Chisholm, M.A., B.Sc.: *The "Swallows" of the River Mole and kindred phenomena elsewhere* [at Norbury Park], 1906.
- Geo. Clinch, F.G.S.: *Surrey before the Conquest*, 1905.
- W. E. St. L. Finny, M.B., J.P. (Alderman): *Addresses at Kingston*.
- F. G. Fleay, M.A.: *Queen Elizabeth, Croydon, and the Drama*, 1898. [Published by the Society.]
The Stage, Southwark, and Shakespeare in 1592; 1899.
Egyptian Chronology [at British Museum], 1900.

- Mrs. Alice B. Gomme : The Folklore of Children's Games, 1901.
- J. J. Foster, F.S.A. : A Chat about the Stuarts [Lantern], 1904.
- T. V. Holmes, F.G.S. : The Geology of Blackheath and Greenwich [at Greenwich Park], 1902.
- Walter Johnson : Our Ancient Megalithic Monuments, 1903.
Our Oldest Industry : the flint workers of Brandon, 1906.
- S. W. Kershaw, M.A., F.S.A. : Gatton in the Past, 1905.
A Note on John Stow [at St. Andrew Undershaft], 1903.
- W. J. Loftie, B.A., F.S.A. : The Rolls House and the Jews, 1905.
The Savoy [in the Chapel Royal, Savoy], 1903.
- H. Elliot Malden, M.A. : Guildford and its Castle [at Guildford Castle], 1906.
Also Addresses at Kingston and Southwark, 1906.
- G. A. T. Middleton, A.R.I.B.A. : Ancient English Architecture [Lantern], 1898.
Ancient and Mediæval Architecture in France, Germany, Belgium, and England [Lantern], 1900.
English Domestic Architecture before the Eighteenth Century [Lantern], 1903.
Greek and Roman Antiquities [at British Museum], 1901.
- J. Holland Rose, Litt.D., M.A. : Fanny Burney [at Chessington], 1906.
- T. W. Shore, F.G.S. : The Archæological Remains and Early Historical Associations of Streatham, Tooting, and Balham, 1897. [Published by the Society.]
The Life and Legends of Old London, 1904.
The Church of St. Mary-le-Bow [at the Church], 1904.
Also Addresses or Notes at various places visited by the Society, 1897-1901.
- J. H. K. Todd : Old Inns and their Story [Lantern], 1906.
- W. Whitaker, F.R.S., formerly Geol. Survey and Pres. Geol. Society : Geological Addresses at Addington Hills, 1897 ; Oxford, and Geological Museum, 1899.

f.c.



Balham and District

Antiquarian and Natural History Society.

ANNUAL REPORT

AND

LIST OF MEMBERS, VISITS, LECTURES, &c.

January, 1911.

BALHAM AND DISTRICT
Antiquarian and Natural History Society.

1911.

President:

SIR EDWARD BRABROOK, C.B., DIRECTOR S.A.

Vice-Presidents:

J. HOLLAND ROSE, Litt.D.
J. J. FOSTER, F.S.A.

DR. W. E. ST. L. FINNY, J.P.
S. W. KERSHAW, M.A., F.S.A.

Director of Meetings:

ARTHUR BONNER, 23 *Streathbourne Road, Upper Tooting, S.W.*

Organising Secretary (for arranging meetings):

MISS MARIAN GARDINER, 14a *St. James' Road, Wandsworth Common, S.W.*

Financial and General Secretary:

ARNOLD L. BARRON, "*Clophill*," *Sandy Lane, Wallington, Surrey.*

Members of Council:

S. G. WARNER, F.I.A. G. A. T. MIDDLETON, A.R.I.B.A. C. V. COATES, M.A.
Miss A. G. BRABROOK. Miss LINDA GARDINER. Miss E. F. KLAASSEN.

RULES.

1.—The Society shall be named "THE BALHAM AND DISTRICT ANTIQUARIAN AND NATURAL HISTORY SOCIETY," and its objects shall be to study and, as far as practicable, to record the Antiquities and Natural History of the district.

2.—The government of the Society shall be vested in a Council to be elected annually and to consist of the President, the Vice-Presidents, the Treasurer and Secretaries *ex-officio*, and not more than six other members.

3.—Members shall be elected by the Council.

4.—Ladies shall be eligible for election as Members.

5.—The Annual Subscription shall be 5s. payable on the 1st January. Members may compound their subscription by a cash payment of 21s. to cover five years, or 40s. to cover ten years.

6.—Each Member shall be at liberty to introduce one visitor to each ordinary meeting of the Society.

7.—The Rules may be altered or rescinded, and names removed from the list of members at general meetings specially called for the purpose by the Council.

The following pamphlets issued by the Society may be obtained from Mr. A. L. Barron (Hon. General Secretary)—

THE ARCHÆOLOGICAL REMAINS AND EARLY HISTORICAL ASSOCIATIONS OF STREATHAM, TOOTING, AND BALHAM. By Thomas W. Shore, F.G.S. 7d. (Post free).

QUEEN ELIZABETH, CROYDON, AND THE DRAMA. By F. G. Fleay, M.A. 4d. (Post free).

Thirteenth Annual Report.

THE Society continues to flourish, the twelve meetings held in 1910 equalling in interest those of any former year, whilst the average attendance, viz., 38, has been exceeded by only one year, 1908. A good start was made in January, when the annual meeting was combined with a conversazione. The innovation was a happy one, and nearly sixty members assembled at Heathfield, kindly lent by Miss Rowley. In addition to the address by the President, a musical programme, contributed by Miss Edith Penny, Mr. Bonner, and Mr. Bernard Gomme, was much enjoyed. A number of exhibits were loaned, including prints, photographs, and maps from the President, Mr. Bonner, and the Photographic Survey of Surrey; and Mr. J. J. Foster, F.S.A., sent his valuable collection of miniatures, Mr. Fenton a representative selection of prehistoric implements, and Mr. Middleton drawings illustrative of Gothic ornament.

“Deneholes and Other Excavations in the Chalk” was the subject of a lecture with lantern illustrations, given by the Rev. J. W. Hayes at Heathfield on February 25th. Mr. Hayes’ vicarage is in the chalk district of South Essex, and he recounted the results of his personal investigations and gave views of the “Dane-holes” at Hangman’s Wood, the caves at Chislehurst, and other examples of these curious remains, regarding which he is an expert. Though the evening was inclement more than thirty members were present.

The Society was fortunate in securing the guidance for an interesting visit to the Temple on March 19th, of Hugh H. L. Bellot, Esq., D.C.L., M.A., author of the exhaustive and entertaining book “The Inner and Middle Temple: Legal, Literary and Historic Associations.” A party of fifty met at the Temple Church, an account of which was given by Dr. Bellot, whilst

Mr. Middleton explained its architecture. Dr. Bellot afterwards conducted the members over the Libraries and Inner Temple Hall, pointing out the features of interest and dwelling on the innumerable historic and literary associations.

Wandsworth does not suggest antiquarian studies. The members, however, who assembled on April 9th at Mount Nod, East Hill, discovered under the genial conductorship of Mr. Cecil Davis, the Borough Librarian, how interesting a part the neighbourhood has taken in the history of the past. At the Huguenot Cemetery they examined the heavy eighteenth century tombstones, on thirty-seven of which French names are recorded. At the Public Library, itself a fine old mansion, Mr. Davis gave a racy account out of the fullness of his knowledge and enthusiasm of Wandsworth in history, and a large selection of views collected by him illustrative of the local events and transmutations was seen. By permission of the Vicar, the Rev. W. Reed, the Parish Church was visited. Though rebuilt at an unfortunate period architecturally, features of interest were pointed out by Mr. Davis in the remains of Norman work in the tower, the Jacobean monuments in the chancel, and the entries in the register.

A meeting at Chislehurst had to be suddenly postponed on the morning of the date fixed, May 7th, on account of the death of the King, and some of the members who did not hear of the alteration made a little party of their own on that date. The postponed meeting was held on May 21st, under Mr. Bonner's guidance. Camden Place, built upon the site of the home of William Camden, and the retreat of Napoleon III. and the Empress Eugenie, was visited by courtesy of the Chislehurst Golf Club, who now occupy the premises. A short walk across the common brought the party to the fifteenth century church, where the fine screens and monuments, the Norman font, etc., were seen. The chief object of interest was, however, the extensive and remarkable excavations known as the Chislehurst Caves. These were duly explored, and Mr. Bonner

gave an address upon "Dane-holes" and these Caves—where chalk has been mined probably from Roman times up to the nineteenth century.

A party of fifty met on June 4th at the quaint and comparatively little known Grey Coat Hospital, Westminster. Miss Day, the Headmistress, not only showed the interesting Queen Anne building and the valuable collection of pictures and books, the Prayer Book containing the Service for the King's Evil, the Queen Anne Charter, etc., but gave a lively address on the history of the school and the changes that had taken place from the time when her connection with it began thirty-six years ago to the present, when modern methods and advantages are enjoyed. Miss Day kindly entertained the party to tea, and afterwards showed her unique collection of London prints.

In spite of the wet summer the Society enjoyed fine weather on all their excursions, except on the one which should have been the most delightful of the season. On June 25th Mr. Bonner conducted a drive about Wimbledon Common and Richmond Park, and Mr. and Mrs. Trevor Davis kindly invited the party to tea in their garden at Sunnyside, Petersham. Nearly forty members set off in open brakes with a fine disregard of the threatening clouds, which shortly afterwards descended in torrential downpours. Fortunately the rain ceased as they drove into Richmond Park, and the party were able to enjoy its leafy beauty, and to listen to the explanatory notes which the Conductor gave of the points of interest, where halts were made. Petersham Church was reached just in time to escape a thunderstorm, and was illuminated for the occasion by flashes of lightning. The Vicar, the Rev. J. Oxley, gave some account of the quaint and interesting little edifice, whose eighteenth century galleries, pews and two-decker pulpit have happily escaped restoration, and of its associations with Captain Cook and Vancouver. Mr. and Mrs. Trevor Davis hospitably entertained the company, and after tea Mr. Bonner gave a

short history of the park. The return drive was made along a different route through Richmond Park, Putney Heath and Wimbledon Park. The evening was fine, and notwithstanding the inauspicious opening, the outing was voted a most enjoyable one.

At Bexley, on July 9th, where the chief attraction was more Dane-holes, the attendance was only small. The cluster of Dane-holes in the charming wood called Cavey Spring was visited by permission of Vesey G. M. Holt, Esq., J.P., who also very kindly lent his windlass and cage apparatus so that one of the shafts (about sixty feet deep) might be descended, and the ancient and curious excavations inspected. Here Dr. E. A. Baker, of Woolwich—an authority and an enthusiast on this subject—and others interested joined the party. A further walk through the woods was taken to see the British camp and other evidences of prehistoric habitation, of which Mr. Bonner gave a brief account. The Vicar, the Rev. J. H. Wicksted, M.A., met the members at the ancient Parish Church, and dealt in a very interesting fashion with its architecture and its numerous and noteworthy brasses and monuments. The beautiful pulpit and screens were greatly admired. They are not, alas! the originals, but they have been carefully restored on the original lines by Mr. Basil Champneys. Through the kind offices of Mr. Wicksted permission was obtained to wander through the lovely old-world garden and grounds of the Manor House.

A fine afternoon again favoured the Society when they met after the summer vacation on September 17th at Cheam. At Whitehall Miss Killick, whose family have resided there for nearly 200 years, kindly showed the party her picturesque timbered house, said to have been used by Queen Elizabeth for royal councils when the Court was at Nonsuch Palace near by. An ancient cavern in the garden adjoining, where, tradition says, coining was carried on in about 1700, was seen by permission of Mr. May. The Lumley Chapel, the remnant of the

old church which was taken down about 1865, when the present one hard by was built, was shown by the Rector, and its magnificent monuments to the Lumley, Fromond, and other families, the ceiling, and the ancient palimpsest and other brasses were noted. After tea at the Red Lion permission was given to inspect this quaint old hostelry. At the stately Manor House, which dates from about 1719, the members were courteously received and conducted round by Arthur Tabor, Esq., and in the drawing-room Mr. Bonner gave a brief account of the houses and cave which had been visited, and a walk through the beautiful grounds concluded a full and enjoyable programme.

C. E. Maurice, Esq., conducted a large party over Hampstead on October 8th, and his energy and enthusiasm, coupled with overflowing information, were such that even in an area so permeated with interest and memorable associations, little was left untold and unvisited. The old-world charm of Church Row, Well Walk, and Keats's Walk, with their associations with Mrs. Barbauld, Mrs. Trimmer, Constable, Keats and Fanny Burney, was noted; the church graveyard, full of memorials of literary and artistic celebrities; Stanfield House, Vane House, the shingled house on Hollybush Hill, where Romney lived, the eighteenth century house where Joanna Baillie was visited by Sir Walter Scott, were all seen. Squire's Mount, a fine old Jacobean mansion, overlooking East Heath and Parliament Hill, was very kindly shown by the Misses Field, who are descendants of Cromwell, and who own so many historic and artistic treasures that the party were reluctant to tear themselves away. Afterwards, however, there was the Heath to explore, Heath House with its anti-slavery connections, Pit House, and Jack Straw's Castle to see, and walks taken through shady avenues and wooded heights to Golder's Hill, formerly Sir Spencer Wells', where tea was enjoyed in a room overlooking the charming grounds.

On November 19th a party of 50, the largest of the year, was attracted by a programme which was very kindly arranged and conducted by Bryan Corcoran, Esq. Mr. Corcoran met the members at the Church of St. Olave's, Hart Street, Mark Lane, where he is upper churchwarden, and gave an account of this interesting fifteenth century edifice, with its quaint monuments

and brasses, and its associations with Pepys and other celebrities. He afterwards guided the party to some notable features of interest in the neighbourhood, including the portions remaining of the Roman and Mediæval city wall between Aldgate and the Thames, one piece of which constitutes the largest mass of unrestored Roman masonry in London; and to the site of the Tower Hill executions in Trinity Square, St. Botolph's Church, Aldgate, and a seventeenth century merchant's house in Mark Lane.

The season wound up on December 17th by a visit to Saddlers' Hall, on the introduction of Mr. Rowley. The members were received by the Prime Warden, Francis J. Hames, Esq., and John W. Sherwell, Esq., Clerk to the Company, gave an informing and entertaining address on the history of the Company and their Hall. The magnificent mediæval pall, the beautifully-illuminated charters, the interesting plate, the unique early specimen of a ballot-box, and the pictures, which include a Romney, were all pointed out, and the fine hall itself, though comparatively modern, was greatly admired. The Company added to their courtesy by entertaining the members to tea.

At the Congress of the South-Eastern Union of Scientific Societies, which was held at Guildford on June 8th-11th, the Society was represented by Mr. Arthur Bonner.

RECEIPTS AND EXPENDITURE FOR 1910.

<i>*Receipts.</i>	<i>£</i>	<i>s.</i>	<i>d.</i>	<i>Expenditure.</i>	<i>£</i>	<i>s.</i>	<i>d.</i>
Balance brought from 1909	3	1	10	Cost of meetings (12) ..	7	10	11
62 Subscriptions for 1910..	15	10	0	Printing	7	7	0
1 " " " 1909..	0	5	0	Postage and stationery ..	1	16	8
1 Compounded Subscription	1	1	0	Carriages, etc., for "Petersham"	4	15	0
51 Tickets for "Conversazione"	1	5	6	Subscription: S. E. Union of Scientific Societies..	0	5	0
34 Tickets for "Petersham"	4	16	4	Subscription: Croydon Antiquities Protection Committee	0	5	0
1 copy Mr. Shore's pamphlet	0	0	7	Subscription: Photographic Survey and Record of Surrey	0	2	6
				Balance in hand	3	18	2
	<u>£26</u>	<u>0</u>	<u>3</u>		<u>£26</u>	<u>0</u>	<u>3</u>

- Kershaw, S. W., M.A., F.S.A., 17 Dorlcote Road, Wandsworth Common.
- Klaassen, Miss A. C., Aberfeldy, Campden Road, Croydon, Surrey.
- Klaassen, Miss E. F., " " " "
- Leach, Mrs., Thirville, Hawthorn Road, Sutton, Surrey.
- Little, Miss H., Arlington House, Belvedere Road, Upper Norwood, S.E.
- Macbeth, D., 92 Culverden Road, Balham, S.W.
- Mann, Miss F., 51 Inchmery Road, Catford, S.E.
- Middleton, G. A. T., A.R.I.B.A., 58 Dafforne Road, Upper Tooting, S.W.
- Middleton, Mrs., " " "
- Oxley, Rev. J., Petersham Vicarage, Surrey.
- Palmer, G. F., 6 Lydhurst Avenue, Streatham Hill, S.W.
- Peacock, Mrs., 155 Franciscan Road, Tooting Common, S.W.
- Penny, Miss, 83 Upper Gloucester Place, Regent's Park, N.W.
- Reburn, Miss C. M., 5 Dorville Road, Ravenscourt Park, W.
- Roberts, Miss Thomes-, 26 Royal Crescent, Holland Park, W.
- Rose, J. Holland, Litt.D., Ethandune, Parkside Gardens, Wimbledon, S.W.
- Rowley, W. E., 15 Elmfield Mansions, Elmfield Road, Balham, S.W.
- Rowley, Miss K. E., LL.A., Heathfield, Balham High Road, S.W.
- Seimund, Miss A., Wanchai, Culverden Road, Balham, S.W.
- Seimund, Miss C., " " "
- Shore, Mrs. T. W., 6 Kingswood Road, Upper Norwood, S.E.
- Smith, Rev. E. J. Janson, 71 Ritherdon Road, Upper Tooting, S.W.
- Smith, Mrs., " " "
- Stead, Miss P., 5 Smith Square, Westminster, S.W.
- Stephens, J., 35 Crockerton Road, Upper Tooting, S.W.
- Stoker, Miss M. E., B.A., 9 Lessar Avenue, Clapham Common, S.W.
- Stout, E. H., 75 Huron Road, Upper Tooting, S.W.
- Stout, Mrs., " " "
- Turner, W. H., P.O. Savings Bank, Blythe Road, West Kensington, W.
- Ward, Miss, 30 Brodrick Road, Upper Tooting, S.W.
- Warner, S. G., F.I.A., Elmside, Wandsworth Common, S.W.
- Warner, Mrs., " " "
- Watson, C. J., 13 Ritherdon Road, Upper Tooting, S.W.
- Watson, Miss D. E., " " "
- Watts, Dr. H., 39 Bolingbroke Grove, Wandsworth Common, S.W.
- Webster, C. D., West View, Tadworth, Surrey.
- Wellbye, R., 6 Beverley Road, Chiswick, W.

BALHAM ANTIQUARIAN SOCIETY.

VISITS BY THE SOCIETY, 1897-1910.

[NOTE.—The Society's visits are all "conducted." When possible, churches are shown by the Rector or Vicar, and other places by a local authority. Ch.=church.]

- Abinger [Ch., Barrow (?)], 1909.
 Addington Hills [with Geological demonstration], 1897.
 Ashted [Ch., earthworks, and Common], 1904.
 Banstead [Ch., tumuli on Downs], 1898; [Ch., Houses, Tumble Beacon), 1909.
 Beddington [Beddington Place, Ch.], 1897, 1906.
 Bexley [Deneholes, Earthworks, Ch., Manor Ho.], 1910.
 Bookham, Great and Little [Churches, Common], 1905.
 Box Hill, 1899.
 Canonbury [Tower and other manorial remains], 1904.
 Carshalton [Ch., etc.], 1897, 1906.
 Chaldon [Ch.], 1900 and 1907.
 Cheam [Ch.], 1901; [Houses, Cave, Ch.], 1910.
 Chelsea [Ch., Hospital], 1899; [Ch., Hospital, Moravian Chapel, Physic Gdn., Houses, etc.], 1908.
 Chelsham [Ch.], 1910.
 Chessington [Ch., Hall, Earthworks], 1906.
 Chislehurst [Camden Pla., Ch., Caves), 1910.
 Cobham [Mill, Ch., houses], 1900.
 Coldharbour [Leith Hill, Anstiebury Camp], 1899.
 Coulsdon [Tumuli on Farthing Down], 1900; [Do. and Ch.], 1907.
 Crays : St. Mary [Ch.] and St. Paul's [Ch.], 1909.
 Croydon [Ch., Archbps. Palace, Whitgift Hospital, Corporation Bldgs., and Museum], 1897 and 1907.
 Dulwich [Old College Bldgs. and Chapel, Gallery], 1902.
 East Ham [Green St. House, Ch.], 1905.
 Eltham [Hall, Houses, and other remains of Palace; Well Hall], 1909.
 Epsom [Ch., Houses, Wells, etc.], 1907.
 Esher [Old Ch., Waynflete's ("Wolsey's") Tower, Bear Inn], 1907.
 Ewell [Ch., Springs, remnant of Nonsuch], 1901.
 Farleigh [Ch.], 1909.

- Farnham [Castle, Ch., Moor Park, Waverley Abbey], 1907.
 Fetcham [Ch.], 1908.
 Forest Hill [Horniman's Museum], 1901.
 Fulham [Palace, Ch.], 1905.
 Gattton [Hall, Ch., etc.], 1904.
 Greenwich [Park, Roman remains, Blackheath Hill, with Geological demonstration], 1902; [Hospital and Park], 1908.
 Guildford [Castle, Abbot's Hospital, Churches, Houses, Crypt, St. Catharine's Chapel ruins, etc.], 1906.
 Hampstead [Houses, Ch., Golders Hill, Heath], 1910.
 Hampton Court [Tudor Palace, Chapel, etc.], 1902.
 Hayes Common [prehistoric dwellings], 1903.
 Highgate [Waterlow Pk., Cromwell House, Ch., Gatehouse, "Swearing on the Horns," etc.], 1907.
 Keston [Common, Ch., Roman remains, Holwood Park (Earthworks, etc.)], 1903.
 Kew [Gardens], 1897; [Palace, Gdns.], 1907.
 Kingston [Town Hall, Lovekyn Chapel, Coronation Stone, Ch., Museum, etc.], 1898, 1900, 1906.
 Lambeth Palace, 1897; Ditto and Ch., 1908.
 Leatherhead [Ch., River Mole, Norbury Park], 1898; (Pachesham Camp, Manor Ho., Ch., etc.), 1908.
 Leith Hill, Coldharbour, and Anstiebury, 1899.
 Limpsfield [Ch.], 1899.
 Malden [Old Ch.], 1906.
 Merstham [Ch., occasional "bourne," Pilgrim's Way], 1904.
 Merton [Old Ch.], 1906.
 Mickleham [Ch.], 1899, 1906.
 Do. [Mole "Swallows" and Norbury Park], 1906.
 Orpington [Ch., "Priory" (House)], 1909.
 Oxted [Ch., "Barrow"], 1899.
 Petersham [Ch., House], 1910.
 Putney [Ch.], 1905.
 Reigate [Castle, Caverns, Ch., houses], 1905.
 Richmond [Palace, houses, Ch., Town Hall], 1903; [Park], 1910.
 Stoke D'Abernon [Ch.], 1900, 1905.
 Southwark [Cathedral], 1898, 1906; [Old St. Thomas's Hospital], 1906; [Marshalsea, George Inn, St. George's Church, etc.], 1907.
 Thames Ditton [Ch.], 1898 and 1907.
 Tooting Graveney [Ch.], 1898.
 Walton-on-Thames [Ch., Manor House, Coway, St. George's Hill], 1906.

Wandsworth [Ch., Library], 1899; [Huguenot Cemetery, Ch., Library], 1910.

Warlingham [Ch., old Inn], 1900; [Worms Hea., Ch.], 1909.

West Wickham [Manor House, Ch.], 1902.

Wimbledon [Ch., Old Rectory, Eagle Ho., etc.], 1908; [Common and Park], 1910.

Wotton [Ho., Ch., Rectory], 1909.

London :—

Bartholomew (St.) Hospital, 1908.

Charterhouse, 1899.

Christ Hospital, 1902.

Churches and Chapels: All Hallows Barking, 1900; All Hallows Staining (tower), 1902; Austin Friars, 1904; Sardinian, 1906; Savoy, 1903. Saints: Alphage (Wall), 1907; Andrew Undershaft, 1903; Bartholomew the Great, 1899; Do. the Less, 1909; Botolph (Aldgate), 1910; Bride (Fleet St.), 1908; Clement Danes, 1903; Dunstan (East), 1907; Ethelburga, 1904; Etheldreda, 1902; Giles, Cripplegate, 1907; Helen, 1899; Katherine Creechurch, 1903; Lawrence Jewry, 1905; Magnus, 1907; Margaret (Lothbury), 1909; Mary Aldermary, 1904; Mary-le-Bow, 1904; Olaves (Hart St.), 1902 and 1910; Peter, Cornhill, 1902; Stephen (Coleman St.), 1909.

Clerkenwell (St. John's Ch., Crypt, and Gatehouse), 1901.

Coal Exchange, 1907.

Halls: Mercers' Co., 1907; Carpenters' Co., 1902; Saddlers' Co., 1910; Crosby, 1899; Guildhall, 1898; Parish Clerks, 1905.

Inns of Law, etc.: Barnard's, 1909; Clifford's, 1904; Gray's, 1899; Lincoln's, 1897 and 1906; Staple, 1899; Temple, 1898 and 1910.

Museums: British (Egyptian, and Greek and Roman Galleries), 1900 and 1901; Geological, 1899; Public Record Office, 1904; Soane's, 1897; S. Kensington (Science), 1901.

Roman Bath, Strand Lane, 1903.

Sion House, 1908.

Tower, 1901.

Water Gate of York House, 1903.

Westminster: Abbey and Monastic buildings, 1900 and 1902; Jewel Tower, Churches of SS. Margaret and John, 1903; Houses of Parliament, 1909; Greycoat Hospital, 1910.

LECTURES, PAPERS, AND ADDRESSES AT THE
SOCIETY'S MEETINGS.

Sir Edward Brabrook, C.B., Director S.A. (Pres.); Mediæval Lavatories, 1902.

The Serjeants-at-Law, 1905.

Robin Hood, 1906.

The Progress of Antiquarian Research up to and in the 19th Century, 1907.

The Clubs and Learned Societies of London, 1908.

The Honourable Society of Lincoln's Inn [at Lincoln's Inn], 1897.

Staple Inn [at Staple Inn], 1899.

The Carpenters' Company, and the site of the Wall Brook and its Pile Dwellings [at Carpenters' Hall], 1903.

Also Addresses or Notes at Bishopsgate, 1899; Fulham Palace, 1905; St. George's Hill, 1906; Wotton House and Abinger, 1909; etc.

A. Bonner: The Monastic Orders in England, the Benedictine Abbey at Westminster, and Westminster School, 1903.

Place Names, Their Origin and Meaning, with illustrations from Surrey and London, 1904.

Ancient Wall Paintings in our Churches, 1909.

Ashted and its Church [at Ashted], 1904.

Stoke D'Abernon Ch. and Manor [at Stoke D'Abernon], 1905.

Fleet Street, the Fleet, and St. Bride's [at St. Bride's Church], 1908.

The Name of Chelsea: Its Origin and Evolution [at Chelsea], 1908.

Old Wimbledon [at Wimbledon], 1908.

Deneholes and the Chislehurst Caves [at Chislehurst], 1910.

Richmond Park: Its Formation and History [at Petersham], 1910.

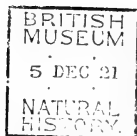
Also Addresses or Notes at Christ Hospital and St. Olave's, Hart St., 1902; St. John's, Westminster, and Roman Bath, Strand Lane, 1903; Austin Friars Ch. and

Gatton Ch., 1904; East Ham [Green St. House] and Putney Ch., 1905; Merton Ch. and St. George's Hill Camp, 1906; Mercers' Hall, Coulsdon, Thames Ditton, Esher, Farnham [Castle, Ch., Moor Pk.], and Kew Palace, 1907; Patchesham Camp, Fetcham, and Leatherhead, 1908; Worms Heath and Abinger, 1909; Chislehurst [Camden Pla. and Ch.] and Richmond Pk., 1910; etc.

- Mrs. H. B. Bonner : Early Alien Immigrations into England, 1905.
- G. G. Chisholm, M.A., B.Sc. : The " Swallows " of the River Mole and kindred phenomena elsewhere [at Norbury Park], 1906.
- Geo. Clinch, F.G.S. : Surrey before the Conquest, 1905.
- W. E. St. L. Finny, M.B., J.P. (Alderman) : Addresses at Kingston.
- F. G. Fleay, M.A. : Queen Elizabeth, Croydon, and the Drama, 1898. [Published by the Society.]
The Stage, Southwark, and Shakespeare in 1592 : 1899.
Egyptian Chronology [at British Museum], 1900.
- J. J. Foster, F.S.A. : A Chat about the Stuarts [Lantern], 1904.
An Antiquarian Holiday in Greece, 1908.
- Lady Gomme : The Folklore of Children's Games, 1901.
- Rev. J. W. Hayes (Vicar of West Thurrock) : Deneholes and other Excavations in the Chalk, 1910.
- T. V. Holmes, F.G.S. : The Geology of Blackheath and Greenwich [at Greenwich Park], 1902; and Address and Notes at Greenwich Hospital and Park, 1908.
- Herbert Hurst, B.A. : Some Notable Wall Paintings in Oxfordshire Churches, 1909.
- Walter Johnson : Our Ancient Megalithic Monuments, 1903.
Our Oldest Industry : The Flint Workers of Brandon, 1906.
- S. W. Kershaw, M.A., F.S.A. : Gatton in the Past, 1905.
A Note on John Stow [at St. Andrew Undershaft], 1903.
Also Addresses, etc., at Lambeth Palace, 1897 and 1908.
- W. J. Loftie, B.A., F.S.A. : The Rolls House and the Jews, 1905.
The Savoy [in the Chapel Royal, Savoy], 1903.
- H. Elliot Malden, M.A. : Guildford and its Castle [at Guildford Castle], 1906.

- Also Addresses at Guildford, Kingston, and Southwark, 1906.
- G. A. T. Middleton, A.R.I.B.A. : Ancient English Architecture [Lantern], 1898.
- Ancient and Mediæval Architecture in France, Germany, Belgium, and England [Lantern], 1900.
- English Domestic Architecture before the Eighteenth Century [Lantern], 1903.
- The Development of Gothic Ornament in England [Lantern], 1909.
- Greek and Roman Antiquities [at British Museum], 1901.
- Also Addresses and Notes at the British Museum, 1901; the Crays and Orpington, 1909; Temple Church, 1910; etc.
- Harvey Piper : Winchester Cathedral [Lantern], 1909.
- J. Holland Rose, Litt.D., M.A. : Fanny Burney [at Chessington], 1906.
- T. W. Shore, F.G.S. : The Archæological Remains and Early Historical Associations of Streatham, Tooting, and Balham, 1897. [Published by the Society].
- The Life and Legends of Old London, 1904.
- The Church of St. Mary-le-Bow [at the Church], 1904.
- Also Addresses or Notes at Carshalton, Kingston, Leatherhead, Warlingham, and other places visited by the Society, 1897-1901.
- Thompson : Surrey Brasses, 1909.
- J. H. K. Todd : Old Inns and their Story [Lantern], 1906.
- Also Addresses and Notes at Southwark, 1907; Chelsea, 1908.
- W. Whitaker, F.R.S., formerly Geol. Survey and Pres. Geol. Society : Geological Addresses at Addington Hills, 1897; Oxted, and Geological Museum, 1899.





Balham and District

Antiquarian and Natural History
Society.

ANNUAL REPORT

AND

LIST OF MEMBERS, &c.

January, 1912.

BALHAM AND DISTRICT

Antiquarian and Natural History Society.

1912.

President:

SIR EDWARD BRABROOK, C.B., DIRECTOR S.A.

Vice-Presidents:

J. J. FOSTER, F.S.A. S. W. KERSHAW, M.A., F.S.A.
DR. W. E. ST. L. FINNY, J.P. S. G. WARNER, F.I.A.
G. A. T. MIDDLETON, A.R.I.B.A.

Director of Meetings:

ARTHUR BONNER, 23 Streathbourne Road, Upper Tooting, S.W.

Organising Secretary (for arranging meetings):

MISS MARIAN GARDINER, 14a St. James' Road, Wandsworth Common, S.W.

Financial and General Secretary:

ARNOLD L. BARRON, "Clophill," Sandy Lane, Wallington, Surrey.

Members of Council:

V. COATES, M.A. MISS A. G. BRABROOK. MISS LINDA GARDINER.
MISS E. F. KLAASSEN. REV. W. H. OXLEY, M.A. MRS. E. H. STOUT.

RULES.

- 1.—The Society shall be named "THE BALHAM AND DISTRICT ANTIQUARIAN AND NATURAL HISTORY SOCIETY," and its objects shall be to study and, as far as practicable, to record the Antiquities and Natural History of the district.
- 2.—The government of the Society shall be vested in a Council to be elected annually and to consist of the President, the Vice-Presidents, the Director of Meetings, the Treasurer and Secretaries *ex-officio*, and not more than six other members.
- 3.—Members shall be elected by the Council.
- 4.—Ladies shall be eligible for election as Members.
- 5.—The Annual Subscription shall be 5s. payable on the 1st January. Members may compound their subscription by a cash payment of 21s. to cover five years, or 40s. to cover ten years.
- 6.—Each Member shall be at liberty to introduce one visitor to each ordinary meeting of the Society.
- 7.—The Rules may be altered or rescinded, and names removed from the list of members at general meetings specially called for the purpose by the Council.

The following pamphlets issued by the Society may be obtained from Mr.
A. L. Barron (Hon. General Secretary)—

THE ARCHÆOLOGICAL REMAINS AND EARLY HISTORICAL ASSOCIATIONS OF
STREATHAM, TOOTING, AND BALHAM. By Thomas W. Shore, F.G.S.
7d. (Post free.)

QUEEN ELIZABETH, CROYDON, AND THE DRAMA. By F. G. Fleay, M.A.
4d. (Post free.)

Fourteenth Annual Report.

THE Annual Meeting, which was held on January 28th, and took the form of a *conversazione*, was marked by a pleasant little ceremony, which made the gathering one of exceptional interest. A loan collection and a musical programme were arranged, but the event of the evening was a presentation made to Mr. Bonner. The members had hailed the opportunity of acknowledging their indebtedness to the Hon. Organising Secretary and Director of Meetings, and readily responded. They conspired in secret, so that the presentation, which was made by Sir Edward Brabrook, in his usual happy manner, came as a complete surprise to the recipient. The testimonial took the form of a collection of books which it had been ascertained would be acceptable, and which consisted of the following:—"History of Surrey" (Victoria County Series. 4 vols.); "Cartularium Saxonicum" (W. de Gray Birch, LL.D., F.S.A. 3 vols.); "Charters and Rolls in the British Museum: Index Locorum" (Bickley and Ellis); "The Gilds and Companies of London" (Geo. Unwin); "The Manor and Manorial Records" (N. J. Hone); "The Nether World of Mendip" (E. A. Baker, Litt.D., M.A., and H. E. Balch). An illuminated address, to which the signatures of sixty-four members were appended, expressed their sentiments as follows:—

" TO ARTHUR BONNER.

"The members past and present of the Balham and District Antiquarian and Natural History Society beg your acceptance of the accompanying volumes as a slight acknowledgment of your invaluable services as its Honorary Secretary for the past nine years, and in grateful appreciation of the ready information and unvarying courtesy which

have made the meetings pleasant and profitable. They would further express the hope that the Society may long enjoy the advantage of your guidance and your learning."

A programme of music followed, to which Miss Ethel Davis, Mr. Bonner, and Mr. Stout contributed songs; Miss Middleton and Mr. Sidney Plomer, pianoforte selections; and Mrs. Stout, Miss Winifred St. Clair, and Mr. Herbert Mason, recitations. In the intervals tea and coffee were served, and the company inspected the interesting exhibit of loans kindly lent by the President and others.

In February, G. A. T. Middleton, Esq., F.R.I.B.A., gave one of his delightful lectures, illustrated by lantern views taken from his own photographs. The subject was the "Cathedrals and Churches of Belgium," and as the lecturer has not only gone over every foot of the ground, but was able to describe the buildings with the appreciation and discrimination born of wide travel and wide knowledge of architecture, his genial narrative was much enjoyed.

The visits made during the year included some that were especially attractive, and the average attendance was forty. The first outdoor meeting was held at the Guildhall on March 25th, when Alfred J. Glasspool, Esq., Keeper of the Guildhall, kindly met the party of fifty in the great hall. The chief object of the visit was to see the mediæval remains discovered by the recent restorations. Mr. Glasspool pointed out the signs of the Great Fire now visible in the discolouration of the columns on the south side. Until the summer of 1910 the whole of the interior was covered one-sixteenth of an inch thick with cement, and painted and distempered—Wren's idea of making it all neat and uniform. The history of the building now revealed adds much to its interest. The fine crypt, by far the most extensive of its date in London, has now been restored to what it was 500 years ago, the beautiful Early English entrance revealed, and the walls cleaned from the dirt and grease accumulated during the preparation of banquets of generations of Lord Mayors. Mr. Glasspool took the party over all the gilded and gorgeous chambers where civic business is transacted, and gave them, whilst seated in the elaborately decorated Council

Chamber (built in mid-Victorian times by Sir Horace Jones) an interesting account of the civic functions.

A full and most interesting afternoon was that devoted to the well-known Church of St. Bartholomew the Great and the Charterhouse, on April 22nd. This grand Norman relic, structurally the oldest parochial church in London, and one of the most interesting ecclesiastical buildings not only in London, but in England, has passed through appalling vicissitudes. There was till recent times a blacksmith's forge in the north transept, a fringe factory in the Lady chapel, a livery stable in the cloister, a wine cellar in the crypt, and a school in the triforium. The Sacristan, in the unavoidable absence of the Rector, showed and well-described the church, and took the party, a large one of fifty-five or sixty, into the cloister and crypt. Charterhouse, "the most beautiful and venerable monument in London," as Sir W. Besant calls it, relic of fourteenth century monastery, Elizabethan mansion, and Stuart College could not be done full justice to in the time allotted. The fine Guest Hall, with its beautiful oriel window, and with panelling and minstrels' gallery added by the Duke of Norfolk, will be most vividly remembered. There the pensioners now dine every day at the table where formerly the Prior of the monastery, the Norths and the Howards dispensed hospitality. The Governor's room, associated with Queen Elizabeth, rich with tapestries, beautiful panelled ceiling, gilt cornice, and splendid Flemish fireplace, was seen. In contrast with this splendour is Washhouse Court—of the later monastic buildings. In the square-panelled chapel, built by Sir Thomas Sutton, the founder of Charterhouse as we know it, Mr. Bonner gave some interesting notes on Smithfield and its Carthusian Monastery. The sumptuous tomb of the founder, rich in coloured marbles, is the chief object in the chapel. The curtained recess where the "O.C.'s" sat, is now vacant; but the "Old Cods," as the boys called the pensioners, attend twice a day on pain of a fine of 1s., and wear the long cloak prescribed by Sir Thomas, and associated with Colonel Newcome.

The Society was greatly privileged by the Earl of Dysart in being allowed on May 6th to visit Ham House, one of the

stately homes not generally shown, and one of the most historic houses near London. On the way, Twickenham Church, full of associations with Pope, Horace Walpole, and the Bolingbrokes, was kindly shown by the Vicar, the Rev. Prebendary Prosser. It was built by John James, the architect of St. George's, Hanover Square, and under the auspices of Sir Godfrey Kneller. Orleans House and other historic mansions were seen on crossing Twickenham Ferry and pursuing the walk along the charming riverside path towards Petersham. Ham House has an air of romantic seclusion, situated within gardens which remain much as they were when they were sung by Thompson. The date, 1610, and the initials of Sir Thomas Vavasour, by whom the house was built, are carved over the entrance of the characteristic and picturesque river front. The house is said to have been built for Prince Henry, son of James I; it was granted by Charles I to the friend of his boyhood, William Murray, whom he created Earl of Dysart. The most remarkable successor to the title was the elder daughter of the first earl, who married the notorious Duke of Lauderdale. The magnificent furnishings of the state rooms, with their Geno velvet upholstery, brocaded hangings, and heavy, carved and gilt Jacobin furniture, are left just as they were fitted with characteristically lavish expenditure by their Graces of Lauderdale 200 years ago. In the "Cabal" room, where the five notorious ministers met, the walls are hung with tapestries made at Mortlake. A fine collection of portraits by Vandyke hangs in the Long Gallery, and other valuable pictures are in the Round Gallery. The drawing-room contains priceless gems of inlaid, carved, and marquetry work. Perhaps the greatest treasures of all are in the miniature room, where besides the portraits, is preserved a lock of hair of the ill-fated Earl of Essex. There is also to be seen the Act of Boundary at the time of the Union of England and Scotland. The party were again, as they had been the previous year on their visit to Richmond Park, most kindly and hospitably entertained to tea by Mr. and Mrs. Trevor Davis. Afterwards the Vicar of Petersham, the Rev. W. H. Oxley, conducted the party over his beautiful new church, and showed its treasures of carving, mosaics, sculpture and embroidery. In the Church House, Mr. Bonner gave an interesting

address on the manors of Ham and Petersham and the derivation of their names.

Under the conductorship of Mr. Bonner, and with the genial guidance also of Mr. Till, the moving spirit of Eynsford, a party of twenty-five enjoyed a pleasant afternoon at that picturesque village on June 17th. The village is not only dear to artists, but can boast a very respectable and well authenticated antiquity. In the church, to which the party had access by the courtesy of the Vicar, the Rev. C. M. Elphinstone, Mr. Bonner pointed out the beautiful Norman door and other features of architectural interest. By the kind permission of H. Fountain, Esq., Mr. Till took the visitors over "Little Mote," a charming Tudor house which has been rebuilt under the superintendence of Mr. Till, so as to harmonise with and retain original features; and after an *al fresco* tea within the shell of the castle, Mr. Till gave a short account of the castle. A delightful walk to Lullingstone Church followed. The church stands in the private grounds of the Right Hon. Sir William Hart-Dyke, and was inspected by his kind permission. Mainly of the Decorated period, there are very handsome examples of Tudor work, especially in the magnificent tomb erected to and by Sir John Péche, and also of Queen Anne work.

A brilliantly fine summer's afternoon, a walk through beautiful country, and two interesting mansions to see, made the excursion to Dorking, on May 27th, perhaps the most enjoyable of the season; and the party was one of the largest, numbering forty-five. The Deepdene, which was visited by kind permission of Almeric Paget, Esq., M.P., has long been celebrated for its art collection, both of pictures and sculpture, and the gardens and "bosques" have been described by Evelyn and Aubrey, the latter pronouncing them to be "an epitome of Paradise." The demesne formed for centuries a portion of the Howard possessions, and was subsequently sold to the Hopes, a family of great antiquity, by whom it is held at the present day. During the occupation of Mr. H. T. Hope (born 1774, died 1831), a scholar and connoisseur, who built most of the present house, the Deepdene was the resort of many eminent men; it is said that Disraeli wrote the greater part of "Coningsby" when

visiting here. After tea a pleasant walk brought the party to Milton Court, a beautiful Elizabethan mansion. The very fine and remarkable staircase and the charming old-world garden were seen by the kindness of Mrs. Rate, the owner.

A long day was arranged on July 8th, when Rochester, Cobham Hall and Cobham Church and College were visited. The meeting was a most interesting one, but whole-day excursions are apparently not popular; perhaps it was also due to the excessive heat that the small number of nine only assembled at the S.E.R. station. George Payne, Esq., F.S.A., kindly took charge of the party, and proved the best possible guide, as he is an enthusiastic antiquary. It is due to him that Eastgate House, which was first visited—a fine Elizabethan mansion—has been acquired by the local authorities, and after a chequered career as ladies' boarding school, Y.M.C.A., and cheap restaurant, has now been restored to its original dignity and is appropriately used as a museum. The morning was devoted mainly to the Cathedral. After lunch the noble Norman castle was visited, and then the uphill drive skirting the lovely woods of Cobham was much enjoyed. Cobham Hall has a most picturesque tout ensemble, with its Inigo Jones centre and characteristic Corinthian pilasters and Elizabethan wings. By permission of Lord Darnley, the party were able to see the splendid picture gallery, which contains one of the finest collections in the country. They were also permitted to view, from the music gallery, the gorgeous "Gilt Hall," built by Inigo Jones, and said, by "the first gentleman in Europe," to be "the finest room in Europe." After tea at the "Leather Bottel," so full of Dickens' pictures and mementoes, there was Cobham Church, with its incomparable brasses, to see. The picturesque remains of the ancient College of Priests, founded 1362, were also inspected.

E. J. Eyre, Esq., who kindly acted as guide, met a party of twenty-seven at Battersea Old Church on September 27th. The church is somewhat weirdly placed close to the river and the shipping, and has been picturesquely described, with old Battersea generally, by Justin McCarthy in his novel, "Camiola." The present building dates from an uninspired period, 1777, but

Battersea Church has interesting associations in its connection with the great Bolingbroke family, and a monument by Roubiliac commemorates the celebrated statesman of Queen Anne. The Vicar, the Rev. Foster Pegg, as well as Mr. Eyre, most kindly pointed out the noteworthy features in the interior, chief of which are the east window, one of the finest heraldic windows in the county, and the curious collection of seventeenth and eighteenth century coffin plates in the crypt. The remains of Bolingbroke House, the once magnificent mansion where Bolingbroke entertained Pope, Swift and the wit and fashion of the period, was seen by permission of Colonel Mayhew, in whose mills the building is now incorporated. In the "cedar parlour," where Pope is said to have written the "Essay on Man," a paper by Mr. Kershaw on the great Bolingbroke was read by Mr. Bonner. Althorp House, one of the few ancient houses left in Battersea, was seen by permission of the tenant, Mr. Goyner.

The Society was fortunate in securing in its visit to the Tower on October 28 such an authority on the subject as C. H. Hopwood, Esq., F.R.G.S., and that it was appreciated was evidenced by the large party of sixty. In St. John's Chapel, one of the most beautiful examples of Norman work in England, and the most complete specimen of a castle chapel, Mr. Hopwood gave an exhaustive account of the Tower. He also took the party into the dungeons and crypt and round the fortifications (not usually shown), and by a remnant of the ancient City wall, by courtesy of the Major of the Tower.

The visit to Ironmongers' Hall would have attracted one of the largest gatherings of the season, but that November 18th was an uncompromisingly wet day. As it was twenty-five assembled, and they were more than repaid by the cordiality with which they were welcomed by E. Hadham Nicholl, Esq., Hon. Librarian, and Miss Nicholl. In the handsome Hall of the Company, built in 1745, and decorated at a later date with splendid buffet, fireplace, and panelling (emblazoned with the arms of the masters and benefactors since the origin of the Company in 1351), Mr. Nicholl gave an interesting history of the Company. The original charters, pictures, and plate were laid out for inspection and, most interesting of all, the original

MS. of the learned history of the Company by John Nicholl, F.S.A., father of the present Hon. Librarian. The six massive folio volumes are not only written in a marvellously clear hand, but are finely illuminated. The visitors also saw the drawing-rooms, library, etc., and were most hospitably entertained to tea in the Court room.

The last meeting was held at Heathfield, when an exhaustive and informing paper on "Mazes," by Herbert Hurst, Esq., was read by Mr. Bonner. The subject was one on which most of the audience knew little or nothing, and it proved unexpectedly interesting. The lecture was illustrated by lantern views.

During the year the Society has been represented by its President on the British Association, by Miss Klaassen on the Photographic Survey and Record of Surrey, and by Mr. Bonner at the Congress of the South-Eastern Union of Scientific Societies (held at St. Albans).

RECEIPTS AND EXPENDITURE FOR 1911.

<i>Receipts.</i>	£	s.	d.	<i>[Expenses.</i>	£	s.	d.
Balance brought from 1910	3	18	2	Cost of meetings	8	0	10
4 Subscriptions for 1910..	1	0	0	Printing	11	17	6
55 " " 1911..	13	15	0	Postage and stationery ..	3	0	11
70 Tickets for "Conversa- ziones"	1	15	0	Subscription: S. E. Union of Scientific Societies..	0	5	0
1 copy Mr. Shore's pam- phlet	0	0	7	Subscription: Croydon An- tiquities Protection Com- mittee	0	5	0
Balance due to Treasurer	3	3	0	Subscription: Photographic Survey and Record of Surrey	0	2	6
	<u>£23 11 9</u>				<u>£23 11 9</u>		

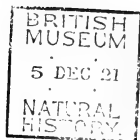
LIST OF MEMBERS, 1911.

- Anderson, A. H., 15, Ryde Vale Road, Balham, S.W.
 Angus, Mrs., Newholme, St. Nicholas Road, Upper Tooting, S.W.
 Baily, Miss C. A., 153, Clapham Road, S.W.
 Barron, A. L., Clophill, Wallington, Surrey.
 Bell, Miss L., 5, Dalebury Road, Upper Tooting, S.W.
 Bonner, A., 23, Streathbourne Road, Upper Tooting, S.W.
 Bonner, Mrs. " " "
 Brabrook, Sir Edward, C.B., F.S.A., 178, Bedford Hill, Balham,
 S.W.
 Brabrook, Miss A. G. " "
 Brabrook, Miss I. M., " "
 Brewer, Mrs., Bosvigo, Blenkarne Road, Wandsworth Common,
 S.W.
 Carter, J. R., 68, Ross Road, Wallington, Surrey.
 Chapman, Miss A., 53, Drakefield Road, Upper Tooting, S.W.
 Chapman, Miss K., " "
 Clarke, A. H., Westerleigh, Elmbourne Road, Upper Tooting, S.W.
 Coates, C. V., M.A., 61, Adelaide Road, N.W.
 Collett, Miss E., 25, Manville Road, Balham, S.W.
 Coxwell, Dr. C. F., 4, Alleyn Park, West Dulwich, S.E.
 Davis, Mrs. Trevor, Sunnyside, Petersham, Surrey.
 Duff, Miss C. I., 39, Riggindale Road, Streatham, S.W.
 Evans, F. B., 5, Dalebury Road, Upper Tooting, S.W.
 Fenton, A. E., 10, Staple Inn, Holborn, W.C.
 Finny, Dr. W. E. St. L., Tamesa, Kingston Hill, Surrey.
 Foster, J. J., F.S.A., Aldwick, Holland Road, Sutton, Surrey.
 Fox, Charles, The Pynes, Warlingham-on-the-Hill, Surrey.
 Gardiner, Miss L., 14A, St. James's Road, Wandsworth Common,
 S.W.
 Gardiner, Miss M., " "
 Green, Mrs., 26, St. Nicholas Road, Upper Tooting, S.W.
 Grimmer, Mrs., 28, Ritherdon Road, Upper Tooting, S.W.
 Hannaford, Miss, P.S.S.A., Devon's Road, Bromley-by-Bow, E.
 Harris, Mrs., 1, The Boltons, S.W.
 Harvey, A. B., Watling House, Canterbury, Kent.
 Holmes, Miss B., 31, Riggindale Road, Streatham, S.W.
 Hughes, Miss, 127A, Beechcroft Road, Upper Tooting, S.W.
 Hughes, Miss M., 26, Cavendish Gardens, Clapham Park, S.W.
 Hurst, Miss, 3, Mayford Road, Wandsworth Common, S.W.
 Jones, Miss G. M., 13, Dornton Road, Balham, S.W.

- Kennedy, Miss C., Ailsa House, Devonshire Road, Balham, S.W.
 Kennedy, Miss J., " " "
 Kershaw, S. W., M.A., F.S.A., 17, Dorlcote Road, Wandsworth
 Common.
 Klaassen, Miss A. C., Aberfeldy, Campden Road. Croydon, Surrey.
 Klaassen, Miss E. F., " " "
 Little, Miss H., Arlington House, Belvedere Road, Upper Norwood,
 S.E.
 Macbeth, D., 92, Culverden Road, Balham, S.W.
 Middleton, G. A. T., A.R.I.B.A., 58, Dafforne Road, Upper Tooting,
 S.W.
 Oxley, Rev. W. H., Petersham Vicarage, Surrey.
 Oxley, Selwyn, 75, Victoria Road, Kensington, W.
 Palmer, G. F., 6, Lydhurst Avenue, Streatham Hill, S.W.
 Penny, Miss, 27, Strathblane Road, St. John's Hill, S.W.
 Phelps, Mrs., 6, Pelham Street, South Kensington, S.W.
 Phelps, Miss, " " "
 Reburn, Miss C. M., 133, Finborough Road, Brompton, S.W.
 Roberts, Miss Thomes-, 26, Royal Crescent, Holland Park, W.
 Rowley, Miss, Heathfield, Balham High Road, S.W.
 Rowley, W. E., 15, Elmfield Mansions, Balham, S.W.
 Sargent, Mrs. E. A., Heathfield, Balham High Road, S.W.
 Seimund, Miss A., Wanchi, Culverden Road, Balham, S.W.
 Seimund, Miss C., " " "
 Shore, Mrs., 6, Kingswood Road, Upper Norwood, S.E.
 Stead, Miss P., 5, Smith Square, Westminster, S.W.
 Stoker, Miss M. E., B.A., 9, Lessar Avenue, Clapham Common,
 S.W.
 Stout, E. H., 75, Huron Road, Upper Tooting, S.W.
 Stout, Mrs., " "
 Turner, W. H., P.O. Savings Bank, Blythe Road, West Kensington,
 W.
 Warner, S. G., F.I.A., Elmside, Wandsworth Common, S.W.
 Warner, Mrs., " "
 Watson, C. J., 13, Ritherdon Road, Upper Tooting, S.W.
 Watson, Miss D. E., " "
 Webster, C. D., West View, Tadworth, Surrey.
 Wellbye, R., South Heath, Missenden, Bucks.
 Whittle, W. E. S., 15, St. Nicholas Road, Upper Tooting, S.W.

No. of members, 71. (1911 list, 74; losses, 12; new members, 9.)





Balham and District

Antiquarian and Natural History
Society.

ANNUAL REPORT

AND

LIST OF MEMBERS, &c.

January, 1913.

BALHAM AND DISTRICT

Antiquarian and Natural History Society.

1913.

President:

SIR EDWARD BRABROOK, C.B., DIRECTOR S.A.

Vice-Presidents:

J. J. FOSTER, F.S.A. S. W. KERSHAW, M.A., F.S.A.
DR. W. E. ST. L. FINNY, J.P. S. G. WARNER, F.I.A.
G. A. T. MIDDLETON, A.R.I.B.A.

Director of Meetings:

ARTHUR BONNER, 23 Streathbourne Road, Upper Tooting, S.W.

Organising Secretary (for arranging meetings):

MISS MARIAN GARDINER, 142 St. James' Road, Wandsworth Common, S.W.

Financial and General Secretary:

ARNOLD L. BARRON, "Clophill," Sandy Lane, Wallington, Surrey.

Members of Council:

C. V. COATES, M.A. MISS A. G. BRABROOK. MISS LINDA GARDINER.
REV. W. H. OXLEY, M.A. MRS. E. H. STOUT. DR. C. F. COXWELL.

RULES.

1.—The Society shall be named the "THE BALHAM AND DISTRICT ANTIQUARIAN AND NATURAL HISTORY SOCIETY," and its objects shall be to study and, as far as practicable, to record the Antiquities and Natural History of the district.

2.—The government of the Society shall be vested in a Council to be elected annually and to consist of the President, the Vice-Presidents, the Director of Meetings, the Treasurer and Secretaries *ex-officio*, and not more than six other members.

3.—Members shall be elected by the Council.

4.—Ladies shall be eligible for election as Members.

5.—The Annual Subscription shall be 5s. payable on the 1st January. Members may compound their subscription by a cash payment of 21s. to cover five years, or 40s. to cover ten years.

6.—Each Member shall be at liberty to introduce one visitor to each ordinary meeting of the Society.

7.—The Rules may be altered or rescinded, and names removed from the list of members at general meetings specially called for the purpose by the Council.

*The following pamphlets issued by the Society may be obtained from Mr.
A. L. Barron (Hon. General Secretary)—*

THE ARCHÆOLOGICAL REMAINS AND EARLY HISTORICAL ASSOCIATIONS OF
STREATHAM, TOOTING, AND BALHAM. By Thomas W. Shore, F.G.S.
7d. (Post free).

QUEEN ELIZABETH, CROYDON, AND THE DRAMA. By F. G. Fleay, M.A.
4d. (Post free).

Fifteenth Annual Report.

THE year 1912 will be remembered as a disastrous one for holiday-makers generally. The Society, however, has no meeting during August, and every one of the excursions—with the exception of the drive through Addington Woods, which was slightly marred by showers—has been favoured by fine weather. Two of the meetings were held at well-known centres of interest, and these were the most largely attended; but the driving excursions have introduced the Members to scenes of fresher interest, and some half-dozen charming specimens of the old English house have been viewed by the courtesy of their owners.

At the Annual Meeting, held on January 27th, at Heathfield, a paper was read by the Hon. Organising Secretary, reviewing the places visited during the preceding year. It was appropriately illustrated by lantern pictures, many of them from photographs taken by three of the Members: Miss Watson and the Misses Seimund.

In February (the 24th) the Members met at the house of the President to hear Mr. Bonner speak on "Some Old London Streets, and how they got their Names." Names of places is a subject which the Director of Meetings has made peculiarly his own, and this paper contained some surprises for those who pin their faith to the obvious and generally accepted derivations.

A long afternoon was spent at Bishopsgate on March 23rd. The Rev. S. T. H. Saunders conducted the large party over the interesting church of St. Helen's, remnant of the important Benedictine nunnery, and with examples of four different periods of architecture. There was some discussion over the beautifully traceried "hagioscope," through which the sick, or some say, the rebellious nuns, were allowed to see Mass; and as to whether

the recess above, with richly decorated soffit, contained an altar tomb or an Easter sepulchre. Mr. Middleton had seen similar Easter sepulchres with arches over them on the Continent. The three small square openings may be aumbreys, or simply openings through which the nuns might talk to their friends; Mr. Oxley had seen such openings in the Sicilian convents. The "Worthy" window, the magnificent tombs of Sir Thomas Gresham, Sir John and Lady Crosby, and other features were noted, and the party proceeded to the Bishopsgate Institute, with its splendid modern equipment, where Mr. Goss, Chief Librarian, was the genial conductor and overflowed with information. He exhibited his fine collection of London prints, and finally read an interesting paper on old Bishopsgate, illustrated by lantern views.

A large party, some sixty in number, although strictly limited to members, assembled at Westminster Abbey on April 27th, when Mr. Bonner conducted them to portions of the Abbey little known, and in some cases to be seen by special permission only. The stone door with seven locks, formerly opened in the presence of representatives of the Treasury and Exchequer and seldom seen, admitted the party into the Chapel of the Pyx. Here Mr. Bonner gave the first of his explanatory addresses, and the stone altar and pillar piscina were pointed out. The Undercroft, the Chapel of St. Faith, the Chapter House and its fine crypt were next visited. In the Library, the 15th century roof, the early MSS. and bindings, the portraits, and the Jacobean carvings were noted. The ruins of St. Catherine's Chapel (c. 1160) were seen in the garden of the Rev. W. H. Pearce; and the Rev. Aiken Sneath kindly received the party in his hall to see the other remains of the monks' Infirmary. By permission of Dr. Gow, Headmaster of Westminster School, the Great School-room (formerly part of the monks' dormitory) was viewed, and also Dr. Busby's Library, the College Hall (once the Abbot's refectory), and Ashburnham House—part of which, at any rate, was designed by Inigo Jones. Some misgivings raised as to the

possible injury of the famous staircase by the helter-skelter of an army of healthy schoolboys, were allayed by the assurance that the stairs were only used by them twice a year on occasions of ceremony. The well-known "Jerusalem" and "Jericho" chambers in the Deanery (the Benedictine Abbot's House) concluded the programme.

A delightful excursion was planned for June 1st to West Wickham and Addington. The party, which numbered over forty, met at West Croydon station, thence driving to Wickham Court, a beautiful Tudor mansion, which has been in the possession of the Lennard family for three centuries. By the kindness of the present representative, Col. Sir Henry Farnaby Lennard, the interior of the house, with its low-beamed, panelled rooms, Tudor stone fireplaces, and splendid Jacobean carved chimney-pieces, was inspected, and also the charming old-world garden with its fine trees and lawns and yew hedges. West Wickham Church, co-eval with the mansion, was shown by the Rev. Bertie Roberts, who pointed out the ancient glass, the brasses, monuments, panelling, etc. Addington Church, where the party were taken charge of by the Rev. A. Carr, contains remains of the 11th, 12th, and 13th centuries, including an interesting triplet window; and a fine Purbeck marble altar tomb of 1509. The drive back to the station was made through the picturesque village and the beautiful Shirley Woods.

Ideal summer weather favoured the outing on June 22nd to Oxted and Limpsfield, when Mr. Bonner was again the conductor, arranging a drive that included two picturesque villages with interesting churches, two charming old houses, and some of the finest scenery in the country. Barrow Green House was first visited, and its tenant (W. Blake McGrath, Esq.) most kindly permitted free access to the interior, which has some Elizabethan work and 17th and 18th century additions, with fine carved panelling, interesting fireplaces, and curious passages and unexpected steps. In the modern billiard room Mr. Bonner gave some account of the manor (whose present owners and

their forbears have been in possession since 1587) and its 19th century tenancy by Bentham, the Mills, and Grote. A delightful drive past Barrow Green and "The Mount" (barrow or fortified mound?), and through the picturesque village of Oxted, with its 16th century inn, brought the company to Limpsfield. The Church, which stands well above the road, and is approached through a lych gate, is a quaint building of mainly 13th century, with a late 12th tower. The interesting features include a piscina with locker recess over it, a deep-splayed low-side window at a low level, 13th century censer, and most curious of all, a small aumbrey, with ceiling made of tiles, that appears to have been an oven for preparing the sacramental wafers. After tea, "De Tillens," an attractive specimen of the timber-framed house of the 15th-16th century, but hidden behind a Georgian face, was viewed by the kind permission of Mrs. Parsons. In an upper room is seen the remains of the original open roof with its magnificent tie-beam; in the 16th century the hall was divided into two stories, and the carvings and linen-fold panelling were added. In the drawing-room, once the 16th century kitchen, the great spit, with exceptionally fine metal work, remains in the open hearth, and some of the old tiles are to be seen on the floor. Finally, after a short field-path walk with charming views came Oxted Church, an interesting mixture of 13th and 14th century work, with traces of the 12th in the tower and arcade responds. Two coffin lids of Norman date on the outside by the south wall were pointed out, and Mr. Bonner drew attention inside to the small passage from the north aisle into the chancel, which is very unusual. There is a 13th century Easter sepulchre, and a piscina with shelf, the same date. The fine example of 14th century woodwork in the south door and the huge iron chest with its many lock-bolts (probably 16th century) were other objects of interest. The large reticulated east window is unfortunately not original, being inserted so late as 1838. The Church was seen by the courtesy of the Rector, the Rev. E. D. S. Ram.

The meeting on July 13th was also a driving excursion and conducted by Mr. Bonner, who had planned an afternoon at Betchworth. A pleasant drive of some three and a-half miles brought the company to Leigh Place, an interesting moated house, part of which dates from the 15th century. Mrs. Anstee kindly received the party, and they were allowed to explore the interior; the priest's hiding place in the ample chimney of the hall was a special matter of curiosity. In the garden Mr. Bonner gave a brief account of the manor, and of the ancient ironworks in the Weald. At Betchworth Church, seen by the courtesy of the Rev. S. G. Longley, who joined the party, attention was drawn to early remains in an Anglo-Saxon capital, an 11th century arch, and an early specimen of a church chest—a rude gouged-out tree trunk. More Place, a picturesque timber-framed manor house, amidst charming grounds, was visited, and Wonham Manor close by—a good Georgian mansion, formerly the residence of Mr. Albert Way, the antiquary—was explored; and a delightful walk amidst characteristic Surrey scenery, over meadows and through wooded lanes, brought the party once more to the station.

The first meeting after the summer holidays was at Hampton Court, and was conducted by Mr. Chart, the resident architect of the Palace. Such a large company assembled, between 60 and 70, that Mr. Chart must have experienced some difficulty in explaining to all the various points of architectural and historical interest on which he is such an authority. Although everyone of those present must have visited Hampton Court once, if not dozens of times, few had observed all the picturesque details, and the nooks and corners of the old courts which Mr. Chart drew attention to. By special permission from the Board of Works, Wolsey's Kitchen was explored, and by permission of the Lord Chamberlain and the Chaplain, the Rev. Nelson Lowe (who joined the party), the Chapel was seen, and its elaborate roof, its pews by Wren, its carvings by Gibbons, and colouring by Verrio, were duly admired. Other portions of the Palace,

usually closed to the public, were also visited under Mr. Chart's escort.

For guidance on the visit to Waltham Abbey on October 5th, the Members were indebted to Mr. Allen S. Walker, London University and Extension lecturer in Archæology, and Hon. Sec. to the British Archæological Association and to the London and Middlesex Archæological Society, whose expert knowledge and agreeable manner of imparting it made him an ideal conductor. From the station a drive was first taken through the little town, past the Queen Eleanor Cross, and Ye Old Four Swannes Hostelrie, and along a charming wooded private road to Theobalds Park, at the entrance to which stands the old Temple Bar. And since it had to be removed from Fleet Street, Inigo Jones would no doubt have been gratified to see it re-erected amidst such pleasant surroundings. At the Abbey, entered by permission of the Rev. F. B. Johnston, Mr. Walker gave an address on its history and architecture. The details, he pointed out, prove that the building is late Norman, not Harold's work as has been asserted, and he likened it to Durham Cathedral in miniature, as the only building in the south of England in that massive style of Transitional Norman. Though it was growing dark a visit was made to the ancient (so-called "Harold's") bridge in the vicinity, and the old square known as "Rome-land" was passed.

The Chaplain at St. John's, Clerkenwell, the Rev. T. C. Elsdon, kindly took charge of the Members who assembled there on November 2nd. The visit to this interesting relic of the English home of the Knights Hospitallers, attracted a numerous party, probably only a few of whom were present when the Society last met there in 1901. The fine crypt, the oldest building in London with two exceptions, and the best preserved, naturally impressed the visitors the most; the 12th century capital of probable Byzantine work, and the numerous masons' marks were pointed out. The church has gone through various vicissitudes since it was the choir of the Priory, and has been in

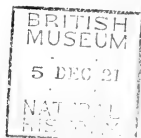
turns fitted up as a private chapel, a library, a Presbyterian Chapel, an 18th century church with galleries and high pews, till finally restored by Mr. J. O. Scott. The library, with its mementoes of the Knights, and the Tudor rooms over the gateway—associated with Wolsey, with Elizabethan revels, and later, with the “Gentleman’s Magazine,” Johnson and Garrick—were seen. Dr. Finny, himself a member of the Order, kindly supplemented the information given by the Chaplain.

The Society was fortunate in securing Mr. Fincham, librarian of St. John’s, to give one of his delightful lectures, entitled “An Ancient Order of Chivalry,” on December 13th. Mr. Fincham is a past master of his subject, and the fascinating and romantic history was made the more entrancing through illustration by 150 lantern pictures.

During the year the Society has been represented by its President on the British Association, and by Miss Klaassen on the Photographic Survey and Record of Surrey.

RECEIPTS AND EXPENDITURE FOR 1912.

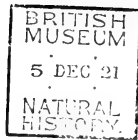
<i>Receipts.</i>	<i>£ s. d.</i>	<i>Expenses.</i>	<i>£ s. d.</i>
7 Compounded Subscriptions	7 7 0	Balance from 1911	3 3 0
1 Subscription for 1910...	0 5 0	Cost of Meetings	5 11 9
4 Subscriptions for 1911...	1 0 0	Printing	8 0 0
61 Subscriptions for 1912...	15 5 0	Postage and Stationery...	2 11 2
Sale of Pamphlets	0 0 11	Colley Hill Preservation Shilling Fund	0 10 0
10 Subscriptions to the Colley Hill Preservation Shilling Fund	0 10 0	Subscriptions: South Eastern Union of Scientific Societies	0 5 0
		Subscription: Croydon Antiquities Protection Committee	0 5 0
		Subscription: Photographic Survey and Record of Surrey	0 2 6
		Balance in Hand	3 19 6
			<hr/>
	<hr/> £24 7 11		<hr/> £24 7 11 <hr/>



LIST OF MEMBERS, 1913.

- Angus, Mrs., Newholme, St. Nicholas Road, Upper Tooting, S.W.
 Baily, Miss C. A., 153, Clapham Road, S.W.
 Barron, A. L., Clophill, Wallington, Surrey.
 Bell, Miss L., 5, Dalebury Road, Upper Tooting, S.W.
 Bonner, A., 23, Streathbourne Road, Upper Tooting, S.W.
 Bonner, Mrs. " " "
 Brabrook, Sir Edward, C.B., F.S.A., 178, Bedford Hill, Balham,
 S.W.
 Brabrook, Miss A. G. " "
 Brabrook, Miss I. M. " "
 Brewer, Mrs., Bosvigo, Blenkarne Road, Wandsworth Common,
 S.W.
 Burke, J. L., 41, Elmbank Mansions, Barnes.
 Carter, J. R., The Old Hall, Wallington, Surrey.
 Chapman, Miss A., 4, Veronica Road, Balham, S.W.
 Chapman, Miss K., " "
 Clarke, A. H., Westerleigh, Elmbourne Road, Upper Tooting, S.W.
 Coates, C. V., M.A., Birkbeck College, E.C.
 Collett, Miss E., 25, Manville Road, Balham, S.W.
 Cox, Miss, 15, Streathbourne Road, Upper Tooting, S.W.
 Coxwell, Dr. C. F., 4, Alleyn Park, West Dulwich, S.E.
 Davis, Mrs. Trevor, Sunnyside, Petersham, Surrey.
 Duff, Miss C. I., 39, Riggindale Road, Streatham, S.W.
 Evans, F. B., 5, Dalebury Road, Upper Tooting, S.W.
 Fenton, A. E., 10, Staple Inn, Holborn, W.C.
 Finny, Dr. W. E. St. L., Tamesa, Kingston Hill, Surrey.
 Foster, J. J., F.S.A., Aldwick, Holland Road, Sutton, Surrey.
 Fox, Charles, The Pynes, Warlingham-on-the-Hill, Surrey.
 Gardiner, Miss L., 14A, St. James's Road, Wandsworth Common,
 S.W.
 Gardiner, Miss M., " "
 Gillam, Miss M., 11, The Court, Guildford.
 Green, Mrs., 26, St. Nicholas Road, Upper Tooting, S.W.
 Grimmer, Mrs., 28, Ritherdon Road, Upper Tooting, S.W.
 Hannaford, Miss, P.S.S.A., Devon's Road, Bromley-by-Bow, E.
 Harvey, A. B., Watling House, Canterbury, Kent.
 Hepburn, Miss M. S., 5, Pendle Road, Streatham, S.W.
 Holmes, Miss B., 31, Riggindale Road, Streatham, S.W.
 Hughes, Miss M., 26, Cavendish Gardens, Clapham Park, S.W.
 Jones, Miss G. M., 20, Terrapin Road, Upper Tooting, S.W.

- Kennedy, Miss C., Ailsa House, Devonshire Road, Balham, S.W.
 Kennedy, Miss J., " " "
 Kershaw, S. W., M.A., F.S.A., 17, Dorlcote Road, Wandsworth
 Common.
 Klaassen, Miss A. C., Aberfeldy, Campden Road, Croydon, Surrey.
 Klaassen, Miss E. F., " " "
 Little, Miss H., Arlington House, Belvedere Road, Upper Nor-
 wood, S.E.
 Lyle, Miss, 35, Shrubbery Road, Streatham, S.W.
 Macbeth, Donald, 92, Culverden Road, Balham, S.W.
 Middleton, G. A. T., A.R.I.B.A., Laleham, Clarence Road, Clap-
 ham Park, S.W.
 Nosworthy, R., 6, Crescent Lane, Clapham Park, S.W.
 Oxley, Rev. W. H., Petersham Vicarage, Surrey.
 Oxley, Selwyn, 75, Victoria Road, Kensington, W.
 Palmer, G. F., 23, Terrapin Road, Upper Tooting, S.W.
 Penny, Miss, 27, Strathblane Road, St. John's Hill, S.W.
 Phelps, Mrs., 6, Pelham Street, South Kensington, S.W.
 Phelps, Miss, " " "
 Reburn, Miss C. M., 133, Finborough Road, Brompton, S.W.
 Rowley, Miss, Heathfield, Balham High Road, S.W.
 Rowley, W. E., 15, Elmfield Mansions, Balham, S.W.
 Sargent, Mrs. E. A., Heathfield, Balham High Road, S.W.
 Seimund, Miss A., Wanchi, Culverden Road, Balham, S.W.
 Seimund, Miss C., " " "
 Shore, Mrs., 6, Kingswood Road, Upper Norwood, S.E.
 Stoker, Miss M. E., B.A., 9, Lessar Avenue, Clapham Common,
 S.W.
 Stout, E. H., 75, Huron Road, Upper Tooting, S.W.
 Stout, Mrs., " " "
 Strickland, R. W., 12, St. James's Road, Wandsworth Common.
 Turner, W. H., P.O. Savings Bank, Blythe Road, West Kensing-
 ton, W.
 Walls, Mrs., 31, Halford Road, Richmond, Surrey.
 Warner, S. G., F.I.A., Elmside, Wandsworth Common, S.W.
 Warner, Mrs., " " "
 Watson, C. J., 13, Ritherdon Road, Upper Tooting, S.W.
 Watson, Miss D. E., " " "
 Webster, C. D., West View, Tadworth, Surrey.
 Wellbye, R., South Heath, Missenden, Bucks.



Balham and District

Antiquarian and Natural History
Society.

ANNUAL REPORT

AND

LIST OF MEMBERS, &c.

January, 1914.

BALHAM AND DISTRICT

Antiquarian and Natural History Society.

1914.

President:

SIR EDWARD BRABROOK, C.B., DIRECTOR. S.A.

Vice-Presidents:

J. J. FOSTER, F.S.A. S. W. KERSHAW, M.A., F.S.A.
DR. W. E. ST. L. FINNY, J.P. S. G. WARNER, F.I.A.
G. A. T. MIDDLETON, A.R.I.B.A.

Director of Meetings:

ARTHUR BONNER.

Organising Secretary (for arranging meetings):

MISS MARIAN GARDINER, 14a St. James' Road, Wandsworth Common, S.W.

Financial and General Secretary:

ARNOLD L. BARRON, "Clophill," Sandy Lane, Wallington, Surrey.

Members of Council:

C. V. COATES, M.A. MISS A. G. BRABROOK. MISS LINDA GARDINER.
REV. W. H. OXLEY, M.A. MRS. E. H. STOUT. DR. C. F. COXWELL.

RULES.

1.—The Society shall be named the "THE BALHAM AND DISTRICT ANTIQUARIAN AND NATURAL HISTORY SOCIETY," and its objects shall be to study and, as far as practicable, to record the Antiquities and Natural History of the district.

2.—The government of the Society shall be vested in a Council to be elected annually and to consist of the President, the Vice-Presidents, the Director of Meetings, the Treasurer and Secretaries *ex-officio*, and not more than six other members.

3.—Members shall be elected by the Council.

4.—Ladies shall be eligible for election as Members.

5.—The Annual Subscription shall be 5s. payable on the 1st January. Members may compound their subscription by a cash payment of 2rs. to cover five years, or 40s. to cover ten years.

6.—Each Member shall be at liberty to introduce one visitor to each ordinary meeting of the Society.

7.—The Rules may be altered or rescinded, and names removed from the list of members at general meetings specially called for the purpose by the Council.

The following pamphlet issued by the Society may be obtained from Mr.
A. L. Barron (Hon. General Secretary)—

THE ARCHÆOLOGICAL REMAINS AND EARLY HISTORICAL ASSOCIATIONS OF
STREATHAM, Tooting, AND BALHAM. By Thomas W. Shore, F.G.S.
7d. (Post free.)

Sixteenth Annual Report.

THE Society has again had a successful year. Ten excursions have been arranged, presenting such varying features of interest as the Roman Wall and Knole House, and ranging from the heart of the City as far as St. Albans and Westerham.

The Annual Meeting, held on January 25th, was compounded of both learning and amusement. The absence of the President, convalescing at Torquay, was much regretted, but he had kindly written a paper for the Society, and the Chair was filled by Mr. Middleton with his usual geniality. The President's address, read by Mr. Bonner, was an account both learned and entertaining, of "The Growth of Interest in Archæology." It dealt with the rise and early history of the Royal Archæological Institute and the British Archæological Association, the one representing the aristocratic, and the other the democratic element—Sir Edward is Vice-President of both—with the formation of various county and local societies; with the Bill for the Protection of Ancient Monuments; with the three Royal Commissions issued, and with the growth generally of public opinion and interest in the matter. A programme of music followed, contributed by Miss Middleton and Mr. E. Treumann, violin and piano; Mr. Strickland piano solos; Mrs. W. H. Turner, who kindly came from Maidenhead, and Mr. E. H. Stout, vocal solos; with two scenes from "The School for Scandal," enacted by Miss Stout and Mr. F. J. Griffiths.

The Roman City Wall and the Apothecaries' Hall constituted our programme for the first outdoor meeting, on March

1st. We were fortunate in having as our conductor Mr. Francis W. Reader, who, with Dr. Philip Norman, acted for and reported to the Society of Antiquaries at the recent excavations. Armed with a permit from the P.O. authorities we were able to walk round and study at close quarters the massive fragments of masonry, Mr. Reader giving us information on the construction and history of the most venerable remains in London, which for over a thousand years survived as the boundary and defence of the City. Following the line of wall we reached Apothecaries' Hall, and saw the interior by permission of the Master and Wardens. The Apothecaries' Hall is an exceptional example of a mediæval guild still retaining its original rules and rights, and exercising its functions. The Hall, rebuilt in 1670, and its shop, court-room, library, and kitchen, remain the same, and though not very imposing, are valuable survivals, and there are interesting portraits, panelling, Chippendale chairs, an old chest and Jacobean table, with a good seventeenth century staircase.

Mr. Walter Bell, author of "Fleet Street in Seven Centuries," a monumental work, and the most comprehensive and complete book on that neighbourhood, was an admirable guide when we visited Fleet Street on March 29th. We met to the number of fifty in the Council Chamber of Prince Henry in the beautiful old house, number 17, Fleet Street, which was so fortunately preserved for the public in 1896, and which is a typical Jacobean dwelling of a city merchant of the better class. Mr. Bell gave a lively history of the historical and literary associations of the "suburb" of lawyers and printers; the newspapers did not come till late years—at the beginning of the reign of Queen Victoria there was only one newspaper office there. By the kindness of Mr. Hamilton Fox we were able to see the rooms in Brick Court occupied by Goldsmith for the last six years of his life. Mr. Bell also conducted us to 17, Gough Square, and by permission of Mr. Cecil Harmsworth, who has acquired the house as a Johnson museum, we went all over it to the spacious garret where the Dictionary was compiled. Mr.

Bell gave an address on Johnson's connection with Gough Square, and of its associations with the publication of the "Rambler," issued here during its two years, and of "Rasselas," also written here. Tea was appropriately taken at "Ye Olde Cheshire Cheese."

On April 19th Mr. Miller Christie, the well-known Essex archæologist, conducted a party of thirty-two further afield over ground that was fresh to many of us, to Eastbury House and Barking. Eastbury House, which we saw by permission of A. Blake, Esq., stands conspicuously isolated among the flat meadows on the banks of the Thames, and looks as though it were a hundred miles from anywhere instead of being within easy reach of Barking. The fine old manor house, characteristically Elizabethan and characteristically Essex, has not been fully inhabited for a hundred years, but the fine brick work, oak staircase, and great tie beams prove how substantially the house was built. The Borough Librarian, who kindly supplemented the information given by Mr. Christie, said that it was hoped that the building might be utilised as a museum or hospital. Barking parish church, approached under the mediæval Curfew Tower, relic of the well-known nunnery, was shown by the Vicar, the Rev. J. W. Eisdell. The church contains Norman pillars and arches, Saxon fragments, and interesting monuments of the Elizabethan, Jacobean, and Georgian periods, and a rare incised fourteenth century stone portrait of the first vicar. On the site of Barking Abbey adjoining, now a recreation ground with the foundations of the abbey carefully and completely marked out in stone, Mr. Christie, who had superintended excavations there, gave a learned and interesting account of this great Benedictine nunnery, which played an important part in mediæval history from the eleventh to the fourteenth centuries, and was the third richest in the kingdom. After tea Mr. Christie further added to the interest of the meeting by reading a paper on the old Court-house, an ancient timber building, the only one of its kind left near London, and Mr.

Bonner gave a short note on the derivation of the name of Barking.

A pleasant afternoon was arranged for us at Dulwich on May 25th. The party to the number of forty met in the Picture Gallery, where the custodian pointed out the paintings of special note. Permission had been accorded us to perambulate the charming gardens, but the death of the Chaplain a few weeks previously deprived us of his guidance. We explored the picturesque precincts and the chapel, where Mr. Foster pointed out the fine copy of Raphael's Transfiguration, the tomb of the founder, and the new East Window. Dr. Coxwell hospitably entertained our party to tea in his own charming garden, and read to us, assembled on the lawn, an interesting paper on Dulwich and its College.

The extraordinary historical, antiquarian, and architectural interest of St. Albans is amply recognised nowadays when train, tram, and 'bus conspire to make the old city quite a resort. On June 14th we had the benefit of having as our guide Mr. Charles H. Ashdown, F.R.G.S., Secretary of the local Antiquarian Society, and a recognised authority on the City and Abbey. We met our conductor at the west entrance, and had a somewhat hurried tour of the interior, necessitated by the approaching hour of Service; we were, however, able to admire, though not to linger over, the nave, with its massive Norman and early English portions, and, in the choir, the Ramryge and Wheathampsted chantries, the restored Wallingford Screen, the only rival to that of Winchester, the painted heraldic ceiling, and, further east, the shrine of St. Alban, and the watching loft, and the ornate Lady Chapel. There was plenty of time to walk round the exterior and study the severely plain Norman work and the much criticised restorations, and to note the character given by the Roman bricks and the noble tower. The fourteenth century Gatehouse, relic of the domestic buildings of the Abbey, which now forms part of the grammar school, was explored by special permission. After tea, under Mr. Ashdown's capable guidance, we took the "historical

walk" by the walls and over the site of the ancient Verulam, to St. Michael's Church, which has Norman, Saxon, and possibly Roman work in its structure, and contains an Elizabethan pulpit, and the monument to Lord Bacon; and then a ramble about the city introduced us to many ancient houses, notably the old Moot Hall, and the Clock Tower built in the early fifteenth century for the curfew bell.

The thirty members who joined the driving excursion to Wolfe's country on July 19th probably thought that afternoon the most enjoyable of the season. The weather was glorious, and the drive from Oxted station to Westerham across Limpsfield Common was representative of the charm of Kent. The Vicar, the Rev. S. le Mesurier, met us at the church, and gave a brief address, pointing out the memorials of General Wolfe, and he afterwards conducted us over the charming Jacobean vicarage to the room where the hero first saw the light. We also enjoyed a stroll in the beautiful old-world garden. Through the kindness of Mr. Learmond—who had recently purchased the house and offered it as a gift to the Canadian Government—we had free access to Quebec House, where Wolfe spent the first twelve years of his life. Careful restorations were made by the late Col. Warde, and the oak-panelled hall and fine staircase, together with a Henry VIII. fireplace, make it interesting as a Tudor house apart from its association with Wolfe. By the permission of the Hon. Mrs. Warde we saw the beautiful grounds of Squerryes Court, where Wolfe often met his early playfellow and life-long friend, James Warde. In the Park, below the pre-historic camp—probably neolithic—Mr. Bonner gave an informing address on "British" and Roman camps. The drive back to the station included the lovely woods near Squerryes and Limpsfield, one of the most charming districts to be found in Kent, or indeed anywhere in England.

The most popular excursion of the season was undoubtedly that on September 27th, the first meeting after the summer vacation, to Knole and Sevenoaks. The day was brilliantly

fine, and our party of sixty could not have seen the magnificently wooded park under more favourable conditions. We were taken in two divisions over the house: a notable type of the fifteenth century slightly fortified manor house with fine seventeenth century additions, and one of the largest houses in the country. The splendid pictures and unrivalled collection of priceless and historical old furniture, to say nothing of panelled walls, fretted ceilings, carving and gilding, make the interior very magnificent. Sevenoaks church was shown by Rev. J. Rooker, the Rector. After tea the President read a brief but much appreciated paper on Knole (printed in the *Antiquary* for January, 1914); and his remarks were supplemented by Messrs. Foster and Middleton.

The name, as our conductor, of Col. Pearson, C.B., Vice-President and Chairman of Council of the London and Middlesex Archæological Society, helped to bring a good party to Rotherhithe on October 24th. This riverside region, given over to warehouses and docks, might have been supposed to yield little of antiquarian interest, and was an unknown ground to most of us. Col. Pearson's address, when we assembled in the church, testified to the antiquity of the place. The present church is only 200 years old, but the first rector was instituted in 1310, and *he* spoke of the parish as having existed 400 years. The list of rectors is complete to the present day. The registers are in forty-eight volumes, beautifully preserved. Under the church is a spacious crypt, and our visit coincided with the discovery made the previous day, during the underpinning of the tower, of supposed Norman remains, which we were permitted to inspect. The church contains a fine Dutch chandelier (there is only one other like it in London), a copy of the *Eikon Basilike* presented by Charles I.—of which replicas are possessed by only three other churches—beautiful carvings about the altar, and a fine relief of a ship dated 1625, all taken from the earlier building. Col. Pearson's knowledge of Rotherhithe for fifty years—since the time when it was largely

swamp and market garden—made him an excellent guide. He led us to the river bank where there are still some remains of a Gothic building in the engineering works of Messrs. Wilmott and Cobon, who permitted us to see them. This building was in the domain of the prior of Bermondsey, and is thought to be either the house in which Henry IV. lodged in 1414, when he rowed up the Thames to the village of Rederiffe seeking a cure for his leprosy; or, as Dr. Philip Norman suggests, mediæval business premises. Our thanks are due to the Rev. F. F. Gledstone, the *locum tenens* in the absence of the Rector, who showed registers and other features of interest in the most genial way; and to the ladies of his congregation who so kindly provided tea for us at the Church House.

For November 15th a meeting was arranged in the heart of the City, when 35 assembled for the churches of St. Swithin and St. Stephen, Walbrook. The Rev. W. J. Foxell, Rector, dealt in a most interesting manner with the history of the former church and of London Stone, for ages the centre of London life, and regarded with respect by the citizens. At St. Stephen's the Rev. R. S. de Courcy Laffan, the Rector—an authority on the church—gave us an address. The church ranks highest amongst Wren's designs of parish churches, and is also noteworthy as being his first venture in domes. The font cover is said to be by Grinling Gibbons, and what is thought to be West's best picture hangs on the wall, and there is the vault of Sir John Vanbrugh.

On December 15th a party of over forty met at the British Museum. Mr. G. A. T. Middleton, A.R.I.B.A., who was our guide there twelve years ago, again acted as conductor, taking us through the Greek galleries, and gave us the benefit of his expert knowledge and the fruits of his travel, especially with regard to his recent discoveries of Greek art at Alexandria. So in our excursions we began at the Roman Wall with a remnant of "the grandeur that was Rome," and ended at the British Museum with "the glory that was Greece."

During the year the President has continued to represent the Society at the British Association; Mr. Bonner has similarly acted at the South-Eastern Union of Scientific Societies (of which he has been elected a member of the Council); and Mr. Donald Macbeth has succeeded Miss Klaassen as delegate to the Photographic Survey and Record of Surrey.

RECEIPTS AND EXPENDITURE FOR 1913.

<i>Receipts.</i>	<i>£</i>	<i>s.</i>	<i>d.</i>	<i>Expenses.</i>	<i>£</i>	<i>s.</i>	<i>d.</i>
Balance brought from 1912	3	19	6	Printing	9	3	10
57 Subscriptions for 1913...	14	5	0	Cost of Meetings	3	19	0
2 Compounded Subscriptions	2	2	0	Postage and Stationery ...	3	15	9
				Subscription to South Eastern Union of Scientific Societies	0	5	0
				Subscription to Photographic Survey and Record of Surrey	0	2	6
				Balance in Hand	3	0	5
	<u>£20</u>	<u>6</u>	<u>6</u>		<u>£20</u>	<u>6</u>	<u>6</u>

- Kennedy, Mrs., 7, Bloomsbury Mansions, 26, Hart Street, W.C.
 Kennedy, Miss C., Ailsa House, Devonshire Road, Balham, S.W.
 Kennedy, Miss J., " " "
 Kershaw, S. W., M.A., F.S.A., 17, Dorlcote Road, Wandsworth
 Common, S.W.
 Klaassen, Miss A. C., Aberfeldy, Campden Road, Croydon, Surrey.
 Klaassen, Miss E. F., " " "
 Little, Miss H., Arlington House, Belvedere Road, Upper Nor-
 wood, S.E.
 Lyle, Miss, 35, Shrubbery Road, Streatham, S.W.
 Macbeth, Donald, 92, Culverden Road, Balham, S.W.
 Middleton, G. A. T., A.R.I.B.A., Laleham, Clarence Road, Clap-
 ham Park, S.W.
 Oxley, Rev. W. H., 75, Victoria Road, Kensington, W.
 Oxley, Selwyn, 75, Victoria Road, Kensington, W.
 Palmer, G. F., 23, Terrapin Road, Upper Tooting, S.W.
 Penny, Miss Edith, 27, Strathblane Road, St. John's Hill, S.W.
 Phelps, Mrs., Thrale Hall, Streatham, S.W.
 Phelps, Miss, " " "
 Proctor, Miss Alice, 1, Grove Road, Willesden Green, N.W.
 Reburn, Miss C. M., St. Matthew's Lodge, Westminster, S.W.
 Rowley, W. E., Heathfield, Balham High Road, S.W.
 Seimund, Miss A., Wanchai, Culverden Road, Balham, S.W.
 Seimund, Miss C., " " "
 Shore, Mrs., 6, Kingswood Road, Upper Norwood, S.E.
 Stoker, Miss M. E., B.A., 9, Lessar Avenue, Clapham Common,
 S.W.
 Stout, E. H., 75, Huron Road, Upper Tooting, S.W.
 Stout, Mrs., " " "
 Strickland, F., Highlands, Purley Downs Road, Purley, Surrey.
 Strickland, Mrs. F., " " "
 Strickland, R. W., 14, Cecil Mansions, Upper Tooting, S.W.
 Turner, W. H., P.O. Savings Bank, Blythe Road, West Kensing-
 ton, W.
 Warner, S. G., F.I.A., Elmside, Wandsworth Common, S.W.
 Warner, Mrs., " " "
 Watson, C. J., 13, Ritherdon Road, Upper Tooting, S.W.
 Watson, Miss D. E., " " "
 Watson, David, 13, Dalebury Road, Upper Tooting, S.W.
 Watson, Mrs. D., " " "
 Webster, C. D., West View, Tadworth, Surrey.
 Wellbye, R., South Heath, Missenden, Bucks.

BRITISH
MUSEUM

5 DEC 21

NATURAL



Balham and District

Antiquarian and Natural History
Society.

ANNUAL REPORT

AND

LIST OF MEMBERS, &c.

January, 1916.

BALHAM AND DISTRICT

Antiquarian and Natural History Society.

1916.

President:

SIR EDWARD BRABROOK, C.B., DIRECTOR S.A.

Vice-Presidents:

J. J. FOSTER, F.S.A. S. G. WARNER, F.I.A.
W. E. ST. L. FINNY, M.D., J.P. REV. W. H. OXLEY, M.A.
ARTHUR BONNER, F.S.A. (*Director of Meetings*).

Treasurer:

F. B. EVANS.

Organising Secretary (*for arranging meetings*):

MISS MARIAN GARDINER,
14a, St. James' Road, Wandsworth Common, S.W.

General Secretary:

R. W. STRICKLAND,
Absent on Service.

Members of Council:

C. V. COATES, M.A.	C. F. COXWELL, M.D.
MISS LINDA GARDINER.	MISS JESSIE KENNEDY.
MRS. E. H. STOUT.	DONALD MACBETH.

RULES.

- 1.—The Society shall be named the "THE BALHAM AND DISTRICT ANTIQUARIAN AND NATURAL HISTORY SOCIETY," and its objects shall be to study and, as far as practicable, to record the Antiquities and Natural History of the district.
- 2.—The government of the Society shall be vested in a Council to be elected annually and to consist of the President, the Vice-Presidents, the Director of Meetings, the Treasurer and Secretaries *ex officio*, and not more than six other members.
- 3.—Members shall be elected by the Council.
- 4.—Ladies shall be eligible for election as Members.
- 5.—The Annual Subscription shall be 5s. payable on the 1st January. Members may compound their subscription by a cash payment of 21s. to cover five years, or 40s. to cover ten years.
- 6.—Each Member shall be at liberty to introduce one visitor to each ordinary meeting of the Society.
- 7.—The Rules may be altered or rescinded, and names removed from the list of members at general meetings specially called for the purpose by the Council.

Eighteenth Annual Report.

ALTHOUGH many of our members are engaged on strenuous war work, and some, we are proud to know, are on active service, the average attendance at the meetings has kept up; and the varied interests thus stimulated are found to be useful tonics. The excursions have been kept to a comparatively short radius, and the members have been surprised to find how much of fresh interest may be found without going far afield.

The Annual Meeting, on January 30th, took the form of a pleasant social gathering at "Laleham," Clapham Park, by the kind invitation of Mr. and Mrs. Middleton. A musical programme followed the short business meeting, Mrs. Fuller Clarke and Miss Agnes Fennings contributing songs and pianoforte solos, the Misses Middleton and Messrs. Harold Cook and Arthur Bonner songs, Miss Irene Stout violin solos, and Mrs. Stout a recitation.

On February 20th the Society was fortunate in having Mr. Walter Johnson, F.G.S., to give one of his informing lectures to the members assembled, by the kind invitation of the Misses Kennedy, at Ailsa House, Balham. The antiquarian aspect of "The British Ox" was dealt with in an entertaining manner, and illustrated by forty lantern slides.

Mr. Walter Bell conducted a large party on March 27th round the neighbourhood of Fleet Street centreing about Clifford's Inn, thus, for the second time, giving the members the benefit of his exhaustive knowledge of that region, which has been embodied in his book, "Fleet Street During Seven Centuries." In its quaint little Hall, Mr. Bell gave an account of the Inn, associated with law since 1394; at a later date Matthew Hale and seventeen judges sat here to adjudicate on the claims arising out of the Great Fire. The churches of St. Clement Danes and St. Dunstan were visited, and also the Roman Bath in Strand Lane, by permission of Mr. Nolan Glave.

Mr. Lloyd Sanders, author of the erudite and entertaining book, "Old Chiswick, Kew, and Kensington," kindly under-

took to conduct a party, on April 24th, around the pleasant district of Chiswick, which, oddly enough, had never before been the object of a Balham antiquarian outing. Grove House was first visited; early eighteenth century in its outward aspect, and eighteenth century also in its beautiful ceilings, which were decorated by Italian workmen, the mansion to-day combines the romance of the ancient original edifice—including underground passages and some seven wells—with modern refinements. The party were received by the owner, Lieut.-Colonel Shipley, with such charming courtesy, and there was so much to see, that the time was all too short. Antiquaries are indebted to Colonel Shipley not only for his restorations at Grove House, but also and especially for the preservation of Hogarth's House. To Hogarth's House the party made their way by an unintentionally devious route, but as the afternoon was very fine the only untoward consequence was that they were too late to meet the Vicar at the church. The main point of interest, Hogarth's tomb in the churchyard, was, however, seen, and also the eighteenth century fishermen's cottages near by. In the quaint little dining-room of the great artist, Mr. Sanders read a most interesting paper on Hogarth and his associations with Chiswick, and on the history of the manor and its famous houses and residents. Hogarth lived here twenty-two years; his garden, gay with daffodils, was seen, and the mulberry-tree from which he was wont to regale the children, still bears fruit. After tea a stroll was taken down the Mall, where Walpole House and other fine old mansions were pointed out.

A meeting was held on May 15th at Clothworkers' Hall, where Mr. P. M. Evans, Clerk to the Company, was the best possible guide. He led the party through the numerous apartments, whose dim religious splendour was lightened by a multiplicity of large mirrors, and by gorgeous chandeliers. The Company's plate was melted down in 1643, but some handsome pieces have been presented since, chief amongst them being the fine loving-cup given by Samuel Pepys when Master. Mr. Evans gave an account of the Company, and of their educational activities. The Clothworkers support schools all over the country, and have special regard to the higher education of women. Mr. Evans also conducted the party to the Norman crypt removed from Lamb's Chapel, Cripplegate, and reconstructed near another stranded relic of old London, the tower

of All Hallows Staining. Here Mr. Bonner gave some interesting notes on the district. By permission of the Rev. Prebendary Carlile the church of St. Mary-at-Hill, rebuilt by Wren, was visited. The notably fine carvings by Rogers, who also executed the carvings in St. Michael, Cornhill; the handsome sword-rest, dated 1770, and the altar, one of the two or three stone altars which remain in London, were noted, and a vivid reminiscence of the Great Fire was suggested by the charred marks on the font cover.

The programme of a visit to Harrow, on June 19th, attracted a party of forty, and they were favoured by a perfect summer afternoon. The Rev. W. Done Bushell, M.A., F.S.A., met the company at the church, on which he is an authority, and was subsequently the guide at the school. The church is mainly Early English. In the fifteenth century John Byrkhede built the highest story of the tower, the renowned lead-cased wooden spire, and the richly carved hammer-beam roof. The fine brasses include two of the fourteenth century to John and Edmund Flambard, a fifteenth to John Byrkhede, and one of the sixteenth century to the founder of Harrow School, John Lyon. At the school, the remaining Elizabethan building, the fourth-form room, now used only for "disciplinary purposes," was of great interest, and the members lingered to trace the names of "Byron," "Sheridan," "Wellesley," and others cut on the panelled walls. The beautiful speech-house built by Burgess as a memorial of the Founder, the chapel, and the Vaughan library were also visited. Among treasures and relics preserved in the last named is the last silver arrow made for the archery competition, a picturesque survival of the sixteenth century which was kept up till 1771. After tea on the fine lawn of the King's Head, a return was made to the terrace to see the Byron tomb and the famous view, which has probably seldom been seen under more favourable conditions. The most distant view points could be discerned, and were pointed out by Messrs. Bonner and Coates.

The most festive outing of the season was that arranged by Mr. Bonner to Weybridge and St. George's Hill on July 17th. The annals of the Society have to be searched as far back as 1910, when the drive to Richmond Park and Wimbledon Common was undertaken, to find an opening similarly inauspicious; but, as in the previous case, those who ventured

were rewarded—the rain cleared and a delightful afternoon was enjoyed. A motor-'bus—less trouble and expense than a train to Weybridge—conveyed the party, numbering 25, via Coombe Hill, Kingston, Hampton Court, Molesey, and Walton, to Oatlands Palace. Little but memories remain of the palace which Henry VIII is said to have built for Anne of Cleves, where Elizabeth hunted, and James I pursued his hobby of silkworm raising; but the ornate grotto constructed at a later period is intact, and though (as Mr. Bonner proved) not quite such a wonderful work as is claimed by the local guide, it is yet a sufficiently magnificent display of the artificial vagaries of the eighteenth century. Mr. Bonner gave an account of Oatlands Palace and its residents, and of the neighbourhood wherein once were the estates of five noblemen, whose desmesnes have all now vanished. At the Museum, where is formed an interesting local collection opened in 1909, the company were received by the Hon. Curator, Mr. J. E. Harting, who gave a brief address on the Roman and later historical remains. The ascent was then made through the beautiful woods of St. George's Hill, where an *al fresco* tea was taken on the summit amid charming surroundings. Mr. Bonner afterwards conducted the party to the fine pre-historic camp—one of the two largest and best-preserved in Surrey—and briefly described this remarkable hill fortress, which belongs to the Bronze or possibly Neolithic Age. The form of the camp and the unusual outworks, which covered about fourteen acres, were clearly illustrated on a diagram. The return drive was made along some of the finest roads in Surrey, by Cobham and Esher Common, Balham being reached shortly before 9.

The meeting at Beddington, also conducted by Mr. Bonner, on September 18th, was naturally also very successful. A pleasant walk through lanes and along the banks of the Wandle, passing an old snuff factory, and, on the road, three ancient timbered cottages, said to be sixteenth century, brought the party to Beddington Park House. This historic home of the Carew family, 1352-1859, was visited by Elizabeth, and is associated with Sir Walter Raleigh. The mansion was purchased for the Royal Female Orphan Asylum in 1859, and it was by courtesy of the head of the establishment that the visit was made. The house was mainly rebuilt in 1709 by Sir Nicholas Carew, and was further stripped of its characteristic features

in 1859; but the Elizabethan hall, with its magnificent hammer-beam roof (resembling that at Hampton Court) remains. The ancient fireplace has been covered up by the panelling placed all round the room. A curious iron lock of the time of Henry VII, belonging to the house, and the only one emblazoned with the royal arms, is now at South Kensington Museum. The handsome church adjoining the house has been much modernised, but there is good mediæval carving on the misereres of choir stalls, on oak screens, and on the sixteenth century pulpit. The beautiful little Tudor Carew chapel contains elaborate monuments, and there are interesting brasses here and in other parts of the church. After a stroll in the extensive gardens of the house, once famous, John Evelyn said, for "the first orange garden in England"—part of the old walls still remain—tea was taken, by the kindness of the matron, Miss Osmond, in the Elizabethan hall. Afterwards Mr. Bonner gave a short address on the manor of Beddington. Ancient remains discovered in the neighbourhood indicate that it was a Saxon habitation in the sixth century, and the manor is referred to in Domesday Book as owning a church and two mills. A letter is extant written by Denewulf, Bishop of Winchester, to Edward the Elder, concerning land at Beddington, the latter being in the Winchester diocese. An inspection of the Beddington Caves, by permission of the Mother Provincial of the Convent of the Good Shepherd, brought the programme to an end.

Camberwell, as shown by Mr. Philip M. Johnston, F.S.A., F.R.I.B.A., on October 23rd, was found to be a region overflowing with interest, ecclesiological, antiquarian, and literary. Mr. Johnston has made a special study of the old church, burnt down in 1841, and now replaced by the fine and characteristic Sir-Gilbert-Scott edifice; and the paper which he read to the members assembled in the church is now appearing in the Transactions of the London and Middlesex Archæological Society. He gave an account, illustrated by plans and drawings, of the previous buildings: a church has occupied the site since probably the seventh or eighth century. The mediæval church was smaller than the present one, and had a curious three-sided apse reminiscent of its Norman predecessor. It contained nothing earlier than the last twenty years of the fourteenth century, except the thirteenth century niche of the Lady chapel.

This niche, together with the beautiful sedilia, and piscina with credence shelf, are now set up in a faked Gothic summer-house in the vicarage garden, and it is to be hoped, as Mr. Johnston said, that they may ere long be restored to their rightful positions. The sedilia has a small window in one of the panels at the back, a very unusual feature, and inserted so that those in the chapel at the side might see the Celebration at the altar. The interesting series of brasses include one temp. Ed. IV, a notable and rare example of the grotesque military figure of the period. The rich plate was confiscated at the Reformation, but generous gifts have been made since. A unique chalice, date 1597, has an oval bowl engraved on the outside with representations of drops of blood. There are two fine flagons, date 1691, and cup and patten, date 1630. At Camberwell House Dr. Edwards kindly showed the party his valuable collection of curios and antiquities. Amongst the former is the old key of Camberwell Gate, an oddly shaped pewter article, and amongst the latter a Roman bowl, discovered in his garden. A most interesting series of water-colour sketches depicting the beauties of the neighbourhood, 1840-1870, was exhibited in the billiard room, and the venerable artist, Mr. J. A. Poulter, was himself present to explain and expound. A walk was taken along Camberwell Grove and Champion Hill, where the houses associated with Dr. Lettsom, Prince George of Denmark, Tom Hood, and other worthies were pointed out. After tea a visit was made to the Minet Public Library, where the Librarian, Mr. C. J. Courtney, F.S.A.(Scot.), displayed its treasures with genial enthusiasm. The Library, founded and endowed by Wm. Minet, M.A., F.S.A., and one of the earliest and most hardly worked of all the public libraries, contains unique local grangerised compilations, and an especially fine and inclusive collection of Surrey books and documents.

On November 13th a visit was made to the churches of St. Andrew and St. Sepulchre, Holborn Viaduct. At the former the Rev. Gordon Wilson acted as guide in the most genial way, and gave a pithy address on the building and its incumbents. The rectors have included five bishops—Bancroft (afterwards archbishop), Hacket, Stillingfleet, Manningham, and Luxmore; and a divine more notorious than any, the Whig frebrand, Dr. Sacheverel. He is buried under the porphyry

communion table, and the fine Venetian east window and decorations were erected in his memory. The registers, kept in unbroken order since the edict of 1539, were shown, and the baptismal entries of Benjamin D'Israeli (*sic*), Richard Savage, and Thomas Chatterton regarded with interest. Much of the plate was stolen in 1786, but a beautiful chalice and patten remain of 1624; others have since been added, and there is now a fine collection. The Harris organ, which competed with that of Father Smith at the Temple church, has been enlarged and added to more than once, and the organist, Mr. Ogbourne, most kindly treated the party to a recital, which was greatly appreciated, and explained the mechanism. The church of St. Sepulchre, like that of St. Andrew, was rebuilt after the Great Fire, though not by Wren, and has fifteenth century work embodied in the tower, and in the beautiful porch; the charming oriel window of the parvise is quite modern. The organ is also one of Harris's; it retains the original magnificent Gibbons case (restored away at St. Andrew's), but the interior is in a less perfect condition. A unique feature in the church is the beautiful stone screen carved in late Renaissance style, which separates the chapel, where is placed the organ, from the nave. The vicar, the Rev. W. M. Cunningham Craig, kindly showed the church. He displayed the plate, which includes two remarkably fine flagons of 1790, pointed out the burial places of Roger Ascham and Capt. John Smith, who married Pocahantas, and drew attention to the handbell formerly rung at midnight outside the cell at Newgate of prisoners condemned to execution next day.

By the courteous invitation of the Balham Literary Society, through Mr. S. G. Warner, Vice-President of both Societies, a joint meeting was held at the Lecture Hall of the Congregational Church on December 6th, when Mr. Bonner gave a lantern lecture on "The modern study of place names." Mr. Bonner has made a special study of the subject, and his lecture was most informing and interesting, and contained many a surprise for those who have pinned their faith to old, and now discredited and superseded, methods.

The Society has suffered a great loss in the removal from the neighbourhood of Mr. Middleton, A.R.I.B.A. Mr. Middleton was one of the earliest members, and for the year 1909 he acted as co-secretary with Mr. Bonner. His expert knowledge,

gained from long study and travel, was always at the disposal of the members, and was conveyed in the pleasantest manner when he accompanied the excursions. He has given many delightful lectures to the Society, illustrated by lantern views taken from his own photographs and drawings. A letter, drawn up by the President, and signed by all the officers, was sent to Mr. Middleton, expressing the regret of the Society at his departure, and their indebtedness to him. Mr. Middleton feelingly replied, saying that the letter would always be valued by him as "a memorial of many a happy excursion during the last twenty years," and that he greatly regretted having to leave the Society.

The Society has temporarily lost the services of its General Secretary, Mr. Strickland, who, following the example of his predecessor, Mr. Barron, took up work in connection with the war, and, shortly after his election as Secretary, went into camp, and thence to the Dardanelles. The President and Mr. Bonner continue to represent the Society at the British Association and the South-Eastern Union of Scientific Societies respectively, and Mr. Macbeth is the delegate to the Photographic Survey and Record of Surrey.

RECEIPTS AND EXPENDITURE FOR 1915.

<i>Receipts.</i>	<i>£ s. d.</i>	<i>Expenses.</i>	<i>£ s. d.</i>
To Balance from 1914 ..	0 19 3	By Printing.. ..	8 19 0
„ 57 Subscriptions for 1915	14 5 0	„ Postage and Stationery	4 9 4
„ Three Compounded Subscriptions	3 3 0	„ Cost of Meetings ..	2 16 0
		„ Subscription to South Eastern Union of Scientific Societies ..	0 5 0
		„ Cost of Engrossing Letter to Mr. Mid- dleton	0 5 0
		„ Balance in hand	1 12 11
	<u>£ 18 7 3</u>		<u>£ 18 7 3</u>

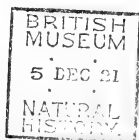
F. B. EVANS

Treasurer.

LIST OF MEMBERS, JANUARY 1916.

- Ambrose, Miss Ethel M., 13, Clairview Road, Streatham, S.W.
 Ambrose, Miss Emmeline, " " "
 Baily, Miss C. A., 153, Clapham Road, S.W.
 Bell, Miss L., 5, Dalebury Road, Upper Tooting, S.W.
 Bell, Walter G., 31, Baskerville Road, Wandsworth Common, S.W.
 Bonner, Arthur, F.S.A., 23, Streathbourne Road, Tooting Common.
 Bonner, Mrs., " " "
 Brabrook, Sir Edward, C.B., Director S.A., Langham House,
 Wallington.
 Brewer, Mrs., Bosvigo, Blenkarne Road, Wandsworth Common,
 S.W.
 Burgess, John H., 51, Cavendish Road, Clapham Park, S.W.
 Burgess, John, Senr., 51, Cavendish Road, Clapham Park, S.W.
 Burke, J. L., 41, Elmbank Mansions, Barnes.
 Carter, J. R., The Old Hall, Woodcote, Wallington, Surrey.
 Chapman, Miss A., 4, Veronica Road, Upper Tooting, S.W.
 Chapman, Miss M., " " "
 Clarke, Miss D. R., 8, Vermont Road, Upper Norwood, S.E.
 Coates, C. V., M.A., Birkbeck College, Breams' Buildings, E.C.
 Collett, Miss E., 25, Manville Road, Tooting Common, S.W.
 Cox, Miss Dora, 15, Streathbourne Road, Tooting Common, S.W.
 Coxwell, Dr. C. F., 4, Alleyn Park, West Dulwich, S.E.
 Dahl, Mrs. E. W., 101, Streathbourne Rd, Tooting Common.
 Dallas, Miss M. E., M.A., Secondary School, Clapham, S.W.
 Davies, Miss F. E., B.Sc., Secondary School, Clapham, S.W.
 Davis, Mrs. Trevor, Sunnyside, Petersham, Surrey.
 de Lisle, Miss W., 58, Tyrwhitt Road, Brockley, S.E.
 Duff, Miss C. I., 11, Parklands Road, Streatham Park, S.W.
 Evans, F. B., 5, Dalebury Road, Upper Tooting, S.W.
 Fennell, Miss S., 95, Haverhill Road, Balham, S.W.
 Fenton, A. E., 90, Cannon Street, E.C.
 Finny, Dr. W. E. St. L., Tamesa, Kingston Hill, Surrey.
 Foster, J. J., F.S.A., Aldwick, Holland Road, Sutton, Surrey.
 Fox, Charles, The Pynes, Warlingham-on-the-Hill, Surrey.
 Gardiner, Miss L., 14A, St. James's Road, Wandsworth Common,
 S.W.
 Gardiner, Miss M., " " "
 Genochio, H., Thorndene, 6, Woodfield Avenue, Streatham, S.W.
 Godman, Mrs., 44, Hosack Road, Upper Tooting, S.W.
 Greenfield, J. H., St. Ronans, Egmont Road, Sutton, Surrey.
 Greenfield, Mrs., " " "

- Hannaford, Miss, P.S.S.A., Devon's Road, Bromley-by-Bow, E.
 Harrison, Miss E., 44, Hosack Road, Upper Tooting, S.W.
 Holmes, Miss I., 31, Riggindale Road, Streatham, S.W.
 Hughes, Miss M., 26, Cavendish Gardens, Clapham Park, S.W.
 Kennedy, Miss C., Ailsa House, Devonshire Road, Balham, S.W.
 Kennedy, Miss J., " " "
 Klaassen, Miss A. C., Aberfeldy, Campden Road, Croydon, Surrey.
 Klaassen, Miss E. F., " " "
 Little, Miss H., Arlington House, Belvedere Road, Upper Nor-
 wood, S.E.
 Lyle, Miss, 35, Shrubbery Road, Streatham, S.W.
 Macbeth, Donald, 92, Culverden Road, Balham, S.W.
 Norrish, Miss, Hawley House, Tudor Road, Upper Norwood, S.E.
 Oliva, R. Piero, Thrale Hall, Streatham, S.W.
 Oxley, Rev. W. H., M.A., 75, Victoria Road, Kensington, W.
 Oxley, Selwyn, 75, Victoria Road, Kensington, W.
 Phelps, Miss, Thrale Hall, Streatham, S.W.
 Pilcher, E. J., 49, Charlwood Street, Belgrave Road, S.W.
 Sanders, Lloyd, 57, Chancery Lane, W.C.
 Seimund, Miss A., Wanchai, Culverden Road, Balham, S.W.
 Seimund, Miss C., " " "
 Shore, Mrs., 6, Kingswood Road, Upper Norwood, S.E.
 Stoker, Miss M. E., B.A., 9, Lessar Avenue, Clapham Common,
 S.W.
 Stout, Mrs. E. H., 75, Huron Road, Upper Tooting, S.W.
 Strickland, F., Highlands, Purley Downs Road, Purley, Surrey.
 Strickland, Mrs. F., " " "
 Strickland, R. W. (absent on service).
 Turner, W. H., P.O. Savings Bank, Blythe Road, West Kensing-
 ton, W.
 Warner, S. G., F.I.A., Elmside, Bolingbroke Grove, Wandsworth
 Common, S.W.
 Warner, Mrs. " "
 Watson, C. J., 13, Ritherdon Road, Upper Tooting, S.W.
 Watson, Miss D. E., " "
 Wolstenholme, Miss M., 33, Malvern Road, Thornton Heath.



S. 10. A.

PRESENTED
26 APR 1934



Balham and District
Antiquarian and Natural History
Society.

ANNUAL REPORT

AND

LIST OF MEMBERS, &c.

February, 1917.

BALHAM AND DISTRICT

Antiquarian and Natural History Society

1917.

President:

SIR EDWARD BRABROOK, C.B., DIRECTOR S.A.

Vice-Presidents :

J. J. FOSTER, F.S.A.	ARTHUR BONNER, F.S.A.
W. E. ST. L. FINNY, M.D., J.P.	REV. W. H. OXLEY, M.A.
S. G. WARNER, Pres.I.A.	C. V. COATES, M.A.

Director of Meetings :

ARTHUR BONNER, F.S.A.

Treasurer

F. B. EVANS.

Organising Secretary (for meetings) :

Miss MARIAN GARDINER,

14a, St. James's Road, Wandsworth Common, S.W.17.

General Secretary :

R. W. STRICKLAND,

(On Service.)

Members of Council :

MISS LINDA GARDINER.	MISS JESSIE KENNEDY.
MRS. E. H. STOUT.	DONALD MACBETH.
C. F. COXWELL, M.D.	H. GENOCHIO.

RULES.

1.—The Society shall be named the "THE BALHAM AND DISTRICT ANTIQUARIAN AND NATURAL HISTORY SOCIETY," and its objects shall be to study and, as far as practicable, to record the Antiquities and Natural History of the district.

2.—The government of the Society shall be vested in a Council to be elected annually and to consist of the President, the Vice-Presidents, the Director of Meetings, the Treasurer and Secretaries *ex officio*, and not more than six other members.

3.—Members shall be elected by the Council.

4.—Ladies shall be eligible for election as Members.

5.—The Annual Subscription shall be 5s. payable on the 1st January. Members may compound their subscription by a cash payment of 21s. to cover five years, or 40s. to cover ten years.

6.—Each Member shall be at liberty to introduce one visitor to each ordinary meeting of the Society.

7.—The Rules may be altered or rescinded, and names removed from the list of members at general meetings specially called for the purpose by the Council.

ANNUAL REPORT FOR 1916.

DURING the past year nine meetings have been held, and though nothing on a large scale has been attempted, three or four of the outings have been as successful and enjoyable as any yet held, and the attendance at all has evidenced the interest maintained in the Society; two of the visits attracted as many as fifty. Some of the members have been so deeply engaged on war work that they have been unable to attend a single meeting, but, as one of them gracefully expressed it, they have not wished to forego the privilege of membership.

The experiment of combining an antiquarian excursion with the Annual Meeting was thought to be a happy one, and a large party assembled at Gray's Inn on January 22nd. Mr. Walter Bell's intimate and historical knowledge of the Inns of Court and of the early law schools of London was manifest in his erudite address given to the company assembled in the noble Hall of Gray's Inn, and in his conducting of the members afterwards through the Sessions Room, rich with carving and panelling, the Chapel, and the precincts. Barnard's Inn, the smallest of the Inns, was also visited. In the time of Henry VI the hall formed part of the town house of the Dean of Lincoln, but most of the fabric is comparatively modern, being mainly rebuilt after the fire there in 1780. At the Annual Meeting held in well-known tea-rooms hard by, the Chair was taken by the Director of Meetings, Mr. Bonner, in the absence of the President, Sir Edward Brabrook. The Annual Report was read by the Secretary, Miss Gardiner, and the financial

statement by the Treasurer, Mr. Evans. The President and officers were re-elected, the name of the Rev. W. H. Oxley being substituted for that of Mr. Middleton (resigned) as Vice-President, and those of Miss Jessie Kennedy and Mr. Donald Macbeth filling the vacancies on the Council caused by the resignation of Miss Brabrook, and the removal of Mr. Oxley to the Vice-Presidency.

On March 4th a meeting was held at Leadenhall Street, when Mr. Arthur Bonner, F.S.A., took charge of the party. At the Church of St. Katherine Cree, which has remains of pre-Reformation building, Mr. Bonner gave an interesting account of the great Augustinian Priory on whose land the mediæval church was built, and of the religious houses which flourished in the vicinity. If the present church was not built by Inigo Jones, as tradition has it, there is a picturesque mixture of Gothic and Renaissance in the architecture. The fine tomb of Sir Nicholas Throckmorton, Chamberlain of the Exchequer to Elizabeth, and son-in-law of Sir Nicholas Carew of Beddington, was noted. The church plate is of the same date as the present building, and was used by Laud at its consecration; the four pewter alms-dishes have been pronounced by Dr. Philip Norman to be among the choicest specimens of pewter in England. The beadle's staff, with its silver figure of St. Katherine and her wheel, and the verger's wand with a mitre in silver, are of interest; the former is a hundred years old, the latter twenty years earlier. At the imposing church of St. Andrew-under-Shaft, seen by the kind permission of the Rector, the Bishop of Willesden, the chief object of pilgrimage by antiquaries is of course the realistic alabaster monument to John Stow. The large West window, containing life-size portraits of Edward VI, Elizabeth, James I, Charles I and II, the Gibbons pulpit, and 17th century screen, are the conspicuous features of the interior. In the vestry were displayed the registers, wherein the death of John Stow is entered; ancient

black-letter books; the plate, which includes a beautifully chased chalice, date 1609; and the fine and massive heads of the maces of Aldgate Ward and that of the church. In his address given to the members before their tour of the building, Mr. Bonner said that the church was mentioned in the early 12th century, and that in the 13th-14th centuries it was described as St. Andrew "towards Alegate," "on the way to Alegate," "upon Cornhill," or "in the street of Cornhill," and also as "Ane Knappe" (on the hillock or elevation); and that the "shaft" was first substituted for one or other of these names during the 15th century. The present church dates from the time of Henry VIII.

The churches of St. Ethelburga, Bishopsgate, and St. Peter, Cornhill, were visited on April 8th. The Rector of St. Ethelburga's was unfortunately prevented by illness from acting as conductor, but he provided an admirable substitute. St. Ethelburga's is one of the smallest churches in London, and, like those visited in March, escaped the Fire. It has recently been restored to its original plan, and now boasts a beautifully carved choir screen and pulpit; the south gallery, erected in 1711 for the "daughters and maids of the parish," has also been replaced. The parishioners have themselves to thank for the shops which mask the front of the church; they were erected in former times for the sake of the rent they brought in (£4 and £5 respectively). By accident or by poetic justice, that money has now been diverted from the parish. Dr. Cobb has had distinguished predecessors, Bishop Burnet and John Wesley being numbered amongst former Rectors. The Rev. G. Bell Doughty, Rector of St. Peter, in the interesting address which he gave there, claimed for his church an interest second only to Glastonbury as the premier British church in London. Roman remains have been found in the excavations recently made. It is the first London parish church named in the Records, as it is mentioned in a deed of A.D. 1038. The present

edifice was built by Wren, and the fine screen is the only one, among City parish churches, left in the position for which he intended it. The exquisite little font cover, registers, and plate escaped the Fire, as did a fine copy of St. Jerome's Vulgate, written in the parish. In the vestry are preserved a fine Elizabethan "withdrawing table" round which Communicants formerly sat, and the keyboard used by Mendelssohn when he played the organ there. The plate includes two fine flagons, and one of the nine Edwardian chalices left in the City.

The success of the excursion to Kingston on May 13th was assured, seeing that it was made under the auspices of Dr. W. E. St. L. Finny, J.P., the recognised historian and antiquary of the town, and a most genial and enthusiastic conductor. Mr. George Thatcher gave a full account of the parish church and its numerous monuments. He also kindly acted as guide at Lovekyn's Chapel—built and endowed as a chantry by John Lovekyn, four times Mayor of London. It is a pleasing example of 14th century architecture, now fallen on sadly secular days. Dr. Finny was in his element at the Town Hall, where he gave a lively history of the ancient township and borough and exhibited emblems of the civic dignity which he has done so much to maintain—the "tipped staff" of the gilds, the maces, and the Lancastrian collar, which forms the Mayor's chain of office. Dr. Finny handsomely entertained the company to tea in the Council Chamber, and afterwards guided them to a house in the market-place where is a fine Jacobean staircase, seen by the kind permission of Mr. Waters. At the Museum the Borough Librarian, Mr. Carter, took charge and gave a most interesting lecture on the evolution of the cinematograph, exhibiting the first films. The original machine was the invention, as far back as 1879, of a Kingston man, Mr. Weybridge, who worked it out to assist him in his photographic studies of the movements of animals, and with no idea of its far-reaching future.

The outing to Richmond on June 27th was greatly enjoyed by a party of fifty. Mr. A. A. Barkas, the local authority on the history and antiquities of the town, who conducted, had arranged a full programme, which included visits to the charming gardens of Asgill and Trumpeting Houses, and of Wardrobe Court, seen by courteous permission of the Rev. A. Welsh Owen, J. B. Hilditch, Esq., J.P., and the Right Hon. Sir G. Cave, K.C., M.P. The members appreciated above all the kindness of Mr. J. L. Middleton, lessee under the Crown of Richmond Palace, who gave them two delightful hours, recounting the historical associations of the Palace from the time of Henry I to that of Queen Charlotte. Mr. Middleton took them over the building, "Queen Elizabeth's room" especially exciting interest, and displayed the treasures of pictures, furniture, and MSS., which he has collected appropriate to the period of each room, whether Tudor or Georgian. He has not only carried out with enthusiastic liberality a complete restoration of the Palace, but has furnished it with the intention of making it a Tudor museum, with discriminating taste. After tea Mr. Barkas read an informing paper on the parish church to the party seated therein, and afterwards took them round the Green, pointing out the many interesting old houses, and giving a brief account of their historical or literary associations.

The excursion to Thames Ditton and Esher on July 15th had to be confined to members on account of the difficulty in procuring vehicles for the drive. At Thames Ditton Church, seen by the courtesy of the Vicar, the Rev. B. H. Bosanquet, the party had the advantage of expert information from Mr. Arthur J. Style, F.R.I.B.A.; attention was drawn to the curiously carved font, lower part of the tower, and pillar piscina, all of the 12th century, and to the numerous monuments, etc. A pleasant drive brought the members to Esher Place and through the Park, by permission of Lord D'Abernon,

to "Wolsey's"—or, as it would correctly be called, Waynflete's—Tower. Mr. Bonner gave an account of the picturesque old gatehouse, all that remains of the palace built by Bishop Waynflete, when the manor was held by the Bishops of Winchester. The palace was an early specimen of the Tudor architecture seen at Hampton Court, and the admirable character of the brickwork of the period is exemplified in the winding staircase. The mansion was restored by Kent, and there is an odd mixture of 15th and 18th century work. Mr. Bonner also gave a note on the names of Ditton and Esher. After tea the members gathered in the old Church at Esher, and were fortunate in having an address from the Vicar, the Rev. J. K. Floyer, F.S.A., who has made a special study of all the points of interest in the building.

The first meeting after the summer interregnum was at Greenwich, and to say that it was conducted by Mr. Bonner is to say that it was thoroughly appreciated. A start was made at the imposing church of St. Alphege, seen by courtesy of the Vicar, the Rev. F. J. Tackley. There is much handsome woodwork, and there are memorable associations. The memorial tablet to General Wolfe, educated and buried in the parish, recalled to the members their visit, a couple of years ago, to the hero's birthplace at Westerham. Another hero, General Gordon, was christened at Greenwich Church. The keyboard said to have been used by Tallis, who was organist of the Chapel Royal, Greenwich, is preserved; Mr. Bonner, however, discerned that it belongs to a later period, and it is in fact, he afterwards proved, the remnant of an organ built by Ralph Dallam and his partner in 1672-3, and an early specimen of English three-manual keyboards. The quaint and picturesque buildings of Trinity Hospital date from the early 17th century; and the Society were privileged in being shown over the Foundation by the Warden, Mr. H. Walter Parker, and Mrs. Walter Parker, and in seeing the Treasury and Court

Rooms with their original panelling and valuable pictures. In the Court Room our Director gave a lucid address on Greenwich Palace and its historical associations; and he then conducted the party to and about the Park, where the Roman remains, "Flamsteed's Hill," the tumuli, and other features of note were pointed out.

Few people are aware of the wealth of antiquarian, literary, and artistic interests which cluster about the squalid purlieus of old Lambeth. Mr. A. G. Hopkins, however, is a keen and well-informed student of the locality, and the Society was fortunate in having him for a conductor on October 14th. A walk under his guidance disclosed mementoes of Roman and Danish occupation; old Dutch houses built at the time when Lambeth pottery was famous; fine old Georgian houses where Hannah Lightfoot and Hogarth lived, and where in more recent times Edward Whympers wrote his "Scrambles amongst the Alps"; the derelict Georgian house where Wm. Blake lived on poetry and art; and the dignified abode of Slade, of art-school and scholarship fame. In the churchyard of the parish church were pointed out the graves of Admiral Bligh of the "Bounty," Countess de la Motte of diamond necklace notoriety, and Tradescant, whose botanical collection started the Ashmolean Museum. Tea was provided by special permission in Archbishop Temple's school.

On November 25th, at the Dutch church in Austin Friars—formerly part of an Augustinian Friary—the Society were joined by the Home Counties Archæological Society, and had the benefit of the exceptional knowledge of Mr. W. A. Cater, F.S.A., who has been making investigations there which have been published by the British Archæological Association. Mr. Cater recounted the discoveries recently made as to the plan of the original buildings, and recalled the associations with Erasmus, Luther, Miles Coverdale, John Fox, and Albert Durer. The Charter granted to "foreigners in London" by

Edward VI, which Mr. Cater called "the Charter of Nonconformity," was on view by special permission, with other historical MSS. Mr. Cater afterwards escorted those interested round the precincts, and pointed out the site of the monastic buildings.

The Society has to lament the loss of two old and valued members, whose genial company was always welcomed: Mr. Charles Fox, who was one of the earliest members and who only resigned last spring, passed away in December; and Mr. C. J. Watson, whose grievously sudden death occurred in November, joined the Society ten years ago and frequently took part in the excursions—his last appearance with it was at Greenwich in September.

The Secretary, Corporal Strickland, R.E., now returned from abroad and stationed at Woolwich, hopes to see something of the Society during the coming year. The President represented the Society at the British Association and the South-Eastern Union of Scientific Societies, and Mr. Macbeth is the delegate to the Photographic Survey and Record of Surrey.

RECEIPTS AND EXPENDITURE FOR 1916.

<i>Receipts.</i>	<i>£ s. d.</i>	<i>Expenses.</i>	<i>£ s. d.</i>
To Balance from 1915 ..	1 12 11	By Printing	6 11 0
„ 54 Subscriptions for		„ Postage and Stationery	3 17 7
1916	13 10 0	„ Cost of Meetings ..	2 11 3
„ 2 Subscriptions for 1915	10 0	„ Subscription to South	
„ 2 Subscriptions for 1917	10 0	Eastern Union of	
„ Two Compounded		Scientific Societies ..	0 5 0
Subscriptions	2 2 0	„ Balance in hand ..	5 0 1
	<u>£ 18 4 11</u>		<u>£ 18 4 11</u>

F. B. EVANS,

Treasurer.

LIST OF MEMBERS, FEBRUARY 1917.

- Baily, Miss C. A., 153, Clapham Road, S.W.9.
 Bell, Miss L., 5, Dalebury Road, Upper Tooting, S.W.17.
 Bell, Walter G., 31, Baskerville Road, Wandsworth Common, S.W.18.
 Bonner, Arthur, F.S.A., 23, Streathbourne Road, Tooting Common, S.W.17.
 Bonner, Mrs., 23, Streathbourne Road, Tooting Common, S.W.17.
 Brabrook, Sir Edward, C.B., Director S.A., Langham House, Stafford Road, Wallington.
 Brabrook, Miss A. G., 16, Terrapin Road, Tooting Common, S.W.17.
 Brewer, J. S., Bosvigo, Blenkarne Road, Wandsworth Common, S.W.11.
 Brewer, Mrs., Bosvigo, Blenkarne Road, Wandsworth Common, S.W.11.
 Burgess, John, sen., 51, Cavendish Road, Clapham Park, S.W.12.
 Burgess, John H., 51, Cavendish Road, Clapham Park, S.W.12.
 Burke, J. L., 41, Elmbank Mansions, Barnes, S.W.13.
 Chapman, Miss A., 4, Veronica Road, Upper Tooting, S.W.17.
 Chapman, Miss M., 4, Veronica Road, Upper Tooting, S.W.17.
 Clarke, Miss D. R., 8, Vermont Road, Upper Norwood, S.E.19.
 Coates, C. V., M.A., Birkbeck College, Breams Buildings, E.C.4.
 Collett, Miss E., 25, Manville Road, Tooting Common, S.W.17.
 Cox, Miss Dora, 15, Streathbourne Road, Tooting Common, S.W.17.
 Coxwell, Dr. C. F., 4, Alleyn Park, West Dulwich, S.E.21.
 Dahl, Mrs. E. W., 101, Streathbourne Road, Tooting Common, S.W.17.
 Dallas, Miss M. E., M.A., Secondary School, Clapham, S.W.11.
 Davis, Mrs. Trevor, Sunnyside, Petersham, Surrey.
 De Lisle, Miss W., 58, Tyrwhitt Road, Brockley, S.E.4.
 Duff, Miss C. I., 11, Parklands Road, Streatham Park, S.W.16.
 Emary, J. L., 1, Culverden Road, Balham, S.W.12.
 Emary, Miss A., 1, Culverden Road, Balham, S.W.12.
 Evans, F. B., 5, Dalebury Road, Upper Tooting, S.W.17.
 Fennell, Miss S., 95, Haverhill Road, Balham, S.W.12.
 Fenton, A. E., 90, Cannon Street, E.C.4.
 Finny, Dr. W. E. St. L., J.P., Tamesa, Kingston Hill, Surrey.
 Foster, J. J., F.S.A., Aldwick, Holland Road, Sutton, Surrey.

- Gardiner, Miss L., 14a, St. James's Road, Wandsworth Common,
S.W.17. [S.W.17.
- Gardiner, Miss M., 14a, St. James's Road, Wandsworth Common,
- Genochio, H., Thorndene, 6, Woodfield Avenue, Streatham,
S.W.16.
- Gilmour, J. P., 17, Bloomsbury Square, W.C.1.
- Godman, Mrs., 44, Hosack Road, Upper Tooting, S.W.17.
- Green, A., 10, North Road, Clapham Park, S.W.4.
- Hannaford, Miss, P.S.S.A., Devon's Road, Bromley-by-Bow, E.3.
- Harrison, Miss E., 44, Hosack Road, Upper Tooting, S.W.17.
- Haward, Miss M. E., 53, Addiscombe Road, Croydon.
- Jones, Miss G. M., 20, Terrapin Road, Tooting Common, S.W.17.
- Kennedy, Mrs., 15, Monmouth Road, Bayswater, W.2.
- Kennedy, Miss C., Ailsa House, Devonshire Road, Balham,
S.W.12.
- Kennedy, Miss J., Ailsa House, Devonshire Road, Balham,
S.W.12.
- Klaassen, Miss A. C., Aberfeldy, Campden Road, Croydon, Surrey.
- Klaassen, Miss E. F., Aberfeldy, Campden Road, Croydon, Surrey.
- Little, Miss H., Arlington House, Belvedere Road, Upper Nor-
wood, S.E.19.
- Lyle, Miss, 35, Shrubbery Road, Streatham, S.W.16.
- Macbeth, Donald, 92, Culverden Road, Balham, S.W.12.
- Mackie, Miss A. W., 12, Milbourne Grove, The Boltons, S.W.10.
- Norrish, Miss, Hawley House, Tudor Road, Upper Norwood,
S.E.19.
- Oxley, Rev. W. H., M.A., 75, Victoria Road, Kensington, W.8.
- Pilcher, E. J., 49, Charlwood Street, Belgrave Road, S.W.1.
- Sanders, Lloyd, 59, Chancery Lane, W.C.4.
- Shore, Mrs., 6, Kingswood Road, Upper Norwood, S.E.19.
- Stoker, Miss M. E., B.A., 9, Lessar Avenue, Clapham Common,
S.W.4.
- Stout, Mrs. E. H., 75, Huron Road, Tooting Common, S.W.17.
- Strickland, F., Highlands, Purley Downs Road, Purley, Surrey.
- Strickland, Mrs. F., Highlands, Purley Downs Road, Purley,
Surrey.
- Strickland, R. W., 12, St. James's Road, Upper Tooting, S.W.17.
- Turner, W. H., P.O. Savings Bank, Blythe Road, West Kensing-
ton, W.14.
- Warner, S. G., F.I.A., Elmside, Bolingbroke Grove, Wandsworth
Common, S.W.11. S.W.11.
- Warner, Mrs., Elmside, Bolingbroke Grove, Wandsworth Common,
- Watson, Miss D. E., 13, Ritherdon Road, Upper Tooting, S.W.17.

PRESENTED

26 APR 1934



