

UC-NRLF
B 4 261 065

7

T
500
F3
N49
1895a
MAIN

STATE OF NEVADA.

REPORT

OF

NEVADA STATE BOARD

WORLD'S FAIR COMMISSIONERS.

J. A. YERINGTON, Chairman.



CARSON CITY, NEVADA.

STATE PRINTING OFFICE : : : J. G. McCARTHY, SUPERINTENDENT.
1895.



NC 44113
B 4 5P7 DP2

T
000
F3
M49
18529
MAIN



STATE OF NEVADA.

REPORT

OF

NEVADA STATE BOARD

WORLD'S FAIR COMMISSIONERS.

J. A. YERINGTON, Chairman.



CARSON CITY, NEVADA.

STATE PRINTING OFFICE : : : J. G. MCCARTHY, SUPERINTENDENT.
1895.



T500

F3N49

1895a

MAIN

In compliance with current copyright law,
U. C. Library Bindery produced this replacement volume on
paper that meets the ANSI Standard Z39.48-1984 to replace
the irreparably deteriorated original.

1993

REPORT OF NEVADA STATE BOARD
WORLD'S FAIR COMMISSIONERS, 1894.

J. A. YERINGTON, CHAIRMAN.

Compliments State Board World's Fair Commissioners.

REPORT.

CARSON, Nevada, December 1, 1894.

To His Excellency R. K. COLCORD, Governor State of Nevada.

SIR: In accordance with the Act providing for an appropriation for making an exhibit of the State's resources at the World's Columbian Exposition, held at Chicago, 1893, I have the honor to transmit to you the report of the State Board of World's Fair Commissioners.

Very respectfully,

J. A. YERINGTON,
Chairman.

REPORT.

On March 19, 1890, the bill providing for the World's Columbian Exposition and locating it in the city of Chicago, under stipulation that ten million dollars would be subscribed by that city, was introduced in Congress. The bill was passed by the House March 26, 1891, and April 11, 1891, passed the Senate. On April 28th it was signed by the President and became a law.

Immediate action was taken by the Illinois corporation, known as "The World's Exposition Company." Organization was completed. The National organization organized June 25th. July 2d the directory selected Jackson Park for the location of the Exposition.

This site was ratified by the National Commission September 23d. The President issued his proclamation December 24th, notifying the nations of the world the Exposition would be held in Chicago, and inviting them to participate.

Hon. George Russell of Elko and Hon. J. W. Haines of Genoa were appointed by the President to represent Nevada in the National Commission. The Commissioners used every effort to have the Legislature of 1891 make an appropriation of \$25,000 in order to make a thorough and exhaustive exhibit of the State's resources. However, no action was taken until the Sixteenth Session of the Legislature, when an appropriation was made of \$10,000, providing also for the appointment of a State Commissioner, who, in conjunction with the two National Commissioners, formed the State Board, the lady Commissioners and all alternates to be ex officio members of said Board.

Up to the time of the passage of the bill no action on the part of the State had been taken towards collecting an exhibit.

March 10th the Governor appointed J. A. Yerington of Esmeralda County to represent the State. On March 15th a meeting of the State Board of Commissioners with ex officio members present was held at the Governor's Office at Carson.

Present—Hon. J. W. Haines, Hon. George Russell, J. A. Yerington.

Ex officio members—Hon. Enoch Strother, Hon. R. Ryland, Mrs. M. D. Foley, Miss Lida Russell, Miss J. Torreyson, Miss M. E. Davies (by proxy).

J. A. Yerington was elected Chairman and Secretary pro tem. of the meeting, and the Bank of Nevada (Reno) Treasurer.

Matters appertaining to the collecting of an exhibit were fully discussed. Five hundred dollars was appropriated from the general fund, and placed to the credit of the Lady Board of Commissioners for the purpose of collecting and maintaining an exhibit in the Woman's Building. The State Board of Examiners were requested to draw a warrant upon the State Treasury for \$5,000, the same to be placed to the credit of the Commission.

The following circular appealing to the citizens to co-operate in assisting to collect an exhibit that would prove worthy of due recognition, was incorporated in the minutes and 2,000 copies ordered printed, to be mailed to all sections of the State:

OFFICE OF THE NEVADA STATE BOARD, }
 WORLD'S FAIR COMMISSIONERS, }
 CARSON CITY, Nevada, March 15, 1893. }

The Sixteenth Session of the Nevada Legislature made an appropriation of \$10,000 for the purpose of making an exhibit of the resources of the State at the Columbian World's Fair, to be held in Chicago, 1893.

The Governor appointed a commission of three to represent Nevada's interests. At a meeting held in Carson by them this day, it was resolved to make an appeal to the citizens of Nevada to the end that they would use every effort to assist the Commissioners in making a most creditable showing. The time being limited, it will be necessary for immediate action, as exhibits will have to reach Chicago by the 20th of April. As many sections of the State will be visited by a Commissioner as the limited time will permit.

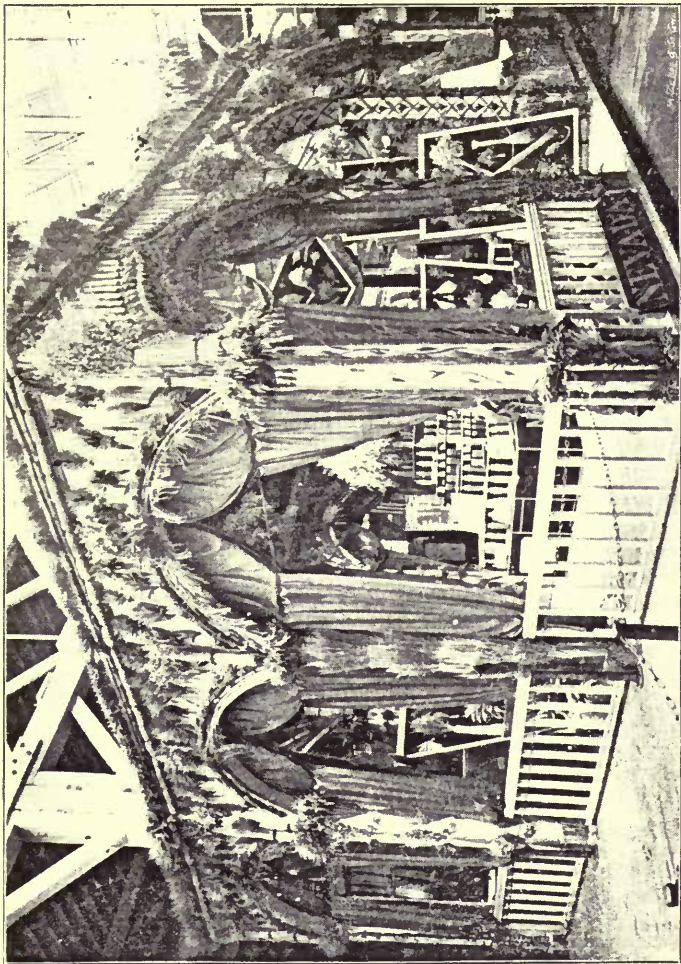
Exhibits from Storey, Ormsby, Washoe, Douglas, Churchill, Lyon and Esmeralda counties can be forwarded to Reno; exhibits from Lander, Nye and Humboldt counties to Winnemucca; exhibits from White Pine, Eureka and Elko counties to Elko, and exhibits from Lincoln county may be sent to Ogden.

J. A. YERINGTON,
 Chairman World's Fair Commissioners.

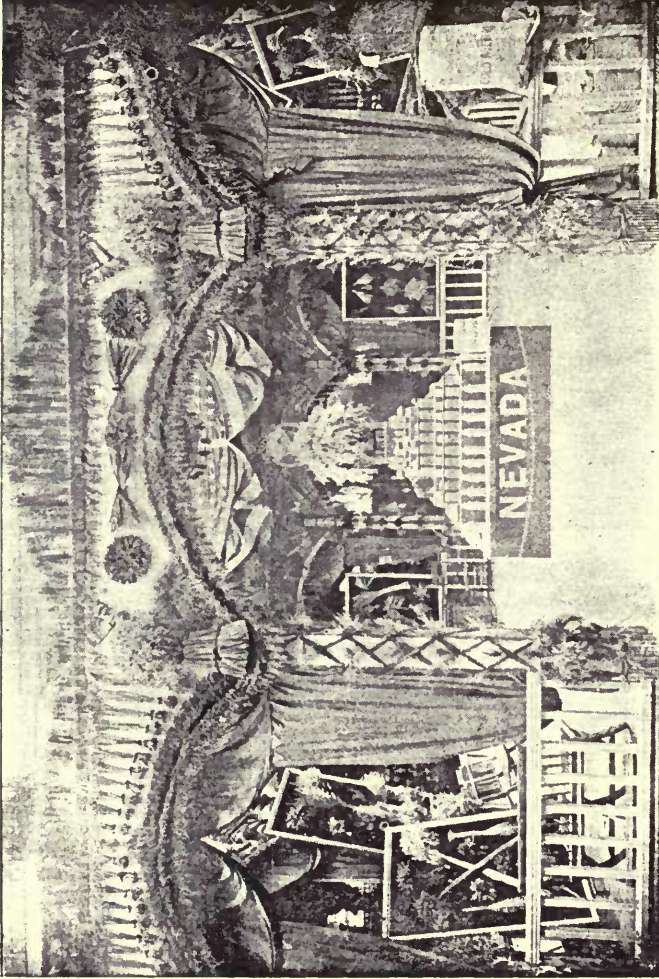
This was accomplished two days later, with a result that proved most gratifying to the commission.

During the next thirty days every part of the State that could be conveniently reached by rail was visited, and as the disposition of the citizens was to extend their aid in making a splendid showing, the result of their efforts bespoke for itself.

On the 15th day of April the exhibit was forwarded, arriving in Chicago on the 22d. In the meantime the Director-General, Chiefs of the Departments, viz: Mines and Mining, Agriculture, Ethnology and Woman's Building, had been appealed to for space. On arriving at Chicago the Commission found much to contend with, owing to the fact that space prominently situated had been reserved,



AGRICULTURAL BOOTH.



AGRICULTURAL BOOTH.

but upon ascertaining Nevada did not intend to make an exhibit, the time for limitation having expired, and the National Commissioners not being able to guarantee an appropriation from the forthcoming Legislature, the space was allotted to other exhibitors.

This made the situation a most trying one. The management had expressed their gratification on ascertaining the State, although at the last hour, had decided to participate in the great fair, and the Commissioners took advantage of every opportunity in having this appreciation fully shown, with the result that the State procured space in each department where the exhibit had been consigned.

Nevada had no State building. North Carolina, Oregon and Wyoming were the only States similarly situated.

Our mining exhibit appropriately deserved space among the most prominent exhibitors of the world on the main floor of the Mining Building, but 2,500 square feet of space had to be procured on the west gallery, with additional space in Groups 48 and 51 on the east gallery for competitive displays of the chemical and building stone exhibits. The weight of the mining exhibit was confined to eighty pounds to the square foot on the galleries. Through Idaho's misfortune in losing a great part of its agricultural exhibit by fire whilst in transit, the State was enabled to procure enough space to make a most creditable exhibit, prominently situated in Section C, surrounded by the exhibits of New Jersey, Wyoming, Colorado and Utah, with California and Ontario close neighbors. Nevada's booth occupying a space thirty feet square, decorated artistically with choice grains and grasses, the large arches draped with salmon-colored silk curtains, had in its center a pyramid six feet square at its base and rising ten feet high, the top surmounted by a large sheaf of Chinese oats, the remainder being covered with a display of forty varieties of choice cereals neatly arranged in redwood boxes covered with glass, a card giving the name of each variety; a display of twenty-nine varieties of apples and ten varieties of pears arranged and classified according to the rules governing the Department of Horticulture, with trimmings of silver molding on olive green cloth and the word "Nevada" in large silver letters on each side at the base, created much admiration. Eight frames of black velvet encased in a deep molding of silver, fifty by sixty inches in size and mounted on Japanese easels, were covered with forty varieties of grains in sheaf, illustrating the growth and corresponding with each variety as represented in the redwood boxes on the pyramid. One corner of the booth was devoted to an exhibit of alfalfa, timothy, redtop and grasses, also showing three crops of alfalfa from one acre during the previous season. Adjoining, an exhibit of potatoes, some fifteen varieties, one weighing $5\frac{3}{4}$ pounds, created no little interest. An exhibit of cheese (that was freely sampled) and vegetables occupied the remaining space. Chairs were placed conveniently for the visitors. The floors having been kept polished, the effect when the bright light from the glass roof penetrated the booth was a most

pleasing one. The Seal of State in bright colors surmounted the two main entrances. By the employment of quite a force of artisans the booth was completed in the short space of eleven days. On presenting the same in the name of the State to the Department of Agriculture, Chief Buchanan remarked, "as he did not expect anything from arid Nevada in the agricultural line he felt disposed to allot gallery space, but upon examining her surprising exhibit he conceded it worthy of the most prominent space in the department."

Later on an exhibit of flour, honey, figs, almonds and grapes were received, the latter three, six weeks ahead of California, having been conveyed sixty miles from Rioville, Lincoln county, to the nearest railway station, Kingman, Arizona.

The Commissioners took great pride in bringing this exhibit to the notice of the National and Executive Boards, who, together with the most prominent visitors at the Fair, expressed great surprise at Nevada's possibilities.

This exhibit fully demonstrated the benefits of irrigation, and no doubt proved an object lesson to many of the older States. It was of common occurrence to have a party return the second and third time, bringing his neighbors along to discuss the exhibit, and it was regretted the Commission did not have the necessary literature at its command to distribute, as the demand for it was great.

The exhibit of soils thoroughly analyzed, and obtained from the best agricultural sections of the State, was placed by the United States Experimental Exhibit in the Agricultural Department, the attention of those seeking information was called to it by the Commissioners.

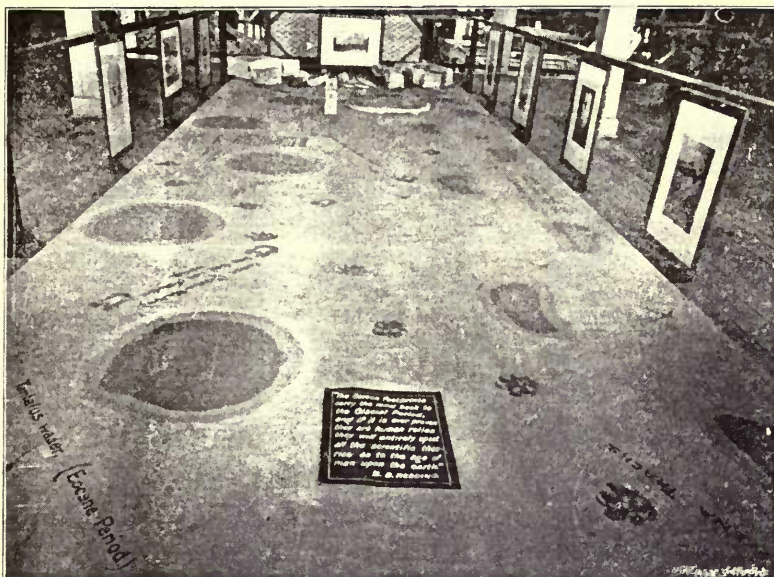
Professor N. E. Wilson, Station Chemist of the State University, was for some time in charge of the exhibit, and Nevada's interests were in splendid hands and well cared for.

The exhibits from the Experimental Station of the State University, prepared by Professor R. H. McDowell, reflected great credit, and tended to fully illustrate the benefits the State is obtaining through his efforts.

Professor Brown prepared the mechanical part of the exhibit and Professor Jackson the mineral.

The fifth annual report of the Nevada Experimental Station for 1892, together with separate reports on beet culture and dairy products, were freely distributed to those directly interested.

The exhibit in the Ethnological Building consisted of the supposed human footprints and fossils from the quarry at the Nevada State Prison, Carson. The space allotted on the west gallery was 19x40 feet. In order to illustrate the exhibit, the platform raised six inches from the floor was covered with canvas, upon which was reproduced the tracks of the supposed man, elephant, horse, tantalus (or wading bird) and saber-tooth tiger. This reproduction was from the reports of Professors Harkness, Le Conte and Davidson, with surveys and maps by Drayton Gibbs, C. E. Although not



PREHISTORIC EXHIBIT.



PREHISTORIC EXHIBIT.



CHEMICAL EXHIBIT.



BUILDING STONE EXHIBIT.

conforming geographically with the originals, as to size, step and straddle they were perfect. The originals were placed at one end of the platform, and a glass case contained the smaller and most valuable relics. The entire exhibit was surrounded by a railing three feet high, from which were suspended large bromide pictures that fully illustrated the position of the tracks, tunnels and height of the surrounding walls. Small maps illustrating the course and number of each series were on the west wall, and quotations from eminent scientists were freely posted, giving their views in full regarding the origin of this interesting exhibit. The comments of scientists and the press were of daily occurrence, and as one German scientist stated, "Nevada had produced the stumbling block of the World's Fair."

Of the remaining two thousand exhibits in that building there was no questioning their originality.

Nearly every museum of note made application for this exhibit in case of its disposition.

Nevada was represented by a very choice exhibit of hand-painted china and needlework in the Woman's Building, under the able management of the Lady Commissioners, with Miss Annie Ware in charge. It was much admired and commented upon.

Returning to the Mining Exhibit, one was not accosted with the remark: "Was it actually produced in Nevada"? The State, having become known to the world as the producer of some eight hundred million (\$800,000,000) dollars in gold, silver, and other precious minerals and chemicals, it was not necessary to corroborate the reports fully illustrating the exhibit. Having become conversant with the surrounding exhibits of the mineral-producing States and countries, the Commissioners had no hesitancy in showing that no other corresponding area could reproduce Nevada's exhibit. Mineralogists took a lively interest in it and considered our natural chemical resources wonderful. Having submitted every article in the laboratory of the Department of Mines the Commissioners had the gratification of seeing fourteen highest medals awarded.

It can be safely averred that no other one exhibit in any department at the great Exposition had a corresponding number of medals attributed to it. This was freely commented upon.

Universities of all countries were furnished with samples from this exhibit, thoroughly advertising Nevada's resources in that line. Although the State, owing to the short space of time allotted to the Commissioners, did not have an exhibit that was massive in its proportions, it had one fully representative of its mining interests, showing ore from the surface to the deepest point in the world (3200 foot level of the Hale and Norcross Mine, great Comstock Lode) from which ore perpendicularly had ever been extracted.

The following list, as catalogued, comprises the Mineral Exhibit, showing both State and individual exhibitors: Groups 42, 46, 51 and 54 were classified as State exhibits; Groups 44 and 48 State and

individual combined, this being done in order to give the State the benefit of having produced the same.

Exhibit 11E, Classification No. 290, was a special exhibit made by E. G. Morrison and Dr. Snyder of Eureka, comprising some 8,000 specimens of the world. This exhibit was valued at \$20,000.

Exhibit No. 9, Classification No. 290, was a special exhibit of silver and lead ores from White Pine county, made by Messrs. Wren and Grandelmyer.

Group 42.

Churchill County—Nickel and cobalt ores.

Douglas County—Placer gold, gold in quartz.

Elko County—Carbonate lead ore, magnetic iron, native lead, oxide of iron, gold and silver in iron ores, sulphuret silver ore, shale.

Esmeralda County—Oxide iron ore, native iron, pyrites of iron, gold and silver in copper ores, bromide silver, chloride silver, carbonate of iron containing gold, silver and lead, native gold in quartz, wire gold in crystals, native gold in iron ore, native gold in calcite, native silver in manganese, wire silver in calcite, wire silver in iron, native silver, gold and silver in carbonate lead ores, chloride of silver ores, antimonial silver ores, horn silver, native turquoise, viriscite, magnetic iron ores, black metal, sulphide of silver in iron ore containing horn silver and black metal, bromide of silver ore, gold and silver lead ore, carbonate of lead, molybdate of lead, galena, native lead ores.

Eureka County—Gold, silver and lead ores.

Humboldt County—Sulphuret silver ores, iron ores, antimonial ores and sulphur.

Lander County—Ruby silver ores, gold and silver in copper ore, gold and silver in quartz, oxide including silicate of copper, sulphuret lead ores, carbonate of lead ores, native lead ore.

Nevada, State of—Antimonial ores, antimonial argentiferous ores, carbonate ores, sulphuret antimonial lead ores, magnetic iron ores, oxide of iron, carbonate of iron, nickel and cobalt ores, cinnabar, silicate, zinc ores, argentiferous lead ores, sulphuret ores containing gold and silver, ruby silver, gold and silver in carbonate ores, carbonate of lead, sulphide of lead, argentiferous pyrites, antimonial silver ores, chloride of silver ores, horn silver, black metal, wire silver, native gold, wire gold, placer gold, wire gold in manganese, wire silver in manganese, copper ores, gypsum, arsenical ore, sulphur, pyrites containing 52.5 per cent. sulphur, alum, black oxide of manganese, asbestos, mica, coal, aluminum, garnets, white topaz, turquoise, viriscite, agates, tourmaline crystals, sulphur and cinnabar combined.

Nye County—Carbonate of lead ores, magnetic iron ores, sulphide of lead, gold in quartz, flake silver ore, gold and silver ores.

Ormsby County—Magnetic iron, gold in quartz, white topaz, pyrites of iron containing 52.5 per cent. sulphur.

Storey County—Sulphuret gold and silver ores.

Washoe County—Cinnabar, quicksilver, arsenical ore carrying alumina, iron ores, copper ores.

White Pine County—Native lead ores, zinc ore, gold and silver lead ores, native silver ores, gold and silver in quartz.

Lyon County—Native gold in quartz, copper ore.

Douglas County—Native gold in quartz, native gold in manganese, native gold in calcite, placer gold.

Group 44.

Elko County—Marble.

Esmeralda County—Breccia.

Linsey, W. E., Carson—Alabaster, sandstone, onyx, white marble, sky-blue marble, creole marble.

Group 46.

Elko County—Asbestos.

Elko County—Native mineral soap.

Lincoln County—Mica.

Group 48.

Aluminum Lustre Company, Hawthorne—Silica natural and ground.

Conn & Trudo—Borax, refined and crystals, tincal and soda ash.

Columbus Borax Company—Borax.

Pacific Borax Company—Borate of lime.

Griswold, E., Ragtown—Soda (unfurnaced).

Inyo Development Company, Carson—Natural soda water, carbonate of soda, bicarbonate of soda, and natural soda crystals.

State of Nevada—Salts, sulphur, borax, borate of lime, soda (carbonate and bicarbonate), tincal.

Occidental Alkali Company, Hawthorne—Salt, soda, soda ash, native carbonate of soda.

Nevada Salt and Borax Company, Rhodes—Salts, borax (crystals and refined), borate of lime, tincal.

Washoe County—Sulphur.

Alex. Wise, Winnemucca—Sulphur (native and refined).

D. Bonelli, Rioville—Rock salt.

Group 51.

Douglas County—Oxide copper ore.

Elko County—Copper ores.

Esmeralda County—Native copper, sulphide of copper, oxide of copper, carbonate of copper.

State of Nevada—Carbonate of copper, native copper, sulphide of copper, oxide of copper.

Nye County—Native and carbonates of copper.

Group 54.

Humboldt County—Antimony.

Lander County—Antimony.

Nye County—Antimony.

Group 61.

William Wilson, Pine Grove—Improved miner's pick.

The following table shows the appropriations made by the different States and Territories, the cost of building, including furniture, and the amounts received from sale of buildings. At the time of writing this report several of the State buildings had not been sold:

States.	Appropriations	Cost of State Building, Including Furniture.	Amount Realized from Sale of Buildings	States.	Appropriations	Cost of State Building, Including Furniture.	Amount Realized from Sale of Buildings
Arkansas	\$25,000	\$16,500		Nebraska	\$85,000	\$20,000	\$75
Arizona	30,000			Nevada	10,000		
Colorado	147,000	32,000	\$300	North Carolina	36,000		
Connecticut	70,000	15,000		New Jersey	130,000	20,000	2,000
California	510,000	115,000	500	New York	600,000	150,000	1,000
Delaware	21,700	9,500		North Dakota	49,100	12,500	150
Florida		10,000	100	New Mexico	32,000		
Indiana	125,000	57,162	1,200	Ohio	189,000	35,000	1,650
Iowa	138,096	40,000		Oregon	60,000		
Illinois	800,000	240,000	1,650	Oklahoma	17,500	11,090	
Idaho	50,000	28,000		New Mexico	32,000		
Kentucky	100,000	27,951	250	Arizona	30,000		
Kansas	65,000	24,000	200	Pennsylvania	300,000	121,100	2,600
Louisiana	40,000	23,000	500	Rhode Island	50,000	11,000	
Michigan	147,000	60,620		South Dakota	65,000	17,000	76
Minnesota	150,000	39,000	275	Utah	53,000	12,000	200
Massachusetts	175,000	44,000		Vermont	30,000	14,750	97
Maine	59,000	32,000		Virginia	33,000	20,000	400
Missouri	150,000	45,000	350	Washington	160,000	60,000	
Maryland	60,000	25,000	450	West Virginia	60,250	22,070	950
Montana	100,000	19,200	350	Wisconsin	165,000	38,080	1,680
New Hampshire	45,000	20,000	100	Wyoming	30,000		

OFFICE NEVADA STATE BOARD WORLD'S FAIR COMMISSIONERS, }
JACKSON PARK, Ill., September 10, 1893. }

Hon. WM. IRELAN, JR., Judge on Board of Awards, Department E,
Mines and Mining Building, World's Columbian Exposition, Jackson
Park, Ill.:

DEAR SIR: I herewith submit to your consideration the certified copies, after careful and thorough analysis in the official laboratory of this department, of the native and refined products of the

State of Nevada, as exhibited in Group 48, Department E, of the Mines and Mining Building.

These products all being of such an important nature to the future welfare of the State, I have had no hesitancy in placing them on exhibit in competition with the world, and to that end have endeavored to show them as they exist from the natural soil and lakes to the refinery. Probably a few remarks as to the importance of each will be in keeping with this report.

EXHIBIT NO. 21.

Aluminum Lustre, exhibited by the Silex Manufacturing Company of Hawthorne. Analysis as follows:

Silica, natural and ground (native)-----	91.43 per cent.
Alumina-----	6.49 per cent.
Protoxide of iron-----	1.29 per cent.
Magnesia-----	0.79 per cent.

This remarkable deposit exists in a ledge reported thirty feet wide, being free from grit and foreign matter detrimental to its use as a polishing compound. It is being placed upon the market.

BORAX.

It is not necessary to enumerate the many uses to which this product is adapted. The deposits are quite extensive and have a great commercial value. The certified analyses show the quality of both the native and refined as follows:

Columbus Borax Company, Columbus.

Concentrated borax-----	99.01 per cent. pure	
Crude borax {	Alkali-----	11.56 per cent.
	Sodium bi-borate-----	28.75 per cent.
	Water-----	27.75 per cent.

Nevada Salt and Borax Company.

Concentrated borax-----	99.10 per cent. pure
Native tincal-----	97.09 per cent.

Conn & Trudo.

Concentrated borax-----	99.72 per cent. pure
-------------------------	----------------------

Sodas and salts are extensively manufactured. The exhibit of the Occidental Alkali Company of natural carbonate of soda proved it to be remarkable, the analysis showing 90.50 per cent. The same company exhibit soda ash (crude) 62.78 per cent., manufactured soda 91.90 per cent. Their works are situated on a marsh about three miles from the line of railroad in Esmeralda county.

The Nevada Salt and Borax Company exhibit table, dairy and

milling salt, the analysis of which has not been submitted by the chemist but will be ready in course of a few days.

D. Bonelli of Rioville, Lincoln county, exhibits native rock salt of which there is reported to be a very extensive deposit. The analysis proves it remarkable, viz: Insoluble matter, .025 per cent.; no lime, no magnesia; moisture, .005 per cent.; no sulphates; 99.925 per cent. pure.

The Inyo Development Company of Carson, operating at Owens Lake, makes a special exhibit of natural soda water. The latest report of the United States Government estimates 20,000,000 tons as the capacity of the lake, making it inexhaustible. Analysis proves the water to contain:

Carbonate of soda (per gallon)-----	1,026.82 grains
Bicarbonate of soda (per gallon)-----	1,150.84 grains
Carbonate of soda from precipitation-----	69.43 per cent.
Bicarbonate of soda, manufactured-----	98.24 per cent.

24.—A. WISE, HUMBOLDT COUNTY—SULPHUR.

The report made by the State Government (p. 106 Report Surveyor-General): "These sulphur mines exist in beds from seven to ten feet in thickness, and are mined similar to beds of coal."

The analysis proves it almost pure in its native state, 99.526 per cent.

Non-volatile mineral matter-----	.058 per cent.; no arsenic.
Non-volatile organic matter-----	.016 per cent.; no sulphuric acid.
Moisture -----	.41 per cent.; no chloride.

The exhibit of natural mineral soap is one that has created no little interest, and owing to the fact that it has the appearance of mottled castile soap, it has been utilized for commercial use, giving in result all that is required of the best soaps. The mine is situated in Elko county, has a perfect ledge, a tunnel traversing it on its pitch some distance into the mountain. The samples submitted are perfectly free from any animal matter whatsoever, the analysis proving this to be the case, viz:

Sand, 5.55 per cent.

Clay, 62.97—Silica 46.15, iron and alu. 14.73, CaO 0.40, MgO 1.81.

Soluble in hydro acid, 16.61—Oxide iron and alu. 10.53, CaCO₃ 5.18, MgCO₃ 0.90.

Alkalies, 14.87—Sodium borate, sodium carb, sodium sulph.

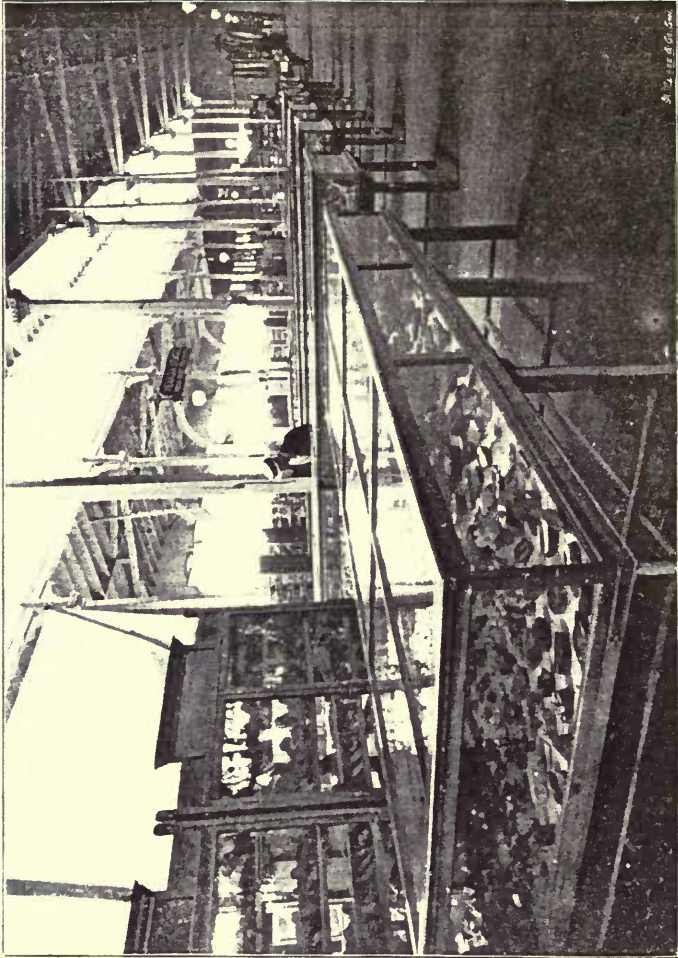
In finally closing this report I would like to show the importance of the salt, soda and borax industry in Nevada by quoting the report of the Assessor of one county, viz: Esmeralda, in which he enumerates 210,980 tons produced, with gross yield or value \$2,370,032; net profit, \$448,649 30.

Most respectfully,

J. A. YERINGTON,
Chairman Nevada State Board.



CHEMICAL EXHIBIT, MINING BUILDING.



MINING EXHIBIT.

AWARDS.

The following list of awards is copied from the original certified list as signed by the Chief of Awards in the different departments, under approval of the various Boards and approved by the Chairman of the Executive Committee on Awards:

Agricultural Department, A.

GROUP 1.

Reno Flour Mill, Reno—Flour.

State of Nevada—Barley, millet, oats, seeds, grasses, wheat, corn.

GROUP 3.

State of Nevada—Sorghum.

E. A. Moore, Reno—Honey.

GROUP 4.

H. C. Wilmings, Lemoille Valley—Potatoes.

W. H. Joy, Reno—Potatoes.

E. Odells, Elko—Potatoes.

F. Drowns, Elko—Potatoes.

GROUP 7.

Reno Creamery, Reno—Cheese.

Theo. Winters, Washoe—Cheese.

GROUP 15.

Multimotor Company, Reno—Windmill.

The foregoing list of awards to exhibitors from Nevada has been carefully compared with the records of this department, and is found to be correct.

(Signed :)
March 30, 1894.

J. S. BROWNING,
Chief of Awards for Agriculture.

Horticulture, Department B.

GROUP 21.

State of Nevada—Apples and pears.

The foregoing list of awards to exhibitors from Nevada has been carefully compared with the records of this department and is correct.

(Signed :)

February 27, 1894.

HENRY HOLZAPFEL, JR.,
Chief of Awards, Department Horticulture.

Department E, Mines and Mining.

GROUP 42.

Notice is hereby given that the following awards have been made by the Board of Judges of the Department of Mines and Mining at the Columbian Exposition :

NEVADA.

Grandelmyer, Joseph, Hamilton—Ores from White Pine county.
 Morrison, E. G., Eureka—Mineral collection.
 State of Nevada—Mineral collection.
 Humboldt County—Antimonial ores.
 Lander County—Ruby silver ores.

GROUP 44.

Lindsey, W. E., Carson—Sky-blue marble.

GROUP 48.

State of Nevada—Sodas, salts, etc.
 Inyo Development Company, Carson—Natural soda water, carb. and bicarb. soda.
 Occidental Alkali Company, Hawthorne—Soda ash (unground).
 Columbus Borax Company, Columbus—Borax.
 Conn & Trudo—Saline, tincal, borax from precipitation.
 Wise, A., Winnemucca—Sulphur, native and refined.
 Silex Manufacturing Company, Hawthorne—Aluminum lustre.
 Nevada Salt and Borax Company, Rhodes—Refined borax.
 Bonelli, D., Rioville—Rock salt.
 Inyo Development Company—Natural soda crystals.
 Occidental Alkali Company, Hawthorne—Soda, native and refined.
 Booher & Alberti, Elko—Natural mineral soap.

GROUP 61.

Wilson William, Pine Grove—Improved miners' pick.

The foregoing list of awards to exhibitors from Nevada has been carefully compared with the records of this department, and is correct.

(Signed:)

F. R. GAMMON,
 Chief of Department Mines and Mining.

February 20, 1894.

Notice is hereby given that the following awards have been made by the Board of Judges of the Department of Manufacture at the Columbian Exposition :

NEVADA.

GROUP 91.

Bray, Miss Ollie, Carson—Decorated china.

GROUP 106.

Mills, Mrs. George T., Carson—Embroidered tea-cloth.

The foregoing list of awards to the exhibitors from Nevada has been carefully compared with the records of this department, and is correct.

(Signed :)

F. R. GAMMON,
Chief of the Department of Manufactures.

February 17, 1894.

NEVADA.

ETHNOLOGY.

State of Nevada—Fossil footprints from Carson.

The foregoing list of awards to exhibitors from Nevada has been carefully compared with the records of this department, and is correct.

(Signed :)

H. W. CANNON,
Chief of the Department of Ethnology.

February 17, 1894.

The foregoing list will show the relative merit of Nevada's exhibit, having been ratified by the Board of Awards, consisting of 44 members in each department, after having been carefully examined by the committee appointed as individual judges.

Department A, Agriculture.

Exhibitor—E. A. Moore, Reno, Nevada.

GROUP 3, CLASS 26.

Exhibit—Honey.

AWARD.

Extracted honey—Exceptionally high excellence, its specific gravity being entirely satisfactory, its flavor all that can be desired, and the color remarkably good.

Honey in comb—Fine appearance of comb and contents.

(Signed :)

EUGENE SECOR,
Individual Judge.

Approved : GEORGE C. TAYLOR,
President Department Committee.

Approved : JOHN BOYD THACKER,
Chairman Executive Committee on Awards.

Dated April 23, 1894.

Department A, Agriculture.

State of Nevada—Reno Flour Mills, Reno.

GROUP 1, CLASS 11.

AWARD.

Purity, good color and strength, well milled.

(Signed:)

GEORGE H. PARKS,
Individual Judge.

Approved: N. B. CRITCHFIELD,
President Department Committee.

Approved: JOHN BOYD THACKER,
Chairman Executive Committee on Awards.

Dated July 19, 1894.

Department A, Agriculture.

Exhibitor—State of Nevada.

GROUP 1, CLASS 4.

Exhibit—Wheat, oats, barley, timothy and grasses.

AWARD.

Yield, weight and general excellence of the different kinds and varieties. The exhibit comprises black barley, white sage, fricks and smooth hulless barley, white, Dutch and Chinese oats, golden millet, Jerusalem corn, bunch grass, baled timothy, alfalfa, grasses, lentils, canary seed, Chili wheat, Australian wheat, Polish wheat and Folger's early sorghum.

(Signed:)

GEORGE C. TAYLOR,
Individual Judge.

Approved by: G. C. TAYLOR,
President Department Committee.

Approved by: JOHN BOYD THACKER,
Chairman of Executive Committee on Awards.

Dated August 21, 1894.

Department B, Horticulture.

Exhibitor—State of Nevada.

GROUP 21, CLASS 133.

Exhibit—Pomaceous fruits.

AWARD.

A fine display of twenty-nine varieties of apples and ten varieties

of pears, all of good size, beautifully colored, free from blemishes and in every respect rating high. This surprising exhibit graphically illustrates the horticultural possibilities of the State of Nevada.

(Signed:) E. F. BABCOCK,
Individual Judge.

Approved: B. STARRATT,
President Department Committee.

Approved: JOHN BOYD THACKER,
Chairman of Executive Committee on Awards.

Dated March 21, 1894.

Department E, Mines and Mining.

Exhibitor—State of Nevada.

GROUP 42, CLASS 290.

Exhibit—Mineral collection.

AWARD.

A very important and instructive exhibit, showing a complete and beautiful collection of one of the most important silver and gold mining sections in the world.

(Signed:) CELSO CAPACCI,
Individual Judge.

Approved: H. M. HOWE,
President Departmental Committee.

Approved: JOHN BOYD THACKER,
Chairman Executive Committee on Awards.

Dated June 4, 1894.

Exhibitor—State of Nevada.

GROUP 42, CLASS 291.

Exhibit—Sulphuret gold and silver ores.

AWARD.

Historic value of some of the specimens. Educational value as a representation of the nature of the ores met with at great depths in the largest and most productive silver lode yet discovered.

The special interest attaching to the specimens from the lowest level reached, viz: 3,200 feet.

The exhibit consists of a collection of silver ores from the famous Comstock lode, included in which are a number of characteristic

samples, collected by Mr. Mackay, from the most remunerative portions of the lode, during its most successful working.

(Signed:)

JOSEPH E. CARNE,
Individual Judge.

Approved: H. M. HOWE,
President Department Committee.

Approved: JOHN BOYD THACKER,
Chairman Executive Committee on Awards.

Dated July 11, 1894.

Exhibitor—State of Nevada.

GROUP 42, CLASS 291.

Exhibit—Ores.

AWARD.

Excellence of a collective exhibit by the State of Nevada. The following counties are represented: Douglas, Churchill, Elko, Esmeralda, Humboldt, Lyon, Eureka, Washoe, Storey, Lander, Lincoln, White Pine, Nye and Ormsby. The exhibits consist of gold, silver, copper, mercury, nickel and cobalt, iron and antimony ores. The cinnabar from Steamboat Springs, Washoe county, is of especial interest. It is shown associated with free sulphur, and impregnating and staining a coarse quartz grit. The nickel and cobalt deposit is reported as offering considerable promise of successful working.

(Signed:)

JOSEPH E. CARNE,
Individual Judge.

Approved: H. M. HOWE,
President Department Committee.

Approved: JOHN BOYD THACKER,
Chairman Executive Committee on Awards.

Dated July 14, 1894.

Exhibitor—State of Nevada.

GROUP 42, CLASS 291.

Exhibit—Ores.

AWARD.

The beauty and interest of the gold specimens and the richness of some of the silver ores displayed in a collective exhibit from Esmeralda county, Nevada. It consists of gold, silver and lead ores. Some of the gold specimens show very interesting examples of elongated crystalline forms known as "wire gold": others occur

associated with earth, manganese oxide, ferric oxide, and carbonate of lead. A considerable number of reef quartz specimens are exhibited, which show coarse gold in exceeding richness. Samples from a recently-discovered vein in the Oest mine, Silver City, are almost pure gold. It is reported from this find four men in twenty-seven days extracted gold to the amount of \$27,000.

The silver ores consist of ores containing native silver and chloride of silver and argentiferous galena.

(Signed :)

JOSEPH E. CARNE,
Individual Judge.

Approved: H. M. HOWE,
President Department Committee.

Approved: JOHN BOYD THACKER,
Chairman Executive Committee on Awards.

Dated July 16, 1894.

Exhibitor—State of Nevada.

GROUP 42, CLASS 291.

Exhibit—Ruby silver ore.

AWARD.

Size, beauty and richness of a handsome block of ruby silver ore weighing one hundred and eleven pounds, and assaying, according to the State Commissioner, \$22,000 per ton. The exhibit contains a number of small specimens. The whole are from the Manhattan mine, Austin, Lander county, Nevada. The mine has been in operation for over twenty years, and has been the largest producer of ruby silver in the State.

(Signed :)

JOSEPH E. CARNE,
Individual Judge.

Approved: H. M. HOWE,
President Department Committee.

Approved: JOHN BOYD THACKER,
Chairman Executive Committee on Awards.

Dated July 11, 1894.

Exhibitor—Lander county.

GROUP 42, CLASS 291.

Exhibit—Antimonial ores.

AWARD.

High percentage of antimony, and being an important industry

of the State, as shown by several specimens, ore being over a ton in weight, representing the Big Creek mines.

(Signed:)

WM. IRELAN, JR.

Individual Judge.

Approved: H. M. HOWE,

President Department Committee.

Approved: JOHN BOYD THACKER,

Chairman Executive Committee on Awards.

Dated July 11, 1894.

Exhibitor—State of Nevada.

GROUP 48, CLASS 320.

Exhibit—Collection of sodas, salts, etc.

AWARD.

A large and beautiful case of borax, soda, and other mineral salts and sulphur found so abundantly in Nevada.

The exhibit is made by the State as a collective one and is representative, large and excellent, as shown by the foregoing analysis:

Bicarbonate of soda—Bicarb. soda, 98.24 per cent.; carb. soda, trace.

Rock salt—Insoluble matter, 0.25 per cent.; moisture, 0.50 per cent.; traces of iodides, bromides and potassium found, but not determined; no traces of lime, magnesia or sulphate found.

Natural sulphur—Non-volatile mineral matter, 0.05 per cent.; non-volatile organic matter, 0.02 per cent.; moisture, 0.40 per cent.; arsenic, sulphurine, and chlorides and other impurities tested for but not found; sulphur by difference, 99.526 per cent.

Borax (4 samples)—Soda baborati, 44.94; containing 47.2 water, 84.99. Sodium baborati, 47.15; containing 47.2 water, 89.22. Sodium baborati, 46.71; containing 47.2 water, 88.40. Sodium baborati, 46.96; containing 47.2 water, 88.81.

Soda ash—Total alkali expressed as carb. soda, 79.97; alkali present as carb. soda, 77.21.

Water (Inyo Development Company)—Sodium carb., 1,026.82 grs. per gal., or 1.044 per cent.; sodium bicarbonate, 1,150.84 grs. per gal., or 1.23 per cent.

(Signed:)

J. D. IMBODEN,

Individual Judge.

Approved: H. M. HOWE,

President Department Committee.

Approved: JOHN BOYD THACKER,

Chairman Executive Committee on Awards.

Dated July 23, 1894.

Exhibitor—D. Bonelli, Rioville, Nevada.

GROUP 48, CLASS 314.

Exhibit—Rock salt.

AWARD.

High grade (99.92) of samples of a very large bed of the material.
(Signed:)

WM. IRELAN, JR.,
Individual Judge,

Approved: H. M. HOWE,
President Department Committee.

Approved: JOHN BOYD THACKER,
Chairman Executive Committee on Awards.

Dated July 13, 1894.

Exhibitor—A. Wise, Winnemucca.

GROUP 48, CLASS 317.

Exhibit—Sulphur (native),

AWARD.

Its high percentage, viz: 99.52 per cent.
(Signed:)

WM. IRELAN, JR.,
Individual Judge.

Approved: H. M. HOWE,
President Department Committee.

Approved: JOHN BOYD THACKER,
Chairman Executive Committee on Awards.

Dated July 13, 1894.

Exhibitor—State of Nevada.

Exhibit—Fossil footprints from Carson.

AWARD.

A painstaking presentation by means of specimens, diagrams,
etc., of the discovery of footprints.

(Signed:)

F. W. TRUE,
Individual Judge.

Approved: W. F. TERRY,
President Department Committee.

Approved: JOHN BOYD THACKER,
Chairman Executive Committee on Awards.

Dated April 23, 1894.

In many instances where the exhibit was individual, the copy of the award, similar to those just enumerated, was forwarded to the individual, consequently the Commissioner has not the data appertaining to such award.

The Multimotor Company exhibited, under the able management of Captain Griffin of Reno, one of their air motors. It was prominently located in Department A of the Department of Agriculture, in the section known as the "City of Windmills," and received much comment favorable to its becoming prominent.

The exhibit of pomaceous fruits was not in Department B of Horticulture, as indicated by diploma, but in Department A of Agriculture. Attention was called by the National Commissioners to it, and the judges in Department B, receiving special jurisdiction from the National Board, visited the exhibit in Department A, and, upon carefully testing same, extended the highest award. The Commissioners had no similar occurrence brought to their notice, and it proved most gratifying to them, tending fully to illustrate the excellence of the exhibit. They were later advised of the shipment of twenty-nine carloads of apples during the fall months preceding the fair.

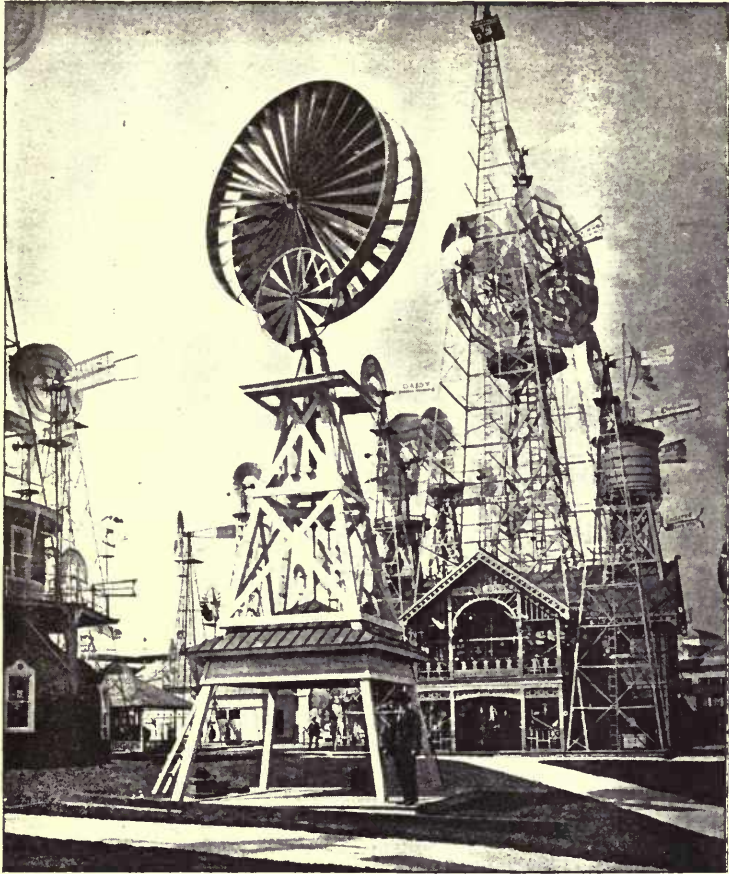
The building stones and marble of Nevada were exhibited in Group 44 and were competitive. The highest award was issued for an exhibit of sky-blue marble. This proved the only marble of its kind on exhibit, although every State and foreign country was well represented.

In several instances exhibits were extended to the California World's Fair Commissioners for competition, the parties owning same fearing Nevada would not be represented. Two of them being of such an important nature, attention was called to them by Nevada's Commissioners, one being a solid piece of antimony weighing over three tons, extracted in Lander county; the other a reproduction of the entire system of underground timbering on the great Comstock lode, which received the highest awards.

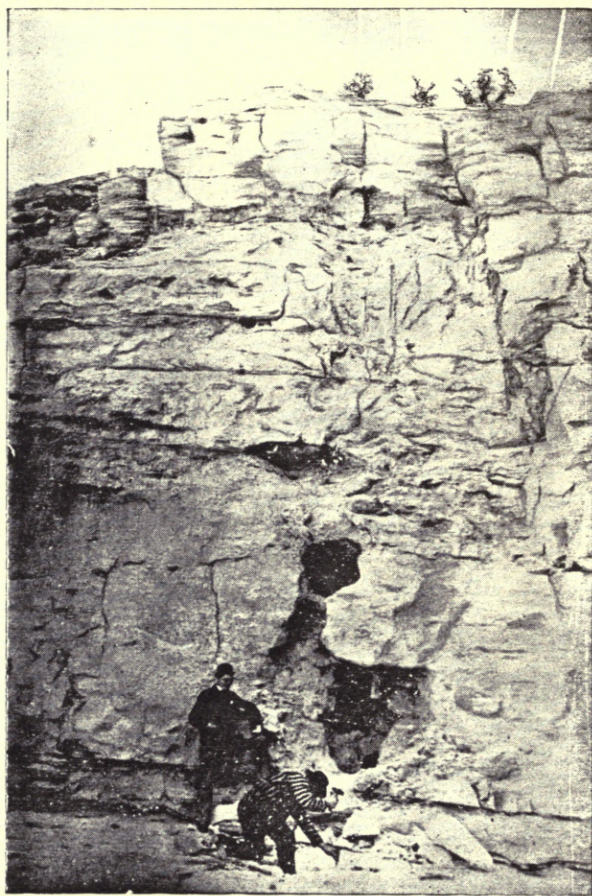
Nevada was credited for having captured the award on butter. This exhibit was sent from the Reno creamery in care of an experienced dairyman, and placed in the Dairy building as an individual exhibit. The Commissioners called the attention of the Judges to the fact that Nevada butter was being shipped to Elgin, Illinois. Upon receipt of the same, a telegram was sent to Governor Colcord by the Dairymen's Union, stating that "Nevada butter was gilt-edged."

To the State Board World's Fair Commissioners :

As the lady managers were very desirous that Nevada should be represented in the Woman's Building, they appealed to the ladies to assist in a collection of decorative work that should be worthy of exhibition. The response was enthusiastic and work immediately began, as the time was limited to four weeks before the opening of



FOULKS' ACCELERATING AIR MOTOR.



REMOVING FOOTPRINTS FOR PREHISTORIC EXHIBIT.

the Fair. In the meantime the lady managers corresponded with the Directors of the Woman's Building, asking for space in the room set apart for the display of State decorative work; also to reserve two large glass cases for the exhibit. Nevada having been assigned space several months previous and not accepting, it was difficult to procure room at this late hour. However, by urging the request and personal interviews, space was again assigned.

The rules of the Woman's Building required each State to install her own exhibits, provide a personal attendant, pay rent for cases, insure exhibit, pay transportation and any incidental expense, all of which was to be met by the appropriation made for the use of woman's work. A professional packer was employed at the close of the Fair. The rules also required the work to be passed upon by a committee before admittance, which necessitated the exhibit being of the highest standard. The exhibit consisted of a choice selection of hand-painted china, point and applique lace, all of which was admitted, but only a small portion was put in competition at the owners' request.

The cases, which were placed near the main entrance, were draped in light-blue silk, the exhibits arranged most artistically and attractively. The display of woman's work of Nevada was much admired and highly commented upon. Awards were received by Miss Ollie Bray and Mrs. George T. Mills.

Mrs. Potter Palmer, President of the Board of Lady Managers, wrote the following letter to Mrs. C. P. N. Smith of Reno in commendation of her exquisite lace work :

My dear Mrs. Smith:

I write to express my admiration of the beautiful lace work which you have had exhibited in the Woman's Building during the summer. The delicate execution of this work elicited the utmost admiration from all who saw it. Mrs. Candace Wheeler of New York, an artist of high standing, expressed in the most cordial manner her appreciation of this charming exhibit upon its installation. Permit me to thank you for having added to the attractiveness of our building, and believe me, with cordial regards,

Very sincerely yours,

BERTHA HONORE PALMER,
President Board Lady Managers.

Chicago, November 17, 1893.

From the appropriation of five hundred dollars one hundred and four dollars and sixty cents was unexpended and placed in the General Fund.

Most respectfully,

MRS. M. D. FOLEY,
MISS LIDA M. RUSSELL.

Meetings were held when opportunity afforded by the State Board to audit all accounts, submit statements of expenditures to the State Board of Examiners as required by law and to freely discuss all matters appertaining to the exhibit and advancement of the State's welfare in general. Word having been sent through the Governor that

the State anticipated making an exhibit at the Midwinter Fair, it was resolved by the Commission that every effort should be made by them in assisting to make it creditable, and its exhibit at the World's Fair, together with all paraphernalia in connection with it, should be extended. It was ordered the Governor should be so advised.

The State was represented in the National Board by Commissioners Russell and Haines and in the Board of National Executive Commissioners by Commissioner Yerington. The National Board held meetings at specified dates during the Fair; the latter organization met every Wednesday afternoon in a different State building. These meetings proved most beneficial and brought in close contact with each other every State and Territory in the Union.

September 18th having been designated by the Governor as "Nevada Day," although no public exercises were held, the exhibit was profusely covered with flowers, flags and bunting. All who visited us on that occasion were treated with true Nevada hospitality. It is needless to say it was taken advantage of by a great throng of people. Every inducement was offered by the management to have the State well cared for on that occasion. Festival Hall and the Administration Band of sixty pieces were extended to the State. The Commission sent invitations to our Representatives in Congress to be present and address the people, but, owing to matters of greater importance to our State occupying their entire attention, it was impossible for them to comply.

On several occasions the State was called upon to render assistance. In contributing to the fund for the widows of the brave firemen who lost their lives in heroically fighting the flames that destroyed the immense cold storage warehouse, and to a monument fund in recognition of their heroism, the State created a monument of remembrance in the hearts of many in the great "White City."

In closing this report the Commissioners wish to extend, in behalf of Nevada, their grateful appreciation for the courtesies and aid extended them, in making what proved a most interesting and valuable exhibit, to the Governor, citizens, State officers, members of the Faculty of the University, Warden of the State Prison, transportation companies and the press of Nevada; the Director-General, chiefs of the various departments, and the National and executive organizations of the World's Columbian Exposition, Hon. Wm. Ireland, Jr., of California, Hon. T. J. Dougine (formerly of Nevada) of Chicago, and J. D. Ernst, Assistant Manager.

Sincerely trusting our efforts will at an early day be manifested in every section of the State,

Most respectfully,

J. W. HAINES,
GEORGE RUSSELL,
J. A. YERINGTON,

State Board World's Fair Commissioners.

PRESS COMMENTS.

Here is a striking anomaly that forces itself upon the attention of the millions at the World's Fair: No State in the Union has been more belittled and abused than Nevada—no State in the Union makes a more complete or creditable exhibit of the products of the farm, of the mine and of the natural resources than this same Nevada.

This anomaly staggers a good many people who have been taught to believe that Nevada has no possible future, and that it is utterly devoid of the elements which fit a community for Statehood. The truth is that if half a million people were shut up in Nevada to-morrow, the first morning of the twentieth century would see there a great State. It would be great not merely in one line of production, but in many. It would have a widespread and diversified agricultural industry, more profitable to individuals than in most other parts of the world. It would have a thriving mining industry, by no means limited to one class of production. It would support a score of manufacturing industries working upon raw materials taken from its mountains and farms. It would have many new lines of railroads and many large towns. The exhibit at the World's Fair gives the lie to the assertion that Nevada is fit only for a cattle range and a mining camp. It proves beyond all question that this State of the Sierras is capable of supporting a large population, of developing a well-rounded and prosperous industrial life, and of adding a new and splendid territory to the domain of civilization.—Irrigation Age.

NEVADA.—The Age has no apology to make for the conspicuous attention devoted to Nevada in the pages of this number. Nevada represents one extreme of existing conditions in the arid region. Here is a State of vast extent, filled with all the raw materials of wealth, with millions of acres of fertile lands and ample water resources for their reclamation. Some people are so obtuse as to imagine that there is no future for such a State. The exhibit at the World's Fair proves how far wrong this opinion is. Nevada has been very backward in its development, but capital and population will inevitably find an outlet there at some period in the future. It is to be hoped that the World's Fair will have a favorable effect upon the fortunes of Nevada. It is with the desire of bringing this about that the Age takes this opportunity to review the hopeful aspects of the State and urge its claims upon investors and home-seekers.—Irrigation Age.

A writer in Current Literature says that the best of all the mineral exhibits at the World's Fair is from Nevada.—Irrigation Age.

Commissioner Yerington was too late to obtain ground floor space for his mining exhibit, but he secured a conspicuous position in the gallery of the Mining Building and filled it with a wonderful collection of Nevada's mineral product. Everything in the broad range of the State's mineral resources is here shown to splendid advantage. There has just been received and placed on exhibition specimens of gold from the Oest mine at Silver City, Nev., where four men recently realized \$24,000 in the yellow metal in twenty-seven days.—Irrigation Age.

Nevada's mineral display covered the largest area of any State.—Baneroff's History of the Fair.

Nevada's exhibit bids fair to prove a dangerous competitor in its respective departments.—Chicago Dispatch.

NEVADA'S SURPRISE PARTY.—Probably the greatest surprise of all at the Fair is the exhibit from Nevada.—Chicago Press.

Nevada has contributed to the World's Fair some remarkable prehistoric relics.—Chicago Daily Inter-Ocean.

Until the Chronicle published its special article a few days ago, it was hardly known on the Pacific slope that the State of Nevada was represented at all at the World's Columbian Exposition, and yet the fact is, as was shown by the article in question, that our neighbor has done more for itself than many larger and more pretentious States have done for themselves.—San Francisco Chronicle.

HURRAH FOR NEVADA.—The State of Nevada made a splendid exhibit at the World's Fair, and will undoubtedly reap immense benefits by the advertising it will get through the numerous awards it has secured.—Inyo Index.

We are pleased Nevada got the the first prize for butter.—San Francisco Report.

Nevada's exhibit at the World's Fair, though small, is attracting a good deal of attention.—Inyo Independent.

Nevada sent to the World's Fair prehistoric cosmic records of incalculable value.—New York World.

FINANCIAL REPORT.

RENO, Nevada, November 27, 1894.

State Board of Examiners, Carson, Nevada :

GENTLEMEN: In accordance with the Act passed by the Sixteenth Session of the Legislature creating an appropriation of \$10,000 for the purpose of making an exhibit of the natural and industrial resources of the State at the Columbian World's Fair, held at Jackson Park, Chicago, Illinois, 1893, and calling upon the State Board of World's Fair Commissioners to make a report to your honorable Board, showing the amount of said appropriation expended, we take pleasure in presenting the same for your approval.

There was an overdraft of \$108 31. A final report will also be submitted, showing in detail the exhibit, with the gratifying result of its having obtained thirty-three highest awards.

Amount expended as per statement rendered -----		\$3,756 79
Maintaining Agricultural Exhibit -----	\$1,838 02	
Maintaining Ethnological Exhibit -----	285 80	
Maintaining Mining Exhibit -----	562 50	
Maintaining Chemical Exhibit -----	271 90	
Maintaining Special Exhibit -----	160 00	
Office rent and expenses -----	218 75	
Freight and express -----	157 85	
Printing -----	253 20	
Celebrating Nevada Day and other National days -----	330 00	
J. A. Yerington (statement rendered)---	2,273 50	
		6,351 52
Total -----		\$10,108 31
Amount of appropriation -----		10,000 00
Overdraft -----		\$108 31

Most respectfully submitted,

J. A. YERINGTON,

Chairman Nevada State Board World's Fair Commissioners.

Statement of J. A. Yerington, Executive Commissioner.

<i>July, 1893.</i>	
Report on Mineral Exhibit, classification -----	\$75 00
Report on Mineral Exhibit, stenographer -----	15 00
Report on Mineral Exhibit, E. G. Morrison -----	40 00
Report Board of Awards, Mining Exhibit -----	6 50
Mineral Exhibit, Chemical Laboratory -----	42 00
Executive Board, World's Fair Commissioners -----	36 00
Executive badge -----	20 00
Miscellaneous, individual expenses -----	97 75
<i>August, 1893.</i>	
American Exhibitors Band, Agricultural Exhibit -----	10 00
Reception, Chief Buchanan -----	20 00
American Exhibitors Association -----	5 00
Miscellaneous expenses -----	41 00
<i>September, 1893.</i>	
Executive Board, World's Fair Commissioners -----	18 00
Miscellaneous expenses -----	63 25
<i>October, 1893.</i>	
Fund (Fireman's relief) -----	25 00
Monument -----	5 00
Miscellaneous expenses -----	63 53
<i>November, 1893.</i>	
Exhibitor's car -----	50 00
Hauling exhibit -----	27 50
Extra labor, packing -----	70 00
B. & O., switching -----	3 50
Expressage -----	13 00
Stenographer -----	25 00
Stamps, stationery, etc. -----	11 85
Sundries -----	84 45
Skiff presentation -----	20 00
Traveling expenses -----	158 45
Official ribbons -----	26 72
Total -----	\$1,073 50
Salary (eight months at \$150) -----	1,200 00
Grand total -----	\$2,273 50

108227



C048902920

RETURN TO the circulation desk of any
University of California Library
or to the
NORTHERN REGIONAL LIBRARY FACILITY
Bldg. 400, Richmond Field Station
University of California
Richmond, CA 94804-4698

ALL BOOKS MAY BE RECALLED AFTER 7 DAYS

- 2-month loans may be renewed by calling (510) 642-6753
- 1-year loans may be recharged by bringing books to NRLF
- Renewals and recharges may be made 4 days prior to due date.

DUE AS STAMPED BELOW

AUG 21 1999
