

LD
175
.A40K
Ap
1925

THE
RHODODENDRON



1925

A

UNIVERSITY LIBRARY
Appalachian State University
Boone, N. C.

No. 184170

DONOR PURCHASED

LIBRARY
Appalachian State University
Boone, North Carolina



RHODODENDRON · 1925 ·

Vaults
378.756
R34
1925
C.2

THE RHODODENDRON

Volume IV
1925

Published by
THE RHODODENDRON STAFF
of the
APPALACHIAN STATE NORMAL SCHOOL
BOONE, NORTH CAROLINA

·RHODODENDRON·1925·

Digitized by the Internet Archive
in 2010 with funding from
University of North Carolina at Chapel Hill

·RHODODENDRON·1925·

Foreword

The Annual Staff presents this fourth volume of the Rhododendron as a scenic story, in part, of our year's work. It fails to show three of our best buildings: Central Dining Hall, Demonstration School, and new Girls' Dormitory. Neither does it adequately reveal that more than one thousand students have been taught here during the year.

·RHODODENDRON·1925·

The Crystal Mount

A mount of crystal formed—
The trees are hid
Beneath the crystal sheen,
A glorious sun reveals
A picture wondrous fair,
So beauteous rare,
As only God can form;
And feeble man,
By word, or pen, or song,
Can ne'er bring forth
The glorious scene
To touch the heart and soul
Of those who ne'er have seen
This wondrous crystal mount,

—*J. M. Doxnum.*

·RHODODENDRON·1925·



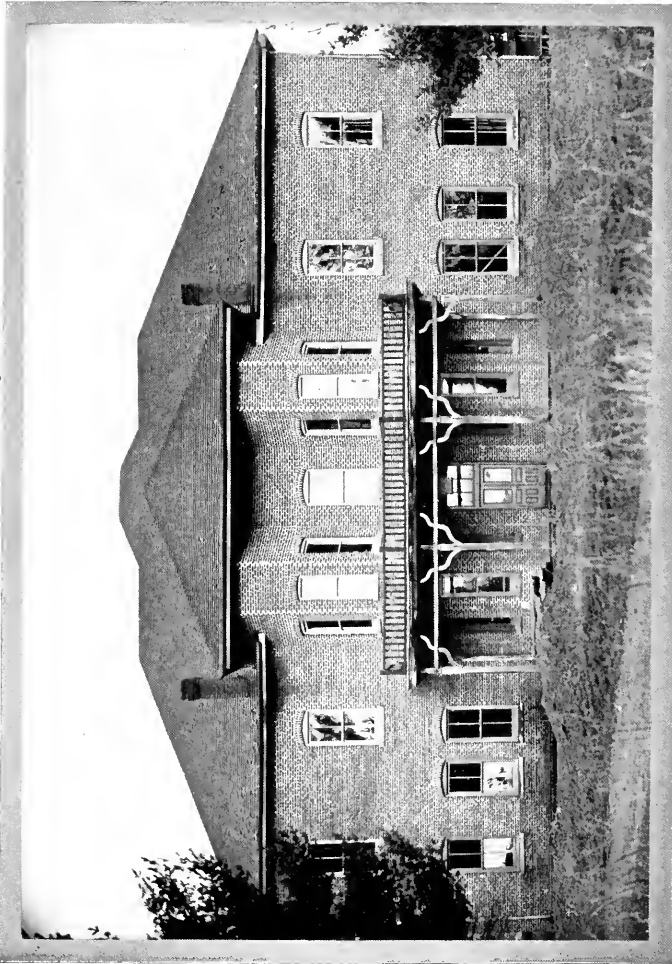
CAMPUS SCENE

·RHODODENDRON·1925·



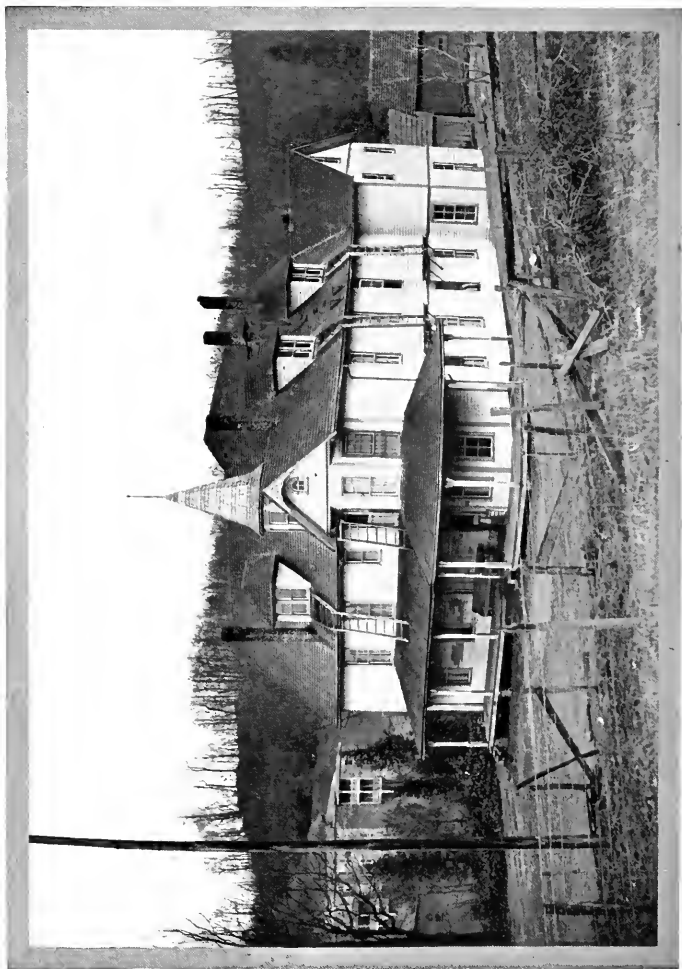
SCIENCE BUILDING

·RHODODENDRON·1925·



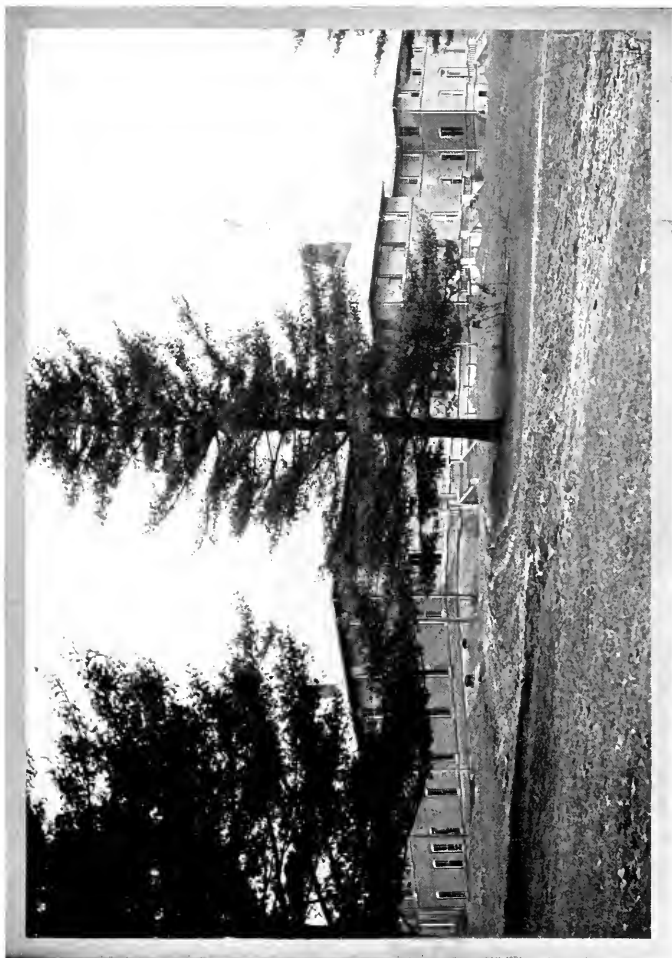
OLD ADMINISTRATION BUILDING

·RHODODENDRON·1925·



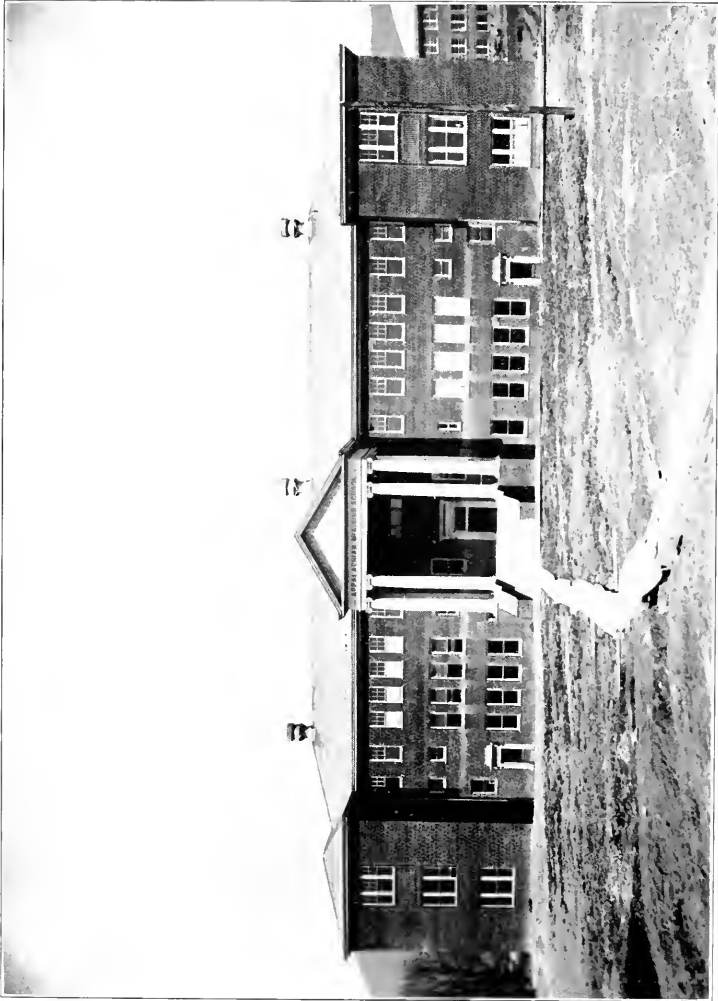
NEWLAND HALL

• RHODODENDRON • 1925 •



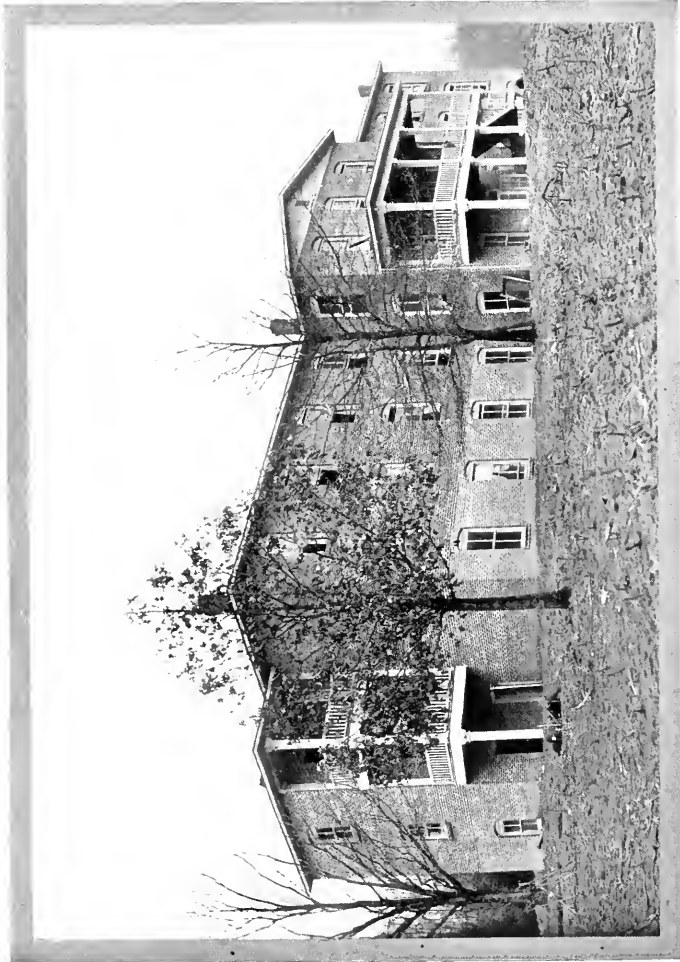
LOYLL HOME

·RHODODENDRON·1925·



NEW ADMINISTRATION BUILDING

• RHODODENDRON • 1925 •



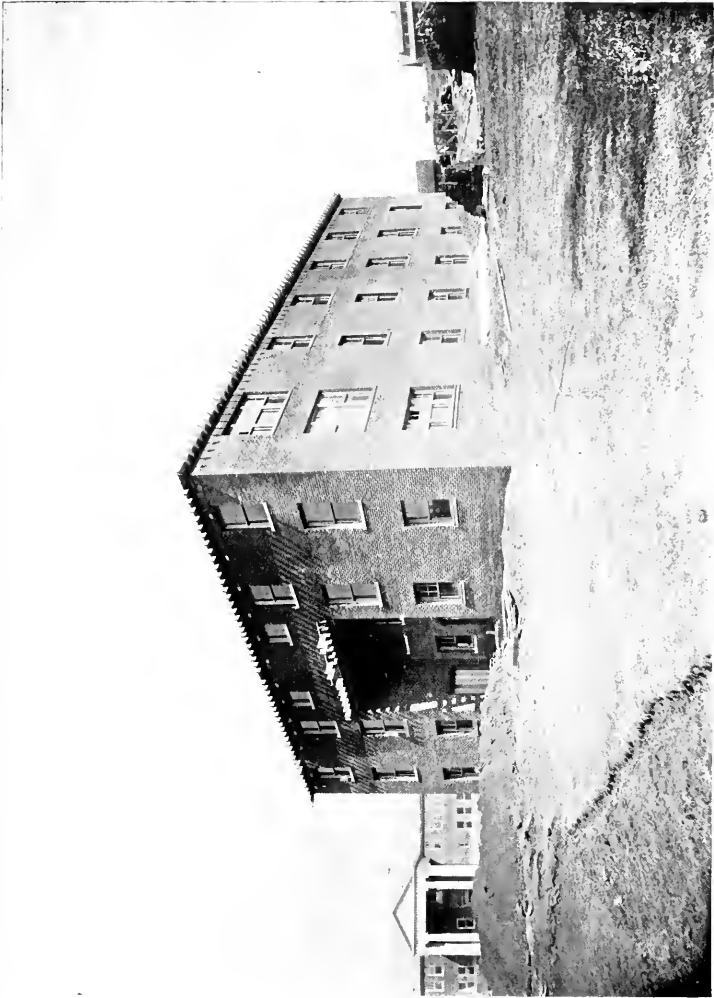
JUSTICE HALL

RHODODENDRON-1925.



WATAUGA ACADEMY

·RHODODENDRON·1925·



PHYSICAL EDUCATION BUILDING (Now completed and in use)

·RHODODENDRON·1925·



Skating on the Lake. Boone Monument— On Winkler's Creek — In the Snow. Power Plant.

·RHODODENDRON·1925·



CAMPUS SNAP SHOTS

RHODODENDRON-1925-



J. D. RANKIN
English



CHAPEL WILSON
Director, Teacher Training



MRS. B. B. FLOWE
Director, Primary Activities



J. C. GREER
History



B. B. DOUGHERTY
President



J. M. DOWMAN
Latin



A. R. SMITH
Science



J. T. C. WRIGHT
Mathematics



J. A. WILLIAMS
Geography & History



MRS. TOWNSEN HENSON
French

RHODODENDRON 1925



V.C. HOWELL
English & History



J.A. KENT
Science.



LILY DALE
Home Economics



L.E. LOGAN
Mathematics & Education.



SUE SPAINHOUR
Piano.



D.D. DOUGHERTY
Treasurer & Business Manager.



RUTH DODSON
Art.



A.J. GREENE
English & Latin.



LILLIAN ROUSE
Piano.



T.R. BAINE
Physical Education & Coach



JENNIE TODD
Supervisor of Women.

·RHODODENDRON·1925·

Annual Staff

Business Manager.....I. G. Greer
Secretary.....Nellie Coffey
Treasurer.....Dewey Mast
Advertising Manager.....Arthur K. Moore
Faculty Editor.....James D. Rankin
Student Editor-in-Chief.....Ada Burt
Associate Editors.....Augustus Peterson

Walter E. Wilson

Howard Ashley

Mildred Laxton

·RHODODENDRON·1925·

The Normal School

RHODODENDRON-1925

Senior Class

MOTTO:

Non finitus, mode inceptions.

COLORS:

Old Gold and Black.

FLOWER

Cream Rose

OFFICERS:

President	James Dula
Vice-President	C. H. Landreth
Secretary and Treasurer	Lola Kilby
Historian	Augustus Peterson
Prophetess	Lena Spencer
Poet	Audry Alphin
Testatrix	Annie L. Wall
Cartoonist	Lena Redfern

Alphin, Audry Clyde
Bannerman, Mrs. Fannie Noel
Brasington, Alice
Brickhouse, Nina
Burt, Ada C.
Candle, Annie Lee
Davis, Ron
Dula, Anne
Dula, James
German, N. Elizabeth
Haire, Minnie
Horner, Alice
Horton, Blanche
Kilby, Lola C.
Koon, Mary
Koon, Pearl

Landreth, C. H.
Law, Annie
Little, Margaret
Moore, Arthur K.
Outlaw, Essie Mae
Perry, Maude A.
Perkins, Ione
Peterson, Augustus
Redfern, Lena
Reece, Clarice
Rice, Nettie
Rocket, Alberta
Spainhour, Ralph
Spencer, Lena
Thomas, Flora
Wall, Annie L.

Wilson, Walter E.

RHODODENDRON 1925

AUDRY ALPHIN

"Lovely and accomplished."

Audry is one of the very finest. She is intellectual, sweet and lovable. What more can we say? The pleasant smile and cheery greeting she has for everyone, have made a warm spot for her in the hearts of all who know her. We predict for her a successful career as a teacher.

HONORS

Secretary, Blan-Dolph Literary Society.
Pianist, Charter Member of Blan-Dolph Literary Society.
Secretary Calliopean Literary Society.
Member Basketball Team, 1924-'25.

ALICE BRASINGTON

"If joy and duty clash, let duty go to smash."

Alice is individually popular. How can we resist her when she possesses so much of charm, personality, and beauty? To see Alice is to stop, look, and admire. We think the senior class chose wisely and well when they voted Alice Brasington the most beautiful of the many graduates. Her pathway will always be strewn with the remains of broken and discarded masculine hearts.

HONORS

Vice-President, Blan-Dolph Literary Society.

MRS. FANNIE NOEL BANNERMAN

"A kind heart is a fountain of gladness."

In Mrs. Bannerman we find a most noble character. She has gained many friends among teachers and students, who will have a lasting remembrance of a gentle, quiet, loyal, capable girl, pressing toward higher things.

NINA BRICKHOUSE

"We pass for what we are."—*Emerson*.

Lucky is the person possessing the friendship of "Brick." Her loyalty can be depended upon under all conditions. There are those who will not soon forget the loving attention, cheerfully given, when the girls had the "flu." She is tactful in the management of children—a good pre-requisite for a primary teacher.

HONORS

President, Y. M. C. A. 1924-'25.
Member, Chorus Club.
Critic, Representative, Blan-Dolph Literary Society.



RHODODENDRON-1925-



ADA BURT
 "She has intelligence, perseverance and a will, coupled with an unusual amount of skill."

Ada is a girl who can be depended upon to say and to do the correct thing at the proper time. The same high standard of honor that she brings to her class duties, is evident in her general conduct, from her success is expected.

HONORS

President, Blan-Dolph Literary Society. Vice-President, B. D. L. S. 1924, Representative, B. D. L. S. 1924. Vice-President, Y. W. C. A. 1925. Cabinet Member 1925. Student Editor-in-Chief Rhododendron 1925. Chorus Club 1925.

JAMES B. DULA

"Always do the right thing,
 If it takes the skin off."

The outstanding characteristics of James, our President, are that he is loyal, square, and true to his classmates and college friends.

No class member deserves higher words of commendation, for his high ideals, aggressive disposition, and for being a friend to others. This has been his chief aim. Jim believes in doing the big, right thing at all times.

HONORS

President, Senior Class.
 Charter Member, Rankin-Wilson Literary Society.

N. ELIZABETH GERMAN

"Her purpose is as true as steel,
 And diligence works out her plans."

N. E. is the unobstructive type. She doesn't climb upon the house tops and herald her presence. She has steadily, surely, pursued her way in the normal college in an apparently serene state of mental poise. She has proved herself a good student in all that she undertakes, especially in the art of solving problems in Mathematics. If she is as consistent outside the collegiate portals as within, her success is assured.

HONORS

Charter Member of Blan-Dolph Literary Society.

MINNIE M. HAIRE

"She is gentle, she is shy,
 But she has mischief in her eye."

Minnie is big in mind and heart; she has made many friends here. In her junior year she made quite a mark as one of the "stars" in English. She has done well in all activities. We are not afraid to prophesy that Minnie will be successful in the teaching profession and in "the greatest game of all." Our best wishes accompany her all the way.

HONORS

President, Blan-Dolph Literary Society.
 Secretary, Blan-Dolph Literary Society.
 Charter Member of Blan-Dolph Literary Society.

Secretary, Y. W. C. A.



RHODODENDRON-1925-

ALICE HORNER

"True as the needle to the point, true the dial to the sun."

The best things are not expressed in words. Such is the case with Alice. She is absolutely dependable and efficient, always duty before pleasure with her. Her quiet unassuming manner together with her sympathy, that deepens as one comes to know her have unfolded as the bud. The charm of her personality has won us.

HONORS

Chaplain, Blan-Dolph Literary Society.
Cabinet member Y. W. C. A.

LOLA KILBY

"Success comes to her who strives."

Lola is studious and diligent worker. She is made of the kind of stuff that the successful ones are. Failure is not on her program.

HONORS

President, Representative, Blan-Dolph Literary Society.
Secretary, Senior Class, 1925.
Member, Art Club.
Member, Tennis Club.
Member, Chorus Club.

MARY KOON

"What is worth doing at all is worth doing well."

Mary is a girl of rare type, and her ingenuity will help her always in right. She gives her whole soul and being to her work, and a duty she never shirks.

HONORS

Chaplain, Blan-Dolph Literary Society.

PEARL KOON

"Great Modesty often hides great merit."

Pearl is a quiet, dignified, and faithful to a degree that commands the admiration of her classmates. A lovable girl whose high sense of honor exceeds the average. She is one of our most studious classmates, and our good wishes follow her into her life's work.

HONORS

President, Blan-Dolph Literary Society.
Cabinet Member of Y. W. C. A.



RHODODENDRON 1925



ANNA LAW

"A smile for all, a greeting glad,
An amicable, jolly way she had."
In Anna, the jolliest member of our class, we find a combination of sunshine and laughter. She always meets her tasks and difficulties with a smile. As to her future, it can be nothing but success, whether she enter the teacher's profession or not.

HONORS

Member of Chorus Club.
Member of Tennis Club.
Charter member, Critic, Blan Dolph Literary Society.



MARGARET LITTLE

"It's the songs ye sing and the smiles ye wear
That's a-making the sunshine everywhere."
Margaret is very much interested in voice, and should she choose this for her career she will succeed. However, in whatever corner of this world she may find herself, one need not fear for her. With her wide range of power and possibilities she will add grace to that corner and "make the sunshine everywhere."

HONORS

Member of Y. W. C. A. Choir.
Member, Chorus Club.



CAMERON LANDRETH

"A man of spotless reputation,
Whose word is equal to his hand."
"Cam" is one of the most popular boys in the college, both with his classmates and the faculty. His morals, character and broad unselfish principles are such that nature may stand up and declare to all the world "here is a man."

ARTHUR MOORE

"Say what you have to say,
Be what you are and no other way."
In personality he is a gem; as a man he is a friend. When in a position to render assistance to a classmate or a friend he does so not only willingly but gladly. He is conscientious, possesses a wonderful personality, and an enduring perserverance.

HONORS

President, Vice-President, Critic, Rankin-Wilson Literary Society.
Manager Athletics.
Annual Staff.
Charter Member of R. W. L. S.



RHODODENDRON 1925

IONE PERKINS

"Much could be said of her if one could read her mind."

Attractive and dainty with just enough indifference thrown in to add spice—that's "Perky." She's never too busy for a good time, but between hours of fun there's work. "Perky" is a loyal friend on whom you can always depend—and yet the half has not been told.

AUGUSTUS PETERSON

"Then on, Then on, where duty leads.
My course he onward still."

Here's a good fellow, pleasant and kind. Everybody likes him and he is as reliable as the rising sun. Real service will be rendered in a forceful way when he undertakes the tasks of life.

HONORS

Vice-President, Senior Class 1923-'24.
Historian, Senior Class, 1924-'25.
President, Secretary, Chaplain, Watanga Literary Society.
Charter Member, President, Secretary, Critic, Rankin-Wilson Literary Society.
Annual Staff, 1923-'25.

MAUDE PERRY

"From care I'm Free,

Why can't they all be happy like me?"

Maude is a happy-go-lucky type of girl, who never worries, and always comes out on top. She has the "gift of gab," she goes about with that smile of happiness and content which she shares with every one. Industrious and straight-forward in every way is Maude.

CLARICE REECE

"Kind hearts are more than coronets,"

Clarice is a quiet, studious, and ambitious, and may be depended upon at all times. She is loved by her friends for her gentle manner, and with her persistent determination, she is bound to win in whatever she attempts.

HONORS

Vice-President, Censor, and Secretary of the Blau-Dolph Literary Society, and Cabinet member of the Y. W. C. A.



RHODODENDRON 1925



NETTIE RICE

"None knew thee but to love Thee,
None named thee but to praise."

We all love Nettie, because of her rare selffishness and unassuming nature. Although she is sober, quiet and pensive, she has won a place in our hearts. Perhaps a little too reserved and timid yet an all-around good girl who is sure to achieve success in whatever line she may choose.

HONORS

Secretary, Blan-Dolph Literary Society.
Member, Y. W. C. A. Choir.
Member, Chorus Club.

ALBERTA ROCKETT

"A smile for all, a greeting glad, an amiable, jolly way she had."

Alberta has that gift of making herself liked, due to the fact that she has a greeting for every one and is always smiling. Her congeniality and amiable disposition make her welcome wherever she goes. To take her as you find her, she is a friend to all.

HONORS

Treasurer, Blan-Dolph Literary Society.

FLORA THOMAS

"Long may we search before we find a heart so gentle and so kind."

If you are looking for a conscientious worker, here she is. She possesses a very quiet and gentle disposition. Flora is a true and loyal friend, one who believes that in order to have friends one must be a friend. What greater compliment could be paid her.

HONORS

Chaplain, Blan-Dolph Literary Society.
Censor, Blan-Dolph Literary Society.
Y. W. C. A. Cabinet member 1925.

ANNIE L. WALL

"If she will, she will, and you may depend on it, and if she won't she won't and there's an end to it."

Here indeed is a girl who has a strong determination. If you are looking for a conscientious worker, here she is. She is capable of thought and reasoning. We will always remember "Annie" as a worthy and admired friend.

HONORS

Chaplain, Blan-Dolph Literary Society.
Critic, Blan-Dolph Literary Society.
Tennis Club.

·RHODODENDRON·1925·



RICHARD PETERSON
Senior Normal Mascot

RHODODENDRON 1925

Senior Class History

The Appalachian State Normal School gives two years of regular normal college work, designed especially for Primary, Intermediate, and Grammar Grade teachers. Therefore it is easy to understand why the classes are made up of men and women who have caught a vision of their life work; that of fighting the common foe (ignorance) in this great state of ours. Many of the students have already commenced their life's work, as the result many remain in school or periods of six weeks, three months or more.

We the Junior Normal Class assemble at the Appalachian Training School, August 26, 1923. A meeting was immediately called for the purpose of electing officers and beginning in earnest a class history. The class had its ideals, ambitions, and temptations, coming out with a fine record unashamed in all respects. During the year the class numbered eighty-four, a record breaker of all previous Normal classes.

On August 26, 1924, with the exception of a few members who were added later, the present senior class of nineteen and twenty-five matriculated at the Appalachian Training School. The class now consists of thirty-three members coming from twenty-one counties of North Carolina, extending from Tyrell (seventy six degrees longitude) on the East to Yancey (eighty two degrees longitude) on the West, and from Union on the South to Ashe on the North, or from South Carolina to Virginia, with one student from the (Old Line State). In addition to the thirteen high schools and the A. T. S. the following Colleges are represented: Mississippi State College for Women, East Carolina Teacher's College, Salem College, Flora McDonald College, Concordia College, North Carolina College for Women, Cullowhee Normal School.

All classes in school have their meetings, (business or otherwise). This class is no exception to the general rule; we have met, usually in the History room, discussed matters, appointed committees and dispatched business.

With reference to our social functions we might mention the splendid entertainment tendered us by the Junior Class on Howard's Knob one Monday in Autumn. This trip erased at least one blue Monday from the page of memory for we enjoyed it immensely and will long remember it for the nice jolly time we had together and the many good things we had to eat. Another important social event was the entertainment of the Junior Class by a progressive conversation party at Lovill Home, later going to the Administration building for a radio concert. If the entertained enjoyed it as much as the entertainers, it was a success.

It was during our Senior year that the name of our institution was changed from the Appalachian Training School to the Appalachian State Normal School. It was with a pleasing expectation that we looked forward to this act of the Legislature.

About the midst of our trials and hardships Captain E. F. Lovill was removed from our midst by death. Captain Lovill was one of the greatest friends the institution has ever had. He was for twenty-five years chairman of the board of trustees. We were made to feel that not only had the institution lost a great friend, but we have lost a lovely, friendly handshake that only he could give.

It also falls to our honor to assist the faculty in selecting a standard ring for the institution.

Much more could be said concerning this, the largest Senior Normal class ever to leave the Appalachian State Normal School to enter the service of humanity in the capacity of teachers.

"We know not what the future hath
Of marvel or surprise,
But remember the crown is won,
By him who tries."

—Guss Peterson.

• RHODODENDRON • 1925 •

Senior Class Prophecy

In the year nineteen hundred and thirty, I decided to broaden my experience and training by traveling in distant lands. Accordingly, I secured passage on a large vessel bound for India. On my arrival at Calcutta, I was thrilled with the mysterious city; many historic memories of this place kept running through my mind. I visited every place of interest and each day seemed to add new mysteries to my adventure.

One day while I was walking in the country, a man suddenly accosted me, calling me by name. I gazed at him in astonishment. How did this man learn the name of an insignificant person as I? My interest rose still more when he told me other facts about my life. When he invited me into his tent, I obeyed instinctively, not knowing why I did so. The interior of this magician's abode was arranged with many strange things. The whole room was pervaded with an atmosphere of secretiveness and necromancy; the air was heavy with the languorous fume of oriental incense which instantly seemed to transport me from the realm of things as they are into a land of enchantment. My stately host then motioned me to a seat before a large crystal. Seated here trembling from head to foot, a strange numbness began to penetrate my whole being: slowly, slowly, every object except the crystal began to sink into oblivion. For the life of me I could neither rise nor flee from this sorcerer; nothing could I do except gaze with fascination into the crystal. Continually the Indian Magician kept numbling some enchanting words until I was in a state of somnambulism, hearing only the words, seeing only the crystal, when behold! the image of our class President appeared upon the magic surface.

I could now hear distinctly the words of the Magician: "Due to the influence of friends and illustrious forbears, James Dula will forsake all others and cleave unto the mathematics department of his Alma Mater, becoming its head, in which position he will be recognized as an influence in the college."

Suddenly James disappeared and Anna Law stood in his place.

The sorcerer continued, "Anna Law will be director of the History Department at East Carolina Teachers' College alternating with summer school work at Duke."

The next was Ada Burt. The words came faintly to my ears, "Dr. Ada Burt will pursue her journalistic inclinations and after some years will be found on the editorial staff of the Ladies' Home Journal."

Audry Alphin appeared.

"Audrey will teach piano until she finds that for her there are better things than a career."

Of course Earl Butler came next.

"Earl Butler will be the father confessor of us all, as a successful lawyer, the whole class will feel that he knows everything, so can sympathize."

The image of Essie Mae Outlaw, Minnie Haire, C. H. Landreth, Annie Lee Caudle, Ione Perkins and Elizabeth German covered the whole crystal.

"Those doomed to eternal teacherhood you see before you," were the words I heard.

Arthur Moore loomed larger than ever.

"Dr. A. K. Moore will be the leading scientist of his day."

The face of Pearl Koon smiled upon us.

"Pearl will head the Home Economics Department at Columbia University."

Margaret Little's jolly face beamed on the crystal.

The magician's voice never faltered in its low subdued tones: "Margaret Little will show in after years the cups she has won for driving in successful automobile races (if she is too modest her husband will show them)."

Flora Thomas appeared.

"A work that has done much for suffering humanity is the movement carried through by Flora Thomas, where she ministers to the heathen in Africa with untiring energy."

RHODODENDRON 1925

Alice Brasington, Clarice Reece, Lula Love, Anne Dula, and Alverta Rockett appeared together.

The magician continued his discourse, "The world must have its share of good housewives and mothers. Where else would these be happy except in their own homes? There you will find them happy, loving, sweet and considerate as ever."

When these images faded, Walter E. Wilson became visible.

"Walter E. Wilson will be a great evangelist."

I next beheld Ron Davis.

"After much study in the field of education, Ron will be superintendent of Public Instruction of North Carolina."

Augustus Peterson appeared.

"Mr. Peterson will be noted for his work in education."

I looked steadily and there was Margaret Love.

"Margaret Love will be the first woman senator from her district and will be in politics until she dies."

While I was wondering who would be next Alice Horner appeared.

"Alice is another of the class of twenty-five who will be the victim of circumstance, the heiress of millions."

I had only a second to rejoice because of Alice's luck when Lola Kilby came upon the scene.

"Lola Kilby was bred, brought up, and educated for a French teacher and a French teacher she will be in a leading college in the Middle West."

Who next? Mary Koon and Nettie Rice.

"Nettie Rice will become a great singer. Mary Koon will accompany her on the violin."

Mrs. Bannerman's figure flashed upon the crystal.

The magician continued continued, "Mrs. Bannerman will become a brilliant lecturer, a staunch supporter of the modern girl and her rights. All over the world she will be received with great enthusiasm."

Last to appear was Annie Wall.

"Annie Wall will be a well known supervisor of teachers. Letters will pour into her office every day from distinguished teachers, asking for advice."

The magician ceased speaking. The spell broke. Presently I was my natural self again and the magician nodded for me to depart saying, "I could prophesy something good for you but it would be useless."

—Lena Spencer.

·RHODODENDRON·1925·

Class Poem.

Under the light of the mellow moon,
Where scenes around me are all so grand
Here in the beautiful city of Boone,
A school so great our State has planned.

These mountains with their monster base,
Their rugged grandly towering peaks:
They hold a wondrous unique place.
'Mong nature's strongly luring freaks.

And when upon these scenes I gaze,
I lose myself and feel so small;
As it seems amid their azure haze,
There dwells the mighty good of all.

Away from the busy city's din,
Away from extremes of fashion's lure,
Where least combats with wisdom ken
There stands our Normal School so sure.

Thankful to God for his bountiful grace,
And for Appalachian Normal's plan;
He gave to us this wonderful place
All to be used for the good of man.

The books we've learned, the friends we've made
Will long remain in our memory;
The thoughts brought forth, the kind words said
Will live in our hearts through eternity.

Our hearts are the soil, our thoughts the seeds,
If pure thoughts are ours, our God will bless;
Useful our lives if filled with good deeds,
And grateful we'll be for our A. S. N. S.

We have not finished, but only begun
To climb toward the heights for which we yearn.
Until we reach life's setting sun
More wisdom true we still shall learn.

—Audry Alphin.

RHODODENDRON 1925

Last Will and Testament of the Normal Class of '25

We, the class of 1925 of Appalachian State Normal School, being of strong bodies and of sound minds (that is to say, as sound as could be expected after enduring so many hardships) realize that we shall soon depart from this college life. As one who, in preparing to start on his last journey, wills his most cherished possessions to those whom he loves, so we, the Seniors, before we leave and start on the journey of life, bestow certain gifts on those we leave behind.

We, the class of '25, do hereby declare this to be our last will and testament.

Item 1. To Alma Mater we bequeath our never ending love and devotion—may she ever hold a warm place in our hearts.

Item 2.—To the founders of this institution who have so faithfully served the cause of education, we leave our unbounded gratitude, appreciation, and support. May they long continue in their great work of service to mankind, and may this school continue to prosper under their guiding hand.

Item 3.—To the faculty in general we will our unmeasured esteem and gratitude for their unbounded kindness toward us and for every attainment they have helped us reach; moreover, there are certain individual bequests.

1. To Dr. Rankin to be delivered in chapel a message from the hearts of many speakers.
2. To professors Smith and Wright, a pitch pipe to be used when the occasion demands, in pitching "Down in Happy Valley" and "Brudder Brown."
3. To Mr. Downum, a new bottle of ink to replace what we have used in his office. May his fountain pen ever be full and he be able to use it.
4. To Professor Greer, we leave our many thanks for his return to us when we so much needed him.
5. To Mrs. Flowe, we each leave a copy of lesson plans, hoping they will be of help to those who do practice teaching in the future.
6. To Professor Wilson, to wear on his next exploring trip, we will a pair of new overalls, having on them a red patch and being exactly the same size as the ones he wore on the former occasion. May they fit him nicely when he explores another "hole in the ground."
7. To Miss Rouse, our gratitude for her extreme patience with us in Public School Music. May her next class be more "harmoniously inclined".
8. We donate to Professors Kent and Howell each a Morris Chair in which to sit during chapel.

Item 4. To the Junior Normal Class we will our surplus dignity and reserve; also our hardships and senior privileged. To them extend our best wishes, with the hope that in filling our places they may make a record worth leaving.

Item 5. Lola Kilby wills to Lucy Gatling her ability to bluff, so the latter may forever be free from the pest called study.

Item 6. To Reid Wallace, Arthur Moore donates his oratorical powers provided he needs it.

Item 7. To Nannie Lou Thomason, Clarice Reece wills the joy and privilege of having dates on Saturday nights with a member of the faculty provided it is not the wrong "chap."

Item 7. Mary Koon wills all her worries over practice teaching to Nellie Blakeley.

Item 9. Anna Lew wills to Sally Henderson some fifty pounds of her flesh, hoping that Sally may thus be capable of holding an important place in the Senior Class next year.

Item 10. Earl Butler wills to Gale McMillan the privilege of sitting in the parlor on Sunday nights and not being disturbed by another couple.

Item 11. Lena Redfern and Anne Dula bequeath their privilege of talking with the faculty to Nancy Hunter and Flora Thomas.

•RHODODENDRON•1925•

Item 12. Alice Horner and Nettie Rice will to Grace Carpenter and Ada Mac White their power to "vamp" the men.

Item 13. James Dula, after careful consideration, bequeaths to Dewey Mast a pitcher of "Zip," with the hope that Dewey will be as greatly benefitted by it as he himself has been, in that it has supplied him with the necessary fat and energy for withstanding the joys and trials of being class president.

Item 14. Elizabeth German and Lena Spencer will their musical ability to Rosada McNulty and Elsie Farthing.

Item 15. Pearl Koon and Margaret Little will their places on the tennis court to Alice Gregory and Madge Reeves hoping that they will become champion tennis players.

Item 16. Since Alice Brasington and Annie Wall have decided to be old maid school teachers, they gladly bequeath all their cooking recipes and household knowledge to Miss Hewitt and Sallie Henderson with the hope that it will be of much value to them in their future life.

Item 17. Nettie Rice and Mary Koon, without any hesitation whatever, bequeath to Hallie Baker the number of chicken wings which fell to their lot at Lovill Home, together with their liking for some other part of the chicken.

Item 18. Ada Burt, Walter E. Wilson, and Augustus Peterson will to certain members of the Junior Class all the pleasures that accompany the management of "The Rhododendron."

Item 19. Finally, to avoid a painful scene, we take the opportunity of leaving to all a fond farewell.

RHODODENDRON 1925



ADA BURT
MOST ORIGINAL



ALICE BRASINGTON
PRETTIEST



CLARICE REECE
BIGGEST FLIRT

WHO'S WHO
IN
SENIOR NORMAL
CLASS



NETTIE RICE
BEST DRESSED



JAMES DULA
HANDSOMEST



ALVERTA ROCKETT
MOST DIGNIFIED

RHODODENDRON 1925



PEARL KOON
NEATEST



ANNA LAW
JOLLIEST



EARL BUTLER
BEST ATHLETE



IONE PERKINS
MOST ARISTOCRATIC

WHO'S WHO
IN



AUDREY ALPHIN
MOST ATTRACTIVE

SENIOR NORMAL

~ CLASS ~



GUS PETERSON
MOST INTELLECTUAL



LOLA KILBY
BIGGEST BLUFF



MARY KOON
MOST STUDIOUS

RHODODENDRON 1925

First Year Normal



President

COLORS

Purple and white

FLOWER

Wistaria

MOTTO

"Climbing through the rocks be rugged"

OFFICERS:

Gordon Winkler	-----	President
Dewey Mast	-----	Vice-President
Nancy Hunter	-----	Secretary
Zulieme Johnson	-----	Treasurer
Sallie Henderson	-----	Poet
Annie Greene	-----	Cartoonist
Geneva Winecoff	-----	Prophet

·RHODODENDRON·1925·

Junior Normals

Abernethy, Fannie Mae	McAulty, Rosada
Baker, Hallie	McIntosh, Monroe
Ballard, Carrie	McFadden, Marie
Barnes, Mrs. Stella	Miller, Cecil
Bingham, I. J.	Miller, G. A.
Bingham, Almedia	Miller, Cora
Brinkley, Gurney	Moore, Ruth
Bingham, Mrs. W. C.	Moretz, Lucy
Bingham, D. L.	Morgan, Effie
Brown, Charlie	Mullens, Mrs. Lola Guffy
Banner, Mildred	Oliver, Bryan
Blakely, Nellie	Oliver, Jessie
Butler, Earl	Pannell, James D.
Brown, Ethel	Pannell, Mrs. James D.
Burnside, Lillian	Perry, Thelma Mae
Cannon, Linda	Perry, Maud
Carpenter, Grace	Phillips, Marion
Coffey, Nellie	Phillips, Mae
Coon, Phillip	Pennington, Lenna
Council, Mary	Payne, Mrs. Blanche
Cook, Bernice	Pridgeon, Harry
Collins, Martha	Qualls, Edward
Crump, Cornelia	Qualls, Mrs. Edward
Dixon, C. F.	Rankin, Elmer
Farthing, Elsie	Reeves, Madge
Franklin, Howard	Rice, Muriel
Fulk, Maude	Rowe, Dorothy
Garland, Jack	Sherwood, Annie Mae
Gatling, Lucy	Younce, Charles
Greene, Mrs. Docia	Shaver, Joy
Greene, Annie	Scism, Gertrude
German, Lucile	Sale, Dana W.
Griffith, Gasper	Spencer, Claudia
Greene, A. J.	Swift, Gladys
Greene, W. F.	Sturgill, Carl
Greer, Blanche	Smith, Mary
Gragg, Ella	Thomas, Flora
Gregory, Alice	Thomasson, Nanie Lou
Greer, Mrs. Addie B.	Thornburg, Nannie
Harrelson, Addie	Tucker, Glenn
Henderson, Sallie	Taylor, Susie
Hewitt, Mattie	Taylor, Alice
Hinson, Vann	Taylor, Mattie
Henson, Russell	Todd, Jennie
Helton, Samuel	Vines, Roby
Hodges, Eula	Vance, Zeb
Harmon, W. S.	Walker, Glenn
Horton, Jas. D.	Watson, Docia
Hovis, Florrie	Wallace, Reid
Hunter, Nancy	White, Ada Mae
Johnson, Zulicene	Wilson, Kemp
Lyon, Beatrice	Winecoff, Geneva
Lamberth, W. C.	Winkler, Gordon
Marks, Dewitt	Younce, Dessie
Mast, Dewey	Younce, Agnes

•RHODODENDRON•1925•



HALLIE BAKER

"When duty and pleasure clash, let duty go to smash."



EARL BUTLER

"The glass of fashion, the mould of form, the observed of all observers."



LILLIAN BURNSIDE

"Sincere and emotional."



ETHEL BROWN

"In my silence I both hear and think."



GRACE CARPENTER

"I would tell you of my experience."



NELLIE COFFEY

"None but herself can be her parallel."

RHODODENDRON 1925

CORNELIA CRUMP

"Dignity adds to attractiveness."



ELSIE FARTHING

"Gifted with both charming personality and musical talent."



LUCY GATLING

"Those who bring sunshine to the lives of others cannot keep it from themselves."



SAMUEL HELTON

"Sterness and solidarity are prerequisites to a successful career."

RUSSELL HENSON

"Silent, thoughtful, wise and willing."



VANN HINSON

"Have your conviction and stand firm."

RHODODENDRON 1925



SALLIE HENDERSON

"Dignified and reserved in appearance, but quiet and witty in speech."



EULA HODGES

"A perfect woman, nobly planned, to warn, to comfort and to command."



ZULEME JOHNSON

"Priscilla, too, was modest and charming."



DEWEY MAST

"It was a glad 'good morning,'
As he passed along the way,
But it spread the morning glory over the
live long day."



"Toward the
Music lovers gain Pen-in
the World!"



MARIE McFADGEN

"Oh, Friend, oh, best of friends, Thy absence more than impending night, darkens the landscape o'er."

RHODODENDRON 1925

LUCY MORETZ

"A cheerful heart,
A winning smile,
A charm of friendship,
All the while."



EFFIE MORGAN

"To acquire knowledge, think;
To have a friend, be one."

JESSIE OLIVER

"Her Trinity—merriment, enjoyment and
pleasure."



MADGE REEVES

"Not all charm is in words."

MURIEL RICE

"Graceful too, and gay."



ELMER RANKIN

"A chip off the old block."



·RHODODENDRON·1925·



ANNIE MAE SHERWOOD

"It's a friendly heart that has plenty of friends."



MARY SMITH

"Beautiful and shy, with mischief in her eye."



GLADYS SWIFT

"Kind and true, more studious than most of you."



JOY SHAVER

"Optimism is the key to popularity."



MATTIE TAYLOR

"Ambition, sincerity, and dignity mingled with goodness."



NANNIE LOU THOMASSON

"Get thee behind me seriousness.—Didn't say Cinconess!"

•RHODODENDRON•1925•



NANNIE THORNBURG

"Ah, quiet lass there are but few,
Who know the treasure hid in you."



GLENN TUCKER

"The world knows nothing of its greatest
men."

BERNICE COOK

"Who mixed reason with pleasure and wis-
dom with mirth."



REID WALLACE

"E'en tho' vanquished I would argue still."

ADA MAE WHITE

"I chatter, chatter as I go,
Every crowd needs a leader."



GENEVA WINECOFF

"Small in statue but not in 'pep.'"

•RHODODENDRON•1925•



JAMES HORTON

"Play Ball!"



GORDON WINKLER

"For take him all in all he was a man, I shall not look upon his like again."

DESSIE YOUNCE

"Industrious, faithful and optimistic."



RUTH MOORE

"The mistress of herself, 'tho China fall."

MONROE McINTOSH

"The will makes the way."

·RHODODENDRON·1925·

The High School

RHODODENDRON 1925

Senior High School Class

CLASS OFFICERS

President	Gale B. McMillan
Vice-President	Margaret Linney
Secretary-Treasurer	Howard Ashley
Prophet	David Moretz
Poet	Louise Coffey
Historian	Blanche Smith
Orator	Nora Mast
Testator	Ruth Robbins
Cartoonist	Hubert Coffey

CLASS ROLL

Eoa Alexander	Ron Jones	Blanche Parsons
Howard Ashley	Ronald Earl Jolunson	Ruth Perry
Lula Austin	Allan Laxton	Ina Prevette
Katherine Baird	Mildred Laxton	Jeter Ramsey
Tracy Ballou	Margaret Linney	Dean Reece
Ruth Benfield	Frank Logan	Cynthia Pearl Reeves
Virginia Mae Beshears	Margaret Louise Loven	Ruth Robbins
Ward Billings	Nora A. Mast	Luther Robinson
Ruth Blair	Phil Mast	Roy Robinson
Fred Church	Ruth Mast	Mattie Rader
Lon Church	Hazel McQuire	Etha Sayle
Addie Coffey	Gale McMillan	Blanche Smith
Hubert Coffey	Elizabeth Miller	Pearl Smith
Louise Coffey	Wade Miller	Helen Stansbury
Rosella Coffey	Fay Mills	Gordon Taylor
Fred Colvard	Maud Moody	Howard Taylor
Vera Cook	Addie Moore	James Taylor
Joseph Cowles	Clifton D. Moore	Erma Teague
Pearl Cowles	Jasper Moore	Lamar Tolbert
Mary Culbreth	Pansy Moore	Don Triplett
Harry Evans	Johnsie Moore	Anna Lee Trivett
Charles Farthing	David Moretz	Wick Vannoy
George Farthing	Eleanor Moretz	Ruth Waddell
Ona Farthing	Maggie Moretz	Jennie Ward
Florence Greene	Robert Moretz	Bettie Williams
Cleve Gross	Ralph Myers	Manley Wilson
Rosa Hardin	Jerry Nelon	Mrs. W. E. Wilson
Ethel Holshouser	Iola Norris	Frank Winkler
Jane Howell	Mary Norris	Lorenzo D. Woodard
Louise Icenhour	Beatrice Parsons	

•RHODODENDRON•1925•

ENA ALEXANDER

"Slender of form, but mighty in charms"

HOWARD ASHLEY

"A leader of leaders"

LULA AUSTIN

"By doing we learn to do."

KATHERINE BAIRD

"Ever faithful."

TRACY BALLOU

"Zealous in his efforts to pursue knowledge."

RUTH BENFIELD

"A lifter not a leaner."

MAE BESHEARS

"Forever grasping something new."



·RHODODENDRON·1925·



WARD BILLING

"It pays to study."



RUTH BLAIR

"Gentleness is a mark of intelligence."



FRED CHURCH

"Onward he is aiming."



LON CHURCH

"Just keep on going."



LOUISE COFFEY

"Not better than the best, but better than the rest."



ROSELLA COFFEY

"To know her is to love her."



VERA COOK

"Success is not without effort."

·RHODODENDRON·1925·

MARY CULBRETH

"Smile and the world smiles with you."

CHARLES FARTHING

"Accomplished, yet not boastful."

ONA FARTHING

"The mildest manners and the gentlest heart."

FLORENCE GREENE

"Green in name, but bright in intellect."

ETHEL HOLSHOUSER

"Modesty often hides great merit."

JANE HOWELL

"No pains, no gains."

LOUISE ISENHOUR

"Grin and grind."



RHODODENDRON 1925



EARL JOHNSON

"Most prudent, and with an excellent mind."



ALLEN LAXTON

"He is true in friendship, and diligent in work."



MILDRED LAXTON

"Gentle of speech, beneficent of mind."



MARGARET LINNEY

"Her heart is worth its weight in gold."



FRANK LOGAN

"A Talent for all he tries to do."
"Small, but well beloved by all."



MARGARET LOVEN

"Small, but well beloved by all."



NORA MAST

"Full of life, sense and wit,
Lots of fun, and plenty of grit."

•RHODODENDRON•1925•

PHIL MAST

"He makes his generous thought a fact."



RUTH MAST

"Learned, wise, and good is she."

HAZEL MCGUIRE

"She is wealthy in her friends."



GALE McMILLAN

"Man delights me not, but woman does."



ELIZABETH MILLER

"Full of 'pep' and a real sport."

WADE MILLER

"A live wire that never gets stepped on."



FAY MILLS

"Cute and not afraid of lightn'n."



RHODODENDRON-1925



MAUD MOODY

"Small, but none the less brilliant."



ADDIE MOORE

"If I am your friend, there is nothing too much for me to do."



JOHSIE MOORE

"Will power paves the way."



PANSY MOORE

"Always ready to say 'I'll try!'"



DAVID MORETZ

"Get there."



ELEANOR MORETZ

"An inflexible will, a generous heart."



RALPH MYERS

"He revealeth the deep and secret things."

•RHODODENDRON•1925•

JERRY NELON

"At the foothills climbing."

IOLA NORRIS

"Life is like a picture so paint it well."

MARY NORRIS

"The friend faithful and true."

BEATRICE PARSONS

"She is the model of propriety."

BLANCHE PARSONS

"A true and royal friend."

RUTH PERRY

"Virtue conquers all things."

INA PREVETTE

"A kind heart is a fountain of gladness."



·RHODODENDRON·1925·



MATTIE RADER

"A calm, thoughtful, energetic girl with highest ideals."

JETER RAMSEY

"Where there's a will there is a way."

DEAN REECE

"A fine young man."

CYNTHA PEARL REEVES

"Not too serious, not too gay,
But a real good pal, in a real good way."

RUTH ROBBINS

"Knowledge is power and power is success."

LUTHER ROBINSON

"Success comes to him who strives."

ROY ROBINSON

"Noble, true, and good sense too."

RHODODENDRON-1925

BLANCHE SMITH

"Gentle in manner but resolute in deed."

PEARL SMITH

"A winning smile and a charming personality."

HELEN STANSBURY

"Far may we search before we find a heart so noble or so kind."

GORDON TAYLOR

"Looking forward, not backward."

JAMES TAYLOR

"Quality, not quantity."

ERMA TEAGUE

"Onward to success."

LAMAR TOLBERT

"To be, not to seem."



RHODODENDRON 1925



DON TRIPLETT

"Admired more for his conduct than his eloquence."



ANNA LEE TRIVETTE

"Her modesty is a candle to her merits."



JENNIE WARD

"Never shirks from her duty."



FRANK WINKLER

"I can; I will."



BETTIE WILLIAMS

"A mirror of love and life"



MANLY WILSON

"His faithful efforts assure him success."



L. D. WOODARD

"We're out to win."

·RHODODENDRON·1925·



CLASS MASCOT
REBECCA WOOSLEY

RHODODENDRON-1925.



MATTIE RADER

"A calm, thoughtful, energetic girl with highest ideals."

JETER RAMSEY

"Where there's a will there is a way."

DEAN REECE

"A fine young man."

CYNTHA PEARL REEVES

"Not too serious, not too gay,
But a real good pal, in a real good way."

RUTH ROBBINS

"Knowledge is power and power is success."

LUTHER ROBINSON

"Success comes to him who strives."

ROY ROBINSON

"Noble, true, and good sense too."

RHODODENDRON-1925

BLANCHE SMITH

"Gentle in manner but resolute in deed."

PEARL SMITH

"A winning smile and a charming personality."

HELEN STANSBURY

"Far may we search before we find a heart so noble or so kind."

GORDON TAYLOR

"Looking forward, not backward."

JAMES TAYLOR

"Quality, not quantity."

ERMA TEAGUE

"Onward to success."

LAMAR TOLBERT

"To be, not to seem."



•RHODODENDRON•1925•



DON TRIPLETT

"Admired more for his conduct than his eloquence."



ANNA LEE TRIVETTE

"Her modesty is a candle to her merits."

JENNIE WARD

"Never shirks from her duty."



FRANK WINKLER

"I can; I will."



BETTIE WILLIAMS

"A mirror of love and life"

MANLY WILSON

"His faithful efforts assure him success."



L. D. WOODARD

"We're out to win."

·RHODODENDRON·1925·



CLASS MASCOT
REBECCA WOOSLEY

RHODODENDRON 1925

History of the Senior High School Class

All through the ages great stress has been laid upon the most important events in the history, and we, the last class to graduate from the High School Department of the Appalachian Training School, (It is now the Appalachian State Normal) feel that our history can be classed as an important event, and in our opinion too much information can not be jotted down of the happenings of our five happy years. We shall try to relate the most important.

We met for the first time August 22, 1921 in the old Administration building with great eagerness to begin our career. We set ourselves to the task of learning. Our number was seventy-three.

After much discussion we elected Edward Osborne president, and chose silver-gray and garnet for our colors and red carnation for our flower. Nothing of unusual interest happened that year except the receiving of our diplomas from the eighth grade in May.

Next year sixty-four boys and girls met at the Science Hall with the title of Freshmen. Our president not returning we elected Fred Looper, president; Margaret Linney, Vice-President; David Moretz, Secretary; Louise Coffey, Poet; and Blanche Smith, Historian; We were indeed zealous freshmen for we had made up our minds to excel in the class room, in athletics, and in deportment.

In 1923 we again took up our school work, happy in having the name of Sophomores. Most of our members had returned with sufficient new members to total ninety-four. About the middle of the year our president was forced to leave on account of illness and we elected Gale McMillan.

Summer vacation over, we came back buoyant with new hope for our Junior year. Some of our class officers did not return so we elected Ruth Robbins, Testator; David Moretz, Prophet; Howard Ashley, Secretary; and Hubert Coffey, Cartoonist. The tragedy of our school career was the death of one of our members, Maggie Cox. We remembered her with sincere appreciation, and extended sympathy to her stricken home.

With the coming of Spring, interest centered around preparation for the Junior-Senior Reception, then came the excitement and fear of failures on examination. The effort, success, and the year had closed.

Seniors! Eighty-seven members returned in the Fall, but seven dropped out. So we now have a class of eighty, the largest to graduate from the A. T. S. Early in the year we changed our class colors to green and white, our flower to Madonna Lily, and our motto to "Live to serve." On February the 22nd, 1925, the Junior class delightfully entertained us at a reception. The average grade of the girls through the four years scored higher than the boys; but the average age of the girls is 18; average age of the boys is 20. Now as we are nearing the end of our high school work and as we look back on the days spent at The Appalachian Training School we are beginning to realize that they were the happiest days of our lives.

RHODODENDRON 1925

Last Will and Testament

STATE OF NORTH CAROLINA
TOWN OF BOONE

APPALACHIAN STATE NORMAL

Friends of the Senior Class, we have called you together on this occasion to listen to the formal reading of the last will and testament of the Class of '25.

As an aged man, making preparation to start on his last journey, wills his cherished possessions to those whom he loves, so we, the Seniors, as we prepare to start on the journey of life, donate certain gifts to those we leave behind.

Item 1. To our Alma Mater we bequeath our love and devotion—may she ever hold first place in our hearts.

Item 2. To the faculty in general, we will our unmeasured esteem and gratitude for every attainment they have helped us to reach, and our thanks for their kindness and patience.

1. To Professor Downum, a Latin class who will get to the recitation room on time.
2. To Prof. Greer, the love of all the class.
3. To Dr. Rankin, a student body that will not stand in the halls.
4. To Prof. Logan, we will a class of girls who enjoy "Pretty Propositions."

Item 3. To the Junior Class, because of our love and admiration for them, we do will, and bequeath our surplus dignity and sophistication, together with our assets, hardships, and responsibilities. We also will them our honors and special privileges, which are so much desired in the eyes of the Juniors, and so little appreciated once they are obtained by the Seniors.

Item 4. To the Sophomores, we will our "sisterly affection" to be used only on the Freshmen-to-be.

Item 5. To the Freshmen, we will the motto "Green but growing."

Item 6. In addition to above will, there are certain personal effects that must be disposed of.

1. Nora Mast wills her dignity to Pearl Parsons.
2. Bettie Williams wills her "church interest" to Ola Dotson.
3. Ruth Benfield wills two feet three inches of her height to Katrina Walsh, so that she may never be known as "Dumps."
4. Louise Icenhour leaves her good humor to Margaret Hahn.
5. Maud Moody leaves all her cast-off Senior beaux to Una Corpening.
6. Gordon Taylor leaves Mary Anna Trivett to the next flirt.

Item 7. Lastly, we, the members of the Senior Class do hereby appoint the Junior Class to execute this will, and request them to see that each person receives his property.

In witness whereof, we set our hands and affix our seal, this the eighth day of May, one thousand nine hundred twenty-five, hereby revoking all other wills carelessly made, wheresoever it may have been probated.

High School Senior Class Poem

To-day we close our High School days,
Pausing with a tender thought,
We think of all the benefits
Which to us this School has brought.

Memories pleasant we shall have
Of the four short years just past;
Though now to us the future calls
We'll remember to the last.

Friends here we've gained will not forsake,
Future pathways they will cheer;
And both in joy and sorrow too
Aids they'll be throughout each year.

And now to us the great world calls
All our dreams to realize;
Higher our work we'll still pursue
For success in future lies.

To faithful be to A. N. S.
Always glad we all shall strive;
And to our Alma Mater true—
We, the Class of '25.

—*Louise Coffey.*

• RHODODENDRON • 1925 •

Junior Class History

Let us now cease pondering over our textbooks and gaze backward for a moment upon the bygone days of our sojourn as High School Juniors.

Having completed our sophomore studies we entered once more into the regular routine of school life on August twenty-sixth. After we had well entered into active pursuits of our various studies, we summoned together all Juniors, both old and new, and organized the present Junior class. We re-elected our former president along with other officers, some of whom were our last year's classmates; others were new members of the Institution.

Now, not many days sped by until we had organized a class of about thirty knowledge seekers. It was at this point that we launched our ships and started forth into the sullen almost impenetrable sea of knowledge. It is at the farthest shore of this huge expanse that we hope some day to anchor; yet we are cognizant that this has not always been a smooth, placid course of travel. Sometimes, gloomy obstacles stared us in the face, but to these we paid the least possible heed; and still we are sailing on and on at full mast.

Ambition: Name or even picture a class with greater ambition than the Junior class; a more aspiring body could not be found. After we are reminded of the familiar old quotation, "He who builds beneath the stars, builds too low," our goals of efficiency and achievement are set in tune with this ideal. They are to be realized only when we have crossed the sea of school education and have become the greatest possible service and usefulness to the institution which have prepared us, to our state and to our nation.

We now realize that we are nearing the end of this year's work, nearing the end of a school year that is dear to the hearts of each of us. In the future we shall recall these days as happy memories; may our numerous faults imprint no embarrassing mark upon us, and may we remember none but pleasant things of one another.

At least, if we met with any measure of success, if we have accomplished any good, if we have learned to master any of those problems with which we have dealt, it has been by the patient assistance and guidance of our teachers. To these, we are thankful; and upon them, we bestow our greatest appreciation and best wishes, for every possible happiness.

—Jay L. Curtiss.

RHODODENDRON 1925

Junior Class

COLORS:

Pink and White

FLOWER:

Pink Carnation

MOTTO:

Excelsior

OFFICERS:

President	-----	Douglas C. Redmond
Vice-President	-----	Ralph E. Dockery
Secretary and Treasurer	-----	Katrina Walsh
Historian	-----	Jay L. Curtis
Representative	-----	Bill Jones

CLASS ROLL

Adams, Ocie L.
Ashcraft, Henry W.
Barnes, Alma
Blair, Boyce B.
Calloway, Clara
Cooke, Hazel
Corpening, Una
Croom, James B.
Curtis, Jay
Dockery, Ralph E.
Dotson, Ola
Duncan, Brantley C.
Ellis, James J.

Fox, Paul
Greer, Fred R.
Hahn, Margaret
Hodges, Bertha
Hodges, Muriel
Jones, Bill
Jones, Major
Jones, Robert D.
Jones, Pearl
Jones, Pearl
Klutz, Howard
Lookabill, Leona
Lyons, Nanabell

Mitchell, Dewey
Moretz, Grace
Norris, Stella
Parsons, Pearl
Proffit, Nettie
Redmond, Douglas C.
Stanberry, Mary
Taylor, Ivazelle
Trivette, Blaine
Walsh, Katrina
Dugger, Marie
Edmisten, Edgar

• RHODODENDRON • 1925 •



JUNIOR HIGH SCHOOL CLASS

RHODODENDRON 1925

Sophomore Class

COLORS:

Black and Gold

FLOWER:

Yellow Roses

MOTTO:

"We will find a way or make one"

OFFICERS:

President	-----	Fred Blair
Vice-President	-----	Bernice Gragg
Secretary	-----	Ruby Cottrell
Treasurer	-----	Margaret Rouse
Poet	-----	Arthur Ruppe
Cartoonist	-----	Norma Brown
Historian	-----	Mary Annie Trivette

Bingham, Mabel
Blair, Fred
Brown, Norma
Butler, Sproles
Cottrell, Howard
Cottrell, Ruby
Council, Alice
Goode, Ralph
Gragg, Bernice
Gragg, Grace
Gragg, Ferrie
Gryder, Gaither
Hodges, Richard
Hughes, Ralph
Johnson, Ruth

Keyes, Lucy
Lewis, Bonnie Jean
Lewis, Glenn
Linney, Kenneth
Lyons, Ralph
Maltba, Vallie
Martin, Effie
Mast Gladys
Michael, Paul A.
Moretz, Virginia
Norris, Dean
Norris, Pearl
Reeves, Willie
Rouse, Margaret
Ruppe, Arthur

Sharpe, Mildred
Shepherd, Roy
Sinus, Annie Lee
Smith, Nelle
Sox, Dorris
Sox, Margaret
Taylor, Joe
Thompson, Lola
Trivette, Mary Annie
Wagner, Luna
Watson, Cohen
White, Mary
Wilson, Nelda
Wyke, Blanche

RHODODENDRON 1925



FRESHMAN HIGH SCHOOL CLASS

RHODODENDRON-1925.

Jokes

Ramsey—Do you know I can sing grand opera with a falsetto voice?
Brownie—That's nothing. My father can chew corn with a false set o' teeth.

Shang P.—(At her first glimpse of the sea)—Ain't it astonishing Wade?
Who'd ever thought there could be as much water as that?
Wade—Yes, and remember dear, you only see what's on top.

Earl J.—Is Sallie H. fond of an argument?
Ann G.—I should think so. Why, she wont eat anything that agrees with her.

Prof. Logan—In what part of the Bible is it taught that a man should have only one wife?

Billy—I guess it is the part that says that a man can not serve more than one master.

C. F. Dixon—You know I love you: Will you marry me?
Ada May White—My dear boy, I just refused you a week ago.
Dixon—Oh! Was that you?

Anna Wall walked into a store and dropped her bag on the counter. "Give me a chicken," she said.

"Do you want a pullet?" the storekeeper asked.

Wall—No, I want to carry it."

Alberta R.—I understand that in the class play Anna Law has quite a difficult part.

Pearl Koon—Difficult? Why she doesn't say a word.

Alberta—Well isn't that difficult for Anna Law?

Mr. Smith—Did you send his present back when you broke his engagement?

Thomasson—Of course not. Did you send back the silver cup that you won when you resigned from the golf club?

Baker—(Reading aloud the conclusion of a long letter post marked Chapell Hill, N. C.)—And when I get my sheep skin, I'll come home and marry the sweetest girl in all the world.

Jean W.—What a dirty trick after being engaged to me?

Co-Ed—What would you do if a Doctor was flirting with your wife?

Ha, Hopeful—I'd eat an apple every day.



·RHODODENDRON·1925·



Special Departments

RHODODENDRON-1925



Instrumental Music

Graduate Students in Piano

Elsie Farthing
Lucy Moretz
Rosada McNulty

High School Graduates in Piano

Ena Alexander
Vera Cook

High School Juniors in Piano

Bernice Gragg
Nora Mast
Nelda Wilson

RHODODENDRON-1925.



SOPHOMORE HIGH SCHOOL CLASS

•RHODODENDRON•1925•

Sophomore Class History

On August 26, 1923, a number of inexperienced and bashful boys and girls gathered in the registrar's office to be enrolled as freshmen in the Appalachian Training School.

Our class was not exempted from the usual teasing and ridicule that befall a freshmen class. But we did not allow the jesting of our school mates to weaken our determination. For we had entered school with the resolution to do our best, and not to be satisfied with just passing our work, so we settled down to work, to study, and to succeed.

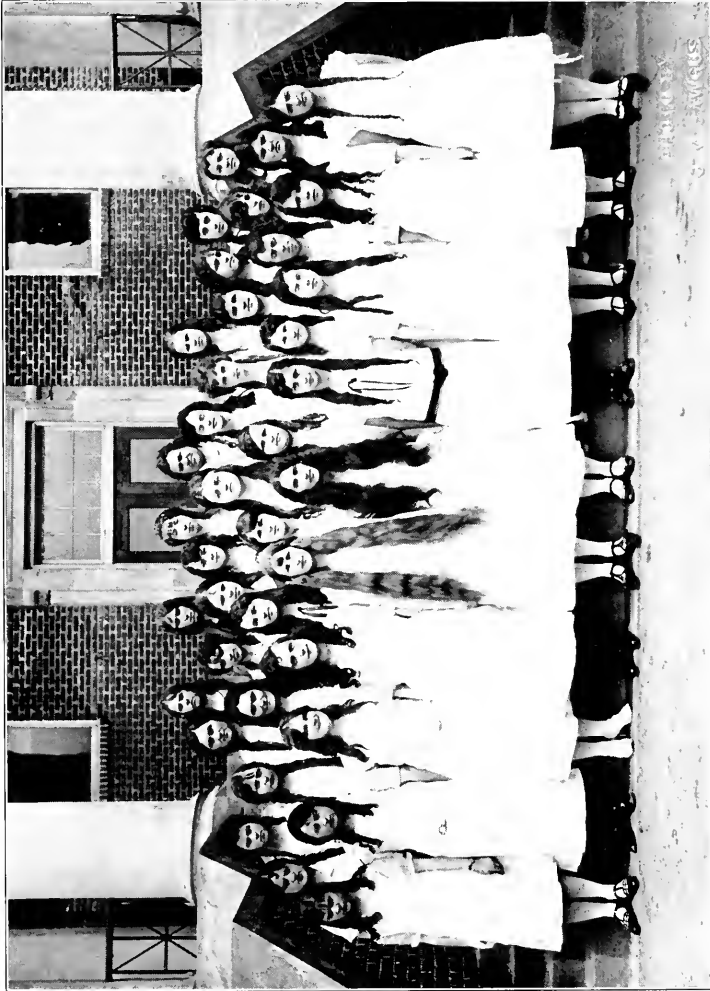
As all the other classes were having meetings for electing officers and for choosing their flowers and mottos, we thought this must be the correct thing to do, so we followed their example.

In the fall of 1924 most of us, now sophomores, returned to our school. This year we did not have to undergo the ridicule of freshmen, for we, bloody sophomores, could now be the investigators of the jokes. Even though we had been promoted to a higher class we were still satisfied with our choice of officers; and were yet willing to pursue our motto, "We will find a way or make one."

If the members of our class realize our ambition, we will have friends preparing themselves to be Physicians, Lawyers, Nurses, Dentists, Stenographers, Preachers, Writers, and Statesmen. And if we do fulfill our aspirations we will owe our success to the instructors who have been so patient with us during our freshmen and sophomore years.

—*Mary Annie Trivett.*

RHODODENDRON 1925



INTELLECTUALLY

RHODODENDRON · 1925 ·

Freshman Class, H. S.

COLORS:

Lavender and White

FLOWER:

White Lilacs

MOTTO:

"Service above Self"

OFFICERS:

President ----- Edgar Barr
Vice-President ----- Ruby Winkler
Secretary and Treasurer ----- Enis Church
Historian ----- Barnard Dougherty
Representative ----- Frank Robbins

CLASS ROLL

Barr, Edgar
Blackburn, Earl
Bingham, Lucy
Brown, Joseph
Bungarner, Florence
Butte, Jesse
Casey, Morris
Calloway, Jack
Carroll, Eula
Church, Ennis
Cook, Roscoe
Cook, Newton
Cook, Romy
Critchler, Willie
Dougherty, Barnard
Estes, Ralph
Furches, Mrs. Sallie

Greer, Erie
Gryder, Beulah
Hahn, Edwin
Hall, Robert
Harmon, Fred
Harris, Lucile
Hester, Ella
Haynes, Paul
Hodges, Grant
Hampton, Lillie
Hagaman, Margaret
Jones, Anna Mae
Keller, Roy
Lewis, Wiley
Luther, Blanche
Løven, Hope
Miller, Emily

Proffit, Ruth
Proffit, Hazel
Prevetie, Effie
Robbins, Frank
Richards, Robert
Speas, Worth
Stephens, Bina
Smith, Sallie
Triplett, Ola
Triplett, Wilhelmina
Watson, Helen
Welsh, Fay
Whisnant, Katheline
Winkler, Paul
Winkler, Ruby
Wilborn, John
Wheeler, Edna
Wheeler, Mollie

•RHODODENDRON•1925•



COOKING CLASS

·RHODODENDRON·1925·

Art Club

Pi Beta Gamme.

Motto: "Trifles makes perfection, and perfection is no trifle."—*Michael Angelo.*

OFFICERS:

Lola Kilby	-----	President
Hallie Baker	-----	Secretary
Ruth Dotson	-----	Instructor

CLASS ROLL.

Lela Ayers
Norma Brown
Mabel Bingham
Hallie Baker
Fred Blair
Rosella Coffey
Mary Culbreth

Erie Greer
Eula Hodges
Zulienne Johnson
Lola Kilby
Hope Loven
Frank Logan
Effie Martin

Dewey Mast
Iola Norris
Mrs. Augustus Peterson
Mrs. Edd Qualls
Lena Redfern
Doris Sox
Gordon Winkler
Nelda Wilson

RHODODENDRON 1925



TBF

ART CLUB

•RHODODENDRON•1925•

Blan-Dolf Literary Society

Fannie Mae Abernethy	Sallie Henderson	Muriel Rice
Audrey Alphin	Alice Horner	Nettie Rice
Hallie Baker	Nancy Hunter	Alverta Rockett
Alice Brasington	Zulienne Johnson	Dorothy Rowe
Nellie Blakely	Lola C. Kilby	Lena Spencer
Fannie Noel Bannerman	Mary E. Koon	Mary Smith
Nina Brickhouse	Pearl Koon	Gladys Swift
Ada Burt	Anna Law	Annie Mae Sherwood
Lillian Burnside	Margaret Little	Nannie Tucker
Ethel V. Brown	Rosada McNulty	Nannie Lou Thomasson
Grace Carpenter	Marie McFadgen	Flora Thomas
Cornelia Crump	Cora Miller	Nannie Thornburg
Linda Cannon	Lucy Moretz	Mattie Taylor
Bertha Dagenhart	Essie Mae Outlaw	Annie L. Wall
Lucy Gatling	Marion Phillips	Ada Mae White
Elsie Farthing	Ione Perkins	Geneva Winecoff
Anne Greene	Clarice Reece	Dessie Younce
Alice Gregory	Madge Reeves	Anne Dula
Elizabeth German	Lena Redfean	

• RHODODENDRON • 1925 •



GRADUATES-IN-PIANO

RHODODENDRON · 1925 ·



CHORUS CLUB

·RHODODENDRON·1925·

Home Economics Students

Bingham, Lucy
Bingham, Mabel
Brasington, Alice
Brown, Norma
Burnside, Lillian
Bungarner, Florence
Church, Ennis
Cottrell, Ruby
Gragg, Grace
Greer, Eric
Gryder, Beulah
Hagaman, Maggie
Harris, Lucile

Hester, Ella
Jones, Anna May
Keyes, Lucy
Kilby, Lola
Laxton, Mildred
Loven, Hope
Maltba, Vallie
Mast, Gladys
McNeil, Blanche
Norris, Pearl
Parsons, Beatrice
Parsons, Pearl

Prevette, Ina
Proffit, Ruth
Stephens, Bian
Redfearn, Lena
Thompson, Lola
Trivette, Mary Anna
Wall, Annie
Walsh, Katrina
Ward, Jennie
Whisnant, Kathleen
Winkler, Ruby
Wyke, Blanche

·RHODODENDRON·1925·



SEWING CLASS

·RHODODENDRON·1925·



BLAU-DOLF LITERARY SOCIETY

•RHODODENDRON•1925•

Rankin-Wilson Literary Society

Arrowood, Ralph
Greene, W. T.
Helton, Samuel
Hinson, Vann
Mast, Dewey
McIntosh, Monroe
Moore, A. K.
Oliver, Bryan
Pannell, J. H.
Peterson, Augustus
Rankin, Elmer
Wallace, Reid
Winkler, Gordon
Wilson, Walter E.

·RHODODENDRON·1925·



RANKIN-WILSON LITERARY SOCIETY

RHODODENDRON-1925-

Calliopean-Euterpean Literary Society

Alexander, Ena
Baird, Katherine
Beshears, Mae
Bingham, Mabel
Bingham, Lucy
Blair, Ruth
Bumgarner, Florence
Calloway, Clara
Church, Ennis
Coffey, Rosella
Cowles, Pearl
Corpening, Una
Culbreth, Mary
Dotson, Ola
Farthing, Ona
Furches, Sallie
Grider, Beulah
Greer, Eric
Greene, Mrs. A. L.
Greene, Mary
Harris, Lueile
Hagaman, Margaret
Holshouser, Ethel
Howell, Jane

Icenhour, Louise
Jones, Annie Mae
Laxton, Mildred
Loven, Margaret
Loven, Hope
Mast, Nora
Mast, Ruth
Mast, Gladys
Martin, Mrs. Fffie
McNeil, Blanche
Miller, Elizabeth
Miller, Emily
Mills, Fay
Moore, Addie
Moore, Pansy
Moore, Johnsie
Moretz, Maggie
Moretz, Grace
Moretz, Virginia,
Norris, Iola
Norris, Stella
Norris, Mary
Parsons, Beatrice
Parsons, Pearl

Perry, Ruth
Prevette, Ina
Prevette, Effie
Proffit, Ruth
Proffit, Nettie
Rader, Mattie
Reeves, Cynthia Pearl
Reeves, Willie
Rouse, Margaret
Sharpe, Mildred
Sale, Etha
Sox, Doris
Sox, Margaret
Smith, Sallie
Stanbury, Mary
Stanbury, Helen
Stephens, Bina
Taylor, Iva
Teague, Erma
Trivett, Mary Annie
Triplett, Wilmena
Walsh, Katrina
Winkler, Ruby
Wyke, Blanche

·RHODODENDRON·1925·



CALLOPEAN-EUTERPEAN LITERARY SOCIETY

·RHODODENDRON·1925·

Roll of Watauga Literary Society

Howard Ashley
Tracy Ballou
Joseph Brown
Jack Calloway
Joseph Cowles
Bernard Dougherty
Ralph Dockery
James Ellis
Cleve Gross
Fred Harnen
Paul Haynes
Robert Hall
Bill Jones
Howard Klutz
Allan Laxton
Ralph Myers
Jerry Nelon

Dean Reece
Douglas Redman
Jeter Ramsey
Roy Robinson
Luther Robinson
Roy Shepherd
Lamar Tolbert
Manley Wilson
Cohen Watson
Earl Johnson
Jay Curtis
Robert Richardson
Newton Cook
John Wilbourn
Edgar Barr
Arthur Ruppe
Frank Logan

·RHODODENDRON·1925·



WATAUGA LITERARY SOCIETY

·RHODODENDRON·1925·

Appalachian Literary Society

Jessie Butte	Kenneth Linney
Ward Billings	Phil Mast
Fred Blair	William Maat
Earl Blackburn	Wade Miller
Fred Church	Dewey Mitchell
Lon Church	David Moretz
Romey Cook	Frank Robbins
Brantley Duncan	Worth Speas
Charles Farthing	Willie Sherrill
Gaither Grider	Gordon Taylor
Grant Hodges	James Taylor
Edwin Hahn	Joe Taylor
Glenn Lewis	Paul Winkler

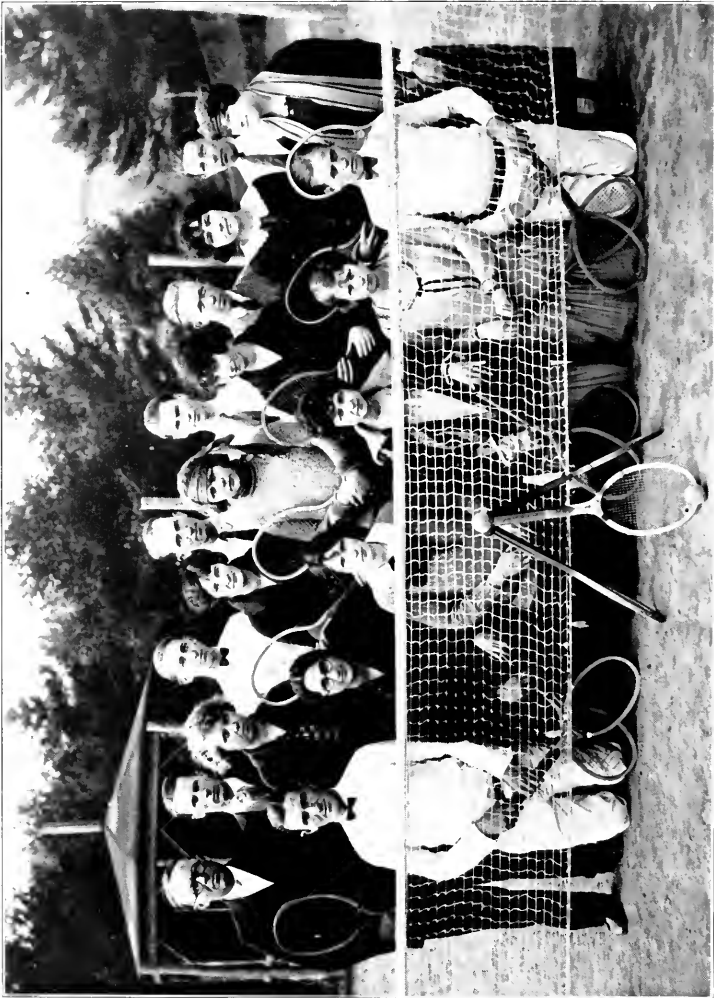
Frank Winkler

• RHODODENDRON • 1925 •



APPALACHIAN LITERARY SOCIETY

• RHODODENDRON • 1925 •



TENNIS CLUB

RHODODENDRON-1925.



BASEBALL TEAM

(Front row left to right) Butler 2B, Church SS, Tucker C, Horton 1B, McMillan 3B, Must P
 (Back Lane) Jones LF, Spears P, Garland 3B, Evans RF, Winkler CF, Coffey P
 T. R. Baine Coach

RHODODENDRON-1925.



GIRLS' BASKETBALL.

Margaret Rouse—FC Marian Phillips F Audery Alphin—F Marie McFadgen—F Elizabeth Miller G Eann Alexander—G
Nannie Lou Thomasson—G Ada Mae White G

T. R. Bahne—Coach

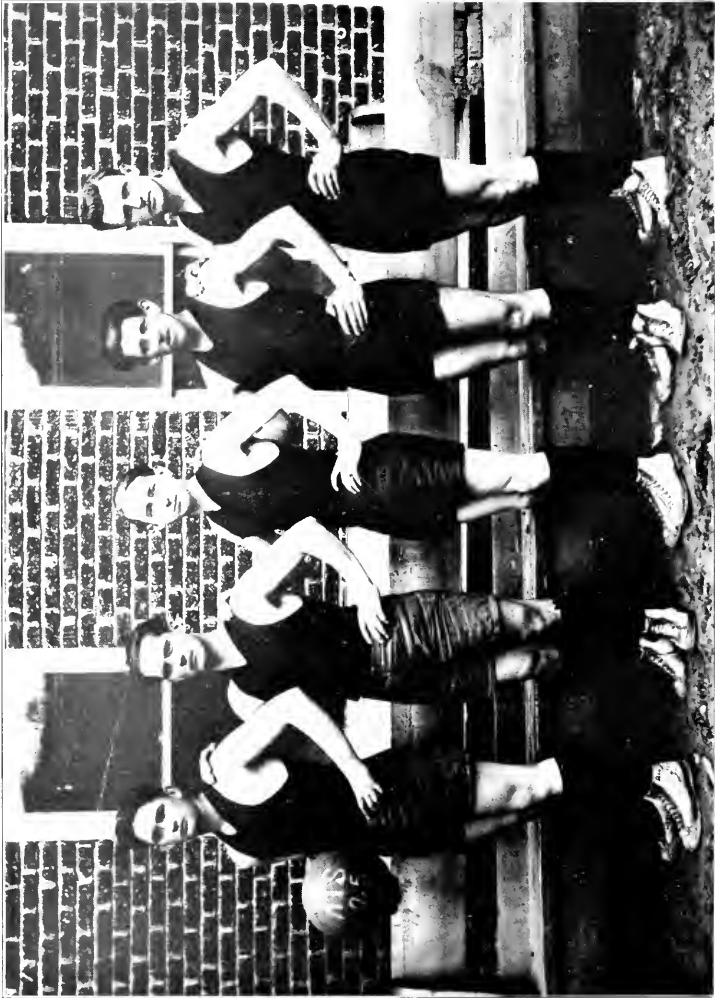
RHODODENDRON 1925



BOYS' BASKETBALL

Standing (left to right) Taylor—F Butler—F Horton—G Moretz—G Croom—G
A. K. Moore, Referee
Sitting (left to right) Hinson—F Evans—C Garland—G

• RHODODENDRON • 1925 •



BOYS' BASKETBALL - SECOND TEAM

Bernard Dougherty - Bill Jones

Gordon Winkler - Reid Wallace

Ralph Myers

• RHODODENDRON • 1925 •

Jokes

"Girls," Prof. Smith remarked sentimentally, "are prettier than men."
"Why naturally," exclaimed Perkins. "No," he gently corrected, artificially."

"Who told you to set that wallpaper on the wall," roared Prof. Williams.
Workman—"Your wife, sir."
Prof. Williams—"Pretty isn't it?" he replied.

White and Brick are pretty thick, aint they?
Mrs. Bannerman—Yes, both of them.

THREE AGES OF A WOMAN

15 to 25—The Muddle age.
35 to 45—The Middle age.
50 on—The Meddle age.

Prof. W. (at choir practice)—"All right girls, all together now—'Christ is born on page five.'"

Mrs. Flowe (in principles of Ed)—"President Coolidge is so democratic."
Marie M.—"Oh! I thought he was a Republican."

Homesick Freshie writing home—"Dear father, please send me permission to come home by return mail."

At a party a prize was offered to the one making the worst face. The judge went to Alice B. sitting in the corner and said, "I think you have won the prize, allow me to—"
"Excuse me," Alice said haughtily, "I wasn't playing."

Nettie Rice—Do you know why we call our native language the mother tongue?
Richard P.—"Because father never gets a chance to use it."

This space is left blank. Thus it is better than some of the jokes. NOW LAUGH.

Mary Koon—Can you tell me what makes the Tower of Pisa lean?
Margaret Little—I don't know or I would take some myself.

Jessie Oliver—Why did the ghost in Hamlet understand Latin?
Rom D.—Because Latin is a dead language.

·RHODODENDRON·1925·

Autographs

• RHODODENDRON • 1925 •

Autographs

RHODODENDRON-1925

THE HART & HOUSTON STORE

AN INSTITUTION WITH AN IDEAL

JOHNSON CITY, TENNESSEE

WE ARE HERE TO SERVE YOU

WE APPRECIATE YOUR TRADE

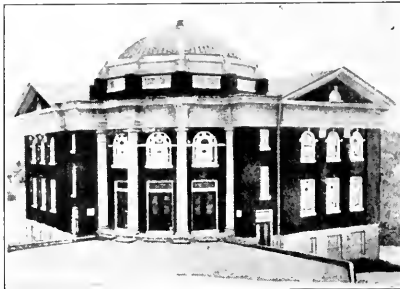
Send us your Mail Orders—They will have prompt and
personal attention.

THE HART & HOUSTON STORE

METHODIST EPISCOPAL CHURCH SOUTH

Boone, North Carolina

7



M. B. Woosley,
Pastor

Sunday School 9:45 A.
M., J. B. Steel, Supt.

Preaching Service at
11 A. M. and 7:30 P. M.

Epworth League, 6:45
P. M.

Prayer Meeting each
Wednesday evening at
7:30 P. M.

A WELCOME IS EXTENDED TO ALL

• RHODODENDRON • 1925 •

First National Bank

Lenoir, : North Carolina

One of the good Banks of
this section.

Large enough to handle your business — Not too large to appreciate it.

E. F. ALLEN, Cashier

Cottrell and Hagaman

Boone, : : North Carolina

*"THE
CORNER
STORE"*

Fancy Groceries and Candies

We solicit the Patronage of the
A. S. N. Students.

J. M. BAWGUS

Boone, North Carolina

Did the photograph work for
this Annual. Kodak finishing,
Commercial works, Portraits,

Copying and Enlarging

Gateway Cafe and Hotel

O. W. Lawing, *Proprietor*

Lenoir, North Carolina

WE FEED THE PEOPLE

When you feel lack a good dinner,
drop in—we have it. We welcome
the A. S. N. Students to stop and
dine with us when passing through.

·RHODODENDRON·1925·

DRESS WELL AND SUCCEED

We keep just the right things to make your personal appearance what it should be. Our store is known as the Young Men's Shop.

Fashion Park Clothes

Stetson Hats

Walk-Over Shoes

GENE MILLER

"MEN'S FASHION SHOP"

LENOIR. : : : : NORTH CAROLINA

Wiley G. Hartzog

CONTRACTOR

BOONE,
N. C.

I do the whole Building

Boone Trail Restaurant

Boone, : : North Carolina

The place where home cooking is done. We bake our own pies.

You Are Welcome Here.

We solicit orders from the
A. S. N. Students.

W. P. Moody, *Proprietor*

RHODODENDRON-1925

A. & B. Chevrolet Co.

Atkins & Bingham, *Managers*

for Economical Transportation

CHEVROLET

Agents for Chevrolet Cars and Pants

Boone, North Carolina

Chevrolet Cars and All Genuine Chevrolet Products. Cars sold on easy payment plans, covering a period of Twelve Months.

Davidson Department Store

Boone, : : North Carolina

*Complete Line of
MEN'S AND LADIES'
APPAREL*

Solid Leather Shoes, Hats, Caps,
Millinery, Notions, Dress
Goods, Etc.

*"The Right Kind of Goods at The
Right Price."*

WATAUGA CAFE

Blowing Rock, North Carolina



Be sure to visit Watauga Cafe when you pass through Blowing Rock. We are pleased to have visitors inspect this, the most complete CAFE in Western North Carolina.

SEND IT DIRECT BY P. P.

WATKIN'S French Dry Cleaning Company

Johnson City, Tenn.

•RHODODENDRON•1925•

Jones-Vance Drug Co.

*EASTMAN
KODAKS*

Supplies. Kodak Finishing

Fountain Pens
All Makes

MAIL US YOUR ORDERS

Johnson City, : : Tennessee

Bank of Blowing Rock

Blowing Rock, : North Carolina

Our Motto: "*Safety and Service*"
One of the good Banks of this section. Not too large to appreciate your business but large enough to handle it.

All New Accounts Welcome

Daniel Boone Hotel

Boone, North Carolina



Is now open ready to receive guest and catering to dinner parties and special Sunday Meals.

CUT FLOWERS

For All Occasions

Sick Friends

Parties

Weddings

Commencement

**Gunnar Teilmann
and Son**

"Johnson City's Leading Florists"

Johnson City, Tenn.

GREENE & BINGHAM, AGENTS

Boone, : : North Carolina

RHODODENDRON 1925

BOONE HARDWARE CO.

INCORPORATED

Wholesale and Retail Dealers

—in—

I. H. C. MACHINERY, OLIVER CHILLED PLOWS, HARDWARE, CUTLERY, PAINTS AND OILS, STOVES, RANGES, KITCHENWARE, WAGONS, HARNESS, IMPLEMENTS, SAWMILL AND PLUMBING SUPPLIES.

We are headquarters for everything in heavy Hardware, Builders' Hardware, Lime, Cement, Farm Machinery. All articles kept in a first-class Hardware Store.

Our First Consideration Is To Serve and Satisfy

Next door to Watauga County Bank—Call when in need of goods in our line

Corner Main and Depot Streets

Boone, North Carolina

Watauga Building and Loan Association

Johnson City, : : Tennessee

We pay Six Per Cent. Interest on Money Loaned Us.

We loan you money to build your home on small monthly payment plan.

Call in and let us explain.

S. J. Barnett and Co.

Boone, N. C.

Dealers in

Farmy Groceries, Feed Stuffs, Dry Goods and Notions

We have the best line of goods at the most reasonable prices.

GIVE US A TRIAL

RHODODENDRON-1925

FIRST BAPTIST CHURCH



Francis Marion Huggins,
Pastor

Boone, : N. C.

Sunday School, 10 a. m.
Preaching Service, 11 a.
m. and 7:30 p. m. on
2nd, 3rd and 4th Sun-
days in the month.

Senior and Junior B. Y.
P. U.'s 6:30 p. m.

Prayer Meeting Wednes-
day, 7:30 p. m.

A CORDIAL INVITATION EXTENDED TO EVERYBODY

East Tennessee & Western North Carolina R. R. Co. Linville Railway Railway Co. Spend Your Vacation In The Mountain

Now is the time to make your plans for the summer outing.

These lines, popularly known as "The Narrow Gauge," pierce the most attractive vacation grounds in the Southeast. Extending from Johnson City, Tenn., to Boone, North Carolina, they cover the greatest variety of natural scenery east of the Rockies, within so short a distance.

The section of Western North Carolina served by the "Narrow Gauge" affords all the attractiveness of the ideal vacation land; altitude, climate, rugged mountains, virgin forests, and beautiful streams where trout abound.

For information relative to rates, special excursions, etc., call on or address.

GENERAL PASSENGER DEPARTMENT
EAST TENN. & WESTERN NORTH CAROLINA RAILROAD CO.
Johnson City, Tennessee

RHODODENDRON 1925

K. A. LINK

Lenoir, North Carolina

*WATCHMAKER, JEWELER
AND OPTOMETRIST*

We solicit a A. S. N. business. We do fine watch, clock and jewelry repairing. Estimates on Class Rings and Fraternity Jewelry, cheerfully furnished.

A large store of everything in the Jewelry line.

BANK OF LENOIR

Lenoir, North Carolina

Resources
over
\$1,000,000.00

J. H. Beall.....President
J. C. Seagle.....Vice-President
G. F. Harper.....Vice-President
A. G. Ford.....Cashier

Hi-Land Pressing Shop

Satisfaction Guaranteed

ALTERING AND REPAIR
WORK.

Come in and See Us.

Located in rear of *Boone Clothing
Company*

W. L. Cook, Proprietor

Boone, : : North Carolina

Tatum's Restaurant

Boone, : North aCrolina

*WE FEED THE PEOPLE
AT LARGE*

The Best of Home Cooking

Our dining room and restaurant is
unsurpassed

*All traits of courtesy are extended
to every customer.*

L. T. Tatum, Proprietor

RHODODENDRON 1925

Peoples Bank and Trust Company

CAPITAL - \$20,000.00

Our Motto: "*Safety and Service*"
Our Aim: "*To Satisfy*"

Big things are only little things put together. Let's pull together, build together, and profit together. Together means to get there. We are keenly interested in the boys, girls, and teachers who are anxious to Get There in Life and are always glad to help them in any way we can. When you come to Boone call in and get acquainted and open an account with us.

T. H. Coffey.....*President*

G. M. Sudderth.....*Vice-President*

A. Y. Howell.....*Cashier*

Russell D. Hodges.....*President*
W. C. Greer.....*Vice-President*
Clyde R. Greene.....*Sec'y.-Treas.*

Farmers Hardware and Supply Company, Inc.

Boone, : : North Carolina

Dealers in

Everything in

HARDWARE AND
ASSOCIATED LINES

Located in the John W. Hodges' Store
Rooms.

OUR MOTTO

*"Service of the Best Variety—Our
Aim; Satisfied Customers."*

The Burr Harrison Studio

Johnson City, Tenn.

*QUALITY PORTRAITS
REASONABLE PRICES
PROMPT DELIVERY*

KODAK FINISHING
PICTURE FRAMING

The Cash Grocery Store and Meat Market

Boone, : : North Carolina

L. H. Hollar, *Proprietor*



We have everything good to eat and
nothing to wear. But if you get
all of this what do you care.

RHODODENDRON 1925

Teague Brothers Taxi Service

Boone, : : North Carolina

A daily line from Lenoir to Boone. Leave Boone at 7:30 a. m. arriving at Lenoir 9:30 a. m., making connection with all West and South-bound trains. We appreciate all the local business—The business of the A. S. N. Students is especially appreciated.

We can move you and your trunk both at once with ease and comfort.

The Price is Right.

E. L. Teague...*General Manager*

BOONE DRUG CO.

"The Recall Store"

Prescription Druggists

Eastman Kodaks and Supplies
Whitman Chocolates

Fine Stationeries and Toilet
Articles.

The Store that appreciates your
business. No need to order from
out-of-town—See us.

Boone, : : North Carolina

Blowing Rock Realty and Insurance Co.

Blowing Rock, : North Carolina

*FIRE, AUTOMOBILE,
ACCIDENT AND
LIABILITY*

We insure everything but
Tomorrow.

J. M. Sudderth
George F. Blair
T. H. Coffey, Jr.

J. W. BRYAN

Boone, North Carolina

*WATCHMAKER
and
JEWELER*

High Quality Work
At Reasonable Prices.

• RHODODENDRON • 1925 •

POE TRIPLETTE CONSTRUCTION CO.

Lenoir, : : : North Carolina

BUILDERS

The buildings appearing in this annual are our products.

DOSSER BROS.

The Woman's Store

*JOHNSON CITY'S MOST
SATISFACTORY STORE*

The best place to buy Ladies'
Ready-to-Wear, Millinery, Shoes,
Dry Goods and Notions.

MAIL ORDERS SOLICITED

J. F. ROBBINS

Boone, N. C.

*GROCERIES
MEATS
VEGETABLES
and
FRUITS*

We Solicit Your Trade

RHODODENDRON 1925

SUMMERS HARDWARE CO. WHOLESALE ONLY

HARDWARE — CUTLERY — SPORTING GOODS — TINWARE
STOVES — RANGES — WAGONS — HARNESS — FARM IMPLE-
MENTS — PAINTS — VARNISHES — BUILDING MATERIALS —
RAILROAD, MINE, ELECTRICAL, AND WATER WORKS SUP-
PLIES. STANDARD SANITARY MANUFACTURING COMPANY'S
PLUMBERS' WARE AND SUPPLIES. AMERICAN RADIATOR
COMPANY'S BOILERS AND RADIATION.

Call on your Merchant for your requirements in our various lines. He
should have our hardware and our catalog with descriptive cuts of what
we carry in stock. We sell at WHOLESALE ONLY to Merchants, Manu-
facturers, Heating and Plumbing Contractors.

A Satisfied Customer Is Our Highest Aim

JOHNSON CITY, : : : : TENNESSEE

CRITCHER HOTEL

M. P. Critcher

Owner and Proprietor

Attitude

3333 feet

Boone, : : North Carolina

The Pastime Theatre

Boone, : : North Carolina

We invite you to our New Theatre,
which is up-to-date in every
respect.

We show only the best of pictures

The Place of Amusement

Hamby and Winkler, *Proprietors*

RHODODENDRON 1925

WATAUGA BAGGAGE & TRANSFER CO.

Boone, North Carolina

Leave Boone, at 7:00 A. M. Arrive at North Wilksboro at 10:30 A. M. We haul freight, express and baggage. We solicit all trunks and baggage for the A. S. N. Students.

Headquarters at Winkler's Garage.

Call or See Us.

Day or Night

Local Hauling A Specialty

C. C. RAGAN and HERMAN WILCOX, *Managers*

The Boone Clothing Store

Boone, North Carolina

A complete line of Gent's furnishings.

A Specialty in Young Men's Clothes.

We solicit the patronage of the A. S. N. Students

You are always at home in our store

Watauga Furniture and Lumber Company

Boone, N. C.

*Everything to Build a House
"FROM CELLAR TO CHIMNEY"*

The
Pioneer Builders
of Boone

WE APPRECIATE YOUR TRADE

·RHODODENDRON·1925·

The Muse-Whitlock Company of Johnson City, Tenn., printers of this Annual, have an attractive proposition to offer for the Annual staffs of 1926. Communicate with this company.

Compliments of
*APPALACHIA'S GREATEST
NEWSPAPERS*

Johnson City Chronicle
(Mornings)

**Johnson City
Staff-News**
(Evenings)

Birstol Bulletin
(Evenings)

The Cuts in this
ANNUAL
were made by
**CINCINNATI
PROCESS
ENGRAVING
COMPANY**
Cincinnati, Ohio.

RHODODENDRON 1925

N. L. Mast, *President*
L. A. Greene, *Vice-President*
Miss Pearl Hodges, *Bookkeeper*

G. P. Hagaman, *Cashier*
Austin E. South, *Ass't. Cashier*
Miss Carrie Coffey, *Stenographer*

THE WATAUGA COUNTY BANK

BOONE, : : : : NORTH CAROLINA

Capital \$50,000.00

Surplus and Profits \$25,000.00

The standard by which we measure our service is the good old golden rule.
We invite the students and teachers of the Appalachian State Normal to
make themselves at home at our bank.

WILL C. WALKER

Boone, : North Carolina

Watches, Clocks, Silverware
Diamonds and Jewelry
Class Rings and Pins

*REPAIRING
A SPECIALTY*

A. S. N. Students Call and See Us

Hi-Land Barber Shop

Boone, : North Carolina

Our shop is neat and absolutely
clean. You will find experienced
barbers that are always cheerful
and who possess the ability to
please you.

C. G. Cook, - - - Manager



LIBRARY
Appalachian State University
Boone, North Carolina

APPALACHIAN STATE UNIVERSITY



3 0346 0050405 U

