

175
.40k
An
1932
V. 10
C. 2

For Reference

APPALACHIAN ROOM. ASU LIBRARY
Not to be taken from this room



RHODODENDRON

COLLEGE LIBRARY

APPALACHIAN STATE TEACHERS COLLEGE

BOONE, N. C.

NO. *16783* COST \$.....

DONOR. *Photoduplication*



LIBRARY
APPALACHIAN STATE TEACHERS COLLEGE
BOONE, N. C.

Presented to

Appalachian Library,

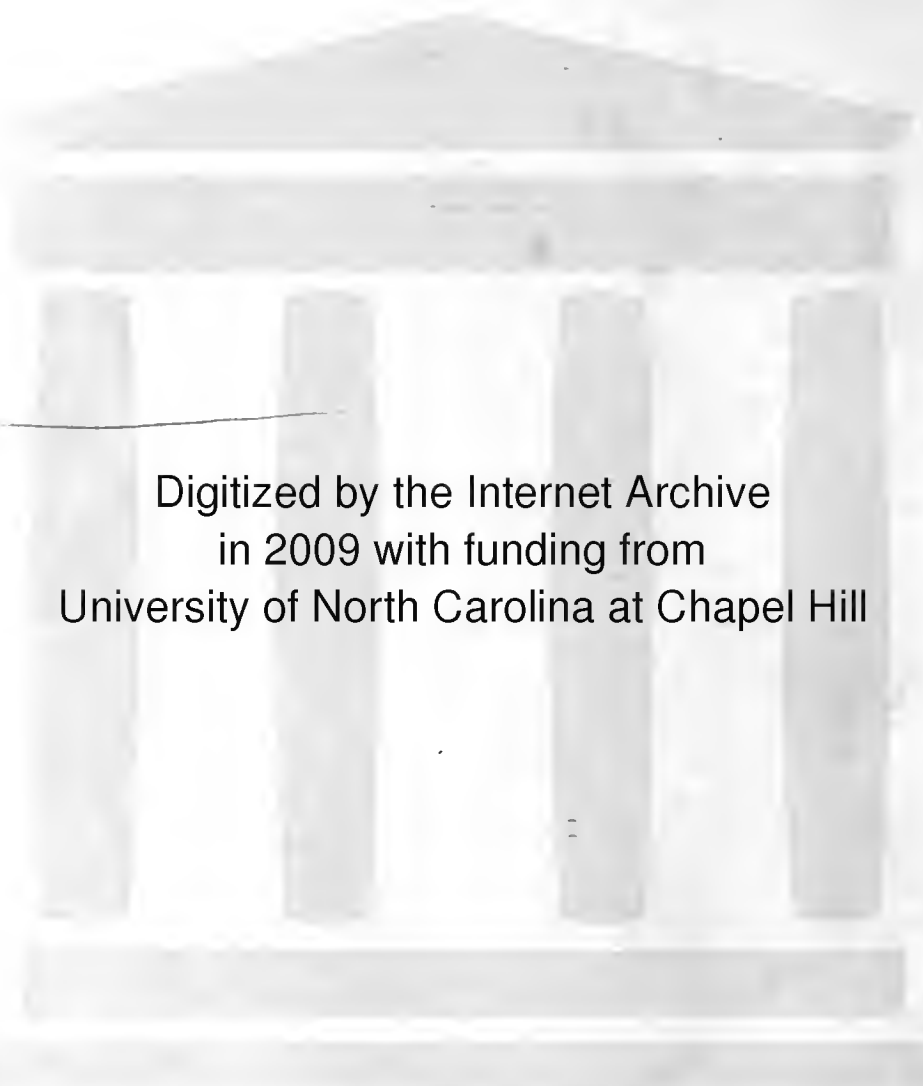
By

Dessa Mae Triplett,

EX LIBRIS

Editor-in-Chief.

LIBRARY
APPALACHIAN STATE TEACHERS COLLEGE
BOONE, N. C.



Digitized by the Internet Archive
in 2009 with funding from
University of North Carolina at Chapel Hill

The
RHODODENDRON



1932





Copyright
1932

DESSA MAE TRIPLETT
Editor-in-Chief

REECE HARRIS
Business Manager





The
RHODODENDRON
1932

PUBLISHED BY THE
**SENIOR CLASS
APPALACHIAN
STATE TEACHERS
COLLEGE**

BOONE, NORTH CAROLINA

The Rhododendron

DEDICATION


This 1931-'32 volume of THE RHODODENDRON we dedicate, jointly, to Hon. W. C. Newland and to Mr. J. M. Bernhardt of Lenoir, North Carolina, in sincere appreciation for their invaluable service to the Appalachian State Teachers College and to the cause of higher education in North Carolina.

HON. W. C. NEWLAND

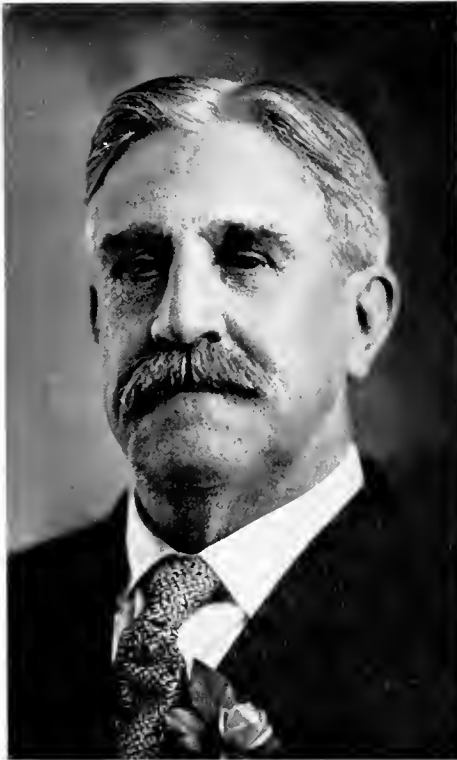
In 1903, Hon. W. C. Newland introduced the bill in the Legislature of North Carolina creating the Appalachian Training School which has developed through due processes into the Appalachian State Teachers College. As chairman of the Board of Trustees through the years of most rapid development he has given unstintingly of his time and wisdom.

MR. J. M. BERNHARDT

Mr. J. M. Bernhardt, as a member of the original Board of Trustees and as Chairman of the Executive Committee during the phenomenal growing period of the college has given unsparingly of his judgment and business experience. He has helped to make and has signed the contracts for all the important buildings.



DEDICATION



HON. C. W. NEWLAND

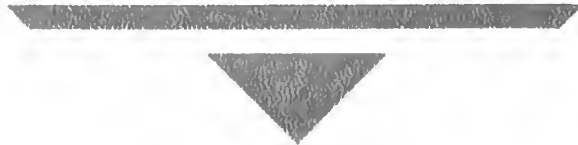


MR. J. M. BERNHARDT



FOREWORD

*The play ends:
The actors pass:
The curtain drops:
Time does not stand still
But bears us away upon its foaming crest.
A new play begins:
New actors come:
The curtain rises.
And less we should forget
The former play,
The past actors,
And the old stage.
We have caught their passing shadows,
In silent moods,
In working poses,
In playful moods,
And assembled them within this the
Tenth volume of THE RHODODENDRON,
Which we present to you.*



C O N T E N T S

COLLEGE

FACULTY

CLASSES

SENIOR

JUNIOR

SOPHOMORE

FRESHMAN

ACTIVITIES

ORGANIZATIONS

ATHLETICS

FEATURES





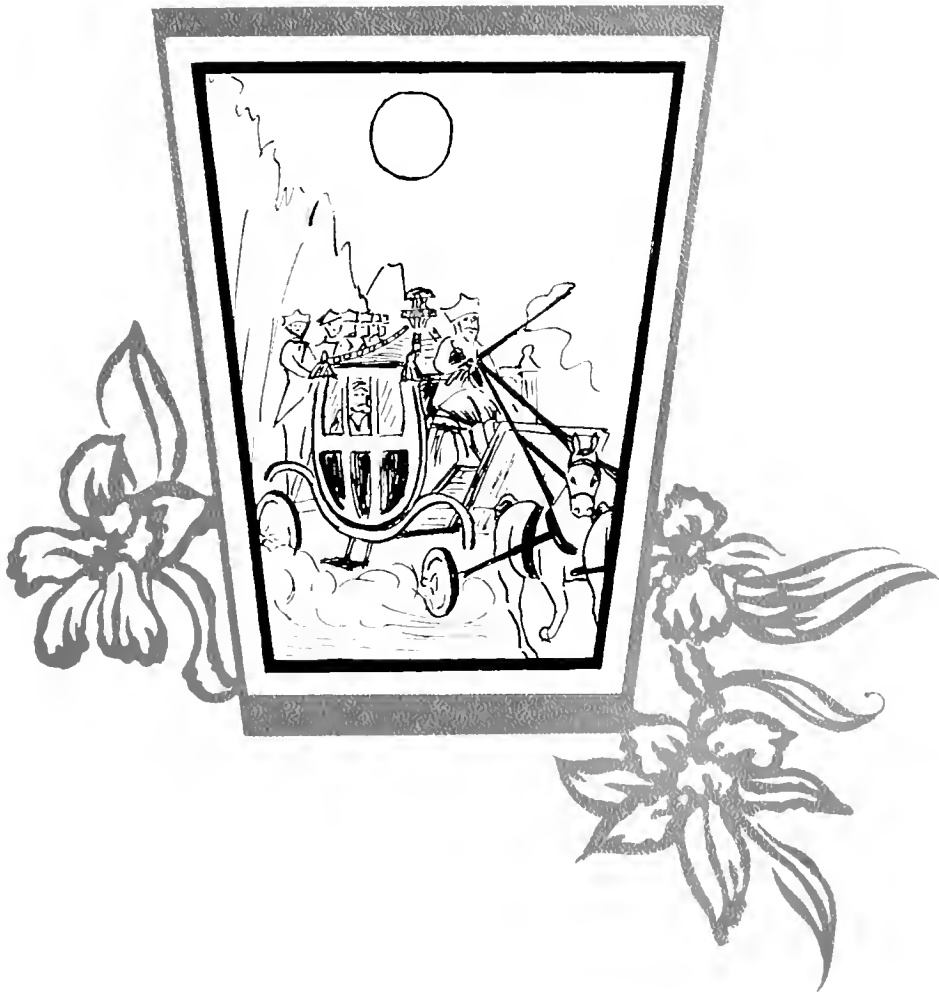
In Memoriam

FRANK DABBS

JAN. 31, 1908—MAY, 1930

This tribute, by the Class of '32, is made with infinite reverence and sorrow. His faithful ideals made him genuine, though cut off in the flower of his ambition.

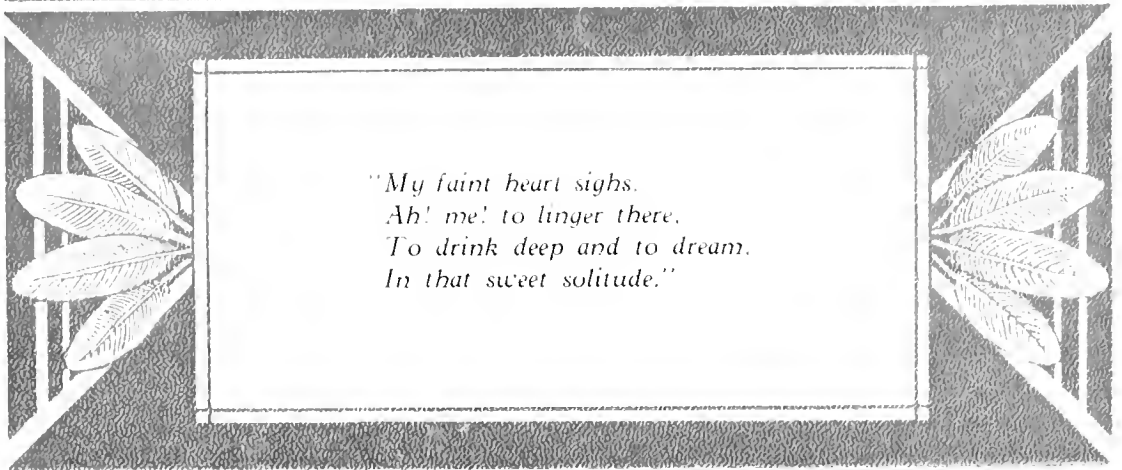
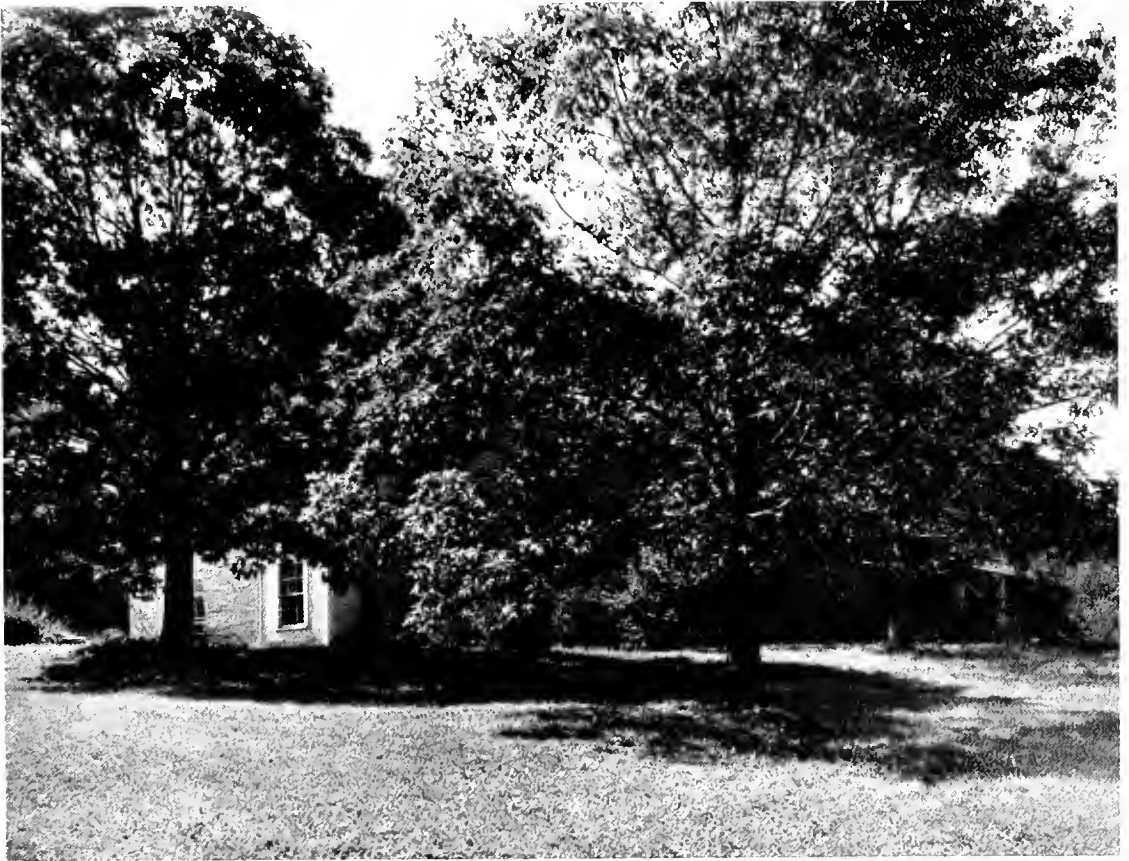
"God's finger touched him: and he sleeps."



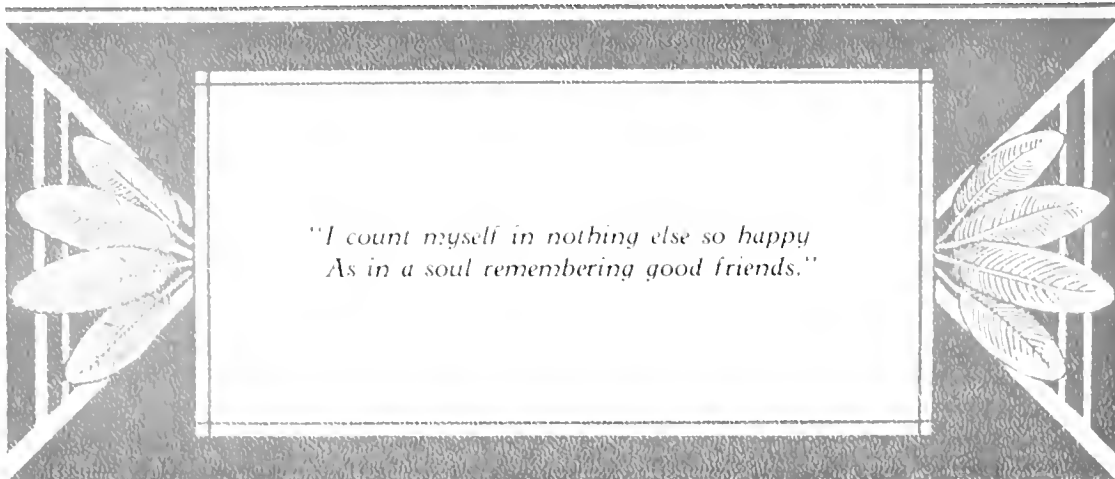
COLLEGE

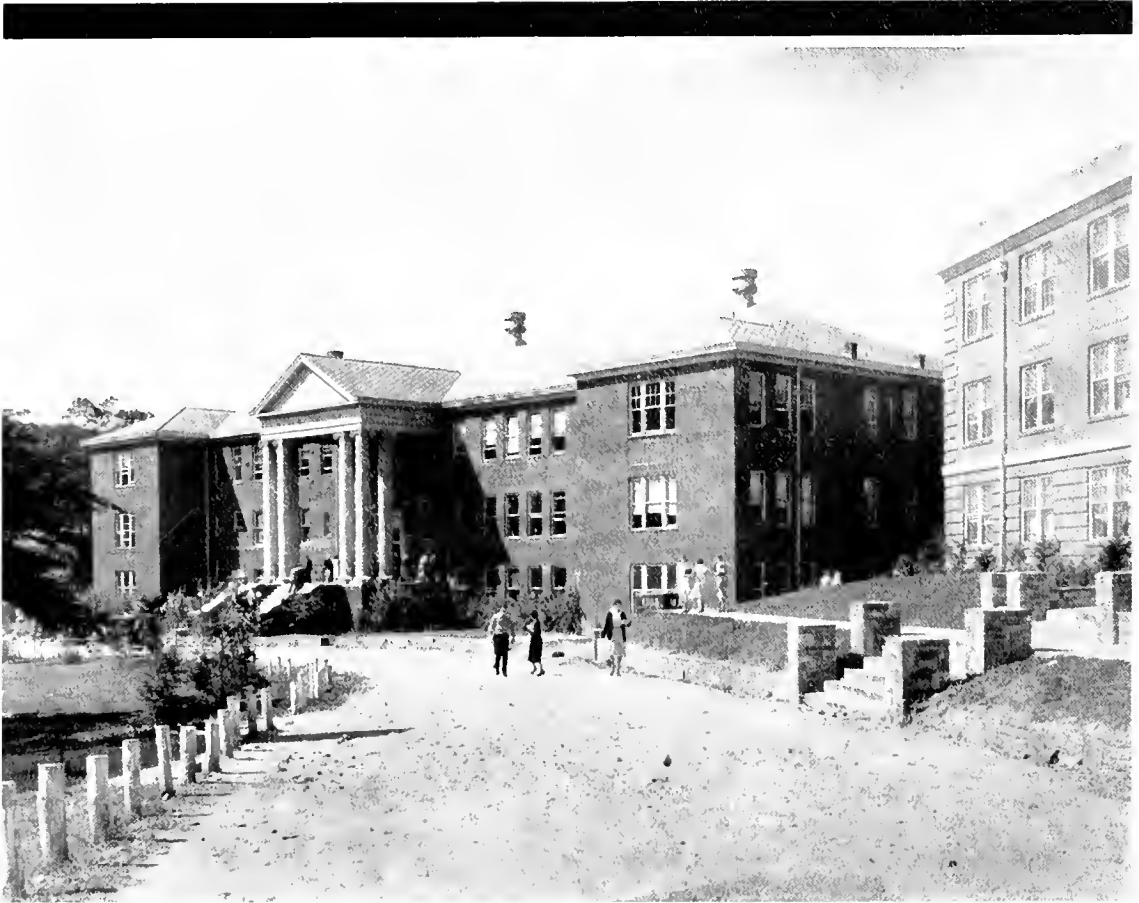






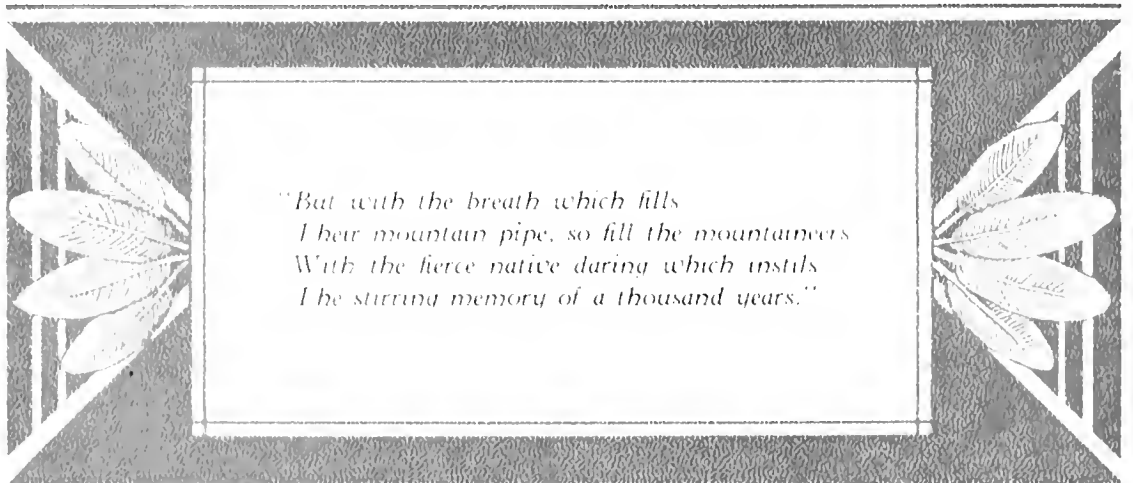
*"My faint heart sighs,
Ah! me! to linger there,
To drink deep and to dream,
In that sweet solitude."*

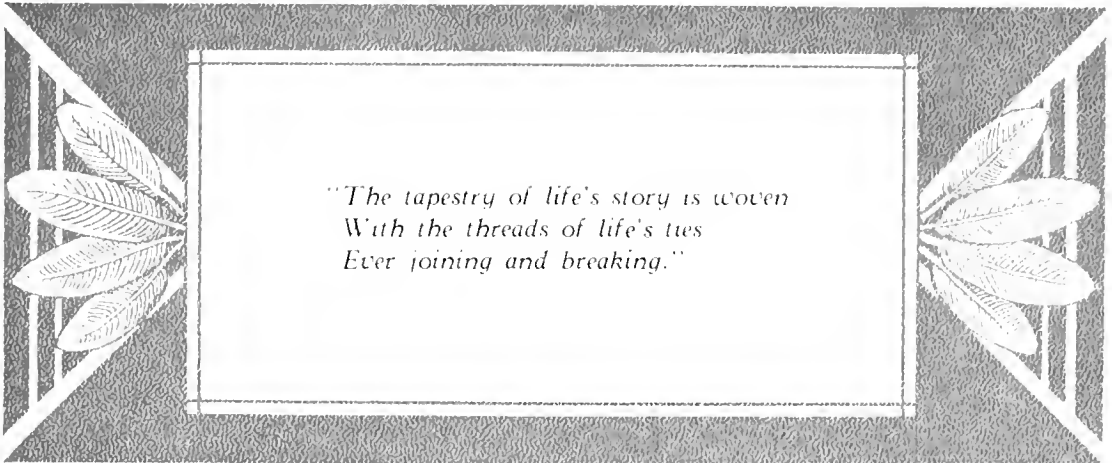




*"Not vainly the gift of its founder was made;
Not prayerless stones of its corner laid;
The blessing of him whom in secret they
sought,
Has owned the good work which the fathers
have wrought."*



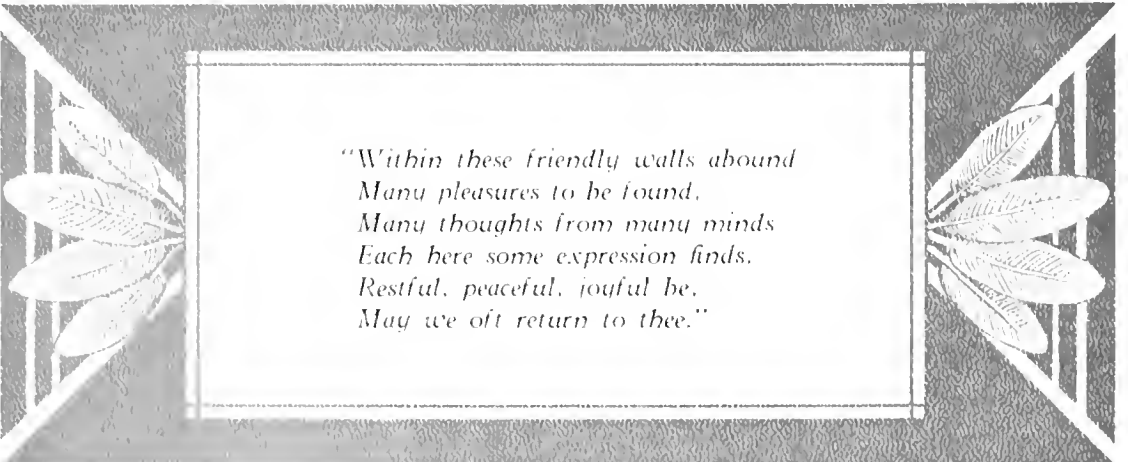




*"The tapestry of life's story is woven
With the threads of life's ties
Ever joining and breaking."*



*"Within these friendly walls abound
Many pleasures to be found,
Many thoughts from many minds
Each here some expression finds,
Restful, peaceful, joyful be,
May we oft return to thee."*





FACULTY







DR. B. B. DOUGHERTY
President



RHODODENDRON



MRS. D. D. DOUGHERTY
Treasurer

DR. J. D. RANKIN. A.B., A.M., S.T.D.
Dean: English



CHAPELL WILSON. A.B., A.M.
*Director of Demonstration Work:
Psychology*

J. M. DOWNUM. A.B.
Registrar



A. R. SMITH. A.B., A.M.
Chemistry

MISS IDA BELLE LEFBETTER. A.B., A.M.
Biologu



MISS JENNIE TODD
Supervisor of Women; Penmanship

A. M. NORTON. A.B., A.M.
English



RHODODENDRON

I. G. GREER
Citizenship

G. L. SAWYER, A.B.
Psychology



J. T. C. WRIGHT, A.B., A.M.
Mathematics and Physics

HERMAN R. EGGERS, A.B., A.M.
Education



J. A. WILLIAMS, A.B., A.M.
Geography

V. C. HOWELL, A.B., M.A.
History



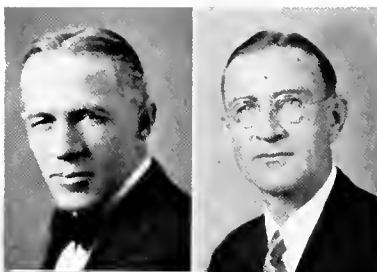
MISS CAROLYN WEAVER, B.S., A.M.
Primary Education

MISS MAUDE E. CATHCART, B.S., M.A.
Biology



ANTONIUS ANTONAKOS, B.S.
Mathematics and Physics

MRS. VAN HINSON, A.B., A.M.
French



14 RHODODENDRON 32



C. B. JOHNSTON, A.B.
Physical Education

MRS. TOM CUSHING, A.B., M.A.
Physical Education for Women



G. P. EGGERS, A.B.
English; Assistant in Physical Education

MISS VIRGINIA WARY, B.M.
Public School Music; Voice



A. J. GREENE
English

MISS LILY DALE, B.S.
Home Economics



VAN HINSON, A.B.
Education

MISS THEODOCIA WATSON, B.S.
Primary Education



MISS KATHERINE HARWELL
Art

MISS ELIZABETH RUCKER, B.S.
Art



RHODODENDRON

MRS. I. G. GREER
Piano; English

MRS. EMMA MOORE
Librarian



LEONARD EURY, A.B.
Librarian

MISS MAUDE GREENE
Secretary to President



MISS NANCY LEWIS
Secretary to Treasurer

MRS. D. C. REDMOND
Secretary to Registrar



MISS LONA MORETZ
Matron Lovill Home

MRS. LILLIE B. HARDIN
Matron New Dormitory



MRS. V. V. MCCONNELL
Dietitian

MRS. STELLA BARNES
Secretary to Dean





IN MEMORY OF

Mrs. V. C. Howell, alumna of Appalachian State Teachers College, and secretary to the Registrar, who has left us and gone to her reward. She will be greatly missed by all who came in contact with her. She was a most faithful and efficient worker, with a kind word for everyone. One of the best things that may be said of a person is that he or she did their part. It can be said truly, of Mrs. Howell, that she did her part well.

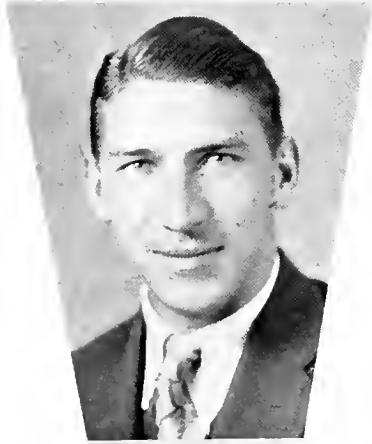
LIBRARY
APPALACHIAN STATE TEACHERS COLLEGE
BOONE, N. C.



CLASSES







CLAUDE PYATTE
President

SENIORS

19 RHODODENDRON 32



Sponsor

MRS. TOM CUSHING

Mascot

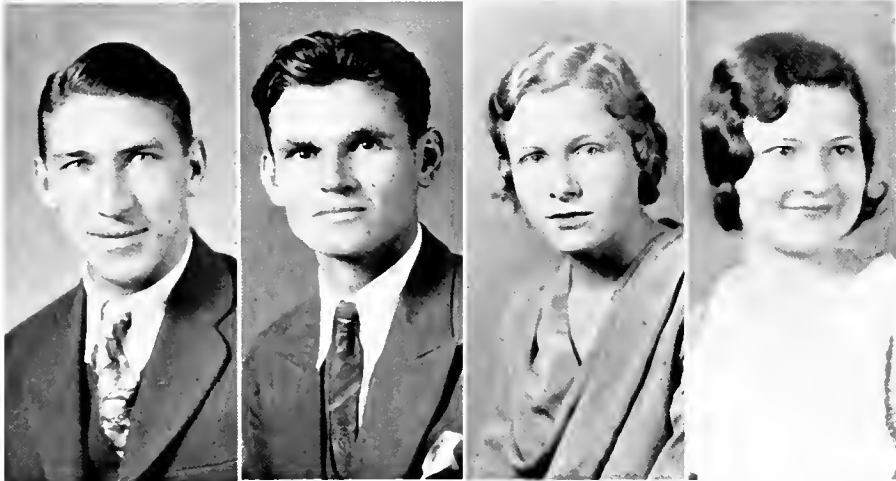
BETTY ANN JOHNSTON

COLORS: *Pink and White*

FLOWER: *Rose*

MOTTO: "*We have crossed the Bay, the Ocean lies before us.*"





CLAUDE PYATTE
President

STANLEY LIVINGSTON
Vice-President

BEATRICE PEARSON
Secretary

JULIA IDOL
Treasurer

Senior Class History

When we look in retrospect upon the far-distant days of '28, we are forcefully reminded of the fact that our college days will soon be a memory. Four years of comradeship, of fellowship, have wrought their transformation of body, mind, and soul. As we stand poised for our venture into the life before us, let us not forget the memorable events that have united us with a bond of mutual experiences—that have made us what we are.

Freshmen in '28 received a significant welcome in the torrential rain which fell those last days of August. Their ardor not dampened in the least, however, the class quickly devoted themselves creditably to the affairs of college life. The honor of the class presidency went to Wm. Davenport. Football, inaugurated that year at Appalachian, was supported enthusiastically by the Freshmen. In other sports the class was well represented. The literary societies added the names of many Freshmen to their roll books. During the year the institution was officially recognized as Appalachian State Teachers College, and the four-year courses were added to the curriculum. Socially, the notable event of the year was the Sophomore-Freshman reception.

The jubilation of the returning Sophomores in '29 was lessened somewhat by the absence of some of their classmates, but this loss was offset by the additions from other colleges. And there were the incoming Freshmen to be initiated into the joys of college life. In Oswald Hooper, the class found a capable leader for the year. Work and play combined to make the time pass quickly. May was here before we knew it. Highlights were the beginning of a new regime in athletics under Coach Johnston, and the bestowing by the college of the first degrees.

Most of the Sophomores who withstood the storms of '29-'30 returned in '31. Other colleges again added a number of students to our class. Our president was Glenn T. Huckman. The Junior Class did its share in upholding the prestige of Appalachia in extra-curricular activities. Outstanding social events of the year were the Hallowe'en Party and the Junior-Senior Reception. Commencement with its train of graduates reminded us that we were soon to follow in their wake. So passed the year.

With the realization that we were Seniors, seventy of us, came also the conviction that, after all, we were just ordinary mortals. The responsibilities of the president were entrusted to Claude Pyatte. Diligently did we work; the near approach of practice teaching and the need of grade points caused worried looks on previously carefree countenances. Participating in every activity of the college, the Seniors measured up to the standards expected of them. Commencement found us on the platform with a mingled feeling of gladness and sadness—glad that we were at last ready for the arduous road before us; sad that we must leave behind the things that have endeared to us our Alma Mater.

—STANLEY LIVINGSTON.





JOSEPHINE ABERNATHY, B.S.
HICKORY, N. C.

Mathematics and Physical Education

Dynician Literary Society (3, 4); Secretary of Dynician (4); Y. W. C. A. (4); New Dormitory Club (3, 4); Presbyterian Club (3, 4); Vice-President (4). Lenoir Rhyme (1, 2).

"That keystone upon which is built all loving and all living dependableness."

Why do we all like Jo so well? It's her sweet disposition, and her refinement. Besides this, she is talented, reliable and willing. Our slogan is, "If you want a thing done and done well, go to Jo."

RUBY BEACH, B.S.
LENOIR, N. C.

Wingate (1, 2); N. C. C. W. (3); Thalian Literary Society (4).

"Above all we love a steadfast friend."

Wingate and N. C. C. W. bequeathed us a welcome addition to our student body in the person of Ruby. Her friendly smile and winning personality have made friends for her. Here's luck to you—we know you'll succeed.

HERMAN S. BAUCOM, B.S.
UNIONVILLE, N. C.

Mathematics and Science

Wingate College (1, 2); Rankin-Wilson Literary Society (3, 4); Football (3, 4); President of Union County Club (3).

"Better looking than the average."

"Shine," or the "Spirit of Wingate," comes to us from Wingate College, not exactly Wingate, but about fifteen miles down Main Street. He loves the ladies as few men do, and will walk for miles just for one more look or smile. At football he's a good quarterback and has gained recognition through the state. "Shine," with his smile divine is sure to shine, when he has left us behind. And "Shine," old boy, we are betting on you.

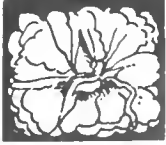
JENNIE LOUISE BEAM, B.S.
ELLENBORO, N. C.

Grammar Grade Education

Venescian Literary Society (4); Society oratorical representative (4); President of Student Volunteers (4); Mars Hill College Club (4); Rutherford County Club (3).

"Wisdom, justice, and moderation, but the greatest of these is a sense of humor."

Louise possesses sparkling wit, always accompanied with a delightful smile. The moment she enters a room the "blues" are chased away. We aren't worried about her future; personality plus energy like hers will get her any place to which it is directed.



RUTH BOWLIN, B.S.
LAUREL SPRINGS, N. C.
Mathematics and Science

Thalian Literary Society (4), Critic (4), President (4); Y. W. C. A. (4); Y. W. C. A. Choir (4); Glee Club (3, 4); Presbyterian and Reformed Club (3, 4); Council (4); State Intercollegiate Orator (3); Intercollegiate Debater (4).

"Roll on world, I won't budge an inch."

"Rufus" possesses the three qualities necessary to success; personality, character and intelligence. She has made a brilliant success as a student. We know she will succeed in life.

HAROLD CALHOUN, B.S.
NEWLAND, N. C.
Mathematics and Science

Rankin-Wilson Literary Society (2, 3, 4); Varsity Football (2, 3, 4); Basketball (2, 3, 4).

"Roll on world—I'll roll with you."

The wit of our analytes Geometry class, a football and basketball star, and a real man Calhoun will be missed. We send you forth, "Cathorn," with our best wishes for the success we know you'll attain.

KATHLEEN BROOKS, B.S.
BONLEE, N. C.
Primary Education

Phila Retian Literary Society (1, 2, 3, 4), Secretary (3), Vice-President (3), Representative (2), Treasurer (4); Y. W. C. A. (1, 2, 3, 4), Y. W. C. A. Cabinet (4); New Dormitory Club (3, 4); J. I. W. W. (2, 3); Assistant Art Editor of Annual (4).

"She is good to look upon, and better yet to know."

Kat has endeared herself to us by her charming personality. She is bright, friendly, intelligent, and attractive. We are expecting great things from her, and we feel confident that she won't disappoint us.

ADA CLARK, B.S.
CROSSNORE, N. C.
Grammar Grade Education

Thalian Literary Society (2, 3, 4); Y. W. C. A. (2, 3, 4); Lily Dale Home Economics Club (4); Presbyterian Club (3, 4); Locell Club (3); New Dormitory Club (4).

"They love her best who know her best."

Ada is a quiet, easy-going, and good-natured girl whom we are proud to call our friend. She is one who works easily and capably, without making any fuss over what she has accomplished. Once she is your friend she is your friend always.



WILLIE CORNELIUS, B.S.
STATESVILLE, N. C.
Primary Education

Davenport College (1, 2); N. C. C. W. (3); Phila Retian Literary Society (4); Y. W. C. A. (4); Home Economics Club (4).

"Strong in will, to strive, to seek, to find and not to yield."

Here is a girl who has won the admiration and respect of us all, although she has been with us only one year. We feel that her success is assured.

RALPH DAVIS, B.S.
PURLEAR, N. C.
Grammar Grade Education

"Too low they build, who build beneath the stars."

Rankin-Wilson Literary Society (1, 2, 3, 4); Wilkes County Club (1, 2, 3, 4), President (1, 3); Y. M. C. A. (4); U. J. A. (2, 3, 4), Secretary (4).

Hats off to the boy who has the never-give-up spirit. Ralph has been with us for four years and we have discovered that the word "can't" isn't in his vocabulary. His slogan is, "If at first you don't succeed try, try again." Ralph, you have been a faithful, conscientious student, you merited our congratulation. Best wishes.

ESSIE DALTON, B.S.
SHELBY, N. C.

Grammar Grade Education

"A fool has no choice; therefore, I will be wise."

We now know why Essie liked her geography in order that she may better know how to locate her red-headed sailor sweetheart. We hope she may in the future visit the points of interest with him.

MARY LEE DILLON, B.S.
COLFAX, N. C.

Grammar Grade Education

Gulford College (1, 2); Phila Retian Literary Society (3, 4); Y. W. C. A. (3, 4); Lily Dale Club (4).

"Charm strikes the sight, but merit reins the soul."

Gulford's loss is our gain. We all love Mary Lee and admire the splendid qualities which she possesses. Her ideals are lofty and she has a determination which will help her as she faces the problems of life.



CLEO VIRGINIA DICKSON, B.S.
HELTON, N. C.

Grammar Grade Education

Thalian Literary Society (4).

"Charm strikes the sight, but merit wins the soul."

Wherever we see Cleo we usually see a book being studied. When we talk to her our minds wander back to the learned women of the past. In her presence we generally feel an atmosphere of sincerity and dignity, but such is not always the case. When the time comes for fun Cleo gets her share. With her ability, perseverance, and charming manner we know that she will succeed.

MARY PINKNEY ESTES, B.S.
BOONE, N. C.

Grammar Grade Education

Watauga County Club (1, 2, 3).

"Speech is silver, silence is golden."

Mary has won many friends in her quiet, unassuming way, and we all expect of her a life of usefulness and of success. We are quite sure that the unspoken dream which we see in her eyes will become a reality.

ROY ELLISON, B.S.
TAMARACK, N. C.

Mathematics and Science

Appalachian Literary Society (1, 2, 3, 4); Critic and Censor of Society; Intercollegiate Debater (1); Vice-President of Class (2); Assistant in Biology and Physics.

Roy, you are a fine student and we are proud of you. You are not satisfied until you make the best grades in your class. That's the spirit! Make good. We will remember you, and here's our best wishes for a successful life.

INEZ FINCHER, B.S.
MINERAL SPRINGS, N. C.

Mathematics and Science

Weaver College (1, 2); Phila Retian Literary Society (3, 4); Treasurer (3); Censor (4); Secretary (4); Lovill Club (3); Union County Club (3); Tennis Club (4); New Dormitory Club (4); Y. W. C. A. (4); President of Epworth League (4); Vice-President (3).

"She is all that she seems and more."

We are glad that Inez decided to come to Appalachia after spending two years at Weaver. She is known by all because of her ability and dash of wit, but best of all by her good, hard-down common sense, which is combined with such an unselfish nature that she expects—and nearly always gets—unselfish treatment from others.



ELIZABETH FOX, B.S.
FRANKLINVILLE, N. C.

Primary Education

Lenoir-Rhyne College (1, 2); N. C. C. W. (3);
Thalian Literary Society (4); Y. W. C. A. (4);
New Dormitory Club (4); Lutheran Student Asso-
ciation (4).

*"A jolly, unselfish personality is the greatest gift
of all."*

We find in Lib a personality that wins with
everybody. Her genial smile and lovable ways en-
dear her to all whom she meets. She is one of the
most likable girls on the campus.

CLYDE MAE GOODMAN, B.S.
WEST JEFFERSON, N. C.

Grammar Grade Education

Dynician Literary Society (1, 2, 3, 4), Presi-
dent of Dynician (4); Home Economics Club (1, 2,
3, 4).

"Lend thine ears to many, thy tongue to few."

Gentle, sweet and considerate, that's Clyde. She
is loyal to her friends, her work and to herself.
She is what she is, good and true, minus all pre-
tense.

HOWARD FRANKLIN, B.S.
CROSSNORE, N. C.

Physical Education and Science

"Effort is the secret of attainment."

Howard is one of those fellows who makes good
grades, but does not spend all of his time in cur-
ricula activities. He is a jolly good fellow, es-
teemed by all. We see for him a bright and happy
future with - ?

MARY GRAVES, B.S.
RUBY, S. C.

Grammar Grade Education

E. C. T. C. (1); Thalian Literary Society (2);
Vernian Literary Society (3, 4), Censor (4); Y.
W. C. A. (2, 3, 4); Lily Dale Home Economics
Club (3, 4), Secretary (3); Boone Orchestra (3);
South Carolina Club (2); Epworth League (4);
Secretary (4); New Dormitory Club (4).

*"Thou art like unto a flower, so good so pure,
so sweet."*

Mary is a girl of noble character, and high ideals.
It would be hard to find a more sincere girl or a
truer friend. Because she is able to make life
count, we are expecting her to rise above the
masses.



WARNER GRAHAM, B.S.
TODD, N. C.

Grammar Grade Education
"Life's what you make it."

Warner is an all-round good fellow. Take character, sincerity of purpose and an appealing personality and combine them with ability and determination to do well and you have the secret of Warner's success in winning such an esteemed place among his classmates and all who know him. We predict for him a useful and happy future.

MARY HACKNEY, B.S.
MARION, N. C.

Grammar Grade Education

Davenport College (1, 2); Vernician Literary Society (3, 4); Y. W. C. A. (3, 4).

*"A sweet, attractive kind of grace
Shown continually from her face."*

It was a lucky day for our class when Mary decided to finish her education at A. S. T. C. She is steady, never-failing, and always reliable. She is every ready to help those in need. Surely success will come to those who labor while others play.

ERIE WHITE GREER, B.S.
BOONE, N. C.

Physical Education and Science

"What is life without the light of love?"

Many admirable characteristics and virtues have combined to give Erie some indefinable something which makes her a necessity to a host of boys and girls. We await with interest the future events which will take place in her life.

HARRY HALLYBURTON, B.S.
MORGANTON, N. C.

Physical Education and Science

Treasurer of RHODODENDRON (4); Rankin-Wilson Literary Society (1, 2, 3, 4); Varsity Football (1, 2, 3, 4); Manager of Baseball (4); Member of Letter Club (1, 2, 3, 4).

"Make the todays count."

Truly "Hally" is one of the finest fellows that A. S. T. C. has ever produced. He has been with us for four years. As a "Frosh" he crept into the spotlight and has continued to hold the center of the stage ever since. In work or play, in the classroom or on the campus, "Hally" has had his say, played his part, and always with efficiency. We believe in you and expect great things of you.



GLEN T. HICKMAN, B.S.
HUDSON, N. C.

Grammar Grade Education

Intercollegiate Debater (1, 2, 3, 4); President Junior Class (3); Editor-in-Chief of RHODODENDRON (2).

"If a thing is worth doing at all, it is worth doing well."

"Best things," they say, "come in small packages." This is certainly true of Hick. During his stay with us he has taken an active part in all phases of school life. He has proven himself capable of leadership.

RUTH HONEYCUTT, B.S.
FAST BEND, N. C.

Primary Education

Phila Retian Literary Society (3, 4); Glee Club (2, 3, 4); Y. W. C. A. Choir (4); Lovill Club (4).

"To whom every cloud has a silver lining."

Do you want someone to laugh with you, cry with you, or give you good advice? The girl you want is Ruth. She faces life and her friends with the sunniest and most even temper. She is ever ready to help. As she leaves us we wish for her the best of all good things.

OSWALD HOOPER, B.S.
CORBETT, N. C.

Physical Education and Science

Varsity Football (1, 2, 3, 4); President of Sophomore Class; Intercollegiate Debater (1); Manager of Basketball (4); Rankin-Wilson Literary Society (1, 2, 3, 4); Assistant Editor-in-Chief of RHODODENDRON (4).

"The only way to have a friend is to be one."

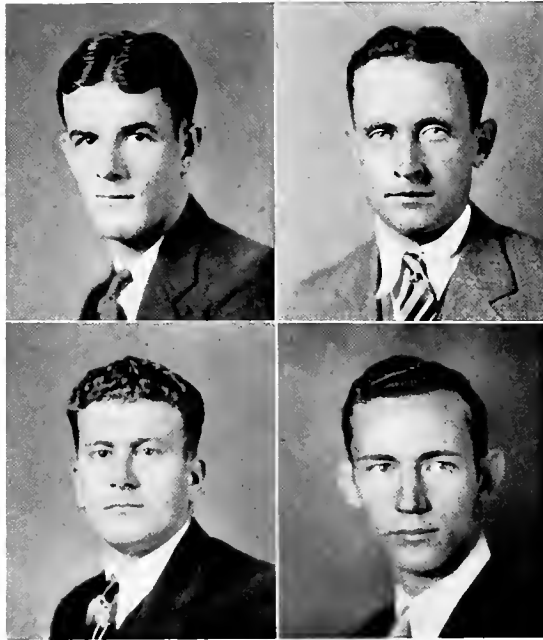
The gods were lavish when they came to bestow gifts upon Hooper. They endowed him with a superior mind, a kind disposition, and a congenial personality. More than once he has carried the pigskin for Appalachia and more than once he has swayed audiences and convinced judges with his argumentative eloquence in intercollegiate debates. Hooper, old boy, we are expecting great things of you.

ALICE HORNER, B.S.
LONG ISLAND, N. C.

Grammar Grade Education

"A friendly smile to all."

Alice has been with us only one year. She has won her way into our hearts by her cheerful and winning ways. Her mission in life seems to be to show by example that she is pure gold—as the gold in her hair and her purity will always shine through as long as real nature prevails.



REECE B. HARRIS, B.S.
THOMASVILLE, N. C.

Physical Education and Science

Varsity Football (2, 3, 4), Captain of Football (4); Baseball (2, 3, 4); Manager of Basketball (4); Member of Letter Club (4); Glee Club (3); Business Manager of RHODODENDRON (4).

*"Women's looks have been his books,
And folly is all they've taught him."*

Reece came to us from Duke University in 1929. To him we owe heartfelt gratitude, as he has been faithful and instrumental in determining the success of the 1931 Mountaineers. As an athlete Reece is great and certainly merits the appreciation of all who love "The Black and Gold." Not only is he an outstanding athlete but an outstanding student, and an efficient leader. As a member of the annual staff he has been faithful.

OREN TOLER HAYNES, B.S.
JONESVILLE, N. C.

Physical Education and Science

Mountain Park Junior College (1); Rankin-Wilson Literary Society (2, 3, 4); President of Rankin-Wilson (3); Yadkin County Club.

"Still water runs deep."

Toler is a good worker and never comes up short. He is fond of the girls, but none have found the grounds on which he surrenders. For him the future is promising. Luck to you, Toler!

JESSE C. HAWKINS, B.S.
YADKIN VALLEY, N. C.

Physical Education and Mathematics

N. C. State College (1, 2); Rankin-Wilson Literary Society (3, 4).

Jesse is one who strives to succeed in everything that he undertakes. He is very studious and manifests a true love for higher things. We send you forth, Jesse, expecting great things of you. We know you won't fail us.

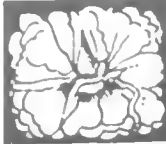
YATES HAVNAER, B.S.
VALE, N. C.

Science and Mathematics

Appalachian Literary Society (1, 2, 3, 4), Chaplain (1), Critic (1), Secretary (2), President (3), Editor (4); Vice-President of Athletic Association (3); Advertising Manager of RHODODENDRON (4); Glee Club (3); Intercollegiate Debater (4).

"Act well your part, there in the honor lies."

Here's to a winner! Yates is one of those few fellows who puts his whole self into any task, whether in work or play. His ability and willingness have brought to him and to his Alma Mater much praise and honor. Yates will be missed from our campus, for all who know him have gained by his strong character and unflinching friendship.



BERTHA HUSKINS, B.S.
BURNSVILLE, N. C.

Primary Education

"Why worry? Life's too short."

Popular, studious, jovial, she takes life as it comes, yet she leaves an impression of dependability and capability. She is a good student, although a good time sparkles in her eyes. She is ever ready to help in the funmaking. In short, a pleasing and lovable personality combined with a strong character is the girl we all know as "Bill."

BERNARD JONES, B.S.
LANSING, N. C.

Science and Mathematics

Rankin-Wilson Literary Society (1, 2, 3, 4); Baseball (1, 2, 4); Ashe County Club (1, 2, 3); President of Ashe County Club (2).

And here is Jones with his ever-ready smile. A likeable, friendly, jolly, capable, popular, especially with the ladies, fellow he is. We shall watch him with a great deal of interest as he goes out to seek his fortune in the world.

JULIA IDOL, B.S.
CLEMMONS, N. C.

Primary Education

CLASS TREASURER

Vermician Literary Society (3, 4), President (3), Treasurer (4); Thalian Literary Society (1, 2); Lily Dale Home Economic Club (1, 2, 3, 4), Treasurer (3), Vice-President (4); Y. W. C. A. (1, 2, 3, 4); New Dormitory Club (3, 4), President (3), Vice-President (4); B. S. U., Council (3); J. L. W. W. (2, 3).

"A friend may well be reckoned the masterpiece of nature."

Along with a winsome personality goes the purity of heart, the happy disposition and the talented capacity that makes Julia the good sport, the ideal friend. In the depth of her soft brown eyes is read the character of her soul.

LEFF JOINES, B.S.
SPARTA, N. C.

Science and Mathematics

Appalachian Literary Society (1, 2, 3, 4); Alleghany County Club (1); President of Alleghany Club (1); Vice-President of Appalachian Literary Society; Football Squad (4).

"Be true to your word, your work, and your friends."

Leff has won for himself many friends and much honor by his ability in the schoolroom, in the literary society hall, and on the athletic field. We believe he will do the same in his life work.



FLOSSIE JOYNER, B.S.
HAMPTONVILLE, N. C.

Grammar Grade Education

Vernician Literary Society (4); Lily Dale Home Economics Club (1, 2, 3); Y. W. C. A. (1, 2, 3); Yadkin County Club (1, 2).

"Love is a great thing after all."

There are so many good things to say about Flossie that it is difficult to describe her in a few lines. She is dependable, kindhearted, and true. She has many friends and she is faithful to them—especially one. We wish for her much happiness teaching, housekeeping or whatever she chooses.

CHINA REDMOND LAVENDAR
COLUMBUS, N. C.

Grammar Grade Education

Glee Club (3, 4), Treasurer (4); Dyncian Literary Society (3, 4), Critic (3); Tennis Club (4); New Dormitory Club (3).

"Why take life so seriously? You'll never get out of it alive."

Individuality is one of Lavendar's outstanding characteristics. She says what she thinks and is usually right. She not only possesses the qualities of a good sport, but also those of dependability. Even without these qualities, her pleasing personality would carry her through unto the end.

ROY KELLER
BLOWING ROCK, N. C.

Science and Mathematics

Appalachian Literary Society (1, 2, 3, 4), Secretary (2), President (3); Intercollegiate Debater (1, 2, 3, 4).

"He can, who thinks he can."

Roy deserves congratulations and praise if any member of the class does. He is steady, constant and persistent. He will be missed in the classroom, on the campus, but the teaching profession will have gained a reliable man.

STANLEY LIVINGSTON, B.S.
KINGS CREEK, N. C.

Science and Physical Education

Varsity Football (3, 4); Varsity Basketball (1, 2, 3, 4); Assistant Manager of Baseball; Appalachian Literary Society (1, 2, 3, 4), President (4); Annual Staff (4).

*"Steadfast and true, sincere and kind,
One of his equal is hard to find."*

Although conquered, "Stan" would argue. He is a hard worker, and is unexcelled in scholastic record. He does not depend on books and study to carry him through, but on his intellectual capacity. We are sure success will be his.



LUCILLE LOHR
LEWINGTON, N. C.

Grammar Grade Education

Y. W. C. A. (1, 2, 3, 4), Cabinet (4); Dyncian Literary Society (1, 2, 3, 4), President (2), Chaplain (4), Critic (3); Associate Editor RITONODENDRON (2); Class Historian (2).

"Our real friends are those who make us do what we can."

'Cille is a leader of leaders. We all follow her orders without questioning, because we have long since come to realize that she knows whereof she speaks. Three things seem essential to her being, "Irene, books, and beauty." Thanks, 'Cille, you have brought the latter to us through your life and endeavors while on the campus.

CYNTHIA MORETZ, B.S.
BOONE, N. C.

Grammar Grade Education

"Nobility was in her guise, purity in her glances."

Cynthia has but one determination, and that is to make good. We are sure she will achieve her goal, since she possesses will-power and determination in unlimited quantities. Her many friends are wishing her much happiness.

OLIVETTE MARTIN
POLKTON, N. C.

Grammar Grade Education

Rauldolph Literary Society (1, 2); Varsity Basketball (1, 2).

"A rare compound of quality, noble and true."

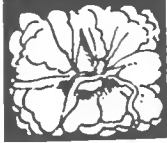
Olivette has a quiet, unassuming manner and a way of attending to her own business. She has the ability to put things across. We feel that success awaits her.

MAGGIE E. MORETZ, B.S.
BOONE, N. C.

Primary Education

"Her ways are true, her friendship lasting."

Friendly, quiet, modest—these are characteristics of Maggie, and have endeared her to us. She has the determination and the ability to succeed, and we know she will. The class of '32 will miss her.



GLENN MCGUIRE, B.S.
TODD, N. C.

Science and Mathematics

*"His quiet ways and faithful work
Are sermons strong to those who shirk."*

Glenn is the same every time you meet him. If you are looking for a friend, here he is. He is an exceptionally good student, always sticking to the task until it is completed. His every deed proves that his motto is: "Actions speak louder than words."

CHARLES McNEILL, B.S.
WILKESBORO, N. C.

Mathematics and Science

Appalachian Literary Society (4); Y. M. C. A. (2, 3, 4); Wilkes County Club (1, 2, 3, 4), President (4); U. J. Association (2, 3, 4), Secretary (3), President (4); B. S. Club (3, 4), Secretary (3), Treasurer (4); Assistant Circulation Manager the RHODODENDRON (4).

"Care may kill a cat, but will never kill me."

When Charles leaves, who will keep things lively and cheerful with good-natured laughter? He has always been dependable, studious, efficient, and popular. We are sure that his ideals and determination will carry him to the top in whatever he undertakes.

SAM MCKINNEY, B.S.
CROSSNORE, N. C.

Mathematics and Science

Davidson College (1); Rankin-Wilson Literary Society (2, 3, 4); Varsity Football (2, 3, 4); Varsity Basketball (2, 3, 4).

"Happy-go-lucky."

Sam is a happy-go-lucky kind of fellow who is always ready to work and is a good student. Coming to us from Davidson College, he soon became one of the most outstanding athletes the college has ever produced. In addition, he is one of the most popular boys on the campus. Here's to you, old boy; may you succeed in the future.

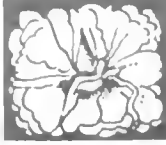
LUCILE MILLER, B.S.
BOONE, N. C.

Grammar Grade Education

Mars Hill College (1); Mars Hill Club (4); Assistant Business Manager of RHODODENDRON (4).

*"Loyal-hearted, strong of mind,
A finer girl you'll never find."*

The embodiment of sweetness, loveliness, and cheerfulness, with an inexpressible air of demureness, Lucile has endeared herself to the hearts of all who know her. Lucile, we wish for you all the luck and happiness this world can give.



ESSIE MAE OUTLAW, B.S.
SEVEN SPRINGS, N. C.

Grammar Grade Education

Phila Retian Literary Society (2, 4); Charter Member Bland-Dolph Literary Society (2), Secretary (3); Y. W. C. A. (4); Tennis Club (4).

*"Slow-going enough to do a thing right;
Not a common pusher, but a steady puller."*

A charming personality characterizes Outlaw. With her ready sense of humor she carries sunshine with her everywhere. She is an enjoyable companion, a good student, and a real friend. The class of '32 and the whole college will long remember her.

PAULINE PARKER, B.S.
MARSHVILLE, N. C.

Primary Education

Wingate Junior College (1, 2); Dyncian Literary Society (4); Y. W. C. A. (4); Lovill Club (4).

"Deeds, not words."

Whether telling a joke or dissecting a cat, "Polly" is ever the jolly, studious, lovable companion. Though we shall miss her greatly, we bid her God-speed and send her forth to reach her highest ambitions. We expect "Polly" to write her name high upon the scroll of fame.

BEATRICE PEARSON, B.S.
NORTH WILKESBORO, N. C.

Grammar Grade Education

Davenport College (1, 2); Dyncian Literary Society (3, 4), Censor (4); Y. W. C. A. (3, 4); New Dormitory Club (4), Secretary-Treasurer (4); Class Secretary (4); Tennis Club (4).

"Rather be small and cast a light than large and cast a shadow."

Know "Bee" and love her! That's what happens to everyone who meets her. She is a regular girl with high ideals and strength of character. "Bee," we can't say enough good things about you. Just know that we love you and wish for you the best life offers.

BEATRICE PARSONS, B.S.
PURELAR, N. C.

Grammar Grade Education

"Still water runs deep."

Beatrice is one of those girls who think "Speech is silver, silence is golden." Even though she doesn't talk so much, her winning personality has won for her a host of friends at A. S. T. C. who wish for her much success in whatever she undertakes.



CLAUDE PYATTE, B.S.
CROSSNORE, N. C.

Science and Physical Education

Varsity Football (2, 3, 4); Varsity Basketball (2, 3, 4); Varsity Baseball (3, 4); Rankin-Wilson Literary Society (2, 3, 4); Chaplain (2, 3); President of Senior Class; Member of RHODODENDRON Staff (4).

"Forward ever, backward never."

As a "Frosh" Claude wandered away to King College only to return to the call of A. S. T. C. in 1929. Claude is known throughout the state for his football and basketball record. He is admired by all on the campus because of his love for fair play. We have found him very efficient, both mentally and physically, and he has proven himself capable of leadership.

WILLIE REEVES, B.S.
LAUREL SPRINGS, N. C.

Science and Physical Education

Phila Retian Society (1, 2, 3, 4); Tennis Club (1, 2, 3, 4); Glee Club (1).

"Men—ahat foolish things they are."

Good nature, friendliness, and seriousness all mixed in correct proportions, make this likeable member of our class. She is always ready for work, and adds dignity to our senior procession. "Billie," we expect of you a high achievement.

JEAN REEVES, B.S.
LAUREL SPRINGS, N. C.

Science and Physical Education

Phila Retian Society (1, 2, 3, 4); Basketball (1, 2, 3, 4), Captain (2), Manager (3); Varsity Basketball (4); Tennis Club (4).

"Good sports are rare."

Outstanding? Yes. As an athlete and student Jean knows the meaning of work. Talented, sincere, patient, and capable of choosing wisely, she symbolizes leadership.

STELLA SCRONCE, B.S.
NEWTON, N. C.

Primary Education

Dynician Literary Society (2, 3, 4); Y. W. C. A. (2, 3, 4); Lily Dale Home Economics Club (2, 3, 4); New Dormitory Club (3, 4).

*"Happy am I, from care I'm free;
Why aren't they all contented like me?"*

We cannot make a complete analysis of Stella's good qualities, but in her we find the real essence of womanhood, the possession of those things destined to win in life. We wish for her as much sunshine in life as she has scattered among us.



KATHRYN SIGMON, B.S.
NEWTON, N. C.

Grammar Grade Education

Mountain Park Junior College; Thalian Literary Society (3, 4); New Dormitory Club (4); Y. W. C. A. (3, 4).

"To whom every cloud has a silver lining."

Kathryn is a good old pal. She likes frolic and fun but she knows when it has gone far enough. We call her a "good-natured, half-pint of fun." Good luck, Kathryn.

RALPH SMITHERMAN, B.S.
EAST BEND, N. C.

Science and Mathematics

Guilford College (1, 2); Rankin-Wilson Literary Society (3, 4), Secretary (3), President (4); President of Yadkin County Club (3).

"The reasoning of the strongest is always the best."

Ralph is a mixture of faults and virtues. That he is a "ladies" man is a fault(?). But his ability to hold his head amid the flattering attentions of the fairer sex is nothing less than virtue. He is an exceptionally good student and has been a real asset to Appalachian.

SARA STALEY, B.S.
STALEY, N. C.

Primary Education

Thalian Literary Society (2, 3, 4), Secretary (4); Lily Dale Home Economic Club (1, 2, 3, 4), Secretary (2), Vice-President (3); Y. W. C. A. (1, 2, 3, 4); Lovill Club (2); New Dormitory Club (3, 4).

*"Humorous, dependable, happy and gay,
These you'll find in her all the day."*

Sara is different. She's not cranky, nor dull, nor silly, but a blues "chaser," a live-wire of fun. Those who have missed knowing Sara intimately have missed knowing a truly worthwhile girl.

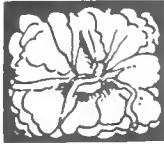
GRACE STEPHENSON, B.S.
KELFORD, N. C.

Physical Education and Mathematics

Phila Retian Literary Society (1); Dynician Literary Society (2, 3, 4); East Carolina Club (1); Tennis Club (4); Glee Club (3, 4).

"Give me music and true friends, and life will be a pleasure."

Grace is frank, friendly and a good sport. She is popular with both boys and girls. She has a wonderful voice, is a good student, and the kind of pal you really like to have.



NORA SHORE, B.S.
YADKINVILLE, N. C.

Grammar Grade Education

Guilford College (1, 2, 3); Dyncian Literary Society (4); Yadkin County Club (4).

"Jolly, always good-natured, and a friendly smile for all."

Nora is a friend to all. Her energetic spirit and sincere optimism are her dominant characteristics. These characteristics are founded upon her sound common judgment and her keen sense of humor.

STEPHEN ISAIAH SMITH, B.S.
WINGATE, N. C.

Science and Mathematics

Wingate Junior College (1, 2); Union County Club (3, 4); Glee Club (4); Football Manager (4); Cheer Leader (3).

"When you know me, you'll love me like all the rest."

Ike is the kind of a fellow that makes friends easily. Coming to us from Wingate, he has made himself one of the most popular members of the class in two years. We can't imagine him being anything but successful. He never gives up and he never ceases to smile. He has one weak spot, but we think Dan Cupid has taken possession of that. He merits our best wishes and he has them in a big way.

BLANCHE SMITH, B.S.
BOONE, N. C.

Primary Education

Thalian Literary Society (3, 4).

"What I am, I am."

Blanche is ever loyal and dependable, with smiles galore. Her modest, attractive ways and true sterling worth win friends wherever she goes. Blanche has plenty of musical talent, and we expect to hear in the future that she is a member of some famous orchestra.

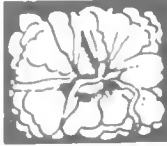
PEARL SMITH, B.S.
WINGATE, N. C.

Primary Education

Wingate Junior College (1); Thalian Literary Society (4); Corresponding Secretary of Thalian Literary Society (4); Union County Club (2, 4); Y. W. C. A. (4); Y. W. C. A. Choir (4).

"A good disposition is more valuable than gold."

It is certainly a privilege to be Pearl's friend. She is made of the stuff that sticks and fights to the bitter end. She is a true humorist. We predict for her a glorious future.



ESTHER STEWART, B.S.
HUNTING CREEK, N. C.
Mathematics and Science

Phila Retian Literary Society (2, 3, 4), Chaplain (2); Y. W. C. A. (1, 2, 3, 4), Publicity Chairman (3, 4); Glee Club (1); Presbyterian Reformed Club (3, 4); Wilkes County Club (1, 2, 3); New Dormitory Club ().

*"Clever, congenial, modest, petite,
Lovable, learned, and sweet!"*

In Esther we have a girl of whom we all are proud. Her untiring zeal, her sincerity, and her scholastic ability all go to make her one of the outstanding members of our class. Fun and seriousness are combined in the right proportions. We can visualize only happiness and success for her.

VIRGINIA DARE PHILLIPS STROTHER, B.S.
SUGAR GROVE, N. C.
Grammar Grade Education

"Determination, self-confidence, and effort make dreams come true."

"Love thyself last" is Dare's motto. She does not claim her graces and her talents, but leaves it to her friends to discover them. She is especially talented in art, and as she leaves us we wish her every success in her career.

LAURIE STEWART, B.S.
HUNTING CREEK, N. C.
Mathematics and Science

Phila Retian Literary Society (2, 3, 4), Treasurer (2), Critic (3); Y. W. C. A. (1, 2, 3, 4), Publicity Chairman (2), Treasurer (3, 4); Glee Club (1); Presbyterian Reformed Club (3, 4); Wilkes County Club (1, 2, 3), Vice-President (3); Art Editor RHODODENDRON (4).

"She follows a path that leads to the hills of fame."

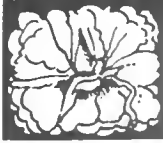
If we were asked to select the most talented member of the senior class, we can think of no one whom we would place before Laurie. Her interest in all phases of school activities and her high scholastic record mark her as an outstanding student. Her artistic ability is exceptional, and we predict that it will write Laurie's name in the halls of fame.

IVAZELLE TAYLOR, B.S.
WHITEHEAD, N. C.
Grammar Grade Education

Blan-Dolph Literary Society (1); Vernician Literary Society (4); Y. W. C. A. (1, 2, 3, 4); Representative Alleghany County Club (4); Tennis Club (1, 2); Lovell Club (4).

"Meet her, know her, and you'll never forget her."

"Toad" is always optimistic and her sunny smiles have cheered us all and pledged us to eternal friendship. Her mind is in striking contrast with her avoirdupois, and we predict a great future for her.



OTUS THOMAS, B.S.
FRANKLINVILLE, N. C.

Science and Physical Education

Mountain Park Junior College (1, 2); Rankin-Wilson Literary Society (4).

"My goal is always ahead."

Otus came gliding in here with a Franklinville smile on his countenance. By appearing intelligent and by looking the teachers straight in the eye, he pulled such a good bluff that even Mr. Williams couldn't tell when he didn't know his lesson perfectly. Otus is really O. K. and here's wishing him a brilliant career.

LOYD TURNER, B.S.
LAWNOALE, N. C.

Physical Education and Science

Appalachian Literary Society (1, 2, 3, 4), President (2); Football Manager (4); Y. M. C. A. (3); Cleveland County Club (1, 2), President (2).

"Determination and capabilities are the prerequisites of success."

Turner, the capable, the kind, the courteous, has won many friends through his dependability and his good sportsmanship. He is a good student and keeps a nice balance between work and play. He remains undaunted by seemingly huge difficulties. He is truly a star of first magnitude.

DESSA MAE TRIPLETT, B.S.
MATSEY, N. C.

Grammar Grade Education

Queens College (1); Y. W. C. A. (2, 3, 4), President (2), Cabinet (3), President (4); Thalian Literary Society (2, 3, 4), Treasurer (2), President (3), Critic (4); Intercollegiate Debater (2, 3, 4); State Intercollegiate Orator (4); Letter Club (3, 4); Business Manager of RHODODENDRON (2); Biology Lab. Assistant (4); Senior Normal Class Poet (2); Editor-in-Chief of RHODODENDRON (4).

"They build too low who build beneath the stars."

Dessa Mae's string of the most coveted honors on the campus, the vote of her class that she is the best all round and her unexcelled scholastic record speaks louder than a volume of high-flown language. Every organization of which she has been a member has been elevated to a higher plane of service. Mae, whatever you do, we believe you will succeed.

BENNIE WAGNER, B.S.
SPARTA, N. C.

Science and Mathematics

"Work is a remedy for most evils."

Bennie came to us this year from N. C. State. He has meant much to our class. He is faithful to his duties, and always does the right thing at the right time. Here's to your success, Bennie!



MARY LOU WARD, B.S.
KFNANSVILLE, N. C.

Grammar Grade Education

E. C. S. T. C. (1, 2); Farmville (3).

"Sail on, Oh Ship of Time."

Mary Lou came to join our class of '32 in her senior year. We were mighty glad to have her for she has made some of our "would have been" dull hours gay. She is a good student but she never slights the opposite sex for studies.

MARY WELLBORN, B.S.
STONY FORK, N. C.

Primary Education

"Happiness seems made to be shared."

Mary is quiet. In fact she is so still that one almost forgets that she's around. Yet A. S. T. C. will not forget her. She has shown by her record that she can do what is expected of her. We feel that her success is assured.

LINDSEY WATERS, B.S.
RUTHERFORDTON, N. C.

Physical Education and Science

Rankin-Wilson Literary Society (1, 2, 3, 4), Chaplain (3), Secretary (3), Censor (2), Critic (1); Rutherford County Club (1, 2, 3), Vice-President (2), President (3); B. S. U. Council (2, 3, 4), Treasurer (3); S. S. Representative (4); President of Student S. S. Class (4); U. J. Association (3, 4), Vice-President (3), President (4).

"My opinion is my guide."

Best things always come in small packages. It is true that Lindsey is small of stature, but he is big of heart and mind. He enters wholeheartedly into everything he undertakes and we have never yet seen him fail. We wish for you the same success in life.

G. D. WILSON, B.S.
BAKERSVILLE, N. C.

Physical Education and Science

Mars Hill College (1, 2); Temis Club (3); Appalaehian Literary Society (3, 4).

"The words of the wise are heard in quiet."

G. D. comes to us from Mars Hill Junior College. We have found him a good student, a jolly companion, who is endowed with qualities of persistence, willingness, and intelligence. The class wishes for him a success such as his superiority deserves.



RUBY WINKLER, B.S.
BOONE, N. C.

Primary Education

Glee Club (3, 4), Secretary (4); Assistant Librarian (3, 4).

"Women are meant to be loved and not understood."

"Winks?" Oh yes, she is a sure cure for the blues, for her supply of jokes and original witticisms seem never to be exhausted. She is a true friend and can ever be relied upon. She is attractive and possesses a magnetic personality which has been proven. Her voice has thrilled many, and we would not be surprised any time to hear the announcer say, "Our next number will be a solo by the world's best loved artist, Miss Ruby Winkler."

CONRAD YORK, B.S.
OLIN, N. C.

Science and Mathematics

Appalachian Literary Society (3, 4), Vice-President (3); State Intercollegiate Orator (3); Glee Club (2, 3, 4).

"Stand up for the right. A square deal will always win."

Conrad has high ideals and ambitions which are built on a solid foundation. He has few troubles because of his upright attitude and the way he walks himself. He has many friends and is a friend to many. If we are not mistaken, Conrad has acquired a "help meet" as well as a degree while here.

FOREST L. YOUNT, B.S.
VALE, N. C.

Science and Mathematics

Lenoir-Rhyne College (1); Appalachian Literary Society (2, 3, 4); Lincoln County Club (2); Y. M. C. A. (3).

"Beauty is as beauty does."

To Forest, the Senior Class extends the heartiest congratulations. For two years he didn't let Cupid enter his heart. Now things are different. He is now the first man to enter White Hall on Sunday and the last one to leave. He is a hard worker and has shown an interest in all campus activities.

JOSEPH ROBERSON
CRESTON, N. C.

Science and Mathematics

Joseph is a quiet, studious fellow whom we like very much. He has, however, forsaken us for the field of matrimony. Best luck, Joe!

RHODODENDRON



*Julia Idol
prettiest*



*Herman Baucom
Handsomest*



*Laurie Stewart
Most Talented*



*Reece Harris
Most popular*



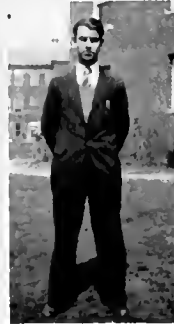
*Kathleen Brooks
Most popular*



*Charles McNeil
Wittiest*



*Esther Stewart
Most Intellectual*



*Harold Calkoun
Most Original*

SENIOR SUPERLATIVES



RHODODENDRON



*Dessa Mae Triplett
Best-all-round*



*Claude Pyatte
Best-all-round*



*Sam McKinney
Best Athlete*



*Pearl Smith
Best Sport*



*Harry Hollyburton
Best Sport*



*Josephine Abernathy
Most Attractive*



*Oswald Hooper
Friendliest*

SENIOR SUPERLATIVES

Page Fifty-one



Alma Mater

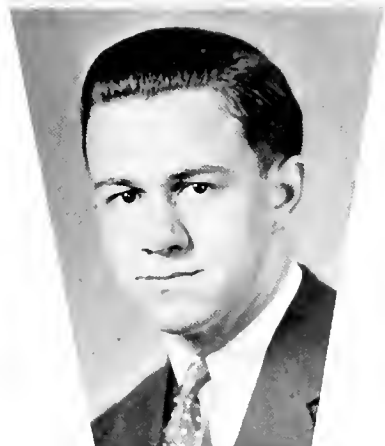
Cherished vision of the Southland,
Alma Mater in the hills;
Thou dost point our minds to wisdom
Till the truth our spirit thrills.

CHORUS

Teachers College, Appalachia,
Of our hearts the joy and pride,
Lead us ever, lead us onward,
Vanguard of the heroes' side.

Alma Mater, Patron College,
Happy memories 'round thee cling;
Friendships dear, and games of laughter
All their need of treasure bring.





JULIAN YODER
President

JUNIORS



Junior Class

OFFICERS

DELLA PAWLAS
 VIRGINIA HUNT
 MALCOLM LAXTON
 MR. A. R. SMITH

Vice-President
Secretary
Treasurer
Sponsor

COLORS: *Green and White*

FLOWER: *White Rose*

MOTTO: *"They conquer who believe they can."*

History

We have long dreamed of ourselves as Juniors, and of that day when we would pass the last mile post of a Junior's career and stand on the threshold of Seniorhood. After many trials we are seeing our cherished dream come true. If there were ever a bunch of "greenies," it was the Freshman Class of '29. In shells, like clams, we looked on—not daring to speak, as we were to be seen, not heard. But most green things grow and ripen. Why should not we? As Sophomores there was never any so wise, so discreet, and so experienced as we.

Now as Juniors there was never a prouder, more determined class. We have long since found that the fairy god mother which brings dreams to pass, wears the disguise of work, and so we pledge ourselves to the task of making good upon the last mile of our journey.

—LOUISE MOORE.



RHODODENDRON

RAY ALEXANDER
MT. ULLA, N. C.

Bashful; studious; good all-round; I know—that's the thing that counts.

VANN AUSTIN
NEW LONDON, N. C.

"You knows Mandy"; yes sar; boss; laugh; goals; boys? no!

GEORGE BAKER
CRESTON, N. C.

Lees McRae; tall; serious; industrious; our ideal.

TRACY BALLEW
DEEP GAP, N. C.

Debater; girls; giggles; curls; government control of industry.

HESSIE BENNETT
JOY, N. C.

Quiet; reserved; dignified; neat; patient; willing; kind.

MARY GRACE BRADFORD
CONCORD, N. C.

Men; no study; fun; pals and cronies; generous; third floor.

MYRTLE BRANDON
FORT MILLS, S. C.

Instructor; smiles; brown dresses; an excellent housekeeper.

LOUVELLA BRICKHOUSE
COLUMBIA, N. C.

Kentucky; red; "I don't know why—I just do"; song bird.

KATE BRIGGS
MARS HILL, N. C.

"Y" office; Mars Hill; jolly; pleasant; Pollyanna special.

D. E. BROOME
BOONE, N. C.

Summer school; ladies' man; barber shop; cat—mew, mew.

DELARAH BUCKNER
MARS HILL, N. C.

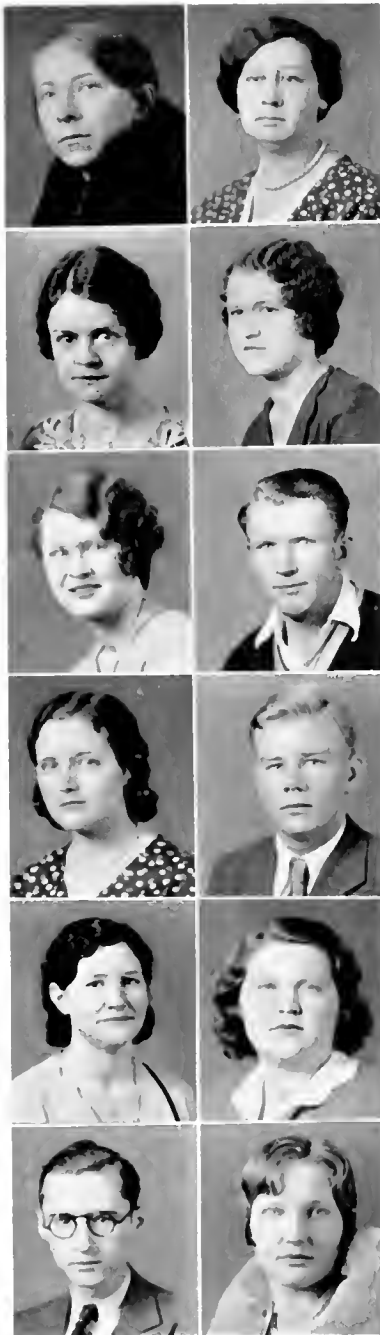
Friendly; kind; loveable; studious; White Hall

ROBERTA BYRD
BLACK MOUNTAIN, N. C.

Quiet, quieter, quietest; seen, not heard; a law observer.



RHODODENDRON



LAUNA CARENDER
MAINY, N. C.

Pickles, two toned pajamas: cough drops, seam stress, corner cutter.

ANNIE CAUDLE
YADKINVILLE, N. C.

Geography two, methods: permanent waves, dignified, silence.

RUTH COFFEY
BOONE, N. C.

Violins, melodies: orchestras: A's: day dreams.

SARAH COOPER
CLEMMONS, N. C.

Forks and knives: pots and pans, operas, leader, Vernician.

IRENE DAVIS
BOONE, N. C.

Up street, lipstick, dates, moonlights, parties: friends

ROBERT DAVIS
BOONE, N. C.

Our Bob: second hand books: cash register: peanuts and chewing gum.

CLEO DEAN
COLFAX, N. C.

Biology lab, natural curls: regular: pretty: so so

ADRIN DOTSER
HICKORY, N. C.

"I'm wide awake": Mr. Williams, good sport, a friend in need

ALICE EDWARDS
COLUMBUS, N. C.

Petite: plenty of fun: work while you work, but play often.

THEO EDWARDS
GIBSONVILLE, N. C.

Jolly: heavyweight: happy-go lucky, one of our best girls

JOSEPH ELLER
CLIFTON, N. C.

Quiet, bashful, studious, cat ology, you can--not me

NETI ENGLISH
MARS HILL, N. C.

Noisy? I should say: serious? never, never, admired? by all.



RHODODENDRON

RUBY FARTHING
BOONE, N. C.

Game warden; "Have you seen Inez?"; "Give me food and fun."

BERNICE FIELDS
SEVEN SPRINGS, N. C.

"I have a man in every port"; rare smiles; easy-going; Collins.

C. M. FOREST
FRANCISCO, N. C.

A sheik; traveler; handsome; zoölogy enthusiast; junior asset.

BONNIE FORTUNE
BOSTIC, N. C.

Faithful; good-natured; man-hater; spot-light.

J. P. FOX
NEW HOPE, N. C.

Small of statue, big of mind, easily heard; every man's rival.

JAMES GLOVER
BAILEY, N. C.

Married; argue; good grades; taxi driver; letter-man.

HERBET GOINES
VALE, N. C.

Will Rogers the second; an athlete; commander-in-chief of Justice, Jr.

DORE GOODE
CROUSE, N. C.

Spontaneous laughter, clever; floor lamp; Methodist choir.

HADRICK GRAGG
BOONE, N. C.

Business man; courteous; Fords and ladies; Carolina Stores.

LOIS GEORGE
LENOIR, N. C.

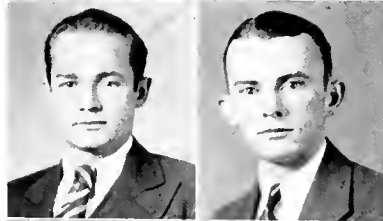
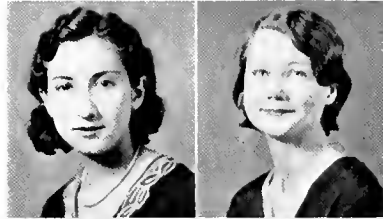
A good chef; sensible; blushes; Freddie; Sunday dinners.

EULA MAE GAMBILL
SPARTA, N. C.

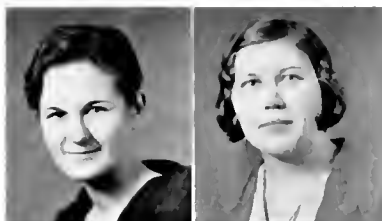
Loyal; precise; ball games; friendly; slang? *no*.

RUBY GOLEY
WILMINGTON, N. C.

Independent; sarcastic; self-reliant; up-town.



19 RHODODENDRON 32



IRENE GROGAN
WINSTON-SALEM, N. C.

"Cille." not me: "I found a pretty poem."

VELMA HAMRICK
SHELBY, N. C.

Teacher training; chicken pie; cool drinks; Palmer.



LOUISE HAIGLER
UNIONVILLE, N. C.

Reserved seat; blondes; moonlights; serious; no fooling.

HERMAN HEAFNER
LINCOLNTON, N. C.

"Any laundry today?"; find Winnie; a mess; little but loud.



WINNIE HEAFNER
LINCOLNTON, N. C.

Our saleswoman; executive ability; sweet; witty.

INEZ HENDERSON
SHULLS MILLS, N. C.

Cosmetics; dressed; Ruby; accomplished; rates.



MABEL HOLDEN
YADKINVILLE, N. C.

At home; peanuts; apples; somber; steady.

LESTER HOLLER
NEW HOPE, N. C.

Ladies' man? Naw, I have two eyes of my own; capable.



RALPH HORNEY
MEMORY, N. C.

Good student; geography; girls?—just one.

B. H. HORTON, JR.
SHELBY, N. C.

Spick and span; just so; shined shoes; a fine fellow.



MITIE HUSKINS
BURNSVILLE, N. C.

Books, more books; and books always; good grades.

RAY KANNAMACHER
MARSHALL, ILL.

Pigskins; a go-getter; friends; not so bad.



RHODODENDRON

PEARL LACKEY
KINGS CREEK, N. C.

Never worry; "among my souvenirs"; blushes; kind.

RUSSEL LACKEY
KINGS CREEK, N. C.

Speedy; the end of the rainbow; my girl.

MRS. CLARA LEONHARDT
CROUSE, N. C.

Hearts; husband; to love and be loved.

HUBERT LEONHARDT
CROUSE, N. C.

Good husband; hen-pecked? Hardly.

CARRIE MAE LOWE
UNION MILLS, N. C.

"Edna"; just a letter; get by; now; practicing teaching? Yes.

KELLY MILES
MILES, N. C.

Prof; physics; "Do we draw the odor too?"; intellectual.

BLAINE MILLER
BOONE, N. C.

The climber; faithful; a girl, the girl, just one girl.

B. F. McCOWIN
ROARING GAP, N. C.

Answer to a maiden's prayer; social army commander.

FREDDIE MacDONALD
POTSDAM, N. Y.

New Yorker; tackle; snappy boat; a defense line.

MILDRED McDONNOLD
WHITE OAKS, N. C.

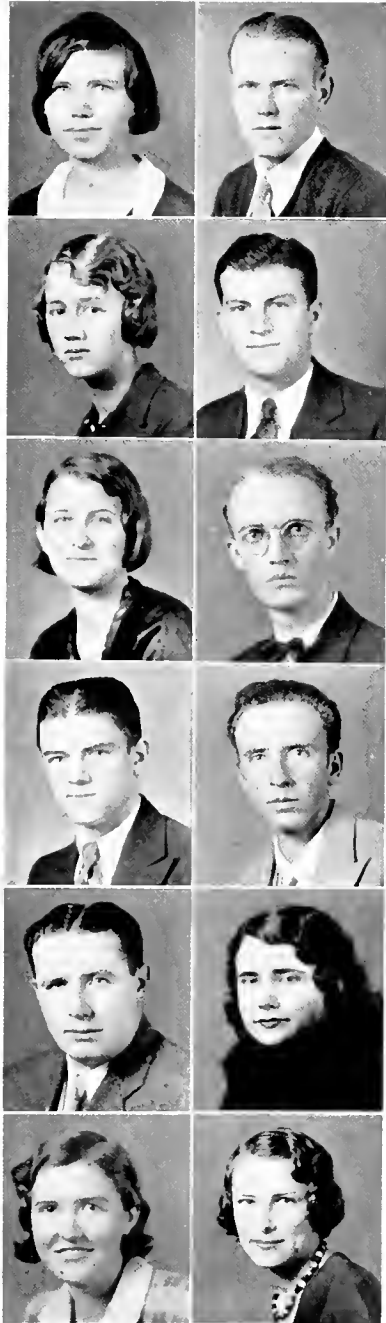
"I can't debate tomorrow"; debate material; Loyd.

LOUISE MOORE
PATTERSON, N. C.

D. school; Helen and I; it can be done; let's eat.

KATE McINTYRE
WINGATE, N. C.

"Goofy"; "When you marry your ideal; enie, menie, minie, mo!



RHODODENDRON



ANNE MORROW
NEBO, N. C.

Freshman boys; lipstick; eyes: once upon a time.



PAUL MOSTELLER
VALE, N. C.

Pete: red headed girl preferred.



PAULINE MOSTELLER
VALE, N. C.

Peas: plenty to eat, please; Jo, Jo; I didn't learn.



RUTH MULL
THOMASVILLE, N. C.

Oh, how favored; that man; Wake Forest; frank; likable; neat.



LOUISE PATTON
MARION, N. C.

Blondie; Y W A : "Now at Mars Hill"; I'm negative.



KERMIT PENDLETON
VALE, N. C.

Jokes; just tales; math shark; Lincoln county sheik.



EDITH PRESTON
TRYON, N. C.

Blow in; physical education; prof; basketball star; gloves.



C. M. RADER
COLLETTSVILLE, N. C.

Handsome; sheriff; better late than never; hot dog stands.

MARVIN ROUSE
BOONE, N. C.

Faithful; loyal; good speaker; hard worker; ambitious.

BEN ROSS
BURLINGTON, N. C.

"Ha"; date manager; popular; agreeable; studious.

ZELMA RICHARDSON
STRATFORD, N. C.

Rings; hearts not hands; always fixed, prim; cosmetics.

BESSIE RUDISELL
NEWTON, N. C.

Harp; dazzling teeth; pep; nutrition; Miss Dale's test.



RHODODENDRON

ELVA SHERMER
YADKINVILLE, N. C.

Music store; halls; man-hater; derby; influential.

HELEN SCROGGS
STATESVILLE, N. C.

In love; loud; good housekeeper; speedy; sure of self.

ETHEL SHOOK
MEMORY, N. C.

Dietitian; Henry; suckers; the meat market; "I tell you!"

ELIZABETH SPEERS
BEAVER CREEK, N. C.

Make a chance; home; kitchen; fool 'em; talented.

WINNIE STROUP
CHARLOTTE, N. C.

Cottage; conscientious; progressive; serious.

JOHNSON STEELMAN
HAMPTONVILLE, N. C.

Candidate for the hen-pecked clan; in training for household service.

DELLA TIPTON
BURNSVILLE, N. C.

Awful grub; Daddy; home; "I object"; "I see it this way."

DONALD THOMPSON
LAUREL SPRINGS, N. C.

"Rah! Rah!"; batter; blondes and brunettes, please.

WILHELMINA TRIPLETT
PURLEAR, N. C.

Life saver; sugar reports; "I won't pass"; "That's good for me."

NELL TRIVETTE
BOONE, N. C.

Music; Glee Club; football heroes; Illinois; Christmas diamonds.



RHODODENDRON



HAZEL VANNOY
WEST JEFFERSON, N. C.

Fords; tall men; poetry in the moonlight;
dream house; US.



B. L. WALKER
CAESAR, N. C.

Red; the squad; Catawba terror; brass bands,
and a drum.



KATHERINE WARLICK
LINCOLN, N. C.

"Y" store; Webster and "Haynes"; lovely eyes;
the brains.



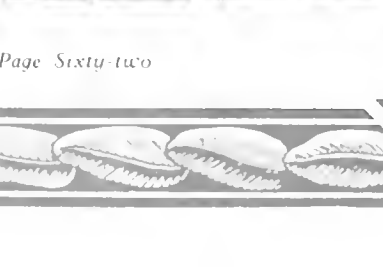
LOIS WHITESIDES
WEAVERVILLE, N. C.

Flutter-flutter; Jonnie said; "Yell, girls, yell."



AYERIS WILLIS
STOCKSVILLE, N. C.

What price? shy; pie bed; don't tell Mama
Rhea.



EDITH WICKER
GUILFORD, N. C.

Conflicting interests; divided attention; neat;
petite; cute.



ETHEL YOUNT
LINCOLN, N. C.

Eck; peanuts; speaks little, says much; a real
friend.

MYRTLE HARMON
BEECH CREEK, N. C.

Congenial; pleasant; dainty; ruffles; waves;
comforting.

OSCAR HOUCK
TODD, N. C.

"Betty Lois"; Opossum; the family man; A-1
student.

CLINT BAIRD
VALLE CRUCIS, N. C.

Notebooks; ex-farmer; ladies' slave; mischief
leader; just Clint.





CLAUDE SMITH
President

SOPHOMORES



Sophomore Class

OFFICERS

LUCILLE HARRIS
 MARY DAILY LITTLE
 LUCILLE FISHER
 I. G. GREER

Vice-President
Secretary
Treasurer
Sponsor

COLORS: *Blue and White*

FLOWER: *Carnation*

MOTTO: *"Depart to serve."*

Class Poem

For two years, comrades, we have trod
 Dame Learning's flinty trail;
 For two years Appalachian sod
 Has urged us not to fail;
 For two years friendships we have made
 And hard now seems their parting—
 But Education is not stayed,
 And Fortune slow in starting.

So to our Alma Mater we
 Bid one last long adieu;
 High may her standards ever be
 For loyal hearts and true.
 And to those friends we leave behind,
 Friendship is not broken,
 For treasured most are friends in mind,
 And sweetest, thoughts unspoken.

So as we go, eager, strong,
 Classmates and comrades ever,
 May college ideals linger long,
 May memories sever never,
 And may our Alma Mater be
 The same bright beaming star
 That she has been for us; may we
 Her memory never mar.

So goodbye, classmates, for a while
 We part, and sad the parting;
 But as we go, let's smile a smile,
 For Life is only starting.
 And let's resolve to make our mark
 In whatever we do,
 That Appalachian, proud, will bark
 To us of thirty-two.

—LEROY SOSSAMON
 (Written for Senior Normal Students)



RHODODENDRON



SOPHOMORES

First Row: A. AARON, H. ABERNATHY, H. ASHLEY, E. AUSTIN, L. AUSTIN, M. BALL.

Second Row: E. BALLARD, H. BARBER, B. BAKER, J. BARNETT, A. BEAM, K. BEAM.

Third Row: J. BESS, D. BIGGERS, E. BINGHAM, M. I. BINGHAM, B. BINGHAM, P. BINGHAM.

Fourth Row: E. BLACKWELL, G. BLANTON, P. BLEVINS, A. BOGER, B. BOULDIN, H. BOWMAN.

Fifth Row: R. BOWMAN, L. BOWMAN, F. BRADY, R. BRAY, H. BRANDON, F. BRASWELL.



RHODODENDRON



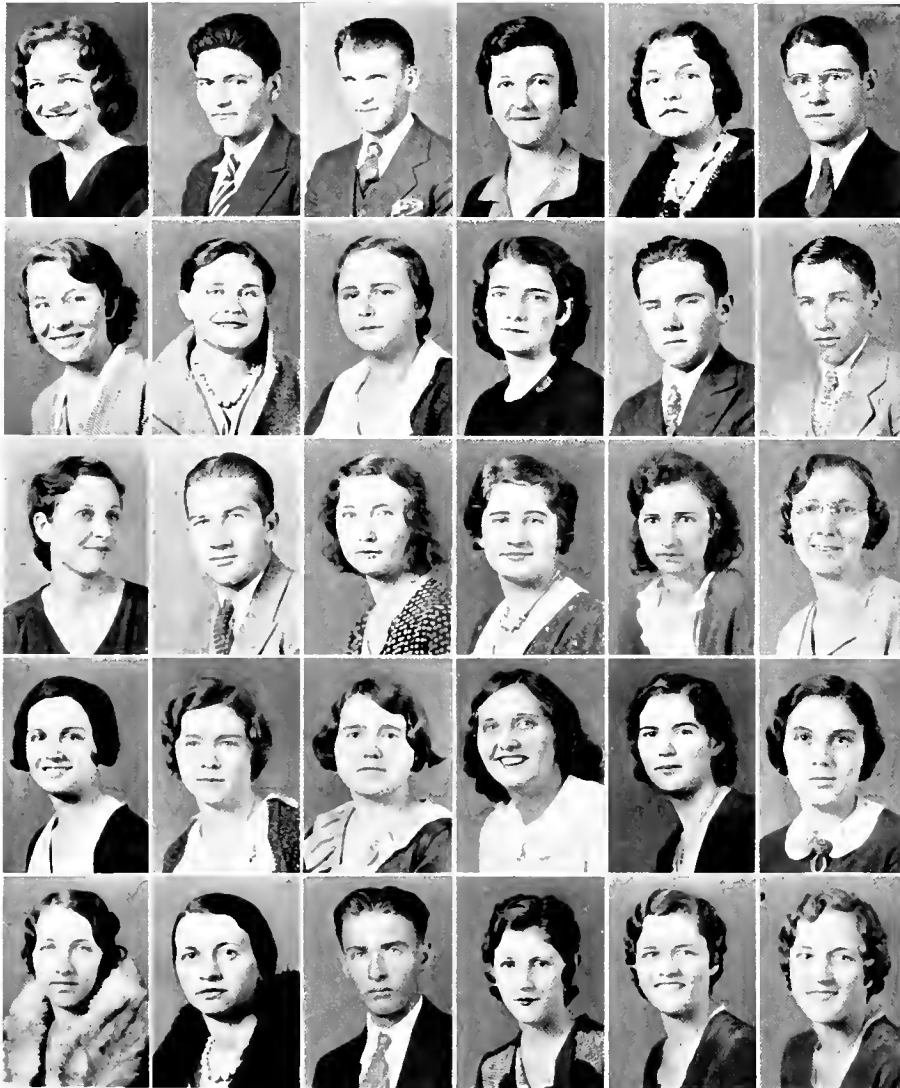
SOPHOMORES

First Row: G. BRIGGS, C. BROCK, E. BROWN, O. BROWN, V. BROWN, F. BRINTLI
Second Row: I. BUCKNER, L. BUMGARDNER, I. BUSIL, M. I. BUINER, N. CALDWELL, M. CAMPBELL
Third Row: M. CARSON, M. CARTER, C. CARPENTER, S. CASSEVINS, R. CHENAULT, B. CHILDERS
Fourth Row: C. BEAR, N. COLF, C. COLLINS, H. COLLINS, I. COMBS, C. COOKI
Fifth Row: S. COON, D. COWLES, M. COWLES, I. COX, M. CRISP, I. CROUSE

Page Sixty-six



RHODODENDRON



SOPHOMORES

First Row: J. CROUSE, E. DOUGHERTY, J. DAVIS, L. DAVIS, LUCILLE DAVIS, M. DAVIS,
Second Row: R. DELAPP, R. DICKERSON, M. F. DILLINGER, O. DIXON, H. DOBBIN, H.
 DOTSON
Third Row: H. DRUM, E. DULA, V. DUNCAN, R. EDWARDS, I. ERVIN, S. EUDY,
Fourth Row: F. FARTHING, K. FISHER, G. FLEMMING, M. FRANKLIN, L. M. FRELMAN,
 M. FRICK,
Fifth Row: MRS. O. FURR, MRS. GENTRY, P. GOODMAN, M. GIBBS, E. GIDNEY, ELSIE
 GIDNEY.

Page Sixty-seven



RHODODENDRON



SOPHOMORES

First Row: W. GRAHAM, P. GREER, P. GREGORY, I. GREENE, I. GRIGG, H. GRAYBEAL.

Second Row: S. GROSE, M. GROVER, E. HACKNEY, J. HAGMAN, E. HAHN, T. HARDIN.

Third Row: S. HARRIS, I. HARRIS, M. HARRIS, E. HARRELL, N. HARRELL, A. HAHN.

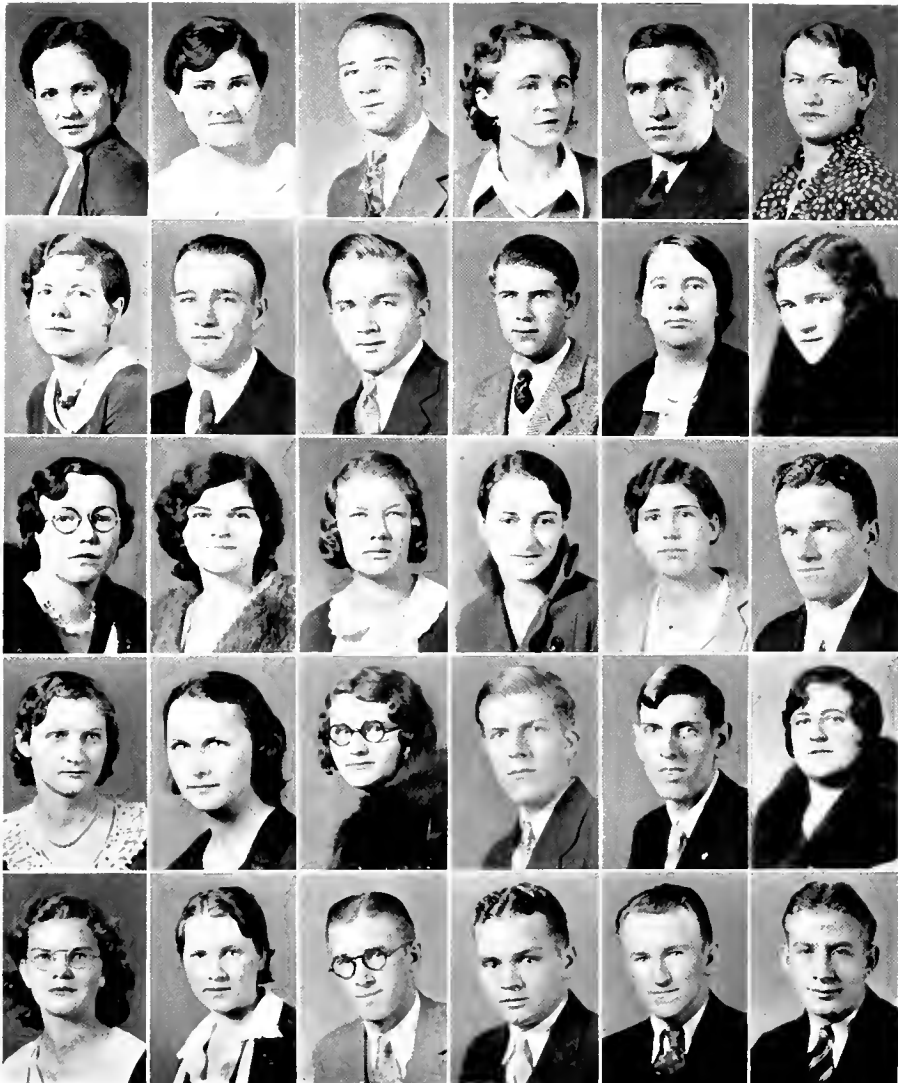
Fourth Row: E. HAYWORTH, ETTRA HELMS, E. HIGG, E. HELMS, I. HENSLEY, W. HERMAN.

Fifth Row: J. HERRING, M. HICKS, I. HIGGINBOTHAM, L. HOLLAND, V. HOLLAND, M. HOLLER.

Page Sixty-eight



RHODODENDRON



SOPHOMORES

First Row: F. HOOKS, P. HOOVER, C. HOUSER, E. HOUSER, P. HOUSER, S. HOYLE
Second Row: E. HUGHES, R. JARVIS, G. JOHNSON, N. JOHNSON, S. JOHNSON, J. JONAS.
Third Row: L. JOYNER, E. KING, V. KING, L. KLUTZ, M. KLUTZ, J. LACKEY.
Fourth Row: V. LANE, R. LAUGHRIDGE, F. LATHAM, JAMES LENTZ, JACOB LENTZ, L. LEWIS.
Fifth Row: V. LINDSEY, N. LINGLE, C. LOMINAC, B. LOY, FLEET MADISON, P. MAHONEY.



RHODODENDRON



SOPHOMORES

First Row: R. MARSHALL, P. MAST, I. MAST, D. MAST, I. MATKINS, C. McBRAYER.
Second Row: B. McCARTER, Z. McCURRY, H. McCALL, H. McDADE, E. McDONALD, M. Mc GIMPSEY.
Third Row: P. MCGIFFE, M. McSWAIN, W. MICHAEL, B. MILLER, I. MILLER, M. MILLER.
Fourth Row: B. MITCHELL, F. MONTAGUE, MRS. J. MOORE, W. MOORE, W. MORGAN, J. MYERS.
Fifth Row: W. NEIL, G. NICHOLSON, B. NORRIS, W. NORRIS, D. OSBORNE, A. PARDUE.

Page Seventy



RHODODENDRON



SOPHOMORES

First Row: E. PATTERSON, G. PERRY, R. PHILBECK, C. PITTMAN, E. PONDENTER, I. PORTER.
Second Row: P. PRITCHARD, O. PRITCHARD, R. PROFFIT, J. PURSLEY, R. PURSLEY, C. RANKIN.
Third Row: W. REAVIS, T. REDMOND, S. REVIERE, J. ROBERSON, D. RITCHIE, S. RITCHIE.
Fourth Row: P. RODGERS, E. RUMMAGE, M. B. SCRUGGS, H. SHIDAL, K. SHORE, J. SIMMS.
Fifth Row: O. SINGLETON, L. SLOOP, M. SMITH, L. SOSSOMAN, A. SPENCER, L. SPRATT.
Sixth Row: S. STACY, L. STEELE, L. SWEATT, B. TAYLOR, D. PATTERSON.

Page Seventy-one



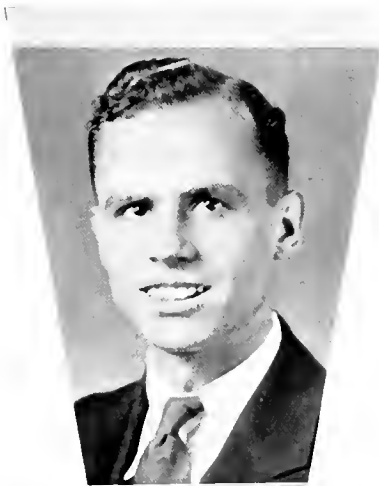
RHODODENDRON



SOPHOMORS

First Row: V. TAYLOR, I. THAYER, E. THOMAS, I. TILFY, C. TRIPLETT, R. I. TROTT.
Second Row: S. TROTT, G. VANCE, T. VICKERY, R. WADFELL, E. WAGONER, I. WALKER.
Third Row: N. WALKER, M. WARD, E. WARDEN, Z. WARDEN, MRS. WEAVER, M. WEATHERSBY.
Fourth Row: J. WELBORN, R. WESTENBERG, I. WHITESIDES, M. WILKINS, E. WILLIAMS, L. WILLIAMSON.
Fifth Row: I. WILLIAMS, D. WILMOTH, I. WORTMAN, I. WYANTI, L. WYLIE, R. YELTON.
Sixth Row: W. YORK, P. YOUNG, M. YOUNG, L. ZIMMERMAN, P. GREENE.





JOHNNIE GREENE
President

FRESHMEN



Freshman Class

OFFICERS

GEORGE MOORE
GLADYS QUINN
EVERETT TOMS
MR. VAN HINSON

Vice-President
Secretary
Treasurer
Sponsor

MOTTO: *"Climb though the rocks be rugged,
For success lies at the gates of labor."*

COLORS: *Rainbow Colors*

FLOWER: *Sweet Pea*

History

The Freshman class, the proverbial class of "green-horn" boys and hero-worshipping girls, has this year created a new epoch in the history of Appalachian State Teachers College. Our class has the greatest number of students ever enrolled in any one class in this college. We boast of (the Administration say the alarming) number of four hundred and nineteen. Not only do we excel in actual numbers, but in some other things as well. We are well represented in the fields of athletics and student activities in general. Some of the more critical upper classmen who freely but at the same time modestly acknowledge their superiority and who derive pleasure in lording it over us, have attempted to attribute our outstanding position to the strength of numbers alone. Although we make no claim to being a hot-bed of genius, we are convinced that the relation between our position and their's is, to say the least, fairly discernible.

—MARY WILLIAMS.



RHODODENDRON



FRESHMEN

First Row: ADAMS, ALEXANDER, ANGEL, ANTONAKAS, AUSTIN, BAKER, J. BALLEW
Second Row: W. BALLEW, C. BANNER, J. BANNER, BARNARD, BARRINGER, BARNES, BASSINGER.
Third Row: BEAM, BECK, BECTON, BERRY, BESS, BIGGERS, BILLINGS
Fourth Row: BLACKWELL, BOLAND, BOESSER, BOST, BRINTLE, BRINKLEY, BROOKSHIRE.
Fifth Row: EARL BROWN, E. BROWN, M. A. BROWN, I. BROWN, R. BROWN, BOWER, G. BUMGARNER.



RHODODENDRON



FRESHMEN

First Row R. BUMGARDNER BUNCH BURCHAM CARENDER CARNATZER CARPENTER
J. CARSON

Second Row: N. CARSON, CASEY M. CAUDLE, E. CAUDLE, CHANDLER, ELIZABETH CLARK,
F. CLARK.

Third Row: M. CLARK, P. CLARK, V. CLINE, CLONINGER, COCKBURN, CORNELIUS, COOKE.

Fourth Row: CORRELL, CRAWFORD, CROUCH, CUTHBERTSON, DEIDMAN, DEAN, DENNY.

Fifth Row: DICKSON, DOWDLE, DOLLINGER, DYER, LATRIDGE, EDMISTON, ELLIOTT.

Page Seventy-six



RHODODENDRON



FRESHMEN

First Row: EPLEY, ESTES, EVANS, ERVIN, FARMER, L. G. FARTHING, L. FARTHING.
Second Row: J. FARTHING, R. FARTHING, FENDER, FITZGERALD, FLINT, FORD, FOX.
Third Row: FRITZ, FULCHER, GILLAM, GLENN, GRAYBEAL, I. GREENE, MRS. GREENE.
Fourth Row: R. GREENE, A. GREENE, GRIMES, GREYBEAL, HAHN, J. HALL, N. HALL.
Fifth Row: HALLYBURTON, HAMMONS, HANNA, C. HARMON, I. HARMON, M. HARMON, HARTSELL.

Page Seventy-seven



RHODODENDRON



FRESHMEN

First Row HAGAMAN, HEARNER, HICKMAN, HELSABECK, HINSIN, HINSON, HOBSON,
Second Row HODGES, HOLCOMB, C. B. HONEYCUTT, G. HONEYCUTT, C. HOUCK, J.
 HOUCK, I. HOUSER,
Third Row W. HOUSER, HOUSTON, HUBBARD, HULLINES, HUFFMAN, B. HUGHES, M.
 HUGHES,
Fourth Row INSCORE, ISSAC, JESSUP, JONES, C. JOHNSON, P. JOHNSON, JOINES,
Fifth Row KECK, KYLS, KESSLER, KING, KNOX, LACKY, J. LAWSON.

Page Seventy eight



RHODODENDRON



FRESHMEN

First Row: R. LAWSON, LESTER, N. LEDFORD, E. LEDFORD, F. LEWIS, G. LEWIS, LEE.

Second Row: LITTLE, P. LONG, R. LONG, LYONS, LOUIS, MACE, MABERY.

Third Row: MASON, MANN, MACGUIRE, MCARTHER, MCCONNELL, MCCURRY, M. McDONALD.

Fourth Row: S. McDONALD, MCGILL, MCGINNIS, MCKENZIE, MCKINNEY, MCKNEILL, MCLEAN.

Fifth Row: MCLURD, MELVIN, E. MILLER, M. MILLER, P. MILLER, H. MILLER, C. MITCHELL.

Page Seventy-nine



RHODODENDRON



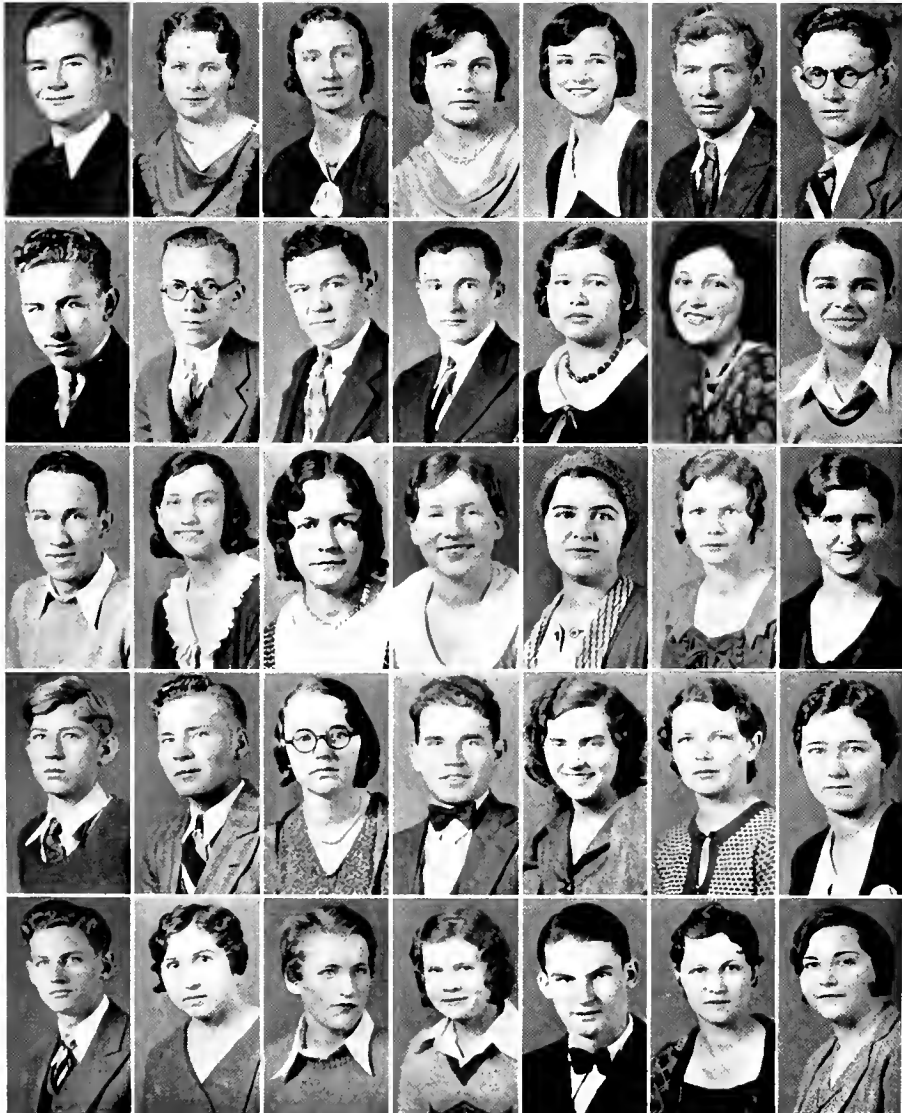
FRESHMEN

First Row: G. MITCHELL, MICHAEL, J. MOORE, M. MOORE, LAYE MORGAN, E. MORGAN,
 H. MORGAN.
Second Row: MORFIZ, MORRISON, MORTIMER, MULL, NESBIT, NICHOLS, D. NORRIS.
Third Row: M. NORRIS, OAKES, OFILIER, OLIVER, O'NEAL, OSBORNE, PARKER.
Fourth Row: PARKS, PAYNE, PARSON, G. PERRY, R. PERRY, D. PELL, N. PELL.
Fifth Row: F. PELL, PERKINS, R. PEPPER, I. PEPPER, M. PHILLIPS, P. PHILLIPS, R.
 PHILLIPS.

Page Eighty



RHODODENDRON



FRESHMEN

First Row: C. PHILLIPS, PRICE, PLOTT, POTTS, POOLE, RAY, A. RAMEY,

Second Row: W. RAMEY, RANKIN, D. C. REDMOND, K. REDMOND, R. REDMOND, RAWLES,

REEVES.

Third Row: C. RHODES, N. RHODES, RINER, MRS. E. HENSON, ROBERSON, ROTHROCK,

RUDISELL.

Fourth Row: SAWYER, SHAW, SESSOMS, SILVER, SHEETS, SCOTT, SHARP.

Fifth Row: SHOEMAKER, SIGMOND, SLEDGE, EDITH SMITH, E. SMITH, M. SMITH, R. SMITH

Page Eighty-one



RHODODENDRON



FRESHMEN

First Row: S. SMITH, SMOAK, SNOW.

Second Row: SOUTHERN, SPRATT, STALEY, C. STEWART, D. STEWART, STELLI, SWAN.

Third Row: SWIS-GOOD, SULLIVAN, A. TAYLOR, J. TAYLOR, R. TAYLOR, THOMAS, C. THOMPSON.

Fourth Row: M. THOMPSON, TIMMIE, TOLLIVER, VANNOY, VENABLE, VONCANON, WAGONER.

Fifth Row: WAKEFIELD, R. WALKER, E. WALKER, B. WARD.

Page Eighty-two



RHODODENDRON



FRESHMEN

First Row: WARDEN, M. WARD, J. WARD.

Second Row: R. WARLICK, J. WARLICK, WEISNER, WEAVER, WEBB, WHEELER, M. WHITE.

Third Row: L. WHITE, A. WHITE, WHITESIDES, WHITNER, WILKINSON, WILKINS, M. WILLIAMS.

Fourth Row: V. WILLIAMS, WILSON, J. WOOD, S. WOOD, WOODRING, WOODIE, WORTMAN.

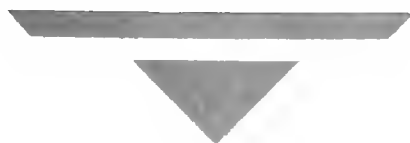
Fifth Row: MRS. WRIGHT, YORK, G. YOUNG, O. YOUNG.







ACTIVITIES





ORGANIZATIONS



Rhododendron Staff

DESSA MAE TRIPLETT
REECE HARRIS

Editor-in-Chief
Business Manager

EDITORIAL STAFF

OSWALD HOOPER
LAURIE STEWART
KATHLEEN BROOKS
CLAUDE PYATTE

Assistant Editor
Art Editor
Assistant Art Editor
Circulation Manager

BUSINESS STAFF

LUCILLE MILLER
HARRY HALLYBURTON
YATES HAVNEAR
STANLEY LIVINGSTON

Assistant Business Manager
Treasurer
Advertising Manager
Assistant Advertising Manager

ADVISORY COMMITTEE

V. C. HOWELL

H. R. EGGERS

A. M. NORTON



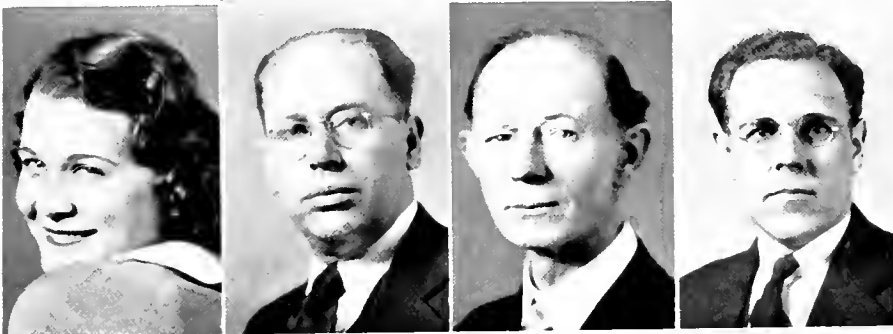
RHODODENDRON



HOOPER MILLER HALLYBURTON



HEAVNER STEWART DYATTE LIVINGSTON



BROOKS HOWELL NORTON EGGERS

RHODODENDRON STAFF

Page Eighty nine



RHODODENDRON



Dynician Literary Society

MOTTO: "What we are to be we are now becoming."

COLORS: *Purple and White*

FLOWER: *Purple Iris*

Sponsor: MISS VIRGINIA WARY

All hail, Dynician Society,
We sing our song of praise.
May we bring honor to your name;
Your banner all our days.
To you we will be loyal,
And ever staunch and true,
And give our best endeavors,
Dynician, dear, to you.

Dear Appalachia of the hills,
We lift our hearts to thee,
In love and reverence ever,
When we must severed be,
Dynician, still the tide of love
That binds our hearts so true,
Will serve thee through the coming years,
Dynician, we love you.

Page Ninety



RHODODENDRON

Dynician Literary Society

OFFICERS

<i>First Term</i>	<i>Second Term</i>	<i>Third Term</i>	
CLYDE MAE GOODMAN	VIRGINIA HUNT	MAVIS FRICK	<i>President</i>
ILA MATKINS	KATE FISHER	JOSEPHINE ABERNATHY	<i>Vice-President</i>
JOSEPHINE ABERNATHY	LAWRAY ZIMMERMAN	CARRIE MCBRAYER	<i>Secretary</i>
WINNIE HEAFNER	ALYCE AARON	KATHERINE WARLICK	<i>Treasurer</i>

MEMBERS

JOSEPHINE ABERNATHY	VIRGINIA LANE
HELEN ABERNATHY	NAN LINGLE
ALYCE AARON	MRS. J. LEE LAVENDER
ALTONIA BEAM	ILA MATKINS
FRANCES BRADY	LUCILLE MILLER
RUBY BRAY	PAULINE MOSTELLER
EDNA BROWN	BLANCHE MCCARTER
GRACE BRADFORD	MARGARITTE MILLER
PAULINE BINGHAM	WILMA MICHAEL
EVELYN BINGHAM	CARRIE MCBRAYER
RUBY BOWER	MARTHA McDONALD
CLARA BANNER	MARGARET OSBORNE
BEULAH BOULDIN	RUTH PHILBECK
HELEN BESS	BEATRICE PEARSON
LOUISE BECK	EDITH PRESTON
HELEN BARNES	PAULINE PARKER
CHRISTINE CARPENTER	REBECCA PURSLEY
DEETTA CRAWFORD	MABEL PARKS
INEZ CROUSE	LEA PRICE
MARJORIE CARTER	BESSIE RUDISELL
ELIZABETH CLARK	MARY SMITH
REBECCA DICKERSON	LOUISE SPRATT
OELLIE DIXON	HAZEL SHIDAL
ROSA DELAPP	ANNE SPENCER
ELIZABETH DONALDSON	MAE BETH SCRUGGS
MARY FAYE DILLINGER	GRACE STEPHENSON
BEULAH EVAN	STELLA SCRONCE
MAVIS FRICKE	ETHEL SIGMON
KATE FISHER	ELIZABETH SWICEGOOD
MADA FRANKLIN	OPAL SCOTT
BERNICE FIELDS	KATE SHORE
GRACE FLEMING	WILHELMINA TRIPLETT
MABEL GIBBS	EDITH THOMAS
CLYDE GOODMAN	SUSIE WOOD
MARY EDNA GRIMES	LEONA WILLIAMSON
DORE GOODE	SADIE WILHELM
PEARL HOOVER	KATHERYN WARLICK
WINNIE HEAFNER	VERNA WILLIAMS
VIRGINIA HUNT	LOIS WEISNER
MABEL HUGHES	ALICE WHITE
BILLY HUGHES	EDNA WHEELER
LENA HEAFNER	MARY WILLIAMS
EVELEAN HOUSER	ETHEL YOUNT
JOSEPHINE JONAS	LOURAY ZIMMERMAN
LUCILLE LOHR	





Phila Retian Literary Society

MOTTO: "Give to the world the best you have
and the best will come back to you."

COLORS: *Green and White*

FLOWER: *White Rose*

Sponsor: MISS MAUDE CATHCART

MEMBERS

FAIR ANTONAKOS
RUTH BARRINGER
MARY BASSANGER
JEWEL BESS
DAISY BIGGERS
WILBY BIGGERS
HILDA BRANDON
CORNELIA BROCK
KATHLEEN BROOKS
MARY ALICE BROWN
MATTIE BUTNER
NELLIE COLE
MARGARET CLONINGER
TINCY COOKE
FRANKIE CORNATZER
LAURA CORNELIUS
WILLIE CORNELIUS
I GU COX
MARJORIE CRISP

JUNE CROUSE
LILLIAN DAVIS
LUCILLE DAVIS
CLO DEAN
LOUISE DEAN
WINNI-RED ESTES
SUE EUDY
LILLIE ERWIN
FRANCIS FARTHING
LAURA FARTHING
INEZ FINCHER
KATHLEEN FULCHER
LILLIE MAE FREEMAN
ELSIE GILLIAM
MABEL GROVER
SUSIE GROSE
ANNA HAHN
BESSIE HARTSELL
ALBERTA HALLYBURTON

EARSLEY HEGE
LOLA HENSLEY
MAMIE HOLLER
MABEL HOLDEN
FLORRIE HOOKS
LESLIE HOUSER
WILLIE HOUSER
MILDRED HUBBARD
RUTH HONEYCUTT
ETHEL JESSUP
PEARL JOHNSON
STELLA JOHNSON
LUNA KISTLER
MARY KLUTZ
CLARA WILLIS LEONHARD
MARY DAILY LITTLE
PEARL LONG
RUBY LONG
MARTHA MCGILL





Phila Retian Literary Society

Phila Retian. Phila Retian.
 You're the highest, you're the noblest;
 And we'll always cherish the memory
 Of the Phila Retian.

When we leave our A. S. T. C.,
 We'll remember, ne'er forget you;
 And we'll say we're a member
 Of the Phila Retian.

MEMBERS

MARY MCGINNIS
 DOT MCKENZIE
 BOBBIE MCNEIL
 MARY MCGUIRE
 MARY MCSWAIN
 ETHEL MONTAGUE
 FANNIE MORGAN
 HESSIE MORGAN
 EVELYN MORTIMER
 FRANCES MULL
 JAUNITA MYERS
 MARY NICHOLS
 THELMA OAKS
 ESSIE MAE OUTLAW
 DOROTHY PATTERSON
 ROSAMARY PEELER
 IRENE PEELER
 EVA PATTERSON
 JULIA PERSLEY
 MARY PHILLIPS

FAYE PLOTT
 ELAINE POOLE
 IDA PORTER
 EUGENIA POINDENTER
 DELLA PAWLAS
 RUTH PROFFIT
 GLADYS QUINN
 RUBY REDMOND
 BEULAH REEVES
 JEAN REEVES
 WILLIE REEVES
 GARNET ROBERSON
 AZALENE RUDISILL
 LORENE SLOOP
 CORRINE SMOAK
 RUBY SNOW
 ELIZABETH SPERES
 ESTHER STEWART
 LAURIE STEWART
 VELMA TAYLOR

CORNELIA THOMAS
 CLARICE THOMPSON
 JONNEY TAYLOR
 GRACE WAGONER
 IRENE WALKER
 NAOMI WALKER
 EDNA WARDEN
 ZENNA WARDEN
 MARGARET WEBB
 LOIS WHITE
 MARY LEE WHITE
 ELIZABETH WHITESIDE
 LOUISE WHITESIDE
 LOIS WHITESIDE
 INEZ WILKINS
 MARY WILKINS
 AYRIS WILLIS
 LENA WYLIE
 GERTRUDE YOUNG





Thalian Society

MOTTO: "Not on the heights, but climbing."

COLORS: Blue and Yellow

Sponsor: MR. I. G. GREER

MEMBERS

VAN AUSTIN
MOSELL-BALL
ETTA BALLARD
HELEN BARBER
NARVIA BEAN
LOUISE BERRY
EVIE SUE BLACKWELL
GEORGIA BLANTON
RUTH BOWLIN
RACHEL BOWMAN
HELEN BOWMAN
ETHEL BRINTLE
MINNIE BRINTLE
MILDRED BROOKSHIRE
LOUISE BUMGARDNER
PAULINE BUNCH
NANCY CALDWELL
MAREN CAMPBELL
LAUNA CARENDER

NANCY CARSON
MILDRED CARSON
LAVOLA CARENDER
EVELYN CAUDLE
ADA CLARK
VINNIE CLINE
LAURA COMBS
MARY CROUCH
GENEVA DEEDMAN
CLEO VE DIXON
THEO EDWARDS
LOUISE ELLIOTT
NELL ENGLISH
LUCILLE FISHER
ERNESTINE FLYNT
ELIZABETH FOX
ELIZABETH GIDNEY
ELSIE GIDNEY
LOUISE HAIGLER

VELVA HAMRICK
INEZ HARRIS
MABEL HARRIS
EDNA HARRILL
JEWELL HERRING
WILLIE HERMAN
EVELYN HELMS
MRS. FORD HINSON
EVELYN HUGHES
GLADYS KECK
ETHEL KING
GUSSIE BUMGARDNER
LOIS KLUTZ
FAIRE LATHAN
JAUNITA LAWSON
EMPRESS LEDFORD
SADIE LESTER
HAZEL LITTLE
CARRIE MAE LOWE





Thalian Society

May thy followers be as plants grown up in youth,
 Each maid a cornerstone polished in love and truth:
 A rainbow always to the storms of life,
 Each member never knowing hate or strife.

CHORUS

Dear Thalian Society, how we love you;
 For thou didst point us to paths of truth;
 We'll always love you truly,
 Dear Thalian Society, Master of Truth.

MEMBERS

HELEN McARTHUR
 HAZEL McDADE
 SALLY McDONALD
 MILDRED McDONALD
 MARGARET MCGIMSEY
 KATE McINTYRE
 EDITH MELVIN
 EVELYN MILLER
 BOBBIE MITCHELL
 LOUISE MOORE
 MARY FRANCES NESBIT
 DORIS OSBORNE

LOUISE PATTON
 GRACE PERRY
 HAZELINE POTTS
 NAN RHODES
 SARAH RITCHIE
 DOROTHY RITCHIE
 PAULINE ROGERS
 LOUISE ROTHROCK
 ELIZABETH RUMMAGE
 KATHERINE SIGMON
 PEARL SMITH
 EDITH SMITH

BLANCHE SMITH
 MARGARET SMITH
 SARAH STALEY
 LILLIAN STEELE
 DESSA MAE TRIPLETT
 NELL TRIVETTE
 RUTH IVEY TROTT
 ELIZABETH WAGNER
 ELIZABETH WALKER
 DOVIE WILMOTH
 ERCELLE WILLIAMS
 IRENE WYANT



RHODODENDRON



Vernician Literary Society

MOTTO: "We never give up."

COLORS: *Red and Gray*

FLOWER: *Rose*

Sponsor: MISS LILY DALE

Hail to thee, Vernician Society,
Loud our anthems swell
You have shown us truth and courage;
Which we'll always tell.

Now we lift our voice in chorus,
Singing praise to thee,
Hail to thee, Vernician Society;
You will reign with me.

Vernician, we will love you always,
From you we'll never part,
You have been our inspiration,
You have won our heart.

MEMBERS

LOUVELLA BRICKHOUSI
LORAIN BUSH
LOUISE BOWMAN
DI-SETTA BOSSER
LOUISE BEAM
SARAH COOPER
HAZEL DRUM
ROSE EDWARDS
MARY GRAVES
IRENE GROGAN
EULA MAE GAMBILL
ELIZABETH HACKNEY
MARY HACKNEY

IDA HIGGENBOTHAM
LUCILLE HOLLAND
LUCILLE HARRIS
SARAH HOYLE
HILDA HUFFINES
NELLIE HARRELL
VETIA HAMMONS
JULIE IDOL
LAURA JOYNER
FLOSSIE JOYNER
PANSY KEYS
VIRGINIA LINDSEY
EDITH McDONALD

VIOLA MANN
FRANCES PELL
NELLIE PELL
DELLA PELL
SARAH REVIERE
ELVA SHERMER
LOIS SWEAT
RUTH SMITH
OLIVE SINGLETON
IVAZELLE TAYLOR
JANE-VERETT WARD
ROBERTA WAKEFIELD
ANNIE LEE WILKINSON

Page *Ninety-six*



RHODODENDRON



Appalachian Literary Society

MOTTO: "With the ropes of the past we'll ring the bells of the future."

COLORS: *Blue and White*

FLOWER: *Carnation*

MEMBERS

LOUIS BROWN
ALLEN BOGER
JOE CARSON
STEVE COON
MARK DAVIS
ROBERT DAVIS
HUGH DOBBIN
ROY ELLISON
EVERETTE ELLEDGE
EUGENE FENDER
JAMES GLOVER
JOHNNIE GREENE

PAUL GREGORY
EARL HAYWORTH
YATES HAVNAER
HERMAN HEAFNER
LEFF JOINES
ROY KELLER
MALCOLM LANTON
JAMES LENTZ
JACOB LENTZ
STANLEY LIVINGSTON
FLEET MADISON
CHARLES McNEIL
KELLEY MILES

ROY PHILLIPS
CHARLES RANKIN
TOM REDMOND
GRAY RANKIN
LEROY SOSSOMAN
LOYD TURNER
DOUGLAS WHITNER
G. D. WILSON
TOM WILSON
JULIAN YODER
CONRAD YORK
FORREST YOUNT

Page Ninety-seven



RHODODENDRON



Rankin-Wilson Literary Society

MOTTO: "We accept the best, but make them better."

COLORS: *Black and Gold*

FLOWER: *Goldenrod*

OFFICERS

<i>First Term</i>	<i>Second Term</i>	<i>Third Term</i>	
MARVIN WARD	RALPH SMITHERMAN	CLAUDE PYATTE	<i>President</i>
RALPH SMITHERMAN	JOHN SIMS	HERMAN BAUCOM	<i>Vice-President</i>
GEORGE NICHOLSON	GORMAN JOHNSON	HERBERT GOINS	<i>Secretary and Treasurer</i>

MEMBERS

GUY ANGEL	TOLER HAYNES	CLINT PARKER
TRACY BALLOU	GLEN HICKMAN	RAYMOND PERRY
HERMAN BAUCOM	J. B. HORTON, JR.	CAESAR PHILLIPS
PAUL BLEVINS	JESSE HOUCK	CLAUDE PYATTE
HAROLD CALHOUN	PAUL HOUSER	FRED RAY
SHAFFER CASSTEVENS	GORMAN JOHNSON	JOHN SIMS
PAUL CLARKE	PINKNEY LACKEY	RALPH SMITHERMAN
HOWARD COLLINS	ROBERT LOY	STARR STACY
RALPH DAVIS	SAM MCKINNEY	JOHN STALEY
JACK DENNY	EUGENE MICHAEL	OTUS THOMAS
COLET DYER	BLAINE MILLER	MARVIN WARD
JAMES FARTHING	WILLIAM MORGAN	LINDSAY WATERS
HERBERT GOINS	GEORGE NICHOLSON	J. L. WILLIAMS
MATTHEW HANNA	DORMAN PAYNE	WESTLEY YORK

Page Ninety-eight





ORATORS

DESSA MAE TRIPLETT. MR. H. R. EGGERS, *Coach*. LEROY SOSSOMAN.

Oratory

The connection of Appalachian with the North Carolina Intercollegiate Forensic Association in the field of oratory dates from the school year of 1931-1932. At that time a number of students interested in this field of forensics called a meeting and laid plans for entering the state contests. Three boys and three girls participated in the preliminary. The winners, who later represented Appalachian, were Ruth Bowlin and Conrad York. Too much credit cannot be given to these trail-blazers into a new field.

Early in the fall quarter of 1931-1932 plans were laid for a more elaborate organization. Accordingly, each society conducted a contest for the purpose of determining who should represent it in the preliminary contest, these representatives to compete for the privilege of representing the college in the state contest. It is intended that this plan shall become permanent, and that more interest will be built up in the literary societies. Two representatives, Dessa Mae Triplett and Leroy Sossamon, are now working in preparation for the contests to be held during the spring quarter.

Until recently the art of public speaking has not received, in our institution, the emphasis which is its due. On every side we are hearing calls for those who have the ability to stand before a gathering of their fellowmen and express themselves clearly, simply, and convincingly. This situation needs some remedy and participation in the state oratorical contest is a part of it. We have the added hope that the time will come when every literary society program will have an oration as part of its plan for the development of its members.





Intercollegiate Debaters

DR. J. D. RANKIN, *Couch*

TRACY BALLOU	<i>Affirmative</i>	GLEN HICKMAN	<i>Negative</i>
RUTH BOWLIN	<i>Negative</i>	ROY KELLER	<i>Affirmative</i>
LAUNA CARENDER	<i>Affirmative</i>	MILDRED McDONALD	<i>Negative</i>
CATHERINE FULCHER	<i>Negative</i>	LOUISE PATTON	<i>Negative</i>
EARL HAYWORTH	<i>Negative</i>	RUTH SMITH	<i>Negative</i>
YATES HAVNAER	<i>Affirmative</i>	LEROY SOSSOMAN	<i>Affirmative</i>
GRACE HONEYCUTT	<i>Negative</i>	LIVINGSTON WILLIAMS	<i>Negative</i>
		DESSA MAE TRIPLETT	<i>Affirmative</i>

In growing appreciation of the importance of argumentation as a separate course of study in American colleges, debating has been organized to provide training and experience for all students of the Appalachian State Teachers College, interested in this kind of work.

To know how to argue is necessary not alone for the lawyer or the publicist, but equally for any one who may wish to influence the opinions or actions of his fellows. It is a power which every educated person should have the opportunity to acquire. And since skill in influencing the thoughts and acts of others requires either, or both the written symbol or the spoken word, the classroom work is supplemented by training in the six literary societies of the college, and by intercollegiate debates.

We have membership in both the North Carolina Forensic Association and in the Southern Association of Teachers of Speech.

Our schedule for the year 1931-1932 includes debates with Lenoir Rhyne, Catawba, Guilford, Elon, High Point, Western State Teachers College, East Tennessee Teachers College, Tennessee Wesleyan, Asheville Normal, Milligan, State College, and North Texas State Teachers College.





Young Women's Christian Association

The Young Women's Christian Association, we believe, has never worked harder and accomplished more at Appalachia, than it has this year. 'Every old girl upon arriving in September found herself possessing a little sister, whom she introduced to college life. In October the "Baby" or Junior Cabinet was selected, after which both cabinets spent a day at Winklers Creek picnicking and "breaking in" the "babies." 'Twas about this time that the association wanted to know who its celebrities were, consequently a meeting was called and after much discussion and voting these were decided upon.

The football banquet, which the Y. W. C. A. sponsored, was one of the most delightful accomplishments of the year. We trust this will become an annual occurrence.

The "Eeny Meeny Miney-Mo" operetta displayed Y. W. C. A. musical talent and gave two enjoyable hours to the student body.

The May Day fete! It needs no explanation. The association considers it one of the decided successes of the year.

The organization has sponsored a current event talked each Thursday morning at Chapel, given by Mr. H. R. Eggers, while a student program has been presented each Friday morning. Sunday evening vesper services have been given each Sunday.

These are some of the things that the Y. W. C. A. is proud of having done this year. To the Y. W. C. A. of 1932-33, we wish to leave this challenge—not that you do as well as we have done but that you do more and better, accomplish the things we have left undone and go further toward "making full and creative life possible for every girl."





Y. W. C. A. Cabinet

Cabinet

DESSA MAE TRIPLETT *President*
 HAZEL MCDADE *Vice-President*
 IRENE GROGAN *Secretary*
 LAURIE STEWART *Treasurer*
 LUCILLE LOHR *Program Chairman*
 ESTHER STEWART *Publicity Chairman*
 HELEN BARBER *Social Service Chairman*
 KATHLEEN BROOKS *Social Chairman*
 LOIS WHITESIDES *World Fellowship Chairman*
 SARAH RITCHIE *Music Director*
 SUSIE GROSE *Pianist*
 INEZ FINCHER *Reporter*

Junior Cabinet

DELLA PAWLAS
 VIRGINIA LINDSEY
 ELAINE POOLE
 KATHERINE WARLICK
 HELEN BESS
 LOU COX
 DESETTA BOESSER
 VIRGINIA HUNT
 LOUISA HAIGLER
 KATE MCINTYRE
 LOUISE BERRY
 MARY WILLIAMS



MAY QUEEN AND ATTENDANTS



RHODODENDRON



Glee Club

MISS VIRGINIA WARY, *Director*

OFFICERS

SARAH COOPER
CHARLES RANKIN
RUBY WINKLER
MRS. J. L. LAVENDAR
PAUL MAHONEY

President
Vice-President
Secretary
Treasurer
Librarian

MEMBERS

SOPRANOS
LUCILLE HARRIS
LOUISE HAIGLER
NAN LINGLE
LOIS WHITESIDE
SARAH COOPER
RUBY WINKLER
GRACE STEPHENSON
BERNICE FIELDS
HELEN ABERNATHY
LALENE GRIGG
LUCILLE HOPKINS

ALTOS
RUTH BOWLIN
SARAH RITCHIE

WINNIE HEAFNER
MRS. J. LEE LAVENDER
INEZ CROUSE
RUTH HONEYCUTT
DORE GOODE
LOUISE ROTHROCK

BASS
CHARLES RANKIN
JAKE HAGAMAN
TOM REDMOND
HEIGHT DOTSON
PAUL GREGORY
MATTHEW HANNA
HARRIS CARPENTER
CLAUDE PYATTE
B. H. HORTON, JR.

TENORS
PAUL MAHONEY
EDWIN DOUGHERTY
ROY GREENE
JOHNNIE GREENE
DALE NORRIS
MADISON MILLER
FLEET MADISON
LEONARD EURY
ZEB DICKSON

PIANIST
NELL TRIVETTE





New Dormitory Club

New Dormitory Club was founded in 1930 by the girls living in said building. Its purpose is two-fold. In the first place, it serves to divert minds that might otherwise grow too serious into channels of wholesome fun and recreation. In the second place, it provides a means whereby wit and humor may be aired for the development of the originator and the benefit of would-be humorists. We further justify its maintenance on the grounds that it is a great cultural agency, of which seniors especially should take advantage, since they may need a superior sense of humor as they tackle the teaching profession. Its Saturday evening programs are the oasis of our blue Saturday evening deserts.





Lily Dale Home Economics Club

MOTTO: "Others."

COLORS: *Yellow and White*

FLOWER: *Lily*

Sponsor: MISS LILY DALE

OFFICERS

First Semester

SARAH COOPER
JULIA IDOL
NELL TRIVETTE
BESSIE RUDISILL

President
Vice-President
Secretary
Treasurer

Second Semester

STELLA SCRONCE
ETHEL MONTAGUE
ADA CLARK
SARAH STALEY

MEMBERS

MARY GRACE BRADFORD
ADA CLARK
WILLIE CORNELIUS
SARAH COOPER
MARY LEE DILLON
MARY GRAVES

ALICE HORNER
JULIA IDOL
FLOSSIE JOYNER
LUCILLE MAST
MARGURETTA MILLER

ETHEL MONTAGUE
BESSIE RUDISAL
STELLA SCRONCE
SARAH STALEY
DELLA TIPTON
NELL TRIVETTE

The Lily Dale Home Economics Club was founded November 2, 1925, by Miss Lily Dale, teacher of Home Economics, together with a large number of students of the Home Economics Department. Miss Dale has studied extensively in this field at Peabody in Nashville, Tennessee, at Columbia University in New York City, and a summer course of the work through England, Wales and Scotland.

Although Home Economics in this institution is now mostly elective, it is hoped that it will be advanced each year until it becomes a required course, not only because of its practical worth, but for its cultural value.

Home Economics education makes a definite contribution to the solution of the problem confronting society in the establishment and maintenance of suitable standards for home and family life.





Lovill Club

MOTTO: "Get all you can, and can all you get."

COLORS: *Green and White*

FLOWER: *Dandelion*

HISTORY OF LOVILL CLUB

One cold Saturday night back in the fall of '29, Nan Smith and Erma Hinson were waiting for their dates to arrive. Just when their suspense had reached a climax, Miss Lona politely informed them that dating on Saturday night was not allowed. The girls were disappointed, but they soon recovered sufficiently to realize that they should provide themselves with some other form of entertainment. They called the girls together with the much-famed and melodious cowbell and suggested the idea of forming a club. In order to partially reconcile Nan to her former disappointment, the girls elected her president. Other officers were elected and a proclamation drawn up decreeing that the club should meet every Saturday evening. Thus, what is known as the Lovill Club, the forerunner of all similar clubs on the campus, had its birth.

Although the club was organized to serve as a balm for bleeding hearts, so much interest has been manifested that it has proved itself a great asset to the social life of its members.

Page One Hundred Seven





BOYS' LETTER CLUB

Front Row (left to right): SOSSOMAN, WILSON, WALKER, THOMPSON, MAHONEY, HOOPER, HARRIS, HALLYBURTON. Middle Row: WOREMAN, I. SMITH, GOINS, C. SMITH, CALBOUN, HAGAMAN, JOHNSON, DAVIS, MCKINNEY. Back Row: TRIPLETT, GOODMAN, WESTENBERG, BAUCUM, GLOVER, TURNER, ELLISON, MOSTELLER, LIVINGSTON, MCCONNELL, PYALTE.



GIRLS' MONOGRAM CLUB

Left to Right: LAUNA CARENDER, *Treasurer*, DESSA MAE TRIPLETT, *President*, EDITH PRESTON, *Secretary*, MARJORIE CRISP, JEAN REEVES, DELIA PAWLES, JEWEL HERRING, *Vice President*.





JIMMIE JOHNSTON
Athletic Mascot

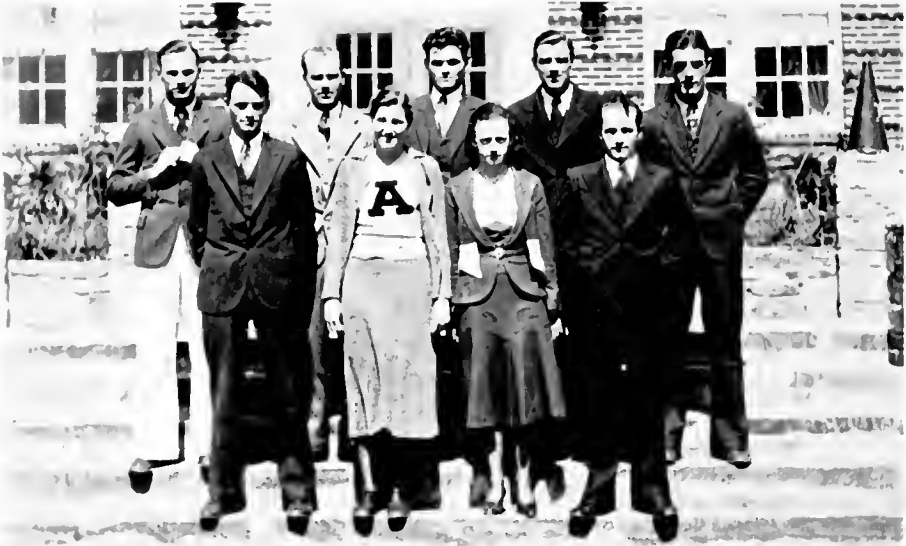
ATHLETICS

RHODODENDRON



COACHES

C. B. JOHNNIE JOHNSON	<i>Head Coach</i>	MRS. TOM CUSHING,	<i>Girls' Coach</i>
G. P. EGGERS	<i>Assistant Coach</i>	G. L. SAWYER	<i>Tennis Coach</i>



MANAGERS OF SPORTS

ISAIAH SMITH and LLOYD TURNER, *Football*; REECE HARRIS and OSWALD HOOPER, *Basketball*; HARRY HALLYBURTON and STANLEY LIVINGSTON, *Baseball*; MARJORIE CRISP and DELLA PAWLAS, *Girls' Basketball*; DELLA PAWLAS, *Girls' Tennis*; J. P. FOX, *Boys' Tennis*.

Page One Hundred Ten



RHODODENDRON



Back Row: WALKER, Fullback; WORTMAN, Guard; DOTSON, Quarterback; MORRISON, Fullback; TRIPLETT, Halfback; GOINS, End; SMITH, Tackle; WESTENBERG, Center; DAVIS, End; MACDONALD, Guard; HARRIS, Halfback; REVIS, Center; MADONEY, Tackle; PYATTE, End; KANNAMACHER, End; Middle Row: WEAVER, Halfback; BAUCUM, Quarterback; O'NEAL, Fullback; OHLER, Tackle; LOY, End; JOHNSON, Center; LIVINGSTON, Tackle; HOOPER, End; LACKEY, End; HOUSER, Guard; R. WALKER, End; JOINES, Tackle; RADER, Tackle; MOORE, Guard. Front Row: HARDY, Guard; AUSTIN, Halfback; SULLIVAN, Halfback; HALL, Halfback; HALLYBURTON, Quarterback; TROTT, End; JIMMIE JOHNSTON, Mascot; CALHOUN, Fullback; BOLAND, Halfback; MCKINNEY, Guard; FITZGERALD, Quarterback; LOCIS, Halfback; COOKE, Center; HUSTON, Halfback.

Football Review, Season 1931

The Appalachian State Mountaineers established another fine record in football, winning nine games and losing two; and two games were tied. The climax to the season was the Charity Day victory over Catawba College in Charlotte. Appalachian State led the North State Conference in individual and team scoring; and was awarded the championship by making a clean sweep of all Conference games. Smith, right tackle; McKinney, right guard, and Fitzgerald, quarterback, were awarded All-Conference positions.

The team spirit was reflective of traditional Mountaineer elevens. Offensive power was indicated by the team's ability to score in every game and totaling 183 points for the season. Defense was an evident factor in the team's success. Individual ability was over shadowed by team spirit and loyalty.

The following men will be lost by graduation in May: Harris, Baucum, Hooper, Pyatte, Joines, Livingston, Calhoun and Hallyburton. They have played their last games, but will carry on with the same spirit that made their records commendable.

RESULTS

Appalachian	20	Campbell College	6
Appalachian	6	Lenoir Rhyne College	0
Appalachian	20	King College	0
Appalachian	20	High Point College	0
Appalachian	7	Catawba College	6
Appalachian	24	Piedmont College	12
Appalachian	25	Naval Apprentice	12
Appalachian	3	Langley Field College	6
Appalachian	6	Maryville College	6
Appalachian	6	Bowden State College	6
Appalachian	25	Concord State College	0
Appalachian	6	Glenville State College	25
Appalachian	15	Catawba College	7
TOTAL	183	OPPONENTS	86



RHODODENDRON



Goins
End



Fitzgerald
Q.B.



Triplett
H.B.



Hooper
End



Harris-Capt
End



McKinney
Guard



Mahoney
Tackle



Smith
Tackle



Walker
F.B.



RHODODENDRON



*Baucum
Q.B.*



*Calkoun
F.B.*



*Hallyburton
Q.B.*



*Livingston
Tackle*



*Pyatte
End*



*McDonald
Tackle*



*JOHNSON
Guard*

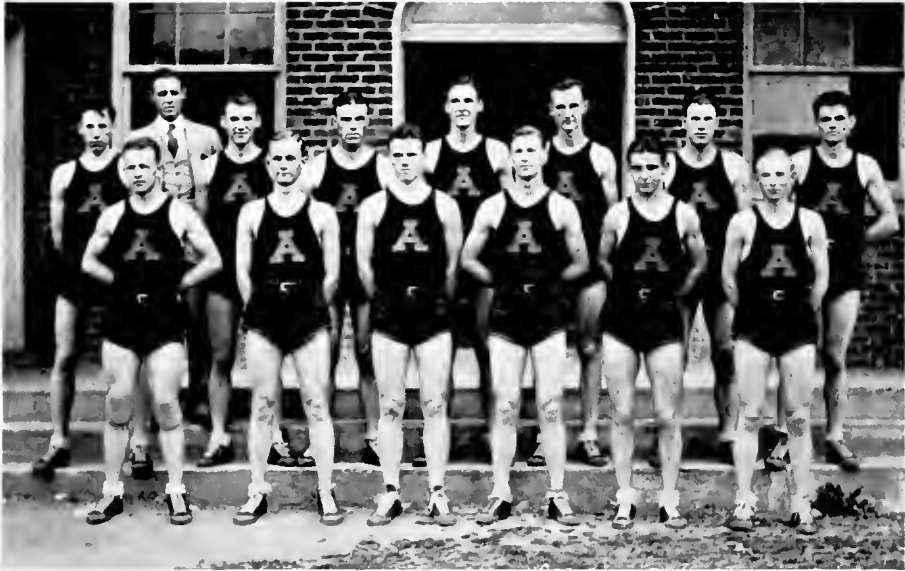


*WORTMAN
Center*



*WESTENBERG
Tackle*





Back Row: DOTSON, Guard; COACH JOHNSTON, DAVIS, Forward; WORTMAN, Guard; MCCONNELL, Center; VENABLE, Center; WALKER, Forward; LIVINGSTON, Forward. Front Row: MCKINNEY, Guard; WARD, Guard; LACKEY, Forward; GREGORY, Forward; MOSTFELER, Forward; BOGER, Forward.

Basketball Review, Season 1932

The basketball team was second in the Conference scoring and third in Conference standing. Only one series was lost by the team during the season. Victory over Tennessee State College, historic rivals in basketball, was the high spot of the season. Tennessee had registered an early season victory over the Mountaineers by the margin of two points, but in the final game the State team flashed brilliant to win by eleven points.

The personnel of the State team was made up from representatives of every class in the college with Sophomores and Freshmen in the majority. The record for the season was eleven victories and six defeats. The team showed a fine offense in every game and team play was the predominating factor.

Graduation will take away a number of men who served well on the court; their spirit and loyalty remains to carry on with the Mountaineers.

RESULTS, 1932

A. S. T. C.	37	Union College, Ky.	27
A. S. T. C.	32	Catawba College	25
A. S. T. C.	25	East Tennessee State	27
A. S. T. C.	35	Western Carolina Teachers	37
A. S. T. C.	46	Wingate College	30
A. S. T. C.	38	Guilford College	34
A. S. T. C.	32	Lenoir Rhyne College	26
A. S. T. C.	29	High Point College	12
A. S. T. C.	20	Catawba College	21
A. S. T. C.	47	A. C. C. College	29
A. S. T. C.	22	Lenoir Rhyne College	28
A. S. T. C.	28	High Point College	26
A. S. T. C.	31	East Tennessee State	22
A. S. T. C.	31	Campbell College	24
A. S. T. C.	43	Guilford College	53
A. S. T. C.	26	Guilford College	34
TOTAL	523	OPPONENTS	455





FORWARDS

CRISP
PRESTON
AUSTIN
YOUNG
JESSUP

GUARDS

B. BAKER
LINGLE
REEVES
M. BAKER
PAWLAS
EDWARDS

Girls' Basketball

The girls basketball team this year is, we believe, the best we have ever had. It may well be described in this way. It is a persistent, coöperative, and successful team. Both coach and team have worked untiringly, drilling old plays and mastering new ones.

Preston, snappy forward, leads the scoring, while Crisp follows a close second. Much of the praise for the success of the year is due our splendid guards.

Out of the nine games played the team lost but one. The total score shows Appalachia 283 to her opponents 174.

The coöperative spirit demonstrated by the players at all times could not have been surpassed.

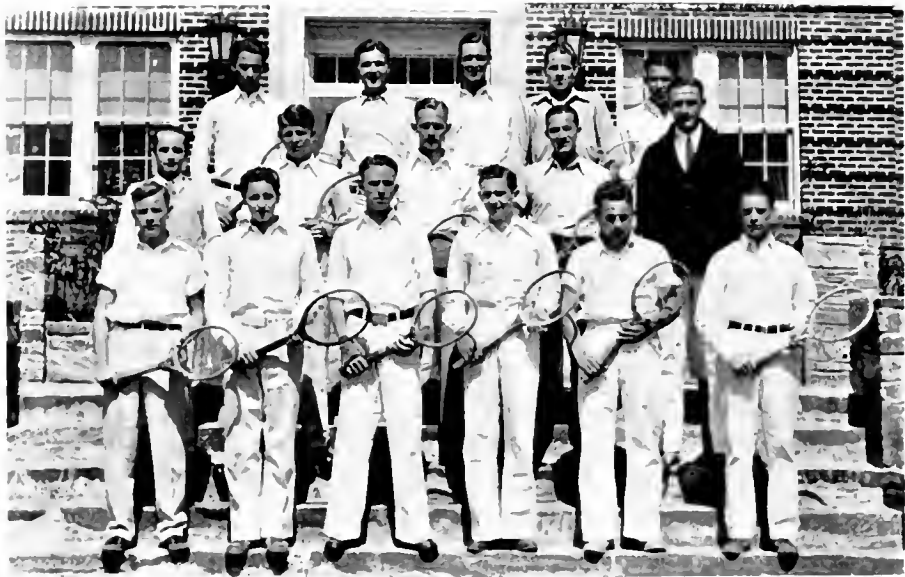
The team loses two players at the May graduation, Reeves and Lingle, two strong guards. Captain Pawlas predicts for the coming year a strong team and a successful year in this intercollegiate sport.





FRESHMAN BASKETBALL SQUAD

Back Row: P. LACKY, Manager; HALL, Forward; HUSTON, Guard; MASON, Forward; DOWELL, Guard; LEWIS, Forward; HORTON, Guard; Front Row: MARR, Guard; WEAVER, Forward; BROWN, Center; KNOX, Guard; OILYER, Guard.



BOYS' TENNIS CLUB

Front Row: DOISER, FENDER, MICHAEL, BALLEW, CLARK, NORRIS; Middle Row: FOX, Manager; CARSON, WARD, DULAN, SAWYER, Coach; Back Row: WILSON, REIDON, MCCONNELL, HAGAMAN, ALEXANDER.



RHODODENDRON



CHEER LEADERS

MARY DAILY LITTLE, DONALD THOMPSON, LOIS WHITESIDES, CHARLES RANKIN.



GIRLS' TENNIS CLUB

First Row: ERVIN, PEARSON, ZIMMERMAN, PAWLAS, *Manager,* FISHER, AUSTIN, THOMPSON, WILLIAMS, BINGHAM, HIGGANBOTHAM, DEAN. *Second Row:* FINCHER, CLARK, PHILLIPS, BINGHAM, CRISP, ROTHRIK, STEELE, LESTER, PRESTON, *Captain,* LAVENDER, LITTLE, MARTIN, BRADFORD, OUTLAW.

Page One Hundred Seventeen





Back Row: COACH JOHNSTON, HARRIS, WORTMAN, MCCONNELL, BROWN, ROSS, DOISON. Front Row: TRIPLETT, WEAVER, JONES, LOUIS, SULLIVAN, THOMPSON, MOSTELLER, JIMMIE JOHNSTON, Mascot.

Baseball

Games have been scheduled with the following for the present year: Maryville, Western Carolina, Catawba, Lenoir Rhyne, Guilford, Piedmont, Parris Island Marines.

RESULTS, 1930-31

A. S. T. C.	4	Piedmont College	8
A. S. T. C.	11	Bowden State	3
A. S. T. C.	7	Campbell	0
A. S. T. C.	3	Wake Forest	2
A. S. T. C.	14	Lenoir Rhyne	6
A. S. T. C.	5	Guilford	11
A. S. T. C.	16	E. Tennessee State	8
A. S. T. C.	12	Lenoir Rhyne	8
A. S. T. C.	4	Bowden State	9
A. S. T. C.	8	Bowden State	9
A. S. T. C.	12	Campbell	4
A. S. T. C.	3	E. Tennessee State	8
<hr/>		<hr/>	
Total	99	Opponents	76





KATHLEEN BROOKS
May Queen

FEATURES



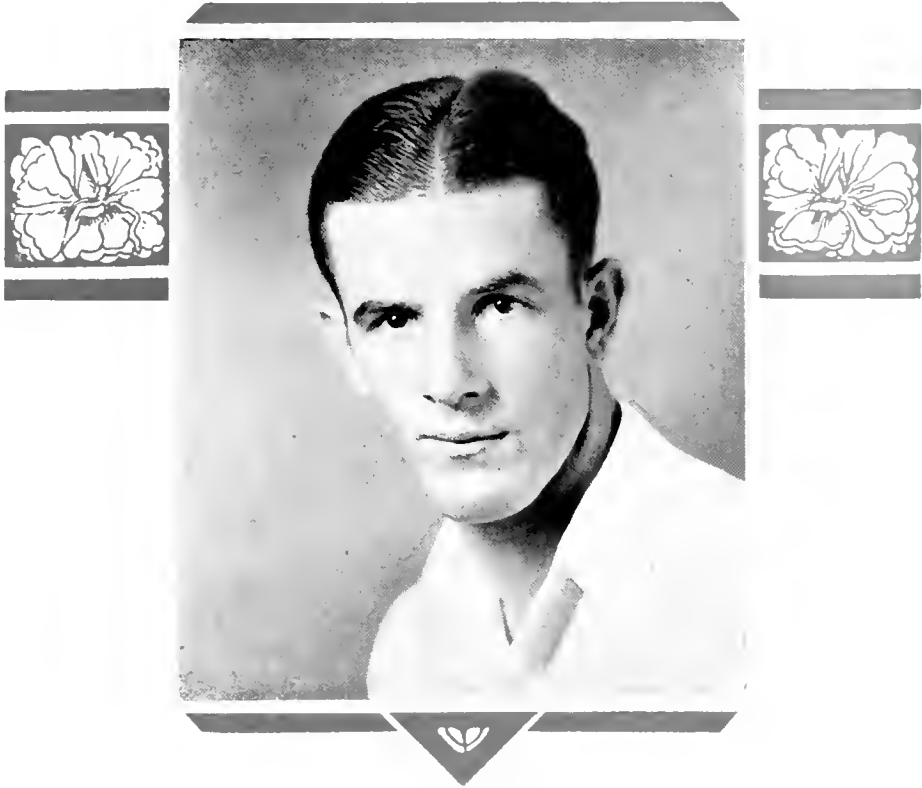
Ollie Dixon
Prettiest



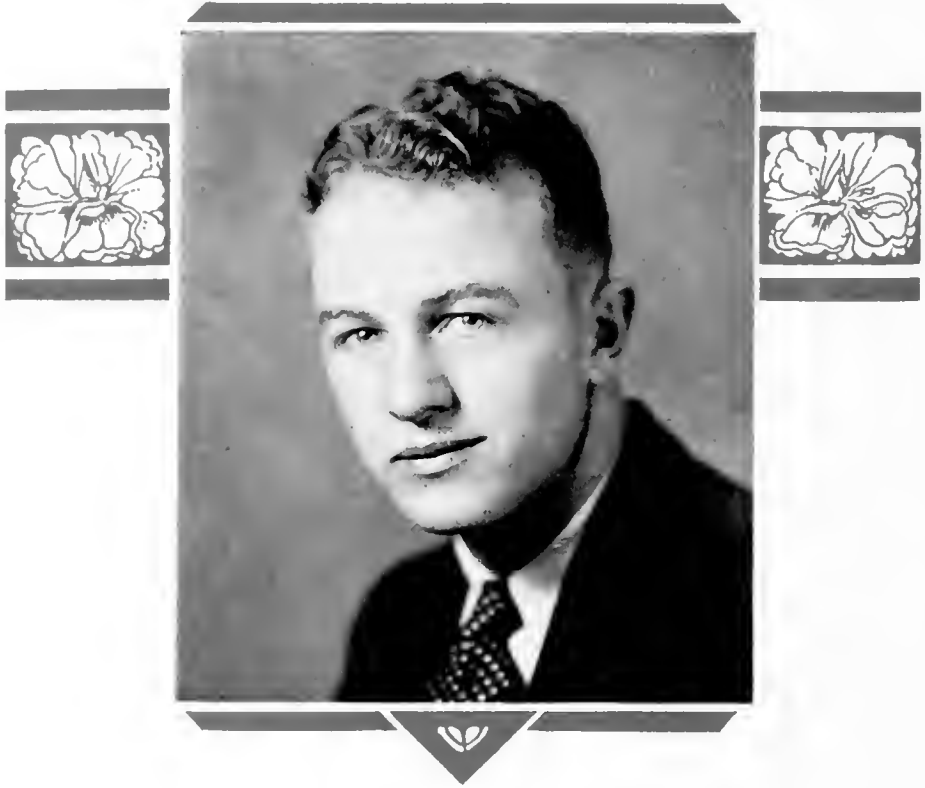
Ray Kannamacher
Handsome



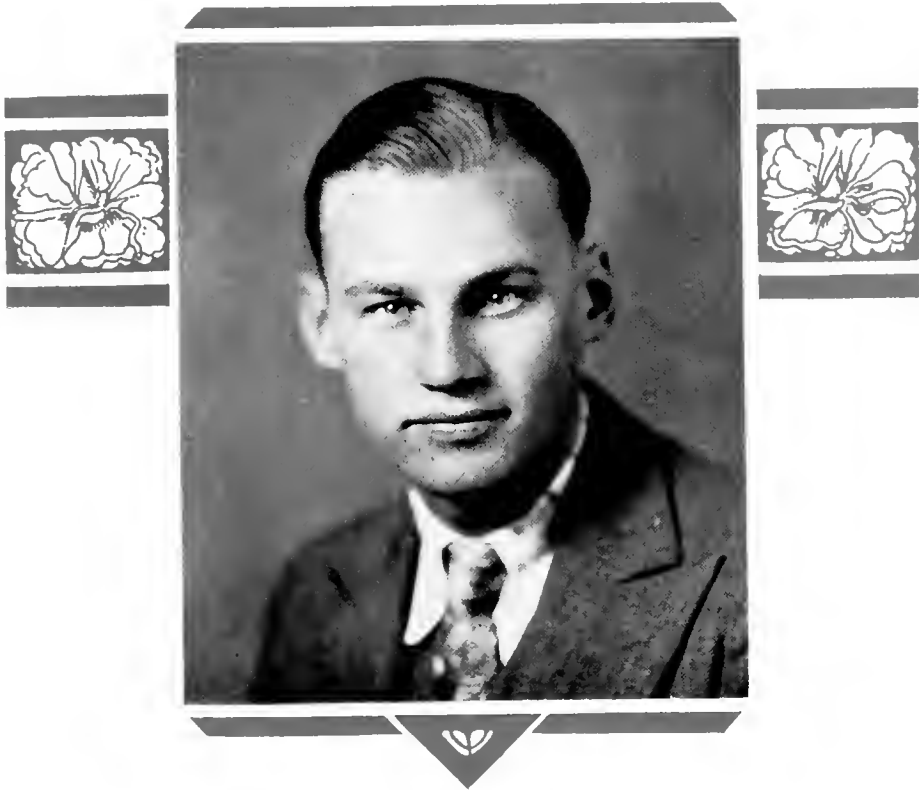
Mary Daily Little
Most Popular Girl



Reece Harris
Most Popular Young Man



Sam McKinney
Best Athlete



Oswald Hooper
Best All-Round Student

THE APPALACHIAN STATE
TEACHERS' COLLEGE

BOONE, N. C.

IN THE BLUE RIDGE MOUNTAINS, 3,333 FEET HIGH

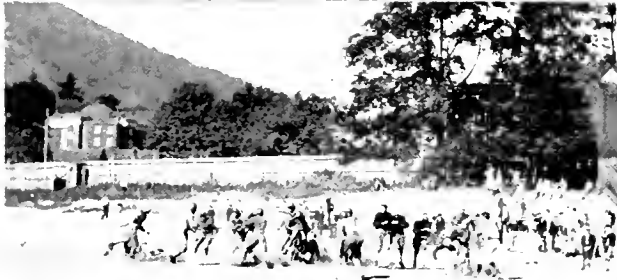


BETTER TRAINED TEACHERS
FOR THE OLD NORTH STATE

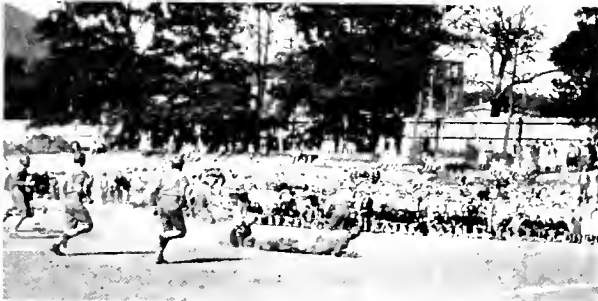


*Where Student Activities Along Social, Intellectual,
Recreational, and Religious Lines Are
Fostered and Encouraged*











The
Photographic Work
In This Annual

FURNISHED BY

THE
BURR HARRISON
STUDIO

ARCADE BUILDING
JOHNSON CITY, TENNESSEE



PORTRAITS OF DISTINCTION

WE ALSO DO EXPERT KODAK FINISHING

COMMERCIAL PHOTOGRAPHERS



RHODODENDRON

YOUR HOME FIRST

RHODES - DAY FURNITURE COMPANY

Complete Furnishers of the Home

NORTH WILKESBORO, N. C.

Mass buying and volume distribution, economy in operation, makes this organization outstanding when it comes to real values.

Your trade is solicited on merit.

SMITHEY'S DEPARTMENT STORE

BOONE, N. C.

SPAINHOURS, INC.

BOONE'S SHOPPING CENTER

Quality merchandise at lowest price

Ready-to-Wear — Millinery — Piece Goods
Stop in to see us often whether you buy or not. We are
always glad to see you.

FIVE TO FIVE STORES

Headquarters for Central's
All Leather Shoes and
Wear Plus Hosiery

Under Priced Merchandise

"Where You Feel at Home"

HANNAH'S, INC.

Johnson City, Tenn.

Style Clothes for Men and
Young Men



\$16.75 — \$40.00



RHODODENDRON

HARRIS BROTHERS

BOONE, N. C.

Quality Merchandise at Lowest Prices



BROWN BUILT SHOES

NEVA GLOW HOSE



GENTS' FURNISHINGS

EAST TENNESSEE & WESTERN NORTH CARO-
LINA RAILROAD COMPANY




LINVILLE RIVER RAILROAD
COMPANY



RHODODENDRON

City Shoe Shop
BOONE, N. C.
Prompt Service
Satisfaction Guaranteed
End of College Street

R. M. Brame & Sons
Prescription Druggists

30 Years' Experience
NORTH WILKESBORO, N. C.

It Pays to Look Well
BARBER WORK
for
Ladies and Gentlemen
CITY BARBER SHOP
BOONE, N. C.

J. E. DEANS
The Gift Store
Hamilton, Bulova and Elgin
Watches. Sheaffer Pens.
Nationally
Advertised Sterling Silver
NORTH WILKESBORO, N. C.

Compliments of
BOONE DRUG CO.
The Rexall Store
BOONE, N. C.

L. L. CRITCHER
Dealer in
Candies, Stationery, Notions
and Groceries
CORNER STORE
College Street

Compliments of
ABSHERS
Complete Outfitters
for
Men and Boys
NORTH WILKESBORO, N. C.

BOONE STEAM LAUNDRY
Dry Cleaning Pressing
Altering
PHONE 56
BOONE, N. C.



BECKNERS'
DIAMONDS - WATCHES - JEWELRY



JOHNSON CITY, TENNESSEE

SUMMERS HARDWARE CO.

WHOLESALE ONLY

Hardware, Cutlery, Sporting Goods, Stoves, Ranges, Varnishes,
Paints, Farm Implements, Building Materials,
Railroad, Mill, Mine, Electrical, Plumbing, and Heating Supplies.
American Boilers and Radiators. Standard
Sanitary Enamelware.

JOHNSON CITY, TENNESSEE

HOME INTERESTS COME FIRST
AT THIS BANK

WATAUGA COUNTY BANK

BOONE, NORTH CAROLINA

Farmers Hardware & Supply Co., Inc.

Everything in Hardware and Associated Lines

BOONE, NORTH CAROLINA

"College Students Are Welcome"



RHODODENDRON

ENGRAVINGS IN THIS BOOK BY

CHARLOTTE ENGRAVING COMPANY

CHARLOTTE, N. C.

Carolina's Finest Engravers

TRUST ONE !!!
WHO KNOWS... o o o

THE OBSERVER PRINTING HOUSE—the home of better annuals—has gained a wealth of valuable experience through thirty-five years of specialization in this field, the benefit of which is yours for the asking.

We offer you the services of a highly trained and efficient organization which will aid you in the planning and compilation of your yearbook, thereby minimizing the worries and uncertainties incident to the publication of an annual.

CORRESPONDENCE INVITED

The Observer Printing House, Inc.
322 - 324 S. Church St.
CHARLOTTE, N. C.





FINIS



LIBRARY
APPALACHIAN STATE TEACHERS COLLEGE
BOONE, N. C.



