

The
RHODODENDRON









EX LIBRIS

COPYRIGHT HERE

L. J. GANN » Editor-in-Chief » »
GILBERT FALLS » Business Manager

*The Nineteen Hundred
and Thirty Six*

1936



DENDRON

» » PUBLISHED » BY » THE » SENIOR » CLASS » »
APPALACHIAN » STATE » TEACHERS » COLLEGE
» » » » BOONE » NORTH » CAROLINA » » » »



J. D. RANKIN
A.B., A.M., S.T.D.



DEDICATION

The lot of administrator is no easy one. It is the good fortune of Appalachian to have Dr. J. D. Rankin as Dean. He has at all times the best interests of the school at heart. In dealing with student problems his one guiding principle is the welfare of the student body as a whole and the welfare of the school.

Capable, firm yet fair, strong yet reasonable, he sets an everyday example of right living.

Because of a sincere admiration and respect for him as an administrator, as a teacher, and as a man, THE 1936 RHODODENDRON is dedicated to Dean Rankin.

FOREWORD



Man thinks that he has reached a very complex stage in his development. We live in an age in which machines and chemicals do work that was once thought to be superhuman. Many things might be cited as evidence of our material culture of the present time. Stream-lined automobiles, aeroplanes, and railroad trains may be seen rushing through space. Surgery and disease control have come to be a vital part of our life today. Wonders of our industrial culture are the dynamo, the linotype machine, and the fast moving elevator. Wonders of our agencies of communication are the modern newspaper, the telephone, the radio, and the telegraph. It is important that we remember that none of them would be possible at the present time if it were not for a few significant discoveries and inventions which were made by man in much earlier stages of his development. A few of these discoveries and inventions have been set forth as a theme for the 1936 RHODODENDRON.



CONTENTS

BOOK 1 » COLLEGE

BOOK 2 » CLASSES

BOOK 3 » ATHLETICS

BOOK 4 » ACTIVITIES

BOOK 5 » FEATURES





BOOK I
COLLEGE

Discovery and Use of Fire

The application of the use of fire illustrates better than any other one thing the cumulative experience of mankind. Primitive man used fire to open the way for the more extensive utilization of his physical environment. This is certainly true in the matter of food and fuel. Fire provided man with a permanent place of abode, thereby furnishing opportunity for social developments. The discovery of fire had to precede the smelting of metals and the making of pottery—two important articles in man's development. The use of fire paved the way for many of the recent discoveries—firearms, internal combustion engines, and many other modern agencies which depend upon heat for their operation.



EAST ENTRANCE





ADMINISTRATION BUILDING





BLAN-DOLF HALL





THE LIBRARY





WEST CAMPUS





EAST CAMPUS





GYMNASIUM



FACULTY



B. B. DOUGHERTY. B.S., Ph.B., D.Litt.

President



Faculty

J. D. RANKIN, A.B., A.M., S.T.D.
Dean—English

MISS JENNIE TODD, B.S.
*Supervisor of Women
Penmanship*

HERMAN R. EGGERS, A.B., A.M.
Education

MISS LONA MORETZ
Matron—Lovill Home

J. M. DOWNUM, A.B.
Registrar

MISS IDA BELLE LEDBETTER
A.B., A.M.
Biology

J. T. C. WRIGHT, A.B., A.M.
Mathematics

MISS MAUDE CATHCART
B.S., A.M.
Biology

V. C. HOWELL, A.B., A.M.
History

MISS META LILES, B.S., M.A.
Grammar Grade Education





Faculty

D. J. WHITENER, A.B., A.M., Ph.D.
History and Government

JULIAN C. YODER, B.S.
History

J. A. WILLIAMS, A.B., A.M.
Geography

MISS CORA LEMAY, B.S., A.M.
Physical Education for Women

W. A. ABRAMS, A.B., A.M., Ph.D.
English

MISS THURSA STEED, B.S., M.A.
Assistant Physical Education for Women

A. J. GREENE
English

MISS KATHARINE HARWELL, B.S.
Art

W. M. GRUBBS, B.A., M.A.
Economics and History

MISS MARY WILLIAMS, B.S.
Secretary to Business Manager



Faculty

PIERCE O. BREWER
Athletic Director

LEONARD EURY, A.B.
Librarian

FLUCIE STEWART
Coach—Basketball

MISS MARGARET GIVENS, B.S.
Librarian

R. W. WATKINS, A.B., M.A.
Assistant Director—Athletics

MISS ALLIE AUSTIN, B.S.
Librarian

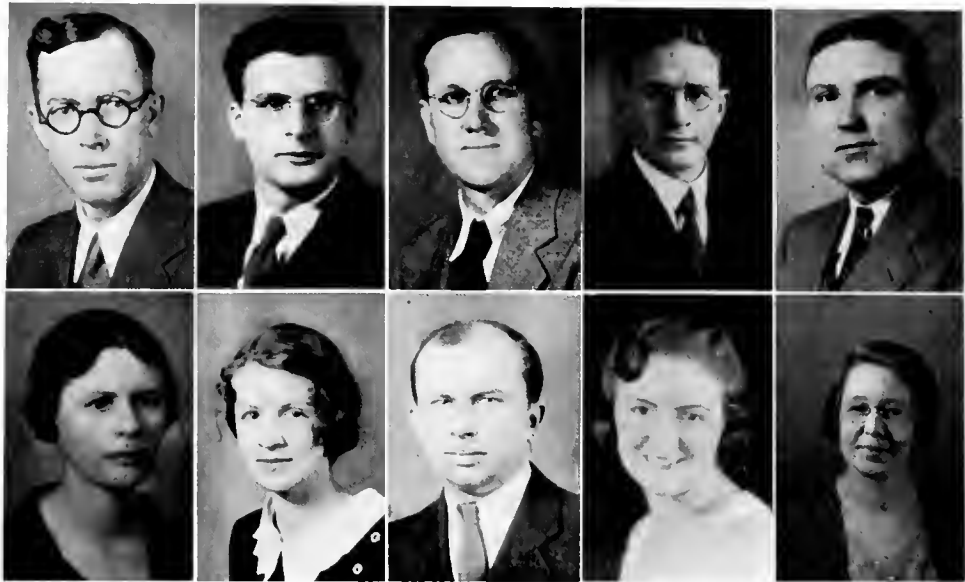
EUGENE GARBEE, B.S., M.A.
Physical Education

STAR STACEY
Mathematics

MRS. EMMA H. MOORE
Librarian

BERNARD DOUGHERTY, B.S.
Business Manager





Faculty

CHAPPELL WILSON
A.B., A.M., S.T.D.
Director Demonstration Work

MISS LILY DALE, B.S., A.M.
Home Education

ANTONIUS ANTONAKOS, B.S., M.S.
Physics

MRS. ELIZABETH WILLIAMS, B.S.
Art

A. R. SMITH, A.B., A.M.
Chemistry

J. HAROLD WOLFE, A.B., A.M.
History and Sociology

G. L. SAWYER, A.B.
Psychology

MISS VIRGINIA WARY, B.M.
Music

VAN HINSON, A.B., M.Ed.
Education

MISS CARRIE I. SMITH, A.B., A.M.
English and Education



Faculty

MISS STELLA BARNES
Secretary to Dean

MRS. D. C. REDMOND
Secretary to Registrar

MRS. VIRGINIA STROTHER, B.S.
Assistant in Biology and Geography

MISS NANCY LEWIS
Secretary to Treasurer

MRS. V. V. MCCONNELL
Dietitian

MRS. VAN HINSON, A.B., A.M.
French

E. S. CHRISTENBURY, B.S., A.M.
Education

MISS CAROLYN WEAVER
B.S., M.A.
Primary Education

HOMER K. COMPTON
Voice

MRS. LILY B. HARDIN
Matron—New Dormitory

EARL HAYWORTH, B.S.
Purchasing Agent





In Memoriam

ANDREW MARTIN NORTON

A.B., A.M.



BOOK II CLASSES

Development of a Written Language

One of the epoch-making events in the civilizing process of man has been the development of a written language. The spoken language is as old as man himself. It is so easily varied that many dialects and even a new language may develop from an original form in the absence of a written language. A written language makes possible uniform and permanent records. Modern devices for writing and printing would never have been conceived and used without a written language. Our present systems of education and government would not be possible without a written language. Indeed, our whole economic, social, and political life is inseparably bound with written languages.





SENIORS



LILLIAN CROW ABRAMS Boone, N. C.

*Primary Education
Summa Cum Laude*

Mars Hill (1, 2); W. C. U. N. C. (3); New Dormitory Club;
Thalian Literary Society (Honorary Member); Y. W. C. A.; Glee Club;
Cleveland County Club.

LOUISE ABRAMS Pinetops, N. C.

*History and English
Summa Cum Laude*

Lovill Club (1); New Dormitory Club (2, 3, 4); East Carolina Club
(3), President (3); Thalian Literary Society (2, 3, 4); Treasurer (2),
President (3); International Relations Club (2, 3, 4), Secretary (4);
Current History Club (2); B. Y. P. U. (2); Playcrafters (4); Assistant
in Library (3); Assistant in English (4); RHODODENDRON Staff (4),
Editor Classes (4).

MARY AUSTIN Shulls Mill, N. C.

MARGUERITE BANDY Lincolnton, N. C.

Primary Education

Dynician Literary Society (1, 2, 4), Censor (2), Representative (4),
President (4); Y. W. C. A. (1, 2, 4), Junior Cabinet (2, 4); Play-
crafters (2, 4); International Relations Club (2, 4); Current History
Club (1, 2), Secretary (1), President (2); Methodist Club (1, 2, 4);
National Economics Club (4); Lincoln County Club (1, 2, 4); White
Hall Club (1); New Dormitory Club (2, 4), President (4); National
Honorary Society (4); Student Volunteer (2, 4).

ESTHER BESS BEAM Cherryville, N. C.

Primary Education

Phila Retian Literary Society (1, 2, 3); Methodist Club (2, 3);
Lincoln County Club (1, 3, 4); Home Economics Club (2, 3); White
Hall Club (1, 2, 3); Lovill Club (4).

LILLIE BEAM Cherryville, N. C.

Primary Education

Lenoir Rhyne College (1, 2); Lincoln County Club (3, 4); Methodist
Club (3, 4); White Hall Club (3, 4); Phila Retian Literary Society (4);
Y. W. C. A. (4).

ALICE BINGHAM Vilas, N. C.

Primary Education

DOROTHY BRAKE Rocky Mount, N. C.

History and Science

Cum Laude

W. C. U. N. C. (1); Vernician Literary Society (2, 3, 4), Treasurer
(2), Vice-President (3), Representative (4); B. S. U. Council, Vice-
President (3), President (4); Y. W. C. A. (2, 3, 4), Junior Cabinet
Member (2), Senior Cabinet Member (3), President (4); Playcrafters
(4); Lovill Club (2, 3, 4); Hockey Varsity (2).

BERTIE EMALINE BRIDGES Mooresboro, N. C.

Grammar Grade Education

Boiling Springs Junior College (1, 2); Dynician Literary Society
(3, 4), Treasurer (4); Y. W. C. A. (4); Lovill Club (3, 4); Cleveland
County Club (4); Student Volunteer (3, 4); B. S. U. (3, 4), Secre-
tary (4).

RAY STIKE, *Senior Class President*

Besides being President of the Class Ray is
an outstanding debater and extemporaneous
speaker de luxe. He is quiet, unassuming, and
withal a ladies' man.

The 1936 RHODODENDRON





VIRGINIA BROWN Charlotte, N. C.

Grammar Grade Education

Salem College (1); Thalian Society (2, 3, 4); Forsyth County Club (2); Orchestra (3, 4); Glee Club (3, 4).

ALMA STILLWELL BURNS Newton, N. C.

English and French

Rutherford College (1); Vernician Literary Society (2, 3, 4), President (4); International Relations Club (4); Y. W. C. A. Cabinet (4); French Club (4).

MARY FOLA BURNS Goldston, N. C.

Grammar Grade Education

Cum Laude

Dynician Literary Society (1, 2, 3, 4), Treasurer (2), Censor (3), President (4); Y. W. C. A. (1, 2, 3, 4); Methodist Club (1, 2, 3, 4), Secretary (4); East Carolina Club (3); White Hall Club (1, 2, 3); New Dormitory Club (4).

LAVOLA CARENDER Matney, N. C.

Grammar Grade Education

Thalian Literary Society (1, 2, 3, 4), Treasurer (2), Corresponding Secretary (3), Representative (4); Y. W. C. A. (1, 2, 3, 4); White Hall Club (1); New Dormitory Club (2, 3, 4); B. Y. P. U. (2).

TRESSIE MAE CASHION Winston-Salem, N. C.

Primary Education

Vernician Literary Society (1, 2, 3, 4), Treasurer (2), Vice-President (3), President (3); Glee Club (2, 3, 4), Librarian (3), President (4); Playcrafters (2, 3, 4), Secretary and Treasurer (4); Methodist Club (1, 2, 3, 4), Secretary (3), President (4); North Carolina Methodist Students Conference (2, 3, 4), Secretary (2); Forsyth County Club (2); Y. W. C. A. (1, 2, 3, 4), Cabinet (2, 3, 4).

RACHEL CAUBLE Salisbury, N. C.

Primary Education

East Carolina Teachers College (1); Phila Retian Literary Society (2, 3, 4); White Hall Club (2); L. S. A. (2, 3, 4); New Dormitory Club (3, 4); Y. W. C. A. (3, 4).

GENEVA CHAFFIN Union Grove, N. C.

Grammar Grade Education

Varsity Basketball Team (1, 2, 3, 4), Captain (4); Dynician Literary Society (3, 4), Vice-President (4); White Hall Club (3); New Dormitory Club (4); Letter Club (1, 2, 3, 4); Baseball Club (1, 2, 3, 4).

DORIS MARIE CHAPMAN Taylorsville, N. C.

Primary Education

Mitchell College (1); Thalian Literary Society (2, 3, 4); B. Y. P. U. (2, 3, 4); Y. W. C. A. (4); New Dormitory Club (2, 3, 4).

LILLIAN CHAMBERLAIN Yadkinville, N. C.

Primary Education

Phila Retian Literary Society (1, 2, 3, 4); Lovill Club (1); New Dormitory Club (2, 3, 4); B. Y. P. U. (1, 3); Y. W. C. A. (4).

DILMON LAWSON, *Vice-President Senior Class*

Dilmon is one who possesses those qualities that characterize an all-round person. Jollity, friendliness, generosity, originality, intelligence —that's "Dick."

The 1936 RHODODENDRON





RUTH ELIZABETH CLARK Boone, N. C.

Grammar Grade Education
B. Y. P. U.

VIRGINIA CLEMENTS Rutherfordton, N. C.

Primary Education

OLLIE JEAN COFFEY Shulls Mills, N. C.

Primary Education
Cum Laude

Glee Club (1, 2, 3); Secretary (2); Vernician Literary Society (2, 3);
Vice-President (3); Y. W. C. A. (2, 3); Junior Cabinet Member (3);
Playcrafters (1, 2, 3); Lovill Club (3).

KATHARINE COWAN Statesville, N. C.

Primary Education

Mitchell College (1); New Dormitory Club (2, 3, 4); Presbyterian
Club (2, 3); Thalian Literary Society (2, 3, 4); Y. W. C. A. (2, 3);
Playcrafters (3).

BEATRICE CULLER Boone, N. C.

Grammar Grade Education
Cum Laude

Watauga County Club (1); Current History Club (3); Biology
Assistant (4).

CLARICE DEESE Monroe, N. C.

Grammar Grade Education

CATHERINE DURHAM Pittsboro, N. C.

Primary Education

Vernician Literary Society (1, 2, 3, 4); Chaplain (2); Treasurer (2);
Recording Secretary (2); Current History Club (2); Secretary (2);
Vice-President (2); Y. W. C. A. (1, 2, 3, 4); Student Volunteer (2, 3);
White Hall Club (1, 2, 3, 4); President (3, 4); Methodist Club (1, 2, 3);
Home Economics Club (3); Playcrafters (4).

CORNELIA FELMET Asheville, N. C.

Physical Education—History

Asheville Teachers College (1, 2); Dynician Literary Society (3);
Secretary (3); Varsity Basketball (3, 4); Physical Education Major
Club (4); President (4); Glee Club; Y. W. C. A.; May Queen Attendant
(4); Methodist Club (3).

MARY EDNA GENTRY Cherry Lane, N. C.

Primary Education

Thalian Literary Society (2, 3, 4); Y. W. C. A. (2, 3, 4); Alleghany
County Club (2).

GRACE GREENE, *Senior Class Secretary*

The senior class is justly proud of Grace.
She is a leader in her class as well as in the
speaking activities of the South.

The 1936 RHODODENDRON





JUANITA GOBBLE

Winston-Salem, N. C.

Glee Club (2, 3, 4), Treasurer (4); Dynician Literary Society (1, 2, 3, 4), Censor (3), Critic (3); Methodist Club (2, 3, 4); Playcrafters (2, 3, 4); Forsyth County Club (2); White Hall Club (1); New Dormitory Club (2, 3, 4); Y. W. C. A. (1, 2, 3, 4); Student Volunteer (2, 4).

JESSIE MAE GOODMAN

West Jefferson, N. C.

Primary Education

Thalian Literary Society (2, 3, 4), Censor (4); White Hall Club (1, 2, 3); B. Y. P. U. (1, 2); Marshal (3).

CONNIE GRANT

Statesville, N. C.

Primary Education

B. Y. P. U. (1); Lovill Club (1); Thalian Literary Society (1, 2, 3, 4); Y. W. C. A. (1, 2, 3, 4); New Dormitory Club (2, 3, 4).

FLOSSIE GRAYBEAL

Fig. N. C.

Grammar Grade Education

GRACE WHITE GREENE

Ronda, N. C.

*French and English
Cum Laude*

Tennessee Wesleyan (1, 2); Phila Retian Literary Society (3, 4), Vice-President (3), President (4); Y. W. C. A. (3, 4), Junior Cabinet Member (3); Student Volunteer (3, 4); Member of Forensic Debating Team (3, 4); Orator (3, 4); Winner of Strawberry Leaf Oratorical Contest (4); Le Cercle Francais (4), Vice-President; Playcrafters (4); I. R. C. (4); White Hall Club (4), Vice-President; Letter Club (3).

HELEN JANE GREENE

Cliffside, N. C.

*English and French
Cum Laude*

Boiling Springs Junior College (1, 2); Dynician Literary Society (3, 4), Vice-President (4); Lovill Club (3, 4); Y. W. C. A. (3, 4), Junior Cabinet (4); B. S. U. Council (4), Director of B. T. U. (4); Rutherford County Club (3); Student Volunteer (4).

ELLEN V. HAMRICK

Ellenboro, N. C.

Grammar Grade Course

B. T. U. (1, 2, 3, 4), President (4); Lovill Club (1, 2, 3, 4), President (3); Thalian Literary Society (1, 2, 3, 4), Vice-President (4); Home Economics Club (3); B. S. U. Council (4); Y. W. C. A. (3, 4); Student Volunteer (4).

LILLIAN HIRE

Winston-Salem, N. C.

Grammar Grade Education

Thalian Literary Society (1, 2, 3, 4), Representative (3), Vice-President (3), President (4); Y. W. C. A. (3, 4); Playcrafters (4); Methodist Club (1, 2, 3); Orator (1); White Hall Club (1, 2); New Dormitory Club (3, 4).

RHEBA HINSON

Monroe, N. C.

Grammar Grade Education

Wingate Junior College (1, 2); Thalian Literary Society (3, 4), Secretary (4); Lovill Club (3, 4); Methodist Club (3, 4); Union County Club (3, 4); Y. W. C. A. (3, 4).

CARL RUDISILL, *Senior Class Treasurer*

"Rudy" is a rarity among athletes. He is a gentleman and a man of sportsmanship. These qualities make him a leader of the senior class.

The 1936 RHODODENDRON





PAULINE HOBSON Ramseur, N. C.
Grammar Grade Education

MARY HOFFMAN Lenoir, N. C.
Primary Education

PRUE HOUSER Lincolnton, N. C.
Primary Education

Dynician Literary Society (1, 2, 3, 4); White Hall Club (1); New
Dormitory Club (2, 3, 4); Lincoln County Club (1, 2, 3, 4); Home
Economics Club (3, 4); Lutheran Student Association (1, 2, 3, 4).

BETTY HOWARD..... Cornelius, N. C.
Grammar Grade Course

Y. W. C. A. (1, 2, 3, 4), Cabinet (3, 4); Vernician Literary Society
(1, 2, 3, 4), President (2), Secretary (2), Representative (3); Home
Economics Club (2, 3, 4), Secretary (2, 3), Vice-President (3); White
Hall Club (1); New Dormitory Club (2, 3, 4), Treasurer (3); Play-
crafters (3, 4); Vice-President of Class (3); Student Volunteer (2, 3, 4);
Maid of Honor (2).

KATE HUSKINS Burnsville, N. C.
English and History

VERA ISENHOUR..... New London, N. C.
Physical Education and History

BEULAH DIXON KETCHIE Mount Ulla, N. C.
Grammar Grade Education

Phila Retian Literary Society (1, 2, 3, 4); Lovill Club (1); New
Dormitory Club (2, 3, 4); Episcopal Club (1, 2, 3, 4); Y. W. C. A.
(1, 2, 3, 4).

CHRISTINE KING Pinnacle, N. C.
Grammar Grade Education

MYRTLE BLANCHE KISTLER Boone, N. C.
History and Mathematics

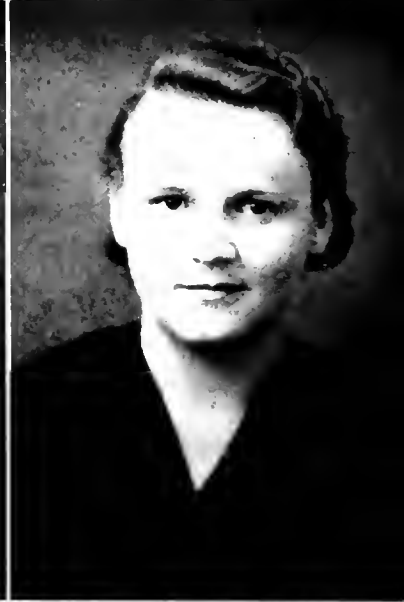
Newberry College (1, 2); Lutheran Students Association (3, 4), Vice-
President (3), Delegate to Southeastern Convention (3, 4); Dynician Lit-
erary Society (3, 4); Lovill Club (3, 4); Marshal (3); National Eco-
nomics Club (4).

W. AMOS ABRAMS, *Class Sponsor*

"Doc" is almost a tradition as senior class
sponsor. This friend and liberal has filled this
sometimes-difficult position to the liking of
every senior.

The 1936 RHODODENDRON





GLADYS KLUTTZ Gold Hill, N. C.

Grammar Grade Education

Catawba College (1, 2); Phila Retian Literary Society (3, 4); Glee Club (2); Presbyterian Club (3); B. Y. P. U. (4).

ELLIE LILLIAN LANE Pinnacle, N. C.

Physical Education and Science

Thalian Literary Society (1, 2, 3, 4); Lovill Club (1, 2); New Dormitory Club (3, 4); Methodist Club (1).

ANNE LEE Lawndale, N. C.

Weaver College (1, 2); Vernician Literary Society (3, 4); Y. W. C. A. (4); White Hall Club (3); New Dormitory Club (4); Methodist Club (4); Cleveland County Club (4).

MABEL LEE Monroe, N. C.

Grammar Grade Education

Phila Retian Literary Society (2, 3); Vice-President (4); Playcrafters (2, 3, 4); Y. W. C. A. (2, 3, 4); Union County Club (2, 3); Presbyterian Club (2, 3).

HELEN LEDBETTER Asheville, N. C.

English, French and History

Summa Cum Laude

Thalian Literary Society (1, 2, 3, 4), Chaplain (2), Representative (3); White Hall Club (1); New Dormitory Club (2, 3, 4); Le Circle Francais (4); Playcrafters (4); B. Y. P. U. (1, 2); Assistant in English (4).

WILLIE FLORENCE LINDSAY Lilesville, N. C.

Primary Education

Queens-Chicora College (1); Wingate Junior College (2); Dyncian Literary Society (4); Lovill Club (4); Methodist Club (4).

MARGARET LIPE Mooresville, N. C.

Grammar Grade Education

Y. W. C. A. (1, 2, 3, 4); Student Volunteer (1, 2); Methodist Club (1, 2, 3); White Hall Club (1, 2); Current History Club (1, 2), Secretary (2); New Dormitory Club (3, 4), President (3); Home Economics Club (4); Thalian Literary Society (1, 2, 3, 4), Critic (2), Censor (2), Reporter (3), President (4).

LOIS MILDRED LONG Forest City, N. C.

Primary Education

Boiling Springs Junior College (1, 2); Dyncian Literary Society (3, 4), Chaplain (4); Y. W. C. A. (3, 4), Vice-President, Junior Cabinet Member; Lovill Club (3, 4); Rutherford County Club (3); Student Volunteer; B. T. U.

ROSALIE HOPPER LYON Sparta, N. C.

Primary Education

Thalian Literary Society (2, 3, 4); Y. W. C. A. (2, 3, 4); Lovill Club (1); Alleghany County Club (1, 2), Secretary and Treasurer (2); Intramural Volley Ball (3, 4); New Dormitory Club (2, 3).

DOROTHY BRAKE

Even a little dot can be quite outstanding. In fact, "Dot" has been chosen as the cutest girl in the senior class. Cute, petite, friendly, and versatile—that's "Dot."

The 1936 RHODODENDRON





VALLIE MALTBA.....Boone, N. C.
Grammar Grade Education

EDNA MILLER.....Boone, N. C.
Grammar Grade Education

CAROLYN MOORE.....Milton, N. C.
Primary Education

Phila Retian Literary Society (1, 2, 3, 4); White Hall Club (1);
New Dormitory Club (2, 3, 4); L. S. A.; Home Economics Club (4);
Playcrafters (4); Y. W. C. A. (4).

IRENE MOORE.....Granite Falls, N. C.
Grammar Grade Education

HESSIE JANE MORGAN.....Norwood, N. C.
Grammar Grade Education

MINNIE LEE MORRIS.....Southmont, N. C.
Grammar Grade Education

W. C. U. N. C. (1); Davidson County Club, Vice-President (3, 4);
French Club, President (4); Thalian Literary Society (2, 3, 4); Lovill
Club (2, 3, 4); French Assistant (2, 3, 4).

MARY LOUISE MORRISON.....Statesville, N. C.
Grammar Grade Education

Phila Retian Literary Society (1, 2, 3, 4); Y. W. C. A. (2, 3, 4);
Presbyterian Club (1); White Hall Club (1); New Dormitory Club
(2, 3, 4); Methodist Club (4).

GEORGIA R. MCCALL.....Asheville, N. C.
English and French

Biltmore College (1, 2); B. S. U. Council (3, 4); Y. W. C. A.
Cabinet (4); B. T. U. (3, 4), President (3); Student Volunteer (3, 4);
Dynician Literary Society (3, 4), President (3); Representative (4);
Debaters (3); Appalachian Staff, Associate Editor (4); Playerafters (3,
4); National Economics Club (4); Home Economics Club (4); Secretary-
Treasurer (4); White Hall Club (3); New Dormitory Club (4).

MARY LOU MCCALL.....Marion, N. C.
Science and Mathematics

Davenport College (1); Phila Retian Literary Society (2, 3, 4);
Y. W. C. A. (3, 4); White Hall Club (2); New Dormitory Club (3, 4);
Methodist Club (2, 3, 4).

JOHN TRIPLETT

"Preacher" John came to us from Ruther-
ford College. Leadership, dependability and
wide-spread interest in the college activities have
made him one of the most valuable young men
on our campus.

The 1936 RHODODENDRON





MARY ANNE NICHOLS Wilkesboro, N. C.

Mathematics and Science

Phila Retian Literary Society (1, 2, 3, 4); Critic (4); Y. W. C. A. (1, 2, 3, 4); Playcrafters (3, 4); Methodist Club (1, 2, 3, 4); Wilkes County Club (1, 2, 3); Secretary (2); White Hall Club (1, 2, 3); New Dormitory Club (4); Biology Club (3).

MARY NORWOOD McBee, S. C.

Primary Education

Davenport College (1, 2); Y. W. C. A. (4); Dyncian Literary Society (4); New Dormitory Club (4).

LONA DARE PARKER Mount Gilead, N. C.

Primary Education

W. C. U. N. C. (1); Flora McDonald (2, 3); Dyncian Literary Society (4); Y. W. C. A. (4); Methodist Club (4); East Carolina Club (4).

RUBY PARSONS Boone, N. C.

Mathematics and Physical Education

FAYE VIRGINIA PLOTT Concord, N. C.

Primary Education

Phila Retian Literary Society (1, 2, 3, 4); Methodist Club (1, 2, 3, 4); Lovill Club (1); New Dormitory Club (2, 3, 4); Y. W. C. A. (1, 2, 3, 4); Playcrafters (4).

ISLEAN RAY Micaville, N. C.

History and English

GENEVA C. RECTOR Drexel, N. C.

Mathematics and Physical Education

EDNA ROGERS Concord, N. C.

Grammar Grade Education

Dyncian Literary Society (1, 2, 3, 4); Lovill Club (1); Home Economics Club (1); B. Y. P. U. (1, 2, 3, 4); New Dormitory Club (2, 3, 4); Glee Club (4); Playcrafters (4); Y. W. C. A. (4).

HAZEL SHARPE Cedar Grove, N. C.

Primary Education

Thalian Literary Society (1, 2, 3, 4); B. Y. P. U. (1, 2); Y. W. C. A. (1, 2, 4); Home Economics Club (3, 4); Lovill Club (1); New Dormitory Club (2, 3, 4).

FRANK MOORE, *Most Influential*

The entire student body has found in Frank Moore the acme of personified leadership and it was with this thought in mind that they acclaimed him the *Most Valuable Young Man* at Appalachian.

The 1936 RHODODENDRON





HASSELLTINE SHIPMAN Hendersonville, N. C.
Physical Education and English

MURIEL SHUMATE Abshers, N. C.
Grammar Grade Education

Phila Retian Society (1, 2, 3, 4), Treasurer (3); Lovill Club (1); New Dormitory Club (2, 3, 4); Wilkes County Club (1, 2, 3); Y. W. C. A. (4).

ELMA R. SIMMONS Winston-Salem, N. C.
Grammar Grade Education

Meredith College (1); Vernician Literary Society (2, 3, 4), Critic (2); Y. W. C. A. (2, 3, 4); B. Y. P. U. (2, 3), Vice-President (2); Forsyth County Club (2); White Hall Club (2); New Dormitory Club (3, 4).

AGNES SIMS Harrisburg, N. C.
Mathematics and Science

Dynician Literary Society (1, 2, 3, 4); Y. W. C. A. (1, 2, 3, 4); Presbyterian Club (1, 2, 3, 4); Lovill Club (1); New Dormitory Club (2, 3, 4).

AGNES SLATE King, N. C.
Primary Education

Guilford College (1, 2, 3); Dynician Literary Society (4); Y. W. C. A. (4); B. Y. P. U. (4); White Hall Club (4).

THEORIA STRAUGHN East Spencer, N. C.
Primary Education

White Hall Club (1, 2); Vernician Literary Society (1, 2, 4); B. Y. P. U. (2, 4).

MARY FRANCES THOMAS Summerfield, N. C.
Grammar Grade Education

Weaver College (1, 2); Y. W. C. A. (3, 4); Lovill Club (3); New Dormitory Club (4); Thalian Literary Society (3, 4).

CLARICE HELEN THOMPSON Glade Valley, N. C.
French and English
Cum Laude

Y. W. C. A. (1, 2, 3, 4), Secretary (4); Phila Retian Literary Society (1, 2, 3, 4), Vice-President (3), Treasurer (4), Representative (4); Class Vice-President (2); Presbyterian Club (1, 2, 3, 4), Vice-President (1, 2), President (3); Alleghany County Club (1, 2, 3), Vice-President (1), Secretary (2), Vice-President (3); White Hall Club (1, 2); New Dormitory Club (3, 4); Playcrafters (3, 4); French Club (4); International Relations Club (4); Marshal (3).

RUBY TRIVETTE Boone, N. C.
English and Physical Education

E. BRUCE MACFADYEN, *Best Executive*

That is the well deserved honor the student body has bestowed on E. Bruce MacFadyen, popular athlete, laboratory assistant, and highly successful business manager of *The Appalachian*.

The 1936 RHODODENDRON





The 1936 RHODODENDRON

ORA VANNOY Reddis River, N. C.
Primary Education

HELEN WAGONER Gold Hill, N. C.
Grammar Grade Education
Cum Laude

NAOMI WALKER Rutherfordton, N. C.
Grammar Grade Education

GRACE BELLE WARD Pittsboro, N. C.
Grammar Grade Education
Cum Laude

Vernician Literary Society (1, 2, 3, 4), Chaplain (2), Treasurer (2), Corresponding Secretary (3), President (3), Representative (4); Y. W. C. A. (1, 2, 3, 4); B. Y. P. U. (1, 2, 3, 4); White Hall Club (1, 2, 3); New Dormitory Club (4); East Carolina Club (3); National Economics Club (4).

MARY ALICE WASHAM Huntersville, N. C.
Primary Education

Thalian Literary Society (1, 2, 3, 4), Treasurer (3); Lovill Club (1, 2, 3, 4); Presbyterian Club (1, 2, 3, 4), Treasurer (3), President (4); Y. W. C. A. (4).

SARAH HOYLE WESTMORELAND Huntersville, N. C.
Grammar Grade Education

Y. W. C. A. (1, 2, 3, 4); Cabinet (4); Vernician Literary Society (1, 2, 3, 4), Secretary (2), Chaplain (3), Vice-President (3), Treasurer (3), President (4); Student Volunteer (2, 3, 4); Lovill Club (1, 2, 3, 4); Methodist Club (1, 2, 3, 4), Vice-President (3).

AVIS WILHELM Cornelius, N. C.
Grammar Grade Education

Vernician Literary Society (1, 2, 3, 4), President (2); Y. W. C. A. (1, 2, 3, 4), Cabinet (3, 4); Student Volunteer (2, 3, 4), President (2); Student Volunteer (2, 3, 4), President (3); Presbyterian Club (1, 2, 3, 4), Secretary (3), Vice-President (4); Lovill Club (1, 2, 3, 4).

MRS. ALBERT WILLIAMS Monroe, N. C.
Grammar Grade Education

HAZEL WILSON Fallston, N. C.
Primary Education
Cum Laude

Weaver (1, 2); Vernician Literary Society (3, 4), Treasurer (4); Y. W. C. A. (4); Methodist Club (4); White Hall Club (3, 4); Home Economics Club (4); Cleveland County Club (4).

JEWELL WILSON Fallston, N. C.
Grammar Grade Education

Weaver College (1); W. C. U. N. C. (2); Vernician Literary Society (3, 4), Censor (3); Y. W. C. A. (4); White Hall Club (3, 4); Methodist Club (4); Home Economics Club (4); Cleveland County Club (4).

GRACE GREENE, *Best Speaker*

There are few people more gifted than Grace. Not only is she talented in speech, but her personality has made her an outstanding student at Appalachian.





WILDA WILSON Lexington, N. C.

Primary Education

Y. W. C. A. (1, 2, 4); Dyncian Literary Society (1, 2, 3, 4);
New Dormitory Club (4); White Hall Club (1, 2, 3); Playcrafters (2);
Student Volunteer (1, 2); Davidson County Club (4).

MABEL YODER Lincolnton, N. C.

Primary Education

Lenoir Rhyne College (1); Dyncian Literary Society (2, 3, 4);
Y. W. C. A. (3, 4); Lutheran Student Association (2, 3, 4), President
(4); Lincoln County Club (3, 4); Home Economics Club (4); White
Hall Club (2); New Dormitory Club (3, 4).

GRACE MITCHAM Marion, N. C.

Grammar Grade Education

JANIE TEDDER Ellenboro, N. C.

Grammar Grade Education

Queens-Chicora College (1); Lovill Club (2); New Dormitory Club
(4); Phila Retian Literary Society (2, 3, 4); Glee Club (2, 4); Y. W.
C. A. (4).

LAWRENCE ATCHLEY Union Mills, N. C.

Mathematics and Science

Appalachian Literary Society (1, 2, 3, 4), President (4); Y. M. C. A.
(2, 4); B. S. U. Council (2, 3, 4); Rutherford County Club (3); Play-
crafters (4); B. Y. P. U. (1, 2, 3, 4).

ADOLPH ATKINS Caroleen, N. C.

English and History

Cum Laude

Boiling Springs College (1, 2); Intercollegiate Debater (1, 2, 4);
Alpha Sigma Gamma Literary Society Representative (1, 3, 4), President
(3), Critic (3), Censor (4); International Relations Club (4); Psychology
Assistant (4); Rutherford County Club, President (4).

J. BOYD BAUCOM Monroe, N. C.

Mathematics and Science

Delta Phi Sigma Literary Society (1, 2, 3, 4), President (4), Vice-
President (3), Censor (2); Y. M. C. A. (2, 3, 4); B. Y. P. U. (1, 2,
3, 4); B. S. U. (2); Union County Club (1, 2, 3), President (1, 2),
Vice-President (3); Letter Club (2, 3, 4); Appalachian "A" Club (4);
Current History Club (2); Football (1, 2, 3); Basketball (1, 2, 3);
Assistant in Mathematics (3); President Junior Class (3).

RALPH H. BEAM Cherryville, N. C.

Physical Education and Science

Appalachian Literary Society (1, 2); Lincoln County Club (1, 2, 3, 4),
President (3); Y. M. C. A. (2, 3); Football Manager (4); National
Economics Club (4); Letter Club (4).

HENRY J. BEEKER Statesville, N. C.

History and English

Cum Laude

Campbell College (1, 2); Wake Forest (3); Alpha Sigma Gamma
Literary Society; Debaters Club; Glee Club (4); Playcrafters (4).

HARRY BREEZE Hillsboro, N. C.

English and History

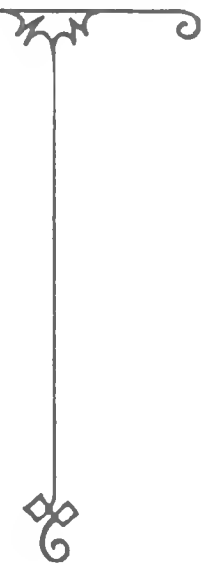
Basketball (1); Delta Phi Sigma (1, 2, 3); *Appalachian Staff*, News
Editor (4), Managing Editor (4).

CULLEN JOHNSON

Cullen is one of the most popular men on our campus. His winning smile, gay greetings, and outstanding ability in numerous college activities have won for him a warm place in our hearts.



The 1936 RHODODENDRON





C. R. BROWN Pittsboro, N. C.

History and Mathematics

Elon College (1); U. N. C. (2, 3); Alpha Sigma Gamma (4); B. Y. P. U. (4); Glee Club (4); Ministerial Association, President (4).

HUGH BROWNING Stony Point, N. C.

English and History

Delta Phi Sigma (2), Representative (4); National Economics Club (4); *Appalachian* Staff, Circulation Manager (4).

WALLACE ROBERT BUCHANAN Minneapolis, N. C.

Grammar Grade Education

DAVID BUNCH

Statesville, N. C.

History and English
Cum Laude

EUGENE BYRD

Black Mountain, N. C.

English and History
Summa Cum Laude

Current History Club (1, 2); President (2); International Relations Club (2, 3, 4); Appalachian Literary Society (3, 4), Vice-President (4); Intercollegiate Debating (3, 4); Alpha Tau Kappa; (3, 4); After Dinner Speaking (4); Extemporaneous Speaking (4); B. Y. P. U. (2, 4); General Director (4); B. S. U. Council (4); Playcrafters (4); Assistant in History (4); French Club (4).

LINDSAY CAGLE

Carthage, N. C.

English and History

ROBERT CASE

Oak Ridge, N. C.

Mathematics and Science

BEN COLVARD

North Wilkesboro, N. C.

English and History

U. N. C. (1, 2); National Economics Club (4); Delta Phi Sigma (4).

LEE SWANSON EDWARDS

Todd, N. C.

Mathematics and Science

Summa Cum Laude

Delta Phi Sigma (4); Ashe County Club (1, 4); Current History Club (1); B. Y. P. U. (1, 2, 3, 4); Ministerial Association (4).

DALE KELLER, *Sycophant*

A personality, wrapped in "beaucoup d'intelligence," sincerity, wit, perseverance, and common sense, not to be forgotten over night.

The 1936 RHODODENDRON





GILBERT FALLS Kings Mountain, N. C.

English and History

U. N. C. (1, 2); Delta Phi Sigma (3, 4), President (4); RHODODENDRON Staff, Business Manager (4).

L. J. GANN Rockingham, N. C.

History and English

Cum Laude

U. N. C. (1); Appalachian Literary Society (2, 3, 4); Critic (4); Y. M. C. A. (2, 3, 4), Secretary-Treasurer (3); International Relations Club (2, 3, 4), President (4); Assistant in History (4); RHODODENDRON Staff (3, 4), Editor-in-Chief (4); Class Treasurer (3).

HERBERT GRAYBEAL Fig, N. C.

Mathematics and Science

Delta Phi Sigma (3, 4), Censor (4), Vice-President (3).

EDWARD ELMO HAMRICK Shelby, N. C.

English and History

Appalachian Literary Society (1, 2, 3, 4), Censor (2, 3), Secretary-Treasurer (4); Playcrafters (2, 3, 4); *Appalachian* Staff (3, 4), Sports Editor (4); RHODODENDRON Staff, Athletic Editor (4); Cleveland County Club (1, 2, 4), President (4).

CECIL HARMON Sugar Grove, N. C.

Grammar Grade Education

Appalachian Literary Society (3, 4); Y. M. C. A. (3, 4); Appalachian Aquateers (3, 4).

THURMAN HOLT, JR. Spencer, N. C.

History and Physical Education

Football (4); Basketball (3, 4); Baseball (3); "A" Club.

BRUNER HONEYCUTT Forest City, N. C.

History and English

Boiling Springs College (1, 2); Limestone College (3).

ELI HOUSER Cherryville, N. C.

English and History

DON C. HUFFMAN Vale, N. C.

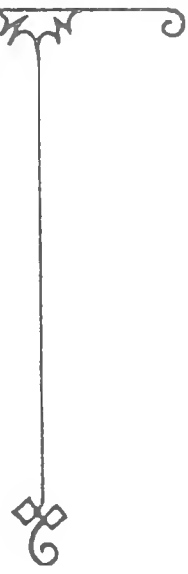
History and Mathematics

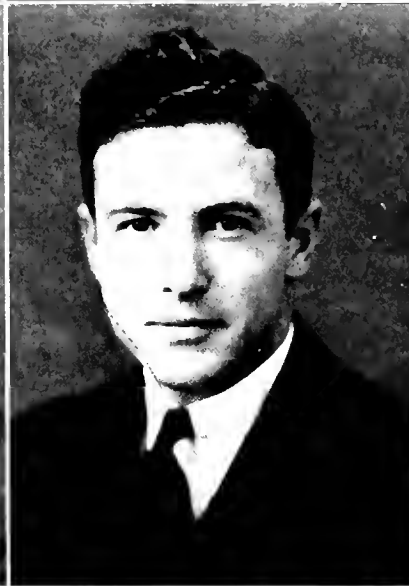
Y. M. C. A. (3, 4), President (4); Delta Phi Sigma (1, 2, 3, 4), Secretary-Treasurer (3), Vice-President (4), President (4); Catawba County Club (1, 2, 3), Vice-President (2), Secretary-Treasurer (3); Playcrafters (4); National Economics Club (4); International Relations Club (4); RHODODENDRON Staff, Managing Editor (4).

EARL "RED" MAY, *Bull-Shooter*

This characteristic seems at times to draw the "fly (pretty and feminine) into the parlor"; at other times his power shifts from the "fly into the parlor" to the "office of authority."

The 1936 RHODODENDRON





CULLEN JOHNSON

Vale, N. C.

History and English

Appalachian Literary Society (1, 2, 3, 4), Vice-President (2), Secretary-Treasurer (3), Vice-President (3), Chaplain (4); Playcrafters (1, 2, 3, 4); Glee Club (1, 2, 3, 4), President (3), Vice-President (4); Lincoln County Club (1, 2, 3, 4); Wesley Club (1, 2, 3, 4), Vice-President (2), President (3); Cheerleader (3, 4), Chief (4).

DALE KELLER

Boone, N. C.

Science and History

Cum Laude

Playcrafters, Technician and Electrician (2, 3, 4), Craftsman (3), Master-craftsman (4); International Relations Club (2, 3, 4); Biology Club (3); Assistant in Physics (2, 3, 4).

EUGENE KOON

Union Mills, N. C.

Mathematics and History

Appalachian Literary Society (2, 3, 4); Y. M. C. A. (3, 4); B. Y. P. U. (1, 2, 3, 4); Appalachian Playcrafters (4); Rutherford County Club (3); B. S. U. (3, 4).

DILMON B. LAWSON

Pinnacle, N. C.

Science and History

Guilford College (1); Vice-President Senior Class; Baseball (2); Basketball (2, 3); Football (3); Delta Phi Sigma (2, 3, 4), Secretary (4); Playcrafters (3, 4).

E. BRUCE MACFADYEN

Fayetteville, N. C.

Mathematics and Science

Davidson (1); Football (3); Baseball (3); Letter Club (3, 4); Delta Phi Sigma (4); Chemistry Assistant (3, 4); *Appalachian* Staff, Business Manager (4); National Economics Club.

CARL THOMAS MARTIN

East Bend, N. C.

English and History

Delta Phi Sigma (1, 2, 3, 4); Y. M. C. A. (2, 3, 4); Epworth League (3, 4).

EARL MAY

Sparks, Ga.

History and English

Young Harris College (1); Delta Phi Sigma (2, 3, 4), President (4); National Economics Club, President (4); International Relations Club (4); Assistant in History and Economics (4); Playcrafters (3, 4).

JACK MCGEE

Boone, N. C.

History and English

Y. M. C. A. (2); Delta Phi Sigma (2, 3); Alpha Sigma Gamma (4).

ALBERT MICHAEL

Boone, N. C.

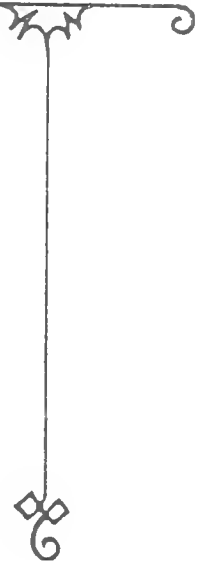
History and Physical Education

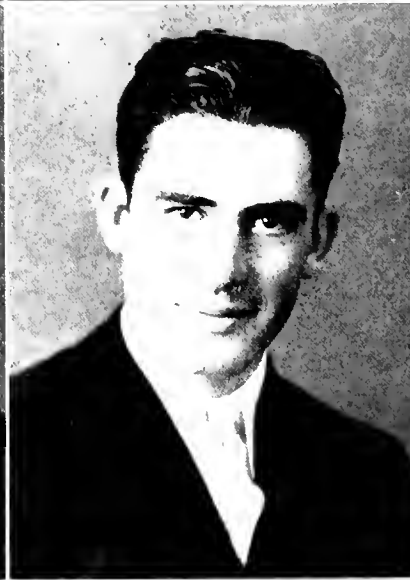
CARL RUDISILL, *Best Athlete*

"Rudy" is the most popular young man on our campus, the best athlete in our class, an all-round student and friend. Once you know him you will always like him.



The 1936 RHODODENDRON





FRANK MOORE Lenoir, N. C.

History and English

Varsity Wrestling (1, 2, 3, 4), Captain (2); Freshman Football; Football (2, 3); Letter Club (4), Secretary; Assistant Wrestling Coach (4); Assistant in English and French; Student Council (3), Chairman; *Appalachian* Staff, Sports Editor (3), Editor-in-Chief (4).

ERVIN NORTON Boone, N. C.

History and English

Band (3, 4); Orchestra (3, 4).

WALLACE O'NEAL Mullins, S. C.

History and Physical Education

Football (2, 3, 4); Basketball, Manager (3).

DORMAN PAYNE Summit, N. C.

Mathematics and Science

Delta Phi Sigma (1, 4).

PAUL A. PERKINS Scottville, N. C.

Mathematics and Science

Baseball (2, 3, 4); Ashe County Club (2, 3, 4); Letter Club (3, 4); Alpha Sigma Gamma (3, 4).

JOHN MURPHY PRIVETTE Peachland, N. C.

History and English

Y. M. C. A. (2, 3, 4), Secretary-Treasurer (4); Alpha Sigma Gamma (3, 4), President (4); Wrestling, Manager (4).

CARL H. RUDISILL Vale, N. C.

History and Physical Education

Delta Phi Sigma (1, 2, 3, 4), Censor (3); L. S. A. (1, 2); Catawba County Club (1, 2), President (1); Football (2, 3, 4) Co-Captain (3); Baseball (1, 2, 3, 4); Wrestling (2); Letter Club (1, 2, 3, 4); Boys' "A" Club; Senior Class Treasurer.

CHARLES H. SCOTT Boone, N. C.

Grammar Grade Education

JUNE STEELE Marston, N. C.

Mathematics and Physical Education

Alpha Sigma Gamma Literary (3, 4); Y. M. C. A. (2, 3, 4); Physical Education Major Club (3); East Carolina Club (3, 4).

GENEVA CHAFFIN, *Best Athlete*

GENEVA—the laughing, flashing athlete with the golden flame in her hair—plus her "on-the-level" social personality, is possessed with an off-stage character of concern and diligence.

The 1936 RHODODENDRON





RAY STIKE Matoaka, West Virginia

English and History

Cum Laude

Senior Class President; Delta Phi Sigma (2, 3, 4), Representative (3), Secretary-Treasurer (3), Critic (4); International Relations Club (2, 3, 4); Debater (2, 3, 4); Extemporaneous Speaker (4); After Dinner Speaker (4); Alpha Tau Kappa (3, 4); Virginia-West Virginia Club (2); Ashe County Club (1); Y. M. C. A. (4); President Epworth League; History Assistant (2, 3); Secretary Athletic Association (4); Chief Marshal (3).

ERNIE TRIPLETT Matney, N. C.

Grammar Grade Education

JOHN TRIPLETT Jonesville, N. C.

English and History

Cum Laude

Rutherford College (1); Class Treasurer (2); Appalachian Literary Society (2, 3, 4), Chaplain (2), Critic (3), President (4); Appalachian Playcrafters (2, 3, 4), President (4); Wesley Club (2, 3), Secretary (2); Glee Club (2, 3, 4); International Relations Club (3, 4), Vice-President (4); RHODOENDRON Staff, Activities Editor (4); N. C. Methodist Students Council (2, 3, 4), Vice-President (3).

CARL TRIPPANY Massena, N. Y.

History and Physical Education

Football (1, 2, 3, 4), Captain (3, 4); Baseball (1, 2, 3); Member "A" Club, President (4).

JOSEPH A. TOWNSEND Boone, N. C.

History and Physical Education

CECIL VANNOY Purlear, N. C.

Mathematics and History

Wilkes County Club (1, 2, 3, 4), President (3); Alpha Sigma Gamma (3, 4); Basketball Manager (4); "A" Club (4).

GLENARD WARLICK Lawndale, N. C.

University of North Carolina (1, 2); Alpha Sigma Gamma Literary Society (3, 4), Vice-President (3, 4), Censor (3), President (4); *Appalachian* Staff (4); Assistant in Psychology (4); Tennis (4).

HOYLE WHITE Vale, N. C.

Grammar Grade Education

Appalachian Literary Society (2, 3, 4), Vice-President (4); Glee Club (4).

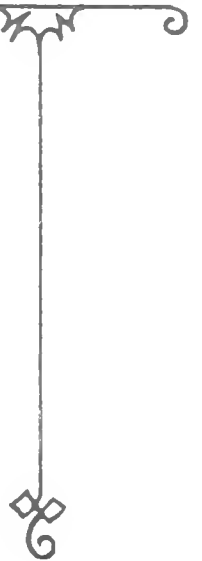
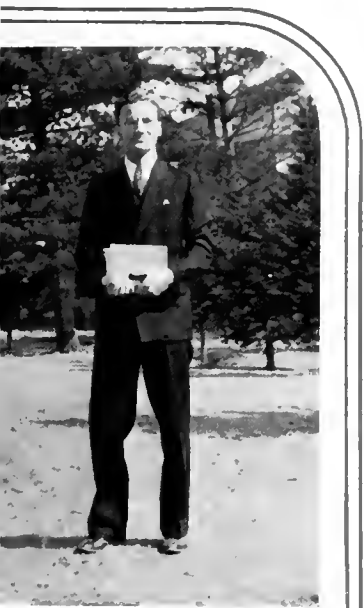
W. ALBERT WILLIAMS Monroe, N. C.

Grammar Grade Education

EUGENE BYRD, *Most Intellectual*

For Gene, the most intellectual member of our class, we predict a brilliant future. A quick mind, ready wit, pleasing personality, and common sense will aid him in achieving success.

The 1936 RHODOENDRON







JUNIORS



Junior Class

OFFICERS

ROBERT KILLIAN

President

THOMAS WOOD

Vice-President

MARGARET FIDDLER

Secretary

JOHN B. MORRIS, JR.

Treasurer



MARY KATHLEEN ANDERSON
Stratford, N. C.

LOTTIE MAE AUSTIN
Oakboro, N. C.

LELIA AYERS
Boone, N. C.

HELEN JANE BAKER
Newton, N. C.

RUBY JO BALLEW
Celo, N. C.

MILDRED BARGER
Mooreville, N. C.

HAZEL BEAVER
Bear Poplar, N. C.

ARLENE BLAKE
Maple Hill, N. C.

LILLY RUTH BLAYLOCK
Harmony, N. C.

DEWETTE BRIGGS
Lexington, N. C.

MARY FRANCES BROWN
Campobello, S. C.

MAY BRYANT
Boone, N. C.

RHODODENDRON

SALLY BURNS
Newton, N. C.

MARTHA BUTNER
Winston-Salem, N. C.

MIRIAM CARSON
Forest City, N. C.

NORA CASE
Oak Ridge, N. C.

BILLY COBLE
Albemarle, N. C.

FOY COOK
Mount Airy, N. C.

HATTIE LEE COSTNER
Lincolnton, N. C.

JIMMIE COULTER
Catawba, N. C.

NORA CRAIG
Lenoir, N. C.

MARY JO CURRY
Lexington, N. C.

HAZEL DOLINGER
Sturgills, N. C.

ELEANOR DOUGHERTY
Sweetwater, Tenn.





POLLY DOUGHERTY
Sweetwater, Tenn.

CLARINE DUKE
Jackson, N. C.

JESSIE EAKER
Cherryville, N. C.



THEDUS EUDY
Stanfield, N. C.

INEZ EVERHART
Thomasville, N. C.

MARGARET FIDLER
Cornelius, N. C.



MARY BELLE GARDNER
Cleveland, N. C.

MILDRED GREENE
New London, N. C.

ELAINE GREER
Boone, N. C.



MARGARET HAMBY
Lenoir, N. C.

MARY HILL HAYES
Gates, N. C.

KNOX HEAFNER
Lincolnton, N. C.



RHODODENDRON

KATHLEEN HELMS
Unionville, N. C.

ETHEL HEMBY
Weddington, N. C.

FRANCES HINSON
Marshville, N. C.

ANNIE MAUD HIRE
Winston-Salem, N. C.

DOROTHY HOLT
Liberty, N. C.

SARA HOWARD
Mount Holly, N. C.

FRANCES HUITT
Claremont, N. C.

RUTH HUSKINS
Burnsville, N. C.

MILDRED ILEY
Harrisburg, N. C.

CORA ELLEN INGRAM
Albemarle, N. C.

LOUISE JOHNSON
Sherwood, N. C.

DONNA JONES
Furches, N. C.





LUCY JUSTICE
Rutherfordton, N. C.

MARGARET KELLY
Cornelius, N. C.

MARY HANNA LIPE
Mooreville, N. C.



ELIZABETH LONG
Forest City, N. C.

KATE PARKER LUBCHENKO
Ansonville, N. C.

FLORA MAE LUCKEY
Charlotte, N. C.



IVAH MARSH
Marshville, N. C.

THELMA MAY MASSEY
Yanceyville, N. C.

PAULINE McCORKLE
Salisbury, N. C.



ANNETTE MCKAY
Marston, N. C.

LULIE MARGIE MCLAMB
Salemberg, N. C.

LOUISE MICHAEL
Mount Holly, N. C.

RHODODENDRON

LEXIE MILLER
Boone, N. C.

KATHLEEN MORRIS
Albemarle, N. C.

AGNES MURPHY
Laurens, S. C.

BEATRICE PARKER
Marshville, N. C.

MILDRED PARKS
Kannapolis, N. C.

LUCY PEARSON
North Wilkesboro, N. C.

AILEEN PERRY
Piney Creek, N. C.

GAIL PHILLIPS
Lenoir, N. C.

HILMA PIERCE
Harmon, N. C.

FLORA PITTMAN
Fairmont, N. C.

ELIZABETH PRATT
Winston-Salem, N. C.

MAE RAMSEY
Lawndale, N. C.





RUTISHA RANKIN
Belmont, N. C.

ELLA REECE
Zionville, N. C.

JULIA RENFRO
Mooresboro, N. C.



ODESSA RICHARDSON
Harmony, N. C.

BERNICE ROBERSON
Robersonville, N. C.

IRENE ROLLINS
Boone, N. C.



CATHERINE RUDISILL
Charlotte, N. C.

MOZELLE SCHUYLER
Lowgap, N. C.

RUTH SHERWOOD
Sherwood, N. C.



RACHEL SHIDAL
Vale, N. C.

VIRGINIA SHIVE
Rockwell, N. C.

ALMA SHOAF
North Wilkesboro, N. C.



RHODODENDRON

GLADYS SIGMAN
Granite Falls, N. C.

LUCILLE SLOOP
Mount Ulla, N. C.

JANE SMITH
Albemarle, N. C.

MAISIE SMITH
Morganton, N. C.

LUCY SNIDER
Denton, N. C.

EDNA L. SNIPES
Bynum, N. C.

MOZELLE SPAINHOUR
Charlotte, N. C.

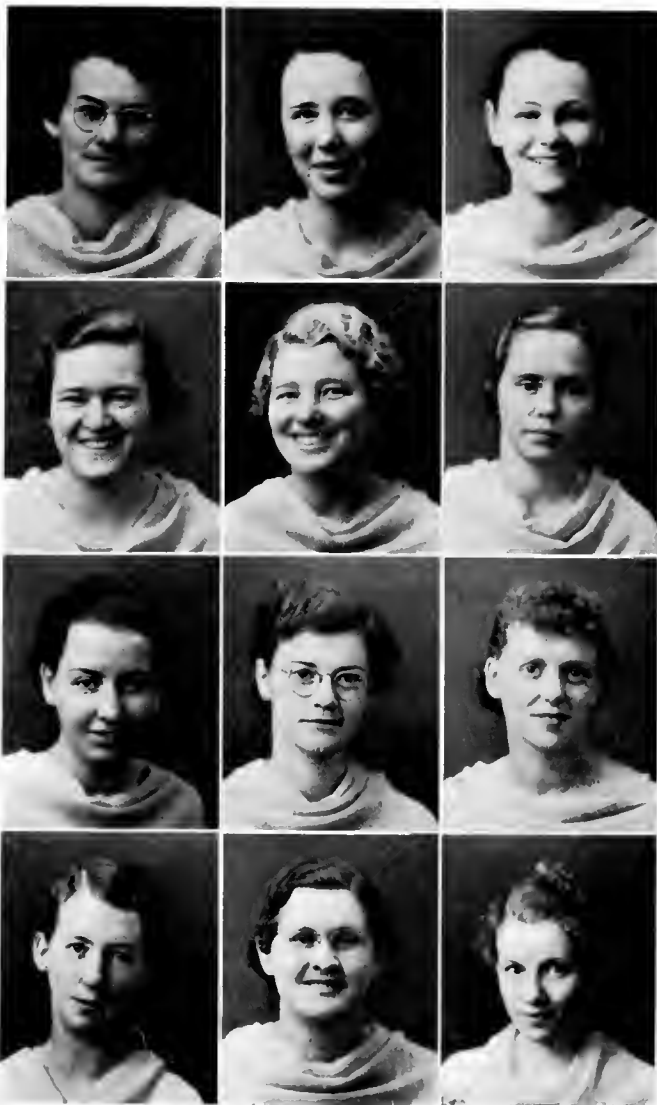
LETA TESTER
Matney, N. C.

ELLA W. THOMPSON
Reidsville, N. C.

VERNIE TOLBERT
Collettsville, N. C.

NAOMI LEE TRANTHAM
Lexington, N. C.

FRANCES WALKER
Shelby, N. C.





LUCILLE WARLICK
Lincolnton, N. C.

GRACE WELLBORN
Boone, N. C.

DOROTHY MAY WHITE
Ruffin, N. C.



ERMA WHITE
Walnut Cove, N. C.

SALLY WHITFIELD
Mount Olive, N. C.

FRANCES WICKER
Sanford, N. C.



ARGIE WELBURN
Wadesboro, N. C.

SADIE WILHELM
Cleveland, N. C.

FANNIE WILSON
Blangh, N. C.



MARY ALICE WILSON
Newton, N. C.

KATE WINEBARGER
Vilas, N. C.

MARY WINKLER
Boone, N. C.



RHODODENDRON

MADGE WORTMAN
Casar, N. C.

LEO YORK
Mount Airy, N. C.

JAMES E. ANDERSON
Yanceyville, N. C.



ROVIE ANGELL
Harmony, N. C.

BASIL ANNAS
Granite Falls, N. C.

KENNETH ANTHONY
Cherryville, N. C.



NICHOLAS ANTONAKOS
High Point, N. C.

MOIR AYERS
Summerfield, N. C.

WILLARD BESS
Cherryville, N. C.

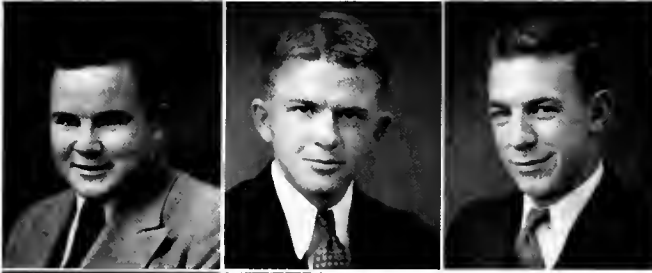


DEWEY BINGHAM
Boone, N. C.

L. WAYNE BLEVINS
Lansing, N. C.

NORMAN CHADWICK
Straits, N. C.





SOMERS COLLINS
Gastonia, N. C.

ALFRED CROMARTIE
Garland, N. C.

JAMES A. CROOKS
Lincolnton, N. C.



MORRIS EGGERS
Boone, N. C.

ROGER EWING
West Grove, Pa.

CLINE FARTHING
Sugar Grove, N. C.



GARLON HAMRICK
Rutherfordton, N. C.

NEIL HARTLEY
Boone, N. C.

HENRY HOUSTON
Harrisburg, N. C.

DANIEL S. HOYLE
Whitakers, N. C.



GILBERT HUBBARD
Greensboro, N. C.

PAUL HUFFMAN
Vale, N. C.

JOHN WESLEY HUNEYCUTT
Boone, N. C.

T. B. HUNEYCUTT
Nebo, N. C.



RHODODENDRON

NEWLAND E. JOHNSON
Minneapolis, N. C.

J. L. JONES
Booneville, N. C.

WILLIE KENDRICK
Merry Oaks, N. C.

FRANK KILLIAN
Lincolnton, N. C.

ROBERT KILLIAN
Lincolnton, N. C.

WILBUR C. KISER
Lincolnton, N. C.

GERALD LACKEY
Haddenite, N. C.

FRED LENTZ
Stony Point, N. C.

BENNIE MAREE
Union Mills, N. C.

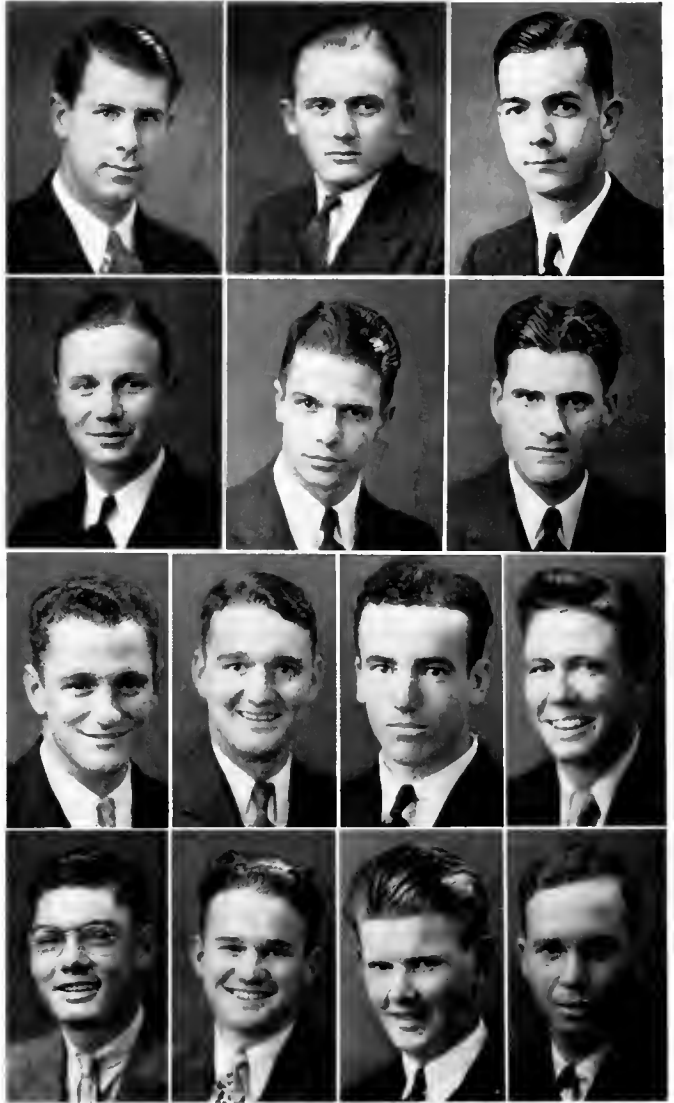
FOY MARTIN
Leland, Miss.

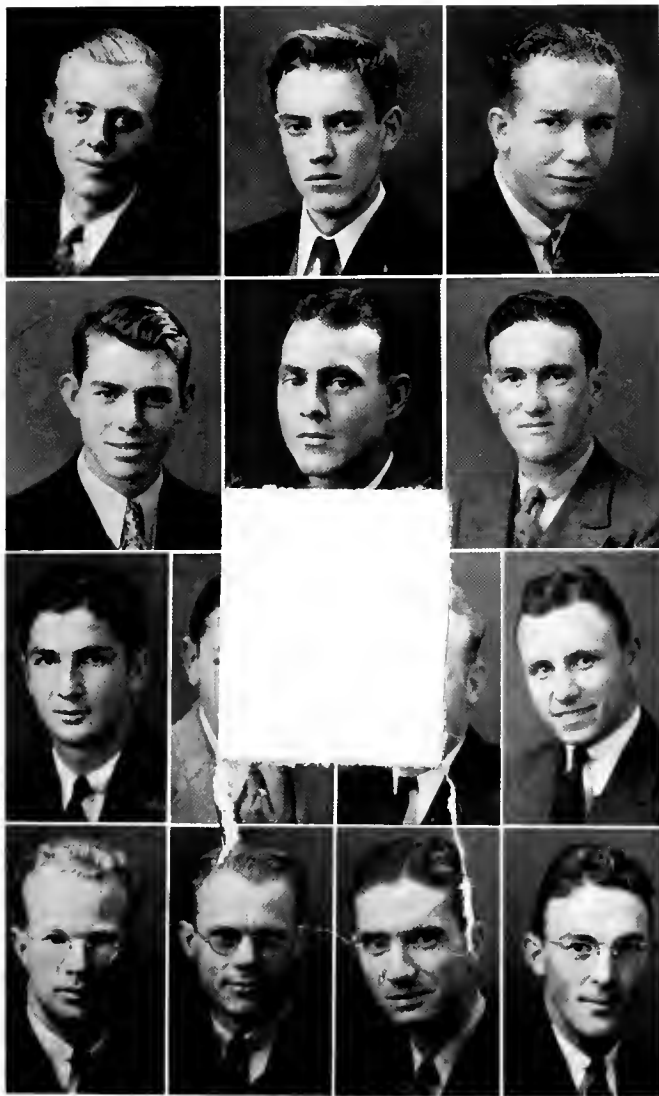
HAROLD MASSEY
Harrisburg, N. C.

VANCE MCBRIDE
Ronda, N. C.

SAM W. MCCrackEN
Clyde, N. C.

PASCHAL MCLAURIN
Bethune, S. C.





WILLIAM MCNEILL
Laurel Springs, N. C.

BANNER MILLER
Boone, N. C.

GLEN MILLER
Comet, N. C.

HAROLD MILLER
Clifton, N. C.

JOHN BIRCH MORRIS, JR.
Albemarle, N. C.

STANCILL NANNEY
Nealsville, N. C.

ANDY NESBITT
Fairview, N. C.

JAMES L. PATTERSON
Shelby, N. C.

JOHNNY PEDEN
Gastonia, N. C.

ROLAND Z. PHILLIPS
Cowpens, S. C.

NORMAN PICKERT
Philadelphia, N. Y.

JAMES REECE
Boone, N. C.

KARL SAWYER
Boone, N. C.

HENRY SHANNON
Gastonia, N. C.

RHODODENDRON

IRVIN SMITH
Linwood, N. C.

JACK SMITH
High Point, N. C.

LAWRENCE SPAVEN
Watertown, N. Y.

HARRELL STEPHENS
Hallsboro, N. C.

LUTHER TODD
Yadkinville, N. C.

PAUL TRIVETT
Boone, N. C.

ROY TURBYFILL, JR.
Maiden, N. C.

J. O. WATERS
Ellenboro, N. C.

EUGENE WIKE
Hiddenite, N. C.

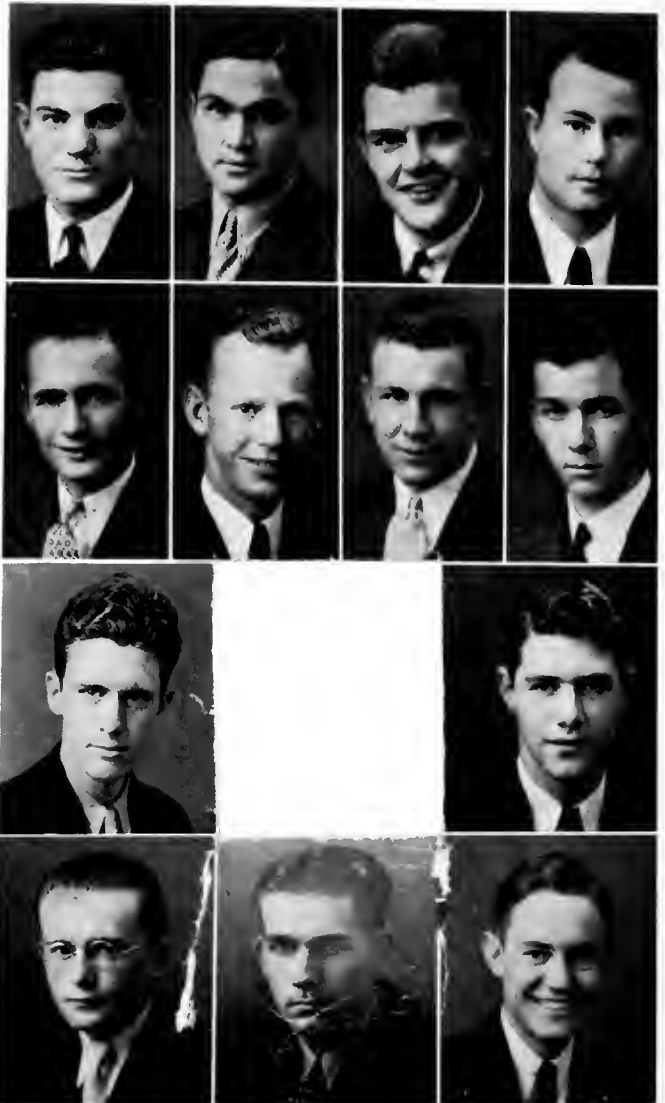
THAD WILKINS
Hendersonville, N. C.

AVERY W. WILLIS
Spruce Pine, N. C.

JACK WILSON
Gastonia, N. C.

HAROLD WINECOFF
Rockwell, N. C.

THOMAS WOOD
Draper, Va.





SOPHOMORES



Sophomore Class

OFFICERS

FREDERICK MOORE *President*
BEN NORRIS *Vice-President*
FLORENCE HUGHES *Secretary*
IVAN PEARSON *Treasurer*



LUCILLE ALLEY
VERGIE ATKINS
NORA BAREFOOT
MINNIE BARBER



RUTH BARKER
HAZEL BEAM
LOTTIE BEAM
VIRGINIA F. BEAM



CAROLE BEASLEY
RUTH BEAVER
BEATRICE BINGHAM
BILLIE L. BLACK



THELMA BLACKBURN
GLADYS BLAKELEY
MYRLE BOLICK
EUPHA BOWMAN



SARA BOWMAN
NAOMI BRANDON
MARY OLIVIA BRASWELL
NELL RUTH BRASWELL



NETA BRIDGES
MINNIE LAURA BROWN
BEULAH BRYANT
LUCILLE BYERLY



RHODODENDRON

LEOLA CAGLE

VIOLA CAGLE

MRS. JENNIE M. CALLOWAY

NELLE CARPENTER



MARY SUE CHILDERS

VIRGINIA CLAY

ELIZABETH COOK

GENEVA COOK

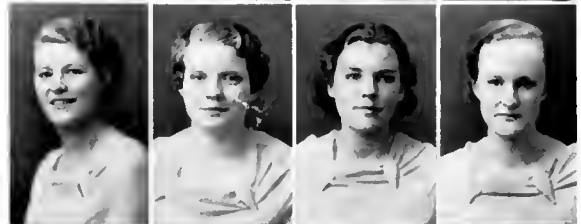


MATHIE M. COVINGTON

NELL CURTIS

GRACE DAVIS

MARTHALENE DAVIS



IRENE DICKSON

LOTTIE L. DICKSON

MARGARET DIXON

MAURICE DOBBINS

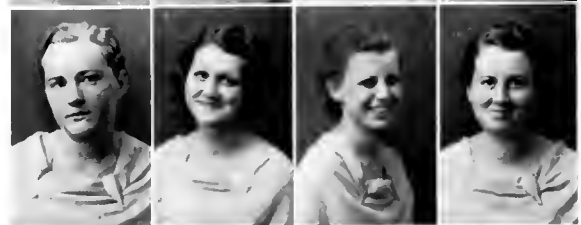


CARRIE EDMISTEN

LAURINE ELLIOT

RUTH EPPS

MAGGIE JO ESTES

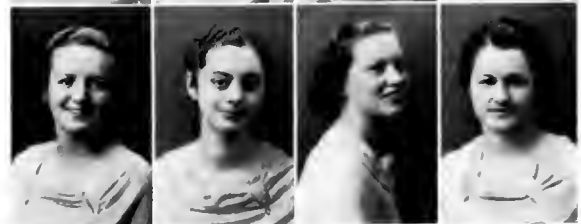


RENA MAE FARTHING

DAISY FLOYD

BEVERLY B. FOWLER

MARTHA E. FURCHESS





IRMA GABRIEL
FRANCES E. GALLOWAY
MABEL GREER
LUCY GULLEDGE



MARTHA HARDIN
MATTIE LOU HARMON
ROSALYN HARTSELL
KATE HENSON



DOROTHY HERMAN
STELLA HIATT
MARY HILL
MABEL HINSHAW



ELIZABETH LOIS HOLDEN
PAULINE HOLMES
MARY ALICE HOPKINS
VIRGINIA HOUCK



BLANCHE HOUSER
LEONA HOUSER
LILLIE HUFF
FLORENCE HUGHES



MIRIAM HUITT
MARGARET ISENHOUR
LOUISE JOHNSON
DELPHYNE JONES



RHODODENDRON

LOUISE JONES

NINA JONES

ETHEL LASSITER

LUCY LITTLE



EDNA MABE

REBECCA MABE

ANNETTE McCLURE

SUSIE McCONNELL



JEAN McMILLAN

NELL McSWAIN

CHLOE MICHAEL

BETTY JANE MILLER



ELIZABETH MILLER

GAYE MILLER

VIOLET MILLER

MARY HELEN MODLIN

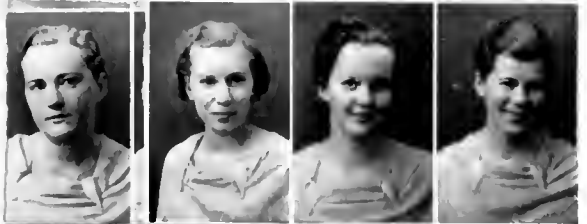


ADDIE MONTGOMERY

EDNA MOODY

ANNIE MAE MOORE

FAYE MOORE



DORA MORTON

ELIZABETH MORTON

NELLIE MOXLEY

MYRTLE NANCE





VIRGINIA NELSON
 NELLIE OVERCASH
 OVELIA OWENS
 LUCILLE PARKER



HAZEL PLASTER
 PAULINE POPE
 AGNES PORTER
 KATHLEEN PORTER



MARY LORENA PRATT
 LAVONNE PUTNAM
 EUNICE QUINN
 BERNICE RALEY



HELEN RATCHFORD
 MARGARET RAY
 MABEL RHYNE
 EDNA RIGGS



ALLEEN ROBBINS
 EDITH RUDISILL
 FAYE SALE
 IVA SALE



RUTH SCARBOROUGH
 ALMA SEAFORD
 MARY SHARPE
 THELMA SHEPHERD



RHODODENDRON

ELIZABETH SINCLAIR
 BONNIE SMITH
 MADGE SMITH
 MYRA ALICE SMITH



RUBY SMITH
 VIRGINIA SOUTH
 FLORENCE SPARROW
 FRANCES SPILLMAN



KATHLEEN STOUT
 NONA STOUT
 JESSIE STRICKLAND
 MARGARET STRICKLAND



GLADYS STURGILL
 CATHERINE STYRES
 JACK SULLIVAN
 PANSY TALENT



MOZELLE TEMPLETON
 LILLIE BLANCHE THOMPSON
 STELLA TILLEY
 NELL TODD



LOIS TOLBERT
 LYNNIE RUTH UPRIGHT
 AVIS VANCE
 ETTA WATERS





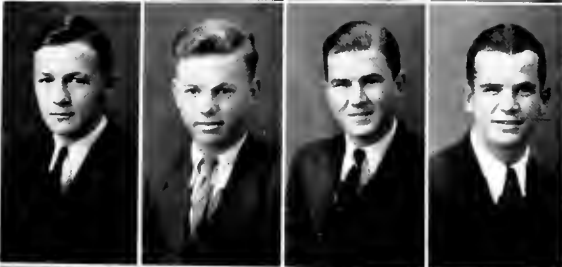
ESTELLE WATSON
REBECCA MAYE WARDEN
GRACE WEAVIL
VEVETTE WEHUNT



HELEN WELCH
VANDA WHICKER
DAISY MAE WILLIAMS
MAUDE WILLIAMS



SUSAN WINKLER
MARY LEE WOOD
MARGARET M. WRAY
EUNICE DAWSON (Junior)



WILLIAM H. BANDY
RALPH BESHEARS
ALFRED BEST
J. RAY BRASWELL



CLINE BRAY
CLIFTON BUMGARNER

RAY CLINE

RAY COON

JOHN ROGERS CREW, JR.

J. B. CROW, JR.



ROBERT P. EDWARDS

A. J. ELLER

BOB ELLIOTT

CYRUS FAW

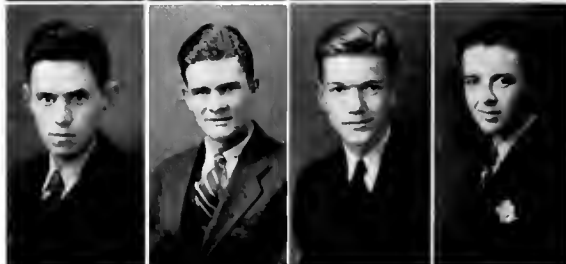


RAY FISHER

J. C. FOLGER

BLAINE GIBBS

JACK H. GIBBS



WILLIAM GOOD

HOWARD GOODMAN

FRANCIS CLYDE GUNTER

LLOYD HOBBS



PAUL HOOVER

WILLARD HOUCK





GRAHAM JACKSON
IVRY JOHNSON
WADE LACKEY
REID LANEY



GEORGE LEDFORD
EDWARD LOVE
JOHN MATTHEWS
HOWARD McCANN



DERMONT MOORE
FREDERICK MOORE
DILMON MOSS
BERNARD MURDOCH



WAYNE NANCE
ALGERNON NEAL
BENJAMIN NORRIS
WILLIAM G. NORRIS



JOHN F. PASSAGE
IVAN PEARSON



RHODODENDRON

DOUGLAS WATSON PORTERFIELD
 G. K. SAVAGE
 STEWART SCOTT
 ELMER SINCLAIR



ERVIN SMART
 WINFIELD D. SMITH, JR.
 ROSCOE STALEY
 HUGH STEELE



JESSIE RAY STONE
 DWAYNE THOMPSON
 R. C. THOMPSON
 KARL THORNBURG

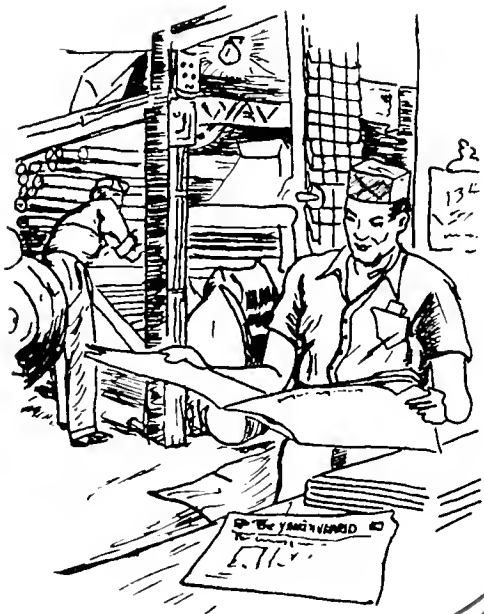


MARSHALL P. WARD
 ALBERT W. WELLONS
 HUGH WHITE
 CLAUDE WHITLEY

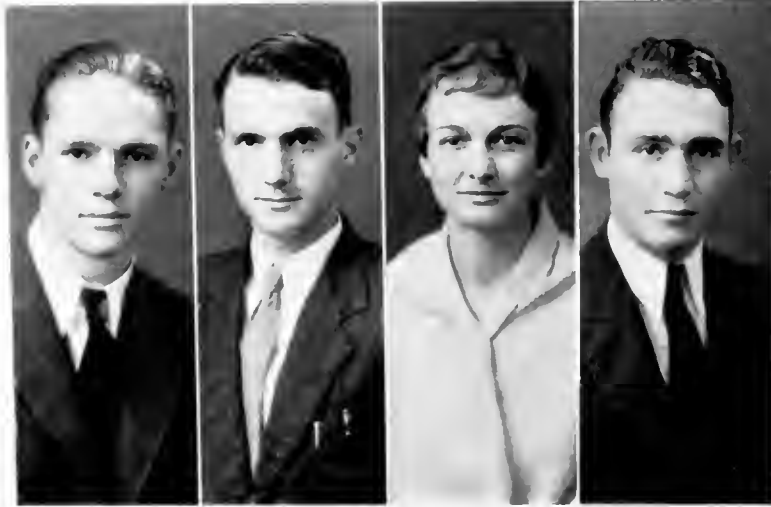


WOODROW WORRELL
 GLENN E. YOUNT





FRESHMEN



Freshman Class

OFFICERS

- | | | |
|------------------|-------|-----------------------|
| JEROME HUNEYCUTT | | <i>President</i> |
| WHEELER FARTHING | | <i>Vice-President</i> |
| ANNIE LEE SMITH | | <i>Secretary</i> |
| STEPHEN HOUSER | | <i>Treasurer</i> |



CALLIE ABERNATHY
 CLARA ADERHOLT
 SARAH LEIGH ARMFIELD
 CHRISTINE AUSTIN
 DAISY AUSTIN
 GLADYS AVERY



DOROTHENE BAINES
 BEULAH BAIRD
 ODESSA LEE BAKER
 TRUMAN BAKER
 BETTY BANNER
 WILMA BAREFOOT



LEITHA BEAM
 MADELINE BEAM
 MADGE BEAM
 SUE BEAM
 ANNIE MAE BEARD
 PORTIA LOUISE BELL



HELEN BINGHAM
 FRANCES BODENHEIMER
 THELMA BOND
 KATHRYN BRACEY
 EDNA BRECHBIEL
 HORTENSE BROWN



RUTH HARPER BROWN
 ROSE BRYANT
 RUTH ALFORD BULLOCK
 MAUDE ANNA BUTNER
 LAURA CARSON
 ZENAL CARTER



ANNA BELL COFFEY
 MARGARET COLLIER
 ALICE COOK
 VIRGINIA COOKE
 MARTHA CRIPPLIVER
 RUBY CULBERTSON



RHODODENDRON

ETHEL DAVIS
 GERALDINE DEAVER
 WALLINE DECK
 MARY LOU DEDMON
 JUANITA DICKERSON
 ROUTH DIXON



SARAH DOGETT
 MARY DOTSON
 DELIA WHITE DOUGLAS
 MABON DYE
 HILDA EAKER
 CHRISTINE EDENS



RACHEL ELLER
 MARY ESTES
 MARGARET EURY
 EVELYN FARMER
 SARA FLINCHUM
 EUDELL FORMYDUVAL



CLEO FRYE
 NELLIE FRYE
 BEULAH FUNDERBURK
 MARION GILBERT
 MILDRED GREER
 ETHEL GRUBBS



MILDRED HALL
 SARAH HALL
 FLORINE HALLMAN
 MARTHA HARRILL
 MAUDE HELMS
 FRANCINE HOLT



HELEN HOLT
 ANNIE HOLLYFIELD
 CHRISTINE HOOPER
 EVA JONES HOPKINS
 ENNIS HOUCK
 RUTH HOWARD

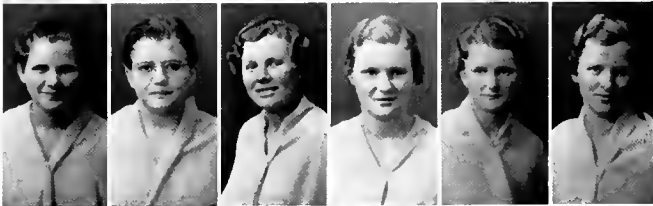




GEORGIE HOWELL
 LUCILLE HOWELL
 HELENA HUTCHINSON
 ELLA MARGUERITE JACKSON
 HESSIE JAYNES
 MARY EVELYN JENKINS



MARY JOHNSON
 RUBY JOHNSON
 SADIE JOHNSON
 ELIZABETH JONES
 ALINE KING
 MABEL KLUTTZ



MARGARET KNOX
 ADDIE MAIE KOON
 WILMA LACKEY
 MARY RUTH LASLEY
 FRANCES LATHAN
 VIRGINIA LAWRENCE



VISTA LAWSON
 LOUISE LEONARD
 LUCILLE LOPP
 BETTIE MARTIN
 LORA MARTIN
 MILTON MAST



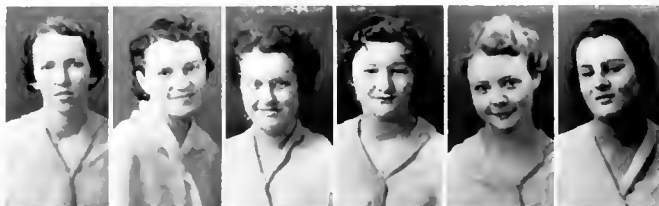
DAISY LEE MEACHAM
 EMMA MILLER
 FAYE L. MILLER
 LORRAINE MILLER
 MABEL MOORE
 MIRIAM MORTIMER



EVA MYERS
 WILLIE MCBRIDE
 MARY MCCOLLUM
 GLADYS MCCURDY
 ETHEL MCDADE
 MARJORIE MCEACHERN

RHODODENDRON

ANNA SUE MCGIMSFY
 GENEVA MCMANUS
 HELEN BELK MCNEELY
 KATHERINE MCNEILL
 PAULINE MCNEILL
 ANNIE LOU NEAL



ODESSA PARKS
 HELEN POOVEY
 ZADA POPF
 EDITH PRATT
 JUANITA PUTNAM
 LOUISE QUACKENBUSH



DEMA REEVES
 AGNES RHYNE
 JOSEPHINE ROBINSON
 RUBY SCRONCE
 MARY NORINE SHARPE
 LOUISE SHOAF



NELLE SHUMAKER
 LOIS SIDES
 LILLIAN SIMPSON
 ANNIE LEE SMITH
 HELEN SMITH
 MAVIS SMITH



MARY JANE SNOW
 AVIS STARLING
 NAOMI STEFLMAN
 ELOISE STROUPE
 KATHLEEN SUTHERLAND
 HAZEL LEE TAYLOR



HAZEL TEAGUE
 GENEVA THOMAS
 LOLA THOMAS
 SELMA THOMAS
 ANNIE LOU THOMPSON
 ROUTH THOMPSON





EMILY TORRENCE
 MATOAKA TORRENCE
 BLANCHE TOWNSEND
 CLATIE TUSSEY
 NERA WADDELL
 MARY LILLIAN WATTS



ANNIE WETMORE
 LUCILLE WILLIS
 BEATRICE WINEBARGER
 GENEVA YATES
 HELEN YODER
 LOUISE YORK



PEARLE YORK
 VIRGINIA YOUNT
 GUS ANTONAKOS
 GRANT AYRES
 ARTHUR W BABB
 DWIGHT BESS



AMOS BEST
 KERMIT CALDWELL
 WARD CARROL
 JAMES W. CARSON
 WILLIAM CHRISTIAN
 WAYNE CHURCH



MARTIN COLE
 O. C. CONNER
 WILBUR CRAFT
 CULVER DALE
 PALMER DAY
 GERALD DEMOND



KYLE DICKSON
 ROY D. EGGLESTON
 CHARLES ELLIOT
 BRUCE FARTHING
 WHEELER FARTHING
 HAYDEN FOX

RHODODENDRON

DOTTIE GLENN
 THOMAS GRAYBEAL
 HOYLE GREEN
 WALTER HAIRE
 WILLIAM E. HALYBURTON
 RICHARD HAMILTON



LOUIS HAMRICK
 LOU'S HARTLEY
 JOHN D. HARTSOG
 BANKS HEAFNER
 JEROME HUNEYCUTT
 DWIGHT HOUCK



STUART HOUCK
 TALMADGE HOUCK
 STEPHEN HOUSER
 PHIL HUDSON
 GLENN HULL
 JOHN IDOL



JAMES INGRAM
 WILTON JACKSON
 CAREY JOHNSTON
 ELMER JONES
 ROBERT R. KING, JR.
 ROGER KING

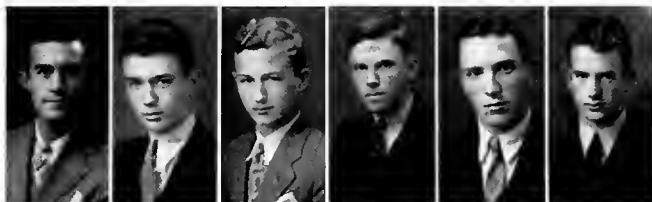


HOWARD KISER
 OTIS LACKEY
 PHILIP LAUGHRIDGE
 HOWARD LEDBETTER
 WILLIAM LINDSAY
 CLIFFORD LONG



JOSEPH MARTIN
 JIMMY MCGILL
 LAWRENCE MCLEOD
 ODELL MERRILL
 WARREN MITCHELL
 AUSTIN MOODY





JOE MOORE
 TOM B. MOORE
 LESTER MULLEN
 GARRETT NEAL
 RICHARD OSBORNE
 HERMAN OWENS



WILBUR PAGE
 GLENN PERRY
 H. B. PERRY
 JACK POTEAT
 GEORGE P. POWELL
 FRED PUTNAM



JACK RITCHIE
 O. W. ROBINSON
 GEORGE RUSHING
 HERBERT SAIN
 FRED SELF
 CULOS SETTLE



OPIE LEE SHELTON
 BILL SHIELDS
 CHARLES SHOOK
 JESSE STALEY
 ED STOWE
 GWYN SUTHERLAND



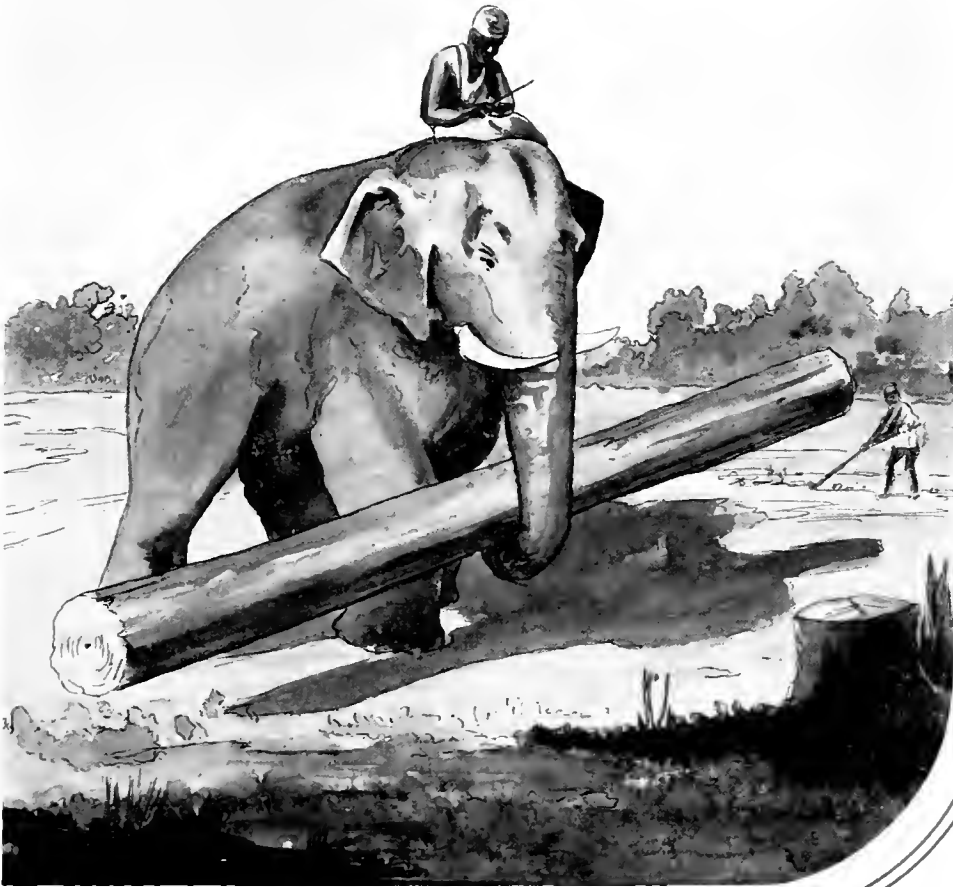
GREELEY TEAGUE
 BRUCE TESH
 E. S. THOMAS, JR.
 JOHN THOMPSON
 FRANK E. TODD
 GLENN TROUT
 JAMES TUCKER



GRADY TYREE
 GEORGE WALL
 A. Z. WILLIAMS, JR.
 WENDAL T. WILSON
 CARSON WOOD
 LEN WOODRUFF
 CHARLES WRIGHT





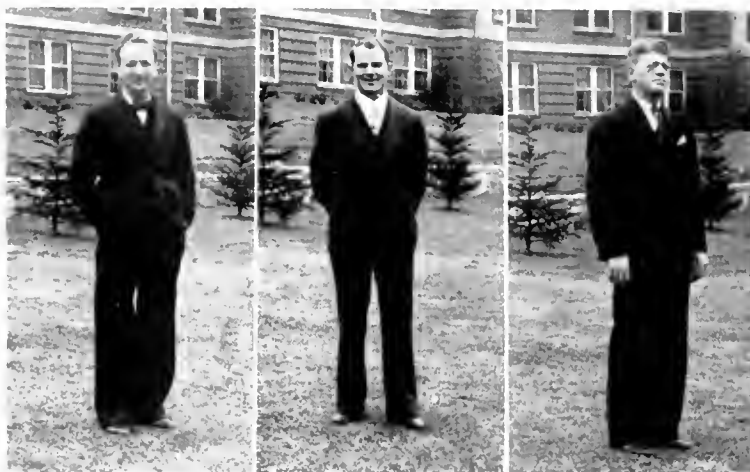


BOOK III

ATHLETICS

Domestication of Plants and Animals

Sometime in the life of man he realized that portions of his physical environment could be used to great advantage. Domestication is the term used to describe the process by which man has been able to bring certain plants and animals under his control and use. Either by accident or by fore-ordained planning the process seems to have been extended to those animals and plants which would be of greatest aid to man in his struggle for life. The process of domestication has continued its development through the ages down to the present time. The mastery of the physical phenomena of plants and animals has been relatively easy. Today, the great problems of agriculture are social, not physical.



BREWER

WATKINS

STEWART

Department of Athletics

KIDD BREWER

Athletic Director

Football

KIDD BREWER
FLUCIE STEWART
R. W. WATKINS

Baseball

R. W. WATKINS

Track

FLUCIE STEWART

Swimming

A. ANTONAKOS



Third Row: COACH STEWART, ED OLIVER, LLOYD HOBBS, MURPHY PRIVETTE, JOHN MATTHEWS, IRVIN SMITH, RALPH BEAM, CECIL VANNOY, COACH BREWER.

Second Row: CLAUDE FARTHING, NORMAN PICKERT, CARL SAWYER, ROY TURBYFILL, CARL RUDISILL, WALLACE O'NEAL, THERMAN HOLT, HERBERT ADAMS, ANDY NESBITT, BRUCE MACFADYEN.

Front Row: BOYD BAUCOM, JAMES CROOKS, "RED" MAYBERRY, JAMES PATTERSON, ROVIE ANGELL, CLINE FARTHING, GERALD LACKEY.



LEMAY



SAWYER



STEED

Department of Athletics

R. W. WATKINS

Basketball

FLUCIE STEWART

Wrestling

R. W. WATKINS

Boxing

KIDD BREWER

Tennis

G. L. SAWYER

Assistant Director

Girls' Athletics

CORA LEMAY

THURSA STEED



Second Row—NAOMI STEELMAN, MARY ESTES, ANNIE LEE SMITH, FLORA MAE LUCKEY, CAROL BEASLEY, EDITH RUDISILL.

Front Row—GENEVA CILAFFIN, RUTH HUSKINS, VANDA WHICKER, CORNELIA FELMET, MOTOAKA TORRENCE, MILDRED BARGER.





Back Row EGGLESTON, McCANN, RUDISILL, MATHEWS, ADAMS, SNIPES, FAIRLEY, HOBBS, TURBYFILL. *Middle Row* MARTIN, THOMPSON, TESH, WARD, ANGELL, SMITH, O'NEAL, HOLL. *Front Row* CONSOR, BARTZ, OLIVER, TRIPPANY, Captain, MAYBERRY, SMITH, SMITH, EARLE 1SG., Captain Elect.

Football Results, 1935

SEPTEMBER 27	0	Lenoir Rhyne	0
Appalachian	(Night, Hickory, N. C.)		
OCTOBER 5	15	Piedmont	0
Appalachian	(Boone, N. C.)		
OCTOBER 12	7	Cumberland	26
Appalachian	(Boone, N. C.)		
OCTOBER 18	20	Milligan	13
Appalachian	(Elizabethton, Tenn.)		
OCTOBER 26	12	Western Carolina	0
Appalachian	(Cullowhee, N. C.)		
NOVEMBER 2	12	East Tennessee	20
Appalachian	(Homecoming—Boone, N. C.)		
NOVEMBER 9	0	South Georgia T. C.	0
Appalachian	(Boone, N. C.)		
NOVEMBER 16	6	Tusculum	0
Appalachian	(Greenville, Tenn.)		
NOVEMBER 23	14	E. C. T. C.	7
Appalachian	(Greenville, N. C.)		

TOTALS: Appalachian 86 points.
Opponents 66 points.



BREWER
Coach



STEWART
Coach



WATKINS
Coach



BEAM
Manager

Varsity Football

Playing a nine-game schedule the Appalachian Gridmen completed a fairly successful season with five wins, two ties and two defeats. With odds seemingly against it the squad under the first year tutelage of Coaches Brewer and Stewart began work last September; Coach Watkins, veteran mentor, rendered valuable services in shaping the Varsity eleven and was in charge of the Freshman team.

The close of the season brought to an end the performance of four Senior lettermen, Captain Trippany, Rudisill, O'Neal, and Holt. Trippany, one of the finest backs ever produced at Appalachian gained national recognition as a result of his ability despite the fact that he was injured early in the season: he was serving his second year as captain of the eleven which alone speaks for his ability and the confidence placed in him by his team-mates.

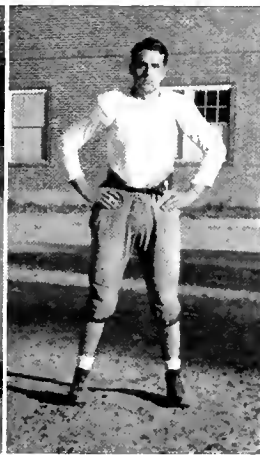
O'Neal, Rudisill, and Holt performed magnificently to swan song for their Alma Mater. O'Neal, great blocking back, stepped into Trippany's shoes after the latter's injury to do part of the ball carrying. Rudisill, star receiving end, and Holt, the other flankman of equal worth will be missed when the football candidates report for duty this fall.



McCANN
Tackle



ADAMS
Center



FAIRLEY
Guard



MARTIN
Quarterback



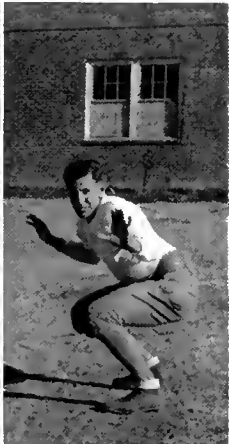
HOLT
End



OLIVER
Halfback



ANGELL
Halfback



TURBYFILL
Tackle



MATTHEWS
End



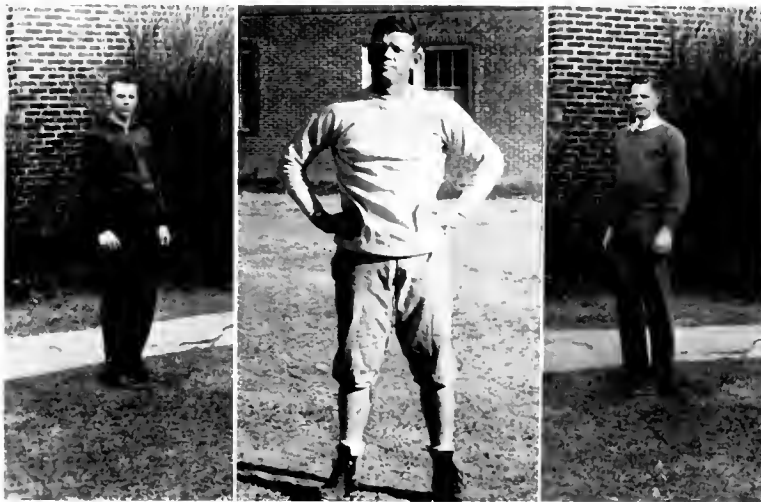
SMITH
Guard



FARTHING
Guard



RUDISILL
End



ANTHONY
Captain

STEWART
Coach

VANNOY
Manager

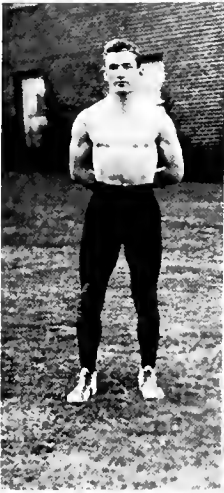
Basketball

Handicapped by the graduation of notables of the 1935 team it was a difficult task to organize a strong quintet, but under the capable leadership of Coach Flucie Stewart the 1936 basketceers played well intermittently. Many of the contests were lost by the margin of only a few points but Appalachian's scoring was sufficient to gain recognition from opposing teams. As a finale to the season, several Mountaineers under the name of the "Appalachian All Stars," were winners in two basketball tournaments held at Banners Elk and Crossnore, N. C. A silver trophy in the college book room denotes this achievement.



Back Row—FLUCIE STEWART, Coach; ANDY NESBITT, Forward; G. K. SAVAGE, Center; CARL RUDISILL, Guard; THURMAN HOLT, Forward; CECIL VANNOY, Manager.

Front Row—BOYD BAUCOM, Guard; EARL HINSON, Forward, KENNETH ANTHONY (Captain), Forward, TRAD WILKINS, Guard; ROVIE ANGELL, Guard.



FARTHING



WATKINS

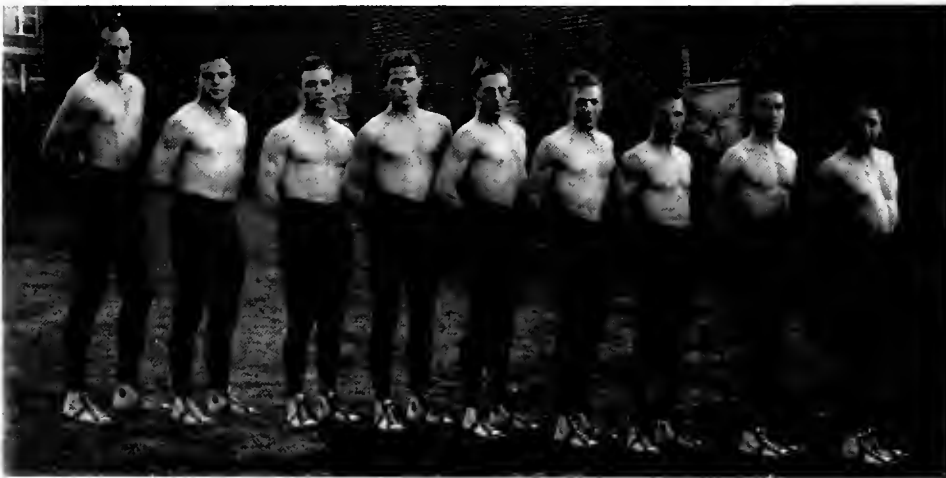


PRIVETTE

Wrestling

Appalachian's matmen invaded wrestling strongholds in North Carolina and Tennessee to emerge from these invasions with a claim to the collegiate wrestling championship of this state and a win over Maryville, Tennessee state champions. The climax of the season was a victory over Davidson who last year defeated the Mountaineer grapplers by a very slim margin.

Much credit for the wrestlers' remarkable season is due Coach R. W. Watkins; his ability in coaching this sport is well known. Frank Moore and Captain Claude Farthing performed brilliantly in their last year of wrestling at Appalachian. Moore, a veteran and the initial captain of the first Mountaineer wrestling aggregation, and Hobbs, unlimited giant were undefeated for the season.



Left to Right—LOYD HOBBS, CLINE FARTHING, CLAUDE FARTHING, FRANK MOORE, BILL NORRIS, JAMES CROOKS, BEN NORRIS, STEWART SCOTT, JAMES PATTERSON.





Cheer Leaders

Back Row: MARGARET EURY, MILDRED BARGER, MATOAKA TORRENCE.
Kneeling: STANCILL NANNEY, HAZEL PLASTER, HASSELTINE SHIPMAN, GLENN YOUNT.



Tennis

Back Row: JAMES TUCKER, FRED LENTZ, BRUNER HONEYCUTT, CECIL VANNOY.
Front Row: LUTHER TODD (*Manager*), ANDY NESBITT, BERNARD MURDOCK, THAD WILKINS, KARL SAWYER, G. L. SAWYER (*Couch*).



CHAFFIN, Captain



BAKER, Manager



LE MAY, Coach

Girls' Basketball

RESULTS

Appalachian	50	Lees-McRae	6
Appalachian	39	Boiling Springs Junior College	20
Appalachian	33	Wingate Junior College	15
Appalachian	27	Milligan	28
Appalachian	38	Lees-McRae	2
Appalachian	34	Lenoir Rhyne	15
Appalachian	33	Boiling Springs	19
Appalachian	36	Mitchell	9
Appalachian	46	Wingate	17
Appalachian	40	Mitchell	16
Appalachian	48	Lenoir Rhyne	18
Appalachian	43	Eastern Carolina S. T. C.	26
Appalachian	21	Milligan	18



Back Row—CORA LEMAY, Coach; THURSA STEED, Assistant Coach; MARY ESTES, Forward; RUTH HUSKINS, Forward; MILDRED BARGER, Center; ANNIE LEE SMITH, Center; FLORA MAE LUCKEY, Guard, EDITH RUDISILL, Guard; MATOAKA TORRENCE, Forward; MARTHA FURCHESS, Assistant Manager; HELEN BAKER, Manager.

Front Row—CAROLE BEASLEY, Guard; CORNELIA FELMET, Forward; GENEVA CHAFFIN (Captain), Guard; NAOMI STEELMAN, Guard; VANDA WHICKER, Guard.





Physical Education Major Club

Back Row—MILDRED BARGER, BEATRICE BINGHAM, EDITH RUDISILL, VANDA WHICKER, BERNICE BRAWLEY, MARTHA DELANEY, MARY BRASWELL, ELLIE LANE, CAROLE BEASLEY, BEVERLEY FOWLER, MARTHA FURCHES, CORNELIA FELMET, MAE BRYANT. *Kneeling*—FLORA MAE LUCKEY, RUTH HUSKINS, HELEN BAKER, ROUTH DIXON, MATOAKA TORRENCE, LOUISE QUACKENBUSH, ELLA THOMPSON, SUSIE MCCONNELL, EUPHA BOWMAN, HAZEL BEAVER.



Freshman Football Squad

Back Row—MCCLOUD, EVANS, PETTIGREW, WILLIS, WHALEY, CARSON, G. PASSAGE, QURNELL, GILLISPIE. *Middle Row*—LACKEY, POTEAT, J. PASSAGE, FARTHING, MORRIS, MCLAURIN, CROOKS. *Front Row*—LAUGHRIDGE, MILLER, HOUCK, CRAFT, WOOD, NORRIS, TOWNSEND.



Volleyball

HELEN BAKER, CAROLE BEASLEY, LOUISE QUACKENBUSH, MARTHA DELANEY, RUTH HUSKINS, FLORA MAE LUCKEY, ROUTH DIXON, ELLA THOMPSON, CORNELIA FELMET.



Hockey

MAE BRYANT, HELEN BAKER, ELLIE LANE, CAROLE BEASLEY, RUTH BEAVER, ELLA THOMPSON, FLORA MAE LUCKEY, DOROTHY HOLT, EDITH RUDISILL, HAZEL BEAVER, MARTHA DELANEY, RUTH HUSKINS, BEATRICE BINGHAM.



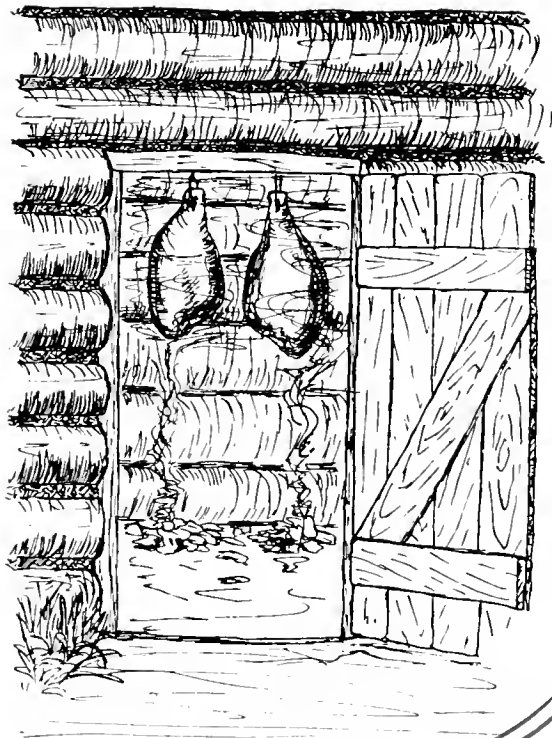


BOOK IV ACTIVITIES

Preservation of Food

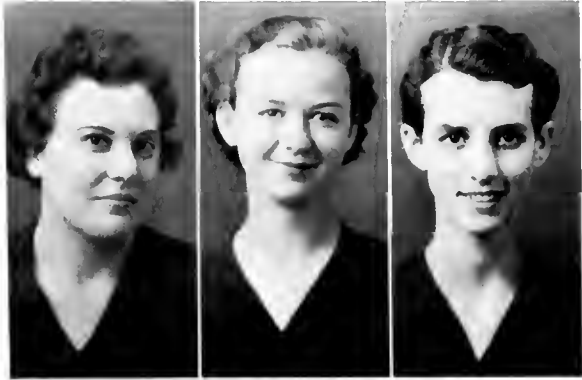
Primitive man satisfied his hunger by daily hunting. He must have met with a great experience when he discovered that there were other ways of providing a food supply. Early man preserved food by the use of salt, by the use of the sun's rays, and by the use of a dehydrating process. The drying process is used at the present time. Other methods of preserving food at the present time are canning and refrigeration. Man has finally achieved some certainty in securing a permanent food supply by using these methods of preservation. The preservation of food must be placed alongside the discovery of fire, the division of a written language, and the domestication of plants and animals as an epochal event in the development of man.





LITERARY SOCIETIES

Thalian Literary Society



HIRE

LIPE

HUSKINS

OFFICERS

FIRST QUARTER

LILLIAN HIRE	<i>President</i>
ELLEN HAMRICK	<i>Vice-President</i>
HELEN BAKER	<i>Recording Secretary</i>
LOUISE MICHAEL	<i>Corresponding Secretary</i>
DOROTHY HOLT	<i>Treasurer</i>
JESSIE MAE GOODMAN	<i>Censor</i>
KATHRINE BROWN	<i>Critic</i>
OVELIA OWENS	<i>Chaplain</i>

SECOND QUARTER

MARGARET LIPE	<i>President</i>
GRACE WEAVIL	<i>Vice-President</i>
RHEBA HINSON	<i>Recording Secretary</i>
ELOISE YELTON	<i>Corresponding Secretary</i>
ETHEL HEMBY	<i>Treasurer</i>
RUTH SCARBOROUGH	<i>Censor</i>
ISLEAN RAY	<i>Critic</i>
VIRGINIA HOUCK	<i>Chaplain</i>

THIRD QUARTER

KATE HUSKINS	<i>President</i>
MARTHA BUTNER	<i>Vice-President</i>
LUCY LITTLE	<i>Recording Secretary</i>
DOROTHY HOLT	<i>Corresponding Secretary</i>
ANNIE MAUDE HIRE	<i>Treasurer</i>
ELLEN HAMRICK	<i>Censor</i>
DAISY FLOYD	<i>Critic</i>
FRANCES HINSON	<i>Chaplain</i>

Thalian Literary Society

MEMBERS

LOUISE ABRAMS	DAISY FLOYD	VERA ISENHOUR	EDITH PRATT
VERGIE ATKINS	FRANCES GALLOWAY	ALINE KING	EUNICE QUINN
CALLIE ABERNATHY	MARION GILBERT	ELLIE LANE	ISLEAN RAY
GLADYS AVERY	EDNA GENTRY	HELEN LEDBETTER	HELEN SMITH
SARA ARMFIELD	JESSIE GOODMAN	MARY LIPE	NORINE SHARPE
ANNE BROWER	CONNIE GRANT	MARGARET LIPE	IVA SALE
HELEN BAKER	ETHEL GRUBBS	LUCY LITTLE	RUTH SCARBOROUGH
MILDRED BARGER	ELLEN HAMERICK	FRANCES LATHAN	HAZEL SHARPE
EUPHA BOWMAN	KATHLEEN HELMS	VISTA LAWSON	MOZELLE SPAINHOUR
VIRGINIA BROWN	ETHEL HEMBY	MARY RUTH LASLEY	NONA STOUT
MARTHA BUTNER	EVA HOPKINS	LUCILLE LOPP	GLADYS STURGILL
BEULAH BRYANT	FRANCINE HOLT	LOUISE LEONARD	CATHERINE STYERS
MAUDE BUTNER	DOROTHY HOLT	REBECCA MABE	LILLIAN SIMPSON
ANNIE BEARD	FRANCES HINSON	LOUISE MICHAEL	MARY JANE SNOW
LAVOLA CARENDER	REBA HINSON	MINNIE MORRIS	LOLA THOMAS
LAURA CARSON	DOROTHY HERMAN	DAISY MEACHAM	CLATIE TUSSEY
MARGARET COLLIER	LILLIAN HIRE	ANNA MCGINSEY	RUTH THOMPSON
MARIE CHAPMAN	ANNIE MAUDE HIRE	MABEL MOORE	NELL TODD
JIMMIE COULTER	PAULINE HOBSON	GRACE MITCHEM	BLANCHE TOWNSEND
MABON DYE	ELIZABETH HOLDEN	EVA MYERS	ANNE WETMORE
RUTH DIXON	VIRGINIA HOUCK	GLADYS MCCURDY	MARY ALICE WASHAM
MARY LOU DEDMON	SARA HOWARD	BETTIE MARTIN	GRACE WEAVIL
IRENE DICKSON	RUTH HUSKINS	MARY MCCOLLUM	ERMA WHITE
LAURINE ELLIOTT	KATE HUSKINS	ANNIE LOU NEAL	ARGIE WILBURN
RUTH EPPS	MARTHA HAROLD	OVELIA OWENS	MARY ALICE WILSON
INEZ EVERHART	MATILDA HAIR	BEATRICE PARKER	MARY LILLIAN WATTS
MARGARET EURY	MILDRED HALL	ELIZABETH PRATT	



Phila Retian Literary Society



PUTNAM



GREENE



THOMPSON

FIRST QUARTER

LAVONNE PUTNAM	<i>President</i>
KATHLEEN MORRIS	<i>Vice-President</i>
CLARINE DUKE	<i>Secretary</i>
CLARICE THOMPSON	<i>Treasurer</i>
FOY COOK	<i>Critic</i>
RUTH SHERWOOD	<i>Censor</i>
TINE SHIPMAN	<i>Reporter</i>
ALMA SHOAF	<i>Chaplain</i>

SECOND QUARTER

GRACE GREENE	<i>President</i>
MABEL LEE	<i>Vice-President</i>
MABEL RHYNE	<i>Secretary</i>
FRANCES HUITT	<i>Treasurer</i>
MARY NICHOLS	<i>Critic</i>
ELLA THOMPSON	<i>Censor</i>
CLARICE THOMPSON	<i>Reporter</i>
TINE SHIPMAN	<i>Chaplain</i>

THIRD QUARTER

CLARICE THOMPSON	<i>President</i>	ALMA SHOAF	<i>Critic</i>
CLARINE DUKE	<i>Vice-President</i>	RACHEL SHIDAL	<i>Censor</i>
ELLA THOMPSON	<i>Secretary</i>	GRACE GREENE	<i>Reporter</i>
BEVERLY FOWLER	<i>Treasurer</i>	MABEL LEE	<i>Chaplain</i>





BURNS

BANDY

WARLICK

Dynician Literary Society

FIRST QUARTER

MARY FOLA BURNS	<i>President</i>
HELEN GREENE	<i>Vice-President</i>
NELL MCSWAIN	<i>Secretary</i>
ELIZABETH SINCLAIR	<i>Treasurer</i>
MARTHALENE DAVIS	<i>Chaplain</i>
DAISY MAY WILLIAMS	<i>Chorister</i>
AVIS VANCE	<i>Pianist</i>
VANDA WHICKER	<i>Critic</i>
LOUISE JONES	<i>Censor</i>

SECOND QUARTER

MARGUERITE BANDY	<i>President</i>
LUCILLE WARLICK	<i>Vice-President</i>
MARTHALENE DAVIS	<i>Secretary</i>
BERTIE BRIDGES	<i>Treasurer</i>
GAIL PHILLIPS	<i>Critic</i>
EDITH RUDISILL	<i>Censor</i>
LOIS LONG	<i>Chaplain</i>
MARGARET ROGERS	<i>Pianist</i>
CORNELIA FELMET	<i>Chorister</i>

THIRD QUARTER

LUCILLE WARLICK	<i>President</i>	MARY FOLA BURNS	<i>Censor</i>
JUANITA GOBBLE	<i>Vice-President</i>	ELIZABETH MILLER	<i>Chaplain</i>
DAISY WILLIAMS	<i>Secretary</i>	MARTHA FURCHESS	<i>Chorister</i>
GENEVA CHAFFIN	<i>Treasurer</i>	AVIS STARLING	<i>Pianist</i>
HELEN GREENE	<i>Critic</i>		



Vernician Literary Society



BURNS



WESTMORELAND

FIRST QUARTER

ALMA BURNS	<i>President</i>
OLLIE JEAN COFFEY	<i>Vice-President</i>
MARY E. BURNS	<i>Recording Secretary</i>
GLADYS BLAKLEY	<i>Cor. Secretary</i>
HAZEL WILSON	<i>Treasurer</i>
VIRGINIA SOUTH	<i>Censor</i>
MARGARET BARRINGER	<i>Critic</i>
NAOMI BRANDON	<i>Chaplain</i>

SECOND QUARTER

SARA HOYLE WESTMORELAND	<i>President</i>
ELIZABETH SHIPMAN	<i>Vice-President</i>
GLADYS BLAKLEY	<i>Recording Secretary</i>
MYRTLE NANCE	<i>Corresponding Secretary</i>
NAOMI BRANDON	<i>Treasurer</i>
FLORA MAE LUCKEY	<i>Censor</i>
NELLIE CARPENTER	<i>Critic</i>
MARGARET FIDLER	<i>Chaplain</i>

THIRD QUARTER

ELIZABETH SHIPMAN	<i>President</i>
CATHERINE DURHAM	<i>Vice-President</i>
NELLE CARPENTER	<i>Rec. Secretary</i>
MARTHA HARDIN	<i>Corresponding Secretary</i>

NAOMI TRANTHAM	<i>Treasurer</i>
MARGARET FIDLER	<i>Censor</i>
OLLIE JEAN COFFEY	<i>Critic</i>
BONNIE SMITH	<i>Chaplain</i>





BAUCOM

MAY

HUFFMAN

Delta Phi Sigma

FIRST QUARTER

BOYD BAUCOM	President
DON HUFFMAN	Vice-President
DICK LAWSON	Secretary-Treasurer
RED LACKEY	Ass't. Secretary-Treasurer
MOIR AYERS	Critic
LUTHER TODD	Chaplain
WILLIAM BANDY	Censor
RAY STIKE	Representative

SECOND QUARTER

EARL MAY	President
LUTHER TODD	Vice-President
BERNARD MURDOCK	Secretary-Treasurer
HERBERT GRAYBEAL	Censor
RAY STIKE	Critic
MOIR AYERS	Chaplain
BILL SHIELDS	Sergeant-of-Arms
HUGH BROWNING	Representative

THIRD QUARTER

DON C. HUFFMAN	President
HERBERT GRAYBEAL	Vice-President
EDWARD LOVE	Secretary-Treasurer
JAMES CROOKS	Ass't. Secretary-Treasurer

LLOYD HOBBS	Censor
NEAL HARTLEY	Critic
WAYNE BLEVINS	Chaplain
ERWIN SMART	Sergeant-of-Arms
RAY STIKE	Representative



Appalachian Literary Society



TRIPLETTE

ATCHLEY

BYRD

FIRST QUARTER

JOHN TRIPLETTE	<i>President</i>
HOYLE WHITE	<i>Vice-President</i>
EDWARD HAMRICK	<i>Secretary-Treasurer</i>
ROBERT KILLIAN	<i>Asst. Secretary-Treasurer</i>
THOMAS WOOD	<i>Critic</i>
JAMES PATTERSON	<i>Chaplain</i>
CULLEN JOHNSON	<i>Censor</i>

SECOND QUARTER

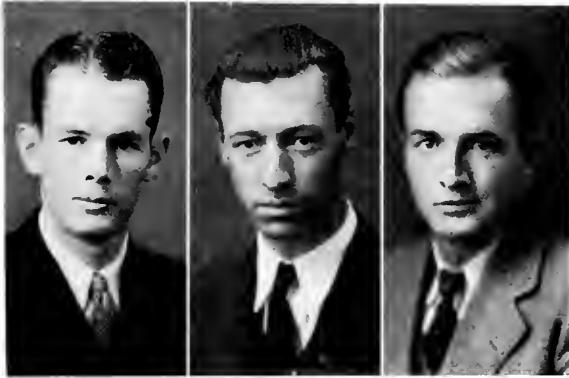
LAWRENCE ATCHLEY	<i>President</i>
EUGENE BYRD	<i>Vice-President</i>
GRAHAM JACKSON	<i>Secretary-Treasurer</i>
DWAYNE THOMPSON	<i>Asst. Sec'y-Treas.</i>
L. J. GANN	<i>Critic</i>
PAUL HUFFMAN	<i>Censor</i>
JOHN TRIPLETTE	<i>Janitor</i>

THIRD QUARTER

EUGENE BYRD	<i>President</i>
EDWARD HAMRICK	<i>Vice-President</i>
JAMES ANDERSON	<i>Secretary-Treasurer</i>
JACK GIBBS	<i>Asst. Secretary-Treasurer</i>

JOHN TRIPLETTE	<i>Critic</i>
EUGENE KOON	<i>Chaplain</i>
ROY TURBYFILL	<i>Censor</i>
LAWRENCE ATCHLEY	<i>Janitor</i>





PRIVETTE

WARLICK

STEELE

Alpha Sigma Gamma

FIRST QUARTER

MURPHY PRIVETTE
GLENARD WARLICK
JUNE STEELE

President
Vice-President
Secretary

SECOND QUARTER

GLENARD WARLICK
HARLON GILLIAM
HOWARD GOODMAN

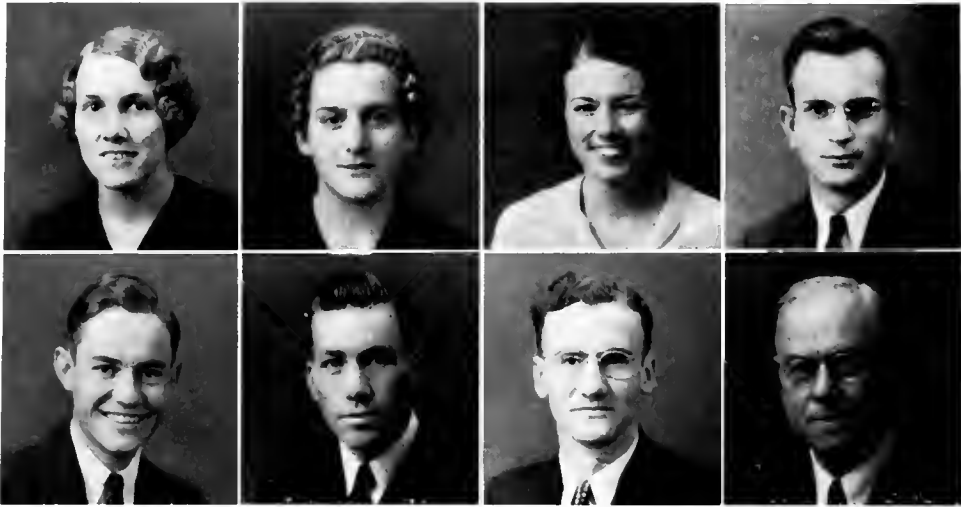
President
Vice-President
Secretary

THIRD QUARTER

JUNE STEELE
CECIL VANNOY
HENRY BEEKER

President
Vice-President
Secretary





G. GREENE
WOOD

H. GREENE
STIKE

PULNAM
BYRD

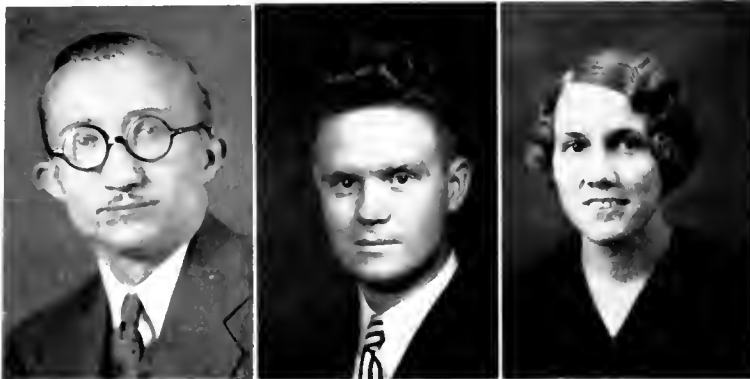
ATRINS
RANKIN, *Coach*

Debating

During this year the debating squad has made one of its best records. The year has been exceptionally filled. Including both Men and Women, the College has engaged in fifty-five debates with the representatives of other colleges.

Due to the use of individual rating systems used in part of the contests, it is impossible to give concrete results for every contest. However, in the South Atlantic Forensic Tournament Women's teams tied for first place, and Men's teams placed in third position.

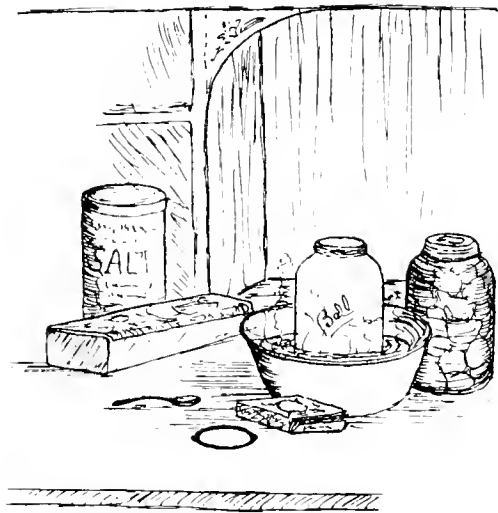
One of the most constructive events of the year has been the founding of the Appalachian Mountain Forensic and Speech Tournament and Model League Assembly. It was held for the first time this year; and the College is expecting to make it a permanent, annual affair.



W. AMOS ABRAMS
Coach

LESTER REED
Orator

GRACE GREENE
Orator



CLUBS



GANN

TRIPLETTE

ABRAMS

WOOD

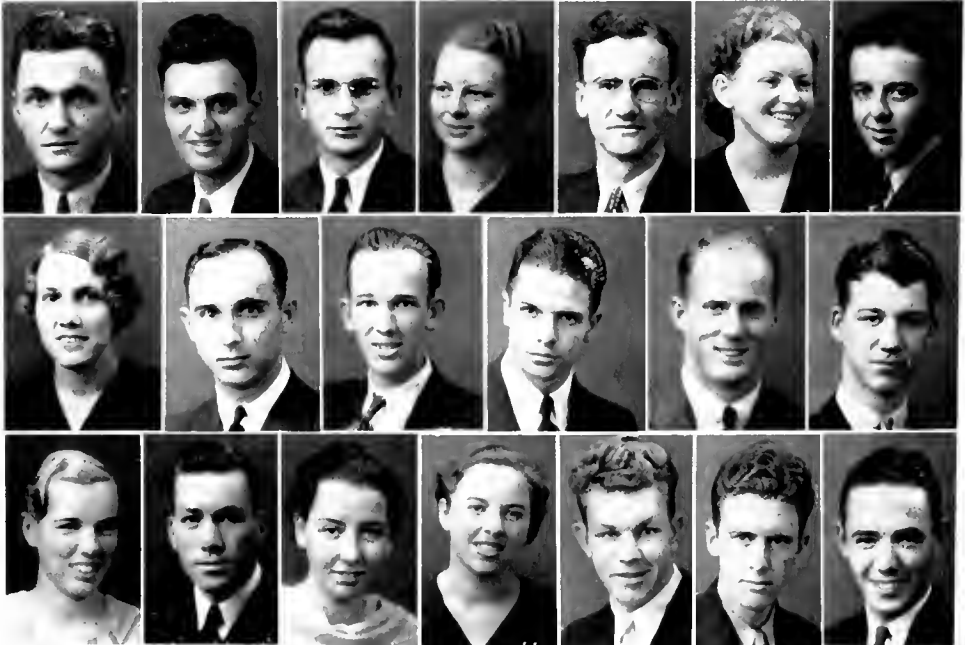
WHITENER

International Relations Club

OFFICERS

L. J. GANN
 JOHN TRIPLETTE
 LOUISE ABRAMS
 ELIZABETH SHIPMAN
 THOMAS WOOD
 DR. D. J. WHITENER

President
Vice-President
Secretary
Recording Secretary
Treasurer
Sponsor



MEMBERS

BASIL ANNAS
 NICK ANTONAKOS
 ADOLPH ATKINS
 MARGUERITE BANDY
 EUGENE BYRD

ALMA BURNS
 JACK GIBBS
 GRACE GREENE
 DON HUFFMAN
 DALE KELLER

ROBERT KILLIAN
 EARL MAY
 BERNARD MURDOCK
 VIRGINIA SOUTH
 RAY STIKE

MOZELLE SPAINHOUR
 CLARICE THOMPSON
 DWAYNE THOMPSON
 EUGENE WIKI
 GLENN YOUNT



MAY

SHANNON

WARD

WIKE

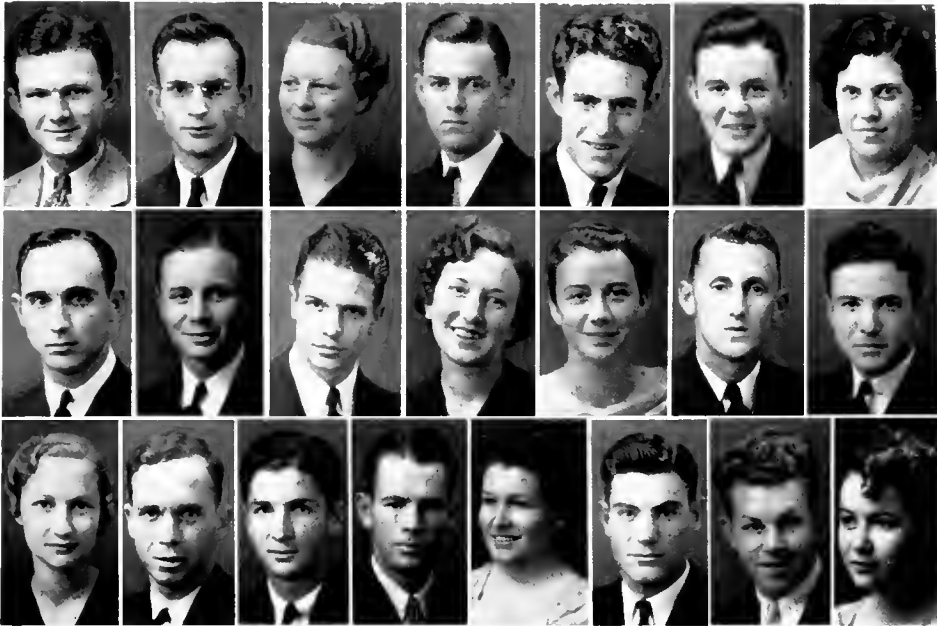
GRUBBS

National Economics Club

OFFICERS

EARL MAY
HENRY SHANNON
GRACE WARD
EUGENE WIKE
PROFESSOR GRUBBS

President
Vice-President
Secretary-Treasurer
Representative
Sponsor



ROLL

JAMES ANDERSON
ADOLPH ATKINS
MARGUERITE BANDY
RALPH BEAM
HUGH BROWNING
J. B. CROW
ANNIE MAUDE HIRE

DON HUFFMAN
FRANK KILLIAN
ROBERT KILLIAN
BLANCHE KISTLER
MARY LIPE
EDWARD LOVE
BRUCE MACFADYEN
GEORGIA MCCALL

PASCHAL MCLAURIN
ANDY NESBITT
MURPHY PRIVETTE
HELEN RATCHFORD
ERVIN SMITH
DWAYNE THOMPSON
VANDA WHICKER



Y. W. C. A.

DOROTHY BRAKE *President*
 AVIS WILHELM *Vice-President*
 CLARICE THOMPSON *Secretary*
 LUCILLE WARLICK *Treasurer*
 BETTY HOWARD, *World Fellowship Chm.*
 ALMA BURNS *Program Chairman*
 HELEN BAKER *Publicity Chairman*
 ELIZABETH SHIPMAN..... *Social Chairman*
 GEORGIA MCCALL *Social Service Chm.*
 SARAH H. WESTMORELAND *Reporter*
 TRESSIE MAE CASHION *Chorister*
 LUCY LITTLE *Pianist*



BRAKE WILHELM THOMPSON WARLICK

SARAH LEE ARMFIELD
 HELEN BAKER
 MARGUERITE BANDY
 NORA BAREFOOT
 LEITHA BEAM
 MADGE BEAM
 ANNE BEARD
 HAZEL BEAVER
 RUTH BEAVER
 THELMA BLACKBURN
 FRANCES BODENHAMMER
 EUPHA BOWMAN
 SARAH BOWMAN
 DOROTHY BRAKE
 BERTIE BRIDGES
 MINNIE LAURA BROWN
 MARY FOIA BURNS
 MARTHA BUTNER
 MAUDE ANNA BUTNER
 ALMA BURNS
 LAVOLA CARENDER
 NORA CASE
 TRESSIE MAE CASHION
 RACHEL CAUBLE
 MARIE CHAPMAN
 MARY SUE CHILDERS
 MARGARET COLLIER
 HATTIE LEE COSTNER
 JIMMIE COULTER
 OLLIE JEAN COFFEY
 JUANITA DICKERSON
 POLLY DOUGHERTY

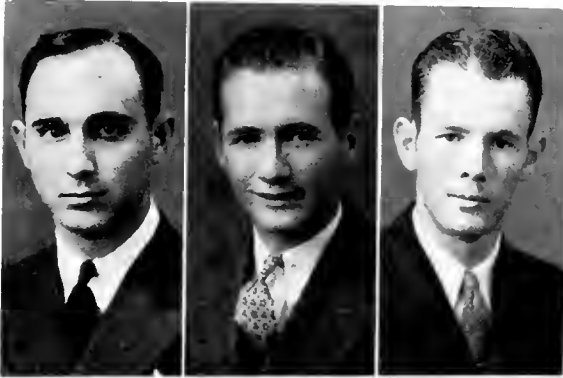
DELIA WHITE DOUGLAS
 CLARINE DUKE
 KATHRYN DURHAM
 RUTH EPPS
 INEZ EVERHART
 CORNELIA FELMET
 SARAH FLINCHEN
 EUEDELL FORMYDUVAL
 MARTHA FURCHESS
 IRMA GABRIEL
 GRACE GREENE
 HELEN GREEN
 MILDRED GREER
 LUCY GULLEGE
 MARGARET HAMRY
 ELLEN HAMRICK
 MARTHA HARDIN
 KNOX HEAFNER
 FRANCES HINSON
 RERA HINSON
 ANNIE MAUD HIRE
 LILLIAN HIRE
 DOROTHY HOLT
 FRANCES HOLT
 EVA JONES HOPKINS
 VIRGINIA HOUCK
 BETTY HOWARD
 RUTH HOWARD
 FRANCES HUITT
 MIRIAM HUITT
 CORA ELLEN INGRAM

NINA JONES
 MARGARET KELLY
 WILMA LEE LACKEY
 MAREL LEE
 LUCY LITTLE
 MARGARET LIPE
 ELIZABETH LONG
 LOIS LONG
 ANNIE LEE
 GEORGIA MCCALL
 MARY MCCALL
 GLADYS MCCURDY
 ANNA SUE MCGIMSEY
 GENEVA MCMANUS
 ELIZABETH MILLER
 MAREL MOORE
 KATHLEEN MORRIS
 LOUISE MORRISON
 EVA MYERS
 MARY NICHOLS
 MILDRED PARKS
 ODESSA PARKS
 GAIL PHILLIPS
 FAYE PLOTT
 FAYE PLOTT
 HELEN POOVEY
 LOUISE QUACKENRUSH
 EDITH ROBERTS
 EDNA ROGERS
 JULIA RENFRO
 EDITH RUDISILL
 FAYE SALE

IVA SALE
 RUTH SCARBOROUGH
 MOZELLE SCHULER
 RUBY SCRONCE
 NORINE SHARPE
 ELIZABETH SHIPMAN
 TINE SHIPMAN
 LOUISE SHOAF
 AGNES SIMS
 AGNES SLATE
 MAISIE SMITH
 NONA STOUT
 JESSIE STRICKLAND
 JANE TEDDER
 CLARICE THOMPSON
 ELLA THOMPSON
 ROUTH THOMPSON
 STELLA TILLEY
 MATOAKA TORRENCE
 GRACE WARD
 MAYE WARDEN
 LUCILLE WARLICK
 MARY ALICE WASHAM
 SARAH H. WESTMORELAND
 AVIS WILHELM
 DAISY WILLIAMS
 HAZEL WILSON
 JEWEL WILSON
 WILDA WILSON
 MARGARET WRAY
 MABEL YODER
 PEARL YORK



HOWARD BURNS BAKER MCCALL WESTMORELAND CASHION



HUFFMAN

TODD

PRIVETTE

Y. M. C. A.

DON C. HUFFMAN
 LUTHER TODD
 J. MURPHY PRIVETTE
 JUNE STEELE
 JAMES PATTERSON
 LAWERENCE ATCHLEY
 BOYD BAUCOM
 VAN G. HINSON

President
Vice-President
Secretary-Treasurer
Chaplain
Chairman Program Committee
Program Committee
Program Committee
Sponsor



Roll according to picture: *First Row*—(Left to Right): MURPHY PRIVETTE, DON C. HUFFMAN, L. J. GANN; *Second Row*: EUGENE KOON, CHARLES ELLIOT, LAWERENCE ATCHLEY; *Third Row*: LUTHER TODD, CLIFFORD LONG, JAMES PATTERSON, CECIL HARMON, GLENN YOUNT; *Fourth Row*: JACK SMITH, JUNE STEELE, HOWARD GOODMAN, JACK GIBBS; *Fifth Row*: CLINE BRAY, GRAHAM JACKSON, JOHN CREW, WILLARD BESS; *Sixth Row*: HOWARD KISER, WHEELER FARTHING, VANCE MCBRIDE, BASIL ANNIS, CARL MARTIN, RAY STIKE, JEROME HUNEYCUIT, J. BOYD BAUCOM. (Not in picture) NEIL HARTLEY.





White Hall Club

OFFICERS

First Half

CATHERINE DURHAM *President*

GRACE GREENE *Vice-President*

KNOX HEAFNER *Secretary-Treasurer*

Last Half

KNOX HEAFNER *President*

HELEN SMITH *Vice-President*

BONNIE SMITH *Secretary-Treasurer*



Lovill Club

OFFICERS

First Quarter

EUNICE QUINN	President
MILDRED GREER	Vice-President
SARA WESTMORELAND	Secretary-Treasurer

Second Quarter

MARGARET ROGERS	President
FRANCES WALKER	Vice-President
EUDELL FORMYDUVAL	Secretary-Treasurer

Third Quarter

SARA DOGGETT	President
MARTHA HARRILL	Vice-President
EVA MYERS	Secretary-Treasurer





New Dormitory Club

OFFICERS

First Half

MARGUERITE BANDY	President
LUCILLE WARLICK	Vice-President
VANDA WHICKER	Secretary
LOUISE JONES	Treasurer

Second Half

MARY LIPE	President
VANDA WHICKER	Vice-President
WILDA WILSON	Secretary
CAROLYN MOORE	Treasurer



GLEE CLUB

CASHION

JOHNSON

AYERS

GOBBLE

OFFICERS

TRESSIE MAE CASHION
 CULLEN JOHNSON
 MOIR AYERS
 JUANITA GOBBLE
 LETA TESTER

President
Vice-President
Secretary
Treasurer
Librarian



Sopranos—Lillian Abrams, Virginia Brown, Ollie Jean Coffey, Geraldine Deaver, Ruth Epps, Mary Lipe, Lucy Little, Edna Rogers, Jane Tedder, Argie Wilburn, Daisy Mae Williams; *Altos*—Nora Barefoot, Tressie Mae Cashion, Margaret Eury, Cornelia Felmet, Juanita Gobble, Margaret Hamby, Miriam Huitt, Alma Seaford; *Tenors*—Moir Ayers, Jack Gibbs, Neal Hartley, T. B. Huneycutt, Stancill Nanney, Bill Shields, Hoyle White; *Basses*—Henry Becker, Dewey Bingham, C. R. Brown, Kyle Dickson, Howard Goodman, Jerome Huneycutt, Cullen Johnson, John Triplette.





Cara Lomes

FREDDIE MOORE

Director

Back Row: JOHNNY THOMPSON, Trombone; ERVIN NORTON, First Trumpet, GEORGE BLUM, Second Trumpet; BOB ELLIOTT, Third Trumpet; BERNARD MURDOCK, Bass; WARREN MITCHELL, Piano.

Front Row: JACK GIBBS, Violin and Vocalist; BILL KESTER, Tenor Saxophone; BLAINE GIBBS, Third Alto Saxophone; WENDELL WILSON, Drums; FREDDIE MOORE, First Alto Saxophone.



The College Orchestra

MRS. RUTH COFFEY PORTER
FREDDIE MOORE
LUCY LITTLE

Director
Assistant Director
President

Back Row: BILL KESTER, BLAINE GIBBS, FREDDIE MOORE, BOB ELLIOTT, ERVIN NORTON, HUGHES BURLFSON, WARREN MITCHELL, WENDELL WILSON

Front Row: JACK GIBBS, LUCY LITTLE, BERNARD MURDOCK, SARA LEIGH ARMFIELD, VISTA LAWSON, MARTHA BURNER (VIRGINIA BROWN, MARGARET ROGERS—not in picture).



Band

ERVIN NORTON

Director

Back Row: Left to Right, BERNARD MURDOCK, GLENN YOUNT, BLAINE GIBBS. *Front Row:* Left to Right, BILL BANDY, BOB ELLIOTT, HUGHES BURLESON, WENDELL WILSON, JACK GIBBS, FRED SELF, BILL KESTER, FREDDIE MOORE, ERVIN MORTON.



Home Economics Club

Roll: LUCY GULLIDGE, PHOEBE GILMORE, HAZEL SHARP, FRANCES HUITT, ANNETTE MCKAY, ELIZABETH PRATT, JEWELL WILSON, HAZEL WILSON, PRUE HOUSER, MISS DALE, LUCY LITTLE, GAIL PHILLIPS, PEG HAMBY, RUTH THOMPSON, GRACE WEAVIL, CAROLYN MOORE, CATHERINE STYERS, MARY JO CURRY, DOROTHY HERMAN, NAOMI WALKER, BETTY HOWARD, BETTY MARTIN, MARGARET LIPE, GEORGIA MCCALL, MILDRED ILEY, KNOX HEAFNER, NORA CASE.





Ashe County Club

HOWARD GOODMAN
WAYNE BLEVINS
EDNA MILLER

President
Vice-President
Secretary and Treasurer

RUTH BARKER
WAYNE BLEVINS
KYLE DICKSON
HAZEL L. DOLINGER
SWANSON EDWARDS
HOWARD GOODMAN

ROLL

HERBERT GRAYBEAL
GERTRUDE GRAYBEAL
THOMAS GRAYBEAL
FLOSSIE GRAYBEAL
TALMADGE HOUCK
ROGER KING

PAULINE MCNEILL
WILLIAM MCNEILL
EDNA MILLER
FAY I. MILLER
KATHLEEN SUTHERLAND
GRADY TYREE



Le Cercle Francais

MINNIE MORRIS
GRACE GREENE
NEIL HARTLEY

President
Vice-President
Secretary and Treasurer



MOORE

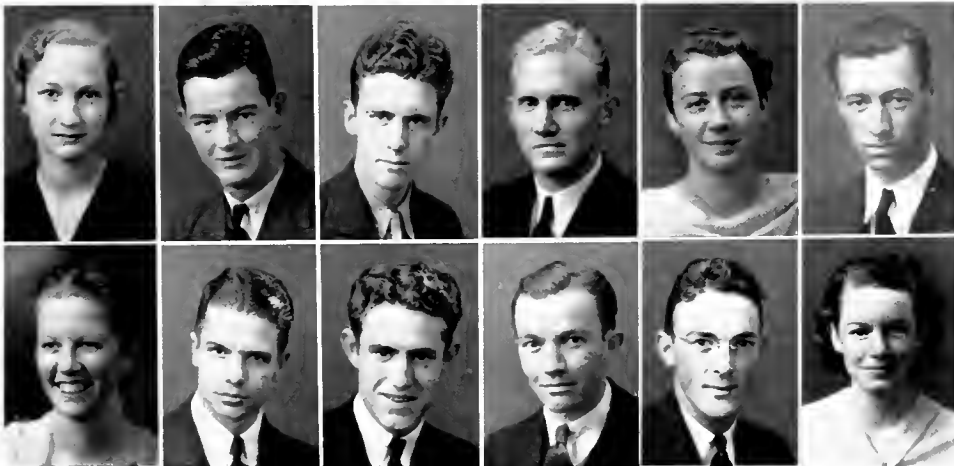


McFADYEN

Appalachian Staff

FRANK MOORE
 BRUCE MACFADYEN
 GEORGIA MCCALL
 HARRY BREEZE
 EUGENE WIKE
 EDWARD HAMRICK
 MARY LIPE
 GLENNARD WARLICK
 RUTH SCARBOROUGH
 ROBERT KILLIAN
 HUGH BROWNING
 JOE TOWNSEND
 HENRY SHANNON
 MARGARET EURY

Editor-in-Chief
Business Manager
Associate Editor
Managing Editor
News Editor
Sports Editor
Social Editor
Feature Editor
Exchange Editor
Alumni Editor
Circulation Manager
Assistant Circulation Manager
Assistant News Editor
Assistant Social Editor



MCCALL
SCARBOROUGH

BREEZE
KILLIAN

WIKE
BROWNING

HAMRICK
TOWNSEND

LIPE
SHANNON

WARLICK
EURY







BOOK V FEATURES

We Look to the Future

We must always look to the future with a knowledge of the past. We cannot accurately predict the future but our actions of tomorrow must be guided by our knowledge of the past. We look into the future and see stream-lined vehicles of the land, sea, and air; we see complicated laboratory instruments and we see huge stainless steel buildings. We know that all of these things would not have been possible if some man in the past had not made the simple lever, some other man had not made the screw, and some other man had not discovered the principle of the wheel and axle.





SUPERLATIVES



Gail Phillips
Miss Appalachian



Marquette Bandy

Most Valuable



Frank Moore

Most Valuable



Carl Rudisill

Most Popular



Hazel Plaster

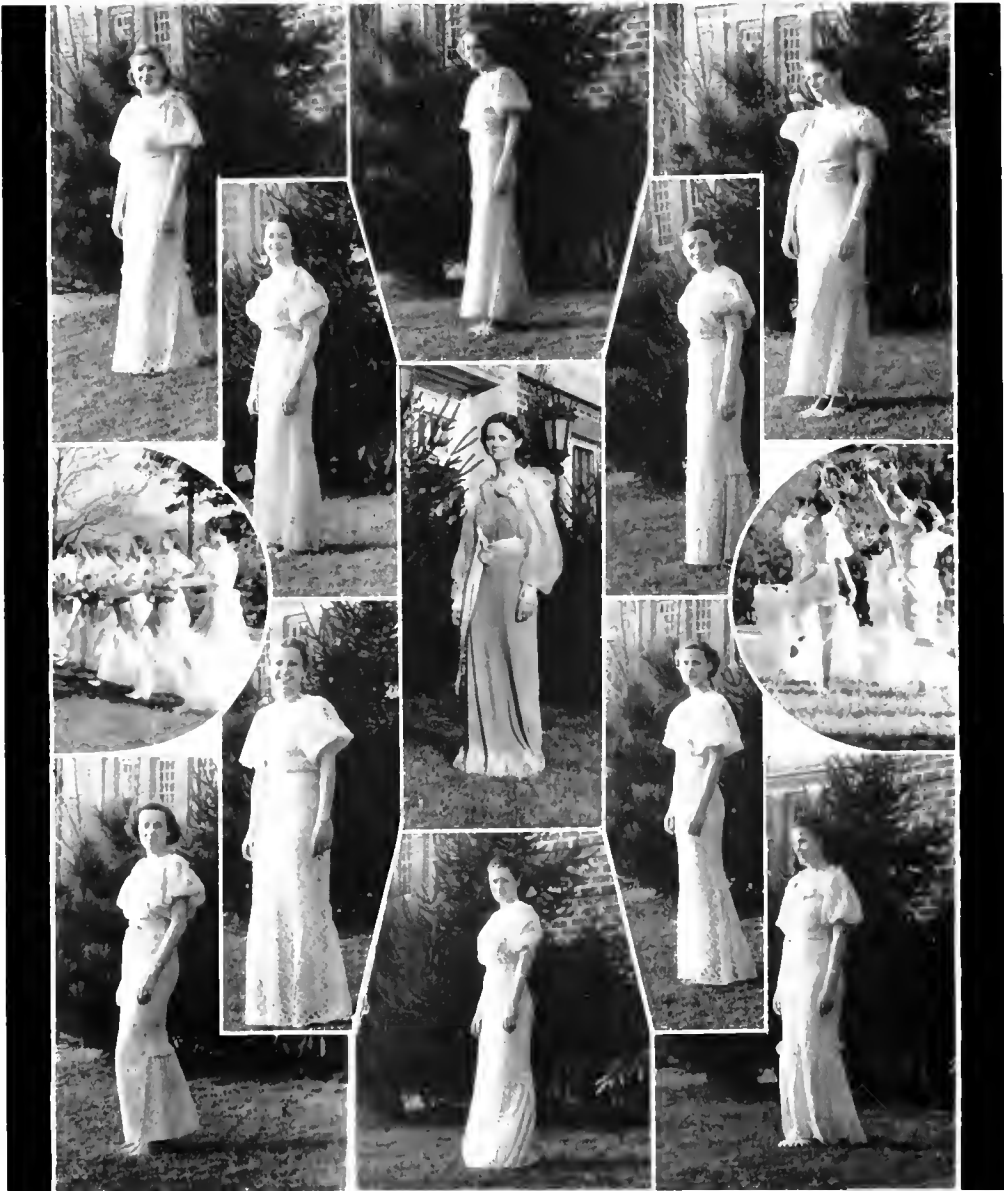
Most Popular



Fressie May Cashion

May Queen

May Queen Attendants



HASSETINE SHIPMAN

GRACE GREENE

CORNELIA FEEMET

DAISS WILLIAMS

POLY DOUGHERTY

THELMA BLACKBURN

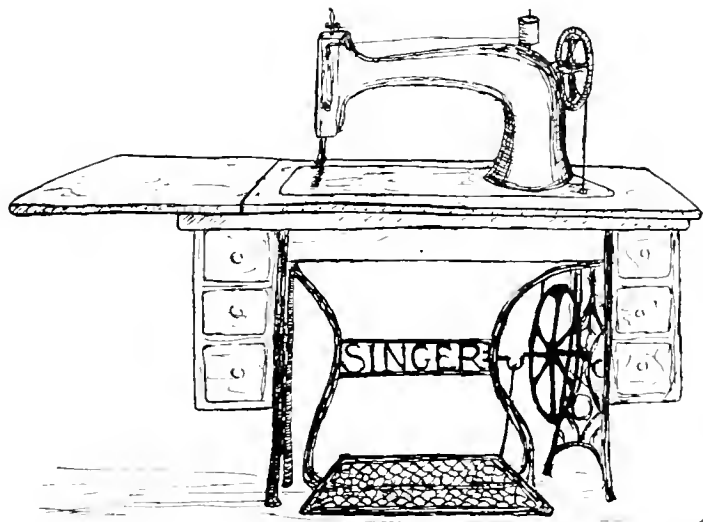
RUTH EPPS

DOROTHY HOLT

GAIL PHILLIPS

EUBELL FORSYTHAI

HELEN POOVEY



SPONSORS



Elizabeth Sinclair

The Rhododendron





Juanita Putnam

The Rhododendron



Elizabeth Holden

Senior Class



Elizabeth Killian
Junior Class



Sara Leigh Armfield
Sophomore Class

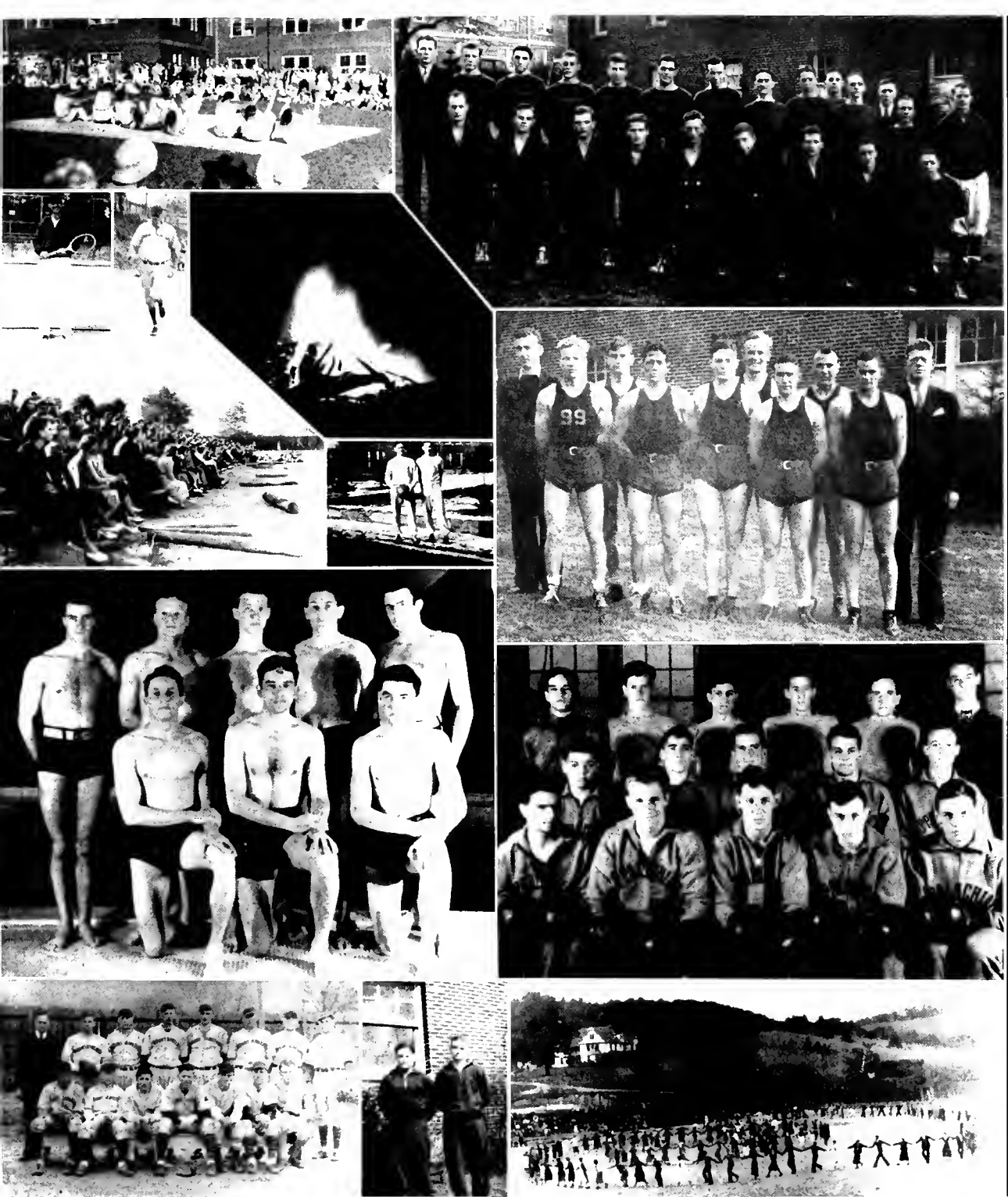


Helen Poovey

Freshman Class



Playcrafters "Footsteps" . . . "Zaraqueta" . . . "Footsteps" . . . "The Mikado" . . . "The Mikado" . . . May Day, 1935 - Here comes the Queen . . . The Court pays tribute . . . Queens of the future . . . Ziegfeld Follies . . . Robin Hoods . . . Gay Nineties . . . Soloist . . . "Swing your partner" . . . Maypole of Merrimount . . . "Sheep are in the meadow."



"Ouch" . . . Watkins' Bone Breakers . . . Second Betsy Grant . . . Home Run . . . Bonfire pep meeting . . . Spectators seeing plenty . . . Bidly and Dick . . . Flucie and his Freshman Basketeers . . . Take to water like Ducks . . . Is there a Dempsey or Louis here? . . . They hit the "Apple" . . . Great Guards (against women) . . . Freshman Snake Dancers.



Lower left-hand corner—On the lonely trail . . . Governor said, "No hand-outs at front." Watch out for fleas . . . "Horse" and Red (mostly Red) . . . What spinach will do for four. Bar across A—"Tweestie" must be on fire . . . Ride, Mister? Right side of the A (starting at top)—Imagine "Ick" with a girl . . . Mac is out for wrestling . . . No marriage: May Day . . . Two artists in same field . . . I would smile too . . . Snow cream is good but cold . . . Love-sick birds . . . Ray, it's easy to make a speech to her . . . Dot and Shannon (operetta, windows, piano, ?) . . . Man-hater Kate . . . Privette with another one . . . Don't catch cold sitting at fountain. Upper right-hand corner (left to right)—Has taken Nature Study . . . We want two "more" . . . Whoa! Horses . . . Fifi . . . Good music, good singing, good looks: all here . . . Ahoy! Captains . . . The trio goes snowing . . . Apple a day keeps the doctor away.

CHATHAM HOMESPUN

In 1894, the Governor of North Carolina said: "We take pleasure in stating that we know Messrs. Chatham Manufacturing Co., Proprietors of the Elkin Woolen Mills, to be thoroughly reliable business gentlemen and we wish their goods, which have such a wide and favorable reputation, could be worn by all our Southern people."

To-day "all our Southern people" are wearing smart Chatham Homespun suits—the same rugged fabric that has been loomed by three generations of Carolina weavers in the Blue Ridge.

CHATHAM MANUFACTURING CO.

Winston-Salem & Elkin, North Carolina.

WATAUGA COUNTY BANK

BOONE, N. C.

A Complete Banking Service

\$5,000 DEPOSITS GUARANTEED

Compliments of

New River Light & Power Company

Dillon Supply Co.

Industrial Supplies
Myers Home Water Systems
National Steel Pipe

RALEIGH—DURHAM

**A
FRIEND**

Compliments of

Smith's Transfer Co.

Motor Express Service

Telephone 24 Lenoir, N. C.

Compliments of

Mr. and Mrs. A. E. Hodges

and

HODGES TIRE CO.

Compliments

A. & P. TEA COMPANY

BOONE, N. C.

T. M. DUNKLEY, *Mgr.*

W. R. CHEVROLET CO.

The Only Complete Low-
Priced Car

SERVICE SUPREME

Compliments from

SPAINHOURS, INC.

*Boone's Leading Department
Store*

Always Backing A. S. T. C.

**PEARSON'S
STORE**

Sanitary Barber Shop

Under Watauga Drug



COMPLIMENTS OF
THE BOOK STORE

APPALACHIAN STATE TEACHERS COLLEGE
CORNER COLLEGE AND LOCUST STREETS

BOONE, N. C.



"Owned and Operated by the College for Your Convenience"

REINS-STURDIVANT

THE FUNERAL HOME

LICENSED EMBALMERS

FUNERAL DIRECTORS

Ambulance Service—Day and Night

PHONE 24

BOONE, N. C.

BELK-WHITE COMPANY

Boone's Newest and Largest Department Store

THE HOME OF BETTER VALUES

ASK ABOUT THE
NEW ROYAL TYPEWRITERS
WITH TOUCH CONTROL

TYPEWRITERS—SAFES—ADDING MACHINES
SALES—SERVICE—SUPPLIES

Deal Typewriter Exchange

1334 UNION SQUARE

HICKORY, N. C.

The
Bank of Blowing Rock

BLOWING ROCK, N. C.

Your deposits in this bank insured
by the Federal Insurance Corporation.

Maximum Insurance for Each
Depositor, \$5,000.00

Compliments of the

Atlas Supply Co.

Wholesale Plumbing, Heating, Water-
works and Industrial Supplies

Atlas Supply Co.

WINSTON-SALEM, N. C.

Compliments of

Daniel Boone Hotel

BOONE, N. C.

"In the Land of the Sky"



THE WILKES HOTEL
NORTH WILKESBORO, N. C.

Compliments of

**BOONE DRUG
COMPANY**

The Rexall Store

BOONE, N. C.

**Lillian Mae Beauty
Shop**

Located over Postoffice

Miss Lillian Reinhart, Manager

PHONE 52

**JOHNSON STUART
COMPANY**

The *FIVE* and *TEN*

BOONE, N. C.



NOLAND COMPANY, Incorporated
WHOLESALE

Plumbing, Heating and Mill Supplies

GENERAL OFFICE: NEWPORT NEWS, VA.

Visit Our Showroom at 636 W. 4th St.
WINSTON-SALEM, N. C.

●
BRANCHES

NEWPORT NEWS, VA.
ROANOKE, VA.
NORFOLK, VA.
WINSTON-SALEM, N. C.
DURHAM, N. C.
WASHINGTON, D. C.
ATLANTA, GA.

RICHMOND, VA.
LYNCHBURG, VA.
ROSSLYN, VA.
RALEIGH, N. C.
SPARTANBURG, S. C.
HAGERSTOWN, MD.
MACON, GA.

CHATANOOGA, TENN.

Compliments of

Watauga Drug Co.

BOONE, N. C.

C. L. RHYNE, *Prop.*

Cottrell's

QUICK LUNCH

D. J. COTTRELL, *Prop.*

*You Are Always Welcome
at the Home of the
Famous Hamburger*

**WATAUGA
DEMOCRAT**

Since 1888

M. & M. MOTOR Co.

CHRYSLER AND
PLYMOUTH

Sales and Service

EAT
DELICIOUS
PET ICE CREAM



"A Year-round Health Food"

WALKER'S JEWELRY STORE

(NEAR THEATRE)

"The Store that Gives Everyone a Square Deal"

—Every Repair Job Guaranteed—

GIVE US A TRIAL

EAST TENNESSEE

AND

WESTERN NORTH CAROLINA
RAILWAY COMPANY



RHODODENDRON



Appalachian State Teachers College

BOONE, NORTH CAROLINA



Devoted Exclusively to
Teacher Training for Public Education
in the South

●
FULL SUMMER QUARTER



PHOTOGRAPHER
OF THE
RHODODENDRON

◆
H. Lee Waters
STUDIO

References Furnished

Samples Submitted

LEXINGTON, N. C.

"Photographers to Colleges and Schools of the Carolinas"

The
Central Barber Shop

JERRY H. WILSON, *Manager*

*Special Consideration to
Students of A. S. T. C.*

Compliments of
MR. AND MRS. PAT MCGUIRE
AND

**Rudemar Beauty
Shoppe**

(Over 5 and 10c Store)
PHONE 91

**THE
PASTIME THEATER**

"The Place of Good Shows"

BOONE, N. C.

The
Ruth Louise Shoppe

Smart Styles in

Ladies Ready-to-Wear and
Millinery

Always Something New
BOONE, N. C.



FAIRBANKS-MORSE STOKERS

SUNBEAM™ AIR-CONDITIONING

EUSTIS A. LANCASTER, JR.

EQUIPMENT - SUPPLIES **ELA** BUILDING - SPECIALTIES

ENGINEERING - SALES - SERVICE - CONTRACTING

Johnson City, Tennessee

JOHN B. STEELE, ASSOCIATE

TELEPHONE 364 J

HICKORY, NORTH CAROLINA

ROLSCREENS — VENETIAN BLINDS — TILE-TEX FLOORING

●
A
FRIEND
●

Compliments of

**DANIEL BOONE
SHOE SHOP**

BOONE, N. C.

PATRONIZE
OUR
ADVERTISERS



Achievement

~ACHIEVEMENT IN ANY LINE
OF ENDEAVOR IS THE NATURAL
RESULT OF ABILITY AND
EXPERIENCE, PLUS OPPORTUNITY.
~THIS ORGANIZATION TAKES PRIDE
IN ITS SUCCESS~~SUCCESS EARNED
BY THE ABILITY OF ITS MEMBERS,
THE EXPERIENCE GAINED IN
TWENTY YEARS OF EFFORT, AND
THE OPPORTUNITIES OFFERED BY
ITS CLIENTS.

CHARLOTTE ENGRAVING
COMPANY INC.

ARTISTS-PHOTO-ENGRAVERS-DESIGNERS

CHARLOTTE
NORTH
CAROLINA

ESTABLISHED NINETEEN FIFTEEN





THIS ANNUAL PRINTED BY

**An
Organization**

Prepared to serve the
most exacting annual staff.

An organization with a thorough knowledge of printing and binding achieved through years of experience in the production of college and high school annuals . . .

OBSERVER PRINTING HOUSE
CHARLOTTE N.C.
ESTABLISHED 1893

