




*The Rhododendron*  
1945





Digitized by the Internet Archive  
in 2009 with funding from  
University of North Carolina at Chapel Hill





*The* 1945 RHODODENDRON

*Presented By*

THE SENIOR CLASS

APPALACHIAN STATE TEACHERS COLLEGE

BOONE, NORTH CAROLINA

## **THESE HAVE PAID THE SUPREME SACRIFICE FOR US**

Hal Bingham	George Lippard
Carl T. Bumgarner	Heath Duncan
Robert B. Davis	Albert Harman
Fred Lowrance	Ben Colvard
Marshall McClure	Roderick John
George Parrish	Henry Cline
Matt Pasky	George Martin
John Crisp	Paul Hagaman
Herbert Poole	J. T. Cunningham
Merl Steimer	Edward Ledbetter
Eugene Knott	Harold Jasper Stone
Lindell Smith	Gatewood Shipman

## **THESE HAVE BEEN WOUNDED**

James D. Hamilton	Ed Clay
Robert Phillips	Paul Summey
Ray Blevins	Stuart Scott
Carson Coffield	Vance James
Orland Gabriel	John Magness
Warren Parrish	Andy Nesbitt
Tom Sinclair	Paul Swofford
Jasper Cherry	Udy Wood
John Marsh	Kyle Dickson

## **THESE ARE MISSING IN ACTION**

Harold Winecoff	Horace Yount
Bill Sparks	Morris Eggers

Joel Bacon

## **THESE ARE PRISONERS OF WAR**

William Nolen	William F. Staley
Marvin Hoffman	Ned Austin (liberated)



## D E D I C A T I O N

To those who hold Appalachian deep in their hearts, her life is a sacred trust; her honor, a breathing spirit; her being, an inviolate personality. From those who love Appalachian there is the deepest regard, the sincerest respect, for the men who have aided in her creation. For one man the depth of this gratitude, the sincerity of this respect, the concentration of this love is greatest; for he, with the other builders, has given his strength to her creation and his power to her preservation. This man is Doctor Graydon Poe Eggers.

At a time when faith is easily lost and devotion to ideals easily forgotten, Dr. Eggers has come forward to give the full power of his character and ability to strengthen Appalachian's faith, to preserve her from disbelief and cynicism. To him all who love Appalachian are indebted for the preservation of all that makes Appalachian great: the democratic, the *American* spirit of learning and teaching.

This man is a scholar, an exacting student in the finest sense of the word. He is a teacher—a teacher whose students have faith in the cultural, philosophical, and moral truth which he proposes because he himself is the embodiment of that truth. This man is a friend—a friend who comforts with his sympathy and perfects with his truth. This man is an American; his is an American philosophy; his is an American religion; his, an American life.

To DOCTOR GRAYDON POE EGGERS the senior class of Appalachian State Teachers College is proud to dedicate the 1945 RHODODENDRON.

# In Memoriam

MRS. D. D. DOUGHERTY

January 20, 1945

D. J. COTTRELL

September 11, 1944



# FOREWORD

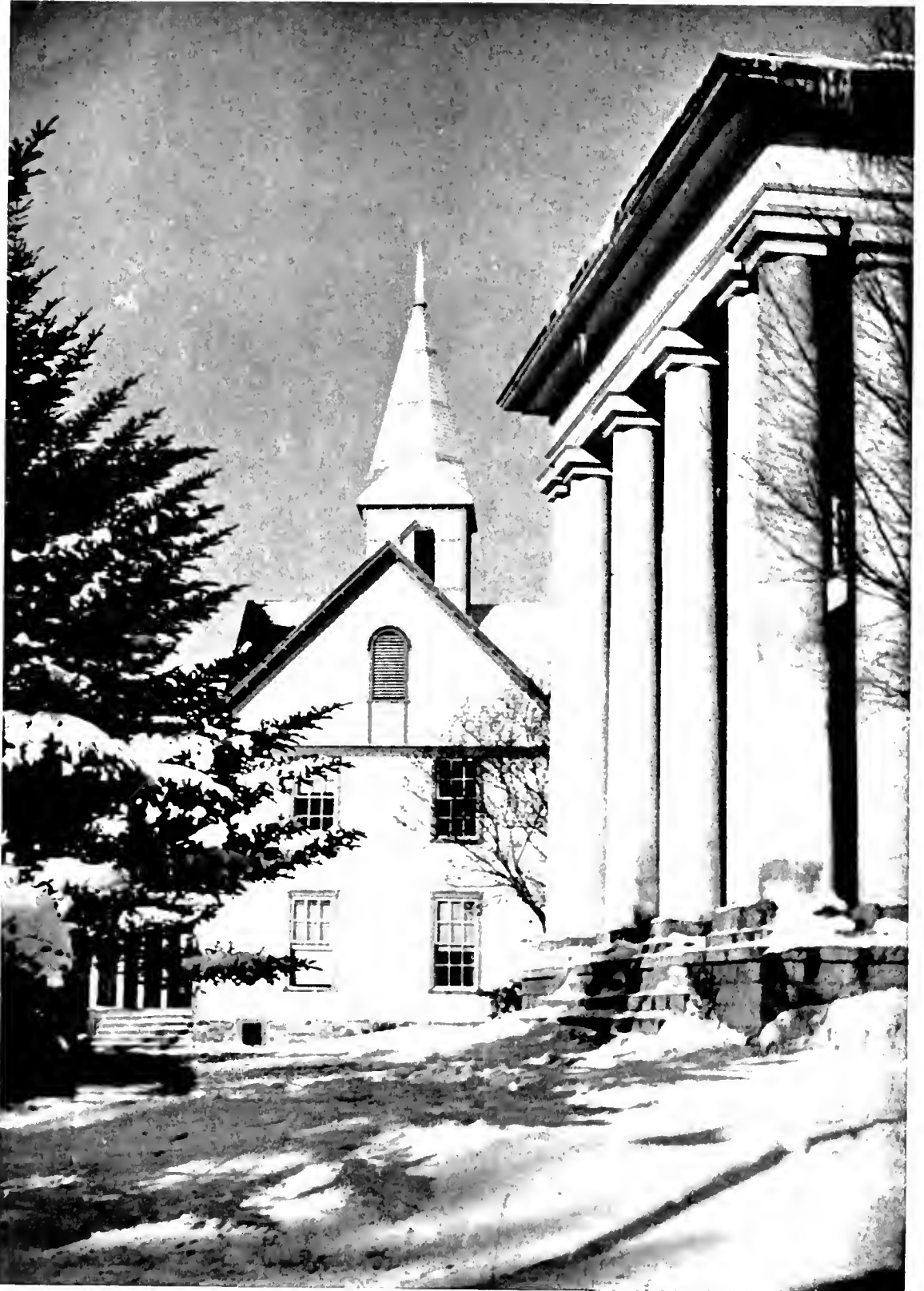
This 1945 RHODODENDRON is your book. We hope that it will be a source of many pleasant memories as you recall this year at Appalachian. It has been a year filled with many heartaches because of the closeness of the international conflict. However, it has been a good year filled to overflowing with happy friends and experiences. May this RHODODENDRON be your guide to the year 1945 at Appalachian.

*"The days are made on a loom, whereof the warp and woof are past and present time."*

—EMERSON.



CONTENTS BOOK 1... CLASSES + BOOK 2  
ACTIVITIES + BOOK 3... ATH-  
LETICS + BOOK 4... FEATURES

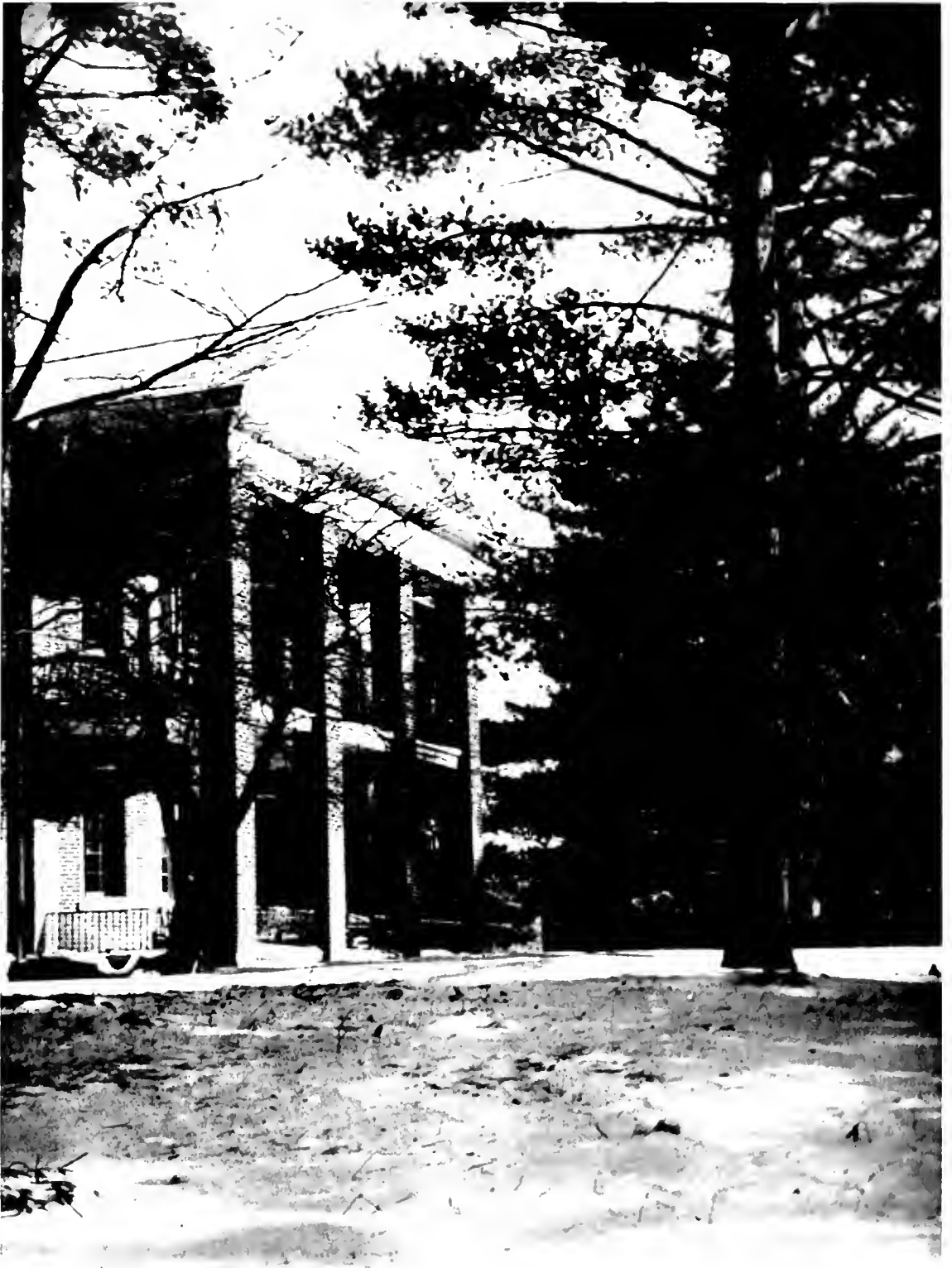


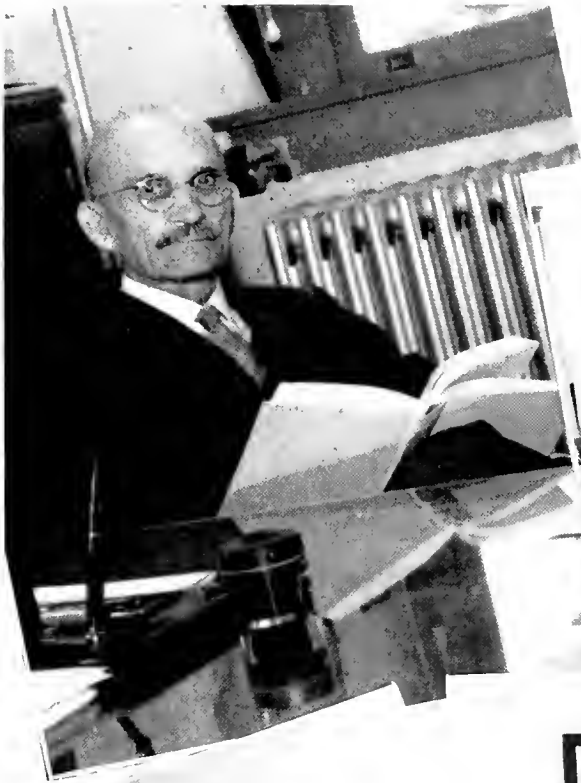


GIRLS DORMITORY



WHITE HALL





B. B. DOUGHERTY, B.S., Ph B., D.Lit., D.Ed.  
*President*

BARNARD DOUGHERTY, B.S.  
*Business Manager*

DEMONSTRATION SCHOOL OFFICIALS

JOHN HOWELL, B.S., M.A., M.Ed.  
*Principal Elementary School*

CHAPELL WILSON, A.B., A.M.  
*Director Demonstration Schools*

HERBERT W. WEY, B.S., M.A.  
*Principal High School*

LANGUAGE DEPARTMENT

ELIZABETH CRADDOCK, B.S., M.A.  
*French and Spanish*

GRAYDON P. EGGERS, A.B., M.A., Ph.D.  
*English*

J. D. RANKIN, A.B., A.M., S.T.D.  
*Dean*

W. AMOS ABRAMS, A.B., M.A., Ph.D.  
*English*

META SWAIN LUTTS, A.B., M.A.  
*English*



**SOCIAL STUDIES DEPARTMENT**

F. W. WARREN, B.S., M.A., B.D., D.D. *History and Sociology*  
 A. C. HOWELL, A.B., A.M. *Government and History*  
 MISS HELEN BURCH, A.B., M.A. *Geography*  
 G. E. SAWYER, A.B., A.M. *History*  
 D. J. WILFINGER, A.B., M.A., Ph.D. *Government and History*  
 W. M. GREENS, B.A., M.A. *Economics*  
 JULIAN YODER, B.S., M.A. *History and Geography*  
 L. A. WILLIAMS, A.B., M.A. *Geography*

**SCIENCE DEPARTMENT**

MAUDE CATHORPE STOLL, B.S., M.A., Ph.D. *Biology*  
 R. C. BOSDEF, B.S., M.A., Ph.D. *Biology*

A. R. SMITH, A.B., M.A. *Chemistry*  
 ANTONIUS ANTONAKIS, B.S., M.S. *Physics*  
 IDA BELL FUEDELLER, A.B., M.A. *Biology*

**MATHEMATICS DEPARTMENT**

J. F. ARENA, A.B., A.M. *Mathematics*  
 I. T. C. WRIGHT, A.B., A.M., Ph.D. *Mathematics*

**HOME ECONOMICS DEPARTMENT**

ELCY BROCK, A.B., M.S. *Home Economics*  
 VIVIAN WOOD, B.S. *Home Economics*  
 BILLY SUE STONE, B.S., M.S. *Home Economics*



**PSYCHOLOGY AND EDUCATION DEPARTMENT**

MYRTLE B. WILSON, B.S., M.A. .... *Dean of Women, Education*  
 RALPH W. HOUSE, B.S., M.A., Ed.D. .... *Education*  
 W. F. SMITH, A.B., M.A., Ph.D. .... *Psychology*  
 HERMAN R. EGGERS, A.B., A.M. .... *Registrar, Education*

**LIBRARY STAFF**

MRS. EMMA H. MOORE ..... *Librarian*  
 ALLIE AUSTIN, B.S., B.S. in L.S. .... *Library*  
 MARY ALICE HUFF, B.S., B.S. in L.S. .... *Library*

**MUSIC DEPARTMENT**

GARNETT FELTS, B.M. .... *Music*  
 MARY ALICE BURNS, B.M.E. .... *Music*  
 HELEN FOSTER, B.S. .... *Music*  
 VIRGINIA WARY, B.M., M.M. .... *Music*

**LIBRARY SCIENCE DEPARTMENT**

FRANCES WILLIAMS, B.S. .... *Library*  
 HELENA CLARDY, A.B., M.A. .... *Library*



**PHYSICAL EDUCATION DEPARTMENT**

Mrs. EUGENE K. GARRETT, B.A. *Physical Education*  
 CELON HAYNES HOBBS, A.B., M.A. *Physical Education*

**ART DEPARTMENT**

CATHERINE SYDDE, A.B., M.A. *Art*

**BUSINESS EDUCATION DEPARTMENT**

ETHEL HISS, A.B., M.A. *Business Education*  
 ELLA LOOG, B.S., M.A. *Business Education*

**SECRETARIES**

MELBA TUGMAN *Secretary to Business Manager*  
 JENNIE SUE A. HERRIN *Secretary to President*  
 BERNICE CRAIG *Secretary to Business Manager*  
 MRS. ED. BINGHAM *Secretary to Registrar*  
 MRS. DOUGLAS REDMOND *Secretary to Business Manager*  
 MRS. RAUFEL W. HOUST *Secretary to Dean*

*Not in picture*

**MATRONS**

MRS. L. B. HADDEN *Blom Dolph Hall*  
 MISS HELEN BURGH *Locall Hall*  
 MISS BERDINE CHARLIER *White Hall*





**B O O K 1 • C L A S S E S**

# SENIOR CLASS



## OFFICERS

RAY W. THOMAS ..... *President*

MEREDITH DUNCAN ..... *Vice-President*

LAURA ALEXANDER ..... *Secretary*

PAULINE CRESS ..... *Treasurer*

ALEXANDER

ASHLEY

AYERS



BEAM

BLAIR

BOONE



LAURA MARIE ALEXANDER  
Huntersville, N. C.

*Business Education and History*

Westminster Fellowship 1, 2, 3, 4; White Hall Club 1, 2; Presbyterian Club 1, 2; President 2; Vernician Literary Society 3, 4; President 3; *Playbill* Staff 2, 3, Editor 2; Playcrafters 1, 2, 3, 4; Officer 4; President 3; *Appalachian* Staff 1, 2, 3, 4; Circulation Manager 3; Business Manager 4; Social Studies Club 3, 4; Business Majors Club 3; President; Y. W. C. A. 1, 2, 3, 4; Cabinet Member 1, 3, 4; Future Teachers Club 3, 4; Student Council 4; Class Officer 4; *Who's Who Among Students in American Universities and Colleges* 4; Senior Superlative; Campus Superlative.

RUBY CARRIE ASHLEY  
Boone, N. C.

*Mathematics and Science*

MARY JUNE AYERS  
Burnsville, N. C.

*English and Social Studies*

Mars Hill Junior College 1, 2; Training Union Director 3; B. S. U. 3, 4; President 4; Y. W. C. A. 3, 4; President 4; Le Cercle Francais 3, 4; Social Studies Club 3, 4; *Appalachian* Staff 3, 4; RHODODENDRON Staff 4; Assistant Business Manager; Maid of Honor 4; *Who's Who Among Students in American Universities and Colleges* 4; Honor Roll 3, 4; Honor Teaching.

MATTIE SUE BEAM  
Shelby, N. C.

*Mathematics and Science*

Gardner-Webb Junior College 1, 2; Baptist Student Union 3, 4; Council 4; Future Teachers Club 4; Treasurer; Forum Club 4; Y. W. C. A. 3, 4; White Hall Club 3.

PALMER SLEIGH BLAIR  
Boone, N. C.

*History and Science*

Glee Club 1; Band 1, 2, 3, 4; Treasurer 2; Vice-President 3; President 4; Dance Orchestra 2, 3, 4; Symphony Orchestra 2; Student Council 3; Intramural Sports 3; History Club 3; Mixed Chorus 4; Y. M. C. A. 4; Campus Superlative 4; Senior Superlative.

DAFFIE V. BOONE  
Asheboro, N. C.

*Library Science and History*

Y. W. C. A. 4; B. S. U. 4; Librarian.



BROWN  
BYRD  
CANNON



CARPENTER  
CLAPP  
CLINARD

OLETA BROWN  
Olin, N. C.

*Home Economics and Science*

Home Economics Club 1, 2, 3, 4; Christian Fellowship Alliance 1, 2, 3.

MARTHA BLANCHE CARPENTER  
Polkton, N. C.

*English and Physical Education*

White Hall Club 1, 2, 3; Y. W. C. A. 1, 3; Playcrafters 2; W. A. A. 2.

WILMA DELIA BYRD  
Nealsville, N. C.

*English and History*

Mars Hill Junior College 1, 2; B. S. U. Council 3, 4; RHODODENDROS Staff 1, Editor-in-Chief; Student Council 4; Y. W. C. A. 3, 4, Cabinet 4; *Appalachian Staff* 3, 4; *Who's Who Among Students in American Universities and Colleges* 4.

MILDRED CLAPP  
Asheville, N. C.

*English and History*

Asheville College 1; Y. W. C. A. 2; Playcrafters 2; A Cappella Choir 3; Social Studies Club 3, 4; *Appalachian Staff* 4.

GENEVA CANNON  
Boone, N. C.

*Business Education and Science*

FRANCES CLINARD  
High Point, N. C.

*Grammar Grade Education*

High Point College 1, 2; Dymician Literary Society 3; Lovill Club 3; Christian Fellowship Alliance 3; Y. W. C. A. 3, 4; B. S. U. 4.



CONNER  
CRESS  
CROWE

CUTHBERTSON  
DAY  
DOUGLAS

MRS. INEZ CONNOR  
Shelby, N. C.  
*English and French*

Gardner-Webb, Junior College 1, 2; Le Cercle Francais 3, President; Y. W. C. A. Cabinet 3; B. S. U. 3.

PAULINE CRESS  
Salisbury, N. C.  
*Music and Primary Education*

Glee Club 1; A Cappella Choir 2, 3, 4; Forum Club 2, 3, 4, President 3; I. R. C. 3, 4; Playcrafters 1, 3; Y. W. C. A. 1, 4; Class Officer 4; A. C. E. 3, 4, President 4; Student Body President 4.

JANNIE LOUISE CROWE  
Ellenboro, N. C.  
*History and Library Science*

B. S. U. Council 1, 2, 3, 4; Y. W. C. A. 1, 2, 3, 4; Thalian Literary Society 1, 2, Officer 2; B. T. U. 1, 2, 3, 4; Christian Fellowship Alliance 3; White Hall Club 1, 2; Social Studies Club 3, 4.

ALMA CUTHBERTSON  
Glen Alpine, N. C.  
*Business Education and History*

LYDIA M. DAY  
Statesville, N. C.

*Grammar Grade Education*

Erskine College 1, 2; W. C. U. N. C.; White Hall Club 3, 4.

VIRGINIA DOUGLAS  
Schenectady, New York  
*English and Music*

Glee Club 1; Orchestra 1, 3, 4; Y. W. C. A. 4; Music Club 3; Girls' Chorus 4, Secretary.



DUNCAN

DUNN

FAVELL



FELTS

FURCHES

FURR

MEREDITH BROOKS DUNCAN

Trade, Tennessee

*Grammar Grade Education*

Y. M. C. A. 1, 2, 3, 4, Officer 2, 3; Intramural Basketball 2, 3; Student Council 4, Vice-President; RHODODENDRON Staff 4; Class Officer 4.

MRS. GARNETT FELTS

Boone, N. C.

*Science and Physical Education*

W. A. A. 1, 2, 3, 4; Y. W. C. A. 1, 2, 3, 4; Flying Fish 4; Glee Club 1; May Queen 4.

JOHN W. DUNN

Pinetops, N. C.

*Mathematics and History*

N. C. State 1, 2; Methodist Youth Fellowship 3, 4; Methodist Club Officer 3; Y. M. C. A. 3, 4, Officer 4; Basketball 3; "A" Club 4; Playcrafters 3, 4, Officer 4; Mixed Chorus 4; Math Club 4, President; Senior Superlative; Social Science Club 4.

NANCY FURCHES

Mocksville, N. C.

*Home Economics and Science*

Y. W. C. A. 1, 2, 3, 4; Home Economics Club 1, 2, 3, 4; Class Officer 3; Junior Marshal 3; May Court 3; Future Teachers Club 4; Lovill Club 1, 2.

RUTH FAVELL

Charlotte, N. C.

*English and History*

Queens College 1, 2; B. S. U. Council 3; Dyncian Literary Society 3; Y. W. C. A. 4; Mixed Chorus 4.

PAULINE FURR

Oakboro, N. C.

*Mathematics and Physical Education*

I. R. C. 3, 4, President 4; Forum Club 3, 4; Future Teachers Club 3, 4; Student Council 4; W. A. A. 1, 2, 3, 4; Y. W. C. A. 1, 2, 3, 4, Cabinet Member 3, 4; Band 1, 2, 3; Dyncian Literary Society 1, 2, 3; B. S. U. 3, 4; *Who's Who Among Students in American Universities and Colleges* 4; Senior Superlative.

GRAYSON  
 GRIFFIN  
 HARMON



HODGES  
 HORNE  
 HUDLER



EVANGELINE GRAYSON  
 Forest City, N. C.  
*Grammar Grade Education*

Mars Hill Junior College 1, 2; B. S. U. Council 4; Glee Club 3; Y. W. C. A. Cabinet 4; B. S. U. 3, 4; RHODODENDRON Staff 4.

MARJORIE B. HODGES  
 Boone, N. C.  
*Mathematics and Science*

Glee Club 1; Playcrafters 1, 3; Future Teachers Club Officer 3.

MRS. RUTH ROBINSON GRIFFIN  
 Charlotte, N. C.  
*English and History*

Rahun Gap Junior College 1, 2; Y. W. C. A. 3; B. S. U. 3.

HELON HORNE  
 Forest City, N. C.  
*Home Economics and Science*

Western Carolina Teachers College 1, 2; Home Economics Club 3, 4; Vernician Literary Society 3, 4, President 4; Y. W. C. A. 3, 4; RHODODENDRON Staff 4; B. S. U. 3, 4; Christian Fellowship Alliance 3.

MILDRED HARMON  
 Elk Park, N. C.

*Music and Primary Education*

Lees-McRae Junior College 1, 2; A. C. E. 3, 4; A Cappella Choir 3; Mixed Chorus 4, Officer; Music Majors Association 3, Officer; Future Teachers Club 4; Junior Marshal 3; Y. W. C. A. Cabinet Member 4.

MARIE HUDLER  
 Grassy Creek, N. C.  
*Music and History*

Glee Club 1; Y. W. C. A. 1; White Hall Club 1, 2; Methodist Club 1; Social Studies Majors Club 2; A Cappella Choir 2; Music Majors Association 2, President; I. R. C. 3; Forum Club 3; Girls' Chorus 3, President; Band 3; Symphony Orchestra 3.



HUNTER  
JARRETT  
JONES



KENDALL  
LACKEY  
LEINBACH

DORIS HUNTER  
Daybook, N. C.  
*History and Music*

Y. W. C. A. 3, 4; History Majors Club 1, 2; Girls' Chorus 4.

NELL AVETT KENDALL  
Norwood, N. C.  
*English and Music*

Glee Club 1; A Cappella Choir 2; Music Majors Association 2; I. R. C. 2, 3; Forum Club 3; Los Picaros Espanoles 3, President; Y. W. C. A. 3; *Appalachian* Staff 3.

CAROLYN JARRETT  
Shelby, N. C.  
*Primary Education*

Asheville College 1; Y. W. C. A. 4; Phila Retian Literary Society 2; A. C. E. 3, 4; *Appalachian* Staff 4.

DORIS LACKEY  
Kannapolis, N. C.  
*English and History*

KATHLEEN JONES  
Elon College, N. C.  
*Science and Physical Education*

Glee Club 1; Y. W. C. A. 2, 3, 4, Officer 3, Cabinet 2; May Court Attendant 2; W. A. A. 1, 2, 3, 4; Junior Marshal.

MRS. GRIFITA GENE LEINBACH  
Winston-Salem, N. C.  
*Home Economics and Science*

Loyall Club 1; White Hall Club 2; Camp Fire Girls 2, 3, Vice-President 2; Home Economics Club 2, 3, 4, President 4; Flying Fish 4; Y. W. C. A. 4.



MARSHALL  
MAYNARD  
MCCOLLUM



MCCOURY  
MCINTYRE  
MCKNIGHT



EDITH MARSHALL  
Concord, N. C.

*Home Economics and Science*

Home Economics Club 1, 2, 3, 4; Class Officer 3; White Hall Club 1, 2; Y. W. C. A. 2, 3, 4; Camp Fire Girls 1.

EUNICE MCCOURY  
Senia, N. C.

*Primary Education*

Lees-McRae Junior College 1; White Hall Club 2; Y. W. C. A. 2, 3; A. C. E. 3, 4; A Cappella Choir 3; Music Majors Association 3; Girls' Chorus 4; B. S. U. 3, 4; RHODODENDRON 4.

DURWARD W. MAYNARD  
Inez, Kentucky  
*Social Studies*

W. J. Bryan University 1, Pikeville College 2, Morehead State Teachers College 3; RHODODENDRON Staff 4, Business Manager; *Appalachian* Staff 4, News Editor; Athletic Publicity Director 4; Y. M. C. A. 4, Chaplain, President; Chief Marshal 4; Social Studies Club 4; A. H. S. A. Basketball and Football Official 4; Baseball 4; Supervisor of Men's Dormitory 4; Honor Teaching 4; Westminster Fellowship 4; Honor Roll 4; First Kentucky student to graduate from the institution.

MARGARET IONE MCINTYRE  
High Point, N. C.

*Library Science and Social Studies*

Methodist Club 1, 2; Christian Fellowship Alliance 2; Lovill Club 1, 2; Le Cerele Francais 1, 2, Officer 2; Y. W. C. A. 2, 3, 4, Cabinet 4; Social Studies Club 3, 4; Future Teachers 3, 4, Officer 4; Playcrafters 2, 3, 4, President 4; Cheerleader 3, 4; Student Council 3, 4; Junior Marshal; RHODODENDRON Staff 4; *Who's Who Among Students in American Universities and Colleges* 3; May Day Attendant 4; Class Superlative 4.

JEAN MCCOLLUM  
Monroe, N. C.

*Grammar Grade Education*

White Hall Club 1; Y. W. C. A. 3, 4; Senior Marshal.

DORIS MCKNIGHT  
Greensboro, N. C.

*Grammar Grade Education*

Y. W. C. A. 2, 3, 4; Future Teachers Club 3, 4, President 4; Vernician Literary Society 3, 4, President 4; May Court Attendant 3; Westminster Fellowship 1, 2, 3, 4.



PATTON  
PAYSEUR  
RUSSELL



SMITH  
SNOW  
SPARKS

HARRIET PATTON  
Joy, N. C.

*Business Education and Mathematics*

Mitchell College 1, 2; *Appalachian Staff* 3; RHODESDRON Staff 4; Methodist Youth Fellowship 4; White Hall Club 3; Debating 3; Future Teachers Club 4; Math Club 4; Business Education 3; Junior Marshal 3.

KITTIE LEE SMITH  
Rutherfordton, N. C.

*Home Economics and Science*

Brevard Junior College 1, 2; W. C. U. N. C. 3; Home Economics Club 4.

CATHERINE PAYSEUR  
Shelby, N. C.

*Primary Education*

Mitchell Junior College 1; A. C. E. 2, 3, 4, Officer 4; Y. W. C. A. 2, 4; *Appalachian Staff* 4, Associate Editor; Senior Superlative; May Court Attendant 4.

DORIS SNOW  
Elkin, N. C.

*Grammar Grade Education*

White Hall Club 1, 2; Y. W. C. A. 3, 4; Playcrafters 4; Methodist Club 1, 2.

LUCHE RUSSELL  
Concord, N. C.

*Primary Education*

Camp Fire Girls 1; A. C. E. 3, 4, Officer 4; White Hall Club 1, 2; Y. W. C. A. 2, 3, 4.

DORIS BRENDA SPARKS  
Amherst, Virginia

*English and History*

*Appalachian Staff* 1, 2, 3, 4, Editor 4; Playcrafters 1, 2, 3, 4, Officer 4; Y. W. C. A. 1, 2, 3, 4; A Cappella Choir 3; Girls' Chorus 4; Future Teachers Club 4; White Hall Club 1, 2; Social Studies Club 3, 4, President 4.

SWAIN  
SWEET  
I. THOMAS



M. THOMAS  
R. THOMAS  
TIMMONS



PHYLMA SWAIN  
High Point, N. C.

*Grammar Grade Education*

Lovill Club 1, 2; Methodist Club 1, 2; Campfire Girls 1;  
Y. W. C. A. 4; Junior Marshal; Playcrafters 1, 4; Editor  
of *Playbill* 4.

WORTH SWEET  
Nathan's Creek, N. C.

*History and Physical Education*

Pfeiffer Junior College 1, 2; Basketball 3, 4; Baseball 3, 4;  
Y. M. C. A. 3, 4, Officer 3; Social Studies Club 3, 4; "A"  
Club 4.

IRIS THOMAS  
Franklinville, N. C.

*Home Economics and Science*

Home Economics Club 1, 2, 3, 4; Y. W. C. A. 2, 3, 4;  
Intramural Basketball 2, 3; *Appalachian* Staff 4, Circulation  
Manager; Lovill Club 2; Playcrafters 4.

MRS. MARY F. THOMAS  
Boone, N. C.

*History and Physical Education*

RAY W. THOMAS  
Boone, N. C.

*Mathematics and History*

Y. M. C. A. 1, 2, 3, 4, Officer 1, 2; Math Club 1, 2;  
Social Science Club 1, 2, 3, 4; I. R. C. 2, 4; Intramural  
Basketball 1, 2; President of Senior Class; Senior Superlative;  
RHODODENDRON Staff 4, Advertising Manager.

MYRTLE MARIE TIMMONS  
Mt. Airy, N. C.

*Mathematics and Physical Education*

Pfeiffer Junior College 1, 2; *Who's Who Among Students  
in American Universities and Colleges* 4; I. R. C. 4; Forum  
Club 4; W. A. A. 3, 4, President 4; Y. W. C. A. 3, 4;  
*Appalachian* Staff 4; Flying Fish 4; Campfire Girls 4.



VENABLE  
WRIGHT  
BARNETT



BLEVINS  
BROYHILL  
CALDWELL

EDNA VENABLE  
Dobson, N. C.

*Grammar Grade Education*

Lovill Club 1, 2; Vernician Literary Society 1, 2, 3, 4; Y. W. C. A. 4; Playcrafters 4; Future Teachers Club 4.

VIRGINIA WRIGHT  
Rutherfordton, N. C.

*Music and History*

Band 1, 2, 3; Symphony Orchestra 2, 3; Music Majors Association 2; Swing Band 2, 3; Girls Chorus 3; A Cappella Choir 2; Glee Club 1; History Majors Club 2, 3; Playcrafters 2, 3; Y. W. C. A. 2, 3; Methodist Youth Fellowship 2, 3, Officer 3.

ESTELLA BLEVINS  
Lansing, N. C.

*Physical Education and History*

W. A. A. 1, 2, 3, 4; Y. W. C. A. 1, 2, 3, 4; Social Science Club 3; Playcrafters 4; Campfire Girls 4; Junior Marshal 3; Future Teachers Club 3, 4; I. R. C. 3, 4; Student Council 3, 4; Class Officer 4; *Who's Who Among Students in American Universities and Colleges* 4.

JESSIE EVELYN BROYHILL  
Boomer, N. C.

*Grammar Grade Education*

Vernician Literary Society 1, 2, 3, 4; Y. W. C. A. 3, 4

MID-YEAR GRADUATES

ROYSTER BARNETT  
Boone, N. C.

*History and Music*

Glee Club 1; A Cappella Choir 2, 3, 4, President 3; Future Teachers Club 4, Officer; *Who's Who Among Students in American Universities and Colleges* 4; B. S. U. 2, 3; French Club 1.

MARGARET H. CALDWELL  
Concord, N. C.

*Grammar Grade Education*

Mars Hill Junior College 1, 2; Flying Fish 3, 4; W. A. A. 3; Y. W. C. A. 3; Presbyterian League Officer 3, 4; Dyncian Society 3; Playcrafters 3.

CLARKE  
 COSTNER  
 FARTHING



GREENE  
 HOLCOMBE  
 LOPP



MARIE CLARK  
 Lansing, N. C.

*Music and Primary Education*

Mars Hill Junior College 1; Y. W. C. A. 2, 3, 4; White Hall Club 2; A. C. E. 3, 4; Future Teachers Club 4; A Cappella Choir 3; Mixed Chorus 4; Music Majors Association 3; *Appalachian Staff* 4; Playcrafters 2, 4; Dyncian Literary Society 2; Junior Marshal; *Who's Who Among Students in American Universities and Colleges* 4; Class Officer 4

MRS. DOROTHY FARTHING GREENE  
 Boone, N. C.

*Grammar Grade Education*

MINNIE FAYE COSTNER  
 Casar, N. C.

*Home Economics and Science*

Baton Club 2; B. S. U. 2; Home Economics Club 1, 2, 3, 4; President 4; I. R. C. 3, 4; Junior Marshal; President Senior Class.

HENRIETTA HOLCOMBE  
 Weaverville, N. C.

*English and History*

Mars Hill Junior College 1, 2; B. S. U. 3, 4; Y. W. C. A. 3, 4; Social Science Club 3, 4; Future Teachers Club 3, 4.

MABEL KATHLEEN FARTHING  
 Boone, N. C.

*English and History*

Co-Editor *Appalachian Staff* 4; I. R. C. 3, 4; Forum Club 4; *Who's Who Among Students in American Universities and Colleges* 4; Future Teachers Club 4; Y. W. C. A. 1, 2, 3, 4; Playcrafters 1, 2, 3, 4; A Cappella Choir 2, 3, 4; Glee Club 1; Social Science Club 3, 4; Dyncian Literary Society 1, 2, 3, 4; Class Officer 3; Junior Marshal.

OPAL LOPP  
 Lexington, N. C.

*Grammar Grade Education*

Lovill Club 1, 2; Vernician Literary Society 2, 3, 4; Officer 4; Y. W. C. A. 3; A Cappella Choir 3; Playcrafters 4.



MARSH  
 MCSWAIN  
 TEMPLETON



TURBYFILL  
 WOOSLEY  
 YOUNG

KATHERINE MARSH  
 Sophia, N. C.

*Home Economics and Science*

Home Economics Club 1, 2, 3, 4; White Hall Club 2, 3; Y. W. C. A. 3, 4.

MILDRED PERRY TURBYFILL  
 Sugar Grove, N. C.

*Physical Education and Science*

White Hall Club 1, 2; Intramural Athletics 1, 2, 3; Thalian Literary Society 1, 2; A. H. S. A. Official 2.

JUANITA MCSWAIN  
 Kings Mountain, N. C.

*English and Music*

Glee Club 1; White Hall Club 2; Mixed Chorus 2, 3, 4; Officer 2; Class Officer 3; Junior Marshal; Future Teachers Club 3, 4; Appalachian Staff 4; Y. W. C. A. 2, 3; Class Officer 4; *Who's Who Among Students in American Universities and Colleges* 3.

FLORENCE ELIZABETH WOOSLEY  
 Clemmons, N. C.

*Grammar Grade Education*

FLORA MAE TEMPLETON  
 Olin, N. C.

*Grammar Grade Education*

White Hall Club 1, 2; Methodist Club 1; Home Economics Club 1; B. T. U. 1, 2; Christian Fellowship 2, 3.

IRIS YOUNG  
 Lansing, N. C.

*Physical Education and History*

W. A. A. 1, 2, 3, 4; Y. W. C. A. 1, 2, 3, 4; Social Studies Club 4; President; Playcrafters 4; Campfire Girls 4; *Who's Who Among Students in American Universities and Colleges* 4; Future Teachers Club 3, 4; Student Council 3, 4.



# SENIOR SUPERLATIVES

*Most Likely to Succeed*

RAY W. THOMAS

*Most Versatile*

POLLY FURR

*Best Girl Athlete*

MYRTLE TIMMONS

*Best Boy Athlete*

JOHN W. DUNN



# SENIOR SUPERLATIVES

*Most Intellectual*  
MARGARET MCINTYRE

*Prettiest*  
CATHERINE PAYSFUR

*Friendliest*  
LAURA ALEXANDER

*Most Handsome*  
PALMER BLAIR



# JUNIOR CLASS



## OFFICERS

GLORIA MATKINS

*President*

FREDA GRUBBS CLINE

*Vice-President*

BETTY GABRIEL

*Secretary*

MILDRED EATON

*Treasurer*



# JUNIORS

LOUISE ADAMS  
 ELIZABETH BLACKWELDER  
 GLADYS S. BLANTON  
 SARAH BLANTON  
 MOZELLE BLOODWORTH  
 LOUISE BOWERS  
 ROSADA BOWMAN  
 RUTH BRITTAIN  
 LENA BROWN  
 HELEN BRUTON  
 ELLEN BURRIS  
 MERLE BUTLER  
 BILLIE CALLAHAN  
 FREDA GRUBBS CLINE  
 VIVIAN CLINE

Hiddenite, N. C.  
 Mooresville, N. C.  
 Boone, N. C.  
 Lattimore, N. C.  
 Kelly, N. C.  
 Elk Park, N. C.  
 Taylorsville, N. C.  
 Casar, N. C.  
 Sandy Ridge, N. C.  
 Mt. Gilead, N. C.  
 Stanfield, N. C.  
 Forest City, N. C.  
 Rutherfordton, N. C.  
 Winston-Salem, N. C.  
 Newton, N. C.



## JUNIORS

CLARA COOKE

ELIZABETH COOPER

ALMA CROWDER

CAROL CROWGEY

RUBY DANCY

NELL DAVIS

MILDRED EATON

BETTY ELLIS

CARRIE LEE FARTHING

AMANDA FEREBEE

DIMPLES FORTUNE

ROSALYN FRANCIS

BEATRICE FRONEBERGER

BETTY JEAN GRIFFIN

BETTY GABRIEL

Westfield, N. C.

Union Grove, N. C.

Nebo, N. C.

Wytheville, Va.

North Wilkesboro, N. C.

Chesterfield, S. C.

Cooleemee, N. C.

Boone, N. C.

Boone, N. C.

Mocksville, N. C.

Nebo, N. C.

Portsmouth, Va.

Gastonia, N. C.

Forest City, N. C.

Lincolnton, N. C.



# JUNIORS

NELLIE GABRIEL	North Wilkesboro, N. C.
CAROL GLASS	Wilkesboro, N. C.
PEARL GOLD	Shelby, N. C.
POLLYANNA GORDON	Pinnacle, N. C.
JULIA GREY	Greensboro, N. C.
MARY ELIZABETH GREER	Boone, N. C.
LUCILE HALL	Landrum, S. C.
BONNIE HAMRICK	Ellenboro, N. C.
MILDRED HARRISON	Boone, N. C.
HELEN HAYES	Mount Airy, N. C.
JOYCE HAYES	North Wilkesboro, N. C.
MARGULEIN HOLLAND	Union Grove, N. C.
BERNITA HUGHES	Bakersville, N. C.
MILDRED INGRAM	Statesville, N. C.
MARY FRANCES KIRKMAN	Forest City, N. C.



## JUNIORS

JOYE LAWSON  
 MARGARET LINEBERGER  
 HELEN MARTIN  
 LILLIAN MARTIN  
 GLORIA MATKINS  
 GUY McCANN  
 FRANCES McCOLLUM  
 LOVELY MILLER  
 MARTHA V. MILLER  
 DOROTHY LEE MOORE  
 CURTIS MURRAY  
 FRANCES PERRY  
 ELLEN PHILBECK  
 AGNES PRESTON  
 UNA PERRY PROPST

Pacolet, S. C.  
 Lincolnton, N. C.  
 Broadway, N. C.  
 Hickory, N. C.  
 Elon College, N. C.  
 Roaring Gap, N. C.  
 Madison, N. C.  
 Boone, N. C.  
 Nathan's Creek, N. C.  
 Galax, Va.  
 Boone, N. C.  
 Wingate, N. C.  
 Shelby, N. C.  
 Boone, N. C.  
 Morganton, N. C.



# JUNIORS

MARY ELLIS REESE	Mars Hill, N. C.
UNA LEE RICHARDSON	Sparta, N. C.
PEGGY ROGERS	Fair Bluff, N. C.
BONITA ROMINGER	Rominger, N. C.
CLARA RUTLEDGE	Lenoir, N. C.
ARLENE SHACKELFORD	High Point, N. C.
FRANCES SHERRILL	Mooresville, N. C.
LORRAINE SIMPSON	Monroe, N. C.
A. J. SMITH, JR.	Whiteville, N. C.
DORIS SMITH	Greensboro, N. C.
HELEN ROSE SMITH	Charlotte, N. C.
KATHRYN SMITH	Jacksonville, Fla.
MARY ELOISE SMITH	Charlotte, N. C.
HELEN MADELINE SMOOT	Mocksville, N. C.
HELEN SOSSAMON	Midland, N. C.



## JUNIORS

PAUL SOWELL  
 VIRGINIA SUDDRETH  
 JOYCE TATE  
 CLAUDIA THORPE  
 RUTH TOMS  
 LOUISE UPCHURCH  
 ELEANOR VANCE  
 ROBERT WAKEFIELD  
 GEORGE WAYNICK  
 MARY LILLIAN WILCOX  
 ELIZABETH WILSON  
 FRANCES YARBOROUGH  
 KATHRYN YOUNCE  
 JUANITA YOUNG

Savannah, Ga.  
 Morganton, N. C.  
 Forest City, N. C.  
 Statesville, N. C.  
 Forest City, N. C.  
 Mt. Gilead, N. C.  
 Huntersville, N. C.  
 Deland, Fla.  
 Winston-Salem, N. C.  
 Boone, N. C.  
 Roland, N. C.  
 Lexington, N. C.  
 Boone, N. C.  
 Micaville, N. C.

MRS. MAGDALENE RANSDALL  
*No Picture*

# SOPHOMORE CLASS



## OFFICERS

WILLIAM WILSON

*President*

EVELYN MILLER

*Vice-President*

BRUCE HARRELL

*Secretary*

ROBERT LACEY

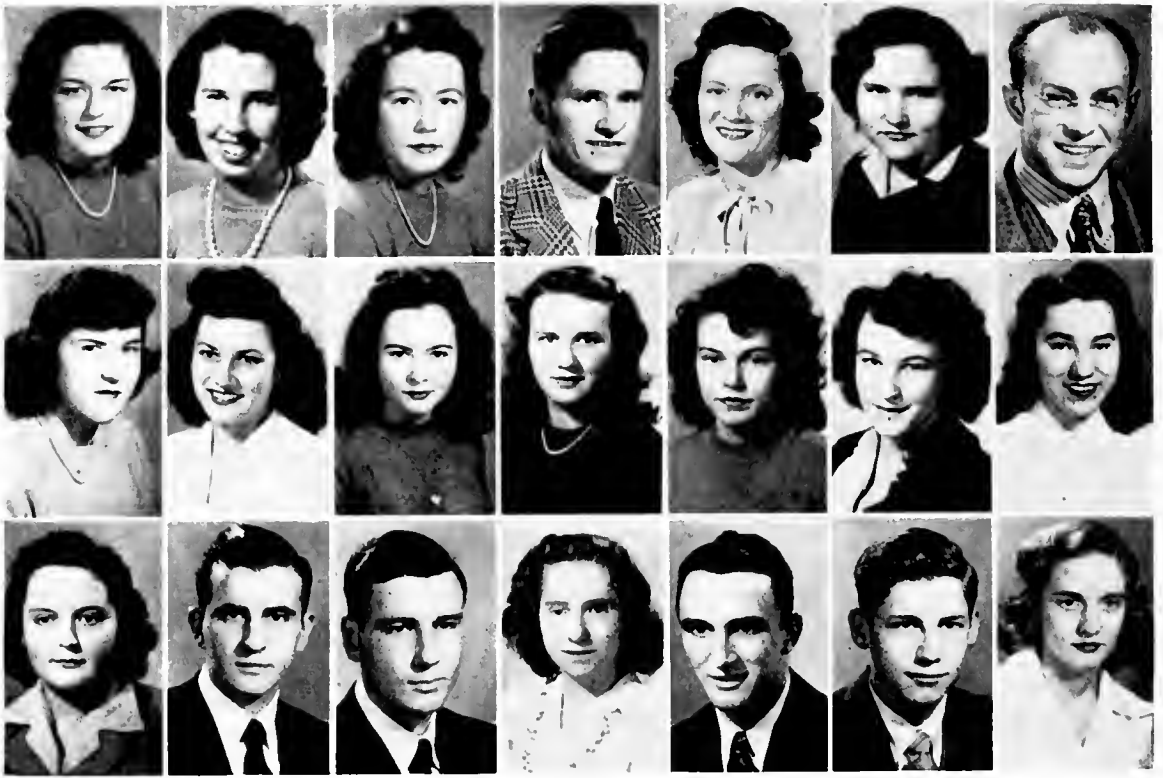
*Treasurer*





# SOPHOMORES

WILHELMINA AYERS	Burnsville, N. C.	ROSENA BURTON	Winston-Salem, N. C.
HELEN BINGHAM	Boone, N. C.	BETTY CANTRELL	Spartanburg, S. C.
HOUSTON BLAIR	Elizabethton, N. C.	OLLIE JEAN CLAWSON	Boone, N. C.
FRANCES BLOUNT	Newport News, Va.	BETTY CLINE	Newton, N. C.
HELEN BOWDITCH	Toecane, N. C.	MARION COBB	Rhodhiss, N. C.
JOYCE BROOKSHIRE	Taylorsville, N. C.	RUBY CROWDER	Lattimore, N. C.
ELOISE BUFF	Valdese, N. C.	LEWIS CURLEE	Marshville, N. C.
TILLIE EAKER		Crouse, N. C.	
MARY EVELYN ELLIS		Heaton, N. C.	
THELMA FARTHING		Boone, N. C.	
MARCIA R. GABRIEL		Sherrill's Ford, N. C.	
SARA J. GILCHRIST		Laurinburg, N. C.	
ELEANOR GREENE		Spindale, N. C.	
LILLIAN GRIFFITH		Newell, N. C.	



# SOPHOMORES

GLORIA M. GRILL	Valdese, N. C.	MILDRED HILL	Mt. Airy, N. C.
MARY JEAN GROSE	Statesville, N. C.	ELOISE HUGHES	Forbes, N. C.
EDITH HAMES	Pacolet, S. C.	MAYO HUNEYCUTT	Indian Trail, N. C.
BRUCE HARRELL	Forbes, N. C.	SARA HUNSUCKER	Maiden, N. C.
EDNA HARRELL	Forbes, N. C.	MARY SUE HUNTER	Day Book, N. C.
DORIS HARRISON	Grantsboro, N. C.	VIRGINIA ISAACS	Elk Park, N. C.
KENT HAYNES	State Road, N. C.	PEARL JAMES	Amy, N. C.
GRACE JENKINS	Ellenboro, N. C.		
LEWIS JENKINS	N. Wilkesboro, N. C.		
JOSEPH KELLY	N. Wilkesboro, N. C.		
JEAN KNIGHT	Roanoke Rapids, N. C.		
ROBERT LACEY	Newland, N. C.		
ALLEN LEDBETTER	Marion, N. C.		
MARGARET LEDBETTER	Marion, N. C.		



# SOPHOMORES

JACQUELINE LOWRY	Jefferson, S. C.	EVELYN MCNEELY	Morganton, N. C.
FERN MARTIN	Mt. Airy, N. C.	EVELYN MILLER	Statesville, N. C.
MARIAN MARTIN	Cramerton, N. C.	KATHLEEN MOORE	Galax, Va.
MILDRED MARTIN	Summerfield, N. C.	HELEN GRAY MOXLEY	Sparta, N. C.
H. W. MAST, JR.	Valle Crucis, N. C.	MABLE NIX	Cherryville, N. C.
JUNE MCBEE	Spruce Pine, N. C.	MYRTLE NIX	Cherryville, N. C.
FRANCES MCCALL	Marion, N. C.	RUBY NELL OWENS	Ellenboro, N. C.
EARL PAYNE	Boone, N. C.		
DOYLE PRUETT	Casar, N. C.		
EUNICE PRUETT	Casar, N. C.		
MARY JO RAGAN	Boone, N. C.		
EVELYN RAY	Boone, N. C.		
GENE REESE	Boone, N. C.		
LILLIAN REEVES	Pilot Mountain, N. C.		



# SOPHOMORES

JUNE RENFROW	Charlotte, N. C.	GERALDINE SMITH	Minneapolis, N. C.
EMMA GENE REYNOLDS	Lincolnton, N. C.	JOHNISE LEE SMITH	Melbourne, Fla.
SALLIE RUTH RICH	Mocksville, N. C.	PATSY SMITH	Mooresville, N. C.
REBEKAH RIVERS	Mountain City, Tenn.	FRANCES STEPHENS	Creston, N. C.
SAVANNAH SEGRAVES	Roaring River, N. C.	MAGDALENE TURPIN	Mt. Airy, N. C.
HAROLD SHOEMAKER	Statesville, N. C.	NANNIE VAN HOY	Piney Creek, N. C.
AUDREY SMITH	Pinnacle, N. C.	MARY LOUISE WATKINS	Morganton, N. C.

DOROTHY WHISNANT	Hickory, N. C.
CALVIN WHITE	Louisburg, N. C.
ARLENE WILLIAMS	Mountain Park, N. C.
RUBY WILSON	Granite Falls, N. C.
WILLIAM WILSON	Boone, N. C.
JEAN WOLFE	Moncure, N. C.

# FRESHMAN CLASS



## OFFICERS

PIERCE M. REYNOLDS

*President*

IMOGENE MOSES

*Vice-President*

DEANE STONESTREET

*Secretary*

CHARLOTTE UPRIGHT

*Treasurer*

# FRESHMEN

BILLY ALEXANDER  
Shulls Mill, N. C.

MINNIE LOU ALLEN  
Polkton, N. C.

GOZELLE ANDREWS  
Boomer, N. C.

ERNESTINE BANNER  
Blowing Rock, N. C.



NANNETTE BANNER  
Newland, N. C.

BETSY BARRETT  
Burlington, N. C.

MARY ANN BARRETT  
Burlington, N. C.

FAYE BARRIER  
Jonas Ridge, N. C.



POLLY BASINGER  
Salisbury, N. C.

BERNICE BEAVER  
Salisbury, N. C.

RUBY BEAVER  
Rockwell, N. C.

JAY LOAL BENBOW  
Oak Ridge, N. C.



MARJORIE BISHOP  
Ferguson, N. C.

ANNERI BEVINS  
Hickory, N. C.

CLARA BOLICK  
Blowing Rock, N. C.

CHARLES BOONE  
Boone, N. C.



BETTY SUF BOSI  
Salisbury, N. C.

ALENE BOWEN  
King, N. C.



# FRESHMEN



RUBY BOWEN  
King, N. C.  
SAMUEL BROOKSHIRE  
Taylorsville, N. C.  
JEWELL BROWN  
Moravian Falls, N. C.  
RACHEL BRYSON  
Greensboro, N. C.



WALTER BUCHANAN  
Minneapolis, N. C.  
JANICE BUIE  
Salisbury, N. C.  
ELIZABETH ANN BUSBY  
Hickory, N. C.  
L. BRYAN BYRD  
Hamlet, N. C.



CHARLINE CAMPBELL  
Taylorsville, N. C.  
PAUL CAMPBELL  
Taylorsville, N. C.  
SIDNEY CAMPBELL  
Greensboro, N. C.  
MILDRED CARPENTER  
Bostic, N. C.



WILLIAM L. CARPENTER  
Rutherfordton, N. C.  
DORIS CLINE  
Kernersville, N. C.  
MARGARET COLE  
Forest City, N. C.  
ETHELENE COCHRAN  
Leaksville, N. C.



MELBA CORNETT  
Warrensville, N. C.  
HANNAH CRAVEN  
Boone, N. C.

# FRESHMEN

ROBERTA CRITCHER  
Boone, N. C.

VEVA C. CROWDER  
Lattimore, N. C.

JOY DELLINGER  
McAdenville, N. C.

WILLIAM J. DIXON  
Nathan's Creek, N. C.



ZOLA GRFY DIXON  
Yadkinville, N. C.

CARL DUNCAN  
Taylorsville, N. C.

MARY ELLEN EARP  
Taylorsville, N. C.

BETTY ELMORE  
Shelby, N. C.



MARY MAXINE ERWIN  
Elk Park, N. C.

BETTY JEAN FARTHING  
Boone, N. C.

MARY NELL FARTHING  
Boone, N. C.

MARGARET FERGUSON  
Cl... N. C.



HILDA FOL...  
Winston-Salem, N. C.

DENNIS FRANKLIN  
Sparta, N. C.

ADELAIDE FRYE  
Catawba, N. C.

RUTH GOLDING  
Charlotte, N. C.



JOYCE GRAGG  
Boone, N. C.

JOHN GRAHAM  
Todd, N. C.





# FRESHMEN



J. M. GRIFFITH  
Forbes, N. C.  
DORIS GROSE  
Statesville, N. C.  
KATHERINE GUTHRIE  
Graham, N. C.  
TED HAGAMAN  
Boone, N. C.



ANNA FAYE HARDIN  
Laxon, N. C.  
THELMA HARMON  
Gastonia, N. C.  
VIOLET HARRELL  
Gastonia, N. C.  
ERMA DEAN HEAFNER  
Lincolnton, N. C.



HELEN HELTON  
Gastonia, N. C.  
GERTRUDE HENSON  
Vilas, N. C.  
RUTH HESTER  
Belew Creek, N. C.  
REBECCA HOBBS  
Mooreville, N. C.



GRACE HOLLIFIELD  
Bostic, N. C.  
JOHN HONBARRIER  
Salisbury, N. C.  
HELEN HOWARD  
Sherrill's Ford, N. C.  
RITA HOWELL  
Boone, N. C.



NELL HUNT  
Lexington, N. C.  
MARY CATHERINE HUNTER  
Bessemer City, N. C.

# FRESHMEN

JESSE HUTCHINSON  
Absbers, N. C.

SUE MAE JACKSON  
Daybrook, N. C.

NELLIE FRANCES JARVIS  
Dobson, N. C.

MARILYN JOHNSON  
Boone, N. C.



RUBY JOHNSON  
Mt. Airy, N. C.

ALVIN JOINES  
Joines, N. C.

JOHN THOMAS JONES  
Greensboro, N. C.

TENNYSON JONES  
Winston-Salem, N. C.



JOSEPHINE KERLEY  
Taylorsville, N. C.

NORMA KERLEY  
Boone, N. C.

MYRTLE KIKER  
Peachland, N. C.

SARA KIRKLEY  
Jefferson, S. C.



RUBY LEE KISER  
Kings Mountain, N. C.

LAURA MARGARET LANTZ  
Lincolnton, N. C.

B. H. LAUGHRIDGE  
Marion, N. C.

BETTY SUE LEONARD  
Lincolnton, N. C.



PEGGY LONG  
West Jefferson, N. C.

RUBY LUCKY  
Charlotte, N. C.



# FRESHMEN



JACK LUTTRELL  
Shulls Mill, N. C.  
EDITH LYLERLY  
Rockwell, N. C.  
EUGENE LYONS  
Boone, N. C.  
LAURA MARTIN  
Sandy Ridge, N. C.



BERNICE MCCOMBS  
China Grove, N. C.  
AGNES McDONALD  
Erwin, N. C.  
ELIZABETH MEDLIN  
Polkton, N. C.  
LOUISE MERONEY  
Mocksville, N. C.



BEATRICE METCALF  
Mars Hill, N. C.  
BLANTON MILLER  
Boone, N. C.  
J. D. MILLER  
Boone, N. C.  
SILVER MILLER  
West Jefferson, N. C.



WILLIAM JACK MILLER  
Nathan's Creek, N. C.  
IMOGENE MOSES  
Pittsboro, N. C.  
LAURA MUNDY  
Morganton, N. C.  
ESSIE NORRIS  
Boone, N. C.



EDITH ODOM  
Boone, N. C.  
ELEENE OSBORNE  
Shady Valley, Tenn.

# FRESHMEN

JOYCE PAILION  
Jonesboro, N. C.

OPAL PHILLIPS  
Boone, N. C.

RUTH QUEEN  
North Wilkesboro, N. C.

MARY LOU RANKIN  
Greensboro, N. C.



ROBERT A. REID  
Statesville, N. C.

PIERCE M. REYNOLDS  
El Dorado, Ark.

BETTY LOU RHYNE  
Lincolnton, N. C.

JUDITH RICHARDSON  
Lexington, N. C.



BETTY JO ROBERTSON  
Statesville, N. C.

JAYNE SEAGLE  
Morganton, N. C.

GRACE SHERWOOD  
Sherwood, N. C.

EDWARD J. SHINN  
Kannapolis, N. C.



HARRIET ANN SHORE  
Charlotte, N. C.

DOROTHY SHUFORD  
Hickory, N. C.

JEANNE SHULL  
Valle Crucis, N. C.

BILLIE GORDON SMITH  
Jacksonville, Fla.



GEORGE ROBERT SMITH, JR.  
Ruffin, N. C.

FRANCES SMITH  
Lemon Springs, N. C.



# FRESHMEN

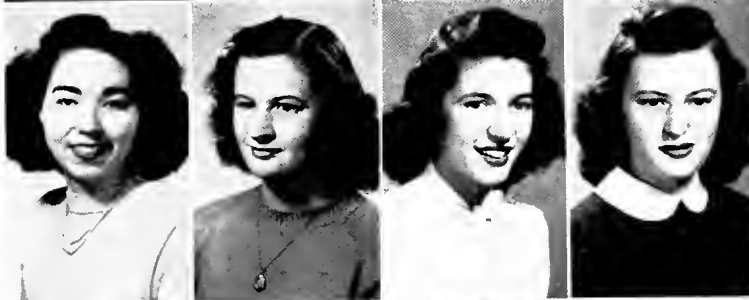


JEANNETTE SMITH  
Clover, S. C.

VERA MAE SMITH  
Mt. Airy, N. C.

STANLEY SOUTH  
Boone, N. C.

AUDREY SPARGER  
Pilot Mountain, N. C.



GENEVA STAFFORD  
Taylorsville, N. C.

EVA MAE STEELMAN  
Hamptonville, N. C.

DEANE STONESTREET  
Mooresville, N. C.

LENA STRICKLAND  
Erwin, N. C.

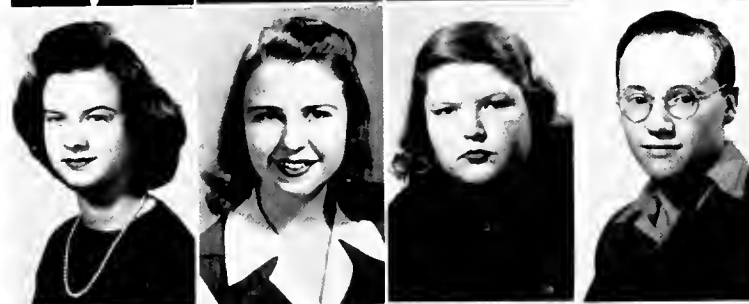


GEORGE TIMMONS  
Boone, N. C.

MARY SUE TISDALE  
Old Fort, N. C.

GERALDINE TRINKS  
Marion, N. C.

GRACE TUCKER  
Monroe, N. C.



MILDRED TUNNEL  
Boone, N. C.

CHARLOTTE UPRIGHT  
Mooresville, N. C.

CATHERINE VANNOY  
Wilkesboro, N. C.

LEONARD VANNOY  
Fleetwood, N. C.



JAMES WALKER  
Casar, N. C.

JOHN E. WALTERS, JR.  
Greensboro, N. C.

# FRESHMEN

MARGARI I WANDS  
Spencer, N. C.

OPAL WATTS  
Taylorsville, N. C.

JUANITA WEAVER  
West Jefferson, N. C.

BETSY WEBSTER  
Murphy, N. C.



FLORENCE WEEKS  
Clinton, N. C.

BETTY WELBORN  
Toronto, Ohio

MARILYN WELCH  
Lansing, N. C.

MRS. RACHEL D. WEST  
Burlington, N. C.



S. B. WHITE, JR.  
Union Grove, N. C.

ANNA FAYE WILLIAMS  
Mountain Park, N. C.

VIRGINIA FERNE WILLIAMS  
New Hope, N. C.

FARRELL WILLIS  
Shelby, N. C.



EUGENE WILSON  
Zionville, N. C.

IRENE WILSON  
Preston, N. C.

SHELTON BRADLEY WILSON  
Vilas, N. C.

MARGARET WINECOFF  
Kannapolis, N. C.



MARBETH WINKLER  
Boone, N. C.

MARY LOUISE YOUNG  
Celo, N. C.

TRUETT STANLEY  
Whiteville, N. C.

JOSEPHINE BROWN  
*No Picture*





**B O O K 2 • A T H L E T I C S**

OFFICERS

“A” CLUB

- |              |                         |
|--------------|-------------------------|
| TED HAGAMAN  | <i>President</i>        |
| ROBERT LACEY | <i>Vice-President</i>   |
| JOHN GRAHAM  | <i>Secretary</i>        |
| S. B. WHITE  | <i>Treasurer</i>        |
| KENT HAYNES  | <i>Sergeant-at-Arms</i> |

- JOHN W. DUNN  
 JOHN GRAHAM  
 TED HAGAMAN  
 BRUCE HARRELL  
 KENT HAYNES



- JOHN JONES  
 ROBERT LACEY  
 BLANTON MILLER  
 J. D. MILLER  
 GENE REECE



- WORTH SWFET  
 CALVIN WHITE  
 S. B. WHITE  
 WILLIAM WILSON  
 COACH G. P. EGGERS





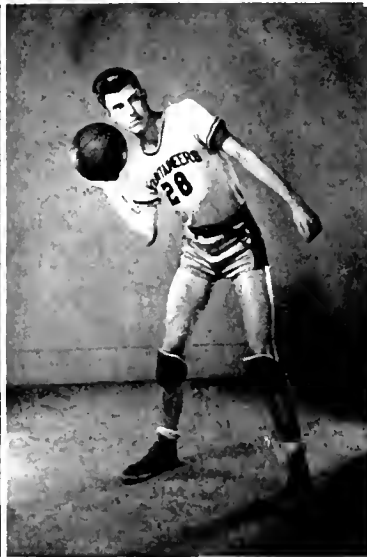
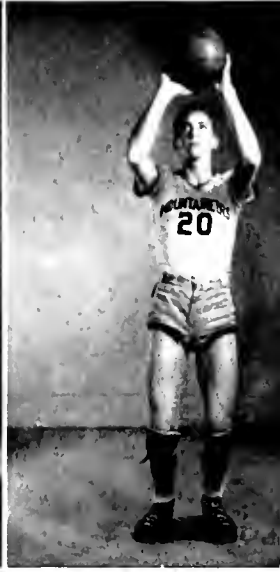


SQUAD

Back row: Walters (Manager), Graham, J. D. Miller, Coach Eggers, Reece, Walker, Haynes (Manager).  
 Front row: White, Harrel, Smith, B. Miller, Jones, Haganan, Lacey, Sweet.

# BOYS' BASKETBALL SCHEDULE

A. S. T. C.	26	L. M. U.	40
A. S. T. C.	30	L. M. U.	40
A. S. T. C.	22	Milligan	74
A. S. T. C.	28	Carson Newman	36
A. S. T. C.	47	High Point	36
A. S. T. C.	33	Guilford	35
A. S. T. C.	35	Carson Newman	30
A. S. T. C.	51	Elon	33
A. S. T. C.	30	Catawba	53
A. S. T. C.	23	Lenoir-Rhyne	29
A. S. T. C.	48	Milligan	91
A. S. T. C.	31	Lenoir-Rhyne	29
A. S. T. C.	37	High Point	44
A. S. T. C.	21	Catawba	53
A. S. T. C.	20	L. M. U.	59
A. S. T. C.	44	L. M. U.	71
A. S. T. C.	47	Guilford	43
A. S. T. C.	43	Elon	44
A. S. T. C.	47	Atlantic Christian	27



# BASKETBALL

BRUCE HARRILL

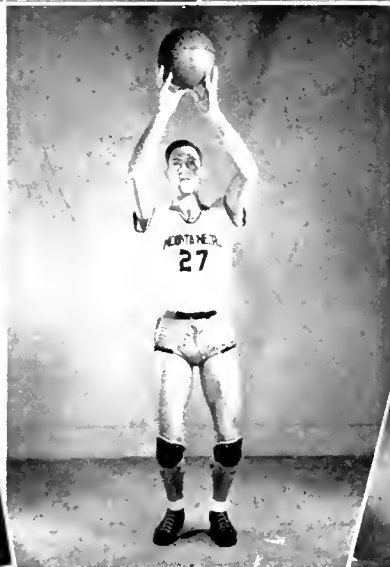
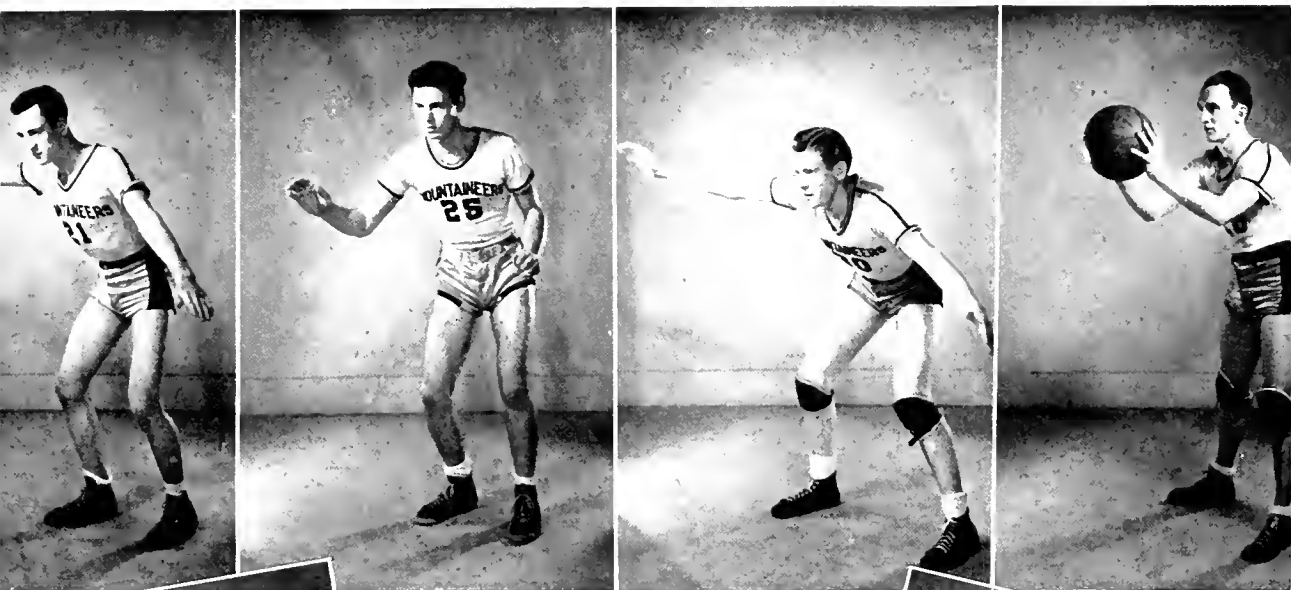
J. D. MILLER

J. D. WHITE

JOHN JONES

BLANTON MILLER

GENE REESE



JOHN GRAHAM  
JAMES WALKER  
TED HAGAMAN  
BOB LACY

COACH EGGERS  
WORTH SWEET  
KENT HAYNES

# BASKETBALL



# W. A. A.

## OFFICERS

MYRTLE TIMMONS	<i>President</i>
ELLEN PHILBECK	<i>Vice-President</i>
BETTY GABRIEL	<i>Secretary-Treasurer</i>
DOROTHY MOORE	<i>Manager</i>
ESTELLA BLEVINS	<i>Reporter</i>
ELLEN PHILBECK	<i>Gold Captain</i>
BETTY GABRIEL	<i>Black Captain</i>
MRS. HODGES	<i>Sponsor</i>



# CHEERLEADERS



*Back row:*

JESSE HUTCHINSON  
JUDITH RICHARDSON  
MARY REESE  
MARION COBB  
FARRELL WILLIS  
REBECCA HOBBS  
VEVA C. CROWDER

*Front row:*

NELLIE GABRIEL  
PATSY SMITH  
FRANCES YARBOROUGH  
MILDRED MARTIN  
MARGARET MCINTYRE



#### BLACKS

Polly Basinger  
Bernice Beaver  
Sarah Blanton  
Istella Blevins  
Ruby Bowen  
Merle Butler  
Alene Felts  
Hilda Foltz  
Pauline Lurr  
Betty Gabriel  
Joyce Gragg  
Lillian Griffith

Mildred Martin  
Gloria Matkins  
Evelyn McNeely  
Martha Miller  
Kathleen Moore  
Joyce Patton  
Evelyn Ray  
Mary Reese  
Frances Sherrill  
Mary E. Smith  
Myrtle Timmons  
Hleanor Vance  
Iris Young

#### GOLDS

Betty Sue Bost  
Janice Buie  
Margaret Caldwell  
Marion Cobb  
Mary Lou Rankin  
Ruth Golding  
Polly Anna Gordon  
Doris Harrison  
Mildred Hill  
Marjorie Hodges  
Kathleen Jones  
Betty Sue Leonard

Bernice McCombs  
Dorothy Moore  
Ellen Philbeck  
Emma Gene Reynolds  
Doris Smith  
Frances Smith  
Helen Smith  
Patsy Smith  
Mary E. Thomas  
Mildred Turbyfield  
Betty Welborn  
Dorothy Whisnant  
Jean Wolfe

#### VOLLEYBALL

Frances Sherrill  
Emma Gene Reynolds  
Pauline Lurr  
Merle Butler  
Dorothy Moore  
Doris Harrison  
Betty Gabriel  
Marion Cobb  
Ellen Philbeck  
Myrtle Timmons



101

**BASKETBALL**

*Back row:*

- Emma Gene Reynolds
- Lillian Griffith
- Pauline Furr
- Betty Gabriel
- Doris Harrison
- Marion Cobb
- Kathleen Cobb

*Front row:*

- Ellen Philbeck

- Louise Upchurch
- Myrtle Timmons

**SPEEDBALL**

*Back row:*

- Emma Gene Reynolds
- Pauline Furr
- Mildred Hill
- Betty Gabriel
- Marion Cobb

- Evelyn McNeely

*Front row:*

- Mary Smith
- Helen Smith
- Frances Sherrill
- Myrtle Timmons
- Ellen Philbeck

**FLYING FISH**

- Betty Sue Stone, *Sponsor*

- Gretta Gene Leinback
- Betty Sue Leonard
- Ireda Grubbs Cline
- Dorothy Moore
- Betty Gabriel
- Alene Felts
- Louise Upchurch
- Mary Reese
- Ellen Philbeck
- Mary Smith
- Myrtle Timmons
- Nellie Gabriel



PIRATES OF PENZANCE





BOOK 3 • ACTIVITIES

# Y. M. C. A.

## OFFICERS

### FALL QUARTER

CALVIN WHITE	<i>President</i>
ROBERT LACEY	<i>Vice-President</i>
LEWIS CURLEE	<i>Secretary-Treasurer</i>
DURWARD W. MAYNARD	<i>Chaplain</i>

### WINTER QUARTER

DURWARD W. MAYNARD	<i>President</i>
CALVIN WHITE	<i>Vice-President</i>
JOHN DUNN	<i>Secretary-Treasurer</i>
LEWIS JENKINS	<i>Chaplain</i>

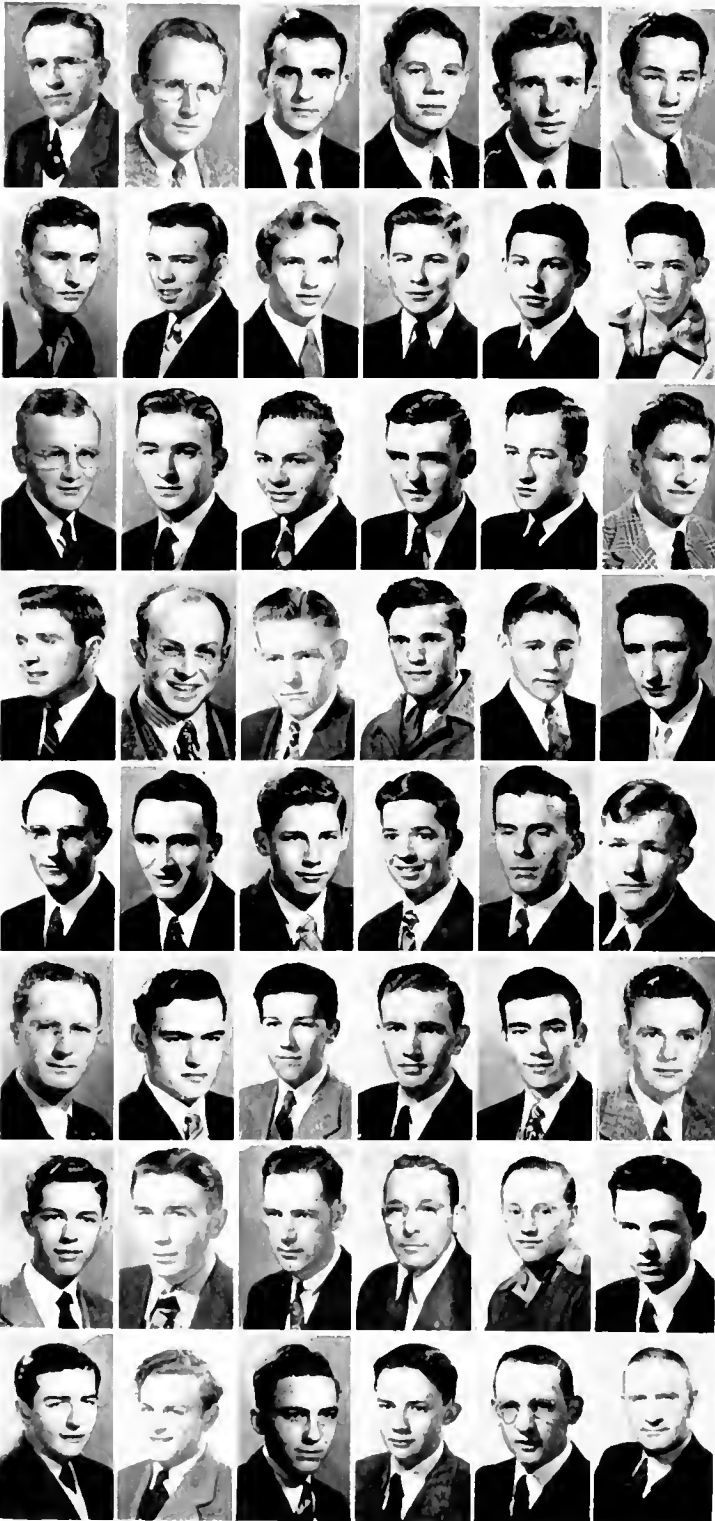
### SPRING QUARTER

LEWIS JENKINS	<i>President</i>
JESSIE HUTCHINS	<i>Vice-President</i>
CALVIN WHITE	<i>Secretary-Treasurer</i>
DENNIS FRANKLIN	<i>Chaplain</i>

## MEMBERS

White	Jones
Maynard	Jones
Jenkins	Lacey
Benbow	Ledbetter
Blair	Laughbridge
Brookshire	McCann
Byrd	Miller
Campbell	Murray
Campbell	Pruett
Curlee	Reed
Carpenter	Reynolds
Dixon	Shoemaker
Duncan	Smith
Dunn	Shinn
Franklin	Sowell
Griffith	Sweet
Graham	Thomas
Harrell	Vannoy
Hutchinson	Walker
Haynes	Walters
Hagaman	Waynick
Honbarrier	Willis
Joiner	White
	Wilson

Mr. Sawyer, *Sponsor*



# Y. W. C. A.

## OFFICERS SENIOR CABINET

JUNE AYERS	<i>President</i>
PAULINE FURR	<i>Vice-President</i>
NELLIE GABRIEL	<i>Secretary</i>
UNA LEE RICHARDSON	<i>Treasurer</i>
MILDRED HARMON	<i>Choister</i>
EVANGELINE GRAYSON	<i>Pianist</i>
BETTY GABRIEL	<i>Membership Chairman</i>
LAURA ALEXANDER	<i>Assembly Program Chairman</i>
WILMA BYRD	<i>Chapel Program Chairman</i>
ELLEN PHILBECK	<i>Social Chairman</i>
MAGADELENE TURPIN	<i>Social Service Chairman</i>
MARGARET MCINTYRE	<i>Publicity Chairman</i>
MRS. GRAYDON EGGERS	<i>Sponsor</i>

## JUNIOR CABINET

SARAH BLANTON	<i>President</i>
PEGGY ROGERS	<i>Vice-President</i>
JOYCE BROOKSHIRE	<i>Secretary</i>
JEWELL BROWN	<i>Treasurer</i>
VIRGINIA ISAACS	<i>Choister</i>
GERALDINE TRINKS	<i>Pianist</i>
LOU RHYNE	<i>Membership Chairman</i>
IRIS THOMAS	<i>Assembly Program Chairman</i>
LORRAINE SIMPSON	<i>Chapel Program Chairman</i>
MYRTLE TIMMONS	<i>Social Chairman</i>
ARLENE WILLIAMS	<i>Social Service Chairman</i>



## MEMBERS

Louise Adams, Minnie Lou Allen, Laura Alexander, June Ayers, Wilhelmina Ayers, Ernestine Banner, Betsy Barrett, Mary Ann Barrett, Bernice Beaver, Ruby Beaver, Mattie Sue Beam, Estella Blevins, Elizabeth Blackwelder, Sarah Blanton, Frances Blount, Clara Bolick, Alene Bowen, Ruby Bowen, Rosada Bowman, Joyce Brookshire, Jewell Brown, Lena Brown, Helen Bluton, Eloise Buff, Janice Buie, Betty Busby, Ellen Gray Burris, Rosena Burton, Wilma Byrd, Charlene Campbell, Betty Cantrell, Mildred Carpenter, Marie Clarke, Betty Cline, Vivian Cline, Marion Cobb, Ethelene Cockran, Margaret Cole, Inez Conner, Clara Cooke, Melba Cornett, Alma Crowder, Ruby Crowder, Veva C. Crowder, Carrol Crowdgy, Polly Cress, Roberta Critcher, Ruby Crouch, Louise Crowe, Alma Cathbertson, Ruby Dancey, Nell Davis, Joy Dellinger, Zola Gray Dixon, Tillie Eaker, Mildred Eaton, Betty Elmore, Mabel Farthing, Alene Felts, Hilda Foltz, Dimples Fortune, Rosalyn Francis, Beatrice Froneberger, Nancy Furches, Pauline Furr, Betty Gabriel, Nellie Gabriel, Marcia Gabriel, Frances Gillespie, Carol Glass, Pearl

Gold, Ruth Golding, Polly Anna Gordon, Doris Gross, Julia Gray, Evangeline Grayson, Eleanor Green, Betty Jean Griffin, Lillian Griffith, Mrs. Ruth Griffin, Gloria Grill, Kay Guthrie, Anna Faye Hardin, Bonnie Jean Hamrick, Violet Harrill, Doris Harrison, Mildred Harmon, Thelma Harmon, Joyce Hayes, Helen Hayes, Erma Dean Heafner, Helen Helton, Ruth Hester, Rebecca Hobbs, Margulein Holland, Grace Hollifield, Helon Horne, Helen Howard, Eloise Hughes, Mayo Huneycutt, Mary Katherine Hunter, Doris Hunter, Sara Hunsucker, Mildred Ingram, Virginia Isaacs, Sue Mae Jackson, Nellie Jarvis, Grace Jenkins, Nell Kendall, Myrtle Kiker, Mary Frances Kirkham, Ruby Lea Kiser, Jean Knight, Josephine Kurley, Margaret Lantz, Joye Lawson, Margaret Ledbetter, Gretta Gene Leinback, Betty Sue Leonard, Margaret Lineberger, Peggy Long, Jackie Lowry, Ruby Lucky, Edith Lyerly, Gloria Matkins, Helen Martin, Lillian Martin, Louise Martin, Laura Martin, Mildred Martin, Katherine Marsh, Edith Marshall, Louise Meroney, Beatrice Metcalf, Elizabeth Medlin, Evelyn Miller, Martha Miller, Dorothy Moore, Kathleen Moore, Imogene Moses, Laura Mundy, June

# Y. W. C. A.—Continued

## MEMBERS

McBee, Jean McCollum, Margaret McIntyre, Agnes McDonald, Doris McKnight, Evelyn McNeely, Eileen Osborne, Ruby Owens, Joyce Patton, Catherine Payseur, Frances Perry, Peggy Phiefer, Ellen Philbeck, Eunice Pruett, Una Perry Propst, Ruth Queen, Marv Lou Rankin, Lillian Reeves, Emma Gene Reynolds, Lou Rhyne, Judith Richardson, Una Lee Richardson, Sallie Ruth Rich, Rebecca Rivers, Betty Jo Robertson, Peggy Rogers, Bonita Rominger, Clara Ruthledge, Lucile Russell, Jayne Seagle, Savannah Seagraves, Frances Sherrill, Grace Sherwood, Harriet Shore, Dorothy Shufford, Lorraine Simpson, Rumell Sisk, Billy Gordon Smith, Geraldine Smith, Frances Smith, Helen Smith, Johnsie

Lee Smith, Judy Smith, Katherine Smith, Mary E. Smith, Patsy Smith, Madeline Smoot, Doris Snow, Helen Sossaman, Audrey Sparger, Doris Sparks, Geneva Stafford, Eva Mae Steelman, Frances Stephens, Deanne Stonestreet, Philma Swain, Iris Thomas, Claudia Thorpe, Myrtle Timmons, Mary Sue Tisdale, Grace Tucker, Magadeline Turpin, Charlotte Upright, Nan Van Hoy, Edna Venable, Margaret Wands, Mary Louise Watkins, Opal Watts, Juanita Weaver, Betsy Webster, Florence Weeks, Betty Welborne, Rachel West, Margaret Winecoff, Arlene Williams, Fern Williams, Elizabeth Wilson, Ruby Wilson, Irene Wilson, Florence Woosely, Virginia Wright, Frances Yarborough, Kathryn Younce, Iris Young.



# B. S. U. COUNCIL

JUNE AYERS  
LOUISE CROWE  
EVANGELINE GRAYSON  
WILMA BYRD  
ARLENE WILLIAMS  
MARY JEAN GROSE  
UNA LEE RICHARDSON  
RUTH BRITTAIN  
MADELINE SMOOT  
MATTIE SUE BEAM

*President*  
*First Vice-President*  
*Second Vice-President*  
*Third Vice-President*  
*Secretary*  
*Treasurer*  
*Training Union Director*  
*Sunday School Supt.*  
*Y. W. A. President*  
*Bible Study Leader*

LORRAINE SIMPSON *Reporter and Publicity Director*  
DORIS HARRISON *Baptist Student Representative*  
PEGGY ROGERS *Music Director*  
POLLY FURR *Editor of TRAIL*  
MARY LILLIAN WILCOX *Town Representative*  
CALVIN WHITE *Newland Enlistment Chairman*  
DAFFIE BOONE *Librarian*  
MARJORIE TOOLE *Student Secretary*  
DR. J. T. C. WRIGHT *Faculty Adviser*

# LUTHERAN STUDENT ASSOCIATION

DOROTHY WHISNANT *President*  
EUGENE LYONS *Vice-President*  
BETTY CLINE *Secretary and Treasurer*

## MEMBERS

Bernice Beaver, Ruby Beaver, Betty Busby, Charline Campbell, Betty Cline, Vivian Cline, J. W. Cuddy, Marilyn Johnson, Jo Kerley, Norma Kerley, Ruby Lee Kiser, Margaret Lantz, Betty Sue Leonard, Edith Lyerly, Eugene Lyons, Helen Lyons, Leatrice Lyons, Bernice McCombs, Mary Alice Moretz, Ralph Moretz, Virginia Moretz, Edwin Troutman, Jr., Rev. Edwin Troutman, Mrs. Clyde Winebarger, Dorothy Whisnant, Margaret Winecoff.



# WESTMINSTER FELLOWSHIP

## WINTER QUARTER

ROBERT WAKEFIELD *President*  
ROSENA BURTON *Vice-President*  
MARY E. SMITH *Secretary-Treasurer*

## SPRING QUARTER

ROSENA BURTON *President*  
BRUCE HARRELL *Vice-President*  
MARCIA GABRIEL *Secretary-Treasurer*

## ROLL

Laura Alexander, Helen Bowditch, Rosena Burton, Lamuel B. Byrd, Paul Campbell, Mildred Clapp, Ruby Dancy, Lydia Day, Betty Ellis, Hilda Mae Foltz, Dimples Fortune, Rosalyn Frances, Marcia Gabriel, Gloria Grill, J. M. Griffin, Lillian Griffith, Bruce Harrell, Edna Harrell, Eloise Hughes, Sara Hunsucker, Doris Hunter, Mary Catherine Hunter, Mary Sue Hunter, Mayo Huneycutt, Mildred Ingram, John Jones, Tennyson Jones, Sara Kirkley, Jean Knight, Jacqueline Lowery, Ruby Lucky, Louise Moroney, Edith Marshall, Helen Martin, Durward W. Maynard, Evelyn Miller, Frances McCall, Frances McCollum, Agnes McDonald, Doris McKnight, Catherine Pavseur, Mary Lou Rankin, Lucille Russell, Harold Shoemaker, Dorothy Shufford, Helen Smith, Mary Smith, Patsy Smith, Geneva Stafford, Lena Rivers Strickland, Eleanor Vance, Rachel West.



# YOUTH FELLOWSHIP



## OFFICERS

PAULINE CRESS	<i>President</i>	LUCILLE RUSSELL	<i>Third Vice-President</i>
NELLIE GABRIEL	<i>Vice-President</i>	KATHRYN SMITH	<i>Secretary</i>
ROSELYN FRANCES	<i>Second Vice-President</i>	CATHERINE PAYSEUR	<i>Treasurer</i>
MRS. WILSON			<i>Sponsor</i>

# AMERICAN CHILDHOOD EDUCATION



## MEMBERS

Rosada Bowman  
 Helen Bruton  
 Rozena Burton  
 Pauline Cress  
 Marie Clark  
 Clara Cooke  
 Nell Davis  
 Dimples Fortune  
 Roselyn Frances  
 Nellie Gabriel  
 Julia Grey  
 Mildred Harmon  
 Mayo Honeycutt  
 Carolyn Jarrett  
 Jean Knight  
 Jacqueline Lowery  
 Gloria Matkins  
 Eunice McCurry  
 Catherine Payseur  
 Lucille Russell  
 Kathryn Smith

# VERNICIAN LITERARY SOCIETY

## FALL QUARTER

HELON HORNE *President*  
 DORIS MCKNIGHT *Vice-President*  
 MARGARET LINEBERGER *Sec'ty.*  
 KATHRYN SMITH *Treasurer*

## WINTER QUARTER

DORIS MCKNIGHT *President*  
 KATHRYN SMITH *Vice-President*  
 EDNA VENABLE *Secretary*  
 ROSALYN FRANCIS *Treasurer*  
 MISS KATHERINE SMITH  
*Sponsor*



# HOME ECONOMICS CLUB

## FIRST TERM

MINNIE FAYE COSTNER *President*  
 ALMA CROWDER *Vice-President*  
 BERNITA HUGHES *Secretary-Treasurer*  
 ARLENE WILLIAMS *Reporter*  
 SAVANNAH SEAGRAVES *Sergeant-at-Arms*

## SECOND TERM

GRETTA GENE LINEBACH *President*  
 CLAUDIA THORPE *Vice-President*  
 BONNIE J. HAMRICK *Secretary-Treasurer*  
 IMOGENE MOSES *Reporter*  
 FERN WILLIAMS *Sergeant-at-Arms*

### Sponsors

MISS BROCK, MISS WOOD, MISS STONE.



# LOS PICAROS ESPANOLAS



## OFFICERS

NELL KENDALL *President*  
 CARRIE LEE FARTHING *Vice-President*  
 BONITA ROMINGER *Secretary-Treasurer*

## MEMBERS

Ernestine Banner	Jack Luttrell
Betsy Barrett	Laura Mundy
Rachel Bryson	Agnes McDonald
Doris Cline	Beatrice Metcalf
Melba Cornett	Essie Norris
Lewis Curlee	Rebekah Rivers
Mrs. Josephine Davis	Bonita Rominger
Carrie Lee Farthing	Jayne Seagle
Betty Ellis	Grace Sherwood
Thelma Farthing	Dorothy Shuford
Kay Guthrie	Jeanne Shull
Catherine Hunter	Johnnie Lee Smith
Marilyn Johnson	Stanley South
Nell Kendall	Eva Mae Steelman
Norma Kerley	Charlotte Upright
Myrtle Kiker	Leonard Vannoy
Peggy Long	Betsy Webster

Miss Craddock, *Sponsor*

# LE CERCLE FRANCAIS



## OFFICERS

INEZ CONNOR *President*  
 KAY GUTHRIE *Vice-President*  
 FRANCES SHERRILL *Secretary-Treasurer*

## MEMBERS

Clara Bolick	Sue Mae Jackson
Jewell Brown	Grace Jenkins
Inez Connor	Ruby Owens
Carrie Lee Farthing	Lillian Reeves
Adelaide Frye	Rebekah Rivers
Carol Glass	Frances Sherrill
Ruth Golding	Eva Mae Steelman
Kay Guthrie	Mary Louise Watkins
Catherine Hunter	Rachel D. West

Miss Craddock, *Sponsor*





## WHITE HALL CLUB

HELEN HAYES  
 AUDREY SMITH  
 GLORIA GRILL

*President*  
*Vice-President*  
*Secretary*

MYRTLE NIX  
 MABEL NIX  
 MISS CHARTIER

*Treasurer*  
*Reporter*  
*Sponsor*



## LOVILL CLUB

RACHEL D. WEST  
 MISS BURCH

*President*  
*Sponsor*

# MIXED CHORUS

## OFFICERS

MARIE CLARKI  
*Pianist*

A. J. SMITH  
*President*

AGNES PRESTON  
*Vice-President*

MILDRED HARMON  
*Secretary and Treasurer*

ELOISE BUFF  
*Librarian*

VIRGINIA WARY  
*Director*



### *Sopranos:*

Pauline Cress  
Mildred Harmon  
Magdalene Turpin  
Juanita McSwain  
Eloise Buff  
Virginia Isaacs  
Billie Smith

### *Altos:*

Agnes Preston  
Royster Barnett  
Thelma Harmon  
Sarah Blanton  
Ruth Favell  
Bettye Ellis  
Mabel Farthing  
Margaret Cole  
Mary Evelyn Ellis

### *Tenors*

A. J. Smith  
John Dunn  
Paul Campbell  
Bob Wakefield  
Sam Brookshire  
Tennyson Jones  
Ed Shinn  
Alvin Joines

### *Bass:*

Stanley South  
Bob Smith  
Hal Shoemaker  
Pierce Reynolds  
Jay Loal Benbow  
Charles Boone  
Robert Reed

# GIRLS' CHORUS

## OFFICERS

MARIE HUDLER  
*President*

GLORIA MATKINS  
*Vice-President*

VIRGINIA DOUGLAS  
*Secretary and Treasurer*

VIRGINIA WRIGHT  
*Librarian*

VIRGINIA WARY  
*Director*

PAULINE CRESS  
*Assistant Director*



### *First Sopranos*

Ernestine Banner  
Virginia Douglas  
Maxine Erwin  
Gloria Grill  
Mildred Hill  
Rita Howell

### *Nellie Jarvis*

Margaret Lantz  
Imogene Moses  
Grace Sherwood  
Madeline Smoot  
Doris Sparks

### *Second Sopranos*

Elizabeth Cooper  
Hilda Foltz  
Marie Hudler  
Doris Hunter

### *Gloria Matkins*

Eunice McCoury  
Judith Richardson  
Dorothy Shuford  
Betsy Webster

### *Altos*

Margaret Cole  
Ruby Dancy  
Mary Evelyn Ellis  
Essie Norris  
Mildred Tunnell  
Virginia Wright



## DANCE BAND

Palmer Blair, Billie Smith, Virginia Wright, B. H. Laughridge, Kathryn Smith, Agnes Preston, Tennyson Jones, A. J. Smith.

GARNETT FELTS, *Director*

## ORCHESTRA

Marie Hudler, Helen Foster, Virginia Douglas, Rachel West, Edwin Troutman, Jr., Billie Smith, Kathryn Smith, Virginia Wright, Margaret Cole.

GARNETT FELTS, *Director*



# BATON CLUB

## OFFICERS

DIMPLES FORTUNE	<i>Leader</i>
MARGARET LEDBETTER	<i>President</i>
EVELYN RAY	<i>Vice-President</i>
JUNE MCBEE	<i>Secretary-Treasurer</i>

## MEMBERS

ELIZABETH BLACKWELDER	JUNE MCBEE
ELOISE BUFF	HELEN G. MOXLEY
BETTY BUSBY	ELEENE OSBORNE
VEVA C. CROWDER	EVELYN RAY
DIMPLES FORTUNE	EMMA GENE REYNOLDS
GERTRUDE HENSON	LOU RHYNE
REBECCA HOBBS	GERALDINE SMITH
MAYO HUNEYCUTT	HELEN SMITH
MARGARET LEDBETTER	PATSY SMITH
RUBY LUCKY	ELEANOR VANCE

BETTY WELBORN



## FUTURE TEACHERS OF AMERICA

DORIS MCKNIGHT  
 NANCY FURCHES  
 MARGIE HODGES  
 MATTIE SUE BEAM  
 EDNA VENABLE  
 MR. WEY

*President*  
*Vice-President*  
*Secretary*  
*Treasurer*  
*Librarian*  
*Sponsor*



## BOY SCOUTS OF AMERICA

DR. R. C. BUSTEED  
 DR. G. P. EGGERS  
 ROBERT LACEY

*District Commissioner*  
*Scoutmaster*  
*Junior Assistant Scoutmaster*

### ROLL

TED HAGAMAN  
 JESS HUTCHISON

ALVIN C. JOINES  
 ROBERT LACEY  
 BLANTON MILLER

JACK MILLER  
 WORTH SWEET



# FORUM CLUB

## *First Half Year*

CURTIS MURRAY	<i>President</i>
CARRIE LEE FARTHING	<i>Vice-President</i>
MARY E. SMITH	<i>Secretary</i>
GLORIA MATKINS	<i>Treasurer</i>

## *Second Half Year*

CURTIS MURRAY	<i>President</i>
BETTY JEAN GRIFFIN	<i>Vice-President</i>
UNA LEE RICHARDSON	<i>Secretary</i>
BETTY GABRIEL	<i>Treasurer</i>

MATTIE SUE BEAM  
 JOYCE BROOKSHIRE  
 ELLEN GRAY BURRIS

BETTY CLINE  
 PAULINE CRESS  
 MILDRED EATON

CARRIE LEE FARTHING  
 PAULINE FURR  
 BETTY GABRIEL

BETTY JEAN GRIFFIN  
 LILLIAN GRIFFITH  
 MARIE HUDLER

NELI. AVETT KENDALL  
 JEAN KNIGHT  
 GLORIA MATKINS

CURTIS MURRAY  
 UNA LEE RICHARDSON  
 BONITA ROMINGER

MARY E. SMITH  
 MADELINE SMOOT  
 MYRTLE TIMMONS

# WHO'S WHO

In American Universities and Colleges

Laura Alexander  
June Ayers  
Royster Barnett  
Estella Blevins  
Wilma Byrd  
Marie Clarke  
Pauline Cress\*  
Mabel Farthing  
Pauline Furr\*  
Betty Gabriel  
Betty Jean Griffin  
Margaret McIntyre\*  
Ellen Philbeck  
Una Lee Richardson  
Madeline Smoot  
Doris Sparks  
Myrtle Timmons  
Iris Young

\*Not in picture



## STUDENT COUNCIL

### OFFICERS

PAULINE CRESS  
MEREDITH DUNCAN  
MADELINE SMOOT  
BETTY GABRIEL

*President*  
*Vice-President*  
*Secretary*  
*Treasurer*

### MEMBERS

Laura Alexander  
Wilma Byrd  
Pauline Furr  
Betty Jean Griffin  
Bob Lacey  
Gloria Matkins  
Margaret McIntyre  
Evelyn McNelly  
Pierce Reynolds  
Deane Stonestreet





# PLAYCRAFTERS

## OFFICERS

MARGARET MCINTYRE  
 BLANTON MILLER  
 CLARA RUTLEDGE  
 PHYLMA SWAIN  
 JOHN DUNN  
 LAURA ALEXANDER  
 LOAL BENBOW  
 A. ANTONAKOS  
 JULIAN YODER

*President*  
*Vice-President*  
*Secretary and Treasurer*  
*Editor of Playbill*  
*Custodian of Properties*  
*Custodian of Costumes*  
*Stage Manager*  
*Director*  
*Business Manager*

## MEMBERS

Alexander, Laura  
 Bishop, Marjorie  
 Blanton, Sarah  
 Boone, Charles  
 Buff, Eloise  
 Clarke, Marie  
 Connor, Inez  
 Cress, Pauline  
 Crowder, Veva C.  
 Dunn, John  
 Eaker, Tillie  
 Farthing, Mabel  
 Favell, Ruth  
 Gillespie, Frances

Grill, Gloria  
 Hobbs, Rebecca  
 Hodges, Marjorie  
 Hollifield, Grace  
 Hunsucker, Sarah  
 Jones, Tennyson  
 Ledbetter, Allen  
 Ledbetter, Margaret  
 Lopp, Opal  
 Martin, Mildred  
 McBee, June  
 McCollum, Jean  
 McIntyre, Margaret  
 Miller, Blanton  
 Miller, Evelyn

Moxley, Helen  
 Perry, Frances  
 Ragan, Mary Jo  
 Reeves, Lillian  
 Rominger, Bonita  
 Rutledge, Clara  
 Shoemaker, Harold  
 Shuford, Dorothy  
 Sparks, Doris  
 Smith, A. J.  
 Smith, Bob  
 Smith, Frances  
 Smith, Geraldine  
 Smith, Patsy  
 Smoot, Madeline

Snow, Doris  
 South, Stanley  
 Stanley, Truett  
 Swain, Phyl  
 Tate, Joyce  
 Thomas, Iris  
 Venable, Edna  
 Wakefield, Bob  
 Weaver, Juanita  
 Welborn, Betty  
 Wright, Jean  
 Webster, Betsy  
 Yarborough, Frances  
 Young, Iris





# I. R. C.

PAULINE FURR  
BETTY GABRIEL  
MADELINE SMOOT  
UNA LEE RICHARDSON  
BONITA ROMINGER

## OFFICERS

*President*  
*Vice-President*  
*Recording Secretary*  
*Corresponding Secretary*  
*Treasurer*



## MEMBERS

ESTELLA BLEVINS  
JOYCE BROOKSHIRE  
BETTY CLINE  
MINNIE FAYE COSTNER  
PAULINE CRESS

RUBY CROWDER  
MILDRED EATON  
CARRIE LEE FARTHING  
MABEL FARTHING  
PAULINE FURR

BETTY GABRIEL  
BETTY JEAN GRIFFIN  
MARIE HUDLER  
NELL AVETT KENDALL  
GLORIA MATKINS

CURTIS MURRAY  
UNA LEE RICHARDSON  
BONITA ROMINGER  
LORRAINE SIMPSON  
MARY SMITH

JOHNISE LEE SMITH  
PATSY SMITH  
MADELINE SMOOT  
MYRTLE TIMMONS  
RAY THOMAS

# APPALACHIAN STAFF



## EDITORIAL STAFF

DORIS SPARKS	<i>Editor-in-Chief</i>
CATHERINE PAYSEUR	<i>Associate Editor</i>
FRANCES YARBOROUGH	<i>News Editor</i>
NELL KENDALL	<i>Feature Editor</i>
MADELINE SMOOT	<i>Feature Editor</i>
CAROLYN JARRIFT	<i>Typist</i>
GERALDINE SMITH	<i>Typist</i>

## REPORTERS

JUNE AYERS	MILLIE CLAPP
WILMA BYRD	ERMA DEAN HEARNER
NELL HUNT	BOB SMITH
MARGARET LANIZ	GLORIA MATKINS
BETSY WEBSTER	BETTY JEAN GRIFFIN
	BECKY RIVERS

## SPORTS STAFF

ELLEN PHILBECK	<i>Editor</i>
BETTY GABRIEL	<i>Assistant Editor</i>
MYRTLE TIMMONS	<i>Reporter</i>
HAL SHOEMAKER	<i>Reporter</i>

## BUSINESS STAFF

LAURA ALEXANDER	<i>Business Manager</i>
NELLIE GABRIEL	<i>Assistant Manager</i>
IRIS THOMAS	<i>Circulation Manager</i>

## ASSISTANTS

PATSY SMITH	VIVIAN CLINE
JEANNE MCCOLLUM	JOHN DUNN
	FRANCES PERRY

# RHODODENDRON STAFF

WILMA BYRD  
*Editor*

DURWARD MAYNARD  
*Business Manager*



## EDITORIAL STAFF

WILMA BYRD	<i>Editor</i>
POLLY FURR	<i>Associate Editor</i>
HELON HORNE	<i>Feature Editor</i>
KENT HAYNES	<i>Sports Editor</i>
NELLIE GABRIEL	<i>Sports Editor</i>
PEGGY ROGERS	<i>Art Editor</i>
MARGARET MCINTYRE	<i>Literary Editor</i>
RUTH FAVELL	<i>Photography Editor</i>
JOHN DUNN	<i>Associate Photography Editor</i>
EVANGELINE GRAYSON	<i>Associate Photography Editor</i>
PALMER BLAIR	<i>Snapshot Editor</i>

## BUSINESS STAFF

DURWARD MAYNARD	<i>Business Manager</i>
JUNE AYERS	<i>Associate Business Manager</i>
RAY THOMAS	<i>Advertising Manager</i>
MEREDITH DUNCAN	<i>Circulation Manager</i>
GERALDINE TRINKS	<i>Freshman Editor</i>
EVELYN MILLER	<i>Sophomore Editor</i>
KATHRYN SMITH	<i>Junior Smith</i>
EUNICE MCCOURY	<i>Senior Editor</i>
HARRIET PATTON	<i>Typist</i>

# **B O O K 4 • F E A T U R E S**



*Alene Jones Felts*  
*May Queen*

*June Ayres*  
*Maid of Honor*





SENIOR ATTENDANTS

*Margaret McIntyre  
Myrtle Timmons  
Catherine Payseur*



JUNIOR ATTENDANTS

*Una Lee Richardson  
Gloria Atkins  
Dorothy Moore*





SOPHOMORE ATTENDANTS

*Patsy Smith*  
*Mayo Huneycutt*

FRESHMAN ATTENDANTS

*Charlotte Upright*  
*Rebecca Hobbs*

CAMPUS



*Myrtle Timmons*

*Miss Appalachian*

*Palmer Blair*

*Mr. Appalachian*



# SUPERLATIVES

*Laura Alexander*

*Most Valuable*



*Robert Lacey*

*Most Popular*

# PUBLICATIONS



*Mrs. W. A. Byrd*

WILMA D. BYRD  
*Editor, RHODODENDRON*

*June Ayers*

DURWOOD MAYNARD  
*Business Manager, RHODODENDRON*



# SPONSORS

*Mrs. M. G. Sparks*

DORIS SPARKS  
*Editor, Appalachian*



*Mrs. F. W. Alexander*

LAURA ALEXANDER  
*Business Manager, Appalachian*

CLASS



*Mrs. Ray Thomas*

*Senior Class*

*Mrs. L. G. Matkins*

*Junior Class*



# SPONSORS

*Jean Wilson*

*Sophomore Class*



*Mrs. Ralph A. Reynolds*

*Freshman Class*

# "THE OTHER SIDE"













*Compliments of*

# WATAUGA DEMOCRAT

ESTABLISHED 1888

+ +

*Compliments of*

SUNBEAM BREAD

By

WALDENSIAN BAKING  
COMPANY

VALDESE, N. C.

+ +

REINS-STURDIVANT FUNERAL HOME AND  
BURIAL ASSOCIATION

*Day and Night Ambulance Service*

PHONE 24

## *The* ECONOMY STORE

*Men's - Women's - Children's*  
SHOES - DRESSES - COATS

JUNE RUSSELL, *Manager*

Depot Street      BOONE, N. C.

## WALKER'S JEWELRY STORE

WATCHES, DIAMONDS, RINGS  
AND SCHOOL SUPPLIES

*Fine Watch Repairing*

A. S. T. C. Students Always  
Welcome

*Compliments of*

## FARMERS HARDWARE COMPANY, Inc.

EVERYTHING IN HARDWARE  
AND ASSOCIATE LINES

BOONE, N. C.

## CHARLIE'S BOWLING CENTER



*Rendezvous for Sports*



BOONE, NORTH CAROLINA

## ARTISTIC BEAUTY SALON

"WE MAKE  
LOVELINESS LOVELIER"

MRS. E. S. QUALLS, *Owner*

Phone 8      BOONE, N. C.

## HOLLAR'S GROCERY

- FANCY GROCERIES
- NATIVE & WESTERN MEATS
- FRESH FRUITS ANYTIME

BOONE, N. C.

*Compliments of*  
**B. W. STALLINGS**

*"Your College Jeweler"*

BOONE, N. C.

WATCHES—DIAMONDS—JEWELRY

**CAROLINA CAFE &  
HOTEL**

*"Boone's Finest"*

FRIED SPRING CHICKEN

COUNTRY HAM

T-BONE STEAKS

MILTON YOUNG, *Manager*

*Compliments of*

**CREST 5 - 10 - 25c STORES COMPANY**

BOONE, NORTH CAROLINA



*"Where all of the little things are available all the time"*



**BUY MORE WAR BONDS**

**"YOU CAN FIND IT"**

AT

**HORN'S CASH STORE**

FOREST CITY, N. C.

**MAYFLOWER BEAUTY SHOP**

*"Your Nearest Hairdressers"*

Work done by expert  
operators

Phone 32

BOONE, N. C.

**GOODMAN DRESS  
SHOP**

*We Specialize in*  
DRESSES, LINGERIE, HATS  
BAGS AND SPORTSWEAR

MRS. D. C. GOODMAN, *Owner*

**APPALACHIAN  
THEATRE**

*Western North Carolina's Finest*

BOONE, N. C.

*Boone Trail  
Cafe*

*"Where Friends Meet to Eat"*



Suggestions and Criticisms  
Appreciated



No Wine or Beer Sold

BOOKS

LUNCHEONETTE  
SCHOOL SUPPLIES

**A. S. T. C.  
BOOK STORE**

STATIONERY — NOVELTIES



OFFICIAL COLLEGE RINGS

THE HOME OF A. S. T. C.  
**GATEWAY CAFE**

*"Western Carolina's Best"*

BOONE, N. C.

MEET YOUR FRIENDS  
AT THE  
**APPALACHIAN  
SODA SHOP**

BOONE, N. C.



**SMITH'S ESSO STATION**

*"The Station of Service"*

A. R. SMITH, *Owner*

BOONE, N. C.

*Compliments of*

**DANIEL BOONE  
SHOE SHOP**

CHARLES C. ROGERS, *Proprietor*

Main Street

BOONE, N. C.

DAVID P. LAVIETES

PAUL E. LAVIETES

**D. & P. PIPE WORKS**

BOONE, NORTH CAROLINA

SPARTA, NORTH CAROLINA

*Creators of the Famous "TRAPWELL" Pipes*

*Known from Coast to Coast*

+

*"Boone Briar Resists Fire"*

*Compliments of*

**PEARCE, YOUNG,  
ANGEL COMPANY**

ASHEVILLE, N. C.

WHOLESALE FRUITS AND  
VEGETABLES

*Compliments of*

**"POP" FAVELL**

*"Shoe Service of Character"*

**FAVELL'S SHOE SHOP**

CHARLOTTE, N. C.

*Compliments of*  
**BOONE DRUG STORE**

*The REXALL Store*

Phone 17

G. K. MOOSE, *Owner*

**MAIN STREET  
SERVICE STATION**

GULF OIL, RECAPPING AND  
VULCANIZING

Phone 9109

BOONE, N. C.

# **QUEEN CITY TRAILWAYS**

SYMBOLIZES A FRIENDLY ORGANIZATION  
DEDICATED TO SERVE THE PEOPLE IN THE CAROLINAS  
WITH THE  
MOST DEPENDABLE BUS SERVICE POSSIBLE



# **QUEEN CITY COACH COMPANY**

(Owner-Operator)

*Compliments of*  
**WESTERN AUTO  
ASSOCIATE STORE**

*Home Owned and Operated by*

J. C. CLINE

BOONE, N. C.

**CITY MEAT MARKET**

FRESH MEATS OF ALL KINDS

*Your Patronage Appreciated*

Main Street

BOONE, N. C.

*Compliments of*

**BOONE TIRE AND  
BARGAIN STORE**

Phone 152

BOONE, N. C.

**DACUS RADIO SHOP**

EXPERT RADIO REPAIRING

21 Years Experience

217 Main St.

BOONE, N. C.

**CAROLINA COMMISSION  
COMPANY, Inc.**



*Wholesale*

**FRESH FRUITS · VEGETABLES · GROCERIES**



**HICKORY, NORTH CAROLINA**

**SMITHEY'S DEPT. STORE**

DRY GOODS, GROCERIES, FEEDS  
POULTRY, GASOLINE, AND OILS

Phone 19

*"Visit our Lunch Room"*

All Sandwiches 5¢

Coffee Free

*Compliments of*

**CITY BARBER SHOP**

BUSINESS APPRECIATED

Main Street

BOONE, N. C.

Opposite Post Office

*Students Bring Your Parents  
and Friends To The*

# HOTEL WATAUGA



Phone 217

Main Street

BOONE, N. C.

*Compliments of*

FRANK M. PAYNE, *General Manager*

# SECURITY LIFE & TRUST CO.

Office Northwestern Bank Bldg.

BOONE, N. C.

*"The Sooner You Plan Your Future  
the Better Your Future Will Be"*

*Compliments of*

# MADDUX ESSO SERVICE

WASHING, GREASING, TIRES  
AND BATTERIES

RECAPPING -:- VULCANIZING

Phone 9103

BOONE, N. C.

# BOONE OIL COMPANY

AMOCO GAS & OIL, TIRES &  
TUBES, WASH & GREASING

ELECTRIC MOTORS

HAMMER MILLS

*All Kinds of Feeds*

Phone 198

BOONE, N. C.

*C. M. WATSON, Proprietor*

**PARKWAY COMPANY**

HARDWARE—ELECTRICAL  
APPLIANCES

RADIO SERVICE

BOONE, N. C.

**CAROLINA  
PHARMACY**

*Your Drug Store*

*Prescriptions*

Phone 47

BOONE, N. C.

*Compliments of*



**Coca-Cola Bottling Company**

OF ASHEVILLE, N. C.



HICKORY, N. C.

**BELK-WHITE COMPANY**

BOONE, N. C.

200 DEPARTMENT STORES

*Sell It For Less*

**KING STREET  
GROCERY**

A COMPLETE LINE OF FANCY  
AND STAPLE GROCERIES

Phone 159

BOONE, N. C.

WELCOME COLLEGE  
STUDENTS AND TEACHERS  
TO

**HUNT'S DEPARTMENT  
STORE**

IN  
*"The Heart of Boone"*



Main Street

Phone 188

*Compliments of*

**Craven Furniture  
Company**

J. R. CRAVEN, *Owner*



Main Street

BOONE, N. C.

*Compliments of*

**HI-LAND  
CLEANERS**



*"You Must Be Satisfied"*



Main Street

BOONE, N. C.

*Compliments of*

R. W. COLVARD

**COLVARD TIRE & CHEVROLET  
COMPANY**

Main Street

BOONE, N. C.

*Compliments of*

# The Northwestern Bank

Total Resources over \$20,000,000.00

Capital, Surplus, and Undivided Profits over \$750,000.00

Boone Office Deposits over \$2,000,000.00

W. D. FARTHING, *Cashier*

BOONE, N. C.

## WINKLER MOTOR COMPANY

*Authorized Ford Dealer*

We Have A Complete Stock of Parts

SEE OUR USED CARS

Phone 69 — Main Street

BOONE, NORTH CAROLINA

## *Acknowledgments*

*We, the RHODODENDRON Staff, wish to express our sincere appreciation to Professor Antonakos and Professor Yoder for all the time and effort they have so generously given to this publication.*

# AUTOGRAPHS



# AUTOGRAPHS

# AUTOGRAPHS

# AUTOGRAPHS









