




*The Rhododendron*  
1947

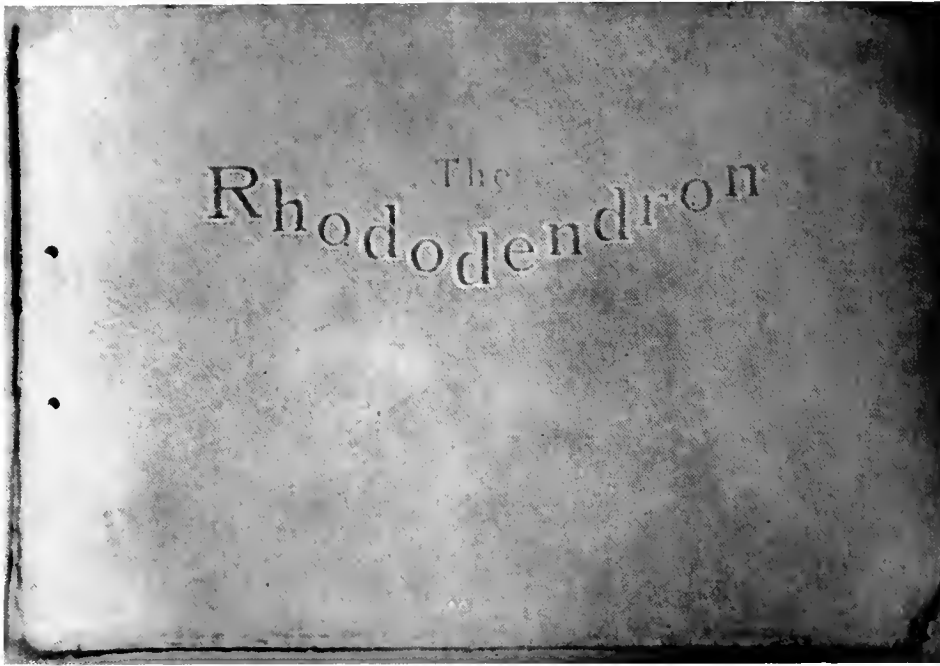


Digitized by the Internet Archive  
in 2009 with funding from  
University of North Carolina at Chapel Hill

Herbert Wey

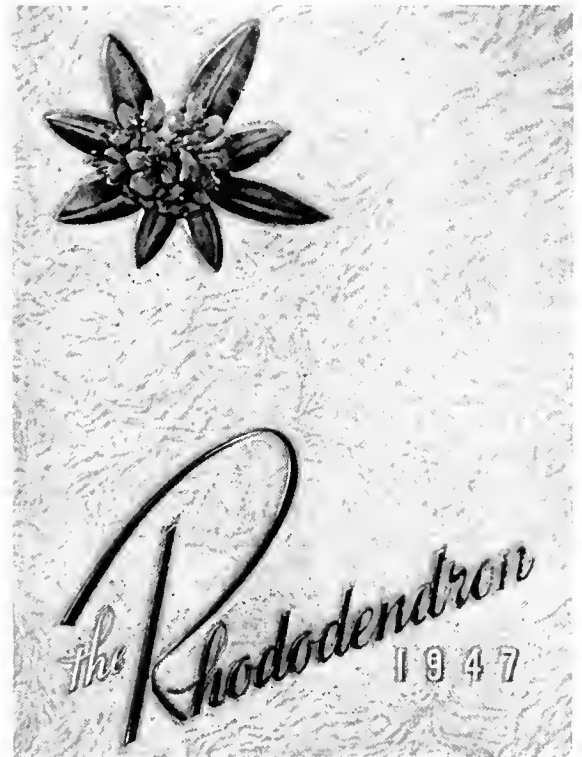






THE 1947 RHODODENDRON

TWENTY-FIFTH  
ANNIVERSARY  
EDITION





# THE 1947 RHODODENDRON

OF

APPALACHIAN STATE

TEACHERS COLLEGE



LLOYD ISAACS, *Editor*  
JAMES COBB, *Business Manager*

*Solitude*



*"Alma Mater  
in the Hills"*

*Life's Threshold*







*Campus from  
Newland Hall*

*Winter  
Wonderland*



*West from  
Whitehall*



MISS EMMA H. MOORE

## DEDICATION

*To Miss Moore—who has served the students of Appalachian for forty years and who has endeared herself to us by her broad sympathy, understanding heart, and untiring service—THE 1947 RHODODENDRON is gratefully dedicated.*



# FOREWORD



*From the past to the present—*

*The pen of Time inscribes upon the scroll of Life fond memories and heartaches of college days as we have lived and loved them. These remembrances of days gone by recapture the silver mists of our yesterdays.*

*In this, our twenty-fifth anniversary edition, we do not compare; we intend, in an humble way, to portray material and spiritual advancement. May the progress of Appalachian through these twenty-five years be your challenge for higher and more noble achievements as the pen of Time moves toward the waning days on the scroll of Life.*

*Pappy and His Brood*





*Mammy and Her Flock*



# ADMINISTRATION



B. B. DOUGHERTY, B.S., Ph.B., D.Lit., D.Ed.  
*President*

J. D. RANKIN, A.B., A.M., S.T.D.  
*Dean, English*

HELEN BURCH, A.B., M.A.  
*Dean of Women, Education*

BARNARD DOUGHERTY, B.S.  
*Business Manager*

HERMAN B. EGGERS, A.B., M.A.  
*Registrar, Education*

CHAPPELL WILSON, A.B., M.A.  
*Director Demonstration School*

HERBERT W. WEY, B.S., M.A.  
*Principal High School*

JOHN T. HOWELL, B.S., M.A., M.Ed.  
*Principal Elementary School*



# English

# Music—Business Education



GRAYDON P. EGGERS, A.B., M.A., Ph.D.

GRACE COUNCIL, B.A.

ELAINE GRUBB, B.A., M.A.

ELIZABETH HALL, A.B.

LORIS SHIPMAN, B.S., M.A.

CRATIS D. WILLIAMS, A.M., M.A.

GORDON NASH, A.B.

HELLEN FOSTER, B.A.

MARGARET MANNING, B.S.

VIRGINIA WARY, B.M., M.M.

JEAN BELL, A.B.

ELLA MAE FOGG, B.S., M.A.

# Psychology — Science

# Home Economics — Education



W. T. SMITH, A.B., M.A., Ph.D.

LEE REYNOLDS, B.S., M.A., Ed.D.

JULIAN YODER, B.S., M.A.

MARY RUTH GUREVICH, B.S., M.S.

A. B. SMITH, A.B., M.A.

IDA BELLE EDMISTER, A.B., M.A.

BETTY SUE STONE, B.S., M.S.

ELVA SPAKI, B.S.

LUCY BROCK, A.B., M.S.

VIVIAN WOOD, B.S.

MYRTLE BRANDON WILSON, B.S., M.A.

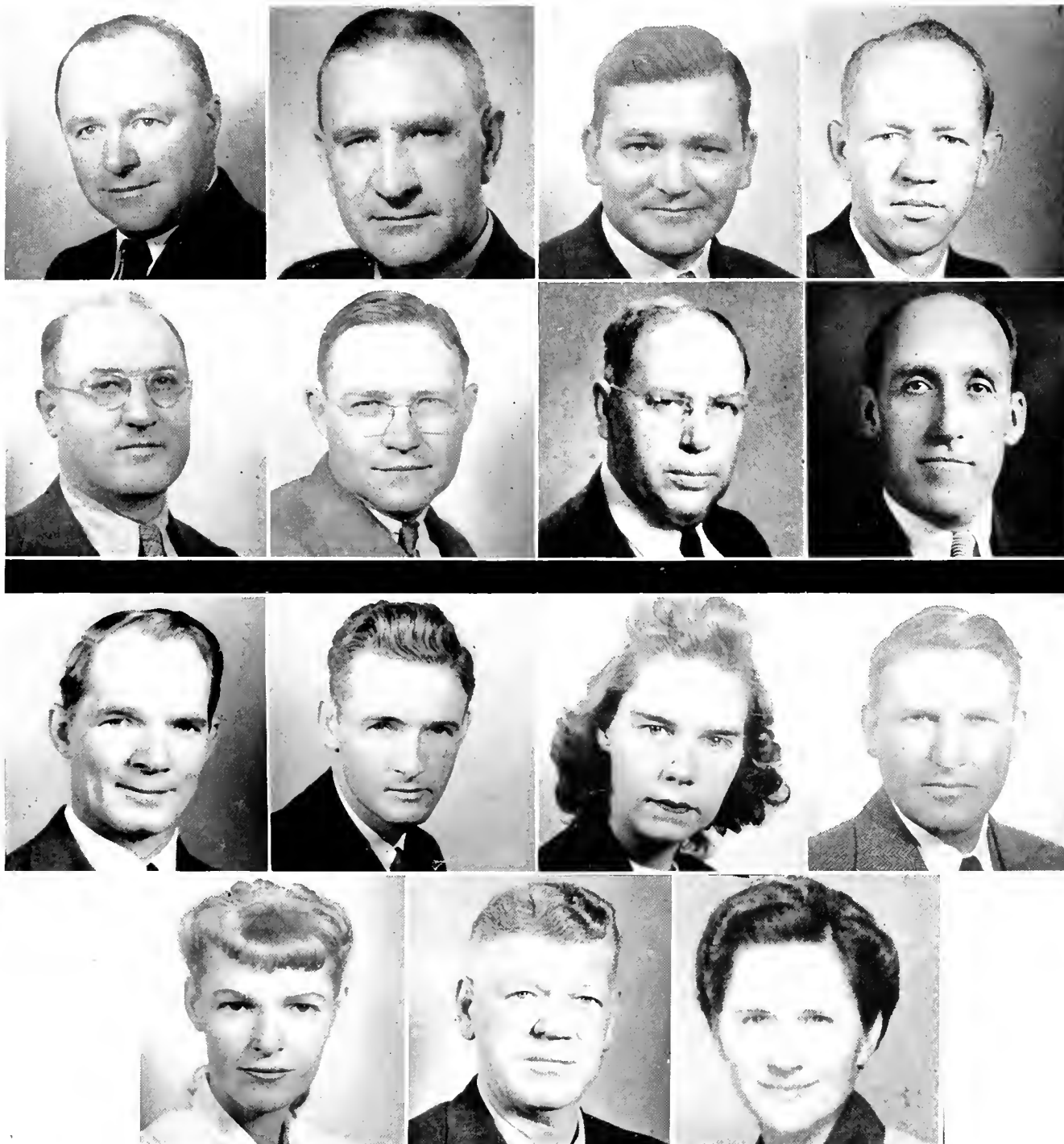
JOHN G. BARDEN, B.A., M.A., Ph.D.



# Social Studies

D. J. WHITENER, A.B., M.A., Ph.D.  
 G. L. SAWYER, A.B., M.A.  
 EDWIN S. DOUGHERTY, B.S., M.A.  
 E. C. DUGGINS, A.B., M.A.

JOHN JUSTICE, A.B., A.M.  
 STARR N. STACY, B.S., M.A.  
 V. C. HOWELL, B.A., M.A.  
 JOHN WORKMAN, A.B., M.A., Ph.D.



# Physical Education

R. W. WATRINS, A.B., M.A.  
 FRANCIS L. HOOVER, B.S.  
 GAIL CLAY, B.S.  
 GEORGE KIRCHNER, B.S., M.S.

MRS. GEORGE KIRCHNER, B.S., M.A.  
 ELLICE L. STEWART, A.B., M.A.  
 CLEON HODGINS, A.B., M.S.

# LIBRARY

EMMA H. MOORE  
 W. L. FURY, AB., BS. in ES  
 ALLIE AUSTIN, BS., BS. in ES  
 MARY AUCI HUFF, BS. in ES

HELEN GARBY, AB., M.A.  
 MRS. WILLIAM CHARLES GARBY  
 LOUISE MOORE, BS. in ES  
 VERA C. LINSLEY



## MATH

J. F. C. WRIGHT, AB., M.A., Ph.D.  
 WALTER G. HAWKINSON, B.S.

## ART

## French and Spanish

CATHERINE J. SMITH, B.S., M.A.  
 ELIZABETH CRADDOCK, B.S., M.A.



# SECRETARIES

DOROTHY ALDRIDGE, *Secretary to Dean Rankin*  
MRS. PEARL BINGHAM, *Secretary to Registrar*  
WILLIAM A. GARVEY, *Veterans Administrator*

BERNICE GRAGG, *Secretary to Business Manager*  
MRS. DOUGLAS REDMOND, *Bookkeeper*  
MELBA TUGMAN, *Secretary to Business Manager*



# HOSTESSES

MRS. HARDIN  
*Blan-Dolf Hall*

MRS. MASSEY  
*White Hall*

MISS BRIDGE  
*Lovill Hall*







1922 — ADMINISTRATION — 1947





## SENIOR CLASS OFFICERS

RICHARD R. PIERCE .....*President*

EVELYN MILLER .....*Vice-President*

ALVIN CLAY JOINES .....*Treasurer*

JOYCE ELIZABETH BROOKSHIRE .....*Secretary*

# SENIORS

WARREN H. AUSTIN  
WASHINGTON, D. C.

*Science and Physical Education*

Men's "A" Club 2, 3, 4; Y. M. C. A. 2, 3; Wrestling 1, 2, 3, 4; Playcrafters 2, 3; Delta Phi Sigma 1, 2; Intramural Sports 1, 2, 3; Veterans' Club 4.

WILHELMINA AYERS  
BURNSVILLE, N. C.

*Business Education and Library Science*

B. S. U. 1, 2, 3, 4, Council 4; Y. W. C. A. 1, 2, 3, 4; Business Education Club 3; Library Science 3, 4, Officer 3, 4; RHODODENDRON Staff 3, 4.

RUTH BAILEY  
BAKERSVILLE, N. C.

*Grammar Grade Education*

Mars Hill College 1, 2.

ALLEN H. BANDY  
LINCOLN, N. C.

*Science and Physical Education*

Band 1, 2; Symphony Orchestra 2; Y. M. C. A. 1, 2; Boy Scouts Troop No. 40 1, 2; Spring Football 2, 3; Veterans' Club 3; Entro Nos 3; Playcrafters 3.

HAROLD WARREN BEAVER  
CHINA GROVE, N. C.

*Physical Education and History*

Pfeiffer Junior College 1, 2; Intramural Football 1, 2; Track, Baseball, and Basketball 1, 2; Y. M. C. A. 1, 2, 3, 4; Cabinet Member 1, 2; Veterans' Club 4; Future Teachers 4; Intramural Sports 3, 4; Pi Gamma Mu 3, 4.

JOYCE BERRY BENFIELD  
VALDESE, N. C.

*Primary Education*

Mars Hill College 1, 2; Y. W. C. A. 3, 4; Westminster Fellowship 3, 4; Vernician Literary Society 3; A. C. E. Officer 3, 4.

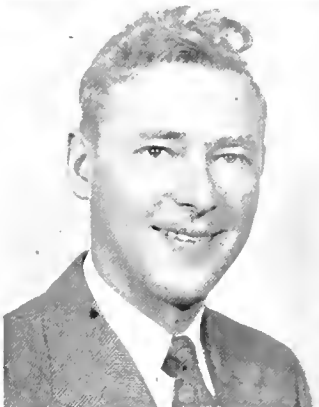
FLOE ELIZABETH BINGHAM  
BOONE, N. C.

*Primary Education*

LEE BRANNON  
SPARTANBURG, S. C.

*Business Education and History*

Asheville College 1; Spartanburg Junior College 2; Vernician Club 3, 4; History Club 4.

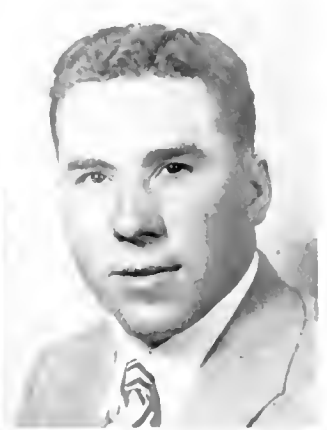


# SENIORS

WILLIAM H. BRENNAN  
DETROIT, MICH.

*Physical Education and History*

Stetson University 1, 2; Tampa University 3.



FEO D. BREVARD  
HENDERSONVILLE, N. C.

*History and Science*

Brevard College 1, University of North Carolina 2; Football 2, 3, 4; "V" Club 3, 4; Baseball 2, 3, 4; Intramural Basketball 2, 3, 4, Champions 2, 3; Volley Ball 2, 3, Champions 3.



GIENN R. BRIDGES  
LINCOLN, N. C.

*Physical Education and Mathematics*

Gardner Webb Junior College 1, 2; Baseball 3, 4; Intramural Sports 3, 4; Sigma Delta Psi Testing Committee 4; Future Teachers Club 4.

ELLEN KATHERINE BOWDITCH  
TOECANE, N. C.

*Home Economics and Science*

Home Economics Club 1, 2, 3, 4; Westminster Fellowship 1, 2, 3, 4; Y. W. C. A. 4; White Hall Club 2, 3.



JOYCE ELISABETH BROOKSHIRE  
TAYLORSVILLE, N. C.

*Home Economics and Science*

Y. W. C. A. 1, 2, 3, 4; Cabinet Member 3, 4; I. R. C. 2, 3, 4, Officer 3, 4; Forum Club 2, 3, 4; Who's Who Among Students in American Universities and Colleges 4; May Court Attendant 1; Future Teachers Club 3, 4; Class Officer 3, 4; Appalachian Staff 4; Junior Marshal; Student Council 4; Senior Superlative.

DAVID BROOME  
MARION, N. C.

*History and Physical Education*

Wingate College 1, 2; Football 3.



JEAN CORNELIA BROWN  
WEAVERVILLE, N. C.

*Physical Education and History*

W. A. A.; Rhododendron Staff 4; Y. W. C. A. 3, 4; Intramural Sports 3, 4.

NAOMI RUTH BROWN  
ROCKWILL, N. C.

*Home Economics and Science*

Berry College 1, 2, Home Economics Club 3, 4; F. S. A. 3, 4, Officer 4; Mixed Chorus 4; White Hall Club 3; Y. W. C. A. 3, 4.



# SENIORS

OLETA BROWN  
OLIN, N. C.

*Home Economics and Science*

Home Economics Club 1, 2, 3, 4; Lovill Club 1, 2, 3; Y. W. C. A. 1, 2, 4.

MARY BELLE BUCHANAN  
CLARRISSA, N. C.

*English and History*

Mars Hill College 1, 2; Social Studies Club 3, 4; B. S. U. 3, 4; Future Teachers Club 4; Y. W. C. A. 3, 4.

BEATRICE ELOISE BUFF  
VALDESE, N. C.

*Music and History*

A Cappella Choir 2, 3, 4; Mixed Chorus 2, 3, 4; Band 1, 2, 3, 4; Baton Club 4; Vermician Literary Society 3, 4; White Hall Club 1; History Club 3, 4; Appalachian Swing Orchestra 4; A. C. E. 1; Y. W. C. A. 1, 2, 3, 4; Appalachian Staff 4; Music Club 1.

ROSENA BURTON  
WINSTON-SALEM, N. C.

*Primary Education*

White Hall Club 1, 2; Westminster Fellowship 1, 2, 3, 4; President 2, Officer 4; Y. W. C. A. 1, 2, 3, 4; A. C. E. 1, 2, 3, 4; Officer 3, President 4; Future Teachers Club 3, 4; Officer 4; Junior Marshal 3.

HELEN GREY CALLOWAY  
BOONE, N. C.

*Science and History*

JAMES LEONARD CALLOWAY  
BOONE, N. C.

*Mathematics and History*

Wingate Junior College 1, 2.

MARTHA E. CALTON  
BOSTIC, N. C.

*Physical Education and History*

Gardner-Webb Junior College 1, 2; B. S. U. 4.

CLIFFORD CARMICHAEL, JR.  
CLIFTON, N. J.

*Mechanical Engineering*

Veterans' Club; Phi Kappa Phi; Y. M. C. A. 4.



# SENIORS

MADGE ELIZABETH CARMICHAEL  
 DURHAM, N. C.  
*Primary Education*  
 Y. W. C. A.



MAX WILSON CARPENTER  
 RUTHERFORDTON, N. C.  
*Math and Science*

Math Club 1, 2, 3, 4; Intramural Sports 1, 2, 3, 4; Senior Superlative 4; Future Teachers Club 4.

WAYNE JACK CAUDILL  
 NORTH WILKESBORO, N. C.  
*Grammar Grade Education*



BETTY CLINE  
 NEWTON, N. C.  
*Math and History*

White Hall Club 1; Y. W. C. A. 1, 2; Lutheran Student Association 1, 2; Officer 2; I. R. C. 2, 3, 4; Forum 2, 3, 4; History Club 2, 3, 4; Appalachian Staff 3, 4; Intramural Sports 1, 2, 3.

JAMES A. COBB  
 RHODISS, N. C.

*History and Physical Education*

Cheerleader 1, 2, 3, 4; Y. M. C. A. 1, 4; Delta Phi Sigma 1; Wrestling 1, 2, 4; Intramurals 1, 2, 3, 4; A. H. S. A. Official 1, 2, 4; Appalachian Staff 1, 2, 3, 4; Business Manager Rhododendron 4; Assistant Football Coach H. S. 4; *Who's Who Among Students in American Universities and Colleges* 4; Veterans' Club 3, 4; History Club 1, 2, 3, 4; Glee Club 1.



MARION MOORE COBB  
 RHODISS, N. C.

*Physical Education and History*

Lovell Club 1, 2; W. A. A. 1, 2, 3, 4; Officer 3, 4; Student Council 4; Y. W. C. A. 1, 2, 3, 4; History Club 1, 2, 3, 4; Cheerleader 2, 3, 4; *Who's Who Among Students in American Universities and Colleges* 4; Appalachian Staff 4.

MARGARET SUSAN COLE  
 FORIST CITY, N. C.  
*Music and History*

Y. W. C. A. 1, 2; Girls' Chorus 1; Mixed Chorus 1, 2, 3; Symphony Orchestra 1, 2; Band 1, 2, 3; Vernician Literary Society 1, 2, 3; Officer 2; History Majors Club 2, 3; Methodist Youth Fellowship 1, 2, 3.



WILLIAM C. CRUMMETT  
 NATHAN'S CREEK, N. C.  
*Grammar Grade Education*

# SENIORS



OBED OWEN DAY  
BOONE, N. C.

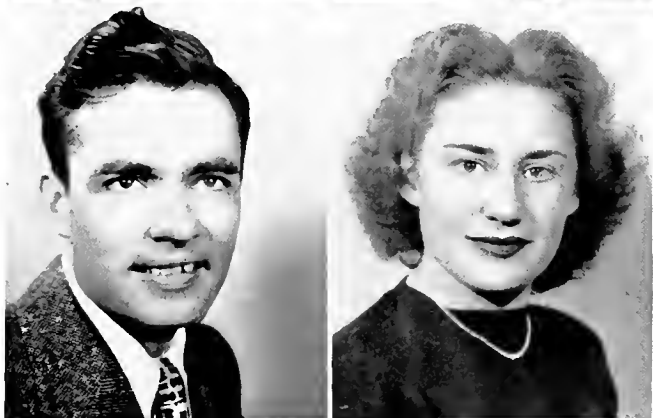
*Science and Physical Education*

Class Officer 1; Football 1, 2, 3, 4; Wrestling 2, 3, 4; Men's "A" Club 2, 3, 4; Y. M. C. A. 1, 2.

RACHAEL BURTON DELANCEY  
REIDSVILLE, N. C.

*Primary Education*

Mitchell College 1, 2; Mixed Chorus 3, 4, Officer 4; A. C. E. 3, 4, Officer 3, 4; Vernician Literary Society 3, 4, Officer 4; Y. W. C. A. 4; Methodist Youth Fellowship 4; May Court Attendant 4.



ANDY P. DICKERSON  
ORLANDO, FLA.

*English and History*

Pfeiffer Junior College 1, 2; Intramural Sports 1, 2, 3, 4; Y. M. C. A. 1, 2, 3, 4; Veterans' Club 3, 4.

SARA TILLIE EAKER  
CROUSE, N. C.

*Math and Science*

Y. W. C. A. 1, 2, 3; Playerafters 1, 2; Associate Editor Playbill 2; Youth Fellowship 1, 2; A Cappella Choir 1; White Hall Club 1; Future Teachers Club 3; Junior Marshal; Lenoir Rhyne College 1.



REEVES M. EDENS  
ROWLAND, N. C.

*Grammar Grade Education*

JACK FAIRCLOTH  
CHARLOTTE, N. C.

*Physical Education and History*

Alpha Sigma Gamma 1, 2; Intramural Sports 3, 4; Football 3.



THELMA J. FARTHING  
BOONE, N. C.

*Business Education and History*

Y. W. C. A. 1, 2; Baton Club 1; Spanish Club 2; Business Majors Club 3, 4; Appalachian Staff 3, 4; History Majors Club 3, 4.

JACK MILTON FLETCHER  
CHESTER, PA.

*History and Physical Education*

Football 1; History Club 1, 4; Future Teachers Club 4; Intramurals 1, 4.

# SENIORS

IRENE HUNTER TOWLER  
WALNUT COVE, N. C.

*Physical Education and History*

Pfeiffer Junior College 1, 2; W. A. A. 3, 4; Officer 4; History Club 3, 4; Modern Dance Group 4; Officer 4; Intramural Sports 3, 4; Life Saving 3; Westminster Fellowship 4.



MARCIA RAE GABRIEL  
SHERRILL'S FORD, N. C.

*Grammar Grade Education*

Y. W. C. A. 1, 2; White Hall Club 1, 2; Vernician Literary Society 4; Westminster Fellowship 1, 2, 3, 4; Officer 3; Home Economics Club 1, 2.



MRS. LILLIAN CAMPBELL GARVEY  
KNOXVILLE, Tenn.

*History and English*

NANNIE LOIS GENTRY  
STATESVILLE, N. C.

*Grammar Grade Education*

Lovill Club 3; Mitchell College 1, 2.

EDWARD JAMES GOMEDELA  
ERWIN, N. C.

*Physical Education and History*

Math Club 4; History Club 4; Y. M. C. A. 4; Circulation Manager Appalachian 4; President Christian Fellowship Alliance; Junior Marshal.



REX B. GORDON  
PILOT MOUNTAIN, N. C.

*Physical Education and History*

Intramurals 1, 2, 3, 4; Alpha Sigma Gamma 1, 2; Veterans' Club 4; Appalachian Staff 1, 2, 3, 4; Rhododendron Staff 4; Troop 40 1, 2; Football Manager 1, 2, 3, 4.

ELEANOR MOZELLE GREENE  
SPINDALE, N. C.

*Math and Science*

V Cappella Choir 1; Y. W. C. A. 1, 2, 3, 4; Spanish Club 3; Christian Fellowship Alliance 1; Vernician Literary Society 3, 4; Playcrafters 4; Junior Marshal; Mathematics Club 1; Mixed Chorus 4; Officer 4; Lovill Club 1, 2.



LILLIAN UTFLY GRIFFITH  
NEWELL, N. C.

*Grammar Grade Education*

White Hall Club 1, 2; W. A. A. 2; Y. W. C. A. 1, 2, 3, 4; President 4; Student Council 3, 4; Forum Club 2, 3, 4; Officer 3; L. R. C. 3, 4; Rhododendron Staff 3; Appalachian Staff 4; Future Teachers Club 3, 4; Officer 4; Westminster Fellowship 1, 2, 3, 4; Officer 1, 3.

# SENIORS

GLORIA M. GRILL  
VALDESE, N. C.

*Business Education and History*

Mary Washington College 1; White Hall Club Secretary 2; Y. W. C. A. 2, 3, 4; Junior Cabinet Member 3; Senior Cabinet Member 4; Playcrafters 2, 3; *Playbill* Editor 3; *Appalachian* Staff 3; History Club 2, 3; Appalachian Service Bureau Head 3; Girls' Chorus 2; Mixed Chorus 3; Business Club Vice-President 3; Future Teachers Club 4; Junior Marshal 3.

MARY JEAN GROSE  
STATESVILLE, N. C.

*Home Economics and Science*

Lovill Club 1; Christian Fellowship Alliance; Home Economics Club 1, 2, 3, 4; Y. W. C. A. 1, 2, 3, 4; Baptist Student Union 1, 2, 3, 4; Council 2, 3, 4.

MARY ELIZABETH GUY  
BANNER ELK, N. C.

*Physical Education and History*

LeesMcRae College 1, 2; Y. W. C. A. 4; W. A. A. Social Studies Club 3, 4; Baton Club 3, 4; Flying Fish 4; Water Safety Instructor 4.

EDNA HARRELL  
FORBES, N. C.

*Home Economics and Science*

Home Economics Club 1, 2, 3, 4; Dynician Society 1; Westminster Fellowship 1, 2, 3, 4; Y. W. C. A. 1, 2, 3, 4; Vernician Literary Society 1.

WILLIAM DAVIS HARRILL  
FOREST CITY, N. C.

*Business Education and History*

N. C. State 1; Berea College 2, 3; Veterans' Association 3; Publicity Director Y. M. C. A. 3; *Appalachian* Staff 3, 4.

DORIS HARRISON  
GRANTSBORO, N. C.

*Physical Education and History*

Baptist Student Union 1, 2, 3, 4; Council 1, 2, 3, 4; President 4; History Majors Club 1, 2, 3, 4; Playcrafters 1; White Hall Club 1, 2; *Appalachian* Staff 1; Vernician Literary Society 3, 4; Intercollegiate Debating 1; W. A. A. 1, 2, 3, 4; Intramural Sports 1, 2, 3, 4.

WARREN HAWKINS  
LEAKSVILLE, N. C.

*Physical Education and Science*

MILDRED HILL  
MOUNT AIRY, N. C.

*Physical Education and Grammar Grade Education*

Y. W. C. A. 1, 3, 4; W. A. A. 1, 2, 3, 4; White Hall Club 1; A Cappella Choir 1; Girls' Chorus 2; Intramural Sports 1, 2, 3, 4; Flying Fish 4; Senior Life Saving 3, 4.



# SENIORS

MYRTLE HUDSON HOYLE  
CONNELLY SPRINGS, N. C.  
*Home Economics and Science*



MARY ELOISE HUGHES  
FORBES, N. C.  
*Home Economics and Science*

Home Economics Club 1, 2, 3, 4; Westminster Fellowship 1, 2, 3, 4; White Hall Club 1, 2; Future Teachers Club 4; Y. W. C. A. 4; A Cappella Choir 1; Dynician Society 1; Junior Marshal.

MAYO HUNEYCUTT  
INDIAN TRAIL, N. C.  
*Primary Education*



Y. W. C. A. 1, 2, 3; Baton Club 1, 2, 3, Officer 2, 3; A. C. T. 1, 2, 3, 4, Officer 3; Playcrafters 1, 4; White Hall Club 1; May Court 2.

MARY SUE HUNTER  
DAY BOOK, N. C.  
*Home Economics and Science*

Home Economics Club 1, 2, 3, 4; Y. W. C. A. 1, 2; Westminster Fellowship, 1, 2, 3, 4; Vernician Literary Society 4.

LLOYD ISAACS  
BOONE, N. C.  
*Physical Education and History*



Rhododendron Staff 1, 2, 3, 4, Associate Editor 2, Editor-in-Chief 4; Basketball 1; Freshman Class Officer; Men's "A" Club 2, 3, 4; Appalachian Staff 1, 2, 3, 4, Associate Editor 4; Junior Marshal; Future Teachers Club 4; Intramural Sports 1, 2; History Club 4; Who's Who Among Students in American Universities and Colleges 4; Baseball 1.

VIRGINIA ELIZABETH ISAACS  
ELK PARK, N. C.  
*Music and History*

Y. W. C. A. 1, 2, 3, 4, Chorister 4; Music Majors Club 1; A Cappella Choir 1; Mixed Chorus 2, 3, 4, Vice-President 4; Band 1, 2, 3, 4, Reporter 4; History Majors Club 2, 4; Baptist Student Union 1, 2, 3, 4, Council Member 3; White Hall Club 1, 2.

FRANCES JACKSON  
MILL SPRING, N. C.  
*Primary Education and Library Science*

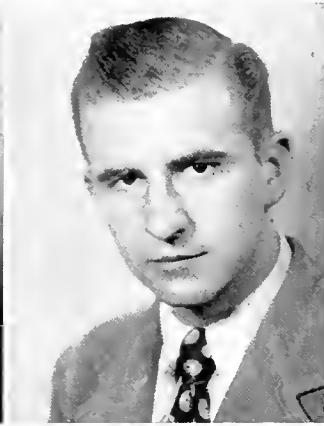


A. C. E. 3, 4; Library Science Club 3, 4; Y. W. C. A. 3, 4; Lovell Club 3; Baptist Student Union 1, 2, 3, 4.

PEARL JAMES  
AMY, N. C.  
*Home Economics and Science*

Home Economics Club 1, 2, 3, 4; Dynician Society 1; Y. W. C. A. 1, 2, 3, 4.

# SENIORS



GRACE JENKINS  
ELLENBORO, N. C.

*Grammar Grade Education*

Y. W. C. A. 1, 2, 3, 4; White Hall Club 1, 2; Le Cercle Francais 2; Y. W. A. 1, 2; Baptist Student Union 1, 2, 3, 4.

LEWIS H. JENKINS  
NORTH WILKESBORO, N. C.

*Mathematics and History*



ALVIN CLAY JOINES  
JOYNES, N. C.

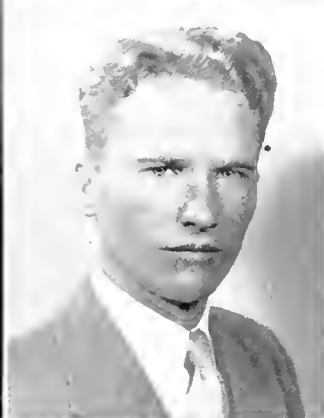
*History and Science*

Y. M. C. A. 1, 2, 3, 4, Officer 2, 4; Mixed Chorus 1; Member of Operetta; Baptist Student Union 1, 2, 4, Council 2, 4; Social Studies Club 2, 4, President 4; Student Council 2; Class Officer 4.

CHARLES J. JONES  
CRAMERTON, N. C.

*Mathematics and Science*

Belmont Abbey College 1.



NELDA JONES  
BAKERSVILLE, N. C.

*Home Economics and Science*

Home Economics Club; Baptist Student Union.

JAMES LOUIS JOYCE  
SANDY RIDGE, N. C.

*Grammar Grade Education*

Baseball 1, 2, 3; Wrestling 2, 3; "A" Club 3, 4; Veterans' Club 3, 4; Alpha Sigma Gamma 2; Delta Phi Sigma 1.



WALTER C. JOYCE  
SANDY RIDGE, N. C.

*Grammar Grade Education*

Alpha Gamma Lambda 1, 2; Delta Phi Sigma 2; Baseball Manager 1, 2, 4; Y. M. C. A. 1, 4; Baptist Training Union 4; Veterans' Club 4.

MARY SUE KEETER  
CLIFFSIDE, N. C.

*Grammar Grade Education*

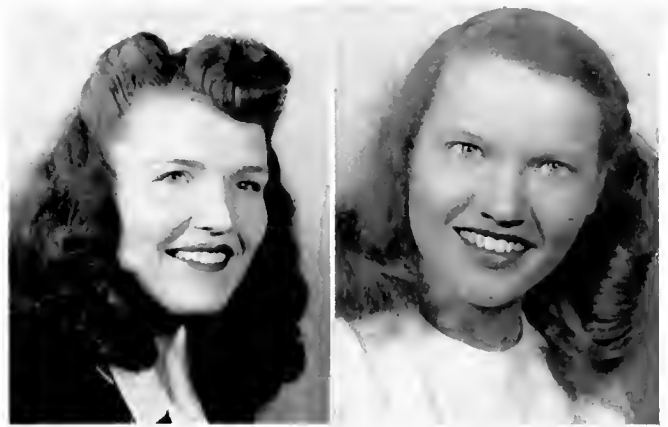
Gardner-Webb 1, 2; White Hall Club 3; Y. W. C. A. 3.

# SENIORS

BARBARA ELIZABETH KEPLEY  
SALISBURY, N. C.

*Primary Education*

Mitchell College 1, 2; Y. W. C. A. 4; W. A. A. 3, 4; Vermeian Literary Society 3, 4; A. C. E. 3, 4; Publicity Chairman 4; Canterbury Club 4; Westminster Fellowship 4.



AUDREY SMITH KIRBY  
PINNACLE, N. C.

*English and History*

Mars Hill Junior College 1; History Club 2; White Hall Club 2, Officer 2; Lovill Club 3, 4; Future Teachers of America 1, Officer 4; Forum Club 3, Officer 4; Baptist Student Union 2, Council 3; I. R. C. 3, 4.



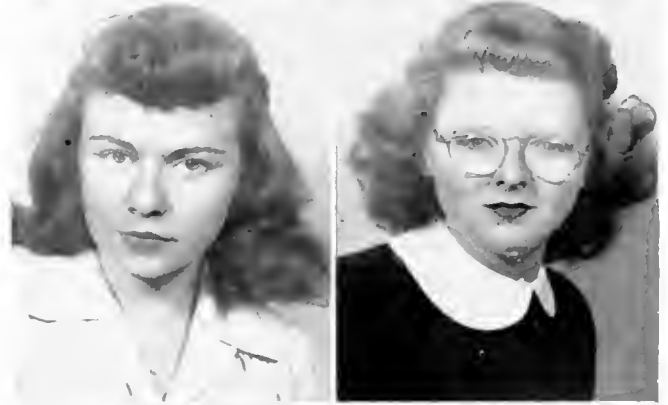
MARGARET LOUISE IEDBETTER  
MARION, N. C.

*Primary Education*

Y. W. C. A. 1, 3; Baton Club 1, 2, President 2; A. C. E. 1, 2, 4; Playcrafters 3, 4; Library Science 3; Baptist Student Union 1, 4; A Cappella Choir 1, 2.

KATHRYN FLORENCE LINGERFELDT  
BESSEMER CITY, N. C.

*Grammar Grade Education*



JACQUELINE LOWRY  
JEFFERSON, S. C.

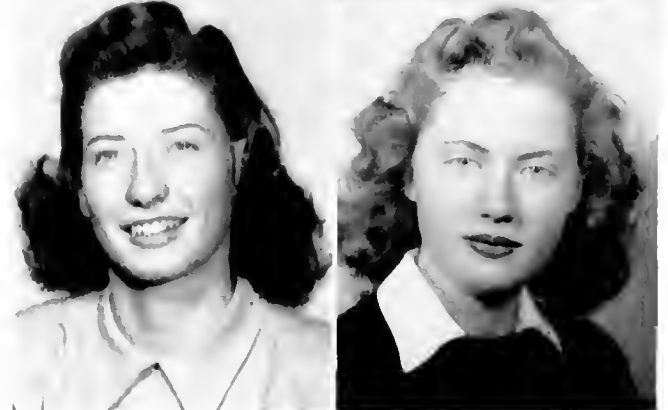
*Primary Education*

Queens College 1; A. C. E. 2, 3, 4, Vice President 4; Vermeian Literary Society 2, 3, 4, Treasurer 3; Westminster Fellowship 2, 3, 4; Y. W. C. A. 2, 3, 4.

MARIAN ELIZABETH MARTIN  
CRAMERTON, N. C.

*Mathematics and Science*

White Hall Club 1; Y. W. C. A. 1, 3, 4; Mathematics Club 4; Future Teachers of America 4; A Cappella Choir 1.



MILDRED MARTIN  
SUMMERFIELD, N. C.

*Physical Education and History*

Cheerleader 1, 2, 3, 4; Y. W. C. A. 1, 2, 3, 4, Cabinet 3; Living Fish 3, 4; W. A. A. 1, 2, 3, 4; Intramural Sports 1, 2, 3, 4; Junior Marshal; Who's Who Among Students in American Universities and Colleges 4; Playcrafters 1; Student Body President 4; Senior Superlative; Campus Superlative; Senior Life Saving 3, 4; Water Safety Instructor 3, 4.

FRANCES EMMA McCALL  
MARION, N. C.

*Home Economics and Science*

Home Economics Club 1, 2, 3, 4; Westminster Fellowship 1, 2, 3, 4; White Hall Club 1, 2.





# SENIORS

GUY McCANN  
ROARING GAP, N. C.

*Mathematics and Science*

Math Club 1, 2, 4; Social Science Club 3, 4; Forum Club 2, 3, 4; B. S. A. 1, 2, 3; A. H. S. A. 1, 2; Y. M. C. A. 3, 4; Appalachian Staff 2, 3; Wrestling 3; Men's "A" Club 3, 4; Intramural Sports 1, 2, 3, 4.

NANCY RUTH McLEAN  
BELMONT, N. C.

*Primary Education*

Sacred Heart College 1, 2; Y. W. C. A. 3, 4, Cabinet Member 3; Westminster Fellowship 3, 4; Vernician Literary Society 3; A. C. E. 3, 4, Officer 4; May Day 3, 4.



EVELYN McNEELY  
MORGANTON, N. C.

*Physical Education and Science*

V Cappella Choir 1; Band 1; White Hall Club 1; Y. W. C. A. 1, 2, 3, 4; Flying Fish 3, 4, Officer 4; Appalachian Staff 3, 4; Girls' "A" Club 4; Student Council 2; Life Saving 3, 4; Water Safety Instructor 3, 4; W. A. A. 1, 2, 3, 4, President 4; Intramural Sports 1, 2, 3, 4.

EVELYN MILLER  
STATESVILLE, N. C.

*Grammar Grade Education*

White Hall Club 1; Treasurer Freshman Class; Y. W. C. A. 1, 2, 3, 4; Playcrafters 2; Westminster Fellowship 2; Sophomore Editor RHODODENDRON; Vice-President Sophomore Class; Appalachian Staff 2, 4; Junior Marshal; Vice-President Senior Class.

MRS. FRANCES M. MILLER  
MADISON, N. C.

*Primary Education*

Y. W. C. A. 2; Playcrafters 2; A. C. E. 2; White Hall Club 2.



SILVER MILLER  
WEST JEFFERSON, N. C.

*English and Spanish*

Lovill Club 1, 2; Los Picaros Espanoles, 2, 3, 4; Forum Club 3, 4.

WALTER MILLER  
BINA, N. C.

*Grammar Grade Education*

HELEN IRENE MOORE  
WEAVERVILLE, N. C.

*Library Science*

Library Science 3, 4, President 4; Westminster Fellowship 3, 4, President 4; Vernician Literary Society 3, 4, Officer 4; Y. W. A. 4; May Queen 4.



# SENIORS

KATHLEEN E. MOORE  
GALAX, VA.

*Physical Education and Mathematics*

Y. W. C. A. 1, 2, 3, 4, Cabinet Member 3, 4; Vice-President Junior Class; President Flying Fish 4; W. A. A. 1, 2, 3, 4, Officer 3, Intramural Manager 4; Lovell Club 1, 2; Intramural Sports 1, 2, 3, 4; Senior Life Saving 3, 4; May Court Attendant 3; Girls' "V" Club 4; Who's Who Among Students in American Universities and Colleges; Appalachian Staff 4; Rhododendron Staff 3; Junior Marshal.



WILLIAM WINSLOW NOLEN  
CROUSE, N. C.

*English and History*

Brevard College 1; Y. M. C. A. 2, 3, 4, President 3.

J. CLIFFORD OUSLEY  
BUIES CREEK, N. C.

*History and Mathematics*

Football Team 1, 2, 3, Letterman 2, 3; Wrestling Team 1, 2, 3; Letterman 2, 3; "V" Club 2, 3, 4; Intramurals 1, 2, 3, 4; Baptist Student Union Council 2, 3; Y. M. C. A. 1, 2, 3, President 3; Social Science Club 4, Officer 4; Math Club 4.



RUBY NELL OWENS  
ELLENBORO, N. C.

*Grammar Grade Education*

Baptist Student Union 1, 2, 3, 4, Council 3; Y. W. C. A. 1, 2, 4; White Hall Club 1, 2; Le Cercle Francais 2; Vernian Literary Society 4.



MARTHA KATHRYN PEARSALL  
ROCKY POINT, N. C.

*Primary Education*

Woman's College U. N. C. 1, 2, 3; Y. W. C. A.; Methodist Youth Fellowship; A. C. L.



GROVER EDWARD PENDRY  
HAYS, N. C.

*Grammar Grade Education*

Band 1, 2, 3, 4; A Cappella Choir 2; Playcrafters 3.

RICHARD B. PIERCE  
MOORESVILLE, N. C.

Appalachian Staff 1, 2, 3, 4, Sports Editor 3, 4; Baseball 1, 2, 3, 4; Wrestling Manager 1, 2, 3, 4; Football Manager 1, 2; "V" Club 4; Publicity Director 3; Rhododendron 1, 2, 3, 4; Senior Superlative 4.



ALTA LOUISE PONDER  
MARS HILL, N. C.

*Library Science and History*

Girls' Chorus 3; White Hall Club 3; Y. W. C. A. 3; Vernian Literary Society 3, 4, President 4; Playcrafters 3, 4, Secretary 4; Library Science Club 3, 4.

# SENIORS

JUNE ELBERT PRATT  
PINNACLE, N. C.  
*History and Mathematics*

SARAH LOUVENIA PRESNELL  
BANNER ELK, N. C.  
*Grammar Grade Education*

Lees McRae College 1, 2; Westminster Fellowship 3, 4.

EUNICE PRIETT  
CASAR, N. C.

*Home Economics and Science*

Home Economics Club 1, 2, 3, 4; Lovill Club 1; Christian Fellowship Alliance 1, 2; Y. W. C. A. 1, 2, 4; Intramurals 2, 4; Baptist Student Union 1, 2, 3, 4.

MARY JO RAGAN  
BOONE, N. C.

*History and Science*

History Majors Club 1; Methodist Youth Fellowship 1, 2, 3, 4; Future Teachers 3, 4, Officer 4.

MAGDALENE RANDSDELL  
BOONE, N. C.

*Library Science and History*

HUGH L. REAVIS, JR.  
STATESVILLE, N. C.

*History and Mathematics*

Mitchell College 1, 2; Baptist Student Union Council 3; Delta Phi Sigma 3; Appalachian Staff 3, 4; Forensic Club 3, 4; Y. M. C. A. 3, 4; Math Club 3, 4, President 4; History 4; Veterans' Club.

JUNE RENFROW  
CHARLOTTE, N. C.

*Primary Education*

Queens College 1; White Hall Club 2; Y. W. C. A. 2, 3, 4; A. C. E. 3, 4, President 4; Girls' Chorus 3; Mixed Chorus 4; Methodist Youth Fellowship 2, 3, 4; Appalachian Staff 4.

EMMA GENE REYNOLDS  
LINCOLNTON, N. C.

*Physical Education and Science*

Y. W. C. A. 1, 2, 3, 4, Junior Cabinet Member 3, 4; Student Council 3, 4, Officer 4; Future Teachers 3, 4, President 4; White Hall Club 1, 2; Baton Club 1, 2, 3, 4, President 2, 4; May Court Attendant 3; W. A. A. 1, 2, 3, 4, Officer 4; Gold Captain 4; Girls' "A" Club 3, 4; Flying Fish 3, 4; Life Saving 1, 2, 3, 4; Water Safety Instructor 1, 2, 3, 4; Methodist Youth Fellowship 1, 2, 3, 4; Senior Superlative.



# SENIORS

UNA EFF RICHARDSON  
SPARTA, N. C.

*Library Science and Grammar Grade Education*

Baptist Student Union 1, 2, 3, 4; Officer 1, 2, 3, 4; White Hall Club 1, 2; Officer 2; Forum Club 3; I. R. C. 2, 3; Officer 3; May Court 3; *Who's Who Among Students in American Universities and Colleges*, 3.



REBEKAH RIVERS  
MOUNTAIN CITY, TENN.

*English and French*

Future Teachers Club 3, 4; *Who's Who Among Students in American Universities and Colleges*, 3, 4; French Club 2, 3, 4; President 3, 4; Spanish Club 2, 3; Vice President 3; Y. W. C. A. 1, 2, 3, 4; Junior Cabinet Member 3; Chief Junior Marshal; *Appalachian* Staff 2, 3, 4; Associate Editor 3; Editor in Chief 4; Rhododendron Staff 3, 4; Associate Editor 4; Junior Class President; May Court 3, 4; Maid of Honor 4; Student Council 4.



MARY ELIZABETH SCISM  
SHILBY, N. C.

*Grammar Grade Education*

Gardner Webb 1, 2; Y. W. C. A. 3; White Hall Club 3.

OMA LEE SHEW  
ELKIN, N. C.

*Home Economics*

Mars Hill Junior College 2, 3; Home Economics Club 3, 4; Officer 4; Baptist Student Union Council 4; Y. W. C. A. 3, 4; Future Teachers of America 4; May Court 4.



ANNIE LAURIE SMITH  
WAGRAM, N. C.

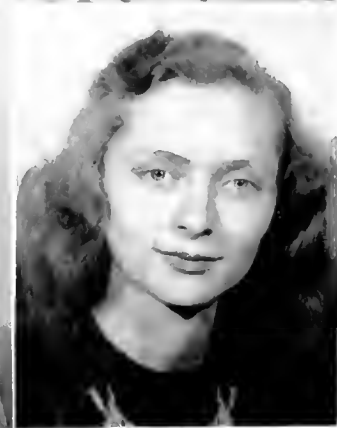
*Grammar Grade Education*

Mars Hill Junior College 1, 2.

PATSY ROSE SMITH  
MOORESVILLE, N. C.

*Mathematics and Physical Education*

I. R. C. 2, 3, 4; Forum 3, 4; Baton Club 2; Cheerleader 1, 2, 3, 4; May Court 2; Y. W. C. A. 1, 2, 3, 4; Junior Cabinet 3; White Hall Club 1; Assistant Business Manager, *Appalachian* 3; Business Manager 4; Playcrafters 1, 2; Girls' Chorus 2, 3; W. A. A. 1, 2, 3; Student Council Secretary 3; Westminster Fellowship 1, 2, 3; *Who's Who Among Students in American Universities and Colleges*, 3, 4.



ARTHUR P. SPOLTORE  
CUMBERLAND, MD.

*History and Science*

Georgia Tech 3; University of Florida 1, 2; Football 4; Baseball 4.

ELMEDA MAE STANALAND  
CHALLOTTE, N. C.

*Grammar Grade Education*

Y. W. C. A. 1, 4.

# SENIORS

MARY IDA STEELE  
BEAR POPLAR, N. C.

*Grammar Grade Education*

Mitchell College 1, 2; Girls' Chorus 3; Vernician Literary Society 3, 4; W. A. A. 3, 4; Y. W. C. A. 3, 4; Westminster Fellowship 3, 4; Modern Dance Group 4.

REBECCA McCOTTER TOMLINSON  
BLACK CREEK, N. C.

*Physical Education and History*

Virginia State Teachers College; Vernician Literary Society 3, 4, Officer 4; W. A. A. 3, 4, Reporter 3; Intramural Sports 3, 4; Senior Life Saving 3; Y. W. C. A. 4; Softball Varsity 3; History Club 3, 4.

GRACE ELAINE TUCKER  
MONROE, N. C.

*Home Economics and Science*

Y. W. C. A. 2, 3, 4, Senior Cabinet Member 4; Baptist Student Union 2, 3, 4, Council 3, 4; White Hall Club 2; Home Economics Club 2, 3, 4, President 4.

MADELINE TURPIN  
MOUNT AIRY, N. C.

*Grammar Grade Education*

A Cappella Choir 1, 2, Officer 2; Mixed Chorus 3, 4; White Hall Club 1; B. S. U. Council 3; B. T. U. 1, 2, 3; Y. W. C. A. 1, 2, 3, 4, Officer 2, 3, 4; Future Teachers of America 3, 4, Officer 4; Student Council 3, Officer 3; Vernician Literary Society 3, Officer 3.

MATTIE SHERWOOD WALSH  
SHERWOOD, N. C.

*Grammar Grade Education*

MARY LOUISE WATKINS  
MORGANTON, N. C.

*English and Mathematics*

Y. W. C. A. 1, 2; Future Teachers of America 3, 4; Mathematics Club 4; Le Cercle Francais 1, Officer 2; Y. W. A. 1; Appalachian Staff 4.

DOROTHY MARIE WHISNANT  
HICKORY, N. C.

*Grammar Grade Education*

Y. W. C. A. 1, 2, 3, 4; Girls' Chorus 1; W. A. A. 1, 2, 3, 4; Vernician Literary Society 3, 4; Lutheran Student Association 1, 2, 3, 4, President 1, 2.

ALICE ARLENE WILLIAMS  
RUSK, N. C.

*Home Economics and Science*

Baptist Student Union 1, 2, 3, 4, Council 2, 3, 4; Future Teachers of America 4; White Hall Club 1, 2; Home Economics Club 1, 2, 3, 4, Officer 2; Y. W. C. A. 2, 3, 4.

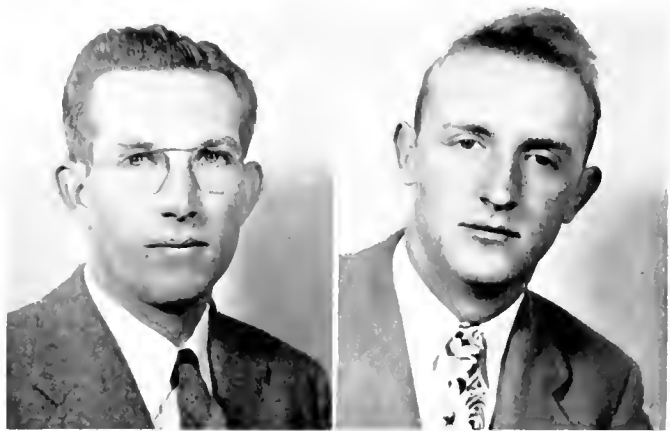


# SENIORS

C. L. WILLIAMS  
ROBBINS, N. C.

*Physical Education and History*

A Cappella Chon 1, 2, 3, 4; Intramural Sports 1, 2, 3, 4; Social Science Club 4; Appalachian Staff 4; Y. W. C. A. 2, 3; Delta Phi Sigma 2, 3.



REID C. WILLIAMS  
FALLSTON, N. C.

*Pre Medical*

BERTHA FAYE WILLIS  
MARS HILL, N. C.

*Physical Education and History*

Mars Hill College 1, 2; W. A. A. 3, 4; Black Captain 4; Y. W. C. A. 3, 4; Playcrafters 3, 4; Editor *Playbill* 4; White Hall Club 3; History Club 3, 4; Vice-President 4; Appalachian Staff 4; Assistant Sports Editor; May Day Attendant 4; Future Teachers of America 4.



RUBY EMMA WILSON  
GRANITE FALLS, N. C.

*English and History*

Band 1, 2, 3, 4; Symphony Orchestra 1; Social Studies Club 1, 2, 3, 4; Y. W. C. A. 2; Eos Picaros Espanoles 3.



MADGE WOOD  
VALE, N. C.

*Home Economics and Science*

Lenoir Rhyne College 1, 2; Y. W. C. A. 3, 4; Home Economics Club 3, 4.

PAUL VERNON YARBOROUGH  
LEXINGTON, N. C.

*Science and History*

Y. M. C. A. 1, 2, 3, 4; History Club 1, 2, 3, 4; Intramural Sports 1, 2, 3, 4; Delta Phi Sigma 1, 2, 3; President 2; Future Teachers Club 4; Beta Club 2.



EDITH JUANITA YORK  
WAYNESVILLE, N. C.

*Home Economics and Science*

Berea College 1, 2; Lovell Hall Club 3; Baptist Student Union Council 1, 3, 4; Home Economics Club 3, 4; Y. W. C. A. 3.

WILLIAM MIDDLETON CHRISTENSEN  
BOONY, N. C.

*Special*

MRS. MADGE MAXFIELD  
BOONY, N. C.

*Special*





1922 — SCIENCE — 1947





## JUNIOR CLASS OFFICERS

ROGERS WHITENER .....*President*

BETTY LOU RHYNE .....*Vice-President*

RUBY LEA KISER .....*Treasurer*

VIRGINIA FERNE WILLIAMS .....*Secretary*



# JUNIORS

CHARLES WYNDELL ALDRIDGE  
Boone, N. C.

BETTY LAVINIA ALLISON  
Black Mountain, N. C.

PAULINE COVINGTON ASHLEY  
Boone, N. C.

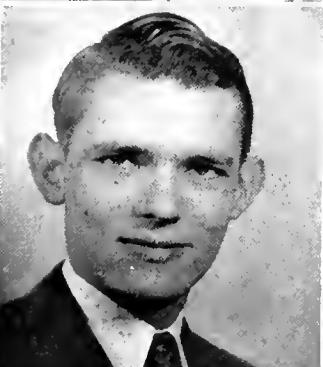
MARY GAGE BARBER  
Wilkesboro, N. C.

MINNIE LOU ALLEN  
Polkton, N. C.

GOZELL ANDREWS  
Boomer, N. C.

NANNETTE BANNER  
Newland, N. C.

BETSY JANE BARRETT  
Burlington, N. C.



MARY ANNE BARRETT  
Burlington, N. C.

THOMAS STUART BEACH  
Boone, N. C.

NANCY ROSS BLACK  
Mathews, N. C.

REBEKAH E. BOONE  
Boone, N. C.

FAYE BARRIER  
Jonas Ridge, N. C.

GERTRUDE MINNIE BINKLEY  
Harmony, N. C.

WILLIAM EARL BLANKENSHIP  
Swannanoa, N. C.

ALENE GRAY BOWEN  
King, N. C.

# JUNIORS

RUBY BOWEN  
King, N. C.



KATE G. BOWERS  
Franklin, N. C.



BUDDY BROOKS  
Columbus, Ga.



OLIVE ALEXANDRA BROOKS  
Midland, N. C.



ELIZABETH A. BROWN  
Leicester, N. C.



JOSEPHINE BROWN  
Sugar Grove, N. C.



LEWIS HERMAN BURCHAM  
Elkin, N. C.



GLENN JAMES BURNETTE  
English, N. C.



ELIZABETH ANN BUSBY  
Hickory, N. C.



FRANCES ELIZABETH CALLOWAY  
Southern Pines, N. C.



ROBERT PAUL CAMPBELL  
Taylorsville, N. C.



WILLIAM LYNCH CARPENTER  
Rutherfordton, N. C.



MARGARET B. BYNUM  
Stanley, N. C.



LOIS CHARLENE CAMPBELL  
Taylorsville, N. C.



MILDRED CARPENTER  
Bostic, N. C.

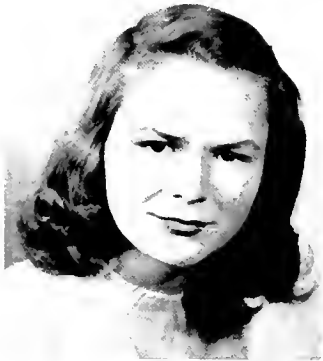


RUTH GWYN CARTNER  
Mocksville, N. C.

# JUNIORS

WANDA LEE CHANEY  
Monroe, N. C.

JAMES W. CHURCH  
Scottville, N. C.



DORIS BEATRICE CLINE  
Kernersville, N. C.

JOE FRIDERICK COMER  
Dobson, N. C.



FAYE COUNTS  
Honaker, Va.

JOHN A. COX, JR.  
Thomasville, N. C.



TOMMY MILLER CRAIG  
Cramerton, N. C.

RONALD ARTHUR CRAVEN, JR.  
High Point, N. C.



ELIZABETH EUDY CRAYTON  
Oakboro, N. C.

HELEN DELLINGER  
Altmont, N. C.

ZOLA GILY DIXON  
Yadkinville, N. C.

PHOEBE CATHERINE DULIN  
Rowland, N. C.

ROBERTA B. CRITCHER  
Boone, N. C.

DOROTHY JUNE DINKINS  
Yadkinville, N. C.

ANNA JOSEPHINE DOCKERY  
Dobson, N. C.

MARY ELLEN FARP  
Taylorsville, N. C.

# JUNIORS

LEISHA HAY EDMISTEN  
Boomer, N. C.

BETTY JEAN FLEMORF  
Lawndale, N. C.



LOIS FETTER  
Mars Hill, N. C.

JACK H. EPPLEY  
Cramerton, N. C.



CAROL MARGARET ERWIN  
Mount Ulla, N. C.

MAXINE IRWIN  
Elk Park, N. C.



JOHN FRANCIS ESSIC  
Cana, N. C.

MARY NELL FAETHING  
Sugar Grove, N. C.



MARGARET ANNE FERGUSON  
Clyde, N. C.

MARY LOU FREEMAN  
Avondale, N. C.

GWYNELL GENTRY  
Forest City, N. C.

RUTH LUCILLE GOLDING  
Charlotte, N. C.

DENNIS K. FRANKLIN  
Sparta, N. C.

ORLAND WILSON GABRIEL, JR.  
Sherrill's Ford, N. C.

HAZEL LEE GIESLER  
Chickamauga, Ga.

DOROTHY JEAN GOOD  
Avondale, N. C.

# JUNIORS

JOYCE E. GRAGG  
Boone, N. C.

TED SMITH HAGAMAN  
Boone, N. C.

ANNA FAYE HARDIN  
Ligon, N. C.

CHARLES EVERETT HARRIS  
Chicago, Ill.

GEORGE H. GREENE  
Ronda, N. C.

EVELYN EMILY HANCOCK  
Mount Croghan, S. C.

VIOLET NAOMI HARRELL  
Gastonia, N. C.

MARGARET ANN HART  
Ford Valley, Ga.



ERMA DEEN HEAENER  
Lincolnton, N. C.

GEORGE BILL HEMPHILL  
Forest City, N. C.

RUTH VAUGHAN HESTER  
Belew Creek, N. C.

JAMES MINT HILL  
Rutherfordton, N. C.

HELEN M. HELLON  
Gastonia, N. C.

JAMES EDGAR HEMPHILL  
North Wilkesboro, N. C.

JOHN DONALD HIATT  
Mount Airy, N. C.

HAROLD YOUNG HODGES  
Mount Airy, N. C.

# JUNIORS

MARVIN D. HOFFMAN  
Statesville, N. C.

JOHNNY H. HOLLARS  
Boone, N. C.

JOHN HENRY HONBARRER  
Granite Quarry, N. C.

RITA KATE HOWELL  
Boone, N. C.

JULIAN HARVEY HOLBROOK  
Charlotte, N. C.

GRACE ELIZABETH HOLLIFIELD  
Bostic, N. C.

EDDIE GROVENE HOWARD  
Polton, N. C.

LAURA LEE HUFFINES  
Cameron, N. C.



MARY CATHERINE HUNTER  
Bessemer City, N. C.

JESSI C. HUTCHINSON  
Abshers, N. C.

NELLIE JARVIS  
Dobson, N. C.

JOSEPHINE KERLEY  
Taylorsville, N. C.

VERLIN HUTCHINSON  
Boone, N. C.

SUE MAE JACKSON  
Westfeld, N. C.

WALTER RALFIGH JOHNSON  
Sugar Grove, N. C.

MYRTLE ELVA KIKER  
Peachland, N. C.

# JUNIORS

JOHN T. KING  
Boone, N. C.

SARA CATHERINE KIRKLEY  
Jefferson, S. C.

LAURA MARGARET LANTZ  
Lincolnton, N. C.

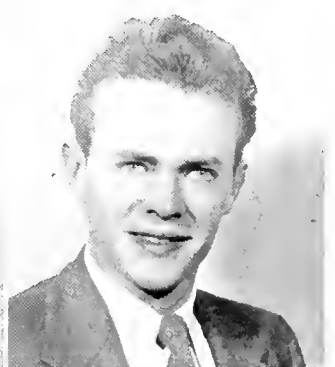
FUFANIA LEDBETTER  
Edneyville, N. C.

JOHN ZEB KIRK  
Lexington, N. C.

RUBY LEA KISER  
Kings Mountain, N. C.

ALLAN T. LEDBETTER, JR.  
Marion, N. C.

BETTY SUE LEONARD  
Lincolnton, N. C.



BROADUS EDGAR LITTLEFIELD  
Fairmont, N. C.

ROY MEDFORD LOVL  
Statesville, N. C.

ERNEST R. MAGNESS, JR.  
Forest City, N. C.

HAROLD G. MAST  
Sugar Grove, N. C.

WILLIAM EUGENE LONG  
Winston-Salem, N. C.

JACK SHIFFLER LUTTRELL  
Shulls Mills, N. C.

LAURA VIRGINIA MARTIN  
Sandy Ridge, N. C.

AINA JEAN MATHIS  
Cyclé, N. C.

# JUNIORS

JAMES ELLIOTT MATHIS  
Jonesville, N. C.

BERNICE ELIZABETH McCOMBS  
China Grove, N. C.

SYBIL ELAINE MILLON  
Caroleen, N. C.

JOHN DAVID MILLER  
Todd, N. C.

FLORITA McBRAYER  
Fairview, N. C.

ELIZABETH W. MEDLIN  
Polkton, N. C.

LOUISE MERONLY  
Mocksville, N. C.

EUGENE DELLINGER MODLIN  
Lincolnton, N. C.



BETTY RUTH MOORE  
Boone, N. C.

LAURA ELIZABETH MUNDY  
Morganton, N. C.

LILLIE EDITH ODOM  
Boone, N. C.

JOHN MILTON PANETTI, JR.  
Charlotte, N. C.

IMOGENE MOSES  
Pittsboro, N. C.

ESSIE C. NORRIS  
Boone, N. C.

EFFIE OSBORNE  
Shady Valley, Tenn.

MARY FRANCIS PARSONS  
Spartanburg, S. C.



# JUNIORS

JOYCE PATTON  
Jonesboro, N. C.

MRS. MARJORIE V. PITTMAN  
Boone, N. C.

GENE L. REISE  
Boone, N. C.

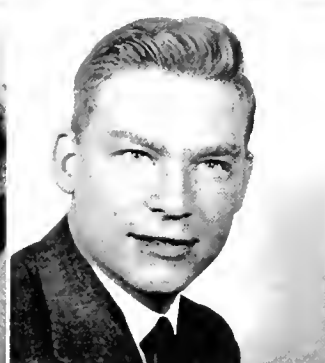
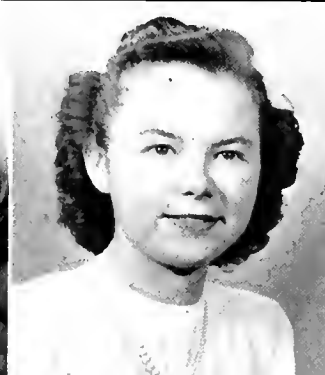
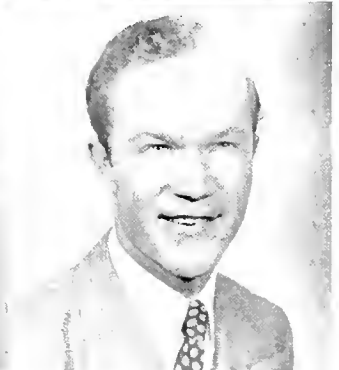
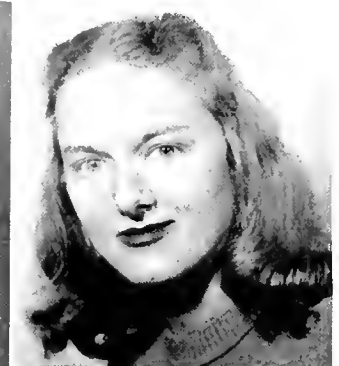
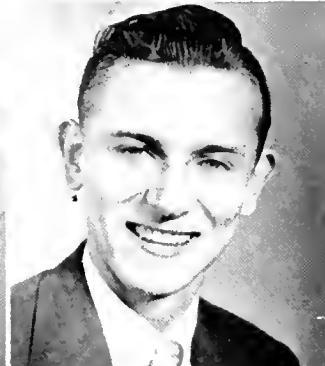
BETTY JO ROBERTSON  
Statesville, N. C.

ROBERT W. PHILBECK  
Shelby, N. C.

MARY LOU RANKIN  
Greensboro, N. C.

BETTY LOU RHYNE  
Lincolnton, N. C.

BILL ROBERTSON  
Boone, N. C.



CHARLES C. ROGERS, JR.  
Boone, N. C.

GRACE E. SHERWOOD  
Sugar Grove, N. C.

HELEN WILLIS SHORE  
Yadkinville, N. C.

ELEANOR JEANNI SHULE  
Valle Crucis, N. C.

WILLIAM SEAFORD  
Mocksville, N. C.

HARRIET ANNE SHORE  
Charlotte, N. C.

DALLAS BEVEL SHUGART  
Jonesville, N. C.

JAMES HARDING SISKI  
Pleasant Garden, N. C.

# JUNIORS

SHERLEY JEAN SMITH  
Arlas, N. C.

ALBA MAI SMITH  
Mount Airy, N. C.



AUDREY G. SPARGER  
Pilot Mountain, N. C.

IVA MAI STEELMAN  
Hamptonville, N. C.



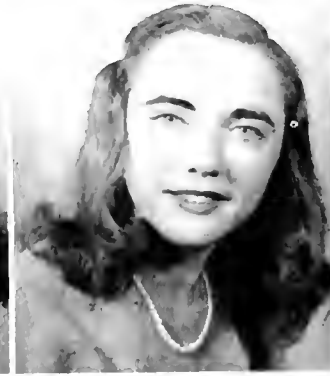
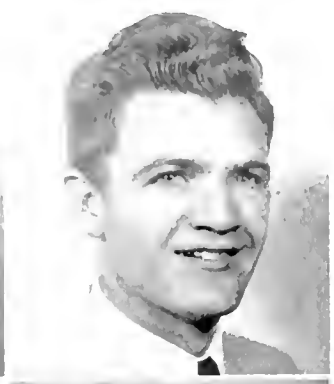
LENA RIVERS STRICKLAND  
Oak Ridge, Tenn.

MYRTLE P. SWARINGEN  
Trap Hill, N. C.



JAMES HUIF TEMPLETON  
Boone, N. C.

LOIS THRONBURG  
Morganton, N. C.



LILLIE LOUISE TIPPETT  
Salisbury, N. C.

MARY SUE TISDALE  
Old Fort, N. C.

CAROLYN LOUISE TOWNSEND  
Buie, N. C.

PAULA BEVERLY TOWNSEND  
Waynesville, N. C.

BECCA GEBALDINI TRINKS  
Marion, N. C.

HASKELL HAMILTON TRULL  
Wingate, N. C.

MILDRED VIRGINIA TUNNELL  
Boone, N. C.

MILDRED CATHERINE VANNOY  
Wilkesboro, N. C.

# JUNIORS

JACK WALKER  
Marion, N. C.

BARBARA ANN WEAVER  
Statesville, N. C.

FLORENCE McPHAIL WEEKS  
Clinton, N. C.

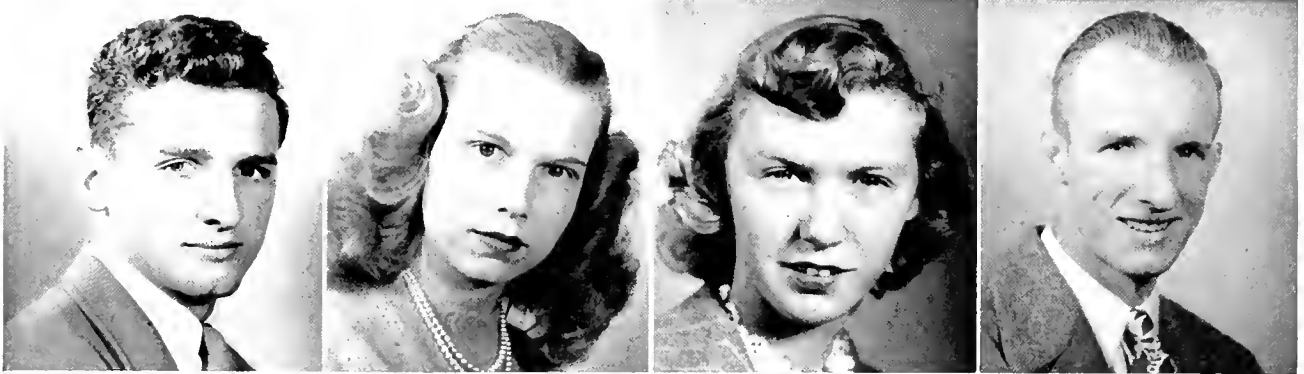
LESLIE EDWARD WEY  
Boone, N. C.

THOMAS LUCKY WARD  
Sugar Grove, N. C.

BETSY WEBSTER  
Boone, N. C.

MARILYN VIVIAN WELCH  
Lansing, N. C.

CELLO VIRGINIA WHITE  
Statesville, N. C.



S. B. WHITE, JR.  
Union Grove, N. C.

NANCY JANE WILCOX  
Boone, N. C.

VIRGINIA FERNE WILLIAMS  
New Hope, N. C.

MARGARET OLA WINECOFF  
Kannapolis, N. C.

CHARLES L. YOUNG  
Boone, N. C.

ROGERS WHITENER  
Spindale, N. C.

ANNA FAY WILLIAMS  
Mountain Park, N. C.

BUTLER EUGENE WILSON  
Zionville, N. C.

MARY SUE WINKLER  
Boone, N. C.

MARY LOUISE YOUNG  
Celo, N. C.

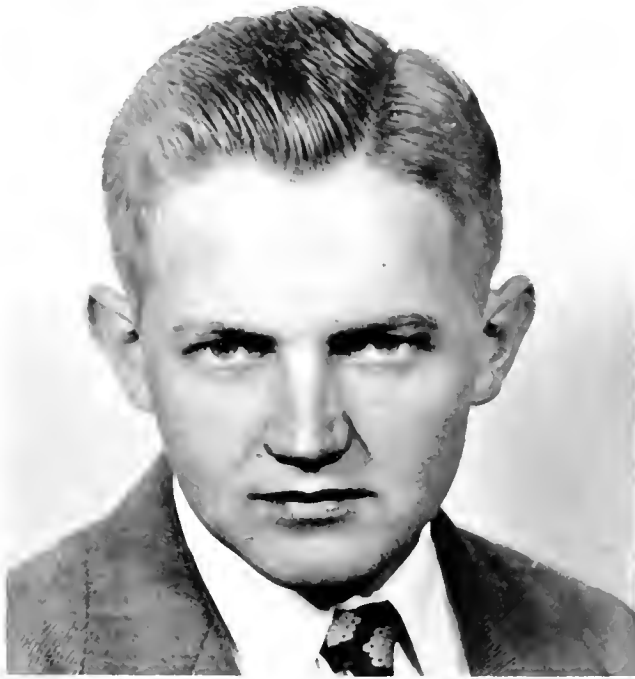




1922 — LOVILL HALL — BLAN-DOLPH HALL — 1947



SOPHOM



## SOPHOMORE CLASS OFFICERS

JIMMIE CLIFFORD McCONNELL .....President

CARL E. FIDLER .....Vice-President

MOZELLE RODGERS .....Secretary-Treasurer

# Sophomores



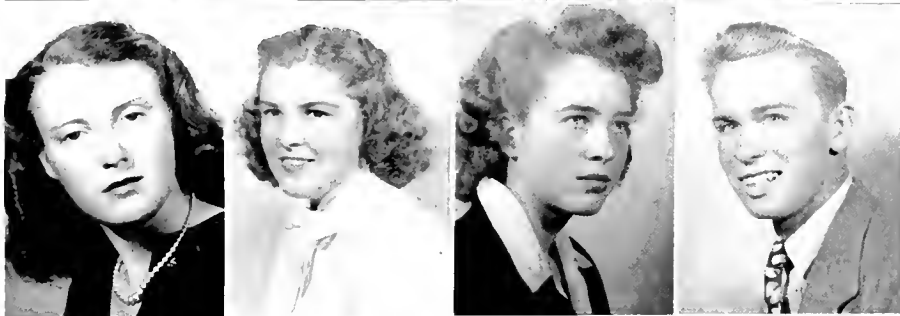
MARGARET MALINDA ADKINS  
Summerfield, N. C.  
MARY FRANCES ALLRED  
Linwood, N. C.  
LORENE AMOS  
Sandy Ridge, N. C.  
M. LOUISE ANDREWS  
Pittsboro, N. C.



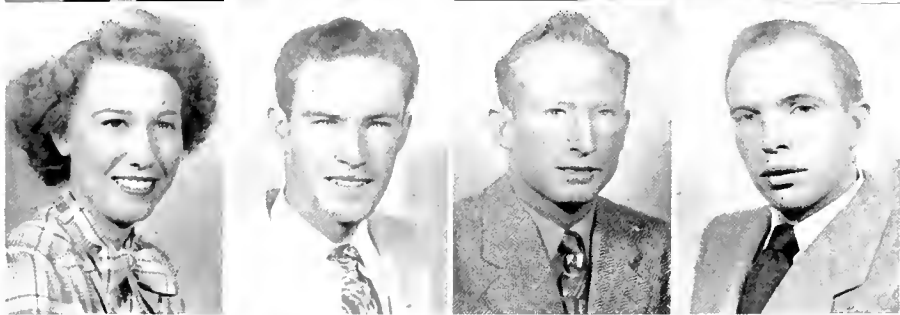
DOYLE W. AYERS  
Marion, N. C.  
NORIE ODOLIA BARBER  
Reidsville, N. C.  
AMELIE RENA BAUGUESS  
Lomax, N. C.  
MARGARET EVELYN BEAMER  
Mt. Airy, N. C.



INEZ BERNHARDT  
Salisbury, N. C.  
BETTY BINGHAM  
Boone, N. C.  
IRA J. BINGHAM, JR.  
Boone, N. C.  
RICHARD FRANKLIN BINGHAM  
Boone, N. C.



VIOLA GERTRUDE BINGHAM  
Boone, N. C.  
DOROTHY ELIZABETH BLACK  
Thomasville, N. C.  
CLEDA R. BOLICK  
Boone, N. C.  
CHARLES D. BOWERS  
Thomasville, N. C.



HUBERT L. BOYD  
Lenoir, N. C.  
GWEN BOYCE  
Seaford, Del.  
TOMMY LEROY BOYETTE  
Charlotte, N. C.  
JAMES DONALD BRADFORD  
Mooresville, N. C.



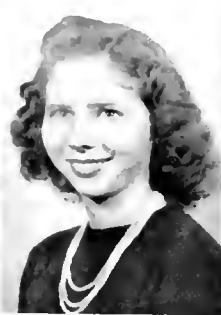
RACHEL ANN BRINTLE  
Mount Airy, N. C.  
HELEN BROOKS  
Sparta, N. C.  
MARIAM COZETTE BROOKSHIRE  
Taylorsville, N. C.  
BETTE BROWN  
Forest City, N. C.

# Sophomores

BETTY LOU BROWN  
Rockwell, N. C.

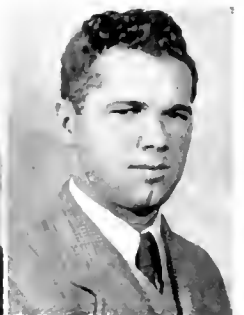


BOBBI BROWN  
Mooreville, N. C.



EVELYN HOPE BROWN  
Moravian Falls, N. C.

JOHN PAUL BROWN  
Creston, N. C.



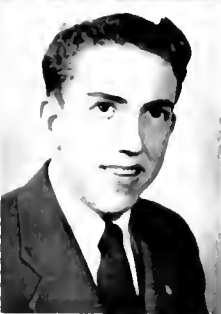
ARTHUR BURWELL BRULON, JR.  
Greensboro, N. C.



SUE BUNCH  
Statesville, N. C.



ROBERT FLOYD BURLISON  
Valle Crucis, N. C.



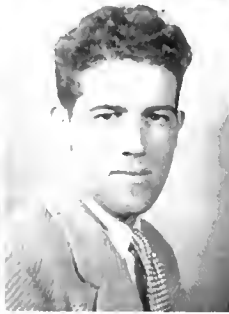
PEGGY BURRIS  
Stanfield, N. C.



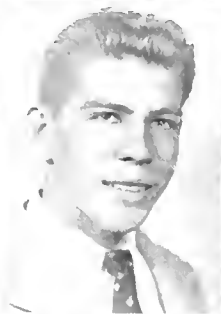
DORIS BUSBY  
Hickory, N. C.



CLARENCE MARION BUTLER, JR.  
Rutherfordton, N. C.



DOYLE FRANKLIN BYNUM  
Lincolnton, N. C.



DOROTHY LOUISE CALTON  
Bostic, N. C.



LUCILLE ELIZABETH CAMERON  
Fairview, N. C.



HUGH WHITLER CAMPBELL  
Union Grove, N. C.



LOUISE M. CAPSHAW  
Granite Falls, N. C.



PEGGY J. CARDWELL  
Moydan, N. C.



BETTY LOU CARTER  
Zebulon, N. C.



ELSIE LOIS CARTER  
Washington, N. C.



LOUISE CLICK  
Woodleaf, N. C.



RACHEL CRAVEN CLEAARD  
High Point, N. C.



MARGARET FLOBA COCKERHAM  
Mountain Park, N. C.



R. M. COLLINS, JR.  
Francisco, N. C.



FRANCES CAROLINE COOK  
Mebane, N. C.



JOB CARROLL COOK  
Boone, N. C.

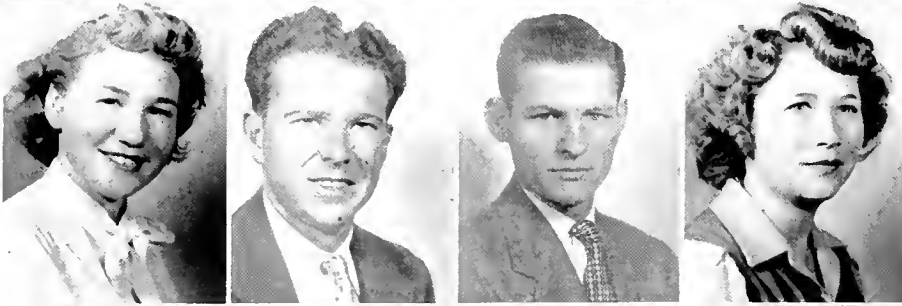




# Sophomores



BETTY WILMA CORNETTE  
West Jefferson, N. C.  
MARTHA JEANETTE CRESS  
Salisbury, N. C.  
JOHN OLIVER CROWE  
Hollis, N. C.  
JANE A. COX  
Thomasville, N. C.



INEZ DALTON  
Edneville, N. C.  
JOHN M. DAVENPORT  
Charlotte, N. C.  
GUY THOMAS DOVE  
Rowland, N. C.  
MADELINE EDMISTEN  
Sugar Grove, N. C.



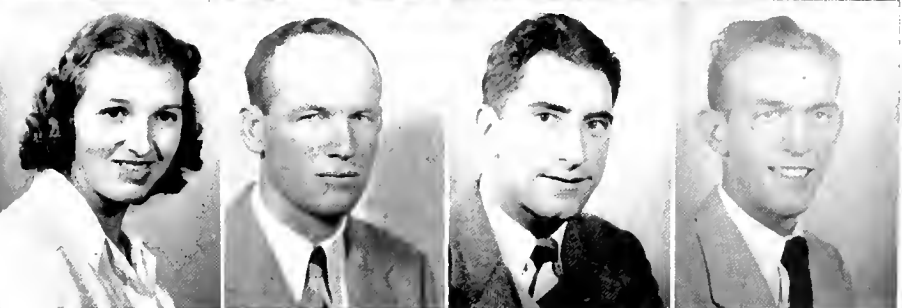
THOMAS EDMISTEN  
Boomer, N. C.  
RUBY EDWARDS  
Concord, N. C.  
FRANCES ELETHA ENGLAND  
Marion, N. C.  
JOYCE GABRIELLE ETHERIDGE  
Baltimore, Md.



NORMA LOU FENDER  
Glade Valley, N. C.  
CARL FIDLER  
Cornelius, N. C.  
JAMES RAY FOX  
Boone, N. C.  
LOUISE FRANCIS  
Francisco, N. C.



MARY LOU FRAZIER  
Julian, N. C.  
ADELAIDE FRYE  
Catawba, N. C.  
JOHN GERRY FULLER  
Detroit, Mich.  
MARY WILKINS GARDNER  
Shelby, N. C.



REBECCA ERLINE GARRISON  
Black Mountain, N. C.  
JULIAN ANDERSON GAULT  
Simpsonville, N. C.  
I TO GLYER  
Brooklyn, N. Y.  
ISAAC BENJAMIN GOFORTH, JR.  
Kings Mountain, N. C.

# Sophomores

LESSIE B. GOODMAN  
Sparta, N. C.

OLON B. GOODNIGHT  
Boone, N. C.

JACQUELYN L. GORDON  
Cramerton, N. C.

ANNE GABRIEL GRAHAM  
Concord, N. C.

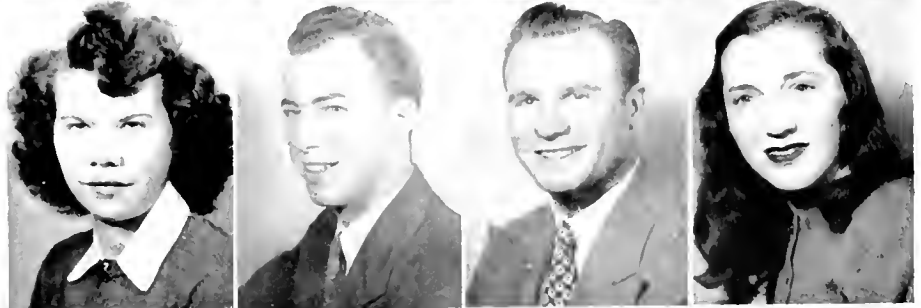


ELLA GRAHAM  
Sturgills, N. C.

L. D. GRAHAM  
Todd, N. C.

WILLIAM H. GRAHAM  
High Point, N. C.

PATSY RUTH HADLEY  
North Wilkesboro, N. C.



WILLIAM IRA HALSTEAD  
Pennington Gap, Va.

RUBY ELIZABETH HARDY  
Pinnacle, N. C.

MARGARET HAZEL HARRILL  
Forest City, N. C.

MARY SUE HENDREN  
Moravian Falls, N. C.



JAMES ALBERT HATT  
Mount Airy, N. C.

ROGER LEW HATT  
Mount Airy, N. C.

AUDREY ELIZABETH HOPE  
Gover, N. C.

MARGARET HOPKINS  
Boone, N. C.



CLAUDE EDGAR HOYLE  
Connelly Springs, N. C.

JAMES C. HUNTER  
Pleasant Garden, N. C.

EL ROY HUNTER  
Burnsville, N. C.

TROY RUFUS HUSKEY  
Avondale, N. C.



DWIGHT NORMAN JEFFERS  
Belwood, N. C.

WILLIE VIRGINIA JENNINGS  
Pores Knob, N. C.

BRICE JOHNSON  
East Bend, N. C.

HOWARD ARNOLD JOHNSTON  
Covington, Va.



# Sophomores



LESLIE EUGENE JOHNSTON  
Mooreville, N. C.  
HARLEY E. JOLLEY  
Boomer, N. C.  
HELEN ELIZABETH JOLLY  
Polkville, N. C.  
CLYDE HOWARD JONES  
Elon College, N. C.



HOUSTON GWYNNE JONES  
Yanceyville, N. C.  
JOHN THOMAS JONES  
Greensboro, N. C.  
MADGE JONES  
Lattimore, N. C.  
EARLINE KEATON  
Anderson, S. C.



MARION WILLENE KESLER  
Winston-Salem, N. C.  
CLARENCE E. LEATHERMAN  
Vale, N. C.  
ELIZABETH LEE  
Kerr, N. C.  
GALE GENTRY LEMLY  
West Jefferson, N. C.



WILLIAM CLYDE LINDSAY, JR.  
Morganton, N. C.  
JOAN LOVILLE  
Boone, N. C.  
EUGENE ALLEN LYONS  
Boone, N. C.  
EDITH LEOLA MAIN  
Boone, N. C.



JAMES F. MALCOLM  
Winston-Salem, N. C.  
BEULAH GREY MARION  
Pinnacle, N. C.  
EDITH ELOISE MARLOWE  
Marion, N. C.  
ELIZABETH PAMELIA MARTIN  
Boonville, N. C.



MARGARET VERNON MASON  
Laurel Hill, N. C.  
MARVIN LOTT MAYBERRY  
Jonesville, N. C.  
ALWAYNE MCCLURE  
High Point, N. C.  
JIMMIE CLIFFORD MCCONNELL  
Boone, N. C.

# Sophomores

HELEN GRACE MELVIN  
Jackson Springs, N. C.

ALAN MILLER  
West Jefferson, N. C.

ASHLEY KATHLEEN MILLER  
Boone, N. C.

WILLIAM THOMAS MILLS  
Statesville, N. C.



BETTY LANE MINOR  
Winston Salem, N. C.

EMMA LUCILLE MITCHELL  
Sparta, N. C.

MARJORIE JANE MITCHEM  
Belwood, N. C.

SAM A. MOIR  
Francisco, N. C.

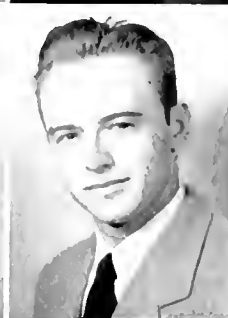


MARTHA LILLIAN MOORE  
Willard, N. C.

CALVIN WARREN MORGAN  
Durham, N. C.

HUBBARD BERNARD MORRIS  
Salisbury, N. C.

VIRGINIA THURLENI MURRAY  
Marion, N. C.



DESSIE ELIZABETH PACK  
Mount Airy, N. C.

JAMES F. PARKS  
Langier, Va.

EDITH CAROLYN PARSONS  
Obids, N. C.

HERBERT DEWLY PARSONS  
Obids, N. C.



JEAN PERRYMAN  
Lexington, N. C.

ELIZABETH BELL PHARR  
Wilkesboro, N. C.

BETTY JO PUYER  
Monroe, N. C.

LAWRENCE FALMADGE QUEEN  
Greensboro, N. C.



CHARLES C. RANDALL, JR.  
Lincolnton, N. C.

MILDRED A. RAMSLEY  
Bakersville, N. C.

ZANA MARILYN BABY  
Jonesville, N. C.

BETTY BAY  
Blowing Rock, N. C.



# Sophomores



ASA J. REESE  
Reese, N. C.  
FAYE VERA RHODFS  
North Wilkesboro, N. C.  
CHARLES HUGH RIDDLE  
Spruce Pine, N. C.  
SARAH LYNN RIVES  
Jonesboro, N. C.



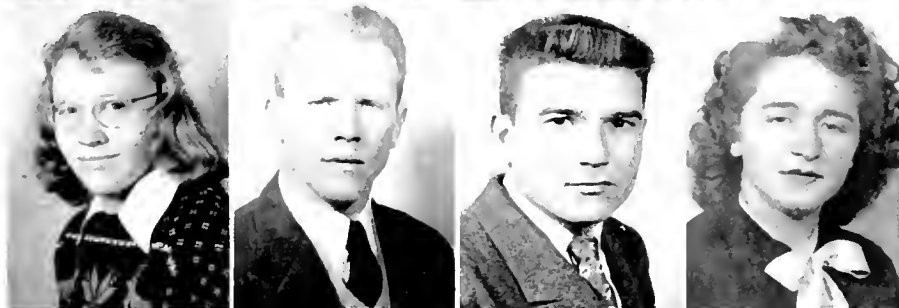
MERRITT B. ROBINSON  
Newdale, N. C.  
MOZELLE RODGERS  
Thomasville, N. C.  
JULIAN FINLEY ROGERS  
Clarkton, N. C.  
VERNON LEE ROSS  
Greensboro, N. C.



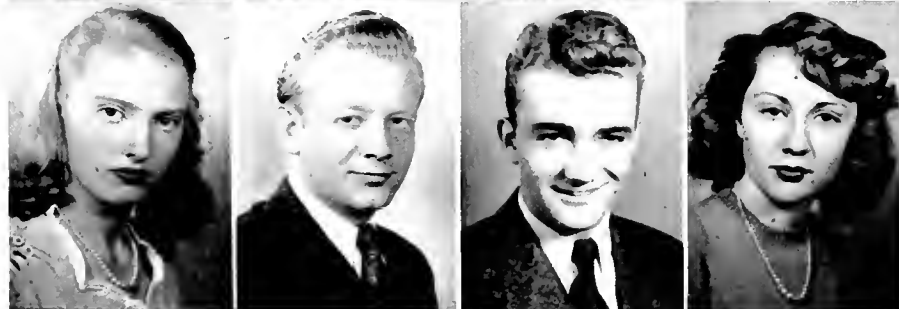
FRED WILLIAM SCOTT  
East Bend, N. C.  
CONRAD ALDEAN SHAW  
Edgewood, Md.  
CLARA MAE SHEPHERD  
Sugar Grove, N. C.  
IZORIA TOY SHEPPARD  
Sandy Ridge, N. C.



JAMES WILEY SHERWOOD  
Sugar Grove, N. C.  
DAPHENE SIDES  
Paw Creek, N. C.  
WAYNE COUNCIL SIMPSON  
China Grove, N. C.  
ELIZABETH JEAN SMITH  
Lenoir, N. C.



RITA L. SMITH  
Charlotte, N. C.  
CECIL M. SPARKS  
Elkin, N. C.  
JOHN BRITT STEELMAN  
Wilkesboro, N. C.  
CELESTE BINA STEPHENS  
Creston, N. C.



EDNA BINGHAM SILWART  
Charlotte, N. C.  
LUTHER CLAY STREET  
Ewart, N. C.  
TOM SUMNER  
Cherryville, N. C.  
MARY JANE TAIT  
Boone, N. C.

# Sophomores

HELEN HUDSON TALLENT  
Charlotte, N. C.

MARY KATHREN TICKLE  
Mount Airy, N. C.

FARLEY LEE TILLEY  
Mount Airy, N. C.

THOMAS E. TIMMONS  
Mount Airy, N. C.

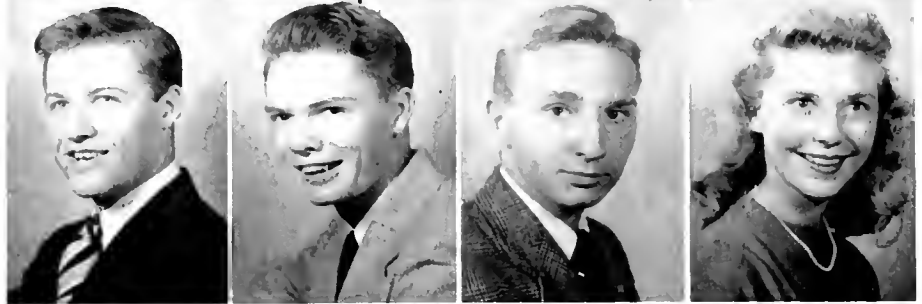


EDWIN NOSHIER TROUFMAN  
Boone, N. C.

MARVIN DELANE TURNER  
Charlotte, N. C.

FRANK DIXON UNDERWOOD  
North Wilkesboro, N. C.

RACHEL ANNE VANCE  
Boone, N. C.



LUCILLE ADELINE VERNON  
Sandy Ridge, N. C.

PAULINE ROZELLE WAGONER  
Roaring River, N. C.

RUBY MAE WALKER  
Charlotte, N. C.

SARA FRANCIS WEAST  
Mount Ulla, N. C.



ANNA LEE WEAVER  
Brandon, N. C.

NELLIE GRAY WEBB  
Reidsville, N. C.

MARGARET WILLMAN  
Belwood, N. C.

BOYCE RUCKER WHITE  
Rutherfordton, N. C.



JAMES MARSHALL WHITE  
Union Grove, N. C.

DORIS ERVIN WHITESIDES  
Clover, S. C.

MILDRED M. WICKER  
Sanford, N. C.

LEE WILKS  
Wing, N. C.



MARY KATHRYN WILSON  
Boone, N. C.

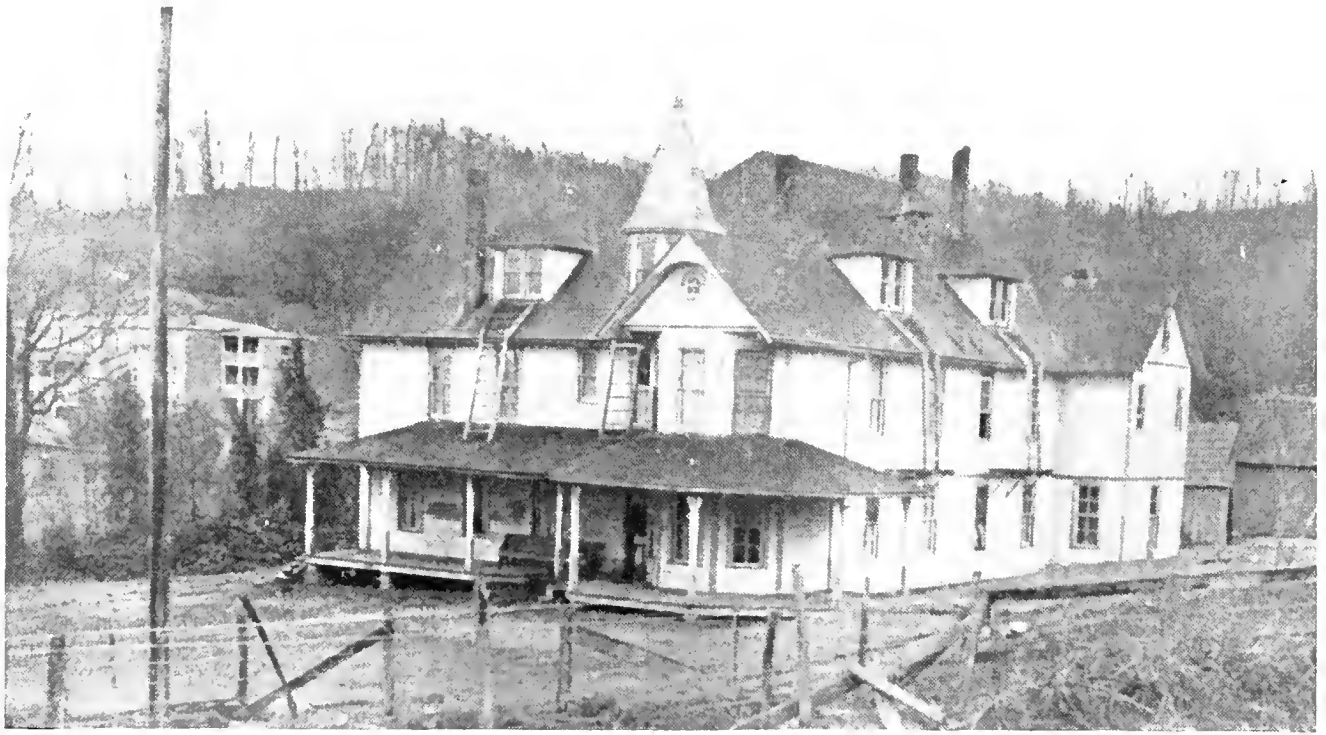
VERA LOUISE WORKMAN  
Hickory, N. C.

WILLIAM W. WORSHAM  
Ruffin, N. C.

MARTIN O. YOUNG  
Cramerton, N. C.

ROBERT YOUNG  
Bakersville, N. C.





1922 — NEWLAND HALL — 1947



F H I T



## FRESHMAN CLASS OFFICERS

- ROBERT LANSING WITHROW ..... *President*  
 RALPH BYRNIÉ WALTERS ..... *Vice President*  
 MARTHA ANN VOSS ..... *Secretary*  
 EMORY DAVID STEPHENS ..... *Treasurer*



# FRESHMEN

ROBERT VERNON ABBE .....Morganton, N. C.  
 JERRY ADAMS .....Vilas, N. C.  
 JOHNNY BURWELL ALBEA ....Winston-Salem, N. C.  
 LUKE S. ALLEN .....Pinnacle, N. C.  
 MARTY FRANCES ALSTON .....Burlington, N. C.  
 RAY LEWIS ALSTON .....Hamlet, N. C.  
 JAMES M. ANDERSON ....North Wilkesboro, N. C.  
 ANNIE MARGARET ANDREWS .....Concord, N. C.  
 BENJAMIN DOUGLAS ARCHER ..Winston-Salem, N. C.  
 DOROTHY GERALDINE ARMSTRONG .Morganton, N. C.  
 BLANCHE IRENE ASHBY .....Concord, N. C.  
 MARGARET ESTELLE AUSTIN ....Albemarle, N. C.  
 RALPH KENNETH AUSTIN .....Lenoir, N. C.  
 AUDREY BAUGUESS .....Lomax, N. C.  
 HELEN BERNICE BAKER .....Boonville, N. C.

WILLIAM FOX BEAL .....Nashville, N. C.  
 RALPH EDWARD BEANE .....Boone, N. C.  
 CLAUDE JENNINGS BLAVER .....Rockwell, N. C.  
 HUGH ALBERT BLAVER .....Rockwell, N. C.  
 RUFUS REID BLAVER .....Rockwell, N. C.  
 JANL BIRER .....Castlewood, Va.  
 ROBERT MANESE BIRKE ....Winston-Salem, N. C.  
 EUGENE ANDREW BIRKE ....Winston-Salem, N. C.  
 MARY EVELYN BISHOP .....Brown Summit, N. C.  
 JAMES B. BLEVINS .....Bakersville, N. C.  
 CLORD SHUFFORD BOLICK .....Boone, N. C.  
 WALTER S. BOONE .....Boone, N. C.  
 LOUIS M. BOST .....Kannapolis, N. C.  
 WILLIAM TROY BOWMAN .....Taylorsville, N. C.  
 MARY MARGERY BRADLEY .....Vilas, N. C.



# FRESHMEN

MILDRED B. BRADLEY .....Charlotte, N. C.  
 IRIS TAGWANDA BRANDI .....Brown Summit, N. C.  
 HELEN D. BRANNER .....Charlotte, N. C.  
 JACK V. BRASWELL .....Morganton, N. C.  
 JOHN RAYMOND BRINDLEY, JR. ....Boone, N. C.  
 LUVENIA CRELCH BRIGHT .....Hookerton, N. C.  
 BOYCE R. BROWN .....Shelby, N. C.  
 BEN D. BROWN .....Lenoir, N. C.  
 WILLIAM F. BROWN, JR. ....Nebo, N. C.  
 ALMA JEAN BUCHANAN .....Minneapolis, N. C.  
 T. D. BURLISON .....Spruce Pine, N. C.  
 JOHN FRANCIS BUENER .....Winston-Salem, N. C.  
 THERESA G. CAUDWELL .....North Wilkesboro, N. C.  
 BETTY JO CAMLSON .....Fairview, N. C.  
 JANE WALKER CANNON .....Wilmington, N. C.

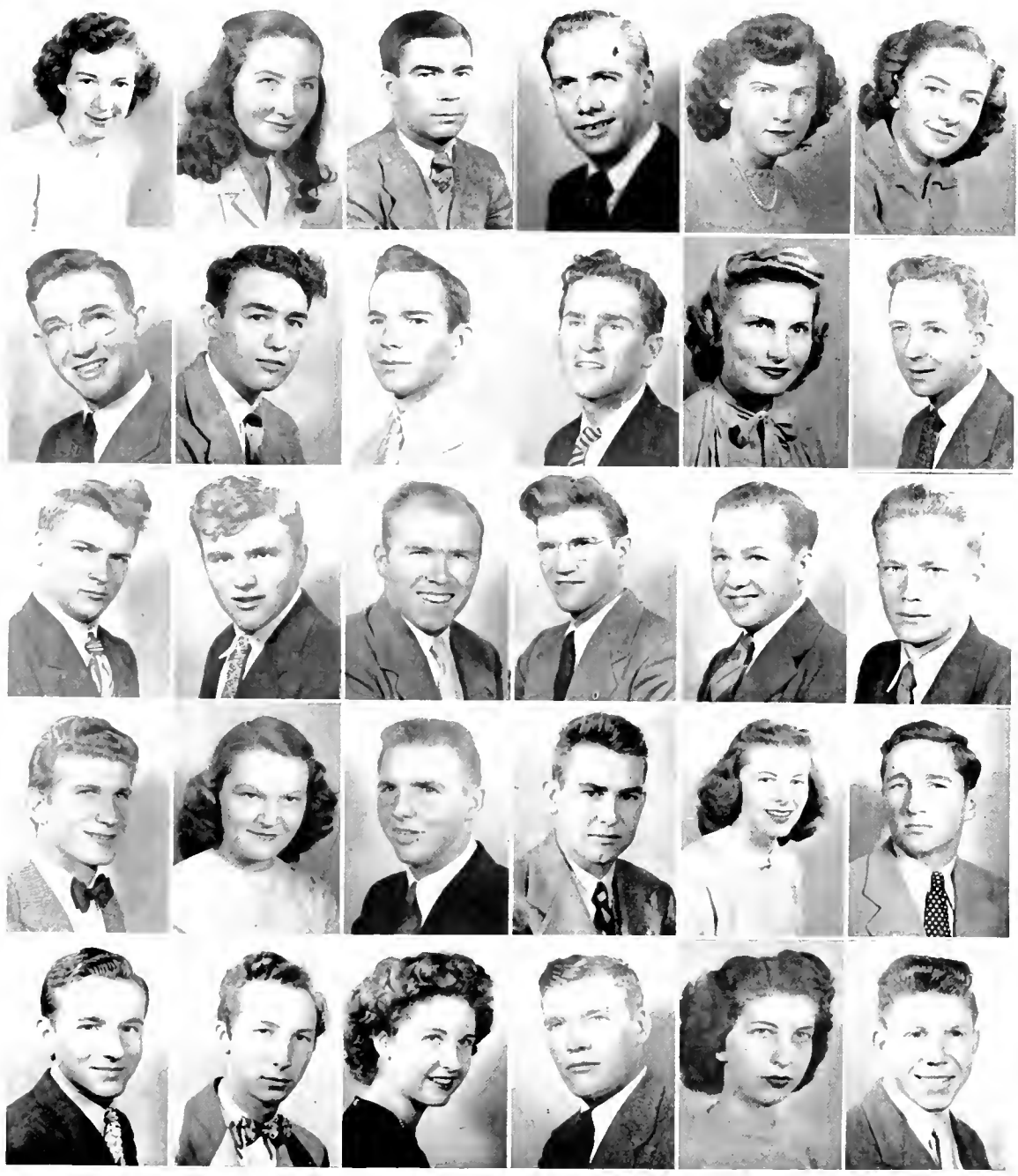
EDWIN JONES CANTER .....Wilkesboro, N. C.  
 JAMES HARIAN CASTRELL .....Avondale, N. C.  
 END FRANCIS CARROLL .....Boone, N. C.  
 ERNEST ROBERT CARTER, JR. ....Winston-Salem, N. C.  
 ALBERT BLECHER CASPY .....Winston-Salem, N. C.  
 LEONARD ROBERT CASHION .....Mooresville, N. C.  
 JOHN ROCKWELL CASKEY .....Mooresville, N. C.  
 HAROLD D. CAUDILL, JR. ....North Wilkesboro, N. C.  
 JACK CAUDILL .....Millers Creek, N. C.  
 VIRGINIA ETHEL CAUDILL .....Millers Creek, N. C.  
 GEORGE GLENN CAUSEY .....Greensboro, N. C.  
 HARRY EUGENE CLENDENIS .....Greensboro, N. C.  
 JAMES ROBERT CLINE .....Fallston, N. C.  
 CHARLES ERVIN CLONTZ .....Lenoir, N. C.  
 CHARLES HOWARD COCKERMAN .....Smethport, N. C.



# FRESHMEN

PHYLLIS JEAN COCHRANE .....Concord, N. C.  
 CARRIE BESS COLE .....High Rock, N. C.  
 ELTON B. COLEMAN .....Whiteville, N. C.  
 HENRY GRAY COOKE .....Pilot Mountain, N. C.  
 VIRGINIA CLARICE COOPER .....Ringgold, Ga.  
 NANCY IMOGENE COVINGTON .....Troy, N. C.  
 WILLIAM LETCHER COUNTS .....Honaker, Va.  
 EUGENE MARSHALL COX .....Whiteville, N. C.  
 CLAUDE RICHARD CRAVER .....Lexington, N. C.  
 ROBERT CLIFTON CRISSMAN .....Oxford, N. C.  
 JERRILYN CROUCH ..... Mooresville, N. C.  
 EDWARD DARWIN DANCY .....North Wilkesboro, N. C.  
 THADDEUS C. DARNELL .....Roaring River, N. C.  
 DEWEY D. DAVIDSON .....Lexington, N. C.  
 GURNEY WALTER DAVIDSON .....Lexington, N. C.

ARTHUR DAVID DAVIS, JR. ....Cleveland, N. C.  
 ROBY DEWARD DAVIS .....Lowgap, N. C.  
 JOSEPH EDWIN DEJOURNETTE ....Thurmond, N. C.  
 ROBERT GLENN DENNIS .....Wilkesboro, N. C.  
 ELIZABETH ANN DIGGS .....Jefferson, N. C.  
 RALPH WILLIAM DIXON .....Fallston, N. C.  
 LIONEL D. DONALDSON ..... Mooresville, N. C.  
 LENORA DUDLEY .....Wadlington, N. C.  
 LOUIS BROWN DULA, JR. ....Wilkesboro, N. C.  
 JOHN CLARENCE EDENS .....Rowland, N. C.  
 JOHN HOYT EDMISTEN .....Boone, N. C.  
 DORIS FLORINE ELLENBURG .....Spartanburg, S. C.  
 KENNETH FRANKLIN ENGLAND ....Morganton, N. C.  
 FRANCES ALICE EUDAILY .....Millers Creek, N. C.  
 WAYNE FRANKLIN EVERHART ....Lexington, N. C.



# FRESHMEN

CATHERINE FARROW .....Shelby, N. C.  
 JOHN ELLERBE FEYNER .....Hamlet, N. C.  
 KARL PAYNE FLEMING .....Wilson, N. C.  
 DAVID WILEY FLETCHER .....Durham, N. C.  
 FUNICE BEANICHE FOLGER .....Dobson, N. C.  
 FRANK DOUGLAS FOWKES .....Yanceyville, N. C.  
 JAY C. FOX .....Taylorsville, N. C.  
 WORTH ELIJAH FRADY .....Rutherfordton, N. C.  
 HOMER K. FREEZE, JR. ....Winston Salem, N. C.  
 ADELAIDE GILES .....Lexington, N. C.  
 GLENN KELLY GOLTHIER .....Ronda, N. C.  
 I. BRUCE GORDON .....Winston Salem, N. C.  
 JUANITA MOZELLE GRANT .....China Grove, N. C.  
 GEORGE C. GREEN .....West Jefferson, N. C.  
 CYCIL MONROE GREENE .....Boone, N. C.

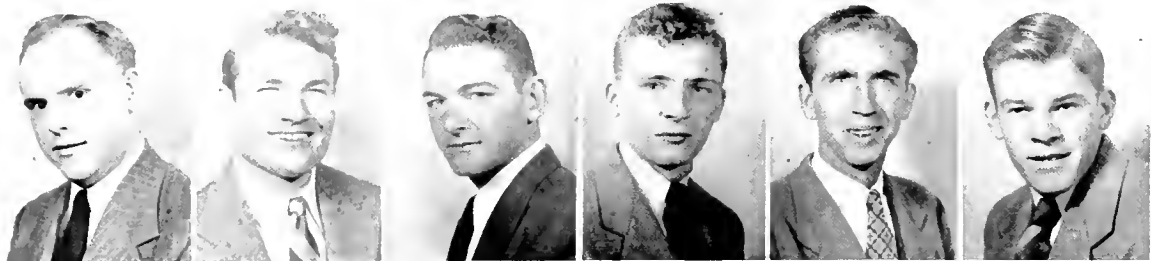
KATE LOIS GRIFFITH .....Relief, N. C.  
 JACK M. HADLEY .....North Wilkesboro, N. C.  
 ROBERT VON HAGAMAN .....Boone, N. C.  
 RICHARD MAX HAGER .....Mooresville, N. C.  
 ANNE LAURA HALL .....Moult Airy, N. C.  
 FRANK B. HALSTEAD .....Pennington Gap, Va.  
 CHRIS COLEMAN HANSON, JR. ....Lancaster, S. C.  
 FRED HAROLD HARDIN .....West Jefferson, N. C.  
 GRACE LUELLE HARDY .....Pinnacle, N. C.  
 FVELYN C. HARLEY .....Boone, N. C.  
 CHARLES LEE HATHCOCK .....Lenoir, N. C.  
 FLIA MAXINE HAWKS .....Greensboro, N. C.  
 JAMES McALPINE HAWPE .....Greenville, Va.  
 MARY LEE HEDGCOCK .....Kernersville, N. C.  
 KENNETH EUGENE HELFNER .....Shelby, N. C.



# FRESHMEN

ANDREW R. HENDERSON, JR. .... Huntersville, N. C.  
 BANDY AGUSTA HERMAN ..... Maiden, N. C.  
 RAY FORD HEWITT ..... Elmwood, N. C.  
 DUDLEY SLOAN HILL, JR. ... North Wilkesboro, N. C.  
 EUGENE R. HILL ..... Mount Airy, N. C.  
 JAMES CECIL HILL ..... Mount Airy, N. C.  
 MILLER KIRK HINSHAW .... Winston-Salem, N. C.  
 THELMA LUNDA HODGES ..... Vilas, N. C.  
 JAMES COLUMBUS HOLLAND ..... Olin, N. C.  
 THOMAS I. HOLLOWAY, JR. .... Shulls Mills, N. C.  
 CHARLES L. HONEYCUTT ..... Bailey, N. C.  
 HOWARD W. HONEYCUTT ..... Boone, N. C.  
 WILLIAM ARMOND HOOD ..... Lenoir, N. C.  
 DEWEY JACK HOOKS ..... Brunswick, N. C.  
 CHARLES LEE HOPE ..... Ellenboro, N. C.

HAROLD C. HORNE ..... Wilmington, N. C.  
 BEN B. HOSKINS ..... Olin, N. C.  
 CHARLES RICHARD HOSKINS .... Summerfield, N. C.  
 JAMES CORBITT HOWARD, JR. ... Sherrill's Ford, N. C.  
 MARIAN LUCILLE HUFFINES ... Brown Summit, N. C.  
 WILLIAM DAVIS HUFFINES ..... Greensboro, N. C.  
 THOMAS EUGENE HUNTER .... Winston-Salem, N. C.  
 BASIL MCGHEE HUNTLEY ..... Lenoir, N. C.  
 CHARLES CUMMINGS HUNTLEY ..... Lenoir, N. C.  
 JOHN WILLIAM HUTCHINSON ..... Lancaster, S. C.  
 ROBERT L. HUTCHISON ..... Abshers, N. C.  
 EUGENE P. IRWIN ..... Sparta, N. C.  
 DAVID HUNTER JACKSON ..... Shelby, N. C.  
 CHARLES SINK JARVIS, JR. .... Winston-Salem, N. C.  
 JACK K. JEFFERY ..... Wilmington, N. C.



# FRESHMEN

DANIEL EDWARD JENSON .....Lakewood, Ohio  
 PAUL P. JENKINS .....Taylorsville, N. C.  
 RALPH JENKINS .....Lawndale, N. C.  
 CHARLES HENRY JOHNSON ....Winston Salem, N. C.  
 CLYDE ELLIS JOHNSON .....Winston Salem, N. C.  
 WILLIAM J. JOHNSON, JR. ....Lafayetteville, N. C.  
 ALBERT GRIER JOHNSTON .....Huntersville, N. C.  
 WESLEY JOINES .....Jovnes, N. C.  
 GEORGE WOODROW JONES .....Pinnacle, N. C.  
 JENNINGS BRYANT JOYE, JR. ....Wilmington, N. C.  
 VERDOLA KELLER .....Boone, N. C.  
 MRS. ELAINE KIRK .....Lexington, N. C.  
 GENE IRVIN KIRKPATRICK .....Shelby, N. C.  
 J. C. LAMM .....Bailey, N. C.  
 CARL ALLEN LANE .....Charlotte, N. C.

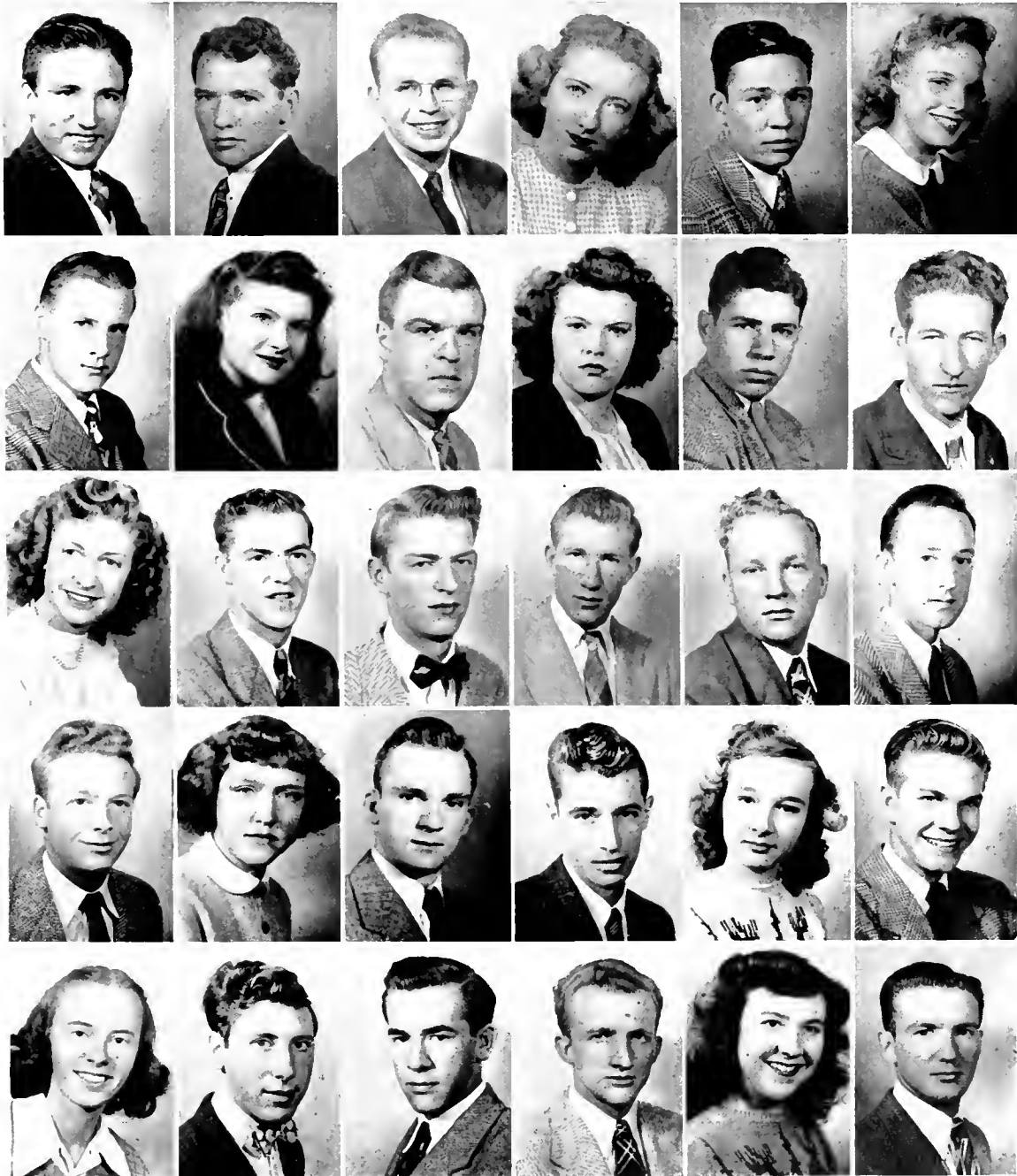
ODUS E. LEE .....Shelby, N. C.  
 CHARLES MARTIN LEITH .....Cumberland, Md.  
 HOMER CARTER LENTZ .....Blowing Rock, N. C.  
 GERARD EUGENE LEONARD .....Lexington, N. C.  
 JACK A. LEWIS .....Gastonia, N. C.  
 JAMES BOYD LEWIS .....Gastonia, N. C.  
 WILLIAM WADE LINKER .....Davidson, N. C.  
 WILLIAM EARL LONG .....Raleigh, N. C.  
 P. L. LOVE .....Winston-Salem, N. C.  
 FRANK ALBERT LOWE .....Pores Knob, N. C.  
 MICKEY MARLOW .....Winston-Salem, N. C.  
 JAMES DAVID MARSH .....Sophia, N. C.  
 ROY PINKNEY MARSH .....Boone, N. C.  
 CLARENCE W. MARTIN .....Mount Airy, N. C.  
 JAMES F. MARTIN .....Sumnerfield, N. C.



# FRESHMEN

MARTIN SWEEZY MARTIN .....Ellenboro, N. C.  
 ROBERT L. MARTIN .....Summerfield, N. C.  
 FREDERICK ALLEN MASTEN ..Winston-Salem, N. C.  
 SARAH MILLER MATTHEWS .....Lenoir, N. C.  
 DEWEY KEITH MAYBERRY .....Jonesville, N. C.  
 WANDA L. MAYNARD .....Beautv, Ky.  
 CHARLES FLETCHER McBRAYER ....Fairview, N. C.  
 SARAH ALICE McCREIGHT .....Knoxville, Tenn.  
 ROBERT HENRY McGHEE .....Greensboro, N. C.  
 FRANCES DELORES McGUIRE .....Heaton, N. C.  
 LAWRENCE ERNEST McLAURIN ..Mooresville, N. C.  
 FREDERICK CARE McLEAN .....Cricket, N. C.  
 RITA DARE McNEAL .....Redlev Park, Pa.  
 COY B. MIKEAS .....Todd, N. C.  
 BAXTER DAVIS MILLER .....Boone, N. C.

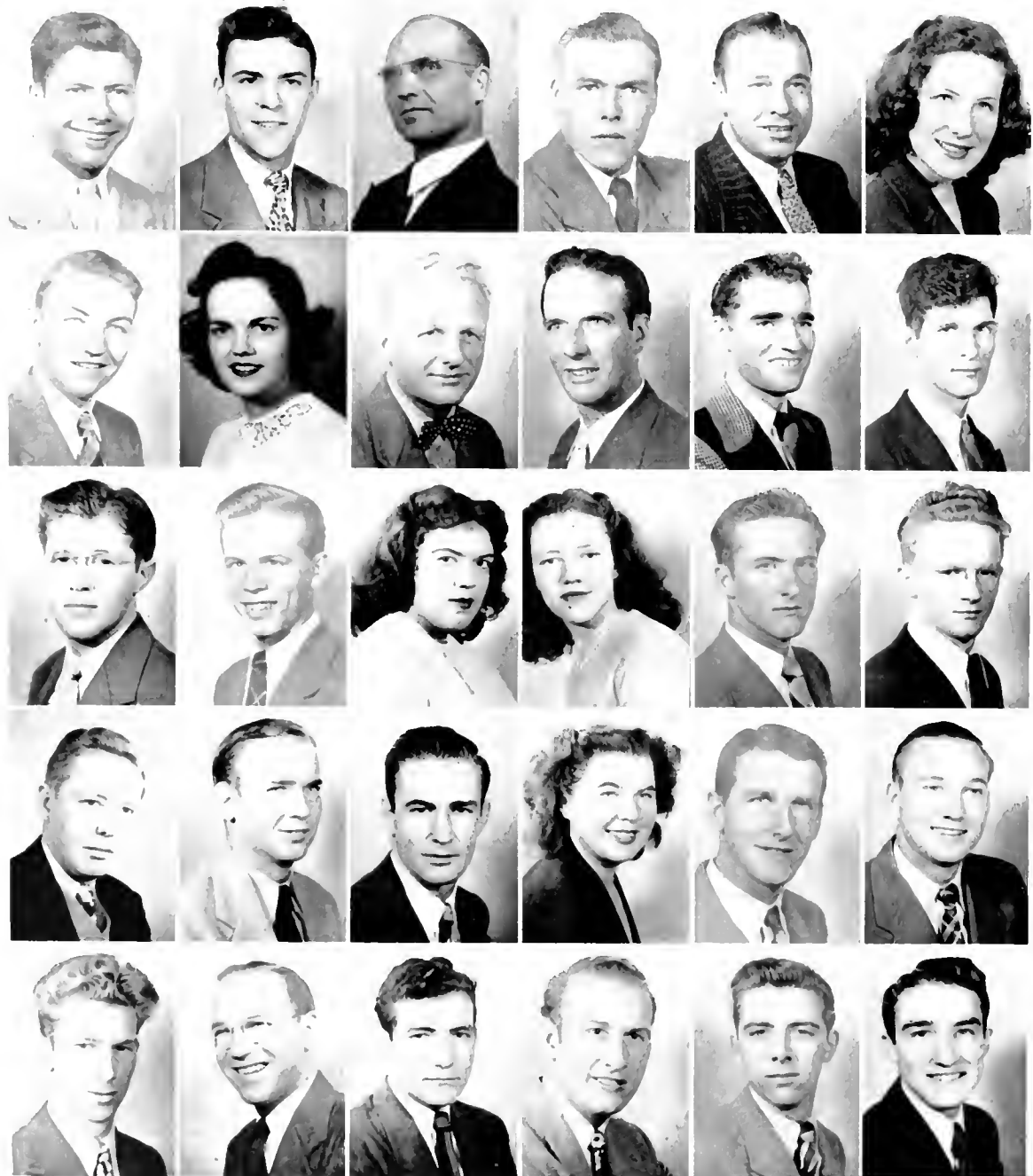
ERNEST ELLWOOD MILLER .....Lake View, S. C.  
 KENT MORETZ MILLER .....Deep Gad, N. C.  
 THURMAN GREEN MILLER, JR. ....Jefferson, N. C.  
 DONALD PAUL MILLSAPS .....Taylorsville, N. C.  
 MIRIAM JUANITA MOOSE .....Concord, N. C.  
 HERBERT C. MORETZ .....Boone, N. C.  
 PAUL BERNARD MORETZ .....Boone, N. C.  
 RUBY DEE MORGAN .....Glenwood, N. C.  
 HARRY LEE MYERS .....Thomasville, N. C.  
 LILLIAN BARRY NEAL .....Charlotte, N. C.  
 FINLEY ROMIS NORRIS .....Boone, N. C.  
 LYDAY MERRILL NORRIS .....Todd, N. C.  
 ROBERT GLEN NORRIS .....Creston, N. C.  
 MURIEL VIRGINIA OAKS .....Heaton, N. C.  
 ANDREW LAWRENCE OLIVER, JR. ....Shelby, N. C.



# FRESHMEN

CARL EUGENE OWEN ..... Burlington, N. C.  
 CHARLES DONALD OWENS ..... Forest City, N. C.  
 WILBUR J. PAGE ..... Yanceyville, N. C.  
 GILBERT MARTIN PARDUE ..... Boonville, N. C.  
 ROGER LEE PARDUE ..... Winston Salem, N. C.  
 BETTY LEE PATTON ..... North Wilkesboro, N. C.  
 WILLIAM TAYLOR PAYNE ..... Sugar Grove, N. C.  
 TRIANA BERNICE PIGRAM ..... Belew Creek, N. C.  
 WILLIAM EARL PENICK ..... Boone, N. C.  
 R. DOYLE PENNELL ..... Taylorsville, N. C.  
 JOHN MARVIN PENNINGTON ..... Jefferson, N. C.  
 CLIFFORD VON PITTMAN ..... Spruce Pine, N. C.  
 JULIAN B. PIPHER, JR. .... Charlotte, N. C.  
 GORDON D. PHILLIPS ..... Boone, N. C.  
 POLLY PLONK ..... Lincolnton, N. C.

JEAN CAMPBELL QUINN ..... Boone, N. C.  
 WALTER JONIS BAGAN ..... Boone, N. C.  
 CLYDE LANE BELCH ..... Zionville, N. C.  
 MAX F. ROBBINS ..... Boone, N. C.  
 JOHN FITON ROOKS ..... Whiteville, N. C.  
 STUART MARTIN ROSE ..... Charlotte, N. C.  
 CATHERINE M. ROSS ..... Morganton, N. C.  
 WILLIAM CLAYWELL ROSS ..... Morganton, N. C.  
 OEHMIG DANIEL BOWT ..... Nebo, N. C.  
 CLYDE EARL SAUNDERS ..... Gastonia, N. C.  
 RALPH HENRY SCARBOROUGH ..... Bessemer City, N. C.  
 JOHN W. SCOTT ..... Todd, N. C.  
 GENE SUEHLER ..... Landis, N. C.  
 MAURICE BLANCHARD SLAVIN ..... Galax, Va.  
 FLAY WILLIAM SELLERS ..... Cheriville, N. C.

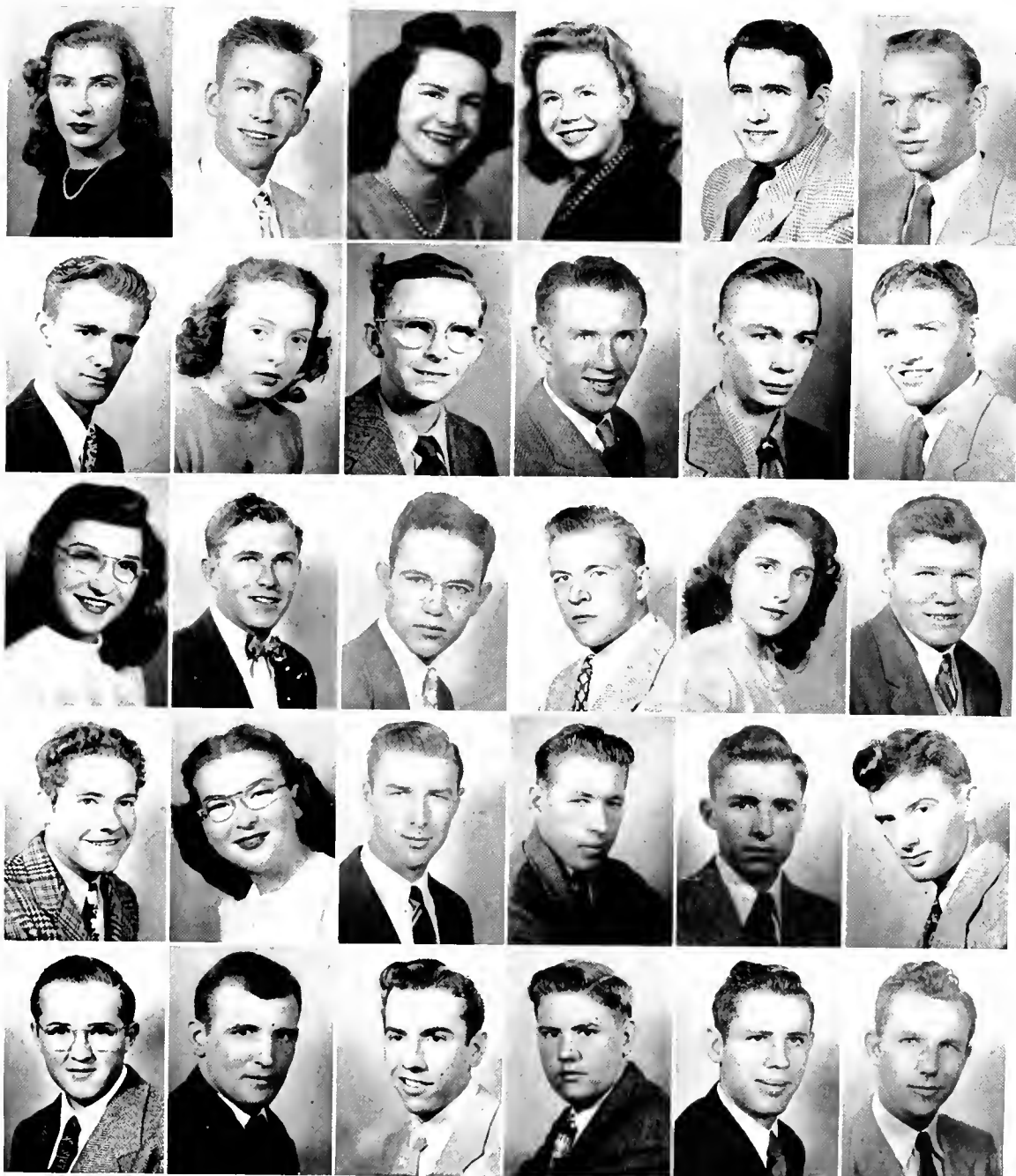




# FRESHMEN

BETTY SCGGINS .....Union, S. C.  
 DONALD DALE SHORES .....Sparta, N. C.  
 MRS. MARY W. SHUGART .....Boonville, N. C.  
 MARY S. SHULL .....Valle Crucis, N. C.  
 ASA A. SIGMON .....Taylorsville, N. C.  
 MAX WRIGHT SLOOP .....Mooreville, N. C.  
 RAYMOND WILLIAM SMITH .....Greensboro, N. C.  
 MARILYN SMITH .....Minneapolis, N. C.  
 W. KERMIT SNELL .....Jacksonville, N. C.  
 LANGDON RAY STANBERRY .....Jefferson, N. C.  
 HOWARD STEELMAN, JR. ....Boone, N. C.  
 EMORY DAVID STEPHENS .....Mooreville, N. C.  
 CORA ANN STUREWALT .....Charlotte, N. C.  
 ALVIN ALFRED STURDIVANT .....Wilkesboro, N. C.  
 DONNELL E. STONEMAN .....Greensboro, N. C.

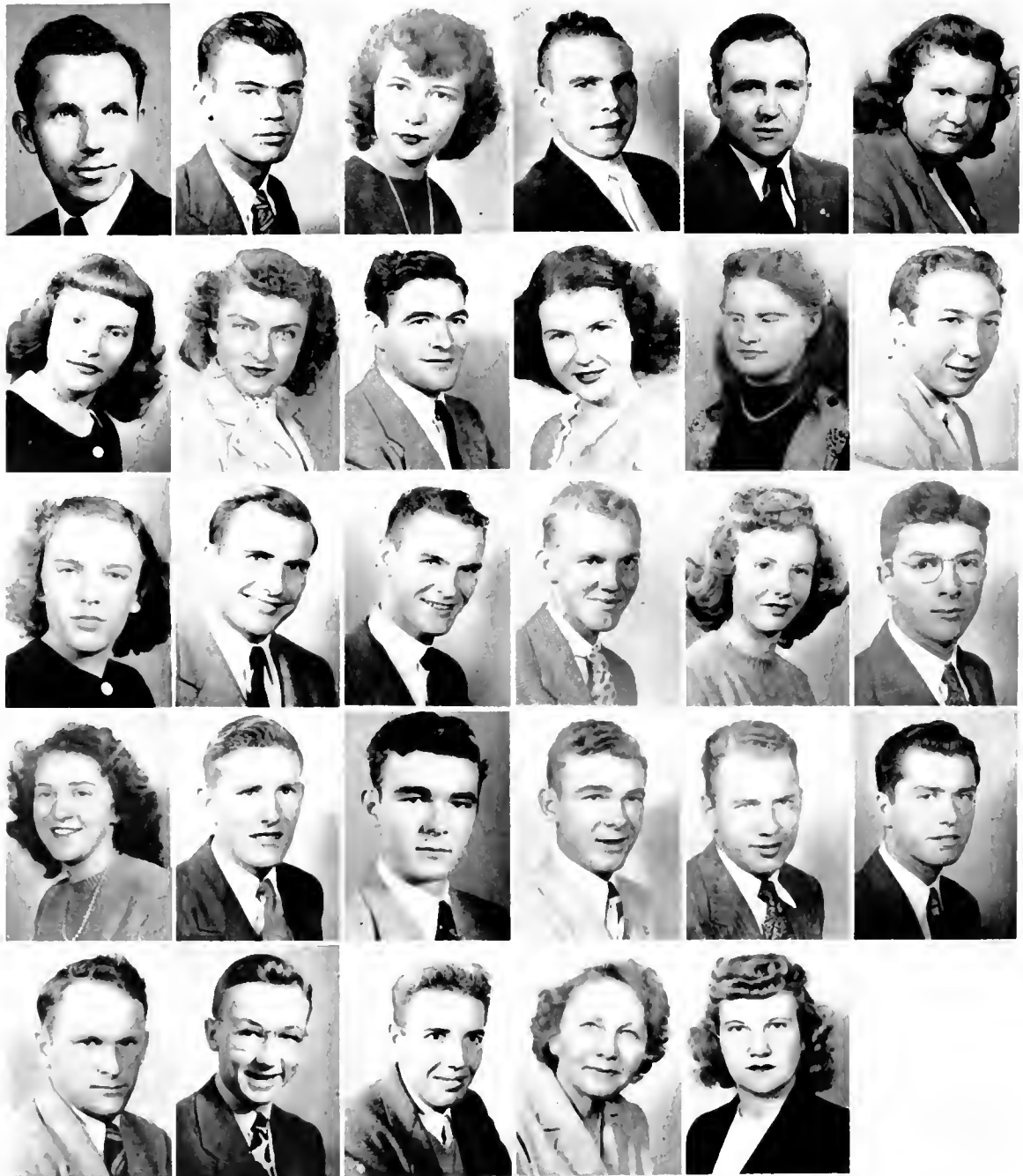
WILLIAM HARRISON SWANN .....Lvman, S. C.  
 REGINA TAIT .....Boone, N. C.  
 JESSE LEE TAYLOR .....Kannapolis, N. C.  
 ROBERT EDWIN TEAQUE .....Winston-Salem, N. C.  
 LOIS ELMO TEDDER .....Winston-Salem, N. C.  
 THOMAS NELSON TEDDER .....Ellenboro, N. C.  
 RAY M. TEEMS .....Shulls Mills, N. C.  
 WILFRED SIDNEY TEMPLETON .....Jonesville, N. C.  
 WHITT THOMAS .....Pinehurst, N. C.  
 HERBERT EDWARD THOMPSON .....Norwood, N. C.  
 EMIL JAMES TOMICK .....Baltimore, Md.  
 HILLARD TRIPLETT .....Lenoir, N. C.  
 CHARLES AMOS TRIVETTE .....Mooreville, N. C.  
 JOHN TATUM TRIVETTE .....Todd, N. C.  
 HOWARD TRUITT .....Galax, N. C.



# FRESHMEN

JOHN TALMAGE TUGMAN . . .North Wilkesboro, N. C.  
 CARL BRUCE TUSSEY . . . . .Lexington, N. C.  
 JANIE RUTH TURNER . . . . .High Point, N. C.  
 PHIL H. VANCL, JR. . . . .Boone, N. C.  
 DON VOSS . . . . .Winston-Salem, N. C.  
 MARTHA ANN VOSS . . . . .Winston-Salem, N. C.  
 EYON RUTH VUNCANNON . . . . .Troy, N. C.  
 MARY ALICI WALLACE . . . . .Jamesville, N. C.  
 RALPH RHYNE WALTERS . . . . .Mooresville, N. C.  
 MAXINE VIRGINIA WARRICK . . . . .Relief, N. C.  
 EULA WATSON . . . . .Deep Gap, N. C.  
 HUGH McRHEA WATTS . . . . .Taylorsville, N. C.  
 DORIS HANNFR WAUGH . . . . .Greensboro, N. C.  
 THOMAS COOK WEBB . . . . .Florence, S. C.  
 JOHNSON LEON WILLBORN . . . . .Deep Gap, N. C.

BOBBY EUGENE WHITE . . . . .Kings Mountain, N. C.  
 FRANCES E. WHITTNER . . . . .Statesville, N. C.  
 JACK CHOATE WHITNER . . . . .Boone, N. C.  
 MARGARET LEE WHITESIDES . . . . .Clover, S. C.  
 THOMAS WILLIAMS . . . . .New Hope, N. C.  
 GEORGE FOLLETT WILSON . . . . .Germanton, N. C.  
 KATH WALKER WILSON . . . . .Davidson, N. C.  
 JAMES W. WINKLER . . . . .Boone, N. C.  
 TOM STEWART WINKLER, JR. . . . .Boone, N. C.  
 ROBERT LANSING WITHROW . . . . .Hollis, N. C.  
 ALVIN DONALD WOLFF . . . . .Bethania, N. C.  
 ALVIN CLYDE YOUNG . . . . .Celo, N. C.  
 MRS. H. S. HOOKER (Special) . . . . .West Palm Beach, Fla.  
 SILENIA RENA HILSON (Special) . . . . .Boone, N. C.

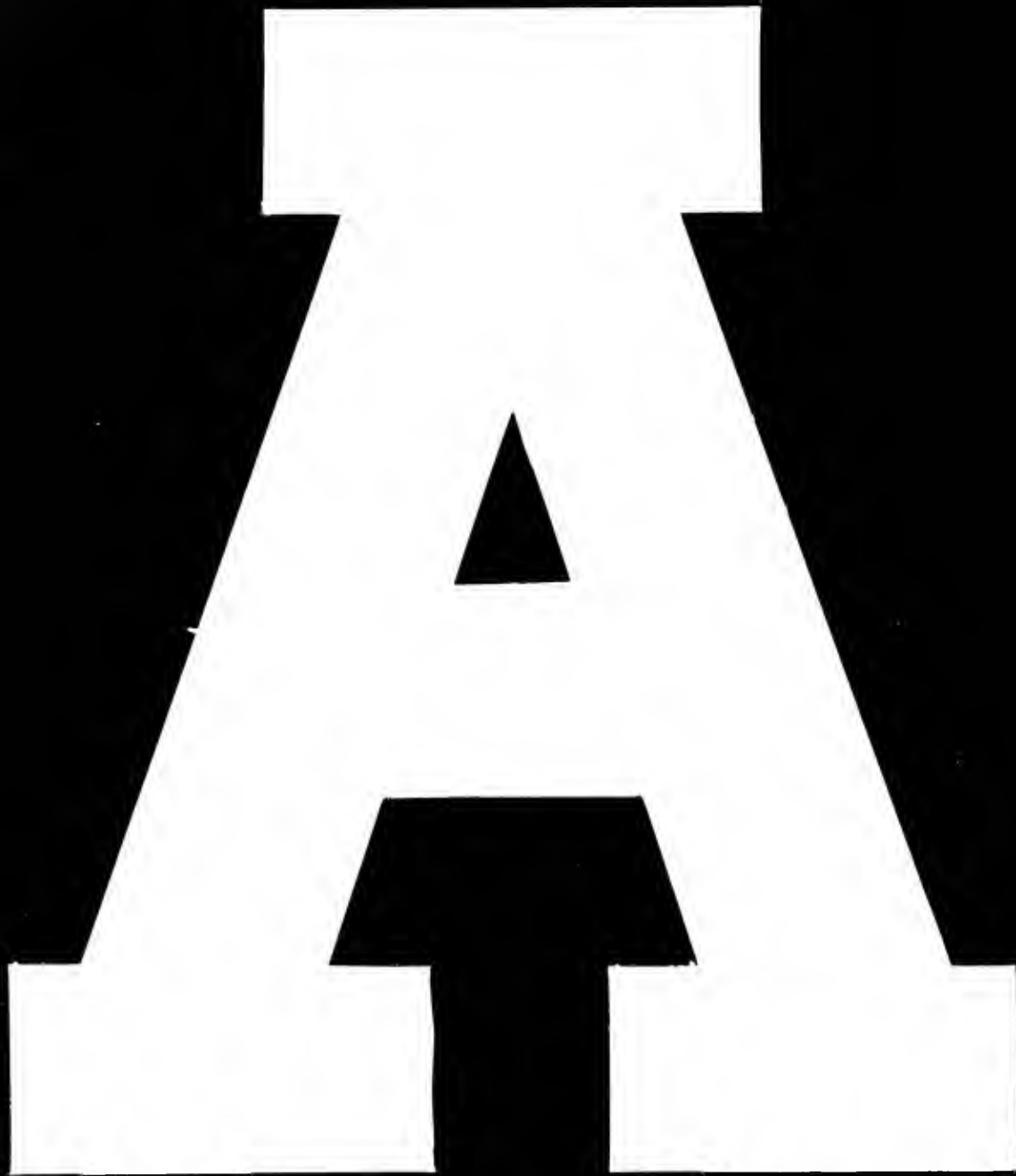




1922 — CAMPUS — 1947



A T H



## MEN'S "A" CLUB



FRANCIS ESSIE  
*President*



TOMMY BOYELL  
*Vice President*



CARL E. LIDLER  
*Secretary*



CHARLES HALL  
*Treasurer*



VERNON TILTON  
*Chaplain*



JOHN Z. KIRK  
*Sergeant at Arms*

# MEMBERS



EDDIE ADELMAN  
WARREN H. AUSTIN  
DOYLE W. AYERS  
TOM BEACH  
LEO D. BREVARD  
BODDY BROOKS  
BOYCE R. BROWN  
ARTHUR B. BRUTON

DOYLE R. BYNUM  
R. M. COLLINS, JR.  
RONALD A. CRAVEN, JR.  
OBED O. DAY  
AUBREY C. FULLER  
TED S. HAGAMAN  
WILLIAM HALSTEAD  
WARREN G. HAWKINS

BILL HEMPHILL  
ALBERT HIATT  
MARVIN D. HOFFMAN  
JOHNNY H. HOLLARS  
JESSE C. HUTCHISON  
LLOYD ISAACS  
J. LEWIS JOYCE  
J. C. KEETER

EUGENE A. LYONS  
EDWARD MAMMORELLA  
GUY McCANN  
SAM MOIR  
PRESTON MULL  
CLIFFORD OUSLEY  
RICHARD R. PIERCE  
WALTER RAGAN  
ASA I. REESE

GENE L. REIST  
MERRITT ROBINSON  
MAX SPARKS  
BRITT STEELMAN  
BILL UNDERWOOD  
JACK WALKER  
ELSIE WEY  
S. B. WHITE, JR.  
CHARLES L. YOUNG

*Additional Members:* DUB AKINS, HERMAN BRYSON, BAXTER BRYAN, BILL DULIN, BRUCE HARBELL, J. C. HONEYCUTT, JOHNNY JONES, JIMMY MILLER, PETER CARLOS MILLS, TOM MURDOCK, PRESTON POWERS, JOHN SMALL.

# FOOTBALL



FLUCIE L. STEWART  
*Head Coach*



E. C. DUGGINS  
*Line Coach*



FRANCIS L. HOOVER  
*Backfield Coach*

## RESULTS

A. S. T. C. ....	28	Newberry .....	19
A. S. T. C. ....	40	Elon .....	0
A. S. T. C. ....	10	High Point .....	6
A. S. T. C. ....	6	Catawba .....	28
A. S. T. C. ....	50	Erskine .....	6
A. S. T. C. ....	19	Lenoir Rhyne .....	7
A. S. T. C. ....	42	W. C. T. C. ....	6
A. S. T. C. ....	0	Milligan .....	6
A. S. T. C. ....	7	Presbyterian .....	14
	<hr/>		<hr/>
	202		92

Won 6

Lost 3



ADELMAN  
AKIN  
AUSTIN  
AYERS



BOYETTE  
BRENNAN  
BREVARD  
BROOKS



BROWN  
BRYSON  
CASKEY  
CRISSMAN



DAVIDSON, C.  
DAVIDSON, G.  
DAY  
DULIN



FELTON  
*Captain*  
FULLER  
GRIFFITH  
HALL



HALSTEAD  
HARRIS  
HEMPHILL  
HIATT





HOLLARS  
HONEYCUTT  
KELLER  
KIRK



LONG  
LOVE  
LYONS  
MAMMORELLA



MILLS  
MUII  
MURDOCK  
PENICK



POWERS  
RAGAN  
SHUGART  
SMALL



SPOFFORD  
TAYLOR  
TEMPLETON  
UNDERWOOD



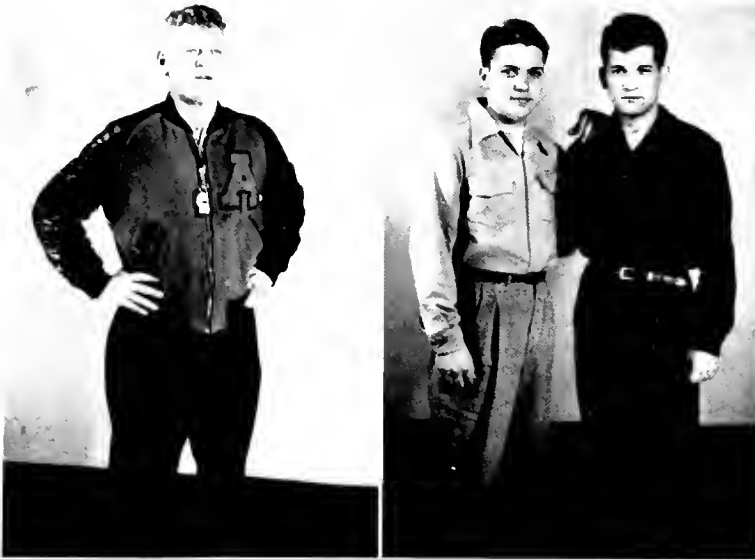
WATERS  
LEITH  
*Manager*  
GORDON  
*Senior  
Manager*



# BASKETBALL

## SCHEDULE

- A. S. T. C. vs Rex Mills
- A. S. T. C. vs Elkin Blanketeers
- A. S. T. C. vs Rex Mills
- A. S. T. C. vs McCrary Eagles
- A. S. T. C. vs Hanes
- A. S. T. C. vs Asheville Pros
- A. S. T. C. vs W. C. T. C.
- A. S. T. C. vs Elon
- A. S. T. C. vs Lenoir Rhyne
- A. S. T. C. vs Milligan
- A. S. T. C. vs Catawba
- A. S. T. C. vs Hanes
- A. S. T. C. vs Guilford
- A. S. T. C. vs Elon
- A. S. T. C. vs High Point
- A. S. T. C. vs McCrary Eagles
- A. S. T. C. vs W. C. T. C.
- A. S. T. C. vs Guilford
- A. S. T. C. vs A. C. C.
- A. S. T. C. vs High Point
- A. S. T. C. vs Lenoir Rhyne
- A. S. T. C. vs Catawba



FLUCIE STEWART  
Coach

COFFEY AND LEITH  
Managers





BROOKS  
SMALL  
MILLER

CRAVIN

HAWKINS  
BRYAN

WY

FIDLER  
BEACH

COLLINS

HIATT  
HOPE  
MOIR

# WRESTLING



R. W. WATKINS  
*Coach*

## SCHEDULE for 1947

A. S. T. C.	vs	Auburn
A. S. T. C.	vs	Naval Apprentice
A. S. T. C.	vs	North Carolina State
A. S. T. C.	vs	V. P. I.
A. S. T. C.	vs	Davidson
A. S. T. C.	vs	Maryville

*First row:* Harris, Tomick, Graham, Day, W. Austin, Bruton, Wilson, Jenson.  
*Second row:* Tilley, Assistant Manager; Bandy, Darnell, Sparks, Sellers, Joye, Herman, K. Austin, Odom.  
*Third row:* Taylor, Crissman, Greene, Kirk, Pierce, Manager; Watkins, Coach.



# "B" TEAM BASKETBALL

First row: Buggles, Emory, Home, Essie.  
Second row: Huskey, Jones, Mayberry, Shugart, Hall.  
Third row: White, Causey, Bingham, Caskey.



# GIRLS' "A" CLUB

MARGARET ANDREWS  
LIB CAMERON  
MARION COBB  
FRANCES COOK  
ADELAIDE GILES  
MILDRED HILL

EVELYN McNFELY  
HELEN G. MELVIN  
KATHILEEN MOORE  
DELSIE E. PACK  
EMMA GUNT REYNOLDS  
MOZELLE RODGERS  
RUBY WALKER

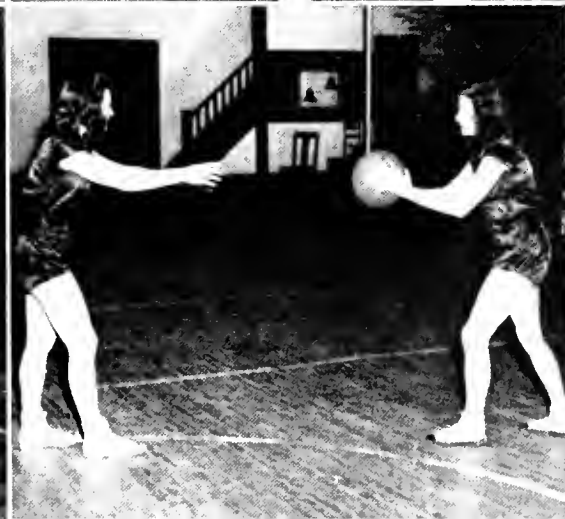
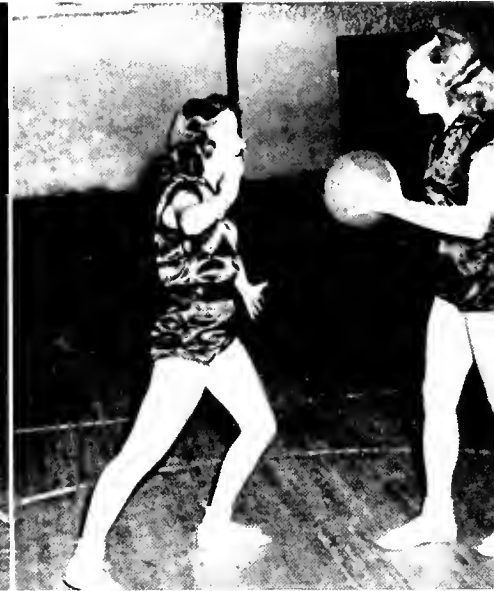
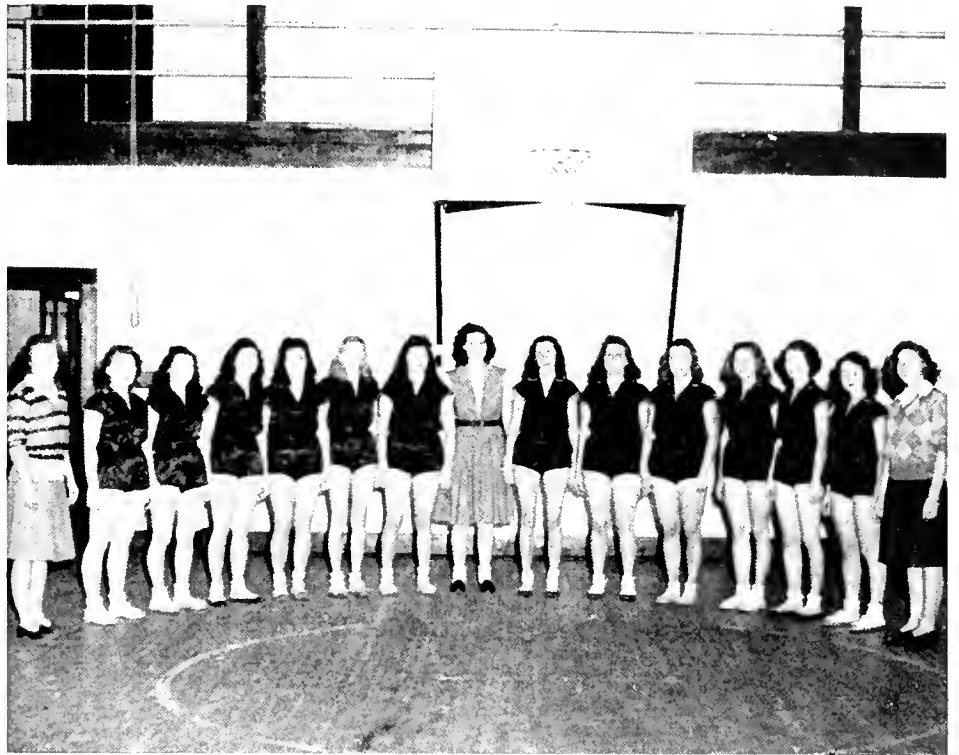


# GIRLS' BASKETBALL



GAIL CLAY  
*Coach*

CAMERON, MELVIN, PACK  
COBB  
DINKINS, REYNOLDS  
MOORE, ANDREWS  
WALKER, COOK  
GILES

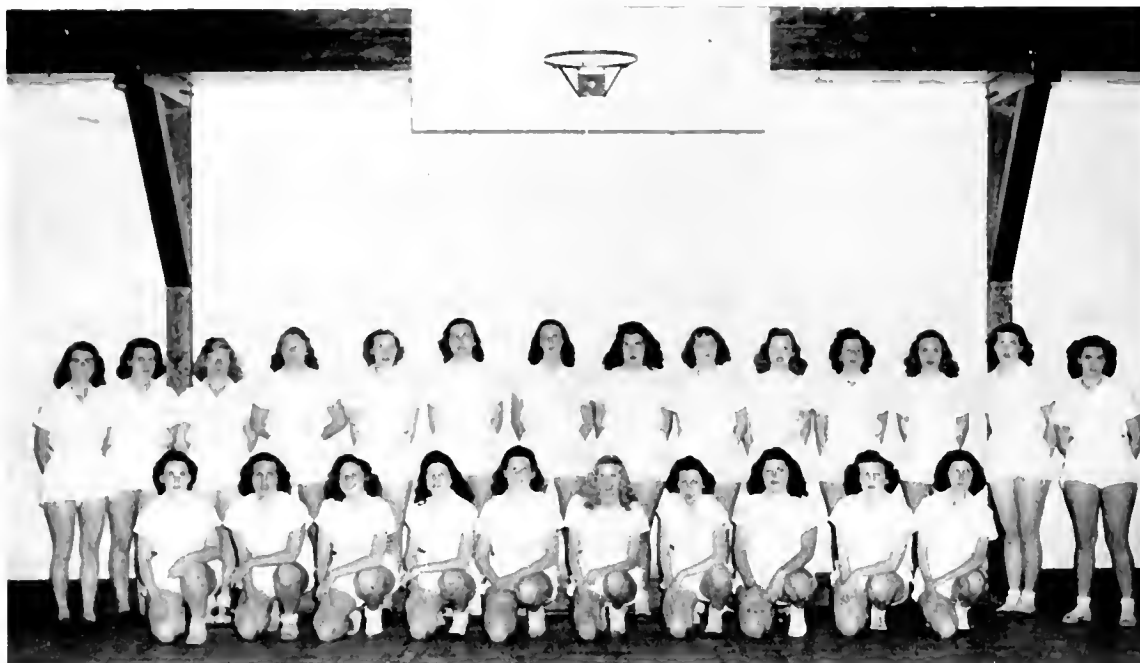


# W. A. A.

*Front row:* Mozelle Rodgers, Helen Tallent, Evelvn McNeely, Frances Cook, Mildred Martin, Kathleen Moore, Evelyn Bishop, Lois Thornburg, Louise Frances, Jovee Cragg.

## BLACKS

*Back row:* Mary Ann Barrett, Jean Brown, Mickey Bradley, Rita Smith, Jovee Patton, Rebecca Tomlinson, Lillian Neal, Polly Plonk, Marion Moose, Frances Whitener, Margaret Winecoff, Irene Fowler, Iris Brande, Mary Alston.



*Front row:* Helen Melvin, Martha Voss, Ruby Walker, Gene Reynolds, June Dinkins, Sara Kirklev, Adelaide Giles, Elizabeth Cameron, Delsie Pack, Mickey Marlow.

## GOLDS

*Back row:* Mary Ida Steele, Margaret Andrews, Pauline Wagoner, Elsie Carver, Lucille Mitchell, Mildred Hill, Marion Cobb, Johnnie Turner, Helen Baker.



MODERN DANCE GROUP

## HONORARY SOFTBALL VARSITY

*Left to right:* June Dinkins, Helen Tallent, Jean Brown, Marty Voss, Mildred Martin, Mildred Hill, Elizabeth Cameron, Rita Smith, Gene Reynolds, Ruby Walker, Kathleen Moore, Mickey Bradley, Frances Cook. *Center:* Helen Melvin, Mozelle Rodgers.

## HONORARY SPEEDBALL VARSITY

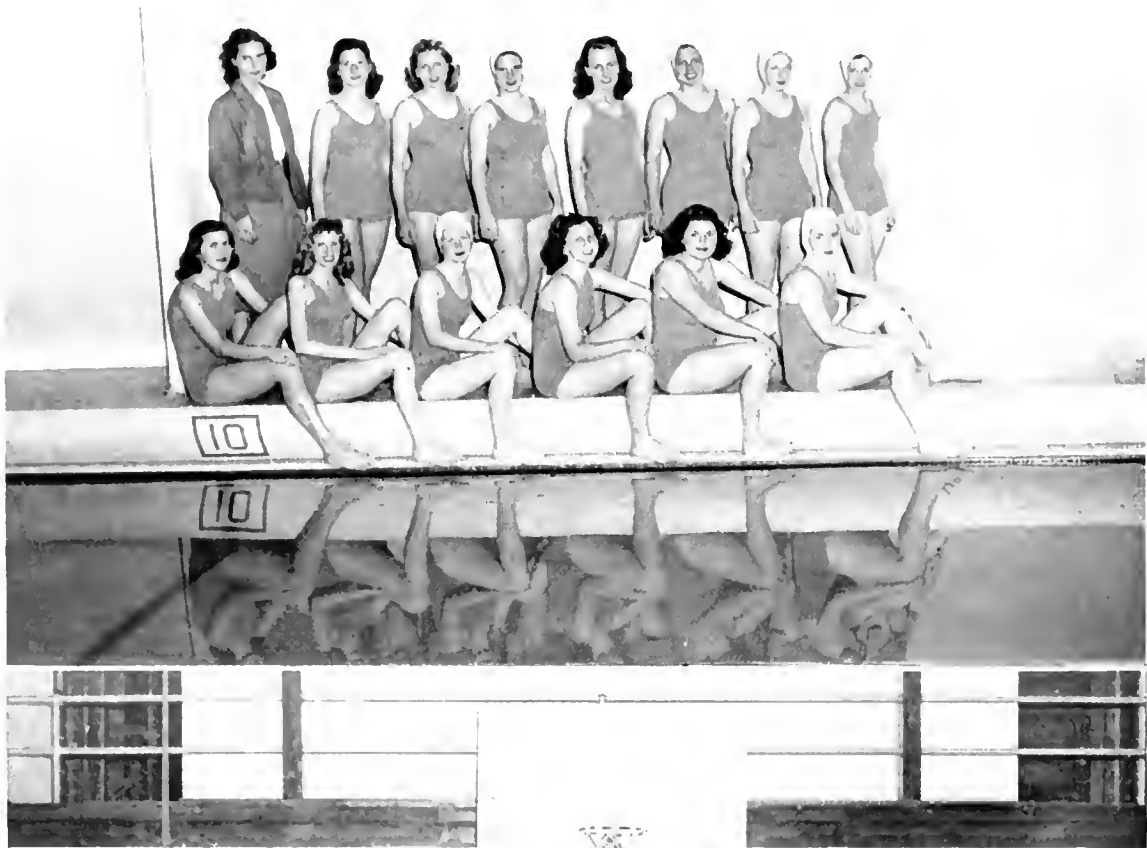
*Left to right:* Mozelle Rodgers, Mary Ann Barrett, Jean Brown, Helen Tallent, Ruby Walker, Gail Clay, Coach: Elsie Carver, Marion Cobb, Elizabeth Cameron, Frances Cook, June Dinkins.



# FLYING FISH

*Front row:* Mildred Hill, Kathleen Moore, Delsie Pack, Evelyn McNeely, Lois Thornburg, Mozelle Rodgers.

*Back row:* Gail Clay, Sponsor; Mildred Martin, Gene Reynolds, Ruby Walker, Elizabeth Guy, Helen Tallent, Helen Melvin, Joan Lovill.



*Front row:* Joyce Gragg, Mickey Marlow, June Dinkins, Marty Alston, Margaret Winehoff, Ruby Walker, Delsie Pack, Evelyn Bishop, Sara Kirklev, Mozelle Rodgers, Helen Melvin, Mickey Bradley, Louise Frances.

## W. A. A.

*Middle row:* Fillian Neal, Helen Baker, Adelaide Giles, Pauline Wagoner, Margaret Andrews, Elsie Carver, Lucille Mitchell, Mildred Hill, Rebecca Tomlinson, Mary Ida Steele, Joyce Patton, Marion Moore, Rita Smith.

*Back row:* Mary Ann Barrett, Lois Thornburg, Johnnie Turner, Gene Reynolds, Marty Voss, Irene Fowler, Elizabeth Cameron, Iris Brande, Marion Cobb, Polly Plonk, Betty Brown, Kathleen Moore, Frances Cook, Evelyn McNeely, Helen Tallent, Jean Brown, Frances Whitener.





# ACTIVITIES



# Y. M. C. A.

## OFFICERS

JOHNNY HIATT ..... *President*  
 ALVIN JOINES ..... *Vice-President*  
 ROGER HIATT ..... *Secretary-Treasurer*  
 JESSE HUTCHINSON ..... *Social Chairman*  
 WILLIAM CRUMMETT ..... *Chaplain*  
 G. L. SAWYER ..... *Sponsor*

## MEMBERS

Harold Beaver	William Harold	Wesley Joines
James Blevins	Johnny Hiatt	Walter Joyce
Glenn Burnette	Roger Hiatt	Bill Linker
James Bradford	Harold Hodges	Bill Nolen
William Carpenter	John Honbarrier	Guv McCann
James Cobb	James Howard	Hugh Reavis
William Crummett	LeRoy Hunter	Merritt Robinson
Karl Flemming	Jesse Hutchinson	William Seaford
John G. Fuller	Howard Johnston	James Sherwood
Dennis Franklin	Gene Johnston	Earley Tilley
Orland Gabriel	Alvin Joines	Herbert Tompson

# BAPTIST STUDENT UNION

DORIS HARRISON .....President  
 ARLENE WILLIAMS .....Enlistment Vice-President  
 EDITH YORK .....Devotional Vice-President  
 MYRTLE KIKER .....Secretary  
 WILHELMINA AYERS .....Treasurer  
 GRACE TUCKER .....Publicity Director  
 UNA LEE RICHARDSON .....Publicity Director  
 JACK SHERWOOD .....Editor of Trail  
 JESSE HUTCHISON ..B. S. U. Magazine Representative  
 and Extension Director

ZOLA GREY DIXON ....Sunday School Representative  
 FRANCIS ESSIC .....Sunday School Representative  
 DORIS CLINE .....Training Union Representative  
 ALVIN JOINES .....Training Union Representative  
 MARY JEAN GROSE .....Mission Forum Leader  
 JOYCE GRAGG .....Town Representative  
 DENNIS FRANKLIN ....."Newland" Representative  
 GRACE SHERWOOD .....Music Director  
 HERNAN R. EGGERS .....Faculty Adviser



# THE METHODIST YOUTH FELLOWSHIP

## OFFICERS

REBEKAH BOONE .....President  
 HELEN HELTON .....Vice President  
 H. G. JONES .....Secretary  
 FRED COUNCILL .....Treasurer  
 MRS. JAMES H. COUNCILL .....Adult Counselor

## COMMITTEE CHAIRMEN

SUE TISDALE .....Worship  
 FLOE BINGHAM .....Recreation  
 RICHARD BINGHAM .....Community Service  
 THURLINE MURRAY .....World Friendship  
 HOWARD JOHNSTON .....Publicity Superintendent  
 JUNE RENFROW .....Song Leader  
 MARGARET COLE .....Pianist

# VERNICIAN LITERARY SOCIETY

ALTA LOUISE PONDER .....President  
 RACHEL DELANCY .....Vice President  
 HELEN MOORE .....Treasurer

FERN WILLIAMS .....Secretary  
 MRS. BILL RANKIN .....Sponsor  
 MRS. GENE MOBILS .....Sponsor

Gettrude Binkley, Lee Brannon, Eloise Butt, Elsie Carver, Betty Cline, Doris Cline, Margaret Cole, Roberta Critcher, Zola Grey Dixon, Josephine Dockery, Irene Fowler, Marcia Gabriel, Eleanor Greene, Doris Harrison, Audrey Hope, Mary Catherine Hunter, Mary Sue Hunter, Nellie Jarvis, Madge Jones, Barbara Kepley, Myrtle Kiker, Sara Kirkley, Ruby Lee Kiser, Jacquelyn Lowry, Mickey Marlow, Laura Martin, Imogene Moses, Ruby Nell Owens, Petty Patton, Mildred Ramsey, Zana Rary, June Rentlow, Grace Sherwood, Helen Shore, Betty Jean Smith, Vera Smith, Audrey Sparger, Mary Ida Steele, Eva Mae Steelman, Becky Tomlinson, Louise Tippet, Sue Tisdale, Rachel Ann Vance, Mary Wallace, Betsy Webster, Dot Whisnani, Mary Catherine Wilson.



# LIBRARY SCIENCE CLUB

HELEN MOORE .....President  
 WILHELMINA AYERS .....Vice President

RUTH HESTER .....Secretary  
 MISS LOUISE MOORE .....Sponsor

Frances Calloway  
 Wanda Chanley  
 Doris Cline  
 Mary Ellen Earp  
 Juanita Grant

Frances Jackson  
 Sue Mae Jackson  
 Brice Johnson  
 Laura Martin  
 Elizabeth Pharr

Alta Louise Ponder  
 Jeanne Shull  
 Shirley Jean Smith  
 Doris Waugh  
 Sarah Frances West

# FUTURE TEACHERS OF AMERICA

EMMA GENE REYNOLDS ..... *President*  
 MARY JO RAGAN ..... *Vice-President*  
 AUDREY SMITH KIRBY ..... *Secretary*  
 MAGDALINE TURPIN ..... *Treasurer*

LILLIAN GRIFFITH ..... *Program Chairman*  
 JOYCE BROOKSHIRE ..... *Social Chairman*  
 ROSENA BURTON ..... *Librarian*  
 MR. HERBERT WEY ..... *Faculty Adviser*

Eddie Adleman, Harold Beaver, Rebekah Boone, G. R. Bridges, Mary Bell Buchanan, Max Carpenter, Betty Cline, Doris Cline, Zola Gray Dixon, Tillie Eaker, J. A. Fletcher, Gloria Grill, Helen Helton, Ruth Hester, Eloise Hughes, Alvin Joines, Ruby Lea Kiser, Lloyd Isaacs, Laura Martin, Marion Martin, Gene Modlin, Lou Rhyne, Rebekah Rivers, Grace Sherwood, Oma Shew, Sue Tislale, Mary Louise Watkins, Betsy Webster, Arlene Williams, Bertha Willis, Paul Yarborough.



## LOVILL CLUB

BIULAH GREY MARION, *President*

Minnie Lou Allen, Marty Alston, Margaret Austin, Geraldine Armstrong, Amelie Bauguess, Audrey Bauguess, Jacqueline Bairy, Faye Barrier, Evelyn Bishop, Dorothy Black, Louise Bost, Alene Bowen, Ruby Bowen, Kate Bowers, Louvenia Bright, Rachel Brintle, Inez Bernhardt, Bette Brown, Elizabeth Brown, Margaret Bynum, Frances Calloway, Betty Jo Cameron, Elizabeth Cameron, Jane Cammon, Peggy Cardwell, Betty Lou Carter, Louise Chick, Rachel Clinard, Jean Cochran, Margaret Cockerham, Carrie Bess Cole, Clarice Cooper, Imogene Covington, Martha Cress, Elizabeth Crayton, Inez Dalton, Mrs. Josephine Davis, Helen Dellinger, Elizabeth Ann Diggs, Lenora Dudley, Madeline Edminsten, Ruby Edwards, Doris Eilenburg, Frances Elliot, Carol Erwin, Gabriel Faye Ethridge, Catherine

Farrow, Erlene Garrison, Guinella Gentry, Kate Griffith, Juanita Grant, Ann Hall, Evelyn Hancock, Luella Hardy, Ruby Hardy, Maxine Hawks, Marie Hodges, Grovone Howard, Virginia Jennings, Clara Jessup, Bryce Johnson, Nettie Kimball, Mrs. Audry Smith Kirby, Wanda Maynard, Alwayne McClure, Sara McCreight, Rita McNeil, Ruby D. Morgan, Lillian Moore, Laura Mundy, Carolyn Muse, Lillian Neal, Delsie Pack, Frances Parsons, Elizabeth Pharr, Jean Quinn, Betty Jo Robertson, Mozelle Rogers, Jane Riner, Betty Scoggins, Daphne Sides, Celeste Stephens, Edna Stewart, Helen Tallent, Evon Von cannon, Martha Ann Voss, Ruby Walker, Mary Wallace, Mary Louise Watkins, Maxine Warrick, Doris Waugh, Frances White-ner, Eula Watson, Doris Whitesides, Margaret Whitesides.



## A. C. E.

ROSENA BURTON ..... <i>President First Half of Year</i>	JACQUELINE LOWRY ..... <i>Vice President</i>
JUNI BLEROW ..... <i>President Second Half of Year</i>	NANCY McLEAN ..... <i>Secretary</i>
JOYCE BINFELD ..... <i>Vice President</i>	RACHALE DiLANCY ..... <i>Treasurer</i>
IRMA DEAN HEALNER ..... <i>Vice-President</i>	BARBARA KIPLEY ..... <i>Reporter</i>
MRS. CHAPEL WILSON ..... <i>Sponsor</i>	

Madge Carmichael  
Zola Gray Dixon  
Phoebe Dulin  
Mary Nell Farthing

Mary Lee Hedgecock  
Mayo Hunevutt  
Laura Lee Hufflines  
Frances Jackson

Margaret Lantz  
Martha Pearsall  
Jean Quinn  
Mildred Ramsey

Lou Rhyne  
Harriet Shore  
Elizabeth Jean Smith  
Vera Smith

# MATH CLUB

HUGH REAVIS .....*President*      ROGER HIATT .....*Secretary-Treasurer*  
 GRACE SHERWOOD .....*Vice-President*      JOHN HIATT .....*Publicity Manager*  
 DR. J. T. C. WRIGHT .....*Sponsor*

David Bingham, Ira Bingham, Dorothy Black, Ruby Bowen, James Bradford, Hope Brown, Herman Burcham, Charline Campbell, Max Carpenter, Betty Cline, Carol Cook, Ruby Edwards, Margaret Ferguson, Carl Fidler, Hazel Gilstrap, Eleanor Greene, Boyd Grigg, Margaret Hart, Clyde Hoyle, Harley Jolley, Jo Kerlev, Marian Martin, Guy McCann, Jimmie McConnell, Allen Miller, Clifford Ousley, June Pratt, Bill Robertson, Edna Stewart, Earley Tillev, Jack Walker, Mary Louise Watkins, Marilyn Welch, Lesley Wex, Margaret Winecoff.



# I. R. C.

IMOGENE MOSES .....*President*      LOU RHYNE .....*Corresponding Secretary*  
 MARGARET LANTZ .....*Vice-President*      RUTH GOLDING .....*Treasurer*  
 CHARLENE CAMPBELL .....*Recording Secretary*      DR. WHITENER .....*Sponsor*

Betsy Barrett, Inez Bernhardt, Hope Brown, Betty Cline, Faye Counts, Jack Epplev, Ruth Hester, Johnny Hiatt, Lillian Griffith, Harley Jolley, Myrtle Kiker, Audrey Smith Kirby, John Miller, Essie Norris, Elizabeth Pharr, Faye Rhodes, Patsy Smith, Catherine Vannoy, Barbara Weaver.



## FORUM CLUB

MARGARET LANTZ ..... *President*  
 ZOLA GRAY DIXON ..... *Vice President*

JOYCE BROOKSHIRE ..... *Secretary*  
 AUDREY SMITH KIRBY ..... *Treasurer*

Betsy Barrett  
 Mary Ann Barrett  
 Rebekah Boone  
 Buddy Brooks  
 Peggy Burris

Charlene Campbell  
 Betty Cline  
 Doris Cline  
 Norma Fender  
 Lillian Griffith

Ruby Hardy  
 Jim Hemphill  
 Guy McCann  
 John Miller  
 Silver Miller

Imogene Moses  
 Lou Rhyne  
 Grace Sherwood  
 Patsy Smith  
 Audrey Sparger



## CANTERBURY CLUB

BILL HUTCHINSON ..... *President*  
 BOB CRISSMAN ..... *Secretary*  
 REBECCA MOOSE ..... *Treasurer*

REV. JAMES McKEOWAN ..... *Co Sponsor*  
 MRS. JAMES McKEOWAN ..... *Co Sponsor*

Mary Gage Barber  
 Sloan Hill

Barbara Kopley  
 Maurice Seaver

Kermit Snell  
 Betsy Webster

George Wilson



# WESTMINSTER FELLOWSHIP

HELEN MOORE .....President  
 MARY SUE HUNTER .....Secretary

ROSINA BURTON .....Social Chairman  
 SARAH FRANCES WEIST .....Program Chairman

Margaret Andrews, Blanche Ashly, Joe Belk, Joyce Benfield, Luther Bingham, Helen Bowditch, James Bradford, Maxine Bradlev, Rosena Burton, Frances Calloway, Elizabeth Cameron, Robert Paul Campbell, Robert Carter, John Casky, James Cobb, Jean Cochrane, Carroll Cook, Tommy Craig, Hannah Craven, John Davenport, Mrs. Josephine Davis, Arthur Davis, Gurney Davidson, Elizabeth A. Diggs, Louis C. Dodd, Phoebe Dulin, Betty Ellis, Carol Erwin, John G. Fuller, Marcia Rae Gabriel, Orland Gabriel, Anne Graham, Lillian Griffith, Gloria Grill, Mary Elizabeth Guy, Annie Laura Hall, Edna Harrell, James Hawpe, Maxine Hawks, Mary Lee Hedgecock, A. R. Henderson, Jr., William Hood, Laura Lee Huffines, Eloise Hughes, Mary Sue Hunter, Mary Catherine Hunter, LeRoy

Hunter, Mayo Hunevcutt, Herbert Ingle, Eugene Johnston, Albert Johnston, Daniel Edward Jensen, Johnny Jones, John T. King, Homes Carter Lentz, Sue Leonard, William Linker, Jacqueline Lowry, Jack Luttrell, Hugh Maness, Harold Manua, Martin Martin, Nancy McLean, Louise Merony, Helen Melvin, Evelyn Miller, Betty Minor, Helen Moore, Lillian Neal, Delsie Pack, Bobo Lee Pardue, Elizabeth Pharr, Louvenia Presnell, Jean Quinn, M. R. Ruggles, Donald Shores, Daphene Sides, James Siske, Mary Ida Steel, Raymond Smith, Edna Stewart, William Swann, Helen Tallent, Don Voss, Martha Ann Voss, Thomas Voss, Ruby Walker, Sara Frances Weest, Barbara Weaver, Doris Whitesides, Frances Whitesides, Margaret Whitesides, Keith Wilson, Don Wolff.



## MIXED CHORUS

EMORY STEPHENS .....President  
 MARTHA VOSS .....Vice-President  
 MARTHA CRESS .....Librarian

ELEANOR GREENI .....Secretary-Treasurer  
 MISS MANNING .....Sponsor

Boyce White, Jim Bradford, Jimmy Siske, Max Hager, Claude Jarrett, Julian Gault, Naomi Brown, Mary Jean Tate, Celeste Stephens, Helen Dellinger, Eula Watson, Beverly Townsend, Betty Cornette, Betty Ruth Moir, Doris Ellenburg, Nannette Banner, Lorene Amos, Gwen Boyce, Betsy Webster, Betty Carter, Gertrude Binklev, Carrie Bess Cole, Mary Wallace, Lillian Moore.

# Y. W. C. A.



LILLIAN GRIFFITH .....	President
JOYCE BROOKSHIRE .....	Vice-President
MADÉLINE TURPIN .....	Secretary
CHARLENE CAMPRELI .....	Treasurer
LOU RHYNE .....	Program Chairman
MARGARET LANTZ .....	Chapel Program Chairman
VIRGINIA LANTZ .....	Chorister
ZOLA G. DIXON .....	Pianist
EMMA DEAN HEAFNER .....	Social Service
GRACE TUCKER .....	Social Chairman
KATHLEEN MOORE .....	Membership
GLORIA GRILL .....	Publicity
MISS BETTY SUE STONE .....	Sponsor

# Y. W. C. A. 1946-47

Minnie Lou Allen  
Frances Allred  
Lorene Amos  
Gozelle Andrews  
Louise Andrews  
Margaret Andrews  
Helen Baker  
Odelia Barber  
Joyce Benfield  
Inez Bernhardt  
Dorothy Black  
Nancy Ross Black  
Louise Bost  
Alene Bowen  
Gwyn Boyce  
Iris Brande  
Cozette Brookshire  
Joyce Brookshire  
Betty Brown  
Betty Lou Brown  
Hope Brown  
Jo Brown  
Naomi Brown  
Oleta Brown  
Alma Buchanan  
Mary Belle Buchanan  
Eloise Buff  
Peggy Burris  
Roseana Burton  
Doris Busby  
Jerry Caldwell  
Frances Calloway  
Charlene Campbell  
Louise Capshaw  
Ruth Cartner  
Elsie Carver  
Louise Click  
Rachel Clinard  
Doris Cline  
Marion Cobb  
Jean Cochrane  
Carrie Cole  
Frances Cooke  
Clarice Cooper  
Betty Cornette  
Martha Cress  
Roberta Critcher  
Josephine Davis  
Rachel Delancy  
Elizabeth Ann Diggs  
June Dinkins  
Zola G. Dixon  
Lenora Dudley  
Phoebe Dulin  
Mary Ellen Earp  
Ruby Edwards  
Betty Elmore  
Frances England  
Carol Ervin  
Kathryn Farrow  
Eunice Folger  
Mary Gardner  
Adelaide Giles

Lessie Goodman  
Jackie Gordon  
Ruth Goulding  
Ann Graham  
Juanita Grant  
Eleanor Green  
Lillian Griffith  
Gloria Grill  
Mary Jean Grose  
Oulene Gregory  
Ruby Hardy  
Edna Harrill  
Margaret Harrill  
Violet Harrill  
Mary Lee Hedgecock  
Helen Helton  
Ruth Hester  
Mildred Hill  
Grace Hollifield  
Audrey Hope  
Laura Lee Huffines  
Marion Huffines  
Eloise Hughes  
Mary Catherine Hunter  
Virginia Isaacs  
Frances Jackson  
Sue Mae Jackson  
Pearl James  
Nellie Jarvis  
Grace Jenkins  
Clara Jessup  
Earline Keaton  
Barbara Kepley  
Willene Kesler  
Ruby Lee Kiser  
Margaret Lantz  
Sue Leonard  
Jacqueline Lowry  
Beulah G. Marion  
Mickey Marlowe  
Louise Maroney  
Laura Martin  
Libby Martin  
Mildred Martin  
Margaret Mason  
Sarah Matthews  
Elfreta McBraver  
Bernice McCombs  
Sara McCreight  
Nancy McLean  
Rita McNeal  
Evelyn McNeely  
Helen Melvin  
Evelyn Miller  
Betty Minor  
Lucille Mitchell  
Marjorie Mitchem  
Helen Moore  
Kathleen Moore  
Miriam Moose  
Imogene Moses  
Thurlene Murray

Ruby Nell Owens  
Betty Patton  
Martha Kathryn Pearsall  
Bernice Pegram  
Elizabeth Pharr  
Polly Plonk  
Betty Jo Plyler  
Eunice Pruitt  
Jean Quinn  
Mildred Ramsey  
Lou Rankin  
Zana Rary  
Betty Ray  
June Renefrow  
Emma Gene Reynolds  
Lou Rhyne  
Jane River  
Rebecca Rivers  
Izoria Sheppard  
Grace Sherwood  
Oma Shew  
Jean Shull  
Harriet Shore  
Helen Shore  
Daphne Sides  
Annie Laura Smith  
Marilynn Smith  
Patsy Smith  
Vera Smith  
Audrey Sparger  
Elnedia Stanland  
Mary Ida Steele  
Celesta Stephens  
Edna Stewart  
Ann Stiwalt  
Lena Strictland  
Myrtle Swaringer  
Helen Tallent  
Mary Kathryn Tickle  
Sue Tisdale  
Rebecca Tomlinson  
Beverly Townsend  
Carolyn Townsend  
Grace Tucker  
Johnnie Ruth Turner  
Madaline Turpin  
Rachel Ann Vance  
Catherine Vannov  
Doris Waugh  
Sara Frances West  
Margaret Wellmon  
Barbara Weaver  
Nellie Grey Webb  
Cleo White  
Frances Whitener  
Peggy Whitesides  
Doris Whitesides  
Arlene Williams  
Ferne Williams  
Bertha Willis  
Mary Catherine Wilson  
Margaret Winecoff  
Madge Wood



## PLAYCRAFTERS

BESSY WEBSTER .....President  
 "SPUD" WHITNER .....Vice President  
 ALTA LOUISE PONDER .....Secretary Treasurer  
 BIRHA WILLIS .....Playbill Editor

CATHERINE VANNOY .....Costume Custodian  
 JO DOCKERY .....Make Up Custodian  
 BILL CHRISTENSEN .....Stage Management and Properties  
 CRATIS D. WILLIAMS .....Sponsor

Jerry Armstrong, Allan Bandy, Bob Birke, J. R. Brendell, Betty Brown, J. D. Burselon, Hugh Campbell, Bill Christensen, Jo Dockery, Ann Graham, Maxine Hawks, Mary Lee Hedgecock, Grace Hollifield, Howard Johnson, Gene Johnston, C. E. Leatherman, Margaret Ledbetter, Charles Leith, Frank A. Lowe, Mickey Marlowe, Sarah Matthews, James Parks, Gordon Phillips, Alta Louise Ponder, Julian Rogers, Donnell Stoneman, Louise Tippet, Beverly Townsend, Catherine Vannoy, Barbara Weaver, Mary Wallace, Betsy Webster.





# MISS WARY'S MIXED CHORUS

## OFFICERS

BEN GOFORTH ..... *President*  
 VIRGINIA ISAACS ..... *Vice-President*  
 REBEKAH BOONE ..... *Secretary-Treasurer*  
 ELOISE BUFF ..... *Librarian*  
 RACHEL DELANCEY ..... *Reporter*

Rebekah Boone	Virginia Isaacs	Mary Shull
Walter Boone	Nellie Jarvis	Donnell Stoneman
Eloise Buff	Helen Jolly	Herbert Thompson
Louise Capshaw	Madge Jones	Louise Tippet
Bill Carpenter	Carl Lane	Edwin Troutman
Margaret Cole	Jack Luttrell	Magdalene Turpin
Rachel DeLancey	Charles Nelson	Rachel Ann Vance
Elizabeth Diggs	Zana Bary	Jack Whitener
Ben Goforth	June Renfrow	Rogers Whitener
Harold Hodges	Maurice Seaver	C. L. Williams
Troy Huskey	Helen Shore	Tom Winkler
John Hiatt		Vera Workman

# LUTHERAN STUDENT ASSOCIATION

NAOMI BROWN .....President      LOUISE BOST .....Secretary Treasurer  
 RUBY LEA KISER .....Vice-President      REV. E. F. TROUTMAN .....Sponsor

Minnie Lou Allen, James Barnes, Inez Bernhardt, Louise Bost, Betty Lou Brown, Naomi Brown, James Cuddy,  
 Ruby Lea Kiser, Margaret Lantz, Eugene Lyons, Herbert Moretz, Paul Moretz, Edwin Troutman, Rev. E. F.  
 Troutman, Vera Workman, Mrs. Clyde Winebarger, Margaret Winecoff.



## HOME ECONOMICS CLUB

GRACE FICKER .....President      OMA SHEW .....Secretary Treasurer  
 MRS. PAULINE ASHLEY .....Vice-President      ERNE WILLIAMS .....Reporter  
 MISS BETTY SUE STONE .....Faculty Adviser

Miss Luca Brock, Miss Ivy Spake, Linda Adkins, Minnie Lou Allen, Geraldine Armstrong, Betty Allison, Orelia Barber, Amelie  
 Bangness, Margaret Beamer, Helen Bowditch, Alene Bowen, Olive Brooks, Elizabeth Brown, Jo Brown, Naomi Brown, Sue Bunch,  
 Oleta Brown, Peggy Burris, Louise Chick, Lave Counts, Jane Covington, Elizabeth Crayton, Jo Dockery, Carol Erwin, Catherine  
 Ferror, Mary Gardner, Anne Graham, Mary Jean Grose, Anna Lave Hardm, Lina Harrel, Helen Helton, Grace Hollfield, Mrs.  
 Myrtle Hoyle, Elsie Hughes, Mary Sue Hunter, Pearl James, Nelda Jones, Ruby Lee Kiser, Lillian Moore, Imogene Moses, Effreta  
 McBraver, Frances McCall, Sara McCreight, Beta McNeal, Helen Osborne, Mrs. Marjorie Pittman, Lucille Pruitt, Lave Rhodes,  
 Lena Strickland, Celeste Stephens, Myrtle Swaringer, Sue Tidale, Geraldine Trinks, Lucille Vernon, Nellie Gray Webb, Anne Wil  
 hams, Arlene Williams, Margaret Williams, Madge Wood.

# HISTORY CLUB

ALVIN JOINES .....President      FRANCIS ESSIC .....Secretary  
 BERTHA WILLIS .....Vice-President      CLIFFORD OUSLEY .....Treasurer  
 DR. D. J. WHITENER .....Faculty Adviser

Mary Ross Black, Kate Bowers, James Bradford, Buddy Brooks, Jean Brown, Eloise Bull, Bill Carpenter, Ruth Cartner, Betty Cline, Marion Cobb, Jack Fletcher, Irene Fowler, Dennis Franklin, Patsy Hadley, Ruth Hester, Grovne Howard, Lloyd Isaacs, Claude Jarrett, Gene Johnston, Wesley Joines, Guy McCann, Mickey Marlowe, Elizabeth Medlin, Frances Parsons, Hugh Reavis, William Seaford, Jimmy Siske, Emory Stephens, Rebecca Tomlinson, C. L. Williams, Ruby Wilson, Dan Voss, Paul Yarborough.



# FRENCH CLUB

REBEKAH RIVERS .....President      MARY LOU FRAZIER .....Secretary-Treasurer  
 AUDREY HOPE .....Vice-President      MISS ELIZABETH CRADDOCK .....Sponsor

Allen Bandy, Richard Bingham, Nancy Black, Louise Bost, William Christensen, Tommy Craig, Seward Davis, Robert Dennis, Ruth Golding, Glenn Gollither, Lessie Goodman, David Hamilton, W. D. Huffines, John Hutchison, H. G. Jones, Carl Lane, Jack Lewis, Ernest Magness, Robert Martin, Elizabeth Pharr, Richard Pierce, Clifford Pittman, Lawrence Queen, Lane Reece, Roger Shepard, James Sherwood, Alvin Sturdivant, Rachael Vance, Catherine Vannoy, Barbara Weaver.

# CHEERLEADERS



MR. C. D. WILLIAMS, Sponsor  
 MARY KATHLEEN WILSON  
 PATSY SMITH

BENJAMIN CORBETT  
 LOIS EILER

MILDRED MARLIN  
 JAMES COBB AND MARION COBB

Junior Squad - RICHARD BINGHAM, MICKY MARLOW, MARY WALLACE, ANN SHRIWALL, RAY ALSTON.



# BAND

MR. GORDON NASH ..... Director  
DOUGLAS B. ARCHER ..... Major

First row: Albea, Beal, Braswell, Buff, Butler, Casey, Cole, Council. Second row: Craig, Hagaman, Harrill, Hunter, Isaacs, Jarrett, Johnson, Jones. Third row: King, Lindsay, Luttrell, McConnell, McCreight, Modlin, Mour, Norris. Fourth row: Pendry, Qualls, Rogers, Storie, Stout, Troutman, Vance, D. Voss. Fifth row: Warman, Whitner, Wilson. Sixth row: Winkler, York.

## BATON TWIRLERS

Left to Right: Erma Dean Heafner, Mary Elizabeth Guy, Betty Ray, Emma Gene Reynolds, Lou Rhyne, Benjamin D. Archer, Drum Major; Lena Strickland, Ekene Osborne, Sarah Kirkley, Peggy Burris, Margaret Lantz.



# WHO'S WHO AMONG STUDENTS IN AMERICAN UNIVERSITIES AND COLLEGES



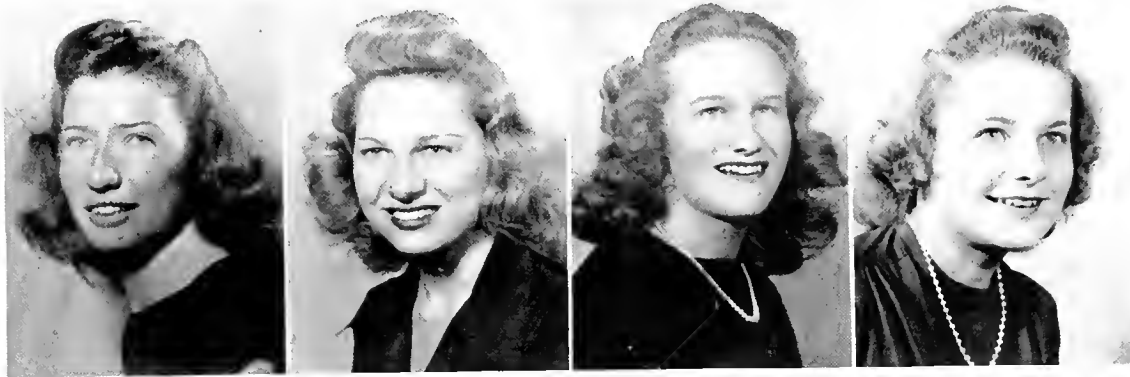
JOYCE BROOKSHIRE  
LILLIAN GRIFFITH  
MILDRED MARTIN  
USA LET RICHARDSON

JAMES COBB  
JOHN HALL  
KATHLEEN MOORE  
REBEKAH RIVERS

MARION COBB  
LOYD ISAACS  
RICHARD PIERCE  
PAISY SMITH

VERNON FELTON  
MARGARET LANTZ  
LOU RHYNE  
ROGERS WHITENER

# STUDENT COUNCIL



## OFFICERS

MILDRED MARTIN .....*President*  
 EMMA GENE REYNOLDS .....*Vice-President*  
 DORIS CLINE .....*Secretary*  
 LOU RHYNE .....*Treasurer*

### *Senior Representatives*

JOYCE BROOKSHIRE  
 MARION COBB  
 LILLIAN GRIFFITH  
 REBEKAH RIVERS

### *Junior Representatives*

LOU RANKIN  
 ROGERS WHITENER

### *Sophomore Representatives*

CARL FIDLER  
 HARLEY JOLLY





LLOYD ISAACS  
*Editor-in Chief*



JAMES COBB  
*Business Manager*

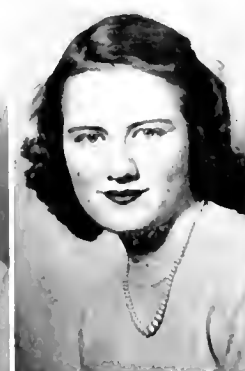
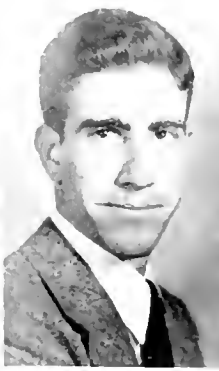


REBEKAH RIVERS  
*Associate Editor*



JOHN G. FULLER  
*Associate Editor*

# THE RHODOENDRON



## EDITORIAL STAFF

CARL EIDLER ..... Assistant Editor  
 REX GORDON ..... Managing Editor  
 RICHARD PIERCE ..... Feature Editor  
 WARREN HAWKINS ..... Sports Editor  
 WILHELMINA AYERS ..... Senior Class Editor  
 ROBERTA CRITCHER ..... Junior Class Editor  
 JIMMIE MCCONNELL ..... Sophomore Class Editor  
 JIMMY WINKLER ..... Freshman Class Editor

## BUSINESS STAFF

FRANCIS ESSIC ..... Assistant Business Manager  
 JOHN T. KING ..... Assistant Business Manager  
 JEAN BROWN ..... Circulation Manager  
 ANN STRIWALL ..... Typist  
 MR. V. C. HOWELL ..... Faculty Adviser



REBEKAH RIVERS  
Editor-in Chief



PATSY SMITH  
Business Manager



LLOYD ISAACS  
Associate Editor

# THE APPALACHIAN



## EDITORIAL STAFF

ROGERS WHITENER ..... Assistant Editor  
 MARGARET LANTZ ..... News Editor  
 EVELYN MILLER ..... Photographic Editor  
 MARY LOUISE WATKINS ..... Feature Editor  
 LILLIAN GRIFFITH ..... Feature Writer  
 CHARLES LEITH ..... Feature Writer  
 THELMA FATHING ..... Typist  
 ROBERTA CRITCHER ..... Typist  
 IRMA DIAN HEALNER ..... Reporter  
 REBEKAH BOONE ..... Reporter  
 EVELYN MCNEELY ..... Reporter  
 NELLIE JARVIS ..... Reporter  
 ANNIE SUE BUNCH ..... Reporter  
 DORIS CLINE ..... Reporter  
 JUNE BENBROW ..... Reporter

JOYCE BROOKSHIRE ..... Reporter  
 JIM COBB ..... Reporter  
 BETSY WEBSTER ..... Reporter  
 BILL HARRILL ..... Reporter  
 FLORENCE BUTT ..... Reporter

## SPORTS STAFF

RICHARD PHURCE ..... Editor  
 REX GORDON ..... Assistant Editor  
 BERTHA WILLIS ..... Assistant Editor  
 EARL THILLY ..... Assistant Editor  
 KATHLEEN MOORE ..... Reporter  
 MARION COBB ..... Reporter  
 MINT HILL ..... Reporter  
 GRACE HOLDFIELD ..... Typist

## BUSINESS STAFF

LOU RHYNE ..... Assistant  
 BETTY CLINE ..... Circulation Manager  
 JOYCE PATTON ..... Assistant Circulation Manager  
 C. I. WILLIAMS ..... Assistant Circulation Manager  
 DR. D. J. WHITENER ..... Sponsor





1922 — WATAUGA ACADEMY — 1947



*Helen Moore*

*May Queen*



MAY COURT



*Rebekah Rivers*

*Maid of Honor*





RACHAEL DELANCEY, *Senior Attendant*  
BERTHA FAYE WILLIS, *Senior Attendant*

OMA SHAW, *Senior Attendant*  
GRACE SHERWOOD, *Junior Attendant*



DORIS CLINE, Junior Attendant  
RACHEL ANNE VANCE, Sophomore Attendant

RUBY LEE KISER, Junior Attendant  
MICKY MARLOW, Freshman Attendant

BEulah GREY MARION, Sophomore Attendant  
SARAH MILLER MATTHEWS, Freshman Attendant



SENIOR  
SUPERLATIVES

MAX CARPENTER  
*Most Handsome*

JOYCE BROOKSHIRE  
*Most Attractive Girl*

ANDY DICKERSON  
*Most Intelligent*

RICHARD PIERCE  
*Most Likely to Succeed*  
*Most Versatile*

VERNON FELTON  
*Most Athletic Boy*

ENIMA GENE REYNOLDS  
*Most Athletic Girl*

MILDRED MARTIN  
*Most Friendly*





MILDRED MARTIN  
*Miss Appalachian*



VERNON FELTON  
*Mr. Appalachian*



ROGERS WHITENER  
*Most Valuable*



LOIS ELLER  
*Most Popular*



## SPONSORS

### RHODODENDRON STAFF

*Mrs. Lloyd Isaacs*

LLOYD ISAACS

*Editor-in-Chief*

*Mrs. H. C. Cobb, Sr.*

JAMES COBB

*Business Manager*





## SPONSORS

APPALACHIAN STAFF

*Mr. James C. Rivers*

REBEKAH RIVERS

*Editor-in-Chief*

*Mrs. Fred Smith*

PATSY ROSE SMITH

*Business Manager*





## SPONSORS

SENIOR CLASS

*Mrs. R. B. Pharr*

RICHARD R. PIERCE

*President*



JUNIOR CLASS

*Rebekah Rivers*

ROGERS WHITNER

*President*





## SPONSORS

SOPHOMORE CLASS

*Mrs. J. C. McConnell*

JIMMIE McCONNELL

*President*



Y. W. C. A.

*Mrs. W. C. Griffith*

LILLIAN GRIFFITH

*President*



# SPONSORS

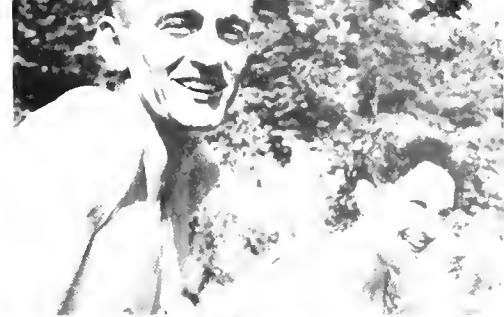
STUDENT COUNCIL

*John W. Martin*

MILDRED MARTIN

*President*





# SNOOP SHOTS



The Bodies . . . Men Only . . . Passing Fancies . . . They say they're of the glamorous variety; what do you think? . . . Forever Amber? . . . Cyrano? . . . Waterlogged . . . Where women are men and men are . . . First date — full of action . . . Whe-e-e-e-e! Fancy Pantsies . . . Rush N' Rivers . . . No ads yet . . . 10:40 . . . Target for the day.



1947 RHODODENDRON

*Pictures Made By*

**BRUMFIELD STUDIOS**

WEST FOURTH STREET

CHARLOTTE, NORTH CAROLINA

J. C. BRUMFIELD, *Owner*



## WILSON'S FEED STORE

*Larro and Purina Feeds*

Red Steer Fertilizer, Grass Seed,  
Fencing, Roofing, Building Supplies

Phone 146

BOONE, N. C.



## BARNETT MOTOR COMPANY

PONTIAC CARS

INTERNATIONAL TRUCKS

BOONE, NORTH CAROLINA

## JENKINS HARDWARE & FURNITURE CO.

*Complete Line of  
Hardware, Furniture and Building Materials*

*To Serve "WESTERN NORTH CAROLINA"*

NORTH WILKESBORO, NORTH CAROLINA

## HOTEL WILKES

J. B. McCoy, *Manager*

NORTH WILKESBORO, N. C.

*Key to the Blue Ridge Parkway*

**COLVARD**

**AUTO                      PARTS**

**and**

**CHEVROLET COMPANY**



*“A Friend of the College  
that Serves the College”*

**BOONE, NORTH CAROLINA**

## ARTISTIC BEAUTY SALON

FOR

*College Girls' Beauty Needs*

*Owned by* SCRUGGS AND STURDIVANT

Phone 8

BOONE, N. C.

## CAROLINA CAFE

*"Home of Fine Foods"*



COLLEGE STUDENTS ALWAYS WELCOME



*Owned by* CHIEF & MRS. O. L. SCRUGGS

Phone 9106

BOONE, N. C.

## BELK-WHITE CO.

BOONE, N. C.

*The Home of Better Values*

## CREST STORES CO.

BOONE'S MODERN SHOPPING CENTER

*"Service with a Smile"*

JOSEPH CONN, *Manager*

BOONE, N. C.

## MADDAUX ESSO STATION



*"Complete Service for Your Car"*



BOONE, N. C.

## BOONE DRUG COMPANY

*"The REXALL Store"*

Phone 17

G. K. MOOSE, *Owner*

BOONE, N. C.

## BARE'S FAIR STORE

"QUALITY MERCHANDISE FOR THE  
COLLEGE CAMPUS"

MRS. J. L. REESE, *Manager*

Phone 111

BOONE, N. C.

# GOODNIGHT BROTHERS

*Packers and Shippers of Watauga Produce*

BOONE, NORTH CAROLINA

*Meet Your Friends At*

## CAROLINA PHARMACY

PHONE 47

BOONE, N. C.

## GATEWAY CAFE

*"Quarterback Club Headquarters"*

*Fine Food to Suit Your Taste*

C. K. MARION, *Owner*

PHONE 5-J

BOONE, N. C.

*Compliments of*

## FARMERS HARDWARE CO., Inc.

*"Everything in Hardware and Associate Lines"*

BOONE, NORTH CAROLINA



## A. R. Smith's Esso Service

Blowing Rock Road

BOONE, N. C.

*Groceries—Cold Drinks*

## Craven Furniture Company



*Complete*

HOME FURNISHINGS

Main Street

Phone 95

BOONE, NORTH CAROLINA

## Watauga Democrat

"Established 1888"

R. C. RIVERS, *Owner*

BOONE, N. C.

*Compliments of*

## Watauga Hardware, Inc.

"THE FRIENDLY STORE"

BOONE, NORTH CAROLINA

## Smithey's Department Store

*Boone's Largest New Daylight Store*



DRY GOODS, GROCERIES, FEEDS,  
POULTRY, GASOLINE AND OILS

*Visit Our Lunch Room*

## Boone Tire & Bargain Store

*Furniture*

*Electric Appliances*

BOONE, N. C.

## Todd's ESSO Service

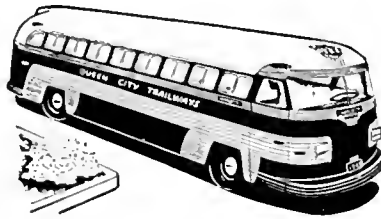
WASHING, GREASING, TIRES,  
BATTERIES



Next to Post Office

Phone 9105

BOONE, N. C.



*Serving... The Carolinas, Tennessee, and Georgia*

*with*

UNEXCELLED MOTOR BUS SERVICE

SAFE      ECONOMICAL      CONVENIENT      COMFORTABLE

QUEEN CITY TRAILWAYS

CHARLOTTE, N. C.

## Hickory Sporting Goods Co.

*Authorized Dealer for*  
MACGREGOR, GOLDSMITH AND SPALDING  
*Athletic Equipment*



FISHING—HUNTING  
BICYCLES—TOYS

RACQUETS RESTRUNG  
(24-Hour Service)

Phone 1540                      1212 11th Avenue  
HICKORY, N. C.

*Sports Headquarters for Western  
North Carolina*

## HERFF-JONES CO.

*Designers and Manufacturers of*  
SCHOOL AND COLLEGE JEWELRY, GRADUA-  
TION ANNOUNCEMENTS, MEDALS, CUPS,  
AND TROPHIES

INDIANAPOLIS, INDIANA

*Jewelers to*

APPALACHIAN STATE TEACHERS COLLEGE

O. E. BASS, *Representative*

## RADIO STATION

# W H K Y

HICKORY, NORTH CAROLINA

180,000 Watt F M Station  
Under Construction



*Outfitters for Men and Boys*

HICKORY, NORTH CAROLINA



**BARGER BROTHERS  
CONSTRUCTION CO.**

*General Contractors*

Supporters of Appalachian

MOORESVILLE, NORTH CAROLINA



*Waldensian  
Sunbeam Bread*



**WALDENSIAN BAKING COMPANY**

Valdese, North Carolina

**WALKER'S JEWELRY  
STORE**

WATCHES—DIAMONDS

*General Line of Jewelry*

WILL C. WALKER, *Owner*

BOONE, N. C.

*Compliments of*  
**WESTERN AUTO  
ASSOCIATE STORE**

J. C. CLINE, *Owner*

BOONE, N. C.

Headquarters for Sporting Goods,  
Auto Parts, Etc.

**BOONE FLOWER SHOP**

*"Flowers for All Occasions"*

Student Headquarters for Flowers

Phone 214-J

BOONE, N. C.

*Compliments of*

**B. W. STALLINGS**

*"Your College Jeweler"*

BOONE, N. C.

*Watches—Diamonds—Jewelry*

**Electric Supply Company**

ASHEVILLE, NORTH CAROLINA

*Distributors*

GE and Sylvania Fluorescent and  
Incandescent Lamps

Sylvania Fluorescent Commercial and  
Industrial Units

Viriden Residential Fixtures

*Let Us Serve You Through Your Local Dealer*

**HOLLARS GROCERY**

FRESH VEGETABLES, LOCAL AND WESTERN  
MEATS, FROZEN FOODS, FANCY GROCERIES,  
FEEDS

J. E. HUFFMAN

B. W. ELLIS

*Delightful Candy  
To Have Handy!*

**SCHRAFFT'S  
CHOCOLATES**

To one who has never before tested SCHRAFFT'S  
Chocolates, each piece is a delightful surprise. The  
magic of their goodness is in the blending of the  
finest materials in exactly the right proportions to  
insure the utmost in fine flavor.

On Sale at  
Good Candy Places  
85c, \$1.25 and \$1.75 a Pound

**Morgan Brothers, Inc.**

*Wholesale Distributors*

ASHEVILLE, N. C.

**WATAUGA HOTEL**

GRADE "A"

Nearest Hotel to College Campus



# College Book Store

*Student Headquarters*

SCHOOL SUPPLIES—LUNCHEONETTE

W. R. COTTRELL, *Manager*

FRANCES HARTLEY

TERESA HOLLARS

RACHEL GREENE





*To the Future Teachers of America—*

## **WE EXPLAIN**

*It Is Our Aim To*

Build a More Prosperous Agricultural Program  
by Furnishing a Market for and Giving Improved  
Methods to the Dairy Farmer.

Build Better Health by Supplying Quality Milk,  
Ice Cream and Other Dairy Products.



**COBLE DAIRY PRODUCTS, Inc.**





**FORD—MERCURY—LINCOLN**

*Sales and Service*

Phone 69—235-W

**Winkler Motor Company**

We Are Headquarters for Clothing and Shoes for

**A. S. T. C.**

**Hunt's Department Store**

*Boone's Favorite Department Store*

*Compliments of*

**EUSTIS LANCASTER ASSOCIATES**

JOHNSON CITY,

TENNESSEE



*Compliments of*

*Coca-Cola*

*Bottling Company*

HICKORY, N. C.



*"a health food"*

**PET DAIRY PRODUCTS  
COMPANY**

JOHNSON CITY, TENN.



## CORNER SHOP

GIFTS—SOUVENIRS  
WATCH REPAIRING

G. G. MORETZ, *Owner*

Main Street

BOONE, N. C.

Men Prefer Us for Quick Complete  
Service in Congenial Surroundings

## RAY'S BARBER SHOP

JERRY WILSON

C. F. RAY

C. F. RAY, *Owner*

## THE GOLD SHOP

*"Where It's Smart to be Thrifty"*

*Clothes for College Girls*

HICKORY

LENOIR

## BOONE BODY SHOP

REBUILDING WRECKED BODIES

OUR SPECIALTY

*Expert Refinishing*

"FISHER BODY" SIMS, *Proprietor*

# *Appalachian Theatre*

*"Always the Best in Modern Movies for the  
College Students"*

## REINS-STURDIVANT OF BOONE, Inc.

*Funeral Directors and Licensed Embalmers*

Phone 24—Day and Night

BOONE, NORTH CAROLINA

REINS-STURDIVANT MUTUAL BURIAL ASSOCIATION, INC.

North Wilkesboro, Boone, Newland, West Jefferson, Sparta, Lenoir, N. C.

# Appalachian State Teachers College

BOONE, NORTH CAROLINA



DEVOTED EXCLUSIVELY TO  
TEACHER TRAINING FOR PUBLIC  
EDUCATION IN THE SOUTH



*Full Summer Quarter*



## HOME ELECTRIC SUPPLY CO. HOME JEWELRY STORE

104 Main Street

BOONE, N. C.



## FRANK M. PAYNE

*General Agent*

**Security Life & Trust Company**

Northwestern Bank Building  
BOONE, N. C.

Phones:

Office 228-W

Residence 55

A GOOD START IS HALF THE BATTLE

## WATAUGA BUILDING AND LOAN ASSOCIATION

BANK BUILDING

BOONE, N. C.

## SANITARY BARBER SHOP

The Best in All Types of  
Tonsorial Work

BOONE, N. C.

## BOONE CANDY COMPANY

*Complete Line of the  
Finer Sweets*

WHOLESALE ONLY

*Compliments of*

**Montaldo's**

*Exclusive Women's Fashions*

WINSTON-SALEM, NORTH CAROLINA

ANTIQUES

**EDMISTEN FURNITURE CO.**

420 West Main St.

*New and Used Furniture*

BOONE, NORTH CAROLINA

*Compliments of*

**FARMERS BURLEY WAREHOUSE, Inc.**

*"House of Friendly Service"*

A. G. WRIGHT

C. C. TAYLOR

REX TAYLOR

BOONE, NORTH CAROLINA

*Compliments of*

**The NORTHWESTERN BANK**

W. D. FARTHING, *Cashier*

BOONE, N. C.

**S. C. EGGERS**

REAL ESTATE BROKER

We Buy and Sell Real Estate

*Rentals*

**DANIEL BOONE HOTEL**

"In the Mountains of the Blue Ridge Parkway"

*Dining Room Service*

Elevation 3333 Feet

C. A. PRICE, *Manager*

BOONE, NORTH CAROLINA

# CITY FLORIST

Telephone 200 or 26-711

811 Main Street

NORTH WILKESBORO, N. C.

Member of F. T. D.

*Equipped to Serve Appalachian*

MRS. J. M. PALMER, *Manager*

## ELECTRICITY SERVES YOU

*Time-Saving and Penny-Wise*

## NEW RIVER LIGHT AND POWER COMPANY

## MILK IS HEALTHY

GRADE "A"

*Hillside Products at—*

Better Stores, Cafes and Hotels

QUALITY BUTTER, BUTTERMILK  
AND MILK RICH IN BUTTER-FAT

## HILLSIDE DAIRY

Telephone 44

BOONE, N. C.

*"Your Leading Dairy"*

Home-Owned and Home Operated







